

Selected Socio-Economic Data

Bluefield city, West Virginia

African American and White, Not Hispanic

Data Set: 2008-2012 American Community Survey 5-Year Estimates

www.fairvote2020.org

www.fairdata2000.com

[29-Dec-13](#)

C02003.DETAILED RACE - Universe: TOTAL POPULATION

Data Set: 2008-2012 American Community Survey 5-Year Estimates

	Bluefield city, West Virginia		
	Population	Margin of Error (+/-)	% of Total
Total:	10,486	34	100.0%
Population of one race:	10,345	119	98.7%
White	7,864	293	75.0%
Black or African American	2,358	272	22.5%
American Indian and Alaska Native	0	18	0.0%
Asian alone	117	119	1.1%
Native Hawaiian and Other Pacific Islander	0	18	0.0%
Some other race	6	11	0.1%
Population of two or more races:	141	111	1.3%
Two races including Some other race	0	18	0.0%
Two races excluding Some other race, and three or more races	141	111	1.3%
Population of two races:	141	111	1.3%
White; Black or African American	121	105	1.2%
White; American Indian and Alaska Native	20	30	0.2%
White; Asian	0	18	0.0%
Black or African American; American Indian and Alaska Native	0	18	0.0%
All other two race combinations	0	18	0.0%
Population of three races	0	18	0.0%
Population of four or more races	0	18	0.0%

Note: Hispanics may be of any race. See Table B03002 and chart.

Source: U.S. Census Bureau, 2008-2012 American Community Survey

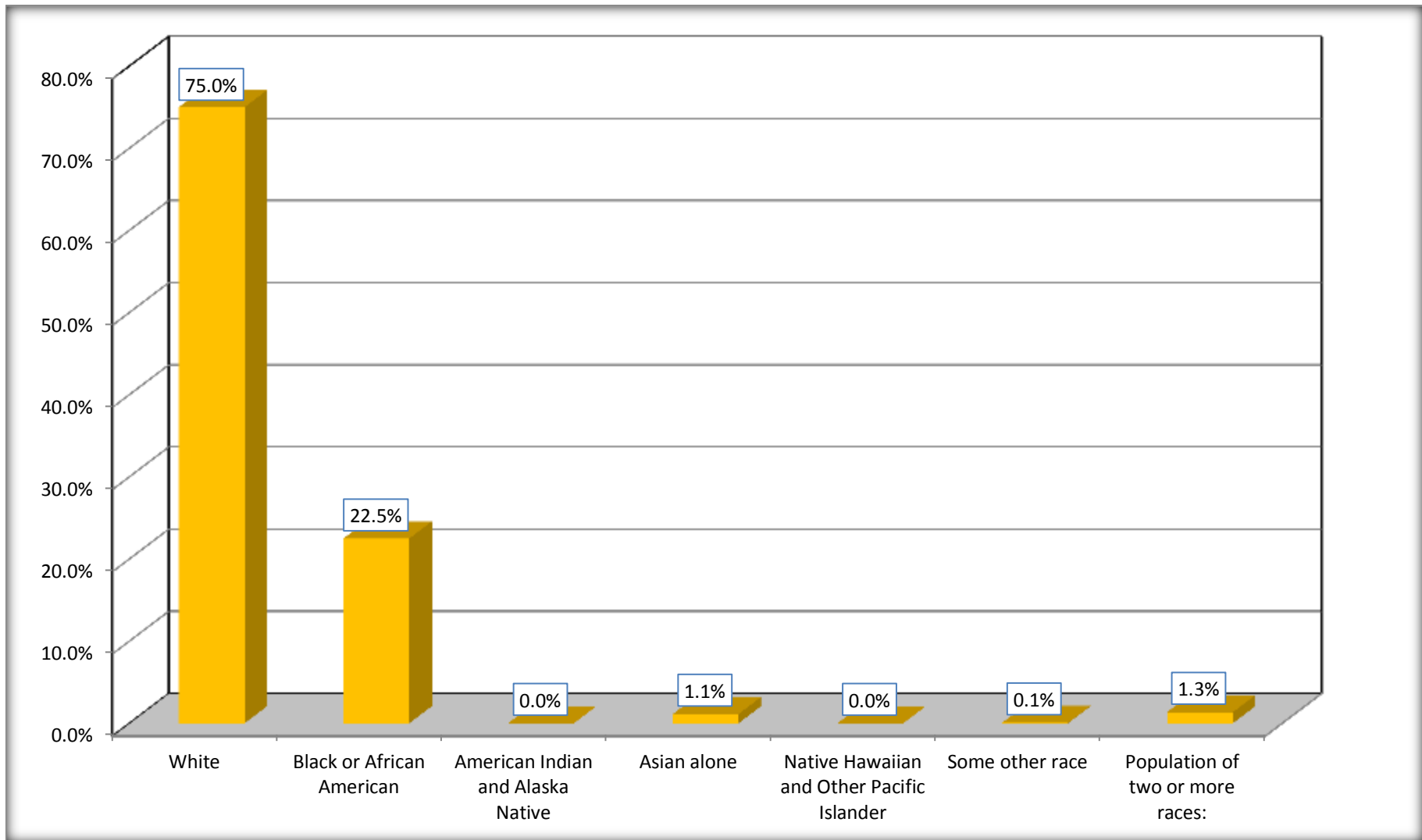
Although the American Community Survey (ACS) produces population, demographic and housing unit estimates, it is the Census Bureau's Population Estimates Program that produces and disseminates the official estimates of the population for the nation, states, counties, cities and towns and estimates of housing units for states and counties.

For information on confidentiality protection, sampling error, nonsampling error, and definitions, see Survey Methodology.

<http://www.census.gov/acs/www/UseData/index.htm>

Population by Race

Bluefield city, West Virginia



Source: C02003.DETAILED RACE - Universe: TOTAL POPULATION
Data Set: 2008-2012 American Community Survey 5-Year Estimates

B03002. HISPANIC OR LATINO ORIGIN BY RACE - Universe: TOTAL POPULATION

Data Set: 2008-2012 American Community Survey 5-Year Estimates

	Bluefield city, West Virginia		
	Population	Margin of Error (+/-)	% of Total
Total:	10,486	34	100.0%
Not Hispanic or Latino:	10,292	178	98.1%
White alone	7,676	336	73.2%
Black or African American alone	2,358	272	22.5%
American Indian and Alaska Native alone	0	18	0.0%
Asian alone	117	119	1.1%
Native Hawaiian and Other Pacific Islander alone	0	18	0.0%
Some other race alone	0	18	0.0%
Two or more races:	141	111	1.3%
Two races including Some other race	0	18	0.0%
Two races excluding Some other race, and three or more races	141	111	1.3%
Hispanic or Latino	194	169	1.9%

Source: U.S. Census Bureau, 2008-2012 American Community Survey

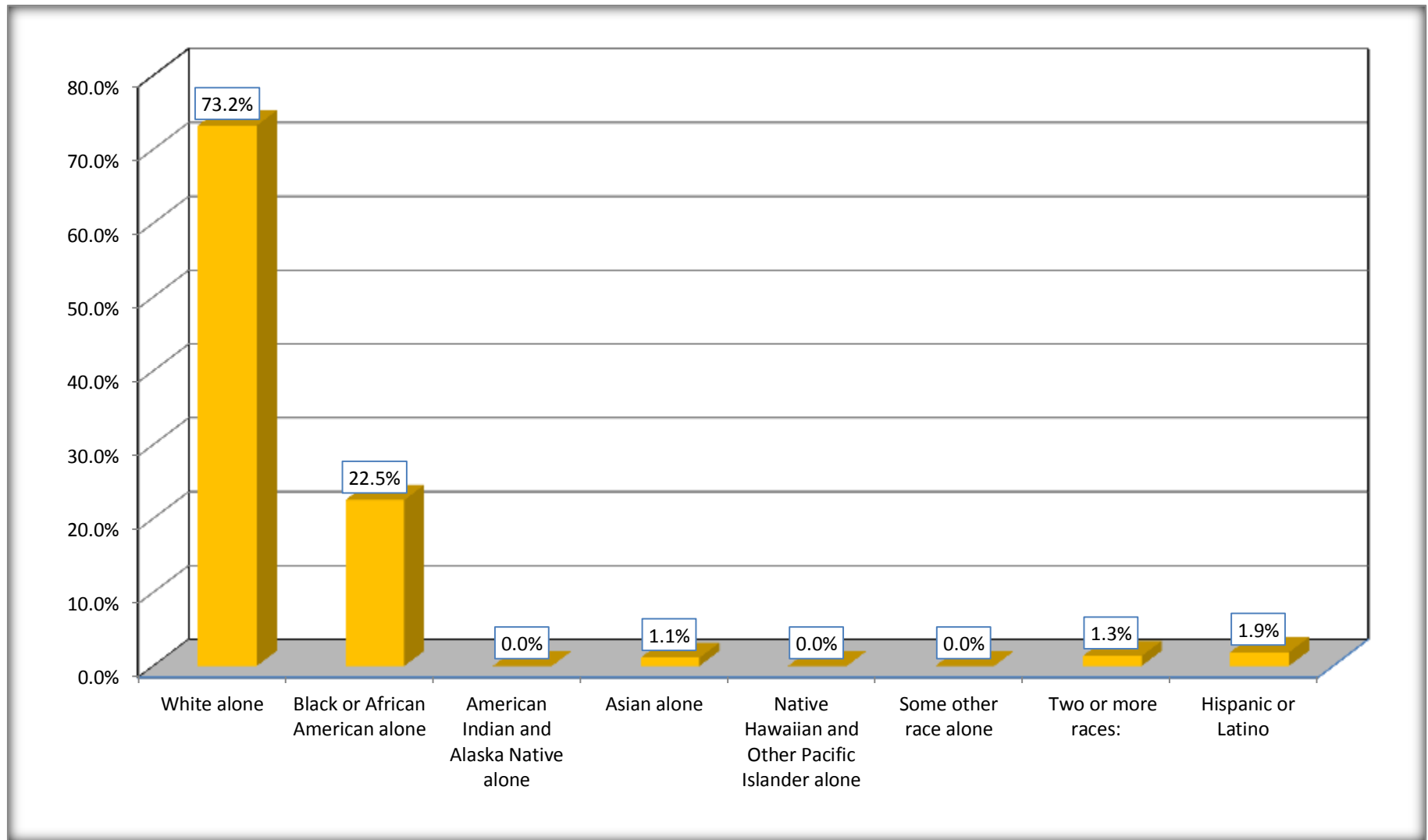
Although the American Community Survey (ACS) produces population, demographic and housing unit estimates, it is the Census Bureau's Population Estimates Program that produces and disseminates the official estimates of the population for the nation, states, counties, cities and towns and estimates of housing units for states and counties.

For information on confidentiality protection, sampling error, nonsampling error, and definitions, see Survey Methodology.

<http://www.census.gov/acs/www/UseData/index.htm>

Non-Hispanic by Race and Hispanic Population

Bluefield city, West Virginia



Source: B03002. HISPANIC OR LATINO ORIGIN BY RACE - Universe: TOTAL POPULATION
Data Set: 2008-2012 American Community Survey 5-Year Estimates

B03002. HISPANIC OR LATINO ORIGIN BY RACE

Data Set: 2008-2012 American Community Survey 5-Year Estimates

	Bluefield city, West Virginia		
	Population	Margin of Error (+/-)	% of Total
Hispanic or Latino:	194	169	100.0%
White alone	188	172	96.9%
Black or African American alone	0	18	0.0%
American Indian and Alaska Native alone	0	18	0.0%
Asian alone	0	18	0.0%
Native Hawaiian and Other Pacific Islander alone	0	18	0.0%
Some other race alone	6	11	3.1%
Two or more races:	0	18	0.0%
Two races including Some other race	0	18	0.0%
Two races excluding Some other race, and three or more races	0	18	0.0%

Source: U.S. Census Bureau, 2008-2012 American Community Survey

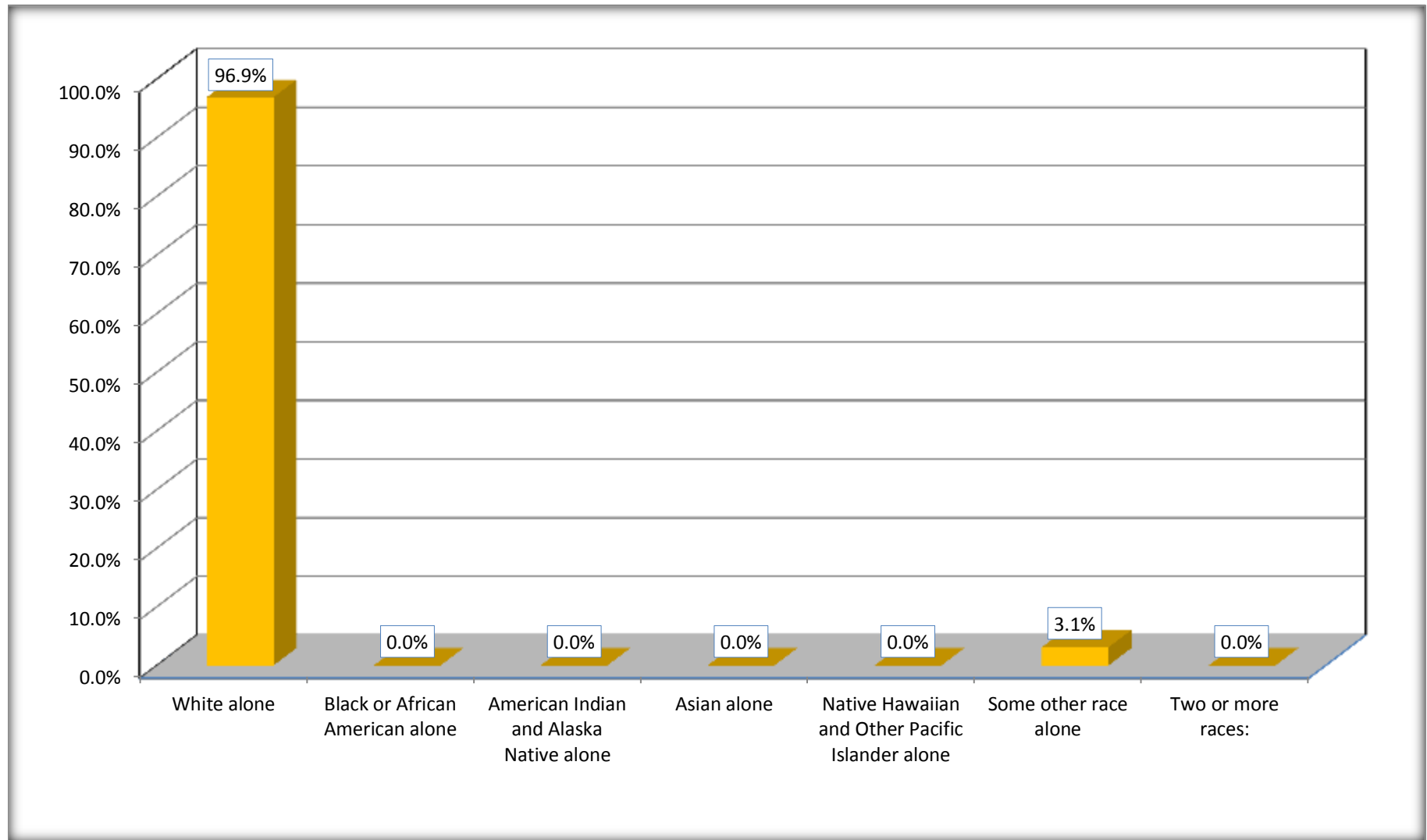
Although the American Community Survey (ACS) produces population, demographic and housing unit estimates, it is the Census Bureau's Population Estimates Program that produces and disseminates the official estimates of the population for the nation, states, counties, cities and towns and estimates of housing units for states and counties.

For information on confidentiality protection, sampling error, nonsampling error, and definitions, see Survey Methodology.

<http://www.census.gov/acs/www/UseData/index.htm>

Hispanic or Latino Origin by Race

Bluefield city, West Virginia



Source: B03002. HISPANIC OR LATINO ORIGIN BY RACE
Data Set: 2008-2012 American Community Survey 5-Year Estimates

B01001. SEX BY AGE

Data Set: 2008-2012 American Community Survey 5-Year Estimates

	Bluefield city, West Virginia					
	African American	Margin of Error (+/-)	% of AA Total	White, Not Hispanic	Margin of Error (+/-)	% of NHW Total
Total:	2,358	272	100.0%	7,676	336	100.0%
Under 18 years	698	NC	29.6%	1,210	NC	15.8%
18 to 64 years	1,336	NC	56.7%	4,527	NC	59.0%
65 years and over	324	NC	13.7%	1,939	NC	25.3%
Male:	1,118	183	47.4%	3,645	389	47.5%
Under 18 years	379	NC	16.1%	642	NC	8.4%
18 to 64 years	629	NC	26.7%	2,132	NC	27.8%
65 years and over	110	NC	4.7%	871	NC	11.3%
Female:	1,240	178	52.6%	4,031	412	52.5%
Under 18 years	319	NC	13.5%	568	NC	7.4%
18 to 64 years	707	NC	30.0%	2,395	NC	31.2%
65 years and over	214	NC	9.1%	1,068	NC	13.9%

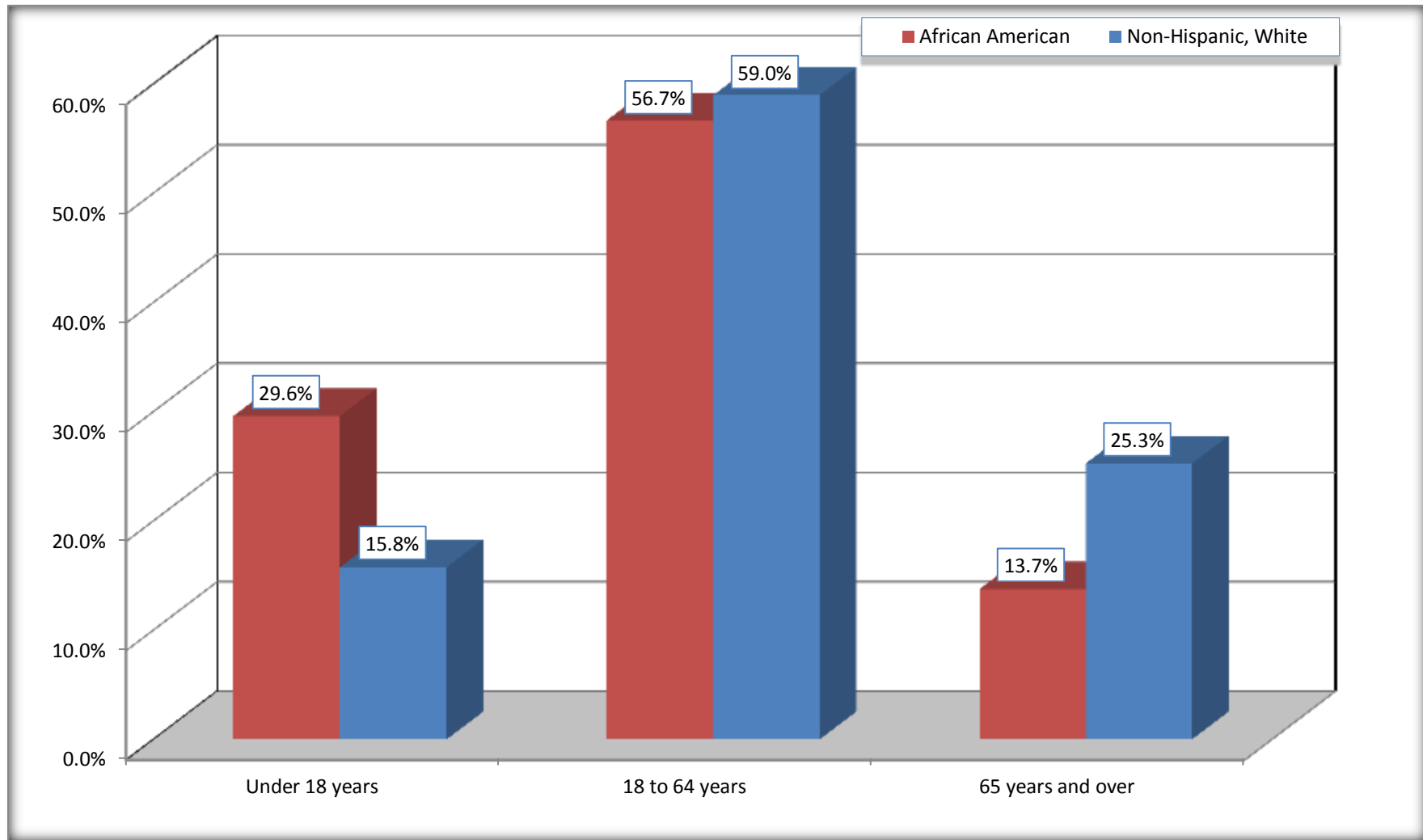
Source: U.S. Census Bureau, 2008-2012 American Community Survey

Although the American Community Survey (ACS) produces population, demographic and housing unit estimates, it is the Census Bureau's Population Estimates Program that produces and disseminates the official estimates of the population for the nation, states, counties, cities and towns and estimates of housing units for states and counties.

For information on confidentiality protection, sampling error, nonsampling error, and definitions, see Survey Methodology.
<http://www.census.gov/acs/www/UseData/index.htm>

Population by Age

Bluefield city, West Virginia



Source: B01001. SEX BY AGE
Data Set: 2008-2012 American Community Survey 5-Year Estimates

B05003. SEX BY AGE BY CITIZENSHIP STATUS

Data Set: 2008-2012 American Community Survey 5-Year Estimates

	Bluefield city, West Virginia					
	African American	Margin of Error (+/-)	% of AA Total by Age	White, Not Hispanic	Margin of Error (+/-)	% of NHW Total by Age
Total:	2,358	272	100.0%	7,676	336	100.0%
Under 18 years:	698	NC	100.0%	1,210	NC	100.0%
Native	669	NC	95.8%	1,210	NC	100.0%
Foreign born:	29	NC	4.2%	0	NC	0.0%
Naturalized U.S. citizen	0	NC	0.0%	0	NC	0.0%
Not a U.S. citizen	29	NC	4.2%	0	NC	0.0%
18 years and over:	1,660	NC	100.0%	6,466	NC	100.0%
Native	1,649	NC	99.3%	6,397	NC	98.9%
Foreign born:	11	NC	0.7%	69	NC	1.1%
Naturalized U.S. citizen	0	NC	0.0%	62	NC	1.0%
Not a U.S. citizen	11	NC	0.7%	7	NC	0.1%
Male:	1,118	183	47.4%	3,645	256	47.5%
Under 18 years:	379	123	100.0%	642	123	100.0%
Native	361	120	95.3%	642	123	100.0%
Foreign born:	18	27	4.7%	0	18	0.0%
Naturalized U.S. citizen	0	18	0.0%	0	18	0.0%
Not a U.S. citizen	18	27	4.7%	0	18	0.0%
18 years and over:	739	127	100.0%	3,003	239	100.0%
Native	739	127	100.0%	2,959	243	98.5%
Foreign born:	0	18	0.0%	44	61	1.5%
Naturalized U.S. citizen	0	18	0.0%	37	61	1.2%
Not a U.S. citizen	0	18	0.0%	7	12	0.2%

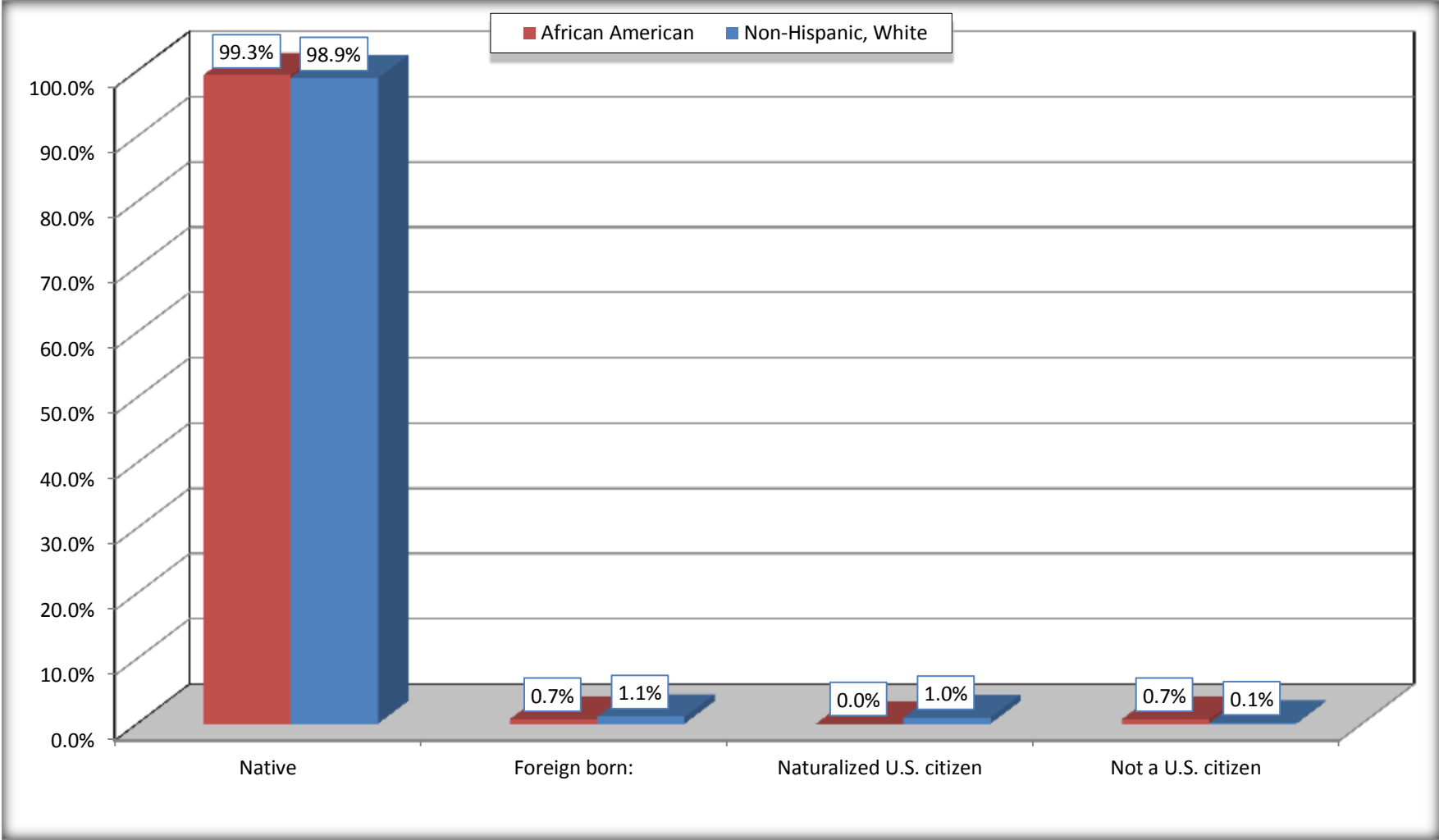
	Bluefield city, West Virginia					
	African American	Margin of Error (+/-)	% of AA by Age	White, Not Hispanic	Margin of Error (+/-)	% of NHW by Age
Female:	1,240	178	52.6%	4,031	251	52.5%
Under 18 years:	319	87	100.0%	568	146	100.0%
Native	308	88	96.6%	568	146	100.0%
Foreign born:	11	18	3.4%	0	18	0.0%
Naturalized U.S. citizen	0	18	0.0%	0	18	0.0%
Not a U.S. citizen	11	18	3.4%	0	18	0.0%
18 years and over:	921	128	100.0%	3,463	213	100.0%
Native	910	125	98.8%	3,438	214	99.3%
Foreign born:	11	17	1.2%	25	28	0.7%
Naturalized U.S. citizen	0	18	0.0%	25	28	0.7%
Not a U.S. citizen	11	17	1.2%	0	18	0.0%

Source: U.S. Census Bureau, 2008-2012 American Community Survey

For information on confidentiality protection, sampling error, nonsampling error, and definitions, see Survey Methodology.
<http://www.census.gov/acs/www/UseData/index.htm>

Citizenship Status of Voting Age Population (18 and Over)

Bluefield city, West Virginia



Source: B05003. SEX BY AGE BY CITIZENSHIP STATUS
Data Set: 2008-2012 American Community Survey 5-Year Estimates

**B07004. GEOGRAPHICAL MOBILITY IN THE PAST YEAR BY RACE FOR CURRENT RESIDENCE IN THE UNITED STATES - Universe:
POPULATION 1 YEAR AND OVER**

Data Set: 2008-2012 American Community Survey 5-Year Estimates

	Bluefield city, West Virginia					
	African American	Margin of Error (+/-)	% of AA Total	White, Not Hispanic	Margin of Error (+/-)	% of NHW Total
Total:	2,358	272	100.0%	7,606	330	100.0%
Same house 1 year ago	2,032	278	86.2%	6,663	342	87.6%
Moved within same county	167	150	7.1%	419	204	5.5%
Moved from different county within same state	59	56	2.5%	282	173	3.7%
Moved from different state	100	143	4.2%	242	146	3.2%
Moved from abroad	0	18	0.0%	0	18	0.0%

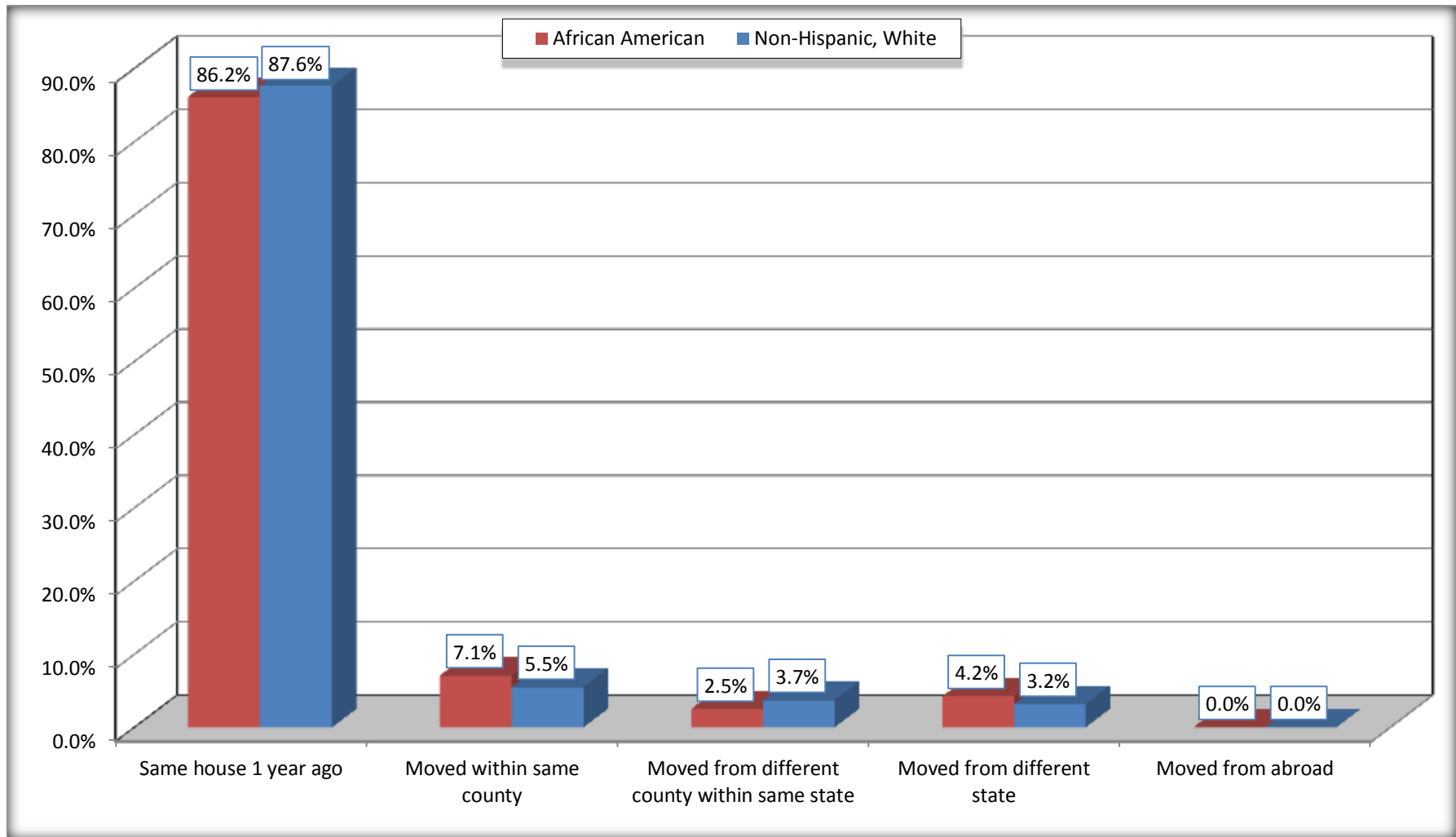
Source: U.S. Census Bureau, 2008-2012 American Community Survey

For information on confidentiality protection, sampling error, nonsampling error, and definitions, see Survey Methodology.

<http://www.census.gov/acs/www/UseData/index.htm>

Geographical Mobility in the Past Year (Population 1 Year and Over)

Bluefield city, West Virginia



Source: B07004. GEOGRAPHICAL MOBILITY IN THE PAST YEAR BY RACE FOR CURRENT RESIDENCE IN THE UNITED STATES - Universe: POPULATION 1 YEAR AND OVER

Data Set: 2008-2012 American Community Survey 5-Year Estimates

B08105. MEANS OF TRANSPORTATION TO WORK - Universe: WORKERS 16 YEARS AND OVER

Data Set: 2008-2012 American Community Survey 5-Year Estimates

	Bluefield city, West Virginia					
	African American	Margin of Error (+/-)	% of AA Total	White, Not Hispanic	Margin of Error (+/-)	% of NHW Total
Total:	850	159	100.0%	3318	304	100.0%
Car, truck, or van - drove alone	614	132	72.2%	2913	293	87.8%
Car, truck, or van - carpooled	43	40	5.1%	169	75	5.1%
Public transportation (excluding taxicab)	35	36	4.1%	2	5	0.1%
Walked	77	63	9.1%	68	62	2.0%
Taxicab, motorcycle, bicycle, or other means	0	18	0.0%	23	27	0.7%
Worked at home	81	63	9.5%	143	95	4.3%

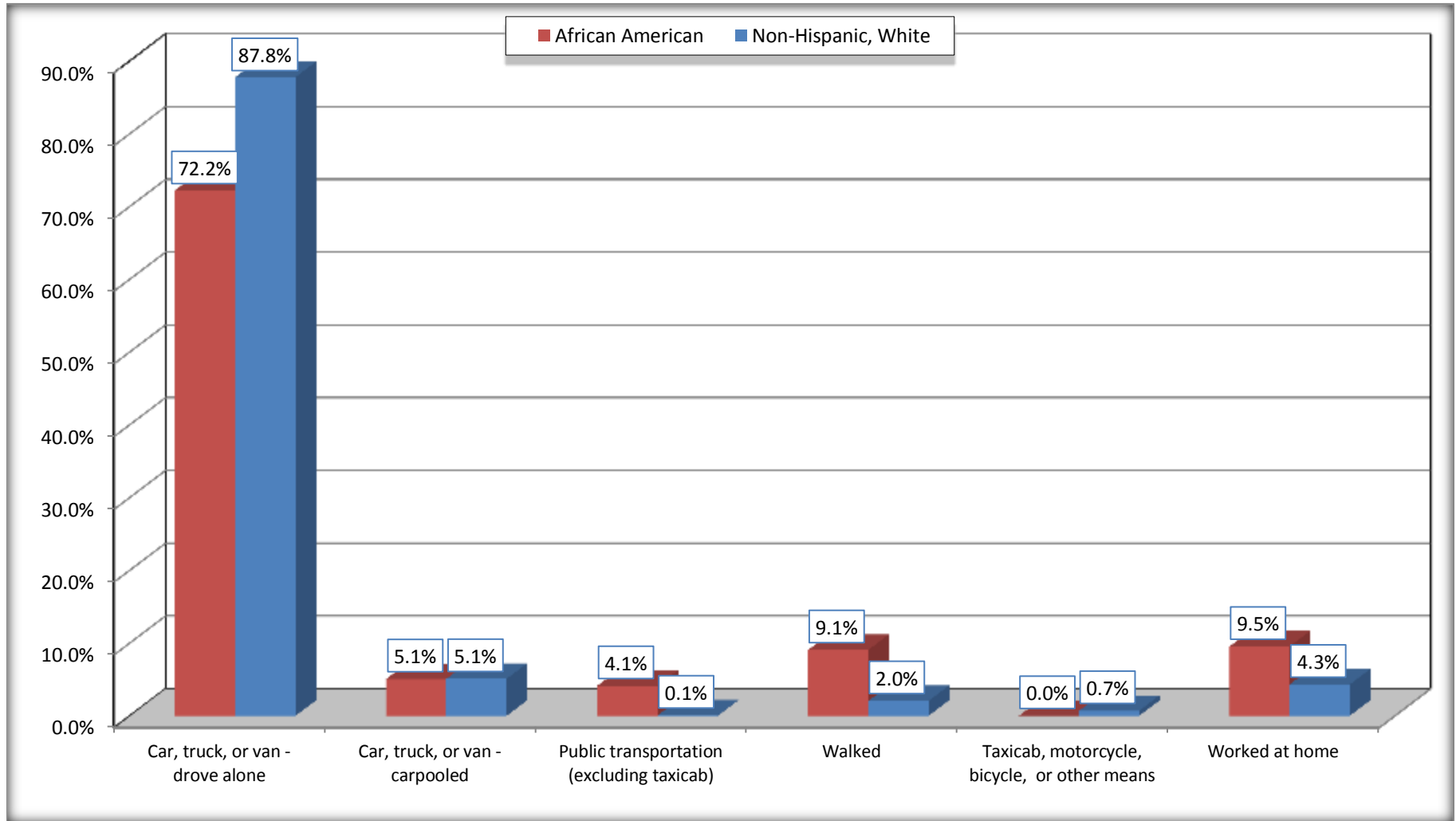
Source: U.S. Census Bureau, 2008-2012 American Community Survey

For information on confidentiality protection, sampling error, nonsampling error, and definitions, see Survey Methodology.

<http://www.census.gov/acs/www/UseData/index.htm>

Means of Transportation to Work (Workers 16 Years and Over)

Bluefield city, West Virginia



Source: B08105. MEANS OF TRANSPORTATION TO WORK - Universe: WORKERS 16 YEARS AND OVER
Data Set: 2008-2012 American Community Survey 5-Year Estimates

B11002. HOUSEHOLD TYPE BY RELATIVES AND NONRELATIVES FOR POPULATION IN HOUSEHOLDS

Data Set: 2008-2012 American Community Survey 5-Year Estimates

	Bluefield city, West Virginia					
	African American	Margin of Error (+/-)	% of AA Total	White, Not Hispanic	Margin of Error (+/-)	% of NHW Total
Total:	2263	294	100.0%	7829	317	100.0%
In family households	1873	295	82.8%	6031	388	77.0%
In nonfamily households	390	111	17.2%	1798	310	23.0%

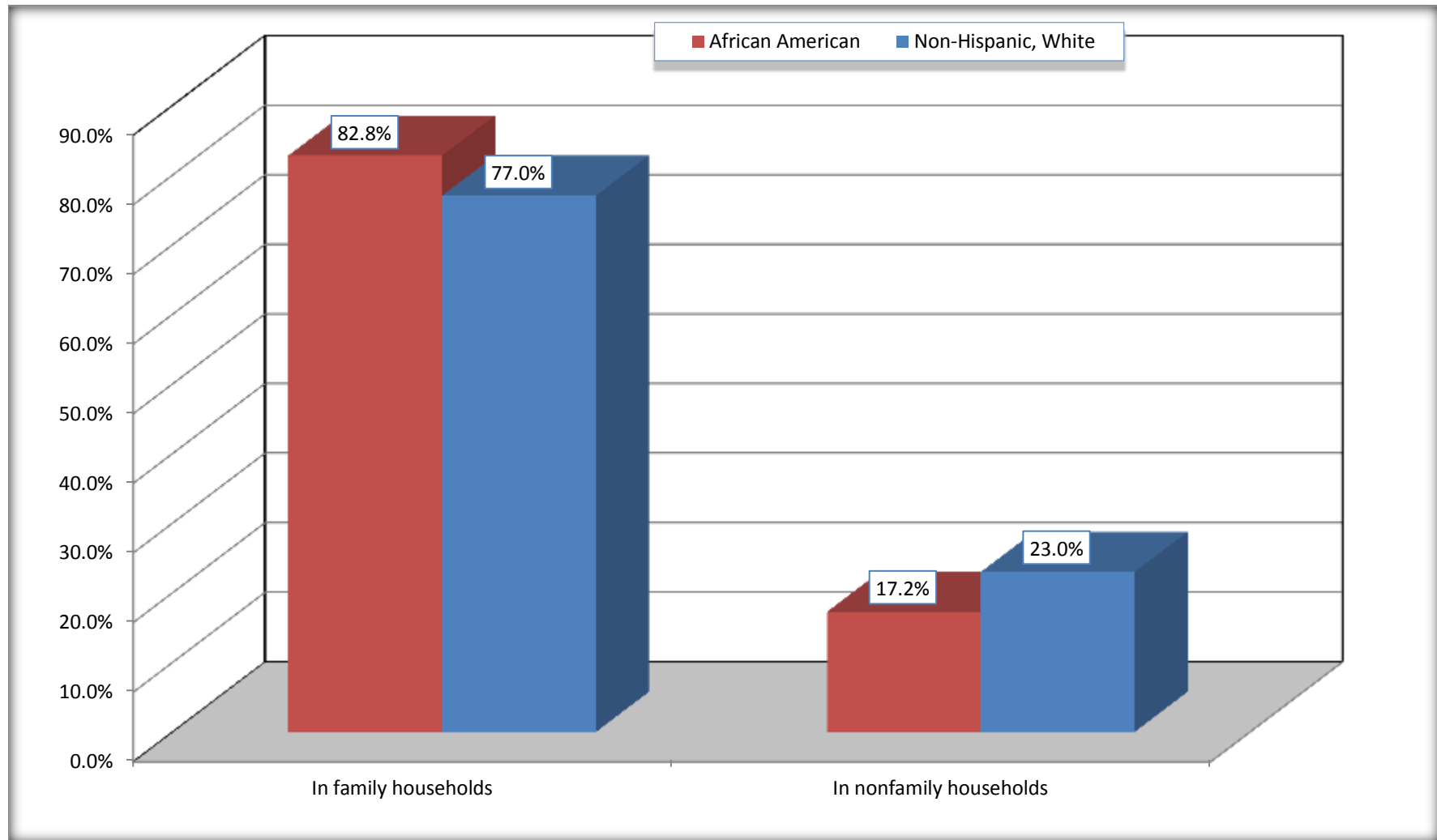
Source: U.S. Census Bureau, 2008-2012 American Community Survey

For information on confidentiality protection, sampling error, nonsampling error, and definitions, see Survey Methodology.

<http://www.census.gov/acs/www/UseData/index.htm>

Household Type for Population in Households

Bluefield city, West Virginia



Source: B11002. HOUSEHOLD TYPE BY RELATIVES AND NONRELATIVES FOR POPULATION IN HOUSEHOLDS
Data Set: 2008-2012 American Community Survey 5-Year Estimates

B12002. MARITAL STATUS FOR THE POPULATION 15 YEARS AND OVER

Data Set: 2008-2012 American Community Survey 5-Year Estimates

	Bluefield city, West Virginia					
	African American	Margin of Error (+/-)	% of AA Total	White, Not Hispanic	Margin of Error (+/-)	% of NHW Total
Total:	1,789	219	100.0%	6,731	300	100.0%
Never married	815	NC	45.6%	1,478	NC	22.0%
Now married (except separated)	607	NC	33.9%	3,723	NC	55.3%
Separated	18	NC	1.0%	79	NC	1.2%
Widowed	161	NC	9.0%	770	NC	11.4%
Divorced	188	NC	10.5%	681	NC	10.1%
Male:	790	128	44.2%	3,131	249	46.5%
Never married	316	87	17.7%	881	228	13.1%
Now married (except separated)	373	89	20.8%	1,811	173	26.9%
Separated	0	18	0.0%	42	49	0.6%
Widowed	29	31	1.6%	170	91	2.5%
Divorced	72	57	4.0%	227	91	3.4%
Female:	999	149	55.8%	3,600	218	53.5%
Never married	499	139	27.9%	597	182	8.9%
Now married (except separated)	234	85	13.1%	1,912	160	28.4%
Separated	18	20	1.0%	37	56	0.5%
Widowed	132	41	7.4%	600	128	8.9%
Divorced	116	54	6.5%	454	130	6.7%

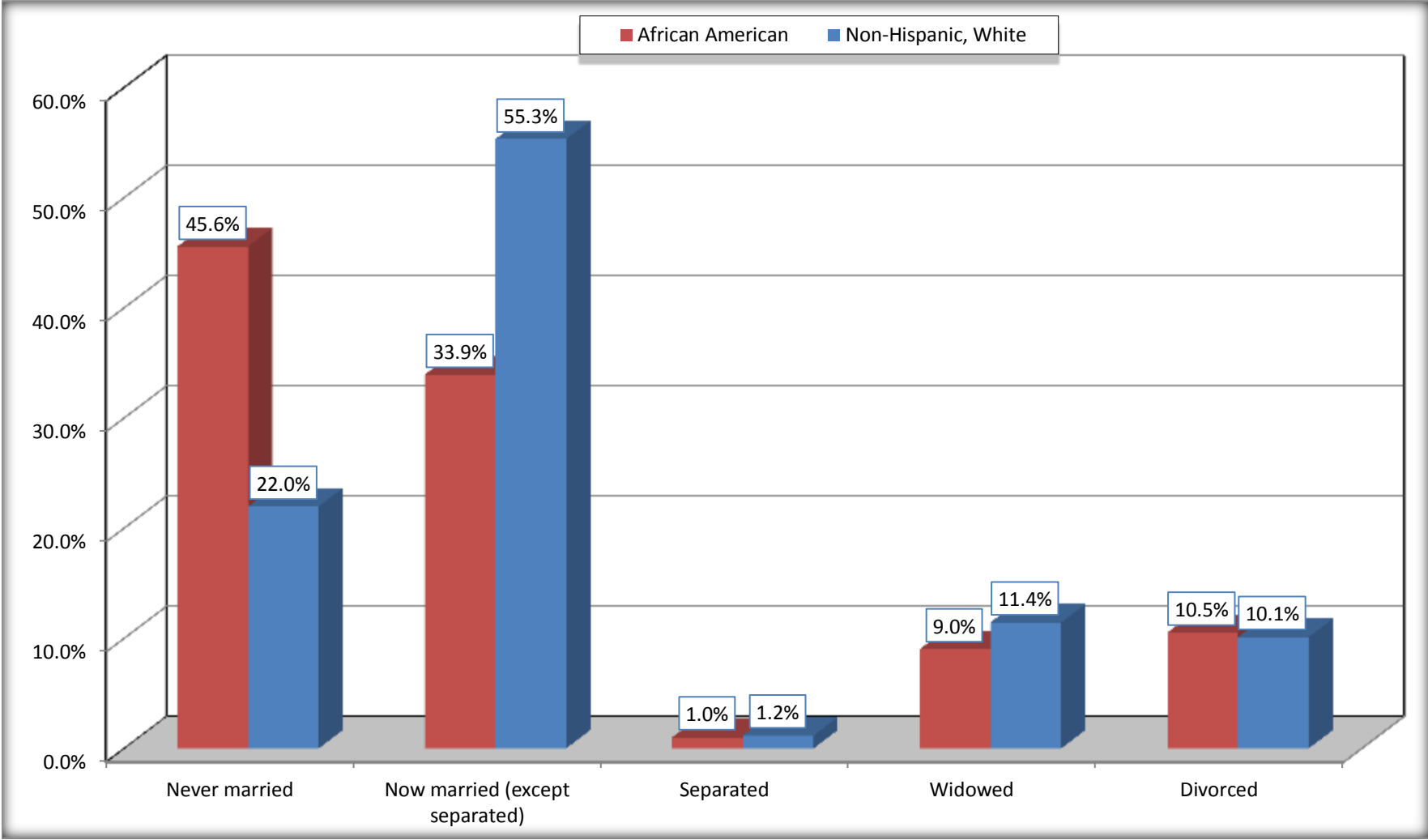
Source: U.S. Census Bureau, 2008-2012 American Community Survey

For information on confidentiality protection, sampling error, nonsampling error, and definitions, see Survey Methodology.

<http://www.census.gov/acs/www/UseData/index.htm>

Marital Status for the Population 15 Years and Over

Bluefield city, West Virginia



Source: B12002. MARITAL STATUS FOR THE POPULATION 15 YEARS AND OVER
Data Set: 2008-2012 American Community Survey 5-Year Estimates

C15002. SEX BY EDUCATIONAL ATTAINMENT FOR THE POPULATION 25 YEARS AND OVER

Data Set: 2008-2012 American Community Survey 5-Year Estimates

	Bluefield city, West Virginia					
	African American	Margin of Error (+/-)	% of AA Total	White, Not Hispanic	Margin of Error (+/-)	% of NHW Total
Total:	1,428	186	100.0%	5,943	307	100.0%
Less than high school diploma	159	NC	11.1%	683	NC	11.5%
High school graduate, GED, or alternative	565	NC	39.6%	1,915	NC	32.2%
Some college or associate's degree	536	NC	37.5%	1,711	NC	28.8%
Bachelor's degree or higher	168	NC	11.8%	1,634	NC	27.5%
Male:	598	108	41.9%	2,757	225	46.4%
Less than high school diploma	42	39	2.9%	368	110	6.2%
High school graduate, GED, or alternative	238	82	16.7%	850	176	14.3%
Some college or associate's degree	279	105	19.5%	705	162	11.9%
Bachelor's degree or higher	39	33	2.7%	834	160	14.0%
Female:	830	131	58.1%	3,186	213	53.6%
Less than high school diploma	117	49	8.2%	315	111	5.3%
High school graduate, GED, or alternative	327	99	22.9%	1,065	175	17.9%
Some college or associate's degree	257	85	18.0%	1,006	186	16.9%
Bachelor's degree or higher	129	75	9.0%	800	195	13.5%

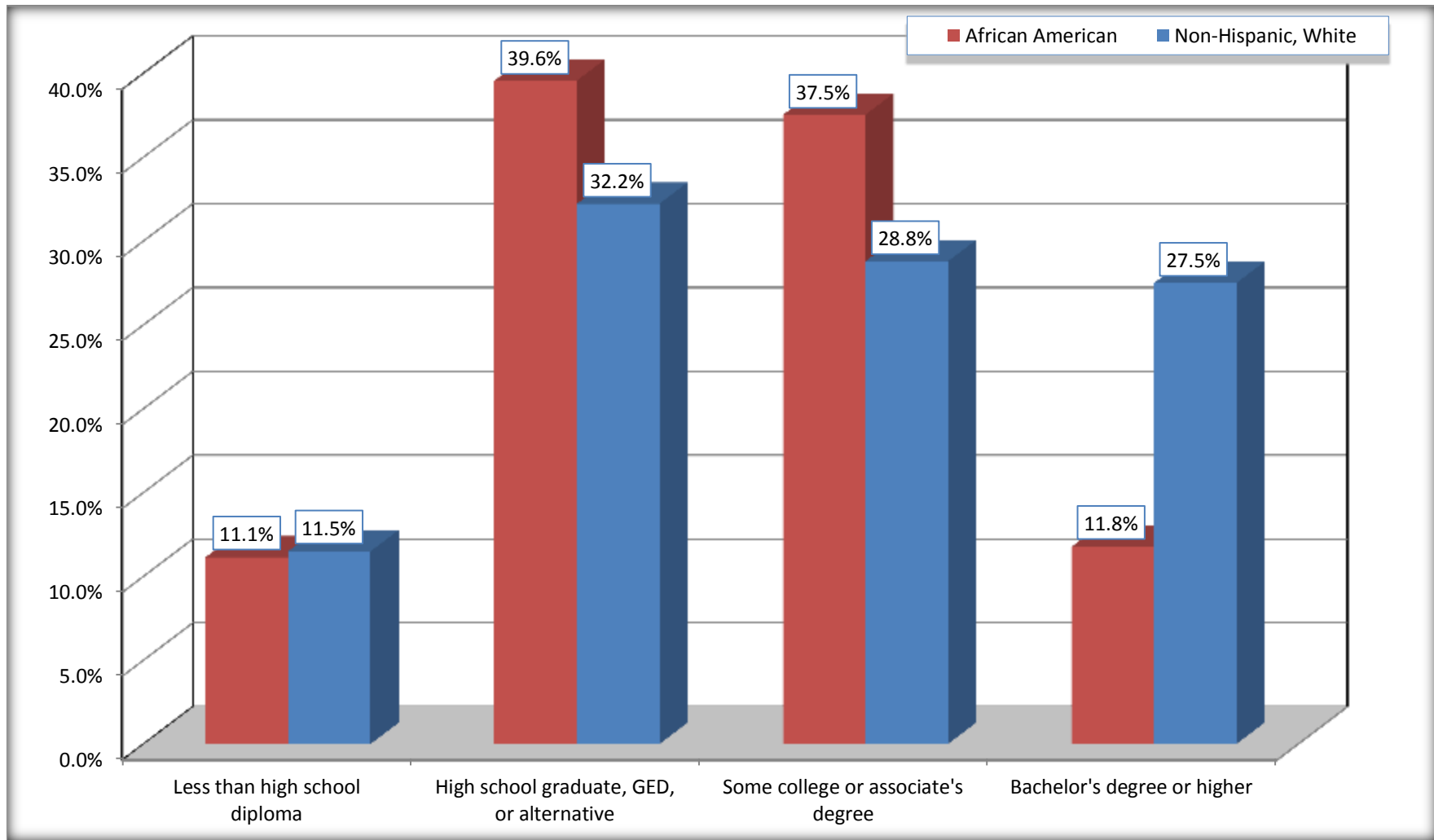
Source: U.S. Census Bureau, 2008-2012 American Community Survey

For information on confidentiality protection, sampling error, nonsampling error, and definitions, see Survey Methodology.

<http://www.census.gov/acs/www/UseData/index.htm>

Educational Attainment for the Population 25 Years and Older

Bluefield city, West Virginia



Source: C15002. SEX BY EDUCATIONAL ATTAINMENT FOR THE POPULATION 25 YEARS AND OVER
Data Set: 2008-2012 American Community Survey 5-Year Estimates

B17010. POVERTY STATUS IN THE PAST 12 MONTHS OF FAMILIES BY FAMILY TYPE BY PRESENCE OF RELATED CHILDREN UNDER 18 YEARS

Data Set: 2008-2012 American Community Survey 5-Year Estimates

	Bluefield city, West Virginia					
	African American	Margin of Error (+/-)	% of AA Total	White, Not Hispanic	Margin of Error (+/-)	% of NHW Total
Total:	558	115	100.0%	2,184	162	100.0%
Income in the past 12 months below poverty level:	185	78	33.2%	186	73	8.5%
Married-couple family:	19	28	3.4%	91	57	4.2%
With related children under 18 years	19	28	3.4%	57	49	2.6%
Other family:	166	75	29.7%	95	58	4.3%
Male householder, no wife present	35	36	6.3%	7	12	0.3%
With related children under 18 years	19	27	3.4%	7	12	0.3%
Female householder, no husband present	131	75	23.5%	88	57	4.0%
With related children under 18 years	131	75	23.5%	88	57	4.0%
Income in the past 12 months at or above poverty level:	373	96	66.8%	1,998	166	91.5%
Married-couple family:	229	86	41.0%	1,758	182	80.5%
With related children under 18 years	91	58	16.3%	533	143	24.4%
Other family:	144	70	25.8%	240	89	11.0%
Male householder, no wife present	31	31	5.6%	37	31	1.7%
With related children under 18 years	18	24	3.2%	11	17	0.5%
Female householder, no husband present	113	63	20.3%	203	88	9.3%
With related children under 18 years	54	60	9.7%	103	72	4.7%

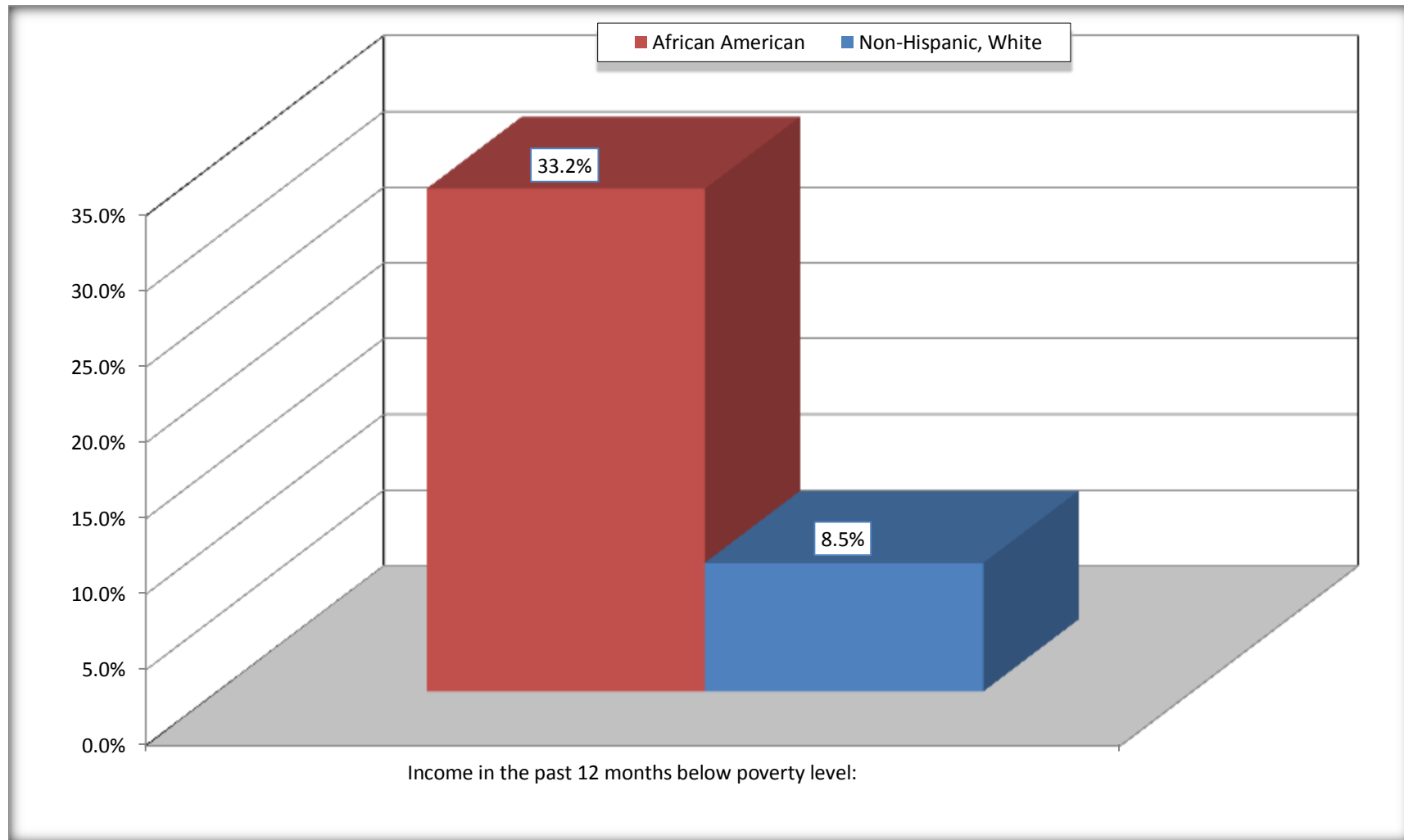
Source: U.S. Census Bureau, 2008-2012 American Community Survey

For information on confidentiality protection, sampling error, nonsampling error, and definitions, see Survey Methodology.

<http://www.census.gov/acs/www/UseData/index.htm>

Family Households Below Poverty in the Past 12 Months

Bluefield city, West Virginia

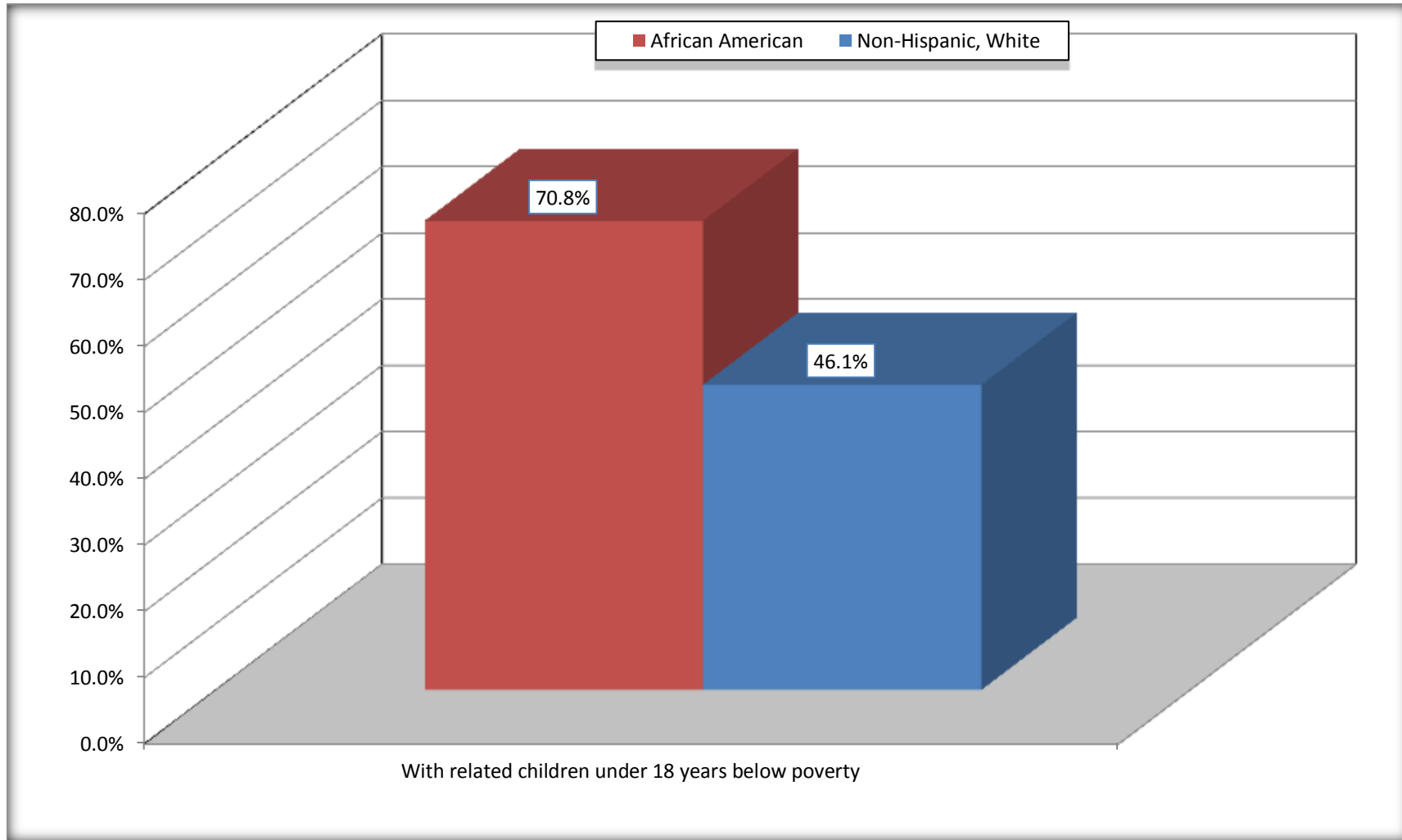


Source: B17010. POVERTY STATUS IN THE PAST 12 MONTHS OF FAMILIES BY FAMILY TYPE BY PRESENCE OF RELATED CHILDREN UNDER 18 YEARS

Data Set: 2008-2012 American Community Survey 5-Year Estimates

Female-headed Households with Related Children Below Poverty in the Past 12 Months

Bluefield city, West Virginia



Source: B17010. POVERTY STATUS IN THE PAST 12 MONTHS OF FAMILIES BY FAMILY TYPE BY PRESENCE OF RELATED CHILDREN UNDER 18 YEARS

Data Set: 2008-2012 American Community Survey 5-Year Estimates

B17020 POVERTY STATUS IN THE PAST 12 MONTHS BY AGE - Universe: POPULATION FOR WHOM POVERTY STATUS IS DETERMINED

Data Set: 2008-2012 American Community Survey 5-Year Estimates

	Bluefield city, West Virginia					
	African American	Margin of Error (+/-)	% of AA By Age	White, Not Hispanic	Margin of Error (+/-)	% of NHW By Age
Total:	2,305	277	100.0%	7,455	338	100.0%
Income in the past 12 months below poverty level:	863	280	37.4%	1,080	324	14.5%
Under 18 years	387	NC	56.9%	292	NC	25.9%
18 to 64 years	420	155	31.8%	625	226	13.9%
65 years and over	56	NC	18.3%	163	NC	8.9%
Income in the past 12 months at or above poverty level:	1,442	275	62.6%	6,375	450	85.5%
Under 18 years	293	NC	43.1%	835	NC	74.1%
18 to 64 years	899	180	68.2%	3,878	349	86.1%
65 years and over	250	NC	81.7%	1,662	NC	91.1%

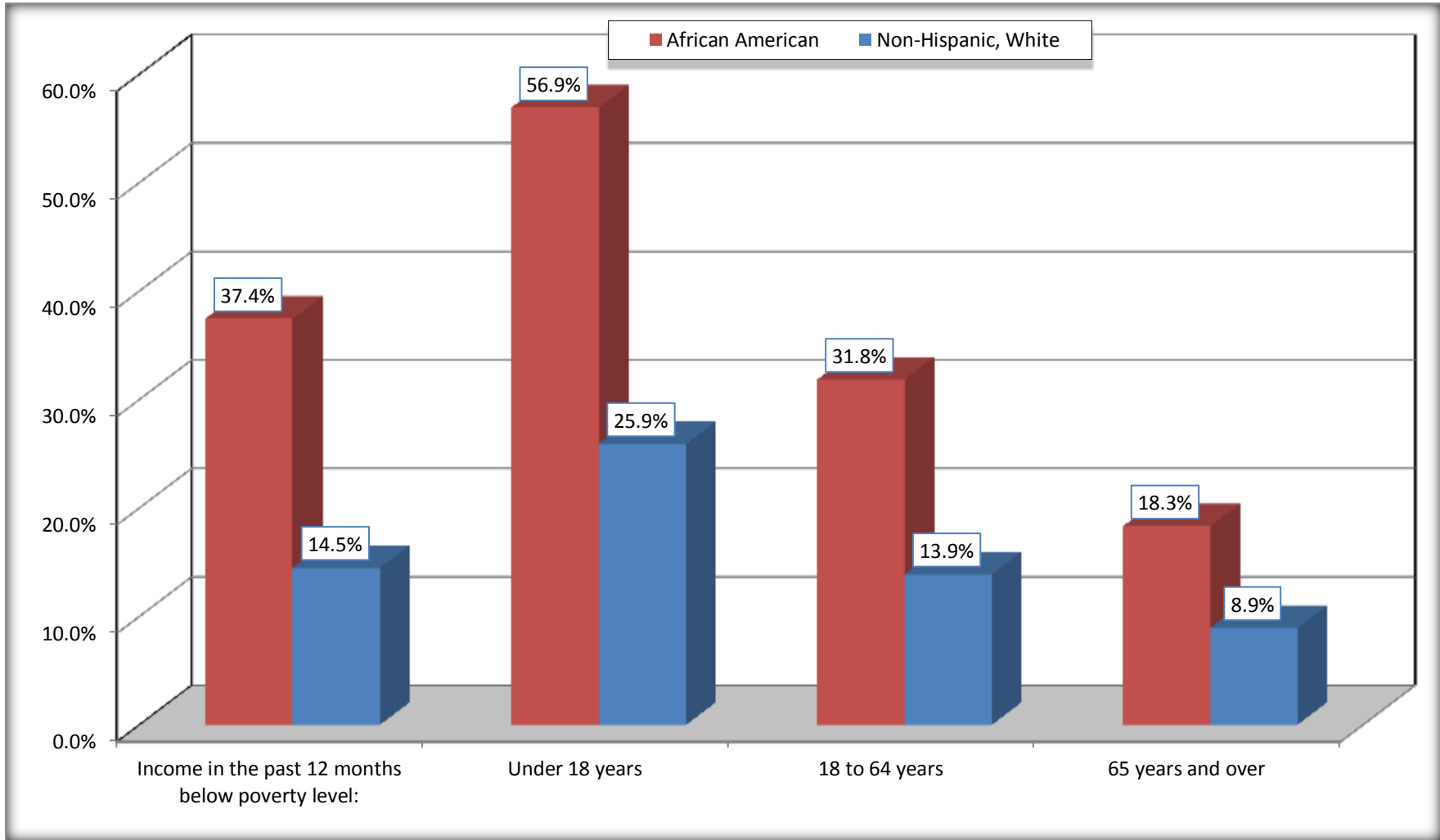
Source: U.S. Census Bureau, 2008-2012 American Community Survey

For information on confidentiality protection, sampling error, nonsampling error, and definitions, see Survey Methodology.

<http://www.census.gov/acs/www/UseData/index.htm>

Population Below Poverty in the Past 12 Months

Bluefield city, West Virginia



Source: B17020 POVERTY STATUS IN THE PAST 12 MONTHS BY AGE - Universe: POPULATION FOR WHOM POVERTY STATUS IS DETERMINED
Data Set: 2008-2012 American Community Survey 5-Year Estimates

B19001. HOUSEHOLD INCOME IN THE PAST 12 MONTHS (IN 2010 INFLATION-ADJUSTED DOLLARS)

Data Set: 2008-2012 American Community Survey 5-Year Estimates

	Bluefield city, West Virginia					
	African American	Margin of Error (+/-)	% of AA Total	White, Not Hispanic	Margin of Error (+/-)	% of NHW Total
Total:	948	150	100.0%	3,707	254	100.0%
Less than \$ 10,000	174	72	18.4%	354	130	9.5%
\$ 10,000 to \$ 14,999	284	114	30.0%	330	145	8.9%
\$ 15,000 to \$ 24,999	176	NC	18.6%	595	NC	16.1%
\$ 25,000 to \$ 34,999	26	NC	2.7%	533	NC	14.4%
\$ 35,000 to \$ 49,999	114	NC	12.0%	521	NC	14.1%
\$ 50,000 to \$ 74,999	103	NC	10.9%	638	NC	17.2%
\$ 75,000 to \$ 99,999	61	40	6.4%	254	98	6.9%
\$ 100,000 to \$ 149,999	10	NC	1.1%	233	NC	6.3%
\$ 150,000 to \$ 199,999	0	18	0.0%	62	38	1.7%
\$ 200,000 or more	0	18	0.0%	187	98	5.0%

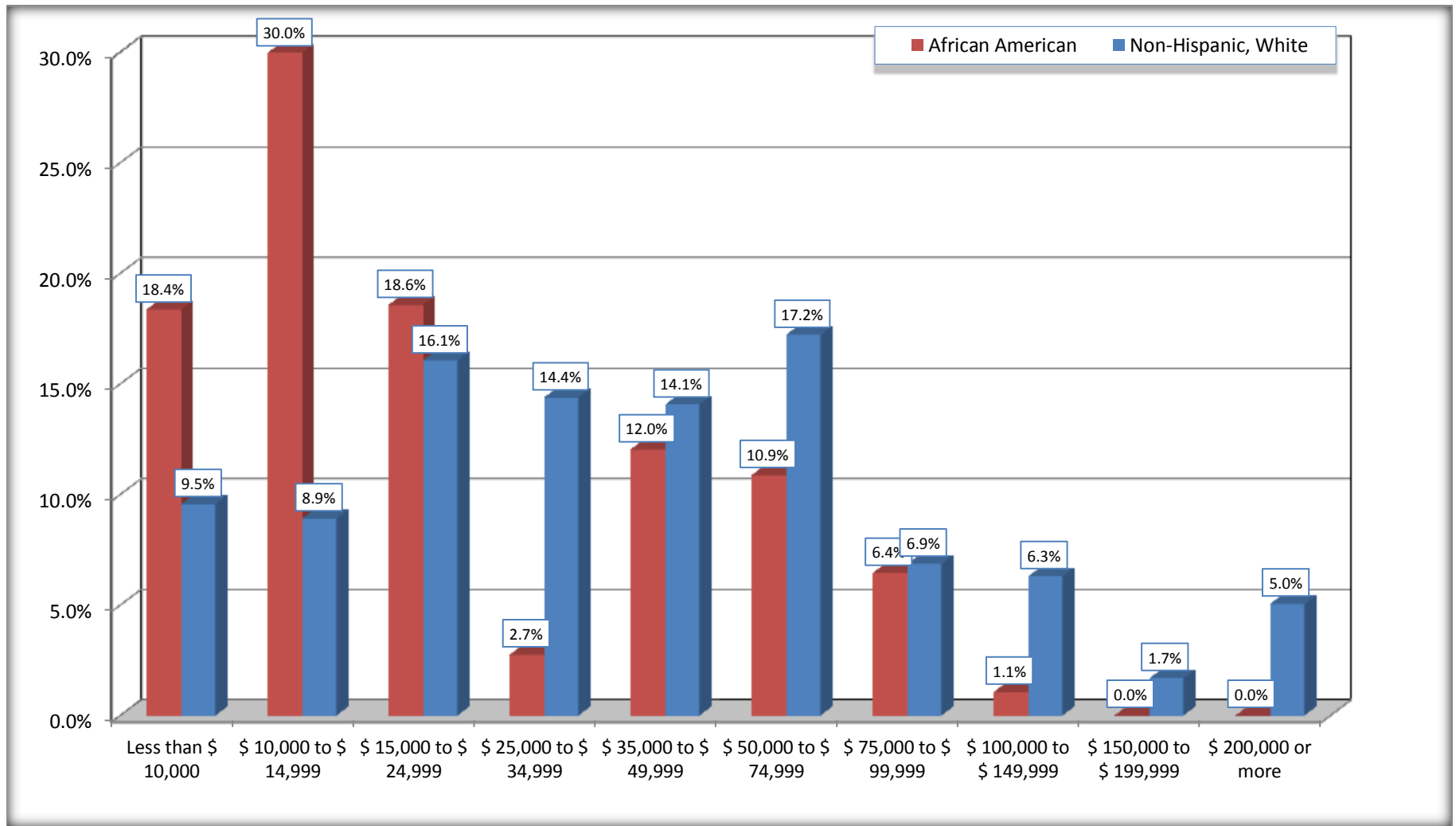
Source: U.S. Census Bureau, 2008-2012 American Community Survey

For information on confidentiality protection, sampling error, nonsampling error, and definitions, see Survey Methodology.

<http://www.census.gov/acs/www/UseData/index.htm>

Household Income in the Past 12 Months

Bluefield city, West Virginia



Source: B19001. HOUSEHOLD INCOME IN THE PAST 12 MONTHS (IN 2010 INFLATION-ADJUSTED DOLLARS)
Data Set: 2008-2012 American Community Survey 5-Year Estimates

B19013. MEDIAN HOUSEHOLD INCOME IN THE PAST 12 MONTHS (IN 2010 INFLATION-ADJUSTED DOLLARS)

Data Set: 2008-2012 American Community Survey 5-Year Estimates

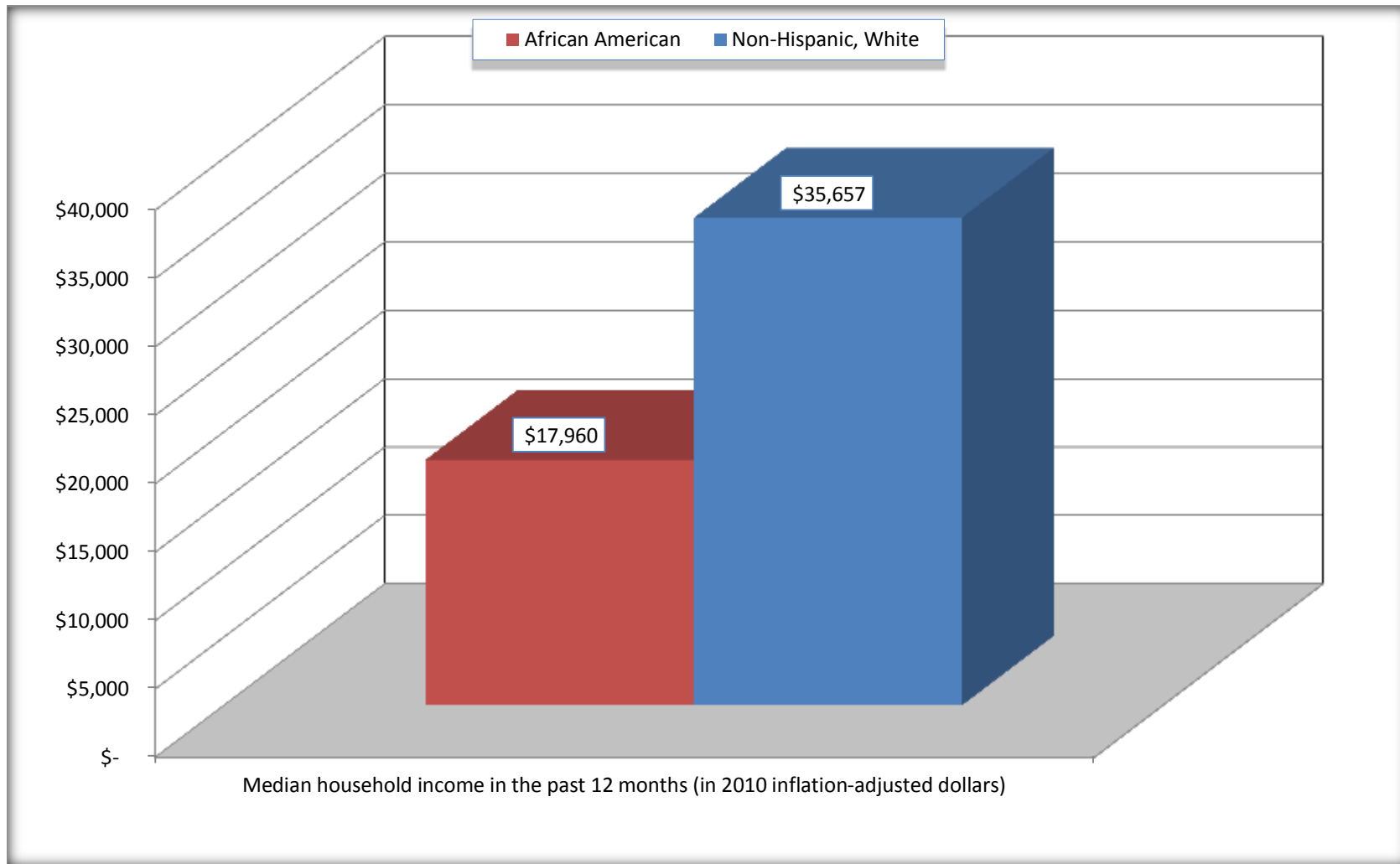
	Bluefield city, West Virginia			
	African American	Margin of Error (+/-)	White, Not Hispanic	Margin of Error (+/-)
Median household income in the past 12 months (in 2010 inflation-adjusted dollars)	\$ 17,960	\$ 5,260	\$ 35,657	\$ 3,598

Source: U.S. Census Bureau, 2008-2012 American Community Survey

For information on confidentiality protection, sampling error, nonsampling error, and definitions, see Survey Methodology.
<http://www.census.gov/acs/www/UseData/index.htm>

Median Household Income in the Past 12 Months

Bluefield city, West Virginia



Source: B19013. MEDIAN HOUSEHOLD INCOME IN THE PAST 12 MONTHS (IN 2010 INFLATION-ADJUSTED DOLLARS)
Data Set: 2008-2012 American Community Survey 5-Year Estimates

B19101. FAMILY INCOME IN THE PAST 12 MONTHS (IN 2010 INFLATION-ADJUSTED DOLLARS)

Data Set: 2008-2012 American Community Survey 5-Year Estimates

	Bluefield city, West Virginia					
	African American	Margin of Error (+/-)	% of AA Total	White, Not Hispanic	Margin of Error (+/-)	% of NHW Total
Total:	558	115	100.0%	2,184	162	100.0%
Less than \$ 10,000	76	61	13.6%	95	59	4.3%
\$ 10,000 to \$ 14,999	82	65	14.7%	93	65	4.3%
\$ 15,000 to \$ 24,999	92	NC	16.5%	316	NC	14.5%
\$ 25,000 to \$ 34,999	26	NC	4.7%	303	NC	13.9%
\$ 35,000 to \$ 49,999	114	NC	20.4%	355	NC	16.3%
\$ 50,000 to \$ 74,999	103	NC	18.5%	429	NC	19.6%
\$ 100,000 to \$ 149,999	4	NC	0.7%	209	NC	9.6%
\$ 150,000 to \$ 199,999	0	18	0.0%	46	32	2.1%
\$ 200,000 or more	0	18	0.0%	134	87	6.1%

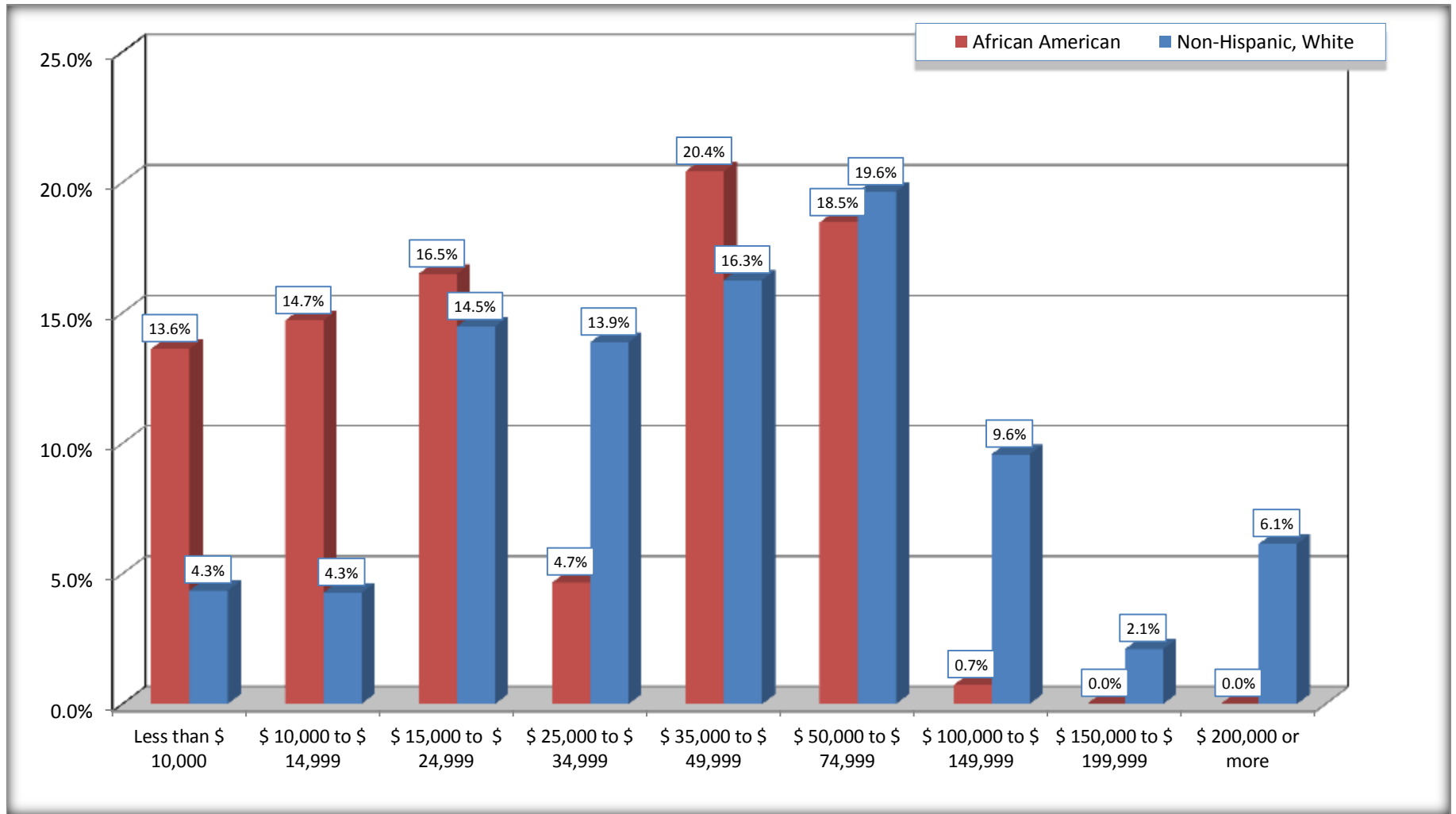
Source: U.S. Census Bureau, 2008-2012 American Community Survey

For information on confidentiality protection, sampling error, nonsampling error, and definitions, see Survey Methodology.

<http://www.census.gov/acs/www/UseData/index.htm>

Family Income in the Past 12 Months

Bluefield city, West Virginia



Source: B19101. FAMILY INCOME IN THE PAST 12 MONTHS (IN 2010 INFLATION-ADJUSTED DOLLARS)
Data Set: 2008-2012 American Community Survey 5-Year Estimates

B19113. MEDIAN FAMILY INCOME IN THE PAST 12 MONTHS (IN 2010 INFLATION-ADJUSTED DOLLARS)

Data Set: 2008-2012 American Community Survey 5-Year Estimates

	Bluefield city, West Virginia			
	African American	Margin of Error (+/-)	White, Not Hispanic	Margin of Error (+/-)
Median family income in the past 12 months (in 2010 inflation-adjusted dollars)	\$ 35,417	\$ 19,744	\$ 45,909	\$ 10,025

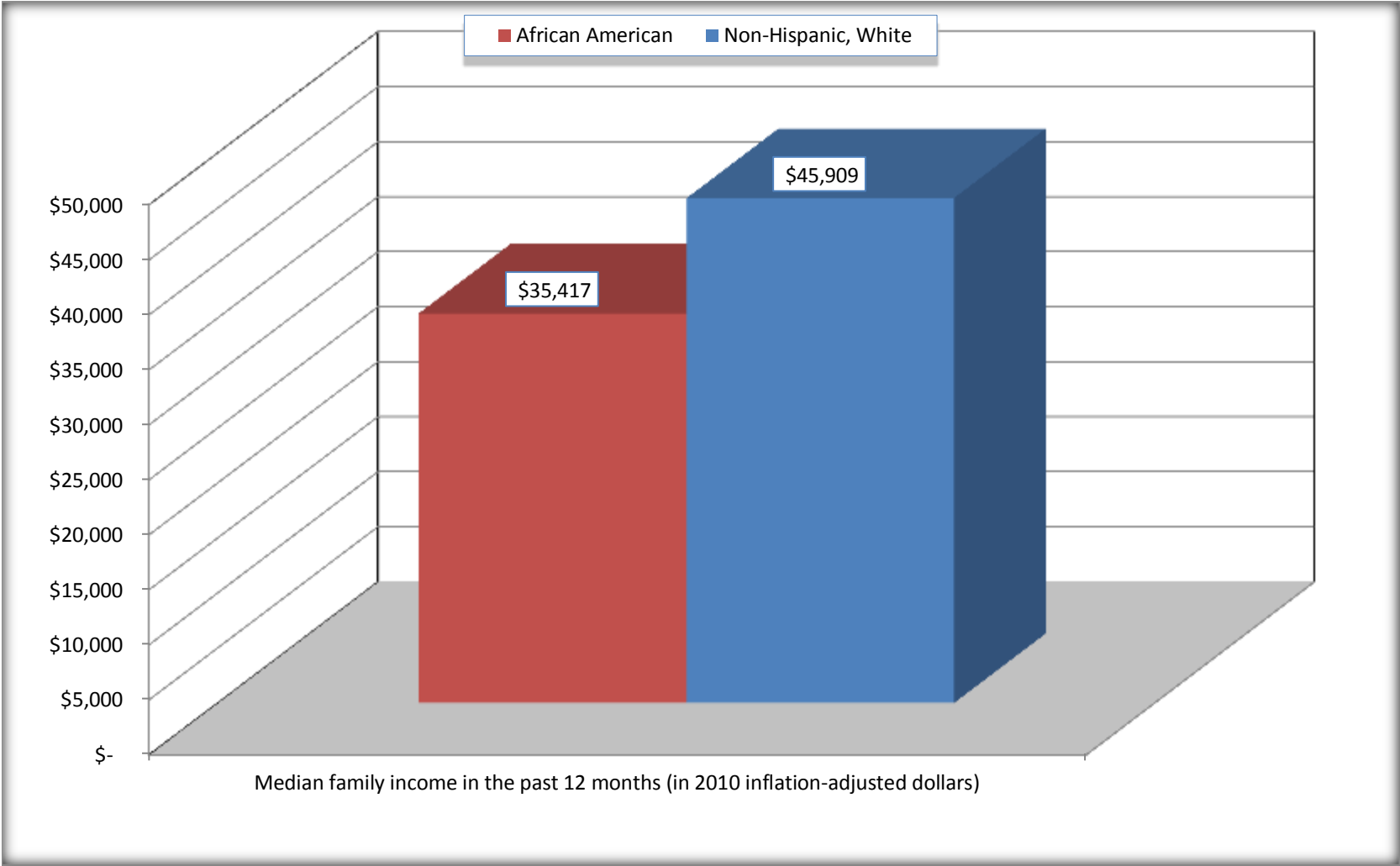
Source: U.S. Census Bureau, 2008-2012 American Community Survey

For information on confidentiality protection, sampling error, nonsampling error, and definitions, see Survey Methodology.

<http://www.census.gov/acs/www/UseData/index.htm>

Median Family Income in the Past 12 Months

Bluefield city, West Virginia



Source: B19113. MEDIAN FAMILY INCOME IN THE PAST 12 MONTHS (IN 2010 INFLATION-ADJUSTED DOLLARS)
Data Set: 2008-2012 American Community Survey 5-Year Estimates

B19202. MEDIAN NONFAMILY HOUSEHOLD INCOME IN THE PAST 12 MONTHS (IN 2010 INFLATION-ADJUSTED DOLLARS)

Data Set: 2008-2012 American Community Survey 5-Year Estimates

	Bluefield city, West Virginia			
	African American	Margin of Error (+/-)	White, Not Hispanic	Margin of Error (+/-)
Median nonfamily household income in the past 12 months (in 2010 inflation-adjusted dollars)	\$ 12,627	\$ 1,839	\$ 23,984	\$ 5,925

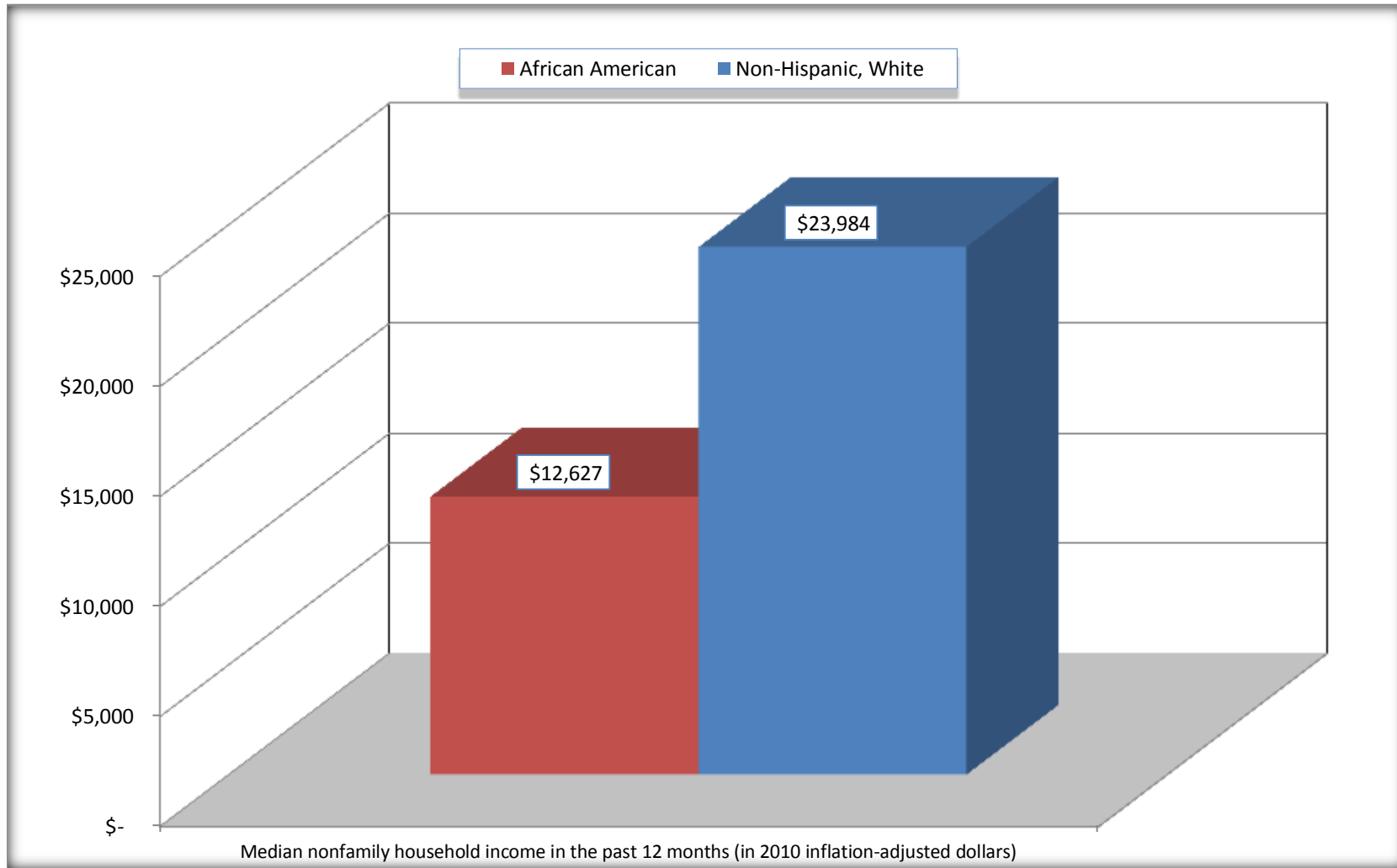
Source: U.S. Census Bureau, 2008-2012 American Community Survey

For information on confidentiality protection, sampling error, nonsampling error, and definitions, see Survey Methodology.

<http://www.census.gov/acs/www/UseData/index.htm>

Median Non-Family Income in the Past 12 Months

Bluefield city, West Virginia



Source: B19202. MEDIAN NONFAMILY HOUSEHOLD INCOME IN THE PAST 12 MONTHS (IN 2010 INFLATION-ADJUSTED DOLLARS)
Data Set: 2008-2012 American Community Survey 5-Year Estimates

B19301. PER CAPITA INCOME IN THE PAST 12 MONTHS (IN 2010 INFLATION-ADJUSTED DOLLARS)

Data Set: 2008-2012 American Community Survey 5-Year Estimates

	Bluefield city, West Virginia			
	African American	Margin of Error (+/-)	White, Not Hispanic	Margin of Error (+/-)
Per capita income in the past 12 months (in 2010 inflation-adjusted dollars)	\$ 12,226	\$ 1,980	\$ 28,006	\$ 4,010

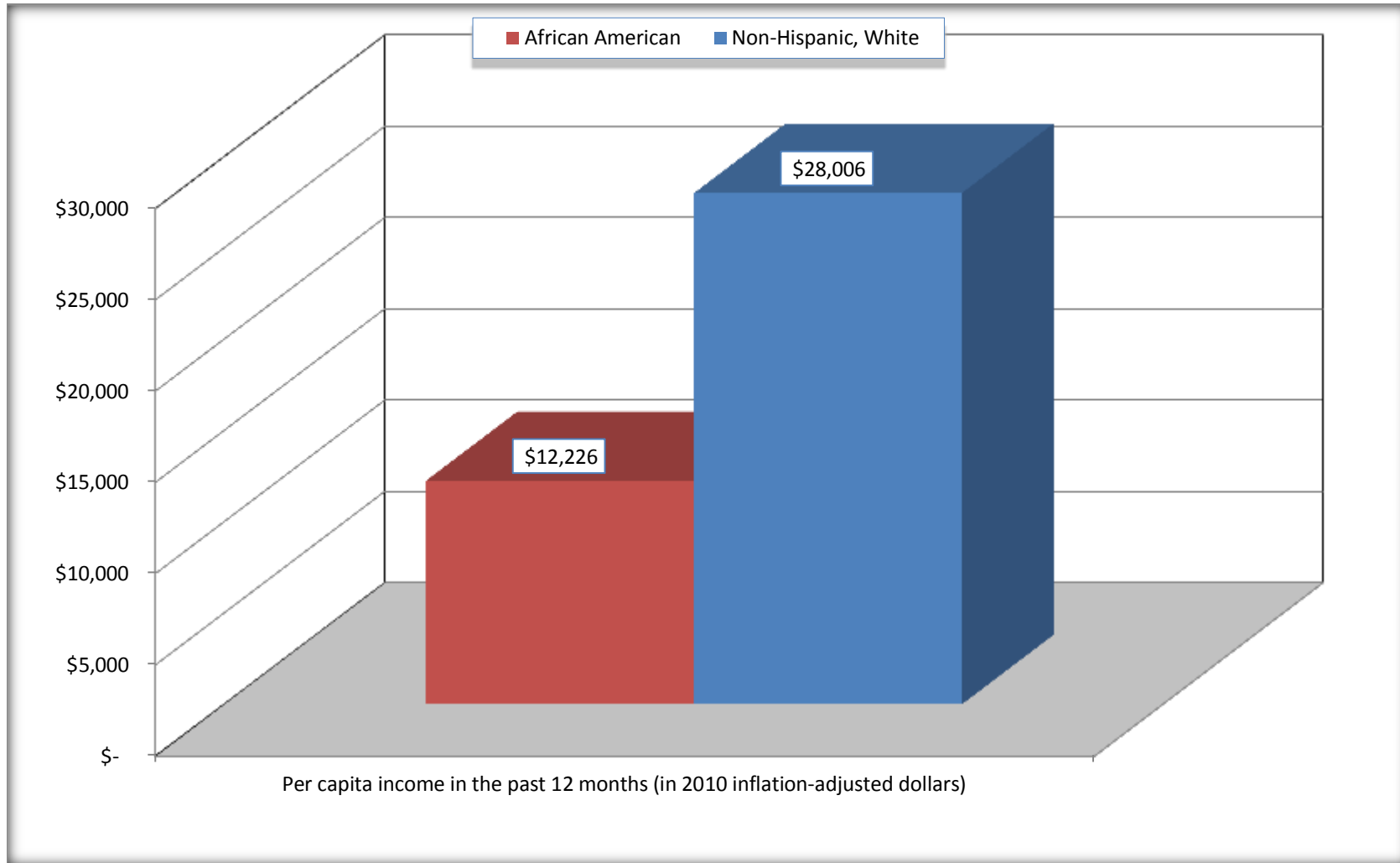
Source: U.S. Census Bureau, 2008-2012 American Community Survey

For information on confidentiality protection, sampling error, nonsampling error, and definitions, see Survey Methodology.

<http://www.census.gov/acs/www/UseData/index.htm>

Per capita Income in the Past 12 Months

Bluefield city, West Virginia



Source: B19301. PER CAPITA INCOME IN THE PAST 12 MONTHS (IN 2010 INFLATION-ADJUSTED DOLLARS)
Data Set: 2008-2012 American Community Survey 5-Year Estimates

B20017. MEDIAN EARNINGS IN THE PAST 12 MONTHS (IN 2010 INFLATION-ADJUSTED DOLLARS) BY SEX BY WORK EXPERIENCE IN THE PAST 12 MONTHS FOR THE POPULATION 16 YEARS AND OVER WITH EARNINGS IN THE PAST 12 MONTHS

Data Set: 2008-2012 American Community Survey 5-Year Estimates

	Bluefield city, West Virginia			
	African American	Margin of Error (+/-)	White, Not Hispanic	Margin of Error (+/-)
Median earnings in the past 12 months (in 2010 inflation-adjusted dollars) --				
Total:	\$ 14,175	\$ 1,914	\$ 25,652	\$ 4,566
Male --				
Total	\$ 18,388	\$ 5,610	\$ 31,043	\$ 2,705
Worked full-time, year-round in the past 12 months	\$ 29,712	\$ 10,496	\$ 36,364	\$ 5,917
Other	\$ 7,288	\$ 3,448	\$ 8,408	\$ 3,951
Female --				
Total	\$ 13,433	\$ 1,085	\$ 21,574	\$ 2,585
Worked full-time, year-round in the past 12 months	\$ 14,577	\$ 4,160	\$ 28,975	\$ 6,620
Other	\$ 6,148	\$ 2,350	\$ 8,837	\$ 2,315

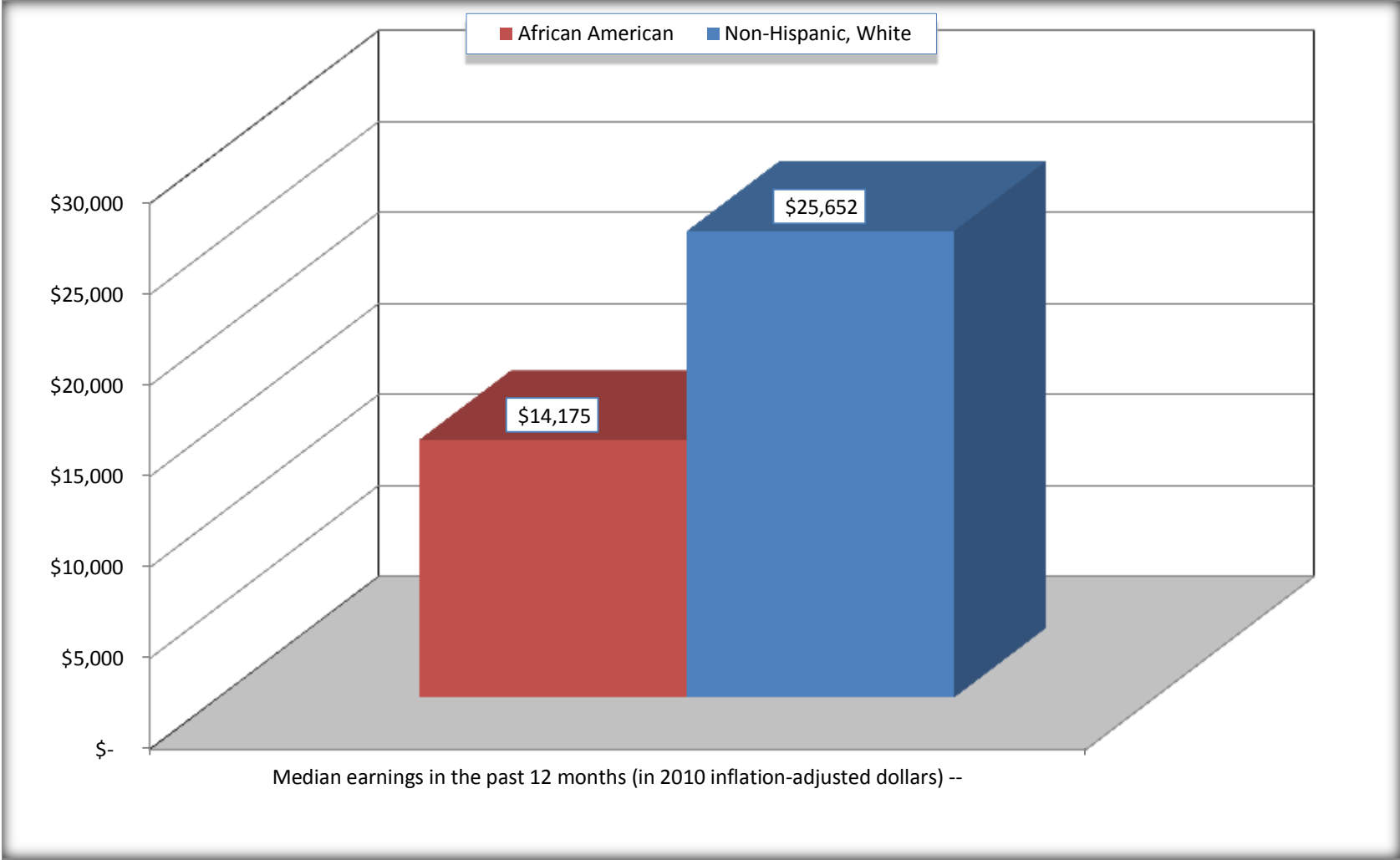
Source: U.S. Census Bureau, 2008-2012 American Community Survey

For information on confidentiality protection, sampling error, nonsampling error, and definitions, see Survey Methodology.

<http://www.census.gov/acs/www/UseData/index.htm>

Median earnings in the Past 12 Months (16 Years and Over with Earnings)

Bluefield city, West Virginia



Source: B20017. MEDIAN EARNINGS IN THE PAST 12 MONTHS (IN 2010 INFLATION-ADJUSTED DOLLARS) BY SEX BY WORK EXPERIENCE IN THE PAST 12 MONTHS FOR THE POPULATION 16 YEARS AND OVER WITH EARNINGS IN THE PAST 12 MONTHS
Data Set: 2008-2012 American Community Survey 5-Year Estimates

B20005. SEX BY WORK EXPERIENCE IN THE PAST 12 MONTHS BY EARNINGS IN THE PAST 12 MONTHS (IN 2010 INFLATION-ADJUSTED DOLLARS) FOR THE POPULATION 16 YEARS AND OVER

Data Set: 2008-2012 American Community Survey 5-Year Estimates

	Bluefield city, West Virginia					
	African American	Margin of Error (+/-)	% of AA Total	White, Not Hispanic	Margin of Error (+/-)	% of NHW Total
Total:	1,749	219	100.0%	6,663	293	100.0%
Worked full-time, year-round in the past 12 months:	525	NC	30.0%	2,363	NC	35.5%
No earnings	0	NC	0.0%	0	NC	0.0%
With earnings:	525	NC	30.0%	2,363	NC	35.5%
\$ 1 to \$ 9,999 or loss	39	NC	2.2%	79	NC	1.2%
\$ 10,000 to \$ 19,999	219	NC	12.5%	359	NC	5.4%
\$ 20,000 to \$ 29,999	79	NC	4.5%	539	NC	8.1%
\$ 30,000 to \$ 49,999	91	NC	5.2%	765	NC	11.5%
\$ 50,000 to \$ 74,999	91	NC	5.2%	250	NC	3.8%
\$ 75,000 or more	6	NC	0.3%	371	NC	5.6%
Other:	1,224	NC	70.0%	4,300	NC	64.5%
No earnings	756	NC	43.2%	2,886	NC	43.3%
With earnings: less than full time, year-round	468	NC	26.8%	1,414	NC	21.2%
Male:	774	129	44.3%	3,111	247	46.7%
Worked full-time, year-round in the past 12 months:	234	78	13.4%	1,270	191	19.1%
No earnings	0	18	0.0%	0	18	0.0%
With earnings:	234	78	13.4%	1,270	191	19.1%
\$ 1 to \$ 9,999 or loss	15	NC	0.9%	32	NC	0.5%
\$ 10,000 to \$ 19,999	52	NC	3.0%	235	NC	3.5%
\$ 20,000 to \$ 29,999	53	NC	3.0%	143	NC	2.1%
\$ 30,000 to \$ 49,999	60	NC	3.4%	413	NC	6.2%
\$ 50,000 to \$ 74,999	54	NC	3.1%	178	NC	2.7%
\$ 75,000 or more	0	NC	0.0%	269	NC	4.0%

	Bluefield city, West Virginia					
	African American	Margin of Error (+/-)	% of AA Total	White, Not Hispanic	Margin of Error (+/-)	% of NHW Total
Other:	540	127	30.9%	1,841	260	27.6%
No earnings	297	106	17.0%	1,204	149	18.1%
With earnings:	243	94	13.9%	637	195	9.6%
Female:	975	144	55.7%	3,552	206	53.3%
Worked full-time, year-round in the past 12 months:	291	108	16.6%	1,093	151	16.4%
No earnings	0	18	0.0%	0	18	0.0%
With earnings:	291	108	16.6%	1,093	151	16.4%
\$ 1 to \$ 9,999 or loss	24	NC	1.4%	47	NC	0.7%
\$ 10,000 to \$ 19,999	167	NC	9.5%	124	NC	1.9%
\$ 20,000 to \$ 29,999	26	NC	1.5%	396	NC	5.9%
\$ 30,000 to \$ 49,999	31	NC	1.8%	352	NC	5.3%
\$ 50,000 to \$ 74,999	37	NC	2.1%	72	NC	1.1%
\$ 75,000 or more	6	NC	0.3%	102	NC	1.5%
Other:	684	117	39.1%	2,459	234	36.9%
No earnings	459	100	26.2%	1,682	214	25.2%
With earnings:	225	93	12.9%	777	169	11.7%

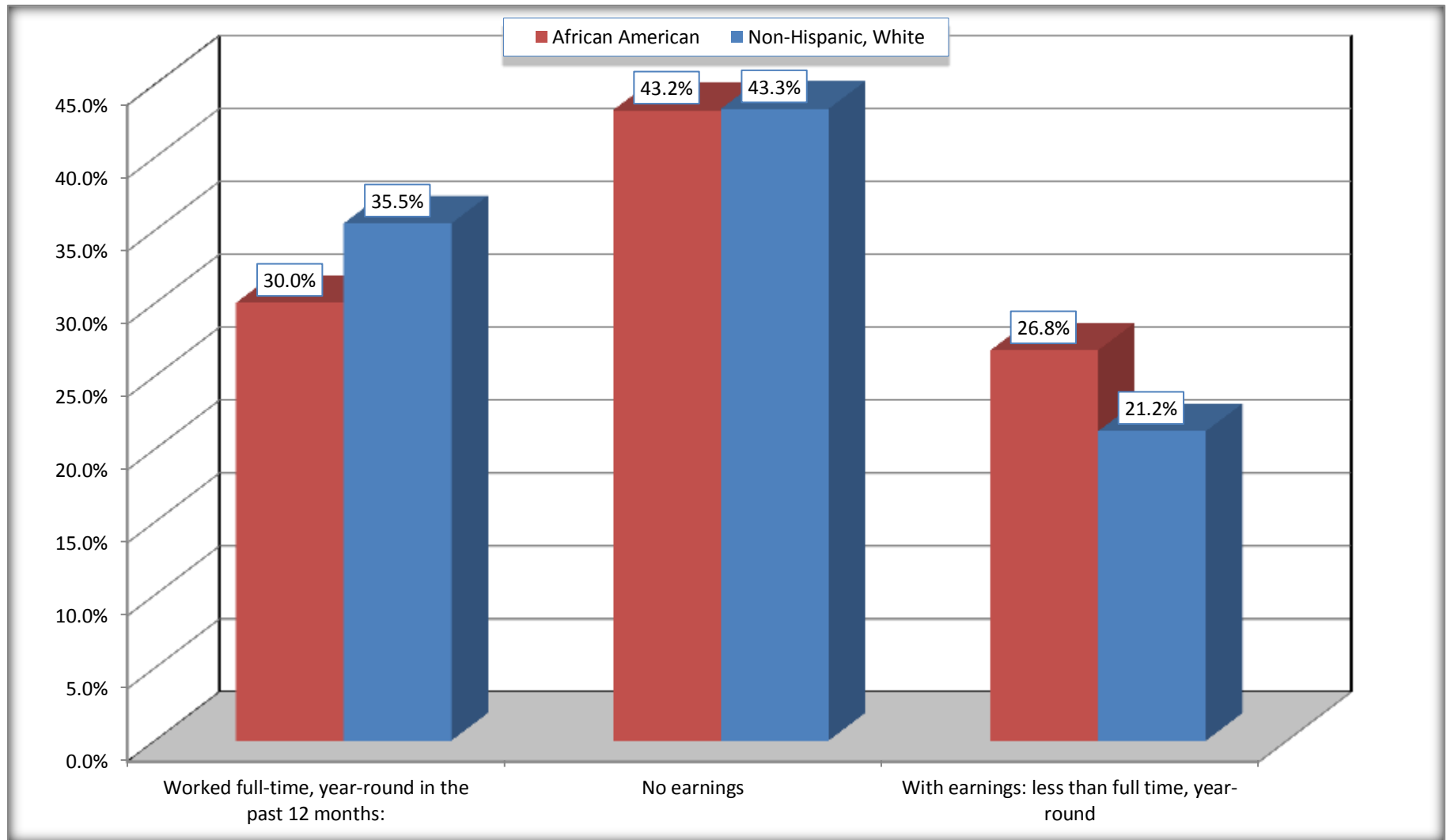
Source: U.S. Census Bureau, 2008-2012 American Community Survey

For information on confidentiality protection, sampling error, nonsampling error, and definitions, see Survey Methodology.

<http://www.census.gov/acs/www/UseData/index.htm>

Employment and Earnings in in the Past 12 Months (16 Years and Over)

Bluefield city, West Virginia



Source: B20005. SEX BY WORK EXPERIENCE IN THE PAST 12 MONTHS BY EARNINGS IN THE PAST 12 MONTHS (IN 2010 INFLATION-ADJUSTED DOLLARS) FOR THE POPULATION 16 YEARS AND OVER

Data Set: 2008-2012 American Community Survey 5-Year Estimates

C21001. SEX BY AGE BY VETERAN STATUS FOR THE CIVILIAN POPULATION 18 YEARS AND OVER

Data Set: 2008-2012 American Community Survey 5-Year Estimates

	Bluefield city, West Virginia					
	African American	Margin of Error (+/-)	% of AA Total	White, Not Hispanic	Margin of Error (+/-)	% of NHW Total
Total:	1,660	204	100.0%	6,466	296	100.0%
Veteran	209	NC	12.6%	1,003	NC	15.5%
Nonveteran	1,451	NC	87.4%	5,463	NC	84.5%
Male:	739	127	44.5%	3,003	239	46.4%
18 to 64 years:	629	119	37.9%	2,132	199	33.0%
Veteran	151	81	9.1%	460	112	7.1%
Nonveteran	478	116	28.8%	1,672	209	25.9%
65 years and over:	110	48	6.6%	871	110	13.5%
Veteran	58	40	3.5%	510	117	7.9%
Nonveteran	52	39	3.1%	361	88	5.6%
Female:	921	128	55.5%	3,463	213	53.6%
18 to 64 years:	707	130	42.6%	2,395	202	37.0%
Veteran	0	18	0.0%	9	16	0.1%
Nonveteran	707	130	42.6%	2,386	201	36.9%
65 years and over:	214	39	12.9%	1,068	132	16.5%
Veteran	0	18	0.0%	24	28	0.4%
Nonveteran	214	39	12.9%	1,044	128	16.1%

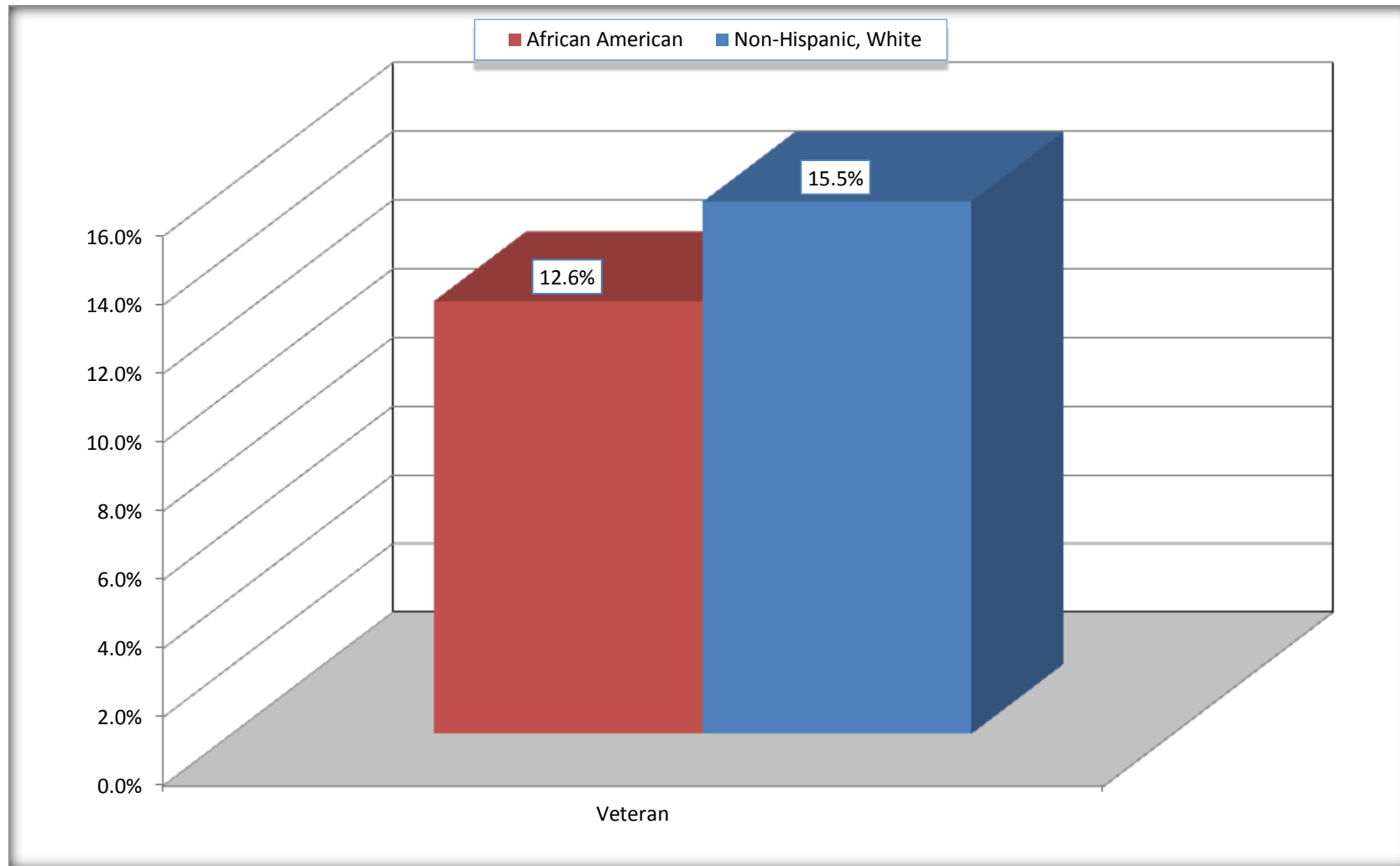
Source: U.S. Census Bureau, 2008-2012 American Community Survey

For information on confidentiality protection, sampling error, nonsampling error, and definitions, see Survey Methodology.

<http://www.census.gov/acs/www/UseData/index.htm>

Veterans in the Civilian Population 18 Years and Over

Bluefield city, West Virginia



Source: C21001. SEX BY AGE BY VETERAN STATUS FOR THE CIVILIAN POPULATION 18 YEARS AND OVER
Data Set: 2008-2012 American Community Survey 5-Year Estimates

B22005. RECEIPT OF FOOD STAMPS/SNAP IN THE PAST 12 MONTHS BY RACE OF HOUSEHOLDER

Data Set: 2008-2012 American Community Survey 5-Year Estimates

	Bluefield city, West Virginia					
	African American	Margin of Error (+/-)	% of AA Total	White, Not Hispanic	Margin of Error (+/-)	% of NHW Total
Total:	948	150	100.0%	3,707	254	100.0%
HH received Food Stamps/SNAP in the past 12 months	284	88	30.0%	565	155	15.2%
HH did not receive Food Stamps/SNAP in the past 12 months	664	130	70.0%	3,142	241	84.8%

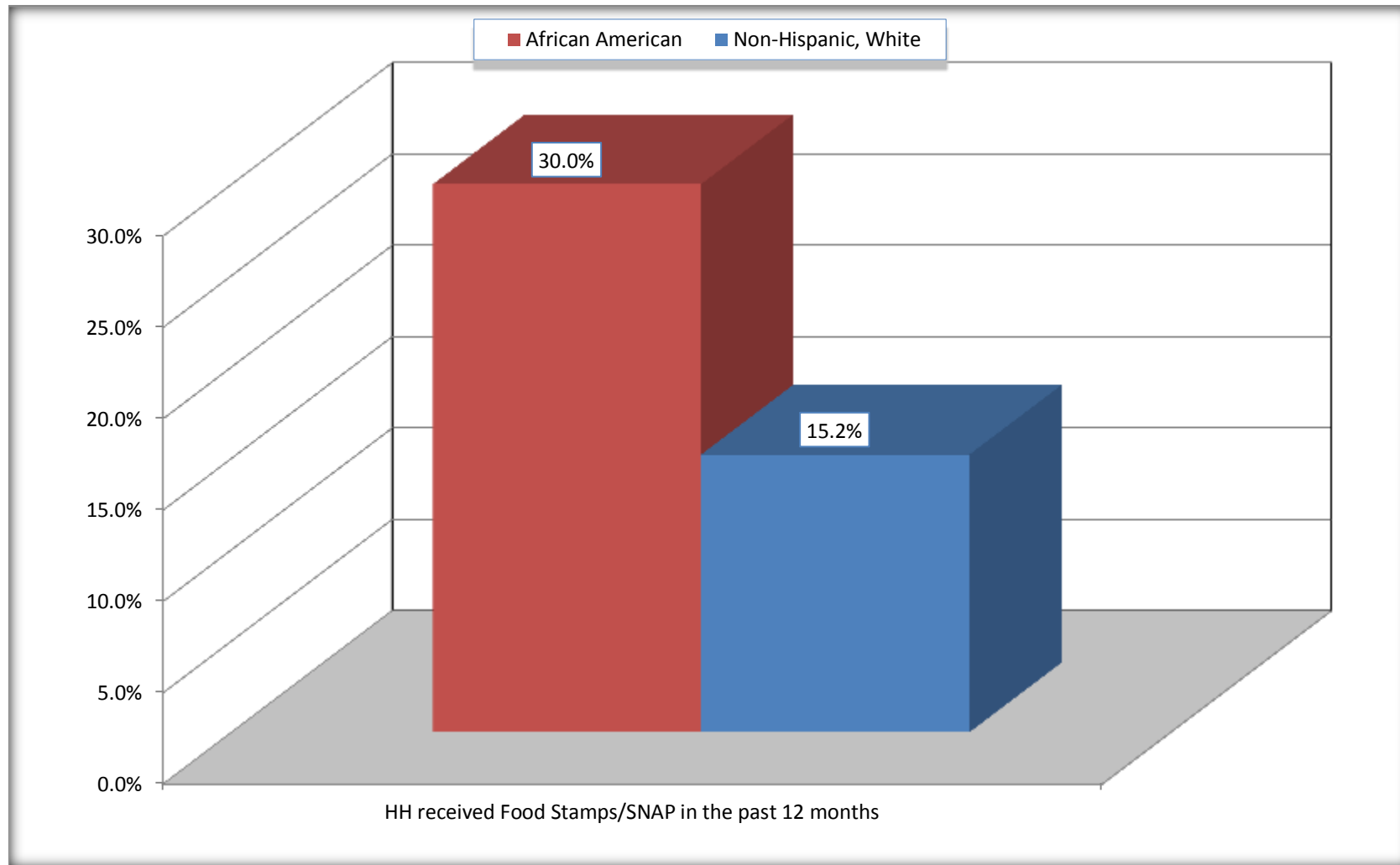
Source: U.S. Census Bureau, 2008-2012 American Community Survey

For information on confidentiality protection, sampling error, nonsampling error, and definitions, see Survey Methodology.

<http://www.census.gov/acs/www/UseData/index.htm>

Receipt of Food Stamps/SNAP in the Past 12 Months by Household

Bluefield city, West Virginia



Source: B22005. RECEIPT OF FOOD STAMPS/SNAP IN THE PAST 12 MONTHS BY RACE OF HOUSEHOLDER
Data Set: 2008-2012 American Community Survey 5-Year Estimates

C23002. SEX BY AGE BY EMPLOYMENT STATUS FOR THE POPULATION 16 YEARS AND OVER

Data Set: 2008-2012 American Community Survey 5-Year Estimates

	Bluefield city, West Virginia					
	African American	Margin of Error (+/-)	% of AA Total	White, Not Hispanic	Margin of Error (+/-)	% of NHW Total
Total:	1,749	219	100.0%	6,663	293	100.0%
In labor force:	975	NC	55.7%	3,546	NC	53.2%
In Armed Forces	0	NC	0.0%	0	NC	0.0%
Civilian:	954	NC	54.5%	3,252	NC	48.8%
Employed	850	NC	48.6%	3,395	NC	51.0%
Unemployed	125	NC	7.1%	151	NC	2.3%
Not in labor force	774	NC	44.3%	3,117	NC	46.8%
Male:	774	129	44.3%	3,111	247	46.7%
16 to 64 years:	664	120	38.0%	2,240	212	33.6%
In labor force:	442	110	25.3%	1,648	196	24.7%
In Armed Forces	0	18	0.0%	0	18	0.0%
Civilian:	442	110	25.3%	1,648	196	24.7%
Employed	364	104	20.8%	1,564	196	23.5%
Unemployed	78	49	4.5%	84	53	1.3%
Not in labor force	222	106	12.7%	592	151	8.9%
65 years and over:	110	48	6.3%	871	110	13.1%
In labor force:	21	28	1.2%	142	65	2.1%
Employed	21	28	1.2%	142	65	2.1%
Unemployed	0	18	0.0%	0	18	0.0%
Not in labor force	89	47	5.1%	729	113	10.9%

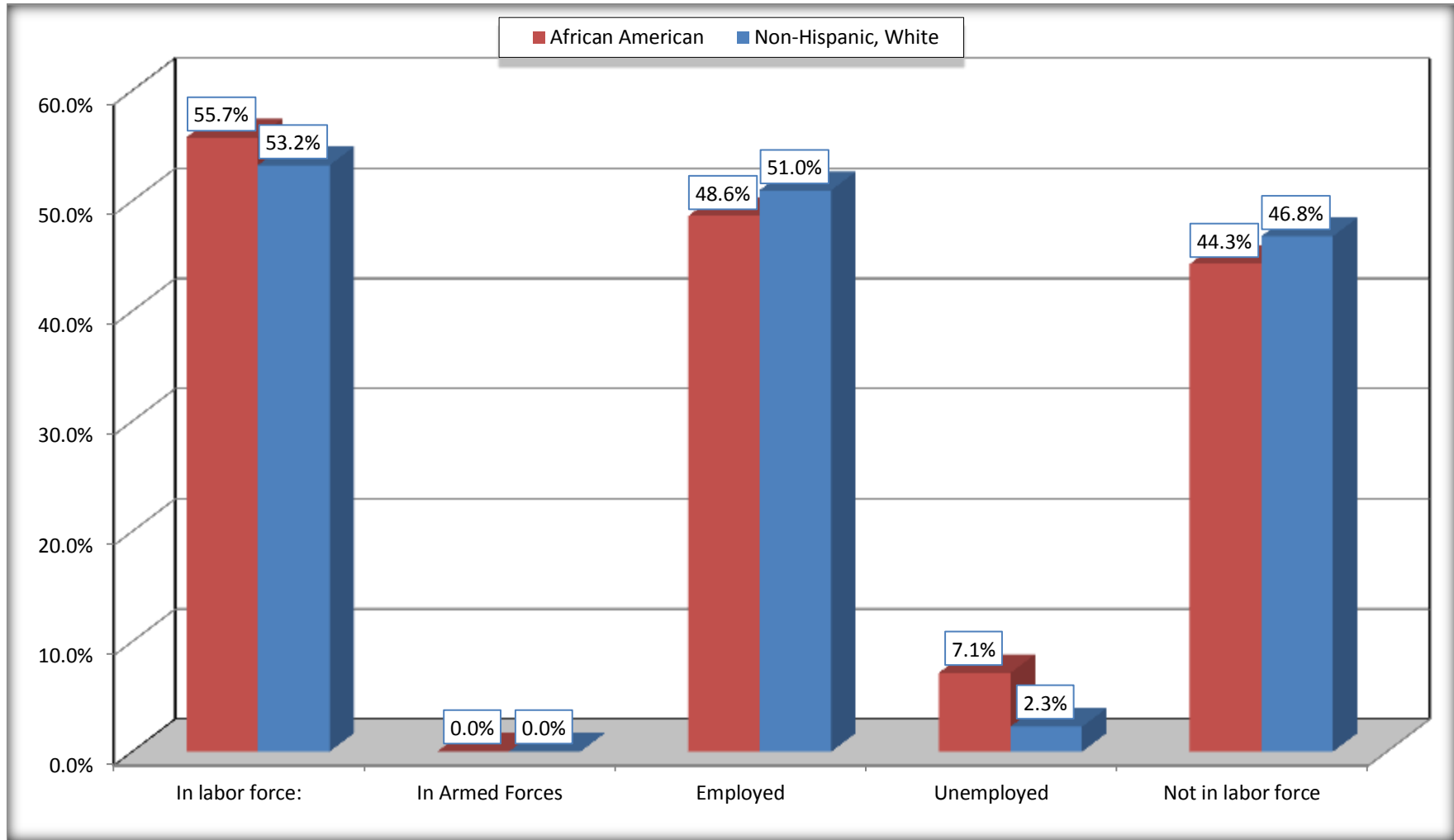
	Bluefield city, West Virginia					
	African American	Margin of Error (+/-)	% of AA Total	White, Not Hispanic	Margin of Error (+/-)	% of NHW Total
Female:	975	144	55.7%	3,552	206	53.3%
16 to 64 years:	761	147	43.5%	2,484	198	37.3%
In labor force:	512	121	29.3%	1,604	203	24.1%
In Armed Forces	0	18	0.0%	0	18	0.0%
Civilian:	512	121	29.3%	1,604	203	24.1%
Employed	465	113	26.6%	1,537	202	23.1%
Unemployed	47	45	2.7%	67	65	1.0%
Not in labor force	249	92	14.2%	880	198	13.2%
65 years and over:	214	39	12.2%	1,068	132	16.0%
In labor force:	0	18	0.0%	152	59	2.3%
Employed	0	18	0.0%	152	59	2.3%
Unemployed	0	18	0.0%	0	18	0.0%
Not in labor force	214	39	12.2%	916	134	13.7%

Source: U.S. Census Bureau, 2008-2012 American Community Survey

For information on confidentiality protection, sampling error, nonsampling error, and definitions, see Survey Methodology.
<http://www.census.gov/acs/www/UseData/index.htm>

Employment Status for the Population 16 years and over

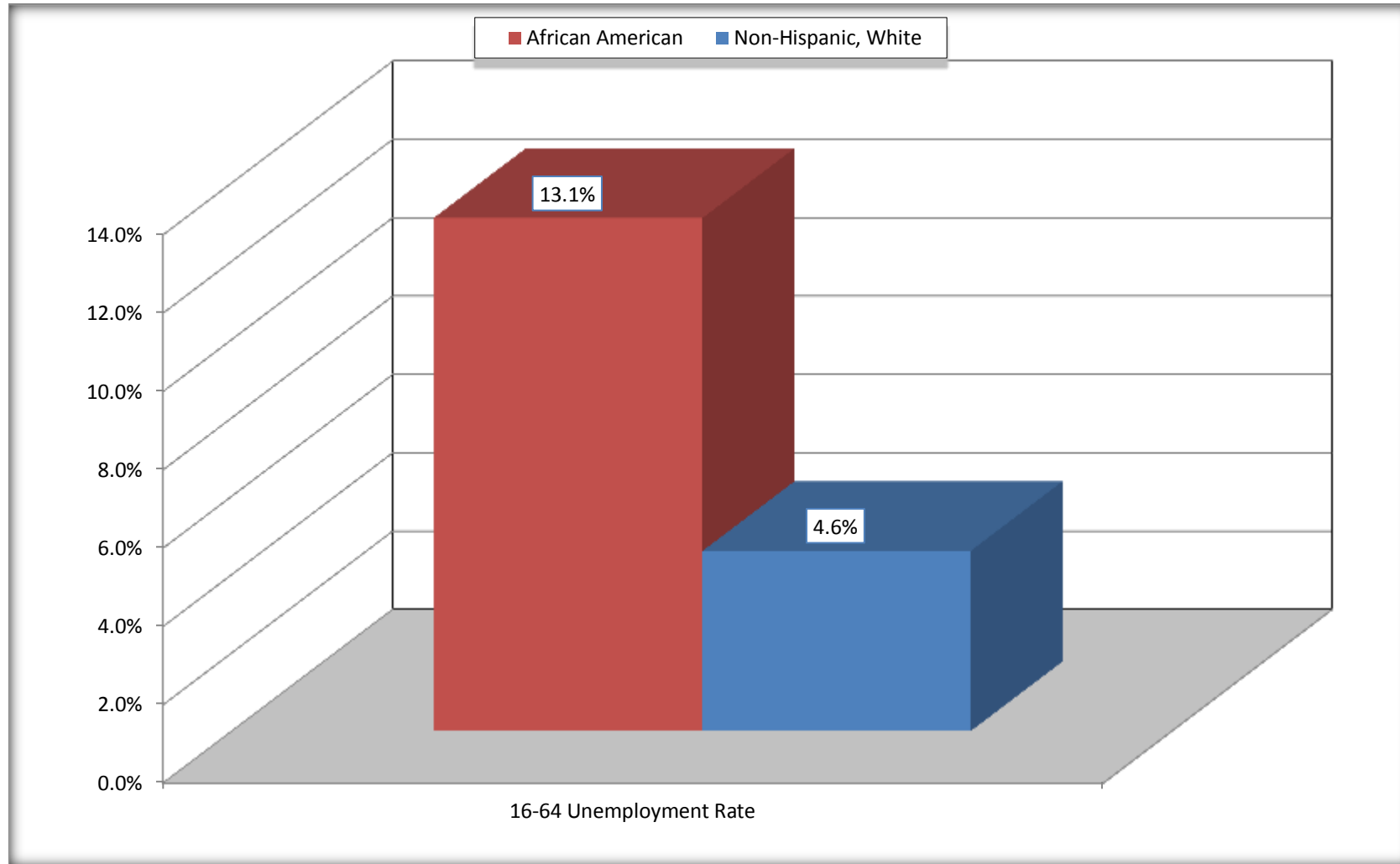
Bluefield city, West Virginia



Source: C23002. SEX BY AGE BY EMPLOYMENT STATUS FOR THE POPULATION 16 YEARS AND OVER
Data Set: 2008-2012 American Community Survey 5-Year Estimates

Unemployment of Working Age Population (Ages 16 to 64) (As a Percent of 16-64 Civilian Labor Force)

Bluefield city, West Virginia



Source: C23002. SEX BY AGE BY EMPLOYMENT STATUS FOR THE POPULATION 16 YEARS AND OVER
Data Set: 2008-2012 American Community Survey 5-Year Estimates

C24010. SEX BY OCCUPATION FOR THE CIVILIAN EMPLOYED POPULATION 16 YEARS AND OVER

Data Set: 2008-2012 American Community Survey 5-Year Estimates

	Bluefield city, West Virginia					
	African American	Margin of Error (+/-)	% of AA Total	White, Not Hispanic	Margin of Error (+/-)	% of NHW Total
Total:	850	159	100.0%	3,395	293	100.0%
Management, professional, and related occupations	183	NC	21.5%	1,310	NC	38.6%
Service occupations	328	NC	38.6%	462	NC	13.6%
Sales and office occupations	257	NC	30.2%	1,144	NC	33.7%
Natural resources, construction, and maintenance occupations:	50	NC	5.9%	273	NC	8.0%
Production, transportation, and material moving occupations	32	NC	3.8%	206	NC	6.1%
Male:	385	106	45.3%	1,706	206	50.3%
Management, business, science, and arts occupations:	88	65	10.4%	689	186	20.3%
Service occupations	69	45	8.1%	208	77	6.1%
Sales and office occupations	150	89	17.6%	358	136	10.5%
Natural resources, construction, and maintenance occupations:	50	40	5.9%	273	123	8.0%
Production, transportation, and material moving occupations	28	46	3.3%	178	99	5.2%
Female:	465	113	54.7%	1,689	199	49.7%
Management, professional, and related occupations	95	67	11.2%	621	160	18.3%
Service occupations	259	105	30.5%	254	100	7.5%
Sales and office occupations	107	66	12.6%	786	158	23.2%
Natural resources, construction, and maintenance occupations:	0	18	0.0%	0	18	0.0%
Production, transportation, and material moving occupations	4	8	0.5%	28	28	0.8%

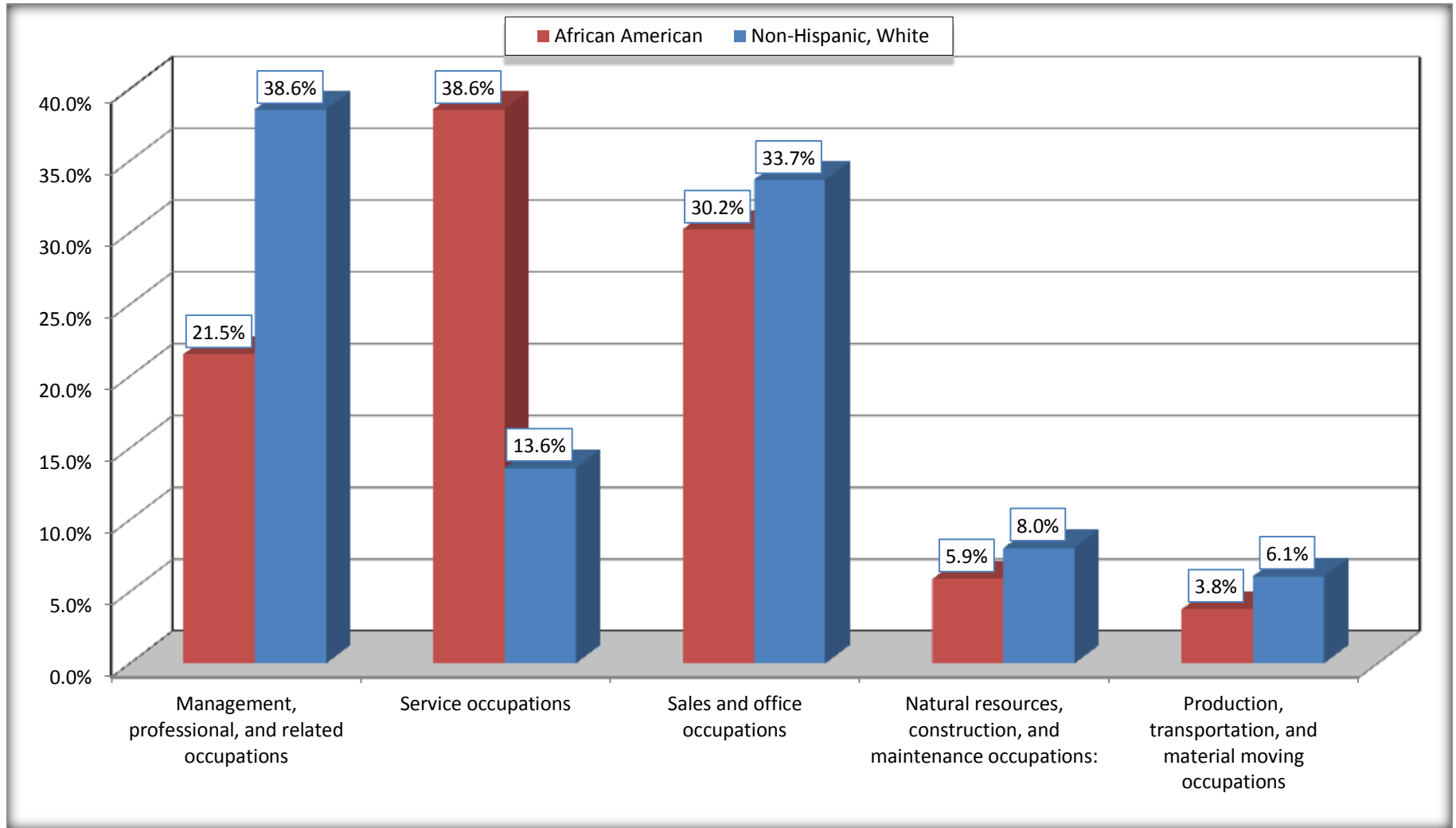
Source: U.S. Census Bureau, 2008-2012 American Community Survey

For information on confidentiality protection, sampling error, nonsampling error, and definitions, see Survey Methodology.

<http://www.census.gov/acs/www/UseData/index.htm>

Occupation for the Civilian Employed 16 Years and Over Population

Bluefield city, West Virginia



Source: C24010. SEX BY OCCUPATION FOR THE CIVILIAN EMPLOYED POPULATION 16 YEARS AND OVER
Data Set: 2008-2012 American Community Survey 5-Year Estimates

B25003. TENURE - Universe: OCCUPIED HOUSING UNITS

Data Set: 2008-2012 American Community Survey 5-Year Estimates

	Bluefield city, West Virginia					
	African American	Margin of Error (+/-)	% of AA Total	White, Not Hispanic	Margin of Error (+/-)	% of NHW Total
Total:	948	150	100.0%	3,707	254	100.0%
Owner occupied	421	100	44.4%	2,729	255	73.6%
Renter occupied	527	124	55.6%	978	187	26.4%

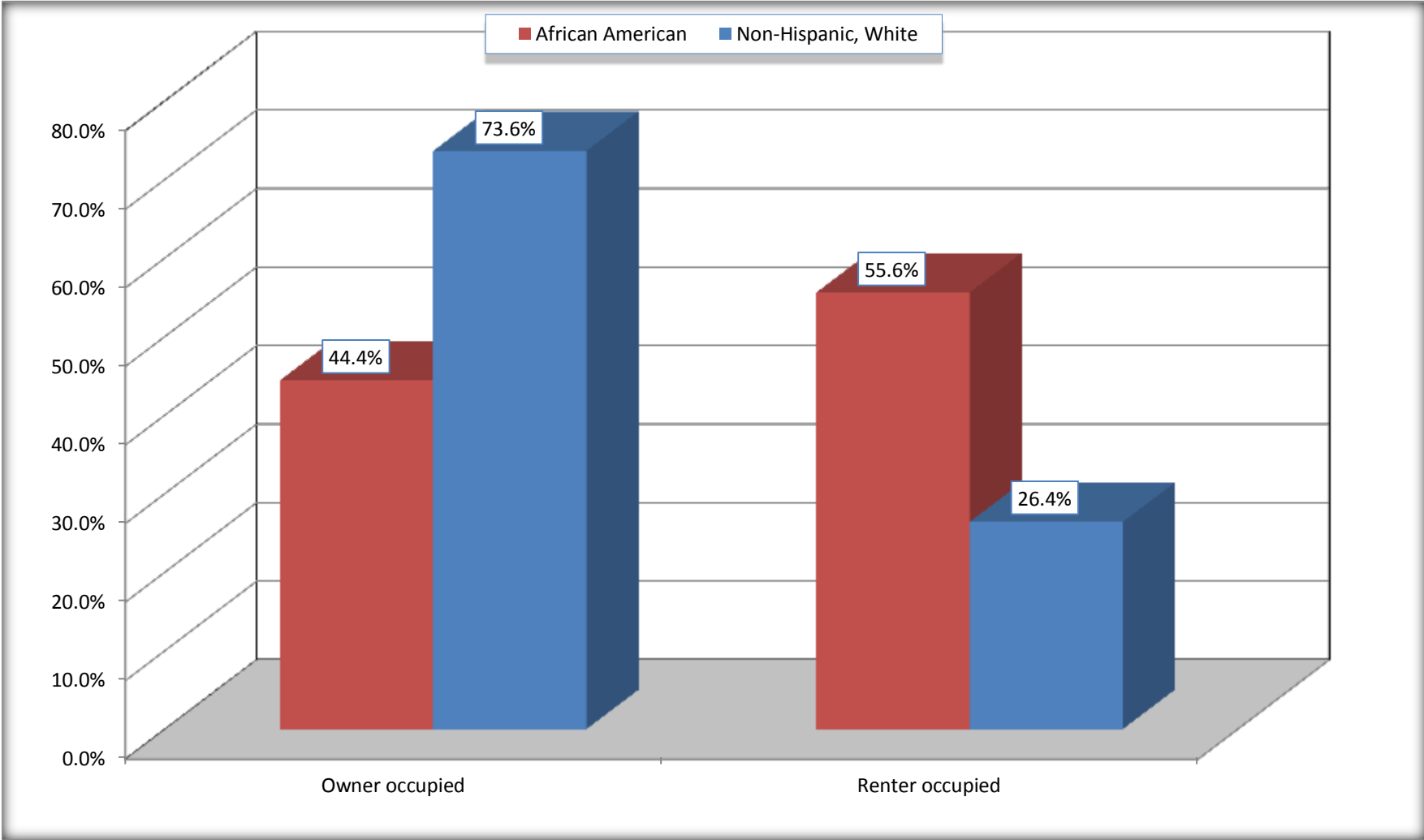
Source: U.S. Census Bureau, 2008-2012 American Community Survey

For information on confidentiality protection, sampling error, nonsampling error, and definitions, see Survey Methodology.

<http://www.census.gov/acs/www/UseData/index.h>

Home Owners and Renters by Household

Bluefield city, West Virginia



Source: B25003. TENURE - Universe: OCCUPIED HOUSING UNITS
Data Set: 2008-2012 American Community Survey 5-Year Estimates

B25014. OCCUPANTS PER ROOM - Universe: OCCUPIED HOUSING UNITS

Data Set: 2008-2012 American Community Survey 5-Year Estimates

	Bluefield city, West Virginia					
	African American	Margin of Error (+/-)	% of AA Total	White, Not Hispanic	Margin of Error (+/-)	% of NHW Total
Total:	948	150	100.0%	3,707	254	100.0%
1.00 or less occupants per room	948	150	100.0%	3,707	254	100.0%
1.01 or more occupants per room	0	18	0.0%	0	18	0.0%

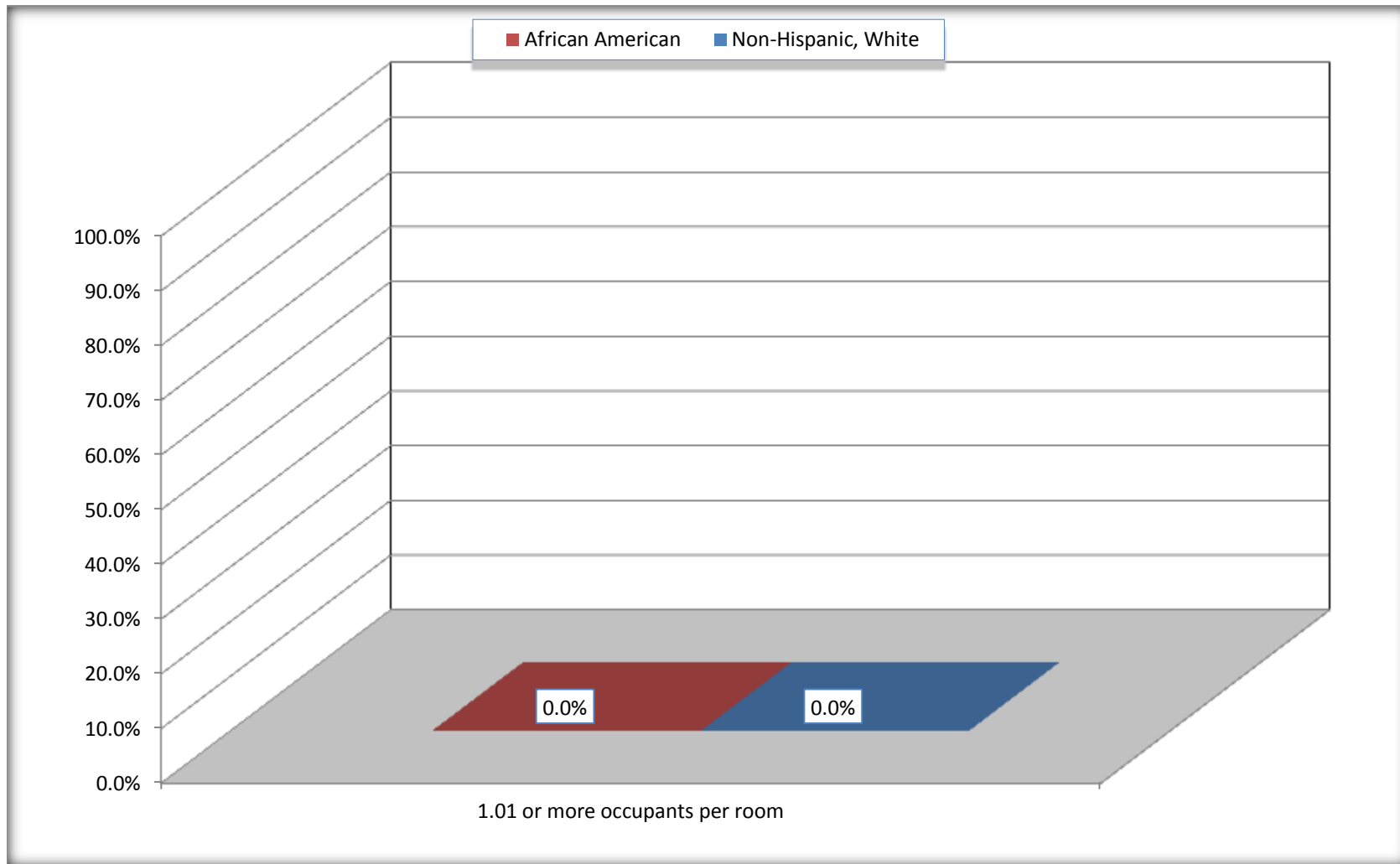
Source: U.S. Census Bureau, 2008-2012 American Community Survey

For information on confidentiality protection, sampling error, nonsampling error, and definitions, see Survey Methodology.

<http://www.census.gov/acs/www/UseData/index.ht>

More than One Person per Room (Crowding) by Household

Bluefield city, West Virginia



Source: B25014. OCCUPANTS PER ROOM - Universe: OCCUPIED HOUSING UNITS
Data Set: 2008-2012 American Community Survey 5-Year Estimates

B18101. AGE BY DISABILITY STATUS

Data Set: 2008-2012 American Community Survey 5-Year Estimates

	Bluefield city, West Virginia					
	African American	Margin of Error (+/-)	% of AA Total	White, Not Hispanic	Margin of Error (+/-)	% of NHW Total
Total:	2,332	276	100.0%	7,528	340	100.0%
Under 18 years:	698	138	29.9%	1,191	61	15.8%
With a disability	72	76	3.1%	85	71	1.1%
No disability	626	148	26.8%	1,106	163	14.7%
18 to 64 years:	1,328	194	56.9%	4,512	257	59.9%
With a disability	312	123	13.4%	818	200	10.9%
No disability	1,016	183	43.6%	3,694	282	49.1%
65 years and over:	306	74	13.1%	1,825	177	24.2%
With a disability	163	69	7.0%	749	151	9.9%
No disability	143	60	6.1%	1,076	171	14.3%

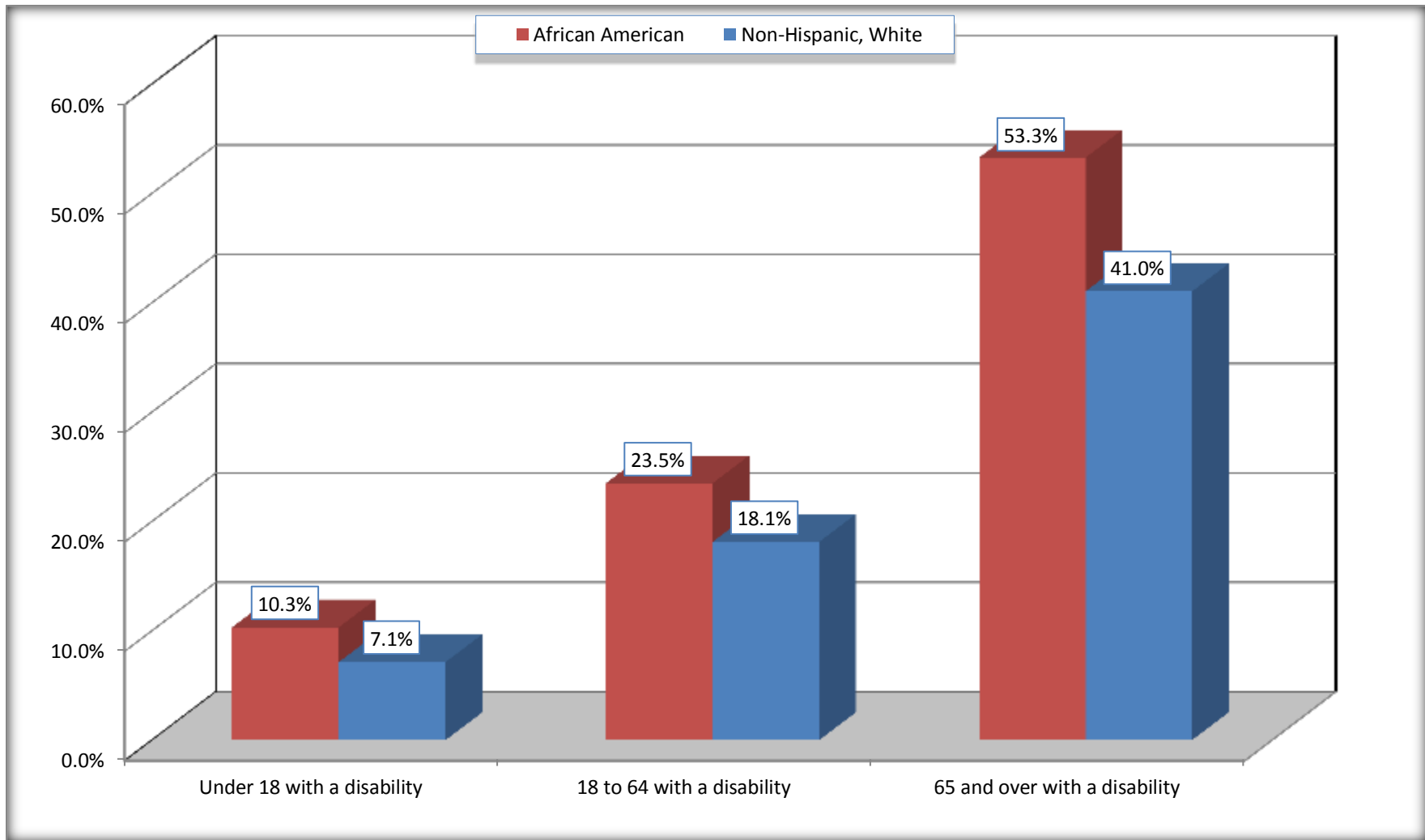
Source: U.S. Census Bureau, 2008-2012 American Community Survey

For information on confidentiality protection, sampling error, nonsampling error, and definitions, see Survey Methodology.

<http://www.census.gov/acs/www/UseData/index.htm>

Disability by Age

Bluefield city, West Virginia



Source: B18101. AGE BY DISABILITY STATUS
Data Set: 2008-2012 American Community Survey 5-Year Estimates

C27001B. HEALTH INSURANCE COVERAGE STATUS BY AGE

Data Set: 2008-2012 American Community Survey 5-Year Estimates

	Bluefield city, West Virginia					
	African American	Margin of Error (+/-)	% of AA Total	White, Not Hispanic	Margin of Error (+/-)	% of NHW Total
Total:	2,332	276	100.0%	7,528	340	100.0%
Under 18 years:	698	138	29.9%	1,191	196	15.8%
With health insurance coverage	655	129	28.1%	1,097	199	14.6%
No health insurance coverage	43	51	1.8%	94	70	1.2%
18 to 64 years:	1,328	194	56.9%	4,512	257	59.9%
With health insurance coverage	920	159	39.5%	3,646	323	48.4%
No health insurance coverage	408	143	17.5%	866	211	11.5%
65 years and over:	306	74	13.1%	1,825	177	24.2%
With health insurance coverage	306	74	13.1%	1,825	177	24.2%
No health insurance coverage	0	18	0.0%	0	18	0.0%

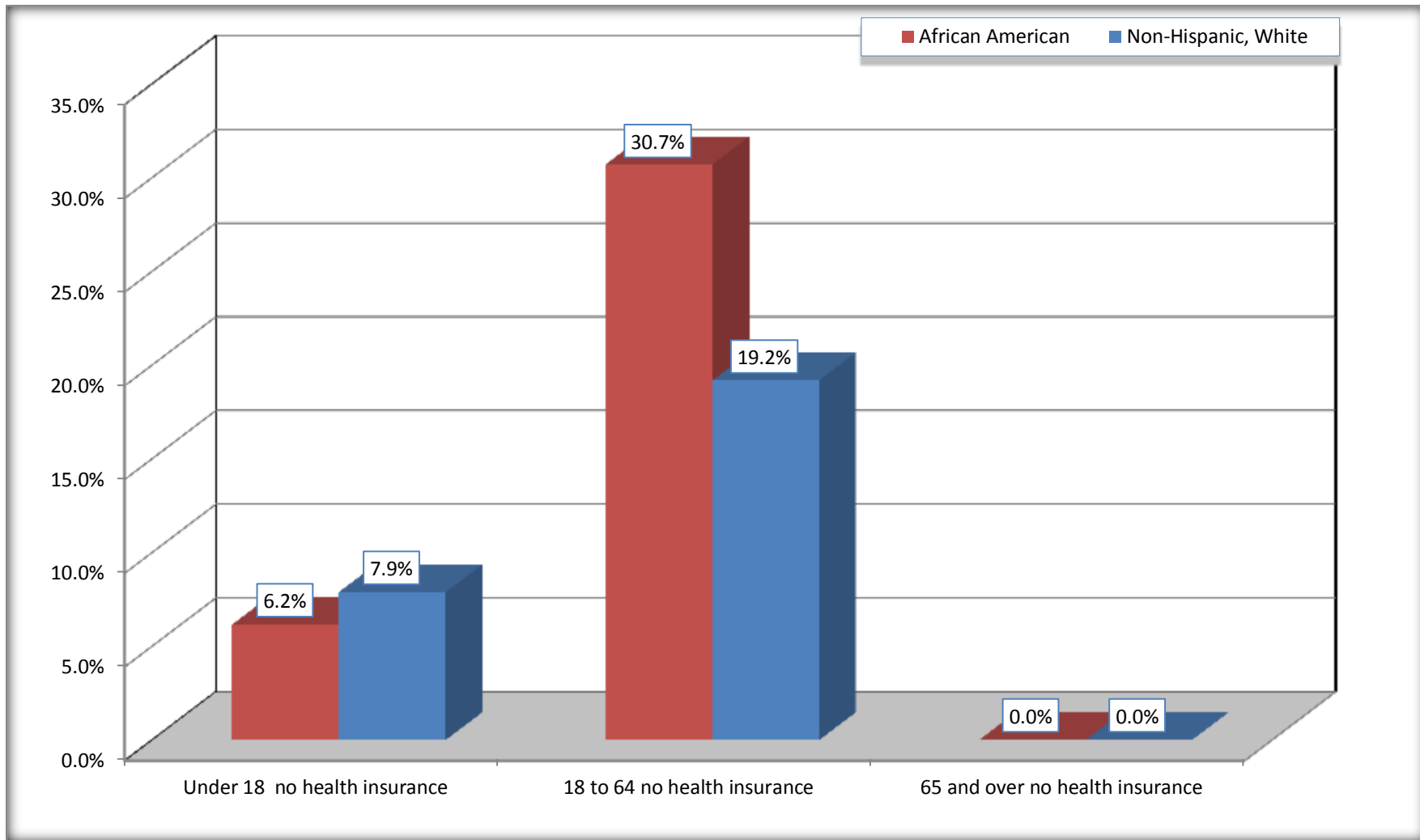
Source: U.S. Census Bureau, 2008-2012 American Community Survey

For information on confidentiality protection, sampling error, nonsampling error, and definitions, see Survey Methodology.

<http://www.census.gov/acs/www/UseData/index.htm>

Lack of Health Insurance Coverage by Age

Bluefield city, West Virginia



Source: C27001B. HEALTH INSURANCE COVERAGE STATUS BY AGE
Data Set: 2008-2012 American Community Survey 5-Year Estimates