

# **Selected Socio-Economic Data**

## **Nelson County, Virginia**

### **African American and White, Not Hispanic**

**Data Set: 2008-2012 American Community Survey 5-Year Estimates**

[www.fairvote2020.org](http://www.fairvote2020.org)

[www.fairdata2000.com](http://www.fairdata2000.com)

[29-Dec-13](#)

**C02003.DETAILED RACE - Universe: TOTAL POPULATION**  
 Data Set: 2008-2012 American Community Survey 5-Year Estimates

	Nelson County, Virginia		
	Population	Margin of Error (+/-)	% of Total
<b>Total:</b>	<b>15,000</b>	<b>*****</b>	<b>100.0%</b>
Population of one race:	14,845	127	99.0%
White	12,407	150	82.7%
Black or African American	2,381	202	15.9%
American Indian and Alaska Native	29	47	0.2%
Asian alone	20	34	0.1%
Native Hawaiian and Other Pacific Islander	0	19	0.0%
Some other race	8	15	0.1%
Population of two or more races:	155	127	1.0%
Two races including Some other race	0	19	0.0%
Two races excluding Some other race, and three or more races	155	127	1.0%
Population of two races:	132	122	0.9%
White; Black or African American	78	108	0.5%
White; American Indian and Alaska Native	54	58	0.4%
White; Asian	0	19	0.0%
Black or African American; American Indian and Alaska Native	0	19	0.0%
All other two race combinations	0	19	0.0%
Population of three races	23	39	0.2%
Population of four or more races	0	19	0.0%

Note: Hispanics may be of any race. See Table B03002 and chart.

Source: U.S. Census Bureau, 2008-2012 American Community Survey

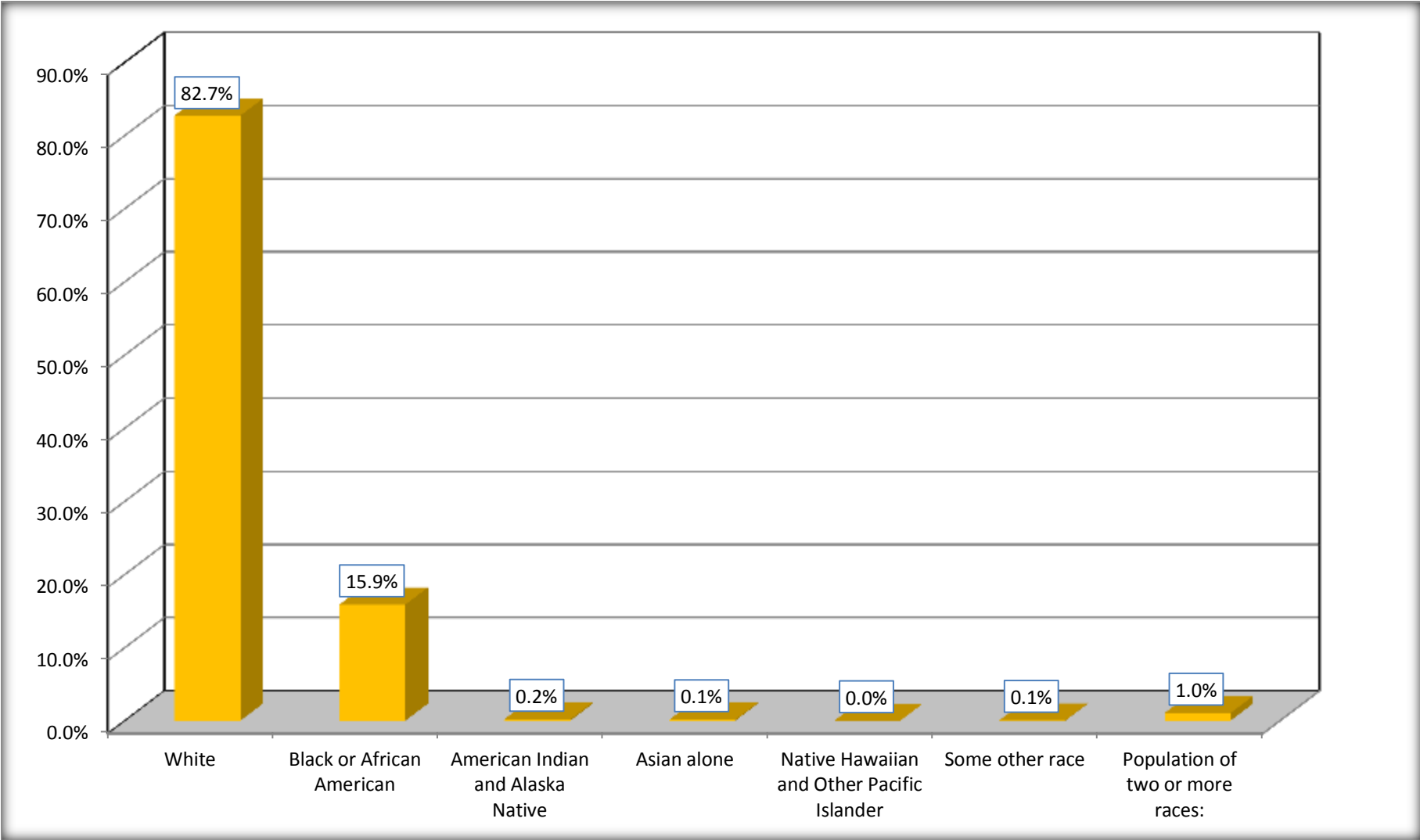
Although the American Community Survey (ACS) produces population, demographic and housing unit estimates, it is the Census Bureau's Population Estimates Program that produces and disseminates the official estimates of the population for the nation, states, counties, cities and towns and estimates of housing units for states and counties.

For information on confidentiality protection, sampling error, nonsampling error, and definitions, see Survey Methodology.

<http://www.census.gov/acs/www/UseData/index.htm>

# Population by Race

## Nelson County, Virginia



Source: C02003.DETAILED RACE - Universe: TOTAL POPULATION  
Data Set: 2008-2012 American Community Survey 5-Year Estimates

**B03002. HISPANIC OR LATINO ORIGIN BY RACE - Universe: TOTAL POPULATION**

Data Set: 2008-2012 American Community Survey 5-Year Estimates

	Nelson County, Virginia		
	Population	Margin of Error (+/-)	% of Total
<b>Total:</b>	15,000	*****	<b>100.0%</b>
Not Hispanic or Latino:	14,840	157	98.9%
White alone	12,266	19	81.8%
Black or African American alone	2,370	206	15.8%
American Indian and Alaska Native alone	29	47	0.2%
Asian alone	20	34	0.1%
Native Hawaiian and Other Pacific Islander alone	0	19	0.0%
Some other race alone	0	19	0.0%
Two or more races:	155	127	1.0%
Two races including Some other race	0	19	0.0%
Two races excluding Some other race, and three or more races	155	127	1.0%
Hispanic or Latino	160	157	1.1%

Source: U.S. Census Bureau, 2008-2012 American Community Survey

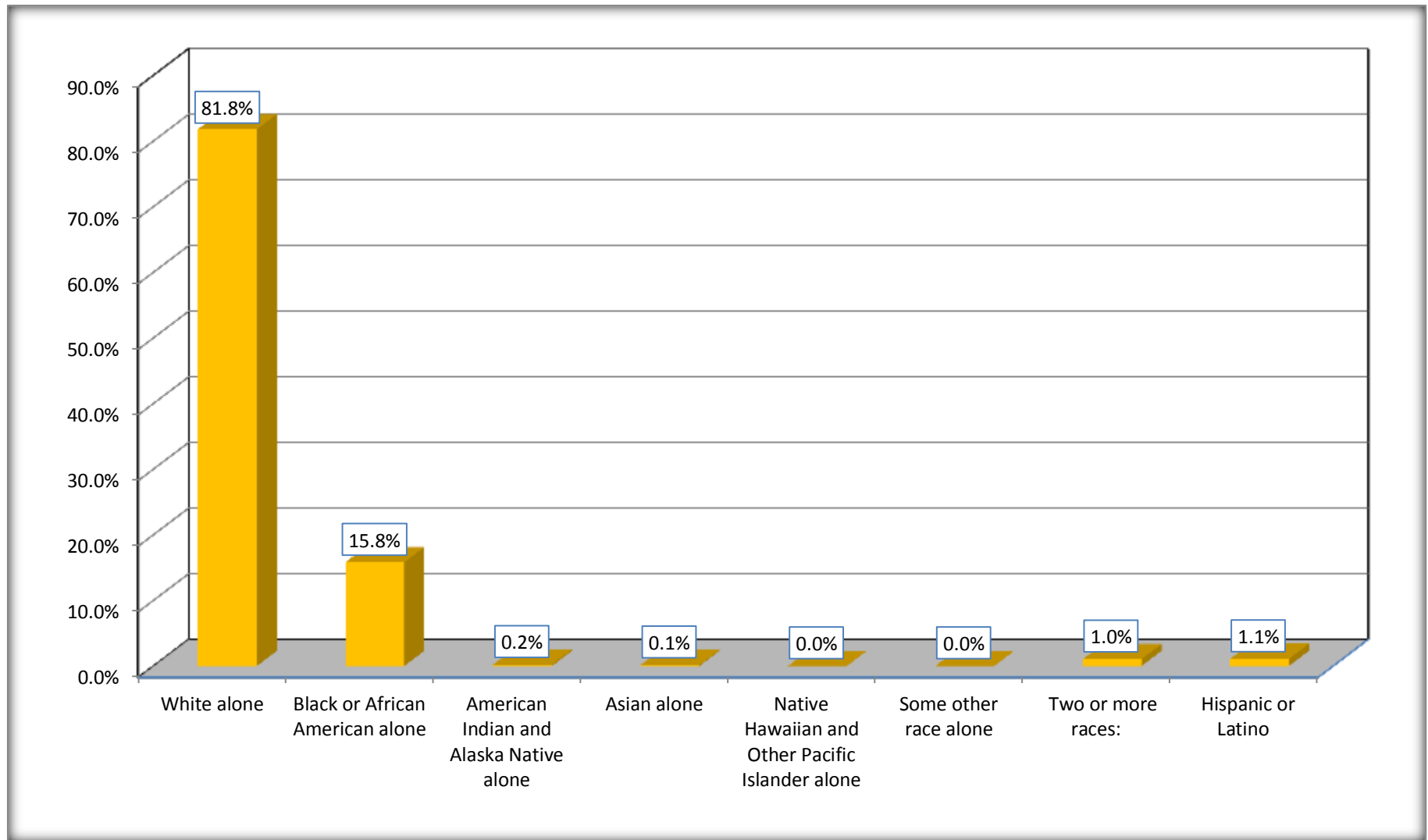
Although the American Community Survey (ACS) produces population, demographic and housing unit estimates, it is the Census Bureau's Population Estimates Program that produces and disseminates the official estimates of the population for the nation, states, counties, cities and towns and estimates of housing units for states and counties.

For information on confidentiality protection, sampling error, nonsampling error, and definitions, see Survey Methodology.

<http://www.census.gov/acs/www/UseData/index.htm>

# Non-Hispanic by Race and Hispanic Population

## Nelson County, Virginia



Source: B03002. HISPANIC OR LATINO ORIGIN BY RACE - Universe: TOTAL POPULATION  
Data Set: 2008-2012 American Community Survey 5-Year Estimates

**B03002. HISPANIC OR LATINO ORIGIN BY RACE**

Data Set: 2008-2012 American Community Survey 5-Year Estimates

	Nelson County, Virginia		
	Population	Margin of Error (+/-)	% of Total
Hispanic or Latino:	160	157	<b>100.0%</b>
White alone	141	150	88.1%
Black or African American alone	11	22	6.9%
American Indian and Alaska Native alone	0	19	0.0%
Asian alone	0	19	0.0%
Native Hawaiian and Other Pacific Islander alone	0	19	0.0%
Some other race alone	8	15	5.0%
Two or more races:	0	19	0.0%
Two races including Some other race	0	19	0.0%
Two races excluding Some other race, and three or more races	0	19	0.0%

Source: U.S. Census Bureau, 2008-2012 American Community Survey

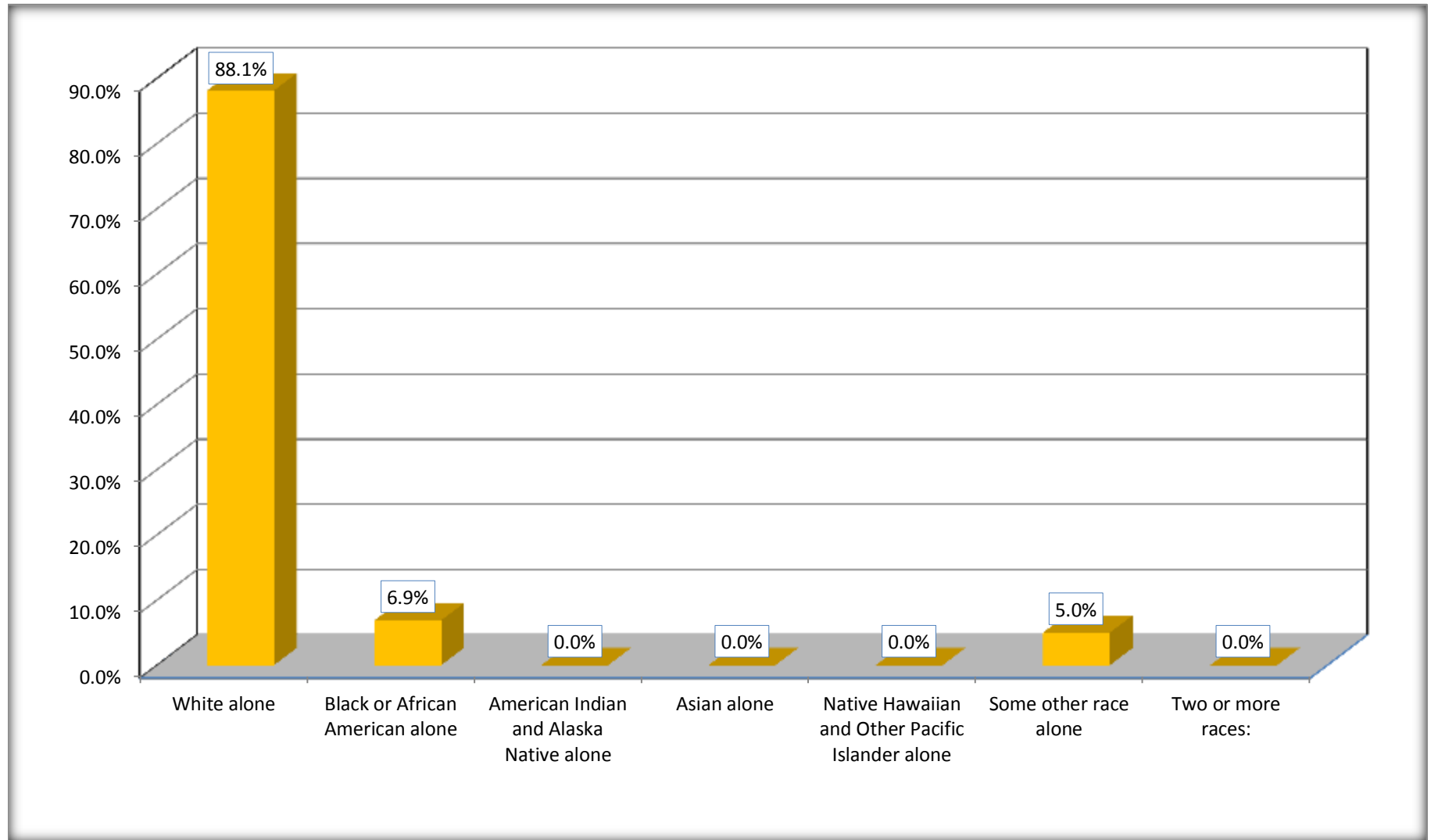
Although the American Community Survey (ACS) produces population, demographic and housing unit estimates, it is the Census Bureau's Population Estimates Program that produces and disseminates the official estimates of the population for the nation, states, counties, cities and towns and estimates of housing units for states and counties.

For information on confidentiality protection, sampling error, nonsampling error, and definitions, see Survey Methodology.

<http://www.census.gov/acs/www/UseData/index.htm>

# Hispanic or Latino Origin by Race

## Nelson County, Virginia



Source: B03002. HISPANIC OR LATINO ORIGIN BY RACE  
Data Set: 2008-2012 American Community Survey 5-Year Estimates

**B01001. SEX BY AGE**

Data Set: 2008-2012 American Community Survey 5-Year Estimates

	Nelson County, Virginia					
	African American	Margin of Error (+/-)	% of AA Total	White, Not Hispanic	Margin of Error (+/-)	% of NHW Total
<b>Total:</b>	<b>2,381</b>	<b>202</b>	<b>100.0%</b>	<b>12,266</b>	<b>19</b>	<b>100.0%</b>
Under 18 years	604	NC	25.4%	2,209	NC	18.0%
18 to 64 years	1,571	NC	66.0%	7,506	NC	61.2%
65 years and over	206	NC	8.7%	2,551	NC	20.8%
Male:	962	188	40.4%	5,906	389	48.1%
Under 18 years	179	NC	7.5%	1,072	NC	8.7%
18 to 64 years	719	NC	30.2%	3,629	NC	29.6%
65 years and over	64	NC	2.7%	1,205	NC	9.8%
Female:	1,419	151	59.6%	6,360	412	51.9%
Under 18 years	425	NC	17.8%	1,137	NC	9.3%
18 to 64 years	852	NC	35.8%	3,877	NC	31.6%
65 years and over	142	NC	6.0%	1,346	NC	11.0%

Source: U.S. Census Bureau, 2008-2012 American Community Survey

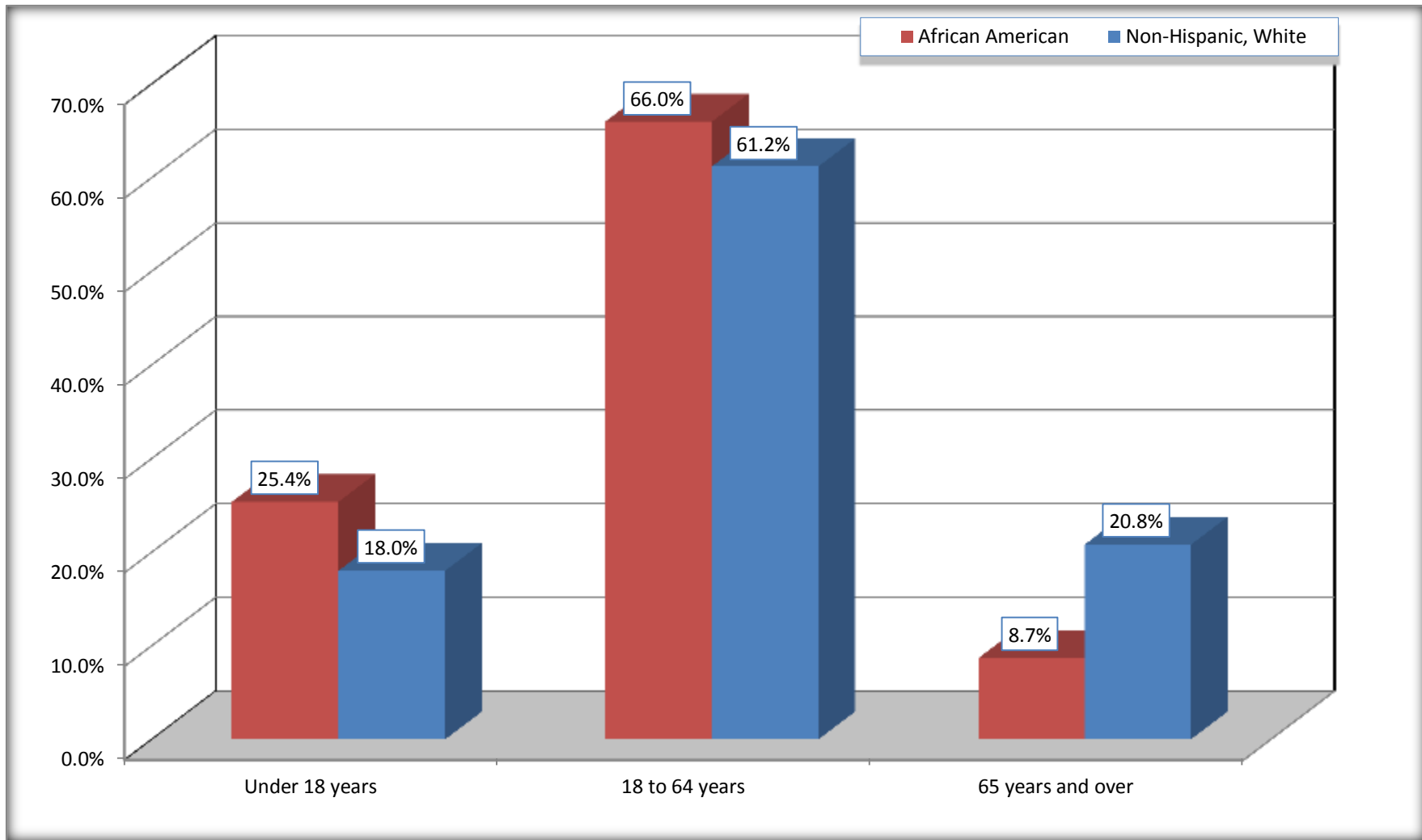
Although the American Community Survey (ACS) produces population, demographic and housing unit estimates, it is the Census Bureau's Population Estimates Program that produces and disseminates the official estimates of the population for the nation, states, counties, cities and towns and estimates of housing units for states and counties.

For information on confidentiality protection, sampling error, nonsampling error, and definitions, see Survey Methodology.  
<http://www.census.gov/acs/www/UseData/index.htm>



# Population by Age

## Nelson County, Virginia



Source: B01001. SEX BY AGE  
Data Set: 2008-2012 American Community Survey 5-Year Estimates

**B05003. SEX BY AGE BY CITIZENSHIP STATUS**

Data Set: 2008-2012 American Community Survey 5-Year Estimates

	Nelson County, Virginia					
	African American	Margin of Error (+/-)	% of AA Total by Age	White, Not Hispanic	Margin of Error (+/-)	% of NHW Total by Age
<b>Total:</b>	<b>2,381</b>	<b>202</b>	<b>100.0%</b>	<b>12,266</b>	<b>19</b>	<b>100.0%</b>
<b>Under 18 years:</b>	<b>604</b>	<b>NC</b>	<b>100.0%</b>	<b>2,209</b>	<b>NC</b>	<b>100.0%</b>
Native	604	NC	100.0%	2,193	NC	99.3%
Foreign born:	0	NC	0.0%	16	NC	0.7%
Naturalized U.S. citizen	0	NC	0.0%	16	NC	0.7%
Not a U.S. citizen	0	NC	0.0%	0	NC	0.0%
<b>18 years and over:</b>	<b>1,777</b>	<b>NC</b>	<b>100.0%</b>	<b>10,057</b>	<b>NC</b>	<b>100.0%</b>
Native	1,777	NC	100.0%	9,781	NC	97.3%
Foreign born:	0	NC	0.0%	276	NC	2.7%
Naturalized U.S. citizen	0	NC	0.0%	99	NC	1.0%
Not a U.S. citizen	0	NC	0.0%	177	NC	1.8%
<b>Male:</b>	<b>962</b>	<b>188</b>	<b>40.4%</b>	<b>5,906</b>	<b>137</b>	<b>48.1%</b>
<b>Under 18 years:</b>	<b>179</b>	<b>114</b>	<b>100.0%</b>	<b>1,072</b>	<b>137</b>	<b>100.0%</b>
Native	179	114	100.0%	1,056	139	98.5%
Foreign born:	0	19	0.0%	16	27	1.5%
Naturalized U.S. citizen	0	19	0.0%	16	27	1.5%
Not a U.S. citizen	0	19	0.0%	0	19	0.0%
<b>18 years and over:</b>	<b>783</b>	<b>139</b>	<b>100.0%</b>	<b>4,834</b>	<b>19</b>	<b>100.0%</b>
Native	783	139	100.0%	4,669	125	96.6%
Foreign born:	0	19	0.0%	165	125	3.4%
Naturalized U.S. citizen	0	19	0.0%	60	77	1.2%
Not a U.S. citizen	0	19	0.0%	105	99	2.2%

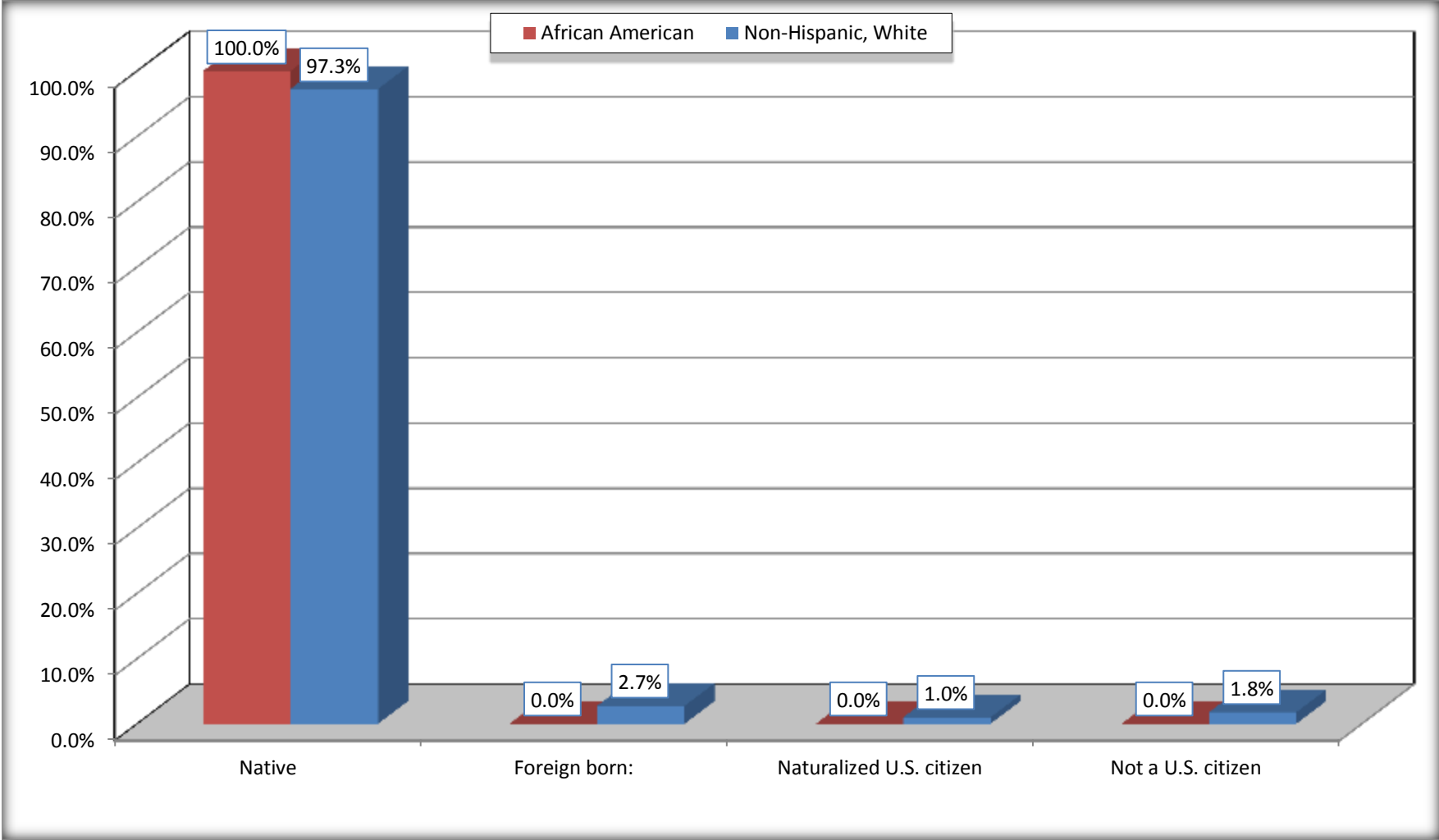
	Nelson County, Virginia					
	African American	Margin of Error (+/-)	% of AA by Age	White, Not Hispanic	Margin of Error (+/-)	% of NHW by Age
<b>Female:</b>	1,419	151	59.6%	6,360	137	51.9%
<b>Under 18 years:</b>	<b>425</b>	<b>141</b>	<b>100.0%</b>	<b>1,137</b>	<b>137</b>	<b>100.0%</b>
Native	425	141	100.0%	1,137	137	100.0%
Foreign born:	0	19	0.0%	0	19	0.0%
Naturalized U.S. citizen	0	19	0.0%	0	19	0.0%
Not a U.S. citizen	0	19	0.0%	0	19	0.0%
<b>18 years and over:</b>	<b>994</b>	<b>54</b>	<b>100.0%</b>	<b>5,223</b>	<b>19</b>	<b>100.0%</b>
Native	994	54	100.0%	5,112	68	97.9%
Foreign born:	0	19	0.0%	111	68	2.1%
Naturalized U.S. citizen	0	19	0.0%	39	33	0.7%
Not a U.S. citizen	0	19	0.0%	72	59	1.4%

Source: U.S. Census Bureau, 2008-2012 American Community Survey

For information on confidentiality protection, sampling error, nonsampling error, and definitions, see Survey Methodology.  
<http://www.census.gov/acs/www/UseData/index.htm>

# Citizenship Status of Voting Age Population (18 and Over)

## Nelson County, Virginia



Source: B05003. SEX BY AGE BY CITIZENSHIP STATUS  
Data Set: 2008-2012 American Community Survey 5-Year Estimates

**B07004. GEOGRAPHICAL MOBILITY IN THE PAST YEAR BY RACE FOR CURRENT RESIDENCE IN THE UNITED STATES - Universe:  
POPULATION 1 YEAR AND OVER**

Data Set: 2008-2012 American Community Survey 5-Year Estimates

	<b>Nelson County, Virginia</b>					
	African American	Margin of Error (+/-)	% of AA Total	White, Not Hispanic	Margin of Error (+/-)	% of NHW Total
<b>Total:</b>	<b>2,381</b>	<b>202</b>	<b>100.0%</b>	<b>12,117</b>	<b>64</b>	<b>100.0%</b>
Same house 1 year ago	2,351	193	98.7%	10,637	473	87.8%
Moved within same county	23	34	1.0%	729	299	6.0%
Moved from different county within same state	7	14	0.3%	596	346	4.9%
Moved from different state	0	19	0.0%	155	104	1.3%
Moved from abroad	0	19	0.0%	0	19	0.0%

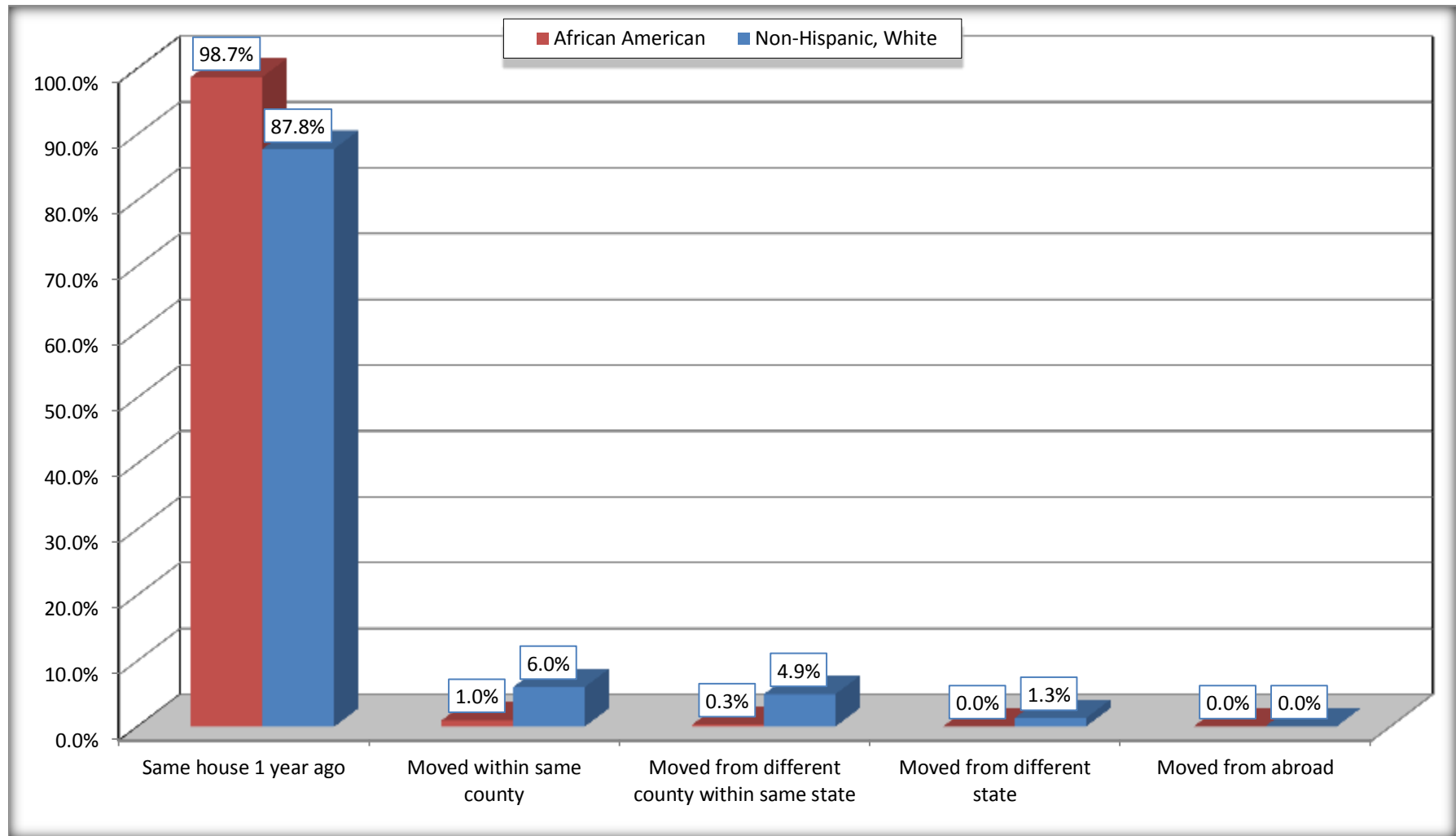
Source: U.S. Census Bureau, 2008-2012 American Community Survey

For information on confidentiality protection, sampling error, nonsampling error, and definitions, see Survey Methodology.

<http://www.census.gov/acs/www/UseData/index.htm>

# Geographical Mobility in the Past Year (Population 1 Year and Over)

## Nelson County, Virginia



Source: B07004. GEOGRAPHICAL MOBILITY IN THE PAST YEAR BY RACE FOR CURRENT RESIDENCE IN THE UNITED STATES - Universe: POPULATION 1 YEAR AND OVER

Data Set: 2008-2012 American Community Survey 5-Year Estimates

**B08105. MEANS OF TRANSPORTATION TO WORK - Universe: WORKERS 16 YEARS AND OVER**

Data Set: 2008-2012 American Community Survey 5-Year Estimates

	Nelson County, Virginia					
	African American	Margin of Error (+/-)	% of AA Total	White, Not Hispanic	Margin of Error (+/-)	% of NHW Total
<b>Total:</b>	869	170	<b>100.0%</b>	5665	326	<b>100.0%</b>
Car, truck, or van - drove alone	736	181	84.7%	4149	381	73.2%
Car, truck, or van - carpooled	104	69	12.0%	754	264	13.3%
Public transportation (excluding taxicab)	0	19	0.0%	54	69	1.0%
Walked	0	19	0.0%	135	108	2.4%
Taxicab, motorcycle, bicycle, or other means	18	36	2.1%	241	128	4.3%
Worked at home	11	22	1.3%	332	109	5.9%

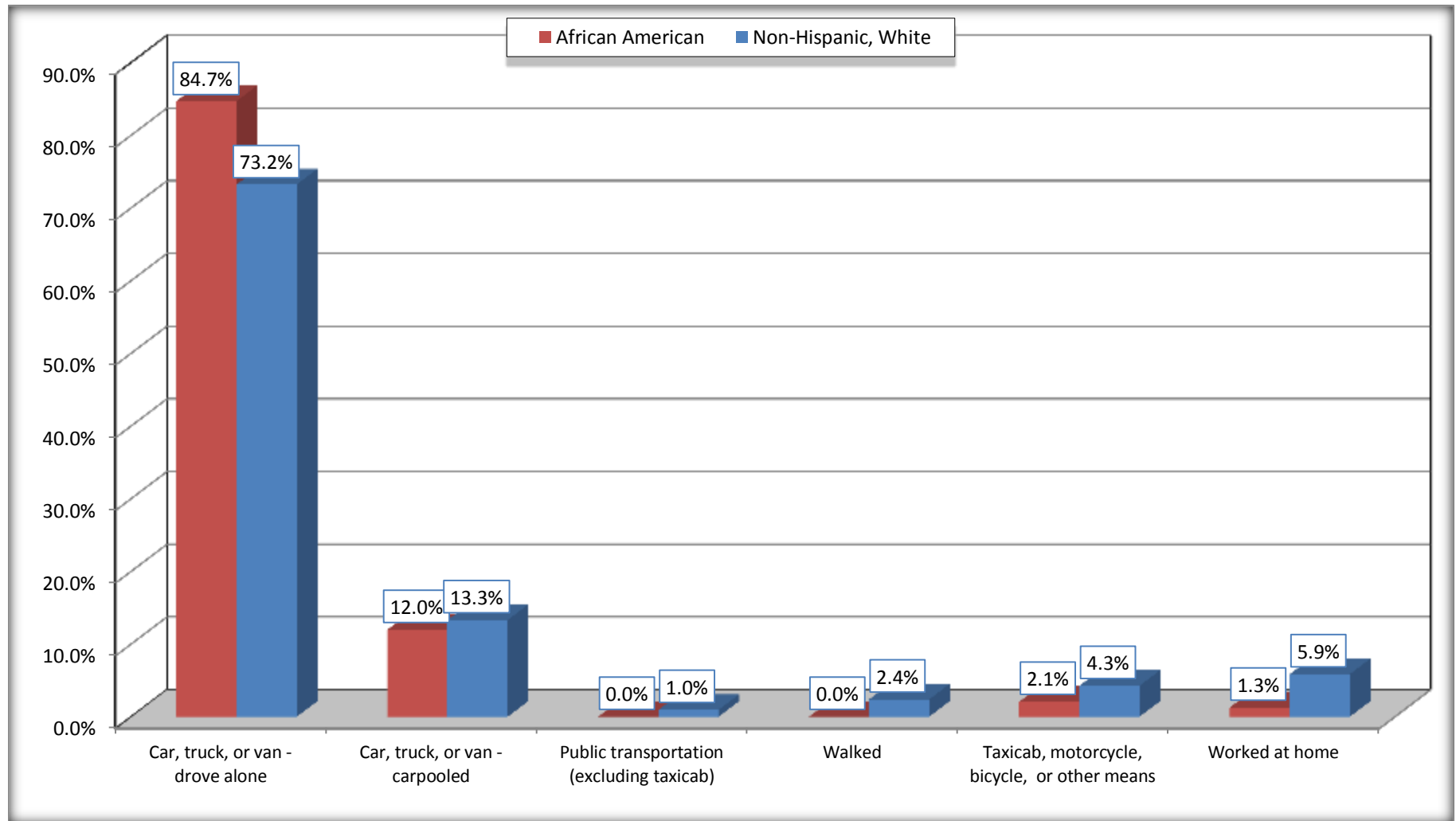
Source: U.S. Census Bureau, 2008-2012 American Community Survey

For information on confidentiality protection, sampling error, nonsampling error, and definitions, see Survey Methodology.

<http://www.census.gov/acs/www/UseData/index.htm>

# Means of Transportation to Work (Workers 16 Years and Over)

## Nelson County, Virginia



Source: B08105. MEANS OF TRANSPORTATION TO WORK - Universe: WORKERS 16 YEARS AND OVER  
Data Set: 2008-2012 American Community Survey 5-Year Estimates



**B11002. HOUSEHOLD TYPE BY RELATIVES AND NONRELATIVES FOR POPULATION IN HOUSEHOLDS**

Data Set: 2008-2012 American Community Survey 5-Year Estimates

	Nelson County, Virginia					
	African American	Margin of Error (+/-)	% of AA Total	White, Not Hispanic	Margin of Error (+/-)	% of NHW Total
<b>Total:</b>	2330	202	<b>100.0%</b>	12153	203	<b>100.0%</b>
In family households	2025	276	86.9%	10023	481	82.5%
In nonfamily households	305	160	13.1%	2130	395	17.5%

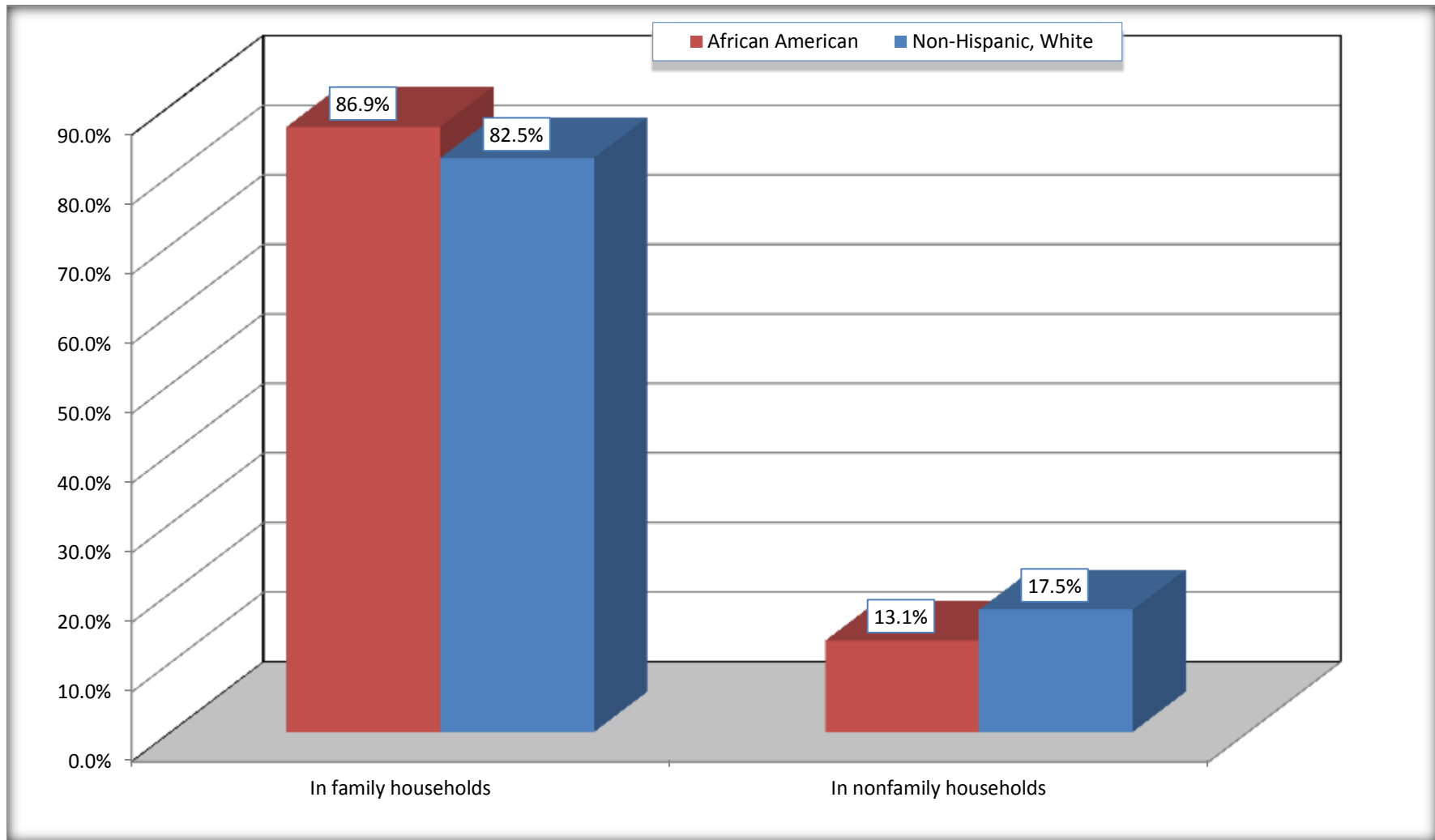
Source: U.S. Census Bureau, 2008-2012 American Community Survey

For information on confidentiality protection, sampling error, nonsampling error, and definitions, see Survey Methodology.

<http://www.census.gov/acs/www/UseData/index.htm>

# Household Type for Population in Households

## Nelson County, Virginia



Source: B11002. HOUSEHOLD TYPE BY RELATIVES AND NONRELATIVES FOR POPULATION IN HOUSEHOLDS  
Data Set: 2008-2012 American Community Survey 5-Year Estimates

**B12002. MARITAL STATUS FOR THE POPULATION 15 YEARS AND OVER**

Data Set: 2008-2012 American Community Survey 5-Year Estimates

	Nelson County, Virginia					
	African American	Margin of Error (+/-)	% of AA Total	White, Not Hispanic	Margin of Error (+/-)	% of NHW Total
<b>Total:</b>	<b>1,917</b>	<b>210</b>	<b>100.0%</b>	<b>10,445</b>	<b>1</b>	<b>100.0%</b>
Never married	890	NC	46.4%	1,994	NC	19.1%
Now married (except separated)	616	NC	32.1%	5,928	NC	56.8%
Separated	54	NC	2.8%	262	NC	2.5%
Widowed	176	NC	9.2%	698	NC	6.7%
Divorced	181	NC	9.4%	1,563	NC	15.0%
<b>Male:</b>	<b>838</b>	<b>162</b>	<b>43.7%</b>	<b>5,071</b>	<b>84</b>	<b>48.5%</b>
Never married	442	145	23.1%	1,121	176	10.7%
Now married (except separated)	325	100	17.0%	2,907	257	27.8%
Separated	4	8	0.2%	117	82	1.1%
Widowed	32	50	1.7%	111	58	1.1%
Divorced	35	62	1.8%	815	174	7.8%
<b>Female:</b>	<b>1,079</b>	<b>113</b>	<b>56.3%</b>	<b>5,374</b>	<b>84</b>	<b>51.5%</b>
Never married	448	146	23.4%	873	178	8.4%
Now married (except separated)	291	120	15.2%	3,021	280	28.9%
Separated	50	69	2.6%	145	129	1.4%
Widowed	144	76	7.5%	587	146	5.6%
Divorced	146	101	7.6%	748	189	7.2%

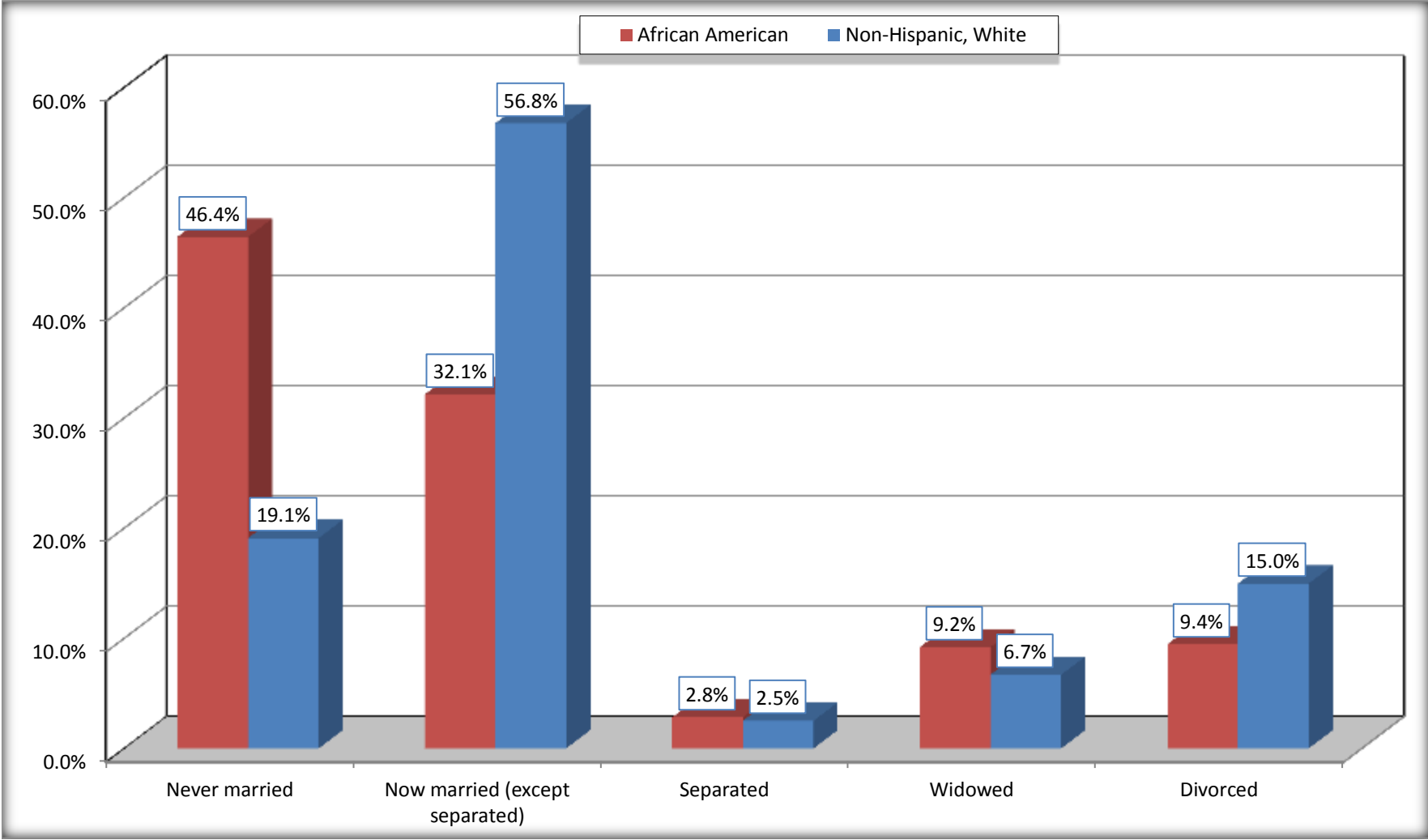
Source: U.S. Census Bureau, 2008-2012 American Community Survey

For information on confidentiality protection, sampling error, nonsampling error, and definitions, see Survey Methodology.

<http://www.census.gov/acs/www/UseData/index.htm>

# Marital Status for the Population 15 Years and Over

## Nelson County, Virginia



Source: B12002. MARITAL STATUS FOR THE POPULATION 15 YEARS AND OVER  
Data Set: 2008-2012 American Community Survey 5-Year Estimates

**C15002. SEX BY EDUCATIONAL ATTAINMENT FOR THE POPULATION 25 YEARS AND OVER**

Data Set: 2008-2012 American Community Survey 5-Year Estimates

	Nelson County, Virginia					
	African American	Margin of Error (+/-)	% of AA Total	White, Not Hispanic	Margin of Error (+/-)	% of NHW Total
<b>Total:</b>	<b>1,582</b>	<b>202</b>	<b>100.0%</b>	<b>9,337</b>	<b>19</b>	<b>100.0%</b>
Less than high school diploma	422	NC	26.7%	1,764	NC	18.9%
High school graduate, GED, or alternative	614	NC	38.8%	3,132	NC	33.5%
Some college or associate's degree	267	NC	16.9%	2,186	NC	23.4%
Bachelor's degree or higher	279	NC	17.6%	2,255	NC	24.2%
Male:	595	184	37.6%	4,469	19	47.9%
Less than high school diploma	223	118	14.1%	873	209	9.3%
High school graduate, GED, or alternative	198	137	12.5%	1,614	257	17.3%
Some college or associate's degree	106	94	6.7%	888	187	9.5%
Bachelor's degree or higher	68	94	4.3%	1,094	190	11.7%
Female:	987	54	62.4%	4,868	19	52.1%
Less than high school diploma	199	88	12.6%	891	196	9.5%
High school graduate, GED, or alternative	416	185	26.3%	1,518	228	16.3%
Some college or associate's degree	161	136	10.2%	1,298	196	13.9%
Bachelor's degree or higher	211	152	13.3%	1,161	221	12.4%

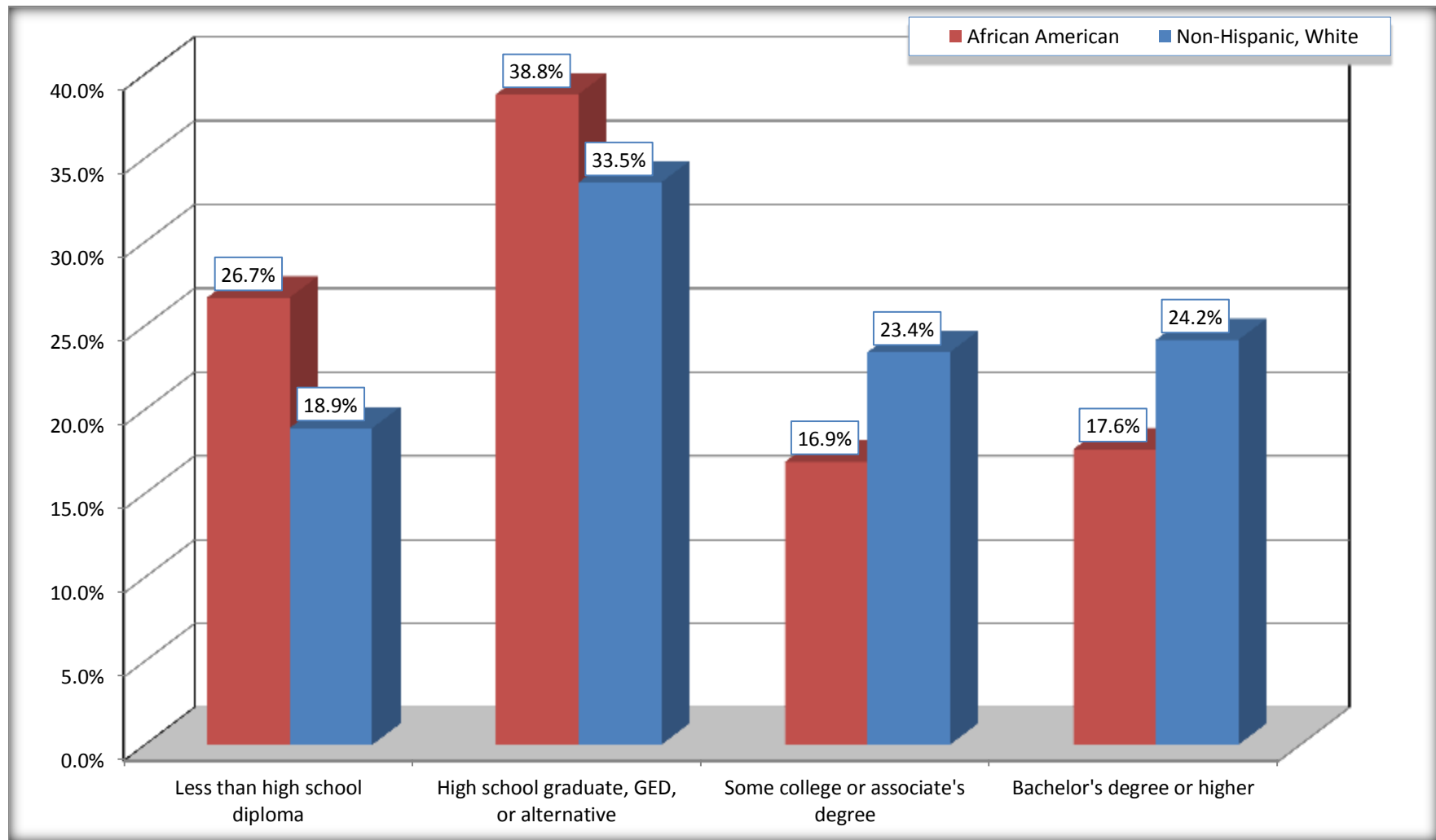
Source: U.S. Census Bureau, 2008-2012 American Community Survey

For information on confidentiality protection, sampling error, nonsampling error, and definitions, see Survey Methodology.

<http://www.census.gov/acs/www/UseData/index.htm>

# Educational Attainment for the Population 25 Years and Older

## Nelson County, Virginia



Source: C15002. SEX BY EDUCATIONAL ATTAINMENT FOR THE POPULATION 25 YEARS AND OVER  
Data Set: 2008-2012 American Community Survey 5-Year Estimates

**B17010. POVERTY STATUS IN THE PAST 12 MONTHS OF FAMILIES BY FAMILY TYPE BY PRESENCE OF RELATED CHILDREN UNDER 18 YEARS**

Data Set: 2008-2012 American Community Survey 5-Year Estimates

	Nelson County, Virginia					
	African American	Margin of Error (+/-)	% of AA Total	White, Not Hispanic	Margin of Error (+/-)	% of NHW Total
<b>Total:</b>	<b>690</b>	<b>154</b>	<b>100.0%</b>	<b>3,505</b>	<b>268</b>	<b>100.0%</b>
Income in the past 12 months below poverty level:	7	20	1.0%	290	128	8.3%
Married-couple family:	7	20	1.0%	172	102	4.9%
With related children under 18 years	0	19	0.0%	90	80	2.6%
Other family:	0	19	0.0%	118	77	3.4%
Male householder, no wife present	0	19	0.0%	7	13	0.2%
With related children under 18 years	0	19	0.0%	7	13	0.2%
Female householder, no husband present	0	19	0.0%	111	78	3.2%
With related children under 18 years	0	19	0.0%	60	63	1.7%
Income in the past 12 months at or above poverty level:	683	160	99.0%	3,215	267	91.7%
Married-couple family:	214	115	31.0%	2,594	253	74.0%
With related children under 18 years	71	83	10.3%	829	174	23.7%
Other family:	469	136	68.0%	621	166	17.7%
Male householder, no wife present	68	70	9.9%	164	90	4.7%
With related children under 18 years	32	50	4.6%	11	17	0.3%
Female householder, no husband present	401	151	58.1%	457	145	13.0%
With related children under 18 years	340	162	49.3%	182	98	5.2%

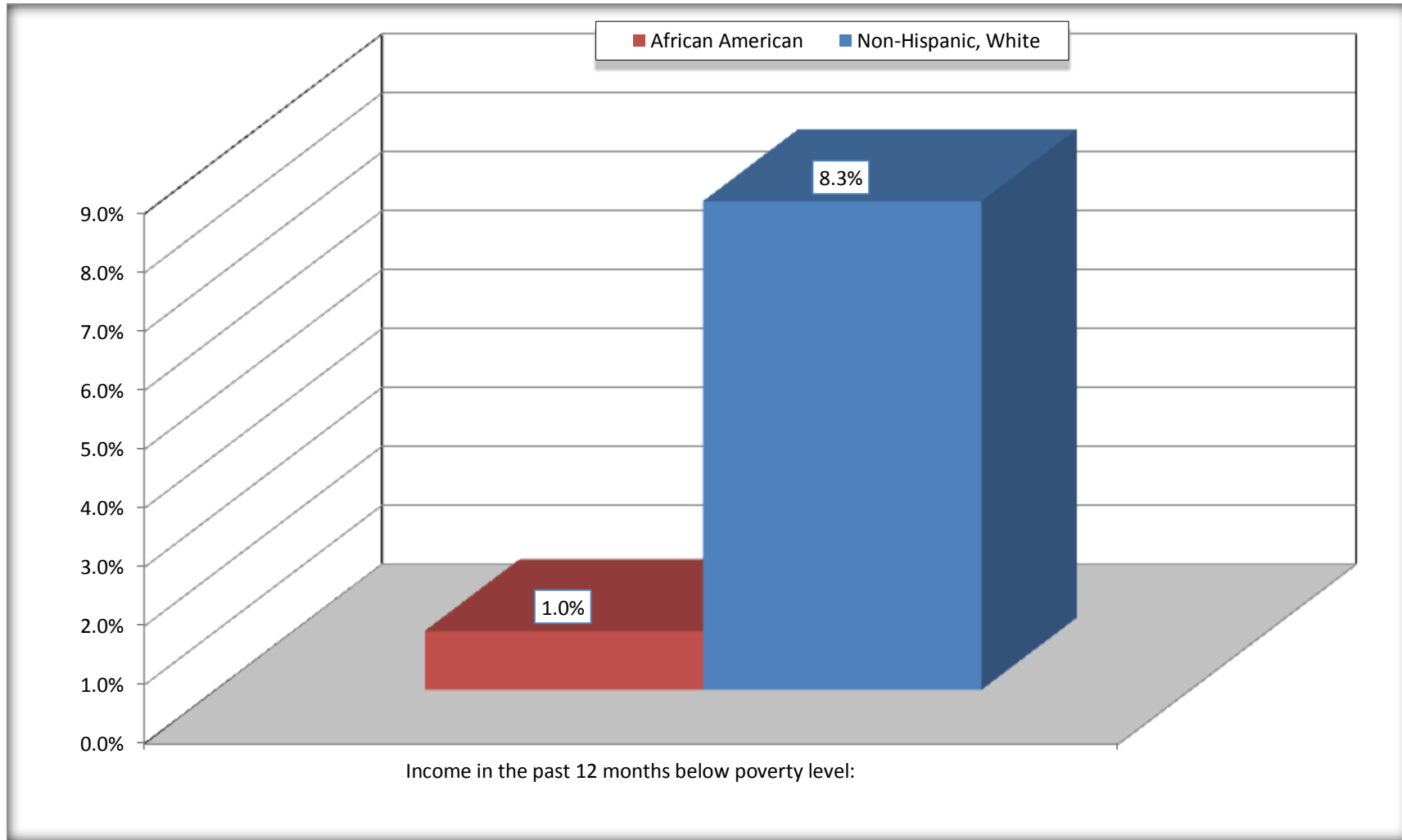
Source: U.S. Census Bureau, 2008-2012 American Community Survey

For information on confidentiality protection, sampling error, nonsampling error, and definitions, see Survey Methodology.

<http://www.census.gov/acs/www/UseData/index.htm>

# Family Households Below Poverty in the Past 12 Months

## Nelson County, Virginia



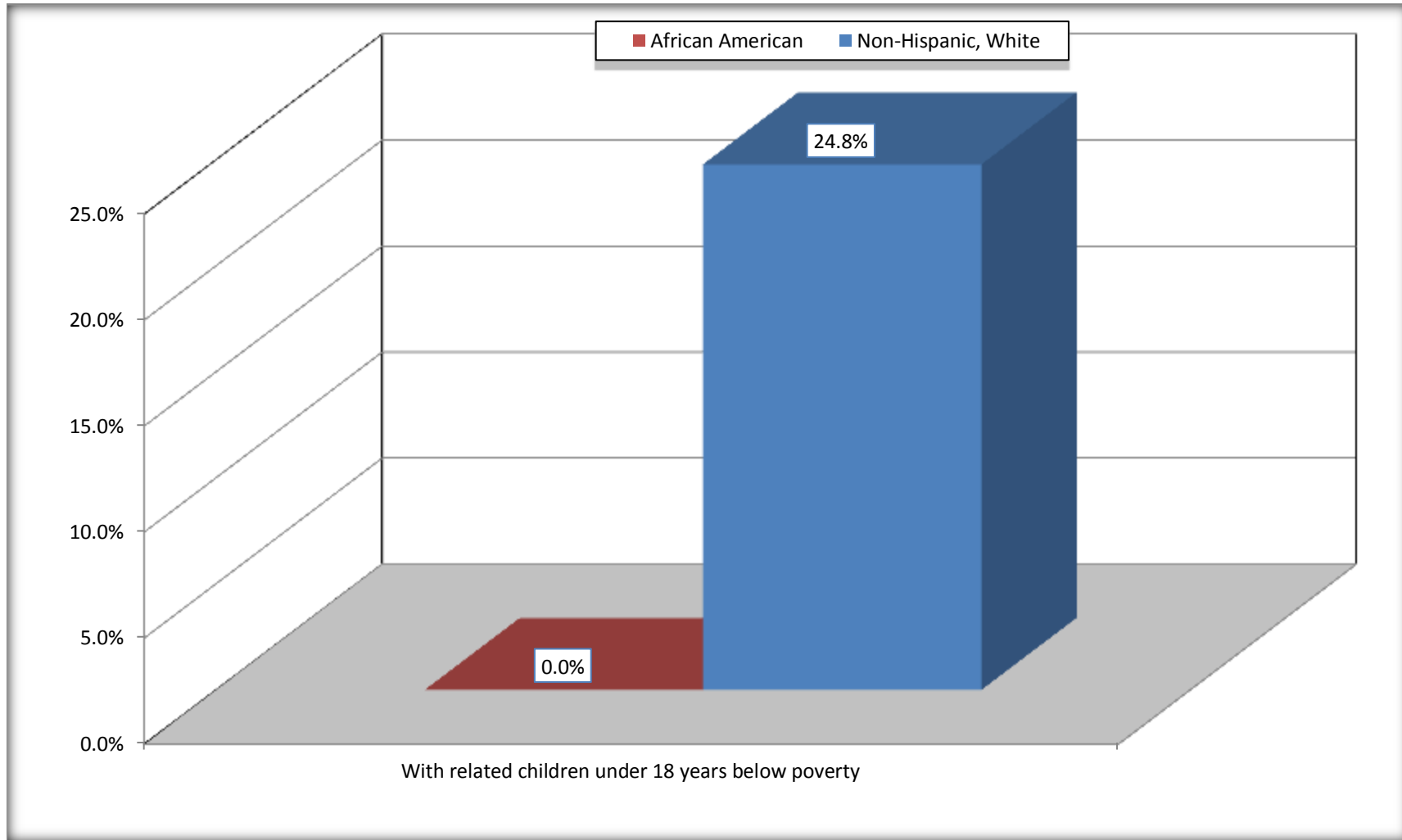
Source: B17010. POVERTY STATUS IN THE PAST 12 MONTHS OF FAMILIES BY FAMILY TYPE BY PRESENCE OF RELATED CHILDREN UNDER 18 YEARS

Data Set: 2008-2012 American Community Survey 5-Year Estimates



# Female-headed Households with Related Children Below Poverty in the Past 12 Months

## Nelson County, Virginia



Source: B17010. POVERTY STATUS IN THE PAST 12 MONTHS OF FAMILIES BY FAMILY TYPE BY PRESENCE OF RELATED CHILDREN UNDER 18 YEARS  
Data Set: 2008-2012 American Community Survey 5-Year Estimates

**B17020 POVERTY STATUS IN THE PAST 12 MONTHS BY AGE - Universe: POPULATION FOR WHOM POVERTY STATUS IS DETERMINED**

Data Set: 2008-2012 American Community Survey 5-Year Estimates

	Nelson County, Virginia					
	African American	Margin of Error (+/-)	% of AA By Age	White, Not Hispanic	Margin of Error (+/-)	% of NHW By Age
<b>Total:</b>	<b>2,362</b>	<b>202</b>	<b>100.0%</b>	<b>12,052</b>	<b>185</b>	<b>100.0%</b>
Income in the past 12 months below poverty level:	148	115	6.3%	1,426	430	11.8%
<b>Under 18 years</b>	0	NC	0.0%	247	NC	12.2%
<b>18 to 64 years</b>	97	81	6.2%	958	299	12.8%
<b>65 years and over</b>	51	NC	26.3%	221	NC	8.8%
Income in the past 12 months at or above poverty level:	2,214	227	93.7%	10,626	443	88.2%
<b>Under 18 years</b>	604	NC	100.0%	1,783	NC	87.8%
<b>18 to 64 years</b>	1,467	203	93.8%	6,540	298	87.2%
<b>65 years and over</b>	143	NC	73.7%	2,303	NC	91.2%

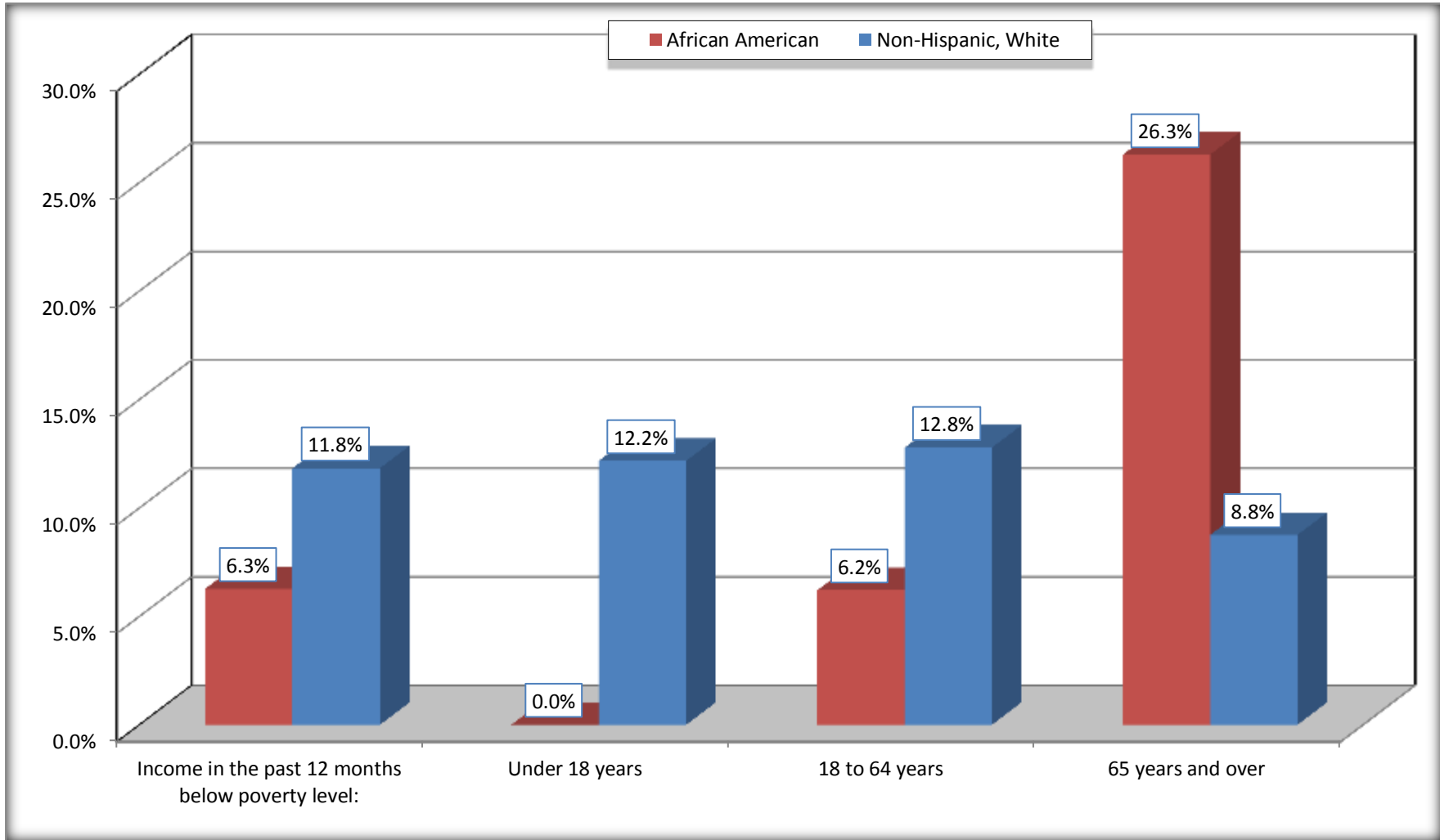
Source: U.S. Census Bureau, 2008-2012 American Community Survey

For information on confidentiality protection, sampling error, nonsampling error, and definitions, see Survey Methodology.

<http://www.census.gov/acs/www/UseData/index.htm>

# Population Below Poverty in the Past 12 Months

## Nelson County, Virginia



Source: B17020 POVERTY STATUS IN THE PAST 12 MONTHS BY AGE - Universe: POPULATION FOR WHOM POVERTY STATUS IS DETERMINED  
Data Set: 2008-2012 American Community Survey 5-Year Estimates

**B19001. HOUSEHOLD INCOME IN THE PAST 12 MONTHS (IN 2010 INFLATION-ADJUSTED DOLLARS)**

Data Set: 2008-2012 American Community Survey 5-Year Estimates

	Nelson County, Virginia					
	African American	Margin of Error (+/-)	% of AA Total	White, Not Hispanic	Margin of Error (+/-)	% of NHW Total
<b>Total:</b>	<b>995</b>	<b>147</b>	<b>100.0%</b>	<b>5,250</b>	<b>313</b>	<b>100.0%</b>
Less than \$ 10,000	87	77	8.7%	336	117	6.4%
\$ 10,000 to \$ 14,999	62	62	6.2%	362	146	6.9%
<b>\$ 15,000 to \$ 24,999</b>	154	NC	15.5%	655	NC	12.5%
<b>\$ 25,000 to \$ 34,999</b>	96	NC	9.6%	512	NC	9.8%
<b>\$ 35,000 to \$ 49,999</b>	212	NC	21.3%	743	NC	14.2%
<b>\$ 50,000 to \$ 74,999</b>	315	NC	31.7%	1,004	NC	19.1%
\$ 75,000 to \$ 99,999	37	63	3.7%	670	151	12.8%
<b>\$ 100,000 to \$ 149,999</b>	32	NC	3.2%	718	NC	13.7%
\$ 150,000 to \$ 199,999	0	19	0.0%	153	82	2.9%
\$ 200,000 or more	0	19	0.0%	97	60	1.8%

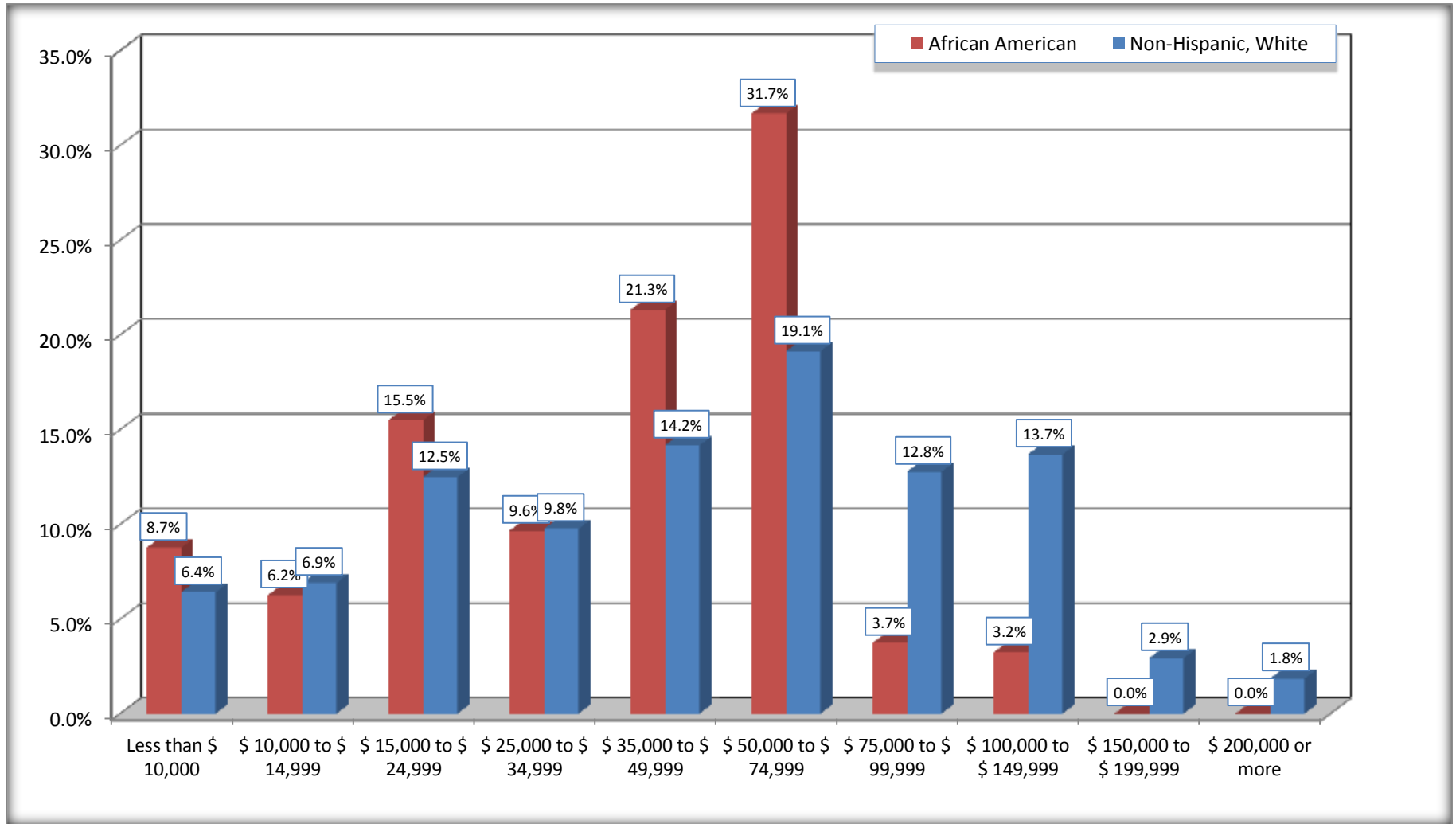
Source: U.S. Census Bureau, 2008-2012 American Community Survey

For information on confidentiality protection, sampling error, nonsampling error, and definitions, see Survey Methodology.

<http://www.census.gov/acs/www/UseData/index.htm>

# Household Income in the Past 12 Months

## Nelson County, Virginia



Source: B19001. HOUSEHOLD INCOME IN THE PAST 12 MONTHS (IN 2010 INFLATION-ADJUSTED DOLLARS)  
Data Set: 2008-2012 American Community Survey 5-Year Estimates

**B19013. MEDIAN HOUSEHOLD INCOME IN THE PAST 12 MONTHS (IN 2010 INFLATION-ADJUSTED DOLLARS)**

Data Set: 2008-2012 American Community Survey 5-Year Estimates

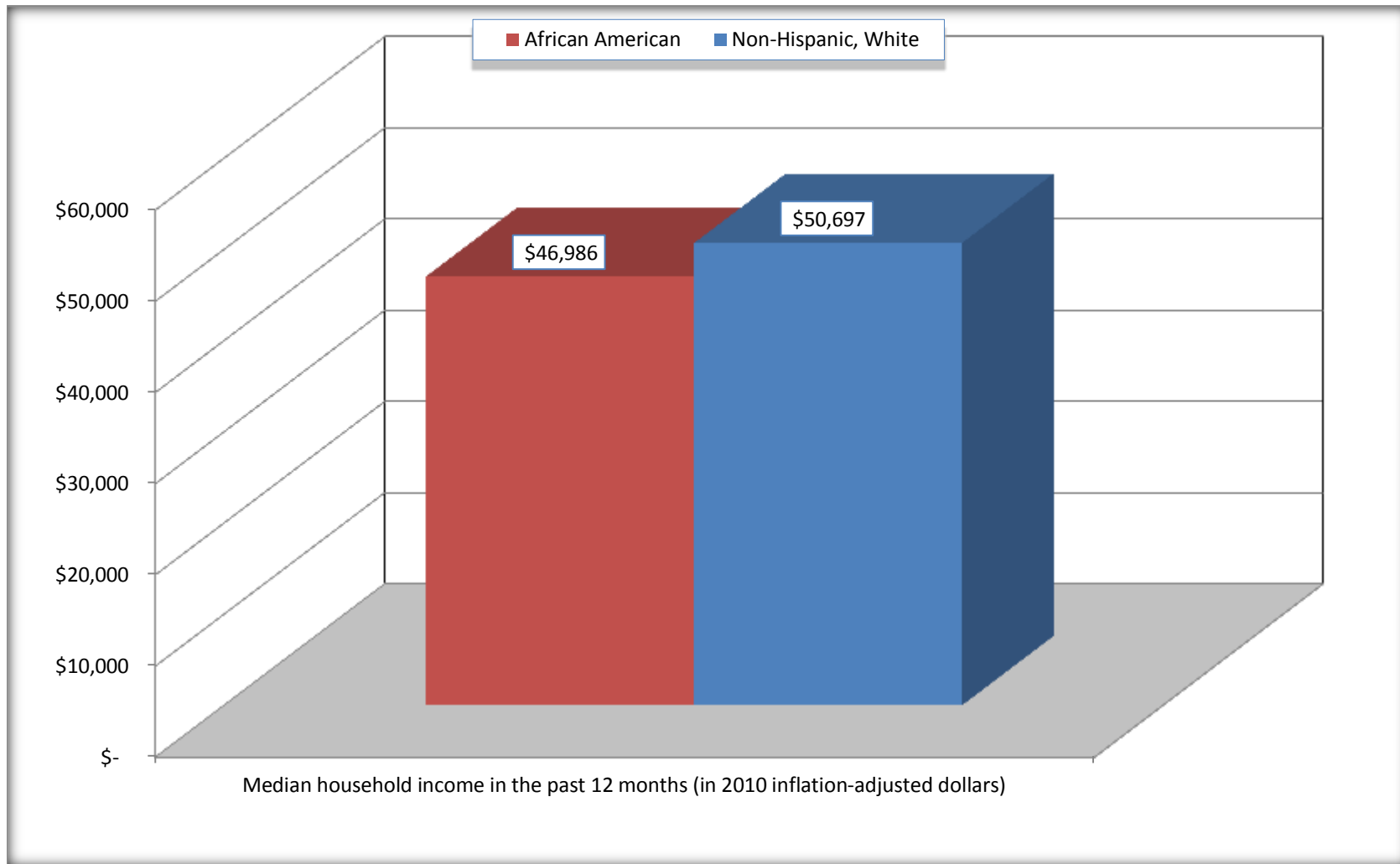
	<b>Nelson County, Virginia</b>			
	African American	Margin of Error (+/-)	White, Not Hispanic	Margin of Error (+/-)
Median household income in the past 12 months (in 2010 inflation-adjusted dollars)	\$ 46,986	\$ 7,297	\$ 50,697	\$ 7,196

Source: U.S. Census Bureau, 2008-2012 American Community Survey

For information on confidentiality protection, sampling error, nonsampling error, and definitions, see Survey Methodology.  
<http://www.census.gov/acs/www/UseData/index.htm>

## Median Household Income in the Past 12 Months

### Nelson County, Virginia



Source: B19013. MEDIAN HOUSEHOLD INCOME IN THE PAST 12 MONTHS (IN 2010 INFLATION-ADJUSTED DOLLARS)  
Data Set: 2008-2012 American Community Survey 5-Year Estimates

**B19101. FAMILY INCOME IN THE PAST 12 MONTHS (IN 2010 INFLATION-ADJUSTED DOLLARS)**

Data Set: 2008-2012 American Community Survey 5-Year Estimates

	Nelson County, Virginia					
	African American	Margin of Error (+/-)	% of AA Total	White, Not Hispanic	Margin of Error (+/-)	% of NHW Total
<b>Total:</b>	<b>690</b>	<b>154</b>	<b>100.0%</b>	<b>3,505</b>	<b>268</b>	<b>100.0%</b>
Less than \$ 10,000	0	19	0.0%	93	54	2.7%
\$ 10,000 to \$ 14,999	7	20	1.0%	116	78	3.3%
<b>\$ 15,000 to \$ 24,999</b>	<b>100</b>	<b>NC</b>	<b>14.5%</b>	<b>330</b>	<b>NC</b>	<b>9.4%</b>
<b>\$ 25,000 to \$ 34,999</b>	<b>65</b>	<b>NC</b>	<b>9.4%</b>	<b>346</b>	<b>NC</b>	<b>9.9%</b>
<b>\$ 35,000 to \$ 49,999</b>	<b>168</b>	<b>NC</b>	<b>24.3%</b>	<b>495</b>	<b>NC</b>	<b>14.1%</b>
<b>\$ 50,000 to \$ 74,999</b>	<b>281</b>	<b>NC</b>	<b>40.7%</b>	<b>822</b>	<b>NC</b>	<b>23.5%</b>
<b>\$ 100,000 to \$ 149,999</b>	<b>32</b>	<b>NC</b>	<b>4.6%</b>	<b>598</b>	<b>NC</b>	<b>17.1%</b>
\$ 150,000 to \$ 199,999	0	19	0.0%	153	82	4.4%
\$ 200,000 or more	0	19	0.0%	85	53	2.4%

Source: U.S. Census Bureau, 2008-2012 American Community Survey

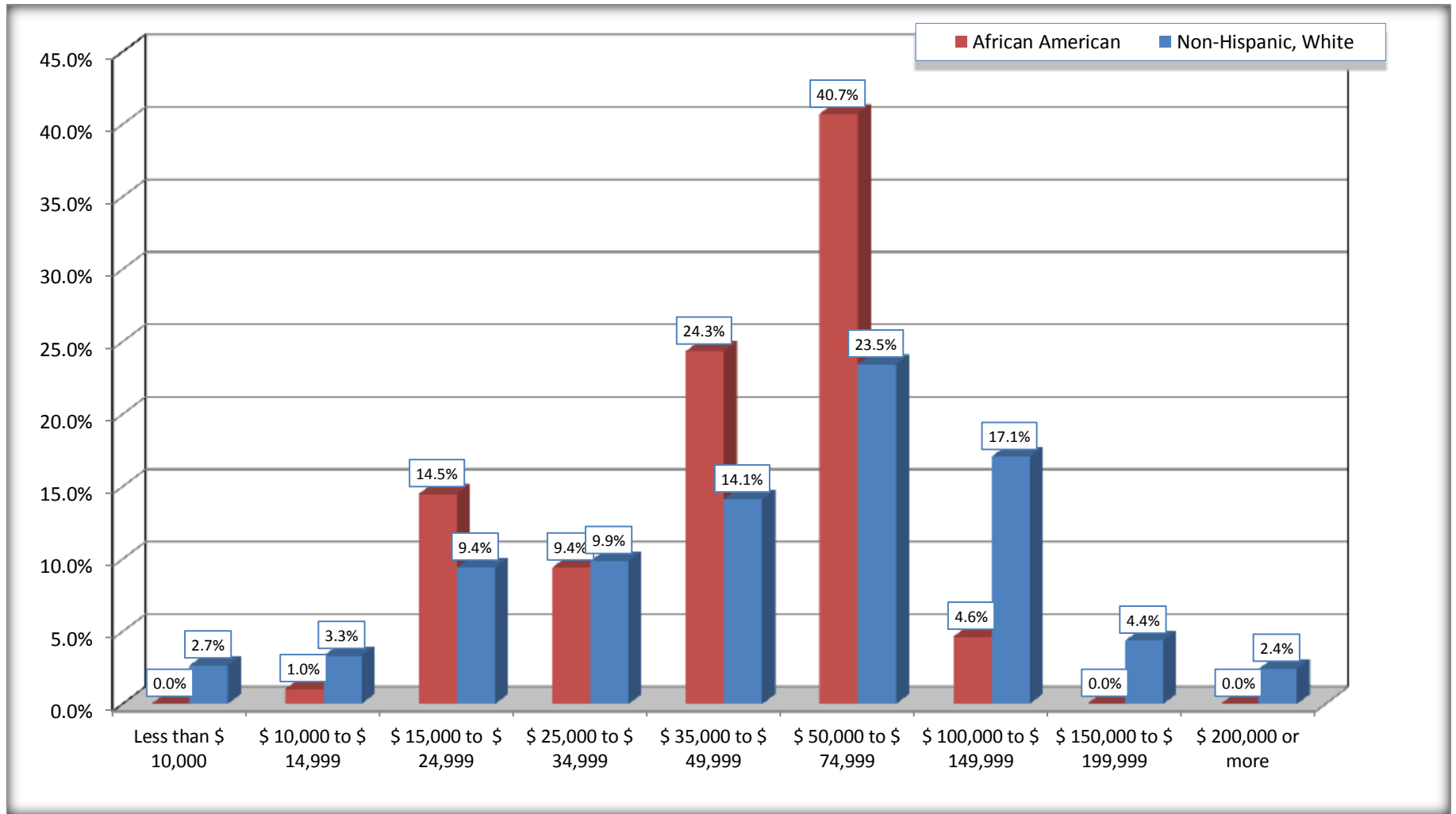
For information on confidentiality protection, sampling error, nonsampling error, and definitions, see Survey Methodology.

<http://www.census.gov/acs/www/UseData/index.htm>



# Family Income in the Past 12 Months

## Nelson County, Virginia



Source: B19101. FAMILY INCOME IN THE PAST 12 MONTHS (IN 2010 INFLATION-ADJUSTED DOLLARS)  
Data Set: 2008-2012 American Community Survey 5-Year Estimates

**B19113. MEDIAN FAMILY INCOME IN THE PAST 12 MONTHS (IN 2010 INFLATION-ADJUSTED DOLLARS)**

Data Set: 2008-2012 American Community Survey 5-Year Estimates

	<b>Nelson County, Virginia</b>			
	African American	Margin of Error (+/-)	White, Not Hispanic	Margin of Error (+/-)
Median family income in the past 12 months (in 2010 inflation-adjusted dollars)	\$ 57,547	\$ 19,370	\$ 63,110	\$ 6,308

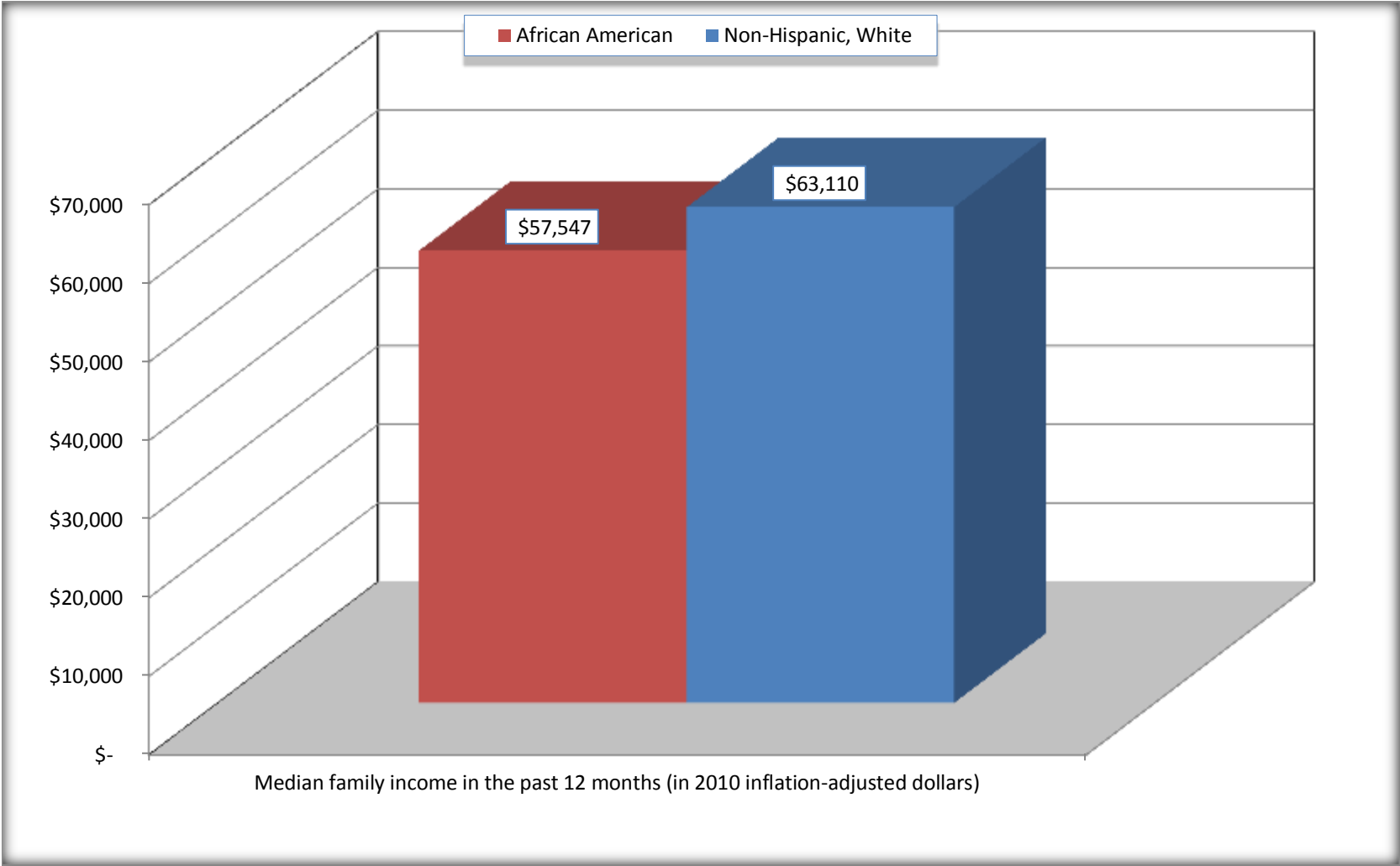
Source: U.S. Census Bureau, 2008-2012 American Community Survey

For information on confidentiality protection, sampling error, nonsampling error, and definitions, see Survey Methodology.

<http://www.census.gov/acs/www/UseData/index.htm>

# Median Family Income in the Past 12 Months

## Nelson County, Virginia



Source: B19113. MEDIAN FAMILY INCOME IN THE PAST 12 MONTHS (IN 2010 INFLATION-ADJUSTED DOLLARS)  
Data Set: 2008-2012 American Community Survey 5-Year Estimates

**B19202. MEDIAN NONFAMILY HOUSEHOLD INCOME IN THE PAST 12 MONTHS (IN 2010 INFLATION-ADJUSTED DOLLARS)**

Data Set: 2008-2012 American Community Survey 5-Year Estimates

	<b>Nelson County, Virginia</b>			
	African American	Margin of Error (+/-)	White, Not Hispanic	Margin of Error (+/-)
Median nonfamily household income in the past 12 months (in 2010 inflation-adjusted dollars)	\$ 15,729	\$ 8,203	\$ 24,695	\$ 9,140

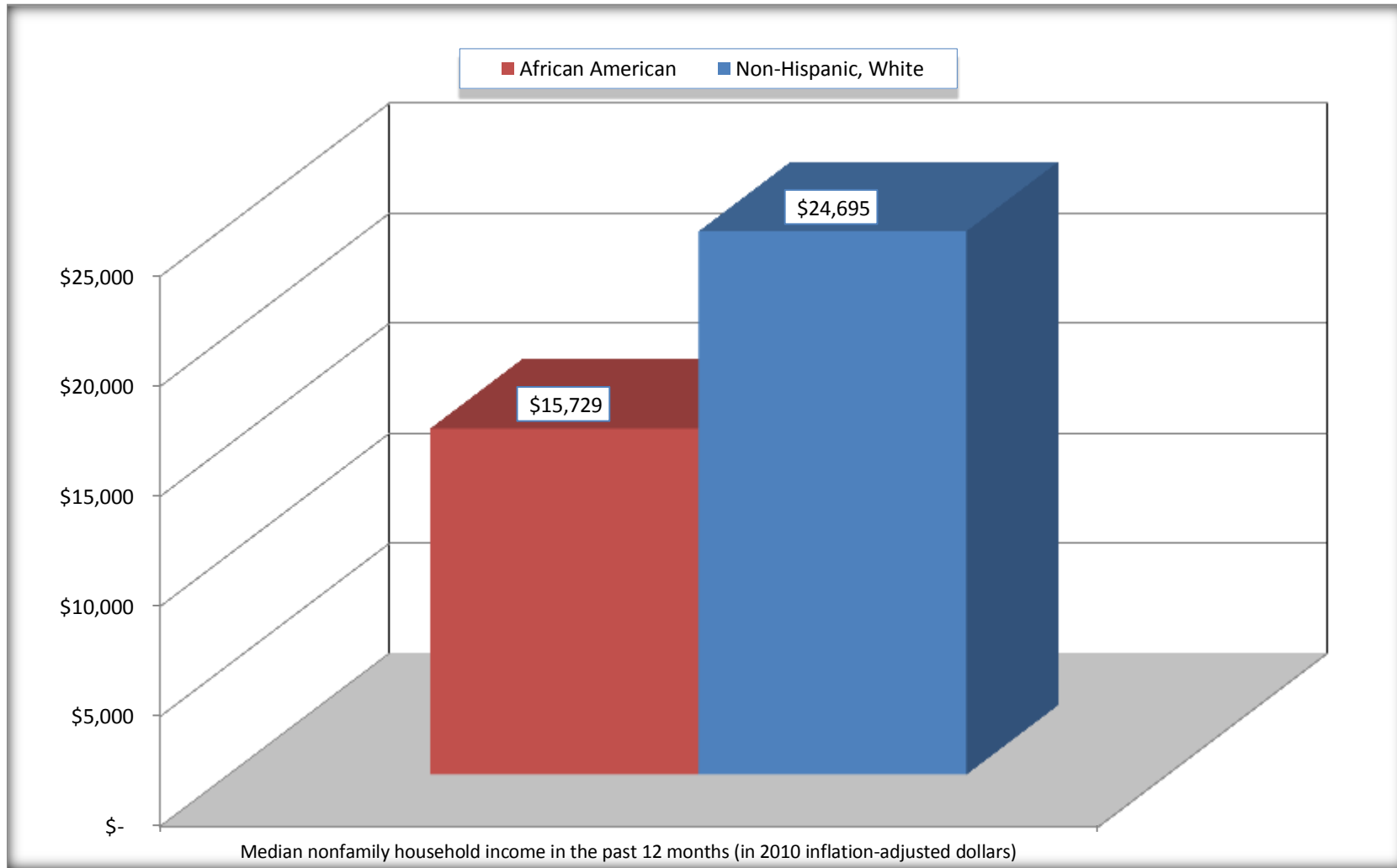
Source: U.S. Census Bureau, 2008-2012 American Community Survey

For information on confidentiality protection, sampling error, nonsampling error, and definitions, see Survey Methodology.

<http://www.census.gov/acs/www/UseData/index.htm>

# Median Non-Family Income in the Past 12 Months

## Nelson County, Virginia



Source: B19202. MEDIAN NONFAMILY HOUSEHOLD INCOME IN THE PAST 12 MONTHS (IN 2010 INFLATION-ADJUSTED DOLLARS)  
Data Set: 2008-2012 American Community Survey 5-Year Estimates

**B19301. PER CAPITA INCOME IN THE PAST 12 MONTHS (IN 2010 INFLATION-ADJUSTED DOLLARS)**

Data Set: 2008-2012 American Community Survey 5-Year Estimates

	<b>Nelson County, Virginia</b>			
	African American	Margin of Error (+/-)	White, Not Hispanic	Margin of Error (+/-)
Per capita income in the past 12 months (in 2010 inflation-adjusted dollars)	\$ 17,520	\$ 2,561	\$ 27,197	\$ 2,027

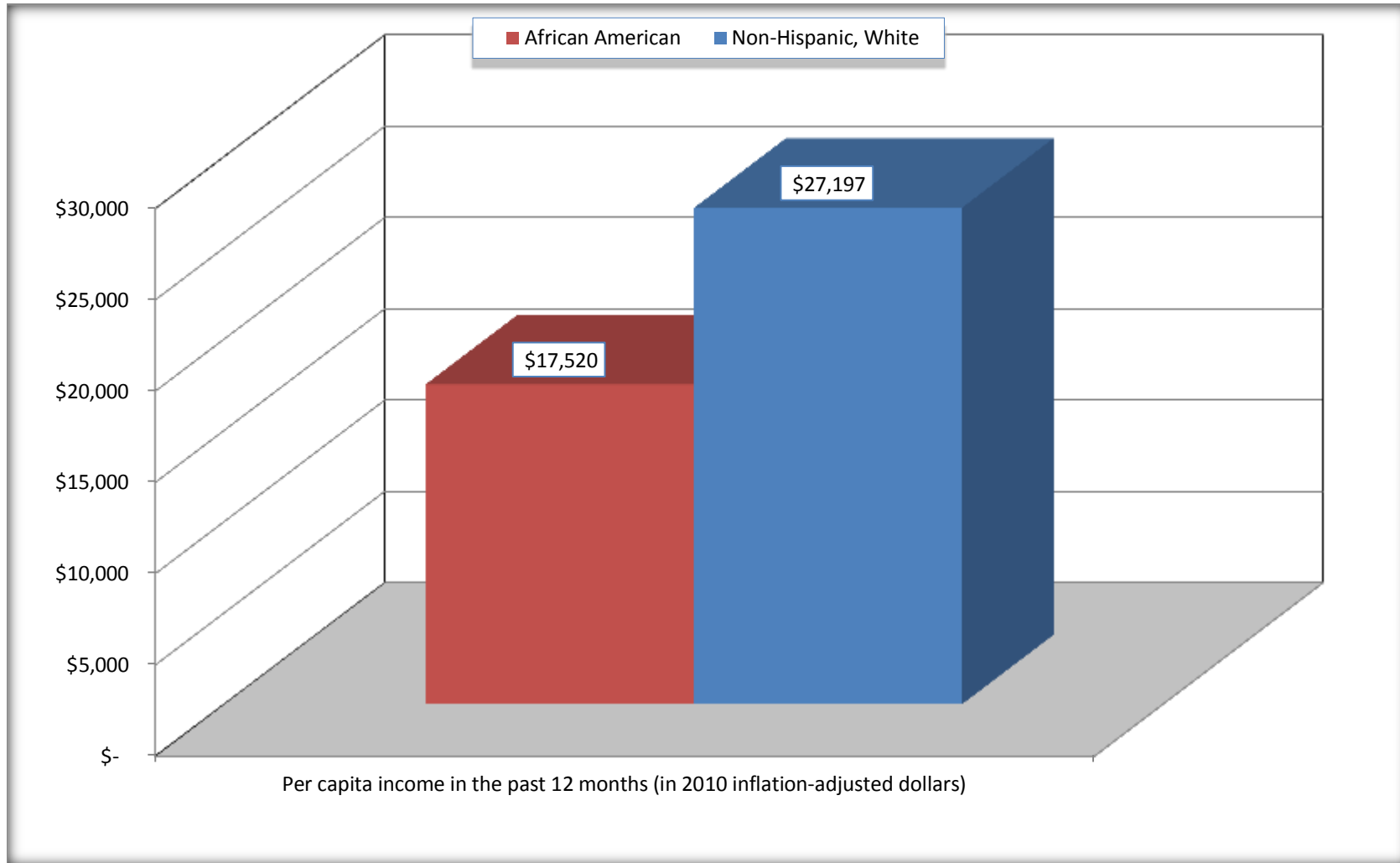
Source: U.S. Census Bureau, 2008-2012 American Community Survey

For information on confidentiality protection, sampling error, nonsampling error, and definitions, see Survey Methodology.

<http://www.census.gov/acs/www/UseData/index.htm>

## Per capita Income in the Past 12 Months

### Nelson County, Virginia



Source: B19301. PER CAPITA INCOME IN THE PAST 12 MONTHS (IN 2010 INFLATION-ADJUSTED DOLLARS)  
Data Set: 2008-2012 American Community Survey 5-Year Estimates

**B20017. MEDIAN EARNINGS IN THE PAST 12 MONTHS (IN 2010 INFLATION-ADJUSTED DOLLARS) BY SEX BY WORK EXPERIENCE IN THE PAST 12 MONTHS FOR THE POPULATION 16 YEARS AND OVER WITH EARNINGS IN THE PAST 12 MONTHS**

Data Set: 2008-2012 American Community Survey 5-Year Estimates

	<b>Nelson County, Virginia</b>			
	African American	Margin of Error (+/-)	White, Not Hispanic	Margin of Error (+/-)
Median earnings in the past 12 months (in 2010 inflation-adjusted dollars) --				
Total:	\$ 32,569	\$ 11,389	\$ 29,722	\$ 2,096
Male --				
Total	\$ 18,553	\$ 11,110	\$ 34,143	\$ 4,947
Worked full-time, year-round in the past 12 months	\$ 21,339	\$ 11,445	\$ 44,250	\$ 6,379
Other	\$ 2,702	\$ 1,574	\$ 11,485	\$ 1,990
Female --				
Total	\$ 37,671	\$ 2,270	\$ 21,985	\$ 3,878
Worked full-time, year-round in the past 12 months	\$ 37,880	\$ 2,046	\$ 38,021	\$ 5,531
Other	\$ 23,313	\$ 19,621	\$ 9,342	\$ 2,300

Source: U.S. Census Bureau, 2008-2012 American Community Survey

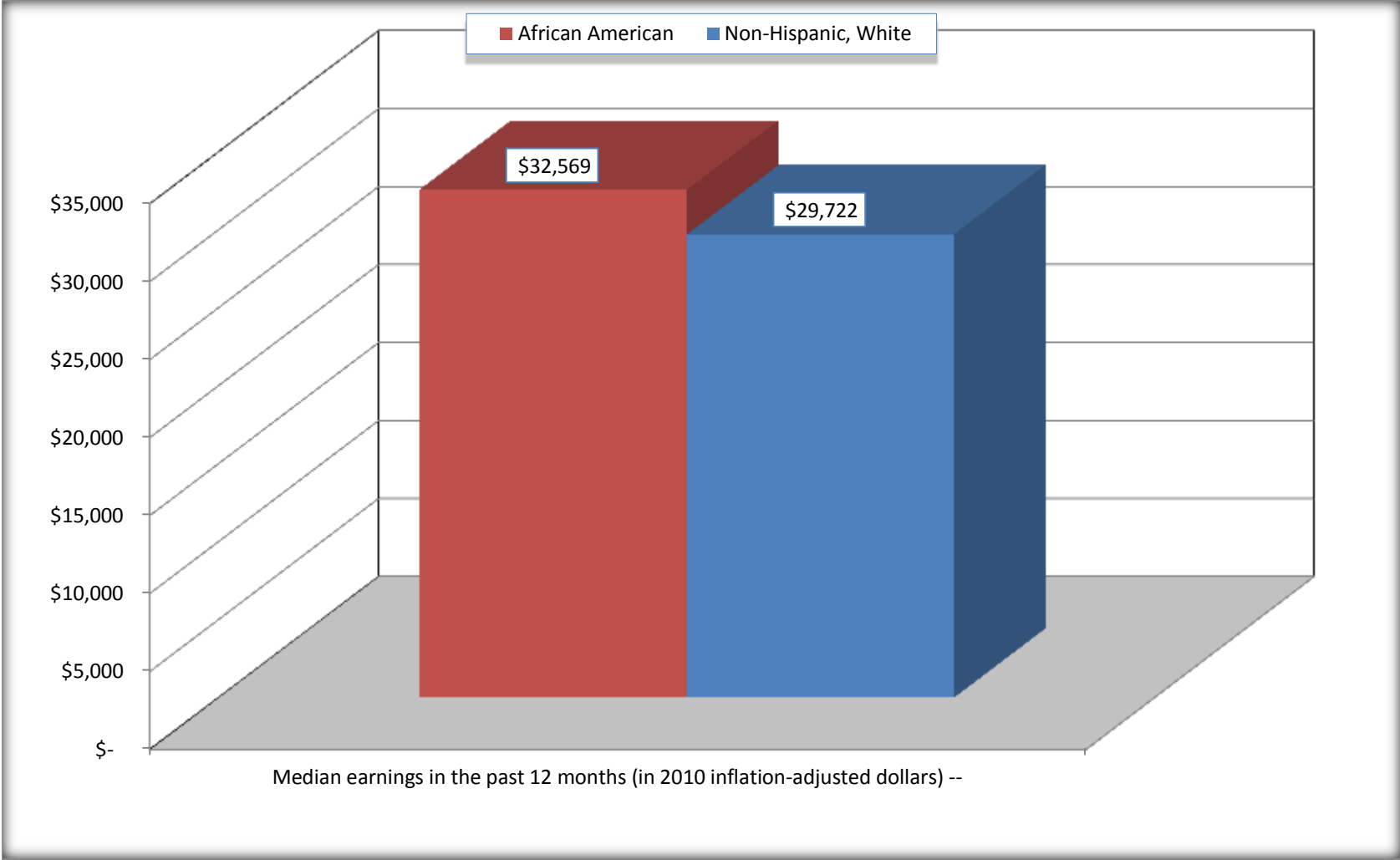
For information on confidentiality protection, sampling error, nonsampling error, and definitions, see Survey Methodology.

<http://www.census.gov/acs/www/UseData/index.htm>



# Median earnings in the Past 12 Months (16 Years and Over with Earnings)

## Nelson County, Virginia



Source: B20017. MEDIAN EARNINGS IN THE PAST 12 MONTHS (IN 2010 INFLATION-ADJUSTED DOLLARS) BY SEX BY WORK EXPERIENCE IN THE PAST 12 MONTHS FOR THE POPULATION 16 YEARS AND OVER WITH EARNINGS IN THE PAST 12 MONTHS  
Data Set: 2008-2012 American Community Survey 5-Year Estimates

**B20005. SEX BY WORK EXPERIENCE IN THE PAST 12 MONTHS BY EARNINGS IN THE PAST 12 MONTHS (IN 2010 INFLATION-ADJUSTED DOLLARS) FOR THE POPULATION 16 YEARS AND OVER**

Data Set: 2008-2012 American Community Survey 5-Year Estimates

	Nelson County, Virginia					
	African American	Margin of Error (+/-)	% of AA Total	White, Not Hispanic	Margin of Error (+/-)	% of NHW Total
<b>Total:</b>	<b>1,884</b>	<b>200</b>	<b>100.0%</b>	<b>10,262</b>	<b>87</b>	<b>100.0%</b>
Worked full-time, year-round in the past 12 months:	846	NC	44.9%	3,869	NC	37.7%
No earnings	0	NC	0.0%	0	NC	0.0%
With earnings:	846	NC	44.9%	3,869	NC	37.7%
\$ 1 to \$ 9,999 or loss	0	NC	0.0%	164	NC	1.6%
\$ 10,000 to \$ 19,999	222	NC	11.8%	385	NC	3.8%
\$ 20,000 to \$ 29,999	124	NC	6.6%	532	NC	5.2%
\$ 30,000 to \$ 49,999	466	NC	24.7%	1,284	NC	12.5%
\$ 50,000 to \$ 74,999	34	NC	1.8%	951	NC	9.3%
\$ 75,000 or more	0	NC	0.0%	553	NC	5.4%
Other:	1,038	NC	55.1%	6,393	NC	62.3%
No earnings	886	NC	47.0%	3,912	NC	38.1%
With earnings: less than full time, year-round	152	NC	8.1%	2,481	NC	24.2%
Male:	805	155	42.7%	4,942	82	48.2%
Worked full-time, year-round in the past 12 months:	241	126	12.8%	2,221	242	21.6%
No earnings	0	19	0.0%	0	19	0.0%
With earnings:	241	126	12.8%	2,221	242	21.6%
\$ 1 to \$ 9,999 or loss	0	NC	0.0%	65	NC	0.6%
\$ 10,000 to \$ 19,999	113	NC	6.0%	147	NC	1.4%
\$ 20,000 to \$ 29,999	71	NC	3.8%	329	NC	3.2%
\$ 30,000 to \$ 49,999	57	NC	3.0%	690	NC	6.7%
\$ 50,000 to \$ 74,999	0	NC	0.0%	608	NC	5.9%
\$ 75,000 or more	0	NC	0.0%	382	NC	3.7%

	Nelson County, Virginia					
	African American	Margin of Error (+/-)	% of AA Total	White, Not Hispanic	Margin of Error (+/-)	% of NHW Total
Other:	564	152	29.9%	2,721	255	26.5%
No earnings	439	115	23.3%	1,649	192	16.1%
With earnings:	125	140	6.6%	1,072	205	10.4%
Female:	1,079	113	57.3%	5,320	66	51.8%
Worked full-time, year-round in the past 12 months:	605	144	32.1%	1,648	213	16.1%
No earnings	0	19	0.0%	0	19	0.0%
With earnings:	605	144	32.1%	1,648	213	16.1%
\$ 1 to \$ 9,999 or less	0	NC	0.0%	99	NC	1.0%
\$ 10,000 to \$ 19,999	109	NC	5.8%	238	NC	2.3%
\$ 20,000 to \$ 29,999	53	NC	2.8%	203	NC	2.0%
\$ 30,000 to \$ 49,999	409	NC	21.7%	594	NC	5.8%
\$ 50,000 to \$ 74,999	34	NC	1.8%	343	NC	3.3%
\$ 75,000 or more	0	NC	0.0%	171	NC	1.7%
Other:	474	137	25.2%	3,672	214	35.8%
No earnings	447	139	23.7%	2,263	206	22.1%
With earnings:	27	44	1.4%	1,409	189	13.7%

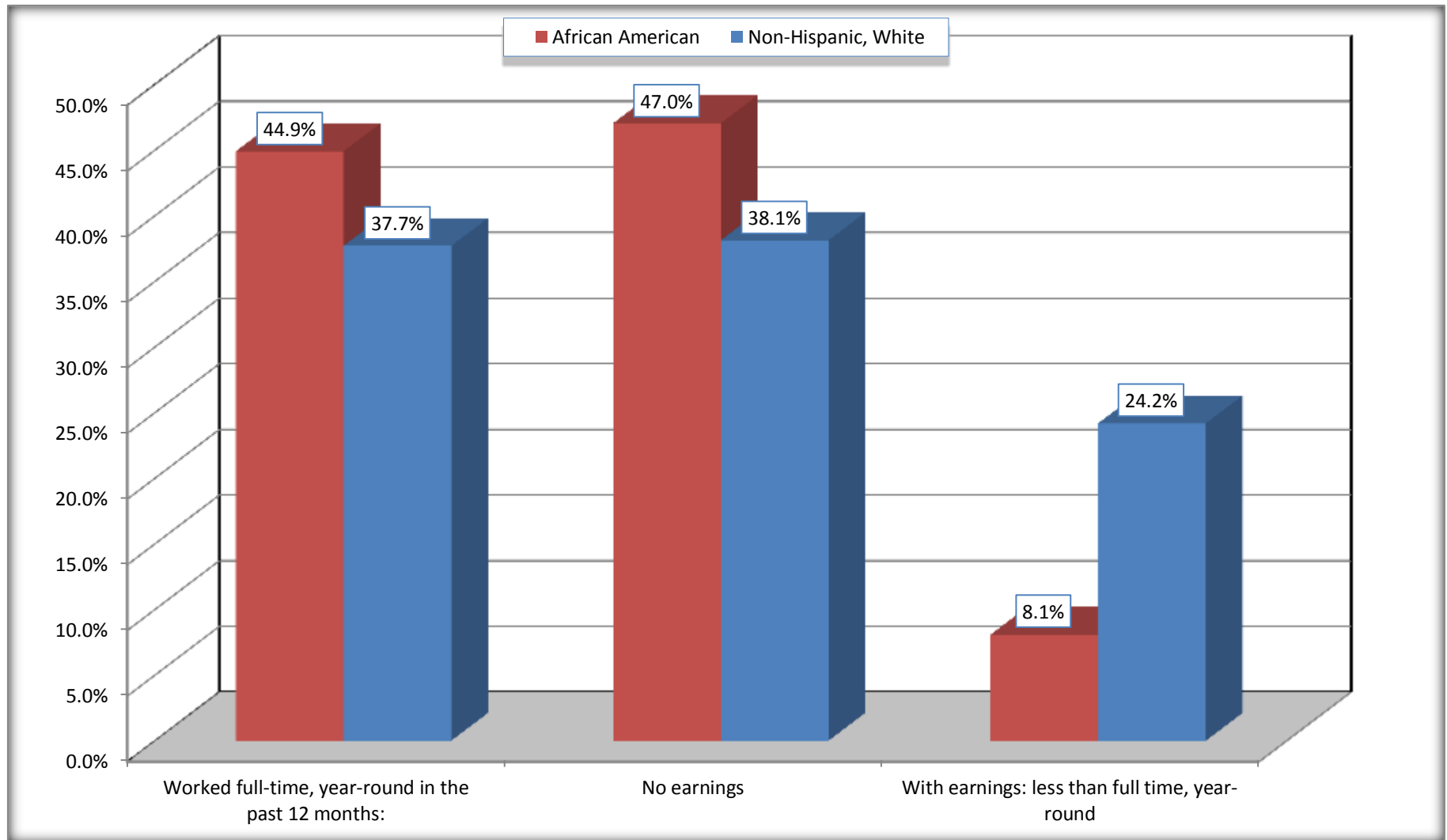
Source: U.S. Census Bureau, 2008-2012 American Community Survey

For information on confidentiality protection, sampling error, nonsampling error, and definitions, see Survey Methodology.

<http://www.census.gov/acs/www/UseData/index.htm>

# Employment and Earnings in in the Past 12 Months (16 Years and Over)

## Nelson County, Virginia



Source: B20005. SEX BY WORK EXPERIENCE IN THE PAST 12 MONTHS BY EARNINGS IN THE PAST 12 MONTHS (IN 2010 INFLATION-ADJUSTED DOLLARS) FOR THE POPULATION 16 YEARS AND OVER

Data Set: 2008-2012 American Community Survey 5-Year Estimates

**C21001. SEX BY AGE BY VETERAN STATUS FOR THE CIVILIAN POPULATION 18 YEARS AND OVER**

Data Set: 2008-2012 American Community Survey 5-Year Estimates

	Nelson County, Virginia					
	African American	Margin of Error (+/-)	% of AA Total	White, Not Hispanic	Margin of Error (+/-)	% of NHW Total
<b>Total:</b>	<b>1,777</b>	<b>156</b>	<b>100.0%</b>	<b>10,057</b>	<b>19</b>	<b>100.0%</b>
Veteran	258	NC	14.5%	1,104	NC	11.0%
Nonveteran	1,519	NC	85.5%	8,953	NC	89.0%
Male:	783	139	44.1%	4,834	19	48.1%
18 to 64 years:	719	139	40.5%	3,629	19	36.1%
Veteran	204	149	11.5%	481	143	4.8%
Nonveteran	515	173	29.0%	3,148	143	31.3%
65 years and over:	64	69	3.6%	1,205	19	12.0%
Veteran	54	60	3.0%	507	127	5.0%
Nonveteran	10	34	0.6%	698	127	6.9%
Female:	994	54	55.9%	5,223	19	51.9%
18 to 64 years:	852	101	47.9%	3,877	19	38.6%
Veteran	0	19	0.0%	72	55	0.7%
Nonveteran	852	101	47.9%	3,805	55	37.8%
65 years and over:	142	84	8.0%	1,346	19	13.4%
Veteran	0	19	0.0%	44	66	0.4%
Nonveteran	142	84	8.0%	1,302	66	12.9%

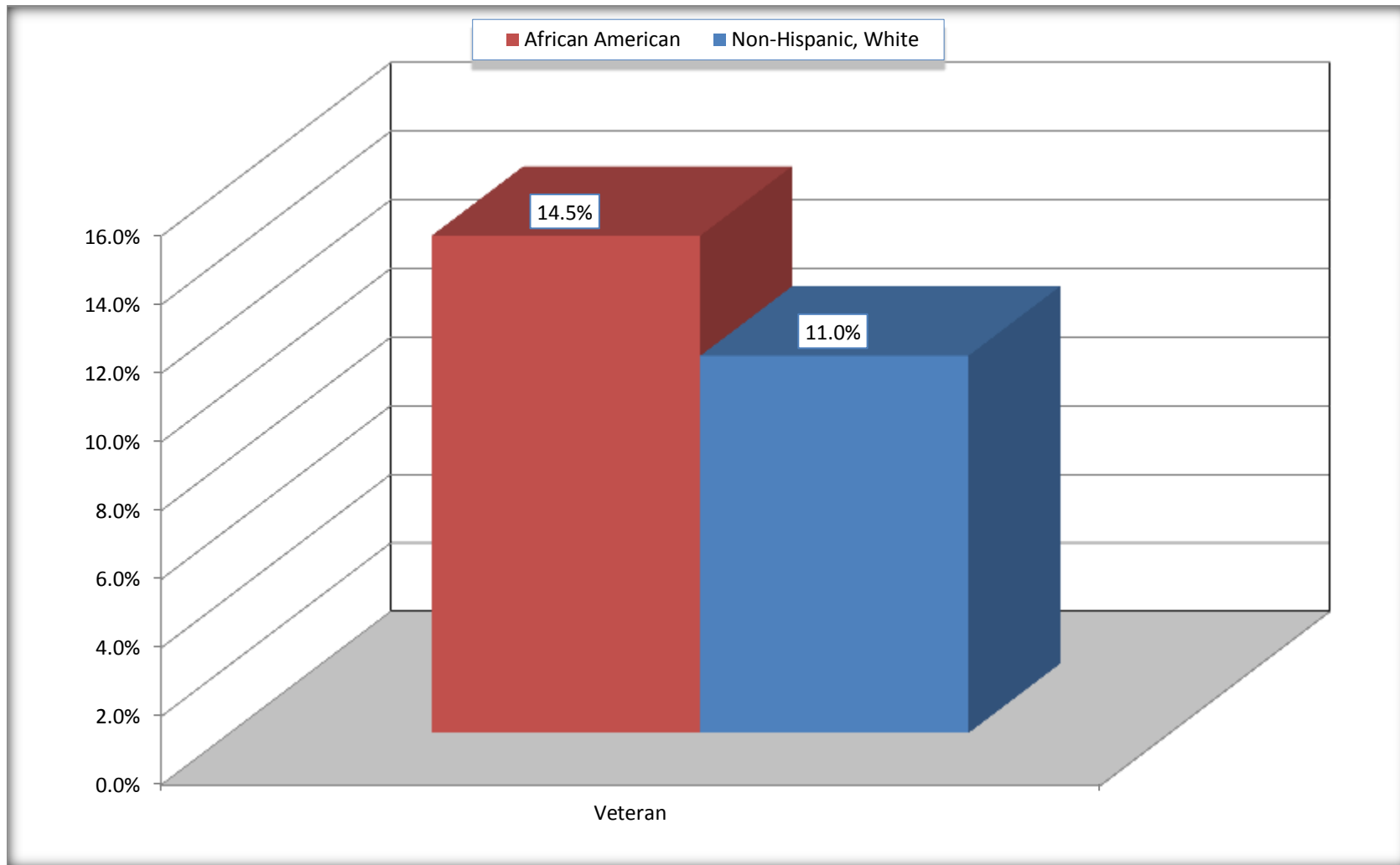
Source: U.S. Census Bureau, 2008-2012 American Community Survey

For information on confidentiality protection, sampling error, nonsampling error, and definitions, see Survey Methodology.

<http://www.census.gov/acs/www/UseData/index.htm>

# Veterans in the Civilian Population 18 Years and Over

## Nelson County, Virginia



Source: C21001. SEX BY AGE BY VETERAN STATUS FOR THE CIVILIAN POPULATION 18 YEARS AND OVER  
Data Set: 2008-2012 American Community Survey 5-Year Estimates

**B22005. RECEIPT OF FOOD STAMPS/SNAP IN THE PAST 12 MONTHS BY RACE OF HOUSEHOLDER**

Data Set: 2008-2012 American Community Survey 5-Year Estimates

	Nelson County, Virginia					
	African American	Margin of Error (+/-)	% of AA Total	White, Not Hispanic	Margin of Error (+/-)	% of NHW Total
<b>Total:</b>	<b>995</b>	<b>147</b>	<b>100.0%</b>	<b>5,250</b>	<b>313</b>	<b>100.0%</b>
HH received Food Stamps/SNAP in the past 12 months	311	147	31.3%	404	152	7.7%
HH did not receive Food Stamps/SNAP in the past 12 months	684	157	68.7%	4,846	338	92.3%

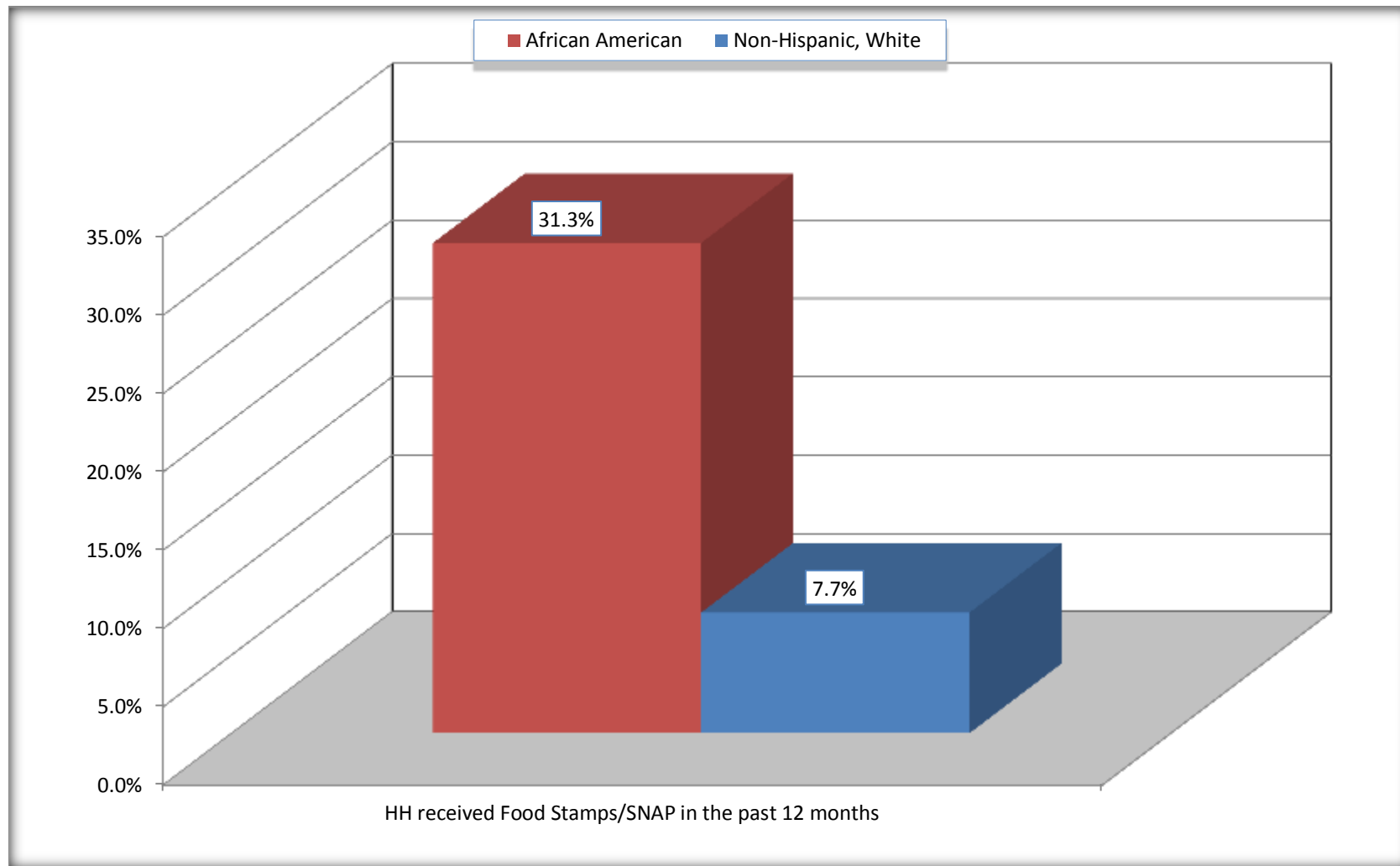
Source: U.S. Census Bureau, 2008-2012 American Community Survey

For information on confidentiality protection, sampling error, nonsampling error, and definitions, see Survey Methodology.

<http://www.census.gov/acs/www/UseData/index.htm>

# Receipt of Food Stamps/SNAP in the Past 12 Months by Household

## Nelson County, Virginia



Source: B22005. RECEIPT OF FOOD STAMPS/SNAP IN THE PAST 12 MONTHS BY RACE OF HOUSEHOLDER  
Data Set: 2008-2012 American Community Survey 5-Year Estimates



**C23002. SEX BY AGE BY EMPLOYMENT STATUS FOR THE POPULATION 16 YEARS AND OVER**

Data Set: 2008-2012 American Community Survey 5-Year Estimates

	Nelson County, Virginia					
	African American	Margin of Error (+/-)	% of AA Total	White, Not Hispanic	Margin of Error (+/-)	% of NHW Total
<b>Total:</b>	<b>1,884</b>	<b>200</b>	<b>100.0%</b>	<b>10,262</b>	<b>87</b>	<b>100.0%</b>
In labor force:	1,042	NC	55.3%	6,121	NC	59.6%
In Armed Forces	0	NC	0.0%	0	NC	0.0%
Civilian:	1,042	NC	55.3%	5,777	NC	56.3%
Employed	912	NC	48.4%	5,784	NC	56.4%
Unemployed	130	NC	6.9%	337	NC	3.3%
Not in labor force	842	NC	44.7%	4,141	NC	40.4%
Male:	805	155	42.7%	4,942	82	48.2%
16 to 64 years:	741	146	39.3%	3,737	82	36.4%
In labor force:	417	127	22.1%	3,011	186	29.3%
In Armed Forces	0	19	0.0%	0	19	0.0%
Civilian:	417	127	22.1%	3,011	186	29.3%
Employed	287	122	15.2%	2810	198	27.4%
Unemployed	130	109	6.9%	201	116	2.0%
Not in labor force	324	100	17.2%	726	178	7.1%
65 years and over:	64	69	3.4%	1,205	19	11.7%
In labor force:	0	19	0.0%	241	86	2.3%
Employed	0	19	0.0%	241	86	2.3%
Unemployed	0	19	0.0%	0	19	0.0%
Not in labor force	64	69	3.4%	964	86	9.4%

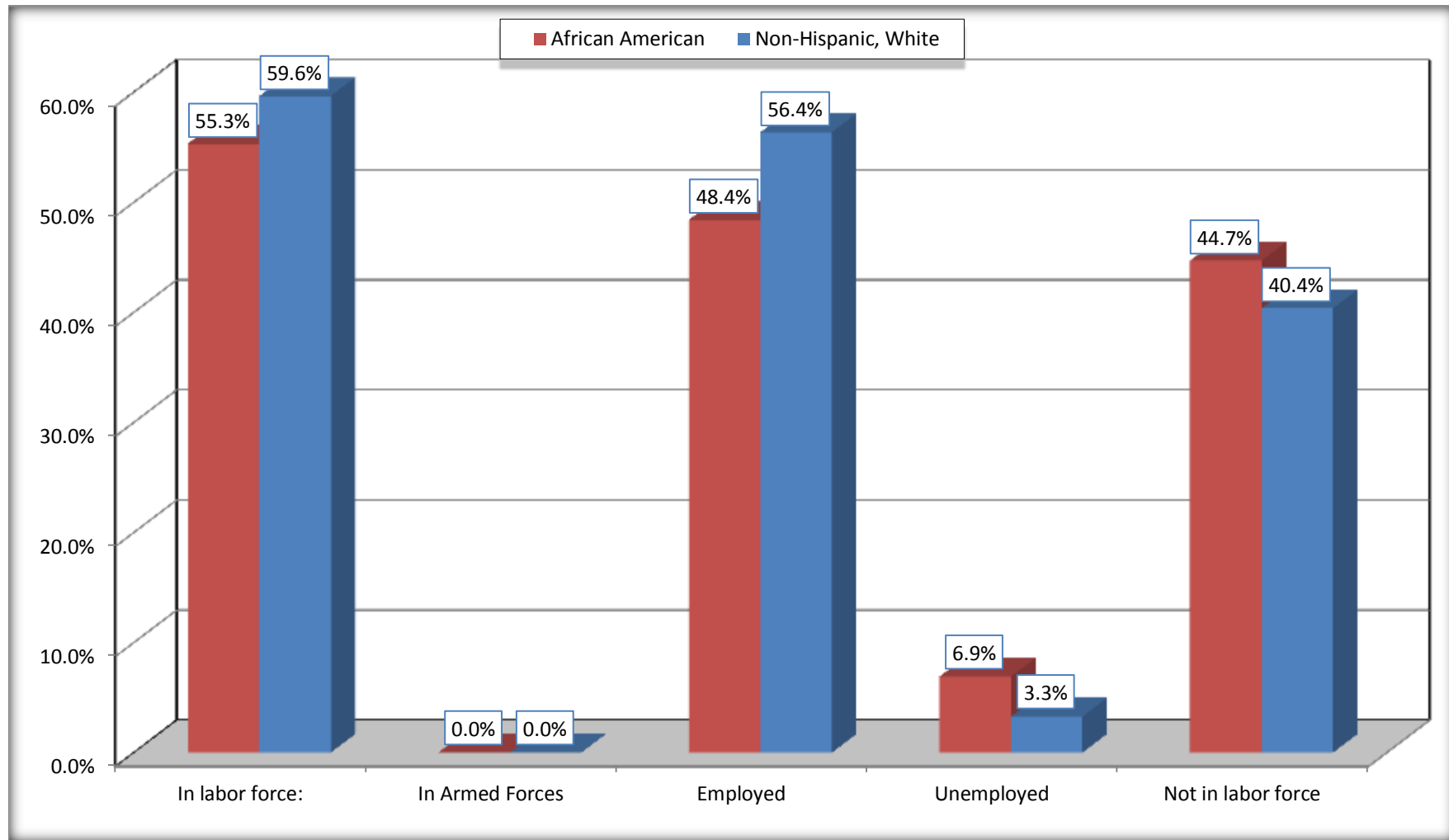
	Nelson County, Virginia					
	African American	Margin of Error (+/-)	% of AA Total	White, Not Hispanic	Margin of Error (+/-)	% of NHW Total
Female:	1,079	113	57.3%	5,320	66	51.8%
16 to 64 years:	937	154	49.7%	3,974	66	38.7%
In labor force:	625	131	33.2%	2,766	231	27.0%
In Armed Forces	0	19	0.0%	0	19	0.0%
Civilian:	625	131	33.2%	2,766	231	27.0%
Employed	625	131	33.2%	2,630	234	25.6%
Unemployed	0	19	0.0%	136	74	1.3%
Not in labor force	312	132	16.6%	1,208	235	11.8%
65 years and over:	142	84	7.5%	1,346	19	13.1%
In labor force:	0	19	0.0%	103	63	1.0%
Employed	0	19	0.0%	103	63	1.0%
Unemployed	0	19	0.0%	0	19	0.0%
Not in labor force	142	84	7.5%	1,243	63	12.1%

Source: U.S. Census Bureau, 2008-2012 American Community Survey

For information on confidentiality protection, sampling error, nonsampling error, and definitions, see Survey Methodology.  
<http://www.census.gov/acs/www/UseData/index.htm>

# Employment Status for the Population 16 years and over

## Nelson County, Virginia

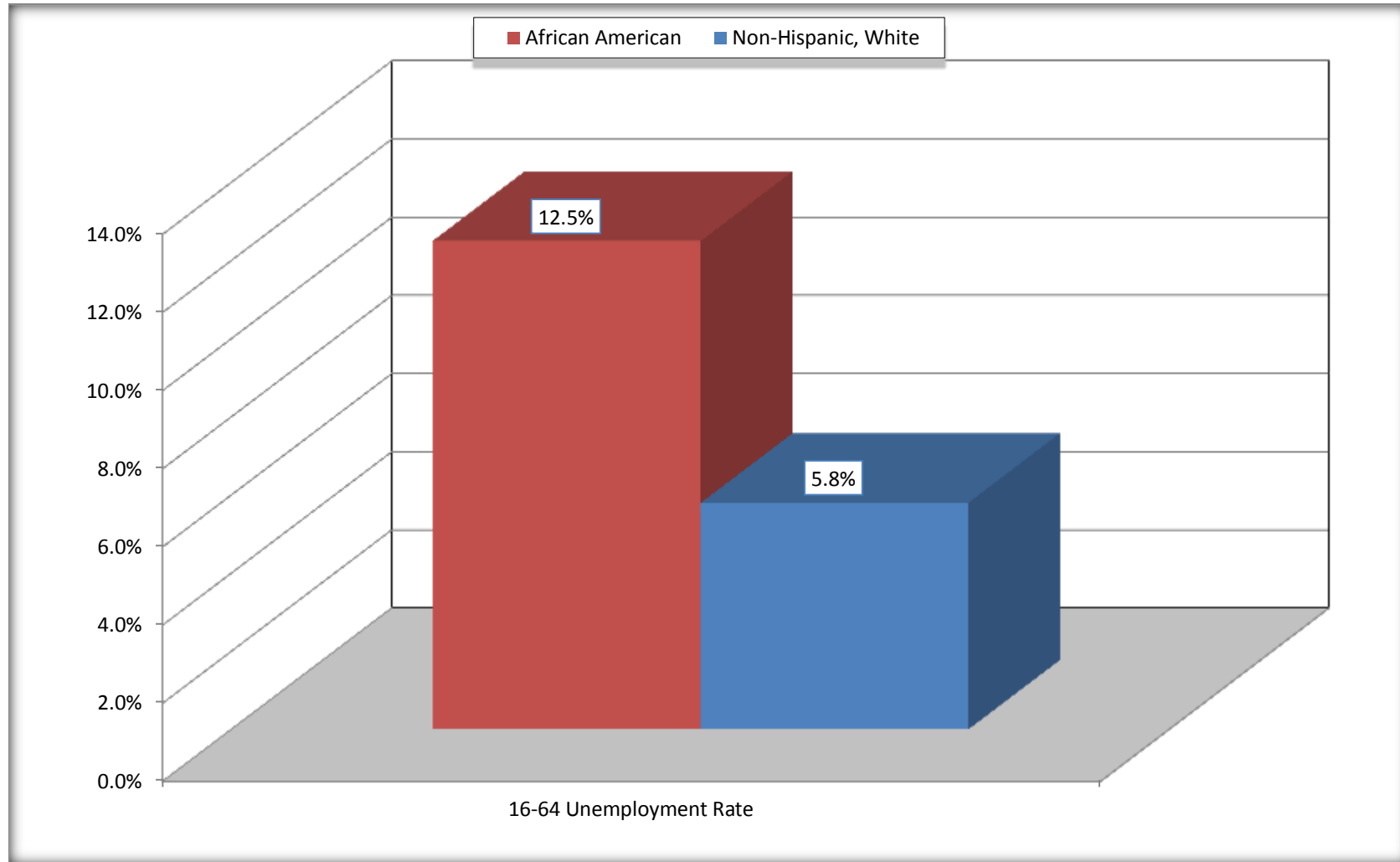


Source: C23002. SEX BY AGE BY EMPLOYMENT STATUS FOR THE POPULATION 16 YEARS AND OVER

Data Set: 2008-2012 American Community Survey 5-Year Estimates

# Unemployment of Working Age Population (Ages 16 to 64) (As a Percent of 16-64 Civilian Labor Force)

## Nelson County, Virginia



Source: C23002. SEX BY AGE BY EMPLOYMENT STATUS FOR THE POPULATION 16 YEARS AND OVER  
Data Set: 2008-2012 American Community Survey 5-Year Estimates

**C24010. SEX BY OCCUPATION FOR THE CIVILIAN EMPLOYED POPULATION 16 YEARS AND OVER**

Data Set: 2008-2012 American Community Survey 5-Year Estimates

	Nelson County, Virginia					
	African American	Margin of Error (+/-)	% of AA Total	White, Not Hispanic	Margin of Error (+/-)	% of NHW Total
<b>Total:</b>	<b>912</b>	<b>181</b>	<b>100.0%</b>	<b>5,784</b>	<b>337</b>	<b>100.0%</b>
Management, professional, and related occupations	189	NC	20.7%	1,963	NC	33.9%
Service occupations	268	NC	29.4%	1,111	NC	19.2%
Sales and office occupations	251	NC	27.5%	1,221	NC	21.1%
Natural resources, construction, and maintenance occupations:	0	NC	0.0%	775	NC	13.4%
Production, transportation, and material moving occupations	204	NC	22.4%	714	NC	12.3%
Male:	287	122	31.5%	3,051	206	52.7%
Management, business, science, and arts occupations:	0	19	0.0%	981	183	17.0%
Service occupations	161	129	17.7%	415	153	7.2%
Sales and office occupations	46	88	5.0%	351	128	6.1%
Natural resources, construction, and maintenance occupations:	0	19	0.0%	733	190	12.7%
Production, transportation, and material moving occupations	80	63	8.8%	571	180	9.9%
Female:	625	131	68.5%	2,733	227	47.3%
Management, professional, and related occupations	189	147	20.7%	982	200	17.0%
Service occupations	107	98	11.7%	696	177	12.0%
Sales and office occupations	205	148	22.5%	870	205	15.0%
Natural resources, construction, and maintenance occupations:	0	19	0.0%	42	56	0.7%
Production, transportation, and material moving occupations	124	125	13.6%	143	87	2.5%

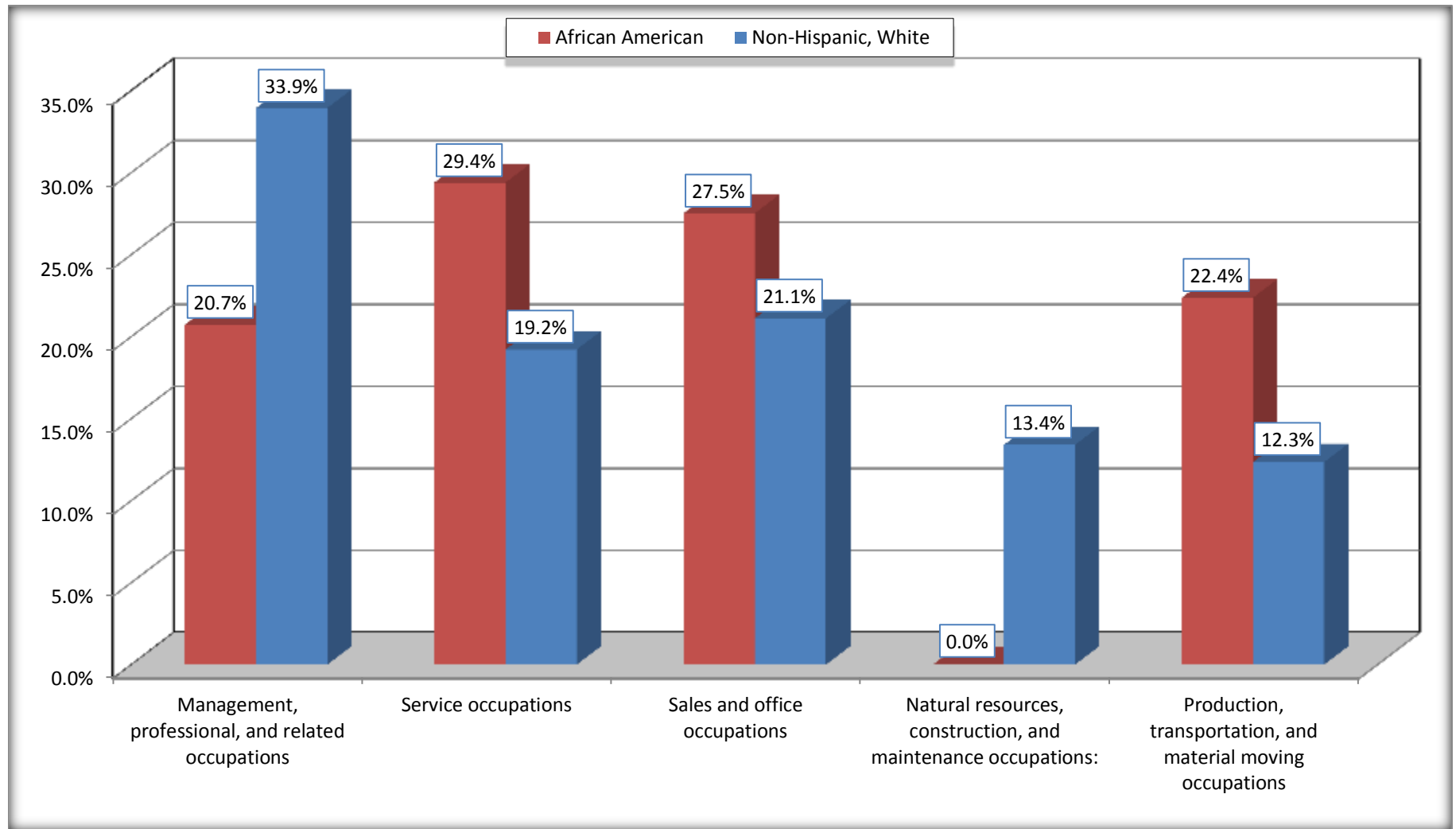
Source: U.S. Census Bureau, 2008-2012 American Community Survey

For information on confidentiality protection, sampling error, nonsampling error, and definitions, see Survey Methodology.

<http://www.census.gov/acs/www/UseData/index.htm>

# Occupation for the Civilian Employed 16 Years and Over Population

## Nelson County, Virginia



Source: C24010. SEX BY OCCUPATION FOR THE CIVILIAN EMPLOYED POPULATION 16 YEARS AND OVER  
Data Set: 2008-2012 American Community Survey 5-Year Estimates

**B25003. TENURE - Universe: OCCUPIED HOUSING UNITS**

Data Set: 2008-2012 American Community Survey 5-Year Estimates

	Nelson County, Virginia					
	African American	Margin of Error (+/-)	% of AA Total	White, Not Hispanic	Margin of Error (+/-)	% of NHW Total
<b>Total:</b>	<b>995</b>	<b>147</b>	<b>100.0%</b>	<b>5,250</b>	<b>313</b>	<b>100.0%</b>
Owner occupied	784	149	78.8%	4,086	253	77.8%
Renter occupied	211	144	21.2%	1,164	236	22.2%

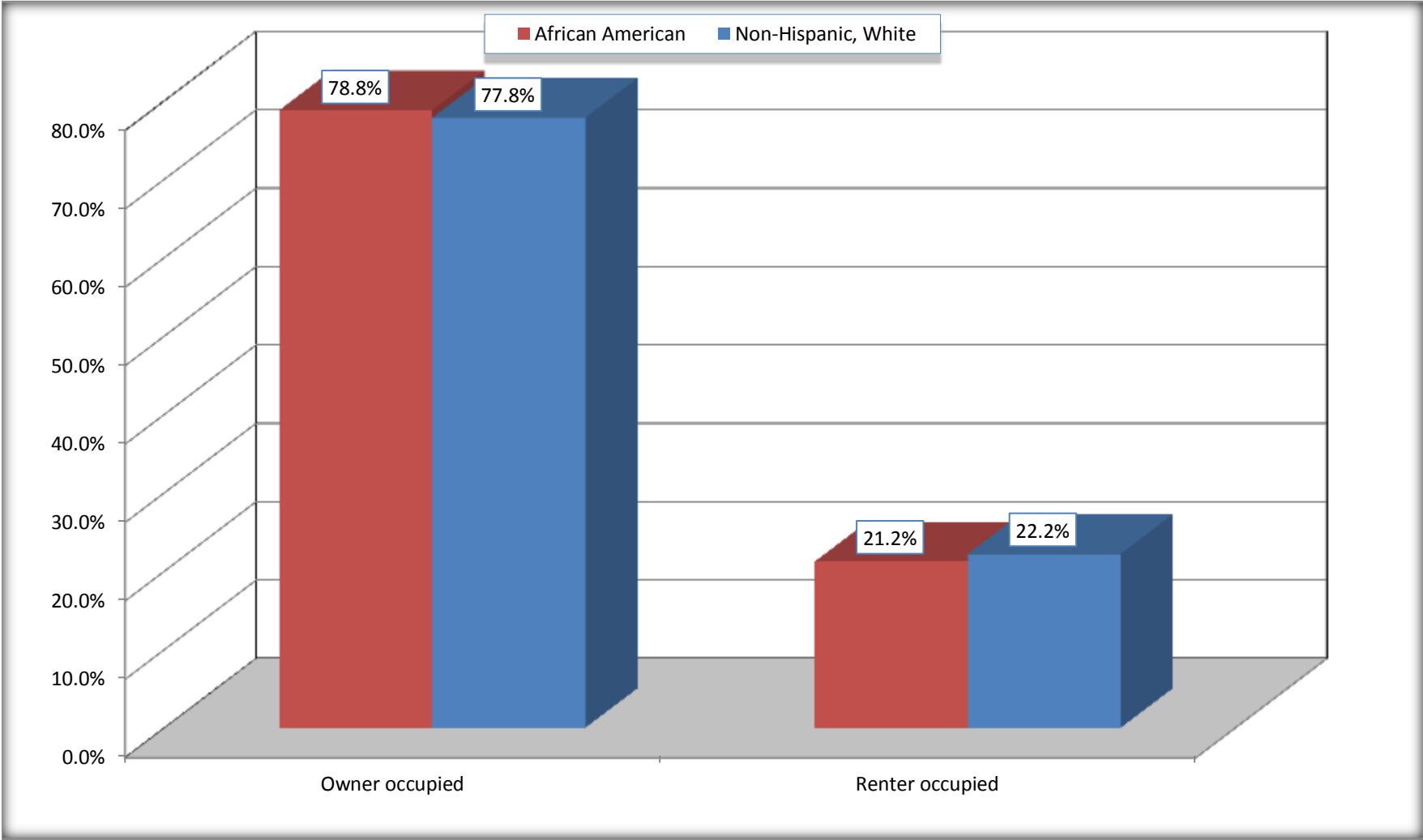
Source: U.S. Census Bureau, 2008-2012 American Community Survey

For information on confidentiality protection, sampling error, nonsampling error, and definitions, see Survey Methodology.

<http://www.census.gov/acs/www/UseData/index.h>

# Home Owners and Renters by Household

## Nelson County, Virginia



Source: B25003. TENURE - Universe: OCCUPIED HOUSING UNITS  
Data Set: 2008-2012 American Community Survey 5-Year Estimates



**B25014. OCCUPANTS PER ROOM - Universe: OCCUPIED HOUSING UNITS**

Data Set: 2008-2012 American Community Survey 5-Year Estimates

	Nelson County, Virginia					
	African American	Margin of Error (+/-)	% of AA Total	White, Not Hispanic	Margin of Error (+/-)	% of NHW Total
<b>Total:</b>	<b>995</b>	<b>147</b>	<b>100.0%</b>	<b>5,250</b>	<b>313</b>	<b>100.0%</b>
1.00 or less occupants per room	963	157	96.8%	5,196	304	99.0%
1.01 or more occupants per room	32	50	3.2%	54	58	1.0%

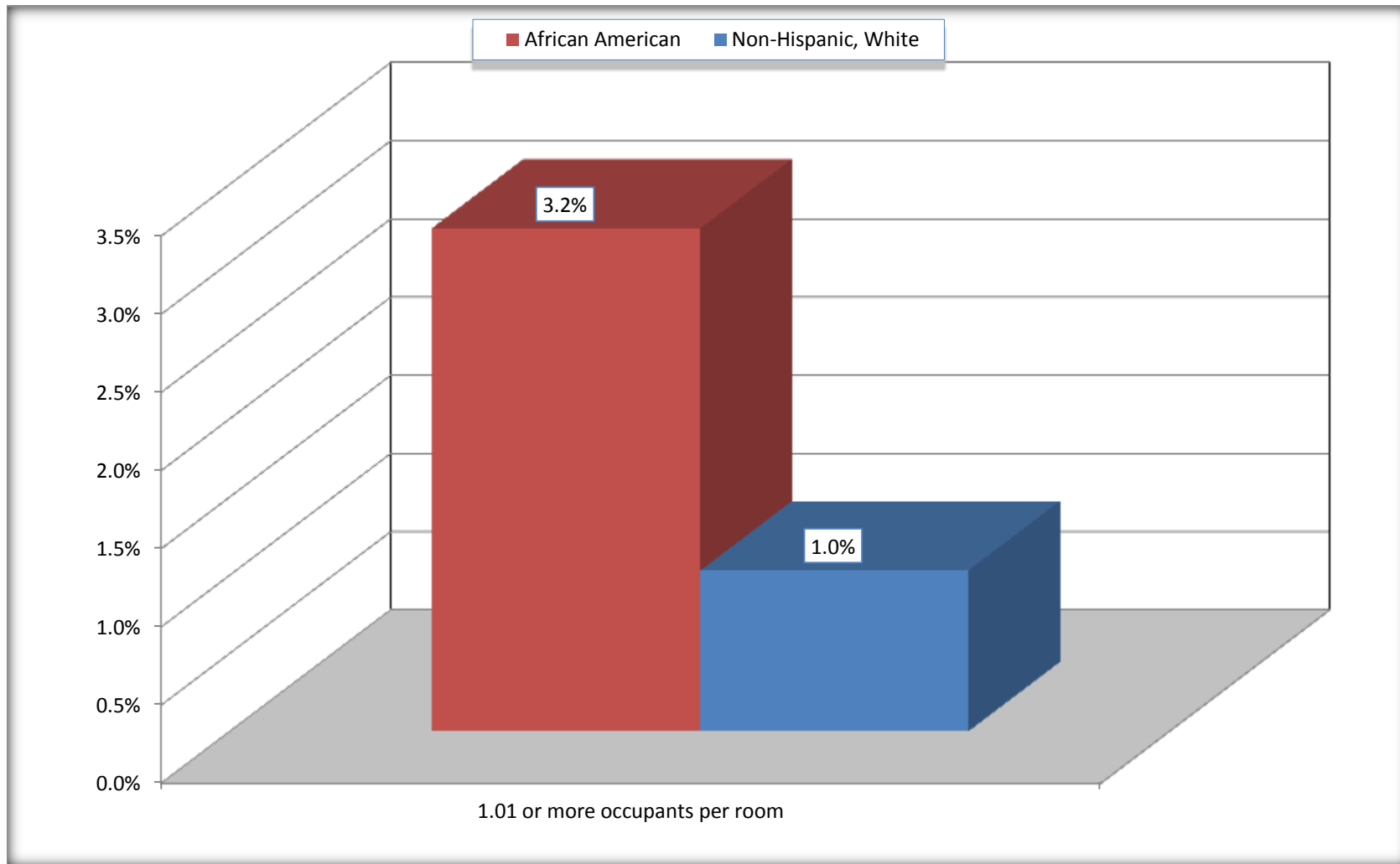
Source: U.S. Census Bureau, 2008-2012 American Community Survey

For information on confidentiality protection, sampling error, nonsampling error, and definitions, see Survey Methodology.

<http://www.census.gov/acs/www/UseData/index.ht>

# More than One Person per Room (Crowding) by Household

## Nelson County, Virginia



Source: B25014. OCCUPANTS PER ROOM - Universe: OCCUPIED HOUSING UNITS  
Data Set: 2008-2012 American Community Survey 5-Year Estimates

**B18101. AGE BY DISABILITY STATUS**

Data Set: 2008-2012 American Community Survey 5-Year Estimates

	Nelson County, Virginia					
	African American	Margin of Error (+/-)	% of AA Total	White, Not Hispanic	Margin of Error (+/-)	% of NHW Total
<b>Total:</b>	<b>2,362</b>	<b>202</b>	<b>100.0%</b>	<b>12,231</b>	<b>46</b>	<b>100.0%</b>
Under 18 years:	604	89	25.6%	2,209	112	18.1%
With a disability	33	54	1.4%	45	37	0.4%
No disability	571	105	24.2%	2,164	37	17.7%
18 to 64 years:	1,564	191	66.2%	7,498	12	61.3%
With a disability	342	169	14.5%	877	228	7.2%
No disability	1,222	218	51.7%	6,621	230	54.1%
65 years and over:	194	129	8.2%	2,524	38	20.6%
With a disability	118	90	5.0%	907	159	7.4%
No disability	76	70	3.2%	1,617	152	13.2%

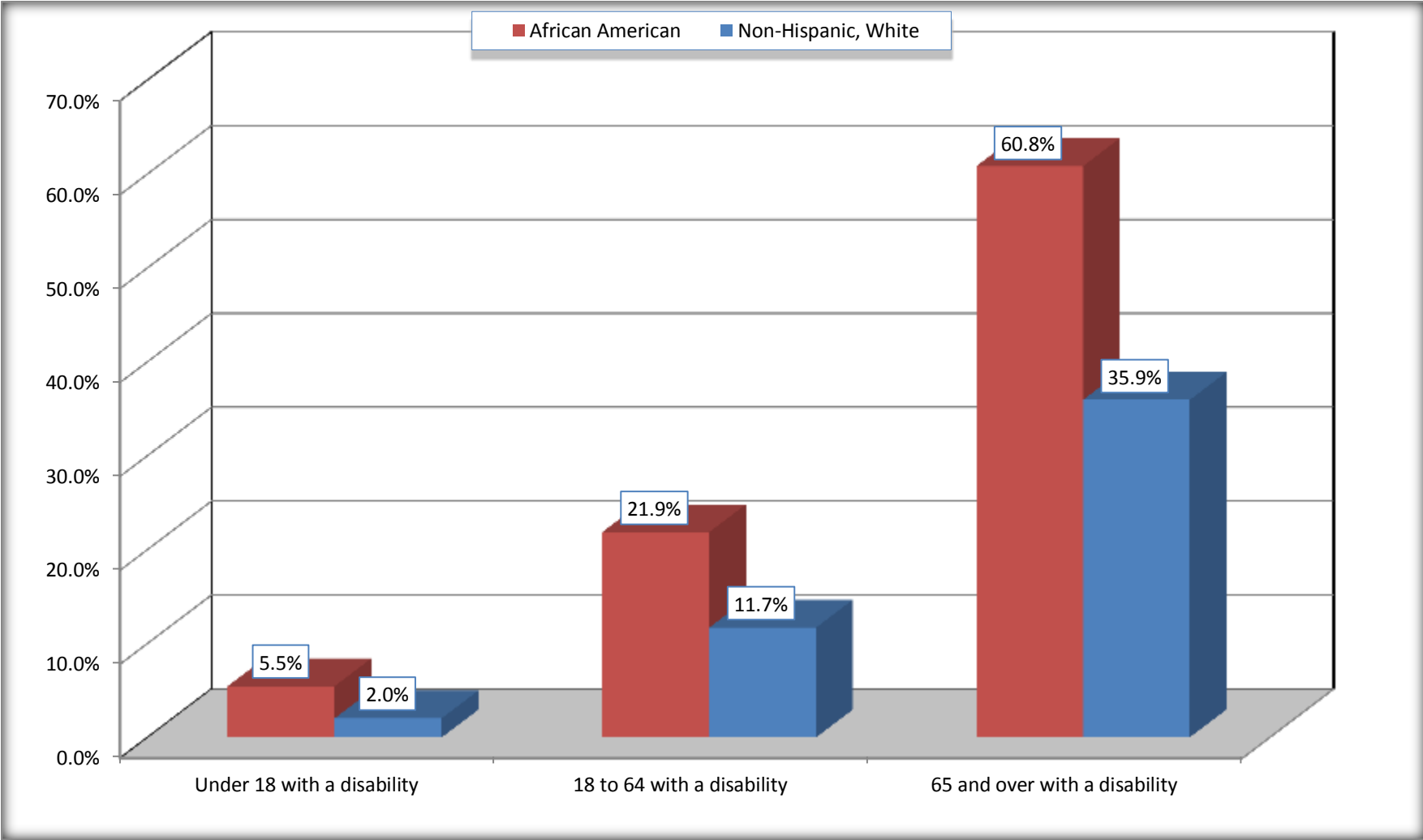
Source: U.S. Census Bureau, 2008-2012 American Community Survey

For information on confidentiality protection, sampling error, nonsampling error, and definitions, see Survey Methodology.

<http://www.census.gov/acs/www/UseData/index.htm>

# Disability by Age

## Nelson County, Virginia



Source: B18101. AGE BY DISABILITY STATUS  
Data Set: 2008-2012 American Community Survey 5-Year Estimates

**C27001B. HEALTH INSURANCE COVERAGE STATUS BY AGE**

Data Set: 2008-2012 American Community Survey 5-Year Estimates

	<b>Nelson County, Virginia</b>					
	African American	Margin of Error (+/-)	% of AA Total	White, Not Hispanic	Margin of Error (+/-)	% of NHW Total
<b>Total:</b>	<b>2,362</b>	<b>202</b>	<b>100.0%</b>	<b>12,231</b>	<b>46</b>	<b>100.0%</b>
Under 18 years:	604	89	25.6%	2,209	19	18.1%
With health insurance coverage	581	101	24.6%	2,158	52	17.6%
No health insurance coverage	23	44	1.0%	51	52	0.4%
18 to 64 years:	1,564	191	66.2%	7,498	12	61.3%
With health insurance coverage	1,247	255	52.8%	6,020	274	49.2%
No health insurance coverage	317	188	13.4%	1,478	275	12.1%
65 years and over:	194	129	8.2%	2,524	38	20.6%
With health insurance coverage	194	129	8.2%	2,494	53	20.4%
No health insurance coverage	0	19	0.0%	30	38	0.2%

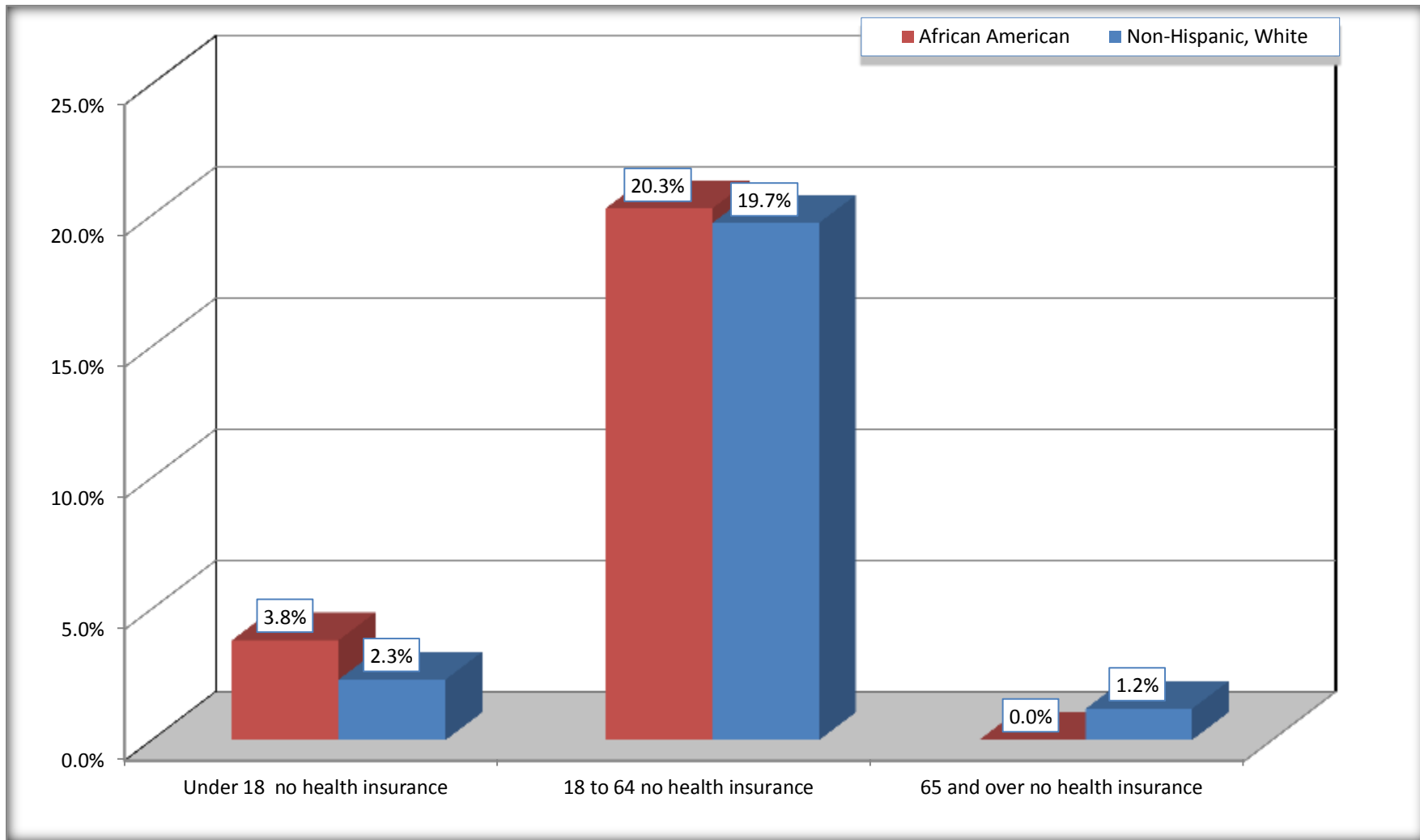
Source: U.S. Census Bureau, 2008-2012 American Community Survey

For information on confidentiality protection, sampling error, nonsampling error, and definitions, see Survey Methodology.

<http://www.census.gov/acs/www/UseData/index.htm>

# Lack of Health Insurance Coverage by Age

## Nelson County, Virginia



Source: C27001B. HEALTH INSURANCE COVERAGE STATUS BY AGE  
Data Set: 2008-2012 American Community Survey 5-Year Estimates