

# **Selected Socio-Economic Data**

## **Lunenburg County, Virginia**

### **African American and White, Not Hispanic**

**Data Set: 2008-2012 American Community Survey 5-Year Estimates**

[www.fairvote2020.org](http://www.fairvote2020.org)

[www.fairdata2000.com](http://www.fairdata2000.com)

[29-Dec-13](#)

**C02003.DETAILED RACE - Universe: TOTAL POPULATION**

Data Set: 2008-2012 American Community Survey 5-Year Estimates

	Lunenburg County, Virginia		
	Population	Margin of Error (+/-)	% of Total
<b>Total:</b>	<b>12,838</b>	<b>*****</b>	<b>100.0%</b>
Population of one race:	12,621	108	98.3%
White	7,911	118	61.6%
Black or African American	4,553	112	35.5%
American Indian and Alaska Native	5	9	0.0%
Asian alone	5	8	0.0%
Native Hawaiian and Other Pacific Islander	12	18	0.1%
Some other race	135	74	1.1%
Population of two or more races:	217	108	1.7%
Two races including Some other race	57	65	0.4%
Two races excluding Some other race, and three or more races	160	81	1.2%
Population of two races:	199	101	1.6%
White; Black or African American	31	27	0.2%
White; American Indian and Alaska Native	81	66	0.6%
White; Asian	11	16	0.1%
Black or African American; American Indian and Alaska Native	4	7	0.0%
All other two race combinations	72	68	0.6%
Population of three races	18	22	0.1%
Population of four or more races	0	19	0.0%

Note: Hispanics may be of any race. See Table B03002 and chart.

Source: U.S. Census Bureau, 2008-2012 American Community Survey

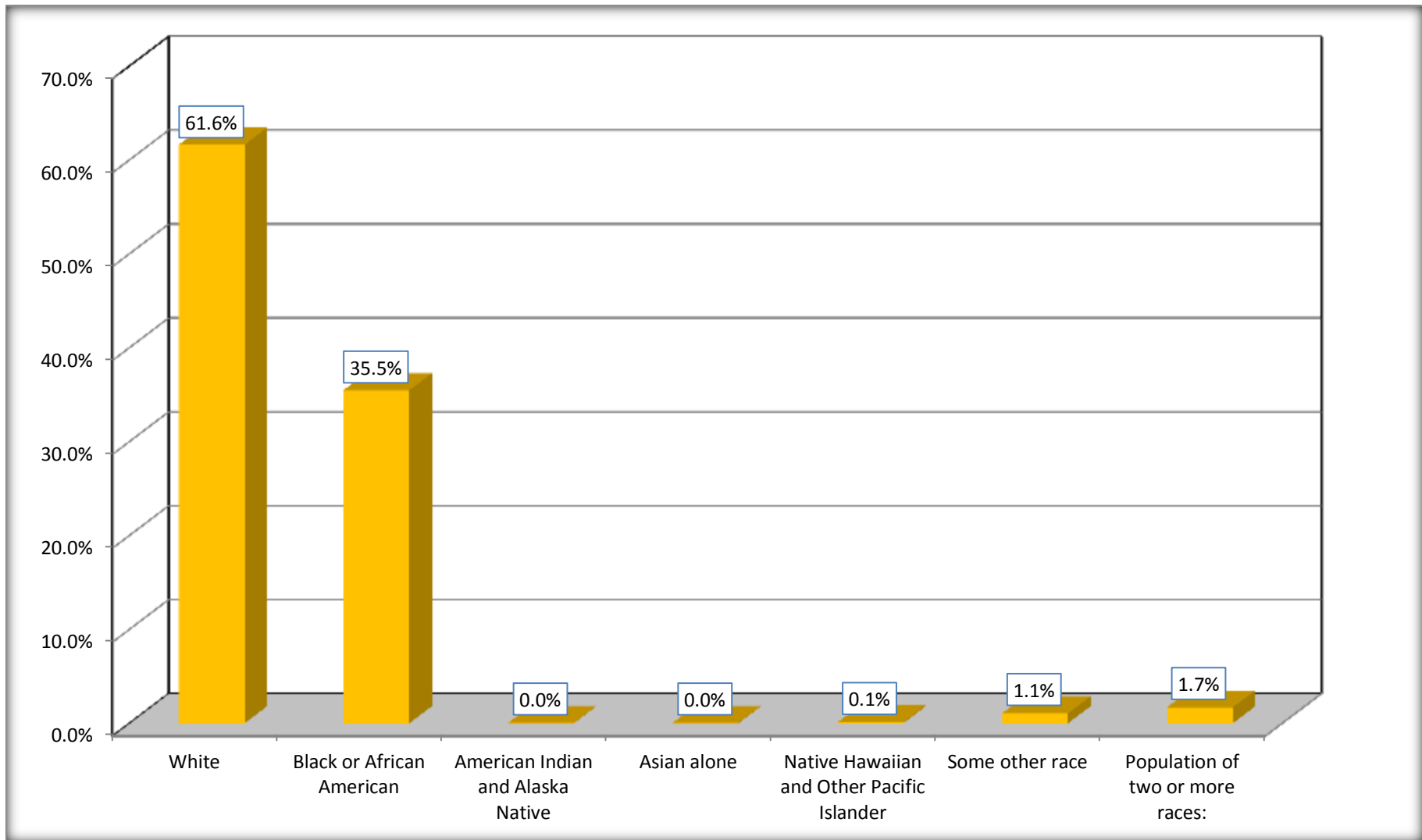
Although the American Community Survey (ACS) produces population, demographic and housing unit estimates, it is the Census Bureau's Population Estimates Program that produces and disseminates the official estimates of the population for the nation, states, counties, cities and towns and estimates of housing units for states and counties.

For information on confidentiality protection, sampling error, nonsampling error, and definitions, see Survey Methodology.

<http://www.census.gov/acs/www/UseData/index.htm>

# Population by Race

## Lunenburg County, Virginia



Source: C02003.DETAILED RACE - Universe: TOTAL POPULATION  
Data Set: 2008-2012 American Community Survey 5-Year Estimates

**B03002. HISPANIC OR LATINO ORIGIN BY RACE - Universe: TOTAL POPULATION**

Data Set: 2008-2012 American Community Survey 5-Year Estimates

	Lunenburg County, Virginia		
	Population	Margin of Error (+/-)	% of Total
<b>Total:</b>	12,838	*****	<b>100.0%</b>
Not Hispanic or Latino:	12,360	*****	96.3%
White alone	7,656	28	59.6%
Black or African American alone	4,502	84	35.1%
American Indian and Alaska Native alone	5	9	0.0%
Asian alone	5	8	0.0%
Native Hawaiian and Other Pacific Islander alone	12	18	0.1%
Some other race alone	9	17	0.1%
Two or more races:	171	87	1.3%
Two races including Some other race	15	23	0.1%
Two races excluding Some other race, and three or more races	156	81	1.2%
Hispanic or Latino	478	*****	3.7%

Source: U.S. Census Bureau, 2008-2012 American Community Survey

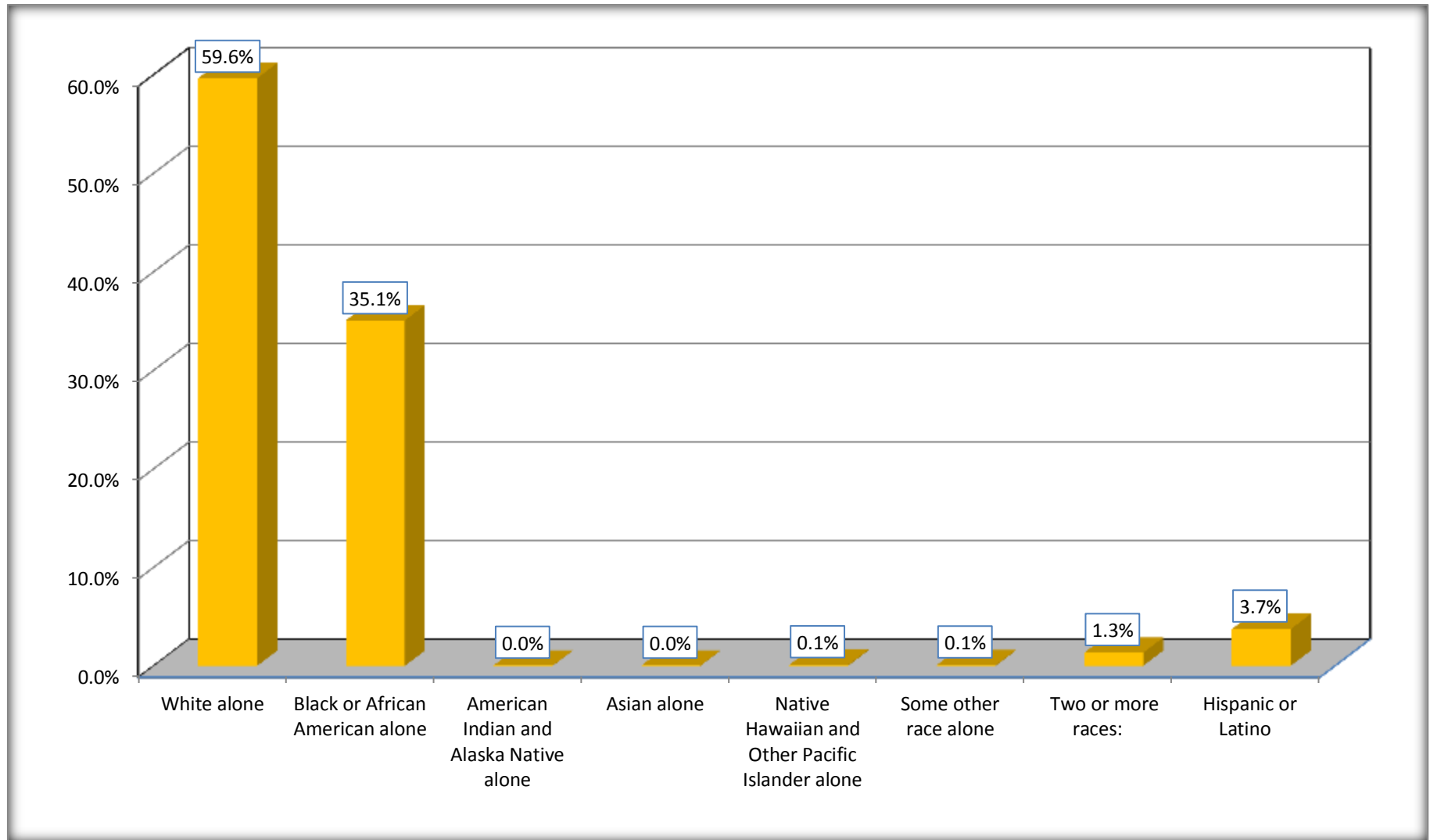
Although the American Community Survey (ACS) produces population, demographic and housing unit estimates, it is the Census Bureau's Population Estimates Program that produces and disseminates the official estimates of the population for the nation, states, counties, cities and towns and estimates of housing units for states and counties.

For information on confidentiality protection, sampling error, nonsampling error, and definitions, see Survey Methodology.

<http://www.census.gov/acs/www/UseData/index.htm>

# Non-Hispanic by Race and Hispanic Population

## Lunenburg County, Virginia



Source: B03002. HISPANIC OR LATINO ORIGIN BY RACE - Universe: TOTAL POPULATION  
Data Set: 2008-2012 American Community Survey 5-Year Estimates

**B03002. HISPANIC OR LATINO ORIGIN BY RACE**

Data Set: 2008-2012 American Community Survey 5-Year Estimates

	Lunenburg County, Virginia		
	Population	Margin of Error (+/-)	% of Total
Hispanic or Latino:	478	*****	<b>100.0%</b>
White alone	255	108	53.3%
Black or African American alone	51	69	10.7%
American Indian and Alaska Native alone	0	19	0.0%
Asian alone	0	19	0.0%
Native Hawaiian and Other Pacific Islander alone	0	19	0.0%
Some other race alone	126	70	26.4%
Two or more races:	46	46	9.6%
Two races including Some other race	42	46	8.8%
Two races excluding Some other race, and three or more races	4	7	0.8%

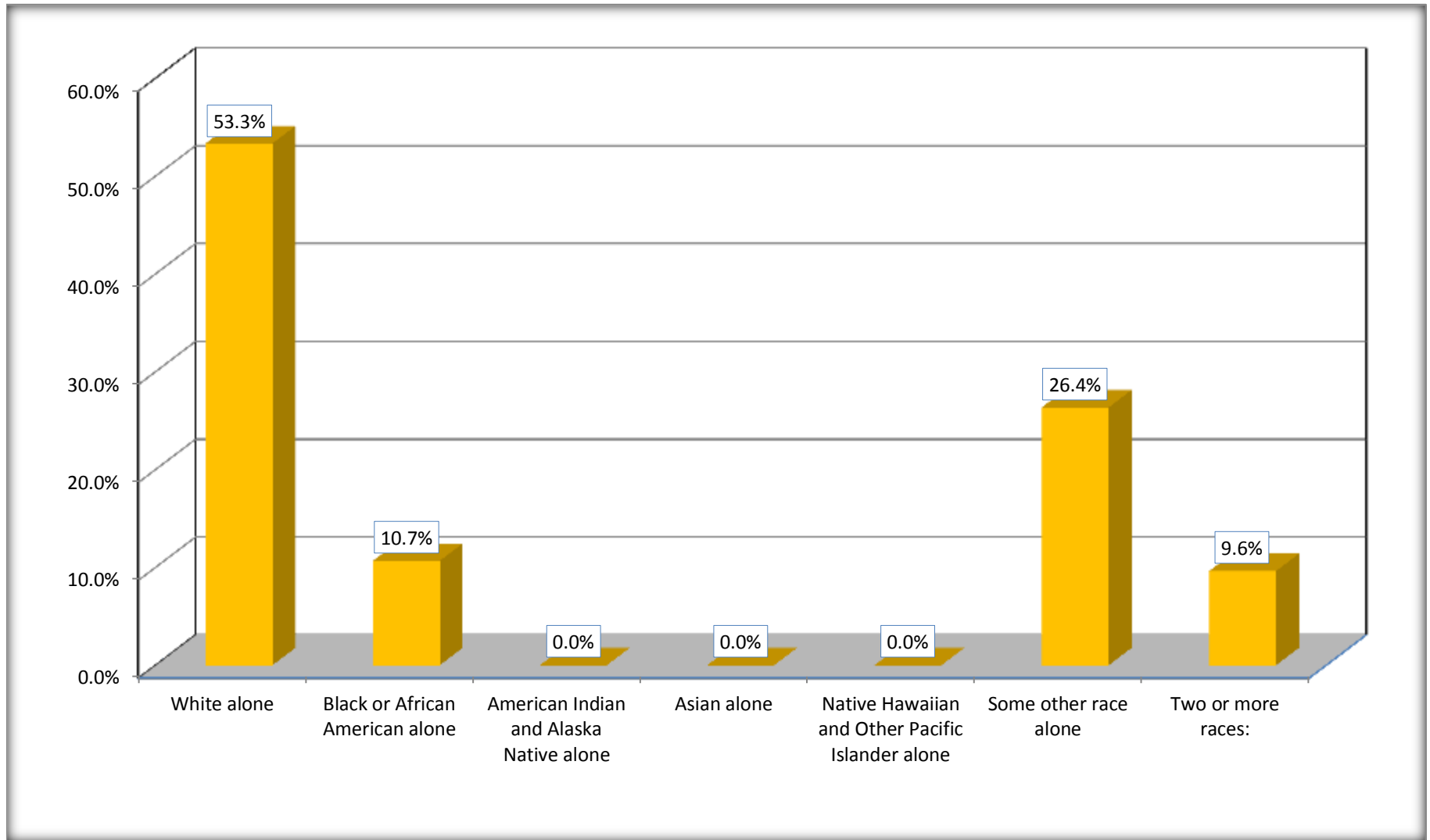
Source: U.S. Census Bureau, 2008-2012 American Community Survey

Although the American Community Survey (ACS) produces population, demographic and housing unit estimates, it is the Census Bureau's Population Estimates Program that produces and disseminates the official estimates of the population for the nation, states, counties, cities and towns and estimates of housing units for states and counties.

For information on confidentiality protection, sampling error, nonsampling error, and definitions, see Survey Methodology.

<http://www.census.gov/acs/www/UseData/index.htm>

## Hispanic or Latino Origin by Race Lunenburg County, Virginia



Source: B03002. HISPANIC OR LATINO ORIGIN BY RACE  
Data Set: 2008-2012 American Community Survey 5-Year Estimates

**B01001. SEX BY AGE**

Data Set: 2008-2012 American Community Survey 5-Year Estimates

	Lunenburg County, Virginia					
	African American	Margin of Error (+/-)	% of AA Total	White, Not Hispanic	Margin of Error (+/-)	% of NHW Total
<b>Total:</b>	<b>4,553</b>	<b>112</b>	<b>100.0%</b>	<b>7,656</b>	<b>28</b>	<b>100.0%</b>
Under 18 years	861	NC	18.9%	1,426	NC	18.6%
18 to 64 years	2,962	NC	65.1%	4,739	NC	61.9%
65 years and over	730	NC	16.0%	1,491	NC	19.5%
Male:	2,473	97	54.3%	3,969	389	51.8%
Under 18 years	422	NC	9.3%	742	NC	9.7%
18 to 64 years	1,750	NC	38.4%	2,550	NC	33.3%
65 years and over	301	NC	6.6%	677	NC	8.8%
Female:	2,080	79	45.7%	3,687	412	48.2%
Under 18 years	439	NC	9.6%	684	NC	8.9%
18 to 64 years	1,212	NC	26.6%	2,189	NC	28.6%
65 years and over	429	NC	9.4%	814	NC	10.6%

Source: U.S. Census Bureau, 2008-2012 American Community Survey

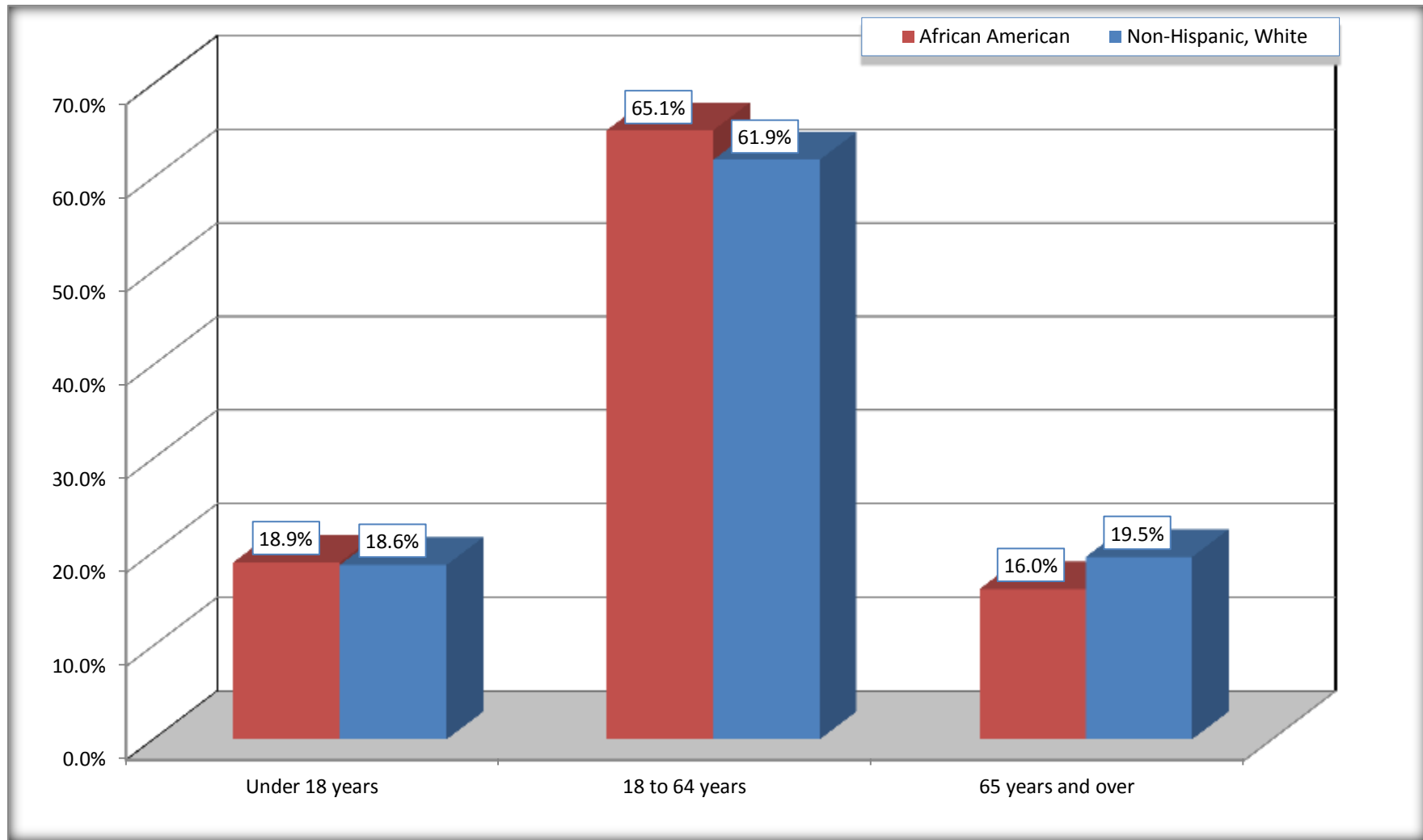
Although the American Community Survey (ACS) produces population, demographic and housing unit estimates, it is the Census Bureau's Population Estimates Program that produces and disseminates the official estimates of the population for the nation, states, counties, cities and towns and estimates of housing units for states and counties.

For information on confidentiality protection, sampling error, nonsampling error, and definitions, see Survey Methodology.  
<http://www.census.gov/acs/www/UseData/index.htm>



# Population by Age

## Lunenburg County, Virginia



Source: B01001. SEX BY AGE  
Data Set: 2008-2012 American Community Survey 5-Year Estimates

**B05003. SEX BY AGE BY CITIZENSHIP STATUS**

Data Set: 2008-2012 American Community Survey 5-Year Estimates

	Lunenburg County, Virginia					
	African American	Margin of Error (+/-)	% of AA Total by Age	White, Not Hispanic	Margin of Error (+/-)	% of NHW Total by Age
<b>Total:</b>	<b>4,553</b>	<b>112</b>	<b>100.0%</b>	<b>7,656</b>	<b>28</b>	<b>100.0%</b>
<b>Under 18 years:</b>	<b>861</b>	<b>NC</b>	<b>100.0%</b>	<b>1,426</b>	<b>NC</b>	<b>100.0%</b>
Native	858	NC	99.7%	1,417	NC	99.4%
Foreign born:	3	NC	0.3%	9	NC	0.6%
Naturalized U.S. citizen	3	NC	0.3%	0	NC	0.0%
Not a U.S. citizen	0	NC	0.0%	9	NC	0.6%
<b>18 years and over:</b>	<b>3,692</b>	<b>NC</b>	<b>100.0%</b>	<b>6,230</b>	<b>NC</b>	<b>100.0%</b>
Native	3,678	NC	99.6%	6,126	NC	98.3%
Foreign born:	14	NC	0.4%	104	NC	1.7%
Naturalized U.S. citizen	5	NC	0.1%	88	NC	1.4%
Not a U.S. citizen	9	NC	0.2%	16	NC	0.3%
<b>Male:</b>	<b>2,473</b>	<b>97</b>	<b>54.3%</b>	<b>3,969</b>	<b>14</b>	<b>51.8%</b>
<b>Under 18 years:</b>	<b>422</b>	<b>74</b>	<b>100.0%</b>	<b>742</b>	<b>12</b>	<b>100.0%</b>
Native	419	73	99.3%	742	12	100.0%
Foreign born:	3	6	0.7%	0	19	0.0%
Naturalized U.S. citizen	3	6	0.7%	0	19	0.0%
Not a U.S. citizen	0	19	0.0%	0	19	0.0%
<b>18 years and over:</b>	<b>2,051</b>	<b>47</b>	<b>100.0%</b>	<b>3,227</b>	<b>4</b>	<b>100.0%</b>
Native	2,041	54	99.5%	3,198	39	99.1%
Foreign born:	10	20	0.5%	29	39	0.9%
Naturalized U.S. citizen	5	8	0.2%	29	39	0.9%
Not a U.S. citizen	5	21	0.2%	0	19	0.0%

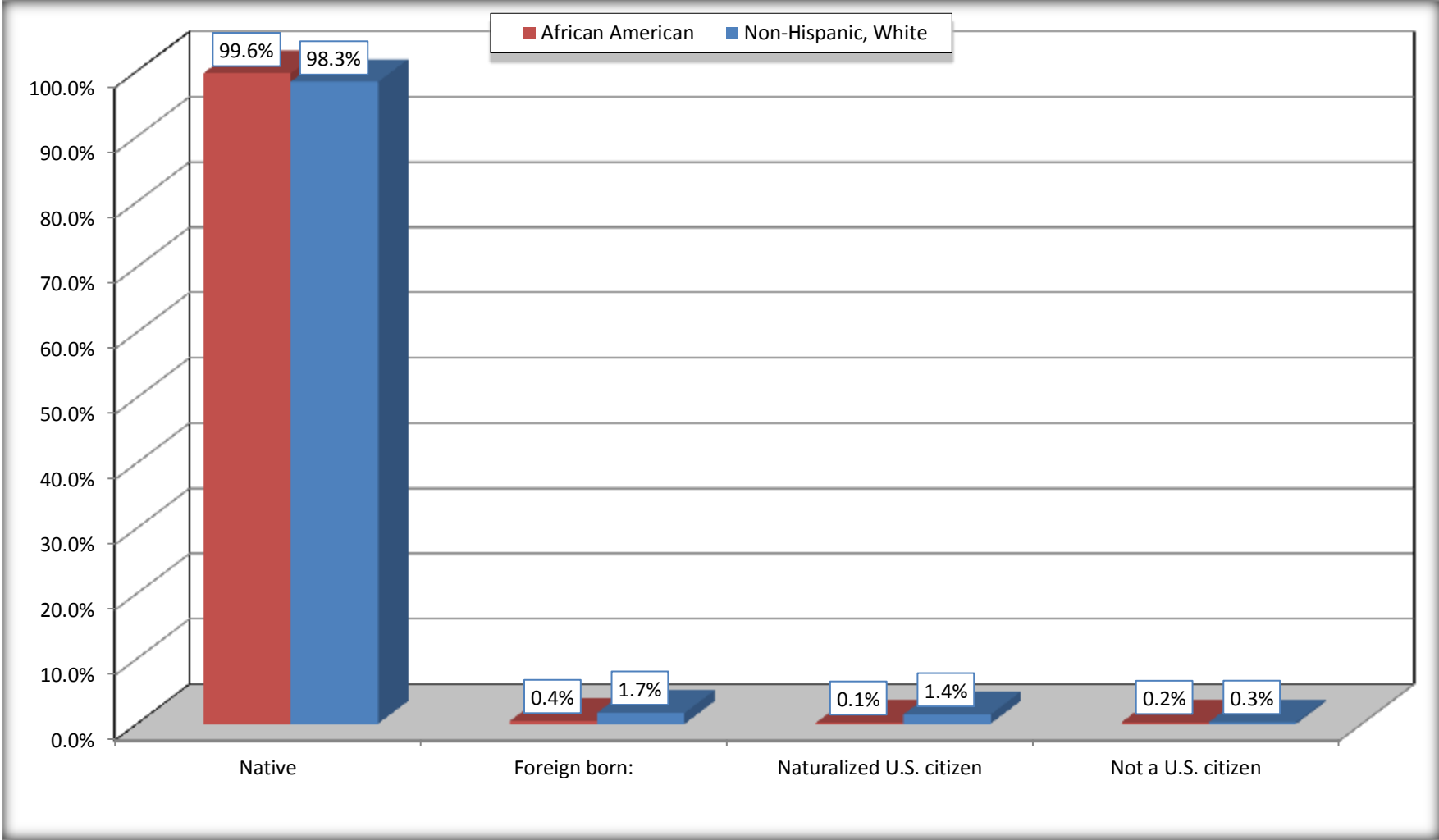
	Lunenburg County, Virginia					
	African American	Margin of Error (+/-)	% of AA by Age	White, Not Hispanic	Margin of Error (+/-)	% of NHW by Age
<b>Female:</b>	2,080	79	45.7%	3,687	15	48.2%
<b>Under 18 years:</b>	<b>439</b>	<b>68</b>	<b>100.0%</b>	<b>684</b>	<b>13</b>	<b>100.0%</b>
Native	439	68	100.0%	675	19	98.7%
Foreign born:	0	19	0.0%	9	14	1.3%
Naturalized U.S. citizen	0	19	0.0%	0	19	0.0%
Not a U.S. citizen	0	19	0.0%	9	14	1.3%
<b>18 years and over:</b>	<b>1,641</b>	<b>32</b>	<b>100.0%</b>	<b>3,003</b>	<b>3</b>	<b>100.0%</b>
Native	1,637	31	99.8%	2,928	76	97.5%
Foreign born:	4	7	0.2%	75	76	2.5%
Naturalized U.S. citizen	0	19	0.0%	59	73	2.0%
Not a U.S. citizen	4	7	0.2%	16	19	0.5%

Source: U.S. Census Bureau, 2008-2012 American Community Survey

For information on confidentiality protection, sampling error, nonsampling error, and definitions, see Survey Methodology.  
<http://www.census.gov/acs/www/UseData/index.htm>

# Citizenship Status of Voting Age Population (18 and Over)

## Lunenburg County, Virginia



Source: B05003. SEX BY AGE BY CITIZENSHIP STATUS  
Data Set: 2008-2012 American Community Survey 5-Year Estimates

**B07004. GEOGRAPHICAL MOBILITY IN THE PAST YEAR BY RACE FOR CURRENT RESIDENCE IN THE UNITED STATES - Universe:  
POPULATION 1 YEAR AND OVER**

Data Set: 2008-2012 American Community Survey 5-Year Estimates

	Lunenburg County, Virginia					
	African American	Margin of Error (+/-)	% of AA Total	White, Not Hispanic	Margin of Error (+/-)	% of NHW Total
<b>Total:</b>	<b>4,553</b>	<b>112</b>	<b>100.0%</b>	<b>7,596</b>	<b>55</b>	<b>100.0%</b>
Same house 1 year ago	4,064	202	89.3%	7,167	152	94.4%
Moved within same county	111	83	2.4%	115	65	1.5%
Moved from different county within same state	284	127	6.2%	245	94	3.2%
Moved from different state	94	72	2.1%	69	50	0.9%
Moved from abroad	0	19	0.0%	0	19	0.0%

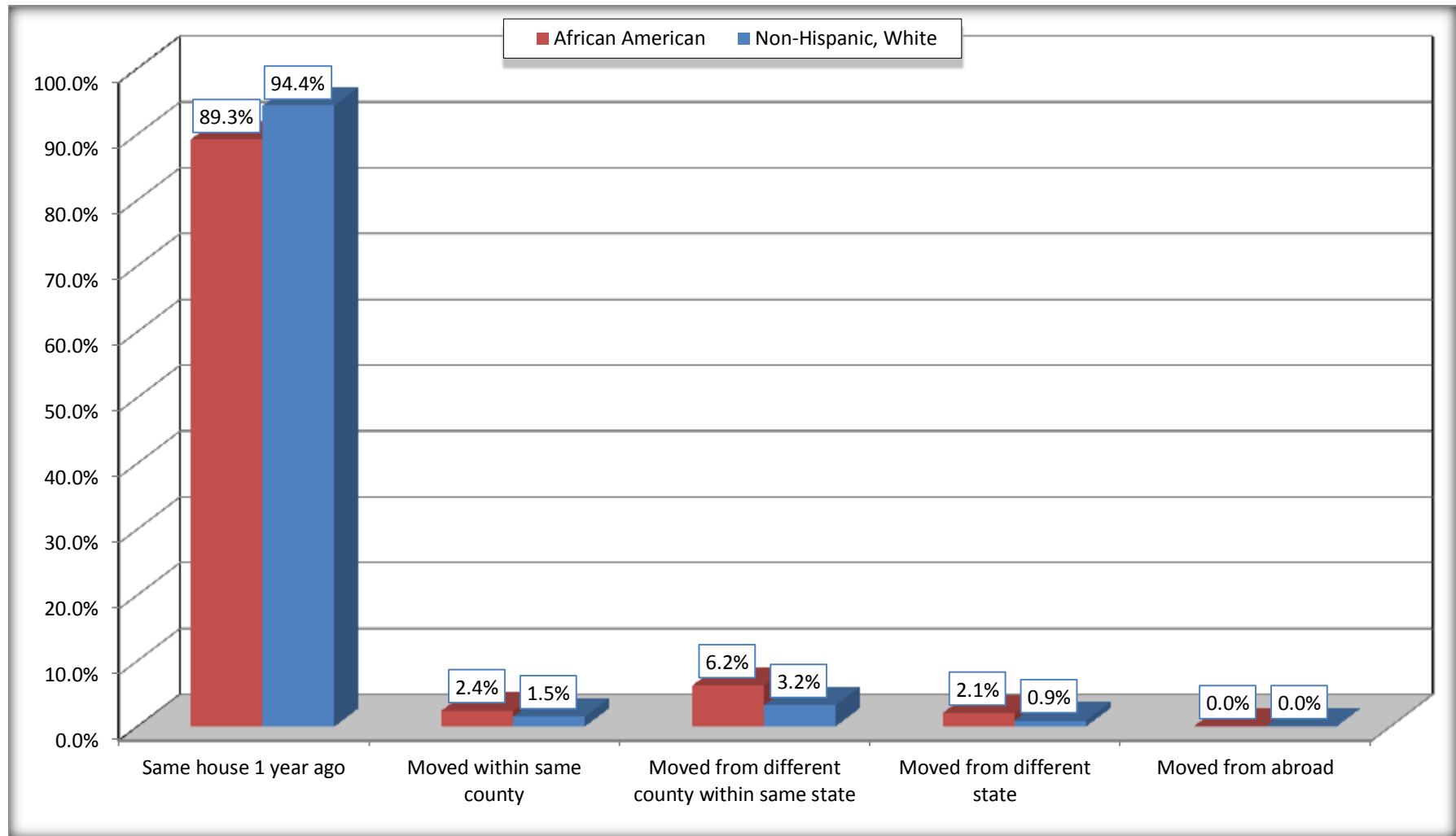
Source: U.S. Census Bureau, 2008-2012 American Community Survey

For information on confidentiality protection, sampling error, nonsampling error, and definitions, see Survey Methodology.

<http://www.census.gov/acs/www/UseData/index.htm>

# Geographical Mobility in the Past Year (Population 1 Year and Over)

## Lunenburg County, Virginia



Source: B07004. GEOGRAPHICAL MOBILITY IN THE PAST YEAR BY RACE FOR CURRENT RESIDENCE IN THE UNITED STATES - Universe: POPULATION 1 YEAR AND OVER

Data Set: 2008-2012 American Community Survey 5-Year Estimates

**B08105. MEANS OF TRANSPORTATION TO WORK - Universe: WORKERS 16 YEARS AND OVER**

Data Set: 2008-2012 American Community Survey 5-Year Estimates

	Lunenburg County, Virginia					
	African American	Margin of Error (+/-)	% of AA Total	White, Not Hispanic	Margin of Error (+/-)	% of NHW Total
<b>Total:</b>	1313	239	<b>100.0%</b>	2964	279	<b>100.0%</b>
Car, truck, or van - drove alone	1073	214	81.7%	2392	244	80.7%
Car, truck, or van - carpooled	190	89	14.5%	286	98	9.6%
Public transportation (excluding taxicab)	2	4	0.2%	19	22	0.6%
Walked	3	7	0.2%	65	52	2.2%
Taxicab, motorcycle, bicycle, or other means	45	41	3.4%	94	48	3.2%
Worked at home	0	19	0.0%	108	53	3.6%

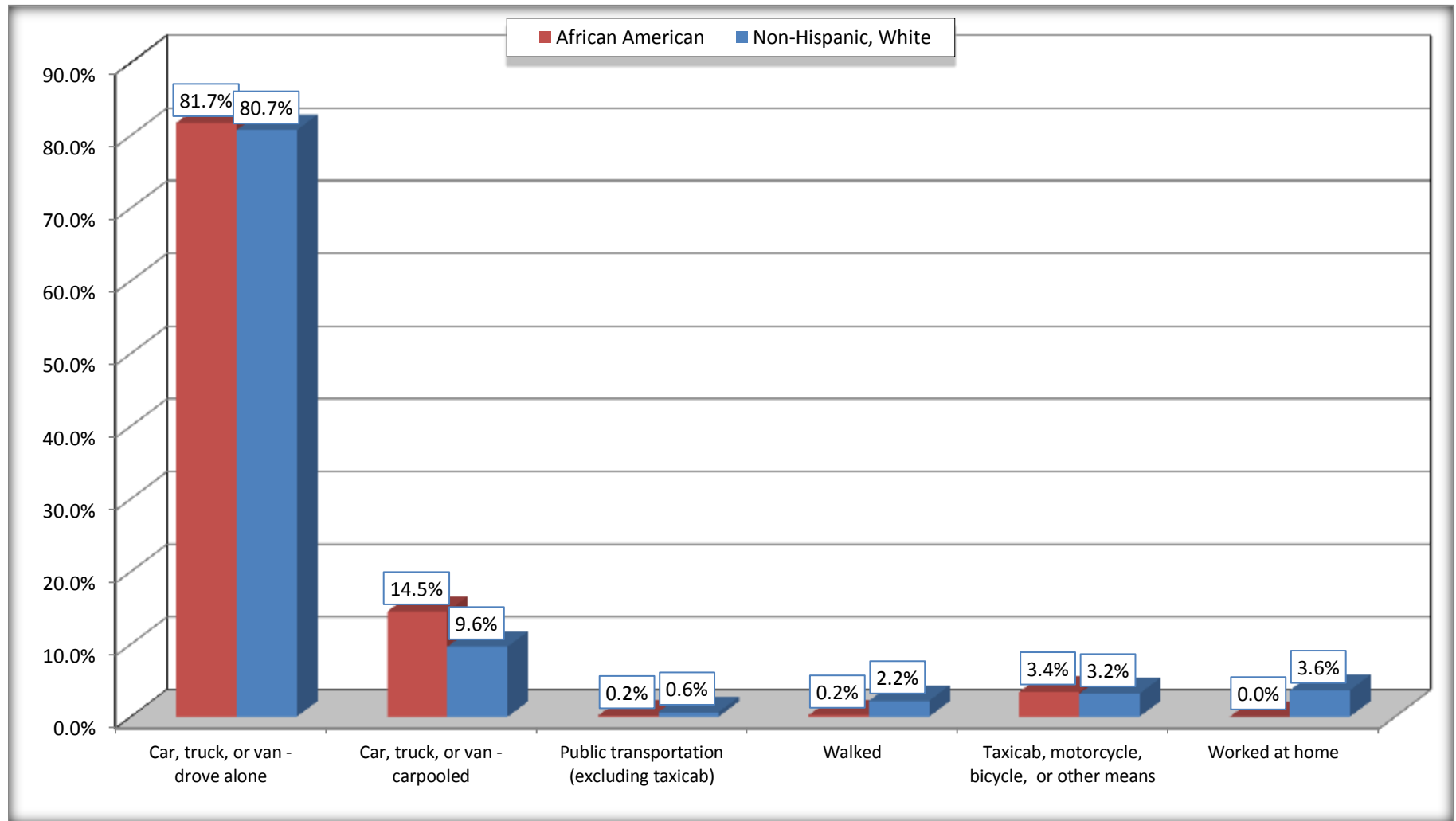
Source: U.S. Census Bureau, 2008-2012 American Community Survey

For information on confidentiality protection, sampling error, nonsampling error, and definitions, see Survey Methodology.

<http://www.census.gov/acs/www/UseData/index.htm>

# Means of Transportation to Work (Workers 16 Years and Over)

## Lunenburg County, Virginia



Source: B08105. MEANS OF TRANSPORTATION TO WORK - Universe: WORKERS 16 YEARS AND OVER  
Data Set: 2008-2012 American Community Survey 5-Year Estimates



**B11002. HOUSEHOLD TYPE BY RELATIVES AND NONRELATIVES FOR POPULATION IN HOUSEHOLDS**

Data Set: 2008-2012 American Community Survey 5-Year Estimates

	Lunenburg County, Virginia					
	African American	Margin of Error (+/-)	% of AA Total	White, Not Hispanic	Margin of Error (+/-)	% of NHW Total
<b>Total:</b>	3634	317	<b>100.0%</b>	7202	298	<b>100.0%</b>
In family households	3019	304	83.1%	6223	336	86.4%
In nonfamily households	615	155	16.9%	979	185	13.6%

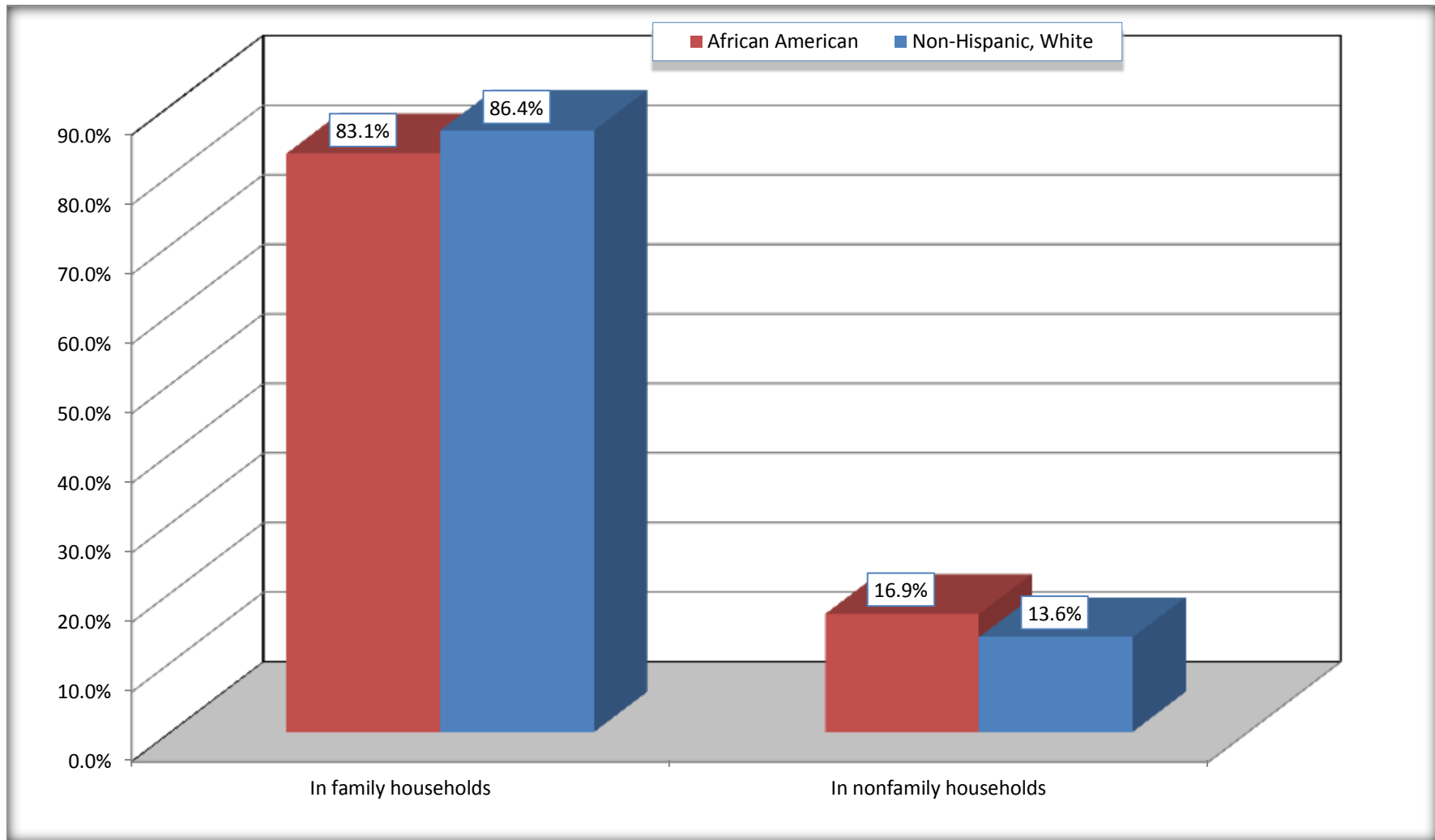
Source: U.S. Census Bureau, 2008-2012 American Community Survey

For information on confidentiality protection, sampling error, nonsampling error, and definitions, see Survey Methodology.

<http://www.census.gov/acs/www/UseData/index.htm>

# Household Type for Population in Households

## Lunenburg County, Virginia



Source: B11002. HOUSEHOLD TYPE BY RELATIVES AND NONRELATIVES FOR POPULATION IN HOUSEHOLDS  
Data Set: 2008-2012 American Community Survey 5-Year Estimates

**B12002. MARITAL STATUS FOR THE POPULATION 15 YEARS AND OVER**

Data Set: 2008-2012 American Community Survey 5-Year Estimates

	Lunenburg County, Virginia					
	African American	Margin of Error (+/-)	% of AA Total	White, Not Hispanic	Margin of Error (+/-)	% of NHW Total
<b>Total:</b>	<b>3,826</b>	<b>81</b>	<b>100.0%</b>	<b>6,490</b>	<b>7</b>	<b>100.0%</b>
Never married	1,536	NC	40.1%	1,432	NC	22.1%
Now married (except separated)	1,319	NC	34.5%	3,713	NC	57.2%
Separated	238	NC	6.2%	182	NC	2.8%
Widowed	351	NC	9.2%	481	NC	7.4%
Divorced	382	NC	10.0%	682	NC	10.5%
<b>Male:</b>	<b>2,131</b>	<b>66</b>	<b>55.7%</b>	<b>3,357</b>	<b>4</b>	<b>51.7%</b>
Never married	959	143	25.1%	918	156	14.1%
Now married (except separated)	724	134	18.9%	1,886	233	29.1%
Separated	151	66	3.9%	78	50	1.2%
Widowed	75	47	2.0%	105	51	1.6%
Divorced	222	72	5.8%	370	97	5.7%
<b>Female:</b>	<b>1,695</b>	<b>62</b>	<b>44.3%</b>	<b>3,133</b>	<b>3</b>	<b>48.3%</b>
Never married	577	98	15.1%	514	84	7.9%
Now married (except separated)	595	111	15.6%	1,827	163	28.2%
Separated	87	51	2.3%	104	43	1.6%
Widowed	276	76	7.2%	376	70	5.8%
Divorced	160	70	4.2%	312	96	4.8%

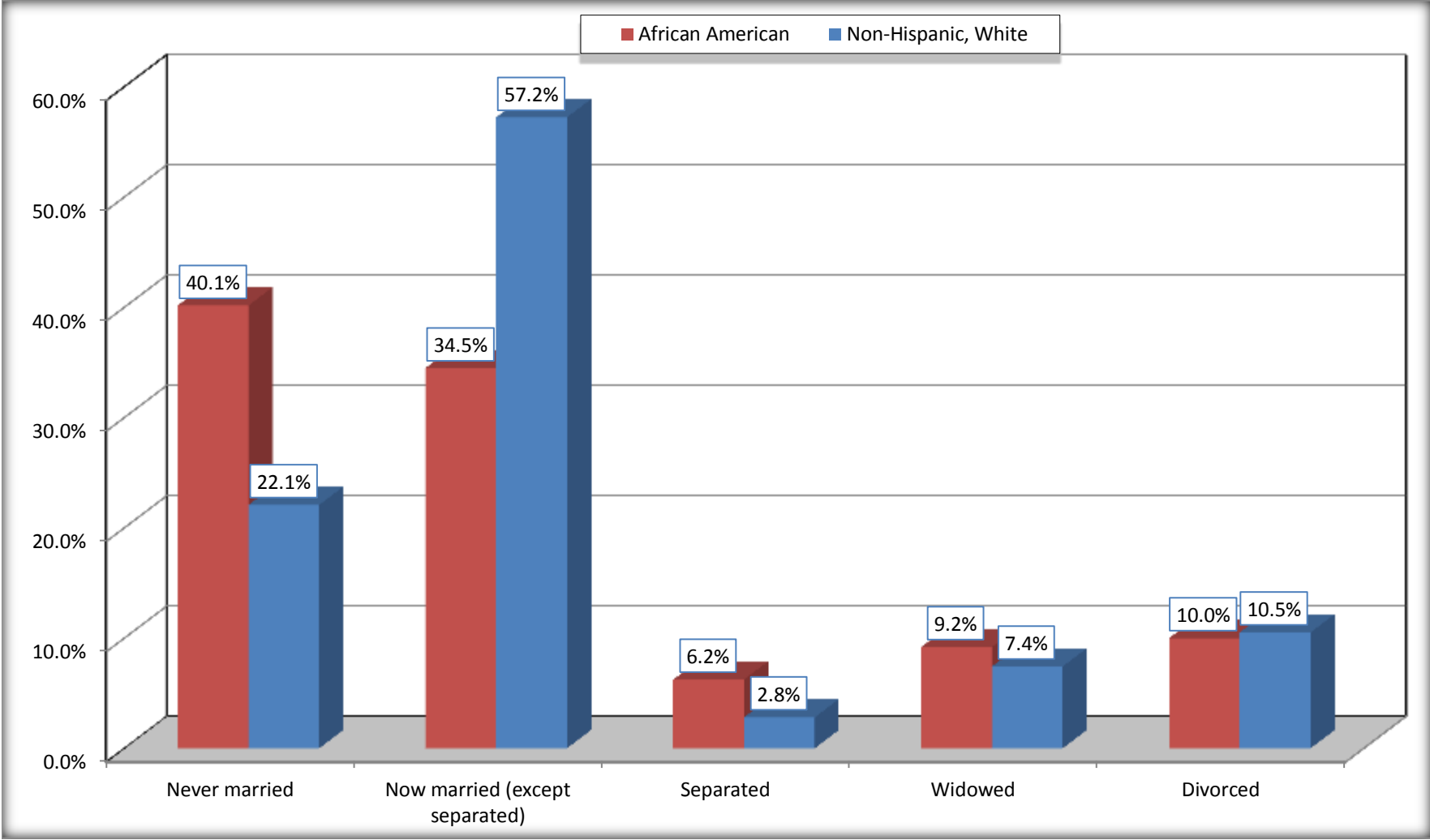
Source: U.S. Census Bureau, 2008-2012 American Community Survey

For information on confidentiality protection, sampling error, nonsampling error, and definitions, see Survey Methodology.

<http://www.census.gov/acs/www/UseData/index.htm>

# Marital Status for the Population 15 Years and Over

## Lunenburg County, Virginia



Source: B12002. MARITAL STATUS FOR THE POPULATION 15 YEARS AND OVER  
Data Set: 2008-2012 American Community Survey 5-Year Estimates

**C15002. SEX BY EDUCATIONAL ATTAINMENT FOR THE POPULATION 25 YEARS AND OVER**

Data Set: 2008-2012 American Community Survey 5-Year Estimates

	Lunenburg County, Virginia					
	African American	Margin of Error (+/-)	% of AA Total	White, Not Hispanic	Margin of Error (+/-)	% of NHW Total
<b>Total:</b>	<b>3,279</b>	<b>79</b>	<b>100.0%</b>	<b>5,663</b>	<b>7</b>	<b>100.0%</b>
Less than high school diploma	1,297	NC	39.6%	1,420	NC	25.1%
High school graduate, GED, or alternative	1,123	NC	34.2%	2,059	NC	36.4%
Some college or associate's degree	721	NC	22.0%	1,382	NC	24.4%
Bachelor's degree or higher	138	NC	4.2%	802	NC	14.2%
Male:	1,813	75	55.3%	2,934	4	51.8%
Less than high school diploma	884	156	27.0%	861	154	15.2%
High school graduate, GED, or alternative	513	107	15.6%	1,087	142	19.2%
Some college or associate's degree	374	111	11.4%	659	144	11.6%
Bachelor's degree or higher	42	37	1.3%	327	101	5.8%
Female:	1,466	25	44.7%	2,729	3	48.2%
Less than high school diploma	413	98	12.6%	559	110	9.9%
High school graduate, GED, or alternative	610	101	18.6%	972	145	17.2%
Some college or associate's degree	347	91	10.6%	723	140	12.8%
Bachelor's degree or higher	96	50	2.9%	475	97	8.4%

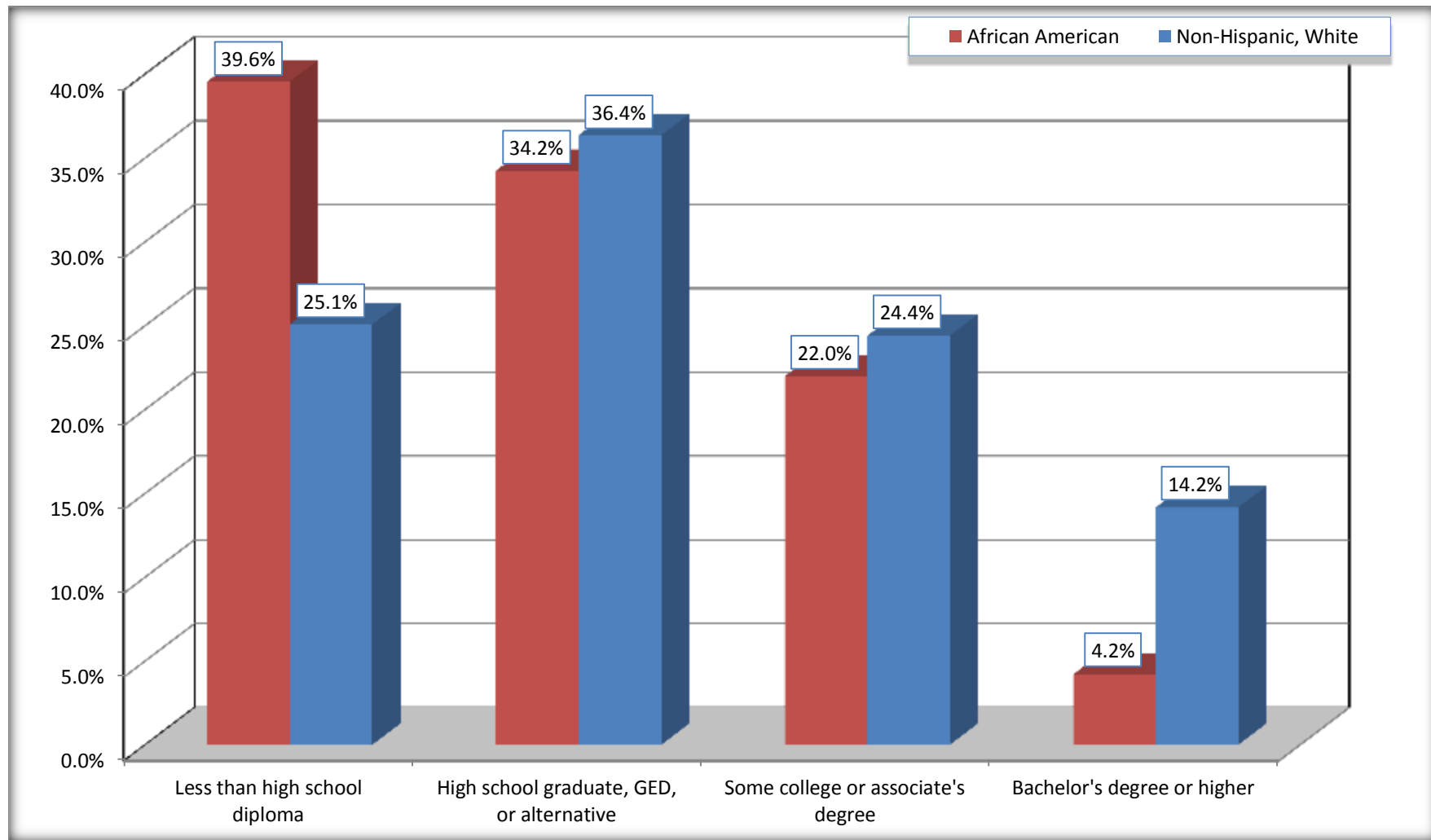
Source: U.S. Census Bureau, 2008-2012 American Community Survey

For information on confidentiality protection, sampling error, nonsampling error, and definitions, see Survey Methodology.

<http://www.census.gov/acs/www/UseData/index.htm>

# Educational Attainment for the Population 25 Years and Older

## Lunenburg County, Virginia



Source: C15002. SEX BY EDUCATIONAL ATTAINMENT FOR THE POPULATION 25 YEARS AND OVER  
Data Set: 2008-2012 American Community Survey 5-Year Estimates

**B17010. POVERTY STATUS IN THE PAST 12 MONTHS OF FAMILIES BY FAMILY TYPE BY PRESENCE OF RELATED CHILDREN UNDER 18 YEARS**

Data Set: 2008-2012 American Community Survey 5-Year Estimates

	Lunenburg County, Virginia					
	African American	Margin of Error (+/-)	% of AA Total	White, Not Hispanic	Margin of Error (+/-)	% of NHW Total
<b>Total:</b>	<b>934</b>	<b>164</b>	<b>100.0%</b>	<b>2,070</b>	<b>180</b>	<b>100.0%</b>
Income in the past 12 months below poverty level:	208	75	22.3%	291	105	14.1%
Married-couple family:	48	37	5.1%	199	97	9.6%
With related children under 18 years	16	20	1.7%	139	82	6.7%
Other family:	160	66	17.1%	92	47	4.4%
Male householder, no wife present	38	33	4.1%	44	33	2.1%
With related children under 18 years	17	21	1.8%	27	27	1.3%
Female householder, no husband present	122	58	13.1%	48	31	2.3%
With related children under 18 years	81	45	8.7%	33	25	1.6%
Income in the past 12 months at or above poverty level:	726	155	77.7%	1,779	178	85.9%
Married-couple family:	477	130	51.1%	1,553	177	75.0%
With related children under 18 years	113	77	12.1%	483	115	23.3%
Other family:	249	92	26.7%	226	71	10.9%
Male householder, no wife present	64	51	6.9%	45	33	2.2%
With related children under 18 years	45	45	4.8%	9	11	0.4%
Female householder, no husband present	185	72	19.8%	181	56	8.7%
With related children under 18 years	76	57	8.1%	115	46	5.6%

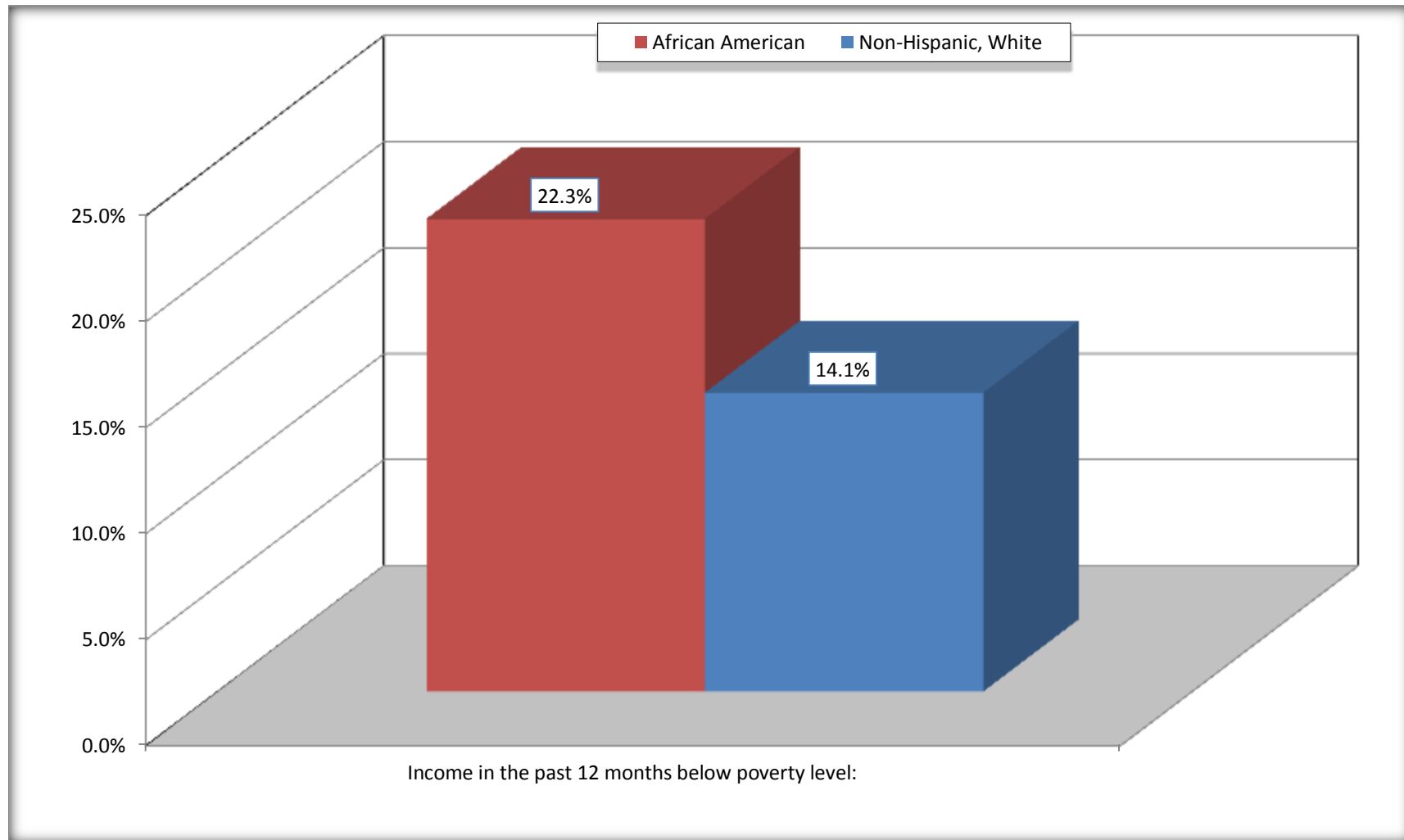
Source: U.S. Census Bureau, 2008-2012 American Community Survey

For information on confidentiality protection, sampling error, nonsampling error, and definitions, see Survey Methodology.

<http://www.census.gov/acs/www/UseData/index.htm>

# Family Households Below Poverty in the Past 12 Months

## Lunenburg County, Virginia



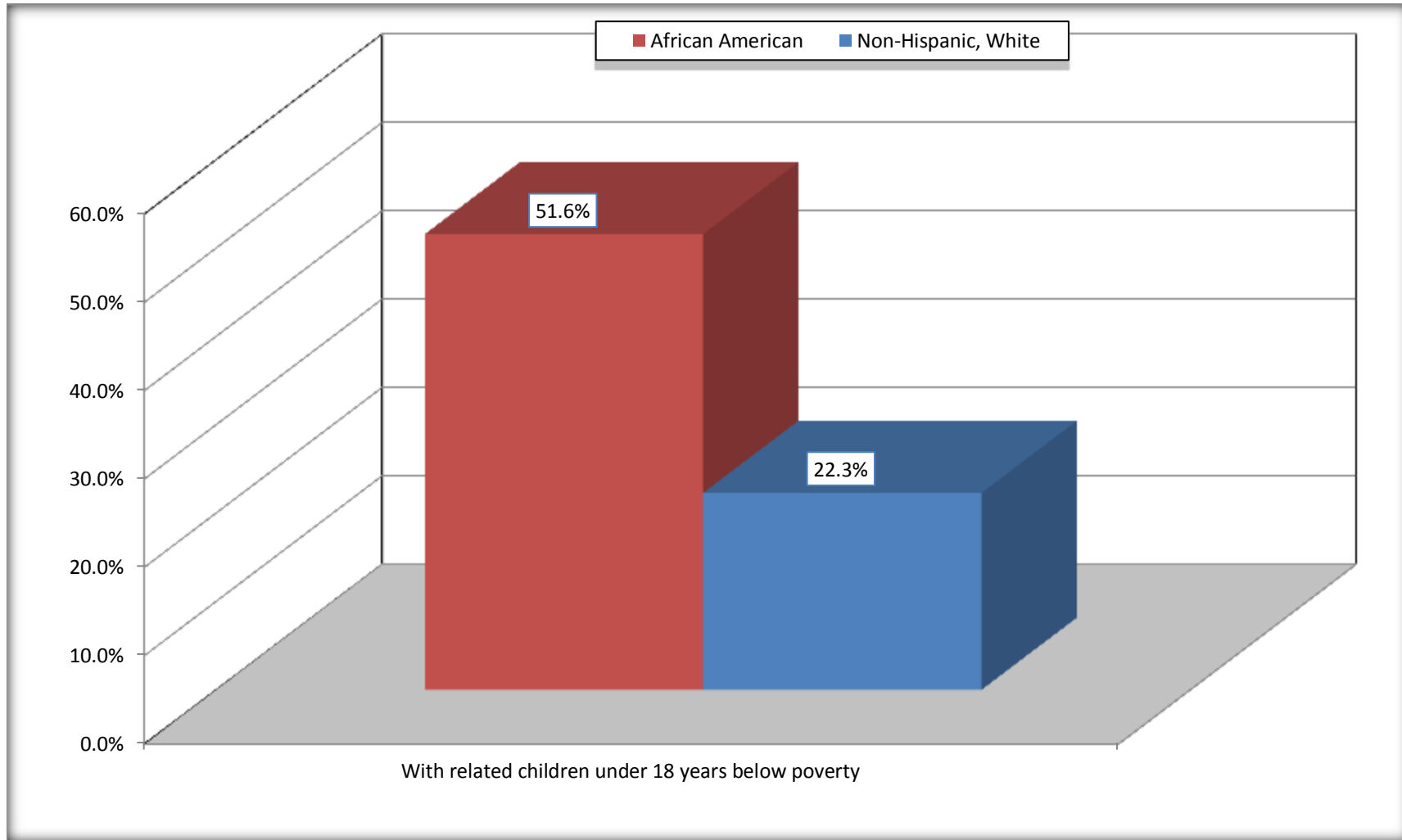
Source: B17010. POVERTY STATUS IN THE PAST 12 MONTHS OF FAMILIES BY FAMILY TYPE BY PRESENCE OF RELATED CHILDREN UNDER 18 YEARS

Data Set: 2008-2012 American Community Survey 5-Year Estimates



# Female-headed Households with Related Children Below Poverty in the Past 12 Months

## Lunenburg County, Virginia



Source: B17010. POVERTY STATUS IN THE PAST 12 MONTHS OF FAMILIES BY FAMILY TYPE BY PRESENCE OF RELATED CHILDREN UNDER 18 YEARS

Data Set: 2008-2012 American Community Survey 5-Year Estimates

**B17020 POVERTY STATUS IN THE PAST 12 MONTHS BY AGE - Universe: POPULATION FOR WHOM POVERTY STATUS IS DETERMINED**

Data Set: 2008-2012 American Community Survey 5-Year Estimates

	Lunenburg County, Virginia					
	African American	Margin of Error (+/-)	% of AA By Age	White, Not Hispanic	Margin of Error (+/-)	% of NHW By Age
<b>Total:</b>	<b>3,686</b>	<b>347</b>	<b>100.0%</b>	<b>7,076</b>	<b>217</b>	<b>100.0%</b>
Income in the past 12 months below poverty level:	996	305	27.0%	1,233	360	17.4%
<b>Under 18 years</b>	242	NC	29.6%	370	NC	26.1%
<b>18 to 64 years</b>	531	197	24.3%	719	226	17.2%
<b>65 years and over</b>	223	NC	32.4%	144	NC	9.7%
Income in the past 12 months at or above poverty level:	2,690	397	73.0%	5,843	394	82.6%
<b>Under 18 years</b>	575	NC	70.4%	1,045	NC	73.9%
<b>18 to 64 years</b>	1,650	314	75.7%	3,456	283	82.8%
<b>65 years and over</b>	465	NC	67.6%	1,342	NC	90.3%

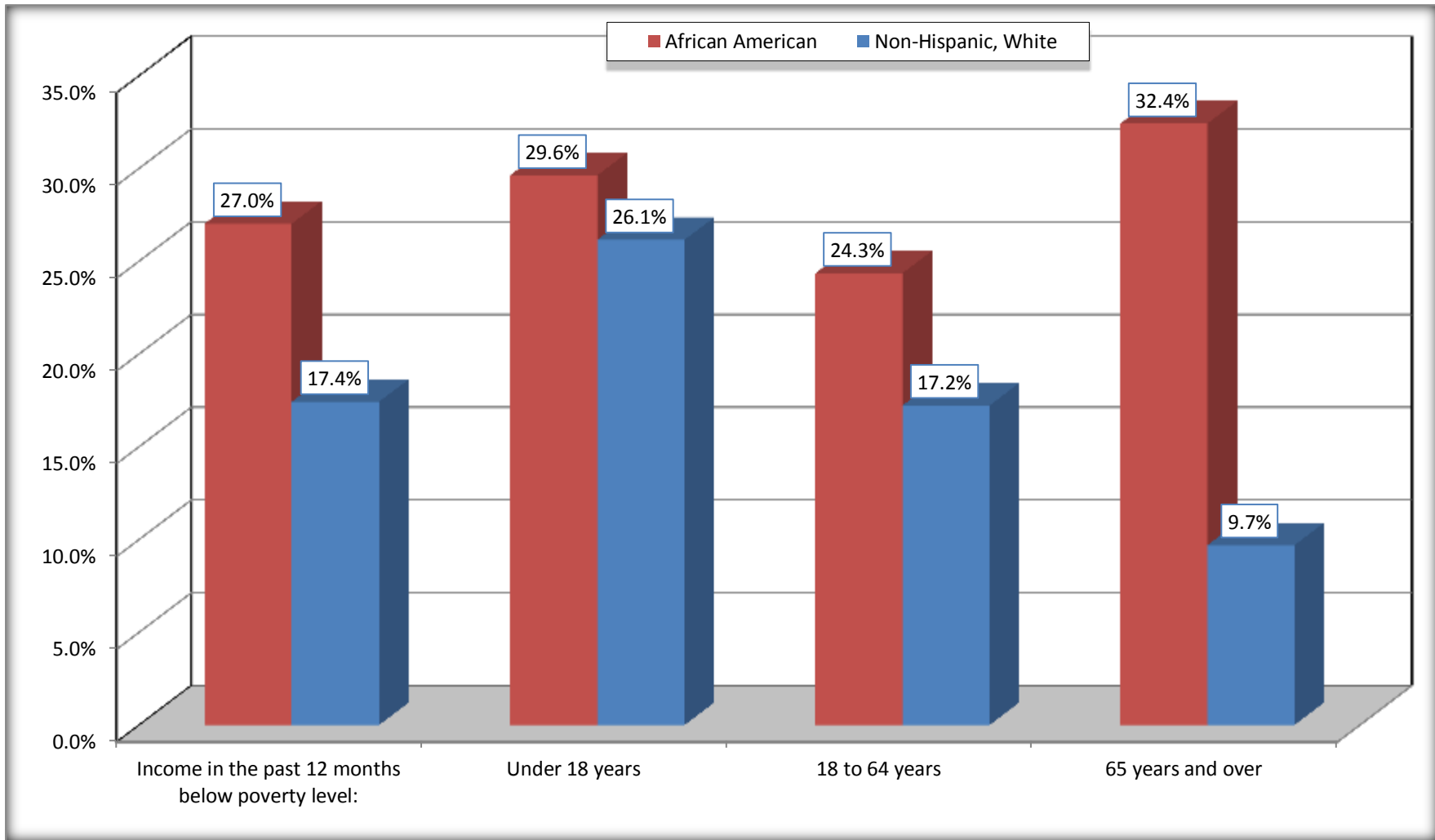
Source: U.S. Census Bureau, 2008-2012 American Community Survey

For information on confidentiality protection, sampling error, nonsampling error, and definitions, see Survey Methodology.

<http://www.census.gov/acs/www/UseData/index.htm>

# Population Below Poverty in the Past 12 Months

## Lunenburg County, Virginia



Source: B17020 POVERTY STATUS IN THE PAST 12 MONTHS BY AGE - Universe: POPULATION FOR WHOM POVERTY STATUS IS DETERMINED  
Data Set: 2008-2012 American Community Survey 5-Year Estimates

**B19001. HOUSEHOLD INCOME IN THE PAST 12 MONTHS (IN 2010 INFLATION-ADJUSTED DOLLARS)**

Data Set: 2008-2012 American Community Survey 5-Year Estimates

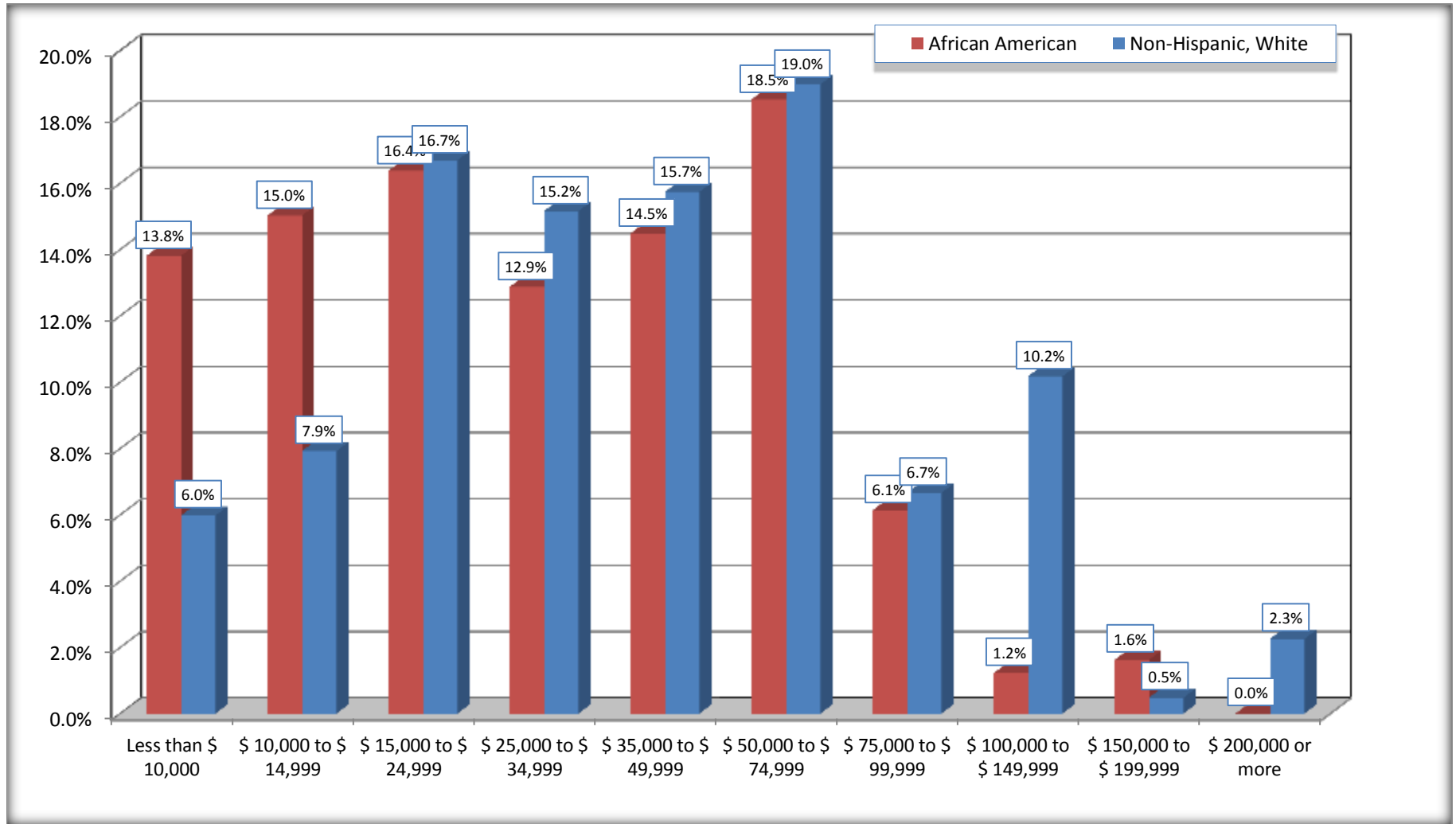
	Lunenburg County, Virginia					
	African American	Margin of Error (+/-)	% of AA Total	White, Not Hispanic	Margin of Error (+/-)	% of NHW Total
<b>Total:</b>	<b>1,485</b>	<b>202</b>	<b>100.0%</b>	<b>2,930</b>	<b>176</b>	<b>100.0%</b>
Less than \$ 10,000	205	75	13.8%	175	57	6.0%
\$ 10,000 to \$ 14,999	223	80	15.0%	232	75	7.9%
<b>\$ 15,000 to \$ 24,999</b>	243	NC	16.4%	489	NC	16.7%
<b>\$ 25,000 to \$ 34,999</b>	191	NC	12.9%	444	NC	15.2%
<b>\$ 35,000 to \$ 49,999</b>	215	NC	14.5%	461	NC	15.7%
<b>\$ 50,000 to \$ 74,999</b>	275	NC	18.5%	556	NC	19.0%
\$ 75,000 to \$ 99,999	91	63	6.1%	195	68	6.7%
<b>\$ 100,000 to \$ 149,999</b>	18	NC	1.2%	298	NC	10.2%
\$ 150,000 to \$ 199,999	24	21	1.6%	14	23	0.5%
\$ 200,000 or more	0	19	0.0%	66	45	2.3%

Source: U.S. Census Bureau, 2008-2012 American Community Survey

For information on confidentiality protection, sampling error, nonsampling error, and definitions, see Survey Methodology.

<http://www.census.gov/acs/www/UseData/index.htm>

## Household Income in the Past 12 Months Lunenburg County, Virginia



Source: B19001. HOUSEHOLD INCOME IN THE PAST 12 MONTHS (IN 2010 INFLATION-ADJUSTED DOLLARS)  
Data Set: 2008-2012 American Community Survey 5-Year Estimates

**B19013. MEDIAN HOUSEHOLD INCOME IN THE PAST 12 MONTHS (IN 2010 INFLATION-ADJUSTED DOLLARS)**

Data Set: 2008-2012 American Community Survey 5-Year Estimates

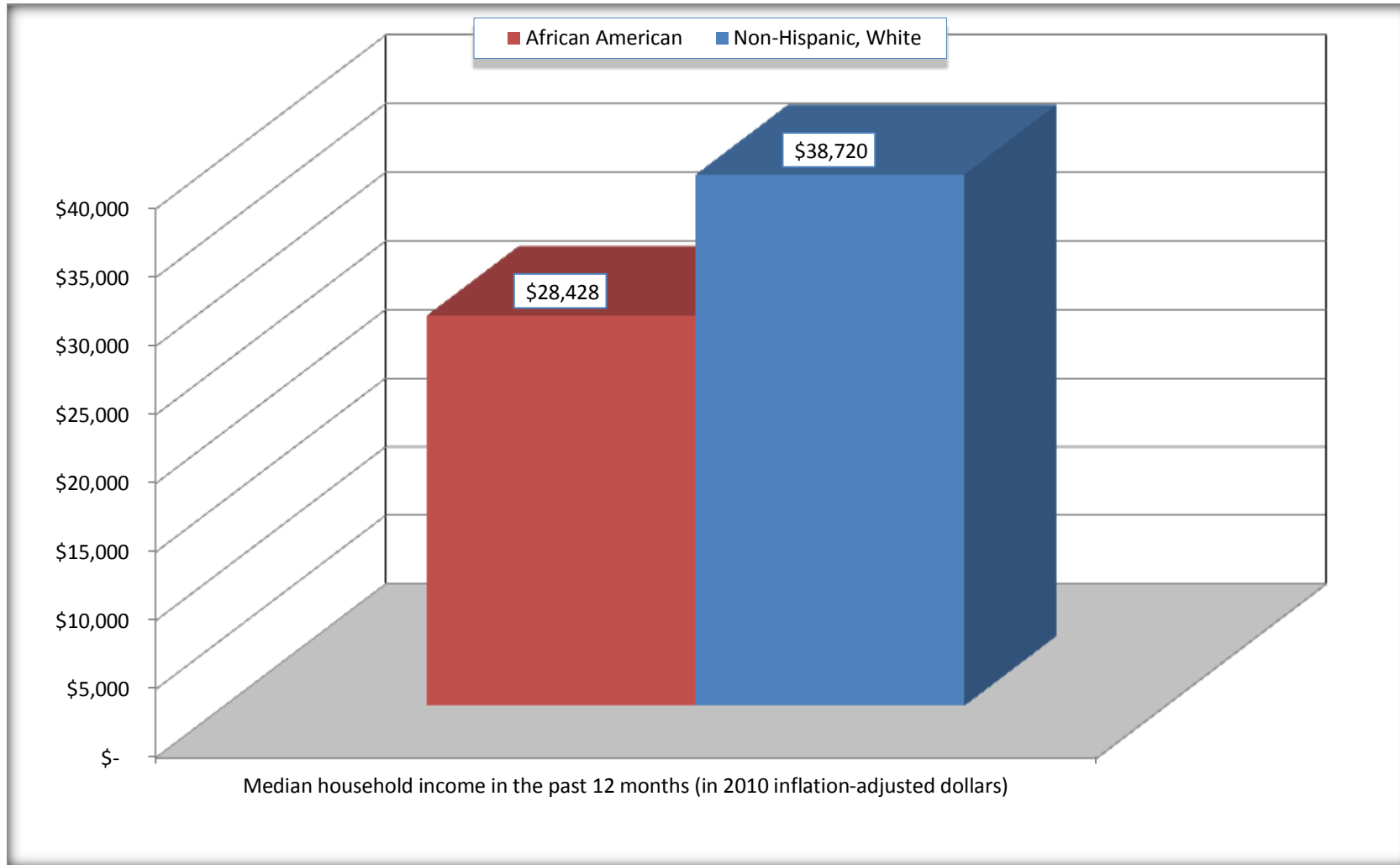
	Lunenburg County, Virginia			
	African American	Margin of Error (+/-)	White, Not Hispanic	Margin of Error (+/-)
Median household income in the past 12 months (in 2010 inflation-adjusted dollars)	\$ 28,428	\$ 5,461	\$ 38,720	\$ 4,674

Source: U.S. Census Bureau, 2008-2012 American Community Survey

For information on confidentiality protection, sampling error, nonsampling error, and definitions, see Survey Methodology.  
<http://www.census.gov/acs/www/UseData/index.htm>

# Median Household Income in the Past 12 Months

## Lunenburg County, Virginia



Source: B19013. MEDIAN HOUSEHOLD INCOME IN THE PAST 12 MONTHS (IN 2010 INFLATION-ADJUSTED DOLLARS)  
Data Set: 2008-2012 American Community Survey 5-Year Estimates

**B19101. FAMILY INCOME IN THE PAST 12 MONTHS (IN 2010 INFLATION-ADJUSTED DOLLARS)**

Data Set: 2008-2012 American Community Survey 5-Year Estimates

	Lunenburg County, Virginia					
	African American	Margin of Error (+/-)	% of AA Total	White, Not Hispanic	Margin of Error (+/-)	% of NHW Total
<b>Total:</b>	<b>934</b>	<b>164</b>	<b>100.0%</b>	<b>2,070</b>	<b>180</b>	<b>100.0%</b>
Less than \$ 10,000	103	53	11.0%	57	45	2.8%
\$ 10,000 to \$ 14,999	74	46	7.9%	82	48	4.0%
<b>\$ 15,000 to \$ 24,999</b>	<b>182</b>	<b>NC</b>	<b>19.5%</b>	<b>300</b>	<b>NC</b>	<b>14.5%</b>
<b>\$ 25,000 to \$ 34,999</b>	<b>111</b>	<b>NC</b>	<b>11.9%</b>	<b>317</b>	<b>NC</b>	<b>15.3%</b>
<b>\$ 35,000 to \$ 49,999</b>	<b>146</b>	<b>NC</b>	<b>15.6%</b>	<b>317</b>	<b>NC</b>	<b>15.3%</b>
<b>\$ 50,000 to \$ 74,999</b>	<b>208</b>	<b>NC</b>	<b>22.3%</b>	<b>449</b>	<b>NC</b>	<b>21.7%</b>
<b>\$ 100,000 to \$ 149,999</b>	<b>24</b>	<b>NC</b>	<b>2.6%</b>	<b>291</b>	<b>NC</b>	<b>14.1%</b>
\$ 150,000 to \$ 199,999	10	21	1.1%	14	23	0.7%
\$ 200,000 or more	0	19	0.0%	66	45	3.2%

Source: U.S. Census Bureau, 2008-2012 American Community Survey

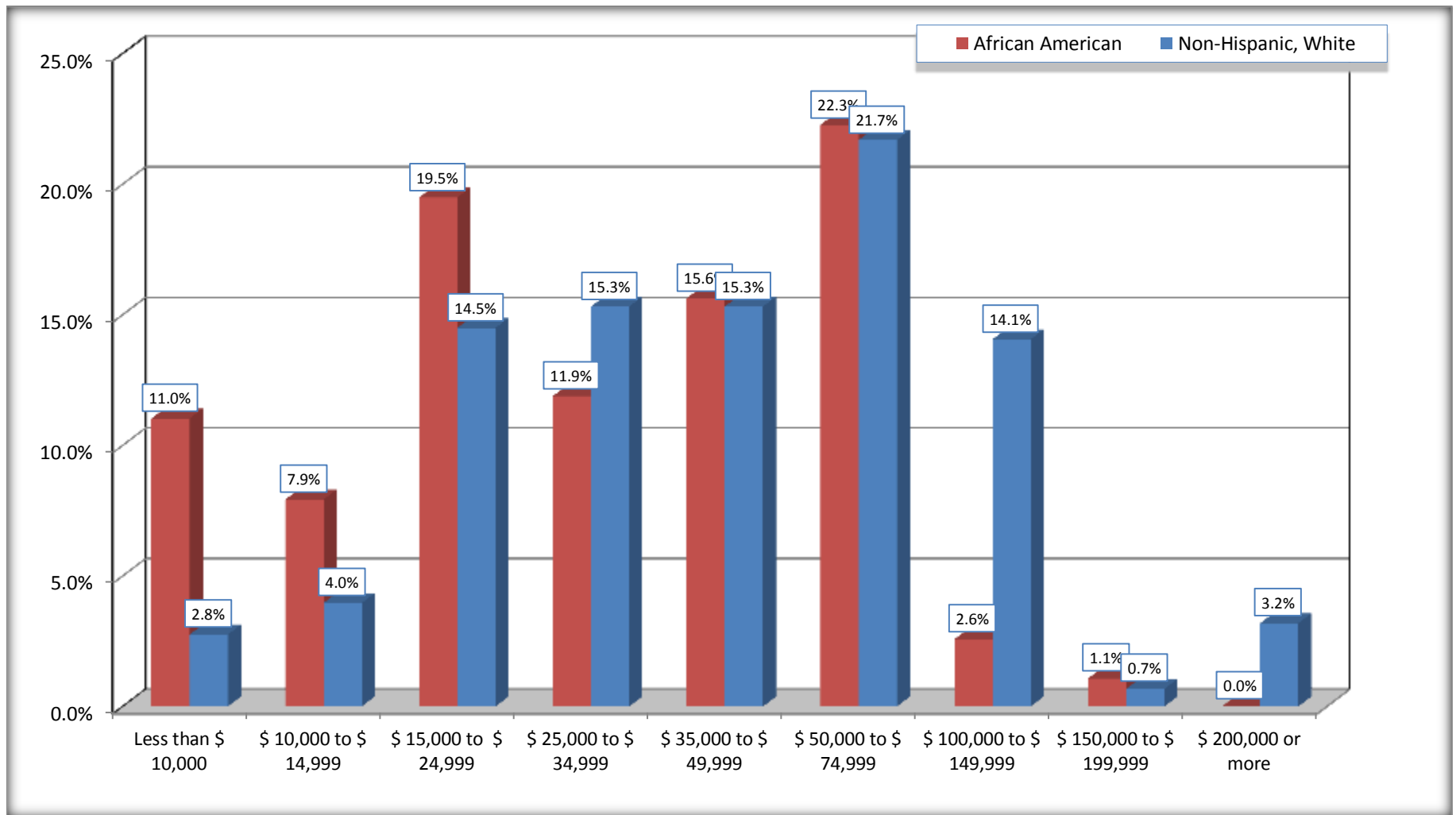
For information on confidentiality protection, sampling error, nonsampling error, and definitions, see Survey Methodology.

<http://www.census.gov/acs/www/UseData/index.htm>



# Family Income in the Past 12 Months

## Lunenburg County, Virginia



Source: B19101. FAMILY INCOME IN THE PAST 12 MONTHS (IN 2010 INFLATION-ADJUSTED DOLLARS)  
Data Set: 2008-2012 American Community Survey 5-Year Estimates

**B19113. MEDIAN FAMILY INCOME IN THE PAST 12 MONTHS (IN 2010 INFLATION-ADJUSTED DOLLARS)**

Data Set: 2008-2012 American Community Survey 5-Year Estimates

	Lunenburg County, Virginia			
	African American	Margin of Error (+/-)	White, Not Hispanic	Margin of Error (+/-)
Median family income in the past 12 months (in 2010 inflation-adjusted dollars)	\$ 34,464	\$ 8,841	\$ 48,173	\$ 6,072

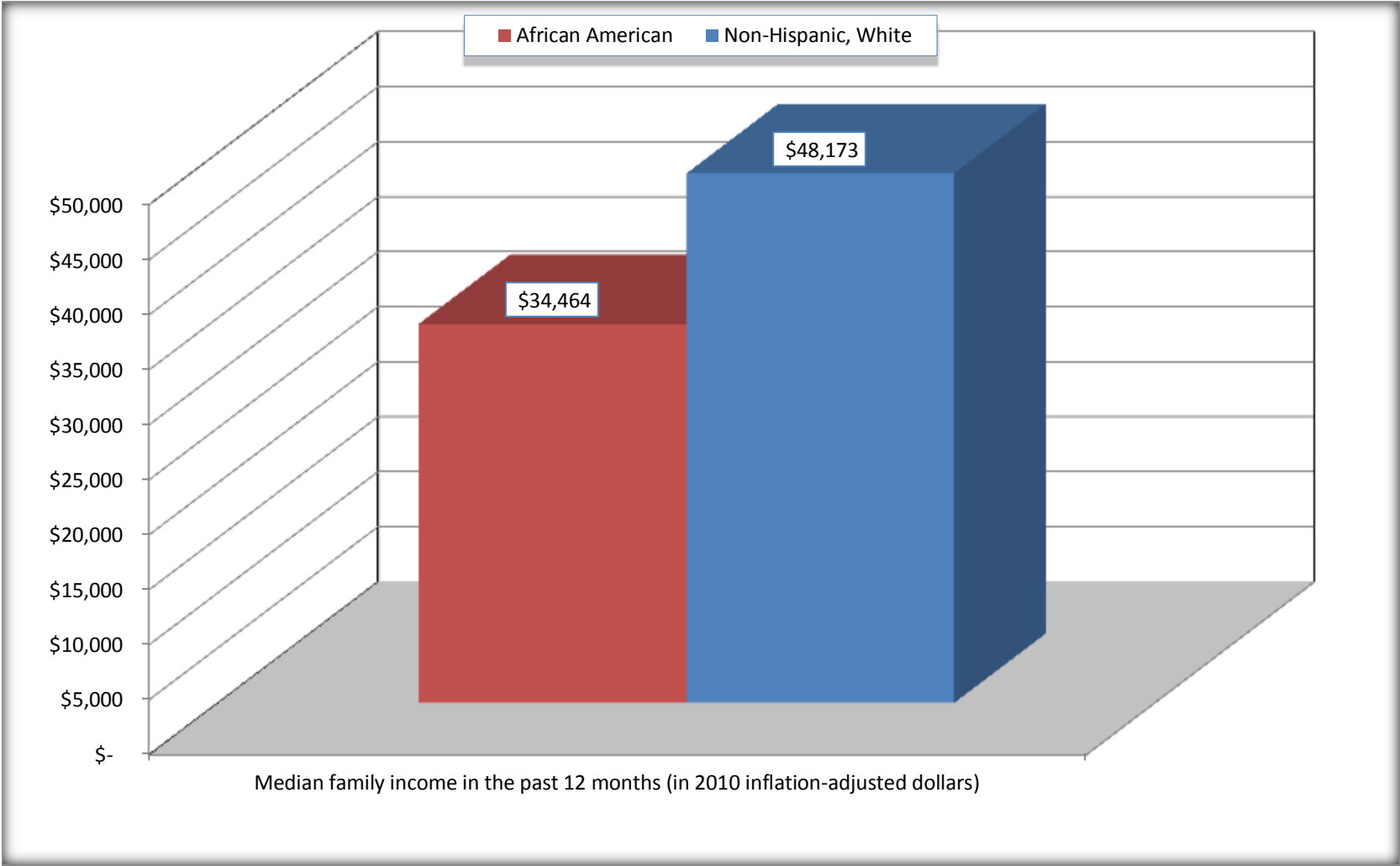
Source: U.S. Census Bureau, 2008-2012 American Community Survey

For information on confidentiality protection, sampling error, nonsampling error, and definitions, see Survey Methodology.

<http://www.census.gov/acs/www/UseData/index.htm>

# Median Family Income in the Past 12 Months

## Lunenburg County, Virginia



Source: B19113. MEDIAN FAMILY INCOME IN THE PAST 12 MONTHS (IN 2010 INFLATION-ADJUSTED DOLLARS)  
Data Set: 2008-2012 American Community Survey 5-Year Estimates

**B19202. MEDIAN NONFAMILY HOUSEHOLD INCOME IN THE PAST 12 MONTHS (IN 2010 INFLATION-ADJUSTED DOLLARS)**

Data Set: 2008-2012 American Community Survey 5-Year Estimates

	Lunenburg County, Virginia			
	African American	Margin of Error (+/-)	White, Not Hispanic	Margin of Error (+/-)
Median nonfamily household income in the past 12 months (in 2010 inflation-adjusted dollars)	\$ 14,571	\$ 7,377	\$ 22,234	\$ 6,232

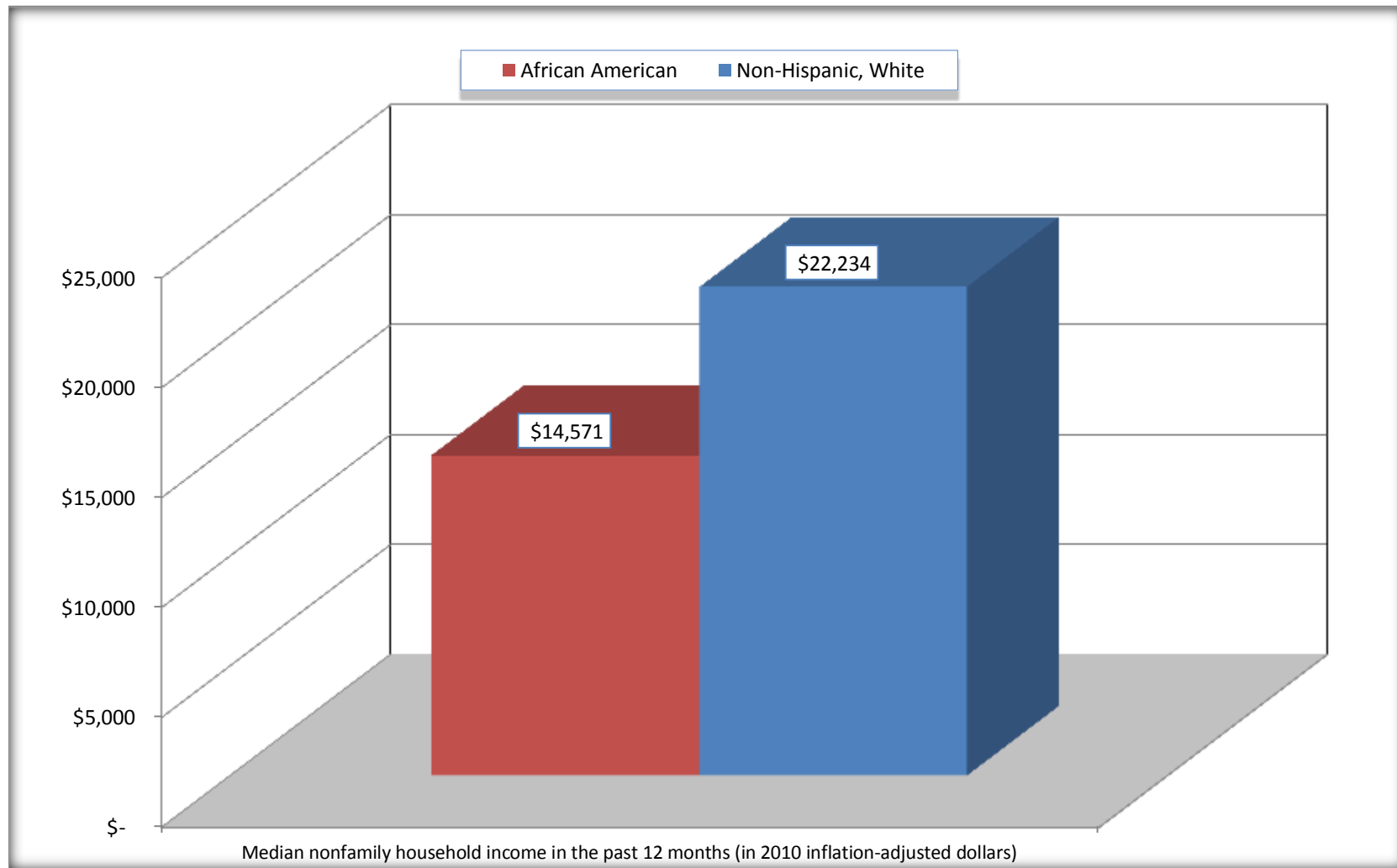
Source: U.S. Census Bureau, 2008-2012 American Community Survey

For information on confidentiality protection, sampling error, nonsampling error, and definitions, see Survey Methodology.

<http://www.census.gov/acs/www/UseData/index.htm>

# Median Non-Family Income in the Past 12 Months

## Lunenburg County, Virginia



Source: B19202. MEDIAN NONFAMILY HOUSEHOLD INCOME IN THE PAST 12 MONTHS (IN 2010 INFLATION-ADJUSTED DOLLARS)  
Data Set: 2008-2012 American Community Survey 5-Year Estimates

**B19301. PER CAPITA INCOME IN THE PAST 12 MONTHS (IN 2010 INFLATION-ADJUSTED DOLLARS)**

Data Set: 2008-2012 American Community Survey 5-Year Estimates

	<b>Lunenburg County, Virginia</b>			
	African American	Margin of Error (+/-)	White, Not Hispanic	Margin of Error (+/-)
Per capita income in the past 12 months (in 2010 inflation-adjusted dollars)	\$ 13,447	\$ 1,898	\$ 20,381	\$ 2,097

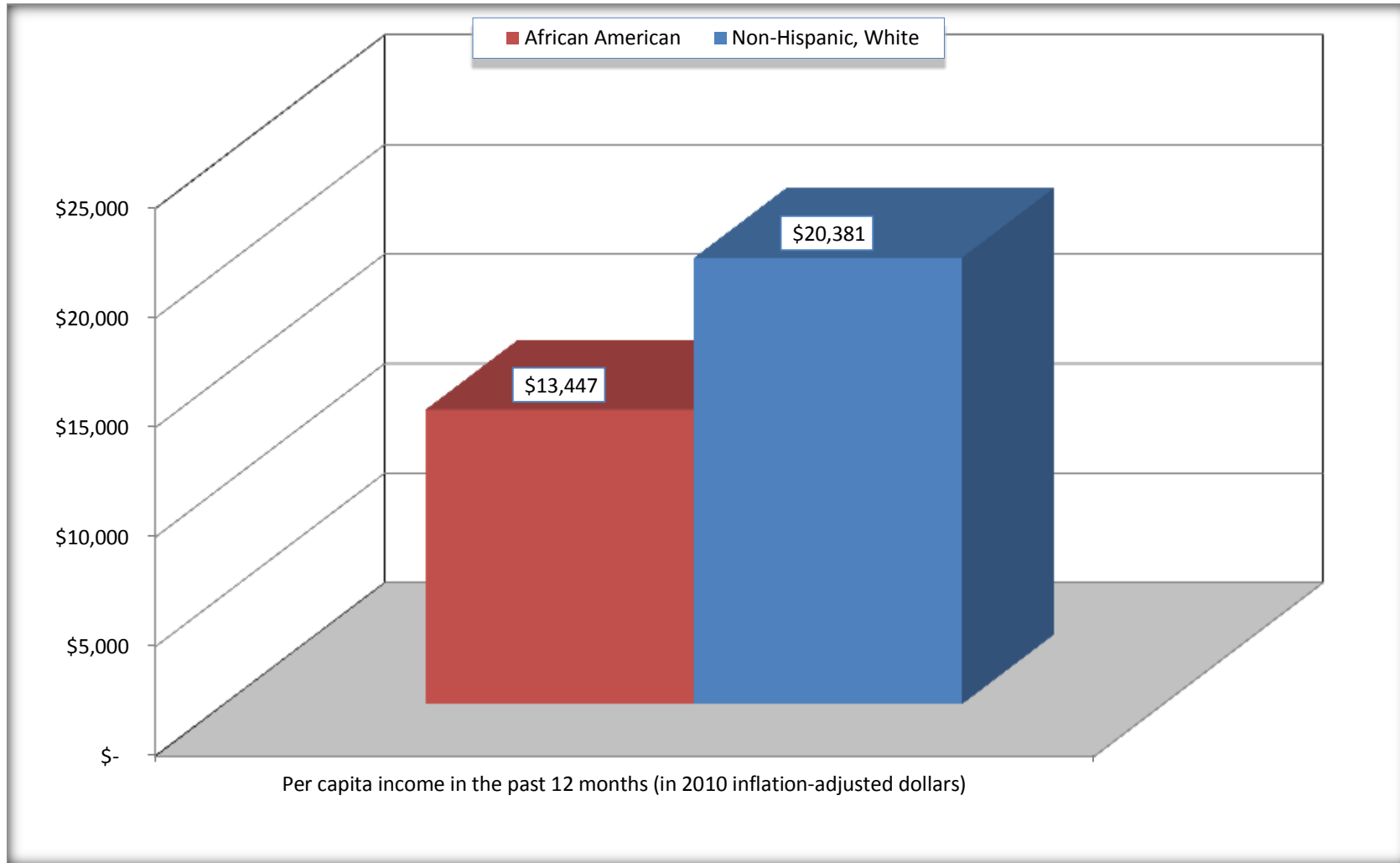
Source: U.S. Census Bureau, 2008-2012 American Community Survey

For information on confidentiality protection, sampling error, nonsampling error, and definitions, see Survey Methodology.

<http://www.census.gov/acs/www/UseData/index.htm>

## Per capita Income in the Past 12 Months

### Lunenburg County, Virginia



Source: B19301. PER CAPITA INCOME IN THE PAST 12 MONTHS (IN 2010 INFLATION-ADJUSTED DOLLARS)  
Data Set: 2008-2012 American Community Survey 5-Year Estimates

**B20017. MEDIAN EARNINGS IN THE PAST 12 MONTHS (IN 2010 INFLATION-ADJUSTED DOLLARS) BY SEX BY WORK EXPERIENCE IN THE PAST 12 MONTHS FOR THE POPULATION 16 YEARS AND OVER WITH EARNINGS IN THE PAST 12 MONTHS**

Data Set: 2008-2012 American Community Survey 5-Year Estimates

	Lunenburg County, Virginia			
	African American	Margin of Error (+/-)	White, Not Hispanic	Margin of Error (+/-)
Median earnings in the past 12 months (in 2010 inflation-adjusted dollars) --				
Total:	\$ 22,025	\$ 2,587	\$ 26,415	\$ 3,032
Male --				
Total	\$ 25,664	\$ 4,622	\$ 30,714	\$ 2,578
Worked full-time, year-round in the past 12 months	\$ 35,172	\$ 5,179	\$ 35,106	\$ 2,968
Other	\$ 14,732	\$ 6,396	\$ 8,235	\$ 3,255
Female --				
Total	\$ 17,487	\$ 6,351	\$ 22,418	\$ 3,410
Worked full-time, year-round in the past 12 months	\$ 24,100	\$ 5,506	\$ 31,632	\$ 1,815
Other	\$ 6,503	\$ 2,548	\$ 8,147	\$ 3,057

Source: U.S. Census Bureau, 2008-2012 American Community Survey

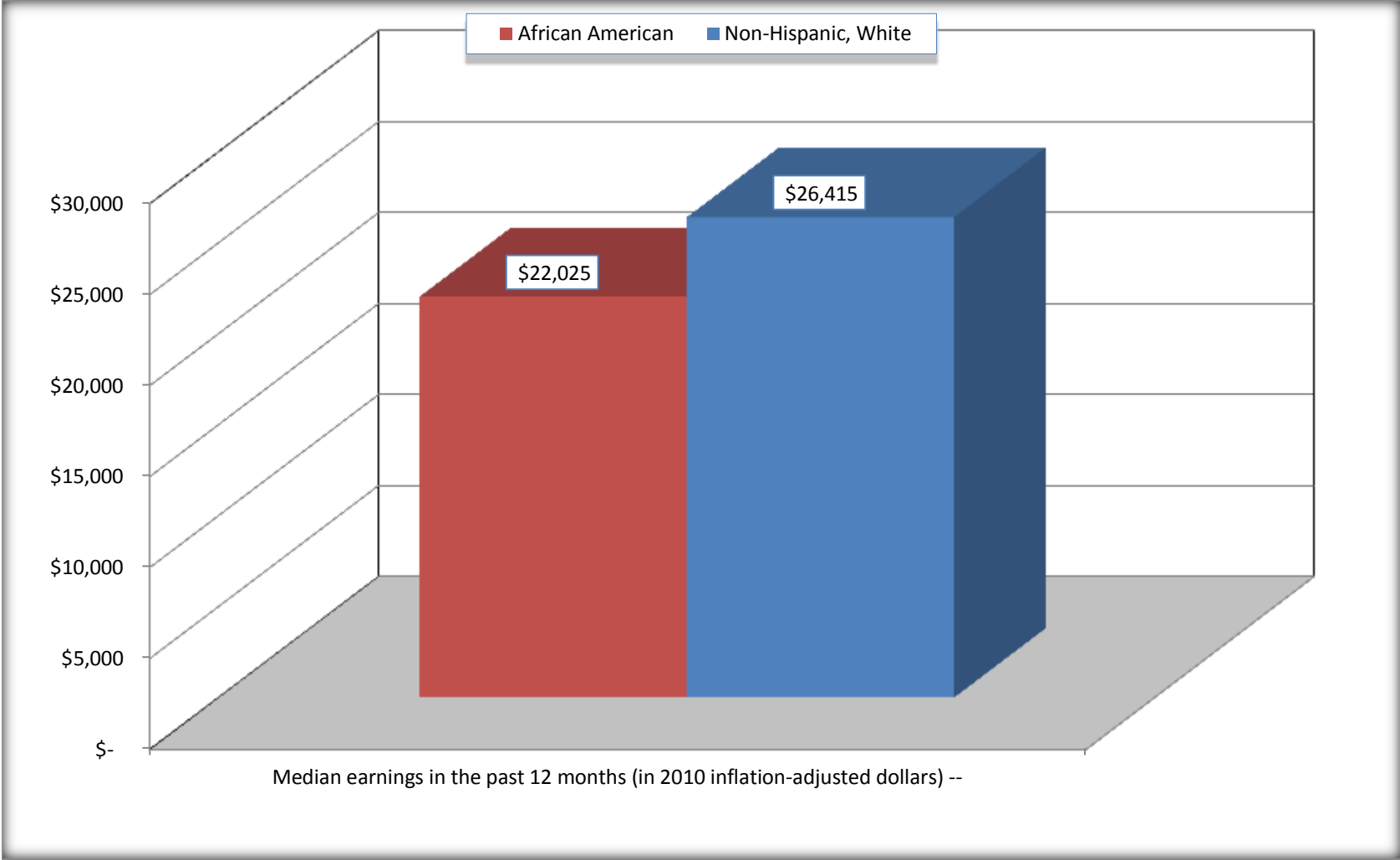
For information on confidentiality protection, sampling error, nonsampling error, and definitions, see Survey Methodology.

<http://www.census.gov/acs/www/UseData/index.htm>



# Median earnings in the Past 12 Months (16 Years and Over with Earnings)

## Lunenburg County, Virginia



Source: B20017. MEDIAN EARNINGS IN THE PAST 12 MONTHS (IN 2010 INFLATION-ADJUSTED DOLLARS) BY SEX BY WORK EXPERIENCE IN THE PAST 12 MONTHS FOR THE POPULATION 16 YEARS AND OVER WITH EARNINGS IN THE PAST 12 MONTHS  
Data Set: 2008-2012 American Community Survey 5-Year Estimates

**B20005. SEX BY WORK EXPERIENCE IN THE PAST 12 MONTHS BY EARNINGS IN THE PAST 12 MONTHS (IN 2010 INFLATION-ADJUSTED DOLLARS) FOR THE POPULATION 16 YEARS AND OVER**

Data Set: 2008-2012 American Community Survey 5-Year Estimates

	Lunenburg County, Virginia					
	African American	Margin of Error (+/-)	% of AA Total	White, Not Hispanic	Margin of Error (+/-)	% of NHW Total
<b>Total:</b>	<b>3,757</b>	<b>83</b>	<b>100.0%</b>	<b>6,431</b>	<b>38</b>	<b>100.0%</b>
Worked full-time, year-round in the past 12 months:	962	NC	25.6%	2,182	NC	33.9%
No earnings	0	NC	0.0%	0	NC	0.0%
With earnings:	962	NC	25.6%	2,182	NC	33.9%
\$ 1 to \$ 9,999 or loss	70	NC	1.9%	51	NC	0.8%
\$ 10,000 to \$ 19,999	173	NC	4.6%	238	NC	3.7%
\$ 20,000 to \$ 29,999	277	NC	7.4%	491	NC	7.6%
\$ 30,000 to \$ 49,999	287	NC	7.6%	907	NC	14.1%
\$ 50,000 to \$ 74,999	155	NC	4.1%	351	NC	5.5%
\$ 75,000 or more	0	NC	0.0%	144	NC	2.2%
Other:	2,795	NC	74.4%	4,249	NC	66.1%
No earnings	2,201	NC	58.6%	2,963	NC	46.1%
With earnings: less than full time, year-round	594	NC	15.8%	1,286	NC	20.0%
Male:	2,062	48	54.9%	3,331	26	51.8%
Worked full-time, year-round in the past 12 months:	416	141	11.1%	1,230	186	19.1%
No earnings	0	19	0.0%	0	19	0.0%
With earnings:	416	141	11.1%	1,230	186	19.1%
\$ 1 to \$ 9,999 or loss	4	NC	0.1%	34	NC	0.5%
\$ 10,000 to \$ 19,999	29	NC	0.8%	113	NC	1.8%
\$ 20,000 to \$ 29,999	101	NC	2.7%	219	NC	3.4%
\$ 30,000 to \$ 49,999	189	NC	5.0%	545	NC	8.5%
\$ 50,000 to \$ 74,999	93	NC	2.5%	231	NC	3.6%
\$ 75,000 or more	0	NC	0.0%	88	NC	1.4%

	Lunenburg County, Virginia					
	African American	Margin of Error (+/-)	% of AA Total	White, Not Hispanic	Margin of Error (+/-)	% of NHW Total
Other:	1,646	148	43.8%	2,101	188	32.7%
No earnings	1,329	207	35.4%	1,463	207	22.7%
With earnings:	317	115	8.4%	638	118	9.9%
Female:	1,695	62	45.1%	3,100	27	48.2%
Worked full-time, year-round in the past 12 months:	546	104	14.5%	952	130	14.8%
No earnings	0	19	0.0%	0	19	0.0%
With earnings:	546	104	14.5%	952	130	14.8%
\$ 1 to \$ 9,999 or loss	66	NC	1.8%	17	NC	0.3%
\$ 10,000 to \$ 19,999	144	NC	3.8%	125	NC	1.9%
\$ 20,000 to \$ 29,999	176	NC	4.7%	272	NC	4.2%
\$ 30,000 to \$ 49,999	98	NC	2.6%	362	NC	5.6%
\$ 50,000 to \$ 74,999	62	NC	1.7%	120	NC	1.9%
\$ 75,000 or more	0	NC	0.0%	56	NC	0.9%
Other:	1,149	104	30.6%	2,148	138	33.4%
No earnings	872	96	23.2%	1,500	144	23.3%
With earnings:	277	85	7.4%	648	149	10.1%

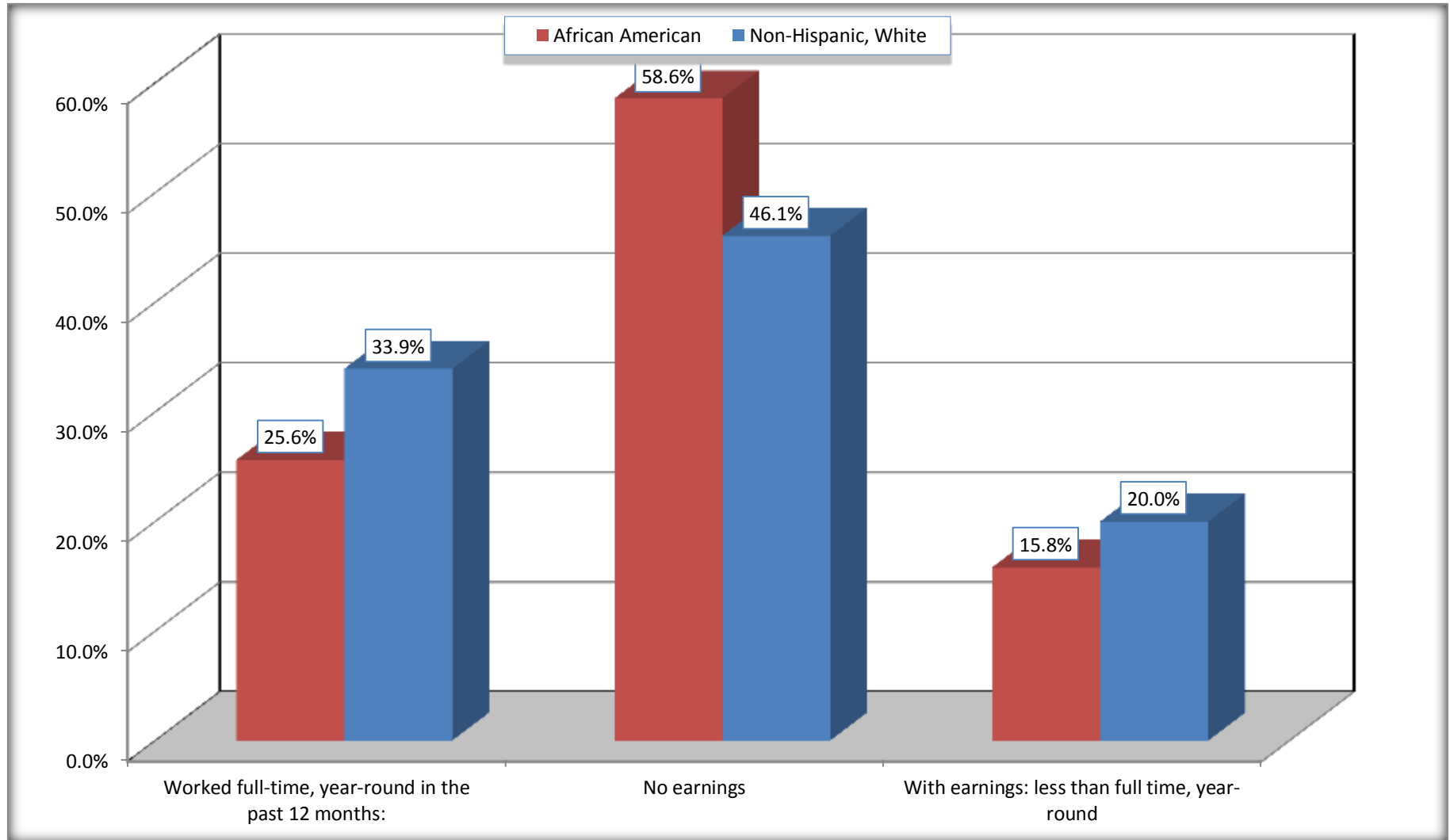
Source: U.S. Census Bureau, 2008-2012 American Community Survey

For information on confidentiality protection, sampling error, nonsampling error, and definitions, see Survey Methodology.

<http://www.census.gov/acs/www/UseData/index.htm>

# Employment and Earnings in in the Past 12 Months (16 Years and Over)

## Lunenburg County, Virginia



Source: B20005. SEX BY WORK EXPERIENCE IN THE PAST 12 MONTHS BY EARNINGS IN THE PAST 12 MONTHS (IN 2010 INFLATION-ADJUSTED DOLLARS) FOR THE POPULATION 16 YEARS AND OVER

Data Set: 2008-2012 American Community Survey 5-Year Estimates

**C21001. SEX BY AGE BY VETERAN STATUS FOR THE CIVILIAN POPULATION 18 YEARS AND OVER**

Data Set: 2008-2012 American Community Survey 5-Year Estimates

	Lunenburg County, Virginia					
	African American	Margin of Error (+/-)	% of AA Total	White, Not Hispanic	Margin of Error (+/-)	% of NHW Total
<b>Total:</b>	<b>3,692</b>	<b>60</b>	<b>100.0%</b>	<b>6,225</b>	<b>12</b>	<b>100.0%</b>
Veteran	350	NC	9.5%	881	NC	14.2%
Nonveteran	3,342	NC	90.5%	5,344	NC	85.8%
Male:	2,051	47	55.6%	3,222	11	51.8%
18 to 64 years:	1,750	47	47.4%	2,545	11	40.9%
Veteran	241	111	6.5%	455	100	7.3%
Nonveteran	1,509	104	40.9%	2,090	100	33.6%
65 years and over:	301	19	8.2%	677	19	10.9%
Veteran	85	42	2.3%	362	63	5.8%
Nonveteran	216	42	5.9%	315	63	5.1%
Female:	1,641	32	44.4%	3,003	3	48.2%
18 to 64 years:	1,212	29	32.8%	2,189	3	35.2%
Veteran	24	24	0.7%	36	27	0.6%
Nonveteran	1,188	40	32.2%	2,153	27	34.6%
65 years and over:	429	11	11.6%	814	19	13.1%
Veteran	0	19	0.0%	28	24	0.4%
Nonveteran	429	11	11.6%	786	24	12.6%

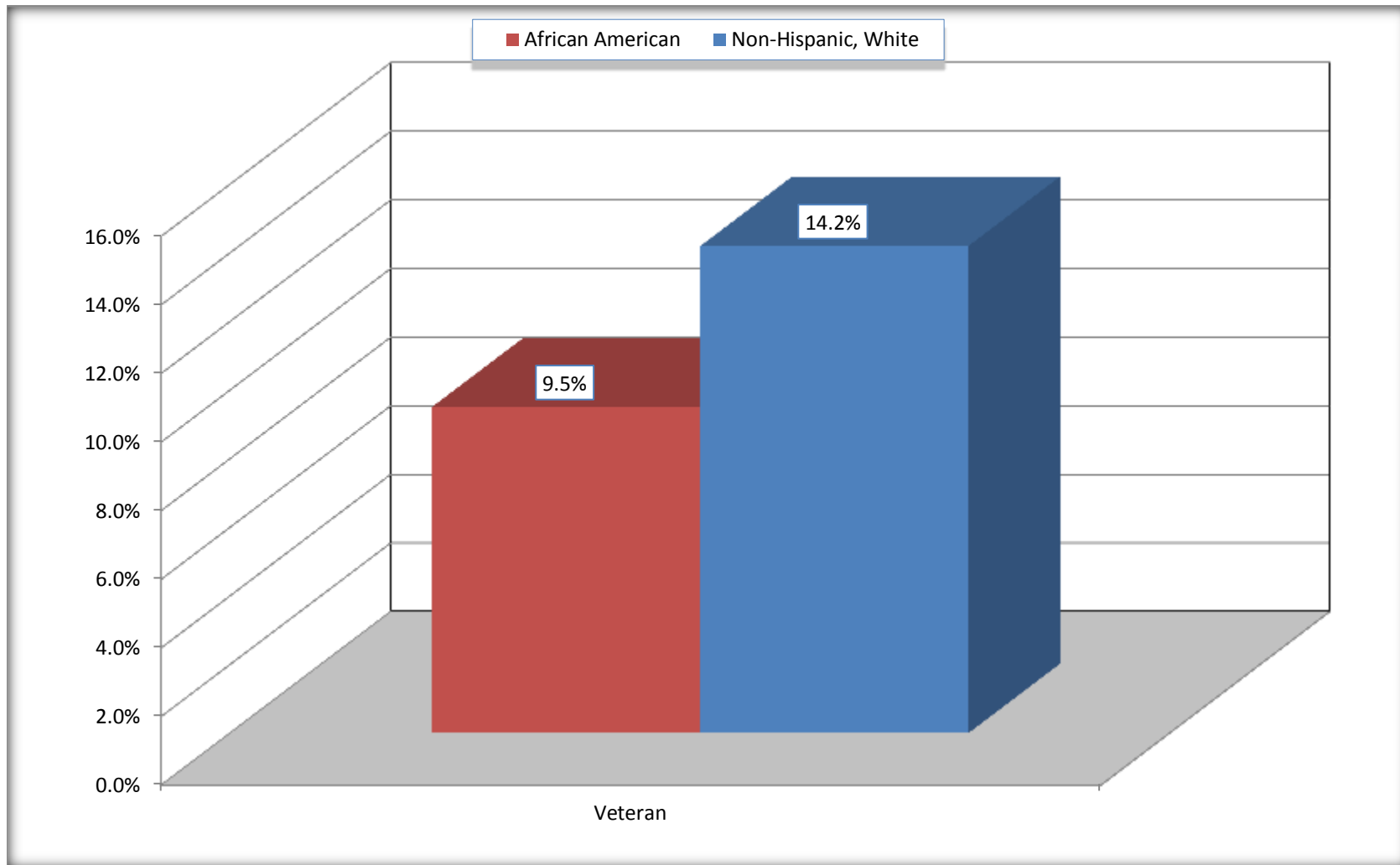
Source: U.S. Census Bureau, 2008-2012 American Community Survey

For information on confidentiality protection, sampling error, nonsampling error, and definitions, see Survey Methodology.

<http://www.census.gov/acs/www/UseData/index.htm>

# Veterans in the Civilian Population 18 Years and Over

## Lunenburg County, Virginia



Source: C21001. SEX BY AGE BY VETERAN STATUS FOR THE CIVILIAN POPULATION 18 YEARS AND OVER  
Data Set: 2008-2012 American Community Survey 5-Year Estimates

**B22005. RECEIPT OF FOOD STAMPS/SNAP IN THE PAST 12 MONTHS BY RACE OF HOUSEHOLDER**

Data Set: 2008-2012 American Community Survey 5-Year Estimates

	<b>Lunenburg County, Virginia</b>					
	African American	Margin of Error (+/-)	% of AA Total	White, Not Hispanic	Margin of Error (+/-)	% of NHW Total
<b>Total:</b>	<b>1,485</b>	<b>202</b>	<b>100.0%</b>	<b>2,930</b>	<b>176</b>	<b>100.0%</b>
HH received Food Stamps/SNAP in the past 12 months	423	101	28.5%	434	106	14.8%
HH did not receive Food Stamps/SNAP in the past 12 months	1,062	192	71.5%	2,496	193	85.2%

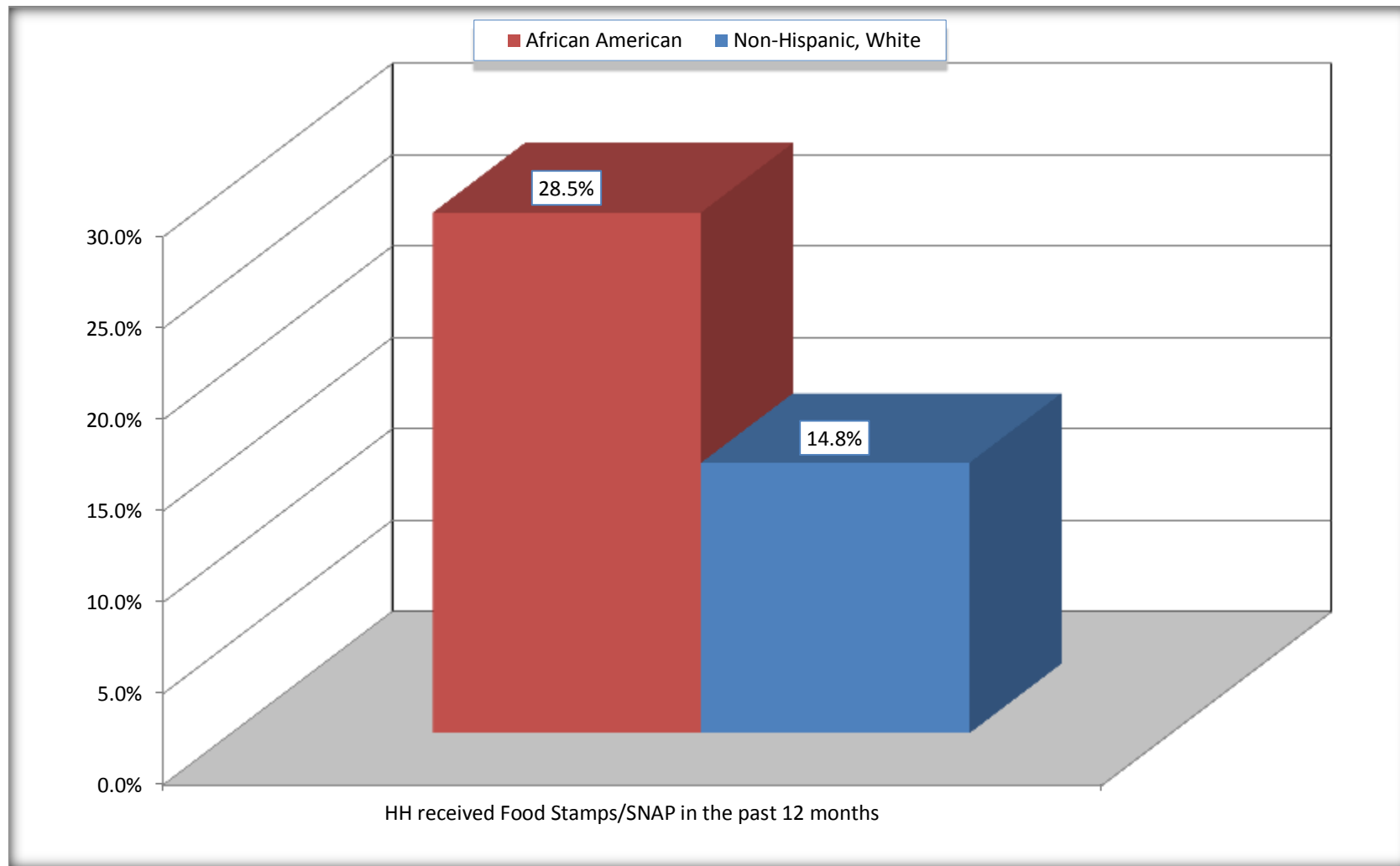
Source: U.S. Census Bureau, 2008-2012 American Community Survey

For information on confidentiality protection, sampling error, nonsampling error, and definitions, see Survey Methodology.

<http://www.census.gov/acs/www/UseData/index.htm>

# Receipt of Food Stamps/SNAP in the Past 12 Months by Household

## Lunenburg County, Virginia



Source: B22005. RECEIPT OF FOOD STAMPS/SNAP IN THE PAST 12 MONTHS BY RACE OF HOUSEHOLDER  
Data Set: 2008-2012 American Community Survey 5-Year Estimates



**C23002. SEX BY AGE BY EMPLOYMENT STATUS FOR THE POPULATION 16 YEARS AND OVER**

Data Set: 2008-2012 American Community Survey 5-Year Estimates

	Lunenburg County, Virginia					
	African American	Margin of Error (+/-)	% of AA Total	White, Not Hispanic	Margin of Error (+/-)	% of NHW Total
<b>Total:</b>	<b>3,757</b>	<b>83</b>	<b>100.0%</b>	<b>6,431</b>	<b>38</b>	<b>100.0%</b>
In labor force:	1,526	NC	40.6%	3,270	NC	50.8%
In Armed Forces	0	NC	0.0%	5	NC	0.1%
Civilian:	1,453	NC	38.7%	2,977	NC	46.3%
Employed	1,320	NC	35.1%	3,051	NC	47.4%
Unemployed	206	NC	5.5%	214	NC	3.3%
Not in labor force	2,231	NC	59.4%	3,161	NC	49.2%
Male:	2,062	48	54.9%	3,331	26	51.8%
16 to 64 years:	1,761	48	46.9%	2,654	26	41.3%
In labor force:	661	251	17.6%	1,542	220	24.0%
In Armed Forces	0	19	0.0%	5	9	0.1%
Civilian:	661	251	17.6%	1,537	221	23.9%
Employed	515	210	13.7%	1,419	201	22.1%
Unemployed	146	81	3.9%	118	57	1.8%
Not in labor force	1,100	260	29.3%	1,112	220	17.3%
65 years and over:	301	19	8.0%	677	19	10.5%
In labor force:	33	23	0.9%	153	51	2.4%
Employed	33	23	0.9%	151	51	2.3%
Unemployed	0	19	0.0%	2	3	0.0%
Not in labor force	268	23	7.1%	524	51	8.1%

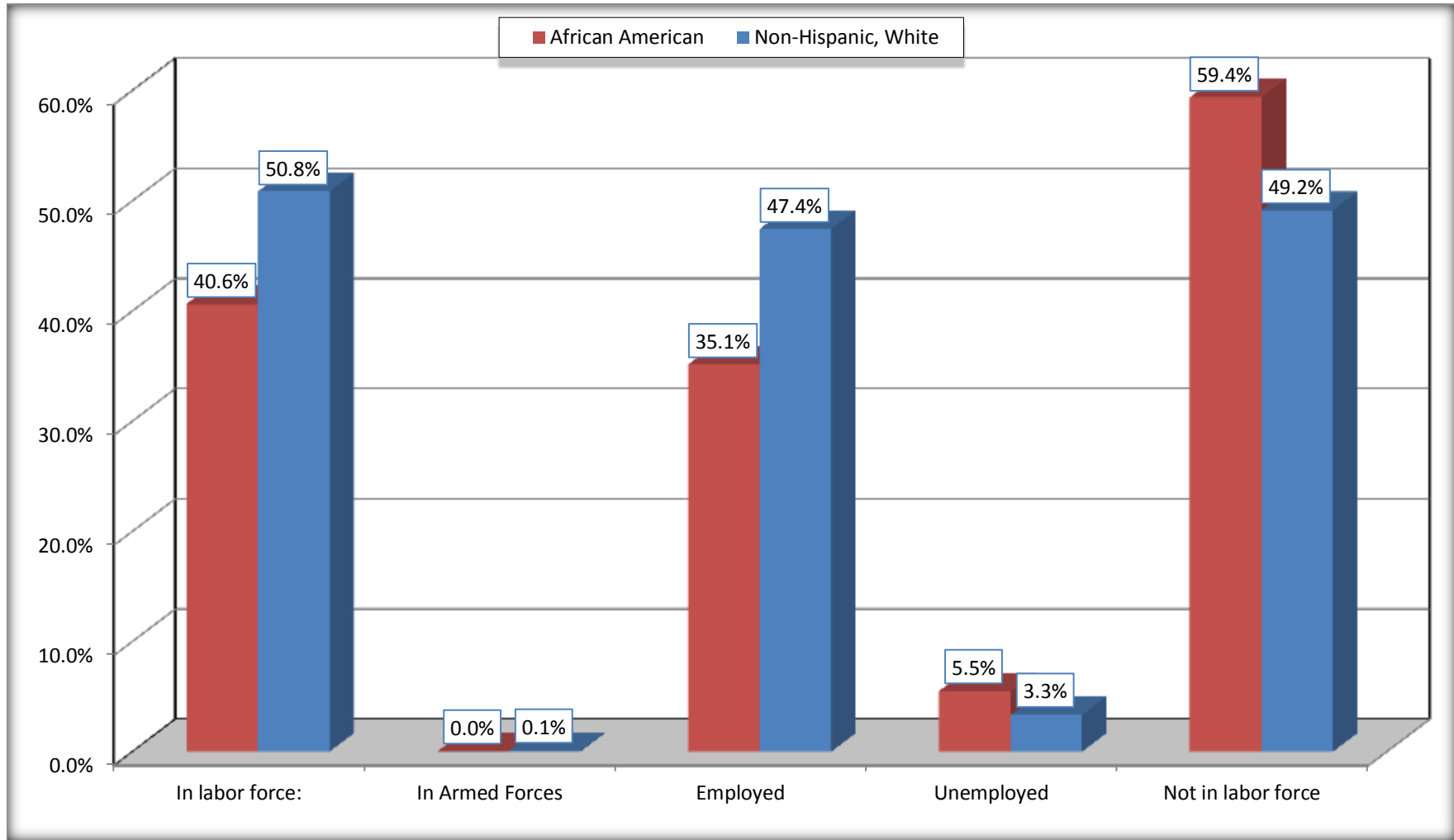
	Lunenburg County, Virginia					
	African American	Margin of Error (+/-)	% of AA Total	White, Not Hispanic	Margin of Error (+/-)	% of NHW Total
Female:	1,695	62	45.1%	3,100	27	48.2%
16 to 64 years:	1,266	61	33.7%	2,286	27	35.5%
In labor force:	792	104	21.1%	1,440	143	22.4%
In Armed Forces	0	19	0.0%	0	19	0.0%
Civilian:	792	104	21.1%	1,440	143	22.4%
Employed	732	103	19.5%	1,346	148	20.9%
Unemployed	60	47	1.6%	94	52	1.5%
Not in labor force	474	83	12.6%	846	146	13.2%
65 years and over:	429	11	11.4%	814	19	12.7%
In labor force:	40	29	1.1%	135	48	2.1%
Employed	40	29	1.1%	135	48	2.1%
Unemployed	0	19	0.0%	0	19	0.0%
Not in labor force	389	31	10.4%	679	48	10.6%

Source: U.S. Census Bureau, 2008-2012 American Community Survey

For information on confidentiality protection, sampling error, nonsampling error, and definitions, see Survey Methodology.  
<http://www.census.gov/acs/www/UseData/index.htm>

# Employment Status for the Population 16 years and over

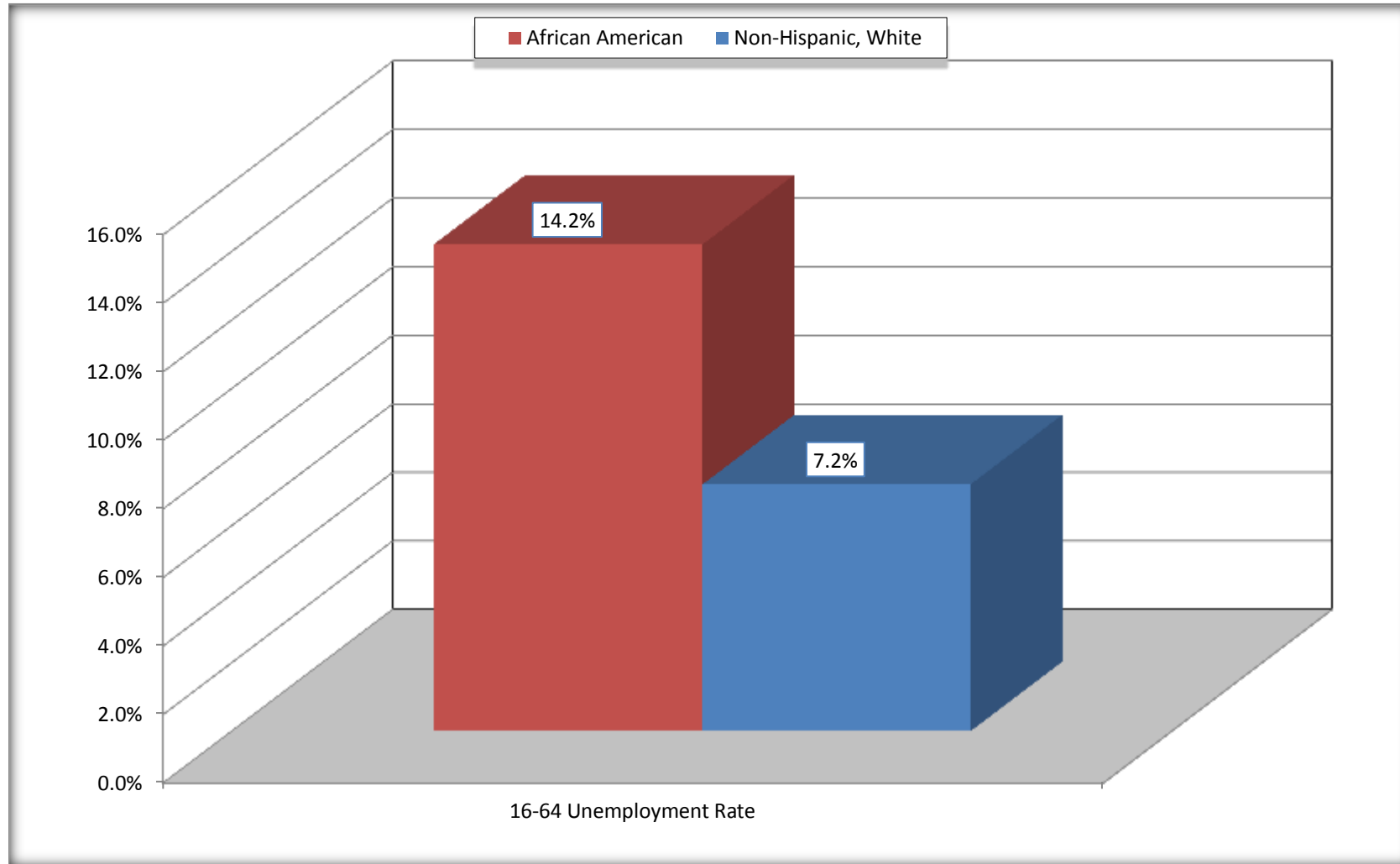
## Lunenburg County, Virginia



Source: C23002. SEX BY AGE BY EMPLOYMENT STATUS FOR THE POPULATION 16 YEARS AND OVER  
Data Set: 2008-2012 American Community Survey 5-Year Estimates

# Unemployment of Working Age Population (Ages 16 to 64) (As a Percent of 16-64 Civilian Labor Force)

## Lunenburg County, Virginia



Source: C23002. SEX BY AGE BY EMPLOYMENT STATUS FOR THE POPULATION 16 YEARS AND OVER  
Data Set: 2008-2012 American Community Survey 5-Year Estimates

**C24010. SEX BY OCCUPATION FOR THE CIVILIAN EMPLOYED POPULATION 16 YEARS AND OVER**

Data Set: 2008-2012 American Community Survey 5-Year Estimates

	Lunenburg County, Virginia					
	African American	Margin of Error (+/-)	% of AA Total	White, Not Hispanic	Margin of Error (+/-)	% of NHW Total
<b>Total:</b>	<b>1,320</b>	<b>239</b>	<b>100.0%</b>	<b>3,051</b>	<b>269</b>	<b>100.0%</b>
Management, professional, and related occupations	174	NC	13.2%	934	NC	30.6%
Service occupations	346	NC	26.2%	442	NC	14.5%
Sales and office occupations	361	NC	27.3%	944	NC	30.9%
Natural resources, construction, and maintenance occupations:	92	NC	7.0%	353	NC	11.6%
Production, transportation, and material moving occupations	347	NC	26.3%	378	NC	12.4%
<b>Male:</b>	<b>548</b>	<b>218</b>	<b>41.5%</b>	<b>1,570</b>	<b>210</b>	<b>51.5%</b>
Management, business, science, and arts occupations:	39	30	3.0%	321	95	10.5%
Service occupations	82	64	6.2%	204	77	6.7%
Sales and office occupations	59	64	4.5%	388	119	12.7%
Natural resources, construction, and maintenance occupations:	92	63	7.0%	353	113	11.6%
Production, transportation, and material moving occupations	276	123	20.9%	304	104	10.0%
<b>Female:</b>	<b>772</b>	<b>103</b>	<b>58.5%</b>	<b>1,481</b>	<b>146</b>	<b>48.5%</b>
Management, professional, and related occupations	135	68	10.2%	613	119	20.1%
Service occupations	264	112	20.0%	238	75	7.8%
Sales and office occupations	302	96	22.9%	556	87	18.2%
Natural resources, construction, and maintenance occupations:	0	19	0.0%	0	19	0.0%
Production, transportation, and material moving occupations	71	48	5.4%	74	38	2.4%

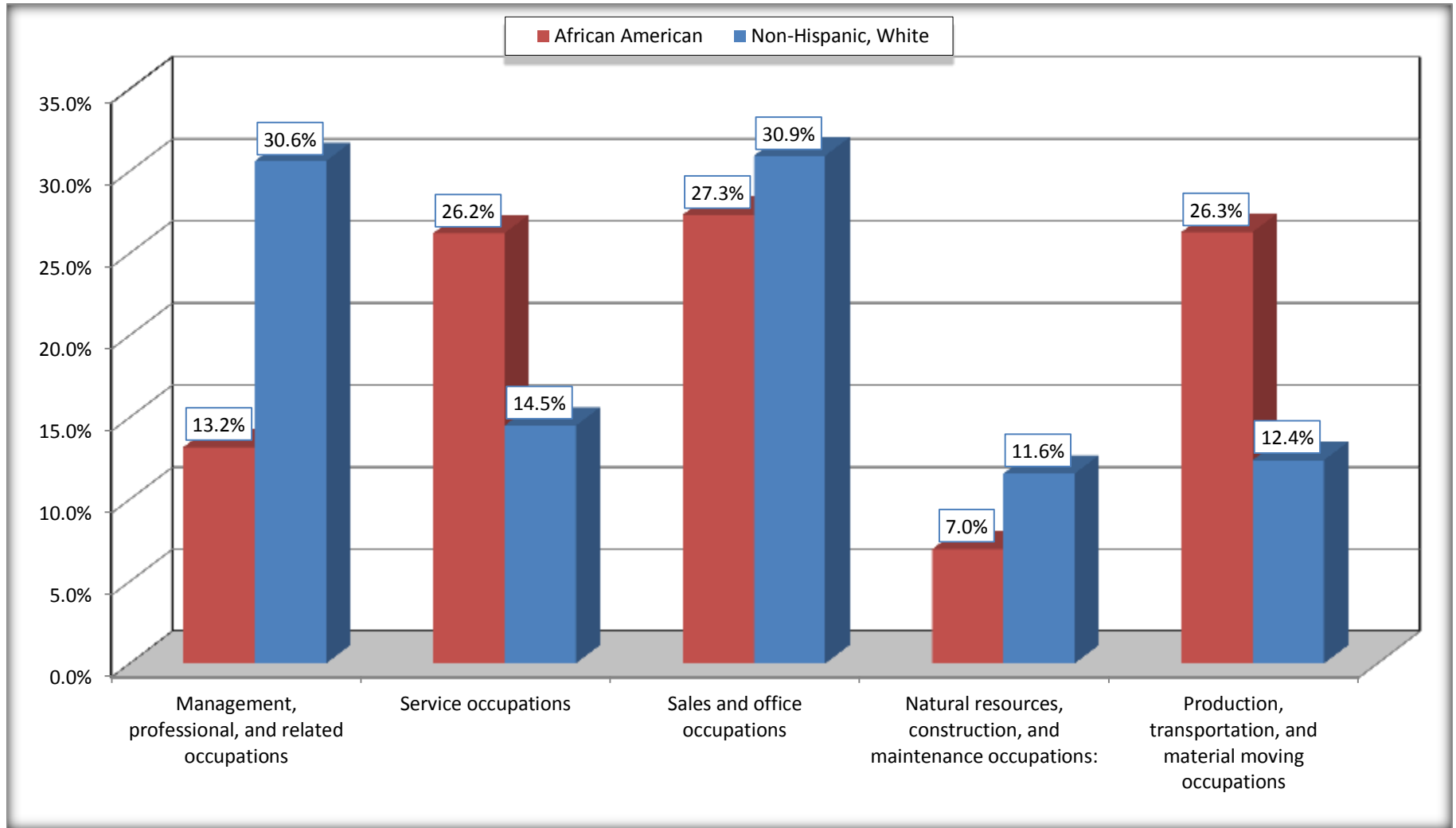
Source: U.S. Census Bureau, 2008-2012 American Community Survey

For information on confidentiality protection, sampling error, nonsampling error, and definitions, see Survey Methodology.

<http://www.census.gov/acs/www/UseData/index.htm>

# Occupation for the Civilian Employed 16 Years and Over Population

## Lunenburg County, Virginia



Source: C24010. SEX BY OCCUPATION FOR THE CIVILIAN EMPLOYED POPULATION 16 YEARS AND OVER  
Data Set: 2008-2012 American Community Survey 5-Year Estimates

**B25003. TENURE - Universe: OCCUPIED HOUSING UNITS**

Data Set: 2008-2012 American Community Survey 5-Year Estimates

	Lunenburg County, Virginia					
	African American	Margin of Error (+/-)	% of AA Total	White, Not Hispanic	Margin of Error (+/-)	% of NHW Total
<b>Total:</b>	<b>1,485</b>	<b>202</b>	<b>100.0%</b>	<b>2,930</b>	<b>176</b>	<b>100.0%</b>
Owner occupied	950	131	64.0%	2,412	168	82.3%
Renter occupied	535	160	36.0%	518	109	17.7%

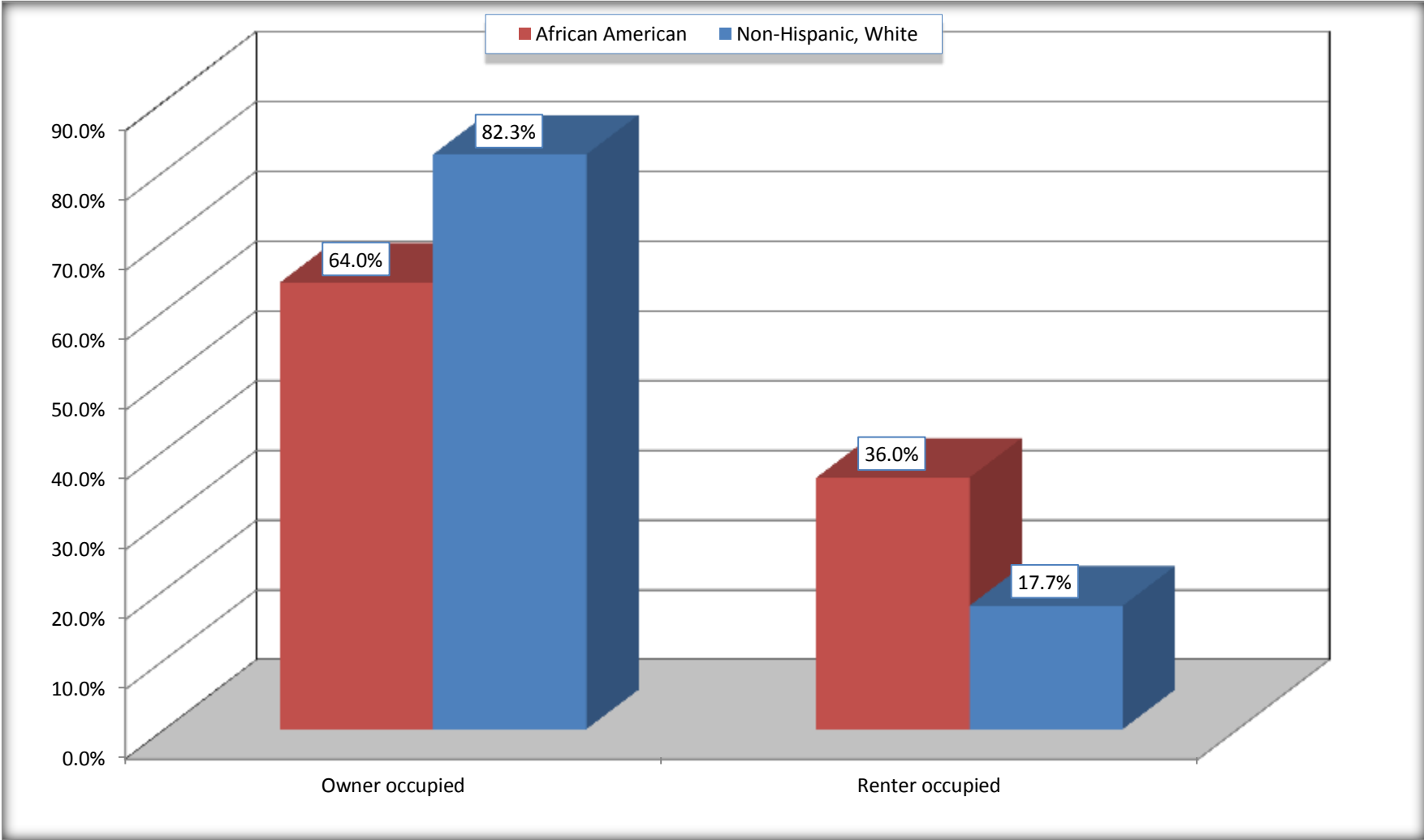
Source: U.S. Census Bureau, 2008-2012 American Community Survey

For information on confidentiality protection, sampling error, nonsampling error, and definitions, see Survey Methodology.

<http://www.census.gov/acs/www/UseData/index.h>

# Home Owners and Renters by Household

## Lunenburg County, Virginia



Source: B25003. TENURE - Universe: OCCUPIED HOUSING UNITS  
Data Set: 2008-2012 American Community Survey 5-Year Estimates



**B25014. OCCUPANTS PER ROOM - Universe: OCCUPIED HOUSING UNITS**

Data Set: 2008-2012 American Community Survey 5-Year Estimates

	Lunenburg County, Virginia					
	African American	Margin of Error (+/-)	% of AA Total	White, Not Hispanic	Margin of Error (+/-)	% of NHW Total
<b>Total:</b>	<b>1,485</b>	<b>202</b>	<b>100.0%</b>	<b>2,930</b>	<b>176</b>	<b>100.0%</b>
1.00 or less occupants per room	1,452	198	97.8%	2,877	174	98.2%
1.01 or more occupants per room	33	28	2.2%	53	60	1.8%

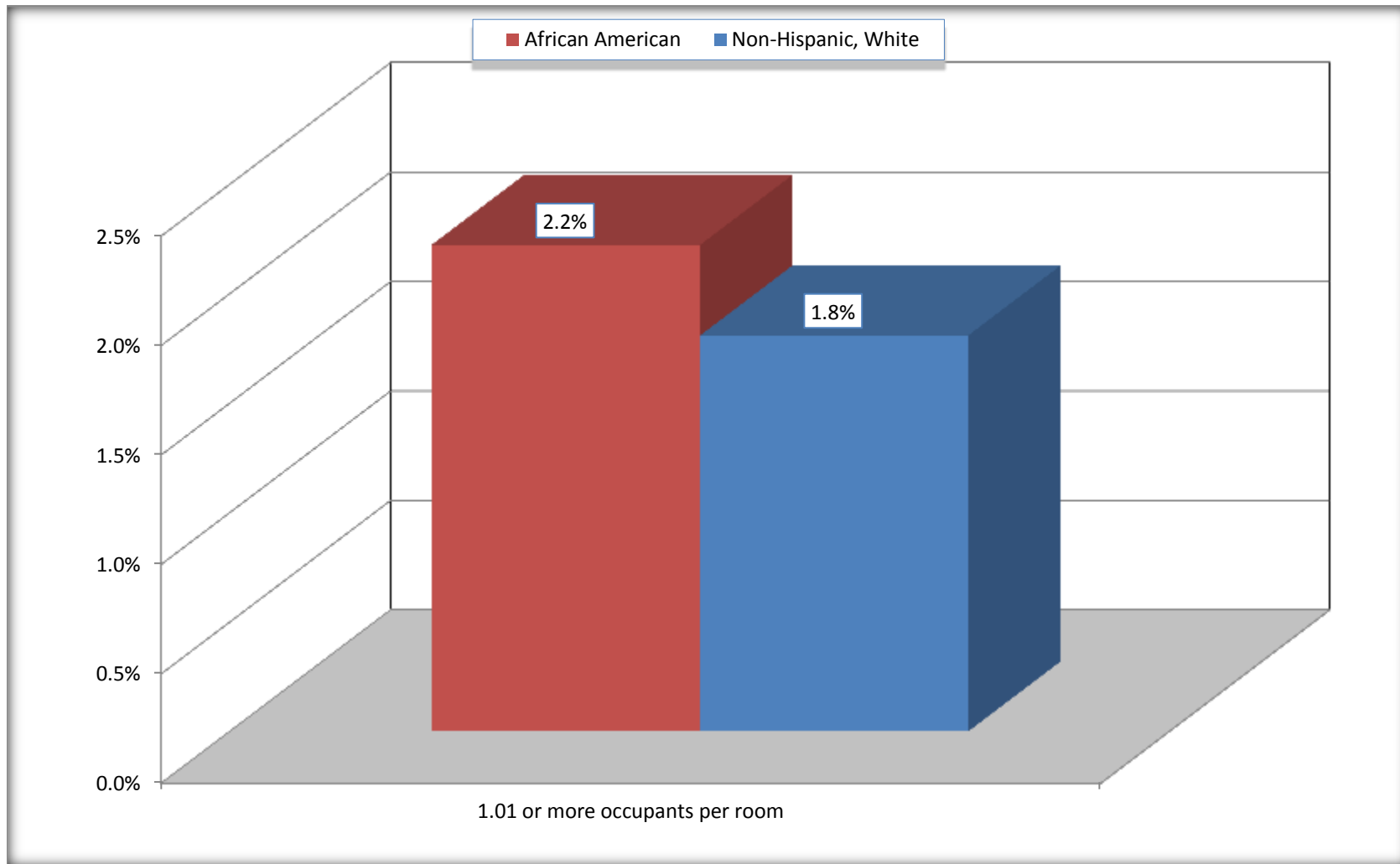
Source: U.S. Census Bureau, 2008-2012 American Community Survey

For information on confidentiality protection, sampling error, nonsampling error, and definitions, see Survey Methodology.

<http://www.census.gov/acs/www/UseData/index.ht>

# More than One Person per Room (Crowding) by Household

## Lunenburg County, Virginia



Source: B25014. OCCUPANTS PER ROOM - Universe: OCCUPIED HOUSING UNITS  
Data Set: 2008-2012 American Community Survey 5-Year Estimates

**B18101. AGE BY DISABILITY STATUS**

Data Set: 2008-2012 American Community Survey 5-Year Estimates

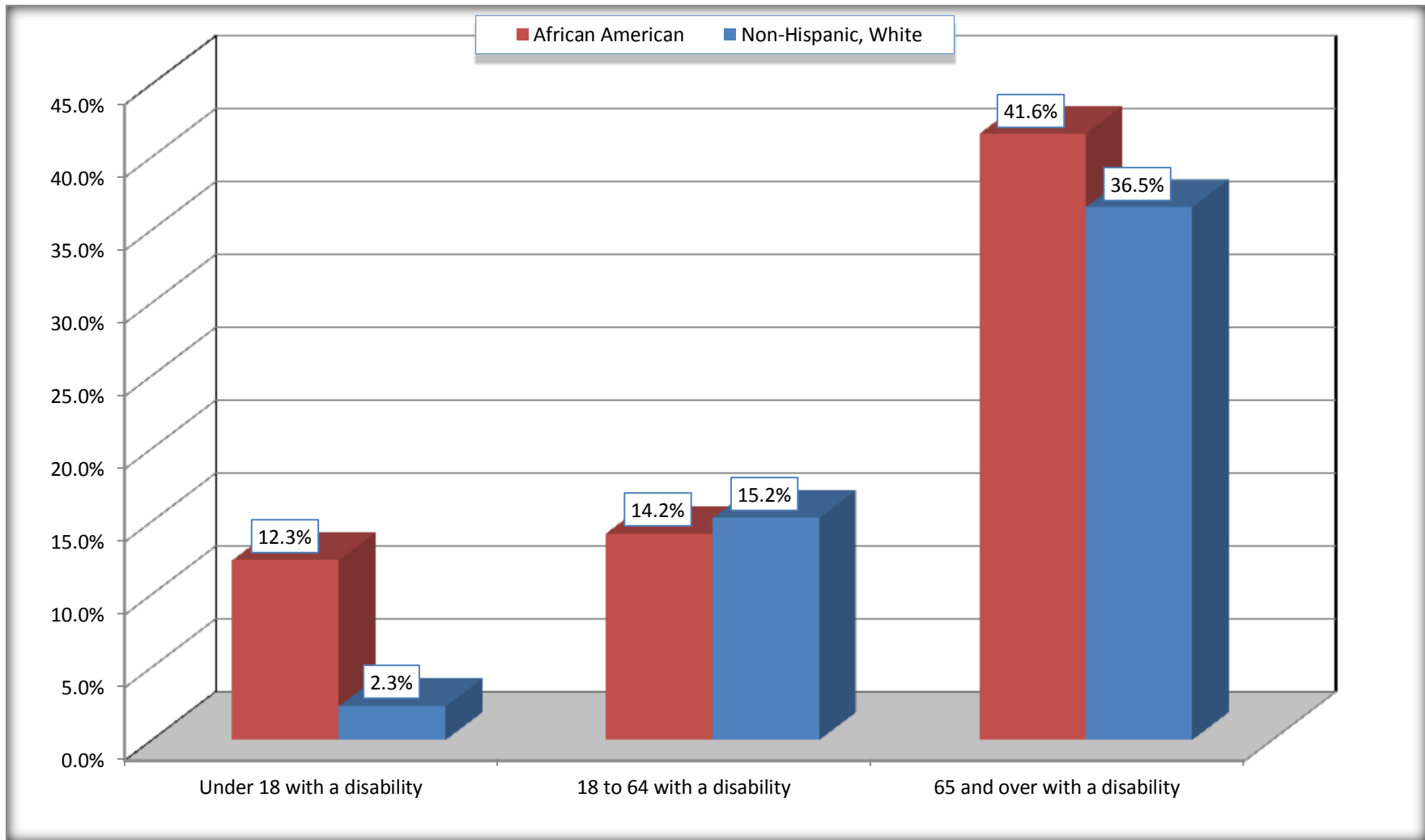
	Lunenburg County, Virginia					
	African American	Margin of Error (+/-)	% of AA Total	White, Not Hispanic	Margin of Error (+/-)	% of NHW Total
<b>Total:</b>	<b>3,721</b>	<b>346</b>	<b>100.0%</b>	<b>7,082</b>	<b>218</b>	<b>100.0%</b>
Under 18 years:	852	73	22.9%	1,426	54	20.1%
With a disability	105	59	2.8%	33	20	0.5%
No disability	747	84	20.1%	1,393	33	19.7%
18 to 64 years:	2,181	330	58.6%	4,170	211	58.9%
With a disability	309	100	8.3%	635	154	9.0%
No disability	1,872	338	50.3%	3,535	229	49.9%
65 years and over:	688	42	18.5%	1,486	9	21.0%
With a disability	286	89	7.7%	543	77	7.7%
No disability	402	85	10.8%	943	77	13.3%

Source: U.S. Census Bureau, 2008-2012 American Community Survey

For information on confidentiality protection, sampling error, nonsampling error, and definitions, see Survey Methodology.

<http://www.census.gov/acs/www/UseData/index.htm>

## Disability by Age Lunenburg County, Virginia



Source: B18101. AGE BY DISABILITY STATUS  
Data Set: 2008-2012 American Community Survey 5-Year Estimates

**C27001B. HEALTH INSURANCE COVERAGE STATUS BY AGE**

Data Set: 2008-2012 American Community Survey 5-Year Estimates

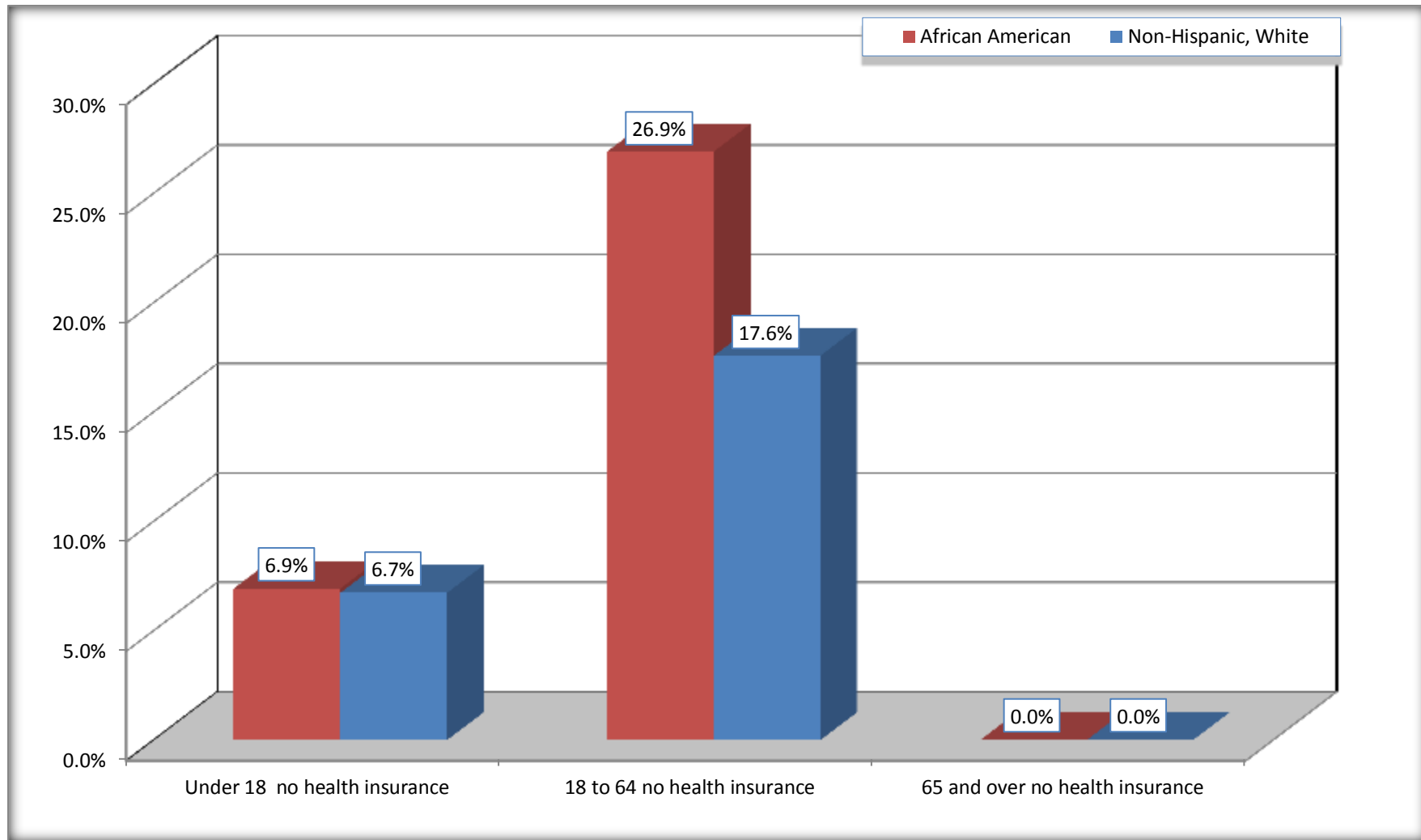
	<b>Lunenburg County, Virginia</b>					
	African American	Margin of Error (+/-)	% of AA Total	White, Not Hispanic	Margin of Error (+/-)	% of NHW Total
<b>Total:</b>	<b>3,721</b>	<b>346</b>	<b>100.0%</b>	<b>7,082</b>	<b>218</b>	<b>100.0%</b>
Under 18 years:	852	73	22.9%	1,426	25	20.1%
With health insurance coverage	793	90	21.3%	1,330	77	18.8%
No health insurance coverage	59	64	1.6%	96	72	1.4%
18 to 64 years:	2,181	330	58.6%	4,170	211	58.9%
With health insurance coverage	1,594	270	42.8%	3,437	279	48.5%
No health insurance coverage	587	205	15.8%	733	188	10.4%
65 years and over:	688	42	18.5%	1,486	9	21.0%
With health insurance coverage	688	42	18.5%	1,486	9	21.0%
No health insurance coverage	0	19	0.0%	0	19	0.0%

Source: U.S. Census Bureau, 2008-2012 American Community Survey

For information on confidentiality protection, sampling error, nonsampling error, and definitions, see Survey Methodology.

<http://www.census.gov/acs/www/UseData/index.htm>

## Lack of Health Insurance Coverage by Age Lunenburg County, Virginia



Source: C27001B. HEALTH INSURANCE COVERAGE STATUS BY AGE  
Data Set: 2008-2012 American Community Survey 5-Year Estimates