

# **Selected Socio-Economic Data**

## **King and Queen County, Virginia**

### **African American and White, Not Hispanic**

**Data Set: 2008-2012 American Community Survey 5-Year Estimates**

[www.fairvote2020.org](http://www.fairvote2020.org)

[www.fairdata2000.com](http://www.fairdata2000.com)

[29-Dec-13](#)

**C02003.DETAILED RACE - Universe: TOTAL POPULATION**

Data Set: 2008-2012 American Community Survey 5-Year Estimates

	King and Queen County, Virginia		
	Population	Margin of Error (+/-)	% of Total
<b>Total:</b>	<b>6,968</b>	<b>*****</b>	<b>100.0%</b>
Population of one race:	6,943	33	99.6%
White	4,756	31	68.3%
Black or African American	2,148	45	30.8%
American Indian and Alaska Native	19	20	0.3%
Asian alone	12	20	0.2%
Native Hawaiian and Other Pacific Islander	0	17	0.0%
Some other race	8	15	0.1%
Population of two or more races:	25	33	0.4%
Two races including Some other race	9	15	0.1%
Two races excluding Some other race, and three or more races	16	32	0.2%
Population of two races:	25	33	0.4%
White; Black or African American	16	32	0.2%
White; American Indian and Alaska Native	0	17	0.0%
White; Asian	0	17	0.0%
Black or African American; American Indian and Alaska Native	0	17	0.0%
All other two race combinations	9	15	0.1%
Population of three races	0	17	0.0%
Population of four or more races	0	17	0.0%

Note: Hispanics may be of any race. See Table B03002 and chart.

Source: U.S. Census Bureau, 2008-2012 American Community Survey

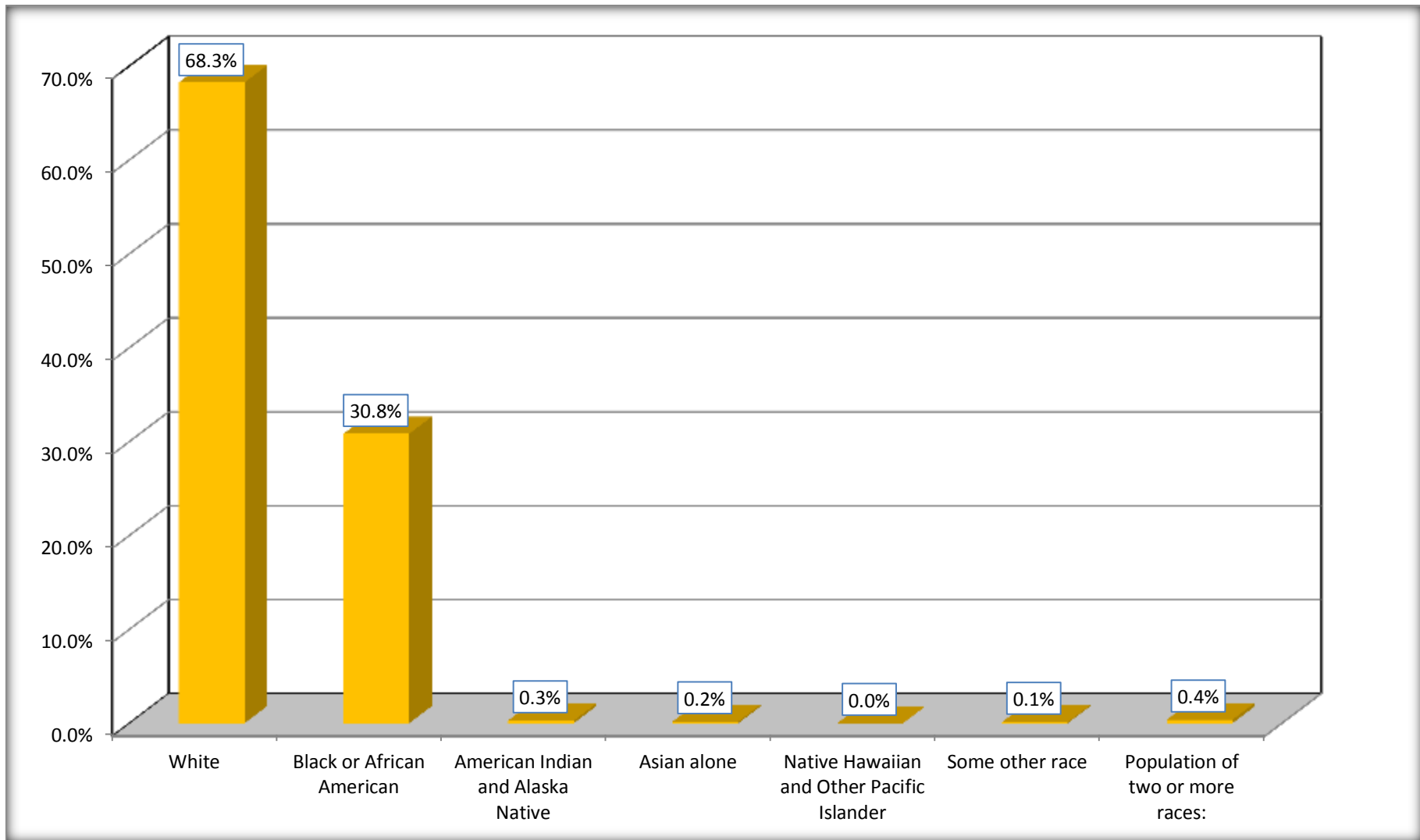
Although the American Community Survey (ACS) produces population, demographic and housing unit estimates, it is the Census Bureau's Population Estimates Program that produces and disseminates the official estimates of the population for the nation, states, counties, cities and towns and estimates of housing units for states and counties.

For information on confidentiality protection, sampling error, nonsampling error, and definitions, see Survey Methodology.

<http://www.census.gov/acs/www/UseData/index.htm>

# Population by Race

## King and Queen County, Virginia



Source: C02003.DETAILED RACE - Universe: TOTAL POPULATION  
Data Set: 2008-2012 American Community Survey 5-Year Estimates

**B03002. HISPANIC OR LATINO ORIGIN BY RACE - Universe: TOTAL POPULATION**

Data Set: 2008-2012 American Community Survey 5-Year Estimates

	King and Queen County, Virginia		
	Population	Margin of Error (+/-)	% of Total
<b>Total:</b>	6,968	*****	<b>100.0%</b>
Not Hispanic or Latino:	6,771	*****	97.2%
White alone	4,582	17	65.8%
Black or African American alone	2,142	47	30.7%
American Indian and Alaska Native alone	19	20	0.3%
Asian alone	12	20	0.2%
Native Hawaiian and Other Pacific Islander alone	0	17	0.0%
Some other race alone	0	17	0.0%
Two or more races:	16	32	0.2%
Two races including Some other race	0	17	0.0%
Two races excluding Some other race, and three or more races	16	32	0.2%
Hispanic or Latino	197	*****	2.8%

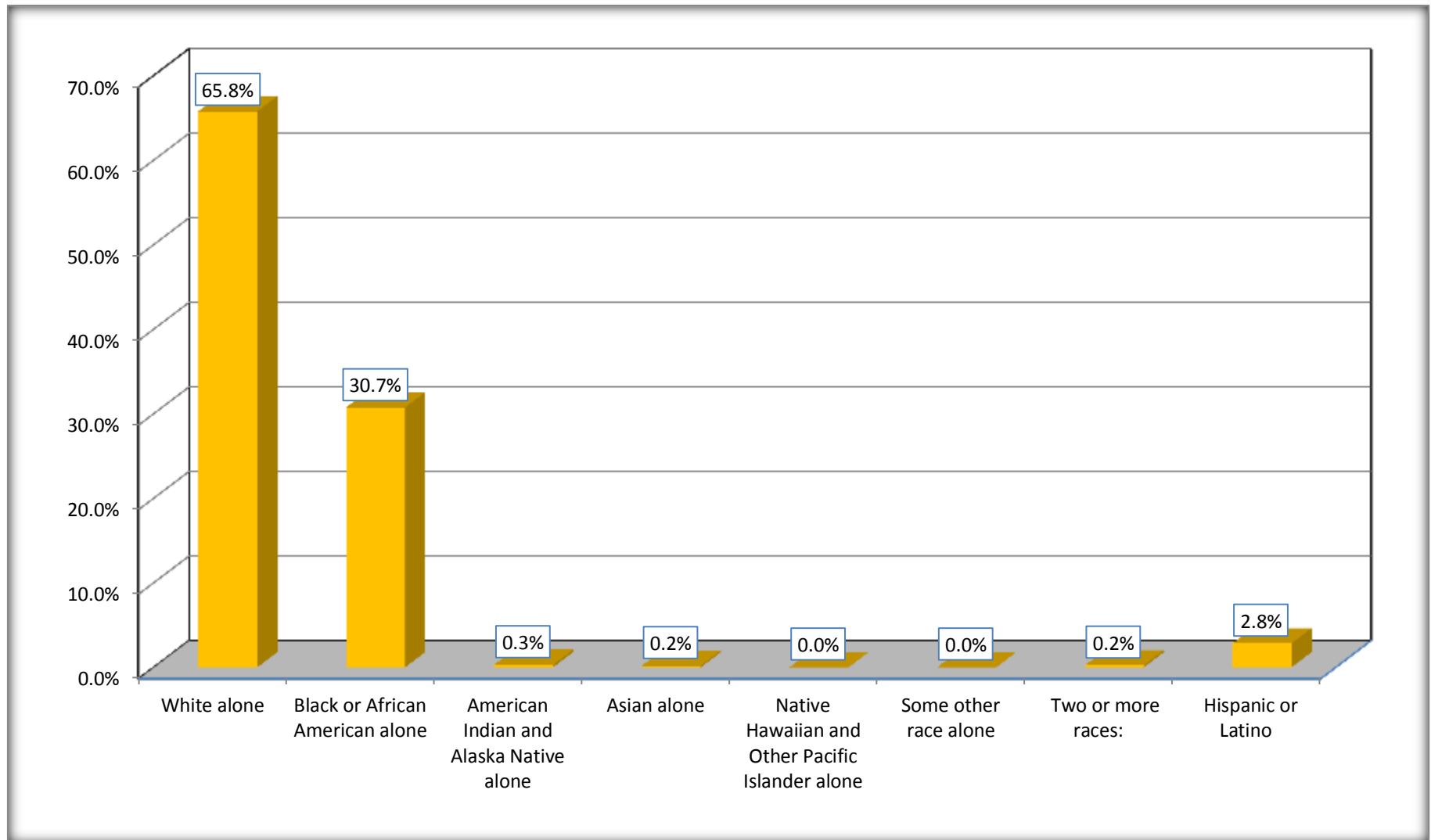
Source: U.S. Census Bureau, 2008-2012 American Community Survey

Although the American Community Survey (ACS) produces population, demographic and housing unit estimates, it is the Census Bureau's Population Estimates Program that produces and disseminates the official estimates of the population for the nation, states, counties, cities and towns and estimates of housing units for states and counties.

For information on confidentiality protection, sampling error, nonsampling error, and definitions, see Survey Methodology.

<http://www.census.gov/acs/www/UseData/index.htm>

## Non-Hispanic by Race and Hispanic Population King and Queen County, Virginia



Source: B03002. HISPANIC OR LATINO ORIGIN BY RACE - Universe: TOTAL POPULATION  
Data Set: 2008-2012 American Community Survey 5-Year Estimates

**B03002. HISPANIC OR LATINO ORIGIN BY RACE**

Data Set: 2008-2012 American Community Survey 5-Year Estimates

	King and Queen County, Virginia		
	Population	Margin of Error (+/-)	% of Total
Hispanic or Latino:	197	*****	<b>100.0%</b>
White alone	174	31	88.3%
Black or African American alone	6	12	3.0%
American Indian and Alaska Native alone	0	17	0.0%
Asian alone	0	17	0.0%
Native Hawaiian and Other Pacific Islander alone	0	17	0.0%
Some other race alone	8	15	4.1%
Two or more races:	9	15	4.6%
Two races including Some other race	9	15	4.6%
Two races excluding Some other race, and three or more races	0	17	0.0%

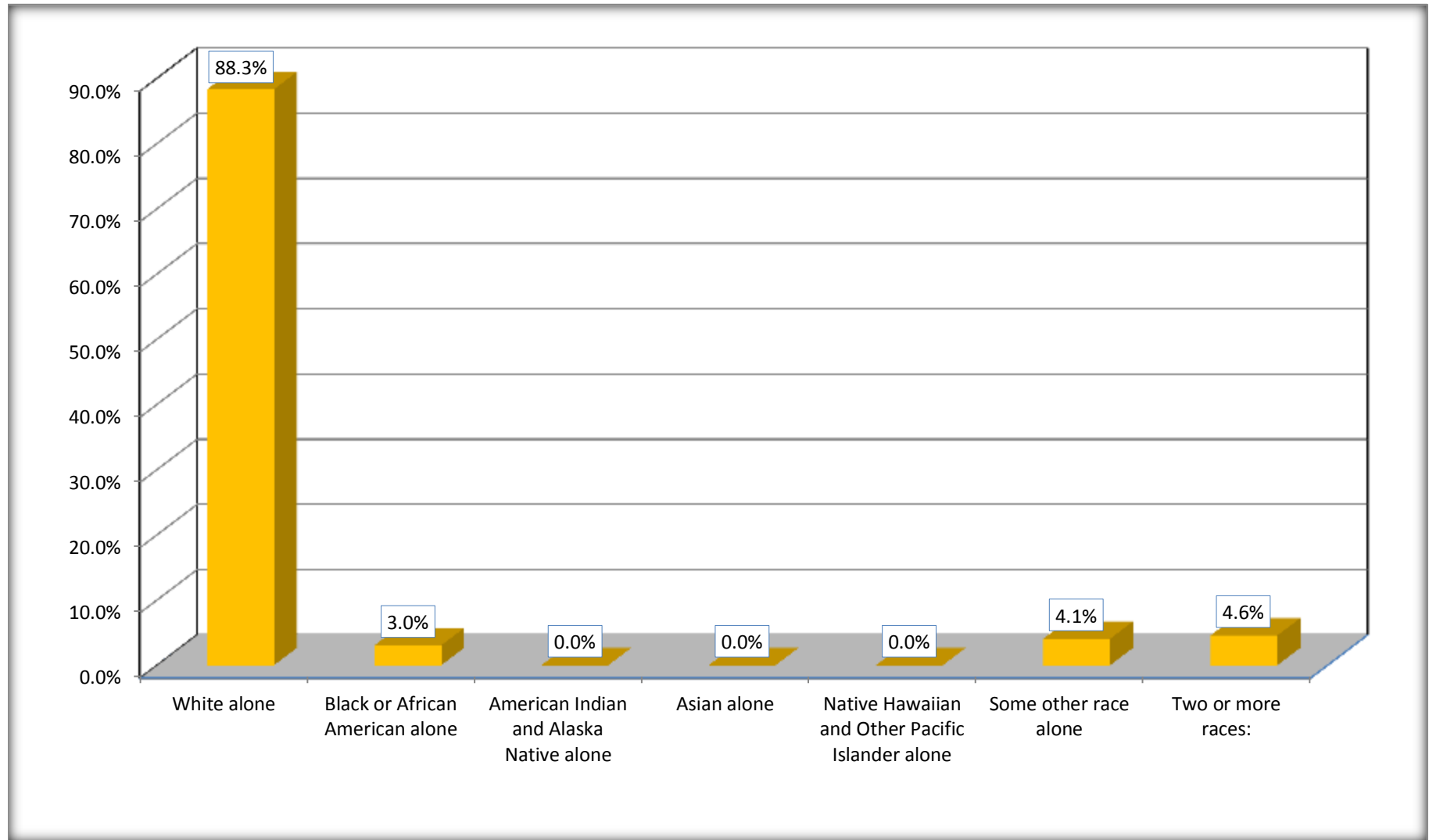
Source: U.S. Census Bureau, 2008-2012 American Community Survey

Although the American Community Survey (ACS) produces population, demographic and housing unit estimates, it is the Census Bureau's Population Estimates Program that produces and disseminates the official estimates of the population for the nation, states, counties, cities and towns and estimates of housing units for states and counties.

For information on confidentiality protection, sampling error, nonsampling error, and definitions, see Survey Methodology.

<http://www.census.gov/acs/www/UseData/index.htm>

## Hispanic or Latino Origin by Race King and Queen County, Virginia



Source: B03002. HISPANIC OR LATINO ORIGIN BY RACE  
Data Set: 2008-2012 American Community Survey 5-Year Estimates

**B01001. SEX BY AGE**

Data Set: 2008-2012 American Community Survey 5-Year Estimates

	King and Queen County, Virginia					
	African American	Margin of Error (+/-)	% of AA Total	White, Not Hispanic	Margin of Error (+/-)	% of NHW Total
<b>Total:</b>	<b>2,148</b>	<b>45</b>	<b>100.0%</b>	<b>4,582</b>	<b>17</b>	<b>100.0%</b>
Under 18 years	433	NC	20.2%	877	NC	19.1%
18 to 64 years	1,303	NC	60.7%	2,871	NC	62.7%
65 years and over	412	NC	19.2%	834	NC	18.2%
Male:	1,150	124	53.5%	2,319	389	50.6%
Under 18 years	330	NC	15.4%	472	NC	10.3%
18 to 64 years	653	NC	30.4%	1,462	NC	31.9%
65 years and over	167	NC	7.8%	385	NC	8.4%
Female:	998	121	46.5%	2,263	412	49.4%
Under 18 years	103	NC	4.8%	405	NC	8.8%
18 to 64 years	650	NC	30.3%	1,409	NC	30.8%
65 years and over	245	NC	11.4%	449	NC	9.8%

Source: U.S. Census Bureau, 2008-2012 American Community Survey

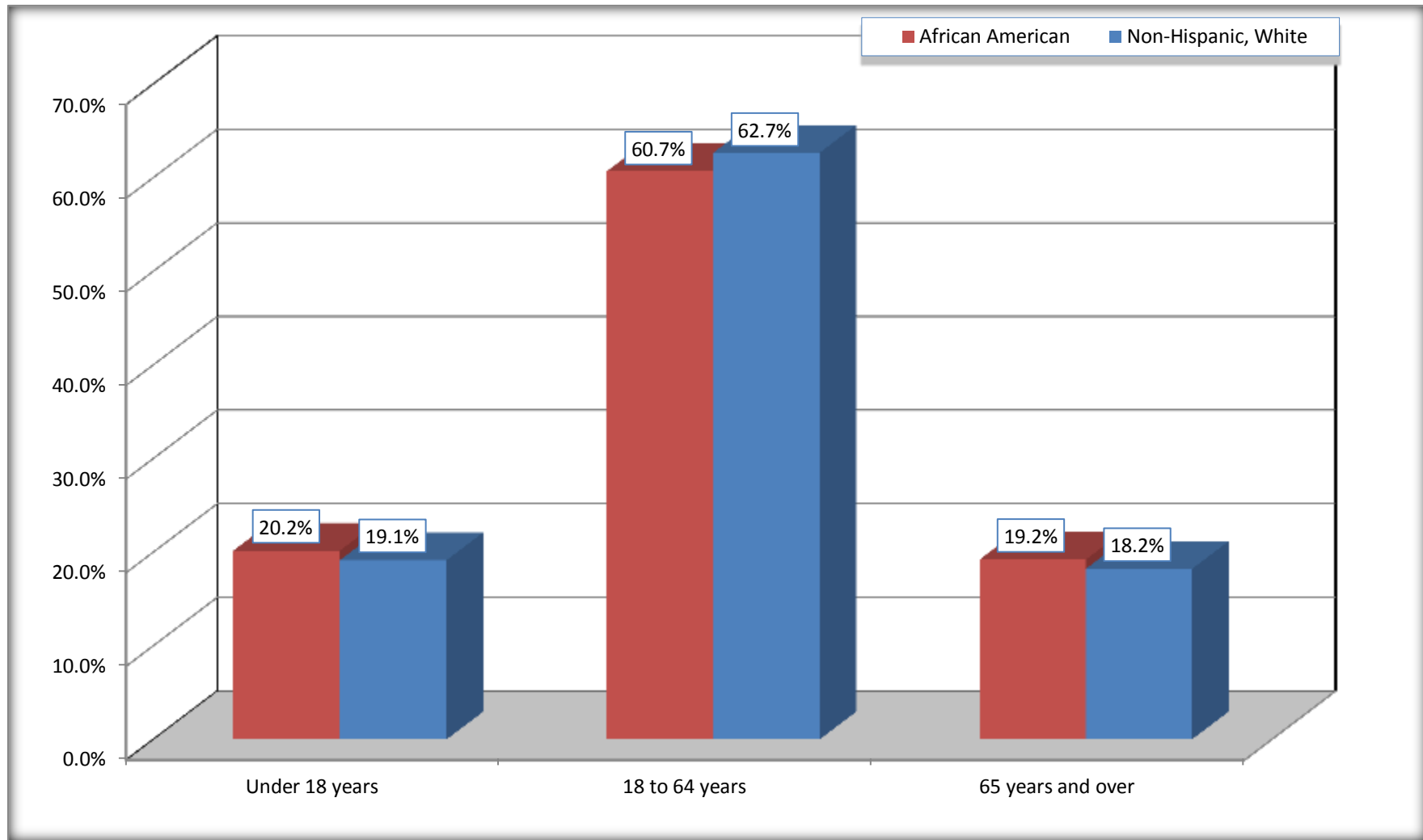
Although the American Community Survey (ACS) produces population, demographic and housing unit estimates, it is the Census Bureau's Population Estimates Program that produces and disseminates the official estimates of the population for the nation, states, counties, cities and towns and estimates of housing units for states and counties.

For information on confidentiality protection, sampling error, nonsampling error, and definitions, see Survey Methodology.  
<http://www.census.gov/acs/www/UseData/index.htm>



# Population by Age

## King and Queen County, Virginia



Source: B01001. SEX BY AGE  
Data Set: 2008-2012 American Community Survey 5-Year Estimates

**B05003. SEX BY AGE BY CITIZENSHIP STATUS**

Data Set: 2008-2012 American Community Survey 5-Year Estimates

	King and Queen County, Virginia					
	African American	Margin of Error (+/-)	% of AA Total by Age	White, Not Hispanic	Margin of Error (+/-)	% of NHW Total by Age
<b>Total:</b>	<b>2,148</b>	<b>45</b>	<b>100.0%</b>	<b>4,582</b>	<b>17</b>	<b>100.0%</b>
<b>Under 18 years:</b>	<b>433</b>	<b>NC</b>	<b>100.0%</b>	<b>877</b>	<b>NC</b>	<b>100.0%</b>
Native	433	NC	100.0%	877	NC	100.0%
Foreign born:	0	NC	0.0%	0	NC	0.0%
Naturalized U.S. citizen	0	NC	0.0%	0	NC	0.0%
Not a U.S. citizen	0	NC	0.0%	0	NC	0.0%
<b>18 years and over:</b>	<b>1,715</b>	<b>NC</b>	<b>100.0%</b>	<b>3,705</b>	<b>NC</b>	<b>100.0%</b>
Native	1,715	NC	100.0%	3,677	NC	99.2%
Foreign born:	0	NC	0.0%	28	NC	0.8%
Naturalized U.S. citizen	0	NC	0.0%	0	NC	0.0%
Not a U.S. citizen	0	NC	0.0%	28	NC	0.8%
<b>Male:</b>	<b>1,150</b>	<b>124</b>	<b>53.5%</b>	<b>2,319</b>	<b>89</b>	<b>50.6%</b>
<b>Under 18 years:</b>	<b>330</b>	<b>120</b>	<b>100.0%</b>	<b>472</b>	<b>89</b>	<b>100.0%</b>
Native	330	120	100.0%	472	89	100.0%
Foreign born:	0	17	0.0%	0	17	0.0%
Naturalized U.S. citizen	0	17	0.0%	0	17	0.0%
Not a U.S. citizen	0	17	0.0%	0	17	0.0%
<b>18 years and over:</b>	<b>820</b>	<b>17</b>	<b>100.0%</b>	<b>1,847</b>	<b>17</b>	<b>100.0%</b>
Native	820	17	100.0%	1,819	34	98.5%
Foreign born:	0	17	0.0%	28	34	1.5%
Naturalized U.S. citizen	0	17	0.0%	0	17	0.0%
Not a U.S. citizen	0	17	0.0%	28	34	1.5%

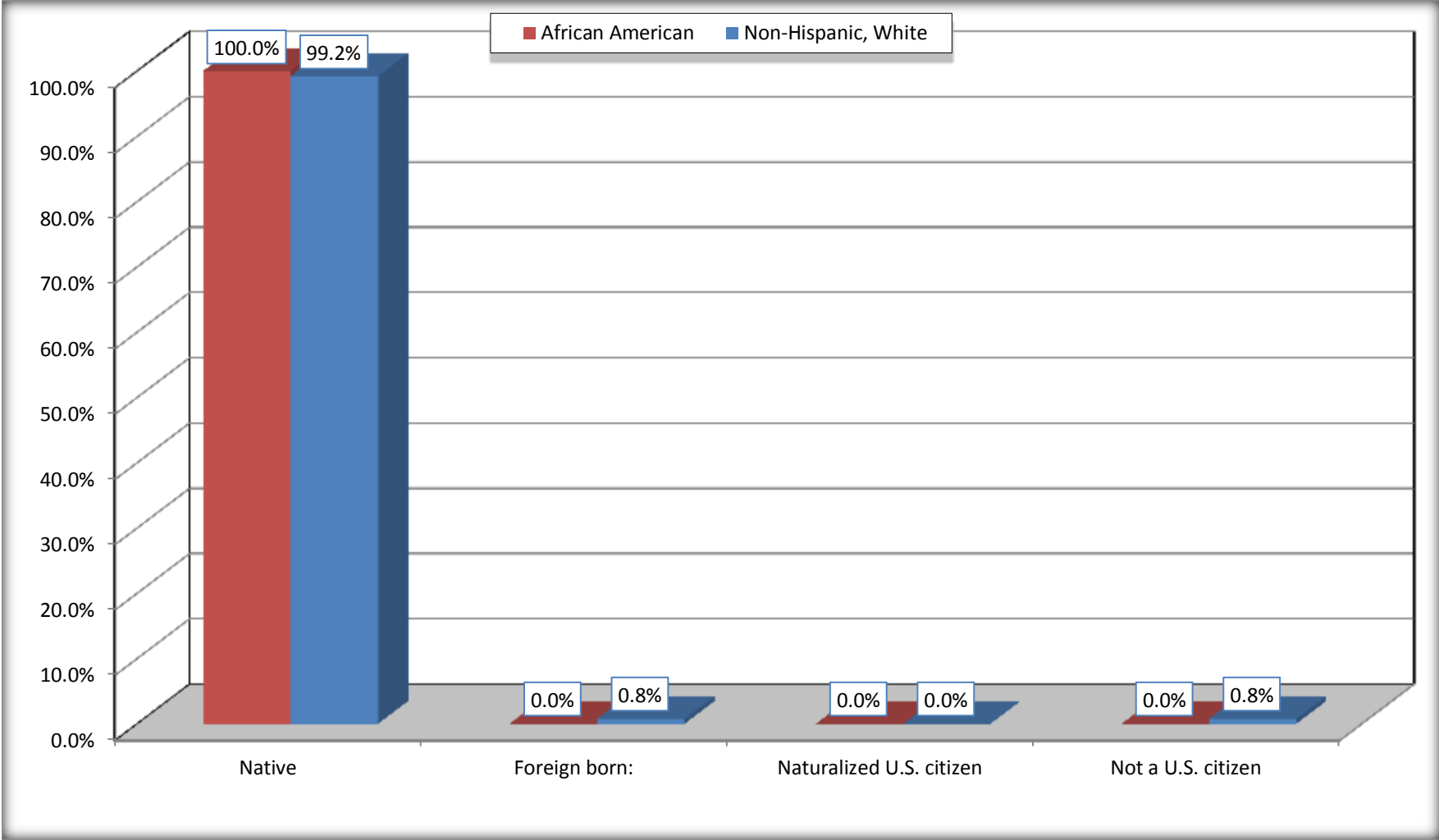
	King and Queen County, Virginia					
	African American	Margin of Error (+/-)	% of AA by Age	White, Not Hispanic	Margin of Error (+/-)	% of NHW by Age
<b>Female:</b>	998	121	46.5%	2,263	89	49.4%
<b>Under 18 years:</b>	<b>103</b>	<b>114</b>	<b>100.0%</b>	<b>405</b>	<b>89</b>	<b>100.0%</b>
Native	103	114	100.0%	405	89	100.0%
Foreign born:	0	17	0.0%	0	17	0.0%
Naturalized U.S. citizen	0	17	0.0%	0	17	0.0%
Not a U.S. citizen	0	17	0.0%	0	17	0.0%
<b>18 years and over:</b>	<b>895</b>	<b>32</b>	<b>100.0%</b>	<b>1,858</b>	<b>17</b>	<b>100.0%</b>
Native	895	32	100.0%	1,858	17	100.0%
Foreign born:	0	17	0.0%	0	17	0.0%
Naturalized U.S. citizen	0	17	0.0%	0	17	0.0%
Not a U.S. citizen	0	17	0.0%	0	17	0.0%

Source: U.S. Census Bureau, 2008-2012 American Community Survey

For information on confidentiality protection, sampling error, nonsampling error, and definitions, see Survey Methodology.  
<http://www.census.gov/acs/www/UseData/index.htm>

# Citizenship Status of Voting Age Population (18 and Over)

## King and Queen County, Virginia



Source: B05003. SEX BY AGE BY CITIZENSHIP STATUS  
Data Set: 2008-2012 American Community Survey 5-Year Estimates

**B07004. GEOGRAPHICAL MOBILITY IN THE PAST YEAR BY RACE FOR CURRENT RESIDENCE IN THE UNITED STATES - Universe:  
POPULATION 1 YEAR AND OVER**

Data Set: 2008-2012 American Community Survey 5-Year Estimates

	King and Queen County, Virginia					
	African American	Margin of Error (+/-)	% of AA Total	White, Not Hispanic	Margin of Error (+/-)	% of NHW Total
<b>Total:</b>	<b>2,118</b>	<b>61</b>	<b>100.0%</b>	<b>4,555</b>	<b>22</b>	<b>100.0%</b>
Same house 1 year ago	2,080	83	98.2%	4,240	188	93.1%
Moved within same county	23	40	1.1%	100	112	2.2%
Moved from different county within same state	15	29	0.7%	144	92	3.2%
Moved from different state	0	17	0.0%	71	103	1.6%
Moved from abroad	0	17	0.0%	0	17	0.0%

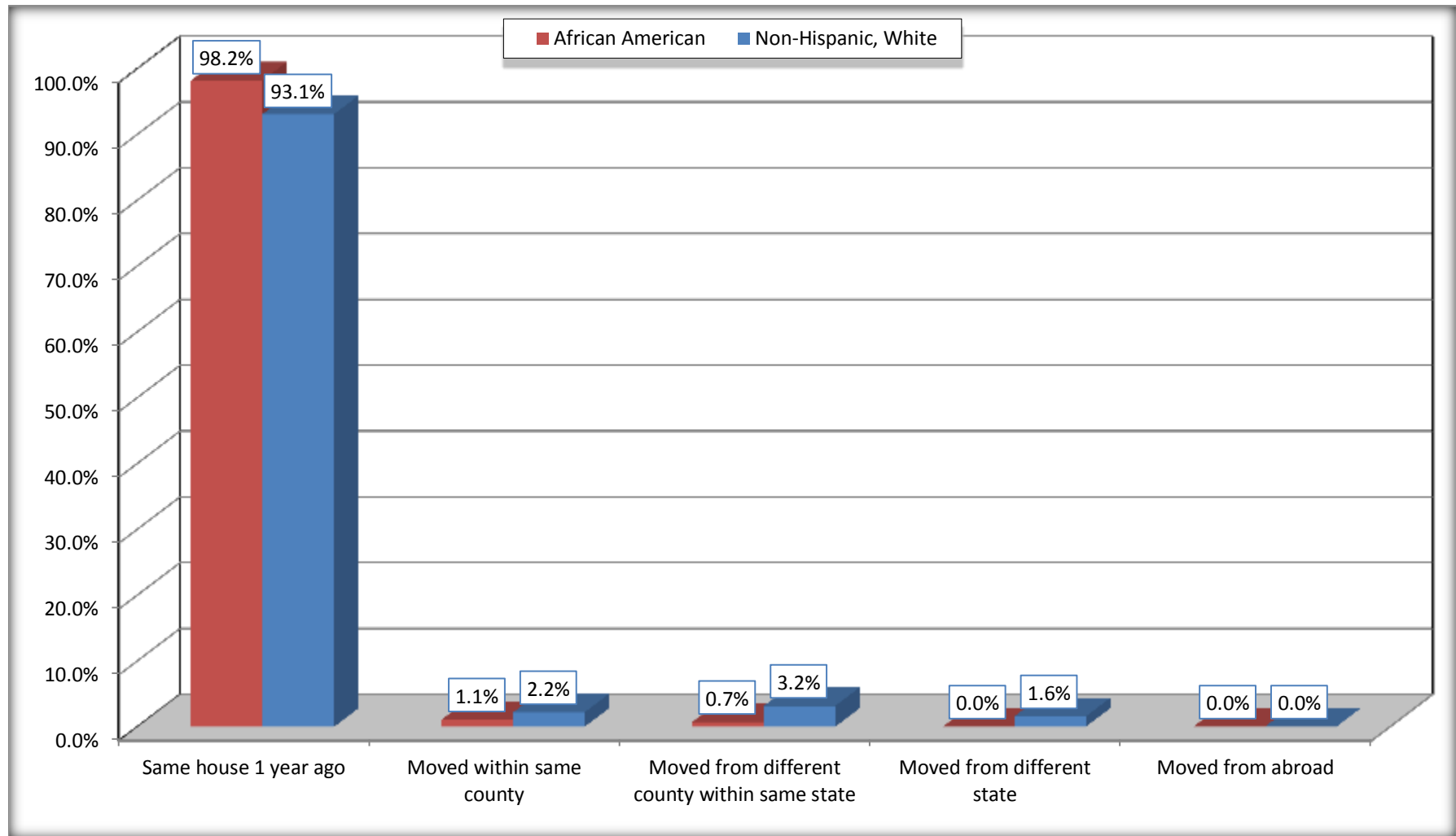
Source: U.S. Census Bureau, 2008-2012 American Community Survey

For information on confidentiality protection, sampling error, nonsampling error, and definitions, see Survey Methodology.

<http://www.census.gov/acs/www/UseData/index.htm>

# Geographical Mobility in the Past Year (Population 1 Year and Over)

## King and Queen County, Virginia



Source: B07004. GEOGRAPHICAL MOBILITY IN THE PAST YEAR BY RACE FOR CURRENT RESIDENCE IN THE UNITED STATES - Universe: POPULATION 1 YEAR AND OVER

Data Set: 2008-2012 American Community Survey 5-Year Estimates

**B08105. MEANS OF TRANSPORTATION TO WORK - Universe: WORKERS 16 YEARS AND OVER**

Data Set: 2008-2012 American Community Survey 5-Year Estimates

	King and Queen County, Virginia					
	African American	Margin of Error (+/-)	% of AA Total	White, Not Hispanic	Margin of Error (+/-)	% of NHW Total
<b>Total:</b>	869	117	<b>100.0%</b>	2322	182	<b>100.0%</b>
Car, truck, or van - drove alone	643	123	74.0%	1925	173	82.9%
Car, truck, or van - carpooled	177	88	20.4%	120	72	5.2%
Public transportation (excluding taxicab)	0	17	0.0%	0	17	0.0%
Walked	0	17	0.0%	61	49	2.6%
Taxicab, motorcycle, bicycle, or other means	0	17	0.0%	0	17	0.0%
Worked at home	49	53	5.6%	216	97	9.3%

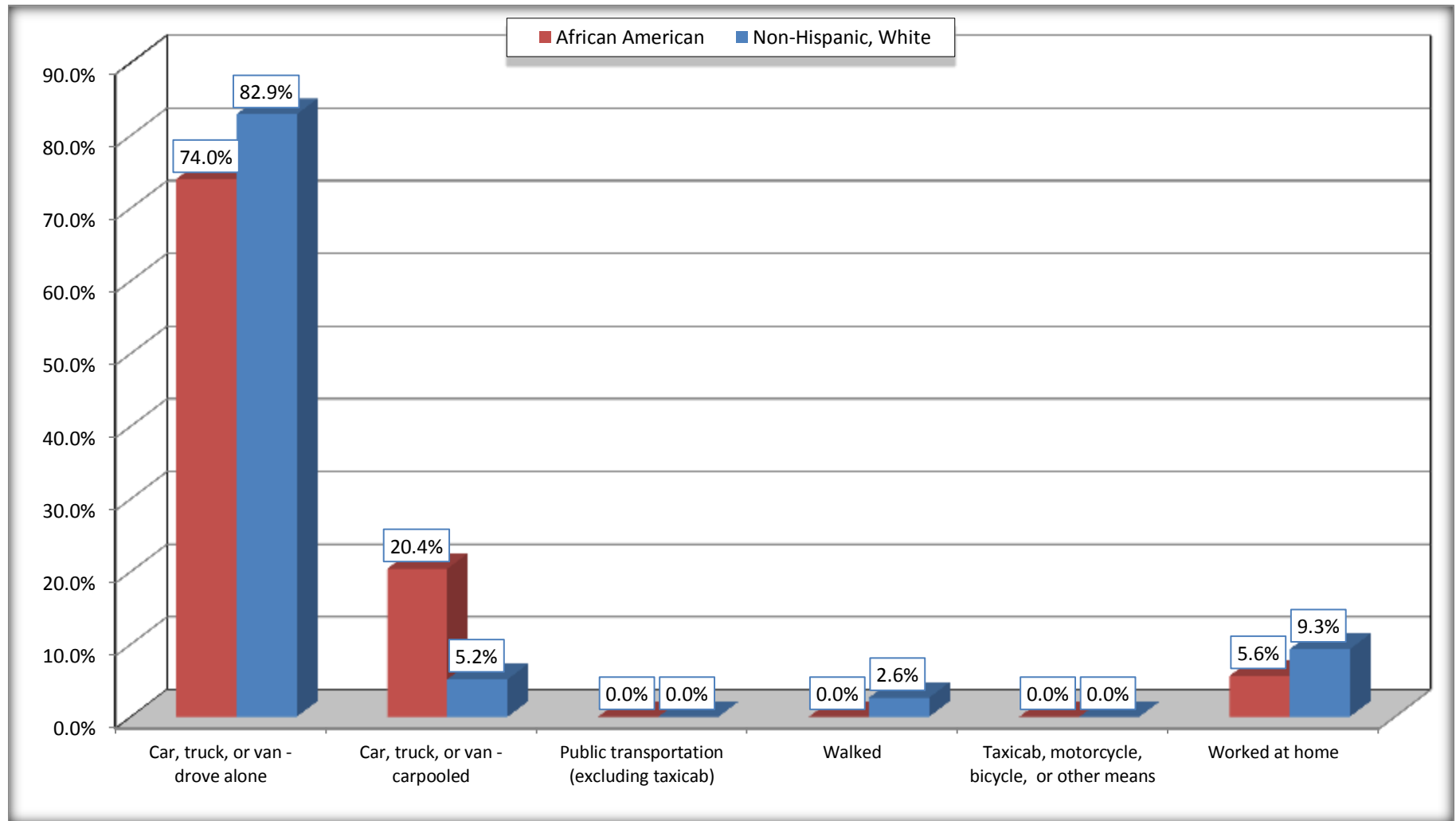
Source: U.S. Census Bureau, 2008-2012 American Community Survey

For information on confidentiality protection, sampling error, nonsampling error, and definitions, see Survey Methodology.

<http://www.census.gov/acs/www/UseData/index.htm>

## Means of Transportation to Work (Workers 16 Years and Over)

### King and Queen County, Virginia



Source: B08105. MEANS OF TRANSPORTATION TO WORK - Universe: WORKERS 16 YEARS AND OVER  
 Data Set: 2008-2012 American Community Survey 5-Year Estimates



**B11002. HOUSEHOLD TYPE BY RELATIVES AND NONRELATIVES FOR POPULATION IN HOUSEHOLDS**

Data Set: 2008-2012 American Community Survey 5-Year Estimates

	King and Queen County, Virginia					
	African American	Margin of Error (+/-)	% of AA Total	White, Not Hispanic	Margin of Error (+/-)	% of NHW Total
<b>Total:</b>	2148	46	<b>100.0%</b>	4602	36	<b>100.0%</b>
In family households	1920	119	89.4%	3875	163	84.2%
In nonfamily households	228	110	10.6%	727	161	15.8%

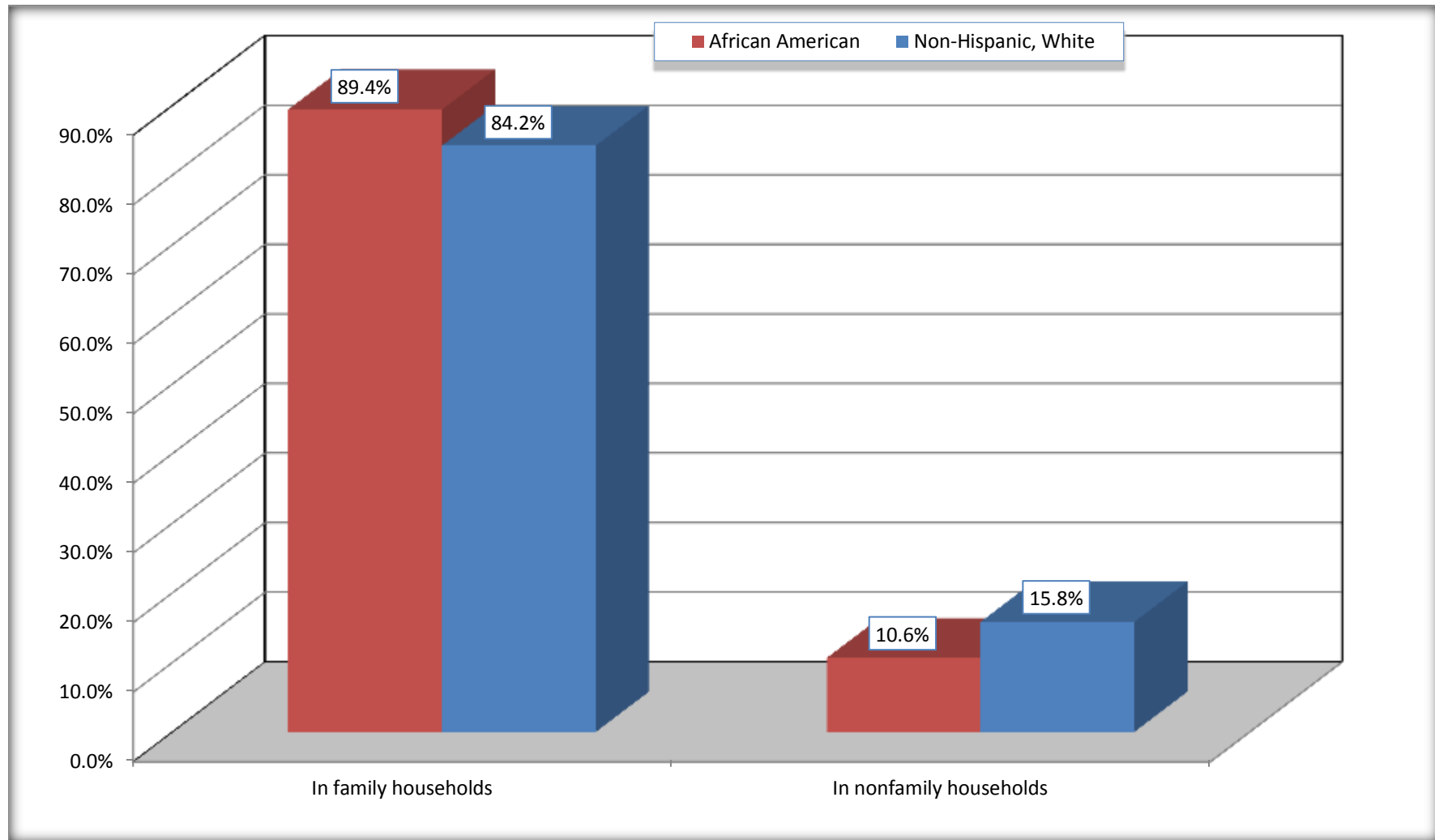
Source: U.S. Census Bureau, 2008-2012 American Community Survey

For information on confidentiality protection, sampling error, nonsampling error, and definitions, see Survey Methodology.

<http://www.census.gov/acs/www/UseData/index.htm>

# Household Type for Population in Households

## King and Queen County, Virginia



Source: B11002. HOUSEHOLD TYPE BY RELATIVES AND NONRELATIVES FOR POPULATION IN HOUSEHOLDS  
Data Set: 2008-2012 American Community Survey 5-Year Estimates

**B12002. MARITAL STATUS FOR THE POPULATION 15 YEARS AND OVER**

Data Set: 2008-2012 American Community Survey 5-Year Estimates

	King and Queen County, Virginia					
	African American	Margin of Error (+/-)	% of AA Total	White, Not Hispanic	Margin of Error (+/-)	% of NHW Total
<b>Total:</b>	<b>1,839</b>	<b>99</b>	<b>100.0%</b>	<b>3,830</b>	<b>88</b>	<b>100.0%</b>
Never married	499	NC	27.1%	629	NC	16.4%
Now married (except separated)	1,053	NC	57.3%	2,483	NC	64.8%
Separated	46	NC	2.5%	76	NC	2.0%
Widowed	139	NC	7.6%	360	NC	9.4%
Divorced	102	NC	5.5%	282	NC	7.4%
<b>Male:</b>	<b>873</b>	<b>74</b>	<b>47.5%</b>	<b>1,934</b>	<b>90</b>	<b>50.5%</b>
Never married	326	111	17.7%	440	121	11.5%
Now married (except separated)	444	104	24.1%	1,281	116	33.4%
Separated	46	38	2.5%	33	37	0.9%
Widowed	8	14	0.4%	69	59	1.8%
Divorced	49	49	2.7%	111	54	2.9%
<b>Female:</b>	<b>966</b>	<b>101</b>	<b>52.5%</b>	<b>1,896</b>	<b>48</b>	<b>49.5%</b>
Never married	173	106	9.4%	189	74	4.9%
Now married (except separated)	609	115	33.1%	1,202	159	31.4%
Separated	0	17	0.0%	43	44	1.1%
Widowed	131	70	7.1%	291	69	7.6%
Divorced	53	46	2.9%	171	83	4.5%

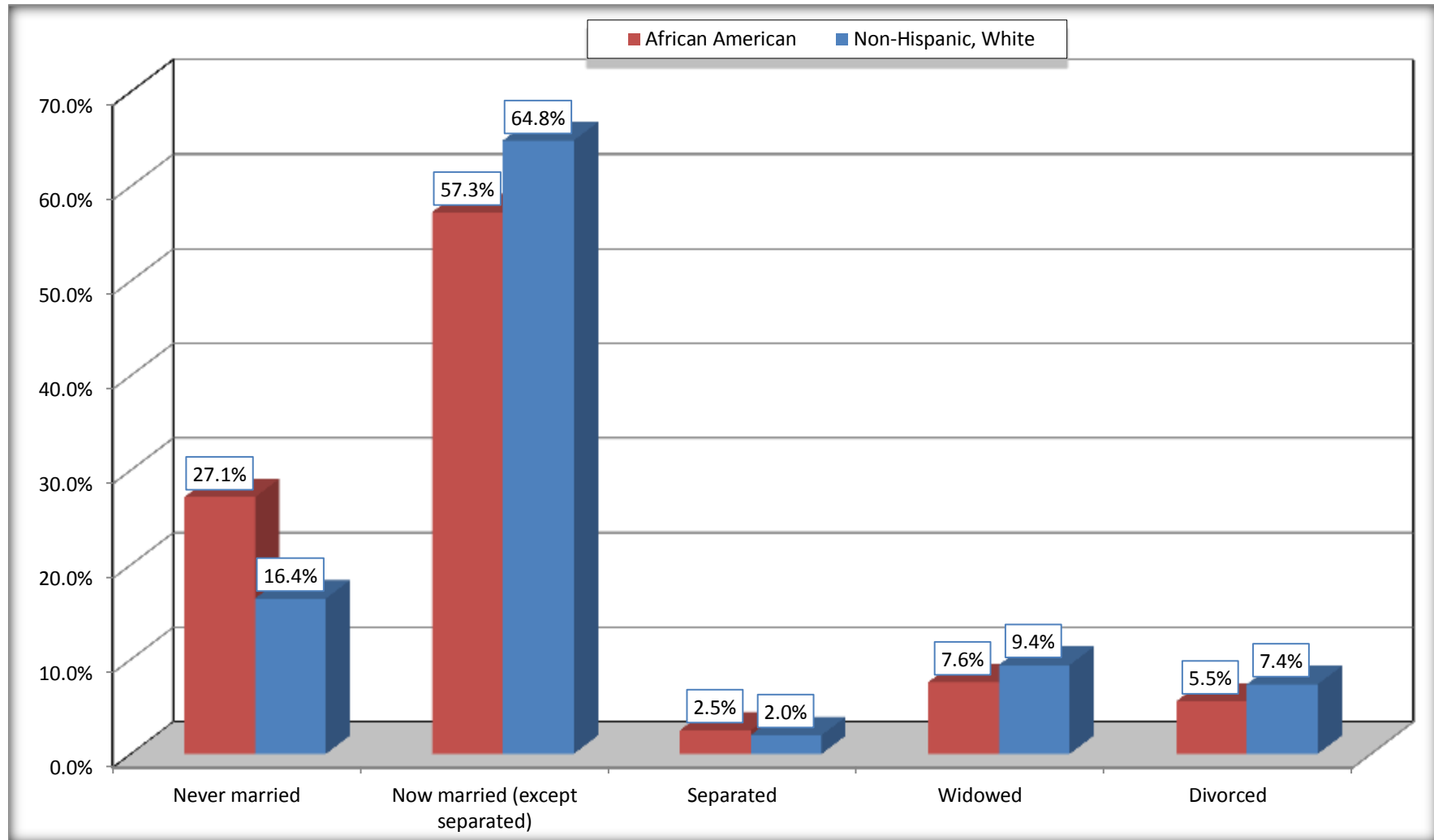
Source: U.S. Census Bureau, 2008-2012 American Community Survey

For information on confidentiality protection, sampling error, nonsampling error, and definitions, see Survey Methodology.

<http://www.census.gov/acs/www/UseData/index.htm>

# Marital Status for the Population 15 Years and Over

## King and Queen County, Virginia



Source: B12002. MARITAL STATUS FOR THE POPULATION 15 YEARS AND OVER  
Data Set: 2008-2012 American Community Survey 5-Year Estimates

**C15002. SEX BY EDUCATIONAL ATTAINMENT FOR THE POPULATION 25 YEARS AND OVER**

Data Set: 2008-2012 American Community Survey 5-Year Estimates

	King and Queen County, Virginia					
	African American	Margin of Error (+/-)	% of AA Total	White, Not Hispanic	Margin of Error (+/-)	% of NHW Total
<b>Total:</b>	<b>1,606</b>	<b>50</b>	<b>100.0%</b>	<b>3,350</b>	<b>49</b>	<b>100.0%</b>
Less than high school diploma	383	NC	23.8%	515	NC	15.4%
High school graduate, GED, or alternative	649	NC	40.4%	1,465	NC	43.7%
Some college or associate's degree	474	NC	29.5%	854	NC	25.5%
Bachelor's degree or higher	100	NC	6.2%	516	NC	15.4%
Male:	711	48	44.3%	1,681	17	50.2%
Less than high school diploma	208	81	13.0%	288	91	8.6%
High school graduate, GED, or alternative	310	72	19.3%	727	110	21.7%
Some college or associate's degree	156	78	9.7%	395	107	11.8%
Bachelor's degree or higher	37	34	2.3%	271	94	8.1%
Female:	895	32	55.7%	1,669	49	49.8%
Less than high school diploma	175	71	10.9%	227	82	6.8%
High school graduate, GED, or alternative	339	108	21.1%	738	135	22.0%
Some college or associate's degree	318	91	19.8%	459	114	13.7%
Bachelor's degree or higher	63	45	3.9%	245	102	7.3%

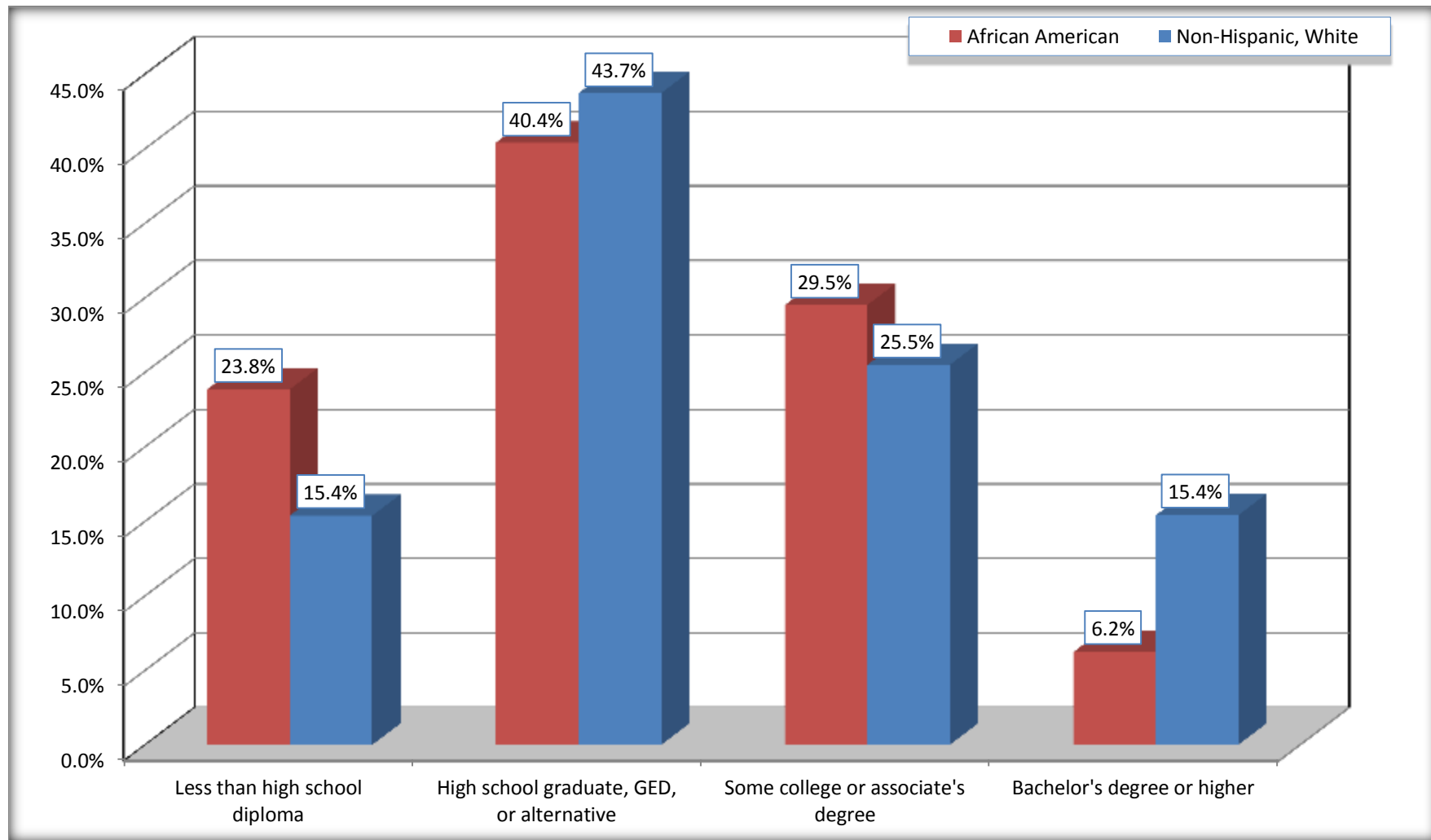
Source: U.S. Census Bureau, 2008-2012 American Community Survey

For information on confidentiality protection, sampling error, nonsampling error, and definitions, see Survey Methodology.

<http://www.census.gov/acs/www/UseData/index.htm>

# Educational Attainment for the Population 25 Years and Older

## King and Queen County, Virginia



Source: C15002. SEX BY EDUCATIONAL ATTAINMENT FOR THE POPULATION 25 YEARS AND OVER  
Data Set: 2008-2012 American Community Survey 5-Year Estimates

**B17010. POVERTY STATUS IN THE PAST 12 MONTHS OF FAMILIES BY FAMILY TYPE BY PRESENCE OF RELATED CHILDREN UNDER 18 YEARS**

Data Set: 2008-2012 American Community Survey 5-Year Estimates

	King and Queen County, Virginia					
	African American	Margin of Error (+/-)	% of AA Total	White, Not Hispanic	Margin of Error (+/-)	% of NHW Total
<b>Total:</b>	<b>658</b>	<b>111</b>	<b>100.0%</b>	<b>1,334</b>	<b>122</b>	<b>100.0%</b>
Income in the past 12 months below poverty level:	67	62	10.2%	56	41	4.2%
Married-couple family:	67	62	10.2%	7	15	0.5%
With related children under 18 years	19	31	2.9%	7	15	0.5%
Other family:	0	17	0.0%	49	41	3.7%
Male householder, no wife present	0	17	0.0%	0	17	0.0%
With related children under 18 years	0	17	0.0%	0	17	0.0%
Female householder, no husband present	0	17	0.0%	49	41	3.7%
With related children under 18 years	0	17	0.0%	49	41	3.7%
Income in the past 12 months at or above poverty level:	591	110	89.8%	1,278	117	95.8%
Married-couple family:	420	106	63.8%	1,134	128	85.0%
With related children under 18 years	96	74	14.6%	319	80	23.9%
Other family:	171	65	26.0%	144	78	10.8%
Male householder, no wife present	32	28	4.9%	79	61	5.9%
With related children under 18 years	0	17	0.0%	18	28	1.3%
Female householder, no husband present	139	62	21.1%	65	56	4.9%
With related children under 18 years	28	42	4.3%	42	47	3.1%

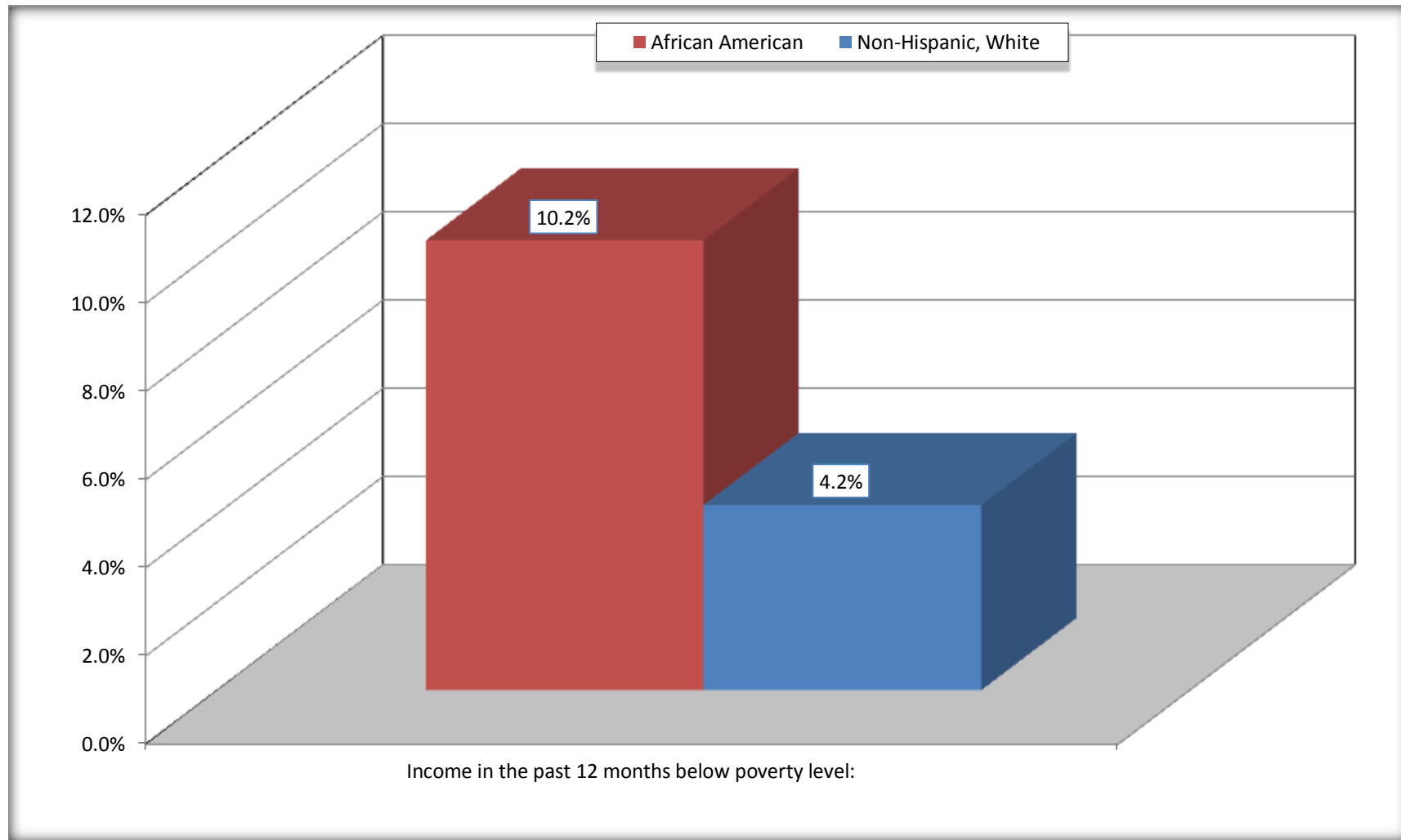
Source: U.S. Census Bureau, 2008-2012 American Community Survey

For information on confidentiality protection, sampling error, nonsampling error, and definitions, see Survey Methodology.

<http://www.census.gov/acs/www/UseData/index.htm>

# Family Households Below Poverty in the Past 12 Months

## King and Queen County, Virginia



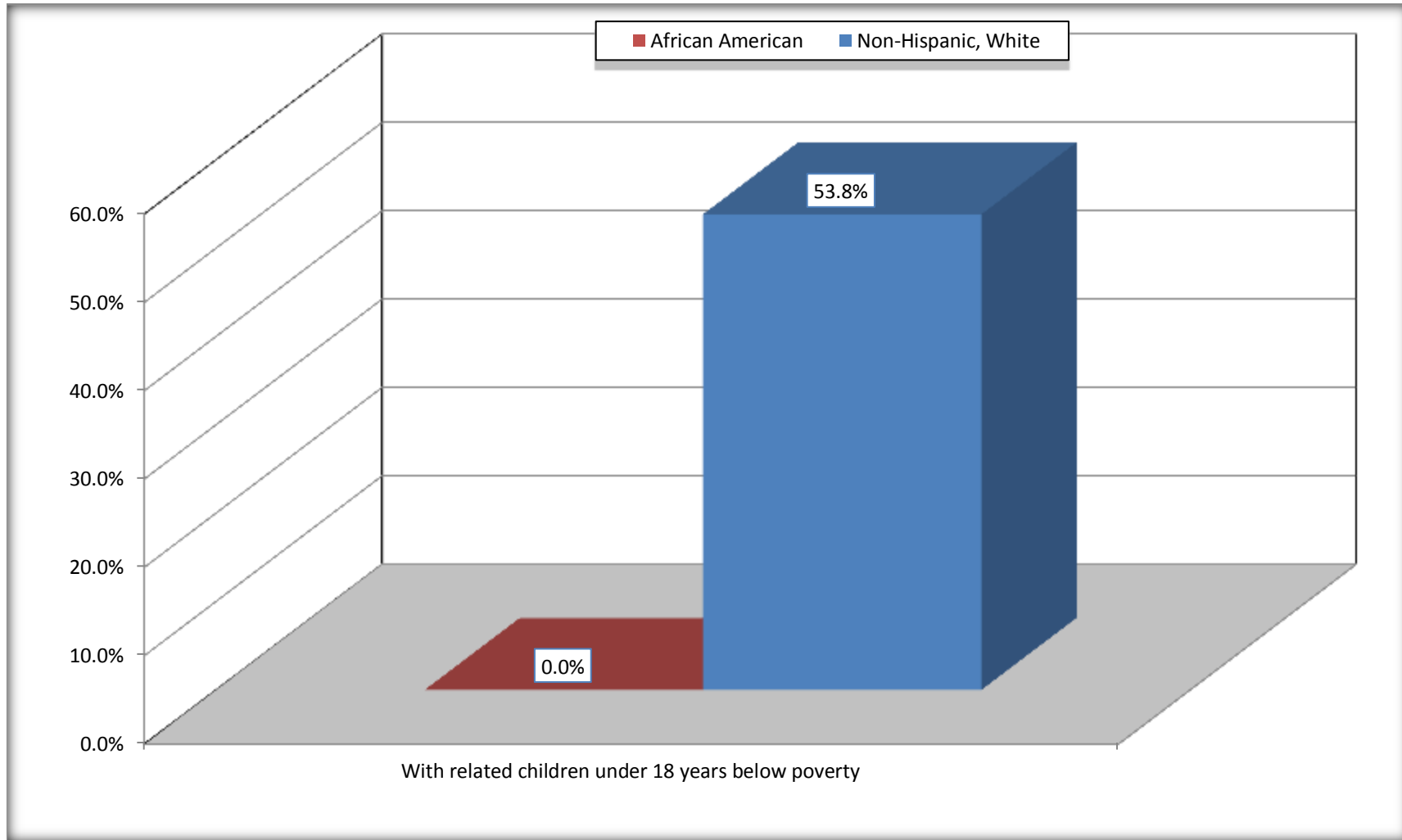
Source: B17010. POVERTY STATUS IN THE PAST 12 MONTHS OF FAMILIES BY FAMILY TYPE BY PRESENCE OF RELATED CHILDREN UNDER 18 YEARS

Data Set: 2008-2012 American Community Survey 5-Year Estimates



# Female-headed Households with Related Children Below Poverty in the Past 12 Months

## King and Queen County, Virginia



Source: B17010. POVERTY STATUS IN THE PAST 12 MONTHS OF FAMILIES BY FAMILY TYPE BY PRESENCE OF RELATED CHILDREN UNDER 18 YEARS

Data Set: 2008-2012 American Community Survey 5-Year Estimates

**B17020 POVERTY STATUS IN THE PAST 12 MONTHS BY AGE - Universe: POPULATION FOR WHOM POVERTY STATUS IS DETERMINED**

Data Set: 2008-2012 American Community Survey 5-Year Estimates

	King and Queen County, Virginia					
	African American	Margin of Error (+/-)	% of AA By Age	White, Not Hispanic	Margin of Error (+/-)	% of NHW By Age
<b>Total:</b>	<b>2,148</b>	<b>45</b>	<b>100.0%</b>	<b>4,582</b>	<b>17</b>	<b>100.0%</b>
Income in the past 12 months below poverty level:	211	178	9.8%	325	184	7.1%
<b>Under 18 years</b>	77	NC	17.8%	132	NC	15.1%
<b>18 to 64 years</b>	66	63	5.1%	159	92	5.5%
<b>65 years and over</b>	68	NC	16.5%	34	NC	4.1%
Income in the past 12 months at or above poverty level:	1,937	185	90.2%	4,257	184	92.9%
<b>Under 18 years</b>	356	NC	82.2%	745	NC	84.9%
<b>18 to 64 years</b>	1,237	69	94.9%	2,712	92	94.5%
<b>65 years and over</b>	344	NC	83.5%	800	NC	95.9%

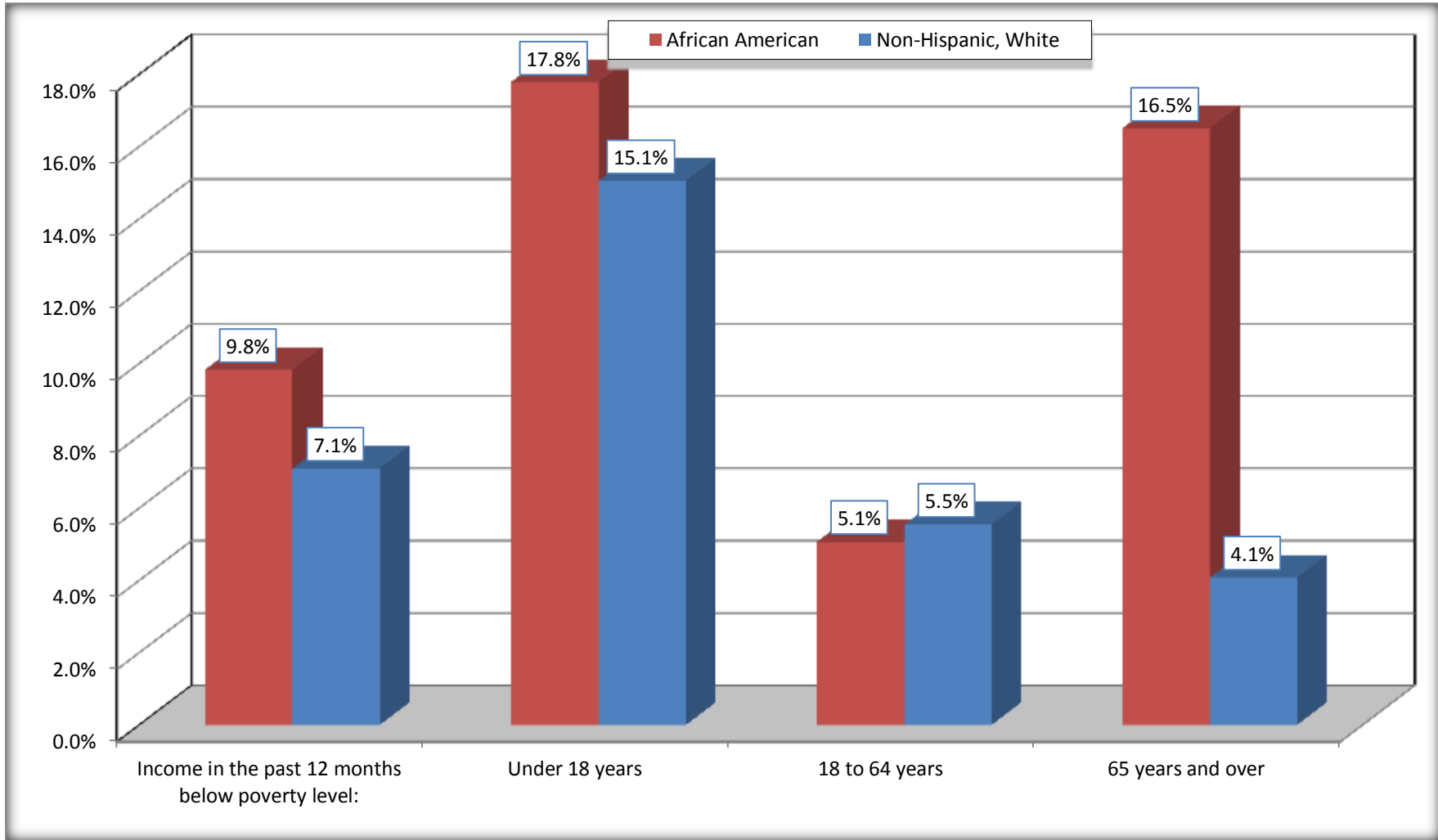
Source: U.S. Census Bureau, 2008-2012 American Community Survey

For information on confidentiality protection, sampling error, nonsampling error, and definitions, see Survey Methodology.

<http://www.census.gov/acs/www/UseData/index.htm>

# Population Below Poverty in the Past 12 Months

## King and Queen County, Virginia



Source: B17020 POVERTY STATUS IN THE PAST 12 MONTHS BY AGE - Universe: POPULATION FOR WHOM POVERTY STATUS IS DETERMINED  
Data Set: 2008-2012 American Community Survey 5-Year Estimates

**B19001. HOUSEHOLD INCOME IN THE PAST 12 MONTHS (IN 2010 INFLATION-ADJUSTED DOLLARS)**

Data Set: 2008-2012 American Community Survey 5-Year Estimates

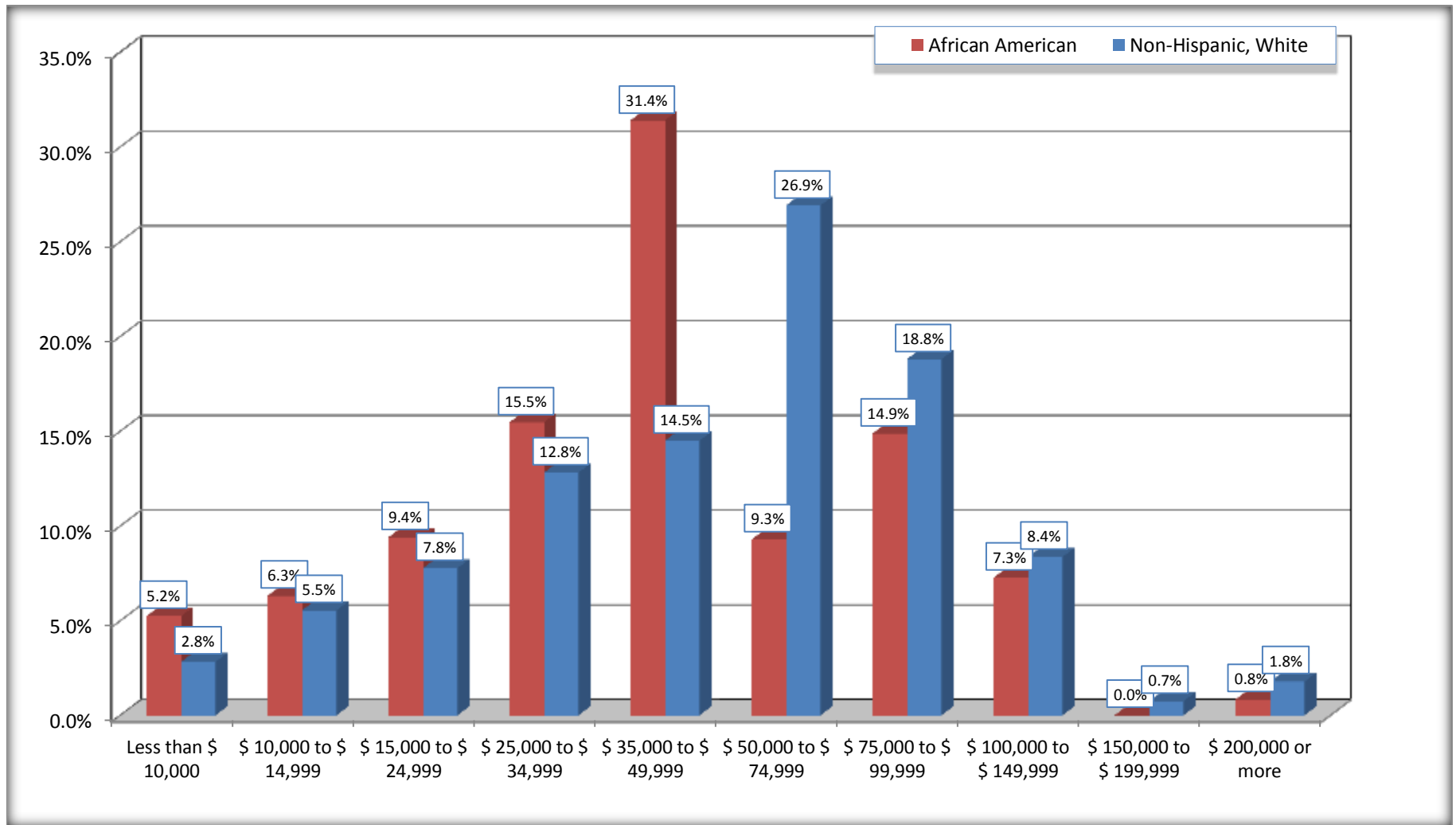
	King and Queen County, Virginia					
	African American	Margin of Error (+/-)	% of AA Total	White, Not Hispanic	Margin of Error (+/-)	% of NHW Total
<b>Total:</b>	<b>841</b>	<b>107</b>	<b>100.0%</b>	<b>2,022</b>	<b>112</b>	<b>100.0%</b>
Less than \$ 10,000	44	41	5.2%	57	50	2.8%
\$ 10,000 to \$ 14,999	53	48	6.3%	112	73	5.5%
<b>\$ 15,000 to \$ 24,999</b>	79	NC	9.4%	157	NC	7.8%
<b>\$ 25,000 to \$ 34,999</b>	130	NC	15.5%	259	NC	12.8%
<b>\$ 35,000 to \$ 49,999</b>	264	NC	31.4%	293	NC	14.5%
<b>\$ 50,000 to \$ 74,999</b>	78	NC	9.3%	544	NC	26.9%
\$ 75,000 to \$ 99,999	125	75	14.9%	380	136	18.8%
<b>\$ 100,000 to \$ 149,999</b>	61	NC	7.3%	169	NC	8.4%
\$ 150,000 to \$ 199,999	0	17	0.0%	15	24	0.7%
\$ 200,000 or more	7	13	0.8%	36	39	1.8%

Source: U.S. Census Bureau, 2008-2012 American Community Survey

For information on confidentiality protection, sampling error, nonsampling error, and definitions, see Survey Methodology.

<http://www.census.gov/acs/www/UseData/index.htm>

## Household Income in the Past 12 Months King and Queen County, Virginia



Source: B19001. HOUSEHOLD INCOME IN THE PAST 12 MONTHS (IN 2010 INFLATION-ADJUSTED DOLLARS)  
Data Set: 2008-2012 American Community Survey 5-Year Estimates

**B19013. MEDIAN HOUSEHOLD INCOME IN THE PAST 12 MONTHS (IN 2010 INFLATION-ADJUSTED DOLLARS)**

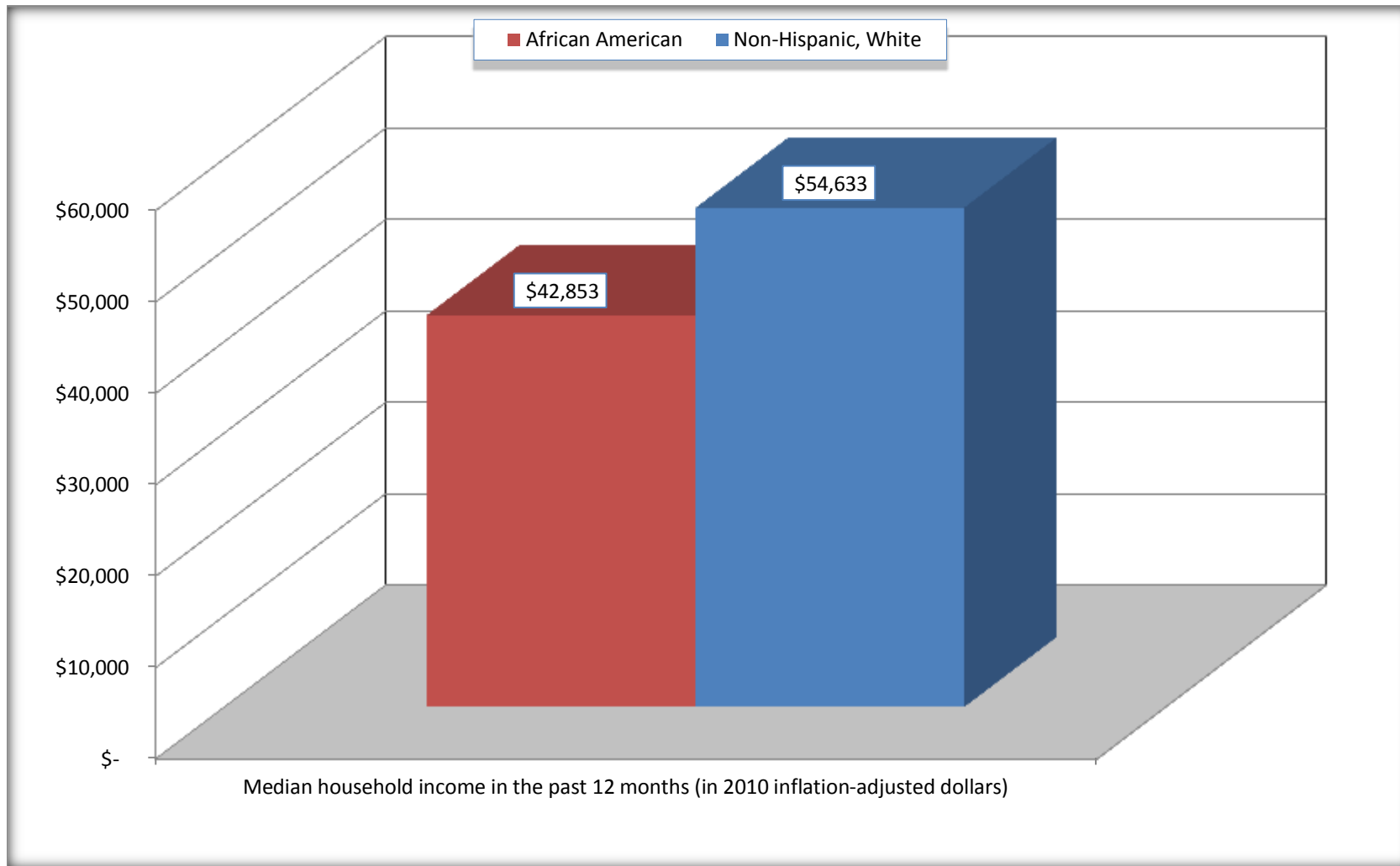
Data Set: 2008-2012 American Community Survey 5-Year Estimates

	King and Queen County, Virginia			
	African American	Margin of Error (+/-)	White, Not Hispanic	Margin of Error (+/-)
Median household income in the past 12 months (in 2010 inflation-adjusted dollars)	\$ 42,853	\$ 5,388	\$ 54,633	\$ 4,290

Source: U.S. Census Bureau, 2008-2012 American Community Survey

For information on confidentiality protection, sampling error, nonsampling error, and definitions, see Survey Methodology.  
<http://www.census.gov/acs/www/UseData/index.htm>

## Median Household Income in the Past 12 Months King and Queen County, Virginia



Source: B19013. MEDIAN HOUSEHOLD INCOME IN THE PAST 12 MONTHS (IN 2010 INFLATION-ADJUSTED DOLLARS)  
Data Set: 2008-2012 American Community Survey 5-Year Estimates

**B19101. FAMILY INCOME IN THE PAST 12 MONTHS (IN 2010 INFLATION-ADJUSTED DOLLARS)**

Data Set: 2008-2012 American Community Survey 5-Year Estimates

	King and Queen County, Virginia					
	African American	Margin of Error (+/-)	% of AA Total	White, Not Hispanic	Margin of Error (+/-)	% of NHW Total
<b>Total:</b>	<b>658</b>	<b>111</b>	<b>100.0%</b>	<b>1,334</b>	<b>122</b>	<b>100.0%</b>
Less than \$ 10,000	20	31	3.0%	13	21	1.0%
\$ 10,000 to \$ 14,999	28	44	4.3%	35	34	2.6%
<b>\$ 15,000 to \$ 24,999</b>	<b>69</b>	<b>NC</b>	<b>10.5%</b>	<b>29</b>	<b>NC</b>	<b>2.2%</b>
<b>\$ 25,000 to \$ 34,999</b>	<b>88</b>	<b>NC</b>	<b>13.4%</b>	<b>183</b>	<b>NC</b>	<b>13.7%</b>
<b>\$ 35,000 to \$ 49,999</b>	<b>201</b>	<b>NC</b>	<b>30.5%</b>	<b>133</b>	<b>NC</b>	<b>10.0%</b>
<b>\$ 50,000 to \$ 74,999</b>	<b>59</b>	<b>NC</b>	<b>9.0%</b>	<b>427</b>	<b>NC</b>	<b>32.0%</b>
<b>\$ 100,000 to \$ 149,999</b>	<b>61</b>	<b>NC</b>	<b>9.3%</b>	<b>152</b>	<b>NC</b>	<b>11.4%</b>
\$ 150,000 to \$ 199,999	0	17	0.0%	28	32	2.1%
\$ 200,000 or more	7	13	1.1%	23	31	1.7%

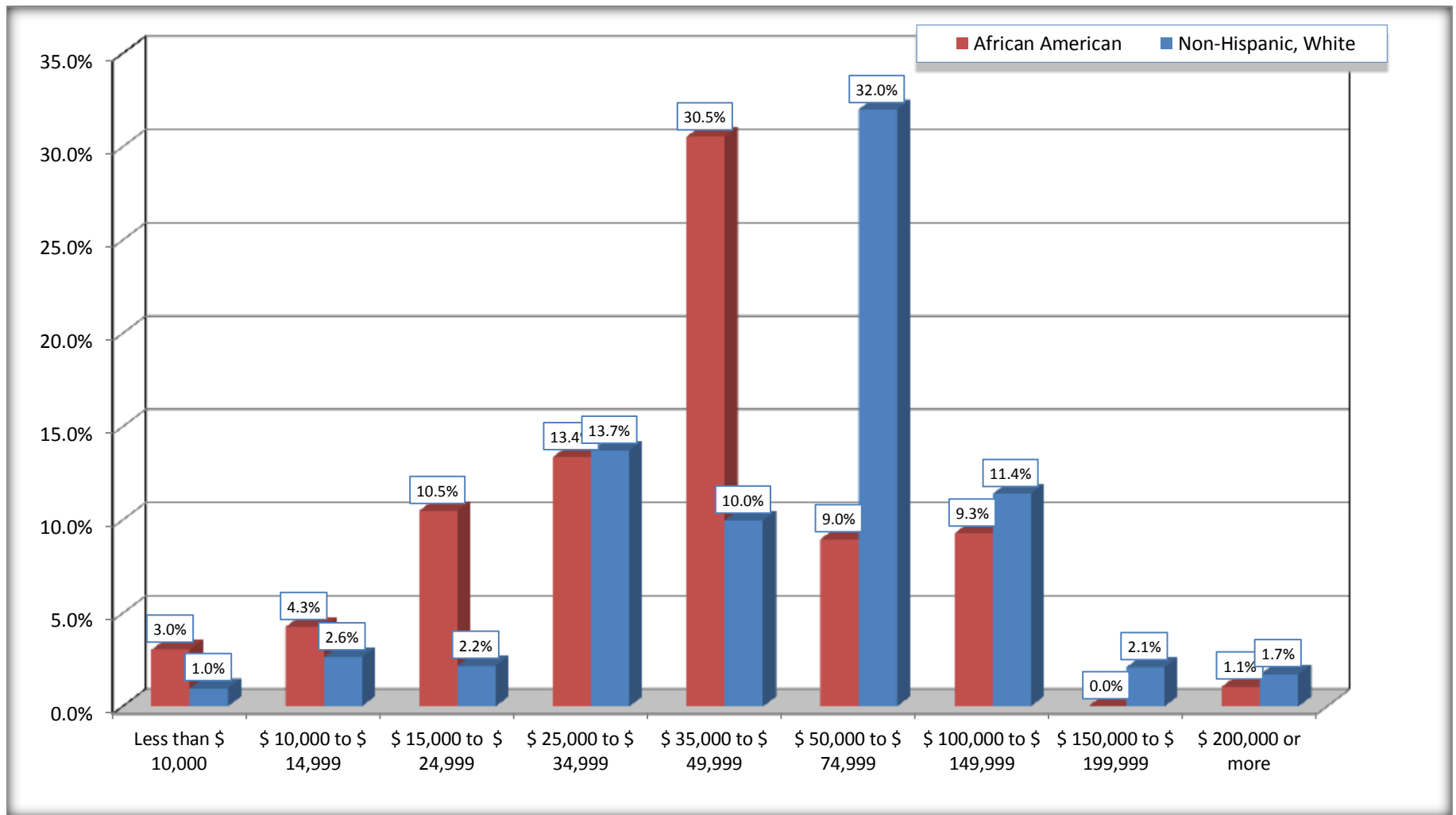
Source: U.S. Census Bureau, 2008-2012 American Community Survey

For information on confidentiality protection, sampling error, nonsampling error, and definitions, see Survey Methodology.

<http://www.census.gov/acs/www/UseData/index.htm>



## Family Income in the Past 12 Months King and Queen County, Virginia



Source: B19101. FAMILY INCOME IN THE PAST 12 MONTHS (IN 2010 INFLATION-ADJUSTED DOLLARS)  
Data Set: 2008-2012 American Community Survey 5-Year Estimates

**B19113. MEDIAN FAMILY INCOME IN THE PAST 12 MONTHS (IN 2010 INFLATION-ADJUSTED DOLLARS)**

Data Set: 2008-2012 American Community Survey 5-Year Estimates

	<b>King and Queen County, Virginia</b>			
	African American	Margin of Error (+/-)	White, Not Hispanic	Margin of Error (+/-)
Median family income in the past 12 months (in 2010 inflation-adjusted dollars)	\$ 43,370	\$ 5,909	\$ 65,493	\$ 9,293

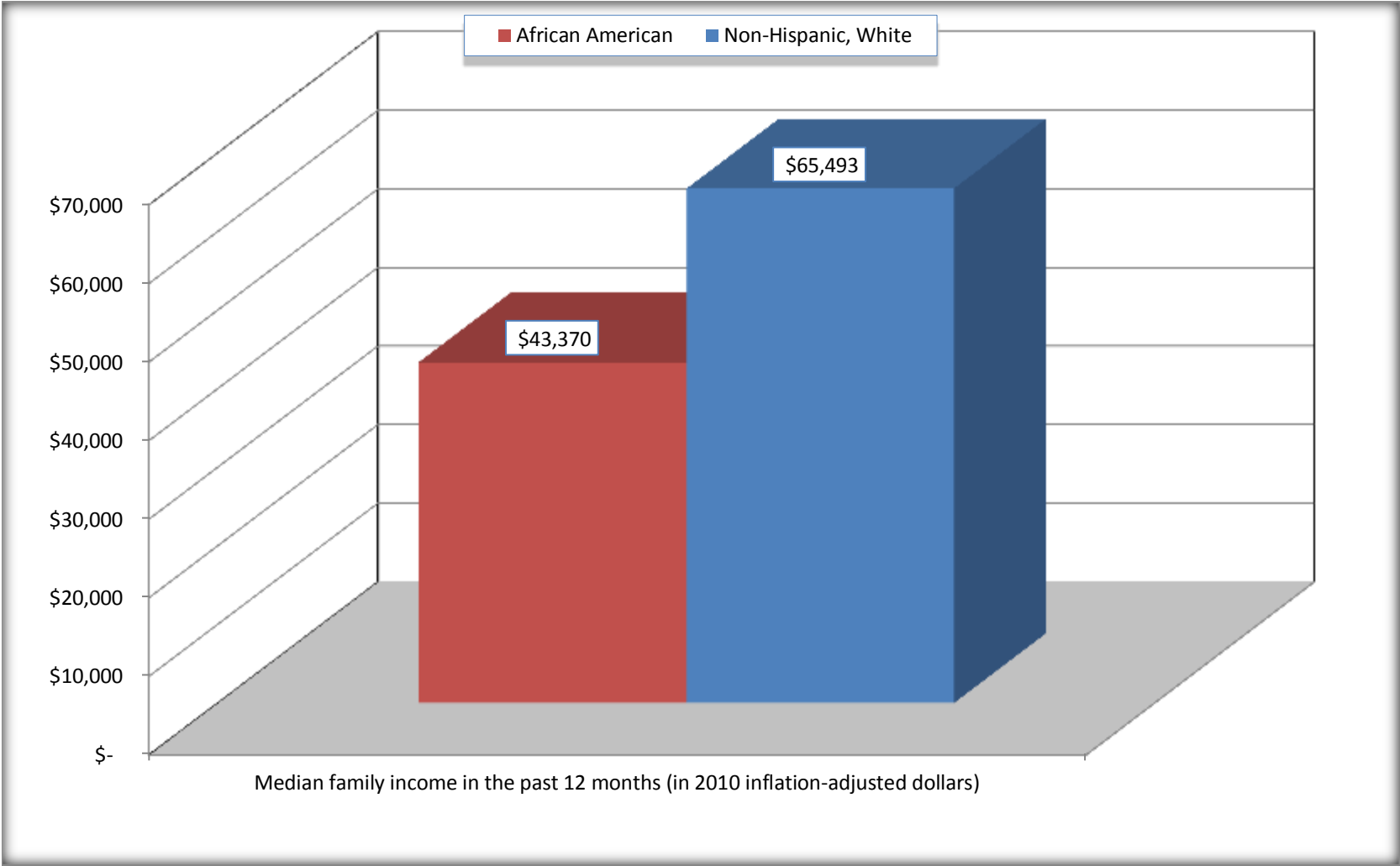
Source: U.S. Census Bureau, 2008-2012 American Community Survey

For information on confidentiality protection, sampling error, nonsampling error, and definitions, see Survey Methodology.

<http://www.census.gov/acs/www/UseData/index.htm>

# Median Family Income in the Past 12 Months

## King and Queen County, Virginia



Source: B19113. MEDIAN FAMILY INCOME IN THE PAST 12 MONTHS (IN 2010 INFLATION-ADJUSTED DOLLARS)  
Data Set: 2008-2012 American Community Survey 5-Year Estimates

**B19202. MEDIAN NONFAMILY HOUSEHOLD INCOME IN THE PAST 12 MONTHS (IN 2010 INFLATION-ADJUSTED DOLLARS)**

Data Set: 2008-2012 American Community Survey 5-Year Estimates

	King and Queen County, Virginia			
	African American	Margin of Error (+/-)	White, Not Hispanic	Margin of Error (+/-)
Median nonfamily household income in the past 12 months (in 2010 inflation-adjusted dollars)	\$ 29,435	\$ 23,924	\$ 36,250	\$ 7,334

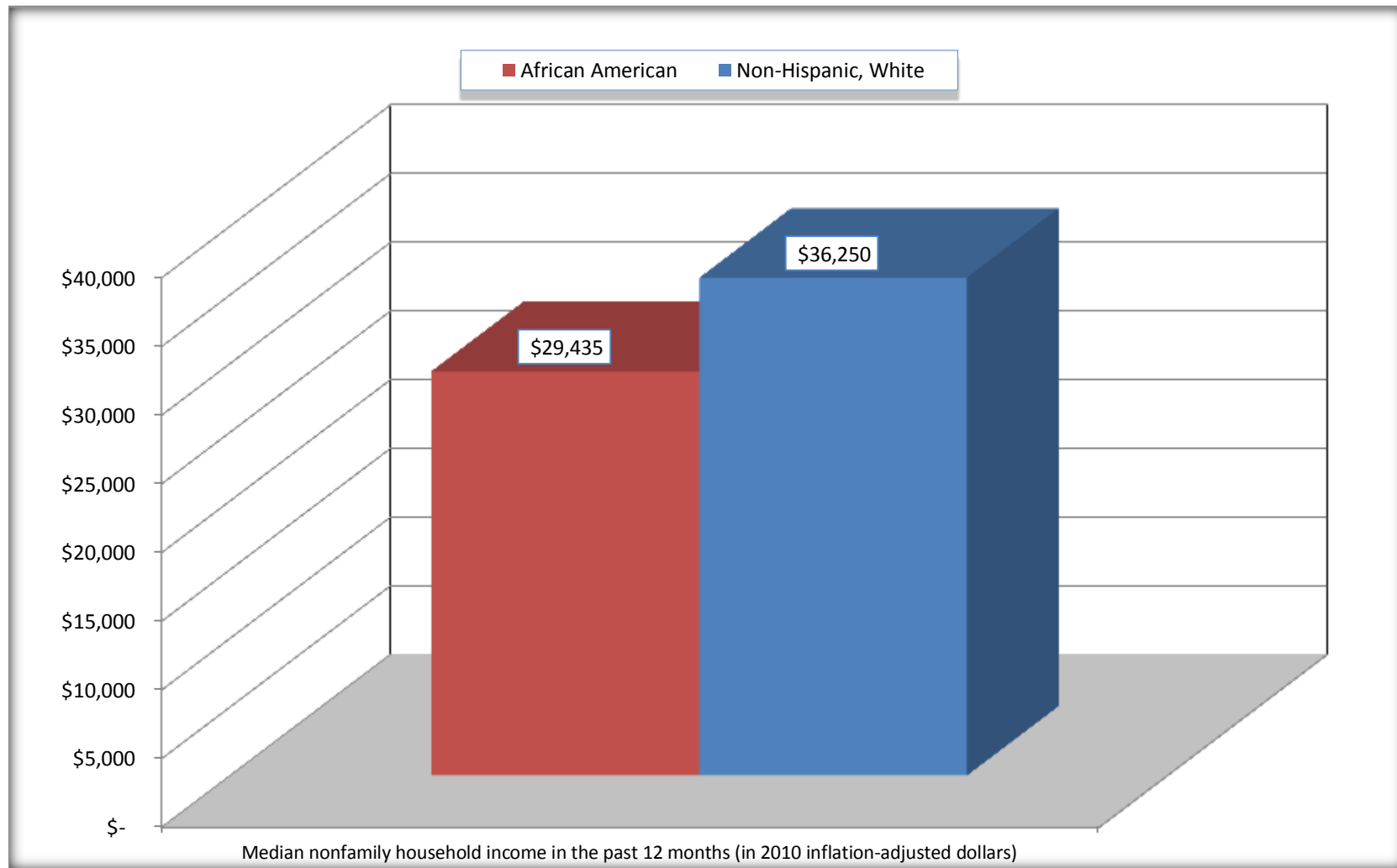
Source: U.S. Census Bureau, 2008-2012 American Community Survey

For information on confidentiality protection, sampling error, nonsampling error, and definitions, see Survey Methodology.

<http://www.census.gov/acs/www/UseData/index.htm>

# Median Non-Family Income in the Past 12 Months

## King and Queen County, Virginia



Source: B19202. MEDIAN NONFAMILY HOUSEHOLD INCOME IN THE PAST 12 MONTHS (IN 2010 INFLATION-ADJUSTED DOLLARS)  
Data Set: 2008-2012 American Community Survey 5-Year Estimates

**B19301. PER CAPITA INCOME IN THE PAST 12 MONTHS (IN 2010 INFLATION-ADJUSTED DOLLARS)**

Data Set: 2008-2012 American Community Survey 5-Year Estimates

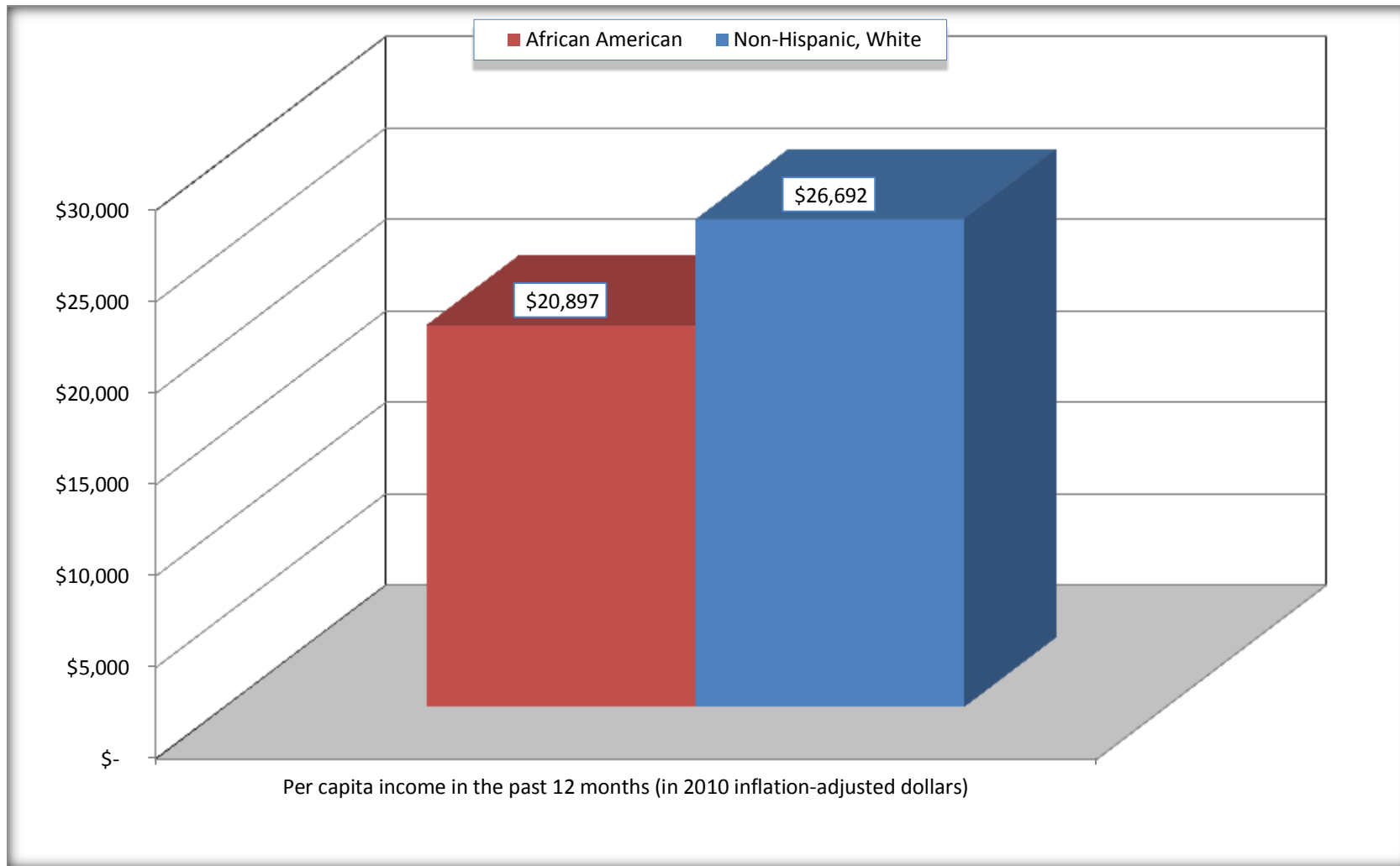
	King and Queen County, Virginia			
	African American	Margin of Error (+/-)	White, Not Hispanic	Margin of Error (+/-)
Per capita income in the past 12 months (in 2010 inflation-adjusted dollars)	\$ 20,897	\$ 6,362	\$ 26,692	\$ 2,215

Source: U.S. Census Bureau, 2008-2012 American Community Survey

For information on confidentiality protection, sampling error, nonsampling error, and definitions, see Survey Methodology.

<http://www.census.gov/acs/www/UseData/index.htm>

## Per capita Income in the Past 12 Months King and Queen County, Virginia



Source: B19301. PER CAPITA INCOME IN THE PAST 12 MONTHS (IN 2010 INFLATION-ADJUSTED DOLLARS)  
Data Set: 2008-2012 American Community Survey 5-Year Estimates

**B20017. MEDIAN EARNINGS IN THE PAST 12 MONTHS (IN 2010 INFLATION-ADJUSTED DOLLARS) BY SEX BY WORK EXPERIENCE IN THE PAST 12 MONTHS FOR THE POPULATION 16 YEARS AND OVER WITH EARNINGS IN THE PAST 12 MONTHS**

Data Set: 2008-2012 American Community Survey 5-Year Estimates

	King and Queen County, Virginia			
	African American	Margin of Error (+/-)	White, Not Hispanic	Margin of Error (+/-)
Median earnings in the past 12 months (in 2010 inflation-adjusted dollars) --				
Total:	\$ 26,406	\$ 4,443	\$ 30,306	\$ 3,548
Male --				
Total	\$ 32,917	\$ 16,233	\$ 37,966	\$ 4,947
Worked full-time, year-round in the past 12 months	\$ 36,429	\$ 4,319	\$ 47,411	\$ 14,521
Other	\$ 12,500	\$ 6,846	\$ 16,905	\$ 8,804
Female --				
Total	\$ 24,643	\$ 4,264	\$ 24,141	\$ 2,912
Worked full-time, year-round in the past 12 months	\$ 28,359	\$ 3,774	\$ 27,303	\$ 3,538
Other	\$ 16,711	\$ 8,834	\$ 6,111	\$ 2,942

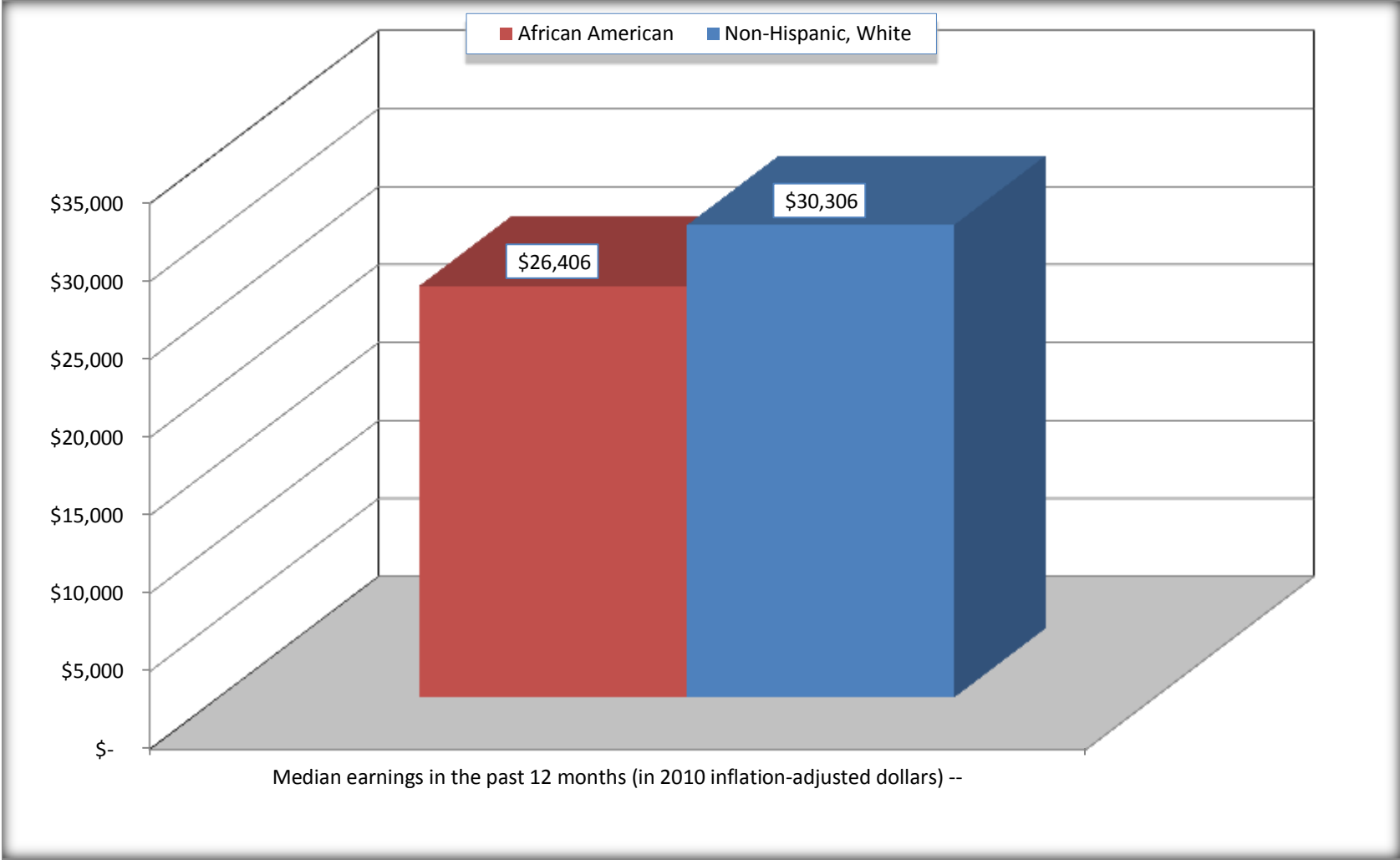
Source: U.S. Census Bureau, 2008-2012 American Community Survey

For information on confidentiality protection, sampling error, nonsampling error, and definitions, see Survey Methodology.

<http://www.census.gov/acs/www/UseData/index.htm>



**Median earnings in the Past 12 Months (16 Years and Over with Earnings)**  
**King and Queen County, Virginia**



Source: B20017. MEDIAN EARNINGS IN THE PAST 12 MONTHS (IN 2010 INFLATION-ADJUSTED DOLLARS) BY SEX BY WORK EXPERIENCE IN THE PAST 12 MONTHS FOR THE POPULATION 16 YEARS AND OVER WITH EARNINGS IN THE PAST 12 MONTHS  
Data Set: 2008-2012 American Community Survey 5-Year Estimates

**B20005. SEX BY WORK EXPERIENCE IN THE PAST 12 MONTHS BY EARNINGS IN THE PAST 12 MONTHS (IN 2010 INFLATION-ADJUSTED DOLLARS) FOR THE POPULATION 16 YEARS AND OVER**

Data Set: 2008-2012 American Community Survey 5-Year Estimates

	King and Queen County, Virginia					
	African American	Margin of Error (+/-)	% of AA Total	White, Not Hispanic	Margin of Error (+/-)	% of NHW Total
<b>Total:</b>	<b>1,839</b>	<b>99</b>	<b>100.0%</b>	<b>3,816</b>	<b>81</b>	<b>100.0%</b>
Worked full-time, year-round in the past 12 months:	736	NC	40.0%	1,817	NC	47.6%
No earnings	0	NC	0.0%	0	NC	0.0%
With earnings:	736	NC	40.0%	1,817	NC	47.6%
\$ 1 to \$ 9,999 or loss	0	NC	0.0%	54	NC	1.4%
\$ 10,000 to \$ 19,999	138	NC	7.5%	189	NC	5.0%
\$ 20,000 to \$ 29,999	205	NC	11.1%	449	NC	11.8%
\$ 30,000 to \$ 49,999	303	NC	16.5%	571	NC	15.0%
\$ 50,000 to \$ 74,999	83	NC	4.5%	388	NC	10.2%
\$ 75,000 or more	7	NC	0.4%	166	NC	4.4%
Other:	1,103	NC	60.0%	1,999	NC	52.4%
No earnings	837	NC	45.5%	1,329	NC	34.8%
With earnings: less than full time, year-round	266	NC	14.5%	670	NC	17.6%
Male:	873	74	47.5%	1,920	83	50.3%
Worked full-time, year-round in the past 12 months:	362	66	19.7%	1,023	123	26.8%
No earnings	0	17	0.0%	0	17	0.0%
With earnings:	362	66	19.7%	1,023	123	26.8%
\$ 1 to \$ 9,999 or loss	0	NC	0.0%	45	NC	1.2%
\$ 10,000 to \$ 19,999	40	NC	2.2%	76	NC	2.0%
\$ 20,000 to \$ 29,999	95	NC	5.2%	87	NC	2.3%
\$ 30,000 to \$ 49,999	144	NC	7.8%	324	NC	8.5%
\$ 50,000 to \$ 74,999	83	NC	4.5%	355	NC	9.3%
\$ 75,000 or more	0	NC	0.0%	136	NC	3.6%

	King and Queen County, Virginia					
	African American	Margin of Error (+/-)	% of AA Total	White, Not Hispanic	Margin of Error (+/-)	% of NHW Total
Other:	511	104	27.8%	897	122	23.5%
No earnings	405	101	22.0%	525	109	13.8%
With earnings:	106	67	5.8%	372	109	9.7%
Female:	966	101	52.5%	1,896	48	49.7%
Worked full-time, year-round in the past 12 months:	374	118	20.3%	794	121	20.8%
No earnings	0	17	0.0%	0	17	0.0%
With earnings:	374	118	20.3%	794	121	20.8%
\$ 1 to \$ 9,999 or loss	0	NC	0.0%	9	NC	0.2%
\$ 10,000 to \$ 19,999	98	NC	5.3%	113	NC	3.0%
\$ 20,000 to \$ 29,999	110	NC	6.0%	362	NC	9.5%
\$ 30,000 to \$ 49,999	159	NC	8.6%	247	NC	6.5%
\$ 50,000 to \$ 74,999	0	NC	0.0%	33	NC	0.9%
\$ 75,000 or more	7	NC	0.4%	30	NC	0.8%
Other:	592	140	32.2%	1,102	137	28.9%
No earnings	432	123	23.5%	804	129	21.1%
With earnings:	160	91	8.7%	298	98	7.8%

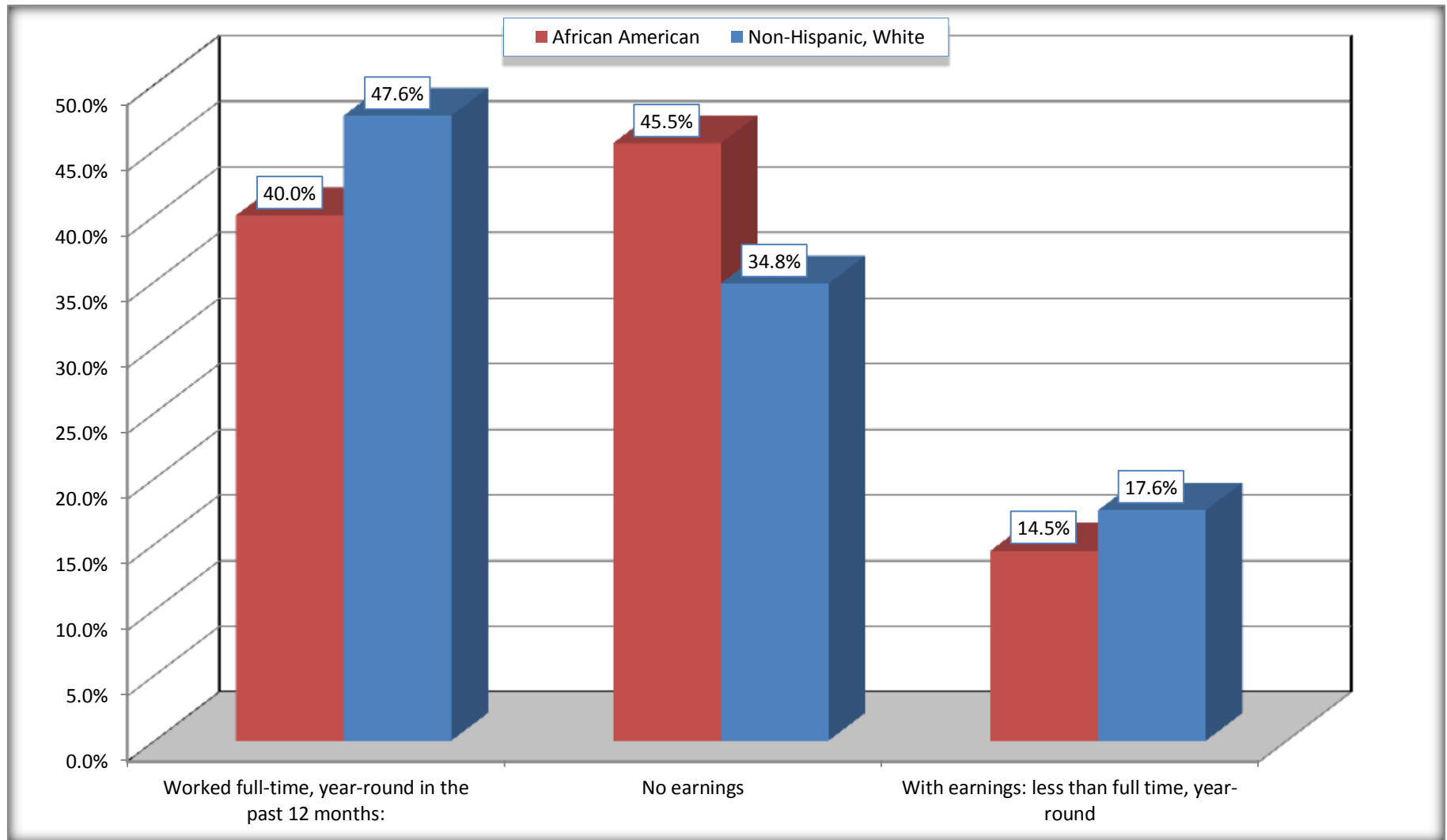
Source: U.S. Census Bureau, 2008-2012 American Community Survey

For information on confidentiality protection, sampling error, nonsampling error, and definitions, see Survey Methodology.

<http://www.census.gov/acs/www/UseData/index.htm>

# Employment and Earnings in in the Past 12 Months (16 Years and Over)

## King and Queen County, Virginia



Source: B20005. SEX BY WORK EXPERIENCE IN THE PAST 12 MONTHS BY EARNINGS IN THE PAST 12 MONTHS (IN 2010 INFLATION-ADJUSTED DOLLARS) FOR THE POPULATION 16 YEARS AND OVER

Data Set: 2008-2012 American Community Survey 5-Year Estimates

**C21001. SEX BY AGE BY VETERAN STATUS FOR THE CIVILIAN POPULATION 18 YEARS AND OVER**

Data Set: 2008-2012 American Community Survey 5-Year Estimates

	King and Queen County, Virginia					
	African American	Margin of Error (+/-)	% of AA Total	White, Not Hispanic	Margin of Error (+/-)	% of NHW Total
<b>Total:</b>	<b>1,715</b>	<b>29</b>	<b>100.0%</b>	<b>3,705</b>	<b>17</b>	<b>100.0%</b>
Veteran	161	NC	9.4%	523	NC	14.1%
Nonveteran	1,554	NC	90.6%	3,182	NC	85.9%
Male:	820	17	47.8%	1,847	17	49.9%
18 to 64 years:	653	17	38.1%	1,462	17	39.5%
Veteran	143	64	8.3%	296	90	8.0%
Nonveteran	510	65	29.7%	1,166	90	31.5%
65 years and over:	167	17	9.7%	385	17	10.4%
Veteran	18	19	1.0%	186	72	5.0%
Nonveteran	149	19	8.7%	199	72	5.4%
Female:	895	32	52.2%	1,858	17	50.1%
18 to 64 years:	650	32	37.9%	1,409	17	38.0%
Veteran	0	17	0.0%	29	40	0.8%
Nonveteran	650	32	37.9%	1,380	40	37.2%
65 years and over:	245	17	14.3%	449	17	12.1%
Veteran	0	17	0.0%	12	21	0.3%
Nonveteran	245	17	14.3%	437	21	11.8%

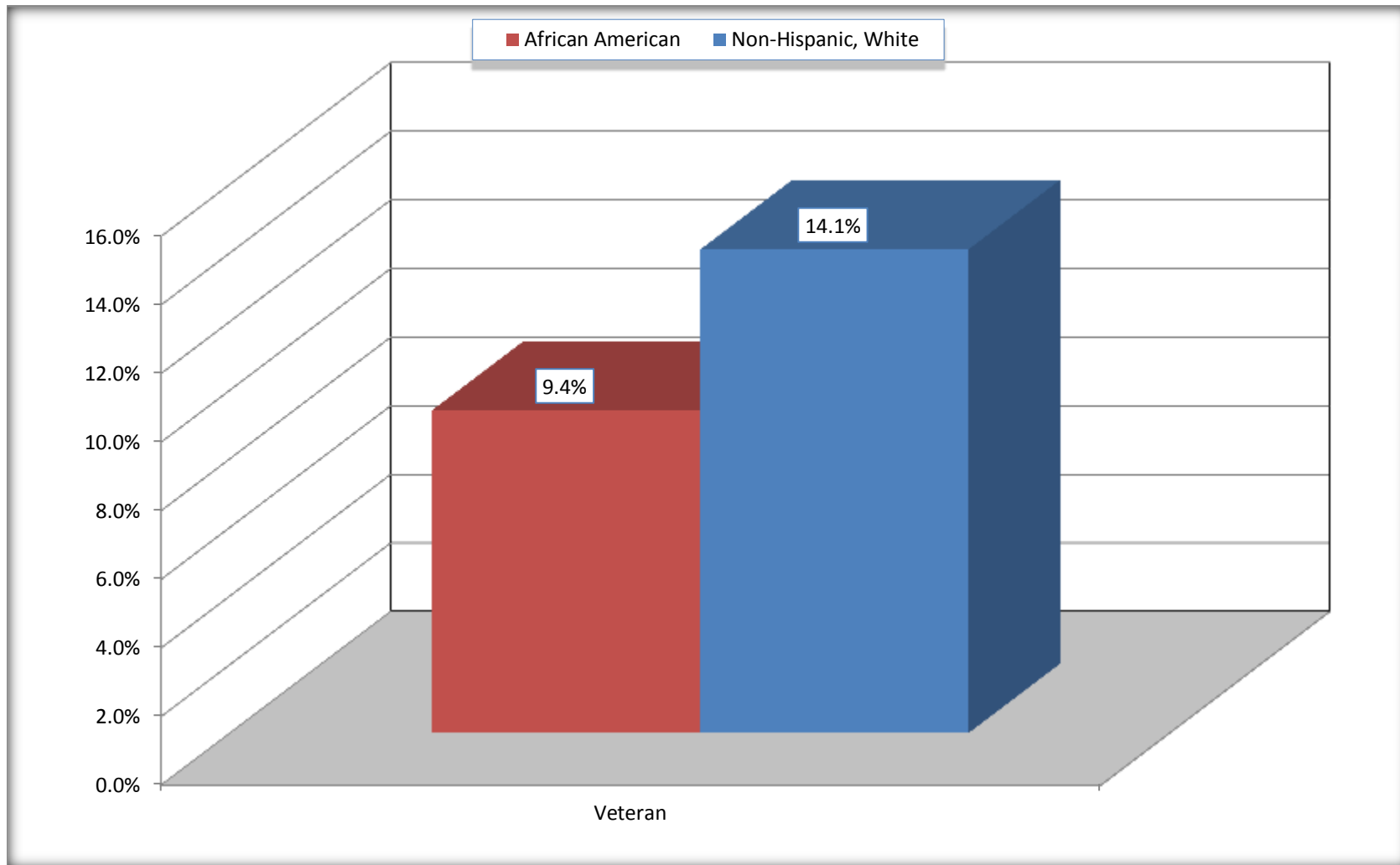
Source: U.S. Census Bureau, 2008-2012 American Community Survey

For information on confidentiality protection, sampling error, nonsampling error, and definitions, see Survey Methodology.

<http://www.census.gov/acs/www/UseData/index.htm>

# Veterans in the Civilian Population 18 Years and Over

## King and Queen County, Virginia



Source: C21001. SEX BY AGE BY VETERAN STATUS FOR THE CIVILIAN POPULATION 18 YEARS AND OVER  
Data Set: 2008-2012 American Community Survey 5-Year Estimates

**B22005. RECEIPT OF FOOD STAMPS/SNAP IN THE PAST 12 MONTHS BY RACE OF HOUSEHOLDER**

Data Set: 2008-2012 American Community Survey 5-Year Estimates

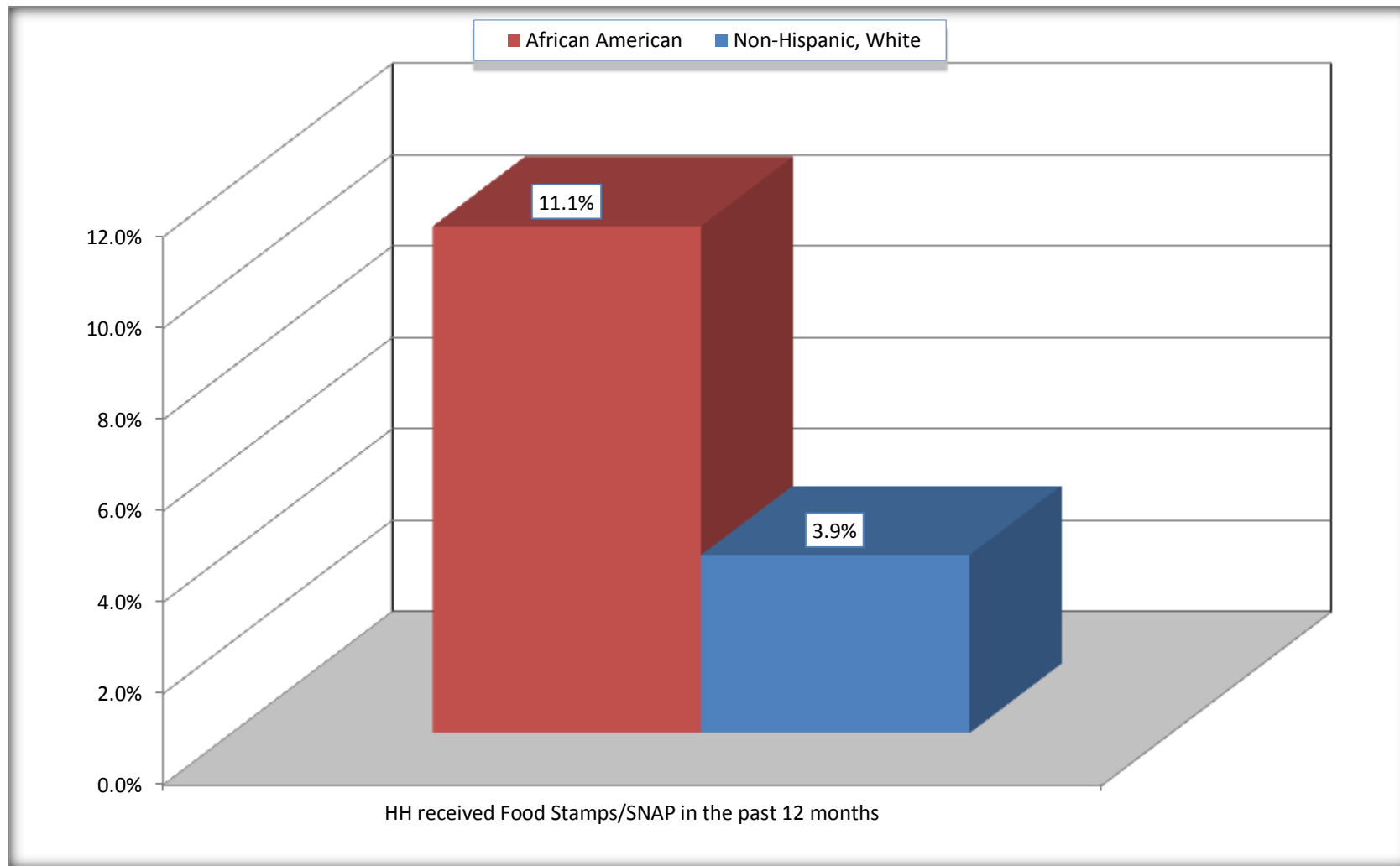
	King and Queen County, Virginia					
	African American	Margin of Error (+/-)	% of AA Total	White, Not Hispanic	Margin of Error (+/-)	% of NHW Total
<b>Total:</b>	<b>841</b>	<b>107</b>	<b>100.0%</b>	<b>2,022</b>	<b>112</b>	<b>100.0%</b>
HH received Food Stamps/SNAP in the past 12 months	93	62	11.1%	79	49	3.9%
HH did not receive Food Stamps/SNAP in the past 12 months	748	121	88.9%	1,943	116	96.1%

Source: U.S. Census Bureau, 2008-2012 American Community Survey

For information on confidentiality protection, sampling error, nonsampling error, and definitions, see Survey Methodology.

<http://www.census.gov/acs/www/UseData/index.htm>

## Receipt of Food Stamps/SNAP in the Past 12 Months by Household King and Queen County, Virginia



Source: B22005. RECEIPT OF FOOD STAMPS/SNAP IN THE PAST 12 MONTHS BY RACE OF HOUSEHOLDER  
Data Set: 2008-2012 American Community Survey 5-Year Estimates



**C23002. SEX BY AGE BY EMPLOYMENT STATUS FOR THE POPULATION 16 YEARS AND OVER**

Data Set: 2008-2012 American Community Survey 5-Year Estimates

	King and Queen County, Virginia					
	African American	Margin of Error (+/-)	% of AA Total	White, Not Hispanic	Margin of Error (+/-)	% of NHW Total
<b>Total:</b>	<b>1,839</b>	<b>99</b>	<b>100.0%</b>	<b>3,816</b>	<b>81</b>	<b>100.0%</b>
In labor force:	1,010	NC	54.9%	2,500	NC	65.5%
In Armed Forces	0	NC	0.0%	0	NC	0.0%
Civilian:	917	NC	49.9%	2,371	NC	62.1%
Employed	939	NC	51.1%	2,378	NC	62.3%
Unemployed	71	NC	3.9%	122	NC	3.2%
Not in labor force	829	NC	45.1%	1,316	NC	34.5%
Male:	873	74	47.5%	1,920	83	50.3%
16 to 64 years:	706	74	38.4%	1,535	83	40.2%
In labor force:	429	73	23.3%	1,319	86	34.6%
In Armed Forces	0	17	0.0%	0	17	0.0%
Civilian:	429	73	23.3%	1,319	86	34.6%
Employed	367	64	20.0%	1,280	97	33.5%
Unemployed	62	57	3.4%	39	36	1.0%
Not in labor force	277	104	15.1%	216	97	5.7%
65 years and over:	167	17	9.1%	385	17	10.1%
In labor force:	56	32	3.0%	65	38	1.7%
Employed	47	30	2.6%	65	38	1.7%
Unemployed	9	14	0.5%	0	17	0.0%
Not in labor force	111	32	6.0%	320	38	8.4%

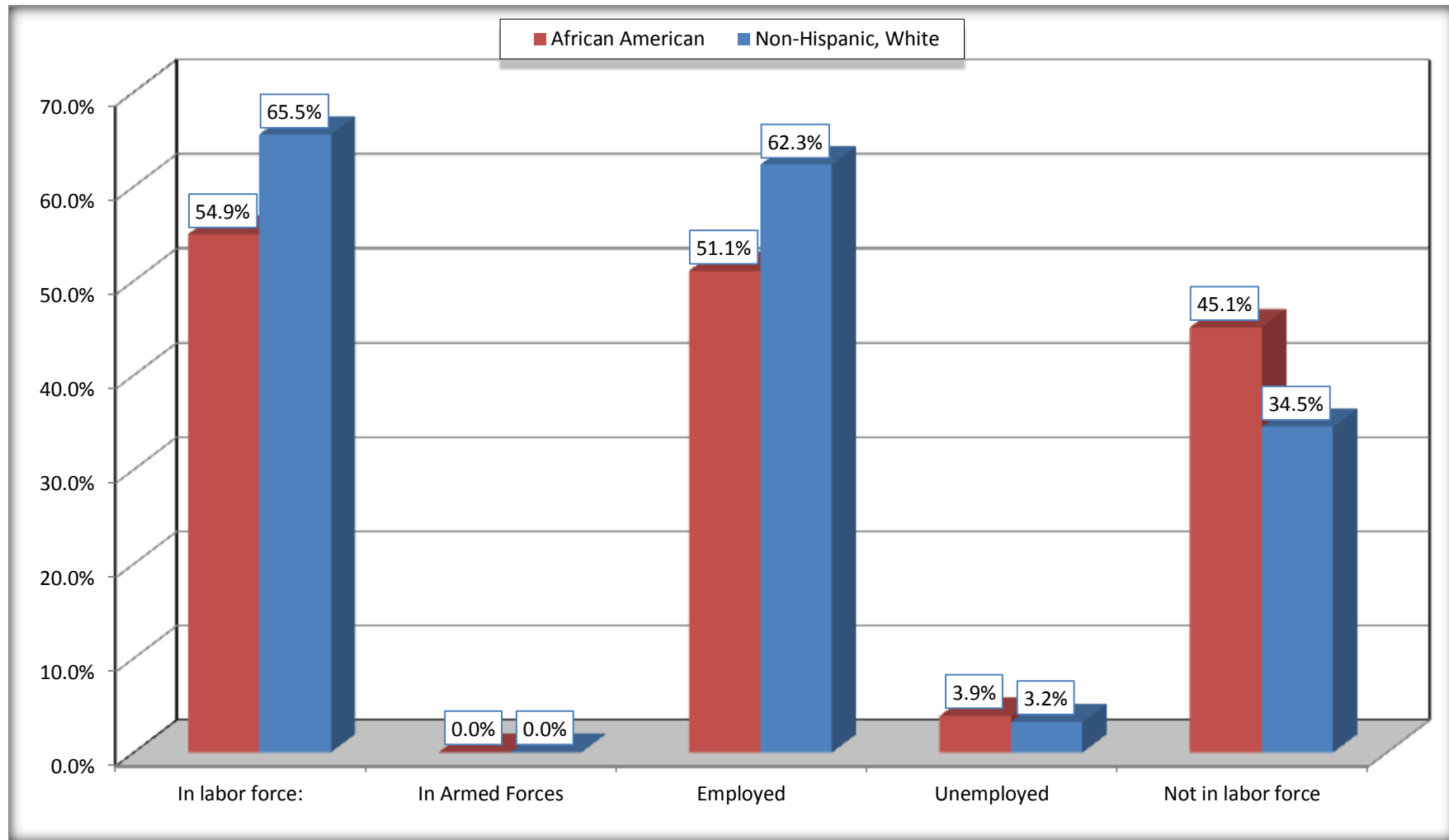
	King and Queen County, Virginia					
	African American	Margin of Error (+/-)	% of AA Total	White, Not Hispanic	Margin of Error (+/-)	% of NHW Total
Female:	966	101	52.5%	1,896	48	49.7%
16 to 64 years:	721	101	39.2%	1,447	48	37.9%
In labor force:	488	75	26.5%	1,052	106	27.6%
In Armed Forces	0	17	0.0%	0	17	0.0%
Civilian:	488	75	26.5%	1,052	106	27.6%
Employed	488	75	26.5%	969	132	25.4%
Unemployed	0	17	0.0%	83	57	2.2%
Not in labor force	233	127	12.7%	395	120	10.4%
65 years and over:	245	17	13.3%	449	17	11.8%
In labor force:	37	39	2.0%	64	48	1.7%
Employed	37	39	2.0%	64	48	1.7%
Unemployed	0	17	0.0%	0	17	0.0%
Not in labor force	208	39	11.3%	385	48	10.1%

Source: U.S. Census Bureau, 2008-2012 American Community Survey

For information on confidentiality protection, sampling error, nonsampling error, and definitions, see Survey Methodology.  
<http://www.census.gov/acs/www/UseData/index.htm>

# Employment Status for the Population 16 years and over

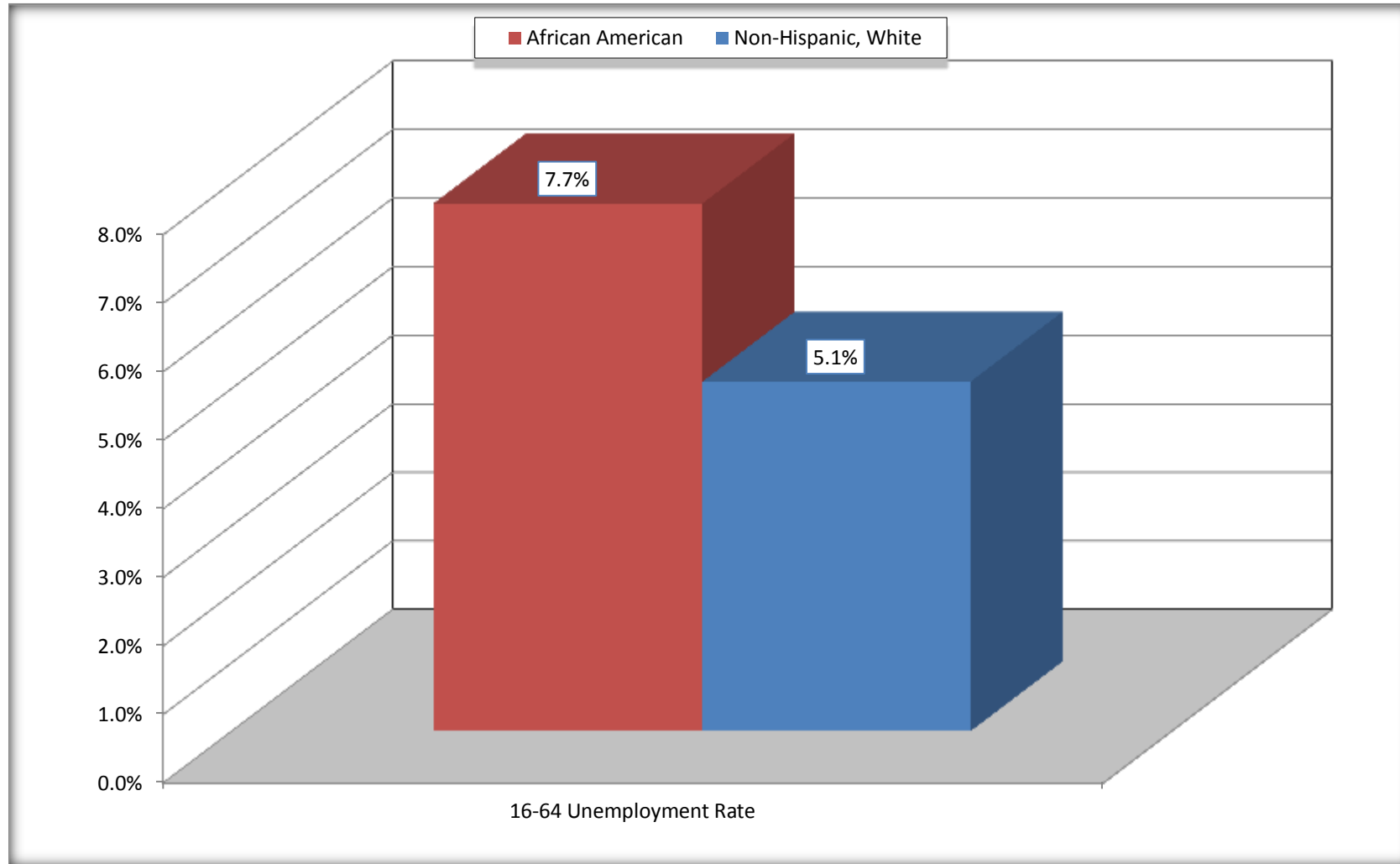
## King and Queen County, Virginia



Source: C23002. SEX BY AGE BY EMPLOYMENT STATUS FOR THE POPULATION 16 YEARS AND OVER  
Data Set: 2008-2012 American Community Survey 5-Year Estimates

# Unemployment of Working Age Population (Ages 16 to 64) (As a Percent of 16-64 Civilian Labor Force)

## King and Queen County, Virginia



Source: C23002. SEX BY AGE BY EMPLOYMENT STATUS FOR THE POPULATION 16 YEARS AND OVER  
Data Set: 2008-2012 American Community Survey 5-Year Estimates

**C24010. SEX BY OCCUPATION FOR THE CIVILIAN EMPLOYED POPULATION 16 YEARS AND OVER**

Data Set: 2008-2012 American Community Survey 5-Year Estimates

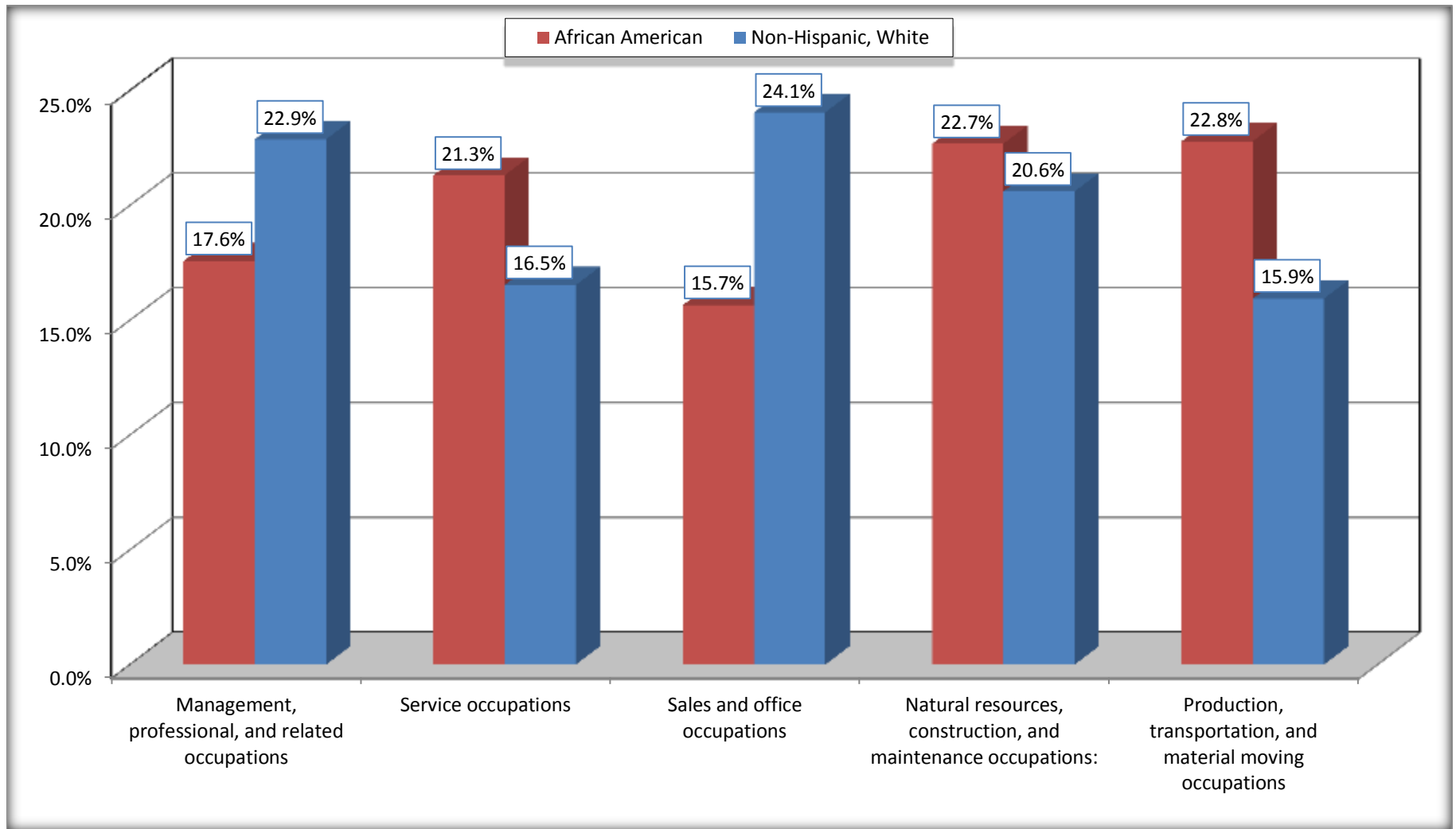
	King and Queen County, Virginia					
	African American	Margin of Error (+/-)	% of AA Total	White, Not Hispanic	Margin of Error (+/-)	% of NHW Total
<b>Total:</b>	<b>939</b>	<b>99</b>	<b>100.0%</b>	<b>2,378</b>	<b>184</b>	<b>100.0%</b>
Management, professional, and related occupations	165	NC	17.6%	544	NC	22.9%
Service occupations	200	NC	21.3%	393	NC	16.5%
Sales and office occupations	147	NC	15.7%	572	NC	24.1%
Natural resources, construction, and maintenance occupations:	213	NC	22.7%	490	NC	20.6%
Production, transportation, and material moving occupations	214	NC	22.8%	379	NC	15.9%
Male:	414	64	44.1%	1,345	104	56.6%
Management, business, science, and arts occupations:	0	17	0.0%	251	90	10.6%
Service occupations	31	30	3.3%	152	79	6.4%
Sales and office occupations	29	36	3.1%	136	60	5.7%
Natural resources, construction, and maintenance occupations:	213	64	22.7%	490	122	20.6%
Production, transportation, and material moving occupations	141	67	15.0%	316	130	13.3%
Female:	525	83	55.9%	1,033	127	43.4%
Management, professional, and related occupations	165	79	17.6%	293	106	12.3%
Service occupations	169	89	18.0%	241	113	10.1%
Sales and office occupations	118	69	12.6%	436	110	18.3%
Natural resources, construction, and maintenance occupations:	0	17	0.0%	0	17	0.0%
Production, transportation, and material moving occupations	73	64	7.8%	63	56	2.6%

Source: U.S. Census Bureau, 2008-2012 American Community Survey

For information on confidentiality protection, sampling error, nonsampling error, and definitions, see Survey Methodology.

<http://www.census.gov/acs/www/UseData/index.htm>

# Occupation for the Civilian Employed 16 Years and Over Population King and Queen County, Virginia



Source: C24010. SEX BY OCCUPATION FOR THE CIVILIAN EMPLOYED POPULATION 16 YEARS AND OVER  
Data Set: 2008-2012 American Community Survey 5-Year Estimates

**B25003. TENURE - Universe: OCCUPIED HOUSING UNITS**

Data Set: 2008-2012 American Community Survey 5-Year Estimates

	King and Queen County, Virginia					
	African American	Margin of Error (+/-)	% of AA Total	White, Not Hispanic	Margin of Error (+/-)	% of NHW Total
<b>Total:</b>	<b>841</b>	<b>107</b>	<b>100.0%</b>	<b>2,022</b>	<b>112</b>	<b>100.0%</b>
Owner occupied	697	113	82.9%	1,531	140	75.7%
Renter occupied	144	67	17.1%	491	151	24.3%

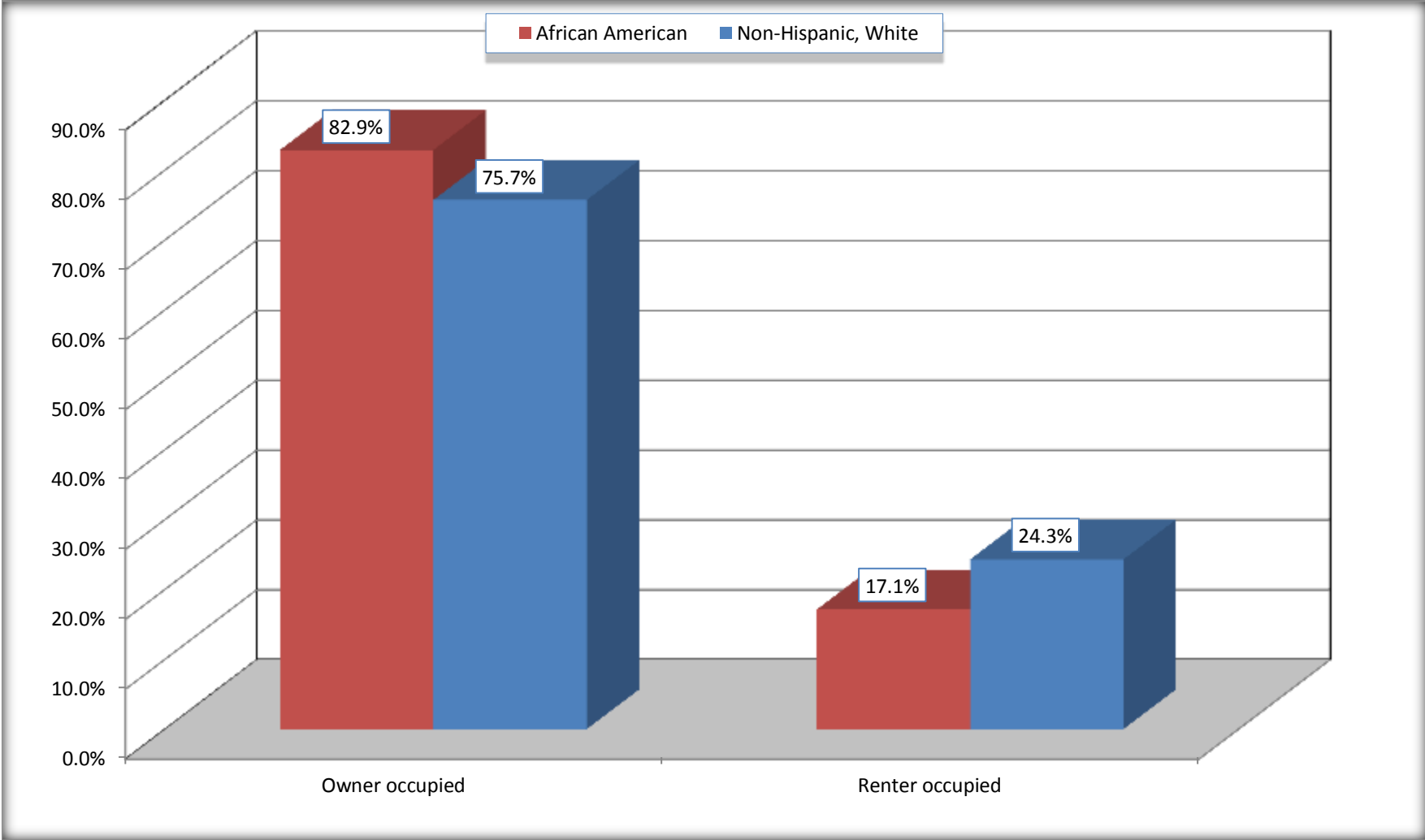
Source: U.S. Census Bureau, 2008-2012 American Community Survey

For information on confidentiality protection, sampling error, nonsampling error, and definitions, see Survey Methodology.

<http://www.census.gov/acs/www/UseData/index.h>

# Home Owners and Renters by Household

## King and Queen County, Virginia



Source: B25003. TENURE - Universe: OCCUPIED HOUSING UNITS  
Data Set: 2008-2012 American Community Survey 5-Year Estimates



**B25014. OCCUPANTS PER ROOM - Universe: OCCUPIED HOUSING UNITS**

Data Set: 2008-2012 American Community Survey 5-Year Estimates

	King and Queen County, Virginia					
	African American	Margin of Error (+/-)	% of AA Total	White, Not Hispanic	Margin of Error (+/-)	% of NHW Total
<b>Total:</b>	<b>841</b>	<b>107</b>	<b>100.0%</b>	<b>2,022</b>	<b>112</b>	<b>100.0%</b>
1.00 or less occupants per room	841	107	100.0%	2,009	111	99.4%
1.01 or more occupants per room	0	17	0.0%	13	21	0.6%

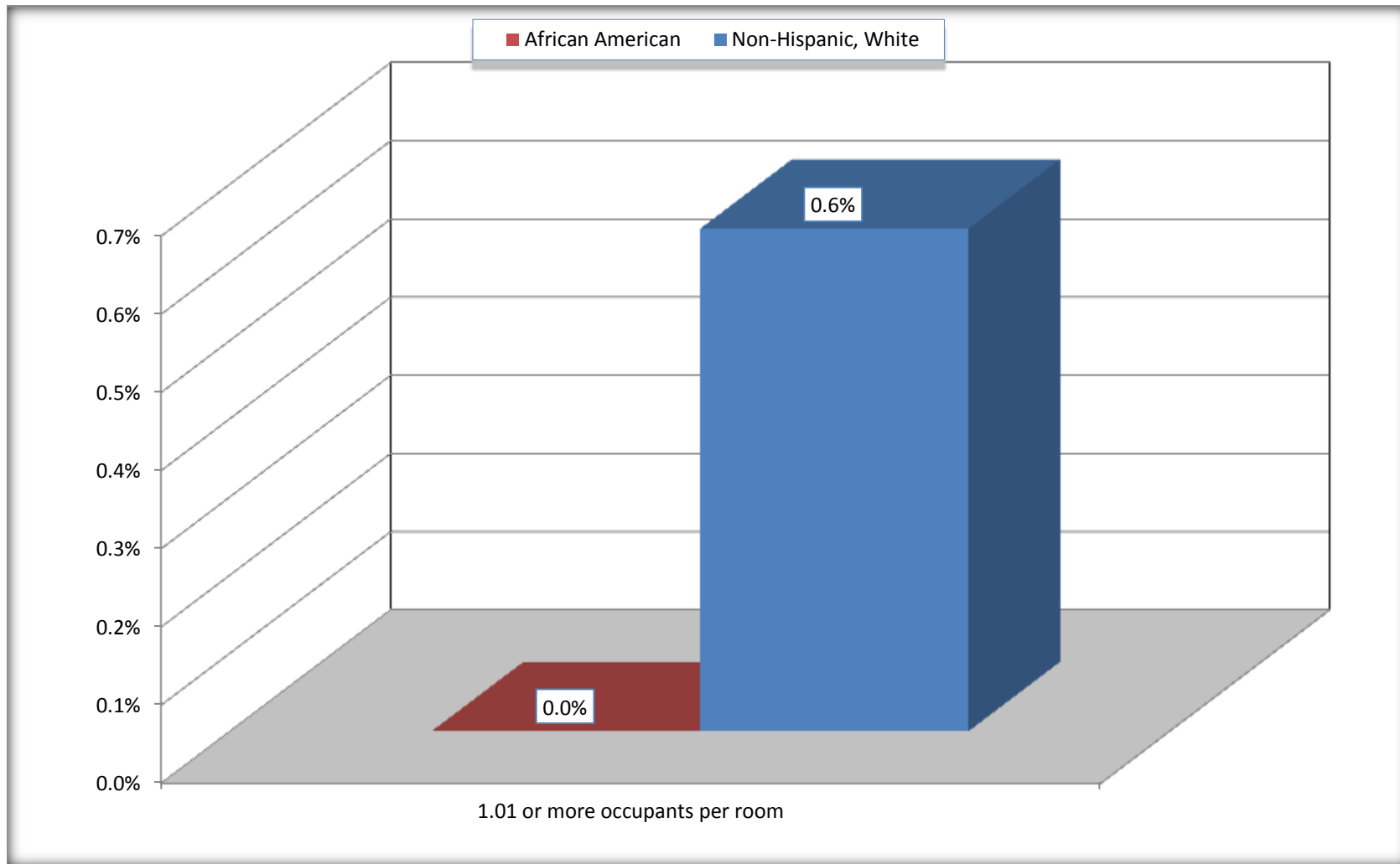
Source: U.S. Census Bureau, 2008-2012 American Community Survey

For information on confidentiality protection, sampling error, nonsampling error, and definitions, see Survey Methodology.

<http://www.census.gov/acs/www/UseData/index.ht>

# More than One Person per Room (Crowding) by Household

## King and Queen County, Virginia



Source: B25014. OCCUPANTS PER ROOM - Universe: OCCUPIED HOUSING UNITS  
Data Set: 2008-2012 American Community Survey 5-Year Estimates

**B18101. AGE BY DISABILITY STATUS**

Data Set: 2008-2012 American Community Survey 5-Year Estimates

	King and Queen County, Virginia					
	African American	Margin of Error (+/-)	% of AA Total	White, Not Hispanic	Margin of Error (+/-)	% of NHW Total
<b>Total:</b>	<b>2,148</b>	<b>45</b>	<b>100.0%</b>	<b>4,582</b>	<b>17</b>	<b>100.0%</b>
Under 18 years:	433	31	20.2%	877	57	19.1%
With a disability	0	17	0.0%	13	27	0.3%
No disability	433	31	20.2%	864	27	18.9%
18 to 64 years:	1,303	29	60.7%	2,871	17	62.7%
With a disability	207	84	9.6%	265	120	5.8%
No disability	1,096	91	51.0%	2,606	120	56.9%
65 years and over:	412	17	19.2%	834	17	18.2%
With a disability	68	39	3.2%	203	74	4.4%
No disability	344	39	16.0%	631	74	13.8%

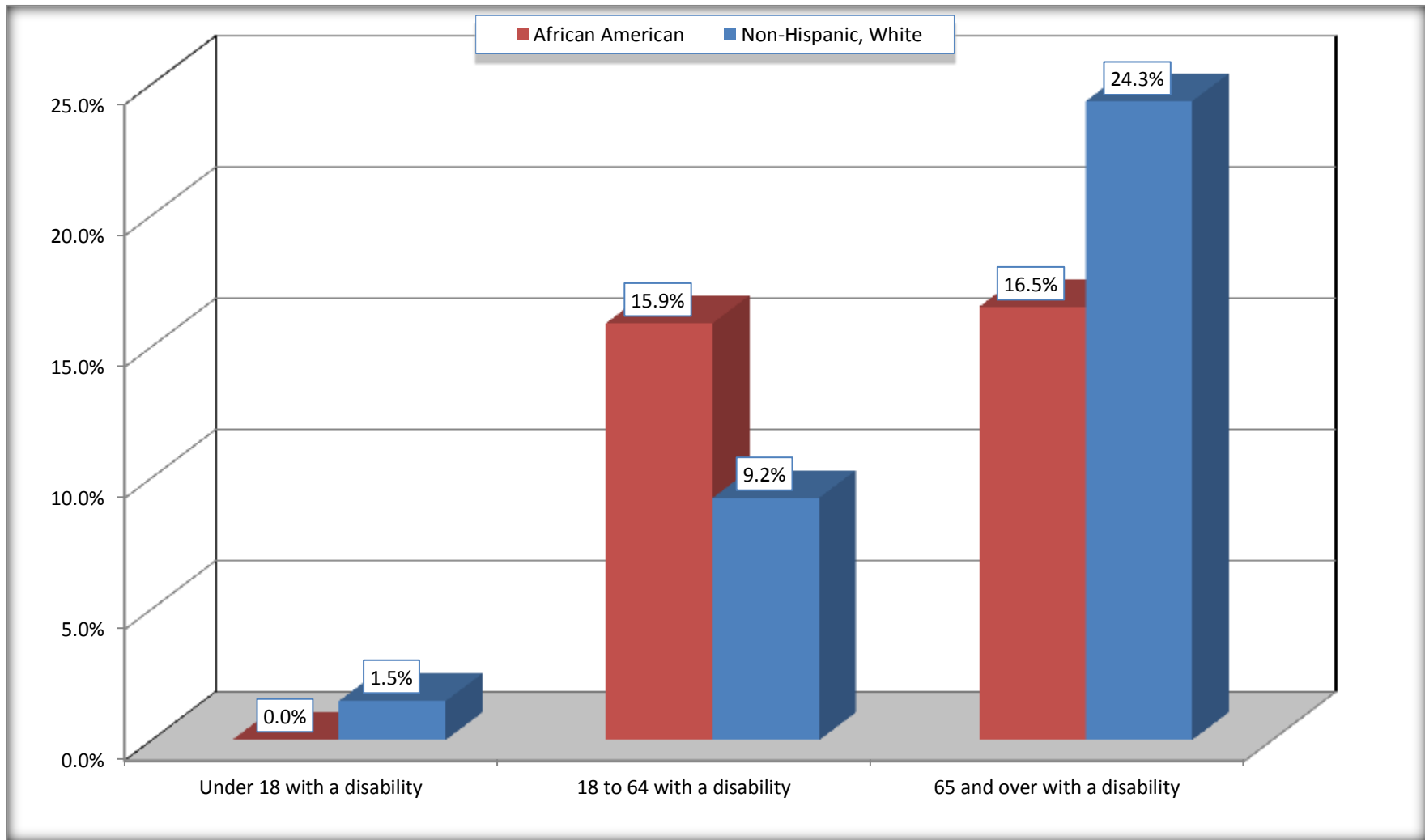
Source: U.S. Census Bureau, 2008-2012 American Community Survey

For information on confidentiality protection, sampling error, nonsampling error, and definitions, see Survey Methodology.

<http://www.census.gov/acs/www/UseData/index.htm>

# Disability by Age

## King and Queen County, Virginia



Source: B18101. AGE BY DISABILITY STATUS  
Data Set: 2008-2012 American Community Survey 5-Year Estimates

**C27001B. HEALTH INSURANCE COVERAGE STATUS BY AGE**

Data Set: 2008-2012 American Community Survey 5-Year Estimates

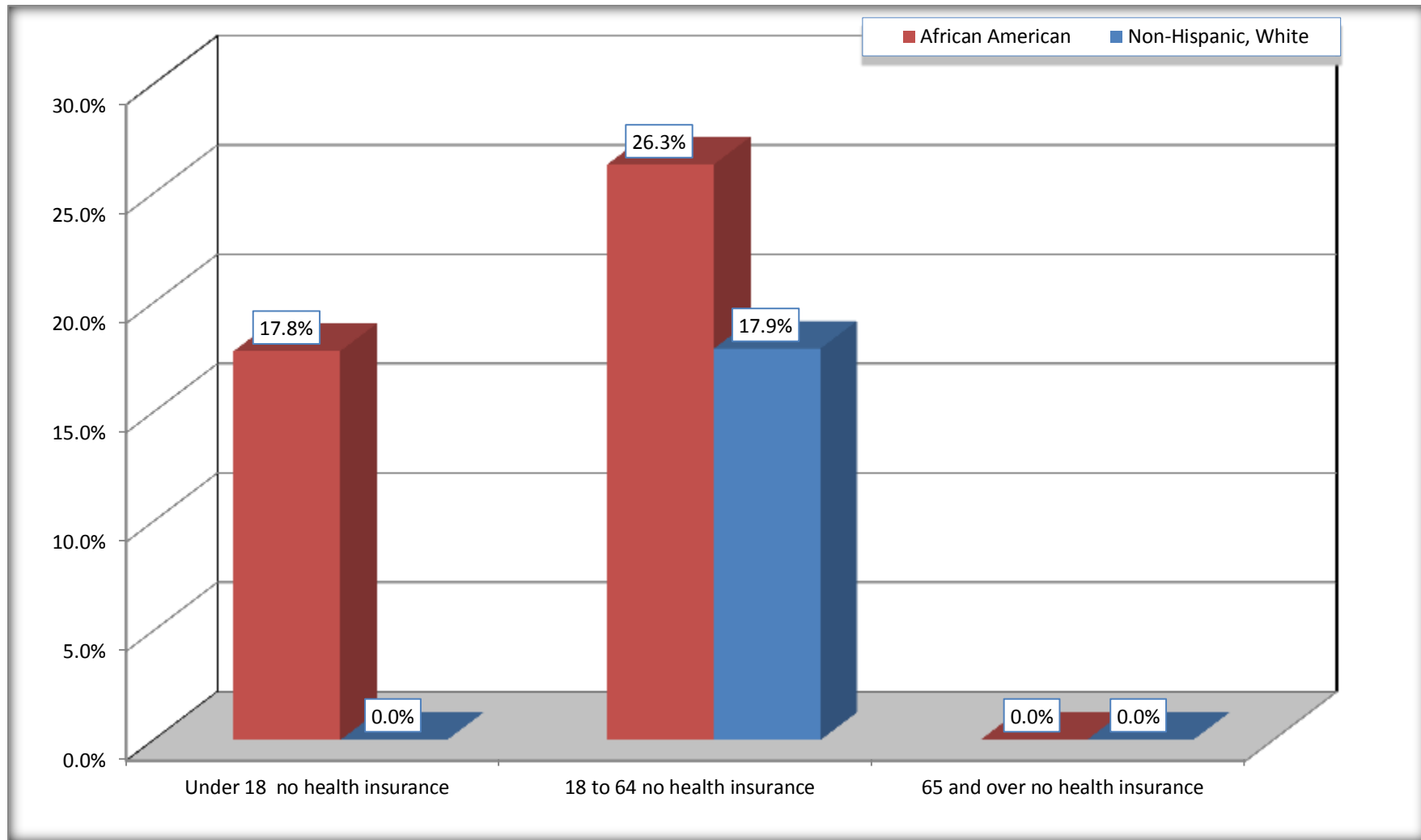
	King and Queen County, Virginia					
	African American	Margin of Error (+/-)	% of AA Total	White, Not Hispanic	Margin of Error (+/-)	% of NHW Total
<b>Total:</b>	<b>2,148</b>	<b>45</b>	<b>100.0%</b>	<b>4,582</b>	<b>17</b>	<b>100.0%</b>
Under 18 years:	433	31	20.2%	877	17	19.1%
With health insurance coverage	356	126	16.6%	877	17	19.1%
No health insurance coverage	77	121	3.6%	0	17	0.0%
18 to 64 years:	1,303	29	60.7%	2,871	17	62.7%
With health insurance coverage	960	103	44.7%	2,357	171	51.4%
No health insurance coverage	343	103	16.0%	514	171	11.2%
65 years and over:	412	17	19.2%	834	17	18.2%
With health insurance coverage	412	17	19.2%	834	17	18.2%
No health insurance coverage	0	17	0.0%	0	17	0.0%

Source: U.S. Census Bureau, 2008-2012 American Community Survey

For information on confidentiality protection, sampling error, nonsampling error, and definitions, see Survey Methodology.

<http://www.census.gov/acs/www/UseData/index.htm>

## Lack of Health Insurance Coverage by Age King and Queen County, Virginia



Source: C27001B. HEALTH INSURANCE COVERAGE STATUS BY AGE  
Data Set: 2008-2012 American Community Survey 5-Year Estimates