

# **Selected Socio-Economic Data**

## **Fort Lee CDP, Virginia**

### **African American and White, Not Hispanic**

**Data Set: 2008-2012 American Community Survey 5-Year Estimates**

[www.fairvote2020.org](http://www.fairvote2020.org)

[www.fairdata2000.com](http://www.fairdata2000.com)

[29-Dec-13](#)

**C02003.DETAILED RACE - Universe: TOTAL POPULATION**

Data Set: 2008-2012 American Community Survey 5-Year Estimates

	Fort Lee CDP, Virginia		
	Population	Margin of Error (+/-)	% of Total
<b>Total:</b>	<b>5,346</b>	<b>633</b>	<b>100.0%</b>
Population of one race:	5,235	635	97.9%
White	2,089	487	39.1%
Black or African American	2,855	490	53.4%
American Indian and Alaska Native	40	50	0.7%
Asian alone	56	56	1.0%
Native Hawaiian and Other Pacific Islander	92	46	1.7%
Some other race	103	87	1.9%
Population of two or more races:	111	88	2.1%
Two races including Some other race	23	35	0.4%
Two races excluding Some other race, and three or more races	88	79	1.6%
Population of two races:	63	48	1.2%
White; Black or African American	36	30	0.7%
White; American Indian and Alaska Native	0	17	0.0%
White; Asian	4	9	0.1%
Black or African American; American Indian and Alaska Native	0	17	0.0%
All other two race combinations	23	35	0.4%
Population of three races	48	69	0.9%
Population of four or more races	0	17	0.0%

Note: Hispanics may be of any race. See Table B03002 and chart.

Source: U.S. Census Bureau, 2008-2012 American Community Survey

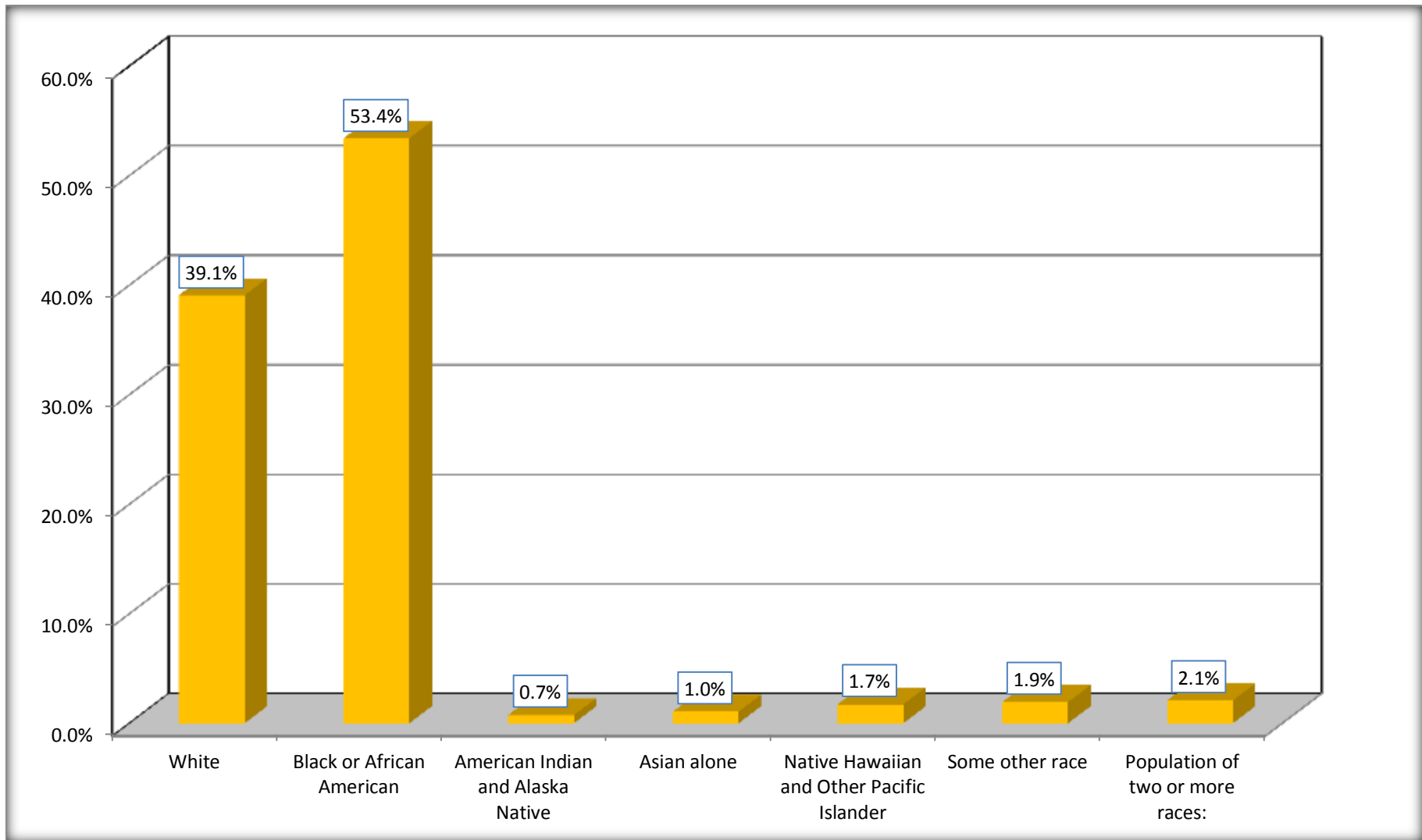
Although the American Community Survey (ACS) produces population, demographic and housing unit estimates, it is the Census Bureau's Population Estimates Program that produces and disseminates the official estimates of the population for the nation, states, counties, cities and towns and estimates of housing units for states and counties.

For information on confidentiality protection, sampling error, nonsampling error, and definitions, see Survey Methodology.

<http://www.census.gov/acs/www/UseData/index.htm>

# Population by Race

## Fort Lee CDP, Virginia



Source: C02003.DETAILED RACE - Universe: TOTAL POPULATION  
Data Set: 2008-2012 American Community Survey 5-Year Estimates

**B03002. HISPANIC OR LATINO ORIGIN BY RACE - Universe: TOTAL POPULATION**

Data Set: 2008-2012 American Community Survey 5-Year Estimates

	Fort Lee CDP, Virginia		
	Population	Margin of Error (+/-)	% of Total
<b>Total:</b>	5,346	633	<b>100.0%</b>
Not Hispanic or Latino:	4,673	610	87.4%
White alone	1,634	429	30.6%
Black or African American alone	2,783	496	52.1%
American Indian and Alaska Native alone	40	50	0.7%
Asian alone	40	42	0.7%
Native Hawaiian and Other Pacific Islander alone	92	46	1.7%
Some other race alone	0	17	0.0%
Two or more races:	84	80	1.6%
Two races including Some other race	0	17	0.0%
Two races excluding Some other race, and three or more races	84	80	1.6%
Hispanic or Latino	673	212	12.6%

Source: U.S. Census Bureau, 2008-2012 American Community Survey

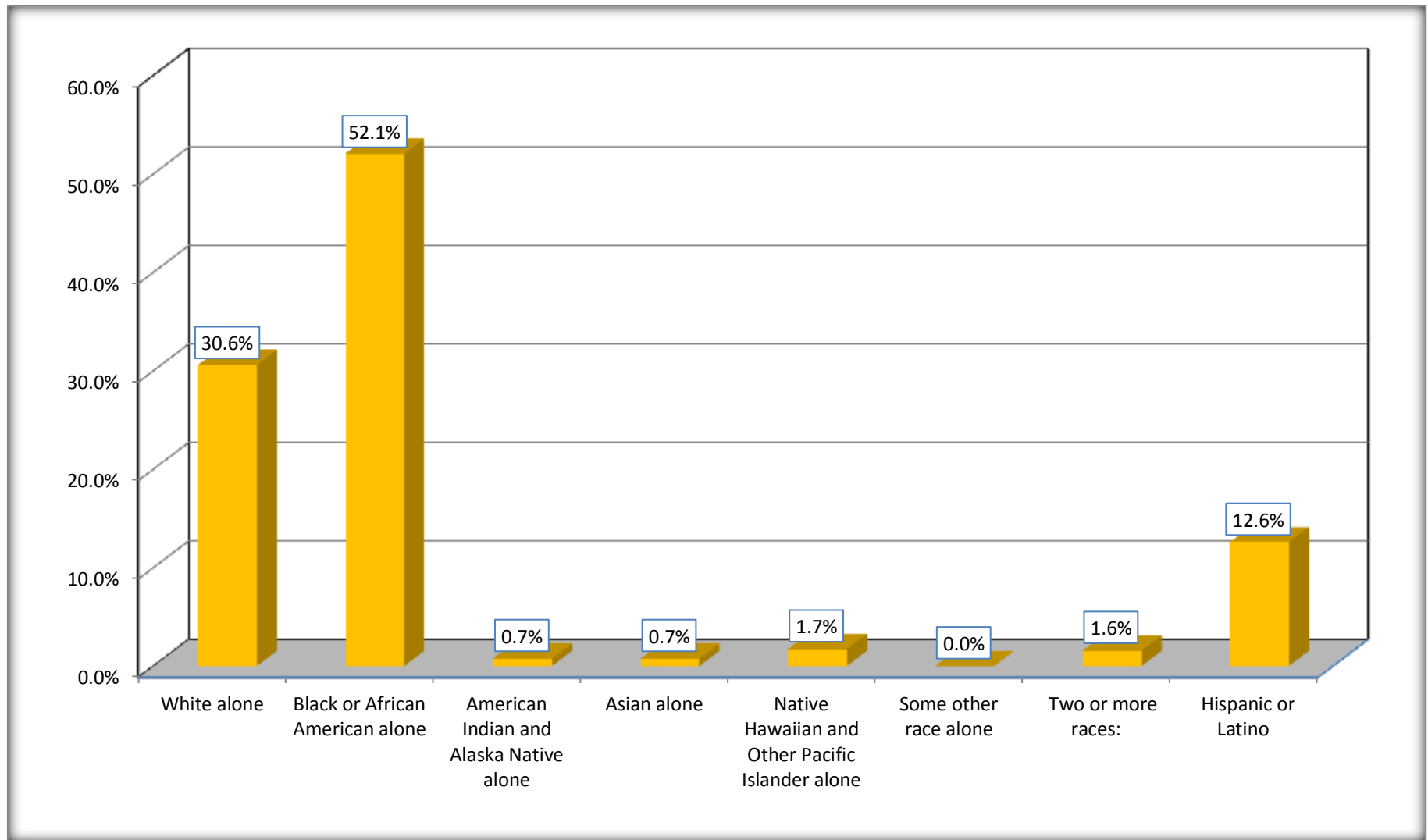
Although the American Community Survey (ACS) produces population, demographic and housing unit estimates, it is the Census Bureau's Population Estimates Program that produces and disseminates the official estimates of the population for the nation, states, counties, cities and towns and estimates of housing units for states and counties.

For information on confidentiality protection, sampling error, nonsampling error, and definitions, see Survey Methodology.

<http://www.census.gov/acs/www/UseData/index.htm>

# Non-Hispanic by Race and Hispanic Population

## Fort Lee CDP, Virginia



Source: B03002. HISPANIC OR LATINO ORIGIN BY RACE - Universe: TOTAL POPULATION  
Data Set: 2008-2012 American Community Survey 5-Year Estimates

**B03002. HISPANIC OR LATINO ORIGIN BY RACE**

Data Set: 2008-2012 American Community Survey 5-Year Estimates

	Fort Lee CDP, Virginia		
	Population	Margin of Error (+/-)	% of Total
Hispanic or Latino:	673	212	<b>100.0%</b>
White alone	455	177	67.6%
Black or African American alone	72	65	10.7%
American Indian and Alaska Native alone	0	17	0.0%
Asian alone	16	29	2.4%
Native Hawaiian and Other Pacific Islander alone	0	17	0.0%
Some other race alone	103	87	15.3%
Two or more races:	27	37	4.0%
Two races including Some other race	23	35	3.4%
Two races excluding Some other race, and three or more races	4	8	0.6%

Source: U.S. Census Bureau, 2008-2012 American Community Survey

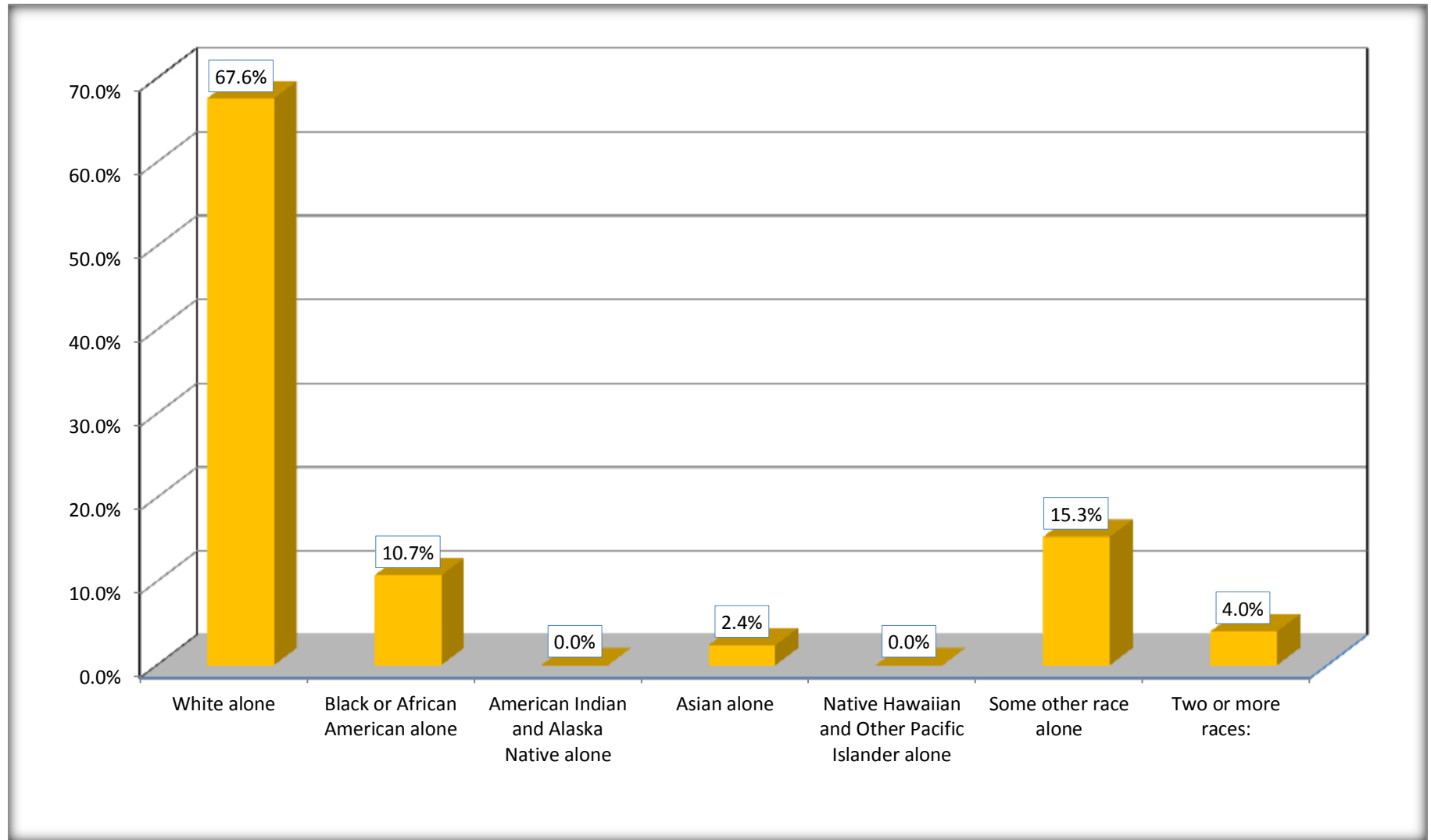
Although the American Community Survey (ACS) produces population, demographic and housing unit estimates, it is the Census Bureau's Population Estimates Program that produces and disseminates the official estimates of the population for the nation, states, counties, cities and towns and estimates of housing units for states and counties.

For information on confidentiality protection, sampling error, nonsampling error, and definitions, see Survey Methodology.

<http://www.census.gov/acs/www/UseData/index.htm>

## Hispanic or Latino Origin by Race

### Fort Lee CDP, Virginia



Source: B03002. HISPANIC OR LATINO ORIGIN BY RACE  
Data Set: 2008-2012 American Community Survey 5-Year Estimates

**B01001. SEX BY AGE**

Data Set: 2008-2012 American Community Survey 5-Year Estimates

	Fort Lee CDP, Virginia					
	African American	Margin of Error (+/-)	% of AA Total	White, Not Hispanic	Margin of Error (+/-)	% of NHW Total
<b>Total:</b>	<b>2,855</b>	<b>490</b>	<b>100.0%</b>	<b>1,634</b>	<b>429</b>	<b>100.0%</b>
Under 18 years	1,251	NC	43.8%	575	NC	35.2%
18 to 64 years	1,604	NC	56.2%	1,059	NC	64.8%
65 years and over	0	NC	0.0%	0	NC	0.0%
Male:	1,472	297	51.6%	998	389	61.1%
Under 18 years	591	NC	20.7%	279	NC	17.1%
18 to 64 years	881	NC	30.9%	719	NC	44.0%
65 years and over	0	NC	0.0%	0	NC	0.0%
Female:	1,383	256	48.4%	636	412	38.9%
Under 18 years	660	NC	23.1%	296	NC	18.1%
18 to 64 years	723	NC	25.3%	340	NC	20.8%
65 years and over	0	NC	0.0%	0	NC	0.0%

Source: U.S. Census Bureau, 2008-2012 American Community Survey

Although the American Community Survey (ACS) produces population, demographic and housing unit estimates, it is the Census Bureau's Population Estimates Program that produces and disseminates the official estimates of the population for the nation, states, counties, cities and towns and estimates of housing units for states and counties.

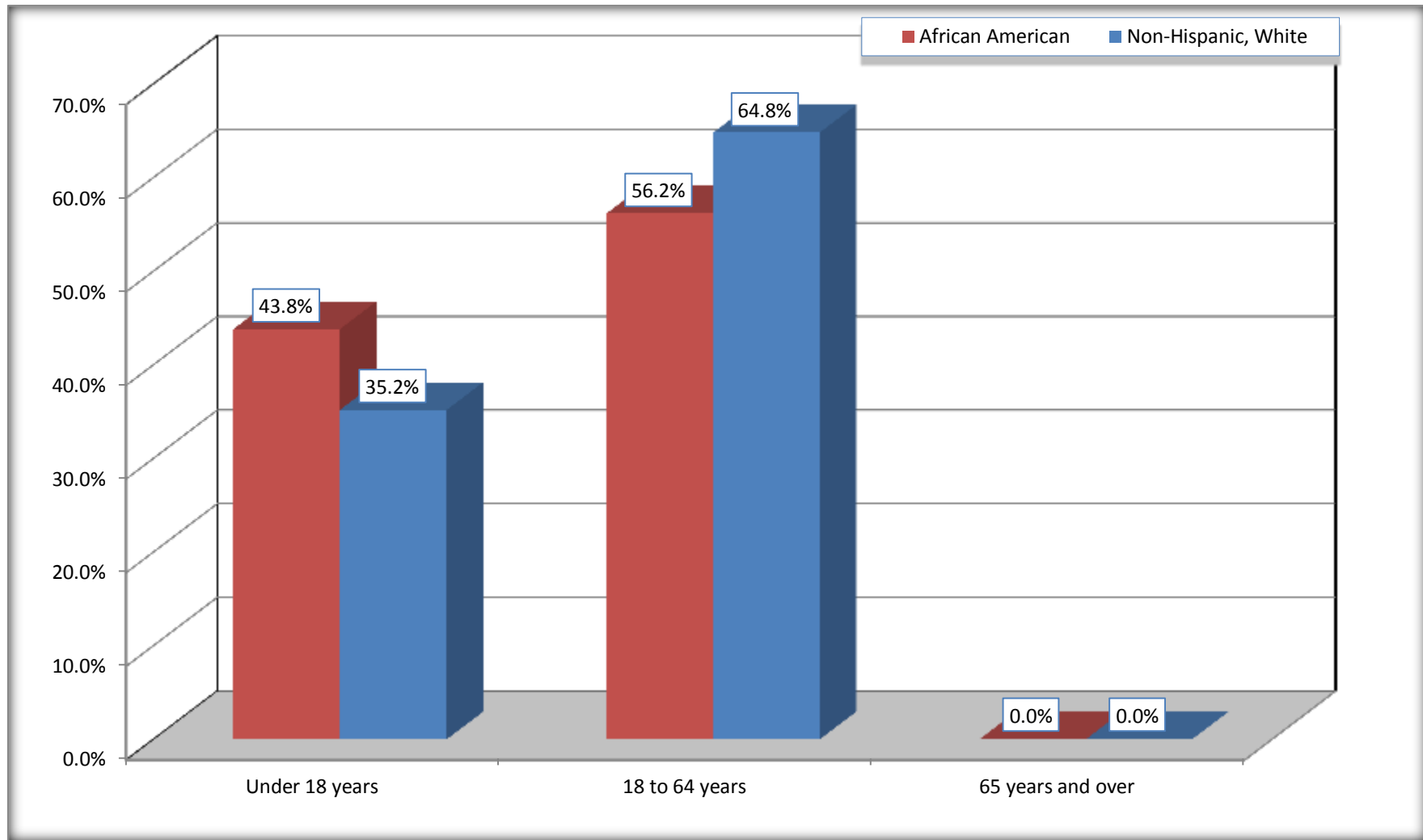
For information on confidentiality protection, sampling error, nonsampling error, and definitions, see Survey Methodology.

<http://www.census.gov/acs/www/UseData/index.htm>



# Population by Age

## Fort Lee CDP, Virginia



Source: B01001. SEX BY AGE  
Data Set: 2008-2012 American Community Survey 5-Year Estimates

**B05003. SEX BY AGE BY CITIZENSHIP STATUS**

Data Set: 2008-2012 American Community Survey 5-Year Estimates

	Fort Lee CDP, Virginia					
	African American	Margin of Error (+/-)	% of AA Total by Age	White, Not Hispanic	Margin of Error (+/-)	% of NHW Total by Age
<b>Total:</b>	<b>2,855</b>	<b>490</b>	<b>100.0%</b>	<b>1,634</b>	<b>429</b>	<b>100.0%</b>
<b>Under 18 years:</b>	<b>1,251</b>	<b>NC</b>	<b>100.0%</b>	<b>575</b>	<b>NC</b>	<b>100.0%</b>
Native	1,251	NC	100.0%	553	NC	96.2%
Foreign born:	0	NC	0.0%	22	NC	3.8%
Naturalized U.S. citizen	0	NC	0.0%	0	NC	0.0%
Not a U.S. citizen	0	NC	0.0%	22	NC	3.8%
<b>18 years and over:</b>	<b>1,604</b>	<b>NC</b>	<b>100.0%</b>	<b>1,059</b>	<b>NC</b>	<b>100.0%</b>
Native	1,533	NC	95.6%	1,021	NC	96.4%
Foreign born:	71	NC	4.4%	38	NC	3.6%
Naturalized U.S. citizen	53	NC	3.3%	0	NC	0.0%
Not a U.S. citizen	18	NC	1.1%	38	NC	3.6%
<b>Male:</b>	<b>1,472</b>	<b>297</b>	<b>51.6%</b>	<b>998</b>	<b>289</b>	<b>61.1%</b>
<b>Under 18 years:</b>	<b>591</b>	<b>159</b>	<b>100.0%</b>	<b>279</b>	<b>133</b>	<b>100.0%</b>
Native	591	159	100.0%	279	133	100.0%
Foreign born:	0	17	0.0%	0	17	0.0%
Naturalized U.S. citizen	0	17	0.0%	0	17	0.0%
Not a U.S. citizen	0	17	0.0%	0	17	0.0%
<b>18 years and over:</b>	<b>881</b>	<b>233</b>	<b>100.0%</b>	<b>719</b>	<b>234</b>	<b>100.0%</b>
Native	810	203	91.9%	719	234	100.0%
Foreign born:	71	57	8.1%	0	17	0.0%
Naturalized U.S. citizen	53	59	6.0%	0	17	0.0%
Not a U.S. citizen	18	22	2.0%	0	17	0.0%

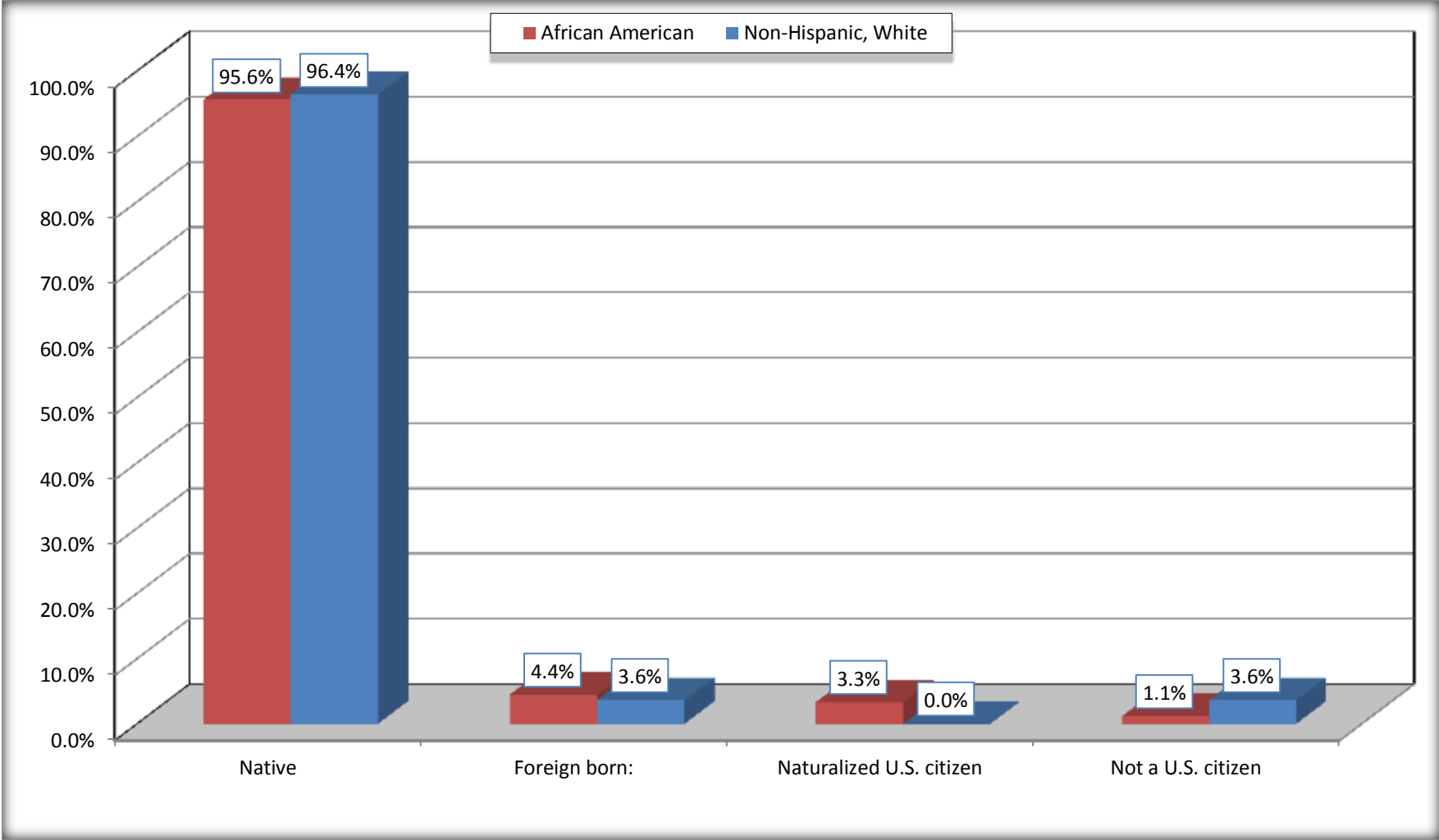
	Fort Lee CDP, Virginia					
	African American	Margin of Error (+/-)	% of AA by Age	White, Not Hispanic	Margin of Error (+/-)	% of NHW by Age
<b>Female:</b>	1,383	256	48.4%	636	204	38.9%
<b>Under 18 years:</b>	<b>660</b>	<b>170</b>	<b>100.0%</b>	<b>296</b>	<b>147</b>	<b>100.0%</b>
Native	660	170	100.0%	274	147	92.6%
Foreign born:	0	17	0.0%	22	34	7.4%
Naturalized U.S. citizen	0	17	0.0%	0	17	0.0%
Not a U.S. citizen	0	17	0.0%	22	34	7.4%
<b>18 years and over:</b>	<b>723</b>	<b>141</b>	<b>100.0%</b>	<b>340</b>	<b>88</b>	<b>100.0%</b>
Native	723	141	100.0%	302	84	88.8%
Foreign born:	0	17	0.0%	38	35	11.2%
Naturalized U.S. citizen	0	17	0.0%	0	17	0.0%
Not a U.S. citizen	0	17	0.0%	38	35	11.2%

Source: U.S. Census Bureau, 2008-2012 American Community Survey

For information on confidentiality protection, sampling error, nonsampling error, and definitions, see Survey Methodology.  
<http://www.census.gov/acs/www/UseData/index.htm>

# Citizenship Status of Voting Age Population (18 and Over)

## Fort Lee CDP, Virginia



Source: B05003. SEX BY AGE BY CITIZENSHIP STATUS  
Data Set: 2008-2012 American Community Survey 5-Year Estimates

**B07004. GEOGRAPHICAL MOBILITY IN THE PAST YEAR BY RACE FOR CURRENT RESIDENCE IN THE UNITED STATES - Universe:  
POPULATION 1 YEAR AND OVER**

Data Set: 2008-2012 American Community Survey 5-Year Estimates

	Fort Lee CDP, Virginia					
	African American	Margin of Error (+/-)	% of AA Total	White, Not Hispanic	Margin of Error (+/-)	% of NHW Total
<b>Total:</b>	<b>2,836</b>	<b>487</b>	<b>100.0%</b>	<b>1,572</b>	<b>400</b>	<b>100.0%</b>
Same house 1 year ago	1,774	462	62.6%	664	320	42.2%
Moved within same county	27	35	1.0%	92	115	5.9%
Moved from different county within same state	80	105	2.8%	148	97	9.4%
Moved from different state	828	372	29.2%	602	238	38.3%
Moved from abroad	127	102	4.5%	66	53	4.2%

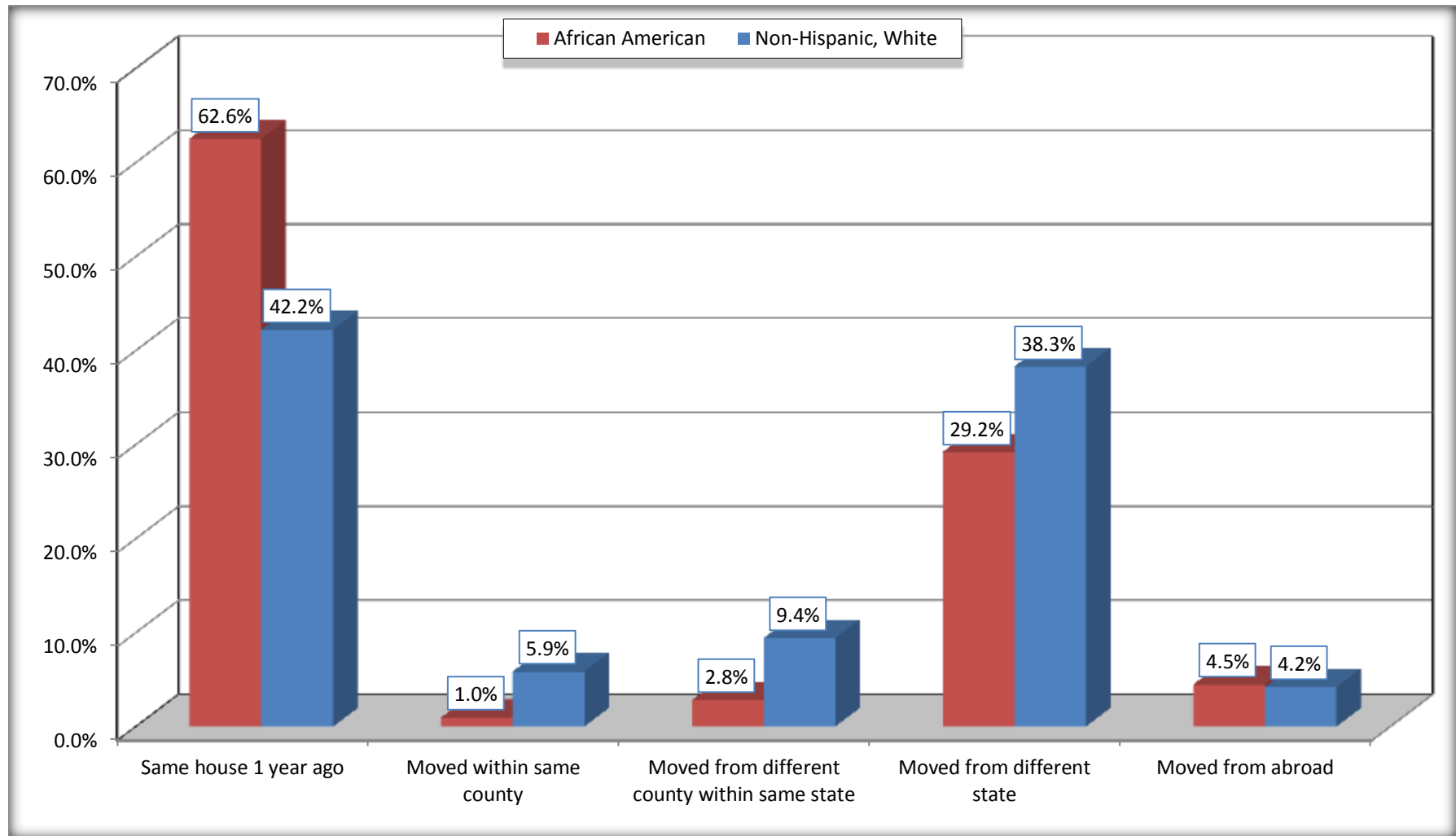
Source: U.S. Census Bureau, 2008-2012 American Community Survey

For information on confidentiality protection, sampling error, nonsampling error, and definitions, see Survey Methodology.

<http://www.census.gov/acs/www/UseData/index.htm>

# Geographical Mobility in the Past Year (Population 1 Year and Over)

## Fort Lee CDP, Virginia



Source: B07004. GEOGRAPHICAL MOBILITY IN THE PAST YEAR BY RACE FOR CURRENT RESIDENCE IN THE UNITED STATES - Universe: POPULATION 1 YEAR AND OVER

Data Set: 2008-2012 American Community Survey 5-Year Estimates

**B08105. MEANS OF TRANSPORTATION TO WORK - Universe: WORKERS 16 YEARS AND OVER**

Data Set: 2008-2012 American Community Survey 5-Year Estimates

	Fort Lee CDP, Virginia					
	African American	Margin of Error (+/-)	% of AA Total	White, Not Hispanic	Margin of Error (+/-)	% of NHW Total
<b>Total:</b>	1261	282	<b>100.0%</b>	831	245	<b>100.0%</b>
Car, truck, or van - drove alone	907	196	71.9%	395	138	47.5%
Car, truck, or van - carpooled	18	29	1.4%	11	17	1.3%
Public transportation (excluding taxicab)	150	162	11.9%	134	123	16.1%
Walked	25	38	2.0%	32	34	3.9%
Taxicab, motorcycle, bicycle, or other means	64	63	5.1%	7	11	0.8%
Worked at home	97	72	7.7%	252	187	30.3%

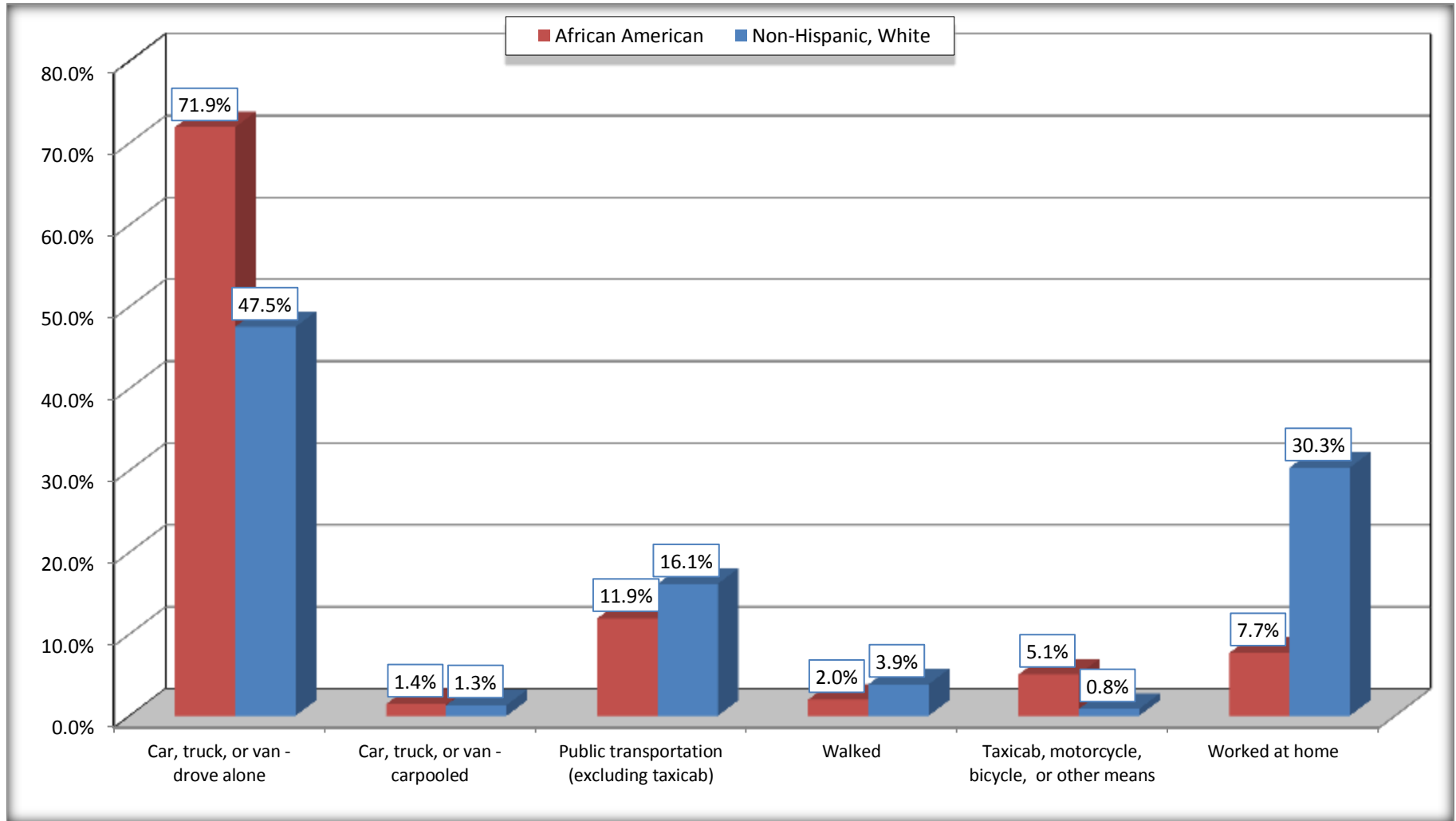
Source: U.S. Census Bureau, 2008-2012 American Community Survey

For information on confidentiality protection, sampling error, nonsampling error, and definitions, see Survey Methodology.

<http://www.census.gov/acs/www/UseData/index.htm>

# Means of Transportation to Work (Workers 16 Years and Over)

## Fort Lee CDP, Virginia



Source: B08105. MEANS OF TRANSPORTATION TO WORK - Universe: WORKERS 16 YEARS AND OVER  
Data Set: 2008-2012 American Community Survey 5-Year Estimates



**B11002. HOUSEHOLD TYPE BY RELATIVES AND NONRELATIVES FOR POPULATION IN HOUSEHOLDS**

Data Set: 2008-2012 American Community Survey 5-Year Estimates

	Fort Lee CDP, Virginia					
	African American	Margin of Error (+/-)	% of AA Total	White, Not Hispanic	Margin of Error (+/-)	% of NHW Total
<b>Total:</b>	2385	442	<b>100.0%</b>	1217	410	<b>100.0%</b>
In family households	2366	441	99.2%	1199	412	98.5%
In nonfamily households	19	31	0.8%	18	19	1.5%

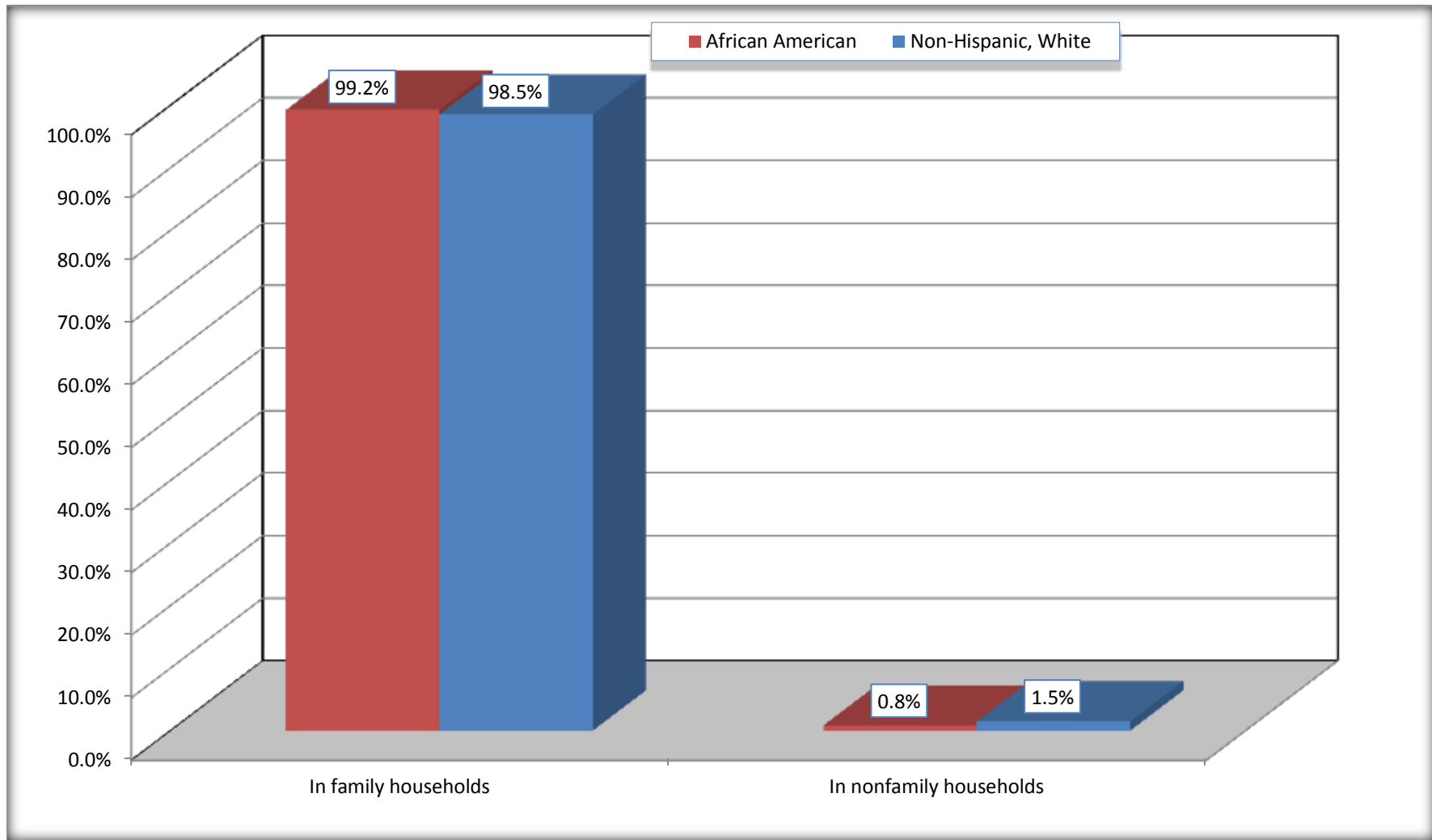
Source: U.S. Census Bureau, 2008-2012 American Community Survey

For information on confidentiality protection, sampling error, nonsampling error, and definitions, see Survey Methodology.

<http://www.census.gov/acs/www/UseData/index.htm>

# Household Type for Population in Households

## Fort Lee CDP, Virginia



Source: B11002. HOUSEHOLD TYPE BY RELATIVES AND NONRELATIVES FOR POPULATION IN HOUSEHOLDS  
Data Set: 2008-2012 American Community Survey 5-Year Estimates

**B12002. MARITAL STATUS FOR THE POPULATION 15 YEARS AND OVER**

Data Set: 2008-2012 American Community Survey 5-Year Estimates

	Fort Lee CDP, Virginia					
	African American	Margin of Error (+/-)	% of AA Total	White, Not Hispanic	Margin of Error (+/-)	% of NHW Total
<b>Total:</b>	<b>1,849</b>	<b>344</b>	<b>100.0%</b>	<b>1,128</b>	<b>280</b>	<b>100.0%</b>
Never married	729	NC	39.4%	422	NC	37.4%
Now married (except separated)	1,041	NC	56.3%	634	NC	56.2%
Separated	39	NC	2.1%	18	NC	1.6%
Widowed	0	NC	0.0%	0	NC	0.0%
Divorced	40	NC	2.2%	54	NC	4.8%
<b>Male:</b>	<b>1,013</b>	<b>242</b>	<b>54.8%</b>	<b>721</b>	<b>235</b>	<b>63.9%</b>
Never married	336	135	18.2%	281	175	24.9%
Now married (except separated)	677	173	36.6%	374	110	33.2%
Separated	0	17	0.0%	18	19	1.6%
Widowed	0	17	0.0%	0	17	0.0%
Divorced	0	17	0.0%	48	48	4.3%
<b>Female:</b>	<b>836</b>	<b>161</b>	<b>45.2%</b>	<b>407</b>	<b>119</b>	<b>36.1%</b>
Never married	393	113	21.3%	141	79	12.5%
Now married (except separated)	364	101	19.7%	260	79	23.0%
Separated	39	51	2.1%	0	17	0.0%
Widowed	0	17	0.0%	0	17	0.0%
Divorced	40	33	2.2%	6	10	0.5%

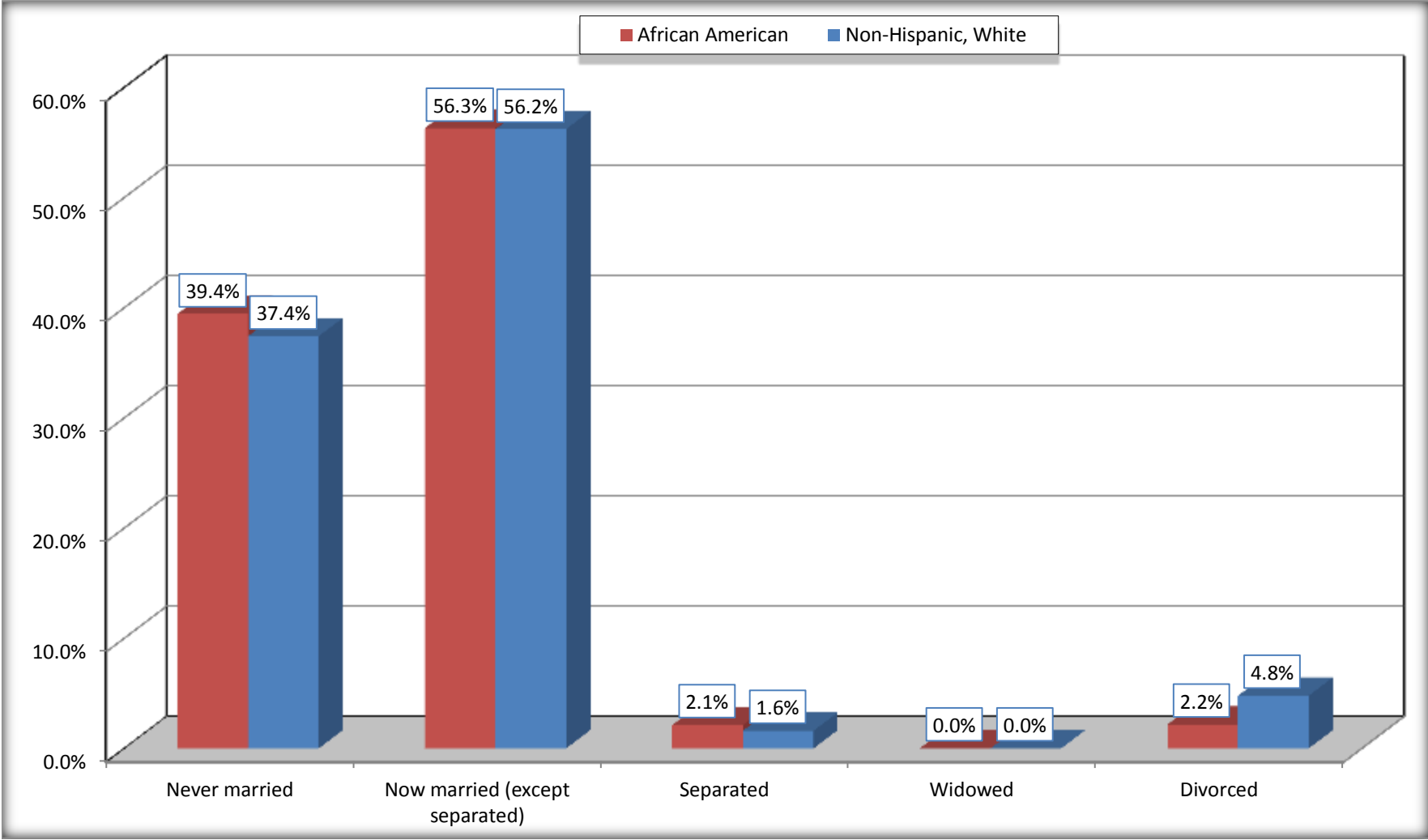
Source: U.S. Census Bureau, 2008-2012 American Community Survey

For information on confidentiality protection, sampling error, nonsampling error, and definitions, see Survey Methodology.

<http://www.census.gov/acs/www/UseData/index.htm>

# Marital Status for the Population 15 Years and Over

## Fort Lee CDP, Virginia



Source: B12002. MARITAL STATUS FOR THE POPULATION 15 YEARS AND OVER  
Data Set: 2008-2012 American Community Survey 5-Year Estimates

**C15002. SEX BY EDUCATIONAL ATTAINMENT FOR THE POPULATION 25 YEARS AND OVER**

Data Set: 2008-2012 American Community Survey 5-Year Estimates

	Fort Lee CDP, Virginia					
	African American	Margin of Error (+/-)	% of AA Total	White, Not Hispanic	Margin of Error (+/-)	% of NHW Total
<b>Total:</b>	<b>1,135</b>	<b>231</b>	<b>100.0%</b>	<b>641</b>	<b>176</b>	<b>100.0%</b>
Less than high school diploma	9	NC	0.8%	6	NC	0.9%
High school graduate, GED, or alternative	337	NC	29.7%	155	NC	24.2%
Some college or associate's degree	579	NC	51.0%	313	NC	48.8%
Bachelor's degree or higher	210	NC	18.5%	167	NC	26.1%
Male:	641	168	56.5%	402	128	62.7%
Less than high school diploma	0	17	0.0%	0	17	0.0%
High school graduate, GED, or alternative	151	84	13.3%	67	52	10.5%
Some college or associate's degree	334	134	29.4%	244	91	38.1%
Bachelor's degree or higher	156	84	13.7%	91	59	14.2%
Female:	494	108	43.5%	239	75	37.3%
Less than high school diploma	9	13	0.8%	6	10	0.9%
High school graduate, GED, or alternative	186	95	16.4%	88	61	13.7%
Some college or associate's degree	245	81	21.6%	69	42	10.8%
Bachelor's degree or higher	54	40	4.8%	76	55	11.9%

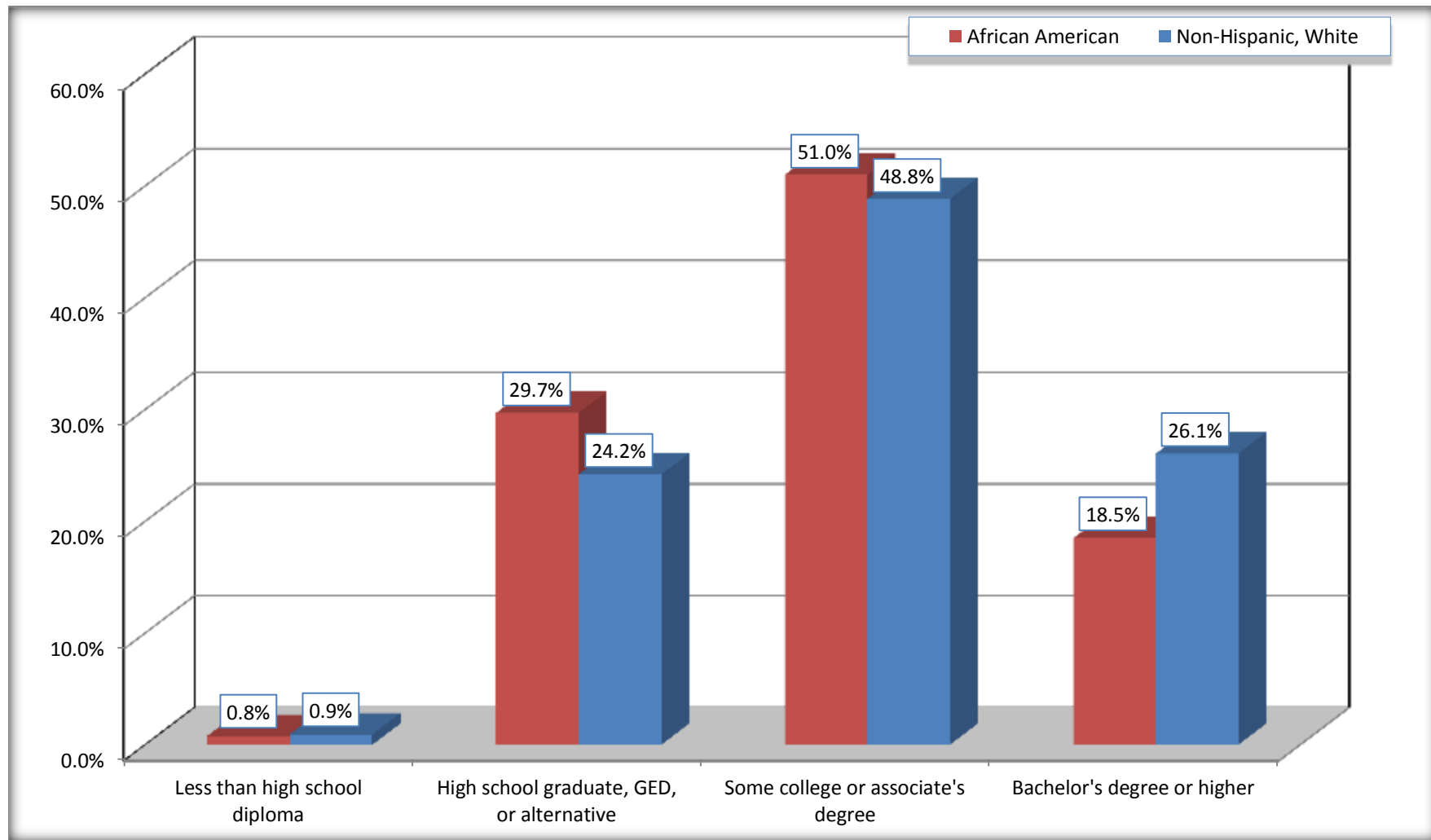
Source: U.S. Census Bureau, 2008-2012 American Community Survey

For information on confidentiality protection, sampling error, nonsampling error, and definitions, see Survey Methodology.

<http://www.census.gov/acs/www/UseData/index.htm>

# Educational Attainment for the Population 25 Years and Older

## Fort Lee CDP, Virginia



Source: C15002. SEX BY EDUCATIONAL ATTAINMENT FOR THE POPULATION 25 YEARS AND OVER  
Data Set: 2008-2012 American Community Survey 5-Year Estimates

**B16005. NATIVITY BY LANGUAGE SPOKEN AT HOME BY ABILITY TO SPEAK ENGLISH FOR THE POPULATION 5 YEARS AND OVER**

Data Set: 2008-2012 American Community Survey 5-Year Estimates

	Fort Lee CDP, Virginia					
	African American	Margin of Error (+/-)	% of AA Total	White, Not Hispanic	Margin of Error (+/-)	% of NHW Total
<b>Total:</b>	<b>2,569</b>	<b>447</b>	<b>100.0%</b>	<b>1,437</b>	<b>362</b>	<b>100.0%</b>
Speak only English	2,461	NC	95.8%	1,252	NC	87.1%
Speak another language	108	NC	4.2%	185	NC	12.9%
Speak English "very well"	104	NC	4.0%	133	NC	9.3%
Speak English "less than very well"	4	NC	0.2%	52	NC	3.6%
Native:	2,498	425	97.2%	1,377	361	95.8%
Speak only English	2,408	432	93.7%	1,244	321	86.6%
Speak another language	90	75	3.5%	133	113	9.3%
Speak English "very well"	86	71	3.3%	120	112	8.4%
Speak English "less than very well"	4	8	0.2%	13	19	0.9%
Foreign born:	71	57	2.8%	60	64	4.2%
Speak only English	53	59	2.1%	8	13	0.6%
Speak another language	18	22	0.7%	52	62	3.6%
Speak English "very well"	18	22	0.7%	13	19	0.9%
Speak English "less than very well"	0	17	0.0%	39	59	2.7%

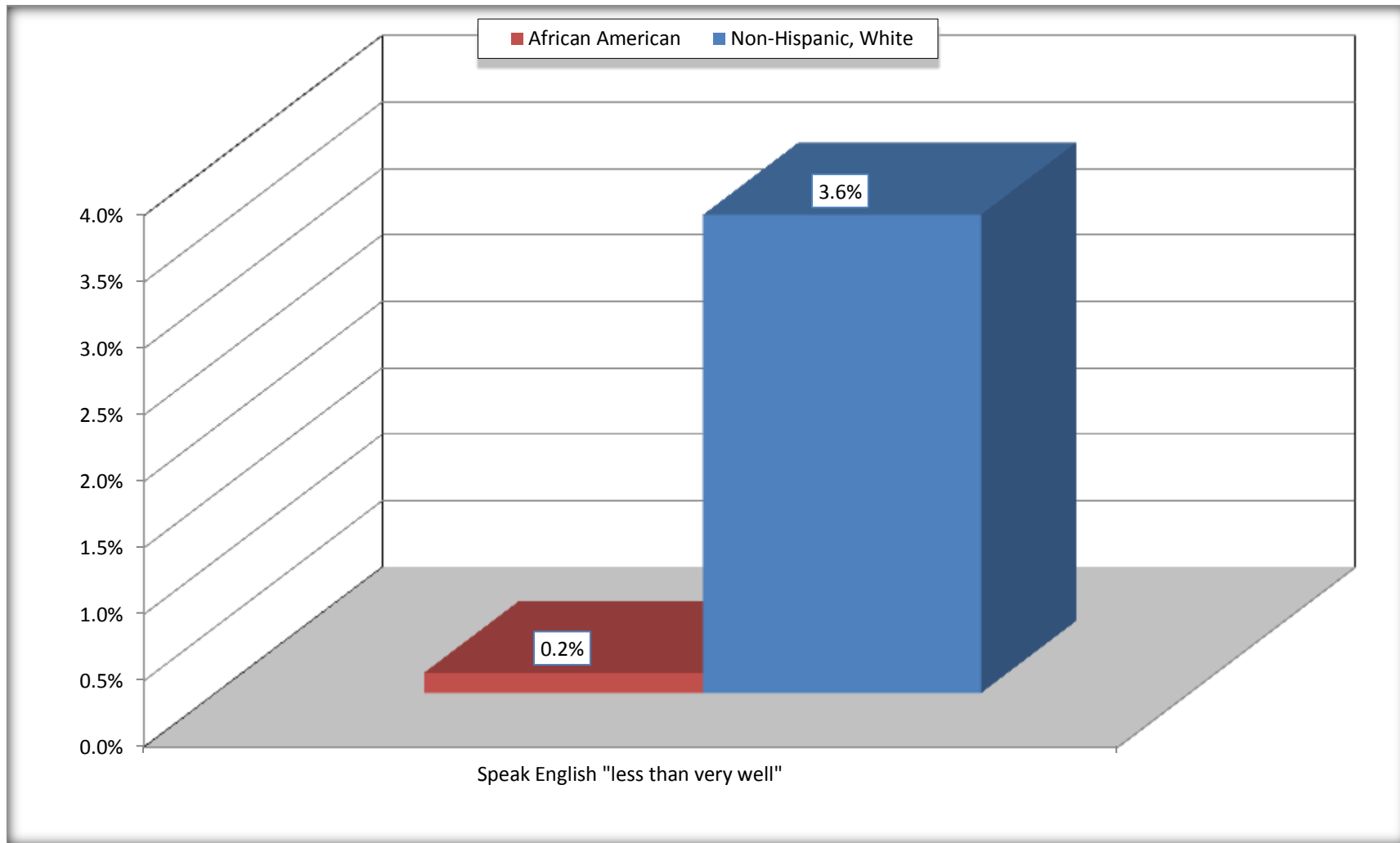
Source: U.S. Census Bureau, 2008-2012 American Community Survey

For information on confidentiality protection, sampling error, nonsampling error, and definitions, see Survey Methodology.

<http://www.census.gov/acs/www/UseData/index.htm>

# Speak English "Less than Very Well" (Population 5 Years and Over)

## Fort Lee CDP, Virginia



Source: B16005. NATIVITY BY LANGUAGE SPOKEN AT HOME BY ABILITY TO SPEAK ENGLISH FOR THE POPULATION 5 YEARS AND OVER  
Data Set: 2008-2012 American Community Survey 5-Year Estimates



**B17010. POVERTY STATUS IN THE PAST 12 MONTHS OF FAMILIES BY FAMILY TYPE BY PRESENCE OF RELATED CHILDREN UNDER 18 YEARS**

Data Set: 2008-2012 American Community Survey 5-Year Estimates

	Fort Lee CDP, Virginia					
	African American	Margin of Error (+/-)	% of AA Total	White, Not Hispanic	Margin of Error (+/-)	% of NHW Total
<b>Total:</b>	<b>588</b>	<b>127</b>	<b>100.0%</b>	<b>281</b>	<b>95</b>	<b>100.0%</b>
Income in the past 12 months below poverty level:	37	44	6.3%	13	22	4.6%
Married-couple family:	37	44	6.3%	13	22	4.6%
With related children under 18 years	7	10	1.2%	13	22	4.6%
Other family:	0	17	0.0%	0	17	0.0%
Male householder, no wife present	0	17	0.0%	0	17	0.0%
With related children under 18 years	0	17	0.0%	0	17	0.0%
Female householder, no husband present	0	17	0.0%	0	17	0.0%
With related children under 18 years	0	17	0.0%	0	17	0.0%
Income in the past 12 months at or above poverty level:	551	129	93.7%	268	88	95.4%
Married-couple family:	443	131	75.3%	255	88	90.7%
With related children under 18 years	407	126	69.2%	208	76	74.0%
Other family:	108	61	18.4%	13	20	4.6%
Male householder, no wife present	0	17	0.0%	0	17	0.0%
With related children under 18 years	0	17	0.0%	0	17	0.0%
Female householder, no husband present	108	61	18.4%	13	20	4.6%
With related children under 18 years	103	60	17.5%	13	20	4.6%

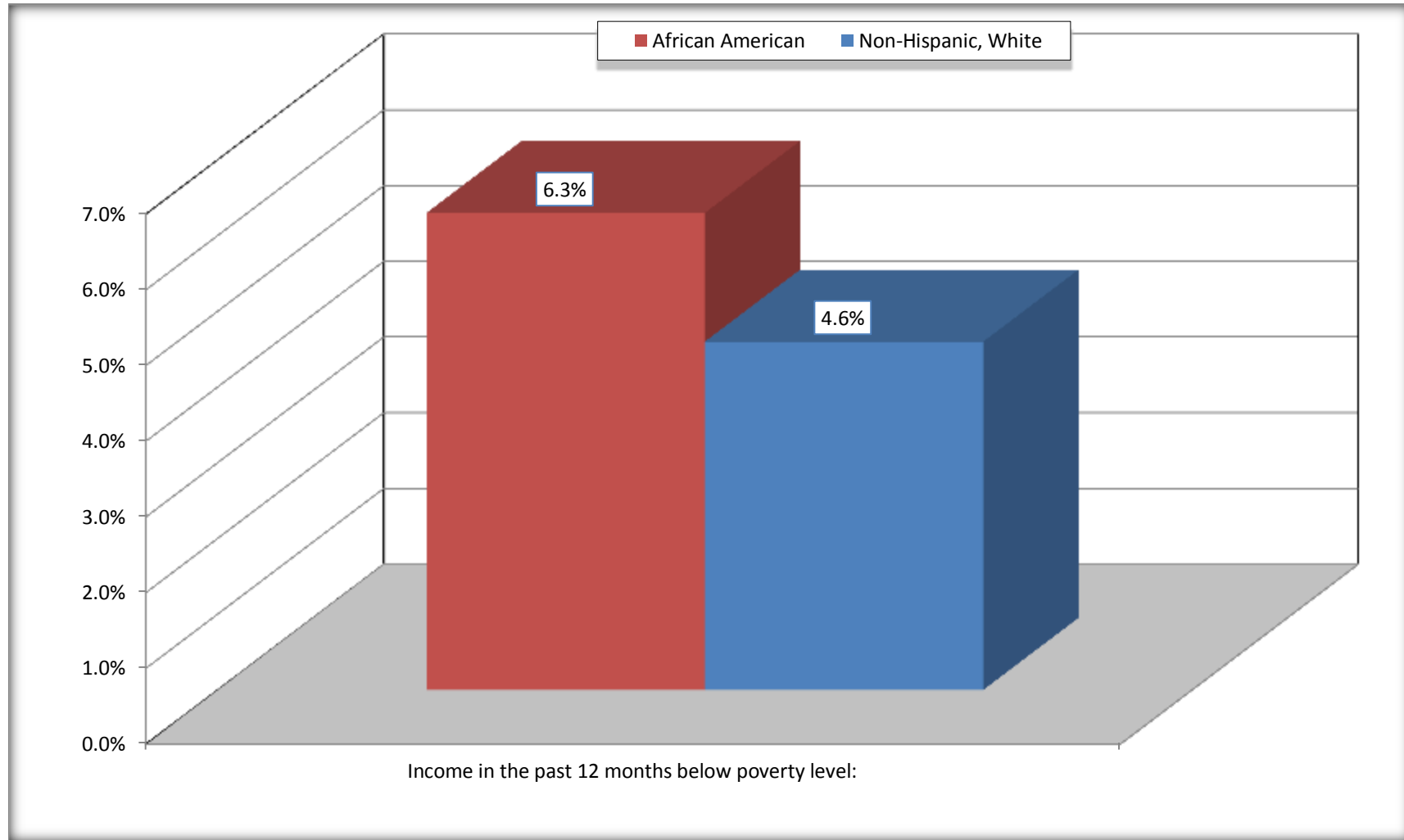
Source: U.S. Census Bureau, 2008-2012 American Community Survey

For information on confidentiality protection, sampling error, nonsampling error, and definitions, see Survey Methodology.

<http://www.census.gov/acs/www/UseData/index.htm>

# Family Households Below Poverty in the Past 12 Months

## Fort Lee CDP, Virginia

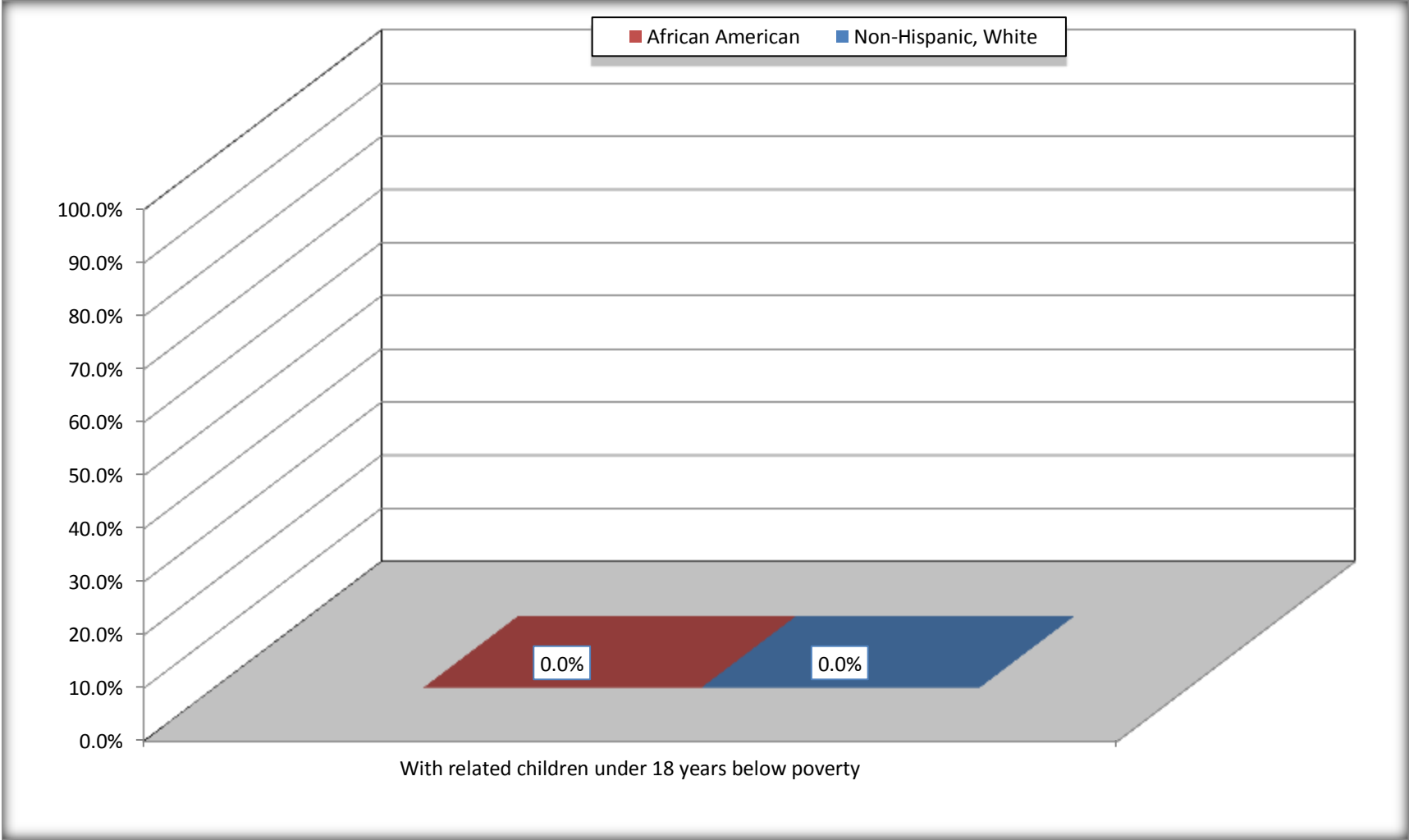


Source: B17010. POVERTY STATUS IN THE PAST 12 MONTHS OF FAMILIES BY FAMILY TYPE BY PRESENCE OF RELATED CHILDREN UNDER 18 YEARS

Data Set: 2008-2012 American Community Survey 5-Year Estimates

# Female-headed Households with Related Children Below Poverty in the Past 12 Months

## Fort Lee CDP, Virginia



Source: B17010. POVERTY STATUS IN THE PAST 12 MONTHS OF FAMILIES BY FAMILY TYPE BY PRESENCE OF RELATED CHILDREN UNDER 18 YEARS

Data Set: 2008-2012 American Community Survey 5-Year Estimates

**B17020 POVERTY STATUS IN THE PAST 12 MONTHS BY AGE - Universe: POPULATION FOR WHOM POVERTY STATUS IS DETERMINED**

Data Set: 2008-2012 American Community Survey 5-Year Estimates

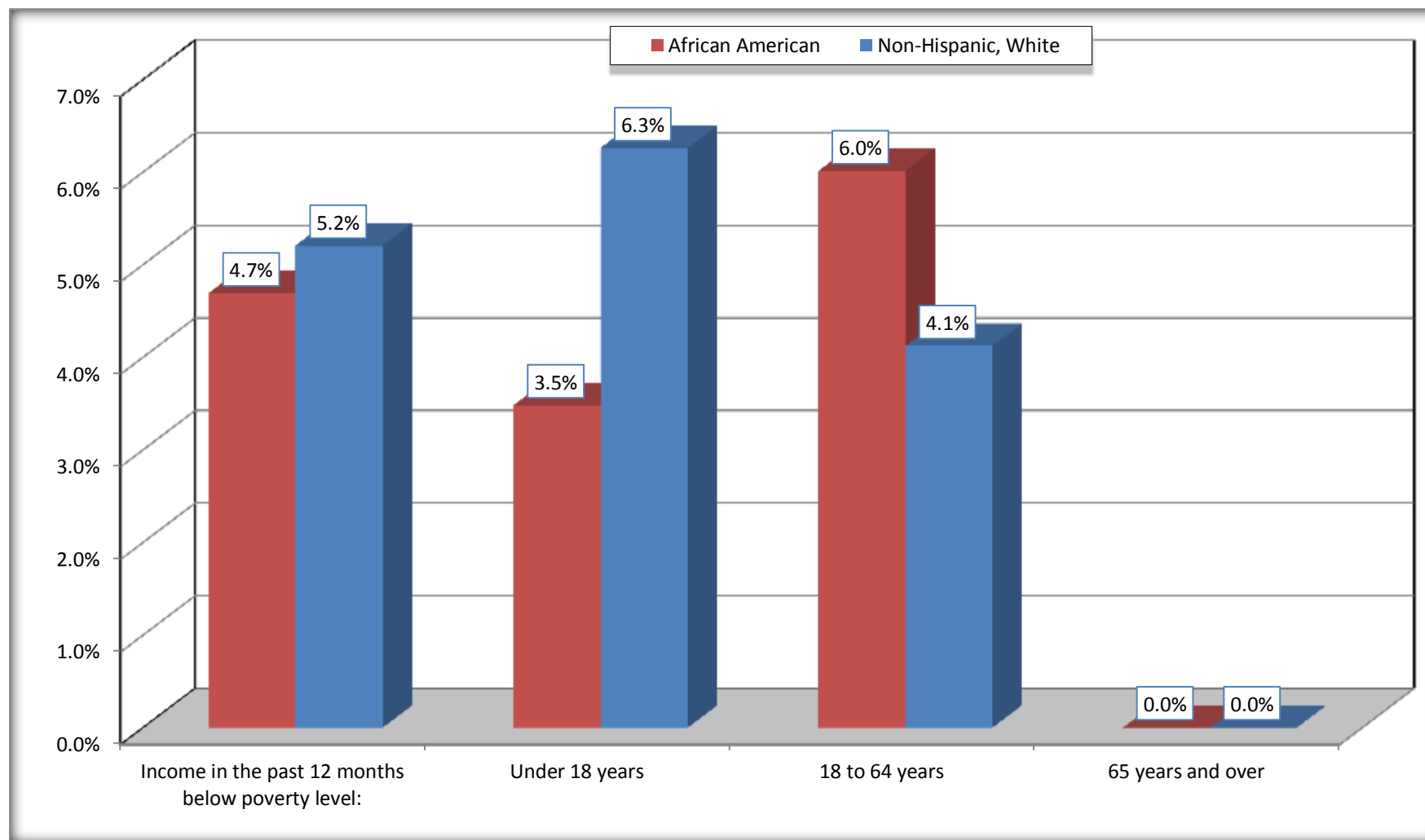
	Fort Lee CDP, Virginia					
	African American	Margin of Error (+/-)	% of AA By Age	White, Not Hispanic	Margin of Error (+/-)	% of NHW By Age
<b>Total:</b>	<b>2,366</b>	<b>441</b>	<b>100.0%</b>	<b>1,133</b>	<b>382</b>	<b>100.0%</b>
Income in the past 12 months below poverty level:	111	93	4.7%	59	96	5.2%
<b>Under 18 years</b>	43	NC	3.5%	36	NC	6.3%
<b>18 to 64 years</b>	68	75	6.0%	23	39	4.1%
<b>65 years and over</b>	0	NC	#DIV/0!	0	NC	#DIV/0!
Income in the past 12 months at or above poverty level:	2,255	460	95.3%	1,074	367	94.8%
<b>Under 18 years</b>	1,192	NC	96.5%	539	NC	93.7%
<b>18 to 64 years</b>	1,063	241	94.0%	535	160	95.9%
<b>65 years and over</b>	0	NC	#DIV/0!	0	NC	#DIV/0!

Source: U.S. Census Bureau, 2008-2012 American Community Survey

For information on confidentiality protection, sampling error, nonsampling error, and definitions, see Survey Methodology.

<http://www.census.gov/acs/www/UseData/index.htm>

## Population Below Poverty in the Past 12 Months Fort Lee CDP, Virginia



Source: B17020 POVERTY STATUS IN THE PAST 12 MONTHS BY AGE - Universe: POPULATION FOR WHOM POVERTY STATUS IS DETERMINED  
Data Set: 2008-2012 American Community Survey 5-Year Estimates

**B19001. HOUSEHOLD INCOME IN THE PAST 12 MONTHS (IN 2010 INFLATION-ADJUSTED DOLLARS)**

Data Set: 2008-2012 American Community Survey 5-Year Estimates

	Fort Lee CDP, Virginia					
	African American	Margin of Error (+/-)	% of AA Total	White, Not Hispanic	Margin of Error (+/-)	% of NHW Total
<b>Total:</b>	<b>607</b>	<b>132</b>	<b>100.0%</b>	<b>299</b>	<b>96</b>	<b>100.0%</b>
Less than \$ 10,000	30	44	4.9%	0	17	0.0%
\$ 10,000 to \$ 14,999	0	17	0.0%	0	17	0.0%
<b>\$ 15,000 to \$ 24,999</b>	3	NC	0.5%	7	NC	2.3%
<b>\$ 25,000 to \$ 34,999</b>	45	NC	7.4%	17	NC	5.7%
<b>\$ 35,000 to \$ 49,999</b>	152	NC	25.0%	69	NC	23.1%
<b>\$ 50,000 to \$ 74,999</b>	298	NC	49.1%	128	NC	42.8%
\$ 75,000 to \$ 99,999	33	41	5.4%	74	57	24.7%
<b>\$ 100,000 to \$ 149,999</b>	46	NC	7.6%	4	NC	1.3%
\$ 150,000 to \$ 199,999	0	17	0.0%	0	17	0.0%
\$ 200,000 or more	0	17	0.0%	0	17	0.0%

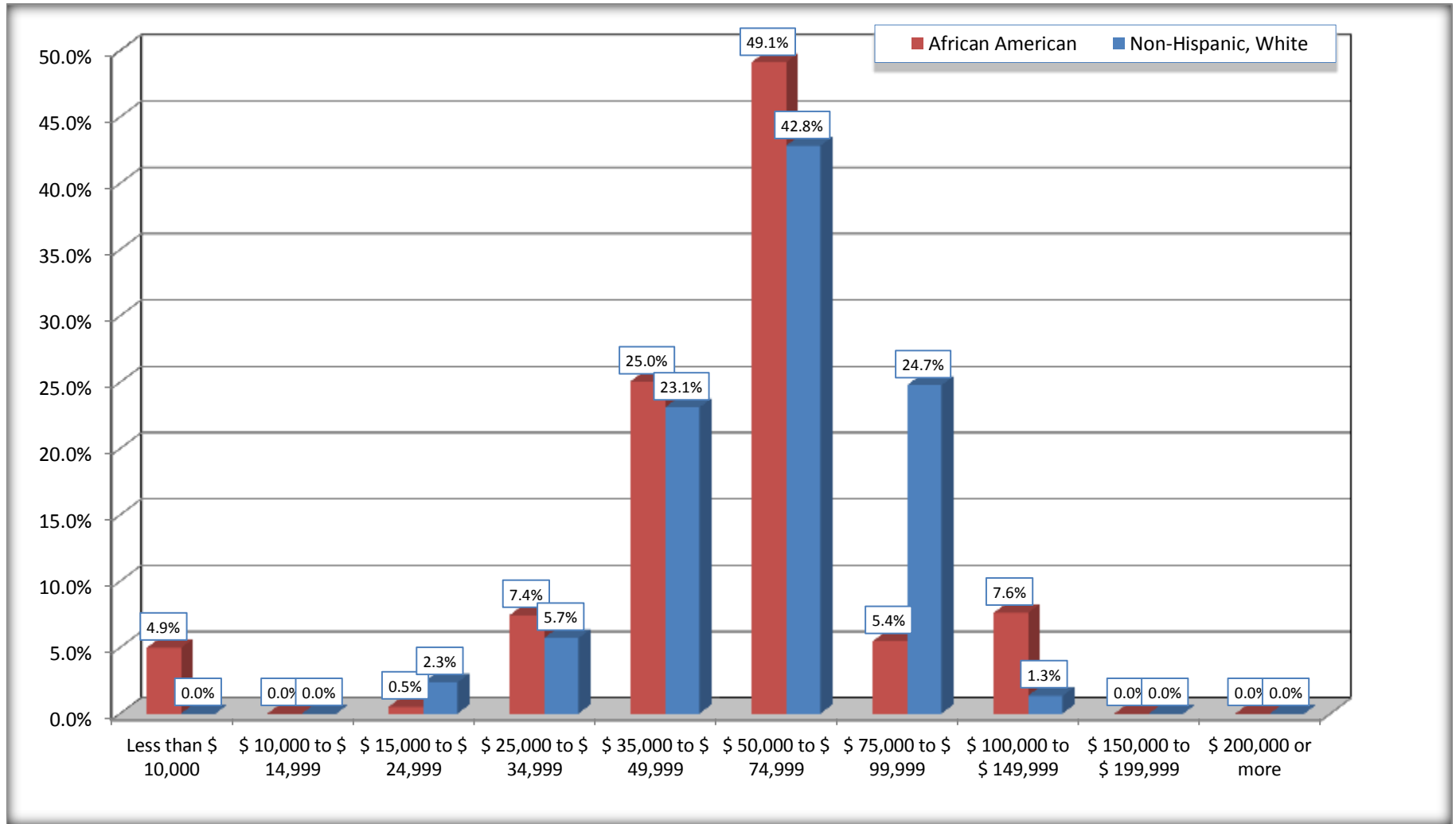
Source: U.S. Census Bureau, 2008-2012 American Community Survey

For information on confidentiality protection, sampling error, nonsampling error, and definitions, see Survey Methodology.

<http://www.census.gov/acs/www/UseData/index.htm>

# Household Income in the Past 12 Months

## Fort Lee CDP, Virginia



Source: B19001. HOUSEHOLD INCOME IN THE PAST 12 MONTHS (IN 2010 INFLATION-ADJUSTED DOLLARS)  
Data Set: 2008-2012 American Community Survey 5-Year Estimates

**B19013. MEDIAN HOUSEHOLD INCOME IN THE PAST 12 MONTHS (IN 2010 INFLATION-ADJUSTED DOLLARS)**

Data Set: 2008-2012 American Community Survey 5-Year Estimates

	Fort Lee CDP, Virginia			
	African American	Margin of Error (+/-)	White, Not Hispanic	Margin of Error (+/-)
Median household income in the past 12 months (in 2010 inflation-adjusted dollars)	\$ 54,063	\$ 2,669	\$ 62,898	\$ 15,334

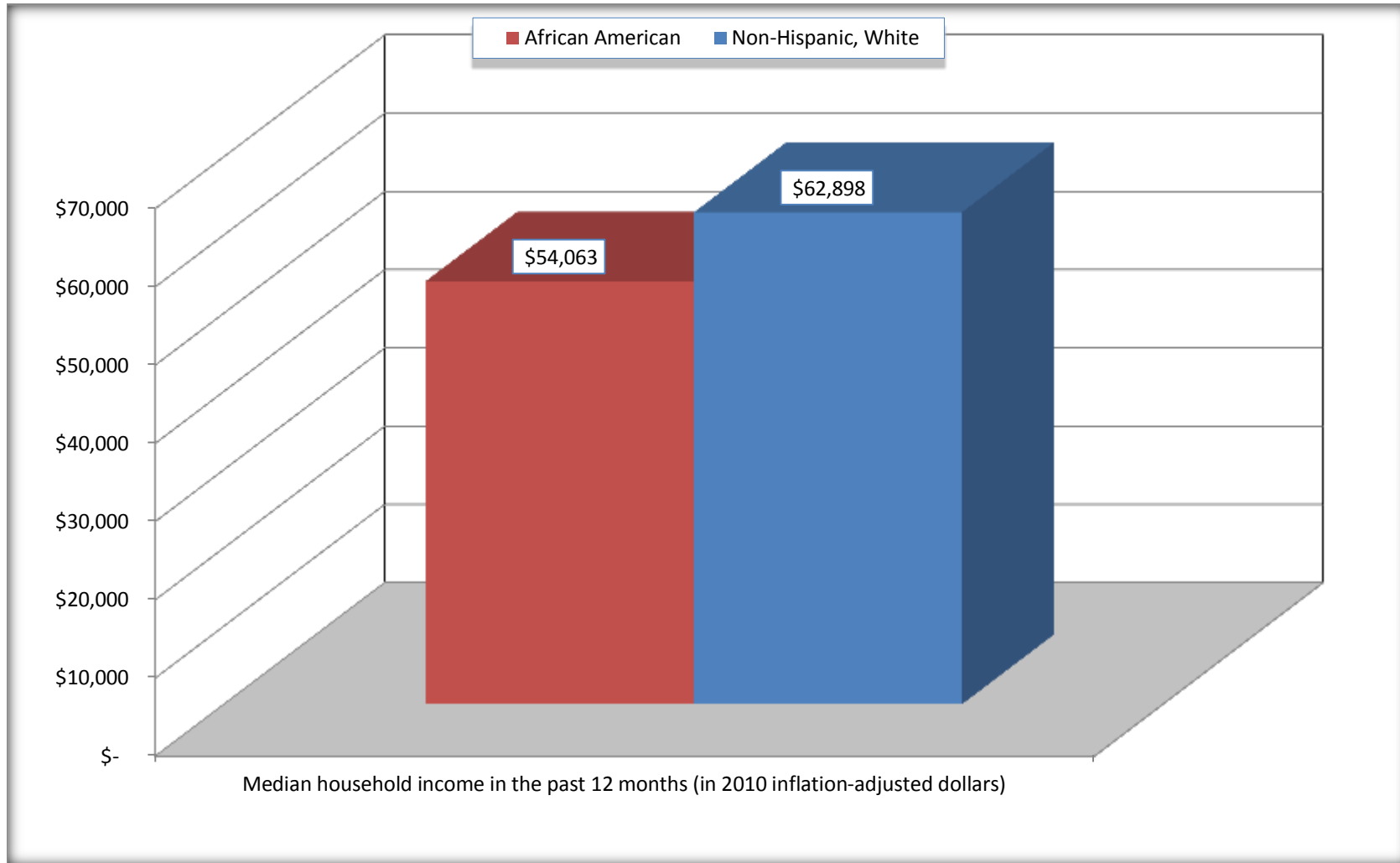
Source: U.S. Census Bureau, 2008-2012 American Community Survey

For information on confidentiality protection, sampling error, nonsampling error, and definitions, see Survey Methodology.  
<http://www.census.gov/acs/www/UseData/index.htm>



# Median Household Income in the Past 12 Months

## Fort Lee CDP, Virginia



Source: B19013. MEDIAN HOUSEHOLD INCOME IN THE PAST 12 MONTHS (IN 2010 INFLATION-ADJUSTED DOLLARS)  
Data Set: 2008-2012 American Community Survey 5-Year Estimates

**B19101. FAMILY INCOME IN THE PAST 12 MONTHS (IN 2010 INFLATION-ADJUSTED DOLLARS)**

Data Set: 2008-2012 American Community Survey 5-Year Estimates

	Fort Lee CDP, Virginia					
	African American	Margin of Error (+/-)	% of AA Total	White, Not Hispanic	Margin of Error (+/-)	% of NHW Total
<b>Total:</b>	<b>588</b>	<b>127</b>	<b>100.0%</b>	<b>281</b>	<b>95</b>	<b>100.0%</b>
Less than \$ 10,000	30	44	5.1%	0	17	0.0%
\$ 10,000 to \$ 14,999	0	17	0.0%	0	17	0.0%
<b>\$ 15,000 to \$ 24,999</b>	<b>3</b>	<b>NC</b>	<b>0.5%</b>	<b>7</b>	<b>NC</b>	<b>2.5%</b>
<b>\$ 25,000 to \$ 34,999</b>	<b>45</b>	<b>NC</b>	<b>7.7%</b>	<b>17</b>	<b>NC</b>	<b>6.0%</b>
<b>\$ 35,000 to \$ 49,999</b>	<b>167</b>	<b>NC</b>	<b>28.4%</b>	<b>69</b>	<b>NC</b>	<b>24.6%</b>
<b>\$ 50,000 to \$ 74,999</b>	<b>264</b>	<b>NC</b>	<b>44.9%</b>	<b>117</b>	<b>NC</b>	<b>41.6%</b>
<b>\$ 100,000 to \$ 149,999</b>	<b>46</b>	<b>NC</b>	<b>7.8%</b>	<b>4</b>	<b>NC</b>	<b>1.4%</b>
\$ 150,000 to \$ 199,999	0	17	0.0%	0	17	0.0%
\$ 200,000 or more	0	17	0.0%	0	17	0.0%

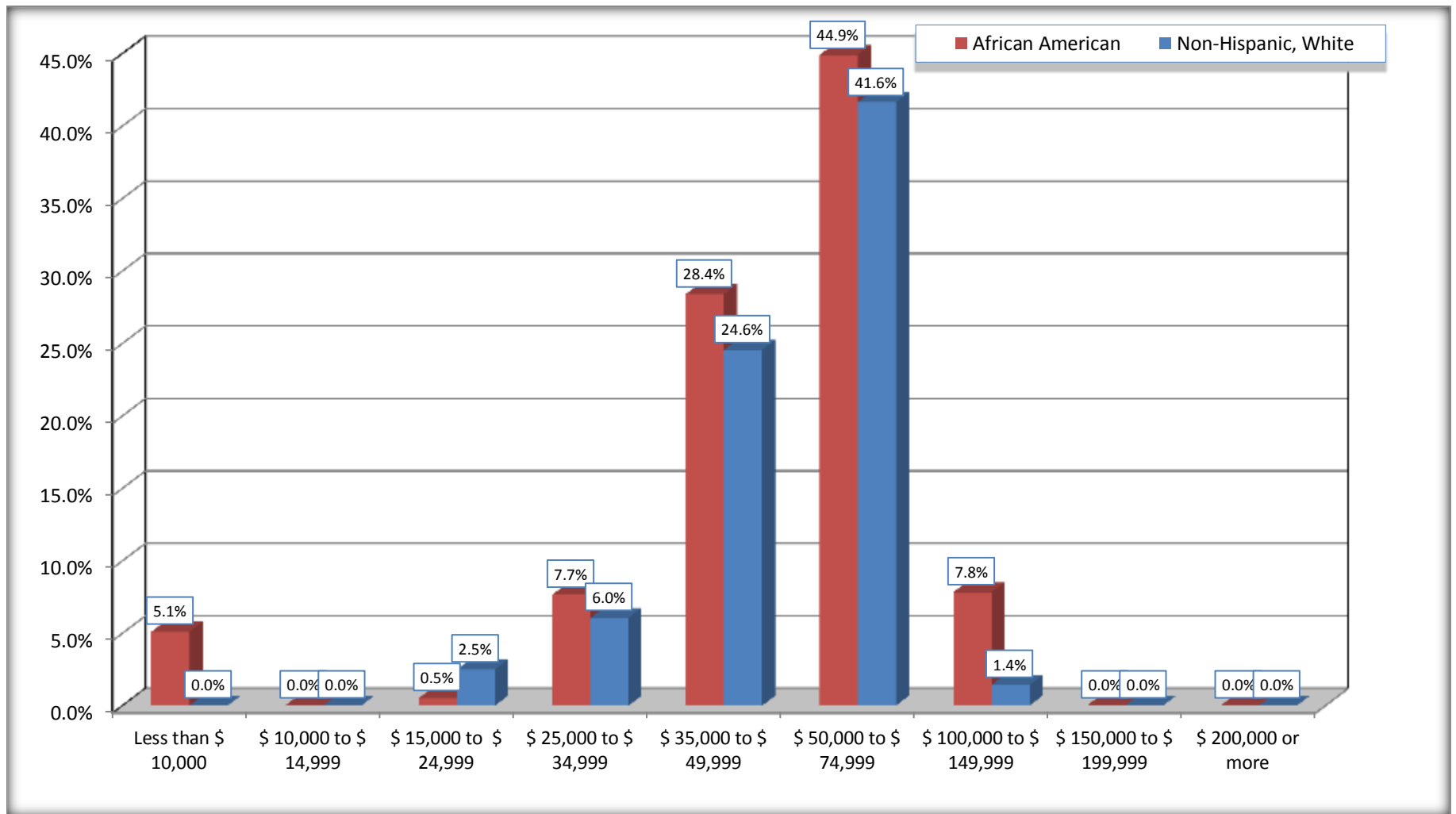
Source: U.S. Census Bureau, 2008-2012 American Community Survey

For information on confidentiality protection, sampling error, nonsampling error, and definitions, see Survey Methodology.

<http://www.census.gov/acs/www/UseData/index.htm>

# Family Income in the Past 12 Months

## Fort Lee CDP, Virginia



Source: B19101. FAMILY INCOME IN THE PAST 12 MONTHS (IN 2010 INFLATION-ADJUSTED DOLLARS)  
Data Set: 2008-2012 American Community Survey 5-Year Estimates

**B19113. MEDIAN FAMILY INCOME IN THE PAST 12 MONTHS (IN 2010 INFLATION-ADJUSTED DOLLARS)**

Data Set: 2008-2012 American Community Survey 5-Year Estimates

	Fort Lee CDP, Virginia			
	African American	Margin of Error (+/-)	White, Not Hispanic	Margin of Error (+/-)
Median family income in the past 12 months (in 2010 inflation-adjusted dollars)	\$ 53,630	\$ 3,390	\$ 61,875	\$ 18,192

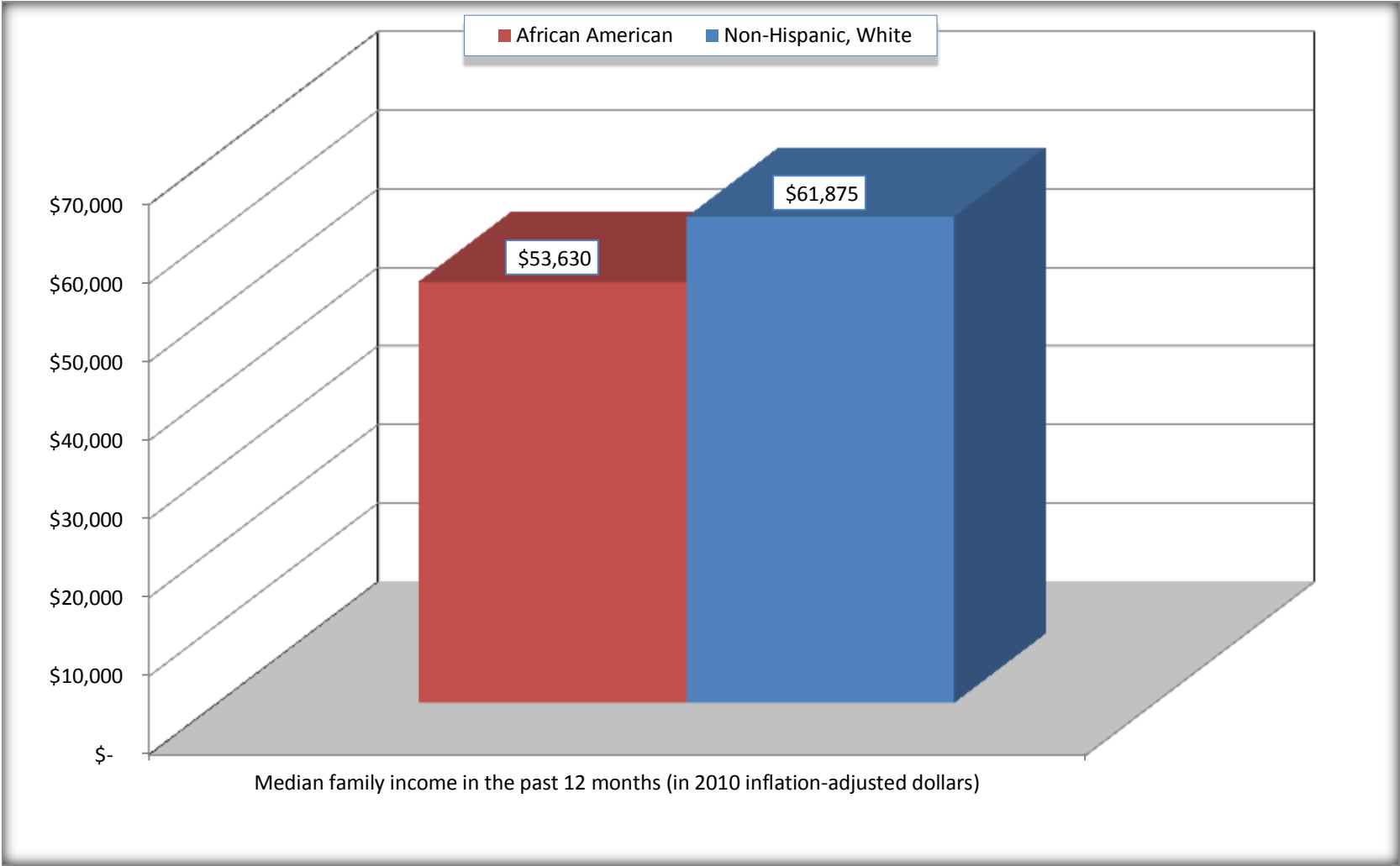
Source: U.S. Census Bureau, 2008-2012 American Community Survey

For information on confidentiality protection, sampling error, nonsampling error, and definitions, see Survey Methodology.

<http://www.census.gov/acs/www/UseData/index.htm>

# Median Family Income in the Past 12 Months

## Fort Lee CDP, Virginia



Source: B19113. MEDIAN FAMILY INCOME IN THE PAST 12 MONTHS (IN 2010 INFLATION-ADJUSTED DOLLARS)  
Data Set: 2008-2012 American Community Survey 5-Year Estimates

**B19301. PER CAPITA INCOME IN THE PAST 12 MONTHS (IN 2010 INFLATION-ADJUSTED DOLLARS)**

Data Set: 2008-2012 American Community Survey 5-Year Estimates

	Fort Lee CDP, Virginia			
	African American	Margin of Error (+/-)	White, Not Hispanic	Margin of Error (+/-)
Per capita income in the past 12 months (in 2010 inflation-adjusted dollars)	\$ 16,813	\$ 2,354	\$ 16,287	\$ 2,700

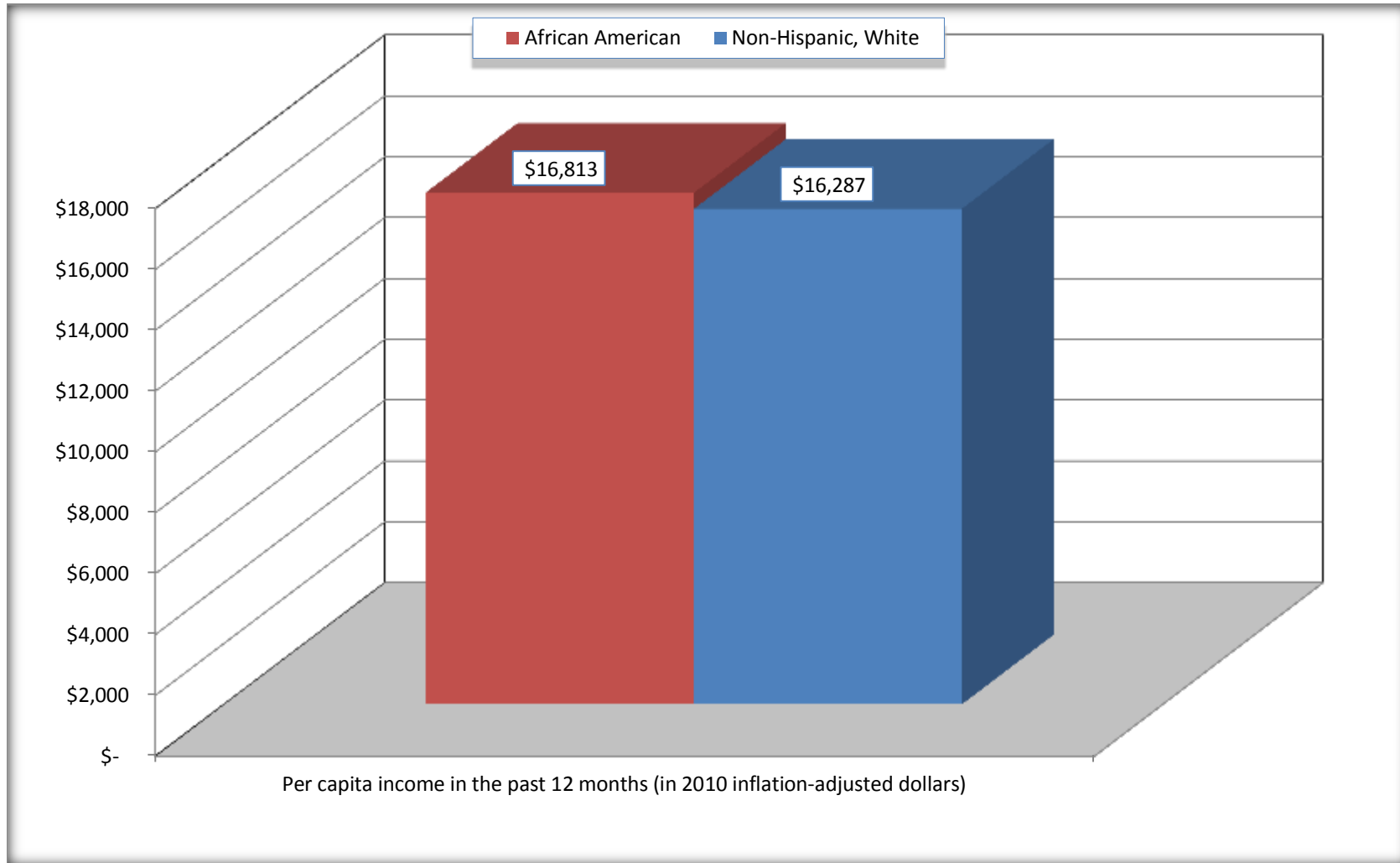
Source: U.S. Census Bureau, 2008-2012 American Community Survey

For information on confidentiality protection, sampling error, nonsampling error, and definitions, see Survey Methodology.

<http://www.census.gov/acs/www/UseData/index.htm>

## Per capita Income in the Past 12 Months

### Fort Lee CDP, Virginia



Source: B19301. PER CAPITA INCOME IN THE PAST 12 MONTHS (IN 2010 INFLATION-ADJUSTED DOLLARS)  
Data Set: 2008-2012 American Community Survey 5-Year Estimates

**B20017. MEDIAN EARNINGS IN THE PAST 12 MONTHS (IN 2010 INFLATION-ADJUSTED DOLLARS) BY SEX BY WORK EXPERIENCE IN THE PAST 12 MONTHS FOR THE POPULATION 16 YEARS AND OVER WITH EARNINGS IN THE PAST 12 MONTHS**

Data Set: 2008-2012 American Community Survey 5-Year Estimates

	Fort Lee CDP, Virginia			
	African American	Margin of Error (+/-)	White, Not Hispanic	Margin of Error (+/-)
Median earnings in the past 12 months (in 2010 inflation-adjusted dollars) --				
Total:	\$ 37,625	\$ 10,638	\$ 23,875	\$ 14,077
Male --				
Total	\$ 41,508	\$ 6,244	\$ 24,344	\$ 14,335
Worked full-time, year-round in the past 12 months	\$ 43,617	\$ 2,578	\$ 39,048	\$ 9,143
Other	\$ 16,466	\$ 15,750	\$ 12,757	\$ 1,303
Female --				
Total	\$ 30,116	\$ 5,995	\$ 12,462	\$ 28,748
Worked full-time, year-round in the past 12 months	\$ 39,375	\$ 21,072	\$ 38,355	\$ 8,144
Other	\$ 15,781	\$ 26,384	\$ 9,567	\$ 2,200

Source: U.S. Census Bureau, 2008-2012 American Community Survey

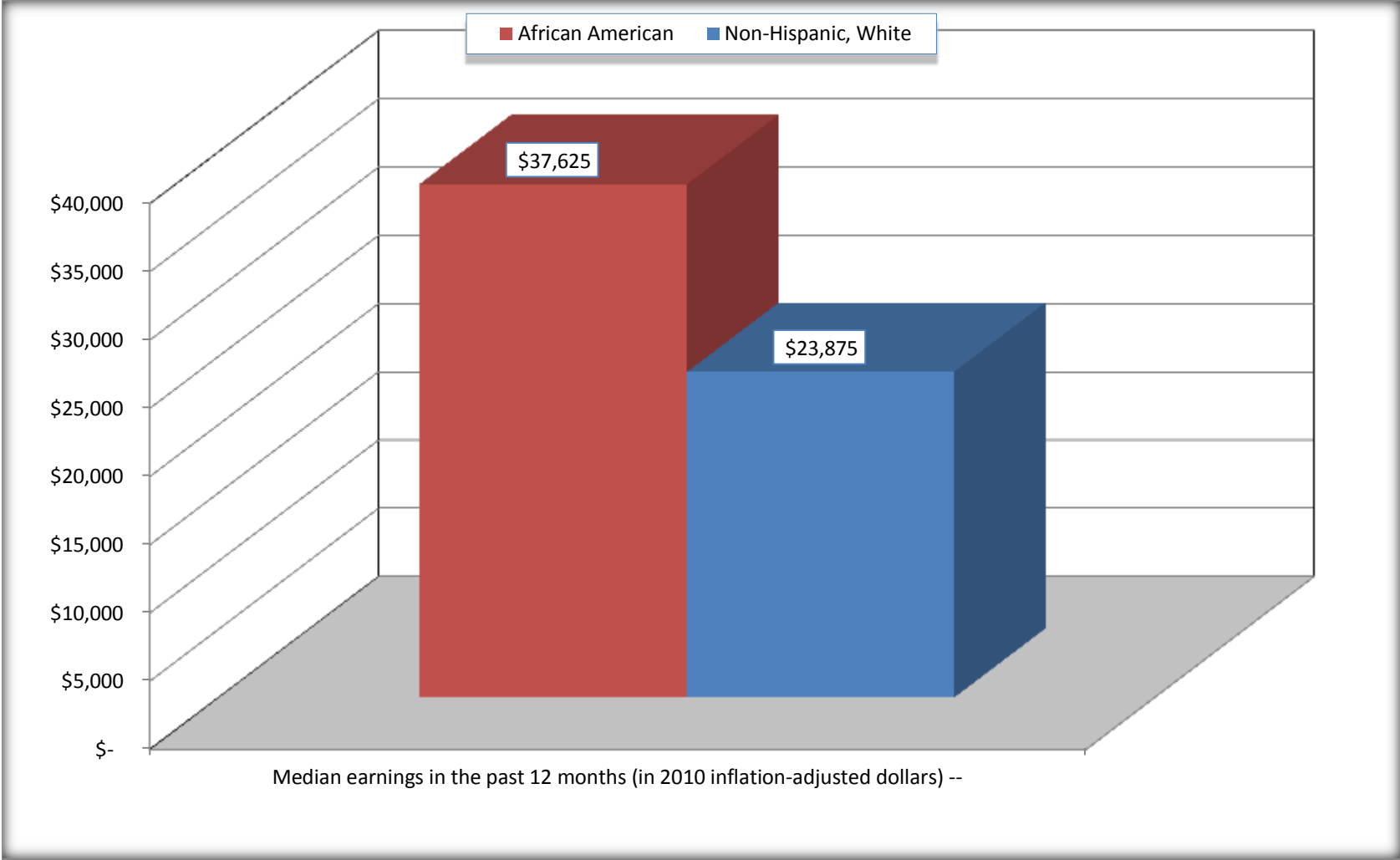
For information on confidentiality protection, sampling error, nonsampling error, and definitions, see Survey Methodology.

<http://www.census.gov/acs/www/UseData/index.htm>



# Median earnings in the Past 12 Months (16 Years and Over with Earnings)

## Fort Lee CDP, Virginia



Source: B20017. MEDIAN EARNINGS IN THE PAST 12 MONTHS (IN 2010 INFLATION-ADJUSTED DOLLARS) BY SEX BY WORK EXPERIENCE IN THE PAST 12 MONTHS FOR THE POPULATION 16 YEARS AND OVER WITH EARNINGS IN THE PAST 12 MONTHS  
Data Set: 2008-2012 American Community Survey 5-Year Estimates

**B20005. SEX BY WORK EXPERIENCE IN THE PAST 12 MONTHS BY EARNINGS IN THE PAST 12 MONTHS (IN 2010 INFLATION-ADJUSTED DOLLARS) FOR THE POPULATION 16 YEARS AND OVER**

Data Set: 2008-2012 American Community Survey 5-Year Estimates

	Fort Lee CDP, Virginia					
	African American	Margin of Error (+/-)	% of AA Total	White, Not Hispanic	Margin of Error (+/-)	% of NHW Total
<b>Total:</b>	<b>1,781</b>	<b>328</b>	<b>100.0%</b>	<b>1,121</b>	<b>278</b>	<b>100.0%</b>
Worked full-time, year-round in the past 12 months:	1,076	NC	60.4%	620	NC	55.3%
No earnings	0	NC	0.0%	0	NC	0.0%
With earnings:	1,076	NC	60.4%	620	NC	55.3%
\$ 1 to \$ 9,999 or loss	43	NC	2.4%	48	NC	4.3%
\$ 10,000 to \$ 19,999	130	NC	7.3%	134	NC	12.0%
\$ 20,000 to \$ 29,999	170	NC	9.5%	72	NC	6.4%
\$ 30,000 to \$ 49,999	463	NC	26.0%	245	NC	21.9%
\$ 50,000 to \$ 74,999	229	NC	12.9%	90	NC	8.0%
\$ 75,000 or more	41	NC	2.3%	31	NC	2.8%
Other:	705	NC	39.6%	501	NC	44.7%
No earnings	434	NC	24.4%	245	NC	21.9%
With earnings: less than full time, year-round	271	NC	15.2%	256	NC	22.8%
Male:	948	232	53.2%	721	235	64.3%
Worked full-time, year-round in the past 12 months:	700	192	39.3%	522	162	46.6%
No earnings	0	17	0.0%	0	17	0.0%
With earnings:	700	192	39.3%	522	162	46.6%
\$ 1 to \$ 9,999 or loss	43	NC	2.4%	36	NC	3.2%
\$ 10,000 to \$ 19,999	78	NC	4.4%	119	NC	10.6%
\$ 20,000 to \$ 29,999	46	NC	2.6%	72	NC	6.4%
\$ 30,000 to \$ 49,999	374	NC	21.0%	185	NC	16.5%
\$ 50,000 to \$ 74,999	143	NC	8.0%	79	NC	7.0%
\$ 75,000 or more	16	NC	0.9%	31	NC	2.8%

	Fort Lee CDP, Virginia					
	African American	Margin of Error (+/-)	% of AA Total	White, Not Hispanic	Margin of Error (+/-)	% of NHW Total
Other:	248	103	13.9%	199	122	17.8%
No earnings	106	71	6.0%	32	35	2.9%
With earnings:	142	93	8.0%	167	119	14.9%
Female:	833	160	46.8%	400	117	35.7%
Worked full-time, year-round in the past 12 months:	376	111	21.1%	98	61	8.7%
No earnings	0	17	0.0%	0	17	0.0%
With earnings:	376	111	21.1%	98	61	8.7%
\$ 1 to \$ 9,999 or loss	0	NC	0.0%	12	NC	1.1%
\$ 10,000 to \$ 19,999	52	NC	2.9%	15	NC	1.3%
\$ 20,000 to \$ 29,999	124	NC	7.0%	0	NC	0.0%
\$ 30,000 to \$ 49,999	89	NC	5.0%	60	NC	5.4%
\$ 50,000 to \$ 74,999	86	NC	4.8%	11	NC	1.0%
\$ 75,000 or more	25	NC	1.4%	0	NC	0.0%
Other:	457	121	25.7%	302	100	26.9%
No earnings	328	118	18.4%	213	89	19.0%
With earnings:	129	81	7.2%	89	51	7.9%

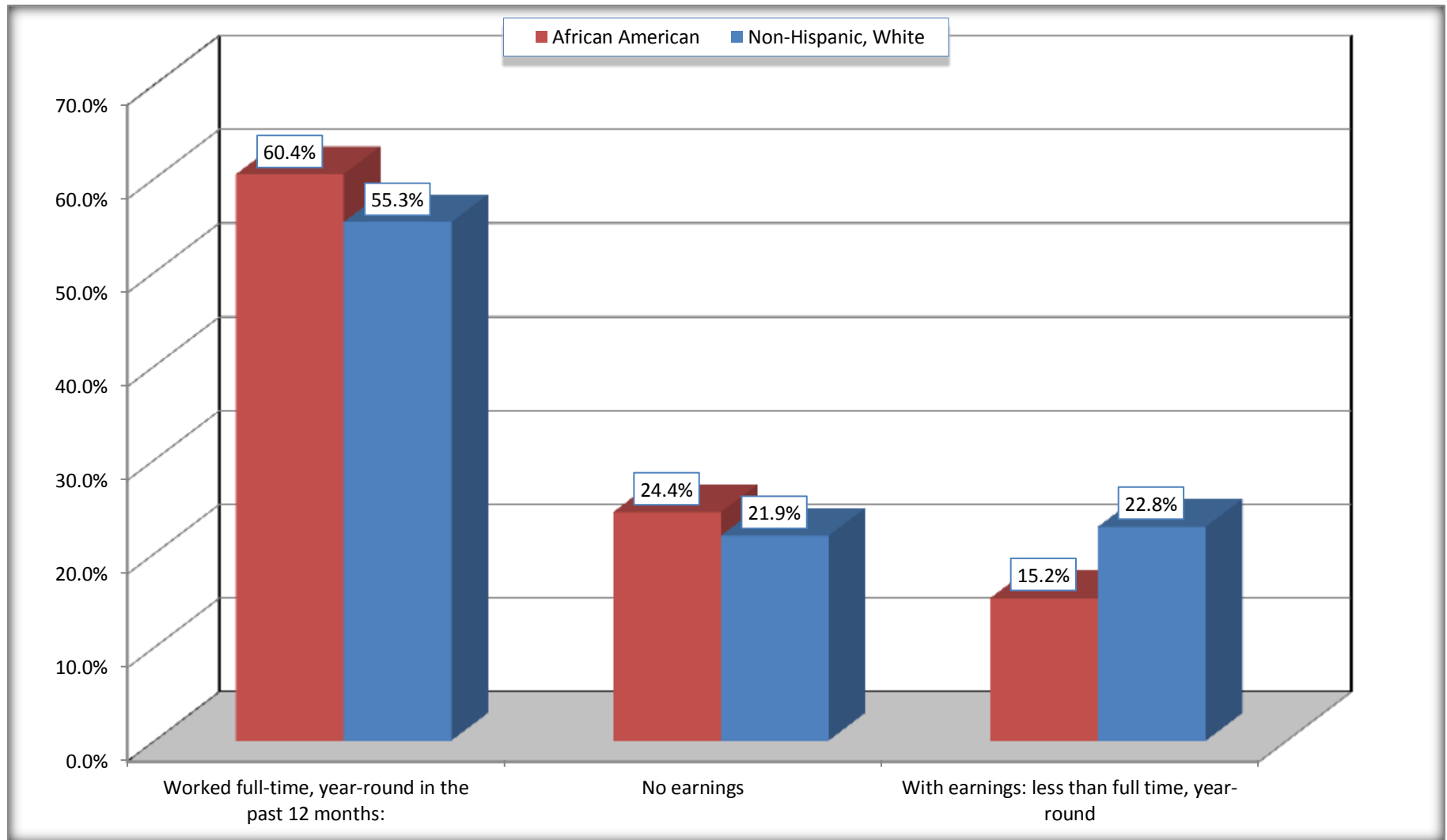
Source: U.S. Census Bureau, 2008-2012 American Community Survey

For information on confidentiality protection, sampling error, nonsampling error, and definitions, see Survey Methodology.

<http://www.census.gov/acs/www/UseData/index.htm>

# Employment and Earnings in in the Past 12 Months (16 Years and Over)

## Fort Lee CDP, Virginia



Source: B20005. SEX BY WORK EXPERIENCE IN THE PAST 12 MONTHS BY EARNINGS IN THE PAST 12 MONTHS (IN 2010 INFLATION-ADJUSTED DOLLARS) FOR THE POPULATION 16 YEARS AND OVER

Data Set: 2008-2012 American Community Survey 5-Year Estimates

**C21001. SEX BY AGE BY VETERAN STATUS FOR THE CIVILIAN POPULATION 18 YEARS AND OVER**

Data Set: 2008-2012 American Community Survey 5-Year Estimates

	Fort Lee CDP, Virginia					
	African American	Margin of Error (+/-)	% of AA Total	White, Not Hispanic	Margin of Error (+/-)	% of NHW Total
<b>Total:</b>	<b>676</b>	<b>180</b>	<b>100.0%</b>	<b>395</b>	<b>117</b>	<b>100.0%</b>
Veteran	162	NC	24.0%	96	NC	24.3%
Nonveteran	514	NC	76.0%	299	NC	75.7%
Male:	210	112	31.1%	114	62	28.9%
18 to 64 years:	210	112	31.1%	114	62	28.9%
Veteran	121	92	17.9%	96	55	24.3%
Nonveteran	89	63	13.2%	18	21	4.6%
65 years and over:	0	17	0.0%	0	17	0.0%
Veteran	0	17	0.0%	0	17	0.0%
Nonveteran	0	17	0.0%	0	17	0.0%
Female:	466	135	68.9%	281	86	71.1%
18 to 64 years:	466	135	68.9%	281	86	71.1%
Veteran	41	36	6.1%	0	17	0.0%
Nonveteran	425	133	62.9%	281	86	71.1%
65 years and over:	0	17	0.0%	0	17	0.0%
Veteran	0	17	0.0%	0	17	0.0%
Nonveteran	0	17	0.0%	0	17	0.0%

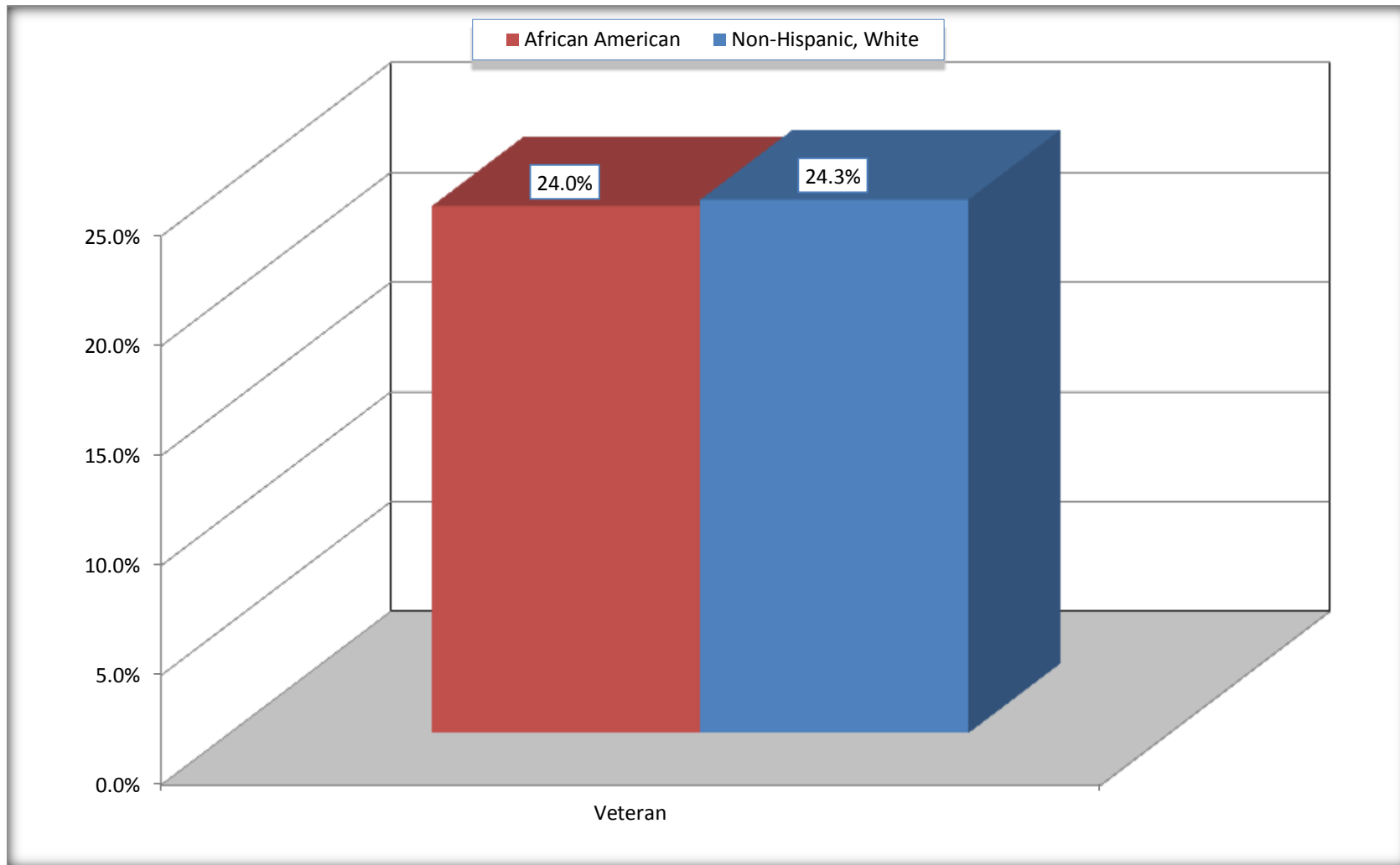
Source: U.S. Census Bureau, 2008-2012 American Community Survey

For information on confidentiality protection, sampling error, nonsampling error, and definitions, see Survey Methodology.

<http://www.census.gov/acs/www/UseData/index.htm>

# Veterans in the Civilian Population 18 Years and Over

## Fort Lee CDP, Virginia



Source: C21001. SEX BY AGE BY VETERAN STATUS FOR THE CIVILIAN POPULATION 18 YEARS AND OVER  
Data Set: 2008-2012 American Community Survey 5-Year Estimates

**B22005. RECEIPT OF FOOD STAMPS/SNAP IN THE PAST 12 MONTHS BY RACE OF HOUSEHOLDER**

Data Set: 2008-2012 American Community Survey 5-Year Estimates

	Fort Lee CDP, Virginia					
	African American	Margin of Error (+/-)	% of AA Total	White, Not Hispanic	Margin of Error (+/-)	% of NHW Total
<b>Total:</b>	<b>607</b>	<b>132</b>	<b>100.0%</b>	<b>299</b>	<b>96</b>	<b>100.0%</b>
HH received Food Stamps/SNAP in the past 12 months	17	26	2.8%	2	5	0.7%
HH did not receive Food Stamps/SNAP in the past 12 months	590	131	97.2%	297	95	99.3%

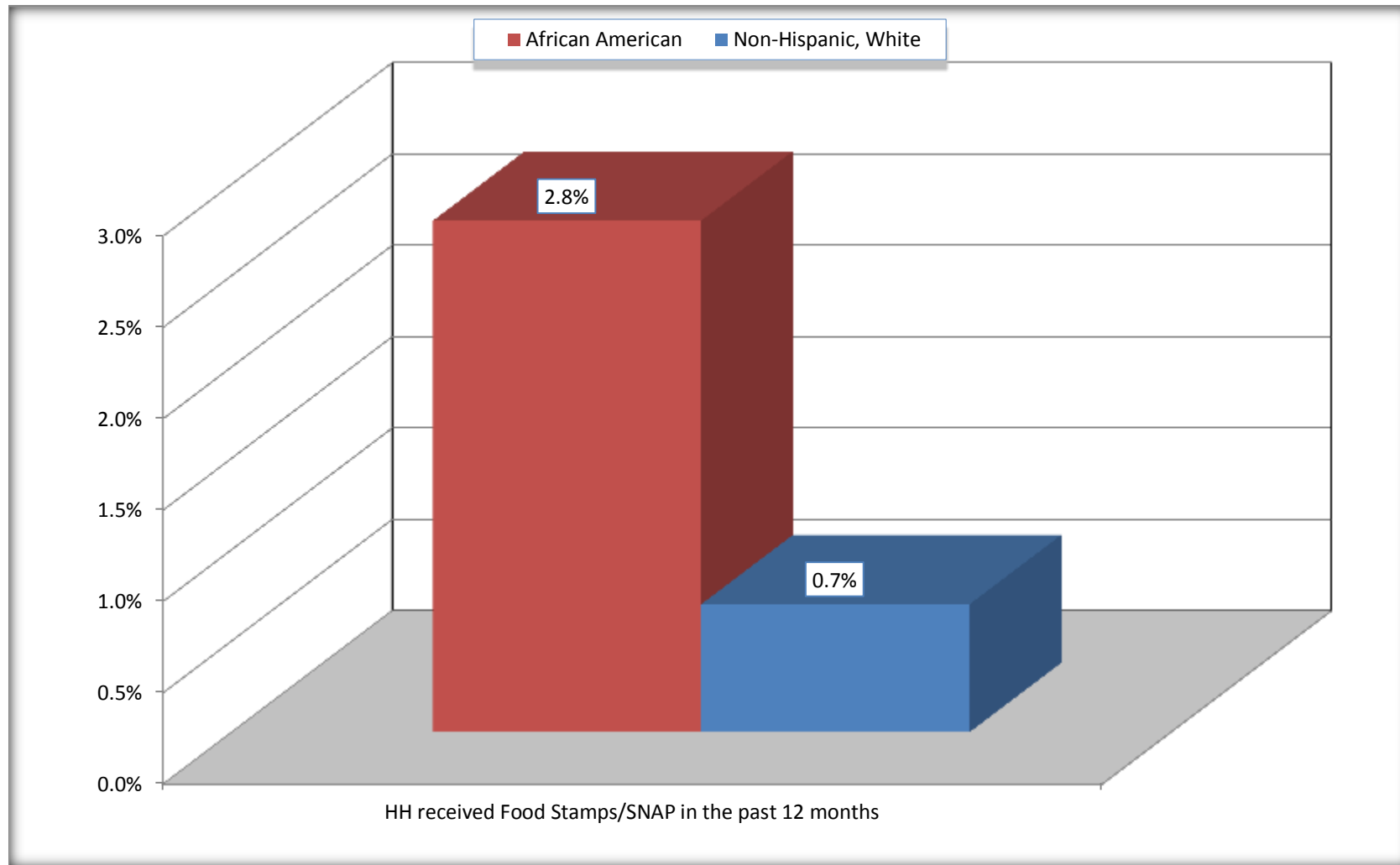
Source: U.S. Census Bureau, 2008-2012 American Community Survey

For information on confidentiality protection, sampling error, nonsampling error, and definitions, see Survey Methodology.

<http://www.census.gov/acs/www/UseData/index.htm>

# Receipt of Food Stamps/SNAP in the Past 12 Months by Household

## Fort Lee CDP, Virginia



Source: B22005. RECEIPT OF FOOD STAMPS/SNAP IN THE PAST 12 MONTHS BY RACE OF HOUSEHOLDER  
Data Set: 2008-2012 American Community Survey 5-Year Estimates



**C23002. SEX BY AGE BY EMPLOYMENT STATUS FOR THE POPULATION 16 YEARS AND OVER**

Data Set: 2008-2012 American Community Survey 5-Year Estimates

	Fort Lee CDP, Virginia					
	African American	Margin of Error (+/-)	% of AA Total	White, Not Hispanic	Margin of Error (+/-)	% of NHW Total
<b>Total:</b>	<b>1,781</b>	<b>328</b>	<b>100.0%</b>	<b>1,121</b>	<b>278</b>	<b>100.0%</b>
In labor force:	1,380	NC	77.5%	853	NC	76.1%
In Armed Forces	928	NC	52.1%	664	NC	59.2%
Civilian:	452	NC	25.4%	189	NC	16.9%
Employed	361	NC	20.3%	167	NC	14.9%
Unemployed	91	NC	5.1%	22	NC	2.0%
Not in labor force	401	NC	22.5%	268	NC	23.9%
Male:	948	232	53.2%	721	235	64.3%
16 to 64 years:	948	232	53.2%	721	235	64.3%
In labor force:	821	233	46.1%	684	234	61.0%
In Armed Forces	671	226	37.7%	605	232	54.0%
Civilian:	150	96	8.4%	79	53	7.0%
Employed	123	92	6.9%	66	52	5.9%
Unemployed	27	28	1.5%	13	17	1.2%
Not in labor force	127	77	7.1%	37	33	3.3%
65 years and over:	0	17	0.0%	0	17	0.0%
In labor force:	0	17	0.0%	0	17	0.0%
Employed	0	17	0.0%	0	17	0.0%
Unemployed	0	17	0.0%	0	17	0.0%
Not in labor force	0	17	0.0%	0	17	0.0%

	Fort Lee CDP, Virginia					
	African American	Margin of Error (+/-)	% of AA Total	White, Not Hispanic	Margin of Error (+/-)	% of NHW Total
Female:	833	160	46.8%	400	117	35.7%
16 to 64 years:	833	160	46.8%	400	117	35.7%
In labor force:	559	132	31.4%	169	76	15.1%
In Armed Forces	257	115	14.4%	59	54	5.3%
Civilian:	302	125	17.0%	110	64	9.8%
Employed	238	95	13.4%	101	62	9.0%
Unemployed	64	58	3.6%	9	11	0.8%
Not in labor force	274	93	15.4%	231	88	20.6%
65 years and over:	0	17	0.0%	0	17	0.0%
In labor force:	0	17	0.0%	0	17	0.0%
Employed	0	17	0.0%	0	17	0.0%
Unemployed	0	17	0.0%	0	17	0.0%
Not in labor force	0	17	0.0%	0	17	0.0%

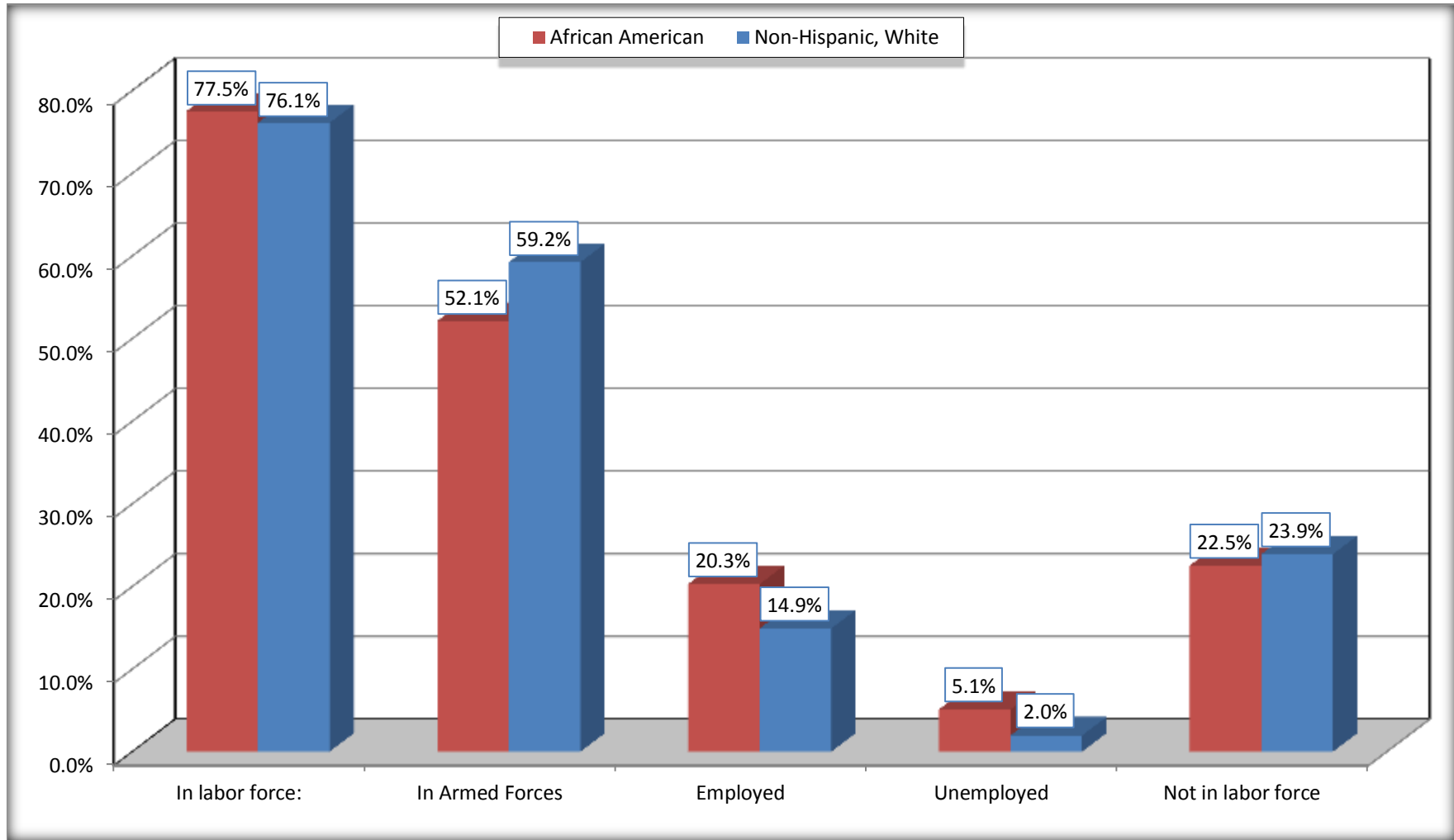
Source: U.S. Census Bureau, 2008-2012 American Community Survey

For information on confidentiality protection, sampling error, nonsampling error, and definitions, see Survey Methodology.

<http://www.census.gov/acs/www/UseData/index.htm>

# Employment Status for the Population 16 years and over

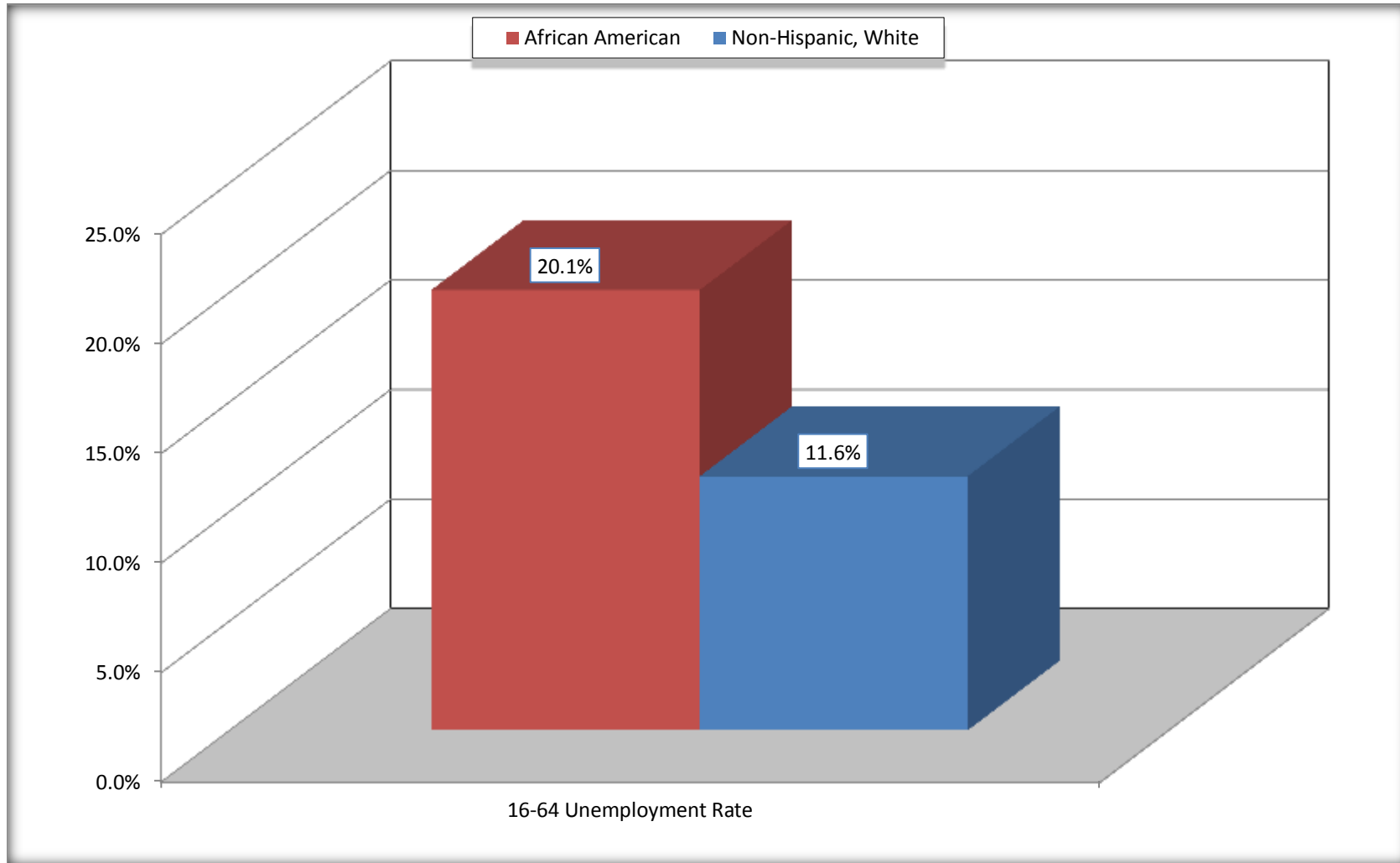
## Fort Lee CDP, Virginia



Source: C23002. SEX BY AGE BY EMPLOYMENT STATUS FOR THE POPULATION 16 YEARS AND OVER  
Data Set: 2008-2012 American Community Survey 5-Year Estimates

# Unemployment of Working Age Population (Ages 16 to 64) (As a Percent of 16-64 Civilian Labor Force)

## Fort Lee CDP, Virginia



Source: C23002. SEX BY AGE BY EMPLOYMENT STATUS FOR THE POPULATION 16 YEARS AND OVER  
Data Set: 2008-2012 American Community Survey 5-Year Estimates

**C24010. SEX BY OCCUPATION FOR THE CIVILIAN EMPLOYED POPULATION 16 YEARS AND OVER**

Data Set: 2008-2012 American Community Survey 5-Year Estimates

	Fort Lee CDP, Virginia					
	African American	Margin of Error (+/-)	% of AA Total	White, Not Hispanic	Margin of Error (+/-)	% of NHW Total
<b>Total:</b>	<b>361</b>	<b>128</b>	<b>100.0%</b>	<b>167</b>	<b>103</b>	<b>100.0%</b>
Management, professional, and related occupations	107	NC	29.6%	52	NC	31.1%
Service occupations	36	NC	10.0%	59	NC	35.3%
Sales and office occupations	162	NC	44.9%	28	NC	16.8%
Natural resources, construction, and maintenance occupations:	2	NC	0.6%	2	NC	1.2%
Production, transportation, and material moving occupations	54	NC	15.0%	26	NC	15.6%
Male:	123	92	34.1%	66	52	39.5%
Management, business, science, and arts occupations:	67	72	18.6%	18	22	10.8%
Service occupations	0	17	0.0%	0	17	0.0%
Sales and office occupations	27	44	7.5%	20	23	12.0%
Natural resources, construction, and maintenance occupations:	2	5	0.6%	2	5	1.2%
Production, transportation, and material moving occupations	27	30	7.5%	26	43	15.6%
Female:	238	95	65.9%	101	62	60.5%
Management, professional, and related occupations	40	40	11.1%	34	29	20.4%
Service occupations	36	33	10.0%	59	52	35.3%
Sales and office occupations	135	73	37.4%	8	13	4.8%
Natural resources, construction, and maintenance occupations:	0	17	0.0%	0	17	0.0%
Production, transportation, and material moving occupations	27	40	7.5%	0	17	0.0%

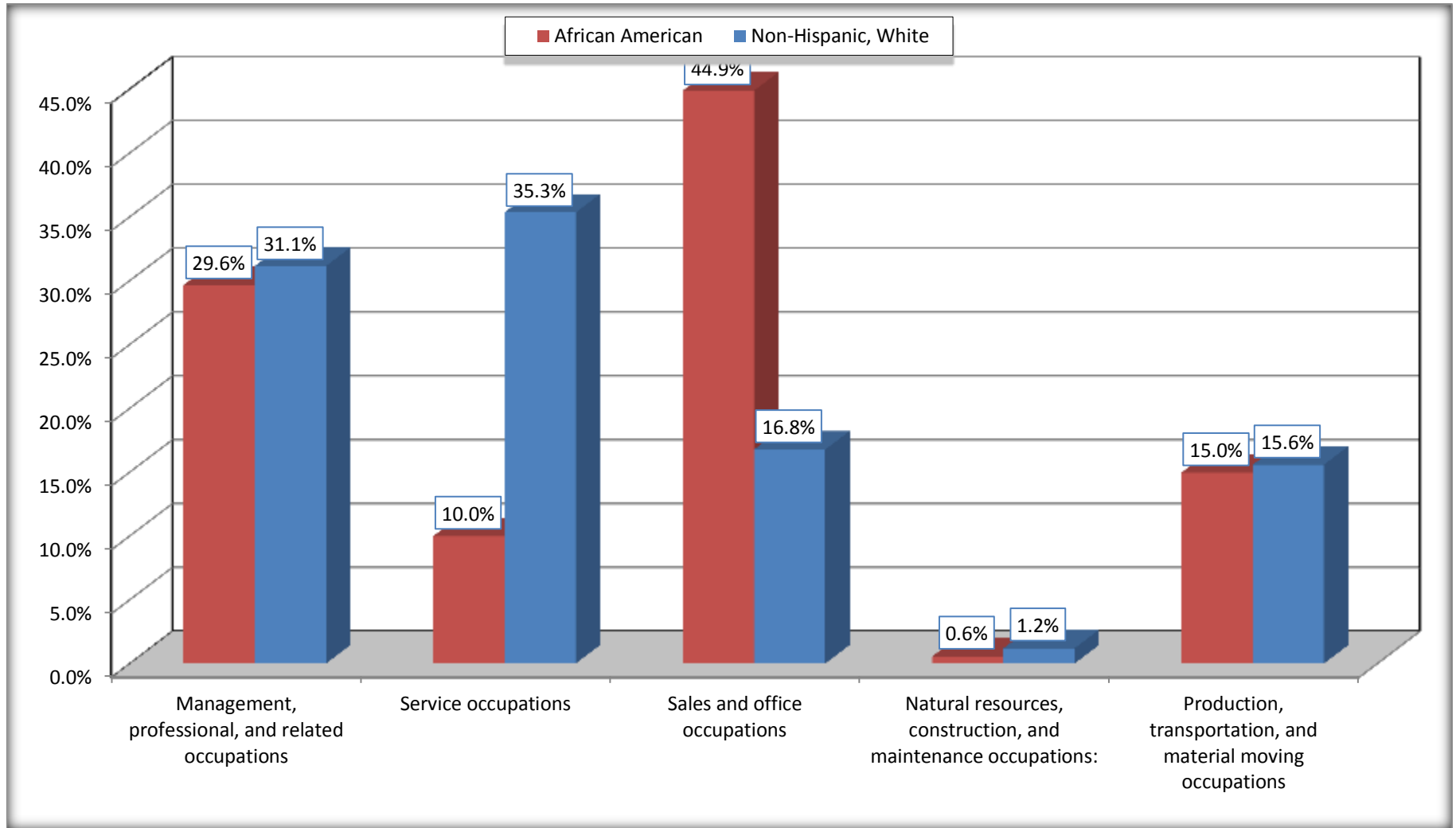
Source: U.S. Census Bureau, 2008-2012 American Community Survey

For information on confidentiality protection, sampling error, nonsampling error, and definitions, see Survey Methodology.

<http://www.census.gov/acs/www/UseData/index.htm>

# Occupation for the Civilian Employed 16 Years and Over Population

## Fort Lee CDP, Virginia



Source: C24010. SEX BY OCCUPATION FOR THE CIVILIAN EMPLOYED POPULATION 16 YEARS AND OVER  
Data Set: 2008-2012 American Community Survey 5-Year Estimates

**B25003. TENURE - Universe: OCCUPIED HOUSING UNITS**

Data Set: 2008-2012 American Community Survey 5-Year Estimates

	Fort Lee CDP, Virginia					
	African American	Margin of Error (+/-)	% of AA Total	White, Not Hispanic	Margin of Error (+/-)	% of NHW Total
<b>Total:</b>	<b>607</b>	<b>132</b>	<b>100.0%</b>	<b>299</b>	<b>96</b>	<b>100.0%</b>
Owner occupied	9	12	1.5%	0	17	0.0%
Renter occupied	598	132	98.5%	299	96	100.0%

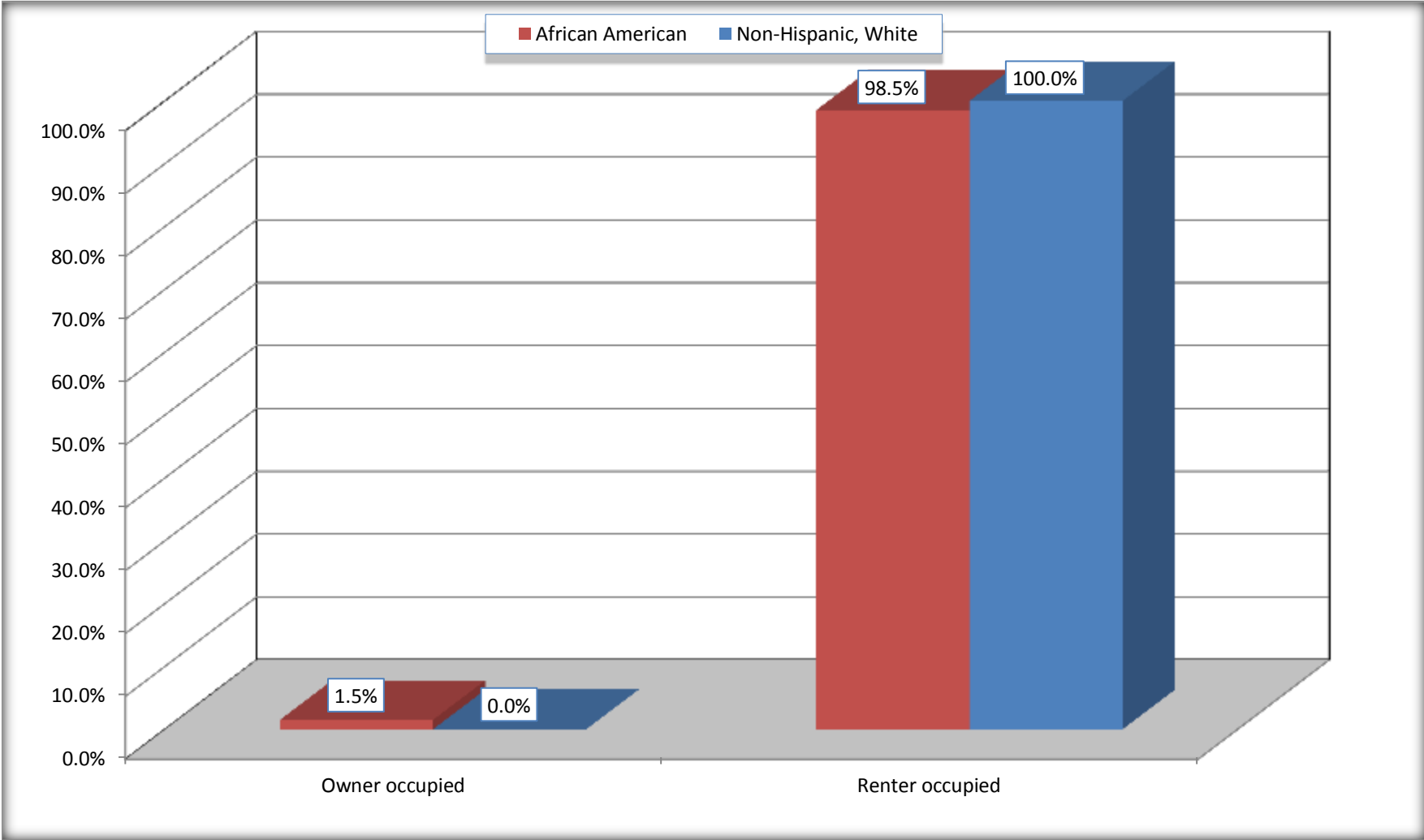
Source: U.S. Census Bureau, 2008-2012 American Community Survey

For information on confidentiality protection, sampling error, nonsampling error, and definitions, see Survey Methodology.

<http://www.census.gov/acs/www/UseData/index.h>

# Home Owners and Renters by Household

## Fort Lee CDP, Virginia



Source: B25003. TENURE - Universe: OCCUPIED HOUSING UNITS  
Data Set: 2008-2012 American Community Survey 5-Year Estimates



**B25014. OCCUPANTS PER ROOM - Universe: OCCUPIED HOUSING UNITS**

Data Set: 2008-2012 American Community Survey 5-Year Estimates

	Fort Lee CDP, Virginia					
	African American	Margin of Error (+/-)	% of AA Total	White, Not Hispanic	Margin of Error (+/-)	% of NHW Total
<b>Total:</b>	<b>607</b>	<b>132</b>	<b>100.0%</b>	<b>299</b>	<b>96</b>	<b>100.0%</b>
1.00 or less occupants per room	597	132	98.4%	294	95	98.3%
1.01 or more occupants per room	10	15	1.6%	5	8	1.7%

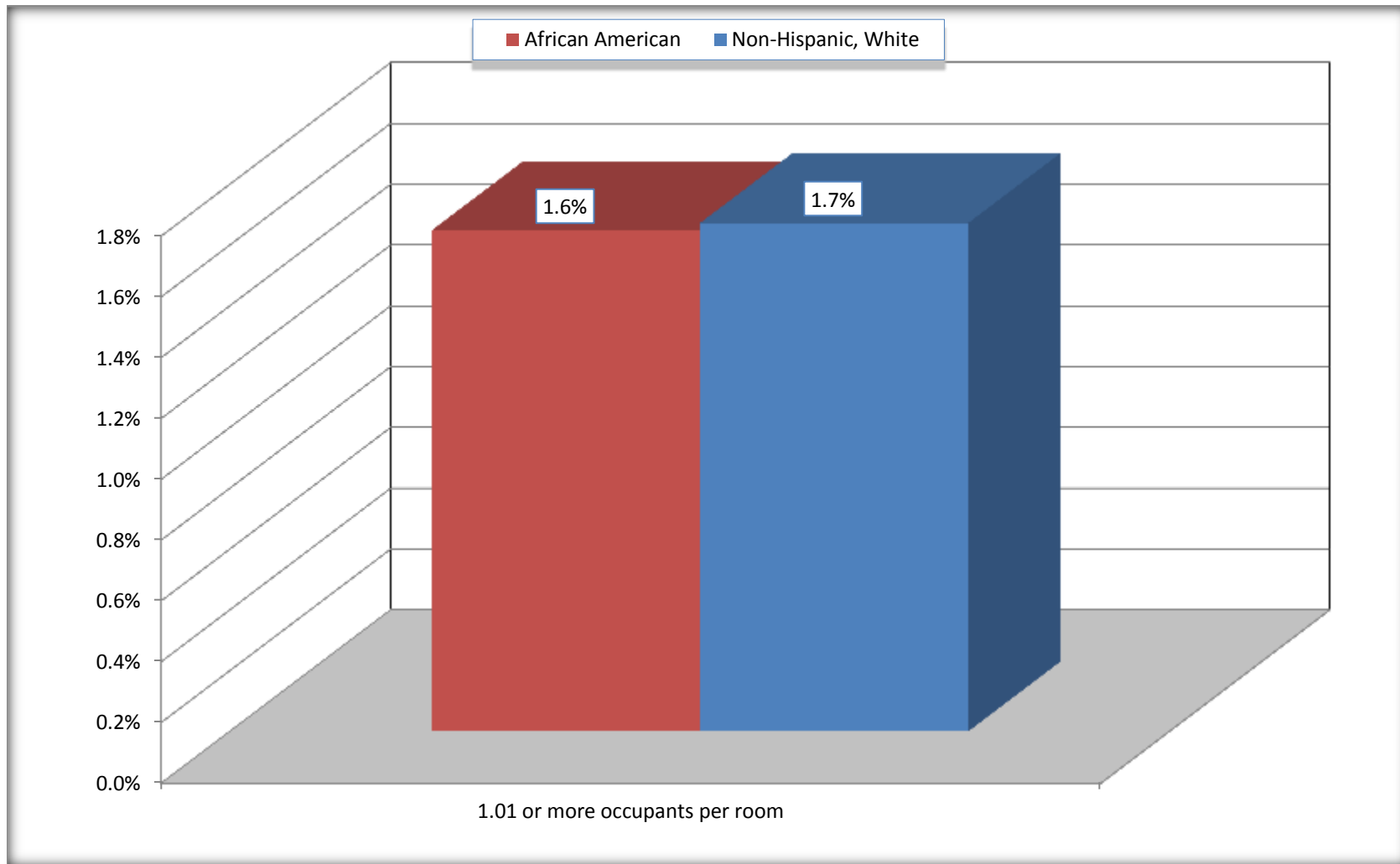
Source: U.S. Census Bureau, 2008-2012 American Community Survey

For information on confidentiality protection, sampling error, nonsampling error, and definitions, see Survey Methodology.

<http://www.census.gov/acs/www/UseData/index.ht>

# More than One Person per Room (Crowding) by Household

## Fort Lee CDP, Virginia



Source: B25014. OCCUPANTS PER ROOM - Universe: OCCUPIED HOUSING UNITS  
Data Set: 2008-2012 American Community Survey 5-Year Estimates

**B18101. AGE BY DISABILITY STATUS**

Data Set: 2008-2012 American Community Survey 5-Year Estimates

	Fort Lee CDP, Virginia					
	African American	Margin of Error (+/-)	% of AA Total	White, Not Hispanic	Margin of Error (+/-)	% of NHW Total
<b>Total:</b>	<b>1,898</b>	<b>371</b>	<b>100.0%</b>	<b>927</b>	<b>349</b>	<b>100.0%</b>
Under 18 years:	1,251	280	65.9%	575	23	62.0%
With a disability	9	14	0.5%	15	19	1.6%
No disability	1,242	280	65.4%	560	255	60.4%
18 to 64 years:	647	172	34.1%	352	111	38.0%
With a disability	23	41	1.2%	44	33	4.7%
No disability	624	169	32.9%	308	108	33.2%
65 years and over:	0	17	0.0%	0	17	0.0%
With a disability	0	17	0.0%	0	17	0.0%
No disability	0	17	0.0%	0	17	0.0%

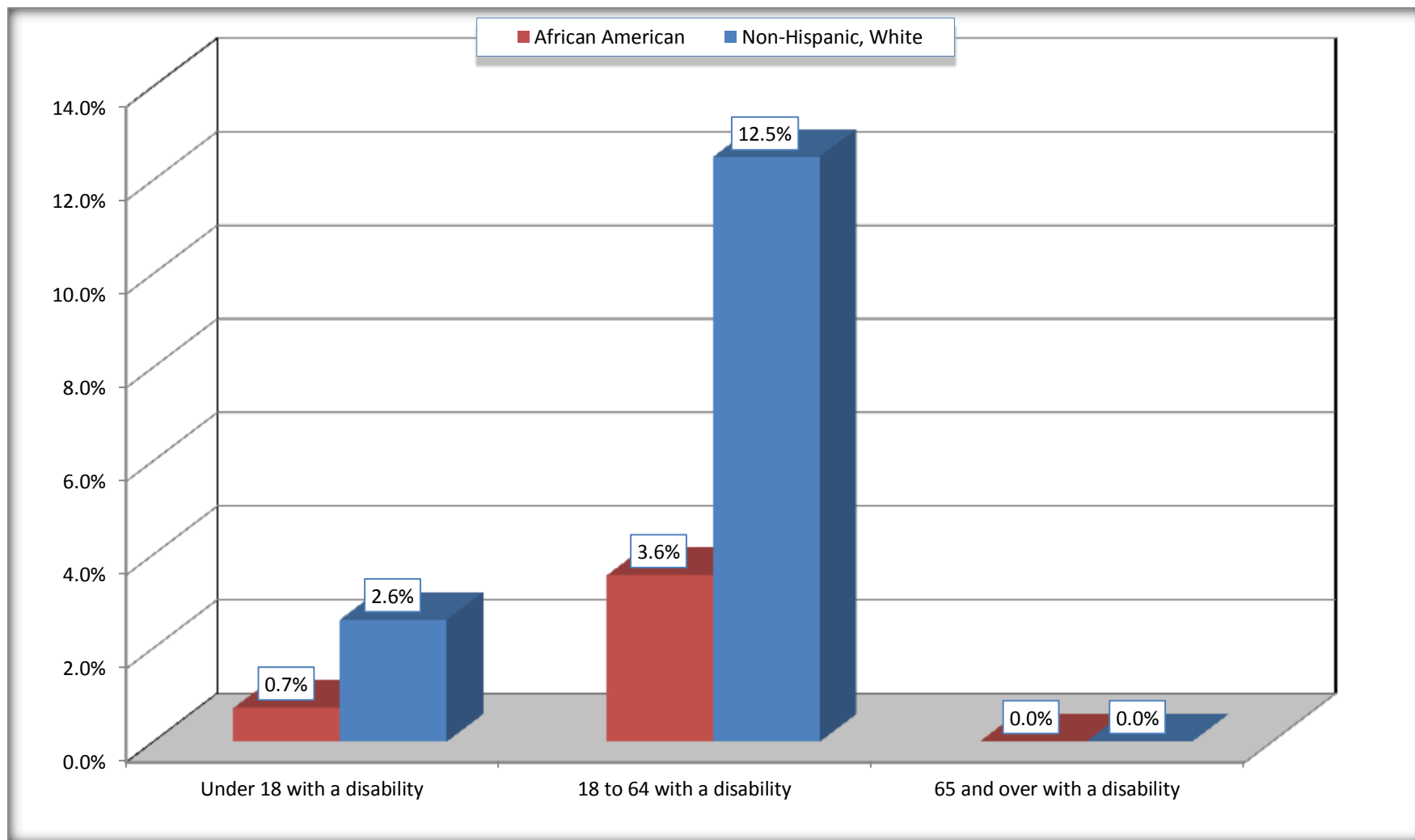
Source: U.S. Census Bureau, 2008-2012 American Community Survey

For information on confidentiality protection, sampling error, nonsampling error, and definitions, see Survey Methodology.

<http://www.census.gov/acs/www/UseData/index.htm>

## Disability by Age

### Fort Lee CDP, Virginia



Source: B18101. AGE BY DISABILITY STATUS  
Data Set: 2008-2012 American Community Survey 5-Year Estimates

**C27001B. HEALTH INSURANCE COVERAGE STATUS BY AGE**

Data Set: 2008-2012 American Community Survey 5-Year Estimates

	Fort Lee CDP, Virginia					
	African American	Margin of Error (+/-)	% of AA Total	White, Not Hispanic	Margin of Error (+/-)	% of NHW Total
Total:	<b>1,898</b>	<b>371</b>	<b>100.0%</b>	<b>927</b>	<b>349</b>	<b>100.0%</b>
Under 18 years:	1,251	280	65.9%	575	257	62.0%
With health insurance coverage	1,248	279	65.8%	575	257	62.0%
No health insurance coverage	3	8	0.2%	0	17	0.0%
18 to 64 years:	647	172	34.1%	352	111	38.0%
With health insurance coverage	592	152	31.2%	352	111	38.0%
No health insurance coverage	55	57	2.9%	0	17	0.0%
65 years and over:	0	17	0.0%	0	17	0.0%
With health insurance coverage	0	17	0.0%	0	17	0.0%
No health insurance coverage	0	17	0.0%	0	17	0.0%

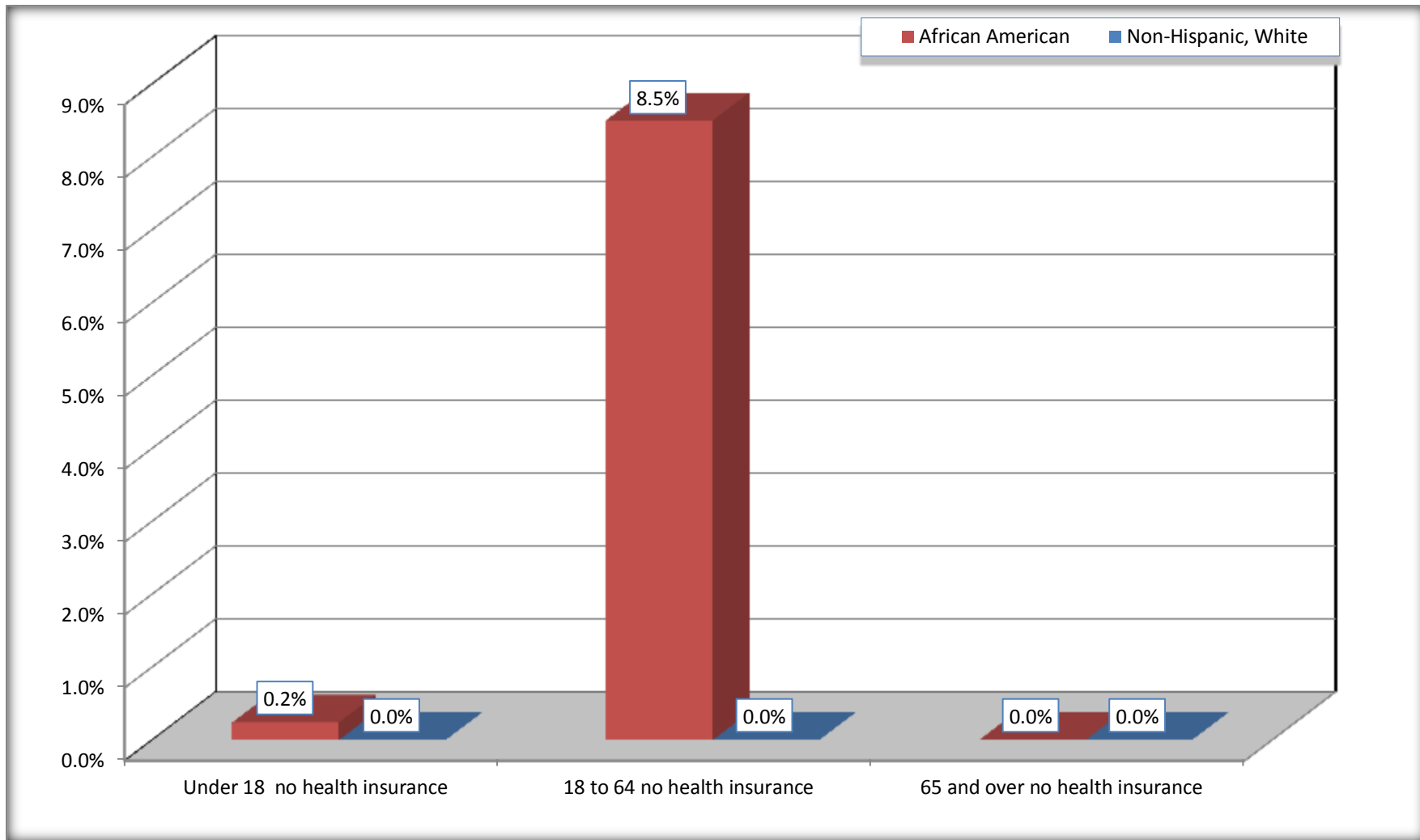
Source: U.S. Census Bureau, 2008-2012 American Community Survey

For information on confidentiality protection, sampling error, nonsampling error, and definitions, see Survey Methodology.

<http://www.census.gov/acs/www/UseData/index.htm>

# Lack of Health Insurance Coverage by Age

## Fort Lee CDP, Virginia



Source: C27001B. HEALTH INSURANCE COVERAGE STATUS BY AGE  
Data Set: 2008-2012 American Community Survey 5-Year Estimates