

Selected Socio-Economic Data

Bedford city, Virginia

African American and White, Not Hispanic

Data Set: 2008-2012 American Community Survey 5-Year Estimates

www.fairvote2020.org

www.fairdata2000.com

[29-Dec-13](#)

C02003.DETAILED RACE - Universe: TOTAL POPULATION

Data Set: 2008-2012 American Community Survey 5-Year Estimates

	Bedford city, Virginia		
	Population	Margin of Error (+/-)	% of Total
Total:	6,103	*****	100.0%
Population of one race:	5,988	80	98.1%
White	4,638	281	76.0%
Black or African American	1,314	256	21.5%
American Indian and Alaska Native	0	17	0.0%
Asian alone	26	38	0.4%
Native Hawaiian and Other Pacific Islander	0	17	0.0%
Some other race	10	18	0.2%
Population of two or more races:	115	80	1.9%
Two races including Some other race	0	17	0.0%
Two races excluding Some other race, and three or more races	115	80	1.9%
Population of two races:	103	77	1.7%
White; Black or African American	75	69	1.2%
White; American Indian and Alaska Native	21	27	0.3%
White; Asian	0	17	0.0%
Black or African American; American Indian and Alaska Native	7	16	0.1%
All other two race combinations	0	17	0.0%
Population of three races	12	19	0.2%
Population of four or more races	0	17	0.0%

Note: Hispanics may be of any race. See Table B03002 and chart.

Source: U.S. Census Bureau, 2008-2012 American Community Survey

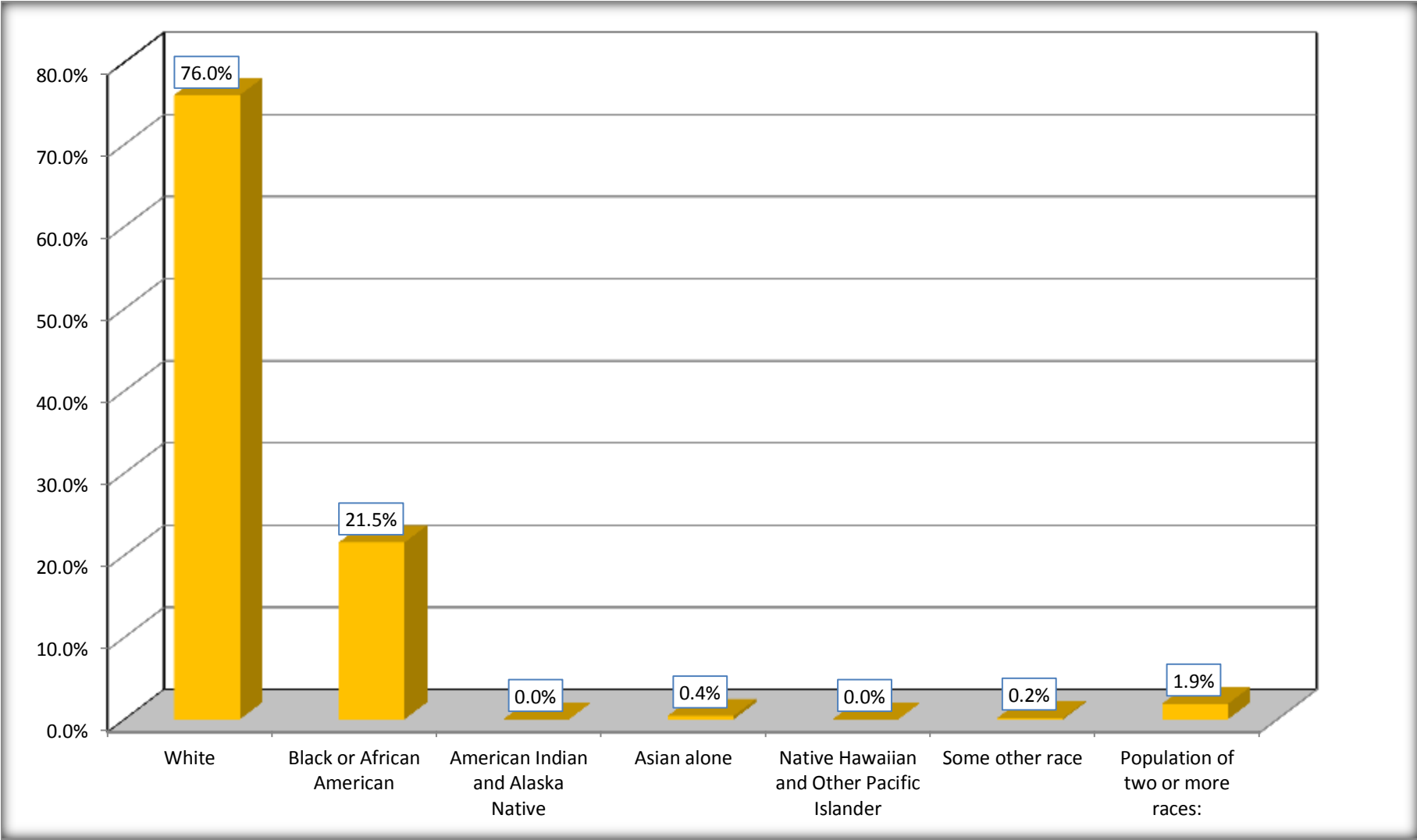
Although the American Community Survey (ACS) produces population, demographic and housing unit estimates, it is the Census Bureau's Population Estimates Program that produces and disseminates the official estimates of the population for the nation, states, counties, cities and towns and estimates of housing units for states and counties.

For information on confidentiality protection, sampling error, nonsampling error, and definitions, see Survey Methodology.

<http://www.census.gov/acs/www/UseData/index.htm>

Population by Race

Bedford city, Virginia



Source: C02003.DETAILED RACE - Universe: TOTAL POPULATION
Data Set: 2008-2012 American Community Survey 5-Year Estimates

B03002. HISPANIC OR LATINO ORIGIN BY RACE - Universe: TOTAL POPULATION

Data Set: 2008-2012 American Community Survey 5-Year Estimates

	Bedford city, Virginia		
	Population	Margin of Error (+/-)	% of Total
Total:	6,103	*****	100.0%
Not Hispanic or Latino:	5,997	98	98.3%
White alone	4,542	289	74.4%
Black or African American alone	1,314	256	21.5%
American Indian and Alaska Native alone	0	17	0.0%
Asian alone	26	38	0.4%
Native Hawaiian and Other Pacific Islander alone	0	17	0.0%
Some other race alone	0	17	0.0%
Two or more races:	115	80	1.9%
Two races including Some other race	0	17	0.0%
Two races excluding Some other race, and three or more races	115	80	1.9%
Hispanic or Latino	106	98	1.7%

Source: U.S. Census Bureau, 2008-2012 American Community Survey

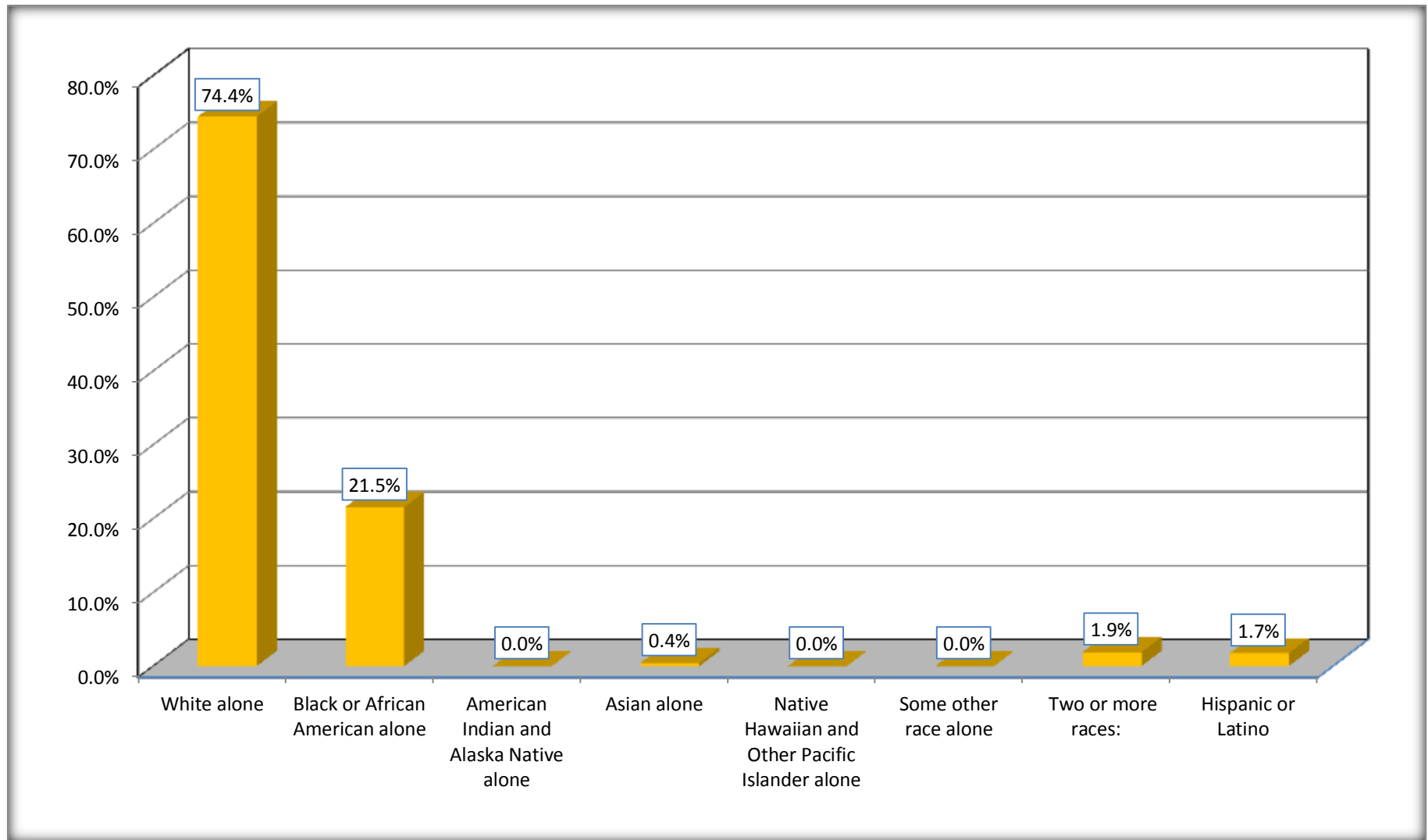
Although the American Community Survey (ACS) produces population, demographic and housing unit estimates, it is the Census Bureau's Population Estimates Program that produces and disseminates the official estimates of the population for the nation, states, counties, cities and towns and estimates of housing units for states and counties.

For information on confidentiality protection, sampling error, nonsampling error, and definitions, see Survey Methodology.

<http://www.census.gov/acs/www/UseData/index.htm>

Non-Hispanic by Race and Hispanic Population

Bedford city, Virginia



Source: B03002. HISPANIC OR LATINO ORIGIN BY RACE - Universe: TOTAL POPULATION
Data Set: 2008-2012 American Community Survey 5-Year Estimates

B03002. HISPANIC OR LATINO ORIGIN BY RACE

Data Set: 2008-2012 American Community Survey 5-Year Estimates

	Bedford city, Virginia		
	Population	Margin of Error (+/-)	% of Total
Hispanic or Latino:	106	98	100.0%
White alone	96	98	90.6%
Black or African American alone	0	17	0.0%
American Indian and Alaska Native alone	0	17	0.0%
Asian alone	0	17	0.0%
Native Hawaiian and Other Pacific Islander alone	0	17	0.0%
Some other race alone	10	18	9.4%
Two or more races:	0	17	0.0%
Two races including Some other race	0	17	0.0%
Two races excluding Some other race, and three or more races	0	17	0.0%

Source: U.S. Census Bureau, 2008-2012 American Community Survey

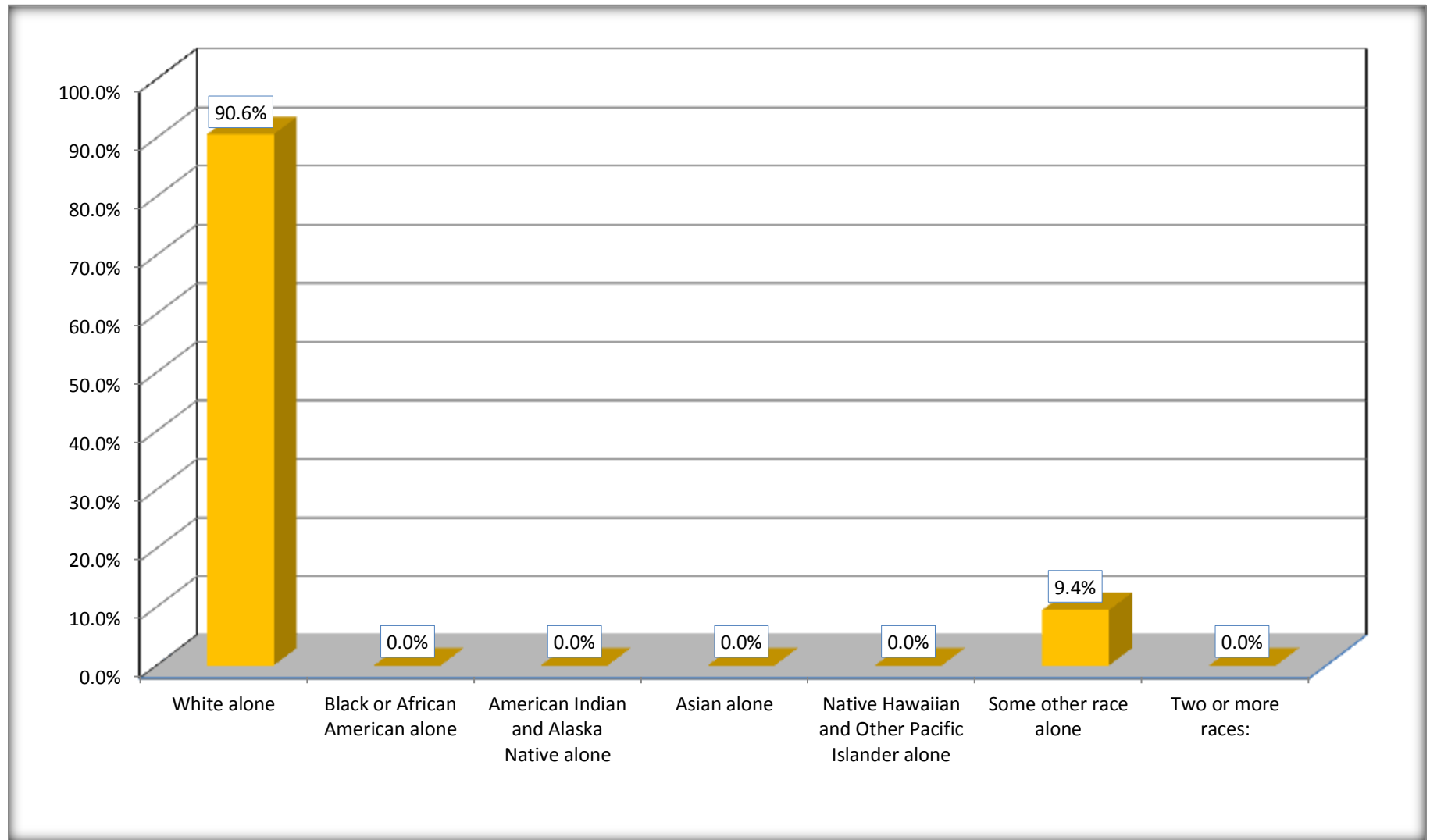
Although the American Community Survey (ACS) produces population, demographic and housing unit estimates, it is the Census Bureau's Population Estimates Program that produces and disseminates the official estimates of the population for the nation, states, counties, cities and towns and estimates of housing units for states and counties.

For information on confidentiality protection, sampling error, nonsampling error, and definitions, see Survey Methodology.

<http://www.census.gov/acs/www/UseData/index.htm>

Hispanic or Latino Origin by Race

Bedford city, Virginia



Source: B03002. HISPANIC OR LATINO ORIGIN BY RACE
Data Set: 2008-2012 American Community Survey 5-Year Estimates

B01001. SEX BY AGE

Data Set: 2008-2012 American Community Survey 5-Year Estimates

	Bedford city, Virginia					
	African American	Margin of Error (+/-)	% of AA Total	White, Not Hispanic	Margin of Error (+/-)	% of NHW Total
Total:	1,314	256	100.0%	4,542	289	100.0%
Under 18 years	281	NC	21.4%	828	NC	18.2%
18 to 64 years	825	NC	62.8%	2,677	NC	58.9%
65 years and over	208	NC	15.8%	1,037	NC	22.8%
Male:	640	175	48.7%	1,969	389	43.4%
Under 18 years	166	NC	12.6%	462	NC	10.2%
18 to 64 years	384	NC	29.2%	1,109	NC	24.4%
65 years and over	90	NC	6.8%	398	NC	8.8%
Female:	674	152	51.3%	2,573	412	56.6%
Under 18 years	115	NC	8.8%	366	NC	8.1%
18 to 64 years	441	NC	33.6%	1,568	NC	34.5%
65 years and over	118	NC	9.0%	639	NC	14.1%

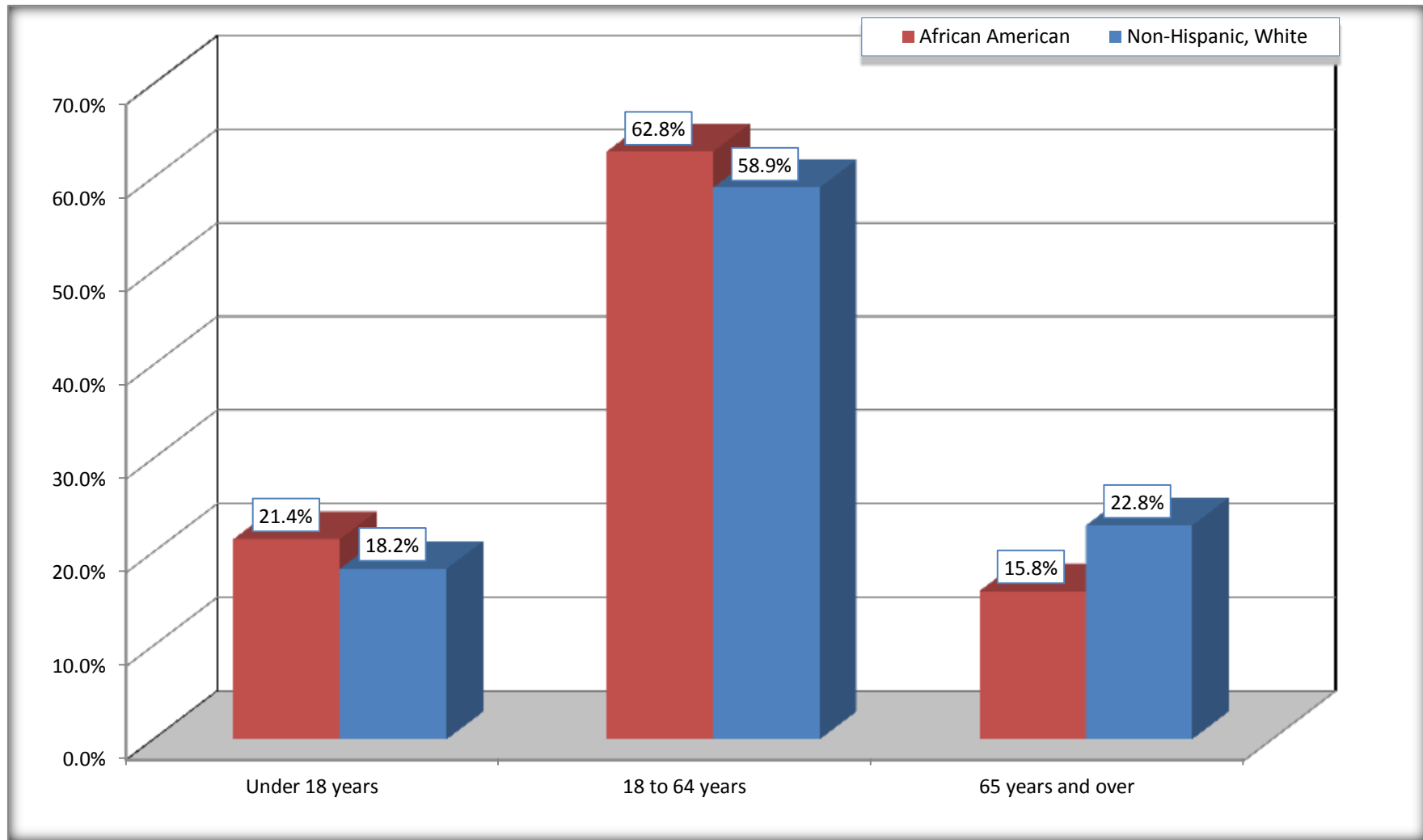
Source: U.S. Census Bureau, 2008-2012 American Community Survey

Although the American Community Survey (ACS) produces population, demographic and housing unit estimates, it is the Census Bureau's Population Estimates Program that produces and disseminates the official estimates of the population for the nation, states, counties, cities and towns and estimates of housing units for states and counties.

For information on confidentiality protection, sampling error, nonsampling error, and definitions, see Survey Methodology.
<http://www.census.gov/acs/www/UseData/index.htm>

Population by Age

Bedford city, Virginia



Source: B01001. SEX BY AGE
Data Set: 2008-2012 American Community Survey 5-Year Estimates

B05003. SEX BY AGE BY CITIZENSHIP STATUS

Data Set: 2008-2012 American Community Survey 5-Year Estimates

	Bedford city, Virginia					
	African American	Margin of Error (+/-)	% of AA Total by Age	White, Not Hispanic	Margin of Error (+/-)	% of NHW Total by Age
Total:	1,314	256	100.0%	4,542	289	100.0%
Under 18 years:	281	NC	100.0%	828	NC	100.0%
Native	281	NC	100.0%	828	NC	100.0%
Foreign born:	0	NC	0.0%	0	NC	0.0%
Naturalized U.S. citizen	0	NC	0.0%	0	NC	0.0%
Not a U.S. citizen	0	NC	0.0%	0	NC	0.0%
18 years and over:	1,033	NC	100.0%	3,714	NC	100.0%
Native	1,033	NC	100.0%	3,622	NC	97.5%
Foreign born:	0	NC	0.0%	92	NC	2.5%
Naturalized U.S. citizen	0	NC	0.0%	15	NC	0.4%
Not a U.S. citizen	0	NC	0.0%	77	NC	2.1%
Male:	640	175	48.7%	1,969	223	43.4%
Under 18 years:	166	84	100.0%	462	134	100.0%
Native	166	84	100.0%	462	134	100.0%
Foreign born:	0	17	0.0%	0	17	0.0%
Naturalized U.S. citizen	0	17	0.0%	0	17	0.0%
Not a U.S. citizen	0	17	0.0%	0	17	0.0%
18 years and over:	474	143	100.0%	1,507	181	100.0%
Native	474	143	100.0%	1,459	192	96.8%
Foreign born:	0	17	0.0%	48	50	3.2%
Naturalized U.S. citizen	0	17	0.0%	0	17	0.0%
Not a U.S. citizen	0	17	0.0%	48	50	3.2%

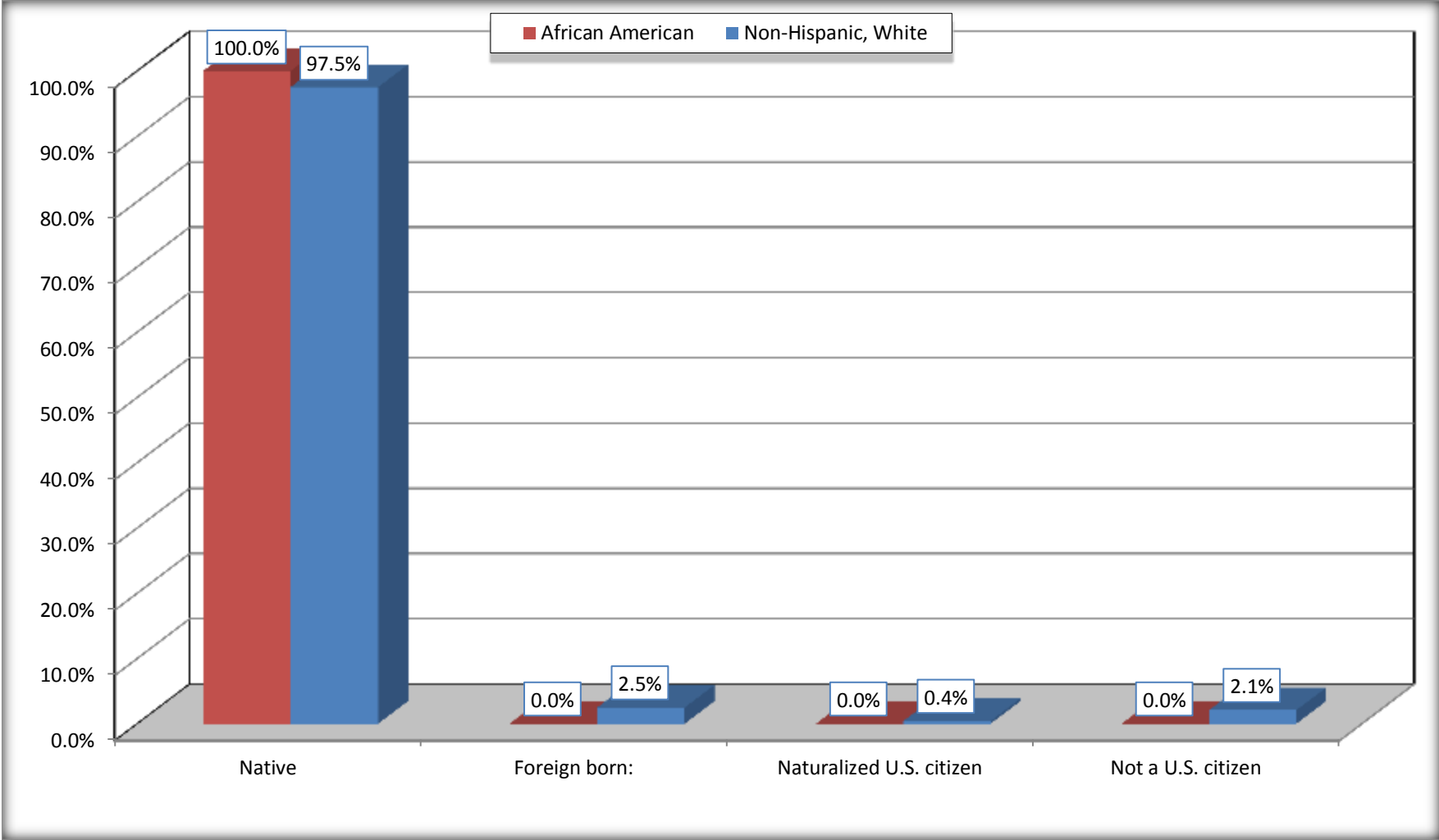
	Bedford city, Virginia					
	African American	Margin of Error (+/-)	% of AA by Age	White, Not Hispanic	Margin of Error (+/-)	% of NHW by Age
Female:	674	152	51.3%	2,573	226	56.6%
Under 18 years:	115	67	100.0%	366	138	100.0%
Native	115	67	100.0%	366	138	100.0%
Foreign born:	0	17	0.0%	0	17	0.0%
Naturalized U.S. citizen	0	17	0.0%	0	17	0.0%
Not a U.S. citizen	0	17	0.0%	0	17	0.0%
18 years and over:	559	128	100.0%	2,207	177	100.0%
Native	559	128	100.0%	2,163	192	98.0%
Foreign born:	0	17	0.0%	44	48	2.0%
Naturalized U.S. citizen	0	17	0.0%	15	25	0.7%
Not a U.S. citizen	0	17	0.0%	29	41	1.3%

Source: U.S. Census Bureau, 2008-2012 American Community Survey

For information on confidentiality protection, sampling error, nonsampling error, and definitions, see Survey Methodology.
<http://www.census.gov/acs/www/UseData/index.htm>

Citizenship Status of Voting Age Population (18 and Over)

Bedford city, Virginia



Source: B05003. SEX BY AGE BY CITIZENSHIP STATUS
Data Set: 2008-2012 American Community Survey 5-Year Estimates

**B07004. GEOGRAPHICAL MOBILITY IN THE PAST YEAR BY RACE FOR CURRENT RESIDENCE IN THE UNITED STATES - Universe:
POPULATION 1 YEAR AND OVER**

Data Set: 2008-2012 American Community Survey 5-Year Estimates

	Bedford city, Virginia					
	African American	Margin of Error (+/-)	% of AA Total	White, Not Hispanic	Margin of Error (+/-)	% of NHW Total
Total:	1,314	256	100.0%	4,508	290	100.0%
Same house 1 year ago	1,144	282	87.1%	4,070	324	90.3%
Moved within same county	45	50	3.4%	149	106	3.3%
Moved from different county within same state	97	87	7.4%	251	151	5.6%
Moved from different state	28	39	2.1%	38	46	0.8%
Moved from abroad	0	17	0.0%	0	17	0.0%

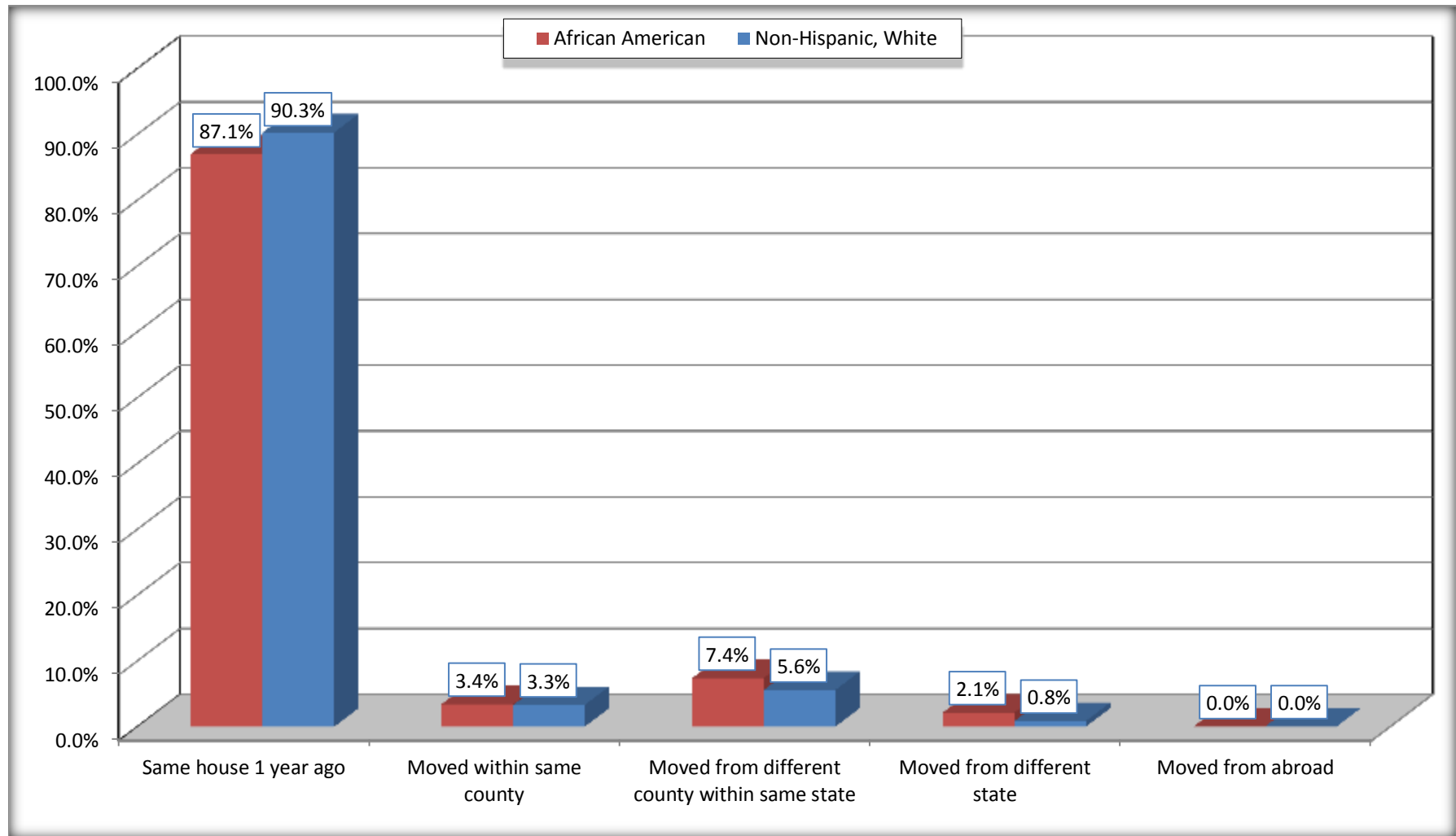
Source: U.S. Census Bureau, 2008-2012 American Community Survey

For information on confidentiality protection, sampling error, nonsampling error, and definitions, see Survey Methodology.

<http://www.census.gov/acs/www/UseData/index.htm>

Geographical Mobility in the Past Year (Population 1 Year and Over)

Bedford city, Virginia



Source: B07004. GEOGRAPHICAL MOBILITY IN THE PAST YEAR BY RACE FOR CURRENT RESIDENCE IN THE UNITED STATES - Universe: POPULATION 1 YEAR AND OVER

Data Set: 2008-2012 American Community Survey 5-Year Estimates

B08105. MEANS OF TRANSPORTATION TO WORK - Universe: WORKERS 16 YEARS AND OVER

Data Set: 2008-2012 American Community Survey 5-Year Estimates

	Bedford city, Virginia					
	African American	Margin of Error (+/-)	% of AA Total	White, Not Hispanic	Margin of Error (+/-)	% of NHW Total
Total:	569	154	100.0%	2124	265	100.0%
Car, truck, or van - drove alone	446	167	78.4%	1785	263	84.0%
Car, truck, or van - carpooled	63	76	11.1%	253	150	11.9%
Public transportation (excluding taxicab)	0	17	0.0%	0	17	0.0%
Walked	28	43	4.9%	56	57	2.6%
Taxicab, motorcycle, bicycle, or other means	0	17	0.0%	21	29	1.0%
Worked at home	32	48	5.6%	9	15	0.4%

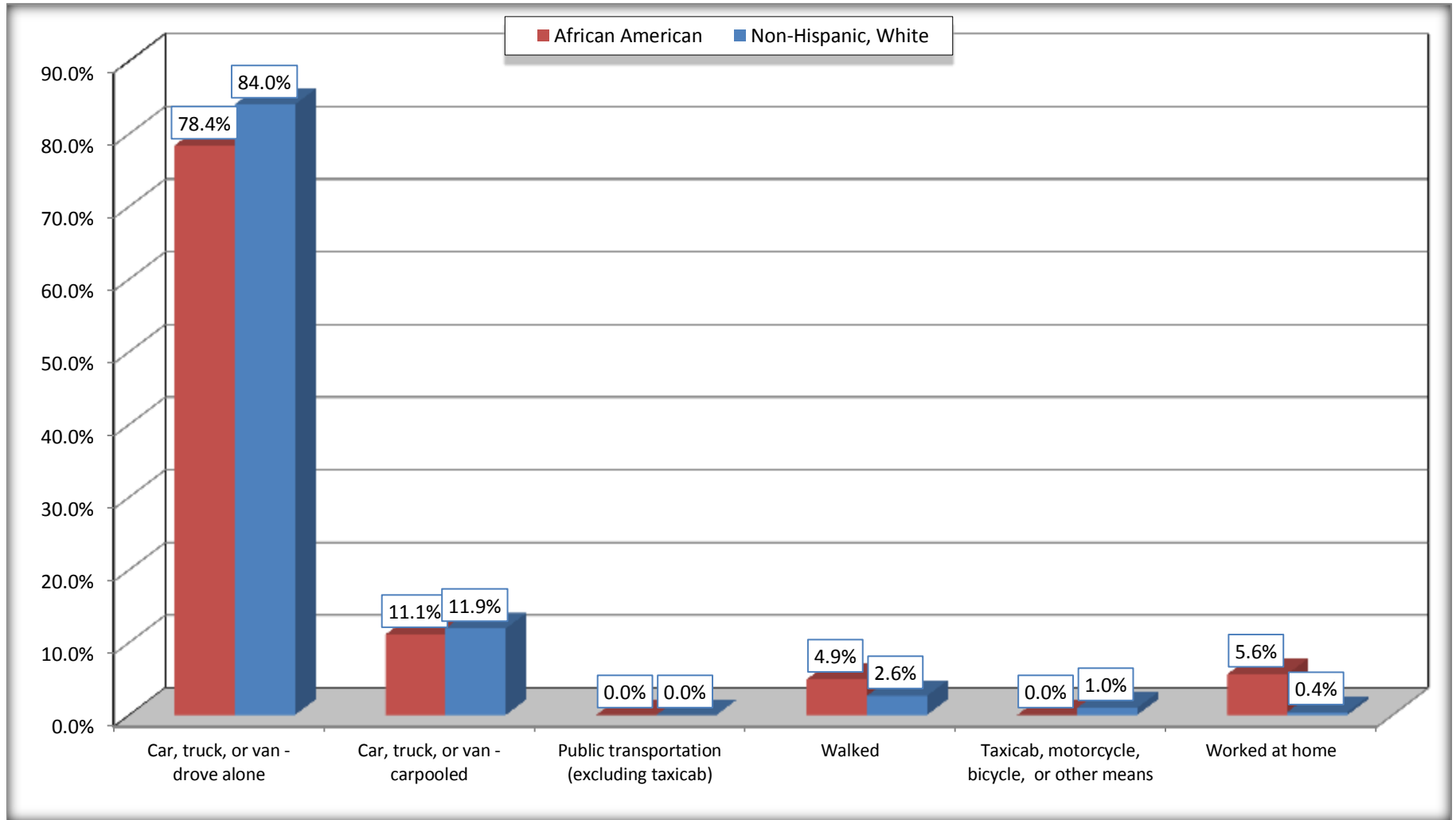
Source: U.S. Census Bureau, 2008-2012 American Community Survey

For information on confidentiality protection, sampling error, nonsampling error, and definitions, see Survey Methodology.

<http://www.census.gov/acs/www/UseData/index.htm>

Means of Transportation to Work (Workers 16 Years and Over)

Bedford city, Virginia



Source: B08105. MEANS OF TRANSPORTATION TO WORK - Universe: WORKERS 16 YEARS AND OVER
Data Set: 2008-2012 American Community Survey 5-Year Estimates

B11002. HOUSEHOLD TYPE BY RELATIVES AND NONRELATIVES FOR POPULATION IN HOUSEHOLDS

Data Set: 2008-2012 American Community Survey 5-Year Estimates

	Bedford city, Virginia					
	African American	Margin of Error (+/-)	% of AA Total	White, Not Hispanic	Margin of Error (+/-)	% of NHW Total
Total:	1265	271	100.0%	4409	305	100.0%
In family households	880	319	69.6%	3735	355	84.7%
In nonfamily households	385	152	30.4%	674	210	15.3%

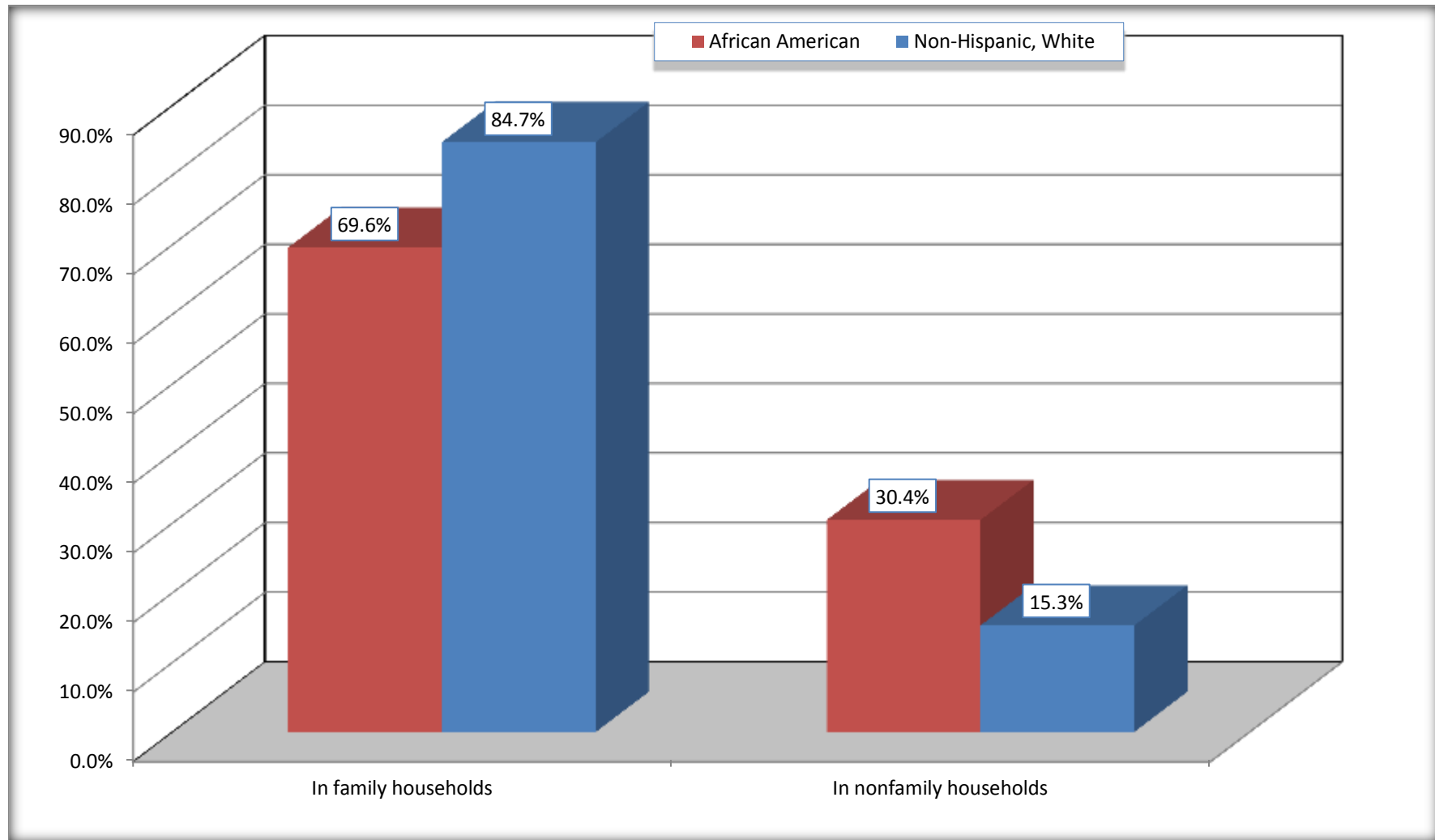
Source: U.S. Census Bureau, 2008-2012 American Community Survey

For information on confidentiality protection, sampling error, nonsampling error, and definitions, see Survey Methodology.

<http://www.census.gov/acs/www/UseData/index.htm>

Household Type for Population in Households

Bedford city, Virginia



Source: B11002. HOUSEHOLD TYPE BY RELATIVES AND NONRELATIVES FOR POPULATION IN HOUSEHOLDS
Data Set: 2008-2012 American Community Survey 5-Year Estimates

B12002. MARITAL STATUS FOR THE POPULATION 15 YEARS AND OVER

Data Set: 2008-2012 American Community Survey 5-Year Estimates

	Bedford city, Virginia					
	African American	Margin of Error (+/-)	% of AA Total	White, Not Hispanic	Margin of Error (+/-)	% of NHW Total
Total:	1,033	224	100.0%	3,929	261	100.0%
Never married	538	NC	52.1%	870	NC	22.1%
Now married (except separated)	245	NC	23.7%	1,879	NC	47.8%
Separated	0	NC	0.0%	237	NC	6.0%
Widowed	84	NC	8.1%	297	NC	7.6%
Divorced	166	NC	16.1%	646	NC	16.4%
Male:	474	143	45.9%	1,588	191	40.4%
Never married	239	103	23.1%	437	141	11.1%
Now married (except separated)	140	76	13.6%	910	175	23.2%
Separated	0	17	0.0%	49	46	1.2%
Widowed	23	37	2.2%	22	25	0.6%
Divorced	72	61	7.0%	170	106	4.3%
Female:	559	128	54.1%	2,341	193	59.6%
Never married	299	123	28.9%	433	138	11.0%
Now married (except separated)	105	53	10.2%	969	186	24.7%
Separated	0	17	0.0%	188	156	4.8%
Widowed	61	81	5.9%	275	111	7.0%
Divorced	94	64	9.1%	476	179	12.1%

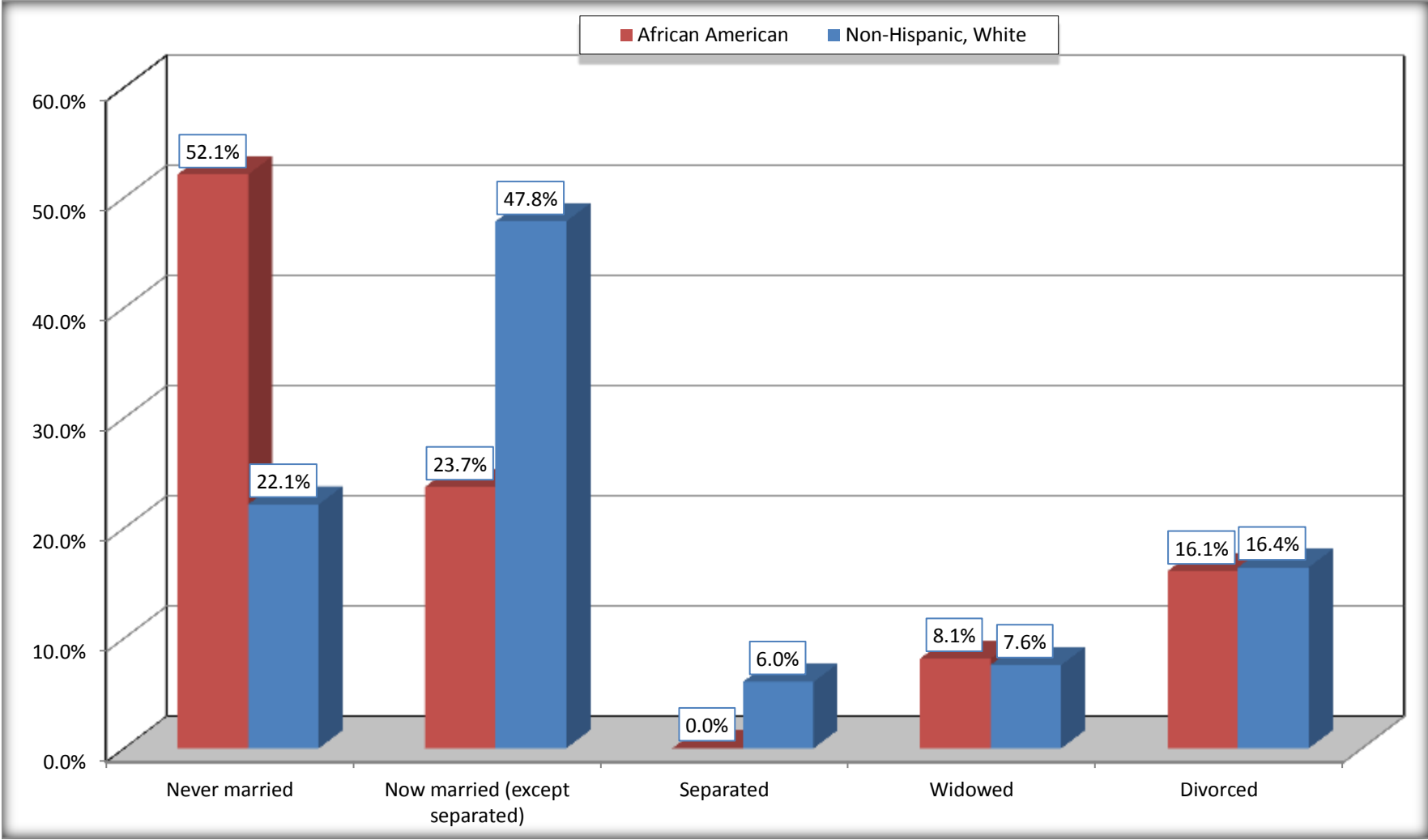
Source: U.S. Census Bureau, 2008-2012 American Community Survey

For information on confidentiality protection, sampling error, nonsampling error, and definitions, see Survey Methodology.

<http://www.census.gov/acs/www/UseData/index.htm>

Marital Status for the Population 15 Years and Over

Bedford city, Virginia



Source: B12002. MARITAL STATUS FOR THE POPULATION 15 YEARS AND OVER
Data Set: 2008-2012 American Community Survey 5-Year Estimates

C15002. SEX BY EDUCATIONAL ATTAINMENT FOR THE POPULATION 25 YEARS AND OVER

Data Set: 2008-2012 American Community Survey 5-Year Estimates

	Bedford city, Virginia					
	African American	Margin of Error (+/-)	% of AA Total	White, Not Hispanic	Margin of Error (+/-)	% of NHW Total
Total:	846	191	100.0%	3,437	274	100.0%
Less than high school diploma	222	NC	26.2%	446	NC	13.0%
High school graduate, GED, or alternative	396	NC	46.8%	1,012	NC	29.4%
Some college or associate's degree	188	NC	22.2%	1,112	NC	32.4%
Bachelor's degree or higher	40	NC	4.7%	867	NC	25.2%
Male:	376	111	44.4%	1,485	182	43.2%
Less than high school diploma	181	99	21.4%	202	87	5.9%
High school graduate, GED, or alternative	77	65	9.1%	372	156	10.8%
Some college or associate's degree	95	66	11.2%	492	156	14.3%
Bachelor's degree or higher	23	31	2.7%	419	126	12.2%
Female:	470	120	55.6%	1,952	165	56.8%
Less than high school diploma	41	41	4.8%	244	117	7.1%
High school graduate, GED, or alternative	319	108	37.7%	640	172	18.6%
Some college or associate's degree	93	79	11.0%	620	185	18.0%
Bachelor's degree or higher	17	20	2.0%	448	171	13.0%

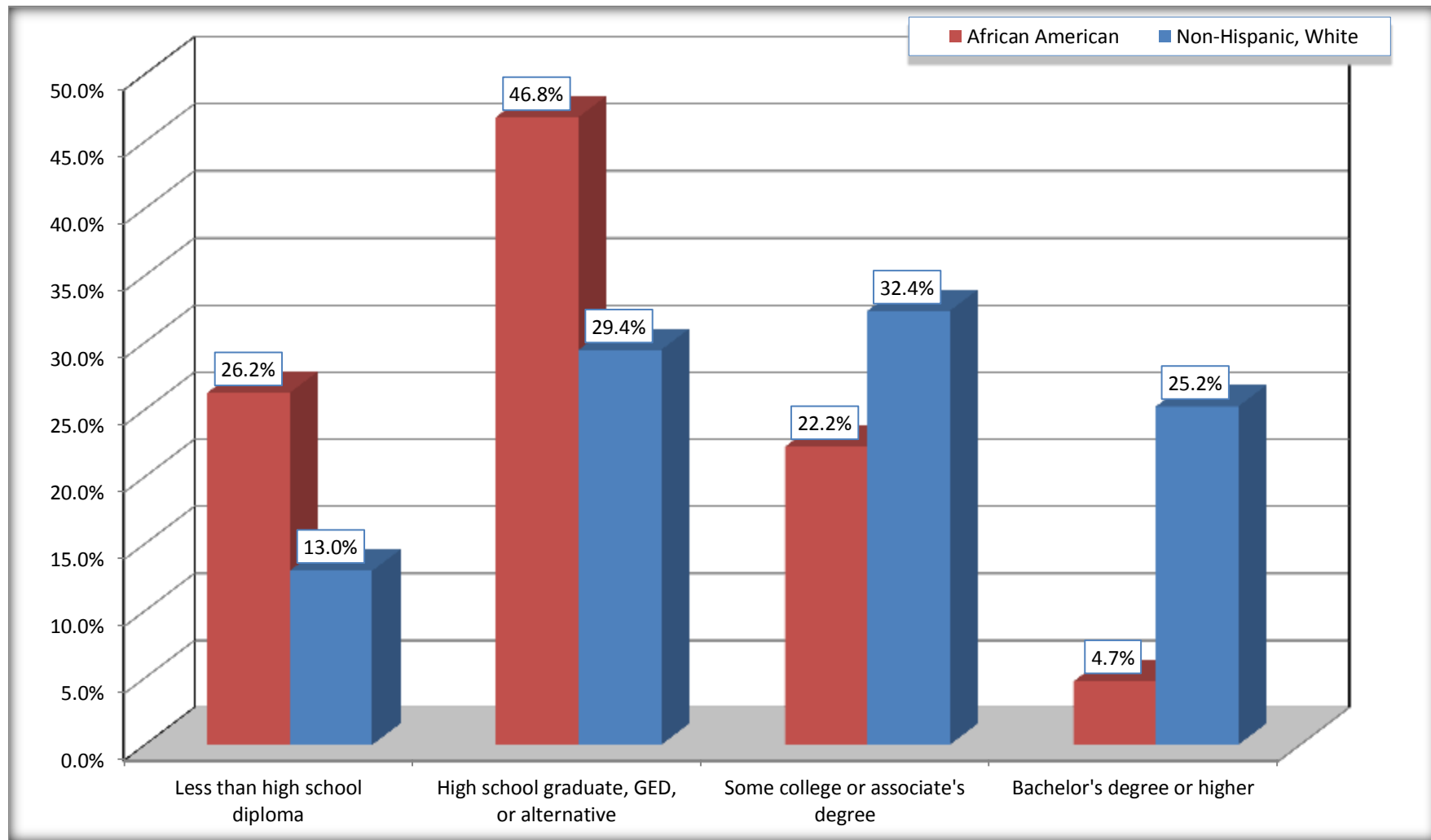
Source: U.S. Census Bureau, 2008-2012 American Community Survey

For information on confidentiality protection, sampling error, nonsampling error, and definitions, see Survey Methodology.

<http://www.census.gov/acs/www/UseData/index.htm>

Educational Attainment for the Population 25 Years and Older

Bedford city, Virginia



Source: C15002. SEX BY EDUCATIONAL ATTAINMENT FOR THE POPULATION 25 YEARS AND OVER
Data Set: 2008-2012 American Community Survey 5-Year Estimates

B17010. POVERTY STATUS IN THE PAST 12 MONTHS OF FAMILIES BY FAMILY TYPE BY PRESENCE OF RELATED CHILDREN UNDER 18 YEARS

Data Set: 2008-2012 American Community Survey 5-Year Estimates

	Bedford city, Virginia					
	African American	Margin of Error (+/-)	% of AA Total	White, Not Hispanic	Margin of Error (+/-)	% of NHW Total
Total:	284	105	100.0%	1,440	169	100.0%
Income in the past 12 months below poverty level:	40	31	14.1%	227	136	15.8%
Married-couple family:	0	17	0.0%	15	27	1.0%
With related children under 18 years	0	17	0.0%	15	27	1.0%
Other family:	40	31	14.1%	212	136	14.7%
Male householder, no wife present	0	17	0.0%	0	17	0.0%
With related children under 18 years	0	17	0.0%	0	17	0.0%
Female householder, no husband present	40	31	14.1%	212	136	14.7%
With related children under 18 years	27	28	9.5%	212	136	14.7%
Income in the past 12 months at or above poverty level:	244	97	85.9%	1,213	198	84.2%
Married-couple family:	109	64	38.4%	829	182	57.6%
With related children under 18 years	45	42	15.8%	278	120	19.3%
Other family:	135	84	47.5%	384	155	26.7%
Male householder, no wife present	68	63	23.9%	23	37	1.6%
With related children under 18 years	28	39	9.9%	0	17	0.0%
Female householder, no husband present	67	71	23.6%	361	161	25.1%
With related children under 18 years	25	28	8.8%	215	115	14.9%

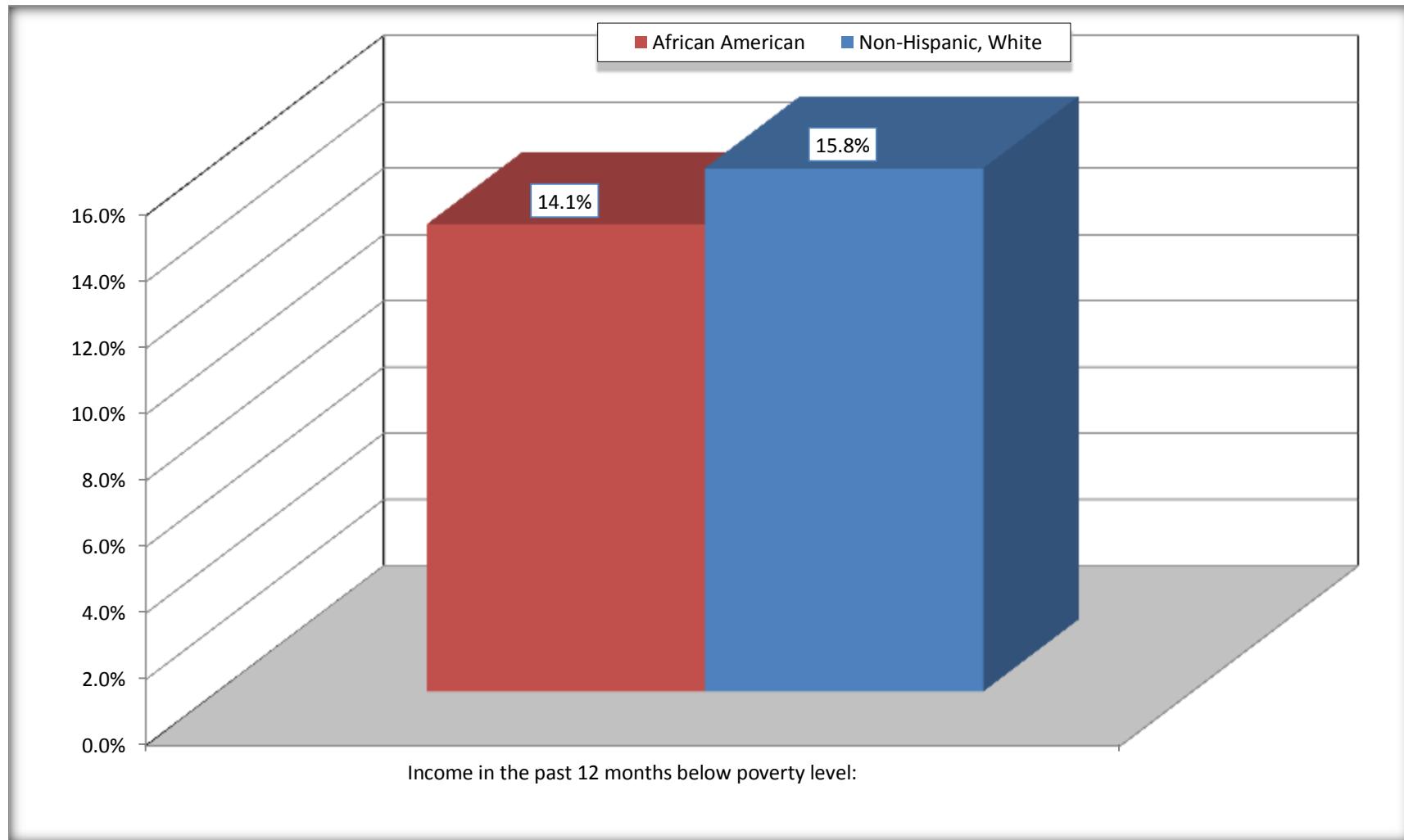
Source: U.S. Census Bureau, 2008-2012 American Community Survey

For information on confidentiality protection, sampling error, nonsampling error, and definitions, see Survey Methodology.

<http://www.census.gov/acs/www/UseData/index.htm>

Family Households Below Poverty in the Past 12 Months

Bedford city, Virginia

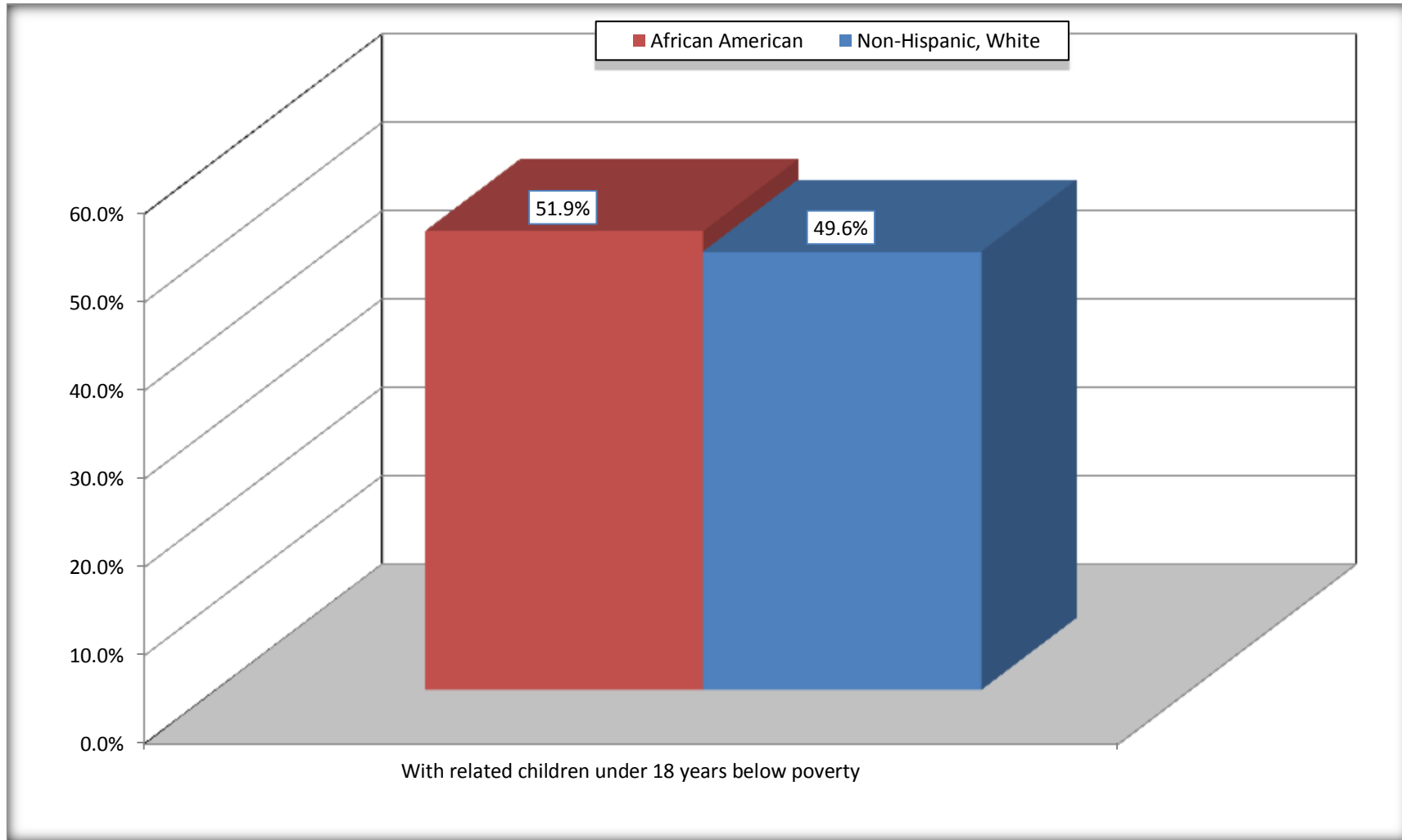


Source: B17010. POVERTY STATUS IN THE PAST 12 MONTHS OF FAMILIES BY FAMILY TYPE BY PRESENCE OF RELATED CHILDREN UNDER 18 YEARS

Data Set: 2008-2012 American Community Survey 5-Year Estimates

Female-headed Households with Related Children Below Poverty in the Past 12 Months

Bedford city, Virginia



Source: B17010. POVERTY STATUS IN THE PAST 12 MONTHS OF FAMILIES BY FAMILY TYPE BY PRESENCE OF RELATED CHILDREN UNDER 18 YEARS

Data Set: 2008-2012 American Community Survey 5-Year Estimates

B17020 POVERTY STATUS IN THE PAST 12 MONTHS BY AGE - Universe: POPULATION FOR WHOM POVERTY STATUS IS DETERMINED

Data Set: 2008-2012 American Community Survey 5-Year Estimates

	Bedford city, Virginia					
	African American	Margin of Error (+/-)	% of AA By Age	White, Not Hispanic	Margin of Error (+/-)	% of NHW By Age
Total:	1,290	254	100.0%	4,346	289	100.0%
Income in the past 12 months below poverty level:	379	154	29.4%	805	342	18.5%
Under 18 years	98	NC	34.9%	243	NC	29.3%
18 to 64 years	281	116	35.1%	489	232	18.7%
65 years and over	0	NC	0.0%	73	NC	8.1%
Income in the past 12 months at or above poverty level:	911	280	70.6%	3,541	442	81.5%
Under 18 years	183	NC	65.1%	585	NC	70.7%
18 to 64 years	520	216	64.9%	2,127	328	81.3%
65 years and over	208	NC	100.0%	829	NC	91.9%

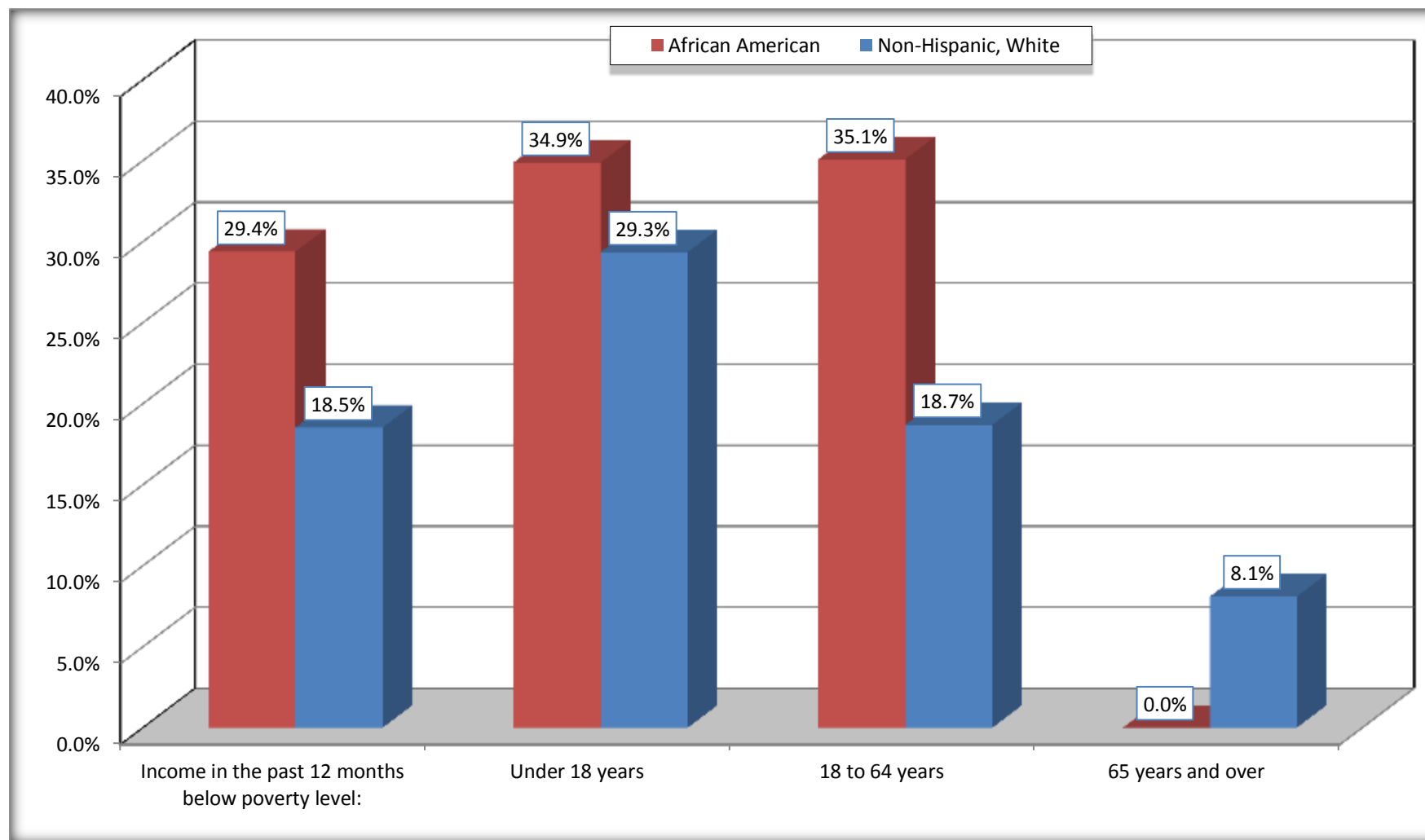
Source: U.S. Census Bureau, 2008-2012 American Community Survey

For information on confidentiality protection, sampling error, nonsampling error, and definitions, see Survey Methodology.

<http://www.census.gov/acs/www/UseData/index.htm>

Population Below Poverty in the Past 12 Months

Bedford city, Virginia



Source: B17020 POVERTY STATUS IN THE PAST 12 MONTHS BY AGE - Universe: POPULATION FOR WHOM POVERTY STATUS IS DETERMINED
Data Set: 2008-2012 American Community Survey 5-Year Estimates

B19001. HOUSEHOLD INCOME IN THE PAST 12 MONTHS (IN 2010 INFLATION-ADJUSTED DOLLARS)

Data Set: 2008-2012 American Community Survey 5-Year Estimates

	Bedford city, Virginia					
	African American	Margin of Error (+/-)	% of AA Total	White, Not Hispanic	Margin of Error (+/-)	% of NHW Total
Total:	618	123	100.0%	2,062	172	100.0%
Less than \$ 10,000	148	85	23.9%	257	165	12.5%
\$ 10,000 to \$ 14,999	92	81	14.9%	96	88	4.7%
\$ 15,000 to \$ 24,999	65	NC	10.5%	285	NC	13.8%
\$ 25,000 to \$ 34,999	139	NC	22.5%	237	NC	11.5%
\$ 35,000 to \$ 49,999	80	NC	12.9%	371	NC	18.0%
\$ 50,000 to \$ 74,999	86	NC	13.9%	438	NC	21.2%
\$ 75,000 to \$ 99,999	0	17	0.0%	68	55	3.3%
\$ 100,000 to \$ 149,999	8	NC	1.3%	219	NC	10.6%
\$ 150,000 to \$ 199,999	0	17	0.0%	78	60	3.8%
\$ 200,000 or more	0	17	0.0%	13	20	0.6%

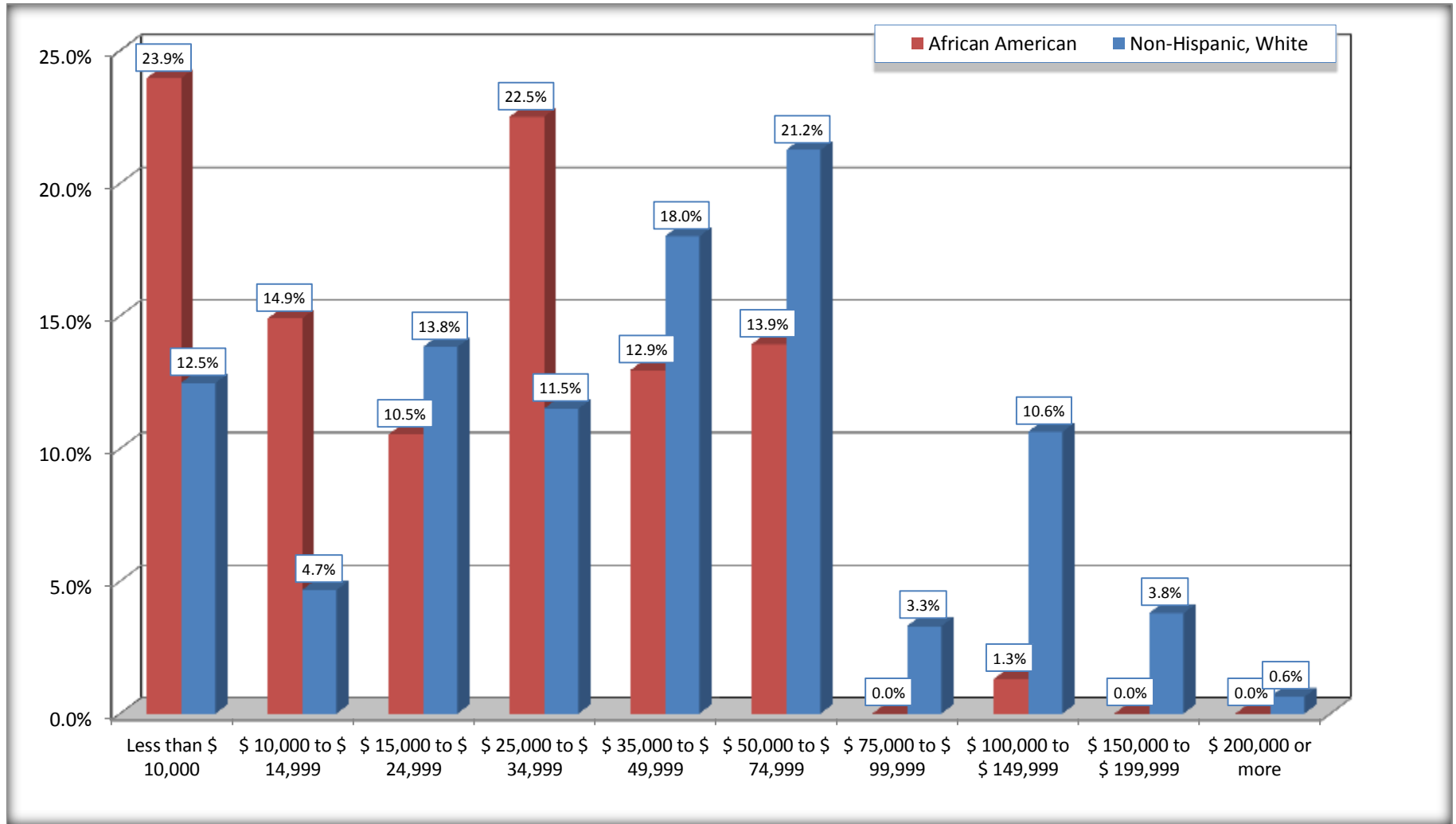
Source: U.S. Census Bureau, 2008-2012 American Community Survey

For information on confidentiality protection, sampling error, nonsampling error, and definitions, see Survey Methodology.

<http://www.census.gov/acs/www/UseData/index.htm>

Household Income in the Past 12 Months

Bedford city, Virginia



Source: B19001. HOUSEHOLD INCOME IN THE PAST 12 MONTHS (IN 2010 INFLATION-ADJUSTED DOLLARS)
Data Set: 2008-2012 American Community Survey 5-Year Estimates

B19013. MEDIAN HOUSEHOLD INCOME IN THE PAST 12 MONTHS (IN 2010 INFLATION-ADJUSTED DOLLARS)

Data Set: 2008-2012 American Community Survey 5-Year Estimates

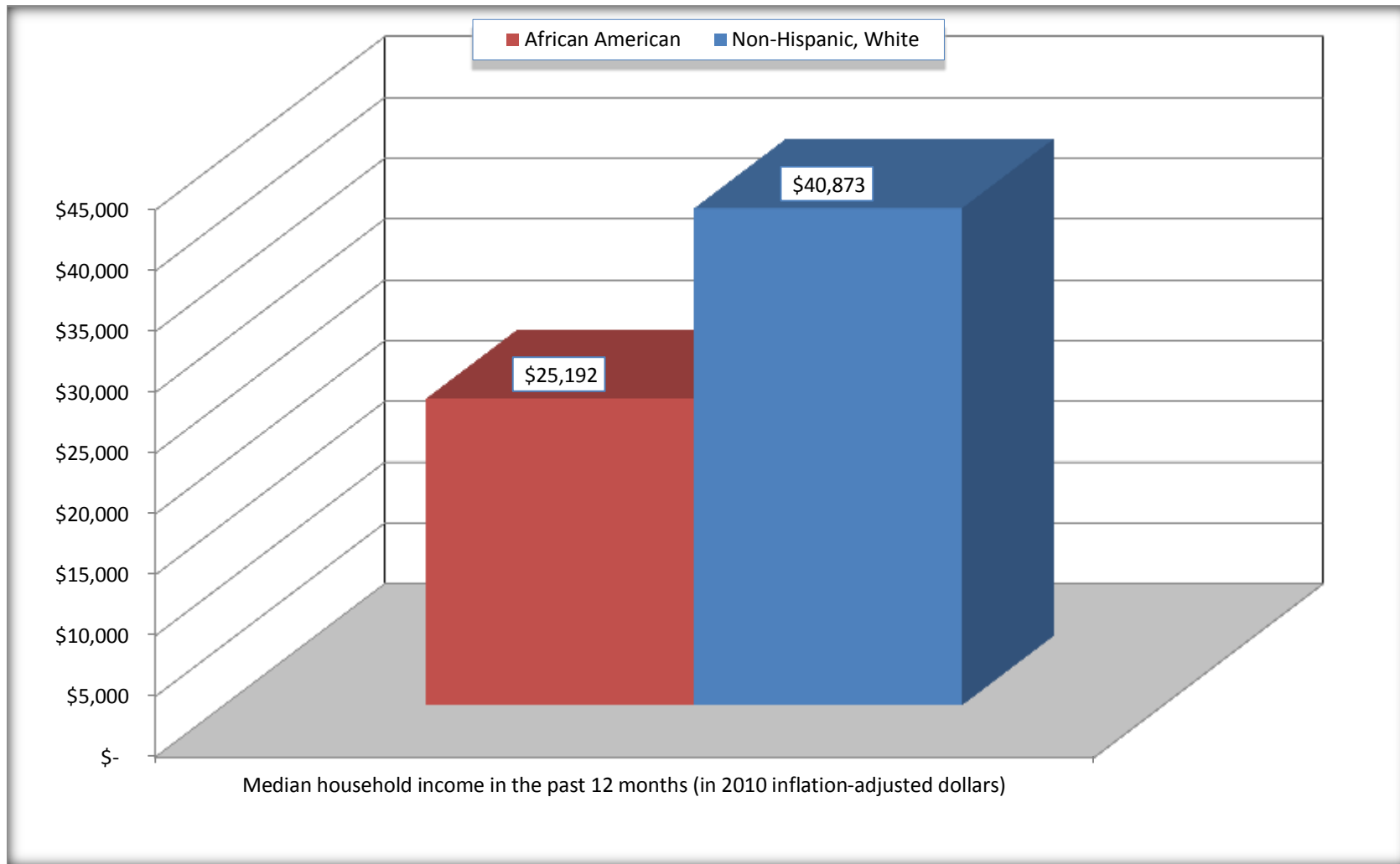
	Bedford city, Virginia			
	African American	Margin of Error (+/-)	White, Not Hispanic	Margin of Error (+/-)
Median household income in the past 12 months (in 2010 inflation-adjusted dollars)	\$ 25,192	\$ 12,883	\$ 40,873	\$ 7,399

Source: U.S. Census Bureau, 2008-2012 American Community Survey

For information on confidentiality protection, sampling error, nonsampling error, and definitions, see Survey Methodology.
<http://www.census.gov/acs/www/UseData/index.htm>

Median Household Income in the Past 12 Months

Bedford city, Virginia



Source: B19013. MEDIAN HOUSEHOLD INCOME IN THE PAST 12 MONTHS (IN 2010 INFLATION-ADJUSTED DOLLARS)
Data Set: 2008-2012 American Community Survey 5-Year Estimates

B19101. FAMILY INCOME IN THE PAST 12 MONTHS (IN 2010 INFLATION-ADJUSTED DOLLARS)

Data Set: 2008-2012 American Community Survey 5-Year Estimates

	Bedford city, Virginia					
	African American	Margin of Error (+/-)	% of AA Total	White, Not Hispanic	Margin of Error (+/-)	% of NHW Total
Total:	284	105	100.0%	1,440	169	100.0%
Less than \$ 10,000	27	28	9.5%	107	96	7.4%
\$ 10,000 to \$ 14,999	13	23	4.6%	27	34	1.9%
\$ 15,000 to \$ 24,999	27	NC	9.5%	215	NC	14.9%
\$ 25,000 to \$ 34,999	55	NC	19.4%	184	NC	12.8%
\$ 35,000 to \$ 49,999	110	NC	38.7%	262	NC	18.2%
\$ 50,000 to \$ 74,999	44	NC	15.5%	314	NC	21.8%
\$ 100,000 to \$ 149,999	8	NC	2.8%	187	NC	13.0%
\$ 150,000 to \$ 199,999	0	17	0.0%	63	55	4.4%
\$ 200,000 or more	0	17	0.0%	13	20	0.9%

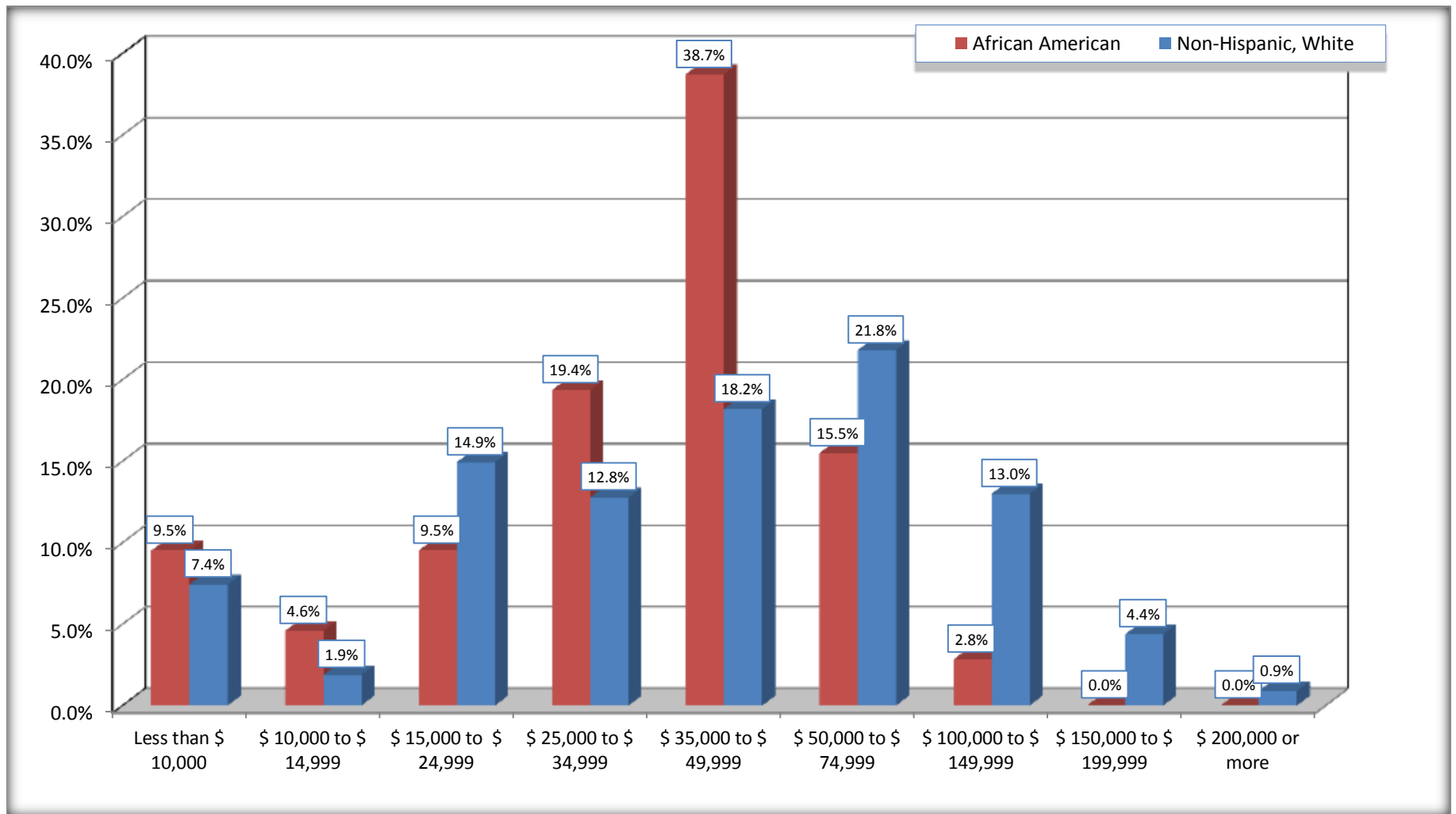
Source: U.S. Census Bureau, 2008-2012 American Community Survey

For information on confidentiality protection, sampling error, nonsampling error, and definitions, see Survey Methodology.

<http://www.census.gov/acs/www/UseData/index.htm>

Family Income in the Past 12 Months

Bedford city, Virginia



Source: B19101. FAMILY INCOME IN THE PAST 12 MONTHS (IN 2010 INFLATION-ADJUSTED DOLLARS)
Data Set: 2008-2012 American Community Survey 5-Year Estimates

B19113. MEDIAN FAMILY INCOME IN THE PAST 12 MONTHS (IN 2010 INFLATION-ADJUSTED DOLLARS)

Data Set: 2008-2012 American Community Survey 5-Year Estimates

	Bedford city, Virginia			
	African American	Margin of Error (+/-)	White, Not Hispanic	Margin of Error (+/-)
Median family income in the past 12 months (in 2010 inflation-adjusted dollars)	\$ 40,318	\$ 8,931	\$ 44,028	\$ 13,918

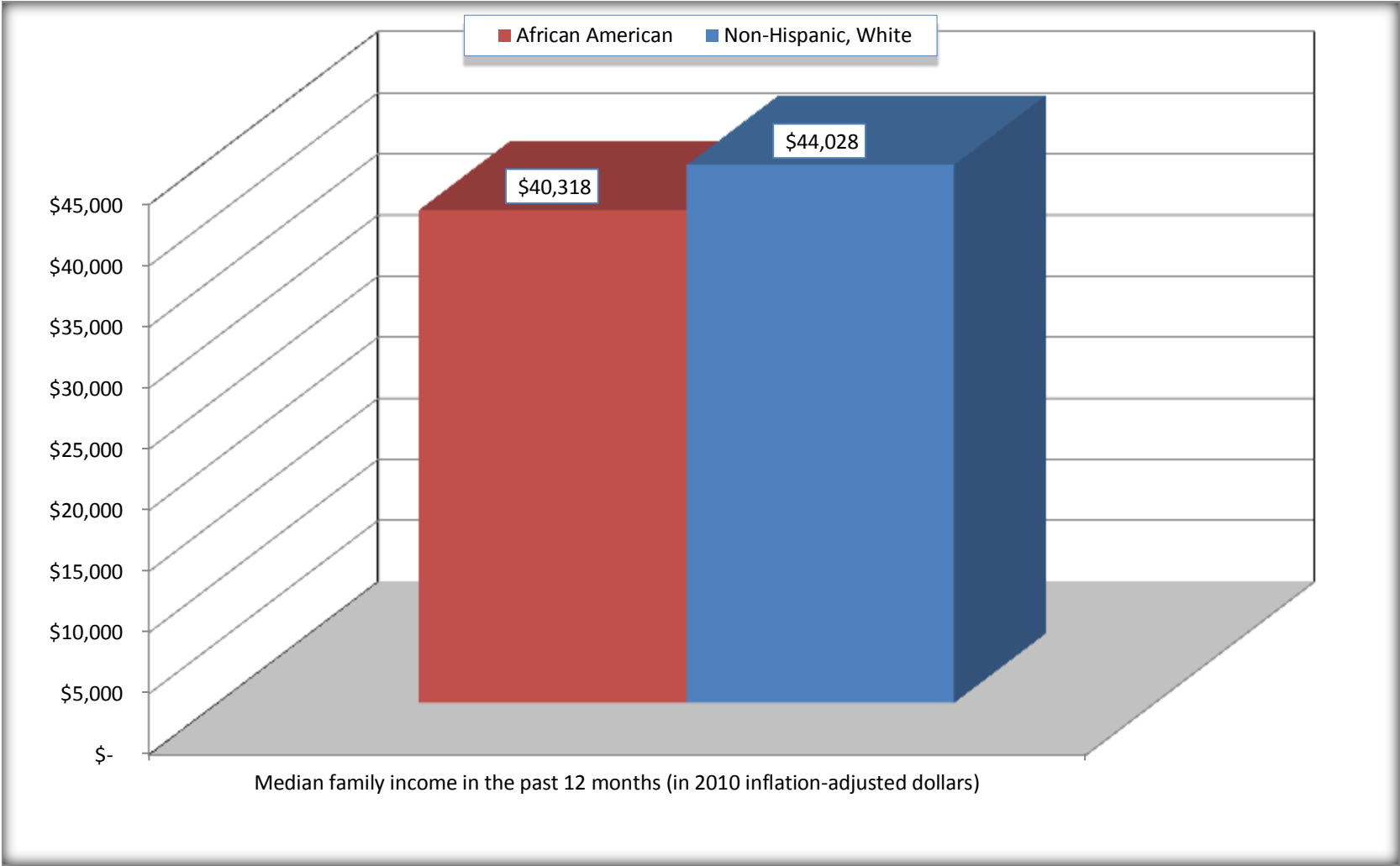
Source: U.S. Census Bureau, 2008-2012 American Community Survey

For information on confidentiality protection, sampling error, nonsampling error, and definitions, see Survey Methodology.

<http://www.census.gov/acs/www/UseData/index.htm>

Median Family Income in the Past 12 Months

Bedford city, Virginia



Source: B19113. MEDIAN FAMILY INCOME IN THE PAST 12 MONTHS (IN 2010 INFLATION-ADJUSTED DOLLARS)
Data Set: 2008-2012 American Community Survey 5-Year Estimates

B19202. MEDIAN NONFAMILY HOUSEHOLD INCOME IN THE PAST 12 MONTHS (IN 2010 INFLATION-ADJUSTED DOLLARS)

Data Set: 2008-2012 American Community Survey 5-Year Estimates

	Bedford city, Virginia			
	African American	Margin of Error (+/-)	White, Not Hispanic	Margin of Error (+/-)
Median nonfamily household income in the past 12 months (in 2010 inflation-adjusted dollars)	\$ 11,643	\$ 4,944	\$ 30,375	\$ 17,678

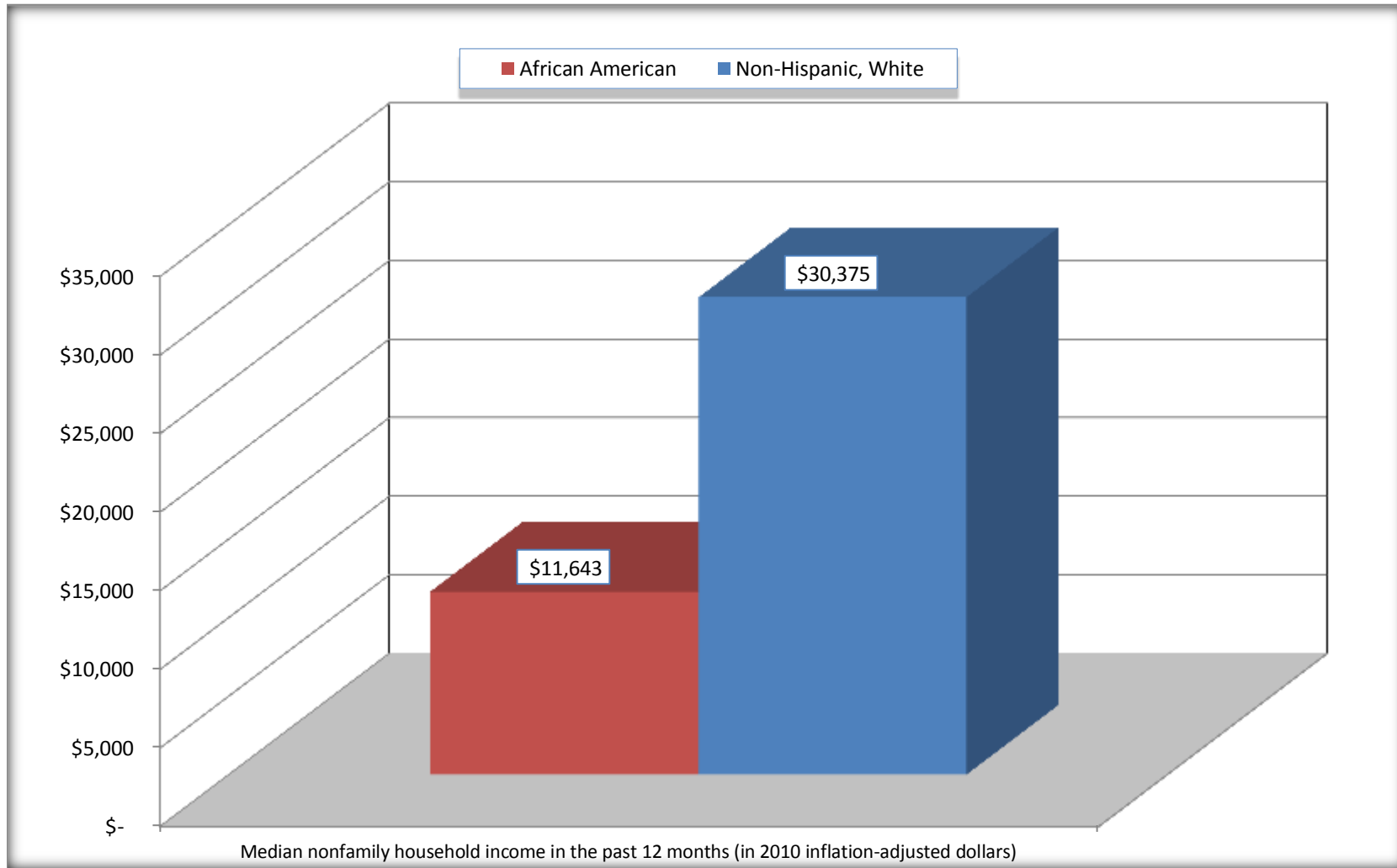
Source: U.S. Census Bureau, 2008-2012 American Community Survey

For information on confidentiality protection, sampling error, nonsampling error, and definitions, see Survey Methodology.

<http://www.census.gov/acs/www/UseData/index.htm>

Median Non-Family Income in the Past 12 Months

Bedford city, Virginia



Source: B19202. MEDIAN NONFAMILY HOUSEHOLD INCOME IN THE PAST 12 MONTHS (IN 2010 INFLATION-ADJUSTED DOLLARS)
Data Set: 2008-2012 American Community Survey 5-Year Estimates

B19301. PER CAPITA INCOME IN THE PAST 12 MONTHS (IN 2010 INFLATION-ADJUSTED DOLLARS)

Data Set: 2008-2012 American Community Survey 5-Year Estimates

	Bedford city, Virginia			
	African American	Margin of Error (+/-)	White, Not Hispanic	Margin of Error (+/-)
Per capita income in the past 12 months (in 2010 inflation-adjusted dollars)	\$ 14,466	\$ 2,754	\$ 25,013	\$ 3,526

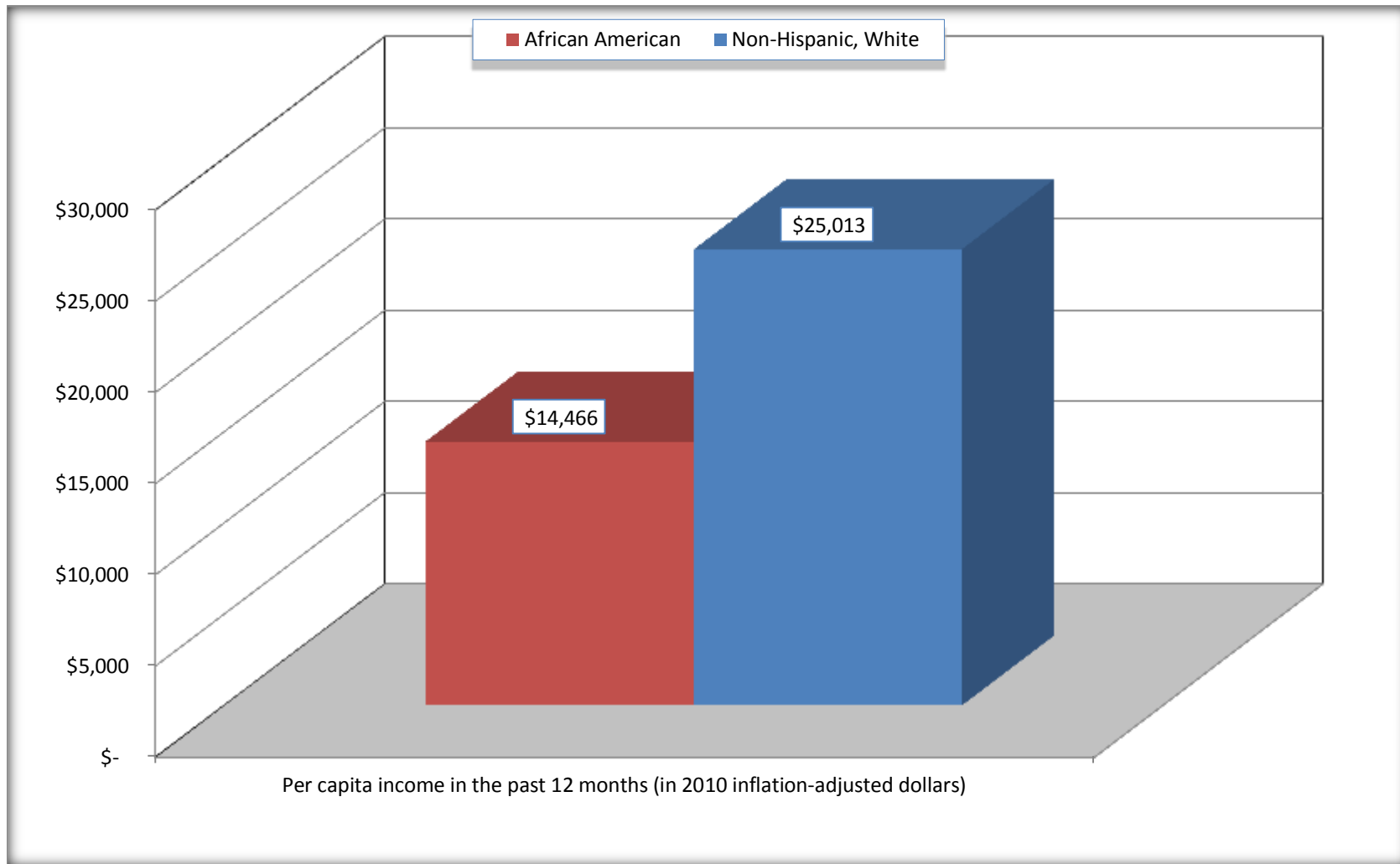
Source: U.S. Census Bureau, 2008-2012 American Community Survey

For information on confidentiality protection, sampling error, nonsampling error, and definitions, see Survey Methodology.

<http://www.census.gov/acs/www/UseData/index.htm>

Per capita Income in the Past 12 Months

Bedford city, Virginia



Source: B19301. PER CAPITA INCOME IN THE PAST 12 MONTHS (IN 2010 INFLATION-ADJUSTED DOLLARS)
Data Set: 2008-2012 American Community Survey 5-Year Estimates

B20017. MEDIAN EARNINGS IN THE PAST 12 MONTHS (IN 2010 INFLATION-ADJUSTED DOLLARS) BY SEX BY WORK EXPERIENCE IN THE PAST 12 MONTHS FOR THE POPULATION 16 YEARS AND OVER WITH EARNINGS IN THE PAST 12 MONTHS

Data Set: 2008-2012 American Community Survey 5-Year Estimates

	Bedford city, Virginia			
	African American	Margin of Error (+/-)	White, Not Hispanic	Margin of Error (+/-)
Median earnings in the past 12 months (in 2010 inflation-adjusted dollars) --				
Total:	\$ 16,833	\$ 13,636	\$ 27,083	\$ 8,618
Male --				
Total	\$ 25,625	\$ 12,178	\$ 35,607	\$ 6,901
Worked full-time, year-round in the past 12 months	\$ 31,736	\$ 7,347	\$ 53,370	\$ 19,103
Other	\$ 5,787	\$ 12,289	\$ 6,950	\$ 10,091
Female --				
Total	\$ 11,349	\$ 9,309	\$ 20,000	\$ 5,792
Worked full-time, year-round in the past 12 months	\$ 25,777	\$ 18,938	\$ 31,027	\$ 9,205
Other	\$ -	\$ -	\$ 7,952	\$ 2,129

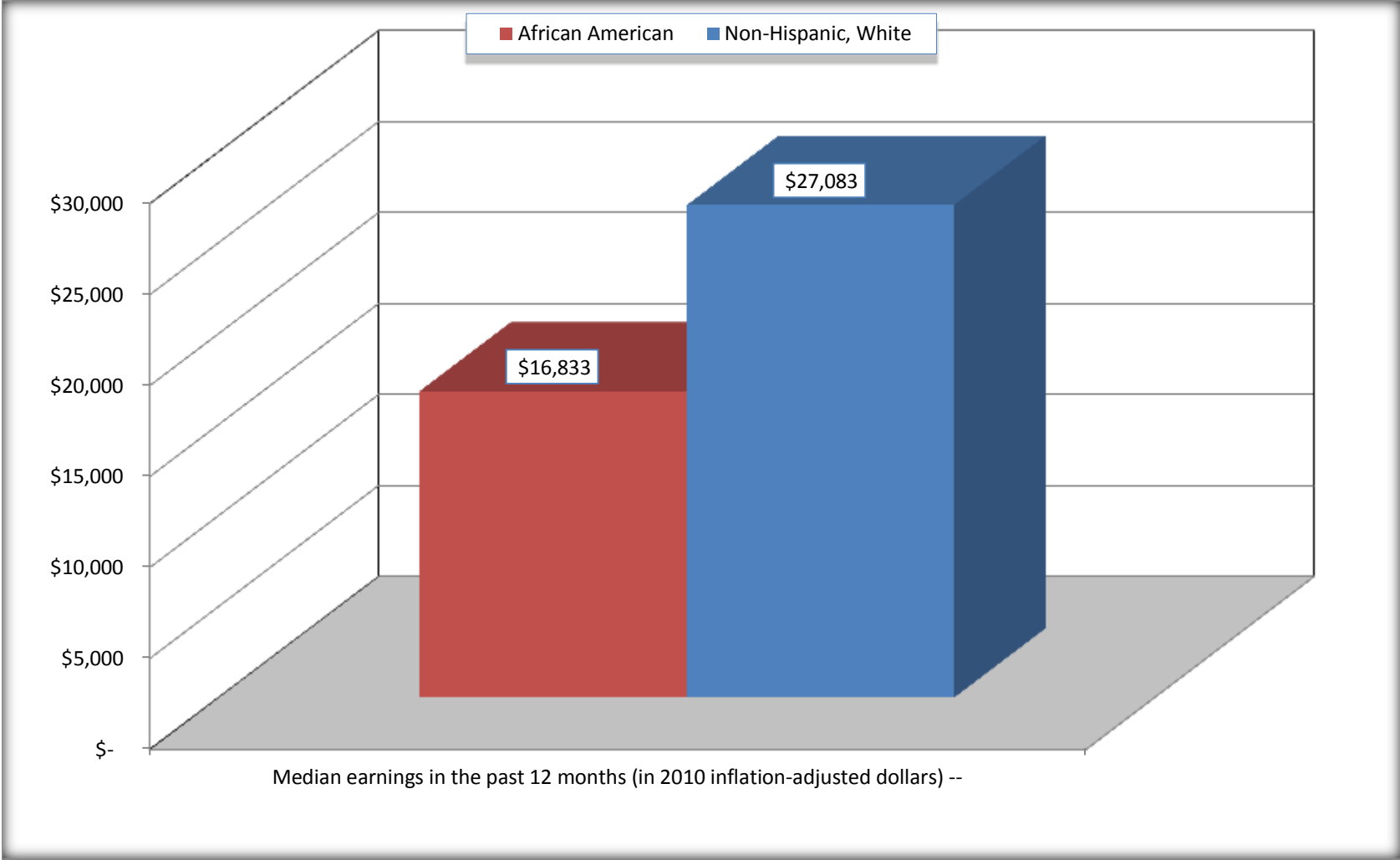
Source: U.S. Census Bureau, 2008-2012 American Community Survey

For information on confidentiality protection, sampling error, nonsampling error, and definitions, see Survey Methodology.

<http://www.census.gov/acs/www/UseData/index.htm>

Median earnings in the Past 12 Months (16 Years and Over with Earnings)

Bedford city, Virginia



Source: B20017. MEDIAN EARNINGS IN THE PAST 12 MONTHS (IN 2010 INFLATION-ADJUSTED DOLLARS) BY SEX BY WORK EXPERIENCE IN THE PAST 12 MONTHS FOR THE POPULATION 16 YEARS AND OVER WITH EARNINGS IN THE PAST 12 MONTHS
Data Set: 2008-2012 American Community Survey 5-Year Estimates

B20005. SEX BY WORK EXPERIENCE IN THE PAST 12 MONTHS BY EARNINGS IN THE PAST 12 MONTHS (IN 2010 INFLATION-ADJUSTED DOLLARS) FOR THE POPULATION 16 YEARS AND OVER

Data Set: 2008-2012 American Community Survey 5-Year Estimates

	Bedford city, Virginia					
	African American	Margin of Error (+/-)	% of AA Total	White, Not Hispanic	Margin of Error (+/-)	% of NHW Total
Total:	1,033	224	100.0%	3,853	248	100.0%
Worked full-time, year-round in the past 12 months:	460	NC	44.5%	1,321	NC	34.3%
No earnings	0	NC	0.0%	0	NC	0.0%
With earnings:	460	NC	44.5%	1,321	NC	34.3%
\$ 1 to \$ 9,999 or loss	57	NC	5.5%	0	NC	0.0%
\$ 10,000 to \$ 19,999	103	NC	10.0%	127	NC	3.3%
\$ 20,000 to \$ 29,999	78	NC	7.6%	268	NC	7.0%
\$ 30,000 to \$ 49,999	170	NC	16.5%	404	NC	10.5%
\$ 50,000 to \$ 74,999	52	NC	5.0%	290	NC	7.5%
\$ 75,000 or more	0	NC	0.0%	232	NC	6.0%
Other:	573	NC	55.5%	2,532	NC	65.7%
No earnings	335	NC	32.4%	1,532	NC	39.8%
With earnings: less than full time, year-round	238	NC	23.0%	1,000	NC	26.0%
Male:	474	143	45.9%	1,542	181	40.0%
Worked full-time, year-round in the past 12 months:	209	83	20.2%	750	173	19.5%
No earnings	0	17	0.0%	0	17	0.0%
With earnings:	209	83	20.2%	750	173	19.5%
\$ 1 to \$ 9,999 or loss	25	NC	2.4%	0	NC	0.0%
\$ 10,000 to \$ 19,999	30	NC	2.9%	6	NC	0.2%
\$ 20,000 to \$ 29,999	12	NC	1.2%	115	NC	3.0%
\$ 30,000 to \$ 49,999	98	NC	9.5%	246	NC	6.4%
\$ 50,000 to \$ 74,999	44	NC	4.3%	164	NC	4.3%
\$ 75,000 or more	0	NC	0.0%	219	NC	5.7%

	Bedford city, Virginia					
	African American	Margin of Error (+/-)	% of AA Total	White, Not Hispanic	Margin of Error (+/-)	% of NHW Total
Other:	265	104	25.7%	792	201	20.6%
No earnings	172	104	16.7%	451	147	11.7%
With earnings:	93	65	9.0%	341	139	8.9%
Female:	559	128	54.1%	2,311	190	60.0%
Worked full-time, year-round in the past 12 months:	251	107	24.3%	571	137	14.8%
No earnings	0	17	0.0%	0	17	0.0%
With earnings:	251	107	24.3%	571	137	14.8%
\$ 1 to \$ 9,999 or loss	32	NC	3.1%	0	NC	0.0%
\$ 10,000 to \$ 19,999	73	NC	7.1%	121	NC	3.1%
\$ 20,000 to \$ 29,999	66	NC	6.4%	153	NC	4.0%
\$ 30,000 to \$ 49,999	72	NC	7.0%	158	NC	4.1%
\$ 50,000 to \$ 74,999	8	NC	0.8%	126	NC	3.3%
\$ 75,000 or more	0	NC	0.0%	13	NC	0.3%
Other:	308	115	29.8%	1,740	224	45.2%
No earnings	163	85	15.8%	1,081	243	28.1%
With earnings:	145	85	14.0%	659	218	17.1%

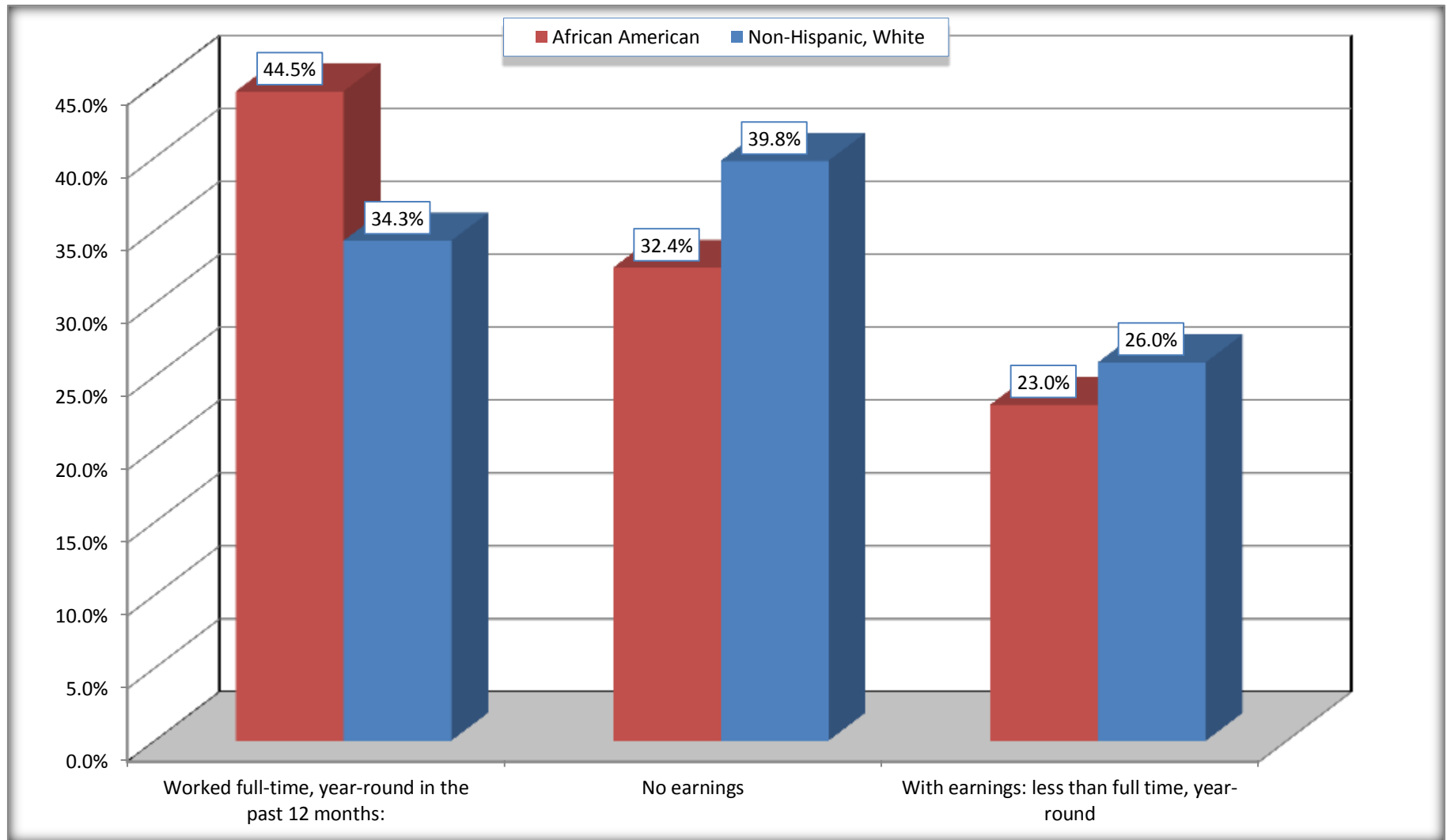
Source: U.S. Census Bureau, 2008-2012 American Community Survey

For information on confidentiality protection, sampling error, nonsampling error, and definitions, see Survey Methodology.

<http://www.census.gov/acs/www/UseData/index.htm>

Employment and Earnings in in the Past 12 Months (16 Years and Over)

Bedford city, Virginia



Source: B20005. SEX BY WORK EXPERIENCE IN THE PAST 12 MONTHS BY EARNINGS IN THE PAST 12 MONTHS (IN 2010 INFLATION-ADJUSTED DOLLARS) FOR THE POPULATION 16 YEARS AND OVER

Data Set: 2008-2012 American Community Survey 5-Year Estimates

C21001. SEX BY AGE BY VETERAN STATUS FOR THE CIVILIAN POPULATION 18 YEARS AND OVER

Data Set: 2008-2012 American Community Survey 5-Year Estimates

	Bedford city, Virginia					
	African American	Margin of Error (+/-)	% of AA Total	White, Not Hispanic	Margin of Error (+/-)	% of NHW Total
Total:	1,033	224	100.0%	3,714	247	100.0%
Veteran	73	NC	7.1%	487	NC	13.1%
Nonveteran	960	NC	92.9%	3,227	NC	86.9%
Male:	474	143	45.9%	1,507	181	40.6%
18 to 64 years:	384	137	37.2%	1,109	172	29.9%
Veteran	43	48	4.2%	150	105	4.0%
Nonveteran	341	144	33.0%	959	195	25.8%
65 years and over:	90	56	8.7%	398	124	10.7%
Veteran	30	33	2.9%	260	106	7.0%
Nonveteran	60	56	5.8%	138	73	3.7%
Female:	559	128	54.1%	2,207	177	59.4%
18 to 64 years:	441	106	42.7%	1,568	203	42.2%
Veteran	0	17	0.0%	77	64	2.1%
Nonveteran	441	106	42.7%	1,491	210	40.1%
65 years and over:	118	70	11.4%	639	149	17.2%
Veteran	0	17	0.0%	0	17	0.0%
Nonveteran	118	70	11.4%	639	149	17.2%

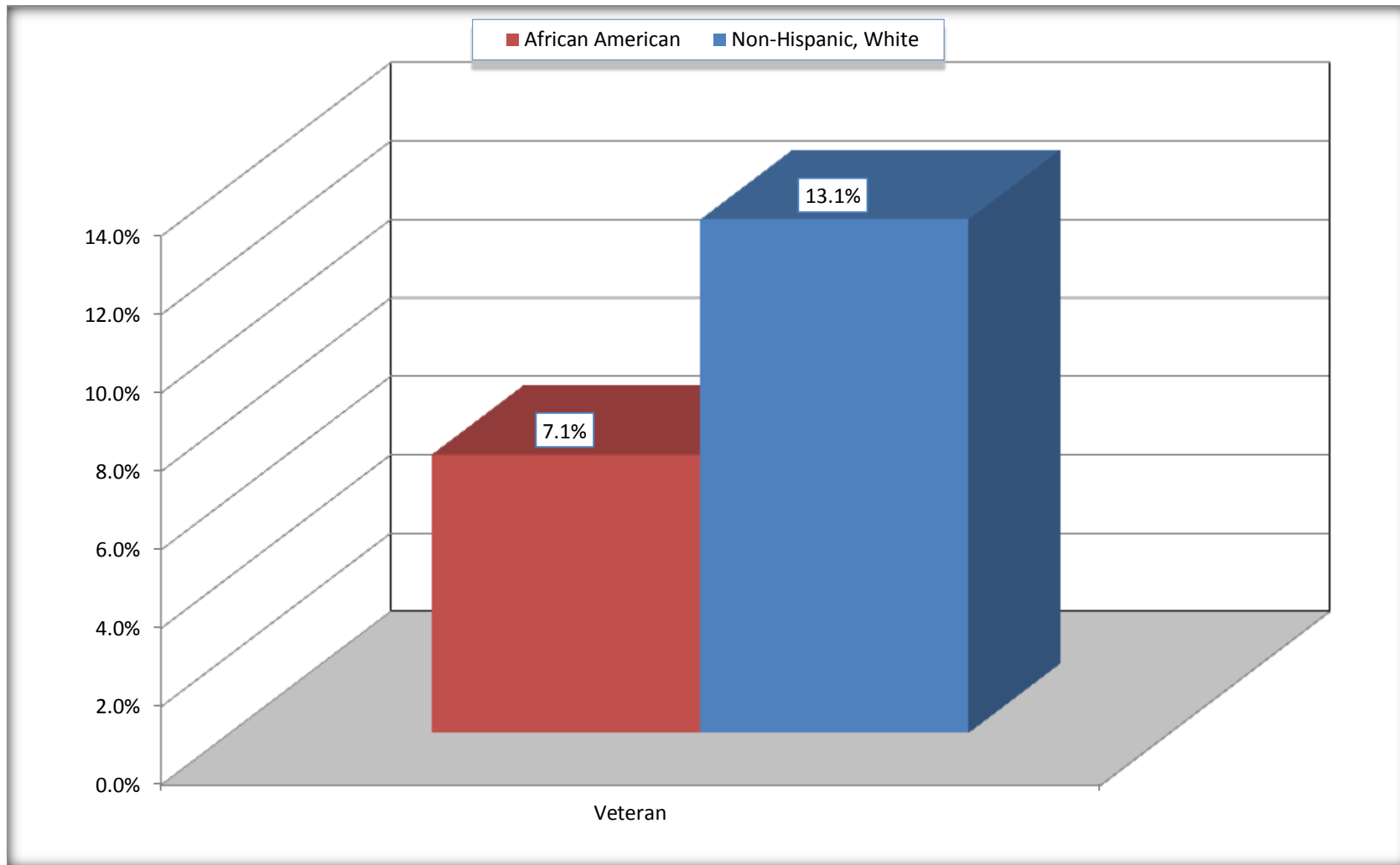
Source: U.S. Census Bureau, 2008-2012 American Community Survey

For information on confidentiality protection, sampling error, nonsampling error, and definitions, see Survey Methodology.

<http://www.census.gov/acs/www/UseData/index.htm>

Veterans in the Civilian Population 18 Years and Over

Bedford city, Virginia



Source: C21001. SEX BY AGE BY VETERAN STATUS FOR THE CIVILIAN POPULATION 18 YEARS AND OVER
Data Set: 2008-2012 American Community Survey 5-Year Estimates

B22005. RECEIPT OF FOOD STAMPS/SNAP IN THE PAST 12 MONTHS BY RACE OF HOUSEHOLDER

Data Set: 2008-2012 American Community Survey 5-Year Estimates

	Bedford city, Virginia					
	African American	Margin of Error (+/-)	% of AA Total	White, Not Hispanic	Margin of Error (+/-)	% of NHW Total
Total:	618	123	100.0%	2,062	172	100.0%
HH received Food Stamps/SNAP in the past 12 months	191	88	30.9%	350	169	17.0%
HH did not receive Food Stamps/SNAP in the past 12 months	427	135	69.1%	1,712	209	83.0%

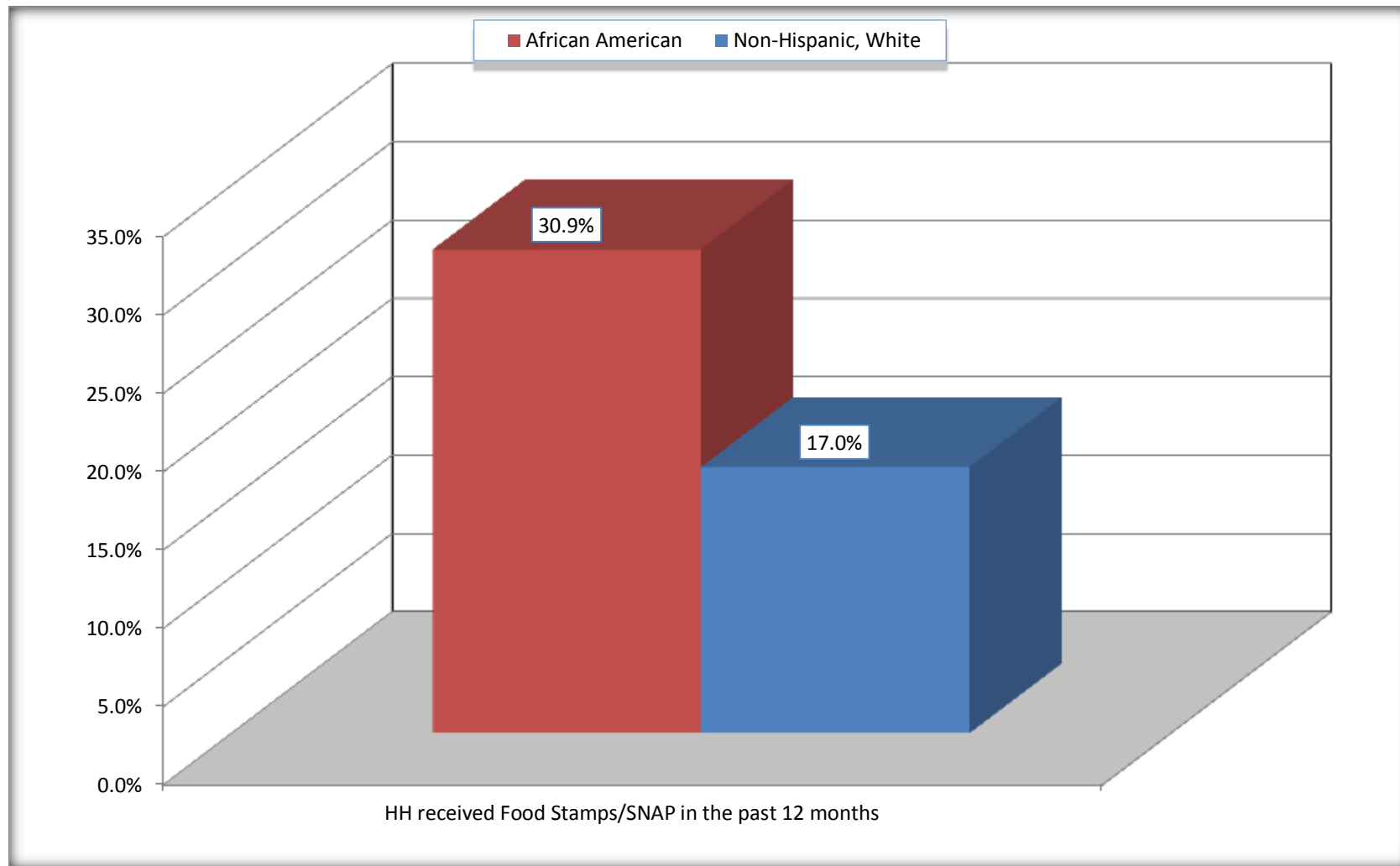
Source: U.S. Census Bureau, 2008-2012 American Community Survey

For information on confidentiality protection, sampling error, nonsampling error, and definitions, see Survey Methodology.

<http://www.census.gov/acs/www/UseData/index.htm>

Receipt of Food Stamps/SNAP in the Past 12 Months by Household

Bedford city, Virginia



Source: B22005. RECEIPT OF FOOD STAMPS/SNAP IN THE PAST 12 MONTHS BY RACE OF HOUSEHOLDER
Data Set: 2008-2012 American Community Survey 5-Year Estimates

C23002. SEX BY AGE BY EMPLOYMENT STATUS FOR THE POPULATION 16 YEARS AND OVER

Data Set: 2008-2012 American Community Survey 5-Year Estimates

	Bedford city, Virginia					
	African American	Margin of Error (+/-)	% of AA Total	White, Not Hispanic	Margin of Error (+/-)	% of NHW Total
Total:	1,033	224	100.0%	3,853	248	100.0%
In labor force:	643	NC	62.2%	2,309	NC	59.9%
In Armed Forces	0	NC	0.0%	0	NC	0.0%
Civilian:	606	NC	58.7%	2,130	NC	55.3%
Employed	592	NC	57.3%	2,190	NC	56.8%
Unemployed	51	NC	4.9%	119	NC	3.1%
Not in labor force	390	NC	37.8%	1,544	NC	40.1%
Male:	474	143	45.9%	1,542	181	40.0%
16 to 64 years:	384	137	37.2%	1,144	174	29.7%
In labor force:	276	100	26.7%	933	179	24.2%
In Armed Forces	0	17	0.0%	0	17	0.0%
Civilian:	276	100	26.7%	933	179	24.2%
Employed	248	94	24.0%	874	178	22.7%
Unemployed	28	39	2.7%	59	46	1.5%
Not in labor force	108	100	10.5%	211	99	5.5%
65 years and over:	90	56	8.7%	398	124	10.3%
In labor force:	7	18	0.7%	125	63	3.2%
Employed	7	18	0.7%	125	63	3.2%
Unemployed	0	17	0.0%	0	17	0.0%
Not in labor force	83	54	8.0%	273	112	7.1%

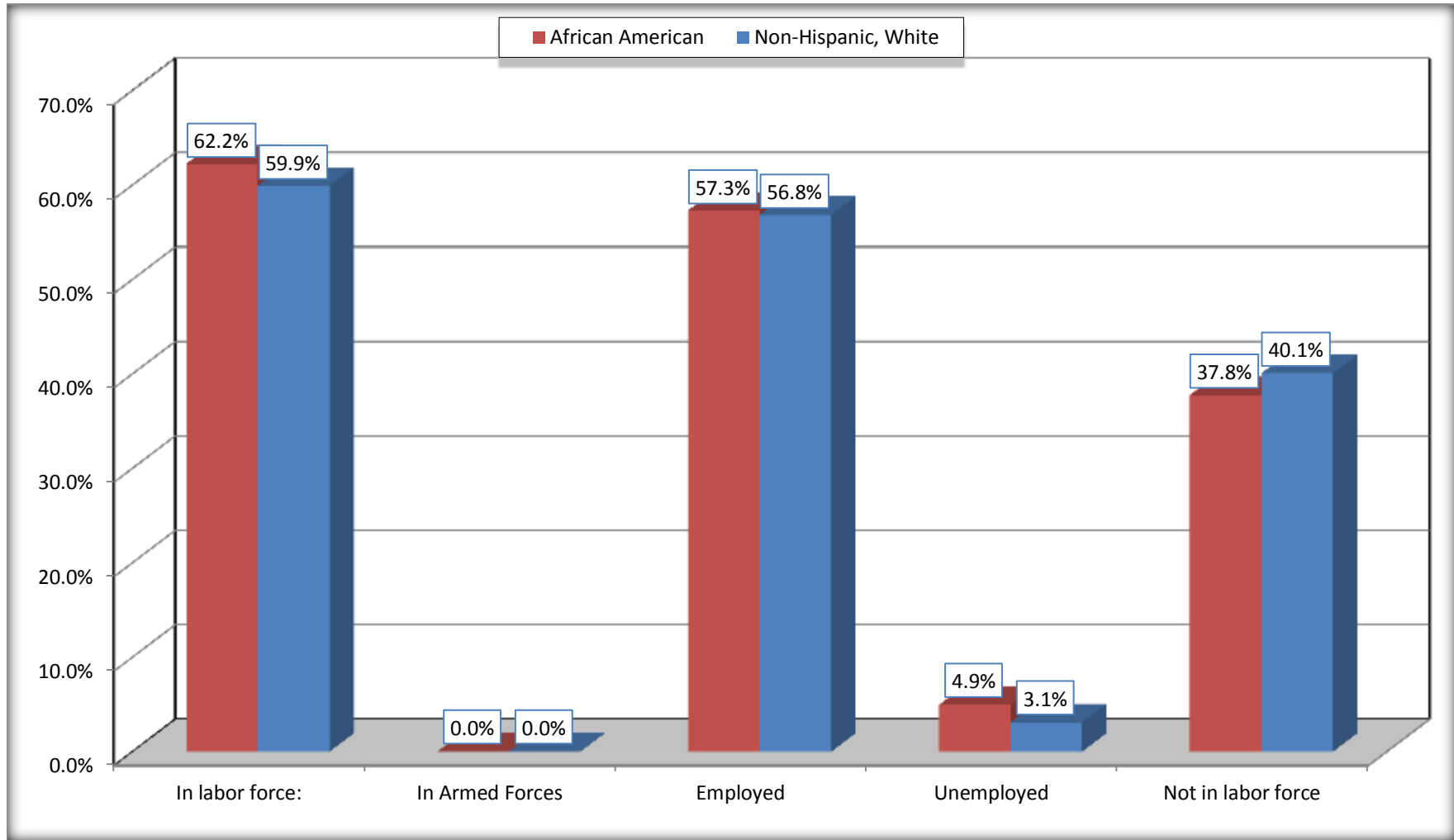
	Bedford city, Virginia					
	African American	Margin of Error (+/-)	% of AA Total	White, Not Hispanic	Margin of Error (+/-)	% of NHW Total
Female:	559	128	54.1%	2,311	190	60.0%
16 to 64 years:	441	106	42.7%	1,672	230	43.4%
In labor force:	330	114	31.9%	1,197	213	31.1%
In Armed Forces	0	17	0.0%	0	17	0.0%
Civilian:	330	114	31.9%	1,197	213	31.1%
Employed	316	117	30.6%	1,137	209	29.5%
Unemployed	14	23	1.4%	60	66	1.6%
Not in labor force	111	59	10.7%	475	206	12.3%
65 years and over:	118	70	11.4%	639	149	16.6%
In labor force:	30	36	2.9%	54	47	1.4%
Employed	21	33	2.0%	54	47	1.4%
Unemployed	9	18	0.9%	0	17	0.0%
Not in labor force	88	69	8.5%	585	151	15.2%

Source: U.S. Census Bureau, 2008-2012 American Community Survey

For information on confidentiality protection, sampling error, nonsampling error, and definitions, see Survey Methodology.
<http://www.census.gov/acs/www/UseData/index.htm>

Employment Status for the Population 16 years and over

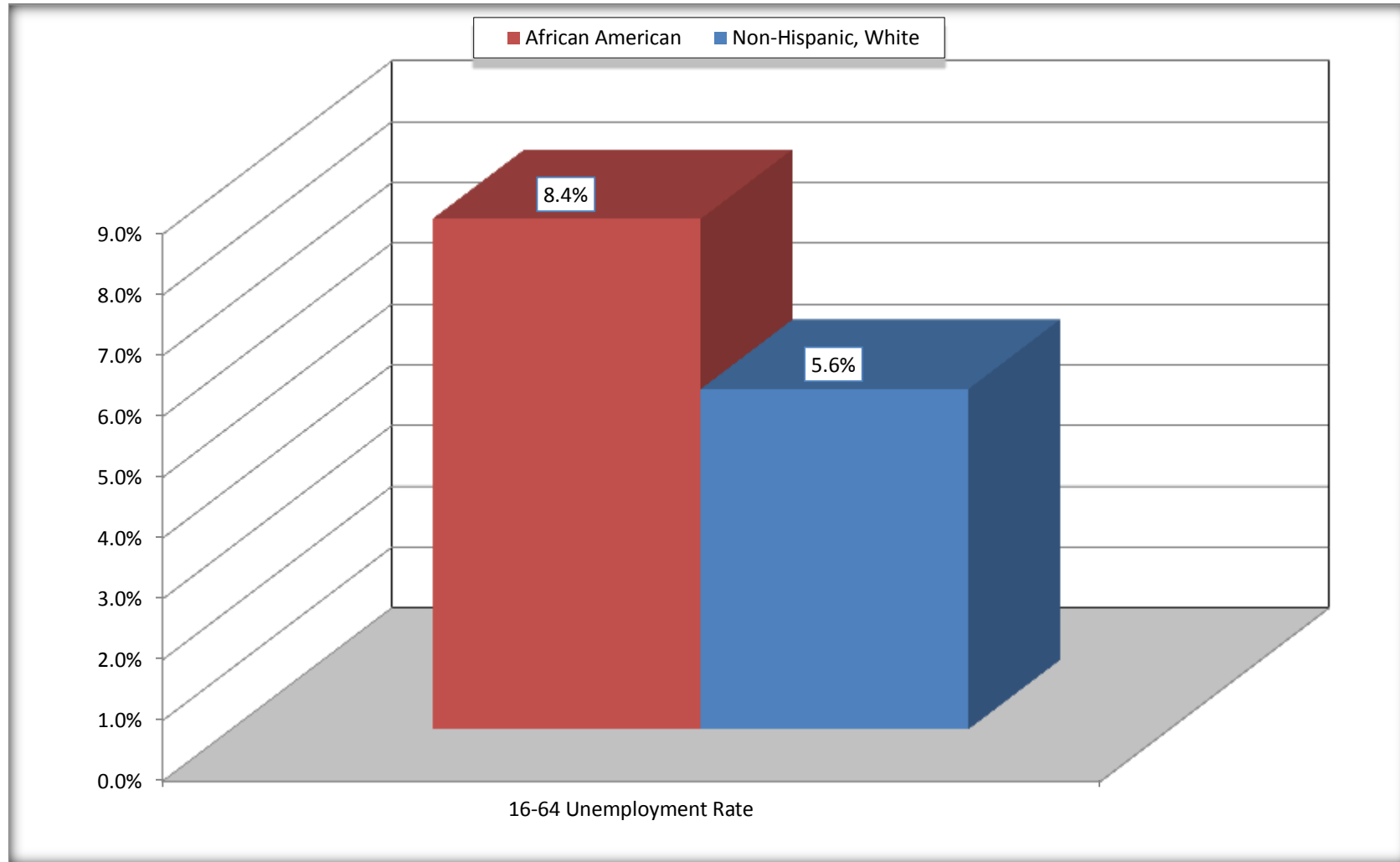
Bedford city, Virginia



Source: C23002. SEX BY AGE BY EMPLOYMENT STATUS FOR THE POPULATION 16 YEARS AND OVER
Data Set: 2008-2012 American Community Survey 5-Year Estimates

Unemployment of Working Age Population (Ages 16 to 64) (As a Percent of 16-64 Civilian Labor Force)

Bedford city, Virginia



Source: C23002. SEX BY AGE BY EMPLOYMENT STATUS FOR THE POPULATION 16 YEARS AND OVER
Data Set: 2008-2012 American Community Survey 5-Year Estimates

C24010. SEX BY OCCUPATION FOR THE CIVILIAN EMPLOYED POPULATION 16 YEARS AND OVER

Data Set: 2008-2012 American Community Survey 5-Year Estimates

	Bedford city, Virginia					
	African American	Margin of Error (+/-)	% of AA Total	White, Not Hispanic	Margin of Error (+/-)	% of NHW Total
Total:	592	153	100.0%	2,190	277	100.0%
Management, professional, and related occupations	104	NC	17.6%	783	NC	35.8%
Service occupations	222	NC	37.5%	265	NC	12.1%
Sales and office occupations	113	NC	19.1%	647	NC	29.5%
Natural resources, construction, and maintenance occupations:	15	NC	2.5%	105	NC	4.8%
Production, transportation, and material moving occupations	138	NC	23.3%	390	NC	17.8%
Male:	255	95	43.1%	999	178	45.6%
Management, business, science, and arts occupations:	23	31	3.9%	399	165	18.2%
Service occupations	79	70	13.3%	31	37	1.4%
Sales and office occupations	60	52	10.1%	177	78	8.1%
Natural resources, construction, and maintenance occupations:	15	26	2.5%	105	75	4.8%
Production, transportation, and material moving occupations	78	65	13.2%	287	152	13.1%
Female:	337	116	56.9%	1,191	212	54.4%
Management, professional, and related occupations	81	77	13.7%	384	154	17.5%
Service occupations	143	101	24.2%	234	145	10.7%
Sales and office occupations	53	77	9.0%	470	153	21.5%
Natural resources, construction, and maintenance occupations:	0	17	0.0%	0	17	0.0%
Production, transportation, and material moving occupations	60	70	10.1%	103	104	4.7%

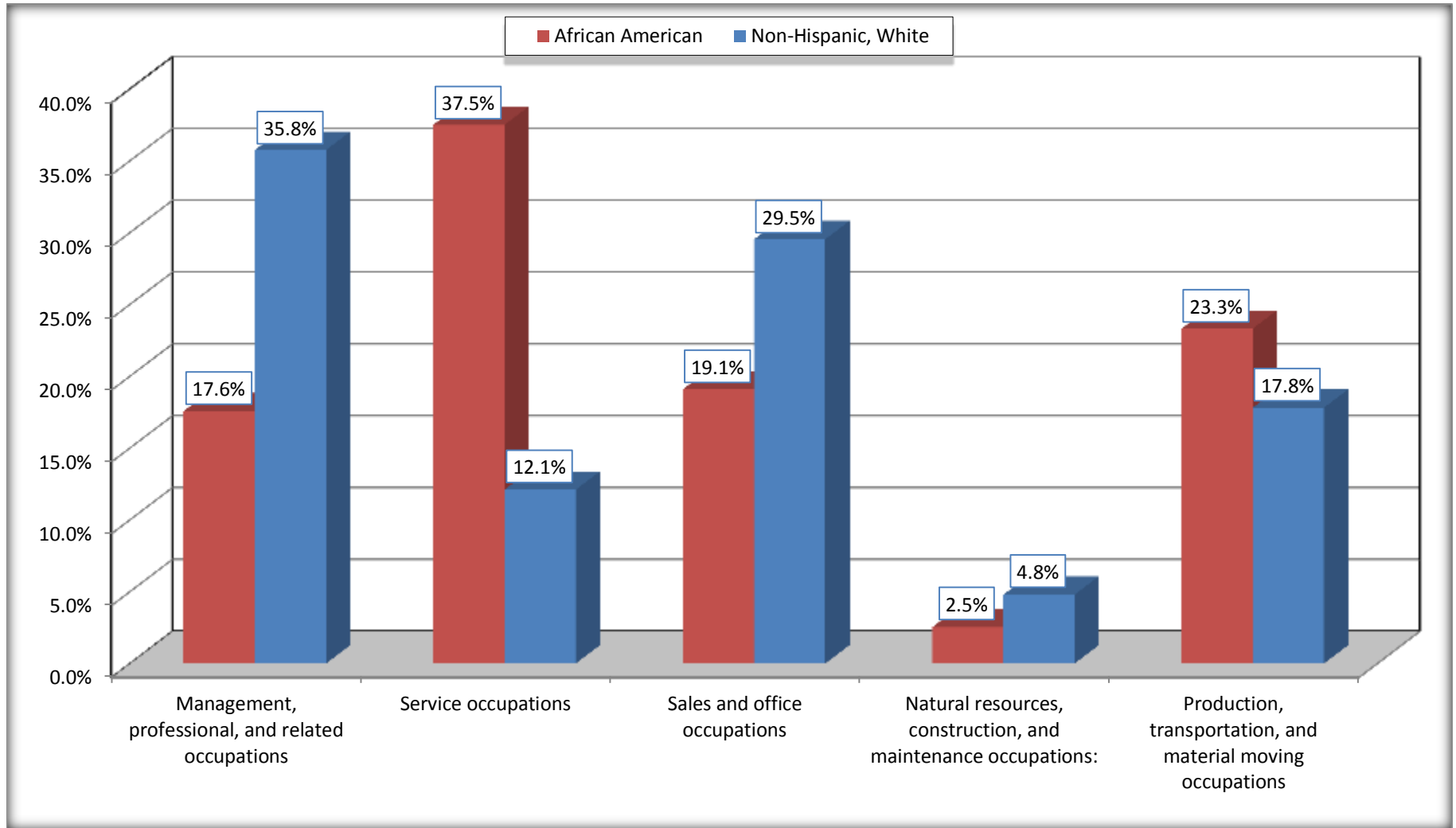
Source: U.S. Census Bureau, 2008-2012 American Community Survey

For information on confidentiality protection, sampling error, nonsampling error, and definitions, see Survey Methodology.

<http://www.census.gov/acs/www/UseData/index.htm>

Occupation for the Civilian Employed 16 Years and Over Population

Bedford city, Virginia



Source: C24010. SEX BY OCCUPATION FOR THE CIVILIAN EMPLOYED POPULATION 16 YEARS AND OVER
Data Set: 2008-2012 American Community Survey 5-Year Estimates

B25003. TENURE - Universe: OCCUPIED HOUSING UNITS

Data Set: 2008-2012 American Community Survey 5-Year Estimates

	Bedford city, Virginia					
	African American	Margin of Error (+/-)	% of AA Total	White, Not Hispanic	Margin of Error (+/-)	% of NHW Total
Total:	618	123	100.0%	2,062	172	100.0%
Owner occupied	209	102	33.8%	1,401	188	67.9%
Renter occupied	409	139	66.2%	661	224	32.1%

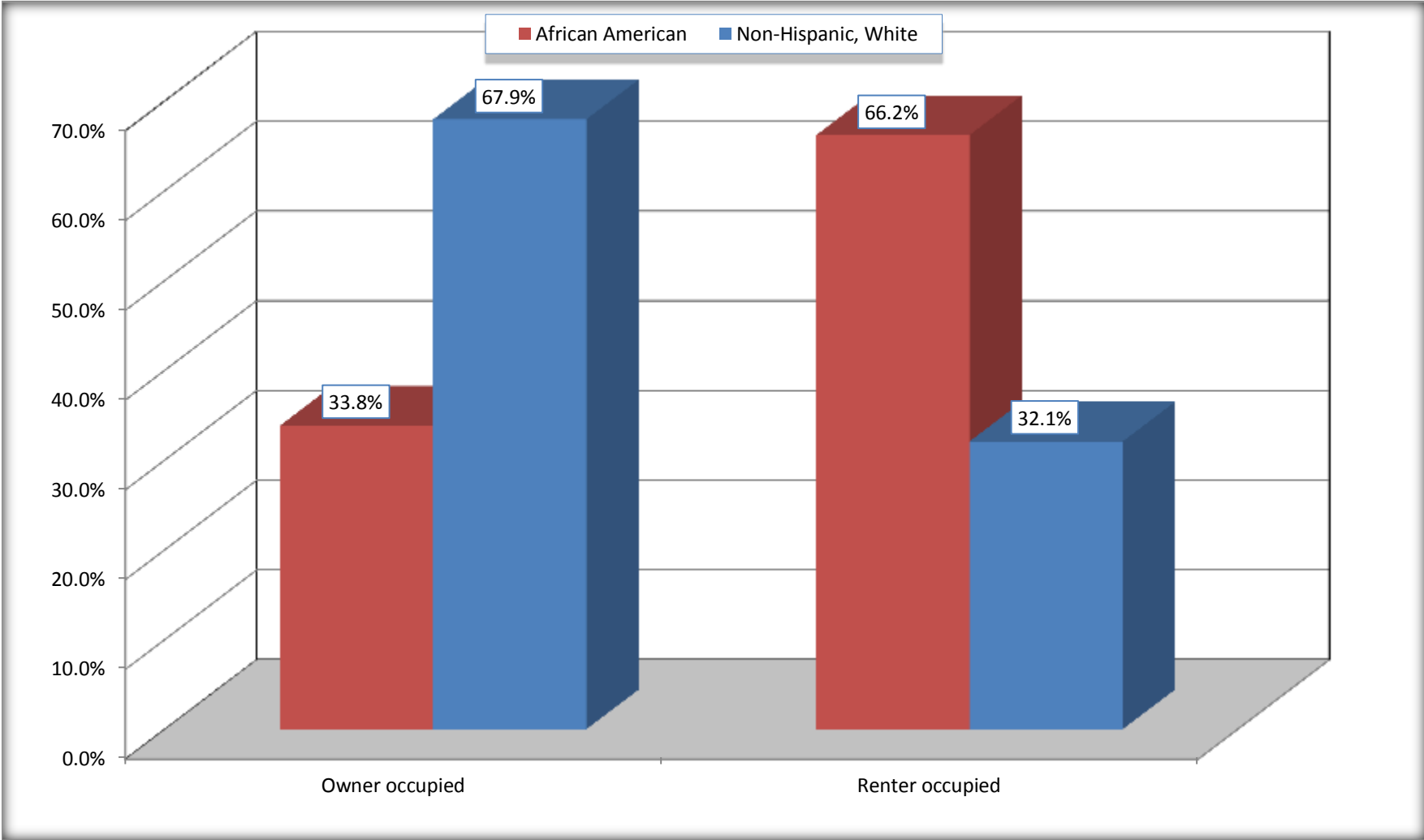
Source: U.S. Census Bureau, 2008-2012 American Community Survey

For information on confidentiality protection, sampling error, nonsampling error, and definitions, see Survey Methodology.

<http://www.census.gov/acs/www/UseData/index.h>

Home Owners and Renters by Household

Bedford city, Virginia



Source: B25003. TENURE - Universe: OCCUPIED HOUSING UNITS
Data Set: 2008-2012 American Community Survey 5-Year Estimates

B25014. OCCUPANTS PER ROOM - Universe: OCCUPIED HOUSING UNITS

Data Set: 2008-2012 American Community Survey 5-Year Estimates

	Bedford city, Virginia					
	African American	Margin of Error (+/-)	% of AA Total	White, Not Hispanic	Margin of Error (+/-)	% of NHW Total
Total:	618	123	100.0%	2,062	172	100.0%
1.00 or less occupants per room	618	123	100.0%	2,062	172	100.0%
1.01 or more occupants per room	0	17	0.0%	0	17	0.0%

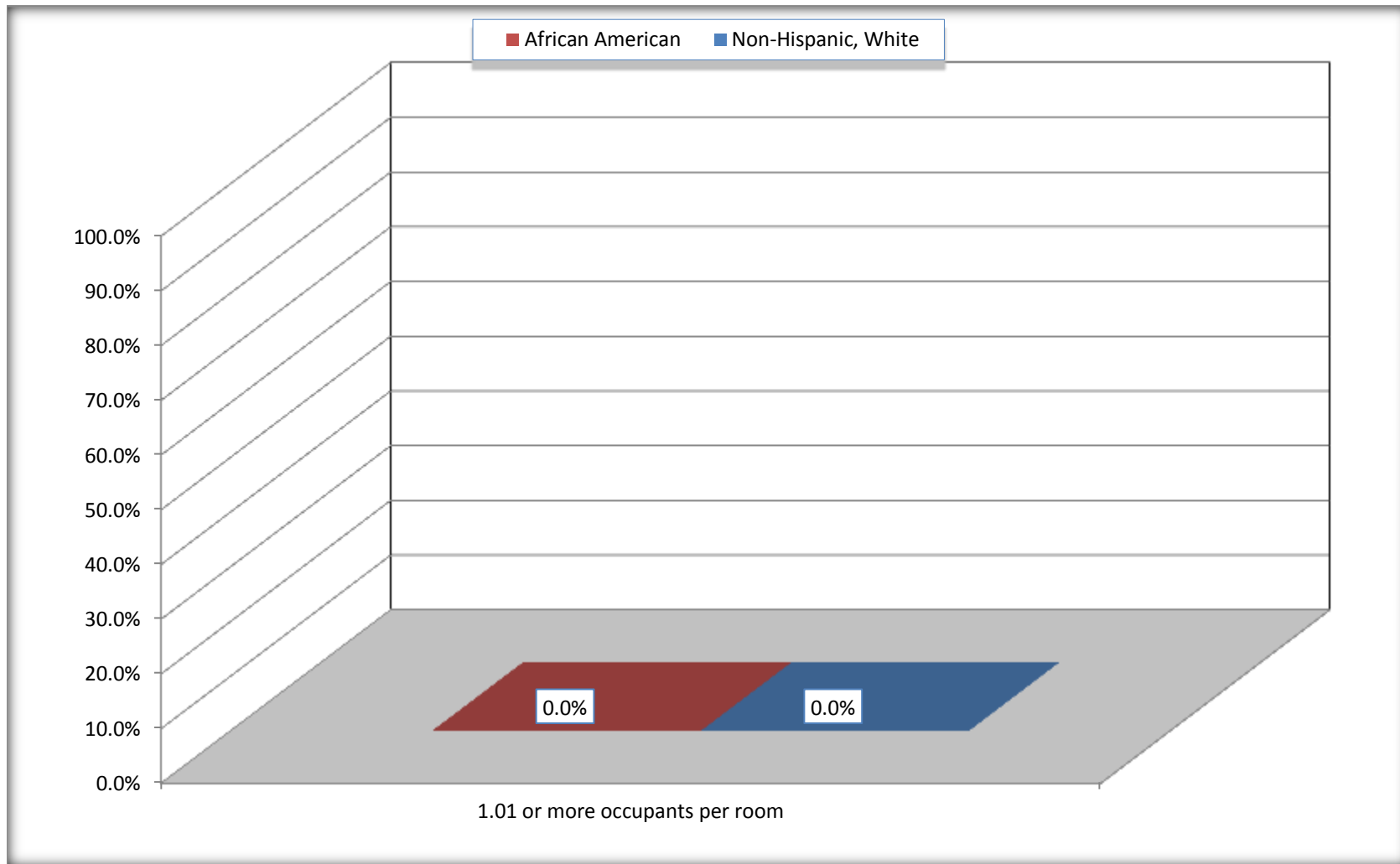
Source: U.S. Census Bureau, 2008-2012 American Community Survey

For information on confidentiality protection, sampling error, nonsampling error, and definitions, see Survey Methodology.

<http://www.census.gov/acs/www/UseData/index.ht>

More than One Person per Room (Crowding) by Household

Bedford city, Virginia



Source: B25014. OCCUPANTS PER ROOM - Universe: OCCUPIED HOUSING UNITS
Data Set: 2008-2012 American Community Survey 5-Year Estimates

B18101. AGE BY DISABILITY STATUS

Data Set: 2008-2012 American Community Survey 5-Year Estimates

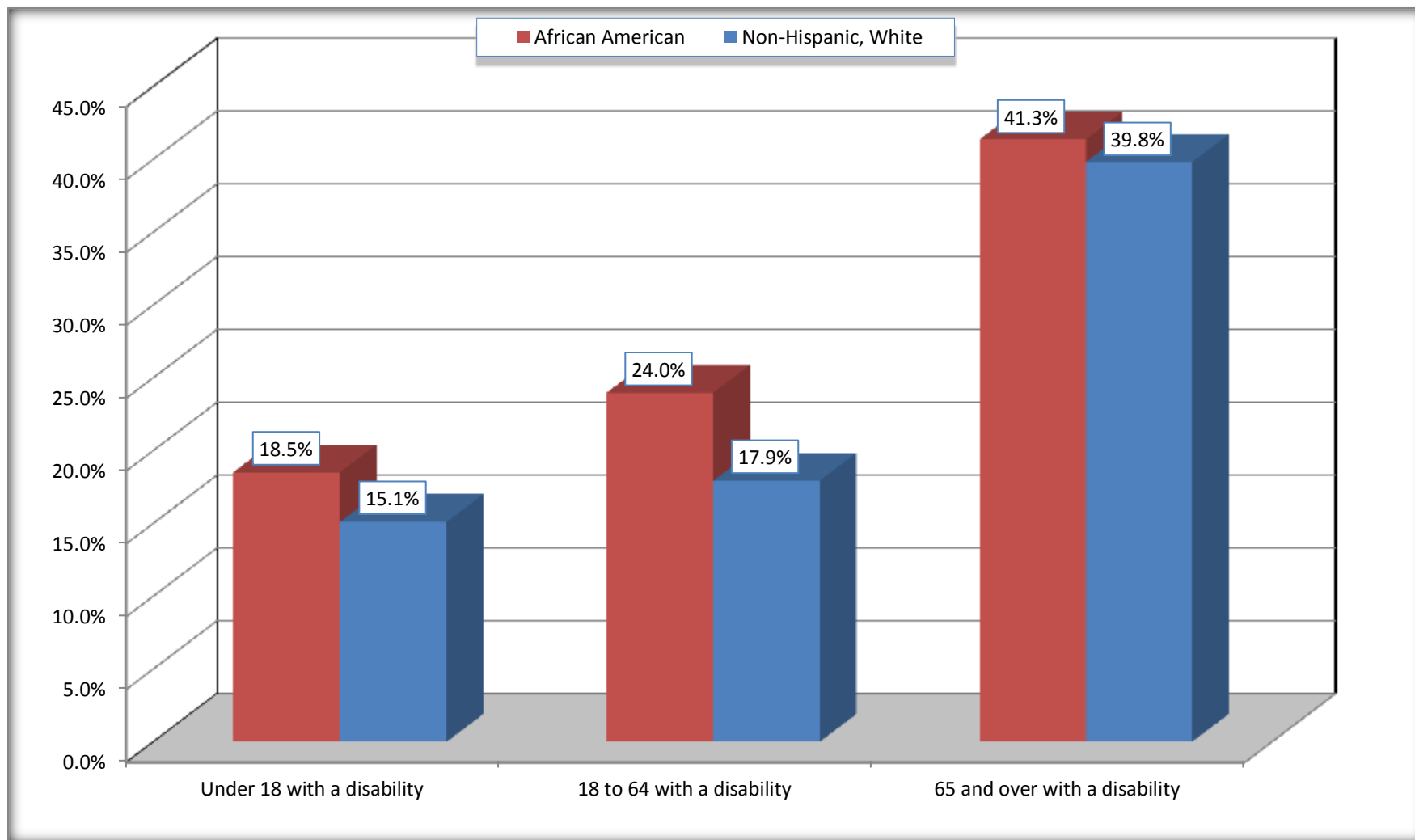
	Bedford city, Virginia					
	African American	Margin of Error (+/-)	% of AA Total	White, Not Hispanic	Margin of Error (+/-)	% of NHW Total
Total:	1,290	254	100.0%	4,346	289	100.0%
Under 18 years:	281	115	21.8%	828	39	19.1%
With a disability	52	58	4.0%	125	118	2.9%
No disability	229	114	17.8%	703	173	16.2%
18 to 64 years:	801	191	62.1%	2,616	259	60.2%
With a disability	192	95	14.9%	469	191	10.8%
No disability	609	147	47.2%	2,147	303	49.4%
65 years and over:	208	101	16.1%	902	234	20.8%
With a disability	86	72	6.7%	359	171	8.3%
No disability	122	88	9.5%	543	169	12.5%

Source: U.S. Census Bureau, 2008-2012 American Community Survey

For information on confidentiality protection, sampling error, nonsampling error, and definitions, see Survey Methodology.

<http://www.census.gov/acs/www/UseData/index.htm>

Disability by Age Bedford city, Virginia



Source: B18101. AGE BY DISABILITY STATUS
Data Set: 2008-2012 American Community Survey 5-Year Estimates

C27001B. HEALTH INSURANCE COVERAGE STATUS BY AGE

Data Set: 2008-2012 American Community Survey 5-Year Estimates

	Bedford city, Virginia					
	African American	Margin of Error (+/-)	% of AA Total	White, Not Hispanic	Margin of Error (+/-)	% of NHW Total
Total:	1,290	254	100.0%	4,346	289	100.0%
Under 18 years:	281	115	21.8%	828	175	19.1%
With health insurance coverage	281	115	21.8%	721	181	16.6%
No health insurance coverage	0	17	0.0%	107	88	2.5%
18 to 64 years:	801	191	62.1%	2,616	259	60.2%
With health insurance coverage	653	201	50.6%	2,111	348	48.6%
No health insurance coverage	148	85	11.5%	505	221	11.6%
65 years and over:	208	101	16.1%	902	234	20.8%
With health insurance coverage	208	101	16.1%	902	234	20.8%
No health insurance coverage	0	17	0.0%	0	17	0.0%

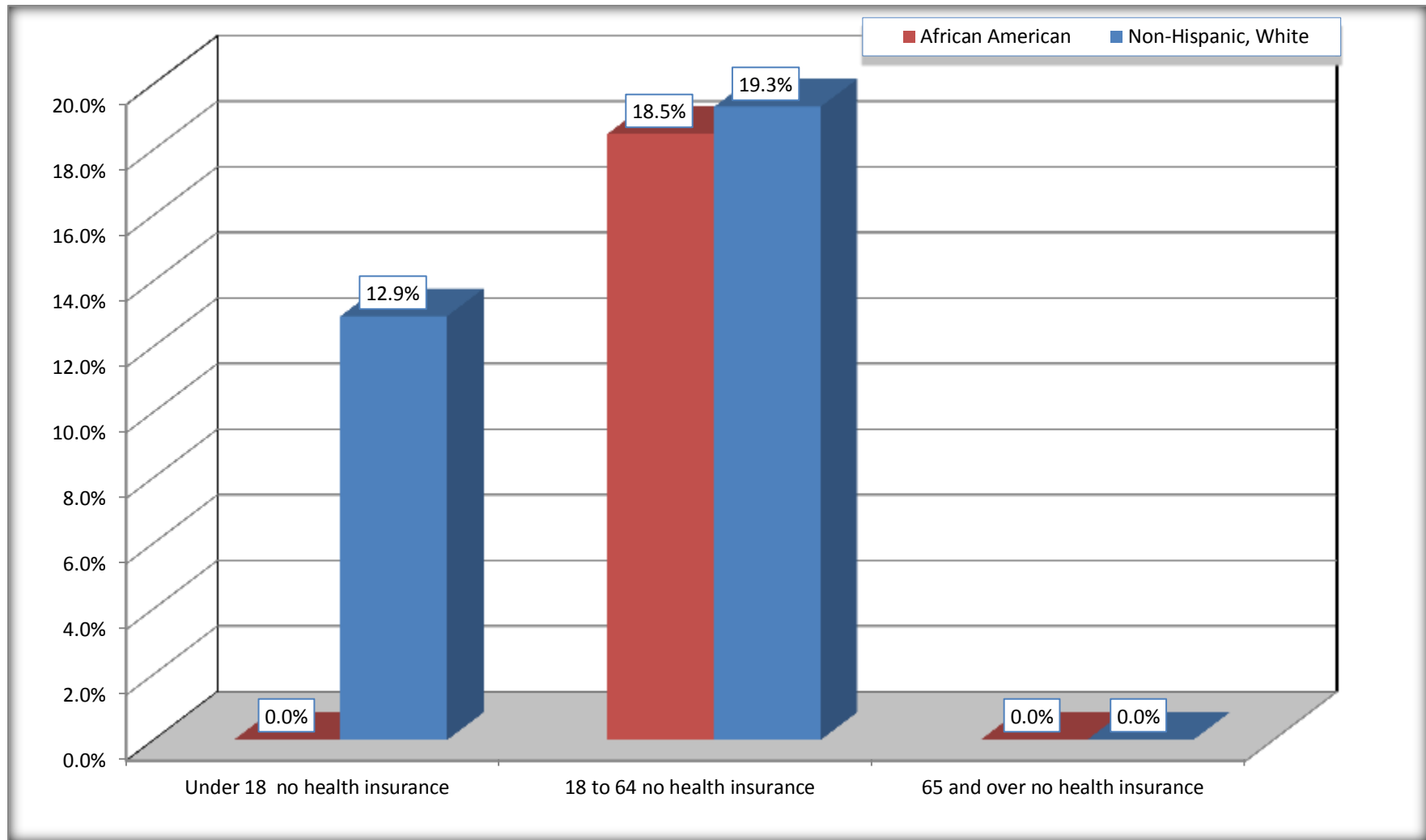
Source: U.S. Census Bureau, 2008-2012 American Community Survey

For information on confidentiality protection, sampling error, nonsampling error, and definitions, see Survey Methodology.

<http://www.census.gov/acs/www/UseData/index.htm>

Lack of Health Insurance Coverage by Age

Bedford city, Virginia



Source: C27001B. HEALTH INSURANCE COVERAGE STATUS BY AGE
Data Set: 2008-2012 American Community Survey 5-Year Estimates