

Selected Socio-Economic Data

Manor city, Texas

African American and White, Not Hispanic

Data Set: 2008-2012 American Community Survey 5-Year Estimates

www.fairvote2020.org

www.fairdata2000.com

[29-Dec-13](#)

C02003.DETAILED RACE - Universe: TOTAL POPULATION

Data Set: 2008-2012 American Community Survey 5-Year Estimates

	Manor city, Texas		
	Population	Margin of Error (+/-)	% of Total
Total:	5,129	38	100.0%
Population of one race:	5,027	83	98.0%
White	2,165	566	42.2%
Black or African American	1,537	453	30.0%
American Indian and Alaska Native	7	11	0.1%
Asian alone	43	42	0.8%
Native Hawaiian and Other Pacific Islander	0	18	0.0%
Some other race	1,275	554	24.9%
Population of two or more races:	102	75	2.0%
Two races including Some other race	10	16	0.2%
Two races excluding Some other race, and three or more races	92	78	1.8%
Population of two races:	76	54	1.5%
White; Black or African American	40	44	0.8%
White; American Indian and Alaska Native	0	18	0.0%
White; Asian	26	27	0.5%
Black or African American; American Indian and Alaska Native	0	18	0.0%
All other two race combinations	10	16	0.2%
Population of three races	26	42	0.5%
Population of four or more races	0	18	0.0%

Note: Hispanics may be of any race. See Table B03002 and chart.

Source: U.S. Census Bureau, 2008-2012 American Community Survey

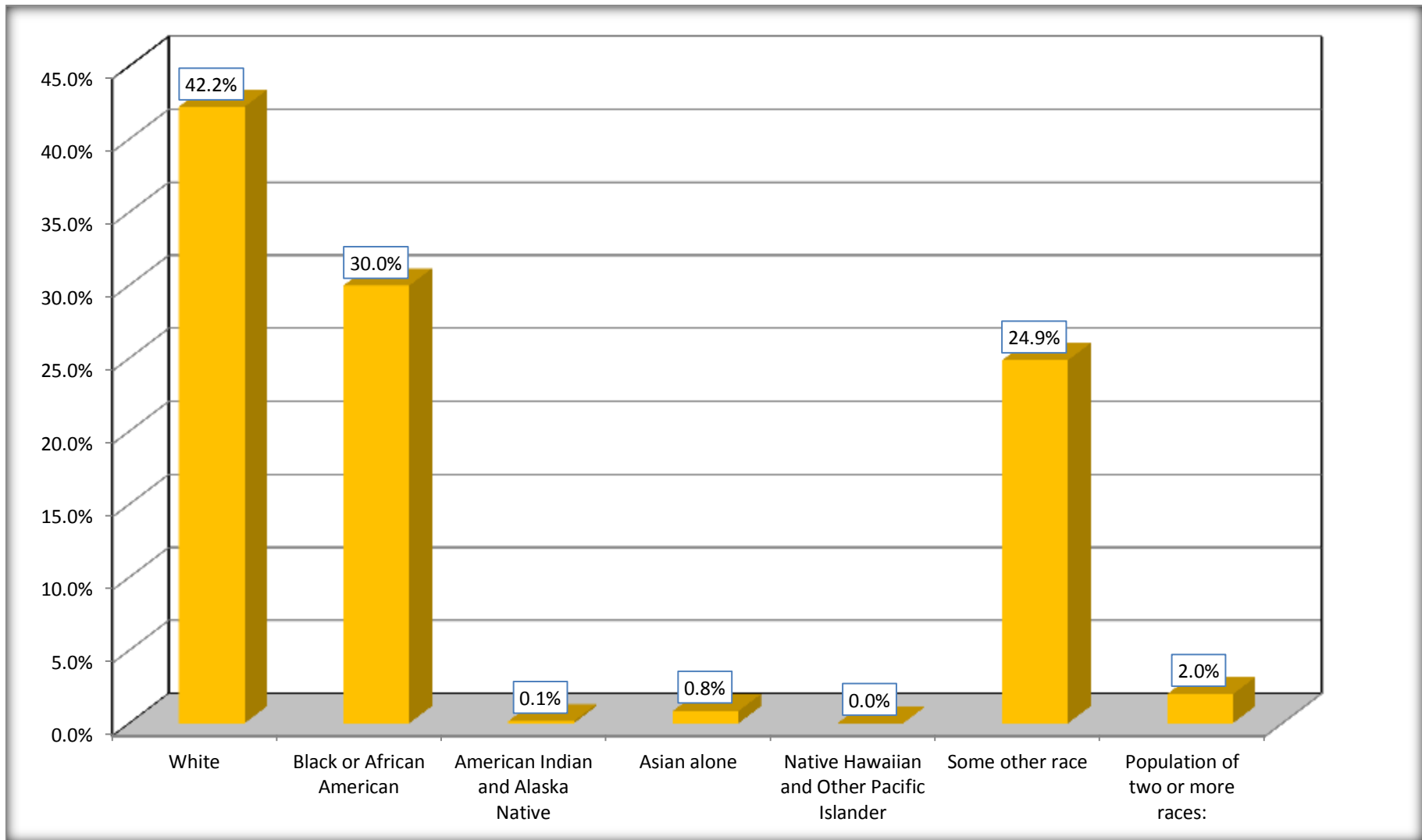
Although the American Community Survey (ACS) produces population, demographic and housing unit estimates, it is the Census Bureau's Population Estimates Program that produces and disseminates the official estimates of the population for the nation, states, counties, cities and towns and estimates of housing units for states and counties.

For information on confidentiality protection, sampling error, nonsampling error, and definitions, see Survey Methodology.

<http://www.census.gov/acs/www/UseData/index.htm>

Population by Race

Manor city, Texas



Source: C02003.DETAILED RACE - Universe: TOTAL POPULATION

Data Set: 2008-2012 American Community Survey 5-Year Estimates

B03002. HISPANIC OR LATINO ORIGIN BY RACE - Universe: TOTAL POPULATION

Data Set: 2008-2012 American Community Survey 5-Year Estimates

	Manor city, Texas		
	Population	Margin of Error (+/-)	% of Total
Total:	5,129	38	100.0%
Not Hispanic or Latino:	2,714	484	52.9%
White alone	1,041	275	20.3%
Black or African American alone	1,528	452	29.8%
American Indian and Alaska Native alone	0	18	0.0%
Asian alone	43	42	0.8%
Native Hawaiian and Other Pacific Islander alone	0	18	0.0%
Some other race alone	0	18	0.0%
Two or more races:	102	75	2.0%
Two races including Some other race	10	16	0.2%
Two races excluding Some other race, and three or more races	92	78	1.8%
Hispanic or Latino	2,415	488	47.1%

Source: U.S. Census Bureau, 2008-2012 American Community Survey

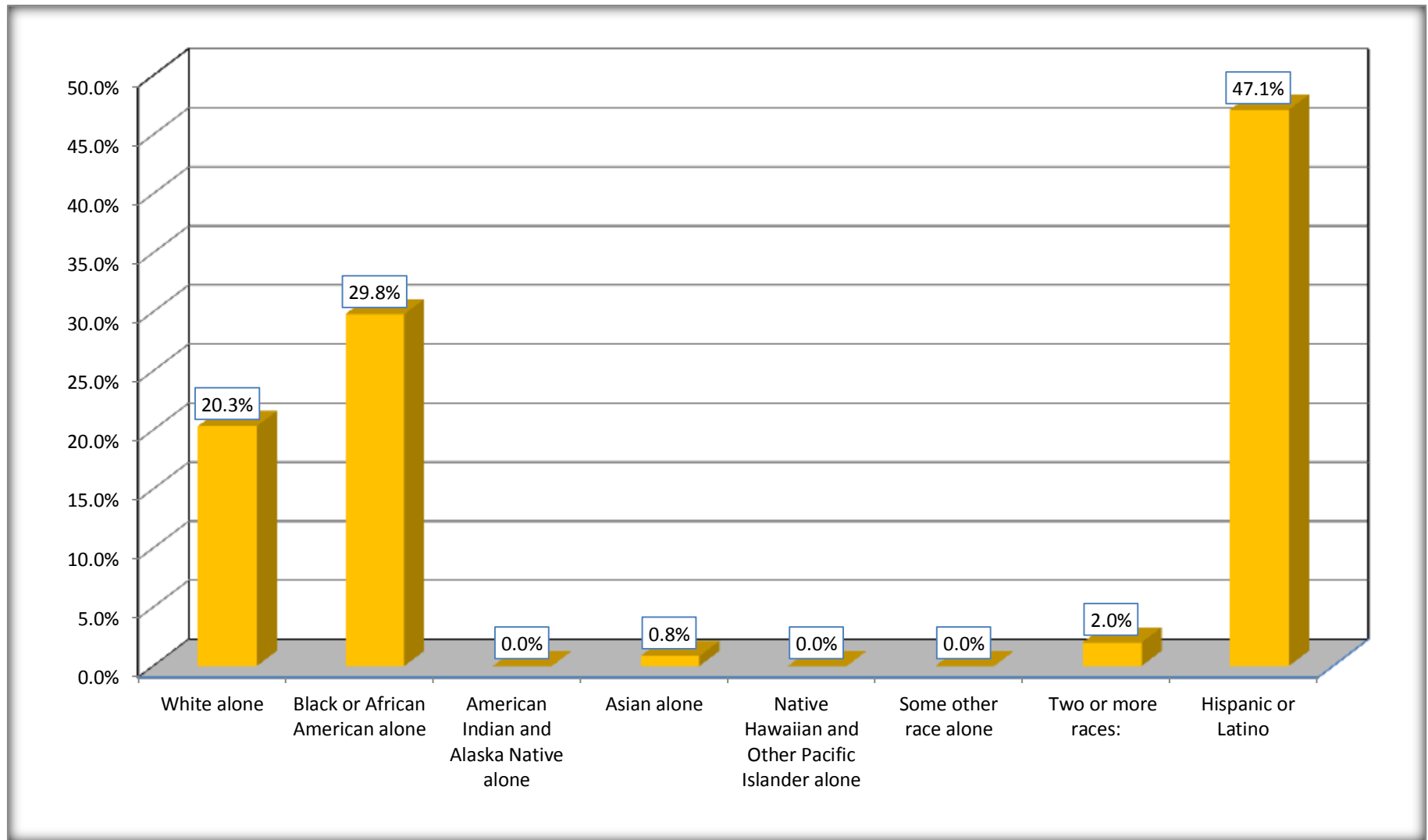
Although the American Community Survey (ACS) produces population, demographic and housing unit estimates, it is the Census Bureau's Population Estimates Program that produces and disseminates the official estimates of the population for the nation, states, counties, cities and towns and estimates of housing units for states and counties.

For information on confidentiality protection, sampling error, nonsampling error, and definitions, see Survey Methodology.

<http://www.census.gov/acs/www/UseData/index.htm>

Non-Hispanic by Race and Hispanic Population

Manor city, Texas



Source: B03002. HISPANIC OR LATINO ORIGIN BY RACE - Universe: TOTAL POPULATION
Data Set: 2008-2012 American Community Survey 5-Year Estimates

B03002. HISPANIC OR LATINO ORIGIN BY RACE

Data Set: 2008-2012 American Community Survey 5-Year Estimates

	Manor city, Texas		
	Population	Margin of Error (+/-)	% of Total
Hispanic or Latino:	2,415	488	100.0%
White alone	1,124	454	46.5%
Black or African American alone	9	15	0.4%
American Indian and Alaska Native alone	7	11	0.3%
Asian alone	0	18	0.0%
Native Hawaiian and Other Pacific Islander alone	0	18	0.0%
Some other race alone	1,275	554	52.8%
Two or more races:	0	18	0.0%
Two races including Some other race	0	18	0.0%
Two races excluding Some other race, and three or more races	0	18	0.0%

Source: U.S. Census Bureau, 2008-2012 American Community Survey

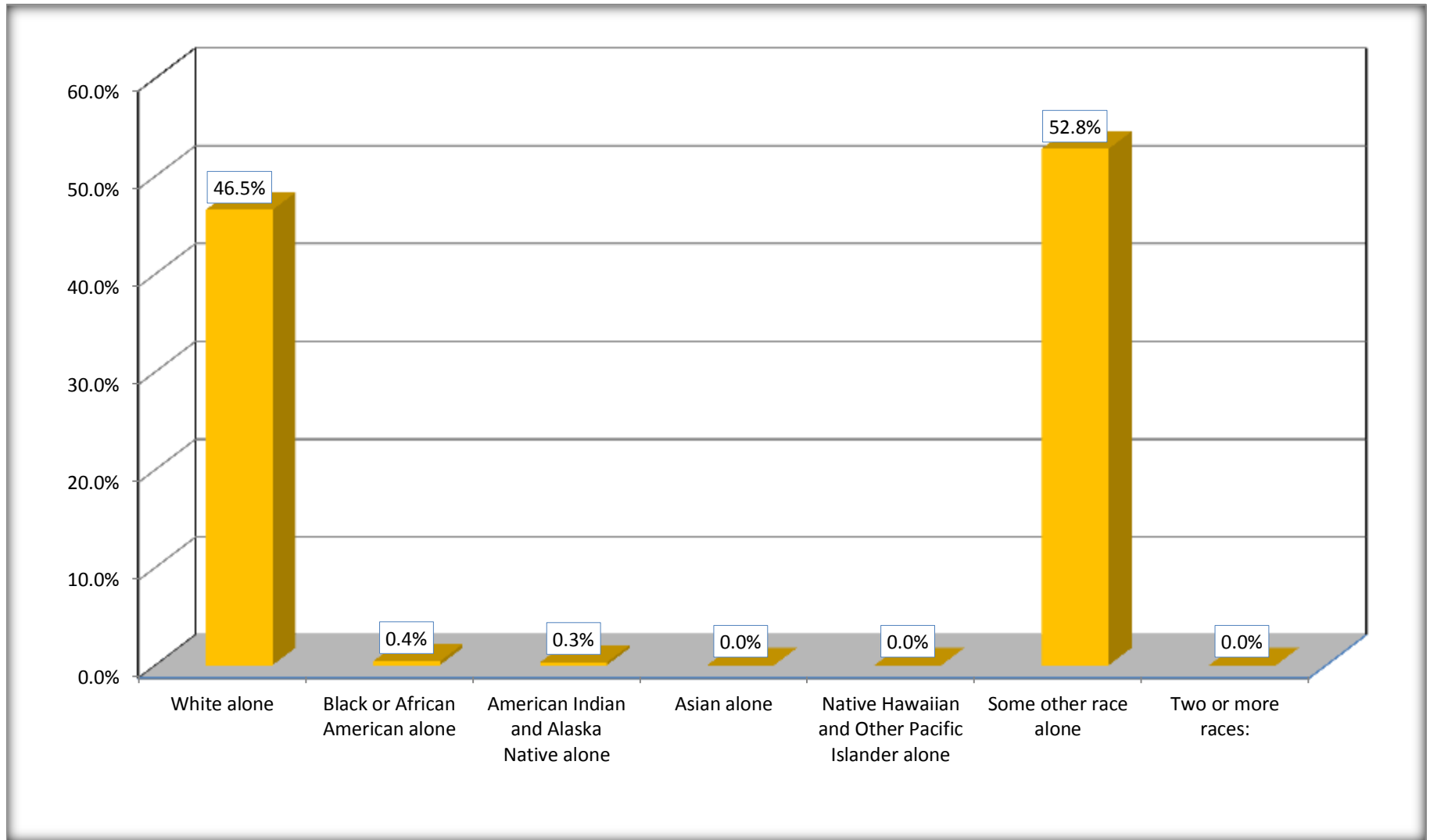
Although the American Community Survey (ACS) produces population, demographic and housing unit estimates, it is the Census Bureau's Population Estimates Program that produces and disseminates the official estimates of the population for the nation, states, counties, cities and towns and estimates of housing units for states and counties.

For information on confidentiality protection, sampling error, nonsampling error, and definitions, see Survey Methodology.

<http://www.census.gov/acs/www/UseData/index.htm>

Hispanic or Latino Origin by Race

Manor city, Texas



Source: B03002. HISPANIC OR LATINO ORIGIN BY RACE
Data Set: 2008-2012 American Community Survey 5-Year Estimates

B01001. SEX BY AGE

Data Set: 2008-2012 American Community Survey 5-Year Estimates

	Manor city, Texas					
	African American	Margin of Error (+/-)	% of AA Total	White, Not Hispanic	Margin of Error (+/-)	% of NHW Total
Total:	1,537	453	100.0%	1,041	275	100.0%
Under 18 years	606	NC	39.4%	210	NC	20.2%
18 to 64 years	837	NC	54.5%	699	NC	67.1%
65 years and over	94	NC	6.1%	132	NC	12.7%
Male:	763	257	49.6%	362	389	34.8%
Under 18 years	337	NC	21.9%	71	NC	6.8%
18 to 64 years	383	NC	24.9%	237	NC	22.8%
65 years and over	43	NC	2.8%	54	NC	5.2%
Female:	774	232	50.4%	679	412	65.2%
Under 18 years	269	NC	17.5%	139	NC	13.4%
18 to 64 years	454	NC	29.5%	462	NC	44.4%
65 years and over	51	NC	3.3%	78	NC	7.5%

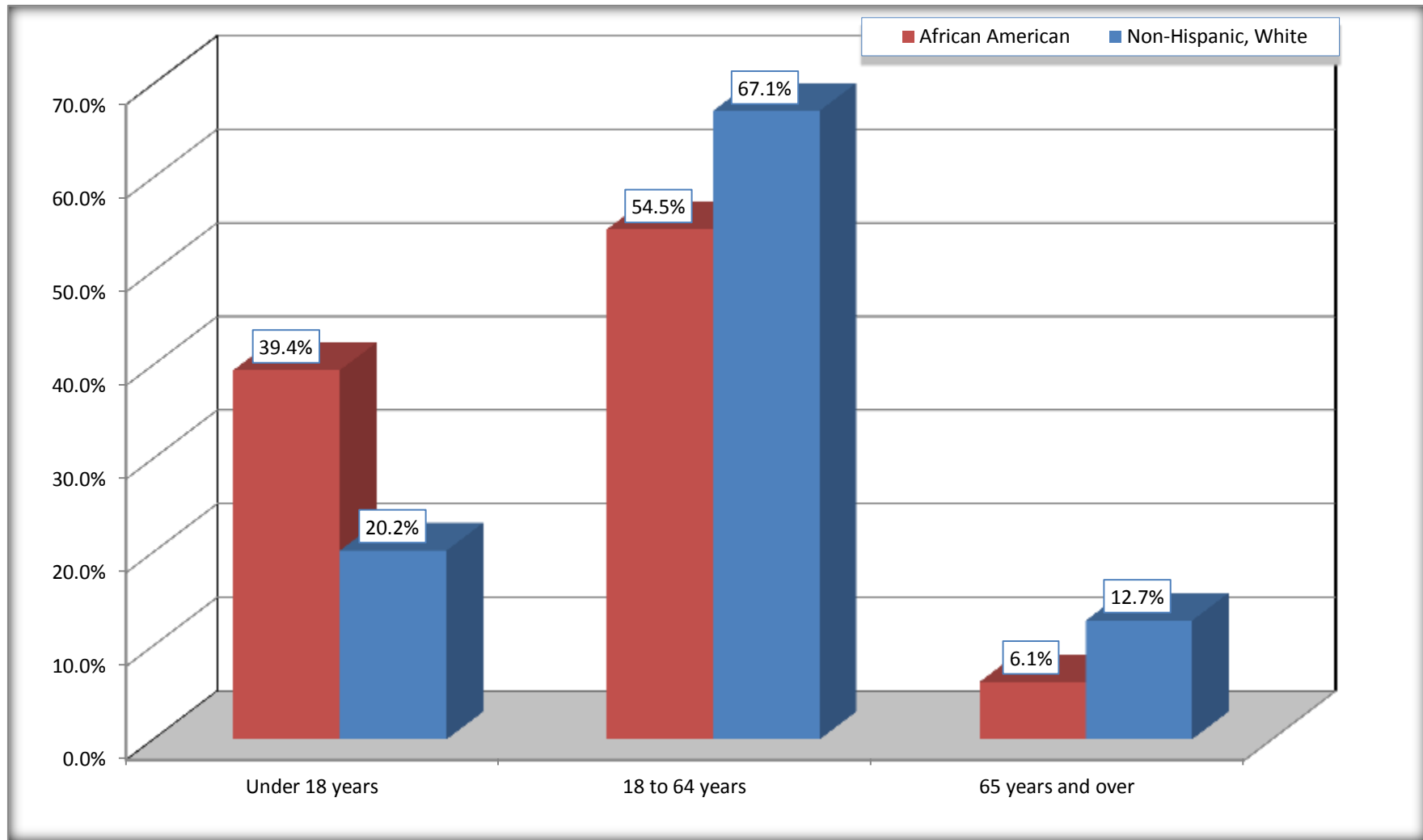
Source: U.S. Census Bureau, 2008-2012 American Community Survey

Although the American Community Survey (ACS) produces population, demographic and housing unit estimates, it is the Census Bureau's Population Estimates Program that produces and disseminates the official estimates of the population for the nation, states, counties, cities and towns and estimates of housing units for states and counties.

For information on confidentiality protection, sampling error, nonsampling error, and definitions, see Survey Methodology.
<http://www.census.gov/acs/www/UseData/index.htm>

Population by Age

Manor city, Texas



Source: B01001. SEX BY AGE

Data Set: 2008-2012 American Community Survey 5-Year Estimates

B05003. SEX BY AGE BY CITIZENSHIP STATUS

Data Set: 2008-2012 American Community Survey 5-Year Estimates

	Manor city, Texas					
	African American	Margin of Error (+/-)	% of AA Total by Age	White, Not Hispanic	Margin of Error (+/-)	% of NHW Total by Age
Total:	1,537	453	100.0%	1,041	275	100.0%
Under 18 years:	606	NC	100.0%	210	NC	100.0%
Native	606	NC	100.0%	210	NC	100.0%
Foreign born:	0	NC	0.0%	0	NC	0.0%
Naturalized U.S. citizen	0	NC	0.0%	0	NC	0.0%
Not a U.S. citizen	0	NC	0.0%	0	NC	0.0%
18 years and over:	931	NC	100.0%	831	NC	100.0%
Native	919	NC	98.7%	822	NC	98.9%
Foreign born:	12	NC	1.3%	9	NC	1.1%
Naturalized U.S. citizen	12	NC	1.3%	0	NC	0.0%
Not a U.S. citizen	0	NC	0.0%	9	NC	1.1%
Male:	763	257	49.6%	362	140	34.8%
Under 18 years:	337	146	100.0%	71	47	100.0%
Native	337	146	100.0%	71	47	100.0%
Foreign born:	0	18	0.0%	0	18	0.0%
Naturalized U.S. citizen	0	18	0.0%	0	18	0.0%
Not a U.S. citizen	0	18	0.0%	0	18	0.0%
18 years and over:	426	146	100.0%	291	113	100.0%
Native	426	146	100.0%	291	113	100.0%
Foreign born:	0	18	0.0%	0	18	0.0%
Naturalized U.S. citizen	0	18	0.0%	0	18	0.0%
Not a U.S. citizen	0	18	0.0%	0	18	0.0%

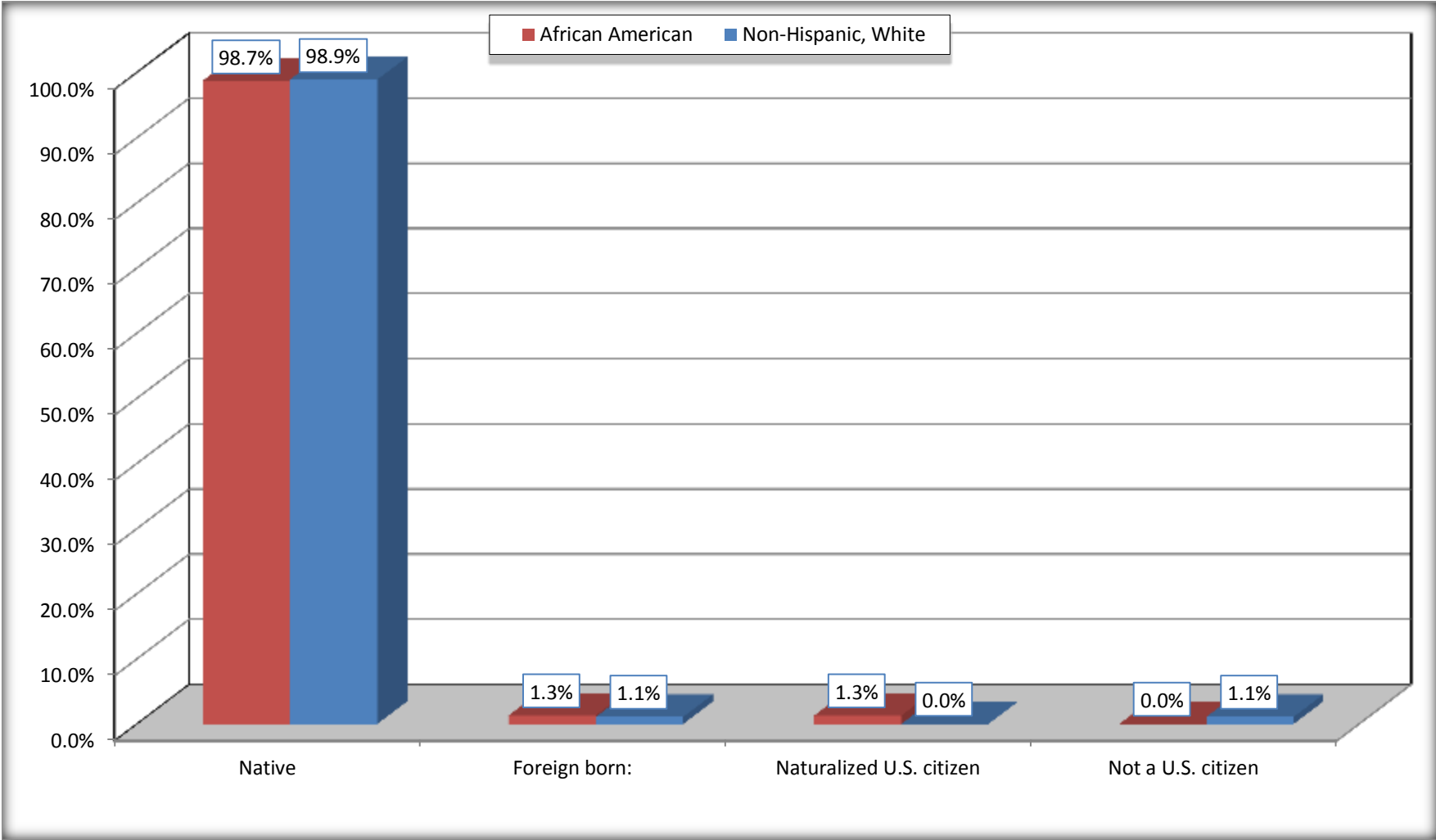
	Manor city, Texas					
	African American	Margin of Error (+/-)	% of AA by Age	White, Not Hispanic	Margin of Error (+/-)	% of NHW by Age
Female:	774	232	50.4%	679	176	65.2%
Under 18 years:	269	127	100.0%	139	80	100.0%
Native	269	127	100.0%	139	80	100.0%
Foreign born:	0	18	0.0%	0	18	0.0%
Naturalized U.S. citizen	0	18	0.0%	0	18	0.0%
Not a U.S. citizen	0	18	0.0%	0	18	0.0%
18 years and over:	505	171	100.0%	540	149	100.0%
Native	493	173	97.6%	531	150	98.3%
Foreign born:	12	18	2.4%	9	15	1.7%
Naturalized U.S. citizen	12	18	2.4%	0	18	0.0%
Not a U.S. citizen	0	18	0.0%	9	15	1.7%

Source: U.S. Census Bureau, 2008-2012 American Community Survey

For information on confidentiality protection, sampling error, nonsampling error, and definitions, see Survey Methodology.
<http://www.census.gov/acs/www/UseData/index.htm>

Citizenship Status of Voting Age Population (18 and Over)

Manor city, Texas



Source: B05003. SEX BY AGE BY CITIZENSHIP STATUS
Data Set: 2008-2012 American Community Survey 5-Year Estimates

**B07004. GEOGRAPHICAL MOBILITY IN THE PAST YEAR BY RACE FOR CURRENT RESIDENCE IN THE UNITED STATES - Universe:
POPULATION 1 YEAR AND OVER**

Data Set: 2008-2012 American Community Survey 5-Year Estimates

	Manor city, Texas					
	African American	Margin of Error (+/-)	% of AA Total	White, Not Hispanic	Margin of Error (+/-)	% of NHW Total
Total:	1,527	453	100.0%	1,041	275	100.0%
Same house 1 year ago	1,446	435	94.7%	955	264	91.7%
Moved within same county	81	62	5.3%	57	49	5.5%
Moved from different county within same state	0	18	0.0%	19	22	1.8%
Moved from different state	0	18	0.0%	10	18	1.0%
Moved from abroad	0	18	0.0%	0	18	0.0%

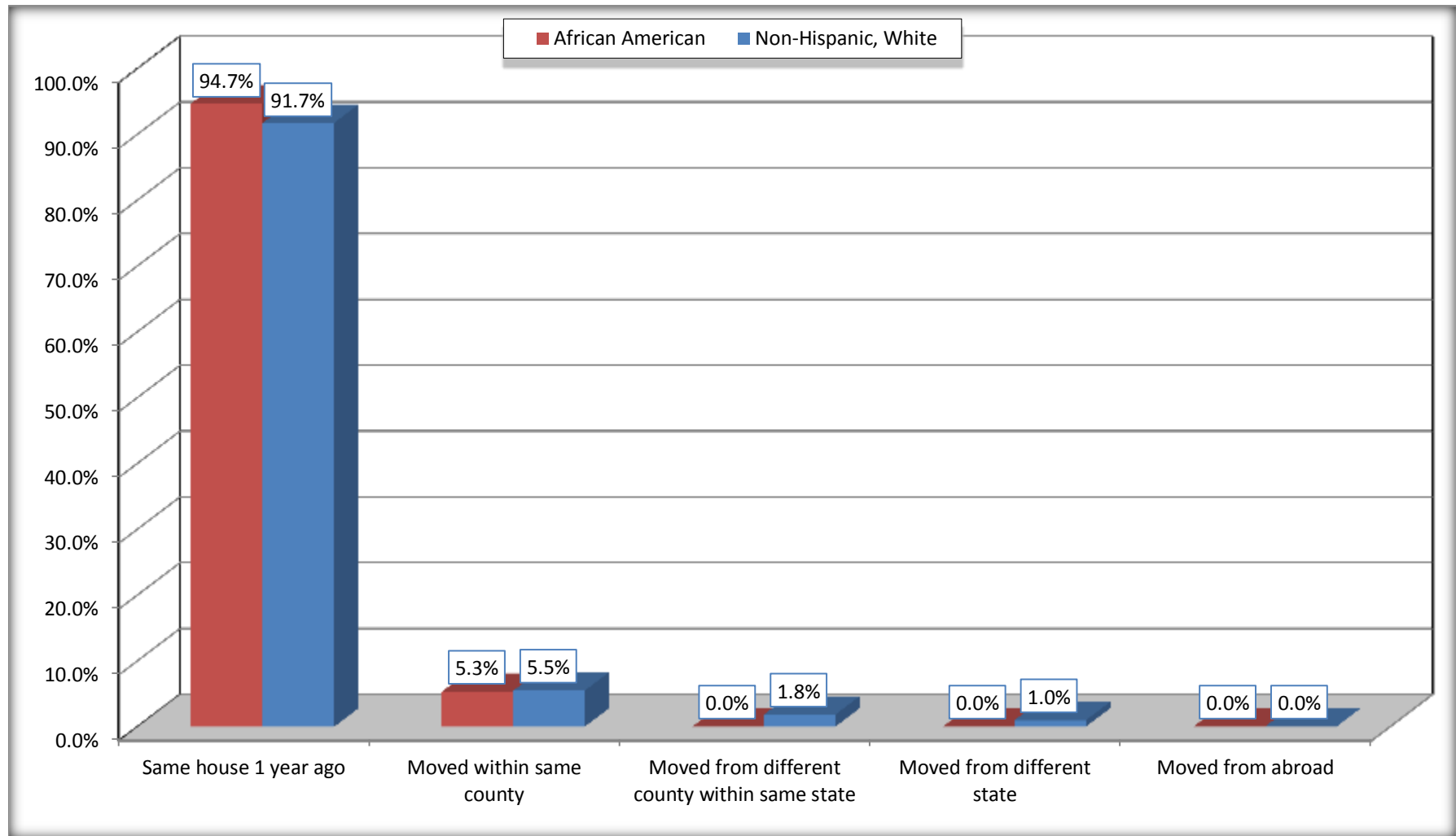
Source: U.S. Census Bureau, 2008-2012 American Community Survey

For information on confidentiality protection, sampling error, nonsampling error, and definitions, see Survey Methodology.

<http://www.census.gov/acs/www/UseData/index.htm>

Geographical Mobility in the Past Year (Population 1 Year and Over)

Manor city, Texas



Source: B07004. GEOGRAPHICAL MOBILITY IN THE PAST YEAR BY RACE FOR CURRENT RESIDENCE IN THE UNITED STATES - Universe: POPULATION 1 YEAR AND OVER

Data Set: 2008-2012 American Community Survey 5-Year Estimates

B08105. MEANS OF TRANSPORTATION TO WORK - Universe: WORKERS 16 YEARS AND OVER

Data Set: 2008-2012 American Community Survey 5-Year Estimates

	Manor city, Texas					
	African American	Margin of Error (+/-)	% of AA Total	White, Not Hispanic	Margin of Error (+/-)	% of NHW Total
Total:	651	213	100.0%	541	156	100.0%
Car, truck, or van - drove alone	575	204	88.3%	357	115	66.0%
Car, truck, or van - carpooled	19	26	2.9%	141	77	26.1%
Public transportation (excluding taxicab)	10	19	1.5%	0	18	0.0%
Walked	0	18	0.0%	0	18	0.0%
Taxicab, motorcycle, bicycle, or other means	42	62	6.5%	10	18	1.8%
Worked at home	5	11	0.8%	33	25	6.1%

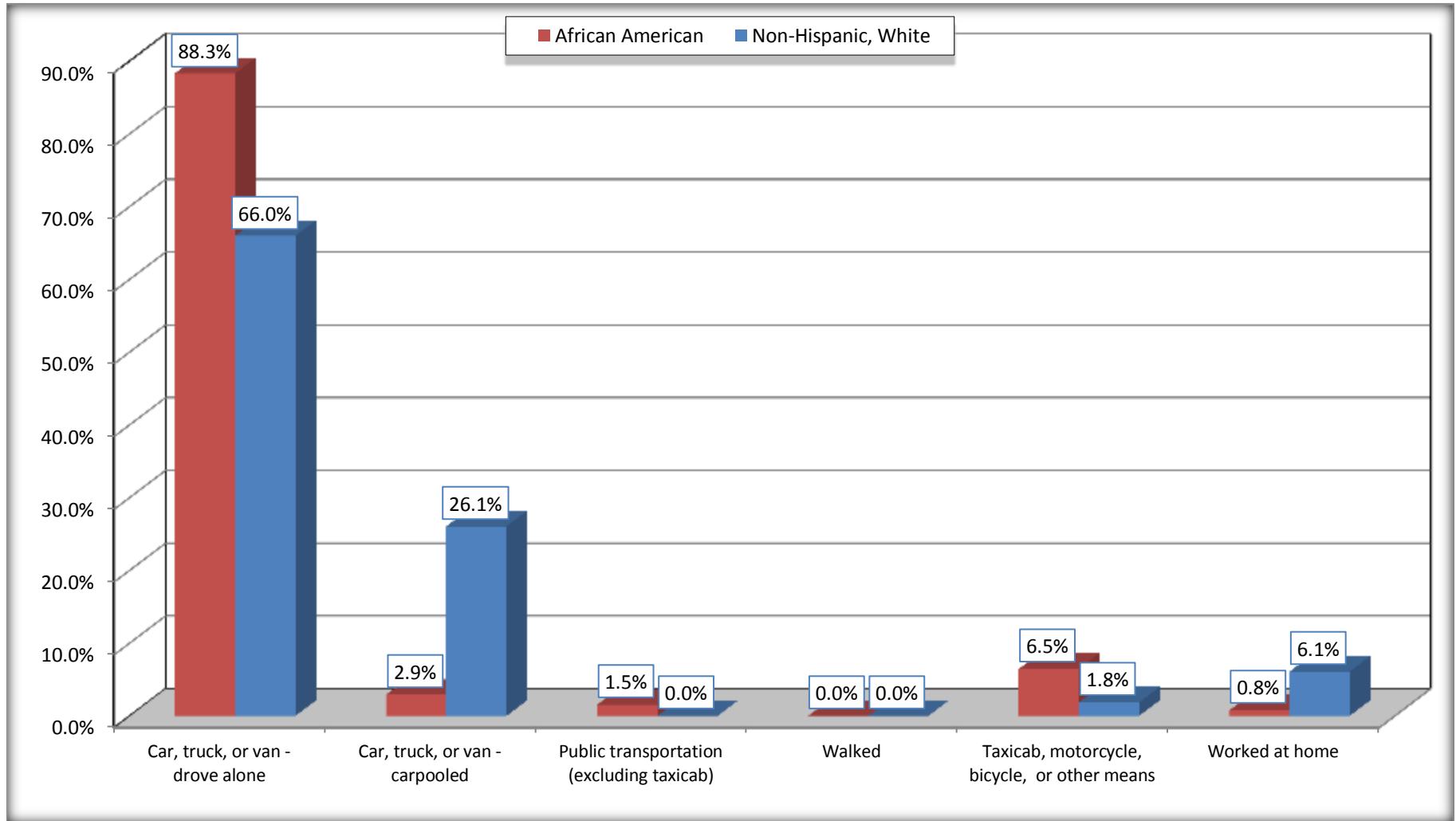
Source: U.S. Census Bureau, 2008-2012 American Community Survey

For information on confidentiality protection, sampling error, nonsampling error, and definitions, see Survey Methodology.

<http://www.census.gov/acs/www/UseData/index.htm>

Means of Transportation to Work (Workers 16 Years and Over)

Manor city, Texas



Source: B08105. MEANS OF TRANSPORTATION TO WORK - Universe: WORKERS 16 YEARS AND OVER
Data Set: 2008-2012 American Community Survey 5-Year Estimates

B11002. HOUSEHOLD TYPE BY RELATIVES AND NONRELATIVES FOR POPULATION IN HOUSEHOLDS

Data Set: 2008-2012 American Community Survey 5-Year Estimates

	Manor city, Texas					
	African American	Margin of Error (+/-)	% of AA Total	White, Not Hispanic	Margin of Error (+/-)	% of NHW Total
Total:	1416	465	100.0%	1095	301	100.0%
In family households	1343	458	94.8%	1007	294	92.0%
In nonfamily households	73	58	5.2%	88	52	8.0%

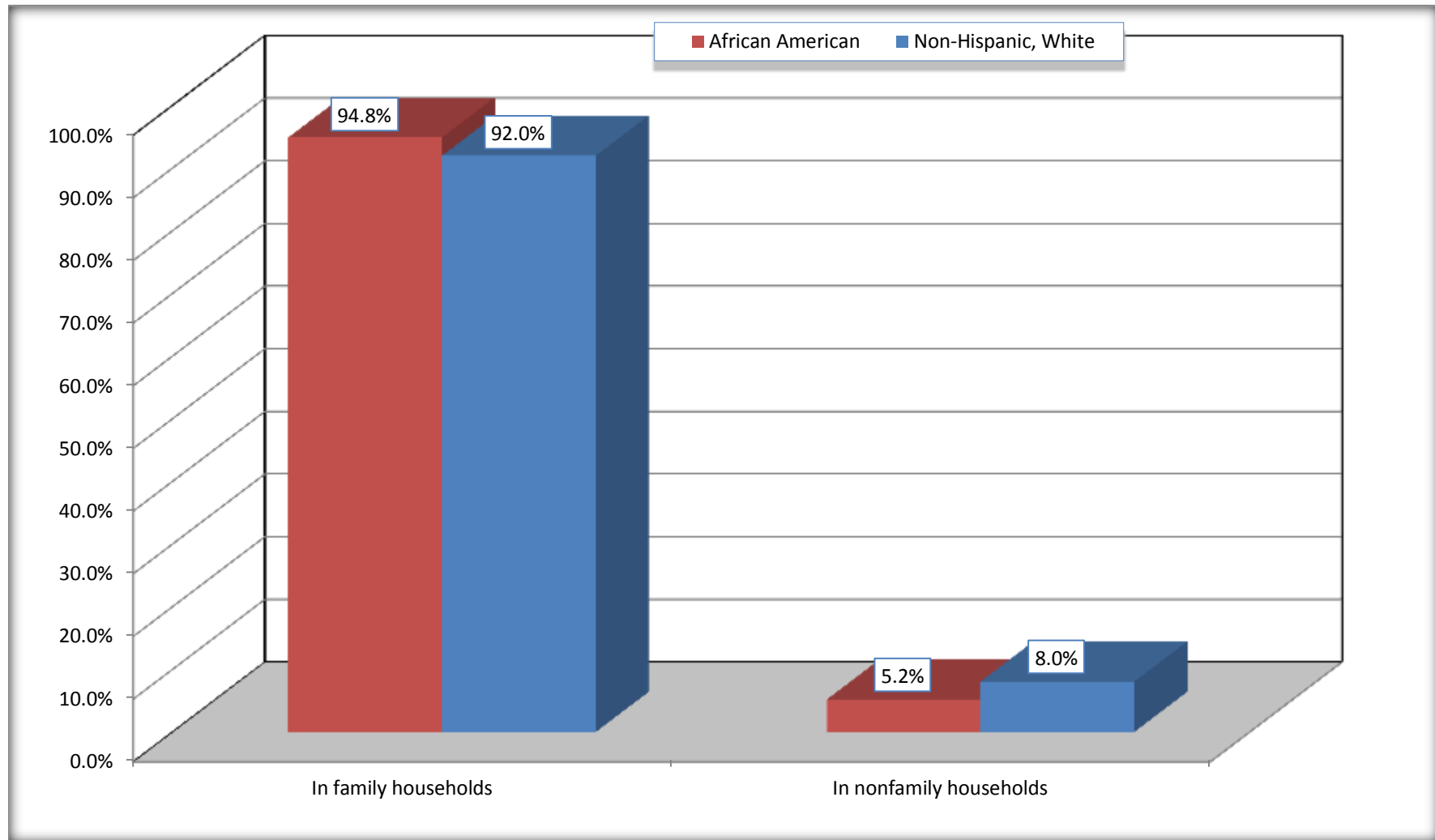
Source: U.S. Census Bureau, 2008-2012 American Community Survey

For information on confidentiality protection, sampling error, nonsampling error, and definitions, see Survey Methodology.

<http://www.census.gov/acs/www/UseData/index.htm>

Household Type for Population in Households

Manor city, Texas



Source: B11002. HOUSEHOLD TYPE BY RELATIVES AND NONRELATIVES FOR POPULATION IN HOUSEHOLDS
Data Set: 2008-2012 American Community Survey 5-Year Estimates

B12002. MARITAL STATUS FOR THE POPULATION 15 YEARS AND OVER

Data Set: 2008-2012 American Community Survey 5-Year Estimates

	Manor city, Texas					
	African American	Margin of Error (+/-)	% of AA Total	White, Not Hispanic	Margin of Error (+/-)	% of NHW Total
Total:	987	283	100.0%	864	221	100.0%
Never married	248	NC	25.1%	152	NC	17.6%
Now married (except separated)	562	NC	56.9%	555	NC	64.2%
Separated	64	NC	6.5%	27	NC	3.1%
Widowed	20	NC	2.0%	26	NC	3.0%
Divorced	93	NC	9.4%	104	NC	12.0%
Male:	447	156	45.3%	303	117	35.1%
Never married	83	70	8.4%	73	51	8.4%
Now married (except separated)	306	141	31.0%	196	87	22.7%
Separated	0	18	0.0%	0	18	0.0%
Widowed	0	18	0.0%	7	12	0.8%
Divorced	58	47	5.9%	27	35	3.1%
Female:	540	176	54.7%	561	155	64.9%
Never married	165	96	16.7%	79	58	9.1%
Now married (except separated)	256	116	25.9%	359	121	41.6%
Separated	64	70	6.5%	27	31	3.1%
Widowed	20	22	2.0%	19	31	2.2%
Divorced	35	33	3.5%	77	46	8.9%

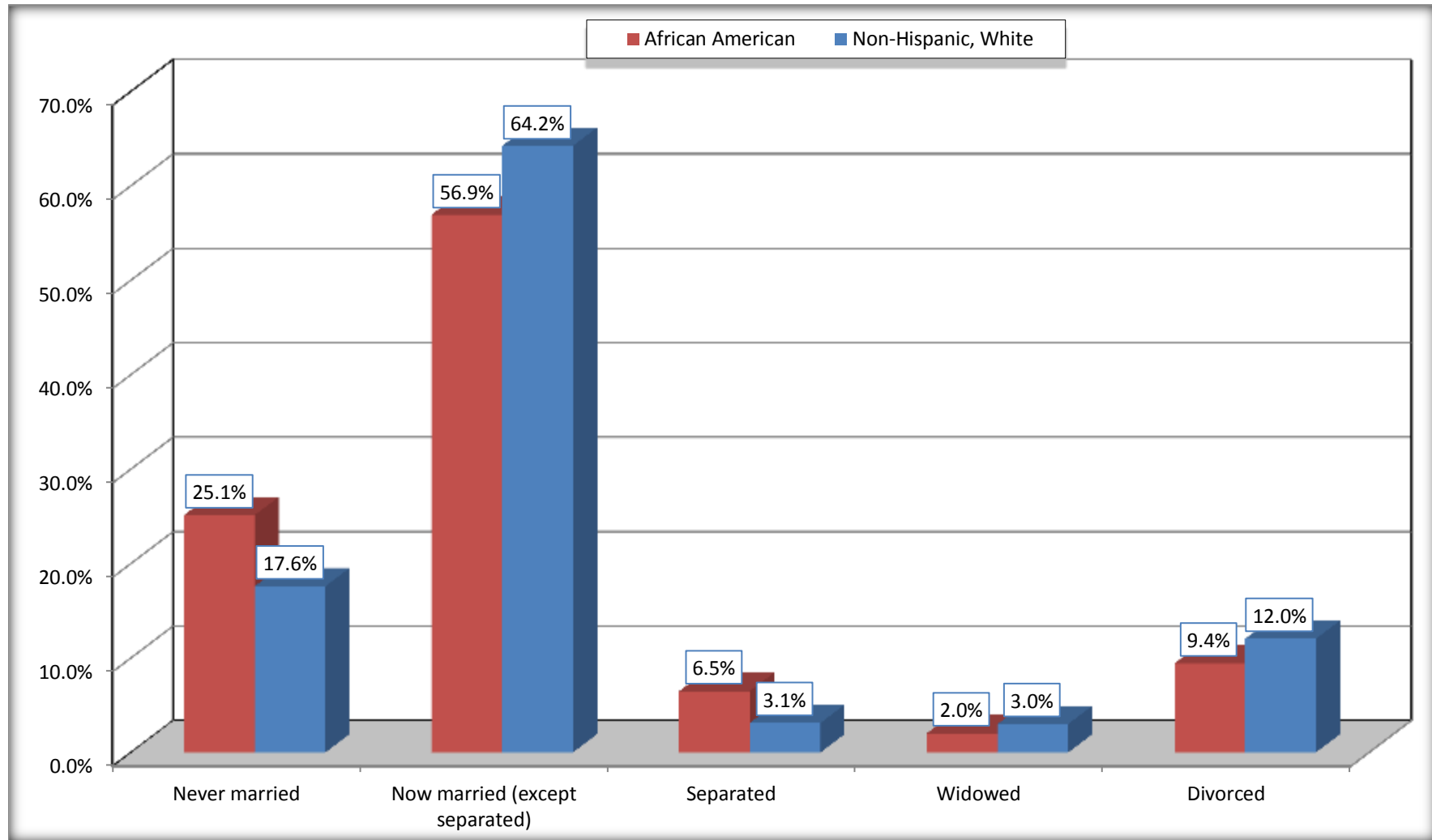
Source: U.S. Census Bureau, 2008-2012 American Community Survey

For information on confidentiality protection, sampling error, nonsampling error, and definitions, see Survey Methodology.

<http://www.census.gov/acs/www/UseData/index.htm>

Marital Status for the Population 15 Years and Over

Manor city, Texas



Source: B12002. MARITAL STATUS FOR THE POPULATION 15 YEARS AND OVER
Data Set: 2008-2012 American Community Survey 5-Year Estimates

C15002. SEX BY EDUCATIONAL ATTAINMENT FOR THE POPULATION 25 YEARS AND OVER

Data Set: 2008-2012 American Community Survey 5-Year Estimates

	Manor city, Texas					
	African American	Margin of Error (+/-)	% of AA Total	White, Not Hispanic	Margin of Error (+/-)	% of NHW Total
Total:	876	243	100.0%	776	204	100.0%
Less than high school diploma	117	NC	13.4%	45	NC	5.8%
High school graduate, GED, or alternative	186	NC	21.2%	246	NC	31.7%
Some college or associate's degree	491	NC	56.1%	284	NC	36.6%
Bachelor's degree or higher	82	NC	9.4%	201	NC	25.9%
Male:	413	140	47.1%	271	109	34.9%
Less than high school diploma	59	56	6.7%	45	48	5.8%
High school graduate, GED, or alternative	53	42	6.1%	87	59	11.2%
Some college or associate's degree	271	129	30.9%	31	29	4.0%
Bachelor's degree or higher	30	27	3.4%	108	62	13.9%
Female:	463	141	52.9%	505	142	65.1%
Less than high school diploma	58	73	6.6%	0	18	0.0%
High school graduate, GED, or alternative	133	65	15.2%	159	89	20.5%
Some college or associate's degree	220	102	25.1%	253	98	32.6%
Bachelor's degree or higher	52	41	5.9%	93	57	12.0%

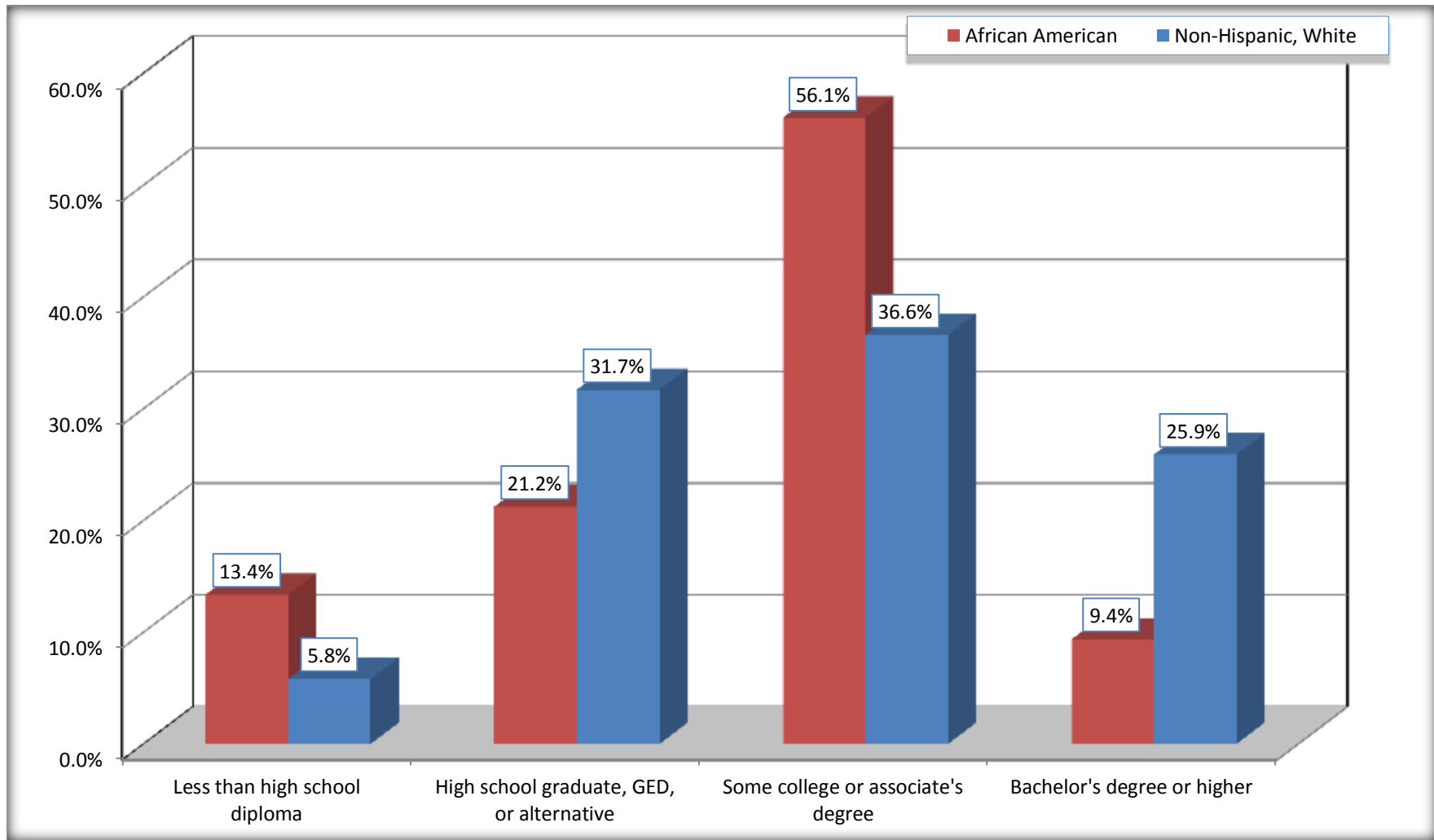
Source: U.S. Census Bureau, 2008-2012 American Community Survey

For information on confidentiality protection, sampling error, nonsampling error, and definitions, see Survey Methodology.

<http://www.census.gov/acs/www/UseData/index.htm>

Educational Attainment for the Population 25 Years and Older

Manor city, Texas



Source: C15002. SEX BY EDUCATIONAL ATTAINMENT FOR THE POPULATION 25 YEARS AND OVER
Data Set: 2008-2012 American Community Survey 5-Year Estimates

B17010. POVERTY STATUS IN THE PAST 12 MONTHS OF FAMILIES BY FAMILY TYPE BY PRESENCE OF RELATED CHILDREN UNDER 18 YEARS

Data Set: 2008-2012 American Community Survey 5-Year Estimates

	Manor city, Texas					
	African American	Margin of Error (+/-)	% of AA Total	White, Not Hispanic	Margin of Error (+/-)	% of NHW Total
Total:	385	124	100.0%	331	98	100.0%
Income in the past 12 months below poverty level:	72	56	18.7%	36	38	10.9%
Married-couple family:	6	10	1.6%	30	36	9.1%
With related children under 18 years	6	10	1.6%	10	16	3.0%
Other family:	66	56	17.1%	6	10	1.8%
Male householder, no wife present	0	18	0.0%	0	18	0.0%
With related children under 18 years	0	18	0.0%	0	18	0.0%
Female householder, no husband present	66	56	17.1%	6	10	1.8%
With related children under 18 years	28	33	7.3%	0	18	0.0%
Income in the past 12 months at or above poverty level:	313	115	81.3%	295	90	89.1%
Married-couple family:	243	117	63.1%	218	83	65.9%
With related children under 18 years	172	101	44.7%	162	63	48.9%
Other family:	70	48	18.2%	77	48	23.3%
Male householder, no wife present	38	31	9.9%	0	18	0.0%
With related children under 18 years	10	17	2.6%	0	18	0.0%
Female householder, no husband present	32	32	8.3%	77	48	23.3%
With related children under 18 years	20	23	5.2%	43	35	13.0%

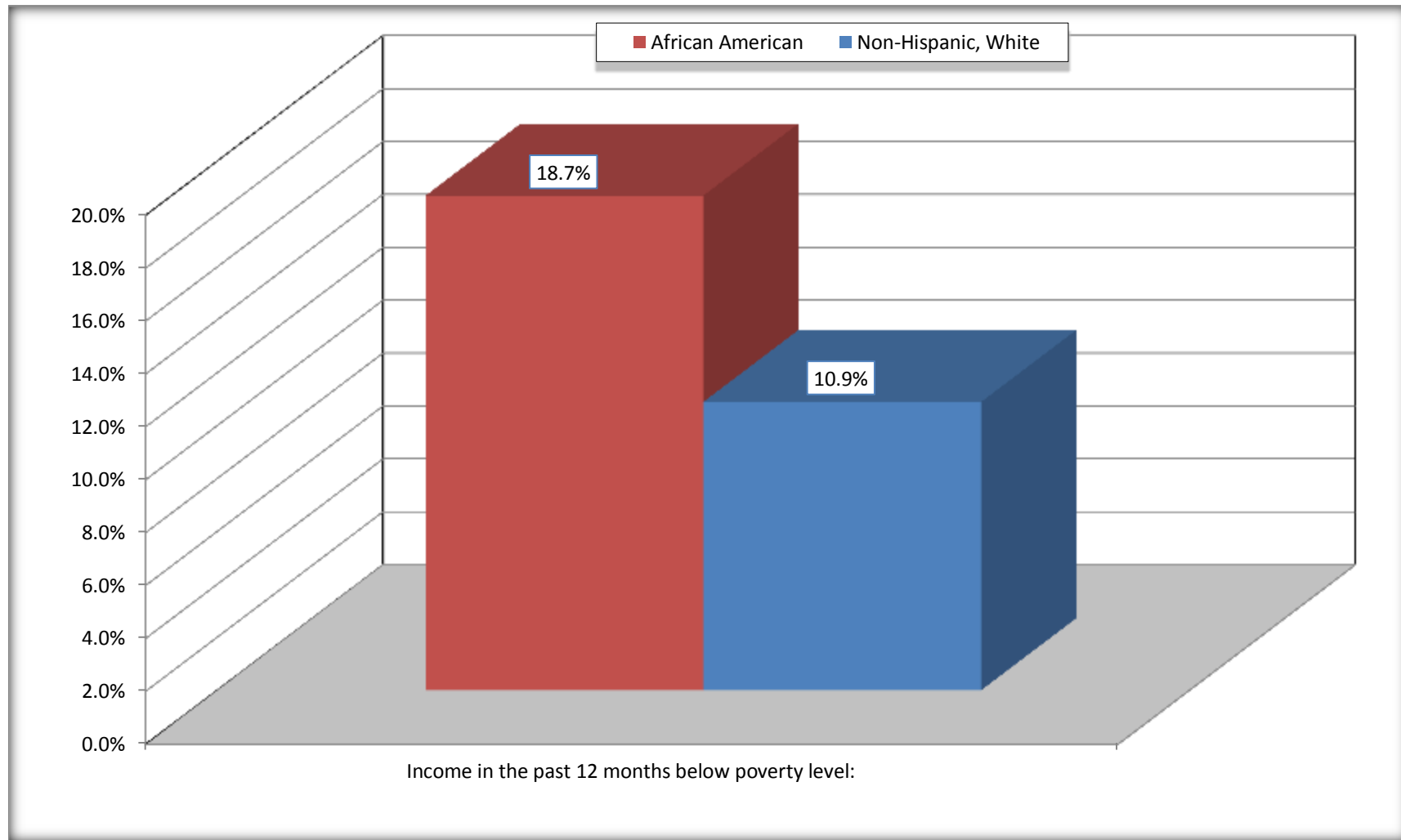
Source: U.S. Census Bureau, 2008-2012 American Community Survey

For information on confidentiality protection, sampling error, nonsampling error, and definitions, see Survey Methodology.

<http://www.census.gov/acs/www/UseData/index.htm>

Family Households Below Poverty in the Past 12 Months

Manor city, Texas

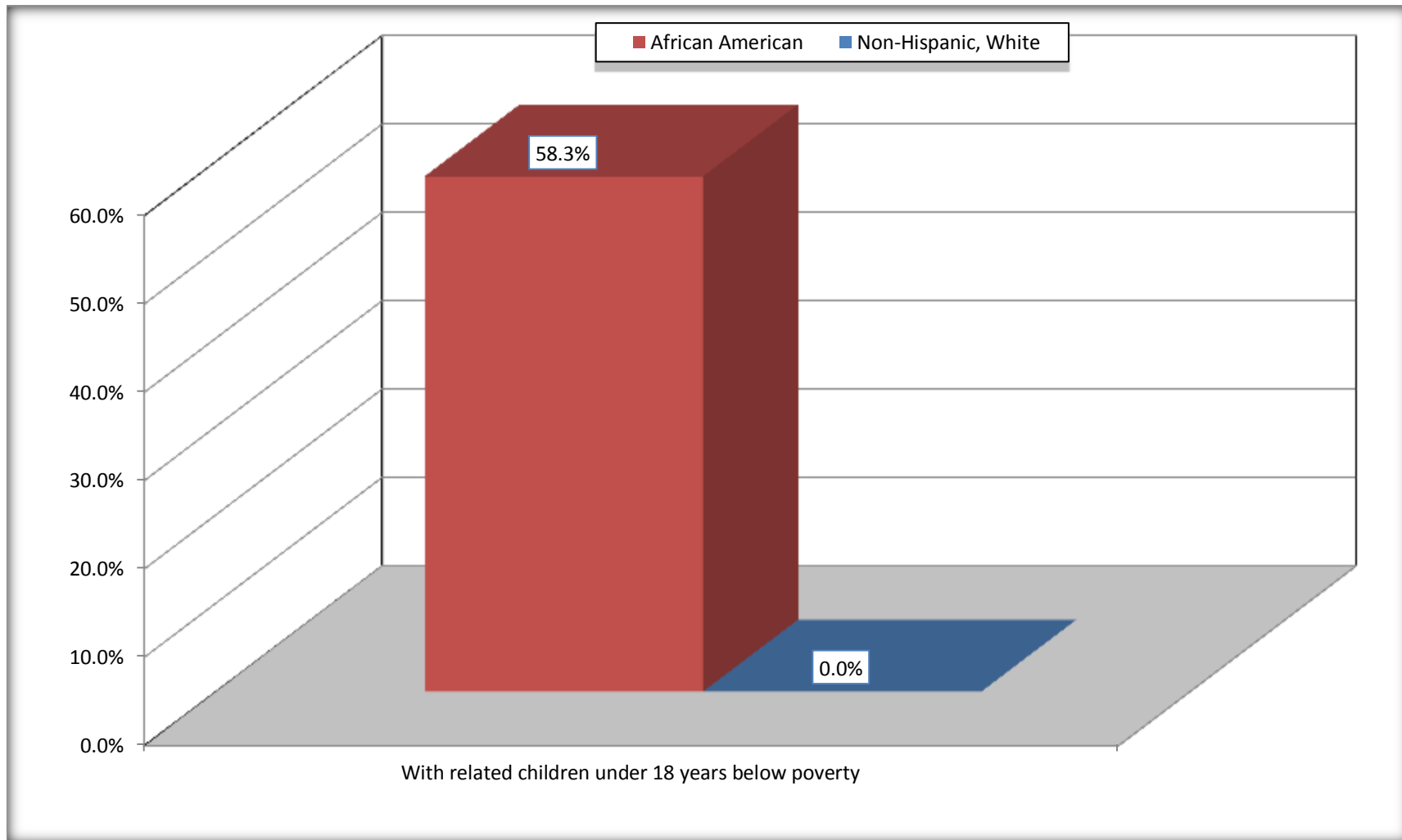


Source: B17010. POVERTY STATUS IN THE PAST 12 MONTHS OF FAMILIES BY FAMILY TYPE BY PRESENCE OF RELATED CHILDREN UNDER 18 YEARS

Data Set: 2008-2012 American Community Survey 5-Year Estimates

Female-headed Households with Related Children Below Poverty in the Past 12 Months

Manor city, Texas



Source: B17010. POVERTY STATUS IN THE PAST 12 MONTHS OF FAMILIES BY FAMILY TYPE BY PRESENCE OF RELATED CHILDREN UNDER 18 YEARS

Data Set: 2008-2012 American Community Survey 5-Year Estimates

B17020 POVERTY STATUS IN THE PAST 12 MONTHS BY AGE - Universe: POPULATION FOR WHOM POVERTY STATUS IS DETERMINED

Data Set: 2008-2012 American Community Survey 5-Year Estimates

	Manor city, Texas					
	African American	Margin of Error (+/-)	% of AA By Age	White, Not Hispanic	Margin of Error (+/-)	% of NHW By Age
Total:	1,527	450	100.0%	1,006	267	100.0%
Income in the past 12 months below poverty level:	339	190	22.2%	88	77	8.7%
Under 18 years	184	NC	30.9%	0	NC	0.0%
18 to 64 years	155	127	18.5%	44	44	6.3%
65 years and over	0	NC	0.0%	44	NC	33.3%
Income in the past 12 months at or above poverty level:	1,188	404	77.8%	918	257	91.3%
Under 18 years	412	NC	69.1%	175	NC	100.0%
18 to 64 years	682	230	81.5%	655	190	93.7%
65 years and over	94	NC	100.0%	88	NC	66.7%

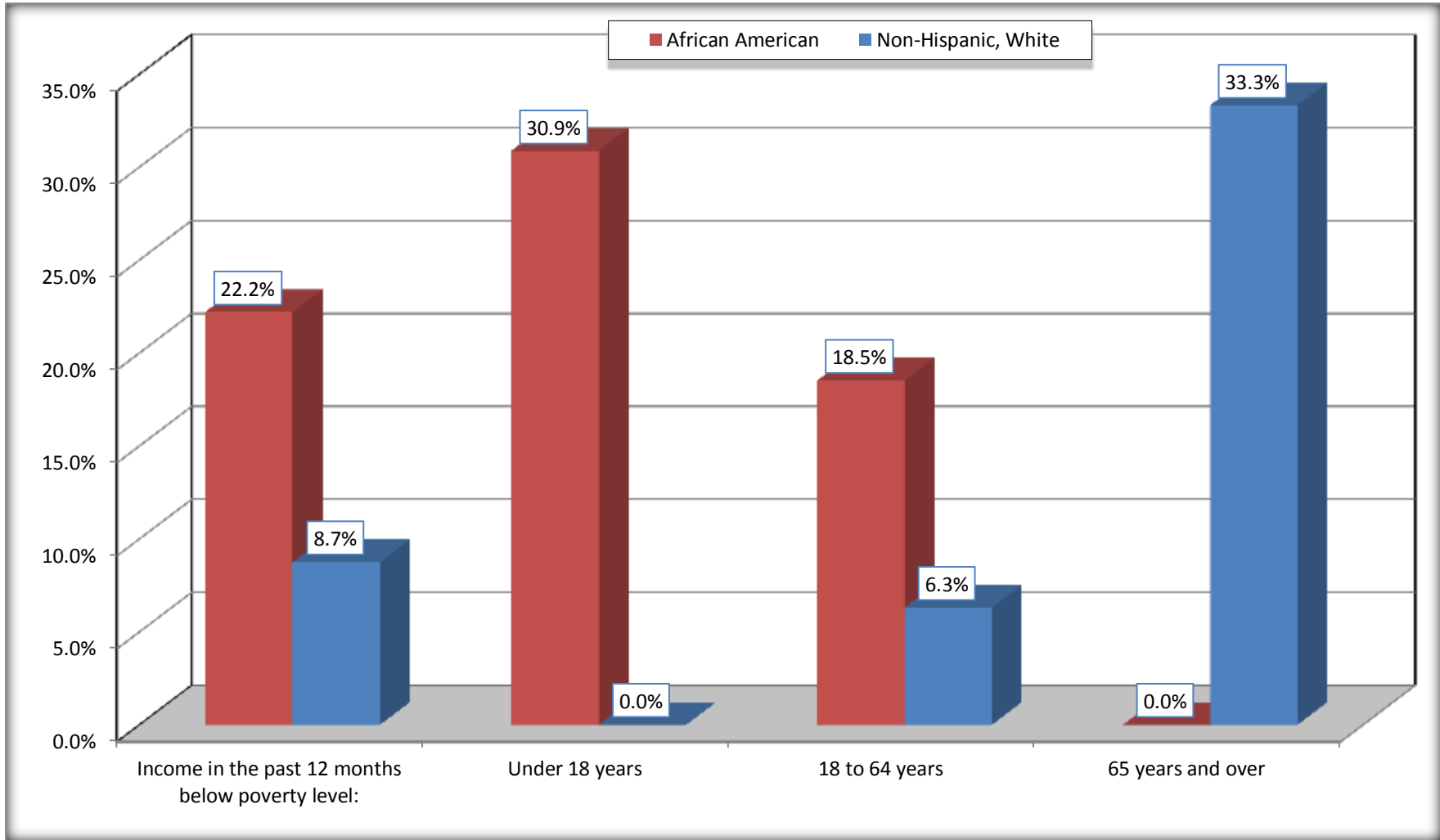
Source: U.S. Census Bureau, 2008-2012 American Community Survey

For information on confidentiality protection, sampling error, nonsampling error, and definitions, see Survey Methodology.

<http://www.census.gov/acs/www/UseData/index.htm>

Population Below Poverty in the Past 12 Months

Manor city, Texas



Source: B17020 POVERTY STATUS IN THE PAST 12 MONTHS BY AGE - Universe: POPULATION FOR WHOM POVERTY STATUS IS DETERMINED
Data Set: 2008-2012 American Community Survey 5-Year Estimates

B19001. HOUSEHOLD INCOME IN THE PAST 12 MONTHS (IN 2010 INFLATION-ADJUSTED DOLLARS)

Data Set: 2008-2012 American Community Survey 5-Year Estimates

	Manor city, Texas					
	African American	Margin of Error (+/-)	% of AA Total	White, Not Hispanic	Margin of Error (+/-)	% of NHW Total
Total:	437	128	100.0%	413	110	100.0%
Less than \$ 10,000	11	18	2.5%	27	34	6.5%
\$ 10,000 to \$ 14,999	76	59	17.4%	11	14	2.7%
\$ 15,000 to \$ 24,999	29	NC	6.6%	52	NC	12.6%
\$ 25,000 to \$ 34,999	23	NC	5.3%	30	NC	7.3%
\$ 35,000 to \$ 49,999	31	NC	7.1%	38	NC	9.2%
\$ 50,000 to \$ 74,999	70	NC	16.0%	52	NC	12.6%
\$ 75,000 to \$ 99,999	161	99	36.8%	70	44	16.9%
\$ 100,000 to \$ 149,999	36	NC	8.2%	62	NC	15.0%
\$ 150,000 to \$ 199,999	0	18	0.0%	54	56	13.1%
\$ 200,000 or more	0	18	0.0%	17	19	4.1%

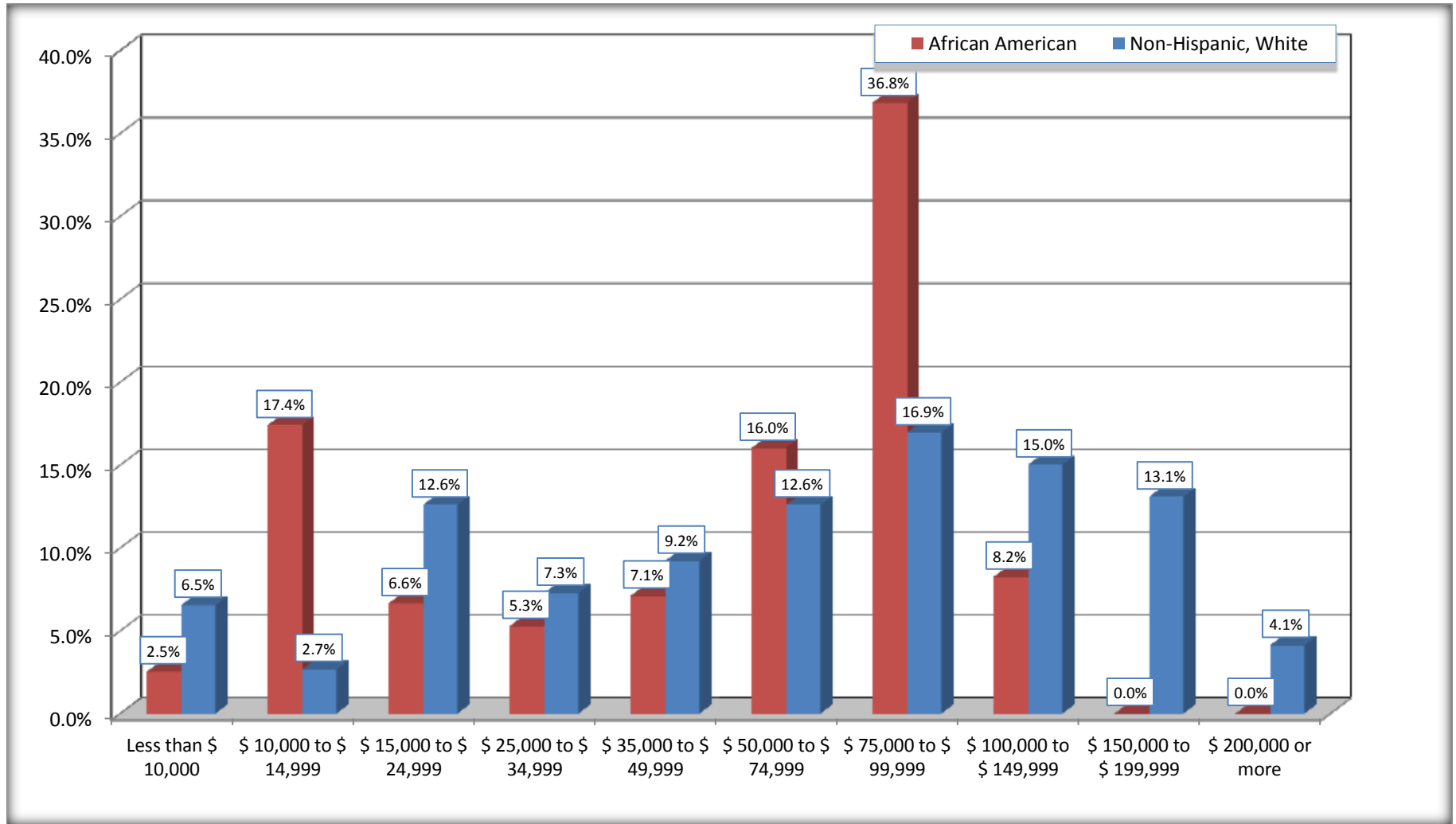
Source: U.S. Census Bureau, 2008-2012 American Community Survey

For information on confidentiality protection, sampling error, nonsampling error, and definitions, see Survey Methodology.

<http://www.census.gov/acs/www/UseData/index.htm>

Household Income in the Past 12 Months

Manor city, Texas



Source: B19001. HOUSEHOLD INCOME IN THE PAST 12 MONTHS (IN 2010 INFLATION-ADJUSTED DOLLARS)
Data Set: 2008-2012 American Community Survey 5-Year Estimates

B19013. MEDIAN HOUSEHOLD INCOME IN THE PAST 12 MONTHS (IN 2010 INFLATION-ADJUSTED DOLLARS)

Data Set: 2008-2012 American Community Survey 5-Year Estimates

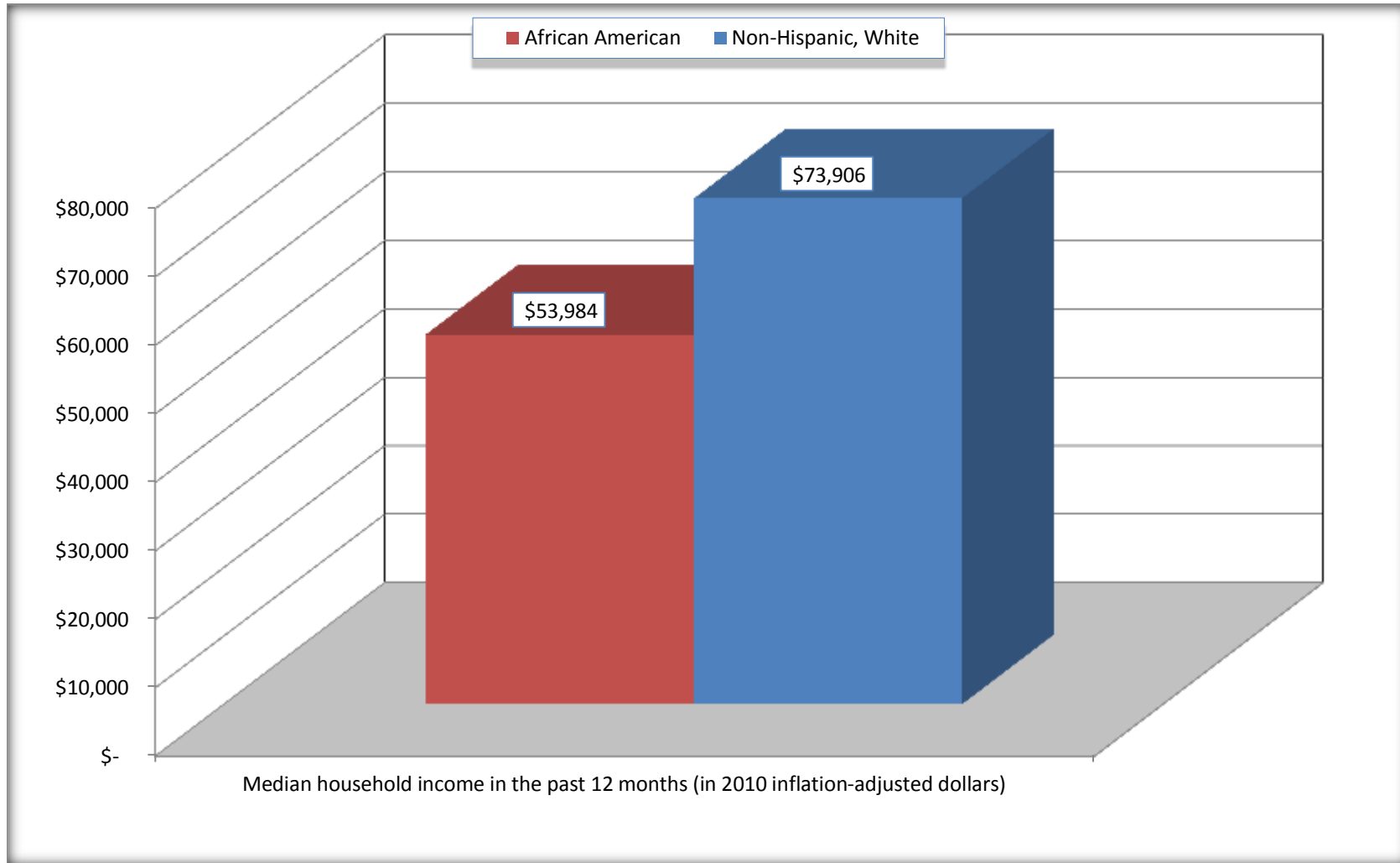
	Manor city, Texas			
	African American	Margin of Error (+/-)	White, Not Hispanic	Margin of Error (+/-)
Median household income in the past 12 months (in 2010 inflation-adjusted dollars)	\$ 53,984	\$ 32,415	\$ 73,906	\$ 27,562

Source: U.S. Census Bureau, 2008-2012 American Community Survey

For information on confidentiality protection, sampling error, nonsampling error, and definitions, see Survey Methodology.
<http://www.census.gov/acs/www/UseData/index.htm>

Median Household Income in the Past 12 Months

Manor city, Texas



Source: B19013. MEDIAN HOUSEHOLD INCOME IN THE PAST 12 MONTHS (IN 2010 INFLATION-ADJUSTED DOLLARS)
Data Set: 2008-2012 American Community Survey 5-Year Estimates

B19101. FAMILY INCOME IN THE PAST 12 MONTHS (IN 2010 INFLATION-ADJUSTED DOLLARS)

Data Set: 2008-2012 American Community Survey 5-Year Estimates

	Manor city, Texas					
	African American	Margin of Error (+/-)	% of AA Total	White, Not Hispanic	Margin of Error (+/-)	% of NHW Total
Total:	385	124	100.0%	331	98	100.0%
Less than \$ 10,000	11	18	2.9%	20	32	6.0%
\$ 10,000 to \$ 14,999	55	53	14.3%	6	10	1.8%
\$ 15,000 to \$ 24,999	23	NC	6.0%	25	NC	7.6%
\$ 25,000 to \$ 34,999	6	NC	1.6%	20	NC	6.0%
\$ 35,000 to \$ 49,999	31	NC	8.1%	27	NC	8.2%
\$ 50,000 to \$ 74,999	62	NC	16.1%	40	NC	12.1%
\$ 100,000 to \$ 149,999	36	NC	9.4%	52	NC	15.7%
\$ 150,000 to \$ 199,999	0	18	0.0%	54	56	16.3%
\$ 200,000 or more	0	18	0.0%	17	19	5.1%

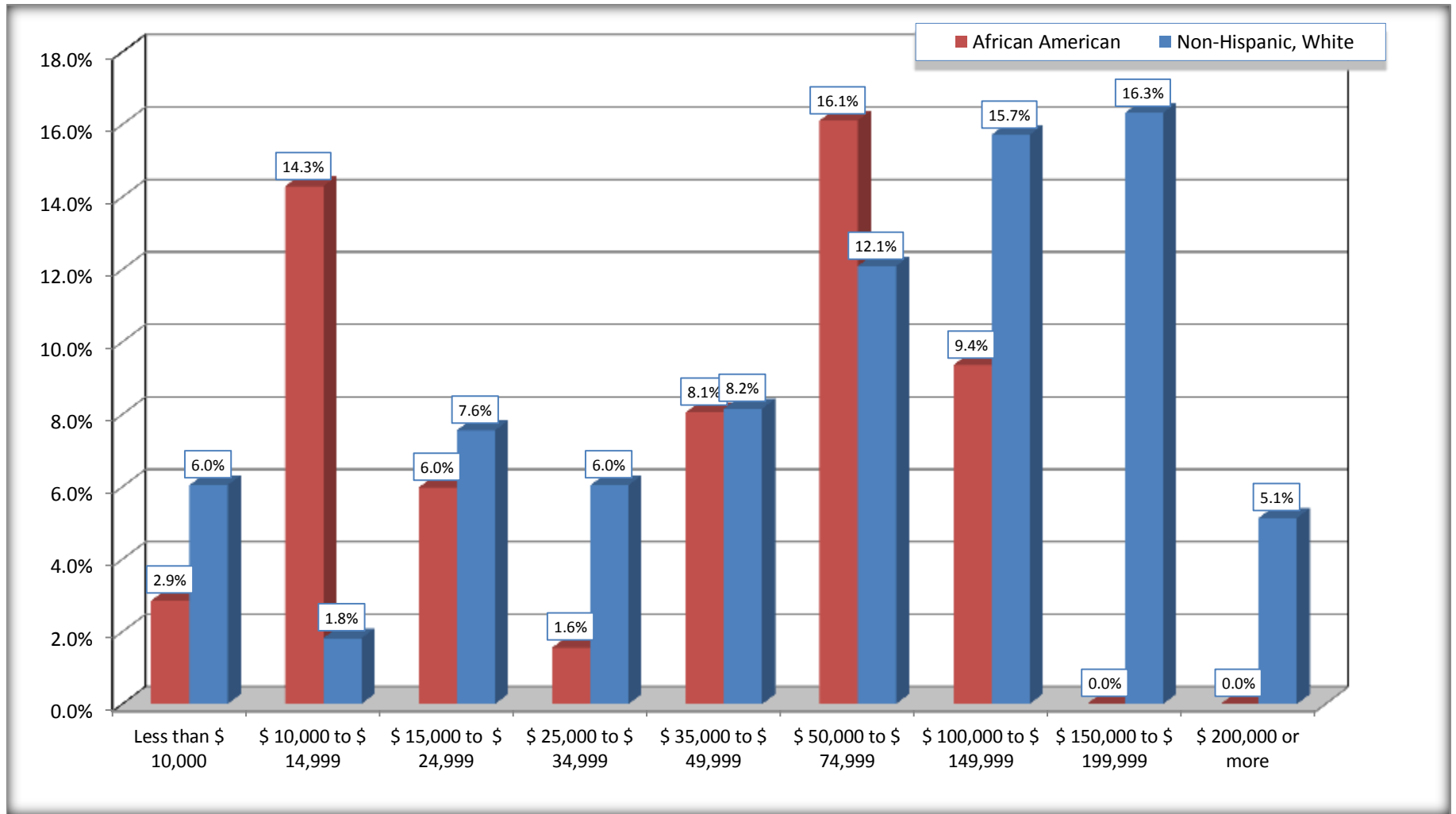
Source: U.S. Census Bureau, 2008-2012 American Community Survey

For information on confidentiality protection, sampling error, nonsampling error, and definitions, see Survey Methodology.

<http://www.census.gov/acs/www/UseData/index.htm>

Family Income in the Past 12 Months

Manor city, Texas



Source: B19101. FAMILY INCOME IN THE PAST 12 MONTHS (IN 2010 INFLATION-ADJUSTED DOLLARS)
Data Set: 2008-2012 American Community Survey 5-Year Estimates

B19113. MEDIAN FAMILY INCOME IN THE PAST 12 MONTHS (IN 2010 INFLATION-ADJUSTED DOLLARS)

Data Set: 2008-2012 American Community Survey 5-Year Estimates

	Manor city, Texas			
	African American	Margin of Error (+/-)	White, Not Hispanic	Margin of Error (+/-)
Median family income in the past 12 months (in 2010 inflation-adjusted dollars)	\$ 75,134	\$ 41,039	\$ 82,434	\$ 11,579

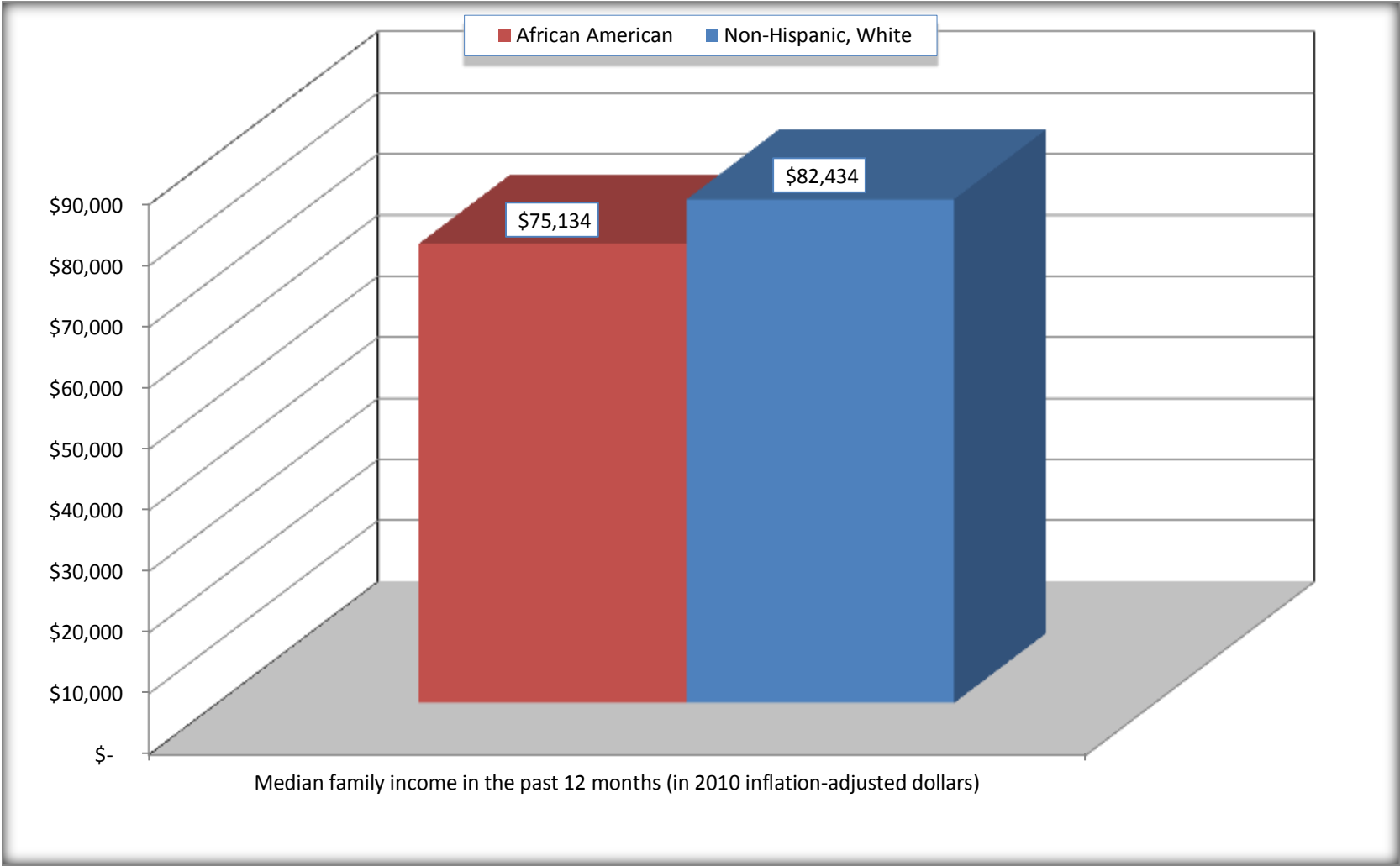
Source: U.S. Census Bureau, 2008-2012 American Community Survey

For information on confidentiality protection, sampling error, nonsampling error, and definitions, see Survey Methodology.

<http://www.census.gov/acs/www/UseData/index.htm>

Median Family Income in the Past 12 Months

Manor city, Texas



Source: B19113. MEDIAN FAMILY INCOME IN THE PAST 12 MONTHS (IN 2010 INFLATION-ADJUSTED DOLLARS)
Data Set: 2008-2012 American Community Survey 5-Year Estimates

B19202. MEDIAN NONFAMILY HOUSEHOLD INCOME IN THE PAST 12 MONTHS (IN 2010 INFLATION-ADJUSTED DOLLARS)

Data Set: 2008-2012 American Community Survey 5-Year Estimates

	Manor city, Texas			
	African American	Margin of Error (+/-)	White, Not Hispanic	Margin of Error (+/-)
Median nonfamily household income in the past 12 months (in 2010 inflation-adjusted dollars)	\$ 19,583	\$ 17,118	\$ 28,500	\$ 30,393

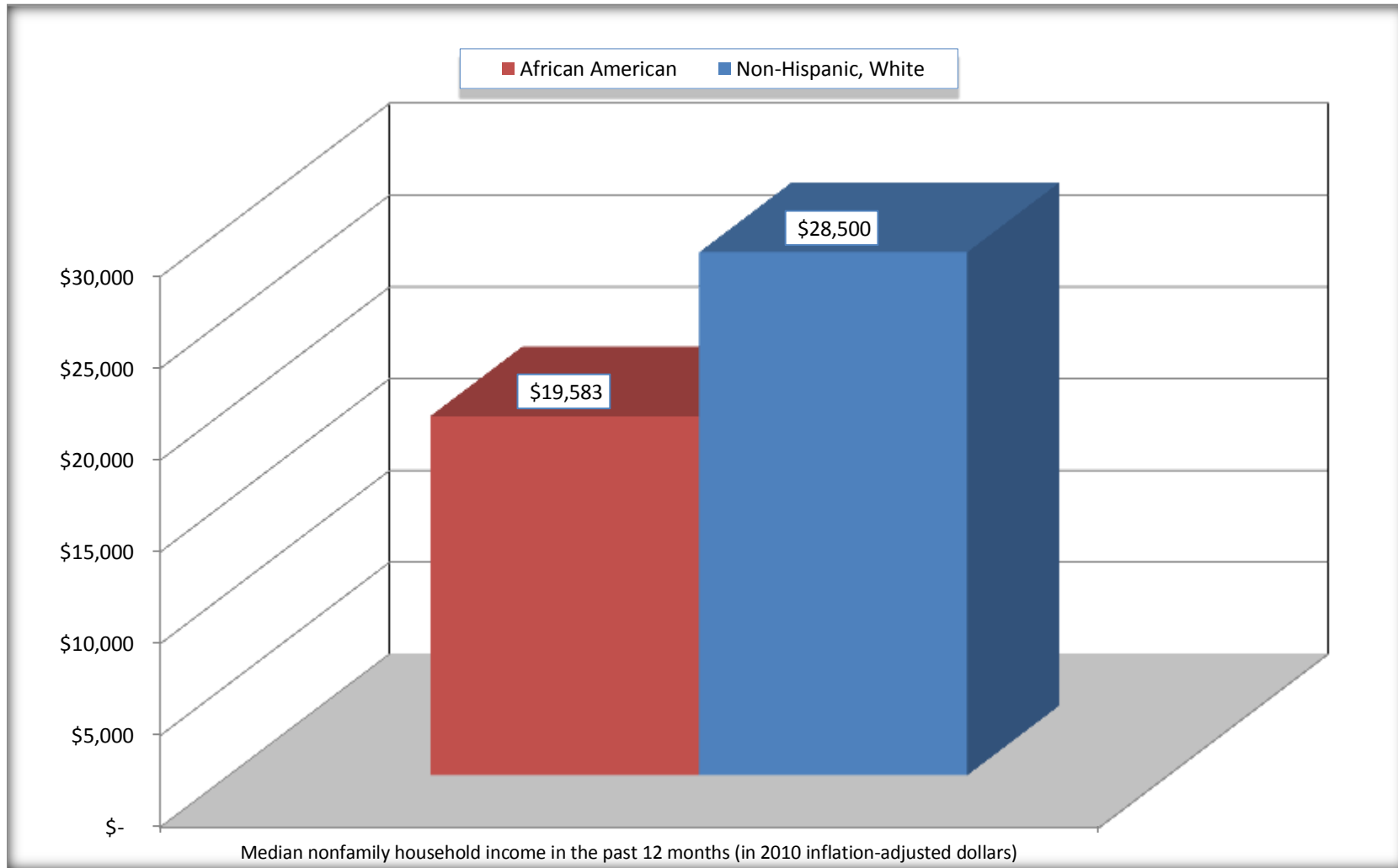
Source: U.S. Census Bureau, 2008-2012 American Community Survey

For information on confidentiality protection, sampling error, nonsampling error, and definitions, see Survey Methodology.

<http://www.census.gov/acs/www/UseData/index.htm>

Median Non-Family Income in the Past 12 Months

Manor city, Texas



Source: B19202. MEDIAN NONFAMILY HOUSEHOLD INCOME IN THE PAST 12 MONTHS (IN 2010 INFLATION-ADJUSTED DOLLARS)
Data Set: 2008-2012 American Community Survey 5-Year Estimates

B19301. PER CAPITA INCOME IN THE PAST 12 MONTHS (IN 2010 INFLATION-ADJUSTED DOLLARS)

Data Set: 2008-2012 American Community Survey 5-Year Estimates

	Manor city, Texas			
	African American	Margin of Error (+/-)	White, Not Hispanic	Margin of Error (+/-)
Per capita income in the past 12 months (in 2010 inflation-adjusted dollars)	\$ 22,525	\$ 5,815	\$ 31,901	\$ 6,883

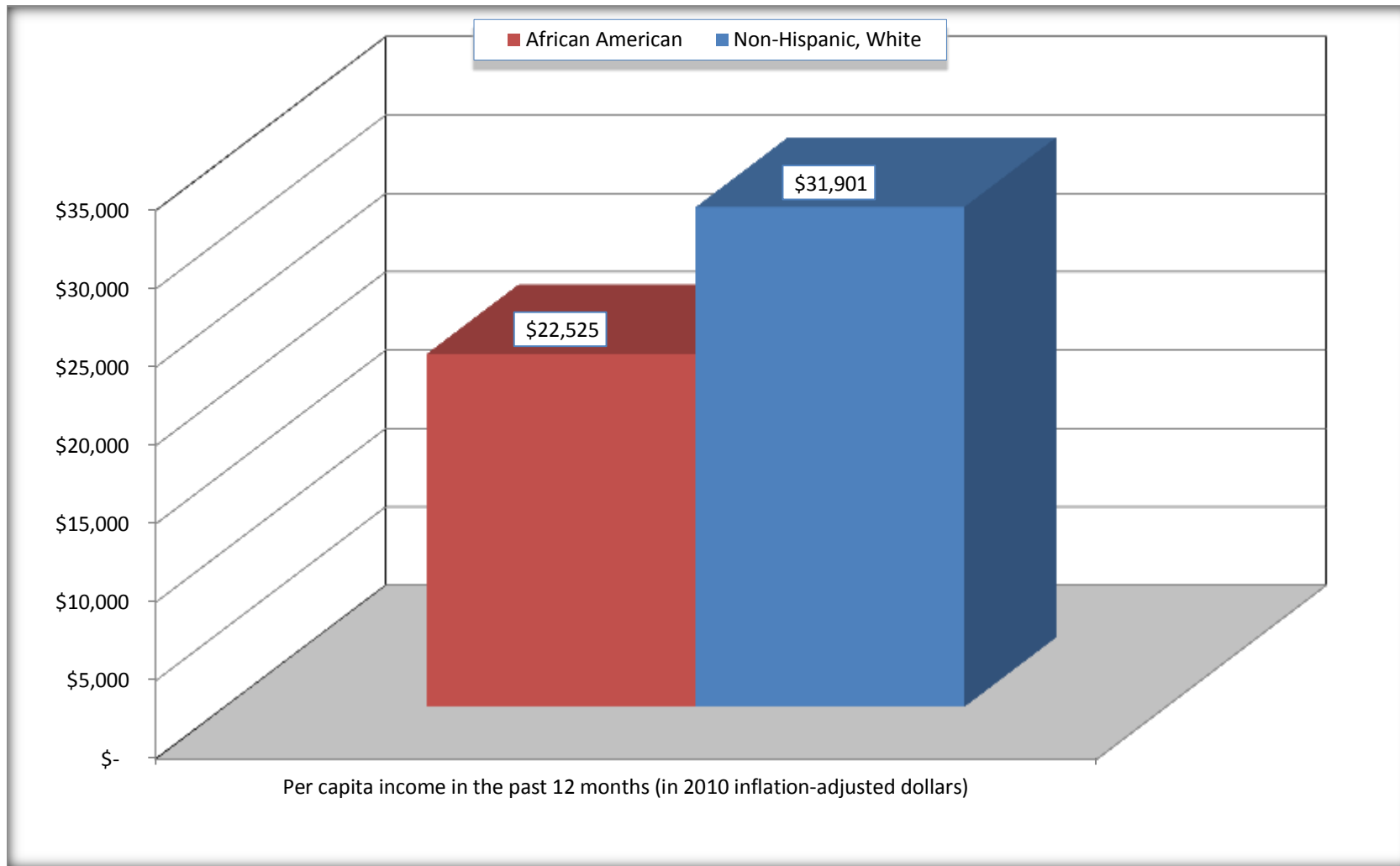
Source: U.S. Census Bureau, 2008-2012 American Community Survey

For information on confidentiality protection, sampling error, nonsampling error, and definitions, see Survey Methodology.

<http://www.census.gov/acs/www/UseData/index.htm>

Per capita Income in the Past 12 Months

Manor city, Texas



Source: B19301. PER CAPITA INCOME IN THE PAST 12 MONTHS (IN 2010 INFLATION-ADJUSTED DOLLARS)
Data Set: 2008-2012 American Community Survey 5-Year Estimates

B20017. MEDIAN EARNINGS IN THE PAST 12 MONTHS (IN 2010 INFLATION-ADJUSTED DOLLARS) BY SEX BY WORK EXPERIENCE IN THE PAST 12 MONTHS FOR THE POPULATION 16 YEARS AND OVER WITH EARNINGS IN THE PAST 12 MONTHS

Data Set: 2008-2012 American Community Survey 5-Year Estimates

	Manor city, Texas			
	African American	Margin of Error (+/-)	White, Not Hispanic	Margin of Error (+/-)
Median earnings in the past 12 months (in 2010 inflation-adjusted dollars) --				
Total:	\$ 36,453	\$ 4,200	\$ 37,017	\$ 4,555
Male --				
Total	\$ 39,882	\$ 16,662	\$ 50,139	\$ 22,412
Worked full-time, year-round in the past 12 months	\$ 39,341	\$ 29,422	\$ 56,667	\$ 20,397
Other	\$ 43,750	\$ 22,904	\$ 18,688	\$ 8,446
Female --				
Total	\$ 33,237	\$ 10,650	\$ 35,873	\$ 4,290
Worked full-time, year-round in the past 12 months	\$ 35,625	\$ 2,097	\$ 37,260	\$ 8,272
Other	\$ 6,545	\$ 5,211	\$ 19,083	\$ 1,895

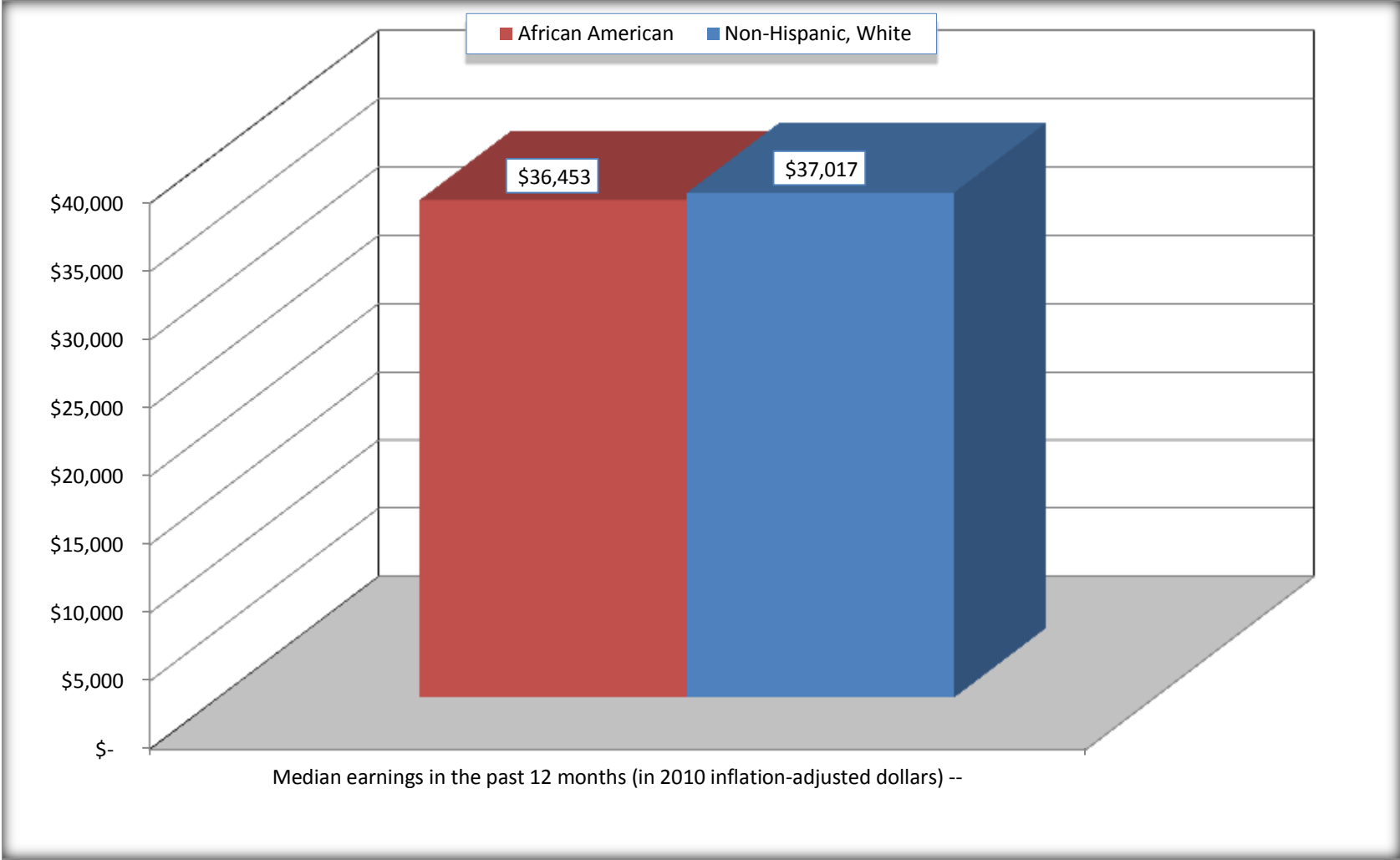
Source: U.S. Census Bureau, 2008-2012 American Community Survey

For information on confidentiality protection, sampling error, nonsampling error, and definitions, see Survey Methodology.

<http://www.census.gov/acs/www/UseData/index.htm>

Median earnings in the Past 12 Months (16 Years and Over with Earnings)

Manor city, Texas



Source: B20017. MEDIAN EARNINGS IN THE PAST 12 MONTHS (IN 2010 INFLATION-ADJUSTED DOLLARS) BY SEX BY WORK EXPERIENCE IN THE PAST 12 MONTHS FOR THE POPULATION 16 YEARS AND OVER WITH EARNINGS IN THE PAST 12 MONTHS
Data Set: 2008-2012 American Community Survey 5-Year Estimates

B20005. SEX BY WORK EXPERIENCE IN THE PAST 12 MONTHS BY EARNINGS IN THE PAST 12 MONTHS (IN 2010 INFLATION-ADJUSTED DOLLARS) FOR THE POPULATION 16 YEARS AND OVER

Data Set: 2008-2012 American Community Survey 5-Year Estimates

	Manor city, Texas					
	African American	Margin of Error (+/-)	% of AA Total	White, Not Hispanic	Margin of Error (+/-)	% of NHW Total
Total:	953	281	100.0%	845	220	100.0%
Worked full-time, year-round in the past 12 months:	568	NC	59.6%	422	NC	49.9%
No earnings	0	NC	0.0%	0	NC	0.0%
With earnings:	568	NC	59.6%	422	NC	49.9%
\$ 1 to \$ 9,999 or loss	14	NC	1.5%	0	NC	0.0%
\$ 10,000 to \$ 19,999	55	NC	5.8%	30	NC	3.6%
\$ 20,000 to \$ 29,999	54	NC	5.7%	18	NC	2.1%
\$ 30,000 to \$ 49,999	309	NC	32.4%	203	NC	24.0%
\$ 50,000 to \$ 74,999	32	NC	3.4%	95	NC	11.2%
\$ 75,000 or more	104	NC	10.9%	76	NC	9.0%
Other:	385	NC	40.4%	423	NC	50.1%
No earnings	233	NC	24.4%	277	NC	32.8%
With earnings: less than full time, year-round	152	NC	15.9%	146	NC	17.3%
Male:	435	152	45.6%	291	113	34.4%
Worked full-time, year-round in the past 12 months:	259	123	27.2%	180	80	21.3%
No earnings	0	18	0.0%	0	18	0.0%
With earnings:	259	123	27.2%	180	80	21.3%
\$ 1 to \$ 9,999 or loss	5	NC	0.5%	0	NC	0.0%
\$ 10,000 to \$ 19,999	0	NC	0.0%	0	NC	0.0%
\$ 20,000 to \$ 29,999	19	NC	2.0%	3	NC	0.4%
\$ 30,000 to \$ 49,999	125	NC	13.1%	72	NC	8.5%
\$ 50,000 to \$ 74,999	27	NC	2.8%	45	NC	5.3%
\$ 75,000 or more	83	NC	8.7%	60	NC	7.1%

	Manor city, Texas					
	African American	Margin of Error (+/-)	% of AA Total	White, Not Hispanic	Margin of Error (+/-)	% of NHW Total
Other:	176	107	18.5%	111	67	13.1%
No earnings	116	87	12.2%	82	55	9.7%
With earnings:	60	64	6.3%	29	37	3.4%
Female:	518	177	54.4%	554	156	65.6%
Worked full-time, year-round in the past 12 months:	309	113	32.4%	242	110	28.6%
No earnings	0	18	0.0%	0	18	0.0%
With earnings:	309	113	32.4%	242	110	28.6%
\$ 1 to \$ 9,999 or loss	9	NC	0.9%	0	NC	0.0%
\$ 10,000 to \$ 19,999	55	NC	5.8%	30	NC	3.6%
\$ 20,000 to \$ 29,999	35	NC	3.7%	15	NC	1.8%
\$ 30,000 to \$ 49,999	184	NC	19.3%	131	NC	15.5%
\$ 50,000 to \$ 74,999	5	NC	0.5%	50	NC	5.9%
\$ 75,000 or more	21	NC	2.2%	16	NC	1.9%
Other:	209	155	21.9%	312	107	36.9%
No earnings	117	97	12.3%	195	97	23.1%
With earnings:	92	68	9.7%	117	68	13.8%

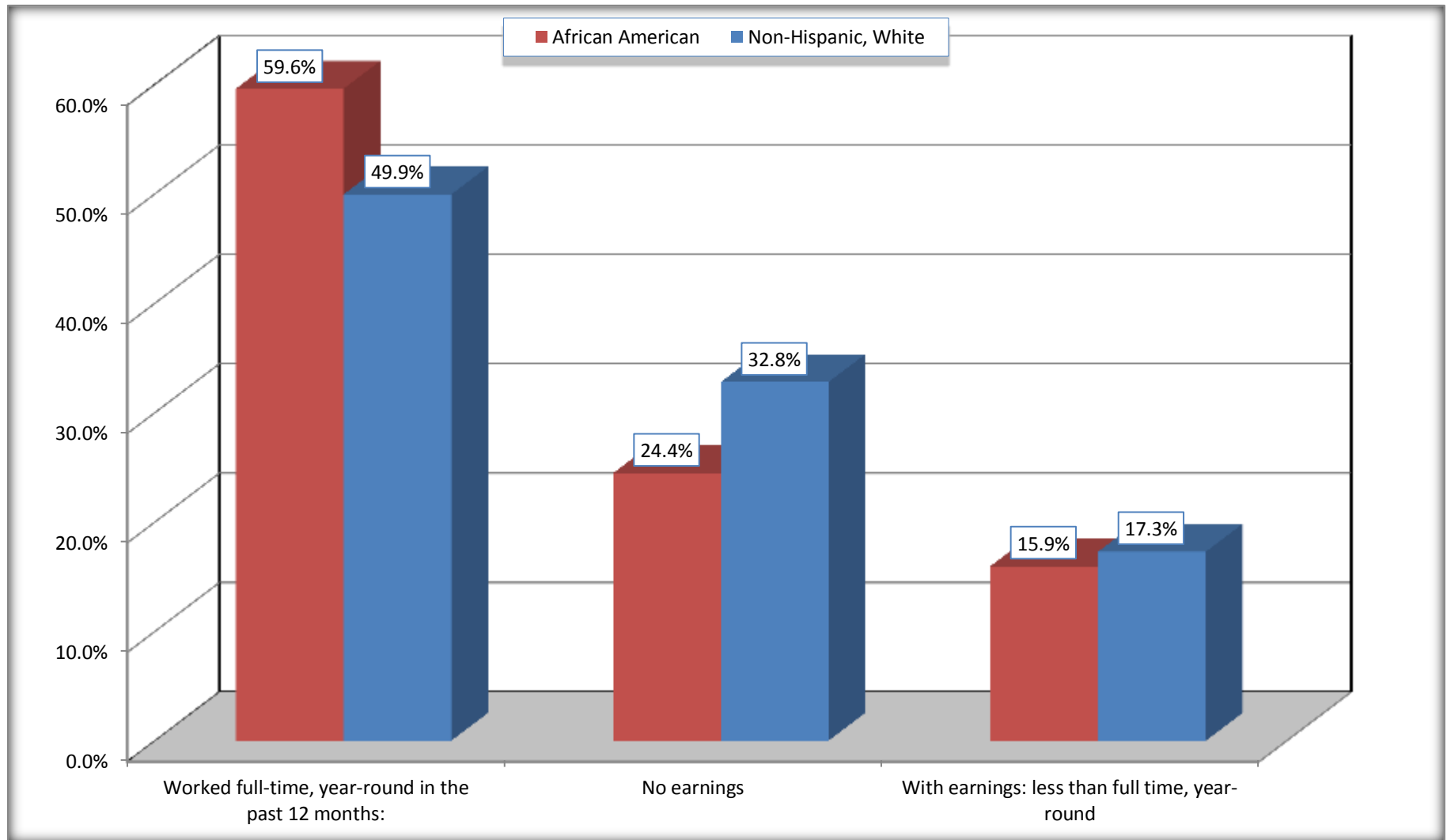
Source: U.S. Census Bureau, 2008-2012 American Community Survey

For information on confidentiality protection, sampling error, nonsampling error, and definitions, see Survey Methodology.

<http://www.census.gov/acs/www/UseData/index.htm>

Employment and Earnings in in the Past 12 Months (16 Years and Over)

Manor city, Texas



Source: B20005. SEX BY WORK EXPERIENCE IN THE PAST 12 MONTHS BY EARNINGS IN THE PAST 12 MONTHS (IN 2010 INFLATION-ADJUSTED DOLLARS) FOR THE POPULATION 16 YEARS AND OVER

Data Set: 2008-2012 American Community Survey 5-Year Estimates

C21001. SEX BY AGE BY VETERAN STATUS FOR THE CIVILIAN POPULATION 18 YEARS AND OVER

Data Set: 2008-2012 American Community Survey 5-Year Estimates

	Manor city, Texas					
	African American	Margin of Error (+/-)	% of AA Total	White, Not Hispanic	Margin of Error (+/-)	% of NHW Total
Total:	931	268	100.0%	831	216	100.0%
Veteran	26	NC	2.8%	78	NC	9.4%
Nonveteran	905	NC	97.2%	753	NC	90.6%
Male:	426	146	45.8%	291	113	35.0%
18 to 64 years:	383	140	41.1%	237	100	28.5%
Veteran	22	24	2.4%	37	32	4.5%
Nonveteran	361	140	38.8%	200	91	24.1%
65 years and over:	43	37	4.6%	54	43	6.5%
Veteran	4	8	0.4%	20	22	2.4%
Nonveteran	39	36	4.2%	34	38	4.1%
Female:	505	171	54.2%	540	149	65.0%
18 to 64 years:	454	167	48.8%	462	140	55.6%
Veteran	0	18	0.0%	21	25	2.5%
Nonveteran	454	167	48.8%	441	131	53.1%
65 years and over:	51	40	5.5%	78	74	9.4%
Veteran	0	18	0.0%	0	18	0.0%
Nonveteran	51	40	5.5%	78	74	9.4%

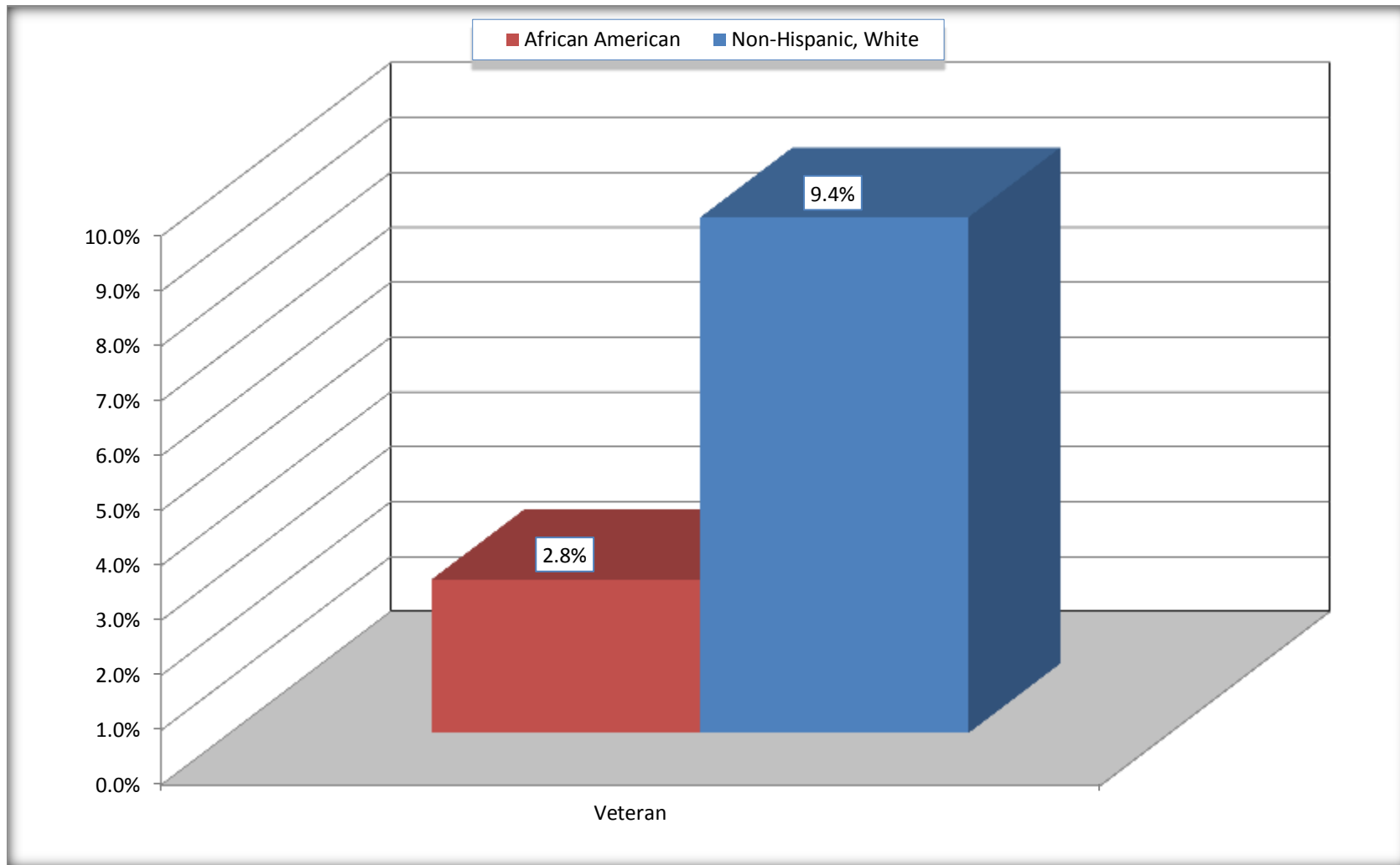
Source: U.S. Census Bureau, 2008-2012 American Community Survey

For information on confidentiality protection, sampling error, nonsampling error, and definitions, see Survey Methodology.

<http://www.census.gov/acs/www/UseData/index.htm>

Veterans in the Civilian Population 18 Years and Over

Manor city, Texas



Source: C21001. SEX BY AGE BY VETERAN STATUS FOR THE CIVILIAN POPULATION 18 YEARS AND OVER
Data Set: 2008-2012 American Community Survey 5-Year Estimates

B22005. RECEIPT OF FOOD STAMPS/SNAP IN THE PAST 12 MONTHS BY RACE OF HOUSEHOLDER

Data Set: 2008-2012 American Community Survey 5-Year Estimates

	Manor city, Texas					
	African American	Margin of Error (+/-)	% of AA Total	White, Not Hispanic	Margin of Error (+/-)	% of NHW Total
Total:	437	128	100.0%	413	110	100.0%
HH received Food Stamps/SNAP in the past 12 months	148	84	33.9%	21	22	5.1%
HH did not receive Food Stamps/SNAP in the past 12 months	289	105	66.1%	392	108	94.9%

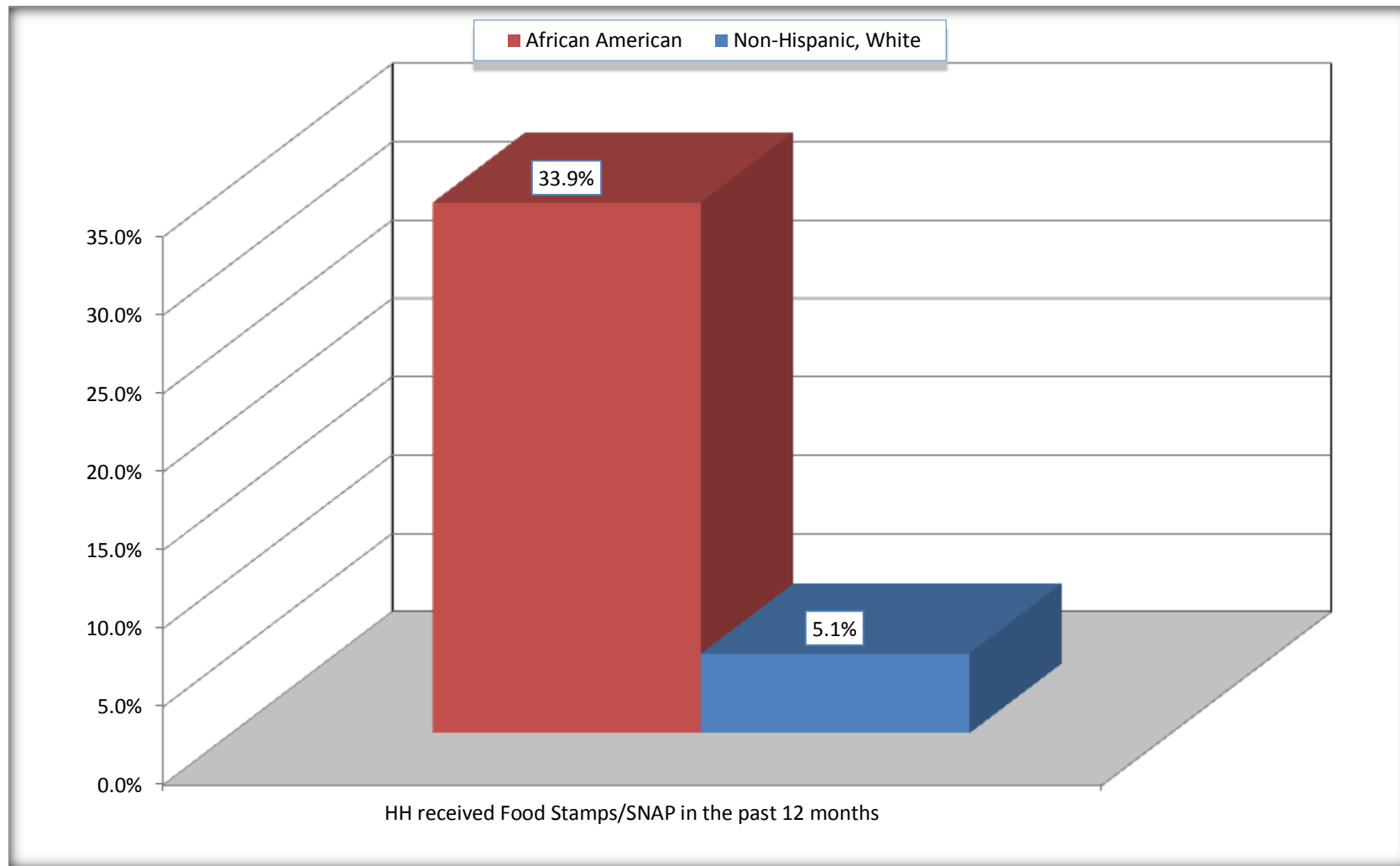
Source: U.S. Census Bureau, 2008-2012 American Community Survey

For information on confidentiality protection, sampling error, nonsampling error, and definitions, see Survey Methodology.

<http://www.census.gov/acs/www/UseData/index.htm>

Receipt of Food Stamps/SNAP in the Past 12 Months by Household

Manor city, Texas



Source: B22005. RECEIPT OF FOOD STAMPS/SNAP IN THE PAST 12 MONTHS BY RACE OF HOUSEHOLDER
Data Set: 2008-2012 American Community Survey 5-Year Estimates

C23002. SEX BY AGE BY EMPLOYMENT STATUS FOR THE POPULATION 16 YEARS AND OVER

Data Set: 2008-2012 American Community Survey 5-Year Estimates

	Manor city, Texas					
	African American	Margin of Error (+/-)	% of AA Total	White, Not Hispanic	Margin of Error (+/-)	% of NHW Total
Total:	953	281	100.0%	845	220	100.0%
In labor force:	737	NC	77.3%	603	NC	71.4%
In Armed Forces	0	NC	0.0%	0	NC	0.0%
Civilian:	701	NC	73.6%	589	NC	69.7%
Employed	671	NC	70.4%	548	NC	64.9%
Unemployed	66	NC	6.9%	55	NC	6.5%
Not in labor force	216	NC	22.7%	242	NC	28.6%
Male:	435	152	45.6%	291	113	34.4%
16 to 64 years:	392	146	41.1%	237	100	28.0%
In labor force:	332	136	34.8%	217	90	25.7%
In Armed Forces	0	18	0.0%	0	18	0.0%
Civilian:	332	136	34.8%	217	90	25.7%
Employed	283	125	29.7%	202	86	23.9%
Unemployed	49	57	5.1%	15	21	1.8%
Not in labor force	60	61	6.3%	20	30	2.4%
65 years and over:	43	37	4.5%	54	43	6.4%
In labor force:	4	8	0.4%	3	5	0.4%
Employed	4	8	0.4%	3	5	0.4%
Unemployed	0	18	0.0%	0	18	0.0%
Not in labor force	39	36	4.1%	51	42	6.0%

	Manor city, Texas					
	African American	Margin of Error (+/-)	% of AA Total	White, Not Hispanic	Margin of Error (+/-)	% of NHW Total
Female:	518	177	54.4%	554	156	65.6%
16 to 64 years:	467	173	49.0%	476	146	56.3%
In labor force:	369	123	38.7%	372	133	44.0%
In Armed Forces	0	18	0.0%	0	18	0.0%
Civilian:	369	123	38.7%	372	133	44.0%
Employed	352	125	36.9%	332	129	39.3%
Unemployed	17	28	1.8%	40	38	4.7%
Not in labor force	98	91	10.3%	104	53	12.3%
65 years and over:	51	40	5.4%	78	74	9.2%
In labor force:	32	26	3.4%	11	12	1.3%
Employed	32	26	3.4%	11	12	1.3%
Unemployed	0	18	0.0%	0	18	0.0%
Not in labor force	19	31	2.0%	67	74	7.9%

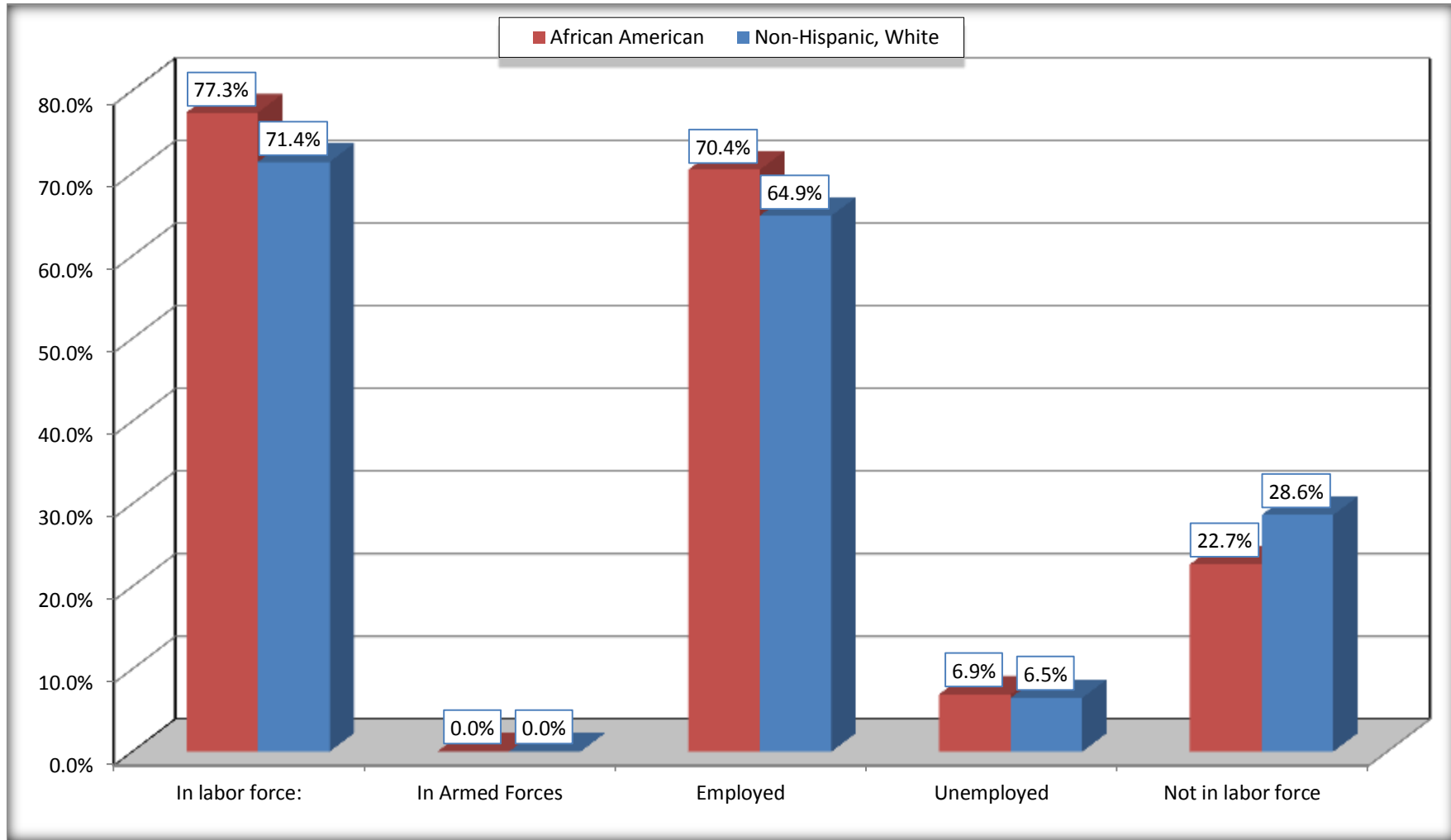
Source: U.S. Census Bureau, 2008-2012 American Community Survey

For information on confidentiality protection, sampling error, nonsampling error, and definitions, see Survey Methodology.

<http://www.census.gov/acs/www/UseData/index.htm>

Employment Status for the Population 16 years and over

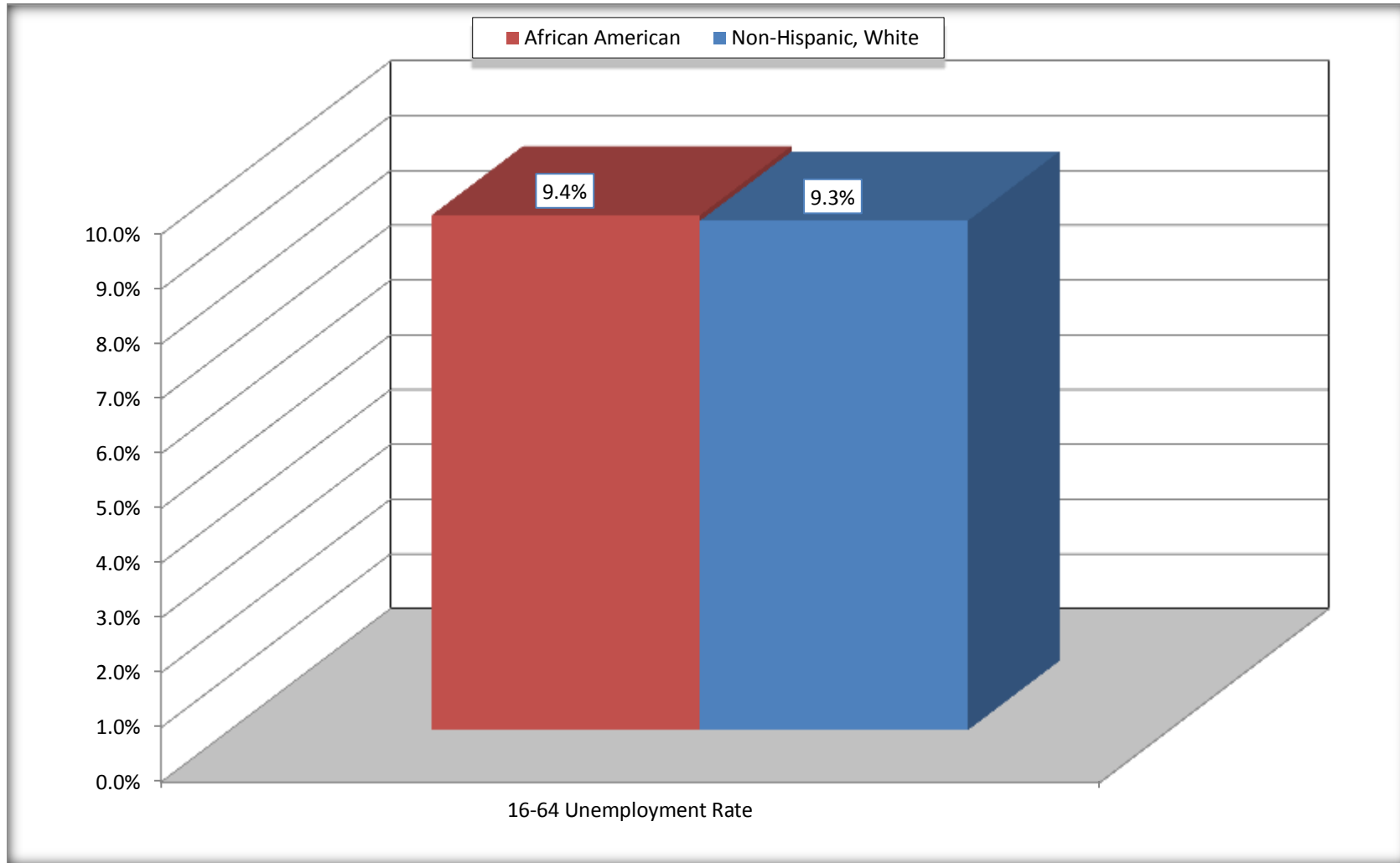
Manor city, Texas



Source: C23002. SEX BY AGE BY EMPLOYMENT STATUS FOR THE POPULATION 16 YEARS AND OVER
Data Set: 2008-2012 American Community Survey 5-Year Estimates

Unemployment of Working Age Population (Ages 16 to 64) (As a Percent of 16-64 Civilian Labor Force)

Manor city, Texas



Source: C23002. SEX BY AGE BY EMPLOYMENT STATUS FOR THE POPULATION 16 YEARS AND OVER
Data Set: 2008-2012 American Community Survey 5-Year Estimates

C24010. SEX BY OCCUPATION FOR THE CIVILIAN EMPLOYED POPULATION 16 YEARS AND OVER

Data Set: 2008-2012 American Community Survey 5-Year Estimates

	Manor city, Texas					
	African American	Margin of Error (+/-)	% of AA Total	White, Not Hispanic	Margin of Error (+/-)	% of NHW Total
Total:	671	207	100.0%	548	156	100.0%
Management, professional, and related occupations	228	NC	34.0%	113	NC	20.6%
Service occupations	125	NC	18.6%	138	NC	25.2%
Sales and office occupations	251	NC	37.4%	222	NC	40.5%
Natural resources, construction, and maintenance occupations:	24	NC	3.6%	39	NC	7.1%
Production, transportation, and material moving occupations	43	NC	6.4%	36	NC	6.6%
Male:	287	127	42.8%	205	87	37.4%
Management, business, science, and arts occupations:	140	97	20.9%	21	23	3.8%
Service occupations	12	18	1.8%	36	40	6.6%
Sales and office occupations	83	82	12.4%	73	52	13.3%
Natural resources, construction, and maintenance occupations:	24	34	3.6%	39	34	7.1%
Production, transportation, and material moving occupations	28	30	4.2%	36	29	6.6%
Female:	384	125	57.2%	343	130	62.6%
Management, professional, and related occupations	88	65	13.1%	92	46	16.8%
Service occupations	113	72	16.8%	102	68	18.6%
Sales and office occupations	168	92	25.0%	149	98	27.2%
Natural resources, construction, and maintenance occupations:	0	18	0.0%	0	18	0.0%
Production, transportation, and material moving occupations	15	19	2.2%	0	18	0.0%

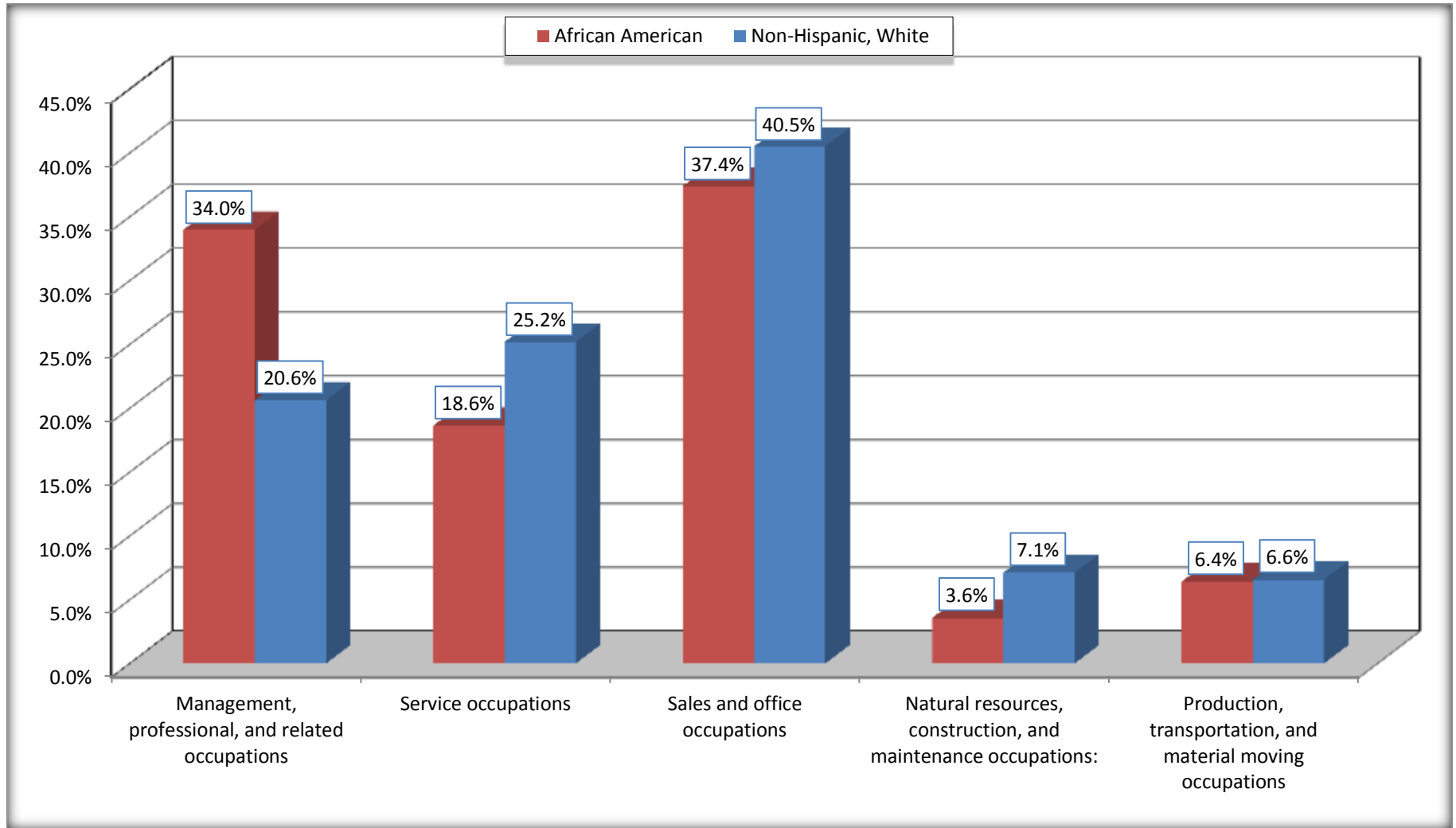
Source: U.S. Census Bureau, 2008-2012 American Community Survey

For information on confidentiality protection, sampling error, nonsampling error, and definitions, see Survey Methodology.

<http://www.census.gov/acs/www/UseData/index.htm>

Occupation for the Civilian Employed 16 Years and Over Population

Manor city, Texas



Source: C24010. SEX BY OCCUPATION FOR THE CIVILIAN EMPLOYED POPULATION 16 YEARS AND OVER
Data Set: 2008-2012 American Community Survey 5-Year Estimates

B25003. TENURE - Universe: OCCUPIED HOUSING UNITS

Data Set: 2008-2012 American Community Survey 5-Year Estimates

	Manor city, Texas					
	African American	Margin of Error (+/-)	% of AA Total	White, Not Hispanic	Margin of Error (+/-)	% of NHW Total
Total:	437	128	100.0%	413	110	100.0%
Owner occupied	362	121	82.8%	383	103	92.7%
Renter occupied	75	51	17.2%	30	37	7.3%

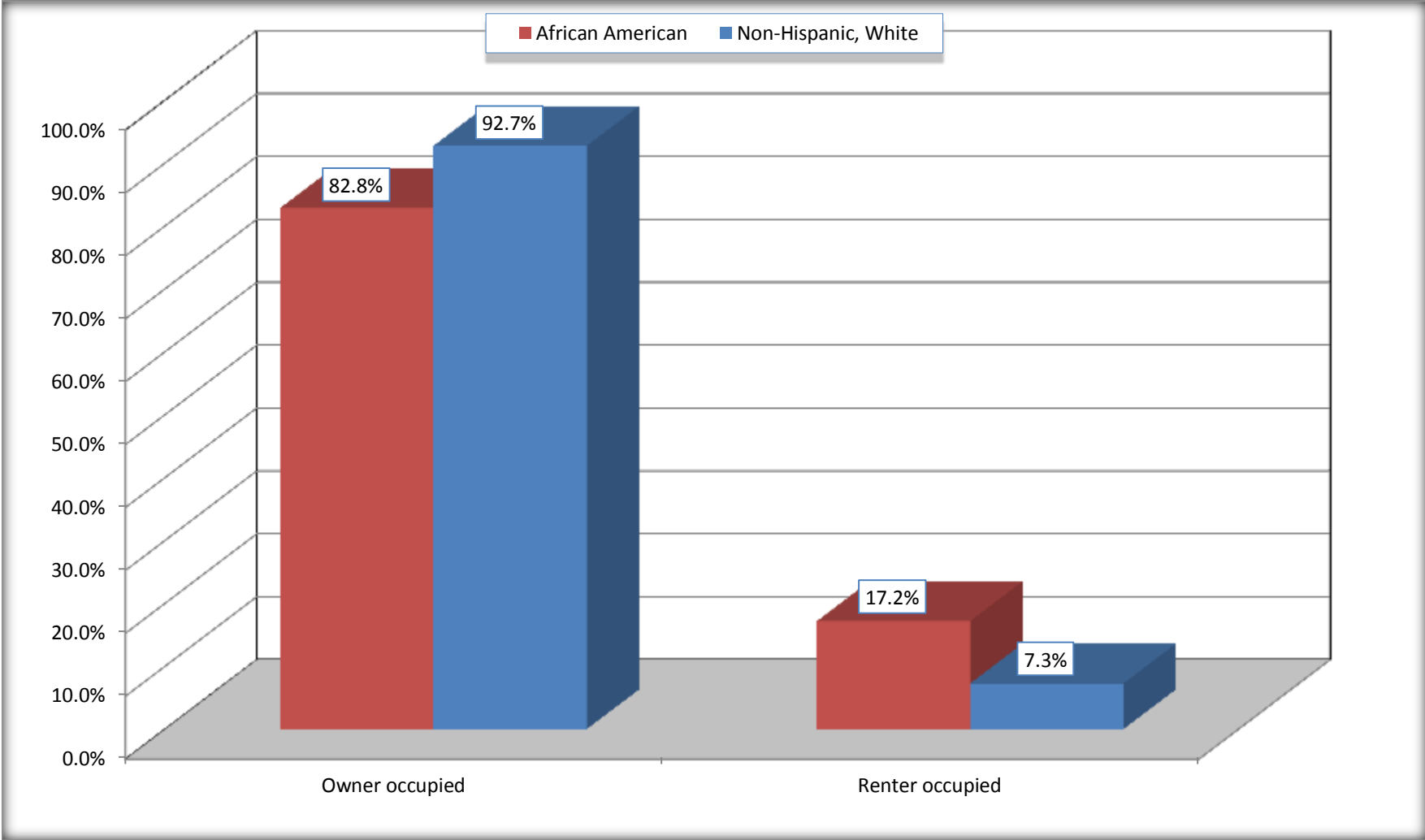
Source: U.S. Census Bureau, 2008-2012 American Community Survey

For information on confidentiality protection, sampling error, nonsampling error, and definitions, see Survey Methodology.

<http://www.census.gov/acs/www/UseData/index.h>

Home Owners and Renters by Household

Manor city, Texas



Source: B25003. TENURE - Universe: OCCUPIED HOUSING UNITS
Data Set: 2008-2012 American Community Survey 5-Year Estimates

B25014. OCCUPANTS PER ROOM - Universe: OCCUPIED HOUSING UNITS

Data Set: 2008-2012 American Community Survey 5-Year Estimates

	Manor city, Texas					
	African American	Margin of Error (+/-)	% of AA Total	White, Not Hispanic	Margin of Error (+/-)	% of NHW Total
Total:	437	128	100.0%	413	110	100.0%
1.00 or less occupants per room	424	126	97.0%	413	110	100.0%
1.01 or more occupants per room	13	19	3.0%	0	18	0.0%

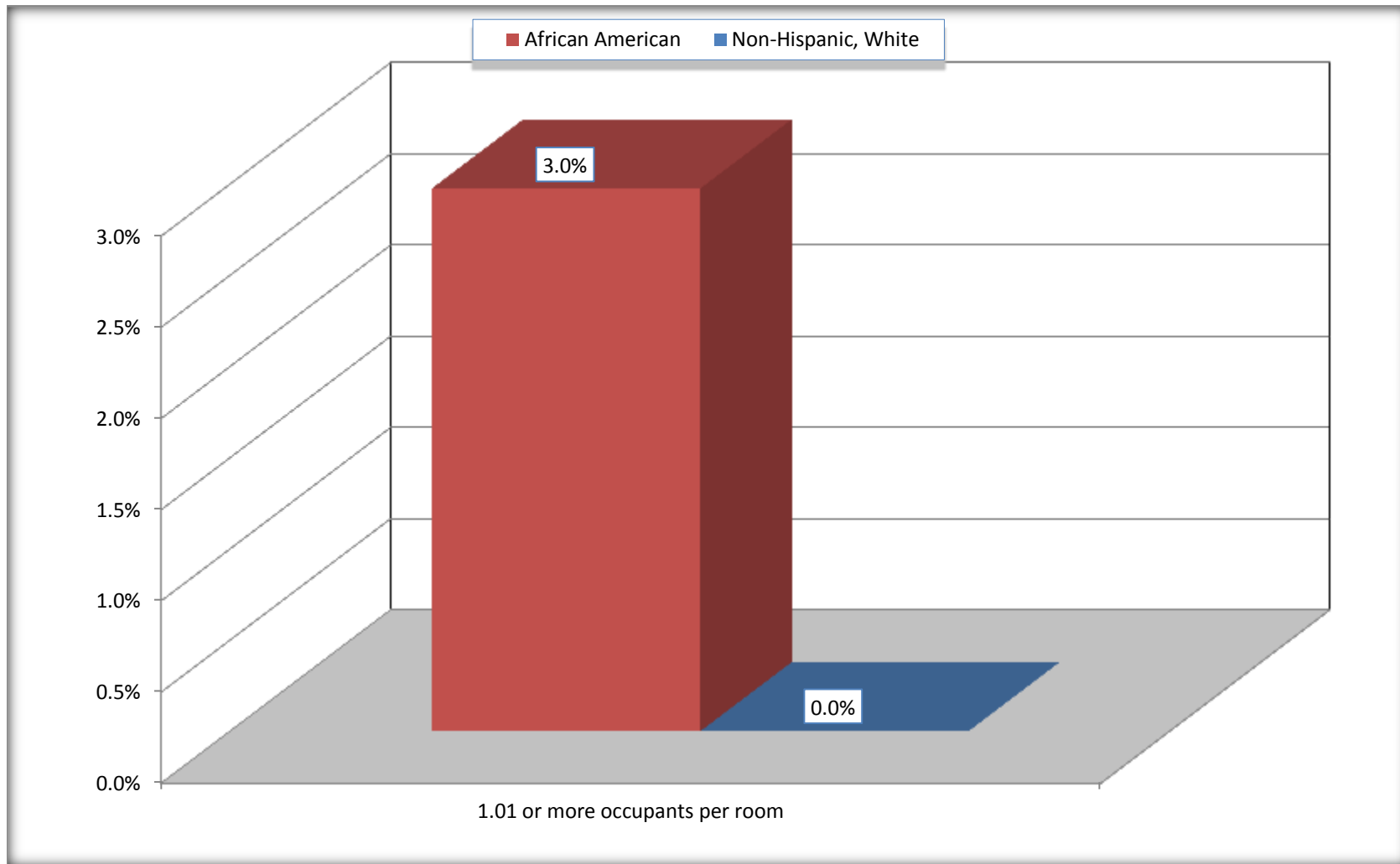
Source: U.S. Census Bureau, 2008-2012 American Community Survey

For information on confidentiality protection, sampling error, nonsampling error, and definitions, see Survey Methodology.

<http://www.census.gov/acs/www/UseData/index.ht>

More than One Person per Room (Crowding) by Household

Manor city, Texas



Source: B25014. OCCUPANTS PER ROOM - Universe: OCCUPIED HOUSING UNITS
Data Set: 2008-2012 American Community Survey 5-Year Estimates

B18101. AGE BY DISABILITY STATUS

Data Set: 2008-2012 American Community Survey 5-Year Estimates

	Manor city, Texas					
	African American	Margin of Error (+/-)	% of AA Total	White, Not Hispanic	Margin of Error (+/-)	% of NHW Total
Total:	1,537	453	100.0%	1,041	275	100.0%
Under 18 years:	606	252	39.4%	210	16	20.2%
With a disability	76	70	4.9%	6	11	0.6%
No disability	530	234	34.5%	204	102	19.6%
18 to 64 years:	837	252	54.5%	699	196	67.1%
With a disability	117	138	7.6%	152	104	14.6%
No disability	720	224	46.8%	547	154	52.5%
65 years and over:	94	72	6.1%	132	92	12.7%
With a disability	33	38	2.1%	37	37	3.6%
No disability	61	45	4.0%	95	74	9.1%

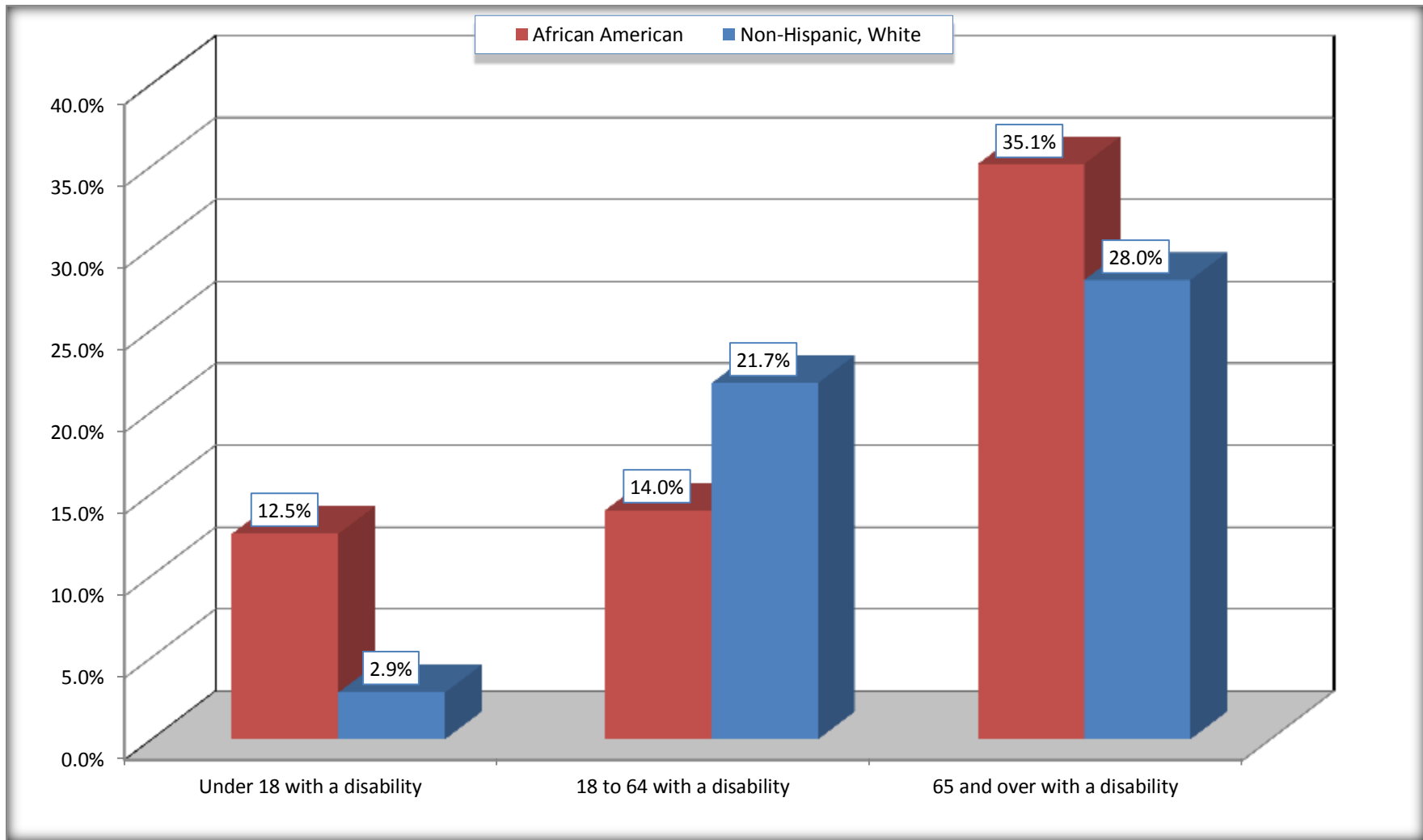
Source: U.S. Census Bureau, 2008-2012 American Community Survey

For information on confidentiality protection, sampling error, nonsampling error, and definitions, see Survey Methodology.

<http://www.census.gov/acs/www/UseData/index.htm>

Disability by Age

Manor city, Texas



Source: B18101. AGE BY DISABILITY STATUS
Data Set: 2008-2012 American Community Survey 5-Year Estimates

C27001B. HEALTH INSURANCE COVERAGE STATUS BY AGE

Data Set: 2008-2012 American Community Survey 5-Year Estimates

	Manor city, Texas					
	African American	Margin of Error (+/-)	% of AA Total	White, Not Hispanic	Margin of Error (+/-)	% of NHW Total
Total:	1,537	453	100.0%	1,041	275	100.0%
Under 18 years:	606	252	39.4%	210	102	20.2%
With health insurance coverage	469	224	30.5%	197	100	18.9%
No health insurance coverage	137	136	8.9%	13	21	1.2%
18 to 64 years:	837	252	54.5%	699	196	67.1%
With health insurance coverage	566	216	36.8%	618	173	59.4%
No health insurance coverage	271	155	17.6%	81	61	7.8%
65 years and over:	94	72	6.1%	132	92	12.7%
With health insurance coverage	94	72	6.1%	132	92	12.7%
No health insurance coverage	0	18	0.0%	0	18	0.0%

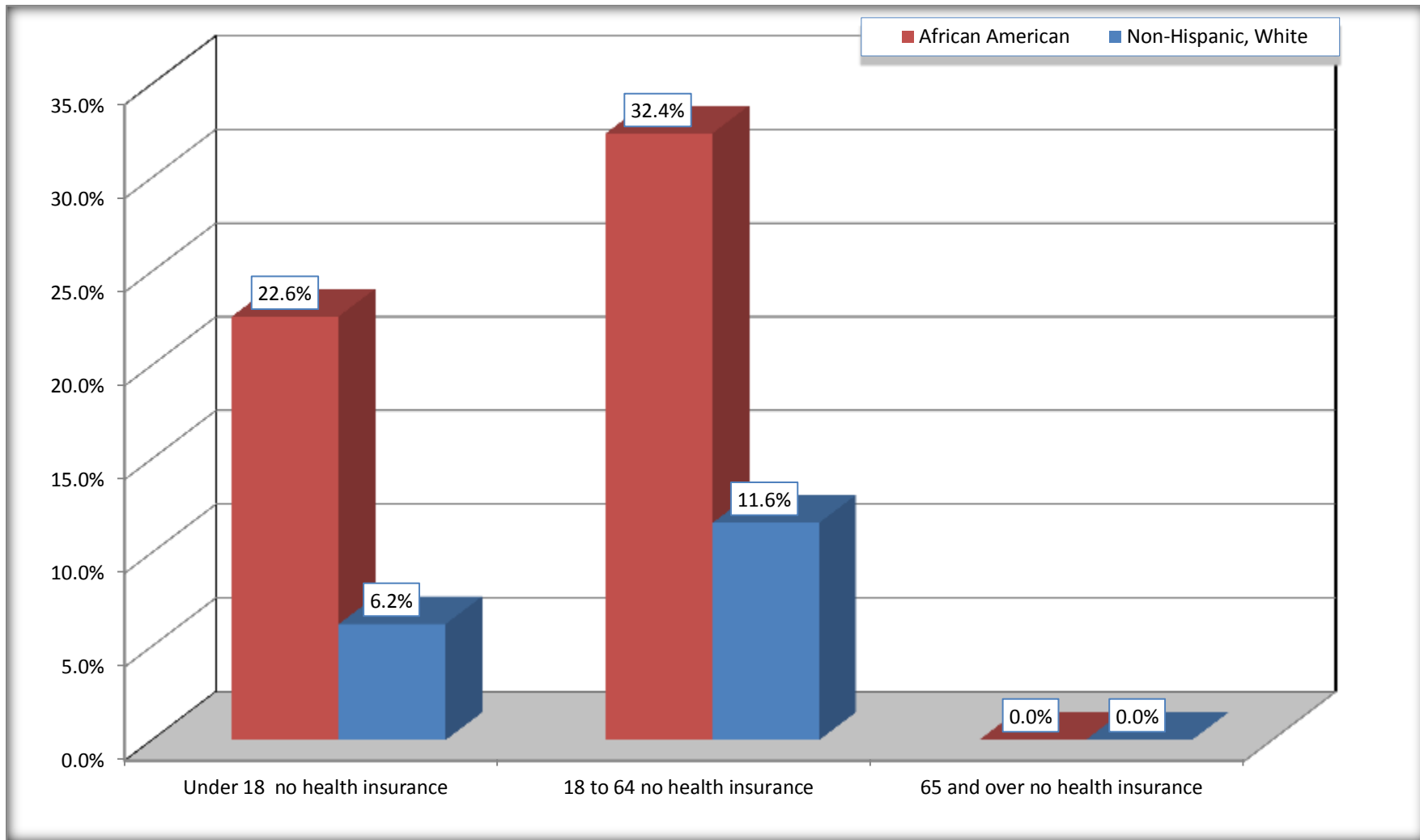
Source: U.S. Census Bureau, 2008-2012 American Community Survey

For information on confidentiality protection, sampling error, nonsampling error, and definitions, see Survey Methodology.

<http://www.census.gov/acs/www/UseData/index.htm>

Lack of Health Insurance Coverage by Age

Manor city, Texas



Source: C27001B. HEALTH INSURANCE COVERAGE STATUS BY AGE
Data Set: 2008-2012 American Community Survey 5-Year Estimates