

Selected Socio-Economic Data

Jasper city, Texas

African American and White, Not Hispanic

Data Set: 2008-2012 American Community Survey 5-Year Estimates

www.fairvote2020.org

www.fairdata2000.com

[29-Dec-13](#)

C02003.DETAILED RACE - Universe: TOTAL POPULATION

Data Set: 2008-2012 American Community Survey 5-Year Estimates

	Jasper city, Texas		
	Population	Margin of Error (+/-)	% of Total
Total:	7,630	22	100.0%
Population of one race:	7,588	61	99.4%
White	3,756	353	49.2%
Black or African American	3,461	361	45.4%
American Indian and Alaska Native	60	67	0.8%
Asian alone	110	113	1.4%
Native Hawaiian and Other Pacific Islander	0	18	0.0%
Some other race	201	117	2.6%
Population of two or more races:	42	55	0.6%
Two races including Some other race	0	18	0.0%
Two races excluding Some other race, and three or more races	42	55	0.6%
Population of two races:	42	55	0.6%
White; Black or African American	37	54	0.5%
White; American Indian and Alaska Native	5	10	0.1%
White; Asian	0	18	0.0%
Black or African American; American Indian and Alaska Native	0	18	0.0%
All other two race combinations	0	18	0.0%
Population of three races	0	18	0.0%
Population of four or more races	0	18	0.0%

Note: Hispanics may be of any race. See Table B03002 and chart.

Source: U.S. Census Bureau, 2008-2012 American Community Survey

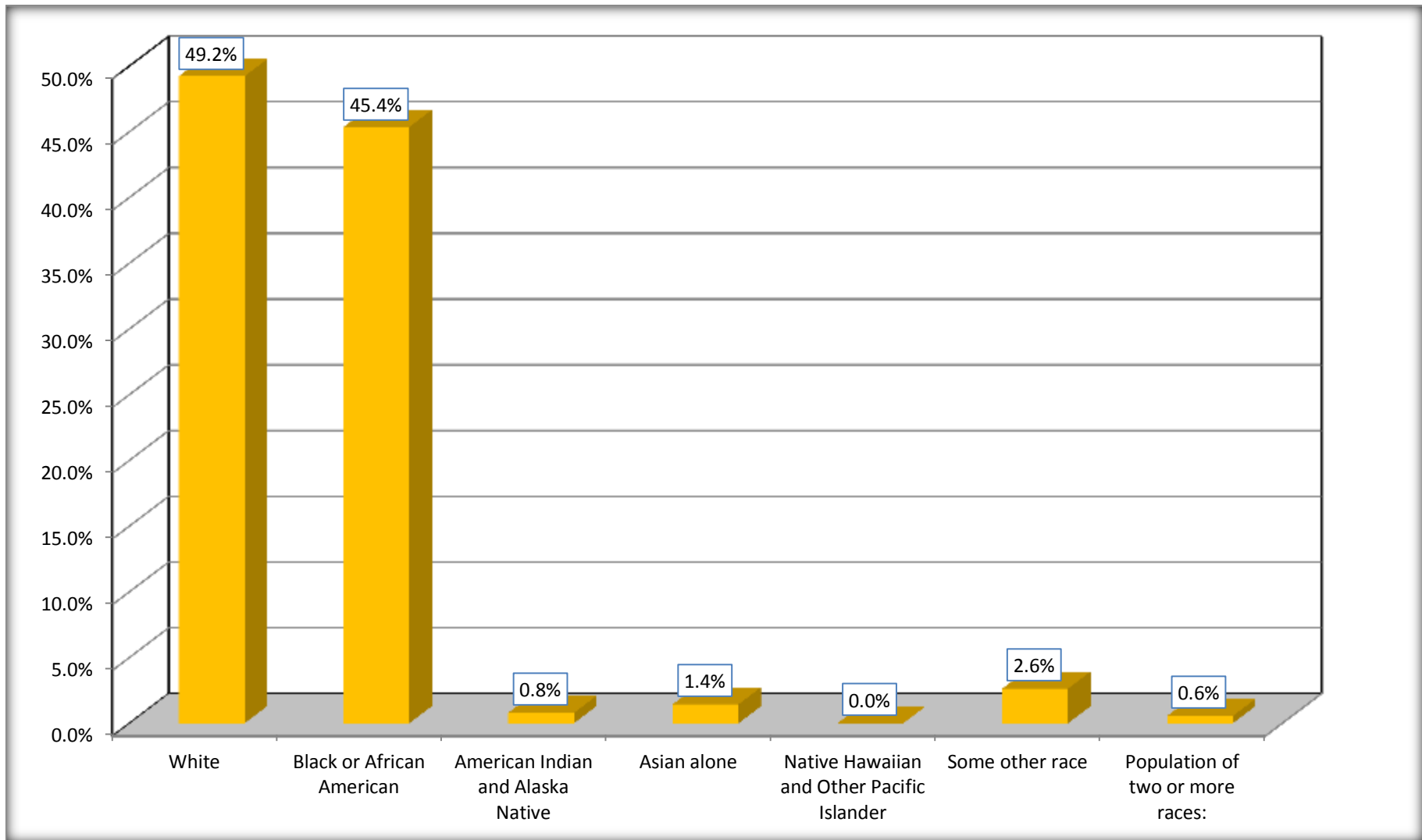
Although the American Community Survey (ACS) produces population, demographic and housing unit estimates, it is the Census Bureau's Population Estimates Program that produces and disseminates the official estimates of the population for the nation, states, counties, cities and towns and estimates of housing units for states and counties.

For information on confidentiality protection, sampling error, nonsampling error, and definitions, see Survey Methodology.

<http://www.census.gov/acs/www/UseData/index.htm>

Population by Race

Jasper city, Texas



Source: C02003.DETAILED RACE - Universe: TOTAL POPULATION

Data Set: 2008-2012 American Community Survey 5-Year Estimates

B03002. HISPANIC OR LATINO ORIGIN BY RACE - Universe: TOTAL POPULATION

Data Set: 2008-2012 American Community Survey 5-Year Estimates

	Jasper city, Texas		
	Population	Margin of Error (+/-)	% of Total
Total:	7,630	22	100.0%
Not Hispanic or Latino:	6,580	163	86.2%
White alone	2,907	373	38.1%
Black or African American alone	3,461	361	45.4%
American Indian and Alaska Native alone	60	67	0.8%
Asian alone	110	113	1.4%
Native Hawaiian and Other Pacific Islander alone	0	18	0.0%
Some other race alone	0	18	0.0%
Two or more races:	42	55	0.6%
Two races including Some other race	0	18	0.0%
Two races excluding Some other race, and three or more races	42	55	0.6%
Hispanic or Latino	1,050	160	13.8%

Source: U.S. Census Bureau, 2008-2012 American Community Survey

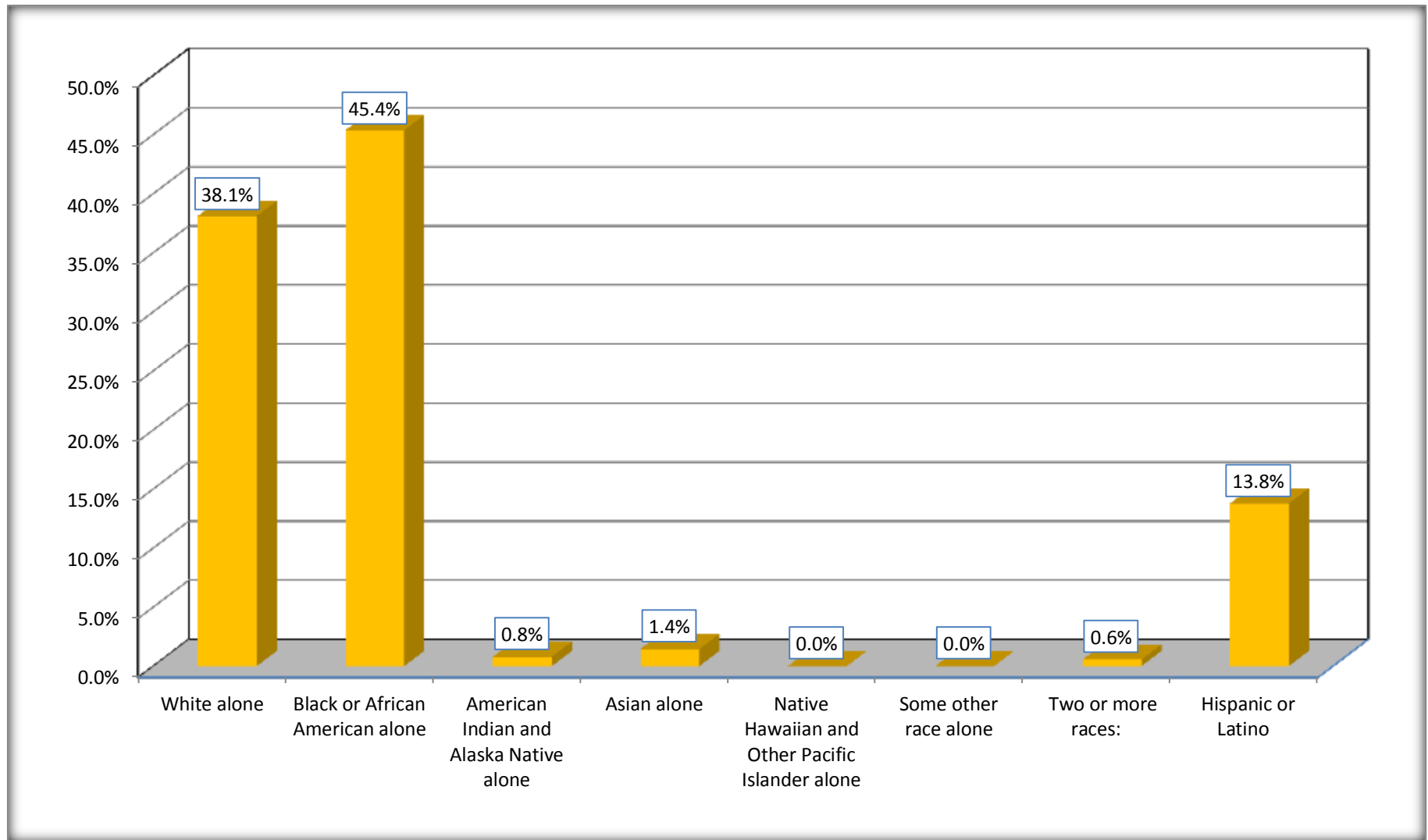
Although the American Community Survey (ACS) produces population, demographic and housing unit estimates, it is the Census Bureau's Population Estimates Program that produces and disseminates the official estimates of the population for the nation, states, counties, cities and towns and estimates of housing units for states and counties.

For information on confidentiality protection, sampling error, nonsampling error, and definitions, see Survey Methodology.

<http://www.census.gov/acs/www/UseData/index.htm>

Non-Hispanic by Race and Hispanic Population

Jasper city, Texas



Source: B03002. HISPANIC OR LATINO ORIGIN BY RACE - Universe: TOTAL POPULATION
Data Set: 2008-2012 American Community Survey 5-Year Estimates

B03002. HISPANIC OR LATINO ORIGIN BY RACE

Data Set: 2008-2012 American Community Survey 5-Year Estimates

	Jasper city, Texas		
	Population	Margin of Error (+/-)	% of Total
Hispanic or Latino:	1,050	160	100.0%
White alone	849	173	80.9%
Black or African American alone	0	18	0.0%
American Indian and Alaska Native alone	0	18	0.0%
Asian alone	0	18	0.0%
Native Hawaiian and Other Pacific Islander alone	0	18	0.0%
Some other race alone	201	117	19.1%
Two or more races:	0	18	0.0%
Two races including Some other race	0	18	0.0%
Two races excluding Some other race, and three or more races	0	18	0.0%

Source: U.S. Census Bureau, 2008-2012 American Community Survey

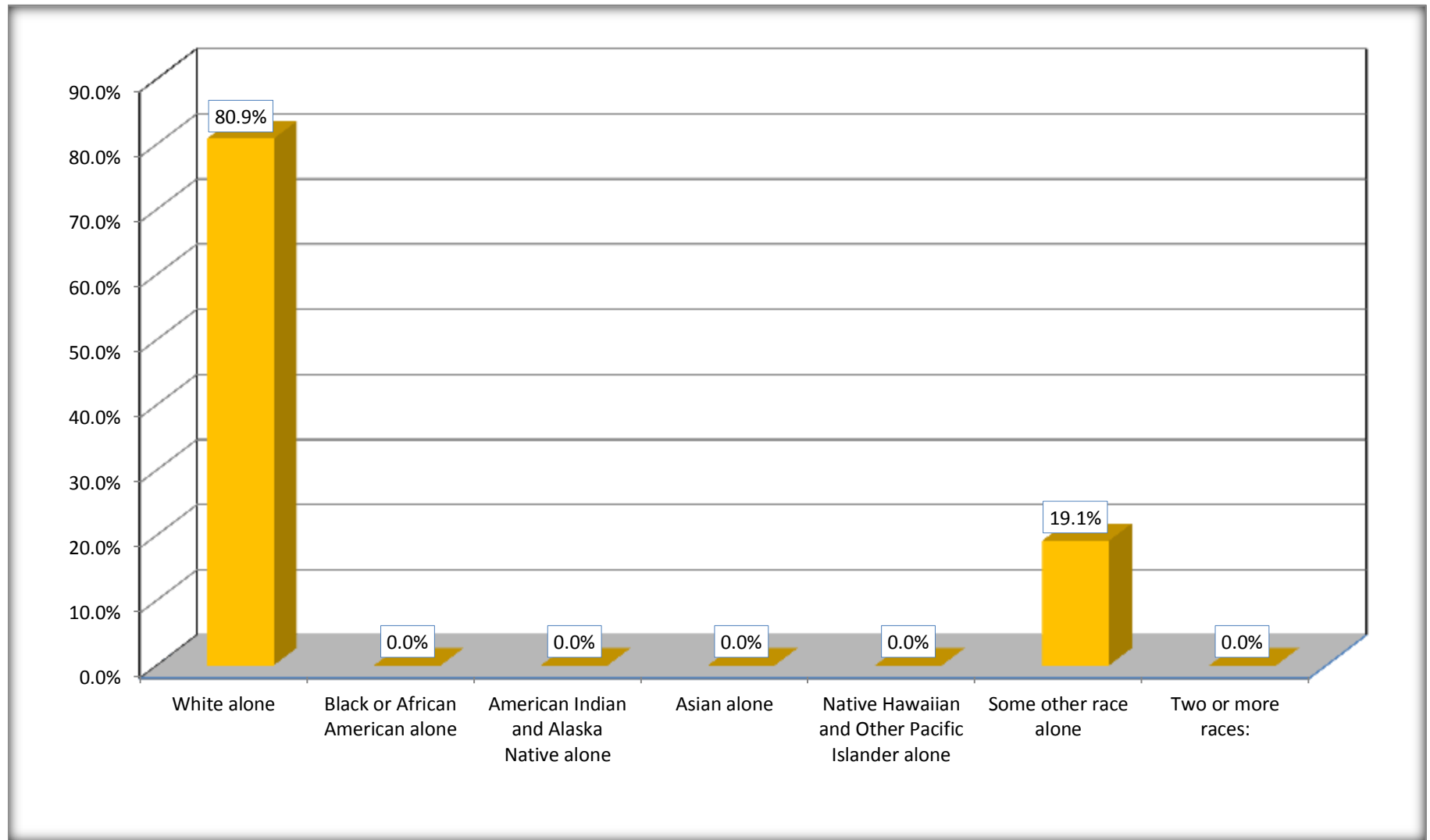
Although the American Community Survey (ACS) produces population, demographic and housing unit estimates, it is the Census Bureau's Population Estimates Program that produces and disseminates the official estimates of the population for the nation, states, counties, cities and towns and estimates of housing units for states and counties.

For information on confidentiality protection, sampling error, nonsampling error, and definitions, see Survey Methodology.

<http://www.census.gov/acs/www/UseData/index.htm>

Hispanic or Latino Origin by Race

Jasper city, Texas



Source: B03002. HISPANIC OR LATINO ORIGIN BY RACE
Data Set: 2008-2012 American Community Survey 5-Year Estimates

B01001. SEX BY AGE

Data Set: 2008-2012 American Community Survey 5-Year Estimates

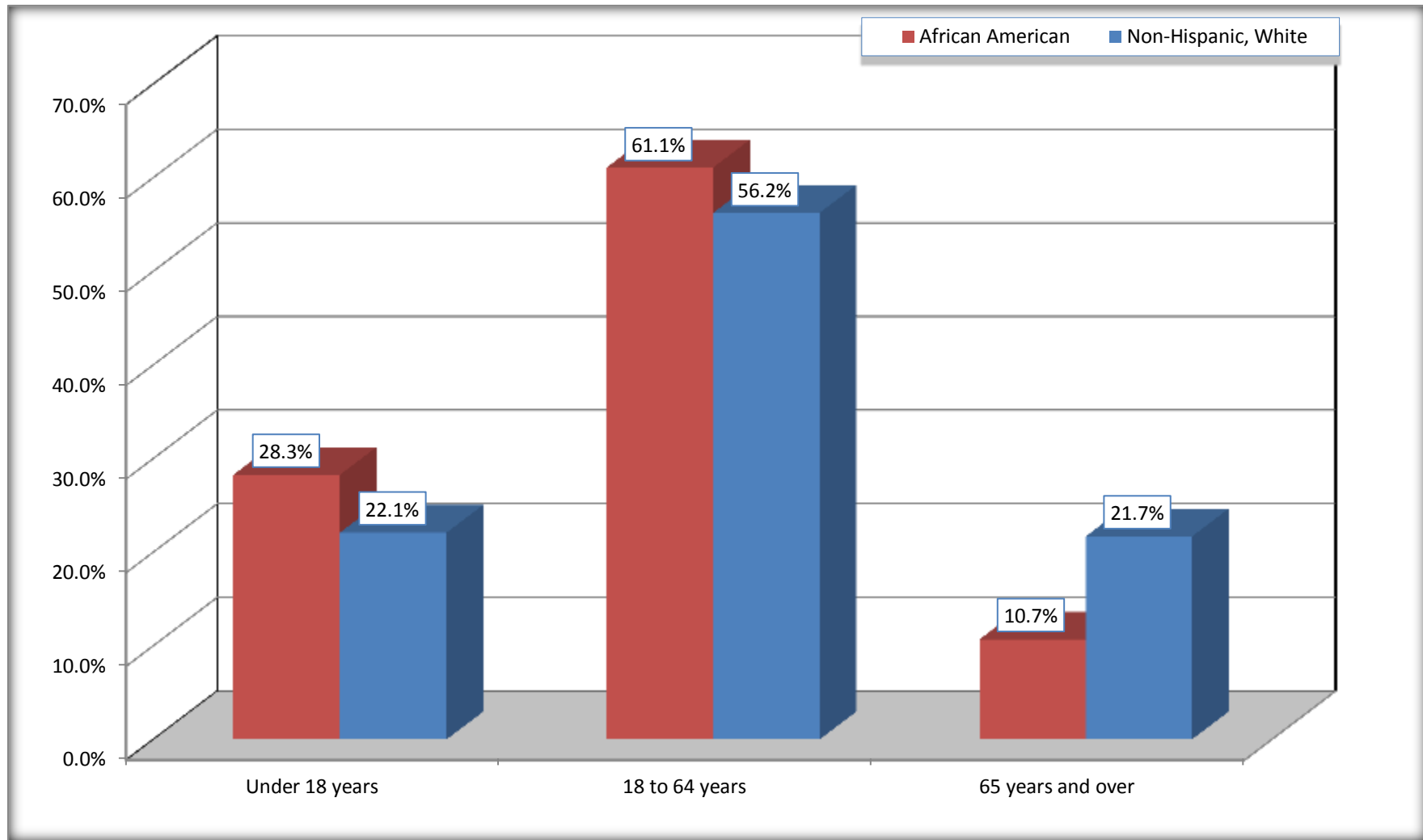
	Jasper city, Texas					
	African American	Margin of Error (+/-)	% of AA Total	White, Not Hispanic	Margin of Error (+/-)	% of NHW Total
Total:	3,461	361	100.0%	2,907	373	100.0%
Under 18 years	978	NC	28.3%	642	NC	22.1%
18 to 64 years	2,114	NC	61.1%	1,635	NC	56.2%
65 years and over	369	NC	10.7%	630	NC	21.7%
Male:	1,658	231	47.9%	1,308	389	45.0%
Under 18 years	554	NC	16.0%	340	NC	11.7%
18 to 64 years	963	NC	27.8%	778	NC	26.8%
65 years and over	141	NC	4.1%	190	NC	6.5%
Female:	1,803	200	52.1%	1,599	412	55.0%
Under 18 years	424	NC	12.3%	302	NC	10.4%
18 to 64 years	1,151	NC	33.3%	857	NC	29.5%
65 years and over	228	NC	6.6%	440	NC	15.1%

Source: U.S. Census Bureau, 2008-2012 American Community Survey

Although the American Community Survey (ACS) produces population, demographic and housing unit estimates, it is the Census Bureau's Population Estimates Program that produces and disseminates the official estimates of the population for the nation, states, counties, cities and towns and estimates of housing units for states and counties.

For information on confidentiality protection, sampling error, nonsampling error, and definitions, see Survey Methodology.
<http://www.census.gov/acs/www/UseData/index.htm>

Population by Age Jasper city, Texas



Source: B01001. SEX BY AGE
Data Set: 2008-2012 American Community Survey 5-Year Estimates

B05003. SEX BY AGE BY CITIZENSHIP STATUS

Data Set: 2008-2012 American Community Survey 5-Year Estimates

	Jasper city, Texas					
	African American	Margin of Error (+/-)	% of AA Total by Age	White, Not Hispanic	Margin of Error (+/-)	% of NHW Total by Age
Total:	3,461	361	100.0%	2,907	373	100.0%
Under 18 years:	978	NC	100.0%	642	NC	100.0%
Native	978	NC	100.0%	642	NC	100.0%
Foreign born:	0	NC	0.0%	0	NC	0.0%
Naturalized U.S. citizen	0	NC	0.0%	0	NC	0.0%
Not a U.S. citizen	0	NC	0.0%	0	NC	0.0%
18 years and over:	2,483	NC	100.0%	2,265	NC	100.0%
Native	2,430	NC	97.9%	2,244	NC	99.1%
Foreign born:	53	NC	2.1%	21	NC	0.9%
Naturalized U.S. citizen	53	NC	2.1%	0	NC	0.0%
Not a U.S. citizen	0	NC	0.0%	21	NC	0.9%
Male:	1,658	231	47.9%	1,308	214	45.0%
Under 18 years:	554	151	100.0%	340	153	100.0%
Native	554	151	100.0%	340	153	100.0%
Foreign born:	0	18	0.0%	0	18	0.0%
Naturalized U.S. citizen	0	18	0.0%	0	18	0.0%
Not a U.S. citizen	0	18	0.0%	0	18	0.0%
18 years and over:	1,104	153	100.0%	968	158	100.0%
Native	1,073	150	97.2%	947	152	97.8%
Foreign born:	31	37	2.8%	21	30	2.2%
Naturalized U.S. citizen	31	37	2.8%	0	18	0.0%
Not a U.S. citizen	0	18	0.0%	21	30	2.2%

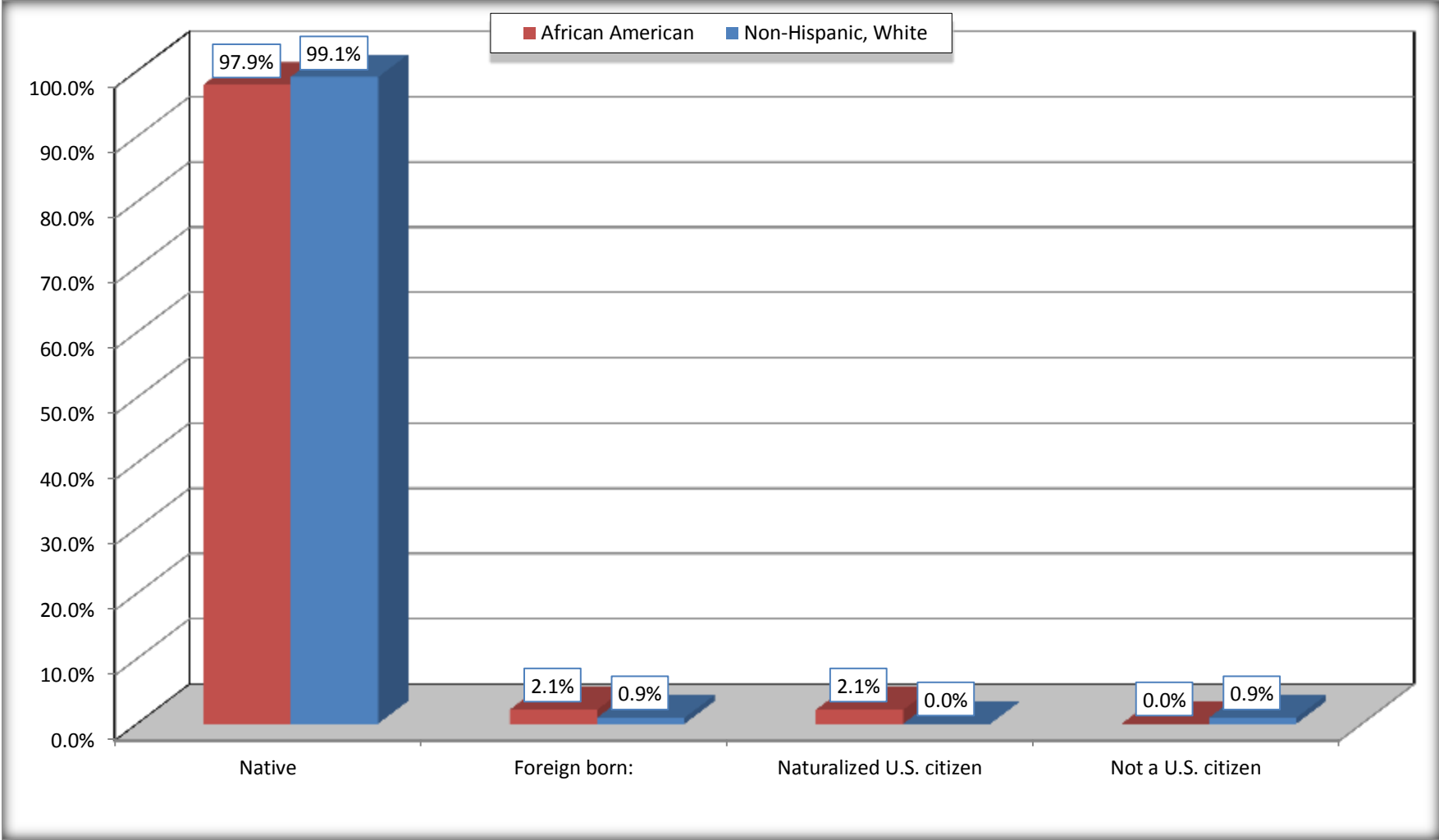
	Jasper city, Texas					
	African American	Margin of Error (+/-)	% of AA by Age	White, Not Hispanic	Margin of Error (+/-)	% of NHW by Age
Female:	1,803	200	52.1%	1,599	235	55.0%
Under 18 years:	424	131	100.0%	302	133	100.0%
Native	424	131	100.0%	302	133	100.0%
Foreign born:	0	18	0.0%	0	18	0.0%
Naturalized U.S. citizen	0	18	0.0%	0	18	0.0%
Not a U.S. citizen	0	18	0.0%	0	18	0.0%
18 years and over:	1,379	132	100.0%	1,297	161	100.0%
Native	1,357	132	98.4%	1,297	161	100.0%
Foreign born:	22	26	1.6%	0	18	0.0%
Naturalized U.S. citizen	22	26	1.6%	0	18	0.0%
Not a U.S. citizen	0	18	0.0%	0	18	0.0%

Source: U.S. Census Bureau, 2008-2012 American Community Survey

For information on confidentiality protection, sampling error, nonsampling error, and definitions, see Survey Methodology.
<http://www.census.gov/acs/www/UseData/index.htm>

Citizenship Status of Voting Age Population (18 and Over)

Jasper city, Texas



Source: B05003. SEX BY AGE BY CITIZENSHIP STATUS
Data Set: 2008-2012 American Community Survey 5-Year Estimates

**B07004. GEOGRAPHICAL MOBILITY IN THE PAST YEAR BY RACE FOR CURRENT RESIDENCE IN THE UNITED STATES - Universe:
POPULATION 1 YEAR AND OVER**

Data Set: 2008-2012 American Community Survey 5-Year Estimates

	Jasper city, Texas					
	African American	Margin of Error (+/-)	% of AA Total	White, Not Hispanic	Margin of Error (+/-)	% of NHW Total
Total:	3,403	364	100.0%	2,889	373	100.0%
Same house 1 year ago	2,294	290	67.4%	2,466	337	85.4%
Moved within same county	749	364	22.0%	239	143	8.3%
Moved from different county within same state	330	195	9.7%	170	125	5.9%
Moved from different state	30	31	0.9%	3	7	0.1%
Moved from abroad	0	18	0.0%	11	18	0.4%

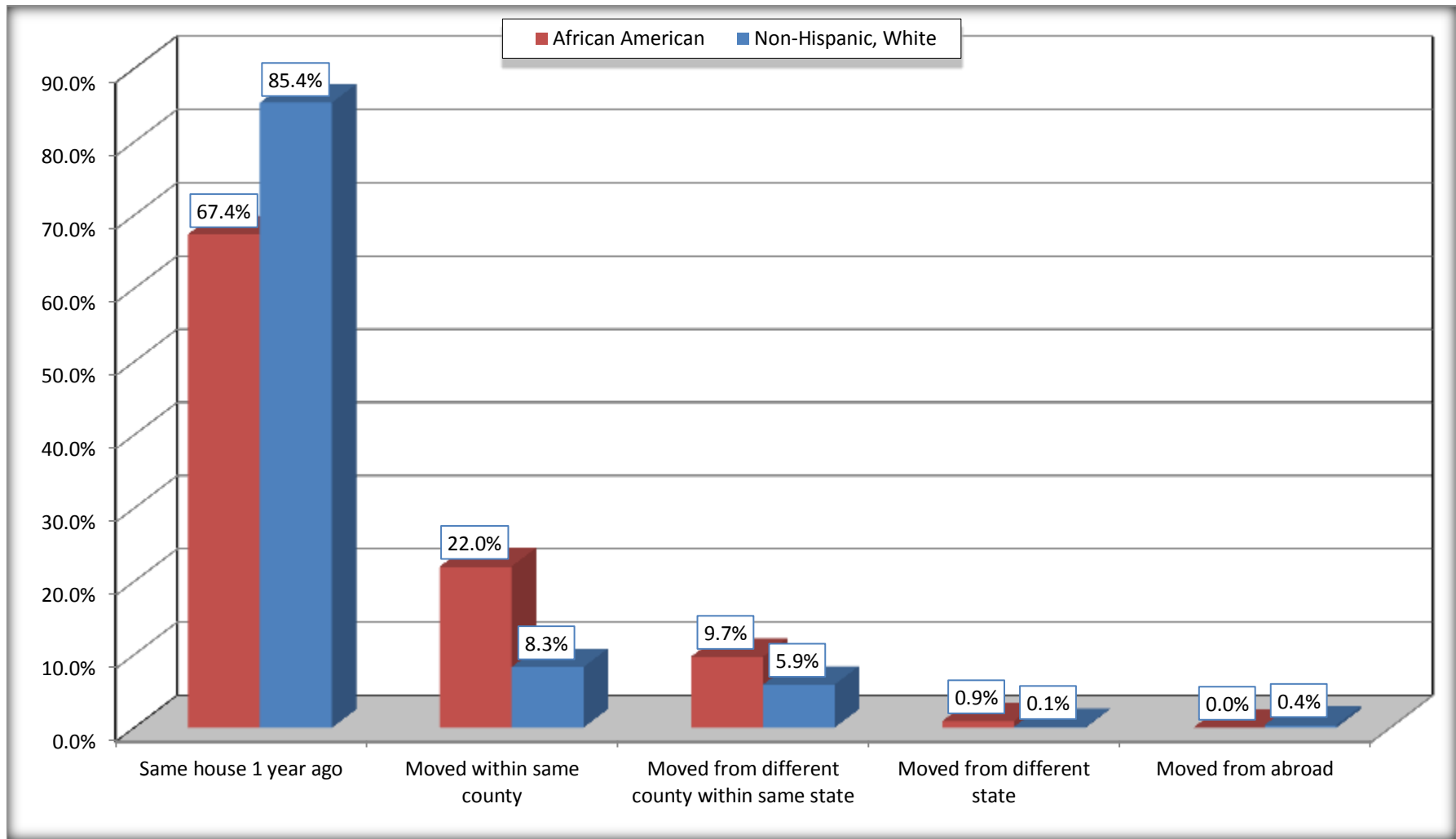
Source: U.S. Census Bureau, 2008-2012 American Community Survey

For information on confidentiality protection, sampling error, nonsampling error, and definitions, see Survey Methodology.

<http://www.census.gov/acs/www/UseData/index.htm>

Geographical Mobility in the Past Year (Population 1 Year and Over)

Jasper city, Texas



Source: B07004. GEOGRAPHICAL MOBILITY IN THE PAST YEAR BY RACE FOR CURRENT RESIDENCE IN THE UNITED STATES - Universe: POPULATION 1 YEAR AND OVER

Data Set: 2008-2012 American Community Survey 5-Year Estimates

B08105. MEANS OF TRANSPORTATION TO WORK - Universe: WORKERS 16 YEARS AND OVER

Data Set: 2008-2012 American Community Survey 5-Year Estimates

	Jasper city, Texas					
	African American	Margin of Error (+/-)	% of AA Total	White, Not Hispanic	Margin of Error (+/-)	% of NHW Total
Total:	1194	206	100.0%	1187	204	100.0%
Car, truck, or van - drove alone	762	214	63.8%	1075	186	90.6%
Car, truck, or van - carpooled	189	110	15.8%	11	19	0.9%
Public transportation (excluding taxicab)	0	18	0.0%	0	18	0.0%
Walked	118	102	9.9%	0	18	0.0%
Taxicab, motorcycle, bicycle, or other means	57	54	4.8%	0	18	0.0%
Worked at home	68	65	5.7%	101	76	8.5%

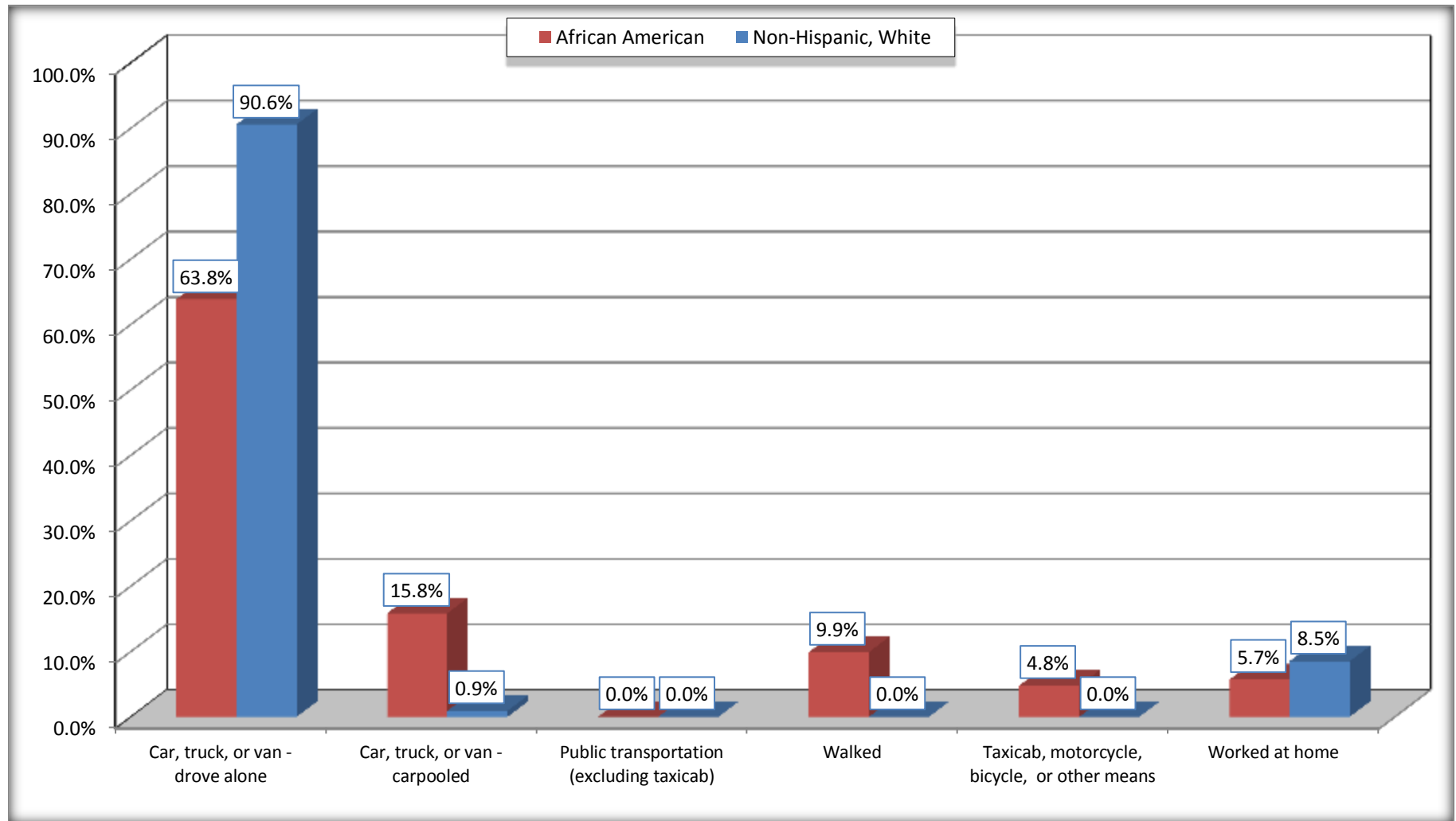
Source: U.S. Census Bureau, 2008-2012 American Community Survey

For information on confidentiality protection, sampling error, nonsampling error, and definitions, see Survey Methodology.

<http://www.census.gov/acs/www/UseData/index.htm>

Means of Transportation to Work (Workers 16 Years and Over)

Jasper city, Texas



Source: B08105. MEANS OF TRANSPORTATION TO WORK - Universe: WORKERS 16 YEARS AND OVER
Data Set: 2008-2012 American Community Survey 5-Year Estimates

B11002. HOUSEHOLD TYPE BY RELATIVES AND NONRELATIVES FOR POPULATION IN HOUSEHOLDS

Data Set: 2008-2012 American Community Survey 5-Year Estimates

	Jasper city, Texas					
	African American	Margin of Error (+/-)	% of AA Total	White, Not Hispanic	Margin of Error (+/-)	% of NHW Total
Total:	3278	359	100.0%	2719	370	100.0%
In family households	2503	403	76.4%	2306	343	84.8%
In nonfamily households	775	216	23.6%	413	98	15.2%

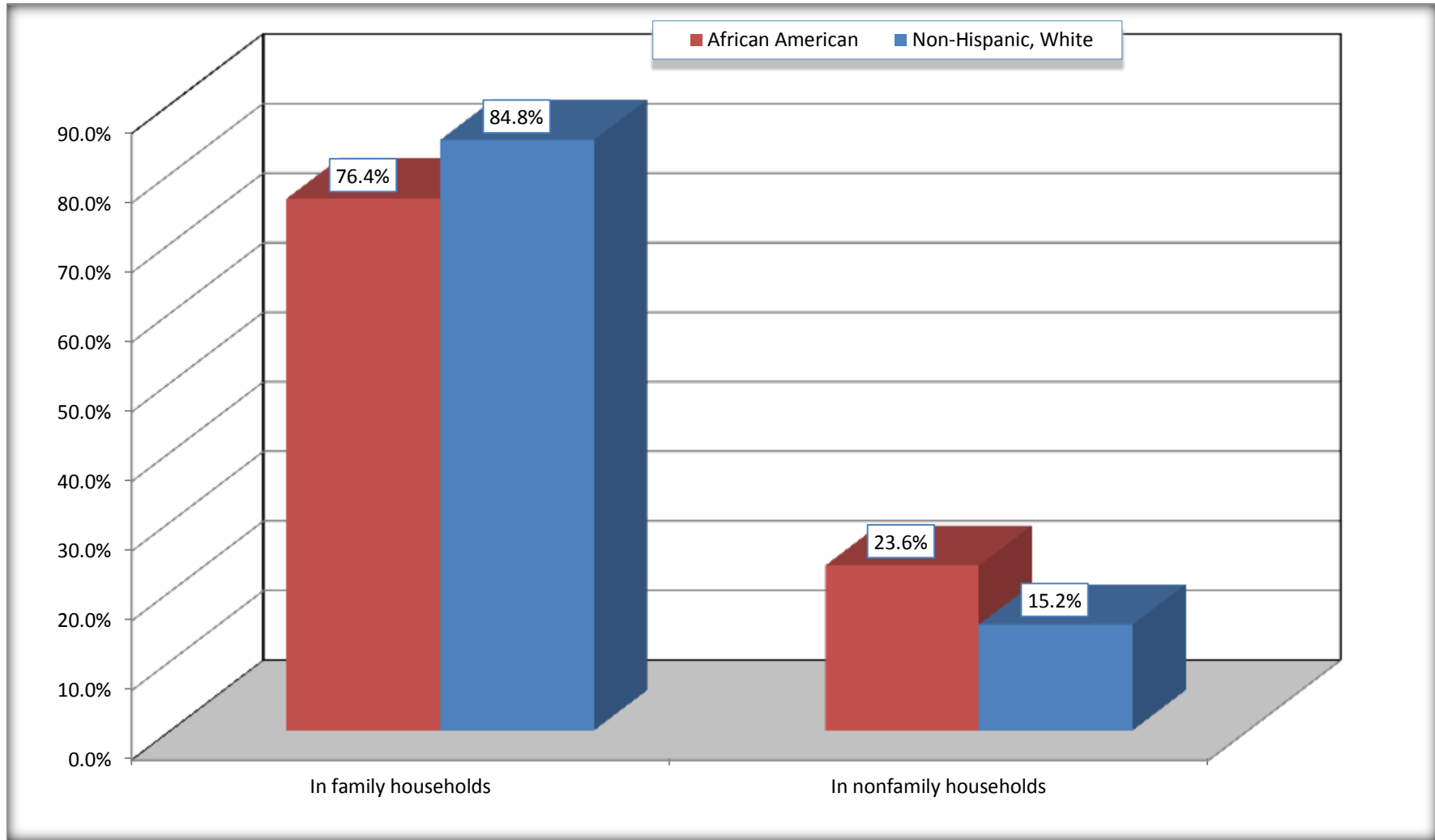
Source: U.S. Census Bureau, 2008-2012 American Community Survey

For information on confidentiality protection, sampling error, nonsampling error, and definitions, see Survey Methodology.

<http://www.census.gov/acs/www/UseData/index.htm>

Household Type for Population in Households

Jasper city, Texas



Source: B11002. HOUSEHOLD TYPE BY RELATIVES AND NONRELATIVES FOR POPULATION IN HOUSEHOLDS
Data Set: 2008-2012 American Community Survey 5-Year Estimates

B12002. MARITAL STATUS FOR THE POPULATION 15 YEARS AND OVER

Data Set: 2008-2012 American Community Survey 5-Year Estimates

	Jasper city, Texas					
	African American	Margin of Error (+/-)	% of AA Total	White, Not Hispanic	Margin of Error (+/-)	% of NHW Total
Total:	2,664	257	100.0%	2,276	264	100.0%
Never married	990	NC	37.2%	211	NC	9.3%
Now married (except separated)	790	NC	29.7%	1,306	NC	57.4%
Separated	189	NC	7.1%	35	NC	1.5%
Widowed	166	NC	6.2%	322	NC	14.1%
Divorced	529	NC	19.9%	402	NC	17.7%
Male:	1,248	184	46.8%	968	158	42.5%
Never married	479	156	18.0%	121	52	5.3%
Now married (except separated)	365	86	13.7%	657	126	28.9%
Separated	58	45	2.2%	10	16	0.4%
Widowed	30	46	1.1%	45	38	2.0%
Divorced	316	136	11.9%	135	62	5.9%
Female:	1,416	146	53.2%	1,308	163	57.5%
Never married	511	138	19.2%	90	60	4.0%
Now married (except separated)	425	134	16.0%	649	114	28.5%
Separated	131	87	4.9%	25	33	1.1%
Widowed	136	61	5.1%	277	78	12.2%
Divorced	213	98	8.0%	267	98	11.7%

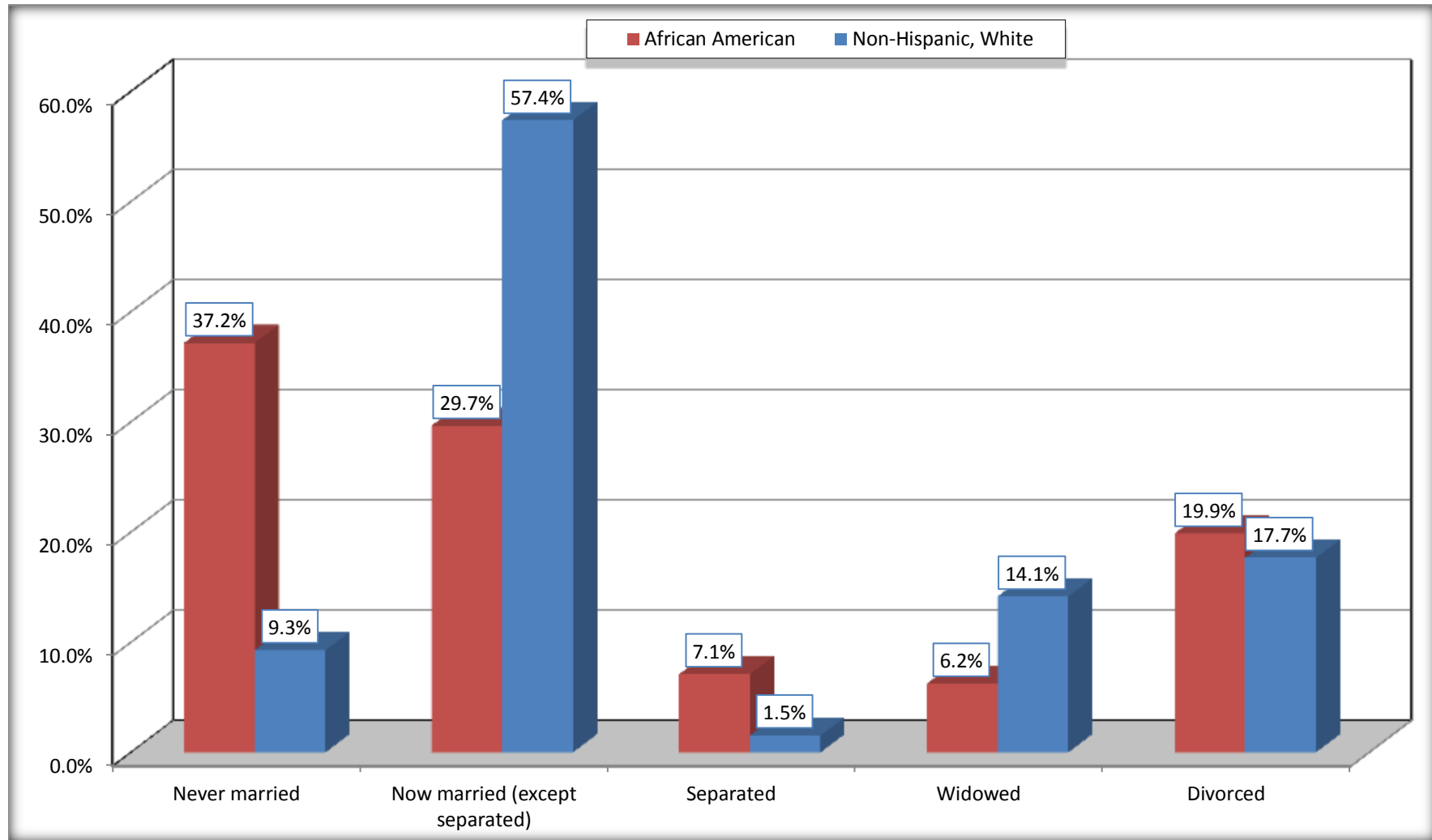
Source: U.S. Census Bureau, 2008-2012 American Community Survey

For information on confidentiality protection, sampling error, nonsampling error, and definitions, see Survey Methodology.

<http://www.census.gov/acs/www/UseData/index.htm>

Marital Status for the Population 15 Years and Over

Jasper city, Texas



Source: B12002. MARITAL STATUS FOR THE POPULATION 15 YEARS AND OVER
Data Set: 2008-2012 American Community Survey 5-Year Estimates

C15002. SEX BY EDUCATIONAL ATTAINMENT FOR THE POPULATION 25 YEARS AND OVER

Data Set: 2008-2012 American Community Survey 5-Year Estimates

	Jasper city, Texas					
	African American	Margin of Error (+/-)	% of AA Total	White, Not Hispanic	Margin of Error (+/-)	% of NHW Total
Total:	2,190	226	100.0%	2,151	248	100.0%
Less than high school diploma	553	NC	25.3%	288	NC	13.4%
High school graduate, GED, or alternative	935	NC	42.7%	687	NC	31.9%
Some college or associate's degree	580	NC	26.5%	684	NC	31.8%
Bachelor's degree or higher	122	NC	5.6%	492	NC	22.9%
Male:	970	139	44.3%	894	147	41.6%
Less than high school diploma	328	122	15.0%	146	64	6.8%
High school graduate, GED, or alternative	437	126	20.0%	234	75	10.9%
Some college or associate's degree	148	77	6.8%	305	103	14.2%
Bachelor's degree or higher	57	40	2.6%	209	85	9.7%
Female:	1,220	128	55.7%	1,257	159	58.4%
Less than high school diploma	225	112	10.3%	142	73	6.6%
High school graduate, GED, or alternative	498	137	22.7%	453	121	21.1%
Some college or associate's degree	432	109	19.7%	379	119	17.6%
Bachelor's degree or higher	65	45	3.0%	283	84	13.2%

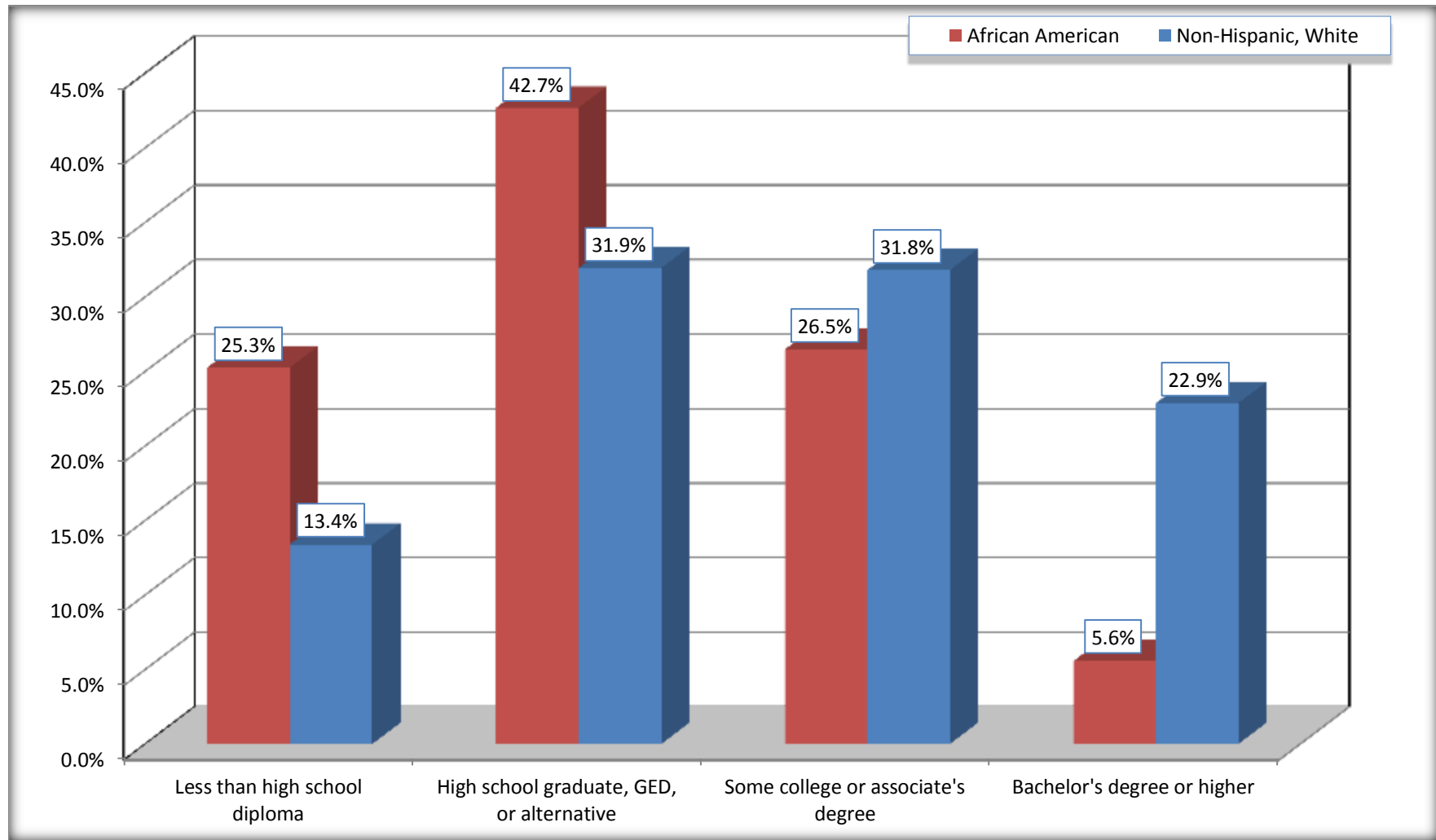
Source: U.S. Census Bureau, 2008-2012 American Community Survey

For information on confidentiality protection, sampling error, nonsampling error, and definitions, see Survey Methodology.

<http://www.census.gov/acs/www/UseData/index.htm>

Educational Attainment for the Population 25 Years and Older

Jasper city, Texas



Source: C15002. SEX BY EDUCATIONAL ATTAINMENT FOR THE POPULATION 25 YEARS AND OVER
Data Set: 2008-2012 American Community Survey 5-Year Estimates

B17010. POVERTY STATUS IN THE PAST 12 MONTHS OF FAMILIES BY FAMILY TYPE BY PRESENCE OF RELATED CHILDREN UNDER 18 YEARS

Data Set: 2008-2012 American Community Survey 5-Year Estimates

	Jasper city, Texas					
	African American	Margin of Error (+/-)	% of AA Total	White, Not Hispanic	Margin of Error (+/-)	% of NHW Total
Total:	726	140	100.0%	843	129	100.0%
Income in the past 12 months below poverty level:	271	101	37.3%	155	72	18.4%
Married-couple family:	31	30	4.3%	71	50	8.4%
With related children under 18 years	0	18	0.0%	44	40	5.2%
Other family:	240	91	33.1%	84	53	10.0%
Male householder, no wife present	0	18	0.0%	0	18	0.0%
With related children under 18 years	0	18	0.0%	0	18	0.0%
Female householder, no husband present	240	91	33.1%	84	53	10.0%
With related children under 18 years	212	84	29.2%	75	53	8.9%
Income in the past 12 months at or above poverty level:	455	122	62.7%	688	119	81.6%
Married-couple family:	265	83	36.5%	552	109	65.5%
With related children under 18 years	141	72	19.4%	189	87	22.4%
Other family:	190	80	26.2%	136	77	16.1%
Male householder, no wife present	71	54	9.8%	40	42	4.7%
With related children under 18 years	27	31	3.7%	0	18	0.0%
Female householder, no husband present	119	58	16.4%	96	69	11.4%
With related children under 18 years	65	48	9.0%	66	59	7.8%

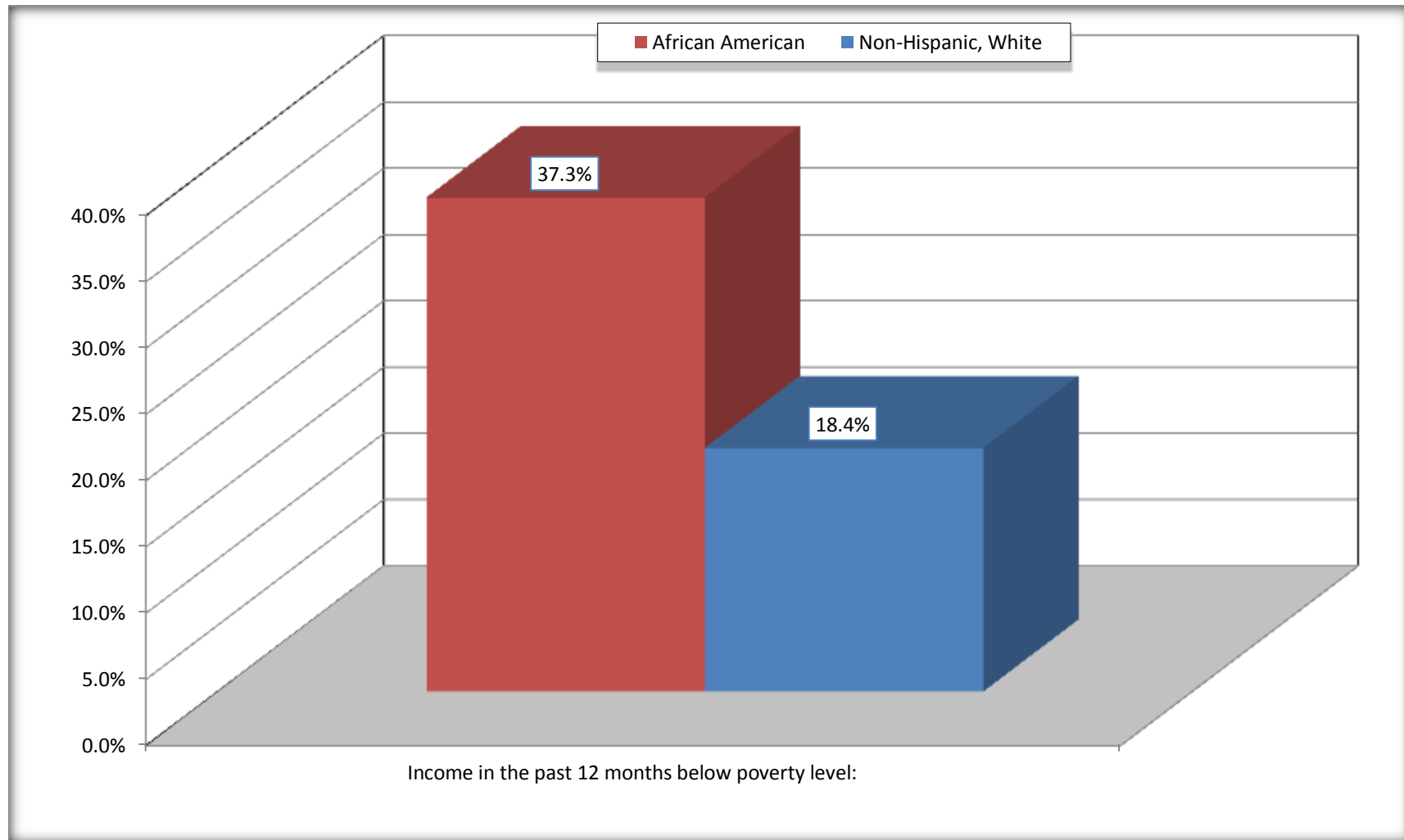
Source: U.S. Census Bureau, 2008-2012 American Community Survey

For information on confidentiality protection, sampling error, nonsampling error, and definitions, see Survey Methodology.

<http://www.census.gov/acs/www/UseData/index.htm>

Family Households Below Poverty in the Past 12 Months

Jasper city, Texas

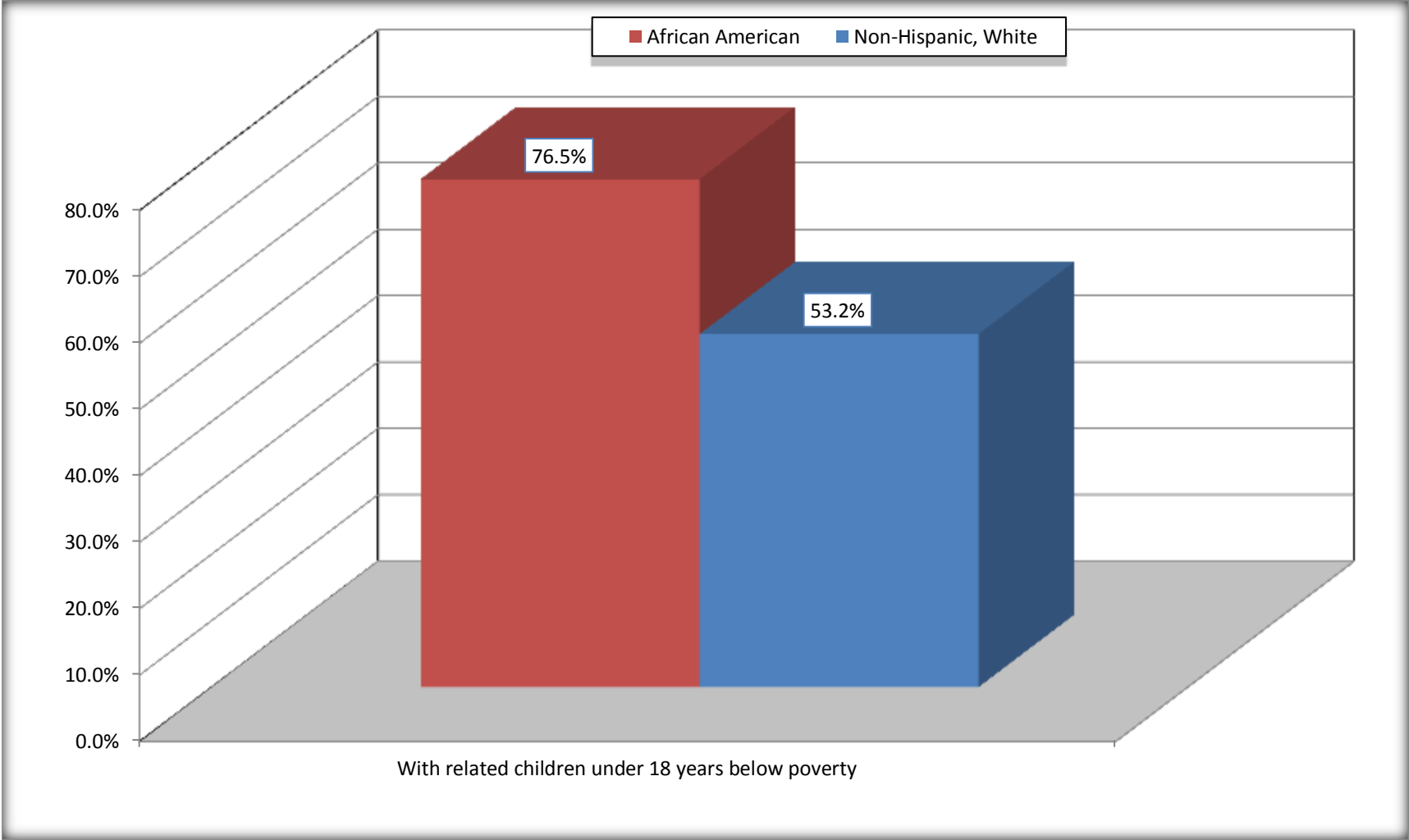


Source: B17010. POVERTY STATUS IN THE PAST 12 MONTHS OF FAMILIES BY FAMILY TYPE BY PRESENCE OF RELATED CHILDREN UNDER 18 YEARS

Data Set: 2008-2012 American Community Survey 5-Year Estimates

Female-headed Households with Related Children Below Poverty in the Past 12 Months

Jasper city, Texas



Source: B17010. POVERTY STATUS IN THE PAST 12 MONTHS OF FAMILIES BY FAMILY TYPE BY PRESENCE OF RELATED CHILDREN UNDER 18 YEARS

Data Set: 2008-2012 American Community Survey 5-Year Estimates

B17020 POVERTY STATUS IN THE PAST 12 MONTHS BY AGE - Universe: POPULATION FOR WHOM POVERTY STATUS IS DETERMINED

Data Set: 2008-2012 American Community Survey 5-Year Estimates

	Jasper city, Texas					
	African American	Margin of Error (+/-)	% of AA By Age	White, Not Hispanic	Margin of Error (+/-)	% of NHW By Age
Total:	3,256	354	100.0%	2,671	366	100.0%
Income in the past 12 months below poverty level:	1,303	386	40.0%	438	225	16.4%
Under 18 years	434	NC	46.0%	163	NC	25.4%
18 to 64 years	778	253	39.8%	262	122	17.5%
65 years and over	91	NC	25.3%	13	NC	2.5%
Income in the past 12 months at or above poverty level:	1,953	465	60.0%	2,233	320	83.6%
Under 18 years	509	NC	54.0%	479	NC	74.6%
18 to 64 years	1,176	271	60.2%	1,239	213	82.5%
65 years and over	268	NC	74.7%	515	NC	97.5%

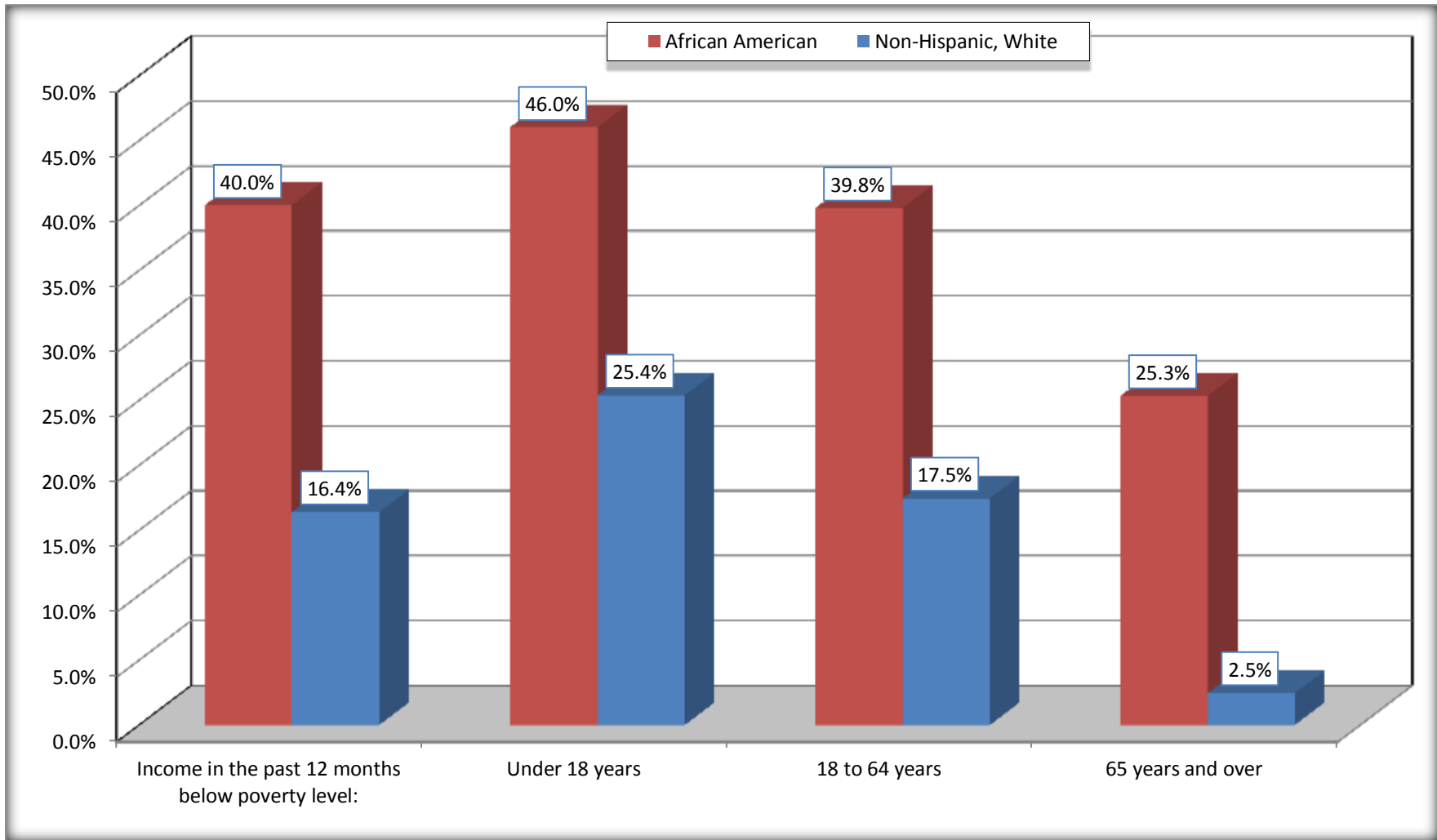
Source: U.S. Census Bureau, 2008-2012 American Community Survey

For information on confidentiality protection, sampling error, nonsampling error, and definitions, see Survey Methodology.

<http://www.census.gov/acs/www/UseData/index.htm>

Population Below Poverty in the Past 12 Months

Jasper city, Texas



Source: B17020 POVERTY STATUS IN THE PAST 12 MONTHS BY AGE - Universe: POPULATION FOR WHOM POVERTY STATUS IS DETERMINED
Data Set: 2008-2012 American Community Survey 5-Year Estimates

B19001. HOUSEHOLD INCOME IN THE PAST 12 MONTHS (IN 2010 INFLATION-ADJUSTED DOLLARS)

Data Set: 2008-2012 American Community Survey 5-Year Estimates

	Jasper city, Texas					
	African American	Margin of Error (+/-)	% of AA Total	White, Not Hispanic	Margin of Error (+/-)	% of NHW Total
Total:	1,381	170	100.0%	1,252	171	100.0%
Less than \$ 10,000	448	170	32.4%	111	70	8.9%
\$ 10,000 to \$ 14,999	213	112	15.4%	121	57	9.7%
\$ 15,000 to \$ 24,999	191	NC	13.8%	266	NC	21.2%
\$ 25,000 to \$ 34,999	174	NC	12.6%	94	NC	7.5%
\$ 35,000 to \$ 49,999	98	NC	7.1%	153	NC	12.2%
\$ 50,000 to \$ 74,999	146	NC	10.6%	183	NC	14.6%
\$ 75,000 to \$ 99,999	68	47	4.9%	161	68	12.9%
\$ 100,000 to \$ 149,999	21	NC	1.5%	106	NC	8.5%
\$ 150,000 to \$ 199,999	6	10	0.4%	57	35	4.6%
\$ 200,000 or more	16	25	1.2%	0	18	0.0%

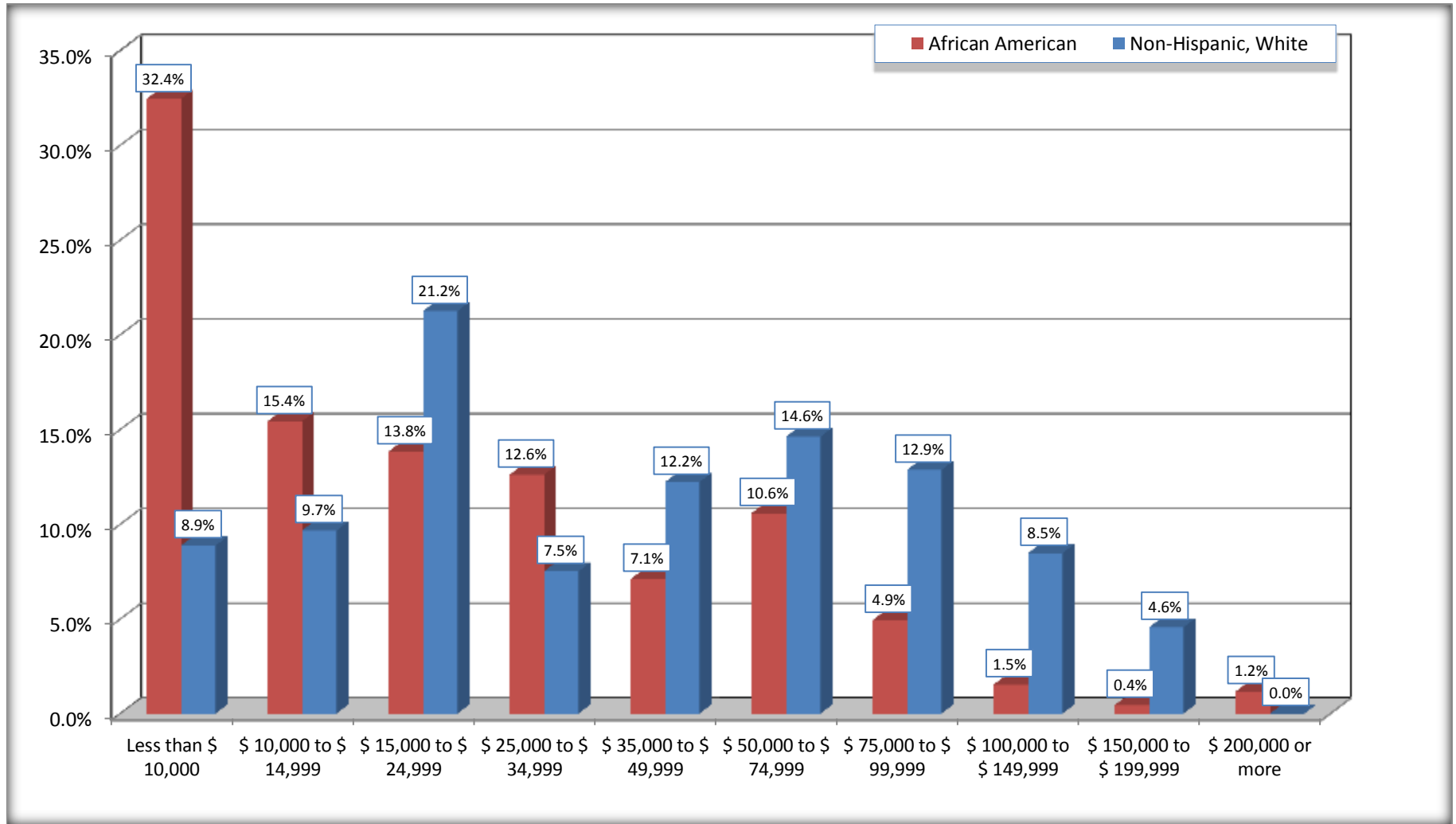
Source: U.S. Census Bureau, 2008-2012 American Community Survey

For information on confidentiality protection, sampling error, nonsampling error, and definitions, see Survey Methodology.

<http://www.census.gov/acs/www/UseData/index.htm>

Household Income in the Past 12 Months

Jasper city, Texas



Source: B19001. HOUSEHOLD INCOME IN THE PAST 12 MONTHS (IN 2010 INFLATION-ADJUSTED DOLLARS)
Data Set: 2008-2012 American Community Survey 5-Year Estimates

B19013. MEDIAN HOUSEHOLD INCOME IN THE PAST 12 MONTHS (IN 2010 INFLATION-ADJUSTED DOLLARS)

Data Set: 2008-2012 American Community Survey 5-Year Estimates

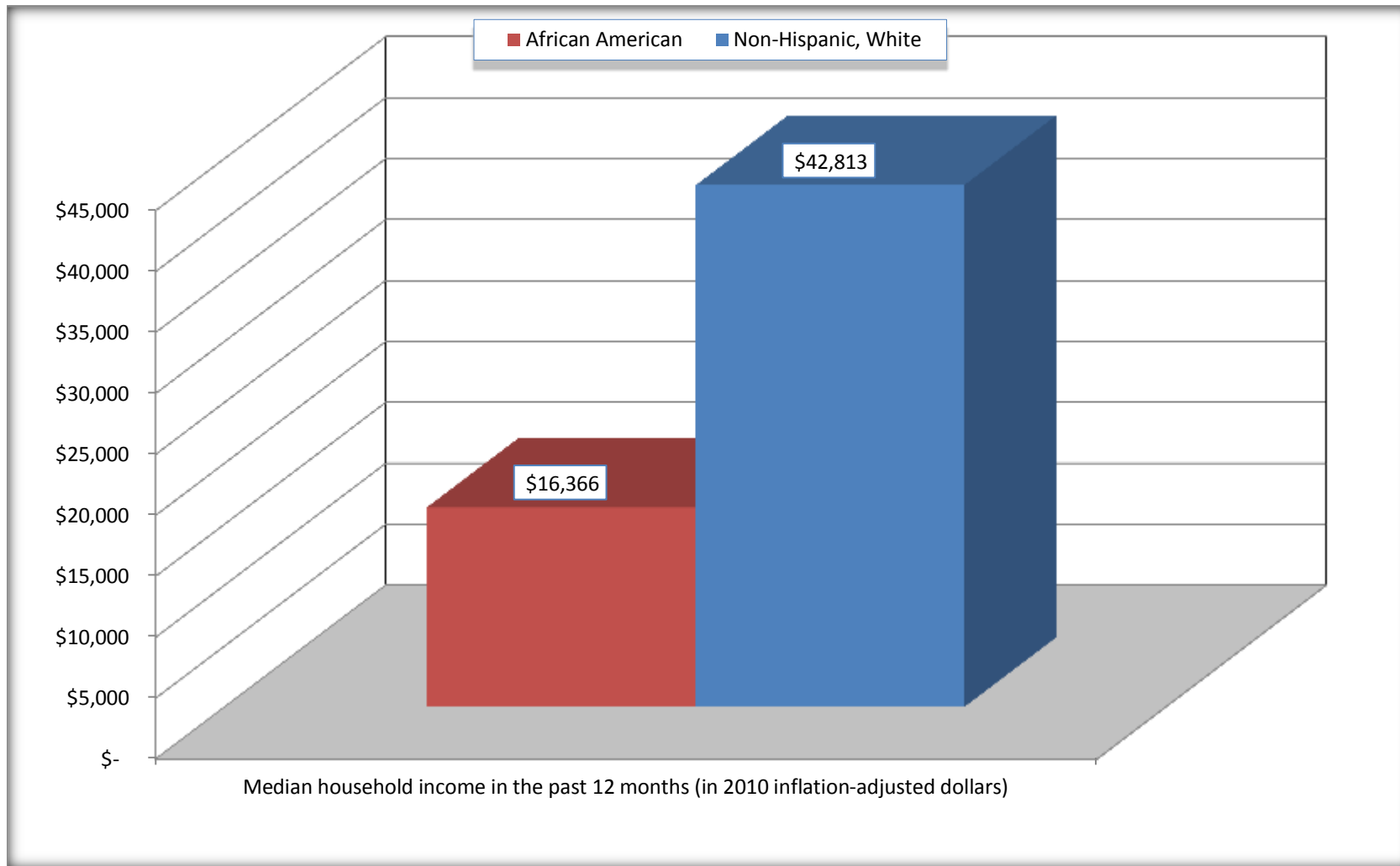
	Jasper city, Texas			
	African American	Margin of Error (+/-)	White, Not Hispanic	Margin of Error (+/-)
Median household income in the past 12 months (in 2010 inflation-adjusted dollars)	\$ 16,366	\$ 5,312	\$ 42,813	\$ 12,359

Source: U.S. Census Bureau, 2008-2012 American Community Survey

For information on confidentiality protection, sampling error, nonsampling error, and definitions, see Survey Methodology.
<http://www.census.gov/acs/www/UseData/index.htm>

Median Household Income in the Past 12 Months

Jasper city, Texas



Source: B19013. MEDIAN HOUSEHOLD INCOME IN THE PAST 12 MONTHS (IN 2010 INFLATION-ADJUSTED DOLLARS)
Data Set: 2008-2012 American Community Survey 5-Year Estimates

B19101. FAMILY INCOME IN THE PAST 12 MONTHS (IN 2010 INFLATION-ADJUSTED DOLLARS)

Data Set: 2008-2012 American Community Survey 5-Year Estimates

	Jasper city, Texas					
	African American	Margin of Error (+/-)	% of AA Total	White, Not Hispanic	Margin of Error (+/-)	% of NHW Total
Total:	726	140	100.0%	843	129	100.0%
Less than \$ 10,000	198	89	27.3%	86	60	10.2%
\$ 10,000 to \$ 14,999	66	36	9.1%	37	33	4.4%
\$ 15,000 to \$ 24,999	72	NC	9.9%	106	NC	12.6%
\$ 25,000 to \$ 34,999	64	NC	8.8%	56	NC	6.6%
\$ 35,000 to \$ 49,999	98	NC	13.5%	123	NC	14.6%
\$ 50,000 to \$ 74,999	124	NC	17.1%	124	NC	14.7%
\$ 100,000 to \$ 149,999	14	NC	1.9%	98	NC	11.6%
\$ 150,000 to \$ 199,999	6	10	0.8%	57	35	6.8%
\$ 200,000 or more	16	25	2.2%	0	18	0.0%

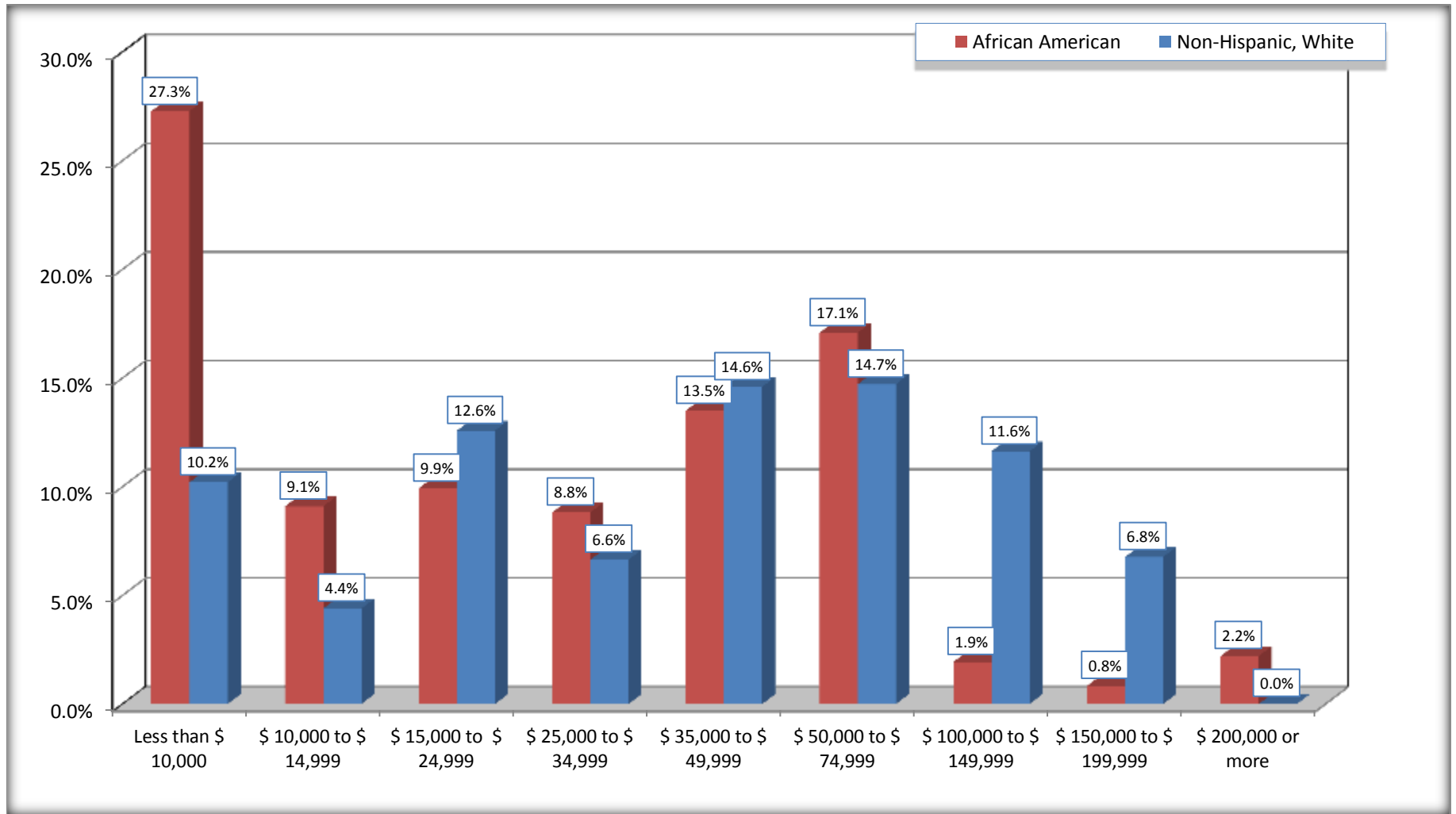
Source: U.S. Census Bureau, 2008-2012 American Community Survey

For information on confidentiality protection, sampling error, nonsampling error, and definitions, see Survey Methodology.

<http://www.census.gov/acs/www/UseData/index.htm>

Family Income in the Past 12 Months

Jasper city, Texas



Source: B19101. FAMILY INCOME IN THE PAST 12 MONTHS (IN 2010 INFLATION-ADJUSTED DOLLARS)
Data Set: 2008-2012 American Community Survey 5-Year Estimates

B19113. MEDIAN FAMILY INCOME IN THE PAST 12 MONTHS (IN 2010 INFLATION-ADJUSTED DOLLARS)

Data Set: 2008-2012 American Community Survey 5-Year Estimates

	Jasper city, Texas			
	African American	Margin of Error (+/-)	White, Not Hispanic	Margin of Error (+/-)
Median family income in the past 12 months (in 2010 inflation-adjusted dollars)	\$ 27,045	\$ 10,170	\$ 57,841	\$ 25,974

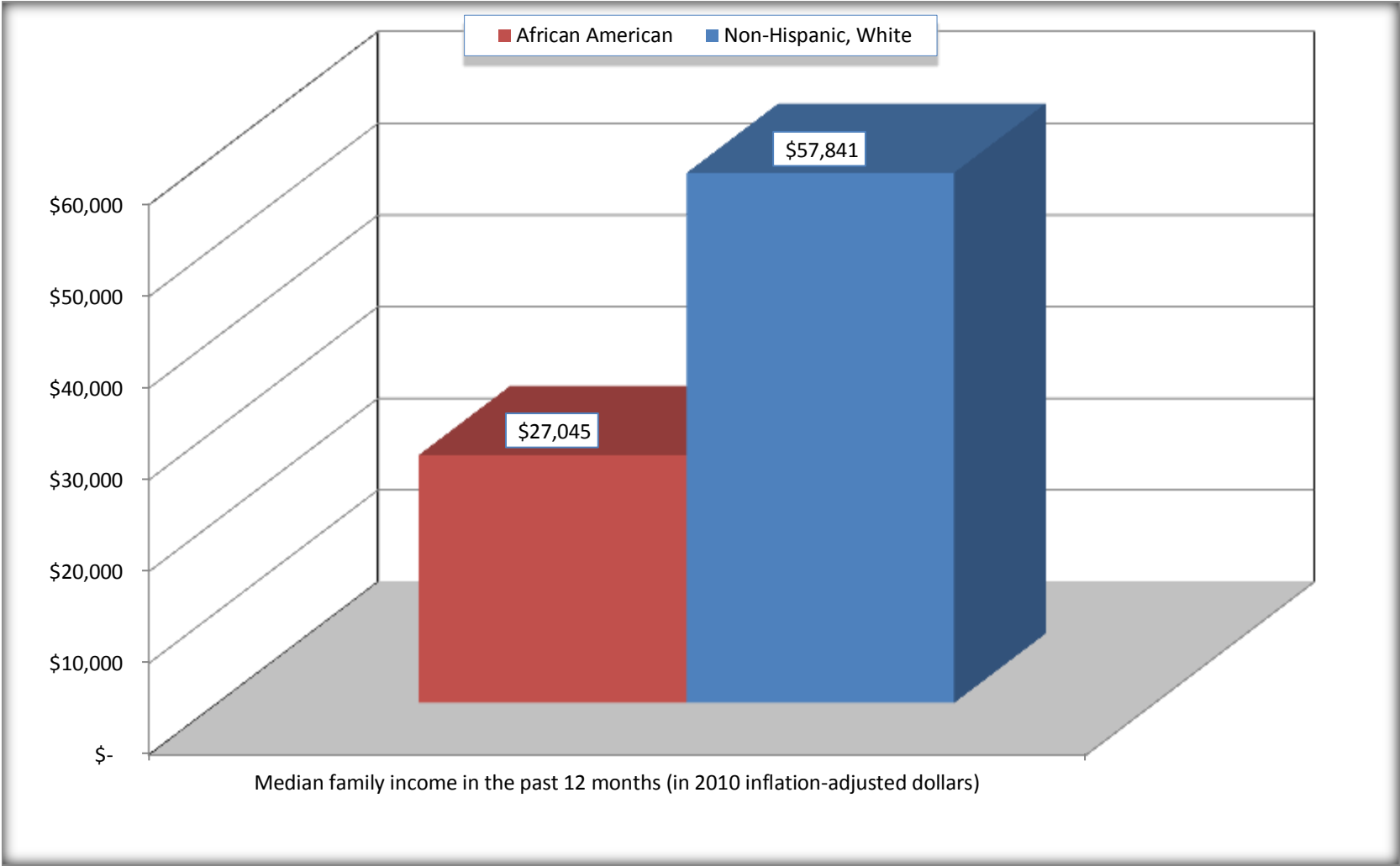
Source: U.S. Census Bureau, 2008-2012 American Community Survey

For information on confidentiality protection, sampling error, nonsampling error, and definitions, see Survey Methodology.

<http://www.census.gov/acs/www/UseData/index.htm>

Median Family Income in the Past 12 Months

Jasper city, Texas



Source: B19113. MEDIAN FAMILY INCOME IN THE PAST 12 MONTHS (IN 2010 INFLATION-ADJUSTED DOLLARS)
Data Set: 2008-2012 American Community Survey 5-Year Estimates

B19202. MEDIAN NONFAMILY HOUSEHOLD INCOME IN THE PAST 12 MONTHS (IN 2010 INFLATION-ADJUSTED DOLLARS)

Data Set: 2008-2012 American Community Survey 5-Year Estimates

	Jasper city, Texas			
	African American	Margin of Error (+/-)	White, Not Hispanic	Margin of Error (+/-)
Median nonfamily household income in the past 12 months (in 2010 inflation-adjusted dollars)	\$ 11,891	\$ 3,827	\$ 19,623	\$ 2,500

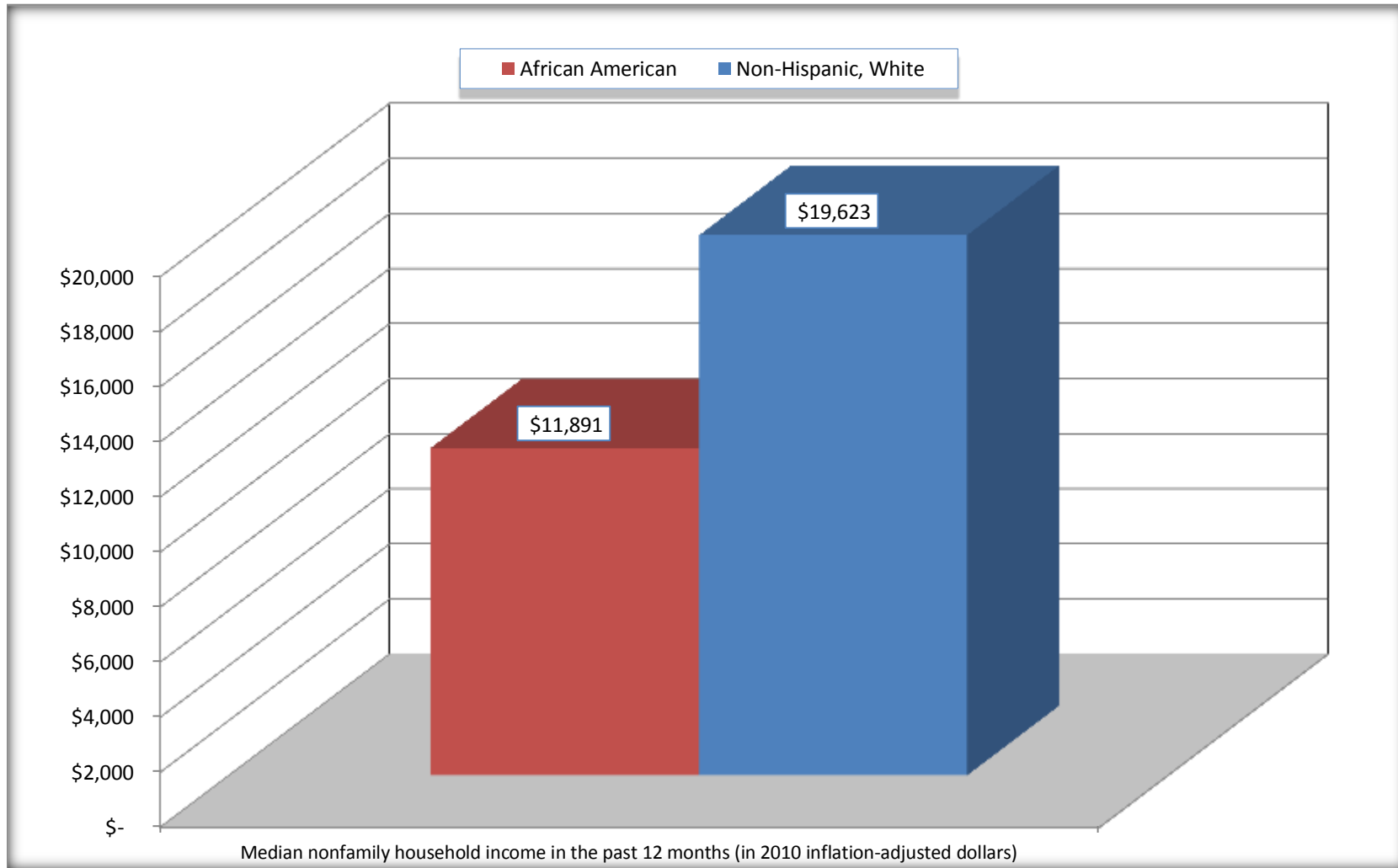
Source: U.S. Census Bureau, 2008-2012 American Community Survey

For information on confidentiality protection, sampling error, nonsampling error, and definitions, see Survey Methodology.

<http://www.census.gov/acs/www/UseData/index.htm>

Median Non-Family Income in the Past 12 Months

Jasper city, Texas



Source: B19202. MEDIAN NONFAMILY HOUSEHOLD INCOME IN THE PAST 12 MONTHS (IN 2010 INFLATION-ADJUSTED DOLLARS)
Data Set: 2008-2012 American Community Survey 5-Year Estimates

B19301. PER CAPITA INCOME IN THE PAST 12 MONTHS (IN 2010 INFLATION-ADJUSTED DOLLARS)

Data Set: 2008-2012 American Community Survey 5-Year Estimates

	Jasper city, Texas			
	African American	Margin of Error (+/-)	White, Not Hispanic	Margin of Error (+/-)
Per capita income in the past 12 months (in 2010 inflation-adjusted dollars)	\$ 12,371	\$ 2,756	\$ 22,220	\$ 2,665

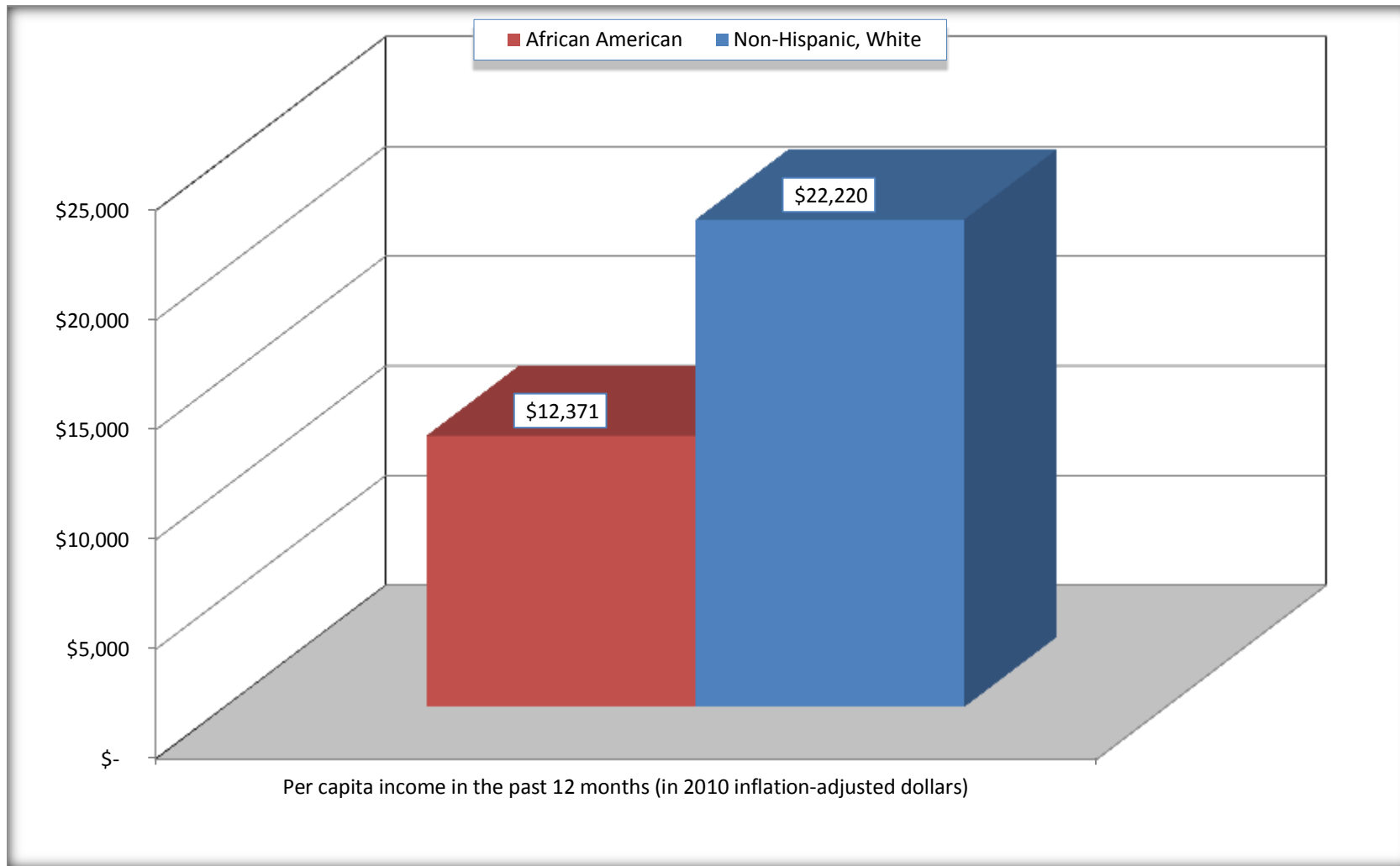
Source: U.S. Census Bureau, 2008-2012 American Community Survey

For information on confidentiality protection, sampling error, nonsampling error, and definitions, see Survey Methodology.

<http://www.census.gov/acs/www/UseData/index.htm>

Per capita Income in the Past 12 Months

Jasper city, Texas



Source: B19301. PER CAPITA INCOME IN THE PAST 12 MONTHS (IN 2010 INFLATION-ADJUSTED DOLLARS)
Data Set: 2008-2012 American Community Survey 5-Year Estimates

B20017. MEDIAN EARNINGS IN THE PAST 12 MONTHS (IN 2010 INFLATION-ADJUSTED DOLLARS) BY SEX BY WORK EXPERIENCE IN THE PAST 12 MONTHS FOR THE POPULATION 16 YEARS AND OVER WITH EARNINGS IN THE PAST 12 MONTHS

Data Set: 2008-2012 American Community Survey 5-Year Estimates

	Jasper city, Texas			
	African American	Margin of Error (+/-)	White, Not Hispanic	Margin of Error (+/-)
Median earnings in the past 12 months (in 2010 inflation-adjusted dollars) --				
Total:	\$ 14,250	\$ 3,229	\$ 28,602	\$ 3,495
Male --				
Total	\$ 16,354	\$ 9,204	\$ 43,301	\$ 17,042
Worked full-time, year-round in the past 12 months	\$ 30,529	\$ 3,140	\$ 46,604	\$ 9,541
Other	\$ 6,194	\$ 2,737	\$ 17,879	\$ 15,925
Female --				
Total	\$ 13,419	\$ 3,460	\$ 22,530	\$ 6,026
Worked full-time, year-round in the past 12 months	\$ 19,828	\$ 7,526	\$ 35,404	\$ 6,405
Other	\$ 6,962	\$ 3,121	\$ 6,750	\$ 8,834

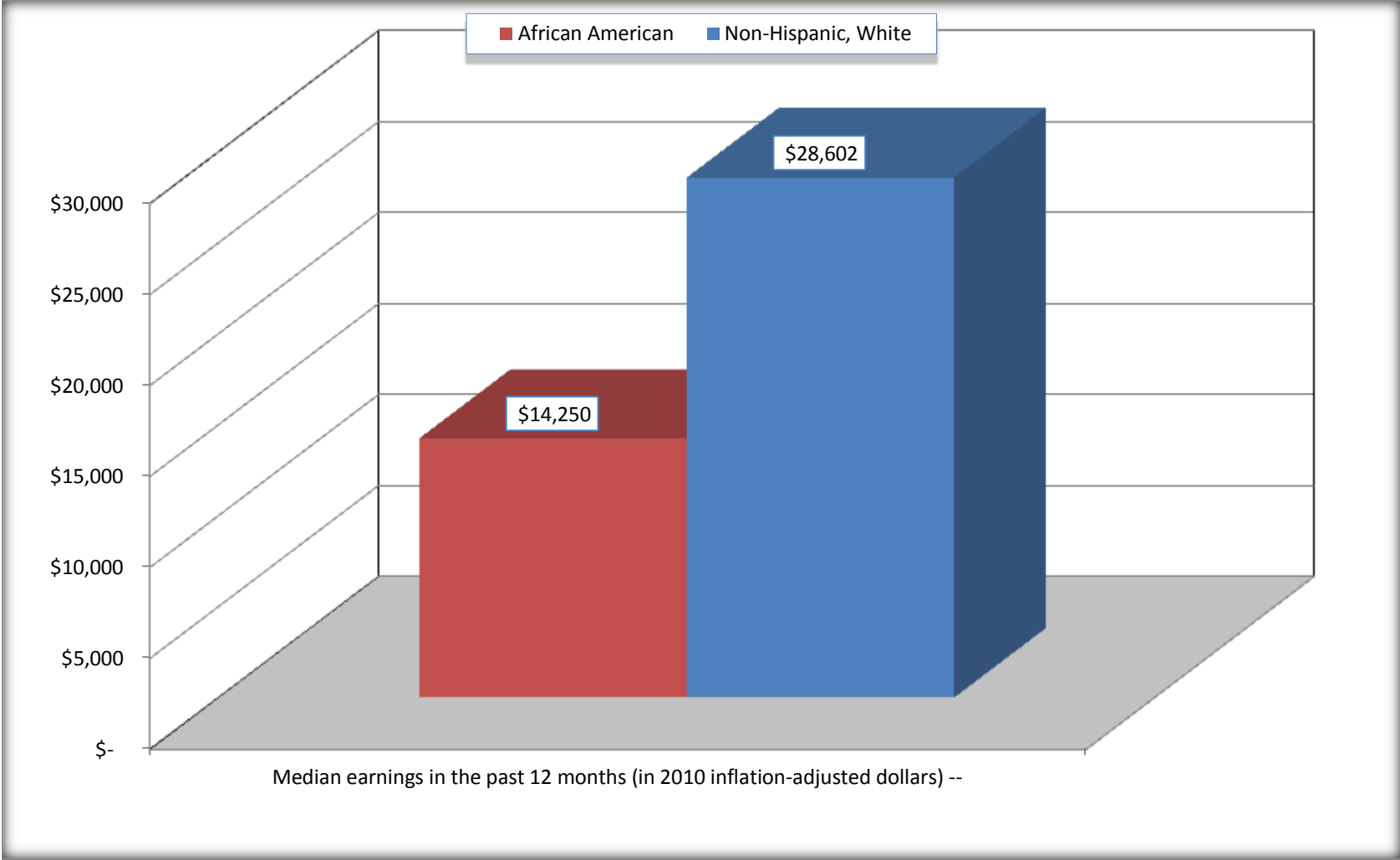
Source: U.S. Census Bureau, 2008-2012 American Community Survey

For information on confidentiality protection, sampling error, nonsampling error, and definitions, see Survey Methodology.

<http://www.census.gov/acs/www/UseData/index.htm>

Median earnings in the Past 12 Months (16 Years and Over with Earnings)

Jasper city, Texas



Source: B20017. MEDIAN EARNINGS IN THE PAST 12 MONTHS (IN 2010 INFLATION-ADJUSTED DOLLARS) BY SEX BY WORK EXPERIENCE IN THE PAST 12 MONTHS FOR THE POPULATION 16 YEARS AND OVER WITH EARNINGS IN THE PAST 12 MONTHS
Data Set: 2008-2012 American Community Survey 5-Year Estimates

B20005. SEX BY WORK EXPERIENCE IN THE PAST 12 MONTHS BY EARNINGS IN THE PAST 12 MONTHS (IN 2010 INFLATION-ADJUSTED DOLLARS) FOR THE POPULATION 16 YEARS AND OVER

Data Set: 2008-2012 American Community Survey 5-Year Estimates

	Jasper city, Texas					
	African American	Margin of Error (+/-)	% of AA Total	White, Not Hispanic	Margin of Error (+/-)	% of NHW Total
Total:	2,594	259	100.0%	2,276	264	100.0%
Worked full-time, year-round in the past 12 months:	768	NC	29.6%	832	NC	36.6%
No earnings	0	NC	0.0%	0	NC	0.0%
With earnings:	768	NC	29.6%	832	NC	36.6%
\$ 1 to \$ 9,999 or loss	31	NC	1.2%	34	NC	1.5%
\$ 10,000 to \$ 19,999	256	NC	9.9%	121	NC	5.3%
\$ 20,000 to \$ 29,999	198	NC	7.6%	117	NC	5.1%
\$ 30,000 to \$ 49,999	197	NC	7.6%	272	NC	12.0%
\$ 50,000 to \$ 74,999	49	NC	1.9%	212	NC	9.3%
\$ 75,000 or more	37	NC	1.4%	76	NC	3.3%
Other:	1,826	NC	70.4%	1,444	NC	63.4%
No earnings	1,086	NC	41.9%	970	NC	42.6%
With earnings: less than full time, year-round	740	NC	28.5%	474	NC	20.8%
Male:	1,178	179	45.4%	968	158	42.5%
Worked full-time, year-round in the past 12 months:	312	107	12.0%	435	110	19.1%
No earnings	0	18	0.0%	0	18	0.0%
With earnings:	312	107	12.0%	435	110	19.1%
\$ 1 to \$ 9,999 or loss	0	NC	0.0%	16	NC	0.7%
\$ 10,000 to \$ 19,999	55	NC	2.1%	51	NC	2.2%
\$ 20,000 to \$ 29,999	90	NC	3.5%	57	NC	2.5%
\$ 30,000 to \$ 49,999	104	NC	4.0%	115	NC	5.1%
\$ 50,000 to \$ 74,999	33	NC	1.3%	141	NC	6.2%
\$ 75,000 or more	30	NC	1.2%	55	NC	2.4%

	Jasper city, Texas					
	African American	Margin of Error (+/-)	% of AA Total	White, Not Hispanic	Margin of Error (+/-)	% of NHW Total
Other:	866	187	33.4%	533	126	23.4%
No earnings	567	189	21.9%	379	97	16.7%
With earnings:	299	132	11.5%	154	85	6.8%
Female:	1,416	146	54.6%	1,308	163	57.5%
Worked full-time, year-round in the past 12 months:	456	130	17.6%	397	111	17.4%
No earnings	0	18	0.0%	0	18	0.0%
With earnings:	456	130	17.6%	397	111	17.4%
\$ 1 to \$ 9,999 or loss	31	NC	1.2%	18	NC	0.8%
\$ 10,000 to \$ 19,999	201	NC	7.7%	70	NC	3.1%
\$ 20,000 to \$ 29,999	108	NC	4.2%	60	NC	2.6%
\$ 30,000 to \$ 49,999	93	NC	3.6%	157	NC	6.9%
\$ 50,000 to \$ 74,999	16	NC	0.6%	71	NC	3.1%
\$ 75,000 or more	7	NC	0.3%	21	NC	0.9%
Other:	960	152	37.0%	911	140	40.0%
No earnings	519	110	20.0%	591	124	26.0%
With earnings:	441	134	17.0%	320	114	14.1%

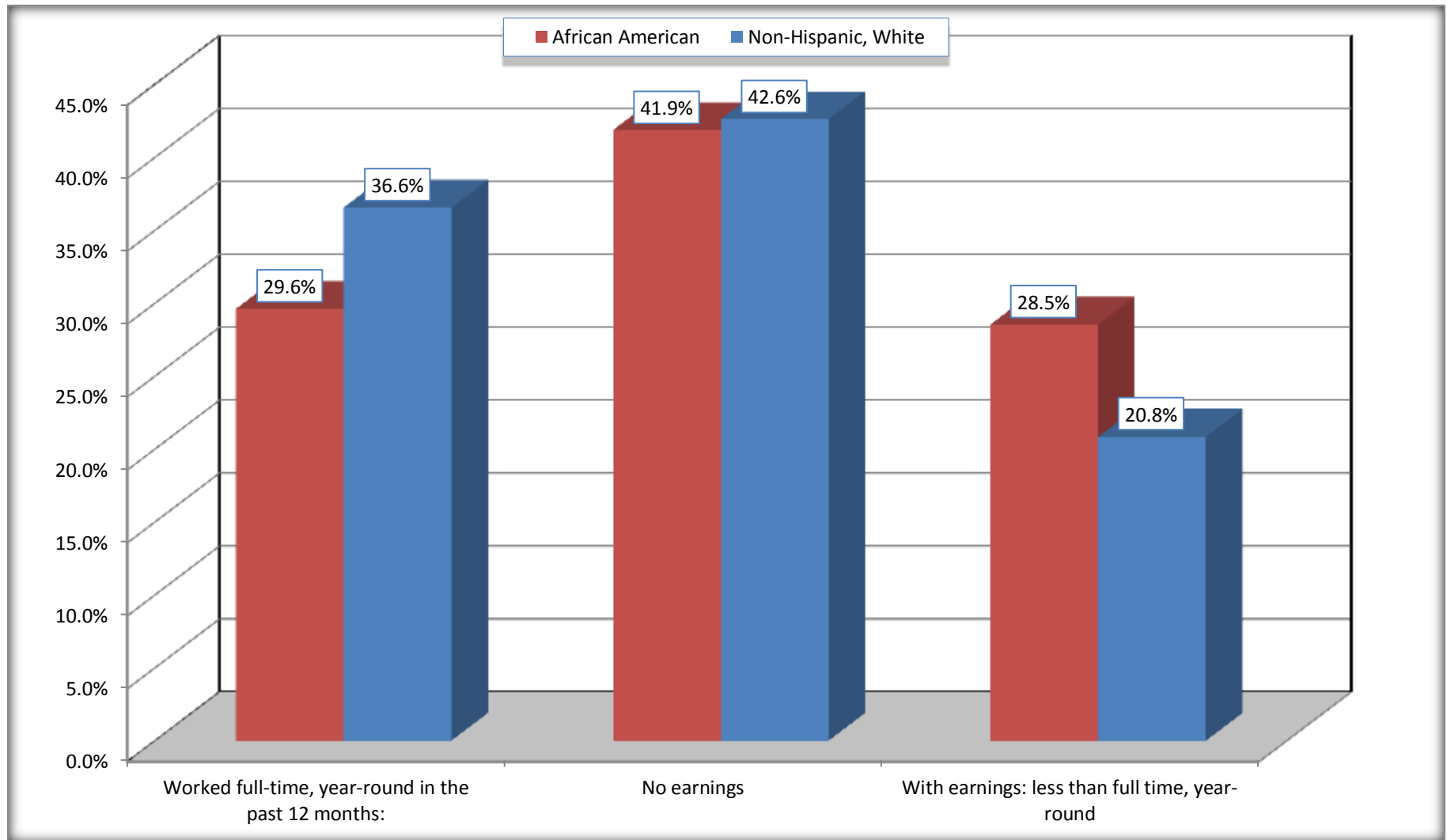
Source: U.S. Census Bureau, 2008-2012 American Community Survey

For information on confidentiality protection, sampling error, nonsampling error, and definitions, see Survey Methodology.

<http://www.census.gov/acs/www/UseData/index.htm>

Employment and Earnings in in the Past 12 Months (16 Years and Over)

Jasper city, Texas



Source: B20005. SEX BY WORK EXPERIENCE IN THE PAST 12 MONTHS BY EARNINGS IN THE PAST 12 MONTHS (IN 2010 INFLATION-ADJUSTED DOLLARS) FOR THE POPULATION 16 YEARS AND OVER

Data Set: 2008-2012 American Community Survey 5-Year Estimates

C21001. SEX BY AGE BY VETERAN STATUS FOR THE CIVILIAN POPULATION 18 YEARS AND OVER

Data Set: 2008-2012 American Community Survey 5-Year Estimates

	Jasper city, Texas					
	African American	Margin of Error (+/-)	% of AA Total	White, Not Hispanic	Margin of Error (+/-)	% of NHW Total
Total:	2,483	235	100.0%	2,265	264	100.0%
Veteran	199	NC	8.0%	257	NC	11.3%
Nonveteran	2,284	NC	92.0%	2,008	NC	88.7%
Male:	1,104	153	44.5%	968	158	42.7%
18 to 64 years:	963	141	38.8%	778	144	34.3%
Veteran	97	56	3.9%	101	52	4.5%
Nonveteran	866	139	34.9%	677	153	29.9%
65 years and over:	141	54	5.7%	190	66	8.4%
Veteran	65	51	2.6%	153	60	6.8%
Nonveteran	76	46	3.1%	37	30	1.6%
Female:	1,379	132	55.5%	1,297	161	57.3%
18 to 64 years:	1,151	125	46.4%	857	142	37.8%
Veteran	37	59	1.5%	3	6	0.1%
Nonveteran	1,114	131	44.9%	854	141	37.7%
65 years and over:	228	55	9.2%	440	105	19.4%
Veteran	0	18	0.0%	0	18	0.0%
Nonveteran	228	55	9.2%	440	105	19.4%

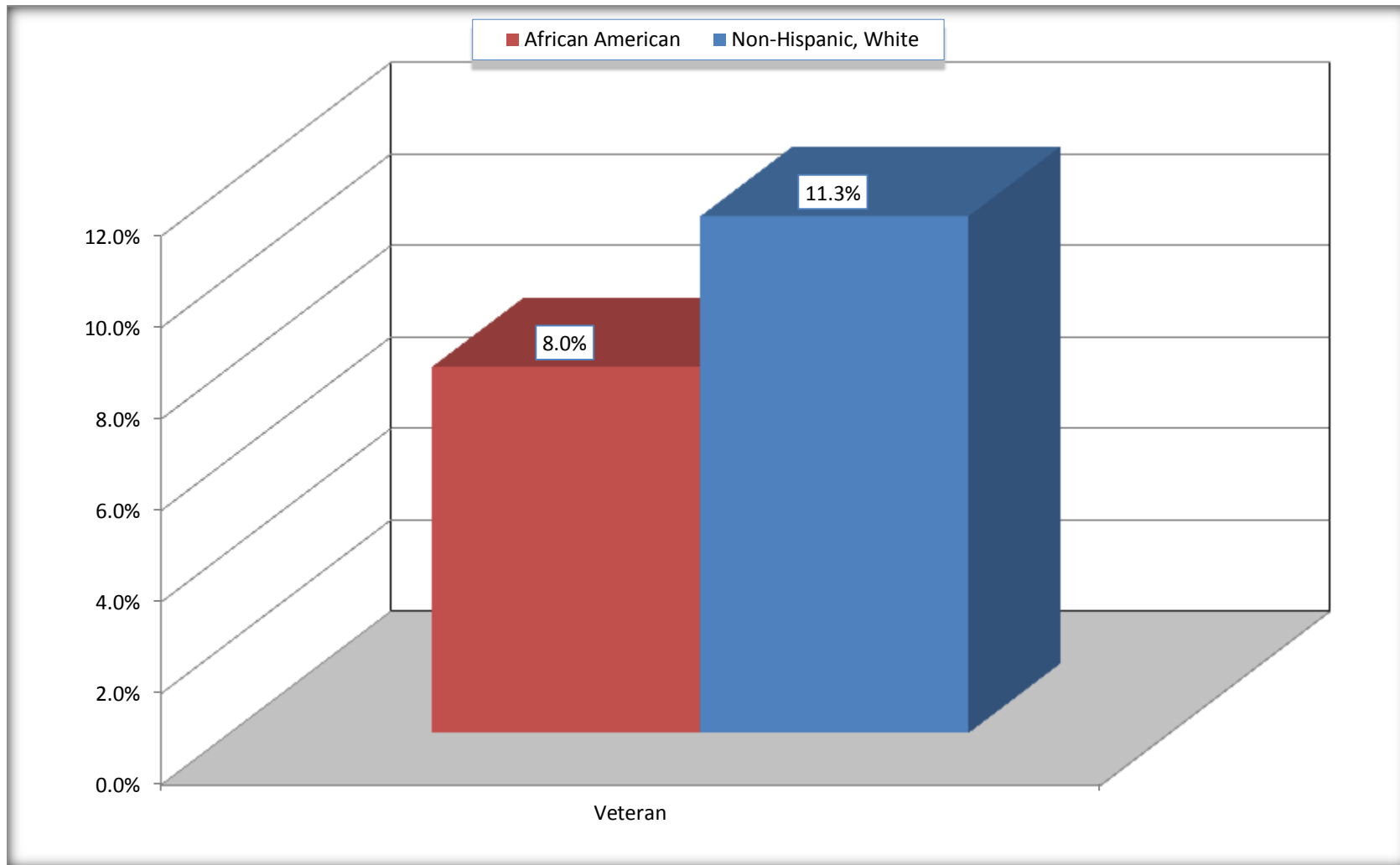
Source: U.S. Census Bureau, 2008-2012 American Community Survey

For information on confidentiality protection, sampling error, nonsampling error, and definitions, see Survey Methodology.

<http://www.census.gov/acs/www/UseData/index.htm>

Veterans in the Civilian Population 18 Years and Over

Jasper city, Texas



Source: C21001. SEX BY AGE BY VETERAN STATUS FOR THE CIVILIAN POPULATION 18 YEARS AND OVER
Data Set: 2008-2012 American Community Survey 5-Year Estimates

B22005. RECEIPT OF FOOD STAMPS/SNAP IN THE PAST 12 MONTHS BY RACE OF HOUSEHOLDER

Data Set: 2008-2012 American Community Survey 5-Year Estimates

	Jasper city, Texas					
	African American	Margin of Error (+/-)	% of AA Total	White, Not Hispanic	Margin of Error (+/-)	% of NHW Total
Total:	1,381	170	100.0%	1,252	171	100.0%
HH received Food Stamps/SNAP in the past 12 months	695	169	50.3%	163	74	13.0%
HH did not receive Food Stamps/SNAP in the past 12 months	686	144	49.7%	1,089	163	87.0%

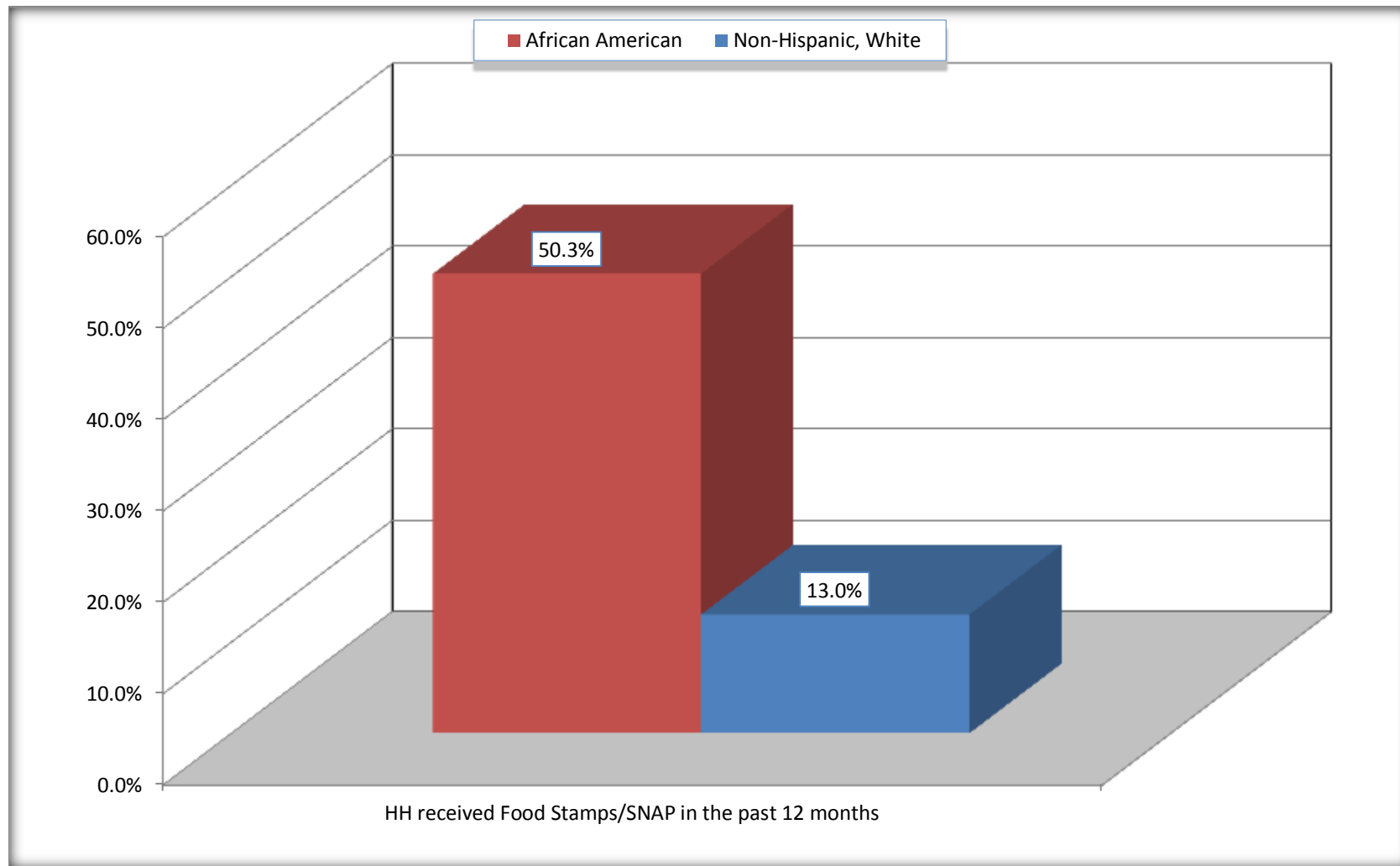
Source: U.S. Census Bureau, 2008-2012 American Community Survey

For information on confidentiality protection, sampling error, nonsampling error, and definitions, see Survey Methodology.

<http://www.census.gov/acs/www/UseData/index.htm>

Receipt of Food Stamps/SNAP in the Past 12 Months by Household

Jasper city, Texas



Source: B22005. RECEIPT OF FOOD STAMPS/SNAP IN THE PAST 12 MONTHS BY RACE OF HOUSEHOLDER
Data Set: 2008-2012 American Community Survey 5-Year Estimates

C23002. SEX BY AGE BY EMPLOYMENT STATUS FOR THE POPULATION 16 YEARS AND OVER

Data Set: 2008-2012 American Community Survey 5-Year Estimates

	Jasper city, Texas					
	African American	Margin of Error (+/-)	% of AA Total	White, Not Hispanic	Margin of Error (+/-)	% of NHW Total
Total:	2,594	259	100.0%	2,276	264	100.0%
In labor force:	1,539	NC	59.3%	1,229	NC	54.0%
In Armed Forces	0	NC	0.0%	0	NC	0.0%
Civilian:	1,484	NC	57.2%	1,147	NC	50.4%
Employed	1,238	NC	47.7%	1,187	NC	52.2%
Unemployed	301	NC	11.6%	42	NC	1.8%
Not in labor force	1,055	NC	40.7%	1,047	NC	46.0%
Male:	1,178	179	45.4%	968	158	42.5%
16 to 64 years:	1,037	166	40.0%	778	144	34.2%
In labor force:	649	156	25.0%	507	118	22.3%
In Armed Forces	0	18	0.0%	0	18	0.0%
Civilian:	649	156	25.0%	507	118	22.3%
Employed	507	138	19.5%	497	117	21.8%
Unemployed	142	92	5.5%	10	18	0.4%
Not in labor force	388	164	15.0%	271	89	11.9%
65 years and over:	141	54	5.4%	190	66	8.3%
In labor force:	6	11	0.2%	36	26	1.6%
Employed	0	18	0.0%	30	23	1.3%
Unemployed	6	11	0.2%	6	11	0.3%
Not in labor force	135	55	5.2%	154	61	6.8%

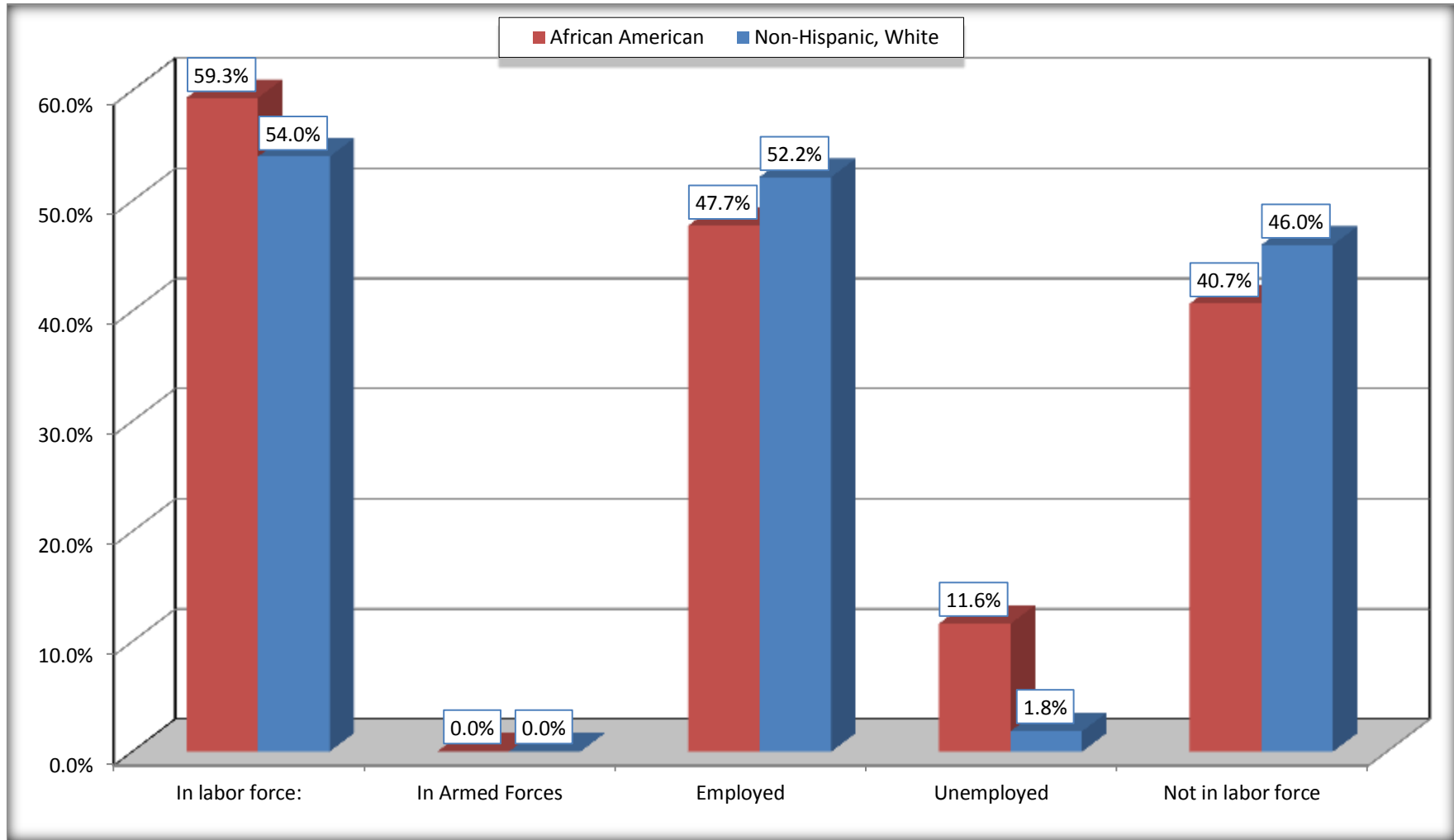
	Jasper city, Texas					
	African American	Margin of Error (+/-)	% of AA Total	White, Not Hispanic	Margin of Error (+/-)	% of NHW Total
Female:	1,416	146	54.6%	1,308	163	57.5%
16 to 64 years:	1,188	138	45.8%	868	145	38.1%
In labor force:	835	129	32.2%	640	143	28.1%
In Armed Forces	0	18	0.0%	0	18	0.0%
Civilian:	835	129	32.2%	640	143	28.1%
Employed	702	131	27.1%	614	136	27.0%
Unemployed	133	77	5.1%	26	40	1.1%
Not in labor force	353	99	13.6%	228	89	10.0%
65 years and over:	228	55	8.8%	440	105	19.3%
In labor force:	49	38	1.9%	46	36	2.0%
Employed	29	28	1.1%	46	36	2.0%
Unemployed	20	30	0.8%	0	18	0.0%
Not in labor force	179	59	6.9%	394	96	17.3%

Source: U.S. Census Bureau, 2008-2012 American Community Survey

For information on confidentiality protection, sampling error, nonsampling error, and definitions, see Survey Methodology.
<http://www.census.gov/acs/www/UseData/index.htm>

Employment Status for the Population 16 years and over

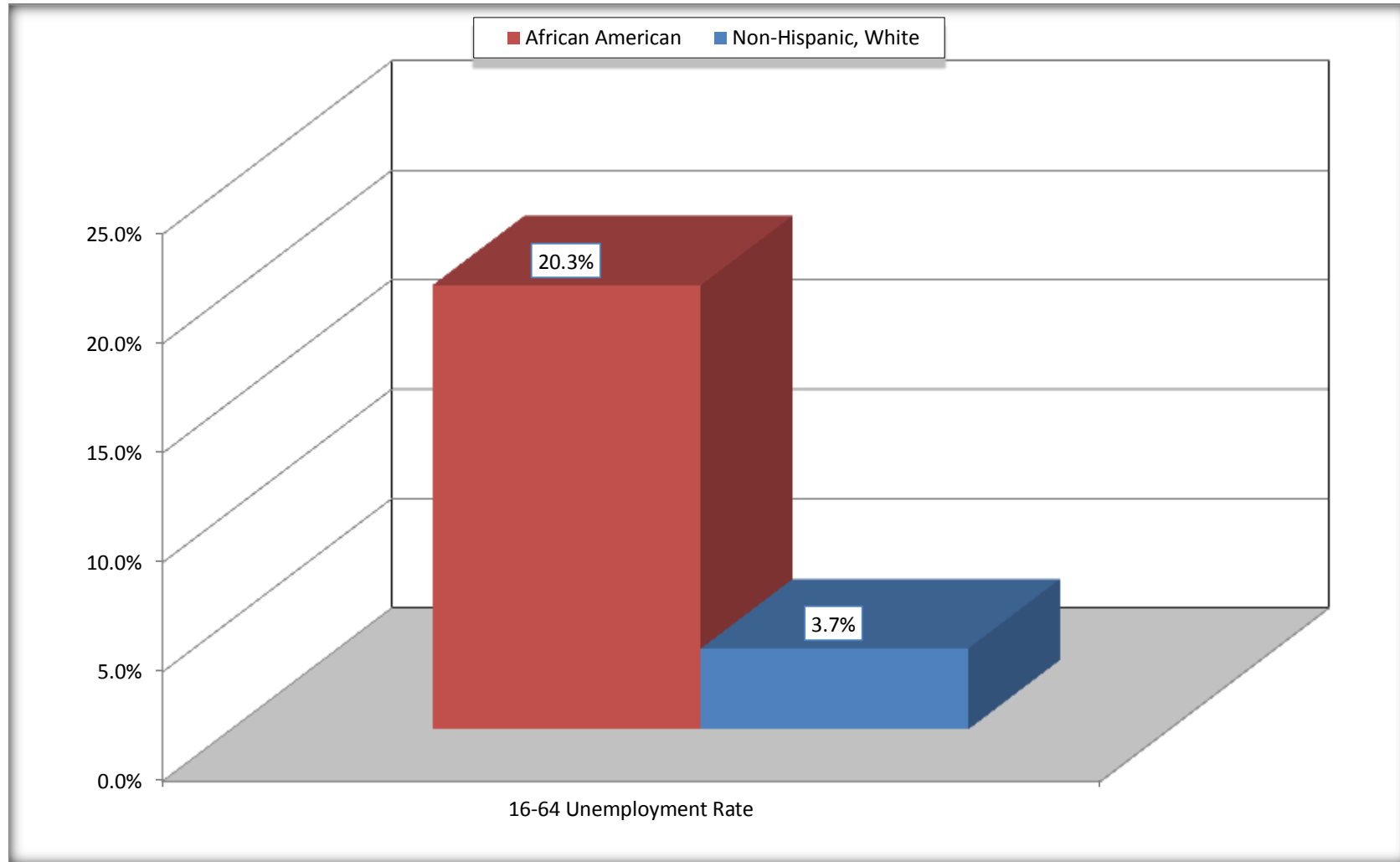
Jasper city, Texas



Source: C23002. SEX BY AGE BY EMPLOYMENT STATUS FOR THE POPULATION 16 YEARS AND OVER
Data Set: 2008-2012 American Community Survey 5-Year Estimates

Unemployment of Working Age Population (Ages 16 to 64) (As a Percent of 16-64 Civilian Labor Force)

Jasper city, Texas



Source: C23002. SEX BY AGE BY EMPLOYMENT STATUS FOR THE POPULATION 16 YEARS AND OVER
Data Set: 2008-2012 American Community Survey 5-Year Estimates

C24010. SEX BY OCCUPATION FOR THE CIVILIAN EMPLOYED POPULATION 16 YEARS AND OVER

Data Set: 2008-2012 American Community Survey 5-Year Estimates

	Jasper city, Texas					
	African American	Margin of Error (+/-)	% of AA Total	White, Not Hispanic	Margin of Error (+/-)	% of NHW Total
Total:	1,238	220	100.0%	1,187	204	100.0%
Management, professional, and related occupations	137	NC	11.1%	406	NC	34.2%
Service occupations	519	NC	41.9%	194	NC	16.3%
Sales and office occupations	352	NC	28.4%	304	NC	25.6%
Natural resources, construction, and maintenance occupations:	108	NC	8.7%	166	NC	14.0%
Production, transportation, and material moving occupations	122	NC	9.9%	117	NC	9.9%
Male:	507	138	41.0%	527	123	44.4%
Management, business, science, and arts occupations:	12	14	1.0%	156	69	13.1%
Service occupations	177	85	14.3%	65	46	5.5%
Sales and office occupations	115	69	9.3%	72	50	6.1%
Natural resources, construction, and maintenance occupations:	108	77	8.7%	156	81	13.1%
Production, transportation, and material moving occupations	95	50	7.7%	78	65	6.6%
Female:	731	139	59.0%	660	138	55.6%
Management, professional, and related occupations	125	78	10.1%	250	88	21.1%
Service occupations	342	128	27.6%	129	67	10.9%
Sales and office occupations	237	116	19.1%	232	94	19.5%
Natural resources, construction, and maintenance occupations:	0	18	0.0%	10	15	0.8%
Production, transportation, and material moving occupations	27	32	2.2%	39	42	3.3%

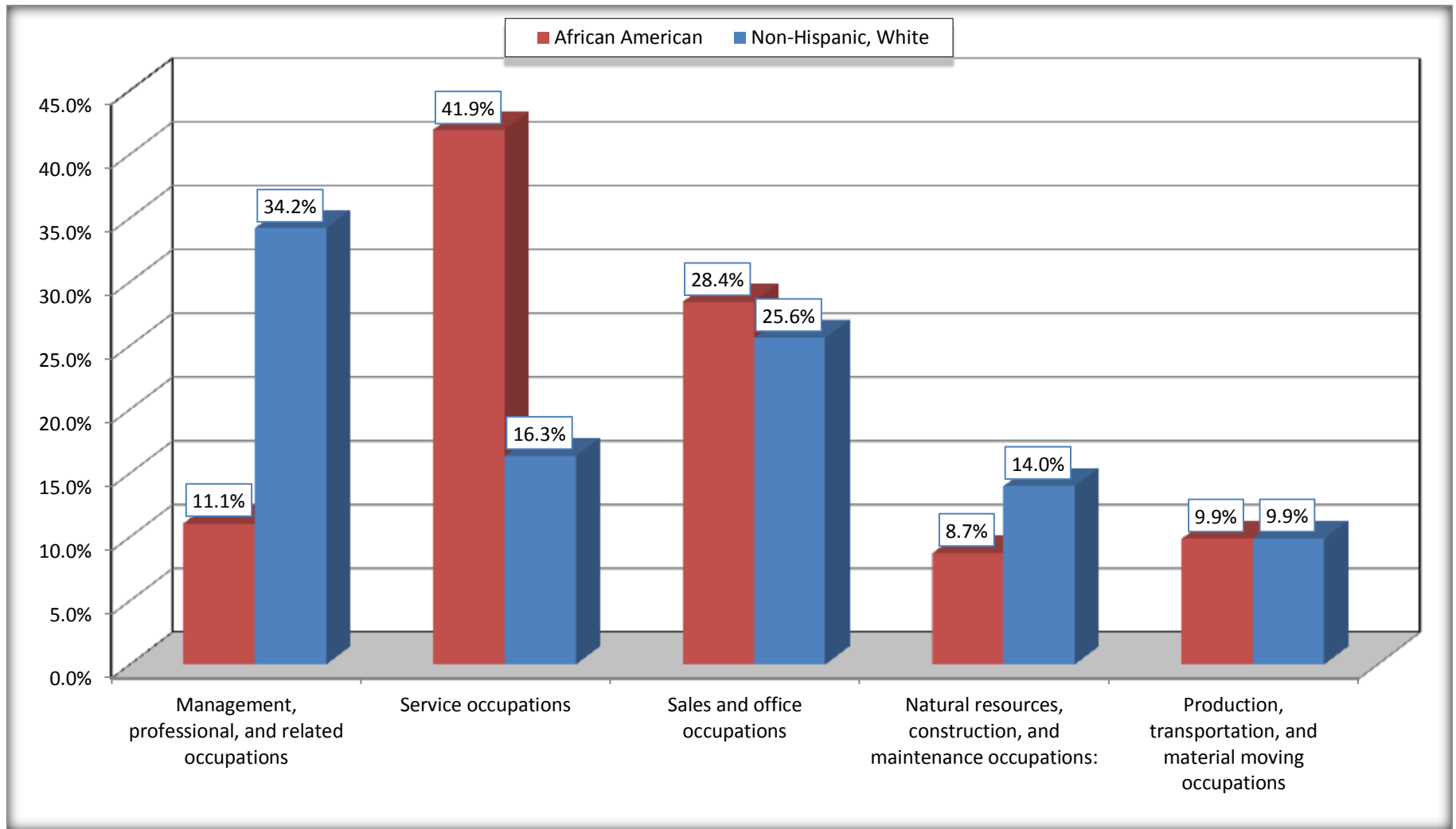
Source: U.S. Census Bureau, 2008-2012 American Community Survey

For information on confidentiality protection, sampling error, nonsampling error, and definitions, see Survey Methodology.

<http://www.census.gov/acs/www/UseData/index.htm>

Occupation for the Civilian Employed 16 Years and Over Population

Jasper city, Texas



Source: C24010. SEX BY OCCUPATION FOR THE CIVILIAN EMPLOYED POPULATION 16 YEARS AND OVER
Data Set: 2008-2012 American Community Survey 5-Year Estimates

B25003. TENURE - Universe: OCCUPIED HOUSING UNITS

Data Set: 2008-2012 American Community Survey 5-Year Estimates

	Jasper city, Texas					
	African American	Margin of Error (+/-)	% of AA Total	White, Not Hispanic	Margin of Error (+/-)	% of NHW Total
Total:	1,381	170	100.0%	1,252	171	100.0%
Owner occupied	700	155	50.7%	813	137	64.9%
Renter occupied	681	194	49.3%	439	117	35.1%

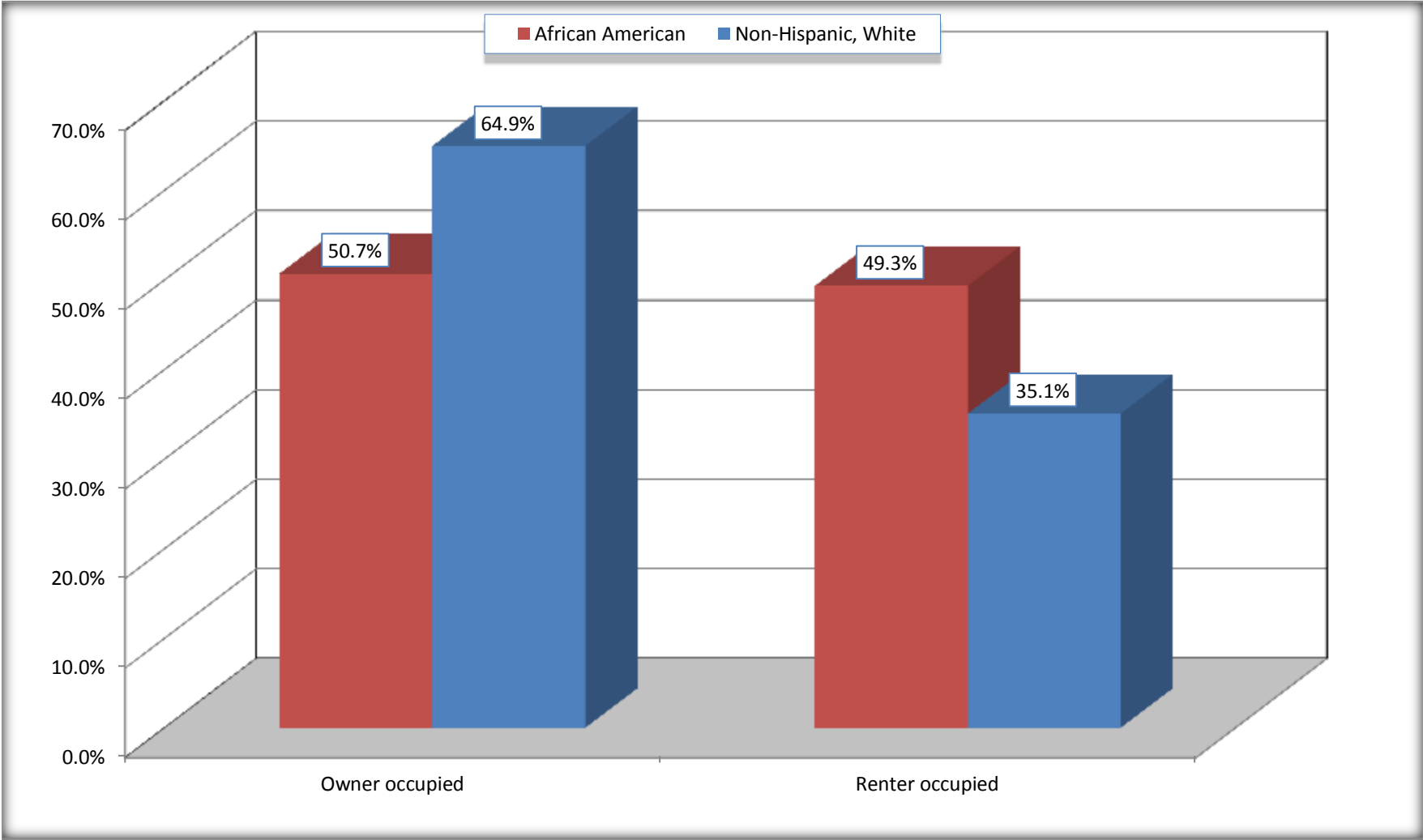
Source: U.S. Census Bureau, 2008-2012 American Community Survey

For information on confidentiality protection, sampling error, nonsampling error, and definitions, see Survey Methodology.

<http://www.census.gov/acs/www/UseData/index.h>

Home Owners and Renters by Household

Jasper city, Texas



Source: B25003. TENURE - Universe: OCCUPIED HOUSING UNITS
Data Set: 2008-2012 American Community Survey 5-Year Estimates

B25014. OCCUPANTS PER ROOM - Universe: OCCUPIED HOUSING UNITS

Data Set: 2008-2012 American Community Survey 5-Year Estimates

	Jasper city, Texas					
	African American	Margin of Error (+/-)	% of AA Total	White, Not Hispanic	Margin of Error (+/-)	% of NHW Total
Total:	1,381	170	100.0%	1,252	171	100.0%
1.00 or less occupants per room	1,340	178	97.0%	1,242	170	99.2%
1.01 or more occupants per room	41	43	3.0%	10	16	0.8%

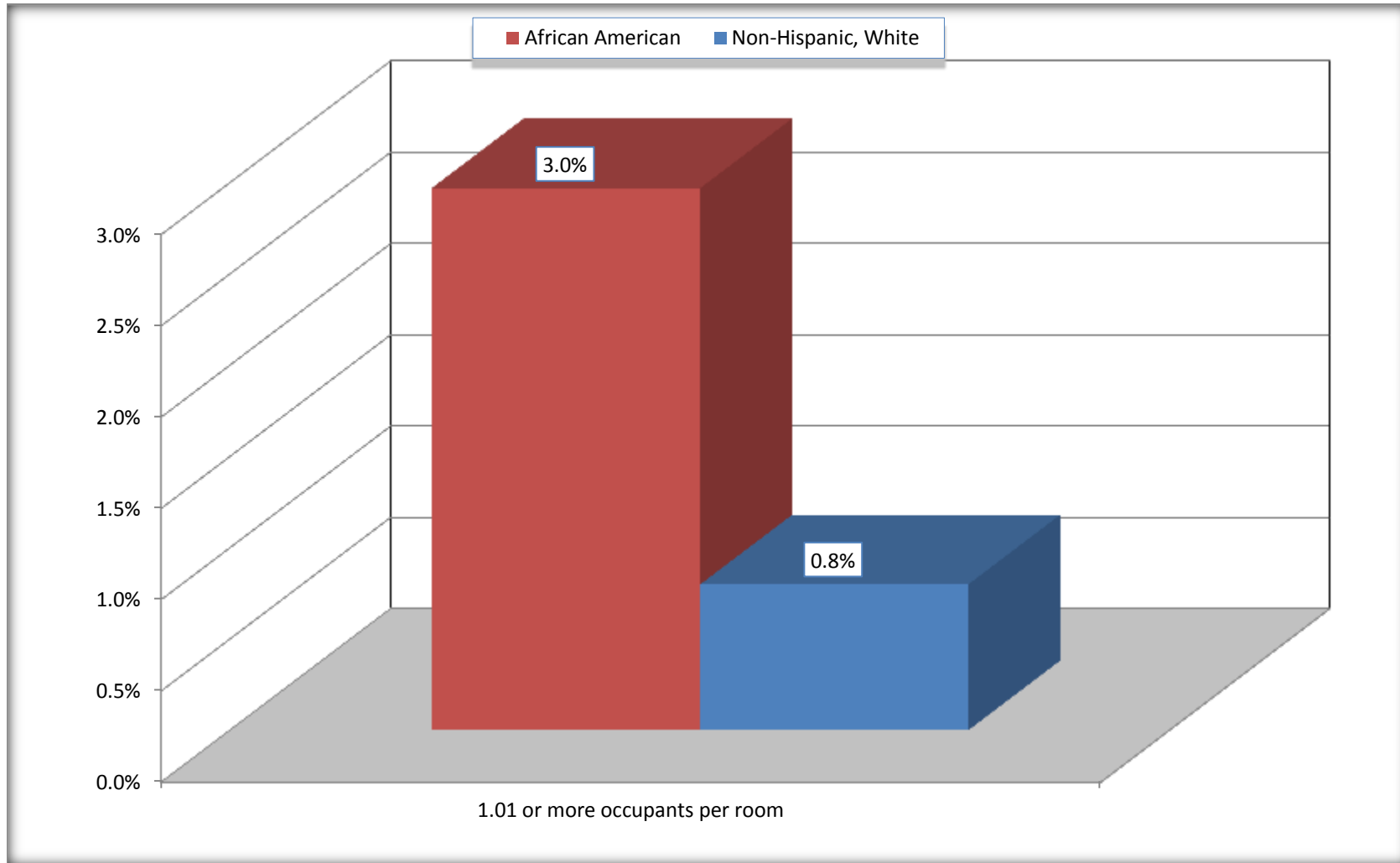
Source: U.S. Census Bureau, 2008-2012 American Community Survey

For information on confidentiality protection, sampling error, nonsampling error, and definitions, see Survey Methodology.

<http://www.census.gov/acs/www/UseData/index.ht>

More than One Person per Room (Crowding) by Household

Jasper city, Texas



Source: B25014. OCCUPANTS PER ROOM - Universe: OCCUPIED HOUSING UNITS
Data Set: 2008-2012 American Community Survey 5-Year Estimates

B18101. AGE BY DISABILITY STATUS

Data Set: 2008-2012 American Community Survey 5-Year Estimates

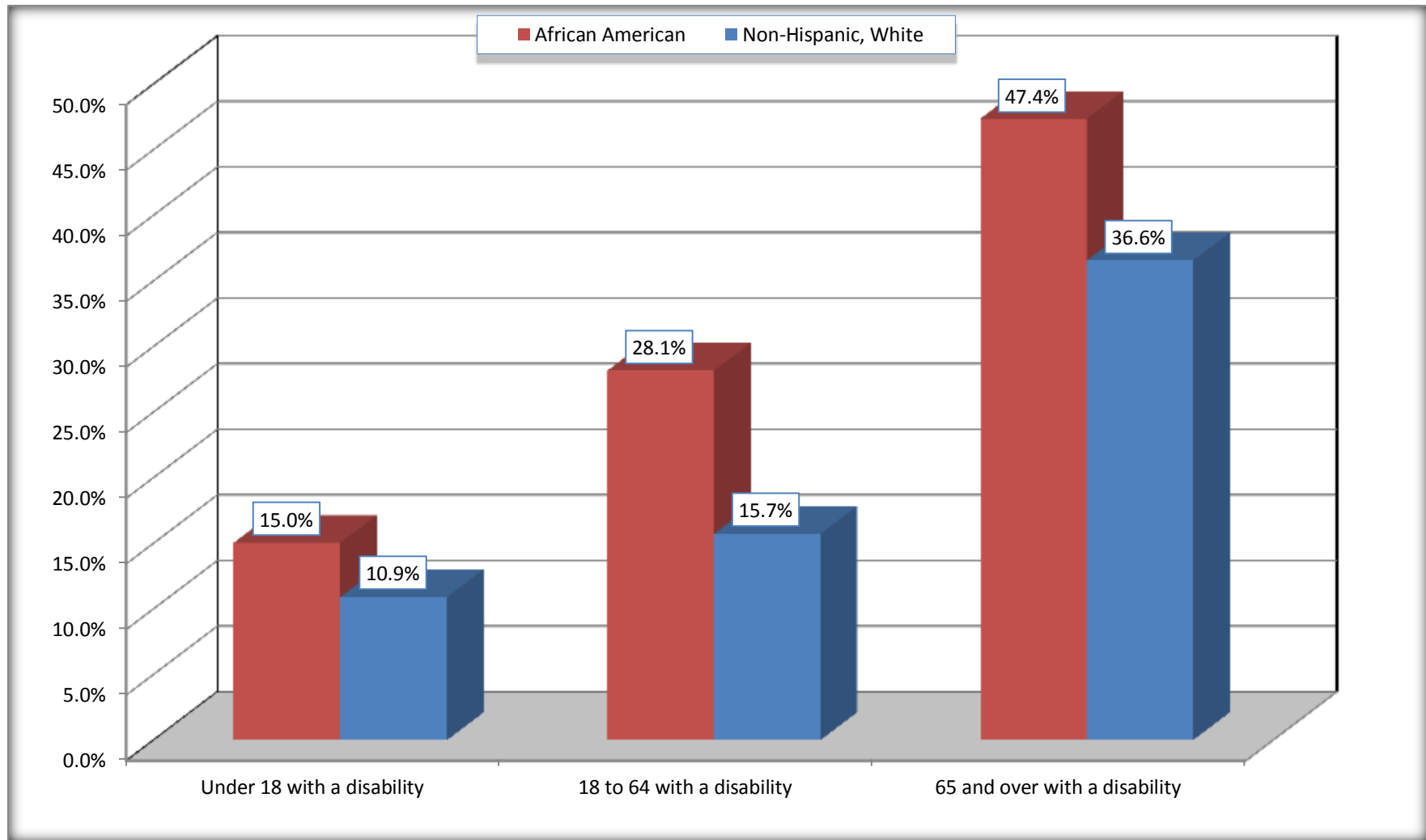
	Jasper city, Texas					
	African American	Margin of Error (+/-)	% of AA Total	White, Not Hispanic	Margin of Error (+/-)	% of NHW Total
Total:	3,291	354	100.0%	2,671	366	100.0%
Under 18 years:	978	224	29.7%	642	20	24.0%
With a disability	147	74	4.5%	70	71	2.6%
No disability	831	191	25.3%	572	183	21.4%
18 to 64 years:	1,954	218	59.4%	1,501	225	56.2%
With a disability	550	179	16.7%	236	114	8.8%
No disability	1,404	237	42.7%	1,265	230	47.4%
65 years and over:	359	75	10.9%	528	123	19.8%
With a disability	170	67	5.2%	193	66	7.2%
No disability	189	68	5.7%	335	91	12.5%

Source: U.S. Census Bureau, 2008-2012 American Community Survey

For information on confidentiality protection, sampling error, nonsampling error, and definitions, see Survey Methodology.

<http://www.census.gov/acs/www/UseData/index.htm>

Disability by Age Jasper city, Texas



Source: B18101. AGE BY DISABILITY STATUS
Data Set: 2008-2012 American Community Survey 5-Year Estimates

C27001B. HEALTH INSURANCE COVERAGE STATUS BY AGE

Data Set: 2008-2012 American Community Survey 5-Year Estimates

	Jasper city, Texas					
	African American	Margin of Error (+/-)	% of AA Total	White, Not Hispanic	Margin of Error (+/-)	% of NHW Total
Total:	3,291	354	100.0%	2,671	366	100.0%
Under 18 years:	978	224	29.7%	642	202	24.0%
With health insurance coverage	959	225	29.1%	556	175	20.8%
No health insurance coverage	19	32	0.6%	86	94	3.2%
18 to 64 years:	1,954	218	59.4%	1,501	225	56.2%
With health insurance coverage	1,057	218	32.1%	1,059	190	39.6%
No health insurance coverage	897	194	27.3%	442	170	16.5%
65 years and over:	359	75	10.9%	528	123	19.8%
With health insurance coverage	353	75	10.7%	528	123	19.8%
No health insurance coverage	6	11	0.2%	0	18	0.0%

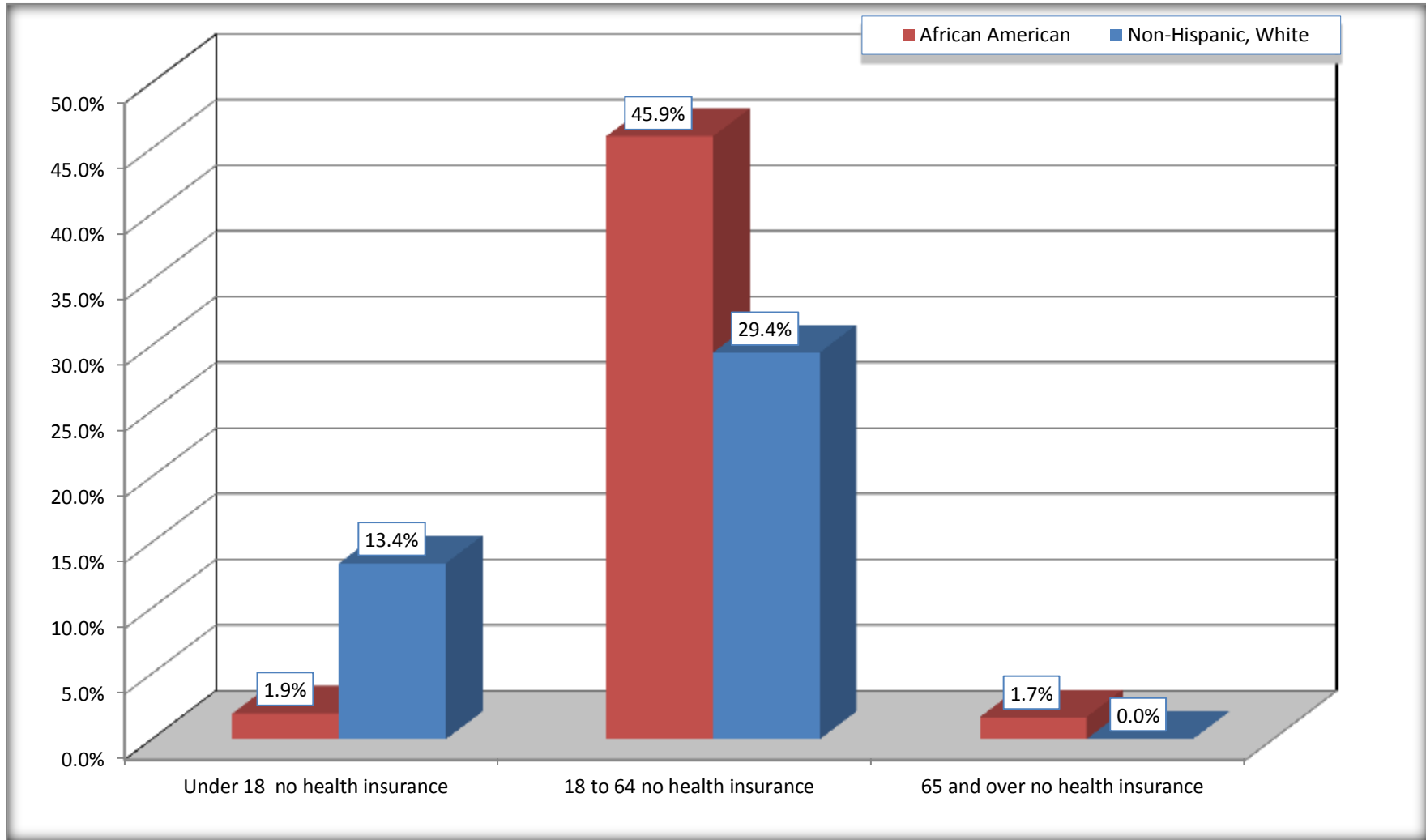
Source: U.S. Census Bureau, 2008-2012 American Community Survey

For information on confidentiality protection, sampling error, nonsampling error, and definitions, see Survey Methodology.

<http://www.census.gov/acs/www/UseData/index.htm>

Lack of Health Insurance Coverage by Age

Jasper city, Texas



Source: C27001B. HEALTH INSURANCE COVERAGE STATUS BY AGE
Data Set: 2008-2012 American Community Survey 5-Year Estimates