

Selected Socio-Economic Data

Hutchins city, Texas

African American and White, Not Hispanic

Data Set: 2008-2012 American Community Survey 5-Year Estimates

www.fairvote2020.org

www.fairdata2000.com

[29-Dec-13](#)

C02003.DETAILED RACE - Universe: TOTAL POPULATION

Data Set: 2008-2012 American Community Survey 5-Year Estimates

	Hutchins city, Texas		
	Population	Margin of Error (+/-)	% of Total
Total:	5,238	32	100.0%
Population of one race:	5,191	54	99.1%
White	2,744	343	52.4%
Black or African American	2,162	320	41.3%
American Indian and Alaska Native	78	66	1.5%
Asian alone	0	18	0.0%
Native Hawaiian and Other Pacific Islander	49	76	0.9%
Some other race	158	137	3.0%
Population of two or more races:	47	39	0.9%
Two races including Some other race	0	18	0.0%
Two races excluding Some other race, and three or more races	47	39	0.9%
Population of two races:	47	39	0.9%
White; Black or African American	24	27	0.5%
White; American Indian and Alaska Native	19	28	0.4%
White; Asian	0	18	0.0%
Black or African American; American Indian and Alaska Native	4	8	0.1%
All other two race combinations	0	18	0.0%
Population of three races	0	18	0.0%
Population of four or more races	0	18	0.0%

Note: Hispanics may be of any race. See Table B03002 and chart.

Source: U.S. Census Bureau, 2008-2012 American Community Survey

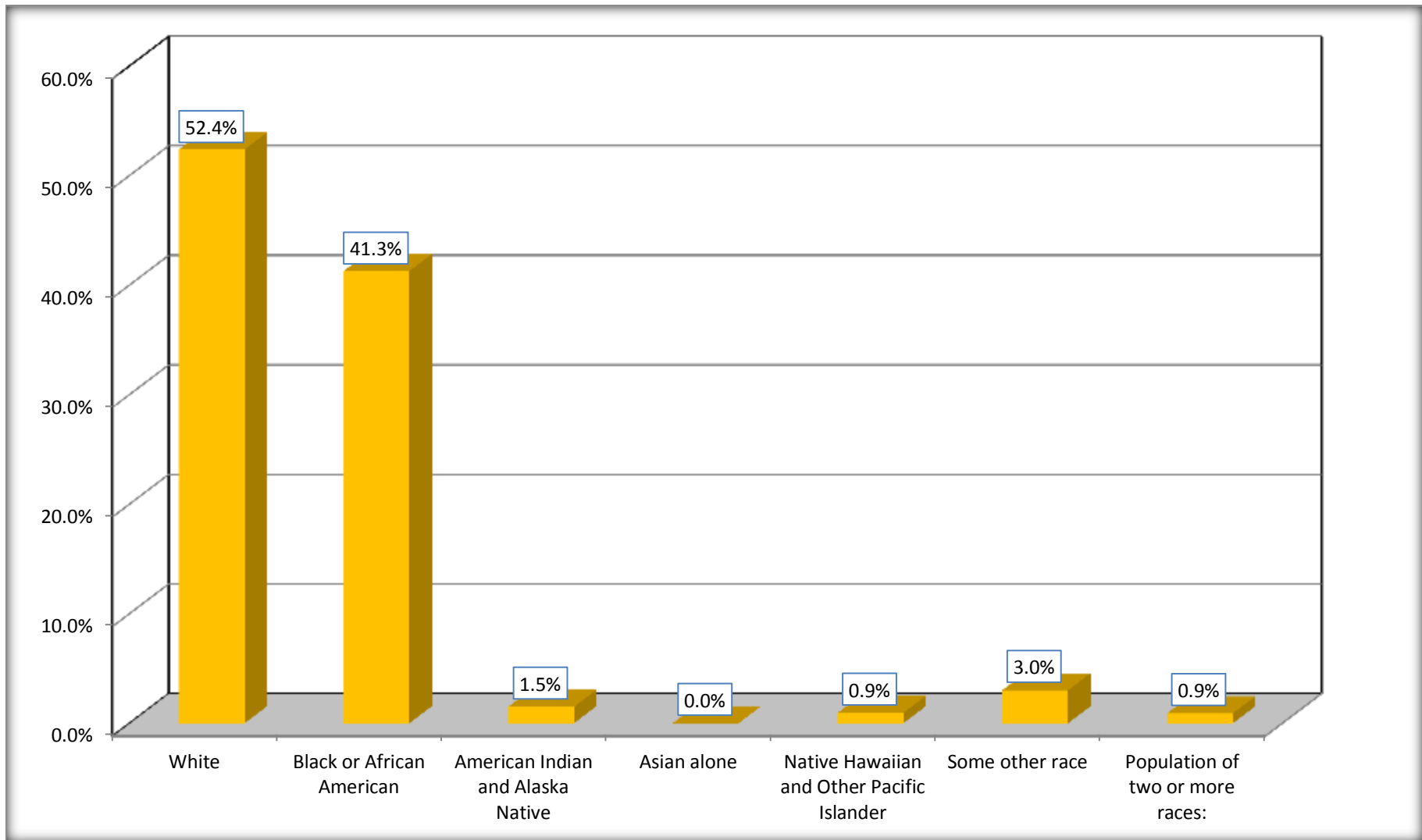
Although the American Community Survey (ACS) produces population, demographic and housing unit estimates, it is the Census Bureau's Population Estimates Program that produces and disseminates the official estimates of the population for the nation, states, counties, cities and towns and estimates of housing units for states and counties.

For information on confidentiality protection, sampling error, nonsampling error, and definitions, see Survey Methodology.

<http://www.census.gov/acs/www/UseData/index.htm>

Population by Race

Hutchins city, Texas



Source: C02003.DETAILED RACE - Universe: TOTAL POPULATION
Data Set: 2008-2012 American Community Survey 5-Year Estimates

B03002. HISPANIC OR LATINO ORIGIN BY RACE - Universe: TOTAL POPULATION

Data Set: 2008-2012 American Community Survey 5-Year Estimates

	Hutchins city, Texas		
	Population	Margin of Error (+/-)	% of Total
Total:	5,238	32	100.0%
Not Hispanic or Latino:	3,516	301	67.1%
White alone	1,270	279	24.2%
Black or African American alone	2,159	320	41.2%
American Indian and Alaska Native alone	0	18	0.0%
Asian alone	0	18	0.0%
Native Hawaiian and Other Pacific Islander alone	49	76	0.9%
Some other race alone	0	18	0.0%
Two or more races:	38	32	0.7%
Two races including Some other race	0	18	0.0%
Two races excluding Some other race, and three or more races	38	32	0.7%
Hispanic or Latino	1,722	296	32.9%

Source: U.S. Census Bureau, 2008-2012 American Community Survey

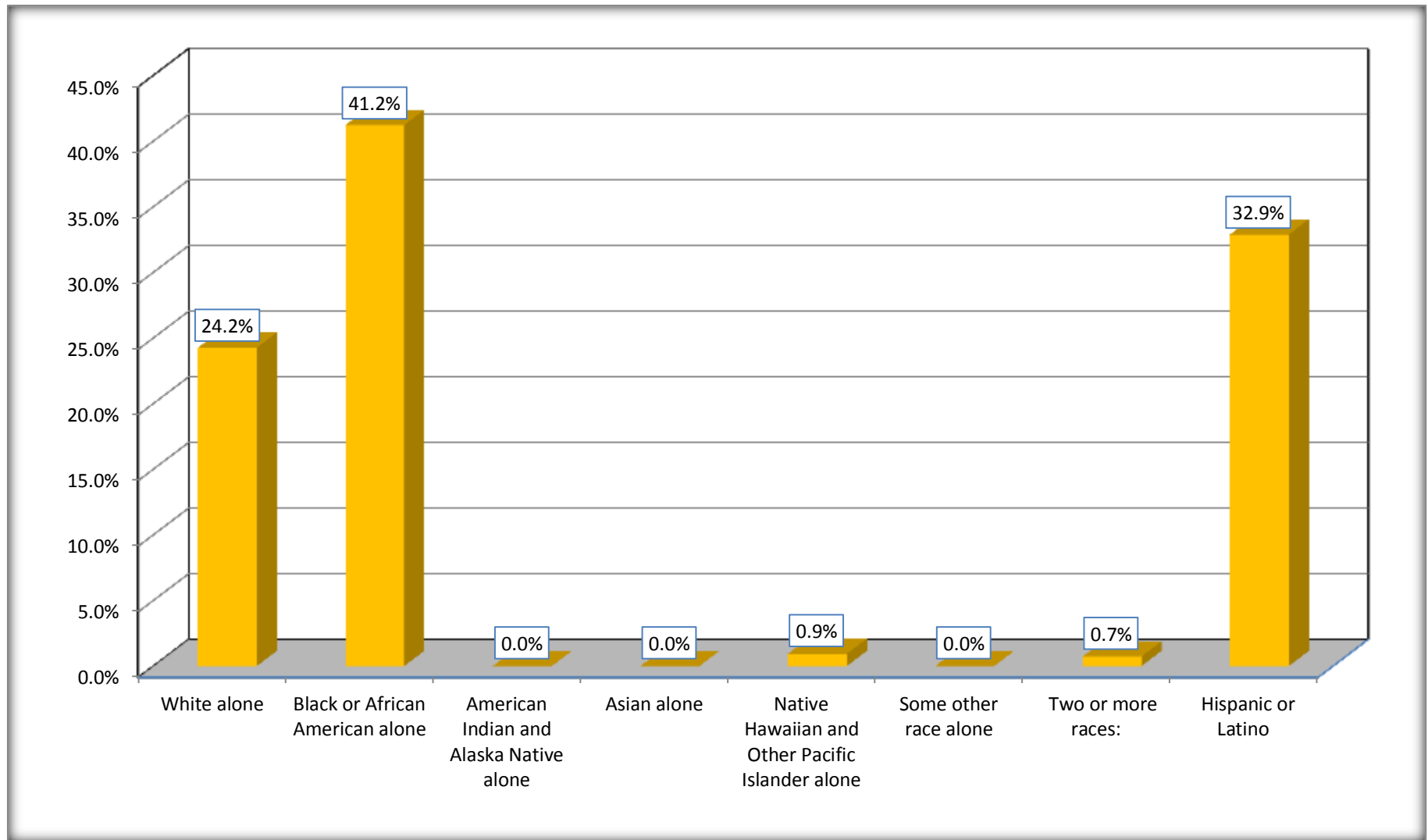
Although the American Community Survey (ACS) produces population, demographic and housing unit estimates, it is the Census Bureau's Population Estimates Program that produces and disseminates the official estimates of the population for the nation, states, counties, cities and towns and estimates of housing units for states and counties.

For information on confidentiality protection, sampling error, nonsampling error, and definitions, see Survey Methodology.

<http://www.census.gov/acs/www/UseData/index.htm>

Non-Hispanic by Race and Hispanic Population

Hutchins city, Texas



Source: B03002. HISPANIC OR LATINO ORIGIN BY RACE - Universe: TOTAL POPULATION
Data Set: 2008-2012 American Community Survey 5-Year Estimates

B03002. HISPANIC OR LATINO ORIGIN BY RACE

Data Set: 2008-2012 American Community Survey 5-Year Estimates

	Hutchins city, Texas		
	Population	Margin of Error (+/-)	% of Total
Hispanic or Latino:	1,722	296	100.0%
White alone	1,474	329	85.6%
Black or African American alone	3	4	0.2%
American Indian and Alaska Native alone	78	66	4.5%
Asian alone	0	18	0.0%
Native Hawaiian and Other Pacific Islander alone	0	18	0.0%
Some other race alone	158	137	9.2%
Two or more races:	9	14	0.5%
Two races including Some other race	0	18	0.0%
Two races excluding Some other race, and three or more races	9	14	0.5%

Source: U.S. Census Bureau, 2008-2012 American Community Survey

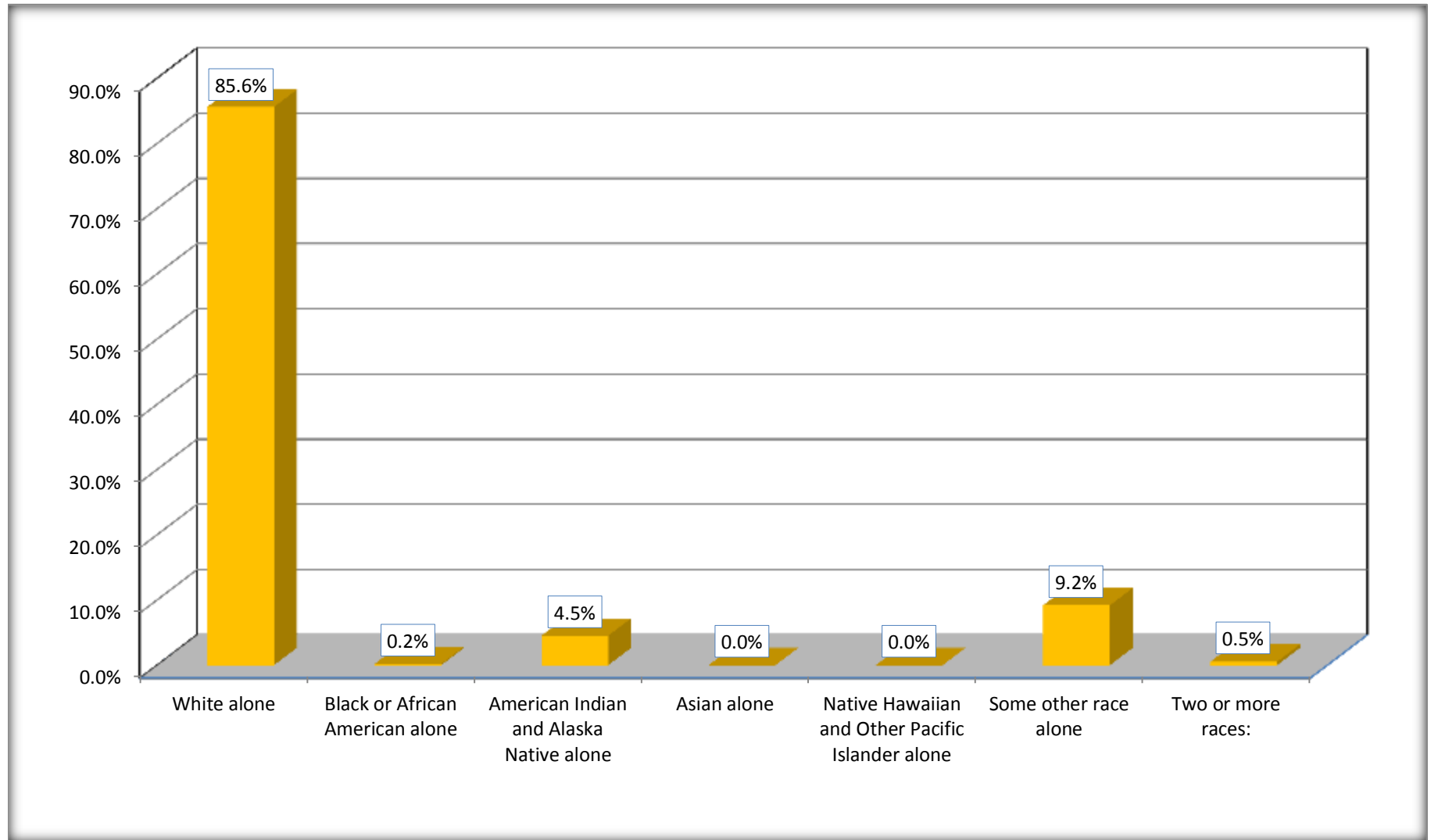
Although the American Community Survey (ACS) produces population, demographic and housing unit estimates, it is the Census Bureau's Population Estimates Program that produces and disseminates the official estimates of the population for the nation, states, counties, cities and towns and estimates of housing units for states and counties.

For information on confidentiality protection, sampling error, nonsampling error, and definitions, see Survey Methodology.

<http://www.census.gov/acs/www/UseData/index.htm>

Hispanic or Latino Origin by Race

Hutchins city, Texas



Source: B03002. HISPANIC OR LATINO ORIGIN BY RACE
Data Set: 2008-2012 American Community Survey 5-Year Estimates

B01001. SEX BY AGE

Data Set: 2008-2012 American Community Survey 5-Year Estimates

	Hutchins city, Texas					
	African American	Margin of Error (+/-)	% of AA Total	White, Not Hispanic	Margin of Error (+/-)	% of NHW Total
Total:	2,162	320	100.0%	1,270	279	100.0%
Under 18 years	598	NC	27.7%	159	NC	12.5%
18 to 64 years	1,415	NC	65.4%	955	NC	75.2%
65 years and over	149	NC	6.9%	156	NC	12.3%
Male:	1,361	199	63.0%	833	389	65.6%
Under 18 years	319	NC	14.8%	79	NC	6.2%
18 to 64 years	942	NC	43.6%	635	NC	50.0%
65 years and over	100	NC	4.6%	119	NC	9.4%
Female:	801	190	37.0%	437	412	34.4%
Under 18 years	279	NC	12.9%	80	NC	6.3%
18 to 64 years	473	NC	21.9%	320	NC	25.2%
65 years and over	49	NC	2.3%	37	NC	2.9%

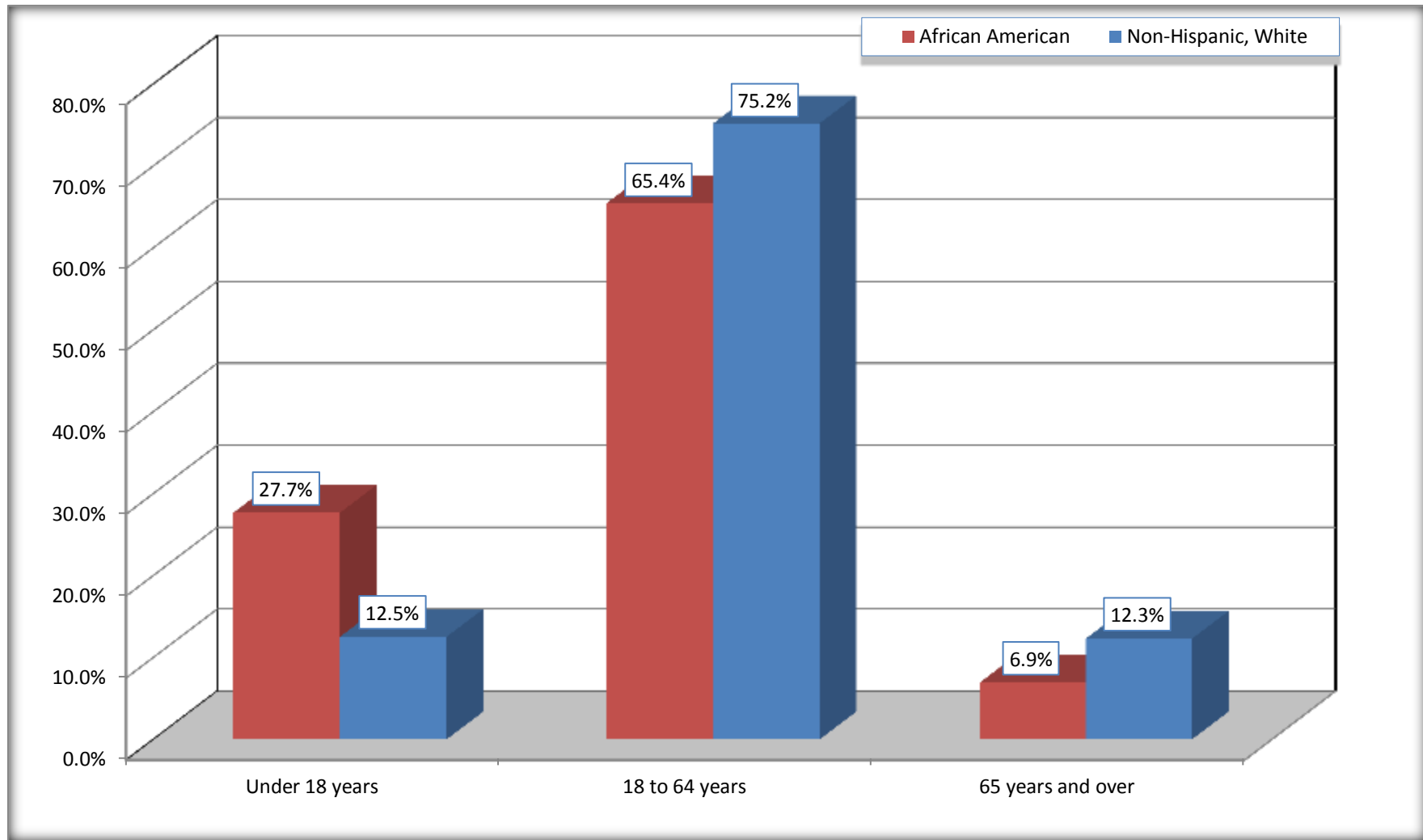
Source: U.S. Census Bureau, 2008-2012 American Community Survey

Although the American Community Survey (ACS) produces population, demographic and housing unit estimates, it is the Census Bureau's Population Estimates Program that produces and disseminates the official estimates of the population for the nation, states, counties, cities and towns and estimates of housing units for states and counties.

For information on confidentiality protection, sampling error, nonsampling error, and definitions, see Survey Methodology.
<http://www.census.gov/acs/www/UseData/index.htm>

Population by Age

Hutchins city, Texas



Source: B01001. SEX BY AGE
Data Set: 2008-2012 American Community Survey 5-Year Estimates

B05003. SEX BY AGE BY CITIZENSHIP STATUS

Data Set: 2008-2012 American Community Survey 5-Year Estimates

	Hutchins city, Texas					
	African American	Margin of Error (+/-)	% of AA Total by Age	White, Not Hispanic	Margin of Error (+/-)	% of NHW Total by Age
Total:	2,162	320	100.0%	1,270	279	100.0%
Under 18 years:	598	NC	100.0%	159	NC	100.0%
Native	598	NC	100.0%	159	NC	100.0%
Foreign born:	0	NC	0.0%	0	NC	0.0%
Naturalized U.S. citizen	0	NC	0.0%	0	NC	0.0%
Not a U.S. citizen	0	NC	0.0%	0	NC	0.0%
18 years and over:	1,564	NC	100.0%	1,111	NC	100.0%
Native	1,564	NC	100.0%	1,103	NC	99.3%
Foreign born:	0	NC	0.0%	8	NC	0.7%
Naturalized U.S. citizen	0	NC	0.0%	2	NC	0.2%
Not a U.S. citizen	0	NC	0.0%	6	NC	0.5%
Male:	1,361	199	63.0%	833	238	65.6%
Under 18 years:	319	127	100.0%	79	56	100.0%
Native	319	127	100.0%	79	56	100.0%
Foreign born:	0	18	0.0%	0	18	0.0%
Naturalized U.S. citizen	0	18	0.0%	0	18	0.0%
Not a U.S. citizen	0	18	0.0%	0	18	0.0%
18 years and over:	1,042	158	100.0%	754	231	100.0%
Native	1,042	158	100.0%	746	232	98.9%
Foreign born:	0	18	0.0%	8	11	1.1%
Naturalized U.S. citizen	0	18	0.0%	2	4	0.3%
Not a U.S. citizen	0	18	0.0%	6	10	0.8%

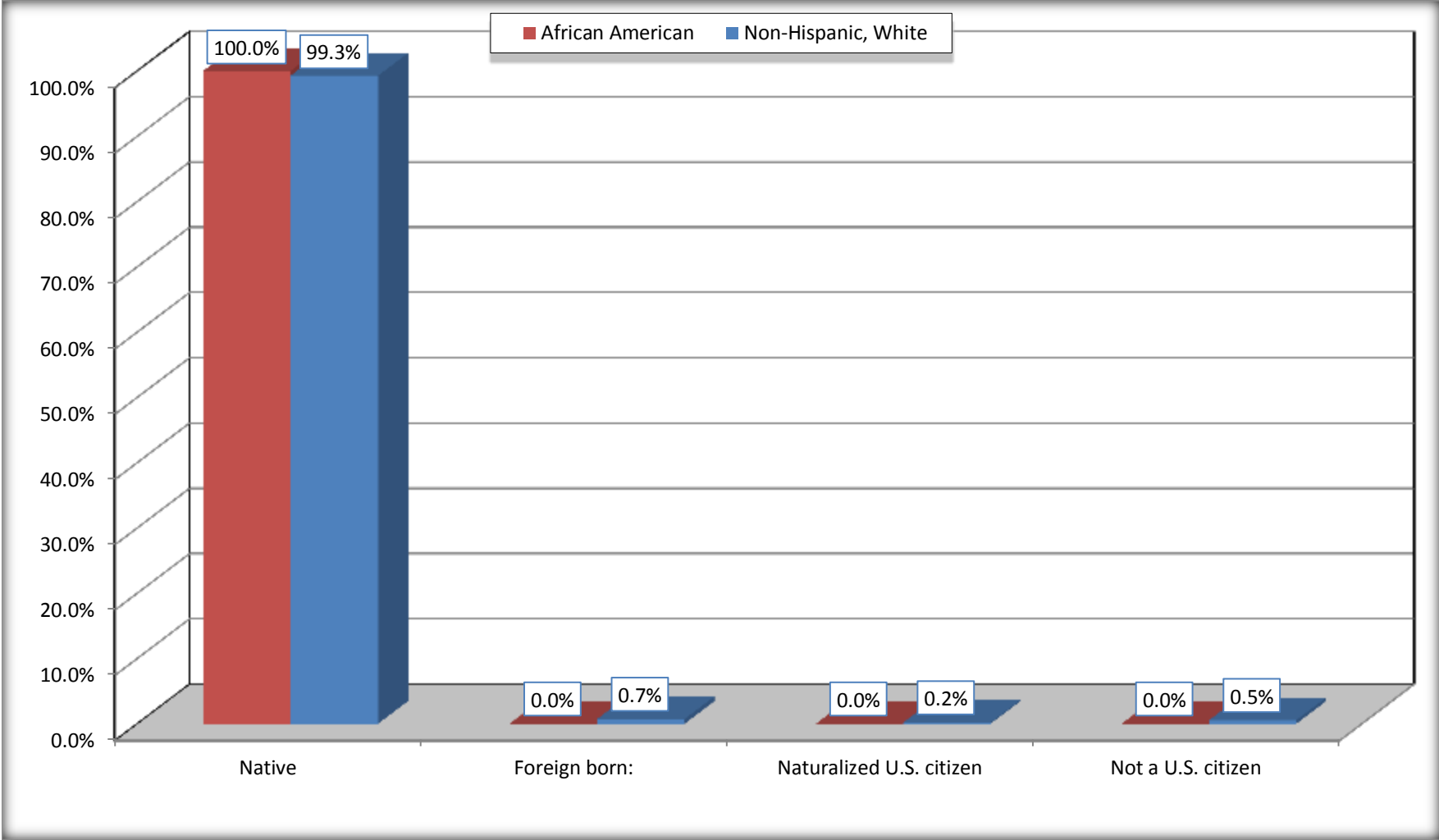
	Hutchins city, Texas					
	African American	Margin of Error (+/-)	% of AA by Age	White, Not Hispanic	Margin of Error (+/-)	% of NHW by Age
Female:	801	190	37.0%	437	114	34.4%
Under 18 years:	279	155	100.0%	80	49	100.0%
Native	279	155	100.0%	80	49	100.0%
Foreign born:	0	18	0.0%	0	18	0.0%
Naturalized U.S. citizen	0	18	0.0%	0	18	0.0%
Not a U.S. citizen	0	18	0.0%	0	18	0.0%
18 years and over:	522	96	100.0%	357	97	100.0%
Native	522	96	100.0%	357	97	100.0%
Foreign born:	0	18	0.0%	0	18	0.0%
Naturalized U.S. citizen	0	18	0.0%	0	18	0.0%
Not a U.S. citizen	0	18	0.0%	0	18	0.0%

Source: U.S. Census Bureau, 2008-2012 American Community Survey

For information on confidentiality protection, sampling error, nonsampling error, and definitions, see Survey Methodology.
<http://www.census.gov/acs/www/UseData/index.htm>

Citizenship Status of Voting Age Population (18 and Over)

Hutchins city, Texas



Source: B05003. SEX BY AGE BY CITIZENSHIP STATUS
Data Set: 2008-2012 American Community Survey 5-Year Estimates

**B07004. GEOGRAPHICAL MOBILITY IN THE PAST YEAR BY RACE FOR CURRENT RESIDENCE IN THE UNITED STATES - Universe:
POPULATION 1 YEAR AND OVER**

Data Set: 2008-2012 American Community Survey 5-Year Estimates

	Hutchins city, Texas					
	African American	Margin of Error (+/-)	% of AA Total	White, Not Hispanic	Margin of Error (+/-)	% of NHW Total
Total:	2,106	313	100.0%	1,246	275	100.0%
Same house 1 year ago	1,748	335	83.0%	846	229	67.9%
Moved within same county	215	82	10.2%	64	43	5.1%
Moved from different county within same state	143	118	6.8%	336	224	27.0%
Moved from different state	0	18	0.0%	0	18	0.0%
Moved from abroad	0	18	0.0%	0	18	0.0%

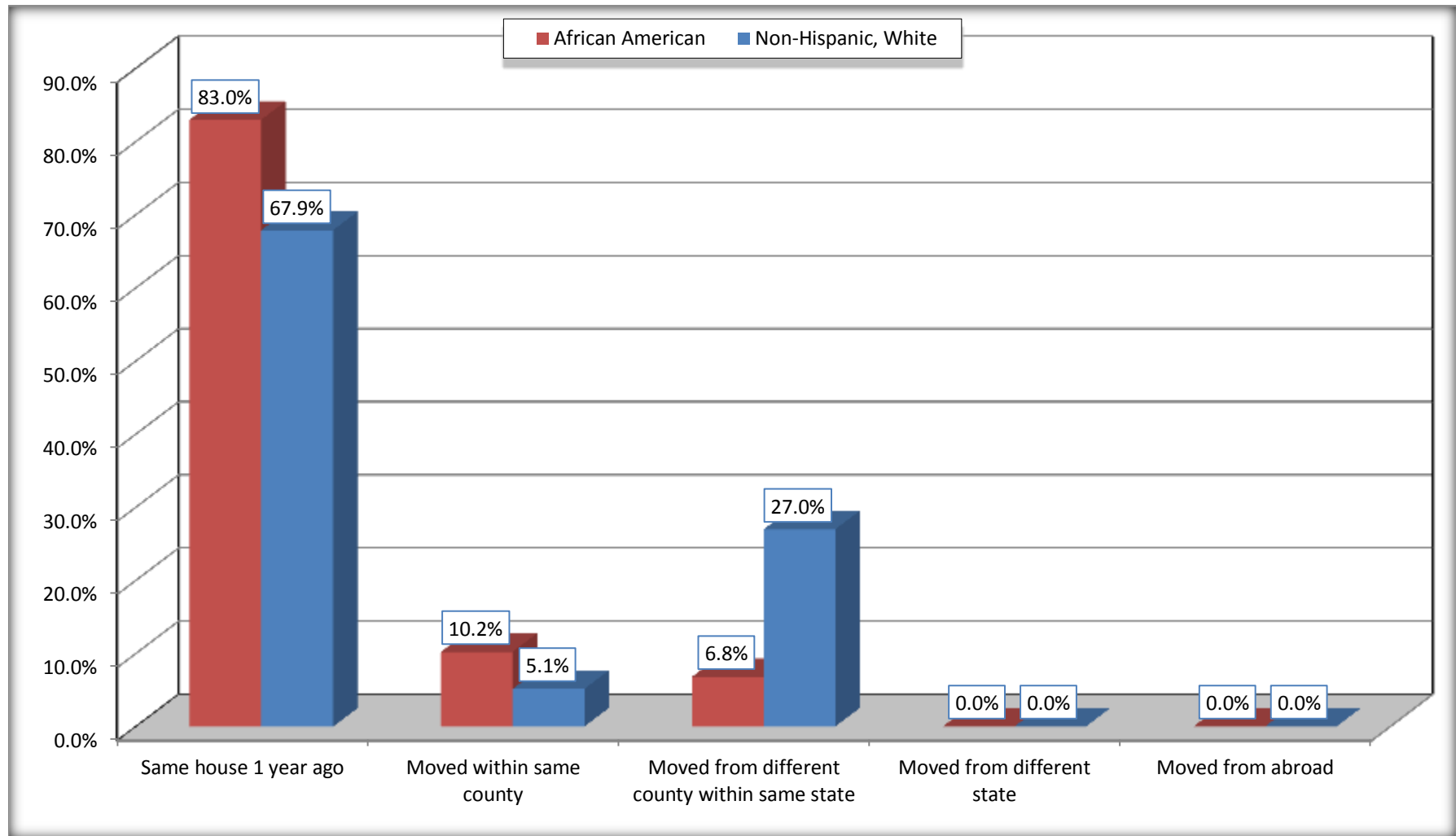
Source: U.S. Census Bureau, 2008-2012 American Community Survey

For information on confidentiality protection, sampling error, nonsampling error, and definitions, see Survey Methodology.

<http://www.census.gov/acs/www/UseData/index.htm>

Geographical Mobility in the Past Year (Population 1 Year and Over)

Hutchins city, Texas



Source: B07004. GEOGRAPHICAL MOBILITY IN THE PAST YEAR BY RACE FOR CURRENT RESIDENCE IN THE UNITED STATES - Universe: POPULATION 1 YEAR AND OVER

Data Set: 2008-2012 American Community Survey 5-Year Estimates

B08105. MEANS OF TRANSPORTATION TO WORK - Universe: WORKERS 16 YEARS AND OVER

Data Set: 2008-2012 American Community Survey 5-Year Estimates

	Hutchins city, Texas					
	African American	Margin of Error (+/-)	% of AA Total	White, Not Hispanic	Margin of Error (+/-)	% of NHW Total
Total:	721	157	100.0%	464	138	100.0%
Car, truck, or van - drove alone	663	159	92.0%	424	130	91.4%
Car, truck, or van - carpooled	46	48	6.4%	40	32	8.6%
Public transportation (excluding taxicab)	6	9	0.8%	0	18	0.0%
Walked	0	18	0.0%	0	18	0.0%
Taxicab, motorcycle, bicycle, or other means	6	12	0.8%	0	18	0.0%
Worked at home	0	18	0.0%	0	18	0.0%

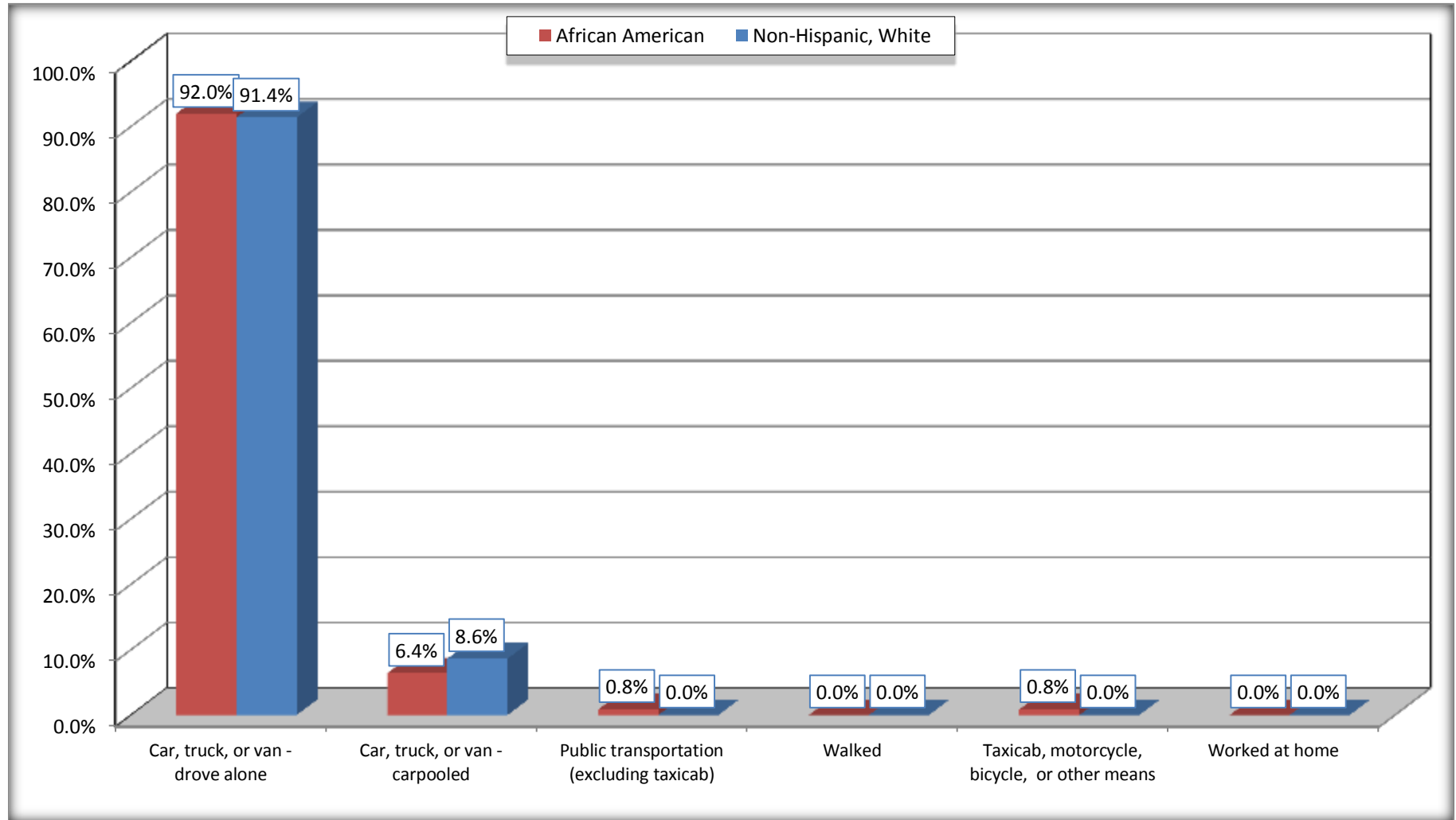
Source: U.S. Census Bureau, 2008-2012 American Community Survey

For information on confidentiality protection, sampling error, nonsampling error, and definitions, see Survey Methodology.

<http://www.census.gov/acs/www/UseData/index.htm>

Means of Transportation to Work (Workers 16 Years and Over)

Hutchins city, Texas



Source: B08105. MEANS OF TRANSPORTATION TO WORK - Universe: WORKERS 16 YEARS AND OVER
Data Set: 2008-2012 American Community Survey 5-Year Estimates

B11002. HOUSEHOLD TYPE BY RELATIVES AND NONRELATIVES FOR POPULATION IN HOUSEHOLDS

Data Set: 2008-2012 American Community Survey 5-Year Estimates

	Hutchins city, Texas					
	African American	Margin of Error (+/-)	% of AA Total	White, Not Hispanic	Margin of Error (+/-)	% of NHW Total
Total:	1803	354	100.0%	860	237	100.0%
In family households	1686	355	93.5%	673	215	78.3%
In nonfamily households	117	67	6.5%	187	93	21.7%

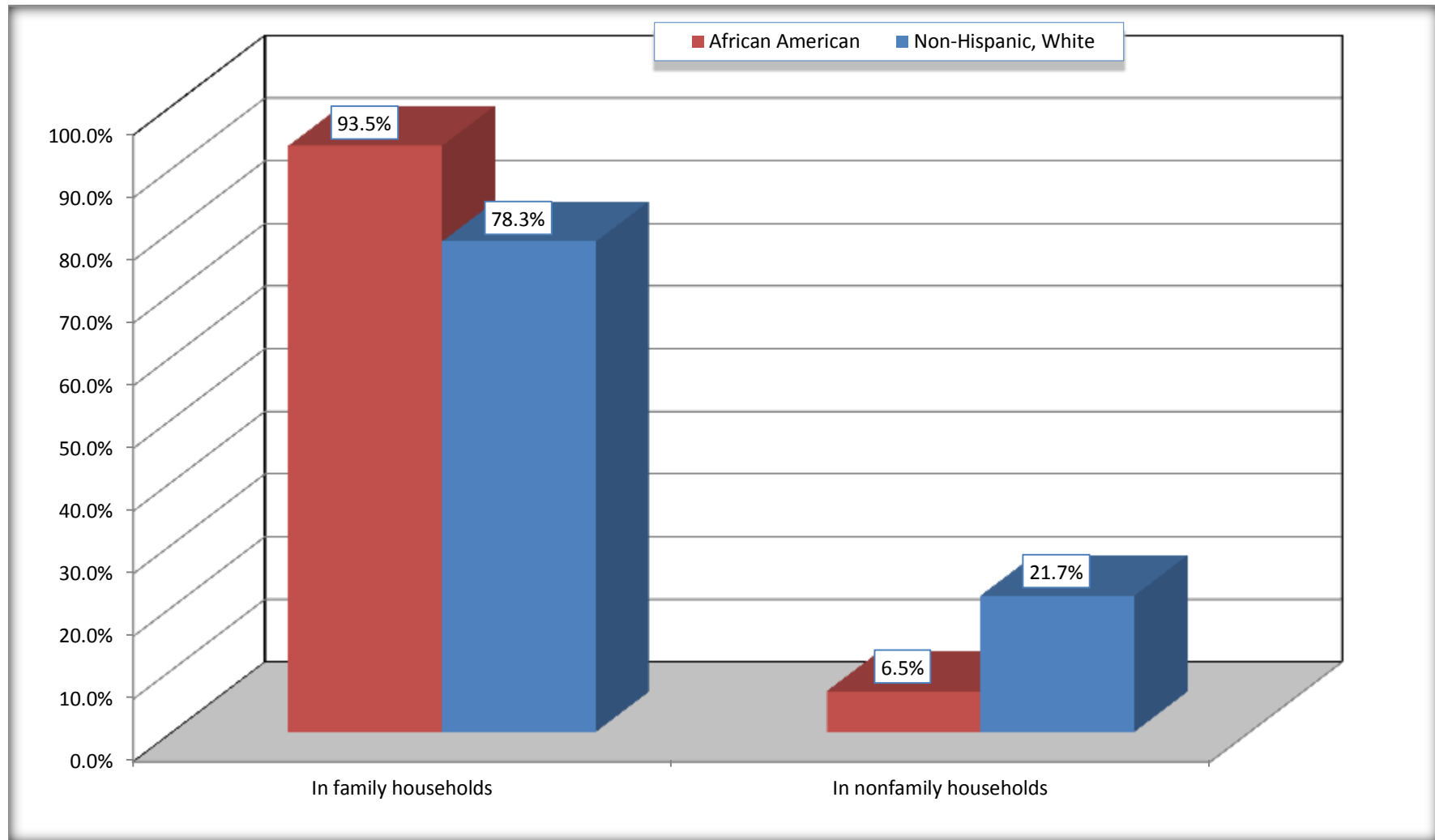
Source: U.S. Census Bureau, 2008-2012 American Community Survey

For information on confidentiality protection, sampling error, nonsampling error, and definitions, see Survey Methodology.

<http://www.census.gov/acs/www/UseData/index.htm>

Household Type for Population in Households

Hutchins city, Texas



Source: B11002. HOUSEHOLD TYPE BY RELATIVES AND NONRELATIVES FOR POPULATION IN HOUSEHOLDS
Data Set: 2008-2012 American Community Survey 5-Year Estimates

B12002. MARITAL STATUS FOR THE POPULATION 15 YEARS AND OVER

Data Set: 2008-2012 American Community Survey 5-Year Estimates

	Hutchins city, Texas					
	African American	Margin of Error (+/-)	% of AA Total	White, Not Hispanic	Margin of Error (+/-)	% of NHW Total
Total:	1,638	181	100.0%	1,118	253	100.0%
Never married	512	NC	31.3%	323	NC	28.9%
Now married (except separated)	767	NC	46.8%	480	NC	42.9%
Separated	122	NC	7.4%	39	NC	3.5%
Widowed	45	NC	2.7%	61	NC	5.5%
Divorced	192	NC	11.7%	215	NC	19.2%
Male:	1,108	150	67.6%	761	231	68.1%
Never married	412	108	25.2%	239	153	21.4%
Now married (except separated)	452	96	27.6%	280	65	25.0%
Separated	83	60	5.1%	29	40	2.6%
Widowed	38	35	2.3%	20	23	1.8%
Divorced	123	79	7.5%	193	74	17.3%
Female:	530	97	32.4%	357	97	31.9%
Never married	100	53	6.1%	84	53	7.5%
Now married (except separated)	315	86	19.2%	200	68	17.9%
Separated	39	31	2.4%	10	16	0.9%
Widowed	7	10	0.4%	41	26	3.7%
Divorced	69	63	4.2%	22	21	2.0%

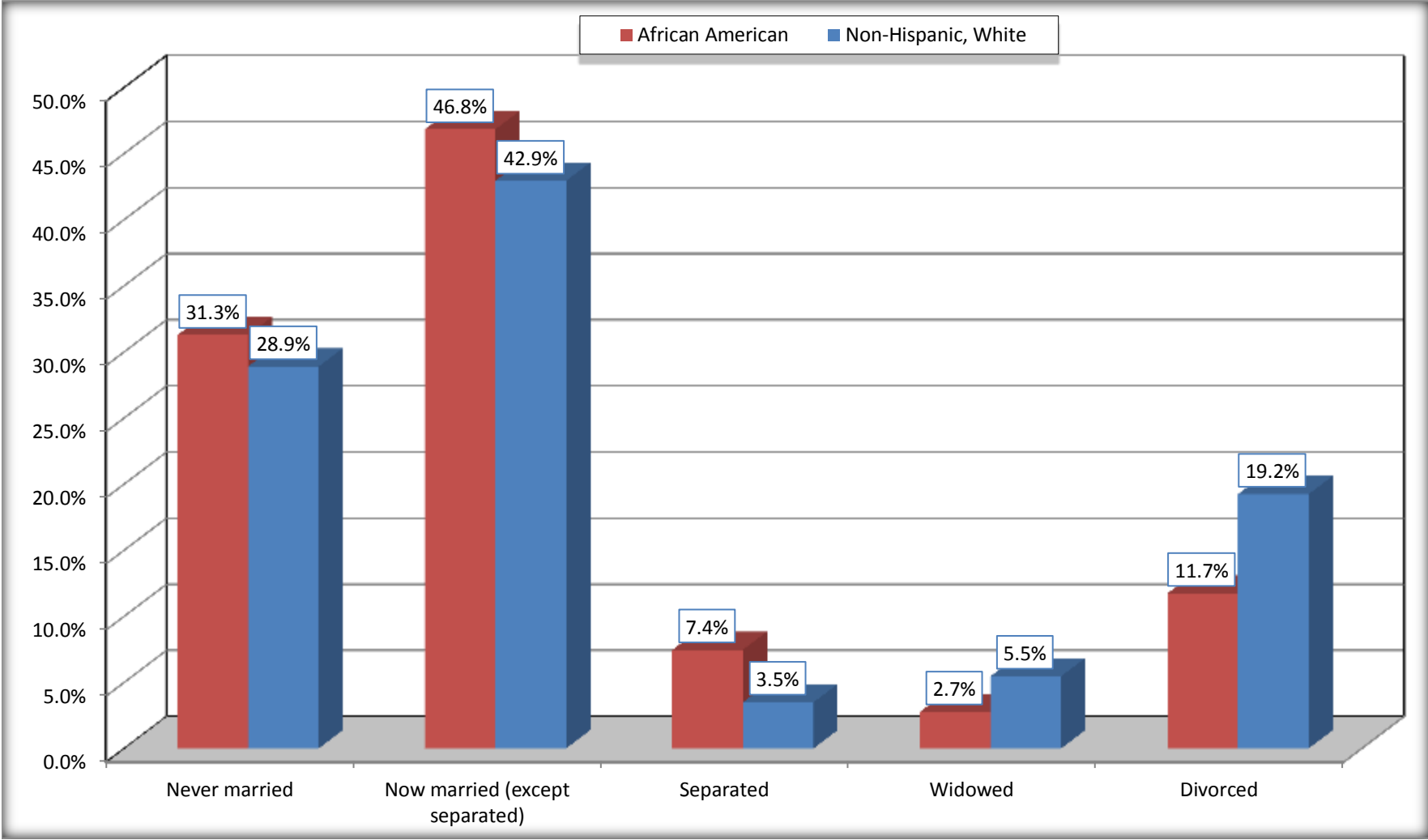
Source: U.S. Census Bureau, 2008-2012 American Community Survey

For information on confidentiality protection, sampling error, nonsampling error, and definitions, see Survey Methodology.

<http://www.census.gov/acs/www/UseData/index.htm>

Marital Status for the Population 15 Years and Over

Hutchins city, Texas



Source: B12002. MARITAL STATUS FOR THE POPULATION 15 YEARS AND OVER
Data Set: 2008-2012 American Community Survey 5-Year Estimates

C15002. SEX BY EDUCATIONAL ATTAINMENT FOR THE POPULATION 25 YEARS AND OVER

Data Set: 2008-2012 American Community Survey 5-Year Estimates

	Hutchins city, Texas					
	African American	Margin of Error (+/-)	% of AA Total	White, Not Hispanic	Margin of Error (+/-)	% of NHW Total
Total:	1,370	184	100.0%	1,039	233	100.0%
Less than high school diploma	208	NC	15.2%	168	NC	16.2%
High school graduate, GED, or alternative	552	NC	40.3%	441	NC	42.4%
Some college or associate's degree	487	NC	35.5%	302	NC	29.1%
Bachelor's degree or higher	123	NC	9.0%	128	NC	12.3%
Male:	910	139	66.4%	699	207	67.3%
Less than high school diploma	123	60	9.0%	130	53	12.5%
High school graduate, GED, or alternative	393	132	28.7%	292	86	28.1%
Some college or associate's degree	332	107	24.2%	175	102	16.8%
Bachelor's degree or higher	62	43	4.5%	102	84	9.8%
Female:	460	89	33.6%	340	91	32.7%
Less than high school diploma	85	62	6.2%	38	24	3.7%
High school graduate, GED, or alternative	159	60	11.6%	149	64	14.3%
Some college or associate's degree	155	79	11.3%	127	57	12.2%
Bachelor's degree or higher	61	41	4.5%	26	29	2.5%

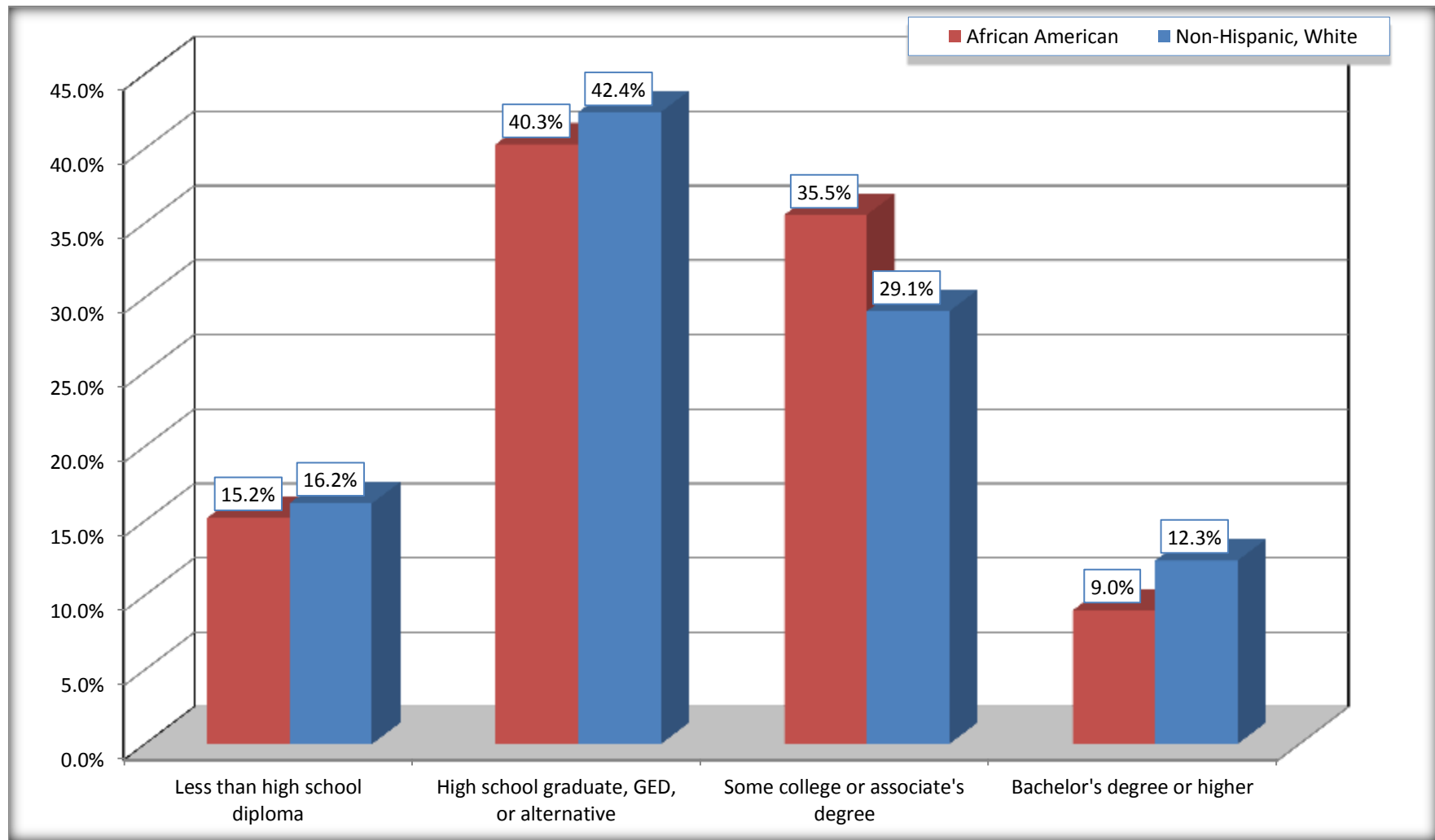
Source: U.S. Census Bureau, 2008-2012 American Community Survey

For information on confidentiality protection, sampling error, nonsampling error, and definitions, see Survey Methodology.

<http://www.census.gov/acs/www/UseData/index.htm>

Educational Attainment for the Population 25 Years and Older

Hutchins city, Texas



Source: C15002. SEX BY EDUCATIONAL ATTAINMENT FOR THE POPULATION 25 YEARS AND OVER
Data Set: 2008-2012 American Community Survey 5-Year Estimates

B17010. POVERTY STATUS IN THE PAST 12 MONTHS OF FAMILIES BY FAMILY TYPE BY PRESENCE OF RELATED CHILDREN UNDER 18 YEARS

Data Set: 2008-2012 American Community Survey 5-Year Estimates

	Hutchins city, Texas					
	African American	Margin of Error (+/-)	% of AA Total	White, Not Hispanic	Margin of Error (+/-)	% of NHW Total
Total:	459	76	100.0%	252	79	100.0%
Income in the past 12 months below poverty level:	78	47	17.0%	13	15	5.2%
Married-couple family:	43	51	9.4%	6	10	2.4%
With related children under 18 years	34	49	7.4%	0	18	0.0%
Other family:	35	28	7.6%	7	11	2.8%
Male householder, no wife present	0	18	0.0%	7	11	2.8%
With related children under 18 years	0	18	0.0%	0	18	0.0%
Female householder, no husband present	35	28	7.6%	0	18	0.0%
With related children under 18 years	35	28	7.6%	0	18	0.0%
Income in the past 12 months at or above poverty level:	381	89	83.0%	239	77	94.8%
Married-couple family:	272	84	59.3%	170	67	67.5%
With related children under 18 years	158	77	34.4%	75	47	29.8%
Other family:	109	62	23.7%	69	52	27.4%
Male householder, no wife present	39	37	8.5%	28	33	11.1%
With related children under 18 years	8	12	1.7%	0	18	0.0%
Female householder, no husband present	70	57	15.3%	41	40	16.3%
With related children under 18 years	25	29	5.4%	0	18	0.0%

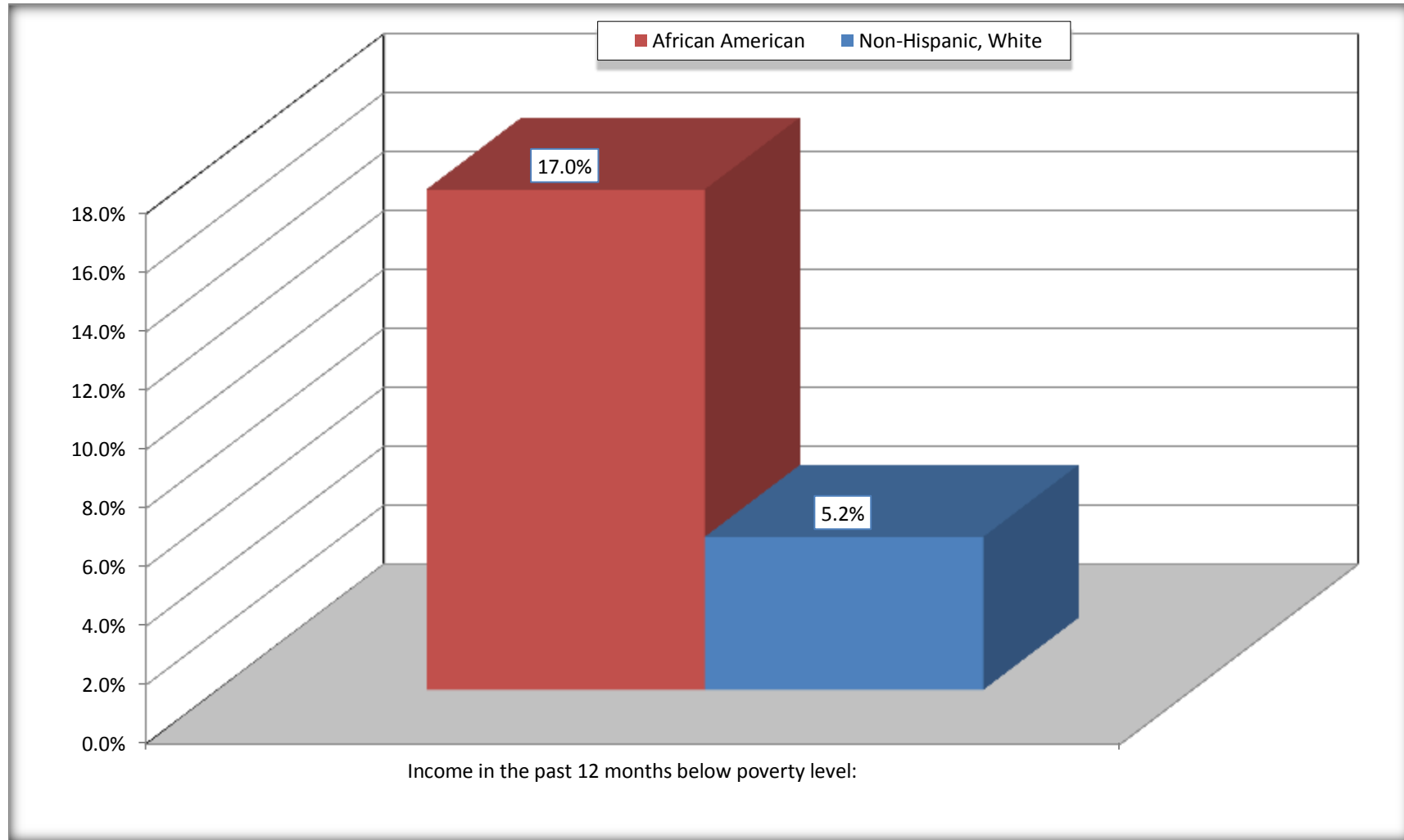
Source: U.S. Census Bureau, 2008-2012 American Community Survey

For information on confidentiality protection, sampling error, nonsampling error, and definitions, see Survey Methodology.

<http://www.census.gov/acs/www/UseData/index.htm>

Family Households Below Poverty in the Past 12 Months

Hutchins city, Texas

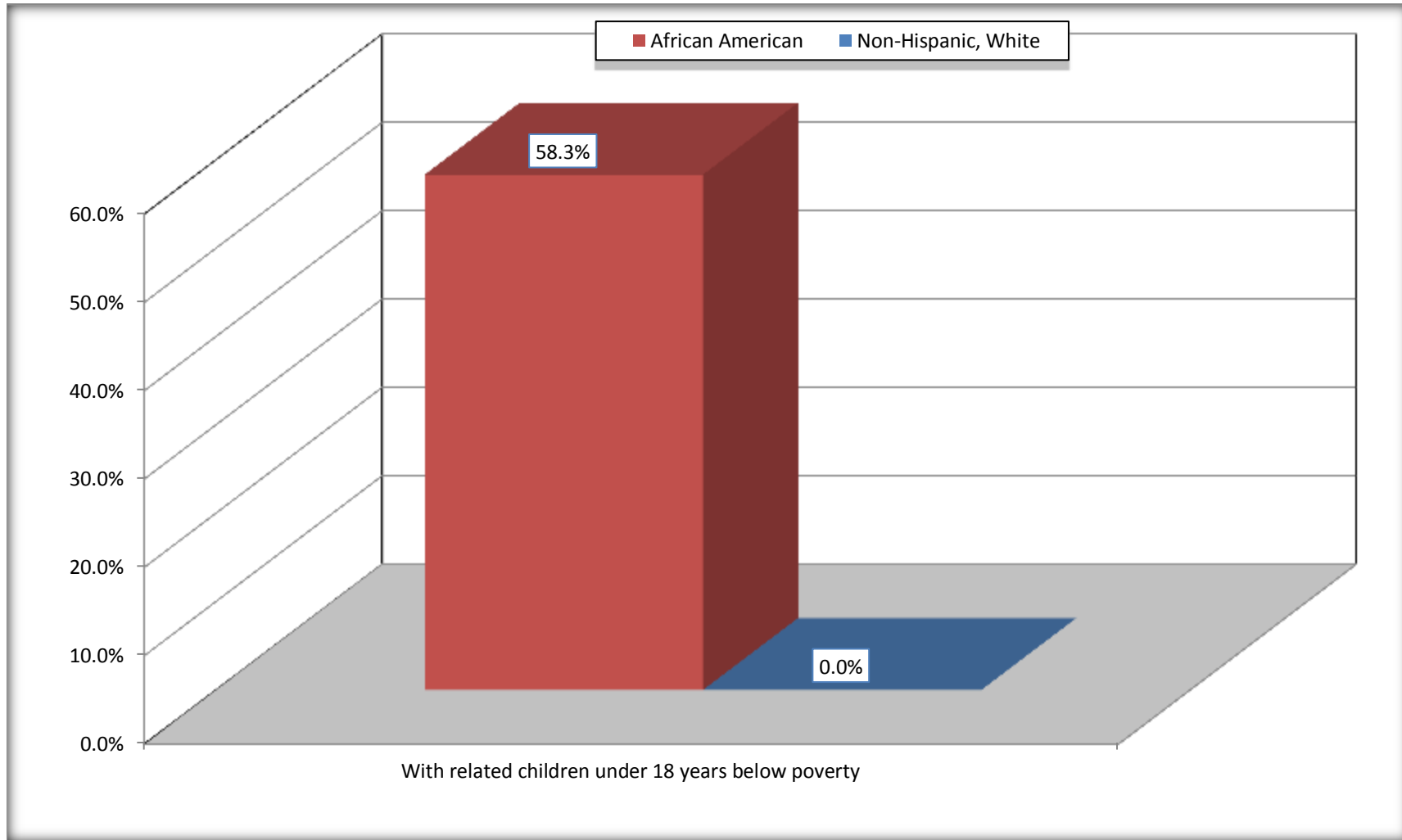


Source: B17010. POVERTY STATUS IN THE PAST 12 MONTHS OF FAMILIES BY FAMILY TYPE BY PRESENCE OF RELATED CHILDREN UNDER 18 YEARS

Data Set: 2008-2012 American Community Survey 5-Year Estimates

Female-headed Households with Related Children Below Poverty in the Past 12 Months

Hutchins city, Texas



Source: B17010. POVERTY STATUS IN THE PAST 12 MONTHS OF FAMILIES BY FAMILY TYPE BY PRESENCE OF RELATED CHILDREN UNDER 18 YEARS

Data Set: 2008-2012 American Community Survey 5-Year Estimates

B17020 POVERTY STATUS IN THE PAST 12 MONTHS BY AGE - Universe: POPULATION FOR WHOM POVERTY STATUS IS DETERMINED

Data Set: 2008-2012 American Community Survey 5-Year Estimates

	Hutchins city, Texas					
	African American	Margin of Error (+/-)	% of AA By Age	White, Not Hispanic	Margin of Error (+/-)	% of NHW By Age
Total:	1,776	349	100.0%	917	246	100.0%
Income in the past 12 months below poverty level:	331	257	18.6%	91	54	9.9%
Under 18 years	176	NC	29.4%	0	NC	0.0%
18 to 64 years	129	90	12.5%	73	49	12.1%
65 years and over	26	NC	17.9%	18	NC	11.5%
Income in the past 12 months at or above poverty level:	1,445	386	81.4%	826	239	90.1%
Under 18 years	422	NC	70.6%	159	NC	100.0%
18 to 64 years	904	209	87.5%	529	158	87.9%
65 years and over	119	NC	82.1%	138	NC	88.5%

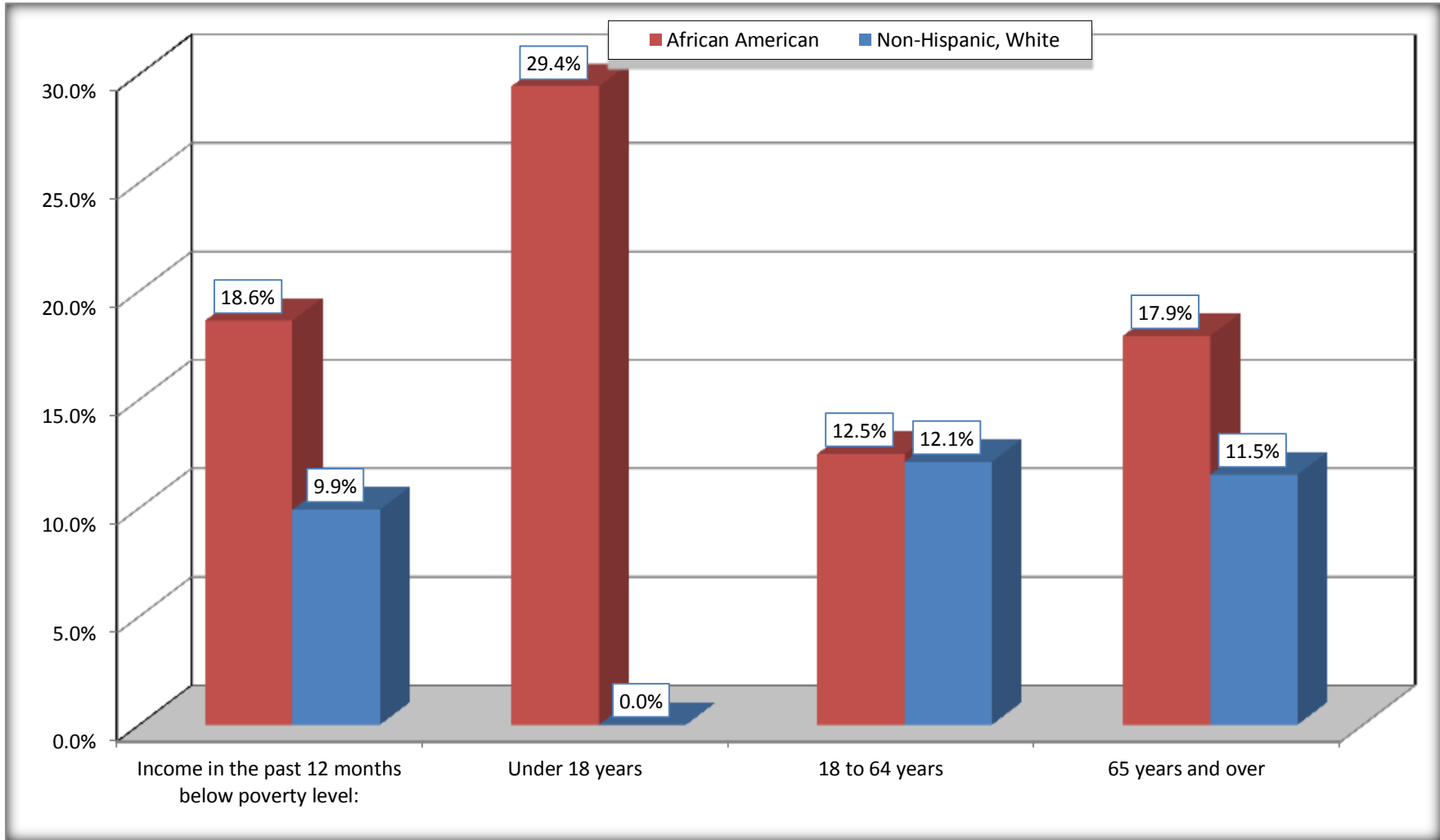
Source: U.S. Census Bureau, 2008-2012 American Community Survey

For information on confidentiality protection, sampling error, nonsampling error, and definitions, see Survey Methodology.

<http://www.census.gov/acs/www/UseData/index.htm>

Population Below Poverty in the Past 12 Months

Hutchins city, Texas



Source: B17020 POVERTY STATUS IN THE PAST 12 MONTHS BY AGE - Universe: POPULATION FOR WHOM POVERTY STATUS IS DETERMINED
Data Set: 2008-2012 American Community Survey 5-Year Estimates

B19001. HOUSEHOLD INCOME IN THE PAST 12 MONTHS (IN 2010 INFLATION-ADJUSTED DOLLARS)

Data Set: 2008-2012 American Community Survey 5-Year Estimates

	Hutchins city, Texas					
	African American	Margin of Error (+/-)	% of AA Total	White, Not Hispanic	Margin of Error (+/-)	% of NHW Total
Total:	565	102	100.0%	400	102	100.0%
Less than \$ 10,000	6	9	1.1%	47	36	11.8%
\$ 10,000 to \$ 14,999	45	28	8.0%	16	18	4.0%
\$ 15,000 to \$ 24,999	51	NC	9.0%	59	NC	14.8%
\$ 25,000 to \$ 34,999	136	NC	24.1%	61	NC	15.3%
\$ 35,000 to \$ 49,999	63	NC	11.2%	86	NC	21.5%
\$ 50,000 to \$ 74,999	131	NC	23.2%	39	NC	9.8%
\$ 75,000 to \$ 99,999	89	60	15.8%	57	45	14.3%
\$ 100,000 to \$ 149,999	26	NC	4.6%	27	NC	6.8%
\$ 150,000 to \$ 199,999	18	23	3.2%	0	18	0.0%
\$ 200,000 or more	0	18	0.0%	8	13	2.0%

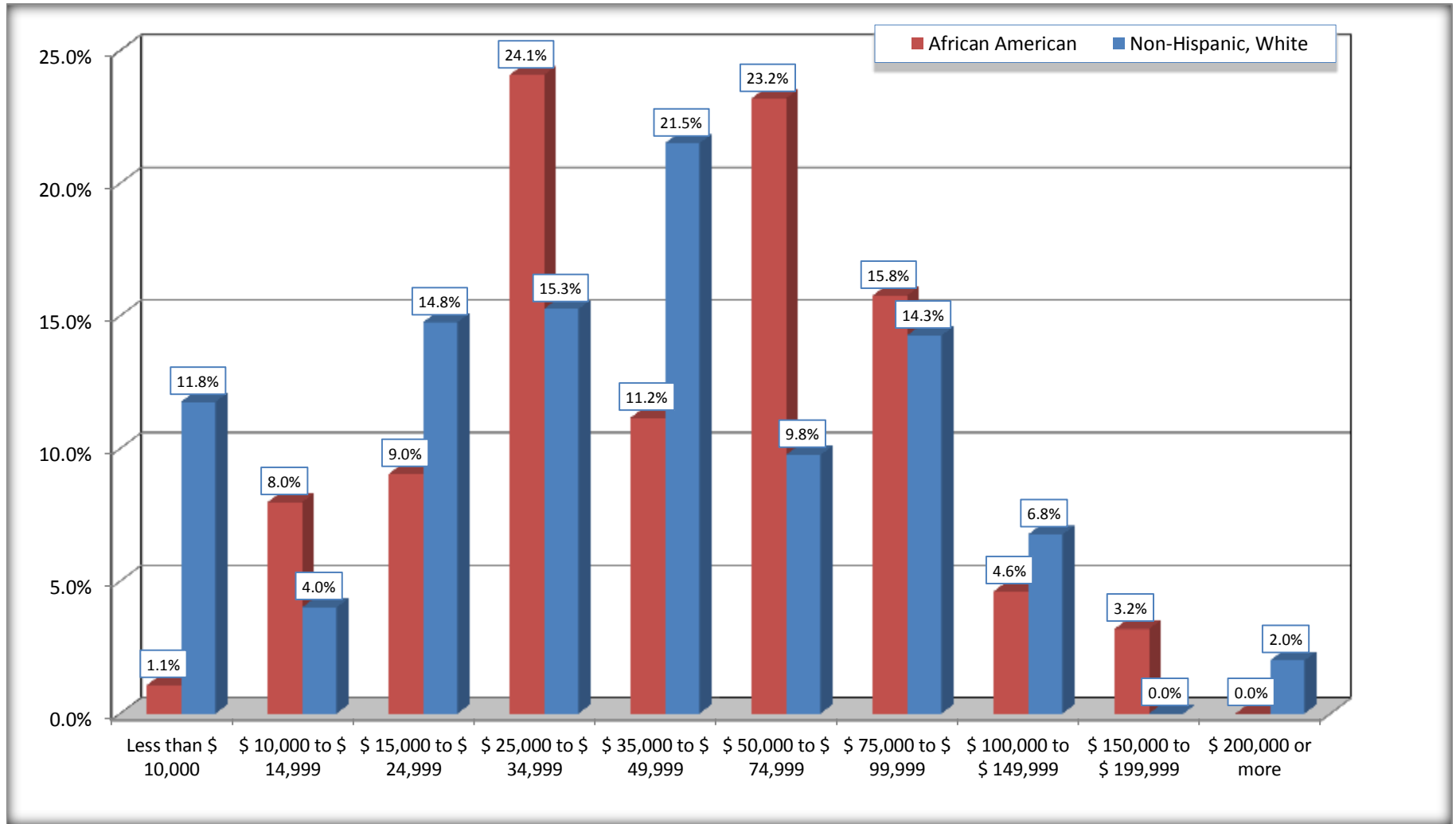
Source: U.S. Census Bureau, 2008-2012 American Community Survey

For information on confidentiality protection, sampling error, nonsampling error, and definitions, see Survey Methodology.

<http://www.census.gov/acs/www/UseData/index.htm>

Household Income in the Past 12 Months

Hutchins city, Texas



Source: B19001. HOUSEHOLD INCOME IN THE PAST 12 MONTHS (IN 2010 INFLATION-ADJUSTED DOLLARS)
Data Set: 2008-2012 American Community Survey 5-Year Estimates

B19013. MEDIAN HOUSEHOLD INCOME IN THE PAST 12 MONTHS (IN 2010 INFLATION-ADJUSTED DOLLARS)

Data Set: 2008-2012 American Community Survey 5-Year Estimates

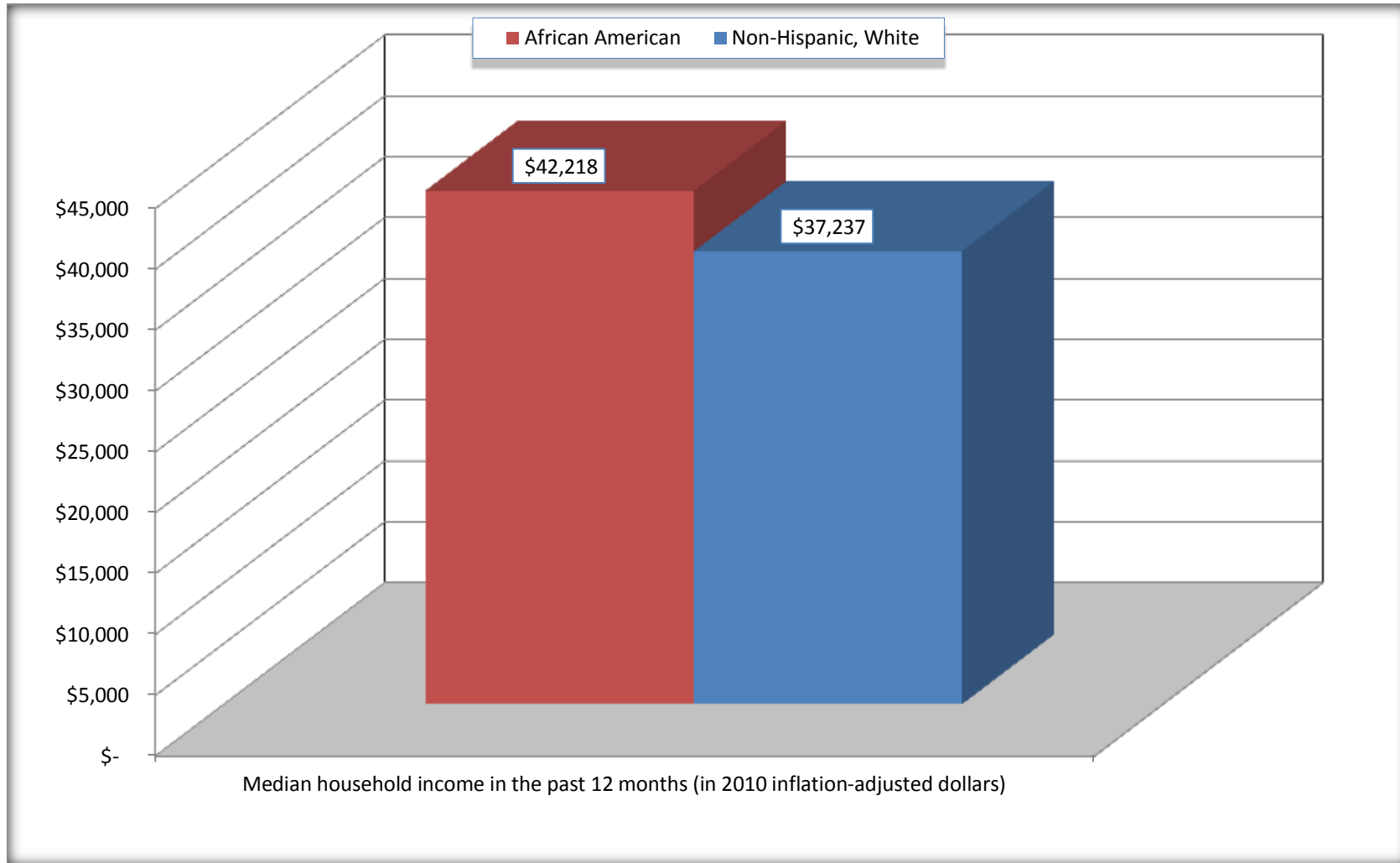
	Hutchins city, Texas			
	African American	Margin of Error (+/-)	White, Not Hispanic	Margin of Error (+/-)
Median household income in the past 12 months (in 2010 inflation-adjusted dollars)	\$ 42,218	\$ 17,493	\$ 37,237	\$ 13,053

Source: U.S. Census Bureau, 2008-2012 American Community Survey

For information on confidentiality protection, sampling error, nonsampling error, and definitions, see Survey Methodology.
<http://www.census.gov/acs/www/UseData/index.htm>

Median Household Income in the Past 12 Months

Hutchins city, Texas



Source: B19013. MEDIAN HOUSEHOLD INCOME IN THE PAST 12 MONTHS (IN 2010 INFLATION-ADJUSTED DOLLARS)
Data Set: 2008-2012 American Community Survey 5-Year Estimates

B19101. FAMILY INCOME IN THE PAST 12 MONTHS (IN 2010 INFLATION-ADJUSTED DOLLARS)

Data Set: 2008-2012 American Community Survey 5-Year Estimates

	Hutchins city, Texas					
	African American	Margin of Error (+/-)	% of AA Total	White, Not Hispanic	Margin of Error (+/-)	% of NHW Total
Total:	459	76	100.0%	252	79	100.0%
Less than \$ 10,000	6	9	1.3%	6	10	2.4%
\$ 10,000 to \$ 14,999	38	26	8.3%	7	11	2.8%
\$ 15,000 to \$ 24,999	30	NC	6.5%	32	NC	12.7%
\$ 25,000 to \$ 34,999	82	NC	17.9%	20	NC	7.9%
\$ 35,000 to \$ 49,999	59	NC	12.9%	65	NC	25.8%
\$ 50,000 to \$ 74,999	120	NC	26.1%	39	NC	15.5%
\$ 100,000 to \$ 149,999	39	NC	8.5%	18	NC	7.1%
\$ 150,000 to \$ 199,999	5	10	1.1%	0	18	0.0%
\$ 200,000 or more	0	18	0.0%	8	13	3.2%

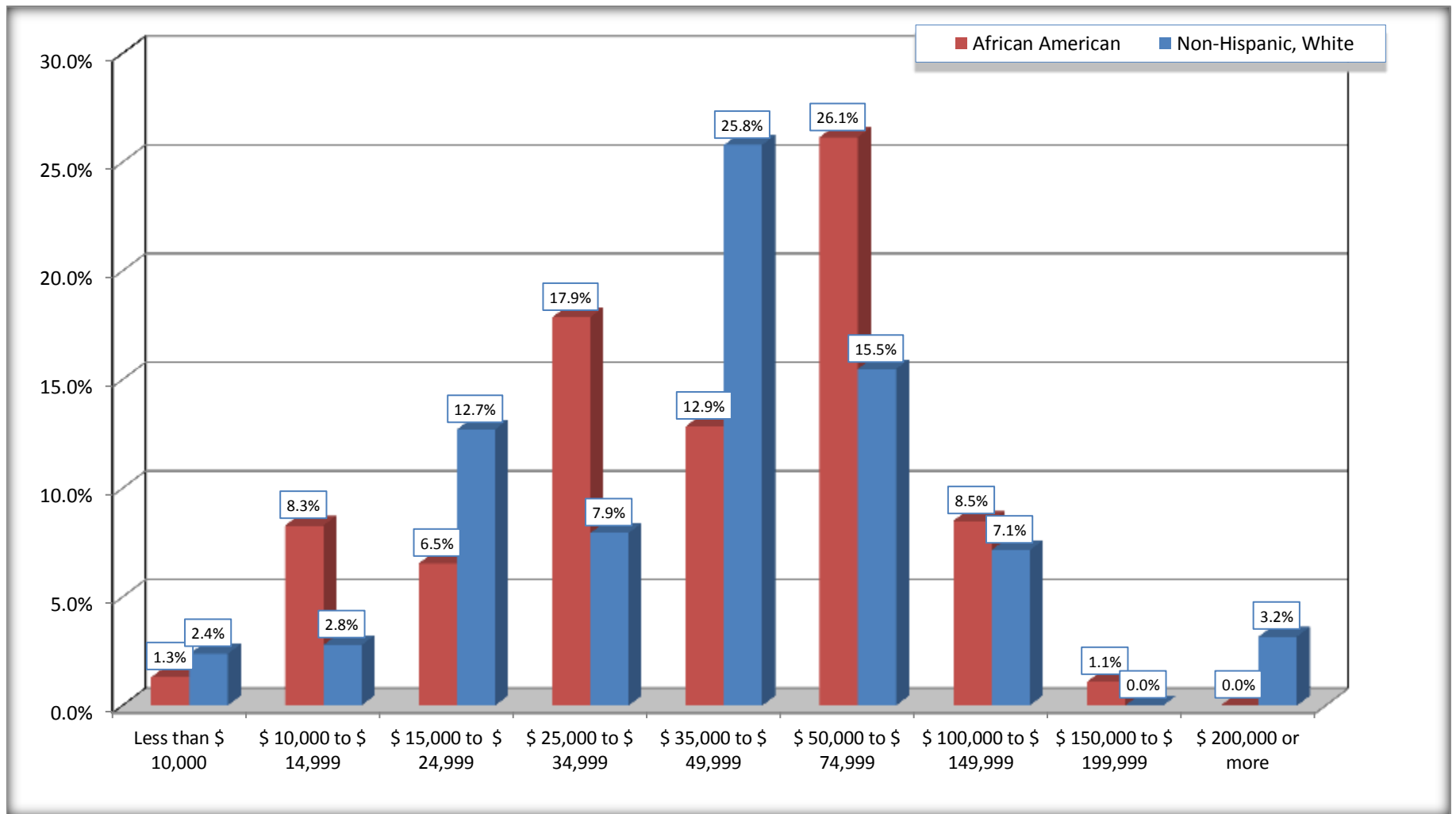
Source: U.S. Census Bureau, 2008-2012 American Community Survey

For information on confidentiality protection, sampling error, nonsampling error, and definitions, see Survey Methodology.

<http://www.census.gov/acs/www/UseData/index.htm>

Family Income in the Past 12 Months

Hutchins city, Texas



Source: B19101. FAMILY INCOME IN THE PAST 12 MONTHS (IN 2010 INFLATION-ADJUSTED DOLLARS)
Data Set: 2008-2012 American Community Survey 5-Year Estimates

B19113. MEDIAN FAMILY INCOME IN THE PAST 12 MONTHS (IN 2010 INFLATION-ADJUSTED DOLLARS)

Data Set: 2008-2012 American Community Survey 5-Year Estimates

	Hutchins city, Texas			
	African American	Margin of Error (+/-)	White, Not Hispanic	Margin of Error (+/-)
Median family income in the past 12 months (in 2010 inflation-adjusted dollars)	\$ 53,094	\$ 10,972	\$ 49,643	\$ 8,810

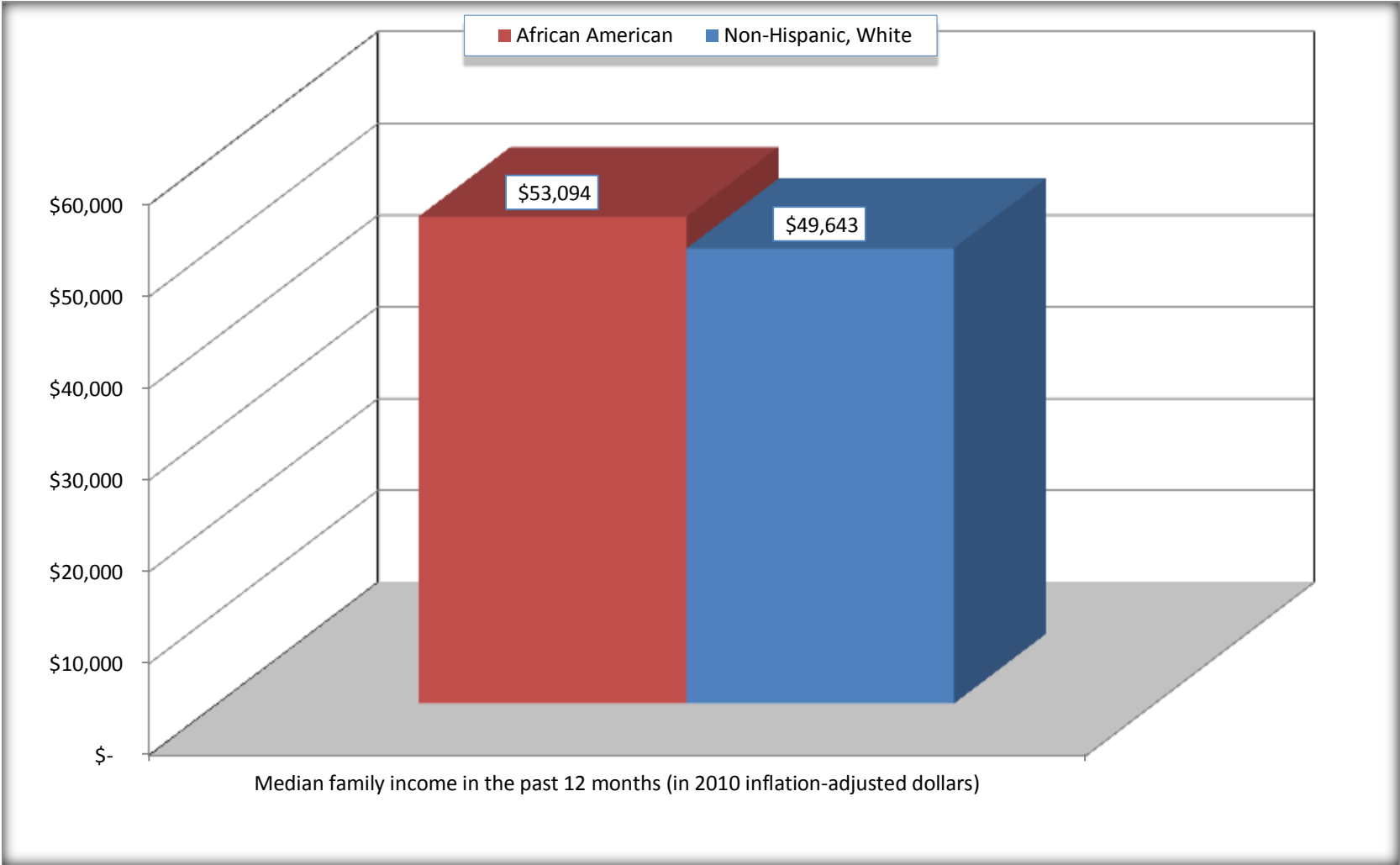
Source: U.S. Census Bureau, 2008-2012 American Community Survey

For information on confidentiality protection, sampling error, nonsampling error, and definitions, see Survey Methodology.

<http://www.census.gov/acs/www/UseData/index.htm>

Median Family Income in the Past 12 Months

Hutchins city, Texas



Source: B19113. MEDIAN FAMILY INCOME IN THE PAST 12 MONTHS (IN 2010 INFLATION-ADJUSTED DOLLARS)
Data Set: 2008-2012 American Community Survey 5-Year Estimates

B19202. MEDIAN NONFAMILY HOUSEHOLD INCOME IN THE PAST 12 MONTHS (IN 2010 INFLATION-ADJUSTED DOLLARS)

Data Set: 2008-2012 American Community Survey 5-Year Estimates

	Hutchins city, Texas			
	African American	Margin of Error (+/-)	White, Not Hispanic	Margin of Error (+/-)
Median nonfamily household income in the past 12 months (in 2010 inflation-adjusted dollars)	\$ 27,803	\$ 2,169	\$ 19,583	\$ 24,157

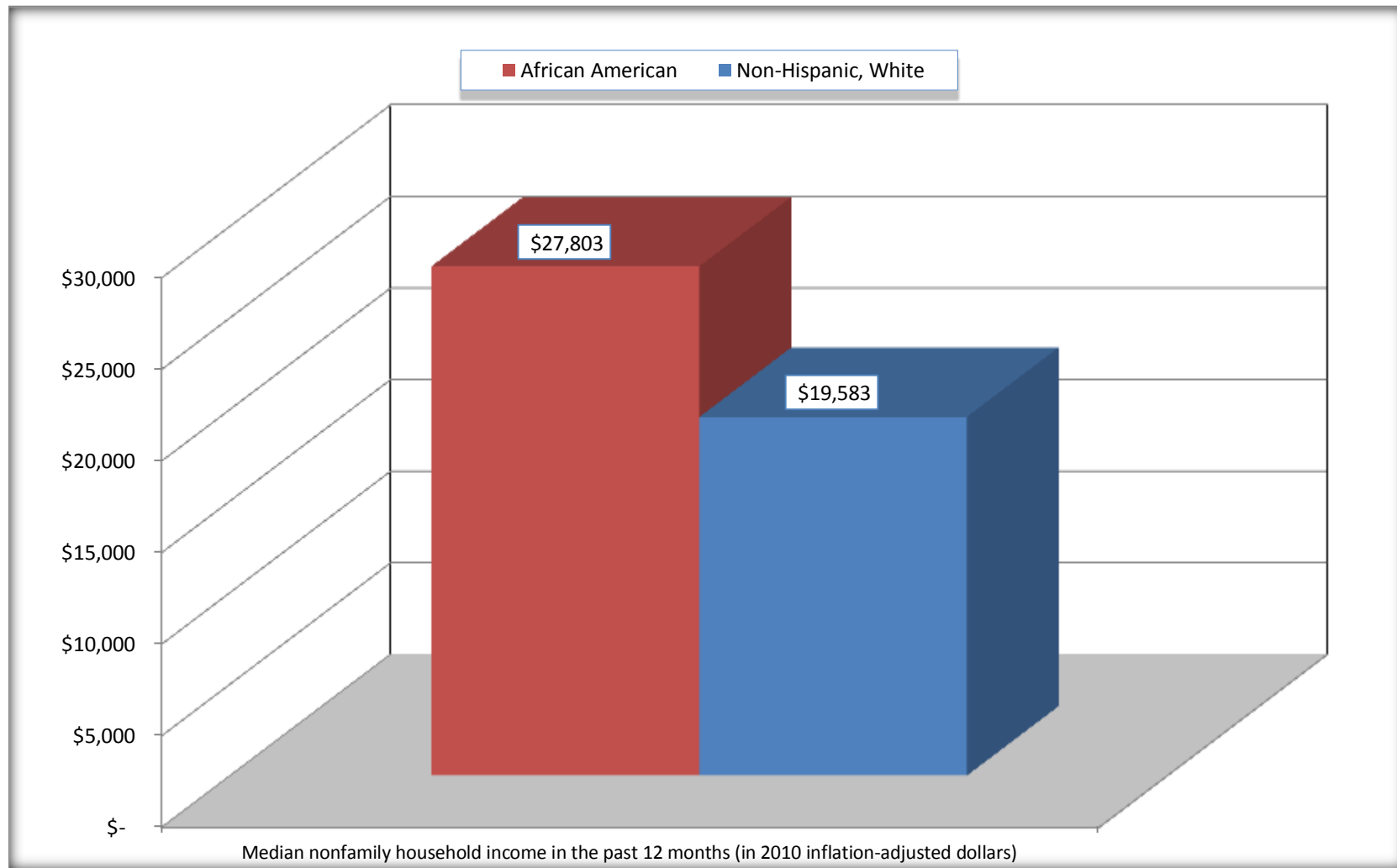
Source: U.S. Census Bureau, 2008-2012 American Community Survey

For information on confidentiality protection, sampling error, nonsampling error, and definitions, see Survey Methodology.

<http://www.census.gov/acs/www/UseData/index.htm>

Median Non-Family Income in the Past 12 Months

Hutchins city, Texas



Source: B19202. MEDIAN NONFAMILY HOUSEHOLD INCOME IN THE PAST 12 MONTHS (IN 2010 INFLATION-ADJUSTED DOLLARS)
Data Set: 2008-2012 American Community Survey 5-Year Estimates

B19301. PER CAPITA INCOME IN THE PAST 12 MONTHS (IN 2010 INFLATION-ADJUSTED DOLLARS)

Data Set: 2008-2012 American Community Survey 5-Year Estimates

	Hutchins city, Texas			
	African American	Margin of Error (+/-)	White, Not Hispanic	Margin of Error (+/-)
Per capita income in the past 12 months (in 2010 inflation-adjusted dollars)	\$ 14,937	\$ 3,071	\$ 19,756	\$ 3,816

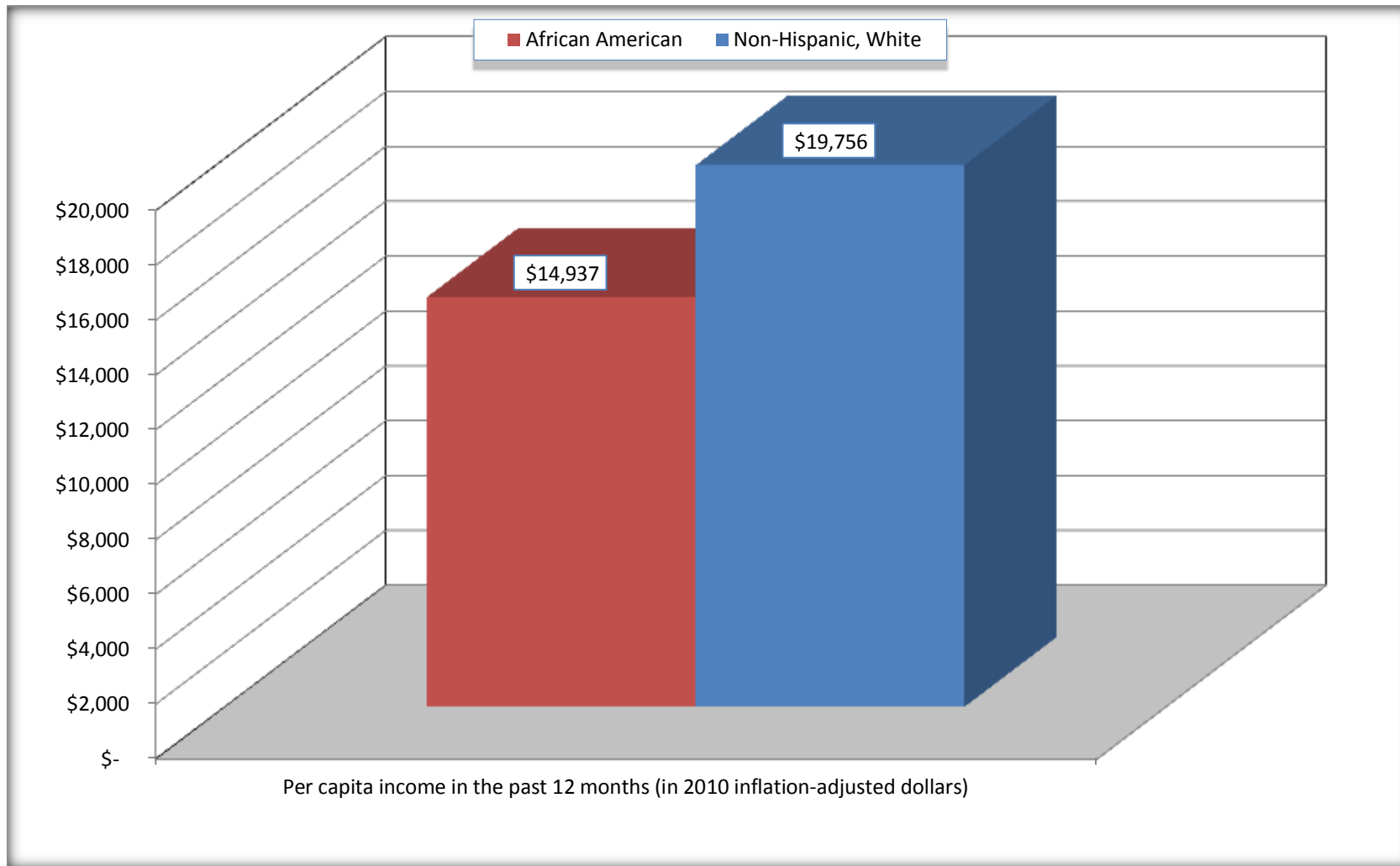
Source: U.S. Census Bureau, 2008-2012 American Community Survey

For information on confidentiality protection, sampling error, nonsampling error, and definitions, see Survey Methodology.

<http://www.census.gov/acs/www/UseData/index.htm>

Per capita Income in the Past 12 Months

Hutchins city, Texas



Source: B19301. PER CAPITA INCOME IN THE PAST 12 MONTHS (IN 2010 INFLATION-ADJUSTED DOLLARS)
Data Set: 2008-2012 American Community Survey 5-Year Estimates

B20017. MEDIAN EARNINGS IN THE PAST 12 MONTHS (IN 2010 INFLATION-ADJUSTED DOLLARS) BY SEX BY WORK EXPERIENCE IN THE PAST 12 MONTHS FOR THE POPULATION 16 YEARS AND OVER WITH EARNINGS IN THE PAST 12 MONTHS

Data Set: 2008-2012 American Community Survey 5-Year Estimates

	Hutchins city, Texas			
	African American	Margin of Error (+/-)	White, Not Hispanic	Margin of Error (+/-)
Median earnings in the past 12 months (in 2010 inflation-adjusted dollars) --				
Total:	\$ 26,023	\$ 4,706	\$ 21,642	\$ 6,778
Male --				
Total	\$ 26,795	\$ 6,390	\$ 20,291	\$ 5,039
Worked full-time, year-round in the past 12 months	\$ 33,594	\$ 2,758	\$ 48,631	\$ 25,348
Other	\$ 12,365	\$ 3,363	\$ 7,375	\$ 10,461
Female --				
Total	\$ 23,882	\$ 8,119	\$ 27,014	\$ 8,049
Worked full-time, year-round in the past 12 months	\$ 30,598	\$ 8,162	\$ 31,591	\$ 13,447
Other	\$ 5,100	\$ 2,285	\$ 10,188	\$ 1,893

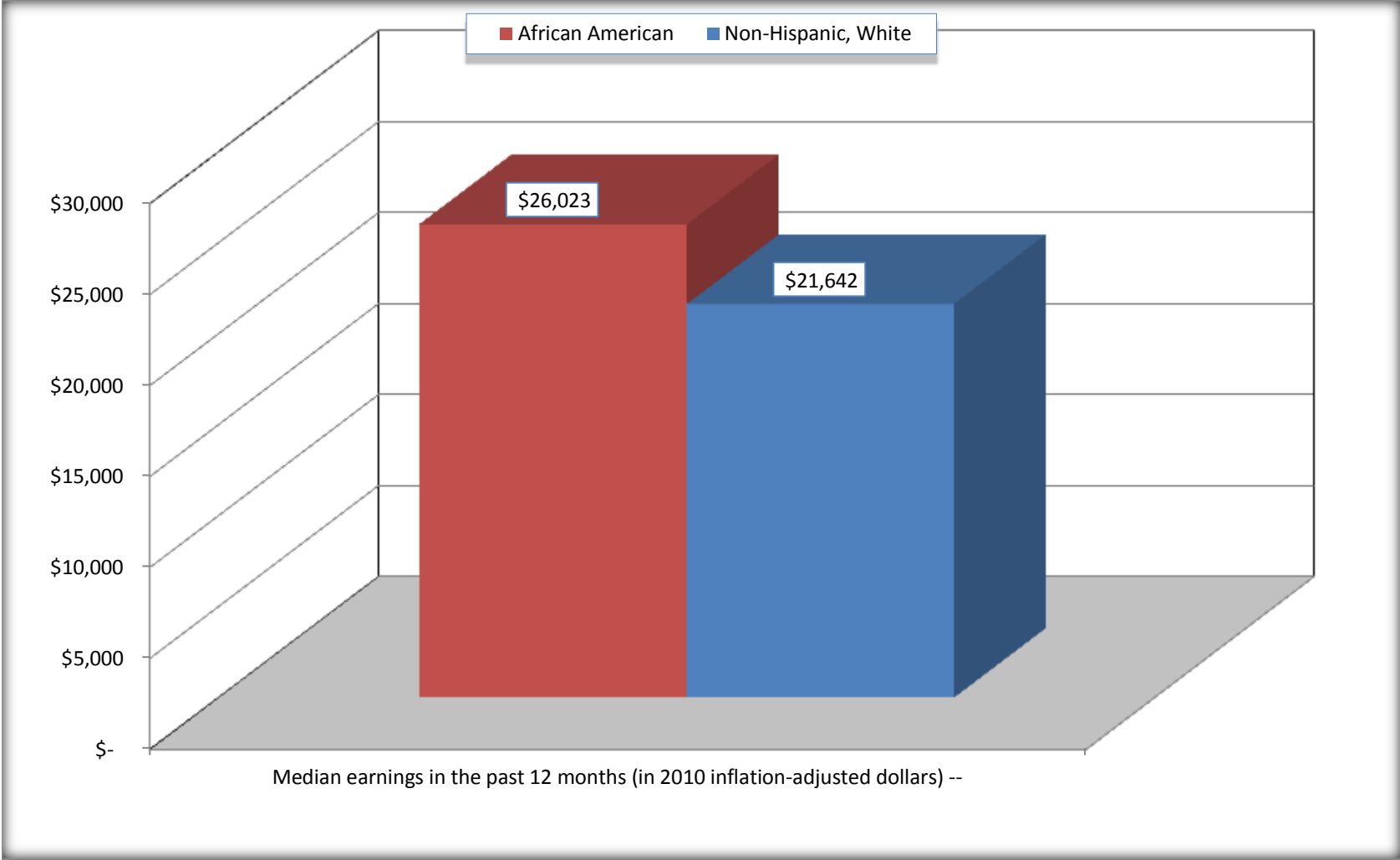
Source: U.S. Census Bureau, 2008-2012 American Community Survey

For information on confidentiality protection, sampling error, nonsampling error, and definitions, see Survey Methodology.

<http://www.census.gov/acs/www/UseData/index.htm>

Median earnings in the Past 12 Months (16 Years and Over with Earnings)

Hutchins city, Texas



Source: B20017. MEDIAN EARNINGS IN THE PAST 12 MONTHS (IN 2010 INFLATION-ADJUSTED DOLLARS) BY SEX BY WORK EXPERIENCE IN THE PAST 12 MONTHS FOR THE POPULATION 16 YEARS AND OVER WITH EARNINGS IN THE PAST 12 MONTHS
Data Set: 2008-2012 American Community Survey 5-Year Estimates

B20005. SEX BY WORK EXPERIENCE IN THE PAST 12 MONTHS BY EARNINGS IN THE PAST 12 MONTHS (IN 2010 INFLATION-ADJUSTED DOLLARS) FOR THE POPULATION 16 YEARS AND OVER

Data Set: 2008-2012 American Community Survey 5-Year Estimates

	Hutchins city, Texas					
	African American	Margin of Error (+/-)	% of AA Total	White, Not Hispanic	Margin of Error (+/-)	% of NHW Total
Total:	1,614	180	100.0%	1,118	253	100.0%
Worked full-time, year-round in the past 12 months:	633	NC	39.2%	373	NC	33.4%
No earnings	0	NC	0.0%	0	NC	0.0%
With earnings:	633	NC	39.2%	373	NC	33.4%
\$ 1 to \$ 9,999 or loss	0	NC	0.0%	0	NC	0.0%
\$ 10,000 to \$ 19,999	40	NC	2.5%	53	NC	4.7%
\$ 20,000 to \$ 29,999	219	NC	13.6%	105	NC	9.4%
\$ 30,000 to \$ 49,999	305	NC	18.9%	94	NC	8.4%
\$ 50,000 to \$ 74,999	34	NC	2.1%	74	NC	6.6%
\$ 75,000 or more	35	NC	2.2%	47	NC	4.2%
Other:	981	NC	60.8%	745	NC	66.6%
No earnings	681	NC	42.2%	463	NC	41.4%
With earnings: less than full time, year-round	300	NC	18.6%	282	NC	25.2%
Male:	1,084	153	67.2%	761	231	68.1%
Worked full-time, year-round in the past 12 months:	391	125	24.2%	247	114	22.1%
No earnings	0	18	0.0%	0	18	0.0%
With earnings:	391	125	24.2%	247	114	22.1%
\$ 1 to \$ 9,999 or loss	0	NC	0.0%	0	NC	0.0%
\$ 10,000 to \$ 19,999	40	NC	2.5%	42	NC	3.8%
\$ 20,000 to \$ 29,999	109	NC	6.8%	60	NC	5.4%
\$ 30,000 to \$ 49,999	197	NC	12.2%	33	NC	3.0%
\$ 50,000 to \$ 74,999	19	NC	1.2%	65	NC	5.8%
\$ 75,000 or more	26	NC	1.6%	47	NC	4.2%

	Hutchins city, Texas					
	African American	Margin of Error (+/-)	% of AA Total	White, Not Hispanic	Margin of Error (+/-)	% of NHW Total
Other:	693	156	42.9%	514	213	46.0%
No earnings	477	155	29.6%	301	122	26.9%
With earnings:	216	107	13.4%	213	110	19.1%
Female:	530	97	32.8%	357	97	31.9%
Worked full-time, year-round in the past 12 months:	242	90	15.0%	126	57	11.3%
No earnings	0	18	0.0%	0	18	0.0%
With earnings:	242	90	15.0%	126	57	11.3%
\$ 1 to \$ 9,999 or loss	0	NC	0.0%	0	NC	0.0%
\$ 10,000 to \$ 19,999	0	NC	0.0%	11	NC	1.0%
\$ 20,000 to \$ 29,999	110	NC	6.8%	45	NC	4.0%
\$ 30,000 to \$ 49,999	108	NC	6.7%	61	NC	5.5%
\$ 50,000 to \$ 74,999	15	NC	0.9%	9	NC	0.8%
\$ 75,000 or more	9	NC	0.6%	0	NC	0.0%
Other:	288	89	17.8%	231	85	20.7%
No earnings	204	73	12.6%	162	73	14.5%
With earnings:	84	48	5.2%	69	36	6.2%

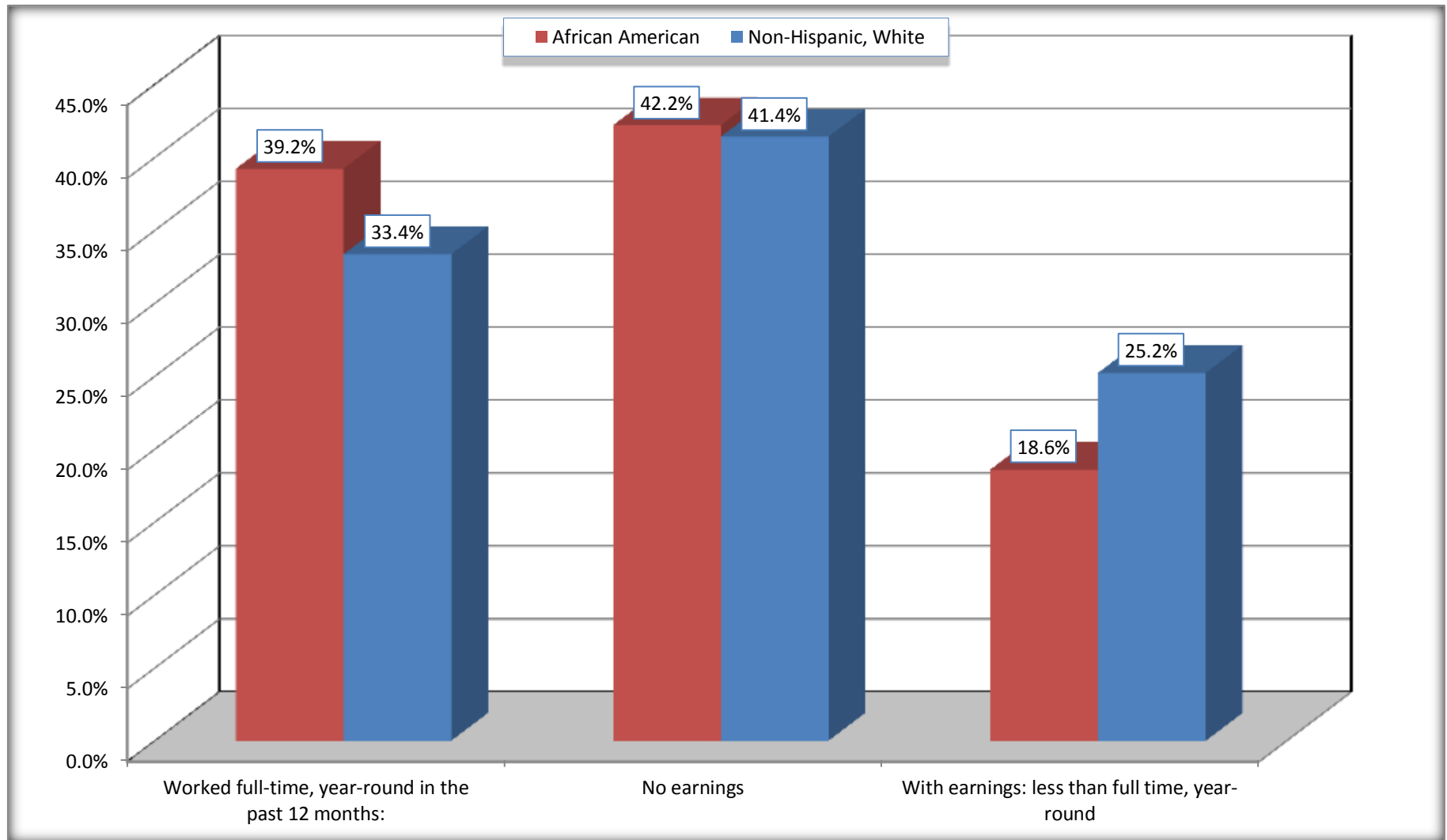
Source: U.S. Census Bureau, 2008-2012 American Community Survey

For information on confidentiality protection, sampling error, nonsampling error, and definitions, see Survey Methodology.

<http://www.census.gov/acs/www/UseData/index.htm>

Employment and Earnings in in the Past 12 Months (16 Years and Over)

Hutchins city, Texas



Source: B20005. SEX BY WORK EXPERIENCE IN THE PAST 12 MONTHS BY EARNINGS IN THE PAST 12 MONTHS (IN 2010 INFLATION-ADJUSTED DOLLARS) FOR THE POPULATION 16 YEARS AND OVER

Data Set: 2008-2012 American Community Survey 5-Year Estimates

C21001. SEX BY AGE BY VETERAN STATUS FOR THE CIVILIAN POPULATION 18 YEARS AND OVER

Data Set: 2008-2012 American Community Survey 5-Year Estimates

	Hutchins city, Texas					
	African American	Margin of Error (+/-)	% of AA Total	White, Not Hispanic	Margin of Error (+/-)	% of NHW Total
Total:	1,564	179	100.0%	1,111	254	100.0%
Veteran	163	NC	10.4%	76	NC	6.8%
Nonveteran	1,401	NC	89.6%	1,035	NC	93.2%
Male:	1,042	158	66.6%	754	231	67.9%
18 to 64 years:	942	162	60.2%	635	221	57.2%
Veteran	96	86	6.1%	53	40	4.8%
Nonveteran	846	162	54.1%	582	222	52.4%
65 years and over:	100	46	6.4%	119	64	10.7%
Veteran	67	38	4.3%	23	21	2.1%
Nonveteran	33	30	2.1%	96	62	8.6%
Female:	522	96	33.4%	357	97	32.1%
18 to 64 years:	473	91	30.2%	320	91	28.8%
Veteran	0	18	0.0%	0	18	0.0%
Nonveteran	473	91	30.2%	320	91	28.8%
65 years and over:	49	35	3.1%	37	26	3.3%
Veteran	0	18	0.0%	0	18	0.0%
Nonveteran	49	35	3.1%	37	26	3.3%

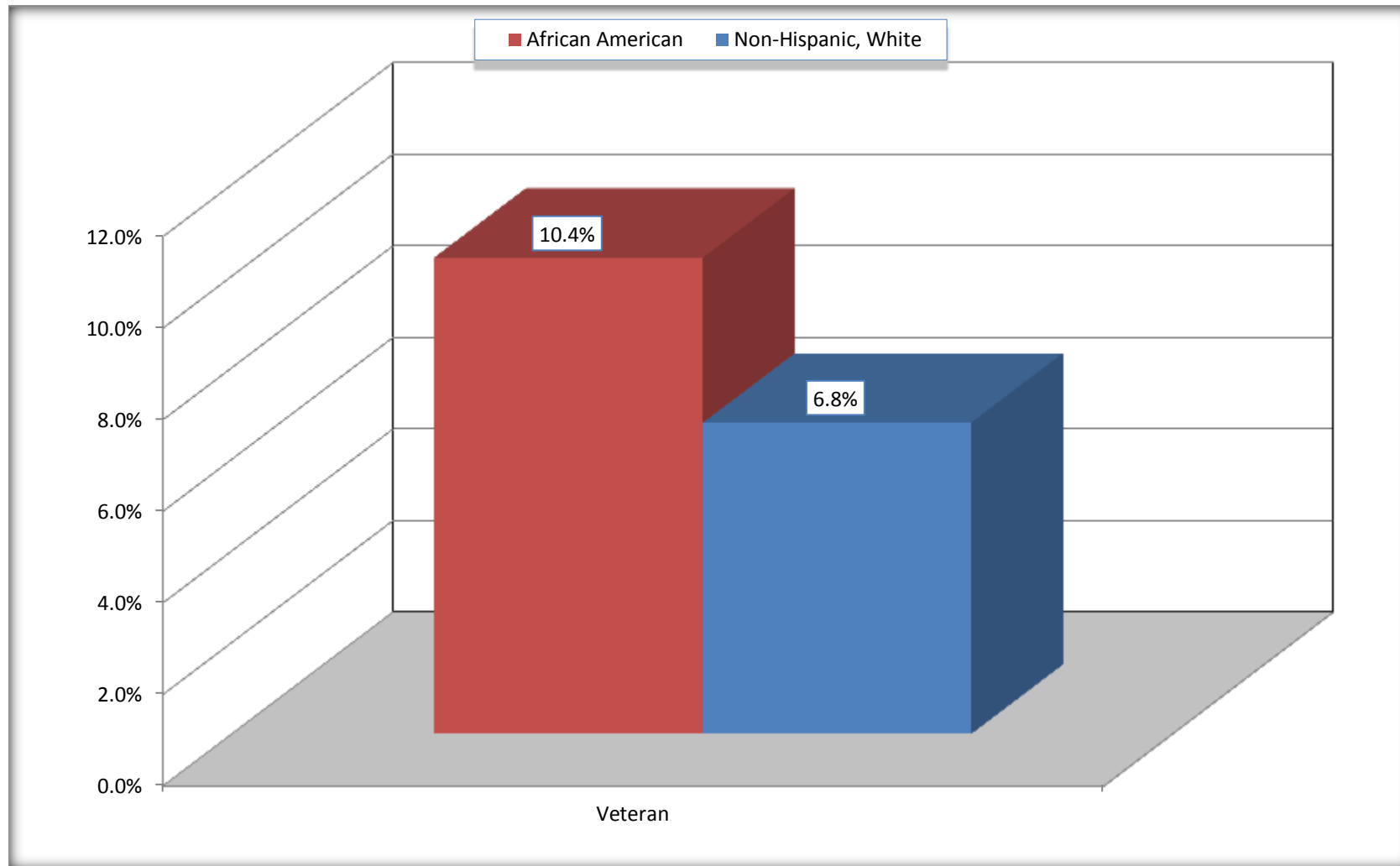
Source: U.S. Census Bureau, 2008-2012 American Community Survey

For information on confidentiality protection, sampling error, nonsampling error, and definitions, see Survey Methodology.

<http://www.census.gov/acs/www/UseData/index.htm>

Veterans in the Civilian Population 18 Years and Over

Hutchins city, Texas



Source: C21001. SEX BY AGE BY VETERAN STATUS FOR THE CIVILIAN POPULATION 18 YEARS AND OVER
Data Set: 2008-2012 American Community Survey 5-Year Estimates

B22005. RECEIPT OF FOOD STAMPS/SNAP IN THE PAST 12 MONTHS BY RACE OF HOUSEHOLDER

Data Set: 2008-2012 American Community Survey 5-Year Estimates

	Hutchins city, Texas					
	African American	Margin of Error (+/-)	% of AA Total	White, Not Hispanic	Margin of Error (+/-)	% of NHW Total
Total:	565	102	100.0%	400	102	100.0%
HH received Food Stamps/SNAP in the past 12 months	51	38	9.0%	7	11	1.8%
HH did not receive Food Stamps/SNAP in the past 12 months	514	108	91.0%	393	102	98.3%

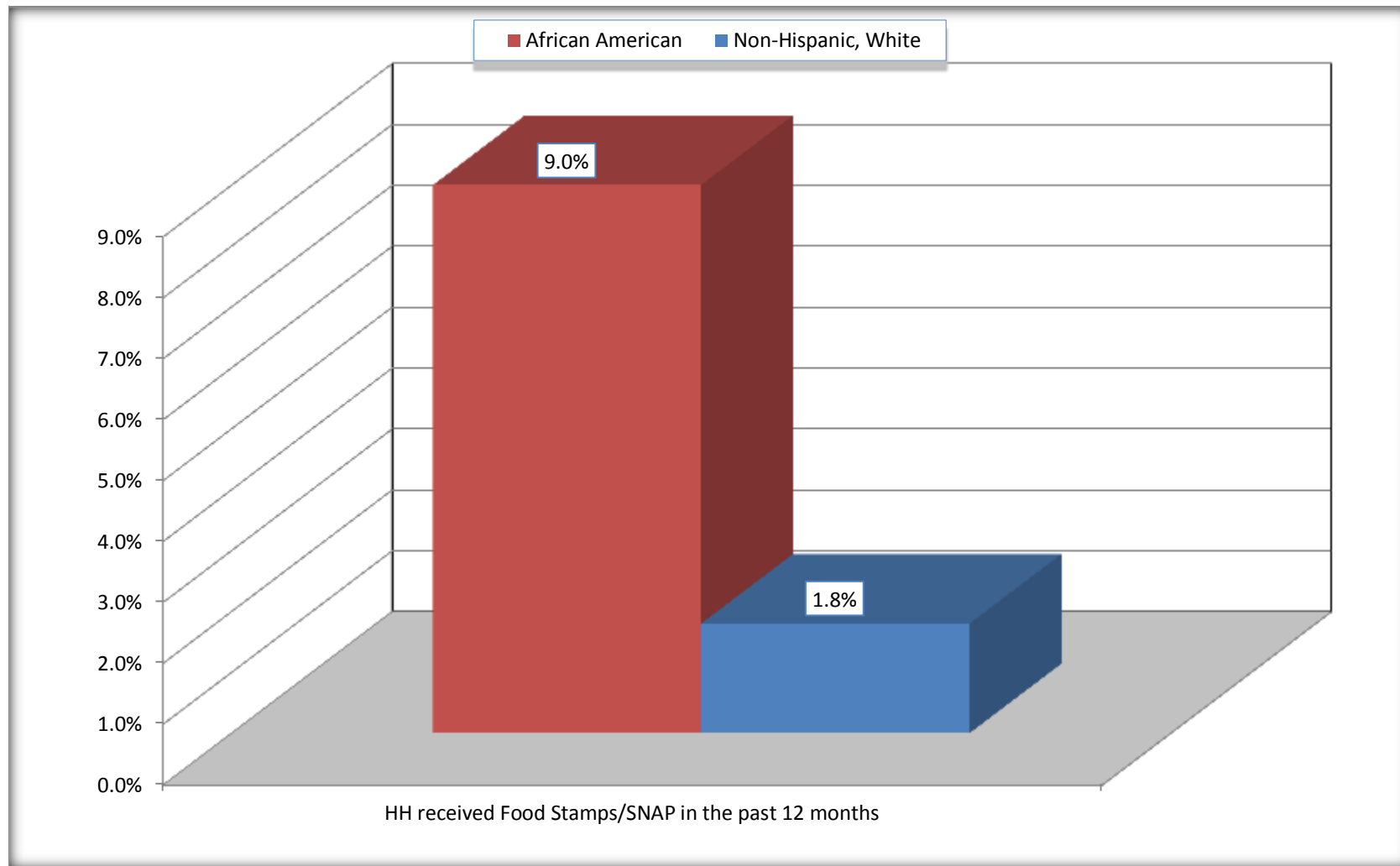
Source: U.S. Census Bureau, 2008-2012 American Community Survey

For information on confidentiality protection, sampling error, nonsampling error, and definitions, see Survey Methodology.

<http://www.census.gov/acs/www/UseData/index.htm>

Receipt of Food Stamps/SNAP in the Past 12 Months by Household

Hutchins city, Texas



Source: B22005. RECEIPT OF FOOD STAMPS/SNAP IN THE PAST 12 MONTHS BY RACE OF HOUSEHOLDER
Data Set: 2008-2012 American Community Survey 5-Year Estimates

C23002. SEX BY AGE BY EMPLOYMENT STATUS FOR THE POPULATION 16 YEARS AND OVER

Data Set: 2008-2012 American Community Survey 5-Year Estimates

	Hutchins city, Texas					
	African American	Margin of Error (+/-)	% of AA Total	White, Not Hispanic	Margin of Error (+/-)	% of NHW Total
Total:	1,614	180	100.0%	1,118	253	100.0%
In labor force:	823	NC	51.0%	486	NC	43.5%
In Armed Forces	0	NC	0.0%	0	NC	0.0%
Civilian:	812	NC	50.3%	425	NC	38.0%
Employed	721	NC	44.7%	464	NC	41.5%
Unemployed	102	NC	6.3%	22	NC	2.0%
Not in labor force	791	NC	49.0%	632	NC	56.5%
Male:	1,084	153	67.2%	761	231	68.1%
16 to 64 years:	984	156	61.0%	642	221	57.4%
In labor force:	494	130	30.6%	230	97	20.6%
In Armed Forces	0	18	0.0%	0	18	0.0%
Civilian:	494	130	30.6%	230	97	20.6%
Employed	448	125	27.8%	217	92	19.4%
Unemployed	46	46	2.9%	13	19	1.2%
Not in labor force	490	149	30.4%	412	220	36.9%
65 years and over:	100	46	6.2%	119	64	10.6%
In labor force:	11	17	0.7%	61	54	5.5%
Employed	11	17	0.7%	52	53	4.7%
Unemployed	0	18	0.0%	9	14	0.8%
Not in labor force	89	42	5.5%	58	46	5.2%

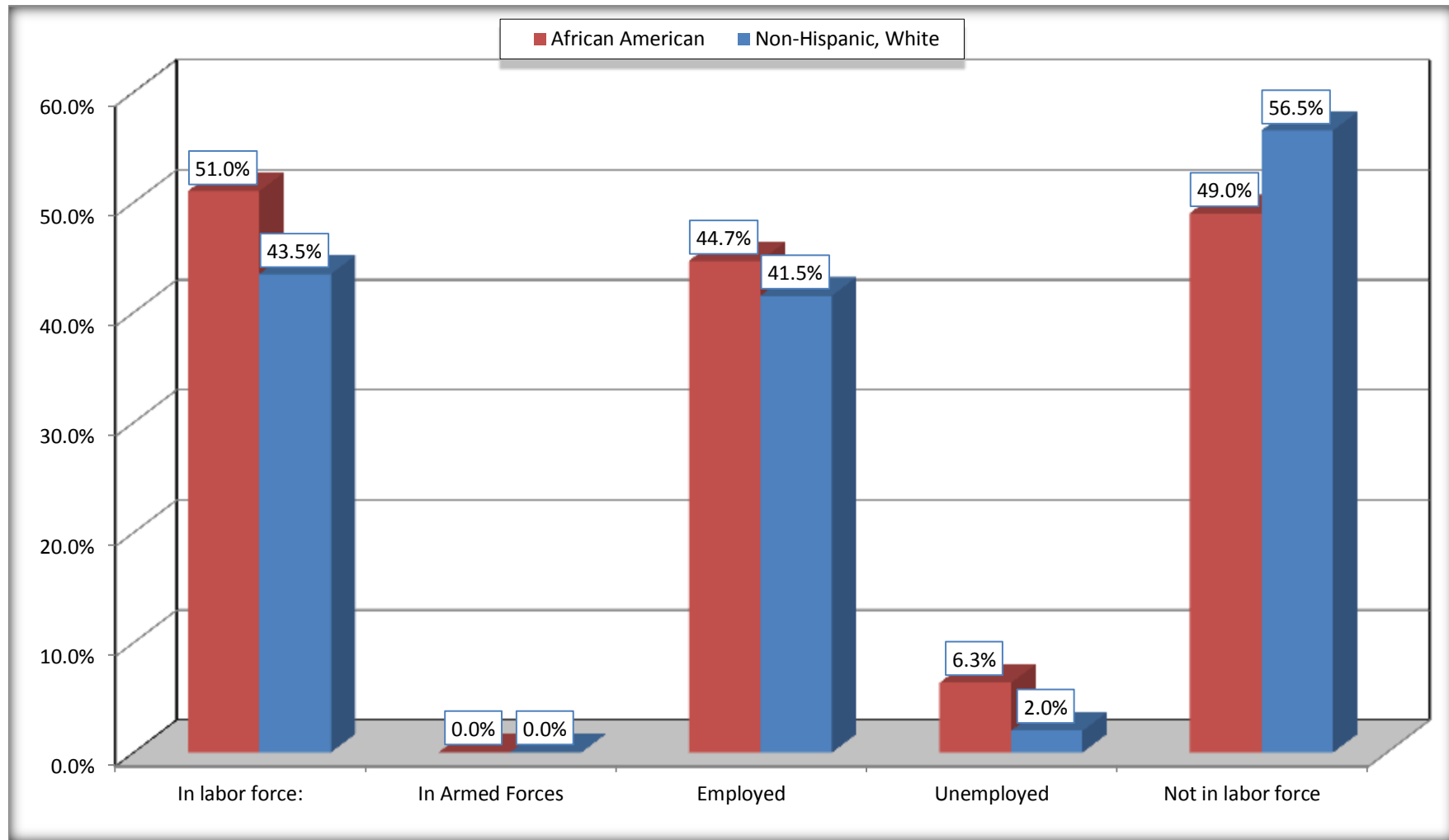
	Hutchins city, Texas					
	African American	Margin of Error (+/-)	% of AA Total	White, Not Hispanic	Margin of Error (+/-)	% of NHW Total
Female:	530	97	32.8%	357	97	31.9%
16 to 64 years:	481	93	29.8%	320	91	28.6%
In labor force:	318	90	19.7%	195	64	17.4%
In Armed Forces	0	18	0.0%	0	18	0.0%
Civilian:	318	90	19.7%	195	64	17.4%
Employed	262	86	16.2%	195	64	17.4%
Unemployed	56	42	3.5%	0	18	0.0%
Not in labor force	163	76	10.1%	125	66	11.2%
65 years and over:	49	35	3.0%	37	26	3.3%
In labor force:	0	18	0.0%	0	18	0.0%
Employed	0	18	0.0%	0	18	0.0%
Unemployed	0	18	0.0%	0	18	0.0%
Not in labor force	49	35	3.0%	37	26	3.3%

Source: U.S. Census Bureau, 2008-2012 American Community Survey

For information on confidentiality protection, sampling error, nonsampling error, and definitions, see Survey Methodology.
<http://www.census.gov/acs/www/UseData/index.htm>

Employment Status for the Population 16 years and over

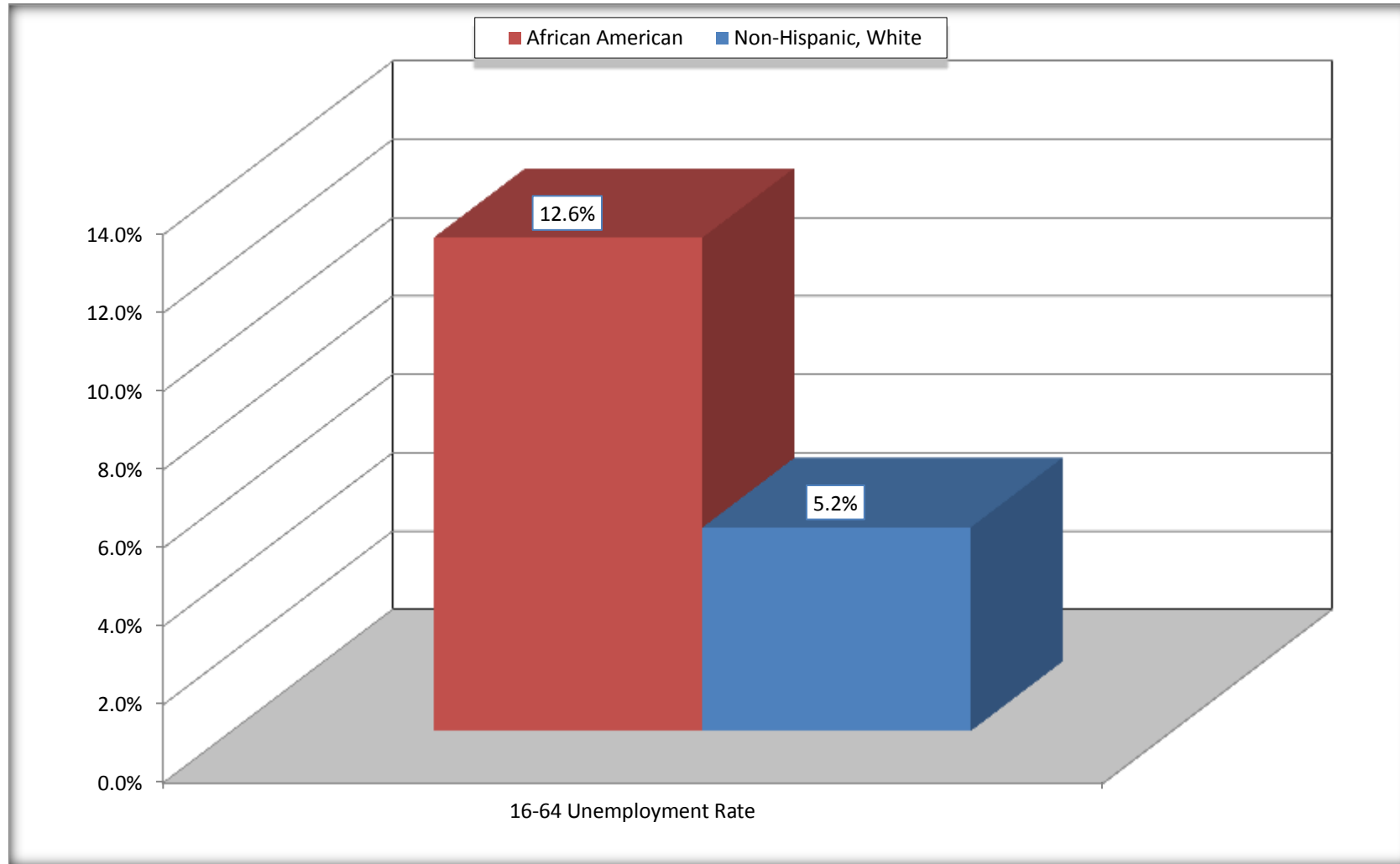
Hutchins city, Texas



Source: C23002. SEX BY AGE BY EMPLOYMENT STATUS FOR THE POPULATION 16 YEARS AND OVER
Data Set: 2008-2012 American Community Survey 5-Year Estimates

Unemployment of Working Age Population (Ages 16 to 64) (As a Percent of 16-64 Civilian Labor Force)

Hutchins city, Texas



Source: C23002. SEX BY AGE BY EMPLOYMENT STATUS FOR THE POPULATION 16 YEARS AND OVER
Data Set: 2008-2012 American Community Survey 5-Year Estimates

C24010. SEX BY OCCUPATION FOR THE CIVILIAN EMPLOYED POPULATION 16 YEARS AND OVER

Data Set: 2008-2012 American Community Survey 5-Year Estimates

	Hutchins city, Texas					
	African American	Margin of Error (+/-)	% of AA Total	White, Not Hispanic	Margin of Error (+/-)	% of NHW Total
Total:	721	157	100.0%	464	138	100.0%
Management, professional, and related occupations	119	NC	16.5%	73	NC	15.7%
Service occupations	69	NC	9.6%	69	NC	14.9%
Sales and office occupations	245	NC	34.0%	144	NC	31.0%
Natural resources, construction, and maintenance occupations:	56	NC	7.8%	67	NC	14.4%
Production, transportation, and material moving occupations	232	NC	32.2%	111	NC	23.9%
Male:	459	129	63.7%	269	107	58.0%
Management, business, science, and arts occupations:	48	43	6.7%	34	33	7.3%
Service occupations	45	41	6.2%	48	47	10.3%
Sales and office occupations	84	58	11.7%	47	36	10.1%
Natural resources, construction, and maintenance occupations:	56	39	7.8%	49	38	10.6%
Production, transportation, and material moving occupations	226	111	31.3%	91	70	19.6%
Female:	262	86	36.3%	195	64	42.0%
Management, professional, and related occupations	71	57	9.8%	39	30	8.4%
Service occupations	24	22	3.3%	21	22	4.5%
Sales and office occupations	161	86	22.3%	97	52	20.9%
Natural resources, construction, and maintenance occupations:	0	18	0.0%	18	29	3.9%
Production, transportation, and material moving occupations	6	9	0.8%	20	21	4.3%

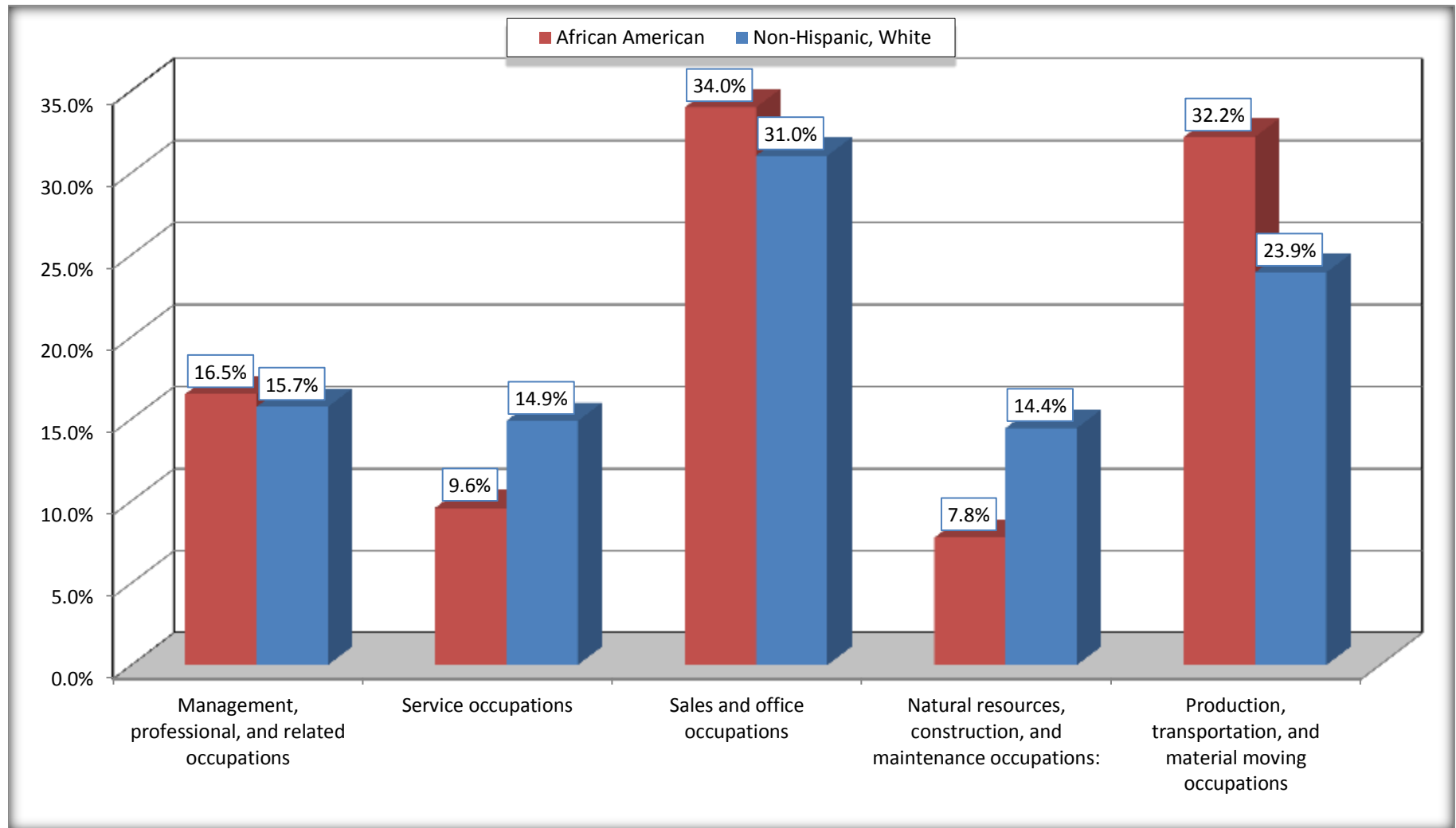
Source: U.S. Census Bureau, 2008-2012 American Community Survey

For information on confidentiality protection, sampling error, nonsampling error, and definitions, see Survey Methodology.

<http://www.census.gov/acs/www/UseData/index.htm>

Occupation for the Civilian Employed 16 Years and Over Population

Hutchins city, Texas



Source: C24010. SEX BY OCCUPATION FOR THE CIVILIAN EMPLOYED POPULATION 16 YEARS AND OVER
Data Set: 2008-2012 American Community Survey 5-Year Estimates

B25003. TENURE - Universe: OCCUPIED HOUSING UNITS

Data Set: 2008-2012 American Community Survey 5-Year Estimates

	Hutchins city, Texas					
	African American	Margin of Error (+/-)	% of AA Total	White, Not Hispanic	Margin of Error (+/-)	% of NHW Total
Total:	565	102	100.0%	400	102	100.0%
Owner occupied	416	91	73.6%	302	86	75.5%
Renter occupied	149	76	26.4%	98	51	24.5%

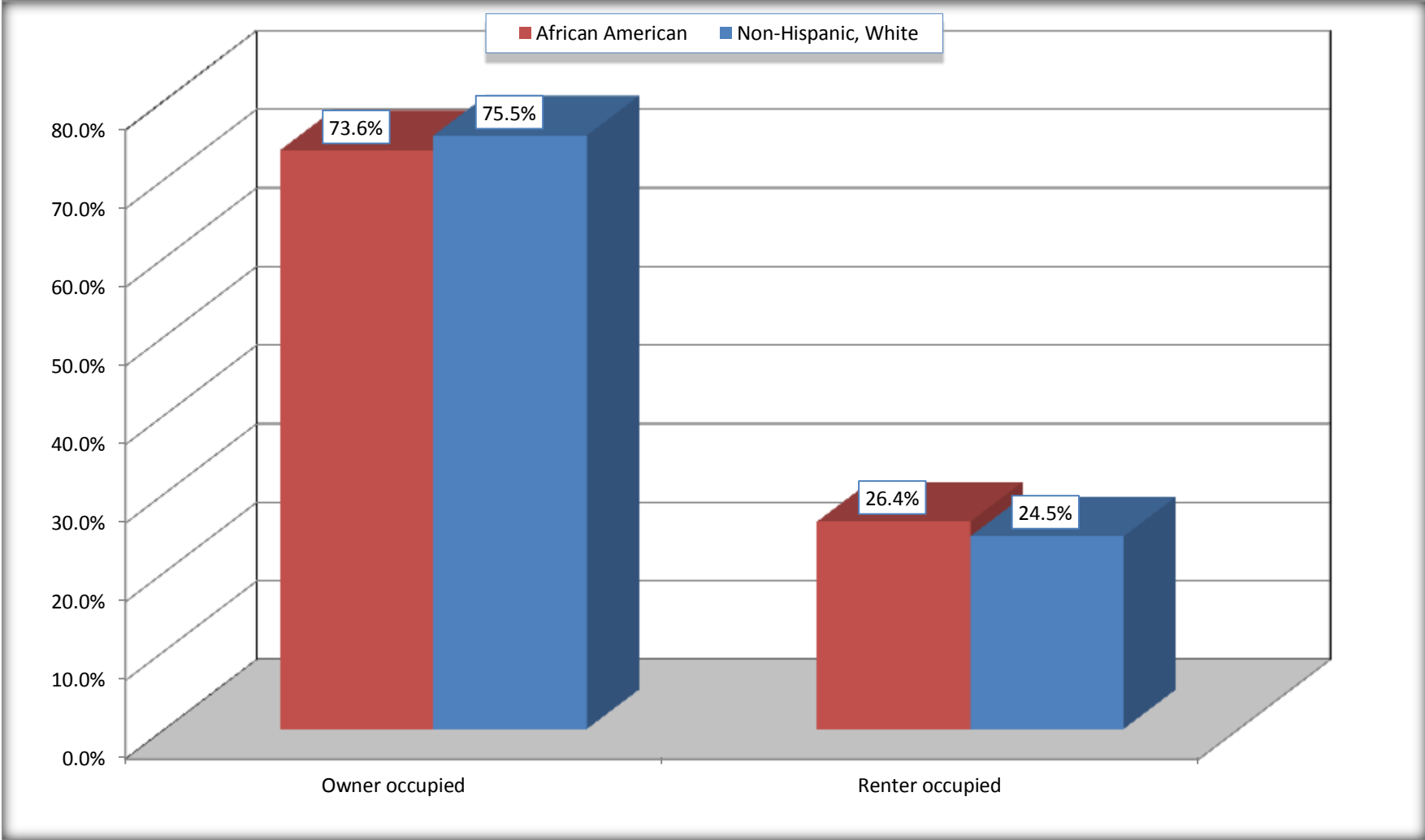
Source: U.S. Census Bureau, 2008-2012 American Community Survey

For information on confidentiality protection, sampling error, nonsampling error, and definitions, see Survey Methodology.

<http://www.census.gov/acs/www/UseData/index.h>

Home Owners and Renters by Household

Hutchins city, Texas



Source: B25003. TENURE - Universe: OCCUPIED HOUSING UNITS
Data Set: 2008-2012 American Community Survey 5-Year Estimates

B25014. OCCUPANTS PER ROOM - Universe: OCCUPIED HOUSING UNITS

Data Set: 2008-2012 American Community Survey 5-Year Estimates

	Hutchins city, Texas					
	African American	Margin of Error (+/-)	% of AA Total	White, Not Hispanic	Margin of Error (+/-)	% of NHW Total
Total:	565	102	100.0%	400	102	100.0%
1.00 or less occupants per room	513	122	90.8%	400	102	100.0%
1.01 or more occupants per room	52	54	9.2%	0	18	0.0%

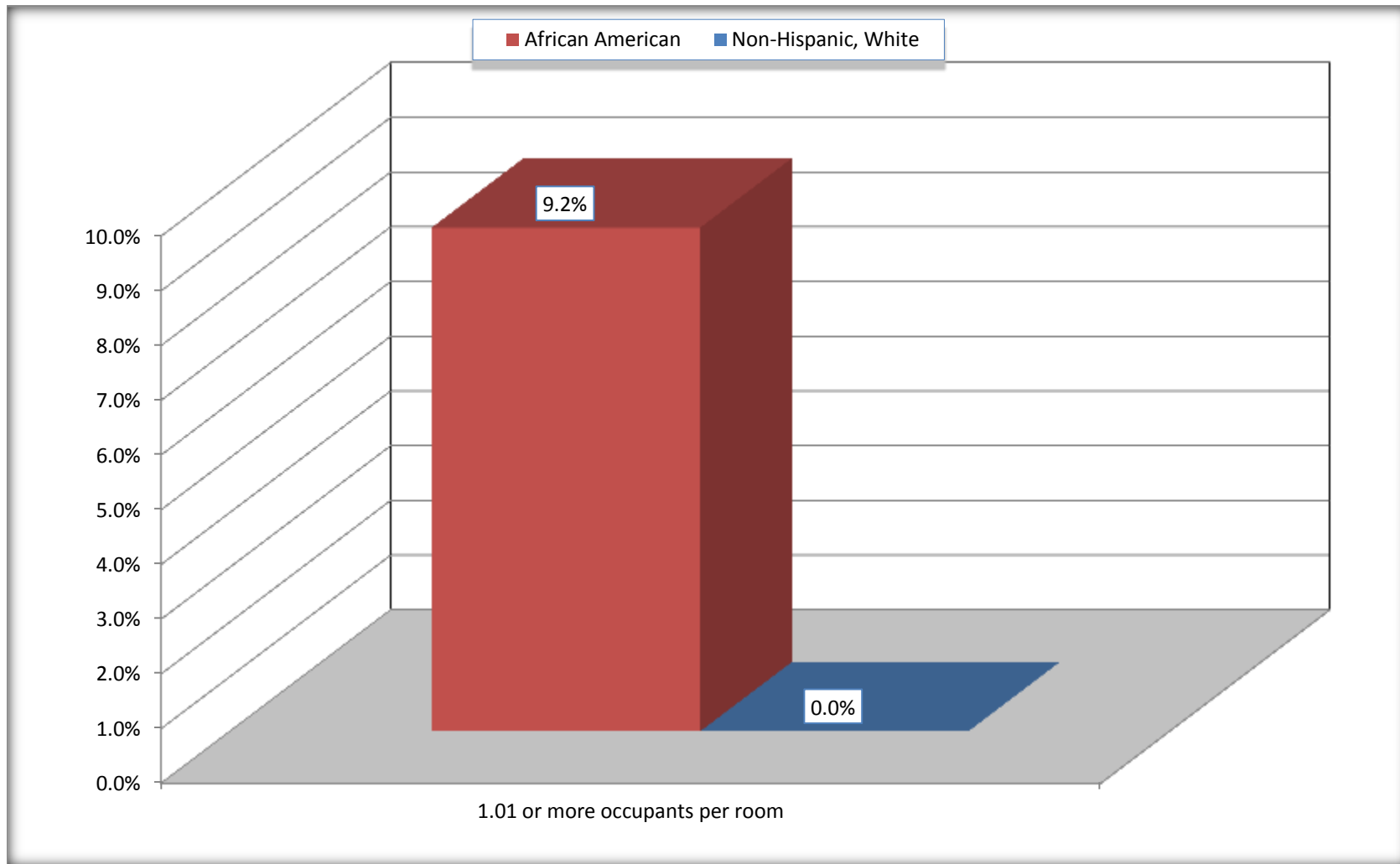
Source: U.S. Census Bureau, 2008-2012 American Community Survey

For information on confidentiality protection, sampling error, nonsampling error, and definitions, see Survey Methodology.

<http://www.census.gov/acs/www/UseData/index.ht>

More than One Person per Room (Crowding) by Household

Hutchins city, Texas



Source: B25014. OCCUPANTS PER ROOM - Universe: OCCUPIED HOUSING UNITS
Data Set: 2008-2012 American Community Survey 5-Year Estimates

B18101. AGE BY DISABILITY STATUS

Data Set: 2008-2012 American Community Survey 5-Year Estimates

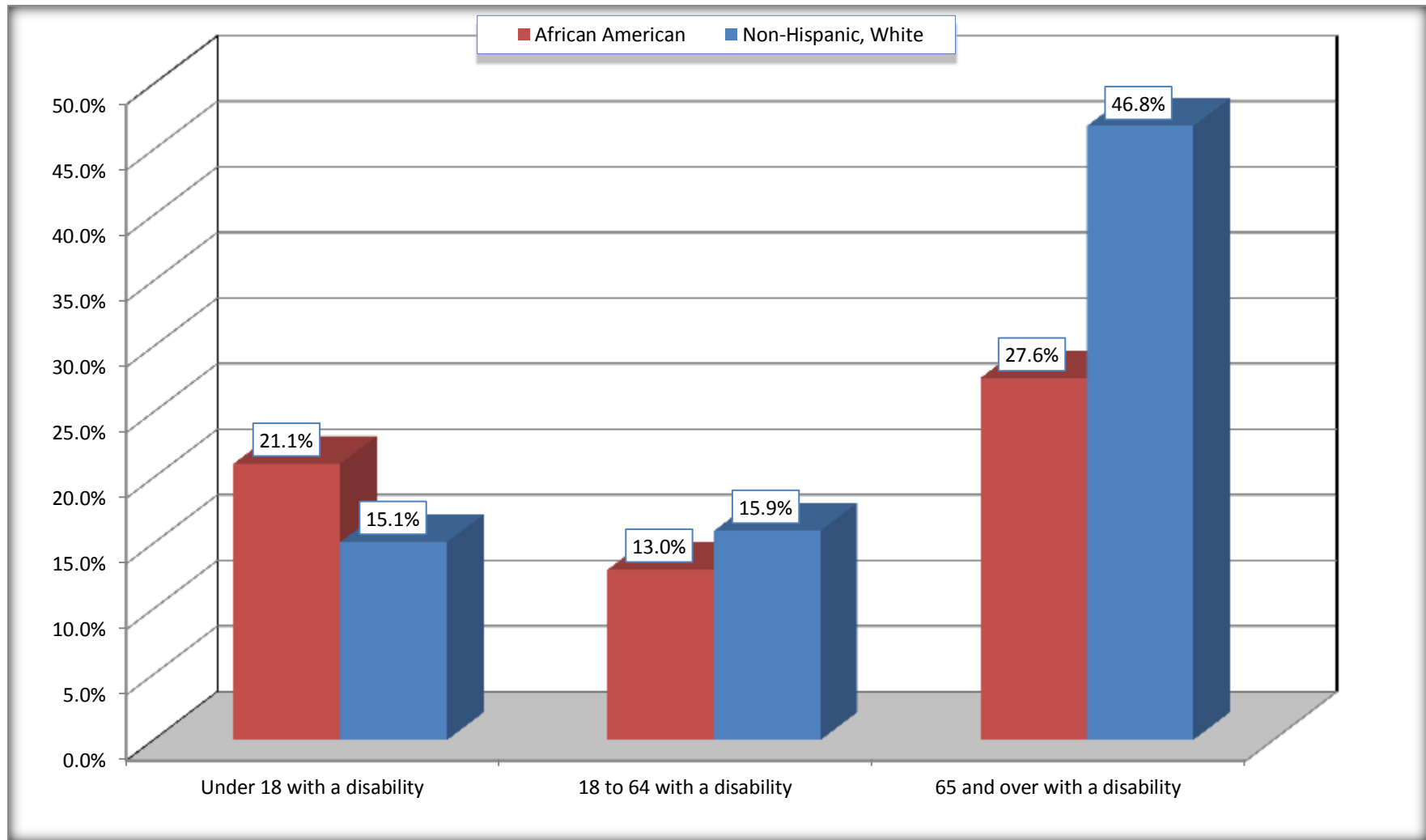
	Hutchins city, Texas					
	African American	Margin of Error (+/-)	% of AA Total	White, Not Hispanic	Margin of Error (+/-)	% of NHW Total
Total:	1,776	349	100.0%	917	246	100.0%
Under 18 years:	598	243	33.7%	159	42	17.3%
With a disability	126	135	7.1%	24	28	2.6%
No disability	472	176	26.6%	135	86	14.7%
18 to 64 years:	1,033	198	58.2%	602	171	65.6%
With a disability	134	66	7.5%	96	54	10.5%
No disability	899	204	50.6%	506	157	55.2%
65 years and over:	145	68	8.2%	156	72	17.0%
With a disability	40	33	2.3%	73	51	8.0%
No disability	105	55	5.9%	83	49	9.1%

Source: U.S. Census Bureau, 2008-2012 American Community Survey

For information on confidentiality protection, sampling error, nonsampling error, and definitions, see Survey Methodology.

<http://www.census.gov/acs/www/UseData/index.htm>

Disability by Age Hutchins city, Texas



Source: B18101. AGE BY DISABILITY STATUS
Data Set: 2008-2012 American Community Survey 5-Year Estimates

C27001B. HEALTH INSURANCE COVERAGE STATUS BY AGE

Data Set: 2008-2012 American Community Survey 5-Year Estimates

	Hutchins city, Texas					
	African American	Margin of Error (+/-)	% of AA Total	White, Not Hispanic	Margin of Error (+/-)	% of NHW Total
Total:	1,776	349	100.0%	917	246	100.0%
Under 18 years:	598	243	33.7%	159	98	17.3%
With health insurance coverage	486	178	27.4%	159	98	17.3%
No health insurance coverage	112	135	6.3%	0	18	0.0%
18 to 64 years:	1,033	198	58.2%	602	171	65.6%
With health insurance coverage	638	177	35.9%	391	134	42.6%
No health insurance coverage	395	166	22.2%	211	97	23.0%
65 years and over:	145	68	8.2%	156	72	17.0%
With health insurance coverage	145	68	8.2%	156	72	17.0%
No health insurance coverage	0	18	0.0%	0	18	0.0%

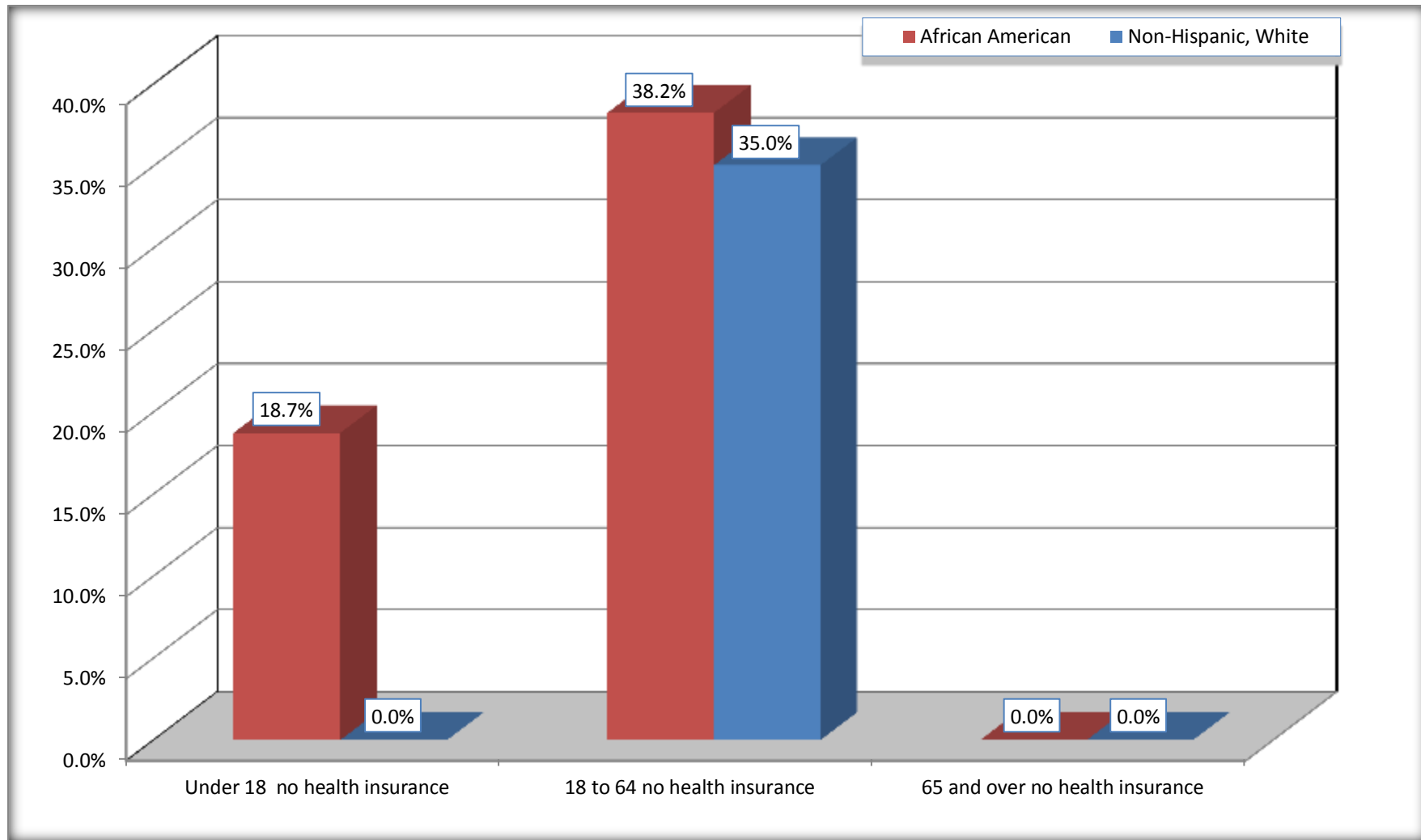
Source: U.S. Census Bureau, 2008-2012 American Community Survey

For information on confidentiality protection, sampling error, nonsampling error, and definitions, see Survey Methodology.

<http://www.census.gov/acs/www/UseData/index.htm>

Lack of Health Insurance Coverage by Age

Hutchins city, Texas



Source: C27001B. HEALTH INSURANCE COVERAGE STATUS BY AGE
Data Set: 2008-2012 American Community Survey 5-Year Estimates