

Selected Socio-Economic Data

Glenn Heights city, Texas

African American and White, Not Hispanic

Data Set: 2008-2012 American Community Survey 5-Year Estimates

www.fairvote2020.org

www.fairdata2000.com

[29-Dec-13](#)

C02003.DETAILED RACE - Universe: TOTAL POPULATION

Data Set: 2008-2012 American Community Survey 5-Year Estimates

	Glenn Heights city, Texas		
	Population	Margin of Error (+/-)	% of Total
Total:	11,226	50	100.0%
Population of one race:	10,880	273	96.9%
White	3,983	593	35.5%
Black or African American	6,290	739	56.0%
American Indian and Alaska Native	55	77	0.5%
Asian alone	80	70	0.7%
Native Hawaiian and Other Pacific Islander	0	20	0.0%
Some other race	472	296	4.2%
Population of two or more races:	346	268	3.1%
Two races including Some other race	0	20	0.0%
Two races excluding Some other race, and three or more races	346	268	3.1%
Population of two races:	346	268	3.1%
White; Black or African American	287	276	2.6%
White; American Indian and Alaska Native	30	32	0.3%
White; Asian	29	36	0.3%
Black or African American; American Indian and Alaska Native	0	20	0.0%
All other two race combinations	0	20	0.0%
Population of three races	0	20	0.0%
Population of four or more races	0	20	0.0%

Note: Hispanics may be of any race. See Table B03002 and chart.

Source: U.S. Census Bureau, 2008-2012 American Community Survey

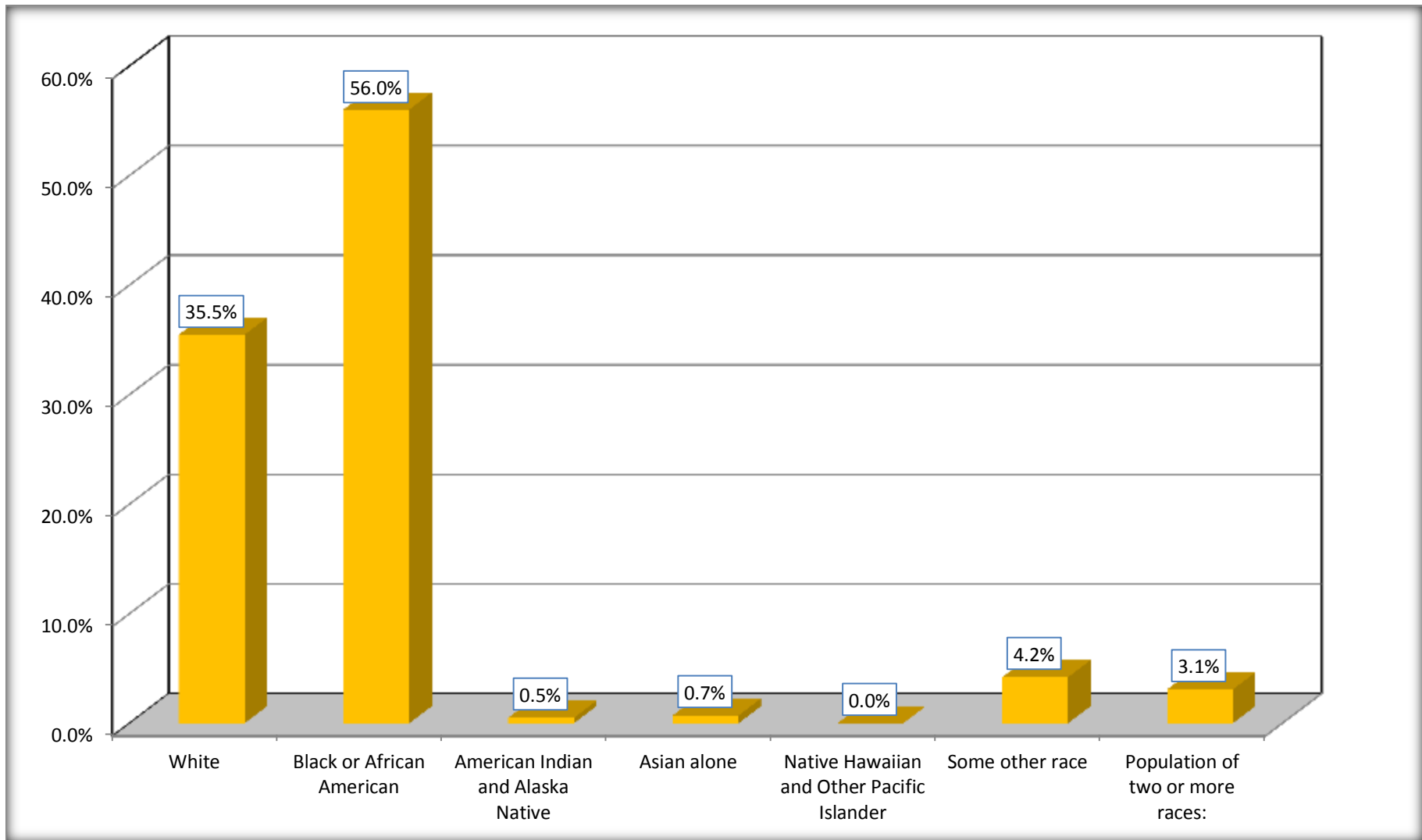
Although the American Community Survey (ACS) produces population, demographic and housing unit estimates, it is the Census Bureau's Population Estimates Program that produces and disseminates the official estimates of the population for the nation, states, counties, cities and towns and estimates of housing units for states and counties.

For information on confidentiality protection, sampling error, nonsampling error, and definitions, see Survey Methodology.

<http://www.census.gov/acs/www/UseData/index.htm>

Population by Race

Glenn Heights city, Texas



Source: C02003.DETAILED RACE - Universe: TOTAL POPULATION
Data Set: 2008-2012 American Community Survey 5-Year Estimates

B03002. HISPANIC OR LATINO ORIGIN BY RACE - Universe: TOTAL POPULATION

Data Set: 2008-2012 American Community Survey 5-Year Estimates

	Glenn Heights city, Texas		
	Population	Margin of Error (+/-)	% of Total
Total:	11,226	50	100.0%
Not Hispanic or Latino:	9,016	577	80.3%
White alone	2,550	577	22.7%
Black or African American alone	6,022	719	53.6%
American Indian and Alaska Native alone	55	77	0.5%
Asian alone	65	68	0.6%
Native Hawaiian and Other Pacific Islander alone	0	20	0.0%
Some other race alone	0	20	0.0%
Two or more races:	324	274	2.9%
Two races including Some other race	0	20	0.0%
Two races excluding Some other race, and three or more races	324	274	2.9%
Hispanic or Latino	2,210	576	19.7%

Source: U.S. Census Bureau, 2008-2012 American Community Survey

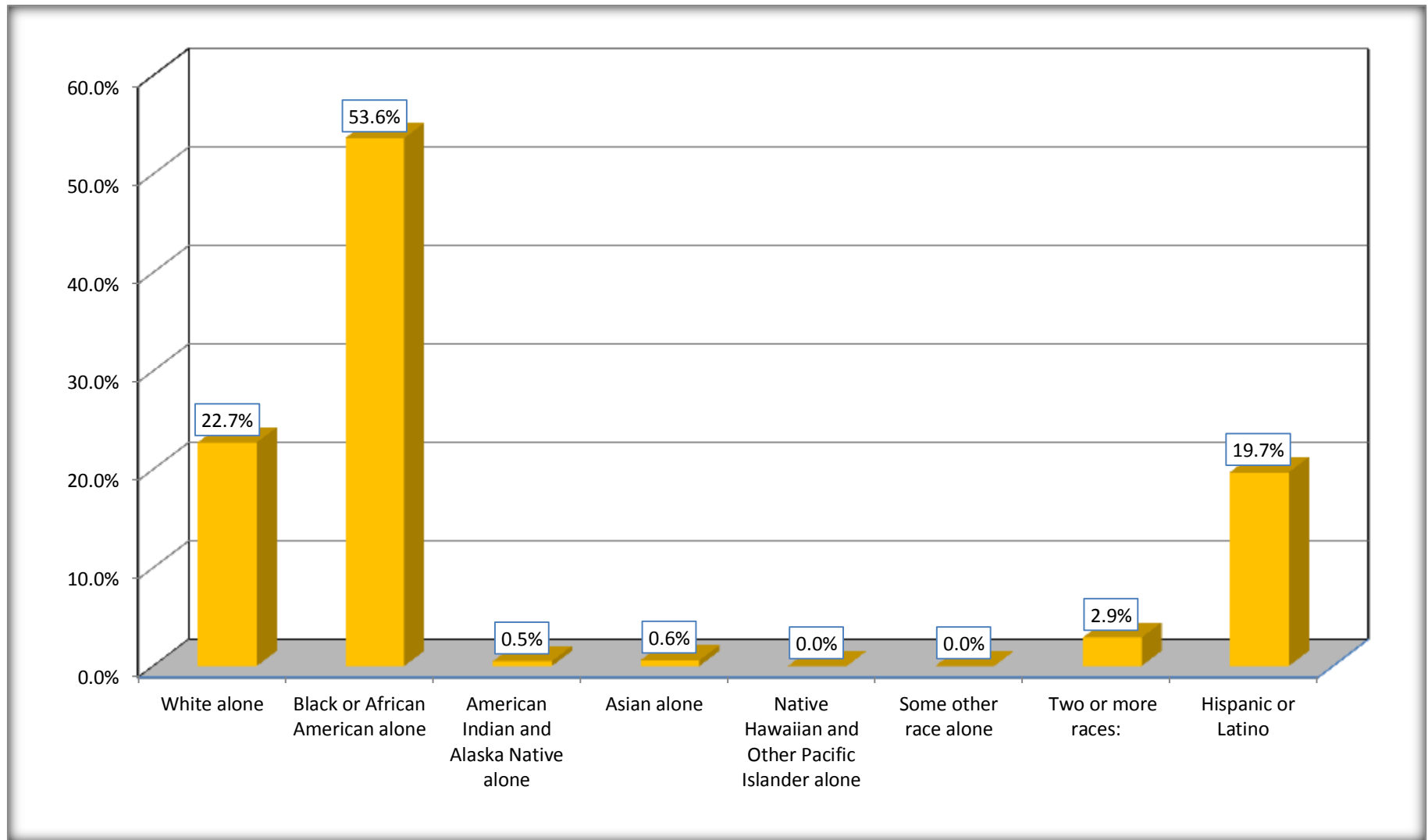
Although the American Community Survey (ACS) produces population, demographic and housing unit estimates, it is the Census Bureau's Population Estimates Program that produces and disseminates the official estimates of the population for the nation, states, counties, cities and towns and estimates of housing units for states and counties.

For information on confidentiality protection, sampling error, nonsampling error, and definitions, see Survey Methodology.

<http://www.census.gov/acs/www/UseData/index.htm>

Non-Hispanic by Race and Hispanic Population

Glenn Heights city, Texas



Source: B03002. HISPANIC OR LATINO ORIGIN BY RACE - Universe: TOTAL POPULATION
Data Set: 2008-2012 American Community Survey 5-Year Estimates

B03002. HISPANIC OR LATINO ORIGIN BY RACE

Data Set: 2008-2012 American Community Survey 5-Year Estimates

	Glenn Heights city, Texas		
	Population	Margin of Error (+/-)	% of Total
Hispanic or Latino:	2,210	576	100.0%
White alone	1,433	458	64.8%
Black or African American alone	268	259	12.1%
American Indian and Alaska Native alone	0	20	0.0%
Asian alone	15	25	0.7%
Native Hawaiian and Other Pacific Islander alone	0	20	0.0%
Some other race alone	472	296	21.4%
Two or more races:	22	28	1.0%
Two races including Some other race	0	20	0.0%
Two races excluding Some other race, and three or more races	22	28	1.0%

Source: U.S. Census Bureau, 2008-2012 American Community Survey

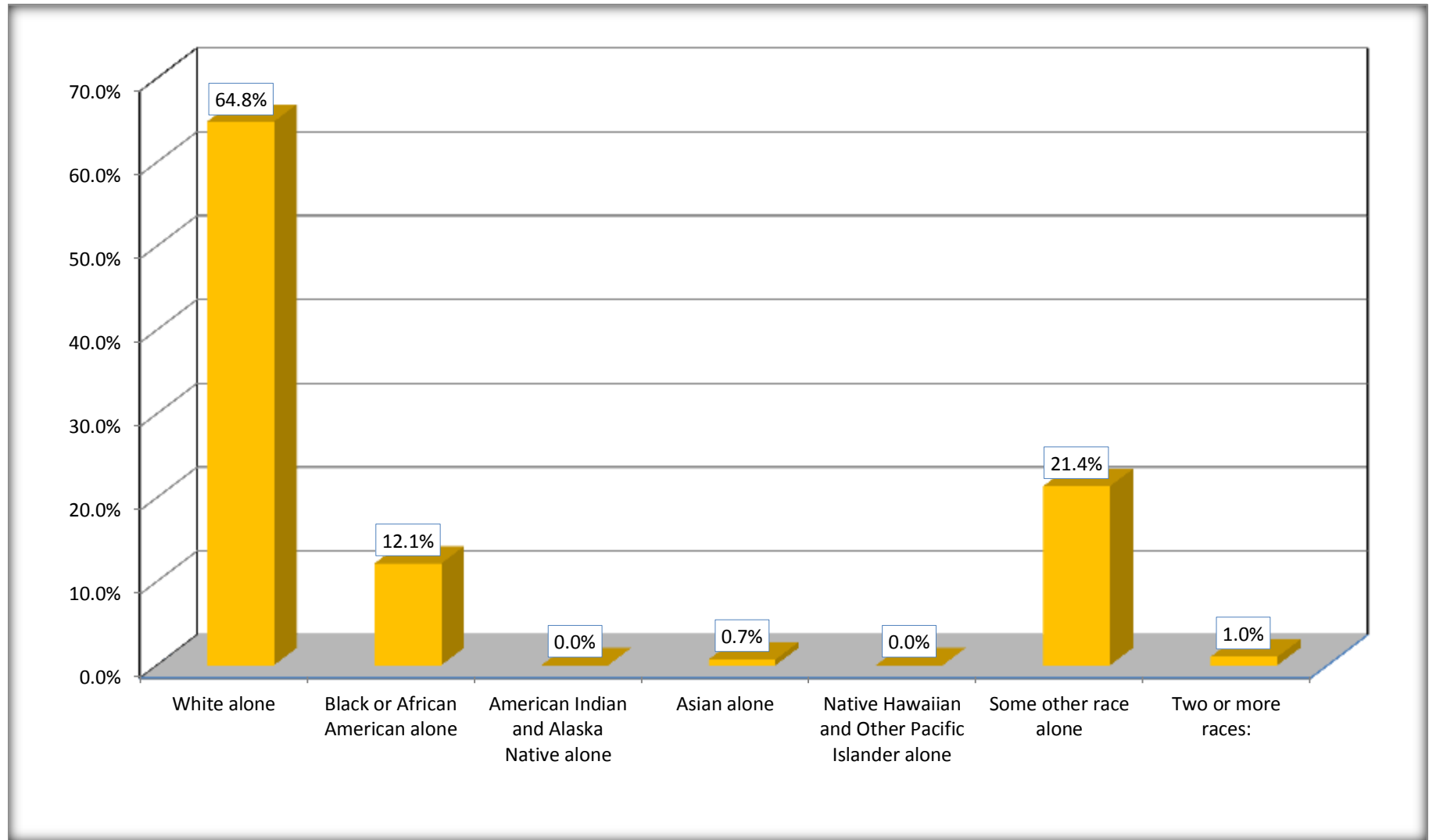
Although the American Community Survey (ACS) produces population, demographic and housing unit estimates, it is the Census Bureau's Population Estimates Program that produces and disseminates the official estimates of the population for the nation, states, counties, cities and towns and estimates of housing units for states and counties.

For information on confidentiality protection, sampling error, nonsampling error, and definitions, see Survey Methodology.

<http://www.census.gov/acs/www/UseData/index.htm>

Hispanic or Latino Origin by Race

Glenn Heights city, Texas



Source: B03002. HISPANIC OR LATINO ORIGIN BY RACE
Data Set: 2008-2012 American Community Survey 5-Year Estimates

B01001. SEX BY AGE

Data Set: 2008-2012 American Community Survey 5-Year Estimates

	Glenn Heights city, Texas					
	African American	Margin of Error (+/-)	% of AA Total	White, Not Hispanic	Margin of Error (+/-)	% of NHW Total
Total:	6,290	739	100.0%	2,550	577	100.0%
Under 18 years	2,312	NC	36.8%	610	NC	23.9%
18 to 64 years	3,796	NC	60.3%	1,709	NC	67.0%
65 years and over	182	NC	2.9%	231	NC	9.1%
Male:	2,788	449	44.3%	1,069	389	41.9%
Under 18 years	1037	NC	16.5%	217	NC	8.5%
18 to 64 years	1,706	NC	27.1%	728	NC	28.5%
65 years and over	45	NC	0.7%	124	NC	4.9%
Female:	3,502	574	55.7%	1,481	412	58.1%
Under 18 years	1,275	NC	20.3%	393	NC	15.4%
18 to 64 years	2,090	NC	33.2%	981	NC	38.5%
65 years and over	137	NC	2.2%	107	NC	4.2%

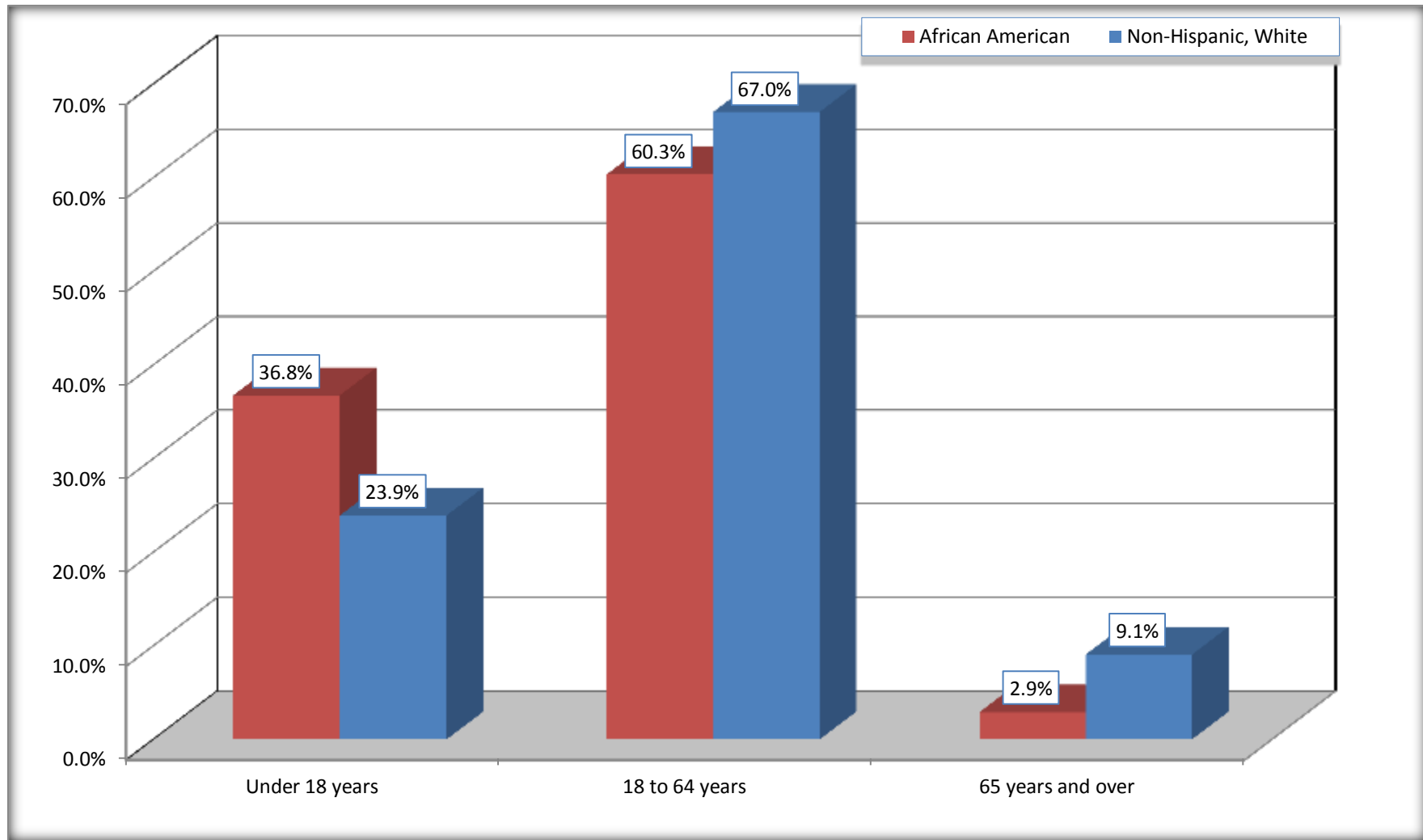
Source: U.S. Census Bureau, 2008-2012 American Community Survey

Although the American Community Survey (ACS) produces population, demographic and housing unit estimates, it is the Census Bureau's Population Estimates Program that produces and disseminates the official estimates of the population for the nation, states, counties, cities and towns and estimates of housing units for states and counties.

For information on confidentiality protection, sampling error, nonsampling error, and definitions, see Survey Methodology.
<http://www.census.gov/acs/www/UseData/index.htm>

Population by Age

Glenn Heights city, Texas



Source: B01001. SEX BY AGE
Data Set: 2008-2012 American Community Survey 5-Year Estimates

B05003. SEX BY AGE BY CITIZENSHIP STATUS

Data Set: 2008-2012 American Community Survey 5-Year Estimates

	Glenn Heights city, Texas					
	African American	Margin of Error (+/-)	% of AA Total by Age	White, Not Hispanic	Margin of Error (+/-)	% of NHW Total by Age
Total:	6,290	739	100.0%	2,550	577	100.0%
Under 18 years:	2,312	NC	100.0%	610	NC	100.0%
Native	2,312	NC	100.0%	610	NC	100.0%
Foreign born:	0	NC	0.0%	0	NC	0.0%
Naturalized U.S. citizen	0	NC	0.0%	0	NC	0.0%
Not a U.S. citizen	0	NC	0.0%	0	NC	0.0%
18 years and over:	3,978	NC	100.0%	1,940	NC	100.0%
Native	3,978	NC	100.0%	1,888	NC	97.3%
Foreign born:	0	NC	0.0%	52	NC	2.7%
Naturalized U.S. citizen	0	NC	0.0%	52	NC	2.7%
Not a U.S. citizen	0	NC	0.0%	0	NC	0.0%
Male:	2,788	449	44.3%	1,069	278	41.9%
Under 18 years:	1,037	277	100.0%	217	113	100.0%
Native	1,037	277	100.0%	217	113	100.0%
Foreign born:	0	20	0.0%	0	20	0.0%
Naturalized U.S. citizen	0	20	0.0%	0	20	0.0%
Not a U.S. citizen	0	20	0.0%	0	20	0.0%
18 years and over:	1,751	376	100.0%	852	222	100.0%
Native	1,751	376	100.0%	830	220	97.4%
Foreign born:	0	20	0.0%	22	21	2.6%
Naturalized U.S. citizen	0	20	0.0%	22	21	2.6%
Not a U.S. citizen	0	20	0.0%	0	20	0.0%

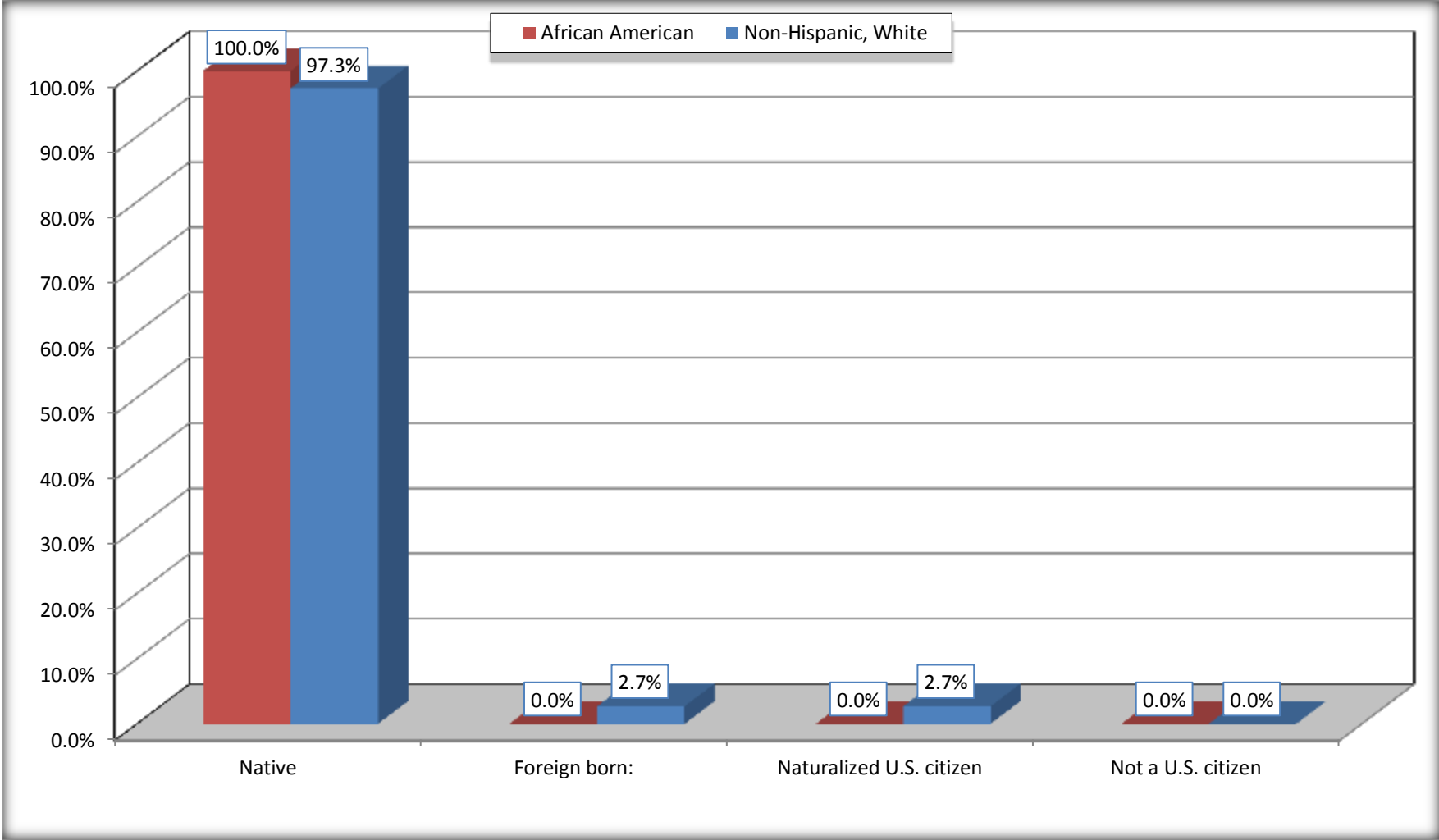
	Glenn Heights city, Texas					
	African American	Margin of Error (+/-)	% of AA by Age	White, Not Hispanic	Margin of Error (+/-)	% of NHW by Age
Female:	3,502	574	55.7%	1,481	340	58.1%
Under 18 years:	1,275	405	100.0%	393	188	100.0%
Native	1,275	405	100.0%	393	188	100.0%
Foreign born:	0	20	0.0%	0	20	0.0%
Naturalized U.S. citizen	0	20	0.0%	0	20	0.0%
Not a U.S. citizen	0	20	0.0%	0	20	0.0%
18 years and over:	2,227	353	100.0%	1,088	238	100.0%
Native	2,227	353	100.0%	1,058	238	97.2%
Foreign born:	0	20	0.0%	30	35	2.8%
Naturalized U.S. citizen	0	20	0.0%	30	35	2.8%
Not a U.S. citizen	0	20	0.0%	0	20	0.0%

Source: U.S. Census Bureau, 2008-2012 American Community Survey

For information on confidentiality protection, sampling error, nonsampling error, and definitions, see Survey Methodology.
<http://www.census.gov/acs/www/UseData/index.htm>

Citizenship Status of Voting Age Population (18 and Over)

Glenn Heights city, Texas



Source: B05003. SEX BY AGE BY CITIZENSHIP STATUS
Data Set: 2008-2012 American Community Survey 5-Year Estimates

**B07004. GEOGRAPHICAL MOBILITY IN THE PAST YEAR BY RACE FOR CURRENT RESIDENCE IN THE UNITED STATES - Universe:
POPULATION 1 YEAR AND OVER**

Data Set: 2008-2012 American Community Survey 5-Year Estimates

	Glenn Heights city, Texas					
	African American	Margin of Error (+/-)	% of AA Total	White, Not Hispanic	Margin of Error (+/-)	% of NHW Total
Total:	6,260	741	100.0%	2,549	576	100.0%
Same house 1 year ago	5,531	718	88.4%	2,437	569	95.6%
Moved within same county	441	256	7.0%	17	26	0.7%
Moved from different county within same state	191	162	3.1%	83	84	3.3%
Moved from different state	69	66	1.1%	12	22	0.5%
Moved from abroad	28	40	0.4%	0	20	0.0%

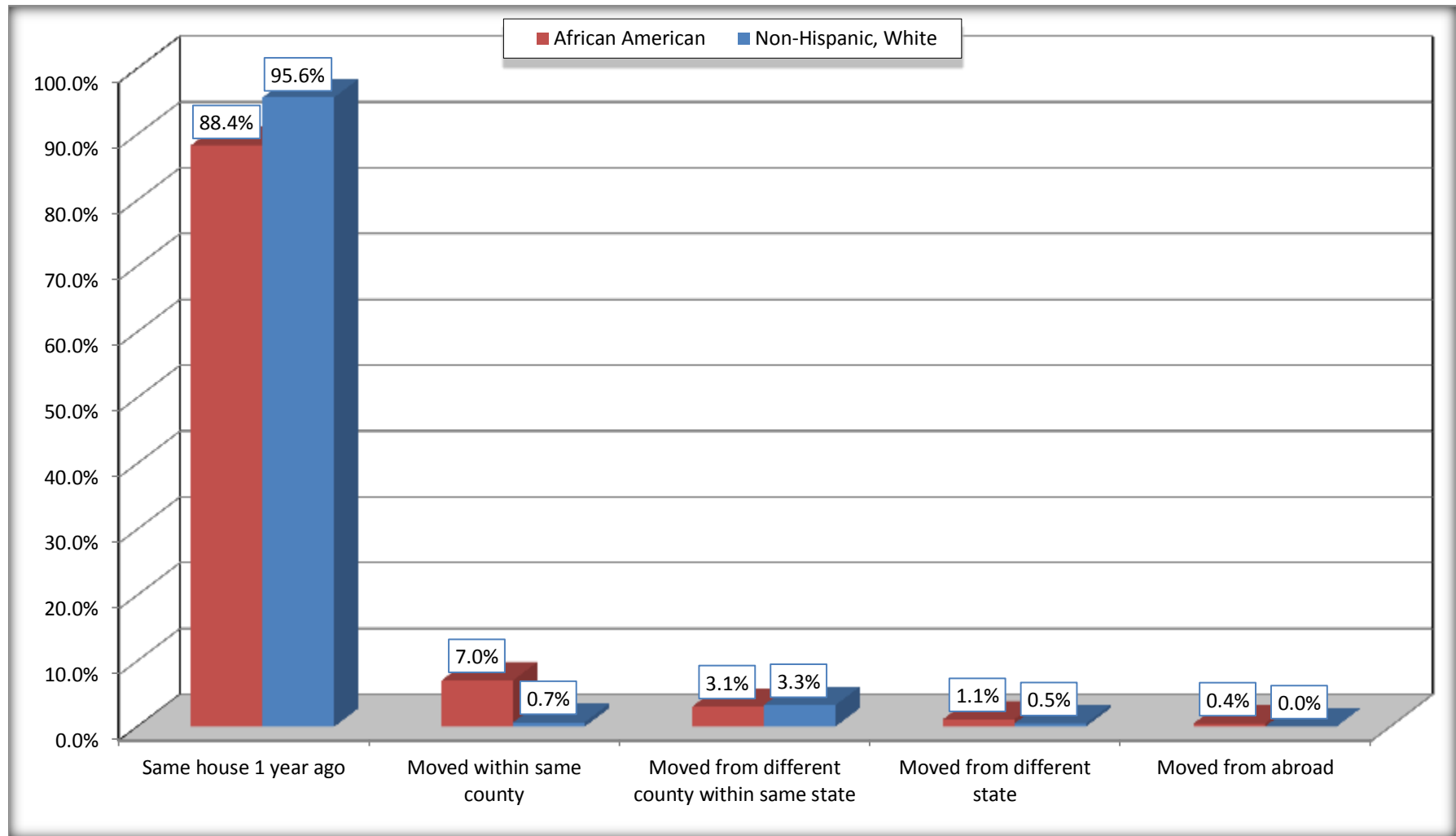
Source: U.S. Census Bureau, 2008-2012 American Community Survey

For information on confidentiality protection, sampling error, nonsampling error, and definitions, see Survey Methodology.

<http://www.census.gov/acs/www/UseData/index.htm>

Geographical Mobility in the Past Year (Population 1 Year and Over)

Glenn Heights city, Texas



Source: B07004. GEOGRAPHICAL MOBILITY IN THE PAST YEAR BY RACE FOR CURRENT RESIDENCE IN THE UNITED STATES - Universe: POPULATION 1 YEAR AND OVER

Data Set: 2008-2012 American Community Survey 5-Year Estimates

B08105. MEANS OF TRANSPORTATION TO WORK - Universe: WORKERS 16 YEARS AND OVER

Data Set: 2008-2012 American Community Survey 5-Year Estimates

	Glenn Heights city, Texas					
	African American	Margin of Error (+/-)	% of AA Total	White, Not Hispanic	Margin of Error (+/-)	% of NHW Total
Total:	2453	474	100.0%	1344	287	100.0%
Car, truck, or van - drove alone	1678	385	68.4%	1128	280	83.9%
Car, truck, or van - carpooled	379	175	15.5%	57	61	4.2%
Public transportation (excluding taxicab)	262	176	10.7%	16	25	1.2%
Walked	0	20	0.0%	46	76	3.4%
Taxicab, motorcycle, bicycle, or other means	40	62	1.6%	0	20	0.0%
Worked at home	94	79	3.8%	97	75	7.2%

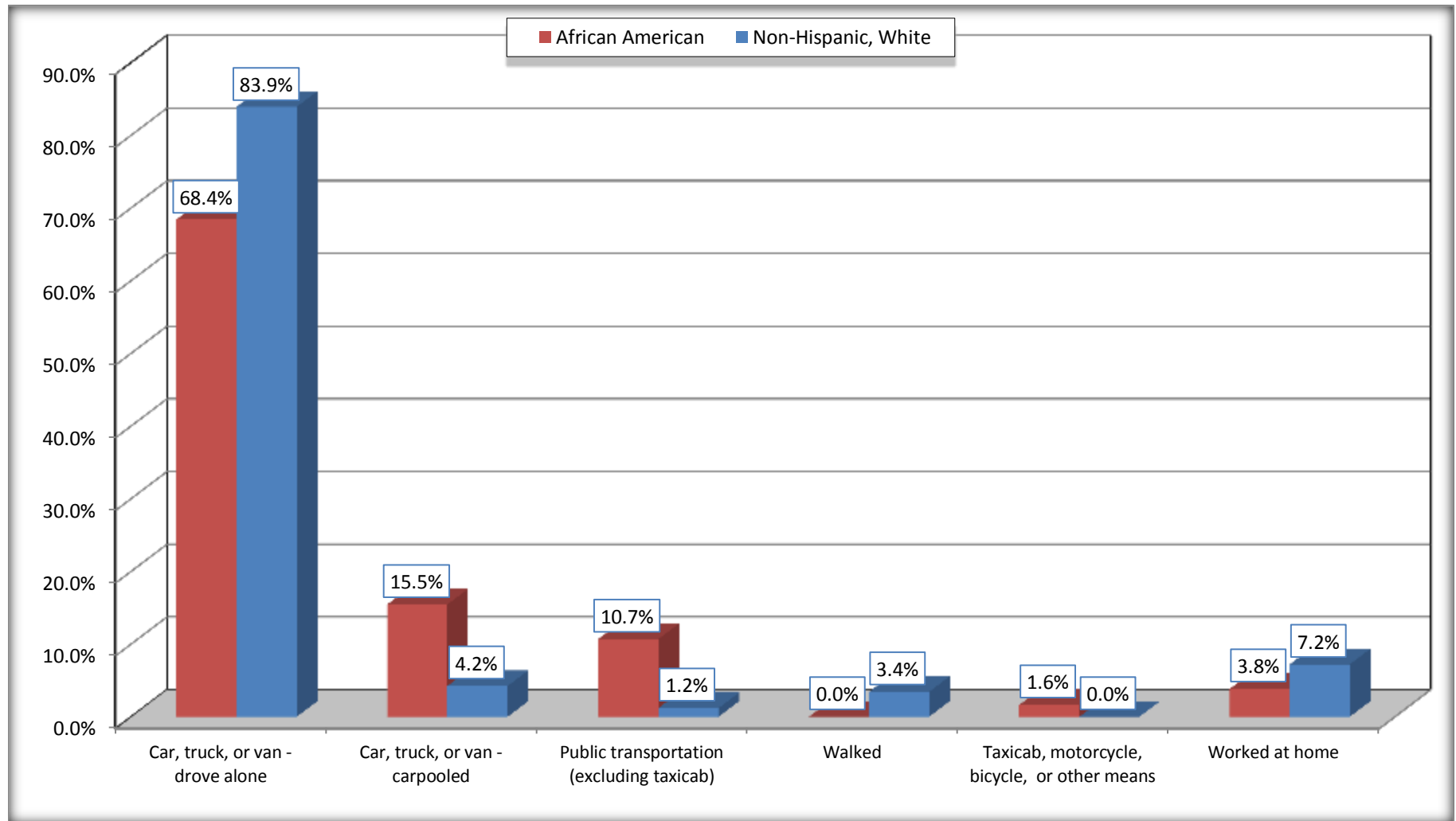
Source: U.S. Census Bureau, 2008-2012 American Community Survey

For information on confidentiality protection, sampling error, nonsampling error, and definitions, see Survey Methodology.

<http://www.census.gov/acs/www/UseData/index.htm>

Means of Transportation to Work (Workers 16 Years and Over)

Glenn Heights city, Texas



Source: B08105. MEANS OF TRANSPORTATION TO WORK - Universe: WORKERS 16 YEARS AND OVER
Data Set: 2008-2012 American Community Survey 5-Year Estimates

B11002. HOUSEHOLD TYPE BY RELATIVES AND NONRELATIVES FOR POPULATION IN HOUSEHOLDS

Data Set: 2008-2012 American Community Survey 5-Year Estimates

	Glenn Heights city, Texas					
	African American	Margin of Error (+/-)	% of AA Total	White, Not Hispanic	Margin of Error (+/-)	% of NHW Total
Total:	6553	653	100.0%	2605	572	100.0%
In family households	5944	725	90.7%	2280	557	87.5%
In nonfamily households	609	364	9.3%	325	136	12.5%

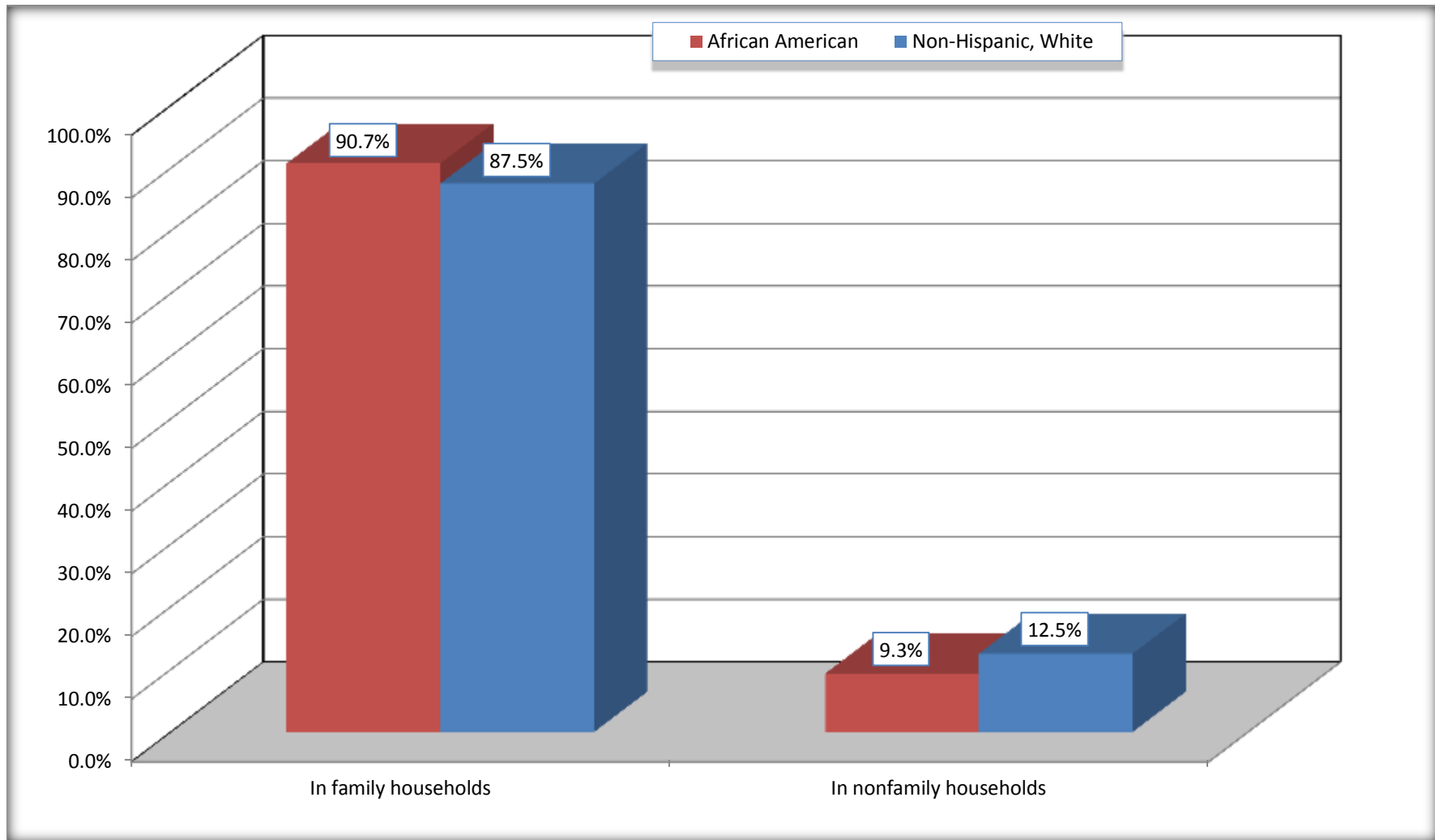
Source: U.S. Census Bureau, 2008-2012 American Community Survey

For information on confidentiality protection, sampling error, nonsampling error, and definitions, see Survey Methodology.

<http://www.census.gov/acs/www/UseData/index.htm>

Household Type for Population in Households

Glenn Heights city, Texas



Source: B11002. HOUSEHOLD TYPE BY RELATIVES AND NONRELATIVES FOR POPULATION IN HOUSEHOLDS
Data Set: 2008-2012 American Community Survey 5-Year Estimates

B12002. MARITAL STATUS FOR THE POPULATION 15 YEARS AND OVER

Data Set: 2008-2012 American Community Survey 5-Year Estimates

	Glenn Heights city, Texas					
	African American	Margin of Error (+/-)	% of AA Total	White, Not Hispanic	Margin of Error (+/-)	% of NHW Total
Total:	4,357	591	100.0%	2,121	460	100.0%
Never married	1,835	NC	42.1%	464	NC	21.9%
Now married (except separated)	1,792	NC	41.1%	1,251	NC	59.0%
Separated	69	NC	1.6%	109	NC	5.1%
Widowed	86	NC	2.0%	92	NC	4.3%
Divorced	575	NC	13.2%	205	NC	9.7%
Male:	1,902	379	43.7%	899	229	42.4%
Never married	794	228	18.2%	179	88	8.4%
Now married (except separated)	900	242	20.7%	582	156	27.4%
Separated	12	18	0.3%	35	39	1.7%
Widowed	0	20	0.0%	0	20	0.0%
Divorced	196	156	4.5%	103	67	4.9%
Female:	2,455	405	56.3%	1,222	279	57.6%
Never married	1,041	360	23.9%	285	150	13.4%
Now married (except separated)	892	267	20.5%	669	166	31.5%
Separated	57	81	1.3%	74	71	3.5%
Widowed	86	67	2.0%	92	62	4.3%
Divorced	379	191	8.7%	102	66	4.8%

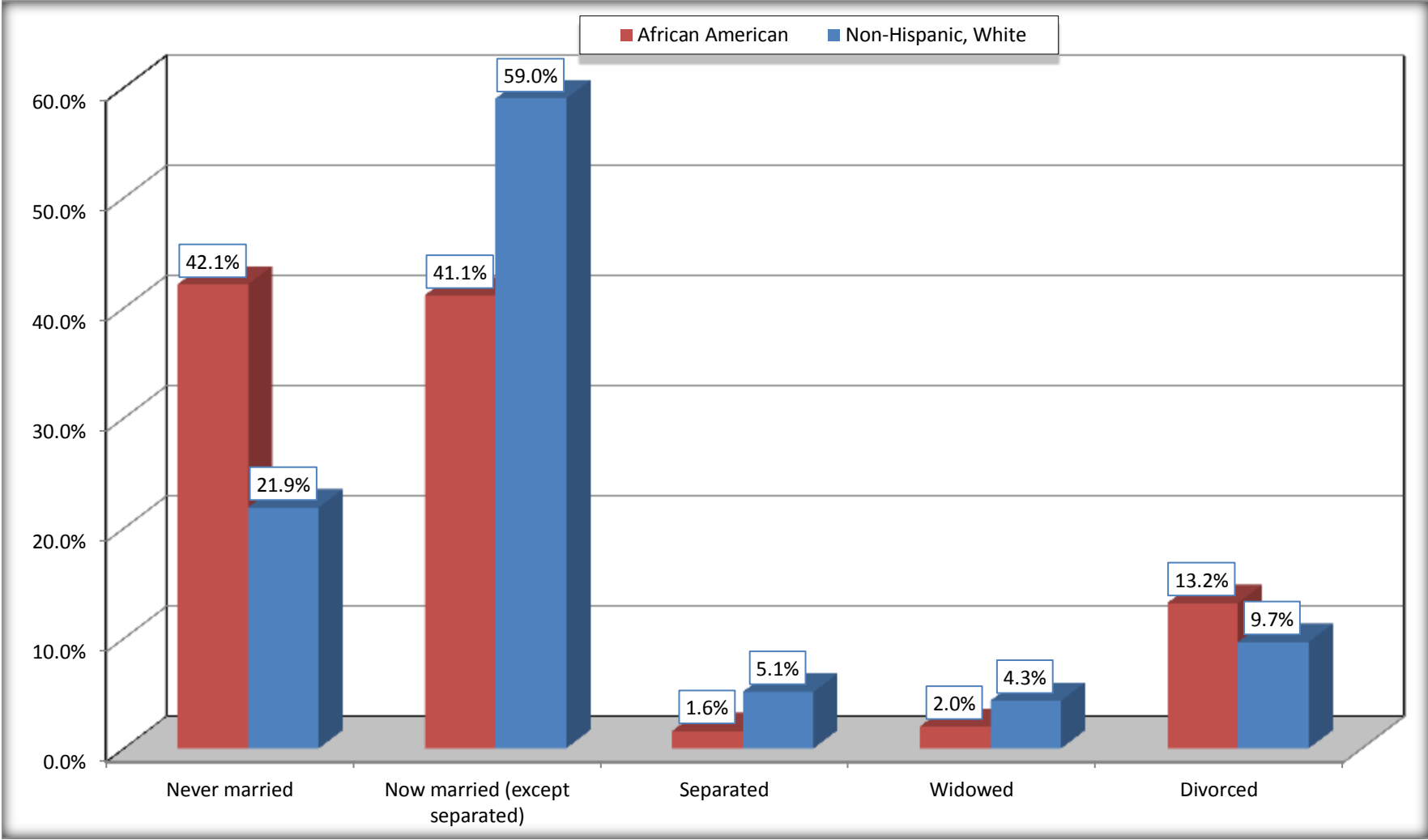
Source: U.S. Census Bureau, 2008-2012 American Community Survey

For information on confidentiality protection, sampling error, nonsampling error, and definitions, see Survey Methodology.

<http://www.census.gov/acs/www/UseData/index.htm>

Marital Status for the Population 15 Years and Over

Glenn Heights city, Texas



Source: B12002. MARITAL STATUS FOR THE POPULATION 15 YEARS AND OVER
Data Set: 2008-2012 American Community Survey 5-Year Estimates

C15002. SEX BY EDUCATIONAL ATTAINMENT FOR THE POPULATION 25 YEARS AND OVER

Data Set: 2008-2012 American Community Survey 5-Year Estimates

	Glenn Heights city, Texas					
	African American	Margin of Error (+/-)	% of AA Total	White, Not Hispanic	Margin of Error (+/-)	% of NHW Total
Total:	3,442	471	100.0%	1,750	360	100.0%
Less than high school diploma	131	NC	3.8%	258	NC	14.7%
High school graduate, GED, or alternative	1,372	NC	39.9%	472	NC	27.0%
Some college or associate's degree	1,116	NC	32.4%	636	NC	36.3%
Bachelor's degree or higher	823	NC	23.9%	384	NC	21.9%
Male:	1,497	322	43.5%	773	189	44.2%
Less than high school diploma	25	28	0.7%	81	68	4.6%
High school graduate, GED, or alternative	638	250	18.5%	229	118	13.1%
Some college or associate's degree	508	208	14.8%	294	117	16.8%
Bachelor's degree or higher	326	139	9.5%	169	74	9.7%
Female:	1,945	286	56.5%	977	212	55.8%
Less than high school diploma	106	120	3.1%	177	122	10.1%
High school graduate, GED, or alternative	734	237	21.3%	243	110	13.9%
Some college or associate's degree	608	185	17.7%	342	118	19.5%
Bachelor's degree or higher	497	197	14.4%	215	112	12.3%

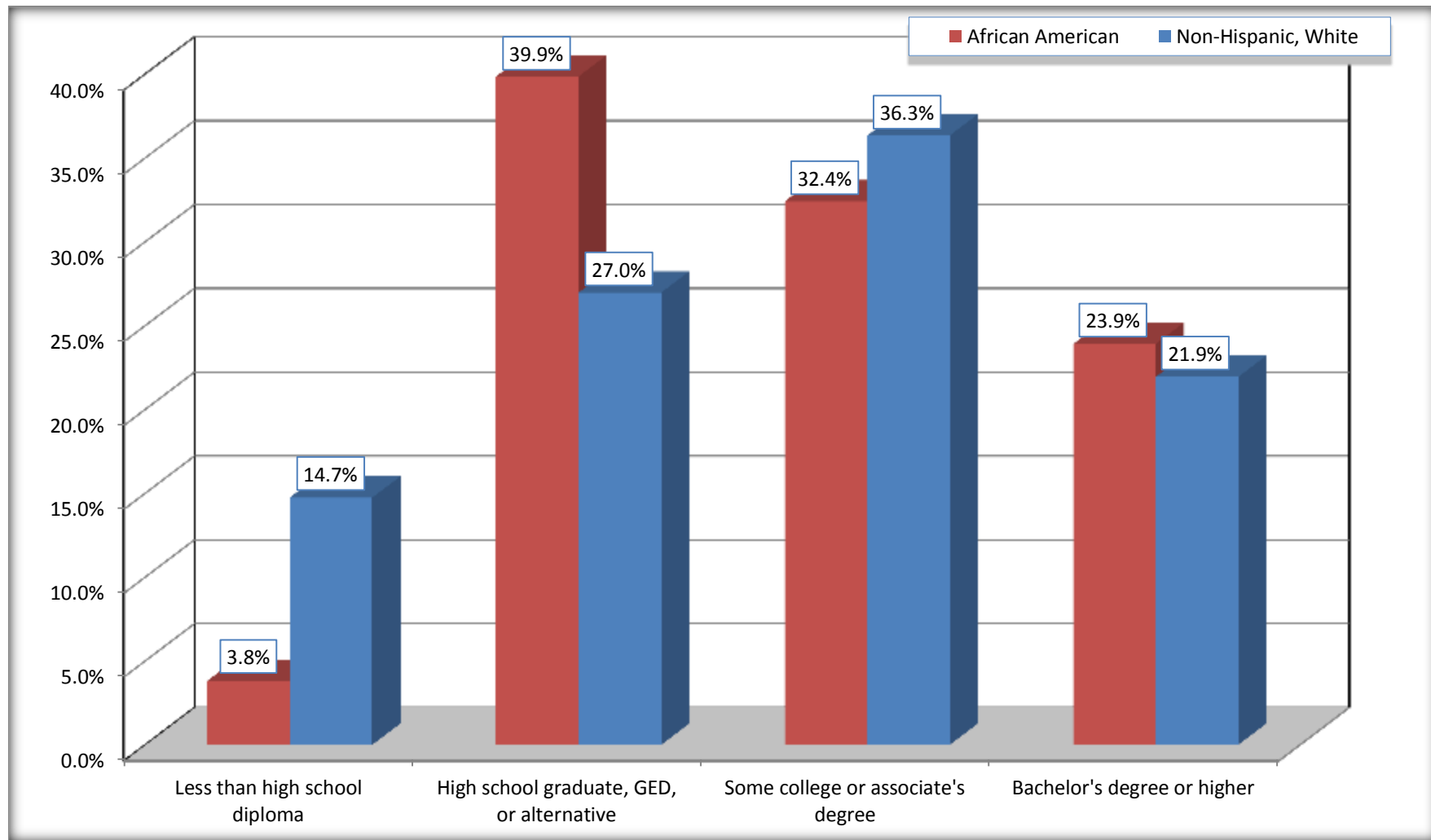
Source: U.S. Census Bureau, 2008-2012 American Community Survey

For information on confidentiality protection, sampling error, nonsampling error, and definitions, see Survey Methodology.

<http://www.census.gov/acs/www/UseData/index.htm>

Educational Attainment for the Population 25 Years and Older

Glenn Heights city, Texas



Source: C15002. SEX BY EDUCATIONAL ATTAINMENT FOR THE POPULATION 25 YEARS AND OVER
Data Set: 2008-2012 American Community Survey 5-Year Estimates

B17010. POVERTY STATUS IN THE PAST 12 MONTHS OF FAMILIES BY FAMILY TYPE BY PRESENCE OF RELATED CHILDREN UNDER 18 YEARS

Data Set: 2008-2012 American Community Survey 5-Year Estimates

	Glenn Heights city, Texas					
	African American	Margin of Error (+/-)	% of AA Total	White, Not Hispanic	Margin of Error (+/-)	% of NHW Total
Total:	1,654	208	100.0%	691	151	100.0%
Income in the past 12 months below poverty level:	203	130	12.3%	24	32	3.5%
Married-couple family:	31	38	1.9%	24	32	3.5%
With related children under 18 years	12	21	0.7%	24	32	3.5%
Other family:	172	128	10.4%	0	20	0.0%
Male householder, no wife present	0	20	0.0%	0	20	0.0%
With related children under 18 years	0	20	0.0%	0	20	0.0%
Female householder, no husband present	172	128	10.4%	0	20	0.0%
With related children under 18 years	172	128	10.4%	0	20	0.0%
Income in the past 12 months at or above poverty level:	1,451	235	87.7%	667	158	96.5%
Married-couple family:	806	234	48.7%	559	149	80.9%
With related children under 18 years	620	212	37.5%	254	107	36.8%
Other family:	645	226	39.0%	108	70	15.6%
Male householder, no wife present	188	133	11.4%	9	14	1.3%
With related children under 18 years	126	115	7.6%	0	20	0.0%
Female householder, no husband present	457	173	27.6%	99	68	14.3%
With related children under 18 years	298	141	18.0%	78	61	11.3%

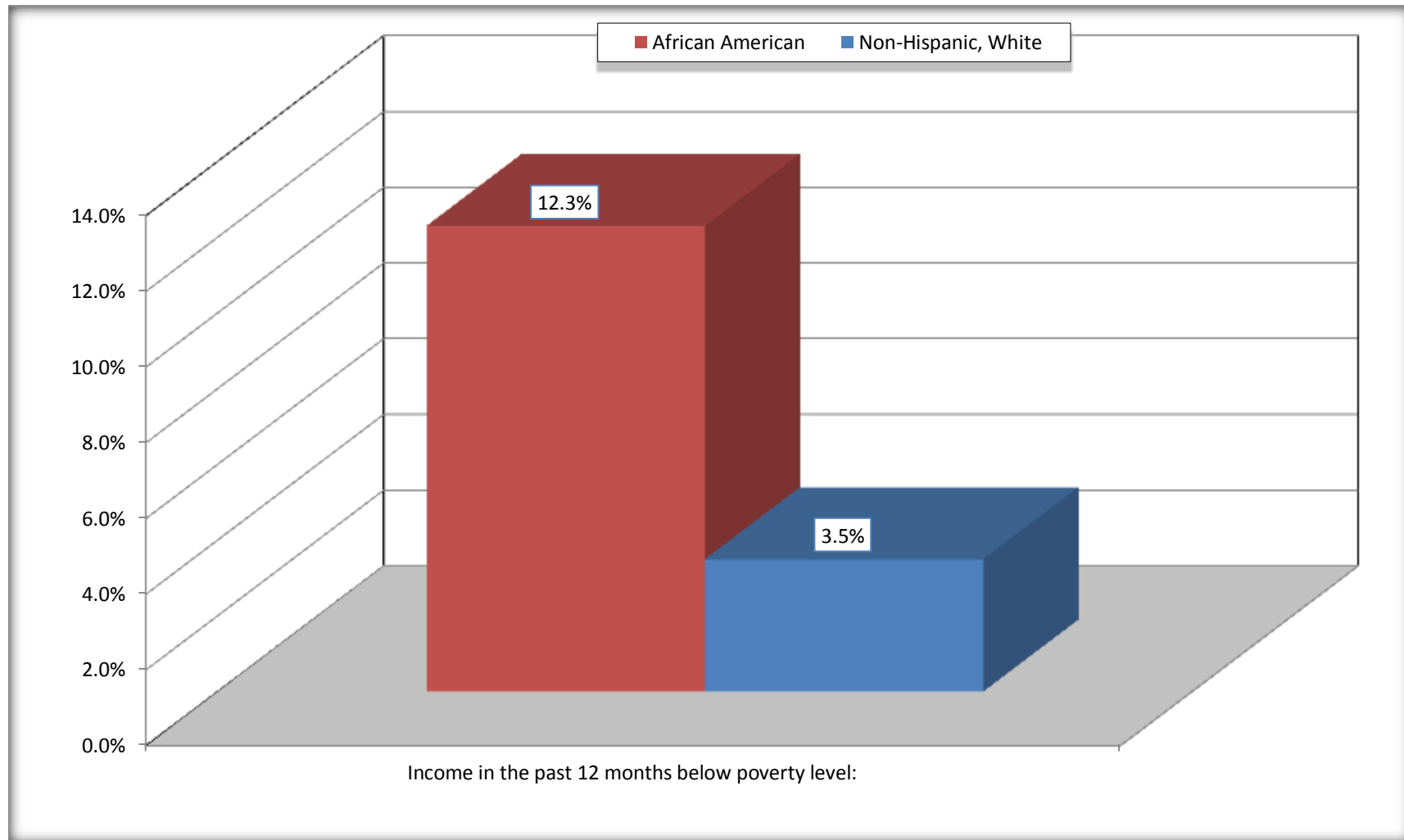
Source: U.S. Census Bureau, 2008-2012 American Community Survey

For information on confidentiality protection, sampling error, nonsampling error, and definitions, see Survey Methodology.

<http://www.census.gov/acs/www/UseData/index.htm>

Family Households Below Poverty in the Past 12 Months

Glenn Heights city, Texas

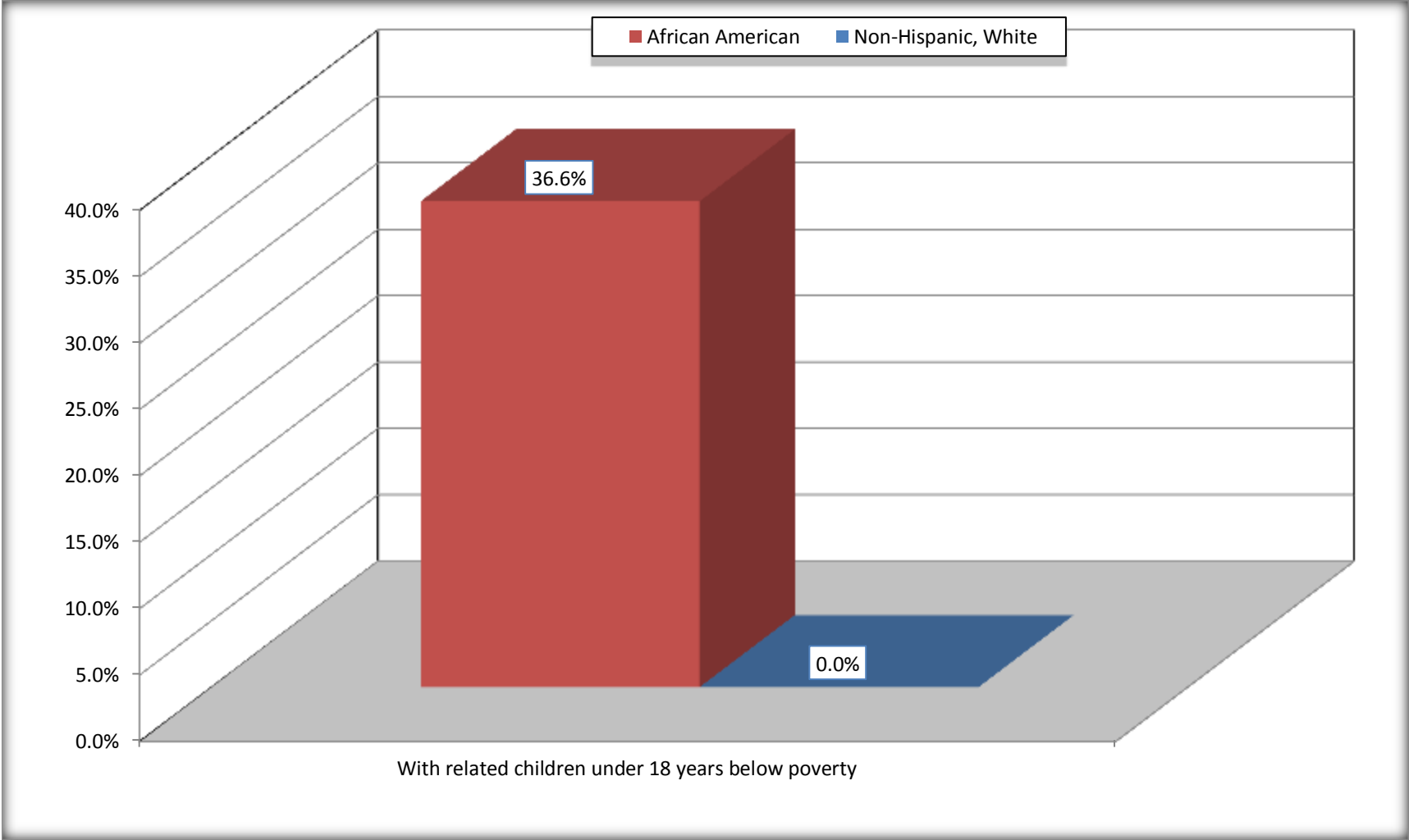


Source: B17010. POVERTY STATUS IN THE PAST 12 MONTHS OF FAMILIES BY FAMILY TYPE BY PRESENCE OF RELATED CHILDREN UNDER 18 YEARS

Data Set: 2008-2012 American Community Survey 5-Year Estimates

Female-headed Households with Related Children Below Poverty in the Past 12 Months

Glenn Heights city, Texas



Source: B17010. POVERTY STATUS IN THE PAST 12 MONTHS OF FAMILIES BY FAMILY TYPE BY PRESENCE OF RELATED CHILDREN UNDER 18 YEARS

Data Set: 2008-2012 American Community Survey 5-Year Estimates

B17020 POVERTY STATUS IN THE PAST 12 MONTHS BY AGE - Universe: POPULATION FOR WHOM POVERTY STATUS IS DETERMINED

Data Set: 2008-2012 American Community Survey 5-Year Estimates

	Glenn Heights city, Texas					
	African American	Margin of Error (+/-)	% of AA By Age	White, Not Hispanic	Margin of Error (+/-)	% of NHW By Age
Total:	6,259	740	100.0%	2,549	576	100.0%
Income in the past 12 months below poverty level:	1,154	594	18.4%	120	156	4.7%
Under 18 years	482	NC	21.1%	53	NC	8.7%
18 to 64 years	672	394	17.7%	67	61	3.9%
65 years and over	0	NC	0.0%	0	NC	0.0%
Income in the past 12 months at or above poverty level:	5,105	879	81.6%	2,429	583	95.3%
Under 18 years	1,799	NC	78.9%	556	NC	91.3%
18 to 64 years	3,124	562	82.3%	1,642	375	96.1%
65 years and over	182	NC	100.0%	231	NC	100.0%

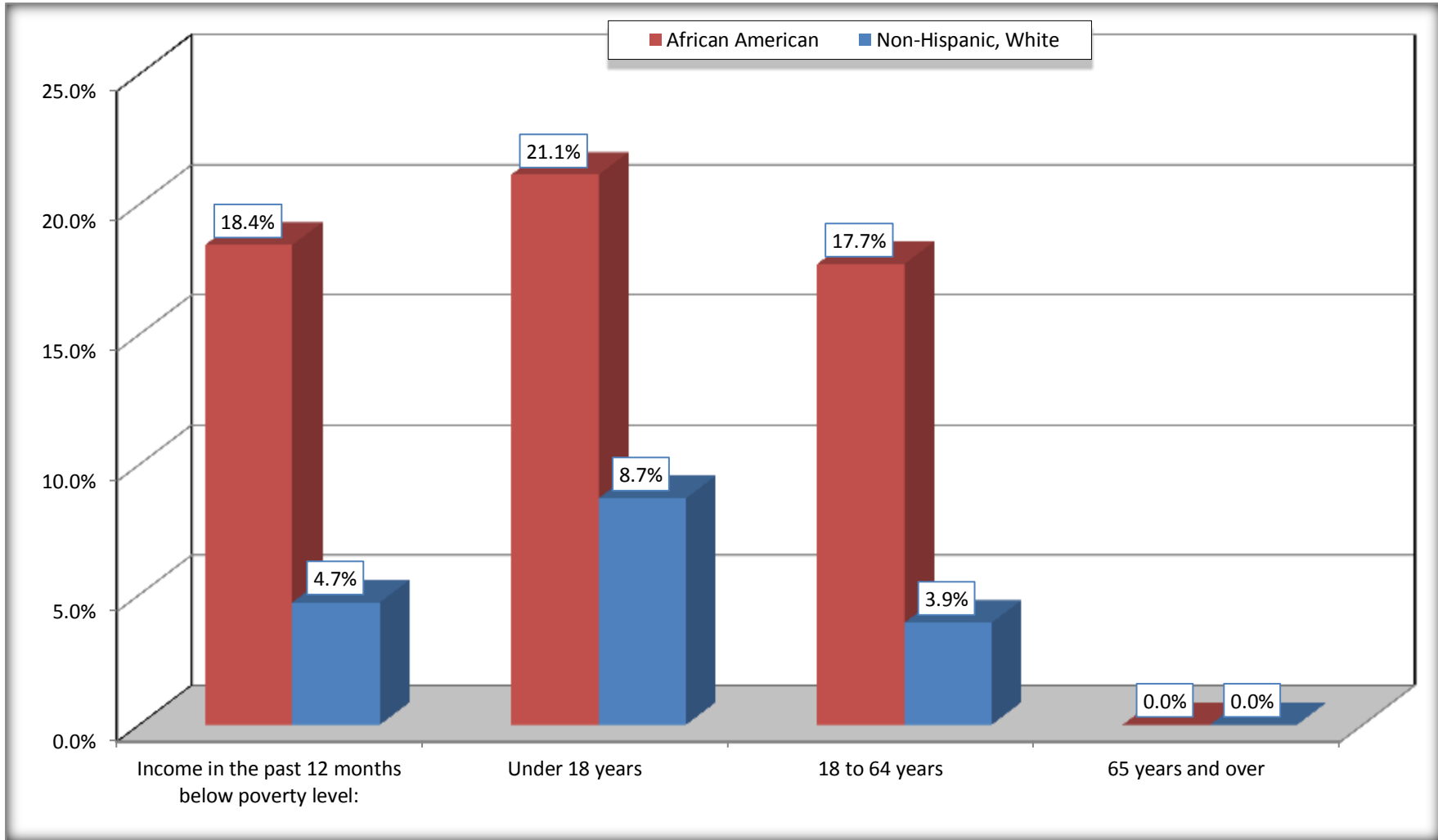
Source: U.S. Census Bureau, 2008-2012 American Community Survey

For information on confidentiality protection, sampling error, nonsampling error, and definitions, see Survey Methodology.

<http://www.census.gov/acs/www/UseData/index.htm>

Population Below Poverty in the Past 12 Months

Glenn Heights city, Texas



Source: B17020 POVERTY STATUS IN THE PAST 12 MONTHS BY AGE - Universe: POPULATION FOR WHOM POVERTY STATUS IS DETERMINED
Data Set: 2008-2012 American Community Survey 5-Year Estimates

B19001. HOUSEHOLD INCOME IN THE PAST 12 MONTHS (IN 2010 INFLATION-ADJUSTED DOLLARS)

Data Set: 2008-2012 American Community Survey 5-Year Estimates

	Glenn Heights city, Texas					
	African American	Margin of Error (+/-)	% of AA Total	White, Not Hispanic	Margin of Error (+/-)	% of NHW Total
Total:	2,077	241	100.0%	974	192	100.0%
Less than \$ 10,000	321	167	15.5%	20	34	2.1%
\$ 10,000 to \$ 14,999	9	14	0.4%	52	62	5.3%
\$ 15,000 to \$ 24,999	70	NC	3.4%	52	NC	5.3%
\$ 25,000 to \$ 34,999	159	NC	7.7%	95	NC	9.8%
\$ 35,000 to \$ 49,999	350	NC	16.9%	136	NC	14.0%
\$ 50,000 to \$ 74,999	533	NC	25.7%	262	NC	26.9%
\$ 75,000 to \$ 99,999	338	153	16.3%	199	105	20.4%
\$ 100,000 to \$ 149,999	228	NC	11.0%	100	NC	10.3%
\$ 150,000 to \$ 199,999	51	63	2.5%	58	47	6.0%
\$ 200,000 or more	18	37	0.9%	0	20	0.0%

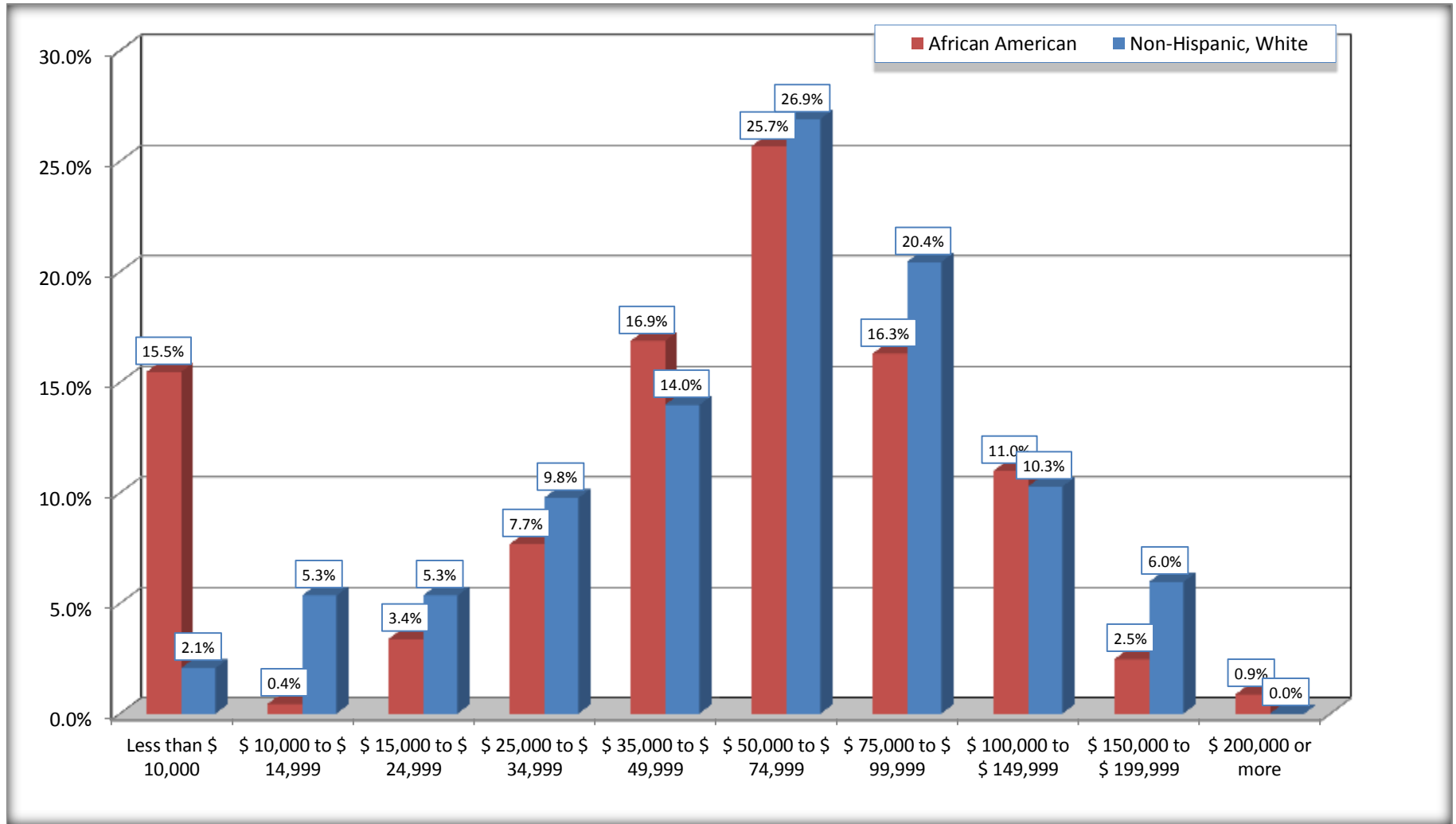
Source: U.S. Census Bureau, 2008-2012 American Community Survey

For information on confidentiality protection, sampling error, nonsampling error, and definitions, see Survey Methodology.

<http://www.census.gov/acs/www/UseData/index.htm>

Household Income in the Past 12 Months

Glenn Heights city, Texas



Source: B19001. HOUSEHOLD INCOME IN THE PAST 12 MONTHS (IN 2010 INFLATION-ADJUSTED DOLLARS)
Data Set: 2008-2012 American Community Survey 5-Year Estimates

B19013. MEDIAN HOUSEHOLD INCOME IN THE PAST 12 MONTHS (IN 2010 INFLATION-ADJUSTED DOLLARS)

Data Set: 2008-2012 American Community Survey 5-Year Estimates

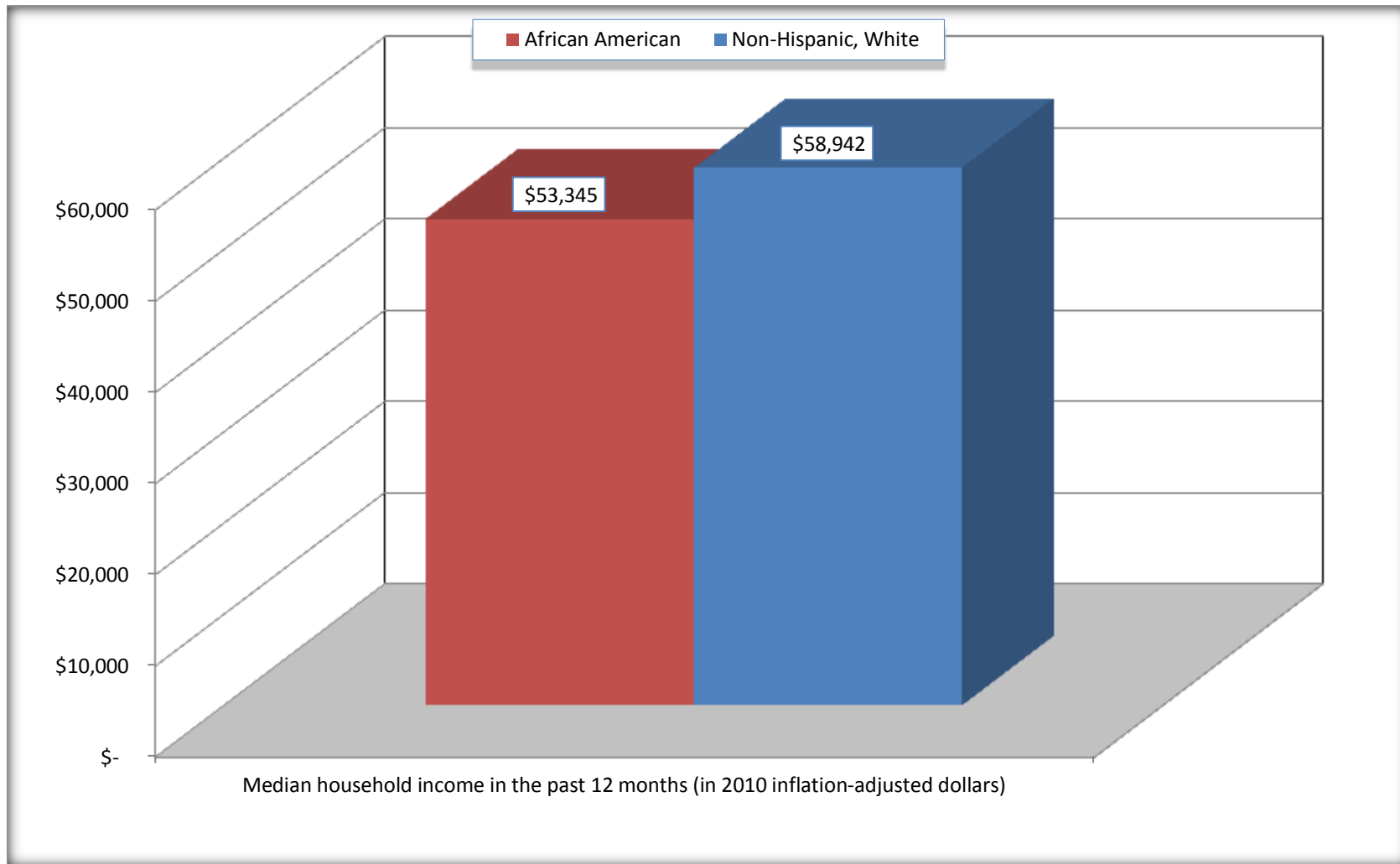
	Glenn Heights city, Texas			
	African American	Margin of Error (+/-)	White, Not Hispanic	Margin of Error (+/-)
Median household income in the past 12 months (in 2010 inflation-adjusted dollars)	\$ 53,345	\$ 5,359	\$ 58,942	\$ 11,736

Source: U.S. Census Bureau, 2008-2012 American Community Survey

For information on confidentiality protection, sampling error, nonsampling error, and definitions, see Survey Methodology.
<http://www.census.gov/acs/www/UseData/index.htm>

Median Household Income in the Past 12 Months

Glenn Heights city, Texas



Source: B19013. MEDIAN HOUSEHOLD INCOME IN THE PAST 12 MONTHS (IN 2010 INFLATION-ADJUSTED DOLLARS)
Data Set: 2008-2012 American Community Survey 5-Year Estimates

B19101. FAMILY INCOME IN THE PAST 12 MONTHS (IN 2010 INFLATION-ADJUSTED DOLLARS)

Data Set: 2008-2012 American Community Survey 5-Year Estimates

	Glenn Heights city, Texas					
	African American	Margin of Error (+/-)	% of AA Total	White, Not Hispanic	Margin of Error (+/-)	% of NHW Total
Total:	1,654	208	100.0%	691	151	100.0%
Less than \$ 10,000	191	128	11.5%	0	20	0.0%
\$ 10,000 to \$ 14,999	0	20	0.0%	0	20	0.0%
\$ 15,000 to \$ 24,999	57	NC	3.4%	22	NC	3.2%
\$ 25,000 to \$ 34,999	198	NC	12.0%	77	NC	11.1%
\$ 35,000 to \$ 49,999	293	NC	17.7%	45	NC	6.5%
\$ 50,000 to \$ 74,999	305	NC	18.4%	245	NC	35.5%
\$ 100,000 to \$ 149,999	228	NC	13.8%	81	NC	11.7%
\$ 150,000 to \$ 199,999	51	63	3.1%	45	43	6.5%
\$ 200,000 or more	18	37	1.1%	0	20	0.0%

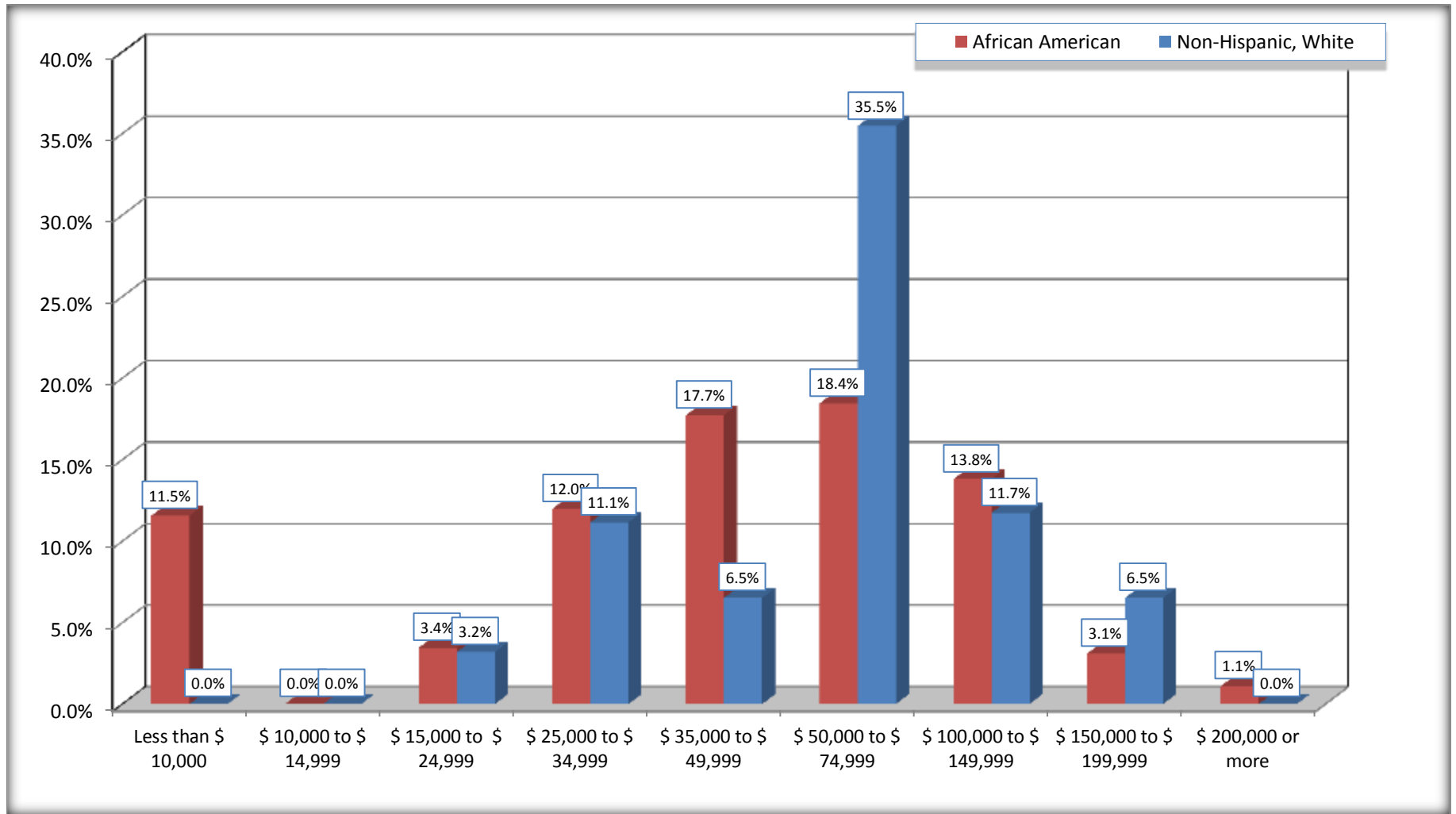
Source: U.S. Census Bureau, 2008-2012 American Community Survey

For information on confidentiality protection, sampling error, nonsampling error, and definitions, see Survey Methodology.

<http://www.census.gov/acs/www/UseData/index.htm>

Family Income in the Past 12 Months

Glenn Heights city, Texas



Source: B19101. FAMILY INCOME IN THE PAST 12 MONTHS (IN 2010 INFLATION-ADJUSTED DOLLARS)
Data Set: 2008-2012 American Community Survey 5-Year Estimates

B19113. MEDIAN FAMILY INCOME IN THE PAST 12 MONTHS (IN 2010 INFLATION-ADJUSTED DOLLARS)

Data Set: 2008-2012 American Community Survey 5-Year Estimates

	Glenn Heights city, Texas			
	African American	Margin of Error (+/-)	White, Not Hispanic	Margin of Error (+/-)
Median family income in the past 12 months (in 2010 inflation-adjusted dollars)	\$ 56,346	\$ 20,437	\$ 72,528	\$ 16,768

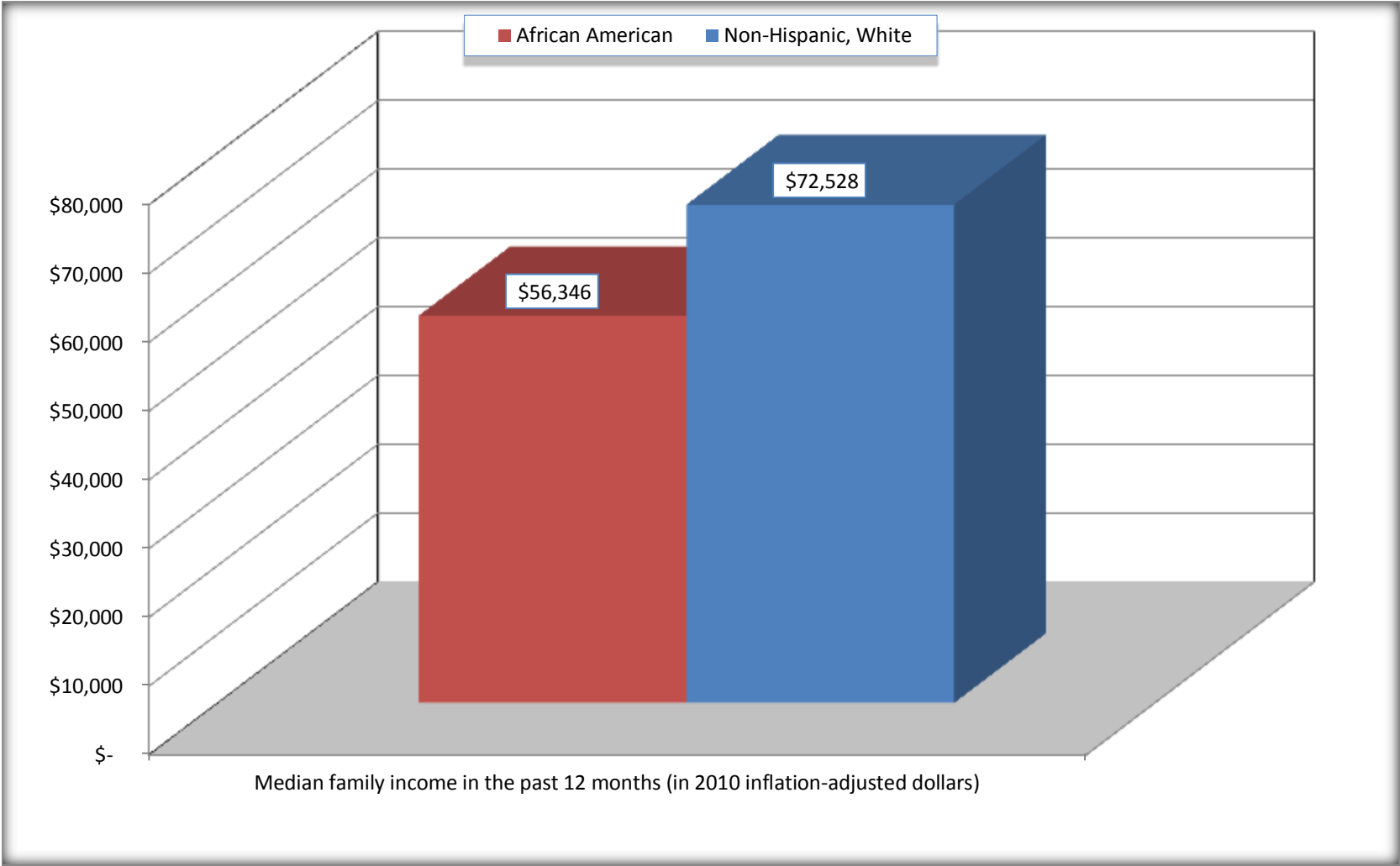
Source: U.S. Census Bureau, 2008-2012 American Community Survey

For information on confidentiality protection, sampling error, nonsampling error, and definitions, see Survey Methodology.

<http://www.census.gov/acs/www/UseData/index.htm>

Median Family Income in the Past 12 Months

Glenn Heights city, Texas



Source: B19113. MEDIAN FAMILY INCOME IN THE PAST 12 MONTHS (IN 2010 INFLATION-ADJUSTED DOLLARS)
Data Set: 2008-2012 American Community Survey 5-Year Estimates

B19202. MEDIAN NONFAMILY HOUSEHOLD INCOME IN THE PAST 12 MONTHS (IN 2010 INFLATION-ADJUSTED DOLLARS)

Data Set: 2008-2012 American Community Survey 5-Year Estimates

	Glenn Heights city, Texas			
	African American	Margin of Error (+/-)	White, Not Hispanic	Margin of Error (+/-)
Median nonfamily household income in the past 12 months (in 2010 inflation-adjusted dollars)	\$ 50,529	\$ 40,127	\$ 36,853	\$ 15,182

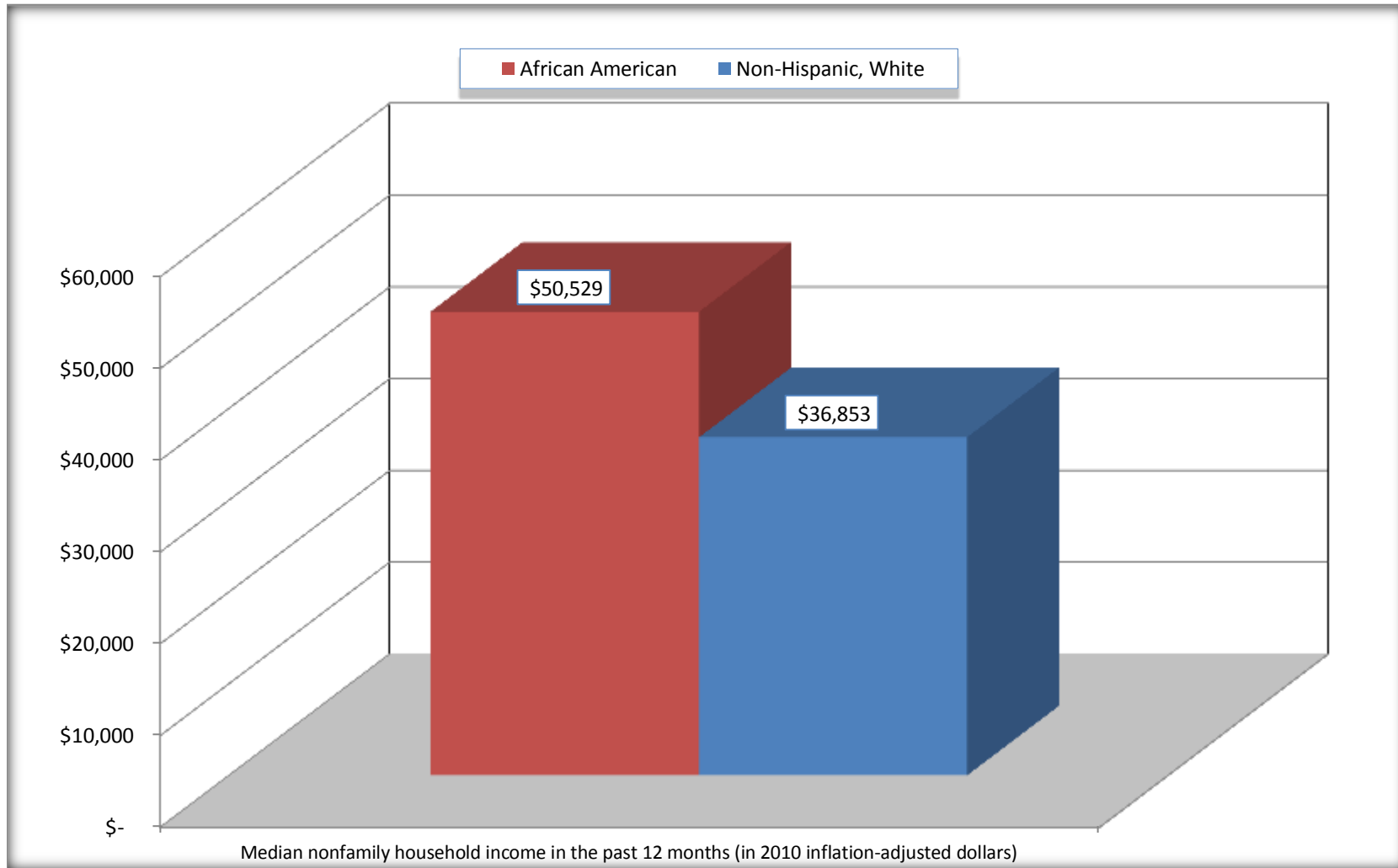
Source: U.S. Census Bureau, 2008-2012 American Community Survey

For information on confidentiality protection, sampling error, nonsampling error, and definitions, see Survey Methodology.

<http://www.census.gov/acs/www/UseData/index.htm>

Median Non-Family Income in the Past 12 Months

Glenn Heights city, Texas



Source: B19202. MEDIAN NONFAMILY HOUSEHOLD INCOME IN THE PAST 12 MONTHS (IN 2010 INFLATION-ADJUSTED DOLLARS)
Data Set: 2008-2012 American Community Survey 5-Year Estimates

B19301. PER CAPITA INCOME IN THE PAST 12 MONTHS (IN 2010 INFLATION-ADJUSTED DOLLARS)

Data Set: 2008-2012 American Community Survey 5-Year Estimates

	Glenn Heights city, Texas			
	African American	Margin of Error (+/-)	White, Not Hispanic	Margin of Error (+/-)
Per capita income in the past 12 months (in 2010 inflation-adjusted dollars)	\$ 19,779	\$ 3,298	\$ 25,222	\$ 4,475

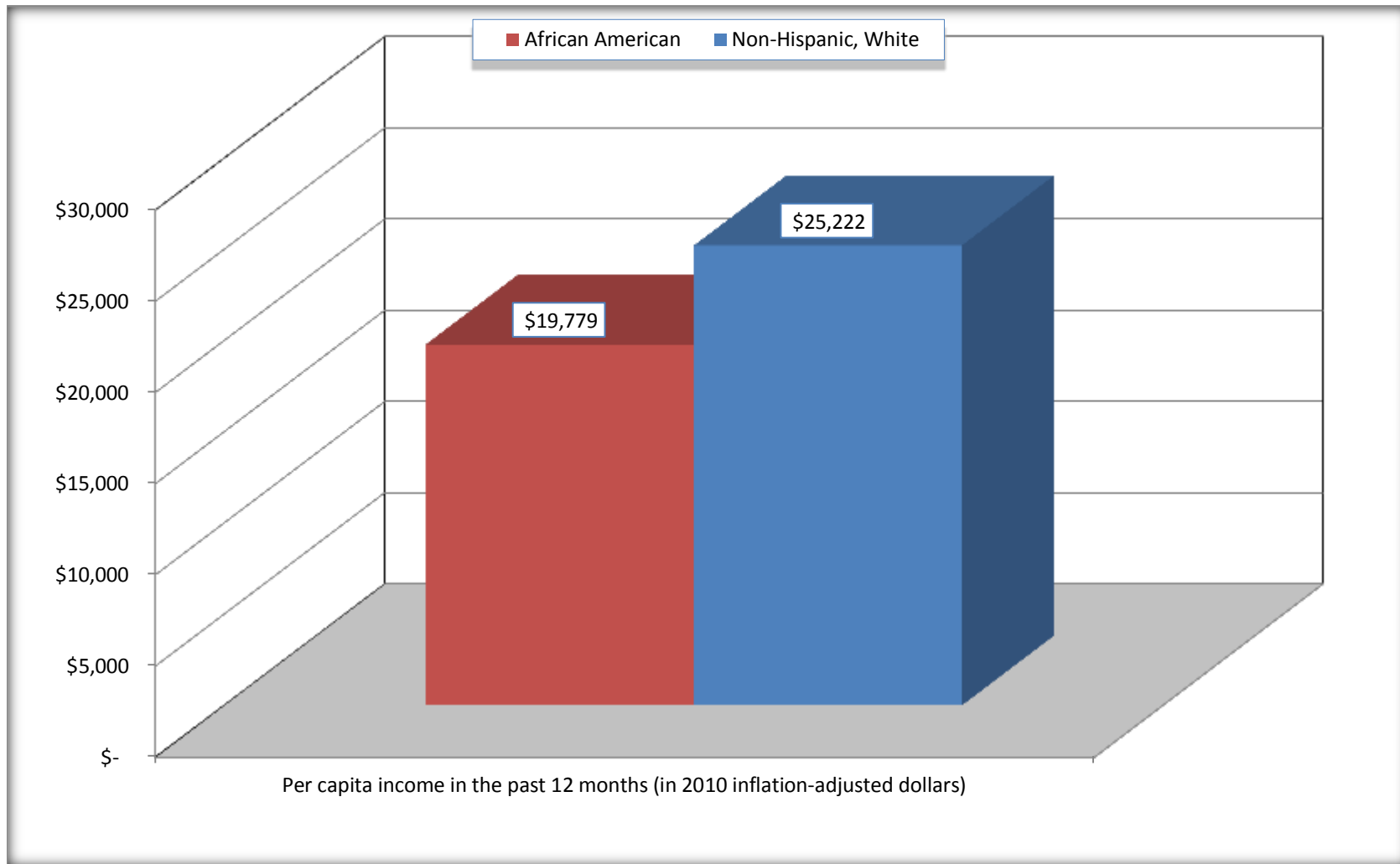
Source: U.S. Census Bureau, 2008-2012 American Community Survey

For information on confidentiality protection, sampling error, nonsampling error, and definitions, see Survey Methodology.

<http://www.census.gov/acs/www/UseData/index.htm>

Per capita Income in the Past 12 Months

Glenn Heights city, Texas



Source: B19301. PER CAPITA INCOME IN THE PAST 12 MONTHS (IN 2010 INFLATION-ADJUSTED DOLLARS)
Data Set: 2008-2012 American Community Survey 5-Year Estimates

B20017. MEDIAN EARNINGS IN THE PAST 12 MONTHS (IN 2010 INFLATION-ADJUSTED DOLLARS) BY SEX BY WORK EXPERIENCE IN THE PAST 12 MONTHS FOR THE POPULATION 16 YEARS AND OVER WITH EARNINGS IN THE PAST 12 MONTHS

Data Set: 2008-2012 American Community Survey 5-Year Estimates

	Glenn Heights city, Texas			
	African American	Margin of Error (+/-)	White, Not Hispanic	Margin of Error (+/-)
Median earnings in the past 12 months (in 2010 inflation-adjusted dollars) --				
Total:	\$ 38,029	\$ 10,844	\$ 32,614	\$ 5,954
Male --				
Total	\$ 44,182	\$ 13,465	\$ 49,451	\$ 8,629
Worked full-time, year-round in the past 12 months	\$ 53,297	\$ 7,474	\$ 53,036	\$ 4,787
Other	\$ 6,500	\$ 5,961	\$ 4,878	\$ 45,556
Female --				
Total	\$ 33,971	\$ 5,721	\$ 21,250	\$ 9,684
Worked full-time, year-round in the past 12 months	\$ 49,483	\$ 5,944	\$ 34,643	\$ 9,000
Other	\$ 8,558	\$ 8,567	\$ 6,994	\$ 6,024

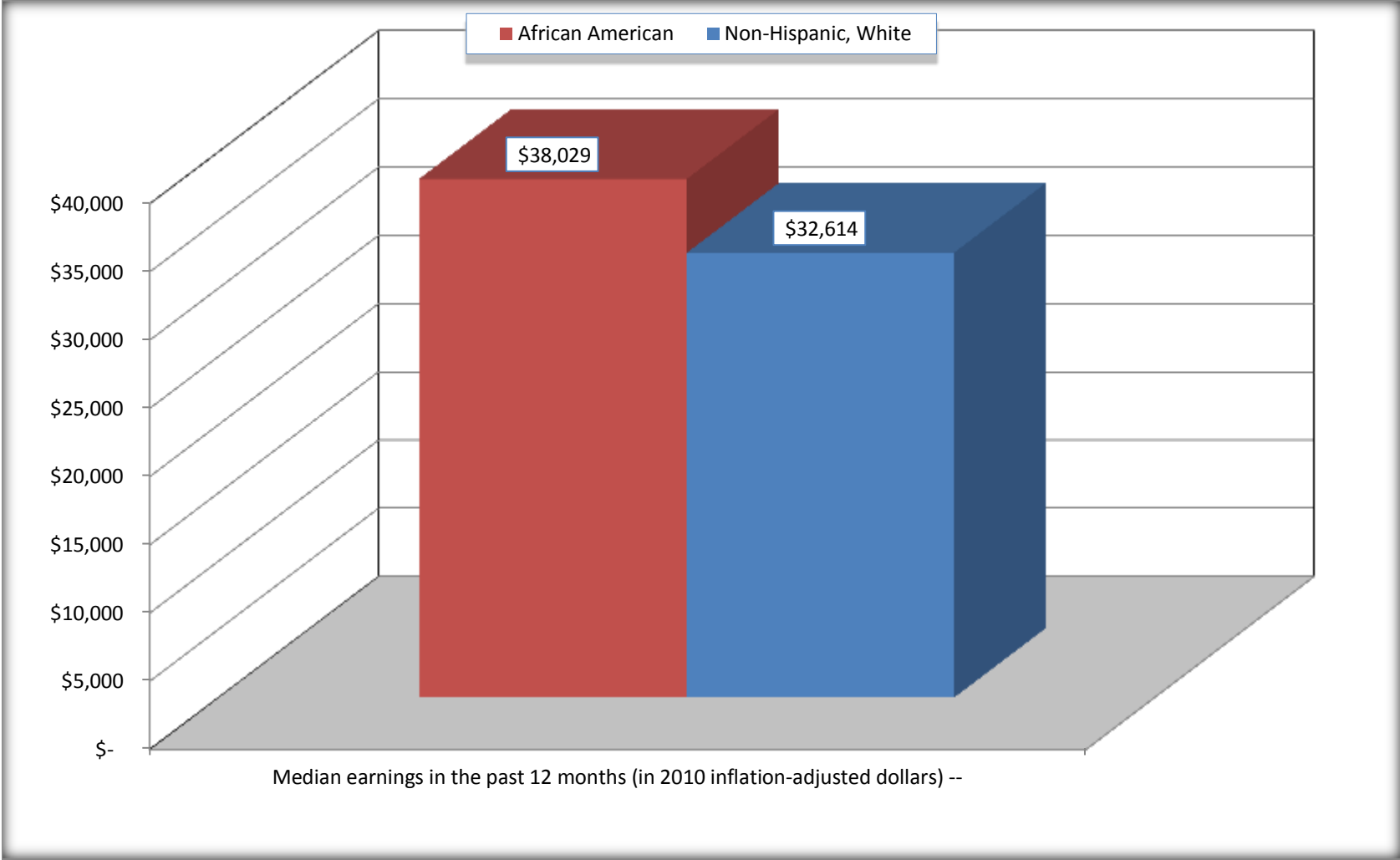
Source: U.S. Census Bureau, 2008-2012 American Community Survey

For information on confidentiality protection, sampling error, nonsampling error, and definitions, see Survey Methodology.

<http://www.census.gov/acs/www/UseData/index.htm>

Median earnings in the Past 12 Months (16 Years and Over with Earnings)

Glenn Heights city, Texas



Source: B20017. MEDIAN EARNINGS IN THE PAST 12 MONTHS (IN 2010 INFLATION-ADJUSTED DOLLARS) BY SEX BY WORK EXPERIENCE IN THE PAST 12 MONTHS FOR THE POPULATION 16 YEARS AND OVER WITH EARNINGS IN THE PAST 12 MONTHS
Data Set: 2008-2012 American Community Survey 5-Year Estimates

B20005. SEX BY WORK EXPERIENCE IN THE PAST 12 MONTHS BY EARNINGS IN THE PAST 12 MONTHS (IN 2010 INFLATION-ADJUSTED DOLLARS) FOR THE POPULATION 16 YEARS AND OVER

Data Set: 2008-2012 American Community Survey 5-Year Estimates

	Glenn Heights city, Texas					
	African American	Margin of Error (+/-)	% of AA Total	White, Not Hispanic	Margin of Error (+/-)	% of NHW Total
Total:	4,238	589	100.0%	2,000	423	100.0%
Worked full-time, year-round in the past 12 months:	1,987	NC	46.9%	966	NC	48.3%
No earnings	0	NC	0.0%	0	NC	0.0%
With earnings:	1,987	NC	46.9%	966	NC	48.3%
\$ 1 to \$ 9,999 or loss	0	NC	0.0%	12	NC	0.6%
\$ 10,000 to \$ 19,999	78	NC	1.8%	32	NC	1.6%
\$ 20,000 to \$ 29,999	384	NC	9.1%	157	NC	7.9%
\$ 30,000 to \$ 49,999	489	NC	11.5%	318	NC	15.9%
\$ 50,000 to \$ 74,999	765	NC	18.1%	317	NC	15.9%
\$ 75,000 or more	271	NC	6.4%	130	NC	6.5%
Other:	2,251	NC	53.1%	1,034	NC	51.7%
No earnings	1,453	NC	34.3%	510	NC	25.5%
With earnings: less than full time, year-round	798	NC	18.8%	524	NC	26.2%
Male:	1,882	380	44.4%	852	222	42.6%
Worked full-time, year-round in the past 12 months:	968	212	22.8%	596	168	29.8%
No earnings	0	20	0.0%	0	20	0.0%
With earnings:	968	212	22.8%	596	168	29.8%
\$ 1 to \$ 9,999 or loss	0	NC	0.0%	12	NC	0.6%
\$ 10,000 to \$ 19,999	40	NC	0.9%	0	NC	0.0%
\$ 20,000 to \$ 29,999	194	NC	4.6%	48	NC	2.4%
\$ 30,000 to \$ 49,999	192	NC	4.5%	187	NC	9.4%
\$ 50,000 to \$ 74,999	397	NC	9.4%	242	NC	12.1%
\$ 75,000 or more	145	NC	3.4%	107	NC	5.4%

	Glenn Heights city, Texas					
	African American	Margin of Error (+/-)	% of AA Total	White, Not Hispanic	Margin of Error (+/-)	% of NHW Total
Other:	914	306	21.6%	256	105	12.8%
No earnings	728	302	17.2%	136	74	6.8%
With earnings:	186	100	4.4%	120	77	6.0%
Female:	2,356	379	55.6%	1,148	248	57.4%
Worked full-time, year-round in the past 12 months:	1,019	241	24.0%	370	131	18.5%
No earnings	0	20	0.0%	0	20	0.0%
With earnings:	1,019	241	24.0%	370	131	18.5%
\$ 1 to \$ 9,999 or loss	0	NC	0.0%	0	NC	0.0%
\$ 10,000 to \$ 19,999	38	NC	0.9%	32	NC	1.6%
\$ 20,000 to \$ 29,999	190	NC	4.5%	109	NC	5.5%
\$ 30,000 to \$ 49,999	297	NC	7.0%	131	NC	6.6%
\$ 50,000 to \$ 74,999	368	NC	8.7%	75	NC	3.8%
\$ 75,000 or more	126	NC	3.0%	23	NC	1.2%
Other:	1,337	333	31.5%	778	214	38.9%
No earnings	725	245	17.1%	374	146	18.7%
With earnings:	612	245	14.4%	404	152	20.2%

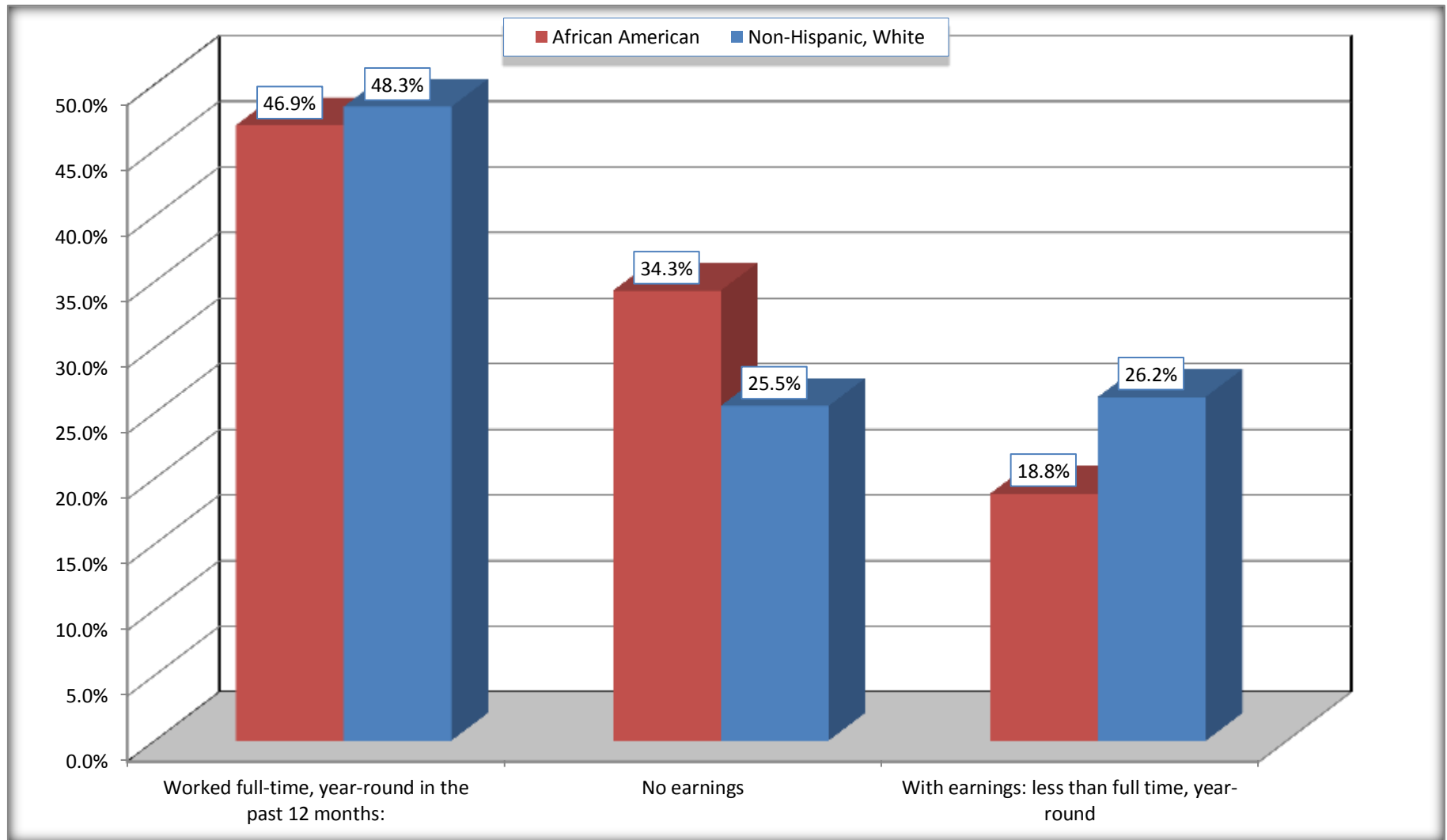
Source: U.S. Census Bureau, 2008-2012 American Community Survey

For information on confidentiality protection, sampling error, nonsampling error, and definitions, see Survey Methodology.

<http://www.census.gov/acs/www/UseData/index.htm>

Employment and Earnings in in the Past 12 Months (16 Years and Over)

Glenn Heights city, Texas



Source: B20005. SEX BY WORK EXPERIENCE IN THE PAST 12 MONTHS BY EARNINGS IN THE PAST 12 MONTHS (IN 2010 INFLATION-ADJUSTED DOLLARS) FOR THE POPULATION 16 YEARS AND OVER

Data Set: 2008-2012 American Community Survey 5-Year Estimates

C21001. SEX BY AGE BY VETERAN STATUS FOR THE CIVILIAN POPULATION 18 YEARS AND OVER

Data Set: 2008-2012 American Community Survey 5-Year Estimates

	Glenn Heights city, Texas					
	African American	Margin of Error (+/-)	% of AA Total	White, Not Hispanic	Margin of Error (+/-)	% of NHW Total
Total:	3,978	556	100.0%	1,940	411	100.0%
Veteran	648	NC	16.3%	194	NC	10.0%
Nonveteran	3,330	NC	83.7%	1,746	NC	90.0%
Male:	1,751	376	44.0%	852	222	43.9%
18 to 64 years:	1,706	376	42.9%	728	198	37.5%
Veteran	456	198	11.5%	124	86	6.4%
Nonveteran	1,250	298	31.4%	604	189	31.1%
65 years and over:	45	38	1.1%	124	68	6.4%
Veteran	0	20	0.0%	54	41	2.8%
Nonveteran	45	38	1.1%	70	55	3.6%
Female:	2,227	353	56.0%	1,088	238	56.1%
18 to 64 years:	2,090	329	52.5%	981	231	50.6%
Veteran	176	149	4.4%	16	25	0.8%
Nonveteran	1,914	352	48.1%	965	230	49.7%
65 years and over:	137	79	3.4%	107	67	5.5%
Veteran	16	19	0.4%	0	20	0.0%
Nonveteran	121	74	3.0%	107	67	5.5%

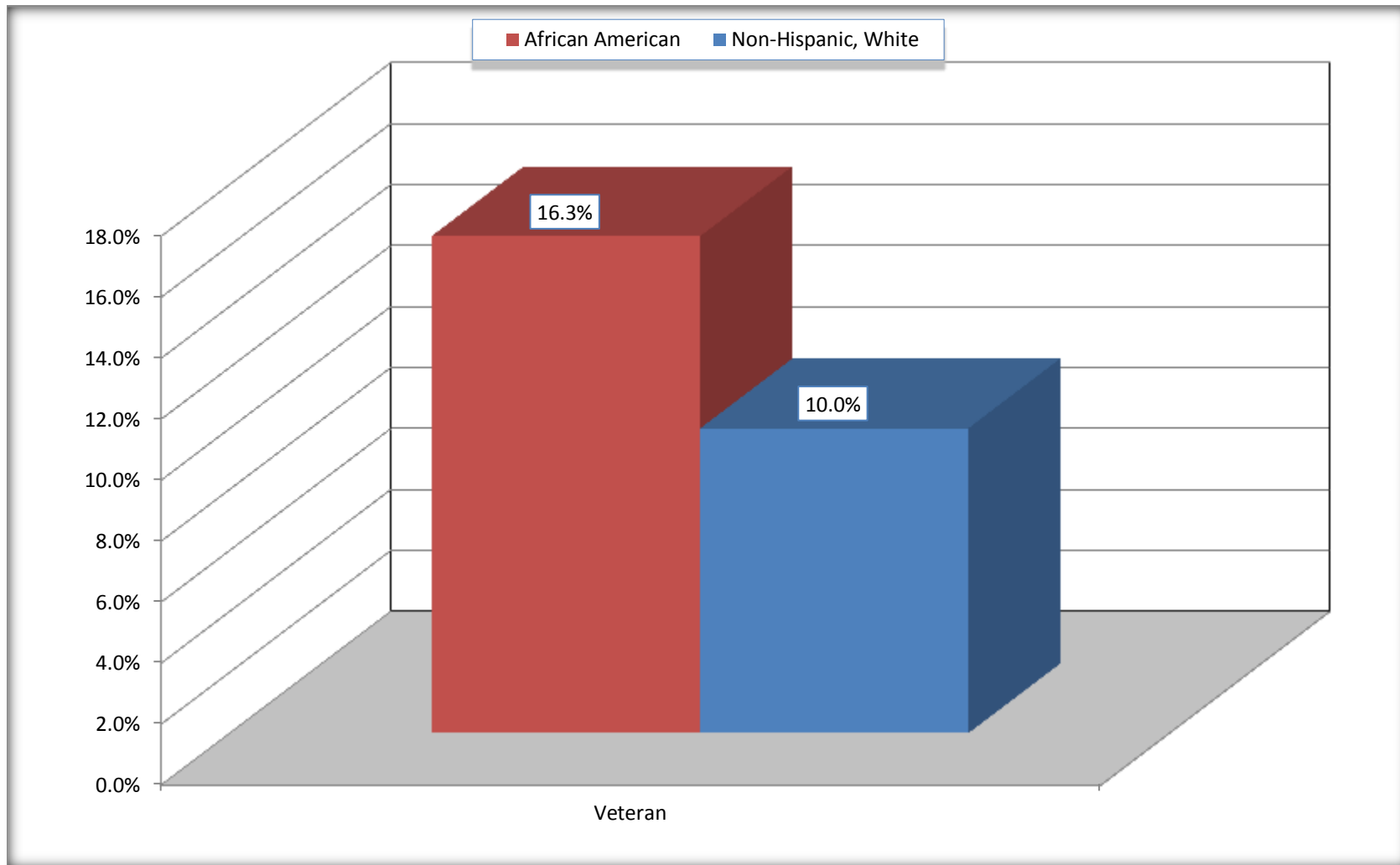
Source: U.S. Census Bureau, 2008-2012 American Community Survey

For information on confidentiality protection, sampling error, nonsampling error, and definitions, see Survey Methodology.

<http://www.census.gov/acs/www/UseData/index.htm>

Veterans in the Civilian Population 18 Years and Over

Glenn Heights city, Texas



Source: C21001. SEX BY AGE BY VETERAN STATUS FOR THE CIVILIAN POPULATION 18 YEARS AND OVER
Data Set: 2008-2012 American Community Survey 5-Year Estimates

B22005. RECEIPT OF FOOD STAMPS/SNAP IN THE PAST 12 MONTHS BY RACE OF HOUSEHOLDER

Data Set: 2008-2012 American Community Survey 5-Year Estimates

	Glenn Heights city, Texas					
	African American	Margin of Error (+/-)	% of AA Total	White, Not Hispanic	Margin of Error (+/-)	% of NHW Total
Total:	2,077	241	100.0%	974	192	100.0%
HH received Food Stamps/SNAP in the past 12 months	295	159	14.2%	31	39	3.2%
HH did not receive Food Stamps/SNAP in the past 12 months	1,782	280	85.8%	943	189	96.8%

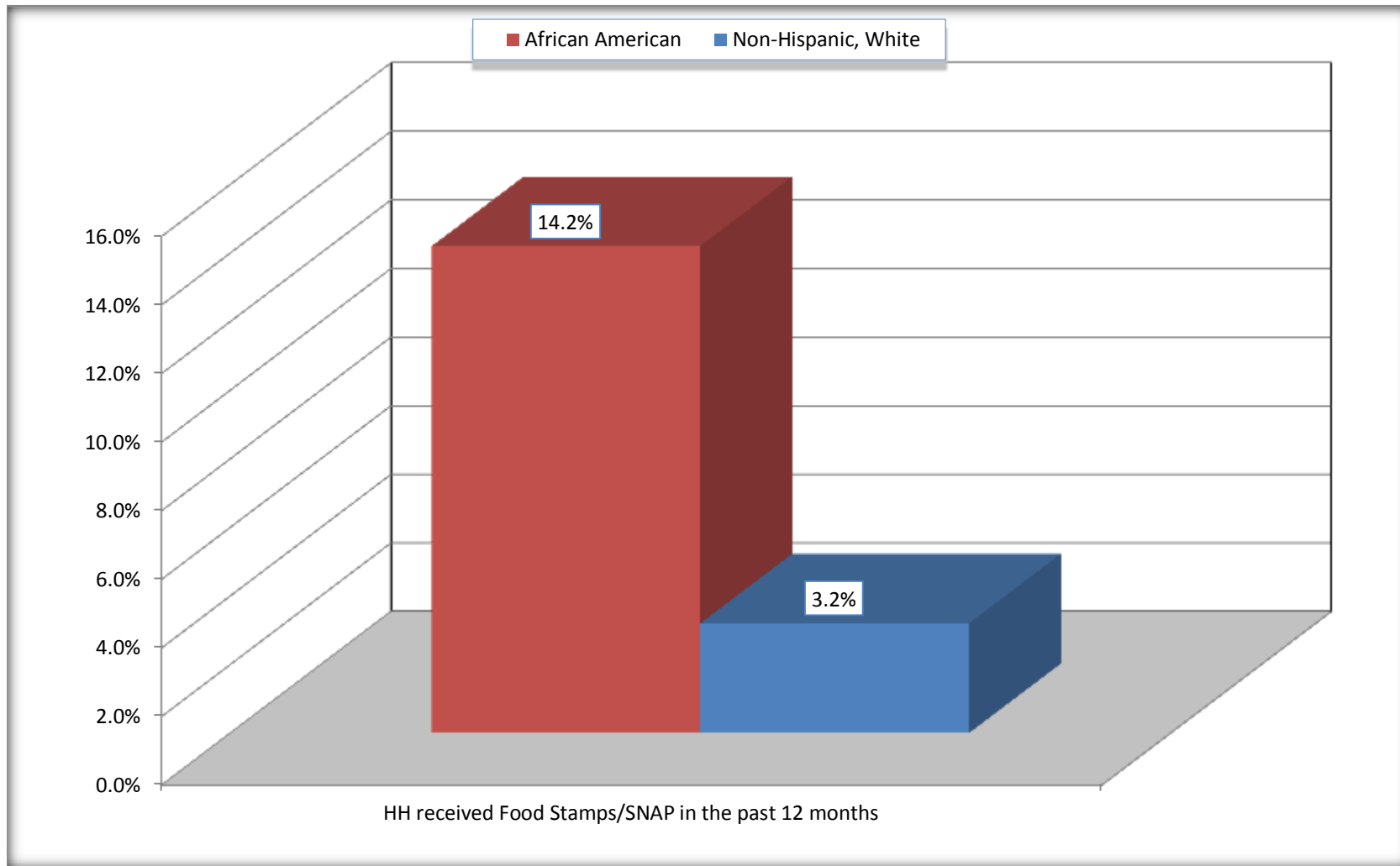
Source: U.S. Census Bureau, 2008-2012 American Community Survey

For information on confidentiality protection, sampling error, nonsampling error, and definitions, see Survey Methodology.

<http://www.census.gov/acs/www/UseData/index.htm>

Receipt of Food Stamps/SNAP in the Past 12 Months by Household

Glenn Heights city, Texas



Source: B22005. RECEIPT OF FOOD STAMPS/SNAP IN THE PAST 12 MONTHS BY RACE OF HOUSEHOLDER
Data Set: 2008-2012 American Community Survey 5-Year Estimates

C23002. SEX BY AGE BY EMPLOYMENT STATUS FOR THE POPULATION 16 YEARS AND OVER

Data Set: 2008-2012 American Community Survey 5-Year Estimates

	Glenn Heights city, Texas					
	African American	Margin of Error (+/-)	% of AA Total	White, Not Hispanic	Margin of Error (+/-)	% of NHW Total
Total:	4,238	589	100.0%	2,000	423	100.0%
In labor force:	2,989	NC	70.5%	1,439	NC	72.0%
In Armed Forces	0	NC	0.0%	0	NC	0.0%
Civilian:	2,973	NC	70.2%	1,360	NC	68.0%
Employed	2,481	NC	58.5%	1,344	NC	67.2%
Unemployed	508	NC	12.0%	95	NC	4.8%
Not in labor force	1,249	NC	29.5%	561	NC	28.1%
Male:	1,882	380	44.4%	852	222	42.6%
16 to 64 years:	1,837	383	43.3%	728	198	36.4%
In labor force:	1,442	304	34.0%	608	164	30.4%
In Armed Forces	0	20	0.0%	0	20	0.0%
Civilian:	1,442	304	34.0%	608	164	30.4%
Employed	1,086	228	25.6%	596	164	29.8%
Unemployed	356	264	8.4%	12	22	0.6%
Not in labor force	395	215	9.3%	120	71	6.0%
65 years and over:	45	38	1.1%	124	68	6.2%
In labor force:	0	20	0.0%	58	52	2.9%
Employed	0	20	0.0%	58	52	2.9%
Unemployed	0	20	0.0%	0	20	0.0%
Not in labor force	45	38	1.1%	66	46	3.3%

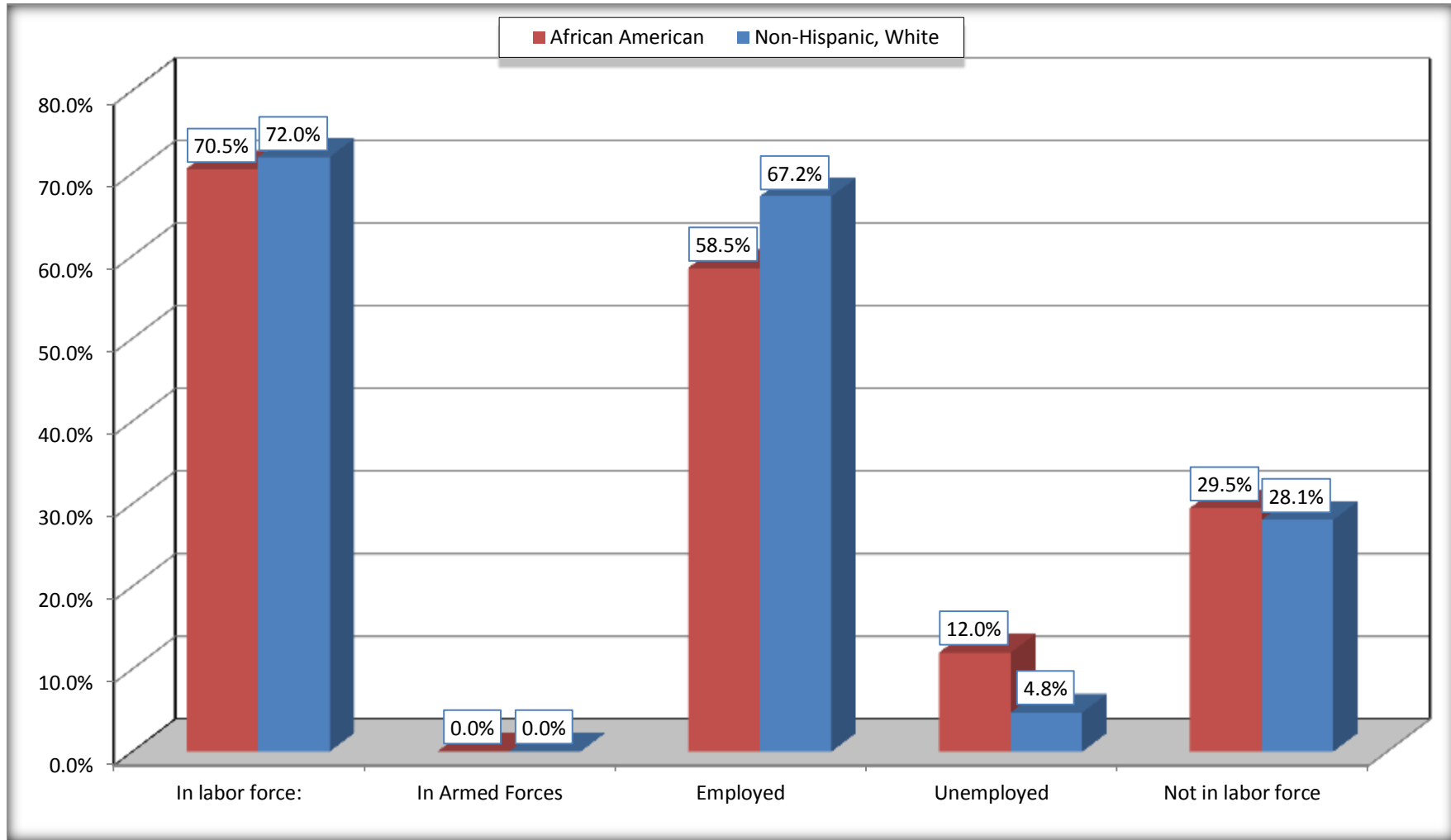
	Glenn Heights city, Texas					
	African American	Margin of Error (+/-)	% of AA Total	White, Not Hispanic	Margin of Error (+/-)	% of NHW Total
Female:	2,356	379	55.6%	1,148	248	57.4%
16 to 64 years:	2,219	354	52.4%	1,041	240	52.1%
In labor force:	1,531	357	36.1%	752	199	37.6%
In Armed Forces	0	20	0.0%	0	20	0.0%
Civilian:	1,531	357	36.1%	752	199	37.6%
Employed	1,379	312	32.5%	669	172	33.5%
Unemployed	152	123	3.6%	83	82	4.2%
Not in labor force	688	261	16.2%	289	139	14.5%
65 years and over:	137	79	3.2%	107	67	5.4%
In labor force:	16	19	0.4%	21	32	1.1%
Employed	16	19	0.4%	21	32	1.1%
Unemployed	0	20	0.0%	0	20	0.0%
Not in labor force	121	74	2.9%	86	61	4.3%

Source: U.S. Census Bureau, 2008-2012 American Community Survey

For information on confidentiality protection, sampling error, nonsampling error, and definitions, see Survey Methodology.
<http://www.census.gov/acs/www/UseData/index.htm>

Employment Status for the Population 16 years and over

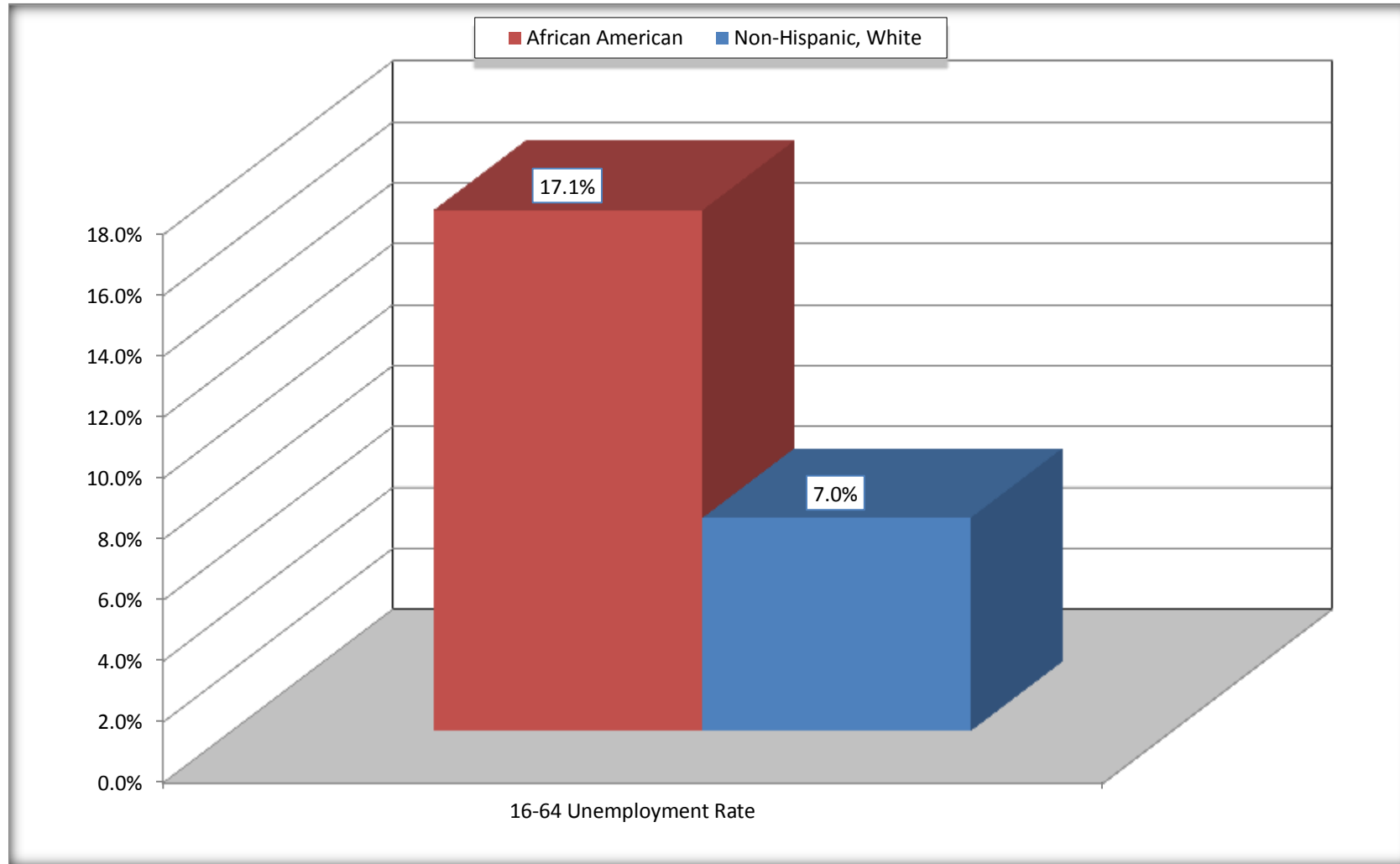
Glenn Heights city, Texas



Source: C23002. SEX BY AGE BY EMPLOYMENT STATUS FOR THE POPULATION 16 YEARS AND OVER
Data Set: 2008-2012 American Community Survey 5-Year Estimates

Unemployment of Working Age Population (Ages 16 to 64) (As a Percent of 16-64 Civilian Labor Force)

Glenn Heights city, Texas



Source: C23002. SEX BY AGE BY EMPLOYMENT STATUS FOR THE POPULATION 16 YEARS AND OVER
Data Set: 2008-2012 American Community Survey 5-Year Estimates

C24010. SEX BY OCCUPATION FOR THE CIVILIAN EMPLOYED POPULATION 16 YEARS AND OVER

Data Set: 2008-2012 American Community Survey 5-Year Estimates

	Glenn Heights city, Texas					
	African American	Margin of Error (+/-)	% of AA Total	White, Not Hispanic	Margin of Error (+/-)	% of NHW Total
Total:	2,481	471	100.0%	1,344	287	100.0%
Management, professional, and related occupations	745	NC	30.0%	395	NC	29.4%
Service occupations	513	NC	20.7%	124	NC	9.2%
Sales and office occupations	712	NC	28.7%	502	NC	37.4%
Natural resources, construction, and maintenance occupations:	79	NC	3.2%	153	NC	11.4%
Production, transportation, and material moving occupations	432	NC	17.4%	170	NC	12.6%
Male:	1,086	228	43.8%	654	175	48.7%
Management, business, science, and arts occupations:	282	122	11.4%	161	87	12.0%
Service occupations	213	165	8.6%	15	24	1.1%
Sales and office occupations	213	129	8.6%	197	94	14.7%
Natural resources, construction, and maintenance occupations:	79	76	3.2%	130	80	9.7%
Production, transportation, and material moving occupations	299	153	12.1%	151	98	11.2%
Female:	1,395	312	56.2%	690	179	51.3%
Management, professional, and related occupations	463	160	18.7%	234	108	17.4%
Service occupations	300	158	12.1%	109	90	8.1%
Sales and office occupations	499	225	20.1%	305	140	22.7%
Natural resources, construction, and maintenance occupations:	0	20	0.0%	23	38	1.7%
Production, transportation, and material moving occupations	133	102	5.4%	19	30	1.4%

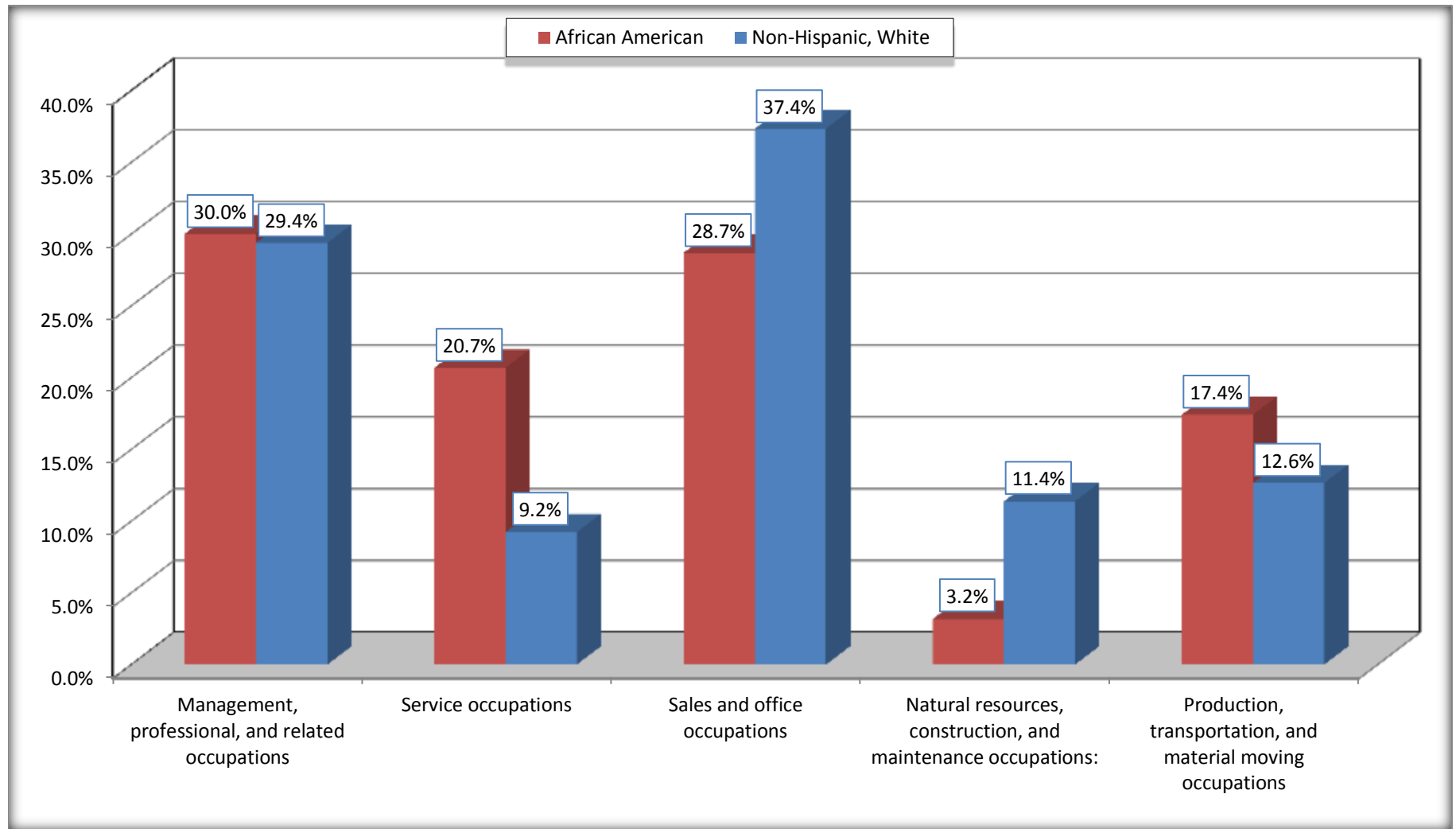
Source: U.S. Census Bureau, 2008-2012 American Community Survey

For information on confidentiality protection, sampling error, nonsampling error, and definitions, see Survey Methodology.

<http://www.census.gov/acs/www/UseData/index.htm>

Occupation for the Civilian Employed 16 Years and Over Population

Glenn Heights city, Texas



Source: C24010. SEX BY OCCUPATION FOR THE CIVILIAN EMPLOYED POPULATION 16 YEARS AND OVER
Data Set: 2008-2012 American Community Survey 5-Year Estimates

B25003. TENURE - Universe: OCCUPIED HOUSING UNITS

Data Set: 2008-2012 American Community Survey 5-Year Estimates

	Glenn Heights city, Texas					
	African American	Margin of Error (+/-)	% of AA Total	White, Not Hispanic	Margin of Error (+/-)	% of NHW Total
Total:	2,077	241	100.0%	974	192	100.0%
Owner occupied	1,212	256	58.4%	765	167	78.5%
Renter occupied	865	197	41.6%	209	94	21.5%

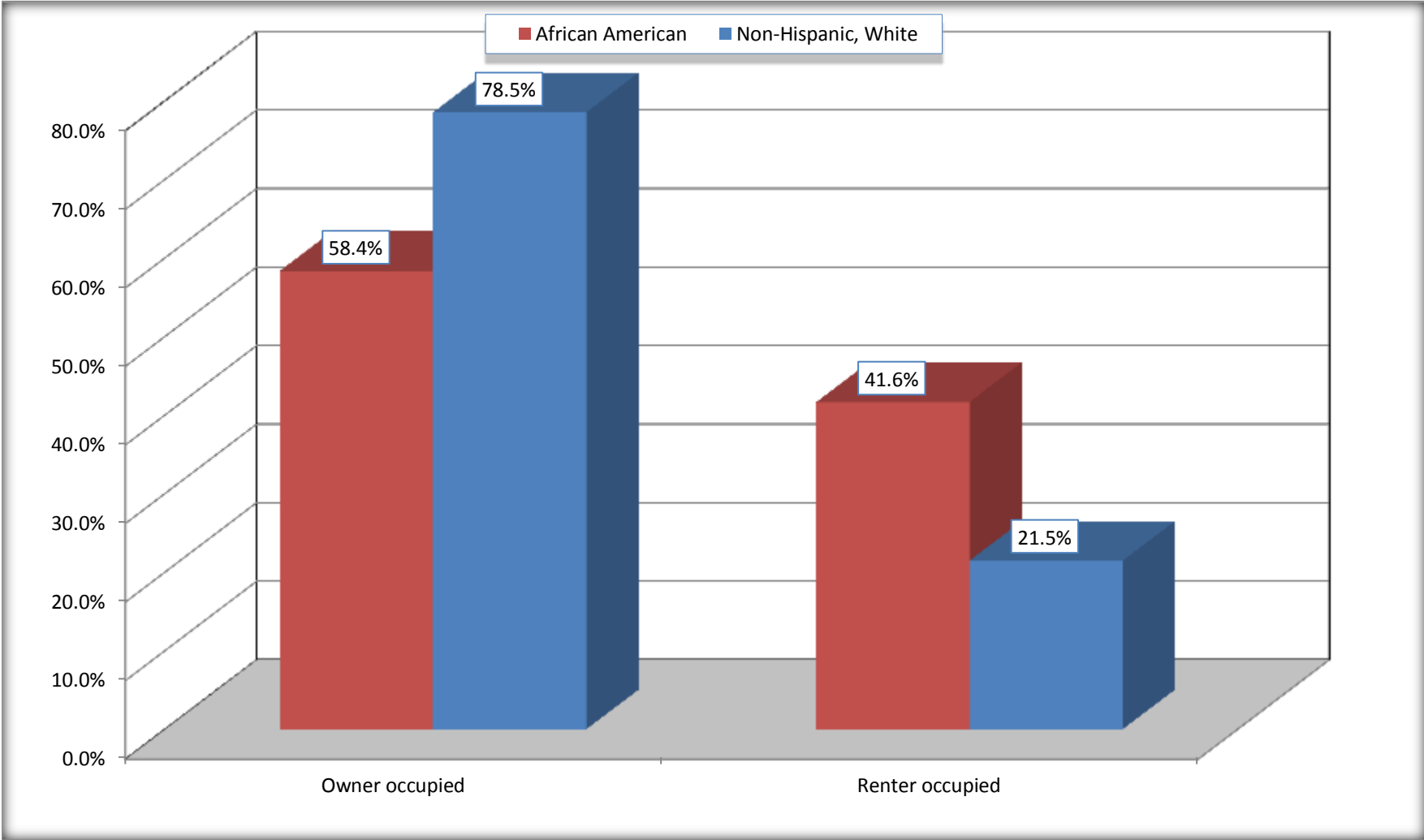
Source: U.S. Census Bureau, 2008-2012 American Community Survey

For information on confidentiality protection, sampling error, nonsampling error, and definitions, see Survey Methodology.

<http://www.census.gov/acs/www/UseData/index.h>

Home Owners and Renters by Household

Glenn Heights city, Texas



Source: B25003. TENURE - Universe: OCCUPIED HOUSING UNITS
Data Set: 2008-2012 American Community Survey 5-Year Estimates

B25014. OCCUPANTS PER ROOM - Universe: OCCUPIED HOUSING UNITS

Data Set: 2008-2012 American Community Survey 5-Year Estimates

	Glenn Heights city, Texas					
	African American	Margin of Error (+/-)	% of AA Total	White, Not Hispanic	Margin of Error (+/-)	% of NHW Total
Total:	2,077	241	100.0%	974	192	100.0%
1.00 or less occupants per room	2,044	248	98.4%	948	191	97.3%
1.01 or more occupants per room	33	41	1.6%	26	42	2.7%

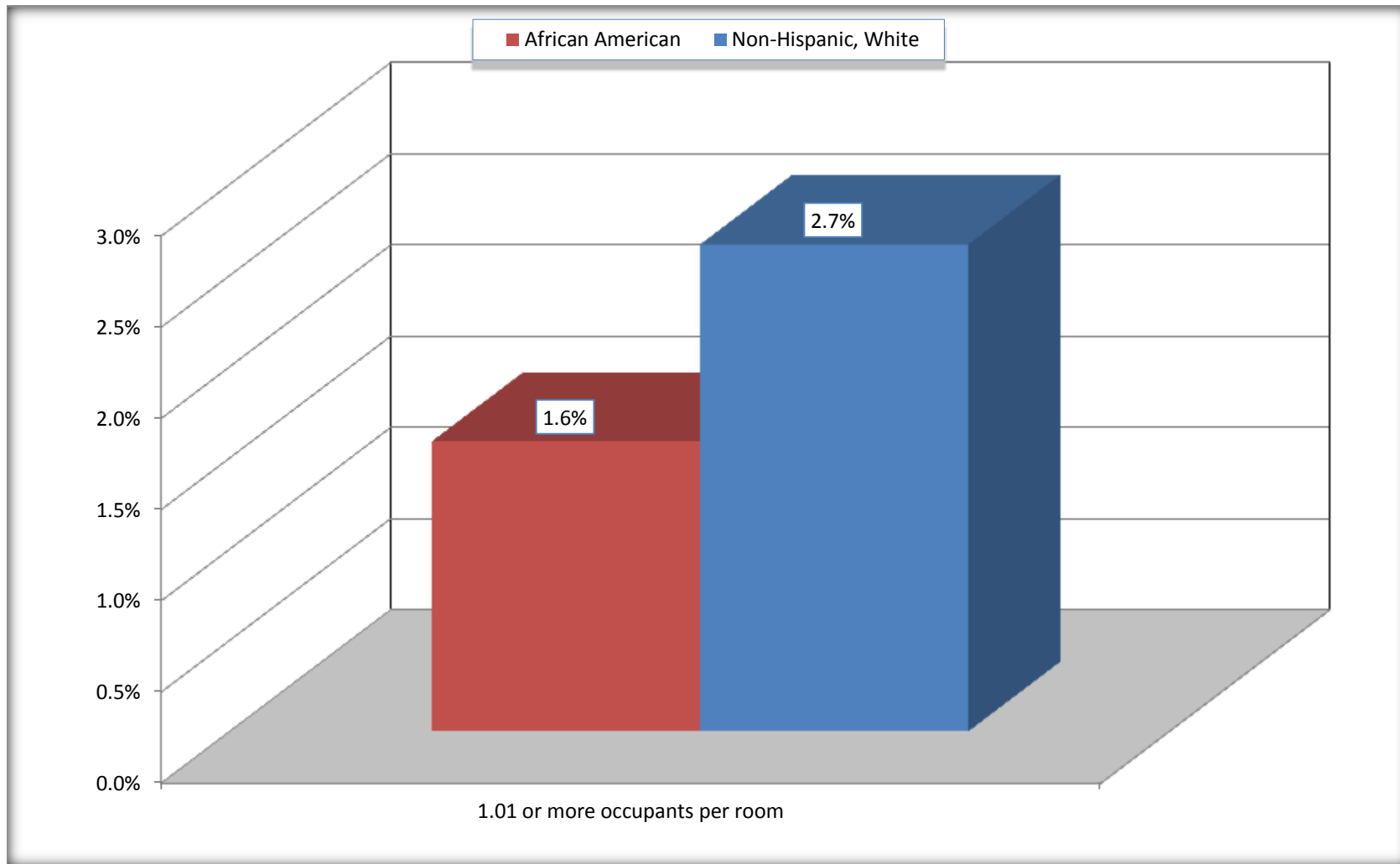
Source: U.S. Census Bureau, 2008-2012 American Community Survey

For information on confidentiality protection, sampling error, nonsampling error, and definitions, see Survey Methodology.

<http://www.census.gov/acs/www/UseData/index.ht>

More than One Person per Room (Crowding) by Household

Glenn Heights city, Texas



Source: B25014. OCCUPANTS PER ROOM - Universe: OCCUPIED HOUSING UNITS
Data Set: 2008-2012 American Community Survey 5-Year Estimates

B18101. AGE BY DISABILITY STATUS

Data Set: 2008-2012 American Community Survey 5-Year Estimates

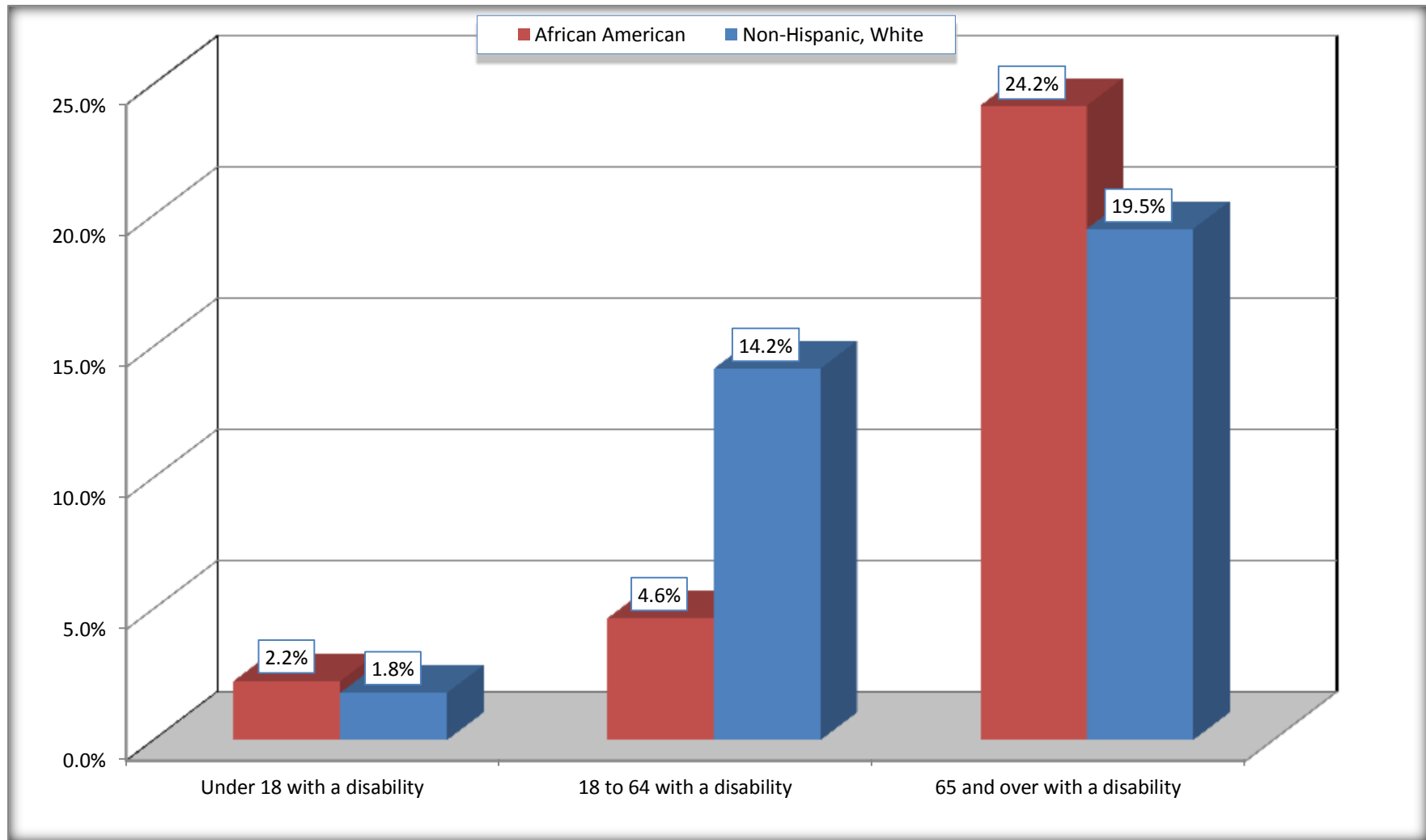
	Glenn Heights city, Texas					
	African American	Margin of Error (+/-)	% of AA Total	White, Not Hispanic	Margin of Error (+/-)	% of NHW Total
Total:	6,290	739	100.0%	2,550	577	100.0%
Under 18 years:	2,312	423	36.8%	610	89	23.9%
With a disability	52	51	0.8%	11	23	0.4%
No disability	2,260	418	35.9%	599	263	23.5%
18 to 64 years:	3,796	549	60.3%	1,709	376	67.0%
With a disability	176	87	2.8%	242	132	9.5%
No disability	3,620	547	57.6%	1,467	319	57.5%
65 years and over:	182	99	2.9%	231	108	9.1%
With a disability	44	53	0.7%	45	41	1.8%
No disability	138	82	2.2%	186	107	7.3%

Source: U.S. Census Bureau, 2008-2012 American Community Survey

For information on confidentiality protection, sampling error, nonsampling error, and definitions, see Survey Methodology.

<http://www.census.gov/acs/www/UseData/index.htm>

Disability by Age Glenn Heights city, Texas



Source: B18101. AGE BY DISABILITY STATUS
Data Set: 2008-2012 American Community Survey 5-Year Estimates

C27001B. HEALTH INSURANCE COVERAGE STATUS BY AGE

Data Set: 2008-2012 American Community Survey 5-Year Estimates

	Glenn Heights city, Texas					
	African American	Margin of Error (+/-)	% of AA Total	White, Not Hispanic	Margin of Error (+/-)	% of NHW Total
Total:	6,290	739	100.0%	2,550	577	100.0%
Under 18 years:	2,312	423	36.8%	610	266	23.9%
With health insurance coverage	2,020	407	32.1%	351	164	13.8%
No health insurance coverage	292	266	4.6%	259	198	10.2%
18 to 64 years:	3,796	549	60.3%	1,709	376	67.0%
With health insurance coverage	2,631	446	41.8%	1,092	253	42.8%
No health insurance coverage	1,165	389	18.5%	617	269	24.2%
65 years and over:	182	99	2.9%	231	108	9.1%
With health insurance coverage	182	99	2.9%	231	108	9.1%
No health insurance coverage	0	20	0.0%	0	20	0.0%

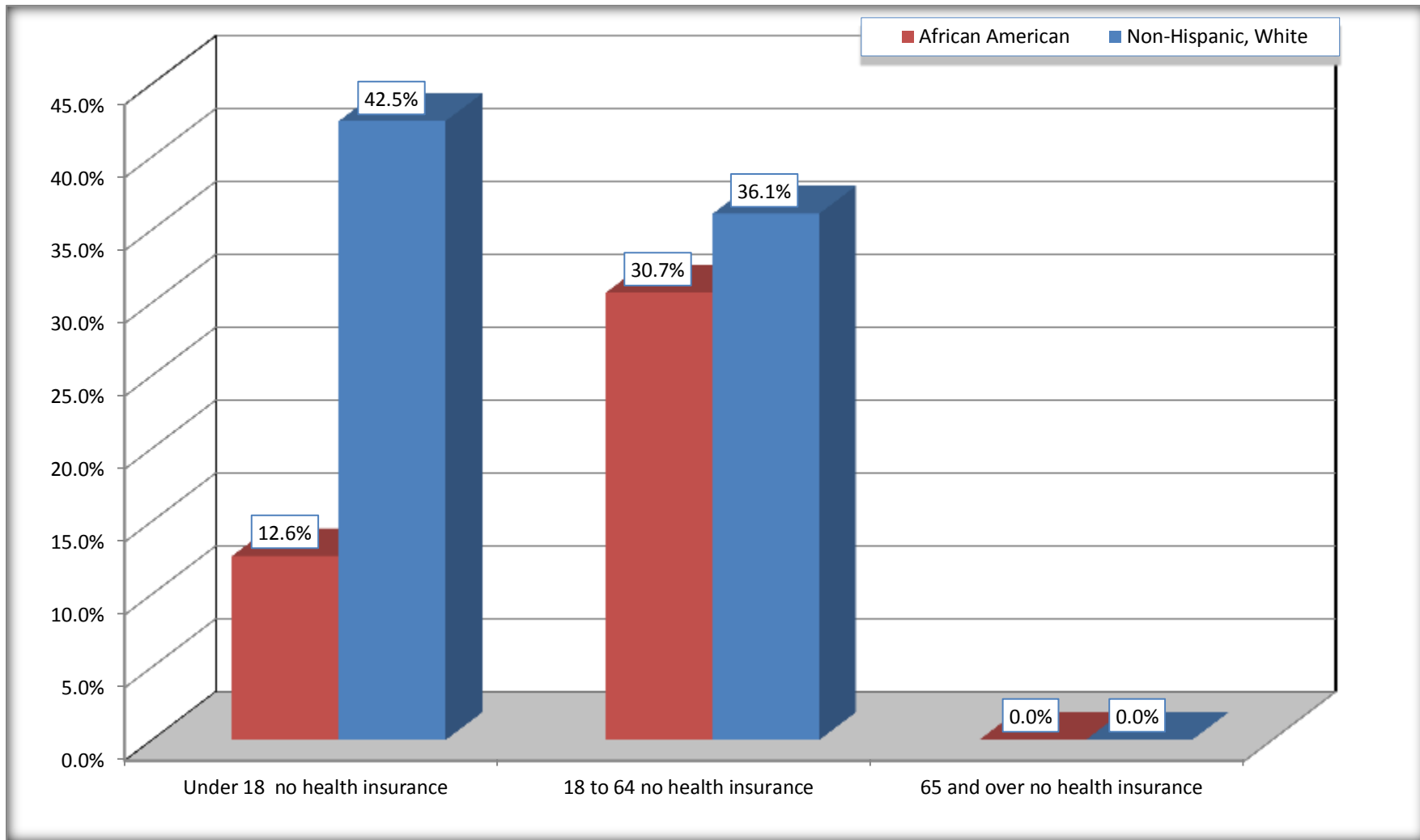
Source: U.S. Census Bureau, 2008-2012 American Community Survey

For information on confidentiality protection, sampling error, nonsampling error, and definitions, see Survey Methodology.

<http://www.census.gov/acs/www/UseData/index.htm>

Lack of Health Insurance Coverage by Age

Glenn Heights city, Texas



Source: C27001B. HEALTH INSURANCE COVERAGE STATUS BY AGE
Data Set: 2008-2012 American Community Survey 5-Year Estimates