

Selected Socio-Economic Data

Forest Hill city, Texas

African American and White, Not Hispanic

Data Set: 2008-2012 American Community Survey 5-Year Estimates

www.fairvote2020.org

www.fairdata2000.com

[29-Dec-13](#)

C02003.DETAILED RACE - Universe: TOTAL POPULATION

Data Set: 2008-2012 American Community Survey 5-Year Estimates

	Forest Hill city, Texas		
	Population	Margin of Error (+/-)	% of Total
Total:	12,478	24	100.0%
Population of one race:	12,316	100	98.7%
White	5,291	621	42.4%
Black or African American	5,783	624	46.3%
American Indian and Alaska Native	37	54	0.3%
Asian alone	41	51	0.3%
Native Hawaiian and Other Pacific Islander	0	20	0.0%
Some other race	1,164	459	9.3%
Population of two or more races:	162	98	1.3%
Two races including Some other race	48	61	0.4%
Two races excluding Some other race, and three or more races	114	78	0.9%
Population of two races:	141	96	1.1%
White; Black or African American	46	50	0.4%
White; American Indian and Alaska Native	27	40	0.2%
White; Asian	0	20	0.0%
Black or African American; American Indian and Alaska Native	0	20	0.0%
All other two race combinations	68	72	0.5%
Population of three races	21	37	0.2%
Population of four or more races	0	20	0.0%

Note: Hispanics may be of any race. See Table B03002 and chart.

Source: U.S. Census Bureau, 2008-2012 American Community Survey

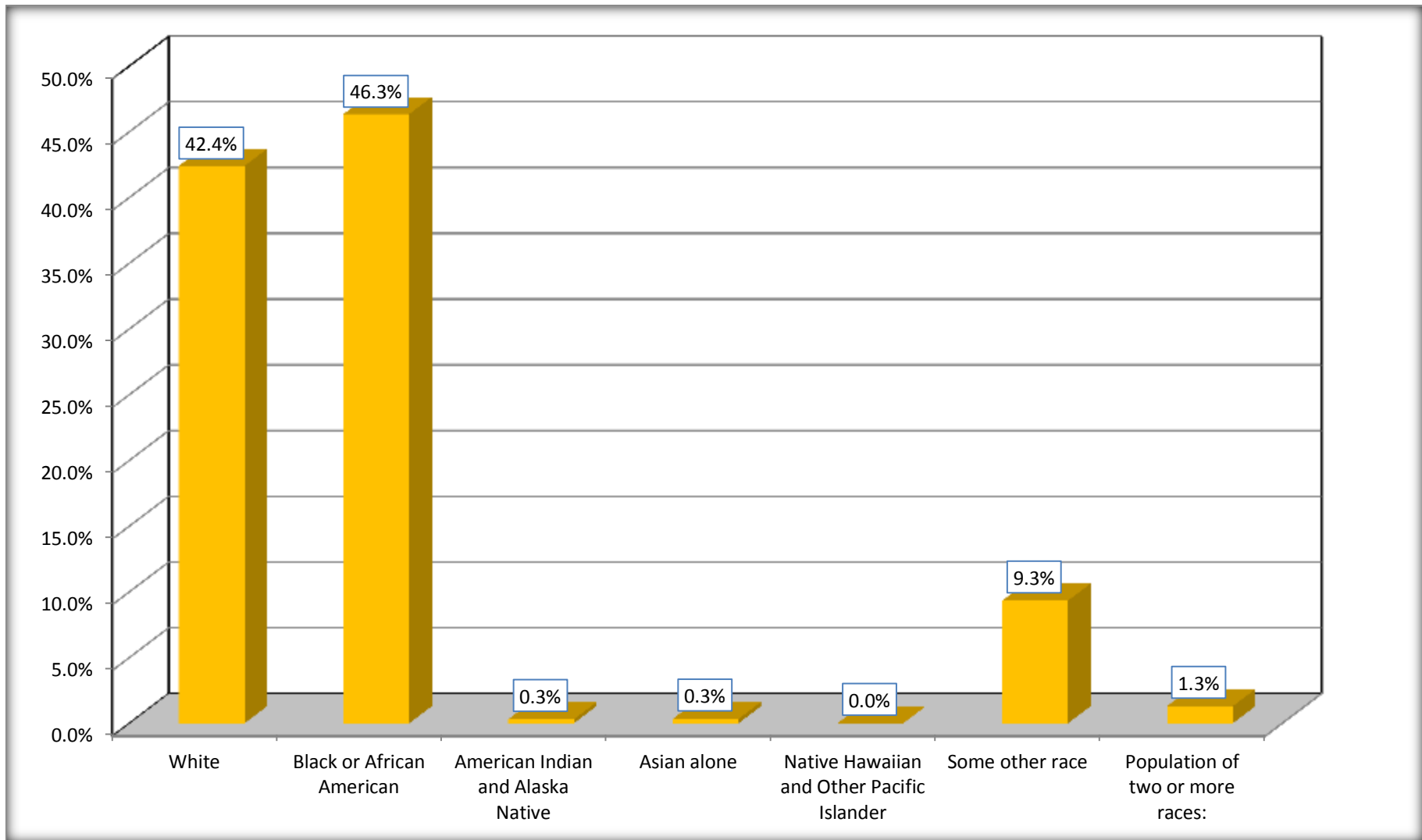
Although the American Community Survey (ACS) produces population, demographic and housing unit estimates, it is the Census Bureau's Population Estimates Program that produces and disseminates the official estimates of the population for the nation, states, counties, cities and towns and estimates of housing units for states and counties.

For information on confidentiality protection, sampling error, nonsampling error, and definitions, see Survey Methodology.

<http://www.census.gov/acs/www/UseData/index.htm>

Population by Race

Forest Hill city, Texas



Source: C02003.DETAILED RACE - Universe: TOTAL POPULATION
Data Set: 2008-2012 American Community Survey 5-Year Estimates

B03002. HISPANIC OR LATINO ORIGIN BY RACE - Universe: TOTAL POPULATION

Data Set: 2008-2012 American Community Survey 5-Year Estimates

	Forest Hill city, Texas		
	Population	Margin of Error (+/-)	% of Total
Total:	12,478	24	100.0%
Not Hispanic or Latino:	7,727	588	61.9%
White alone	1,833	288	14.7%
Black or African American alone	5,713	598	45.8%
American Indian and Alaska Native alone	37	54	0.3%
Asian alone	41	51	0.3%
Native Hawaiian and Other Pacific Islander alone	0	20	0.0%
Some other race alone	10	22	0.1%
Two or more races:	93	76	0.7%
Two races including Some other race	0	20	0.0%
Two races excluding Some other race, and three or more races	93	76	0.7%
Hispanic or Latino	4,751	589	38.1%

Source: U.S. Census Bureau, 2008-2012 American Community Survey

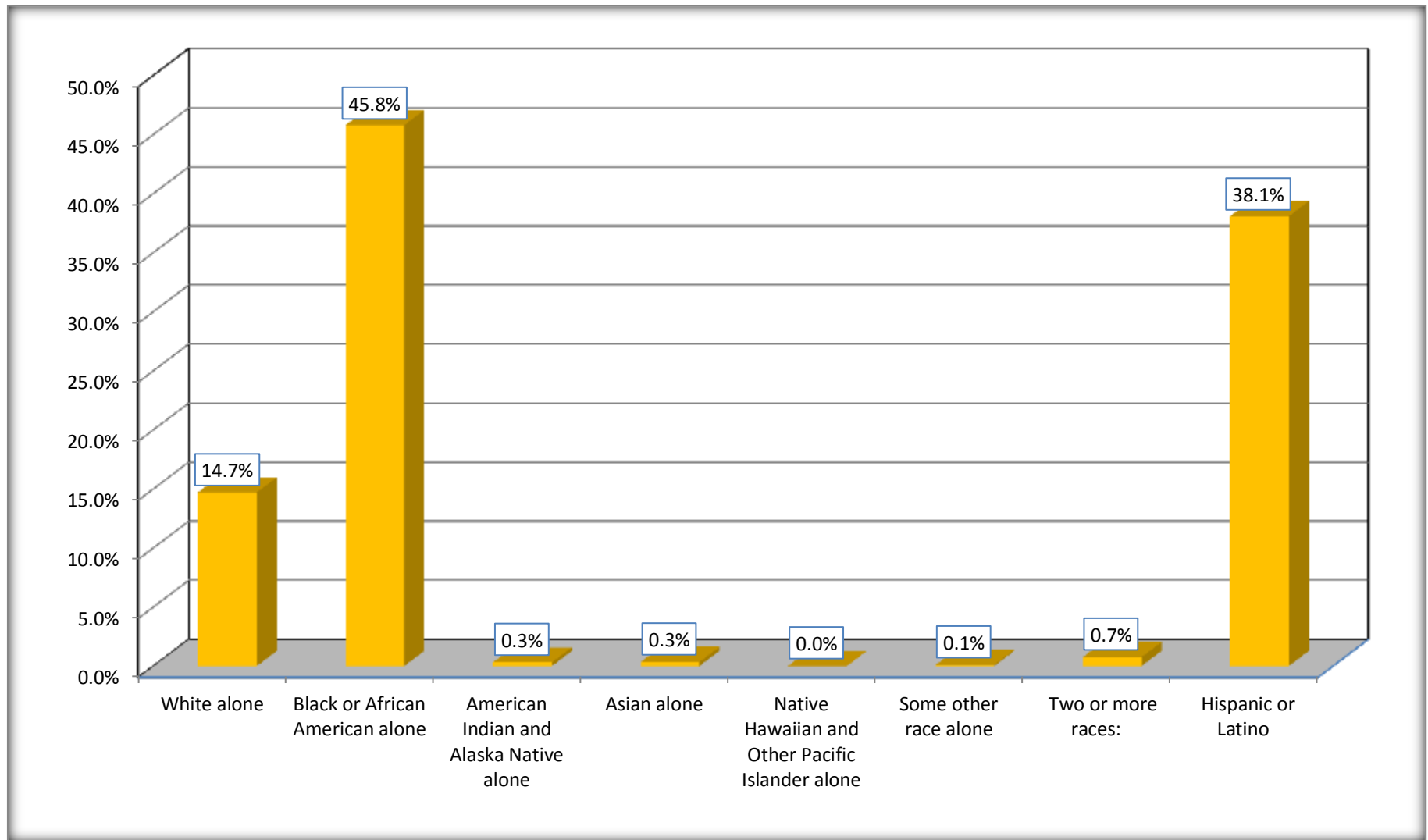
Although the American Community Survey (ACS) produces population, demographic and housing unit estimates, it is the Census Bureau's Population Estimates Program that produces and disseminates the official estimates of the population for the nation, states, counties, cities and towns and estimates of housing units for states and counties.

For information on confidentiality protection, sampling error, nonsampling error, and definitions, see Survey Methodology.

<http://www.census.gov/acs/www/UseData/index.htm>

Non-Hispanic by Race and Hispanic Population

Forest Hill city, Texas



Source: B03002. HISPANIC OR LATINO ORIGIN BY RACE - Universe: TOTAL POPULATION
Data Set: 2008-2012 American Community Survey 5-Year Estimates

B03002. HISPANIC OR LATINO ORIGIN BY RACE

Data Set: 2008-2012 American Community Survey 5-Year Estimates

	Forest Hill city, Texas		
	Population	Margin of Error (+/-)	% of Total
Hispanic or Latino:	4,751	589	100.0%
White alone	3,458	601	72.8%
Black or African American alone	70	95	1.5%
American Indian and Alaska Native alone	0	20	0.0%
Asian alone	0	20	0.0%
Native Hawaiian and Other Pacific Islander alone	0	20	0.0%
Some other race alone	1,154	458	24.3%
Two or more races:	69	72	1.5%
Two races including Some other race	48	61	1.0%
Two races excluding Some other race, and three or more races	21	37	0.4%

Source: U.S. Census Bureau, 2008-2012 American Community Survey

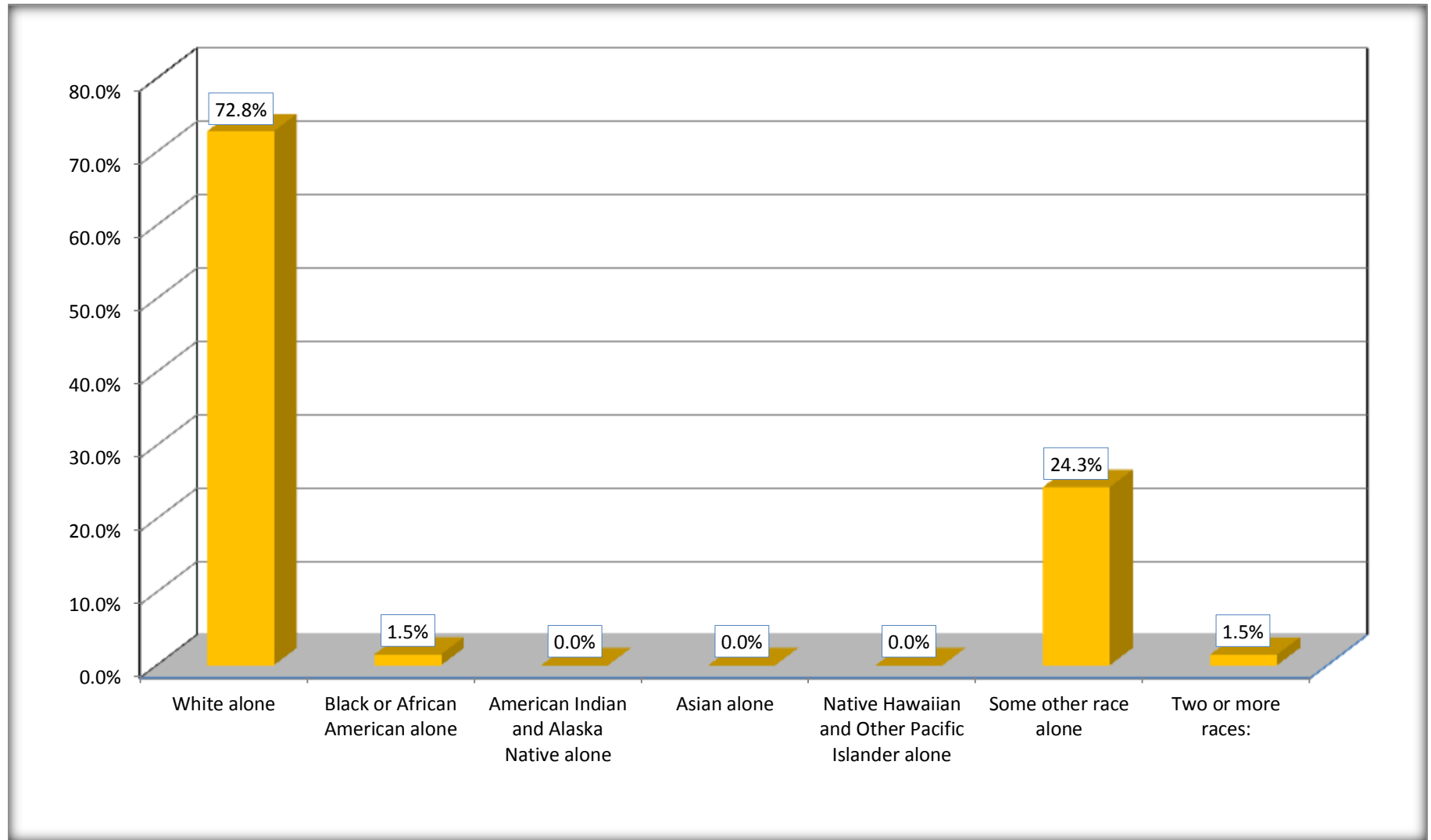
Although the American Community Survey (ACS) produces population, demographic and housing unit estimates, it is the Census Bureau's Population Estimates Program that produces and disseminates the official estimates of the population for the nation, states, counties, cities and towns and estimates of housing units for states and counties.

For information on confidentiality protection, sampling error, nonsampling error, and definitions, see Survey Methodology.

<http://www.census.gov/acs/www/UseData/index.htm>

Hispanic or Latino Origin by Race

Forest Hill city, Texas



Source: B03002. HISPANIC OR LATINO ORIGIN BY RACE
Data Set: 2008-2012 American Community Survey 5-Year Estimates

B01001. SEX BY AGE

Data Set: 2008-2012 American Community Survey 5-Year Estimates

	Forest Hill city, Texas					
	African American	Margin of Error (+/-)	% of AA Total	White, Not Hispanic	Margin of Error (+/-)	% of NHW Total
Total:	5,783	624	100.0%	1,833	288	100.0%
Under 18 years	1,547	NC	26.8%	97	NC	5.3%
18 to 64 years	3,595	NC	62.2%	1,344	NC	73.3%
65 years and over	641	NC	11.1%	392	NC	21.4%
Male:	2,742	397	47.4%	1,231	389	67.2%
Under 18 years	745	NC	12.9%	84	NC	4.6%
18 to 64 years	1,768	NC	30.6%	933	NC	50.9%
65 years and over	229	NC	4.0%	214	NC	11.7%
Female:	3,041	361	52.6%	602	412	32.8%
Under 18 years	802	NC	13.9%	13	NC	0.7%
18 to 64 years	1,827	NC	31.6%	411	NC	22.4%
65 years and over	412	NC	7.1%	178	NC	9.7%

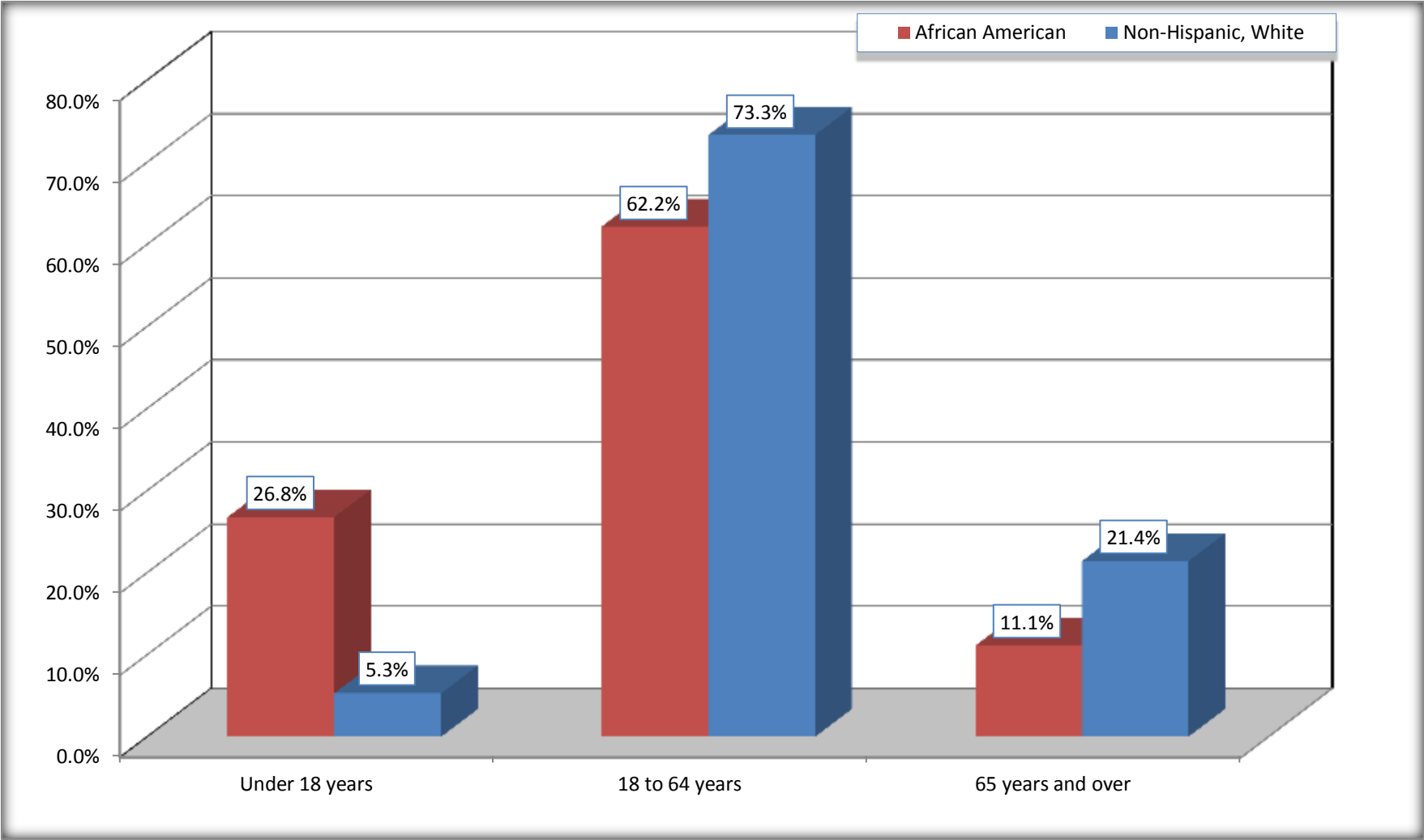
Source: U.S. Census Bureau, 2008-2012 American Community Survey

Although the American Community Survey (ACS) produces population, demographic and housing unit estimates, it is the Census Bureau's Population Estimates Program that produces and disseminates the official estimates of the population for the nation, states, counties, cities and towns and estimates of housing units for states and counties.

For information on confidentiality protection, sampling error, nonsampling error, and definitions, see Survey Methodology.
<http://www.census.gov/acs/www/UseData/index.htm>

Population by Age

Forest Hill city, Texas



Source: B01001. SEX BY AGE
Data Set: 2008-2012 American Community Survey 5-Year Estimates

B05003. SEX BY AGE BY CITIZENSHIP STATUS

Data Set: 2008-2012 American Community Survey 5-Year Estimates

	Forest Hill city, Texas					
	African American	Margin of Error (+/-)	% of AA Total by Age	White, Not Hispanic	Margin of Error (+/-)	% of NHW Total by Age
Total:	5,783	624	100.0%	1,833	288	100.0%
Under 18 years:	1,547	NC	100.0%	97	NC	100.0%
Native	1,511	NC	97.7%	97	NC	100.0%
Foreign born:	36	NC	2.3%	0	NC	0.0%
Naturalized U.S. citizen	0	NC	0.0%	0	NC	0.0%
Not a U.S. citizen	36	NC	2.3%	0	NC	0.0%
18 years and over:	4,236	NC	100.0%	1,736	NC	100.0%
Native	4,184	NC	98.8%	1,712	NC	98.6%
Foreign born:	52	NC	1.2%	24	NC	1.4%
Naturalized U.S. citizen	13	NC	0.3%	24	NC	1.4%
Not a U.S. citizen	39	NC	0.9%	0	NC	0.0%
Male:	2,742	397	47.4%	1,231	214	67.2%
Under 18 years:	745	218	100.0%	84	57	100.0%
Native	737	216	98.9%	84	57	100.0%
Foreign born:	8	15	1.1%	0	20	0.0%
Naturalized U.S. citizen	0	20	0.0%	0	20	0.0%
Not a U.S. citizen	8	15	1.1%	0	20	0.0%
18 years and over:	1,997	358	100.0%	1,147	193	100.0%
Native	1,975	358	98.9%	1,123	195	97.9%
Foreign born:	22	24	1.1%	24	43	2.1%
Naturalized U.S. citizen	13	20	0.7%	24	43	2.1%
Not a U.S. citizen	9	15	0.5%	0	20	0.0%

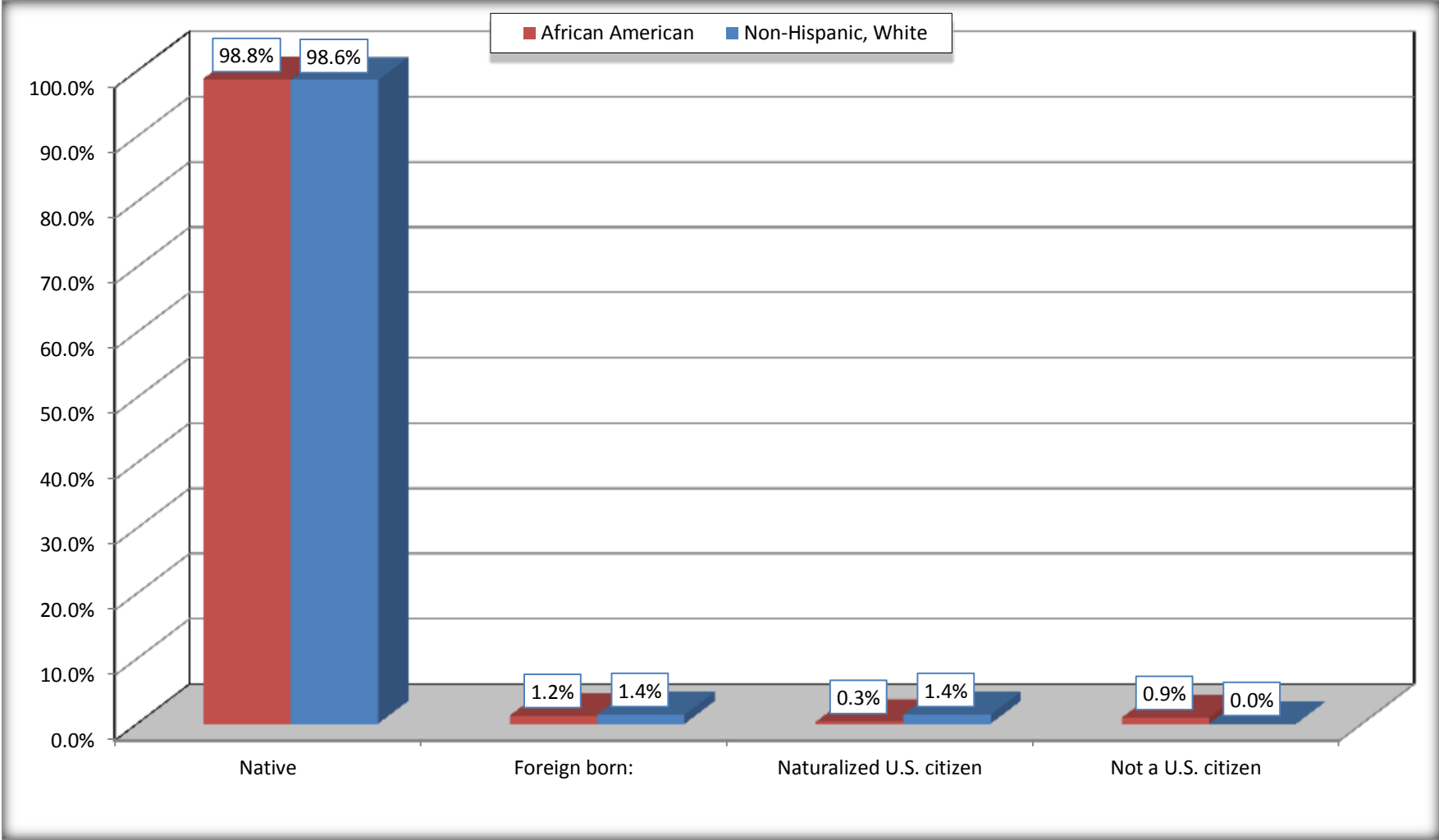
	Forest Hill city, Texas					
	African American	Margin of Error (+/-)	% of AA by Age	White, Not Hispanic	Margin of Error (+/-)	% of NHW by Age
Female:	3,041	361	52.6%	602	140	32.8%
Under 18 years:	802	200	100.0%	13	17	100.0%
Native	774	199	96.5%	13	17	100.0%
Foreign born:	28	36	3.5%	0	20	0.0%
Naturalized U.S. citizen	0	20	0.0%	0	20	0.0%
Not a U.S. citizen	28	36	3.5%	0	20	0.0%
18 years and over:	2,239	290	100.0%	589	142	100.0%
Native	2,209	292	98.7%	589	142	100.0%
Foreign born:	30	34	1.3%	0	20	0.0%
Naturalized U.S. citizen	0	20	0.0%	0	20	0.0%
Not a U.S. citizen	30	34	1.3%	0	20	0.0%

Source: U.S. Census Bureau, 2008-2012 American Community Survey

For information on confidentiality protection, sampling error, nonsampling error, and definitions, see Survey Methodology.
<http://www.census.gov/acs/www/UseData/index.htm>

Citizenship Status of Voting Age Population (18 and Over)

Forest Hill city, Texas



Source: B05003. SEX BY AGE BY CITIZENSHIP STATUS
Data Set: 2008-2012 American Community Survey 5-Year Estimates

**B07004. GEOGRAPHICAL MOBILITY IN THE PAST YEAR BY RACE FOR CURRENT RESIDENCE IN THE UNITED STATES - Universe:
POPULATION 1 YEAR AND OVER**

Data Set: 2008-2012 American Community Survey 5-Year Estimates

	Forest Hill city, Texas					
	African American	Margin of Error (+/-)	% of AA Total	White, Not Hispanic	Margin of Error (+/-)	% of NHW Total
Total:	5,759	623	100.0%	1,833	288	100.0%
Same house 1 year ago	5,027	552	87.3%	1,587	280	86.6%
Moved within same county	575	307	10.0%	76	106	4.1%
Moved from different county within same state	52	53	0.9%	73	76	4.0%
Moved from different state	105	87	1.8%	97	107	5.3%
Moved from abroad	0	20	0.0%	0	20	0.0%

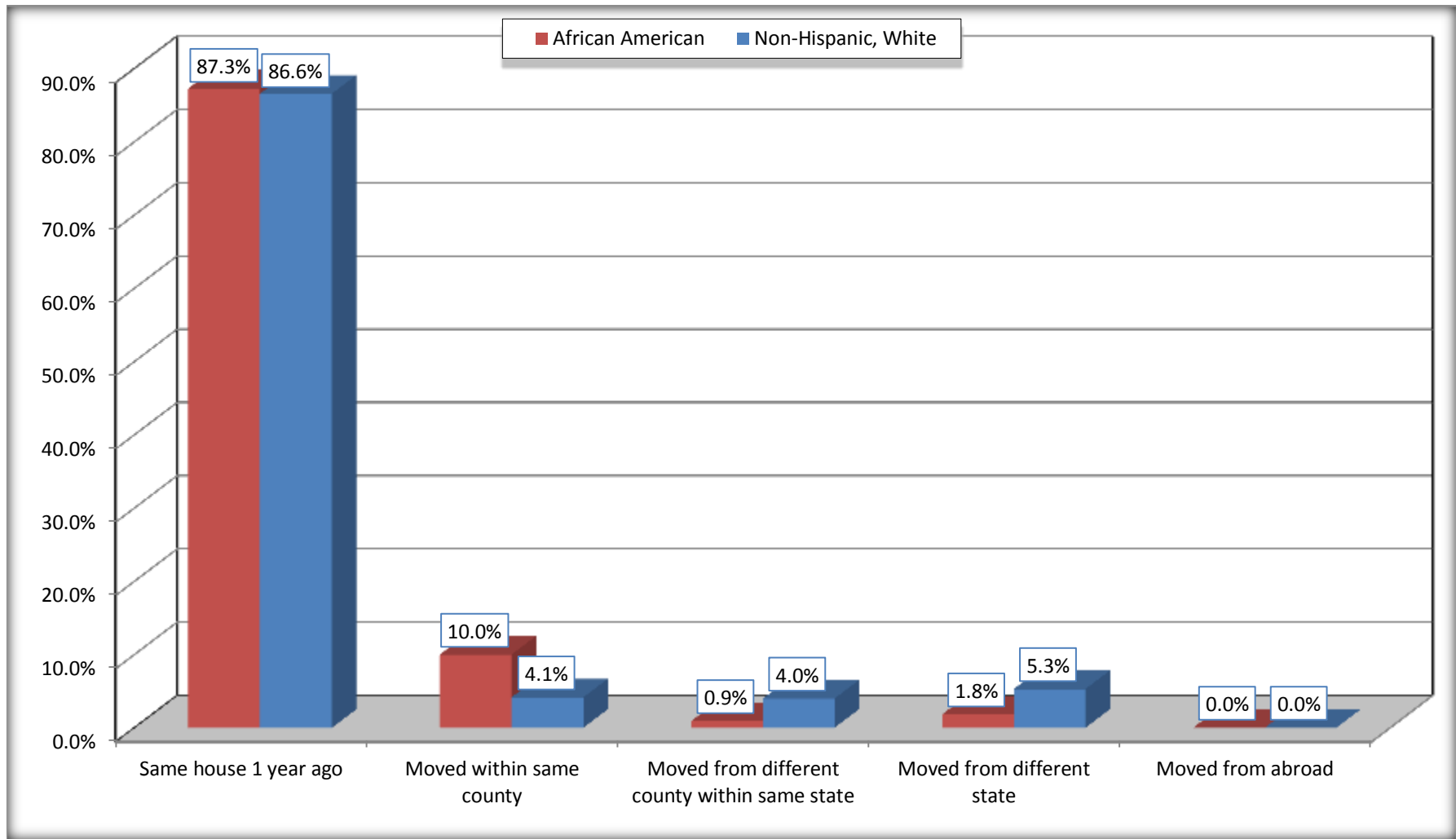
Source: U.S. Census Bureau, 2008-2012 American Community Survey

For information on confidentiality protection, sampling error, nonsampling error, and definitions, see Survey Methodology.

<http://www.census.gov/acs/www/UseData/index.htm>

Geographical Mobility in the Past Year (Population 1 Year and Over)

Forest Hill city, Texas



Source: B07004. GEOGRAPHICAL MOBILITY IN THE PAST YEAR BY RACE FOR CURRENT RESIDENCE IN THE UNITED STATES - Universe: POPULATION 1 YEAR AND OVER

Data Set: 2008-2012 American Community Survey 5-Year Estimates

B08105. MEANS OF TRANSPORTATION TO WORK - Universe: WORKERS 16 YEARS AND OVER

Data Set: 2008-2012 American Community Survey 5-Year Estimates

	Forest Hill city, Texas					
	African American	Margin of Error (+/-)	% of AA Total	White, Not Hispanic	Margin of Error (+/-)	% of NHW Total
Total:	2192	312	100.0%	492	191	100.0%
Car, truck, or van - drove alone	1860	273	84.9%	443	177	90.0%
Car, truck, or van - carpooled	119	72	5.4%	30	37	6.1%
Public transportation (excluding taxicab)	47	53	2.1%	13	20	2.6%
Walked	42	43	1.9%	0	20	0.0%
Taxicab, motorcycle, bicycle, or other means	15	25	0.7%	5	10	1.0%
Worked at home	109	92	5.0%	1	3	0.2%

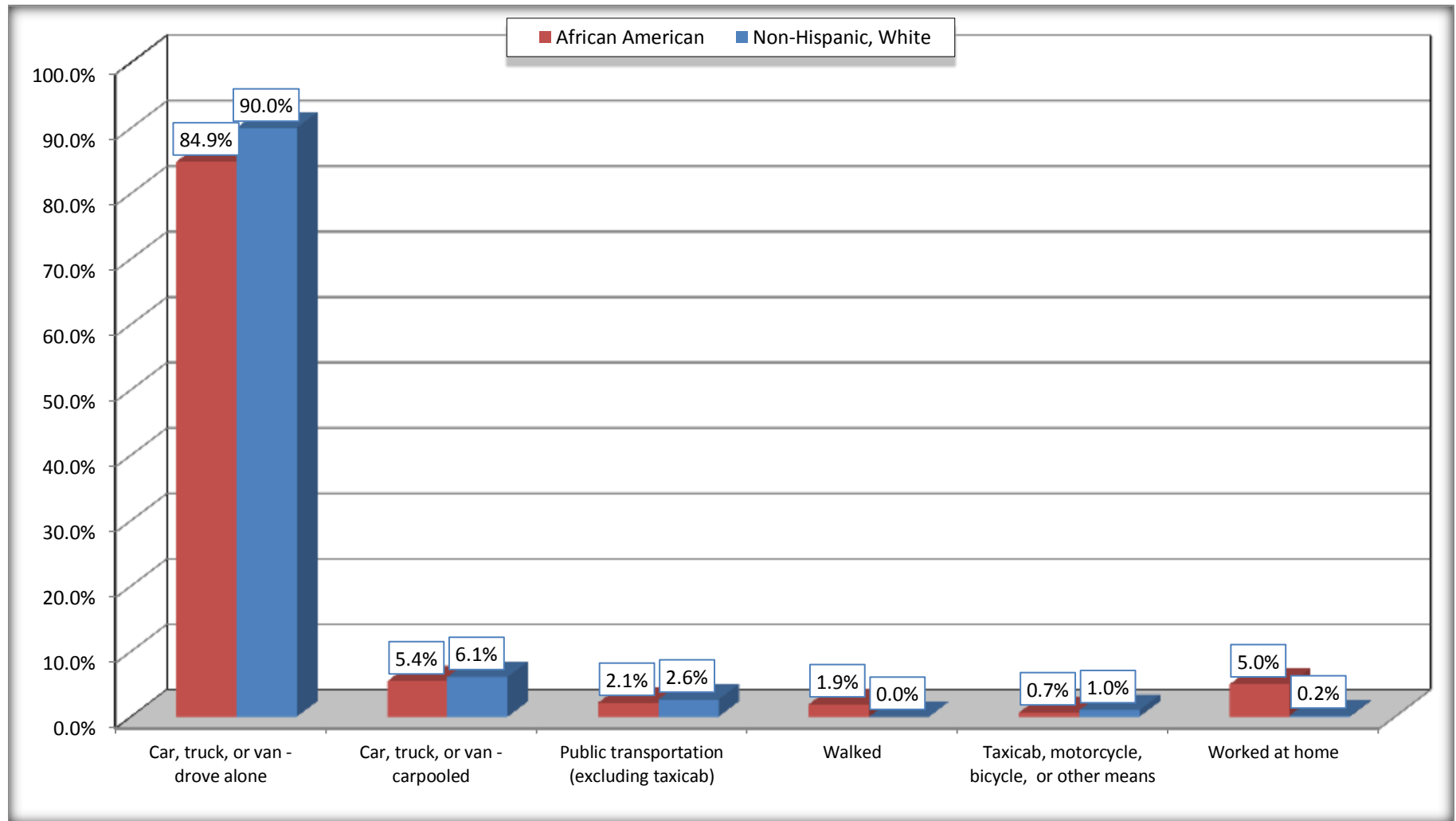
Source: U.S. Census Bureau, 2008-2012 American Community Survey

For information on confidentiality protection, sampling error, nonsampling error, and definitions, see Survey Methodology.

<http://www.census.gov/acs/www/UseData/index.htm>

Means of Transportation to Work (Workers 16 Years and Over)

Forest Hill city, Texas



Source: B08105. MEANS OF TRANSPORTATION TO WORK - Universe: WORKERS 16 YEARS AND OVER
Data Set: 2008-2012 American Community Survey 5-Year Estimates

B11002. HOUSEHOLD TYPE BY RELATIVES AND NONRELATIVES FOR POPULATION IN HOUSEHOLDS

Data Set: 2008-2012 American Community Survey 5-Year Estimates

	Forest Hill city, Texas					
	African American	Margin of Error (+/-)	% of AA Total	White, Not Hispanic	Margin of Error (+/-)	% of NHW Total
Total:	5476	660	100.0%	1434	431	100.0%
In family households	5097	643	93.1%	1279	408	89.2%
In nonfamily households	379	111	6.9%	155	103	10.8%

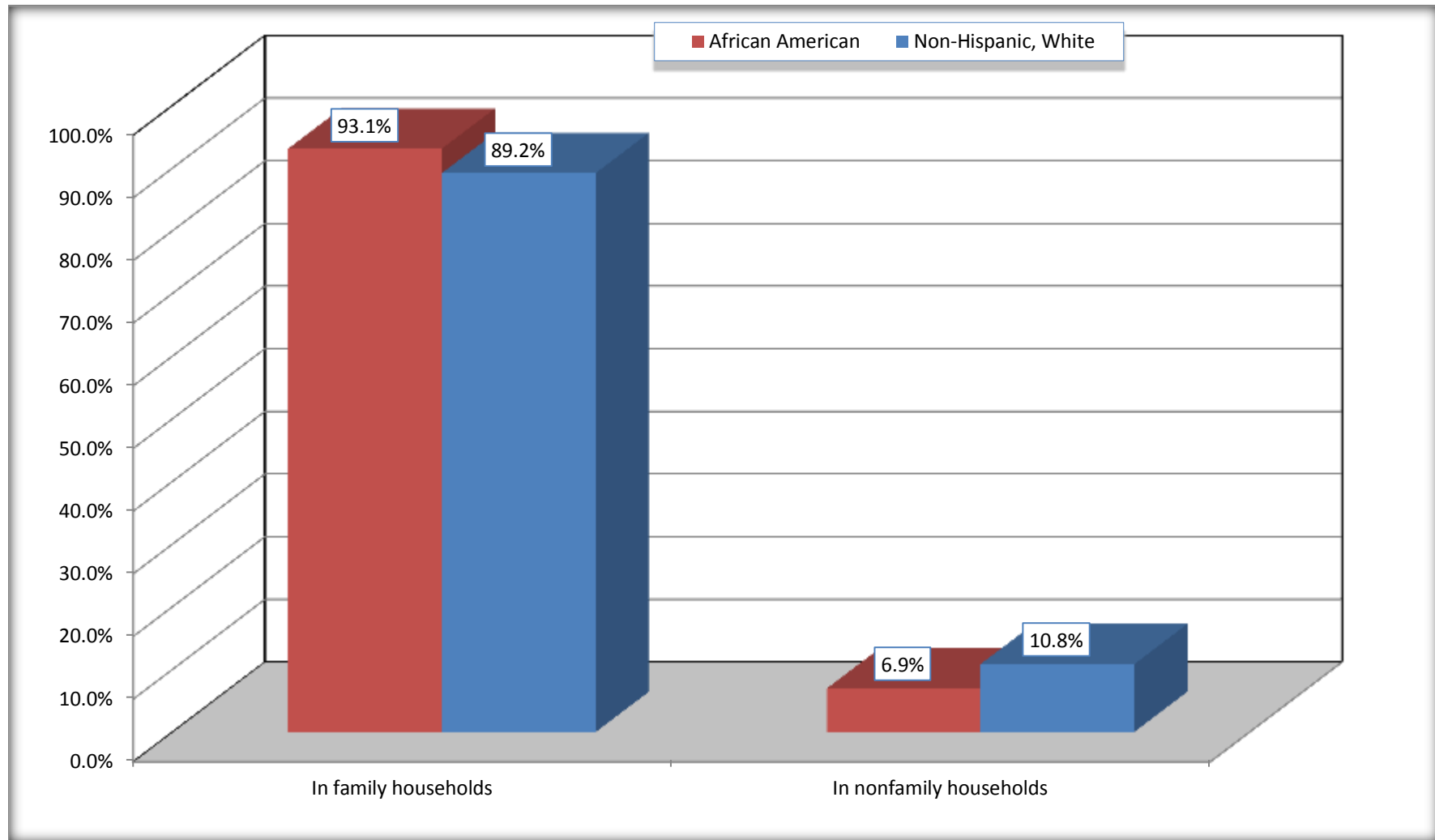
Source: U.S. Census Bureau, 2008-2012 American Community Survey

For information on confidentiality protection, sampling error, nonsampling error, and definitions, see Survey Methodology.

<http://www.census.gov/acs/www/UseData/index.htm>

Household Type for Population in Households

Forest Hill city, Texas



Source: B11002. HOUSEHOLD TYPE BY RELATIVES AND NONRELATIVES FOR POPULATION IN HOUSEHOLDS
Data Set: 2008-2012 American Community Survey 5-Year Estimates

B12002. MARITAL STATUS FOR THE POPULATION 15 YEARS AND OVER

Data Set: 2008-2012 American Community Survey 5-Year Estimates

	Forest Hill city, Texas					
	African American	Margin of Error (+/-)	% of AA Total	White, Not Hispanic	Margin of Error (+/-)	% of NHW Total
Total:	4,637	541	100.0%	1,771	272	100.0%
Never married	1,902	NC	41.0%	365	NC	20.6%
Now married (except separated)	1,588	NC	34.2%	772	NC	43.6%
Separated	157	NC	3.4%	55	NC	3.1%
Widowed	315	NC	6.8%	162	NC	9.1%
Divorced	675	NC	14.6%	417	NC	23.5%
Male:	2,135	368	46.0%	1,169	197	66.0%
Never married	1,011	248	21.8%	284	105	16.0%
Now married (except separated)	800	185	17.3%	437	150	24.7%
Separated	84	68	1.8%	28	40	1.6%
Widowed	67	48	1.4%	63	64	3.6%
Divorced	173	105	3.7%	357	127	20.2%
Female:	2,502	326	54.0%	602	140	34.0%
Never married	891	232	19.2%	81	63	4.6%
Now married (except separated)	788	160	17.0%	335	108	18.9%
Separated	73	54	1.6%	27	40	1.5%
Widowed	248	100	5.3%	99	62	5.6%
Divorced	502	150	10.8%	60	50	3.4%

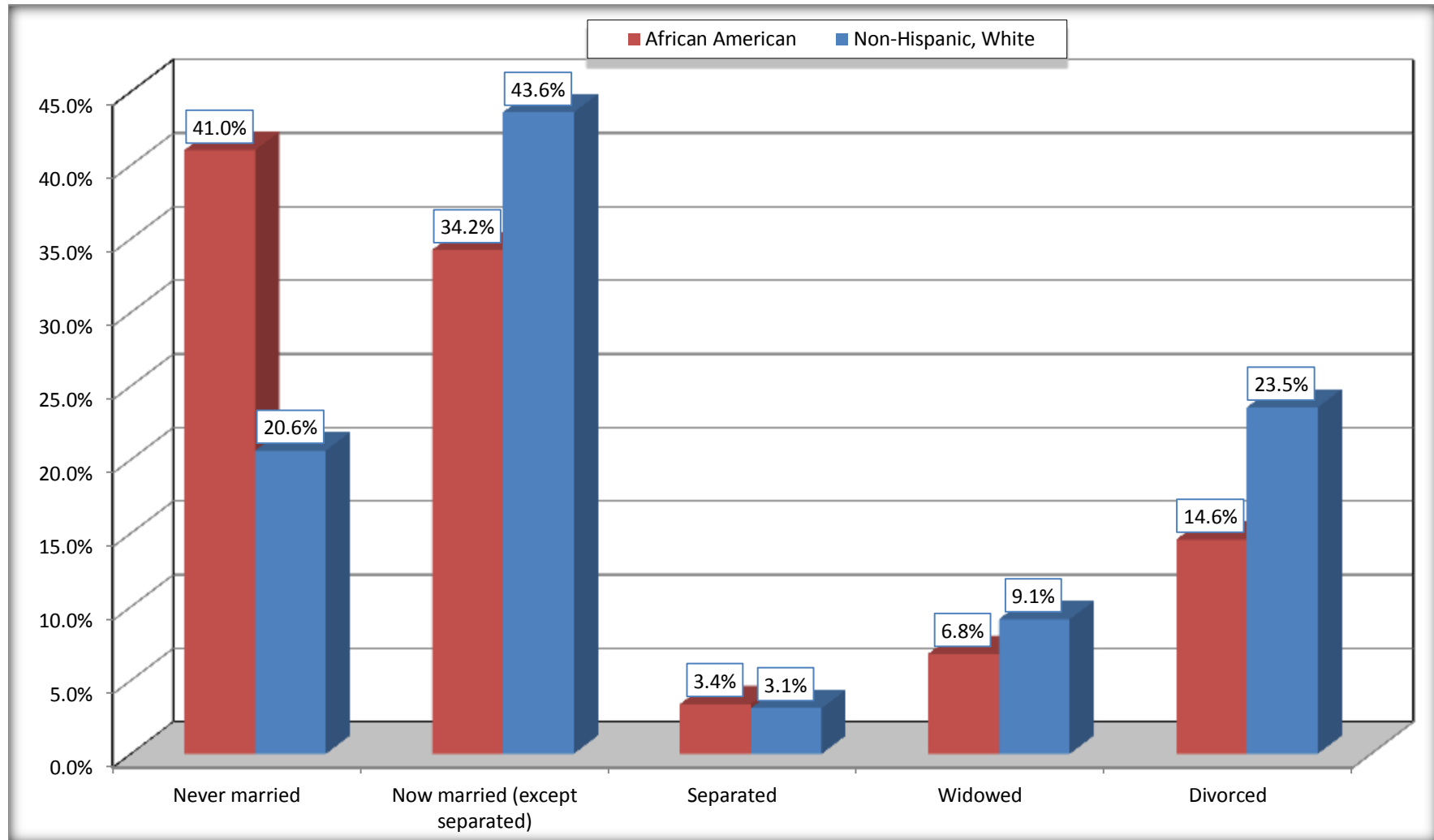
Source: U.S. Census Bureau, 2008-2012 American Community Survey

For information on confidentiality protection, sampling error, nonsampling error, and definitions, see Survey Methodology.

<http://www.census.gov/acs/www/UseData/index.htm>

Marital Status for the Population 15 Years and Over

Forest Hill city, Texas



Source: B12002. MARITAL STATUS FOR THE POPULATION 15 YEARS AND OVER
Data Set: 2008-2012 American Community Survey 5-Year Estimates

C15002. SEX BY EDUCATIONAL ATTAINMENT FOR THE POPULATION 25 YEARS AND OVER

Data Set: 2008-2012 American Community Survey 5-Year Estimates

	Forest Hill city, Texas					
	African American	Margin of Error (+/-)	% of AA Total	White, Not Hispanic	Margin of Error (+/-)	% of NHW Total
Total:	3,626	421	100.0%	1,659	263	100.0%
Less than high school diploma	348	NC	9.6%	136	NC	8.2%
High school graduate, GED, or alternative	1,177	NC	32.5%	633	NC	38.2%
Some college or associate's degree	1,493	NC	41.2%	697	NC	42.0%
Bachelor's degree or higher	608	NC	16.8%	193	NC	11.6%
Male:	1,660	275	45.8%	1,078	190	65.0%
Less than high school diploma	235	110	6.5%	98	74	5.9%
High school graduate, GED, or alternative	668	181	18.4%	375	142	22.6%
Some college or associate's degree	511	156	14.1%	442	149	26.6%
Bachelor's degree or higher	246	102	6.8%	163	90	9.8%
Female:	1,966	236	54.2%	581	140	35.0%
Less than high school diploma	113	75	3.1%	38	33	2.3%
High school graduate, GED, or alternative	509	128	14.0%	258	99	15.6%
Some college or associate's degree	982	188	27.1%	255	113	15.4%
Bachelor's degree or higher	362	124	10.0%	30	42	1.8%

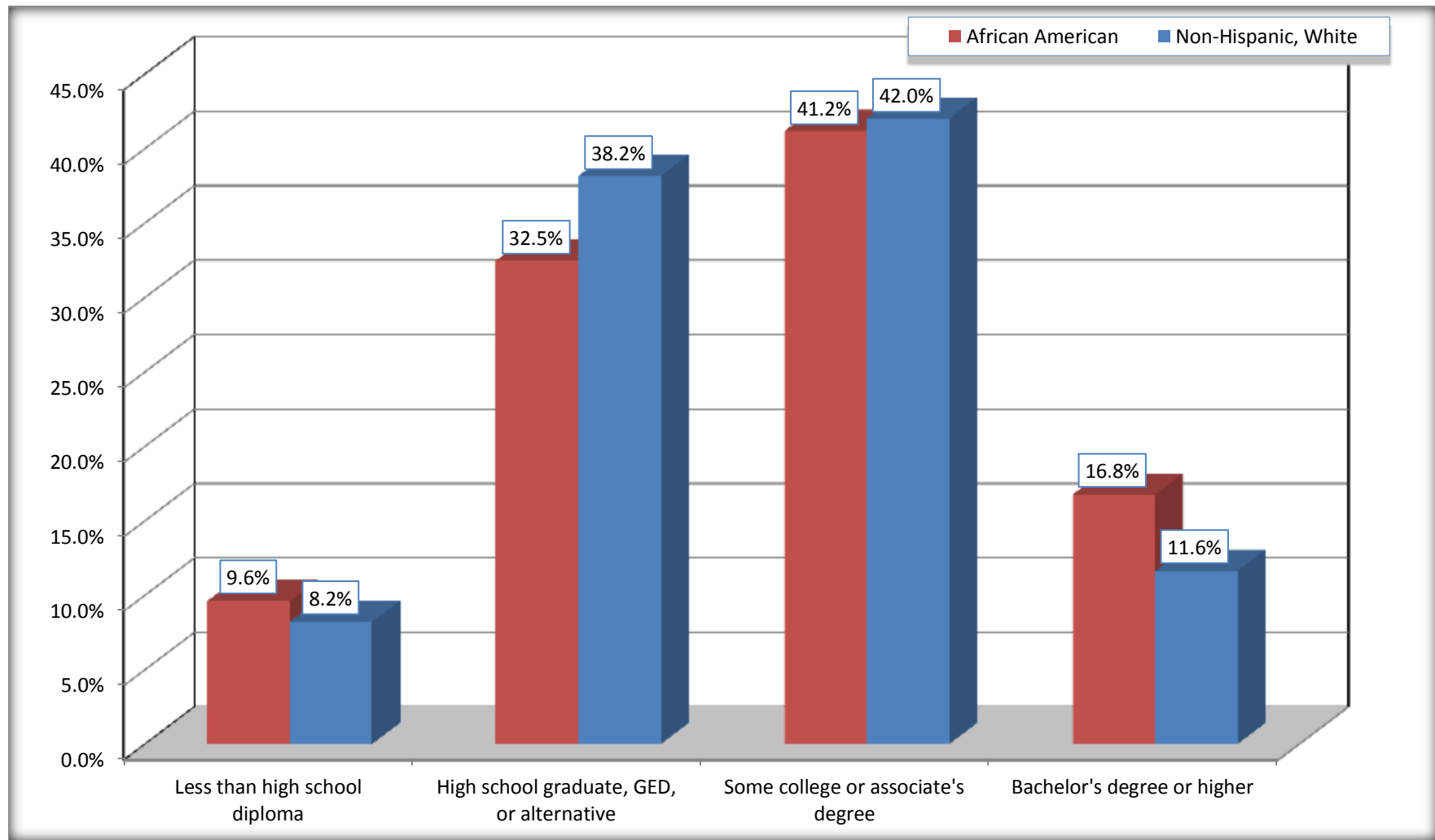
Source: U.S. Census Bureau, 2008-2012 American Community Survey

For information on confidentiality protection, sampling error, nonsampling error, and definitions, see Survey Methodology.

<http://www.census.gov/acs/www/UseData/index.htm>

Educational Attainment for the Population 25 Years and Older

Forest Hill city, Texas



Source: C15002. SEX BY EDUCATIONAL ATTAINMENT FOR THE POPULATION 25 YEARS AND OVER
Data Set: 2008-2012 American Community Survey 5-Year Estimates

B17010. POVERTY STATUS IN THE PAST 12 MONTHS OF FAMILIES BY FAMILY TYPE BY PRESENCE OF RELATED CHILDREN UNDER 18 YEARS

Data Set: 2008-2012 American Community Survey 5-Year Estimates

	Forest Hill city, Texas					
	African American	Margin of Error (+/-)	% of AA Total	White, Not Hispanic	Margin of Error (+/-)	% of NHW Total
Total:	1,438	200	100.0%	437	134	100.0%
Income in the past 12 months below poverty level:	197	100	13.7%	42	45	9.6%
Married-couple family:	35	29	2.4%	37	46	8.5%
With related children under 18 years	5	9	0.3%	32	46	7.3%
Other family:	162	98	11.3%	5	10	1.1%
Male householder, no wife present	0	20	0.0%	0	20	0.0%
With related children under 18 years	0	20	0.0%	0	20	0.0%
Female householder, no husband present	162	98	11.3%	5	10	1.1%
With related children under 18 years	162	98	11.3%	5	10	1.1%
Income in the past 12 months at or above poverty level:	1,241	188	86.3%	395	140	90.4%
Married-couple family:	687	170	47.8%	287	114	65.7%
With related children under 18 years	233	79	16.2%	113	73	25.9%
Other family:	554	157	38.5%	108	66	24.7%
Male householder, no wife present	103	78	7.2%	48	47	11.0%
With related children under 18 years	74	74	5.1%	0	20	0.0%
Female householder, no husband present	451	130	31.4%	60	51	13.7%
With related children under 18 years	317	101	22.0%	22	38	5.0%

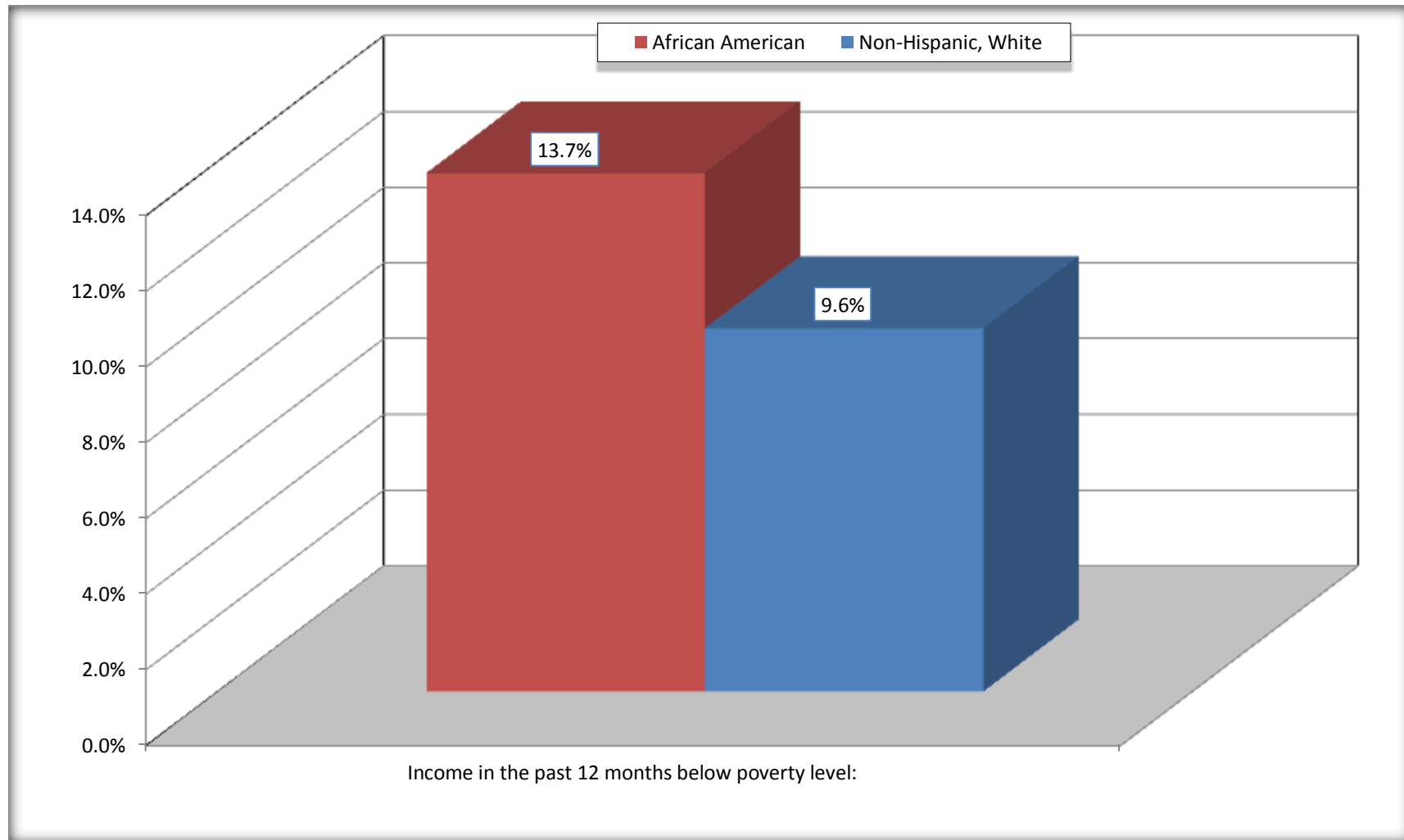
Source: U.S. Census Bureau, 2008-2012 American Community Survey

For information on confidentiality protection, sampling error, nonsampling error, and definitions, see Survey Methodology.

<http://www.census.gov/acs/www/UseData/index.htm>

Family Households Below Poverty in the Past 12 Months

Forest Hill city, Texas

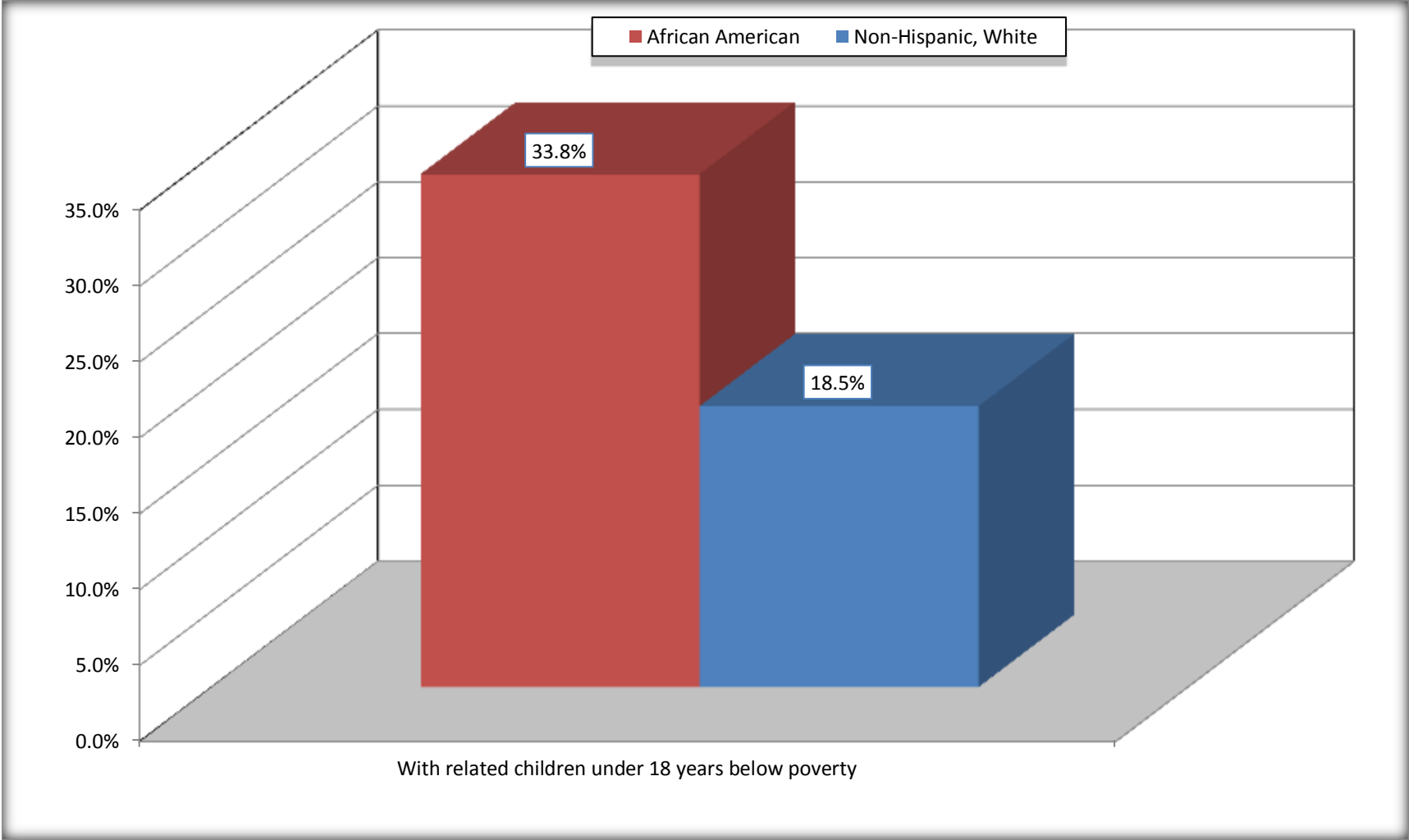


Source: B17010. POVERTY STATUS IN THE PAST 12 MONTHS OF FAMILIES BY FAMILY TYPE BY PRESENCE OF RELATED CHILDREN UNDER 18 YEARS

Data Set: 2008-2012 American Community Survey 5-Year Estimates

Female-headed Households with Related Children Below Poverty in the Past 12 Months

Forest Hill city, Texas



Source: B17010. POVERTY STATUS IN THE PAST 12 MONTHS OF FAMILIES BY FAMILY TYPE BY PRESENCE OF RELATED CHILDREN UNDER 18 YEARS

Data Set: 2008-2012 American Community Survey 5-Year Estimates

B17020 POVERTY STATUS IN THE PAST 12 MONTHS BY AGE - Universe: POPULATION FOR WHOM POVERTY STATUS IS DETERMINED

Data Set: 2008-2012 American Community Survey 5-Year Estimates

	Forest Hill city, Texas					
	African American	Margin of Error (+/-)	% of AA By Age	White, Not Hispanic	Margin of Error (+/-)	% of NHW By Age
Total:	5,378	619	100.0%	1,081	261	100.0%
Income in the past 12 months below poverty level:	803	322	14.9%	134	79	12.4%
Under 18 years	364	NC	24.8%	5	NC	5.2%
18 to 64 years	370	154	11.3%	84	57	11.6%
65 years and over	69	NC	10.8%	45	NC	17.4%
Income in the past 12 months at or above poverty level:	4,575	564	85.1%	947	269	87.6%
Under 18 years	1,104	NC	75.2%	92	NC	94.8%
18 to 64 years	2,899	395	88.7%	642	224	88.4%
65 years and over	572	NC	89.2%	213	NC	82.6%

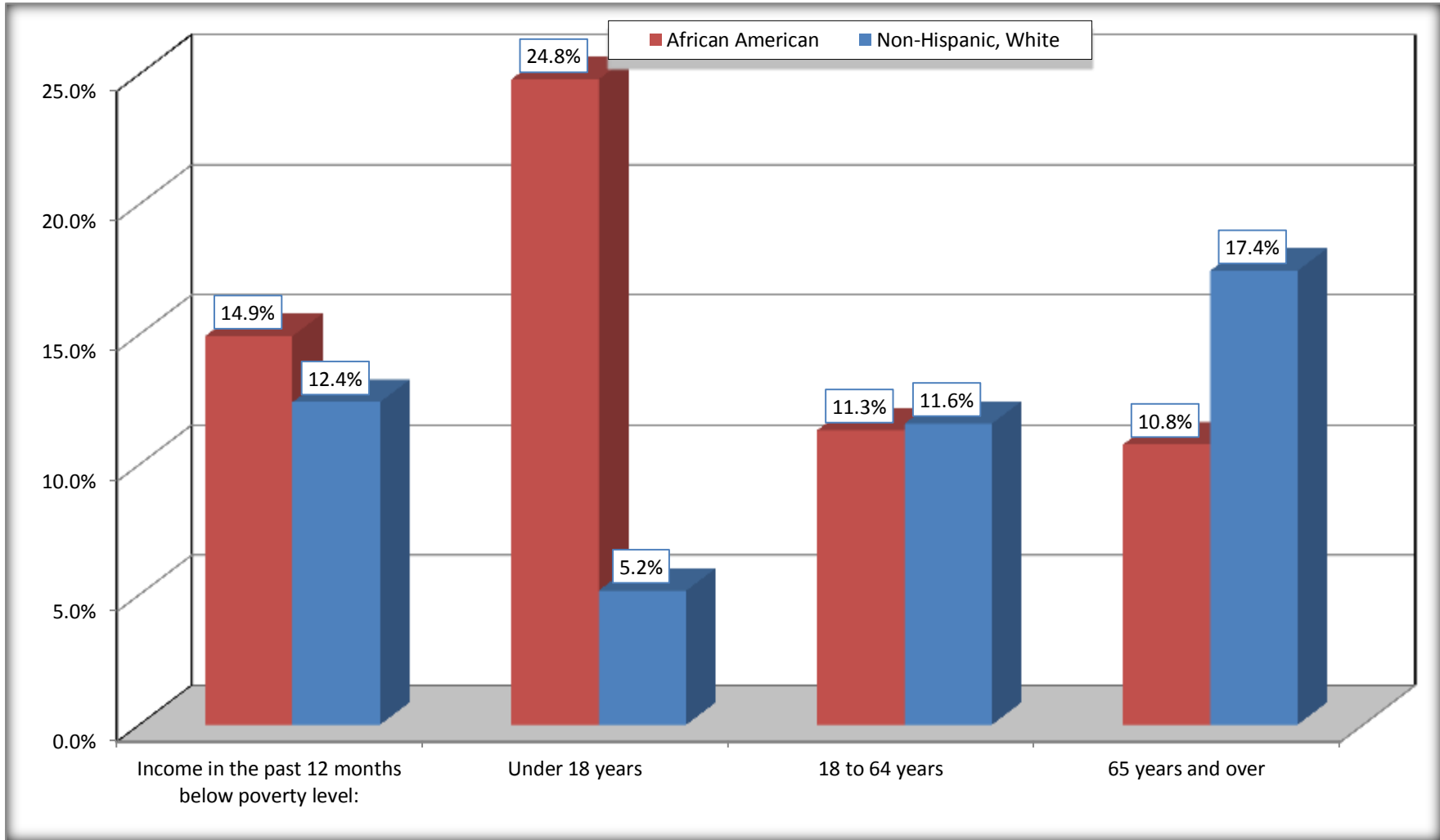
Source: U.S. Census Bureau, 2008-2012 American Community Survey

For information on confidentiality protection, sampling error, nonsampling error, and definitions, see Survey Methodology.

<http://www.census.gov/acs/www/UseData/index.htm>

Population Below Poverty in the Past 12 Months

Forest Hill city, Texas



Source: B17020 POVERTY STATUS IN THE PAST 12 MONTHS BY AGE - Universe: POPULATION FOR WHOM POVERTY STATUS IS DETERMINED
Data Set: 2008-2012 American Community Survey 5-Year Estimates

B19001. HOUSEHOLD INCOME IN THE PAST 12 MONTHS (IN 2010 INFLATION-ADJUSTED DOLLARS)

Data Set: 2008-2012 American Community Survey 5-Year Estimates

	Forest Hill city, Texas					
	African American	Margin of Error (+/-)	% of AA Total	White, Not Hispanic	Margin of Error (+/-)	% of NHW Total
Total:	1,817	235	100.0%	571	155	100.0%
Less than \$ 10,000	147	98	8.1%	40	36	7.0%
\$ 10,000 to \$ 14,999	101	49	5.6%	42	34	7.4%
\$ 15,000 to \$ 24,999	197	NC	10.8%	36	NC	6.3%
\$ 25,000 to \$ 34,999	245	NC	13.5%	64	NC	11.2%
\$ 35,000 to \$ 49,999	215	NC	11.8%	40	NC	7.0%
\$ 50,000 to \$ 74,999	437	NC	24.1%	205	NC	35.9%
\$ 75,000 to \$ 99,999	195	91	10.7%	106	67	18.6%
\$ 100,000 to \$ 149,999	241	NC	13.3%	38	NC	6.7%
\$ 150,000 to \$ 199,999	39	32	2.1%	0	20	0.0%
\$ 200,000 or more	0	20	0.0%	0	20	0.0%

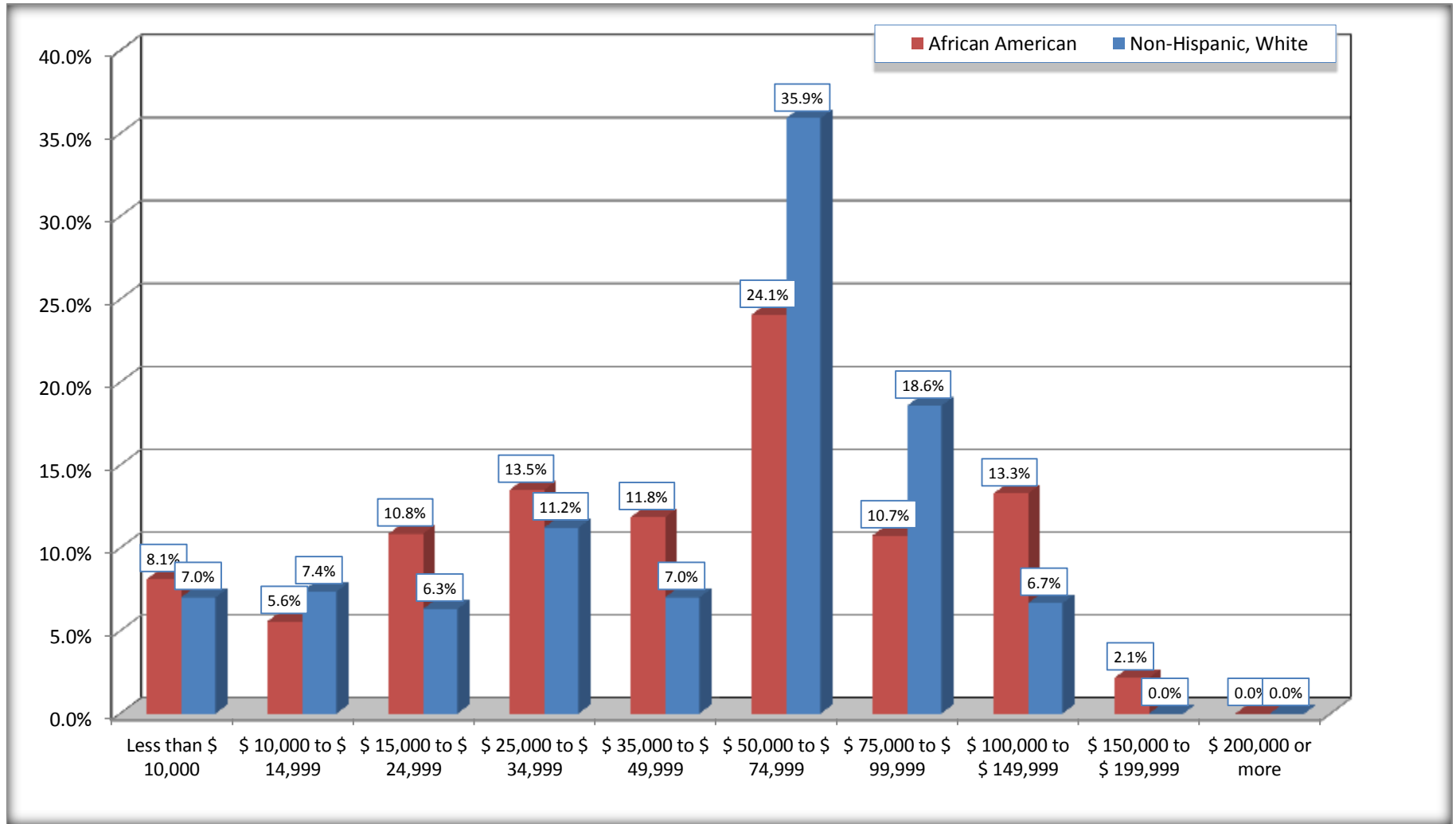
Source: U.S. Census Bureau, 2008-2012 American Community Survey

For information on confidentiality protection, sampling error, nonsampling error, and definitions, see Survey Methodology.

<http://www.census.gov/acs/www/UseData/index.htm>

Household Income in the Past 12 Months

Forest Hill city, Texas



Source: B19001. HOUSEHOLD INCOME IN THE PAST 12 MONTHS (IN 2010 INFLATION-ADJUSTED DOLLARS)
Data Set: 2008-2012 American Community Survey 5-Year Estimates

B19013. MEDIAN HOUSEHOLD INCOME IN THE PAST 12 MONTHS (IN 2010 INFLATION-ADJUSTED DOLLARS)

Data Set: 2008-2012 American Community Survey 5-Year Estimates

	Forest Hill city, Texas			
	African American	Margin of Error (+/-)	White, Not Hispanic	Margin of Error (+/-)
Median household income in the past 12 months (in 2010 inflation-adjusted dollars)	\$ 50,417	\$ 10,752	\$ 62,701	\$ 6,674

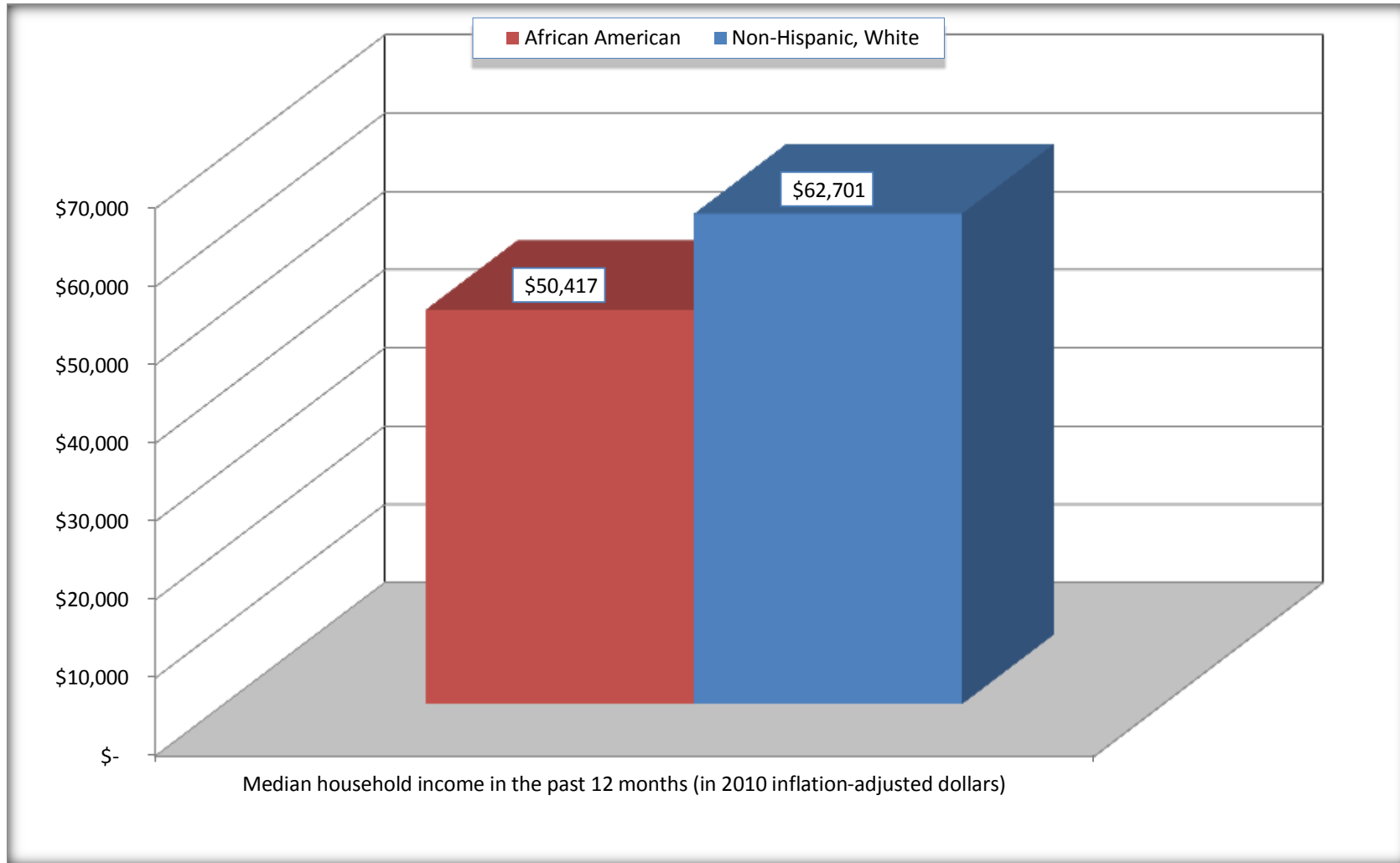
Source: U.S. Census Bureau, 2008-2012 American Community Survey

For information on confidentiality protection, sampling error, nonsampling error, and definitions, see Survey Methodology.

<http://www.census.gov/acs/www/UseData/index.htm>

Median Household Income in the Past 12 Months

Forest Hill city, Texas



Source: B19013. MEDIAN HOUSEHOLD INCOME IN THE PAST 12 MONTHS (IN 2010 INFLATION-ADJUSTED DOLLARS)
Data Set: 2008-2012 American Community Survey 5-Year Estimates

B19101. FAMILY INCOME IN THE PAST 12 MONTHS (IN 2010 INFLATION-ADJUSTED DOLLARS)

Data Set: 2008-2012 American Community Survey 5-Year Estimates

	Forest Hill city, Texas					
	African American	Margin of Error (+/-)	% of AA Total	White, Not Hispanic	Margin of Error (+/-)	% of NHW Total
Total:	1,438	200	100.0%	437	134	100.0%
Less than \$ 10,000	107	96	7.4%	10	13	2.3%
\$ 10,000 to \$ 14,999	30	34	2.1%	0	20	0.0%
\$ 15,000 to \$ 24,999	206	NC	14.3%	22	NC	5.0%
\$ 25,000 to \$ 34,999	130	NC	9.0%	64	NC	14.6%
\$ 35,000 to \$ 49,999	232	NC	16.1%	35	NC	8.0%
\$ 50,000 to \$ 74,999	335	NC	23.3%	184	NC	42.1%
\$ 100,000 to \$ 149,999	217	NC	15.1%	38	NC	8.7%
\$ 150,000 to \$ 199,999	39	32	2.7%	0	20	0.0%
\$ 200,000 or more	0	20	0.0%	0	20	0.0%

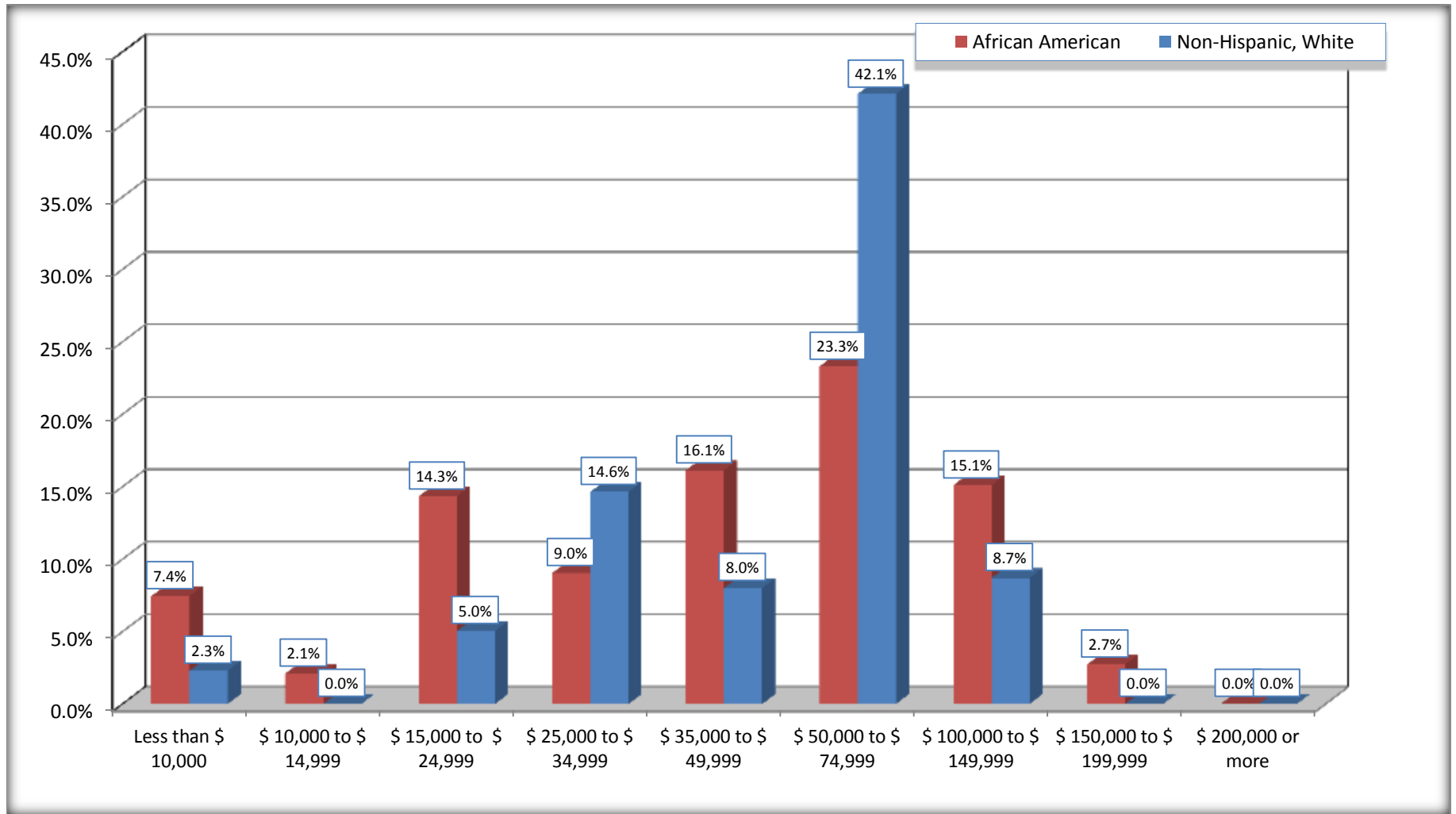
Source: U.S. Census Bureau, 2008-2012 American Community Survey

For information on confidentiality protection, sampling error, nonsampling error, and definitions, see Survey Methodology.

<http://www.census.gov/acs/www/UseData/index.htm>

Family Income in the Past 12 Months

Forest Hill city, Texas



Source: B19101. FAMILY INCOME IN THE PAST 12 MONTHS (IN 2010 INFLATION-ADJUSTED DOLLARS)
Data Set: 2008-2012 American Community Survey 5-Year Estimates

B19113. MEDIAN FAMILY INCOME IN THE PAST 12 MONTHS (IN 2010 INFLATION-ADJUSTED DOLLARS)

Data Set: 2008-2012 American Community Survey 5-Year Estimates

	Forest Hill city, Texas			
	African American	Margin of Error (+/-)	White, Not Hispanic	Margin of Error (+/-)
Median family income in the past 12 months (in 2010 inflation-adjusted dollars)	\$ 51,667	\$ 11,460	\$ 64,710	\$ 5,372

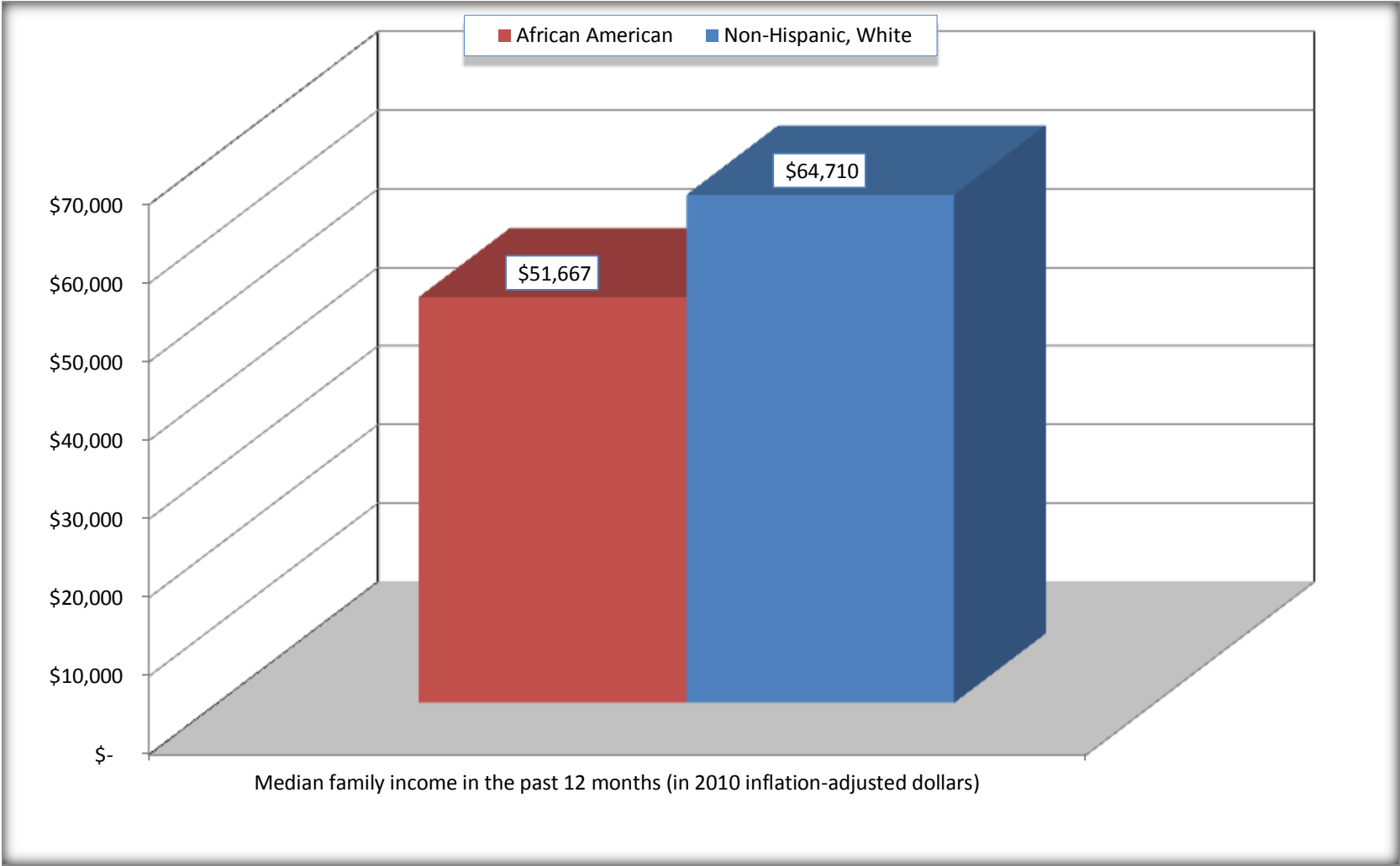
Source: U.S. Census Bureau, 2008-2012 American Community Survey

For information on confidentiality protection, sampling error, nonsampling error, and definitions, see Survey Methodology.

<http://www.census.gov/acs/www/UseData/index.htm>

Median Family Income in the Past 12 Months

Forest Hill city, Texas



Source: B19113. MEDIAN FAMILY INCOME IN THE PAST 12 MONTHS (IN 2010 INFLATION-ADJUSTED DOLLARS)
Data Set: 2008-2012 American Community Survey 5-Year Estimates

B19202. MEDIAN NONFAMILY HOUSEHOLD INCOME IN THE PAST 12 MONTHS (IN 2010 INFLATION-ADJUSTED DOLLARS)

Data Set: 2008-2012 American Community Survey 5-Year Estimates

	Forest Hill city, Texas			
	African American	Margin of Error (+/-)	White, Not Hispanic	Margin of Error (+/-)
Median nonfamily household income in the past 12 months (in 2010 inflation-adjusted dollars)	\$ 27,150	\$ 8,918	\$ 13,750	\$ 22,836

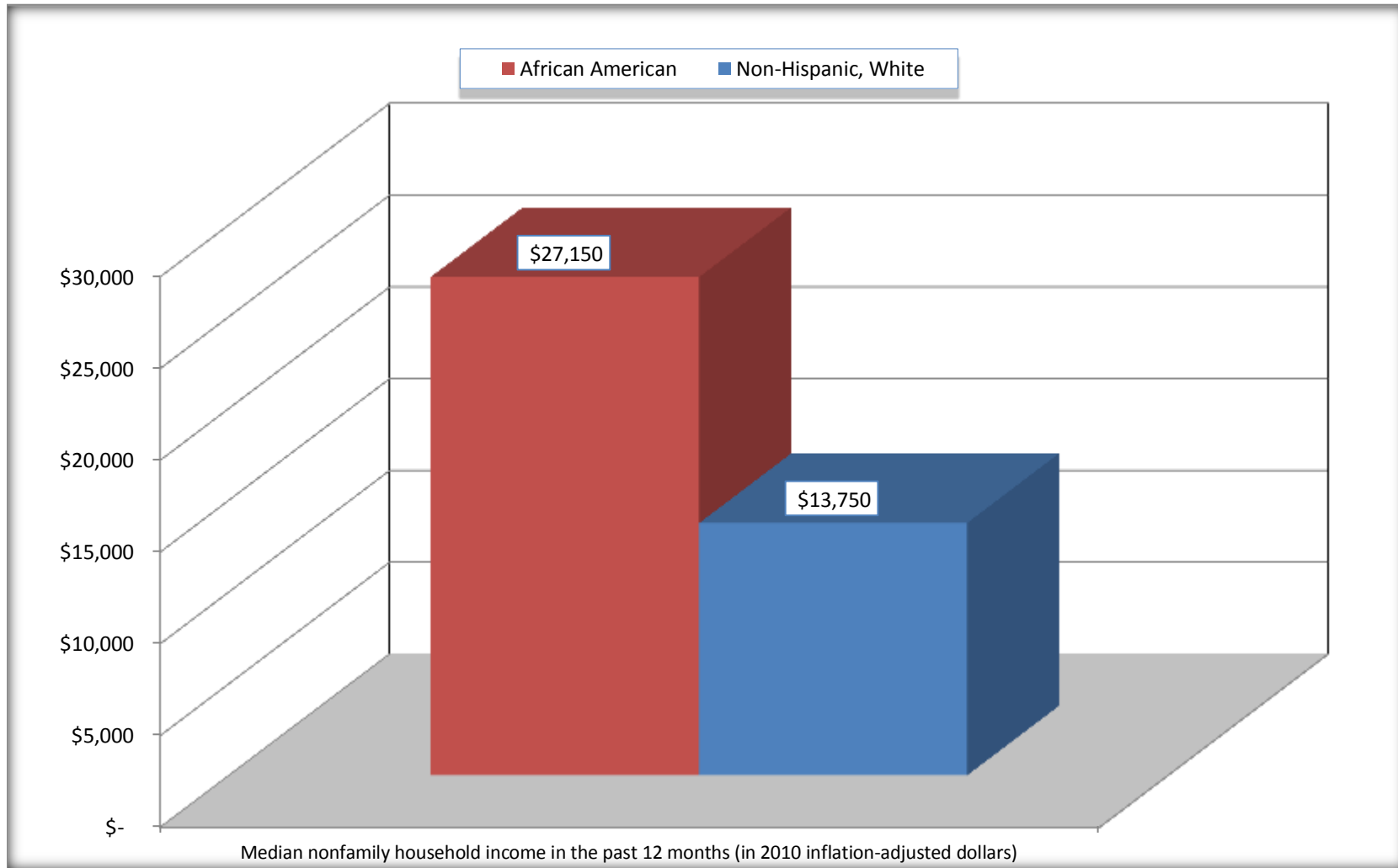
Source: U.S. Census Bureau, 2008-2012 American Community Survey

For information on confidentiality protection, sampling error, nonsampling error, and definitions, see Survey Methodology.

<http://www.census.gov/acs/www/UseData/index.htm>

Median Non-Family Income in the Past 12 Months

Forest Hill city, Texas



Source: B19202. MEDIAN NONFAMILY HOUSEHOLD INCOME IN THE PAST 12 MONTHS (IN 2010 INFLATION-ADJUSTED DOLLARS)
Data Set: 2008-2012 American Community Survey 5-Year Estimates

B19301. PER CAPITA INCOME IN THE PAST 12 MONTHS (IN 2010 INFLATION-ADJUSTED DOLLARS)

Data Set: 2008-2012 American Community Survey 5-Year Estimates

	Forest Hill city, Texas			
	African American	Margin of Error (+/-)	White, Not Hispanic	Margin of Error (+/-)
Per capita income in the past 12 months (in 2010 inflation-adjusted dollars)	\$ 18,512	\$ 2,188	\$ 23,197	\$ 4,892

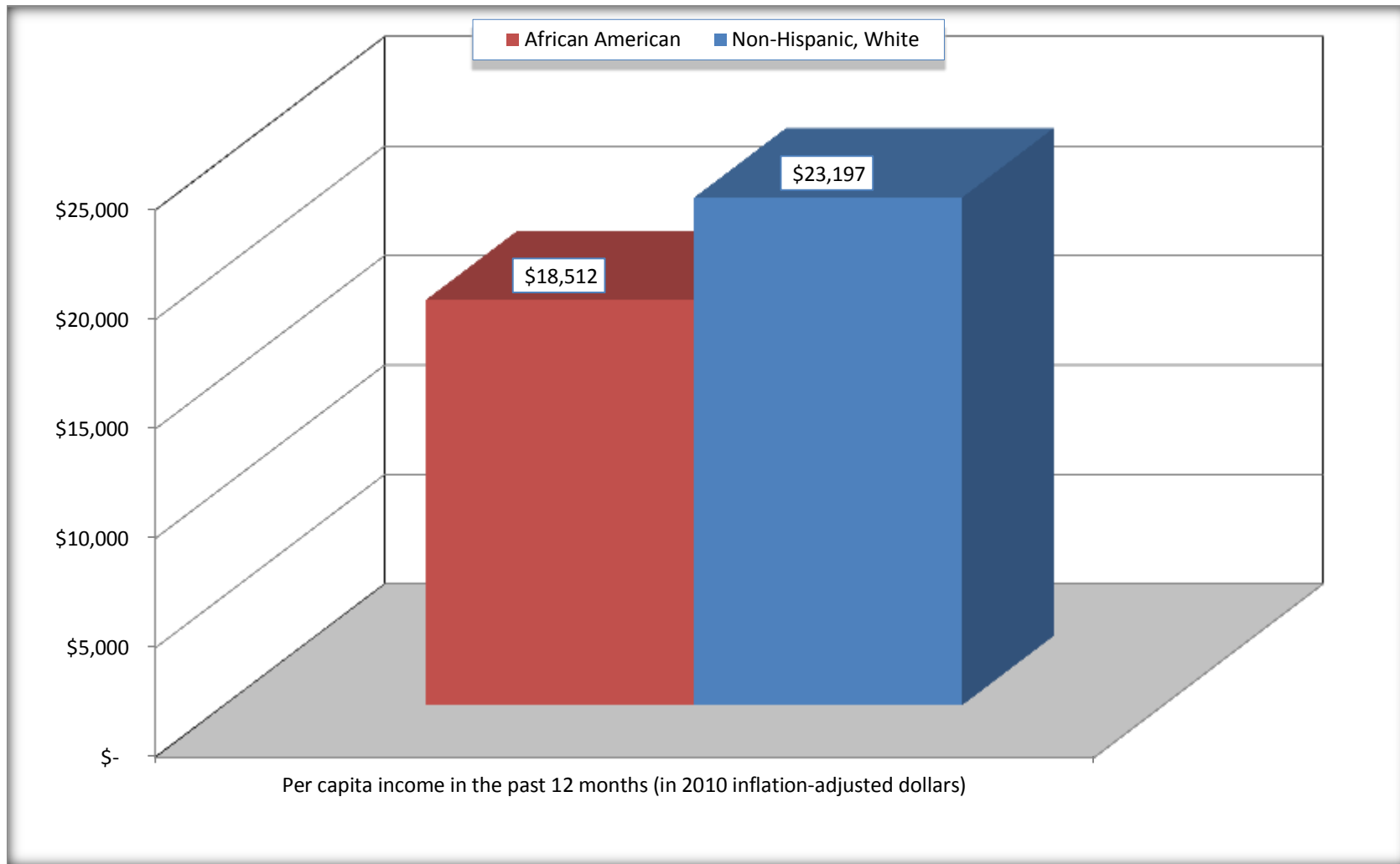
Source: U.S. Census Bureau, 2008-2012 American Community Survey

For information on confidentiality protection, sampling error, nonsampling error, and definitions, see Survey Methodology.

<http://www.census.gov/acs/www/UseData/index.htm>

Per capita Income in the Past 12 Months

Forest Hill city, Texas



Source: B19301. PER CAPITA INCOME IN THE PAST 12 MONTHS (IN 2010 INFLATION-ADJUSTED DOLLARS)
Data Set: 2008-2012 American Community Survey 5-Year Estimates

B20017. MEDIAN EARNINGS IN THE PAST 12 MONTHS (IN 2010 INFLATION-ADJUSTED DOLLARS) BY SEX BY WORK EXPERIENCE IN THE PAST 12 MONTHS FOR THE POPULATION 16 YEARS AND OVER WITH EARNINGS IN THE PAST 12 MONTHS

Data Set: 2008-2012 American Community Survey 5-Year Estimates

	Forest Hill city, Texas			
	African American	Margin of Error (+/-)	White, Not Hispanic	Margin of Error (+/-)
Median earnings in the past 12 months (in 2010 inflation-adjusted dollars) --				
Total:	\$ 27,545	\$ 5,422	\$ 31,167	\$ 1,663
Male --				
Total	\$ 28,005	\$ 8,850	\$ 31,312	\$ 5,128
Worked full-time, year-round in the past 12 months	\$ 31,738	\$ 12,297	\$ 34,800	\$ 14,091
Other	\$ 8,114	\$ 3,654	\$ 30,602	\$ 19,835
Female --				
Total	\$ 26,399	\$ 7,176	\$ 31,027	\$ 1,715
Worked full-time, year-round in the past 12 months	\$ 35,019	\$ 7,004	\$ 32,656	\$ 9,114
Other	\$ 10,233	\$ 4,321	\$ 30,307	\$ 3,353

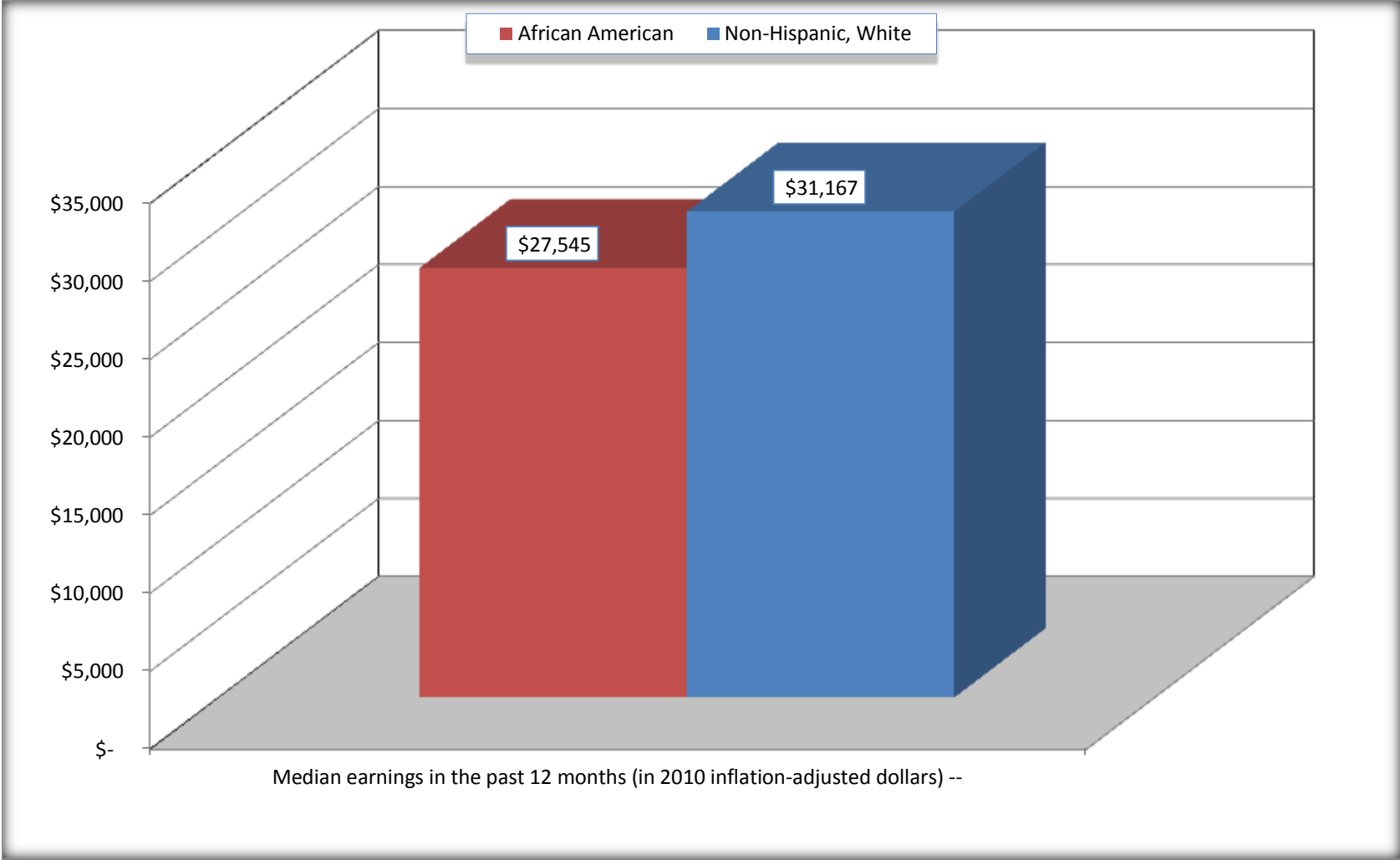
Source: U.S. Census Bureau, 2008-2012 American Community Survey

For information on confidentiality protection, sampling error, nonsampling error, and definitions, see Survey Methodology.

<http://www.census.gov/acs/www/UseData/index.htm>

Median earnings in the Past 12 Months (16 Years and Over with Earnings)

Forest Hill city, Texas



Source: B20017. MEDIAN EARNINGS IN THE PAST 12 MONTHS (IN 2010 INFLATION-ADJUSTED DOLLARS) BY SEX BY WORK EXPERIENCE IN THE PAST 12 MONTHS FOR THE POPULATION 16 YEARS AND OVER WITH EARNINGS IN THE PAST 12 MONTHS
Data Set: 2008-2012 American Community Survey 5-Year Estimates

B20005. SEX BY WORK EXPERIENCE IN THE PAST 12 MONTHS BY EARNINGS IN THE PAST 12 MONTHS (IN 2010 INFLATION-ADJUSTED DOLLARS) FOR THE POPULATION 16 YEARS AND OVER

Data Set: 2008-2012 American Community Survey 5-Year Estimates

	Forest Hill city, Texas					
	African American	Margin of Error (+/-)	% of AA Total	White, Not Hispanic	Margin of Error (+/-)	% of NHW Total
Total:	4,565	532	100.0%	1,771	272	100.0%
Worked full-time, year-round in the past 12 months:	1,784	NC	39.1%	383	NC	21.6%
No earnings	0	NC	0.0%	0	NC	0.0%
With earnings:	1,784	NC	39.1%	383	NC	21.6%
\$ 1 to \$ 9,999 or loss	48	NC	1.1%	24	NC	1.4%
\$ 10,000 to \$ 19,999	281	NC	6.2%	76	NC	4.3%
\$ 20,000 to \$ 29,999	355	NC	7.8%	41	NC	2.3%
\$ 30,000 to \$ 49,999	674	NC	14.8%	154	NC	8.7%
\$ 50,000 to \$ 74,999	261	NC	5.7%	42	NC	2.4%
\$ 75,000 or more	165	NC	3.6%	46	NC	2.6%
Other:	2,781	NC	60.9%	1,388	NC	78.4%
No earnings	1,780	NC	39.0%	919	NC	51.9%
With earnings: less than full time, year-round	1,001	NC	21.9%	469	NC	26.5%
Male:	2,106	366	46.1%	1,169	197	66.0%
Worked full-time, year-round in the past 12 months:	789	222	17.3%	214	115	12.1%
No earnings	0	20	0.0%	0	20	0.0%
With earnings:	789	222	17.3%	214	115	12.1%
\$ 1 to \$ 9,999 or loss	38	NC	0.8%	24	NC	1.4%
\$ 10,000 to \$ 19,999	128	NC	2.8%	27	NC	1.5%
\$ 20,000 to \$ 29,999	200	NC	4.4%	33	NC	1.9%
\$ 30,000 to \$ 49,999	186	NC	4.1%	85	NC	4.8%
\$ 50,000 to \$ 74,999	154	NC	3.4%	16	NC	0.9%
\$ 75,000 or more	83	NC	1.8%	29	NC	1.6%

	Forest Hill city, Texas					
	African American	Margin of Error (+/-)	% of AA Total	White, Not Hispanic	Margin of Error (+/-)	% of NHW Total
Other:	1,317	288	28.8%	955	205	53.9%
No earnings	940	247	20.6%	614	174	34.7%
With earnings:	377	115	8.3%	341	159	19.3%
Female:	2,459	314	53.9%	602	140	34.0%
Worked full-time, year-round in the past 12 months:	995	181	21.8%	169	110	9.5%
No earnings	0	20	0.0%	0	20	0.0%
With earnings:	995	181	21.8%	169	110	9.5%
\$ 1 to \$ 9,999 or loss	10	NC	0.2%	0	NC	0.0%
\$ 10,000 to \$ 19,999	153	NC	3.4%	49	NC	2.8%
\$ 20,000 to \$ 29,999	155	NC	3.4%	8	NC	0.5%
\$ 30,000 to \$ 49,999	488	NC	10.7%	69	NC	3.9%
\$ 50,000 to \$ 74,999	107	NC	2.3%	26	NC	1.5%
\$ 75,000 or more	82	NC	1.8%	17	NC	1.0%
Other:	1,464	240	32.1%	433	117	24.4%
No earnings	840	194	18.4%	305	93	17.2%
With earnings:	624	155	13.7%	128	94	7.2%

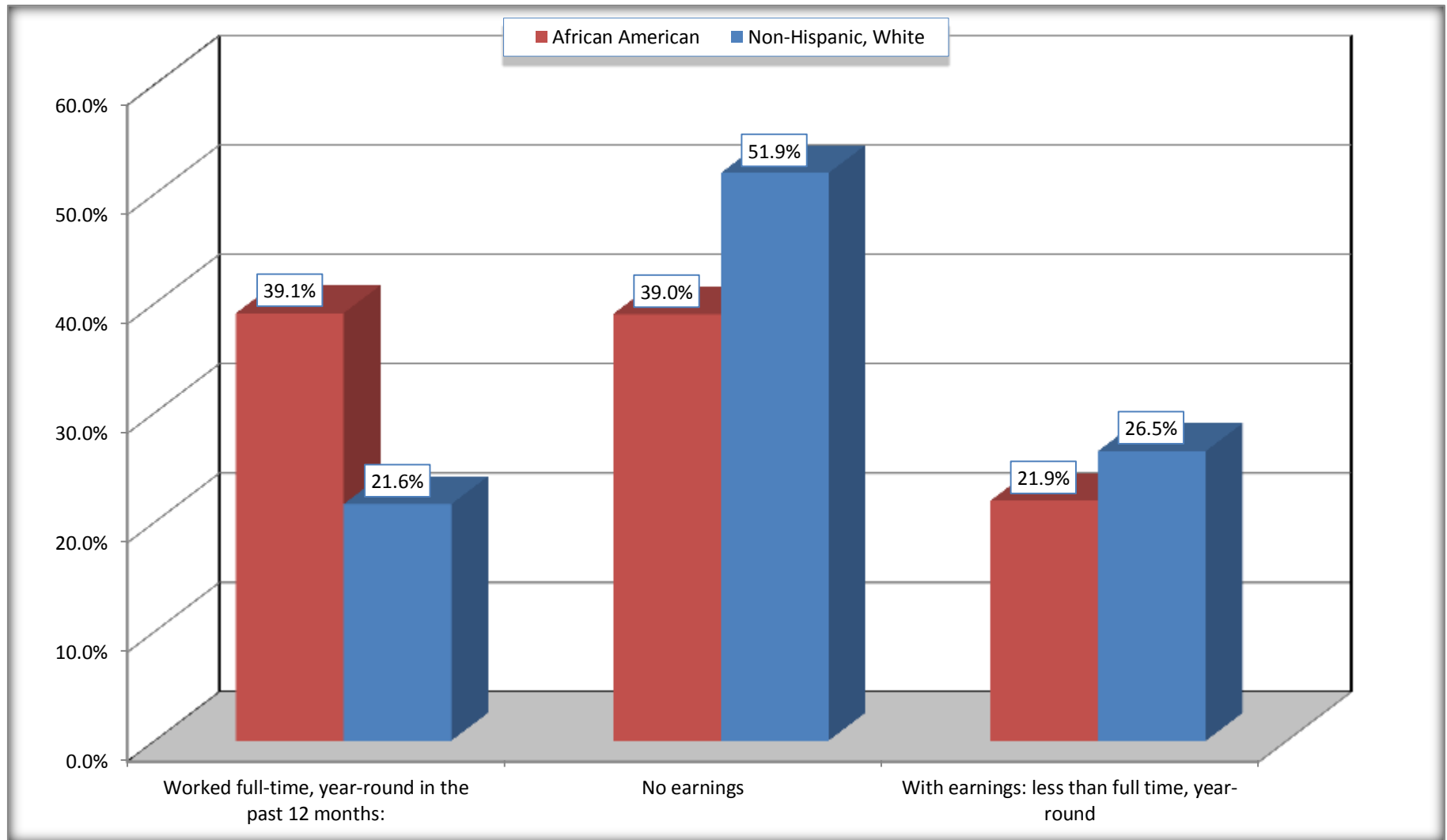
Source: U.S. Census Bureau, 2008-2012 American Community Survey

For information on confidentiality protection, sampling error, nonsampling error, and definitions, see Survey Methodology.

<http://www.census.gov/acs/www/UseData/index.htm>

Employment and Earnings in in the Past 12 Months (16 Years and Over)

Forest Hill city, Texas



Source: B20005. SEX BY WORK EXPERIENCE IN THE PAST 12 MONTHS BY EARNINGS IN THE PAST 12 MONTHS (IN 2010 INFLATION-ADJUSTED DOLLARS) FOR THE POPULATION 16 YEARS AND OVER

Data Set: 2008-2012 American Community Survey 5-Year Estimates

C21001. SEX BY AGE BY VETERAN STATUS FOR THE CIVILIAN POPULATION 18 YEARS AND OVER

Data Set: 2008-2012 American Community Survey 5-Year Estimates

	Forest Hill city, Texas					
	African American	Margin of Error (+/-)	% of AA Total	White, Not Hispanic	Margin of Error (+/-)	% of NHW Total
Total:	4,236	493	100.0%	1,736	267	100.0%
Veteran	412	NC	9.7%	301	NC	17.3%
Nonveteran	3,824	NC	90.3%	1,435	NC	82.7%
Male:	1,997	358	47.1%	1,147	193	66.1%
18 to 64 years:	1,768	344	41.7%	933	186	53.7%
Veteran	236	102	5.6%	155	112	8.9%
Nonveteran	1,532	340	36.2%	778	190	44.8%
65 years and over:	229	89	5.4%	214	106	12.3%
Veteran	139	64	3.3%	133	84	7.7%
Nonveteran	90	50	2.1%	81	69	4.7%
Female:	2,239	290	52.9%	589	142	33.9%
18 to 64 years:	1,827	269	43.1%	411	119	23.7%
Veteran	28	29	0.7%	13	20	0.7%
Nonveteran	1,799	269	42.5%	398	113	22.9%
65 years and over:	412	99	9.7%	178	71	10.3%
Veteran	9	14	0.2%	0	20	0.0%
Nonveteran	403	98	9.5%	178	71	10.3%

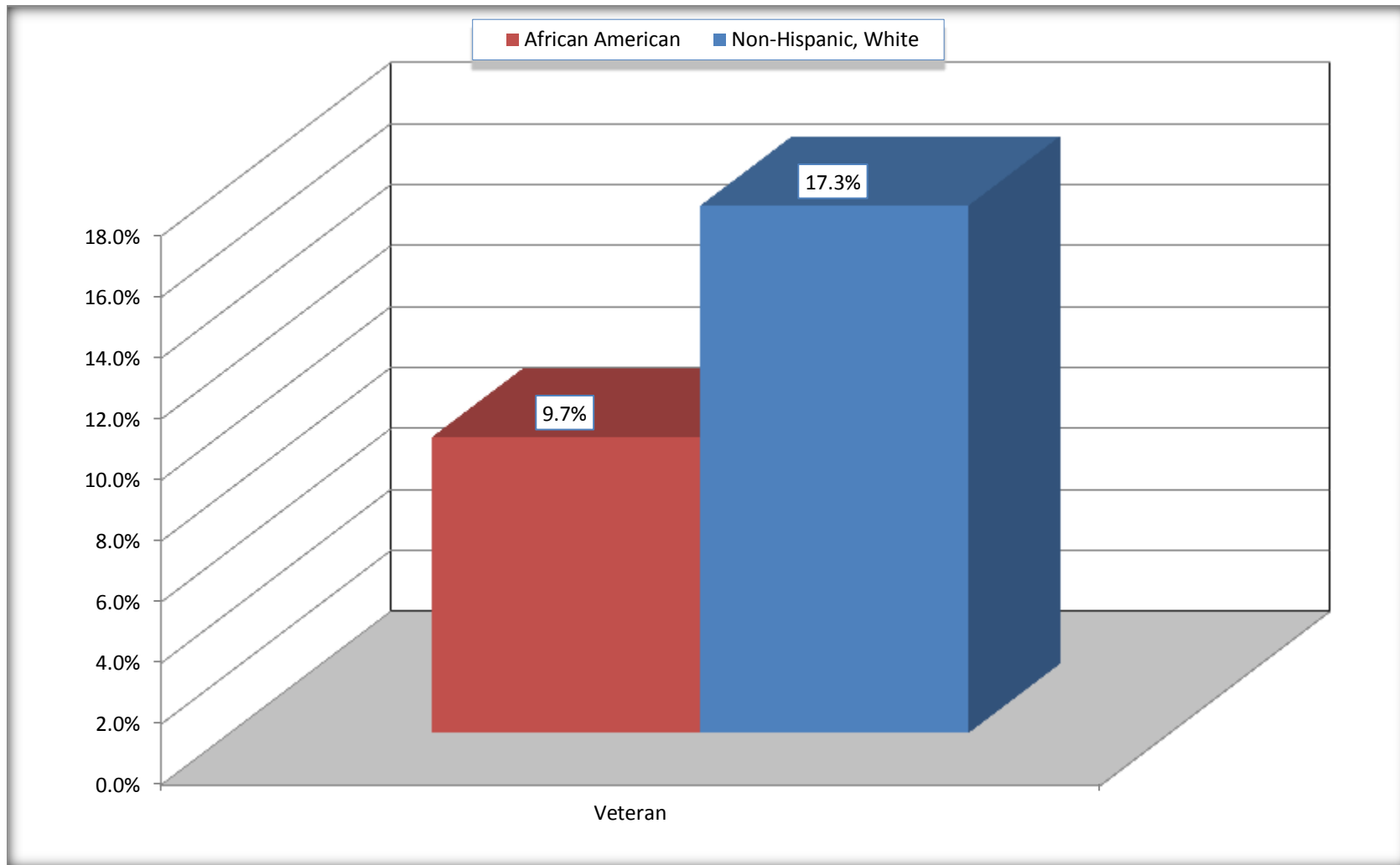
Source: U.S. Census Bureau, 2008-2012 American Community Survey

For information on confidentiality protection, sampling error, nonsampling error, and definitions, see Survey Methodology.

<http://www.census.gov/acs/www/UseData/index.htm>

Veterans in the Civilian Population 18 Years and Over

Forest Hill city, Texas



Source: C21001. SEX BY AGE BY VETERAN STATUS FOR THE CIVILIAN POPULATION 18 YEARS AND OVER
Data Set: 2008-2012 American Community Survey 5-Year Estimates

B22005. RECEIPT OF FOOD STAMPS/SNAP IN THE PAST 12 MONTHS BY RACE OF HOUSEHOLDER

Data Set: 2008-2012 American Community Survey 5-Year Estimates

	Forest Hill city, Texas					
	African American	Margin of Error (+/-)	% of AA Total	White, Not Hispanic	Margin of Error (+/-)	% of NHW Total
Total:	1,817	235	100.0%	571	155	100.0%
HH received Food Stamps/SNAP in the past 12 months	297	104	16.3%	99	66	17.3%
HH did not receive Food Stamps/SNAP in the past 12 months	1,520	206	83.7%	472	151	82.7%

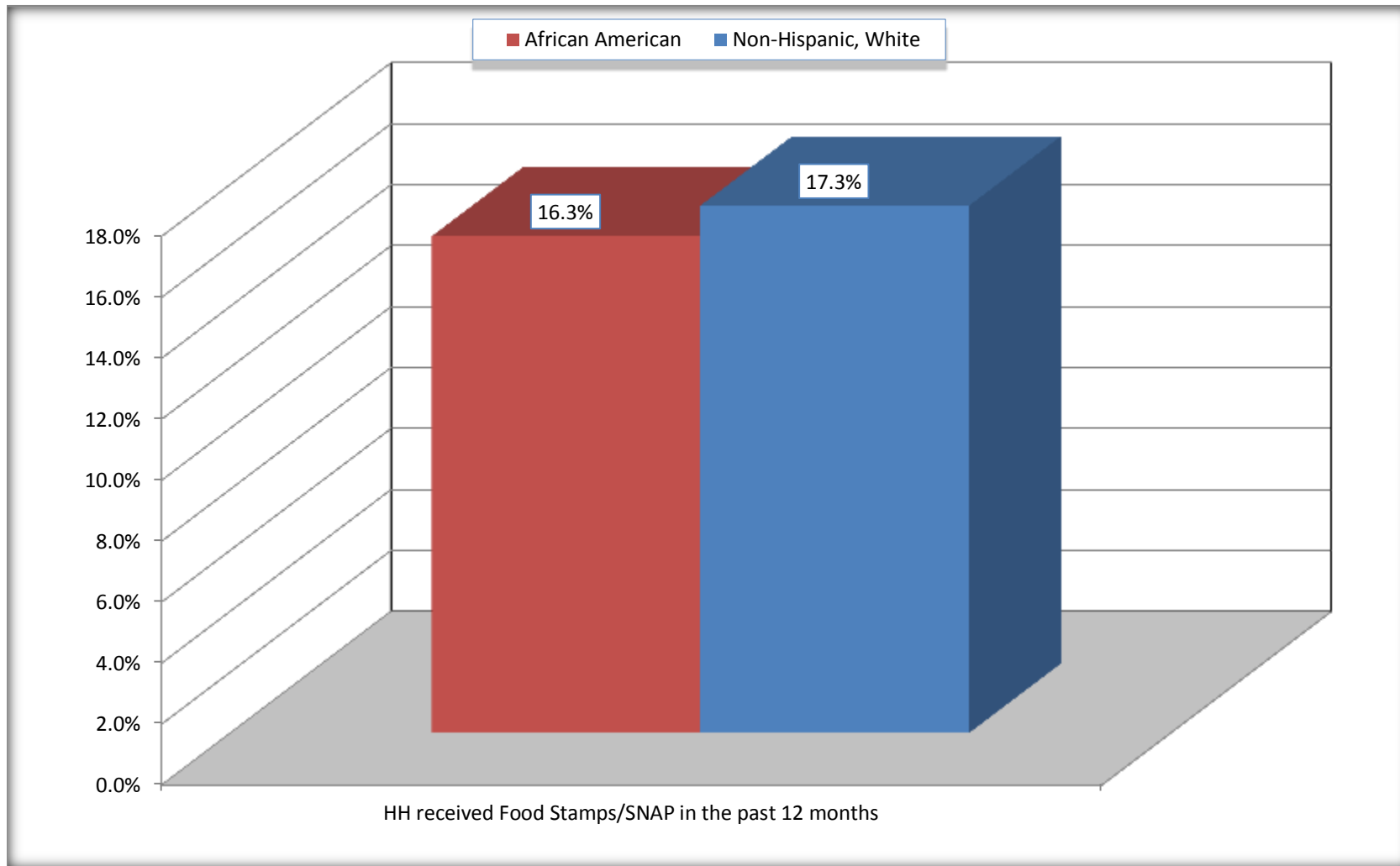
Source: U.S. Census Bureau, 2008-2012 American Community Survey

For information on confidentiality protection, sampling error, nonsampling error, and definitions, see Survey Methodology.

<http://www.census.gov/acs/www/UseData/index.htm>

Receipt of Food Stamps/SNAP in the Past 12 Months by Household

Forest Hill city, Texas



Source: B22005. RECEIPT OF FOOD STAMPS/SNAP IN THE PAST 12 MONTHS BY RACE OF HOUSEHOLDER
Data Set: 2008-2012 American Community Survey 5-Year Estimates

C23002. SEX BY AGE BY EMPLOYMENT STATUS FOR THE POPULATION 16 YEARS AND OVER

Data Set: 2008-2012 American Community Survey 5-Year Estimates

	Forest Hill city, Texas					
	African American	Margin of Error (+/-)	% of AA Total	White, Not Hispanic	Margin of Error (+/-)	% of NHW Total
Total:	4,565	532	100.0%	1,771	272	100.0%
In labor force:	2,650	NC	58.1%	564	NC	31.8%
In Armed Forces	0	NC	0.0%	0	NC	0.0%
Civilian:	2,487	NC	54.5%	564	NC	31.8%
Employed	2,238	NC	49.0%	531	NC	30.0%
Unemployed	412	NC	9.0%	33	NC	1.9%
Not in labor force	1,915	NC	41.9%	1,207	NC	68.2%
Male:	2,106	366	46.1%	1,169	197	66.0%
16 to 64 years:	1,877	352	41.1%	955	191	53.9%
In labor force:	995	225	21.8%	256	118	14.5%
In Armed Forces	0	20	0.0%	0	20	0.0%
Civilian:	995	225	21.8%	256	118	14.5%
Employed	858	207	18.8%	256	118	14.5%
Unemployed	137	84	3.0%	0	20	0.0%
Not in labor force	882	259	19.3%	699	154	39.5%
65 years and over:	229	89	5.0%	214	106	12.1%
In labor force:	45	38	1.0%	0	20	0.0%
Employed	45	38	1.0%	0	20	0.0%
Unemployed	0	20	0.0%	0	20	0.0%
Not in labor force	184	80	4.0%	214	106	12.1%

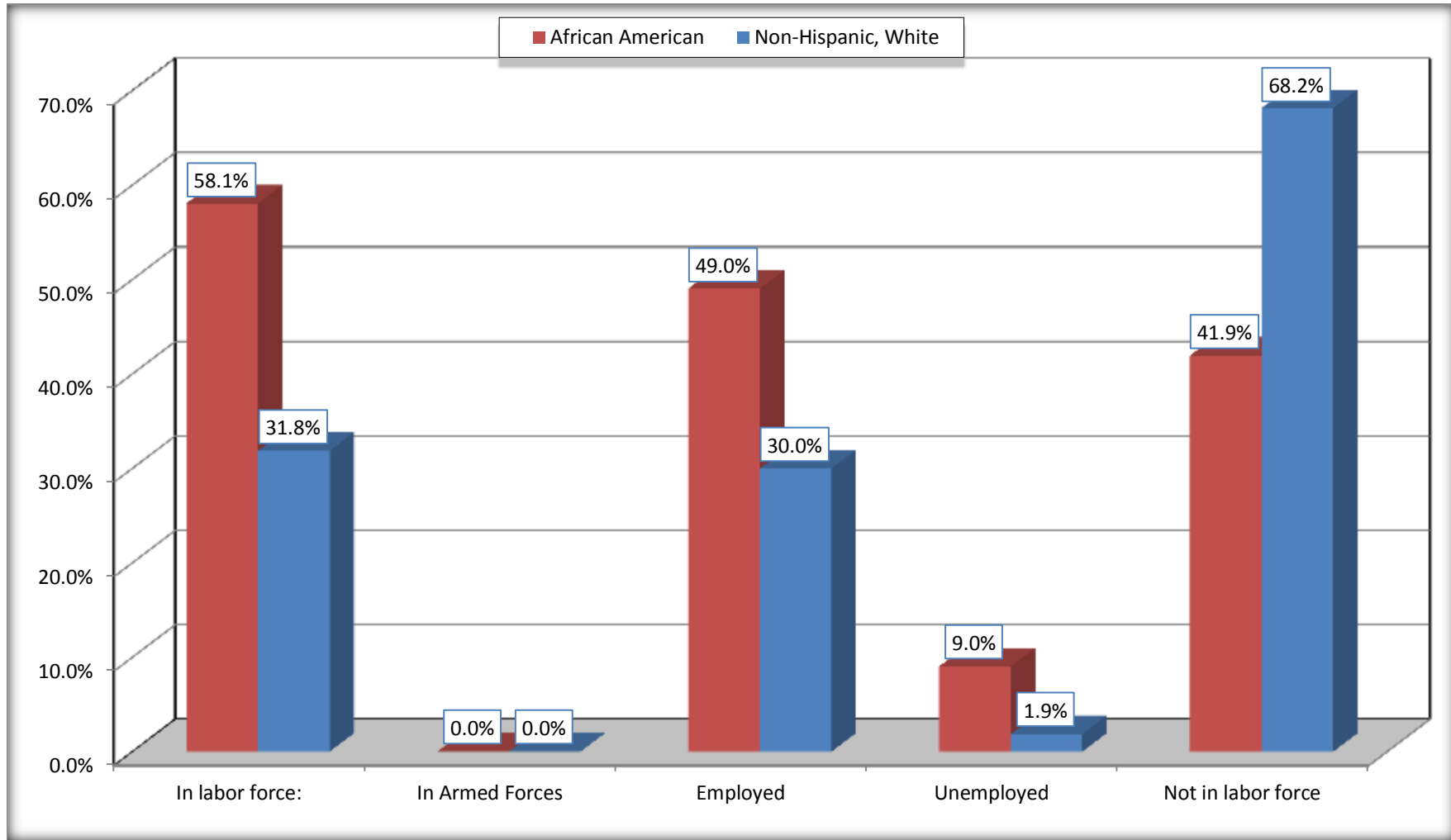
	Forest Hill city, Texas					
	African American	Margin of Error (+/-)	% of AA Total	White, Not Hispanic	Margin of Error (+/-)	% of NHW Total
Female:	2,459	314	53.9%	602	140	34.0%
16 to 64 years:	2,047	296	44.8%	424	118	23.9%
In labor force:	1,492	259	32.7%	308	127	17.4%
In Armed Forces	0	20	0.0%	0	20	0.0%
Civilian:	1,492	259	32.7%	308	127	17.4%
Employed	1,217	190	26.7%	275	124	15.5%
Unemployed	275	144	6.0%	33	31	1.9%
Not in labor force	555	149	12.2%	116	60	6.5%
65 years and over:	412	99	9.0%	178	71	10.1%
In labor force:	118	66	2.6%	0	20	0.0%
Employed	118	66	2.6%	0	20	0.0%
Unemployed	0	20	0.0%	0	20	0.0%
Not in labor force	294	83	6.4%	178	71	10.1%

Source: U.S. Census Bureau, 2008-2012 American Community Survey

For information on confidentiality protection, sampling error, nonsampling error, and definitions, see Survey Methodology.
<http://www.census.gov/acs/www/UseData/index.htm>

Employment Status for the Population 16 years and over

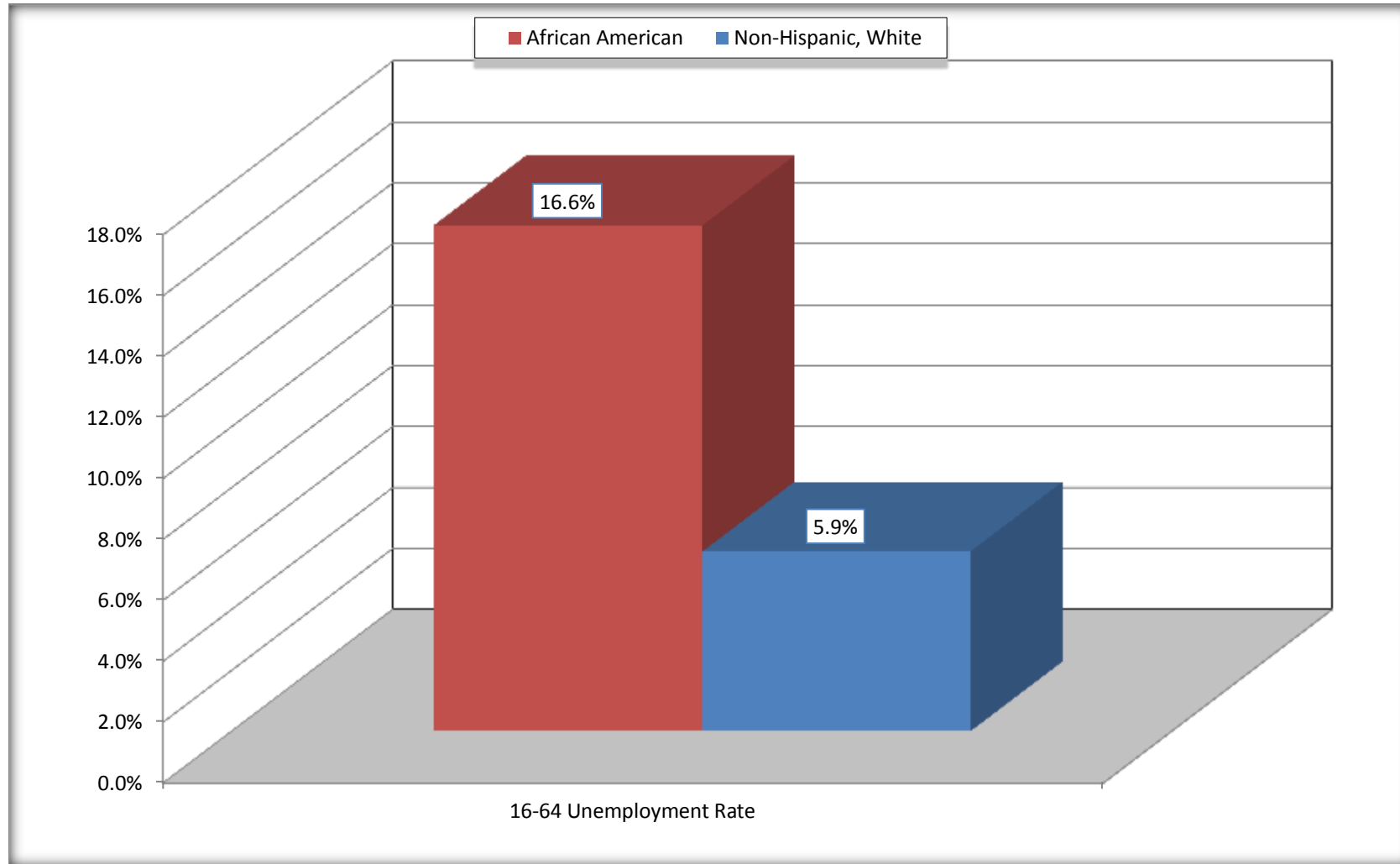
Forest Hill city, Texas



Source: C23002. SEX BY AGE BY EMPLOYMENT STATUS FOR THE POPULATION 16 YEARS AND OVER
Data Set: 2008-2012 American Community Survey 5-Year Estimates

Unemployment of Working Age Population (Ages 16 to 64) (As a Percent of 16-64 Civilian Labor Force)

Forest Hill city, Texas



Source: C23002. SEX BY AGE BY EMPLOYMENT STATUS FOR THE POPULATION 16 YEARS AND OVER
Data Set: 2008-2012 American Community Survey 5-Year Estimates

C24010. SEX BY OCCUPATION FOR THE CIVILIAN EMPLOYED POPULATION 16 YEARS AND OVER

Data Set: 2008-2012 American Community Survey 5-Year Estimates

	Forest Hill city, Texas					
	African American	Margin of Error (+/-)	% of AA Total	White, Not Hispanic	Margin of Error (+/-)	% of NHW Total
Total:	2,238	315	100.0%	531	204	100.0%
Management, professional, and related occupations	644	NC	28.8%	172	NC	32.4%
Service occupations	424	NC	18.9%	27	NC	5.1%
Sales and office occupations	655	NC	29.3%	140	NC	26.4%
Natural resources, construction, and maintenance occupations:	112	NC	5.0%	138	NC	26.0%
Production, transportation, and material moving occupations	403	NC	18.0%	54	NC	10.2%
Male:	903	214	40.3%	256	118	48.2%
Management, business, science, and arts occupations:	208	101	9.3%	22	35	4.1%
Service occupations	147	73	6.6%	0	20	0.0%
Sales and office occupations	242	134	10.8%	62	50	11.7%
Natural resources, construction, and maintenance occupations:	81	54	3.6%	124	92	23.4%
Production, transportation, and material moving occupations	225	90	10.1%	48	38	9.0%
Female:	1,335	201	59.7%	275	124	51.8%
Management, professional, and related occupations	436	135	19.5%	150	84	28.2%
Service occupations	277	133	12.4%	27	35	5.1%
Sales and office occupations	413	137	18.5%	78	71	14.7%
Natural resources, construction, and maintenance occupations:	31	47	1.4%	14	22	2.6%
Production, transportation, and material moving occupations	178	91	8.0%	6	11	1.1%

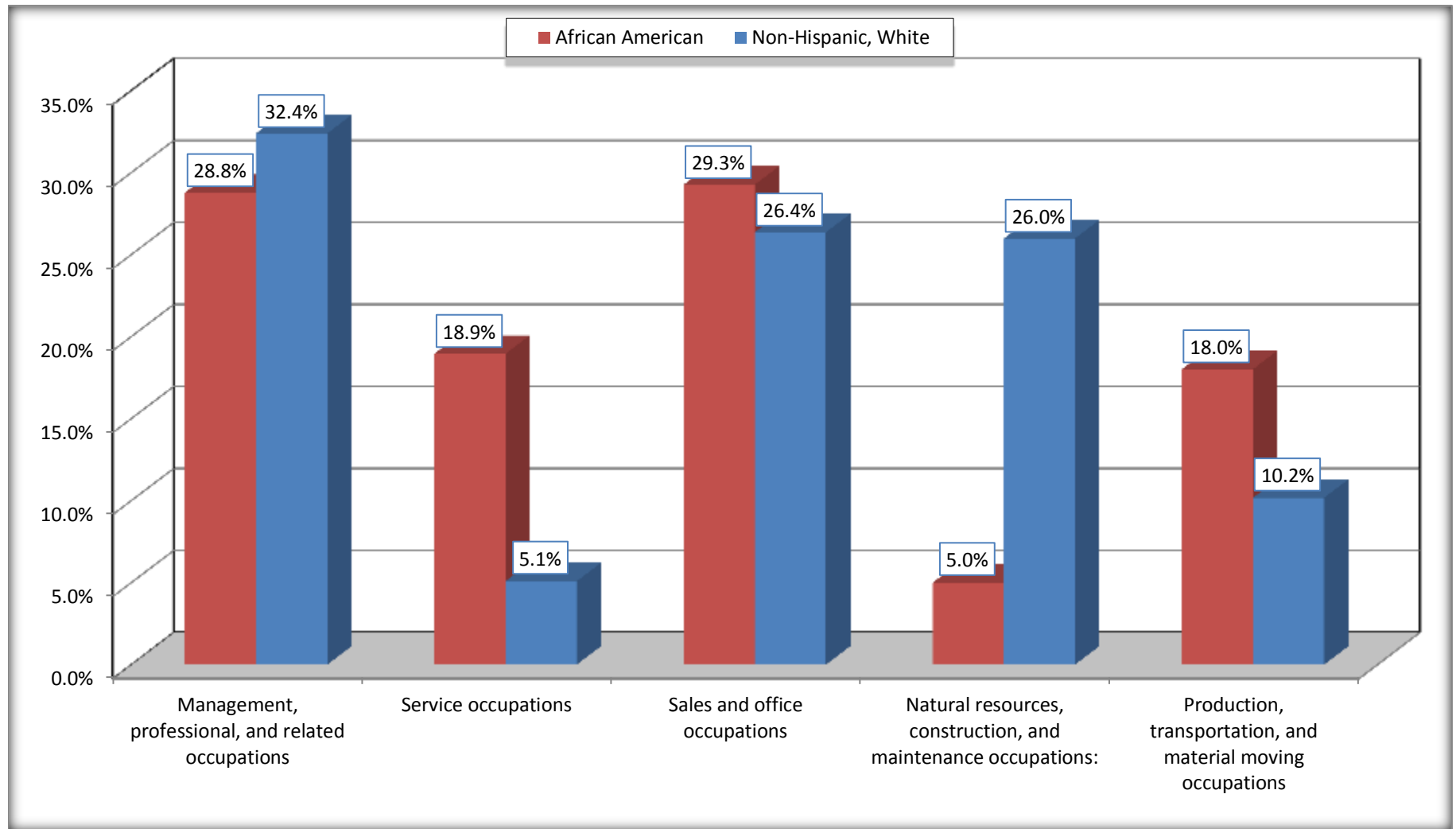
Source: U.S. Census Bureau, 2008-2012 American Community Survey

For information on confidentiality protection, sampling error, nonsampling error, and definitions, see Survey Methodology.

<http://www.census.gov/acs/www/UseData/index.htm>

Occupation for the Civilian Employed 16 Years and Over Population

Forest Hill city, Texas



Source: C24010. SEX BY OCCUPATION FOR THE CIVILIAN EMPLOYED POPULATION 16 YEARS AND OVER
Data Set: 2008-2012 American Community Survey 5-Year Estimates

B25003. TENURE - Universe: OCCUPIED HOUSING UNITS

Data Set: 2008-2012 American Community Survey 5-Year Estimates

	Forest Hill city, Texas					
	African American	Margin of Error (+/-)	% of AA Total	White, Not Hispanic	Margin of Error (+/-)	% of NHW Total
Total:	1,817	235	100.0%	571	155	100.0%
Owner occupied	1,294	199	71.2%	452	139	79.2%
Renter occupied	523	171	28.8%	119	74	20.8%

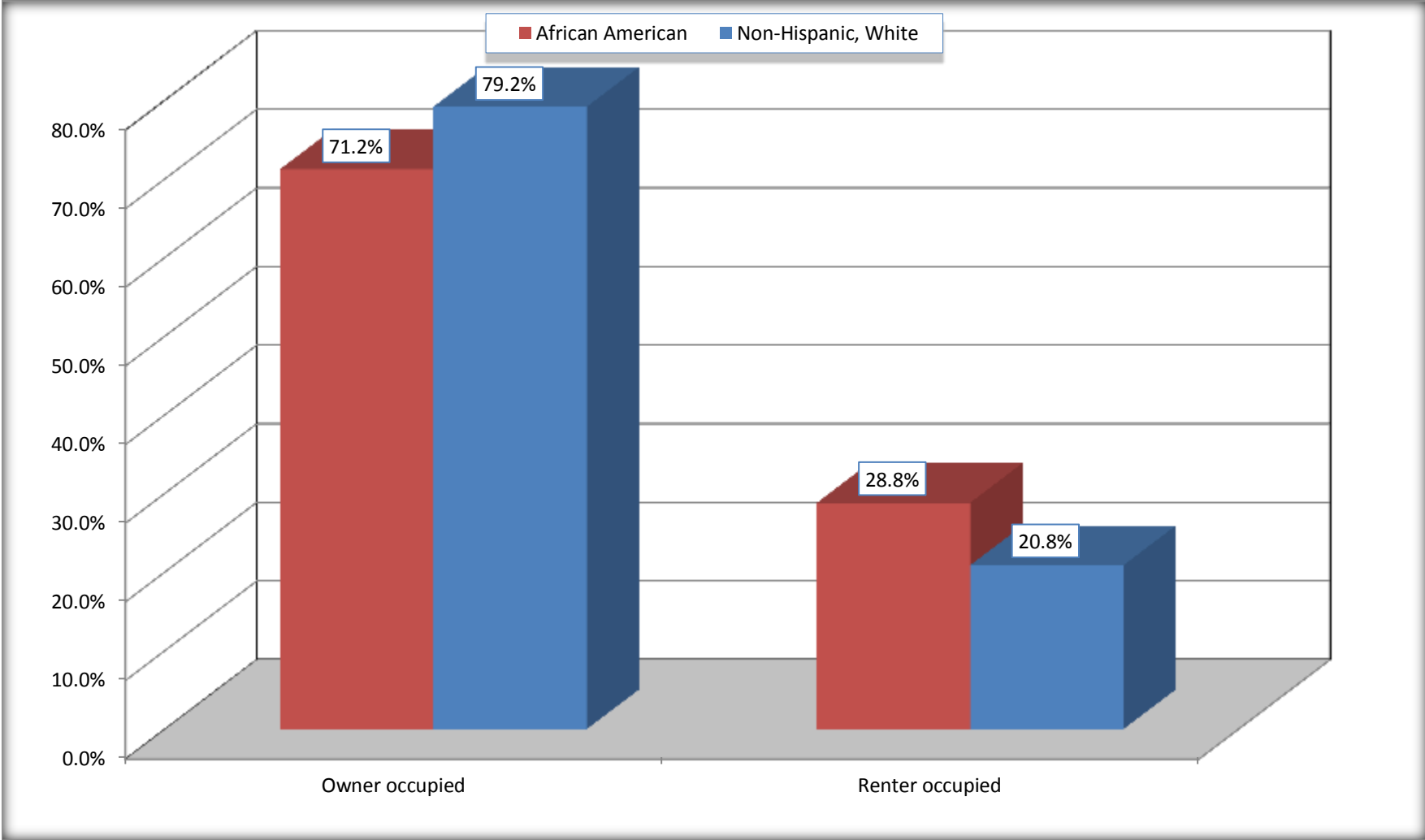
Source: U.S. Census Bureau, 2008-2012 American Community Survey

For information on confidentiality protection, sampling error, nonsampling error, and definitions, see Survey Methodology.

<http://www.census.gov/acs/www/UseData/index.h>

Home Owners and Renters by Household

Forest Hill city, Texas



Source: B25003. TENURE - Universe: OCCUPIED HOUSING UNITS
Data Set: 2008-2012 American Community Survey 5-Year Estimates

B25014. OCCUPANTS PER ROOM - Universe: OCCUPIED HOUSING UNITS

Data Set: 2008-2012 American Community Survey 5-Year Estimates

	Forest Hill city, Texas					
	African American	Margin of Error (+/-)	% of AA Total	White, Not Hispanic	Margin of Error (+/-)	% of NHW Total
Total:	1,817	235	100.0%	571	155	100.0%
1.00 or less occupants per room	1,809	236	99.6%	539	157	94.4%
1.01 or more occupants per room	8	13	0.4%	32	46	5.6%

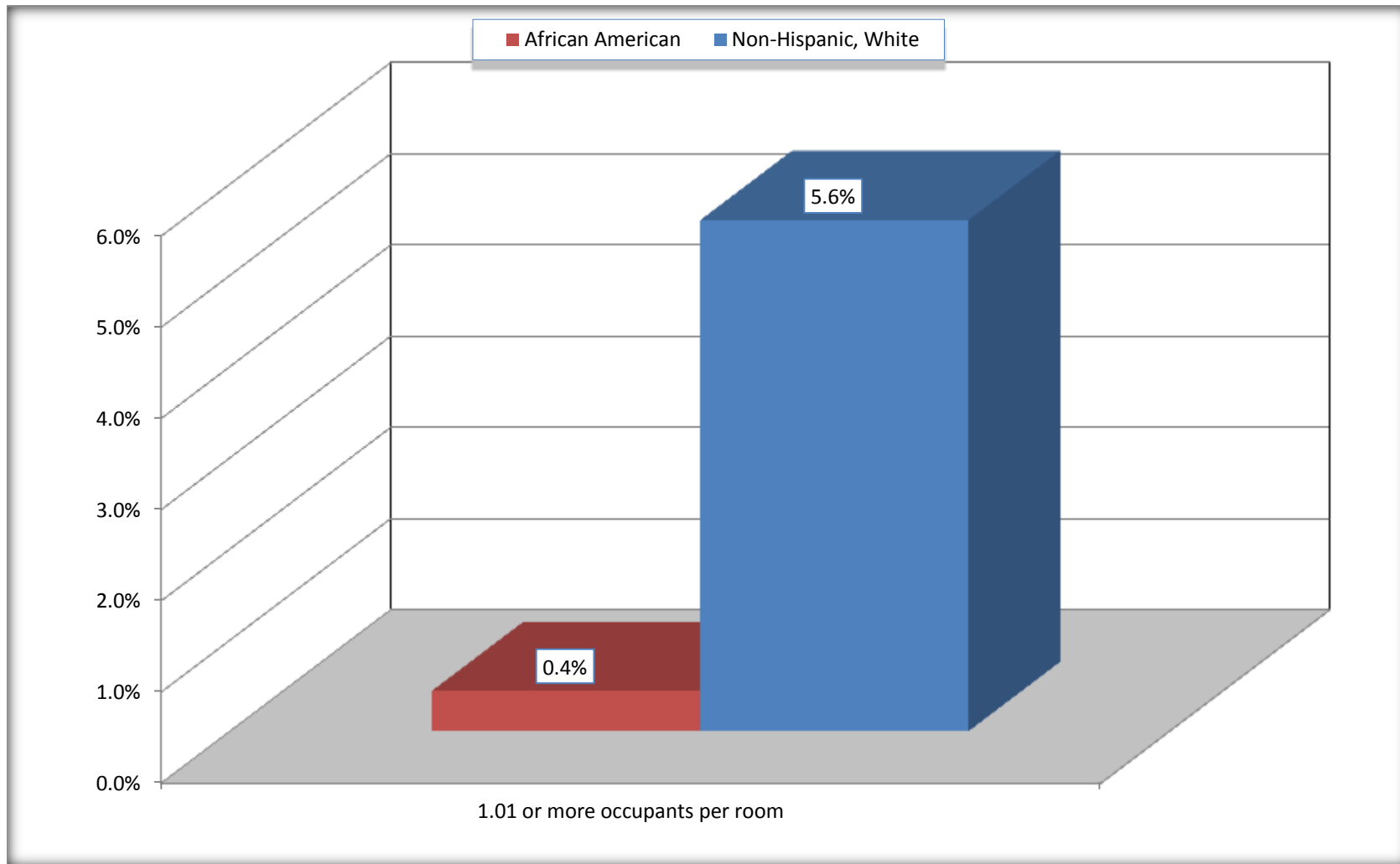
Source: U.S. Census Bureau, 2008-2012 American Community Survey

For information on confidentiality protection, sampling error, nonsampling error, and definitions, see Survey Methodology.

<http://www.census.gov/acs/www/UseData/index.ht>

More than One Person per Room (Crowding) by Household

Forest Hill city, Texas



Source: B25014. OCCUPANTS PER ROOM - Universe: OCCUPIED HOUSING UNITS
Data Set: 2008-2012 American Community Survey 5-Year Estimates

B18101. AGE BY DISABILITY STATUS

Data Set: 2008-2012 American Community Survey 5-Year Estimates

	Forest Hill city, Texas					
	African American	Margin of Error (+/-)	% of AA Total	White, Not Hispanic	Margin of Error (+/-)	% of NHW Total
Total:	5,457	620	100.0%	1,081	261	100.0%
Under 18 years:	1,547	290	28.3%	97	7	9.0%
With a disability	16	24	0.3%	0	20	0.0%
No disability	1,531	289	28.1%	97	58	9.0%
18 to 64 years:	3,269	431	59.9%	726	213	67.2%
With a disability	495	166	9.1%	166	100	15.4%
No disability	2,774	392	50.8%	560	169	51.8%
65 years and over:	641	146	11.7%	258	100	23.9%
With a disability	219	88	4.0%	133	61	12.3%
No disability	422	122	7.7%	125	72	11.6%

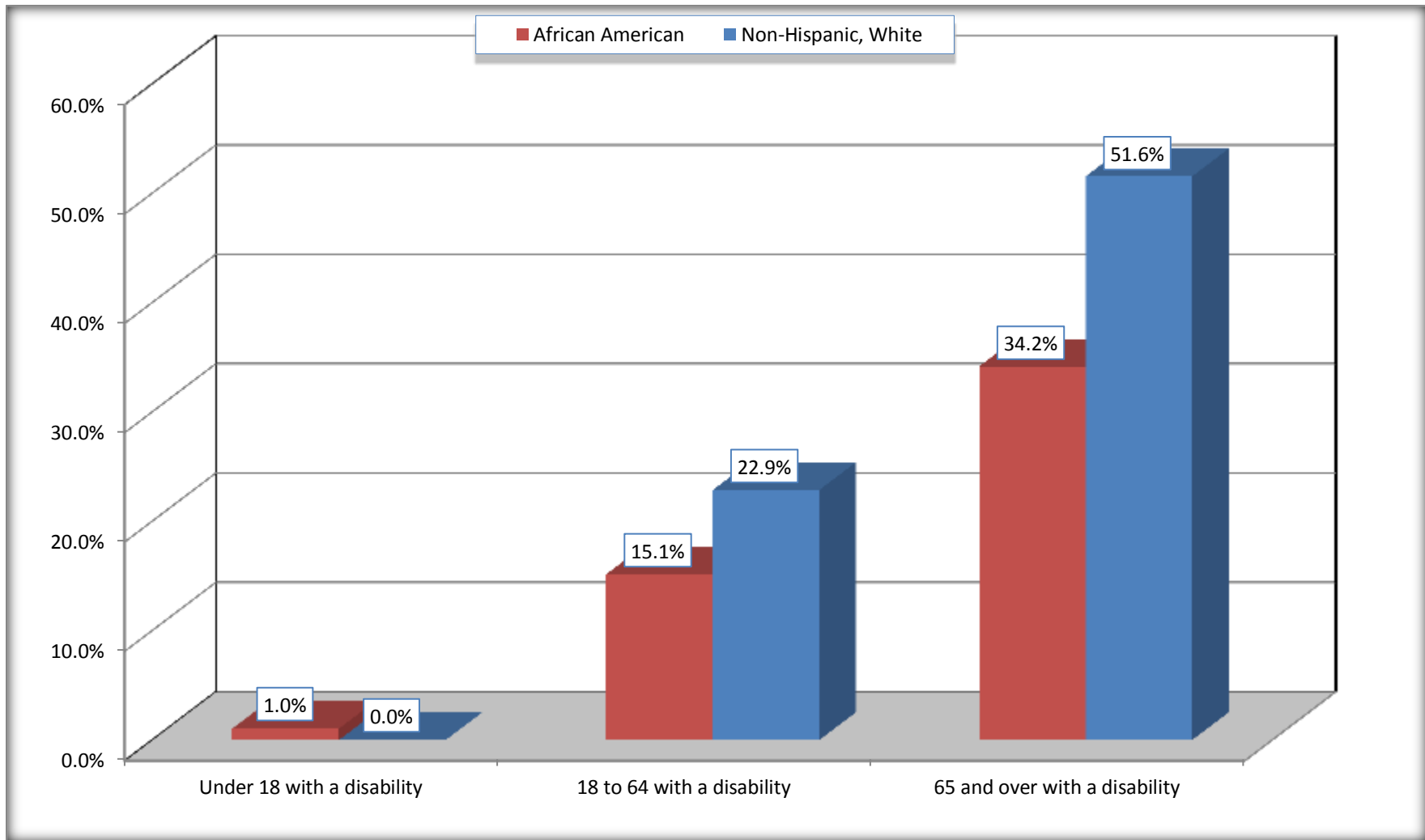
Source: U.S. Census Bureau, 2008-2012 American Community Survey

For information on confidentiality protection, sampling error, nonsampling error, and definitions, see Survey Methodology.

<http://www.census.gov/acs/www/UseData/index.htm>

Disability by Age

Forest Hill city, Texas



Source: B18101. AGE BY DISABILITY STATUS
Data Set: 2008-2012 American Community Survey 5-Year Estimates

C27001B. HEALTH INSURANCE COVERAGE STATUS BY AGE

Data Set: 2008-2012 American Community Survey 5-Year Estimates

	Forest Hill city, Texas					
	African American	Margin of Error (+/-)	% of AA Total	White, Not Hispanic	Margin of Error (+/-)	% of NHW Total
Total:	5,457	620	100.0%	1,081	261	100.0%
Under 18 years:	1,547	290	28.3%	97	58	9.0%
With health insurance coverage	1,328	281	24.3%	81	50	7.5%
No health insurance coverage	219	129	4.0%	16	28	1.5%
18 to 64 years:	3,269	431	59.9%	726	213	67.2%
With health insurance coverage	2,358	401	43.2%	523	175	48.4%
No health insurance coverage	911	192	16.7%	203	113	18.8%
65 years and over:	641	146	11.7%	258	100	23.9%
With health insurance coverage	628	145	11.5%	258	100	23.9%
No health insurance coverage	13	20	0.2%	0	20	0.0%

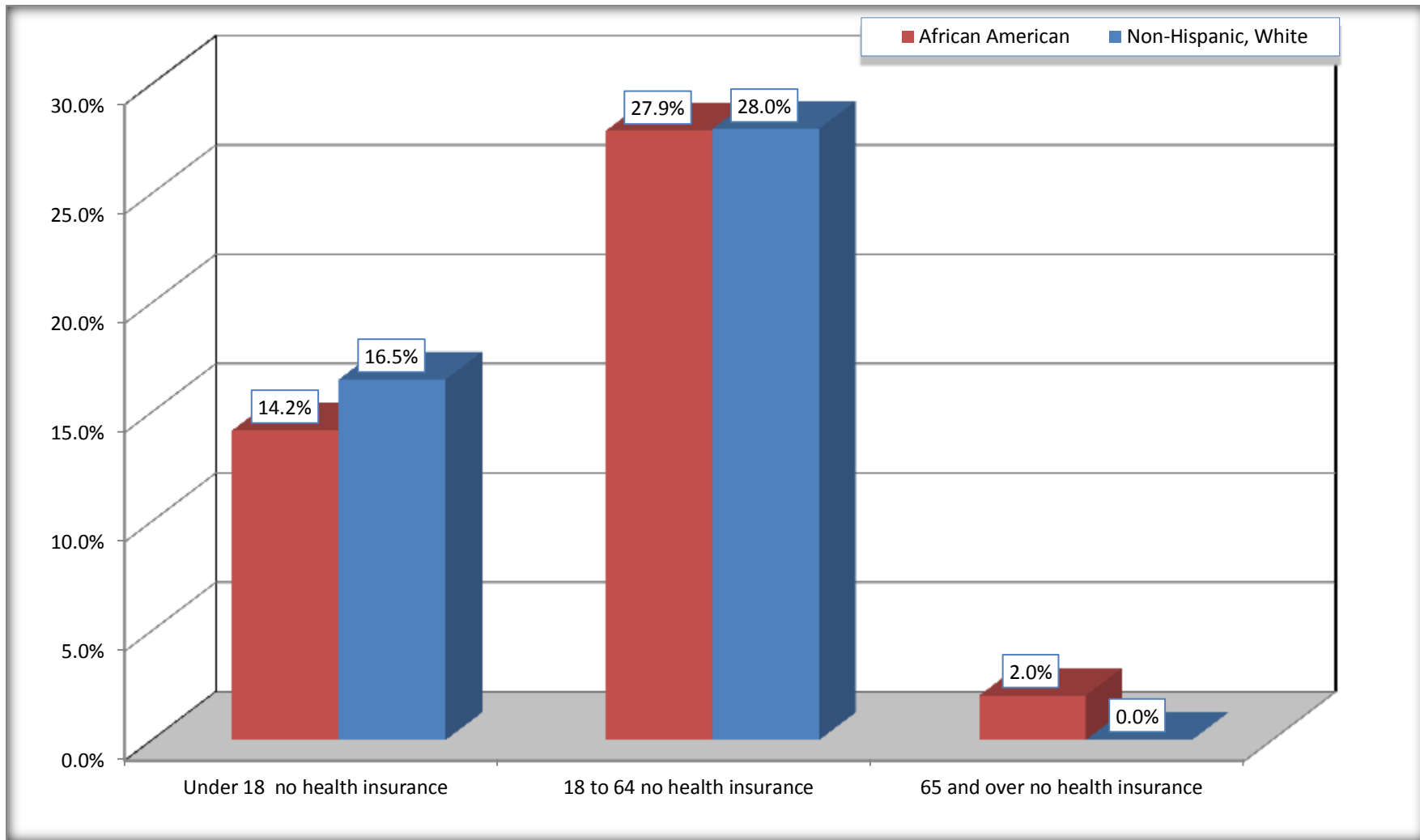
Source: U.S. Census Bureau, 2008-2012 American Community Survey

For information on confidentiality protection, sampling error, nonsampling error, and definitions, see Survey Methodology.

<http://www.census.gov/acs/www/UseData/index.htm>

Lack of Health Insurance Coverage by Age

Forest Hill city, Texas



Source: C27001B. HEALTH INSURANCE COVERAGE STATUS BY AGE
Data Set: 2008-2012 American Community Survey 5-Year Estimates