

Selected Socio-Economic Data

Falls County, Texas

African American and White, Not Hispanic

Data Set: 2008-2012 American Community Survey 5-Year Estimates

www.fairvote2020.org

www.fairdata2000.com

[29-Dec-13](#)

C02003.DETAILED RACE - Universe: TOTAL POPULATION

Data Set: 2008-2012 American Community Survey 5-Year Estimates

	Falls County, Texas		
	Population	Margin of Error (+/-)	% of Total
Total:	17,756	*****	100.0%
Population of one race:	17,485	85	98.5%
White	12,351	212	69.6%
Black or African American	4,386	209	24.7%
American Indian and Alaska Native	54	40	0.3%
Asian alone	185	203	1.0%
Native Hawaiian and Other Pacific Islander	0	20	0.0%
Some other race	509	206	2.9%
Population of two or more races:	271	85	1.5%
Two races including Some other race	83	88	0.5%
Two races excluding Some other race, and three or more races	188	62	1.1%
Population of two races:	271	85	1.5%
White; Black or African American	87	37	0.5%
White; American Indian and Alaska Native	87	46	0.5%
White; Asian	0	20	0.0%
Black or African American; American Indian and Alaska Native	14	17	0.1%
All other two race combinations	83	88	0.5%
Population of three races	0	20	0.0%
Population of four or more races	0	20	0.0%

Note: Hispanics may be of any race. See Table B03002 and chart.

Source: U.S. Census Bureau, 2008-2012 American Community Survey

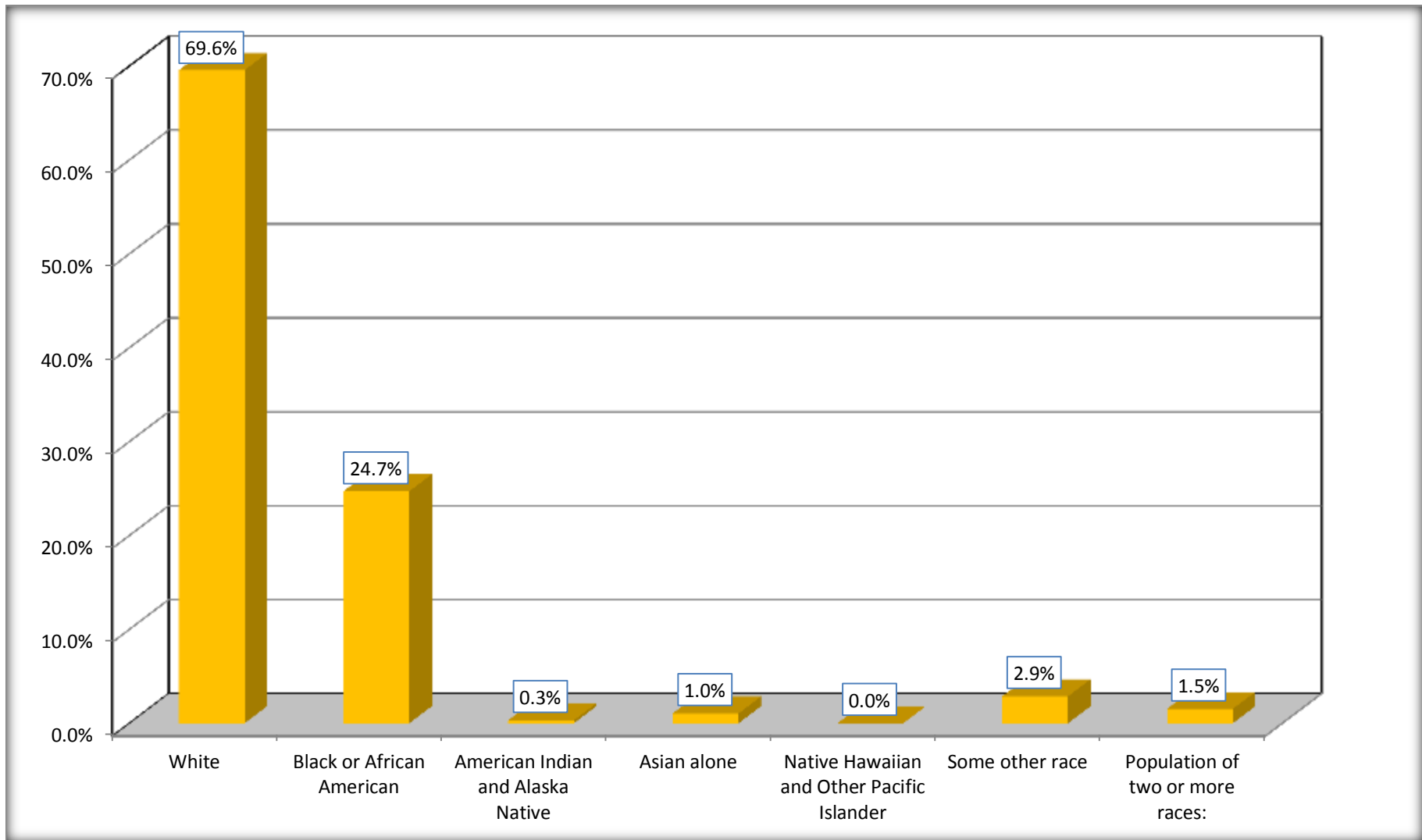
Although the American Community Survey (ACS) produces population, demographic and housing unit estimates, it is the Census Bureau's Population Estimates Program that produces and disseminates the official estimates of the population for the nation, states, counties, cities and towns and estimates of housing units for states and counties.

For information on confidentiality protection, sampling error, nonsampling error, and definitions, see Survey Methodology.

<http://www.census.gov/acs/www/UseData/index.htm>

Population by Race

Falls County, Texas



Source: C02003.DETAILED RACE - Universe: TOTAL POPULATION
Data Set: 2008-2012 American Community Survey 5-Year Estimates

B03002. HISPANIC OR LATINO ORIGIN BY RACE - Universe: TOTAL POPULATION

Data Set: 2008-2012 American Community Survey 5-Year Estimates

	Falls County, Texas		
	Population	Margin of Error (+/-)	% of Total
Total:	17,756	*****	100.0%
Not Hispanic or Latino:	14,058	*****	79.2%
White alone	9,330	9	52.5%
Black or African American alone	4,362	207	24.6%
American Indian and Alaska Native alone	45	38	0.3%
Asian alone	185	203	1.0%
Native Hawaiian and Other Pacific Islander alone	0	20	0.0%
Some other race alone	5	9	0.0%
Two or more races:	131	56	0.7%
Two races including Some other race	0	20	0.0%
Two races excluding Some other race, and three or more races	131	56	0.7%
Hispanic or Latino	3,698	*****	20.8%

Source: U.S. Census Bureau, 2008-2012 American Community Survey

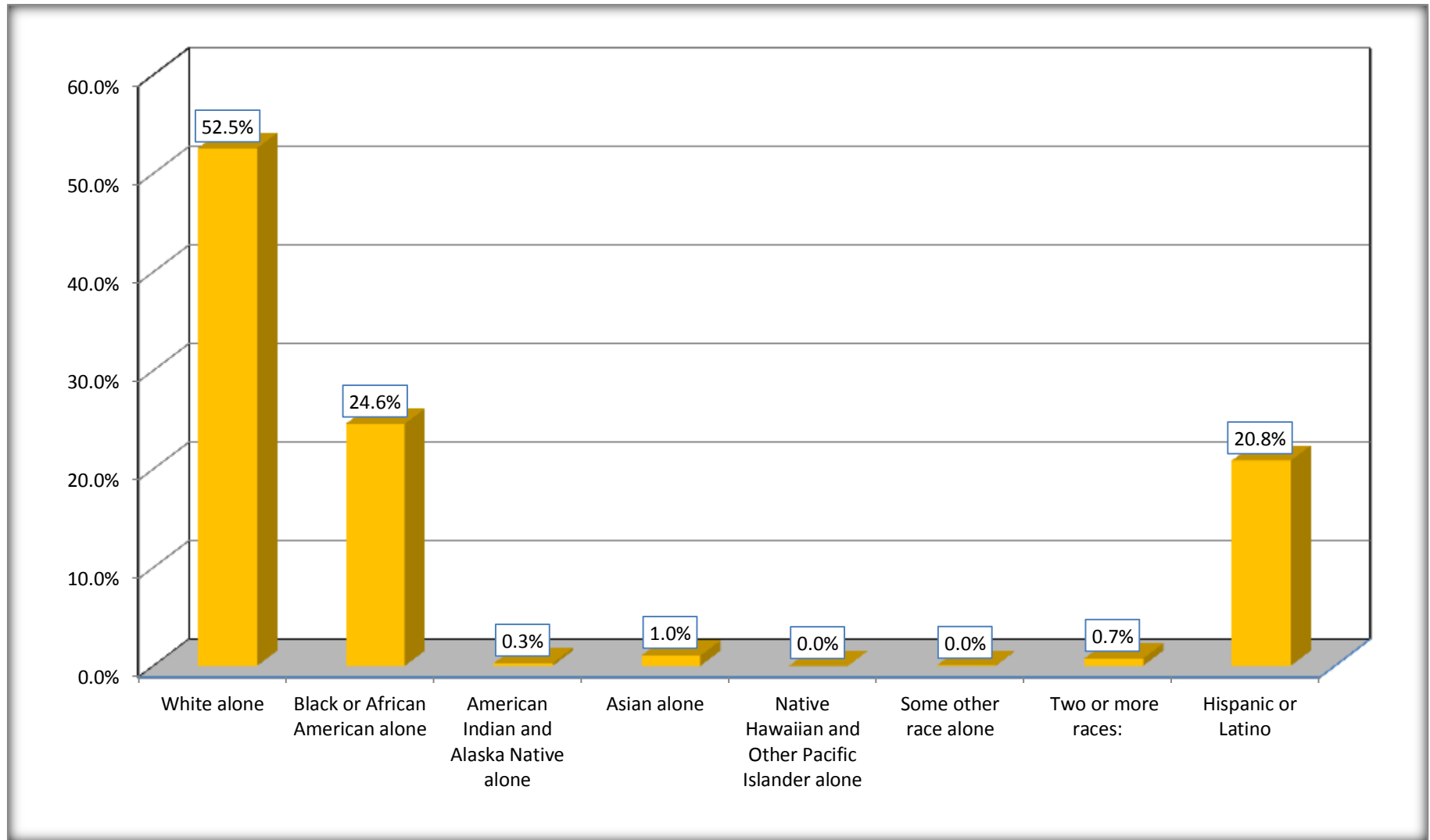
Although the American Community Survey (ACS) produces population, demographic and housing unit estimates, it is the Census Bureau's Population Estimates Program that produces and disseminates the official estimates of the population for the nation, states, counties, cities and towns and estimates of housing units for states and counties.

For information on confidentiality protection, sampling error, nonsampling error, and definitions, see Survey Methodology.

<http://www.census.gov/acs/www/UseData/index.htm>

Non-Hispanic by Race and Hispanic Population

Falls County, Texas



Source: B03002. HISPANIC OR LATINO ORIGIN BY RACE - Universe: TOTAL POPULATION
Data Set: 2008-2012 American Community Survey 5-Year Estimates

B03002. HISPANIC OR LATINO ORIGIN BY RACE

Data Set: 2008-2012 American Community Survey 5-Year Estimates

	Falls County, Texas		
	Population	Margin of Error (+/-)	% of Total
Hispanic or Latino:	3,698	*****	100.0%
White alone	3,021	211	81.7%
Black or African American alone	24	25	0.6%
American Indian and Alaska Native alone	9	13	0.2%
Asian alone	0	20	0.0%
Native Hawaiian and Other Pacific Islander alone	0	20	0.0%
Some other race alone	504	205	13.6%
Two or more races:	140	83	3.8%
Two races including Some other race	83	88	2.2%
Two races excluding Some other race, and three or more races	57	32	1.5%

Source: U.S. Census Bureau, 2008-2012 American Community Survey

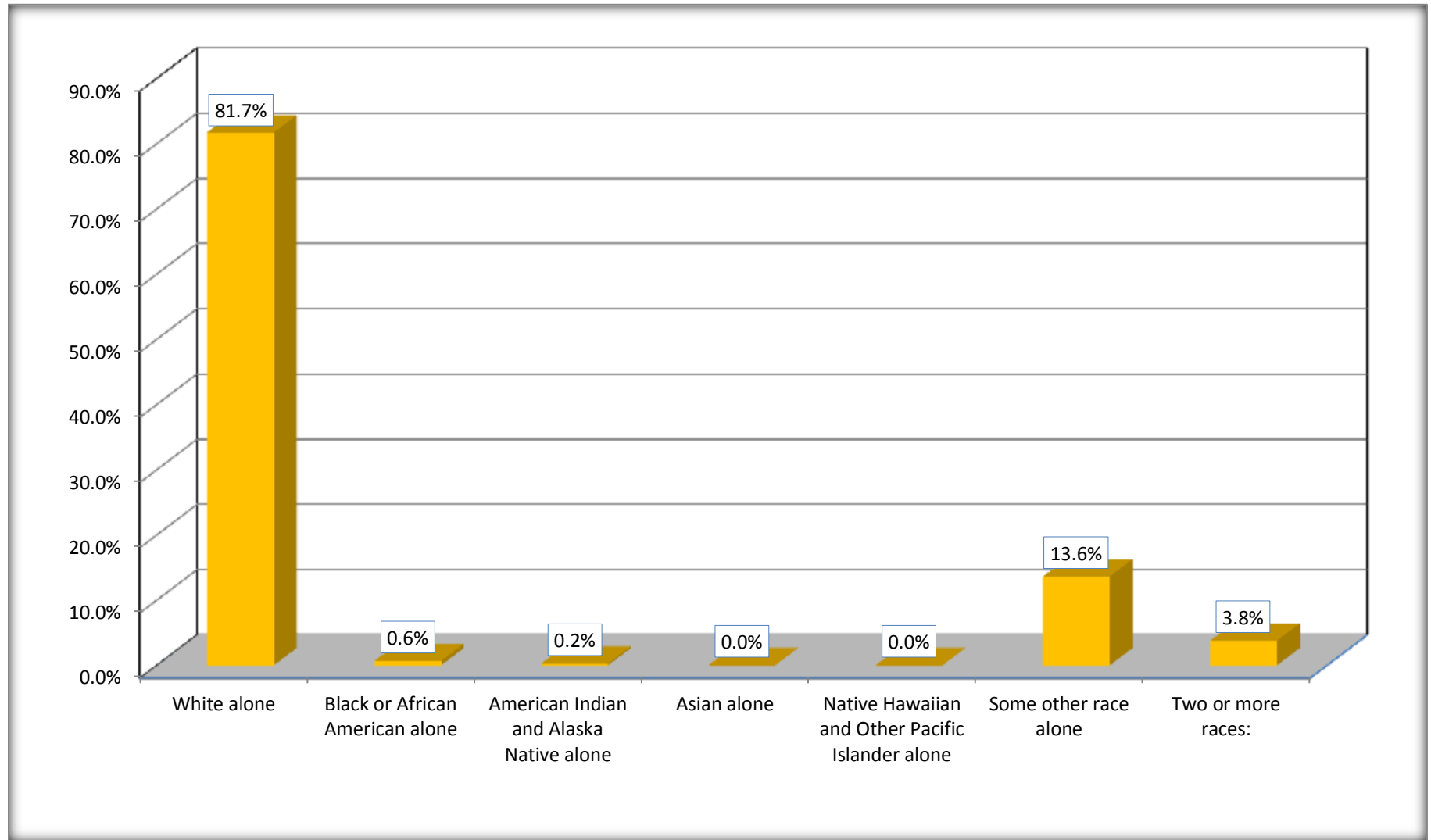
Although the American Community Survey (ACS) produces population, demographic and housing unit estimates, it is the Census Bureau's Population Estimates Program that produces and disseminates the official estimates of the population for the nation, states, counties, cities and towns and estimates of housing units for states and counties.

For information on confidentiality protection, sampling error, nonsampling error, and definitions, see Survey Methodology.

<http://www.census.gov/acs/www/UseData/index.htm>

Hispanic or Latino Origin by Race

Falls County, Texas



Source: B03002. HISPANIC OR LATINO ORIGIN BY RACE
Data Set: 2008-2012 American Community Survey 5-Year Estimates

B01001. SEX BY AGE

Data Set: 2008-2012 American Community Survey 5-Year Estimates

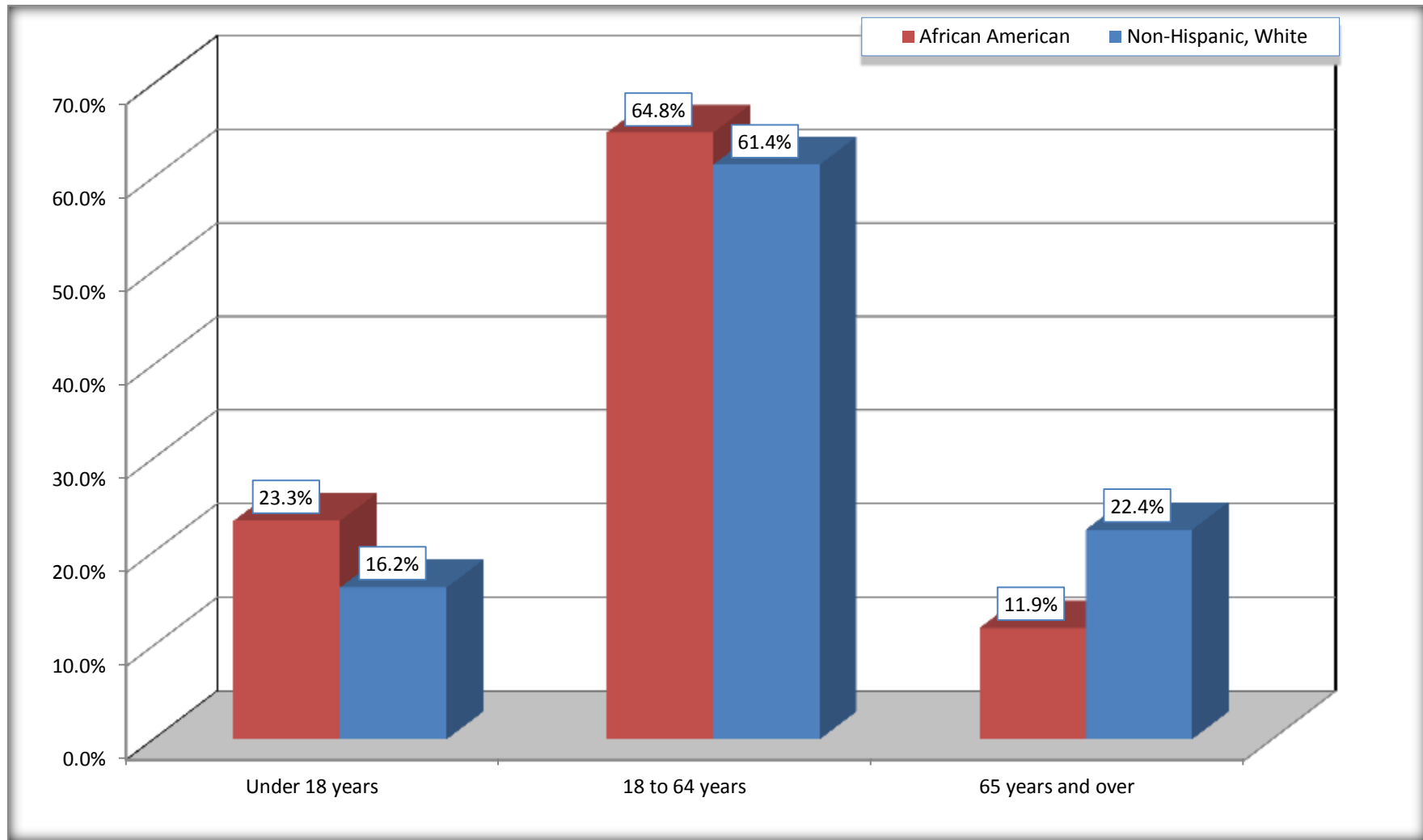
	Falls County, Texas					
	African American	Margin of Error (+/-)	% of AA Total	White, Not Hispanic	Margin of Error (+/-)	% of NHW Total
Total:	4,386	209	100.0%	9,330	9	100.0%
Under 18 years	1,023	NC	23.3%	1,513	NC	16.2%
18 to 64 years	2,842	NC	64.8%	5,728	NC	61.4%
65 years and over	521	NC	11.9%	2,089	NC	22.4%
Male:	1,744	98	39.8%	4,443	389	47.6%
Under 18 years	370	NC	8.4%	799	NC	8.6%
18 to 64 years	1,185	NC	27.0%	2,675	NC	28.7%
65 years and over	189	NC	4.3%	969	NC	10.4%
Female:	2,642	160	60.2%	4,887	412	52.4%
Under 18 years	653	NC	14.9%	714	NC	7.7%
18 to 64 years	1,657	NC	37.8%	3,053	NC	32.7%
65 years and over	332	NC	7.6%	1,120	NC	12.0%

Source: U.S. Census Bureau, 2008-2012 American Community Survey

Although the American Community Survey (ACS) produces population, demographic and housing unit estimates, it is the Census Bureau's Population Estimates Program that produces and disseminates the official estimates of the population for the nation, states, counties, cities and towns and estimates of housing units for states and counties.

For information on confidentiality protection, sampling error, nonsampling error, and definitions, see Survey Methodology.
<http://www.census.gov/acs/www/UseData/index.htm>

Population by Age Falls County, Texas



Source: B01001. SEX BY AGE
Data Set: 2008-2012 American Community Survey 5-Year Estimates

B05003. SEX BY AGE BY CITIZENSHIP STATUS

Data Set: 2008-2012 American Community Survey 5-Year Estimates

	Falls County, Texas					
	African American	Margin of Error (+/-)	% of AA Total by Age	White, Not Hispanic	Margin of Error (+/-)	% of NHW Total by Age
Total:	4,386	209	100.0%	9,330	9	100.0%
Under 18 years:	1,023	NC	100.0%	1,513	NC	100.0%
Native	1,023	NC	100.0%	1,507	NC	99.6%
Foreign born:	0	NC	0.0%	6	NC	0.4%
Naturalized U.S. citizen	0	NC	0.0%	6	NC	0.4%
Not a U.S. citizen	0	NC	0.0%	0	NC	0.0%
18 years and over:	3,363	NC	100.0%	7,817	NC	100.0%
Native	3,352	NC	99.7%	7,791	NC	99.7%
Foreign born:	11	NC	0.3%	26	NC	0.3%
Naturalized U.S. citizen	0	NC	0.0%	26	NC	0.3%
Not a U.S. citizen	11	NC	0.3%	0	NC	0.0%
Male:	1,744	98	39.8%	4,443	20	47.6%
Under 18 years:	370	79	100.0%	799	20	100.0%
Native	370	79	100.0%	797	3	99.7%
Foreign born:	0	20	0.0%	2	3	0.3%
Naturalized U.S. citizen	0	20	0.0%	2	3	0.3%
Not a U.S. citizen	0	20	0.0%	0	20	0.0%
18 years and over:	1,374	39	100.0%	3,644	20	100.0%
Native	1,370	38	99.7%	3,634	14	99.7%
Foreign born:	4	6	0.3%	10	14	0.3%
Naturalized U.S. citizen	0	20	0.0%	10	14	0.3%
Not a U.S. citizen	4	6	0.3%	0	20	0.0%

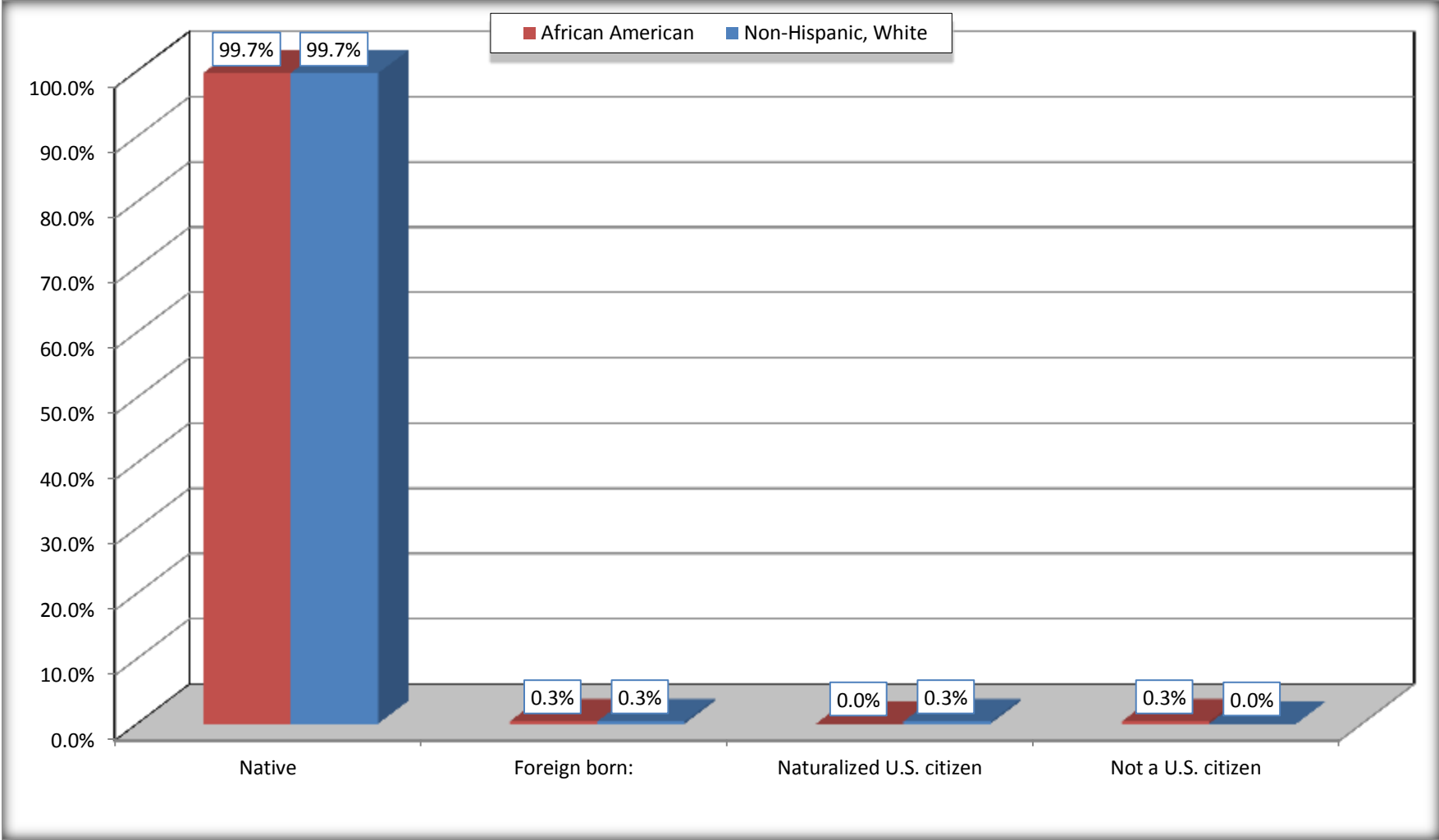
	Falls County, Texas					
	African American	Margin of Error (+/-)	% of AA by Age	White, Not Hispanic	Margin of Error (+/-)	% of NHW by Age
Female:	2,642	160	60.2%	4,887	9	52.4%
Under 18 years:	653	137	100.0%	714	20	100.0%
Native	653	137	100.0%	710	7	99.4%
Foreign born:	0	20	0.0%	4	7	0.6%
Naturalized U.S. citizen	0	20	0.0%	4	7	0.6%
Not a U.S. citizen	0	20	0.0%	0	20	0.0%
18 years and over:	1,989	53	100.0%	4,173	9	100.0%
Native	1,982	51	99.6%	4,157	20	99.6%
Foreign born:	7	10	0.4%	16	17	0.4%
Naturalized U.S. citizen	0	20	0.0%	16	17	0.4%
Not a U.S. citizen	7	10	0.4%	0	20	0.0%

Source: U.S. Census Bureau, 2008-2012 American Community Survey

For information on confidentiality protection, sampling error, nonsampling error, and definitions, see Survey Methodology.
<http://www.census.gov/acs/www/UseData/index.htm>

Citizenship Status of Voting Age Population (18 and Over)

Falls County, Texas



Source: B05003. SEX BY AGE BY CITIZENSHIP STATUS
Data Set: 2008-2012 American Community Survey 5-Year Estimates

**B07004. GEOGRAPHICAL MOBILITY IN THE PAST YEAR BY RACE FOR CURRENT RESIDENCE IN THE UNITED STATES - Universe:
POPULATION 1 YEAR AND OVER**

Data Set: 2008-2012 American Community Survey 5-Year Estimates

	Falls County, Texas					
	African American	Margin of Error (+/-)	% of AA Total	White, Not Hispanic	Margin of Error (+/-)	% of NHW Total
Total:	4,290	185	100.0%	9,253	42	100.0%
Same house 1 year ago	3,819	234	89.0%	8,128	221	87.8%
Moved within same county	221	159	5.2%	276	130	3.0%
Moved from different county within same state	239	77	5.6%	794	195	8.6%
Moved from different state	11	21	0.3%	55	66	0.6%
Moved from abroad	0	20	0.0%	0	20	0.0%

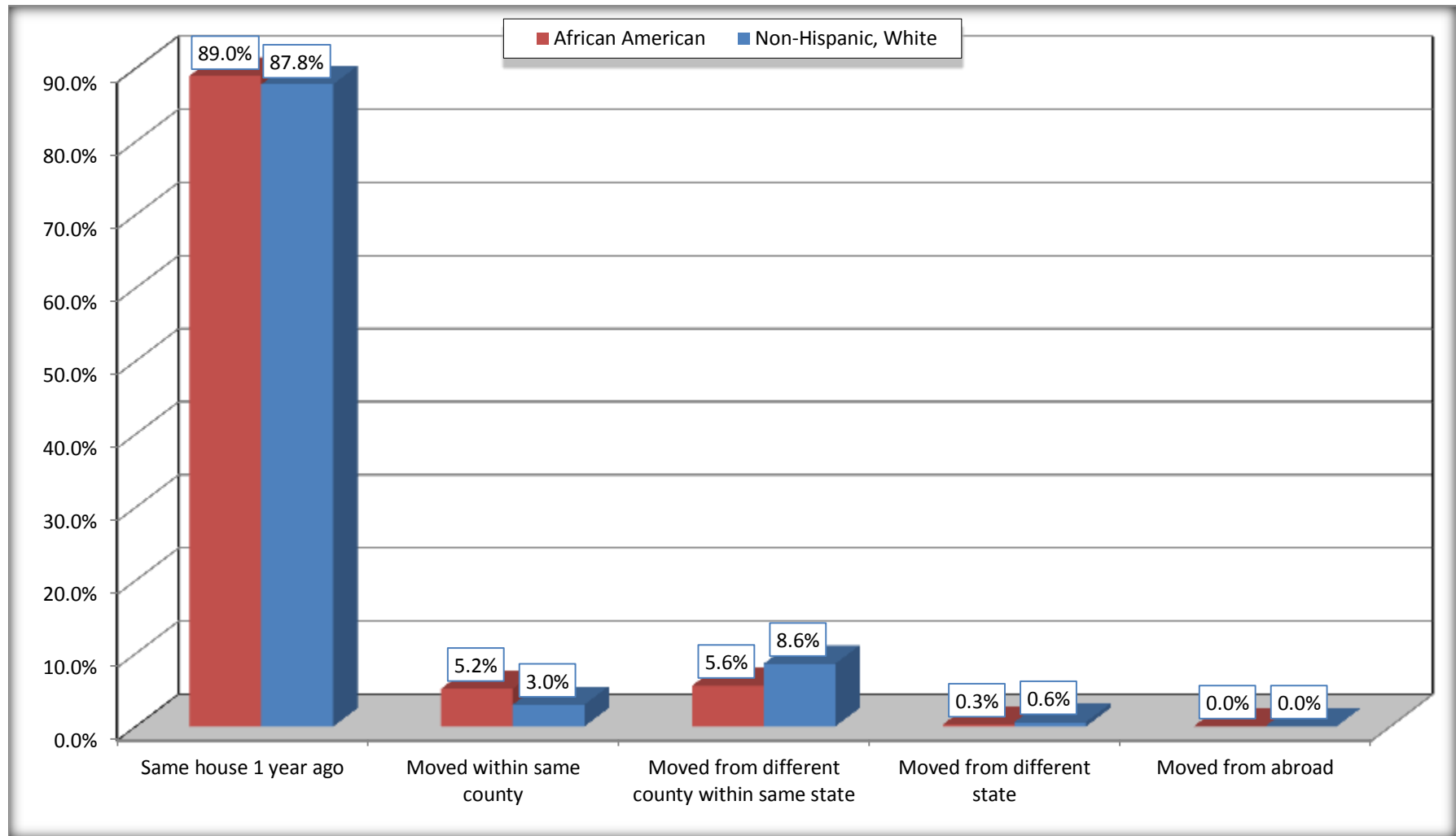
Source: U.S. Census Bureau, 2008-2012 American Community Survey

For information on confidentiality protection, sampling error, nonsampling error, and definitions, see Survey Methodology.

<http://www.census.gov/acs/www/UseData/index.htm>

Geographical Mobility in the Past Year (Population 1 Year and Over)

Falls County, Texas



Source: B07004. GEOGRAPHICAL MOBILITY IN THE PAST YEAR BY RACE FOR CURRENT RESIDENCE IN THE UNITED STATES - Universe: POPULATION 1 YEAR AND OVER

Data Set: 2008-2012 American Community Survey 5-Year Estimates

B08105. MEANS OF TRANSPORTATION TO WORK - Universe: WORKERS 16 YEARS AND OVER

Data Set: 2008-2012 American Community Survey 5-Year Estimates

	Falls County, Texas					
	African American	Margin of Error (+/-)	% of AA Total	White, Not Hispanic	Margin of Error (+/-)	% of NHW Total
Total:	1163	200	100.0%	4004	228	100.0%
Car, truck, or van - drove alone	804	190	69.1%	3299	253	82.4%
Car, truck, or van - carpooled	205	122	17.6%	367	106	9.2%
Public transportation (excluding taxicab)	54	73	4.6%	19	22	0.5%
Walked	21	34	1.8%	76	45	1.9%
Taxicab, motorcycle, bicycle, or other means	49	48	4.2%	34	25	0.8%
Worked at home	30	33	2.6%	209	91	5.2%

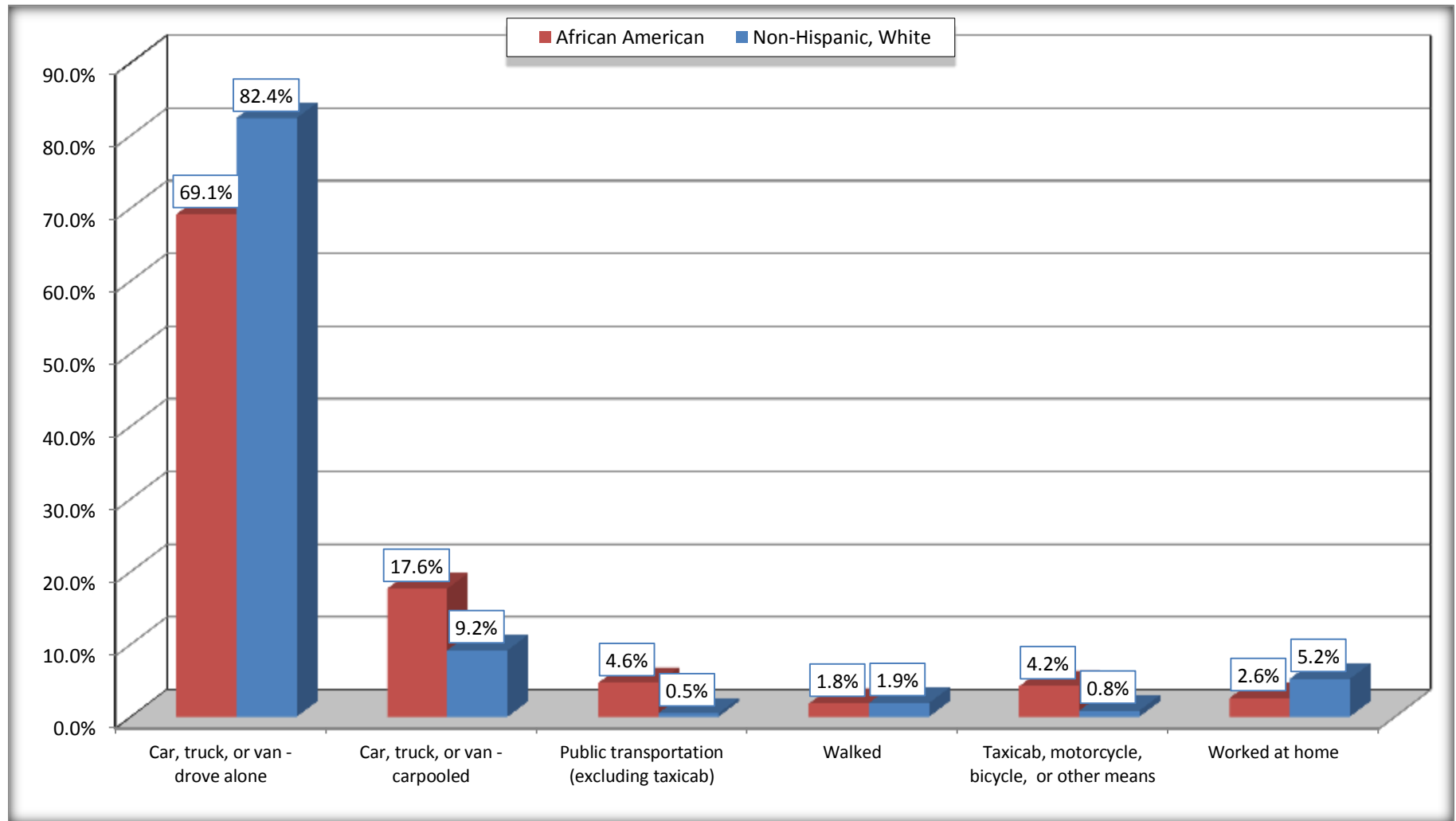
Source: U.S. Census Bureau, 2008-2012 American Community Survey

For information on confidentiality protection, sampling error, nonsampling error, and definitions, see Survey Methodology.

<http://www.census.gov/acs/www/UseData/index.htm>

Means of Transportation to Work (Workers 16 Years and Over)

Falls County, Texas



Source: B08105. MEANS OF TRANSPORTATION TO WORK - Universe: WORKERS 16 YEARS AND OVER
Data Set: 2008-2012 American Community Survey 5-Year Estimates

B11002. HOUSEHOLD TYPE BY RELATIVES AND NONRELATIVES FOR POPULATION IN HOUSEHOLDS

Data Set: 2008-2012 American Community Survey 5-Year Estimates

	Falls County, Texas					
	African American	Margin of Error (+/-)	% of AA Total	White, Not Hispanic	Margin of Error (+/-)	% of NHW Total
Total:	3705	225	100.0%	8726	256	100.0%
In family households	3112	274	84.0%	7257	346	83.2%
In nonfamily households	593	146	16.0%	1469	245	16.8%

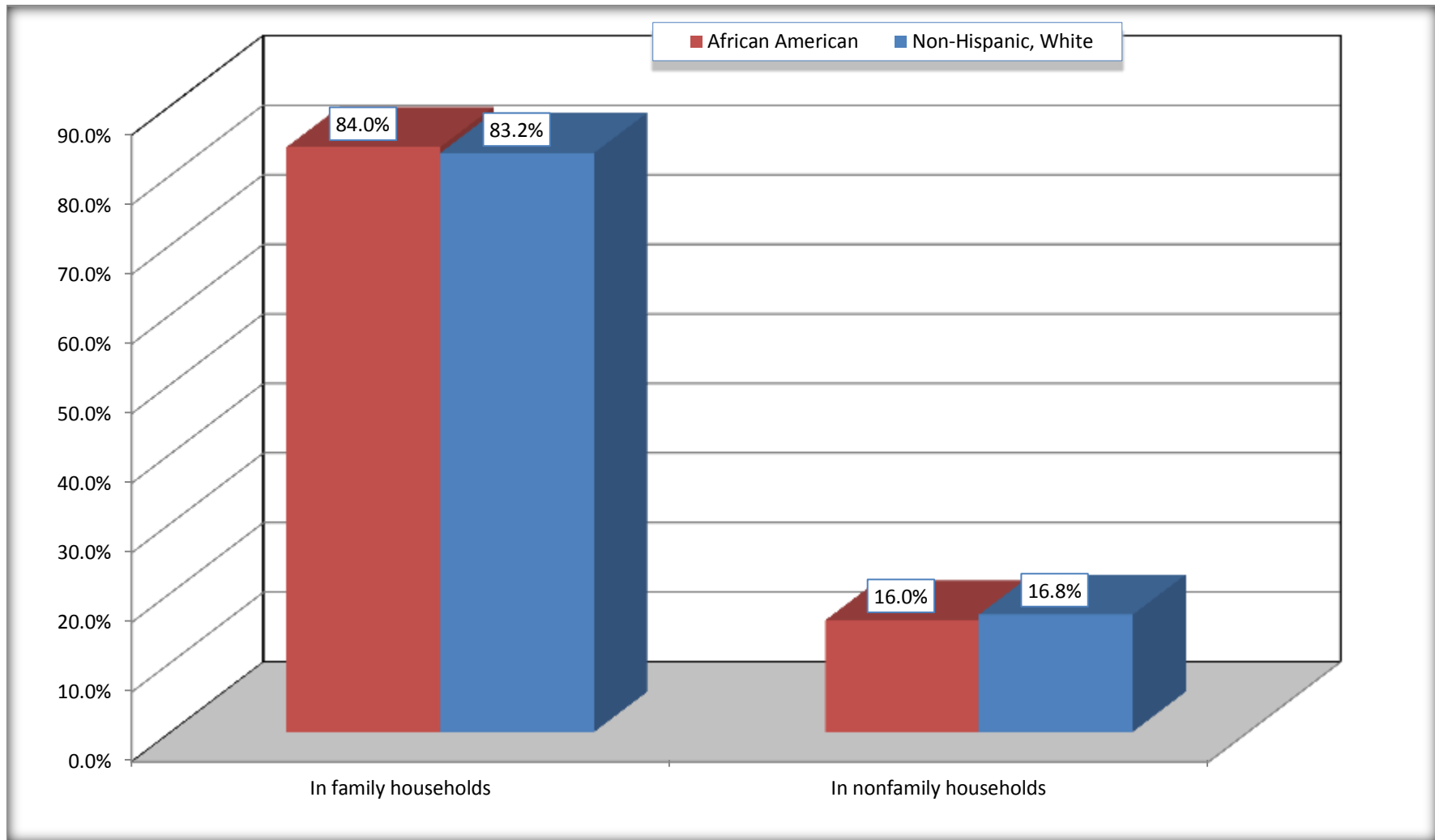
Source: U.S. Census Bureau, 2008-2012 American Community Survey

For information on confidentiality protection, sampling error, nonsampling error, and definitions, see Survey Methodology.

<http://www.census.gov/acs/www/UseData/index.htm>

Household Type for Population in Households

Falls County, Texas



Source: B11002. HOUSEHOLD TYPE BY RELATIVES AND NONRELATIVES FOR POPULATION IN HOUSEHOLDS
Data Set: 2008-2012 American Community Survey 5-Year Estimates

B12002. MARITAL STATUS FOR THE POPULATION 15 YEARS AND OVER

Data Set: 2008-2012 American Community Survey 5-Year Estimates

	Falls County, Texas					
	African American	Margin of Error (+/-)	% of AA Total	White, Not Hispanic	Margin of Error (+/-)	% of NHW Total
Total:	3,616	79	100.0%	8,095	9	100.0%
Never married	2,045	NC	56.6%	1,735	NC	21.4%
Now married (except separated)	722	NC	20.0%	4,092	NC	50.5%
Separated	139	NC	3.8%	227	NC	2.8%
Widowed	357	NC	9.9%	797	NC	9.8%
Divorced	353	NC	9.8%	1,244	NC	15.4%
Male:	1,456	64	40.3%	3,786	20	46.8%
Never married	876	109	24.2%	908	112	11.2%
Now married (except separated)	297	72	8.2%	1,975	189	24.4%
Separated	31	29	0.9%	77	44	1.0%
Widowed	45	41	1.2%	225	65	2.8%
Divorced	207	89	5.7%	601	137	7.4%
Female:	2,160	79	59.7%	4,309	9	53.2%
Never married	1,169	135	32.3%	827	114	10.2%
Now married (except separated)	425	103	11.8%	2,117	177	26.2%
Separated	108	57	3.0%	150	88	1.9%
Widowed	312	77	8.6%	572	89	7.1%
Divorced	146	65	4.0%	643	135	7.9%

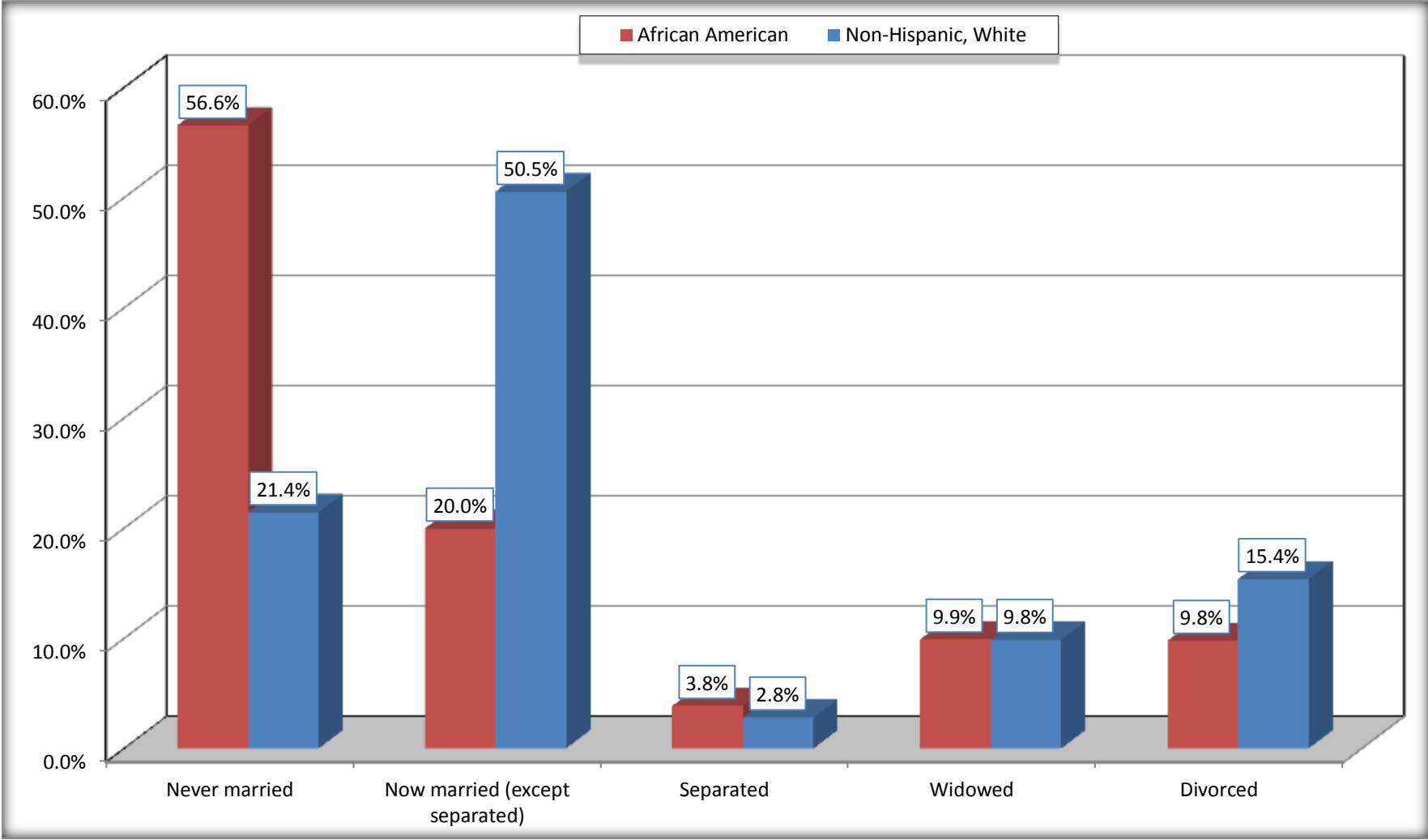
Source: U.S. Census Bureau, 2008-2012 American Community Survey

For information on confidentiality protection, sampling error, nonsampling error, and definitions, see Survey Methodology.

<http://www.census.gov/acs/www/UseData/index.htm>

Marital Status for the Population 15 Years and Over

Falls County, Texas



Source: B12002. MARITAL STATUS FOR THE POPULATION 15 YEARS AND OVER
Data Set: 2008-2012 American Community Survey 5-Year Estimates

C15002. SEX BY EDUCATIONAL ATTAINMENT FOR THE POPULATION 25 YEARS AND OVER

Data Set: 2008-2012 American Community Survey 5-Year Estimates

	Falls County, Texas					
	African American	Margin of Error (+/-)	% of AA Total	White, Not Hispanic	Margin of Error (+/-)	% of NHW Total
Total:	2,713	94	100.0%	7,193	9	100.0%
Less than high school diploma	713	NC	26.3%	1,058	NC	14.7%
High school graduate, GED, or alternative	1,115	NC	41.1%	2,774	NC	38.6%
Some college or associate's degree	731	NC	26.9%	2,157	NC	30.0%
Bachelor's degree or higher	154	NC	5.7%	1,204	NC	16.7%
Male:	1,089	75	40.1%	3,322	20	46.2%
Less than high school diploma	264	87	9.7%	503	117	7.0%
High school graduate, GED, or alternative	523	116	19.3%	1,309	144	18.2%
Some college or associate's degree	263	95	9.7%	944	149	13.1%
Bachelor's degree or higher	39	30	1.4%	566	116	7.9%
Female:	1,624	55	59.9%	3,871	9	53.8%
Less than high school diploma	449	123	16.5%	555	145	7.7%
High school graduate, GED, or alternative	592	138	21.8%	1,465	144	20.4%
Some college or associate's degree	468	117	17.3%	1,213	152	16.9%
Bachelor's degree or higher	115	63	4.2%	638	140	8.9%

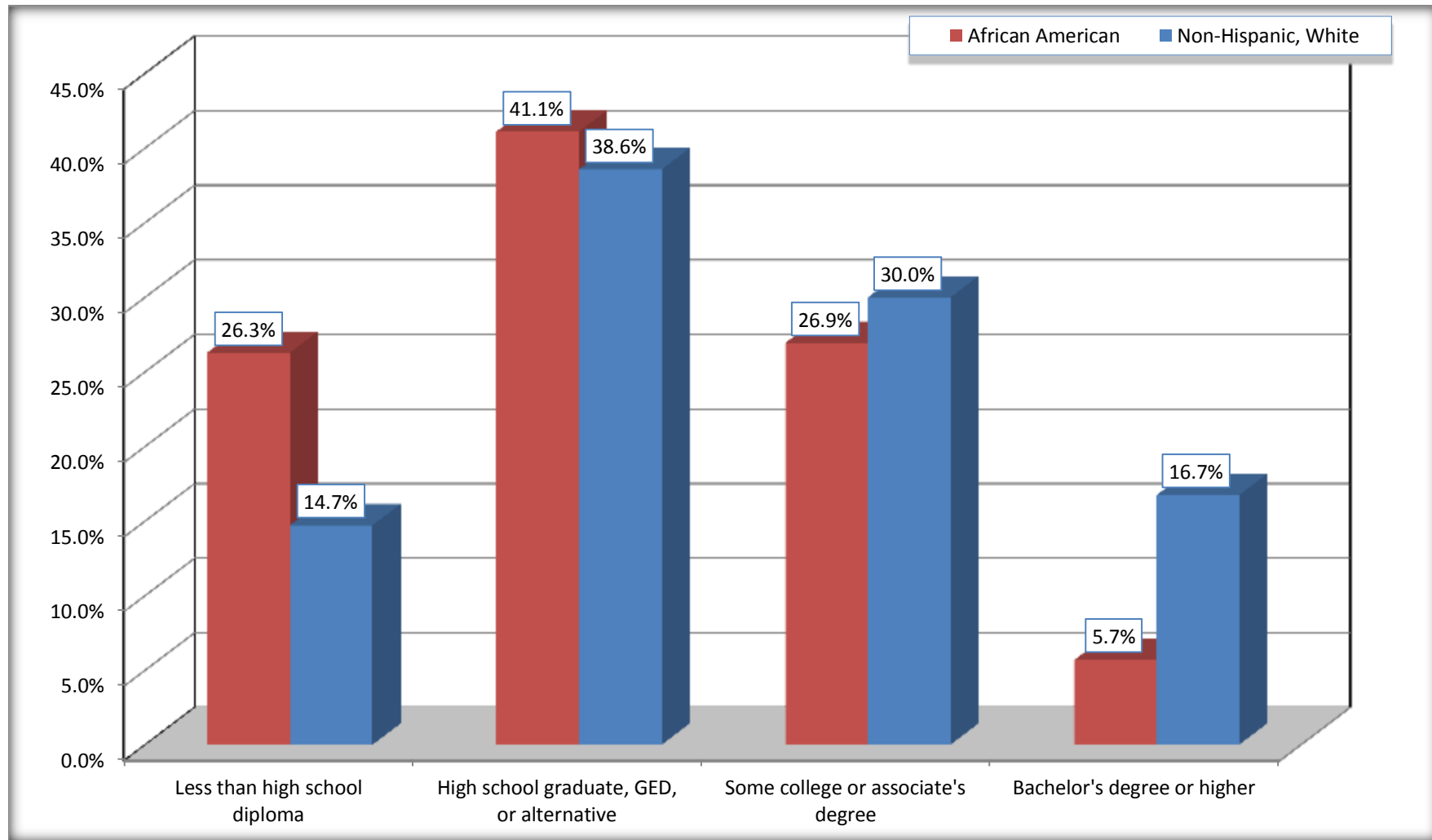
Source: U.S. Census Bureau, 2008-2012 American Community Survey

For information on confidentiality protection, sampling error, nonsampling error, and definitions, see Survey Methodology.

<http://www.census.gov/acs/www/UseData/index.htm>

Educational Attainment for the Population 25 Years and Older

Falls County, Texas



Source: C15002. SEX BY EDUCATIONAL ATTAINMENT FOR THE POPULATION 25 YEARS AND OVER
Data Set: 2008-2012 American Community Survey 5-Year Estimates

B17010. POVERTY STATUS IN THE PAST 12 MONTHS OF FAMILIES BY FAMILY TYPE BY PRESENCE OF RELATED CHILDREN UNDER 18 YEARS

Data Set: 2008-2012 American Community Survey 5-Year Estimates

	Falls County, Texas					
	African American	Margin of Error (+/-)	% of AA Total	White, Not Hispanic	Margin of Error (+/-)	% of NHW Total
Total:	858	106	100.0%	2,288	186	100.0%
Income in the past 12 months below poverty level:	286	89	33.3%	161	68	7.0%
Married-couple family:	32	28	3.7%	70	49	3.1%
With related children under 18 years	0	20	0.0%	29	29	1.3%
Other family:	254	91	29.6%	91	53	4.0%
Male householder, no wife present	3	5	0.3%	0	20	0.0%
With related children under 18 years	0	20	0.0%	0	20	0.0%
Female householder, no husband present	251	90	29.3%	91	53	4.0%
With related children under 18 years	151	76	17.6%	85	52	3.7%
Income in the past 12 months at or above poverty level:	572	121	66.7%	2,127	170	93.0%
Married-couple family:	226	75	26.3%	1,734	179	75.8%
With related children under 18 years	111	59	12.9%	465	94	20.3%
Other family:	346	100	40.3%	393	104	17.2%
Male householder, no wife present	25	21	2.9%	133	56	5.8%
With related children under 18 years	8	12	0.9%	50	31	2.2%
Female householder, no husband present	321	103	37.4%	260	74	11.4%
With related children under 18 years	165	83	19.2%	100	44	4.4%

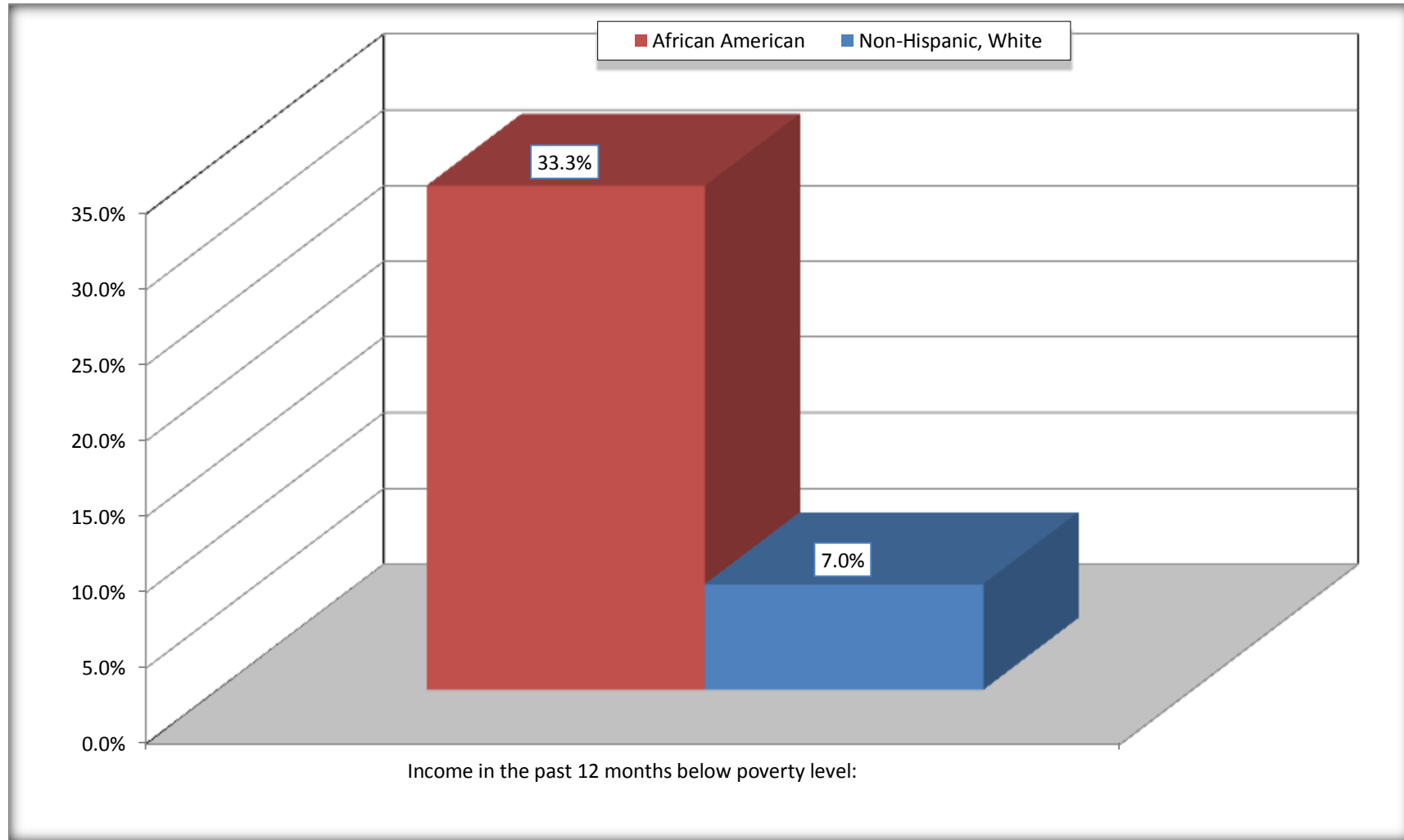
Source: U.S. Census Bureau, 2008-2012 American Community Survey

For information on confidentiality protection, sampling error, nonsampling error, and definitions, see Survey Methodology.

<http://www.census.gov/acs/www/UseData/index.htm>

Family Households Below Poverty in the Past 12 Months

Falls County, Texas

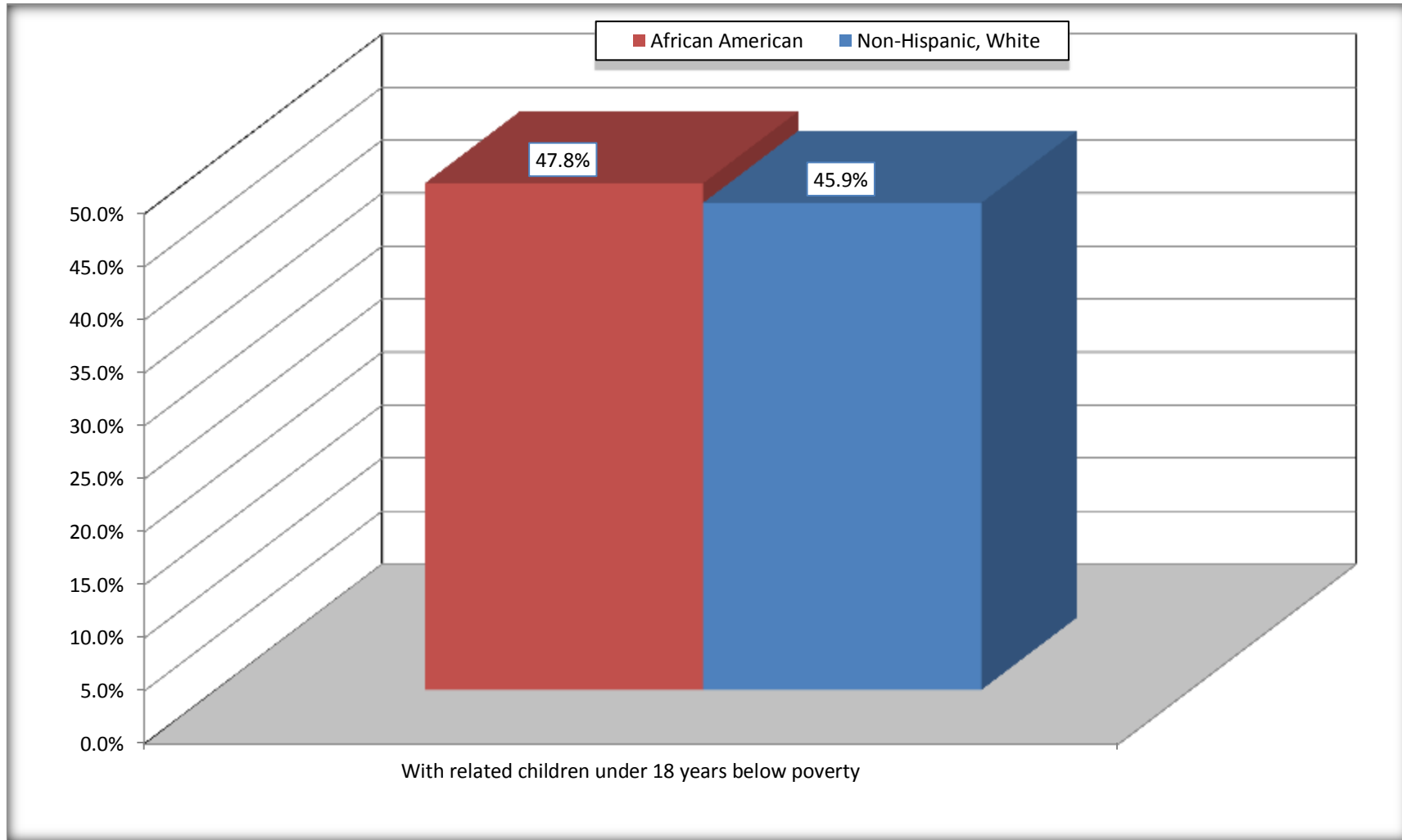


Source: B17010. POVERTY STATUS IN THE PAST 12 MONTHS OF FAMILIES BY FAMILY TYPE BY PRESENCE OF RELATED CHILDREN UNDER 18 YEARS

Data Set: 2008-2012 American Community Survey 5-Year Estimates

Female-headed Households with Related Children Below Poverty in the Past 12 Months

Falls County, Texas



Source: B17010. POVERTY STATUS IN THE PAST 12 MONTHS OF FAMILIES BY FAMILY TYPE BY PRESENCE OF RELATED CHILDREN UNDER 18 YEARS

Data Set: 2008-2012 American Community Survey 5-Year Estimates

B17020 POVERTY STATUS IN THE PAST 12 MONTHS BY AGE - Universe: POPULATION FOR WHOM POVERTY STATUS IS DETERMINED

Data Set: 2008-2012 American Community Survey 5-Year Estimates

	Falls County, Texas					
	African American	Margin of Error (+/-)	% of AA By Age	White, Not Hispanic	Margin of Error (+/-)	% of NHW By Age
Total:	3,722	231	100.0%	8,653	185	100.0%
Income in the past 12 months below poverty level:	1,373	333	36.9%	1,011	244	11.7%
Under 18 years	413	NC	41.4%	278	NC	18.4%
18 to 64 years	842	238	37.4%	494	142	9.6%
65 years and over	118	NC	24.9%	239	NC	12.1%
Income in the past 12 months at or above poverty level:	2,349	337	63.1%	7,642	275	88.3%
Under 18 years	584	NC	58.6%	1,230	NC	81.6%
18 to 64 years	1,409	254	62.6%	4,671	189	90.4%
65 years and over	356	NC	75.1%	1,741	NC	87.9%

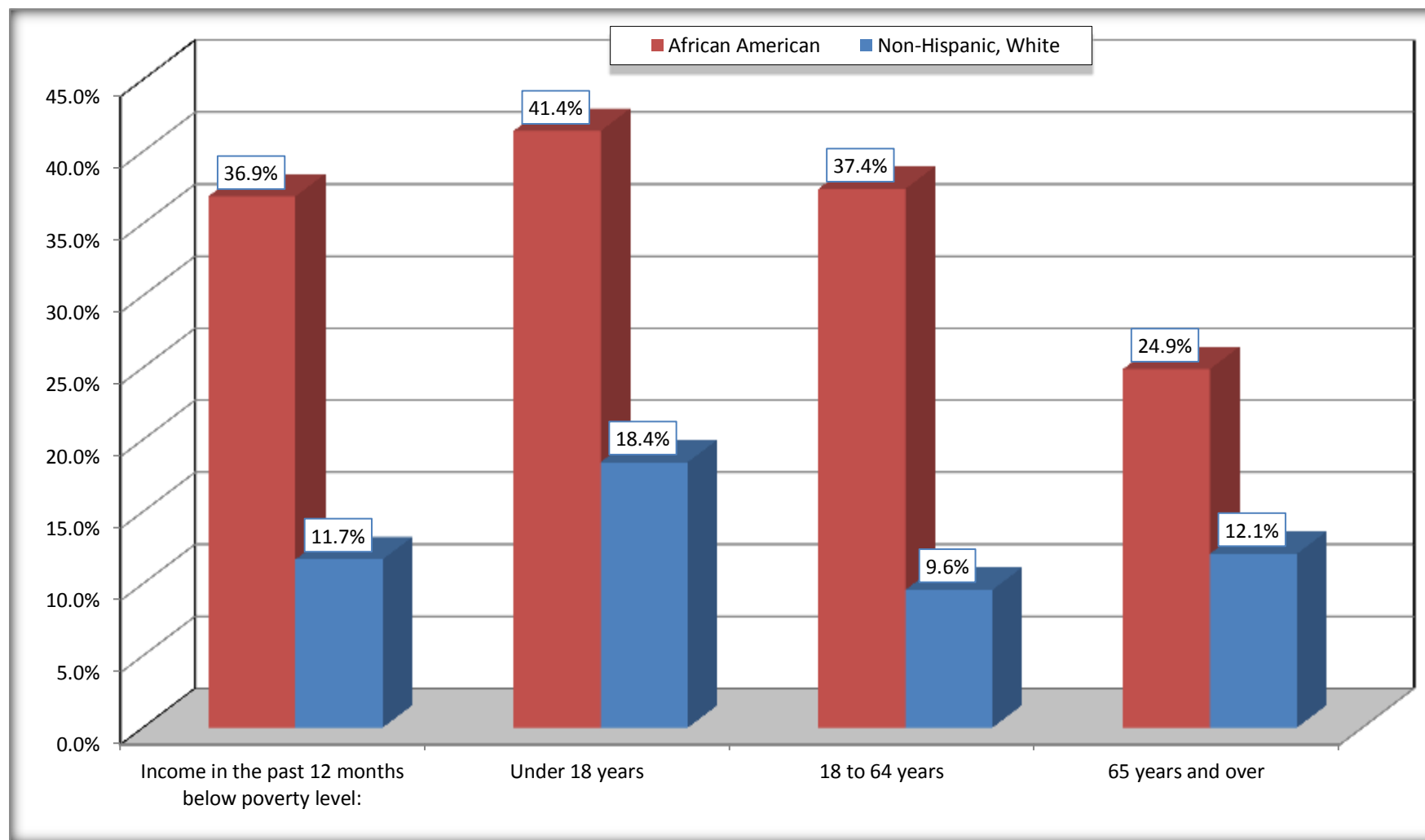
Source: U.S. Census Bureau, 2008-2012 American Community Survey

For information on confidentiality protection, sampling error, nonsampling error, and definitions, see Survey Methodology.

<http://www.census.gov/acs/www/UseData/index.htm>

Population Below Poverty in the Past 12 Months

Falls County, Texas



Source: B17020 POVERTY STATUS IN THE PAST 12 MONTHS BY AGE - Universe: POPULATION FOR WHOM POVERTY STATUS IS DETERMINED
Data Set: 2008-2012 American Community Survey 5-Year Estimates

B19001. HOUSEHOLD INCOME IN THE PAST 12 MONTHS (IN 2010 INFLATION-ADJUSTED DOLLARS)

Data Set: 2008-2012 American Community Survey 5-Year Estimates

	Falls County, Texas					
	African American	Margin of Error (+/-)	% of AA Total	White, Not Hispanic	Margin of Error (+/-)	% of NHW Total
Total:	1,407	131	100.0%	3,494	195	100.0%
Less than \$ 10,000	325	90	23.1%	211	75	6.0%
\$ 10,000 to \$ 14,999	229	98	16.3%	287	96	8.2%
\$ 15,000 to \$ 24,999	204	NC	14.5%	425	NC	12.2%
\$ 25,000 to \$ 34,999	259	NC	18.4%	531	NC	15.2%
\$ 35,000 to \$ 49,999	117	NC	8.3%	480	NC	13.7%
\$ 50,000 to \$ 74,999	182	NC	12.9%	667	NC	19.1%
\$ 75,000 to \$ 99,999	44	30	3.1%	487	110	13.9%
\$ 100,000 to \$ 149,999	47	NC	3.3%	265	NC	7.6%
\$ 150,000 to \$ 199,999	0	20	0.0%	102	47	2.9%
\$ 200,000 or more	0	20	0.0%	39	27	1.1%

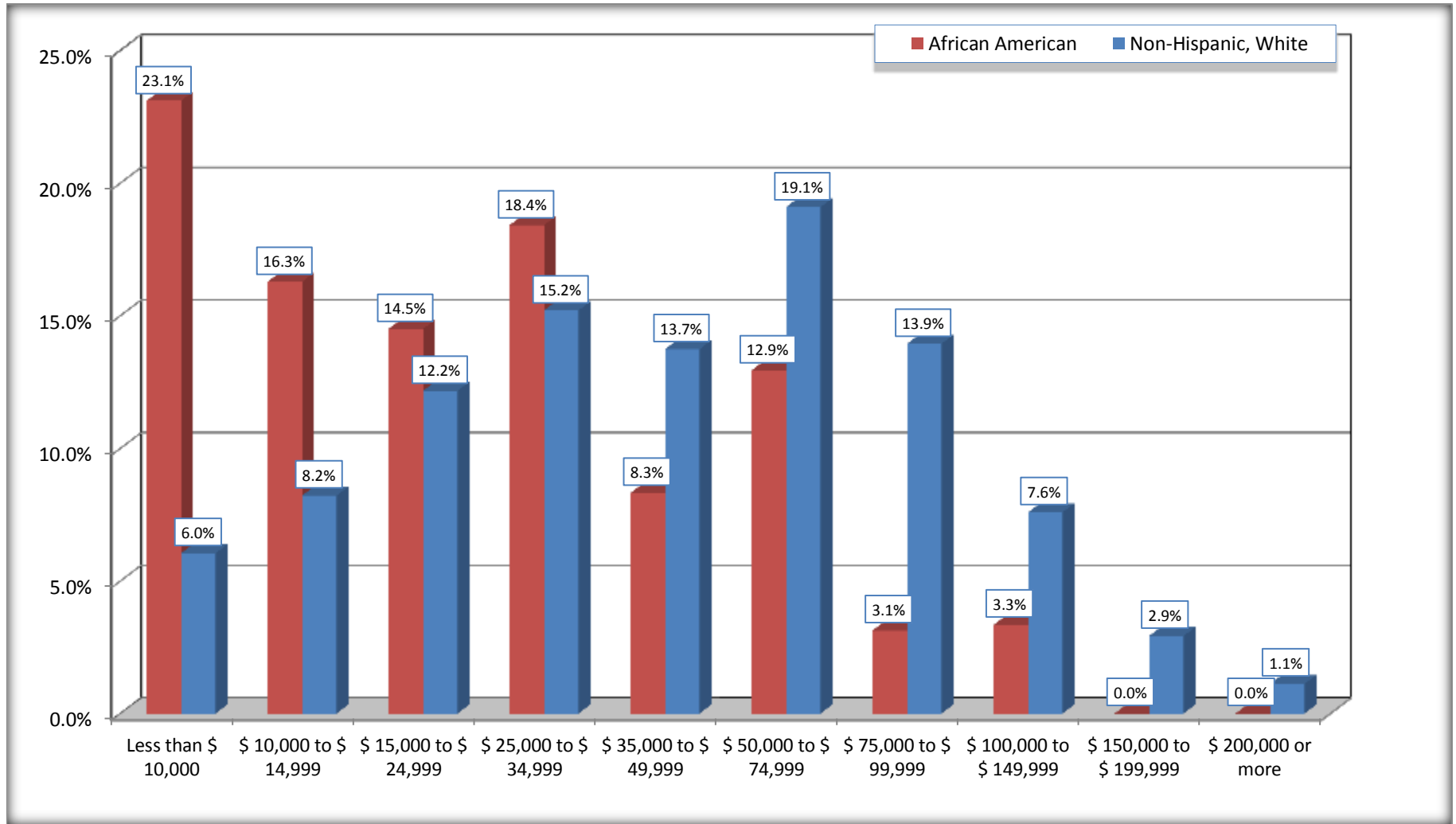
Source: U.S. Census Bureau, 2008-2012 American Community Survey

For information on confidentiality protection, sampling error, nonsampling error, and definitions, see Survey Methodology.

<http://www.census.gov/acs/www/UseData/index.htm>

Household Income in the Past 12 Months

Falls County, Texas



Source: B19001. HOUSEHOLD INCOME IN THE PAST 12 MONTHS (IN 2010 INFLATION-ADJUSTED DOLLARS)
Data Set: 2008-2012 American Community Survey 5-Year Estimates

B19013. MEDIAN HOUSEHOLD INCOME IN THE PAST 12 MONTHS (IN 2010 INFLATION-ADJUSTED DOLLARS)

Data Set: 2008-2012 American Community Survey 5-Year Estimates

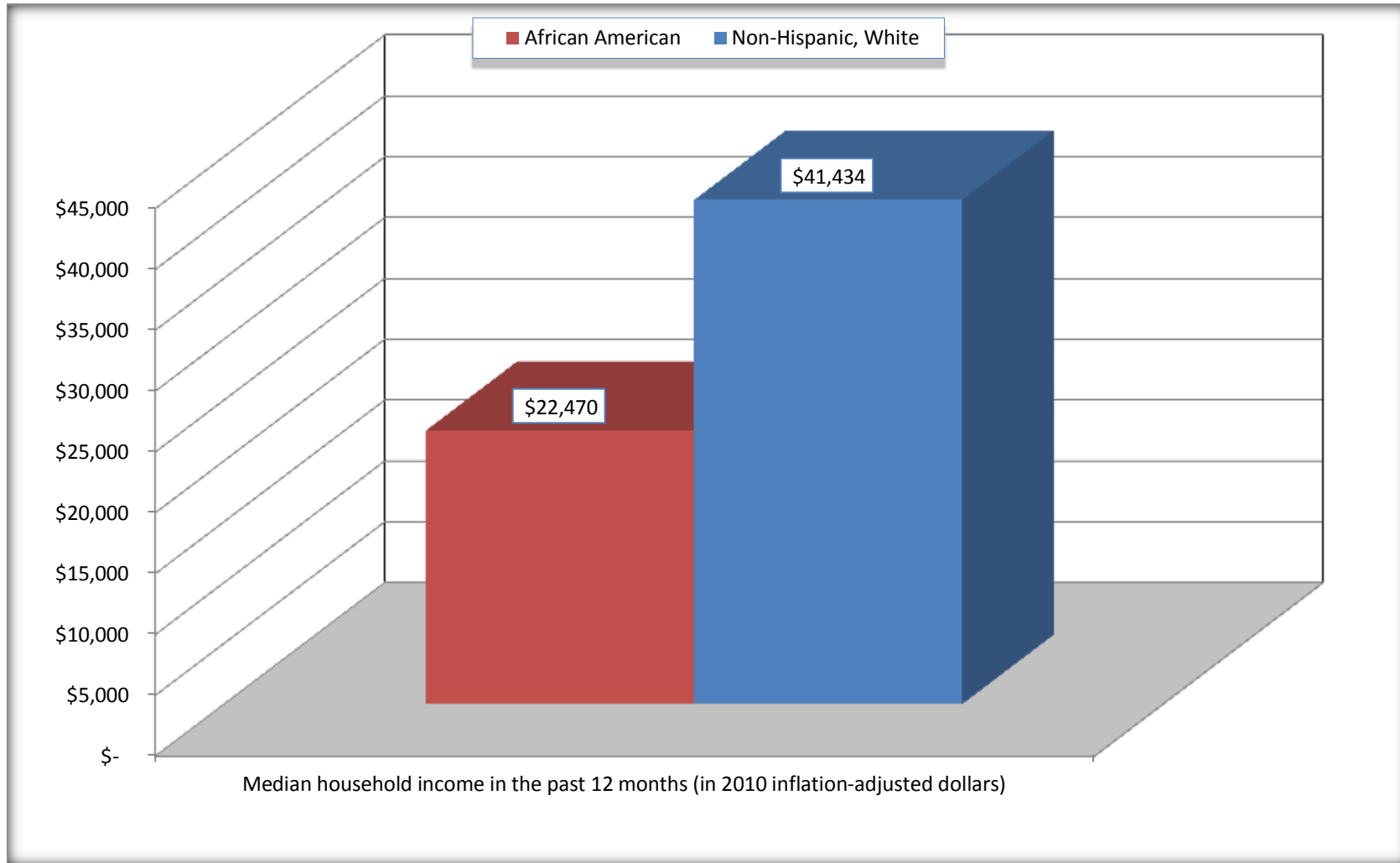
	Falls County, Texas			
	African American	Margin of Error (+/-)	White, Not Hispanic	Margin of Error (+/-)
Median household income in the past 12 months (in 2010 inflation-adjusted dollars)	\$ 22,470	\$ 5,828	\$ 41,434	\$ 4,343

Source: U.S. Census Bureau, 2008-2012 American Community Survey

For information on confidentiality protection, sampling error, nonsampling error, and definitions, see Survey Methodology.
<http://www.census.gov/acs/www/UseData/index.htm>

Median Household Income in the Past 12 Months

Falls County, Texas



Source: B19013. MEDIAN HOUSEHOLD INCOME IN THE PAST 12 MONTHS (IN 2010 INFLATION-ADJUSTED DOLLARS)
Data Set: 2008-2012 American Community Survey 5-Year Estimates

B19101. FAMILY INCOME IN THE PAST 12 MONTHS (IN 2010 INFLATION-ADJUSTED DOLLARS)

Data Set: 2008-2012 American Community Survey 5-Year Estimates

	Falls County, Texas					
	African American	Margin of Error (+/-)	% of AA Total	White, Not Hispanic	Margin of Error (+/-)	% of NHW Total
Total:	858	106	100.0%	2,288	186	100.0%
Less than \$ 10,000	151	71	17.6%	39	39	1.7%
\$ 10,000 to \$ 14,999	108	60	12.6%	85	49	3.7%
\$ 15,000 to \$ 24,999	158	NC	18.4%	225	NC	9.8%
\$ 25,000 to \$ 34,999	204	NC	23.8%	306	NC	13.4%
\$ 35,000 to \$ 49,999	55	NC	6.4%	284	NC	12.4%
\$ 50,000 to \$ 74,999	105	NC	12.2%	563	NC	24.6%
\$ 100,000 to \$ 149,999	44	NC	5.1%	240	NC	10.5%
\$ 150,000 to \$ 199,999	0	20	0.0%	85	43	3.7%
\$ 200,000 or more	0	20	0.0%	35	26	1.5%

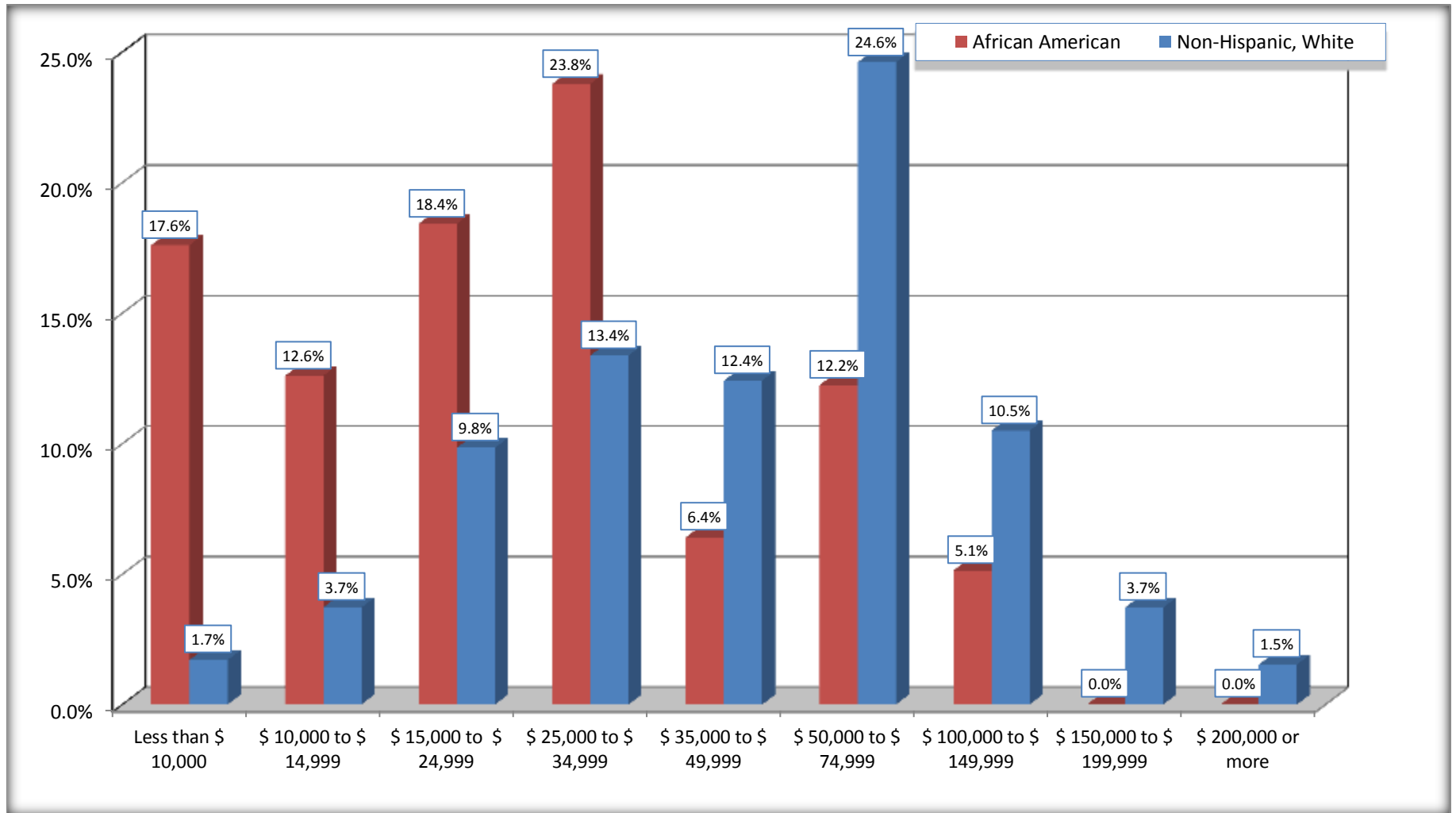
Source: U.S. Census Bureau, 2008-2012 American Community Survey

For information on confidentiality protection, sampling error, nonsampling error, and definitions, see Survey Methodology.

<http://www.census.gov/acs/www/UseData/index.htm>

Family Income in the Past 12 Months

Falls County, Texas



Source: B19101. FAMILY INCOME IN THE PAST 12 MONTHS (IN 2010 INFLATION-ADJUSTED DOLLARS)
Data Set: 2008-2012 American Community Survey 5-Year Estimates

B19113. MEDIAN FAMILY INCOME IN THE PAST 12 MONTHS (IN 2010 INFLATION-ADJUSTED DOLLARS)

Data Set: 2008-2012 American Community Survey 5-Year Estimates

	Falls County, Texas			
	African American	Margin of Error (+/-)	White, Not Hispanic	Margin of Error (+/-)
Median family income in the past 12 months (in 2010 inflation-adjusted dollars)	\$ 25,526	\$ 4,387	\$ 58,654	\$ 6,429

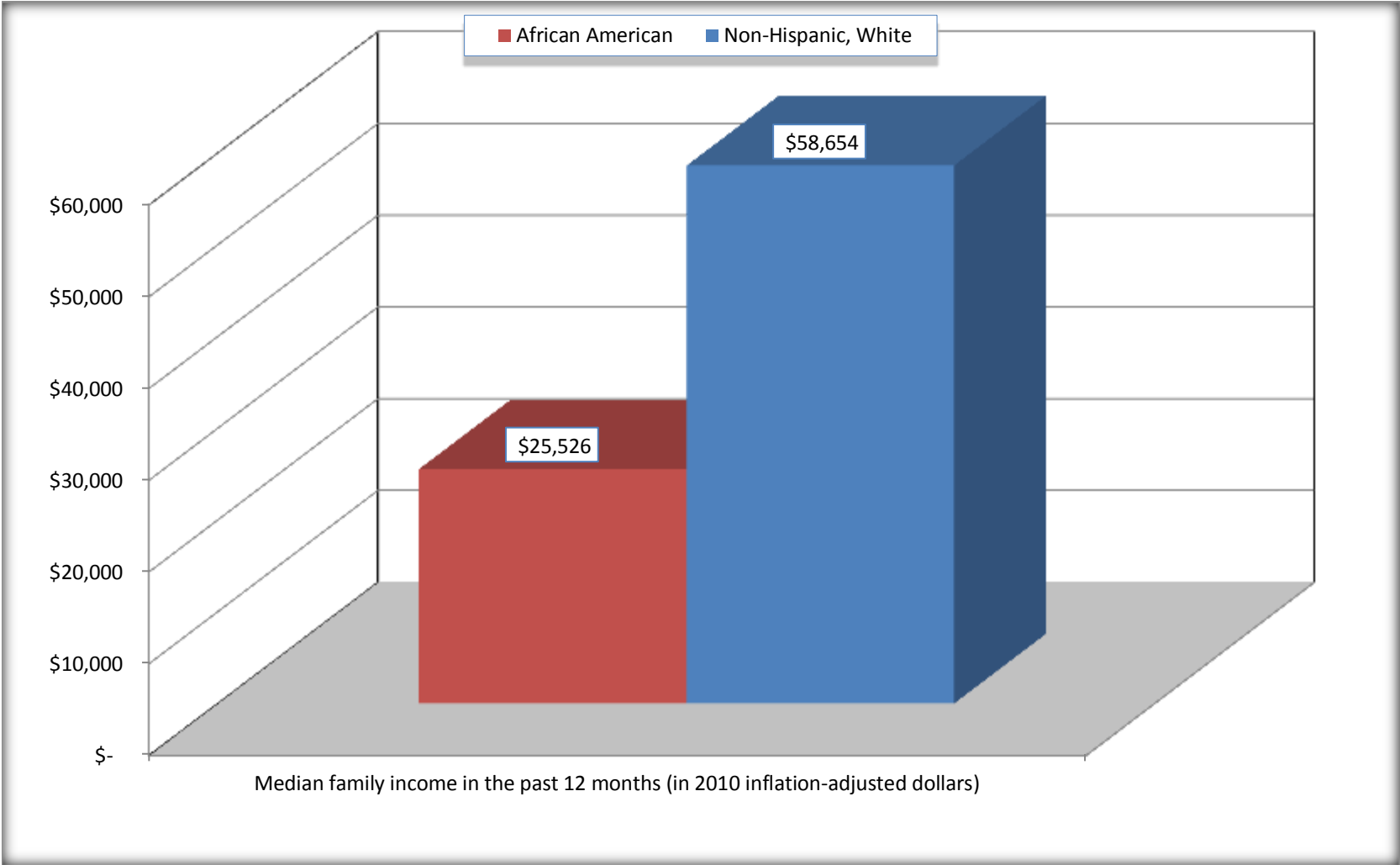
Source: U.S. Census Bureau, 2008-2012 American Community Survey

For information on confidentiality protection, sampling error, nonsampling error, and definitions, see Survey Methodology.

<http://www.census.gov/acs/www/UseData/index.htm>

Median Family Income in the Past 12 Months

Falls County, Texas



Source: B19113. MEDIAN FAMILY INCOME IN THE PAST 12 MONTHS (IN 2010 INFLATION-ADJUSTED DOLLARS)
Data Set: 2008-2012 American Community Survey 5-Year Estimates

B19202. MEDIAN NONFAMILY HOUSEHOLD INCOME IN THE PAST 12 MONTHS (IN 2010 INFLATION-ADJUSTED DOLLARS)

Data Set: 2008-2012 American Community Survey 5-Year Estimates

	Falls County, Texas			
	African American	Margin of Error (+/-)	White, Not Hispanic	Margin of Error (+/-)
Median nonfamily household income in the past 12 months (in 2010 inflation-adjusted dollars)	\$ 14,116	\$ 4,331	\$ 25,130	\$ 2,948

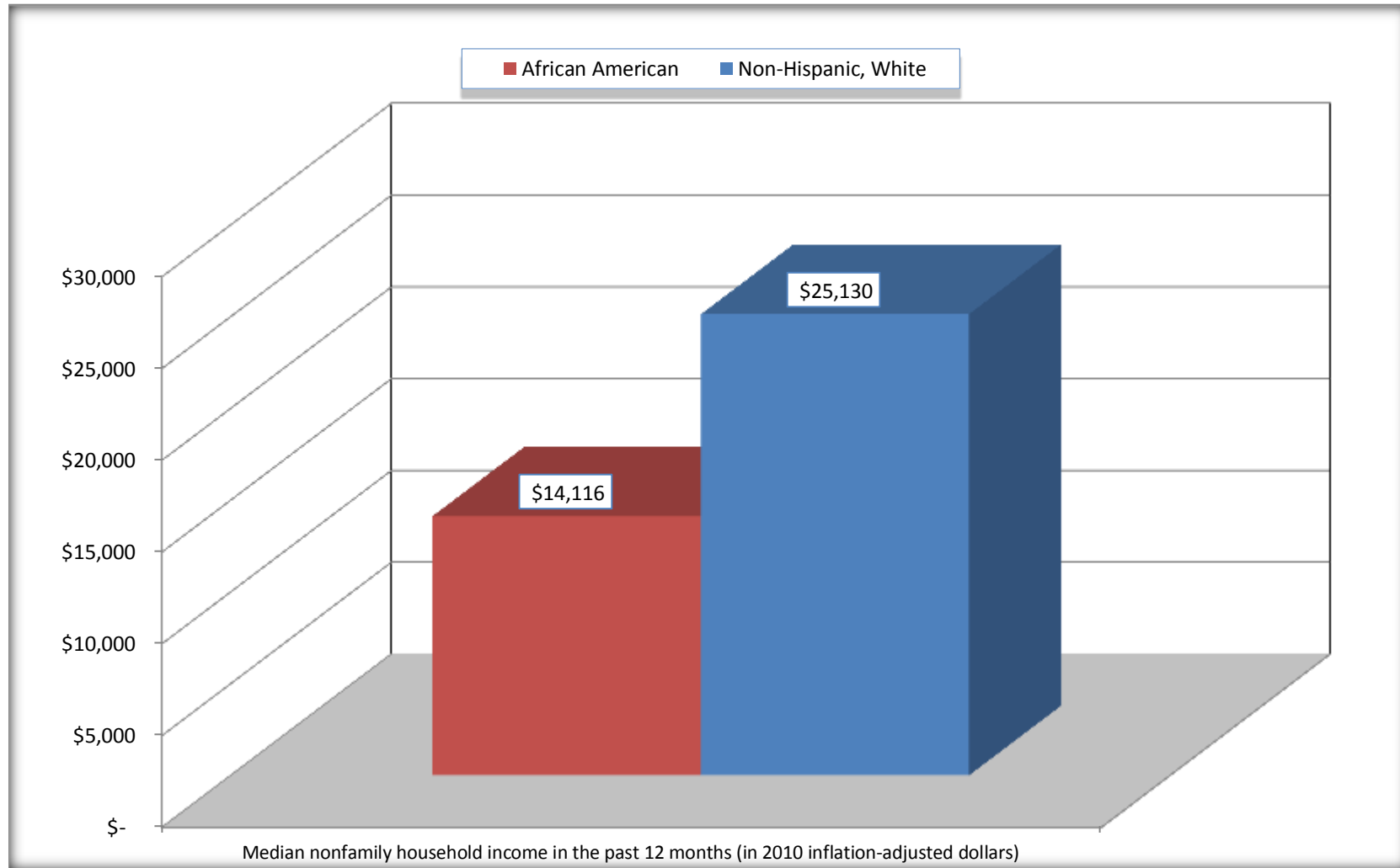
Source: U.S. Census Bureau, 2008-2012 American Community Survey

For information on confidentiality protection, sampling error, nonsampling error, and definitions, see Survey Methodology.

<http://www.census.gov/acs/www/UseData/index.htm>

Median Non-Family Income in the Past 12 Months

Falls County, Texas



Source: B19202. MEDIAN NONFAMILY HOUSEHOLD INCOME IN THE PAST 12 MONTHS (IN 2010 INFLATION-ADJUSTED DOLLARS)
Data Set: 2008-2012 American Community Survey 5-Year Estimates

B19301. PER CAPITA INCOME IN THE PAST 12 MONTHS (IN 2010 INFLATION-ADJUSTED DOLLARS)

Data Set: 2008-2012 American Community Survey 5-Year Estimates

	Falls County, Texas			
	African American	Margin of Error (+/-)	White, Not Hispanic	Margin of Error (+/-)
Per capita income in the past 12 months (in 2010 inflation-adjusted dollars)	\$ 10,759	\$ 1,464	\$ 22,337	\$ 1,341

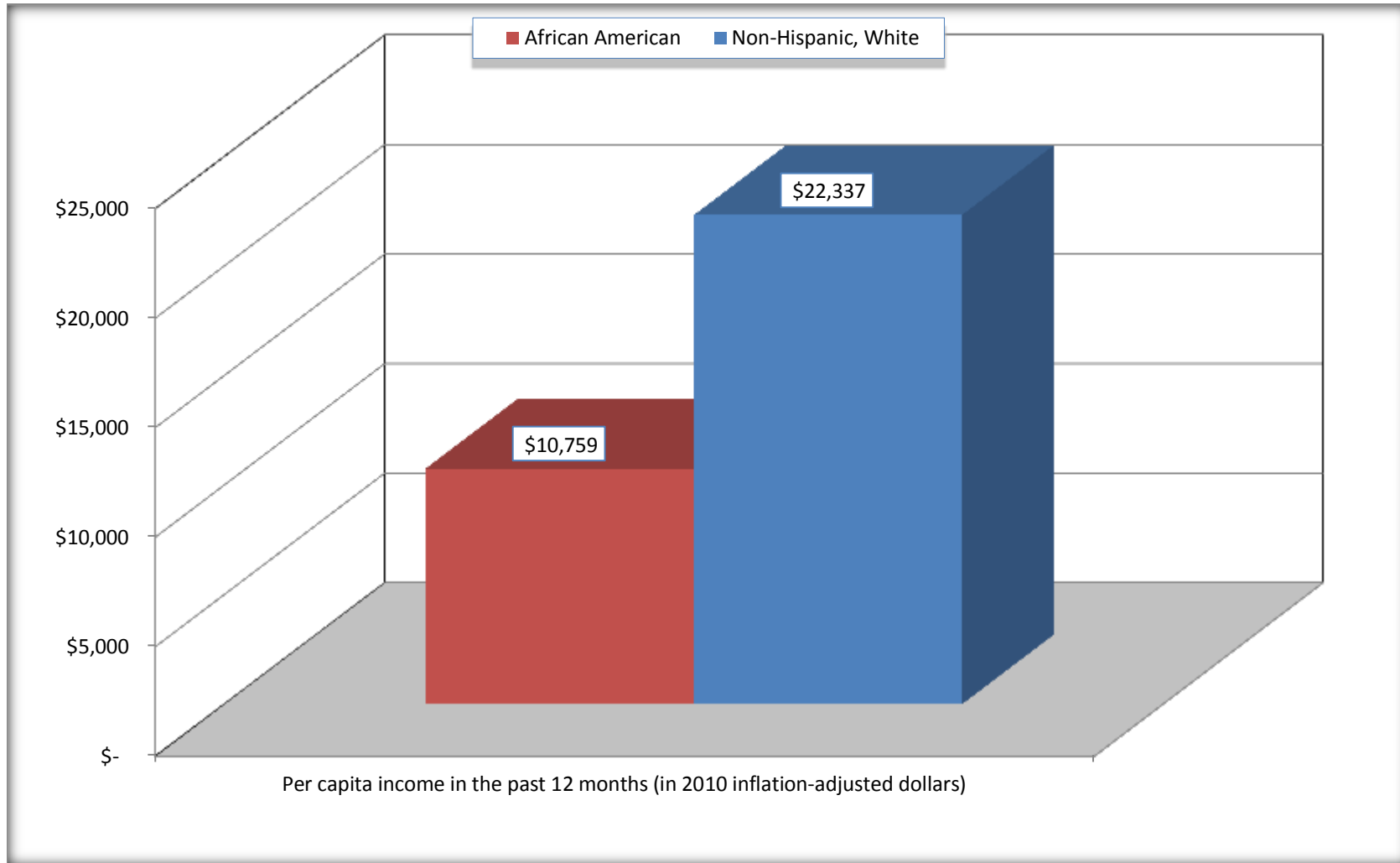
Source: U.S. Census Bureau, 2008-2012 American Community Survey

For information on confidentiality protection, sampling error, nonsampling error, and definitions, see Survey Methodology.

<http://www.census.gov/acs/www/UseData/index.htm>

Per capita Income in the Past 12 Months

Falls County, Texas



Source: B19301. PER CAPITA INCOME IN THE PAST 12 MONTHS (IN 2010 INFLATION-ADJUSTED DOLLARS)
Data Set: 2008-2012 American Community Survey 5-Year Estimates

B20017. MEDIAN EARNINGS IN THE PAST 12 MONTHS (IN 2010 INFLATION-ADJUSTED DOLLARS) BY SEX BY WORK EXPERIENCE IN THE PAST 12 MONTHS FOR THE POPULATION 16 YEARS AND OVER WITH EARNINGS IN THE PAST 12 MONTHS

Data Set: 2008-2012 American Community Survey 5-Year Estimates

	Falls County, Texas			
	African American	Margin of Error (+/-)	White, Not Hispanic	Margin of Error (+/-)
Median earnings in the past 12 months (in 2010 inflation-adjusted dollars) --				
Total:	\$ 15,052	\$ 4,627	\$ 30,735	\$ 1,755
Male --				
Total	\$ 14,418	\$ 4,944	\$ 35,235	\$ 2,060
Worked full-time, year-round in the past 12 months	\$ 30,500	\$ 16,504	\$ 39,516	\$ 3,465
Other	\$ 3,514	\$ 3,511	\$ 9,125	\$ 3,529
Female --				
Total	\$ 16,250	\$ 8,094	\$ 27,307	\$ 2,778
Worked full-time, year-round in the past 12 months	\$ 27,479	\$ 8,997	\$ 32,724	\$ 1,862
Other	\$ 4,507	\$ 1,749	\$ 6,998	\$ 1,320

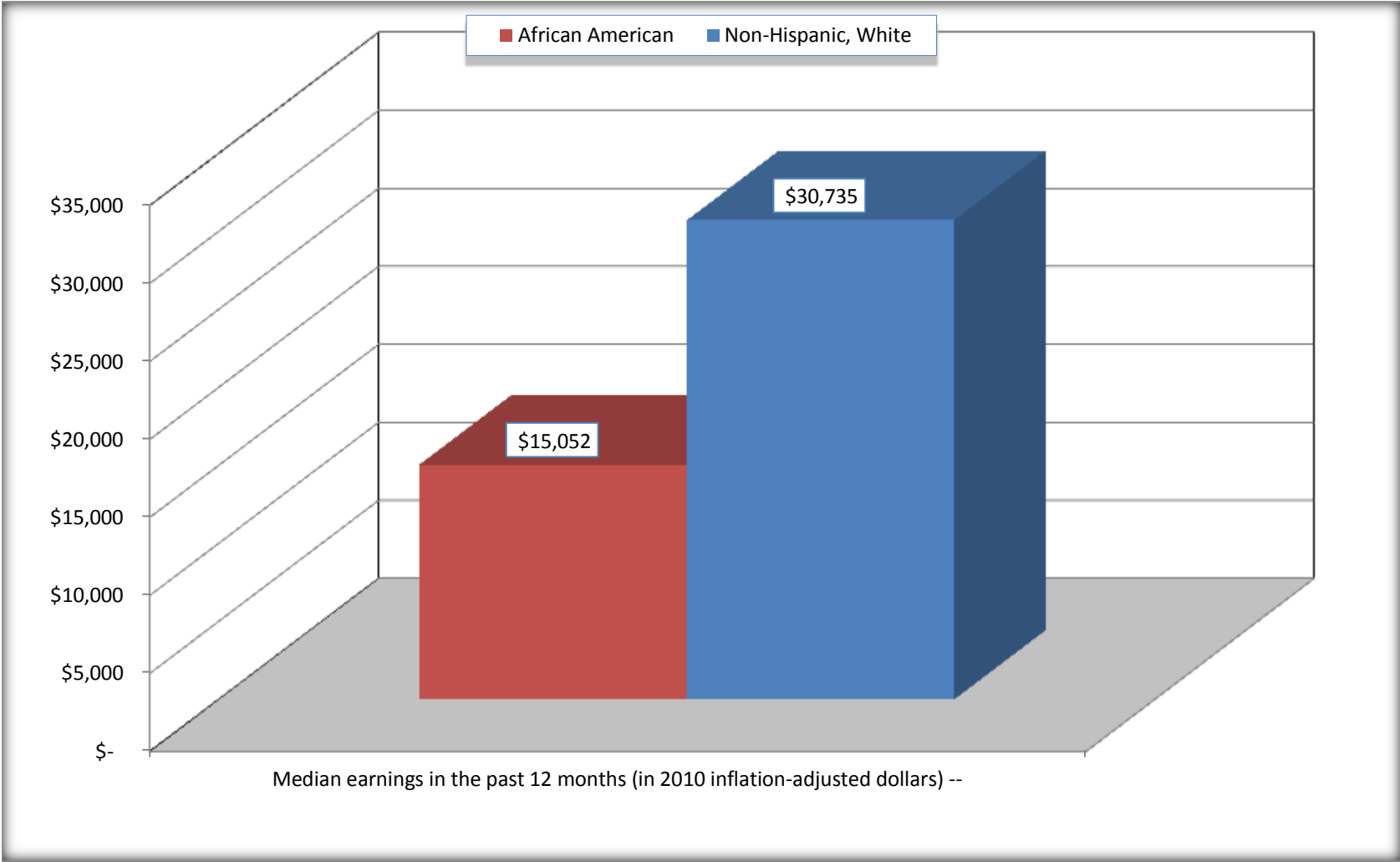
Source: U.S. Census Bureau, 2008-2012 American Community Survey

For information on confidentiality protection, sampling error, nonsampling error, and definitions, see Survey Methodology.

<http://www.census.gov/acs/www/UseData/index.htm>

Median earnings in the Past 12 Months (16 Years and Over with Earnings)

Falls County, Texas



Source: B20017. MEDIAN EARNINGS IN THE PAST 12 MONTHS (IN 2010 INFLATION-ADJUSTED DOLLARS) BY SEX BY WORK EXPERIENCE IN THE PAST 12 MONTHS FOR THE POPULATION 16 YEARS AND OVER WITH EARNINGS IN THE PAST 12 MONTHS
Data Set: 2008-2012 American Community Survey 5-Year Estimates

B20005. SEX BY WORK EXPERIENCE IN THE PAST 12 MONTHS BY EARNINGS IN THE PAST 12 MONTHS (IN 2010 INFLATION-ADJUSTED DOLLARS) FOR THE POPULATION 16 YEARS AND OVER

Data Set: 2008-2012 American Community Survey 5-Year Estimates

	Falls County, Texas					
	African American	Margin of Error (+/-)	% of AA Total	White, Not Hispanic	Margin of Error (+/-)	% of NHW Total
Total:	3,559	89	100.0%	8,030	32	100.0%
Worked full-time, year-round in the past 12 months:	793	NC	22.3%	3,247	NC	40.4%
No earnings	0	NC	0.0%	0	NC	0.0%
With earnings:	793	NC	22.3%	3,247	NC	40.4%
\$ 1 to \$ 9,999 or loss	31	NC	0.9%	135	NC	1.7%
\$ 10,000 to \$ 19,999	168	NC	4.7%	393	NC	4.9%
\$ 20,000 to \$ 29,999	195	NC	5.5%	562	NC	7.0%
\$ 30,000 to \$ 49,999	262	NC	7.4%	1,389	NC	17.3%
\$ 50,000 to \$ 74,999	127	NC	3.6%	484	NC	6.0%
\$ 75,000 or more	10	NC	0.3%	284	NC	3.5%
Other:	2,766	NC	77.7%	4,783	NC	59.6%
No earnings	1,959	NC	55.0%	3,589	NC	44.7%
With earnings: less than full time, year-round	807	NC	22.7%	1,194	NC	14.9%
Male:	1,456	64	40.9%	3,765	20	46.9%
Worked full-time, year-round in the past 12 months:	326	109	9.2%	1,727	148	21.5%
No earnings	0	20	0.0%	0	20	0.0%
With earnings:	326	109	9.2%	1,727	148	21.5%
\$ 1 to \$ 9,999 or loss	5	NC	0.1%	75	NC	0.9%
\$ 10,000 to \$ 19,999	60	NC	1.7%	154	NC	1.9%
\$ 20,000 to \$ 29,999	95	NC	2.7%	269	NC	3.3%
\$ 30,000 to \$ 49,999	99	NC	2.8%	649	NC	8.1%
\$ 50,000 to \$ 74,999	64	NC	1.8%	350	NC	4.4%
\$ 75,000 or more	3	NC	0.1%	230	NC	2.9%

	Falls County, Texas					
	African American	Margin of Error (+/-)	% of AA Total	White, Not Hispanic	Margin of Error (+/-)	% of NHW Total
Other:	1,130	123	31.8%	2,038	151	25.4%
No earnings	814	145	22.9%	1,517	149	18.9%
With earnings:	316	87	8.9%	521	106	6.5%
Female:	2,103	72	59.1%	4,265	27	53.1%
Worked full-time, year-round in the past 12 months:	467	106	13.1%	1,520	184	18.9%
No earnings	0	20	0.0%	0	20	0.0%
With earnings:	467	106	13.1%	1,520	184	18.9%
\$ 1 to \$ 9,999 or loss	26	NC	0.7%	60	NC	0.7%
\$ 10,000 to \$ 19,999	108	NC	3.0%	239	NC	3.0%
\$ 20,000 to \$ 29,999	100	NC	2.8%	293	NC	3.6%
\$ 30,000 to \$ 49,999	163	NC	4.6%	740	NC	9.2%
\$ 50,000 to \$ 74,999	63	NC	1.8%	134	NC	1.7%
\$ 75,000 or more	7	NC	0.2%	54	NC	0.7%
Other:	1,636	133	46.0%	2,745	189	34.2%
No earnings	1,145	154	32.2%	2,072	201	25.8%
With earnings:	491	148	13.8%	673	139	8.4%

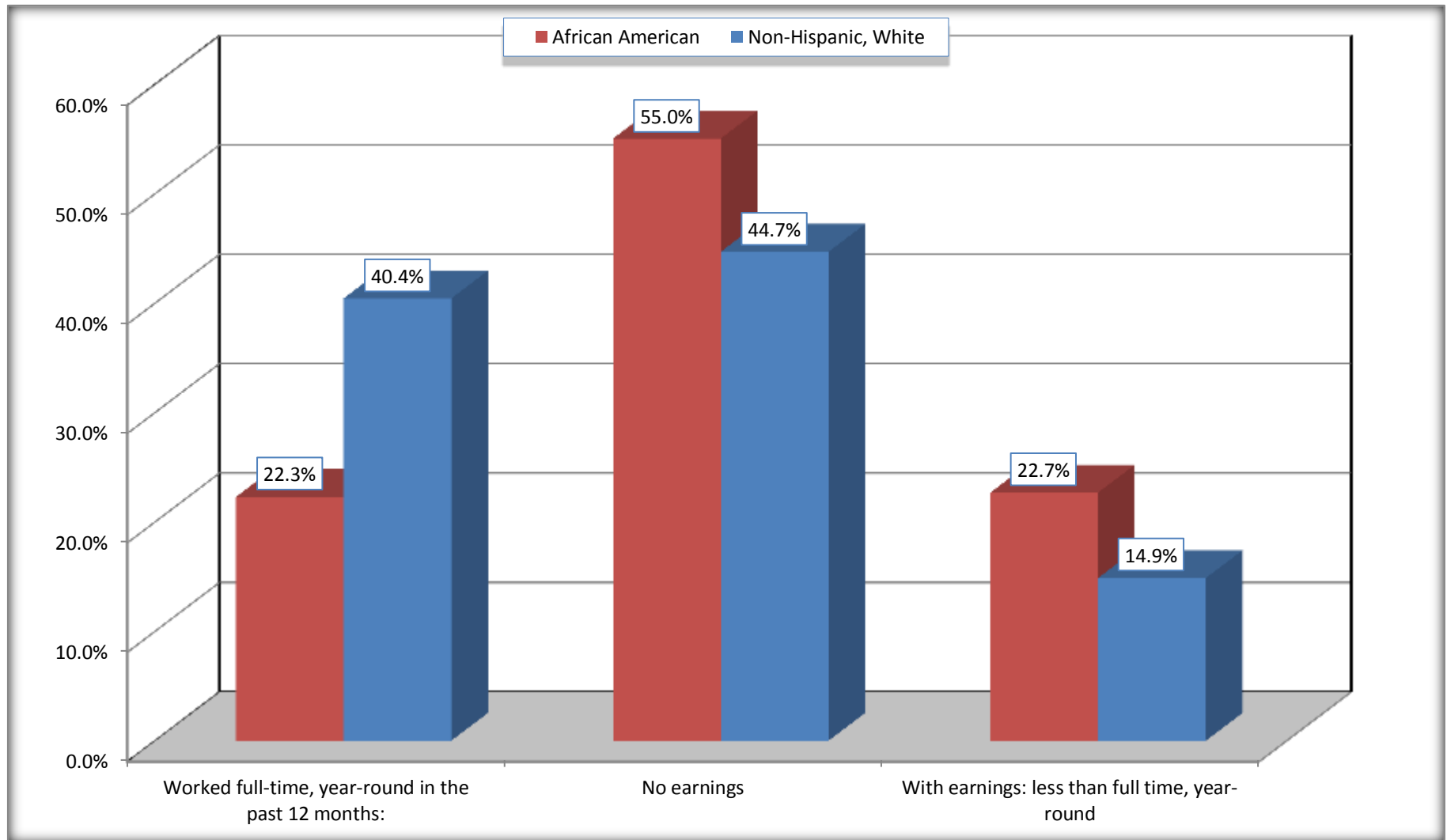
Source: U.S. Census Bureau, 2008-2012 American Community Survey

For information on confidentiality protection, sampling error, nonsampling error, and definitions, see Survey Methodology.

<http://www.census.gov/acs/www/UseData/index.htm>

Employment and Earnings in in the Past 12 Months (16 Years and Over)

Falls County, Texas



Source: B20005. SEX BY WORK EXPERIENCE IN THE PAST 12 MONTHS BY EARNINGS IN THE PAST 12 MONTHS (IN 2010 INFLATION-ADJUSTED DOLLARS) FOR THE POPULATION 16 YEARS AND OVER

Data Set: 2008-2012 American Community Survey 5-Year Estimates

C21001. SEX BY AGE BY VETERAN STATUS FOR THE CIVILIAN POPULATION 18 YEARS AND OVER

Data Set: 2008-2012 American Community Survey 5-Year Estimates

	Falls County, Texas					
	African American	Margin of Error (+/-)	% of AA Total	White, Not Hispanic	Margin of Error (+/-)	% of NHW Total
Total:	3,363	79	100.0%	7,817	9	100.0%
Veteran	301	NC	9.0%	1,061	NC	13.6%
Nonveteran	3,062	NC	91.0%	6,756	NC	86.4%
Male:	1,374	39	40.9%	3,644	20	46.6%
18 to 64 years:	1,185	35	35.2%	2,675	20	34.2%
Veteran	205	69	6.1%	465	114	5.9%
Nonveteran	980	73	29.1%	2,210	114	28.3%
65 years and over:	189	17	5.6%	969	20	12.4%
Veteran	66	37	2.0%	522	68	6.7%
Nonveteran	123	39	3.7%	447	68	5.7%
Female:	1,989	53	59.1%	4,173	9	53.4%
18 to 64 years:	1,657	50	49.3%	3,053	9	39.1%
Veteran	30	27	0.9%	58	38	0.7%
Nonveteran	1,627	54	48.4%	2,995	39	38.3%
65 years and over:	332	13	9.9%	1,120	20	14.3%
Veteran	0	20	0.0%	16	13	0.2%
Nonveteran	332	13	9.9%	1,104	13	14.1%

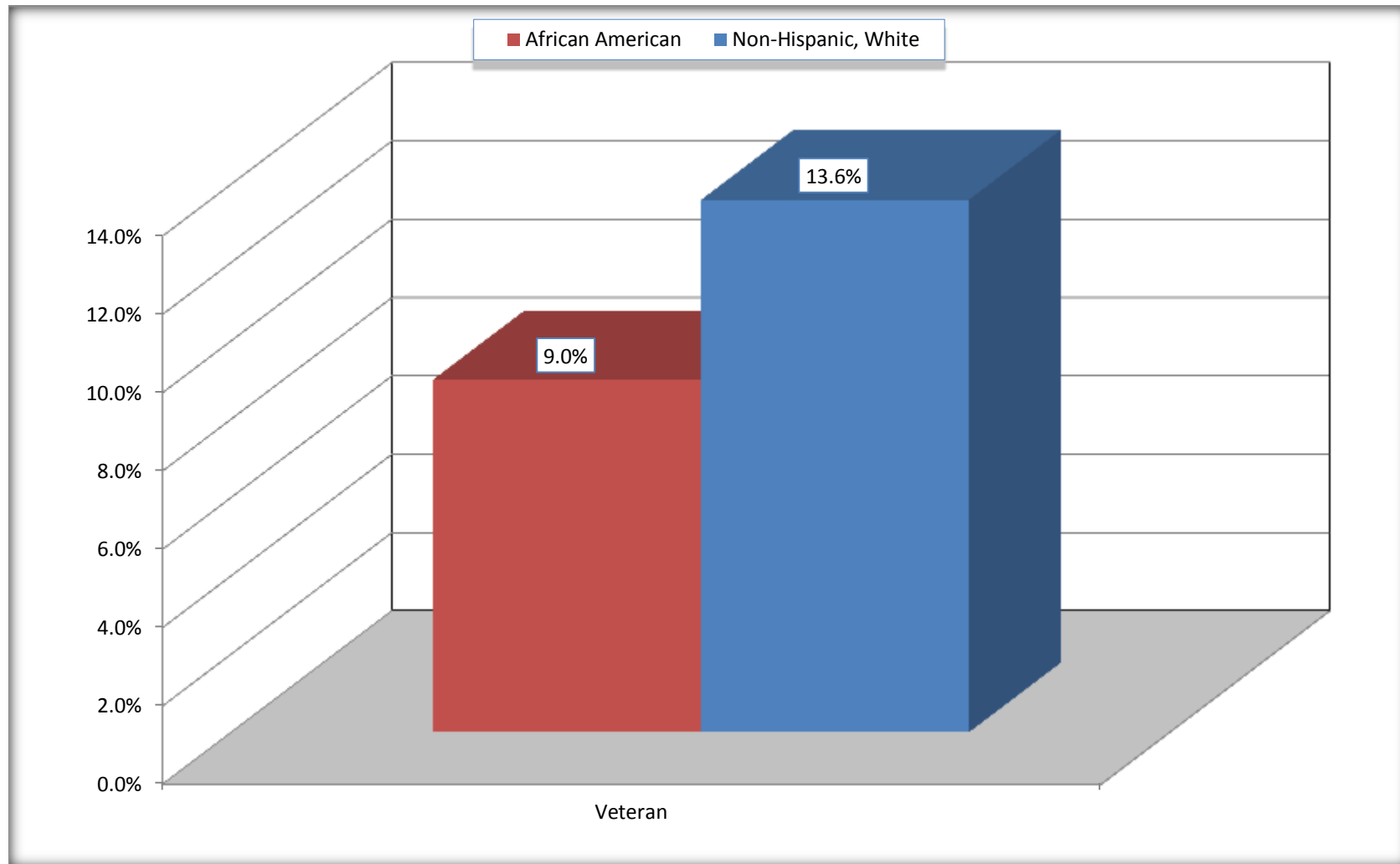
Source: U.S. Census Bureau, 2008-2012 American Community Survey

For information on confidentiality protection, sampling error, nonsampling error, and definitions, see Survey Methodology.

<http://www.census.gov/acs/www/UseData/index.htm>

Veterans in the Civilian Population 18 Years and Over

Falls County, Texas



Source: C21001. SEX BY AGE BY VETERAN STATUS FOR THE CIVILIAN POPULATION 18 YEARS AND OVER
Data Set: 2008-2012 American Community Survey 5-Year Estimates

B22005. RECEIPT OF FOOD STAMPS/SNAP IN THE PAST 12 MONTHS BY RACE OF HOUSEHOLDER

Data Set: 2008-2012 American Community Survey 5-Year Estimates

	Falls County, Texas					
	African American	Margin of Error (+/-)	% of AA Total	White, Not Hispanic	Margin of Error (+/-)	% of NHW Total
Total:	1,407	131	100.0%	3,494	195	100.0%
HH received Food Stamps/SNAP in the past 12 months	579	120	41.2%	287	76	8.2%
HH did not receive Food Stamps/SNAP in the past 12 months	828	152	58.8%	3,207	184	91.8%

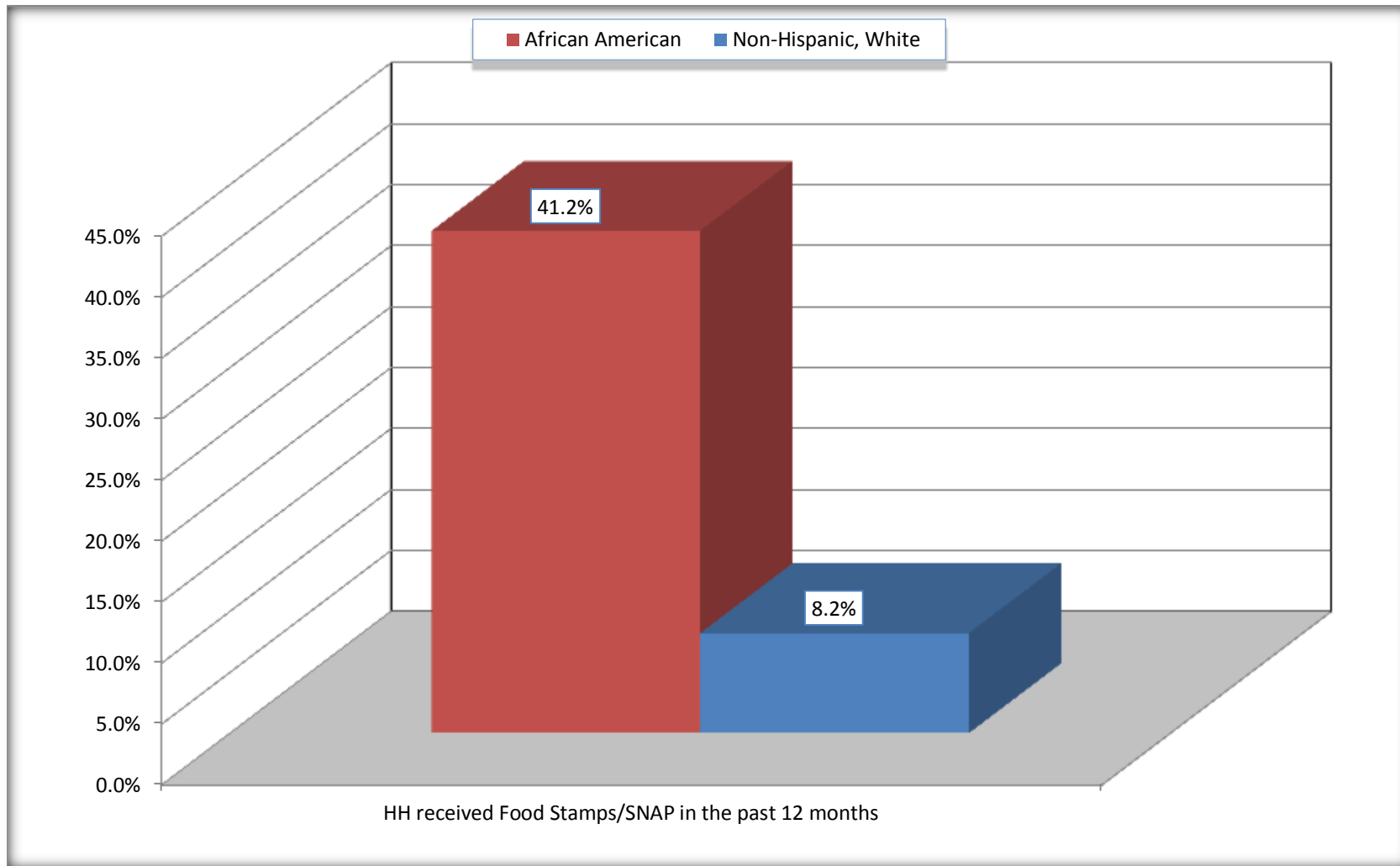
Source: U.S. Census Bureau, 2008-2012 American Community Survey

For information on confidentiality protection, sampling error, nonsampling error, and definitions, see Survey Methodology.

<http://www.census.gov/acs/www/UseData/index.htm>

Receipt of Food Stamps/SNAP in the Past 12 Months by Household

Falls County, Texas



Source: B22005. RECEIPT OF FOOD STAMPS/SNAP IN THE PAST 12 MONTHS BY RACE OF HOUSEHOLDER
Data Set: 2008-2012 American Community Survey 5-Year Estimates

C23002. SEX BY AGE BY EMPLOYMENT STATUS FOR THE POPULATION 16 YEARS AND OVER

Data Set: 2008-2012 American Community Survey 5-Year Estimates

	Falls County, Texas					
	African American	Margin of Error (+/-)	% of AA Total	White, Not Hispanic	Margin of Error (+/-)	% of NHW Total
Total:	3,559	89	100.0%	8,030	32	100.0%
In labor force:	1,444	NC	40.6%	4,313	NC	53.7%
In Armed Forces	0	NC	0.0%	0	NC	0.0%
Civilian:	1,424	NC	40.0%	3,946	NC	49.1%
Employed	1,295	NC	36.4%	4,023	NC	50.1%
Unemployed	149	NC	4.2%	290	NC	3.6%
Not in labor force	2,115	NC	59.4%	3,717	NC	46.3%
Male:	1,456	64	40.9%	3,765	20	46.9%
16 to 64 years:	1,267	62	35.6%	2,796	20	34.8%
In labor force:	546	148	15.3%	1,994	158	24.8%
In Armed Forces	0	20	0.0%	0	20	0.0%
Civilian:	546	148	15.3%	1,994	158	24.8%
Employed	474	138	13.3%	1,867	152	23.3%
Unemployed	72	51	2.0%	127	68	1.6%
Not in labor force	721	156	20.3%	802	158	10.0%
65 years and over:	189	17	5.3%	969	20	12.1%
In labor force:	0	20	0.0%	191	55	2.4%
Employed	0	20	0.0%	180	55	2.2%
Unemployed	0	20	0.0%	11	11	0.1%
Not in labor force	189	17	5.3%	778	55	9.7%

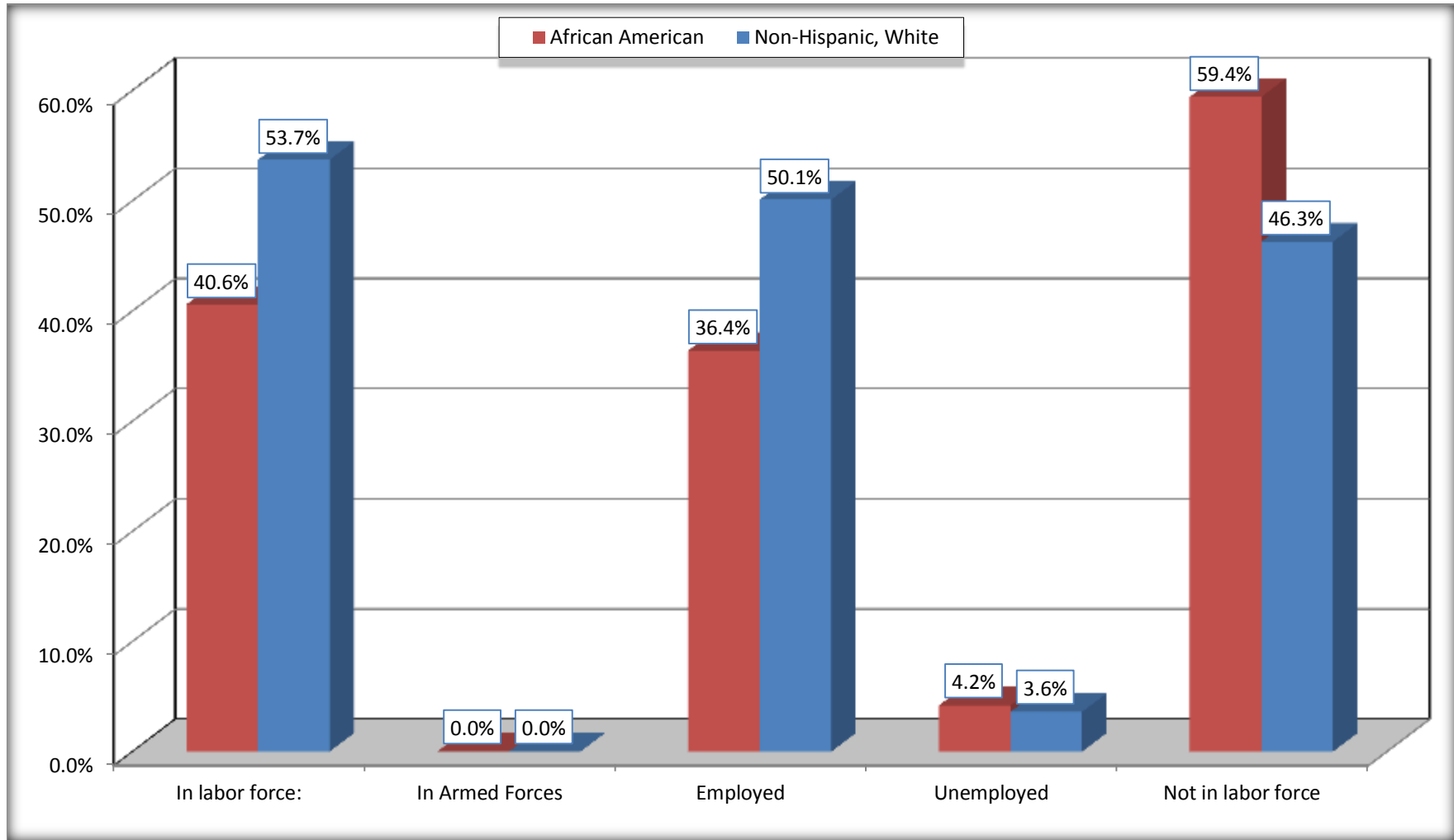
	Falls County, Texas					
	African American	Margin of Error (+/-)	% of AA Total	White, Not Hispanic	Margin of Error (+/-)	% of NHW Total
Female:	2,103	72	59.1%	4,265	27	53.1%
16 to 64 years:	1,771	72	49.8%	3,145	27	39.2%
In labor force:	878	144	24.7%	1,952	176	24.3%
In Armed Forces	0	20	0.0%	0	20	0.0%
Civilian:	878	144	24.7%	1,952	176	24.3%
Employed	801	151	22.5%	1,804	177	22.5%
Unemployed	77	53	2.2%	148	59	1.8%
Not in labor force	893	152	25.1%	1,193	177	14.9%
65 years and over:	332	13	9.3%	1,120	20	13.9%
In labor force:	20	20	0.6%	176	79	2.2%
Employed	20	20	0.6%	172	79	2.1%
Unemployed	0	20	0.0%	4	8	0.0%
Not in labor force	312	24	8.8%	944	79	11.8%

Source: U.S. Census Bureau, 2008-2012 American Community Survey

For information on confidentiality protection, sampling error, nonsampling error, and definitions, see Survey Methodology.
<http://www.census.gov/acs/www/UseData/index.htm>

Employment Status for the Population 16 years and over

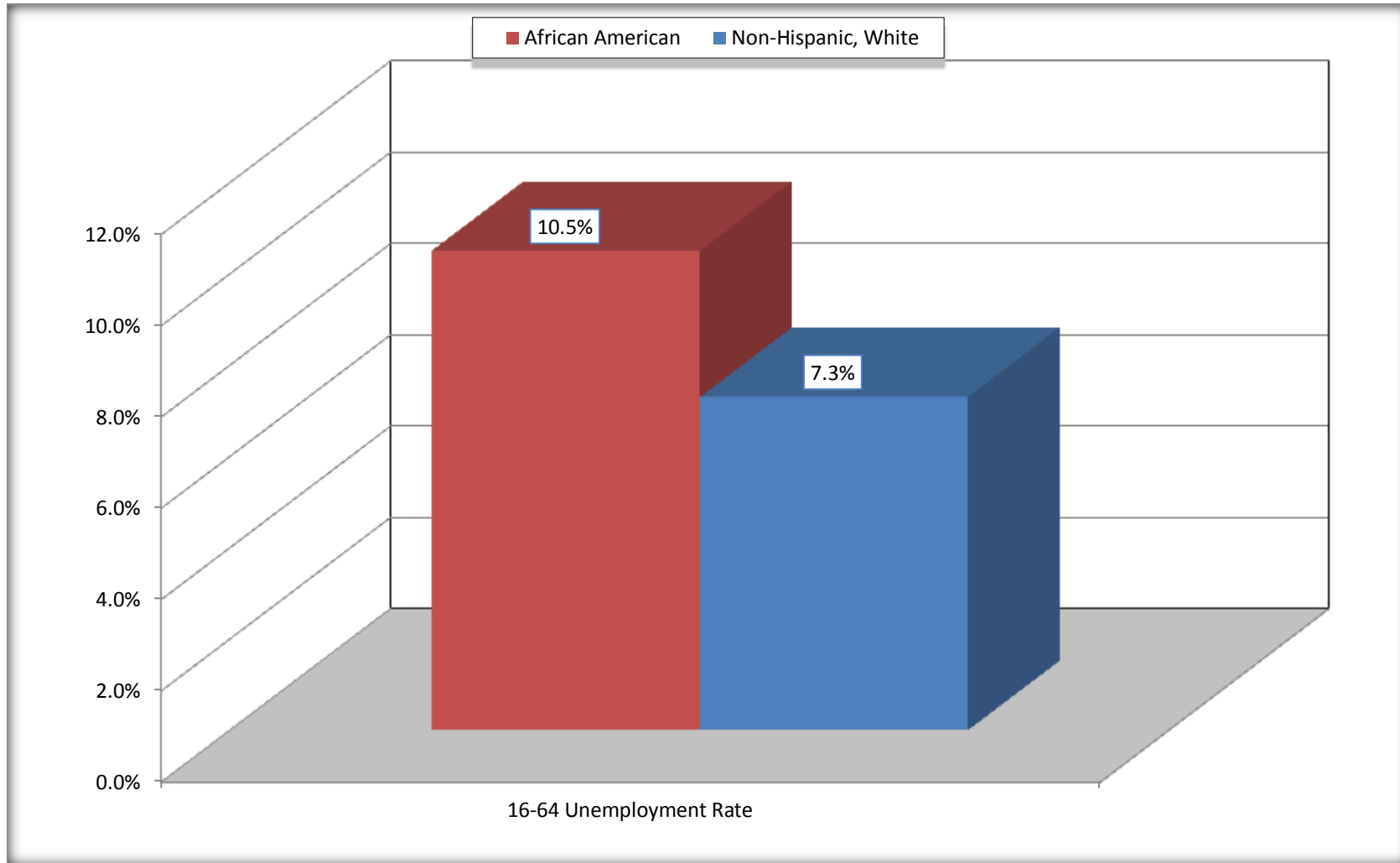
Falls County, Texas



Source: C23002. SEX BY AGE BY EMPLOYMENT STATUS FOR THE POPULATION 16 YEARS AND OVER
Data Set: 2008-2012 American Community Survey 5-Year Estimates

Unemployment of Working Age Population (Ages 16 to 64) (As a Percent of 16-64 Civilian Labor Force)

Falls County, Texas



Source: C23002. SEX BY AGE BY EMPLOYMENT STATUS FOR THE POPULATION 16 YEARS AND OVER
Data Set: 2008-2012 American Community Survey 5-Year Estimates

C24010. SEX BY OCCUPATION FOR THE CIVILIAN EMPLOYED POPULATION 16 YEARS AND OVER

Data Set: 2008-2012 American Community Survey 5-Year Estimates

	Falls County, Texas					
	African American	Margin of Error (+/-)	% of AA Total	White, Not Hispanic	Margin of Error (+/-)	% of NHW Total
Total:	1,295	214	100.0%	4,023	225	100.0%
Management, professional, and related occupations	238	NC	18.4%	1,305	NC	32.4%
Service occupations	609	NC	47.0%	577	NC	14.3%
Sales and office occupations	133	NC	10.3%	1,087	NC	27.0%
Natural resources, construction, and maintenance occupations:	114	NC	8.8%	513	NC	12.8%
Production, transportation, and material moving occupations	201	NC	15.5%	541	NC	13.4%
Male:	474	138	36.6%	2,047	148	50.9%
Management, business, science, and arts occupations:	31	33	2.4%	560	123	13.9%
Service occupations	172	124	13.3%	198	85	4.9%
Sales and office occupations	50	50	3.9%	312	76	7.8%
Natural resources, construction, and maintenance occupations:	114	90	8.8%	513	124	12.8%
Production, transportation, and material moving occupations	107	66	8.3%	464	101	11.5%
Female:	821	149	63.4%	1,976	202	49.1%
Management, professional, and related occupations	207	85	16.0%	745	140	18.5%
Service occupations	437	112	33.7%	379	108	9.4%
Sales and office occupations	83	58	6.4%	775	163	19.3%
Natural resources, construction, and maintenance occupations:	0	20	0.0%	0	20	0.0%
Production, transportation, and material moving occupations	94	87	7.3%	77	40	1.9%

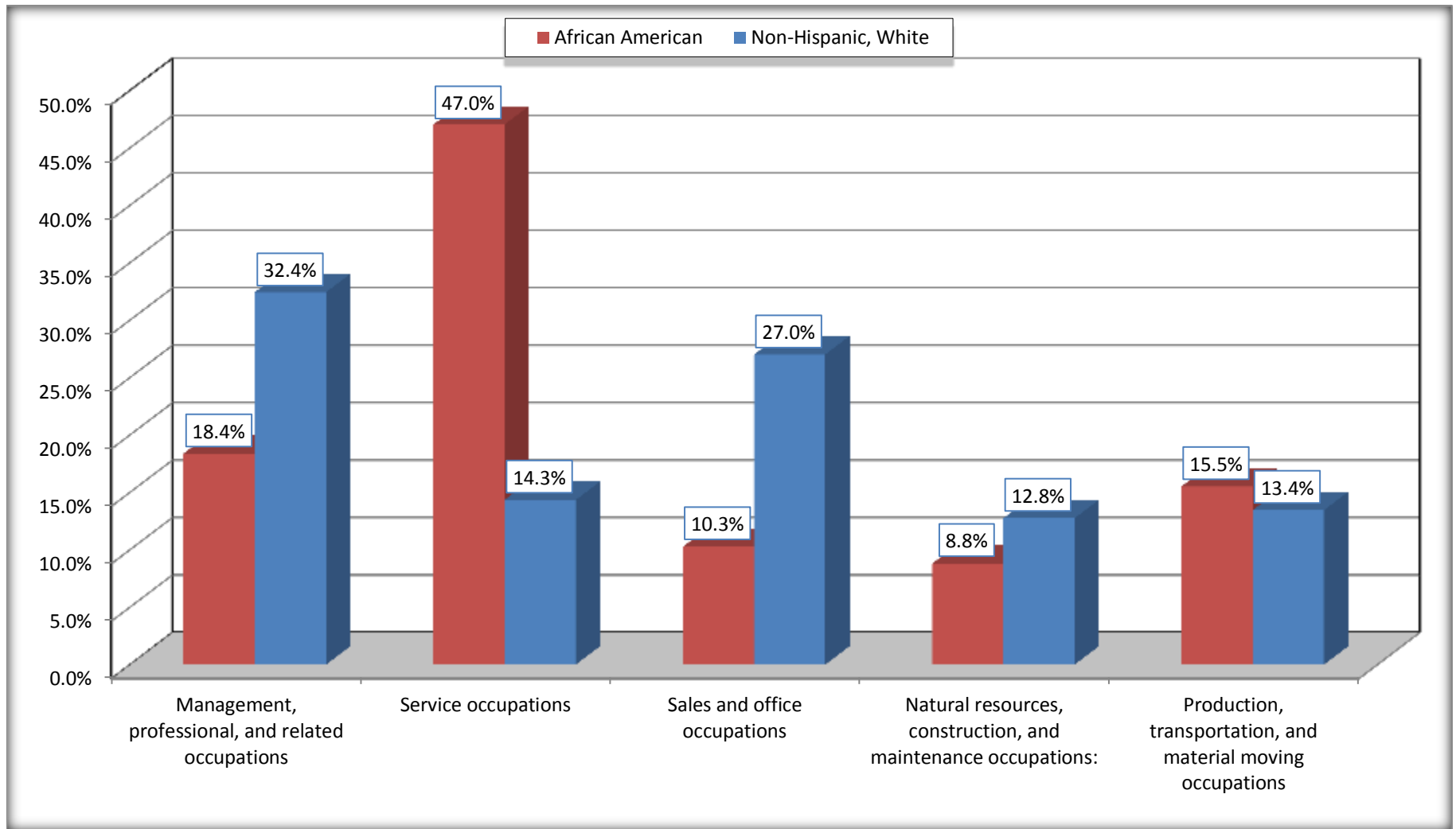
Source: U.S. Census Bureau, 2008-2012 American Community Survey

For information on confidentiality protection, sampling error, nonsampling error, and definitions, see Survey Methodology.

<http://www.census.gov/acs/www/UseData/index.htm>

Occupation for the Civilian Employed 16 Years and Over Population

Falls County, Texas



Source: C24010. SEX BY OCCUPATION FOR THE CIVILIAN EMPLOYED POPULATION 16 YEARS AND OVER
Data Set: 2008-2012 American Community Survey 5-Year Estimates

B25003. TENURE - Universe: OCCUPIED HOUSING UNITS

Data Set: 2008-2012 American Community Survey 5-Year Estimates

	Falls County, Texas					
	African American	Margin of Error (+/-)	% of AA Total	White, Not Hispanic	Margin of Error (+/-)	% of NHW Total
Total:	1,407	131	100.0%	3,494	195	100.0%
Owner occupied	675	124	48.0%	2,795	188	80.0%
Renter occupied	732	154	52.0%	699	118	20.0%

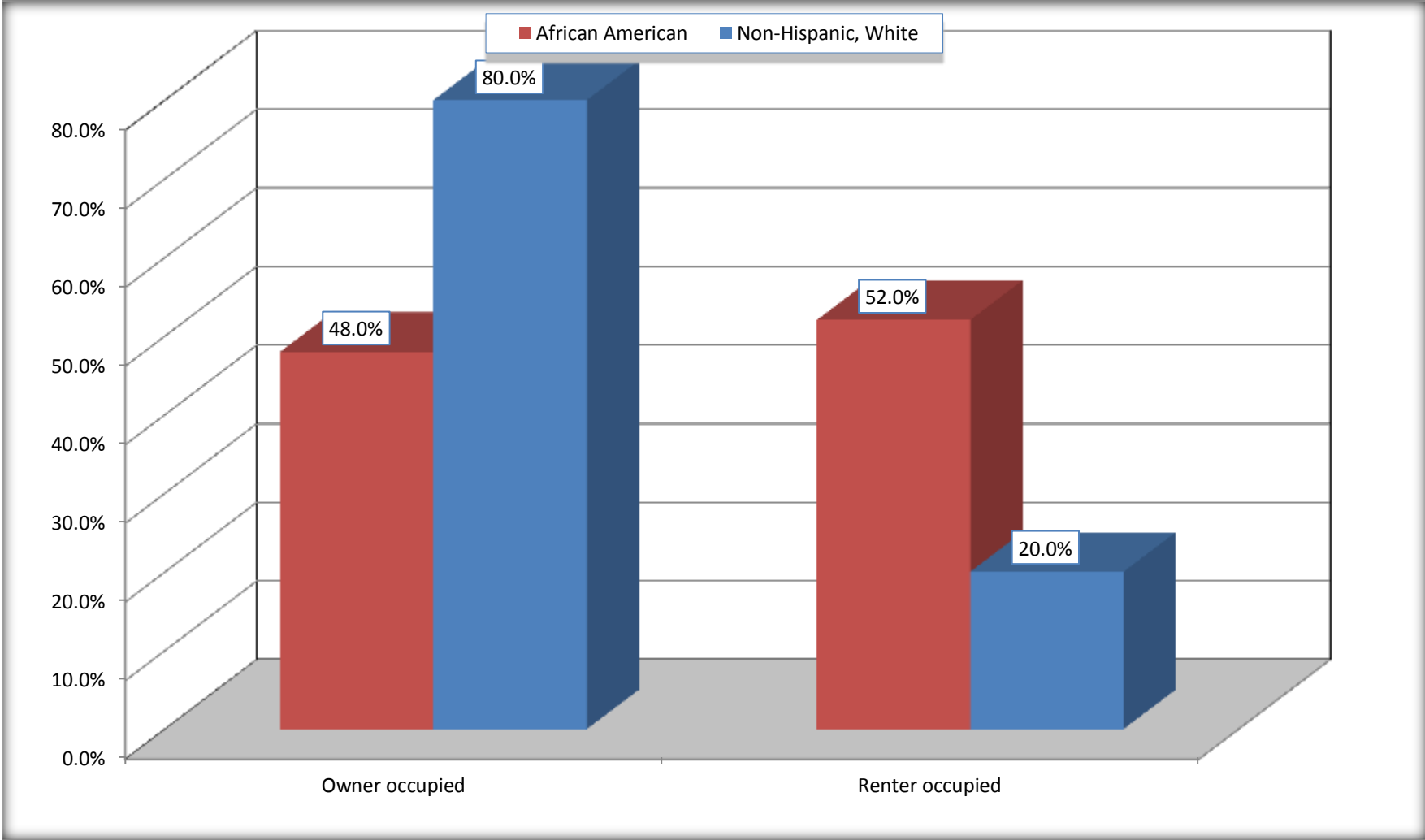
Source: U.S. Census Bureau, 2008-2012 American Community Survey

For information on confidentiality protection, sampling error, nonsampling error, and definitions, see Survey Methodology.

<http://www.census.gov/acs/www/UseData/index.h>

Home Owners and Renters by Household

Falls County, Texas



Source: B25003. TENURE - Universe: OCCUPIED HOUSING UNITS
Data Set: 2008-2012 American Community Survey 5-Year Estimates

B25014. OCCUPANTS PER ROOM - Universe: OCCUPIED HOUSING UNITS

Data Set: 2008-2012 American Community Survey 5-Year Estimates

	Falls County, Texas					
	African American	Margin of Error (+/-)	% of AA Total	White, Not Hispanic	Margin of Error (+/-)	% of NHW Total
Total:	1,407	131	100.0%	3,494	195	100.0%
1.00 or less occupants per room	1,372	135	97.5%	3,437	199	98.4%
1.01 or more occupants per room	35	33	2.5%	57	33	1.6%

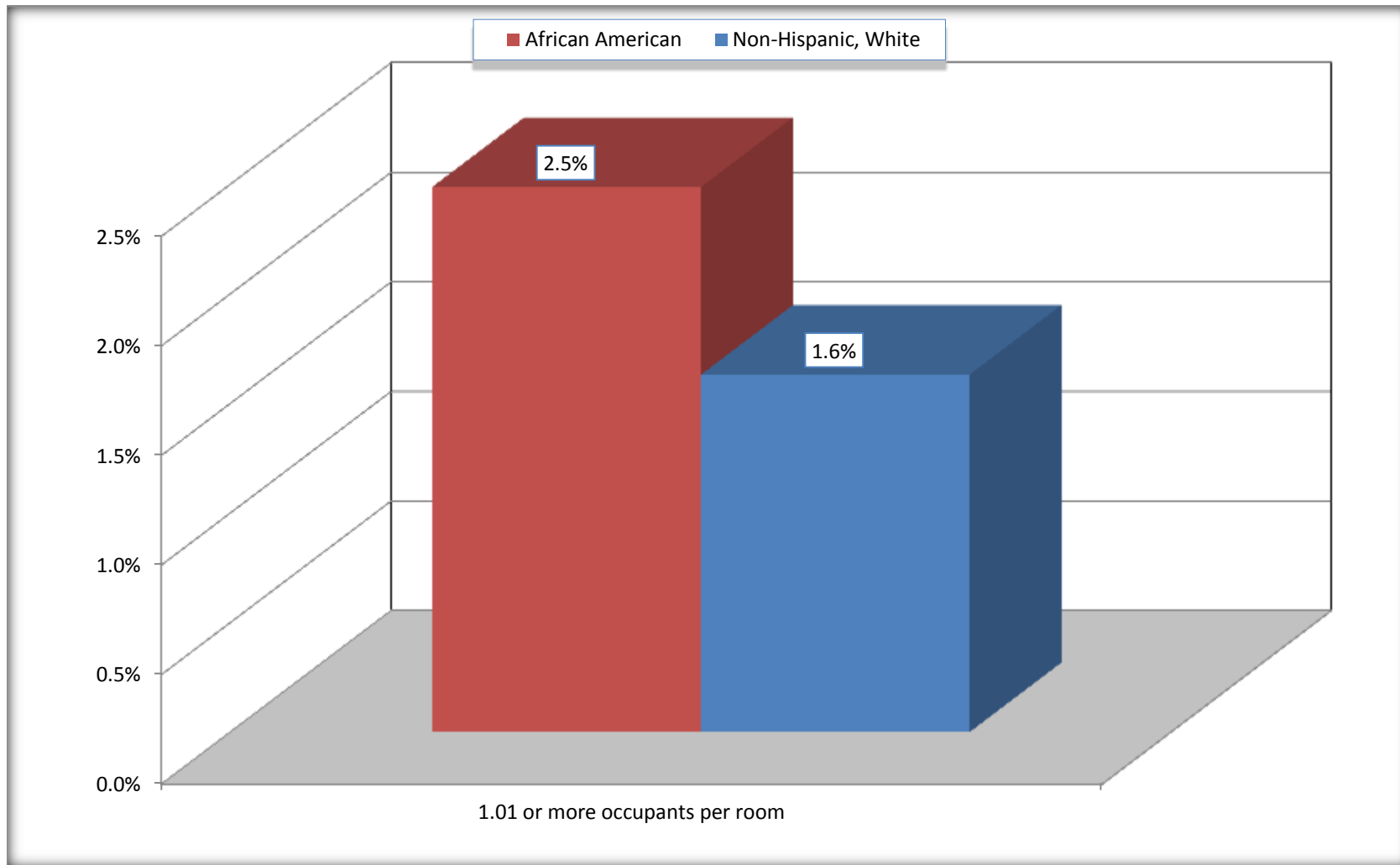
Source: U.S. Census Bureau, 2008-2012 American Community Survey

For information on confidentiality protection, sampling error, nonsampling error, and definitions, see Survey Methodology.

<http://www.census.gov/acs/www/UseData/index.ht>

More than One Person per Room (Crowding) by Household

Falls County, Texas



Source: B25014. OCCUPANTS PER ROOM - Universe: OCCUPIED HOUSING UNITS
Data Set: 2008-2012 American Community Survey 5-Year Estimates

B18101. AGE BY DISABILITY STATUS

Data Set: 2008-2012 American Community Survey 5-Year Estimates

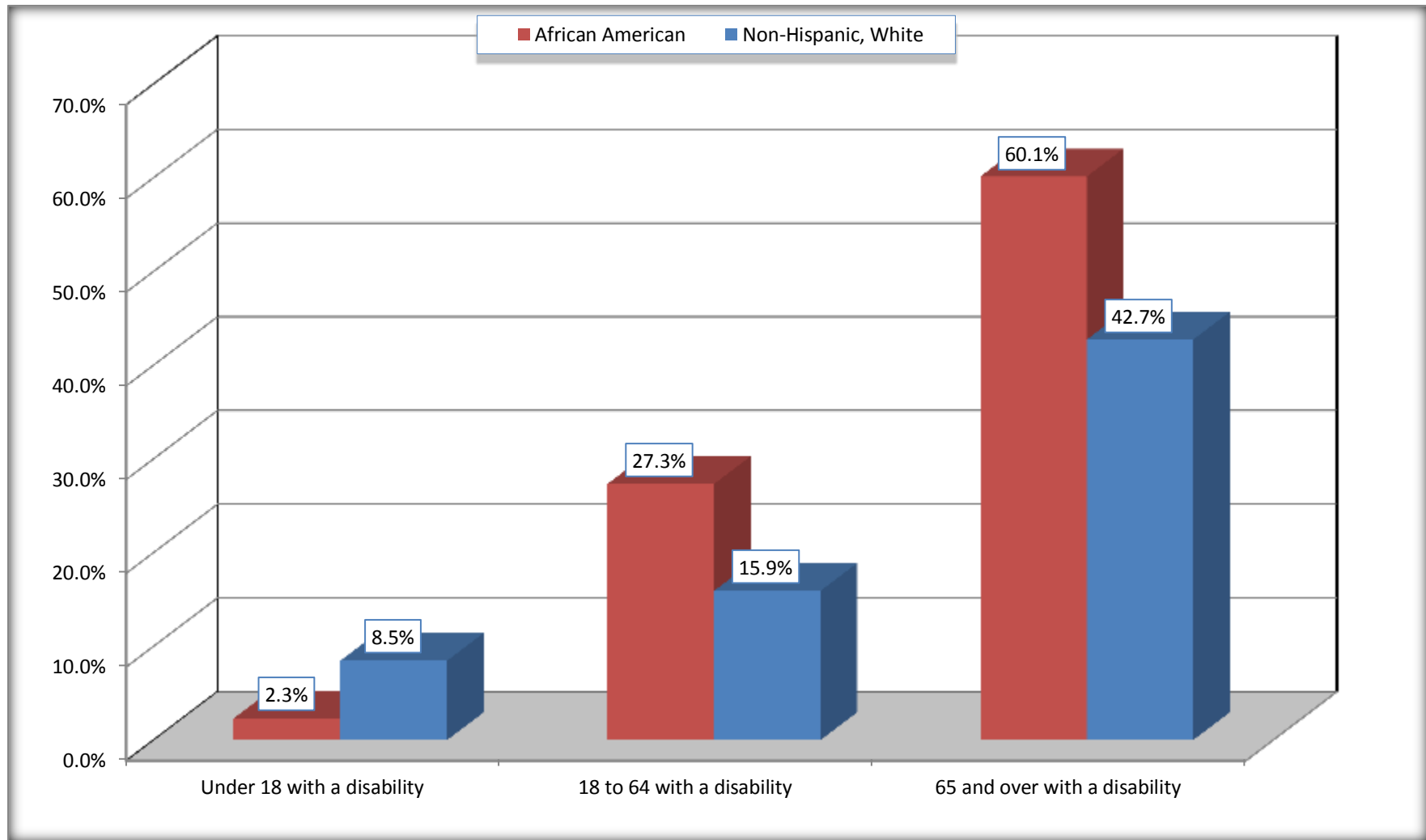
	Falls County, Texas					
	African American	Margin of Error (+/-)	% of AA Total	White, Not Hispanic	Margin of Error (+/-)	% of NHW Total
Total:	3,722	231	100.0%	8,657	183	100.0%
Under 18 years:	997	156	26.8%	1,512	67	17.5%
With a disability	23	24	0.6%	128	69	1.5%
No disability	974	160	26.2%	1,384	69	16.0%
18 to 64 years:	2,251	124	60.5%	5,165	177	59.7%
With a disability	615	147	16.5%	822	171	9.5%
No disability	1,636	176	44.0%	4,343	223	50.2%
65 years and over:	474	48	12.7%	1,980	59	22.9%
With a disability	285	55	7.7%	846	121	9.8%
No disability	189	61	5.1%	1,134	125	13.1%

Source: U.S. Census Bureau, 2008-2012 American Community Survey

For information on confidentiality protection, sampling error, nonsampling error, and definitions, see Survey Methodology.

<http://www.census.gov/acs/www/UseData/index.htm>

Disability by Age Falls County, Texas



Source: B18101. AGE BY DISABILITY STATUS
Data Set: 2008-2012 American Community Survey 5-Year Estimates

C27001B. HEALTH INSURANCE COVERAGE STATUS BY AGE

Data Set: 2008-2012 American Community Survey 5-Year Estimates

	Falls County, Texas					
	African American	Margin of Error (+/-)	% of AA Total	White, Not Hispanic	Margin of Error (+/-)	% of NHW Total
Total:	3,722	231	100.0%	8,657	183	100.0%
Under 18 years:	997	156	26.8%	1,512	3	17.5%
With health insurance coverage	963	153	25.9%	1,313	84	15.2%
No health insurance coverage	34	36	0.9%	199	83	2.3%
18 to 64 years:	2,251	124	60.5%	5,165	177	59.7%
With health insurance coverage	1,586	232	42.6%	3,995	254	46.1%
No health insurance coverage	665	233	17.9%	1,170	234	13.5%
65 years and over:	474	48	12.7%	1,980	59	22.9%
With health insurance coverage	474	48	12.7%	1,977	59	22.8%
No health insurance coverage	0	20	0.0%	3	6	0.0%

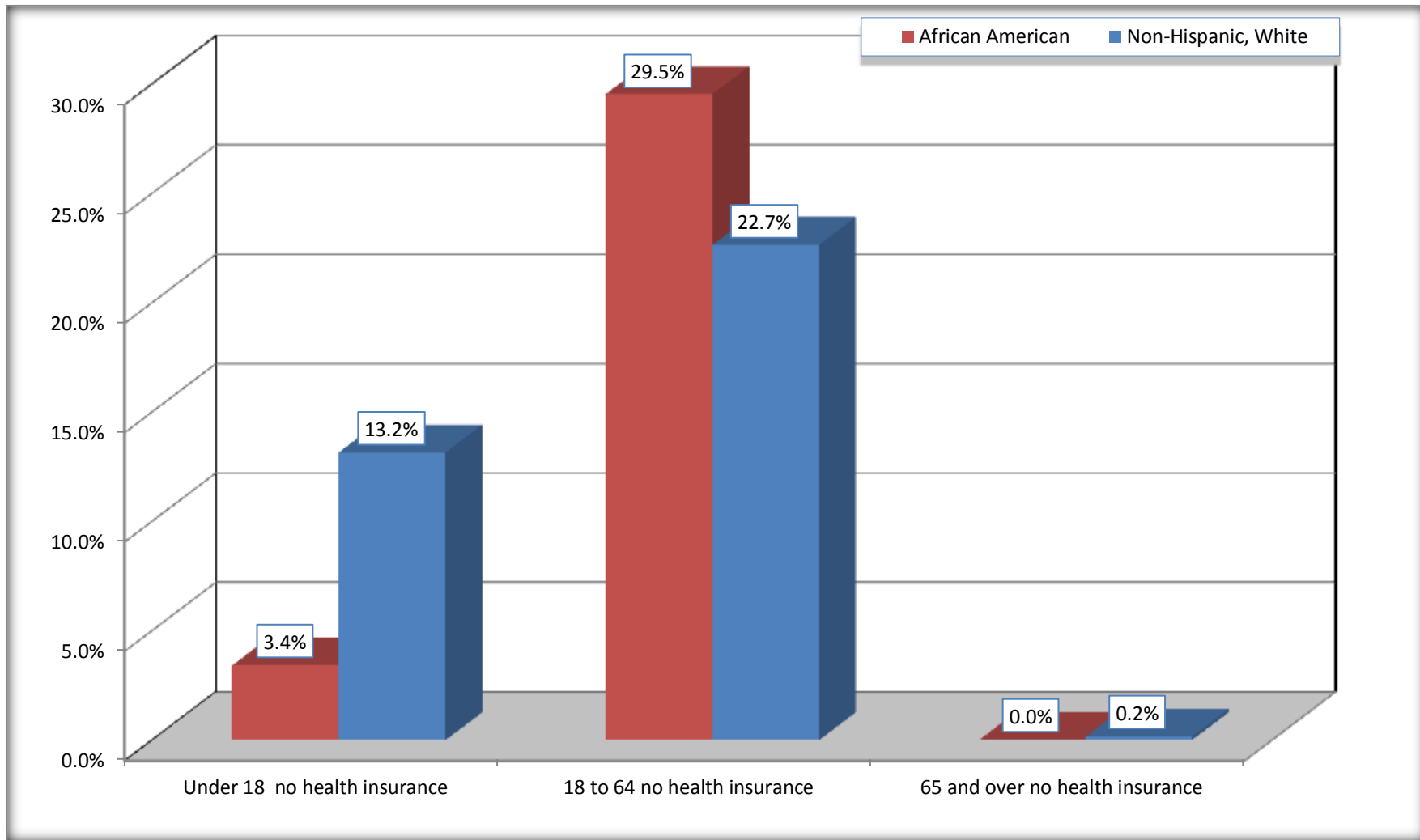
Source: U.S. Census Bureau, 2008-2012 American Community Survey

For information on confidentiality protection, sampling error, nonsampling error, and definitions, see Survey Methodology.

<http://www.census.gov/acs/www/UseData/index.htm>

Lack of Health Insurance Coverage by Age

Falls County, Texas



Source: C27001B. HEALTH INSURANCE COVERAGE STATUS BY AGE
Data Set: 2008-2012 American Community Survey 5-Year Estimates