

Selected Socio-Economic Data

Cuero city, Texas

African American and White, Not Hispanic

Data Set: 2008-2012 American Community Survey 5-Year Estimates

www.fairvote2020.org

www.fairdata2000.com

[29-Dec-13](#)

C02003.DETAILED RACE - Universe: TOTAL POPULATION

Data Set: 2008-2012 American Community Survey 5-Year Estimates

	Cuero city, Texas		
	Population	Margin of Error (+/-)	% of Total
Total:	6,844	26	100.0%
Population of one race:	6,680	89	97.6%
White	3,512	384	51.3%
Black or African American	1,209	229	17.7%
American Indian and Alaska Native	28	35	0.4%
Asian alone	58	60	0.8%
Native Hawaiian and Other Pacific Islander	13	21	0.2%
Some other race	1,860	359	27.2%
Population of two or more races:	164	90	2.4%
Two races including Some other race	68	64	1.0%
Two races excluding Some other race, and three or more races	96	74	1.4%
Population of two races:	164	90	2.4%
White; Black or African American	15	23	0.2%
White; American Indian and Alaska Native	20	20	0.3%
White; Asian	0	18	0.0%
Black or African American; American Indian and Alaska Native	5	13	0.1%
All other two race combinations	124	84	1.8%
Population of three races	0	18	0.0%
Population of four or more races	0	18	0.0%

Note: Hispanics may be of any race. See Table B03002 and chart.

Source: U.S. Census Bureau, 2008-2012 American Community Survey

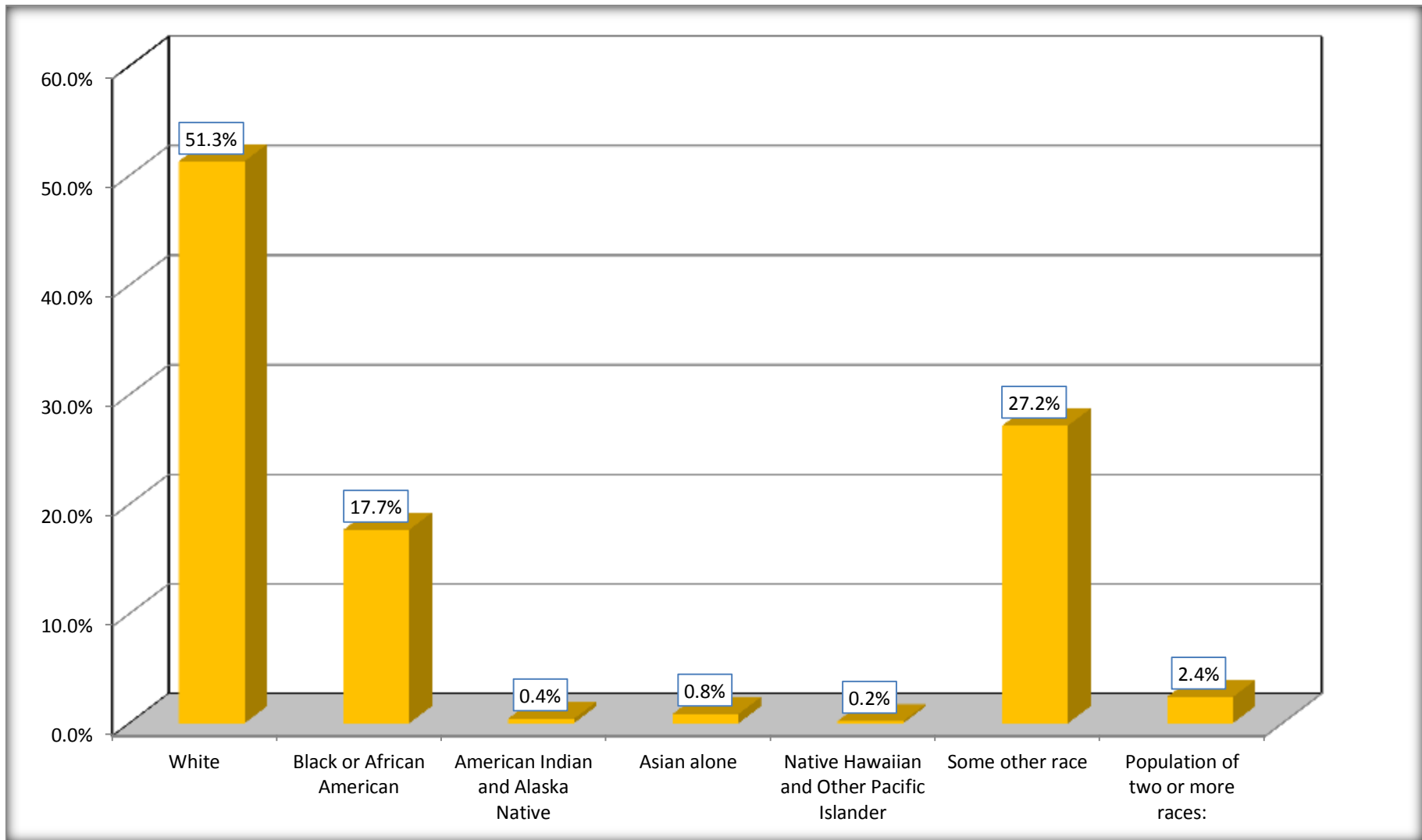
Although the American Community Survey (ACS) produces population, demographic and housing unit estimates, it is the Census Bureau's Population Estimates Program that produces and disseminates the official estimates of the population for the nation, states, counties, cities and towns and estimates of housing units for states and counties.

For information on confidentiality protection, sampling error, nonsampling error, and definitions, see Survey Methodology.

<http://www.census.gov/acs/www/UseData/index.htm>

Population by Race

Cuero city, Texas



Source: C02003.DETAILED RACE - Universe: TOTAL POPULATION
Data Set: 2008-2012 American Community Survey 5-Year Estimates

B03002. HISPANIC OR LATINO ORIGIN BY RACE - Universe: TOTAL POPULATION

Data Set: 2008-2012 American Community Survey 5-Year Estimates

	Cuero city, Texas		
	Population	Margin of Error (+/-)	% of Total
Total:	6,844	26	100.0%
Not Hispanic or Latino:	3,940	300	57.6%
White alone	2,628	306	38.4%
Black or African American alone	1,173	229	17.1%
American Indian and Alaska Native alone	28	35	0.4%
Asian alone	58	60	0.8%
Native Hawaiian and Other Pacific Islander alone	0	18	0.0%
Some other race alone	0	18	0.0%
Two or more races:	53	36	0.8%
Two races including Some other race	0	18	0.0%
Two races excluding Some other race, and three or more races	53	36	0.8%
Hispanic or Latino	2,904	302	42.4%

Source: U.S. Census Bureau, 2008-2012 American Community Survey

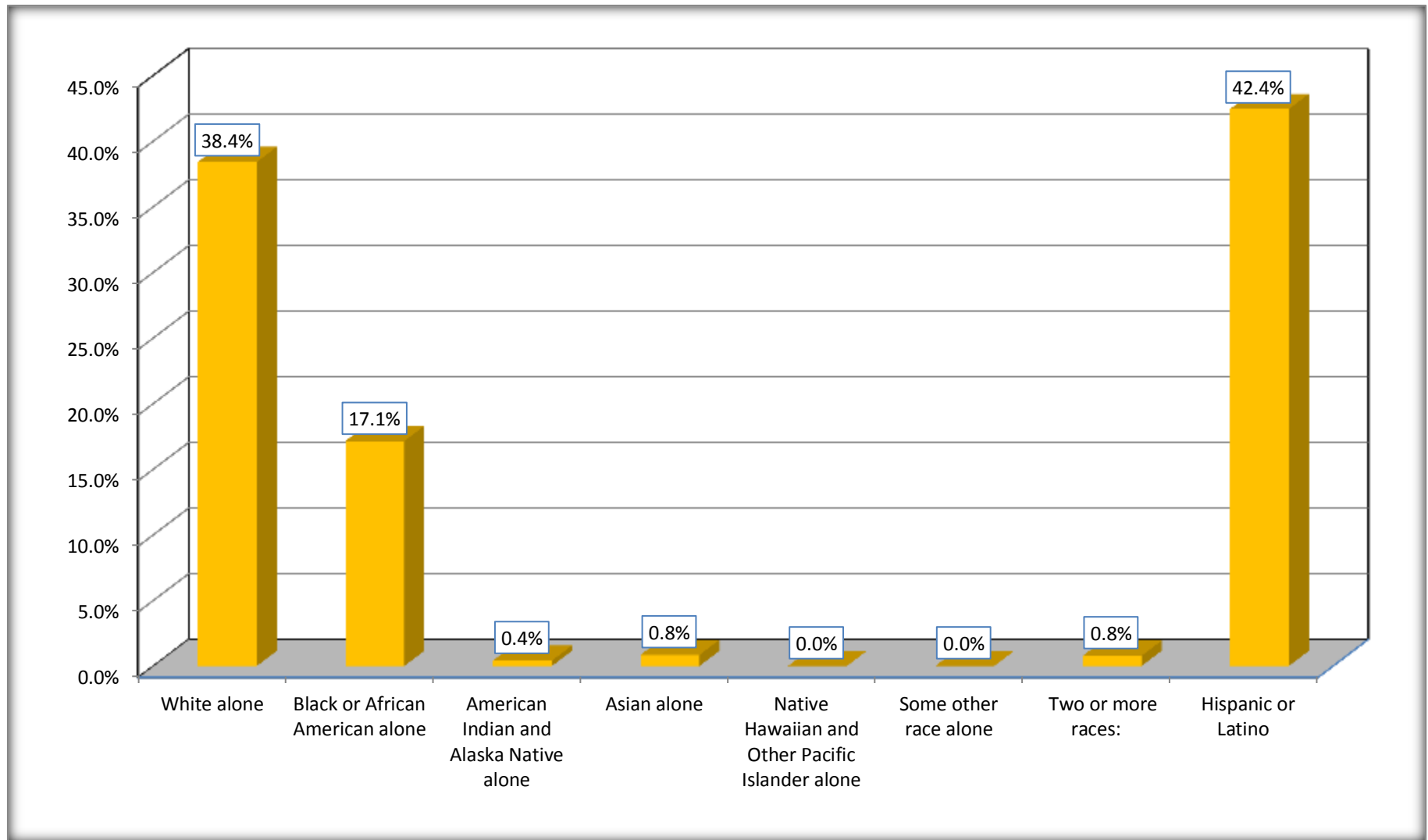
Although the American Community Survey (ACS) produces population, demographic and housing unit estimates, it is the Census Bureau's Population Estimates Program that produces and disseminates the official estimates of the population for the nation, states, counties, cities and towns and estimates of housing units for states and counties.

For information on confidentiality protection, sampling error, nonsampling error, and definitions, see Survey Methodology.

<http://www.census.gov/acs/www/UseData/index.htm>

Non-Hispanic by Race and Hispanic Population

Cuero city, Texas



Source: B03002. HISPANIC OR LATINO ORIGIN BY RACE - Universe: TOTAL POPULATION
Data Set: 2008-2012 American Community Survey 5-Year Estimates

B03002. HISPANIC OR LATINO ORIGIN BY RACE

Data Set: 2008-2012 American Community Survey 5-Year Estimates

	Cuero city, Texas		
	Population	Margin of Error (+/-)	% of Total
Hispanic or Latino:	2,904	302	100.0%
White alone	884	225	30.4%
Black or African American alone	36	40	1.2%
American Indian and Alaska Native alone	0	18	0.0%
Asian alone	0	18	0.0%
Native Hawaiian and Other Pacific Islander alone	13	21	0.4%
Some other race alone	1,860	359	64.0%
Two or more races:	111	81	3.8%
Two races including Some other race	68	64	2.3%
Two races excluding Some other race, and three or more races	43	64	1.5%

Source: U.S. Census Bureau, 2008-2012 American Community Survey

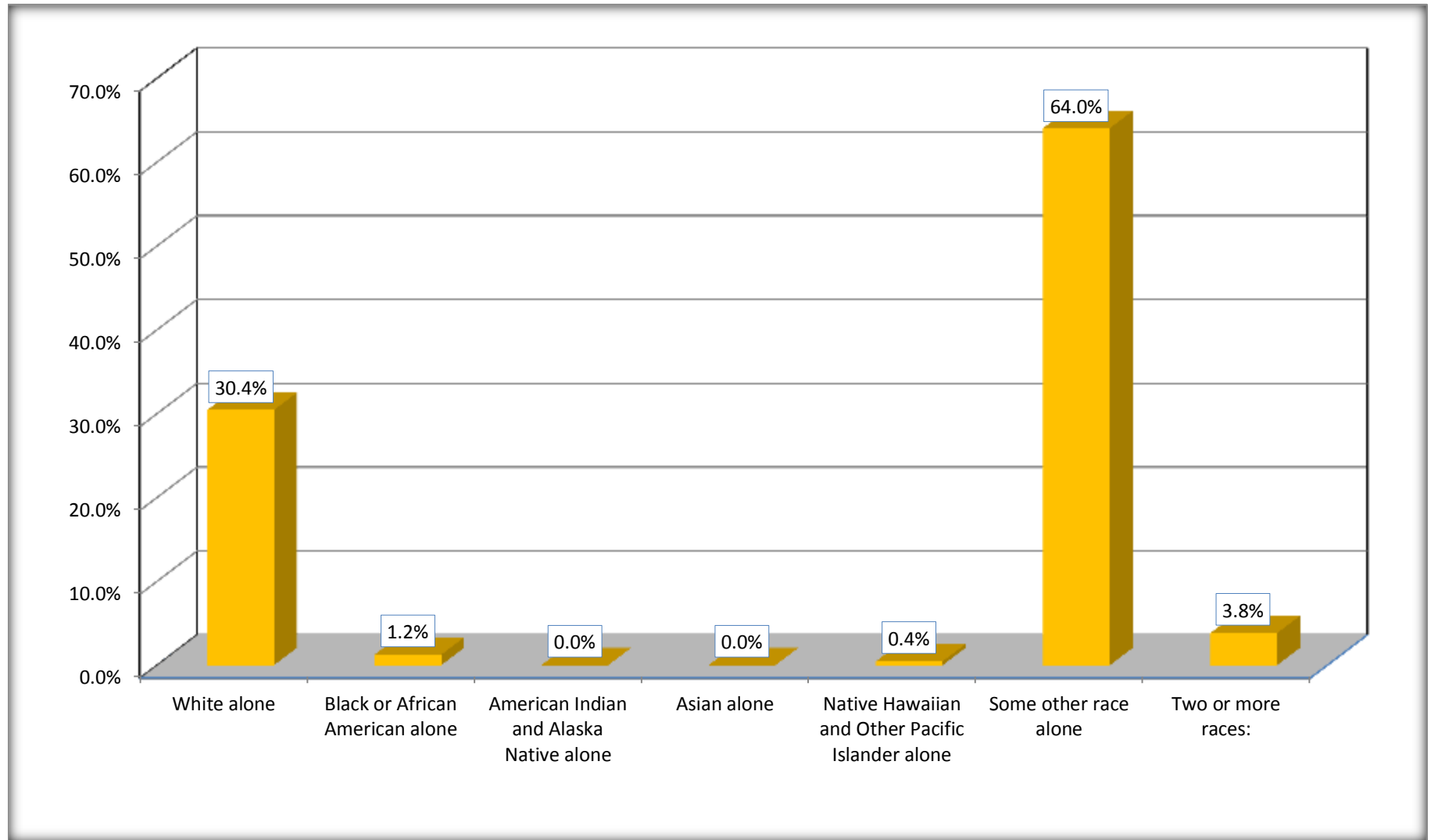
Although the American Community Survey (ACS) produces population, demographic and housing unit estimates, it is the Census Bureau's Population Estimates Program that produces and disseminates the official estimates of the population for the nation, states, counties, cities and towns and estimates of housing units for states and counties.

For information on confidentiality protection, sampling error, nonsampling error, and definitions, see Survey Methodology.

<http://www.census.gov/acs/www/UseData/index.htm>

Hispanic or Latino Origin by Race

Cuero city, Texas



Source: B03002. HISPANIC OR LATINO ORIGIN BY RACE
Data Set: 2008-2012 American Community Survey 5-Year Estimates

B01001. SEX BY AGE

Data Set: 2008-2012 American Community Survey 5-Year Estimates

	Cuero city, Texas					
	African American	Margin of Error (+/-)	% of AA Total	White, Not Hispanic	Margin of Error (+/-)	% of NHW Total
Total:	1,209	229	100.0%	2,628	306	100.0%
Under 18 years	325	NC	26.9%	536	NC	20.4%
18 to 64 years	710	NC	58.7%	1,434	NC	54.6%
65 years and over	174	NC	14.4%	658	NC	25.0%
Male:	741	154	61.3%	1,203	389	45.8%
Under 18 years	217	NC	17.9%	251	NC	9.6%
18 to 64 years	459	NC	38.0%	716	NC	27.2%
65 years and over	65	NC	5.4%	236	NC	9.0%
Female:	468	149	38.7%	1,425	412	54.2%
Under 18 years	108	NC	8.9%	285	NC	10.8%
18 to 64 years	251	NC	20.8%	718	NC	27.3%
65 years and over	109	NC	9.0%	422	NC	16.1%

Source: U.S. Census Bureau, 2008-2012 American Community Survey

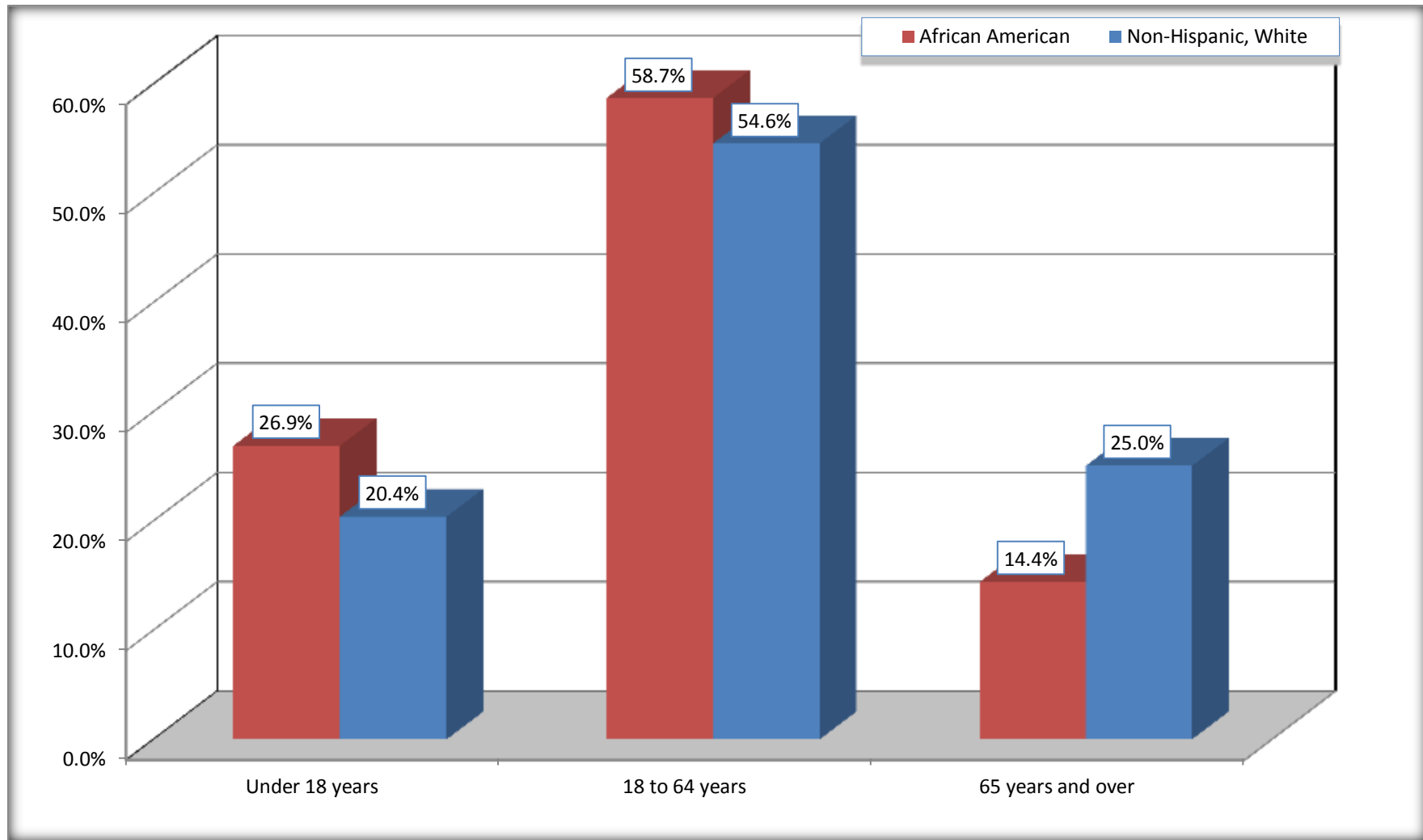
Although the American Community Survey (ACS) produces population, demographic and housing unit estimates, it is the Census Bureau's Population Estimates Program that produces and disseminates the official estimates of the population for the nation, states, counties, cities and towns and estimates of housing units for states and counties.

For information on confidentiality protection, sampling error, nonsampling error, and definitions, see Survey Methodology.

<http://www.census.gov/acs/www/UseData/index.htm>

Population by Age

Cuero city, Texas



Source: B01001. SEX BY AGE

Data Set: 2008-2012 American Community Survey 5-Year Estimates

B05003. SEX BY AGE BY CITIZENSHIP STATUS

Data Set: 2008-2012 American Community Survey 5-Year Estimates

	Cuero city, Texas					
	African American	Margin of Error (+/-)	% of AA Total by Age	White, Not Hispanic	Margin of Error (+/-)	% of NHW Total by Age
Total:	1,209	229	100.0%	2,628	306	100.0%
Under 18 years:	325	NC	100.0%	536	NC	100.0%
Native	325	NC	100.0%	536	NC	100.0%
Foreign born:	0	NC	0.0%	0	NC	0.0%
Naturalized U.S. citizen	0	NC	0.0%	0	NC	0.0%
Not a U.S. citizen	0	NC	0.0%	0	NC	0.0%
18 years and over:	884	NC	100.0%	2,092	NC	100.0%
Native	879	NC	99.4%	2,085	NC	99.7%
Foreign born:	5	NC	0.6%	7	NC	0.3%
Naturalized U.S. citizen	5	NC	0.6%	7	NC	0.3%
Not a U.S. citizen	0	NC	0.0%	0	NC	0.0%
Male:	741	154	61.3%	1,203	188	45.8%
Under 18 years:	217	112	100.0%	251	90	100.0%
Native	217	112	100.0%	251	90	100.0%
Foreign born:	0	18	0.0%	0	18	0.0%
Naturalized U.S. citizen	0	18	0.0%	0	18	0.0%
Not a U.S. citizen	0	18	0.0%	0	18	0.0%
18 years and over:	524	131	100.0%	952	154	100.0%
Native	519	130	99.0%	952	154	100.0%
Foreign born:	5	8	1.0%	0	18	0.0%
Naturalized U.S. citizen	5	8	1.0%	0	18	0.0%
Not a U.S. citizen	0	18	0.0%	0	18	0.0%

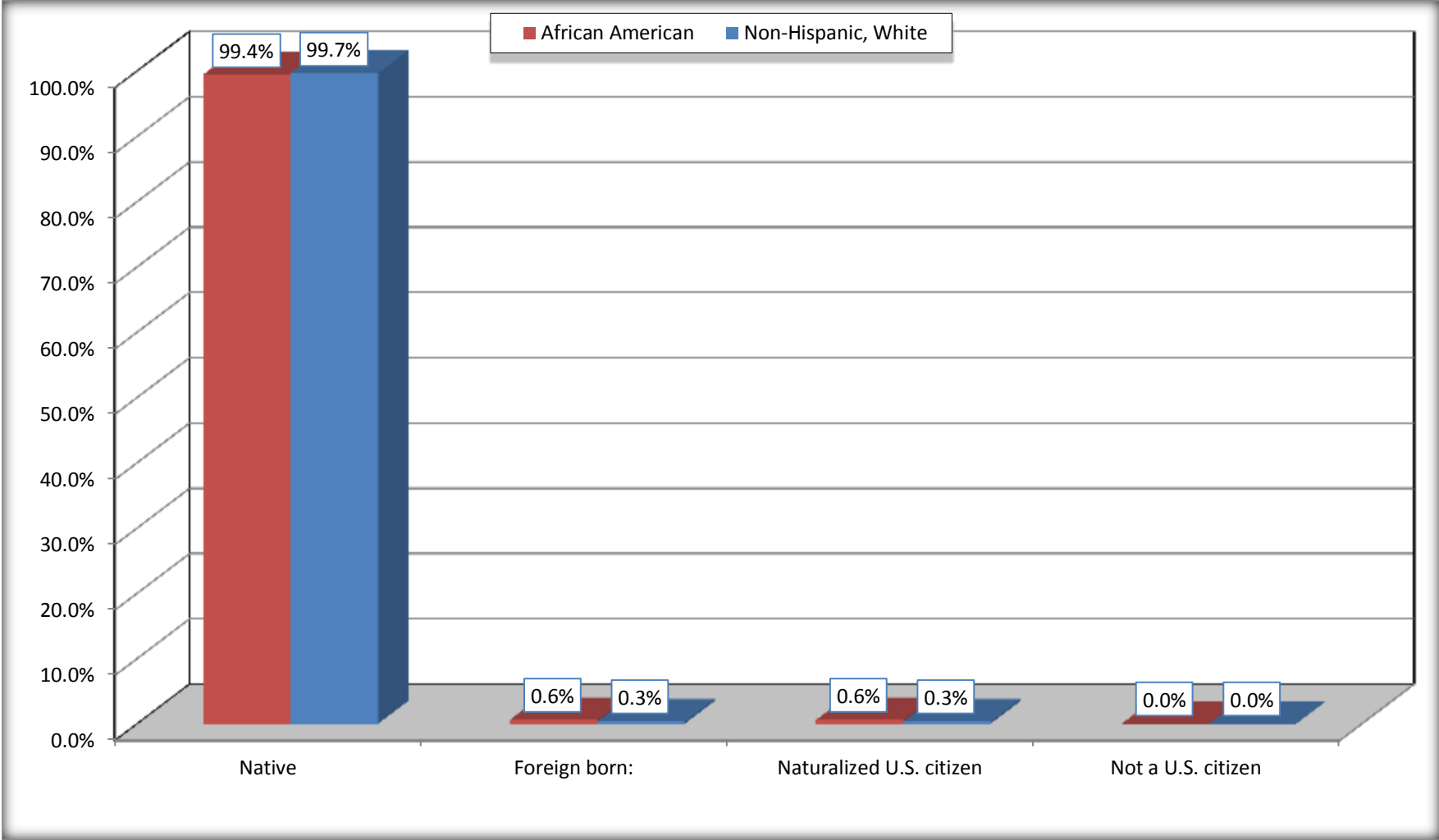
	Cuero city, Texas					
	African American	Margin of Error (+/-)	% of AA by Age	White, Not Hispanic	Margin of Error (+/-)	% of NHW by Age
Female:	468	149	38.7%	1,425	178	54.2%
Under 18 years:	108	88	100.0%	285	95	100.0%
Native	108	88	100.0%	285	95	100.0%
Foreign born:	0	18	0.0%	0	18	0.0%
Naturalized U.S. citizen	0	18	0.0%	0	18	0.0%
Not a U.S. citizen	0	18	0.0%	0	18	0.0%
18 years and over:	360	105	100.0%	1,140	133	100.0%
Native	360	105	100.0%	1,133	131	99.4%
Foreign born:	0	18	0.0%	7	10	0.6%
Naturalized U.S. citizen	0	18	0.0%	7	10	0.6%
Not a U.S. citizen	0	18	0.0%	0	18	0.0%

Source: U.S. Census Bureau, 2008-2012 American Community Survey

For information on confidentiality protection, sampling error, nonsampling error, and definitions, see Survey Methodology.
<http://www.census.gov/acs/www/UseData/index.htm>

Citizenship Status of Voting Age Population (18 and Over)

Cuero city, Texas



Source: B05003. SEX BY AGE BY CITIZENSHIP STATUS
Data Set: 2008-2012 American Community Survey 5-Year Estimates

**B07004. GEOGRAPHICAL MOBILITY IN THE PAST YEAR BY RACE FOR CURRENT RESIDENCE IN THE UNITED STATES - Universe:
POPULATION 1 YEAR AND OVER**

Data Set: 2008-2012 American Community Survey 5-Year Estimates

	Cuero city, Texas					
	African American	Margin of Error (+/-)	% of AA Total	White, Not Hispanic	Margin of Error (+/-)	% of NHW Total
Total:	1,209	229	100.0%	2,606	302	100.0%
Same house 1 year ago	1,016	258	84.0%	2,085	294	80.0%
Moved within same county	147	124	12.2%	249	149	9.6%
Moved from different county within same state	42	33	3.5%	254	120	9.7%
Moved from different state	4	8	0.3%	17	28	0.7%
Moved from abroad	0	18	0.0%	1	3	0.0%

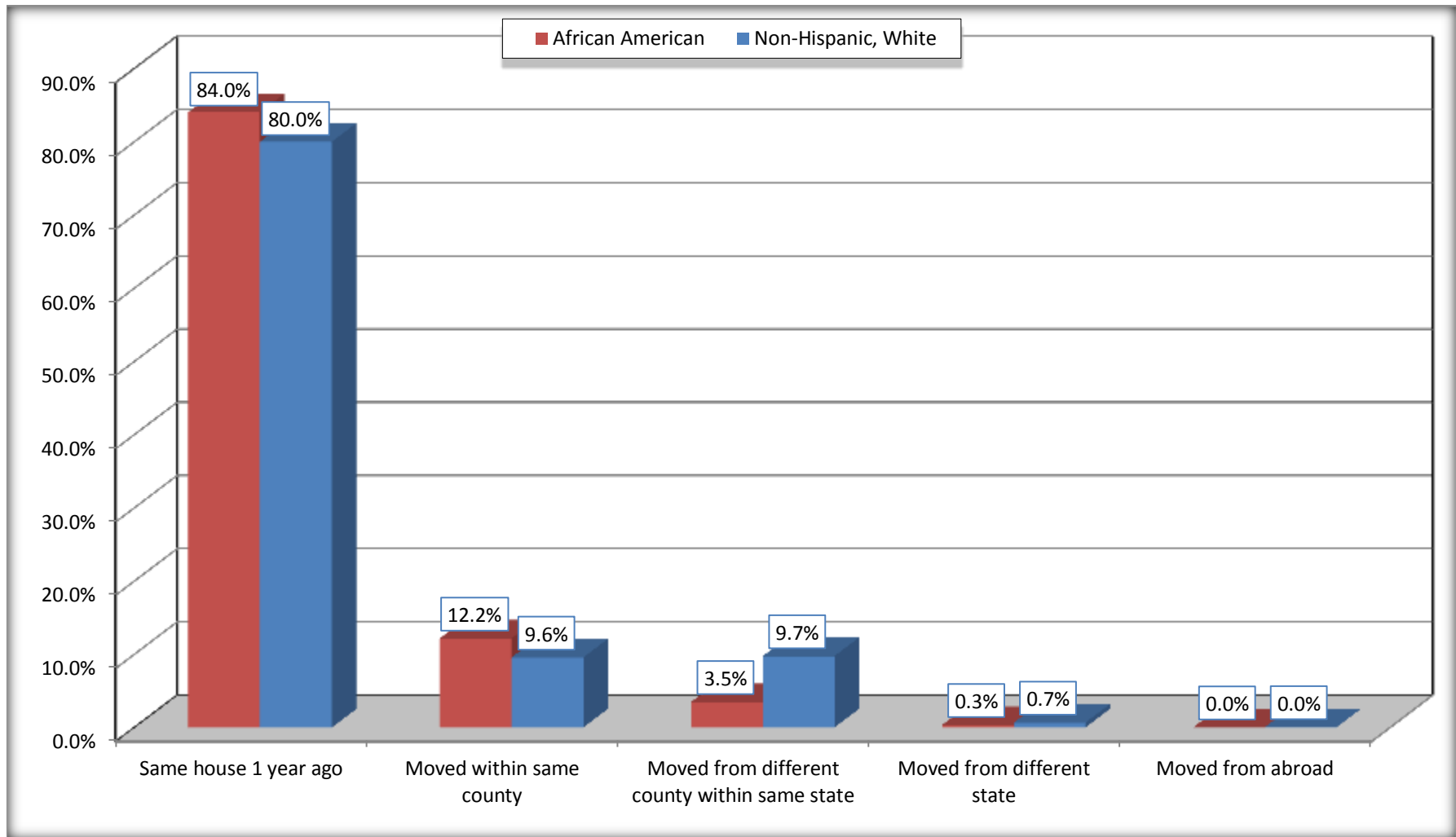
Source: U.S. Census Bureau, 2008-2012 American Community Survey

For information on confidentiality protection, sampling error, nonsampling error, and definitions, see Survey Methodology.

<http://www.census.gov/acs/www/UseData/index.htm>

Geographical Mobility in the Past Year (Population 1 Year and Over)

Cuero city, Texas



Source: B07004. GEOGRAPHICAL MOBILITY IN THE PAST YEAR BY RACE FOR CURRENT RESIDENCE IN THE UNITED STATES - Universe: POPULATION 1 YEAR AND OVER

Data Set: 2008-2012 American Community Survey 5-Year Estimates

B08105. MEANS OF TRANSPORTATION TO WORK - Universe: WORKERS 16 YEARS AND OVER

Data Set: 2008-2012 American Community Survey 5-Year Estimates

	Cuero city, Texas					
	African American	Margin of Error (+/-)	% of AA Total	White, Not Hispanic	Margin of Error (+/-)	% of NHW Total
Total:	434	140	100.0%	1094	180	100.0%
Car, truck, or van - drove alone	409	138	94.2%	849	184	77.6%
Car, truck, or van - carpooled	9	14	2.1%	160	96	14.6%
Public transportation (excluding taxicab)	0	18	0.0%	0	18	0.0%
Walked	0	18	0.0%	15	18	1.4%
Taxicab, motorcycle, bicycle, or other means	0	18	0.0%	25	23	2.3%
Worked at home	16	25	3.7%	45	32	4.1%

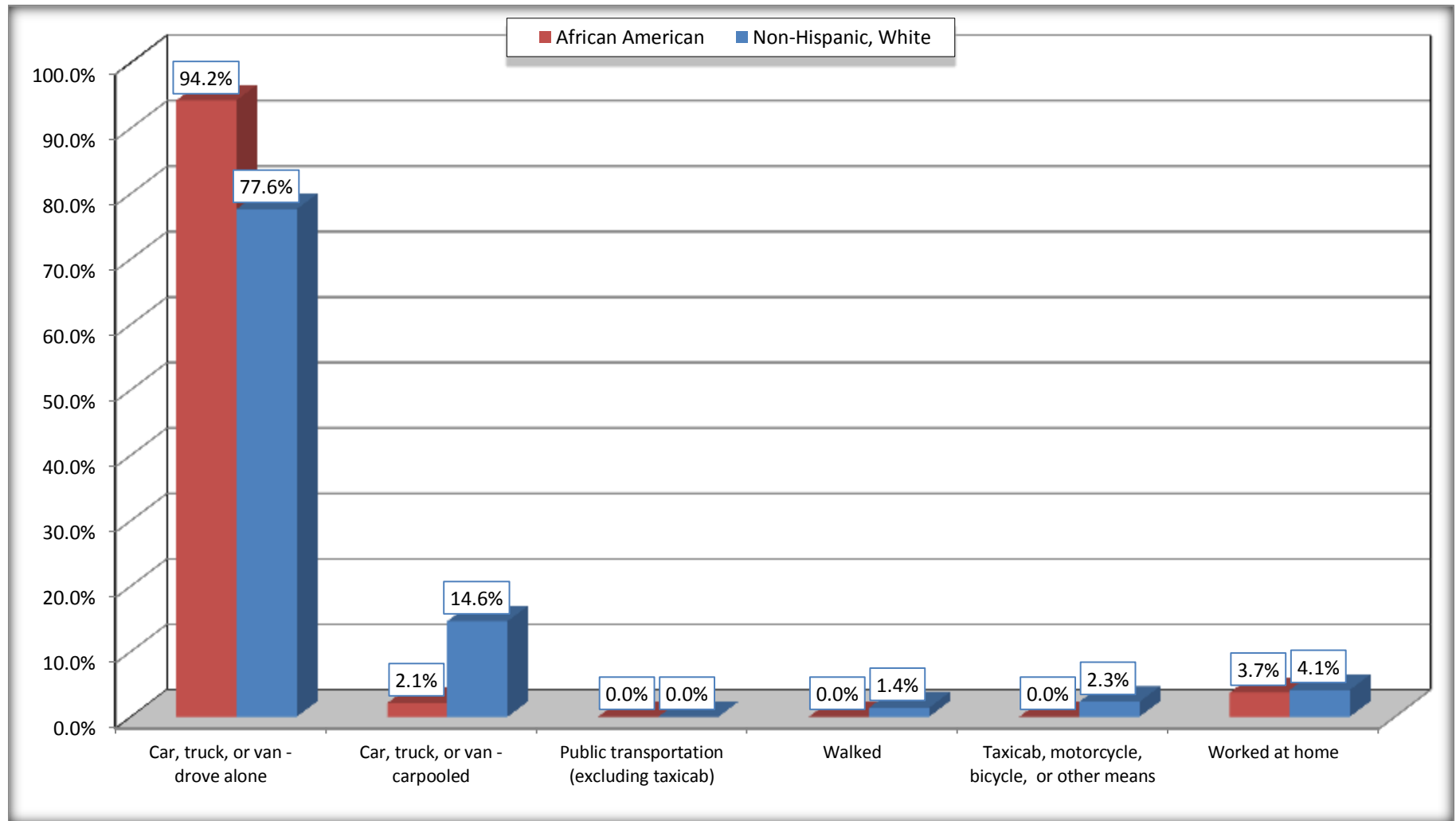
Source: U.S. Census Bureau, 2008-2012 American Community Survey

For information on confidentiality protection, sampling error, nonsampling error, and definitions, see Survey Methodology.

<http://www.census.gov/acs/www/UseData/index.htm>

Means of Transportation to Work (Workers 16 Years and Over)

Cuero city, Texas



Source: B08105. MEANS OF TRANSPORTATION TO WORK - Universe: WORKERS 16 YEARS AND OVER
Data Set: 2008-2012 American Community Survey 5-Year Estimates

B11002. HOUSEHOLD TYPE BY RELATIVES AND NONRELATIVES FOR POPULATION IN HOUSEHOLDS

Data Set: 2008-2012 American Community Survey 5-Year Estimates

	Cuero city, Texas					
	African American	Margin of Error (+/-)	% of AA Total	White, Not Hispanic	Margin of Error (+/-)	% of NHW Total
Total:	1115	250	100.0%	2208	345	100.0%
In family households	916	267	82.2%	1837	361	83.2%
In nonfamily households	199	96	17.8%	371	117	16.8%

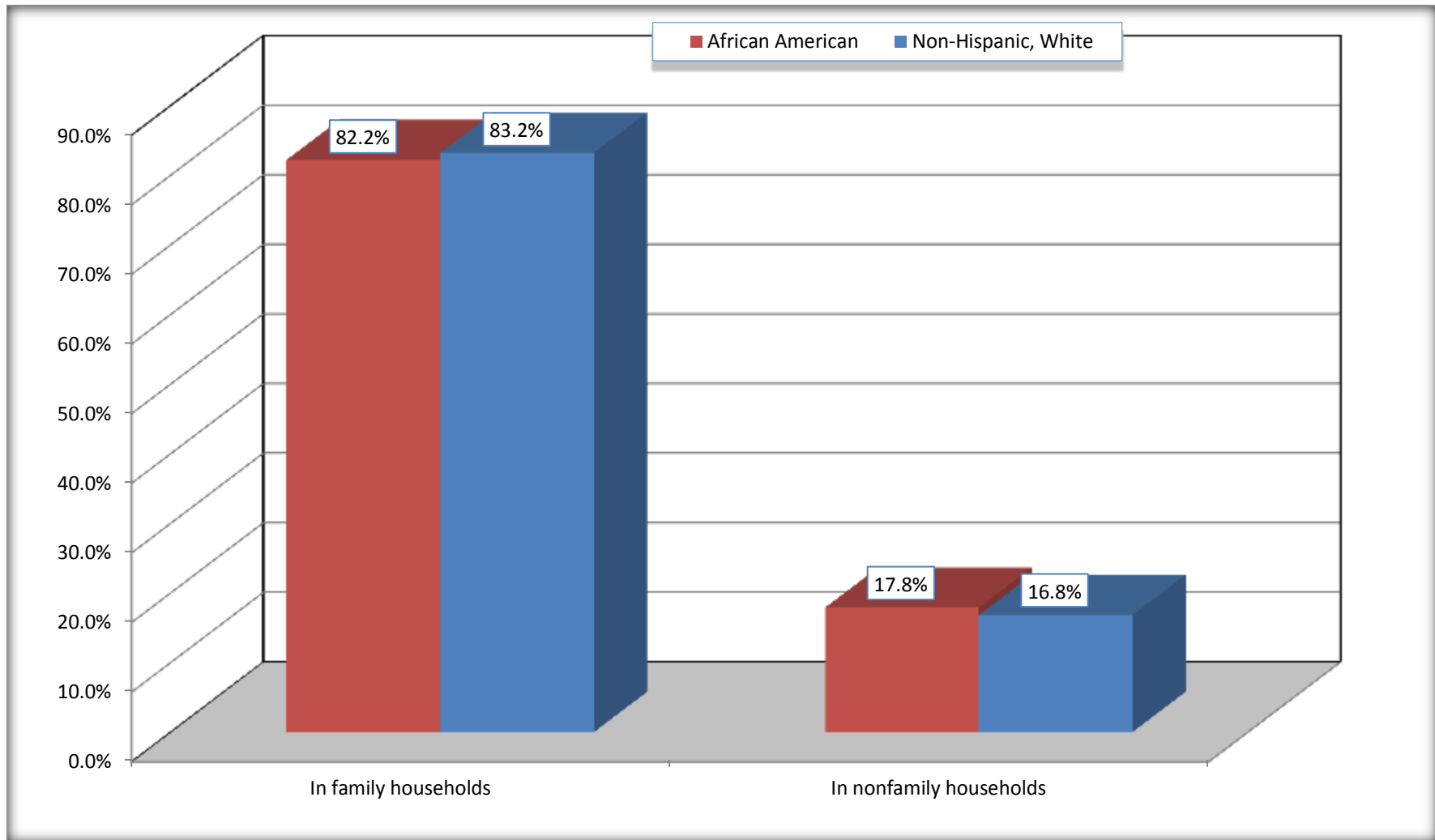
Source: U.S. Census Bureau, 2008-2012 American Community Survey

For information on confidentiality protection, sampling error, nonsampling error, and definitions, see Survey Methodology.

<http://www.census.gov/acs/www/UseData/index.htm>

Household Type for Population in Households

Cuero city, Texas



Source: B11002. HOUSEHOLD TYPE BY RELATIVES AND NONRELATIVES FOR POPULATION IN HOUSEHOLDS
Data Set: 2008-2012 American Community Survey 5-Year Estimates

B12002. MARITAL STATUS FOR THE POPULATION 15 YEARS AND OVER

Data Set: 2008-2012 American Community Survey 5-Year Estimates

	Cuero city, Texas					
	African American	Margin of Error (+/-)	% of AA Total	White, Not Hispanic	Margin of Error (+/-)	% of NHW Total
Total:	1,014	211	100.0%	2,149	234	100.0%
Never married	483	NC	47.6%	450	NC	20.9%
Now married (except separated)	309	NC	30.5%	1,024	NC	47.7%
Separated	0	NC	0.0%	34	NC	1.6%
Widowed	81	NC	8.0%	355	NC	16.5%
Divorced	141	NC	13.9%	286	NC	13.3%
Male:	654	163	64.5%	970	159	45.1%
Never married	360	141	35.5%	180	72	8.4%
Now married (except separated)	143	61	14.1%	515	107	24.0%
Separated	0	18	0.0%	26	27	1.2%
Widowed	29	36	2.9%	96	60	4.5%
Divorced	122	108	12.0%	153	68	7.1%
Female:	360	105	35.5%	1,179	148	54.9%
Never married	123	74	12.1%	270	106	12.6%
Now married (except separated)	166	84	16.4%	509	114	23.7%
Separated	0	18	0.0%	8	9	0.4%
Widowed	52	55	5.1%	259	86	12.1%
Divorced	19	23	1.9%	133	58	6.2%

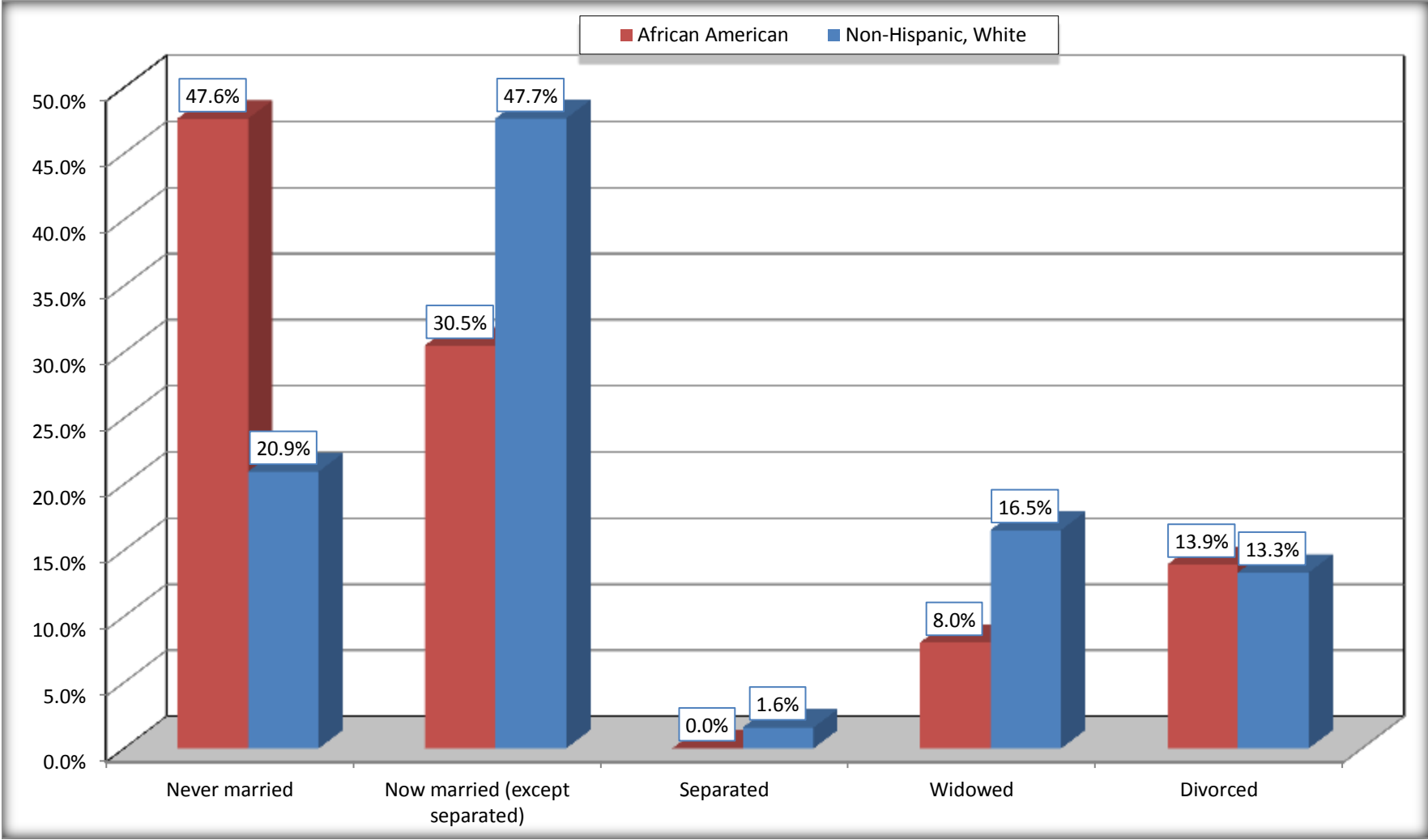
Source: U.S. Census Bureau, 2008-2012 American Community Survey

For information on confidentiality protection, sampling error, nonsampling error, and definitions, see Survey Methodology.

<http://www.census.gov/acs/www/UseData/index.htm>

Marital Status for the Population 15 Years and Over

Cuero city, Texas



Source: B12002. MARITAL STATUS FOR THE POPULATION 15 YEARS AND OVER
Data Set: 2008-2012 American Community Survey 5-Year Estimates

C15002. SEX BY EDUCATIONAL ATTAINMENT FOR THE POPULATION 25 YEARS AND OVER

Data Set: 2008-2012 American Community Survey 5-Year Estimates

	Cuero city, Texas					
	African American	Margin of Error (+/-)	% of AA Total	White, Not Hispanic	Margin of Error (+/-)	% of NHW Total
Total:	817	166	100.0%	1,932	198	100.0%
Less than high school diploma	205	NC	25.1%	346	NC	17.9%
High school graduate, GED, or alternative	260	NC	31.8%	642	NC	33.2%
Some college or associate's degree	347	NC	42.5%	582	NC	30.1%
Bachelor's degree or higher	5	NC	0.6%	362	NC	18.7%
Male:	507	131	62.1%	903	151	46.7%
Less than high school diploma	149	53	18.2%	211	91	10.9%
High school graduate, GED, or alternative	140	91	17.1%	260	80	13.5%
Some college or associate's degree	213	103	26.1%	261	78	13.5%
Bachelor's degree or higher	5	8	0.6%	171	65	8.9%
Female:	310	91	37.9%	1,029	120	53.3%
Less than high school diploma	56	48	6.9%	135	69	7.0%
High school graduate, GED, or alternative	120	55	14.7%	382	93	19.8%
Some college or associate's degree	134	82	16.4%	321	94	16.6%
Bachelor's degree or higher	0	18	0.0%	191	65	9.9%

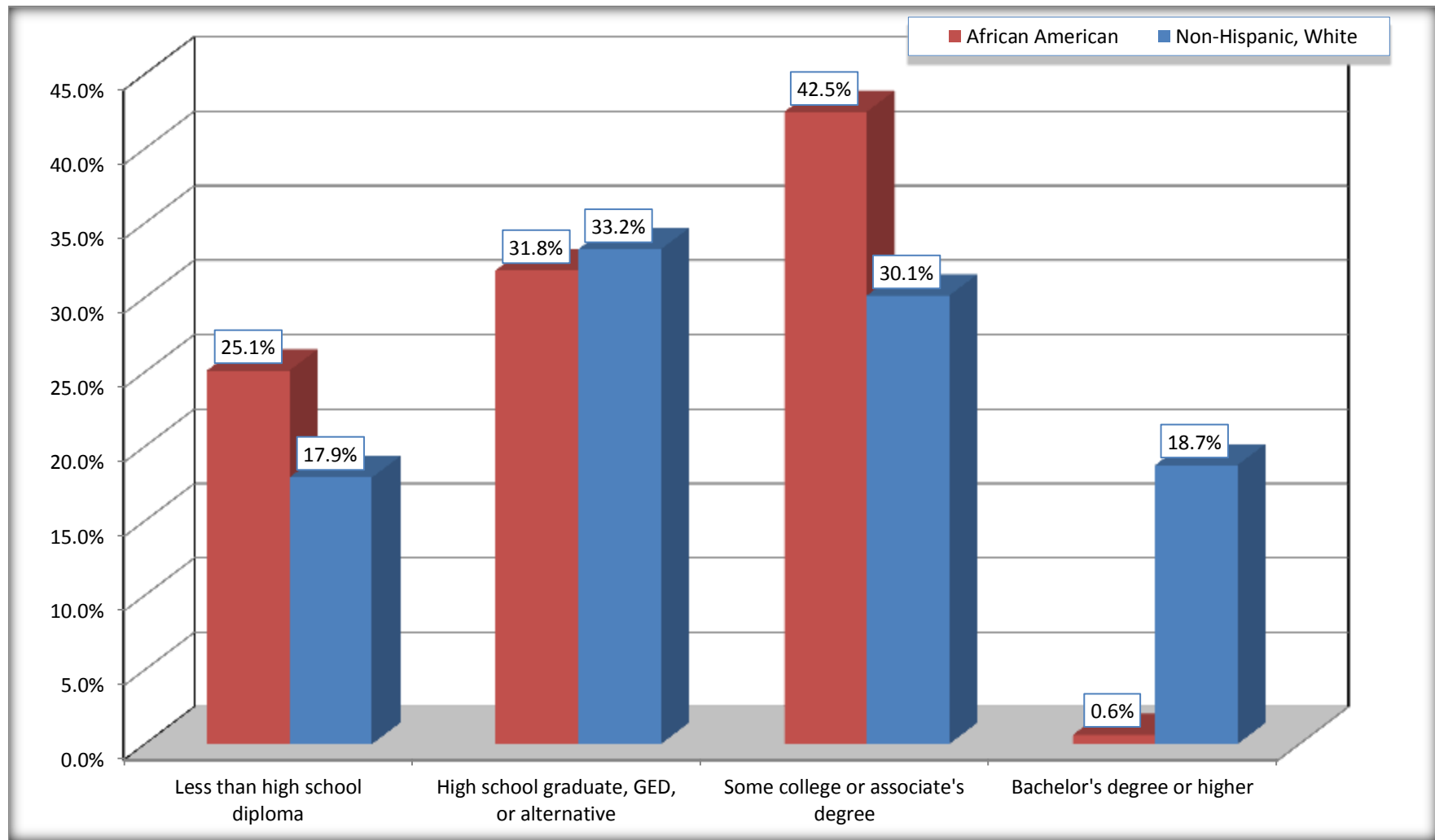
Source: U.S. Census Bureau, 2008-2012 American Community Survey

For information on confidentiality protection, sampling error, nonsampling error, and definitions, see Survey Methodology.

<http://www.census.gov/acs/www/UseData/index.htm>

Educational Attainment for the Population 25 Years and Older

Cuero city, Texas



Source: C15002. SEX BY EDUCATIONAL ATTAINMENT FOR THE POPULATION 25 YEARS AND OVER
Data Set: 2008-2012 American Community Survey 5-Year Estimates

B17010. POVERTY STATUS IN THE PAST 12 MONTHS OF FAMILIES BY FAMILY TYPE BY PRESENCE OF RELATED CHILDREN UNDER 18 YEARS

Data Set: 2008-2012 American Community Survey 5-Year Estimates

	Cuero city, Texas					
	African American	Margin of Error (+/-)	% of AA Total	White, Not Hispanic	Margin of Error (+/-)	% of NHW Total
Total:	232	86	100.0%	519	90	100.0%
Income in the past 12 months below poverty level:	5	10	2.2%	57	32	11.0%
Married-couple family:	0	18	0.0%	21	19	4.0%
With related children under 18 years	0	18	0.0%	9	15	1.7%
Other family:	5	10	2.2%	36	23	6.9%
Male householder, no wife present	0	18	0.0%	0	18	0.0%
With related children under 18 years	0	18	0.0%	0	18	0.0%
Female householder, no husband present	5	10	2.2%	36	23	6.9%
With related children under 18 years	5	10	2.2%	26	24	5.0%
Income in the past 12 months at or above poverty level:	227	85	97.8%	462	82	89.0%
Married-couple family:	174	78	75.0%	364	73	70.1%
With related children under 18 years	82	51	35.3%	115	55	22.2%
Other family:	53	49	22.8%	98	39	18.9%
Male householder, no wife present	10	18	4.3%	11	13	2.1%
With related children under 18 years	0	18	0.0%	0	18	0.0%
Female householder, no husband present	43	46	18.5%	87	36	16.8%
With related children under 18 years	33	44	14.2%	56	35	10.8%

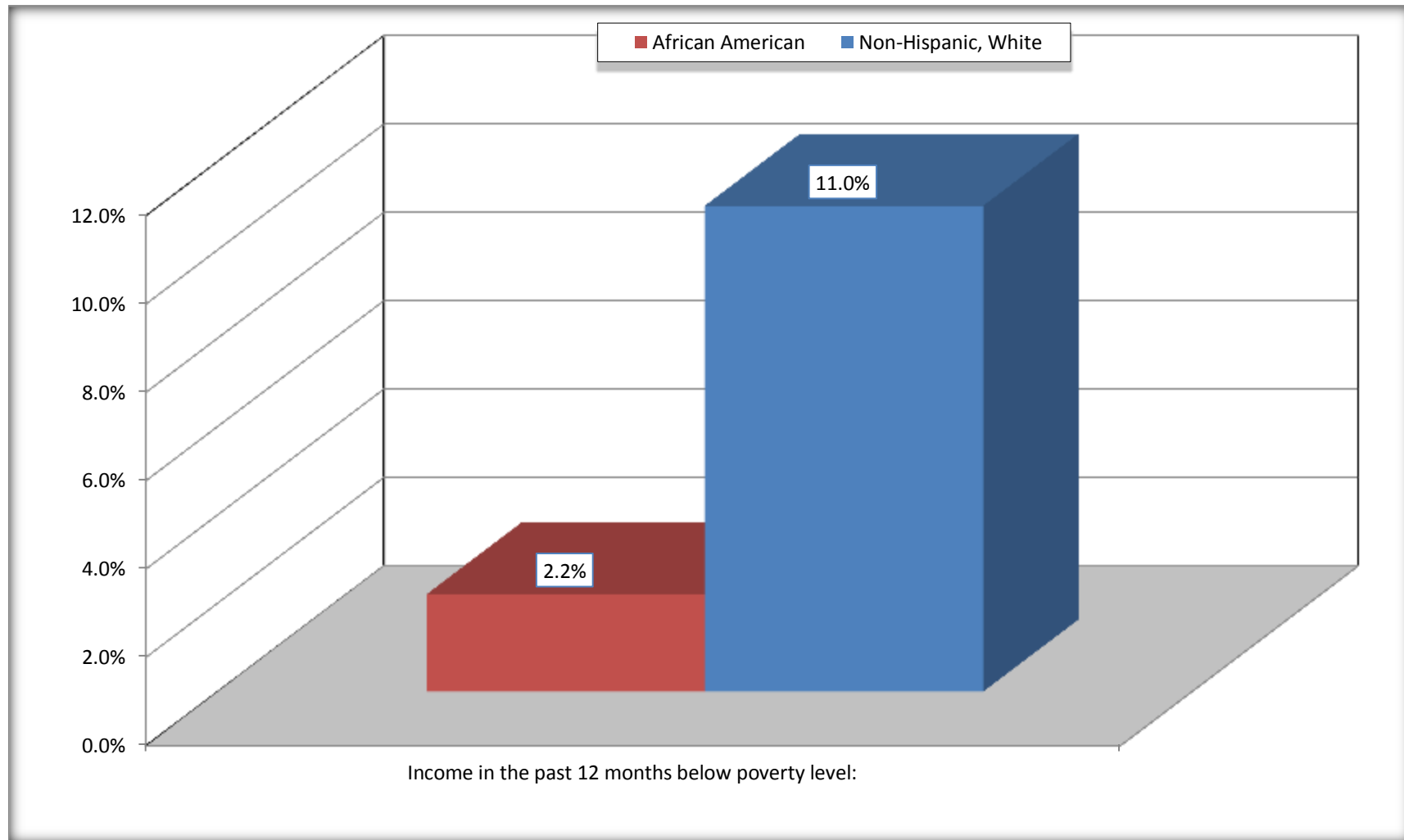
Source: U.S. Census Bureau, 2008-2012 American Community Survey

For information on confidentiality protection, sampling error, nonsampling error, and definitions, see Survey Methodology.

<http://www.census.gov/acs/www/UseData/index.htm>

Family Households Below Poverty in the Past 12 Months

Cuero city, Texas

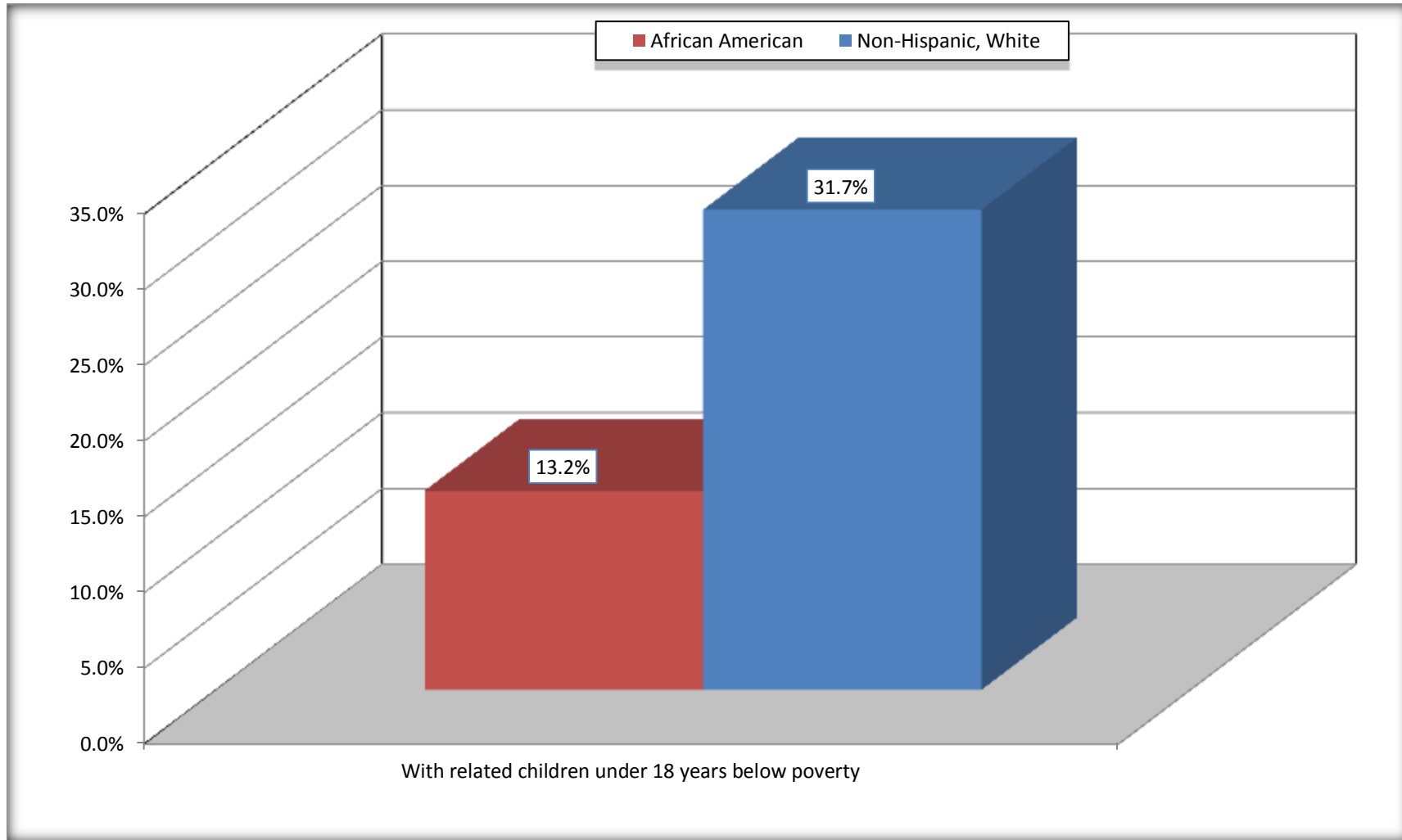


Source: B17010. POVERTY STATUS IN THE PAST 12 MONTHS OF FAMILIES BY FAMILY TYPE BY PRESENCE OF RELATED CHILDREN UNDER 18 YEARS

Data Set: 2008-2012 American Community Survey 5-Year Estimates

Female-headed Households with Related Children Below Poverty in the Past 12 Months

Cuero city, Texas



Source: B17010. POVERTY STATUS IN THE PAST 12 MONTHS OF FAMILIES BY FAMILY TYPE BY PRESENCE OF RELATED CHILDREN UNDER 18 YEARS

Data Set: 2008-2012 American Community Survey 5-Year Estimates

B17020 POVERTY STATUS IN THE PAST 12 MONTHS BY AGE - Universe: POPULATION FOR WHOM POVERTY STATUS IS DETERMINED

Data Set: 2008-2012 American Community Survey 5-Year Estimates

	Cuero city, Texas					
	African American	Margin of Error (+/-)	% of AA By Age	White, Not Hispanic	Margin of Error (+/-)	% of NHW By Age
Total:	1,094	248	100.0%	2,319	306	100.0%
Income in the past 12 months below poverty level:	127	85	11.6%	239	105	10.3%
Under 18 years	11	NC	3.4%	58	NC	10.8%
18 to 64 years	70	54	11.4%	155	68	12.0%
65 years and over	46	NC	29.5%	26	NC	5.3%
Income in the past 12 months at or above poverty level:	967	257	88.4%	2,080	315	89.7%
Under 18 years	314	NC	96.6%	478	NC	89.2%
18 to 64 years	543	172	88.6%	1,137	206	88.0%
65 years and over	110	NC	70.5%	465	NC	94.7%

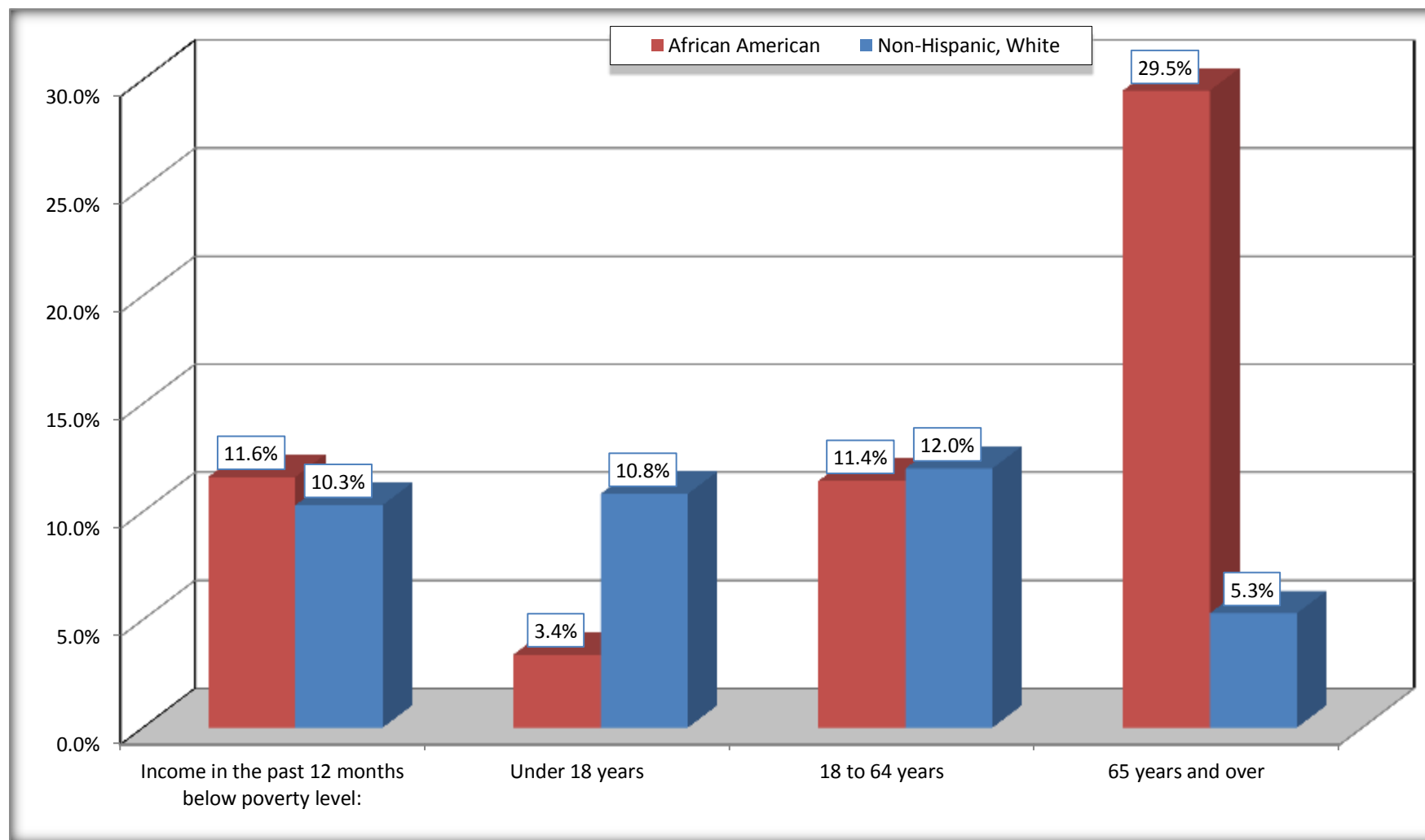
Source: U.S. Census Bureau, 2008-2012 American Community Survey

For information on confidentiality protection, sampling error, nonsampling error, and definitions, see Survey Methodology.

<http://www.census.gov/acs/www/UseData/index.htm>

Population Below Poverty in the Past 12 Months

Cuero city, Texas



Source: B17020 POVERTY STATUS IN THE PAST 12 MONTHS BY AGE - Universe: POPULATION FOR WHOM POVERTY STATUS IS DETERMINED
Data Set: 2008-2012 American Community Survey 5-Year Estimates

B19001. HOUSEHOLD INCOME IN THE PAST 12 MONTHS (IN 2010 INFLATION-ADJUSTED DOLLARS)

Data Set: 2008-2012 American Community Survey 5-Year Estimates

	Cuero city, Texas					
	African American	Margin of Error (+/-)	% of AA Total	White, Not Hispanic	Margin of Error (+/-)	% of NHW Total
Total:	431	100	100.0%	879	132	100.0%
Less than \$ 10,000	111	75	25.8%	57	39	6.5%
\$ 10,000 to \$ 14,999	36	38	8.4%	80	44	9.1%
\$ 15,000 to \$ 24,999	9	NC	2.1%	160	NC	18.2%
\$ 25,000 to \$ 34,999	73	NC	16.9%	93	NC	10.6%
\$ 35,000 to \$ 49,999	39	NC	9.0%	73	NC	8.3%
\$ 50,000 to \$ 74,999	129	NC	29.9%	159	NC	18.1%
\$ 75,000 to \$ 99,999	34	50	7.9%	121	53	13.8%
\$ 100,000 to \$ 149,999	0	NC	0.0%	57	NC	6.5%
\$ 150,000 to \$ 199,999	0	18	0.0%	21	19	2.4%
\$ 200,000 or more	0	18	0.0%	58	33	6.6%

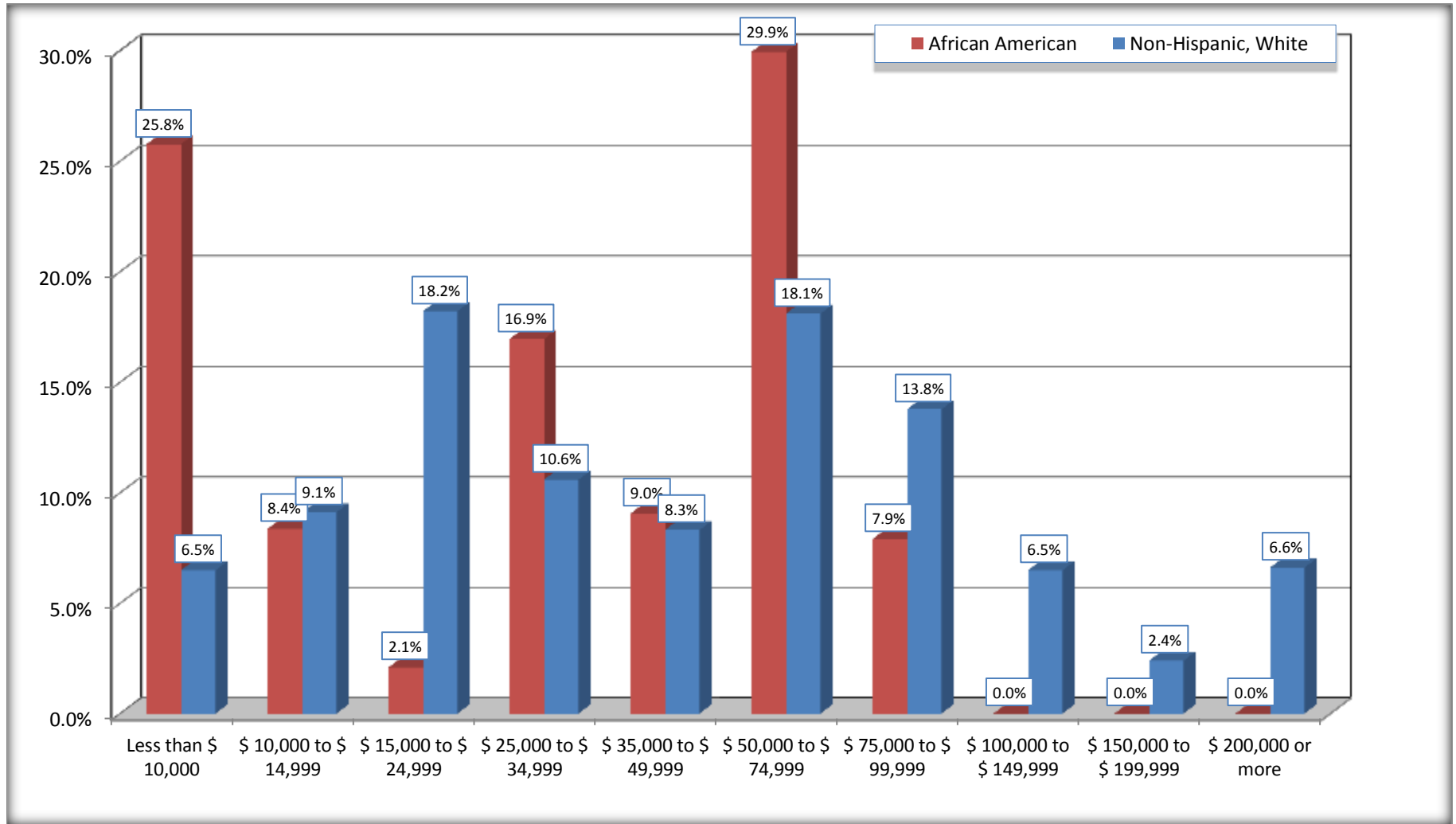
Source: U.S. Census Bureau, 2008-2012 American Community Survey

For information on confidentiality protection, sampling error, nonsampling error, and definitions, see Survey Methodology.

<http://www.census.gov/acs/www/UseData/index.htm>

Household Income in the Past 12 Months

Cuero city, Texas



Source: B19001. HOUSEHOLD INCOME IN THE PAST 12 MONTHS (IN 2010 INFLATION-ADJUSTED DOLLARS)
Data Set: 2008-2012 American Community Survey 5-Year Estimates

B19013. MEDIAN HOUSEHOLD INCOME IN THE PAST 12 MONTHS (IN 2010 INFLATION-ADJUSTED DOLLARS)

Data Set: 2008-2012 American Community Survey 5-Year Estimates

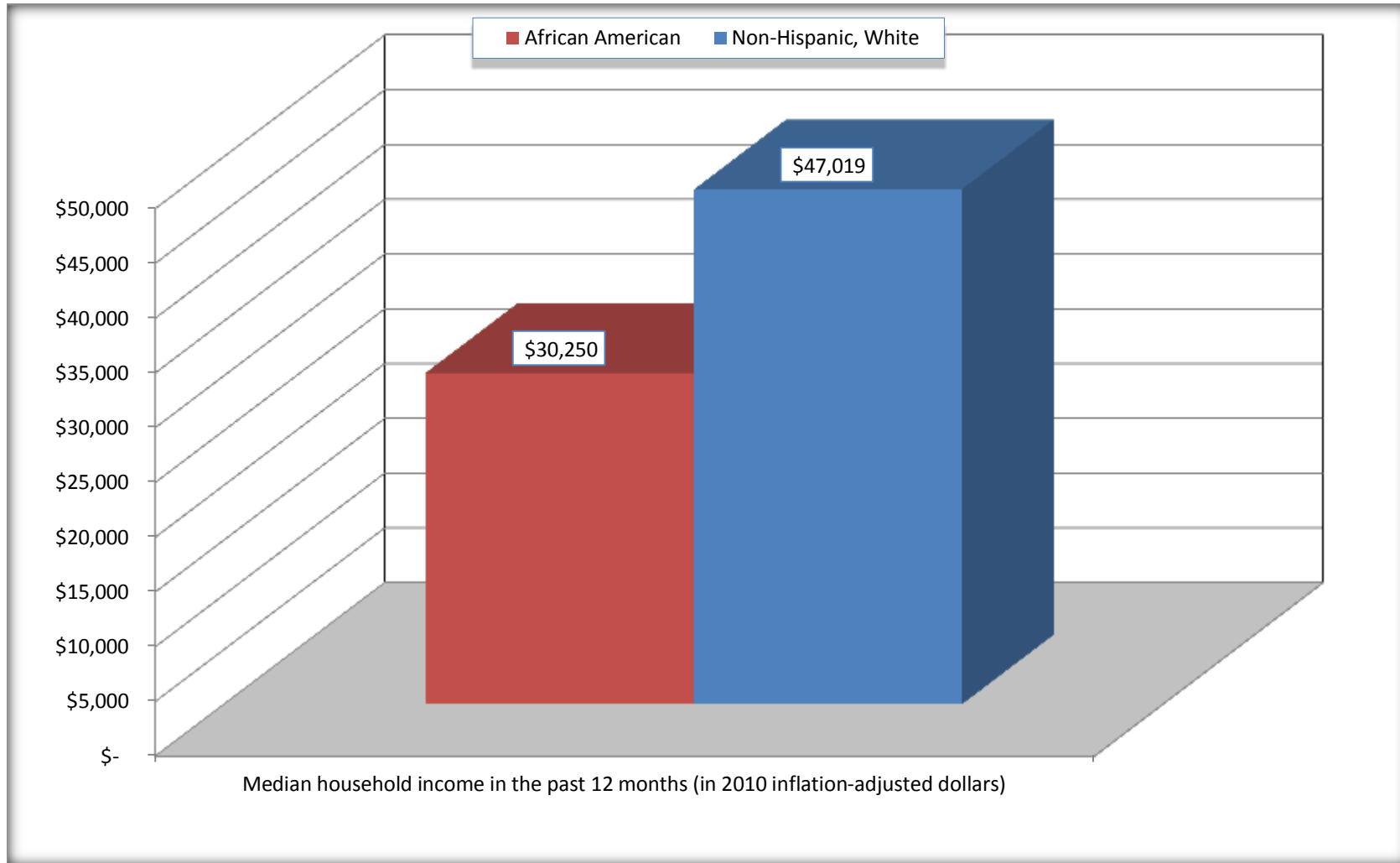
	Cuero city, Texas			
	African American	Margin of Error (+/-)	White, Not Hispanic	Margin of Error (+/-)
Median household income in the past 12 months (in 2010 inflation-adjusted dollars)	\$ 30,250	\$ 25,498	\$ 47,019	\$ 12,013

Source: U.S. Census Bureau, 2008-2012 American Community Survey

For information on confidentiality protection, sampling error, nonsampling error, and definitions, see Survey Methodology.
<http://www.census.gov/acs/www/UseData/index.htm>

Median Household Income in the Past 12 Months

Cuero city, Texas



Source: B19013. MEDIAN HOUSEHOLD INCOME IN THE PAST 12 MONTHS (IN 2010 INFLATION-ADJUSTED DOLLARS)
Data Set: 2008-2012 American Community Survey 5-Year Estimates

B19101. FAMILY INCOME IN THE PAST 12 MONTHS (IN 2010 INFLATION-ADJUSTED DOLLARS)

Data Set: 2008-2012 American Community Survey 5-Year Estimates

	Cuero city, Texas					
	African American	Margin of Error (+/-)	% of AA Total	White, Not Hispanic	Margin of Error (+/-)	% of NHW Total
Total:	232	86	100.0%	519	90	100.0%
Less than \$ 10,000	0	18	0.0%	4	7	0.8%
\$ 10,000 to \$ 14,999	5	10	2.2%	26	26	5.0%
\$ 15,000 to \$ 24,999	0	NC	0.0%	62	NC	11.9%
\$ 25,000 to \$ 34,999	35	NC	15.1%	45	NC	8.7%
\$ 35,000 to \$ 49,999	39	NC	16.8%	39	NC	7.5%
\$ 50,000 to \$ 74,999	129	NC	55.6%	107	NC	20.6%
\$ 100,000 to \$ 149,999	-	NC	0.0%	57	NC	11.0%
\$ 150,000 to \$ 199,999	0	18	0.0%	21	19	4.0%
\$ 200,000 or more	0	18	0.0%	42	28	8.1%

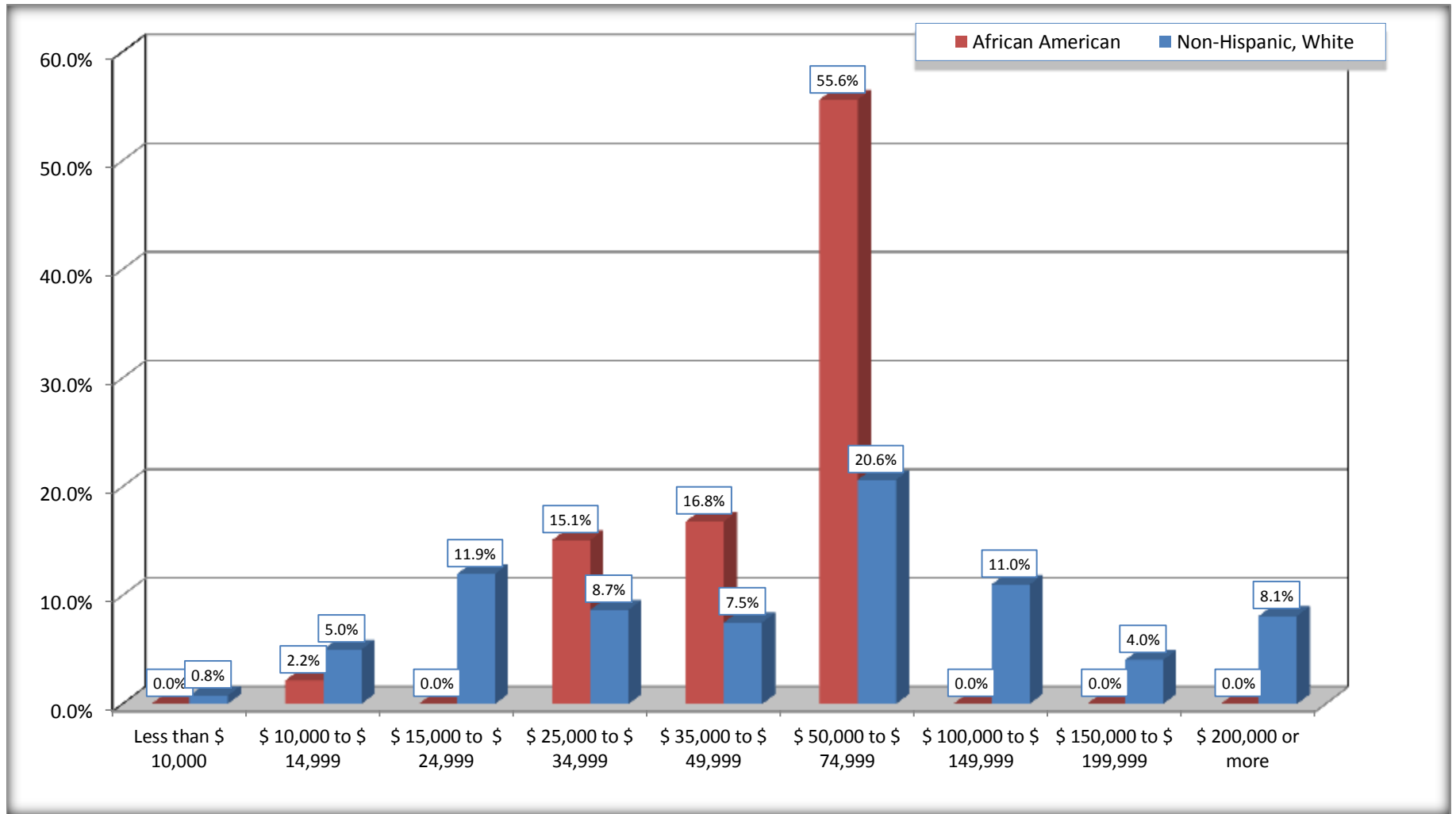
Source: U.S. Census Bureau, 2008-2012 American Community Survey

For information on confidentiality protection, sampling error, nonsampling error, and definitions, see Survey Methodology.

<http://www.census.gov/acs/www/UseData/index.htm>

Family Income in the Past 12 Months

Cuero city, Texas



Source: B19101. FAMILY INCOME IN THE PAST 12 MONTHS (IN 2010 INFLATION-ADJUSTED DOLLARS)
Data Set: 2008-2012 American Community Survey 5-Year Estimates

B19113. MEDIAN FAMILY INCOME IN THE PAST 12 MONTHS (IN 2010 INFLATION-ADJUSTED DOLLARS)

Data Set: 2008-2012 American Community Survey 5-Year Estimates

	Cuero city, Texas			
	African American	Margin of Error (+/-)	White, Not Hispanic	Margin of Error (+/-)
Median family income in the past 12 months (in 2010 inflation-adjusted dollars)	\$ 52,778	\$ 9,392	\$ 68,906	\$ 14,253

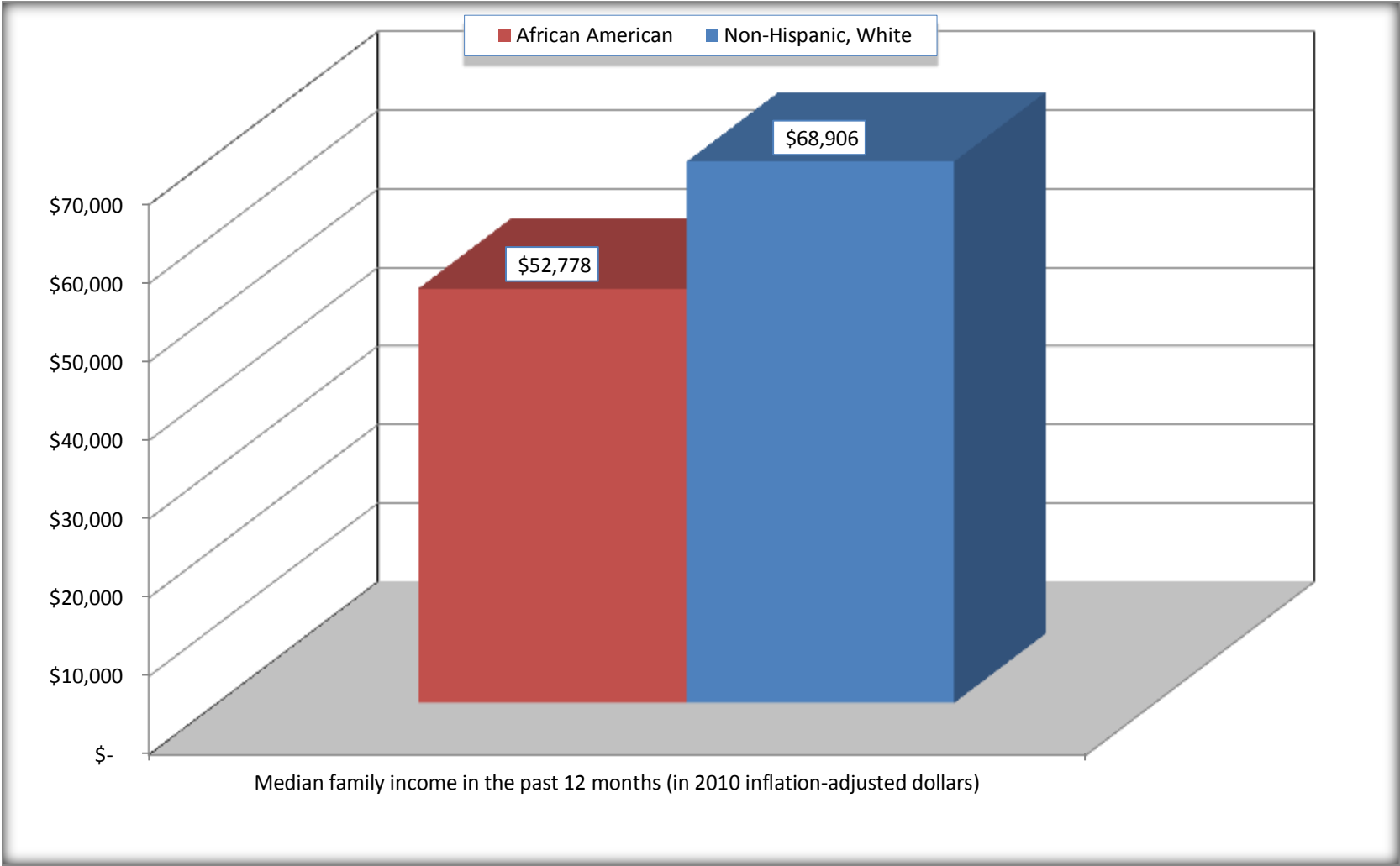
Source: U.S. Census Bureau, 2008-2012 American Community Survey

For information on confidentiality protection, sampling error, nonsampling error, and definitions, see Survey Methodology.

<http://www.census.gov/acs/www/UseData/index.htm>

Median Family Income in the Past 12 Months

Cuero city, Texas



Source: B19113. MEDIAN FAMILY INCOME IN THE PAST 12 MONTHS (IN 2010 INFLATION-ADJUSTED DOLLARS)
Data Set: 2008-2012 American Community Survey 5-Year Estimates

B19202. MEDIAN NONFAMILY HOUSEHOLD INCOME IN THE PAST 12 MONTHS (IN 2010 INFLATION-ADJUSTED DOLLARS)

Data Set: 2008-2012 American Community Survey 5-Year Estimates

	Cuero city, Texas			
	African American	Margin of Error (+/-)	White, Not Hispanic	Margin of Error (+/-)
Median nonfamily household income in the past 12 months (in 2010 inflation-adjusted dollars)	\$ 9,707	\$ 1,672	\$ 23,264	\$ 6,905

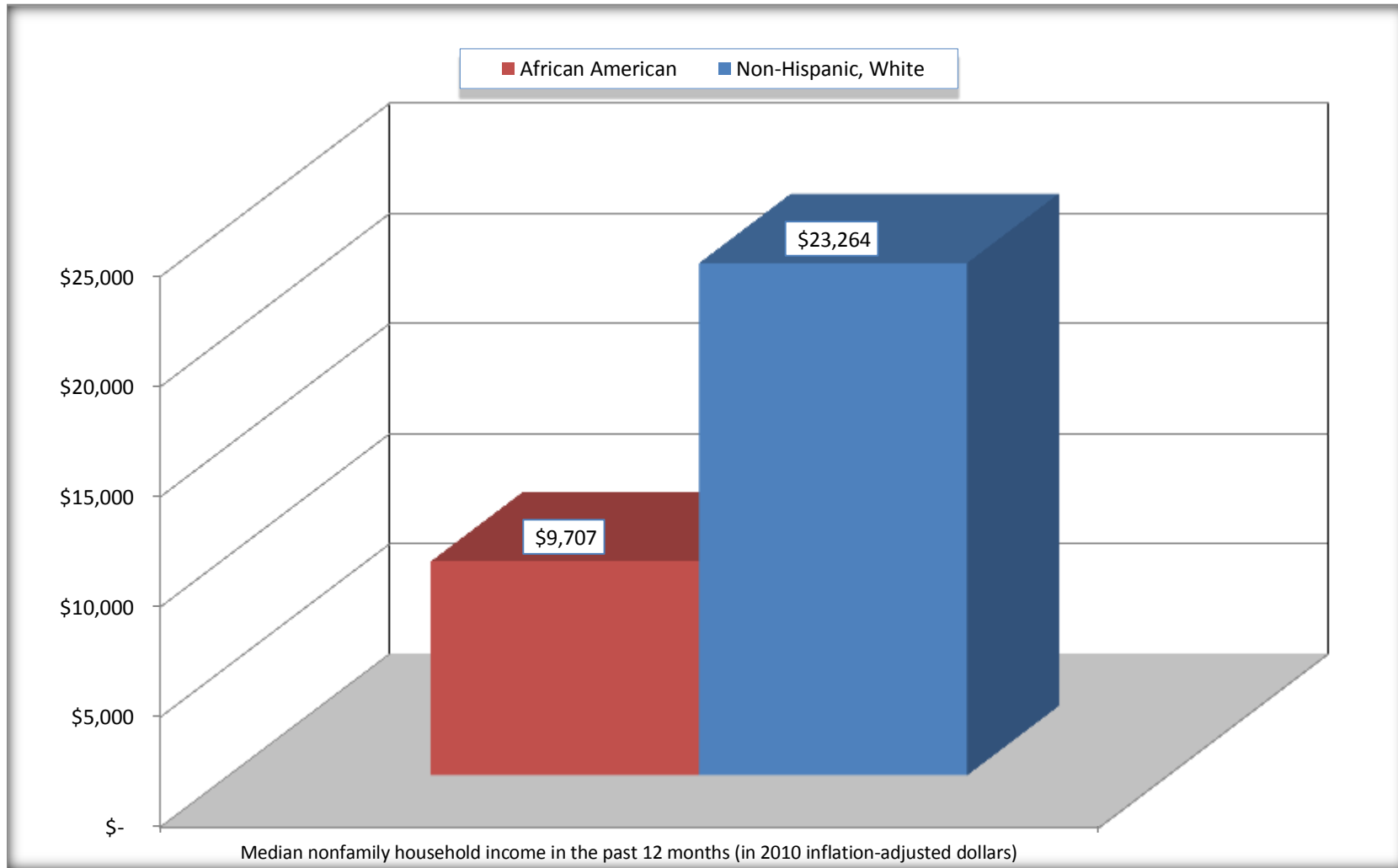
Source: U.S. Census Bureau, 2008-2012 American Community Survey

For information on confidentiality protection, sampling error, nonsampling error, and definitions, see Survey Methodology.

<http://www.census.gov/acs/www/UseData/index.htm>

Median Non-Family Income in the Past 12 Months

Cuero city, Texas



Source: B19202. MEDIAN NONFAMILY HOUSEHOLD INCOME IN THE PAST 12 MONTHS (IN 2010 INFLATION-ADJUSTED DOLLARS)
Data Set: 2008-2012 American Community Survey 5-Year Estimates

B19301. PER CAPITA INCOME IN THE PAST 12 MONTHS (IN 2010 INFLATION-ADJUSTED DOLLARS)

Data Set: 2008-2012 American Community Survey 5-Year Estimates

	Cuero city, Texas			
	African American	Margin of Error (+/-)	White, Not Hispanic	Margin of Error (+/-)
Per capita income in the past 12 months (in 2010 inflation-adjusted dollars)	\$ 13,259	\$ 2,875	\$ 28,457	\$ 4,669

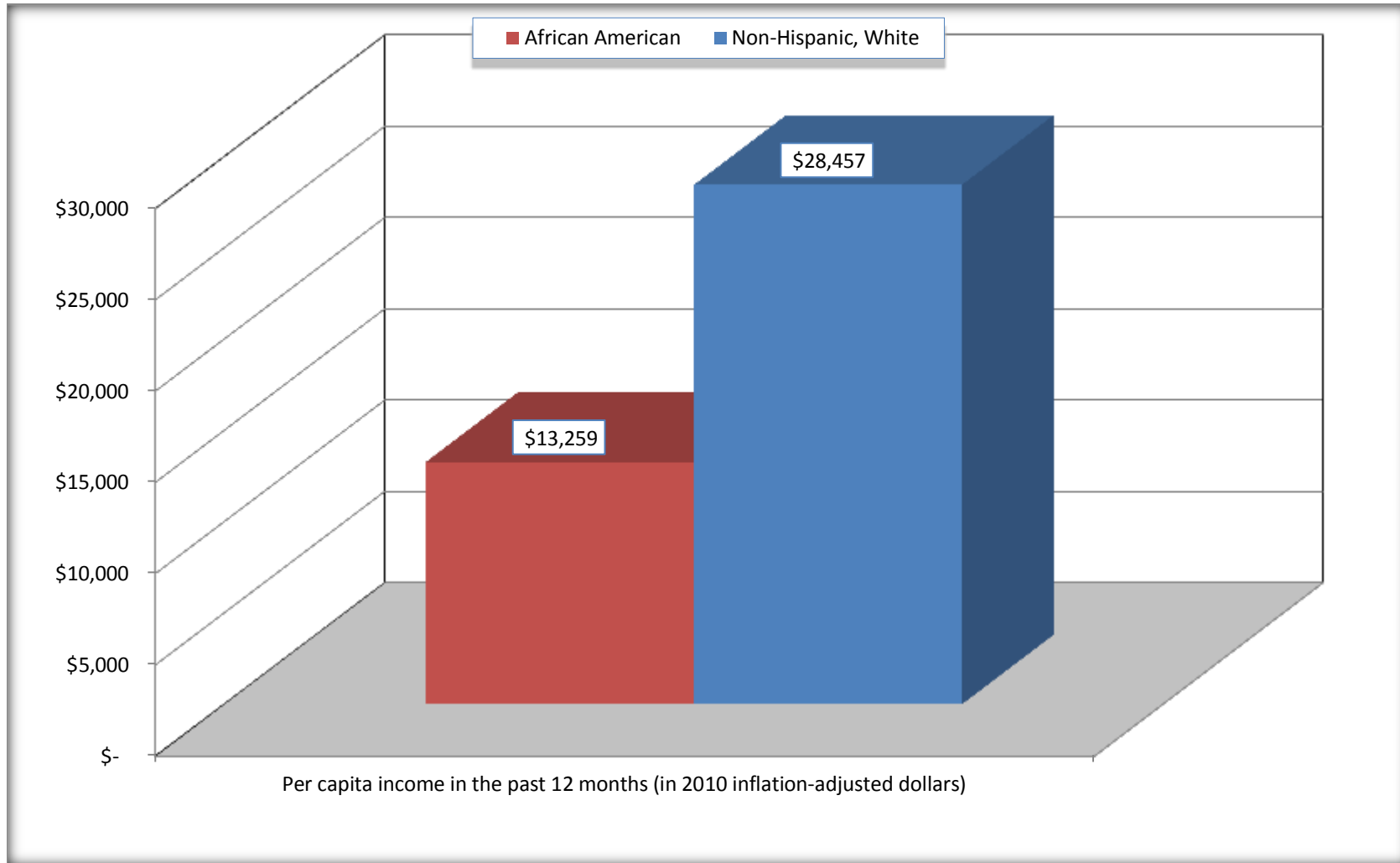
Source: U.S. Census Bureau, 2008-2012 American Community Survey

For information on confidentiality protection, sampling error, nonsampling error, and definitions, see Survey Methodology.

<http://www.census.gov/acs/www/UseData/index.htm>

Per capita Income in the Past 12 Months

Cuero city, Texas



Source: B19301. PER CAPITA INCOME IN THE PAST 12 MONTHS (IN 2010 INFLATION-ADJUSTED DOLLARS)
Data Set: 2008-2012 American Community Survey 5-Year Estimates

B20017. MEDIAN EARNINGS IN THE PAST 12 MONTHS (IN 2010 INFLATION-ADJUSTED DOLLARS) BY SEX BY WORK EXPERIENCE IN THE PAST 12 MONTHS FOR THE POPULATION 16 YEARS AND OVER WITH EARNINGS IN THE PAST 12 MONTHS

Data Set: 2008-2012 American Community Survey 5-Year Estimates

	Cuero city, Texas			
	African American	Margin of Error (+/-)	White, Not Hispanic	Margin of Error (+/-)
Median earnings in the past 12 months (in 2010 inflation-adjusted dollars) --				
Total:	\$ 22,500	\$ 11,640	\$ 31,734	\$ 3,952
Male --				
Total	\$ 23,840	\$ 2,067	\$ 44,948	\$ 8,820
Worked full-time, year-round in the past 12 months	\$ 24,021	\$ 8,015	\$ 51,103	\$ 10,116
Other	\$ 20,556	\$ 17,302	\$ 15,882	\$ 9,112
Female --				
Total	\$ 15,377	\$ 5,718	\$ 22,317	\$ 6,380
Worked full-time, year-round in the past 12 months	\$ 16,792	\$ 10,204	\$ 34,762	\$ 5,671
Other	\$ 10,081	\$ 13,302	\$ 10,406	\$ 4,305

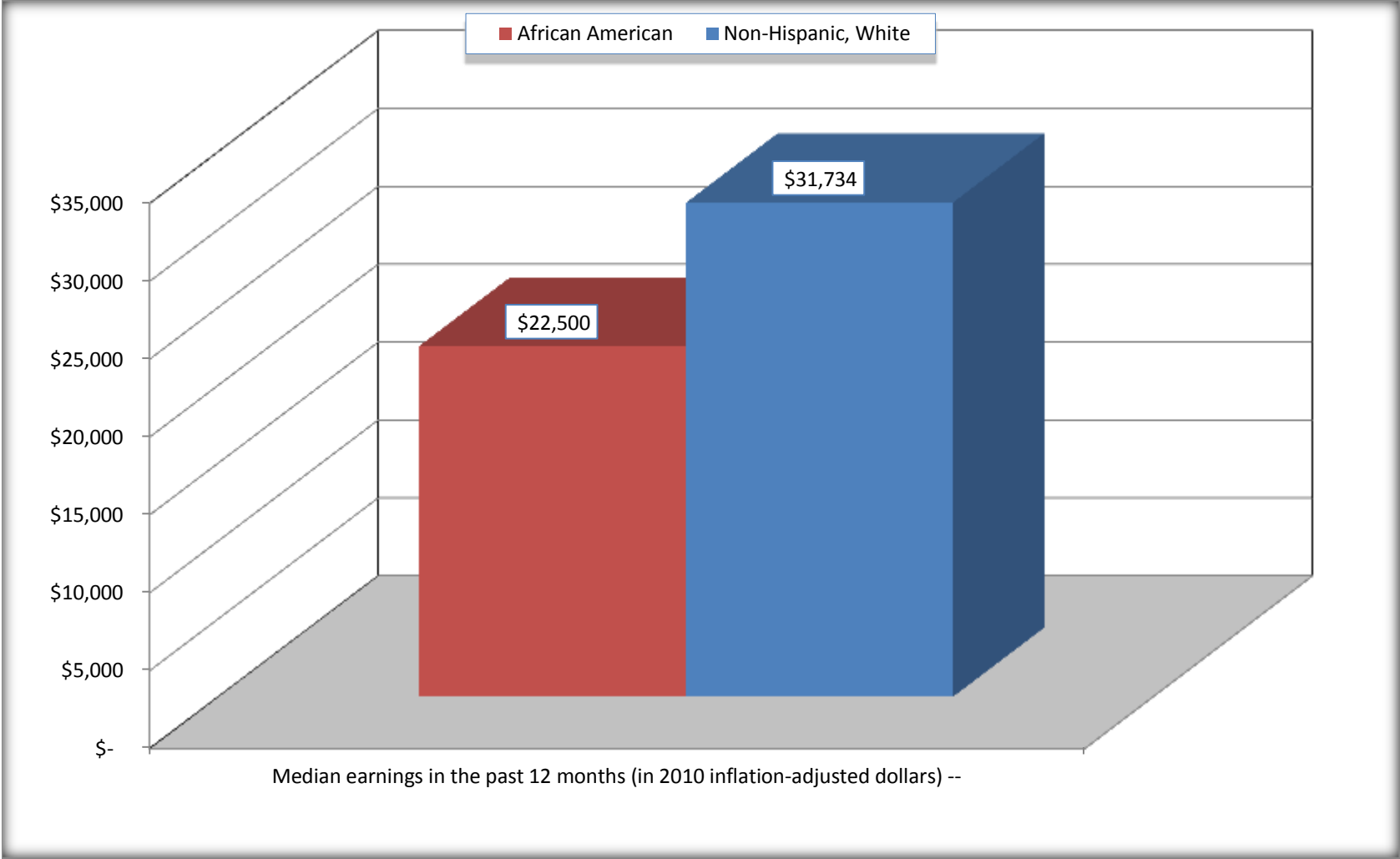
Source: U.S. Census Bureau, 2008-2012 American Community Survey

For information on confidentiality protection, sampling error, nonsampling error, and definitions, see Survey Methodology.

<http://www.census.gov/acs/www/UseData/index.htm>

Median earnings in the Past 12 Months (16 Years and Over with Earnings)

Cuero city, Texas



Source: B20017. MEDIAN EARNINGS IN THE PAST 12 MONTHS (IN 2010 INFLATION-ADJUSTED DOLLARS) BY SEX BY WORK EXPERIENCE IN THE PAST 12 MONTHS FOR THE POPULATION 16 YEARS AND OVER WITH EARNINGS IN THE PAST 12 MONTHS
Data Set: 2008-2012 American Community Survey 5-Year Estimates

B20005. SEX BY WORK EXPERIENCE IN THE PAST 12 MONTHS BY EARNINGS IN THE PAST 12 MONTHS (IN 2010 INFLATION-ADJUSTED DOLLARS) FOR THE POPULATION 16 YEARS AND OVER

Data Set: 2008-2012 American Community Survey 5-Year Estimates

	Cuero city, Texas					
	African American	Margin of Error (+/-)	% of AA Total	White, Not Hispanic	Margin of Error (+/-)	% of NHW Total
Total:	931	186	100.0%	2,138	230	100.0%
Worked full-time, year-round in the past 12 months:	422	NC	45.3%	819	NC	38.3%
No earnings	0	NC	0.0%	0	NC	0.0%
With earnings:	422	NC	45.3%	819	NC	38.3%
\$ 1 to \$ 9,999 or loss	52	NC	5.6%	12	NC	0.6%
\$ 10,000 to \$ 19,999	122	NC	13.1%	57	NC	2.7%
\$ 20,000 to \$ 29,999	141	NC	15.1%	139	NC	6.5%
\$ 30,000 to \$ 49,999	54	NC	5.8%	305	NC	14.3%
\$ 50,000 to \$ 74,999	43	NC	4.6%	164	NC	7.7%
\$ 75,000 or more	10	NC	1.1%	142	NC	6.6%
Other:	509	NC	54.7%	1,319	NC	61.7%
No earnings	409	NC	43.9%	927	NC	43.4%
With earnings: less than full time, year-round	100	NC	10.7%	392	NC	18.3%
Male:	571	145	61.3%	959	156	44.9%
Worked full-time, year-round in the past 12 months:	230	112	24.7%	461	111	21.6%
No earnings	0	18	0.0%	0	18	0.0%
With earnings:	230	112	24.7%	461	111	21.6%
\$ 1 to \$ 9,999 or loss	30	NC	3.2%	4	NC	0.2%
\$ 10,000 to \$ 19,999	26	NC	2.8%	16	NC	0.7%
\$ 20,000 to \$ 29,999	103	NC	11.1%	54	NC	2.5%
\$ 30,000 to \$ 49,999	54	NC	5.8%	149	NC	7.0%
\$ 50,000 to \$ 74,999	17	NC	1.8%	117	NC	5.5%
\$ 75,000 or more	0	NC	0.0%	121	NC	5.7%

	Cuero city, Texas					
	African American	Margin of Error (+/-)	% of AA Total	White, Not Hispanic	Margin of Error (+/-)	% of NHW Total
Other:	341	95	36.6%	498	120	23.3%
No earnings	301	86	32.3%	394	106	18.4%
With earnings:	40	38	4.3%	104	60	4.9%
Female:	360	105	38.7%	1,179	148	55.1%
Worked full-time, year-round in the past 12 months:	192	96	20.6%	358	78	16.7%
No earnings	0	18	0.0%	0	18	0.0%
With earnings:	192	96	20.6%	358	78	16.7%
\$ 1 to \$ 9,999 or loss	22	NC	2.4%	8	NC	0.4%
\$ 10,000 to \$ 19,999	96	NC	10.3%	41	NC	1.9%
\$ 20,000 to \$ 29,999	38	NC	4.1%	85	NC	4.0%
\$ 30,000 to \$ 49,999	0	NC	0.0%	156	NC	7.3%
\$ 50,000 to \$ 74,999	26	NC	2.8%	47	NC	2.2%
\$ 75,000 or more	10	NC	1.1%	21	NC	1.0%
Other:	168	80	18.0%	821	138	38.4%
No earnings	108	60	11.6%	533	106	24.9%
With earnings:	60	53	6.4%	288	108	13.5%

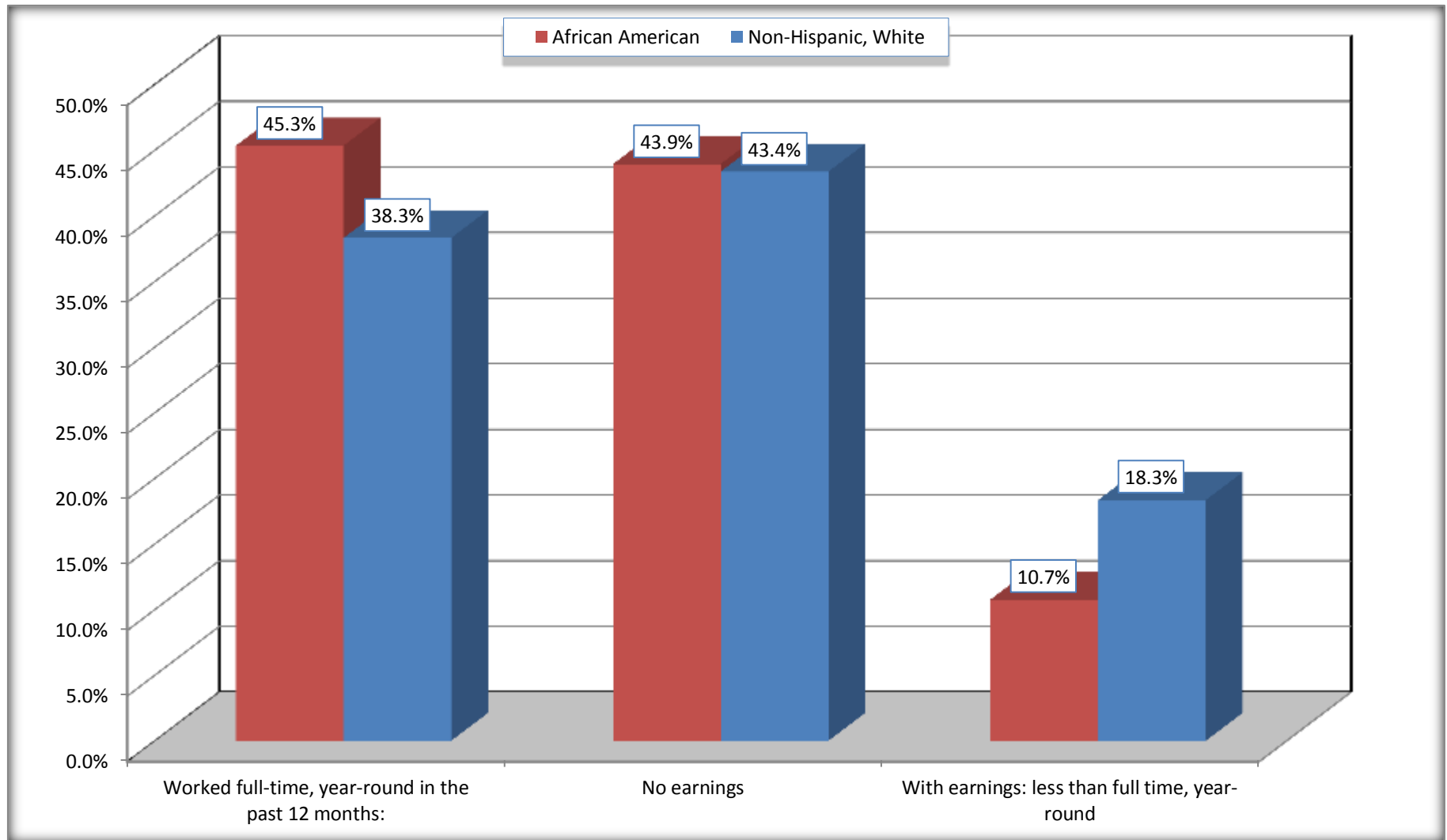
Source: U.S. Census Bureau, 2008-2012 American Community Survey

For information on confidentiality protection, sampling error, nonsampling error, and definitions, see Survey Methodology.

<http://www.census.gov/acs/www/UseData/index.htm>

Employment and Earnings in in the Past 12 Months (16 Years and Over)

Cuero city, Texas



Source: B20005. SEX BY WORK EXPERIENCE IN THE PAST 12 MONTHS BY EARNINGS IN THE PAST 12 MONTHS (IN 2010 INFLATION-ADJUSTED DOLLARS) FOR THE POPULATION 16 YEARS AND OVER

Data Set: 2008-2012 American Community Survey 5-Year Estimates

C21001. SEX BY AGE BY VETERAN STATUS FOR THE CIVILIAN POPULATION 18 YEARS AND OVER

Data Set: 2008-2012 American Community Survey 5-Year Estimates

	Cuero city, Texas					
	African American	Margin of Error (+/-)	% of AA Total	White, Not Hispanic	Margin of Error (+/-)	% of NHW Total
Total:	884	173	100.0%	2,092	217	100.0%
Veteran	134	NC	15.2%	252	NC	12.0%
Nonveteran	750	NC	84.8%	1,840	NC	88.0%
Male:	524	131	59.3%	952	154	45.5%
18 to 64 years:	459	119	51.9%	716	140	34.2%
Veteran	79	53	8.9%	124	56	5.9%
Nonveteran	380	122	43.0%	592	132	28.3%
65 years and over:	65	41	7.4%	236	70	11.3%
Veteran	31	36	3.5%	128	54	6.1%
Nonveteran	34	36	3.8%	108	45	5.2%
Female:	360	105	40.7%	1,140	133	54.5%
18 to 64 years:	251	105	28.4%	718	119	34.3%
Veteran	24	41	2.7%	0	18	0.0%
Nonveteran	227	105	25.7%	718	119	34.3%
65 years and over:	109	59	12.3%	422	93	20.2%
Veteran	0	18	0.0%	0	18	0.0%
Nonveteran	109	59	12.3%	422	93	20.2%

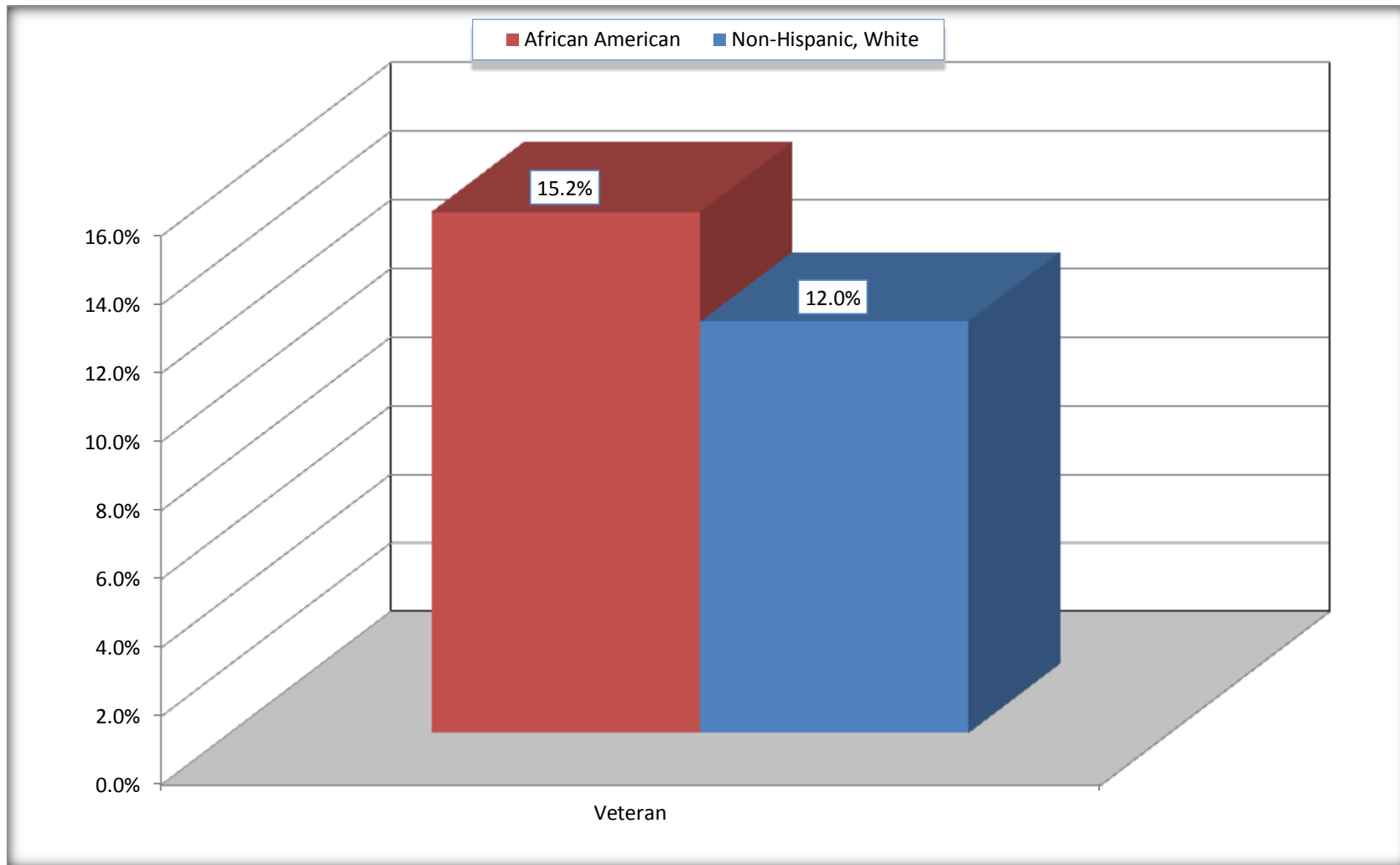
Source: U.S. Census Bureau, 2008-2012 American Community Survey

For information on confidentiality protection, sampling error, nonsampling error, and definitions, see Survey Methodology.

<http://www.census.gov/acs/www/UseData/index.htm>

Veterans in the Civilian Population 18 Years and Over

Cuero city, Texas



Source: C21001. SEX BY AGE BY VETERAN STATUS FOR THE CIVILIAN POPULATION 18 YEARS AND OVER
Data Set: 2008-2012 American Community Survey 5-Year Estimates

B22005. RECEIPT OF FOOD STAMPS/SNAP IN THE PAST 12 MONTHS BY RACE OF HOUSEHOLDER

Data Set: 2008-2012 American Community Survey 5-Year Estimates

	Cuero city, Texas					
	African American	Margin of Error (+/-)	% of AA Total	White, Not Hispanic	Margin of Error (+/-)	% of NHW Total
Total:	431	100	100.0%	879	132	100.0%
HH received Food Stamps/SNAP in the past 12 months	104	54	24.1%	99	48	11.3%
HH did not receive Food Stamps/SNAP in the past 12 months	327	101	75.9%	780	121	88.7%

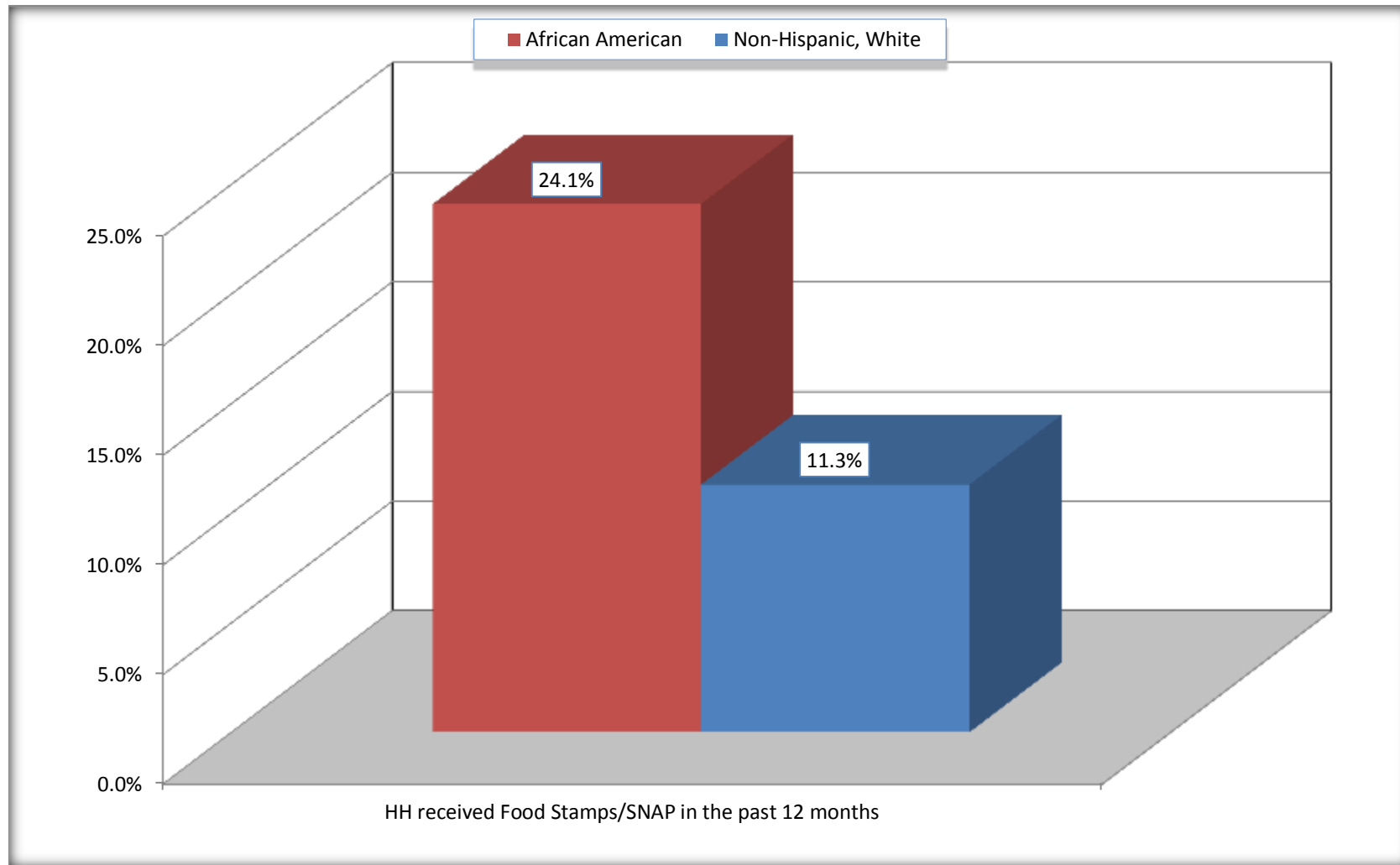
Source: U.S. Census Bureau, 2008-2012 American Community Survey

For information on confidentiality protection, sampling error, nonsampling error, and definitions, see Survey Methodology.

<http://www.census.gov/acs/www/UseData/index.htm>

Receipt of Food Stamps/SNAP in the Past 12 Months by Household

Cuero city, Texas



Source: B22005. RECEIPT OF FOOD STAMPS/SNAP IN THE PAST 12 MONTHS BY RACE OF HOUSEHOLDER
Data Set: 2008-2012 American Community Survey 5-Year Estimates

C23002. SEX BY AGE BY EMPLOYMENT STATUS FOR THE POPULATION 16 YEARS AND OVER

Data Set: 2008-2012 American Community Survey 5-Year Estimates

	Cuero city, Texas					
	African American	Margin of Error (+/-)	% of AA Total	White, Not Hispanic	Margin of Error (+/-)	% of NHW Total
Total:	931	186	100.0%	2,138	230	100.0%
In labor force:	475	NC	51.0%	1,159	NC	54.2%
In Armed Forces	0	NC	0.0%	0	NC	0.0%
Civilian:	443	NC	47.6%	1,068	NC	50.0%
Employed	434	NC	46.6%	1,125	NC	52.6%
Unemployed	41	NC	4.4%	34	NC	1.6%
Not in labor force	456	NC	49.0%	979	NC	45.8%
Male:	571	145	61.3%	959	156	44.9%
16 to 64 years:	506	137	54.4%	723	143	33.8%
In labor force:	257	110	27.6%	477	122	22.3%
In Armed Forces	0	18	0.0%	0	18	0.0%
Civilian:	257	110	27.6%	477	122	22.3%
Employed	252	108	27.1%	469	120	21.9%
Unemployed	5	9	0.5%	8	13	0.4%
Not in labor force	249	92	26.7%	246	63	11.5%
65 years and over:	65	41	7.0%	236	70	11.0%
In labor force:	0	18	0.0%	63	39	2.9%
Employed	0	18	0.0%	63	39	2.9%
Unemployed	0	18	0.0%	0	18	0.0%
Not in labor force	65	41	7.0%	173	75	8.1%

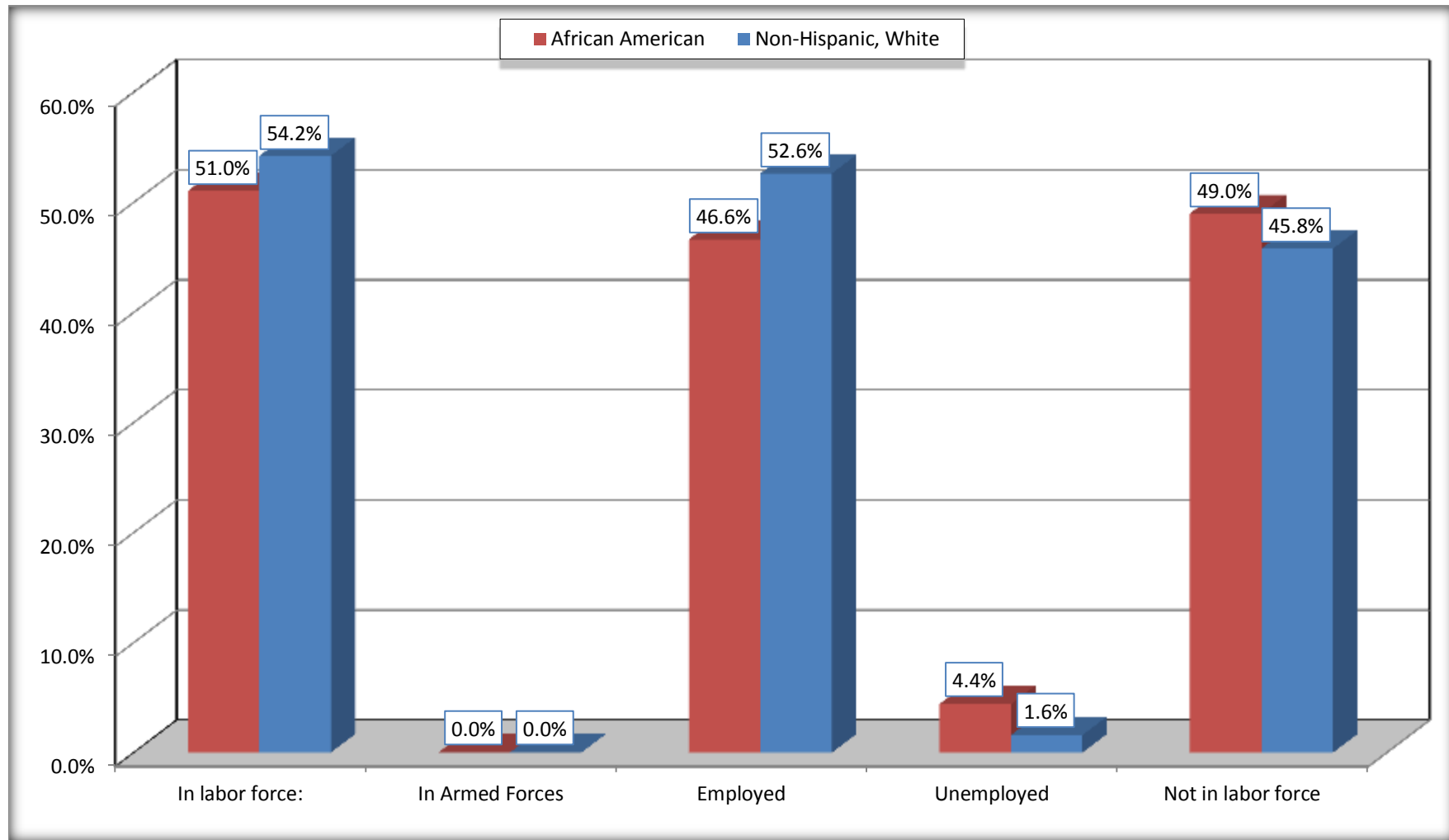
	Cuero city, Texas					
	African American	Margin of Error (+/-)	% of AA Total	White, Not Hispanic	Margin of Error (+/-)	% of NHW Total
Female:	360	105	38.7%	1,179	148	55.1%
16 to 64 years:	251	105	27.0%	757	138	35.4%
In labor force:	186	90	20.0%	591	117	27.6%
In Armed Forces	0	18	0.0%	0	18	0.0%
Civilian:	186	90	20.0%	591	117	27.6%
Employed	160	78	17.2%	571	106	26.7%
Unemployed	26	41	2.8%	20	32	0.9%
Not in labor force	65	56	7.0%	166	56	7.8%
65 years and over:	109	59	11.7%	422	93	19.7%
In labor force:	32	31	3.4%	28	24	1.3%
Employed	22	33	2.4%	22	21	1.0%
Unemployed	10	16	1.1%	6	10	0.3%
Not in labor force	77	54	8.3%	394	86	18.4%

Source: U.S. Census Bureau, 2008-2012 American Community Survey

For information on confidentiality protection, sampling error, nonsampling error, and definitions, see Survey Methodology.
<http://www.census.gov/acs/www/UseData/index.htm>

Employment Status for the Population 16 years and over

Cuero city, Texas

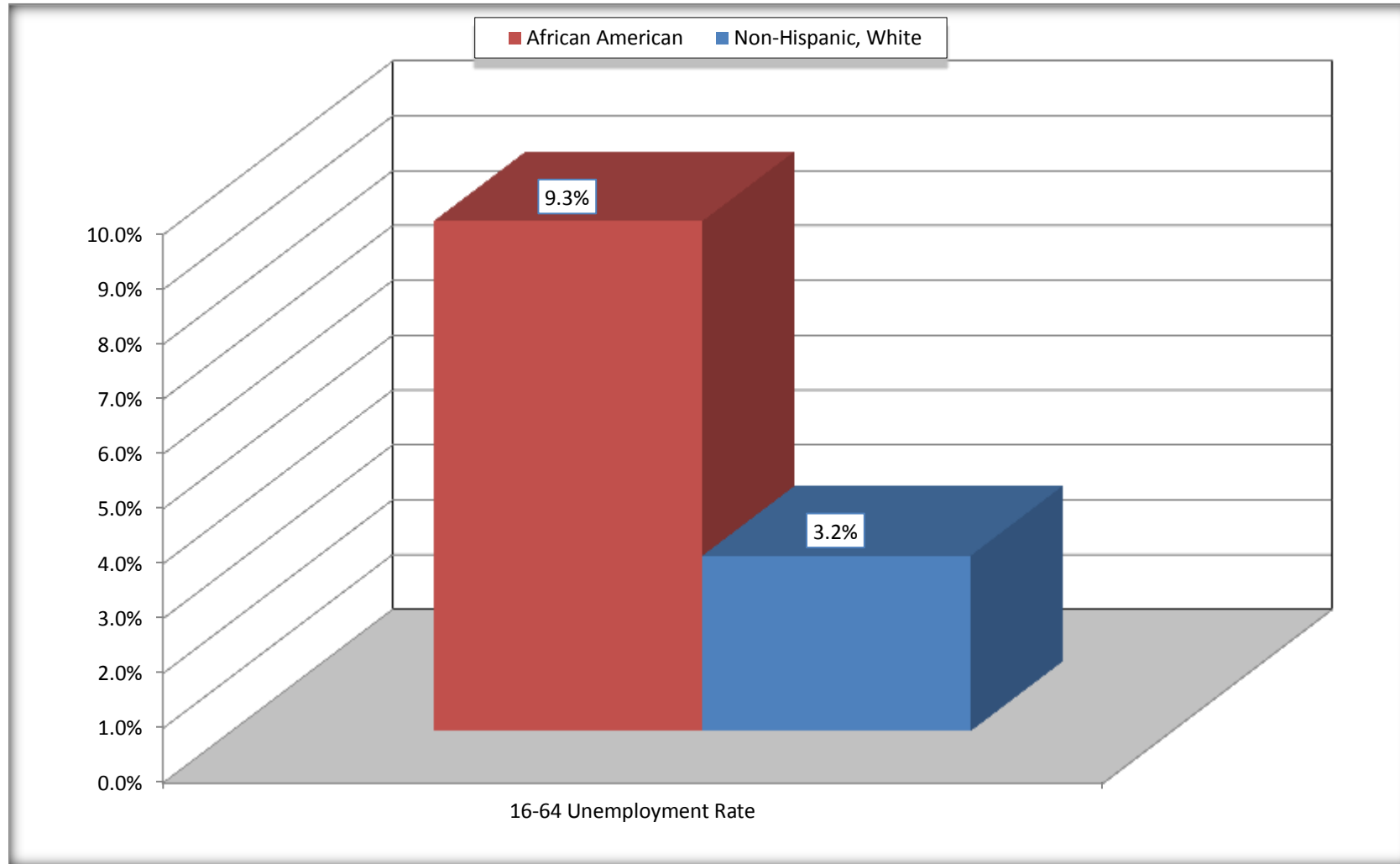


Source: C23002. SEX BY AGE BY EMPLOYMENT STATUS FOR THE POPULATION 16 YEARS AND OVER

Data Set: 2008-2012 American Community Survey 5-Year Estimates

Unemployment of Working Age Population (Ages 16 to 64) (As a Percent of 16-64 Civilian Labor Force)

Cuero city, Texas



Source: C23002. SEX BY AGE BY EMPLOYMENT STATUS FOR THE POPULATION 16 YEARS AND OVER
Data Set: 2008-2012 American Community Survey 5-Year Estimates

C24010. SEX BY OCCUPATION FOR THE CIVILIAN EMPLOYED POPULATION 16 YEARS AND OVER

Data Set: 2008-2012 American Community Survey 5-Year Estimates

	Cuero city, Texas					
	African American	Margin of Error (+/-)	% of AA Total	White, Not Hispanic	Margin of Error (+/-)	% of NHW Total
Total:	434	140	100.0%	1,125	185	100.0%
Management, professional, and related occupations	151	NC	34.8%	430	NC	38.2%
Service occupations	146	NC	33.6%	154	NC	13.7%
Sales and office occupations	35	NC	8.1%	250	NC	22.2%
Natural resources, construction, and maintenance occupations:	0	NC	0.0%	166	NC	14.8%
Production, transportation, and material moving occupations	102	NC	23.5%	125	NC	11.1%
Male:	252	108	58.1%	532	124	47.3%
Management, business, science, and arts occupations:	110	114	25.3%	192	73	17.1%
Service occupations	71	63	16.4%	30	24	2.7%
Sales and office occupations	0	18	0.0%	45	34	4.0%
Natural resources, construction, and maintenance occupations:	0	18	0.0%	166	78	14.8%
Production, transportation, and material moving occupations	71	60	16.4%	99	51	8.8%
Female:	182	90	41.9%	593	107	52.7%
Management, professional, and related occupations	41	44	9.4%	238	57	21.2%
Service occupations	75	58	17.3%	124	75	11.0%
Sales and office occupations	35	35	8.1%	205	69	18.2%
Natural resources, construction, and maintenance occupations:	0	18	0.0%	0	18	0.0%
Production, transportation, and material moving occupations	31	42	7.1%	26	21	2.3%

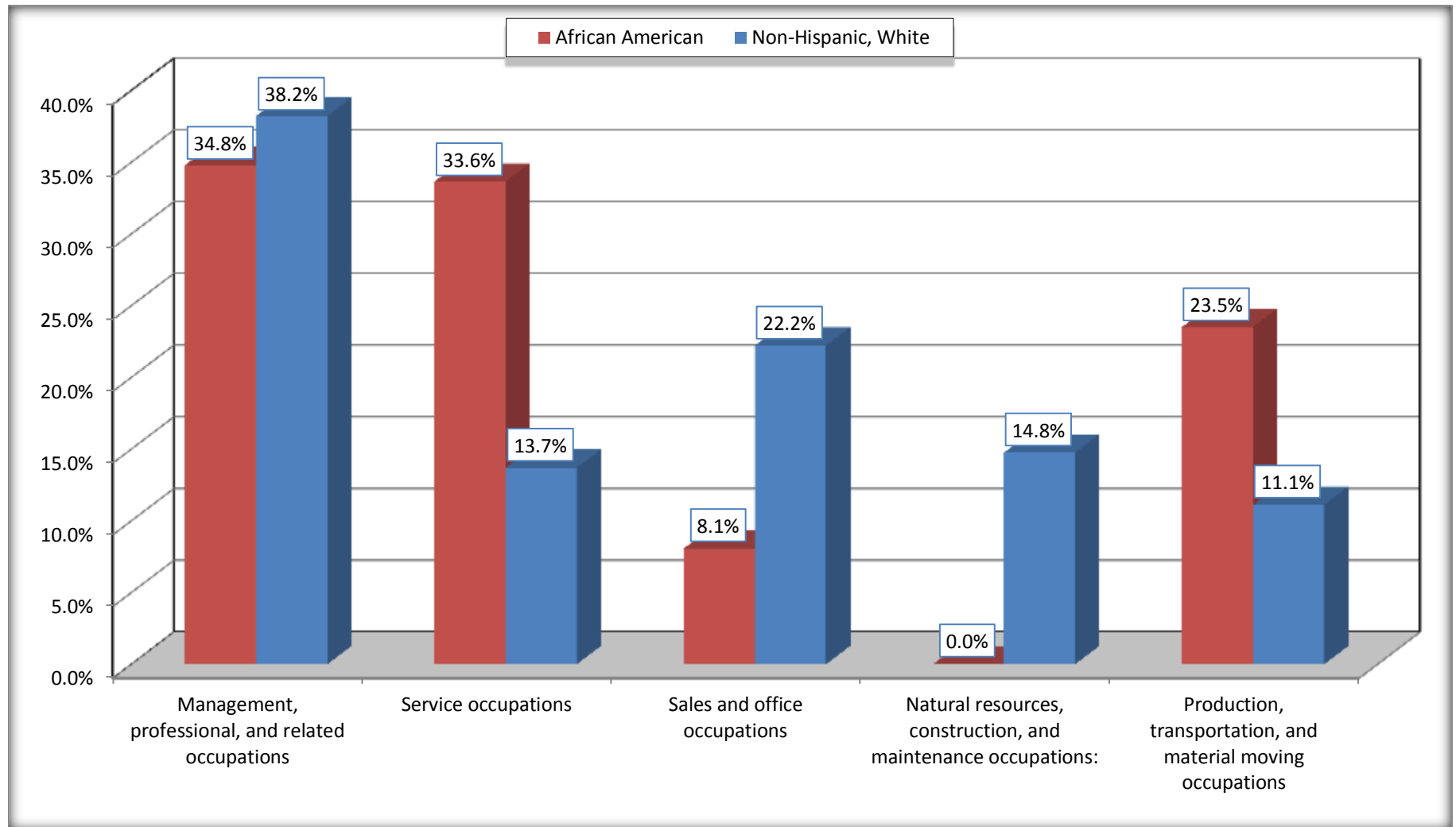
Source: U.S. Census Bureau, 2008-2012 American Community Survey

For information on confidentiality protection, sampling error, nonsampling error, and definitions, see Survey Methodology.

<http://www.census.gov/acs/www/UseData/index.htm>

Occupation for the Civilian Employed 16 Years and Over Population

Cuero city, Texas



Source: C24010. SEX BY OCCUPATION FOR THE CIVILIAN EMPLOYED POPULATION 16 YEARS AND OVER
Data Set: 2008-2012 American Community Survey 5-Year Estimates

B25003. TENURE - Universe: OCCUPIED HOUSING UNITS

Data Set: 2008-2012 American Community Survey 5-Year Estimates

	Cuero city, Texas					
	African American	Margin of Error (+/-)	% of AA Total	White, Not Hispanic	Margin of Error (+/-)	% of NHW Total
Total:	431	100	100.0%	879	132	100.0%
Owner occupied	272	104	63.1%	637	111	72.5%
Renter occupied	159	81	36.9%	242	73	27.5%

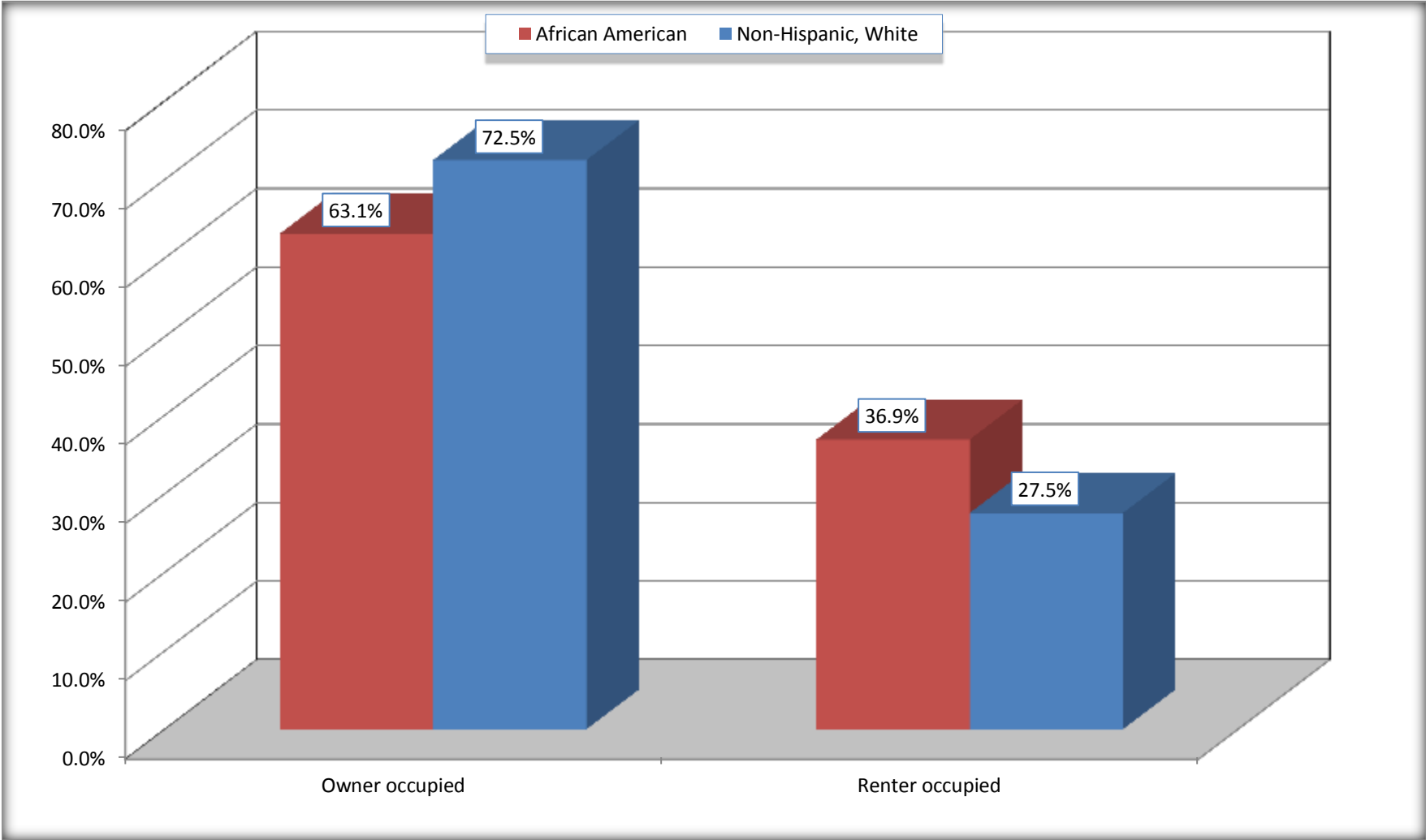
Source: U.S. Census Bureau, 2008-2012 American Community Survey

For information on confidentiality protection, sampling error, nonsampling error, and definitions, see Survey Methodology.

<http://www.census.gov/acs/www/UseData/index.h>

Home Owners and Renters by Household

Cuero city, Texas



Source: B25003. TENURE - Universe: OCCUPIED HOUSING UNITS
Data Set: 2008-2012 American Community Survey 5-Year Estimates

B25014. OCCUPANTS PER ROOM - Universe: OCCUPIED HOUSING UNITS

Data Set: 2008-2012 American Community Survey 5-Year Estimates

	Cuero city, Texas					
	African American	Margin of Error (+/-)	% of AA Total	White, Not Hispanic	Margin of Error (+/-)	% of NHW Total
Total:	431	100	100.0%	879	132	100.0%
1.00 or less occupants per room	410	102	95.1%	879	132	100.0%
1.01 or more occupants per room	21	32	4.9%	0	18	0.0%

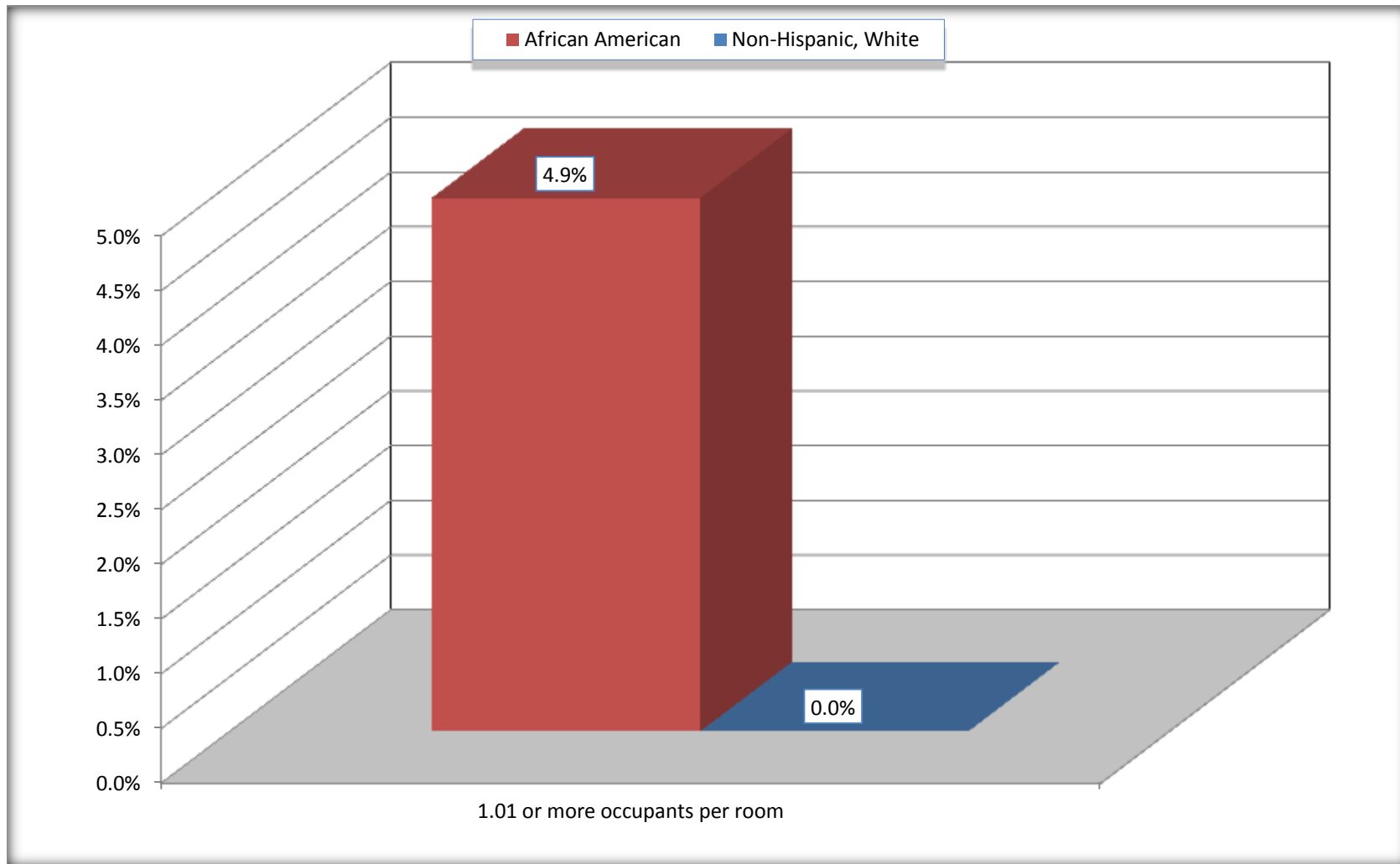
Source: U.S. Census Bureau, 2008-2012 American Community Survey

For information on confidentiality protection, sampling error, nonsampling error, and definitions, see Survey Methodology.

<http://www.census.gov/acs/www/UseData/index.ht>

More than One Person per Room (Crowding) by Household

Cuero city, Texas



Source: B25014. OCCUPANTS PER ROOM - Universe: OCCUPIED HOUSING UNITS
Data Set: 2008-2012 American Community Survey 5-Year Estimates

B18101. AGE BY DISABILITY STATUS

Data Set: 2008-2012 American Community Survey 5-Year Estimates

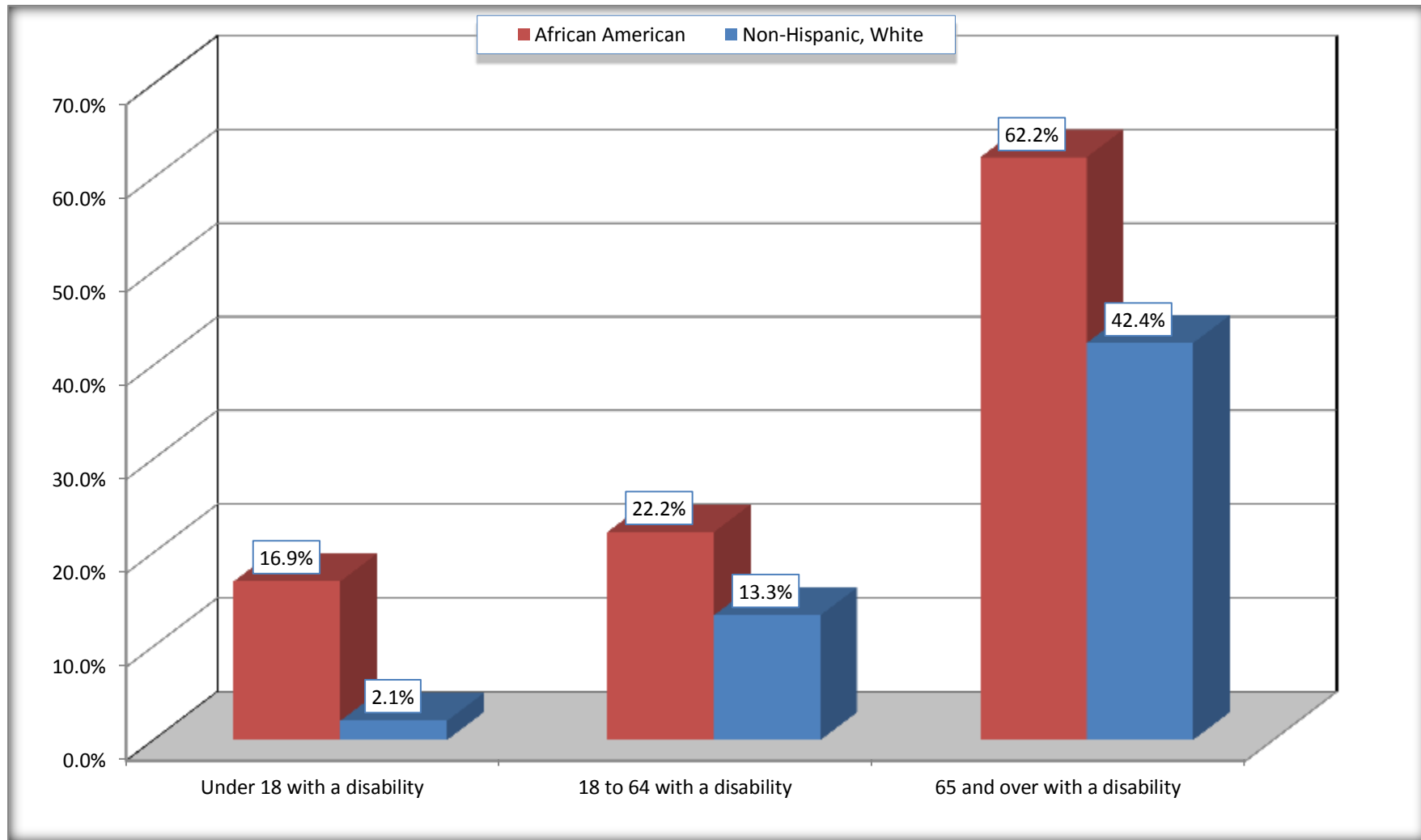
	Cuero city, Texas					
	African American	Margin of Error (+/-)	% of AA Total	White, Not Hispanic	Margin of Error (+/-)	% of NHW Total
Total:	1,094	248	100.0%	2,319	306	100.0%
Under 18 years:	325	162	29.7%	536	58	23.1%
With a disability	55	86	5.0%	11	13	0.5%
No disability	270	155	24.7%	525	154	22.6%
18 to 64 years:	613	169	56.0%	1,292	200	55.7%
With a disability	136	97	12.4%	172	73	7.4%
No disability	477	172	43.6%	1,120	185	48.3%
65 years and over:	156	65	14.3%	491	102	21.2%
With a disability	97	72	8.9%	208	71	9.0%
No disability	59	39	5.4%	283	78	12.2%

Source: U.S. Census Bureau, 2008-2012 American Community Survey

For information on confidentiality protection, sampling error, nonsampling error, and definitions, see Survey Methodology.

<http://www.census.gov/acs/www/UseData/index.htm>

Disability by Age Cuero city, Texas



Source: B18101. AGE BY DISABILITY STATUS
Data Set: 2008-2012 American Community Survey 5-Year Estimates

C27001B. HEALTH INSURANCE COVERAGE STATUS BY AGE

Data Set: 2008-2012 American Community Survey 5-Year Estimates

	Cuero city, Texas					
	African American	Margin of Error (+/-)	% of AA Total	White, Not Hispanic	Margin of Error (+/-)	% of NHW Total
Total:	1,094	248	100.0%	2,319	306	100.0%
Under 18 years:	325	162	29.7%	536	155	23.1%
With health insurance coverage	278	174	25.4%	440	135	19.0%
No health insurance coverage	47	83	4.3%	96	88	4.1%
18 to 64 years:	613	169	56.0%	1,292	200	55.7%
With health insurance coverage	587	168	53.7%	960	178	41.4%
No health insurance coverage	26	28	2.4%	332	107	14.3%
65 years and over:	156	65	14.3%	491	102	21.2%
With health insurance coverage	156	65	14.3%	491	102	21.2%
No health insurance coverage	0	18	0.0%	0	18	0.0%

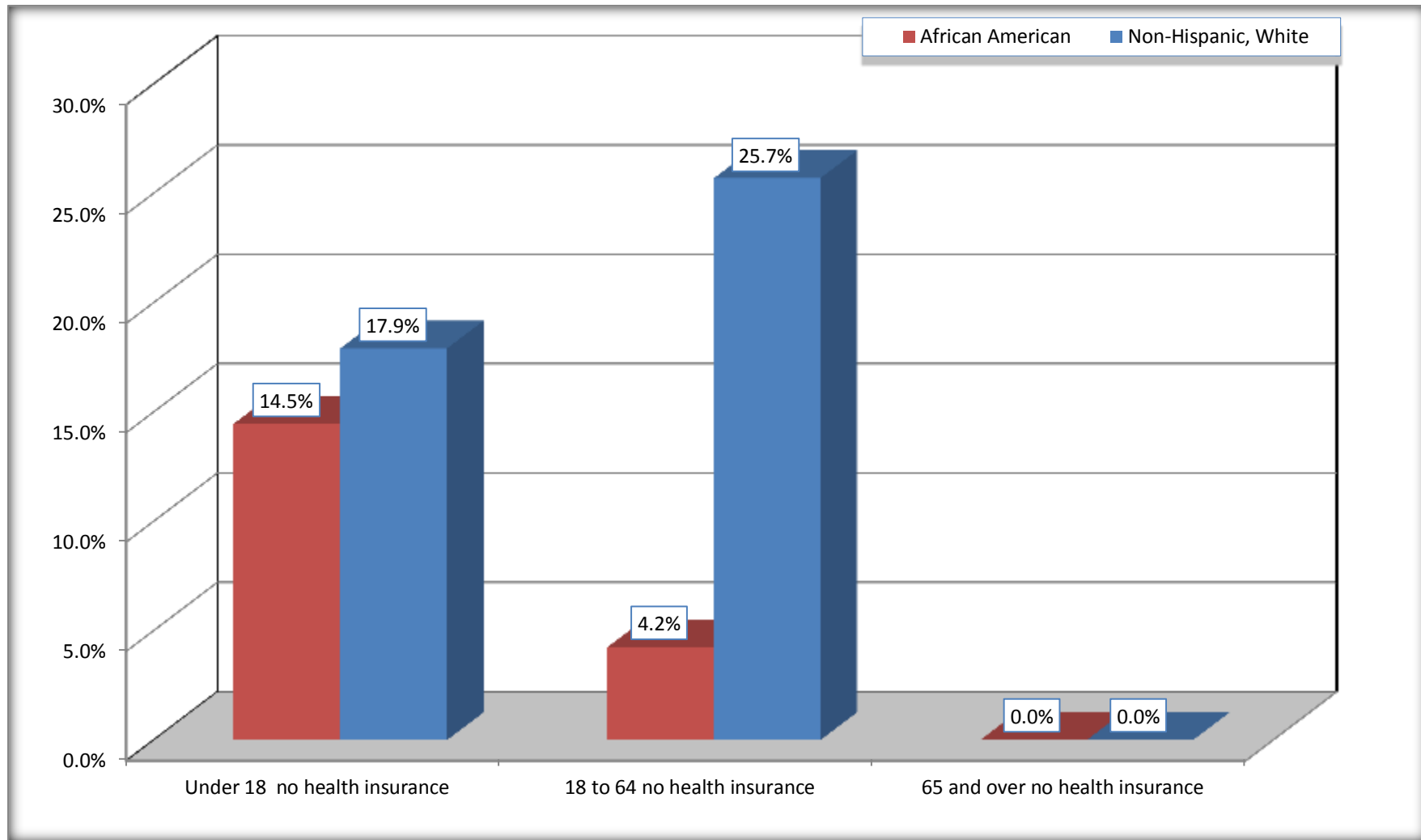
Source: U.S. Census Bureau, 2008-2012 American Community Survey

For information on confidentiality protection, sampling error, nonsampling error, and definitions, see Survey Methodology.

<http://www.census.gov/acs/www/UseData/index.htm>

Lack of Health Insurance Coverage by Age

Cuero city, Texas



Source: C27001B. HEALTH INSURANCE COVERAGE STATUS BY AGE
Data Set: 2008-2012 American Community Survey 5-Year Estimates