

Selected Socio-Economic Data

Cameron city, Texas

African American and White, Not Hispanic

Data Set: 2008-2012 American Community Survey 5-Year Estimates

www.fairvote2020.org

www.fairdata2000.com

[29-Dec-13](#)

C02003.DETAILED RACE - Universe: TOTAL POPULATION

Data Set: 2008-2012 American Community Survey 5-Year Estimates

	Cameron city, Texas		
	Population	Margin of Error (+/-)	% of Total
Total:	5,553	21	100.0%
Population of one race:	5,489	66	98.8%
White	3,950	392	71.1%
Black or African American	962	305	17.3%
American Indian and Alaska Native	87	115	1.6%
Asian alone	0	18	0.0%
Native Hawaiian and Other Pacific Islander	0	18	0.0%
Some other race	490	317	8.8%
Population of two or more races:	64	61	1.2%
Two races including Some other race	15	26	0.3%
Two races excluding Some other race, and three or more races	49	56	0.9%
Population of two races:	64	61	1.2%
White; Black or African American	39	54	0.7%
White; American Indian and Alaska Native	10	12	0.2%
White; Asian	0	18	0.0%
Black or African American; American Indian and Alaska Native	0	18	0.0%
All other two race combinations	15	26	0.3%
Population of three races	0	18	0.0%
Population of four or more races	0	18	0.0%

Note: Hispanics may be of any race. See Table B03002 and chart.

Source: U.S. Census Bureau, 2008-2012 American Community Survey

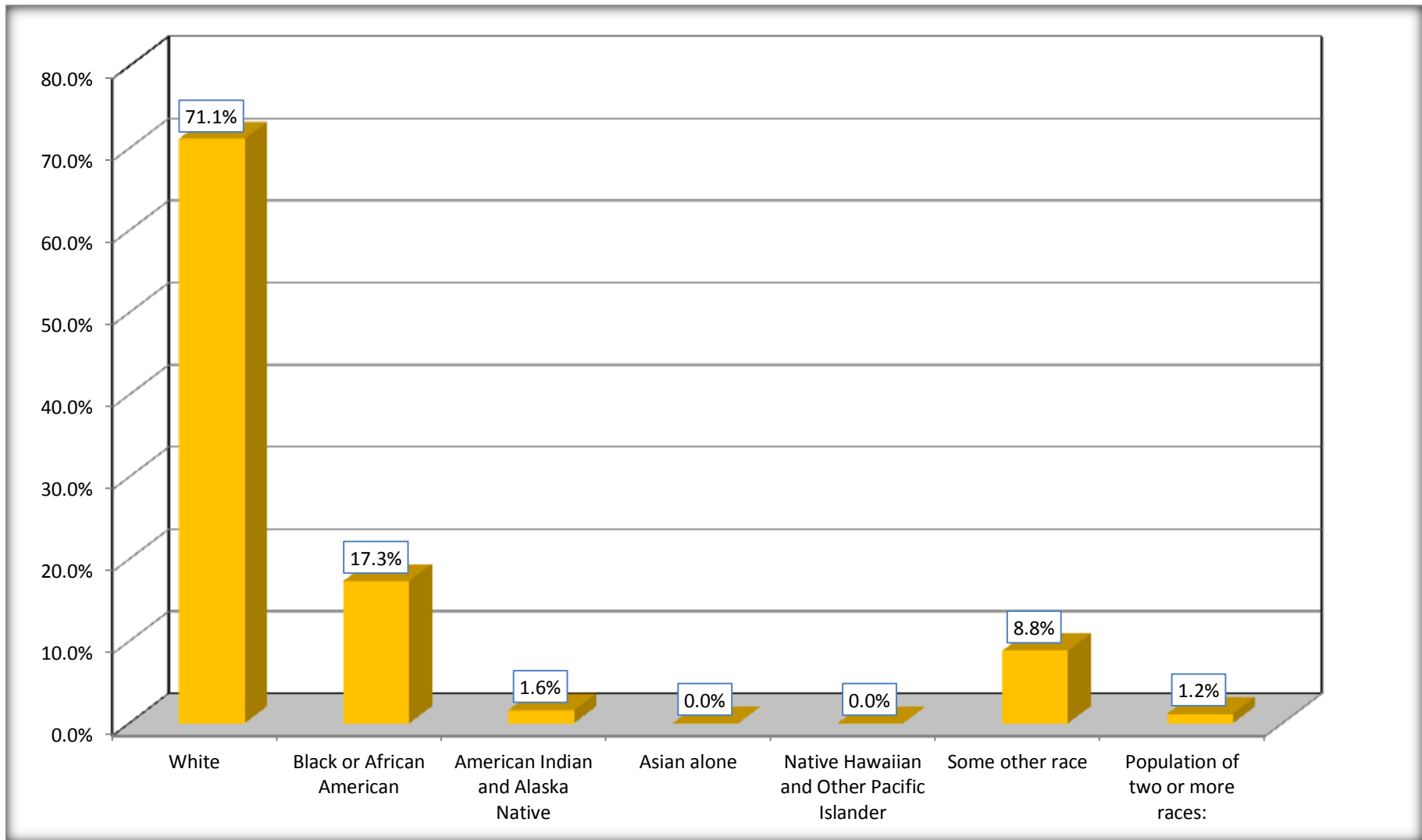
Although the American Community Survey (ACS) produces population, demographic and housing unit estimates, it is the Census Bureau's Population Estimates Program that produces and disseminates the official estimates of the population for the nation, states, counties, cities and towns and estimates of housing units for states and counties.

For information on confidentiality protection, sampling error, nonsampling error, and definitions, see Survey Methodology.

<http://www.census.gov/acs/www/UseData/index.htm>

Population by Race

Cameron city, Texas



Source: C02003.DETAILED RACE - Universe: TOTAL POPULATION
Data Set: 2008-2012 American Community Survey 5-Year Estimates

B03002. HISPANIC OR LATINO ORIGIN BY RACE - Universe: TOTAL POPULATION

Data Set: 2008-2012 American Community Survey 5-Year Estimates

	Cameron city, Texas		
	Population	Margin of Error (+/-)	% of Total
Total:	5,553	21	100.0%
Not Hispanic or Latino:	3,508	433	63.2%
White alone	2,497	410	45.0%
Black or African American alone	962	305	17.3%
American Indian and Alaska Native alone	0	18	0.0%
Asian alone	0	18	0.0%
Native Hawaiian and Other Pacific Islander alone	0	18	0.0%
Some other race alone	0	18	0.0%
Two or more races:	49	56	0.9%
Two races including Some other race	0	18	0.0%
Two races excluding Some other race, and three or more races	49	56	0.9%
Hispanic or Latino	2,045	434	36.8%

Source: U.S. Census Bureau, 2008-2012 American Community Survey

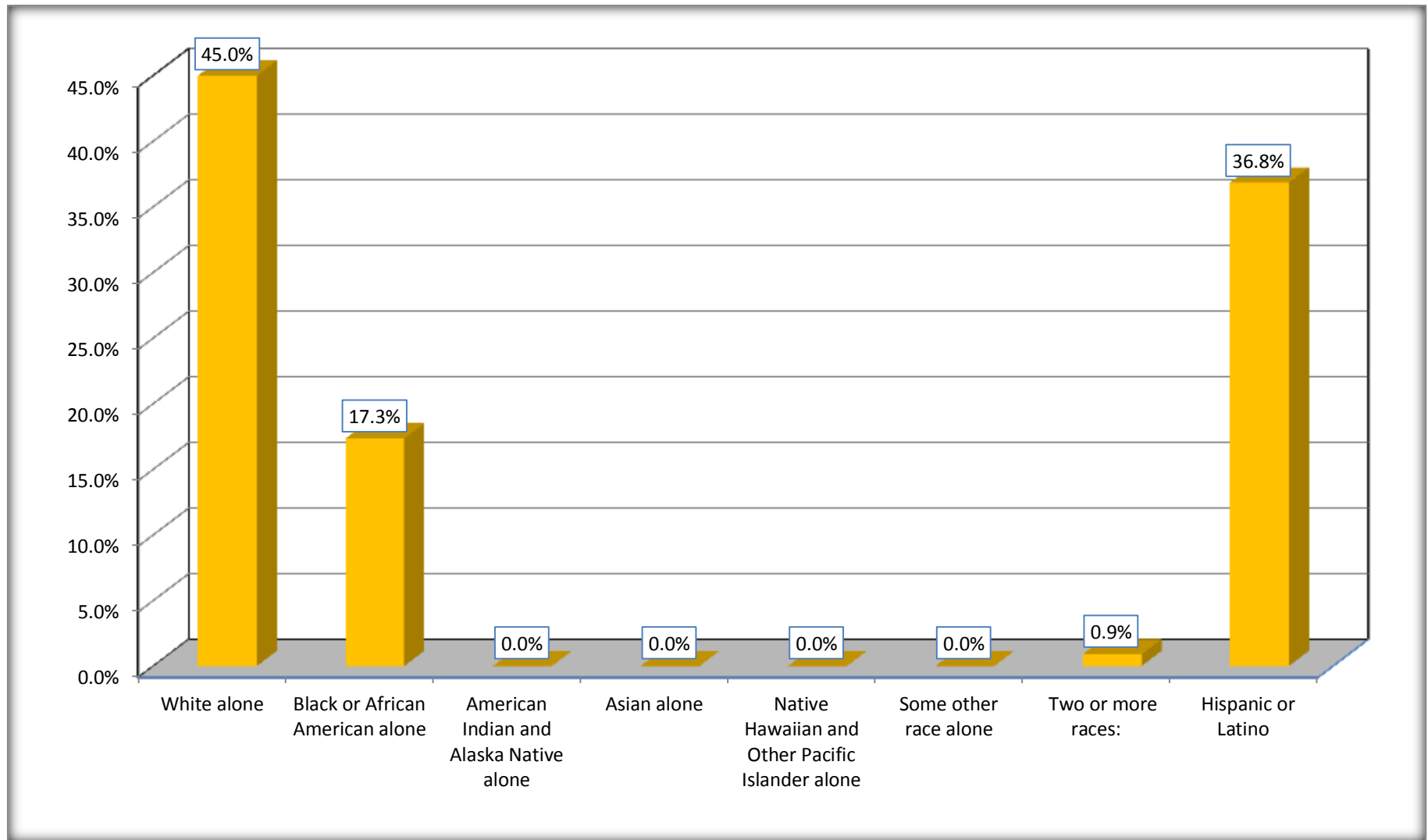
Although the American Community Survey (ACS) produces population, demographic and housing unit estimates, it is the Census Bureau's Population Estimates Program that produces and disseminates the official estimates of the population for the nation, states, counties, cities and towns and estimates of housing units for states and counties.

For information on confidentiality protection, sampling error, nonsampling error, and definitions, see Survey Methodology.

<http://www.census.gov/acs/www/UseData/index.htm>

Non-Hispanic by Race and Hispanic Population

Cameron city, Texas



Source: B03002. HISPANIC OR LATINO ORIGIN BY RACE - Universe: TOTAL POPULATION
Data Set: 2008-2012 American Community Survey 5-Year Estimates

B03002. HISPANIC OR LATINO ORIGIN BY RACE

Data Set: 2008-2012 American Community Survey 5-Year Estimates

	Cameron city, Texas		
	Population	Margin of Error (+/-)	% of Total
Hispanic or Latino:	2,045	434	100.0%
White alone	1,453	361	71.1%
Black or African American alone	0	18	0.0%
American Indian and Alaska Native alone	87	115	4.3%
Asian alone	0	18	0.0%
Native Hawaiian and Other Pacific Islander alone	0	18	0.0%
Some other race alone	490	317	24.0%
Two or more races:	15	26	0.7%
Two races including Some other race	15	26	0.7%
Two races excluding Some other race, and three or more races	0	18	0.0%

Source: U.S. Census Bureau, 2008-2012 American Community Survey

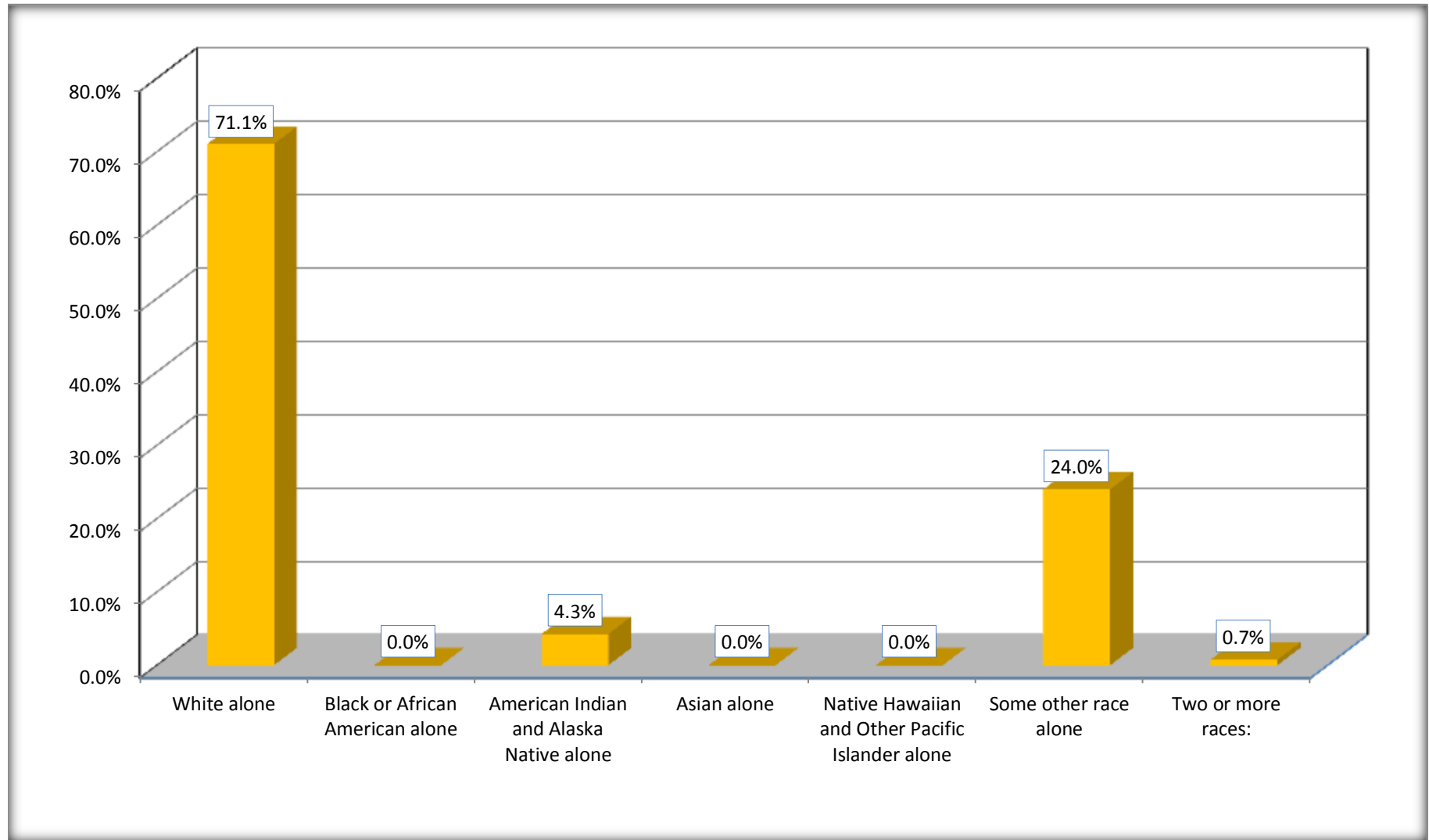
Although the American Community Survey (ACS) produces population, demographic and housing unit estimates, it is the Census Bureau's Population Estimates Program that produces and disseminates the official estimates of the population for the nation, states, counties, cities and towns and estimates of housing units for states and counties.

For information on confidentiality protection, sampling error, nonsampling error, and definitions, see Survey Methodology.

<http://www.census.gov/acs/www/UseData/index.htm>

Hispanic or Latino Origin by Race

Cameron city, Texas



Source: B03002. HISPANIC OR LATINO ORIGIN BY RACE
Data Set: 2008-2012 American Community Survey 5-Year Estimates

B01001. SEX BY AGE

Data Set: 2008-2012 American Community Survey 5-Year Estimates

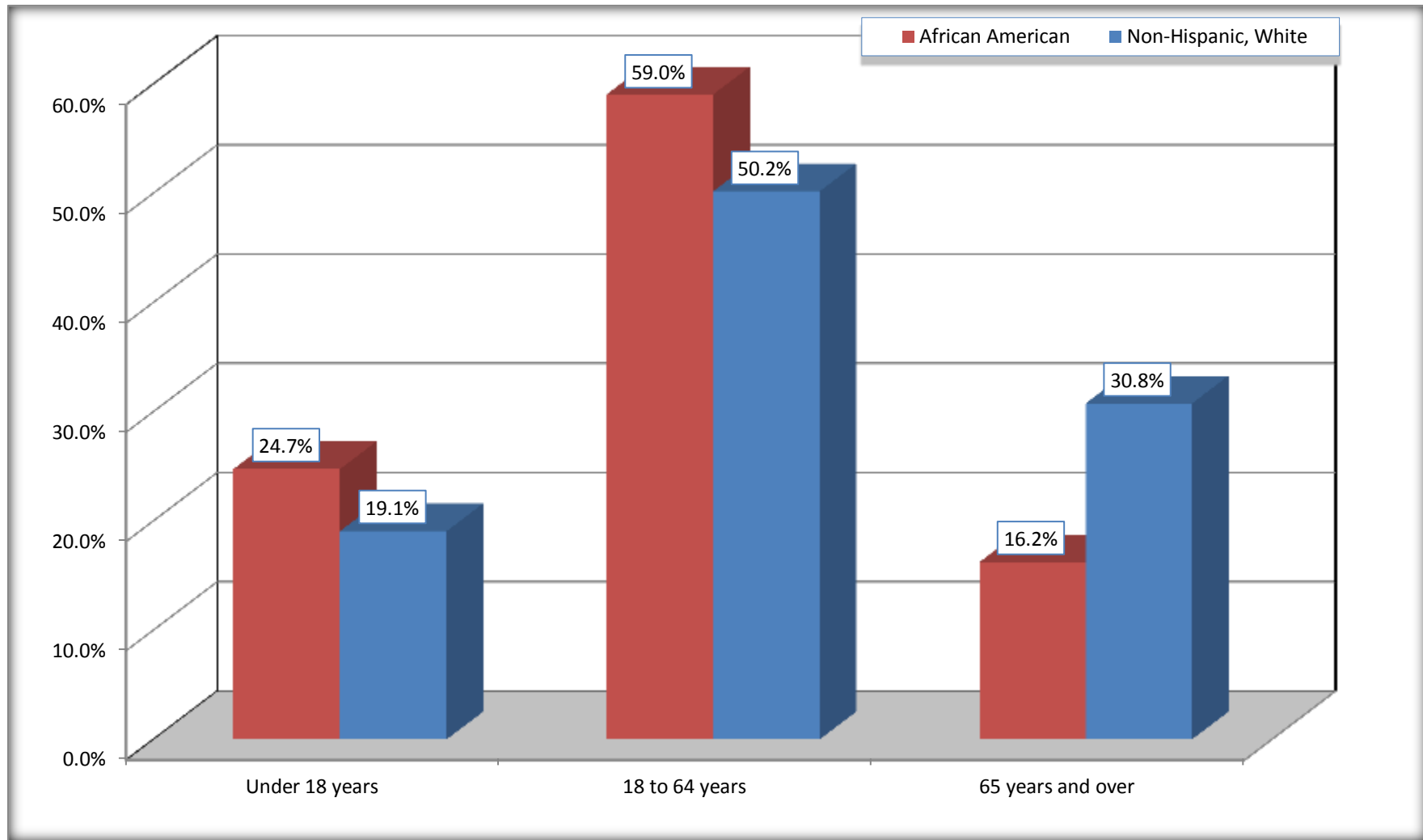
	Cameron city, Texas					
	African American	Margin of Error (+/-)	% of AA Total	White, Not Hispanic	Margin of Error (+/-)	% of NHW Total
Total:	962	305	100.0%	2,497	410	100.0%
Under 18 years	238	NC	24.7%	476	NC	19.1%
18 to 64 years	568	NC	59.0%	1,253	NC	50.2%
65 years and over	156	NC	16.2%	768	NC	30.8%
Male:	490	179	50.9%	1,163	389	46.6%
Under 18 years	127	NC	13.2%	277	NC	11.1%
18 to 64 years	279	NC	29.0%	591	NC	23.7%
65 years and over	84	NC	8.7%	295	NC	11.8%
Female:	472	173	49.1%	1,334	412	53.4%
Under 18 years	111	NC	11.5%	199	NC	8.0%
18 to 64 years	289	NC	30.0%	662	NC	26.5%
65 years and over	72	NC	7.5%	473	NC	18.9%

Source: U.S. Census Bureau, 2008-2012 American Community Survey

Although the American Community Survey (ACS) produces population, demographic and housing unit estimates, it is the Census Bureau's Population Estimates Program that produces and disseminates the official estimates of the population for the nation, states, counties, cities and towns and estimates of housing units for states and counties.

For information on confidentiality protection, sampling error, nonsampling error, and definitions, see Survey Methodology.
<http://www.census.gov/acs/www/UseData/index.htm>

Population by Age Cameron city, Texas



Source: B01001. SEX BY AGE
Data Set: 2008-2012 American Community Survey 5-Year Estimates

B05003. SEX BY AGE BY CITIZENSHIP STATUS

Data Set: 2008-2012 American Community Survey 5-Year Estimates

	Cameron city, Texas					
	African American	Margin of Error (+/-)	% of AA Total by Age	White, Not Hispanic	Margin of Error (+/-)	% of NHW Total by Age
Total:	962	305	100.0%	2,497	410	100.0%
Under 18 years:	238	NC	100.0%	476	NC	100.0%
Native	238	NC	100.0%	476	NC	100.0%
Foreign born:	0	NC	0.0%	0	NC	0.0%
Naturalized U.S. citizen	0	NC	0.0%	0	NC	0.0%
Not a U.S. citizen	0	NC	0.0%	0	NC	0.0%
18 years and over:	724	NC	100.0%	2,021	NC	100.0%
Native	724	NC	100.0%	2,010	NC	99.5%
Foreign born:	0	NC	0.0%	11	NC	0.5%
Naturalized U.S. citizen	0	NC	0.0%	0	NC	0.0%
Not a U.S. citizen	0	NC	0.0%	11	NC	0.5%
Male:	490	179	50.9%	1,163	220	46.6%
Under 18 years:	127	104	100.0%	277	133	100.0%
Native	127	104	100.0%	277	133	100.0%
Foreign born:	0	18	0.0%	0	18	0.0%
Naturalized U.S. citizen	0	18	0.0%	0	18	0.0%
Not a U.S. citizen	0	18	0.0%	0	18	0.0%
18 years and over:	363	125	100.0%	886	170	100.0%
Native	363	125	100.0%	875	170	98.8%
Foreign born:	0	18	0.0%	11	18	1.2%
Naturalized U.S. citizen	0	18	0.0%	0	18	0.0%
Not a U.S. citizen	0	18	0.0%	11	18	1.2%

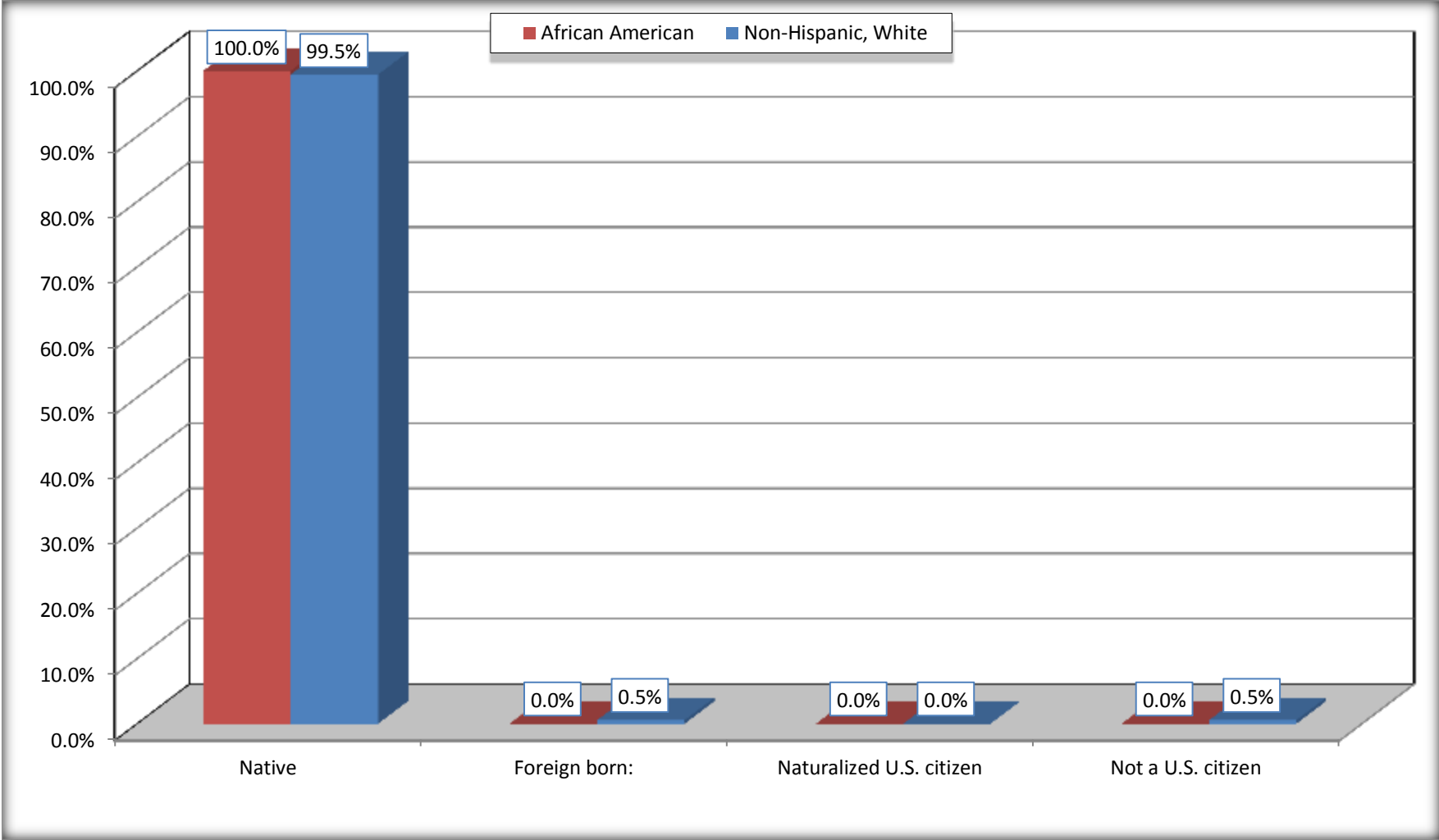
	Cameron city, Texas					
	African American	Margin of Error (+/-)	% of AA by Age	White, Not Hispanic	Margin of Error (+/-)	% of NHW by Age
Female:	472	173	49.1%	1,334	262	53.4%
Under 18 years:	111	83	100.0%	199	132	100.0%
Native	111	83	100.0%	199	132	100.0%
Foreign born:	0	18	0.0%	0	18	0.0%
Naturalized U.S. citizen	0	18	0.0%	0	18	0.0%
Not a U.S. citizen	0	18	0.0%	0	18	0.0%
18 years and over:	361	126	100.0%	1,135	196	100.0%
Native	361	126	100.0%	1,135	196	100.0%
Foreign born:	0	18	0.0%	0	18	0.0%
Naturalized U.S. citizen	0	18	0.0%	0	18	0.0%
Not a U.S. citizen	0	18	0.0%	0	18	0.0%

Source: U.S. Census Bureau, 2008-2012 American Community Survey

For information on confidentiality protection, sampling error, nonsampling error, and definitions, see Survey Methodology.
<http://www.census.gov/acs/www/UseData/index.htm>

Citizenship Status of Voting Age Population (18 and Over)

Cameron city, Texas



Source: B05003. SEX BY AGE BY CITIZENSHIP STATUS
Data Set: 2008-2012 American Community Survey 5-Year Estimates

**B07004. GEOGRAPHICAL MOBILITY IN THE PAST YEAR BY RACE FOR CURRENT RESIDENCE IN THE UNITED STATES - Universe:
POPULATION 1 YEAR AND OVER**

Data Set: 2008-2012 American Community Survey 5-Year Estimates

	Cameron city, Texas					
	African American	Margin of Error (+/-)	% of AA Total	White, Not Hispanic	Margin of Error (+/-)	% of NHW Total
Total:	950	303	100.0%	2,497	410	100.0%
Same house 1 year ago	850	311	89.5%	2,372	411	95.0%
Moved within same county	73	79	7.7%	54	50	2.2%
Moved from different county within same state	27	34	2.8%	52	57	2.1%
Moved from different state	0	18	0.0%	6	10	0.2%
Moved from abroad	0	18	0.0%	13	22	0.5%

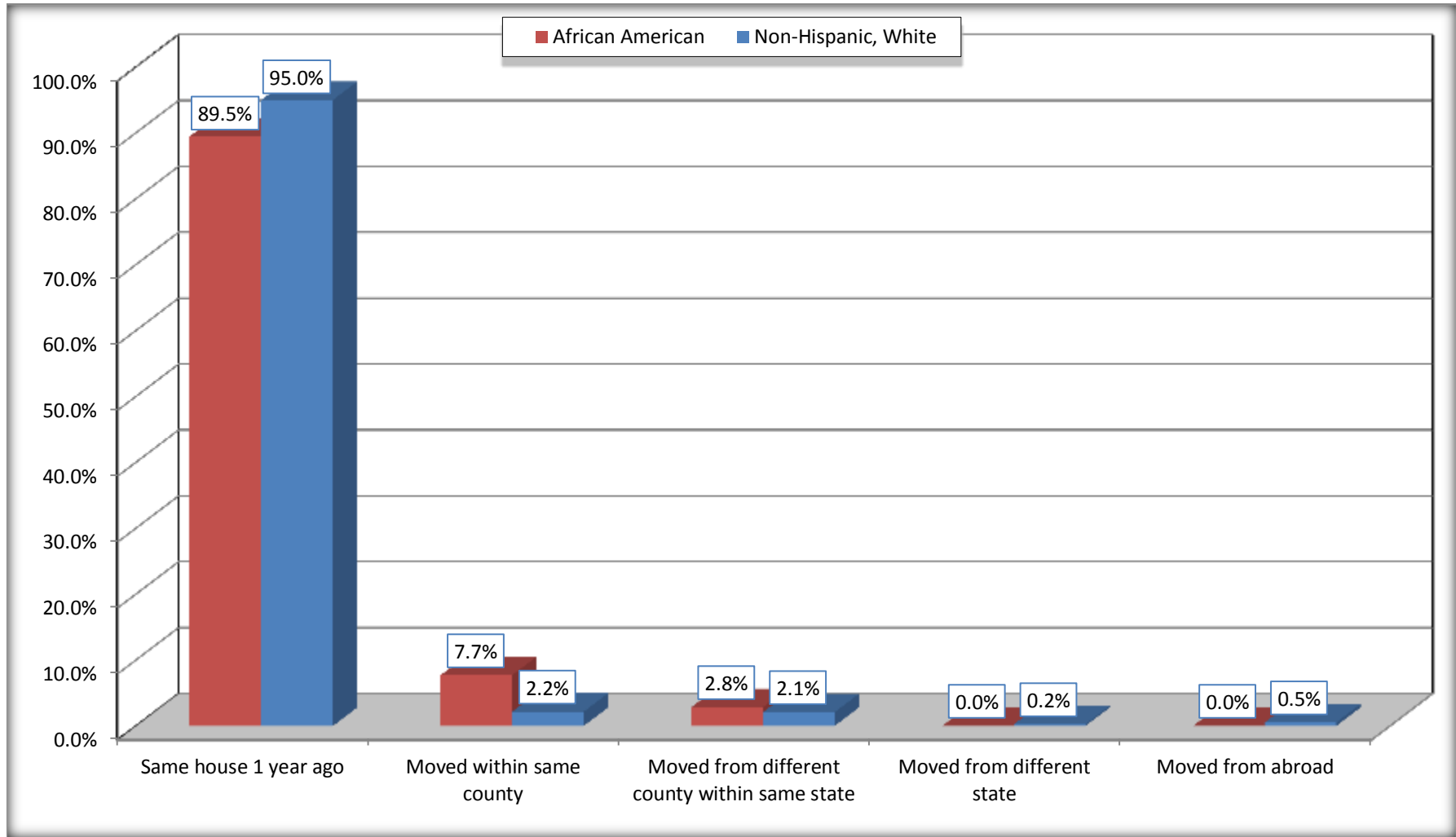
Source: U.S. Census Bureau, 2008-2012 American Community Survey

For information on confidentiality protection, sampling error, nonsampling error, and definitions, see Survey Methodology.

<http://www.census.gov/acs/www/UseData/index.htm>

Geographical Mobility in the Past Year (Population 1 Year and Over)

Cameron city, Texas



Source: B07004. GEOGRAPHICAL MOBILITY IN THE PAST YEAR BY RACE FOR CURRENT RESIDENCE IN THE UNITED STATES - Universe: POPULATION 1 YEAR AND OVER

Data Set: 2008-2012 American Community Survey 5-Year Estimates

B08105. MEANS OF TRANSPORTATION TO WORK - Universe: WORKERS 16 YEARS AND OVER

Data Set: 2008-2012 American Community Survey 5-Year Estimates

	Cameron city, Texas					
	African American	Margin of Error (+/-)	% of AA Total	White, Not Hispanic	Margin of Error (+/-)	% of NHW Total
Total:	363	135	100.0%	799	222	100.0%
Car, truck, or van - drove alone	235	113	64.7%	734	213	91.9%
Car, truck, or van - carpooled	39	43	10.7%	38	35	4.8%
Public transportation (excluding taxicab)	0	18	0.0%	0	18	0.0%
Walked	33	54	9.1%	0	18	0.0%
Taxicab, motorcycle, bicycle, or other means	56	84	15.4%	14	17	1.8%
Worked at home	0	18	0.0%	13	22	1.6%

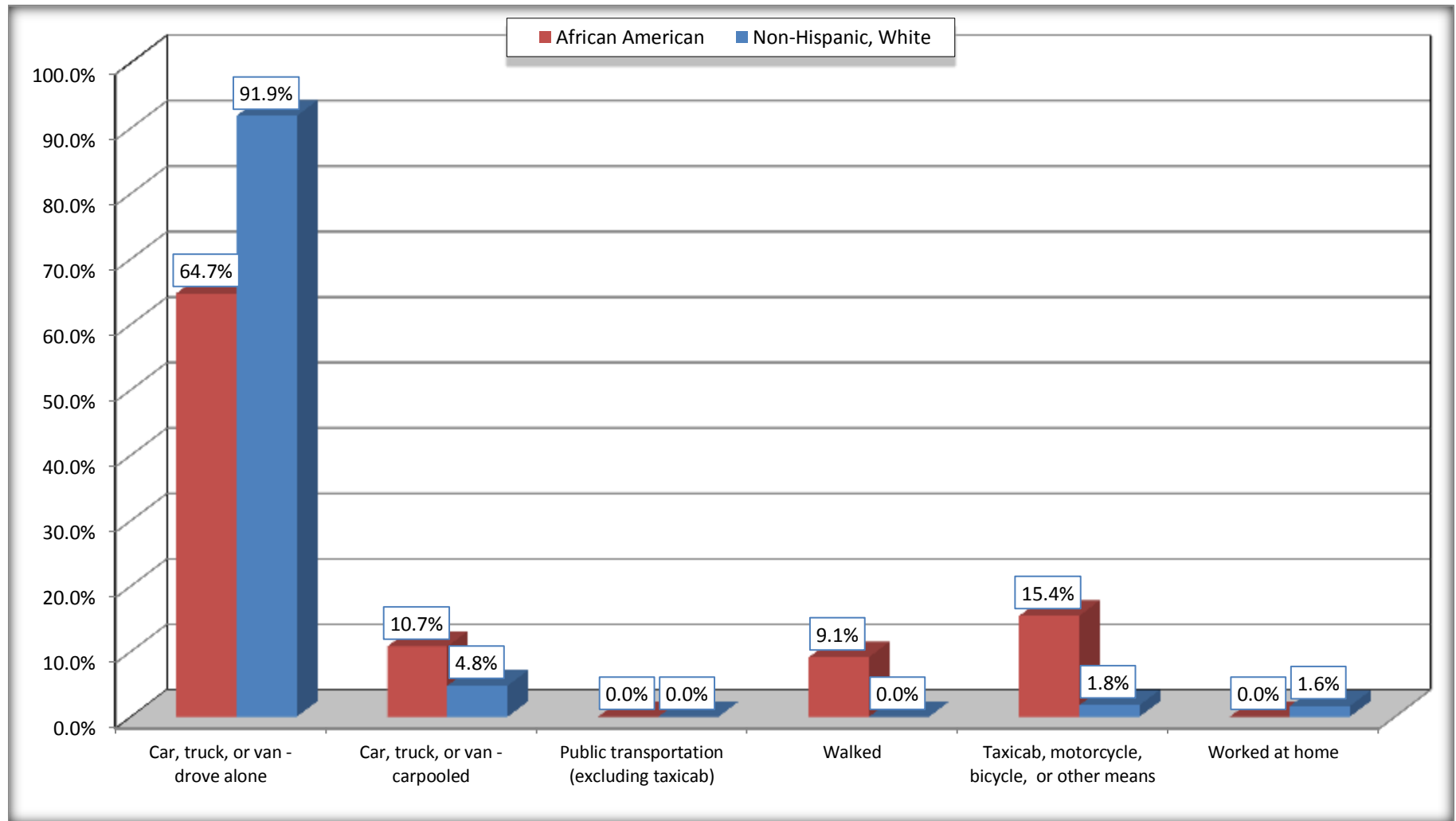
Source: U.S. Census Bureau, 2008-2012 American Community Survey

For information on confidentiality protection, sampling error, nonsampling error, and definitions, see Survey Methodology.

<http://www.census.gov/acs/www/UseData/index.htm>

Means of Transportation to Work (Workers 16 Years and Over)

Cameron city, Texas



Source: B08105. MEANS OF TRANSPORTATION TO WORK - Universe: WORKERS 16 YEARS AND OVER
Data Set: 2008-2012 American Community Survey 5-Year Estimates

B11002. HOUSEHOLD TYPE BY RELATIVES AND NONRELATIVES FOR POPULATION IN HOUSEHOLDS

Data Set: 2008-2012 American Community Survey 5-Year Estimates

	Cameron city, Texas					
	African American	Margin of Error (+/-)	% of AA Total	White, Not Hispanic	Margin of Error (+/-)	% of NHW Total
Total:	946	303	100.0%	2442	468	100.0%
In family households	740	295	78.2%	2075	475	85.0%
In nonfamily households	206	100	21.8%	367	139	15.0%

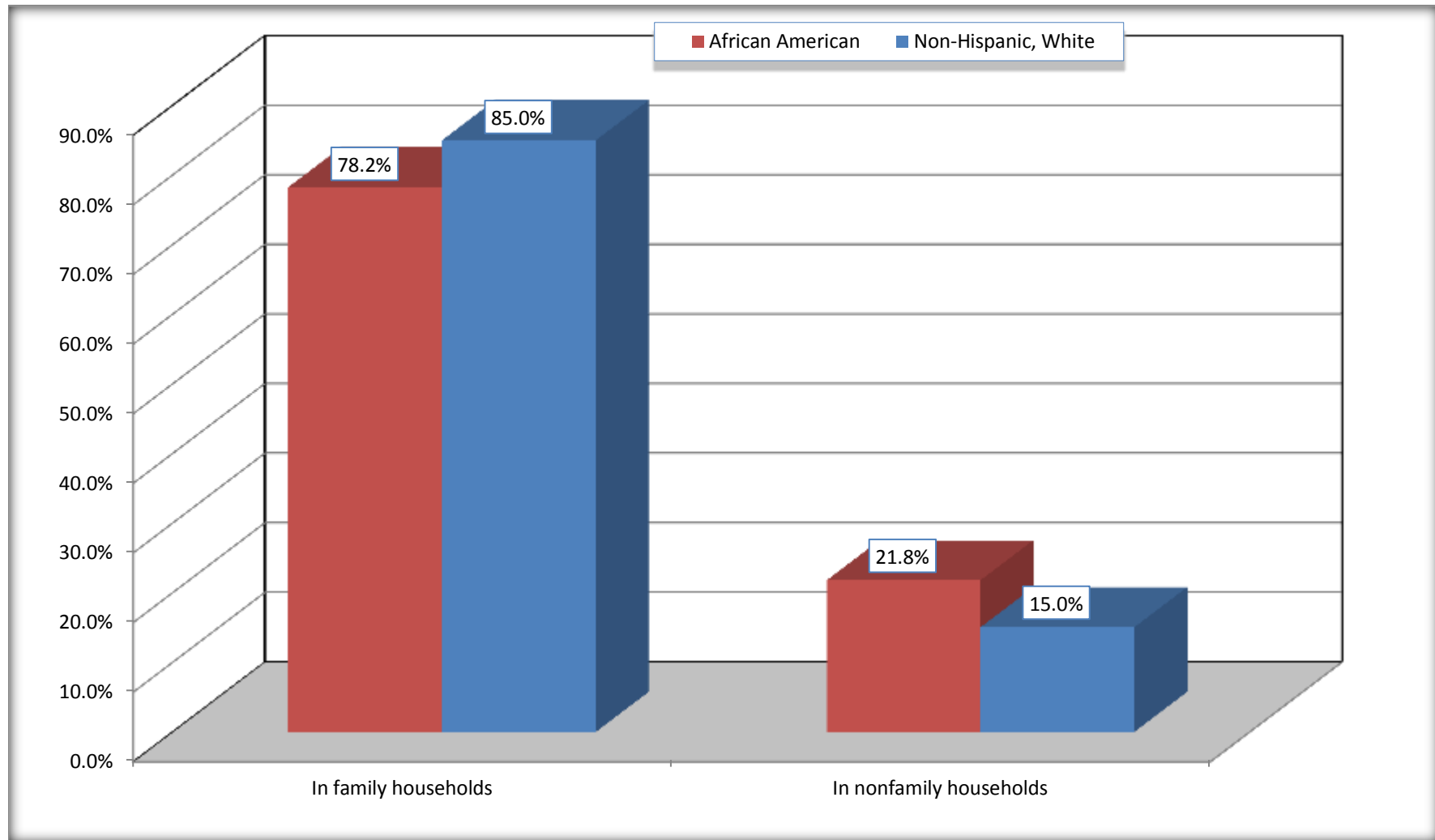
Source: U.S. Census Bureau, 2008-2012 American Community Survey

For information on confidentiality protection, sampling error, nonsampling error, and definitions, see Survey Methodology.

<http://www.census.gov/acs/www/UseData/index.htm>

Household Type for Population in Households

Cameron city, Texas



Source: B11002. HOUSEHOLD TYPE BY RELATIVES AND NONRELATIVES FOR POPULATION IN HOUSEHOLDS
Data Set: 2008-2012 American Community Survey 5-Year Estimates

B12002. MARITAL STATUS FOR THE POPULATION 15 YEARS AND OVER

Data Set: 2008-2012 American Community Survey 5-Year Estimates

	Cameron city, Texas					
	African American	Margin of Error (+/-)	% of AA Total	White, Not Hispanic	Margin of Error (+/-)	% of NHW Total
Total:	776	241	100.0%	2,162	339	100.0%
Never married	418	NC	53.9%	525	NC	24.3%
Now married (except separated)	131	NC	16.9%	1,131	NC	52.3%
Separated	67	NC	8.6%	0	NC	0.0%
Widowed	116	NC	14.9%	246	NC	11.4%
Divorced	44	NC	5.7%	260	NC	12.0%
Male:	415	158	53.5%	981	180	45.4%
Never married	249	122	32.1%	277	151	12.8%
Now married (except separated)	61	55	7.9%	521	124	24.1%
Separated	0	18	0.0%	0	18	0.0%
Widowed	89	67	11.5%	64	38	3.0%
Divorced	16	27	2.1%	119	62	5.5%
Female:	361	126	46.5%	1,181	206	54.6%
Never married	169	77	21.8%	248	139	11.5%
Now married (except separated)	70	72	9.0%	610	140	28.2%
Separated	67	58	8.6%	0	18	0.0%
Widowed	27	31	3.5%	182	83	8.4%
Divorced	28	39	3.6%	141	64	6.5%

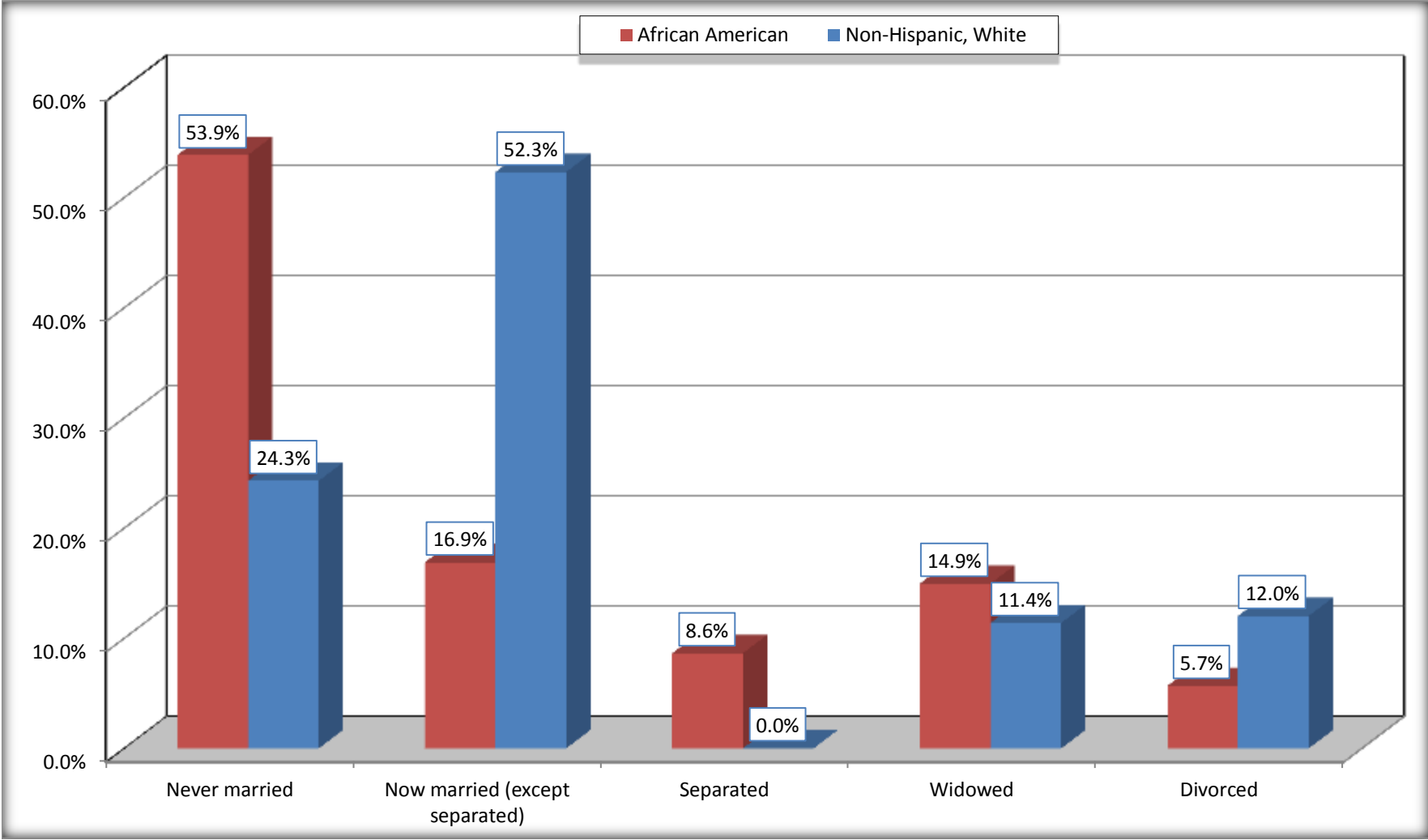
Source: U.S. Census Bureau, 2008-2012 American Community Survey

For information on confidentiality protection, sampling error, nonsampling error, and definitions, see Survey Methodology.

<http://www.census.gov/acs/www/UseData/index.htm>

Marital Status for the Population 15 Years and Over

Cameron city, Texas



Source: B12002. MARITAL STATUS FOR THE POPULATION 15 YEARS AND OVER
Data Set: 2008-2012 American Community Survey 5-Year Estimates

C15002. SEX BY EDUCATIONAL ATTAINMENT FOR THE POPULATION 25 YEARS AND OVER

Data Set: 2008-2012 American Community Survey 5-Year Estimates

	Cameron city, Texas					
	African American	Margin of Error (+/-)	% of AA Total	White, Not Hispanic	Margin of Error (+/-)	% of NHW Total
Total:	647	204	100.0%	1,953	305	100.0%
Less than high school diploma	238	NC	36.8%	255	NC	13.1%
High school graduate, GED, or alternative	316	NC	48.8%	748	NC	38.3%
Some college or associate's degree	93	NC	14.4%	503	NC	25.8%
Bachelor's degree or higher	0	NC	0.0%	447	NC	22.9%
Male:	363	125	56.1%	850	164	43.5%
Less than high school diploma	157	90	24.3%	122	68	6.2%
High school graduate, GED, or alternative	206	92	31.8%	336	131	17.2%
Some college or associate's degree	0	18	0.0%	198	73	10.1%
Bachelor's degree or higher	0	18	0.0%	194	80	9.9%
Female:	284	122	43.9%	1,103	190	56.5%
Less than high school diploma	81	78	12.5%	133	73	6.8%
High school graduate, GED, or alternative	110	79	17.0%	412	163	21.1%
Some college or associate's degree	93	69	14.4%	305	112	15.6%
Bachelor's degree or higher	0	18	0.0%	253	108	13.0%

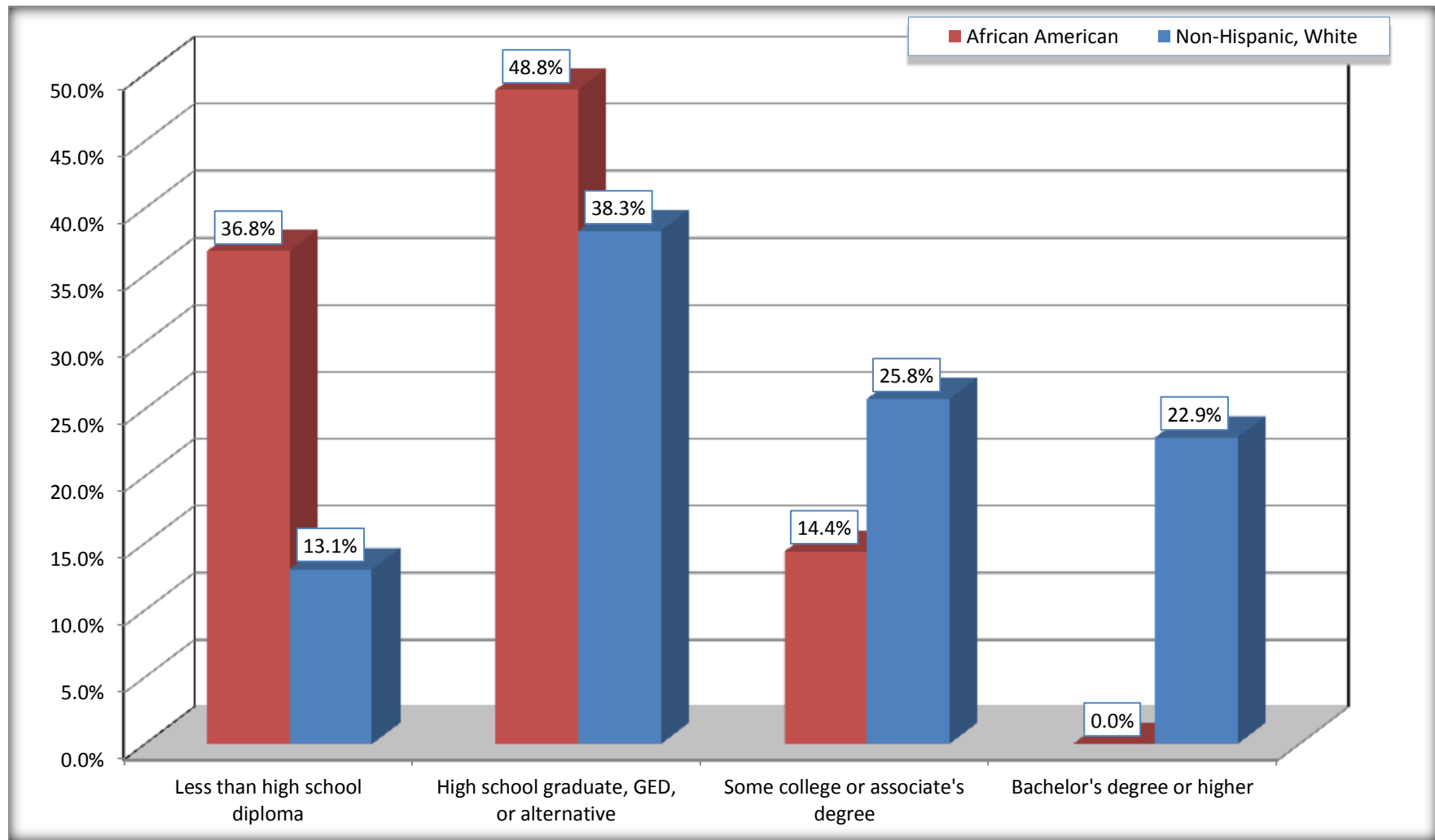
Source: U.S. Census Bureau, 2008-2012 American Community Survey

For information on confidentiality protection, sampling error, nonsampling error, and definitions, see Survey Methodology.

<http://www.census.gov/acs/www/UseData/index.htm>

Educational Attainment for the Population 25 Years and Older

Cameron city, Texas



Source: C15002. SEX BY EDUCATIONAL ATTAINMENT FOR THE POPULATION 25 YEARS AND OVER
Data Set: 2008-2012 American Community Survey 5-Year Estimates

B17010. POVERTY STATUS IN THE PAST 12 MONTHS OF FAMILIES BY FAMILY TYPE BY PRESENCE OF RELATED CHILDREN UNDER 18 YEARS

Data Set: 2008-2012 American Community Survey 5-Year Estimates

	Cameron city, Texas					
	African American	Margin of Error (+/-)	% of AA Total	White, Not Hispanic	Margin of Error (+/-)	% of NHW Total
Total:	306	114	100.0%	690	144	100.0%
Income in the past 12 months below poverty level:	126	65	41.2%	85	58	12.3%
Married-couple family:	0	18	0.0%	12	17	1.7%
With related children under 18 years	0	18	0.0%	12	17	1.7%
Other family:	126	65	41.2%	73	63	10.6%
Male householder, no wife present	0	18	0.0%	0	18	0.0%
With related children under 18 years	0	18	0.0%	0	18	0.0%
Female householder, no husband present	126	65	41.2%	73	63	10.6%
With related children under 18 years	117	62	38.2%	73	63	10.6%
Income in the past 12 months at or above poverty level:	180	107	58.8%	605	131	87.7%
Married-couple family:	84	80	27.5%	511	123	74.1%
With related children under 18 years	51	69	16.7%	99	71	14.3%
Other family:	96	81	31.4%	94	65	13.6%
Male householder, no wife present	25	44	8.2%	16	19	2.3%
With related children under 18 years	25	44	8.2%	9	15	1.3%
Female householder, no husband present	71	66	23.2%	78	64	11.3%
With related children under 18 years	26	39	8.5%	25	29	3.6%

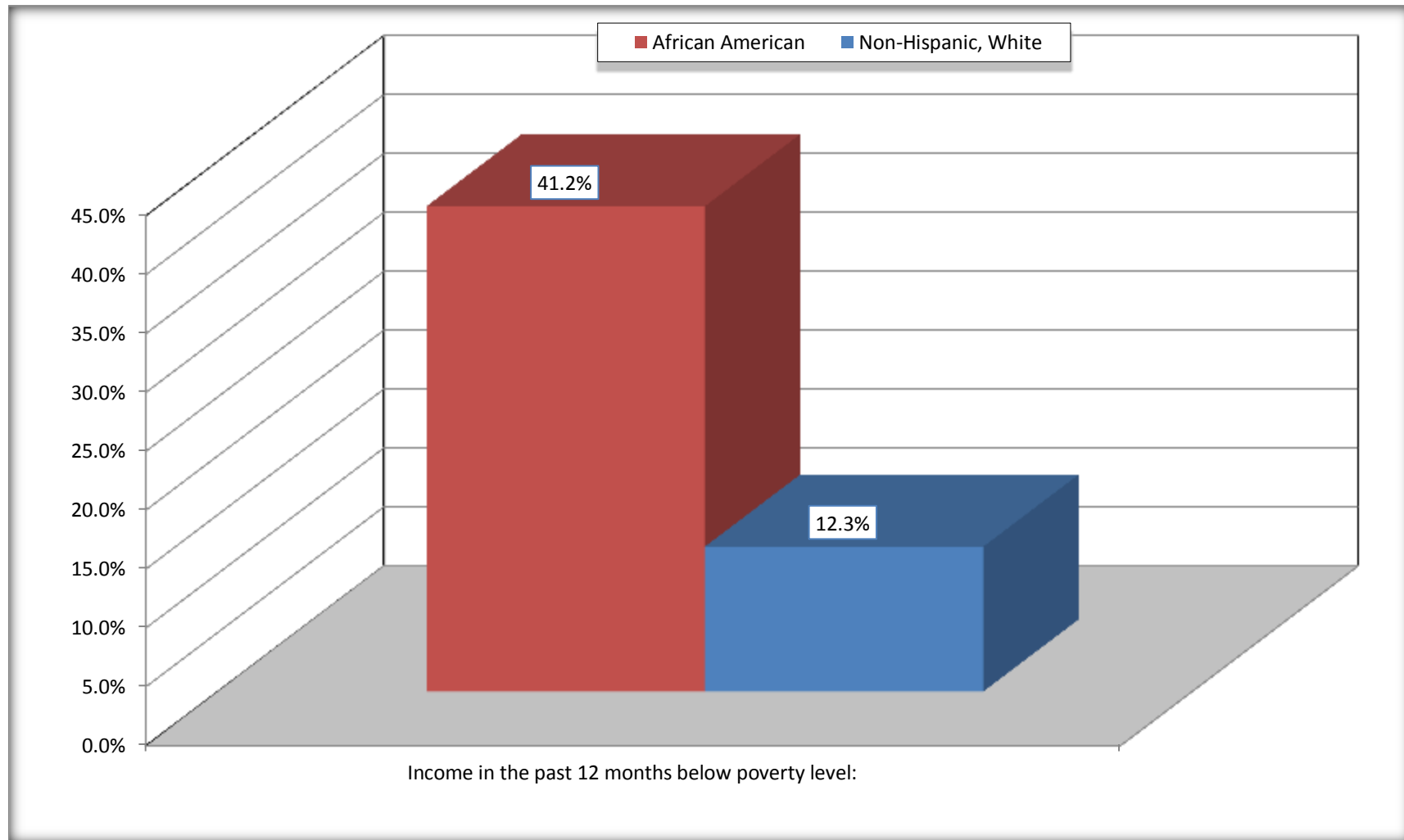
Source: U.S. Census Bureau, 2008-2012 American Community Survey

For information on confidentiality protection, sampling error, nonsampling error, and definitions, see Survey Methodology.

<http://www.census.gov/acs/www/UseData/index.htm>

Family Households Below Poverty in the Past 12 Months

Cameron city, Texas

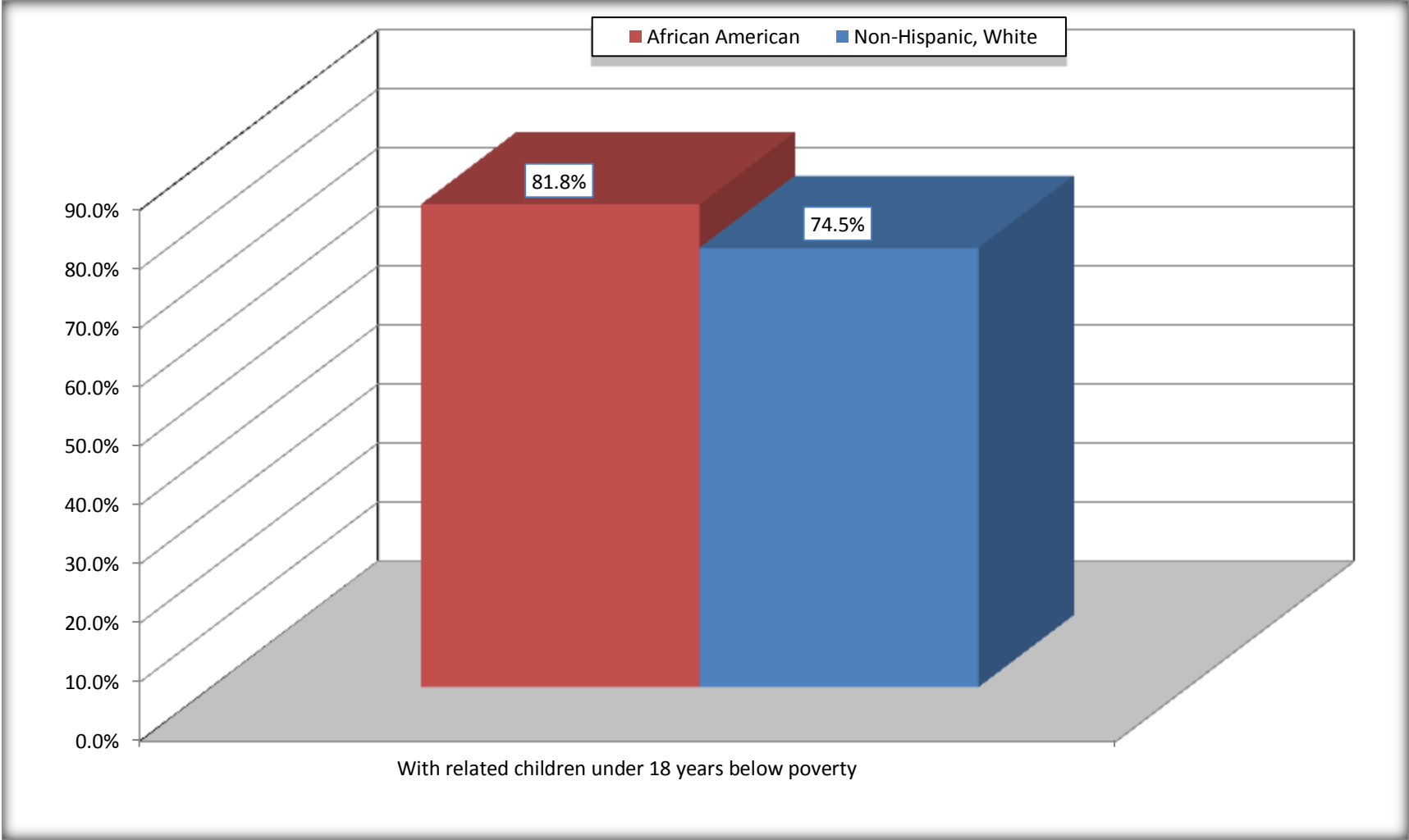


Source: B17010. POVERTY STATUS IN THE PAST 12 MONTHS OF FAMILIES BY FAMILY TYPE BY PRESENCE OF RELATED CHILDREN UNDER 18 YEARS

Data Set: 2008-2012 American Community Survey 5-Year Estimates

Female-headed Households with Related Children Below Poverty in the Past 12 Months

Cameron city, Texas



Source: B17010. POVERTY STATUS IN THE PAST 12 MONTHS OF FAMILIES BY FAMILY TYPE BY PRESENCE OF RELATED CHILDREN UNDER 18 YEARS

Data Set: 2008-2012 American Community Survey 5-Year Estimates

B17020 POVERTY STATUS IN THE PAST 12 MONTHS BY AGE - Universe: POPULATION FOR WHOM POVERTY STATUS IS DETERMINED

Data Set: 2008-2012 American Community Survey 5-Year Estimates

	Cameron city, Texas					
	African American	Margin of Error (+/-)	% of AA By Age	White, Not Hispanic	Margin of Error (+/-)	% of NHW By Age
Total:	934	302	100.0%	2,393	412	100.0%
Income in the past 12 months below poverty level:	420	206	45.0%	360	242	15.0%
Under 18 years	144	NC	60.5%	139	NC	29.3%
18 to 64 years	195	99	36.0%	205	126	16.6%
65 years and over	81	NC	52.6%	16	NC	2.3%
Income in the past 12 months at or above poverty level:	514	237	55.0%	2,033	390	85.0%
Under 18 years	94	NC	39.5%	336	NC	70.7%
18 to 64 years	347	144	64.0%	1,032	244	83.4%
65 years and over	73	NC	47.4%	665	NC	97.7%

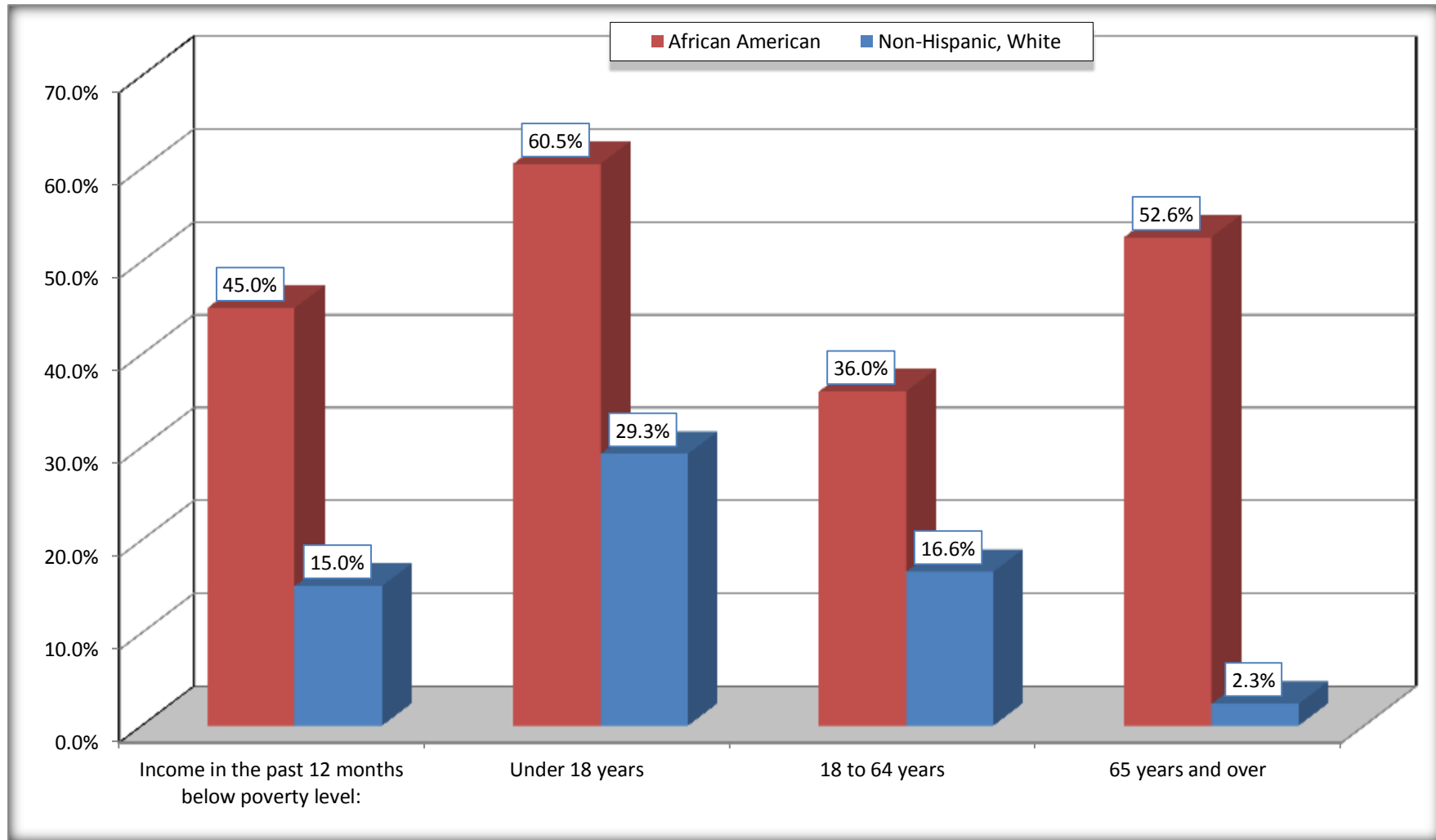
Source: U.S. Census Bureau, 2008-2012 American Community Survey

For information on confidentiality protection, sampling error, nonsampling error, and definitions, see Survey Methodology.

<http://www.census.gov/acs/www/UseData/index.htm>

Population Below Poverty in the Past 12 Months

Cameron city, Texas



Source: B17020 POVERTY STATUS IN THE PAST 12 MONTHS BY AGE - Universe: POPULATION FOR WHOM POVERTY STATUS IS DETERMINED
Data Set: 2008-2012 American Community Survey 5-Year Estimates

B19001. HOUSEHOLD INCOME IN THE PAST 12 MONTHS (IN 2010 INFLATION-ADJUSTED DOLLARS)

Data Set: 2008-2012 American Community Survey 5-Year Estimates

	Cameron city, Texas					
	African American	Margin of Error (+/-)	% of AA Total	White, Not Hispanic	Margin of Error (+/-)	% of NHW Total
Total:	512	147	100.0%	1,049	187	100.0%
Less than \$ 10,000	77	74	15.0%	44	51	4.2%
\$ 10,000 to \$ 14,999	128	92	25.0%	116	70	11.1%
\$ 15,000 to \$ 24,999	58	NC	11.3%	133	NC	12.7%
\$ 25,000 to \$ 34,999	76	NC	14.8%	107	NC	10.2%
\$ 35,000 to \$ 49,999	70	NC	13.7%	70	NC	6.7%
\$ 50,000 to \$ 74,999	34	NC	6.6%	247	NC	23.5%
\$ 75,000 to \$ 99,999	0	18	0.0%	143	69	13.6%
\$ 100,000 to \$ 149,999	69	NC	13.5%	127	NC	12.1%
\$ 150,000 to \$ 199,999	0	18	0.0%	37	38	3.5%
\$ 200,000 or more	0	18	0.0%	25	30	2.4%

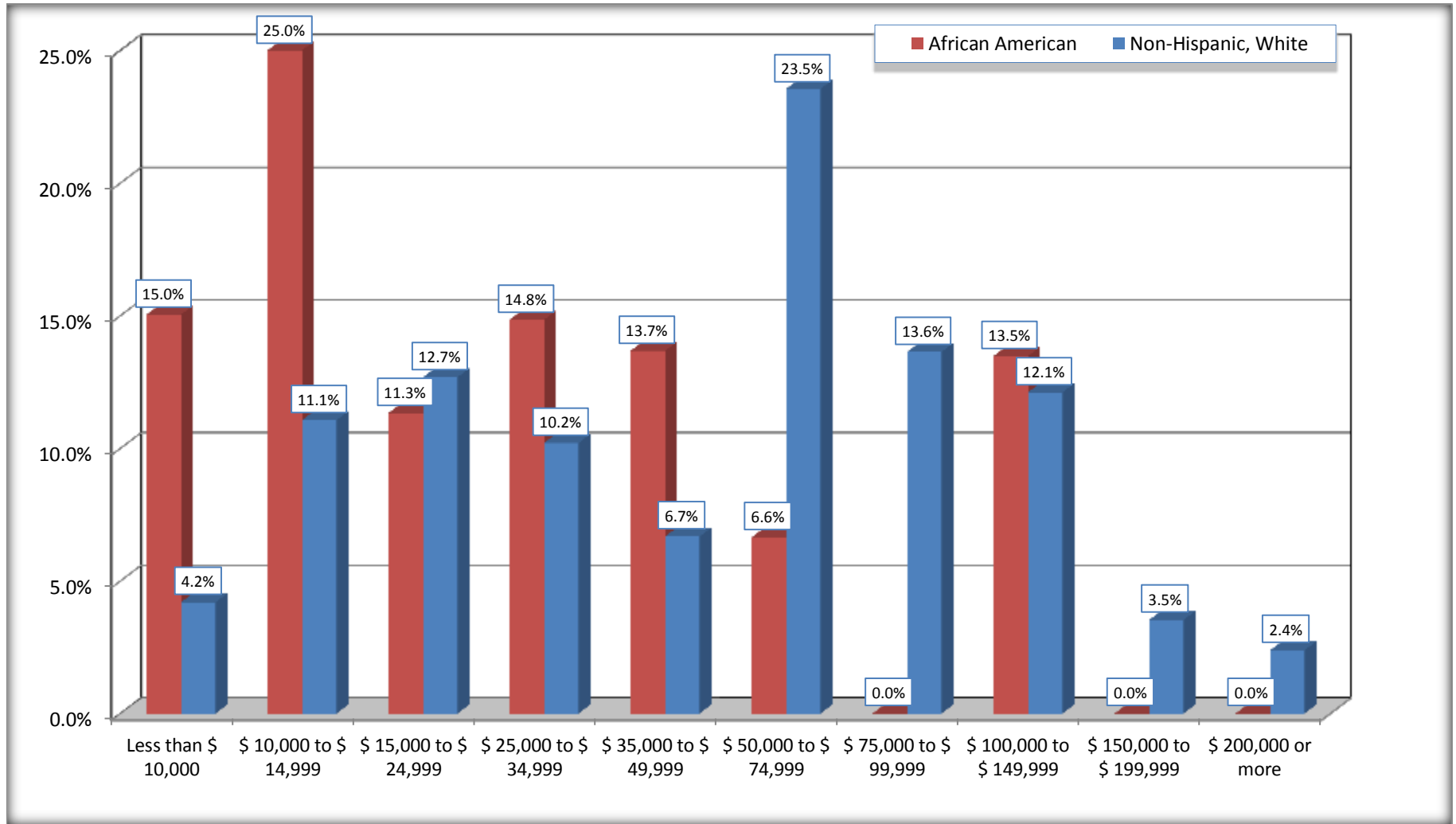
Source: U.S. Census Bureau, 2008-2012 American Community Survey

For information on confidentiality protection, sampling error, nonsampling error, and definitions, see Survey Methodology.

<http://www.census.gov/acs/www/UseData/index.htm>

Household Income in the Past 12 Months

Cameron city, Texas



Source: B19001. HOUSEHOLD INCOME IN THE PAST 12 MONTHS (IN 2010 INFLATION-ADJUSTED DOLLARS)
Data Set: 2008-2012 American Community Survey 5-Year Estimates

B19013. MEDIAN HOUSEHOLD INCOME IN THE PAST 12 MONTHS (IN 2010 INFLATION-ADJUSTED DOLLARS)

Data Set: 2008-2012 American Community Survey 5-Year Estimates

	Cameron city, Texas			
	African American	Margin of Error (+/-)	White, Not Hispanic	Margin of Error (+/-)
Median household income in the past 12 months (in 2010 inflation-adjusted dollars)	\$ 23,750	\$ 15,494	\$ 52,969	\$ 11,767

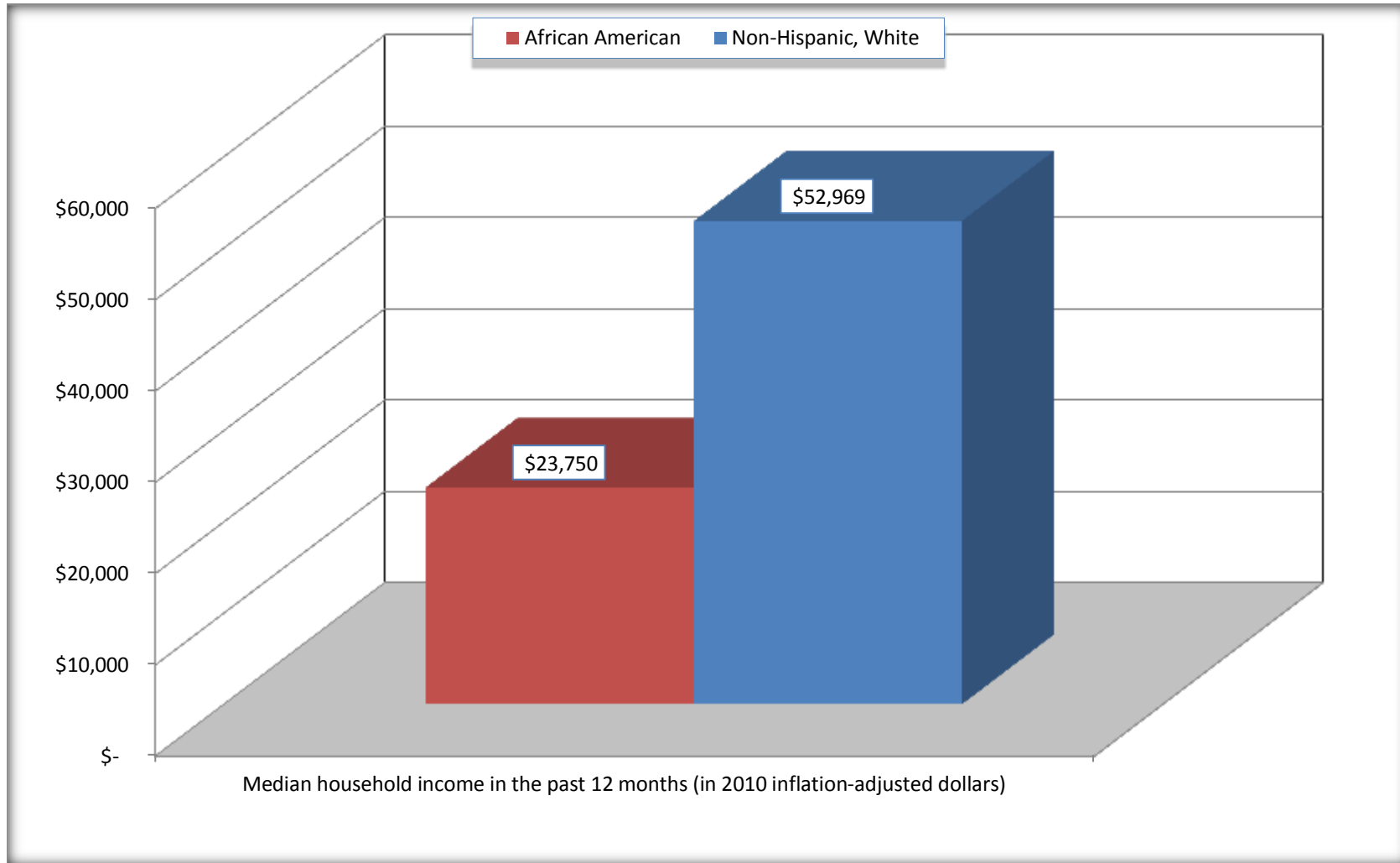
Source: U.S. Census Bureau, 2008-2012 American Community Survey

For information on confidentiality protection, sampling error, nonsampling error, and definitions, see Survey Methodology.

<http://www.census.gov/acs/www/UseData/index.htm>

Median Household Income in the Past 12 Months

Cameron city, Texas



Source: B19013. MEDIAN HOUSEHOLD INCOME IN THE PAST 12 MONTHS (IN 2010 INFLATION-ADJUSTED DOLLARS)
Data Set: 2008-2012 American Community Survey 5-Year Estimates

B19101. FAMILY INCOME IN THE PAST 12 MONTHS (IN 2010 INFLATION-ADJUSTED DOLLARS)

Data Set: 2008-2012 American Community Survey 5-Year Estimates

	Cameron city, Texas					
	African American	Margin of Error (+/-)	% of AA Total	White, Not Hispanic	Margin of Error (+/-)	% of NHW Total
Total:	306	114	100.0%	690	144	100.0%
Less than \$ 10,000	48	44	15.7%	73	63	10.6%
\$ 10,000 to \$ 14,999	101	90	33.0%	5	10	0.7%
\$ 15,000 to \$ 24,999	47	NC	15.4%	40	NC	5.8%
\$ 25,000 to \$ 34,999	51	NC	16.7%	84	NC	12.2%
\$ 35,000 to \$ 49,999	59	NC	19.3%	56	NC	8.1%
\$ 50,000 to \$ 74,999	0	NC	0.0%	131	NC	19.0%
\$ 100,000 to \$ 149,999	-	NC	0.0%	108	NC	15.7%
\$ 150,000 to \$ 199,999	0	18	0.0%	37	38	5.4%
\$ 200,000 or more	0	18	0.0%	25	30	3.6%

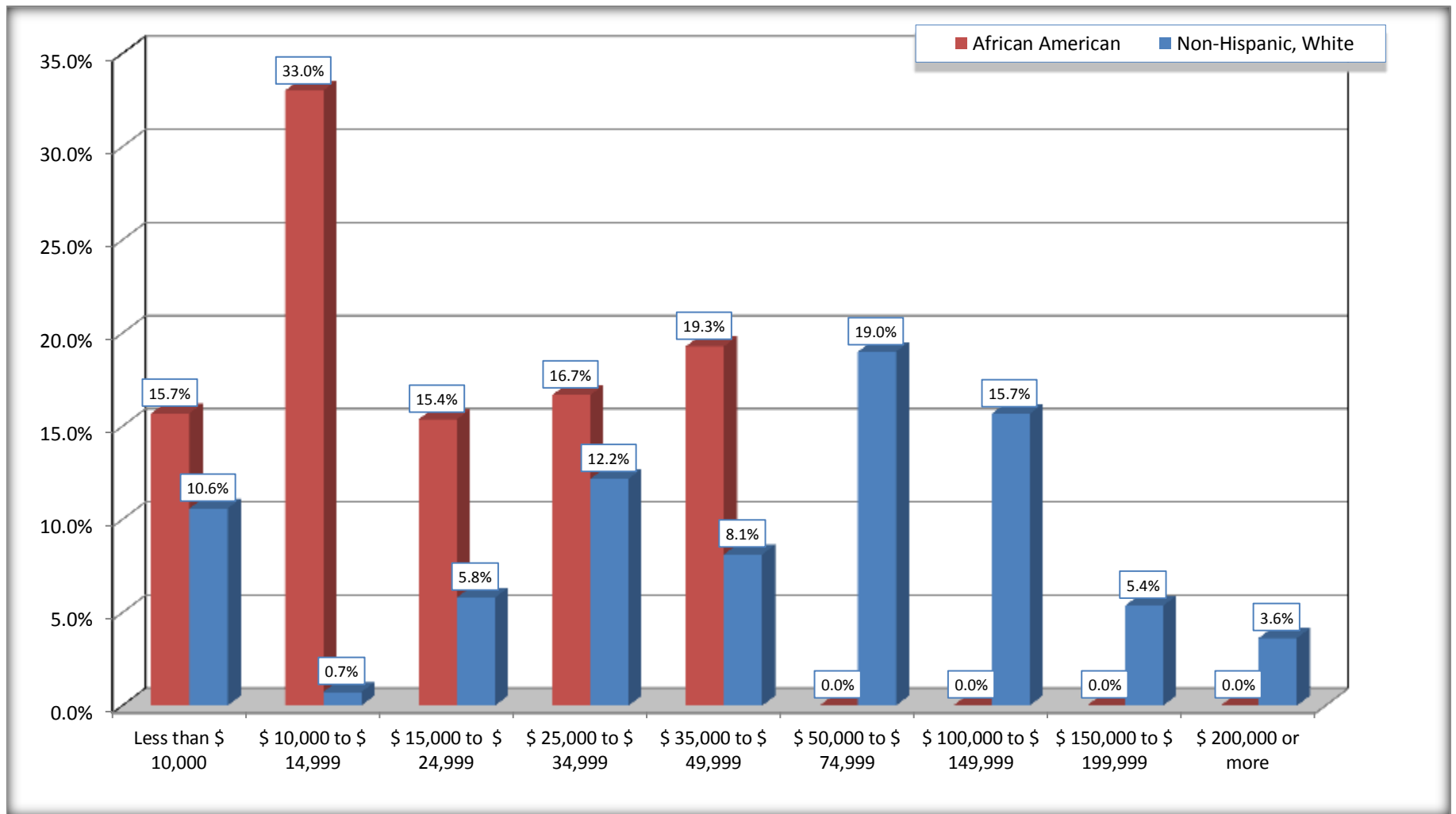
Source: U.S. Census Bureau, 2008-2012 American Community Survey

For information on confidentiality protection, sampling error, nonsampling error, and definitions, see Survey Methodology.

<http://www.census.gov/acs/www/UseData/index.htm>

Family Income in the Past 12 Months

Cameron city, Texas



Source: B19101. FAMILY INCOME IN THE PAST 12 MONTHS (IN 2010 INFLATION-ADJUSTED DOLLARS)
Data Set: 2008-2012 American Community Survey 5-Year Estimates

B19113. MEDIAN FAMILY INCOME IN THE PAST 12 MONTHS (IN 2010 INFLATION-ADJUSTED DOLLARS)

Data Set: 2008-2012 American Community Survey 5-Year Estimates

	Cameron city, Texas			
	African American	Margin of Error (+/-)	White, Not Hispanic	Margin of Error (+/-)
Median family income in the past 12 months (in 2010 inflation-adjusted dollars)	\$ 15,625	\$ 10,994	\$ 66,765	\$ 15,272

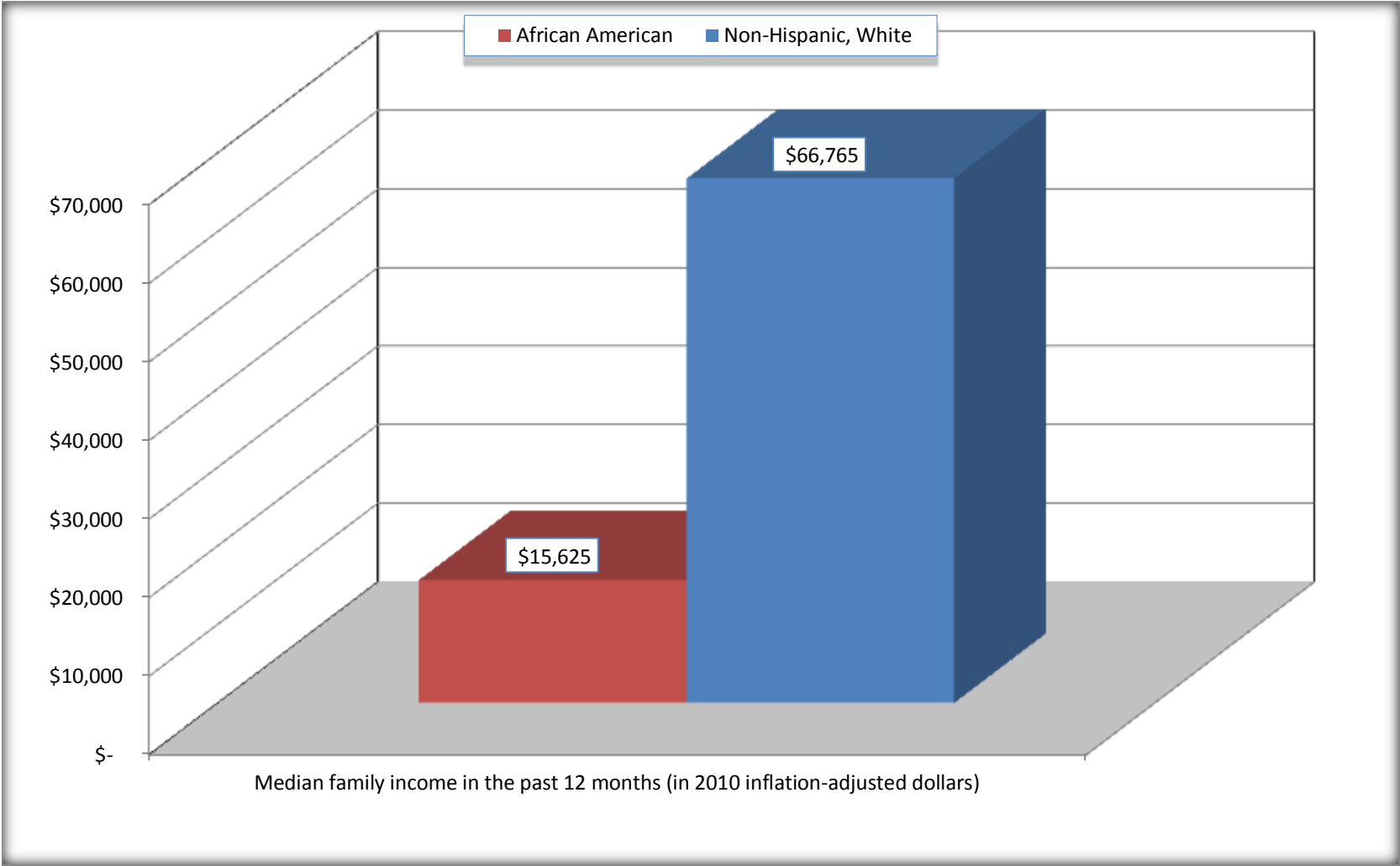
Source: U.S. Census Bureau, 2008-2012 American Community Survey

For information on confidentiality protection, sampling error, nonsampling error, and definitions, see Survey Methodology.

<http://www.census.gov/acs/www/UseData/index.htm>

Median Family Income in the Past 12 Months

Cameron city, Texas



Source: B19113. MEDIAN FAMILY INCOME IN THE PAST 12 MONTHS (IN 2010 INFLATION-ADJUSTED DOLLARS)
Data Set: 2008-2012 American Community Survey 5-Year Estimates

B19202. MEDIAN NONFAMILY HOUSEHOLD INCOME IN THE PAST 12 MONTHS (IN 2010 INFLATION-ADJUSTED DOLLARS)

Data Set: 2008-2012 American Community Survey 5-Year Estimates

	Cameron city, Texas			
	African American	Margin of Error (+/-)	White, Not Hispanic	Margin of Error (+/-)
Median nonfamily household income in the past 12 months (in 2010 inflation-adjusted dollars)	\$ 42,500	\$ 90,609	\$ 21,950	\$ 11,050

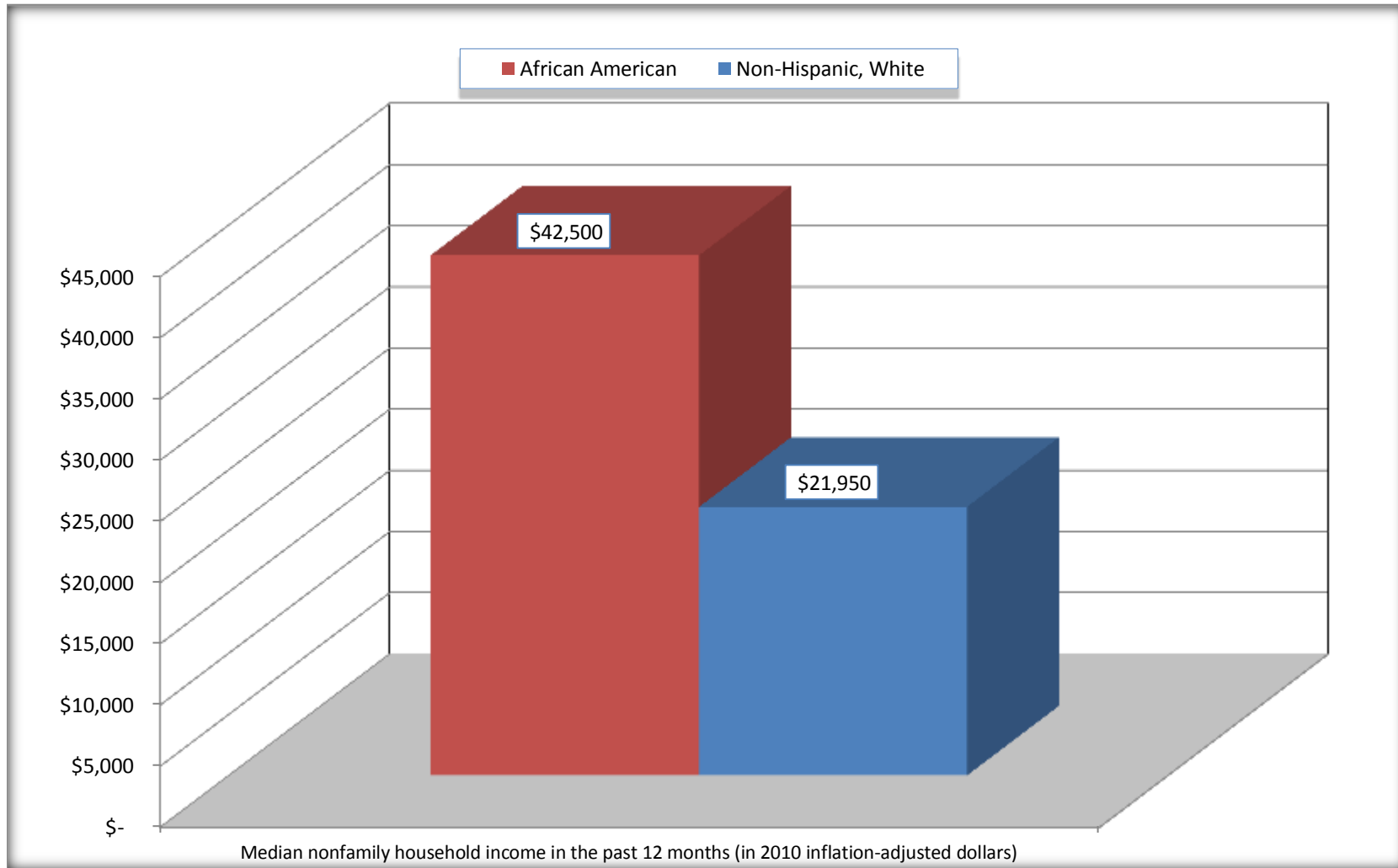
Source: U.S. Census Bureau, 2008-2012 American Community Survey

For information on confidentiality protection, sampling error, nonsampling error, and definitions, see Survey Methodology.

<http://www.census.gov/acs/www/UseData/index.htm>

Median Non-Family Income in the Past 12 Months

Cameron city, Texas



Source: B19202. MEDIAN NONFAMILY HOUSEHOLD INCOME IN THE PAST 12 MONTHS (IN 2010 INFLATION-ADJUSTED DOLLARS)
Data Set: 2008-2012 American Community Survey 5-Year Estimates

B19301. PER CAPITA INCOME IN THE PAST 12 MONTHS (IN 2010 INFLATION-ADJUSTED DOLLARS)

Data Set: 2008-2012 American Community Survey 5-Year Estimates

	Cameron city, Texas			
	African American	Margin of Error (+/-)	White, Not Hispanic	Margin of Error (+/-)
Per capita income in the past 12 months (in 2010 inflation-adjusted dollars)	\$ 19,924	\$ 9,721	\$ 27,746	\$ 5,444

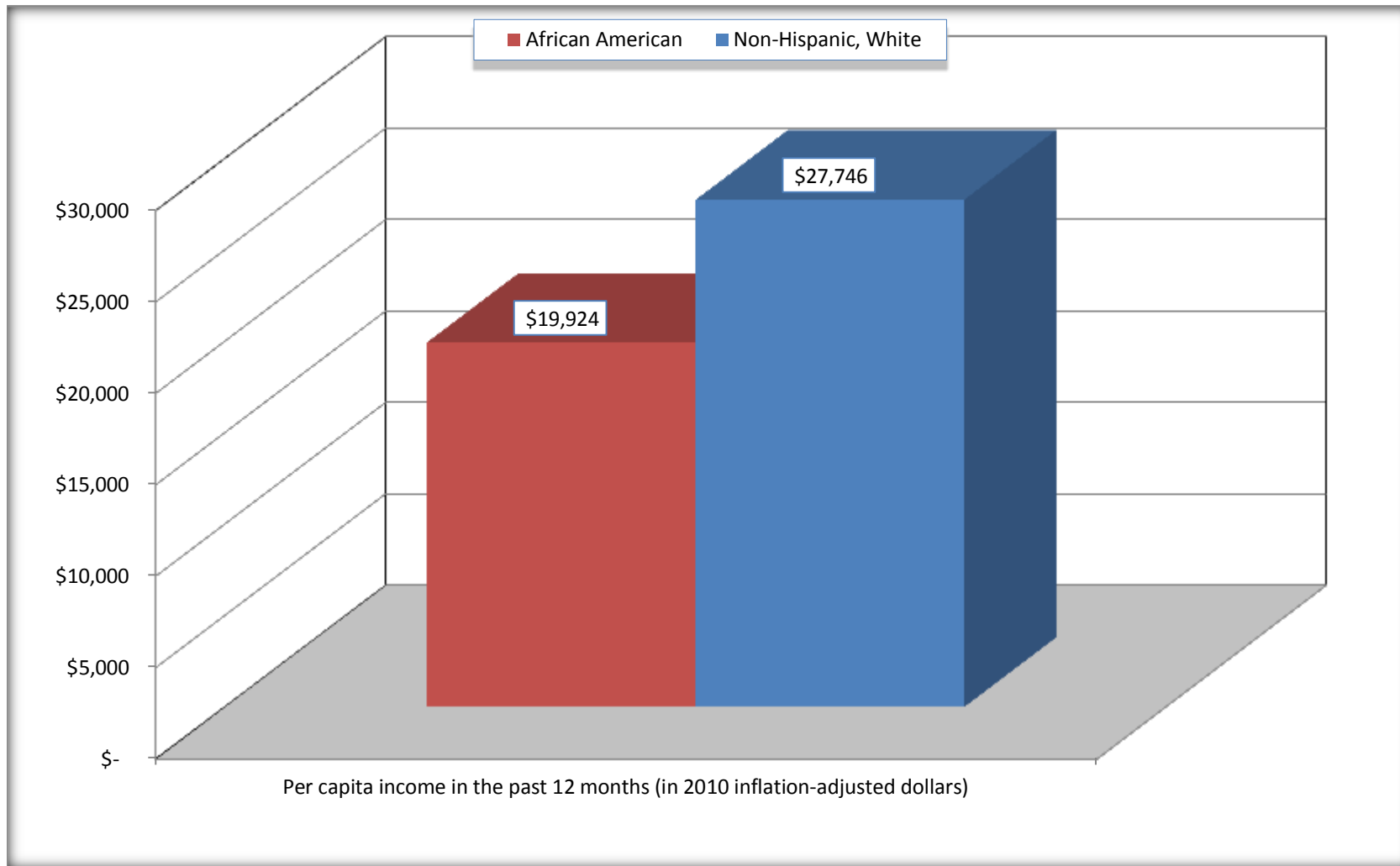
Source: U.S. Census Bureau, 2008-2012 American Community Survey

For information on confidentiality protection, sampling error, nonsampling error, and definitions, see Survey Methodology.

<http://www.census.gov/acs/www/UseData/index.htm>

Per capita Income in the Past 12 Months

Cameron city, Texas



Source: B19301. PER CAPITA INCOME IN THE PAST 12 MONTHS (IN 2010 INFLATION-ADJUSTED DOLLARS)
Data Set: 2008-2012 American Community Survey 5-Year Estimates

B20017. MEDIAN EARNINGS IN THE PAST 12 MONTHS (IN 2010 INFLATION-ADJUSTED DOLLARS) BY SEX BY WORK EXPERIENCE IN THE PAST 12 MONTHS FOR THE POPULATION 16 YEARS AND OVER WITH EARNINGS IN THE PAST 12 MONTHS

Data Set: 2008-2012 American Community Survey 5-Year Estimates

	Cameron city, Texas			
	African American	Margin of Error (+/-)	White, Not Hispanic	Margin of Error (+/-)
Median earnings in the past 12 months (in 2010 inflation-adjusted dollars) --				
Total:	\$ 20,448	\$ 9,163	\$ 25,595	\$ 7,215
Male --				
Total	\$ 33,203	\$ 46,318	\$ 34,926	\$ 22,010
Worked full-time, year-round in the past 12 months	\$ 117,717	\$ 148,912	\$ 52,569	\$ 12,724
Other	\$ 13,281	\$ 19,478	\$ 10,714	\$ 6,943
Female --				
Total	\$ 9,821	\$ 17,601	\$ 22,607	\$ 5,788
Worked full-time, year-round in the past 12 months	\$ 38,173	\$ 12,434	\$ 31,944	\$ 10,278
Other	\$ 8,125	\$ 2,214	\$ 9,028	\$ 4,257

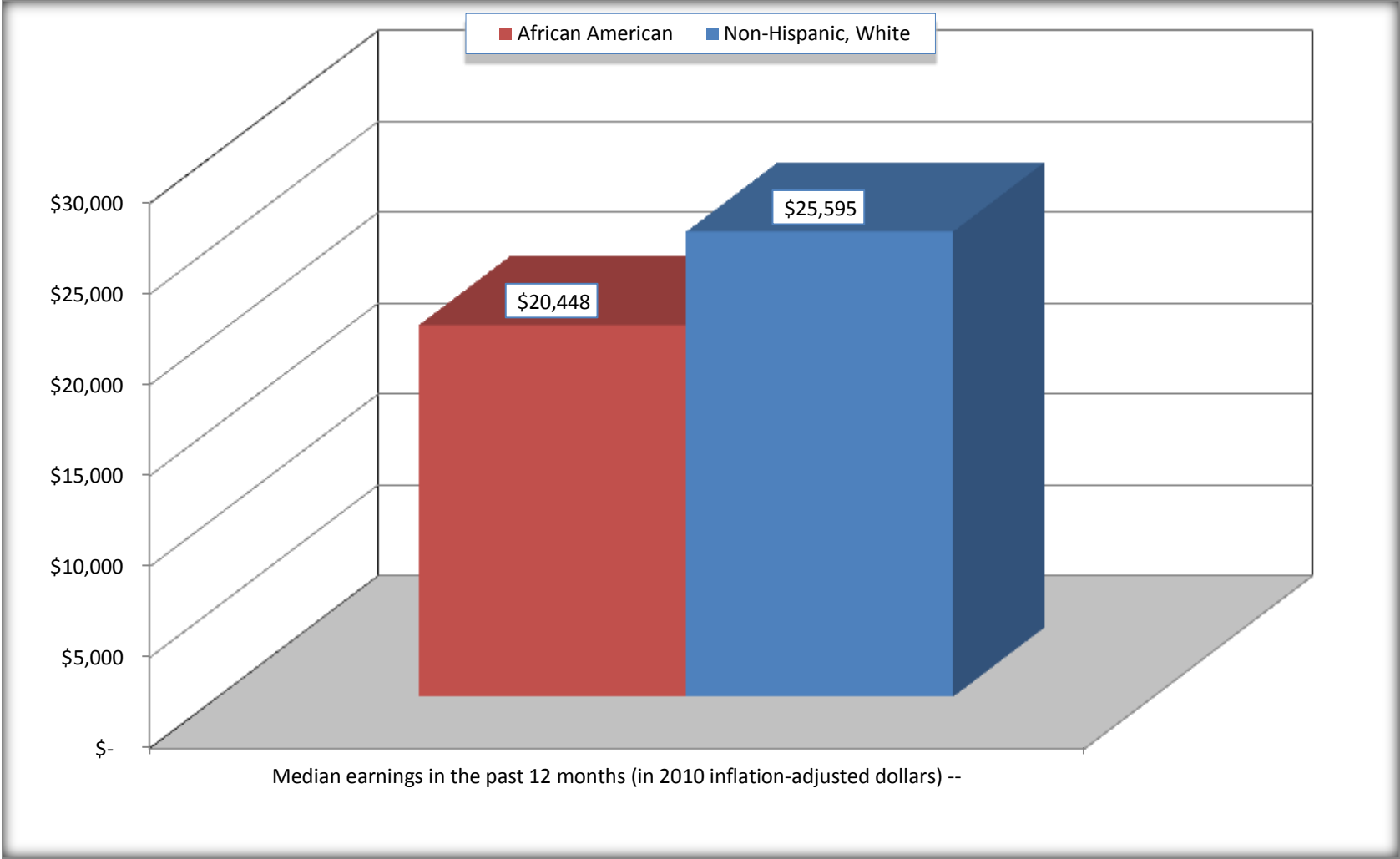
Source: U.S. Census Bureau, 2008-2012 American Community Survey

For information on confidentiality protection, sampling error, nonsampling error, and definitions, see Survey Methodology.

<http://www.census.gov/acs/www/UseData/index.htm>

Median earnings in the Past 12 Months (16 Years and Over with Earnings)

Cameron city, Texas



Source: B20017. MEDIAN EARNINGS IN THE PAST 12 MONTHS (IN 2010 INFLATION-ADJUSTED DOLLARS) BY SEX BY WORK EXPERIENCE IN THE PAST 12 MONTHS FOR THE POPULATION 16 YEARS AND OVER WITH EARNINGS IN THE PAST 12 MONTHS
Data Set: 2008-2012 American Community Survey 5-Year Estimates

B20005. SEX BY WORK EXPERIENCE IN THE PAST 12 MONTHS BY EARNINGS IN THE PAST 12 MONTHS (IN 2010 INFLATION-ADJUSTED DOLLARS) FOR THE POPULATION 16 YEARS AND OVER

Data Set: 2008-2012 American Community Survey 5-Year Estimates

	Cameron city, Texas					
	African American	Margin of Error (+/-)	% of AA Total	White, Not Hispanic	Margin of Error (+/-)	% of NHW Total
Total:	776	241	100.0%	2,090	318	100.0%
Worked full-time, year-round in the past 12 months:	202	NC	26.0%	593	NC	28.4%
No earnings	0	NC	0.0%	0	NC	0.0%
With earnings:	202	NC	26.0%	593	NC	28.4%
\$ 1 to \$ 9,999 or loss	0	NC	0.0%	47	NC	2.2%
\$ 10,000 to \$ 19,999	17	NC	2.2%	50	NC	2.4%
\$ 20,000 to \$ 29,999	31	NC	4.0%	95	NC	4.5%
\$ 30,000 to \$ 49,999	75	NC	9.7%	102	NC	4.9%
\$ 50,000 to \$ 74,999	10	NC	1.3%	164	NC	7.8%
\$ 75,000 or more	69	NC	8.9%	135	NC	6.5%
Other:	574	NC	74.0%	1,497	NC	71.6%
No earnings	345	NC	44.5%	1,108	NC	53.0%
With earnings: less than full time, year-round	229	NC	29.5%	389	NC	18.6%
Male:	415	158	53.5%	925	173	44.3%
Worked full-time, year-round in the past 12 months:	126	85	16.2%	351	115	16.8%
No earnings	0	18	0.0%	0	18	0.0%
With earnings:	126	85	16.2%	351	115	16.8%
\$ 1 to \$ 9,999 or loss	0	NC	0.0%	47	NC	2.2%
\$ 10,000 to \$ 19,999	0	NC	0.0%	24	NC	1.1%
\$ 20,000 to \$ 29,999	31	NC	4.0%	28	NC	1.3%
\$ 30,000 to \$ 49,999	16	NC	2.1%	47	NC	2.2%
\$ 50,000 to \$ 74,999	10	NC	1.3%	106	NC	5.1%
\$ 75,000 or more	69	NC	8.9%	99	NC	4.7%

	Cameron city, Texas					
	African American	Margin of Error (+/-)	% of AA Total	White, Not Hispanic	Margin of Error (+/-)	% of NHW Total
Other:	289	150	37.2%	574	148	27.5%
No earnings	198	125	25.5%	376	146	18.0%
With earnings:	91	80	11.7%	198	99	9.5%
Female:	361	126	46.5%	1,165	204	55.7%
Worked full-time, year-round in the past 12 months:	76	67	9.8%	242	92	11.6%
No earnings	0	18	0.0%	0	18	0.0%
With earnings:	76	67	9.8%	242	92	11.6%
\$ 1 to \$ 9,999 or loss	0	NC	0.0%	0	NC	0.0%
\$ 10,000 to \$ 19,999	17	NC	2.2%	26	NC	1.2%
\$ 20,000 to \$ 29,999	0	NC	0.0%	67	NC	3.2%
\$ 30,000 to \$ 49,999	59	NC	7.6%	55	NC	2.6%
\$ 50,000 to \$ 74,999	0	NC	0.0%	58	NC	2.8%
\$ 75,000 or more	0	NC	0.0%	36	NC	1.7%
Other:	285	129	36.7%	923	193	44.2%
No earnings	147	95	18.9%	732	160	35.0%
With earnings:	138	74	17.8%	191	97	9.1%

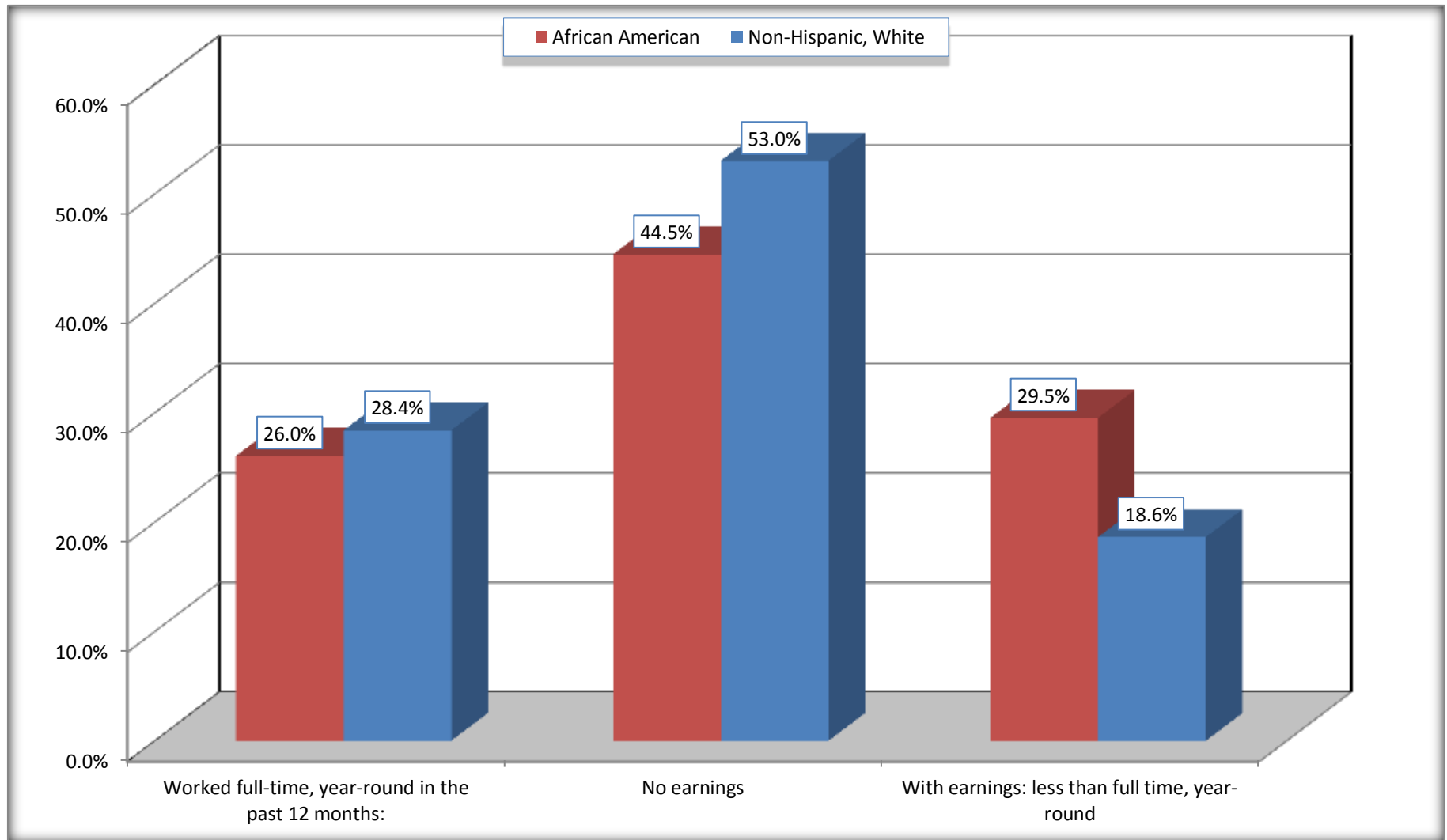
Source: U.S. Census Bureau, 2008-2012 American Community Survey

For information on confidentiality protection, sampling error, nonsampling error, and definitions, see Survey Methodology.

<http://www.census.gov/acs/www/UseData/index.htm>

Employment and Earnings in in the Past 12 Months (16 Years and Over)

Cameron city, Texas



Source: B20005. SEX BY WORK EXPERIENCE IN THE PAST 12 MONTHS BY EARNINGS IN THE PAST 12 MONTHS (IN 2010 INFLATION-ADJUSTED DOLLARS) FOR THE POPULATION 16 YEARS AND OVER

Data Set: 2008-2012 American Community Survey 5-Year Estimates

C21001. SEX BY AGE BY VETERAN STATUS FOR THE CIVILIAN POPULATION 18 YEARS AND OVER

Data Set: 2008-2012 American Community Survey 5-Year Estimates

	Cameron city, Texas					
	African American	Margin of Error (+/-)	% of AA Total	White, Not Hispanic	Margin of Error (+/-)	% of NHW Total
Total:	724	202	100.0%	2,021	311	100.0%
Veteran	183	NC	25.3%	202	NC	10.0%
Nonveteran	541	NC	74.7%	1,819	NC	90.0%
Male:	363	125	50.1%	886	170	43.8%
18 to 64 years:	279	101	38.5%	591	161	29.2%
Veteran	100	84	13.8%	23	29	1.1%
Nonveteran	179	90	24.7%	568	161	28.1%
65 years and over:	84	70	11.6%	295	88	14.6%
Veteran	83	70	11.5%	158	81	7.8%
Nonveteran	1	3	0.1%	137	55	6.8%
Female:	361	126	49.9%	1,135	196	56.2%
18 to 64 years:	289	109	39.9%	662	162	32.8%
Veteran	0	18	0.0%	21	26	1.0%
Nonveteran	289	109	39.9%	641	164	31.7%
65 years and over:	72	51	9.9%	473	102	23.4%
Veteran	0	18	0.0%	0	18	0.0%
Nonveteran	72	51	9.9%	473	102	23.4%

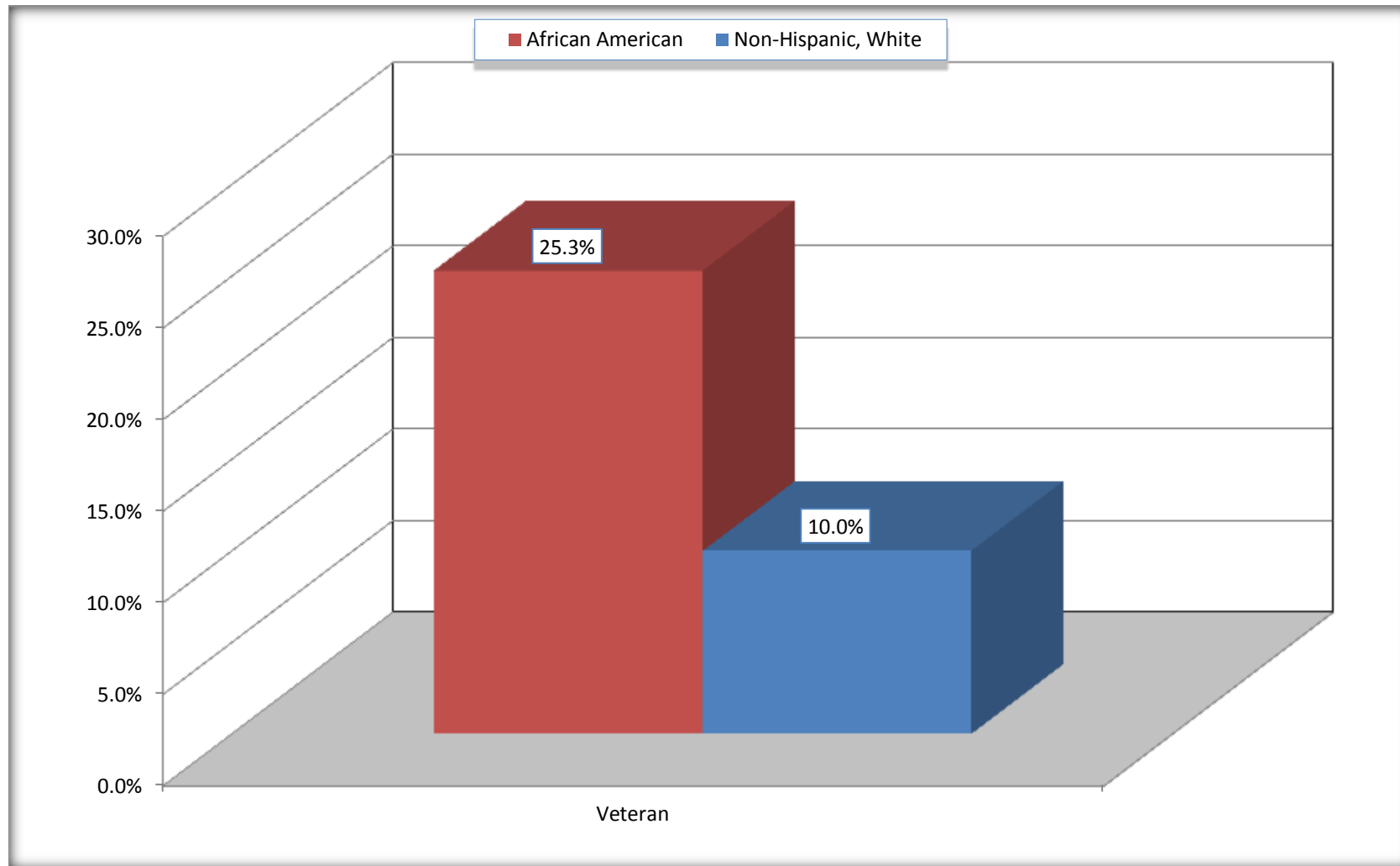
Source: U.S. Census Bureau, 2008-2012 American Community Survey

For information on confidentiality protection, sampling error, nonsampling error, and definitions, see Survey Methodology.

<http://www.census.gov/acs/www/UseData/index.htm>

Veterans in the Civilian Population 18 Years and Over

Cameron city, Texas



Source: C21001. SEX BY AGE BY VETERAN STATUS FOR THE CIVILIAN POPULATION 18 YEARS AND OVER
Data Set: 2008-2012 American Community Survey 5-Year Estimates

B22005. RECEIPT OF FOOD STAMPS/SNAP IN THE PAST 12 MONTHS BY RACE OF HOUSEHOLDER

Data Set: 2008-2012 American Community Survey 5-Year Estimates

	Cameron city, Texas					
	African American	Margin of Error (+/-)	% of AA Total	White, Not Hispanic	Margin of Error (+/-)	% of NHW Total
Total:	512	147	100.0%	1,049	187	100.0%
HH received Food Stamps/SNAP in the past 12 months	212	86	41.4%	129	83	12.3%
HH did not receive Food Stamps/SNAP in the past 12 months	300	128	58.6%	920	170	87.7%

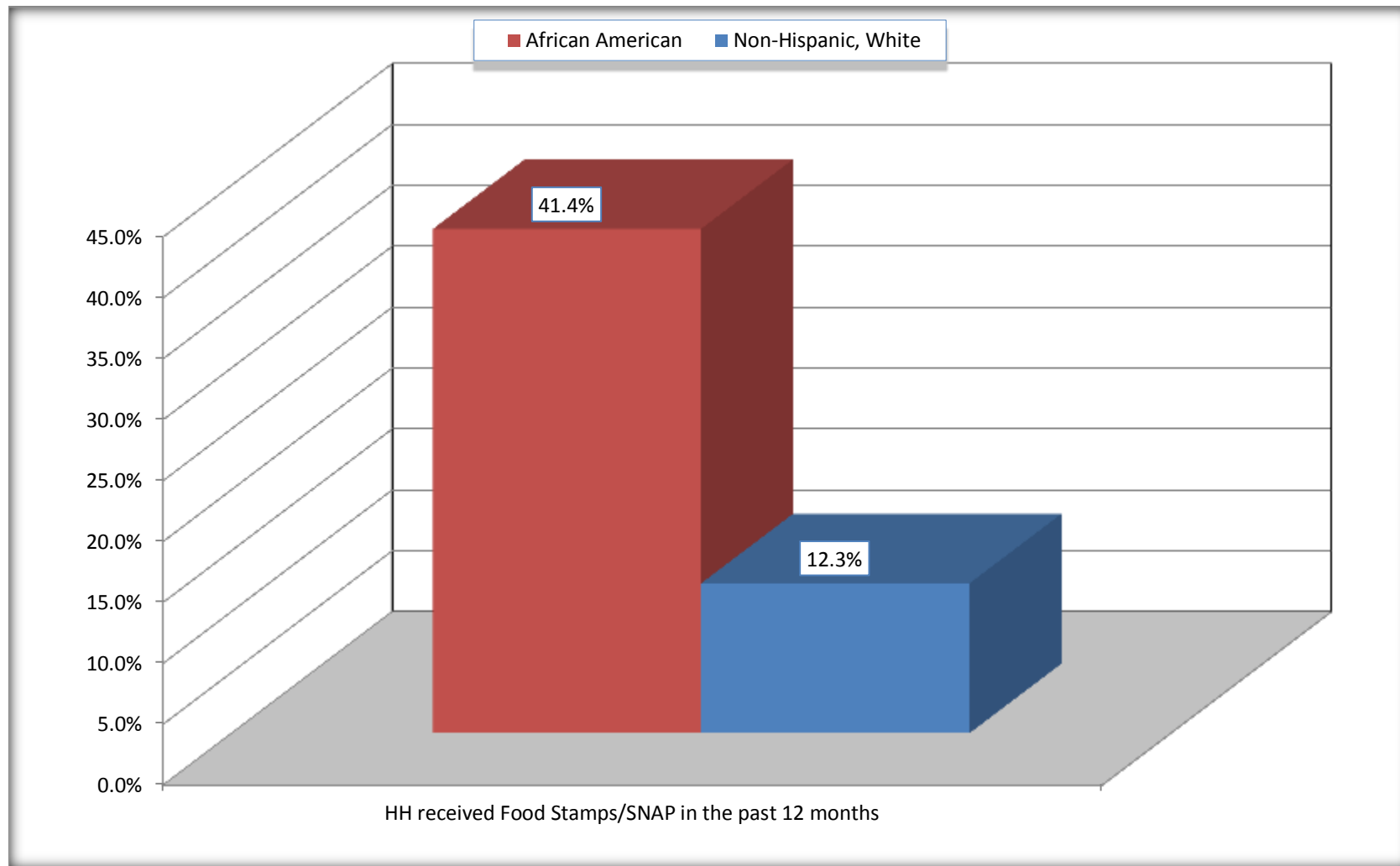
Source: U.S. Census Bureau, 2008-2012 American Community Survey

For information on confidentiality protection, sampling error, nonsampling error, and definitions, see Survey Methodology.

<http://www.census.gov/acs/www/UseData/index.htm>

Receipt of Food Stamps/SNAP in the Past 12 Months by Household

Cameron city, Texas



Source: B22005. RECEIPT OF FOOD STAMPS/SNAP IN THE PAST 12 MONTHS BY RACE OF HOUSEHOLDER
Data Set: 2008-2012 American Community Survey 5-Year Estimates

C23002. SEX BY AGE BY EMPLOYMENT STATUS FOR THE POPULATION 16 YEARS AND OVER

Data Set: 2008-2012 American Community Survey 5-Year Estimates

	Cameron city, Texas					
	African American	Margin of Error (+/-)	% of AA Total	White, Not Hispanic	Margin of Error (+/-)	% of NHW Total
Total:	776	241	100.0%	2,090	318	100.0%
In labor force:	407	NC	52.4%	861	NC	41.2%
In Armed Forces	0	NC	0.0%	0	NC	0.0%
Civilian:	391	NC	50.4%	712	NC	34.1%
Employed	363	NC	46.8%	819	NC	39.2%
Unemployed	44	NC	5.7%	42	NC	2.0%
Not in labor force	369	NC	47.6%	1,229	NC	58.8%
Male:	415	158	53.5%	925	173	44.3%
16 to 64 years:	331	140	42.7%	630	161	30.1%
In labor force:	165	94	21.3%	441	135	21.1%
In Armed Forces	0	18	0.0%	0	18	0.0%
Civilian:	165	94	21.3%	441	135	21.1%
Employed	154	100	19.8%	406	135	19.4%
Unemployed	11	30	1.4%	35	36	1.7%
Not in labor force	166	111	21.4%	189	115	9.0%
65 years and over:	84	70	10.8%	295	88	14.1%
In labor force:	16	27	2.1%	83	56	4.0%
Employed	16	27	2.1%	83	56	4.0%
Unemployed	0	18	0.0%	0	18	0.0%
Not in labor force	68	71	8.8%	212	80	10.1%

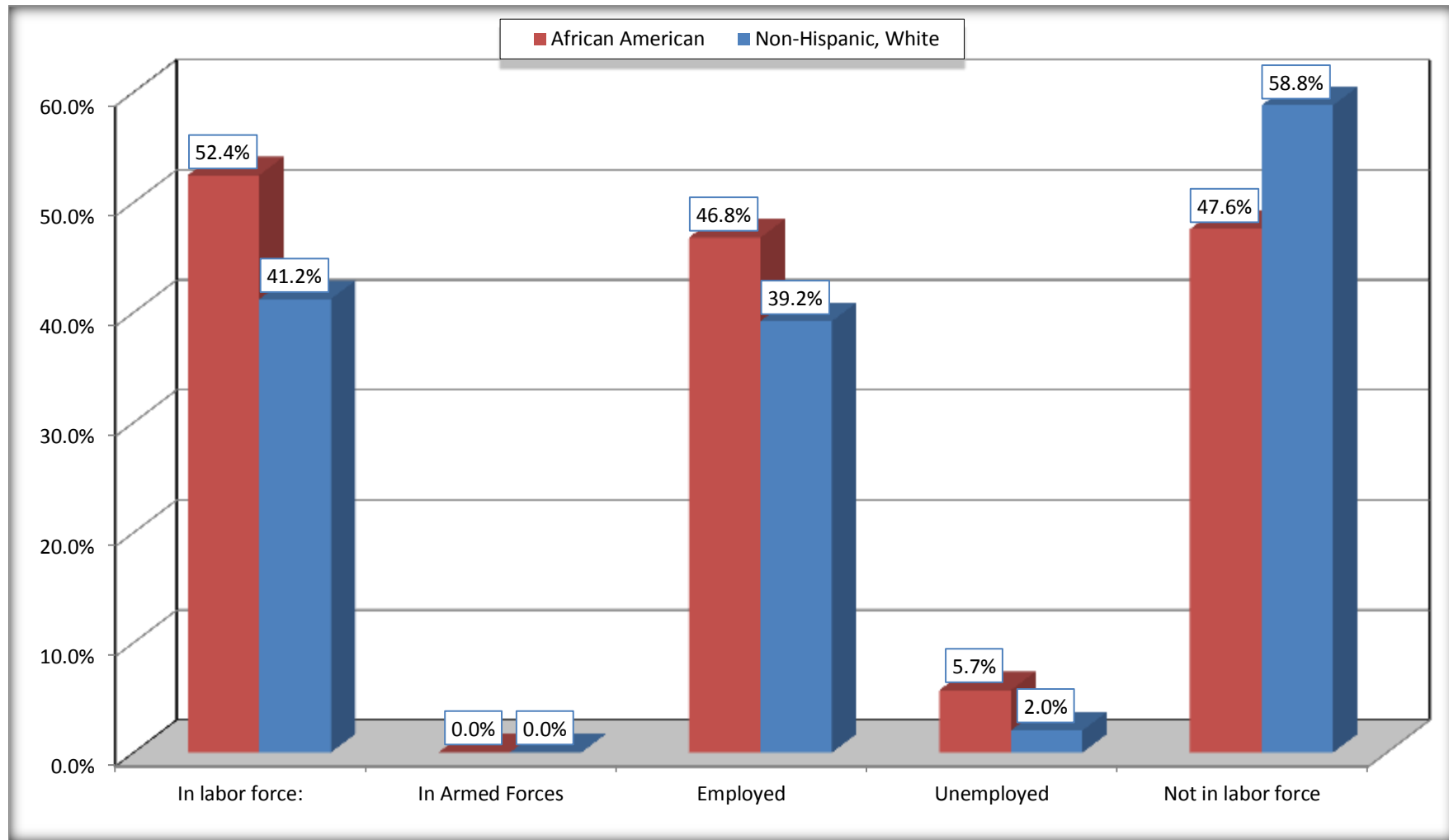
	Cameron city, Texas					
	African American	Margin of Error (+/-)	% of AA Total	White, Not Hispanic	Margin of Error (+/-)	% of NHW Total
Female:	361	126	46.5%	1,165	204	55.7%
16 to 64 years:	289	109	37.2%	692	173	33.1%
In labor force:	226	92	29.1%	271	90	13.0%
In Armed Forces	0	18	0.0%	0	18	0.0%
Civilian:	226	92	29.1%	271	90	13.0%
Employed	193	85	24.9%	264	88	12.6%
Unemployed	33	52	4.3%	7	12	0.3%
Not in labor force	63	72	8.1%	421	161	20.1%
65 years and over:	72	51	9.3%	473	102	22.6%
In labor force:	0	18	0.0%	66	45	3.2%
Employed	0	18	0.0%	66	45	3.2%
Unemployed	0	18	0.0%	0	18	0.0%
Not in labor force	72	51	9.3%	407	98	19.5%

Source: U.S. Census Bureau, 2008-2012 American Community Survey

For information on confidentiality protection, sampling error, nonsampling error, and definitions, see Survey Methodology.
<http://www.census.gov/acs/www/UseData/index.htm>

Employment Status for the Population 16 years and over

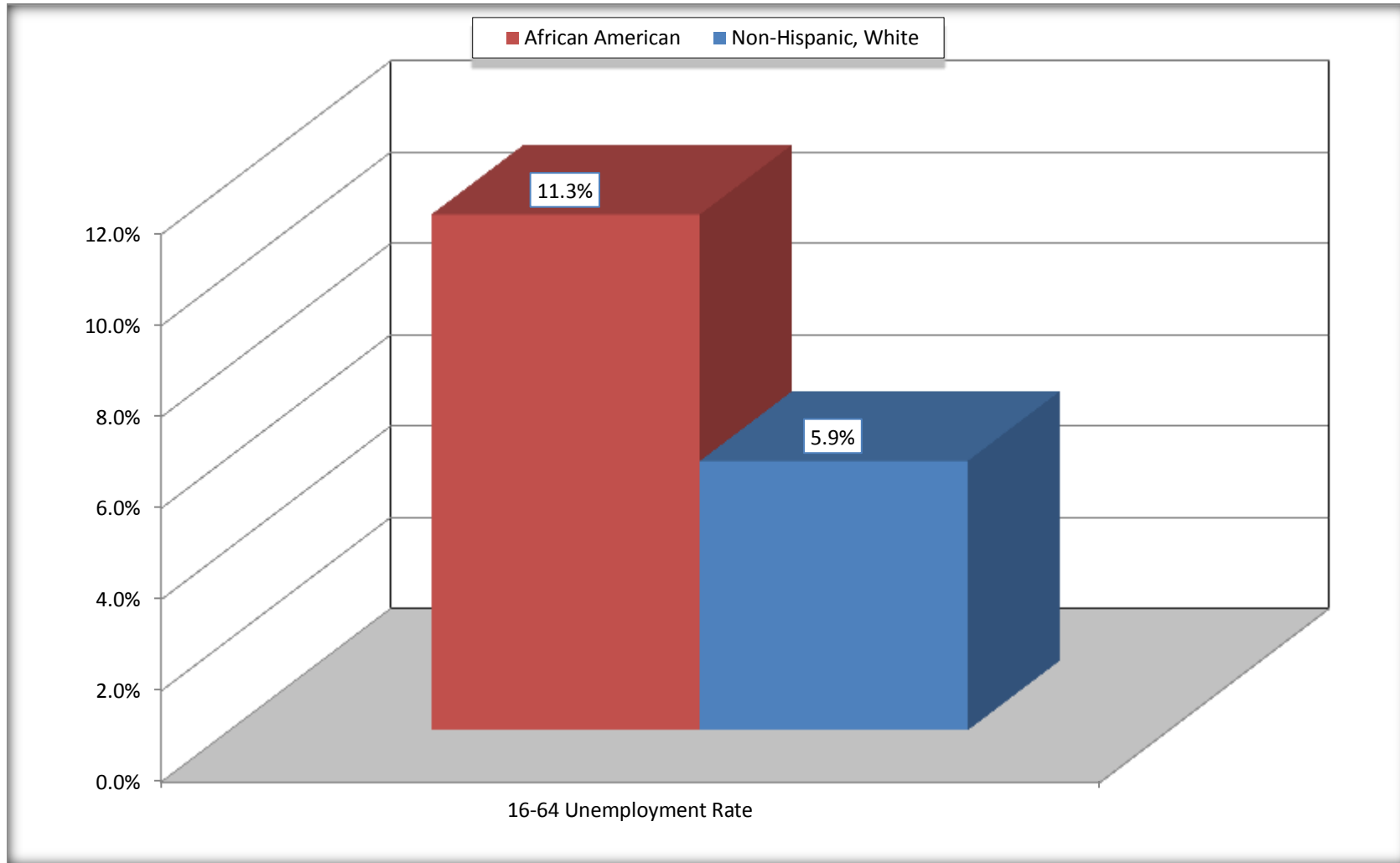
Cameron city, Texas



Source: C23002. SEX BY AGE BY EMPLOYMENT STATUS FOR THE POPULATION 16 YEARS AND OVER
Data Set: 2008-2012 American Community Survey 5-Year Estimates

Unemployment of Working Age Population (Ages 16 to 64) (As a Percent of 16-64 Civilian Labor Force)

Cameron city, Texas



Source: C23002. SEX BY AGE BY EMPLOYMENT STATUS FOR THE POPULATION 16 YEARS AND OVER
Data Set: 2008-2012 American Community Survey 5-Year Estimates

C24010. SEX BY OCCUPATION FOR THE CIVILIAN EMPLOYED POPULATION 16 YEARS AND OVER

Data Set: 2008-2012 American Community Survey 5-Year Estimates

	Cameron city, Texas					
	African American	Margin of Error (+/-)	% of AA Total	White, Not Hispanic	Margin of Error (+/-)	% of NHW Total
Total:	363	135	100.0%	819	225	100.0%
Management, professional, and related occupations	51	NC	14.0%	314	NC	38.3%
Service occupations	198	NC	54.5%	128	NC	15.6%
Sales and office occupations	62	NC	17.1%	187	NC	22.8%
Natural resources, construction, and maintenance occupations:	21	NC	5.8%	18	NC	2.2%
Production, transportation, and material moving occupations	31	NC	8.5%	172	NC	21.0%
Male:	170	101	46.8%	489	156	59.7%
Management, business, science, and arts occupations:	0	18	0.0%	184	86	22.5%
Service occupations	70	83	19.3%	50	40	6.1%
Sales and office occupations	48	61	13.2%	80	64	9.8%
Natural resources, construction, and maintenance occupations:	21	33	5.8%	18	25	2.2%
Production, transportation, and material moving occupations	31	48	8.5%	157	96	19.2%
Female:	193	85	53.2%	330	106	40.3%
Management, professional, and related occupations	51	54	14.0%	130	72	15.9%
Service occupations	128	83	35.3%	78	52	9.5%
Sales and office occupations	14	32	3.9%	107	65	13.1%
Natural resources, construction, and maintenance occupations:	0	18	0.0%	0	18	0.0%
Production, transportation, and material moving occupations	0	18	0.0%	15	18	1.8%

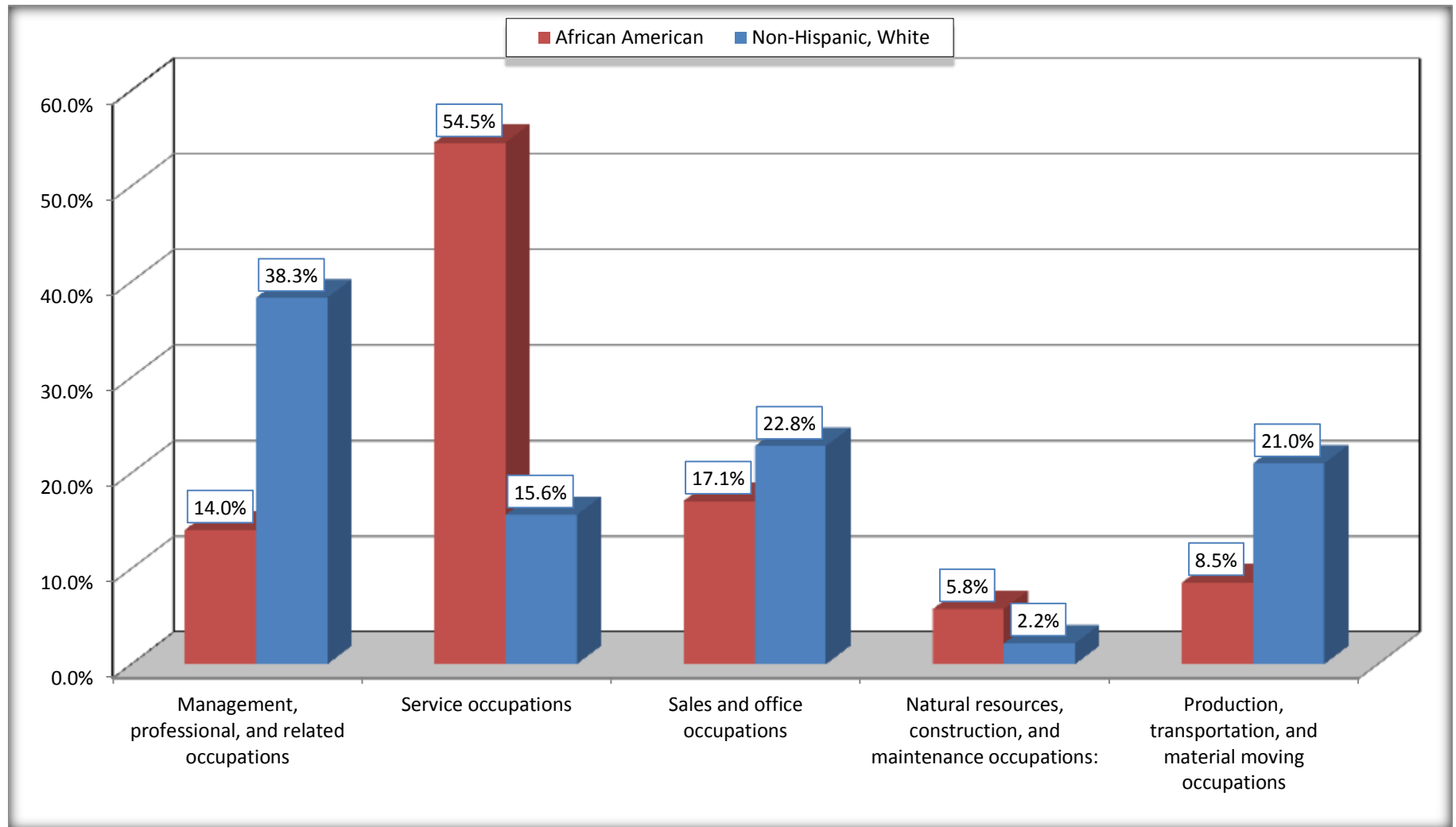
Source: U.S. Census Bureau, 2008-2012 American Community Survey

For information on confidentiality protection, sampling error, nonsampling error, and definitions, see Survey Methodology.

<http://www.census.gov/acs/www/UseData/index.htm>

Occupation for the Civilian Employed 16 Years and Over Population

Cameron city, Texas



Source: C24010. SEX BY OCCUPATION FOR THE CIVILIAN EMPLOYED POPULATION 16 YEARS AND OVER
Data Set: 2008-2012 American Community Survey 5-Year Estimates

B25003. TENURE - Universe: OCCUPIED HOUSING UNITS

Data Set: 2008-2012 American Community Survey 5-Year Estimates

	Cameron city, Texas					
	African American	Margin of Error (+/-)	% of AA Total	White, Not Hispanic	Margin of Error (+/-)	% of NHW Total
Total:	512	147	100.0%	1,049	187	100.0%
Owner occupied	192	115	37.5%	725	138	69.1%
Renter occupied	320	124	62.5%	324	124	30.9%

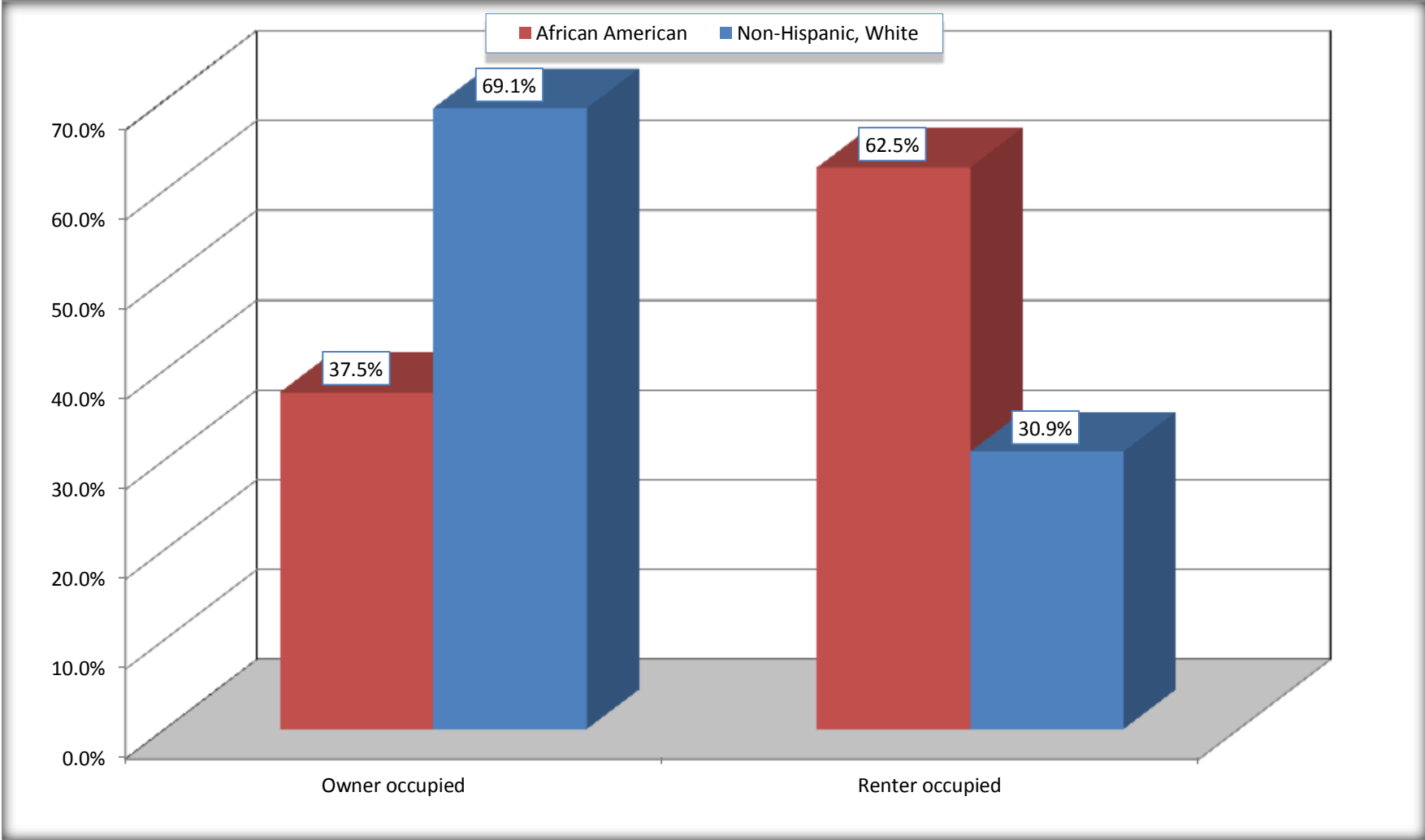
Source: U.S. Census Bureau, 2008-2012 American Community Survey

For information on confidentiality protection, sampling error, nonsampling error, and definitions, see Survey Methodology.

<http://www.census.gov/acs/www/UseData/index.h>

Home Owners and Renters by Household

Cameron city, Texas



Source: B25003. TENURE - Universe: OCCUPIED HOUSING UNITS
Data Set: 2008-2012 American Community Survey 5-Year Estimates

B25014. OCCUPANTS PER ROOM - Universe: OCCUPIED HOUSING UNITS

Data Set: 2008-2012 American Community Survey 5-Year Estimates

	Cameron city, Texas					
	African American	Margin of Error (+/-)	% of AA Total	White, Not Hispanic	Margin of Error (+/-)	% of NHW Total
Total:	512	147	100.0%	1,049	187	100.0%
1.00 or less occupants per room	512	147	100.0%	1,033	190	98.5%
1.01 or more occupants per room	0	18	0.0%	16	24	1.5%

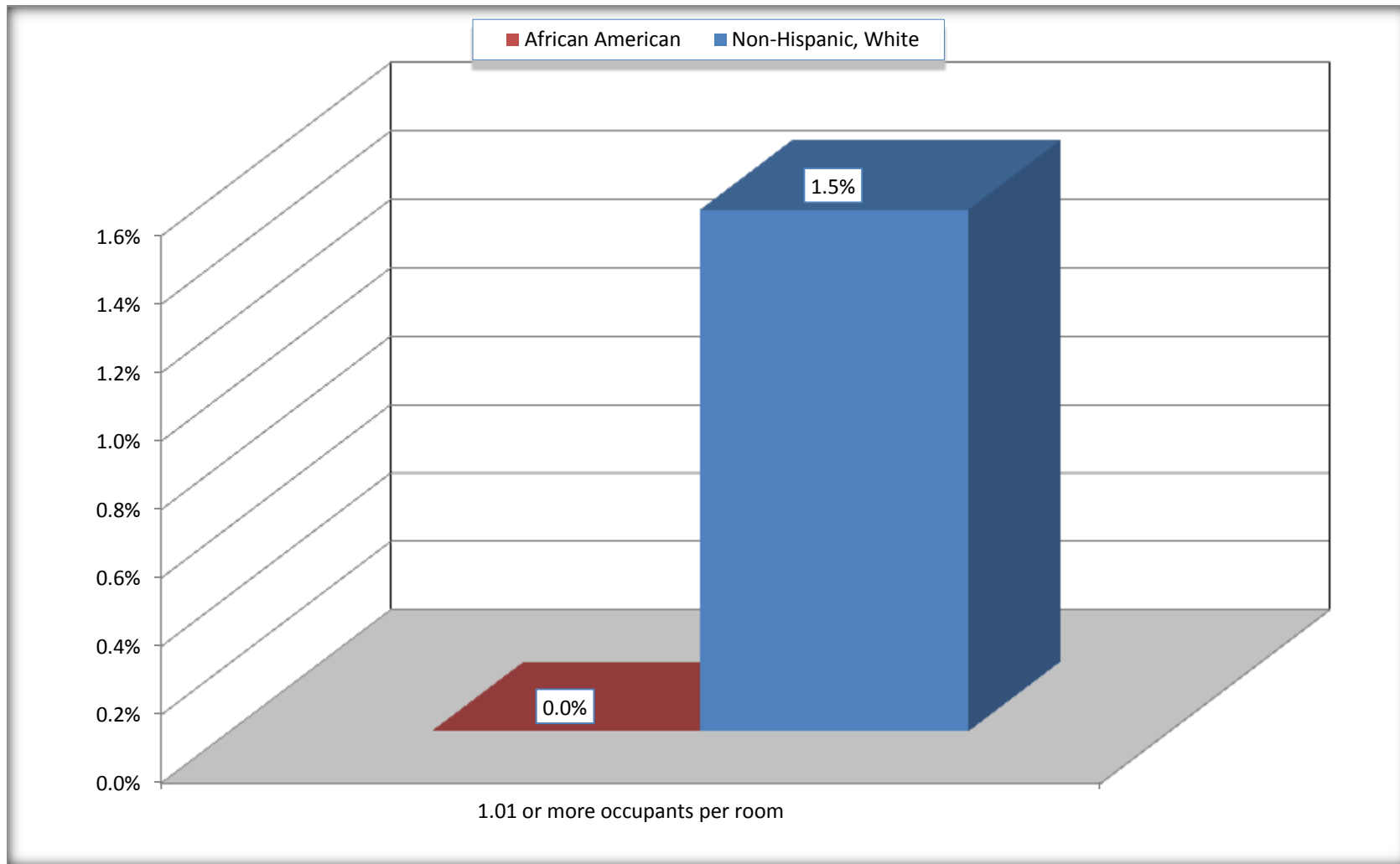
Source: U.S. Census Bureau, 2008-2012 American Community Survey

For information on confidentiality protection, sampling error, nonsampling error, and definitions, see Survey Methodology.

<http://www.census.gov/acs/www/UseData/index.ht>

More than One Person per Room (Crowding) by Household

Cameron city, Texas



Source: B25014. OCCUPANTS PER ROOM - Universe: OCCUPIED HOUSING UNITS
Data Set: 2008-2012 American Community Survey 5-Year Estimates

B18101. AGE BY DISABILITY STATUS

Data Set: 2008-2012 American Community Survey 5-Year Estimates

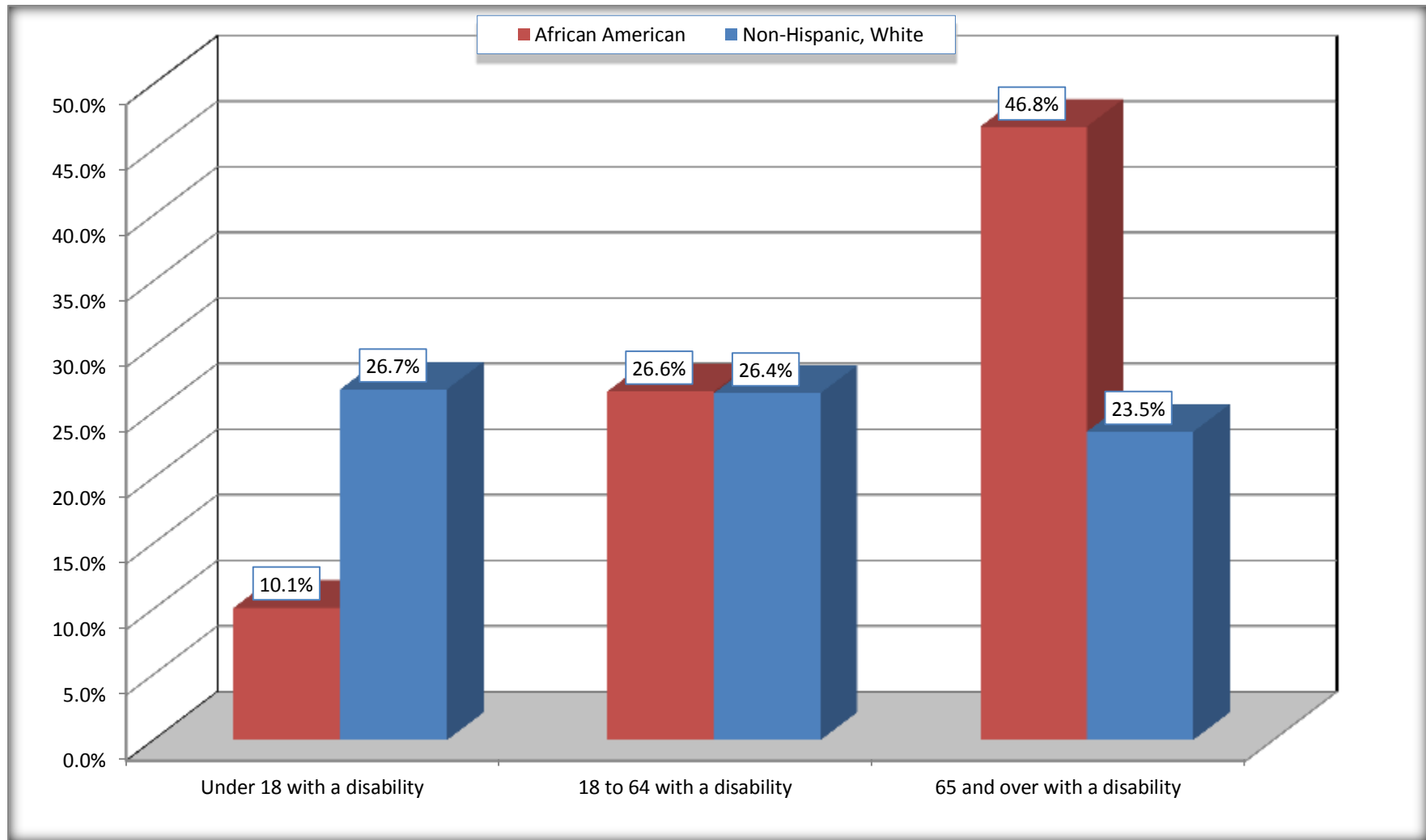
	Cameron city, Texas					
	African American	Margin of Error (+/-)	% of AA Total	White, Not Hispanic	Margin of Error (+/-)	% of NHW Total
Total:	934	302	100.0%	2,393	412	100.0%
Under 18 years:	238	144	25.5%	475	40	19.8%
With a disability	24	40	2.6%	127	142	5.3%
No disability	214	130	22.9%	348	171	14.5%
18 to 64 years:	542	168	58.0%	1,237	277	51.7%
With a disability	144	90	15.4%	327	156	13.7%
No disability	398	155	42.6%	910	239	38.0%
65 years and over:	154	97	16.5%	681	146	28.5%
With a disability	72	51	7.7%	160	94	6.7%
No disability	82	70	8.8%	521	137	21.8%

Source: U.S. Census Bureau, 2008-2012 American Community Survey

For information on confidentiality protection, sampling error, nonsampling error, and definitions, see Survey Methodology.

<http://www.census.gov/acs/www/UseData/index.htm>

Disability by Age Cameron city, Texas



Source: B18101. AGE BY DISABILITY STATUS
Data Set: 2008-2012 American Community Survey 5-Year Estimates

C27001B. HEALTH INSURANCE COVERAGE STATUS BY AGE

Data Set: 2008-2012 American Community Survey 5-Year Estimates

	Cameron city, Texas					
	African American	Margin of Error (+/-)	% of AA Total	White, Not Hispanic	Margin of Error (+/-)	% of NHW Total
Total:	934	302	100.0%	2,393	412	100.0%
Under 18 years:	238	144	25.5%	475	176	19.8%
With health insurance coverage	207	127	22.2%	450	176	18.8%
No health insurance coverage	31	46	3.3%	25	41	1.0%
18 to 64 years:	542	168	58.0%	1,237	277	51.7%
With health insurance coverage	341	120	36.5%	1,010	258	42.2%
No health insurance coverage	201	137	21.5%	227	129	9.5%
65 years and over:	154	97	16.5%	681	146	28.5%
With health insurance coverage	154	97	16.5%	681	146	28.5%
No health insurance coverage	0	18	0.0%	0	18	0.0%

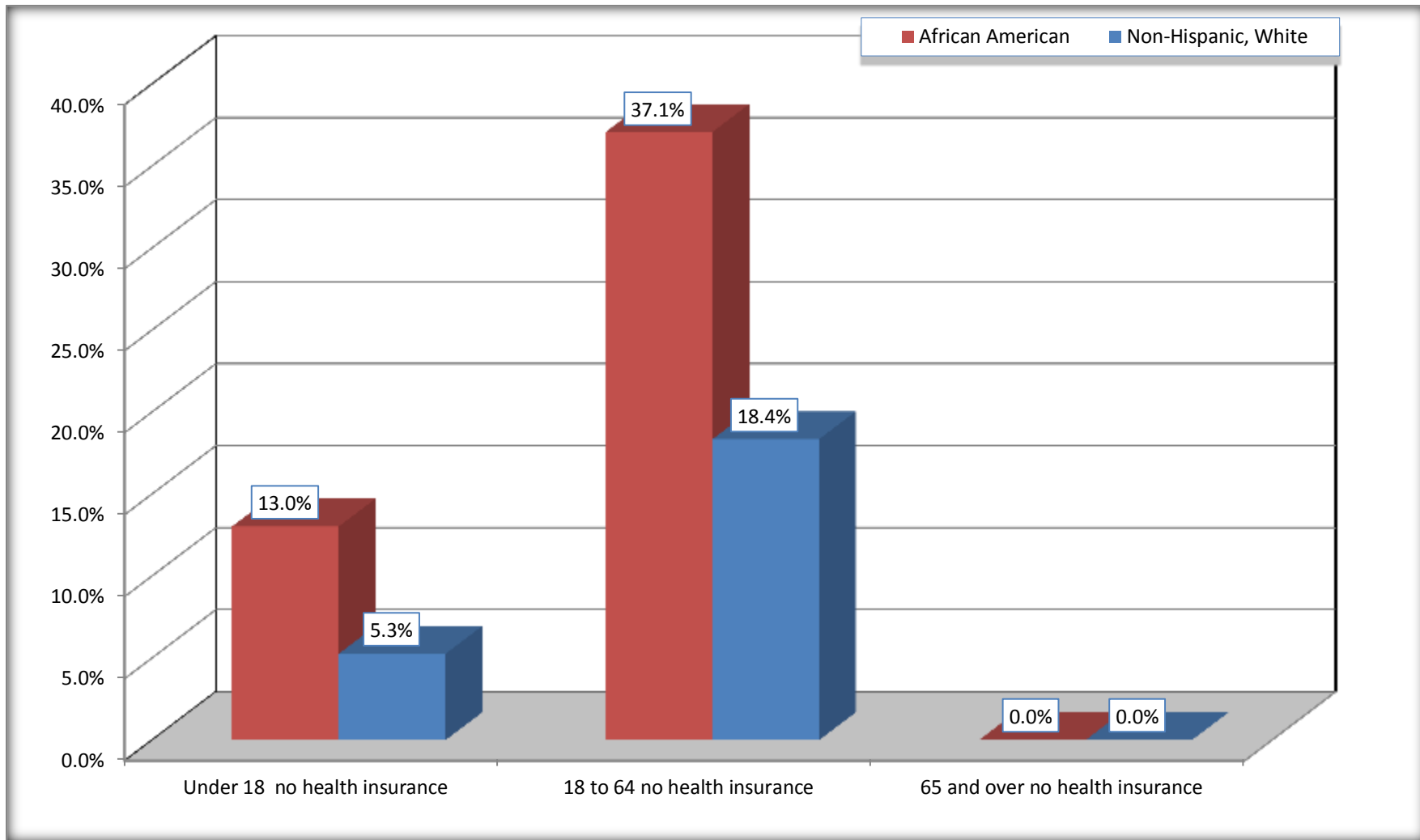
Source: U.S. Census Bureau, 2008-2012 American Community Survey

For information on confidentiality protection, sampling error, nonsampling error, and definitions, see Survey Methodology.

<http://www.census.gov/acs/www/UseData/index.htm>

Lack of Health Insurance Coverage by Age

Cameron city, Texas



Source: C27001B. HEALTH INSURANCE COVERAGE STATUS BY AGE
Data Set: 2008-2012 American Community Survey 5-Year Estimates