

# **Selected Socio-Economic Data**

## **Atlanta city, Texas**

### **African American and White, Not Hispanic**

**Data Set: 2008-2012 American Community Survey 5-Year Estimates**

[www.fairvote2020.org](http://www.fairvote2020.org)

[www.fairdata2000.com](http://www.fairdata2000.com)

[29-Dec-13](#)

**C02003.DETAILED RACE - Universe: TOTAL POPULATION**  
 Data Set: 2008-2012 American Community Survey 5-Year Estimates

	Atlanta city, Texas		
	Population	Margin of Error (+/-)	% of Total
<b>Total:</b>	<b>5,655</b>	<b>19</b>	<b>100.0%</b>
Population of one race:	5,622	45	99.4%
White	3,915	254	69.2%
Black or African American	1,657	239	29.3%
American Indian and Alaska Native	0	18	0.0%
Asian alone	50	55	0.9%
Native Hawaiian and Other Pacific Islander	0	18	0.0%
Some other race	0	18	0.0%
Population of two or more races:	33	40	0.6%
Two races including Some other race	6	11	0.1%
Two races excluding Some other race, and three or more races	27	35	0.5%
Population of two races:	33	40	0.6%
White; Black or African American	6	11	0.1%
White; American Indian and Alaska Native	21	33	0.4%
White; Asian	0	18	0.0%
Black or African American; American Indian and Alaska Native	0	18	0.0%
All other two race combinations	6	11	0.1%
Population of three races	0	18	0.0%
Population of four or more races	0	18	0.0%

Note: Hispanics may be of any race. See Table B03002 and chart.

Source: U.S. Census Bureau, 2008-2012 American Community Survey

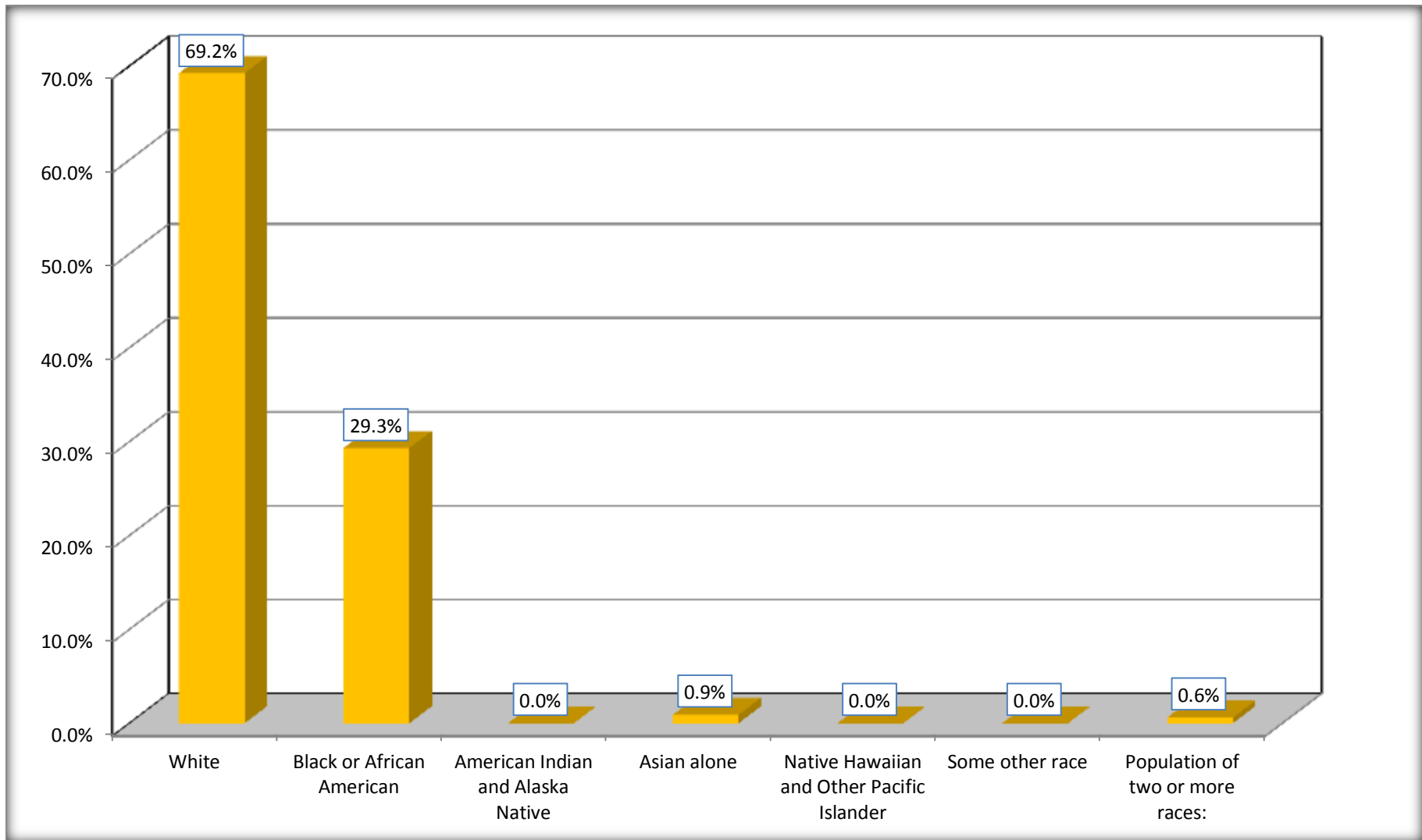
Although the American Community Survey (ACS) produces population, demographic and housing unit estimates, it is the Census Bureau's Population Estimates Program that produces and disseminates the official estimates of the population for the nation, states, counties, cities and towns and estimates of housing units for states and counties.

For information on confidentiality protection, sampling error, nonsampling error, and definitions, see Survey Methodology.

<http://www.census.gov/acs/www/UseData/index.htm>

# Population by Race

## Atlanta city, Texas



Source: C02003.DETAILED RACE - Universe: TOTAL POPULATION  
Data Set: 2008-2012 American Community Survey 5-Year Estimates

**B03002. HISPANIC OR LATINO ORIGIN BY RACE - Universe: TOTAL POPULATION**

Data Set: 2008-2012 American Community Survey 5-Year Estimates

	Atlanta city, Texas		
	Population	Margin of Error (+/-)	% of Total
<b>Total:</b>	5,655	19	<b>100.0%</b>
Not Hispanic or Latino:	5,559	114	98.3%
White alone	3,829	281	67.7%
Black or African American alone	1,653	237	29.2%
American Indian and Alaska Native alone	0	18	0.0%
Asian alone	50	55	0.9%
Native Hawaiian and Other Pacific Islander alone	0	18	0.0%
Some other race alone	0	18	0.0%
Two or more races:	27	35	0.5%
Two races including Some other race	0	18	0.0%
Two races excluding Some other race, and three or more races	27	35	0.5%
Hispanic or Latino	96	113	1.7%

Source: U.S. Census Bureau, 2008-2012 American Community Survey

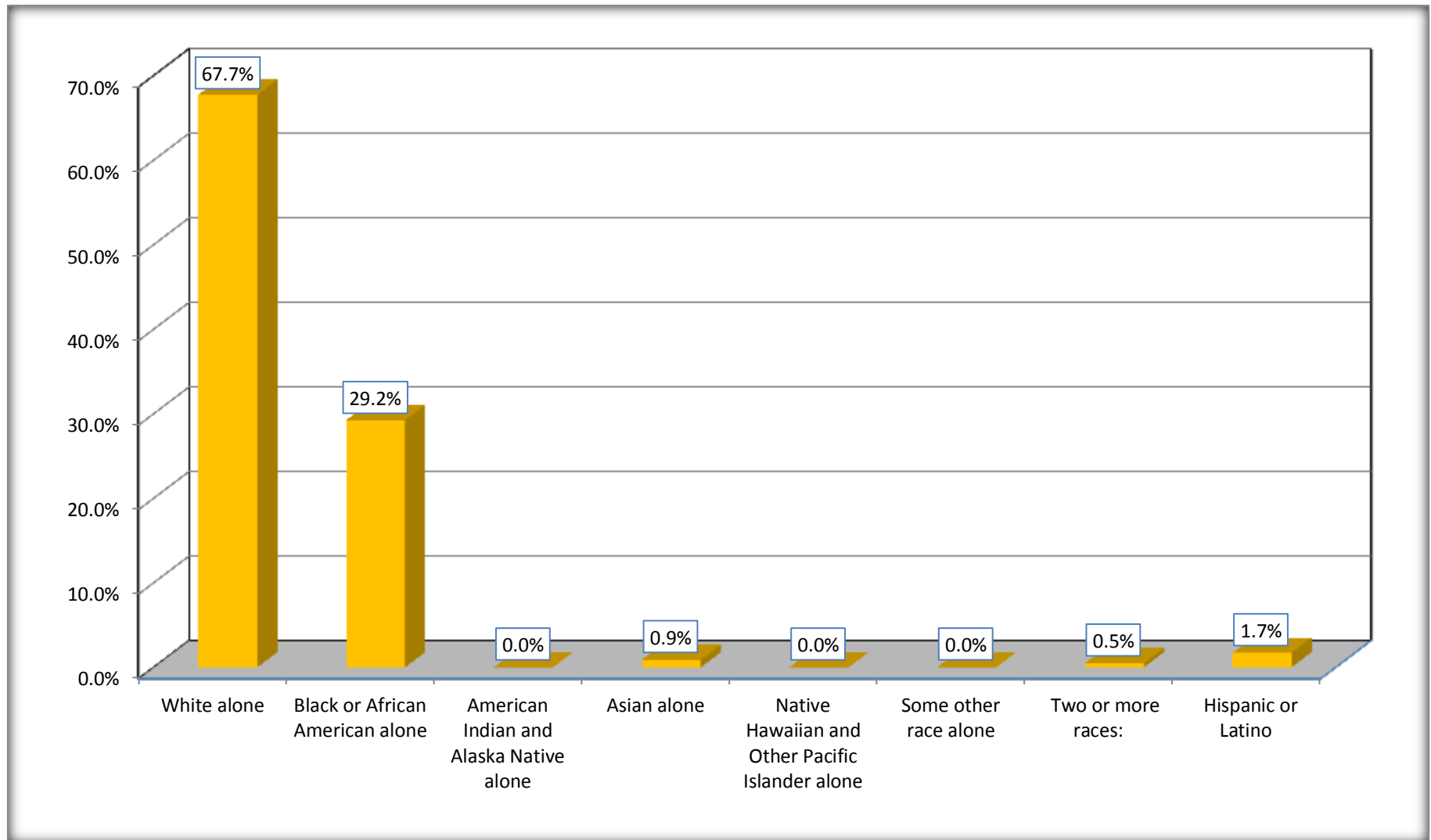
Although the American Community Survey (ACS) produces population, demographic and housing unit estimates, it is the Census Bureau's Population Estimates Program that produces and disseminates the official estimates of the population for the nation, states, counties, cities and towns and estimates of housing units for states and counties.

For information on confidentiality protection, sampling error, nonsampling error, and definitions, see Survey Methodology.

<http://www.census.gov/acs/www/UseData/index.htm>

# Non-Hispanic by Race and Hispanic Population

## Atlanta city, Texas



Source: B03002. HISPANIC OR LATINO ORIGIN BY RACE - Universe: TOTAL POPULATION  
Data Set: 2008-2012 American Community Survey 5-Year Estimates

**B03002. HISPANIC OR LATINO ORIGIN BY RACE**

Data Set: 2008-2012 American Community Survey 5-Year Estimates

	Atlanta city, Texas		
	Population	Margin of Error (+/-)	% of Total
Hispanic or Latino:	96	113	<b>100.0%</b>
White alone	86	110	89.6%
Black or African American alone	4	9	4.2%
American Indian and Alaska Native alone	0	18	0.0%
Asian alone	0	18	0.0%
Native Hawaiian and Other Pacific Islander alone	0	18	0.0%
Some other race alone	0	18	0.0%
Two or more races:	6	11	6.3%
Two races including Some other race	6	11	6.3%
Two races excluding Some other race, and three or more races	0	18	0.0%

Source: U.S. Census Bureau, 2008-2012 American Community Survey

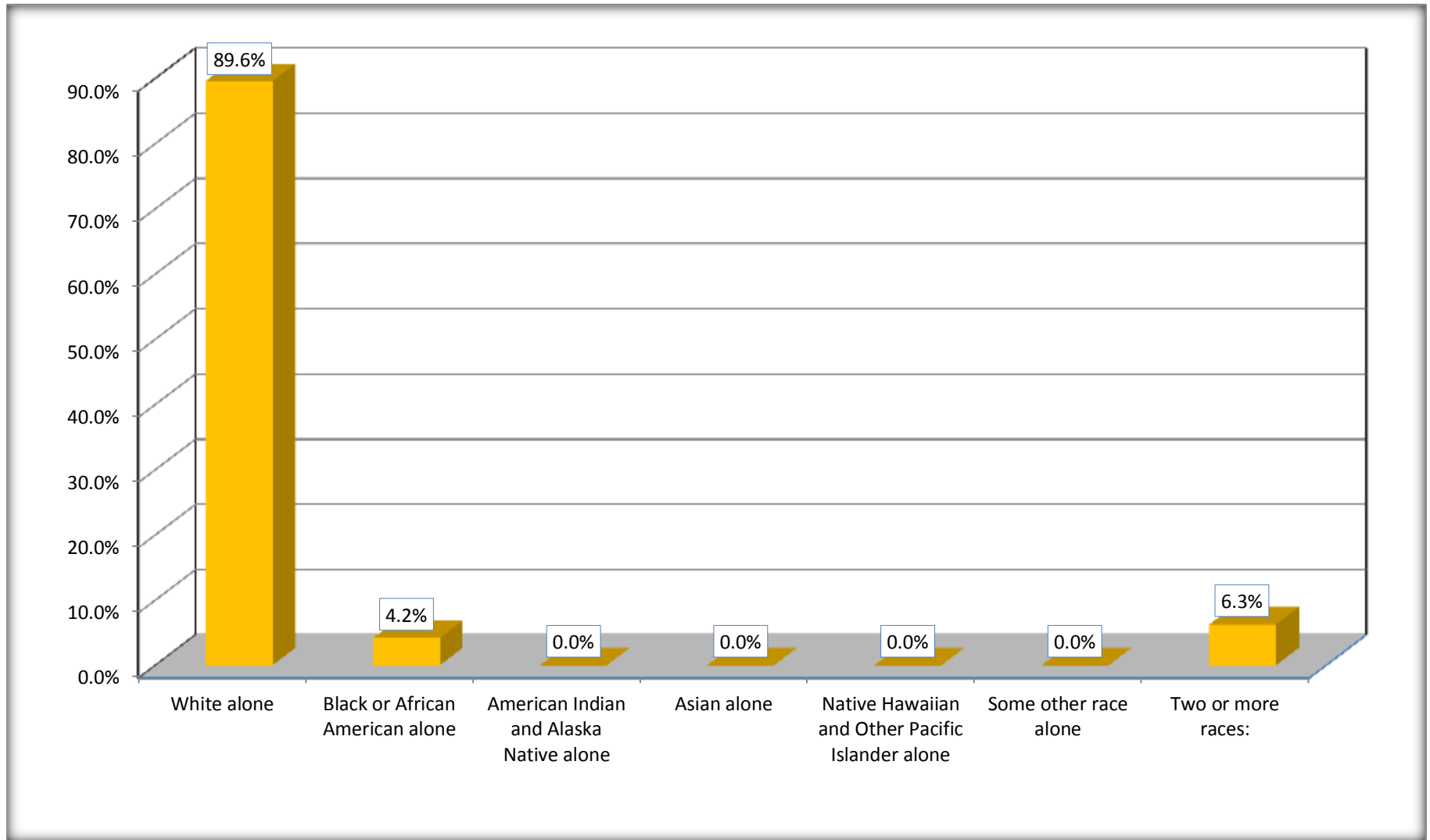
Although the American Community Survey (ACS) produces population, demographic and housing unit estimates, it is the Census Bureau's Population Estimates Program that produces and disseminates the official estimates of the population for the nation, states, counties, cities and towns and estimates of housing units for states and counties.

For information on confidentiality protection, sampling error, nonsampling error, and definitions, see Survey Methodology.

<http://www.census.gov/acs/www/UseData/index.htm>

# Hispanic or Latino Origin by Race

## Atlanta city, Texas



Source: B03002. HISPANIC OR LATINO ORIGIN BY RACE  
Data Set: 2008-2012 American Community Survey 5-Year Estimates

**B01001. SEX BY AGE**

Data Set: 2008-2012 American Community Survey 5-Year Estimates

	Atlanta city, Texas					
	African American	Margin of Error (+/-)	% of AA Total	White, Not Hispanic	Margin of Error (+/-)	% of NHW Total
<b>Total:</b>	<b>1,657</b>	<b>239</b>	<b>100.0%</b>	<b>3,829</b>	<b>281</b>	<b>100.0%</b>
Under 18 years	381	NC	23.0%	807	NC	21.1%
18 to 64 years	933	NC	56.3%	2,145	NC	56.0%
65 years and over	343	NC	20.7%	877	NC	22.9%
Male:	545	136	32.9%	1,747	389	45.6%
Under 18 years	126	NC	7.6%	352	NC	9.2%
18 to 64 years	293	NC	17.7%	1,089	NC	28.4%
65 years and over	126	NC	7.6%	306	NC	8.0%
Female:	1,112	176	67.1%	2,082	412	54.4%
Under 18 years	255	NC	15.4%	455	NC	11.9%
18 to 64 years	640	NC	38.6%	1,056	NC	27.6%
65 years and over	217	NC	13.1%	571	NC	14.9%

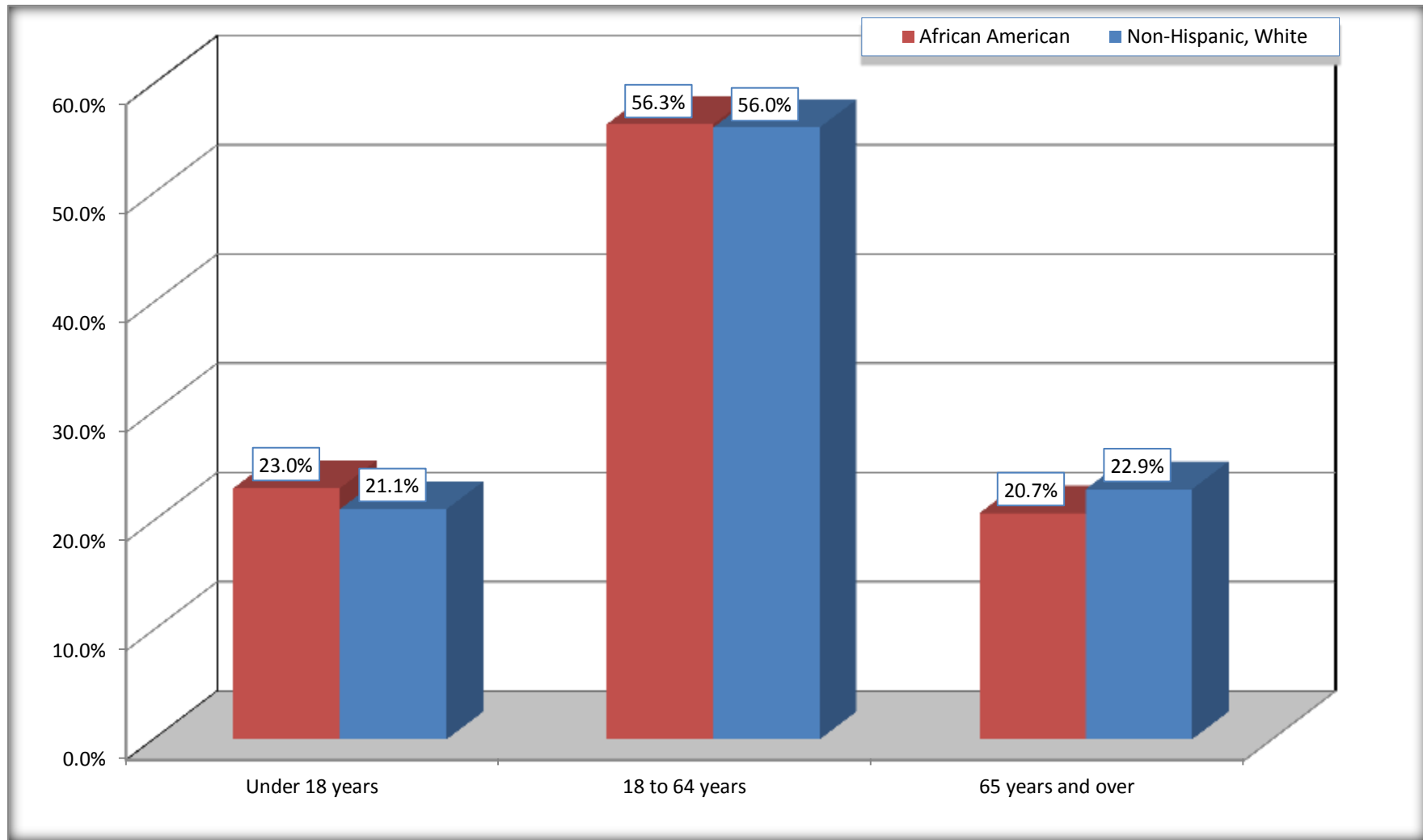
Source: U.S. Census Bureau, 2008-2012 American Community Survey

Although the American Community Survey (ACS) produces population, demographic and housing unit estimates, it is the Census Bureau's Population Estimates Program that produces and disseminates the official estimates of the population for the nation, states, counties, cities and towns and estimates of housing units for states and counties.

For information on confidentiality protection, sampling error, nonsampling error, and definitions, see Survey Methodology.  
<http://www.census.gov/acs/www/UseData/index.htm>



## Population by Age Atlanta city, Texas



Source: B01001. SEX BY AGE  
Data Set: 2008-2012 American Community Survey 5-Year Estimates

**B05003. SEX BY AGE BY CITIZENSHIP STATUS**

Data Set: 2008-2012 American Community Survey 5-Year Estimates

	Atlanta city, Texas					
	African American	Margin of Error (+/-)	% of AA Total by Age	White, Not Hispanic	Margin of Error (+/-)	% of NHW Total by Age
<b>Total:</b>	<b>1,657</b>	<b>239</b>	<b>100.0%</b>	<b>3,829</b>	<b>281</b>	<b>100.0%</b>
<b>Under 18 years:</b>	<b>381</b>	<b>NC</b>	<b>100.0%</b>	<b>807</b>	<b>NC</b>	<b>100.0%</b>
Native	381	NC	100.0%	807	NC	100.0%
Foreign born:	0	NC	0.0%	0	NC	0.0%
Naturalized U.S. citizen	0	NC	0.0%	0	NC	0.0%
Not a U.S. citizen	0	NC	0.0%	0	NC	0.0%
<b>18 years and over:</b>	<b>1,276</b>	<b>NC</b>	<b>100.0%</b>	<b>3,022</b>	<b>NC</b>	<b>100.0%</b>
Native	1,274	NC	99.8%	3,022	NC	100.0%
Foreign born:	2	NC	0.2%	0	NC	0.0%
Naturalized U.S. citizen	0	NC	0.0%	0	NC	0.0%
Not a U.S. citizen	2	NC	0.2%	0	NC	0.0%
<b>Male:</b>	<b>545</b>	<b>136</b>	<b>32.9%</b>	<b>1,747</b>	<b>182</b>	<b>45.6%</b>
<b>Under 18 years:</b>	<b>126</b>	<b>101</b>	<b>100.0%</b>	<b>352</b>	<b>104</b>	<b>100.0%</b>
Native	126	101	100.0%	352	104	100.0%
Foreign born:	0	18	0.0%	0	18	0.0%
Naturalized U.S. citizen	0	18	0.0%	0	18	0.0%
Not a U.S. citizen	0	18	0.0%	0	18	0.0%
<b>18 years and over:</b>	<b>419</b>	<b>110</b>	<b>100.0%</b>	<b>1,395</b>	<b>167</b>	<b>100.0%</b>
Native	419	110	100.0%	1,395	167	100.0%
Foreign born:	0	18	0.0%	0	18	0.0%
Naturalized U.S. citizen	0	18	0.0%	0	18	0.0%
Not a U.S. citizen	0	18	0.0%	0	18	0.0%

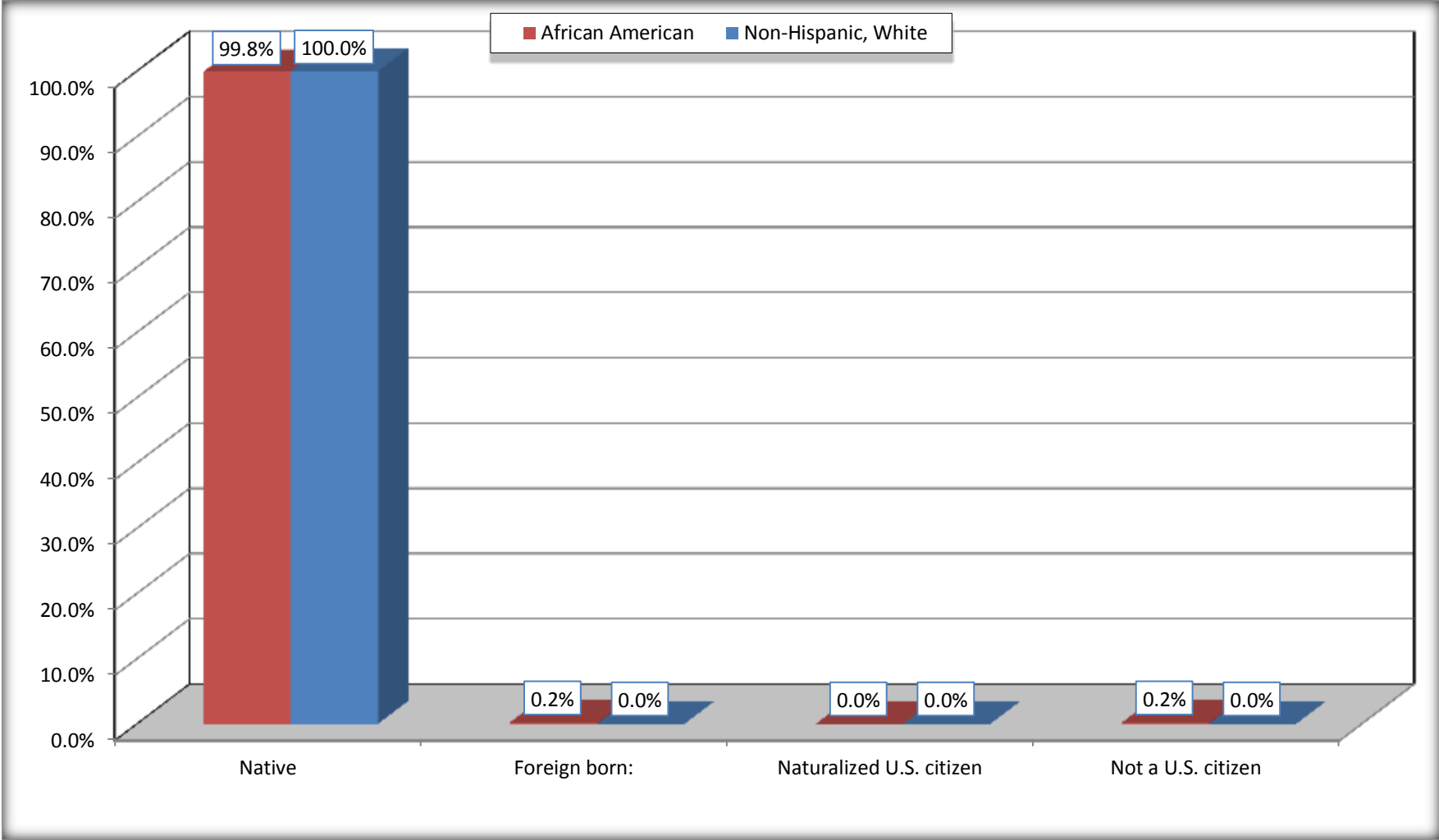
	Atlanta city, Texas					
	African American	Margin of Error (+/-)	% of AA by Age	White, Not Hispanic	Margin of Error (+/-)	% of NHW by Age
<b>Female:</b>	1,112	176	67.1%	2,082	211	54.4%
<b>Under 18 years:</b>	<b>255</b>	<b>77</b>	<b>100.0%</b>	<b>455</b>	<b>142</b>	<b>100.0%</b>
Native	255	77	100.0%	455	142	100.0%
Foreign born:	0	18	0.0%	0	18	0.0%
Naturalized U.S. citizen	0	18	0.0%	0	18	0.0%
Not a U.S. citizen	0	18	0.0%	0	18	0.0%
<b>18 years and over:</b>	<b>857</b>	<b>144</b>	<b>100.0%</b>	<b>1,627</b>	<b>167</b>	<b>100.0%</b>
Native	855	145	99.8%	1,627	167	100.0%
Foreign born:	2	4	0.2%	0	18	0.0%
Naturalized U.S. citizen	0	18	0.0%	0	18	0.0%
Not a U.S. citizen	2	4	0.2%	0	18	0.0%

Source: U.S. Census Bureau, 2008-2012 American Community Survey

For information on confidentiality protection, sampling error, nonsampling error, and definitions, see Survey Methodology.  
<http://www.census.gov/acs/www/UseData/index.htm>

# Citizenship Status of Voting Age Population (18 and Over)

## Atlanta city, Texas



Source: B05003. SEX BY AGE BY CITIZENSHIP STATUS  
Data Set: 2008-2012 American Community Survey 5-Year Estimates

**B07004. GEOGRAPHICAL MOBILITY IN THE PAST YEAR BY RACE FOR CURRENT RESIDENCE IN THE UNITED STATES - Universe:  
POPULATION 1 YEAR AND OVER**

Data Set: 2008-2012 American Community Survey 5-Year Estimates

	Atlanta city, Texas					
	African American	Margin of Error (+/-)	% of AA Total	White, Not Hispanic	Margin of Error (+/-)	% of NHW Total
<b>Total:</b>	<b>1,657</b>	<b>239</b>	<b>100.0%</b>	<b>3,780</b>	<b>275</b>	<b>100.0%</b>
Same house 1 year ago	1,304	270	78.7%	3,328	351	88.0%
Moved within same county	194	242	11.7%	309	214	8.2%
Moved from different county within same state	139	140	8.4%	130	109	3.4%
Moved from different state	20	35	1.2%	0	18	0.0%
Moved from abroad	0	18	0.0%	13	23	0.3%

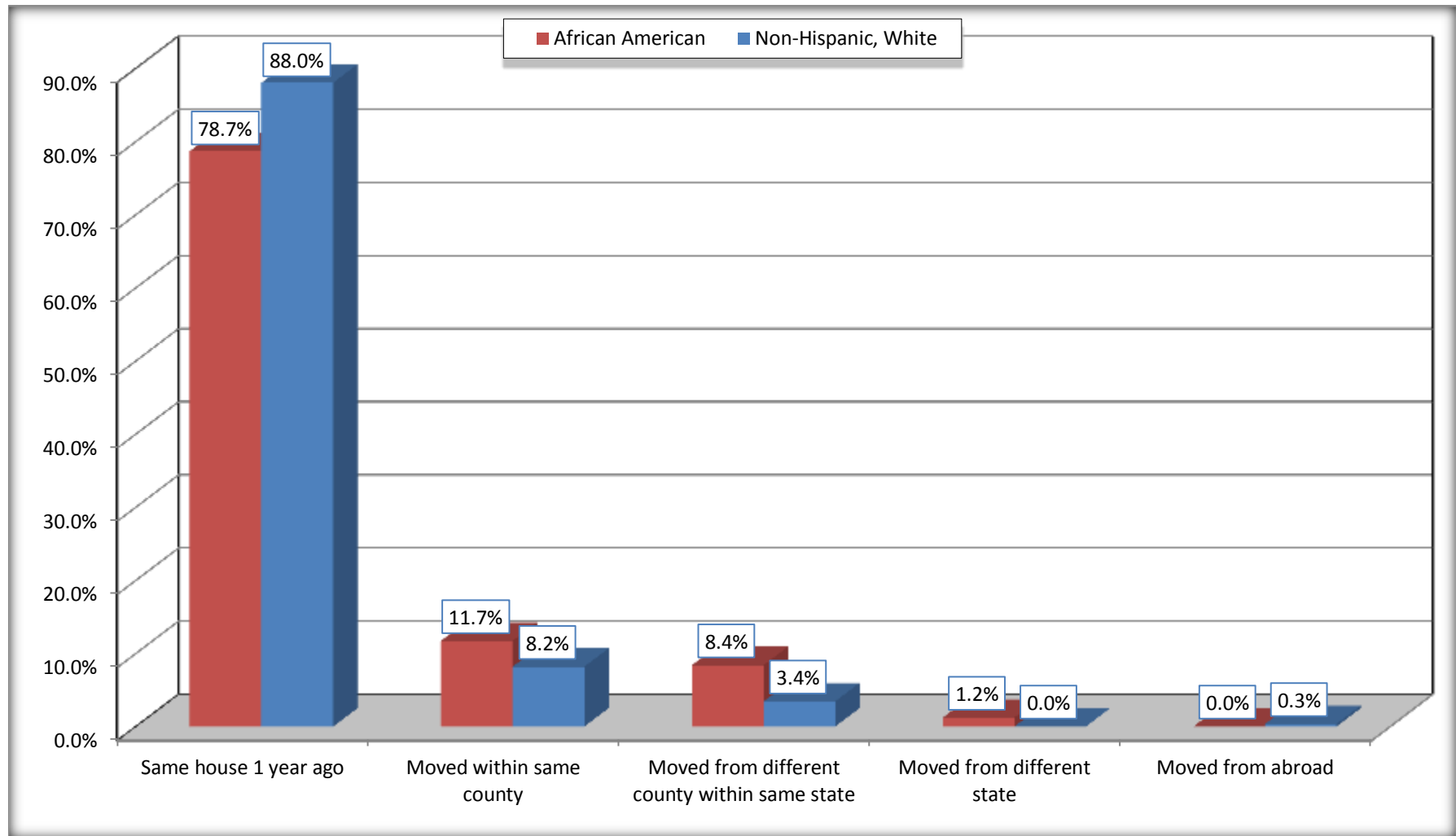
Source: U.S. Census Bureau, 2008-2012 American Community Survey

For information on confidentiality protection, sampling error, nonsampling error, and definitions, see Survey Methodology.

<http://www.census.gov/acs/www/UseData/index.htm>

# Geographical Mobility in the Past Year (Population 1 Year and Over)

## Atlanta city, Texas



Source: B07004. GEOGRAPHICAL MOBILITY IN THE PAST YEAR BY RACE FOR CURRENT RESIDENCE IN THE UNITED STATES - Universe: POPULATION 1 YEAR AND OVER

Data Set: 2008-2012 American Community Survey 5-Year Estimates

**B08105. MEANS OF TRANSPORTATION TO WORK - Universe: WORKERS 16 YEARS AND OVER**

Data Set: 2008-2012 American Community Survey 5-Year Estimates

	Atlanta city, Texas					
	African American	Margin of Error (+/-)	% of AA Total	White, Not Hispanic	Margin of Error (+/-)	% of NHW Total
<b>Total:</b>	589	130	<b>100.0%</b>	1518	238	<b>100.0%</b>
Car, truck, or van - drove alone	477	138	81.0%	1299	211	85.6%
Car, truck, or van - carpooled	26	29	4.4%	127	77	8.4%
Public transportation (excluding taxicab)	2	4	0.3%	0	18	0.0%
Walked	23	39	3.9%	0	18	0.0%
Taxicab, motorcycle, bicycle, or other means	61	71	10.4%	53	68	3.5%
Worked at home	0	18	0.0%	39	50	2.6%

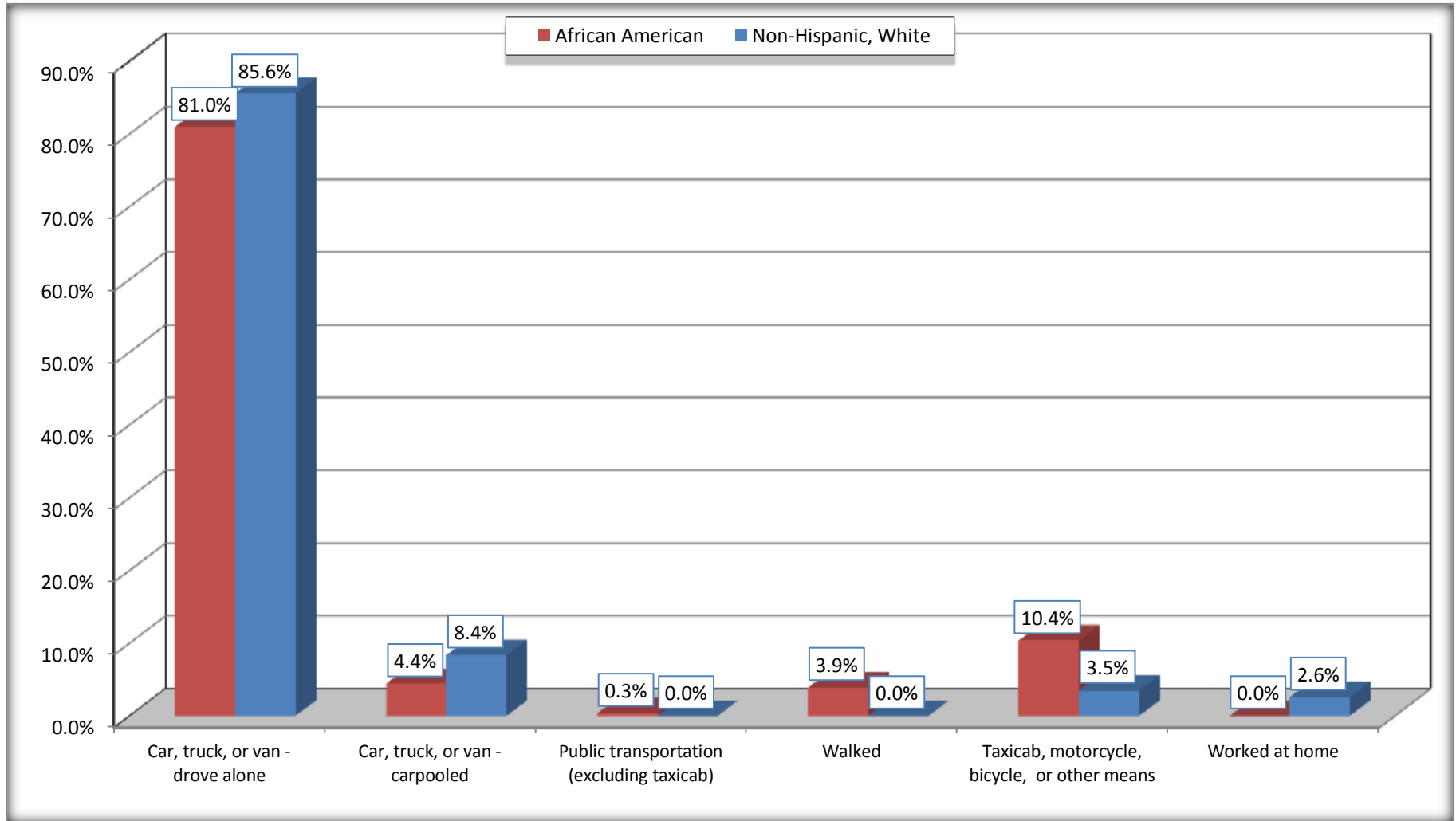
Source: U.S. Census Bureau, 2008-2012 American Community Survey

For information on confidentiality protection, sampling error, nonsampling error, and definitions, see Survey Methodology.

<http://www.census.gov/acs/www/UseData/index.htm>

# Means of Transportation to Work (Workers 16 Years and Over)

## Atlanta city, Texas



Source: B08105. MEANS OF TRANSPORTATION TO WORK - Universe: WORKERS 16 YEARS AND OVER  
Data Set: 2008-2012 American Community Survey 5-Year Estimates



**B11002. HOUSEHOLD TYPE BY RELATIVES AND NONRELATIVES FOR POPULATION IN HOUSEHOLDS**

Data Set: 2008-2012 American Community Survey 5-Year Estimates

	Atlanta city, Texas					
	African American	Margin of Error (+/-)	% of AA Total	White, Not Hispanic	Margin of Error (+/-)	% of NHW Total
<b>Total:</b>	1669	246	<b>100.0%</b>	3637	288	<b>100.0%</b>
In family households	1294	263	77.5%	3097	301	85.2%
In nonfamily households	375	137	22.5%	540	182	14.8%

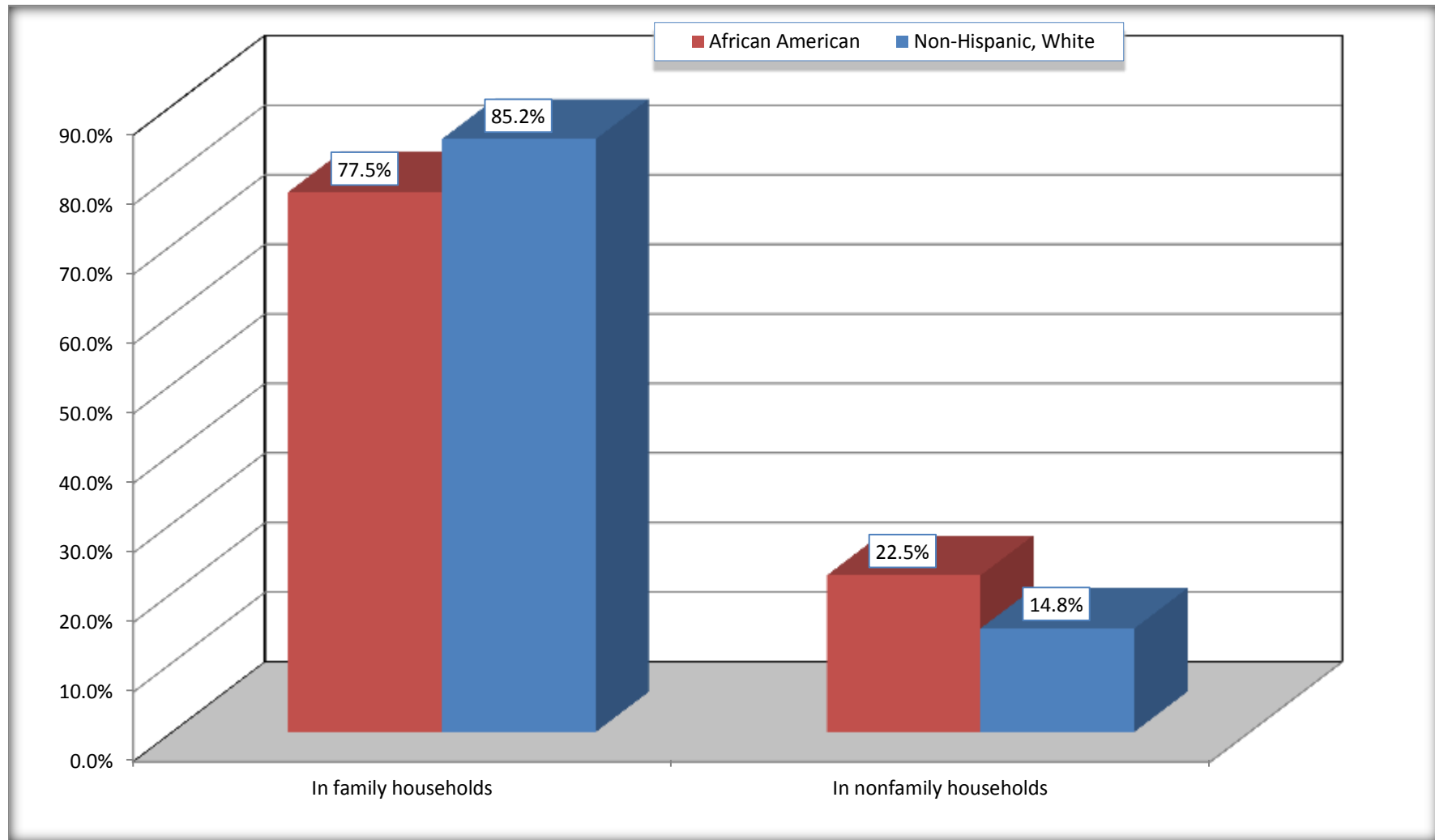
Source: U.S. Census Bureau, 2008-2012 American Community Survey

For information on confidentiality protection, sampling error, nonsampling error, and definitions, see Survey Methodology.

<http://www.census.gov/acs/www/UseData/index.htm>

# Household Type for Population in Households

## Atlanta city, Texas



Source: B11002. HOUSEHOLD TYPE BY RELATIVES AND NONRELATIVES FOR POPULATION IN HOUSEHOLDS  
Data Set: 2008-2012 American Community Survey 5-Year Estimates

**B12002. MARITAL STATUS FOR THE POPULATION 15 YEARS AND OVER**

Data Set: 2008-2012 American Community Survey 5-Year Estimates

	Atlanta city, Texas					
	African American	Margin of Error (+/-)	% of AA Total	White, Not Hispanic	Margin of Error (+/-)	% of NHW Total
<b>Total:</b>	<b>1,401</b>	<b>220</b>	<b>100.0%</b>	<b>3,106</b>	<b>234</b>	<b>100.0%</b>
Never married	484	NC	34.5%	628	NC	20.2%
Now married (except separated)	318	NC	22.7%	1,659	NC	53.4%
Separated	48	NC	3.4%	65	NC	2.1%
Widowed	275	NC	19.6%	284	NC	9.1%
Divorced	276	NC	19.7%	470	NC	15.1%
<b>Male:</b>	<b>461</b>	<b>116</b>	<b>32.9%</b>	<b>1,429</b>	<b>170</b>	<b>46.0%</b>
Never married	147	79	10.5%	322	128	10.4%
Now married (except separated)	169	76	12.1%	816	149	26.3%
Separated	36	58	2.6%	58	61	1.9%
Widowed	73	65	5.2%	37	38	1.2%
Divorced	36	42	2.6%	196	117	6.3%
<b>Female:</b>	<b>940</b>	<b>158</b>	<b>67.1%</b>	<b>1,677</b>	<b>170</b>	<b>54.0%</b>
Never married	337	96	24.1%	306	115	9.9%
Now married (except separated)	149	68	10.6%	843	135	27.1%
Separated	12	21	0.9%	7	15	0.2%
Widowed	202	101	14.4%	247	92	8.0%
Divorced	240	90	17.1%	274	93	8.8%

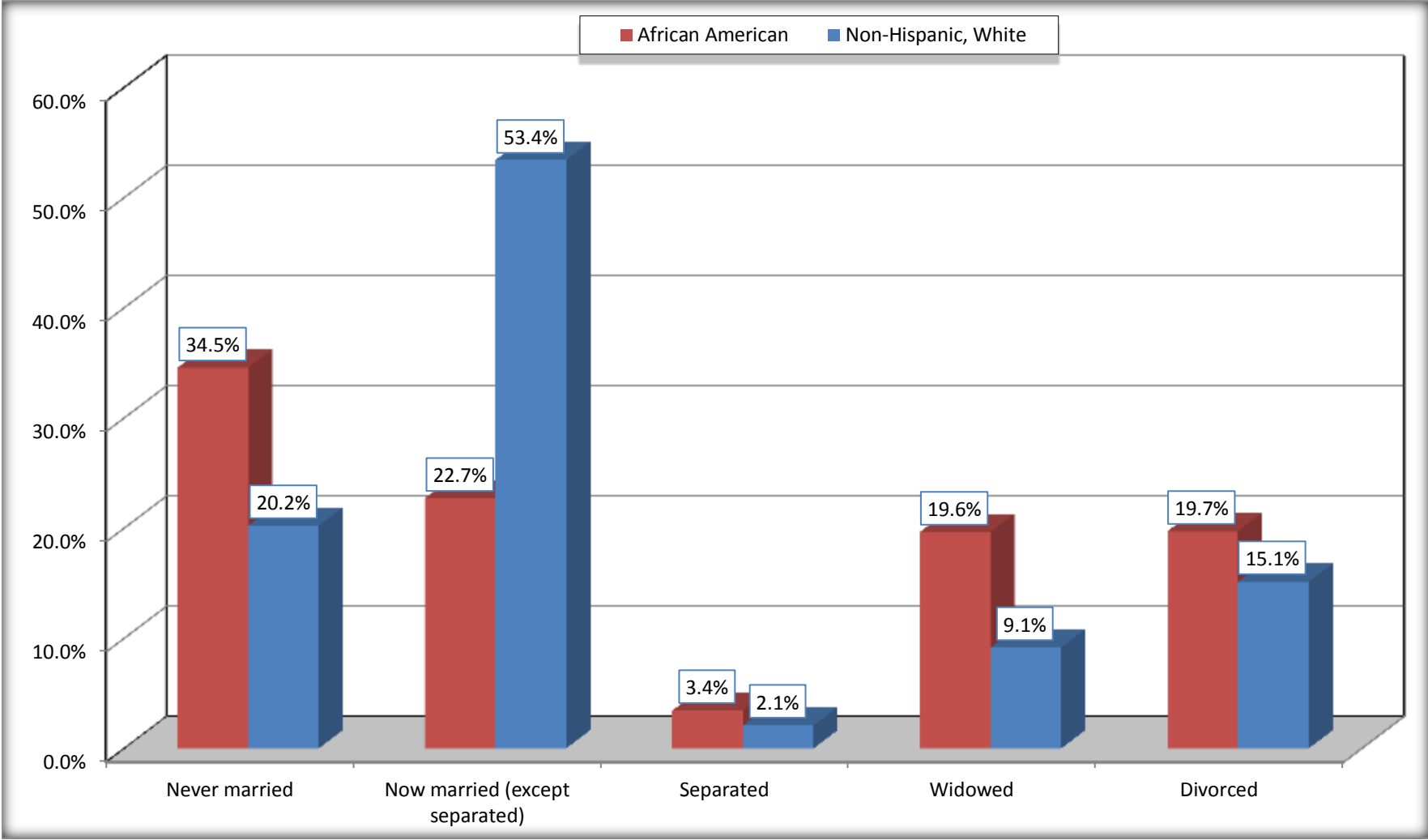
Source: U.S. Census Bureau, 2008-2012 American Community Survey

For information on confidentiality protection, sampling error, nonsampling error, and definitions, see Survey Methodology.

<http://www.census.gov/acs/www/UseData/index.htm>

# Marital Status for the Population 15 Years and Over

## Atlanta city, Texas



Source: B12002. MARITAL STATUS FOR THE POPULATION 15 YEARS AND OVER  
Data Set: 2008-2012 American Community Survey 5-Year Estimates

**C15002. SEX BY EDUCATIONAL ATTAINMENT FOR THE POPULATION 25 YEARS AND OVER**

Data Set: 2008-2012 American Community Survey 5-Year Estimates

	Atlanta city, Texas					
	African American	Margin of Error (+/-)	% of AA Total	White, Not Hispanic	Margin of Error (+/-)	% of NHW Total
<b>Total:</b>	<b>1,082</b>	<b>184</b>	<b>100.0%</b>	<b>2,761</b>	<b>213</b>	<b>100.0%</b>
Less than high school diploma	312	NC	28.8%	416	NC	15.1%
High school graduate, GED, or alternative	447	NC	41.3%	884	NC	32.0%
Some college or associate's degree	231	NC	21.3%	909	NC	32.9%
Bachelor's degree or higher	92	NC	8.5%	552	NC	20.0%
Male:	331	109	30.6%	1,275	143	46.2%
Less than high school diploma	88	73	8.1%	181	78	6.6%
High school graduate, GED, or alternative	177	97	16.4%	433	129	15.7%
Some college or associate's degree	40	47	3.7%	383	105	13.9%
Bachelor's degree or higher	26	31	2.4%	278	90	10.1%
Female:	751	127	69.4%	1,486	165	53.8%
Less than high school diploma	224	104	20.7%	235	102	8.5%
High school graduate, GED, or alternative	270	92	25.0%	451	111	16.3%
Some college or associate's degree	191	90	17.7%	526	127	19.1%
Bachelor's degree or higher	66	56	6.1%	274	105	9.9%

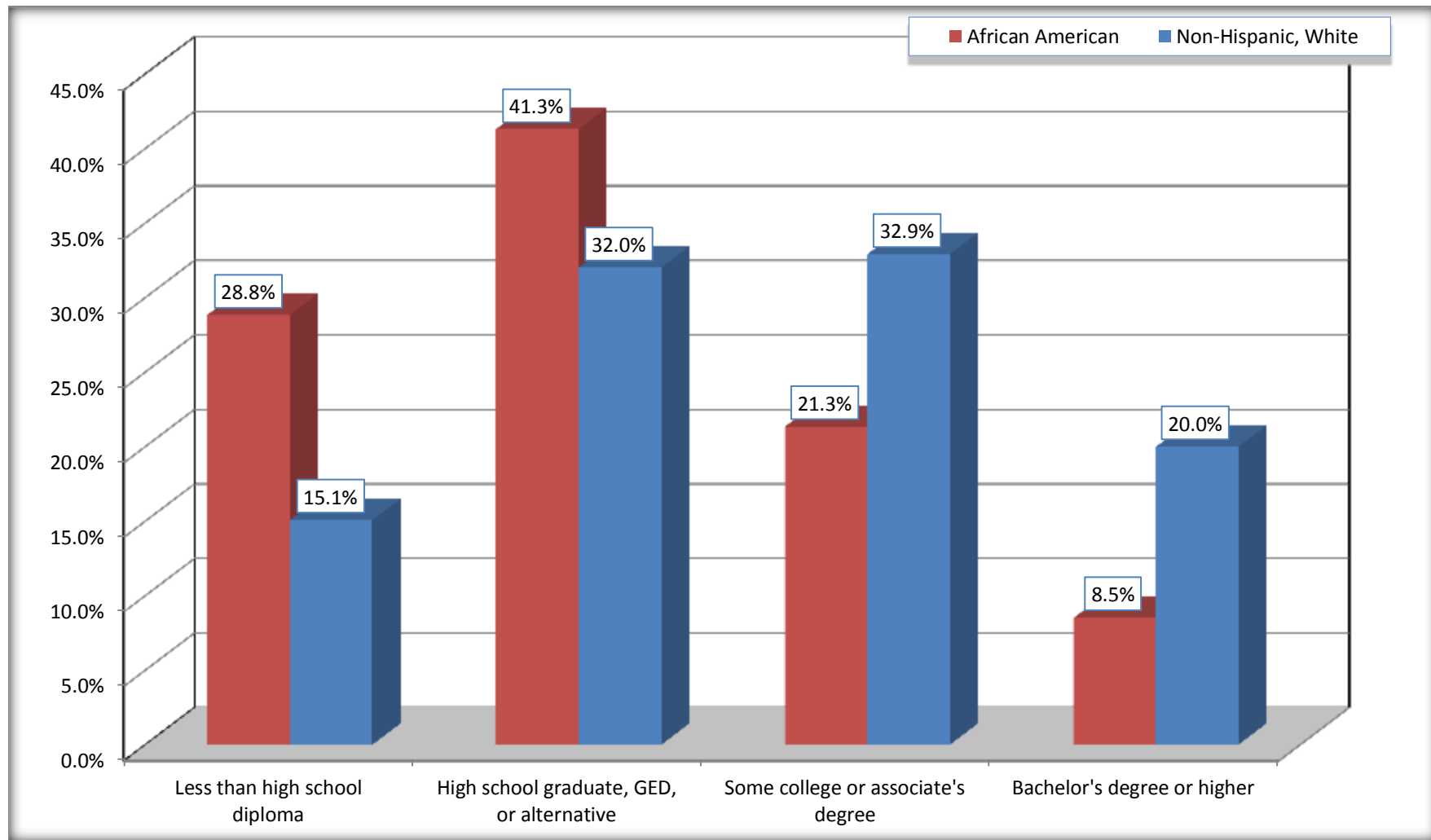
Source: U.S. Census Bureau, 2008-2012 American Community Survey

For information on confidentiality protection, sampling error, nonsampling error, and definitions, see Survey Methodology.

<http://www.census.gov/acs/www/UseData/index.htm>

# Educational Attainment for the Population 25 Years and Older

## Atlanta city, Texas



Source: C15002. SEX BY EDUCATIONAL ATTAINMENT FOR THE POPULATION 25 YEARS AND OVER  
Data Set: 2008-2012 American Community Survey 5-Year Estimates

**B17010. POVERTY STATUS IN THE PAST 12 MONTHS OF FAMILIES BY FAMILY TYPE BY PRESENCE OF RELATED CHILDREN UNDER 18 YEARS**

Data Set: 2008-2012 American Community Survey 5-Year Estimates

	Atlanta city, Texas					
	African American	Margin of Error (+/-)	% of AA Total	White, Not Hispanic	Margin of Error (+/-)	% of NHW Total
<b>Total:</b>	<b>388</b>	<b>94</b>	<b>100.0%</b>	<b>896</b>	<b>115</b>	<b>100.0%</b>
Income in the past 12 months below poverty level:	164	86	42.3%	77	57	8.6%
Married-couple family:	0	18	0.0%	14	23	1.6%
With related children under 18 years	0	18	0.0%	0	18	0.0%
Other family:	164	86	42.3%	63	51	7.0%
Male householder, no wife present	25	34	6.4%	0	18	0.0%
With related children under 18 years	25	34	6.4%	0	18	0.0%
Female householder, no husband present	139	77	35.8%	63	51	7.0%
With related children under 18 years	108	72	27.8%	55	48	6.1%
Income in the past 12 months at or above poverty level:	224	80	57.7%	819	119	91.4%
Married-couple family:	140	72	36.1%	692	128	77.2%
With related children under 18 years	22	34	5.7%	296	104	33.0%
Other family:	84	52	21.6%	127	65	14.2%
Male householder, no wife present	12	24	3.1%	49	37	5.5%
With related children under 18 years	12	24	3.1%	34	27	3.8%
Female householder, no husband present	72	46	18.6%	78	53	8.7%
With related children under 18 years	36	32	9.3%	8	15	0.9%

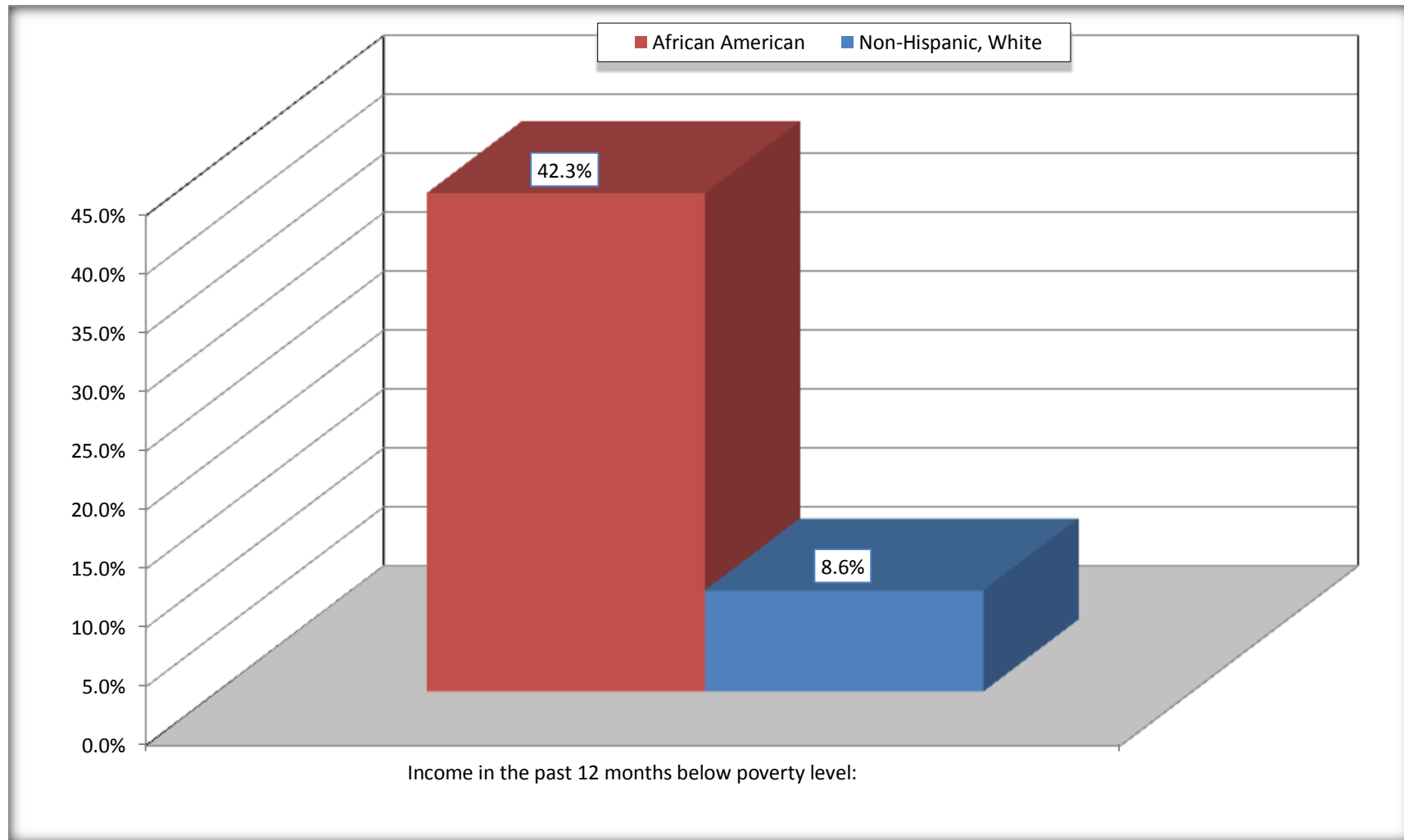
Source: U.S. Census Bureau, 2008-2012 American Community Survey

For information on confidentiality protection, sampling error, nonsampling error, and definitions, see Survey Methodology.

<http://www.census.gov/acs/www/UseData/index.htm>

# Family Households Below Poverty in the Past 12 Months

## Atlanta city, Texas



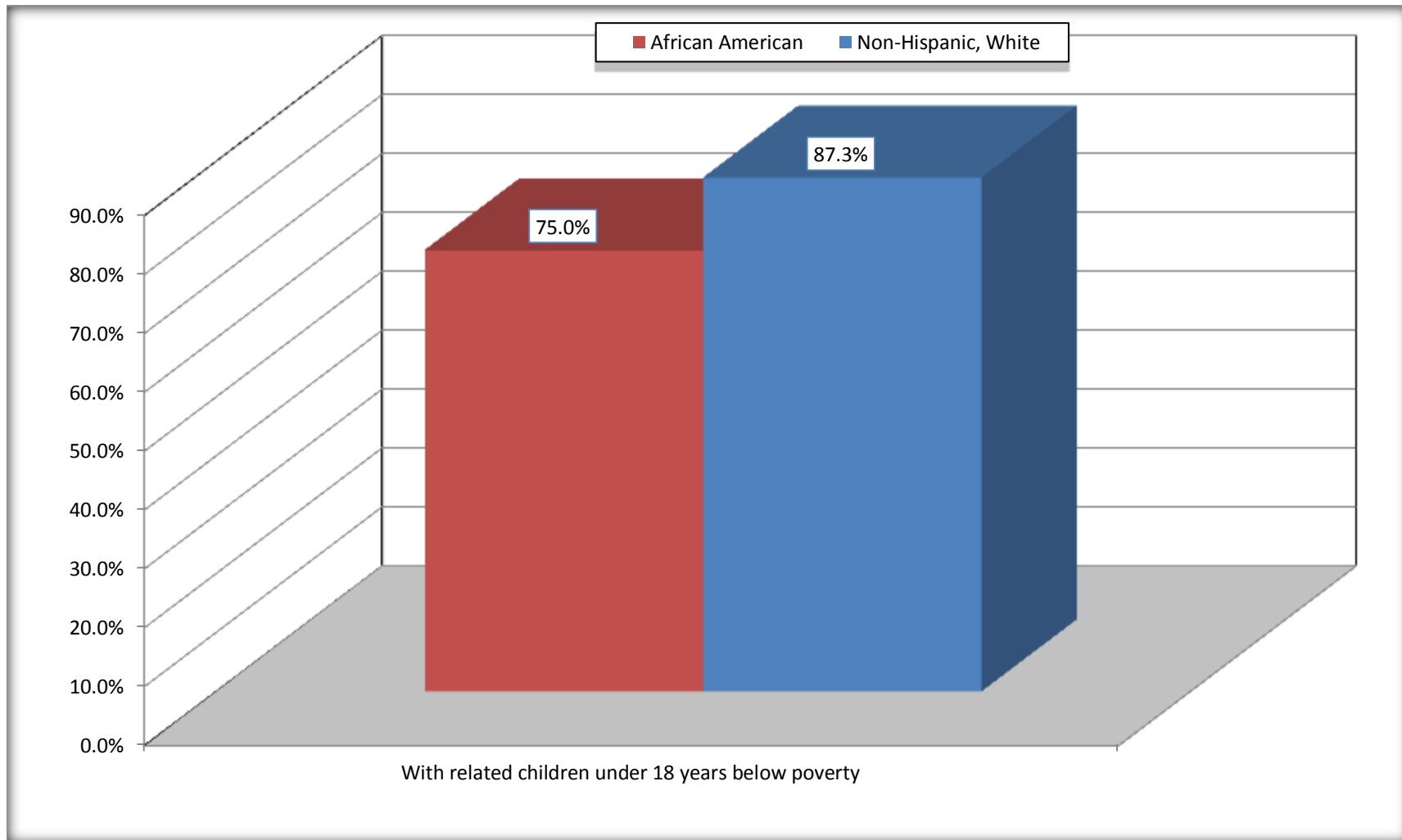
Source: B17010. POVERTY STATUS IN THE PAST 12 MONTHS OF FAMILIES BY FAMILY TYPE BY PRESENCE OF RELATED CHILDREN UNDER 18 YEARS

Data Set: 2008-2012 American Community Survey 5-Year Estimates



# Female-headed Households with Related Children Below Poverty in the Past 12 Months

## Atlanta city, Texas



Source: B17010. POVERTY STATUS IN THE PAST 12 MONTHS OF FAMILIES BY FAMILY TYPE BY PRESENCE OF RELATED CHILDREN UNDER 18 YEARS

Data Set: 2008-2012 American Community Survey 5-Year Estimates

**B17020 POVERTY STATUS IN THE PAST 12 MONTHS BY AGE - Universe: POPULATION FOR WHOM POVERTY STATUS IS DETERMINED**

Data Set: 2008-2012 American Community Survey 5-Year Estimates

	Atlanta city, Texas					
	African American	Margin of Error (+/-)	% of AA By Age	White, Not Hispanic	Margin of Error (+/-)	% of NHW By Age
<b>Total:</b>	<b>1,650</b>	<b>237</b>	<b>100.0%</b>	<b>3,653</b>	<b>284</b>	<b>100.0%</b>
Income in the past 12 months below poverty level:	704	277	42.7%	571	251	15.6%
<b>Under 18 years</b>	231	NC	60.6%	162	NC	20.3%
<b>18 to 64 years</b>	374	134	40.1%	325	160	15.2%
<b>65 years and over</b>	99	NC	29.4%	84	NC	11.7%
Income in the past 12 months at or above poverty level:	946	288	57.3%	3,082	344	84.4%
<b>Under 18 years</b>	150	NC	39.4%	638	NC	79.8%
<b>18 to 64 years</b>	558	217	59.9%	1,810	253	84.8%
<b>65 years and over</b>	238	NC	70.6%	634	NC	88.3%

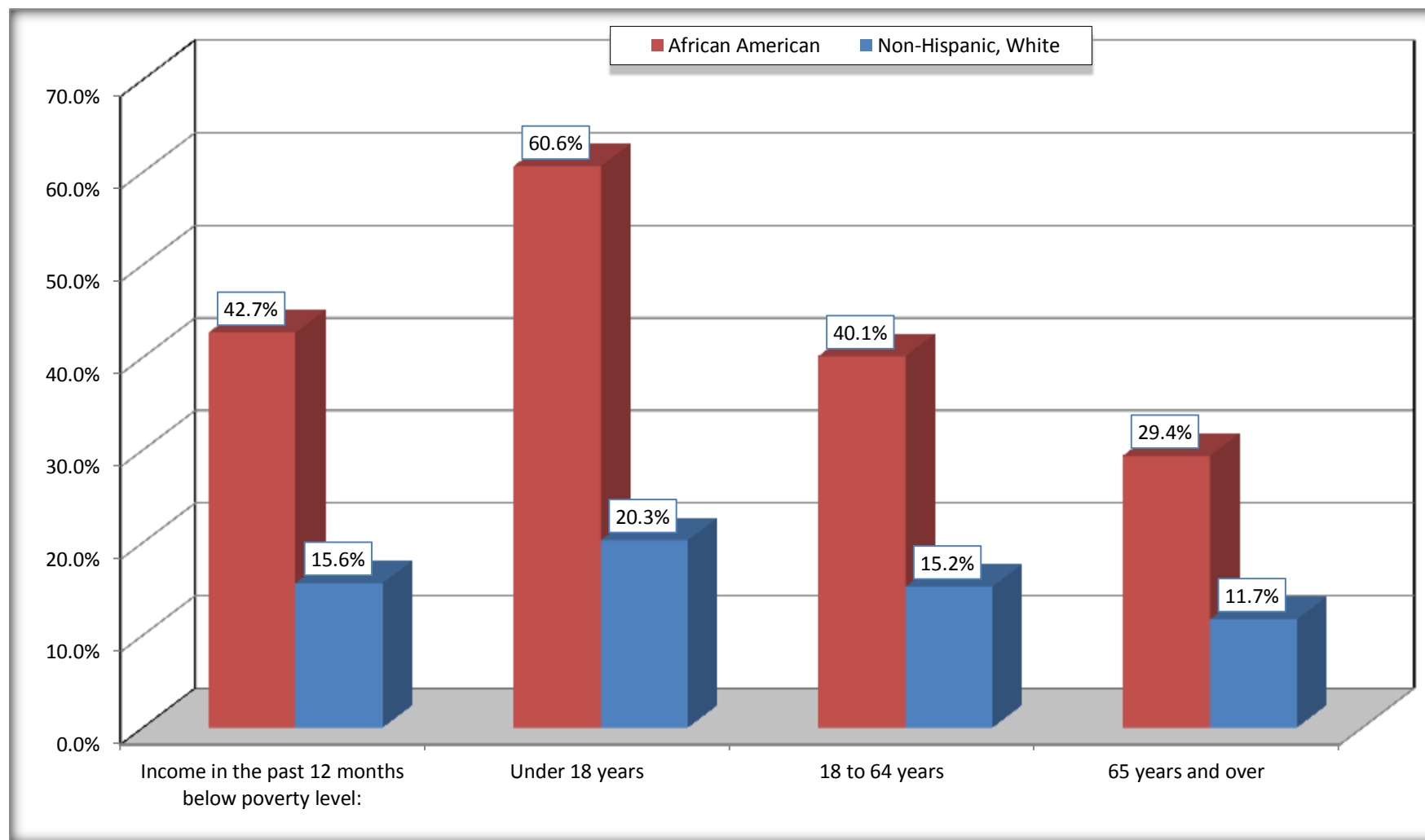
Source: U.S. Census Bureau, 2008-2012 American Community Survey

For information on confidentiality protection, sampling error, nonsampling error, and definitions, see Survey Methodology.

<http://www.census.gov/acs/www/UseData/index.htm>

# Population Below Poverty in the Past 12 Months

## Atlanta city, Texas



Source: B17020 POVERTY STATUS IN THE PAST 12 MONTHS BY AGE - Universe: POPULATION FOR WHOM POVERTY STATUS IS DETERMINED  
Data Set: 2008-2012 American Community Survey 5-Year Estimates

**B19001. HOUSEHOLD INCOME IN THE PAST 12 MONTHS (IN 2010 INFLATION-ADJUSTED DOLLARS)**

Data Set: 2008-2012 American Community Survey 5-Year Estimates

	Atlanta city, Texas					
	African American	Margin of Error (+/-)	% of AA Total	White, Not Hispanic	Margin of Error (+/-)	% of NHW Total
<b>Total:</b>	<b>728</b>	<b>128</b>	<b>100.0%</b>	<b>1,332</b>	<b>165</b>	<b>100.0%</b>
Less than \$ 10,000	104	76	14.3%	74	60	5.6%
\$ 10,000 to \$ 14,999	264	119	36.3%	173	95	13.0%
<b>\$ 15,000 to \$ 24,999</b>	140	NC	19.2%	201	NC	15.1%
<b>\$ 25,000 to \$ 34,999</b>	74	NC	10.2%	142	NC	10.7%
<b>\$ 35,000 to \$ 49,999</b>	74	NC	10.2%	104	NC	7.8%
<b>\$ 50,000 to \$ 74,999</b>	46	NC	6.3%	314	NC	23.6%
\$ 75,000 to \$ 99,999	18	21	2.5%	174	65	13.1%
<b>\$ 100,000 to \$ 149,999</b>	0	NC	0.0%	106	NC	8.0%
\$ 150,000 to \$ 199,999	8	14	1.1%	44	31	3.3%
\$ 200,000 or more	0	18	0.0%	0	18	0.0%

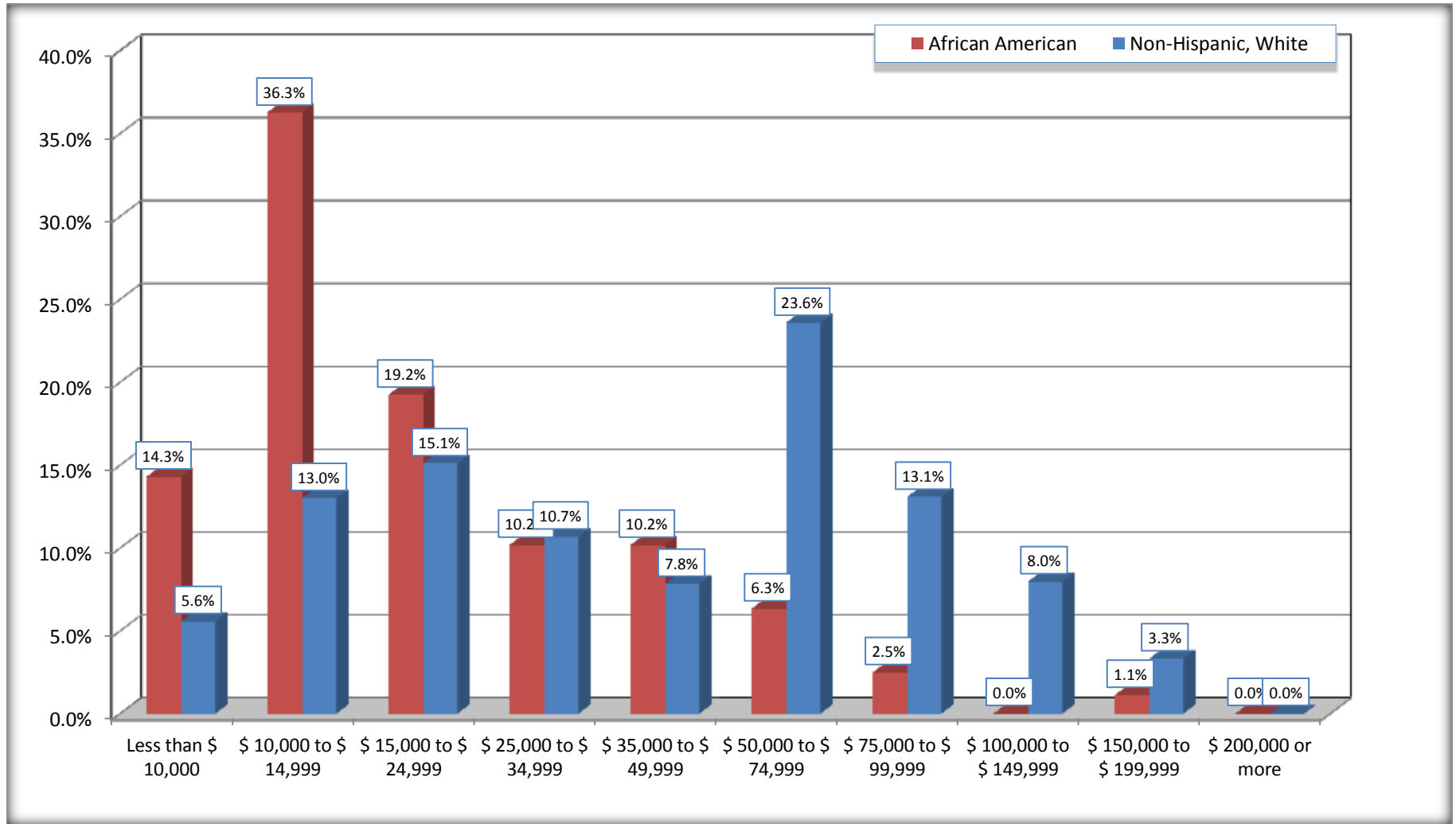
Source: U.S. Census Bureau, 2008-2012 American Community Survey

For information on confidentiality protection, sampling error, nonsampling error, and definitions, see Survey Methodology.

<http://www.census.gov/acs/www/UseData/index.htm>

# Household Income in the Past 12 Months

## Atlanta city, Texas



Source: B19001. HOUSEHOLD INCOME IN THE PAST 12 MONTHS (IN 2010 INFLATION-ADJUSTED DOLLARS)  
Data Set: 2008-2012 American Community Survey 5-Year Estimates

**B19013. MEDIAN HOUSEHOLD INCOME IN THE PAST 12 MONTHS (IN 2010 INFLATION-ADJUSTED DOLLARS)**

Data Set: 2008-2012 American Community Survey 5-Year Estimates

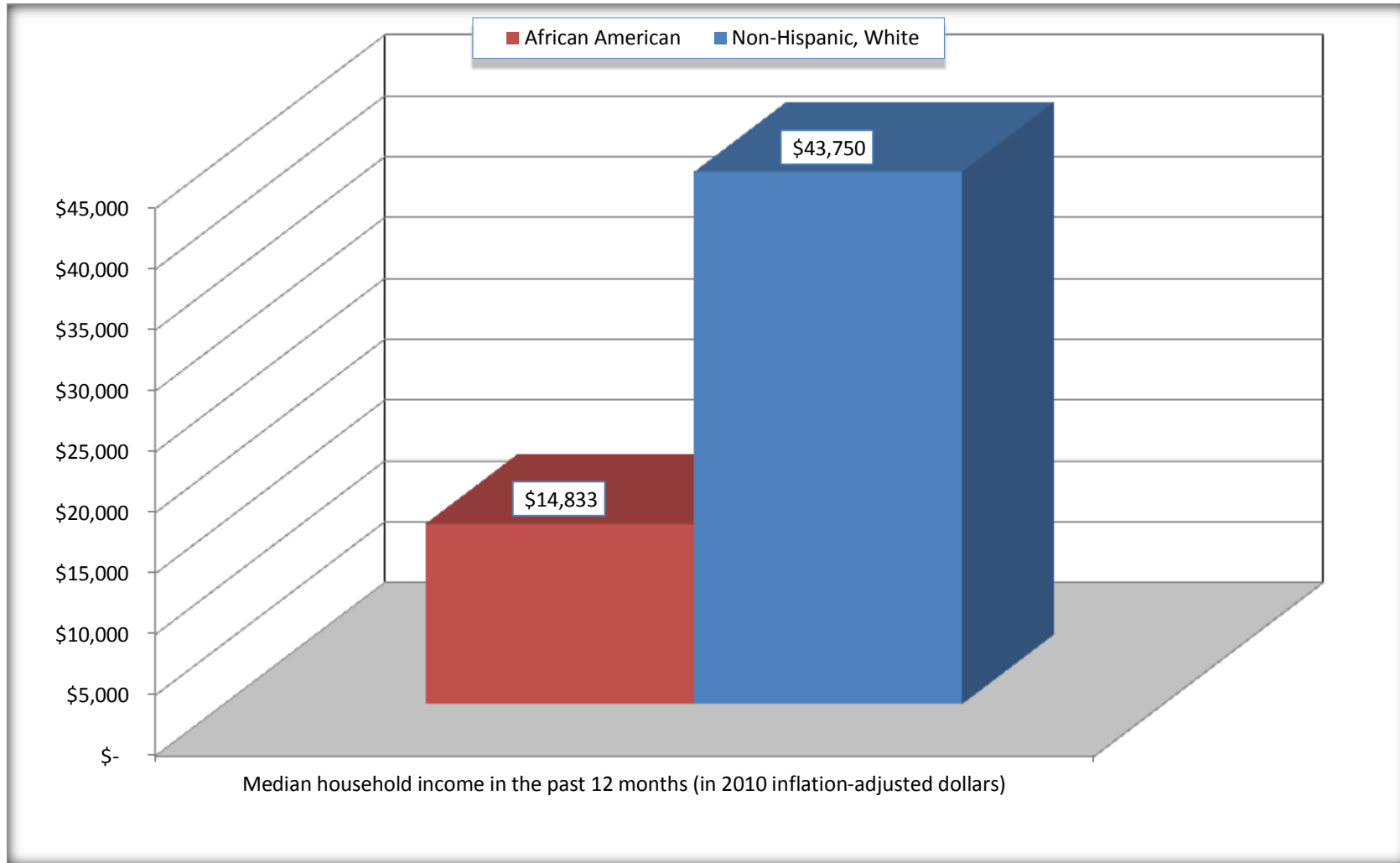
	<b>Atlanta city, Texas</b>			
	African American	Margin of Error (+/-)	White, Not Hispanic	Margin of Error (+/-)
Median household income in the past 12 months (in 2010 inflation-adjusted dollars)	\$ 14,833	\$ 3,573	\$ 43,750	\$ 19,239

Source: U.S. Census Bureau, 2008-2012 American Community Survey

For information on confidentiality protection, sampling error, nonsampling error, and definitions, see Survey Methodology.  
<http://www.census.gov/acs/www/UseData/index.htm>

# Median Household Income in the Past 12 Months

## Atlanta city, Texas



Source: B19013. MEDIAN HOUSEHOLD INCOME IN THE PAST 12 MONTHS (IN 2010 INFLATION-ADJUSTED DOLLARS)  
Data Set: 2008-2012 American Community Survey 5-Year Estimates

**B19101. FAMILY INCOME IN THE PAST 12 MONTHS (IN 2010 INFLATION-ADJUSTED DOLLARS)**

Data Set: 2008-2012 American Community Survey 5-Year Estimates

	Atlanta city, Texas					
	African American	Margin of Error (+/-)	% of AA Total	White, Not Hispanic	Margin of Error (+/-)	% of NHW Total
<b>Total:</b>	<b>388</b>	<b>94</b>	<b>100.0%</b>	<b>896</b>	<b>115</b>	<b>100.0%</b>
Less than \$ 10,000	58	62	14.9%	18	23	2.0%
\$ 10,000 to \$ 14,999	67	49	17.3%	40	38	4.5%
<b>\$ 15,000 to \$ 24,999</b>	<b>140</b>	<b>NC</b>	<b>36.1%</b>	<b>97</b>	<b>NC</b>	<b>10.8%</b>
<b>\$ 25,000 to \$ 34,999</b>	<b>32</b>	<b>NC</b>	<b>8.2%</b>	<b>59</b>	<b>NC</b>	<b>6.6%</b>
<b>\$ 35,000 to \$ 49,999</b>	<b>48</b>	<b>NC</b>	<b>12.4%</b>	<b>90</b>	<b>NC</b>	<b>10.0%</b>
<b>\$ 50,000 to \$ 74,999</b>	<b>17</b>	<b>NC</b>	<b>4.4%</b>	<b>273</b>	<b>NC</b>	<b>30.5%</b>
<b>\$ 100,000 to \$ 149,999</b>	<b>-</b>	<b>NC</b>	<b>0.0%</b>	<b>106</b>	<b>NC</b>	<b>11.8%</b>
\$ 150,000 to \$ 199,999	8	14	2.1%	44	31	4.9%
\$ 200,000 or more	0	18	0.0%	0	18	0.0%

Source: U.S. Census Bureau, 2008-2012 American Community Survey

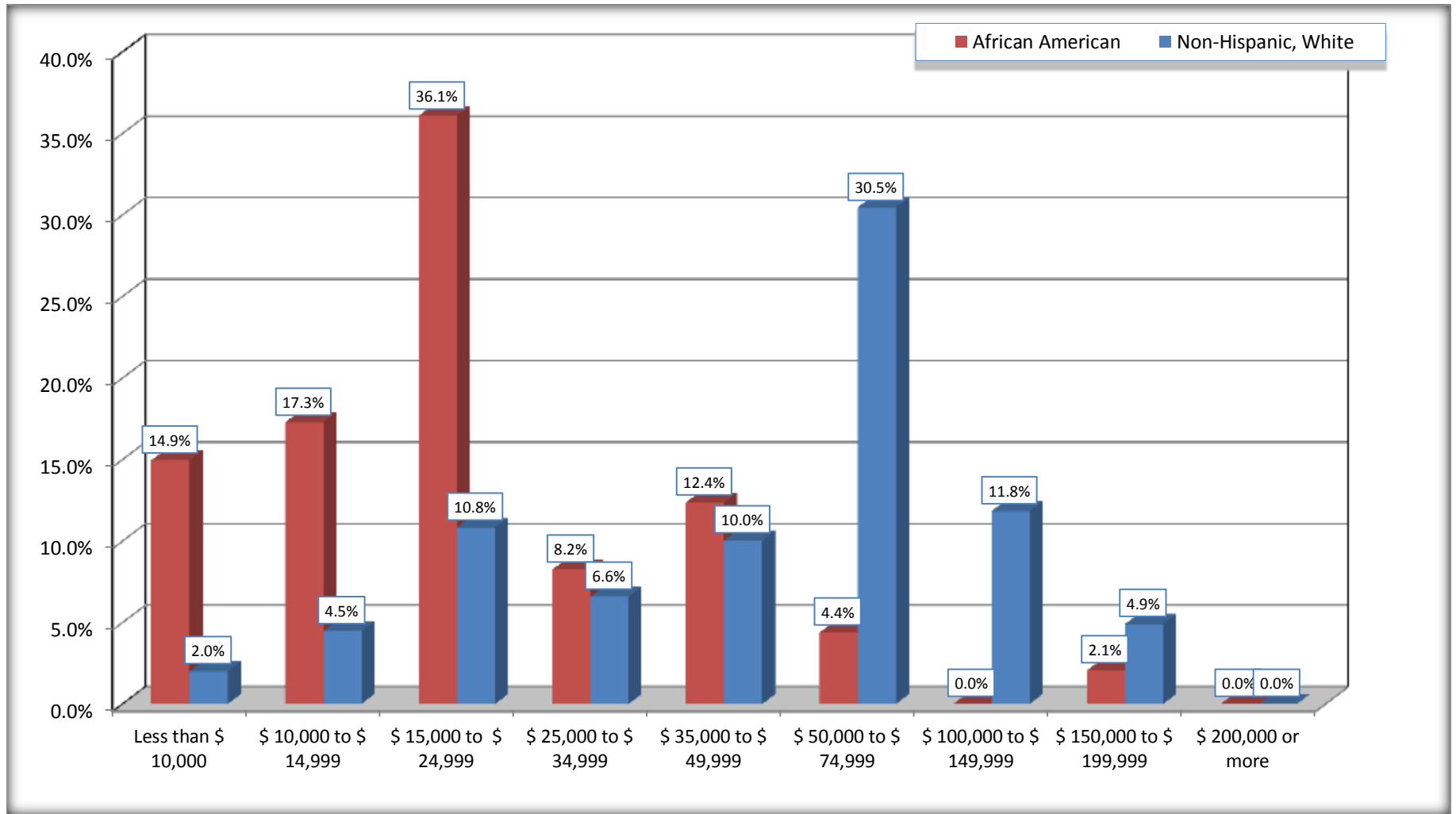
For information on confidentiality protection, sampling error, nonsampling error, and definitions, see Survey Methodology.

<http://www.census.gov/acs/www/UseData/index.htm>



# Family Income in the Past 12 Months

## Atlanta city, Texas



Source: B19101. FAMILY INCOME IN THE PAST 12 MONTHS (IN 2010 INFLATION-ADJUSTED DOLLARS)  
Data Set: 2008-2012 American Community Survey 5-Year Estimates

**B19113. MEDIAN FAMILY INCOME IN THE PAST 12 MONTHS (IN 2010 INFLATION-ADJUSTED DOLLARS)**

Data Set: 2008-2012 American Community Survey 5-Year Estimates

	<b>Atlanta city, Texas</b>			
	African American	Margin of Error (+/-)	White, Not Hispanic	Margin of Error (+/-)
Median family income in the past 12 months (in 2010 inflation-adjusted dollars)	\$ 17,130	\$ 6,770	\$ 66,300	\$ 10,241

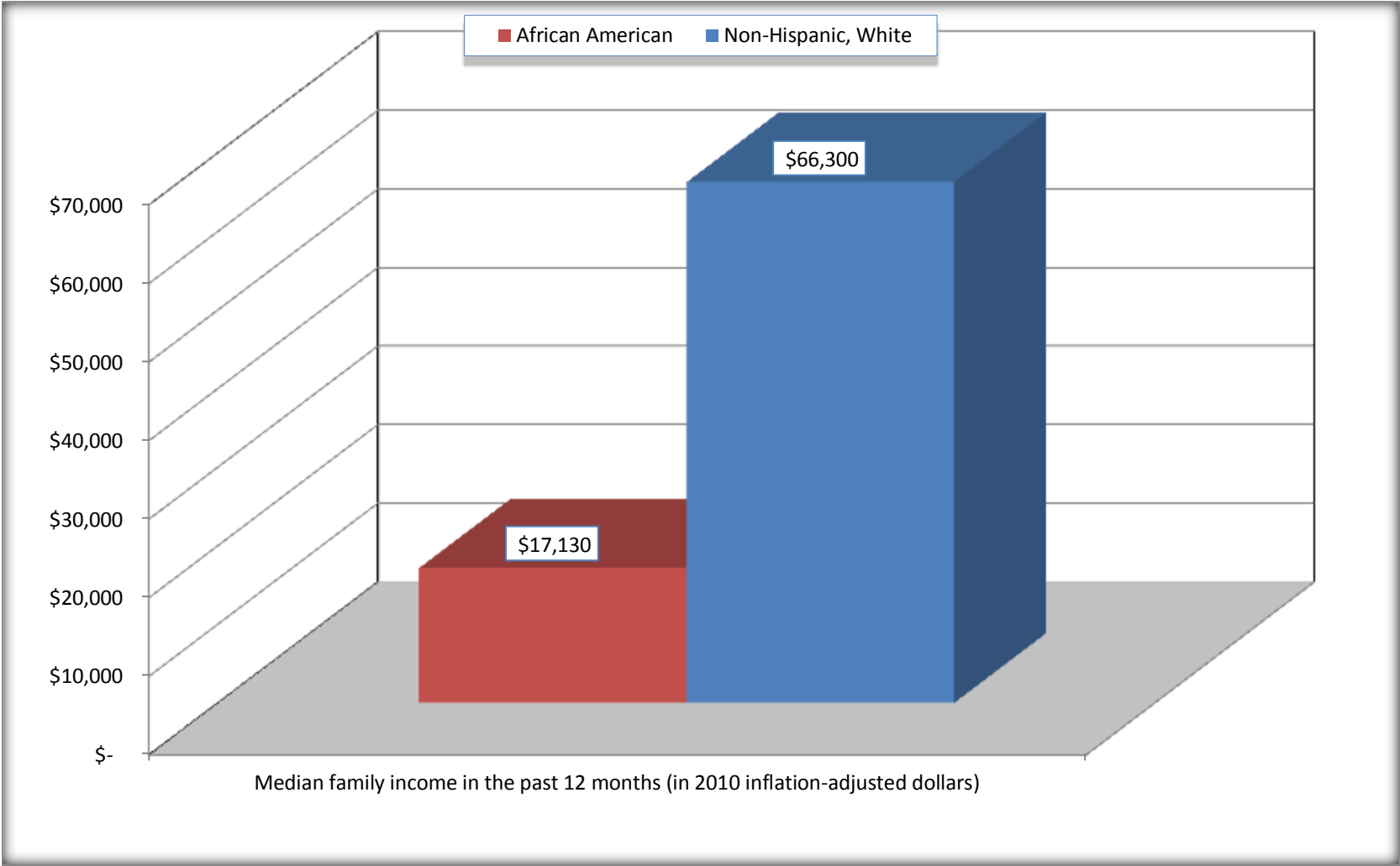
Source: U.S. Census Bureau, 2008-2012 American Community Survey

For information on confidentiality protection, sampling error, nonsampling error, and definitions, see Survey Methodology.

<http://www.census.gov/acs/www/UseData/index.htm>

# Median Family Income in the Past 12 Months

## Atlanta city, Texas



Source: B19113. MEDIAN FAMILY INCOME IN THE PAST 12 MONTHS (IN 2010 INFLATION-ADJUSTED DOLLARS)  
Data Set: 2008-2012 American Community Survey 5-Year Estimates

**B19202. MEDIAN NONFAMILY HOUSEHOLD INCOME IN THE PAST 12 MONTHS (IN 2010 INFLATION-ADJUSTED DOLLARS)**

Data Set: 2008-2012 American Community Survey 5-Year Estimates

	Atlanta city, Texas			
	African American	Margin of Error (+/-)	White, Not Hispanic	Margin of Error (+/-)
Median nonfamily household income in the past 12 months (in 2010 inflation-adjusted dollars)	\$ 11,590	\$ 582	\$ 18,162	\$ 8,272

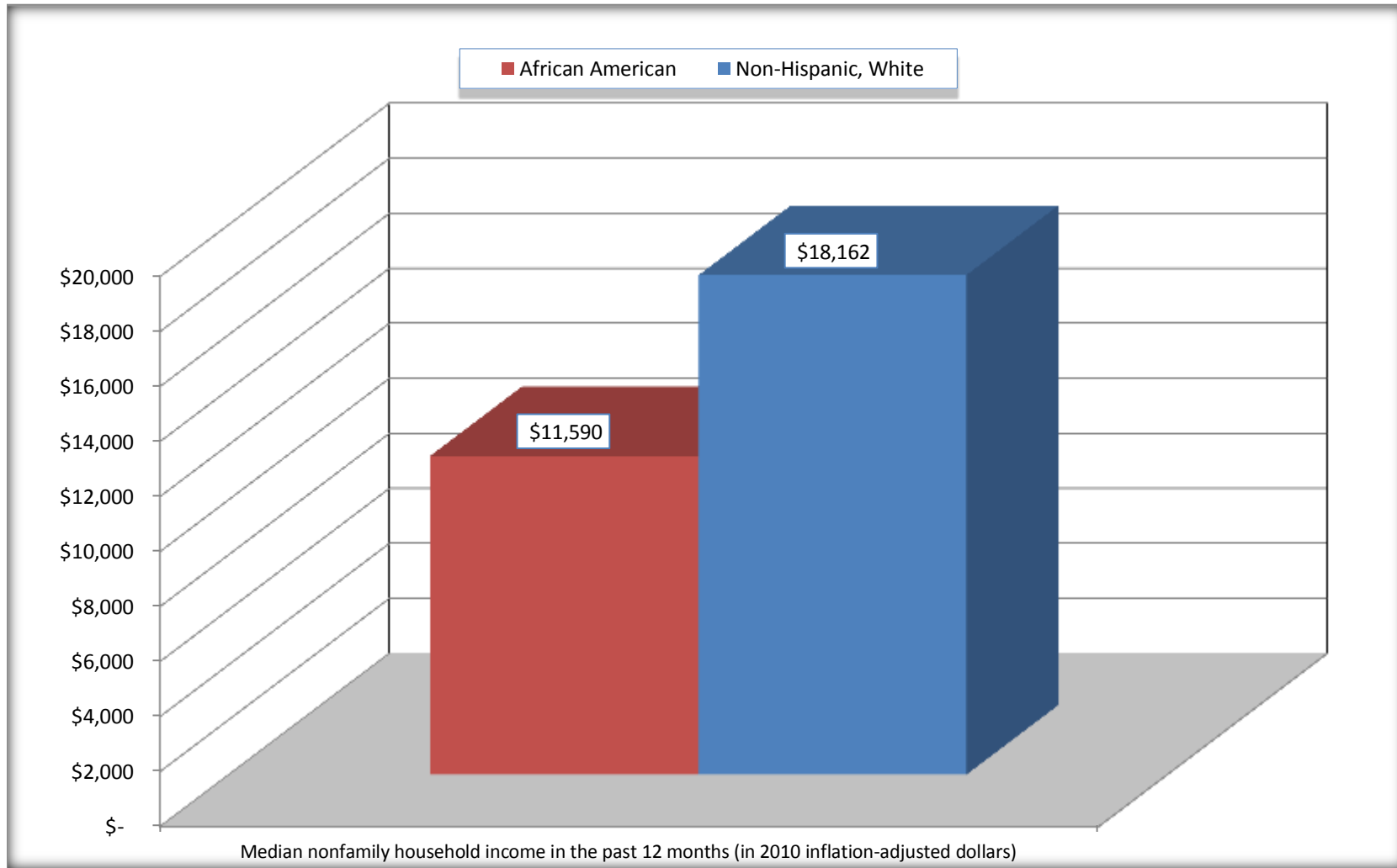
Source: U.S. Census Bureau, 2008-2012 American Community Survey

For information on confidentiality protection, sampling error, nonsampling error, and definitions, see Survey Methodology.

<http://www.census.gov/acs/www/UseData/index.htm>

# Median Non-Family Income in the Past 12 Months

## Atlanta city, Texas



Source: B19202. MEDIAN NONFAMILY HOUSEHOLD INCOME IN THE PAST 12 MONTHS (IN 2010 INFLATION-ADJUSTED DOLLARS)  
Data Set: 2008-2012 American Community Survey 5-Year Estimates

**B19301. PER CAPITA INCOME IN THE PAST 12 MONTHS (IN 2010 INFLATION-ADJUSTED DOLLARS)**

Data Set: 2008-2012 American Community Survey 5-Year Estimates

	Atlanta city, Texas			
	African American	Margin of Error (+/-)	White, Not Hispanic	Margin of Error (+/-)
Per capita income in the past 12 months (in 2010 inflation-adjusted dollars)	\$ 11,579	\$ 2,479	\$ 20,458	\$ 2,048

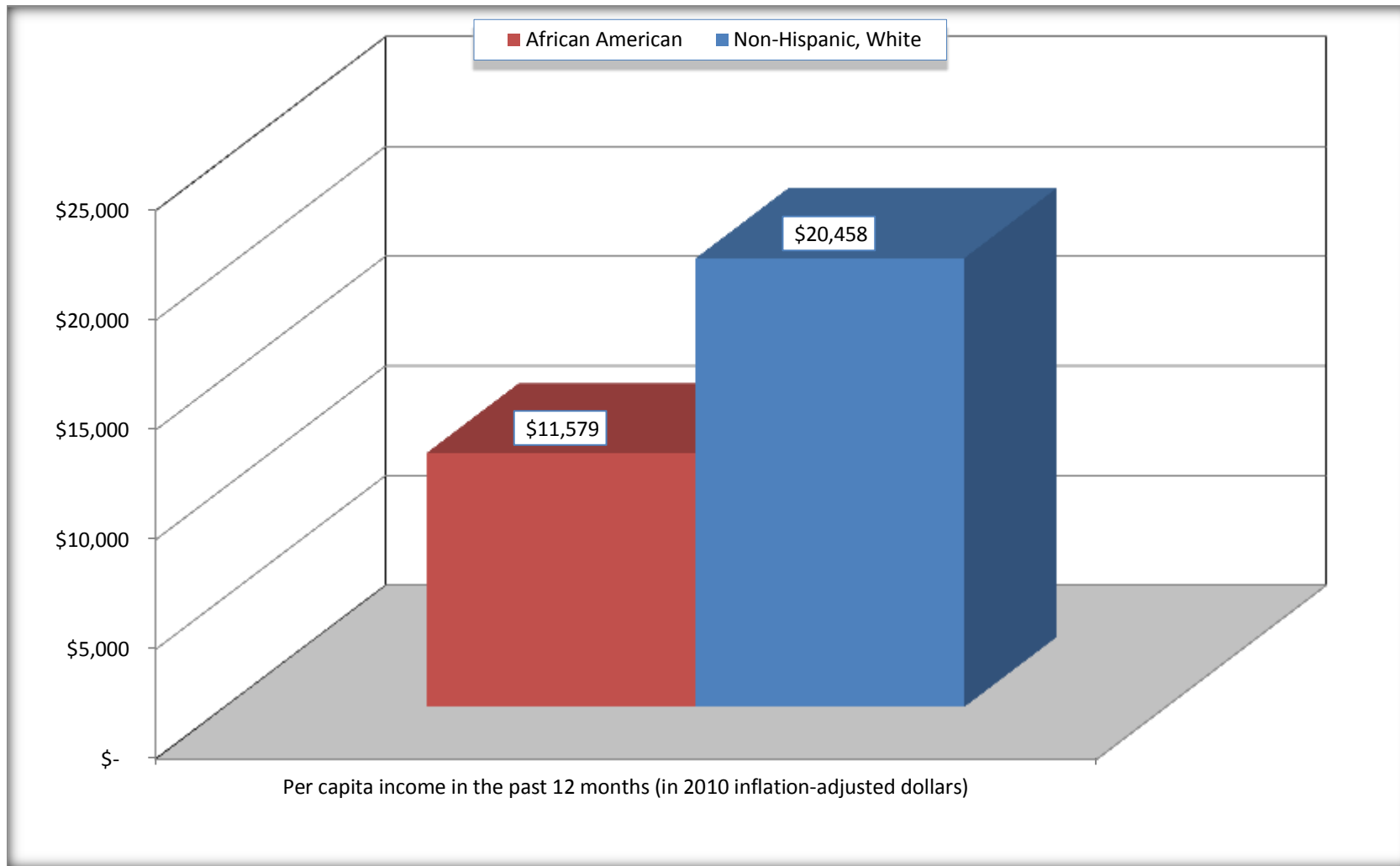
Source: U.S. Census Bureau, 2008-2012 American Community Survey

For information on confidentiality protection, sampling error, nonsampling error, and definitions, see Survey Methodology.

<http://www.census.gov/acs/www/UseData/index.htm>

## Per capita Income in the Past 12 Months

### Atlanta city, Texas



Source: B19301. PER CAPITA INCOME IN THE PAST 12 MONTHS (IN 2010 INFLATION-ADJUSTED DOLLARS)  
Data Set: 2008-2012 American Community Survey 5-Year Estimates

**B20017. MEDIAN EARNINGS IN THE PAST 12 MONTHS (IN 2010 INFLATION-ADJUSTED DOLLARS) BY SEX BY WORK EXPERIENCE IN THE PAST 12 MONTHS FOR THE POPULATION 16 YEARS AND OVER WITH EARNINGS IN THE PAST 12 MONTHS**

Data Set: 2008-2012 American Community Survey 5-Year Estimates

	Atlanta city, Texas			
	African American	Margin of Error (+/-)	White, Not Hispanic	Margin of Error (+/-)
Median earnings in the past 12 months (in 2010 inflation-adjusted dollars) --				
Total:	\$ 11,829	\$ 2,634	\$ 23,494	\$ 5,013
Male --				
Total	\$ 6,979	\$ 17,173	\$ 26,681	\$ 3,894
Worked full-time, year-round in the past 12 months	\$ 18,950	\$ 16,377	\$ 43,333	\$ 17,034
Other	\$ 5,694	\$ 1,340	\$ 16,632	\$ 7,479
Female --				
Total	\$ 12,026	\$ 2,763	\$ 19,844	\$ 4,985
Worked full-time, year-round in the past 12 months	\$ 28,357	\$ 13,317	\$ 31,797	\$ 2,957
Other	\$ 7,222	\$ 7,637	\$ 7,614	\$ 2,855

Source: U.S. Census Bureau, 2008-2012 American Community Survey

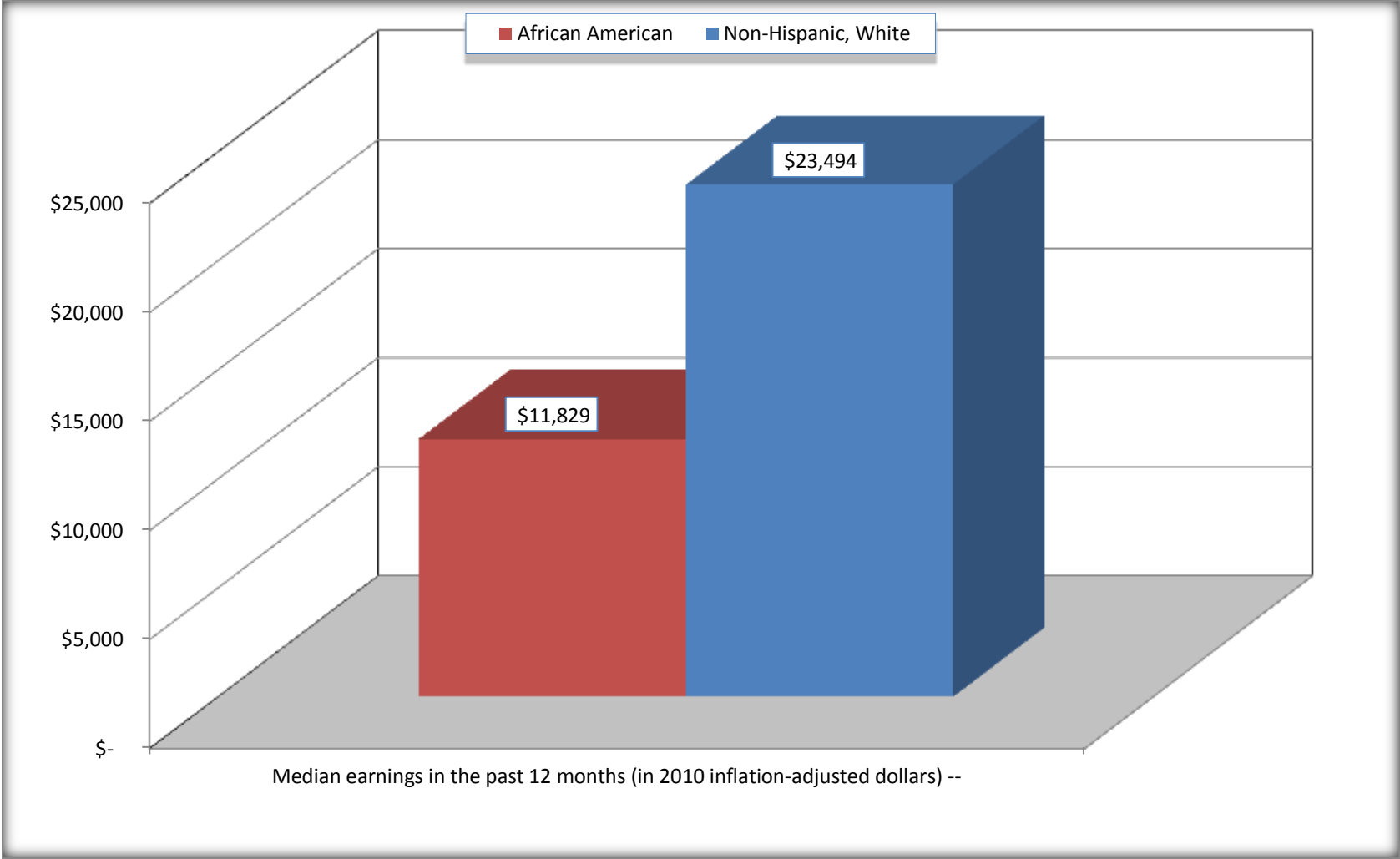
For information on confidentiality protection, sampling error, nonsampling error, and definitions, see Survey Methodology.

<http://www.census.gov/acs/www/UseData/index.htm>



# Median earnings in the Past 12 Months (16 Years and Over with Earnings)

## Atlanta city, Texas



Source: B20017. MEDIAN EARNINGS IN THE PAST 12 MONTHS (IN 2010 INFLATION-ADJUSTED DOLLARS) BY SEX BY WORK EXPERIENCE IN THE PAST 12 MONTHS FOR THE POPULATION 16 YEARS AND OVER WITH EARNINGS IN THE PAST 12 MONTHS  
Data Set: 2008-2012 American Community Survey 5-Year Estimates

**B20005. SEX BY WORK EXPERIENCE IN THE PAST 12 MONTHS BY EARNINGS IN THE PAST 12 MONTHS (IN 2010 INFLATION-ADJUSTED DOLLARS) FOR THE POPULATION 16 YEARS AND OVER**

Data Set: 2008-2012 American Community Survey 5-Year Estimates

	Atlanta city, Texas					
	African American	Margin of Error (+/-)	% of AA Total	White, Not Hispanic	Margin of Error (+/-)	% of NHW Total
<b>Total:</b>	<b>1,350</b>	<b>222</b>	<b>100.0%</b>	<b>3,086</b>	<b>232</b>	<b>100.0%</b>
Worked full-time, year-round in the past 12 months:	303	NC	22.4%	934	NC	30.3%
No earnings	0	NC	0.0%	0	NC	0.0%
With earnings:	303	NC	22.4%	934	NC	30.3%
\$ 1 to \$ 9,999 or loss	36	NC	2.7%	4	NC	0.1%
\$ 10,000 to \$ 19,999	98	NC	7.3%	142	NC	4.6%
\$ 20,000 to \$ 29,999	63	NC	4.7%	213	NC	6.9%
\$ 30,000 to \$ 49,999	82	NC	6.1%	291	NC	9.4%
\$ 50,000 to \$ 74,999	16	NC	1.2%	179	NC	5.8%
\$ 75,000 or more	8	NC	0.6%	105	NC	3.4%
Other:	1,047	NC	77.6%	2,152	NC	69.7%
No earnings	579	NC	42.9%	1,183	NC	38.3%
With earnings: less than full time, year-round	468	NC	34.7%	969	NC	31.4%
Male:	419	110	31.0%	1,414	165	45.8%
Worked full-time, year-round in the past 12 months:	105	66	7.8%	552	150	17.9%
No earnings	0	18	0.0%	0	18	0.0%
With earnings:	105	66	7.8%	552	150	17.9%
\$ 1 to \$ 9,999 or loss	34	NC	2.5%	0	NC	0.0%
\$ 10,000 to \$ 19,999	29	NC	2.1%	94	NC	3.0%
\$ 20,000 to \$ 29,999	12	NC	0.9%	120	NC	3.9%
\$ 30,000 to \$ 49,999	22	NC	1.6%	117	NC	3.8%
\$ 50,000 to \$ 74,999	0	NC	0.0%	143	NC	4.6%
\$ 75,000 or more	8	NC	0.6%	78	NC	2.5%

	Atlanta city, Texas					
	African American	Margin of Error (+/-)	% of AA Total	White, Not Hispanic	Margin of Error (+/-)	% of NHW Total
Other:	314	116	23.3%	862	182	27.9%
No earnings	238	119	17.6%	453	149	14.7%
With earnings:	76	60	5.6%	409	133	13.3%
Female:	931	162	69.0%	1,672	171	54.2%
Worked full-time, year-round in the past 12 months:	198	90	14.7%	382	113	12.4%
No earnings	0	18	0.0%	0	18	0.0%
With earnings:	198	90	14.7%	382	113	12.4%
\$ 1 to \$ 9,999 or loss	2	NC	0.1%	4	NC	0.1%
\$ 10,000 to \$ 19,999	69	NC	5.1%	48	NC	1.6%
\$ 20,000 to \$ 29,999	51	NC	3.8%	93	NC	3.0%
\$ 30,000 to \$ 49,999	60	NC	4.4%	174	NC	5.6%
\$ 50,000 to \$ 74,999	16	NC	1.2%	36	NC	1.2%
\$ 75,000 or more	0	NC	0.0%	27	NC	0.9%
Other:	733	150	54.3%	1,290	176	41.8%
No earnings	341	102	25.3%	730	142	23.7%
With earnings:	392	149	29.0%	560	122	18.1%

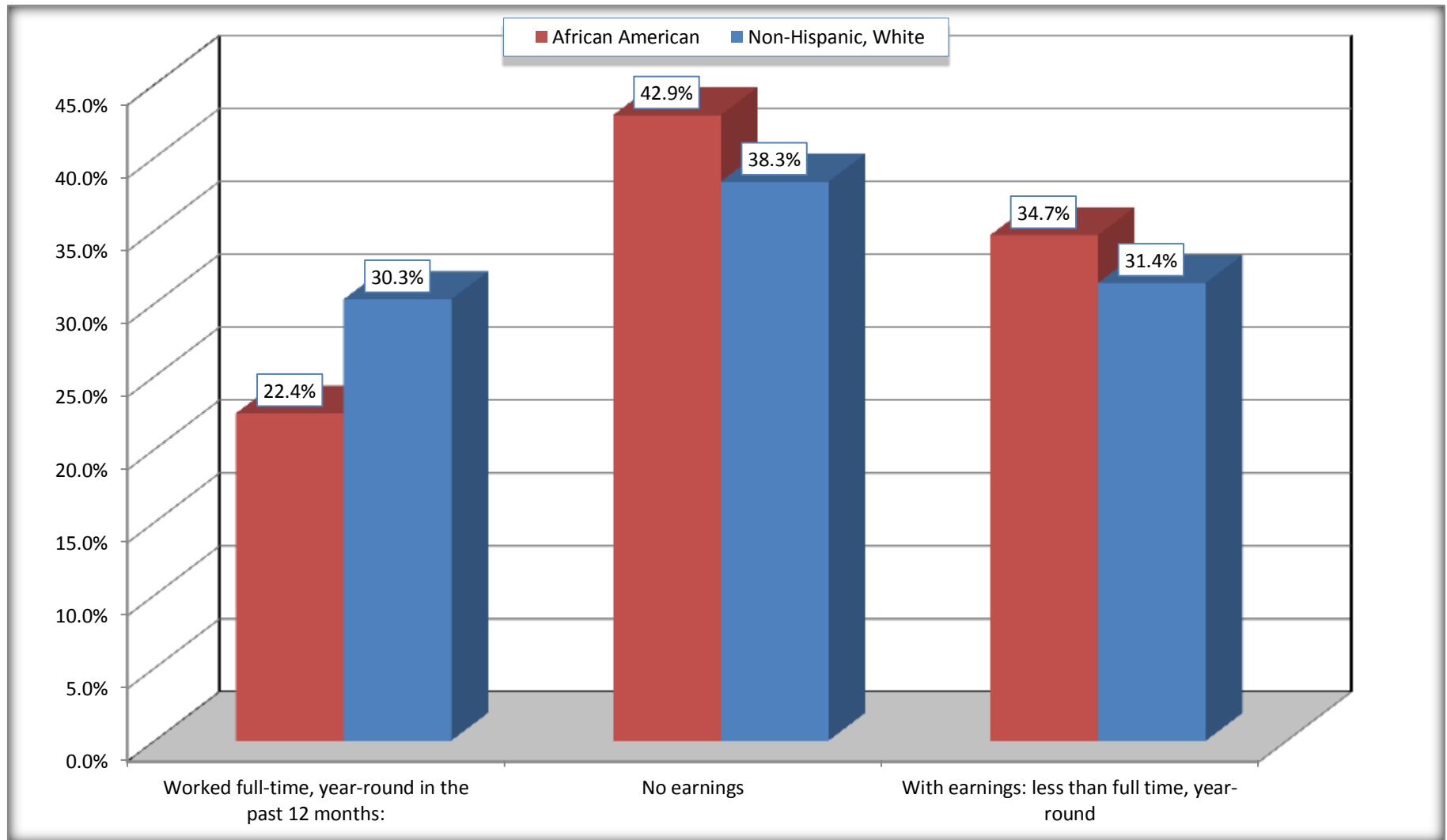
Source: U.S. Census Bureau, 2008-2012 American Community Survey

For information on confidentiality protection, sampling error, nonsampling error, and definitions, see Survey Methodology.

<http://www.census.gov/acs/www/UseData/index.htm>

# Employment and Earnings in in the Past 12 Months (16 Years and Over)

## Atlanta city, Texas



Source: B20005. SEX BY WORK EXPERIENCE IN THE PAST 12 MONTHS BY EARNINGS IN THE PAST 12 MONTHS (IN 2010 INFLATION-ADJUSTED DOLLARS) FOR THE POPULATION 16 YEARS AND OVER

Data Set: 2008-2012 American Community Survey 5-Year Estimates

**C21001. SEX BY AGE BY VETERAN STATUS FOR THE CIVILIAN POPULATION 18 YEARS AND OVER**

Data Set: 2008-2012 American Community Survey 5-Year Estimates

	Atlanta city, Texas					
	African American	Margin of Error (+/-)	% of AA Total	White, Not Hispanic	Margin of Error (+/-)	% of NHW Total
<b>Total:</b>	<b>1,276</b>	<b>205</b>	<b>100.0%</b>	<b>3,022</b>	<b>227</b>	<b>100.0%</b>
Veteran	54	NC	4.2%	450	NC	14.9%
Nonveteran	1,222	NC	95.8%	2,572	NC	85.1%
Male:	419	110	32.8%	1,395	167	46.2%
18 to 64 years:	293	101	23.0%	1,089	161	36.0%
Veteran	36	58	2.8%	235	103	7.8%
Nonveteran	257	92	20.1%	854	178	28.3%
65 years and over:	126	78	9.9%	306	79	10.1%
Veteran	18	28	1.4%	215	68	7.1%
Nonveteran	108	77	8.5%	91	54	3.0%
Female:	857	144	67.2%	1,627	167	53.8%
18 to 64 years:	640	136	50.2%	1,056	136	34.9%
Veteran	0	18	0.0%	0	18	0.0%
Nonveteran	640	136	50.2%	1,056	136	34.9%
65 years and over:	217	69	17.0%	571	122	18.9%
Veteran	0	18	0.0%	0	18	0.0%
Nonveteran	217	69	17.0%	571	122	18.9%

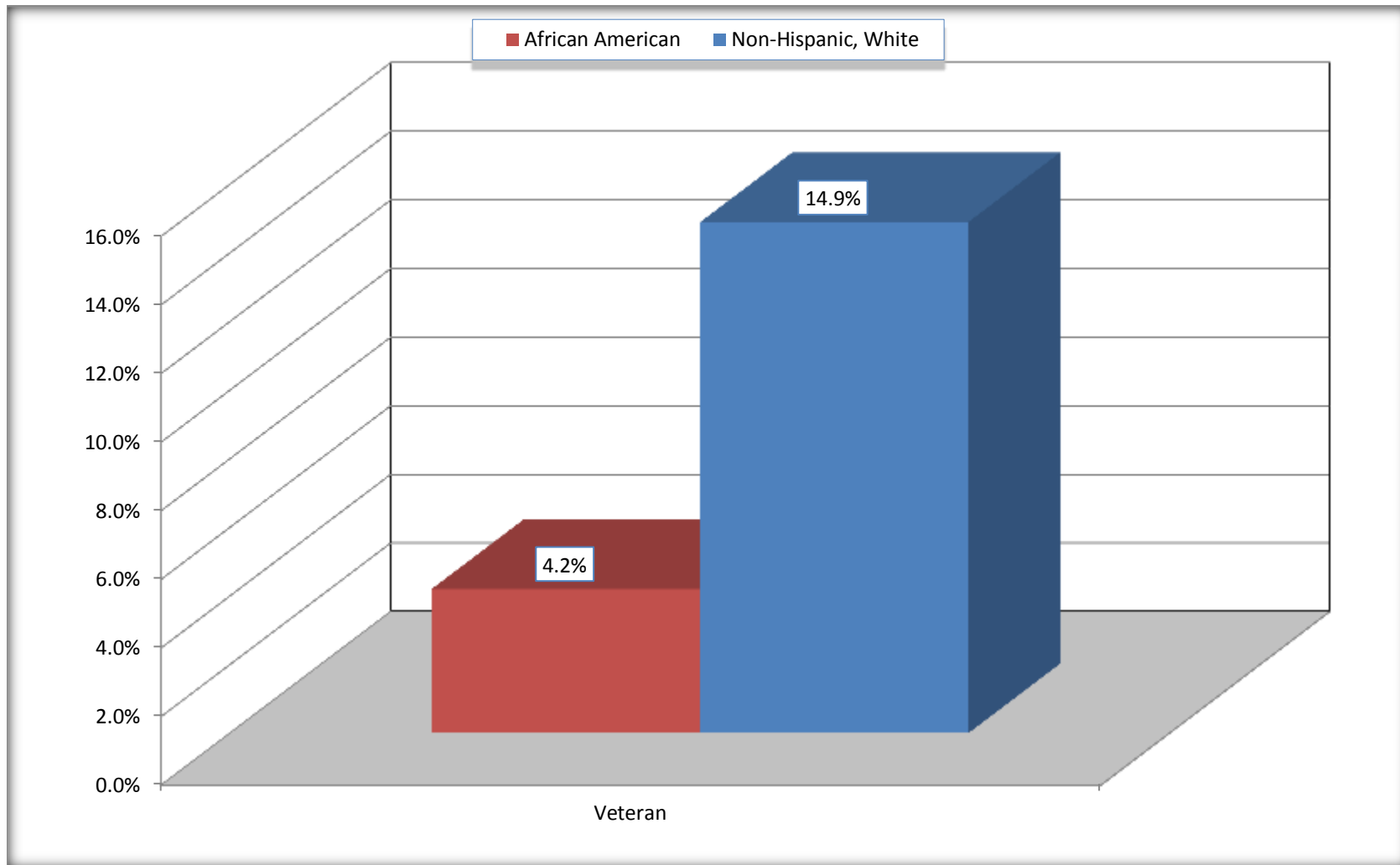
Source: U.S. Census Bureau, 2008-2012 American Community Survey

For information on confidentiality protection, sampling error, nonsampling error, and definitions, see Survey Methodology.

<http://www.census.gov/acs/www/UseData/index.htm>

# Veterans in the Civilian Population 18 Years and Over

## Atlanta city, Texas



Source: C21001. SEX BY AGE BY VETERAN STATUS FOR THE CIVILIAN POPULATION 18 YEARS AND OVER  
Data Set: 2008-2012 American Community Survey 5-Year Estimates

**B22005. RECEIPT OF FOOD STAMPS/SNAP IN THE PAST 12 MONTHS BY RACE OF HOUSEHOLDER**

Data Set: 2008-2012 American Community Survey 5-Year Estimates

	Atlanta city, Texas					
	African American	Margin of Error (+/-)	% of AA Total	White, Not Hispanic	Margin of Error (+/-)	% of NHW Total
<b>Total:</b>	<b>728</b>	<b>128</b>	<b>100.0%</b>	<b>1,332</b>	<b>165</b>	<b>100.0%</b>
HH received Food Stamps/SNAP in the past 12 months	294	111	40.4%	225	105	16.9%
HH did not receive Food Stamps/SNAP in the past 12 months	434	116	59.6%	1,107	164	83.1%

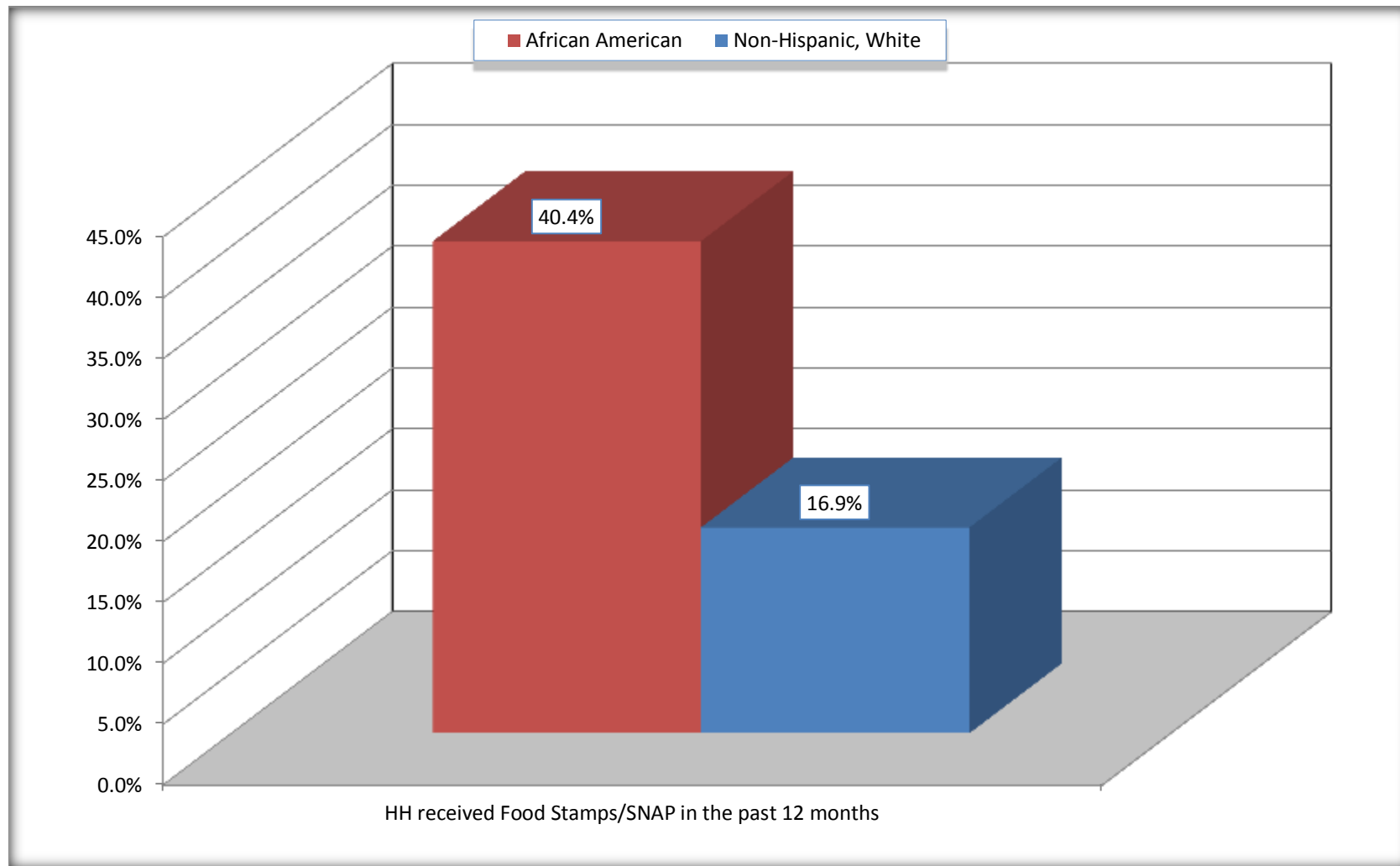
Source: U.S. Census Bureau, 2008-2012 American Community Survey

For information on confidentiality protection, sampling error, nonsampling error, and definitions, see Survey Methodology.

<http://www.census.gov/acs/www/UseData/index.htm>

# Receipt of Food Stamps/SNAP in the Past 12 Months by Household

## Atlanta city, Texas



Source: B22005. RECEIPT OF FOOD STAMPS/SNAP IN THE PAST 12 MONTHS BY RACE OF HOUSEHOLDER  
Data Set: 2008-2012 American Community Survey 5-Year Estimates



**C23002. SEX BY AGE BY EMPLOYMENT STATUS FOR THE POPULATION 16 YEARS AND OVER**

Data Set: 2008-2012 American Community Survey 5-Year Estimates

	Atlanta city, Texas					
	African American	Margin of Error (+/-)	% of AA Total	White, Not Hispanic	Margin of Error (+/-)	% of NHW Total
<b>Total:</b>	<b>1,350</b>	<b>222</b>	<b>100.0%</b>	<b>3,086</b>	<b>232</b>	<b>100.0%</b>
In labor force:	690	NC	51.1%	1,805	NC	58.5%
In Armed Forces	0	NC	0.0%	0	NC	0.0%
Civilian:	655	NC	48.5%	1,594	NC	51.7%
Employed	589	NC	43.6%	1,531	NC	49.6%
Unemployed	101	NC	7.5%	274	NC	8.9%
Not in labor force	660	NC	48.9%	1,281	NC	41.5%
Male:	419	110	31.0%	1,414	165	45.8%
16 to 64 years:	293	101	21.7%	1,108	160	35.9%
In labor force:	201	83	14.9%	882	155	28.6%
In Armed Forces	0	18	0.0%	0	18	0.0%
Civilian:	201	83	14.9%	882	155	28.6%
Employed	135	68	10.0%	724	150	23.5%
Unemployed	66	66	4.9%	158	110	5.1%
Not in labor force	92	84	6.8%	226	113	7.3%
65 years and over:	126	78	9.3%	306	79	9.9%
In labor force:	18	28	1.3%	67	47	2.2%
Employed	18	28	1.3%	67	47	2.2%
Unemployed	0	18	0.0%	0	18	0.0%
Not in labor force	108	77	8.0%	239	83	7.7%

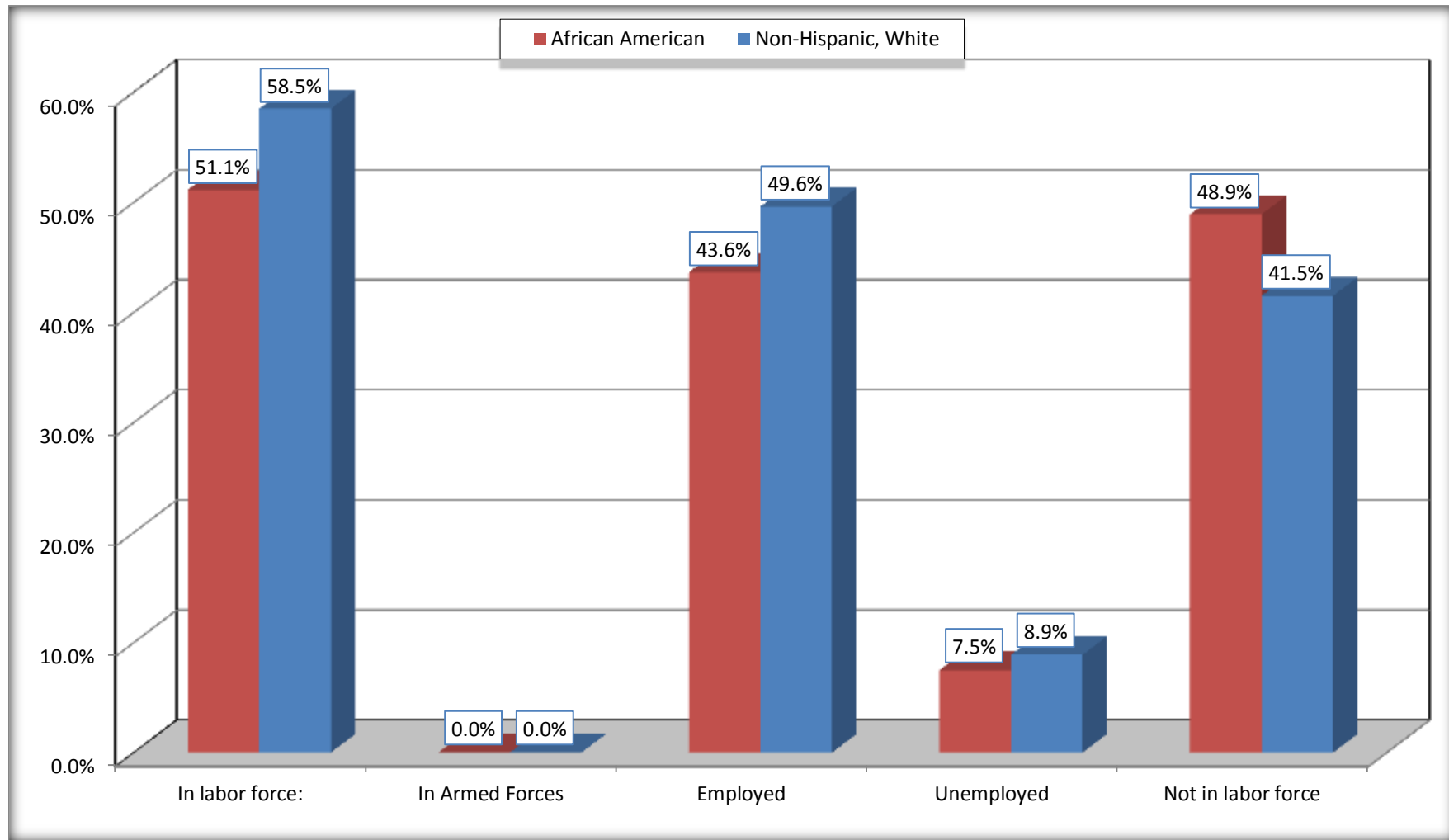
	Atlanta city, Texas					
	African American	Margin of Error (+/-)	% of AA Total	White, Not Hispanic	Margin of Error (+/-)	% of NHW Total
Female:	931	162	69.0%	1,672	171	54.2%
16 to 64 years:	714	154	52.9%	1,101	143	35.7%
In labor force:	454	99	33.6%	712	125	23.1%
In Armed Forces	0	18	0.0%	0	18	0.0%
Civilian:	454	99	33.6%	712	125	23.1%
Employed	419	94	31.0%	596	125	19.3%
Unemployed	35	44	2.6%	116	70	3.8%
Not in labor force	260	113	19.3%	389	125	12.6%
65 years and over:	217	69	16.1%	571	122	18.5%
In labor force:	17	27	1.3%	144	77	4.7%
Employed	17	27	1.3%	144	77	4.7%
Unemployed	0	18	0.0%	0	18	0.0%
Not in labor force	200	71	14.8%	427	105	13.8%

Source: U.S. Census Bureau, 2008-2012 American Community Survey

For information on confidentiality protection, sampling error, nonsampling error, and definitions, see Survey Methodology.  
<http://www.census.gov/acs/www/UseData/index.htm>

# Employment Status for the Population 16 years and over

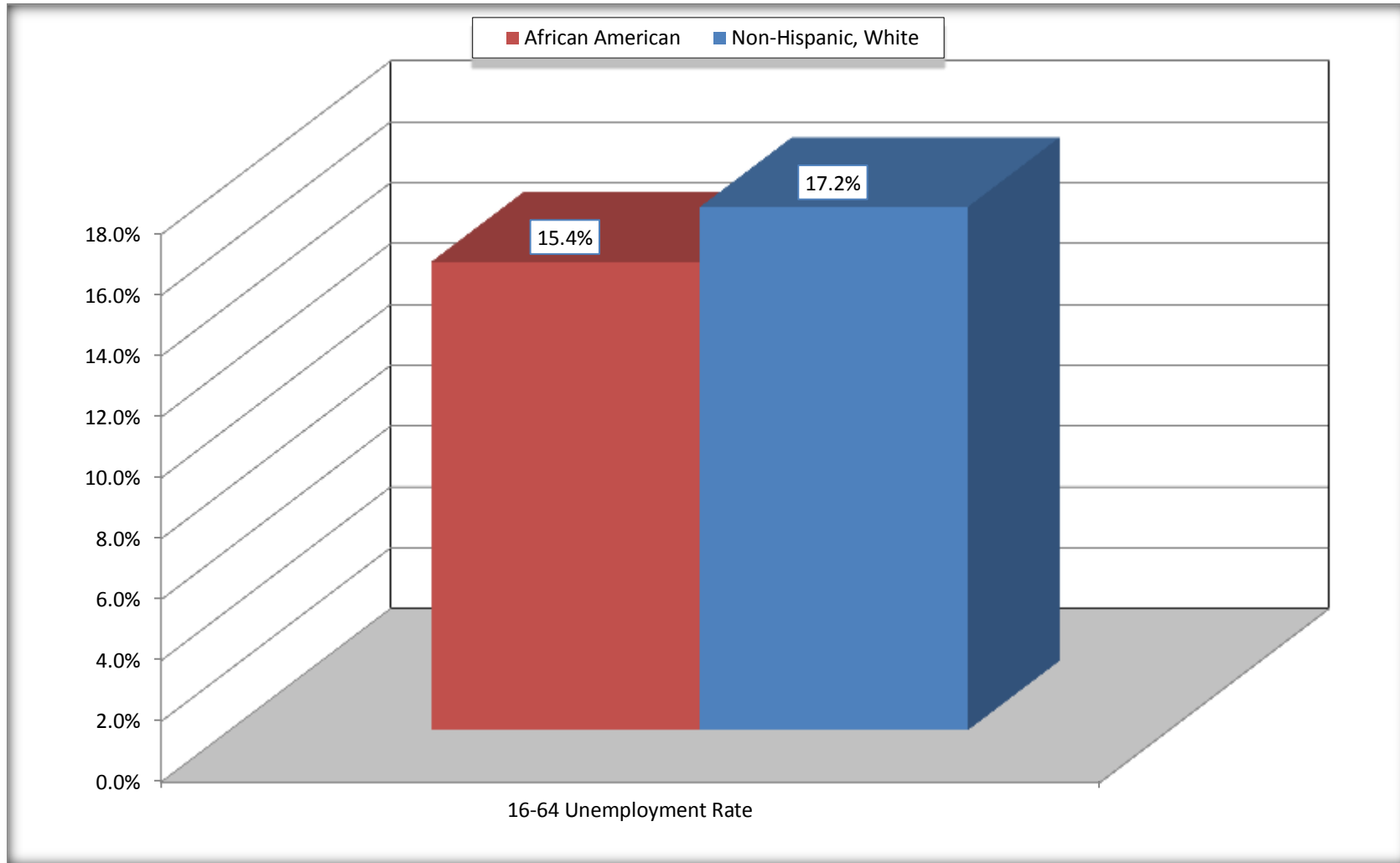
## Atlanta city, Texas



Source: C23002. SEX BY AGE BY EMPLOYMENT STATUS FOR THE POPULATION 16 YEARS AND OVER  
Data Set: 2008-2012 American Community Survey 5-Year Estimates

# Unemployment of Working Age Population (Ages 16 to 64) (As a Percent of 16-64 Civilian Labor Force)

## Atlanta city, Texas



Source: C23002. SEX BY AGE BY EMPLOYMENT STATUS FOR THE POPULATION 16 YEARS AND OVER  
Data Set: 2008-2012 American Community Survey 5-Year Estimates

**C24010. SEX BY OCCUPATION FOR THE CIVILIAN EMPLOYED POPULATION 16 YEARS AND OVER**

Data Set: 2008-2012 American Community Survey 5-Year Estimates

	Atlanta city, Texas					
	African American	Margin of Error (+/-)	% of AA Total	White, Not Hispanic	Margin of Error (+/-)	% of NHW Total
<b>Total:</b>	<b>589</b>	<b>130</b>	<b>100.0%</b>	<b>1,531</b>	<b>239</b>	<b>100.0%</b>
Management, professional, and related occupations	89	NC	15.1%	527	NC	34.4%
Service occupations	317	NC	53.8%	160	NC	10.5%
Sales and office occupations	66	NC	11.2%	393	NC	25.7%
Natural resources, construction, and maintenance occupations:	42	NC	7.1%	226	NC	14.8%
Production, transportation, and material moving occupations	75	NC	12.7%	225	NC	14.7%
Male:	153	74	26.0%	791	158	51.7%
Management, business, science, and arts occupations:	0	18	0.0%	170	70	11.1%
Service occupations	52	46	8.8%	97	67	6.3%
Sales and office occupations	0	18	0.0%	99	53	6.5%
Natural resources, construction, and maintenance occupations:	42	48	7.1%	226	99	14.8%
Production, transportation, and material moving occupations	59	47	10.0%	199	90	13.0%
Female:	436	105	74.0%	740	144	48.3%
Management, professional, and related occupations	89	57	15.1%	357	104	23.3%
Service occupations	265	87	45.0%	63	54	4.1%
Sales and office occupations	66	58	11.2%	294	104	19.2%
Natural resources, construction, and maintenance occupations:	0	18	0.0%	0	18	0.0%
Production, transportation, and material moving occupations	16	23	2.7%	26	34	1.7%

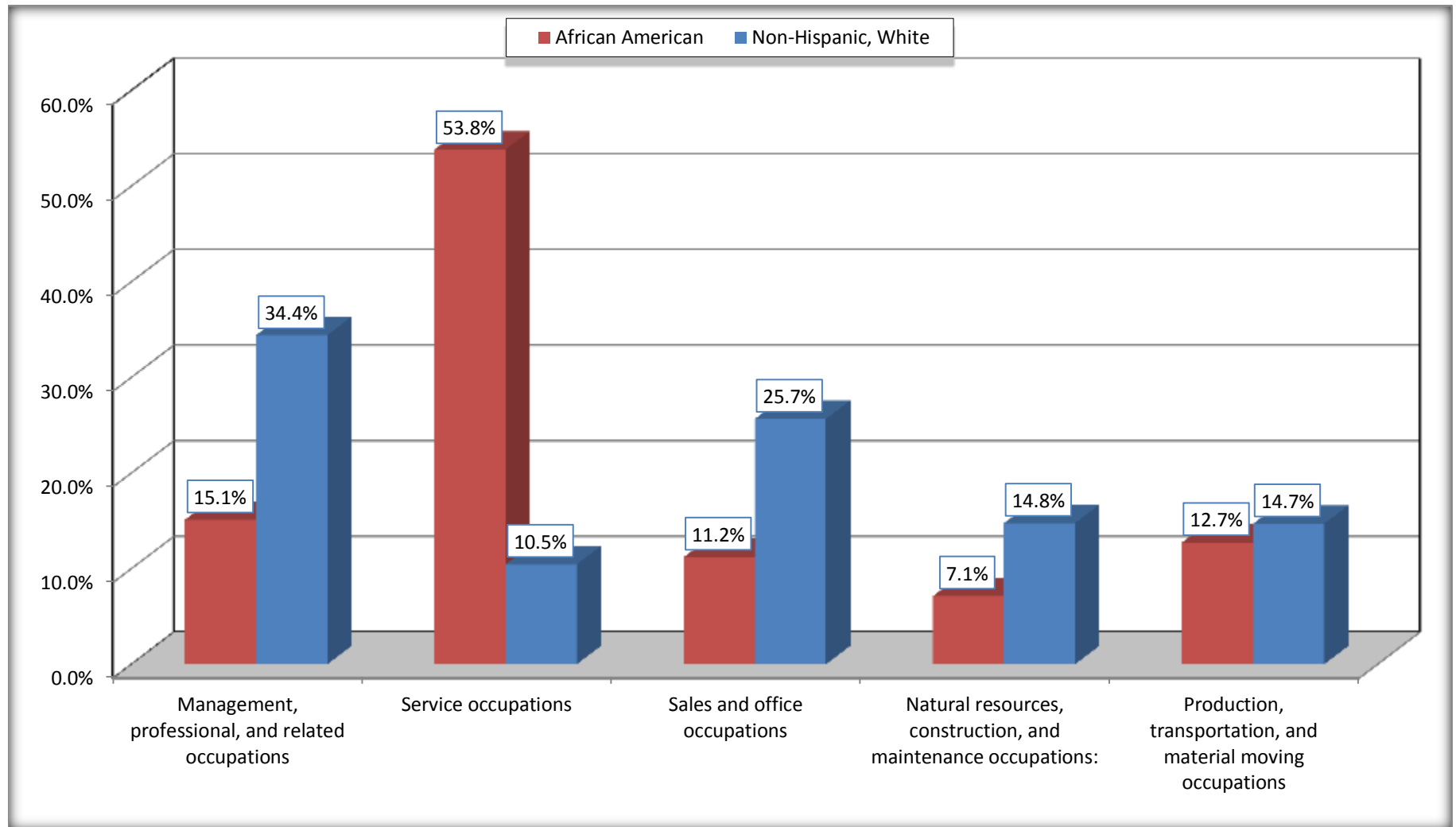
Source: U.S. Census Bureau, 2008-2012 American Community Survey

For information on confidentiality protection, sampling error, nonsampling error, and definitions, see Survey Methodology.

<http://www.census.gov/acs/www/UseData/index.htm>

# Occupation for the Civilian Employed 16 Years and Over Population

## Atlanta city, Texas



Source: C24010. SEX BY OCCUPATION FOR THE CIVILIAN EMPLOYED POPULATION 16 YEARS AND OVER  
Data Set: 2008-2012 American Community Survey 5-Year Estimates

**B25003. TENURE - Universe: OCCUPIED HOUSING UNITS**

Data Set: 2008-2012 American Community Survey 5-Year Estimates

	Atlanta city, Texas					
	African American	Margin of Error (+/-)	% of AA Total	White, Not Hispanic	Margin of Error (+/-)	% of NHW Total
<b>Total:</b>	<b>728</b>	<b>128</b>	<b>100.0%</b>	<b>1,332</b>	<b>165</b>	<b>100.0%</b>
Owner occupied	245	92	33.7%	1,034	139	77.6%
Renter occupied	483	143	66.3%	298	121	22.4%

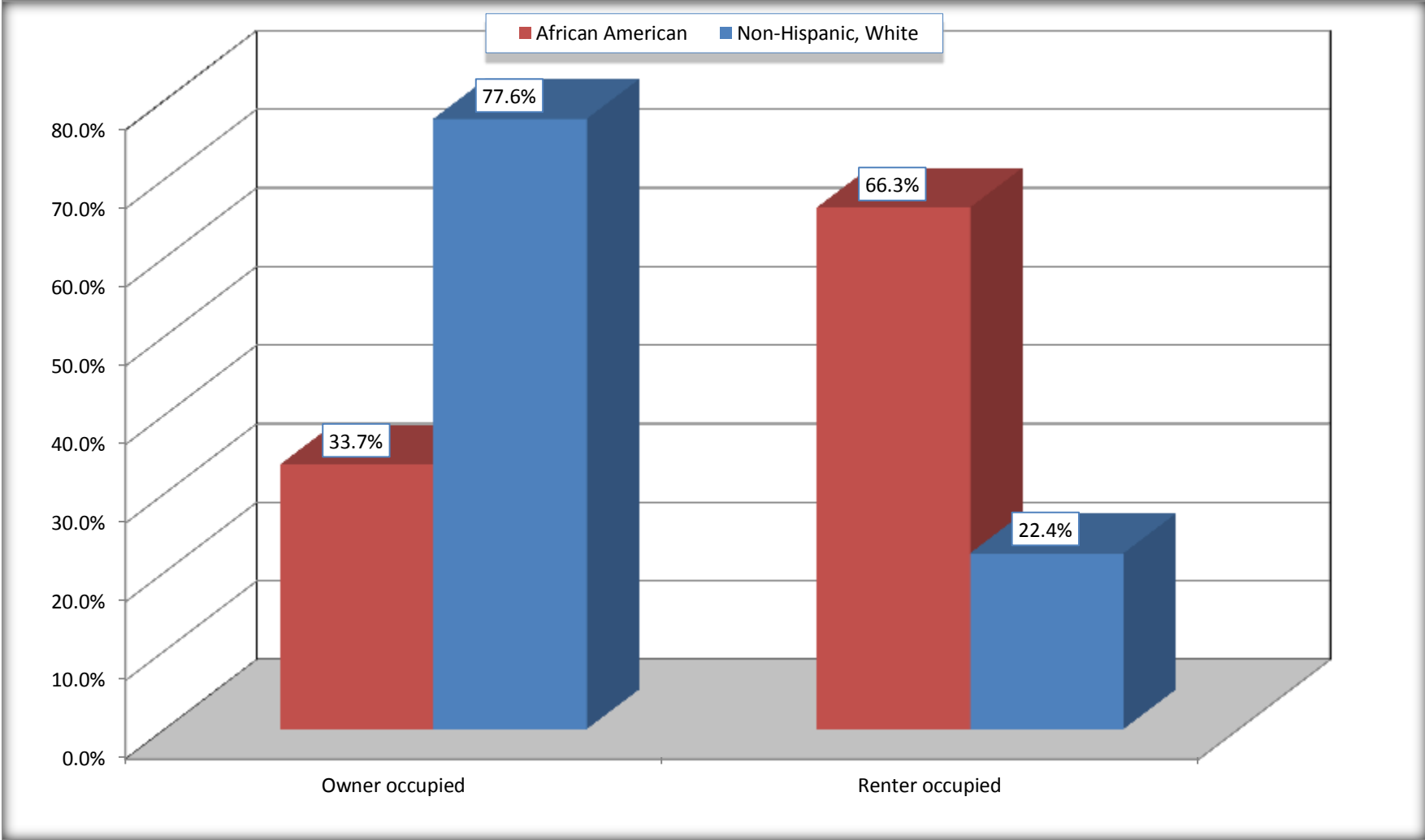
Source: U.S. Census Bureau, 2008-2012 American Community Survey

For information on confidentiality protection, sampling error, nonsampling error, and definitions, see Survey Methodology.

<http://www.census.gov/acs/www/UseData/index.h>

# Home Owners and Renters by Household

## Atlanta city, Texas



Source: B25003. TENURE - Universe: OCCUPIED HOUSING UNITS  
Data Set: 2008-2012 American Community Survey 5-Year Estimates



**B25014. OCCUPANTS PER ROOM - Universe: OCCUPIED HOUSING UNITS**

Data Set: 2008-2012 American Community Survey 5-Year Estimates

	Atlanta city, Texas					
	African American	Margin of Error (+/-)	% of AA Total	White, Not Hispanic	Margin of Error (+/-)	% of NHW Total
<b>Total:</b>	<b>728</b>	<b>128</b>	<b>100.0%</b>	<b>1,332</b>	<b>165</b>	<b>100.0%</b>
1.00 or less occupants per room	671	131	92.2%	1,328	167	99.7%
1.01 or more occupants per room	57	43	7.8%	4	10	0.3%

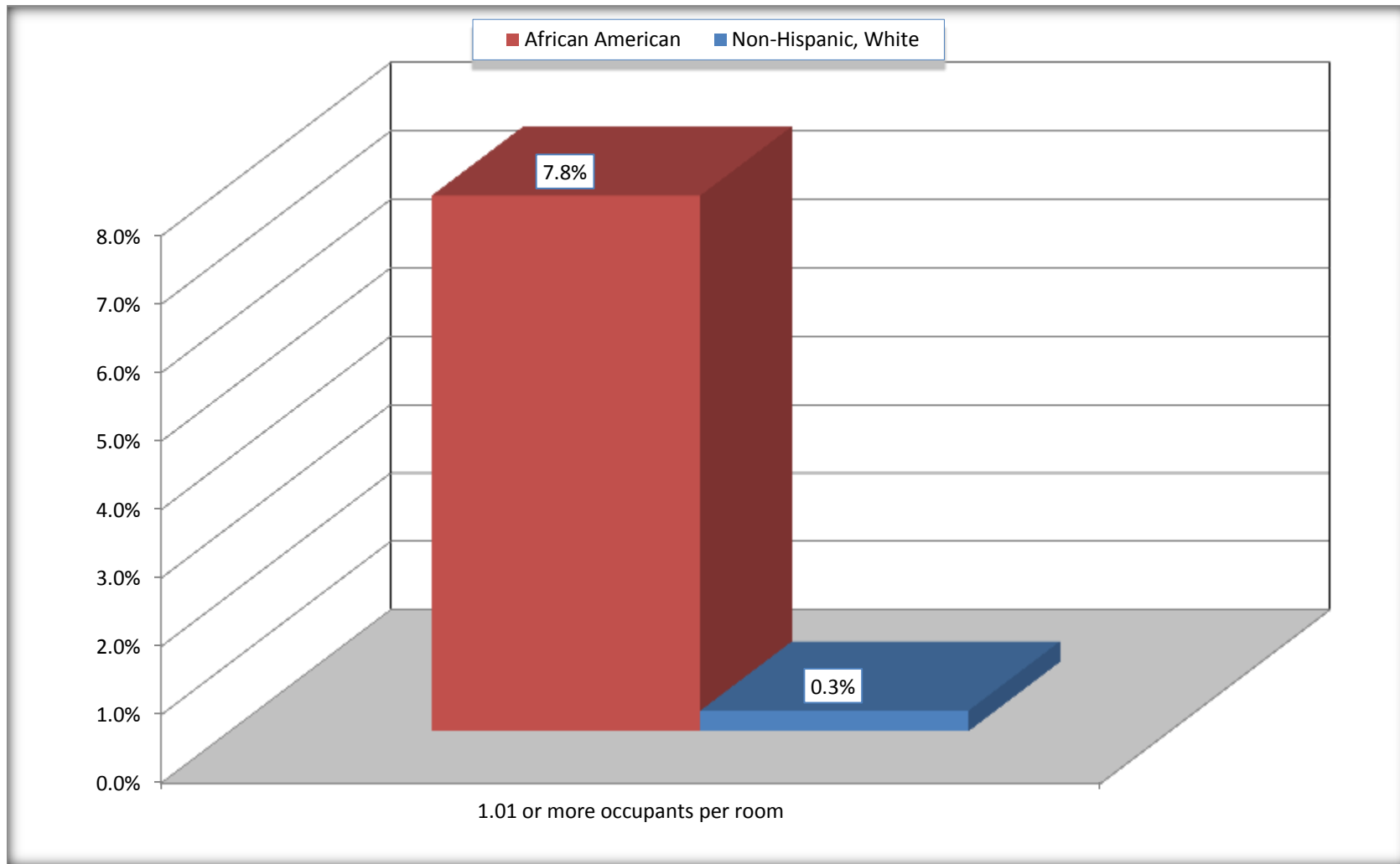
Source: U.S. Census Bureau, 2008-2012 American Community Survey

For information on confidentiality protection, sampling error, nonsampling error, and definitions, see Survey Methodology.

<http://www.census.gov/acs/www/UseData/index.ht>

# More than One Person per Room (Crowding) by Household

## Atlanta city, Texas



Source: B25014. OCCUPANTS PER ROOM - Universe: OCCUPIED HOUSING UNITS  
Data Set: 2008-2012 American Community Survey 5-Year Estimates

**B18101. AGE BY DISABILITY STATUS**

Data Set: 2008-2012 American Community Survey 5-Year Estimates

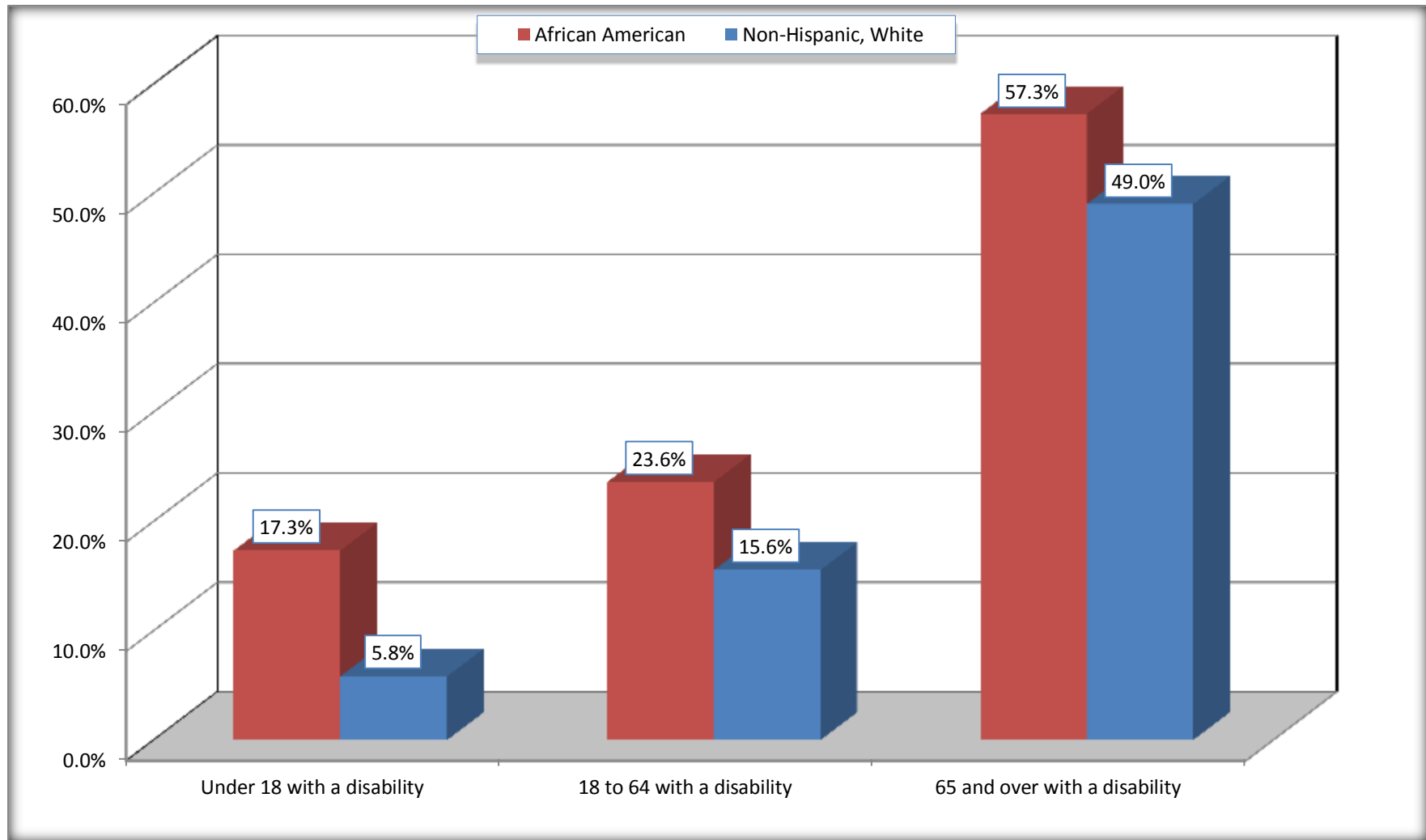
	Atlanta city, Texas					
	African American	Margin of Error (+/-)	% of AA Total	White, Not Hispanic	Margin of Error (+/-)	% of NHW Total
<b>Total:</b>	<b>1,650</b>	<b>237</b>	<b>100.0%</b>	<b>3,660</b>	<b>283</b>	<b>100.0%</b>
Under 18 years:	381	134	23.1%	807	36	22.0%
With a disability	66	57	4.0%	47	36	1.3%
No disability	315	113	19.1%	760	186	20.8%
18 to 64 years:	932	191	56.5%	2,135	216	58.3%
With a disability	220	147	13.3%	332	133	9.1%
No disability	712	150	43.2%	1,803	222	49.3%
65 years and over:	337	106	20.4%	718	159	19.6%
With a disability	193	90	11.7%	352	134	9.6%
No disability	144	67	8.7%	366	110	10.0%

Source: U.S. Census Bureau, 2008-2012 American Community Survey

For information on confidentiality protection, sampling error, nonsampling error, and definitions, see Survey Methodology.

<http://www.census.gov/acs/www/UseData/index.htm>

## Disability by Age Atlanta city, Texas



Source: B18101. AGE BY DISABILITY STATUS  
Data Set: 2008-2012 American Community Survey 5-Year Estimates

**C27001B. HEALTH INSURANCE COVERAGE STATUS BY AGE**

Data Set: 2008-2012 American Community Survey 5-Year Estimates

	<b>Atlanta city, Texas</b>					
	African American	Margin of Error (+/-)	% of AA Total	White, Not Hispanic	Margin of Error (+/-)	% of NHW Total
<b>Total:</b>	<b>1,650</b>	<b>237</b>	<b>100.0%</b>	<b>3,660</b>	<b>283</b>	<b>100.0%</b>
Under 18 years:	381	134	23.1%	807	188	22.0%
With health insurance coverage	352	128	21.3%	508	157	13.9%
No health insurance coverage	29	39	1.8%	299	169	8.2%
18 to 64 years:	932	191	56.5%	2,135	216	58.3%
With health insurance coverage	484	134	29.3%	1,348	213	36.8%
No health insurance coverage	448	189	27.2%	787	169	21.5%
65 years and over:	337	106	20.4%	718	159	19.6%
With health insurance coverage	337	106	20.4%	718	159	19.6%
No health insurance coverage	0	18	0.0%	0	18	0.0%

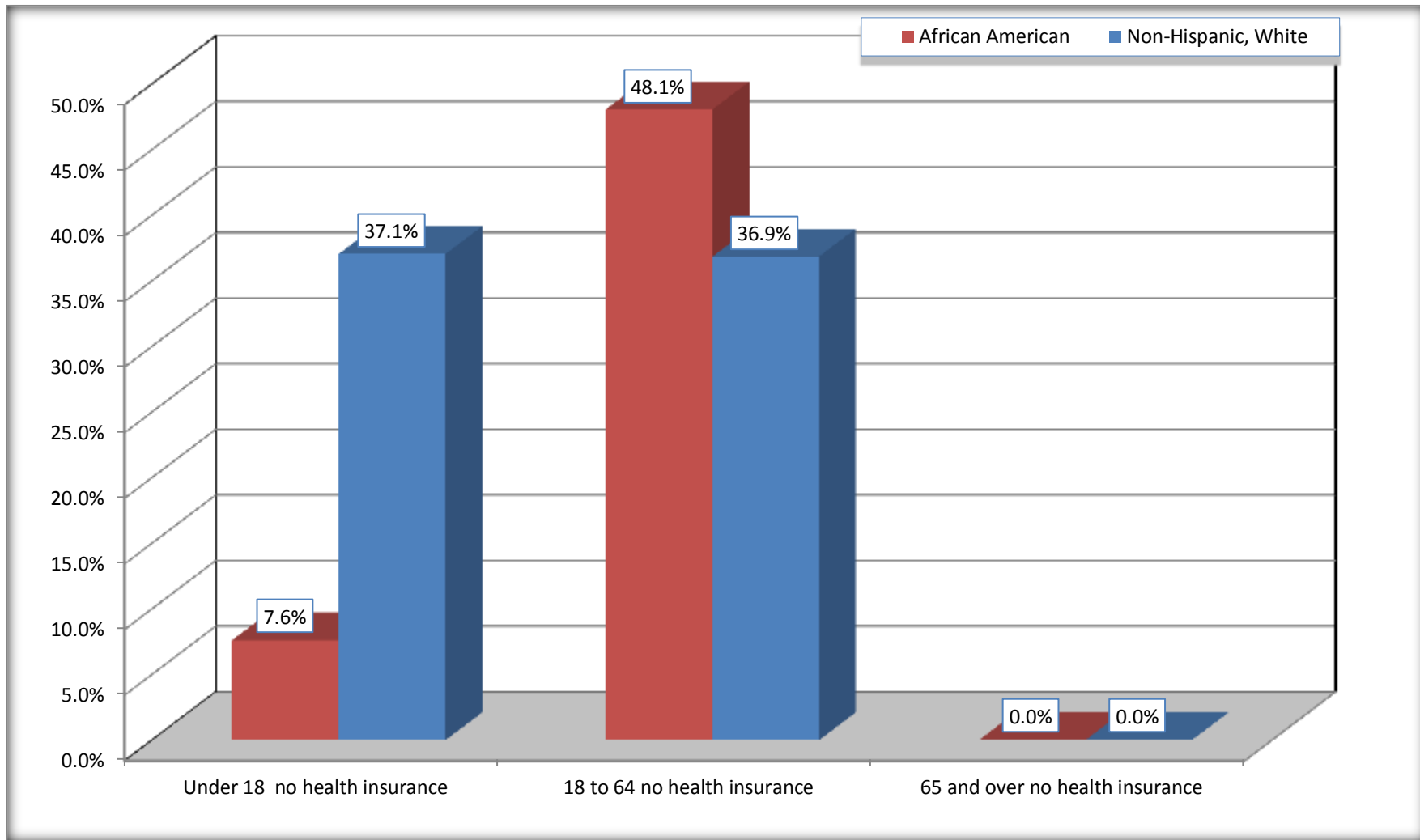
Source: U.S. Census Bureau, 2008-2012 American Community Survey

For information on confidentiality protection, sampling error, nonsampling error, and definitions, see Survey Methodology.

<http://www.census.gov/acs/www/UseData/index.htm>

# Lack of Health Insurance Coverage by Age

## Atlanta city, Texas



Source: C27001B. HEALTH INSURANCE COVERAGE STATUS BY AGE  
Data Set: 2008-2012 American Community Survey 5-Year Estimates