

Selected Socio-Economic Data

Haywood County, Tennessee

African American and White, Not Hispanic

Data Set: 2008-2012 American Community Survey 5-Year Estimates

www.fairvote2020.org

www.fairdata2000.com

[29-Dec-13](#)

C02003.DETAILED RACE - Universe: TOTAL POPULATION
 Data Set: 2008-2012 American Community Survey 5-Year Estimates

| | Haywood County, Tennessee | | |
|--|---------------------------|-----------------------|---------------|
| | Population | Margin of Error (+/-) | % of Total |
| Total: | 18,673 | ***** | 100.0% |
| Population of one race: | 18,291 | 277 | 98.0% |
| White | 8,775 | 130 | 47.0% |
| Black or African American | 9,188 | 285 | 49.2% |
| American Indian and Alaska Native | 34 | 34 | 0.2% |
| Asian alone | 64 | 95 | 0.3% |
| Native Hawaiian and Other Pacific Islander | 0 | 19 | 0.0% |
| Some other race | 230 | 145 | 1.2% |
| Population of two or more races: | 382 | 277 | 2.0% |
| Two races including Some other race | 10 | 16 | 0.1% |
| Two races excluding Some other race, and three or more races | 372 | 276 | 2.0% |
| Population of two races: | 337 | 272 | 1.8% |
| White; Black or African American | 288 | 271 | 1.5% |
| White; American Indian and Alaska Native | 9 | 14 | 0.0% |
| White; Asian | 0 | 19 | 0.0% |
| Black or African American; American Indian and Alaska Native | 0 | 19 | 0.0% |
| All other two race combinations | 40 | 57 | 0.2% |
| Population of three races | 45 | 50 | 0.2% |
| Population of four or more races | 0 | 19 | 0.0% |

Note: Hispanics may be of any race. See Table B03002 and chart.

Source: U.S. Census Bureau, 2008-2012 American Community Survey

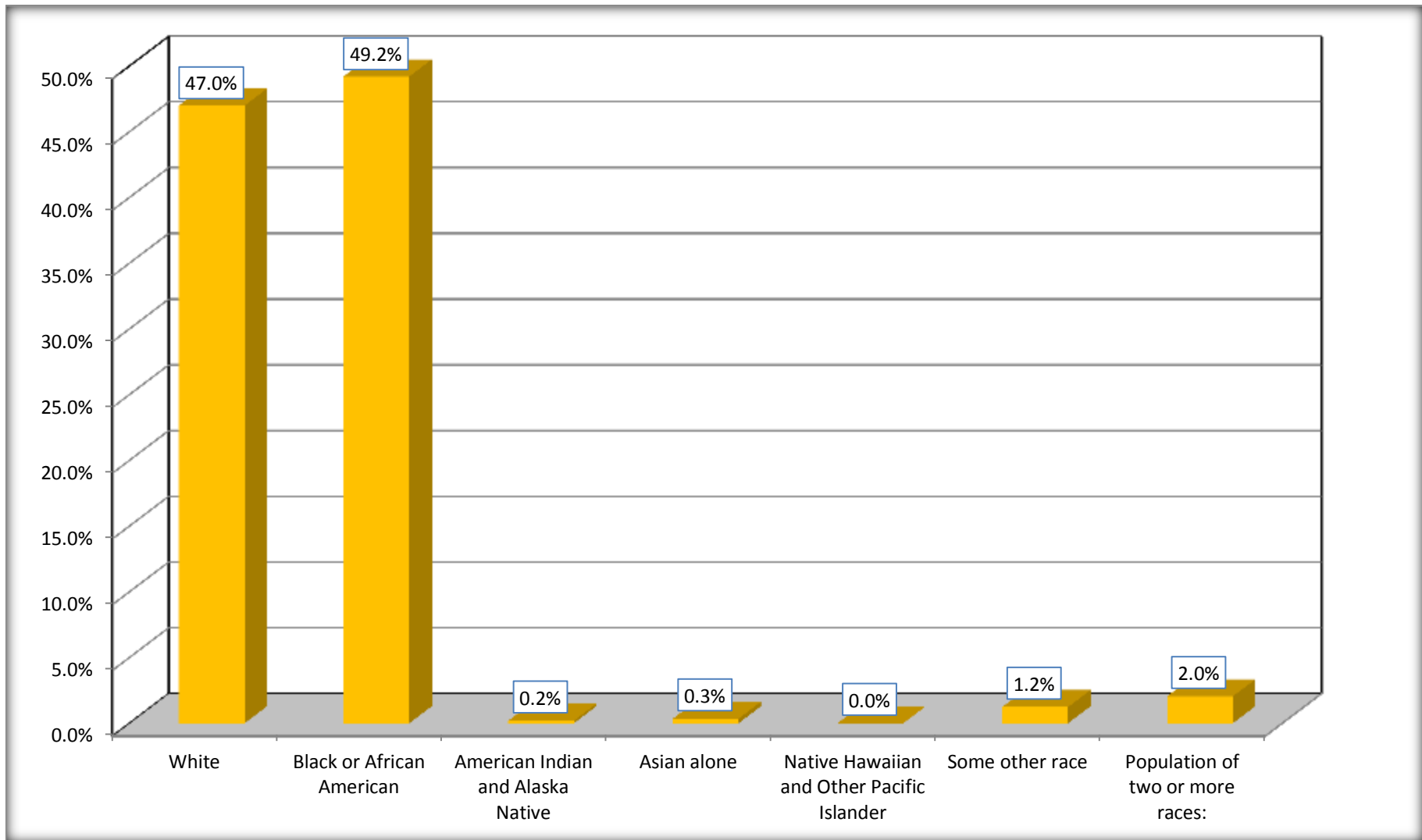
Although the American Community Survey (ACS) produces population, demographic and housing unit estimates, it is the Census Bureau's Population Estimates Program that produces and disseminates the official estimates of the population for the nation, states, counties, cities and towns and estimates of housing units for states and counties.

For information on confidentiality protection, sampling error, nonsampling error, and definitions, see Survey Methodology.

<http://www.census.gov/acs/www/UseData/index.htm>

Population by Race

Haywood County, Tennessee



Source: C02003.DETAILED RACE - Universe: TOTAL POPULATION
Data Set: 2008-2012 American Community Survey 5-Year Estimates

B03002. HISPANIC OR LATINO ORIGIN BY RACE - Universe: TOTAL POPULATION

Data Set: 2008-2012 American Community Survey 5-Year Estimates

| | Haywood County, Tennessee | | |
|--|---------------------------|-----------------------|---------------|
| | Population | Margin of Error (+/-) | % of Total |
| Total: | 18,673 | ***** | 100.0% |
| Not Hispanic or Latino: | 17,953 | ***** | 96.1% |
| White alone | 8,409 | 19 | 45.0% |
| Black or African American alone | 9,150 | 284 | 49.0% |
| American Indian and Alaska Native alone | 23 | 30 | 0.1% |
| Asian alone | 64 | 95 | 0.3% |
| Native Hawaiian and Other Pacific Islander alone | 0 | 19 | 0.0% |
| Some other race alone | 0 | 19 | 0.0% |
| Two or more races: | 307 | 272 | 1.6% |
| Two races including Some other race | 10 | 16 | 0.1% |
| Two races excluding Some other race, and three or more races | 297 | 272 | 1.6% |
| Hispanic or Latino | 720 | ***** | 3.9% |

Source: U.S. Census Bureau, 2008-2012 American Community Survey

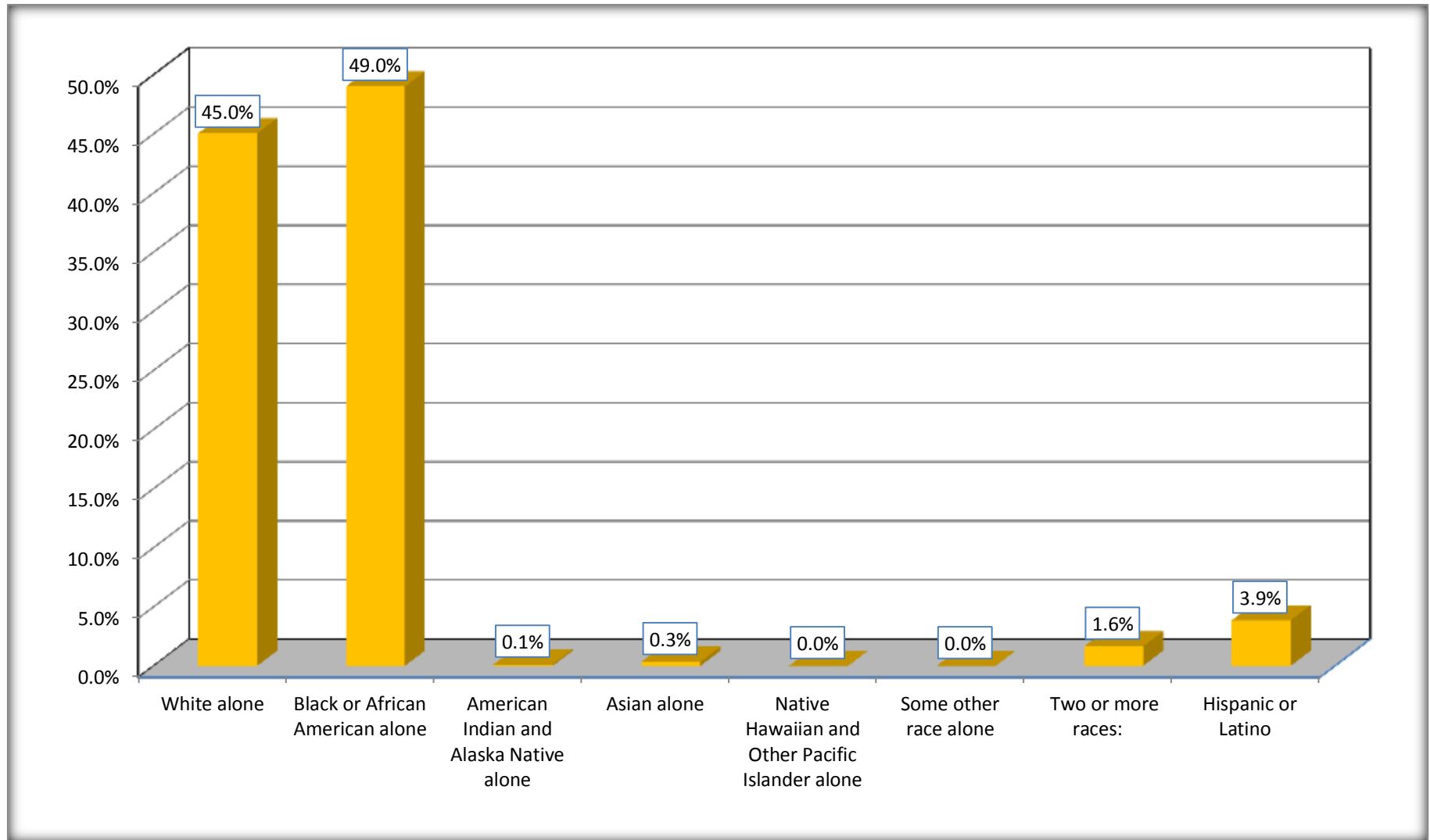
Although the American Community Survey (ACS) produces population, demographic and housing unit estimates, it is the Census Bureau's Population Estimates Program that produces and disseminates the official estimates of the population for the nation, states, counties, cities and towns and estimates of housing units for states and counties.

For information on confidentiality protection, sampling error, nonsampling error, and definitions, see Survey Methodology.

<http://www.census.gov/acs/www/UseData/index.htm>

Non-Hispanic by Race and Hispanic Population

Haywood County, Tennessee



Source: B03002. HISPANIC OR LATINO ORIGIN BY RACE - Universe: TOTAL POPULATION
Data Set: 2008-2012 American Community Survey 5-Year Estimates

B03002. HISPANIC OR LATINO ORIGIN BY RACE

Data Set: 2008-2012 American Community Survey 5-Year Estimates

| | Haywood County, Tennessee | | |
|--|---------------------------|-----------------------|---------------|
| | Population | Margin of Error (+/-) | % of Total |
| Hispanic or Latino: | 720 | ***** | 100.0% |
| White alone | 366 | 130 | 50.8% |
| Black or African American alone | 38 | 46 | 5.3% |
| American Indian and Alaska Native alone | 11 | 18 | 1.5% |
| Asian alone | 0 | 19 | 0.0% |
| Native Hawaiian and Other Pacific Islander alone | 0 | 19 | 0.0% |
| Some other race alone | 230 | 145 | 31.9% |
| Two or more races: | 75 | 69 | 10.4% |
| Two races including Some other race | 0 | 19 | 0.0% |
| Two races excluding Some other race, and three or more races | 75 | 69 | 10.4% |

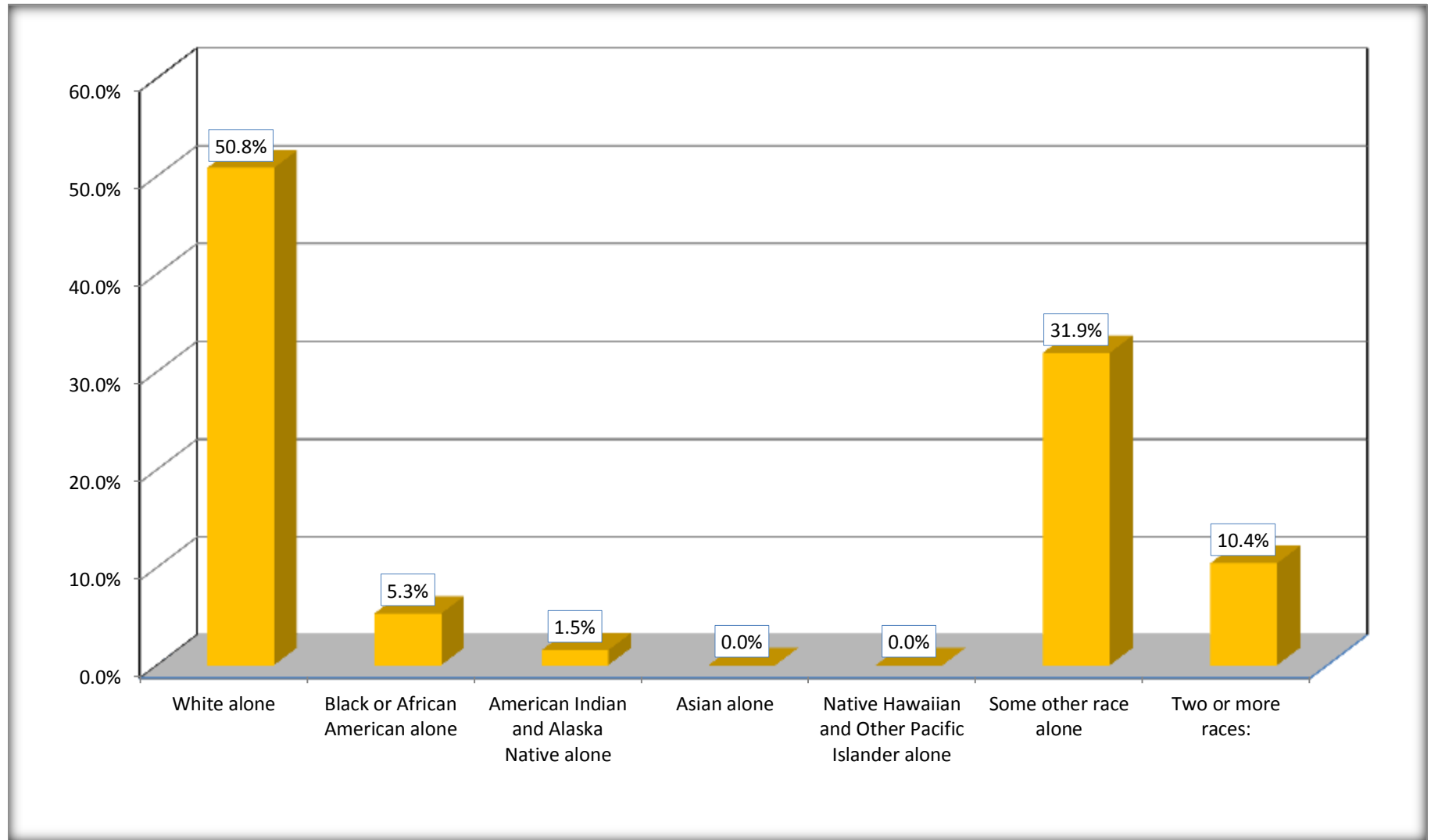
Source: U.S. Census Bureau, 2008-2012 American Community Survey

Although the American Community Survey (ACS) produces population, demographic and housing unit estimates, it is the Census Bureau's Population Estimates Program that produces and disseminates the official estimates of the population for the nation, states, counties, cities and towns and estimates of housing units for states and counties.

For information on confidentiality protection, sampling error, nonsampling error, and definitions, see Survey Methodology.

<http://www.census.gov/acs/www/UseData/index.htm>

Hispanic or Latino Origin by Race Haywood County, Tennessee



Source: B03002. HISPANIC OR LATINO ORIGIN BY RACE
Data Set: 2008-2012 American Community Survey 5-Year Estimates

B01001. SEX BY AGE

Data Set: 2008-2012 American Community Survey 5-Year Estimates

| | Haywood County, Tennessee | | | | | |
|-------------------|---------------------------|-----------------------|---------------|---------------------|-----------------------|----------------|
| | African American | Margin of Error (+/-) | % of AA Total | White, Not Hispanic | Margin of Error (+/-) | % of NHW Total |
| Total: | 9,188 | 285 | 100.0% | 8,409 | 19 | 100.0% |
| Under 18 years | 2,441 | NC | 26.6% | 1,795 | NC | 21.3% |
| 18 to 64 years | 5,753 | NC | 62.6% | 5,014 | NC | 59.6% |
| 65 years and over | 994 | NC | 10.8% | 1,600 | NC | 19.0% |
| Male: | 4,221 | 151 | 45.9% | 4,020 | 389 | 47.8% |
| Under 18 years | 1300 | NC | 14.1% | 873 | NC | 10.4% |
| 18 to 64 years | 2,552 | NC | 27.8% | 2,475 | NC | 29.4% |
| 65 years and over | 369 | NC | 4.0% | 672 | NC | 8.0% |
| Female: | 4,967 | 176 | 54.1% | 4,389 | 412 | 52.2% |
| Under 18 years | 1,141 | NC | 12.4% | 922 | NC | 11.0% |
| 18 to 64 years | 3,201 | NC | 34.8% | 2,539 | NC | 30.2% |
| 65 years and over | 625 | NC | 6.8% | 928 | NC | 11.0% |

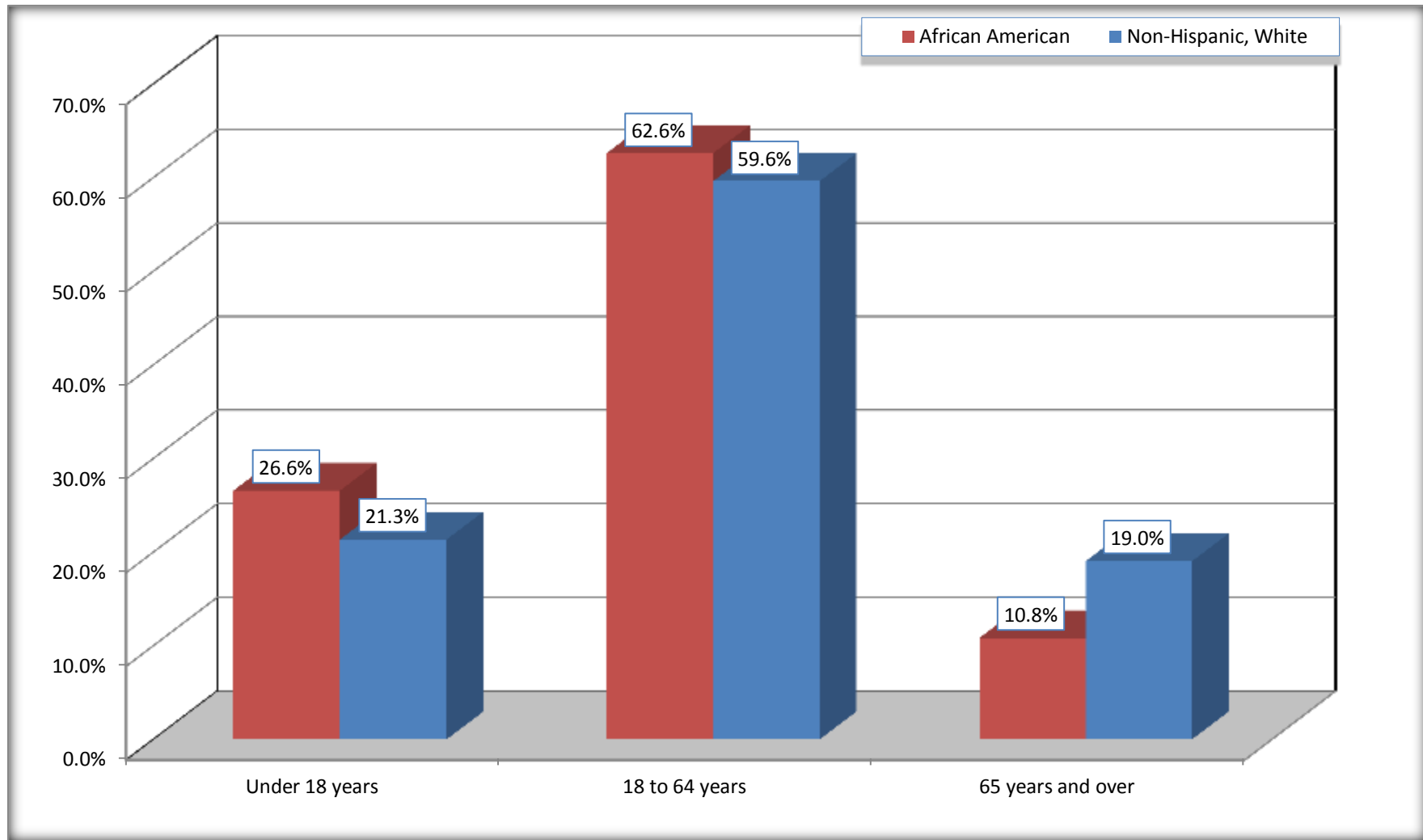
Source: U.S. Census Bureau, 2008-2012 American Community Survey

Although the American Community Survey (ACS) produces population, demographic and housing unit estimates, it is the Census Bureau's Population Estimates Program that produces and disseminates the official estimates of the population for the nation, states, counties, cities and towns and estimates of housing units for states and counties.

For information on confidentiality protection, sampling error, nonsampling error, and definitions, see Survey Methodology.
<http://www.census.gov/acs/www/UseData/index.htm>

Population by Age

Haywood County, Tennessee



Source: B01001. SEX BY AGE
Data Set: 2008-2012 American Community Survey 5-Year Estimates

B05003. SEX BY AGE BY CITIZENSHIP STATUS

Data Set: 2008-2012 American Community Survey 5-Year Estimates

| | Haywood County, Tennessee | | | | | |
|---------------------------|---------------------------|-----------------------|----------------------|---------------------|-----------------------|-----------------------|
| | African American | Margin of Error (+/-) | % of AA Total by Age | White, Not Hispanic | Margin of Error (+/-) | % of NHW Total by Age |
| Total: | 9,188 | 285 | 100.0% | 8,409 | 19 | 100.0% |
| Under 18 years: | 2,441 | NC | 100.0% | 1,795 | NC | 100.0% |
| Native | 2,441 | NC | 100.0% | 1,795 | NC | 100.0% |
| Foreign born: | 0 | NC | 0.0% | 0 | NC | 0.0% |
| Naturalized U.S. citizen | 0 | NC | 0.0% | 0 | NC | 0.0% |
| Not a U.S. citizen | 0 | NC | 0.0% | 0 | NC | 0.0% |
| 18 years and over: | 6,747 | NC | 100.0% | 6,614 | NC | 100.0% |
| Native | 6,747 | NC | 100.0% | 6,578 | NC | 99.5% |
| Foreign born: | 0 | NC | 0.0% | 36 | NC | 0.5% |
| Naturalized U.S. citizen | 0 | NC | 0.0% | 36 | NC | 0.5% |
| Not a U.S. citizen | 0 | NC | 0.0% | 0 | NC | 0.0% |
| Male: | 4,221 | 151 | 45.9% | 4,020 | 64 | 47.8% |
| Under 18 years: | 1300 | 142 | 100.0% | 873 | 64 | 100.0% |
| Native | 1,300 | 142 | 100.0% | 873 | 64 | 100.0% |
| Foreign born: | 0 | 19 | 0.0% | 0 | 19 | 0.0% |
| Naturalized U.S. citizen | 0 | 19 | 0.0% | 0 | 19 | 0.0% |
| Not a U.S. citizen | 0 | 19 | 0.0% | 0 | 19 | 0.0% |
| 18 years and over: | 2,921 | 56 | 100.0% | 3,147 | 19 | 100.0% |
| Native | 2,921 | 56 | 100.0% | 3,147 | 19 | 100.0% |
| Foreign born: | 0 | 19 | 0.0% | 0 | 19 | 0.0% |
| Naturalized U.S. citizen | 0 | 19 | 0.0% | 0 | 19 | 0.0% |
| Not a U.S. citizen | 0 | 19 | 0.0% | 0 | 19 | 0.0% |

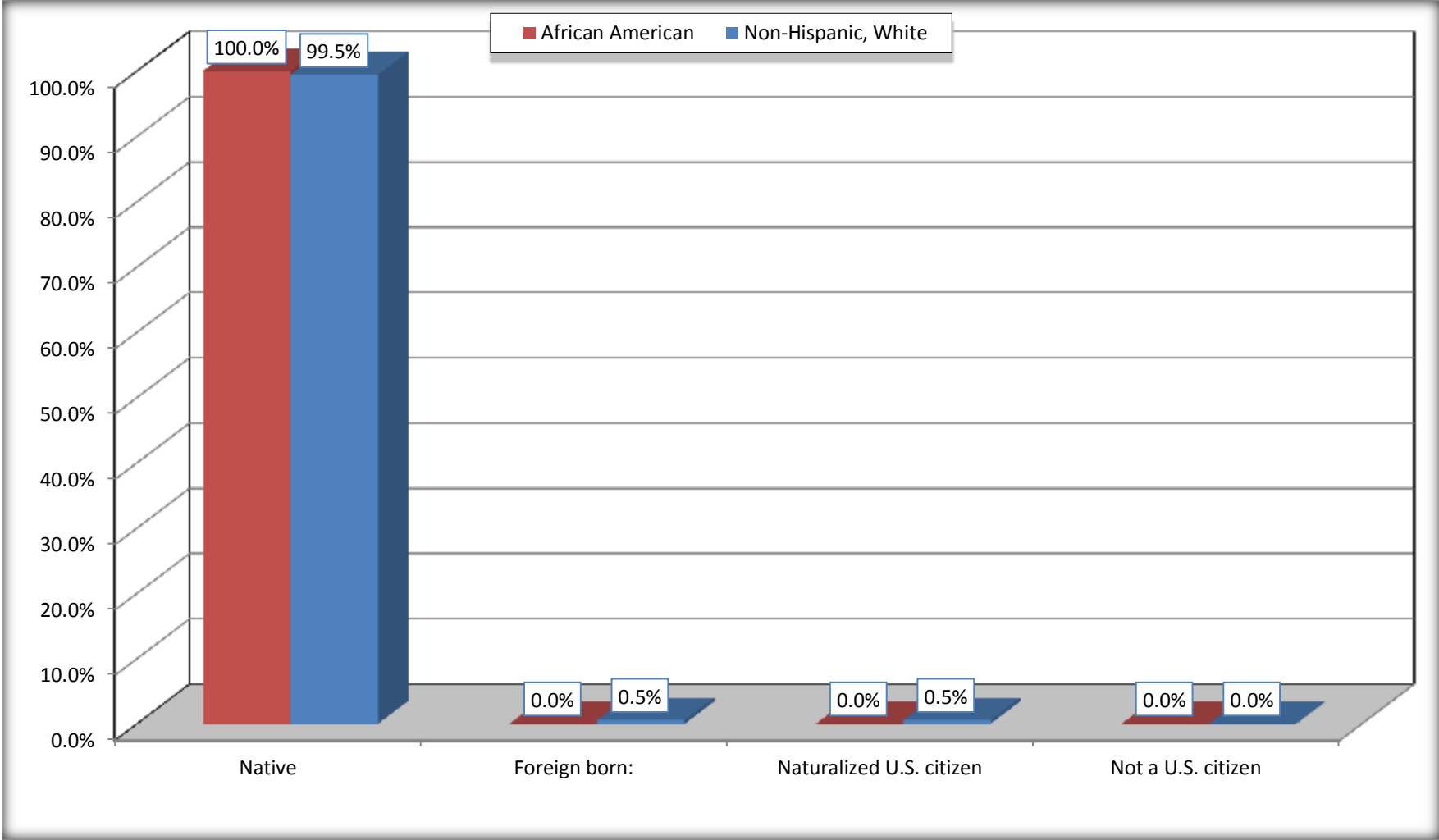
| | Haywood County, Tennessee | | | | | |
|---------------------------|---------------------------|-----------------------|----------------|---------------------|-----------------------|-----------------|
| | African American | Margin of Error (+/-) | % of AA by Age | White, Not Hispanic | Margin of Error (+/-) | % of NHW by Age |
| Female: | 4,967 | 176 | 54.1% | 4,389 | 64 | 52.2% |
| Under 18 years: | 1,141 | 166 | 100.0% | 922 | 64 | 100.0% |
| Native | 1,141 | 166 | 100.0% | 922 | 64 | 100.0% |
| Foreign born: | 0 | 19 | 0.0% | 0 | 19 | 0.0% |
| Naturalized U.S. citizen | 0 | 19 | 0.0% | 0 | 19 | 0.0% |
| Not a U.S. citizen | 0 | 19 | 0.0% | 0 | 19 | 0.0% |
| 18 years and over: | 3,826 | 60 | 100.0% | 3,467 | 19 | 100.0% |
| Native | 3,826 | 60 | 100.0% | 3,431 | 38 | 99.0% |
| Foreign born: | 0 | 19 | 0.0% | 36 | 38 | 1.0% |
| Naturalized U.S. citizen | 0 | 19 | 0.0% | 36 | 38 | 1.0% |
| Not a U.S. citizen | 0 | 19 | 0.0% | 0 | 19 | 0.0% |

Source: U.S. Census Bureau, 2008-2012 American Community Survey

For information on confidentiality protection, sampling error, nonsampling error, and definitions, see Survey Methodology.
<http://www.census.gov/acs/www/UseData/index.htm>

Citizenship Status of Voting Age Population (18 and Over)

Haywood County, Tennessee



Source: B05003. SEX BY AGE BY CITIZENSHIP STATUS
Data Set: 2008-2012 American Community Survey 5-Year Estimates

**B07004. GEOGRAPHICAL MOBILITY IN THE PAST YEAR BY RACE FOR CURRENT RESIDENCE IN THE UNITED STATES - Universe:
POPULATION 1 YEAR AND OVER**

Data Set: 2008-2012 American Community Survey 5-Year Estimates

| | Haywood County, Tennessee | | | | | |
|---|---------------------------|-----------------------|---------------|---------------------|-----------------------|----------------|
| | African American | Margin of Error (+/-) | % of AA Total | White, Not Hispanic | Margin of Error (+/-) | % of NHW Total |
| Total: | 9,112 | 280 | 100.0% | 8,306 | 70 | 100.0% |
| Same house 1 year ago | 8,029 | 504 | 88.1% | 7,174 | 361 | 86.4% |
| Moved within same county | 756 | 398 | 8.3% | 740 | 325 | 8.9% |
| Moved from different county within same state | 315 | 189 | 3.5% | 197 | 130 | 2.4% |
| Moved from different state | 3 | 6 | 0.0% | 181 | 159 | 2.2% |
| Moved from abroad | 9 | 15 | 0.1% | 14 | 21 | 0.2% |

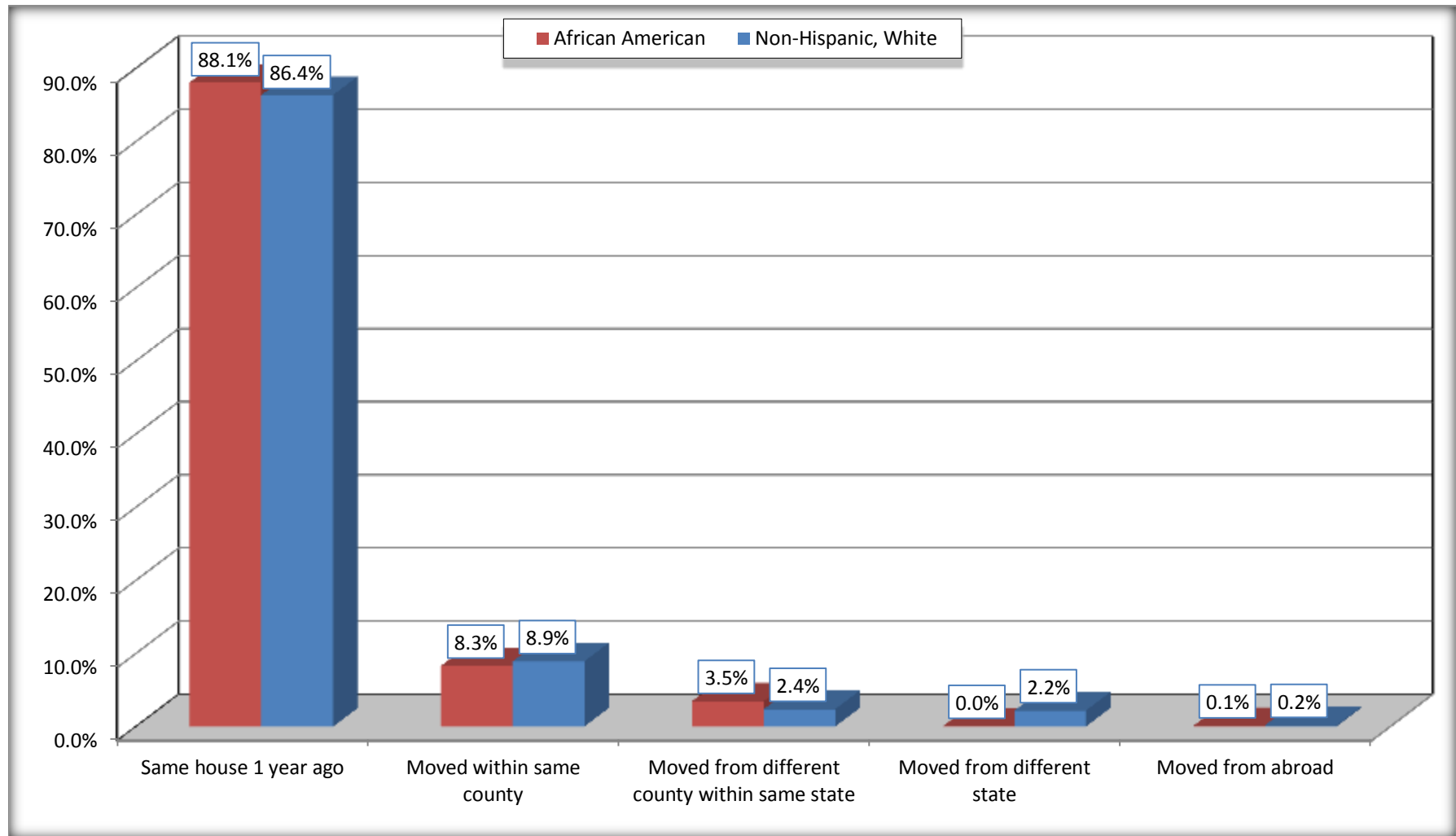
Source: U.S. Census Bureau, 2008-2012 American Community Survey

For information on confidentiality protection, sampling error, nonsampling error, and definitions, see Survey Methodology.

<http://www.census.gov/acs/www/UseData/index.htm>

Geographical Mobility in the Past Year (Population 1 Year and Over)

Haywood County, Tennessee



Source: B07004. GEOGRAPHICAL MOBILITY IN THE PAST YEAR BY RACE FOR CURRENT RESIDENCE IN THE UNITED STATES - Universe: POPULATION 1 YEAR AND OVER

Data Set: 2008-2012 American Community Survey 5-Year Estimates

B08105. MEANS OF TRANSPORTATION TO WORK - Universe: WORKERS 16 YEARS AND OVER

Data Set: 2008-2012 American Community Survey 5-Year Estimates

| | Haywood County, Tennessee | | | | | |
|--|---------------------------|-----------------------|---------------|---------------------|-----------------------|----------------|
| | African American | Margin of Error (+/-) | % of AA Total | White, Not Hispanic | Margin of Error (+/-) | % of NHW Total |
| Total: | 3085 | 344 | 100.0% | 3683 | 223 | 100.0% |
| Car, truck, or van - drove alone | 2555 | 349 | 82.8% | 3356 | 238 | 91.1% |
| Car, truck, or van - carpooled | 397 | 139 | 12.9% | 199 | 90 | 5.4% |
| Public transportation (excluding taxicab) | 0 | 19 | 0.0% | 6 | 10 | 0.2% |
| Walked | 26 | 30 | 0.8% | 16 | 19 | 0.4% |
| Taxicab, motorcycle, bicycle, or other means | 98 | 74 | 3.2% | 4 | 4 | 0.1% |
| Worked at home | 9 | 12 | 0.3% | 102 | 55 | 2.8% |

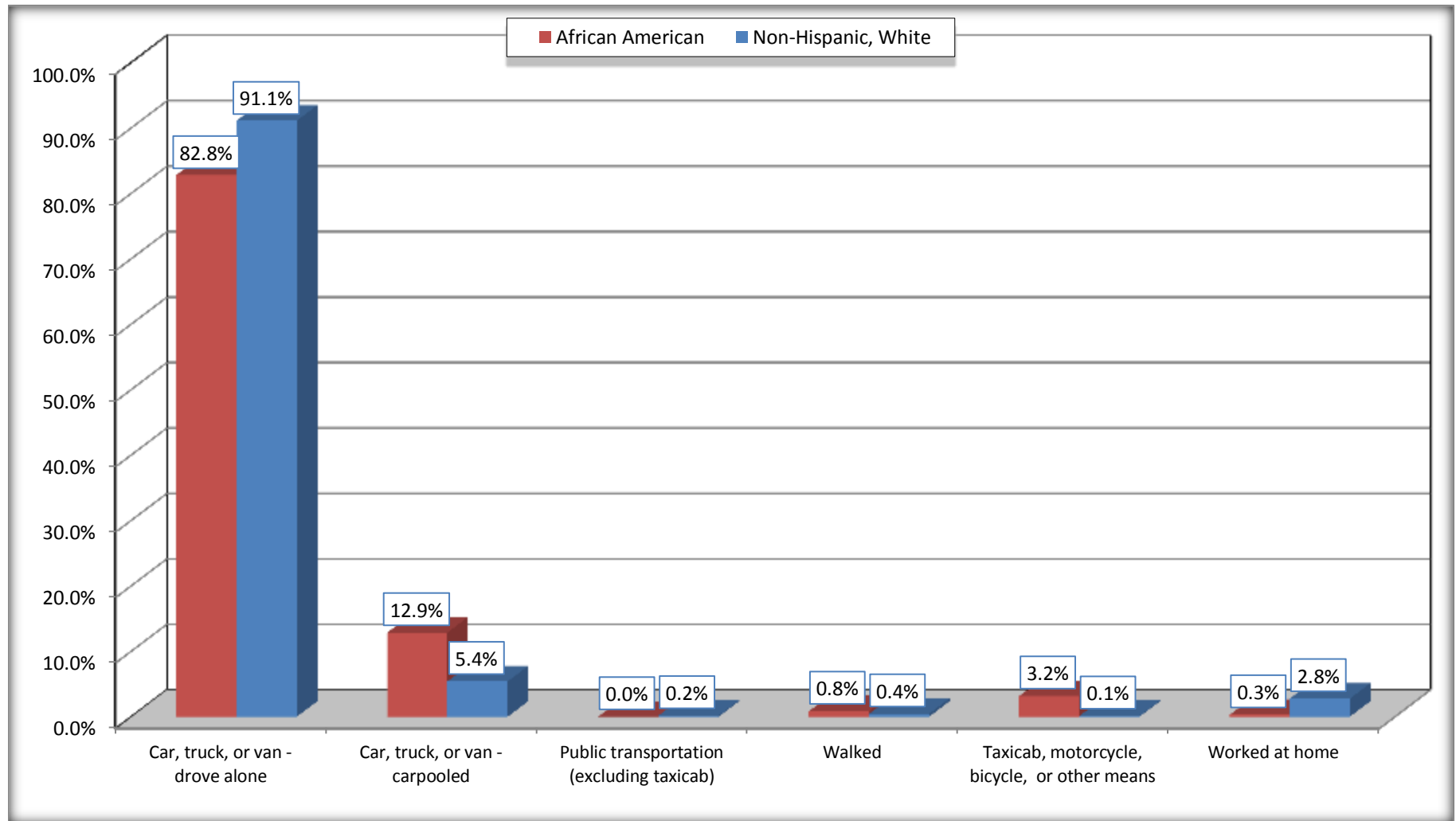
Source: U.S. Census Bureau, 2008-2012 American Community Survey

For information on confidentiality protection, sampling error, nonsampling error, and definitions, see Survey Methodology.

<http://www.census.gov/acs/www/UseData/index.htm>

Means of Transportation to Work (Workers 16 Years and Over)

Haywood County, Tennessee



Source: B08105. MEANS OF TRANSPORTATION TO WORK - Universe: WORKERS 16 YEARS AND OVER
Data Set: 2008-2012 American Community Survey 5-Year Estimates

B11002. HOUSEHOLD TYPE BY RELATIVES AND NONRELATIVES FOR POPULATION IN HOUSEHOLDS

Data Set: 2008-2012 American Community Survey 5-Year Estimates

| | Haywood County, Tennessee | | | | | |
|-------------------------|---------------------------|-----------------------|---------------|---------------------|-----------------------|----------------|
| | African American | Margin of Error (+/-) | % of AA Total | White, Not Hispanic | Margin of Error (+/-) | % of NHW Total |
| Total: | 9037 | 336 | 100.0% | 8679 | 306 | 100.0% |
| In family households | 7630 | 402 | 84.4% | 7336 | 366 | 84.5% |
| In nonfamily households | 1407 | 273 | 15.6% | 1343 | 232 | 15.5% |

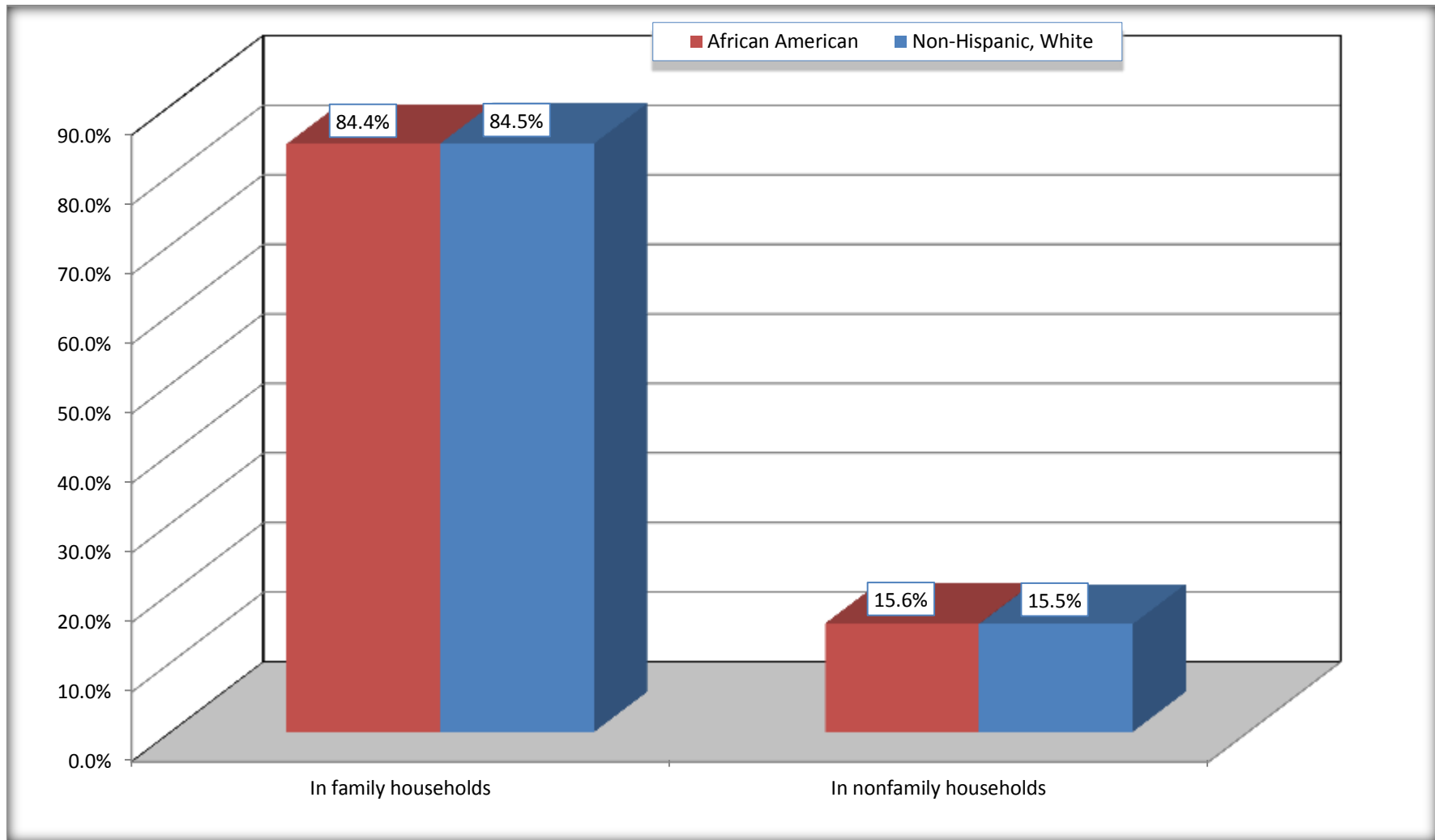
Source: U.S. Census Bureau, 2008-2012 American Community Survey

For information on confidentiality protection, sampling error, nonsampling error, and definitions, see Survey Methodology.

<http://www.census.gov/acs/www/UseData/index.htm>

Household Type for Population in Households

Haywood County, Tennessee



Source: B11002. HOUSEHOLD TYPE BY RELATIVES AND NONRELATIVES FOR POPULATION IN HOUSEHOLDS
Data Set: 2008-2012 American Community Survey 5-Year Estimates

B12002. MARITAL STATUS FOR THE POPULATION 15 YEARS AND OVER

Data Set: 2008-2012 American Community Survey 5-Year Estimates

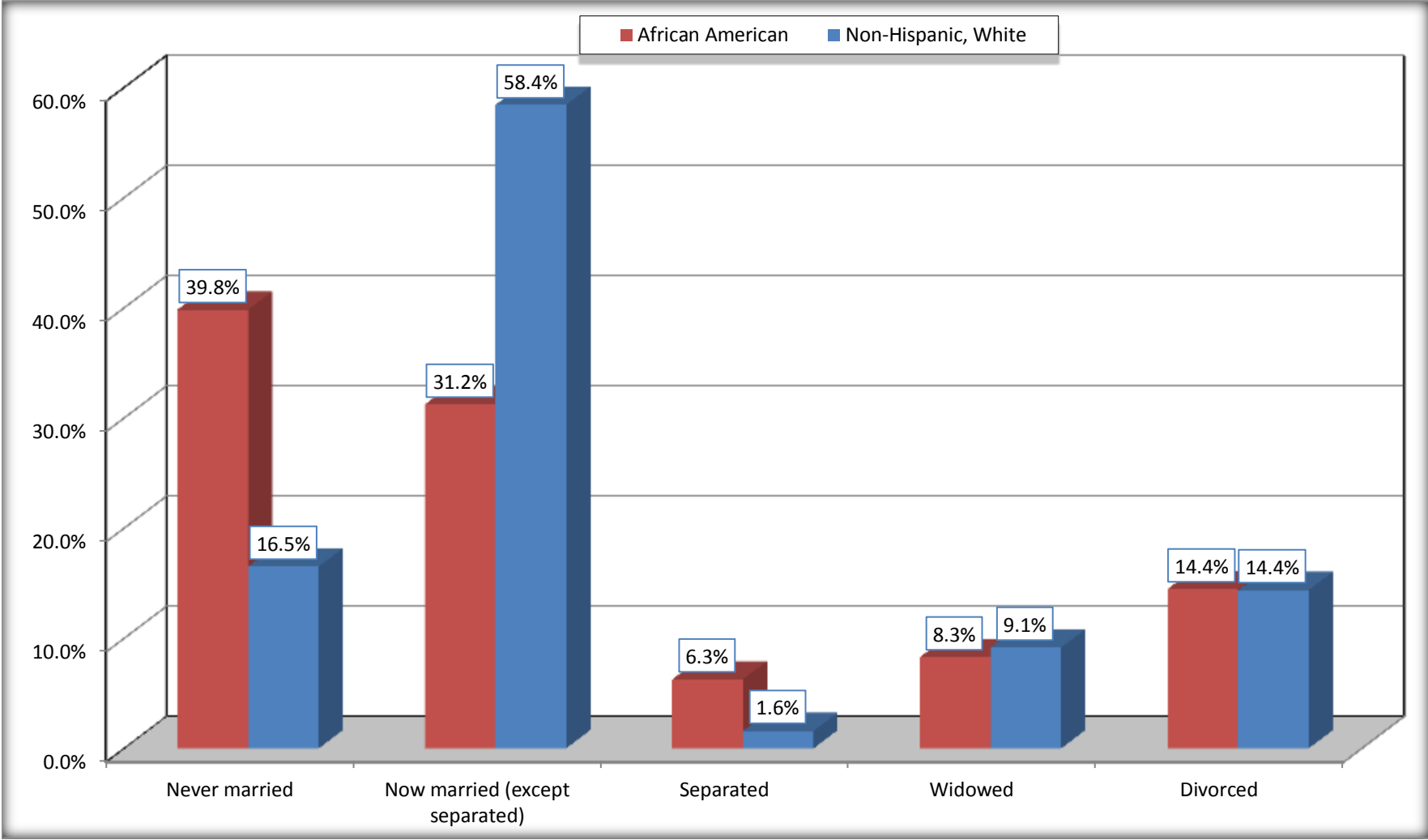
| | Haywood County, Tennessee | | | | | |
|--------------------------------|---------------------------|-----------------------|---------------|---------------------|-----------------------|----------------|
| | African American | Margin of Error (+/-) | % of AA Total | White, Not Hispanic | Margin of Error (+/-) | % of NHW Total |
| Total: | 7,236 | 106 | 100.0% | 6,946 | 19 | 100.0% |
| Never married | 2,881 | NC | 39.8% | 1,146 | NC | 16.5% |
| Now married (except separated) | 2,259 | NC | 31.2% | 4,057 | NC | 58.4% |
| Separated | 453 | NC | 6.3% | 110 | NC | 1.6% |
| Widowed | 598 | NC | 8.3% | 635 | NC | 9.1% |
| Divorced | 1,045 | NC | 14.4% | 998 | NC | 14.4% |
| Male: | 3,179 | 56 | 43.9% | 3,283 | 64 | 47.3% |
| Never married | 1,382 | 143 | 19.1% | 655 | 127 | 9.4% |
| Now married (except separated) | 1,106 | 171 | 15.3% | 1,991 | 176 | 28.7% |
| Separated | 216 | 106 | 3.0% | 71 | 58 | 1.0% |
| Widowed | 106 | 48 | 1.5% | 114 | 55 | 1.6% |
| Divorced | 369 | 127 | 5.1% | 452 | 119 | 6.5% |
| Female: | 4,057 | 60 | 56.1% | 3,663 | 64 | 52.7% |
| Never married | 1,499 | 161 | 20.7% | 491 | 96 | 7.1% |
| Now married (except separated) | 1,153 | 207 | 15.9% | 2,066 | 159 | 29.7% |
| Separated | 237 | 109 | 3.3% | 39 | 30 | 0.6% |
| Widowed | 492 | 121 | 6.8% | 521 | 102 | 7.5% |
| Divorced | 676 | 182 | 9.3% | 546 | 132 | 7.9% |

Source: U.S. Census Bureau, 2008-2012 American Community Survey

For information on confidentiality protection, sampling error, nonsampling error, and definitions, see Survey Methodology.

<http://www.census.gov/acs/www/UseData/index.htm>

Marital Status for the Population 15 Years and Over
Haywood County, Tennessee



Source: B12002. MARITAL STATUS FOR THE POPULATION 15 YEARS AND OVER
Data Set: 2008-2012 American Community Survey 5-Year Estimates

C15002. SEX BY EDUCATIONAL ATTAINMENT FOR THE POPULATION 25 YEARS AND OVER

Data Set: 2008-2012 American Community Survey 5-Year Estimates

| | Haywood County, Tennessee | | | | | |
|---|---------------------------|-----------------------|---------------|---------------------|-----------------------|----------------|
| | African American | Margin of Error (+/-) | % of AA Total | White, Not Hispanic | Margin of Error (+/-) | % of NHW Total |
| Total: | 5,867 | 106 | 100.0% | 6,095 | 78 | 100.0% |
| Less than high school diploma | 1,607 | NC | 27.4% | 1,025 | NC | 16.8% |
| High school graduate, GED, or alternative | 2,717 | NC | 46.3% | 2,346 | NC | 38.5% |
| Some college or associate's degree | 1,080 | NC | 18.4% | 1,768 | NC | 29.0% |
| Bachelor's degree or higher | 463 | NC | 7.9% | 956 | NC | 15.7% |
| Male: | 2,476 | 56 | 42.2% | 2,927 | 78 | 48.0% |
| Less than high school diploma | 841 | 127 | 14.3% | 585 | 127 | 9.6% |
| High school graduate, GED, or alternative | 1,265 | 159 | 21.6% | 1,203 | 168 | 19.7% |
| Some college or associate's degree | 323 | 115 | 5.5% | 754 | 147 | 12.4% |
| Bachelor's degree or higher | 47 | 40 | 0.8% | 385 | 119 | 6.3% |
| Female: | 3,391 | 60 | 57.8% | 3,168 | 19 | 52.0% |
| Less than high school diploma | 766 | 158 | 13.1% | 440 | 133 | 7.2% |
| High school graduate, GED, or alternative | 1,452 | 186 | 24.7% | 1,143 | 168 | 18.8% |
| Some college or associate's degree | 757 | 181 | 12.9% | 1,014 | 168 | 16.6% |
| Bachelor's degree or higher | 416 | 139 | 7.1% | 571 | 128 | 9.4% |

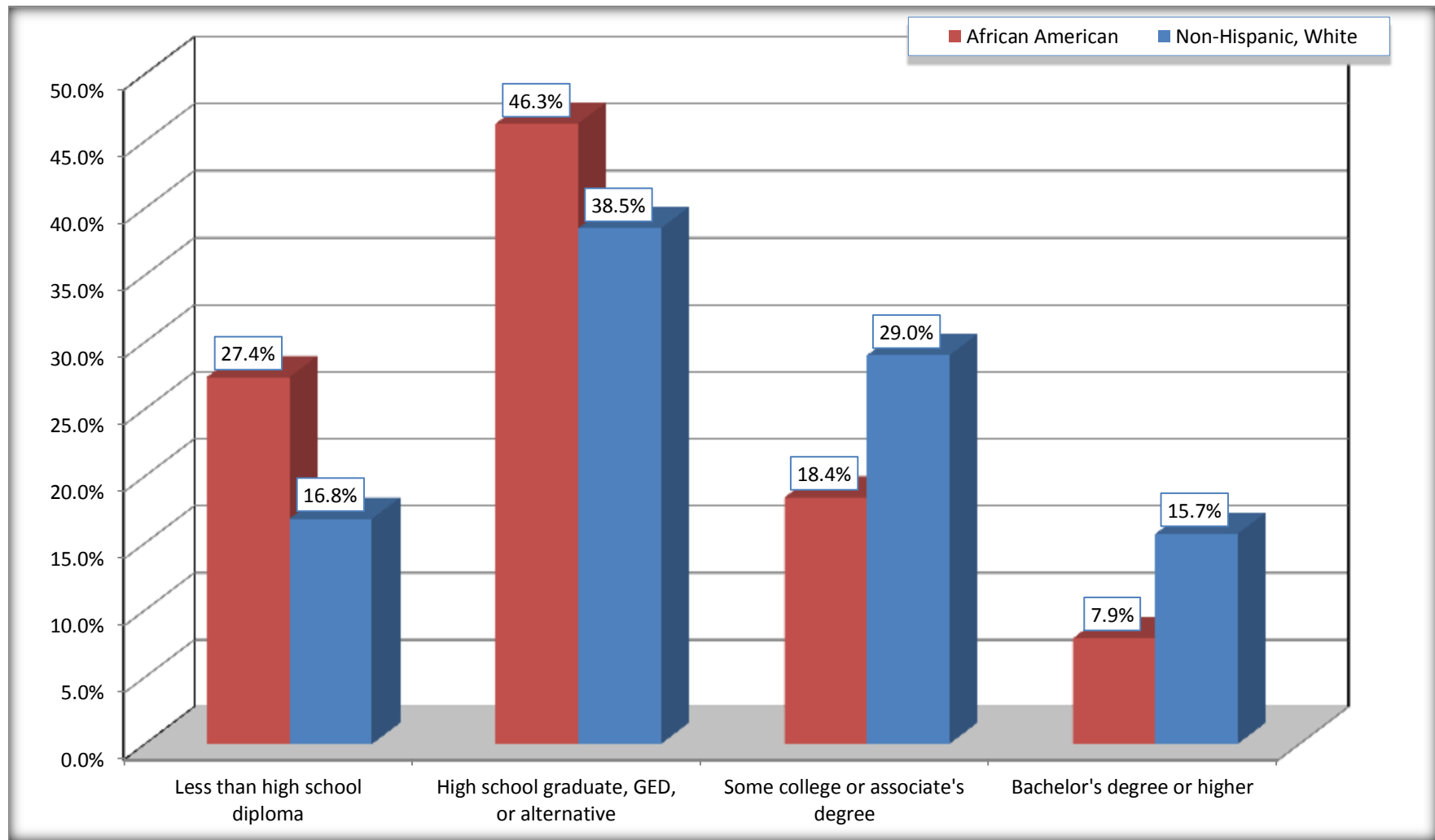
Source: U.S. Census Bureau, 2008-2012 American Community Survey

For information on confidentiality protection, sampling error, nonsampling error, and definitions, see Survey Methodology.

<http://www.census.gov/acs/www/UseData/index.htm>

Educational Attainment for the Population 25 Years and Older

Haywood County, Tennessee



Source: C15002. SEX BY EDUCATIONAL ATTAINMENT FOR THE POPULATION 25 YEARS AND OVER
Data Set: 2008-2012 American Community Survey 5-Year Estimates

B17010. POVERTY STATUS IN THE PAST 12 MONTHS OF FAMILIES BY FAMILY TYPE BY PRESENCE OF RELATED CHILDREN UNDER 18 YEARS

Data Set: 2008-2012 American Community Survey 5-Year Estimates

| | Haywood County, Tennessee | | | | | |
|---|---------------------------|-----------------------|---------------|---------------------|-----------------------|----------------|
| | African American | Margin of Error (+/-) | % of AA Total | White, Not Hispanic | Margin of Error (+/-) | % of NHW Total |
| Total: | 2,215 | 198 | 100.0% | 2,305 | 158 | 100.0% |
| Income in the past 12 months below poverty level: | 456 | 134 | 20.6% | 332 | 139 | 14.4% |
| Married-couple family: | 104 | 64 | 4.7% | 229 | 113 | 9.9% |
| With related children under 18 years | 51 | 43 | 2.3% | 124 | 74 | 5.4% |
| Other family: | 352 | 123 | 15.9% | 103 | 66 | 4.5% |
| Male householder, no wife present | 10 | 12 | 0.5% | 12 | 19 | 0.5% |
| With related children under 18 years | 4 | 7 | 0.2% | 12 | 19 | 0.5% |
| Female householder, no husband present | 342 | 121 | 15.4% | 91 | 63 | 3.9% |
| With related children under 18 years | 298 | 119 | 13.5% | 11 | 14 | 0.5% |
| Income in the past 12 months at or above poverty level: | 1,759 | 188 | 79.4% | 1,973 | 164 | 85.6% |
| Married-couple family: | 832 | 167 | 37.6% | 1,708 | 166 | 74.1% |
| With related children under 18 years | 293 | 124 | 13.2% | 584 | 116 | 25.3% |
| Other family: | 927 | 150 | 41.9% | 265 | 84 | 11.5% |
| Male householder, no wife present | 79 | 50 | 3.6% | 157 | 72 | 6.8% |
| With related children under 18 years | 30 | 28 | 1.4% | 38 | 35 | 1.6% |
| Female householder, no husband present | 848 | 152 | 38.3% | 108 | 50 | 4.7% |
| With related children under 18 years | 430 | 122 | 19.4% | 45 | 35 | 2.0% |

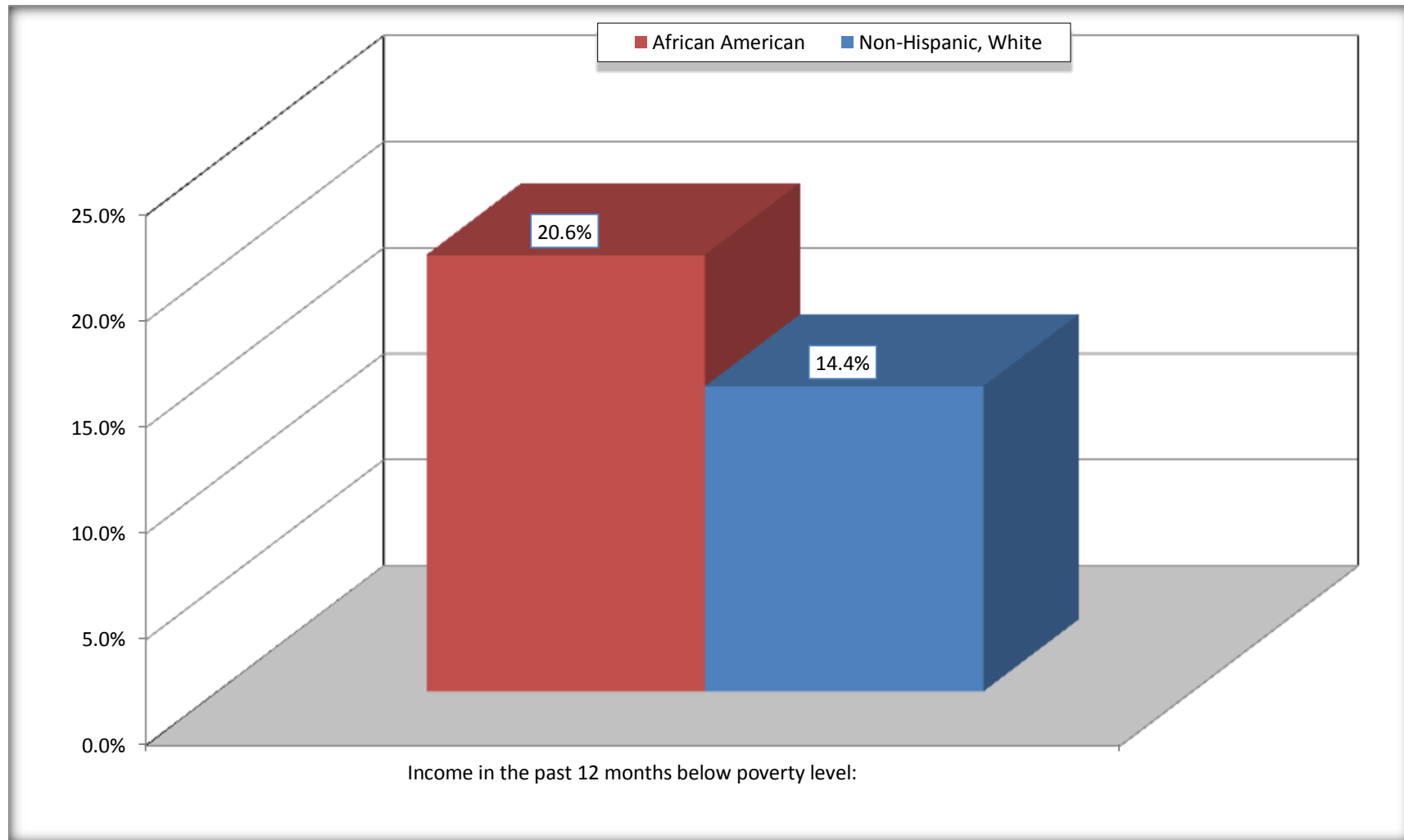
Source: U.S. Census Bureau, 2008-2012 American Community Survey

For information on confidentiality protection, sampling error, nonsampling error, and definitions, see Survey Methodology.

<http://www.census.gov/acs/www/UseData/index.htm>

Family Households Below Poverty in the Past 12 Months

Haywood County, Tennessee

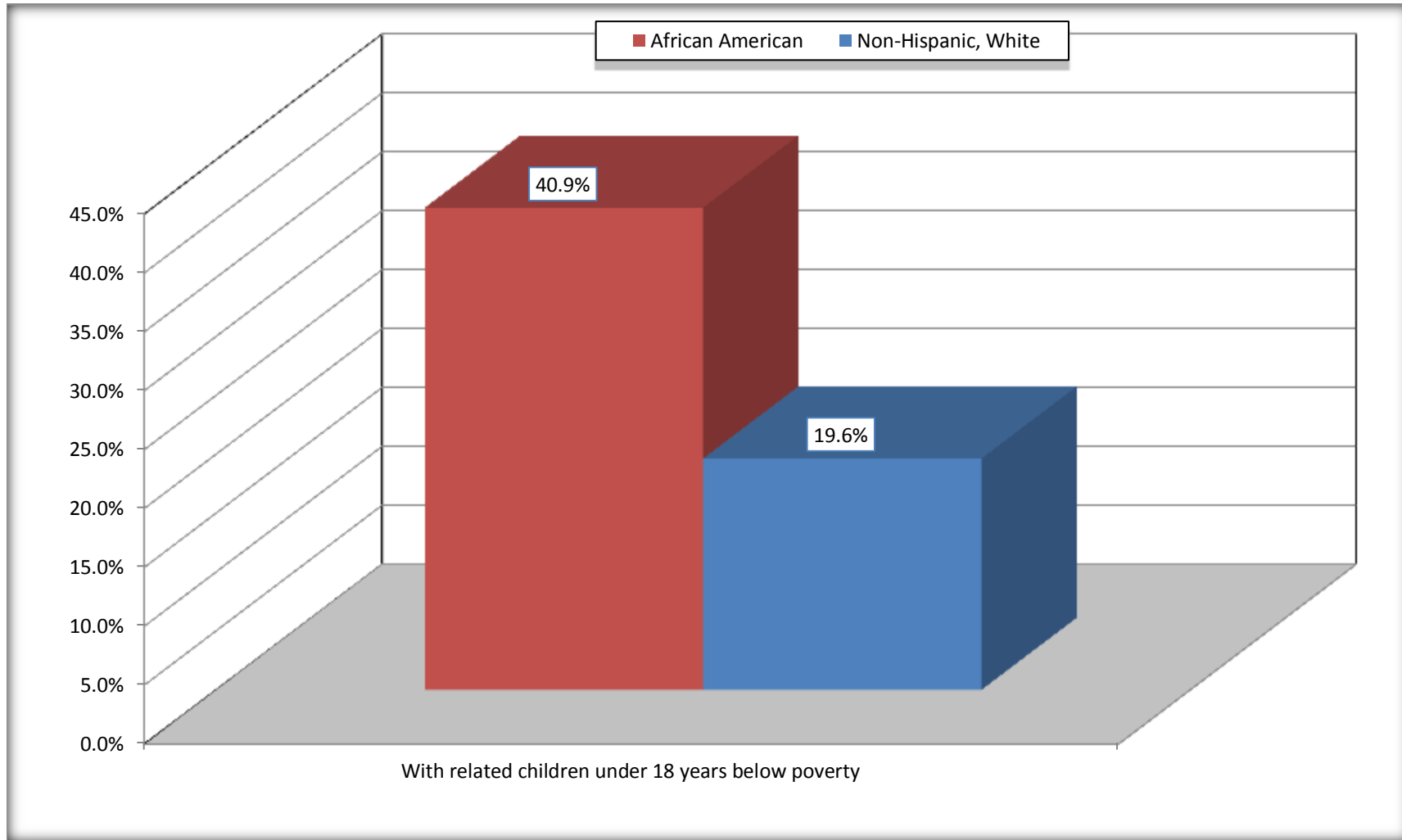


Source: B17010. POVERTY STATUS IN THE PAST 12 MONTHS OF FAMILIES BY FAMILY TYPE BY PRESENCE OF RELATED CHILDREN UNDER 18 YEARS

Data Set: 2008-2012 American Community Survey 5-Year Estimates

Female-headed Households with Related Children Below Poverty in the Past 12 Months

Haywood County, Tennessee



Source: B17010. POVERTY STATUS IN THE PAST 12 MONTHS OF FAMILIES BY FAMILY TYPE BY PRESENCE OF RELATED CHILDREN UNDER 18 YEARS

Data Set: 2008-2012 American Community Survey 5-Year Estimates

B17020 POVERTY STATUS IN THE PAST 12 MONTHS BY AGE - Universe: POPULATION FOR WHOM POVERTY STATUS IS DETERMINED

Data Set: 2008-2012 American Community Survey 5-Year Estimates

| | Haywood County, Tennessee | | | | | |
|---|---------------------------|-----------------------|----------------|---------------------|-----------------------|-----------------|
| | African American | Margin of Error (+/-) | % of AA By Age | White, Not Hispanic | Margin of Error (+/-) | % of NHW By Age |
| Total: | 9,103 | 293 | 100.0% | 8,297 | 69 | 100.0% |
| Income in the past 12 months below poverty level: | 2,457 | 491 | 27.0% | 1,381 | 389 | 16.6% |
| Under 18 years | 862 | NC | 35.3% | 347 | NC | 19.3% |
| 18 to 64 years | 1,277 | 290 | 22.4% | 813 | 235 | 16.4% |
| 65 years and over | 318 | NC | 33.2% | 221 | NC | 14.3% |
| Income in the past 12 months at or above poverty level: | 6,646 | 550 | 73.0% | 6,916 | 394 | 83.4% |
| Under 18 years | 1,579 | NC | 64.7% | 1,448 | NC | 80.7% |
| 18 to 64 years | 4,426 | 308 | 77.6% | 4,144 | 242 | 83.6% |
| 65 years and over | 641 | NC | 66.8% | 1,324 | NC | 85.7% |

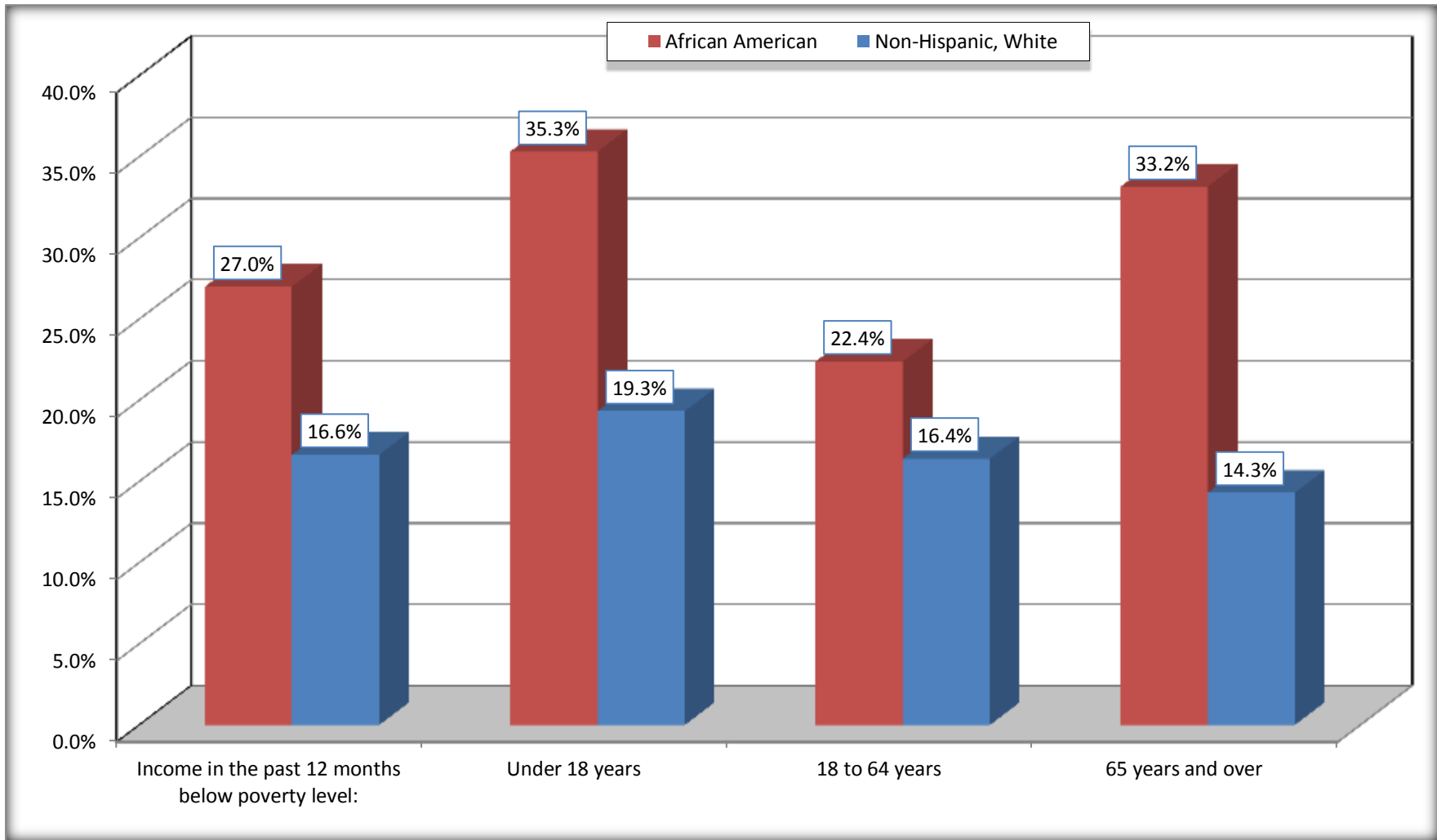
Source: U.S. Census Bureau, 2008-2012 American Community Survey

For information on confidentiality protection, sampling error, nonsampling error, and definitions, see Survey Methodology.

<http://www.census.gov/acs/www/UseData/index.htm>

Population Below Poverty in the Past 12 Months

Haywood County, Tennessee



Source: B17020 POVERTY STATUS IN THE PAST 12 MONTHS BY AGE - Universe: POPULATION FOR WHOM POVERTY STATUS IS DETERMINED
Data Set: 2008-2012 American Community Survey 5-Year Estimates

B19001. HOUSEHOLD INCOME IN THE PAST 12 MONTHS (IN 2010 INFLATION-ADJUSTED DOLLARS)

Data Set: 2008-2012 American Community Survey 5-Year Estimates

| | Haywood County, Tennessee | | | | | |
|---------------------------------|---------------------------|-----------------------|---------------|---------------------|-----------------------|----------------|
| | African American | Margin of Error (+/-) | % of AA Total | White, Not Hispanic | Margin of Error (+/-) | % of NHW Total |
| Total: | 3,411 | 223 | 100.0% | 3,470 | 184 | 100.0% |
| Less than \$ 10,000 | 570 | 139 | 16.7% | 283 | 106 | 8.2% |
| \$ 10,000 to \$ 14,999 | 315 | 106 | 9.2% | 316 | 98 | 9.1% |
| \$ 15,000 to \$ 24,999 | 785 | NC | 23.0% | 427 | NC | 12.3% |
| \$ 25,000 to \$ 34,999 | 582 | NC | 17.1% | 365 | NC | 10.5% |
| \$ 35,000 to \$ 49,999 | 565 | NC | 16.6% | 574 | NC | 16.5% |
| \$ 50,000 to \$ 74,999 | 318 | NC | 9.3% | 796 | NC | 22.9% |
| \$ 75,000 to \$ 99,999 | 160 | 89 | 4.7% | 290 | 95 | 8.4% |
| \$ 100,000 to \$ 149,999 | 64 | NC | 1.9% | 287 | NC | 8.3% |
| \$ 150,000 to \$ 199,999 | 52 | 44 | 1.5% | 70 | 54 | 2.0% |
| \$ 200,000 or more | 0 | 19 | 0.0% | 62 | 43 | 1.8% |

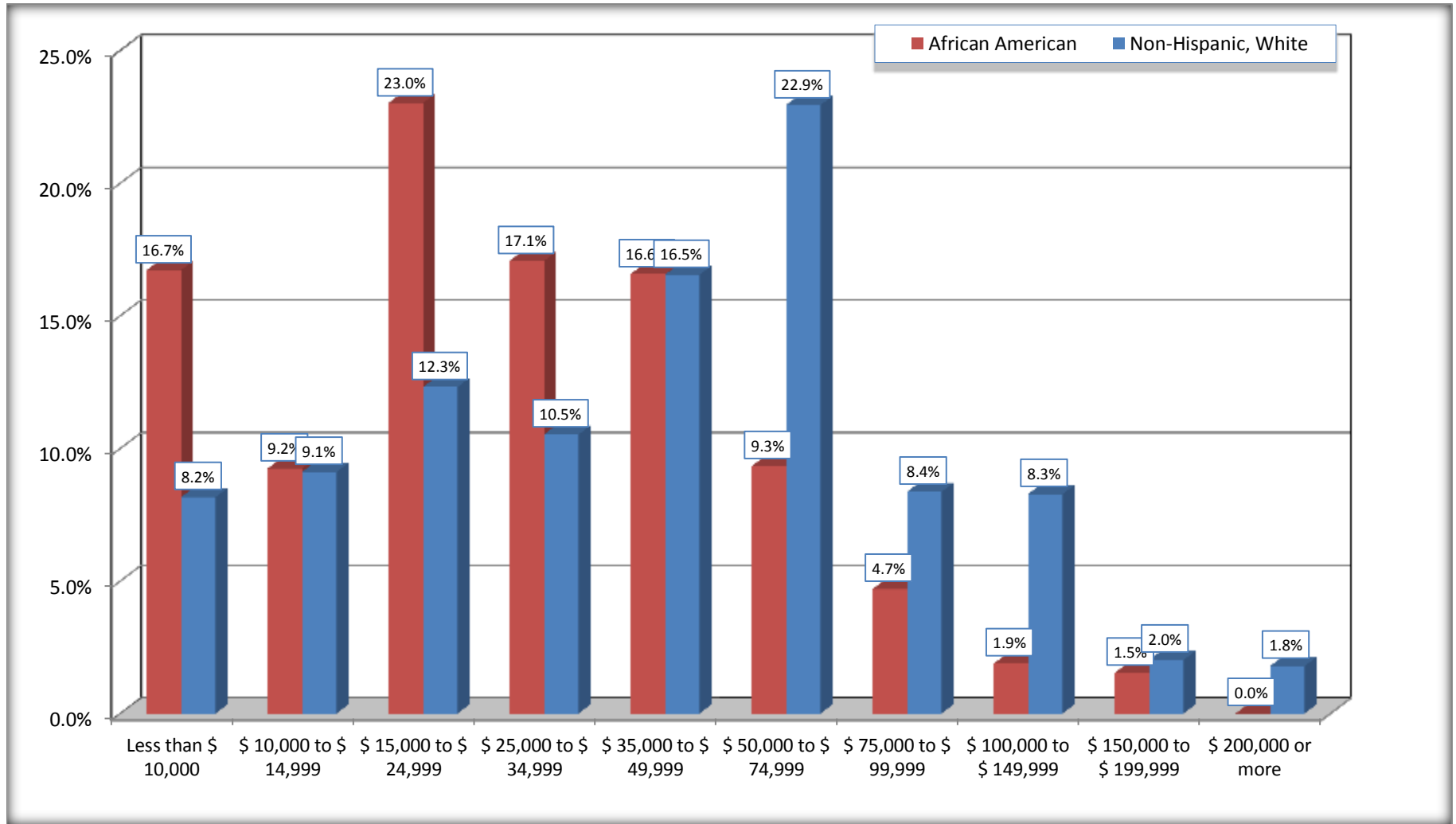
Source: U.S. Census Bureau, 2008-2012 American Community Survey

For information on confidentiality protection, sampling error, nonsampling error, and definitions, see Survey Methodology.

<http://www.census.gov/acs/www/UseData/index.htm>

Household Income in the Past 12 Months

Haywood County, Tennessee



Source: B19001. HOUSEHOLD INCOME IN THE PAST 12 MONTHS (IN 2010 INFLATION-ADJUSTED DOLLARS)
Data Set: 2008-2012 American Community Survey 5-Year Estimates

B19013. MEDIAN HOUSEHOLD INCOME IN THE PAST 12 MONTHS (IN 2010 INFLATION-ADJUSTED DOLLARS)

Data Set: 2008-2012 American Community Survey 5-Year Estimates

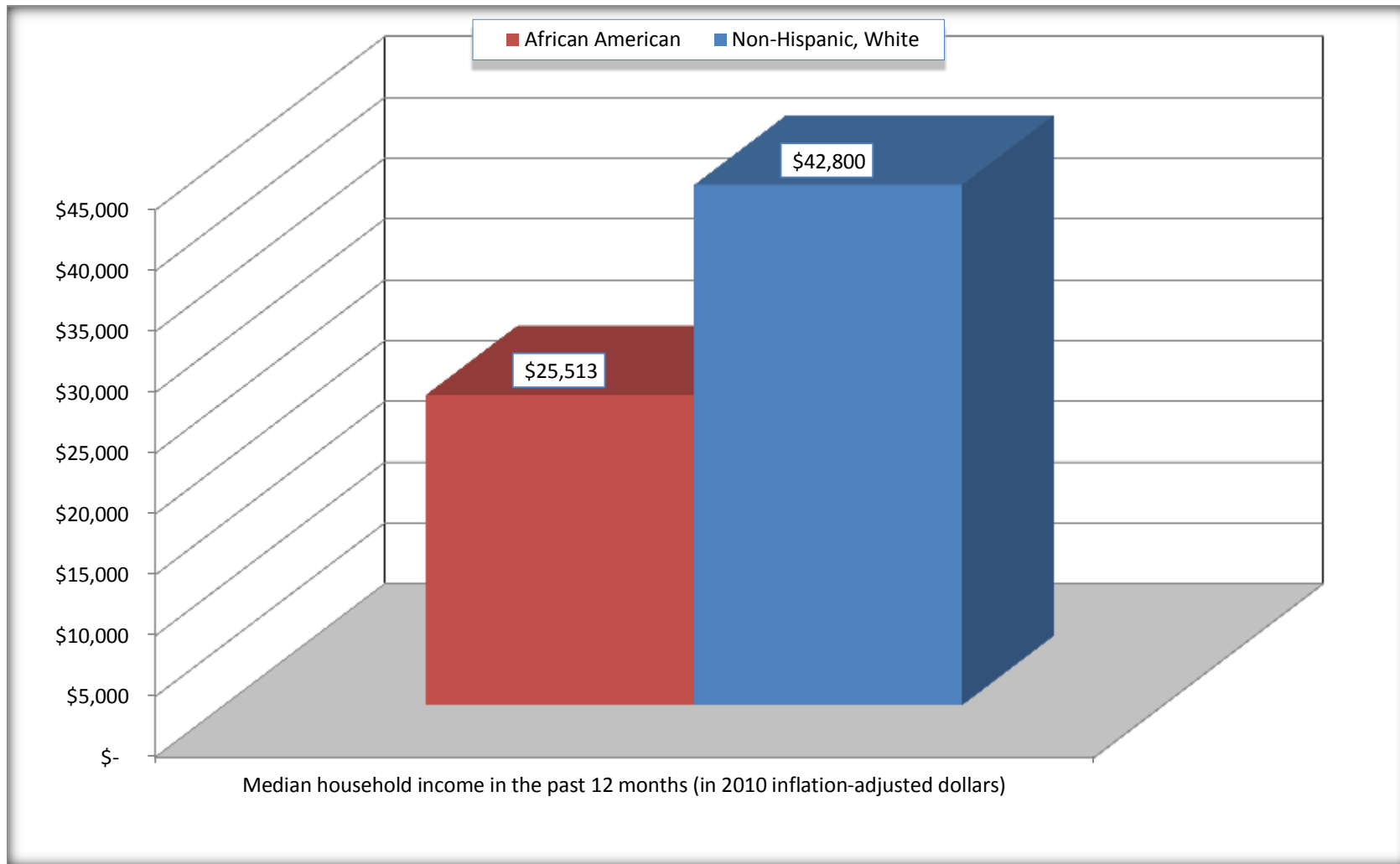
| | Haywood County, Tennessee | | | |
|--|---------------------------|-----------------------|---------------------|-----------------------|
| | African American | Margin of Error (+/-) | White, Not Hispanic | Margin of Error (+/-) |
| Median household income in the past 12 months (in 2010 inflation-adjusted dollars) | \$ 25,513 | \$ 3,450 | \$ 42,800 | \$ 5,479 |

Source: U.S. Census Bureau, 2008-2012 American Community Survey

For information on confidentiality protection, sampling error, nonsampling error, and definitions, see Survey Methodology.
<http://www.census.gov/acs/www/UseData/index.htm>

Median Household Income in the Past 12 Months

Haywood County, Tennessee



Source: B19013. MEDIAN HOUSEHOLD INCOME IN THE PAST 12 MONTHS (IN 2010 INFLATION-ADJUSTED DOLLARS)
Data Set: 2008-2012 American Community Survey 5-Year Estimates

B19101. FAMILY INCOME IN THE PAST 12 MONTHS (IN 2010 INFLATION-ADJUSTED DOLLARS)

Data Set: 2008-2012 American Community Survey 5-Year Estimates

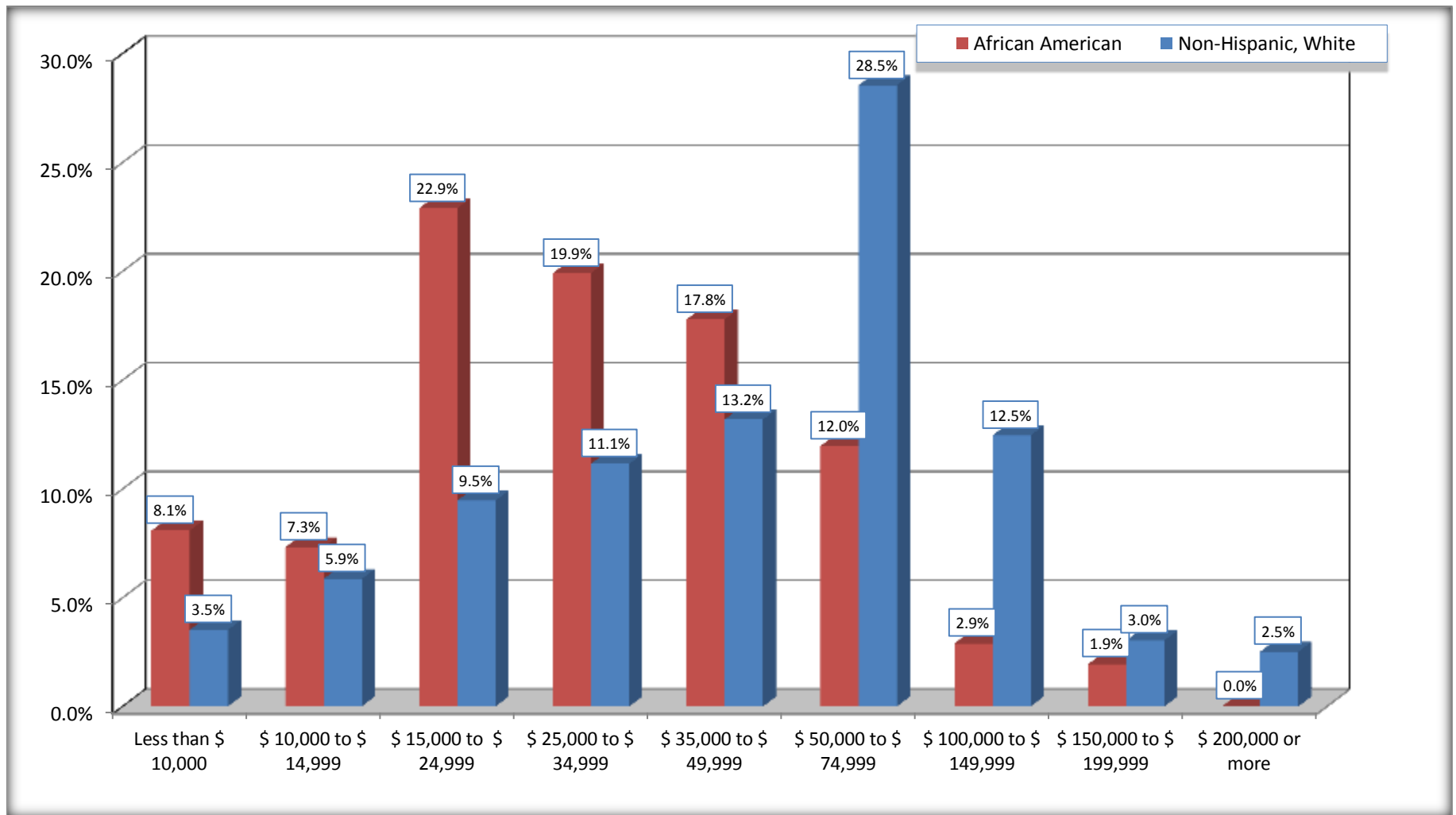
| | Haywood County, Tennessee | | | | | |
|---------------------------------|---------------------------|-----------------------|---------------|---------------------|-----------------------|----------------|
| | African American | Margin of Error (+/-) | % of AA Total | White, Not Hispanic | Margin of Error (+/-) | % of NHW Total |
| Total: | 2,215 | 198 | 100.0% | 2,305 | 158 | 100.0% |
| Less than \$ 10,000 | 179 | 89 | 8.1% | 81 | 47 | 3.5% |
| \$ 10,000 to \$ 14,999 | 162 | 87 | 7.3% | 135 | 97 | 5.9% |
| \$ 15,000 to \$ 24,999 | 507 | NC | 22.9% | 218 | NC | 9.5% |
| \$ 25,000 to \$ 34,999 | 441 | NC | 19.9% | 257 | NC | 11.1% |
| \$ 35,000 to \$ 49,999 | 394 | NC | 17.8% | 304 | NC | 13.2% |
| \$ 50,000 to \$ 74,999 | 265 | NC | 12.0% | 658 | NC | 28.5% |
| \$ 100,000 to \$ 149,999 | 64 | NC | 2.9% | 287 | NC | 12.5% |
| \$ 150,000 to \$ 199,999 | 43 | 43 | 1.9% | 70 | 54 | 3.0% |
| \$ 200,000 or more | 0 | 19 | 0.0% | 58 | 43 | 2.5% |

Source: U.S. Census Bureau, 2008-2012 American Community Survey

For information on confidentiality protection, sampling error, nonsampling error, and definitions, see Survey Methodology.

<http://www.census.gov/acs/www/UseData/index.htm>

Family Income in the Past 12 Months Haywood County, Tennessee



Source: B19101. FAMILY INCOME IN THE PAST 12 MONTHS (IN 2010 INFLATION-ADJUSTED DOLLARS)
Data Set: 2008-2012 American Community Survey 5-Year Estimates

B19113. MEDIAN FAMILY INCOME IN THE PAST 12 MONTHS (IN 2010 INFLATION-ADJUSTED DOLLARS)

Data Set: 2008-2012 American Community Survey 5-Year Estimates

| | Haywood County, Tennessee | | | |
|---|---------------------------|-----------------------|---------------------|-----------------------|
| | African American | Margin of Error (+/-) | White, Not Hispanic | Margin of Error (+/-) |
| Median family income in the past 12 months (in 2010 inflation-adjusted dollars) | \$ 28,903 | \$ 3,315 | \$ 54,433 | \$ 4,739 |

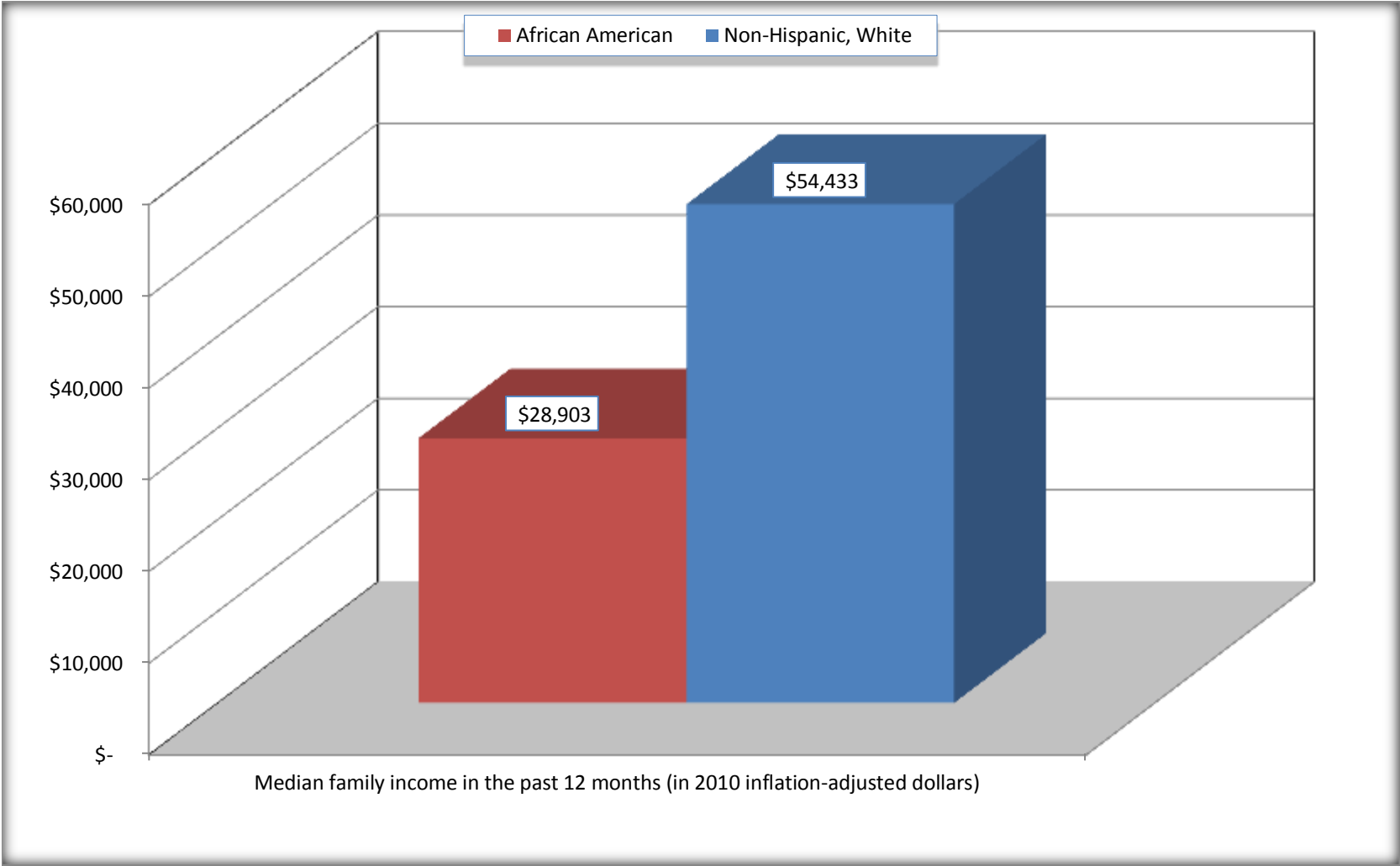
Source: U.S. Census Bureau, 2008-2012 American Community Survey

For information on confidentiality protection, sampling error, nonsampling error, and definitions, see Survey Methodology.

<http://www.census.gov/acs/www/UseData/index.htm>

Median Family Income in the Past 12 Months

Haywood County, Tennessee



Source: B19113. MEDIAN FAMILY INCOME IN THE PAST 12 MONTHS (IN 2010 INFLATION-ADJUSTED DOLLARS)
Data Set: 2008-2012 American Community Survey 5-Year Estimates

B19202. MEDIAN NONFAMILY HOUSEHOLD INCOME IN THE PAST 12 MONTHS (IN 2010 INFLATION-ADJUSTED DOLLARS)

Data Set: 2008-2012 American Community Survey 5-Year Estimates

| | Haywood County, Tennessee | | | |
|--|---------------------------|-----------------------|---------------------|-----------------------|
| | African American | Margin of Error (+/-) | White, Not Hispanic | Margin of Error (+/-) |
| Median nonfamily household income in the past 12 months (in 2010 inflation-adjusted dollars) | \$ 16,023 | \$ 2,563 | \$ 24,623 | \$ 6,312 |

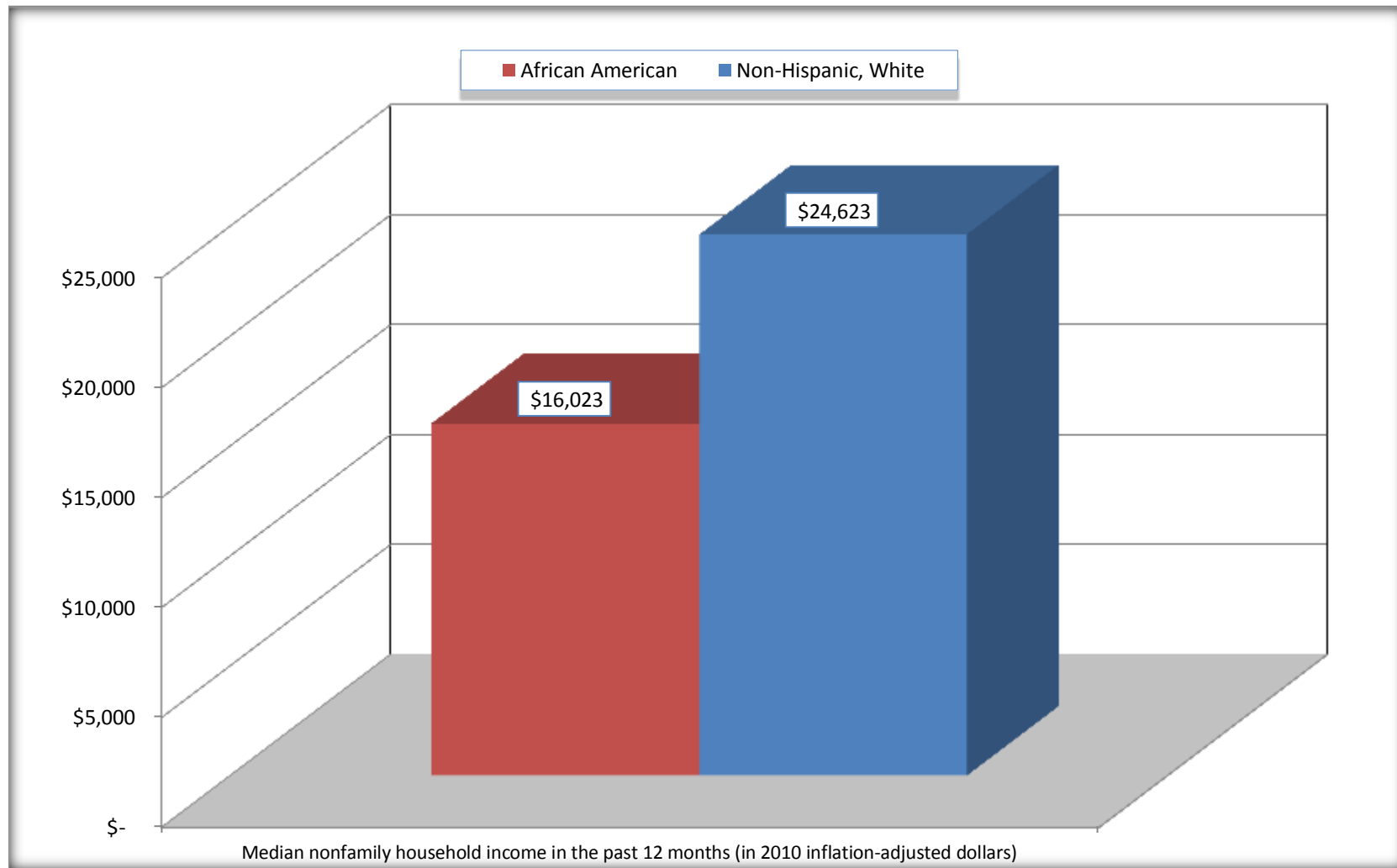
Source: U.S. Census Bureau, 2008-2012 American Community Survey

For information on confidentiality protection, sampling error, nonsampling error, and definitions, see Survey Methodology.

<http://www.census.gov/acs/www/UseData/index.htm>

Median Non-Family Income in the Past 12 Months

Haywood County, Tennessee



Source: B19202. MEDIAN NONFAMILY HOUSEHOLD INCOME IN THE PAST 12 MONTHS (IN 2010 INFLATION-ADJUSTED DOLLARS)
Data Set: 2008-2012 American Community Survey 5-Year Estimates

B19301. PER CAPITA INCOME IN THE PAST 12 MONTHS (IN 2010 INFLATION-ADJUSTED DOLLARS)

Data Set: 2008-2012 American Community Survey 5-Year Estimates

| | Haywood County, Tennessee | | | |
|--|---------------------------|-----------------------|---------------------|-----------------------|
| | African American | Margin of Error (+/-) | White, Not Hispanic | Margin of Error (+/-) |
| Per capita income in the past 12 months (in 2010 inflation-adjusted dollars) | \$ 13,509 | \$ 1,491 | \$ 22,484 | \$ 1,802 |

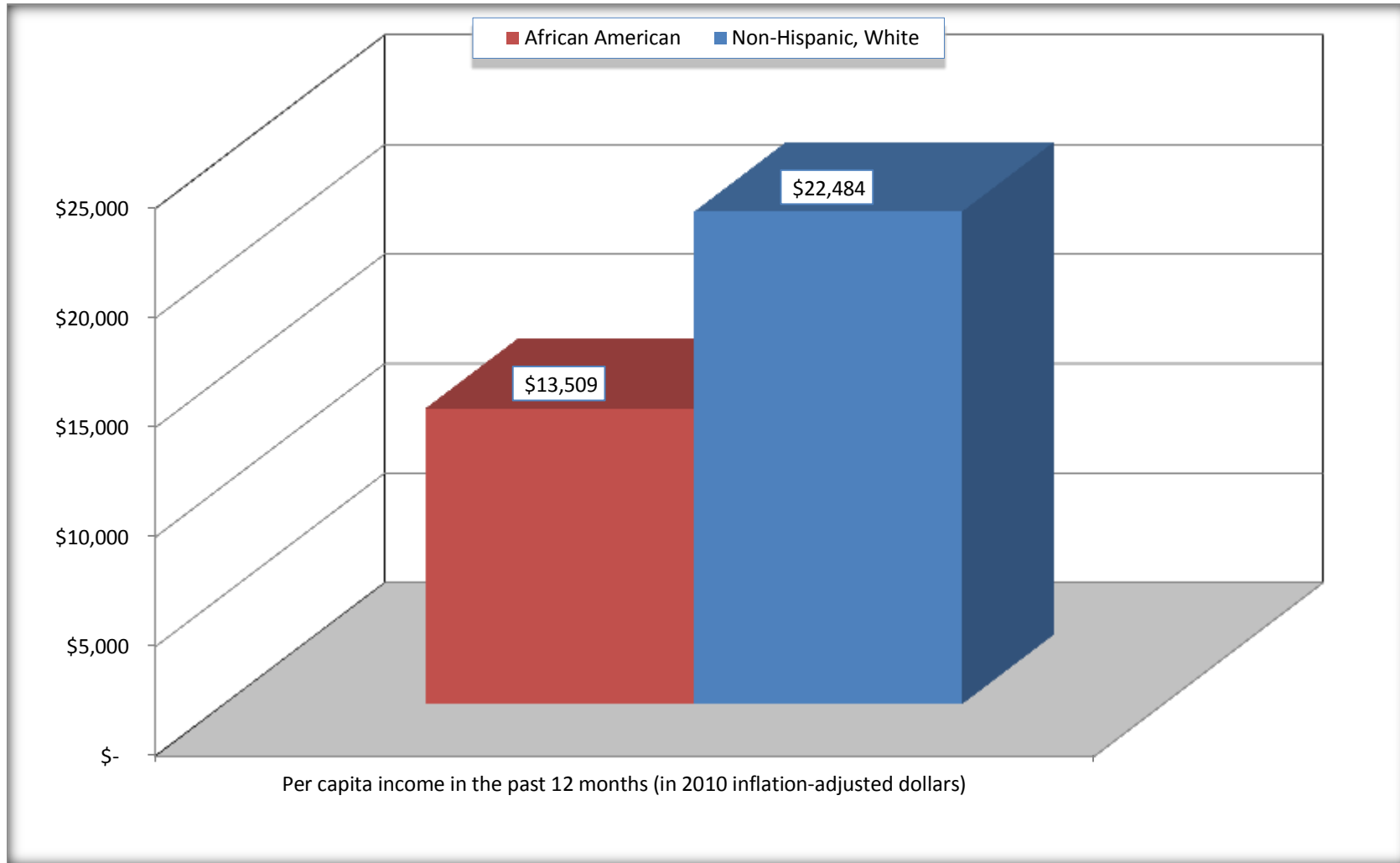
Source: U.S. Census Bureau, 2008-2012 American Community Survey

For information on confidentiality protection, sampling error, nonsampling error, and definitions, see Survey Methodology.

<http://www.census.gov/acs/www/UseData/index.htm>

Per capita Income in the Past 12 Months

Haywood County, Tennessee



Source: B19301. PER CAPITA INCOME IN THE PAST 12 MONTHS (IN 2010 INFLATION-ADJUSTED DOLLARS)
Data Set: 2008-2012 American Community Survey 5-Year Estimates

B20017. MEDIAN EARNINGS IN THE PAST 12 MONTHS (IN 2010 INFLATION-ADJUSTED DOLLARS) BY SEX BY WORK EXPERIENCE IN THE PAST 12 MONTHS FOR THE POPULATION 16 YEARS AND OVER WITH EARNINGS IN THE PAST 12 MONTHS

Data Set: 2008-2012 American Community Survey 5-Year Estimates

| | Haywood County, Tennessee | | | |
|---|---------------------------|-----------------------|---------------------|-----------------------|
| | African American | Margin of Error (+/-) | White, Not Hispanic | Margin of Error (+/-) |
| Median earnings in the past 12 months (in 2010 inflation-adjusted dollars) -- | | | | |
| Total: | \$ 20,402 | \$ 1,944 | \$ 26,909 | \$ 2,746 |
| Male -- | | | | |
| Total | \$ 20,479 | \$ 4,573 | \$ 29,292 | \$ 3,801 |
| Worked full-time, year-round in the past 12 months | \$ 35,603 | \$ 5,589 | \$ 38,462 | \$ 5,335 |
| Other | \$ 6,875 | \$ 3,328 | \$ 11,340 | \$ 2,498 |
| Female -- | | | | |
| Total | \$ 20,338 | \$ 1,984 | \$ 22,371 | \$ 4,307 |
| Worked full-time, year-round in the past 12 months | \$ 27,946 | \$ 4,907 | \$ 35,653 | \$ 2,733 |
| Other | \$ 10,585 | \$ 1,820 | \$ 8,250 | \$ 4,730 |

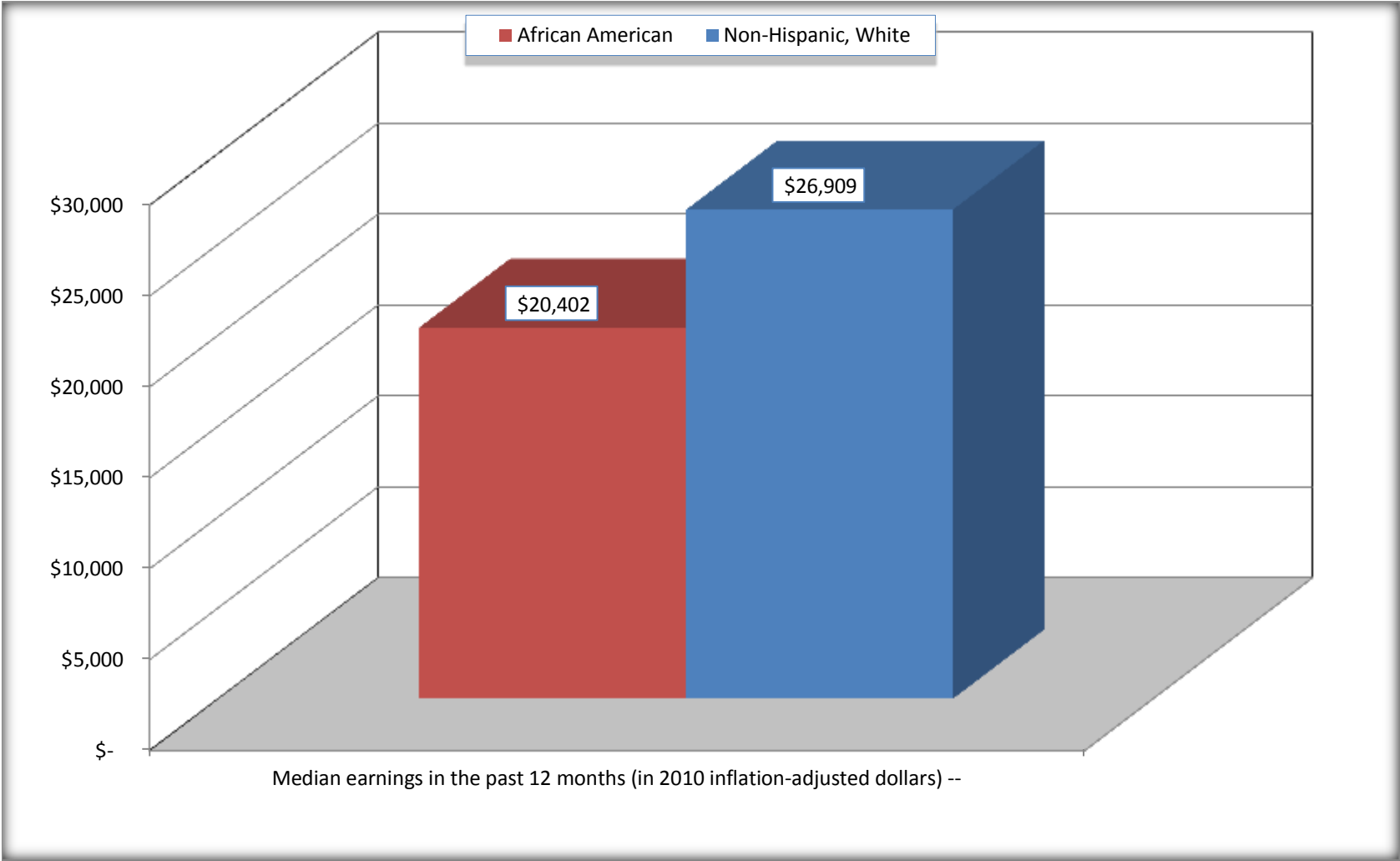
Source: U.S. Census Bureau, 2008-2012 American Community Survey

For information on confidentiality protection, sampling error, nonsampling error, and definitions, see Survey Methodology.

<http://www.census.gov/acs/www/UseData/index.htm>

Median earnings in the Past 12 Months (16 Years and Over with Earnings)

Haywood County, Tennessee



Source: B20017. MEDIAN EARNINGS IN THE PAST 12 MONTHS (IN 2010 INFLATION-ADJUSTED DOLLARS) BY SEX BY WORK EXPERIENCE IN THE PAST 12 MONTHS FOR THE POPULATION 16 YEARS AND OVER WITH EARNINGS IN THE PAST 12 MONTHS
Data Set: 2008-2012 American Community Survey 5-Year Estimates

B20005. SEX BY WORK EXPERIENCE IN THE PAST 12 MONTHS BY EARNINGS IN THE PAST 12 MONTHS (IN 2010 INFLATION-ADJUSTED DOLLARS) FOR THE POPULATION 16 YEARS AND OVER

Data Set: 2008-2012 American Community Survey 5-Year Estimates

| | Haywood County, Tennessee | | | | | |
|---|---------------------------|-----------------------|---------------|---------------------|-----------------------|----------------|
| | African American | Margin of Error (+/-) | % of AA Total | White, Not Hispanic | Margin of Error (+/-) | % of NHW Total |
| Total: | 7,085 | 114 | 100.0% | 6,872 | 55 | 100.0% |
| Worked full-time, year-round in the past 12 months: | 2,112 | NC | 29.8% | 2,709 | NC | 39.4% |
| No earnings | 0 | NC | 0.0% | 0 | NC | 0.0% |
| With earnings: | 2,112 | NC | 29.8% | 2,709 | NC | 39.4% |
| \$ 1 to \$ 9,999 or loss | 21 | NC | 0.3% | 39 | NC | 0.6% |
| \$ 10,000 to \$ 19,999 | 506 | NC | 7.1% | 376 | NC | 5.5% |
| \$ 20,000 to \$ 29,999 | 447 | NC | 6.3% | 429 | NC | 6.2% |
| \$ 30,000 to \$ 49,999 | 892 | NC | 12.6% | 1,171 | NC | 17.0% |
| \$ 50,000 to \$ 74,999 | 112 | NC | 1.6% | 408 | NC | 5.9% |
| \$ 75,000 or more | 134 | NC | 1.9% | 286 | NC | 4.2% |
| Other: | 4,973 | NC | 70.2% | 4,163 | NC | 60.6% |
| No earnings | 3,245 | NC | 45.8% | 2,515 | NC | 36.6% |
| With earnings: less than full time, year-round | 1,728 | NC | 24.4% | 1,648 | NC | 24.0% |
| Male: | 3,135 | 68 | 44.2% | 3,259 | 64 | 47.4% |
| Worked full-time, year-round in the past 12 months: | 824 | 178 | 11.6% | 1,520 | 180 | 22.1% |
| No earnings | 0 | 19 | 0.0% | 0 | 19 | 0.0% |
| With earnings: | 824 | 178 | 11.6% | 1,520 | 180 | 22.1% |
| \$ 1 to \$ 9,999 or loss | 7 | NC | 0.1% | 27 | NC | 0.4% |
| \$ 10,000 to \$ 19,999 | 150 | NC | 2.1% | 213 | NC | 3.1% |
| \$ 20,000 to \$ 29,999 | 127 | NC | 1.8% | 242 | NC | 3.5% |
| \$ 30,000 to \$ 49,999 | 402 | NC | 5.7% | 535 | NC | 7.8% |
| \$ 50,000 to \$ 74,999 | 49 | NC | 0.7% | 252 | NC | 3.7% |
| \$ 75,000 or more | 89 | NC | 1.3% | 251 | NC | 3.7% |

| | Haywood County, Tennessee | | | | | |
|---|---------------------------|-----------------------|---------------|---------------------|-----------------------|----------------|
| | African American | Margin of Error (+/-) | % of AA Total | White, Not Hispanic | Margin of Error (+/-) | % of NHW Total |
| Other: | 2,311 | 180 | 32.6% | 1,739 | 198 | 25.3% |
| No earnings | 1,533 | 191 | 21.6% | 892 | 113 | 13.0% |
| With earnings: | 778 | 180 | 11.0% | 847 | 172 | 12.3% |
| Female: | 3,950 | 68 | 55.8% | 3,613 | 89 | 52.6% |
| Worked full-time, year-round in the past 12 months: | 1,288 | 176 | 18.2% | 1,189 | 147 | 17.3% |
| No earnings | 0 | 19 | 0.0% | 0 | 19 | 0.0% |
| With earnings: | 1,288 | 176 | 18.2% | 1,189 | 147 | 17.3% |
| \$ 1 to \$ 9,999 or loss | 14 | NC | 0.2% | 12 | NC | 0.2% |
| \$ 10,000 to \$ 19,999 | 356 | NC | 5.0% | 163 | NC | 2.4% |
| \$ 20,000 to \$ 29,999 | 320 | NC | 4.5% | 187 | NC | 2.7% |
| \$ 30,000 to \$ 49,999 | 490 | NC | 6.9% | 636 | NC | 9.3% |
| \$ 50,000 to \$ 74,999 | 63 | NC | 0.9% | 156 | NC | 2.3% |
| \$ 75,000 or more | 45 | NC | 0.6% | 35 | NC | 0.5% |
| Other: | 2,662 | 184 | 37.6% | 2,424 | 182 | 35.3% |
| No earnings | 1,712 | 215 | 24.2% | 1,623 | 175 | 23.6% |
| With earnings: | 950 | 177 | 13.4% | 801 | 149 | 11.7% |

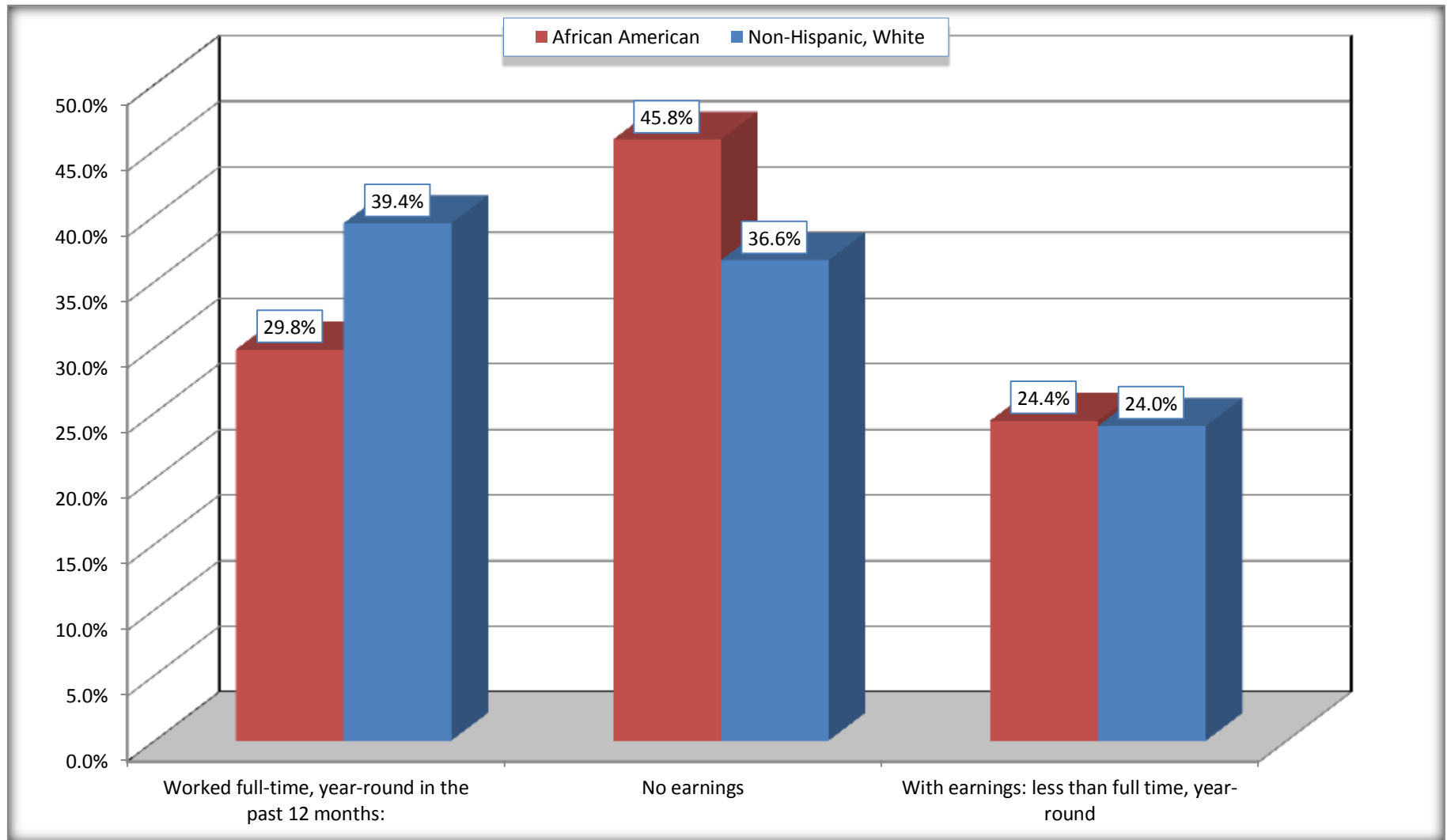
Source: U.S. Census Bureau, 2008-2012 American Community Survey

For information on confidentiality protection, sampling error, nonsampling error, and definitions, see Survey Methodology.

<http://www.census.gov/acs/www/UseData/index.htm>

Employment and Earnings in in the Past 12 Months (16 Years and Over)

Haywood County, Tennessee



Source: B20005. SEX BY WORK EXPERIENCE IN THE PAST 12 MONTHS BY EARNINGS IN THE PAST 12 MONTHS (IN 2010 INFLATION-ADJUSTED DOLLARS) FOR THE POPULATION 16 YEARS AND OVER

Data Set: 2008-2012 American Community Survey 5-Year Estimates

C21001. SEX BY AGE BY VETERAN STATUS FOR THE CIVILIAN POPULATION 18 YEARS AND OVER

Data Set: 2008-2012 American Community Survey 5-Year Estimates

| | Haywood County, Tennessee | | | | | |
|--------------------|---------------------------|-----------------------|---------------|---------------------|-----------------------|----------------|
| | African American | Margin of Error (+/-) | % of AA Total | White, Not Hispanic | Margin of Error (+/-) | % of NHW Total |
| Total: | 6,747 | 106 | 100.0% | 6,614 | 19 | 100.0% |
| Veteran | 362 | NC | 5.4% | 919 | NC | 13.9% |
| Nonveteran | 6,385 | NC | 94.6% | 5,695 | NC | 86.1% |
| Male: | 2,921 | 56 | 43.3% | 3,147 | 19 | 47.6% |
| 18 to 64 years: | 2,552 | 56 | 37.8% | 2,475 | 19 | 37.4% |
| Veteran | 257 | 110 | 3.8% | 539 | 130 | 8.1% |
| Nonveteran | 2,295 | 121 | 34.0% | 1,936 | 130 | 29.3% |
| 65 years and over: | 369 | 19 | 5.5% | 672 | 19 | 10.2% |
| Veteran | 94 | 47 | 1.4% | 353 | 73 | 5.3% |
| Nonveteran | 275 | 47 | 4.1% | 319 | 73 | 4.8% |
| Female: | 3,826 | 60 | 56.7% | 3,467 | 19 | 52.4% |
| 18 to 64 years: | 3,201 | 60 | 47.4% | 2,539 | 19 | 38.4% |
| Veteran | 11 | 14 | 0.2% | 27 | 25 | 0.4% |
| Nonveteran | 3,190 | 62 | 47.3% | 2,512 | 25 | 38.0% |
| 65 years and over: | 625 | 18 | 9.3% | 928 | 19 | 14.0% |
| Veteran | 0 | 19 | 0.0% | 0 | 19 | 0.0% |
| Nonveteran | 625 | 18 | 9.3% | 928 | 19 | 14.0% |

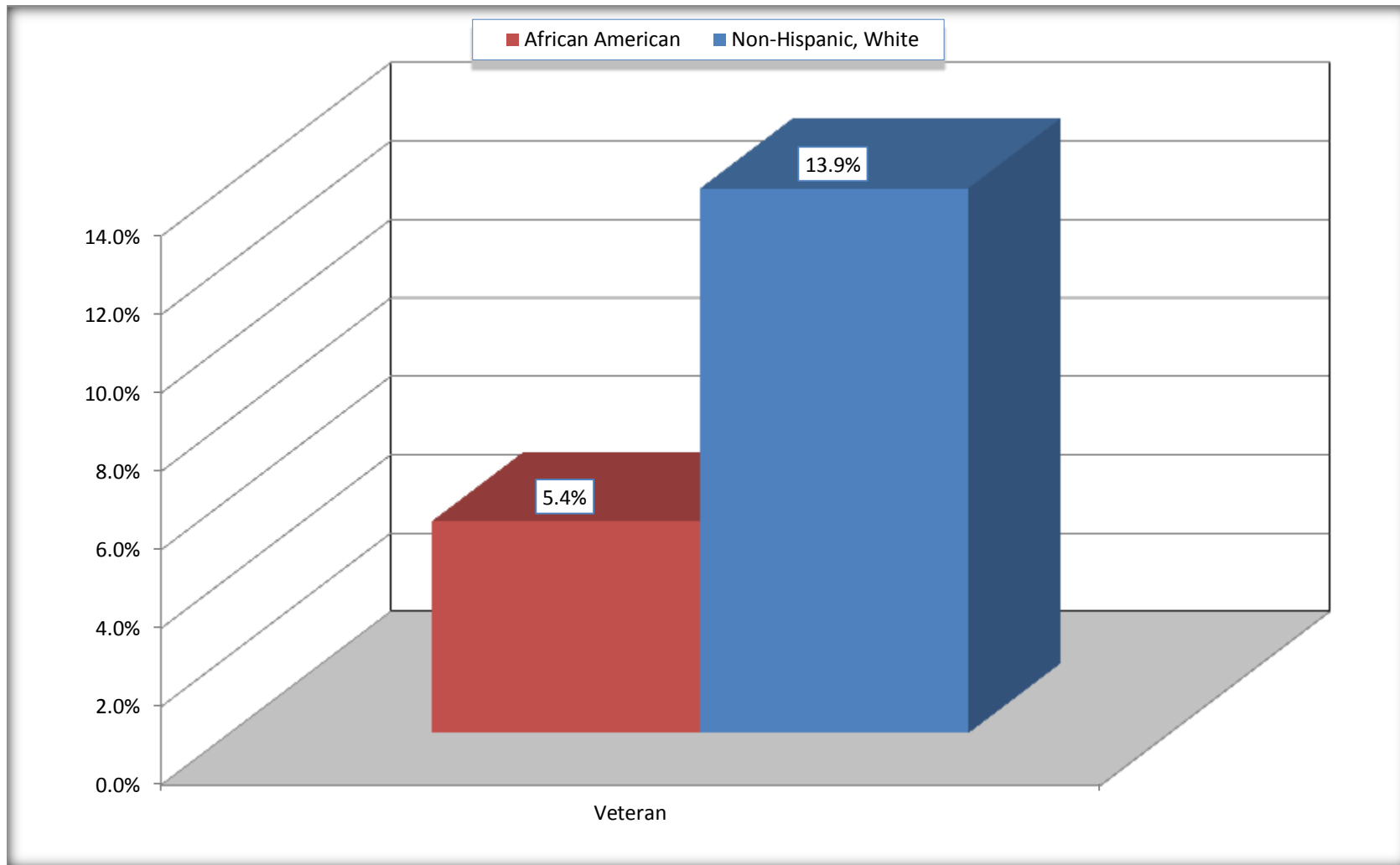
Source: U.S. Census Bureau, 2008-2012 American Community Survey

For information on confidentiality protection, sampling error, nonsampling error, and definitions, see Survey Methodology.

<http://www.census.gov/acs/www/UseData/index.htm>

Veterans in the Civilian Population 18 Years and Over

Haywood County, Tennessee



Source: C21001. SEX BY AGE BY VETERAN STATUS FOR THE CIVILIAN POPULATION 18 YEARS AND OVER
Data Set: 2008-2012 American Community Survey 5-Year Estimates

B22005. RECEIPT OF FOOD STAMPS/SNAP IN THE PAST 12 MONTHS BY RACE OF HOUSEHOLDER

Data Set: 2008-2012 American Community Survey 5-Year Estimates

| | Haywood County, Tennessee | | | | | |
|---|---------------------------|-----------------------|---------------|---------------------|-----------------------|----------------|
| | African American | Margin of Error (+/-) | % of AA Total | White, Not Hispanic | Margin of Error (+/-) | % of NHW Total |
| Total: | 3,411 | 223 | 100.0% | 3,470 | 184 | 100.0% |
| HH received Food Stamps/SNAP in the past 12 months | 1,335 | 185 | 39.1% | 494 | 137 | 14.2% |
| HH did not receive Food Stamps/SNAP in the past 12 months | 2,076 | 208 | 60.9% | 2,976 | 163 | 85.8% |

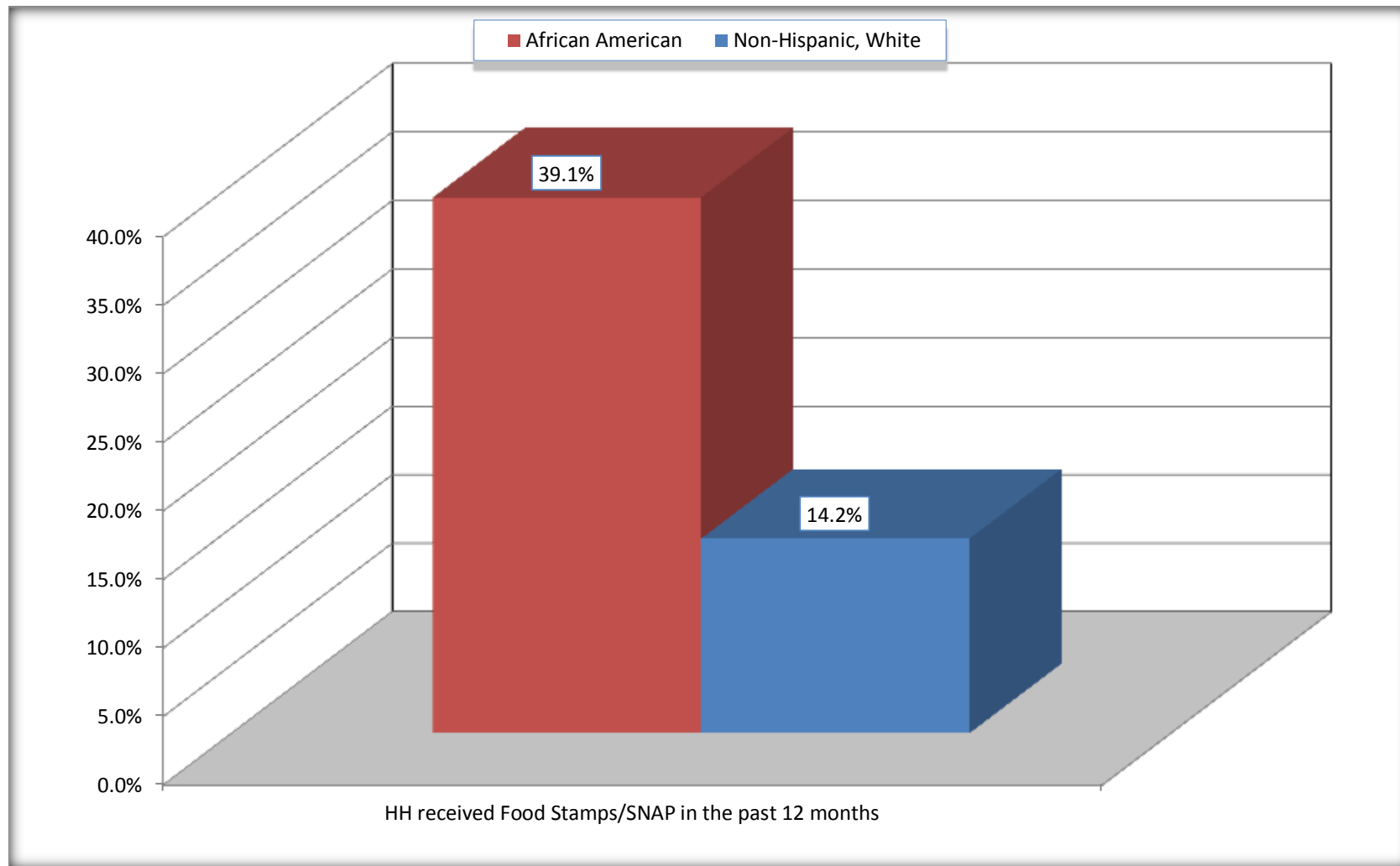
Source: U.S. Census Bureau, 2008-2012 American Community Survey

For information on confidentiality protection, sampling error, nonsampling error, and definitions, see Survey Methodology.

<http://www.census.gov/acs/www/UseData/index.htm>

Receipt of Food Stamps/SNAP in the Past 12 Months by Household

Haywood County, Tennessee



Source: B22005. RECEIPT OF FOOD STAMPS/SNAP IN THE PAST 12 MONTHS BY RACE OF HOUSEHOLDER
Data Set: 2008-2012 American Community Survey 5-Year Estimates

C23002. SEX BY AGE BY EMPLOYMENT STATUS FOR THE POPULATION 16 YEARS AND OVER

Data Set: 2008-2012 American Community Survey 5-Year Estimates

| | Haywood County, Tennessee | | | | | |
|--------------------|---------------------------|-----------------------|---------------|---------------------|-----------------------|----------------|
| | African American | Margin of Error (+/-) | % of AA Total | White, Not Hispanic | Margin of Error (+/-) | % of NHW Total |
| Total: | 7,085 | 114 | 100.0% | 6,872 | 55 | 100.0% |
| In labor force: | 3,954 | NC | 55.8% | 4,152 | NC | 60.4% |
| In Armed Forces | 0 | NC | 0.0% | 0 | NC | 0.0% |
| Civilian: | 3,846 | NC | 54.3% | 3,878 | NC | 56.4% |
| Employed | 3,228 | NC | 45.6% | 3,757 | NC | 54.7% |
| Unemployed | 726 | NC | 10.2% | 395 | NC | 5.7% |
| Not in labor force | 3,131 | NC | 44.2% | 2,720 | NC | 39.6% |
| Male: | 3,135 | 68 | 44.2% | 3,259 | 64 | 47.4% |
| 16 to 64 years: | 2,766 | 68 | 39.0% | 2,587 | 64 | 37.6% |
| In labor force: | 1,708 | 191 | 24.1% | 2,080 | 127 | 30.3% |
| In Armed Forces | 0 | 19 | 0.0% | 0 | 19 | 0.0% |
| Civilian: | 1,708 | 191 | 24.1% | 2,080 | 127 | 30.3% |
| Employed | 1,296 | 198 | 18.3% | 1,848 | 142 | 26.9% |
| Unemployed | 412 | 189 | 5.8% | 232 | 103 | 3.4% |
| Not in labor force | 1,058 | 185 | 14.9% | 507 | 131 | 7.4% |
| 65 years and over: | 369 | 19 | 5.2% | 672 | 19 | 9.8% |
| In labor force: | 57 | 36 | 0.8% | 162 | 70 | 2.4% |
| Employed | 32 | 28 | 0.5% | 162 | 70 | 2.4% |
| Unemployed | 25 | 27 | 0.4% | 0 | 19 | 0.0% |
| Not in labor force | 312 | 36 | 4.4% | 510 | 70 | 7.4% |

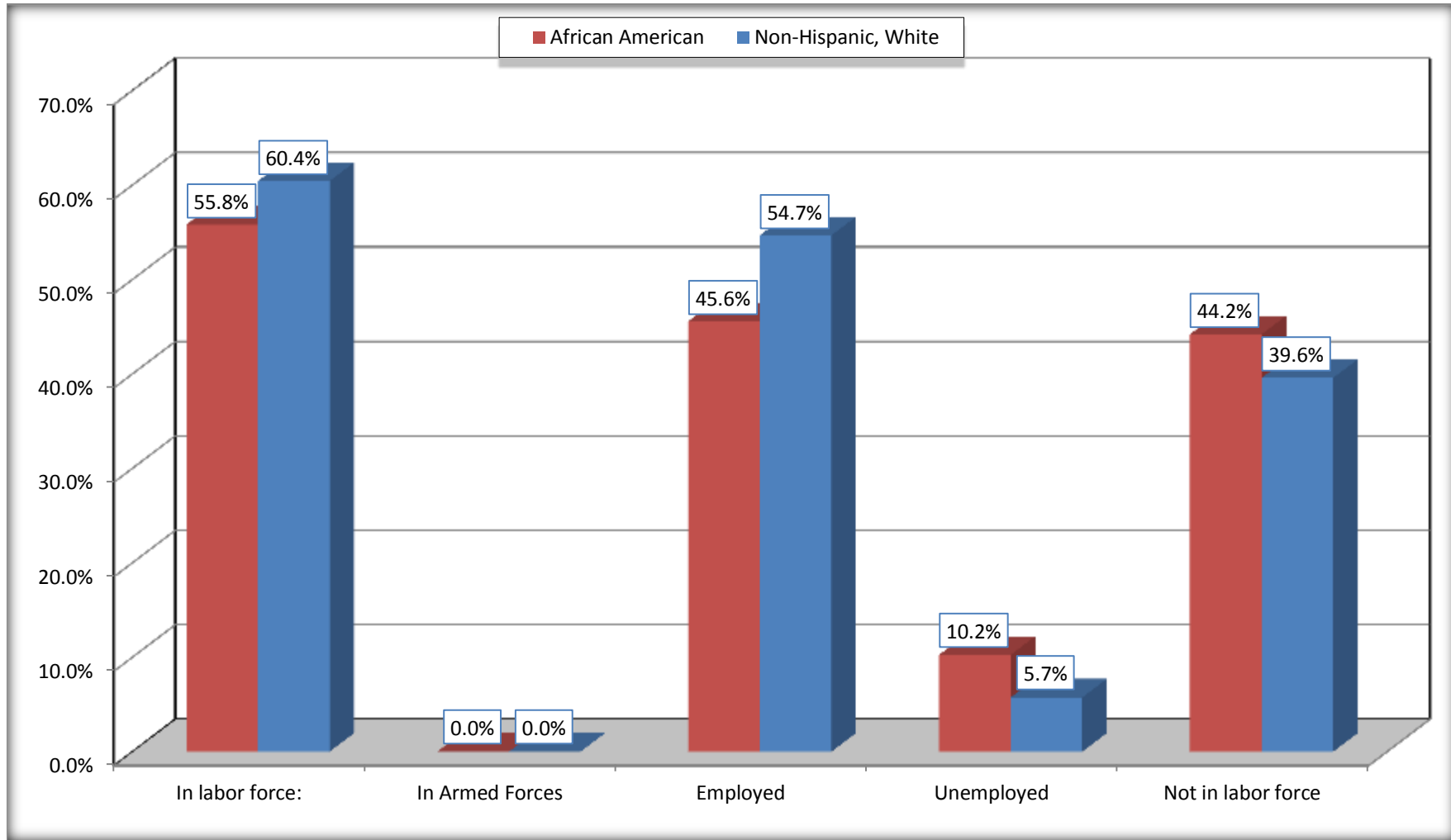
| | Haywood County, Tennessee | | | | | |
|--------------------|---------------------------|-----------------------|---------------|---------------------|-----------------------|----------------|
| | African American | Margin of Error (+/-) | % of AA Total | White, Not Hispanic | Margin of Error (+/-) | % of NHW Total |
| Female: | 3,950 | 68 | 55.8% | 3,613 | 89 | 52.6% |
| 16 to 64 years: | 3,325 | 68 | 46.9% | 2,685 | 89 | 39.1% |
| In labor force: | 2,138 | 242 | 30.2% | 1,798 | 135 | 26.2% |
| In Armed Forces | 0 | 19 | 0.0% | 0 | 19 | 0.0% |
| Civilian: | 2,138 | 242 | 30.2% | 1,798 | 135 | 26.2% |
| Employed | 1,867 | 235 | 26.4% | 1,643 | 134 | 23.9% |
| Unemployed | 271 | 132 | 3.8% | 155 | 69 | 2.3% |
| Not in labor force | 1,187 | 228 | 16.8% | 887 | 157 | 12.9% |
| 65 years and over: | 625 | 18 | 8.8% | 928 | 19 | 13.5% |
| In labor force: | 51 | 35 | 0.7% | 112 | 49 | 1.6% |
| Employed | 33 | 25 | 0.5% | 104 | 49 | 1.5% |
| Unemployed | 18 | 25 | 0.3% | 8 | 14 | 0.1% |
| Not in labor force | 574 | 38 | 8.1% | 816 | 49 | 11.9% |

Source: U.S. Census Bureau, 2008-2012 American Community Survey

For information on confidentiality protection, sampling error, nonsampling error, and definitions, see Survey Methodology.
<http://www.census.gov/acs/www/UseData/index.htm>

Employment Status for the Population 16 years and over

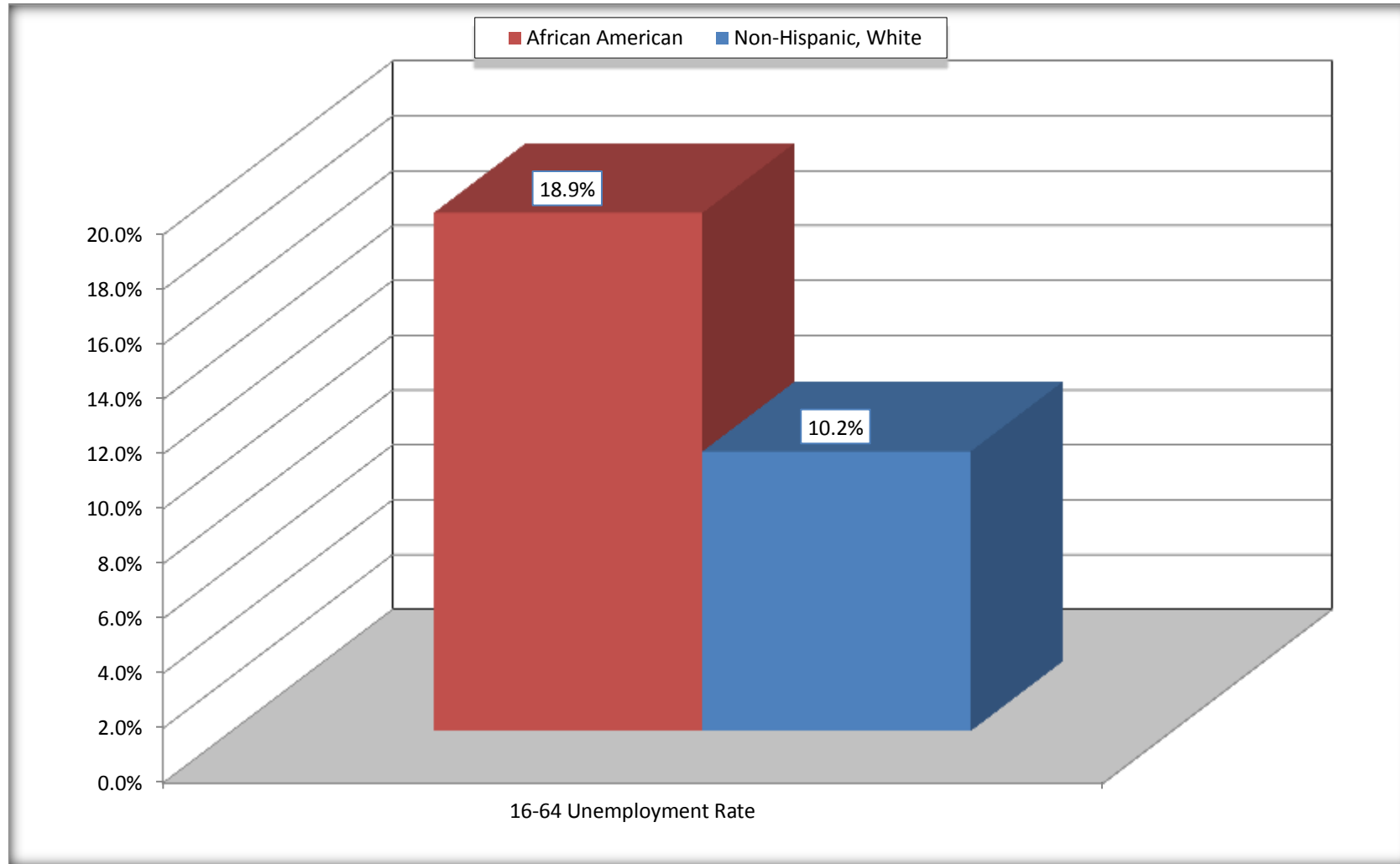
Haywood County, Tennessee



Source: C23002. SEX BY AGE BY EMPLOYMENT STATUS FOR THE POPULATION 16 YEARS AND OVER
Data Set: 2008-2012 American Community Survey 5-Year Estimates

Unemployment of Working Age Population (Ages 16 to 64) (As a Percent of 16-64 Civilian Labor Force)

Haywood County, Tennessee



Source: C23002. SEX BY AGE BY EMPLOYMENT STATUS FOR THE POPULATION 16 YEARS AND OVER
Data Set: 2008-2012 American Community Survey 5-Year Estimates

C24010. SEX BY OCCUPATION FOR THE CIVILIAN EMPLOYED POPULATION 16 YEARS AND OVER

Data Set: 2008-2012 American Community Survey 5-Year Estimates

| | Haywood County, Tennessee | | | | | |
|---|---------------------------|-----------------------|---------------|---------------------|-----------------------|----------------|
| | African American | Margin of Error (+/-) | % of AA Total | White, Not Hispanic | Margin of Error (+/-) | % of NHW Total |
| Total: | 3,228 | 336 | 100.0% | 3,757 | 215 | 100.0% |
| Management, professional, and related occupations | 505 | NC | 15.6% | 1,091 | NC | 29.0% |
| Service occupations | 840 | NC | 26.0% | 508 | NC | 13.5% |
| Sales and office occupations | 560 | NC | 17.3% | 1,039 | NC | 27.7% |
| Natural resources, construction, and maintenance occupations: | 200 | NC | 6.2% | 503 | NC | 13.4% |
| Production, transportation, and material moving occupations | 1,123 | NC | 34.8% | 616 | NC | 16.4% |
| Male: | 1,328 | 196 | 41.1% | 2,010 | 160 | 53.5% |
| Management, business, science, and arts occupations: | 30 | 33 | 0.9% | 447 | 106 | 11.9% |
| Service occupations | 356 | 139 | 11.0% | 163 | 81 | 4.3% |
| Sales and office occupations | 98 | 61 | 3.0% | 410 | 110 | 10.9% |
| Natural resources, construction, and maintenance occupations: | 194 | 105 | 6.0% | 500 | 126 | 13.3% |
| Production, transportation, and material moving occupations | 650 | 162 | 20.1% | 490 | 130 | 13.0% |
| Female: | 1,900 | 241 | 58.9% | 1,747 | 142 | 46.5% |
| Management, professional, and related occupations | 475 | 131 | 14.7% | 644 | 146 | 17.1% |
| Service occupations | 484 | 143 | 15.0% | 345 | 113 | 9.2% |
| Sales and office occupations | 462 | 164 | 14.3% | 629 | 161 | 16.7% |
| Natural resources, construction, and maintenance occupations: | 6 | 13 | 0.2% | 3 | 5 | 0.1% |
| Production, transportation, and material moving occupations | 473 | 133 | 14.7% | 126 | 79 | 3.4% |

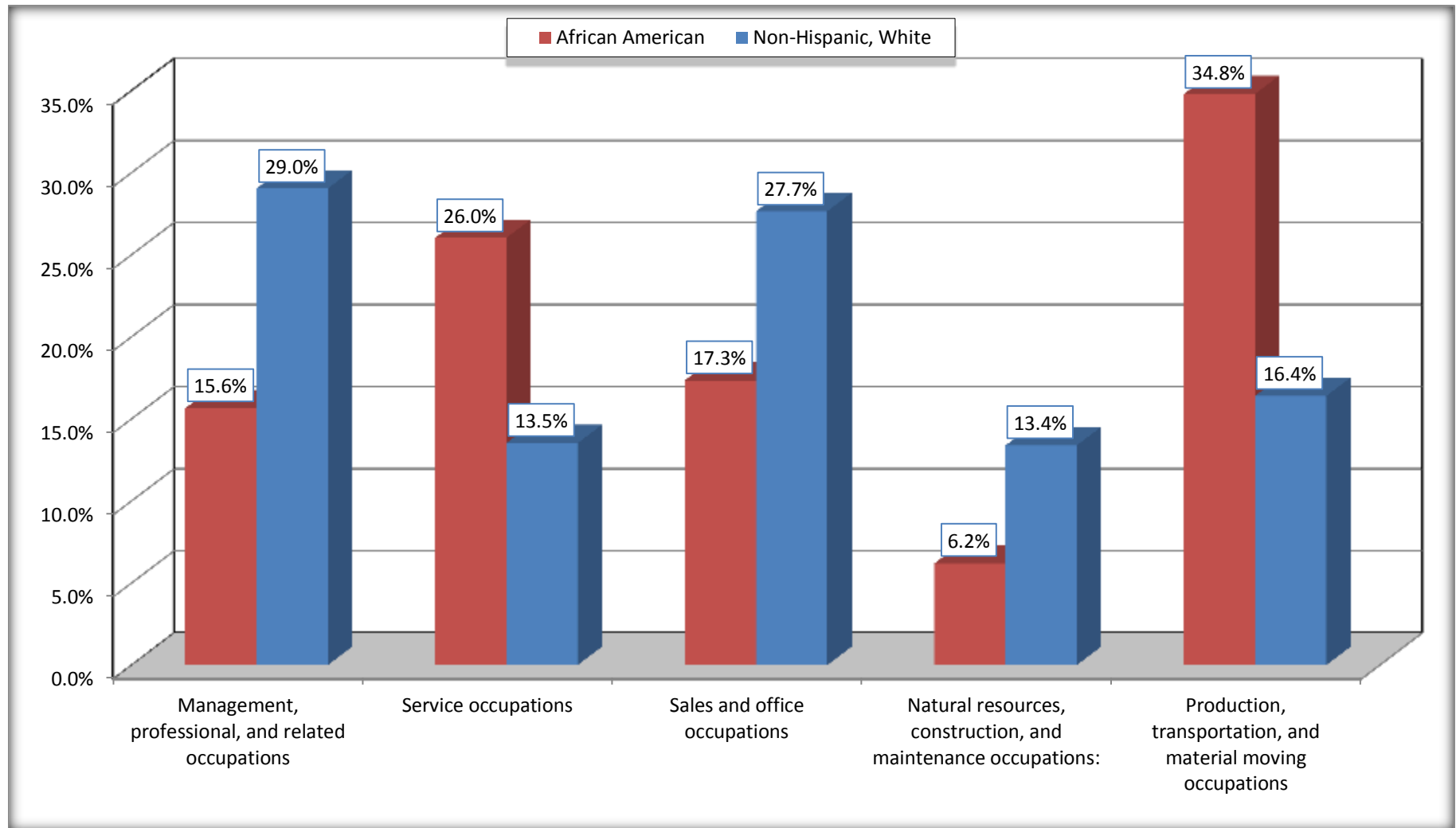
Source: U.S. Census Bureau, 2008-2012 American Community Survey

For information on confidentiality protection, sampling error, nonsampling error, and definitions, see Survey Methodology.

<http://www.census.gov/acs/www/UseData/index.htm>

Occupation for the Civilian Employed 16 Years and Over Population

Haywood County, Tennessee



Source: C24010. SEX BY OCCUPATION FOR THE CIVILIAN EMPLOYED POPULATION 16 YEARS AND OVER
Data Set: 2008-2012 American Community Survey 5-Year Estimates

B25003. TENURE - Universe: OCCUPIED HOUSING UNITS

Data Set: 2008-2012 American Community Survey 5-Year Estimates

| | Haywood County, Tennessee | | | | | |
|-----------------|---------------------------|-----------------------|---------------|---------------------|-----------------------|----------------|
| | African American | Margin of Error (+/-) | % of AA Total | White, Not Hispanic | Margin of Error (+/-) | % of NHW Total |
| Total: | 3,411 | 223 | 100.0% | 3,470 | 184 | 100.0% |
| Owner occupied | 1,751 | 203 | 51.3% | 2,577 | 176 | 74.3% |
| Renter occupied | 1,660 | 240 | 48.7% | 893 | 159 | 25.7% |

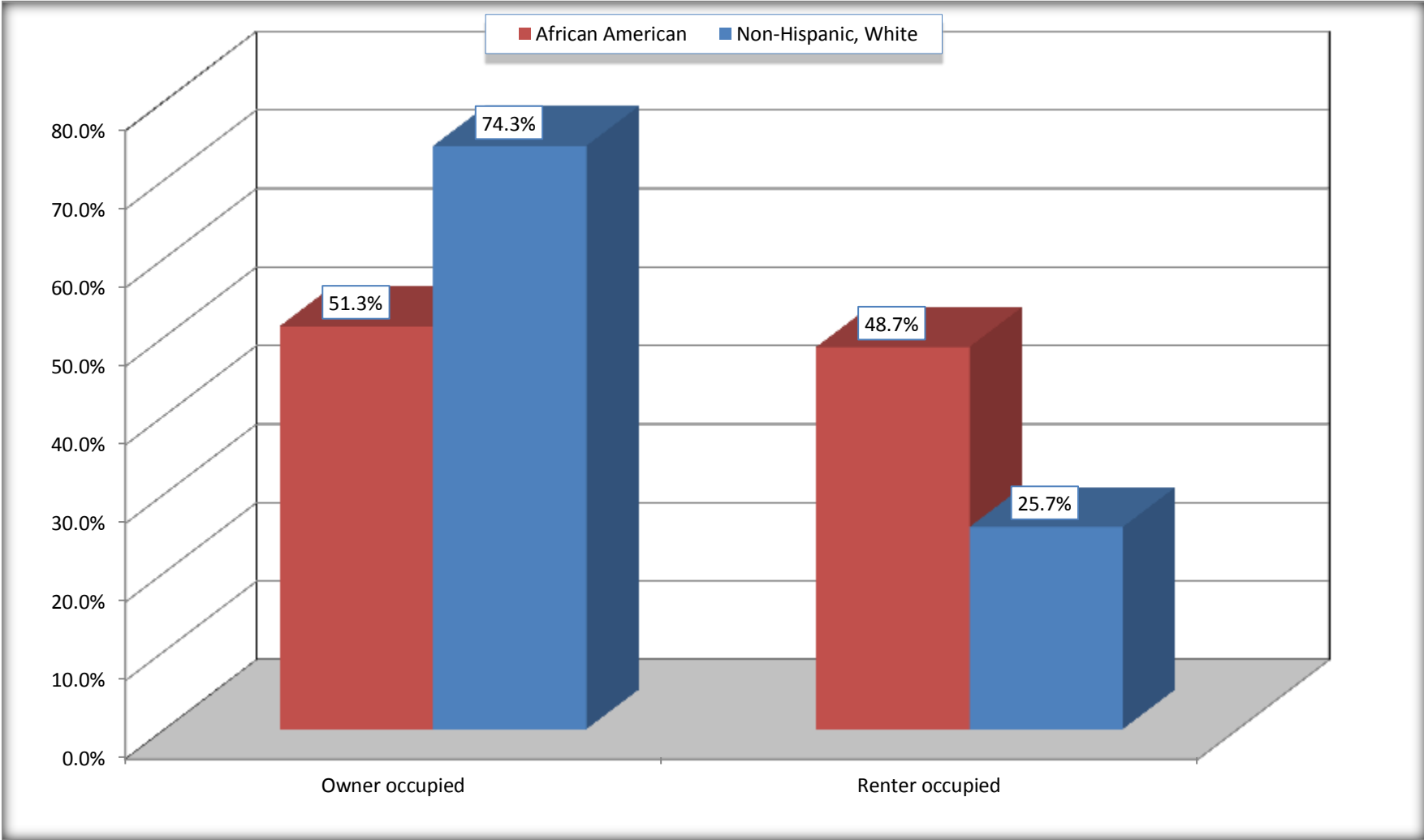
Source: U.S. Census Bureau, 2008-2012 American Community Survey

For information on confidentiality protection, sampling error, nonsampling error, and definitions, see Survey Methodology.

<http://www.census.gov/acs/www/UseData/index.h>

Home Owners and Renters by Household

Haywood County, Tennessee



Source: B25003. TENURE - Universe: OCCUPIED HOUSING UNITS
Data Set: 2008-2012 American Community Survey 5-Year Estimates

B25014. OCCUPANTS PER ROOM - Universe: OCCUPIED HOUSING UNITS

Data Set: 2008-2012 American Community Survey 5-Year Estimates

| | Haywood County, Tennessee | | | | | |
|---------------------------------|---------------------------|-----------------------|---------------|---------------------|-----------------------|----------------|
| | African American | Margin of Error (+/-) | % of AA Total | White, Not Hispanic | Margin of Error (+/-) | % of NHW Total |
| Total: | 3,411 | 223 | 100.0% | 3,470 | 184 | 100.0% |
| 1.00 or less occupants per room | 3,264 | 215 | 95.7% | 3,418 | 184 | 98.5% |
| 1.01 or more occupants per room | 147 | 90 | 4.3% | 52 | 41 | 1.5% |

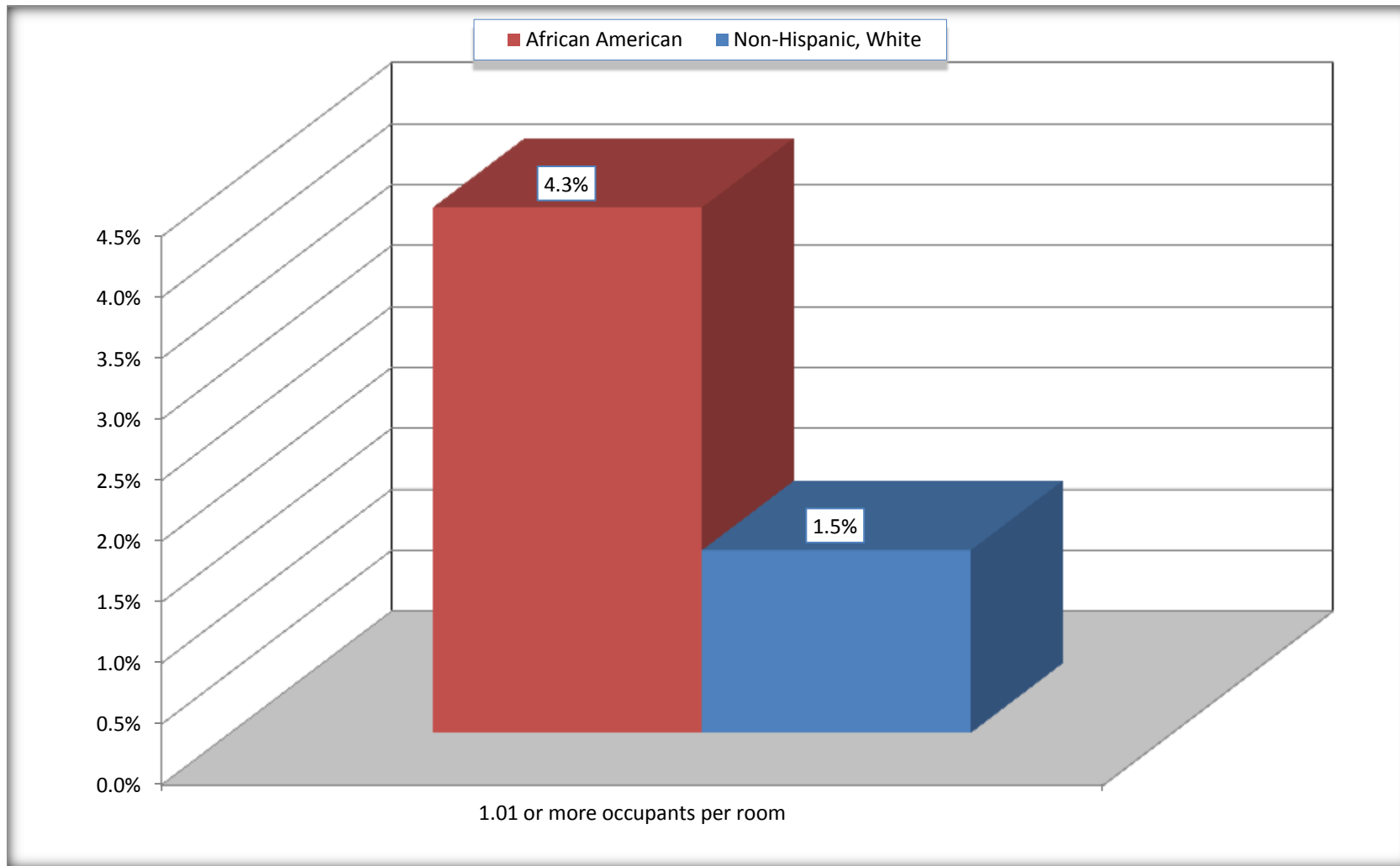
Source: U.S. Census Bureau, 2008-2012 American Community Survey

For information on confidentiality protection, sampling error, nonsampling error, and definitions, see Survey Methodology.

<http://www.census.gov/acs/www/UseData/index.ht>

More than One Person per Room (Crowding) by Household

Haywood County, Tennessee



Source: B25014. OCCUPANTS PER ROOM - Universe: OCCUPIED HOUSING UNITS
Data Set: 2008-2012 American Community Survey 5-Year Estimates

B18101. AGE BY DISABILITY STATUS

Data Set: 2008-2012 American Community Survey 5-Year Estimates

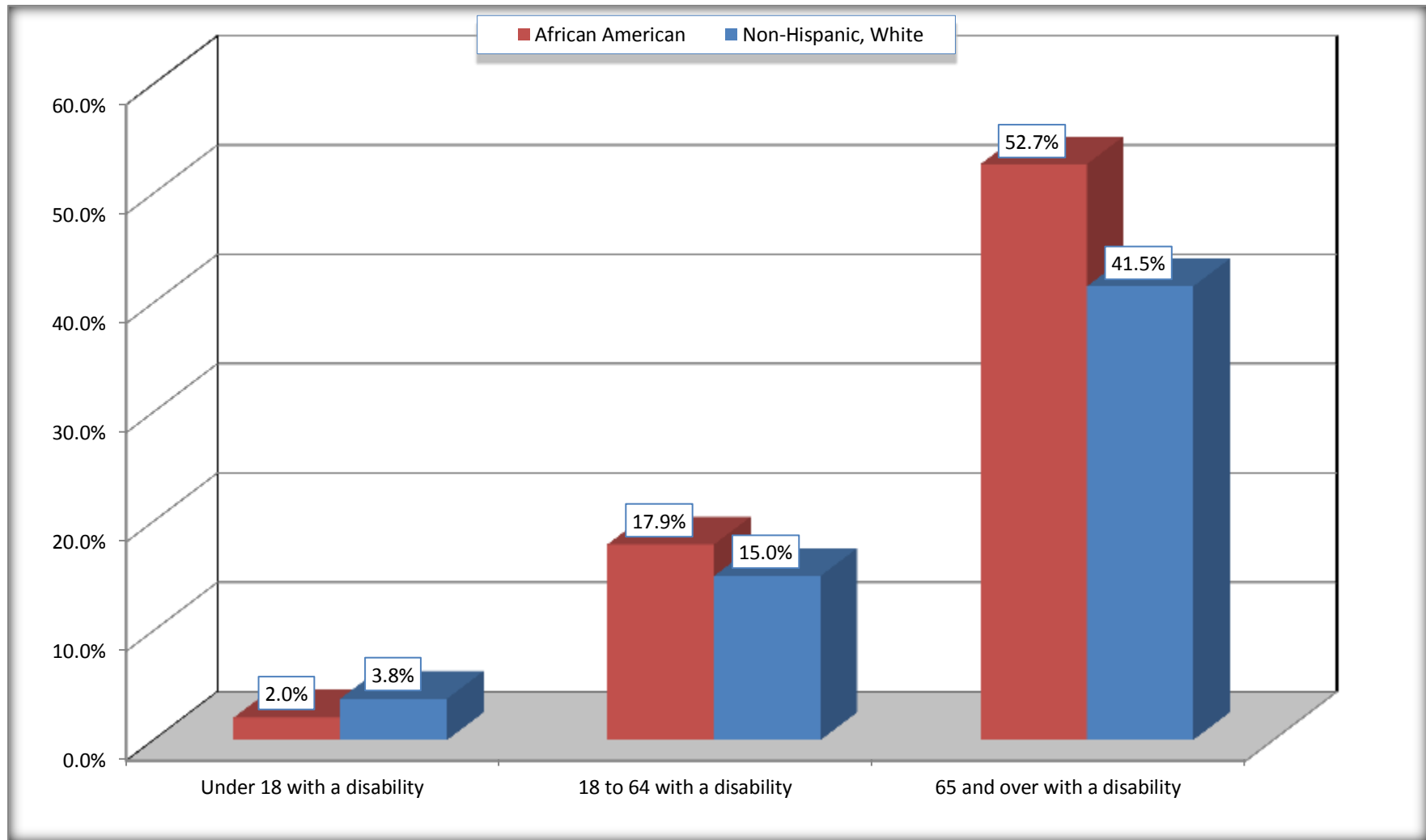
| | Haywood County, Tennessee | | | | | |
|--------------------|---------------------------|-----------------------|---------------|---------------------|-----------------------|----------------|
| | African American | Margin of Error (+/-) | % of AA Total | White, Not Hispanic | Margin of Error (+/-) | % of NHW Total |
| Total: | 9,103 | 293 | 100.0% | 8,297 | 69 | 100.0% |
| Under 18 years: | 2,441 | 268 | 26.8% | 1,795 | 73 | 21.6% |
| With a disability | 50 | 52 | 0.5% | 68 | 53 | 0.8% |
| No disability | 2,391 | 280 | 26.3% | 1,727 | 53 | 20.8% |
| 18 to 64 years: | 5,703 | 115 | 62.6% | 4,957 | 42 | 59.7% |
| With a disability | 1,020 | 198 | 11.2% | 744 | 174 | 9.0% |
| No disability | 4,683 | 224 | 51.4% | 4,213 | 181 | 50.8% |
| 65 years and over: | 959 | 46 | 10.5% | 1,545 | 54 | 18.6% |
| With a disability | 505 | 104 | 5.5% | 641 | 102 | 7.7% |
| No disability | 454 | 104 | 5.0% | 904 | 99 | 10.9% |

Source: U.S. Census Bureau, 2008-2012 American Community Survey

For information on confidentiality protection, sampling error, nonsampling error, and definitions, see Survey Methodology.

<http://www.census.gov/acs/www/UseData/index.htm>

Disability by Age Haywood County, Tennessee



Source: B18101. AGE BY DISABILITY STATUS
Data Set: 2008-2012 American Community Survey 5-Year Estimates

C27001B. HEALTH INSURANCE COVERAGE STATUS BY AGE

Data Set: 2008-2012 American Community Survey 5-Year Estimates

| | Haywood County, Tennessee | | | | | |
|--------------------------------|---------------------------|-----------------------|---------------|---------------------|-----------------------|----------------|
| | African American | Margin of Error (+/-) | % of AA Total | White, Not Hispanic | Margin of Error (+/-) | % of NHW Total |
| Total: | 9,103 | 293 | 100.0% | 8,297 | 69 | 100.0% |
| Under 18 years: | 2,441 | 268 | 26.8% | 1,795 | 19 | 21.6% |
| With health insurance coverage | 2,352 | 279 | 25.8% | 1,696 | 75 | 20.4% |
| No health insurance coverage | 89 | 59 | 1.0% | 99 | 75 | 1.2% |
| 18 to 64 years: | 5,703 | 115 | 62.6% | 4,957 | 42 | 59.7% |
| With health insurance coverage | 4,122 | 347 | 45.3% | 3,680 | 252 | 44.4% |
| No health insurance coverage | 1,581 | 335 | 17.4% | 1,277 | 248 | 15.4% |
| 65 years and over: | 959 | 46 | 10.5% | 1,545 | 54 | 18.6% |
| With health insurance coverage | 939 | 52 | 10.3% | 1,545 | 54 | 18.6% |
| No health insurance coverage | 20 | 25 | 0.2% | 0 | 19 | 0.0% |

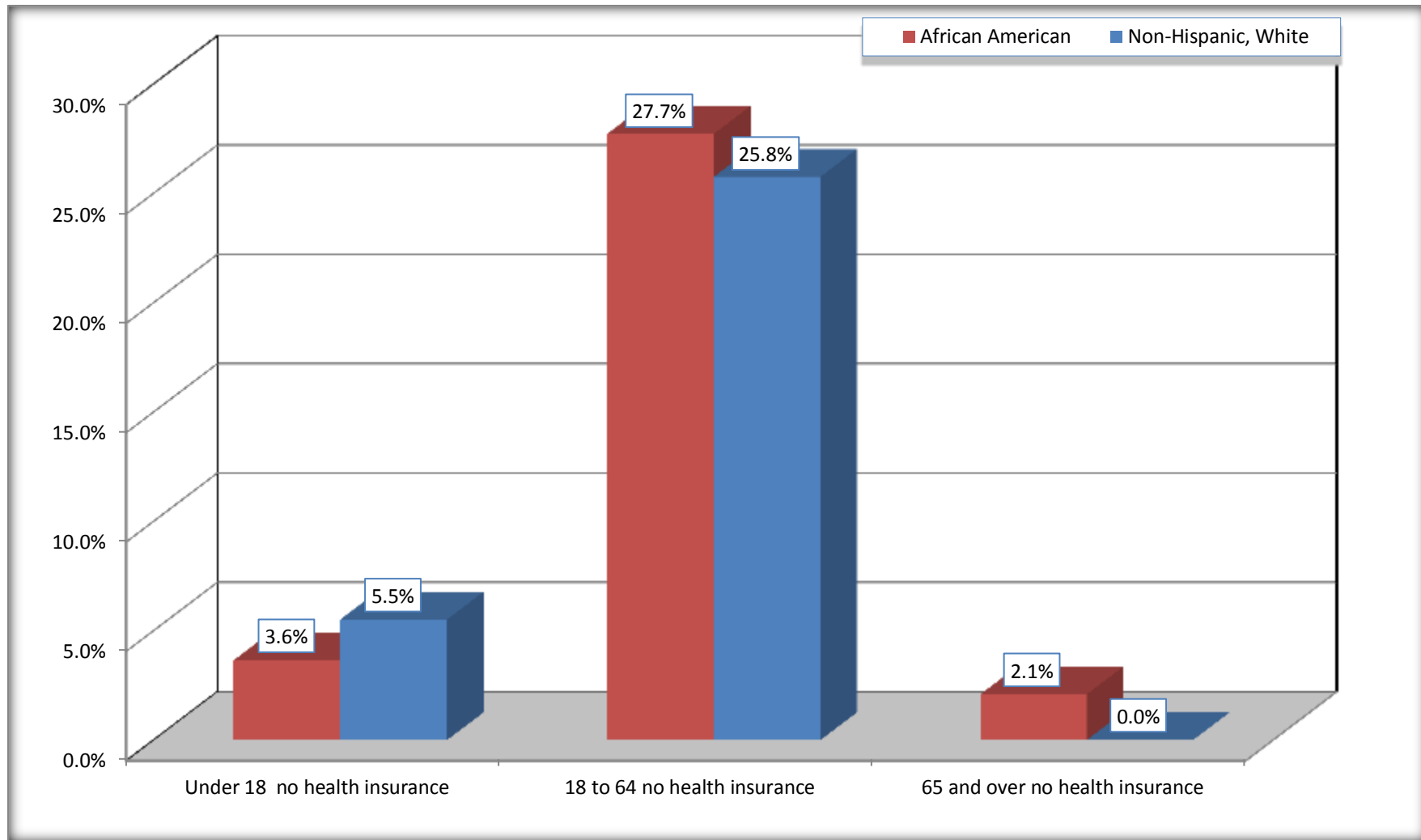
Source: U.S. Census Bureau, 2008-2012 American Community Survey

For information on confidentiality protection, sampling error, nonsampling error, and definitions, see Survey Methodology.

<http://www.census.gov/acs/www/UseData/index.htm>

Lack of Health Insurance Coverage by Age

Haywood County, Tennessee



Source: C27001B. HEALTH INSURANCE COVERAGE STATUS BY AGE
Data Set: 2008-2012 American Community Survey 5-Year Estimates