

Selected Socio-Economic Data

Covington city, Tennessee

African American and White, Not Hispanic

Data Set: 2008-2012 American Community Survey 5-Year Estimates

www.fairvote2020.org

www.fairdata2000.com

[29-Dec-13](#)

C02003.DETAILED RACE - Universe: TOTAL POPULATION
 Data Set: 2008-2012 American Community Survey 5-Year Estimates

	Covington city, Tennessee		
	Population	Margin of Error (+/-)	% of Total
Total:	9,068	46	100.0%
Population of one race:	9,028	68	99.6%
White	4,035	493	44.5%
Black or African American	4,981	493	54.9%
American Indian and Alaska Native	12	21	0.1%
Asian alone	0	17	0.0%
Native Hawaiian and Other Pacific Islander	0	17	0.0%
Some other race	0	17	0.0%
Population of two or more races:	40	48	0.4%
Two races including Some other race	0	17	0.0%
Two races excluding Some other race, and three or more races	40	48	0.4%
Population of two races:	40	48	0.4%
White; Black or African American	7	12	0.1%
White; American Indian and Alaska Native	14	25	0.2%
White; Asian	0	17	0.0%
Black or African American; American Indian and Alaska Native	19	37	0.2%
All other two race combinations	0	17	0.0%
Population of three races	0	17	0.0%
Population of four or more races	0	17	0.0%

Note: Hispanics may be of any race. See Table B03002 and chart.

Source: U.S. Census Bureau, 2008-2012 American Community Survey

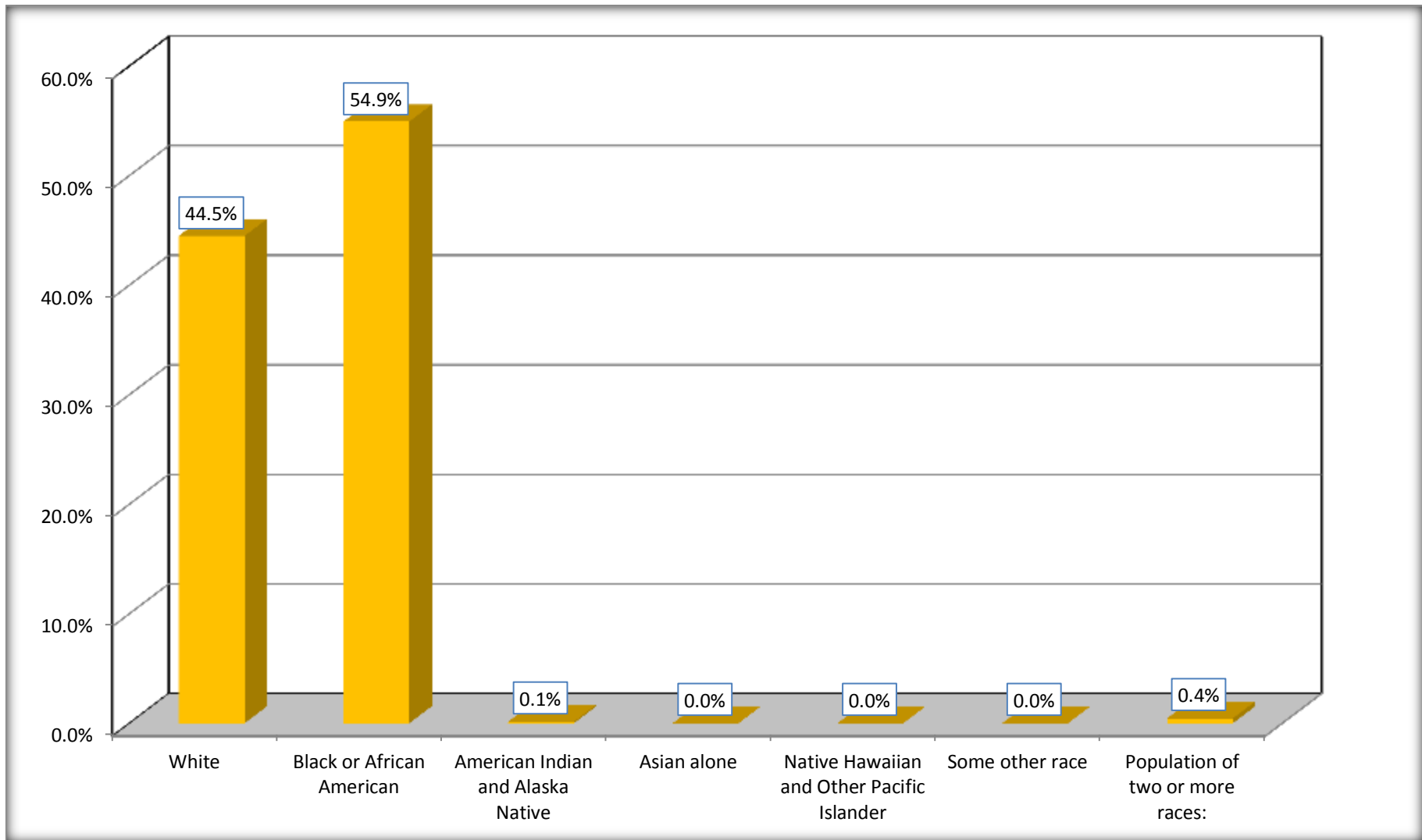
Although the American Community Survey (ACS) produces population, demographic and housing unit estimates, it is the Census Bureau's Population Estimates Program that produces and disseminates the official estimates of the population for the nation, states, counties, cities and towns and estimates of housing units for states and counties.

For information on confidentiality protection, sampling error, nonsampling error, and definitions, see Survey Methodology.

<http://www.census.gov/acs/www/UseData/index.htm>

Population by Race

Covington city, Tennessee



Source: C02003.DETAILED RACE - Universe: TOTAL POPULATION
Data Set: 2008-2012 American Community Survey 5-Year Estimates

B03002. HISPANIC OR LATINO ORIGIN BY RACE - Universe: TOTAL POPULATION

Data Set: 2008-2012 American Community Survey 5-Year Estimates

	Covington city, Tennessee		
	Population	Margin of Error (+/-)	% of Total
Total:	9,068	46	100.0%
Not Hispanic or Latino:	9,027	55	99.5%
White alone	4,012	493	44.2%
Black or African American alone	4,963	493	54.7%
American Indian and Alaska Native alone	12	21	0.1%
Asian alone	0	17	0.0%
Native Hawaiian and Other Pacific Islander alone	0	17	0.0%
Some other race alone	0	17	0.0%
Two or more races:	40	48	0.4%
Two races including Some other race	0	17	0.0%
Two races excluding Some other race, and three or more races	40	48	0.4%
Hispanic or Latino	41	35	0.5%

Source: U.S. Census Bureau, 2008-2012 American Community Survey

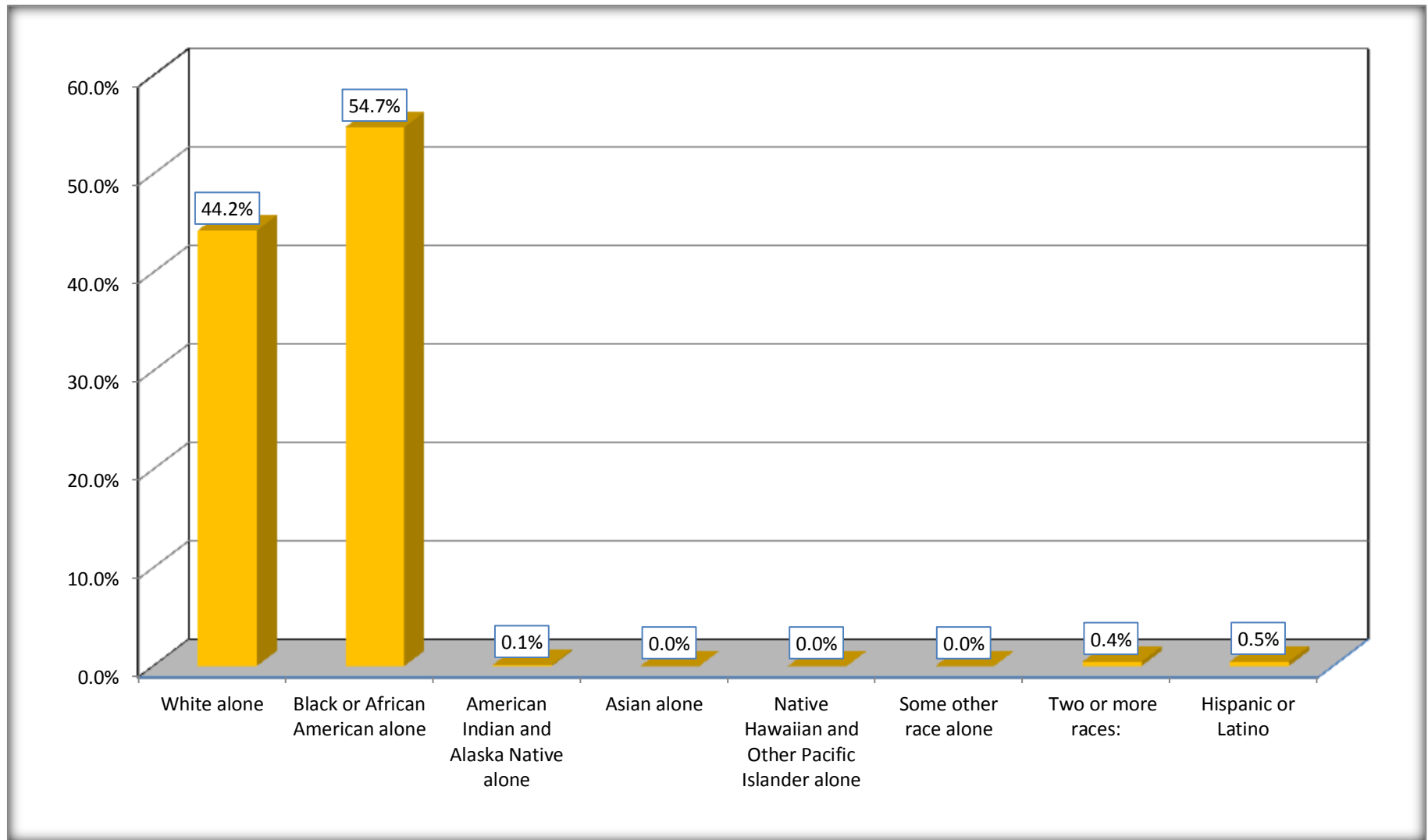
Although the American Community Survey (ACS) produces population, demographic and housing unit estimates, it is the Census Bureau's Population Estimates Program that produces and disseminates the official estimates of the population for the nation, states, counties, cities and towns and estimates of housing units for states and counties.

For information on confidentiality protection, sampling error, nonsampling error, and definitions, see Survey Methodology.

<http://www.census.gov/acs/www/UseData/index.htm>

Non-Hispanic by Race and Hispanic Population

Covington city, Tennessee



Source: B03002. HISPANIC OR LATINO ORIGIN BY RACE - Universe: TOTAL POPULATION
Data Set: 2008-2012 American Community Survey 5-Year Estimates

B03002. HISPANIC OR LATINO ORIGIN BY RACE

Data Set: 2008-2012 American Community Survey 5-Year Estimates

	Covington city, Tennessee		
	Population	Margin of Error (+/-)	% of Total
Hispanic or Latino:	41	35	100.0%
White alone	23	24	56.1%
Black or African American alone	18	23	43.9%
American Indian and Alaska Native alone	0	17	0.0%
Asian alone	0	17	0.0%
Native Hawaiian and Other Pacific Islander alone	0	17	0.0%
Some other race alone	0	17	0.0%
Two or more races:	0	17	0.0%
Two races including Some other race	0	17	0.0%
Two races excluding Some other race, and three or more races	0	17	0.0%

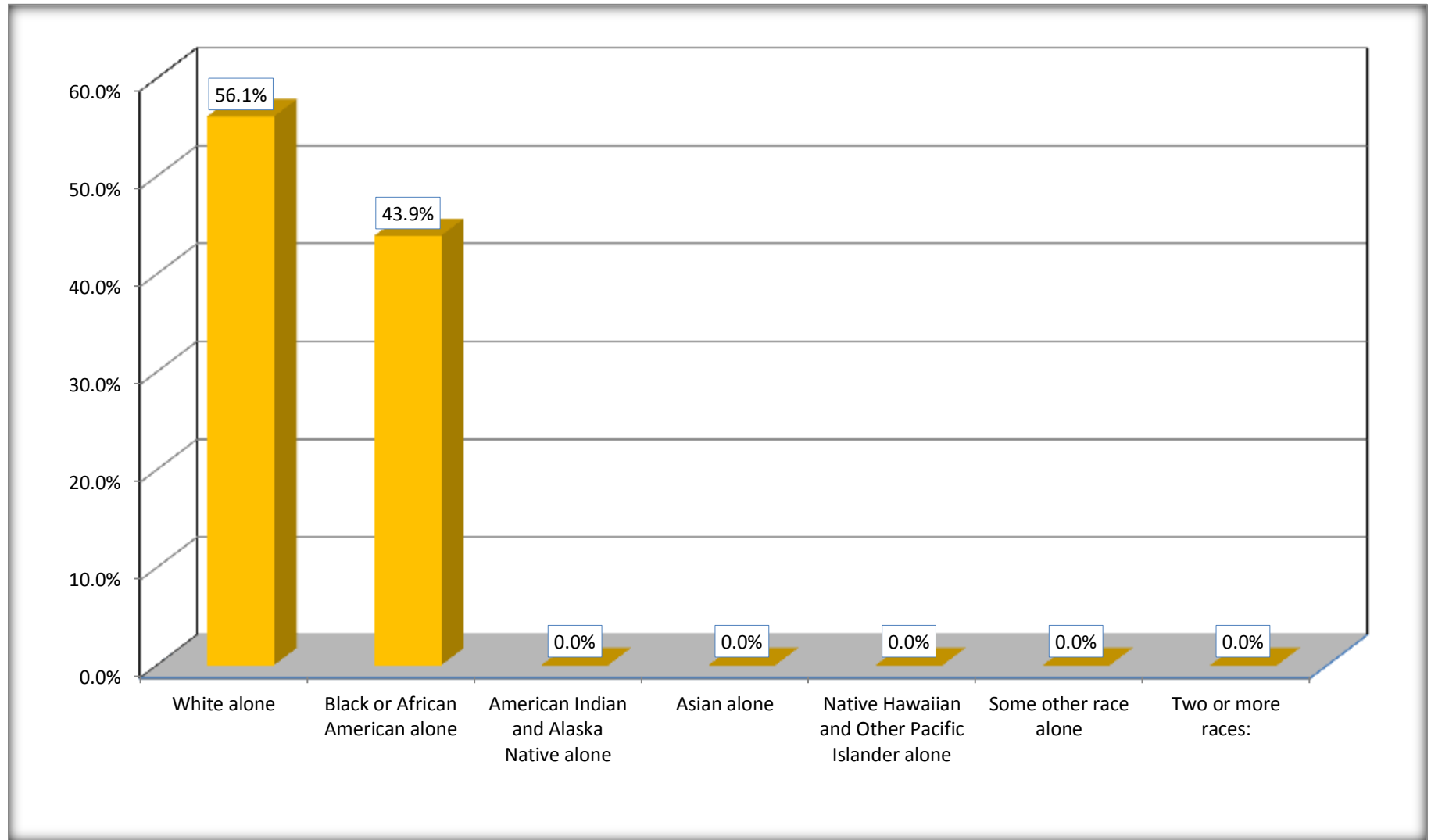
Source: U.S. Census Bureau, 2008-2012 American Community Survey

Although the American Community Survey (ACS) produces population, demographic and housing unit estimates, it is the Census Bureau's Population Estimates Program that produces and disseminates the official estimates of the population for the nation, states, counties, cities and towns and estimates of housing units for states and counties.

For information on confidentiality protection, sampling error, nonsampling error, and definitions, see Survey Methodology.

<http://www.census.gov/acs/www/UseData/index.htm>

Hispanic or Latino Origin by Race Covington city, Tennessee



Source: B03002. HISPANIC OR LATINO ORIGIN BY RACE
Data Set: 2008-2012 American Community Survey 5-Year Estimates

B01001. SEX BY AGE

Data Set: 2008-2012 American Community Survey 5-Year Estimates

	Covington city, Tennessee					
	African American	Margin of Error (+/-)	% of AA Total	White, Not Hispanic	Margin of Error (+/-)	% of NHW Total
Total:	4,981	493	100.0%	4,012	493	100.0%
Under 18 years	1,490	NC	29.9%	444	NC	11.1%
18 to 64 years	3,004	NC	60.3%	2,559	NC	63.8%
65 years and over	487	NC	9.8%	1,009	NC	25.1%
Male:	2,295	312	46.1%	1,894	389	47.2%
Under 18 years	677	NC	13.6%	295	NC	7.4%
18 to 64 years	1,440	NC	28.9%	1,163	NC	29.0%
65 years and over	178	NC	3.6%	436	NC	10.9%
Female:	2,686	284	53.9%	2,118	412	52.8%
Under 18 years	813	NC	16.3%	149	NC	3.7%
18 to 64 years	1,564	NC	31.4%	1,396	NC	34.8%
65 years and over	309	NC	6.2%	573	NC	14.3%

Source: U.S. Census Bureau, 2008-2012 American Community Survey

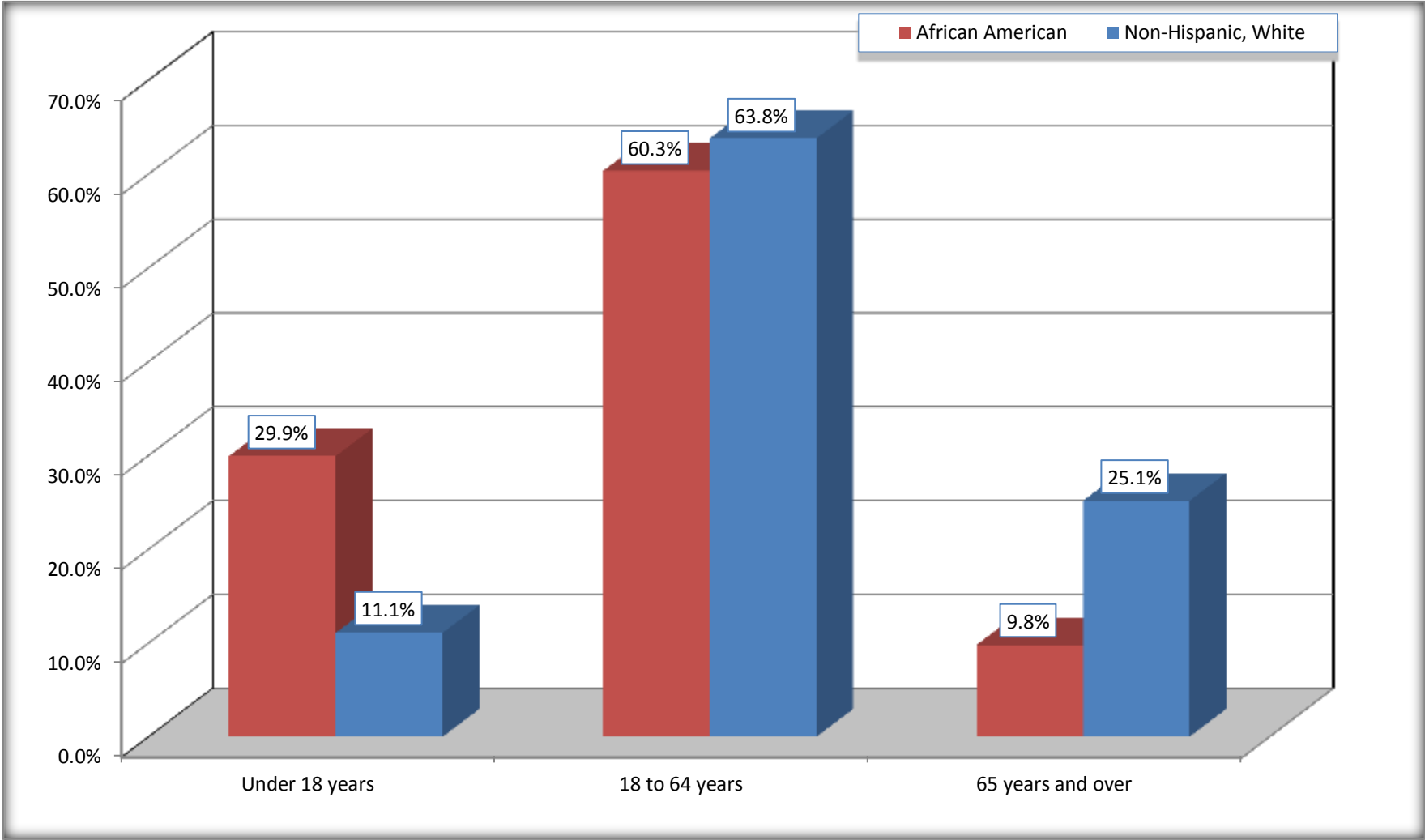
Although the American Community Survey (ACS) produces population, demographic and housing unit estimates, it is the Census Bureau's Population Estimates Program that produces and disseminates the official estimates of the population for the nation, states, counties, cities and towns and estimates of housing units for states and counties.

For information on confidentiality protection, sampling error, nonsampling error, and definitions, see Survey Methodology.

<http://www.census.gov/acs/www/UseData/index.htm>

Population by Age

Covington city, Tennessee



Source: B01001. SEX BY AGE
Data Set: 2008-2012 American Community Survey 5-Year Estimates

B05003. SEX BY AGE BY CITIZENSHIP STATUS

Data Set: 2008-2012 American Community Survey 5-Year Estimates

	Covington city, Tennessee					
	African American	Margin of Error (+/-)	% of AA Total by Age	White, Not Hispanic	Margin of Error (+/-)	% of NHW Total by Age
Total:	4,981	493	100.0%	4,012	493	100.0%
Under 18 years:	1,490	NC	100.0%	444	NC	100.0%
Native	1,490	NC	100.0%	444	NC	100.0%
Foreign born:	0	NC	0.0%	0	NC	0.0%
Naturalized U.S. citizen	0	NC	0.0%	0	NC	0.0%
Not a U.S. citizen	0	NC	0.0%	0	NC	0.0%
18 years and over:	3,491	NC	100.0%	3,568	NC	100.0%
Native	3,491	NC	100.0%	3,542	NC	99.3%
Foreign born:	0	NC	0.0%	26	NC	0.7%
Naturalized U.S. citizen	0	NC	0.0%	0	NC	0.0%
Not a U.S. citizen	0	NC	0.0%	26	NC	0.7%
Male:	2,295	312	46.1%	1,894	272	47.2%
Under 18 years:	677	167	100.0%	295	137	100.0%
Native	677	167	100.0%	295	137	100.0%
Foreign born:	0	17	0.0%	0	17	0.0%
Naturalized U.S. citizen	0	17	0.0%	0	17	0.0%
Not a U.S. citizen	0	17	0.0%	0	17	0.0%
18 years and over:	1,618	255	100.0%	1,599	243	100.0%
Native	1,618	255	100.0%	1,587	244	99.2%
Foreign born:	0	17	0.0%	12	19	0.8%
Naturalized U.S. citizen	0	17	0.0%	0	17	0.0%
Not a U.S. citizen	0	17	0.0%	12	19	0.8%

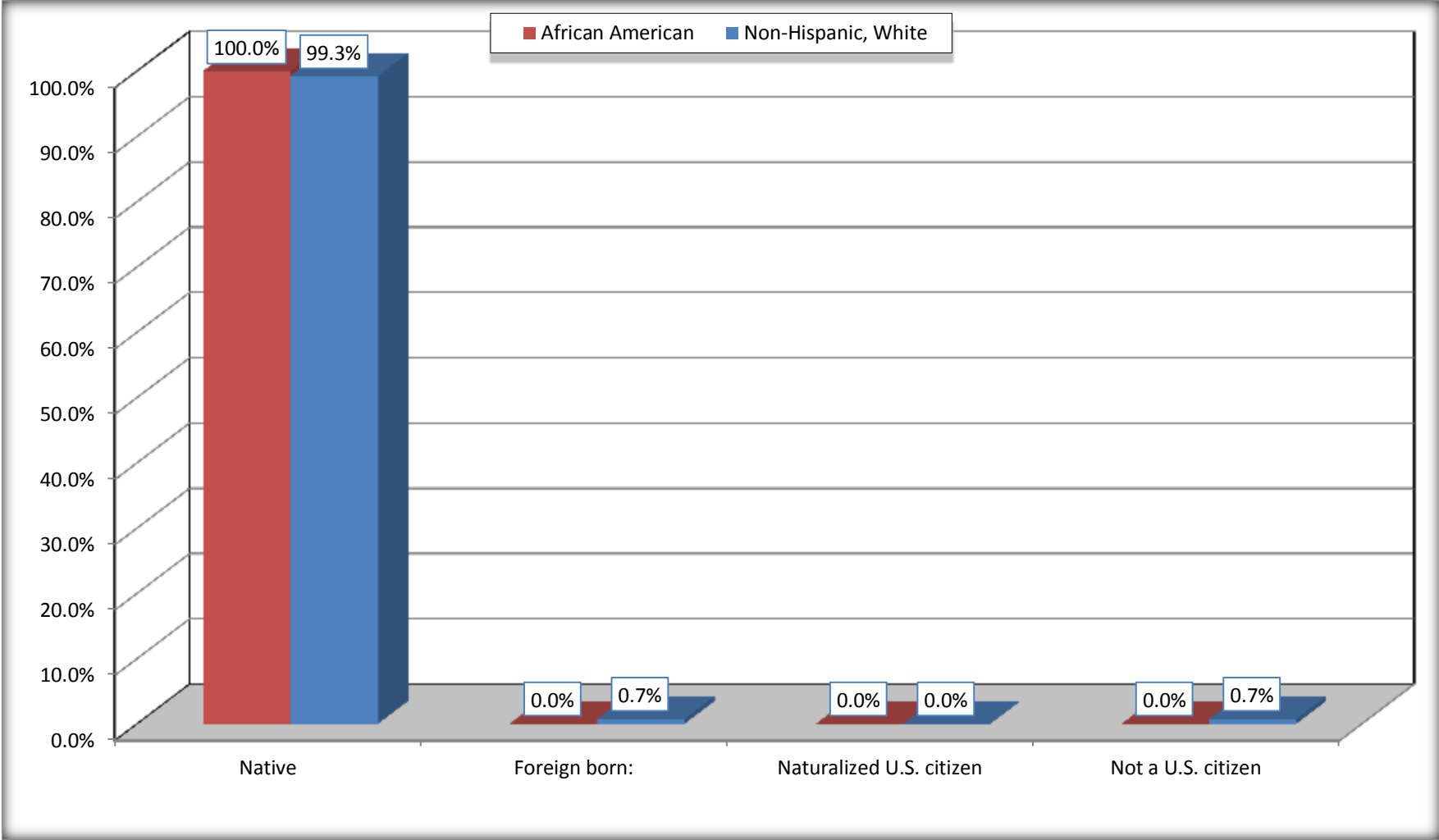
	Covington city, Tennessee					
	African American	Margin of Error (+/-)	% of AA by Age	White, Not Hispanic	Margin of Error (+/-)	% of NHW by Age
Female:	2,686	284	53.9%	2,118	324	52.8%
Under 18 years:	813	159	100.0%	149	127	100.0%
Native	813	159	100.0%	149	127	100.0%
Foreign born:	0	17	0.0%	0	17	0.0%
Naturalized U.S. citizen	0	17	0.0%	0	17	0.0%
Not a U.S. citizen	0	17	0.0%	0	17	0.0%
18 years and over:	1,873	220	100.0%	1,969	291	100.0%
Native	1,873	220	100.0%	1,955	293	99.3%
Foreign born:	0	17	0.0%	14	23	0.7%
Naturalized U.S. citizen	0	17	0.0%	0	17	0.0%
Not a U.S. citizen	0	17	0.0%	14	23	0.7%

Source: U.S. Census Bureau, 2008-2012 American Community Survey

For information on confidentiality protection, sampling error, nonsampling error, and definitions, see Survey Methodology.
<http://www.census.gov/acs/www/UseData/index.htm>

Citizenship Status of Voting Age Population (18 and Over)

Covington city, Tennessee



Source: B05003. SEX BY AGE BY CITIZENSHIP STATUS
Data Set: 2008-2012 American Community Survey 5-Year Estimates

**B07004. GEOGRAPHICAL MOBILITY IN THE PAST YEAR BY RACE FOR CURRENT RESIDENCE IN THE UNITED STATES - Universe:
POPULATION 1 YEAR AND OVER**

Data Set: 2008-2012 American Community Survey 5-Year Estimates

	Covington city, Tennessee					
	African American	Margin of Error (+/-)	% of AA Total	White, Not Hispanic	Margin of Error (+/-)	% of NHW Total
Total:	4,886	494	100.0%	3,964	483	100.0%
Same house 1 year ago	3,584	600	73.4%	3,442	422	86.8%
Moved within same county	1,057	443	21.6%	277	152	7.0%
Moved from different county within same state	162	139	3.3%	169	138	4.3%
Moved from different state	83	117	1.7%	76	61	1.9%
Moved from abroad	0	17	0.0%	0	17	0.0%

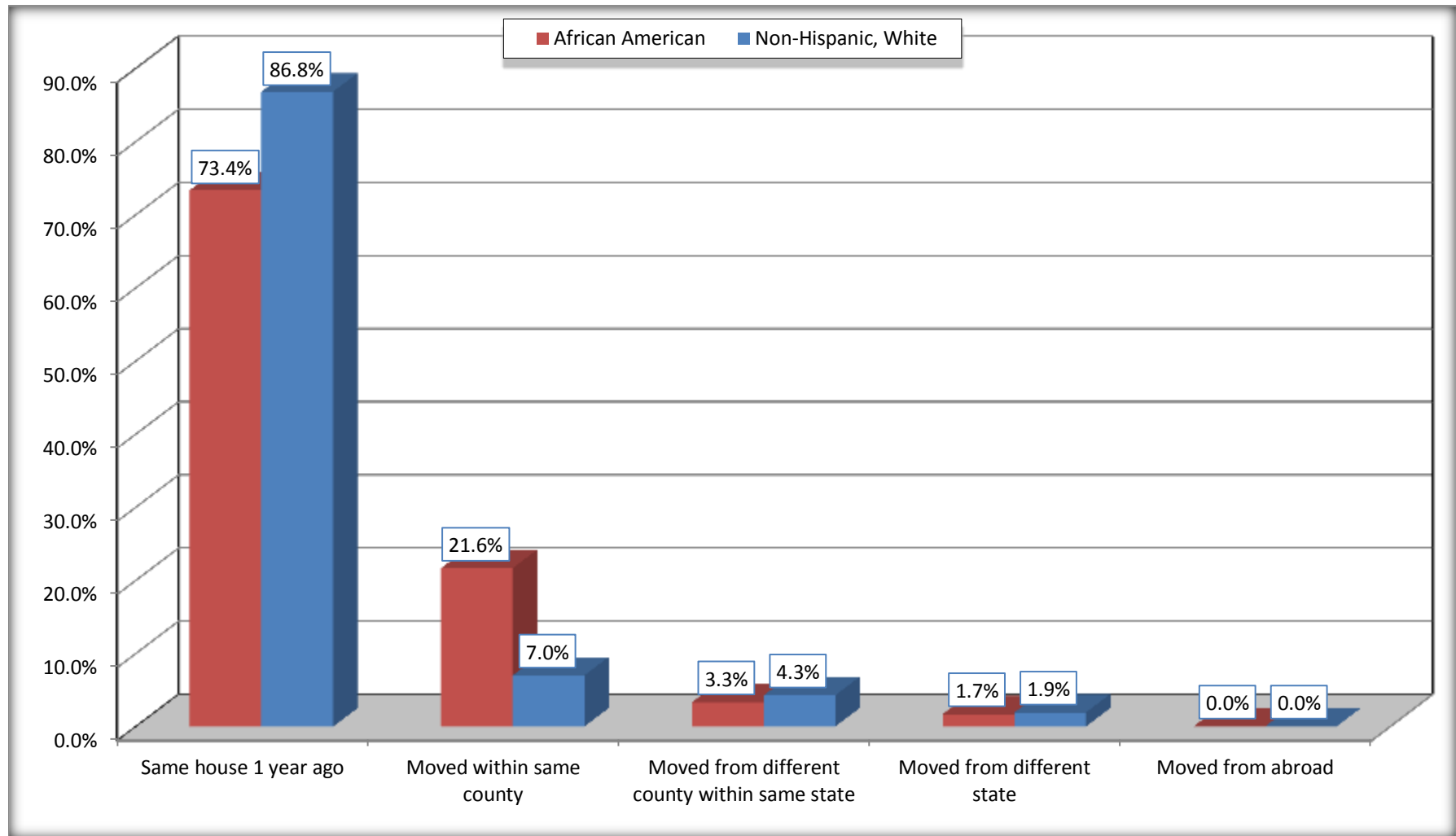
Source: U.S. Census Bureau, 2008-2012 American Community Survey

For information on confidentiality protection, sampling error, nonsampling error, and definitions, see Survey Methodology.

<http://www.census.gov/acs/www/UseData/index.htm>

Geographical Mobility in the Past Year (Population 1 Year and Over)

Covington city, Tennessee



Source: B07004. GEOGRAPHICAL MOBILITY IN THE PAST YEAR BY RACE FOR CURRENT RESIDENCE IN THE UNITED STATES - Universe: POPULATION 1 YEAR AND OVER

Data Set: 2008-2012 American Community Survey 5-Year Estimates

B08105. MEANS OF TRANSPORTATION TO WORK - Universe: WORKERS 16 YEARS AND OVER

Data Set: 2008-2012 American Community Survey 5-Year Estimates

	Covington city, Tennessee					
	African American	Margin of Error (+/-)	% of AA Total	White, Not Hispanic	Margin of Error (+/-)	% of NHW Total
Total:	1281	248	100.0%	1859	336	100.0%
Car, truck, or van - drove alone	1073	283	83.8%	1463	287	78.7%
Car, truck, or van - carpooled	76	56	5.9%	254	126	13.7%
Public transportation (excluding taxicab)	0	17	0.0%	0	17	0.0%
Walked	0	17	0.0%	54	87	2.9%
Taxicab, motorcycle, bicycle, or other means	115	99	9.0%	0	17	0.0%
Worked at home	17	27	1.3%	88	81	4.7%

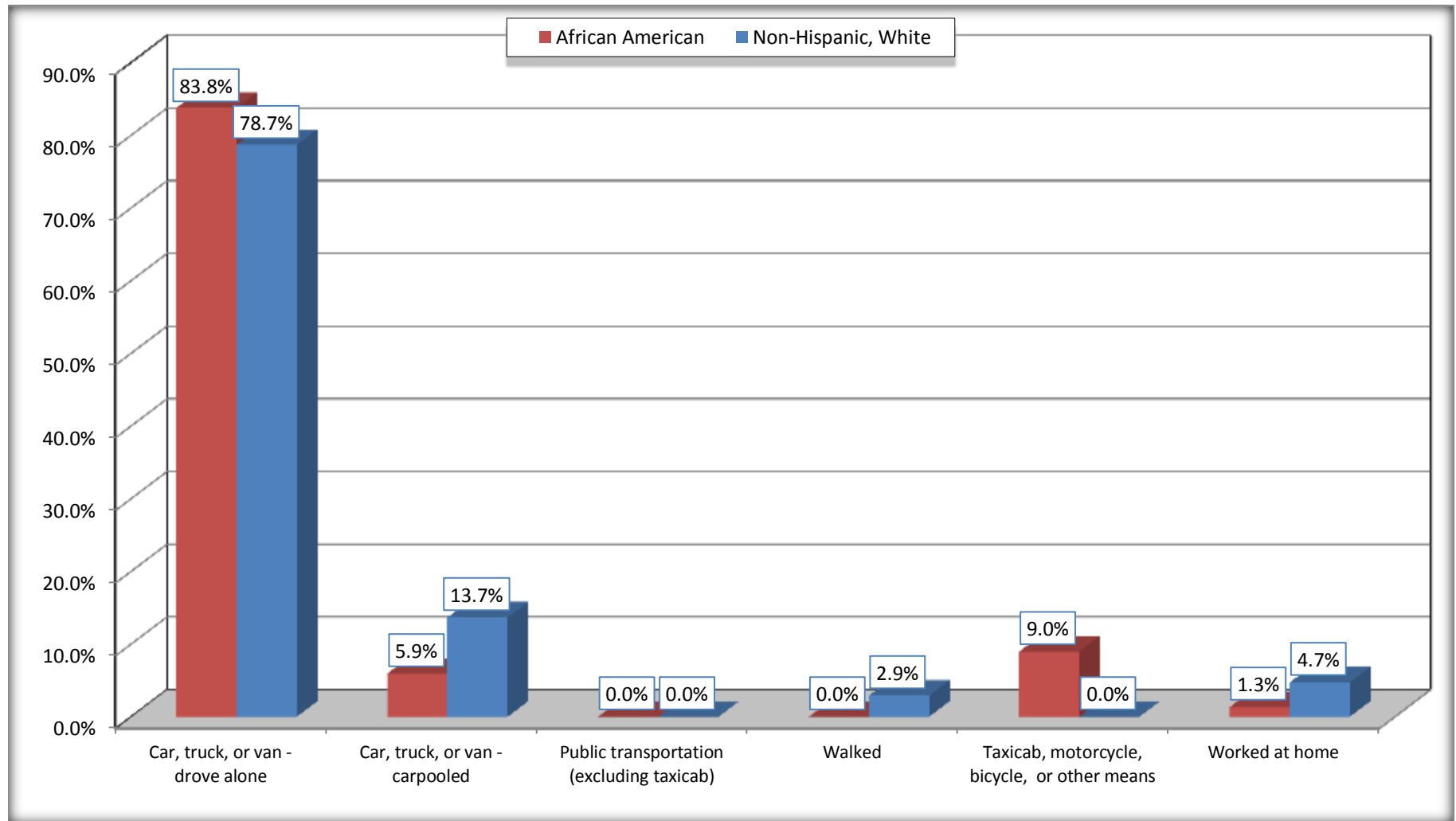
Source: U.S. Census Bureau, 2008-2012 American Community Survey

For information on confidentiality protection, sampling error, nonsampling error, and definitions, see Survey Methodology.

<http://www.census.gov/acs/www/UseData/index.htm>

Means of Transportation to Work (Workers 16 Years and Over)

Covington city, Tennessee



Source: B08105. MEANS OF TRANSPORTATION TO WORK - Universe: WORKERS 16 YEARS AND OVER
Data Set: 2008-2012 American Community Survey 5-Year Estimates

B11002. HOUSEHOLD TYPE BY RELATIVES AND NONRELATIVES FOR POPULATION IN HOUSEHOLDS

Data Set: 2008-2012 American Community Survey 5-Year Estimates

	Covington city, Tennessee					
	African American	Margin of Error (+/-)	% of AA Total	White, Not Hispanic	Margin of Error (+/-)	% of NHW Total
Total:	4829	506	100.0%	3792	494	100.0%
In family households	4338	521	89.8%	2919	489	77.0%
In nonfamily households	491	215	10.2%	873	237	23.0%

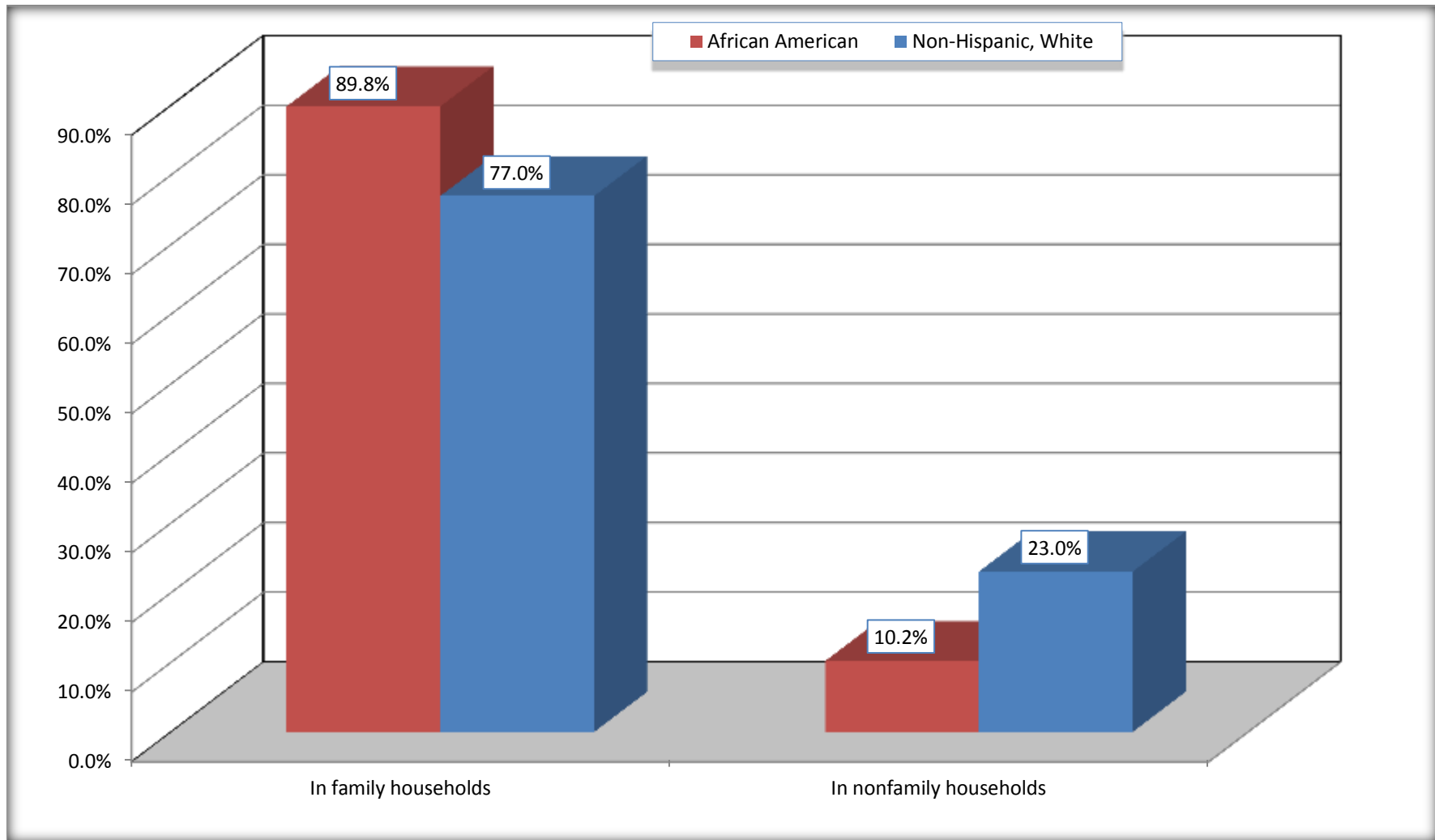
Source: U.S. Census Bureau, 2008-2012 American Community Survey

For information on confidentiality protection, sampling error, nonsampling error, and definitions, see Survey Methodology.

<http://www.census.gov/acs/www/UseData/index.htm>

Household Type for Population in Households

Covington city, Tennessee



Source: B11002. HOUSEHOLD TYPE BY RELATIVES AND NONRELATIVES FOR POPULATION IN HOUSEHOLDS
Data Set: 2008-2012 American Community Survey 5-Year Estimates

B12002. MARITAL STATUS FOR THE POPULATION 15 YEARS AND OVER

Data Set: 2008-2012 American Community Survey 5-Year Estimates

	Covington city, Tennessee					
	African American	Margin of Error (+/-)	% of AA Total	White, Not Hispanic	Margin of Error (+/-)	% of NHW Total
Total:	3,804	429	100.0%	3,623	436	100.0%
Never married	1,853	NC	48.7%	838	NC	23.1%
Now married (except separated)	746	NC	19.6%	1,648	NC	45.5%
Separated	371	NC	9.8%	43	NC	1.2%
Widowed	347	NC	9.1%	501	NC	13.8%
Divorced	487	NC	12.8%	593	NC	16.4%
Male:	1,787	263	47.0%	1,654	247	45.7%
Never married	903	195	23.7%	486	181	13.4%
Now married (except separated)	389	133	10.2%	820	169	22.6%
Separated	202	137	5.3%	17	30	0.5%
Widowed	7	14	0.2%	48	33	1.3%
Divorced	286	148	7.5%	283	109	7.8%
Female:	2,017	231	53.0%	1,969	291	54.3%
Never married	950	229	25.0%	352	140	9.7%
Now married (except separated)	357	127	9.4%	828	172	22.9%
Separated	169	83	4.4%	26	25	0.7%
Widowed	340	108	8.9%	453	137	12.5%
Divorced	201	101	5.3%	310	125	8.6%

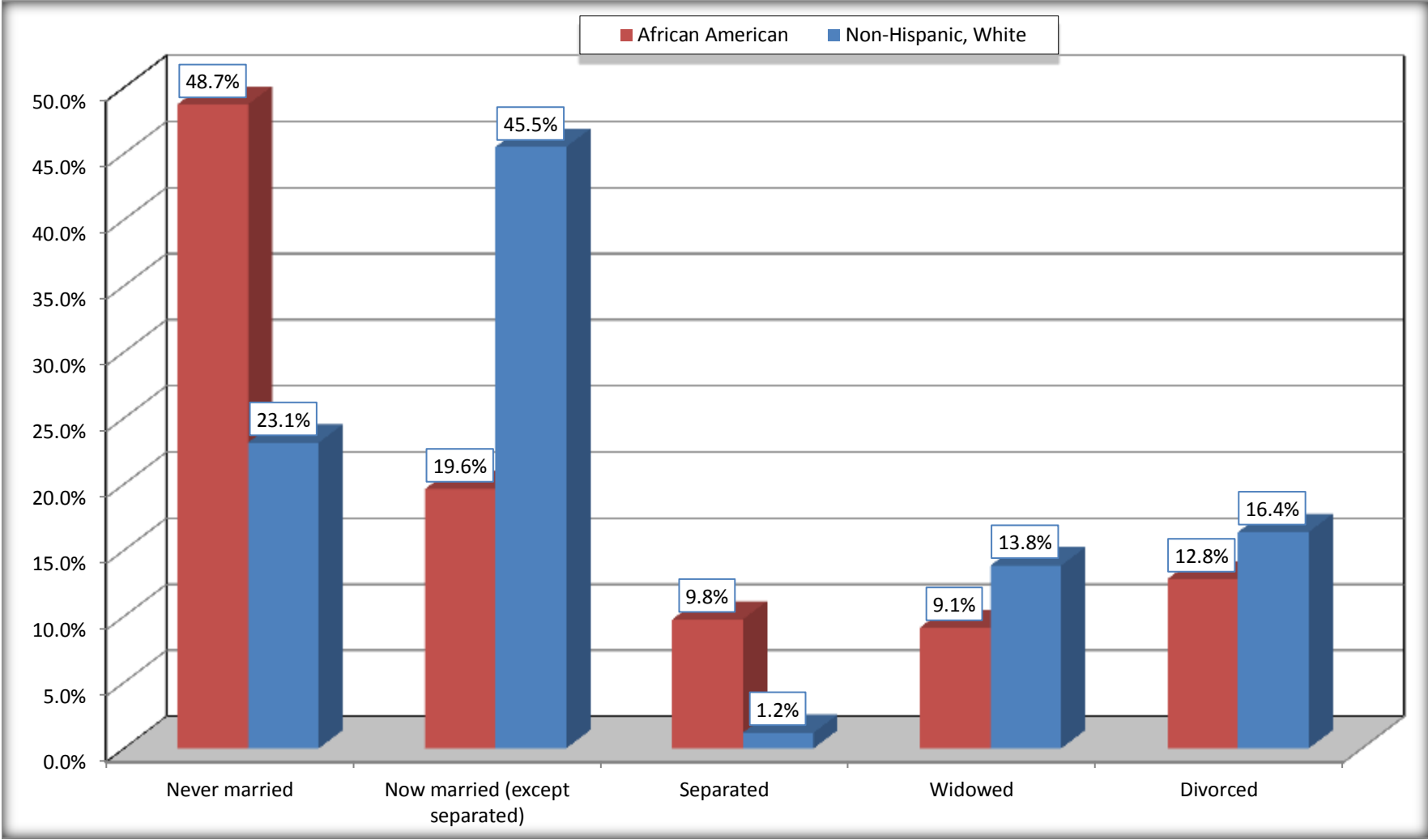
Source: U.S. Census Bureau, 2008-2012 American Community Survey

For information on confidentiality protection, sampling error, nonsampling error, and definitions, see Survey Methodology.

<http://www.census.gov/acs/www/UseData/index.htm>

Marital Status for the Population 15 Years and Over

Covington city, Tennessee



Source: B12002. MARITAL STATUS FOR THE POPULATION 15 YEARS AND OVER
Data Set: 2008-2012 American Community Survey 5-Year Estimates

C15002. SEX BY EDUCATIONAL ATTAINMENT FOR THE POPULATION 25 YEARS AND OVER

Data Set: 2008-2012 American Community Survey 5-Year Estimates

	Covington city, Tennessee					
	African American	Margin of Error (+/-)	% of AA Total	White, Not Hispanic	Margin of Error (+/-)	% of NHW Total
Total:	2,853	344	100.0%	3,096	393	100.0%
Less than high school diploma	939	NC	32.9%	614	NC	19.8%
High school graduate, GED, or alternative	1,041	NC	36.5%	1,122	NC	36.2%
Some college or associate's degree	743	NC	26.0%	867	NC	28.0%
Bachelor's degree or higher	130	NC	4.6%	493	NC	15.9%
Male:	1,267	212	44.4%	1,407	222	45.4%
Less than high school diploma	483	153	16.9%	258	137	8.3%
High school graduate, GED, or alternative	419	122	14.7%	564	155	18.2%
Some college or associate's degree	258	102	9.0%	354	140	11.4%
Bachelor's degree or higher	107	88	3.8%	231	89	7.5%
Female:	1,586	198	55.6%	1,689	271	54.6%
Less than high school diploma	456	121	16.0%	356	134	11.5%
High school graduate, GED, or alternative	622	165	21.8%	558	170	18.0%
Some college or associate's degree	485	124	17.0%	513	163	16.6%
Bachelor's degree or higher	23	29	0.8%	262	130	8.5%

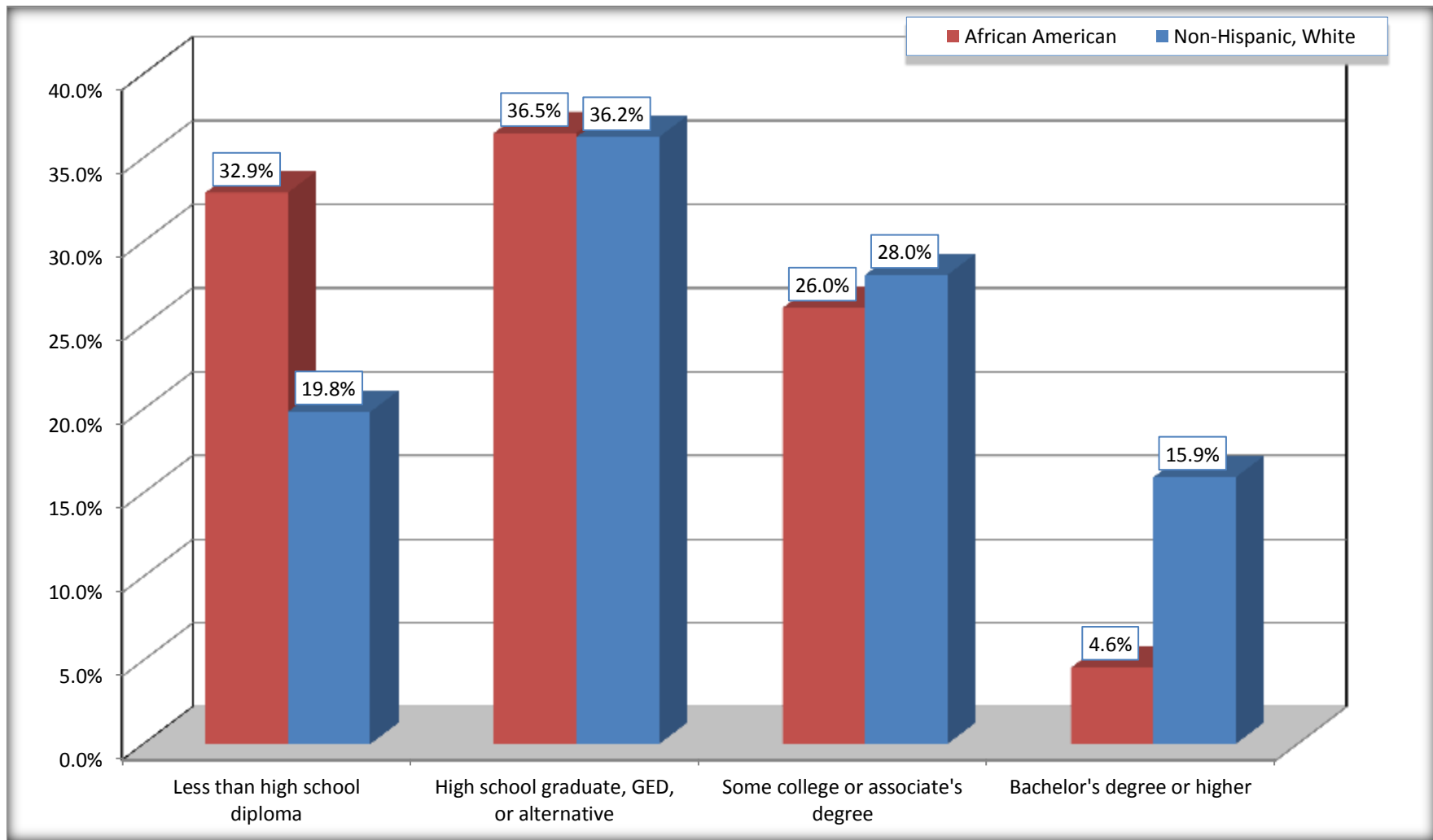
Source: U.S. Census Bureau, 2008-2012 American Community Survey

For information on confidentiality protection, sampling error, nonsampling error, and definitions, see Survey Methodology.

<http://www.census.gov/acs/www/UseData/index.htm>

Educational Attainment for the Population 25 Years and Older

Covington city, Tennessee



Source: C15002. SEX BY EDUCATIONAL ATTAINMENT FOR THE POPULATION 25 YEARS AND OVER
Data Set: 2008-2012 American Community Survey 5-Year Estimates

B17010. POVERTY STATUS IN THE PAST 12 MONTHS OF FAMILIES BY FAMILY TYPE BY PRESENCE OF RELATED CHILDREN UNDER 18 YEARS

Data Set: 2008-2012 American Community Survey 5-Year Estimates

	Covington city, Tennessee					
	African American	Margin of Error (+/-)	% of AA Total	White, Not Hispanic	Margin of Error (+/-)	% of NHW Total
Total:	1,219	192	100.0%	1,020	154	100.0%
Income in the past 12 months below poverty level:	510	138	41.8%	105	80	10.3%
Married-couple family:	26	47	2.1%	16	28	1.6%
With related children under 18 years	0	17	0.0%	16	28	1.6%
Other family:	484	133	39.7%	89	86	8.7%
Male householder, no wife present	13	20	1.1%	0	17	0.0%
With related children under 18 years	13	20	1.1%	0	17	0.0%
Female householder, no husband present	471	133	38.6%	89	86	8.7%
With related children under 18 years	403	134	33.1%	79	84	7.7%
Income in the past 12 months at or above poverty level:	709	181	58.2%	915	151	89.7%
Married-couple family:	351	123	28.8%	758	163	74.3%
With related children under 18 years	176	81	14.4%	143	91	14.0%
Other family:	358	144	29.4%	157	95	15.4%
Male householder, no wife present	90	91	7.4%	65	67	6.4%
With related children under 18 years	0	17	0.0%	0	17	0.0%
Female householder, no husband present	268	118	22.0%	92	68	9.0%
With related children under 18 years	168	95	13.8%	49	60	4.8%

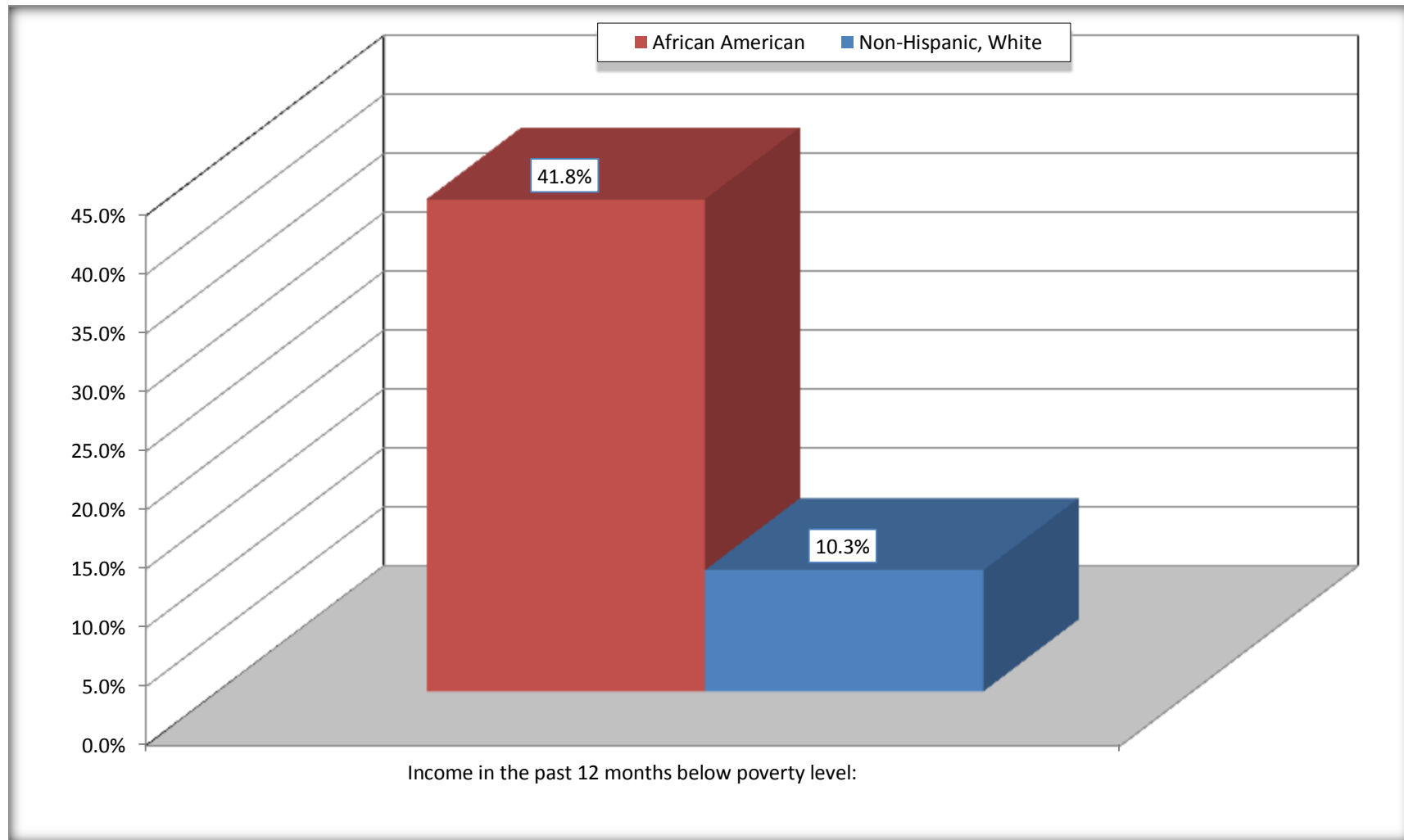
Source: U.S. Census Bureau, 2008-2012 American Community Survey

For information on confidentiality protection, sampling error, nonsampling error, and definitions, see Survey Methodology.

<http://www.census.gov/acs/www/UseData/index.htm>

Family Households Below Poverty in the Past 12 Months

Covington city, Tennessee

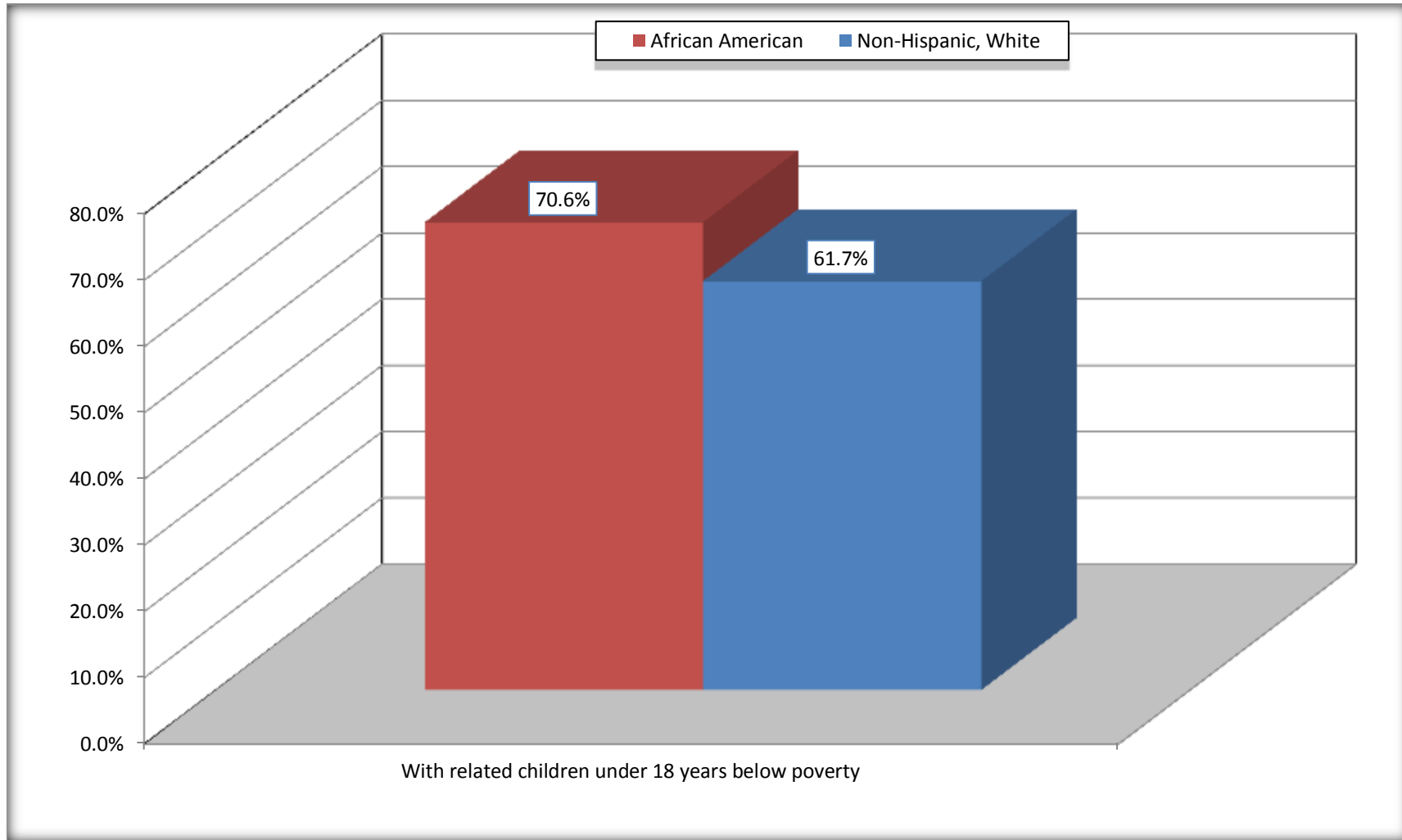


Source: B17010. POVERTY STATUS IN THE PAST 12 MONTHS OF FAMILIES BY FAMILY TYPE BY PRESENCE OF RELATED CHILDREN UNDER 18 YEARS

Data Set: 2008-2012 American Community Survey 5-Year Estimates

Female-headed Households with Related Children Below Poverty in the Past 12 Months

Covington city, Tennessee



Source: B17010. POVERTY STATUS IN THE PAST 12 MONTHS OF FAMILIES BY FAMILY TYPE BY PRESENCE OF RELATED CHILDREN UNDER 18 YEARS
Data Set: 2008-2012 American Community Survey 5-Year Estimates

B17020 POVERTY STATUS IN THE PAST 12 MONTHS BY AGE - Universe: POPULATION FOR WHOM POVERTY STATUS IS DETERMINED

Data Set: 2008-2012 American Community Survey 5-Year Estimates

	Covington city, Tennessee					
	African American	Margin of Error (+/-)	% of AA By Age	White, Not Hispanic	Margin of Error (+/-)	% of NHW By Age
Total:	4,808	506	100.0%	3,820	495	100.0%
Income in the past 12 months below poverty level:	1,909	438	39.7%	629	273	16.5%
Under 18 years	838	NC	57.6%	121	NC	27.8%
18 to 64 years	1,015	253	34.9%	451	206	18.2%
65 years and over	56	NC	12.6%	57	NC	6.3%
Income in the past 12 months at or above poverty level:	2,899	621	60.3%	3,191	488	83.5%
Under 18 years	616	NC	42.4%	314	NC	72.2%
18 to 64 years	1,894	402	65.1%	2,029	343	81.8%
65 years and over	389	NC	87.4%	848	NC	93.7%

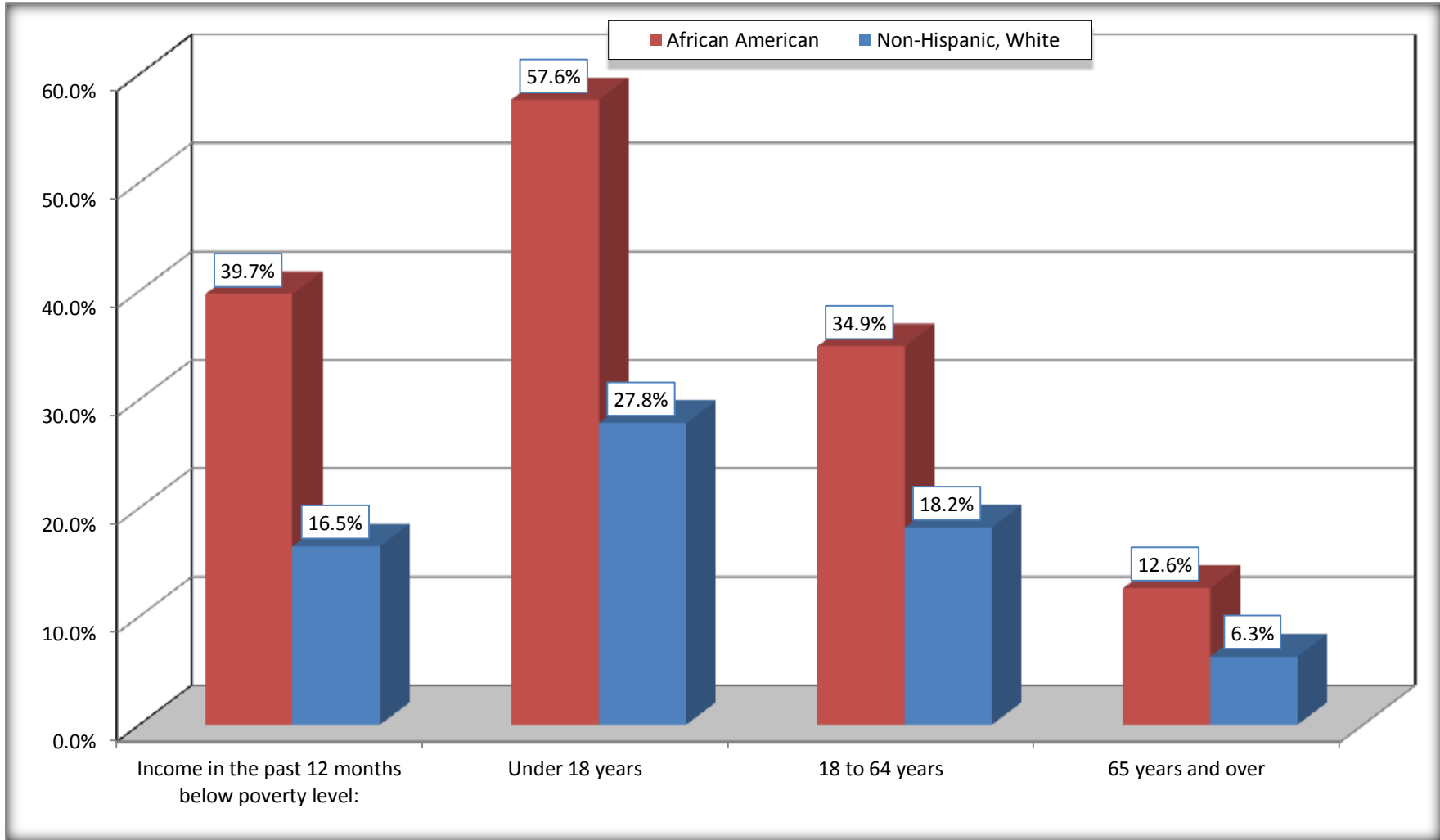
Source: U.S. Census Bureau, 2008-2012 American Community Survey

For information on confidentiality protection, sampling error, nonsampling error, and definitions, see Survey Methodology.

<http://www.census.gov/acs/www/UseData/index.htm>

Population Below Poverty in the Past 12 Months

Covington city, Tennessee



Source: B17020 POVERTY STATUS IN THE PAST 12 MONTHS BY AGE - Universe: POPULATION FOR WHOM POVERTY STATUS IS DETERMINED
Data Set: 2008-2012 American Community Survey 5-Year Estimates

B19001. HOUSEHOLD INCOME IN THE PAST 12 MONTHS (IN 2010 INFLATION-ADJUSTED DOLLARS)

Data Set: 2008-2012 American Community Survey 5-Year Estimates

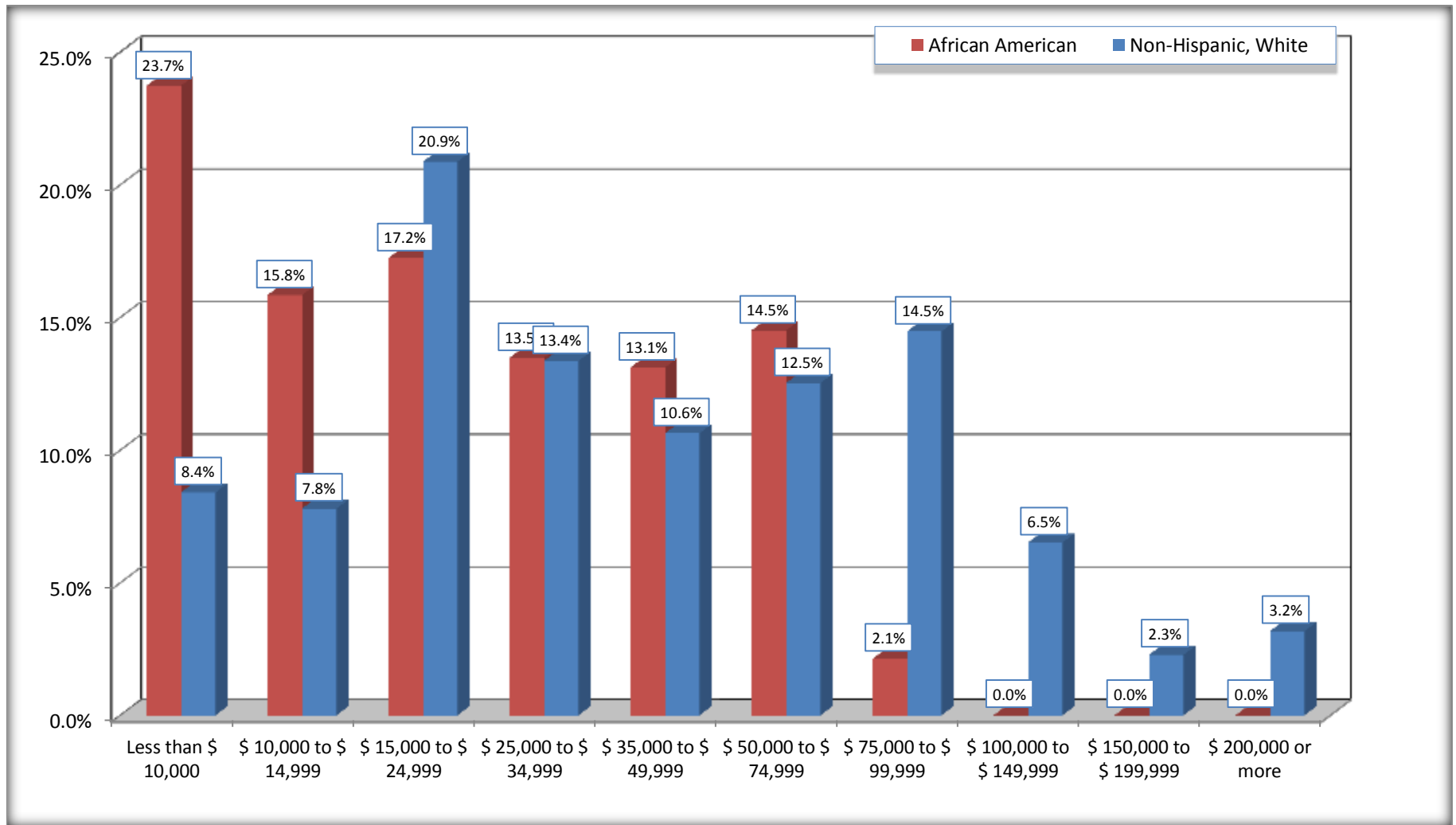
	Covington city, Tennessee					
	African American	Margin of Error (+/-)	% of AA Total	White, Not Hispanic	Margin of Error (+/-)	% of NHW Total
Total:	1,648	216	100.0%	1,797	244	100.0%
Less than \$ 10,000	391	148	23.7%	151	121	8.4%
\$ 10,000 to \$ 14,999	261	144	15.8%	140	92	7.8%
\$ 15,000 to \$ 24,999	284	NC	17.2%	375	NC	20.9%
\$ 25,000 to \$ 34,999	222	NC	13.5%	240	NC	13.4%
\$ 35,000 to \$ 49,999	216	NC	13.1%	191	NC	10.6%
\$ 50,000 to \$ 74,999	239	NC	14.5%	225	NC	12.5%
\$ 75,000 to \$ 99,999	35	43	2.1%	260	117	14.5%
\$ 100,000 to \$ 149,999	0	NC	0.0%	117	NC	6.5%
\$ 150,000 to \$ 199,999	0	17	0.0%	41	43	2.3%
\$ 200,000 or more	0	17	0.0%	57	66	3.2%

Source: U.S. Census Bureau, 2008-2012 American Community Survey

For information on confidentiality protection, sampling error, nonsampling error, and definitions, see Survey Methodology.

<http://www.census.gov/acs/www/UseData/index.htm>

Household Income in the Past 12 Months Covington city, Tennessee



Source: B19001. HOUSEHOLD INCOME IN THE PAST 12 MONTHS (IN 2010 INFLATION-ADJUSTED DOLLARS)
Data Set: 2008-2012 American Community Survey 5-Year Estimates

B19013. MEDIAN HOUSEHOLD INCOME IN THE PAST 12 MONTHS (IN 2010 INFLATION-ADJUSTED DOLLARS)

Data Set: 2008-2012 American Community Survey 5-Year Estimates

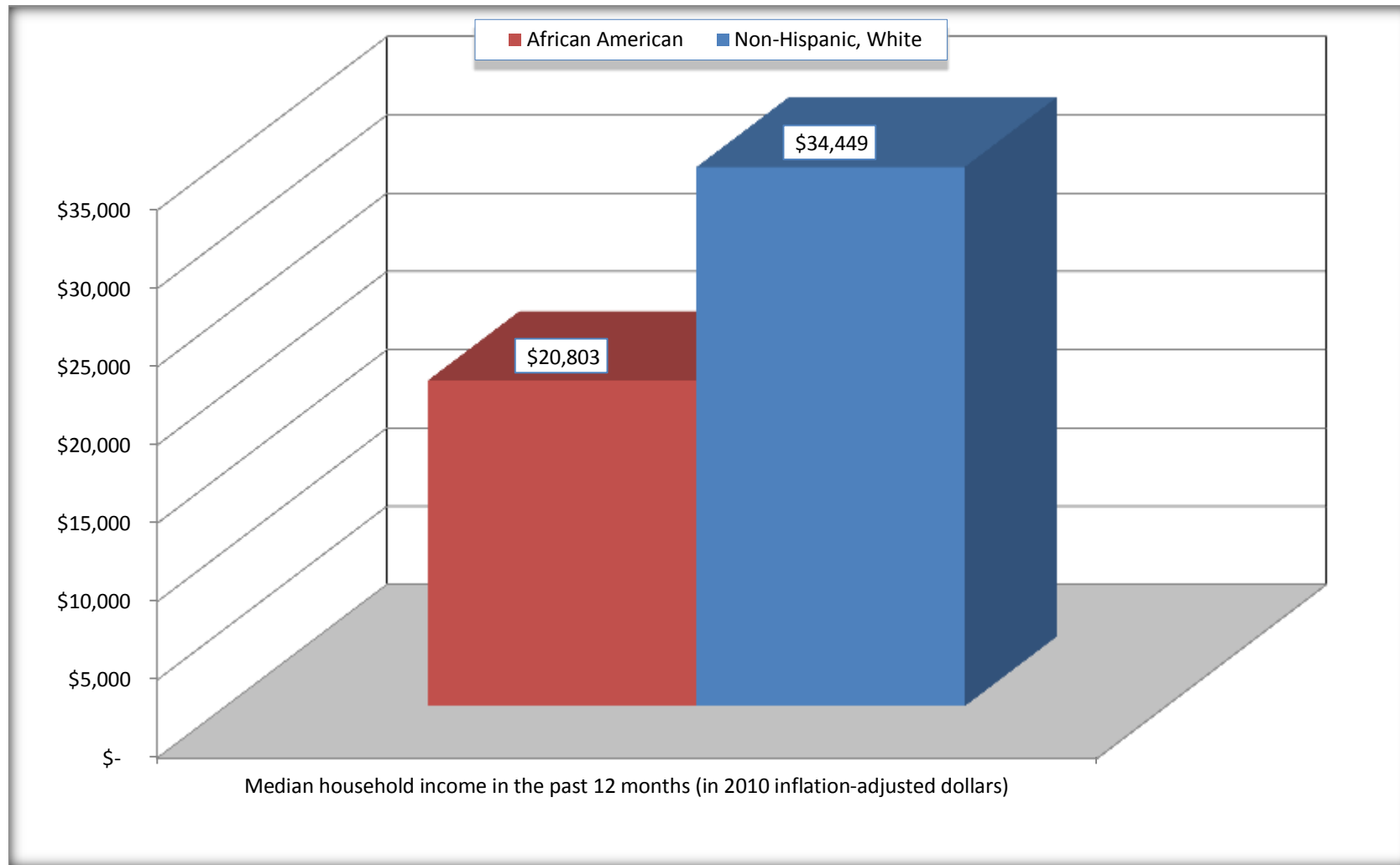
	Covington city, Tennessee			
	African American	Margin of Error (+/-)	White, Not Hispanic	Margin of Error (+/-)
Median household income in the past 12 months (in 2010 inflation-adjusted dollars)	\$ 20,803	\$ 4,255	\$ 34,449	\$ 9,328

Source: U.S. Census Bureau, 2008-2012 American Community Survey

For information on confidentiality protection, sampling error, nonsampling error, and definitions, see Survey Methodology.
<http://www.census.gov/acs/www/UseData/index.htm>

Median Household Income in the Past 12 Months

Covington city, Tennessee



Source: B19013. MEDIAN HOUSEHOLD INCOME IN THE PAST 12 MONTHS (IN 2010 INFLATION-ADJUSTED DOLLARS)
Data Set: 2008-2012 American Community Survey 5-Year Estimates

B19101. FAMILY INCOME IN THE PAST 12 MONTHS (IN 2010 INFLATION-ADJUSTED DOLLARS)

Data Set: 2008-2012 American Community Survey 5-Year Estimates

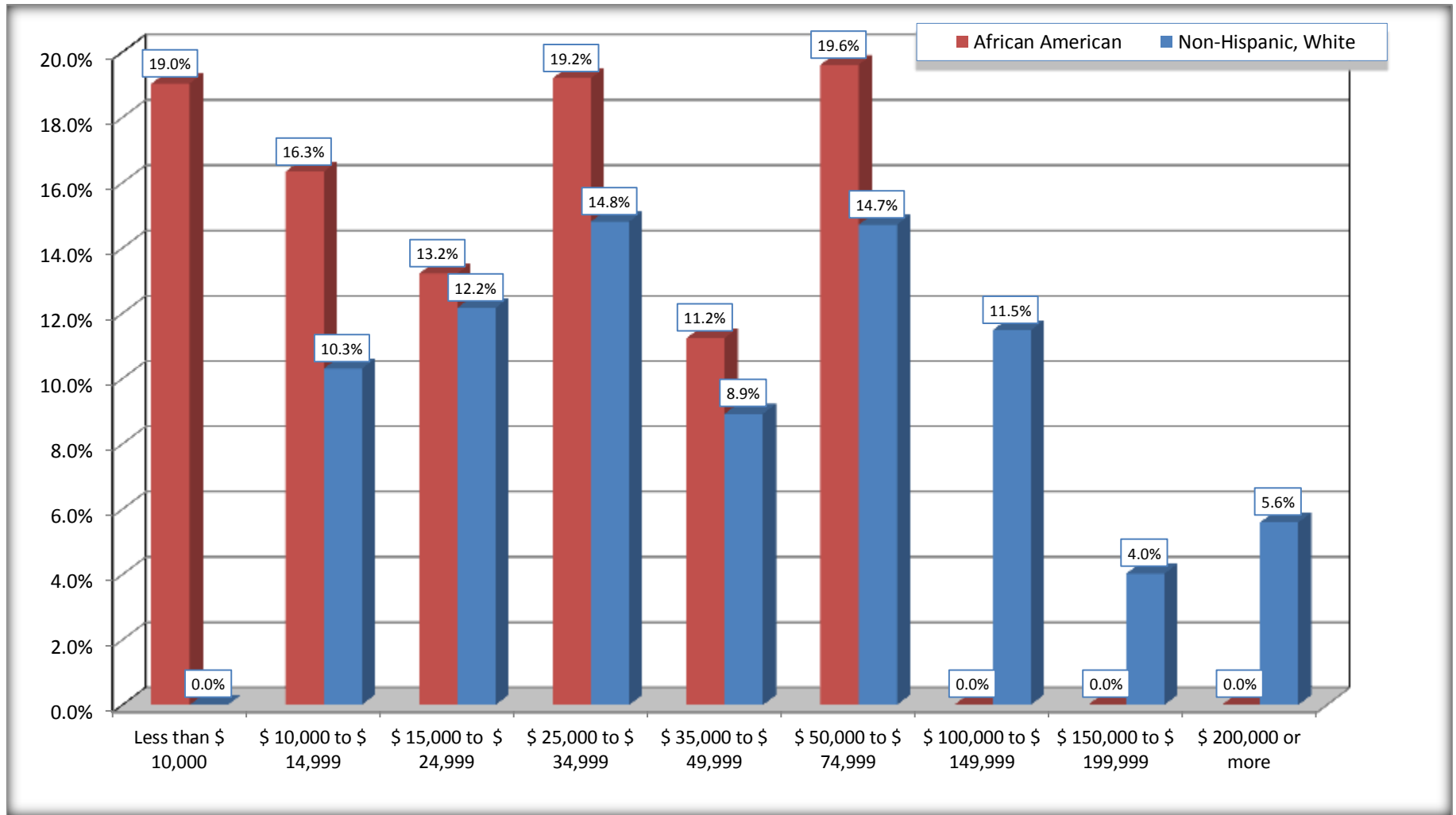
	Covington city, Tennessee					
	African American	Margin of Error (+/-)	% of AA Total	White, Not Hispanic	Margin of Error (+/-)	% of NHW Total
Total:	1,219	192	100.0%	1,020	154	100.0%
Less than \$ 10,000	232	103	19.0%	0	17	0.0%
\$ 10,000 to \$ 14,999	199	126	16.3%	105	80	10.3%
\$ 15,000 to \$ 24,999	161	NC	13.2%	124	NC	12.2%
\$ 25,000 to \$ 34,999	234	NC	19.2%	151	NC	14.8%
\$ 35,000 to \$ 49,999	137	NC	11.2%	91	NC	8.9%
\$ 50,000 to \$ 74,999	239	NC	19.6%	150	NC	14.7%
\$ 100,000 to \$ 149,999	-	NC	0.0%	117	NC	11.5%
\$ 150,000 to \$ 199,999	0	17	0.0%	41	43	4.0%
\$ 200,000 or more	0	17	0.0%	57	66	5.6%

Source: U.S. Census Bureau, 2008-2012 American Community Survey

For information on confidentiality protection, sampling error, nonsampling error, and definitions, see Survey Methodology.

<http://www.census.gov/acs/www/UseData/index.htm>

Family Income in the Past 12 Months Covington city, Tennessee



Source: B19101. FAMILY INCOME IN THE PAST 12 MONTHS (IN 2010 INFLATION-ADJUSTED DOLLARS)
Data Set: 2008-2012 American Community Survey 5-Year Estimates

B19113. MEDIAN FAMILY INCOME IN THE PAST 12 MONTHS (IN 2010 INFLATION-ADJUSTED DOLLARS)

Data Set: 2008-2012 American Community Survey 5-Year Estimates

	Covington city, Tennessee			
	African American	Margin of Error (+/-)	White, Not Hispanic	Margin of Error (+/-)
Median family income in the past 12 months (in 2010 inflation-adjusted dollars)	\$ 25,384	\$ 7,066	\$ 60,227	\$ 23,140

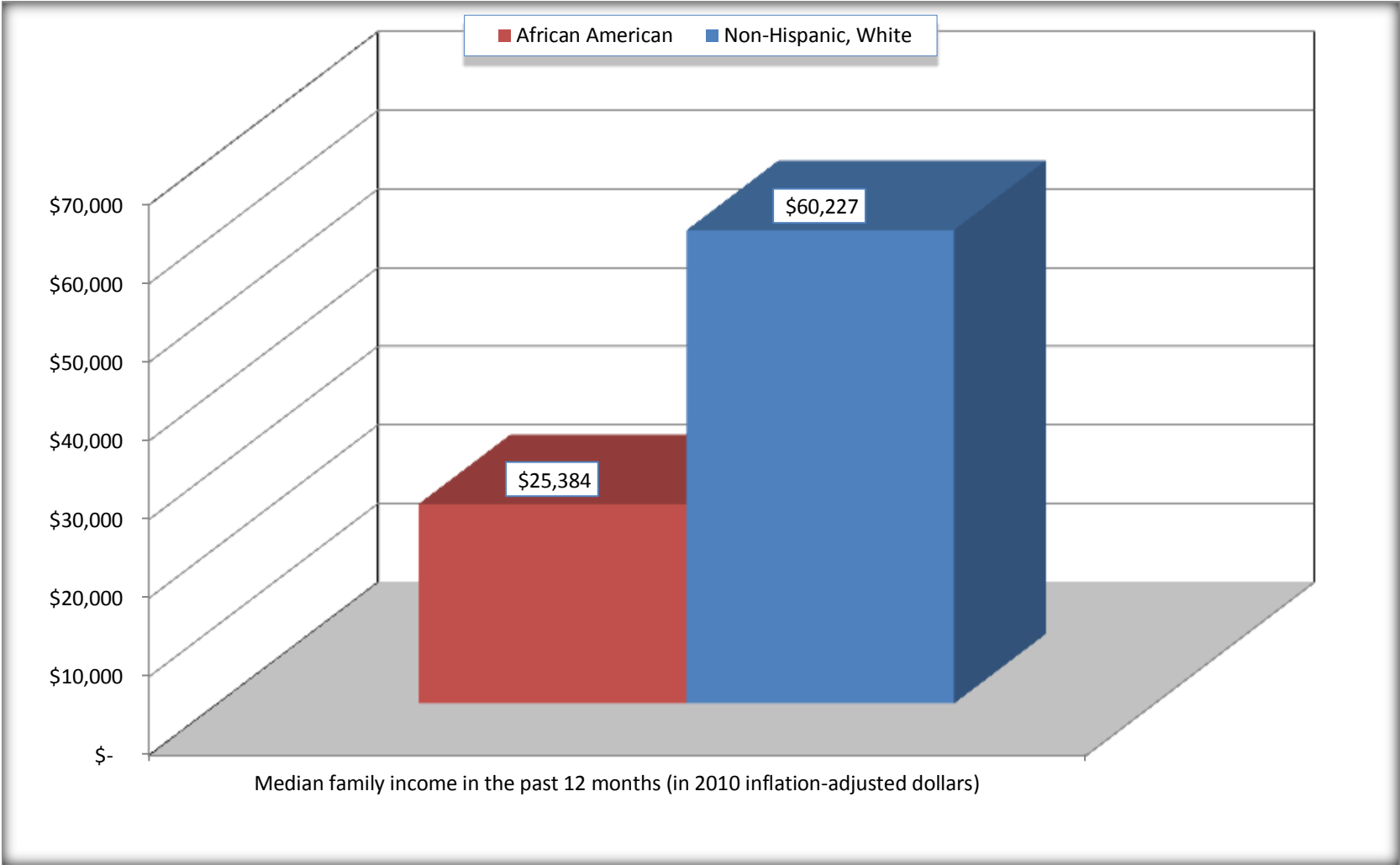
Source: U.S. Census Bureau, 2008-2012 American Community Survey

For information on confidentiality protection, sampling error, nonsampling error, and definitions, see Survey Methodology.

<http://www.census.gov/acs/www/UseData/index.htm>

Median Family Income in the Past 12 Months

Covington city, Tennessee



Source: B19113. MEDIAN FAMILY INCOME IN THE PAST 12 MONTHS (IN 2010 INFLATION-ADJUSTED DOLLARS)
Data Set: 2008-2012 American Community Survey 5-Year Estimates

B19202. MEDIAN NONFAMILY HOUSEHOLD INCOME IN THE PAST 12 MONTHS (IN 2010 INFLATION-ADJUSTED DOLLARS)

Data Set: 2008-2012 American Community Survey 5-Year Estimates

	Covington city, Tennessee			
	African American	Margin of Error (+/-)	White, Not Hispanic	Margin of Error (+/-)
Median nonfamily household income in the past 12 months (in 2010 inflation-adjusted dollars)	\$ 14,261	\$ 6,470	\$ 21,985	\$ 5,034

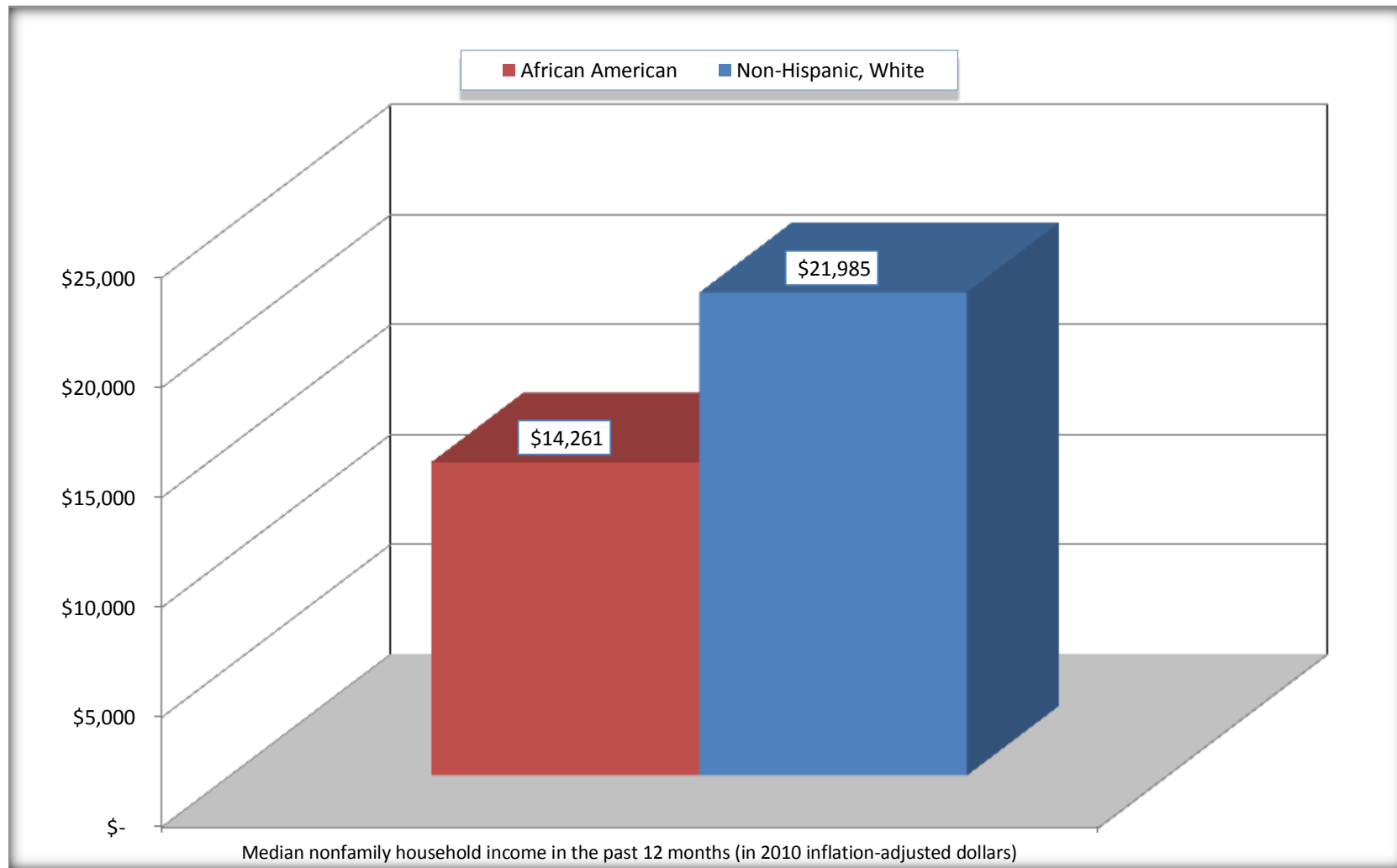
Source: U.S. Census Bureau, 2008-2012 American Community Survey

For information on confidentiality protection, sampling error, nonsampling error, and definitions, see Survey Methodology.

<http://www.census.gov/acs/www/UseData/index.htm>

Median Non-Family Income in the Past 12 Months

Covington city, Tennessee



Source: B19202. MEDIAN NONFAMILY HOUSEHOLD INCOME IN THE PAST 12 MONTHS (IN 2010 INFLATION-ADJUSTED DOLLARS)
Data Set: 2008-2012 American Community Survey 5-Year Estimates

B19301. PER CAPITA INCOME IN THE PAST 12 MONTHS (IN 2010 INFLATION-ADJUSTED DOLLARS)

Data Set: 2008-2012 American Community Survey 5-Year Estimates

	Covington city, Tennessee			
	African American	Margin of Error (+/-)	White, Not Hispanic	Margin of Error (+/-)
Per capita income in the past 12 months (in 2010 inflation-adjusted dollars)	\$ 9,739	\$ 1,125	\$ 29,087	\$ 7,615

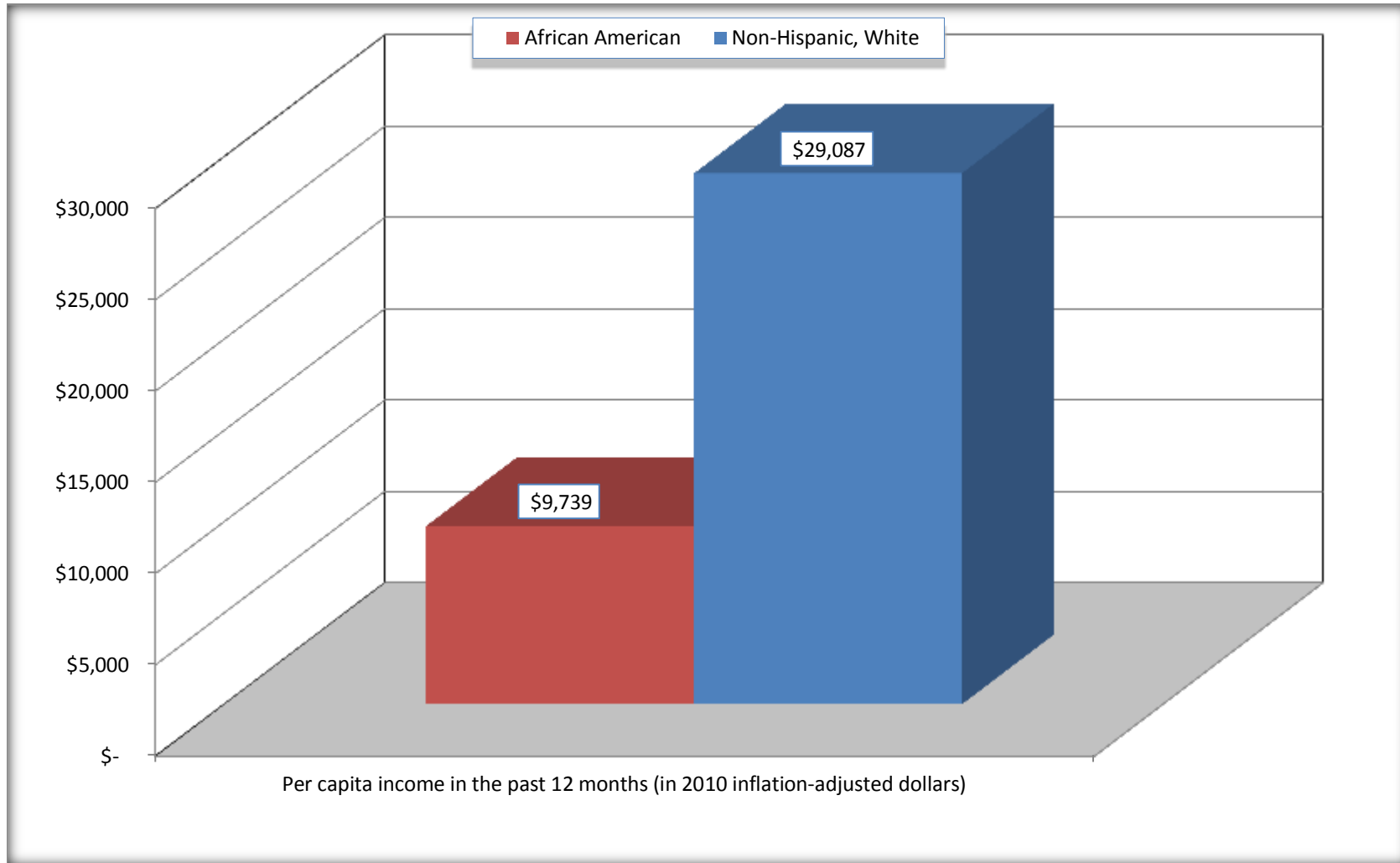
Source: U.S. Census Bureau, 2008-2012 American Community Survey

For information on confidentiality protection, sampling error, nonsampling error, and definitions, see Survey Methodology.

<http://www.census.gov/acs/www/UseData/index.htm>

Per capita Income in the Past 12 Months

Covington city, Tennessee



Source: B19301. PER CAPITA INCOME IN THE PAST 12 MONTHS (IN 2010 INFLATION-ADJUSTED DOLLARS)
Data Set: 2008-2012 American Community Survey 5-Year Estimates

B20017. MEDIAN EARNINGS IN THE PAST 12 MONTHS (IN 2010 INFLATION-ADJUSTED DOLLARS) BY SEX BY WORK EXPERIENCE IN THE PAST 12 MONTHS FOR THE POPULATION 16 YEARS AND OVER WITH EARNINGS IN THE PAST 12 MONTHS

Data Set: 2008-2012 American Community Survey 5-Year Estimates

	Covington city, Tennessee			
	African American	Margin of Error (+/-)	White, Not Hispanic	Margin of Error (+/-)
Median earnings in the past 12 months (in 2010 inflation-adjusted dollars) --				
Total:	\$ 15,028	\$ 3,983	\$ 21,875	\$ 8,747
Male --				
Total	\$ 20,191	\$ 5,220	\$ 31,398	\$ 3,821
Worked full-time, year-round in the past 12 months	\$ 29,293	\$ 1,712	\$ 48,864	\$ 29,470
Other	\$ 8,588	\$ 4,442	\$ 10,495	\$ 3,627
Female --				
Total	\$ 12,862	\$ 2,275	\$ 16,786	\$ 6,641
Worked full-time, year-round in the past 12 months	\$ 18,728	\$ 11,671	\$ 37,426	\$ 7,652
Other	\$ 7,540	\$ 2,998	\$ 7,203	\$ 1,745

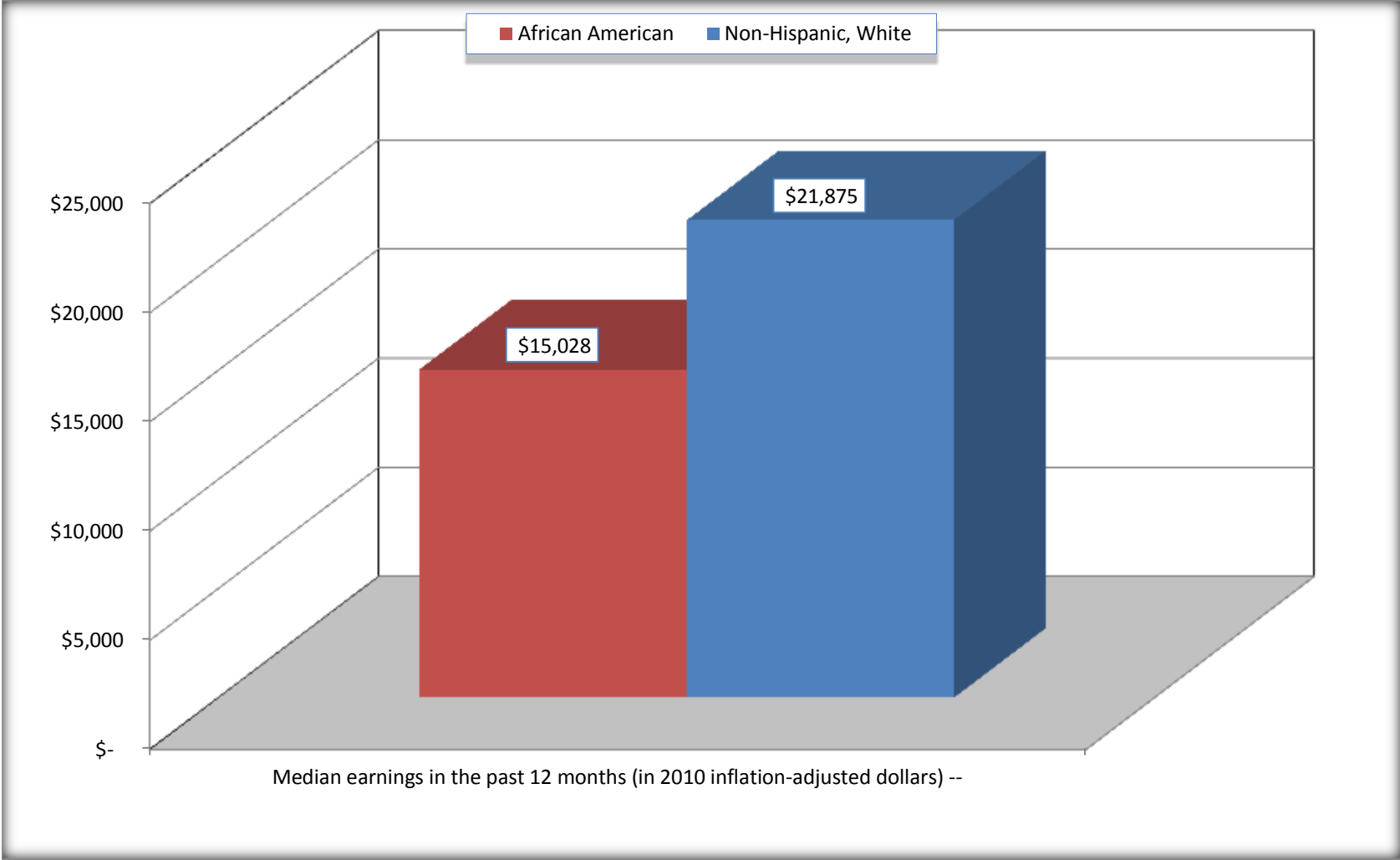
Source: U.S. Census Bureau, 2008-2012 American Community Survey

For information on confidentiality protection, sampling error, nonsampling error, and definitions, see Survey Methodology.

<http://www.census.gov/acs/www/UseData/index.htm>

Median earnings in the Past 12 Months (16 Years and Over with Earnings)

Covington city, Tennessee



Source: B20017. MEDIAN EARNINGS IN THE PAST 12 MONTHS (IN 2010 INFLATION-ADJUSTED DOLLARS) BY SEX BY WORK EXPERIENCE IN THE PAST 12 MONTHS FOR THE POPULATION 16 YEARS AND OVER WITH EARNINGS IN THE PAST 12 MONTHS
Data Set: 2008-2012 American Community Survey 5-Year Estimates

B20005. SEX BY WORK EXPERIENCE IN THE PAST 12 MONTHS BY EARNINGS IN THE PAST 12 MONTHS (IN 2010 INFLATION-ADJUSTED DOLLARS) FOR THE POPULATION 16 YEARS AND OVER

Data Set: 2008-2012 American Community Survey 5-Year Estimates

	Covington city, Tennessee					
	African American	Margin of Error (+/-)	% of AA Total	White, Not Hispanic	Margin of Error (+/-)	% of NHW Total
Total:	3,742	436	100.0%	3,594	433	100.0%
Worked full-time, year-round in the past 12 months:	916	NC	24.5%	1,236	NC	34.4%
No earnings	0	NC	0.0%	0	NC	0.0%
With earnings:	916	NC	24.5%	1,236	NC	34.4%
\$ 1 to \$ 9,999 or loss	11	NC	0.3%	39	NC	1.1%
\$ 10,000 to \$ 19,999	314	NC	8.4%	194	NC	5.4%
\$ 20,000 to \$ 29,999	253	NC	6.8%	159	NC	4.4%
\$ 30,000 to \$ 49,999	320	NC	8.6%	384	NC	10.7%
\$ 50,000 to \$ 74,999	18	NC	0.5%	254	NC	7.1%
\$ 75,000 or more	0	NC	0.0%	206	NC	5.7%
Other:	2,826	NC	75.5%	2,358	NC	65.6%
No earnings	1,918	NC	51.3%	1,382	NC	38.5%
With earnings: less than full time, year-round	908	NC	24.3%	976	NC	27.2%
Male:	1,770	260	47.3%	1,625	251	45.2%
Worked full-time, year-round in the past 12 months:	489	160	13.1%	734	170	20.4%
No earnings	0	17	0.0%	0	17	0.0%
With earnings:	489	160	13.1%	734	170	20.4%
\$ 1 to \$ 9,999 or loss	0	NC	0.0%	24	NC	0.7%
\$ 10,000 to \$ 19,999	83	NC	2.2%	90	NC	2.5%
\$ 20,000 to \$ 29,999	207	NC	5.5%	83	NC	2.3%
\$ 30,000 to \$ 49,999	181	NC	4.8%	175	NC	4.9%
\$ 50,000 to \$ 74,999	18	NC	0.5%	179	NC	5.0%
\$ 75,000 or more	0	NC	0.0%	183	NC	5.1%

	Covington city, Tennessee					
	African American	Margin of Error (+/-)	% of AA Total	White, Not Hispanic	Margin of Error (+/-)	% of NHW Total
Other:	1,281	246	34.2%	891	232	24.8%
No earnings	771	180	20.6%	523	184	14.6%
With earnings:	510	146	13.6%	368	163	10.2%
Female:	1,972	240	52.7%	1,969	291	54.8%
Worked full-time, year-round in the past 12 months:	427	138	11.4%	502	179	14.0%
No earnings	0	17	0.0%	0	17	0.0%
With earnings:	427	138	11.4%	502	179	14.0%
\$ 1 to \$ 9,999 or loss	11	NC	0.3%	15	NC	0.4%
\$ 10,000 to \$ 19,999	231	NC	6.2%	104	NC	2.9%
\$ 20,000 to \$ 29,999	46	NC	1.2%	76	NC	2.1%
\$ 30,000 to \$ 49,999	139	NC	3.7%	209	NC	5.8%
\$ 50,000 to \$ 74,999	0	NC	0.0%	75	NC	2.1%
\$ 75,000 or more	0	NC	0.0%	23	NC	0.6%
Other:	1,545	253	41.3%	1,467	270	40.8%
No earnings	1,147	252	30.7%	859	182	23.9%
With earnings:	398	127	10.6%	608	223	16.9%

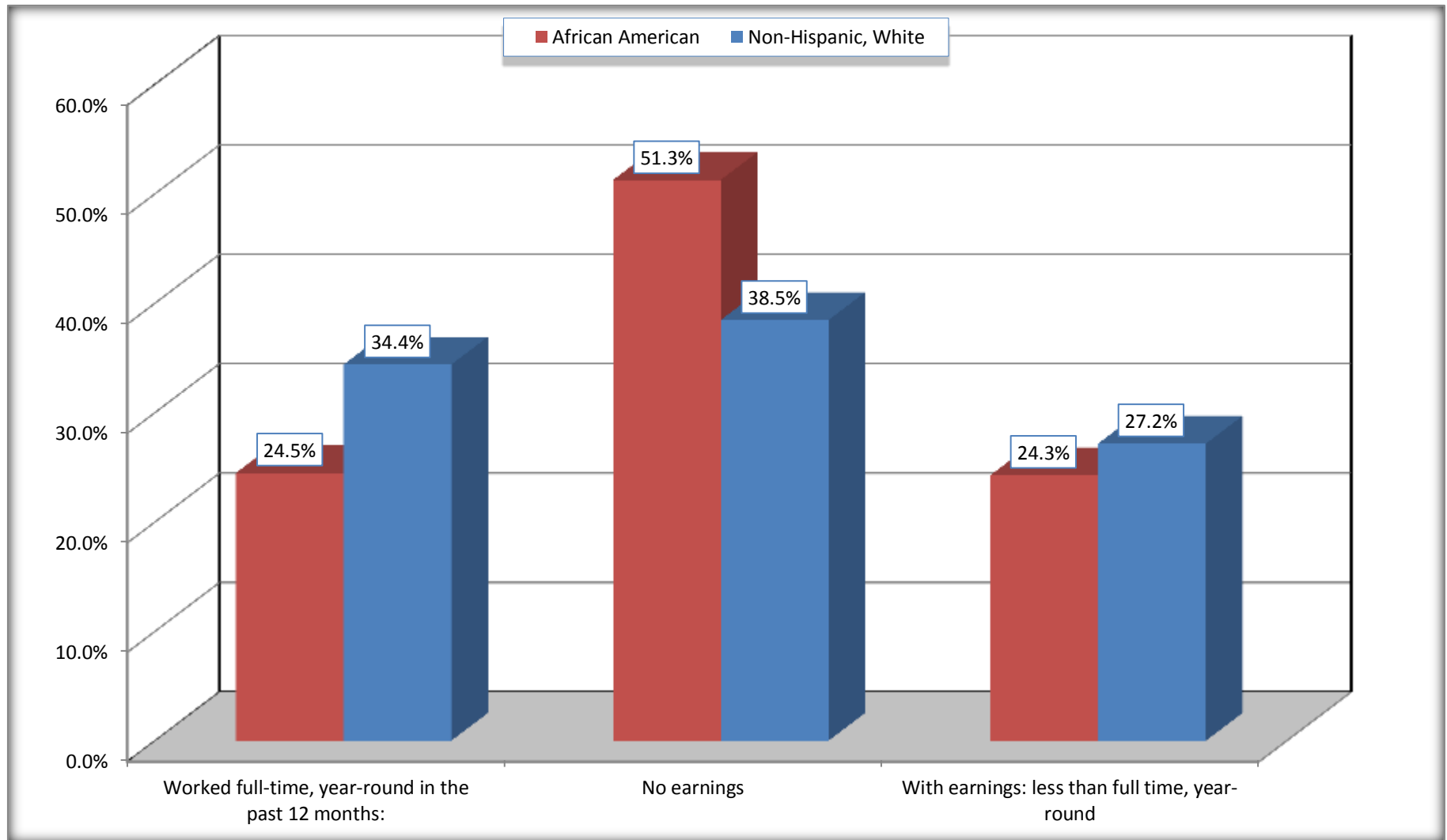
Source: U.S. Census Bureau, 2008-2012 American Community Survey

For information on confidentiality protection, sampling error, nonsampling error, and definitions, see Survey Methodology.

<http://www.census.gov/acs/www/UseData/index.htm>

Employment and Earnings in in the Past 12 Months (16 Years and Over)

Covington city, Tennessee



Source: B20005. SEX BY WORK EXPERIENCE IN THE PAST 12 MONTHS BY EARNINGS IN THE PAST 12 MONTHS (IN 2010 INFLATION-ADJUSTED DOLLARS) FOR THE POPULATION 16 YEARS AND OVER

Data Set: 2008-2012 American Community Survey 5-Year Estimates

C21001. SEX BY AGE BY VETERAN STATUS FOR THE CIVILIAN POPULATION 18 YEARS AND OVER

Data Set: 2008-2012 American Community Survey 5-Year Estimates

	Covington city, Tennessee					
	African American	Margin of Error (+/-)	% of AA Total	White, Not Hispanic	Margin of Error (+/-)	% of NHW Total
Total:	3,491	413	100.0%	3,536	415	100.0%
Veteran	182	NC	5.2%	351	NC	9.9%
Nonveteran	3,309	NC	94.8%	3,185	NC	90.1%
Male:	1,618	255	46.3%	1,567	238	44.3%
18 to 64 years:	1,440	250	41.2%	1,131	215	32.0%
Veteran	173	82	5.0%	166	93	4.7%
Nonveteran	1,267	251	36.3%	965	192	27.3%
65 years and over:	178	66	5.1%	436	97	12.3%
Veteran	9	14	0.3%	169	55	4.8%
Nonveteran	169	69	4.8%	267	91	7.6%
Female:	1,873	220	53.7%	1,969	291	55.7%
18 to 64 years:	1,564	195	44.8%	1,396	269	39.5%
Veteran	0	17	0.0%	16	25	0.5%
Nonveteran	1,564	195	44.8%	1,380	270	39.0%
65 years and over:	309	70	8.9%	573	116	16.2%
Veteran	0	17	0.0%	0	17	0.0%
Nonveteran	309	70	8.9%	573	116	16.2%

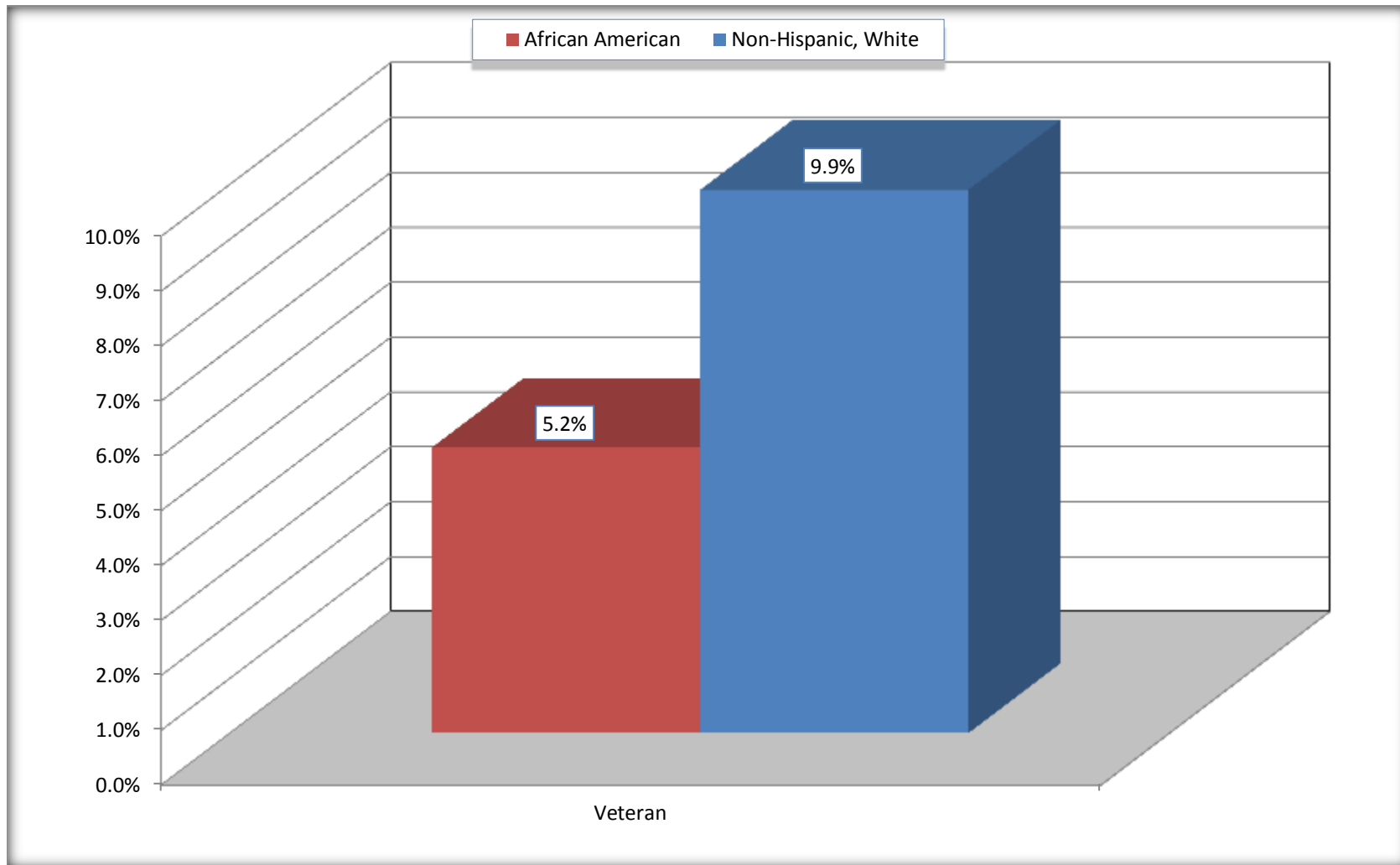
Source: U.S. Census Bureau, 2008-2012 American Community Survey

For information on confidentiality protection, sampling error, nonsampling error, and definitions, see Survey Methodology.

<http://www.census.gov/acs/www/UseData/index.htm>

Veterans in the Civilian Population 18 Years and Over

Covington city, Tennessee



Source: C21001. SEX BY AGE BY VETERAN STATUS FOR THE CIVILIAN POPULATION 18 YEARS AND OVER
Data Set: 2008-2012 American Community Survey 5-Year Estimates

B22005. RECEIPT OF FOOD STAMPS/SNAP IN THE PAST 12 MONTHS BY RACE OF HOUSEHOLDER

Data Set: 2008-2012 American Community Survey 5-Year Estimates

	Covington city, Tennessee					
	African American	Margin of Error (+/-)	% of AA Total	White, Not Hispanic	Margin of Error (+/-)	% of NHW Total
Total:	1,648	216	100.0%	1,797	244	100.0%
HH received Food Stamps/SNAP in the past 12 months	880	222	53.4%	280	93	15.6%
HH did not receive Food Stamps/SNAP in the past 12 months	768	207	46.6%	1,517	227	84.4%

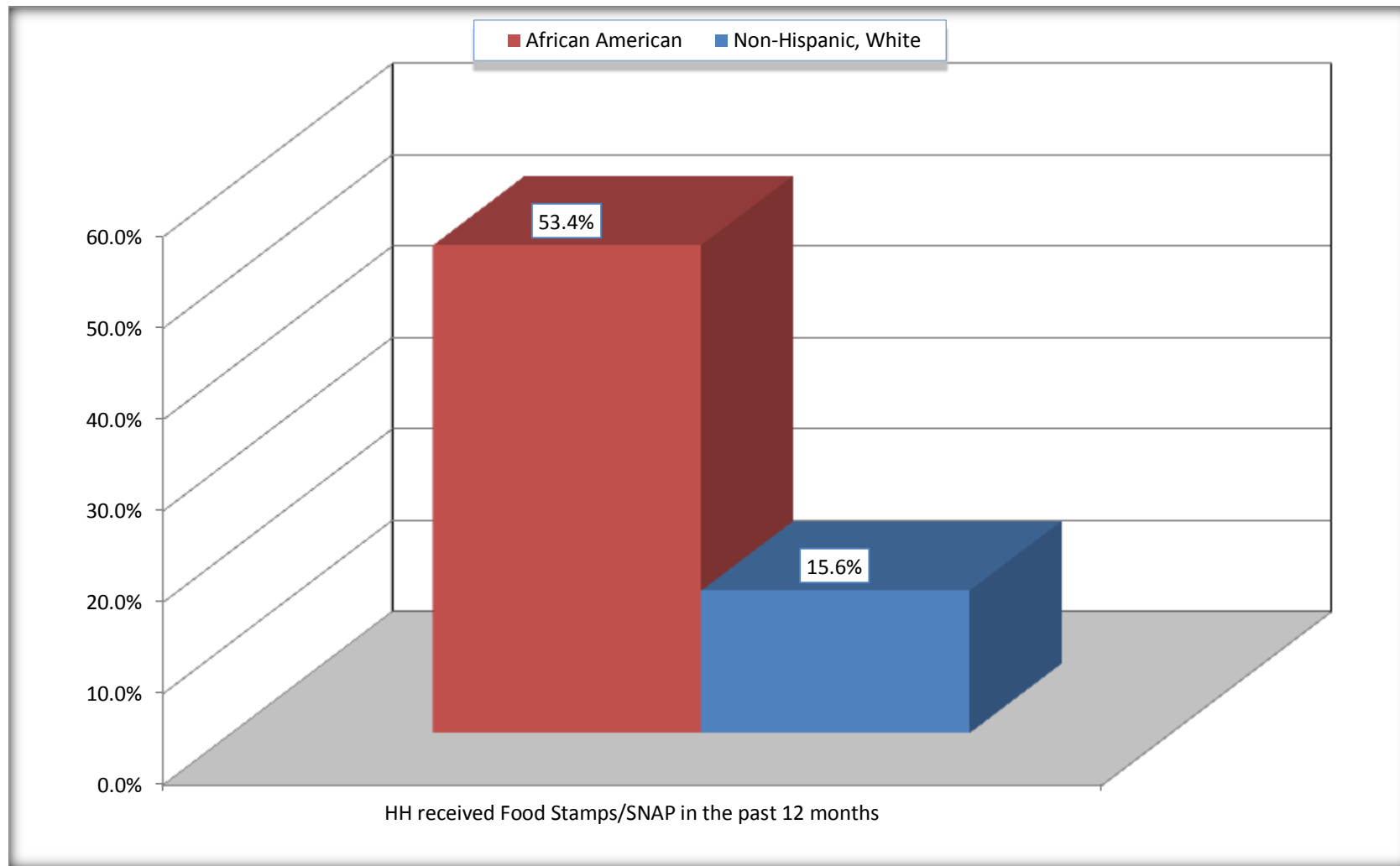
Source: U.S. Census Bureau, 2008-2012 American Community Survey

For information on confidentiality protection, sampling error, nonsampling error, and definitions, see Survey Methodology.

<http://www.census.gov/acs/www/UseData/index.htm>

Receipt of Food Stamps/SNAP in the Past 12 Months by Household

Covington city, Tennessee



Source: B22005. RECEIPT OF FOOD STAMPS/SNAP IN THE PAST 12 MONTHS BY RACE OF HOUSEHOLDER
Data Set: 2008-2012 American Community Survey 5-Year Estimates

C23002. SEX BY AGE BY EMPLOYMENT STATUS FOR THE POPULATION 16 YEARS AND OVER

Data Set: 2008-2012 American Community Survey 5-Year Estimates

	Covington city, Tennessee					
	African American	Margin of Error (+/-)	% of AA Total	White, Not Hispanic	Margin of Error (+/-)	% of NHW Total
Total:	3,742	436	100.0%	3,594	433	100.0%
In labor force:	2,034	NC	54.4%	2,028	NC	56.4%
In Armed Forces	0	NC	0.0%	32	NC	0.9%
Civilian:	1,996	NC	53.3%	1,801	NC	50.1%
Employed	1,387	NC	37.1%	1,827	NC	50.8%
Unemployed	647	NC	17.3%	169	NC	4.7%
Not in labor force	1,708	NC	45.6%	1,566	NC	43.6%
Male:	1,770	260	47.3%	1,625	251	45.2%
16 to 64 years:	1,592	255	42.5%	1,189	224	33.1%
In labor force:	999	209	26.7%	953	199	26.5%
In Armed Forces	0	17	0.0%	32	45	0.9%
Civilian:	999	209	26.7%	921	197	25.6%
Employed	767	205	20.5%	864	194	24.0%
Unemployed	232	137	6.2%	57	62	1.6%
Not in labor force	593	158	15.8%	236	143	6.6%
65 years and over:	178	66	4.8%	436	97	12.1%
In labor force:	38	45	1.0%	135	63	3.8%
Employed	38	45	1.0%	135	63	3.8%
Unemployed	0	17	0.0%	0	17	0.0%
Not in labor force	140	71	3.7%	301	95	8.4%

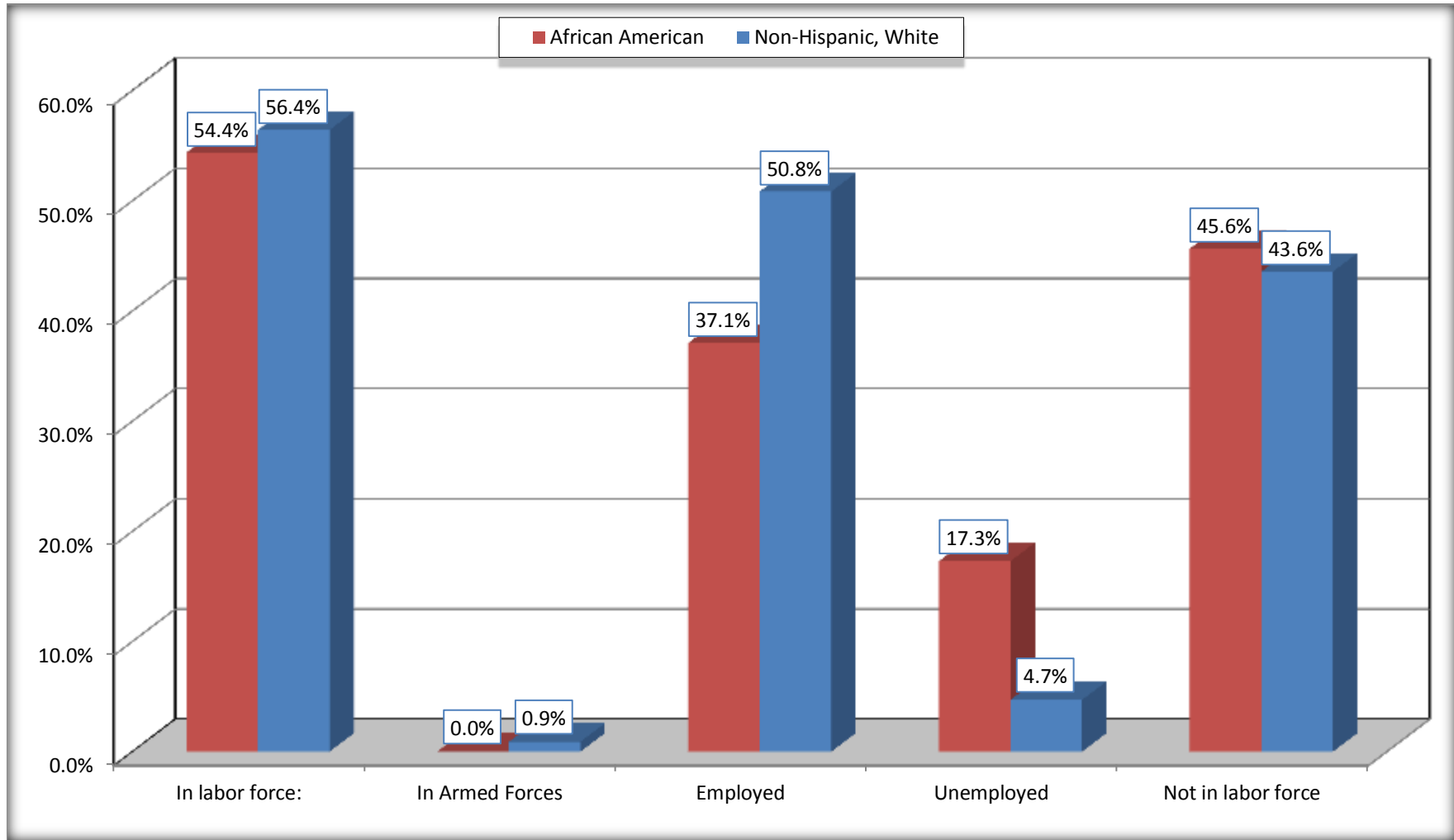
	Covington city, Tennessee					
	African American	Margin of Error (+/-)	% of AA Total	White, Not Hispanic	Margin of Error (+/-)	% of NHW Total
Female:	1,972	240	52.7%	1,969	291	54.8%
16 to 64 years:	1,663	217	44.4%	1,396	269	38.8%
In labor force:	997	160	26.6%	880	241	24.5%
In Armed Forces	0	17	0.0%	0	17	0.0%
Civilian:	997	160	26.6%	880	241	24.5%
Employed	582	160	15.6%	778	228	21.6%
Unemployed	415	103	11.1%	102	75	2.8%
Not in labor force	666	217	17.8%	516	176	14.4%
65 years and over:	309	70	8.3%	573	116	15.9%
In labor force:	0	17	0.0%	60	38	1.7%
Employed	0	17	0.0%	50	37	1.4%
Unemployed	0	17	0.0%	10	15	0.3%
Not in labor force	309	70	8.3%	513	114	14.3%

Source: U.S. Census Bureau, 2008-2012 American Community Survey

For information on confidentiality protection, sampling error, nonsampling error, and definitions, see Survey Methodology.
<http://www.census.gov/acs/www/UseData/index.htm>

Employment Status for the Population 16 years and over

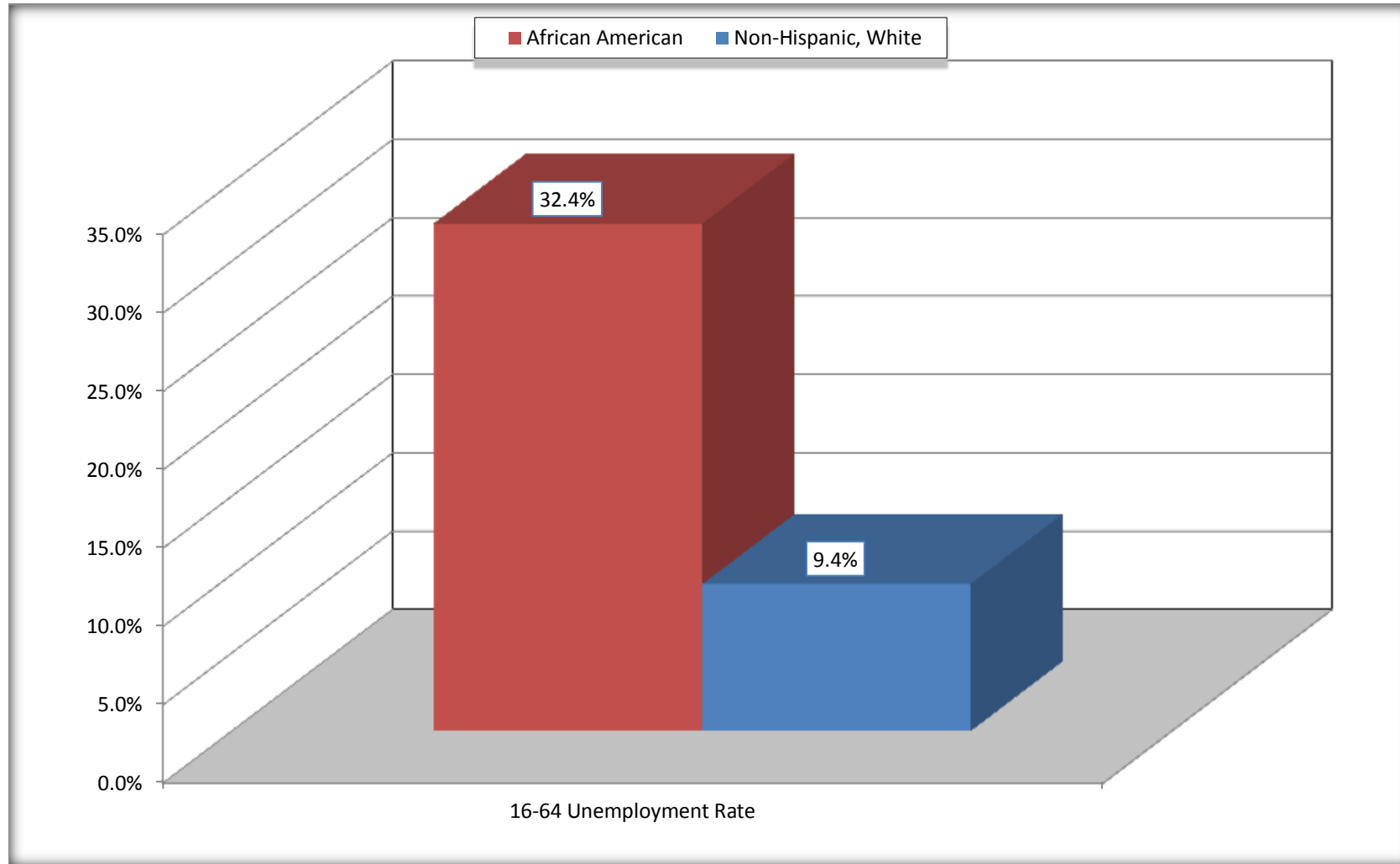
Covington city, Tennessee



Source: C23002. SEX BY AGE BY EMPLOYMENT STATUS FOR THE POPULATION 16 YEARS AND OVER
Data Set: 2008-2012 American Community Survey 5-Year Estimates

Unemployment of Working Age Population (Ages 16 to 64) (As a Percent of 16-64 Civilian Labor Force)

Covington city, Tennessee



Source: C23002. SEX BY AGE BY EMPLOYMENT STATUS FOR THE POPULATION 16 YEARS AND OVER
Data Set: 2008-2012 American Community Survey 5-Year Estimates

C24010. SEX BY OCCUPATION FOR THE CIVILIAN EMPLOYED POPULATION 16 YEARS AND OVER

Data Set: 2008-2012 American Community Survey 5-Year Estimates

	Covington city, Tennessee					
	African American	Margin of Error (+/-)	% of AA Total	White, Not Hispanic	Margin of Error (+/-)	% of NHW Total
Total:	1,387	266	100.0%	1,827	327	100.0%
Management, professional, and related occupations	155	NC	11.2%	679	NC	37.2%
Service occupations	325	NC	23.4%	296	NC	16.2%
Sales and office occupations	340	NC	24.5%	584	NC	32.0%
Natural resources, construction, and maintenance occupations:	171	NC	12.3%	119	NC	6.5%
Production, transportation, and material moving occupations	396	NC	28.6%	149	NC	8.2%
Male:	805	204	58.0%	999	212	54.7%
Management, business, science, and arts occupations:	55	45	4.0%	347	136	19.0%
Service occupations	175	115	12.6%	220	123	12.0%
Sales and office occupations	148	121	10.7%	164	93	9.0%
Natural resources, construction, and maintenance occupations:	171	109	12.3%	119	75	6.5%
Production, transportation, and material moving occupations	256	118	18.5%	149	97	8.2%
Female:	582	160	42.0%	828	232	45.3%
Management, professional, and related occupations	100	70	7.2%	332	149	18.2%
Service occupations	150	79	10.8%	76	72	4.2%
Sales and office occupations	192	124	13.8%	420	158	23.0%
Natural resources, construction, and maintenance occupations:	0	17	0.0%	0	17	0.0%
Production, transportation, and material moving occupations	140	94	10.1%	0	17	0.0%

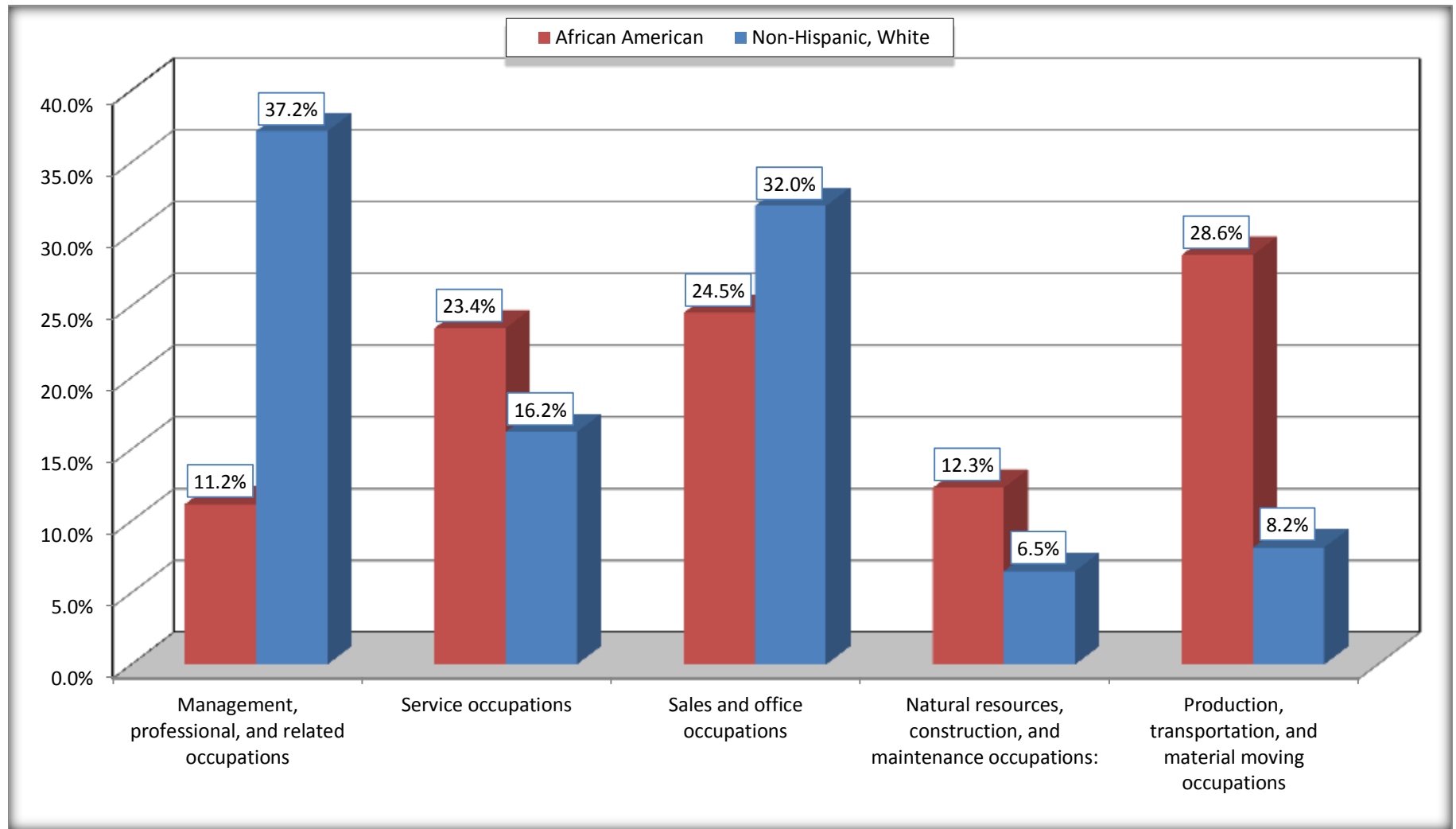
Source: U.S. Census Bureau, 2008-2012 American Community Survey

For information on confidentiality protection, sampling error, nonsampling error, and definitions, see Survey Methodology.

<http://www.census.gov/acs/www/UseData/index.htm>

Occupation for the Civilian Employed 16 Years and Over Population

Covington city, Tennessee



Source: C24010. SEX BY OCCUPATION FOR THE CIVILIAN EMPLOYED POPULATION 16 YEARS AND OVER
Data Set: 2008-2012 American Community Survey 5-Year Estimates

B25003. TENURE - Universe: OCCUPIED HOUSING UNITS

Data Set: 2008-2012 American Community Survey 5-Year Estimates

	Covington city, Tennessee					
	African American	Margin of Error (+/-)	% of AA Total	White, Not Hispanic	Margin of Error (+/-)	% of NHW Total
Total:	1,648	216	100.0%	1,797	244	100.0%
Owner occupied	647	168	39.3%	1,144	189	63.7%
Renter occupied	1,001	193	60.7%	653	206	36.3%

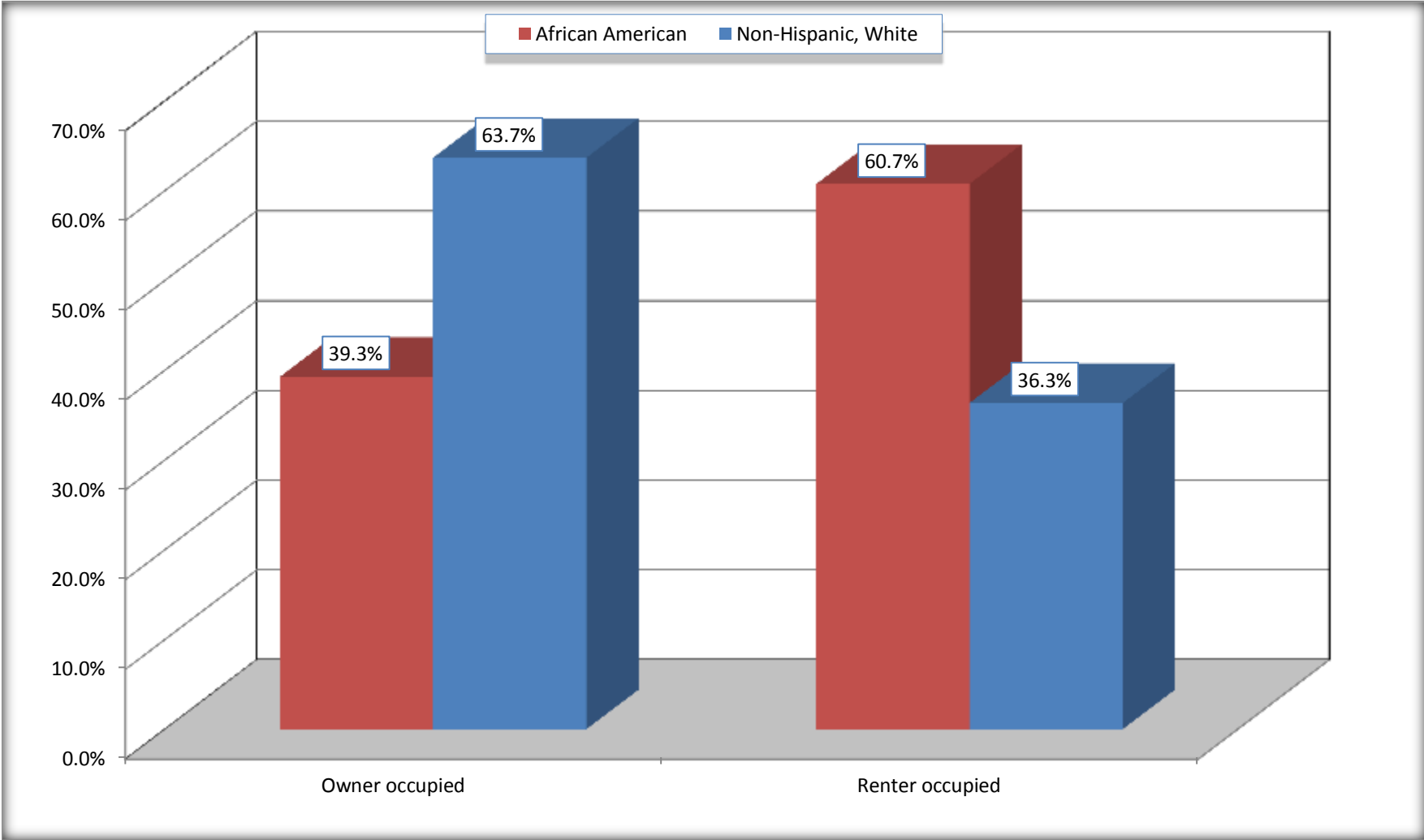
Source: U.S. Census Bureau, 2008-2012 American Community Survey

For information on confidentiality protection, sampling error, nonsampling error, and definitions, see Survey Methodology.

<http://www.census.gov/acs/www/UseData/index.h>

Home Owners and Renters by Household

Covington city, Tennessee



Source: B25003. TENURE - Universe: OCCUPIED HOUSING UNITS
Data Set: 2008-2012 American Community Survey 5-Year Estimates

B25014. OCCUPANTS PER ROOM - Universe: OCCUPIED HOUSING UNITS

Data Set: 2008-2012 American Community Survey 5-Year Estimates

	Covington city, Tennessee					
	African American	Margin of Error (+/-)	% of AA Total	White, Not Hispanic	Margin of Error (+/-)	% of NHW Total
Total:	1,648	216	100.0%	1,797	244	100.0%
1.00 or less occupants per room	1,610	212	97.7%	1,772	246	98.6%
1.01 or more occupants per room	38	40	2.3%	25	32	1.4%

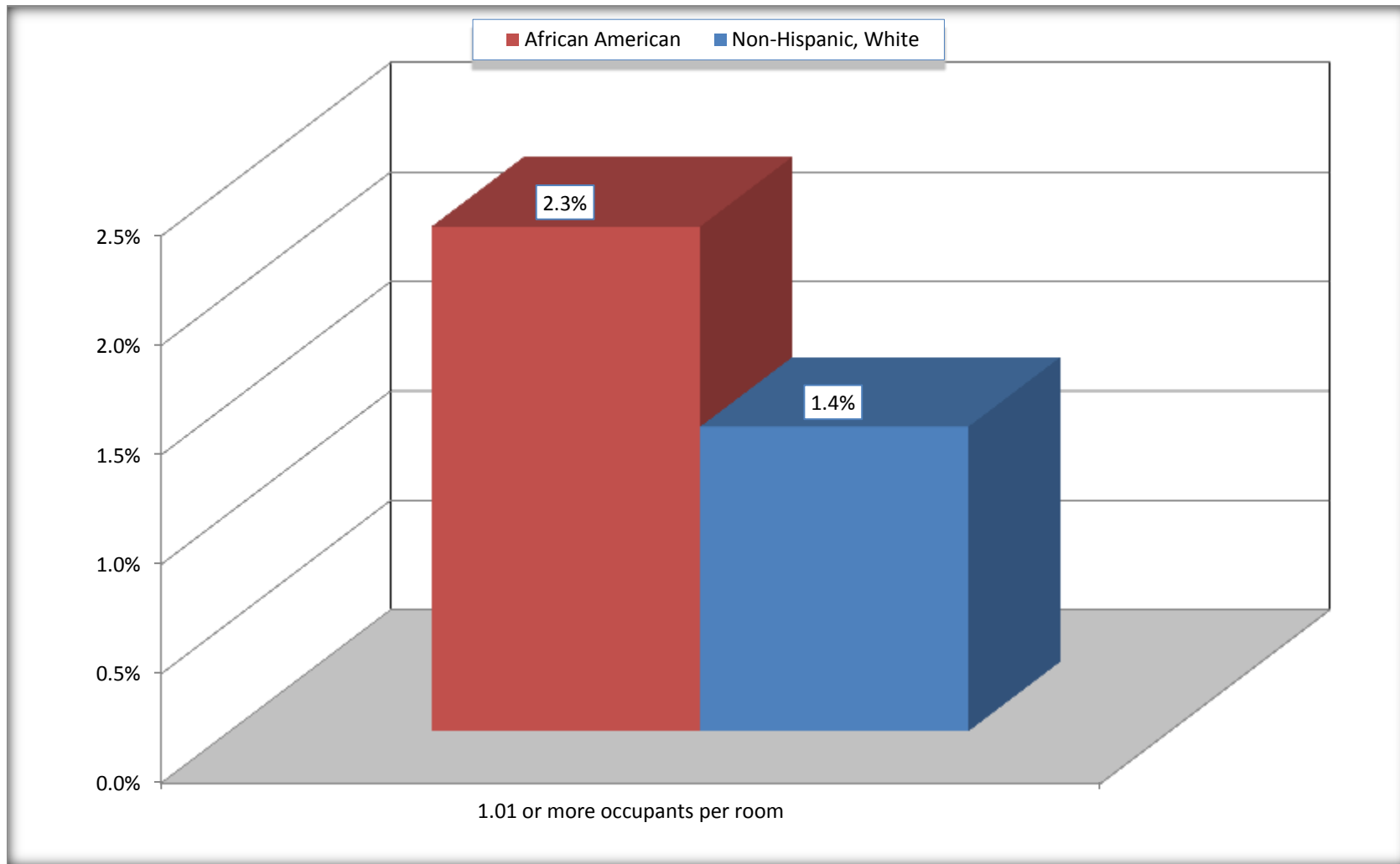
Source: U.S. Census Bureau, 2008-2012 American Community Survey

For information on confidentiality protection, sampling error, nonsampling error, and definitions, see Survey Methodology.

<http://www.census.gov/acs/www/UseData/index.ht>

More than One Person per Room (Crowding) by Household

Covington city, Tennessee



Source: B25014. OCCUPANTS PER ROOM - Universe: OCCUPIED HOUSING UNITS
Data Set: 2008-2012 American Community Survey 5-Year Estimates

B18101. AGE BY DISABILITY STATUS

Data Set: 2008-2012 American Community Survey 5-Year Estimates

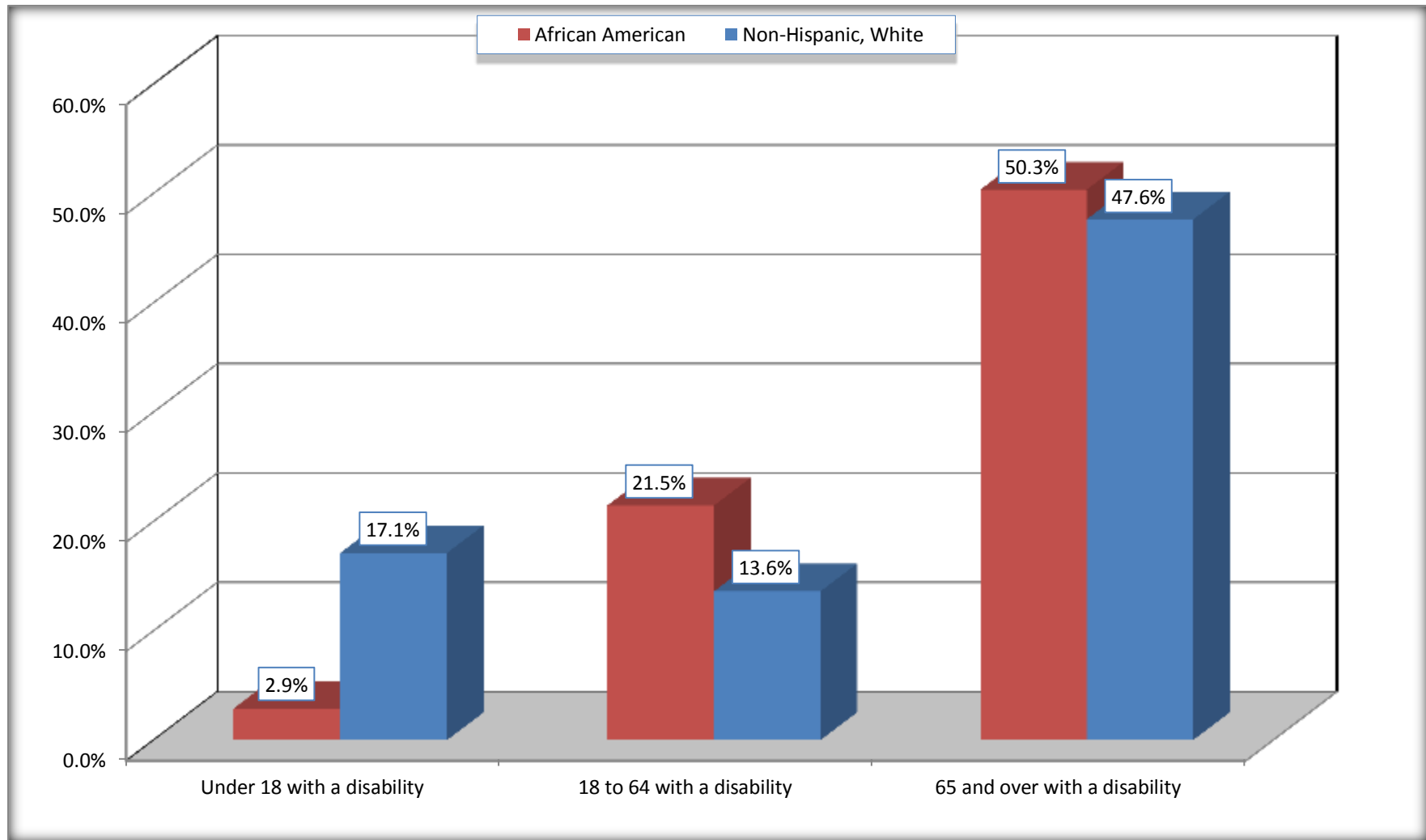
	Covington city, Tennessee					
	African American	Margin of Error (+/-)	% of AA Total	White, Not Hispanic	Margin of Error (+/-)	% of NHW Total
Total:	4,844	506	100.0%	3,797	479	100.0%
Under 18 years:	1,490	222	30.8%	444	31	11.7%
With a disability	43	44	0.9%	76	85	2.0%
No disability	1,447	215	29.9%	368	205	9.7%
18 to 64 years:	2,909	389	60.1%	2,448	375	64.5%
With a disability	624	228	12.9%	333	117	8.8%
No disability	2,285	326	47.2%	2,115	338	55.7%
65 years and over:	445	97	9.2%	905	140	23.8%
With a disability	224	85	4.6%	431	115	11.4%
No disability	221	81	4.6%	474	127	12.5%

Source: U.S. Census Bureau, 2008-2012 American Community Survey

For information on confidentiality protection, sampling error, nonsampling error, and definitions, see Survey Methodology.

<http://www.census.gov/acs/www/UseData/index.htm>

Disability by Age Covington city, Tennessee



Source: B18101. AGE BY DISABILITY STATUS
Data Set: 2008-2012 American Community Survey 5-Year Estimates

C27001B. HEALTH INSURANCE COVERAGE STATUS BY AGE

Data Set: 2008-2012 American Community Survey 5-Year Estimates

	Covington city, Tennessee					
	African American	Margin of Error (+/-)	% of AA Total	White, Not Hispanic	Margin of Error (+/-)	% of NHW Total
Total:	4,844	506	100.0%	3,797	479	100.0%
Under 18 years:	1,490	222	30.8%	444	220	11.7%
With health insurance coverage	1,414	224	29.2%	397	212	10.5%
No health insurance coverage	76	59	1.6%	47	73	1.2%
18 to 64 years:	2,909	389	60.1%	2,448	375	64.5%
With health insurance coverage	2,107	350	43.5%	2,012	358	53.0%
No health insurance coverage	802	216	16.6%	436	161	11.5%
65 years and over:	445	97	9.2%	905	140	23.8%
With health insurance coverage	445	97	9.2%	905	140	23.8%
No health insurance coverage	0	17	0.0%	0	17	0.0%

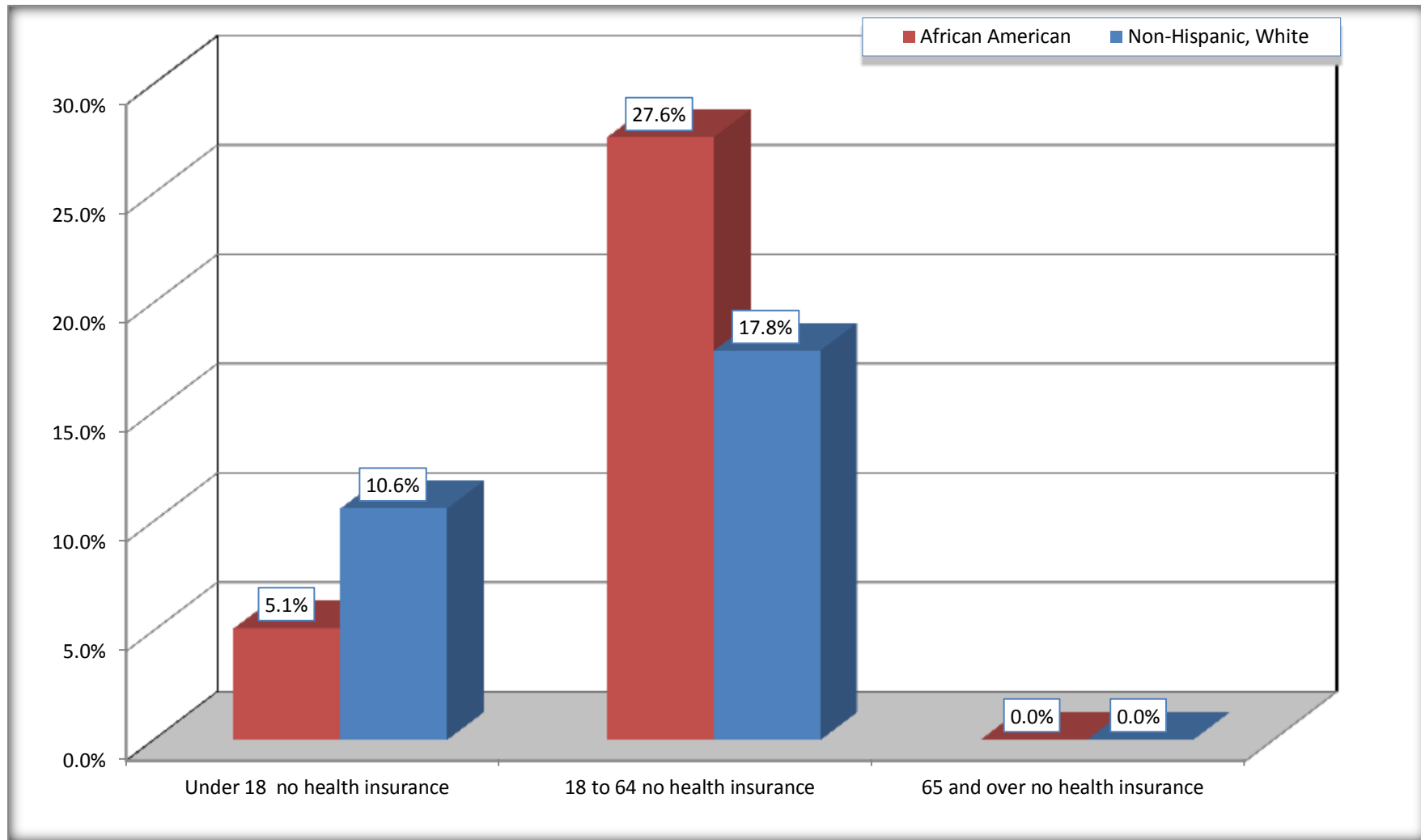
Source: U.S. Census Bureau, 2008-2012 American Community Survey

For information on confidentiality protection, sampling error, nonsampling error, and definitions, see Survey Methodology.

<http://www.census.gov/acs/www/UseData/index.htm>

Lack of Health Insurance Coverage by Age

Covington city, Tennessee



Source: C27001B. HEALTH INSURANCE COVERAGE STATUS BY AGE
Data Set: 2008-2012 American Community Survey 5-Year Estimates