

Selected Socio-Economic Data

Lee County, South Carolina

African American and White, Not Hispanic

Data Set: 2008-2012 American Community Survey 5-Year Estimates

www.fairvote2020.org

www.fairdata2000.com

[29-Dec-13](#)

C02003.DETAILED RACE - Universe: TOTAL POPULATION

Data Set: 2008-2012 American Community Survey 5-Year Estimates

	Lee County, South Carolina		
	Population	Margin of Error (+/-)	% of Total
Total:	19,160	*****	100.0%
Population of one race:	19,001	83	99.2%
White	6,322	201	33.0%
Black or African American	12,344	64	64.4%
American Indian and Alaska Native	6	13	0.0%
Asian alone	29	34	0.2%
Native Hawaiian and Other Pacific Islander	0	20	0.0%
Some other race	300	177	1.6%
Population of two or more races:	159	83	0.8%
Two races including Some other race	46	70	0.2%
Two races excluding Some other race, and three or more races	113	48	0.6%
Population of two races:	146	77	0.8%
White; Black or African American	14	19	0.1%
White; American Indian and Alaska Native	64	13	0.3%
White; Asian	0	20	0.0%
Black or African American; American Indian and Alaska Native	11	17	0.1%
All other two race combinations	57	73	0.3%
Population of three races	13	24	0.1%
Population of four or more races	0	20	0.0%

Note: Hispanics may be of any race. See Table B03002 and chart.

Source: U.S. Census Bureau, 2008-2012 American Community Survey

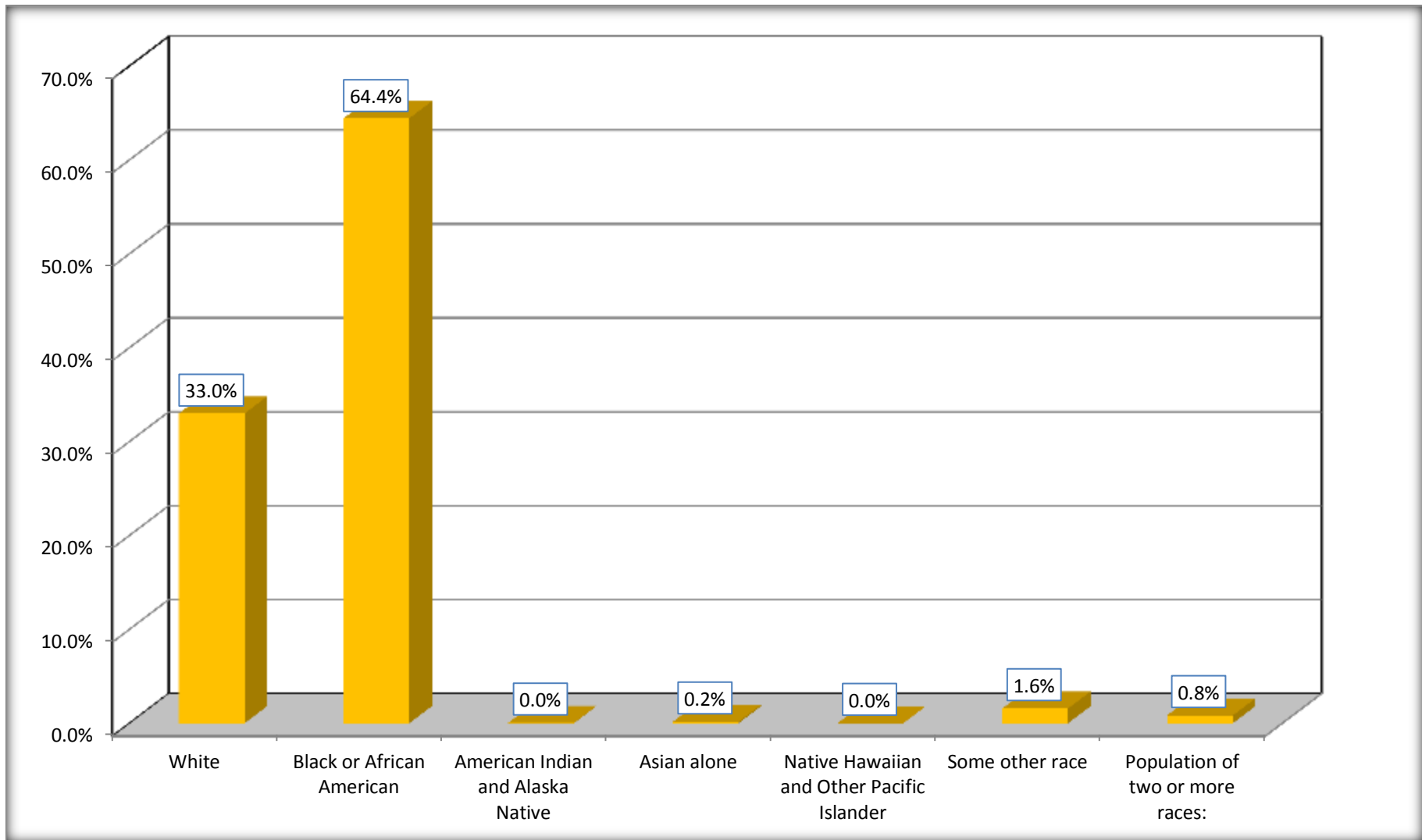
Although the American Community Survey (ACS) produces population, demographic and housing unit estimates, it is the Census Bureau's Population Estimates Program that produces and disseminates the official estimates of the population for the nation, states, counties, cities and towns and estimates of housing units for states and counties.

For information on confidentiality protection, sampling error, nonsampling error, and definitions, see Survey Methodology.

<http://www.census.gov/acs/www/UseData/index.htm>

Population by Race

Lee County, South Carolina



Source: C02003.DETAILED RACE - Universe: TOTAL POPULATION
Data Set: 2008-2012 American Community Survey 5-Year Estimates

B03002. HISPANIC OR LATINO ORIGIN BY RACE - Universe: TOTAL POPULATION

Data Set: 2008-2012 American Community Survey 5-Year Estimates

	Lee County, South Carolina		
	Population	Margin of Error (+/-)	% of Total
Total:	19,160	*****	100.0%
Not Hispanic or Latino:	18,792	*****	98.1%
White alone	6,239	98	32.6%
Black or African American alone	12,340	64	64.4%
American Indian and Alaska Native alone	6	13	0.0%
Asian alone	29	34	0.2%
Native Hawaiian and Other Pacific Islander alone	0	20	0.0%
Some other race alone	19	29	0.1%
Two or more races:	159	83	0.8%
Two races including Some other race	46	70	0.2%
Two races excluding Some other race, and three or more races	113	48	0.6%
Hispanic or Latino	368	*****	1.9%

Source: U.S. Census Bureau, 2008-2012 American Community Survey

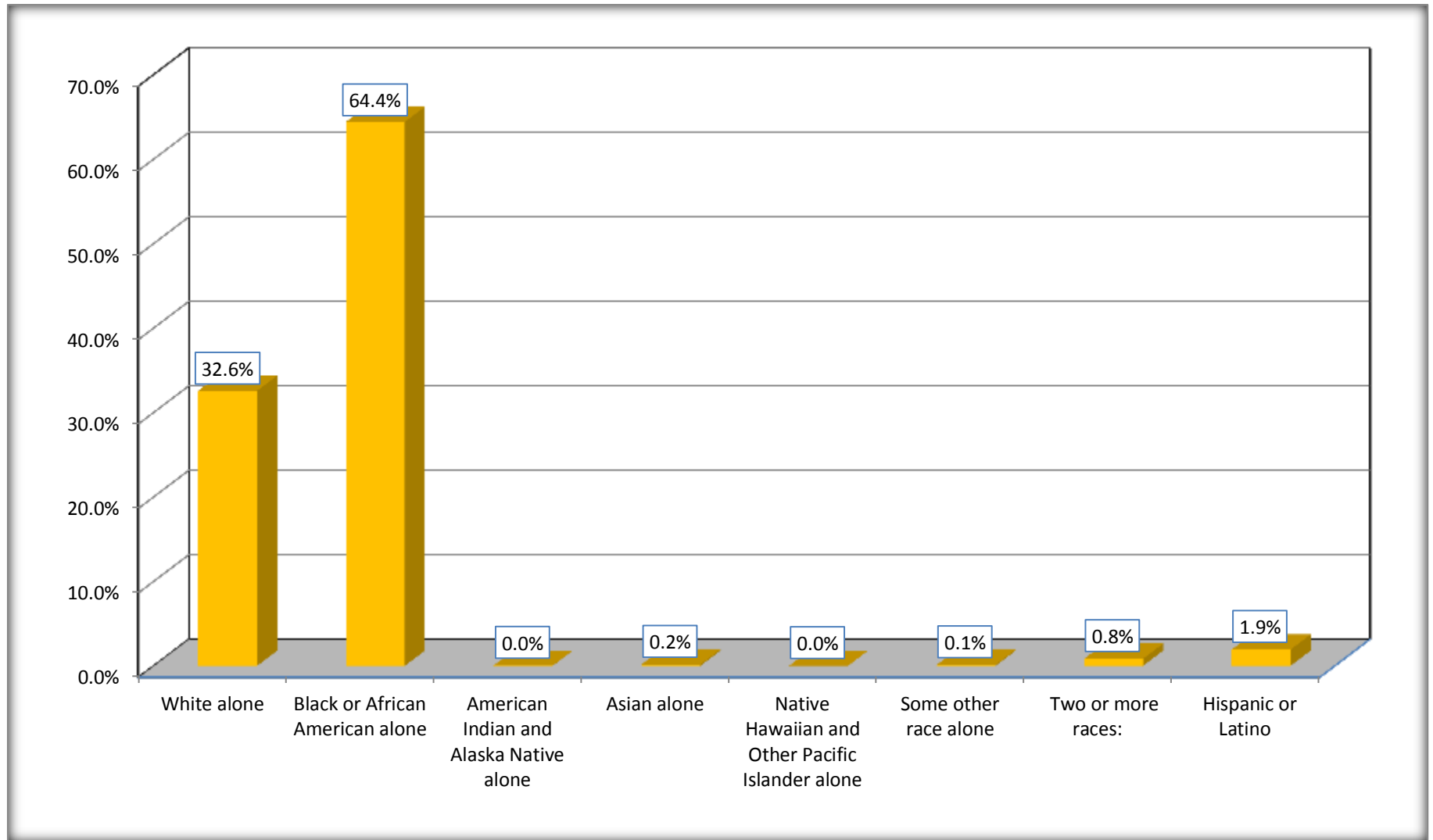
Although the American Community Survey (ACS) produces population, demographic and housing unit estimates, it is the Census Bureau's Population Estimates Program that produces and disseminates the official estimates of the population for the nation, states, counties, cities and towns and estimates of housing units for states and counties.

For information on confidentiality protection, sampling error, nonsampling error, and definitions, see Survey Methodology.

<http://www.census.gov/acs/www/UseData/index.htm>

Non-Hispanic by Race and Hispanic Population

Lee County, South Carolina



Source: B03002. HISPANIC OR LATINO ORIGIN BY RACE - Universe: TOTAL POPULATION
Data Set: 2008-2012 American Community Survey 5-Year Estimates

B03002. HISPANIC OR LATINO ORIGIN BY RACE

Data Set: 2008-2012 American Community Survey 5-Year Estimates

	Lee County, South Carolina		
	Population	Margin of Error (+/-)	% of Total
Hispanic or Latino:	368	*****	100.0%
White alone	83	175	22.6%
Black or African American alone	4	8	1.1%
American Indian and Alaska Native alone	0	20	0.0%
Asian alone	0	20	0.0%
Native Hawaiian and Other Pacific Islander alone	0	20	0.0%
Some other race alone	281	175	76.4%
Two or more races:	0	20	0.0%
Two races including Some other race	0	20	0.0%
Two races excluding Some other race, and three or more races	0	20	0.0%

Source: U.S. Census Bureau, 2008-2012 American Community Survey

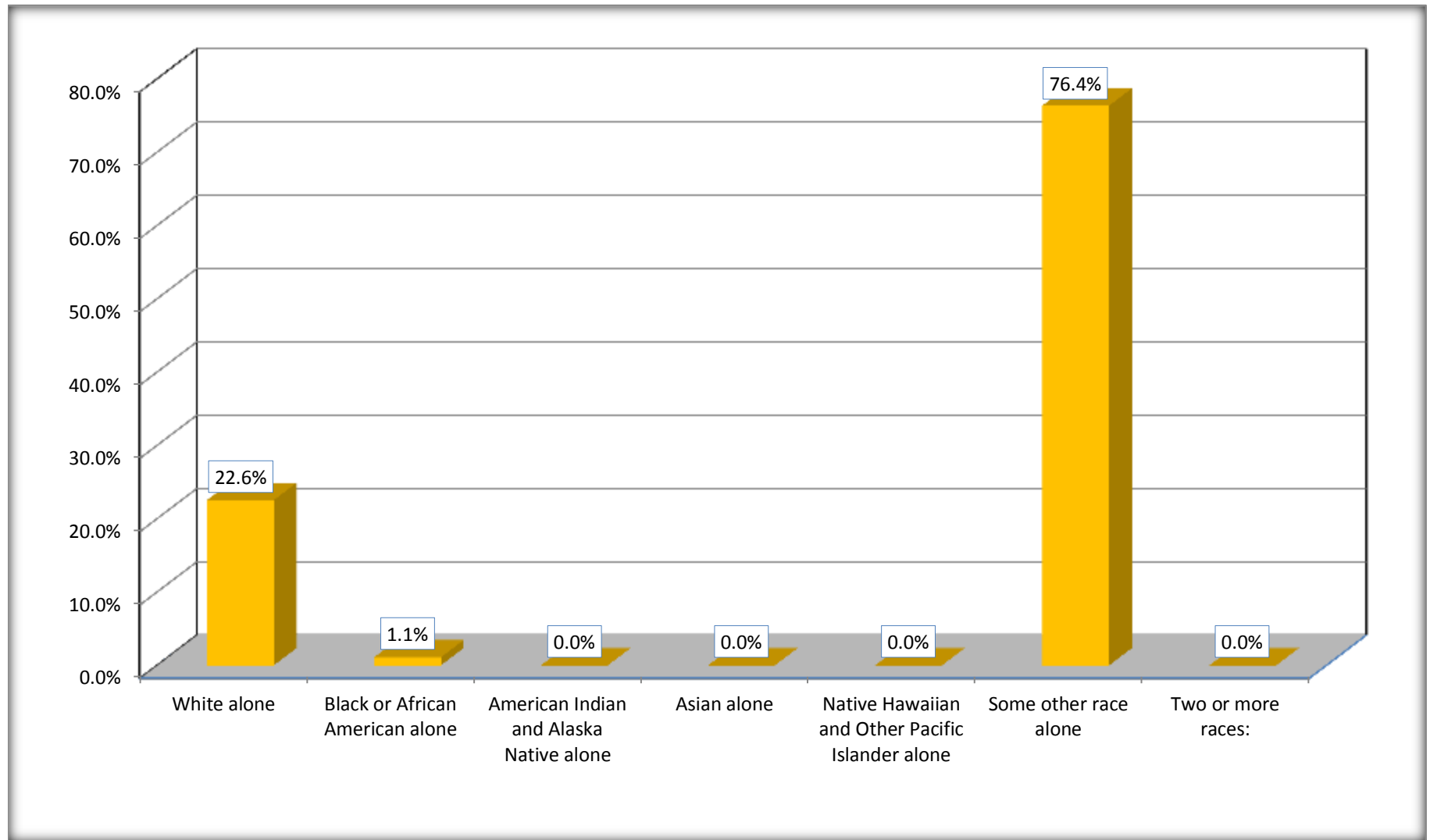
Although the American Community Survey (ACS) produces population, demographic and housing unit estimates, it is the Census Bureau's Population Estimates Program that produces and disseminates the official estimates of the population for the nation, states, counties, cities and towns and estimates of housing units for states and counties.

For information on confidentiality protection, sampling error, nonsampling error, and definitions, see Survey Methodology.

<http://www.census.gov/acs/www/UseData/index.htm>

Hispanic or Latino Origin by Race

Lee County, South Carolina



Source: B03002. HISPANIC OR LATINO ORIGIN BY RACE
Data Set: 2008-2012 American Community Survey 5-Year Estimates

B01001. SEX BY AGE

Data Set: 2008-2012 American Community Survey 5-Year Estimates

	Lee County, South Carolina					
	African American	Margin of Error (+/-)	% of AA Total	White, Not Hispanic	Margin of Error (+/-)	% of NHW Total
Total:	12,344	64	100.0%	6,239	98	100.0%
Under 18 years	3,118	NC	25.3%	972	NC	15.6%
18 to 64 years	7,911	NC	64.1%	3,963	NC	63.5%
65 years and over	1,315	NC	10.7%	1,304	NC	20.9%
Male:	6,342	33	51.4%	3,291	389	52.7%
Under 18 years	1574	NC	12.8%	538	NC	8.6%
18 to 64 years	4,257	NC	34.5%	2,199	NC	35.2%
65 years and over	511	NC	4.1%	554	NC	8.9%
Female:	6,002	54	48.6%	2,948	412	47.3%
Under 18 years	1,544	NC	12.5%	434	NC	7.0%
18 to 64 years	3,654	NC	29.6%	1,764	NC	28.3%
65 years and over	804	NC	6.5%	750	NC	12.0%

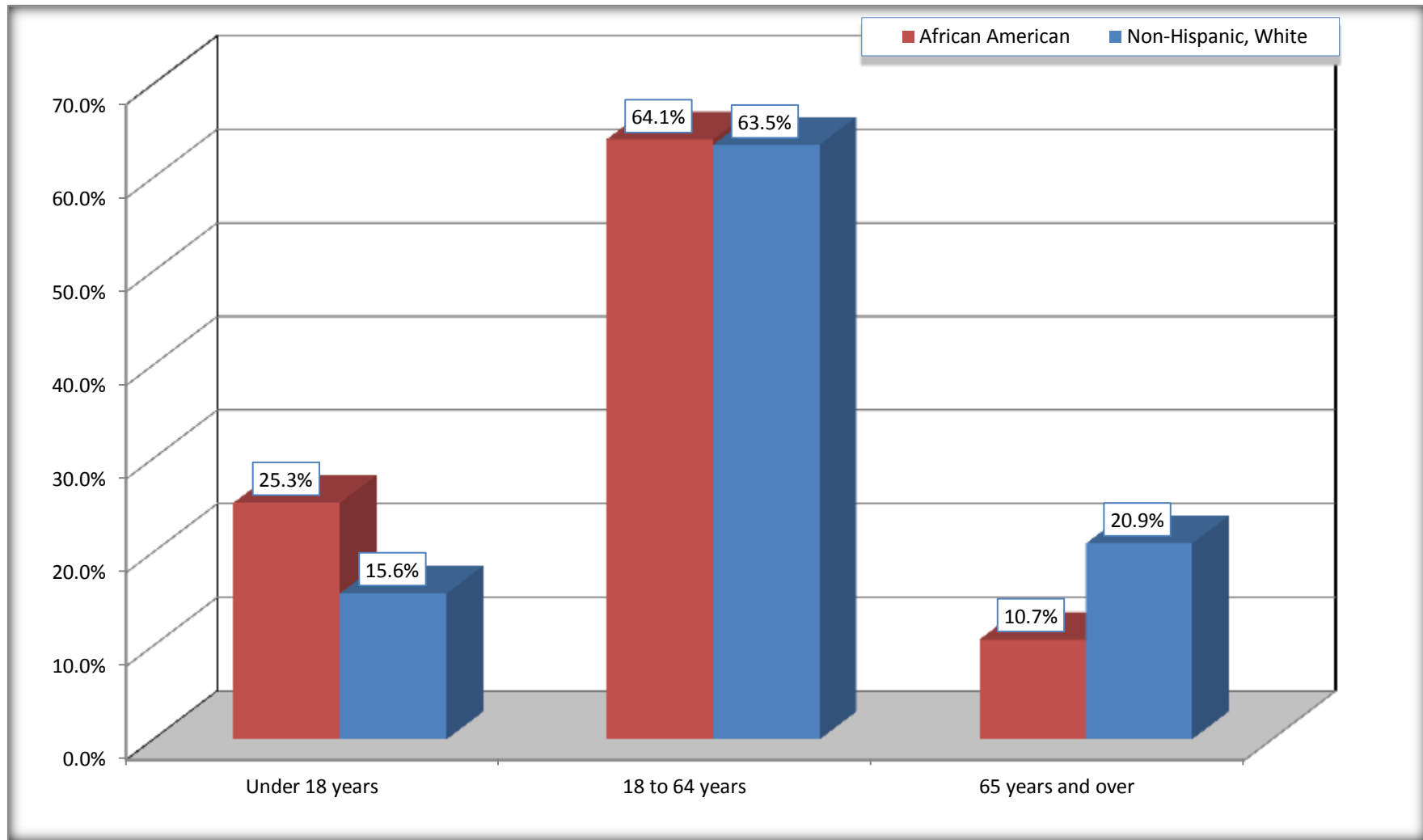
Source: U.S. Census Bureau, 2008-2012 American Community Survey

Although the American Community Survey (ACS) produces population, demographic and housing unit estimates, it is the Census Bureau's Population Estimates Program that produces and disseminates the official estimates of the population for the nation, states, counties, cities and towns and estimates of housing units for states and counties.

For information on confidentiality protection, sampling error, nonsampling error, and definitions, see Survey Methodology.
<http://www.census.gov/acs/www/UseData/index.htm>

Population by Age

Lee County, South Carolina



Source: B01001. SEX BY AGE
Data Set: 2008-2012 American Community Survey 5-Year Estimates

B05003. SEX BY AGE BY CITIZENSHIP STATUS

Data Set: 2008-2012 American Community Survey 5-Year Estimates

	Lee County, South Carolina					
	African American	Margin of Error (+/-)	% of AA Total by Age	White, Not Hispanic	Margin of Error (+/-)	% of NHW Total by Age
Total:	12,344	64	100.0%	6,239	98	100.0%
Under 18 years:	3,118	NC	100.0%	972	NC	100.0%
Native	3,118	NC	100.0%	972	NC	100.0%
Foreign born:	0	NC	0.0%	0	NC	0.0%
Naturalized U.S. citizen	0	NC	0.0%	0	NC	0.0%
Not a U.S. citizen	0	NC	0.0%	0	NC	0.0%
18 years and over:	9,226	NC	100.0%	5,267	NC	100.0%
Native	9,226	NC	100.0%	5,204	NC	98.8%
Foreign born:	0	NC	0.0%	63	NC	1.2%
Naturalized U.S. citizen	0	NC	0.0%	0	NC	0.0%
Not a U.S. citizen	0	NC	0.0%	63	NC	1.2%
Male:	6,342	33	51.4%	3,291	63	52.7%
Under 18 years:	1574	20	100.0%	538	63	100.0%
Native	1,574	20	100.0%	538	63	100.0%
Foreign born:	0	20	0.0%	0	20	0.0%
Naturalized U.S. citizen	0	20	0.0%	0	20	0.0%
Not a U.S. citizen	0	20	0.0%	0	20	0.0%
18 years and over:	4,768	33	100.0%	2,753	20	100.0%
Native	4,768	33	100.0%	2,705	67	98.3%
Foreign born:	0	20	0.0%	48	67	1.7%
Naturalized U.S. citizen	0	20	0.0%	0	20	0.0%
Not a U.S. citizen	0	20	0.0%	48	67	1.7%

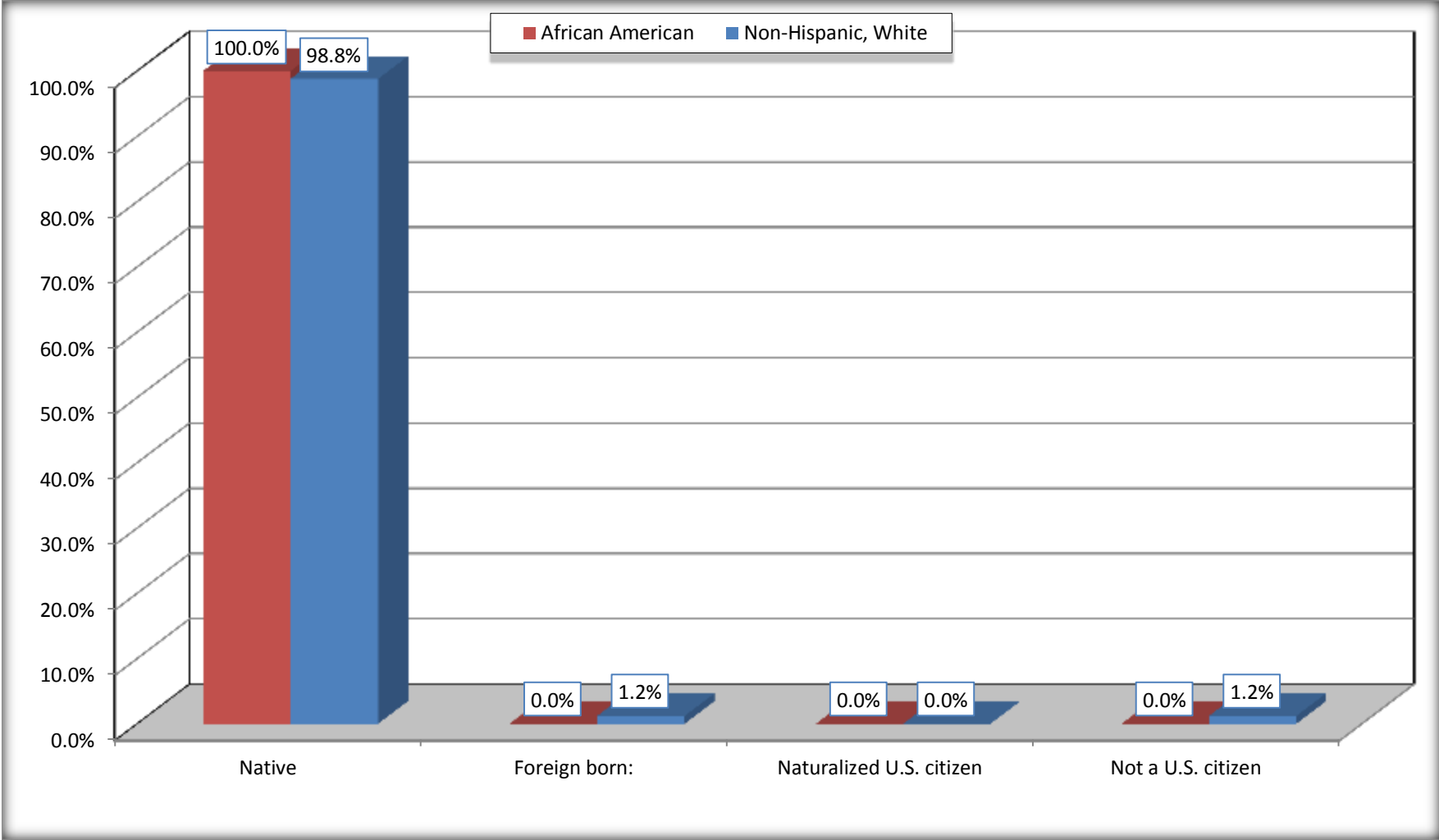
	Lee County, South Carolina					
	African American	Margin of Error (+/-)	% of AA by Age	White, Not Hispanic	Margin of Error (+/-)	% of NHW by Age
Female:	6,002	54	48.6%	2,948	60	47.3%
Under 18 years:	1,544	10	100.0%	434	39	100.0%
Native	1,544	10	100.0%	434	39	100.0%
Foreign born:	0	20	0.0%	0	20	0.0%
Naturalized U.S. citizen	0	20	0.0%	0	20	0.0%
Not a U.S. citizen	0	20	0.0%	0	20	0.0%
18 years and over:	4,458	47	100.0%	2,514	29	100.0%
Native	4,458	47	100.0%	2,499	36	99.4%
Foreign born:	0	20	0.0%	15	20	0.6%
Naturalized U.S. citizen	0	20	0.0%	0	20	0.0%
Not a U.S. citizen	0	20	0.0%	15	20	0.6%

Source: U.S. Census Bureau, 2008-2012 American Community Survey

For information on confidentiality protection, sampling error, nonsampling error, and definitions, see Survey Methodology.
<http://www.census.gov/acs/www/UseData/index.htm>

Citizenship Status of Voting Age Population (18 and Over)

Lee County, South Carolina



Source: B05003. SEX BY AGE BY CITIZENSHIP STATUS
Data Set: 2008-2012 American Community Survey 5-Year Estimates

**B07004. GEOGRAPHICAL MOBILITY IN THE PAST YEAR BY RACE FOR CURRENT RESIDENCE IN THE UNITED STATES - Universe:
POPULATION 1 YEAR AND OVER**

Data Set: 2008-2012 American Community Survey 5-Year Estimates

	Lee County, South Carolina					
	African American	Margin of Error (+/-)	% of AA Total	White, Not Hispanic	Margin of Error (+/-)	% of NHW Total
Total:	12,239	83	100.0%	6,207	101	100.0%
Same house 1 year ago	11,185	361	91.4%	5,774	194	93.0%
Moved within same county	674	307	5.5%	42	32	0.7%
Moved from different county within same state	196	141	1.6%	325	188	5.2%
Moved from different state	184	152	1.5%	42	49	0.7%
Moved from abroad	0	20	0.0%	24	29	0.4%

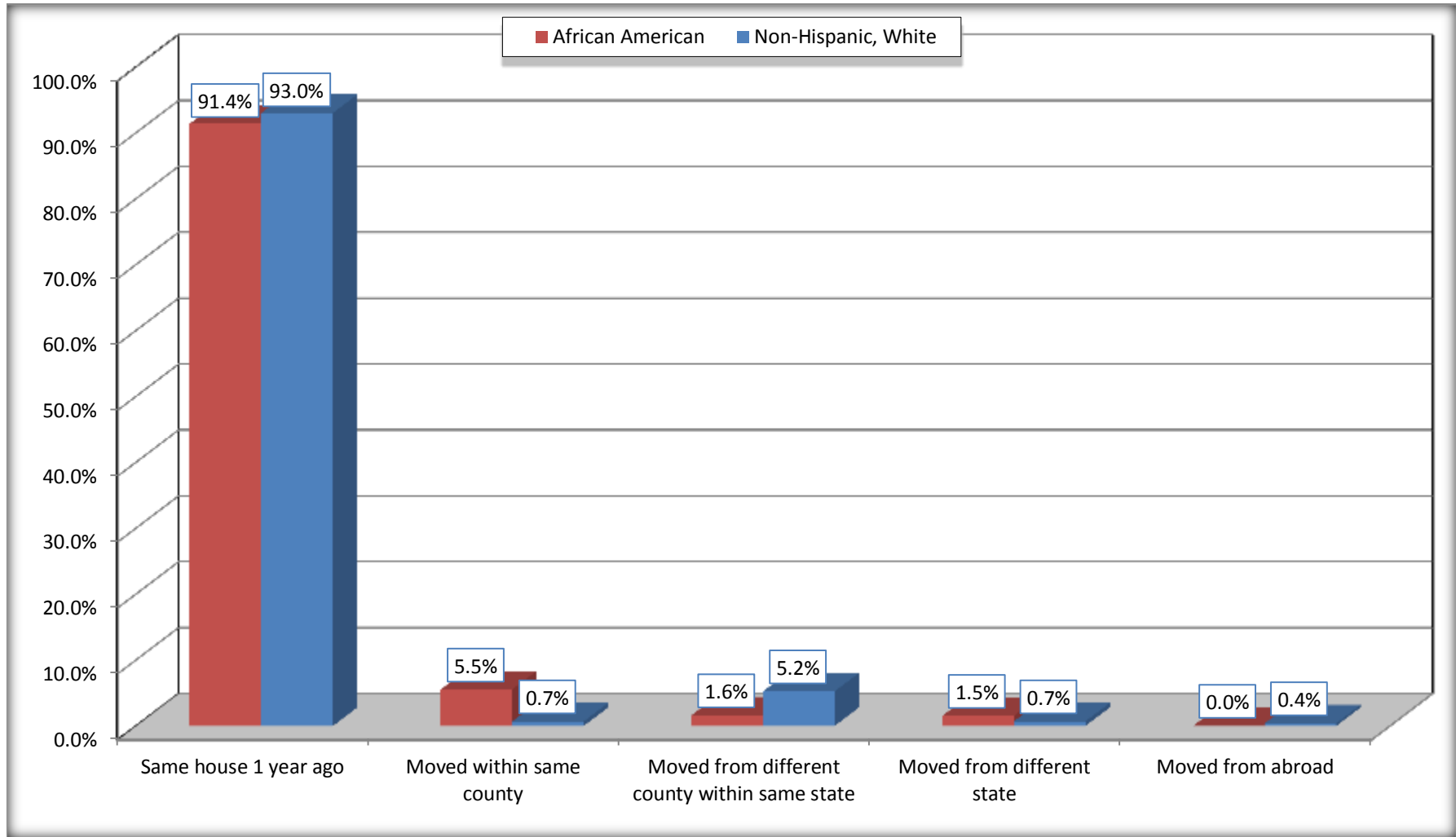
Source: U.S. Census Bureau, 2008-2012 American Community Survey

For information on confidentiality protection, sampling error, nonsampling error, and definitions, see Survey Methodology.

<http://www.census.gov/acs/www/UseData/index.htm>

Geographical Mobility in the Past Year (Population 1 Year and Over)

Lee County, South Carolina



Source: B07004. GEOGRAPHICAL MOBILITY IN THE PAST YEAR BY RACE FOR CURRENT RESIDENCE IN THE UNITED STATES - Universe: POPULATION 1 YEAR AND OVER

Data Set: 2008-2012 American Community Survey 5-Year Estimates

B08105. MEANS OF TRANSPORTATION TO WORK - Universe: WORKERS 16 YEARS AND OVER

Data Set: 2008-2012 American Community Survey 5-Year Estimates

	Lee County, South Carolina					
	African American	Margin of Error (+/-)	% of AA Total	White, Not Hispanic	Margin of Error (+/-)	% of NHW Total
Total:	3597	323	100.0%	2348	208	100.0%
Car, truck, or van - drove alone	2816	293	78.3%	1980	216	84.3%
Car, truck, or van - carpooled	658	246	18.3%	140	61	6.0%
Public transportation (excluding taxicab)	32	34	0.9%	0	20	0.0%
Walked	34	33	0.9%	16	21	0.7%
Taxicab, motorcycle, bicycle, or other means	32	26	0.9%	7	11	0.3%
Worked at home	25	23	0.7%	205	116	8.7%

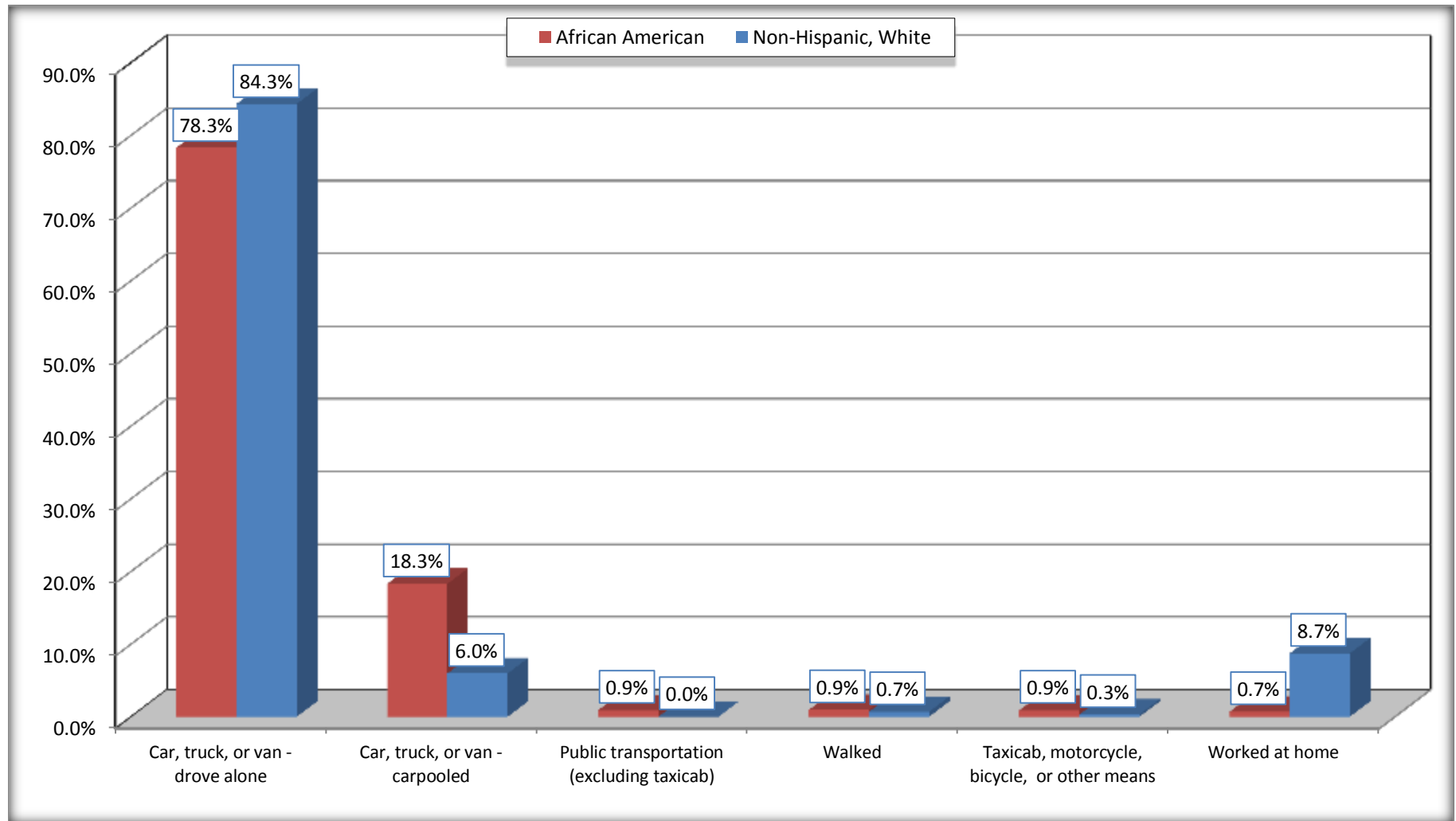
Source: U.S. Census Bureau, 2008-2012 American Community Survey

For information on confidentiality protection, sampling error, nonsampling error, and definitions, see Survey Methodology.

<http://www.census.gov/acs/www/UseData/index.htm>

Means of Transportation to Work (Workers 16 Years and Over)

Lee County, South Carolina



Source: B08105. MEANS OF TRANSPORTATION TO WORK - Universe: WORKERS 16 YEARS AND OVER
Data Set: 2008-2012 American Community Survey 5-Year Estimates

B11002. HOUSEHOLD TYPE BY RELATIVES AND NONRELATIVES FOR POPULATION IN HOUSEHOLDS

Data Set: 2008-2012 American Community Survey 5-Year Estimates

	Lee County, South Carolina					
	African American	Margin of Error (+/-)	% of AA Total	White, Not Hispanic	Margin of Error (+/-)	% of NHW Total
Total:	11069	194	100.0%	5760	185	100.0%
In family households	9742	331	88.0%	4610	310	80.0%
In nonfamily households	1327	276	12.0%	1150	222	20.0%

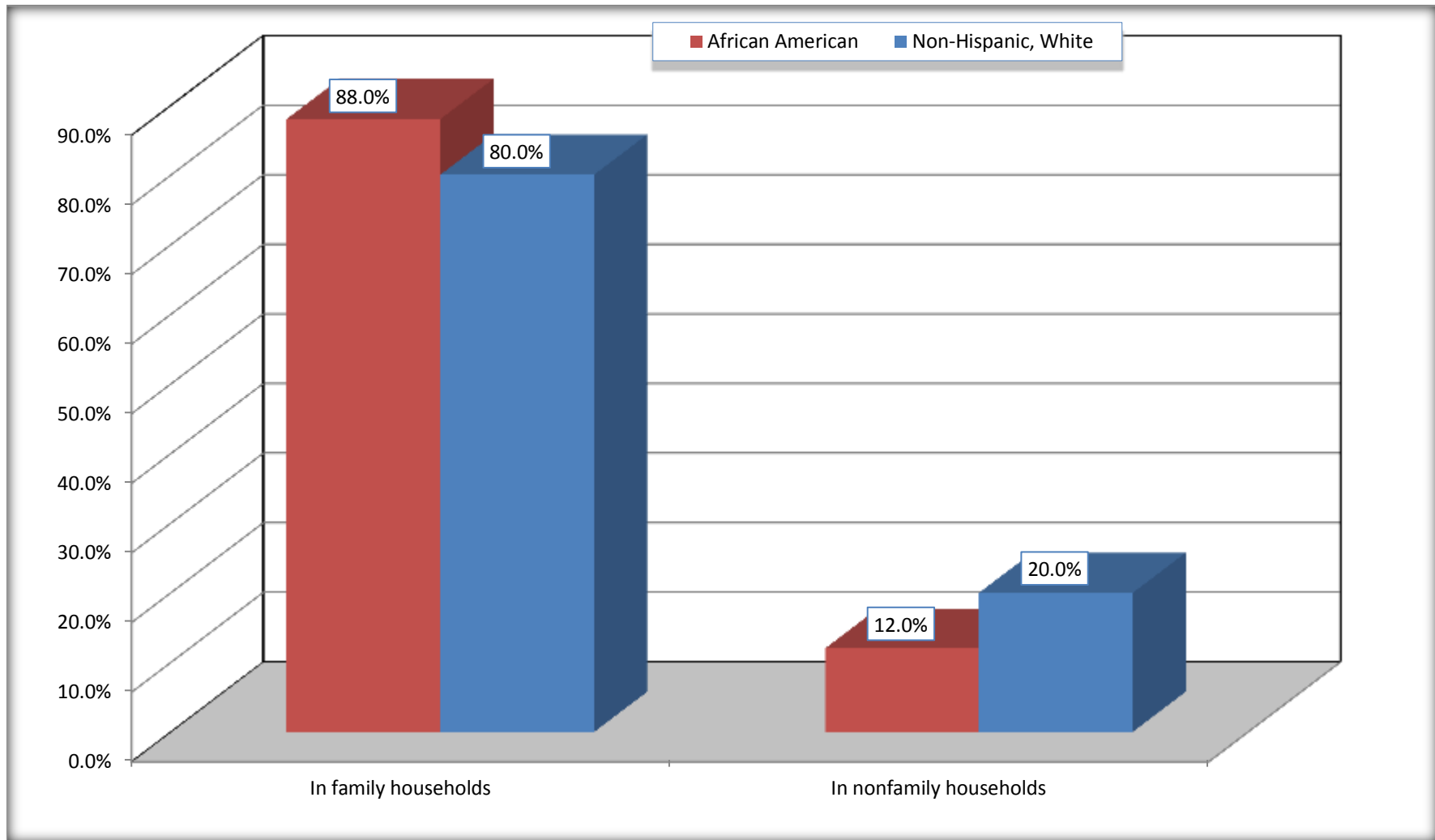
Source: U.S. Census Bureau, 2008-2012 American Community Survey

For information on confidentiality protection, sampling error, nonsampling error, and definitions, see Survey Methodology.

<http://www.census.gov/acs/www/UseData/index.htm>

Household Type for Population in Households

Lee County, South Carolina



Source: B11002. HOUSEHOLD TYPE BY RELATIVES AND NONRELATIVES FOR POPULATION IN HOUSEHOLDS
Data Set: 2008-2012 American Community Survey 5-Year Estimates

B12002. MARITAL STATUS FOR THE POPULATION 15 YEARS AND OVER

Data Set: 2008-2012 American Community Survey 5-Year Estimates

	Lee County, South Carolina					
	African American	Margin of Error (+/-)	% of AA Total	White, Not Hispanic	Margin of Error (+/-)	% of NHW Total
Total:	9,792	58	100.0%	5,447	29	100.0%
Never married	5,388	NC	55.0%	1,250	NC	22.9%
Now married (except separated)	2,337	NC	23.9%	2,688	NC	49.3%
Separated	719	NC	7.3%	176	NC	3.2%
Widowed	700	NC	7.1%	663	NC	12.2%
Divorced	648	NC	6.6%	670	NC	12.3%
Male:	5,055	33	51.6%	2,882	35	52.9%
Never married	3,172	174	32.4%	863	126	15.8%
Now married (except separated)	1,203	162	12.3%	1,388	173	25.5%
Separated	192	79	2.0%	92	59	1.7%
Widowed	159	69	1.6%	153	86	2.8%
Divorced	329	114	3.4%	386	104	7.1%
Female:	4,737	47	48.4%	2,565	49	47.1%
Never married	2,216	250	22.6%	387	84	7.1%
Now married (except separated)	1,134	185	11.6%	1,300	145	23.9%
Separated	527	170	5.4%	84	55	1.5%
Widowed	541	145	5.5%	510	90	9.4%
Divorced	319	103	3.3%	284	100	5.2%

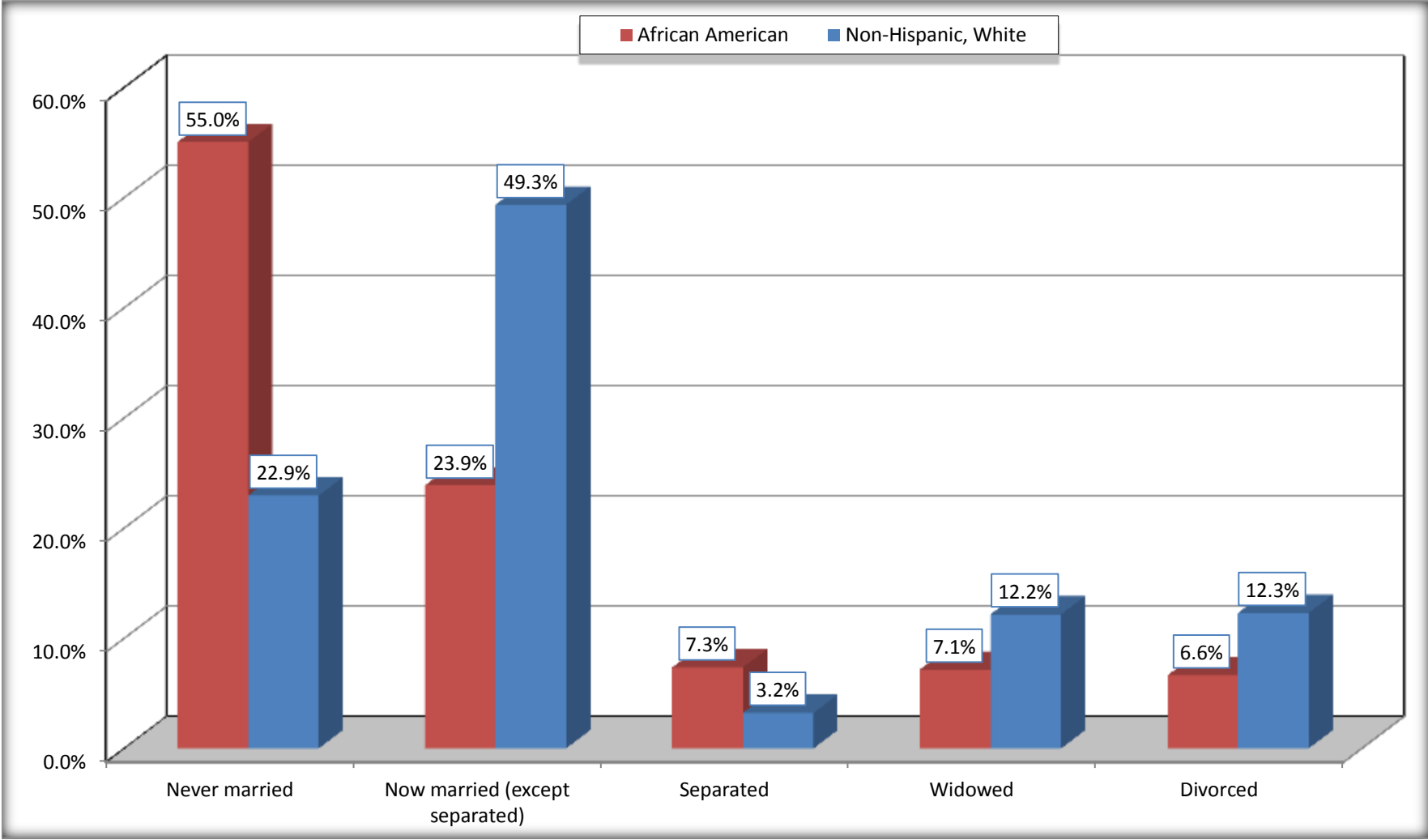
Source: U.S. Census Bureau, 2008-2012 American Community Survey

For information on confidentiality protection, sampling error, nonsampling error, and definitions, see Survey Methodology.

<http://www.census.gov/acs/www/UseData/index.htm>

Marital Status for the Population 15 Years and Over

Lee County, South Carolina



Source: B12002. MARITAL STATUS FOR THE POPULATION 15 YEARS AND OVER
Data Set: 2008-2012 American Community Survey 5-Year Estimates

C15002. SEX BY EDUCATIONAL ATTAINMENT FOR THE POPULATION 25 YEARS AND OVER

Data Set: 2008-2012 American Community Survey 5-Year Estimates

	Lee County, South Carolina					
	African American	Margin of Error (+/-)	% of AA Total	White, Not Hispanic	Margin of Error (+/-)	% of NHW Total
Total:	7,774	58	100.0%	4,813	76	100.0%
Less than high school diploma	2,646	NC	34.0%	1,006	NC	20.9%
High school graduate, GED, or alternative	3,012	NC	38.7%	1,892	NC	39.3%
Some college or associate's degree	1,789	NC	23.0%	1,283	NC	26.7%
Bachelor's degree or higher	327	NC	4.2%	632	NC	13.1%
Male:	3,861	33	49.7%	2,488	62	51.7%
Less than high school diploma	1,417	191	18.2%	537	110	11.2%
High school graduate, GED, or alternative	1,728	195	22.2%	994	145	20.7%
Some college or associate's degree	625	116	8.0%	680	138	14.1%
Bachelor's degree or higher	91	58	1.2%	277	79	5.8%
Female:	3,913	47	50.3%	2,325	29	48.3%
Less than high school diploma	1,229	207	15.8%	469	95	9.7%
High school graduate, GED, or alternative	1,284	202	16.5%	898	161	18.7%
Some college or associate's degree	1,164	194	15.0%	603	132	12.5%
Bachelor's degree or higher	236	90	3.0%	355	118	7.4%

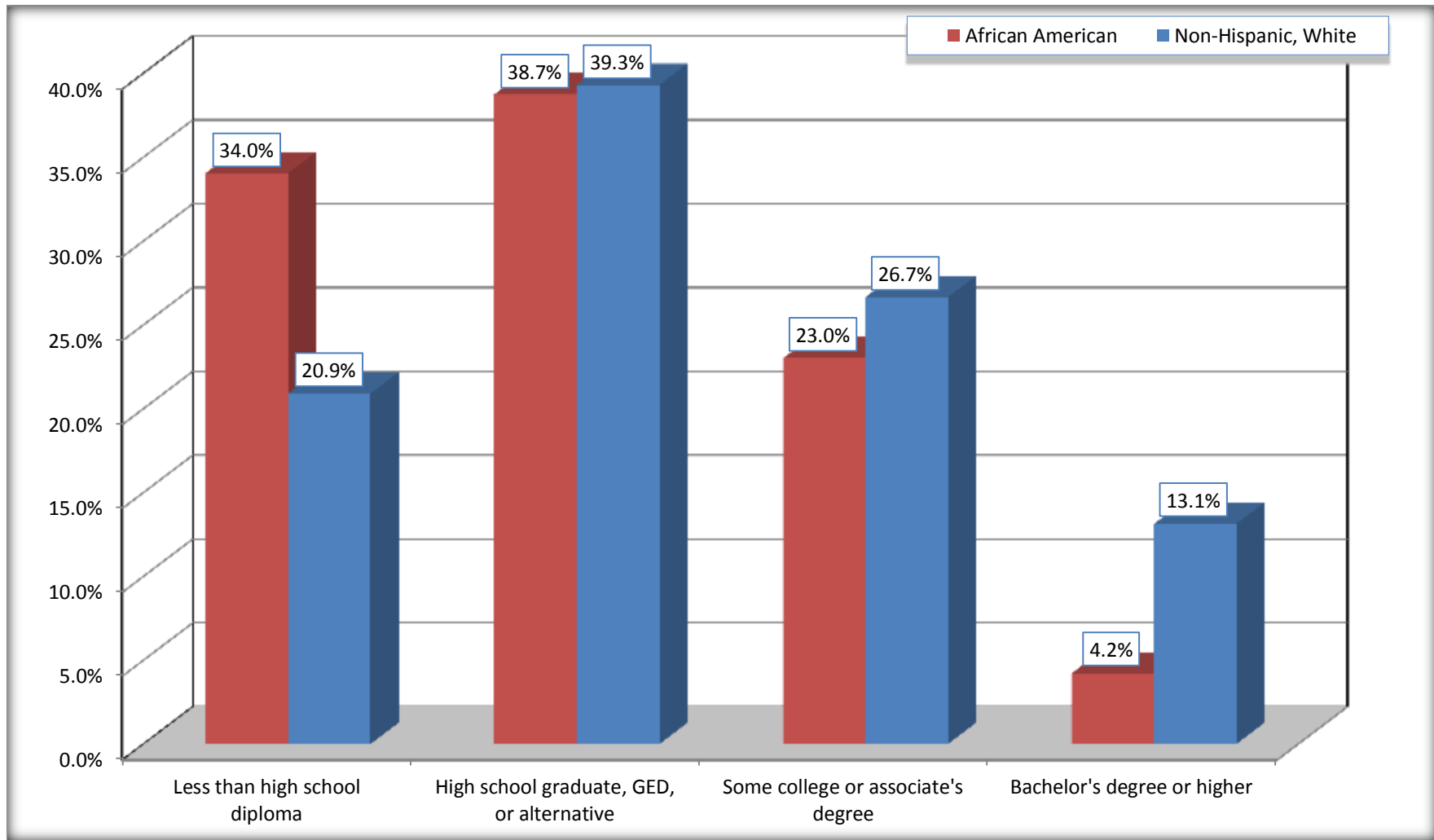
Source: U.S. Census Bureau, 2008-2012 American Community Survey

For information on confidentiality protection, sampling error, nonsampling error, and definitions, see Survey Methodology.

<http://www.census.gov/acs/www/UseData/index.htm>

Educational Attainment for the Population 25 Years and Older

Lee County, South Carolina



Source: C15002. SEX BY EDUCATIONAL ATTAINMENT FOR THE POPULATION 25 YEARS AND OVER
Data Set: 2008-2012 American Community Survey 5-Year Estimates

B17010. POVERTY STATUS IN THE PAST 12 MONTHS OF FAMILIES BY FAMILY TYPE BY PRESENCE OF RELATED CHILDREN UNDER 18 YEARS

Data Set: 2008-2012 American Community Survey 5-Year Estimates

	Lee County, South Carolina					
	African American	Margin of Error (+/-)	% of AA Total	White, Not Hispanic	Margin of Error (+/-)	% of NHW Total
Total:	2,673	206	100.0%	1,492	137	100.0%
Income in the past 12 months below poverty level:	788	161	29.5%	185	97	12.4%
Married-couple family:	148	83	5.5%	89	60	6.0%
With related children under 18 years	115	73	4.3%	38	48	2.5%
Other family:	640	160	23.9%	96	69	6.4%
Male householder, no wife present	77	52	2.9%	0	20	0.0%
With related children under 18 years	42	37	1.6%	0	20	0.0%
Female householder, no husband present	563	139	21.1%	96	69	6.4%
With related children under 18 years	441	136	16.5%	78	66	5.2%
Income in the past 12 months at or above poverty level:	1,885	211	70.5%	1,307	157	87.6%
Married-couple family:	919	139	34.4%	1,120	146	75.1%
With related children under 18 years	264	96	9.9%	353	101	23.7%
Other family:	966	167	36.1%	187	65	12.5%
Male householder, no wife present	174	95	6.5%	51	37	3.4%
With related children under 18 years	72	65	2.7%	5	8	0.3%
Female householder, no husband present	792	166	29.6%	136	61	9.1%
With related children under 18 years	491	150	18.4%	96	56	6.4%

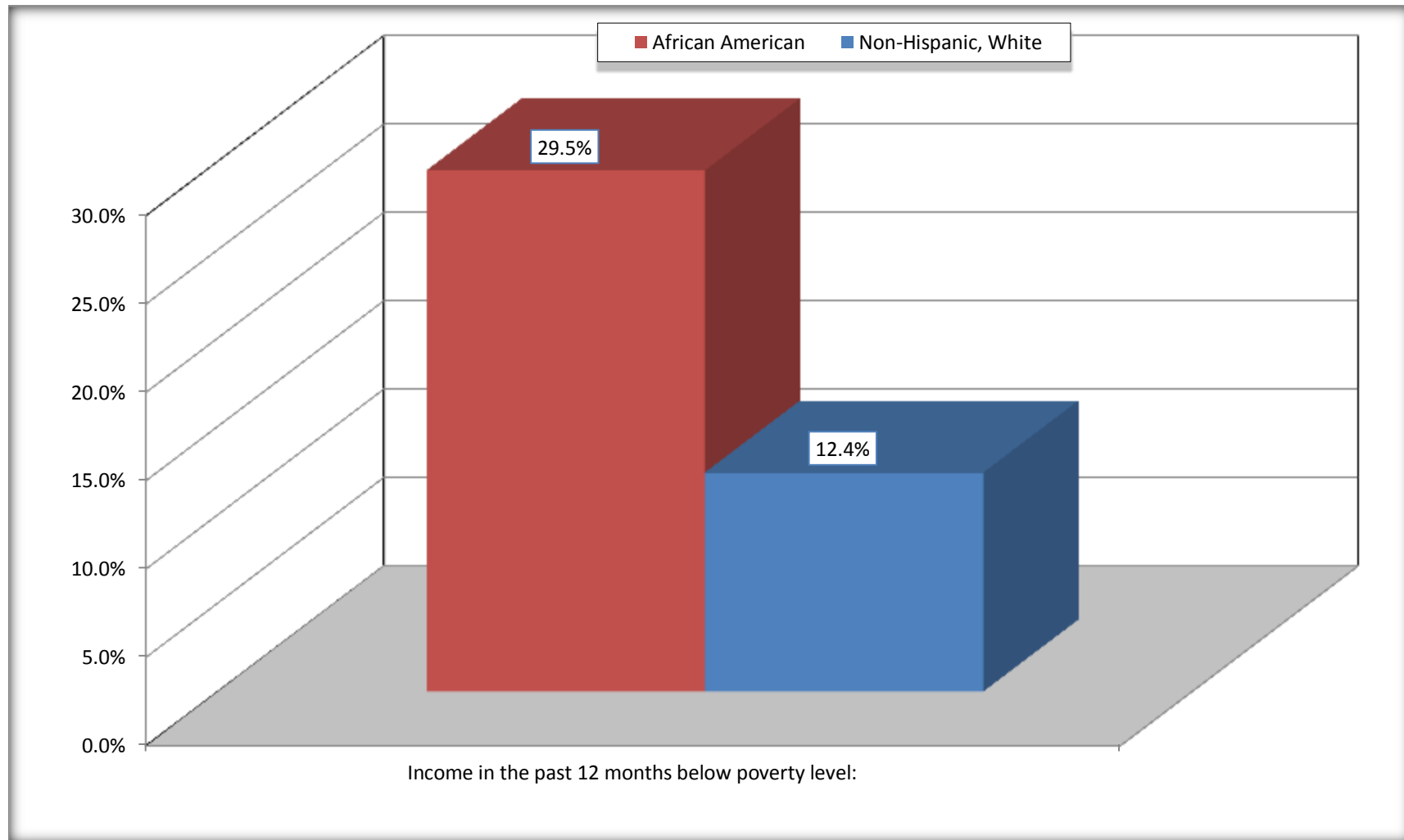
Source: U.S. Census Bureau, 2008-2012 American Community Survey

For information on confidentiality protection, sampling error, nonsampling error, and definitions, see Survey Methodology.

<http://www.census.gov/acs/www/UseData/index.htm>

Family Households Below Poverty in the Past 12 Months

Lee County, South Carolina

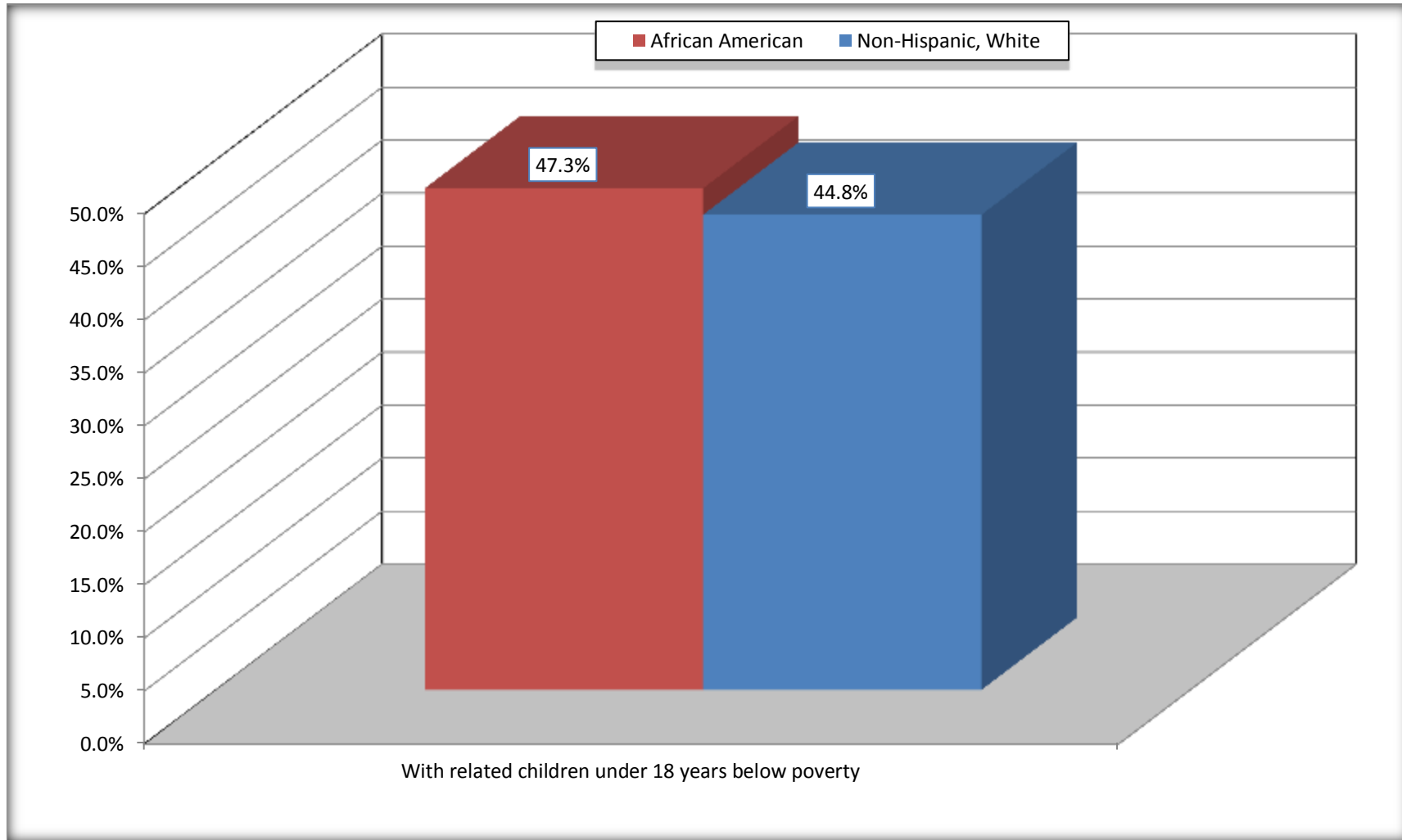


Source: B17010. POVERTY STATUS IN THE PAST 12 MONTHS OF FAMILIES BY FAMILY TYPE BY PRESENCE OF RELATED CHILDREN UNDER 18 YEARS

Data Set: 2008-2012 American Community Survey 5-Year Estimates

Female-headed Households with Related Children Below Poverty in the Past 12 Months

Lee County, South Carolina



Source: B17010. POVERTY STATUS IN THE PAST 12 MONTHS OF FAMILIES BY FAMILY TYPE BY PRESENCE OF RELATED CHILDREN UNDER 18 YEARS

Data Set: 2008-2012 American Community Survey 5-Year Estimates

B17020 POVERTY STATUS IN THE PAST 12 MONTHS BY AGE - Universe: POPULATION FOR WHOM POVERTY STATUS IS DETERMINED

Data Set: 2008-2012 American Community Survey 5-Year Estimates

	Lee County, South Carolina					
	African American	Margin of Error (+/-)	% of AA By Age	White, Not Hispanic	Margin of Error (+/-)	% of NHW By Age
Total:	11,187	170	100.0%	5,694	152	100.0%
Income in the past 12 months below poverty level:	3,758	591	33.6%	965	387	16.9%
Under 18 years	1,434	NC	46.0%	250	NC	25.7%
18 to 64 years	1,841	317	27.0%	673	239	19.3%
65 years and over	483	NC	38.2%	42	NC	3.4%
Income in the past 12 months at or above poverty level:	7,429	572	66.4%	4,729	408	83.1%
Under 18 years	1,684	NC	54.0%	722	NC	74.3%
18 to 64 years	4,965	315	73.0%	2,823	266	80.7%
65 years and over	780	NC	61.8%	1,184	NC	96.6%

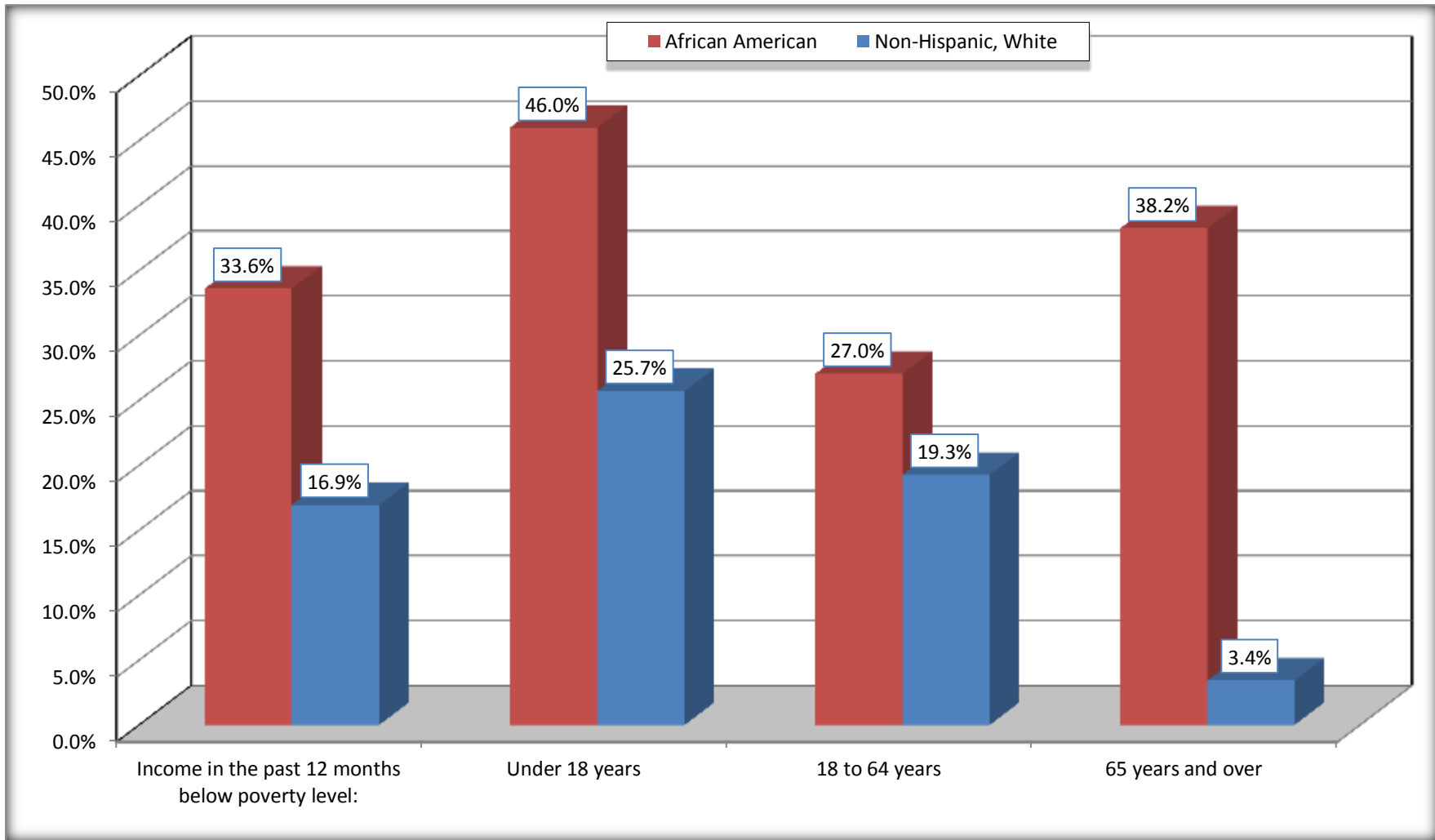
Source: U.S. Census Bureau, 2008-2012 American Community Survey

For information on confidentiality protection, sampling error, nonsampling error, and definitions, see Survey Methodology.

<http://www.census.gov/acs/www/UseData/index.htm>

Population Below Poverty in the Past 12 Months

Lee County, South Carolina



Source: B17020 POVERTY STATUS IN THE PAST 12 MONTHS BY AGE - Universe: POPULATION FOR WHOM POVERTY STATUS IS DETERMINED
Data Set: 2008-2012 American Community Survey 5-Year Estimates

B19001. HOUSEHOLD INCOME IN THE PAST 12 MONTHS (IN 2010 INFLATION-ADJUSTED DOLLARS)

Data Set: 2008-2012 American Community Survey 5-Year Estimates

	Lee County, South Carolina					
	African American	Margin of Error (+/-)	% of AA Total	White, Not Hispanic	Margin of Error (+/-)	% of NHW Total
Total:	3,885	221	100.0%	2,546	174	100.0%
Less than \$ 10,000	624	149	16.1%	179	93	7.0%
\$ 10,000 to \$ 14,999	565	148	14.5%	283	117	11.1%
\$ 15,000 to \$ 24,999	827	NC	21.3%	460	NC	18.1%
\$ 25,000 to \$ 34,999	482	NC	12.4%	259	NC	10.2%
\$ 35,000 to \$ 49,999	537	NC	13.8%	288	NC	11.3%
\$ 50,000 to \$ 74,999	574	NC	14.8%	461	NC	18.1%
\$ 75,000 to \$ 99,999	225	83	5.8%	318	89	12.5%
\$ 100,000 to \$ 149,999	40	NC	1.0%	224	NC	8.8%
\$ 150,000 to \$ 199,999	11	18	0.3%	55	39	2.2%
\$ 200,000 or more	0	20	0.0%	19	23	0.7%

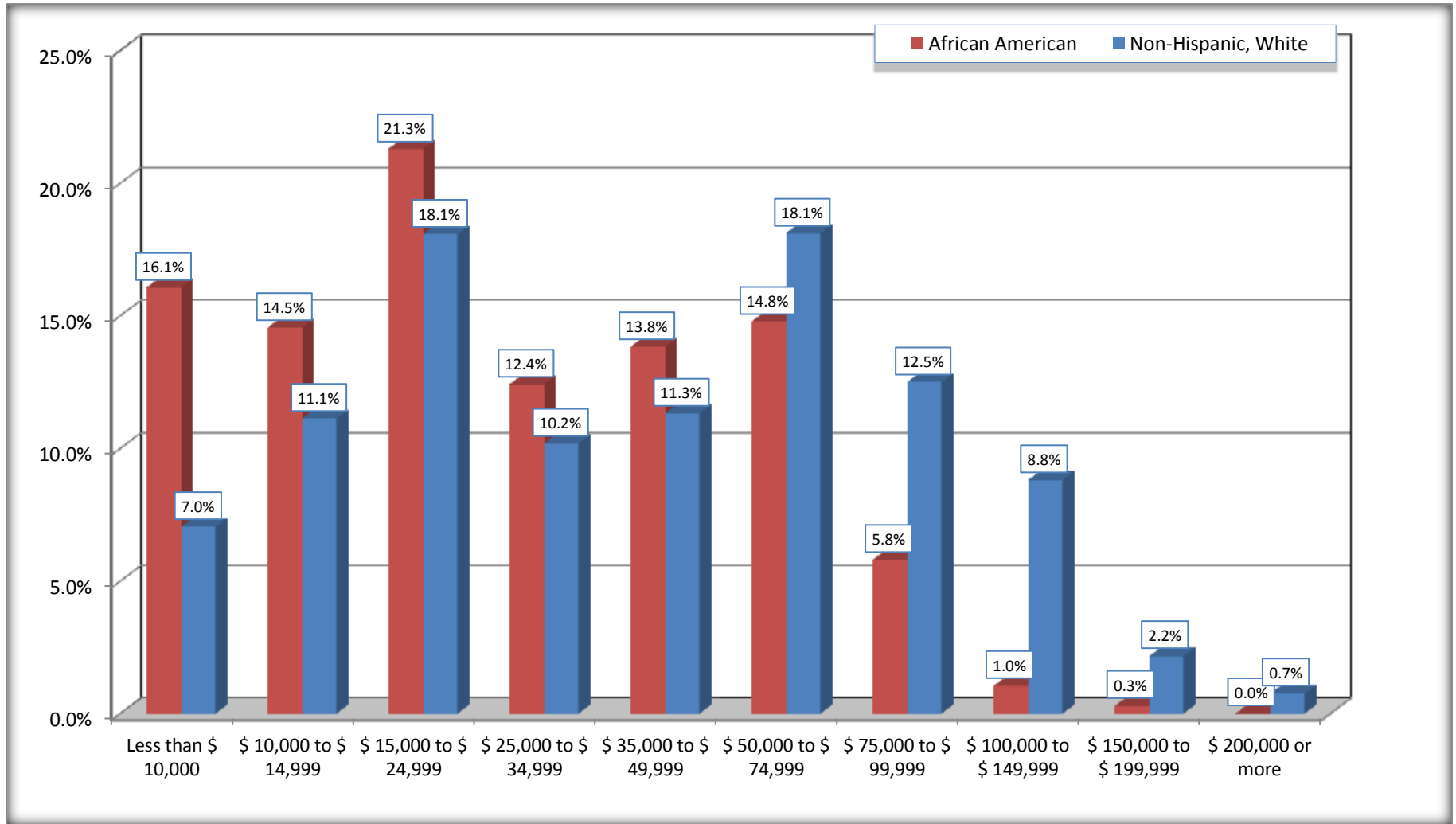
Source: U.S. Census Bureau, 2008-2012 American Community Survey

For information on confidentiality protection, sampling error, nonsampling error, and definitions, see Survey Methodology.

<http://www.census.gov/acs/www/UseData/index.htm>

Household Income in the Past 12 Months

Lee County, South Carolina



Source: B19001. HOUSEHOLD INCOME IN THE PAST 12 MONTHS (IN 2010 INFLATION-ADJUSTED DOLLARS)
Data Set: 2008-2012 American Community Survey 5-Year Estimates

B19013. MEDIAN HOUSEHOLD INCOME IN THE PAST 12 MONTHS (IN 2010 INFLATION-ADJUSTED DOLLARS)

Data Set: 2008-2012 American Community Survey 5-Year Estimates

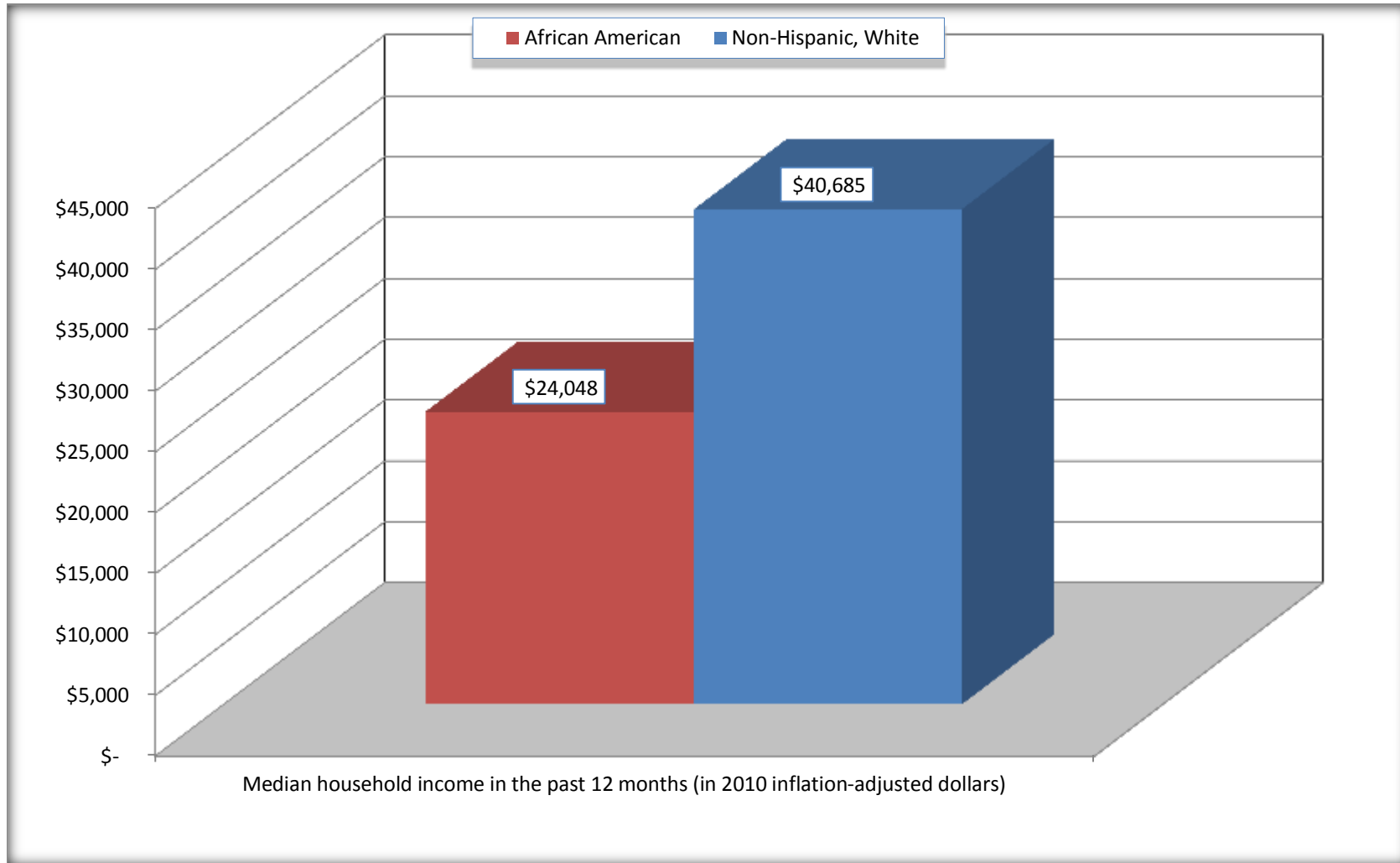
	Lee County, South Carolina			
	African American	Margin of Error (+/-)	White, Not Hispanic	Margin of Error (+/-)
Median household income in the past 12 months (in 2010 inflation-adjusted dollars)	\$ 24,048	\$ 2,568	\$ 40,685	\$ 9,143

Source: U.S. Census Bureau, 2008-2012 American Community Survey

For information on confidentiality protection, sampling error, nonsampling error, and definitions, see Survey Methodology.
<http://www.census.gov/acs/www/UseData/index.htm>

Median Household Income in the Past 12 Months

Lee County, South Carolina



Source: B19013. MEDIAN HOUSEHOLD INCOME IN THE PAST 12 MONTHS (IN 2010 INFLATION-ADJUSTED DOLLARS)
Data Set: 2008-2012 American Community Survey 5-Year Estimates

B19101. FAMILY INCOME IN THE PAST 12 MONTHS (IN 2010 INFLATION-ADJUSTED DOLLARS)

Data Set: 2008-2012 American Community Survey 5-Year Estimates

	Lee County, South Carolina					
	African American	Margin of Error (+/-)	% of AA Total	White, Not Hispanic	Margin of Error (+/-)	% of NHW Total
Total:	2,673	206	100.0%	1,492	137	100.0%
Less than \$ 10,000	224	83	8.4%	87	74	5.8%
\$ 10,000 to \$ 14,999	382	124	14.3%	73	54	4.9%
\$ 15,000 to \$ 24,999	609	NC	22.8%	141	NC	9.5%
\$ 25,000 to \$ 34,999	308	NC	11.5%	101	NC	6.8%
\$ 35,000 to \$ 49,999	471	NC	17.6%	223	NC	14.9%
\$ 50,000 to \$ 74,999	440	NC	16.5%	331	NC	22.2%
\$ 100,000 to \$ 149,999	40	NC	1.5%	210	NC	14.1%
\$ 150,000 to \$ 199,999	11	18	0.4%	42	36	2.8%
\$ 200,000 or more	0	20	0.0%	19	23	1.3%

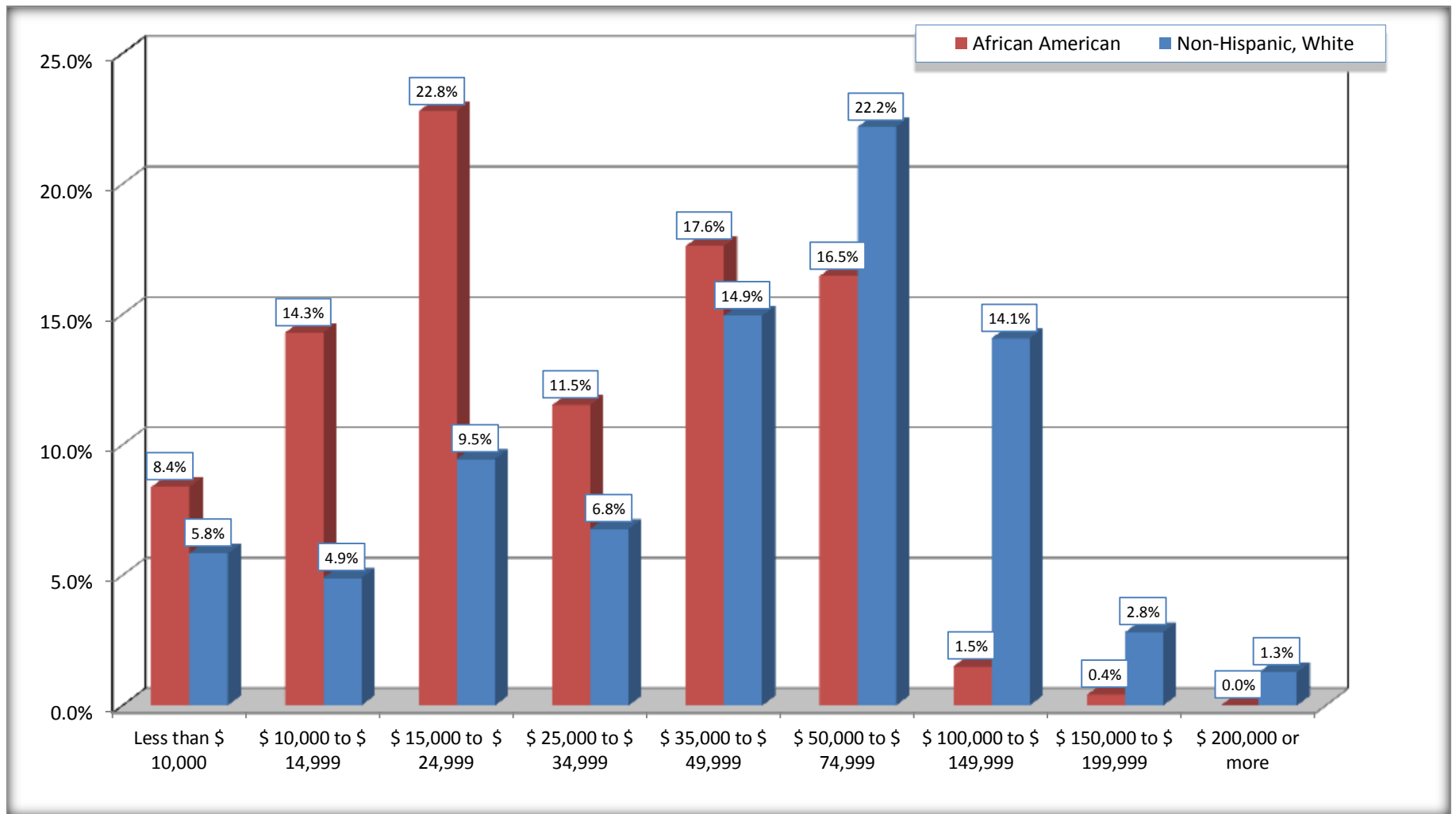
Source: U.S. Census Bureau, 2008-2012 American Community Survey

For information on confidentiality protection, sampling error, nonsampling error, and definitions, see Survey Methodology.

<http://www.census.gov/acs/www/UseData/index.htm>

Family Income in the Past 12 Months

Lee County, South Carolina



Source: B19101. FAMILY INCOME IN THE PAST 12 MONTHS (IN 2010 INFLATION-ADJUSTED DOLLARS)
Data Set: 2008-2012 American Community Survey 5-Year Estimates

B19113. MEDIAN FAMILY INCOME IN THE PAST 12 MONTHS (IN 2010 INFLATION-ADJUSTED DOLLARS)

Data Set: 2008-2012 American Community Survey 5-Year Estimates

	Lee County, South Carolina			
	African American	Margin of Error (+/-)	White, Not Hispanic	Margin of Error (+/-)
Median family income in the past 12 months (in 2010 inflation-adjusted dollars)	\$ 28,346	\$ 4,018	\$ 56,341	\$ 4,496

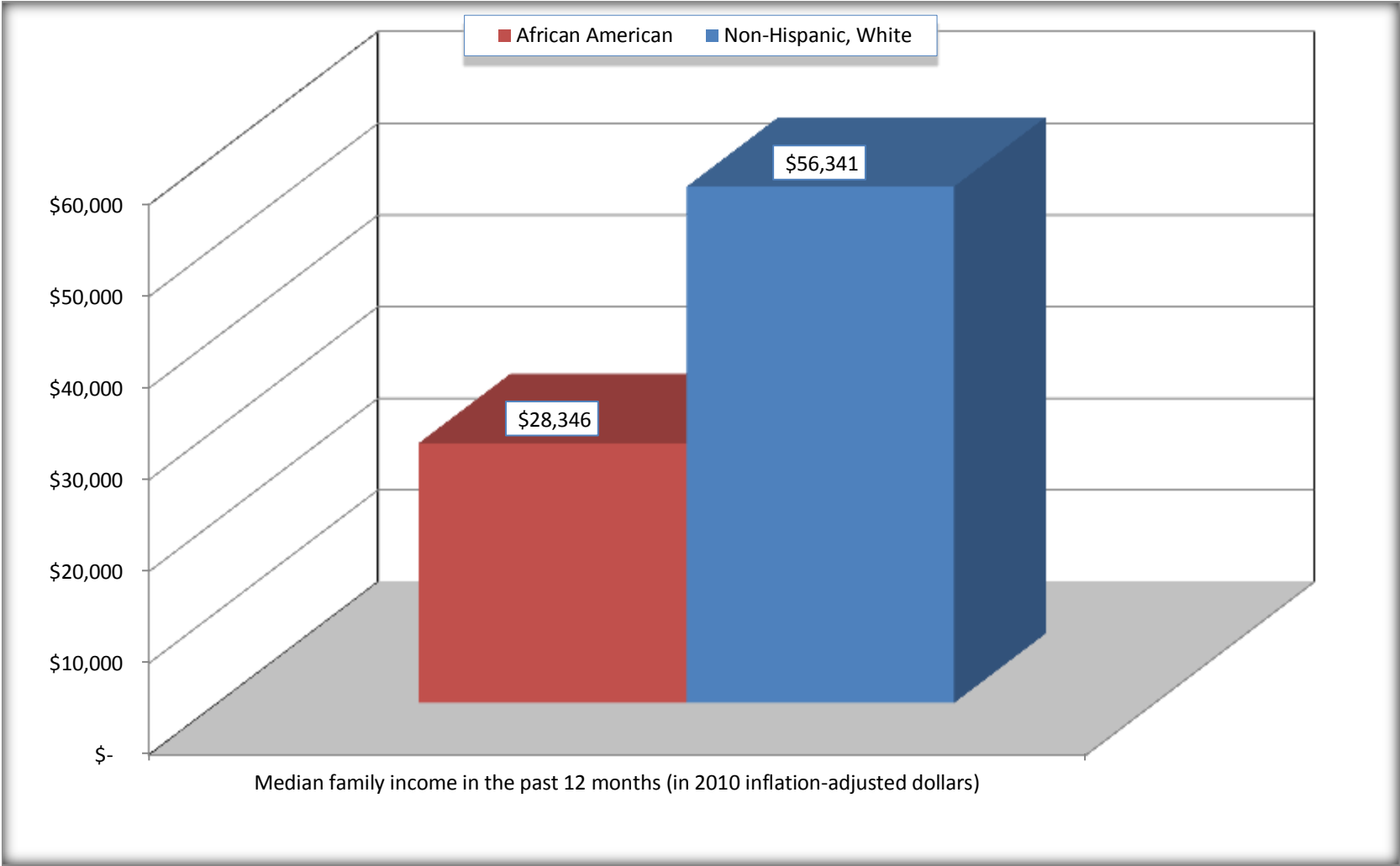
Source: U.S. Census Bureau, 2008-2012 American Community Survey

For information on confidentiality protection, sampling error, nonsampling error, and definitions, see Survey Methodology.

<http://www.census.gov/acs/www/UseData/index.htm>

Median Family Income in the Past 12 Months

Lee County, South Carolina



Source: B19113. MEDIAN FAMILY INCOME IN THE PAST 12 MONTHS (IN 2010 INFLATION-ADJUSTED DOLLARS)
Data Set: 2008-2012 American Community Survey 5-Year Estimates

B19202. MEDIAN NONFAMILY HOUSEHOLD INCOME IN THE PAST 12 MONTHS (IN 2010 INFLATION-ADJUSTED DOLLARS)

Data Set: 2008-2012 American Community Survey 5-Year Estimates

	Lee County, South Carolina			
	African American	Margin of Error (+/-)	White, Not Hispanic	Margin of Error (+/-)
Median nonfamily household income in the past 12 months (in 2010 inflation-adjusted dollars)	\$ 14,892	\$ 3,790	\$ 19,509	\$ 2,796

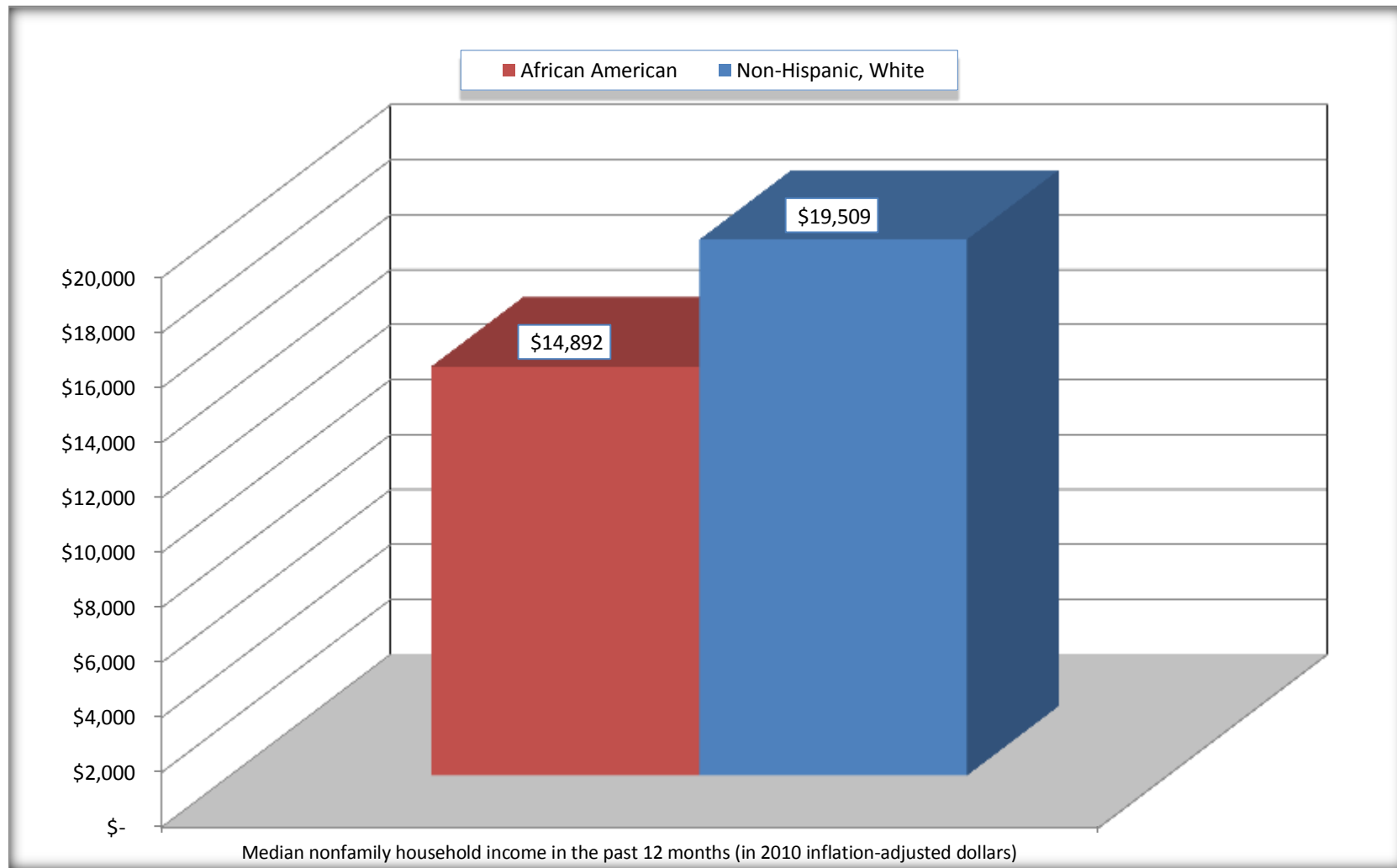
Source: U.S. Census Bureau, 2008-2012 American Community Survey

For information on confidentiality protection, sampling error, nonsampling error, and definitions, see Survey Methodology.

<http://www.census.gov/acs/www/UseData/index.htm>

Median Non-Family Income in the Past 12 Months

Lee County, South Carolina



Source: B19202. MEDIAN NONFAMILY HOUSEHOLD INCOME IN THE PAST 12 MONTHS (IN 2010 INFLATION-ADJUSTED DOLLARS)
Data Set: 2008-2012 American Community Survey 5-Year Estimates

B19301. PER CAPITA INCOME IN THE PAST 12 MONTHS (IN 2010 INFLATION-ADJUSTED DOLLARS)

Data Set: 2008-2012 American Community Survey 5-Year Estimates

	Lee County, South Carolina			
	African American	Margin of Error (+/-)	White, Not Hispanic	Margin of Error (+/-)
Per capita income in the past 12 months (in 2010 inflation-adjusted dollars)	\$ 10,856	\$ 756	\$ 22,718	\$ 3,231

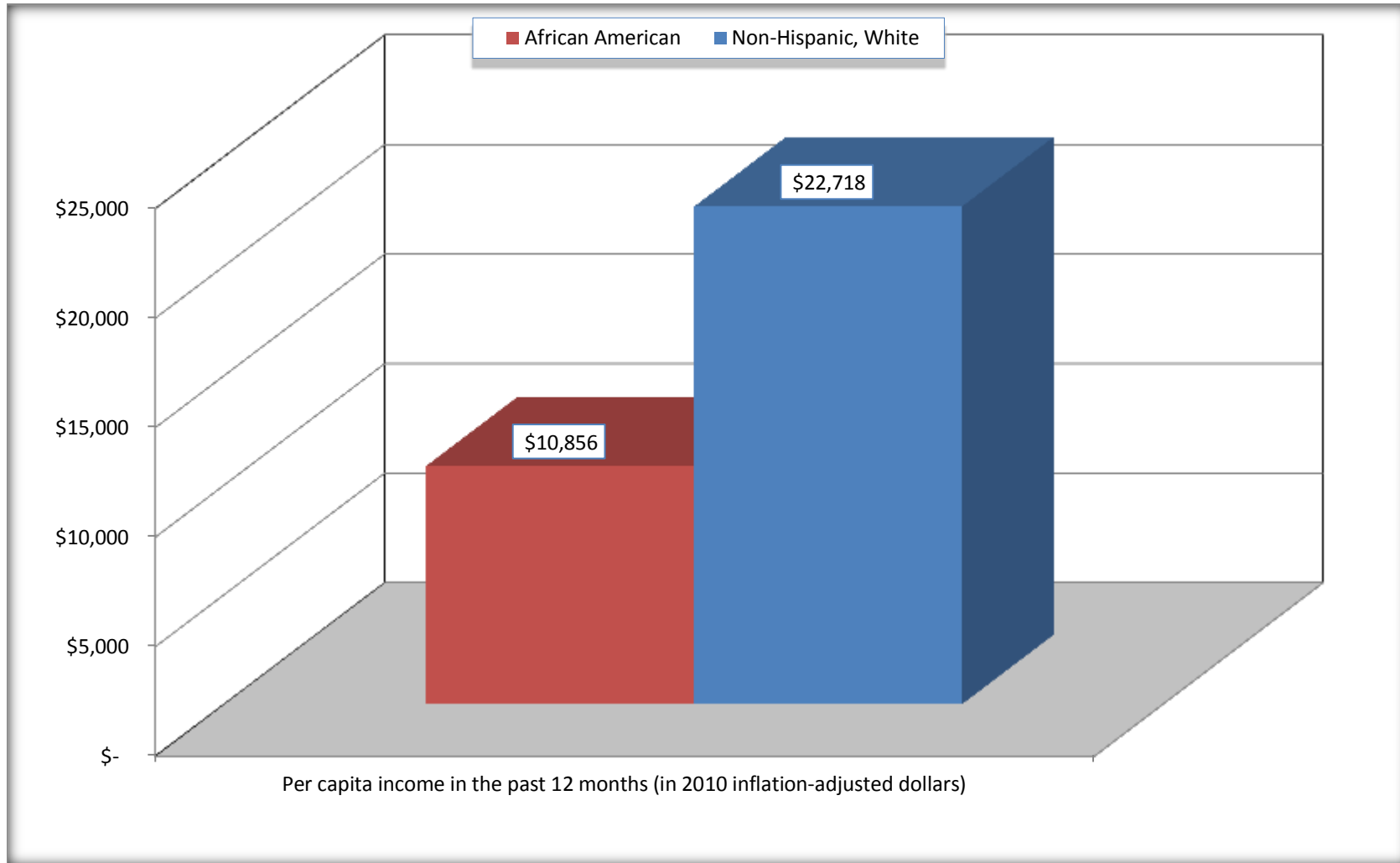
Source: U.S. Census Bureau, 2008-2012 American Community Survey

For information on confidentiality protection, sampling error, nonsampling error, and definitions, see Survey Methodology.

<http://www.census.gov/acs/www/UseData/index.htm>

Per capita Income in the Past 12 Months

Lee County, South Carolina



Source: B19301. PER CAPITA INCOME IN THE PAST 12 MONTHS (IN 2010 INFLATION-ADJUSTED DOLLARS)
Data Set: 2008-2012 American Community Survey 5-Year Estimates

B20017. MEDIAN EARNINGS IN THE PAST 12 MONTHS (IN 2010 INFLATION-ADJUSTED DOLLARS) BY SEX BY WORK EXPERIENCE IN THE PAST 12 MONTHS FOR THE POPULATION 16 YEARS AND OVER WITH EARNINGS IN THE PAST 12 MONTHS

Data Set: 2008-2012 American Community Survey 5-Year Estimates

	Lee County, South Carolina			
	African American	Margin of Error (+/-)	White, Not Hispanic	Margin of Error (+/-)
Median earnings in the past 12 months (in 2010 inflation-adjusted dollars) --				
Total:	\$ 19,954	\$ 1,610	\$ 29,857	\$ 6,092
Male --				
Total	\$ 22,233	\$ 2,797	\$ 31,860	\$ 10,855
Worked full-time, year-round in the past 12 months	\$ 27,365	\$ 5,203	\$ 44,773	\$ 7,112
Other	\$ 10,351	\$ 4,092	\$ 5,941	\$ 1,548
Female --				
Total	\$ 18,143	\$ 1,774	\$ 28,325	\$ 5,718
Worked full-time, year-round in the past 12 months	\$ 21,549	\$ 1,076	\$ 38,176	\$ 5,355
Other	\$ 9,182	\$ 3,030	\$ 12,757	\$ 5,826

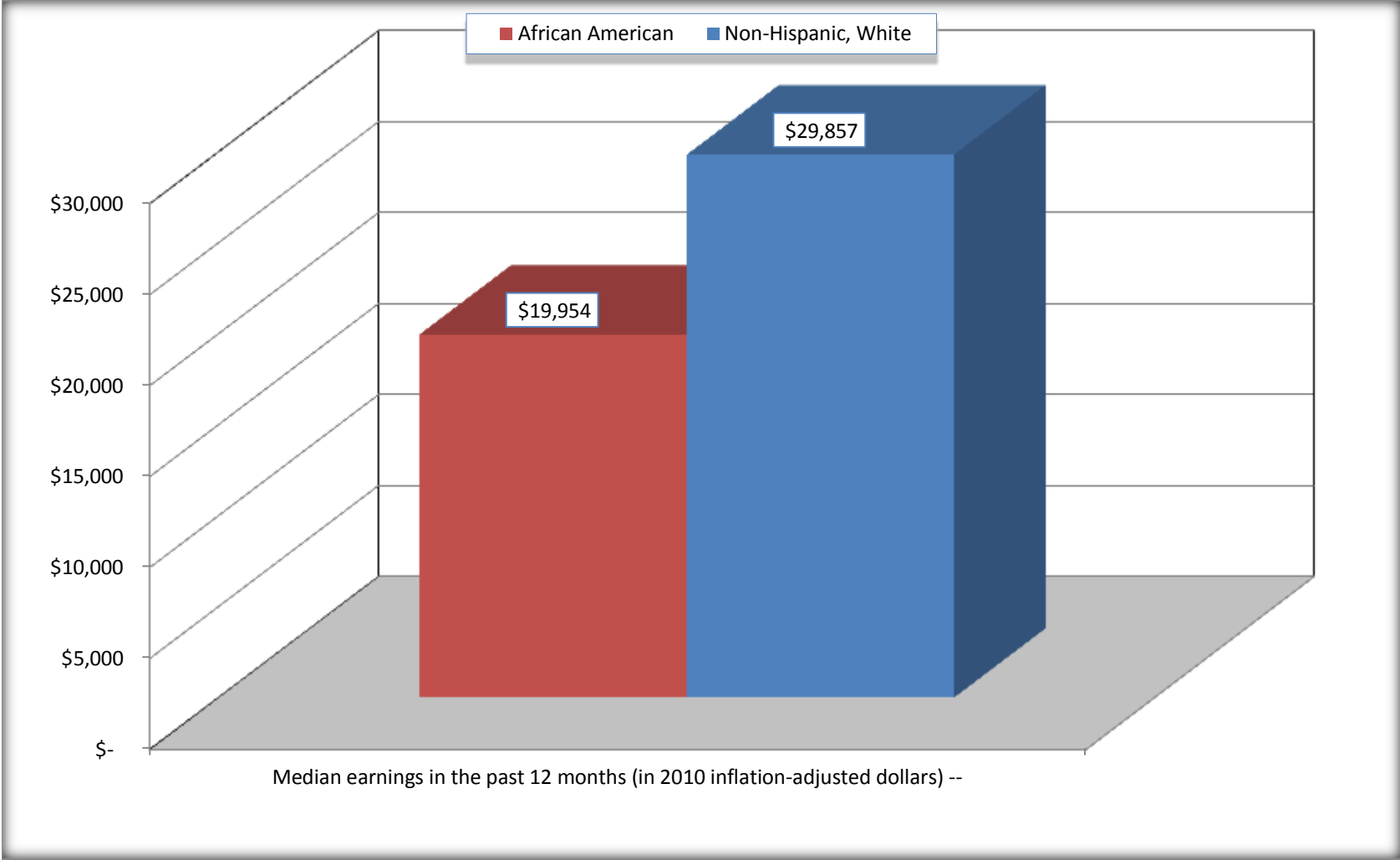
Source: U.S. Census Bureau, 2008-2012 American Community Survey

For information on confidentiality protection, sampling error, nonsampling error, and definitions, see Survey Methodology.

<http://www.census.gov/acs/www/UseData/index.htm>

Median earnings in the Past 12 Months (16 Years and Over with Earnings)

Lee County, South Carolina



Source: B20017. MEDIAN EARNINGS IN THE PAST 12 MONTHS (IN 2010 INFLATION-ADJUSTED DOLLARS) BY SEX BY WORK EXPERIENCE IN THE PAST 12 MONTHS FOR THE POPULATION 16 YEARS AND OVER WITH EARNINGS IN THE PAST 12 MONTHS
Data Set: 2008-2012 American Community Survey 5-Year Estimates

B20005. SEX BY WORK EXPERIENCE IN THE PAST 12 MONTHS BY EARNINGS IN THE PAST 12 MONTHS (IN 2010 INFLATION-ADJUSTED DOLLARS) FOR THE POPULATION 16 YEARS AND OVER

Data Set: 2008-2012 American Community Survey 5-Year Estimates

	Lee County, South Carolina					
	African American	Margin of Error (+/-)	% of AA Total	White, Not Hispanic	Margin of Error (+/-)	% of NHW Total
Total:	9,609	97	100.0%	5,343	55	100.0%
Worked full-time, year-round in the past 12 months:	2,599	NC	27.0%	1,791	NC	33.5%
No earnings	0	NC	0.0%	0	NC	0.0%
With earnings:	2,599	NC	27.0%	1,791	NC	33.5%
\$ 1 to \$ 9,999 or loss	32	NC	0.3%	89	NC	1.7%
\$ 10,000 to \$ 19,999	726	NC	7.6%	264	NC	4.9%
\$ 20,000 to \$ 29,999	961	NC	10.0%	184	NC	3.4%
\$ 30,000 to \$ 49,999	670	NC	7.0%	513	NC	9.6%
\$ 50,000 to \$ 74,999	161	NC	1.7%	599	NC	11.2%
\$ 75,000 or more	49	NC	0.5%	142	NC	2.7%
Other:	7,010	NC	73.0%	3,552	NC	66.5%
No earnings	5,142	NC	53.5%	2,750	NC	51.5%
With earnings: less than full time, year-round	1,868	NC	19.4%	802	NC	15.0%
Male:	4,976	56	51.8%	2,804	31	52.5%
Worked full-time, year-round in the past 12 months:	1,053	205	11.0%	1,044	156	19.5%
No earnings	0	20	0.0%	0	20	0.0%
With earnings:	1,053	205	11.0%	1,044	156	19.5%
\$ 1 to \$ 9,999 or loss	9	NC	0.1%	19	NC	0.4%
\$ 10,000 to \$ 19,999	173	NC	1.8%	188	NC	3.5%
\$ 20,000 to \$ 29,999	386	NC	4.0%	97	NC	1.8%
\$ 30,000 to \$ 49,999	353	NC	3.7%	265	NC	5.0%
\$ 50,000 to \$ 74,999	105	NC	1.1%	343	NC	6.4%
\$ 75,000 or more	27	NC	0.3%	132	NC	2.5%

	Lee County, South Carolina					
	African American	Margin of Error (+/-)	% of AA Total	White, Not Hispanic	Margin of Error (+/-)	% of NHW Total
Other:	3,923	201	40.8%	1,760	162	32.9%
No earnings	3,139	230	32.7%	1,338	161	25.0%
With earnings:	784	180	8.2%	422	112	7.9%
Female:	4,633	85	48.2%	2,539	42	47.5%
Worked full-time, year-round in the past 12 months:	1,546	234	16.1%	747	109	14.0%
No earnings	0	20	0.0%	0	20	0.0%
With earnings:	1,546	234	16.1%	747	109	14.0%
\$ 1 to \$ 9,999 or loss	23	NC	0.2%	70	NC	1.3%
\$ 10,000 to \$ 19,999	553	NC	5.8%	76	NC	1.4%
\$ 20,000 to \$ 29,999	575	NC	6.0%	87	NC	1.6%
\$ 30,000 to \$ 49,999	317	NC	3.3%	248	NC	4.6%
\$ 50,000 to \$ 74,999	56	NC	0.6%	256	NC	4.8%
\$ 75,000 or more	22	NC	0.2%	10	NC	0.2%
Other:	3,087	255	32.1%	1,792	114	33.5%
No earnings	2,003	215	20.8%	1,412	131	26.4%
With earnings:	1,084	183	11.3%	380	112	7.1%

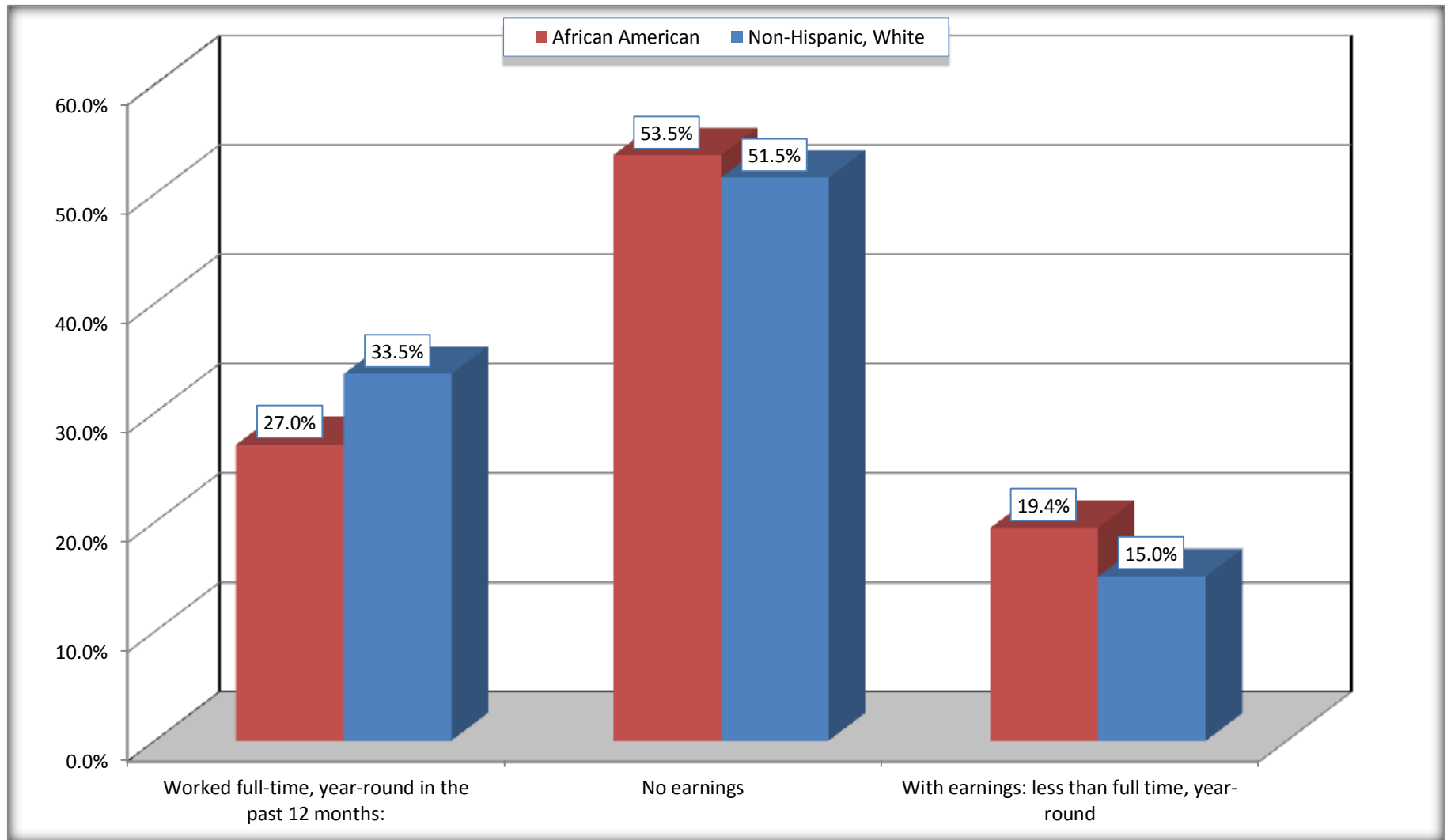
Source: U.S. Census Bureau, 2008-2012 American Community Survey

For information on confidentiality protection, sampling error, nonsampling error, and definitions, see Survey Methodology.

<http://www.census.gov/acs/www/UseData/index.htm>

Employment and Earnings in in the Past 12 Months (16 Years and Over)

Lee County, South Carolina



Source: B20005. SEX BY WORK EXPERIENCE IN THE PAST 12 MONTHS BY EARNINGS IN THE PAST 12 MONTHS (IN 2010 INFLATION-ADJUSTED DOLLARS) FOR THE POPULATION 16 YEARS AND OVER

Data Set: 2008-2012 American Community Survey 5-Year Estimates

C21001. SEX BY AGE BY VETERAN STATUS FOR THE CIVILIAN POPULATION 18 YEARS AND OVER

Data Set: 2008-2012 American Community Survey 5-Year Estimates

	Lee County, South Carolina					
	African American	Margin of Error (+/-)	% of AA Total	White, Not Hispanic	Margin of Error (+/-)	% of NHW Total
Total:	9,226	58	100.0%	5,267	29	100.0%
Veteran	446	NC	4.8%	597	NC	11.3%
Nonveteran	8,780	NC	95.2%	4,670	NC	88.7%
Male:	4,768	33	51.7%	2,753	20	52.3%
18 to 64 years:	4,257	33	46.1%	2,199	20	41.8%
Veteran	264	94	2.9%	232	88	4.4%
Nonveteran	3,993	98	43.3%	1,967	88	37.3%
65 years and over:	511	20	5.5%	554	20	10.5%
Veteran	75	43	0.8%	278	73	5.3%
Nonveteran	436	43	4.7%	276	73	5.2%
Female:	4,458	47	48.3%	2,514	29	47.7%
18 to 64 years:	3,654	34	39.6%	1,764	29	33.5%
Veteran	107	73	1.2%	61	39	1.2%
Nonveteran	3,547	82	38.4%	1,703	49	32.3%
65 years and over:	804	24	8.7%	750	20	14.2%
Veteran	0	20	0.0%	26	27	0.5%
Nonveteran	804	24	8.7%	724	27	13.7%

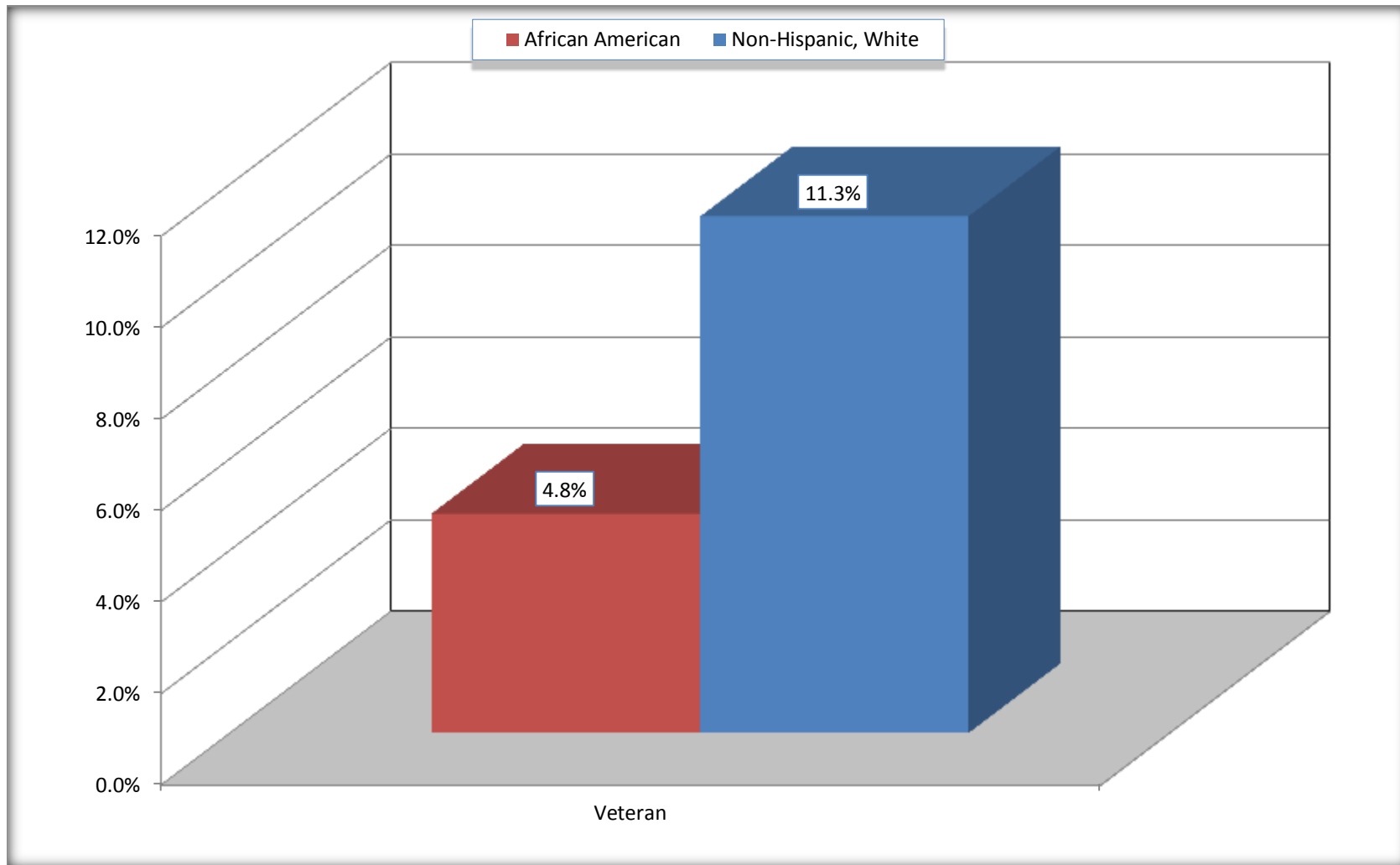
Source: U.S. Census Bureau, 2008-2012 American Community Survey

For information on confidentiality protection, sampling error, nonsampling error, and definitions, see Survey Methodology.

<http://www.census.gov/acs/www/UseData/index.htm>

Veterans in the Civilian Population 18 Years and Over

Lee County, South Carolina



Source: C21001. SEX BY AGE BY VETERAN STATUS FOR THE CIVILIAN POPULATION 18 YEARS AND OVER
Data Set: 2008-2012 American Community Survey 5-Year Estimates

B22005. RECEIPT OF FOOD STAMPS/SNAP IN THE PAST 12 MONTHS BY RACE OF HOUSEHOLDER

Data Set: 2008-2012 American Community Survey 5-Year Estimates

	Lee County, South Carolina					
	African American	Margin of Error (+/-)	% of AA Total	White, Not Hispanic	Margin of Error (+/-)	% of NHW Total
Total:	3,885	221	100.0%	2,546	174	100.0%
HH received Food Stamps/SNAP in the past 12 months	1,402	204	36.1%	327	105	12.8%
HH did not receive Food Stamps/SNAP in the past 12 months	2,483	278	63.9%	2,219	195	87.2%

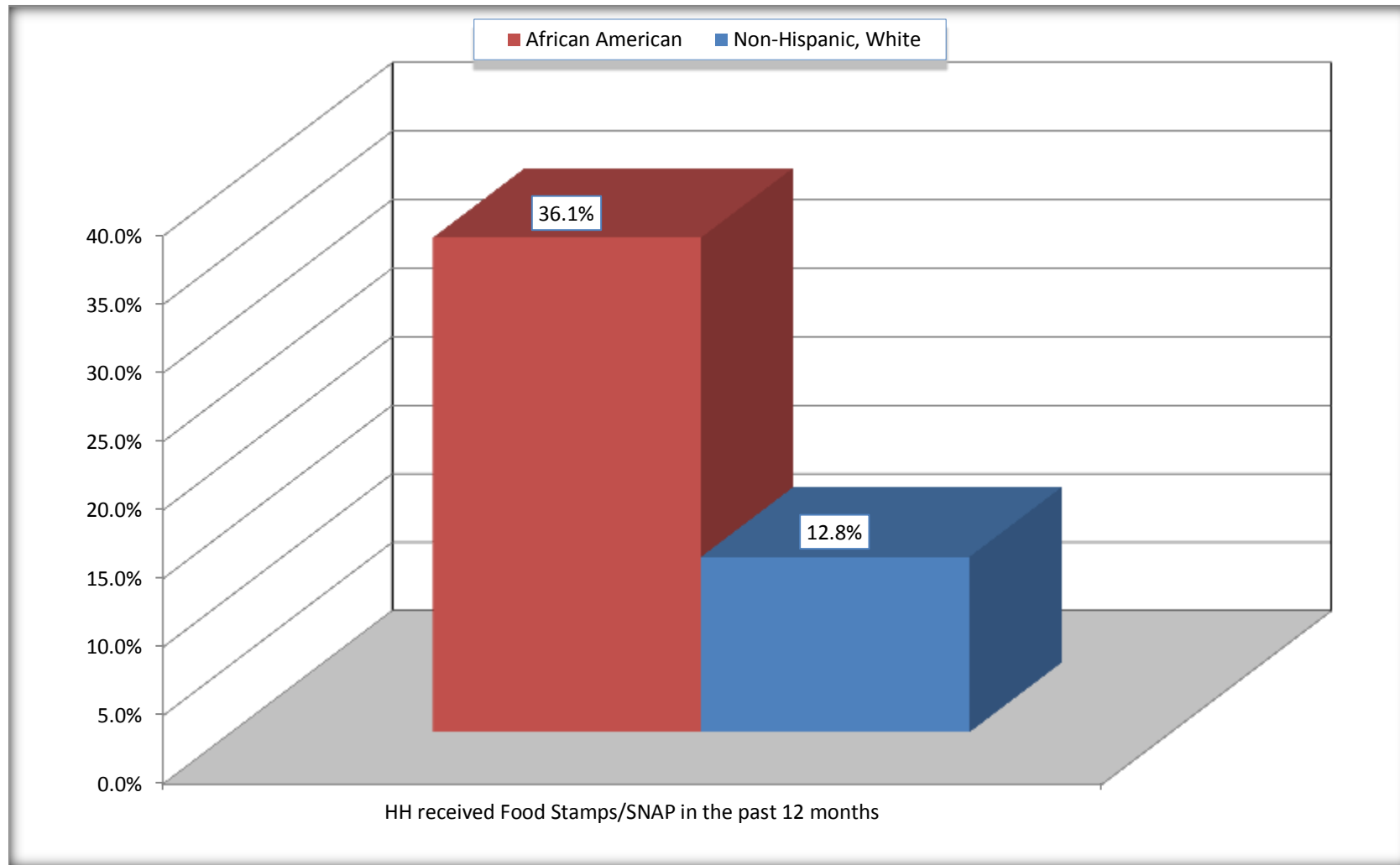
Source: U.S. Census Bureau, 2008-2012 American Community Survey

For information on confidentiality protection, sampling error, nonsampling error, and definitions, see Survey Methodology.

<http://www.census.gov/acs/www/UseData/index.htm>

Receipt of Food Stamps/SNAP in the Past 12 Months by Household

Lee County, South Carolina



Source: B22005. RECEIPT OF FOOD STAMPS/SNAP IN THE PAST 12 MONTHS BY RACE OF HOUSEHOLDER
Data Set: 2008-2012 American Community Survey 5-Year Estimates

C23002. SEX BY AGE BY EMPLOYMENT STATUS FOR THE POPULATION 16 YEARS AND OVER

Data Set: 2008-2012 American Community Survey 5-Year Estimates

	Lee County, South Carolina					
	African American	Margin of Error (+/-)	% of AA Total	White, Not Hispanic	Margin of Error (+/-)	% of NHW Total
Total:	9,609	97	100.0%	5,343	55	100.0%
In labor force:	4,844	NC	50.4%	2,593	NC	48.5%
In Armed Forces	0	NC	0.0%	0	NC	0.0%
Civilian:	4,745	NC	49.4%	2,453	NC	45.9%
Employed	3,747	NC	39.0%	2,370	NC	44.4%
Unemployed	1,097	NC	11.4%	223	NC	4.2%
Not in labor force	4,765	NC	49.6%	2,750	NC	51.5%
Male:	4,976	56	51.8%	2,804	31	52.5%
16 to 64 years:	4,465	56	46.5%	2,250	31	42.1%
In labor force:	2,012	229	20.9%	1,318	137	24.7%
In Armed Forces	0	20	0.0%	0	20	0.0%
Civilian:	2,012	229	20.9%	1,318	137	24.7%
Employed	1,336	212	13.9%	1,218	151	22.8%
Unemployed	676	168	7.0%	100	60	1.9%
Not in labor force	2,453	226	25.5%	932	140	17.4%
65 years and over:	511	20	5.3%	554	20	10.4%
In labor force:	78	56	0.8%	114	55	2.1%
Employed	78	56	0.8%	114	55	2.1%
Unemployed	0	20	0.0%	0	20	0.0%
Not in labor force	433	56	4.5%	440	55	8.2%

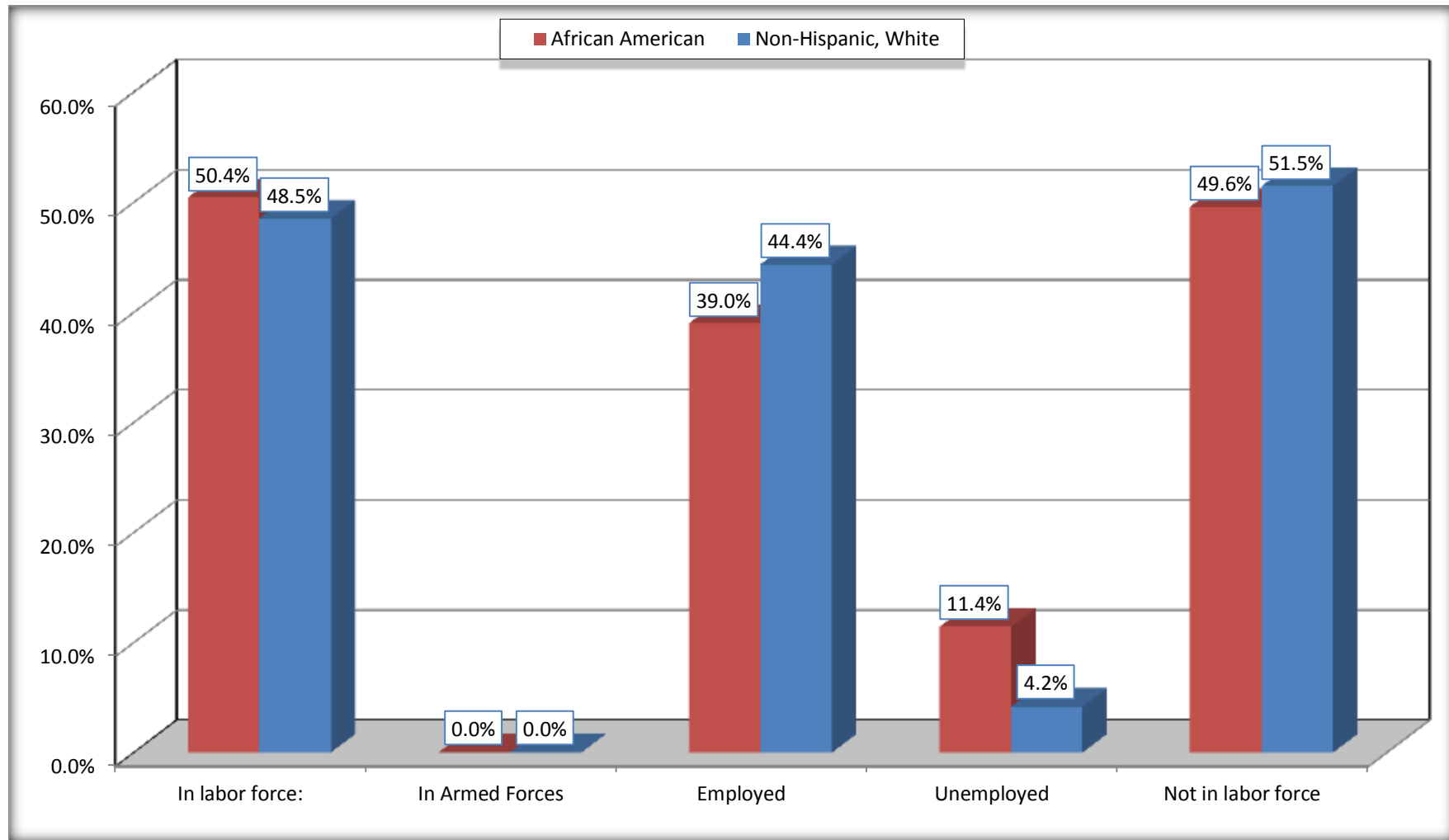
	Lee County, South Carolina					
	African American	Margin of Error (+/-)	% of AA Total	White, Not Hispanic	Margin of Error (+/-)	% of NHW Total
Female:	4,633	85	48.2%	2,539	42	47.5%
16 to 64 years:	3,829	74	39.8%	1,789	42	33.5%
In labor force:	2,733	203	28.4%	1,135	122	21.2%
In Armed Forces	0	20	0.0%	0	20	0.0%
Civilian:	2,733	203	28.4%	1,135	122	21.2%
Employed	2,318	247	24.1%	1,012	111	18.9%
Unemployed	415	138	4.3%	123	82	2.3%
Not in labor force	1,096	222	11.4%	654	121	12.2%
65 years and over:	804	24	8.4%	750	20	14.0%
In labor force:	21	20	0.2%	26	26	0.5%
Employed	15	17	0.2%	26	26	0.5%
Unemployed	6	10	0.1%	0	20	0.0%
Not in labor force	783	33	8.1%	724	26	13.6%

Source: U.S. Census Bureau, 2008-2012 American Community Survey

For information on confidentiality protection, sampling error, nonsampling error, and definitions, see Survey Methodology.
<http://www.census.gov/acs/www/UseData/index.htm>

Employment Status for the Population 16 years and over

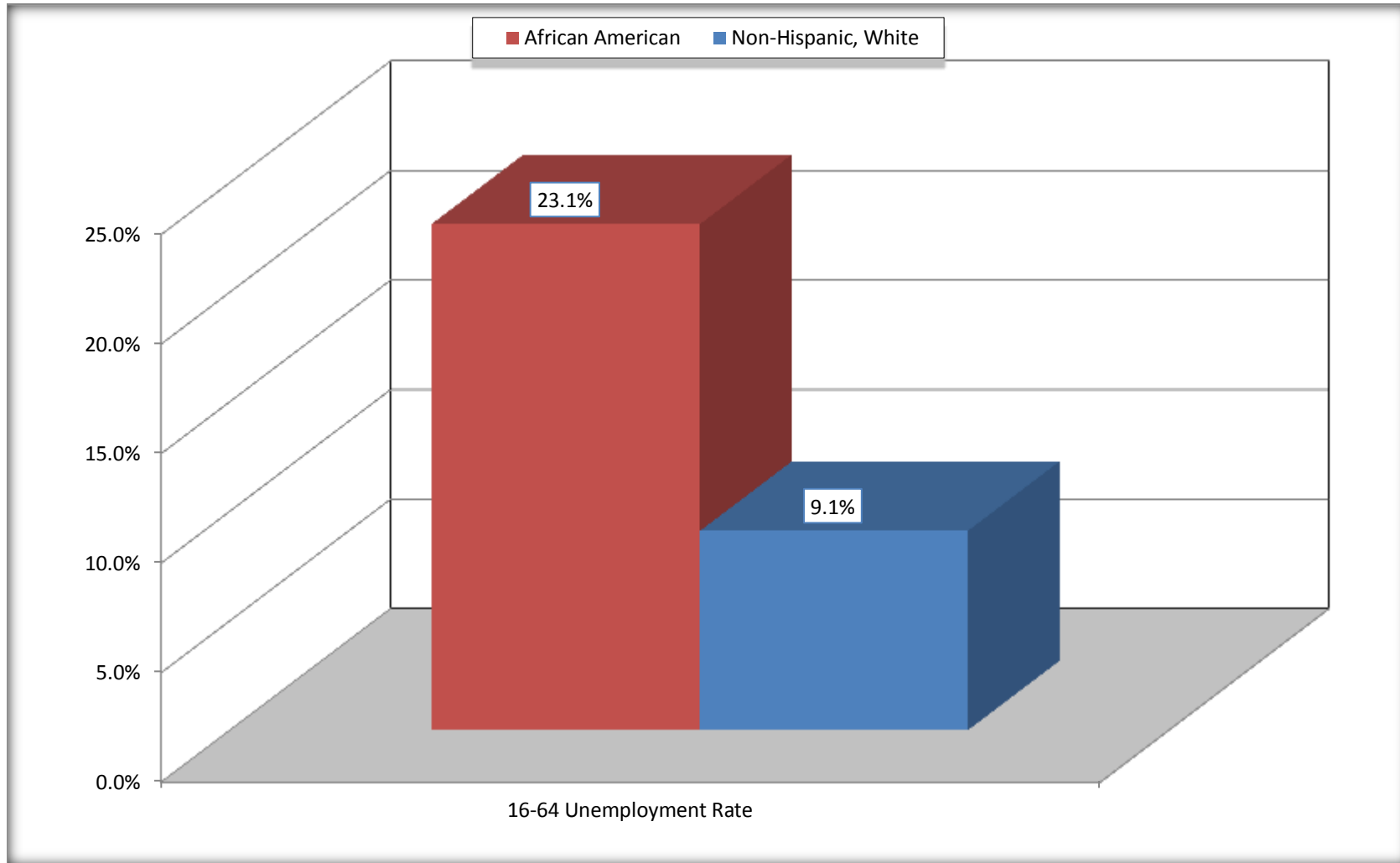
Lee County, South Carolina



Source: C23002. SEX BY AGE BY EMPLOYMENT STATUS FOR THE POPULATION 16 YEARS AND OVER
Data Set: 2008-2012 American Community Survey 5-Year Estimates

Unemployment of Working Age Population (Ages 16 to 64) (As a Percent of 16-64 Civilian Labor Force)

Lee County, South Carolina



Source: C23002. SEX BY AGE BY EMPLOYMENT STATUS FOR THE POPULATION 16 YEARS AND OVER
Data Set: 2008-2012 American Community Survey 5-Year Estimates

C24010. SEX BY OCCUPATION FOR THE CIVILIAN EMPLOYED POPULATION 16 YEARS AND OVER

Data Set: 2008-2012 American Community Survey 5-Year Estimates

	Lee County, South Carolina					
	African American	Margin of Error (+/-)	% of AA Total	White, Not Hispanic	Margin of Error (+/-)	% of NHW Total
Total:	3,747	327	100.0%	2,370	207	100.0%
Management, professional, and related occupations	660	NC	17.6%	904	NC	38.1%
Service occupations	992	NC	26.5%	363	NC	15.3%
Sales and office occupations	838	NC	22.4%	638	NC	26.9%
Natural resources, construction, and maintenance occupations:	294	NC	7.8%	233	NC	9.8%
Production, transportation, and material moving occupations	963	NC	25.7%	232	NC	9.8%
Male:	1,414	212	37.7%	1,332	159	56.2%
Management, business, science, and arts occupations:	72	64	1.9%	455	128	19.2%
Service occupations	210	96	5.6%	165	73	7.0%
Sales and office occupations	301	120	8.0%	312	103	13.2%
Natural resources, construction, and maintenance occupations:	281	113	7.5%	233	90	9.8%
Production, transportation, and material moving occupations	550	141	14.7%	167	85	7.0%
Female:	2,333	245	62.3%	1,038	119	43.8%
Management, professional, and related occupations	588	170	15.7%	449	104	18.9%
Service occupations	782	208	20.9%	198	82	8.4%
Sales and office occupations	537	165	14.3%	326	94	13.8%
Natural resources, construction, and maintenance occupations:	13	20	0.3%	0	20	0.0%
Production, transportation, and material moving occupations	413	157	11.0%	65	48	2.7%

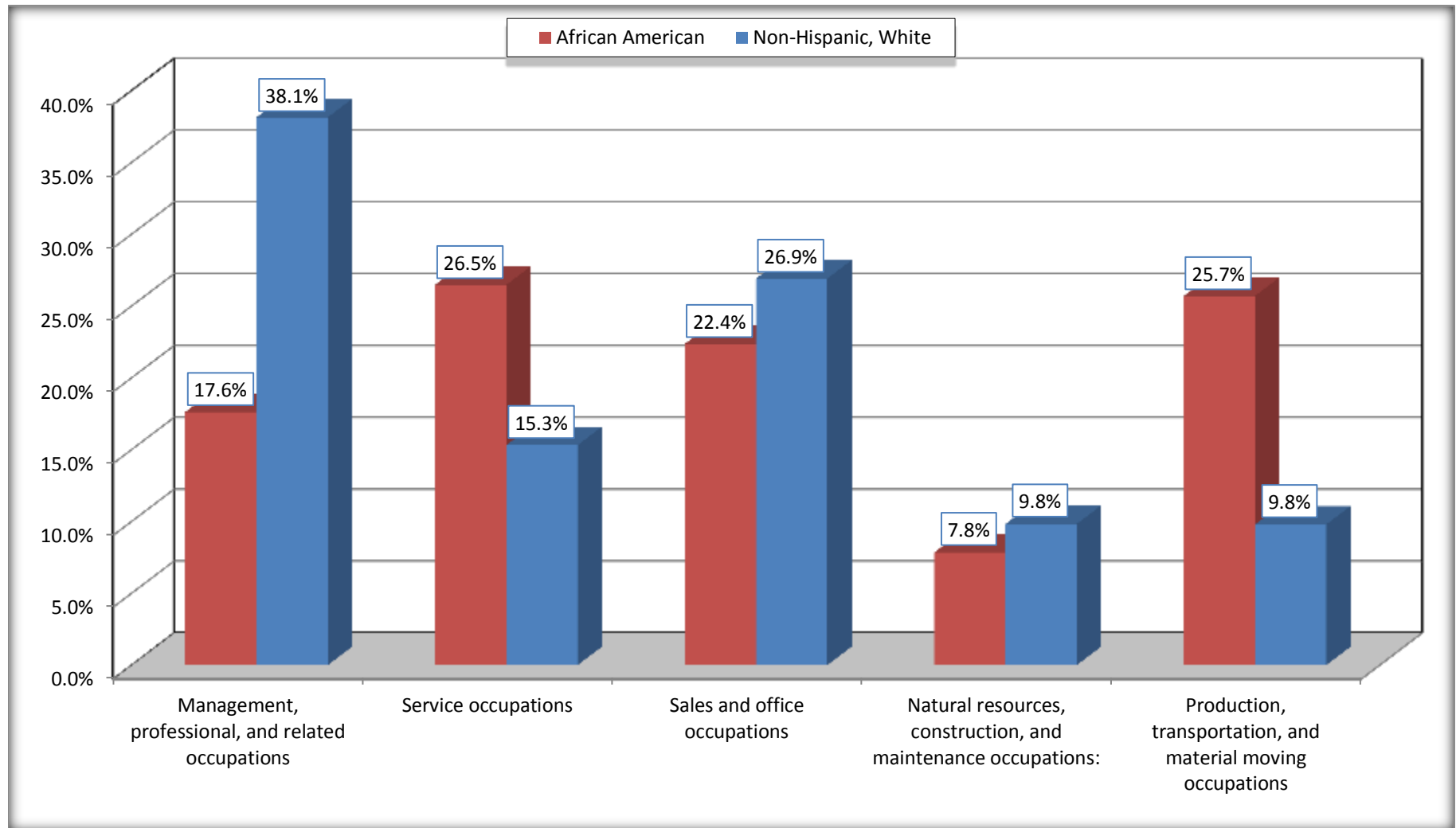
Source: U.S. Census Bureau, 2008-2012 American Community Survey

For information on confidentiality protection, sampling error, nonsampling error, and definitions, see Survey Methodology.

<http://www.census.gov/acs/www/UseData/index.htm>

Occupation for the Civilian Employed 16 Years and Over Population

Lee County, South Carolina



Source: C24010. SEX BY OCCUPATION FOR THE CIVILIAN EMPLOYED POPULATION 16 YEARS AND OVER
Data Set: 2008-2012 American Community Survey 5-Year Estimates

B25003. TENURE - Universe: OCCUPIED HOUSING UNITS

Data Set: 2008-2012 American Community Survey 5-Year Estimates

	Lee County, South Carolina					
	African American	Margin of Error (+/-)	% of AA Total	White, Not Hispanic	Margin of Error (+/-)	% of NHW Total
Total:	3,885	221	100.0%	2,546	174	100.0%
Owner occupied	2,631	220	67.7%	2,052	172	80.6%
Renter occupied	1,254	235	32.3%	494	139	19.4%

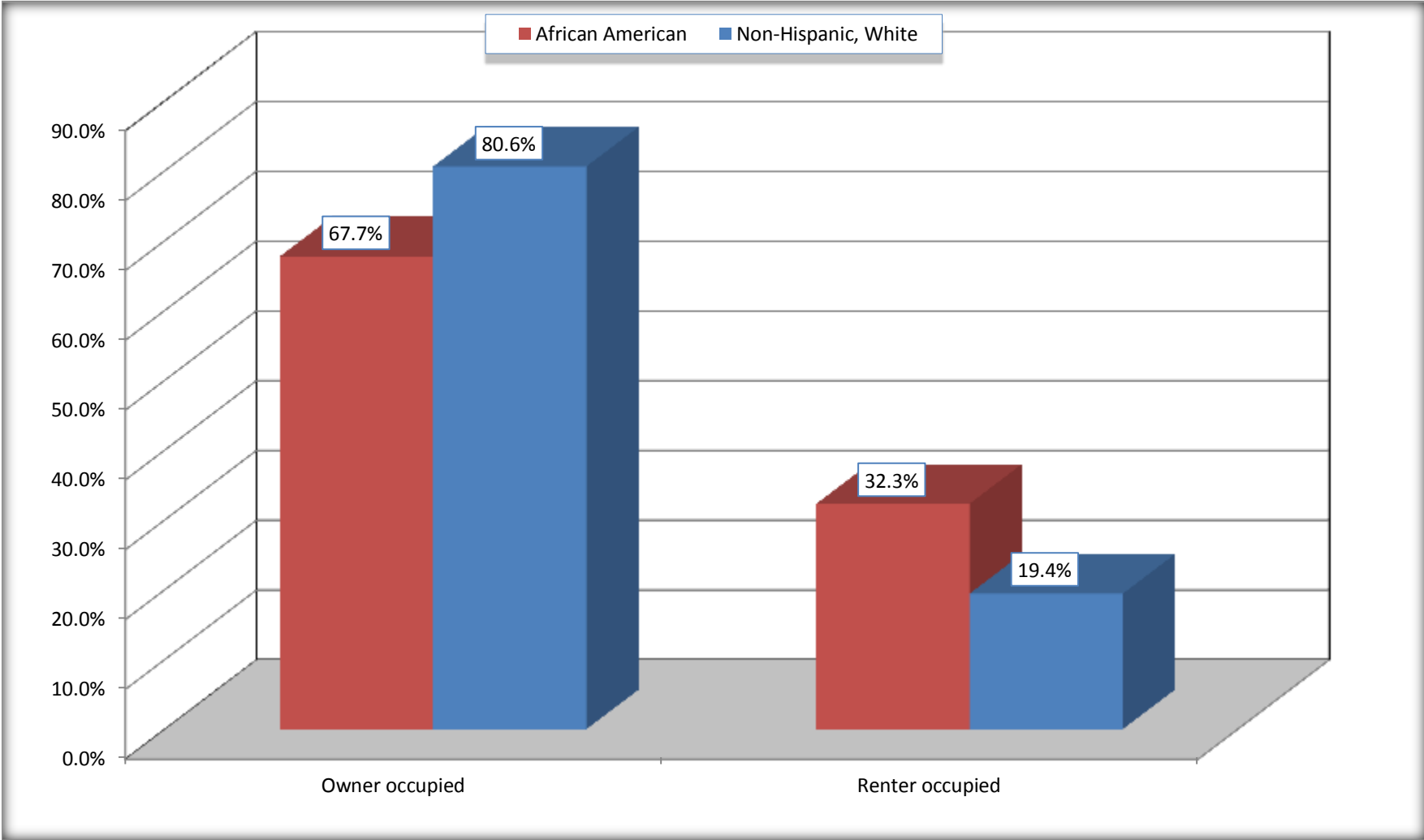
Source: U.S. Census Bureau, 2008-2012 American Community Survey

For information on confidentiality protection, sampling error, nonsampling error, and definitions, see Survey Methodology.

<http://www.census.gov/acs/www/UseData/index.h>

Home Owners and Renters by Household

Lee County, South Carolina



Source: B25003. TENURE - Universe: OCCUPIED HOUSING UNITS
Data Set: 2008-2012 American Community Survey 5-Year Estimates

B25014. OCCUPANTS PER ROOM - Universe: OCCUPIED HOUSING UNITS

Data Set: 2008-2012 American Community Survey 5-Year Estimates

	Lee County, South Carolina					
	African American	Margin of Error (+/-)	% of AA Total	White, Not Hispanic	Margin of Error (+/-)	% of NHW Total
Total:	3,885	221	100.0%	2,546	174	100.0%
1.00 or less occupants per room	3,765	231	96.9%	2,532	179	99.5%
1.01 or more occupants per room	120	73	3.1%	14	17	0.5%

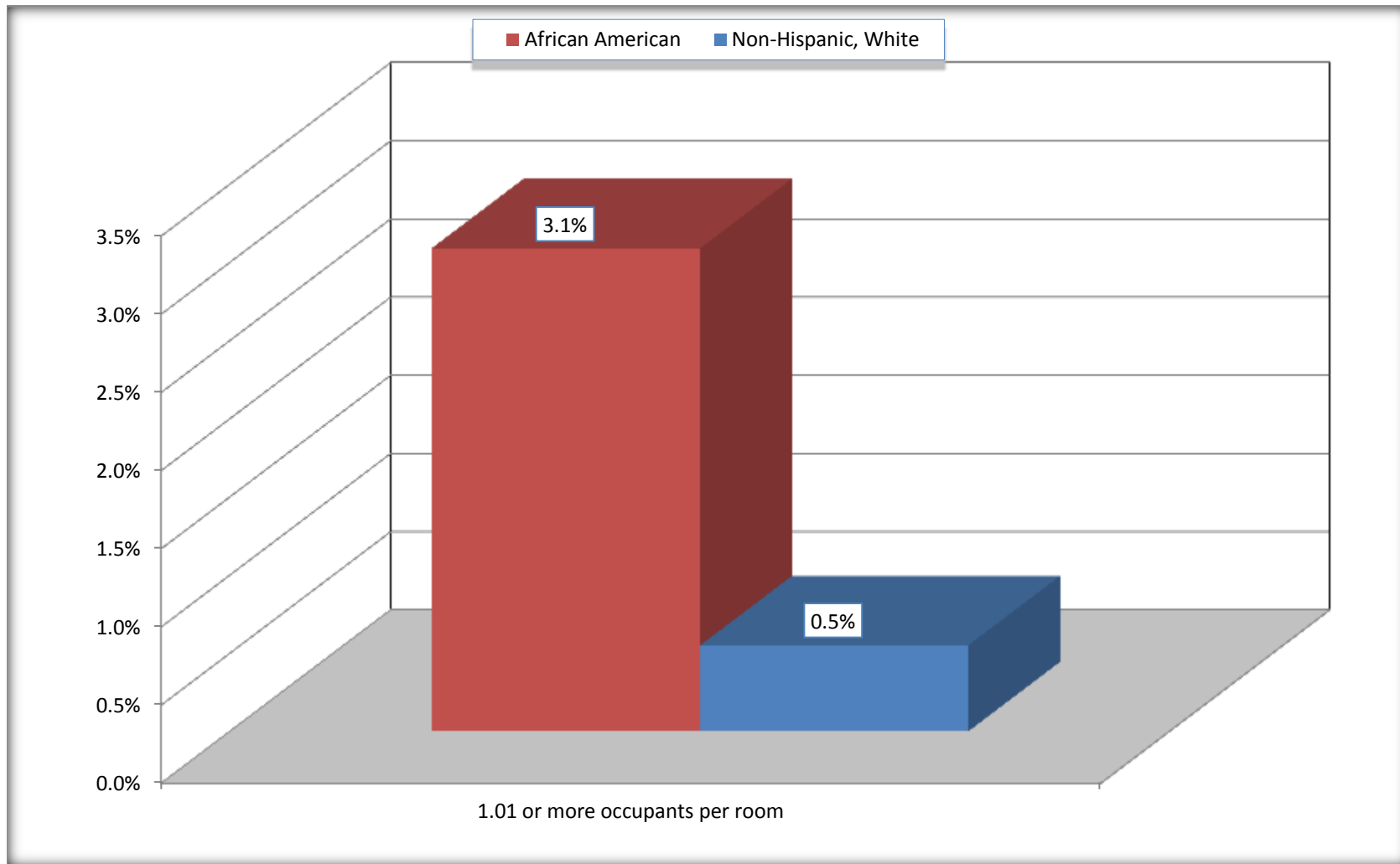
Source: U.S. Census Bureau, 2008-2012 American Community Survey

For information on confidentiality protection, sampling error, nonsampling error, and definitions, see Survey Methodology.

<http://www.census.gov/acs/www/UseData/index.ht>

More than One Person per Room (Crowding) by Household

Lee County, South Carolina



Source: B25014. OCCUPANTS PER ROOM - Universe: OCCUPIED HOUSING UNITS
Data Set: 2008-2012 American Community Survey 5-Year Estimates

B18101. AGE BY DISABILITY STATUS

Data Set: 2008-2012 American Community Survey 5-Year Estimates

	Lee County, South Carolina					
	African American	Margin of Error (+/-)	% of AA Total	White, Not Hispanic	Margin of Error (+/-)	% of NHW Total
Total:	11,187	170	100.0%	5,694	152	100.0%
Under 18 years:	3,118	10	27.9%	972	47	17.1%
With a disability	133	78	1.2%	24	32	0.4%
No disability	2,985	78	26.7%	948	83	16.6%
18 to 64 years:	6,806	163	60.8%	3,496	116	61.4%
With a disability	1,065	153	9.5%	523	152	9.2%
No disability	5,741	219	51.3%	2,973	160	52.2%
65 years and over:	1,263	39	11.3%	1,226	34	21.5%
With a disability	548	144	4.9%	499	85	8.8%
No disability	715	149	6.4%	727	86	12.8%

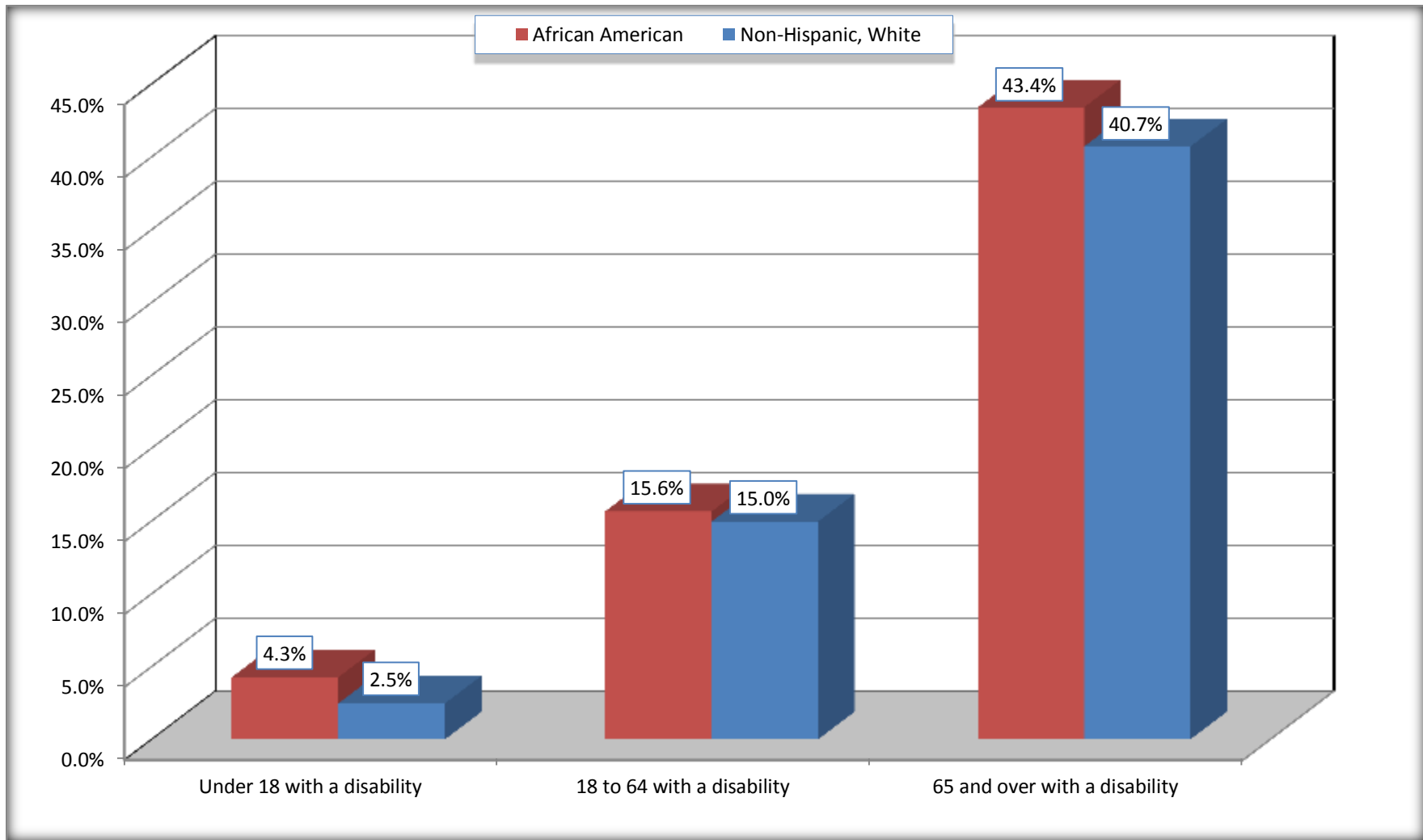
Source: U.S. Census Bureau, 2008-2012 American Community Survey

For information on confidentiality protection, sampling error, nonsampling error, and definitions, see Survey Methodology.

<http://www.census.gov/acs/www/UseData/index.htm>

Disability by Age

Lee County, South Carolina



Source: B18101. AGE BY DISABILITY STATUS
Data Set: 2008-2012 American Community Survey 5-Year Estimates

C27001B. HEALTH INSURANCE COVERAGE STATUS BY AGE

Data Set: 2008-2012 American Community Survey 5-Year Estimates

	Lee County, South Carolina					
	African American	Margin of Error (+/-)	% of AA Total	White, Not Hispanic	Margin of Error (+/-)	% of NHW Total
Total:	11,187	170	100.0%	5,694	152	100.0%
Under 18 years:	3,118	10	27.9%	972	70	17.1%
With health insurance coverage	2,988	78	26.7%	826	131	14.5%
No health insurance coverage	130	78	1.2%	146	121	2.6%
18 to 64 years:	6,806	163	60.8%	3,496	116	61.4%
With health insurance coverage	4,925	326	44.0%	2,903	178	51.0%
No health insurance coverage	1,881	316	16.8%	593	153	10.4%
65 years and over:	1,263	39	11.3%	1,226	34	21.5%
With health insurance coverage	1,263	39	11.3%	1,226	34	21.5%
No health insurance coverage	0	20	0.0%	0	20	0.0%

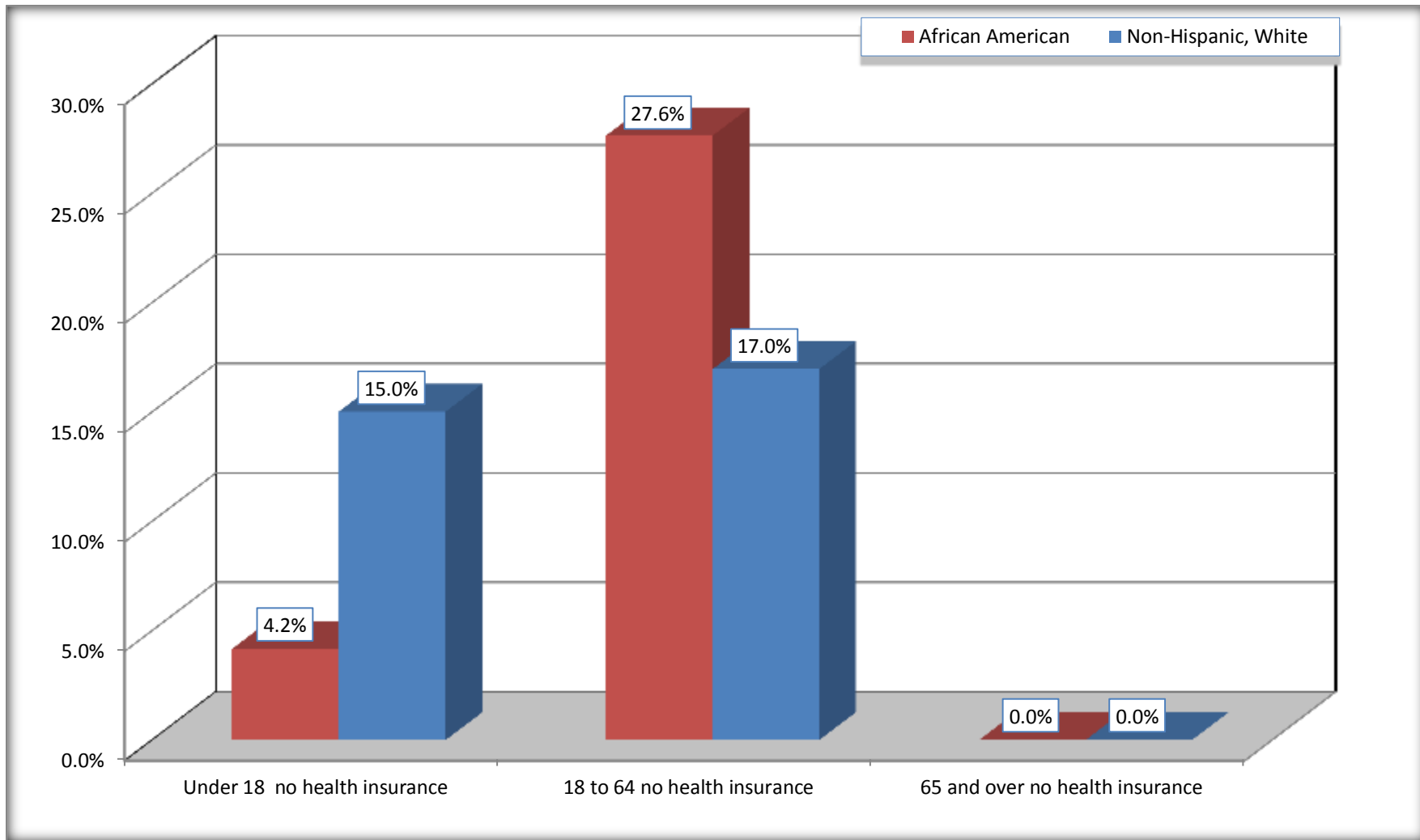
Source: U.S. Census Bureau, 2008-2012 American Community Survey

For information on confidentiality protection, sampling error, nonsampling error, and definitions, see Survey Methodology.

<http://www.census.gov/acs/www/UseData/index.htm>

Lack of Health Insurance Coverage by Age

Lee County, South Carolina



Source: C27001B. HEALTH INSURANCE COVERAGE STATUS BY AGE
Data Set: 2008-2012 American Community Survey 5-Year Estimates