

# **Selected Socio-Economic Data**

## **Homeland Park CDP, South Carolina**

### **African American and White, Not Hispanic**

**Data Set: 2008-2012 American Community Survey 5-Year Estimates**

[www.fairvote2020.org](http://www.fairvote2020.org)

[www.fairdata2000.com](http://www.fairdata2000.com)

[29-Dec-13](#)

**C02003.DETAILED RACE - Universe: TOTAL POPULATION**

Data Set: 2008-2012 American Community Survey 5-Year Estimates

	Homeland Park CDP, South Carolina		
	Population	Margin of Error (+/-)	% of Total
<b>Total:</b>	<b>6,311</b>	<b>604</b>	<b>100.0%</b>
Population of one race:	6,153	603	97.5%
White	3,854	576	61.1%
Black or African American	2,299	502	36.4%
American Indian and Alaska Native	0	18	0.0%
Asian alone	0	18	0.0%
Native Hawaiian and Other Pacific Islander	0	18	0.0%
Some other race	0	18	0.0%
Population of two or more races:	158	157	2.5%
Two races including Some other race	0	18	0.0%
Two races excluding Some other race, and three or more races	158	157	2.5%
Population of two races:	116	135	1.8%
White; Black or African American	76	121	1.2%
White; American Indian and Alaska Native	40	56	0.6%
White; Asian	0	18	0.0%
Black or African American; American Indian and Alaska Native	0	18	0.0%
All other two race combinations	0	18	0.0%
Population of three races	42	66	0.7%
Population of four or more races	0	18	0.0%

Note: Hispanics may be of any race. See Table B03002 and chart.

Source: U.S. Census Bureau, 2008-2012 American Community Survey

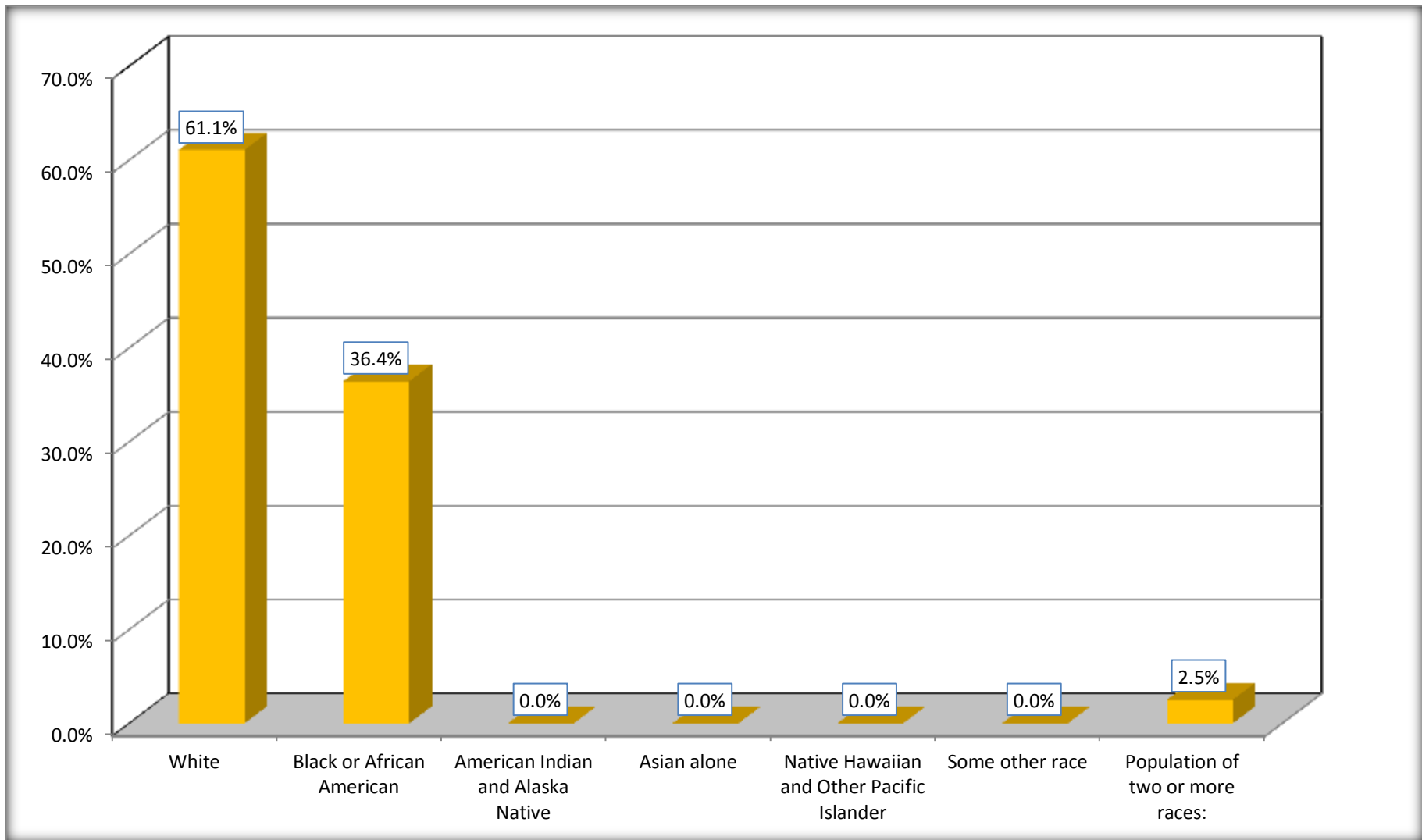
Although the American Community Survey (ACS) produces population, demographic and housing unit estimates, it is the Census Bureau's Population Estimates Program that produces and disseminates the official estimates of the population for the nation, states, counties, cities and towns and estimates of housing units for states and counties.

For information on confidentiality protection, sampling error, nonsampling error, and definitions, see Survey Methodology.

<http://www.census.gov/acs/www/UseData/index.htm>

# Population by Race

## Homeland Park CDP, South Carolina



Source: C02003.DETAILED RACE - Universe: TOTAL POPULATION  
Data Set: 2008-2012 American Community Survey 5-Year Estimates

**B03002. HISPANIC OR LATINO ORIGIN BY RACE - Universe: TOTAL POPULATION**

Data Set: 2008-2012 American Community Survey 5-Year Estimates

	Homeland Park CDP, South Carolina		
	Population	Margin of Error (+/-)	% of Total
<b>Total:</b>	6,311	604	<b>100.0%</b>
Not Hispanic or Latino:	6,175	586	97.8%
White alone	3,719	562	58.9%
Black or African American alone	2,298	502	36.4%
American Indian and Alaska Native alone	0	18	0.0%
Asian alone	0	18	0.0%
Native Hawaiian and Other Pacific Islander alone	0	18	0.0%
Some other race alone	0	18	0.0%
Two or more races:	158	157	2.5%
Two races including Some other race	0	18	0.0%
Two races excluding Some other race, and three or more races	158	157	2.5%
Hispanic or Latino	136	147	2.2%

Source: U.S. Census Bureau, 2008-2012 American Community Survey

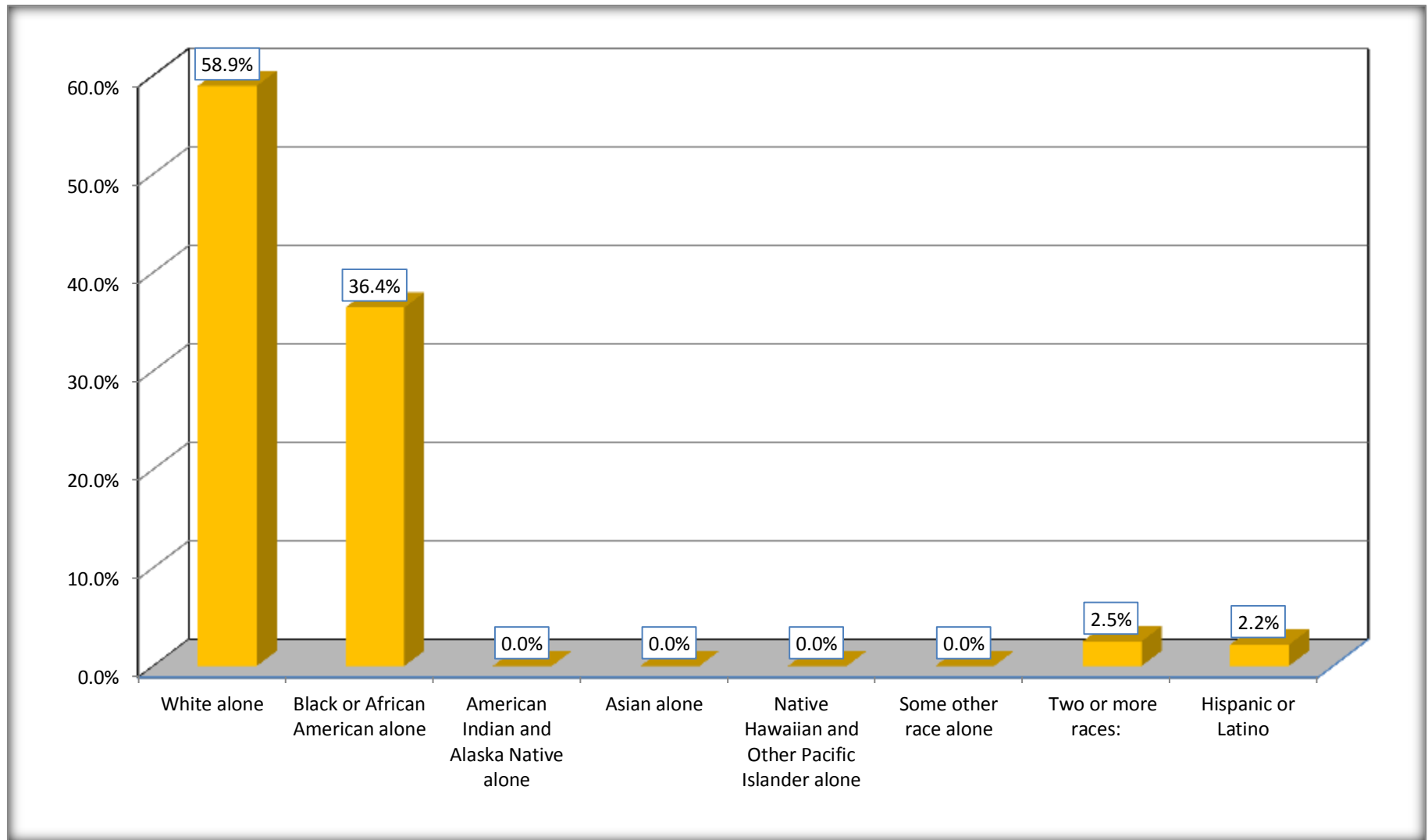
Although the American Community Survey (ACS) produces population, demographic and housing unit estimates, it is the Census Bureau's Population Estimates Program that produces and disseminates the official estimates of the population for the nation, states, counties, cities and towns and estimates of housing units for states and counties.

For information on confidentiality protection, sampling error, nonsampling error, and definitions, see Survey Methodology.

<http://www.census.gov/acs/www/UseData/index.htm>

# Non-Hispanic by Race and Hispanic Population

## Homeland Park CDP, South Carolina



Source: B03002. HISPANIC OR LATINO ORIGIN BY RACE - Universe: TOTAL POPULATION  
Data Set: 2008-2012 American Community Survey 5-Year Estimates

**B03002. HISPANIC OR LATINO ORIGIN BY RACE**

Data Set: 2008-2012 American Community Survey 5-Year Estimates

	Homeland Park CDP, South Carolina		
	Population	Margin of Error (+/-)	% of Total
Hispanic or Latino:	136	147	<b>100.0%</b>
White alone	135	147	99.3%
Black or African American alone	1	4	0.7%
American Indian and Alaska Native alone	0	18	0.0%
Asian alone	0	18	0.0%
Native Hawaiian and Other Pacific Islander alone	0	18	0.0%
Some other race alone	0	18	0.0%
Two or more races:	0	18	0.0%
Two races including Some other race	0	18	0.0%
Two races excluding Some other race, and three or more races	0	18	0.0%

Source: U.S. Census Bureau, 2008-2012 American Community Survey

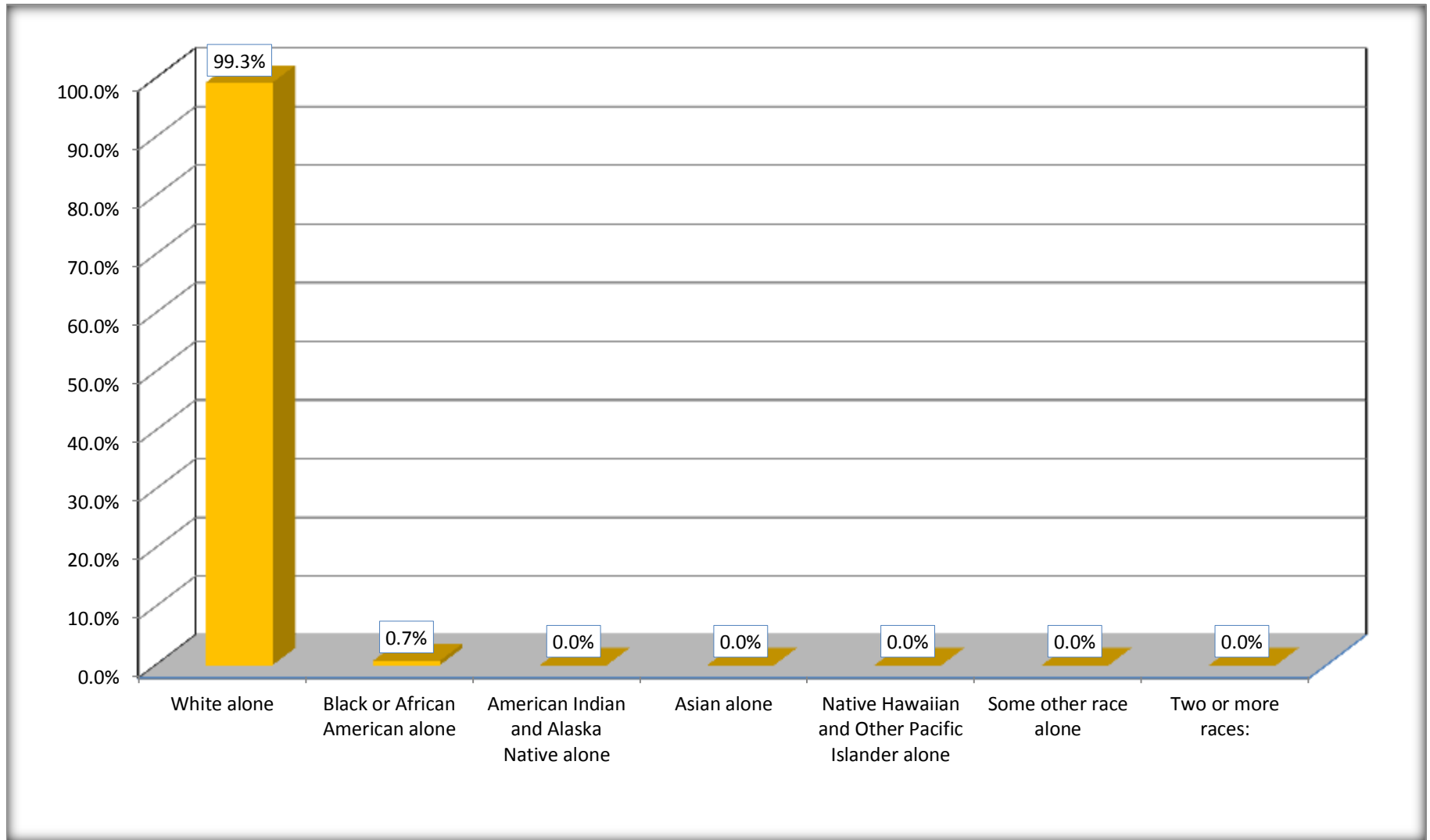
Although the American Community Survey (ACS) produces population, demographic and housing unit estimates, it is the Census Bureau's Population Estimates Program that produces and disseminates the official estimates of the population for the nation, states, counties, cities and towns and estimates of housing units for states and counties.

For information on confidentiality protection, sampling error, nonsampling error, and definitions, see Survey Methodology.

<http://www.census.gov/acs/www/UseData/index.htm>

# Hispanic or Latino Origin by Race

## Homeland Park CDP, South Carolina



Source: B03002. HISPANIC OR LATINO ORIGIN BY RACE  
Data Set: 2008-2012 American Community Survey 5-Year Estimates

**B01001. SEX BY AGE**

Data Set: 2008-2012 American Community Survey 5-Year Estimates

	Homeland Park CDP, South Carolina					
	African American	Margin of Error (+/-)	% of AA Total	White, Not Hispanic	Margin of Error (+/-)	% of NHW Total
<b>Total:</b>	<b>2,299</b>	<b>502</b>	<b>100.0%</b>	<b>3,719</b>	<b>562</b>	<b>100.0%</b>
Under 18 years	684	NC	29.8%	667	NC	17.9%
18 to 64 years	1,549	NC	67.4%	2,246	NC	60.4%
65 years and over	66	NC	2.9%	806	NC	21.7%
Male:	908	270	39.5%	1,776	389	47.8%
Under 18 years	262	NC	11.4%	326	NC	8.8%
18 to 64 years	614	NC	26.7%	1,139	NC	30.6%
65 years and over	32	NC	1.4%	311	NC	8.4%
Female:	1,391	331	60.5%	1,943	412	52.2%
Under 18 years	422	NC	18.4%	341	NC	9.2%
18 to 64 years	935	NC	40.7%	1,107	NC	29.8%
65 years and over	34	NC	1.5%	495	NC	13.3%

Source: U.S. Census Bureau, 2008-2012 American Community Survey

Although the American Community Survey (ACS) produces population, demographic and housing unit estimates, it is the Census Bureau's Population Estimates Program that produces and disseminates the official estimates of the population for the nation, states, counties, cities and towns and estimates of housing units for states and counties.

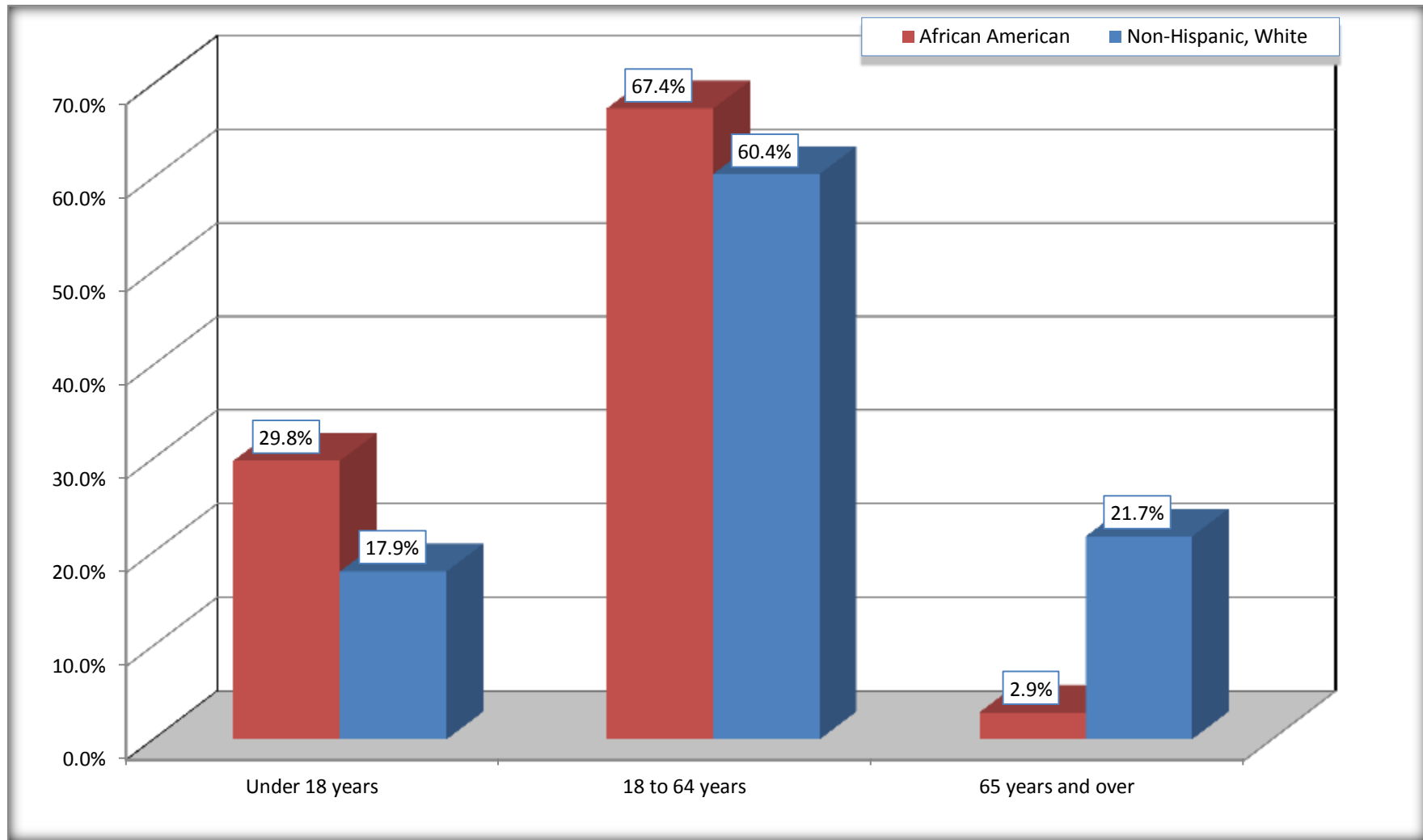
For information on confidentiality protection, sampling error, nonsampling error, and definitions, see Survey Methodology.

<http://www.census.gov/acs/www/UseData/index.htm>



# Population by Age

## Homeland Park CDP, South Carolina



Source: B01001. SEX BY AGE  
Data Set: 2008-2012 American Community Survey 5-Year Estimates

**B05003. SEX BY AGE BY CITIZENSHIP STATUS**

Data Set: 2008-2012 American Community Survey 5-Year Estimates

	Homeland Park CDP, South Carolina					
	African American	Margin of Error (+/-)	% of AA Total by Age	White, Not Hispanic	Margin of Error (+/-)	% of NHW Total by Age
<b>Total:</b>	<b>2,299</b>	<b>502</b>	<b>100.0%</b>	<b>3,719</b>	<b>562</b>	<b>100.0%</b>
<b>Under 18 years:</b>	<b>684</b>	<b>NC</b>	<b>100.0%</b>	<b>667</b>	<b>NC</b>	<b>100.0%</b>
Native	684	NC	100.0%	667	NC	100.0%
Foreign born:	0	NC	0.0%	0	NC	0.0%
Naturalized U.S. citizen	0	NC	0.0%	0	NC	0.0%
Not a U.S. citizen	0	NC	0.0%	0	NC	0.0%
<b>18 years and over:</b>	<b>1,615</b>	<b>NC</b>	<b>100.0%</b>	<b>3,052</b>	<b>NC</b>	<b>100.0%</b>
Native	1,615	NC	100.0%	3,039	NC	99.6%
Foreign born:	0	NC	0.0%	13	NC	0.4%
Naturalized U.S. citizen	0	NC	0.0%	0	NC	0.0%
Not a U.S. citizen	0	NC	0.0%	13	NC	0.4%
<b>Male:</b>	<b>908</b>	<b>270</b>	<b>39.5%</b>	<b>1,776</b>	<b>349</b>	<b>47.8%</b>
<b>Under 18 years:</b>	<b>262</b>	<b>129</b>	<b>100.0%</b>	<b>326</b>	<b>135</b>	<b>100.0%</b>
Native	262	129	100.0%	326	135	100.0%
Foreign born:	0	18	0.0%	0	18	0.0%
Naturalized U.S. citizen	0	18	0.0%	0	18	0.0%
Not a U.S. citizen	0	18	0.0%	0	18	0.0%
<b>18 years and over:</b>	<b>646</b>	<b>201</b>	<b>100.0%</b>	<b>1,450</b>	<b>288</b>	<b>100.0%</b>
Native	646	201	100.0%	1,450	288	100.0%
Foreign born:	0	18	0.0%	0	18	0.0%
Naturalized U.S. citizen	0	18	0.0%	0	18	0.0%
Not a U.S. citizen	0	18	0.0%	0	18	0.0%

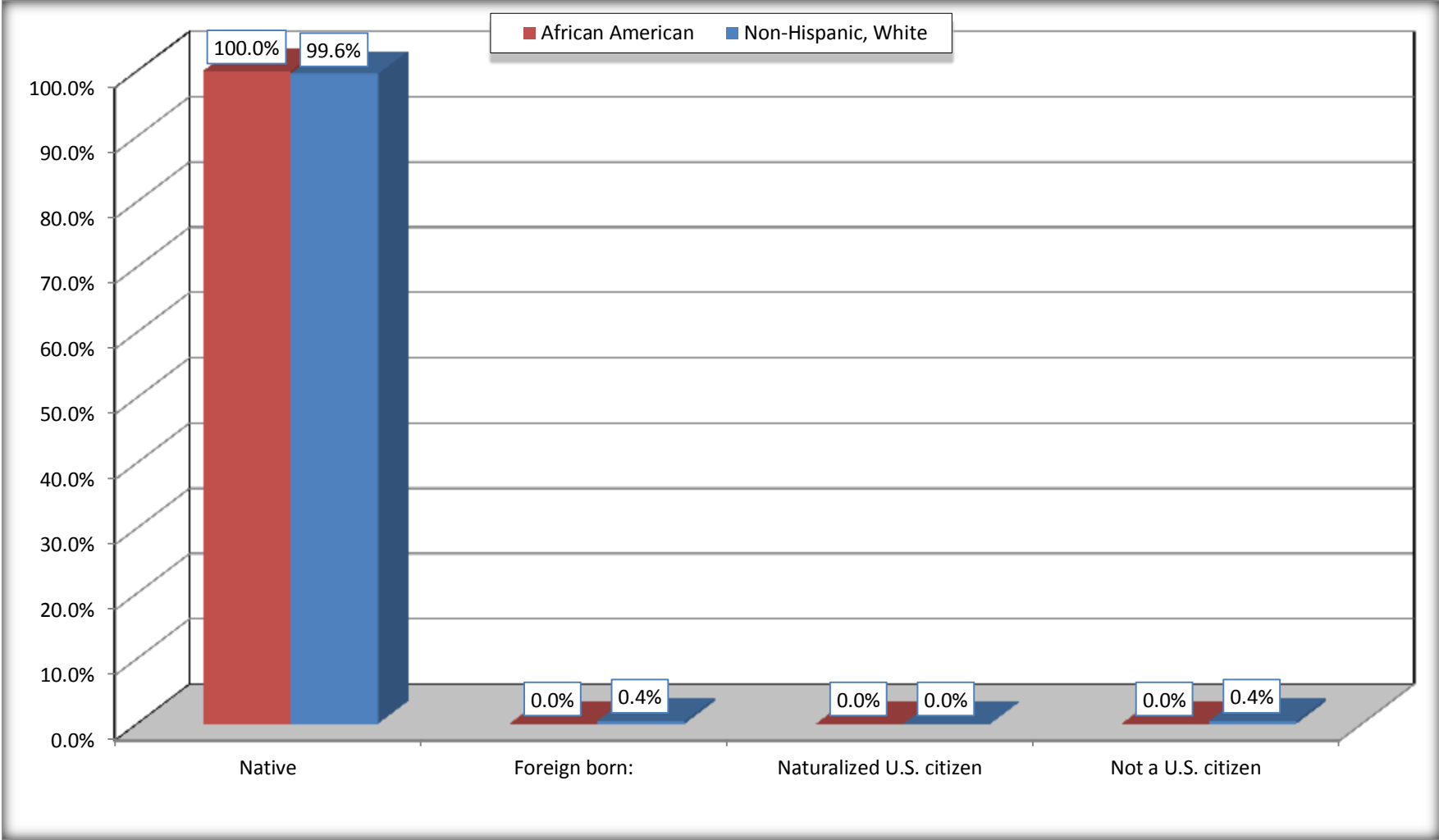
	Homeland Park CDP, South Carolina					
	African American	Margin of Error (+/-)	% of AA by Age	White, Not Hispanic	Margin of Error (+/-)	% of NHW by Age
<b>Female:</b>	1,391	331	60.5%	1,943	324	52.2%
<b>Under 18 years:</b>	<b>422</b>	<b>194</b>	<b>100.0%</b>	<b>341</b>	<b>129</b>	<b>100.0%</b>
Native	422	194	100.0%	341	129	100.0%
Foreign born:	0	18	0.0%	0	18	0.0%
Naturalized U.S. citizen	0	18	0.0%	0	18	0.0%
Not a U.S. citizen	0	18	0.0%	0	18	0.0%
<b>18 years and over:</b>	<b>969</b>	<b>233</b>	<b>100.0%</b>	<b>1,602</b>	<b>241</b>	<b>100.0%</b>
Native	969	233	100.0%	1,589	241	99.2%
Foreign born:	0	18	0.0%	13	21	0.8%
Naturalized U.S. citizen	0	18	0.0%	0	18	0.0%
Not a U.S. citizen	0	18	0.0%	13	21	0.8%

Source: U.S. Census Bureau, 2008-2012 American Community Survey

For information on confidentiality protection, sampling error, nonsampling error, and definitions, see Survey Methodology.  
<http://www.census.gov/acs/www/UseData/index.htm>

# Citizenship Status of Voting Age Population (18 and Over)

## Homeland Park CDP, South Carolina



Source: B05003. SEX BY AGE BY CITIZENSHIP STATUS  
Data Set: 2008-2012 American Community Survey 5-Year Estimates

**B07004. GEOGRAPHICAL MOBILITY IN THE PAST YEAR BY RACE FOR CURRENT RESIDENCE IN THE UNITED STATES - Universe:  
POPULATION 1 YEAR AND OVER**

Data Set: 2008-2012 American Community Survey 5-Year Estimates

	Homeland Park CDP, South Carolina					
	African American	Margin of Error (+/-)	% of AA Total	White, Not Hispanic	Margin of Error (+/-)	% of NHW Total
<b>Total:</b>	<b>2,230</b>	<b>489</b>	<b>100.0%</b>	<b>3,650</b>	<b>542</b>	<b>100.0%</b>
Same house 1 year ago	1,513	368	67.8%	3,343	494	91.6%
Moved within same county	535	364	24.0%	225	154	6.2%
Moved from different county within same state	182	115	8.2%	36	48	1.0%
Moved from different state	0	18	0.0%	46	52	1.3%
Moved from abroad	0	18	0.0%	0	18	0.0%

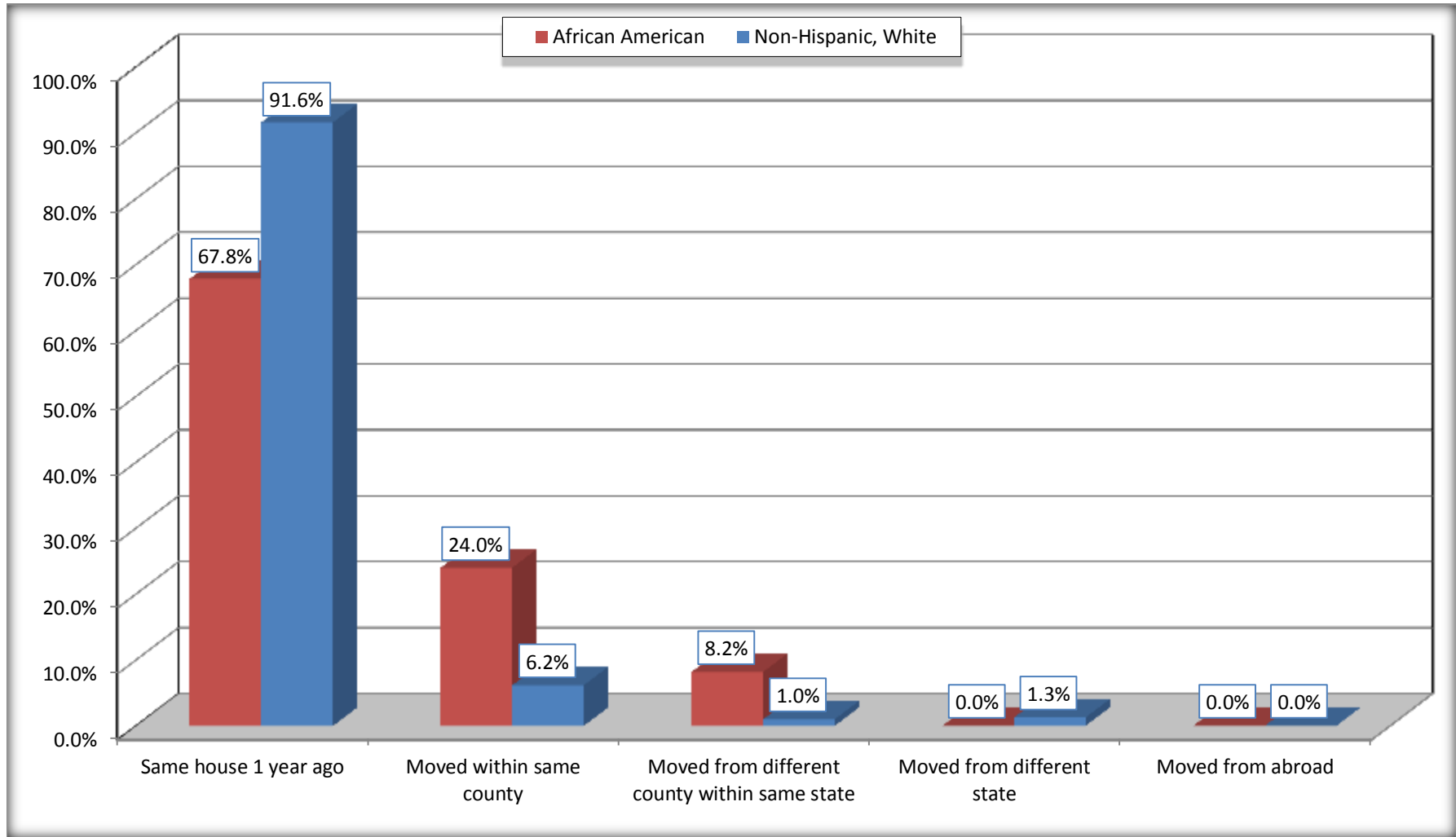
Source: U.S. Census Bureau, 2008-2012 American Community Survey

For information on confidentiality protection, sampling error, nonsampling error, and definitions, see Survey Methodology.

<http://www.census.gov/acs/www/UseData/index.htm>

# Geographical Mobility in the Past Year (Population 1 Year and Over)

## Homeland Park CDP, South Carolina



Source: B07004. GEOGRAPHICAL MOBILITY IN THE PAST YEAR BY RACE FOR CURRENT RESIDENCE IN THE UNITED STATES - Universe: POPULATION 1 YEAR AND OVER

Data Set: 2008-2012 American Community Survey 5-Year Estimates

**B08105. MEANS OF TRANSPORTATION TO WORK - Universe: WORKERS 16 YEARS AND OVER**

Data Set: 2008-2012 American Community Survey 5-Year Estimates

	Homeland Park CDP, South Carolina					
	African American	Margin of Error (+/-)	% of AA Total	White, Not Hispanic	Margin of Error (+/-)	% of NHW Total
<b>Total:</b>	814	213	<b>100.0%</b>	1300	290	<b>100.0%</b>
Car, truck, or van - drove alone	713	198	87.6%	1098	271	84.5%
Car, truck, or van - carpooled	15	21	1.8%	117	69	9.0%
Public transportation (excluding taxicab)	67	72	8.2%	0	18	0.0%
Walked	1	4	0.1%	10	15	0.8%
Taxicab, motorcycle, bicycle, or other means	18	32	2.2%	16	27	1.2%
Worked at home	0	18	0.0%	59	77	4.5%

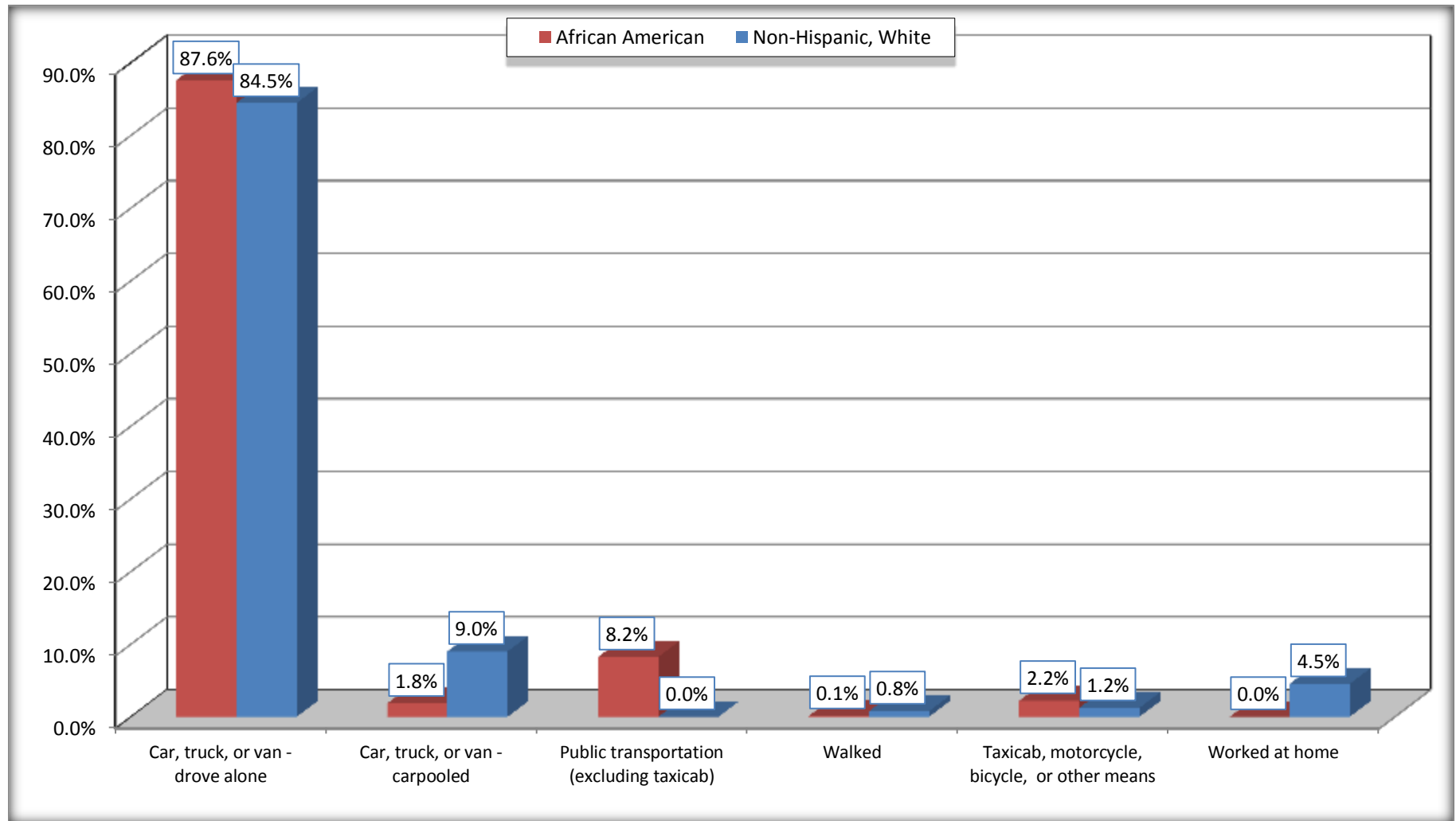
Source: U.S. Census Bureau, 2008-2012 American Community Survey

For information on confidentiality protection, sampling error, nonsampling error, and definitions, see Survey Methodology.

<http://www.census.gov/acs/www/UseData/index.htm>

# Means of Transportation to Work (Workers 16 Years and Over)

## Homeland Park CDP, South Carolina



Source: B08105. MEANS OF TRANSPORTATION TO WORK - Universe: WORKERS 16 YEARS AND OVER  
Data Set: 2008-2012 American Community Survey 5-Year Estimates



**B11002. HOUSEHOLD TYPE BY RELATIVES AND NONRELATIVES FOR POPULATION IN HOUSEHOLDS**

Data Set: 2008-2012 American Community Survey 5-Year Estimates

	Homeland Park CDP, South Carolina					
	African American	Margin of Error (+/-)	% of AA Total	White, Not Hispanic	Margin of Error (+/-)	% of NHW Total
<b>Total:</b>	2262	499	<b>100.0%</b>	3782	570	<b>100.0%</b>
In family households	1986	522	87.8%	2946	572	77.9%
In nonfamily households	276	181	12.2%	836	222	22.1%

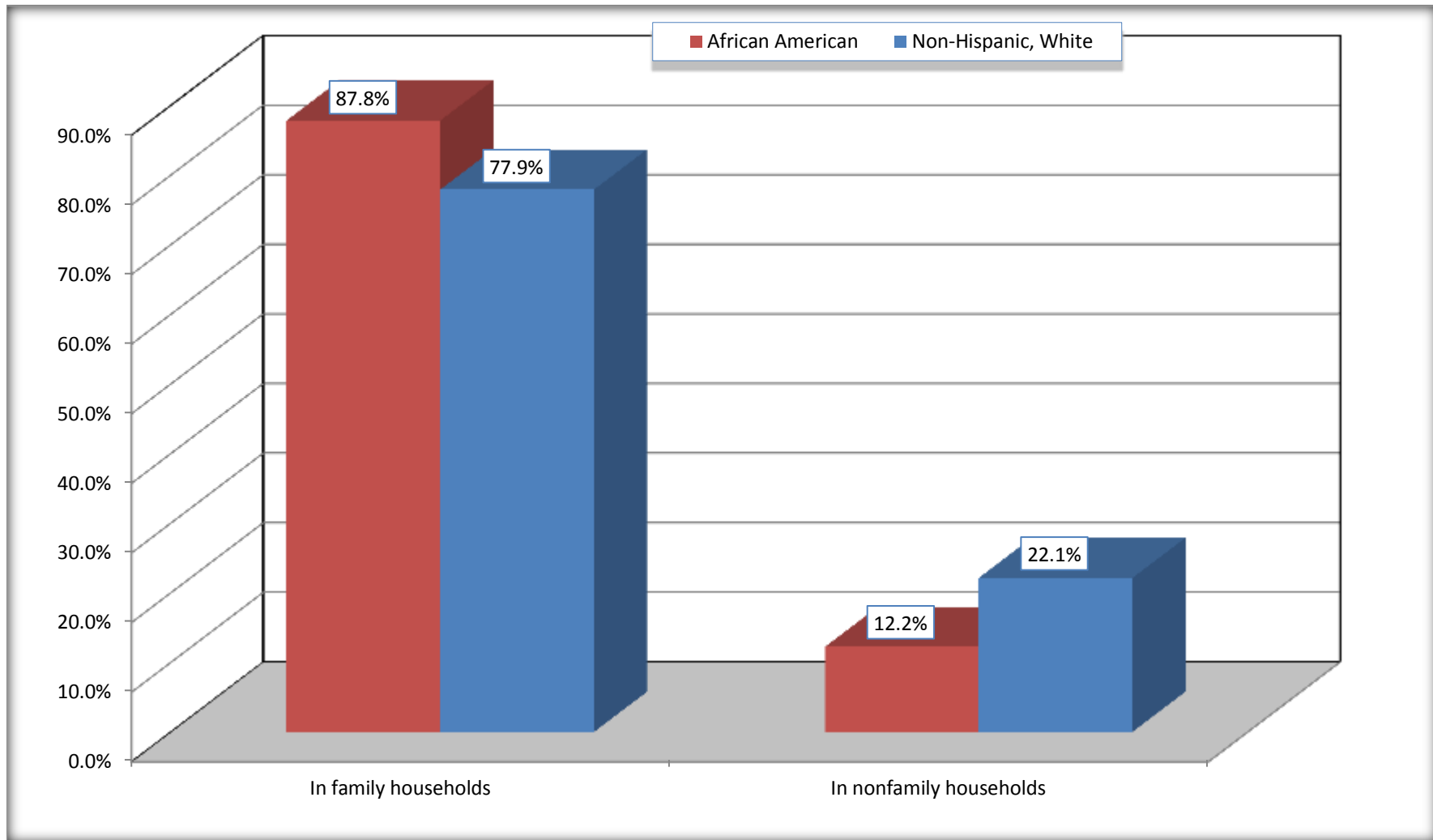
Source: U.S. Census Bureau, 2008-2012 American Community Survey

For information on confidentiality protection, sampling error, nonsampling error, and definitions, see Survey Methodology.

<http://www.census.gov/acs/www/UseData/index.htm>

# Household Type for Population in Households

## Homeland Park CDP, South Carolina



Source: B11002. HOUSEHOLD TYPE BY RELATIVES AND NONRELATIVES FOR POPULATION IN HOUSEHOLDS  
Data Set: 2008-2012 American Community Survey 5-Year Estimates

**B12002. MARITAL STATUS FOR THE POPULATION 15 YEARS AND OVER**

Data Set: 2008-2012 American Community Survey 5-Year Estimates

	Homeland Park CDP, South Carolina					
	African American	Margin of Error (+/-)	% of AA Total	White, Not Hispanic	Margin of Error (+/-)	% of NHW Total
<b>Total:</b>	<b>1,756</b>	<b>403</b>	<b>100.0%</b>	<b>3,271</b>	<b>460</b>	<b>100.0%</b>
Never married	756	NC	43.1%	738	NC	22.6%
Now married (except separated)	539	NC	30.7%	1,461	NC	44.7%
Separated	112	NC	6.4%	81	NC	2.5%
Widowed	161	NC	9.2%	294	NC	9.0%
Divorced	188	NC	10.7%	697	NC	21.3%
<b>Male:</b>	696	211	39.6%	1,584	317	48.4%
Never married	178	112	10.1%	381	192	11.6%
Now married (except separated)	301	111	17.1%	759	134	23.2%
Separated	43	48	2.4%	73	60	2.2%
Widowed	61	81	3.5%	44	41	1.3%
Divorced	113	99	6.4%	327	133	10.0%
<b>Female:</b>	1,060	287	60.4%	1,687	261	51.6%
Never married	578	341	32.9%	357	163	10.9%
Now married (except separated)	238	102	13.6%	702	136	21.5%
Separated	69	82	3.9%	8	17	0.2%
Widowed	100	81	5.7%	250	107	7.6%
Divorced	75	67	4.3%	370	138	11.3%

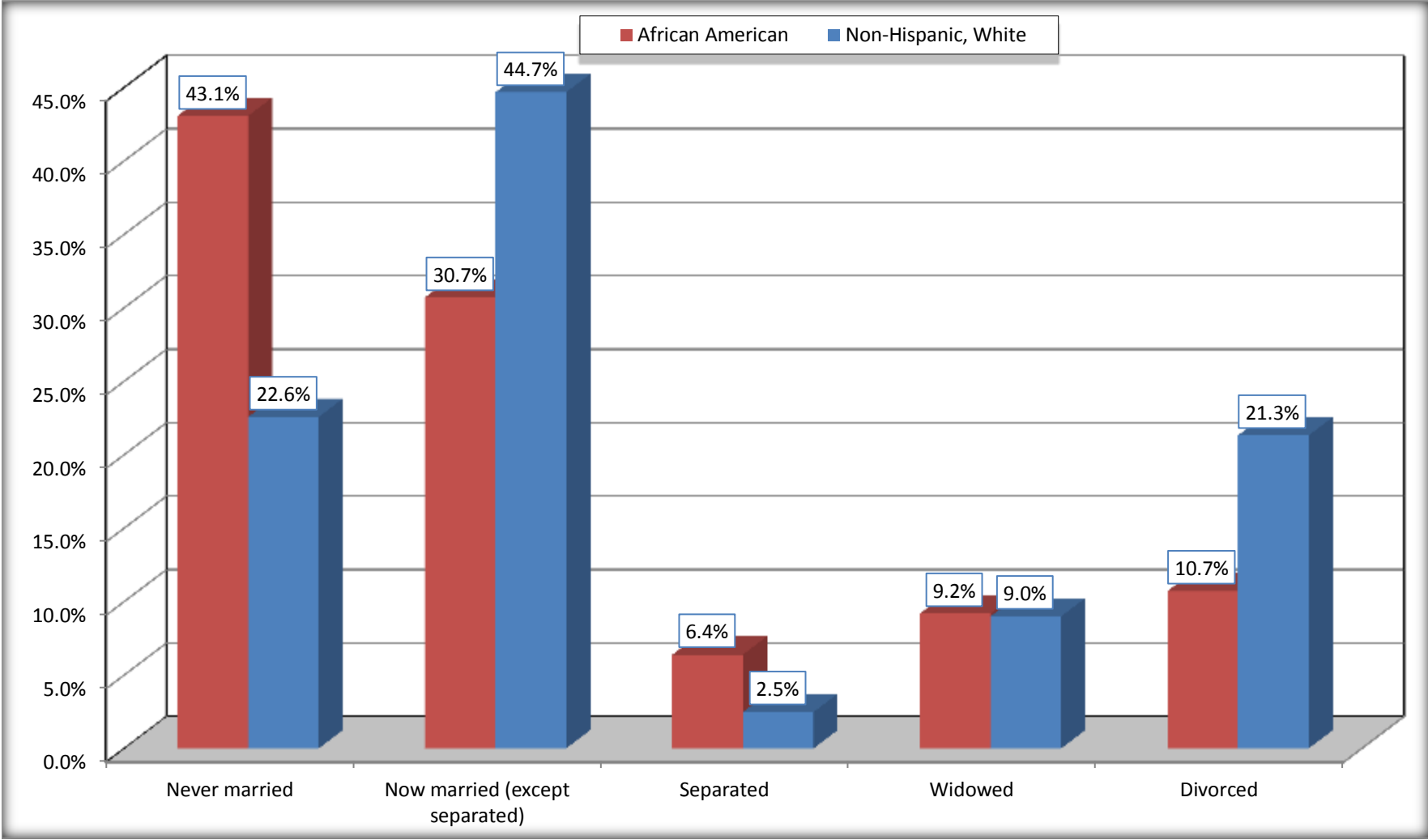
Source: U.S. Census Bureau, 2008-2012 American Community Survey

For information on confidentiality protection, sampling error, nonsampling error, and definitions, see Survey Methodology.

<http://www.census.gov/acs/www/UseData/index.htm>

# Marital Status for the Population 15 Years and Over

## Homeland Park CDP, South Carolina



Source: B12002. MARITAL STATUS FOR THE POPULATION 15 YEARS AND OVER  
Data Set: 2008-2012 American Community Survey 5-Year Estimates

**C15002. SEX BY EDUCATIONAL ATTAINMENT FOR THE POPULATION 25 YEARS AND OVER**

Data Set: 2008-2012 American Community Survey 5-Year Estimates

	Homeland Park CDP, South Carolina					
	African American	Margin of Error (+/-)	% of AA Total	White, Not Hispanic	Margin of Error (+/-)	% of NHW Total
<b>Total:</b>	<b>1,380</b>	<b>297</b>	<b>100.0%</b>	<b>2,835</b>	<b>385</b>	<b>100.0%</b>
Less than high school diploma	492	NC	35.7%	938	NC	33.1%
High school graduate, GED, or alternative	591	NC	42.8%	1,169	NC	41.2%
Some college or associate's degree	249	NC	18.0%	621	NC	21.9%
Bachelor's degree or higher	48	NC	3.5%	107	NC	3.8%
Male:	604	194	43.8%	1,360	278	48.0%
Less than high school diploma	294	172	21.3%	434	146	15.3%
High school graduate, GED, or alternative	226	118	16.4%	582	224	20.5%
Some college or associate's degree	84	80	6.1%	293	97	10.3%
Bachelor's degree or higher	0	18	0.0%	51	42	1.8%
Female:	776	154	56.2%	1,475	227	52.0%
Less than high school diploma	198	116	14.3%	504	169	17.8%
High school graduate, GED, or alternative	365	163	26.4%	587	139	20.7%
Some college or associate's degree	165	109	12.0%	328	134	11.6%
Bachelor's degree or higher	48	58	3.5%	56	42	2.0%

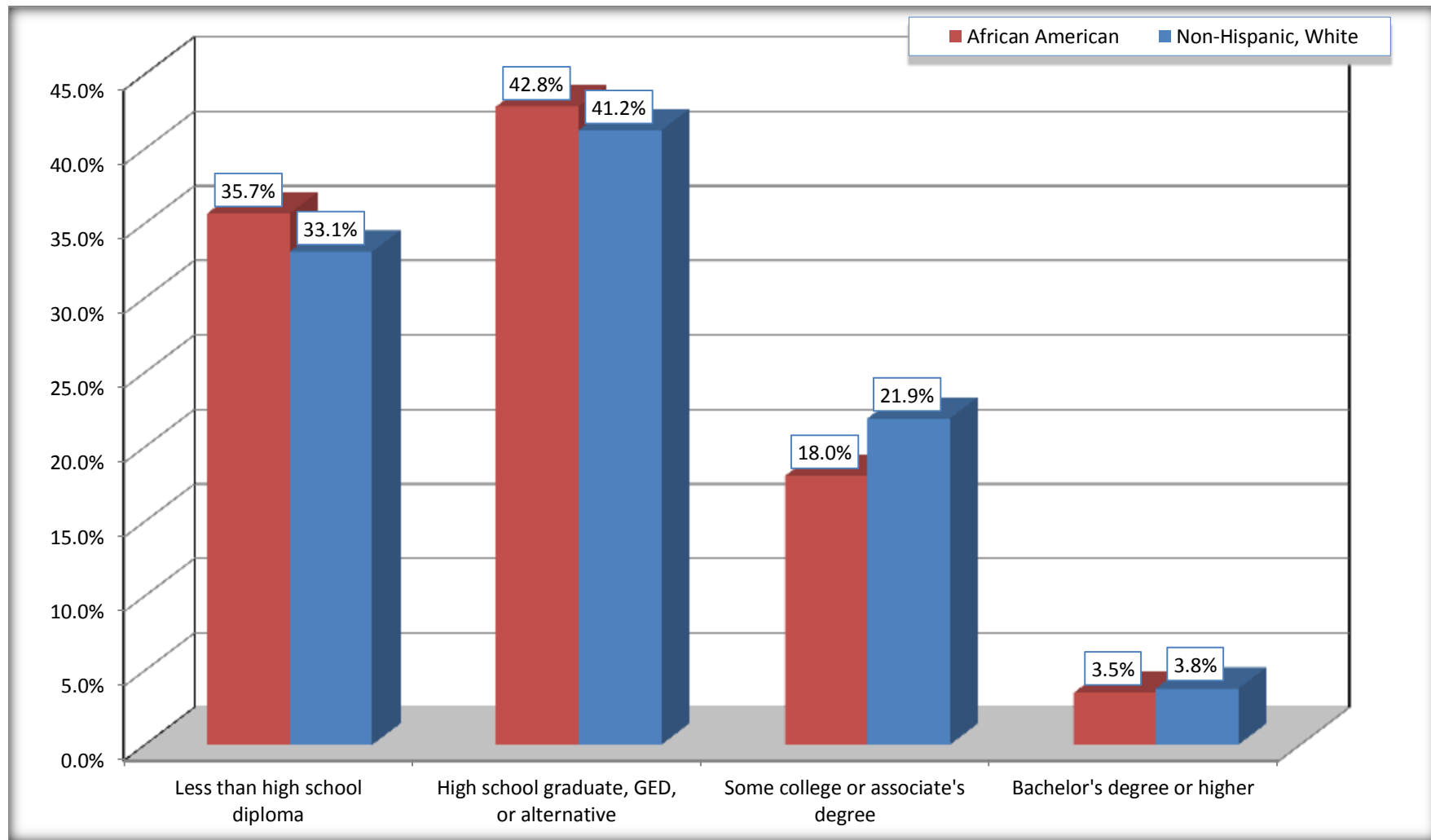
Source: U.S. Census Bureau, 2008-2012 American Community Survey

For information on confidentiality protection, sampling error, nonsampling error, and definitions, see Survey Methodology.

<http://www.census.gov/acs/www/UseData/index.htm>

# Educational Attainment for the Population 25 Years and Older

## Homeland Park CDP, South Carolina



Source: C15002. SEX BY EDUCATIONAL ATTAINMENT FOR THE POPULATION 25 YEARS AND OVER  
Data Set: 2008-2012 American Community Survey 5-Year Estimates

**B17010. POVERTY STATUS IN THE PAST 12 MONTHS OF FAMILIES BY FAMILY TYPE BY PRESENCE OF RELATED CHILDREN UNDER 18 YEARS**

Data Set: 2008-2012 American Community Survey 5-Year Estimates

	Homeland Park CDP, South Carolina					
	African American	Margin of Error (+/-)	% of AA Total	White, Not Hispanic	Margin of Error (+/-)	% of NHW Total
<b>Total:</b>	<b>635</b>	<b>147</b>	<b>100.0%</b>	<b>998</b>	<b>192</b>	<b>100.0%</b>
Income in the past 12 months below poverty level:	233	114	36.7%	225	107	22.5%
Married-couple family:	63	58	9.9%	77	76	7.7%
With related children under 18 years	63	58	9.9%	13	23	1.3%
Other family:	170	111	26.8%	148	90	14.8%
Male householder, no wife present	30	46	4.7%	63	75	6.3%
With related children under 18 years	0	18	0.0%	63	75	6.3%
Female householder, no husband present	140	94	22.0%	85	57	8.5%
With related children under 18 years	105	81	16.5%	61	49	6.1%
Income in the past 12 months at or above poverty level:	402	127	63.3%	773	150	77.5%
Married-couple family:	184	99	29.0%	547	118	54.8%
With related children under 18 years	15	19	2.4%	258	95	25.9%
Other family:	218	122	34.3%	226	111	22.6%
Male householder, no wife present	0	18	0.0%	60	57	6.0%
With related children under 18 years	0	18	0.0%	19	36	1.9%
Female householder, no husband present	218	122	34.3%	166	102	16.6%
With related children under 18 years	154	112	24.3%	96	87	9.6%

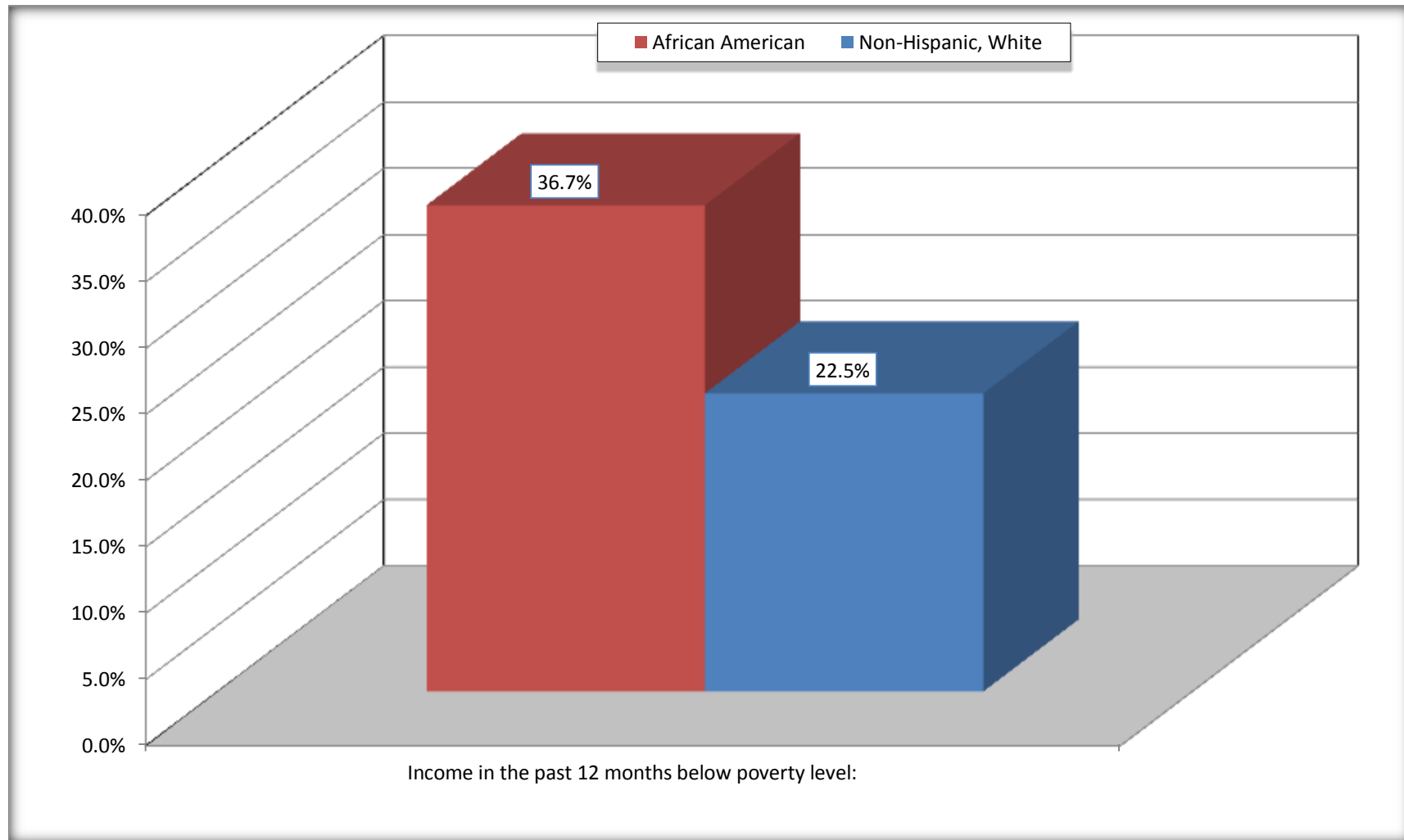
Source: U.S. Census Bureau, 2008-2012 American Community Survey

For information on confidentiality protection, sampling error, nonsampling error, and definitions, see Survey Methodology.

<http://www.census.gov/acs/www/UseData/index.htm>

# Family Households Below Poverty in the Past 12 Months

## Homeland Park CDP, South Carolina



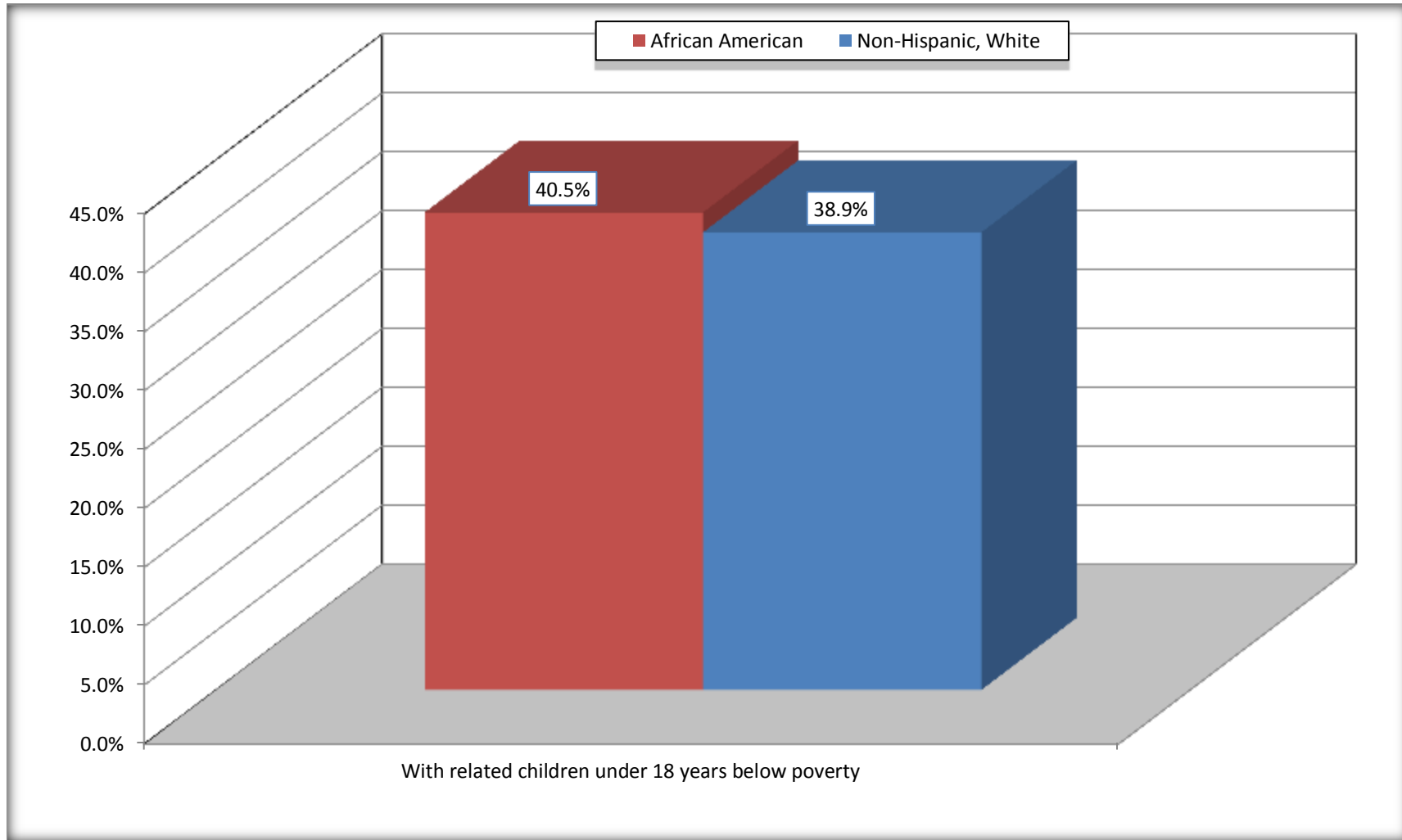
Source: B17010. POVERTY STATUS IN THE PAST 12 MONTHS OF FAMILIES BY FAMILY TYPE BY PRESENCE OF RELATED CHILDREN UNDER 18 YEARS

Data Set: 2008-2012 American Community Survey 5-Year Estimates



# Female-headed Households with Related Children Below Poverty in the Past 12 Months

## Homeland Park CDP, South Carolina



Source: B17010. POVERTY STATUS IN THE PAST 12 MONTHS OF FAMILIES BY FAMILY TYPE BY PRESENCE OF RELATED CHILDREN UNDER 18 YEARS

Data Set: 2008-2012 American Community Survey 5-Year Estimates

**B17020 POVERTY STATUS IN THE PAST 12 MONTHS BY AGE - Universe: POPULATION FOR WHOM POVERTY STATUS IS DETERMINED**

Data Set: 2008-2012 American Community Survey 5-Year Estimates

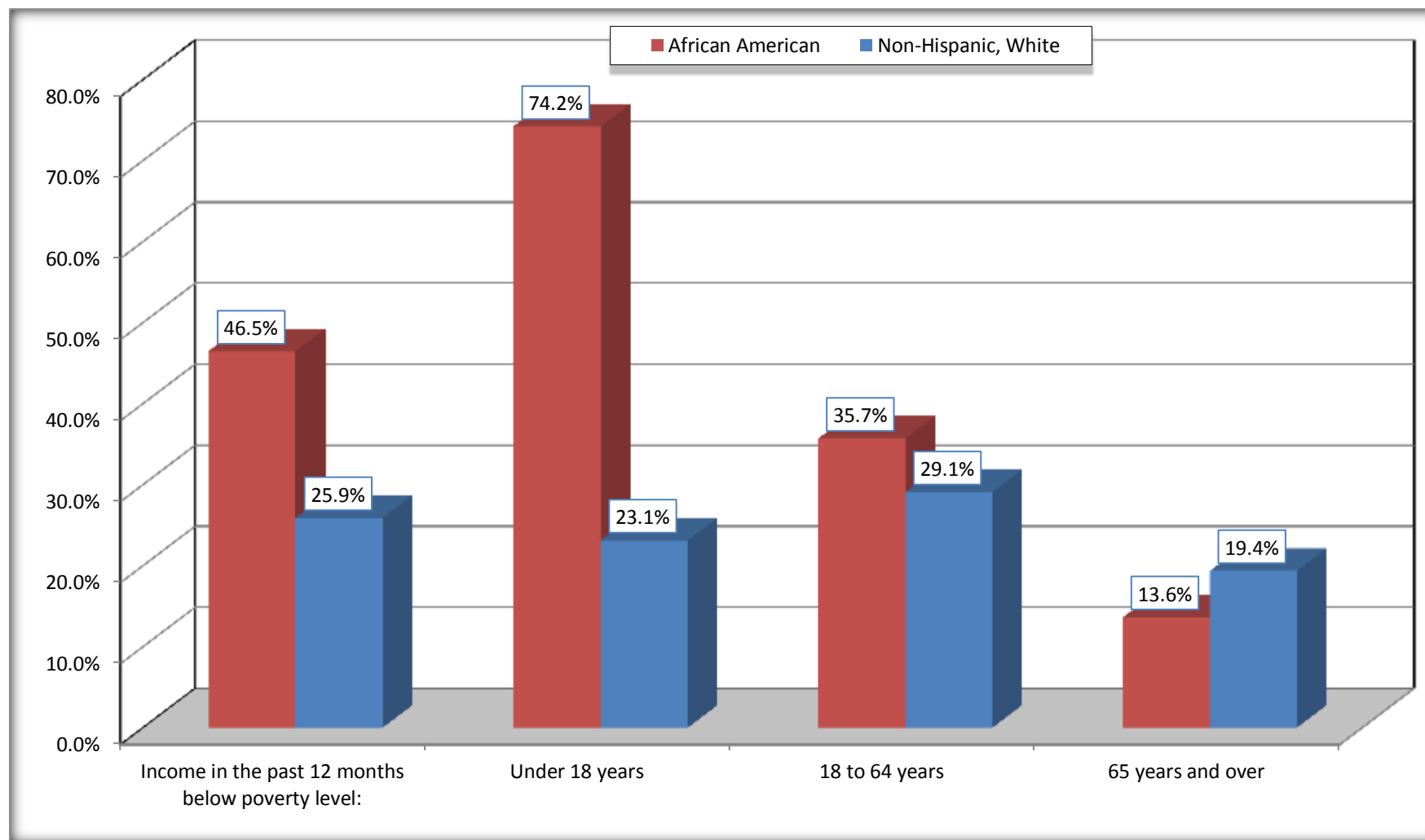
	Homeland Park CDP, South Carolina					
	African American	Margin of Error (+/-)	% of AA By Age	White, Not Hispanic	Margin of Error (+/-)	% of NHW By Age
<b>Total:</b>	<b>2,294</b>	<b>501</b>	<b>100.0%</b>	<b>3,718</b>	<b>562</b>	<b>100.0%</b>
Income in the past 12 months below poverty level:	1,066	406	46.5%	963	341	25.9%
<b>Under 18 years</b>	504	NC	74.2%	154	NC	23.1%
<b>18 to 64 years</b>	553	226	35.7%	653	255	29.1%
<b>65 years and over</b>	9	NC	13.6%	156	NC	19.4%
Income in the past 12 months at or above poverty level:	1,228	334	53.5%	2,755	481	74.1%
<b>Under 18 years</b>	175	NC	25.8%	512	NC	76.9%
<b>18 to 64 years</b>	996	260	64.3%	1,593	345	70.9%
<b>65 years and over</b>	57	NC	86.4%	650	NC	80.6%

Source: U.S. Census Bureau, 2008-2012 American Community Survey

For information on confidentiality protection, sampling error, nonsampling error, and definitions, see Survey Methodology.

<http://www.census.gov/acs/www/UseData/index.htm>

## Population Below Poverty in the Past 12 Months Homeland Park CDP, South Carolina



Source: B17020 POVERTY STATUS IN THE PAST 12 MONTHS BY AGE - Universe: POPULATION FOR WHOM POVERTY STATUS IS DETERMINED  
Data Set: 2008-2012 American Community Survey 5-Year Estimates

**B19001. HOUSEHOLD INCOME IN THE PAST 12 MONTHS (IN 2010 INFLATION-ADJUSTED DOLLARS)**

Data Set: 2008-2012 American Community Survey 5-Year Estimates

	Homeland Park CDP, South Carolina					
	African American	Margin of Error (+/-)	% of AA Total	White, Not Hispanic	Margin of Error (+/-)	% of NHW Total
<b>Total:</b>	<b>865</b>	<b>171</b>	<b>100.0%</b>	<b>1,722</b>	<b>223</b>	<b>100.0%</b>
Less than \$ 10,000	151	99	17.5%	374	154	21.7%
\$ 10,000 to \$ 14,999	75	71	8.7%	161	78	9.3%
<b>\$ 15,000 to \$ 24,999</b>	215	NC	24.9%	293	NC	17.0%
<b>\$ 25,000 to \$ 34,999</b>	159	NC	18.4%	221	NC	12.8%
<b>\$ 35,000 to \$ 49,999</b>	58	NC	6.7%	272	NC	15.8%
<b>\$ 50,000 to \$ 74,999</b>	202	NC	23.4%	303	NC	17.6%
\$ 75,000 to \$ 99,999	5	8	0.6%	71	56	4.1%
<b>\$ 100,000 to \$ 149,999</b>	0	NC	0.0%	27	NC	1.6%
\$ 150,000 to \$ 199,999	0	18	0.0%	0	18	0.0%
\$ 200,000 or more	0	18	0.0%	0	18	0.0%

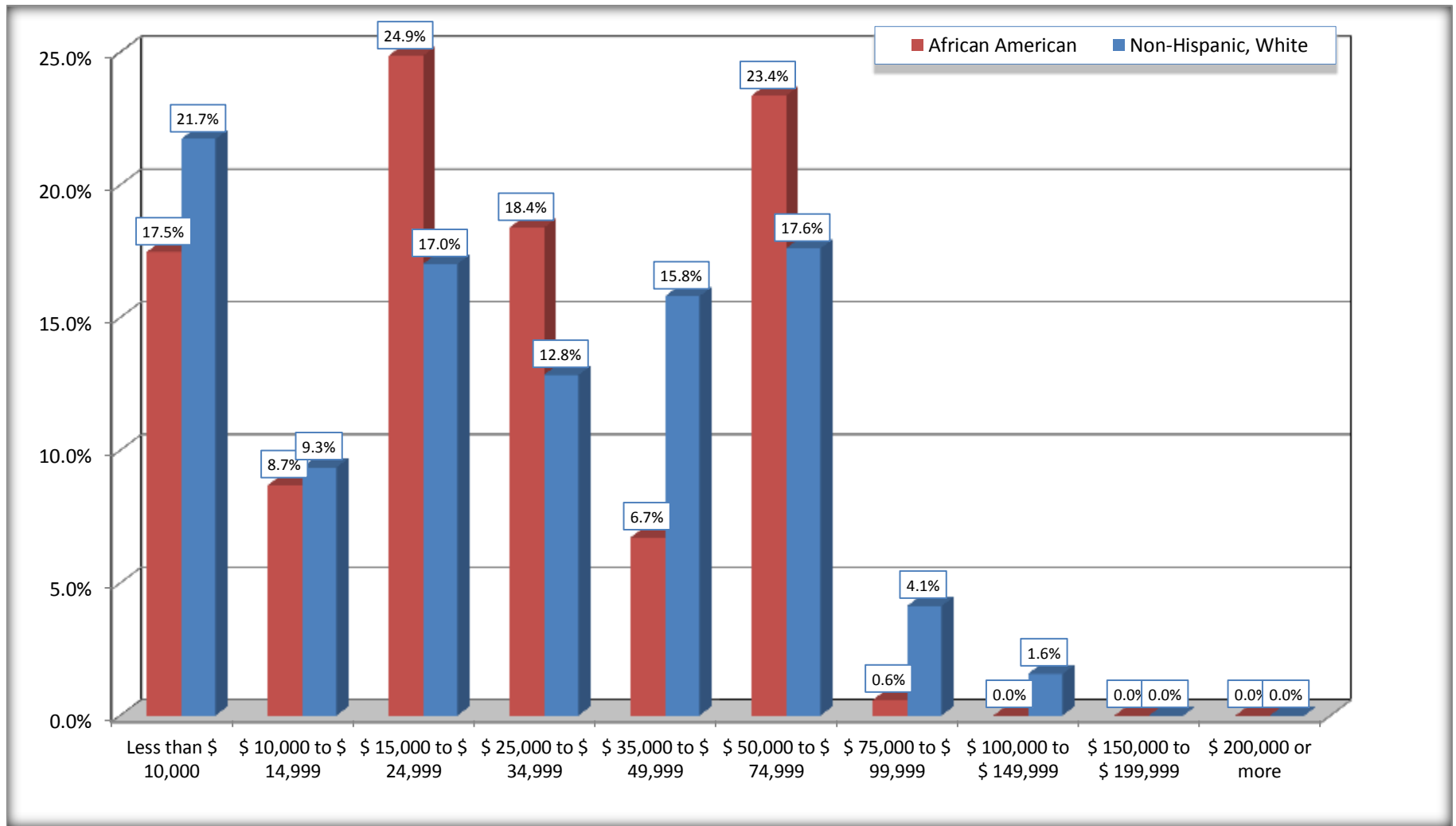
Source: U.S. Census Bureau, 2008-2012 American Community Survey

For information on confidentiality protection, sampling error, nonsampling error, and definitions, see Survey Methodology.

<http://www.census.gov/acs/www/UseData/index.htm>

## Household Income in the Past 12 Months

### Homeland Park CDP, South Carolina



Source: B19001. HOUSEHOLD INCOME IN THE PAST 12 MONTHS (IN 2010 INFLATION-ADJUSTED DOLLARS)  
 Data Set: 2008-2012 American Community Survey 5-Year Estimates

**B19013. MEDIAN HOUSEHOLD INCOME IN THE PAST 12 MONTHS (IN 2010 INFLATION-ADJUSTED DOLLARS)**

Data Set: 2008-2012 American Community Survey 5-Year Estimates

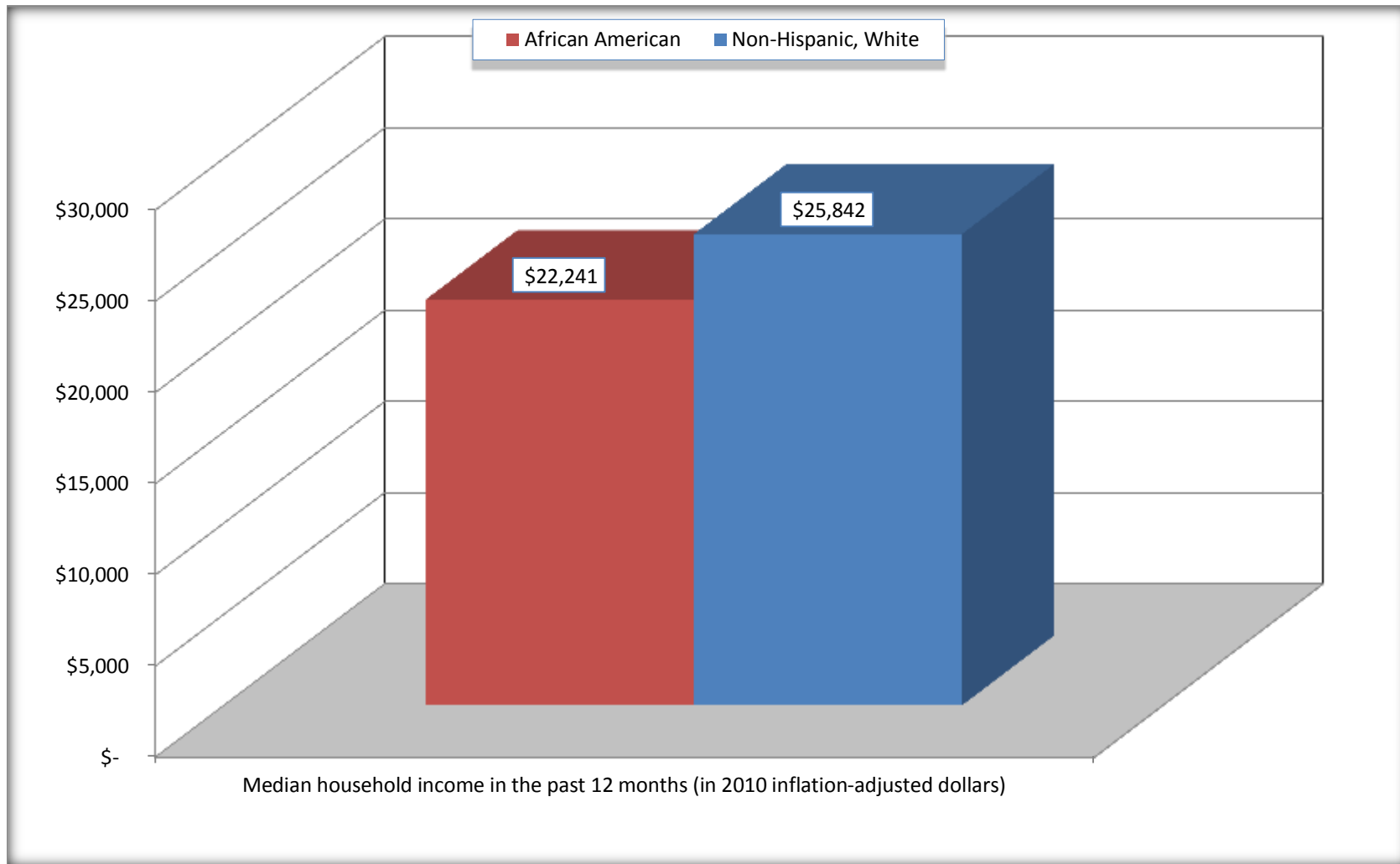
	<b>Homeland Park CDP, South Carolina</b>			
	African American	Margin of Error (+/-)	White, Not Hispanic	Margin of Error (+/-)
Median household income in the past 12 months (in 2010 inflation-adjusted dollars)	\$ 22,241	\$ 7,837	\$ 25,842	\$ 4,948

Source: U.S. Census Bureau, 2008-2012 American Community Survey

For information on confidentiality protection, sampling error, nonsampling error, and definitions, see Survey Methodology.  
<http://www.census.gov/acs/www/UseData/index.htm>

## Median Household Income in the Past 12 Months

### Homeland Park CDP, South Carolina



Source: B19013. MEDIAN HOUSEHOLD INCOME IN THE PAST 12 MONTHS (IN 2010 INFLATION-ADJUSTED DOLLARS)  
Data Set: 2008-2012 American Community Survey 5-Year Estimates

**B19101. FAMILY INCOME IN THE PAST 12 MONTHS (IN 2010 INFLATION-ADJUSTED DOLLARS)**

Data Set: 2008-2012 American Community Survey 5-Year Estimates

	Homeland Park CDP, South Carolina					
	African American	Margin of Error (+/-)	% of AA Total	White, Not Hispanic	Margin of Error (+/-)	% of NHW Total
<b>Total:</b>	<b>635</b>	<b>147</b>	<b>100.0%</b>	<b>998</b>	<b>192</b>	<b>100.0%</b>
Less than \$ 10,000	124	95	19.5%	148	99	14.8%
\$ 10,000 to \$ 14,999	46	46	7.2%	48	41	4.8%
<b>\$ 15,000 to \$ 24,999</b>	<b>87</b>	<b>NC</b>	<b>13.7%</b>	<b>162</b>	<b>NC</b>	<b>16.2%</b>
<b>\$ 25,000 to \$ 34,999</b>	<b>127</b>	<b>NC</b>	<b>20.0%</b>	<b>151</b>	<b>NC</b>	<b>15.1%</b>
<b>\$ 35,000 to \$ 49,999</b>	<b>83</b>	<b>NC</b>	<b>13.1%</b>	<b>176</b>	<b>NC</b>	<b>17.6%</b>
<b>\$ 50,000 to \$ 74,999</b>	<b>163</b>	<b>NC</b>	<b>25.7%</b>	<b>215</b>	<b>NC</b>	<b>21.5%</b>
<b>\$ 100,000 to \$ 149,999</b>	<b>-</b>	<b>NC</b>	<b>0.0%</b>	<b>27</b>	<b>NC</b>	<b>2.7%</b>
\$ 150,000 to \$ 199,999	0	18	0.0%	0	18	0.0%
\$ 200,000 or more	0	18	0.0%	0	18	0.0%

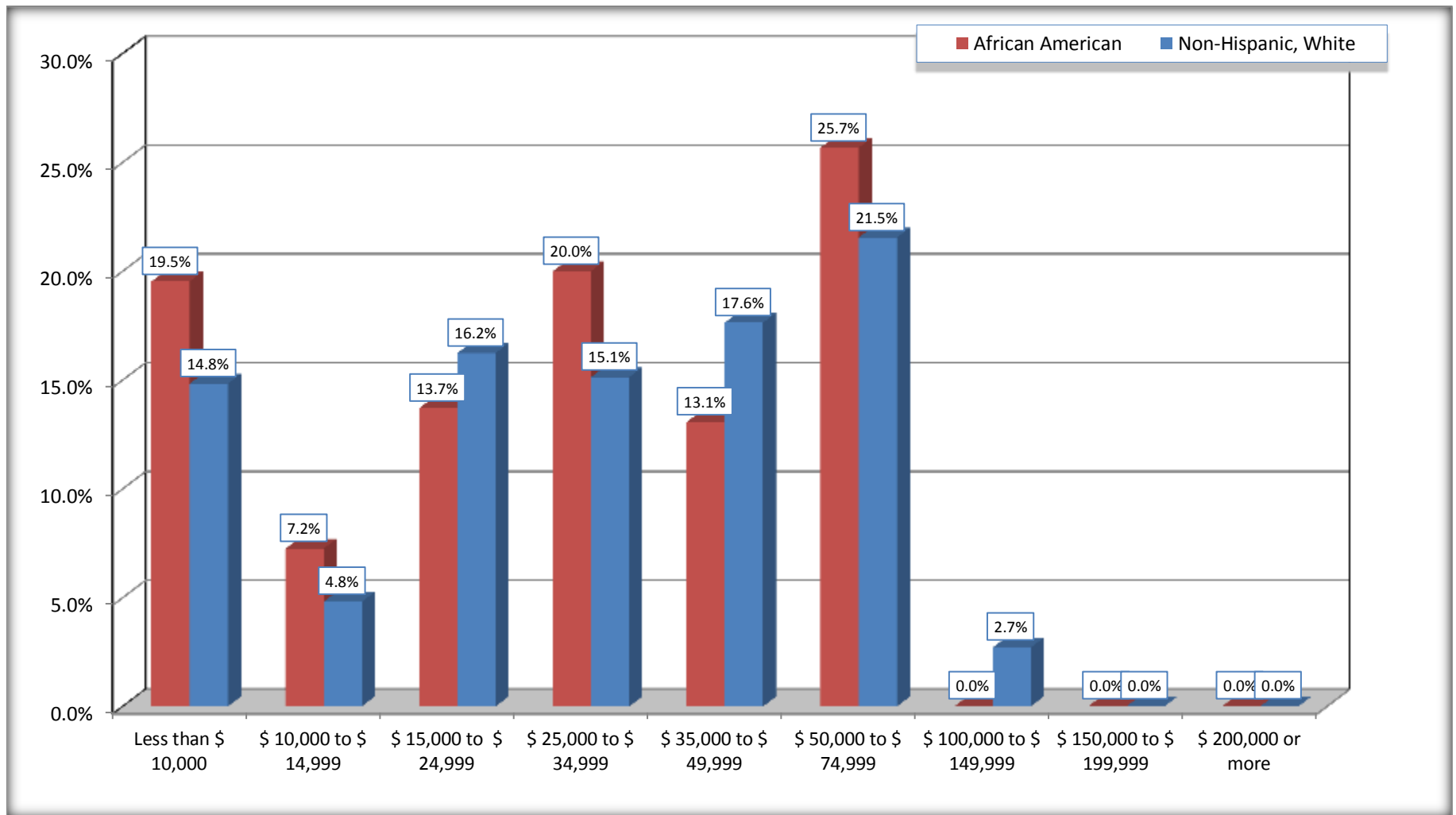
Source: U.S. Census Bureau, 2008-2012 American Community Survey

For information on confidentiality protection, sampling error, nonsampling error, and definitions, see Survey Methodology.

<http://www.census.gov/acs/www/UseData/index.htm>



## Family Income in the Past 12 Months Homeland Park CDP, South Carolina



Source: B19101. FAMILY INCOME IN THE PAST 12 MONTHS (IN 2010 INFLATION-ADJUSTED DOLLARS)  
Data Set: 2008-2012 American Community Survey 5-Year Estimates

**B19113. MEDIAN FAMILY INCOME IN THE PAST 12 MONTHS (IN 2010 INFLATION-ADJUSTED DOLLARS)**

Data Set: 2008-2012 American Community Survey 5-Year Estimates

	<b>Homeland Park CDP, South Carolina</b>			
	African American	Margin of Error (+/-)	White, Not Hispanic	Margin of Error (+/-)
Median family income in the past 12 months (in 2010 inflation-adjusted dollars)	\$ 28,479	\$ 6,749	\$ 32,500	\$ 16,032

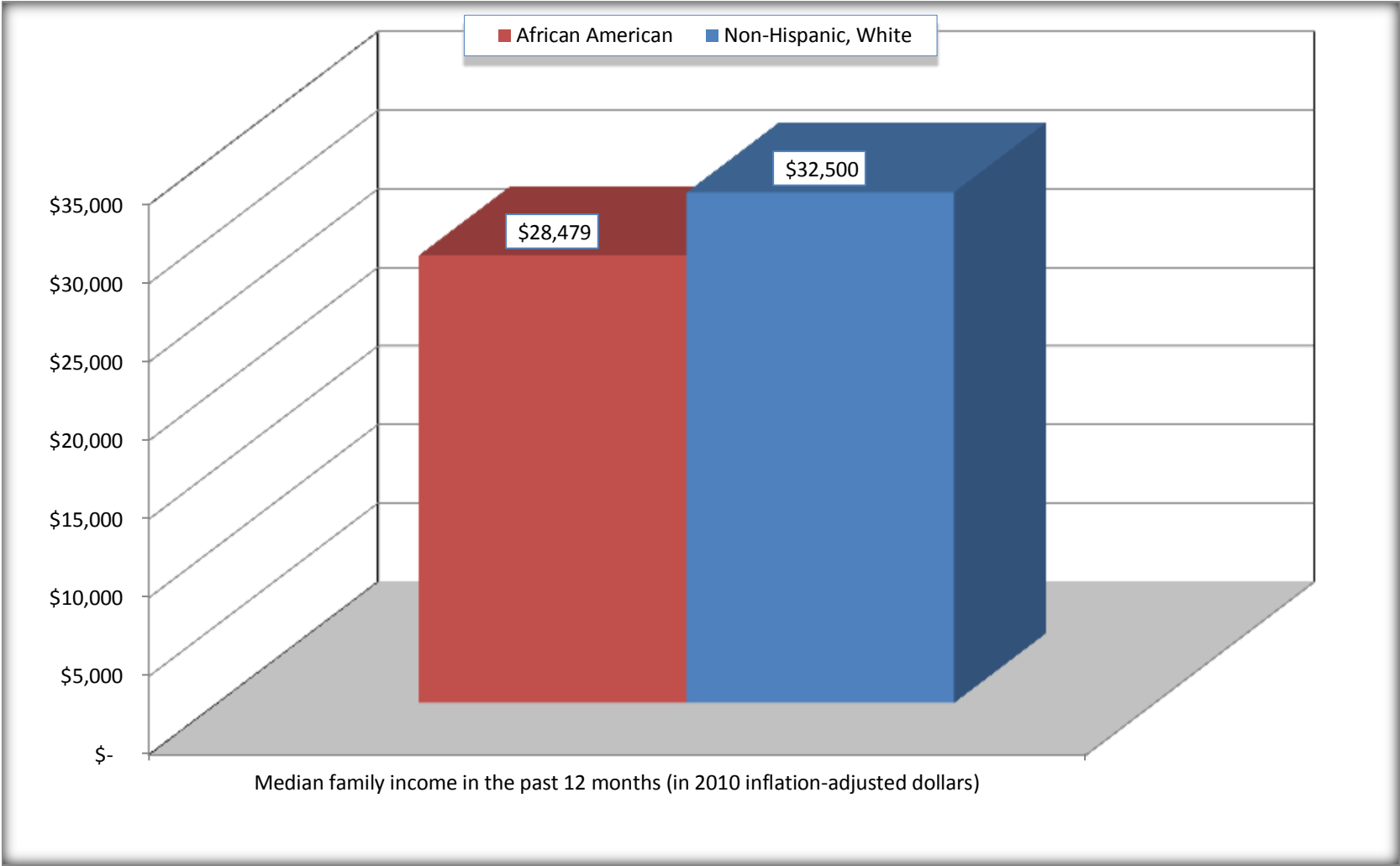
Source: U.S. Census Bureau, 2008-2012 American Community Survey

For information on confidentiality protection, sampling error, nonsampling error, and definitions, see Survey Methodology.

<http://www.census.gov/acs/www/UseData/index.htm>

# Median Family Income in the Past 12 Months

## Homeland Park CDP, South Carolina



Source: B19113. MEDIAN FAMILY INCOME IN THE PAST 12 MONTHS (IN 2010 INFLATION-ADJUSTED DOLLARS)  
Data Set: 2008-2012 American Community Survey 5-Year Estimates

**B19202. MEDIAN NONFAMILY HOUSEHOLD INCOME IN THE PAST 12 MONTHS (IN 2010 INFLATION-ADJUSTED DOLLARS)**

Data Set: 2008-2012 American Community Survey 5-Year Estimates

	<b>Homeland Park CDP, South Carolina</b>			
	African American	Margin of Error (+/-)	White, Not Hispanic	Margin of Error (+/-)
Median nonfamily household income in the past 12 months (in 2010 inflation-adjusted dollars)	\$ 15,809	\$ 4,891	\$ 15,927	\$ 5,236

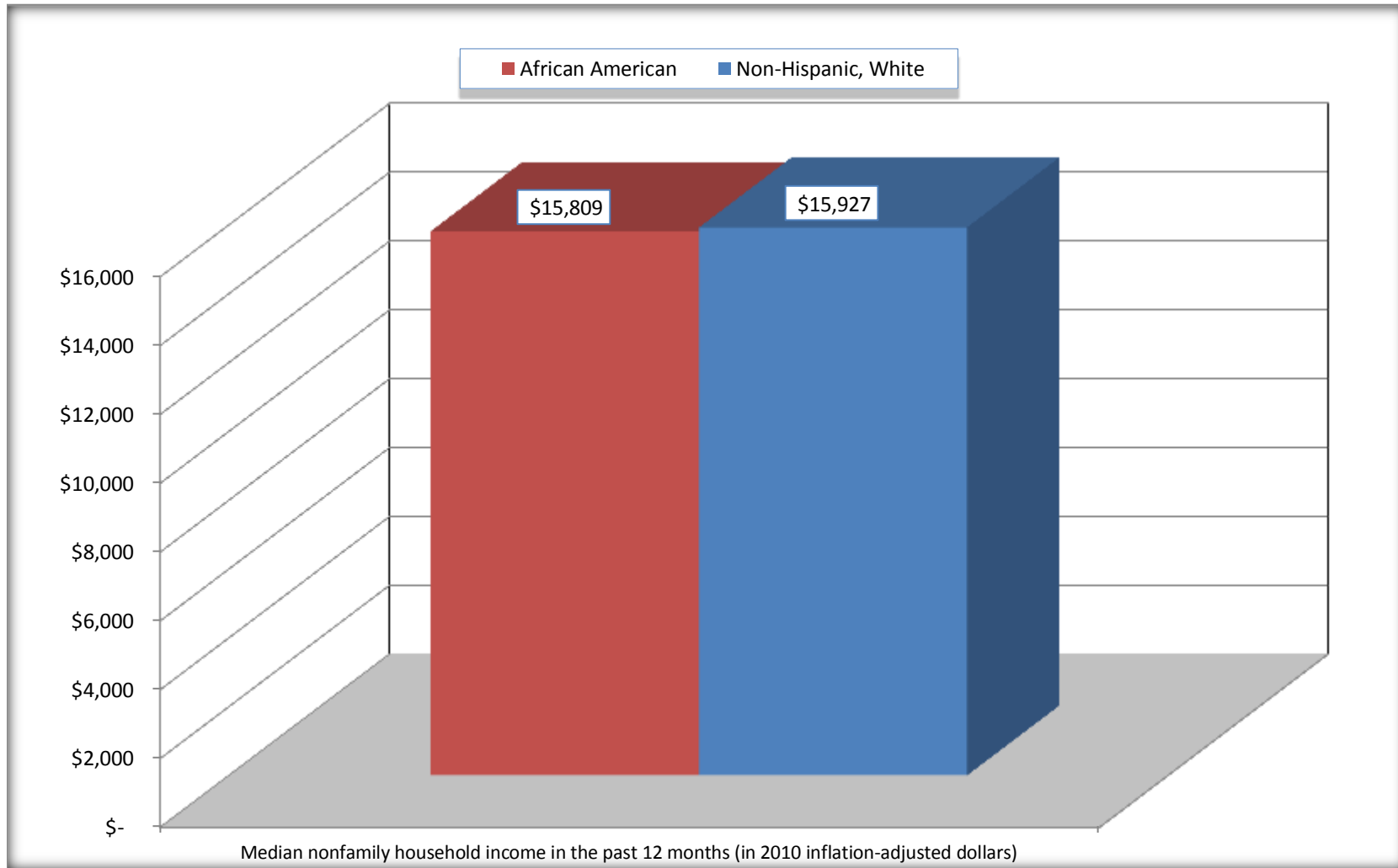
Source: U.S. Census Bureau, 2008-2012 American Community Survey

For information on confidentiality protection, sampling error, nonsampling error, and definitions, see Survey Methodology.

<http://www.census.gov/acs/www/UseData/index.htm>

# Median Non-Family Income in the Past 12 Months

## Homeland Park CDP, South Carolina



Source: B19202. MEDIAN NONFAMILY HOUSEHOLD INCOME IN THE PAST 12 MONTHS (IN 2010 INFLATION-ADJUSTED DOLLARS)  
Data Set: 2008-2012 American Community Survey 5-Year Estimates

**B19301. PER CAPITA INCOME IN THE PAST 12 MONTHS (IN 2010 INFLATION-ADJUSTED DOLLARS)**

Data Set: 2008-2012 American Community Survey 5-Year Estimates

	<b>Homeland Park CDP, South Carolina</b>			
	African American	Margin of Error (+/-)	White, Not Hispanic	Margin of Error (+/-)
Per capita income in the past 12 months (in 2010 inflation-adjusted dollars)	\$ 11,325	\$ 2,472	\$ 15,117	\$ 1,711

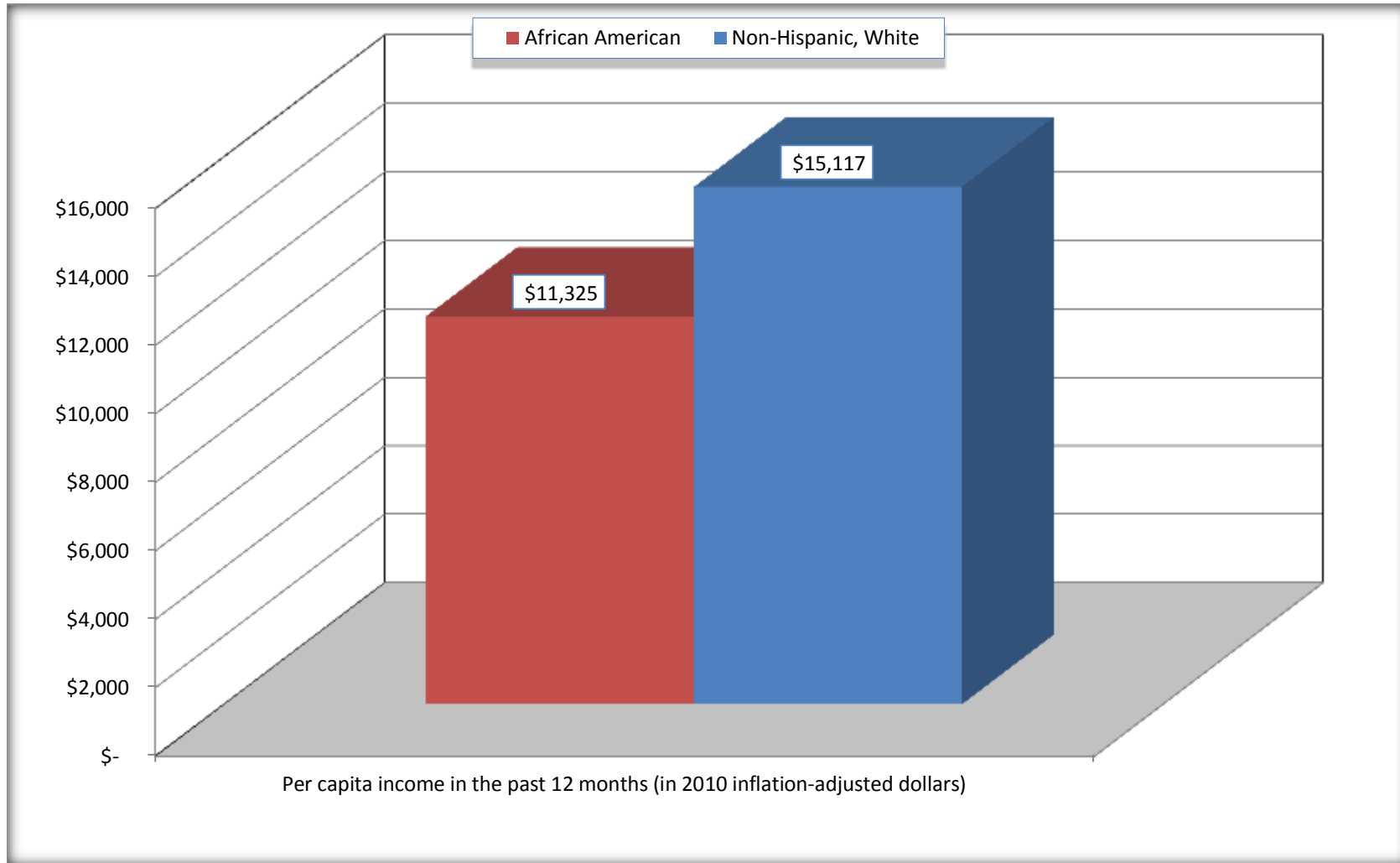
Source: U.S. Census Bureau, 2008-2012 American Community Survey

For information on confidentiality protection, sampling error, nonsampling error, and definitions, see Survey Methodology.

<http://www.census.gov/acs/www/UseData/index.htm>

# Per capita Income in the Past 12 Months

## Homeland Park CDP, South Carolina



Source: B19301. PER CAPITA INCOME IN THE PAST 12 MONTHS (IN 2010 INFLATION-ADJUSTED DOLLARS)  
Data Set: 2008-2012 American Community Survey 5-Year Estimates

**B20017. MEDIAN EARNINGS IN THE PAST 12 MONTHS (IN 2010 INFLATION-ADJUSTED DOLLARS) BY SEX BY WORK EXPERIENCE IN THE PAST 12 MONTHS FOR THE POPULATION 16 YEARS AND OVER WITH EARNINGS IN THE PAST 12 MONTHS**

Data Set: 2008-2012 American Community Survey 5-Year Estimates

	Homeland Park CDP, South Carolina			
	African American	Margin of Error (+/-)	White, Not Hispanic	Margin of Error (+/-)
Median earnings in the past 12 months (in 2010 inflation-adjusted dollars) --				
Total:	\$ 17,482	\$ 3,586	\$ 20,542	\$ 5,540
Male --				
Total	\$ 15,853	\$ 3,121	\$ 23,963	\$ 8,509
Worked full-time, year-round in the past 12 months	\$ 19,018	\$ 6,091	\$ 37,321	\$ 10,378
Other	\$ 4,684	\$ 13,527	\$ 10,982	\$ 6,097
Female --				
Total	\$ 22,149	\$ 7,227	\$ 15,161	\$ 7,423
Worked full-time, year-round in the past 12 months	\$ 27,729	\$ 4,085	\$ 25,529	\$ 5,691
Other	\$ 9,345	\$ 8,913	\$ 7,267	\$ 4,727

Source: U.S. Census Bureau, 2008-2012 American Community Survey

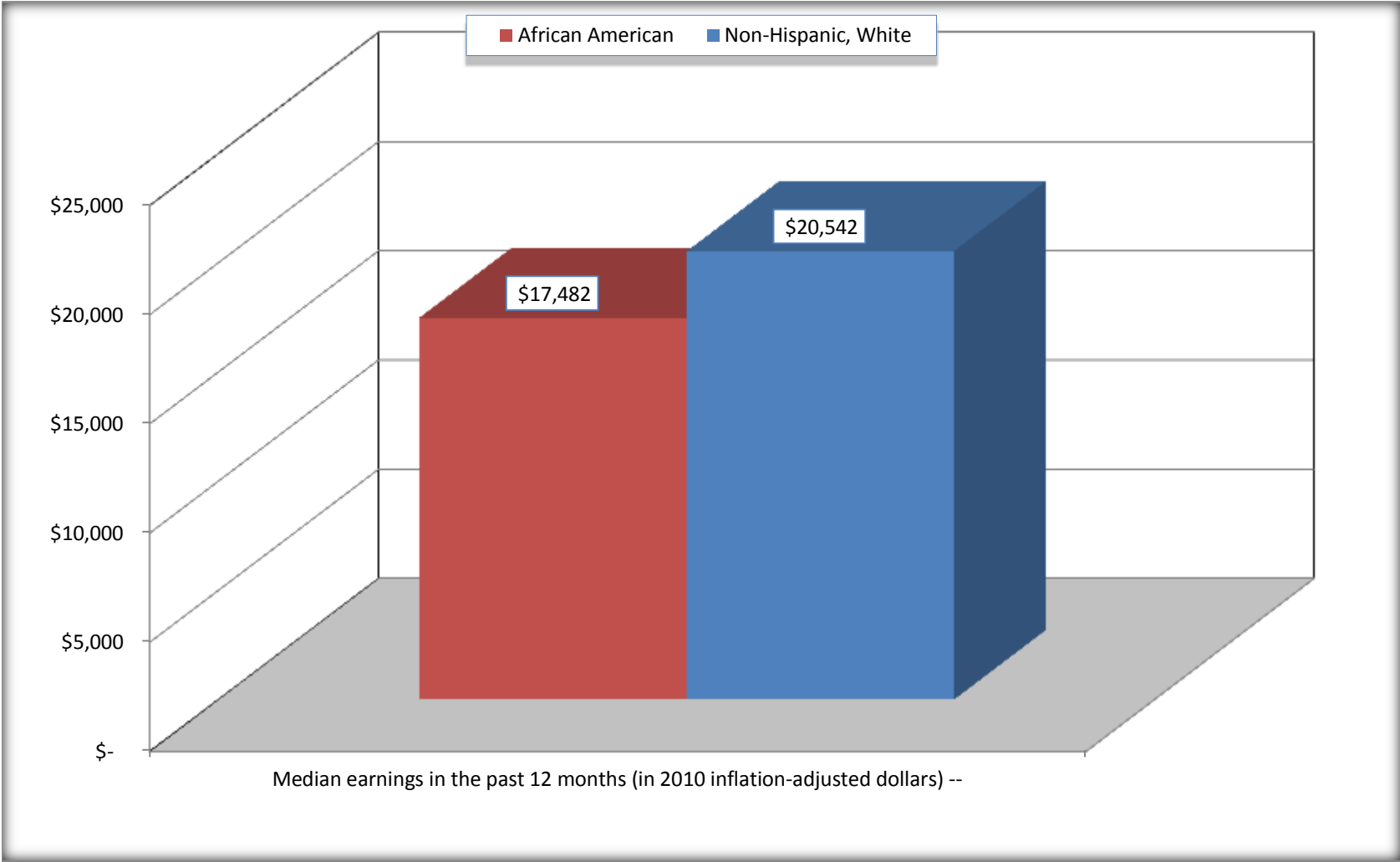
For information on confidentiality protection, sampling error, nonsampling error, and definitions, see Survey Methodology.

<http://www.census.gov/acs/www/UseData/index.htm>



# Median earnings in the Past 12 Months (16 Years and Over with Earnings)

## Homeland Park CDP, South Carolina



Source: B20017. MEDIAN EARNINGS IN THE PAST 12 MONTHS (IN 2010 INFLATION-ADJUSTED DOLLARS) BY SEX BY WORK EXPERIENCE IN THE PAST 12 MONTHS FOR THE POPULATION 16 YEARS AND OVER WITH EARNINGS IN THE PAST 12 MONTHS  
Data Set: 2008-2012 American Community Survey 5-Year Estimates

**B20005. SEX BY WORK EXPERIENCE IN THE PAST 12 MONTHS BY EARNINGS IN THE PAST 12 MONTHS (IN 2010 INFLATION-ADJUSTED DOLLARS) FOR THE POPULATION 16 YEARS AND OVER**

Data Set: 2008-2012 American Community Survey 5-Year Estimates

	Homeland Park CDP, South Carolina					
	African American	Margin of Error (+/-)	% of AA Total	White, Not Hispanic	Margin of Error (+/-)	% of NHW Total
<b>Total:</b>	<b>1,754</b>	<b>403</b>	<b>100.0%</b>	<b>3,253</b>	<b>457</b>	<b>100.0%</b>
Worked full-time, year-round in the past 12 months:	639	NC	36.4%	957	NC	29.4%
No earnings	0	NC	0.0%	0	NC	0.0%
With earnings:	639	NC	36.4%	957	NC	29.4%
\$ 1 to \$ 9,999 or loss	25	NC	1.4%	115	NC	3.5%
\$ 10,000 to \$ 19,999	200	NC	11.4%	177	NC	5.4%
\$ 20,000 to \$ 29,999	201	NC	11.5%	182	NC	5.6%
\$ 30,000 to \$ 49,999	201	NC	11.5%	414	NC	12.7%
\$ 50,000 to \$ 74,999	12	NC	0.7%	69	NC	2.1%
\$ 75,000 or more	0	NC	0.0%	0	NC	0.0%
Other:	1,115	NC	63.6%	2,296	NC	70.6%
No earnings	744	NC	42.4%	1,673	NC	51.4%
With earnings: less than full time, year-round	371	NC	21.2%	623	NC	19.2%
Male:	694	211	39.6%	1,584	317	48.7%
Worked full-time, year-round in the past 12 months:	258	120	14.7%	440	151	13.5%
No earnings	0	18	0.0%	0	18	0.0%
With earnings:	258	120	14.7%	440	151	13.5%
\$ 1 to \$ 9,999 or loss	9	NC	0.5%	59	NC	1.8%
\$ 10,000 to \$ 19,999	142	NC	8.1%	51	NC	1.6%
\$ 20,000 to \$ 29,999	30	NC	1.7%	63	NC	1.9%
\$ 30,000 to \$ 49,999	70	NC	4.0%	221	NC	6.8%
\$ 50,000 to \$ 74,999	7	NC	0.4%	46	NC	1.4%
\$ 75,000 or more	0	NC	0.0%	0	NC	0.0%

	Homeland Park CDP, South Carolina					
	African American	Margin of Error (+/-)	% of AA Total	White, Not Hispanic	Margin of Error (+/-)	% of NHW Total
Other:	436	192	24.9%	1,144	267	35.2%
No earnings	232	158	13.2%	858	238	26.4%
With earnings:	204	128	11.6%	286	102	8.8%
Female:	1,060	287	60.4%	1,669	260	51.3%
Worked full-time, year-round in the past 12 months:	381	138	21.7%	517	171	15.9%
No earnings	0	18	0.0%	0	18	0.0%
With earnings:	381	138	21.7%	517	171	15.9%
\$ 1 to \$ 9,999 or loss	16	NC	0.9%	56	NC	1.7%
\$ 10,000 to \$ 19,999	58	NC	3.3%	126	NC	3.9%
\$ 20,000 to \$ 29,999	171	NC	9.7%	119	NC	3.7%
\$ 30,000 to \$ 49,999	131	NC	7.5%	193	NC	5.9%
\$ 50,000 to \$ 74,999	5	NC	0.3%	23	NC	0.7%
\$ 75,000 or more	0	NC	0.0%	0	NC	0.0%
Other:	679	284	38.7%	1,152	204	35.4%
No earnings	512	304	29.2%	815	180	25.1%
With earnings:	167	115	9.5%	337	126	10.4%

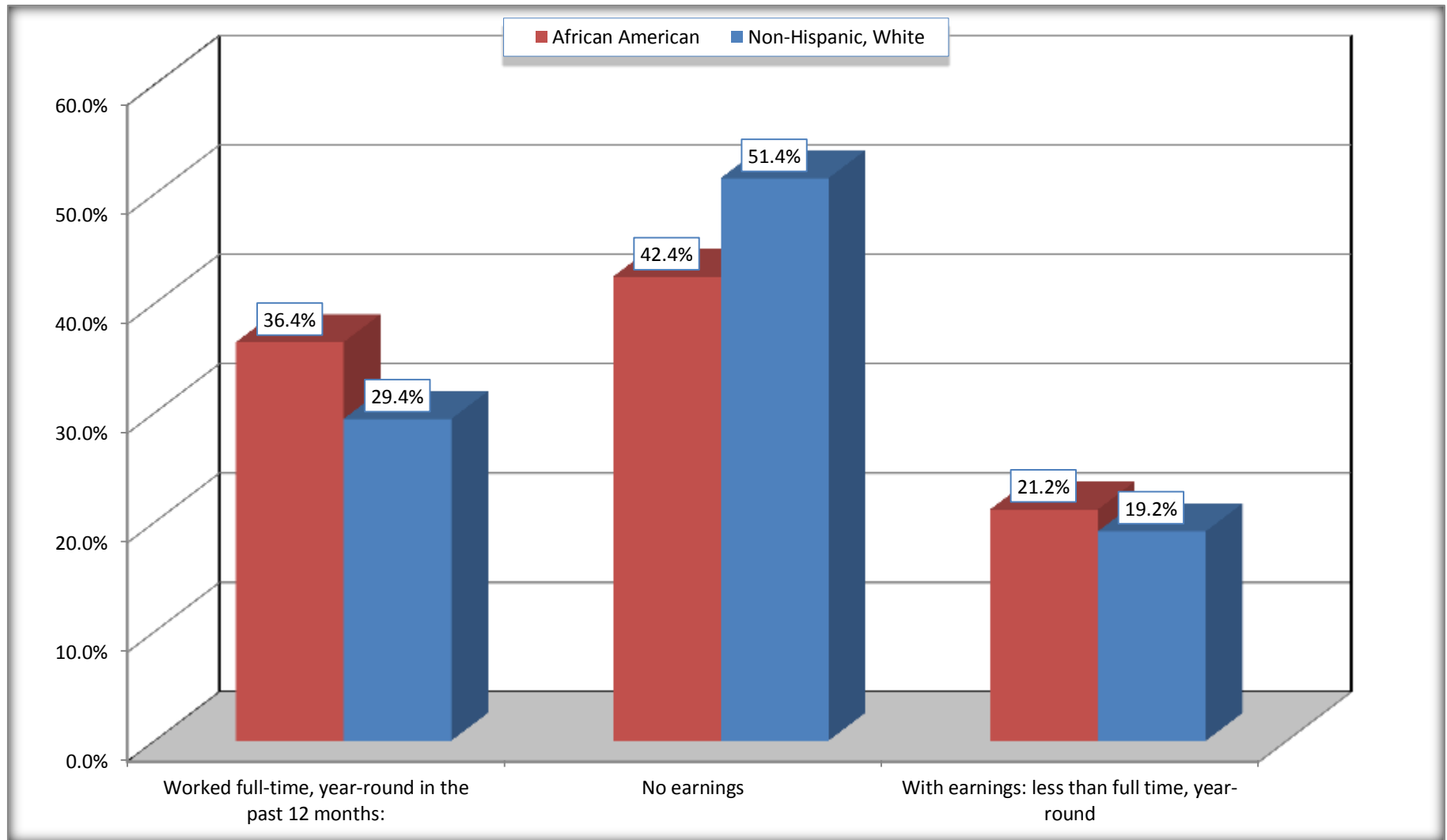
Source: U.S. Census Bureau, 2008-2012 American Community Survey

For information on confidentiality protection, sampling error, nonsampling error, and definitions, see Survey Methodology.

<http://www.census.gov/acs/www/UseData/index.htm>

# Employment and Earnings in in the Past 12 Months (16 Years and Over)

## Homeland Park CDP, South Carolina



Source: B20005. SEX BY WORK EXPERIENCE IN THE PAST 12 MONTHS BY EARNINGS IN THE PAST 12 MONTHS (IN 2010 INFLATION-ADJUSTED DOLLARS) FOR THE POPULATION 16 YEARS AND OVER

Data Set: 2008-2012 American Community Survey 5-Year Estimates

**C21001. SEX BY AGE BY VETERAN STATUS FOR THE CIVILIAN POPULATION 18 YEARS AND OVER**

Data Set: 2008-2012 American Community Survey 5-Year Estimates

	Homeland Park CDP, South Carolina					
	African American	Margin of Error (+/-)	% of AA Total	White, Not Hispanic	Margin of Error (+/-)	% of NHW Total
<b>Total:</b>	<b>1,615</b>	<b>369</b>	<b>100.0%</b>	<b>3,052</b>	<b>415</b>	<b>100.0%</b>
Veteran	61	NC	3.8%	307	NC	10.1%
Nonveteran	1,554	NC	96.2%	2,745	NC	89.9%
Male:	646	201	40.0%	1,450	288	47.5%
18 to 64 years:	614	192	38.0%	1,139	288	37.3%
Veteran	26	28	1.6%	136	70	4.5%
Nonveteran	588	190	36.4%	1,003	292	32.9%
65 years and over:	32	38	2.0%	311	72	10.2%
Veteran	24	36	1.5%	137	70	4.5%
Nonveteran	8	13	0.5%	174	69	5.7%
Female:	969	233	60.0%	1,602	241	52.5%
18 to 64 years:	935	232	57.9%	1,107	224	36.3%
Veteran	11	20	0.7%	34	34	1.1%
Nonveteran	924	232	57.2%	1,073	224	35.2%
65 years and over:	34	29	2.1%	495	113	16.2%
Veteran	0	18	0.0%	0	18	0.0%
Nonveteran	34	29	2.1%	495	113	16.2%

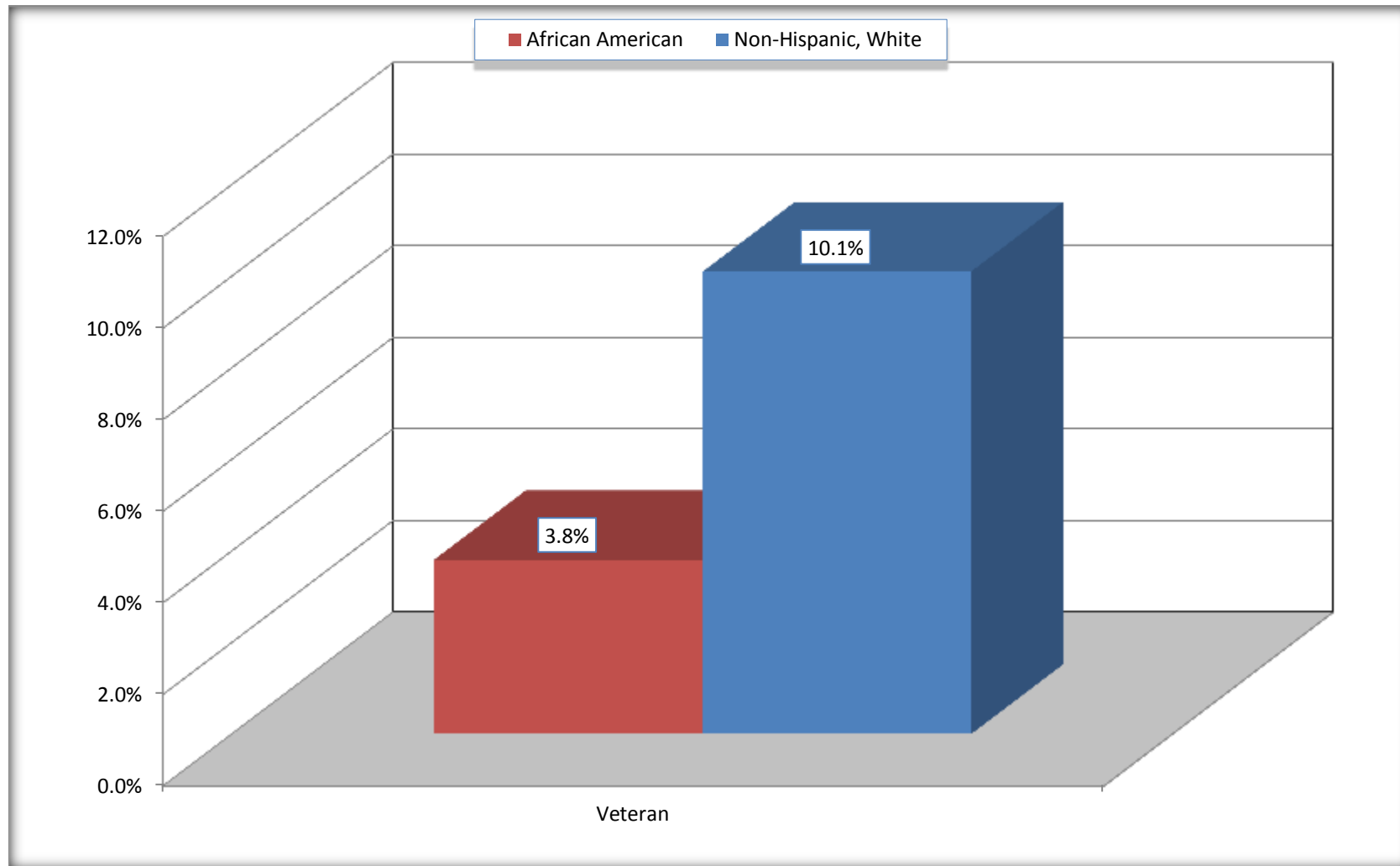
Source: U.S. Census Bureau, 2008-2012 American Community Survey

For information on confidentiality protection, sampling error, nonsampling error, and definitions, see Survey Methodology.

<http://www.census.gov/acs/www/UseData/index.htm>

# Veterans in the Civilian Population 18 Years and Over

## Homeland Park CDP, South Carolina



Source: C21001. SEX BY AGE BY VETERAN STATUS FOR THE CIVILIAN POPULATION 18 YEARS AND OVER  
Data Set: 2008-2012 American Community Survey 5-Year Estimates

**B22005. RECEIPT OF FOOD STAMPS/SNAP IN THE PAST 12 MONTHS BY RACE OF HOUSEHOLDER**

Data Set: 2008-2012 American Community Survey 5-Year Estimates

	Homeland Park CDP, South Carolina					
	African American	Margin of Error (+/-)	% of AA Total	White, Not Hispanic	Margin of Error (+/-)	% of NHW Total
<b>Total:</b>	<b>865</b>	<b>171</b>	<b>100.0%</b>	<b>1,722</b>	<b>223</b>	<b>100.0%</b>
HH received Food Stamps/SNAP in the past 12 months	277	140	32.0%	318	119	18.5%
HH did not receive Food Stamps/SNAP in the past 12 months	588	170	68.0%	1,404	205	81.5%

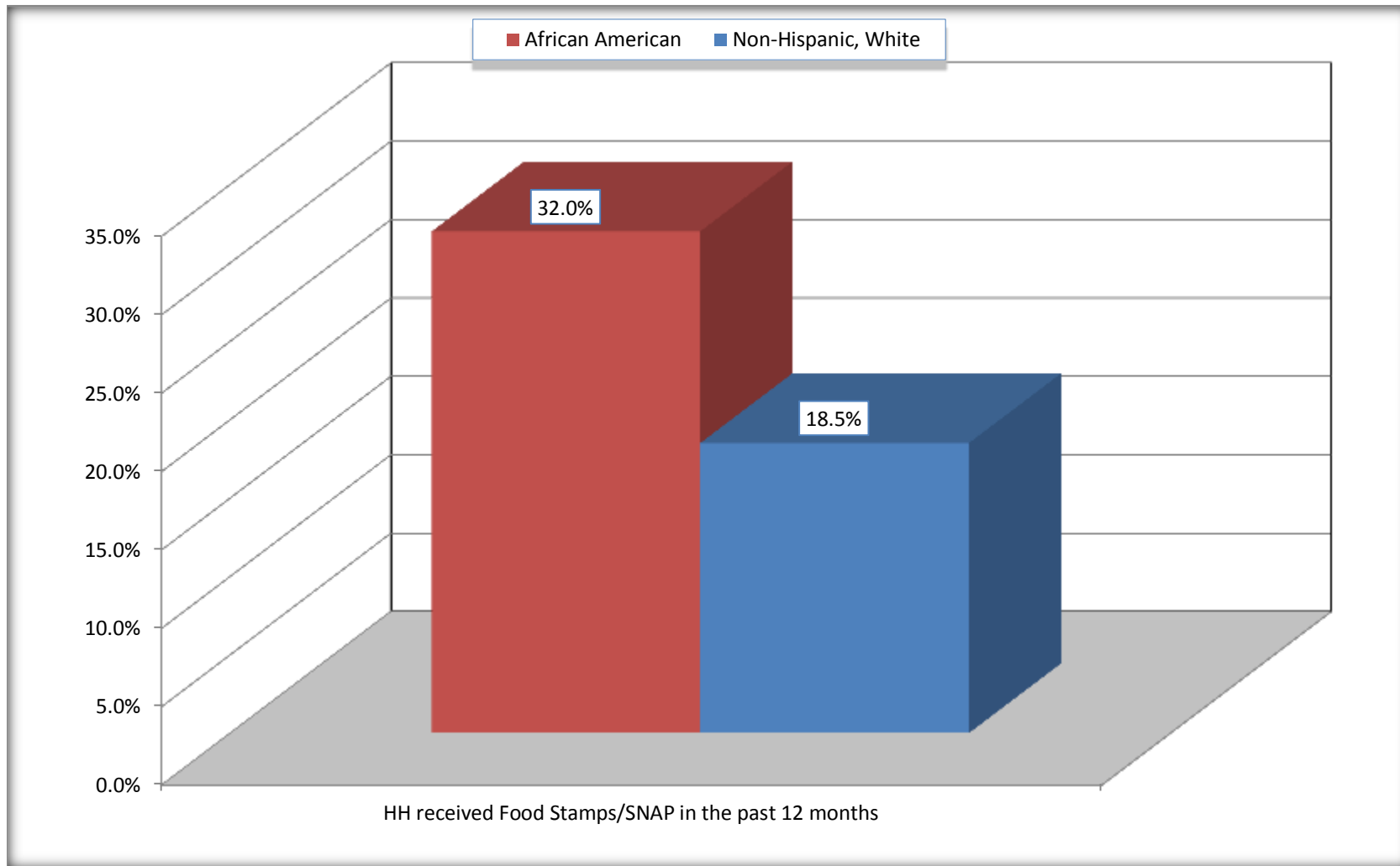
Source: U.S. Census Bureau, 2008-2012 American Community Survey

For information on confidentiality protection, sampling error, nonsampling error, and definitions, see Survey Methodology.

<http://www.census.gov/acs/www/UseData/index.htm>

# Receipt of Food Stamps/SNAP in the Past 12 Months by Household

## Homeland Park CDP, South Carolina



Source: B22005. RECEIPT OF FOOD STAMPS/SNAP IN THE PAST 12 MONTHS BY RACE OF HOUSEHOLDER  
Data Set: 2008-2012 American Community Survey 5-Year Estimates



**C23002. SEX BY AGE BY EMPLOYMENT STATUS FOR THE POPULATION 16 YEARS AND OVER**

Data Set: 2008-2012 American Community Survey 5-Year Estimates

	Homeland Park CDP, South Carolina					
	African American	Margin of Error (+/-)	% of AA Total	White, Not Hispanic	Margin of Error (+/-)	% of NHW Total
<b>Total:</b>	<b>1,754</b>	<b>403</b>	<b>100.0%</b>	<b>3,253</b>	<b>457</b>	<b>100.0%</b>
In labor force:	1,186	NC	67.6%	1,526	NC	46.9%
In Armed Forces	0	NC	0.0%	0	NC	0.0%
Civilian:	1,162	NC	66.2%	1,467	NC	45.1%
Employed	829	NC	47.3%	1,340	NC	41.2%
Unemployed	357	NC	20.4%	186	NC	5.7%
Not in labor force	568	NC	32.4%	1,727	NC	53.1%
Male:	694	211	39.6%	1,584	317	48.7%
16 to 64 years:	662	203	37.7%	1,273	315	39.1%
In labor force:	510	156	29.1%	747	198	23.0%
In Armed Forces	0	18	0.0%	0	18	0.0%
Civilian:	510	156	29.1%	747	198	23.0%
Employed	403	164	23.0%	611	172	18.8%
Unemployed	107	80	6.1%	136	102	4.2%
Not in labor force	152	130	8.7%	526	196	16.2%
65 years and over:	32	38	1.8%	311	72	9.6%
In labor force:	24	36	1.4%	21	24	0.6%
Employed	24	36	1.4%	21	24	0.6%
Unemployed	0	18	0.0%	0	18	0.0%
Not in labor force	8	13	0.5%	290	73	8.9%

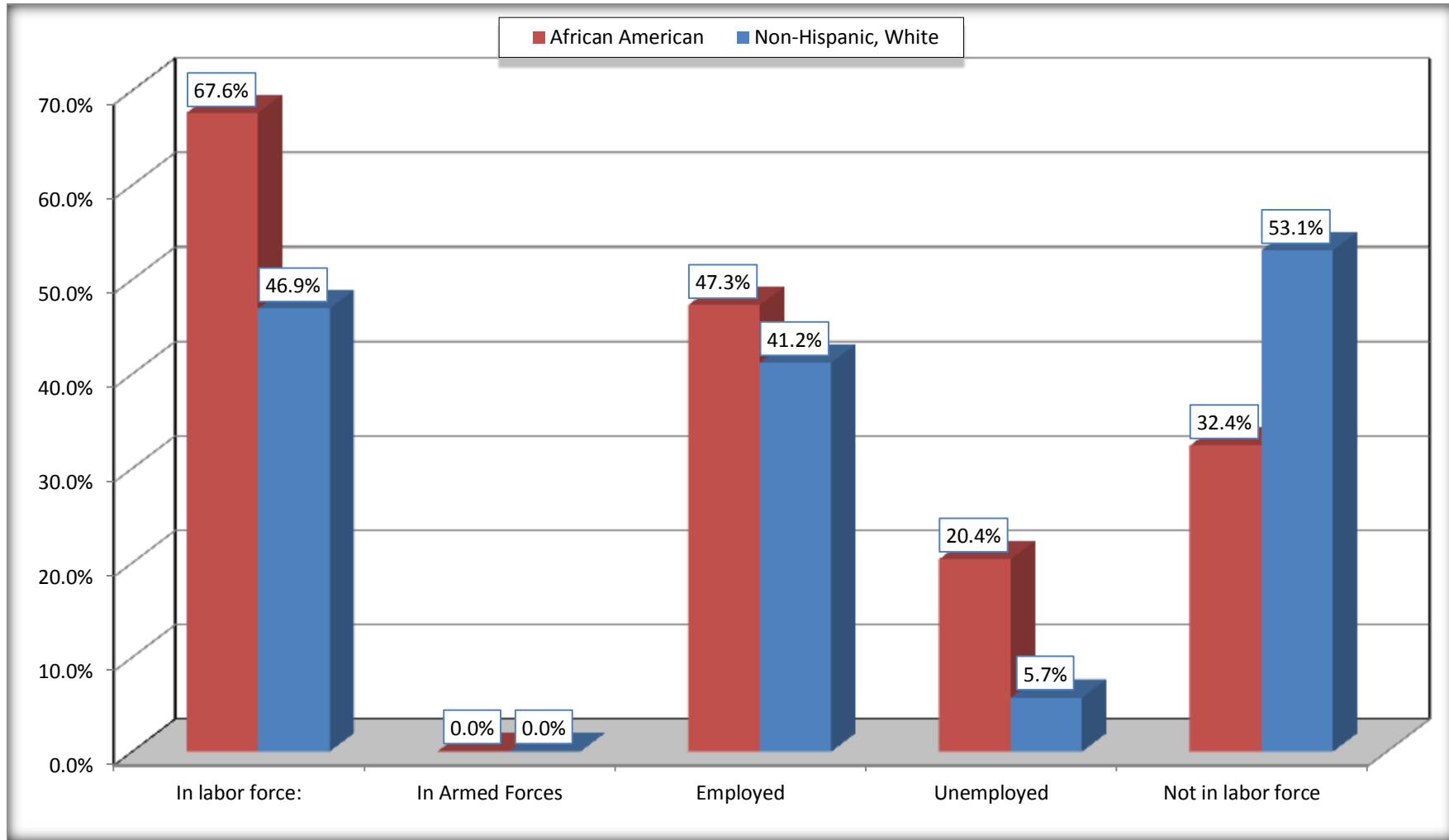
	Homeland Park CDP, South Carolina					
	African American	Margin of Error (+/-)	% of AA Total	White, Not Hispanic	Margin of Error (+/-)	% of NHW Total
Female:	1,060	287	60.4%	1,669	260	51.3%
16 to 64 years:	1,026	286	58.5%	1,174	244	36.1%
In labor force:	652	178	37.2%	720	189	22.1%
In Armed Forces	0	18	0.0%	0	18	0.0%
Civilian:	652	178	37.2%	720	189	22.1%
Employed	402	137	22.9%	670	190	20.6%
Unemployed	250	125	14.3%	50	47	1.5%
Not in labor force	374	298	21.3%	454	168	14.0%
65 years and over:	34	29	1.9%	495	113	15.2%
In labor force:	0	18	0.0%	38	36	1.2%
Employed	0	18	0.0%	38	36	1.2%
Unemployed	0	18	0.0%	0	18	0.0%
Not in labor force	34	29	1.9%	457	112	14.0%

Source: U.S. Census Bureau, 2008-2012 American Community Survey

For information on confidentiality protection, sampling error, nonsampling error, and definitions, see Survey Methodology.  
<http://www.census.gov/acs/www/UseData/index.htm>

# Employment Status for the Population 16 years and over

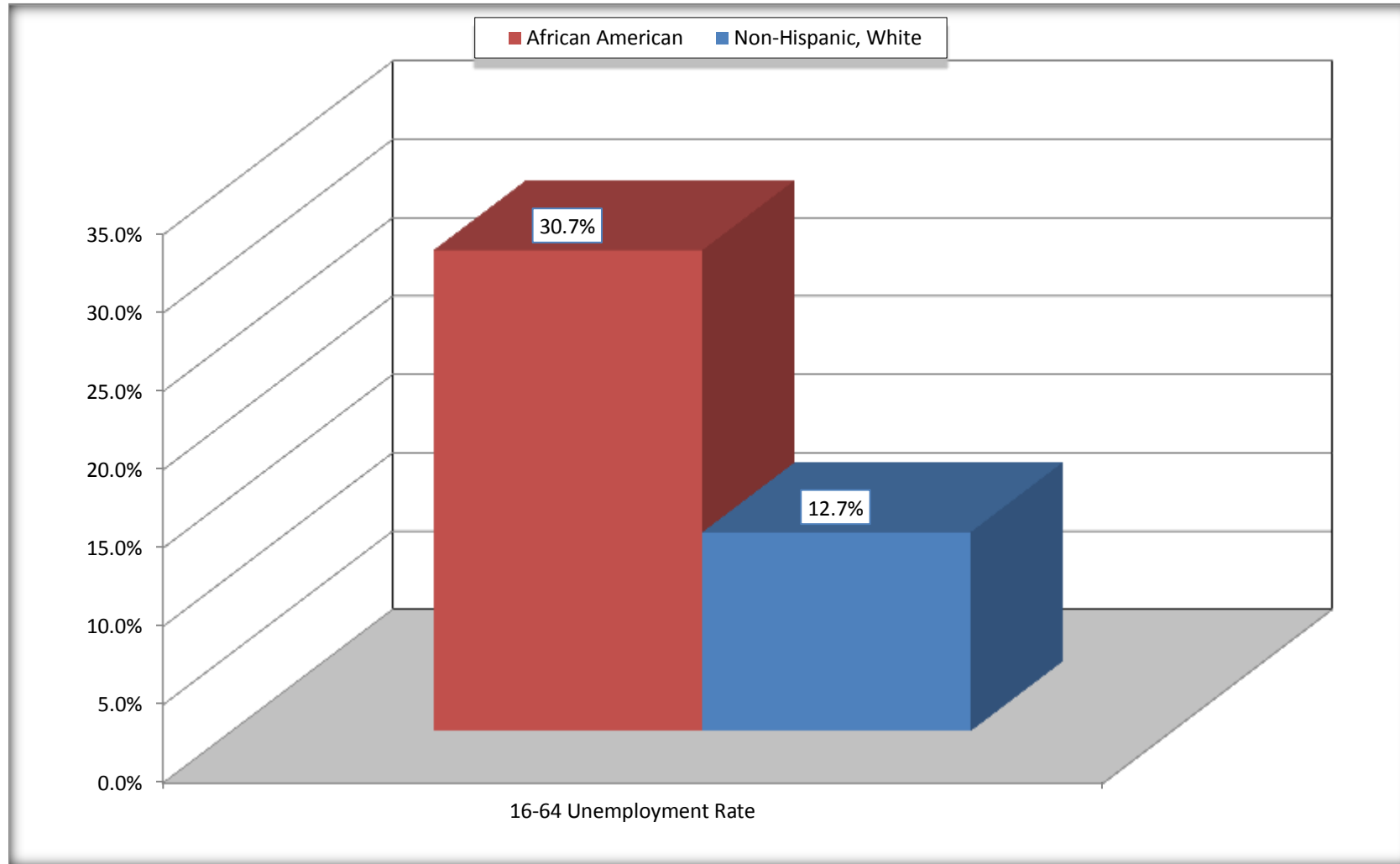
## Homeland Park CDP, South Carolina



Source: C23002. SEX BY AGE BY EMPLOYMENT STATUS FOR THE POPULATION 16 YEARS AND OVER  
Data Set: 2008-2012 American Community Survey 5-Year Estimates

# Unemployment of Working Age Population (Ages 16 to 64) (As a Percent of 16-64 Civilian Labor Force)

## Homeland Park CDP, South Carolina



Source: C23002. SEX BY AGE BY EMPLOYMENT STATUS FOR THE POPULATION 16 YEARS AND OVER  
Data Set: 2008-2012 American Community Survey 5-Year Estimates

**C24010. SEX BY OCCUPATION FOR THE CIVILIAN EMPLOYED POPULATION 16 YEARS AND OVER**

Data Set: 2008-2012 American Community Survey 5-Year Estimates

	Homeland Park CDP, South Carolina					
	African American	Margin of Error (+/-)	% of AA Total	White, Not Hispanic	Margin of Error (+/-)	% of NHW Total
<b>Total:</b>	<b>829</b>	<b>213</b>	<b>100.0%</b>	<b>1,340</b>	<b>296</b>	<b>100.0%</b>
Management, professional, and related occupations	41	NC	4.9%	199	NC	14.9%
Service occupations	256	NC	30.9%	253	NC	18.9%
Sales and office occupations	144	NC	17.4%	388	NC	29.0%
Natural resources, construction, and maintenance occupations:	0	NC	0.0%	313	NC	23.4%
Production, transportation, and material moving occupations	388	NC	46.8%	187	NC	14.0%
Male:	427	169	51.5%	632	178	47.2%
Management, business, science, and arts occupations:	0	18	0.0%	48	45	3.6%
Service occupations	133	101	16.0%	53	41	4.0%
Sales and office occupations	104	90	12.5%	118	64	8.8%
Natural resources, construction, and maintenance occupations:	0	18	0.0%	313	143	23.4%
Production, transportation, and material moving occupations	190	104	22.9%	100	71	7.5%
Female:	402	137	48.5%	708	190	52.8%
Management, professional, and related occupations	41	57	4.9%	151	82	11.3%
Service occupations	123	98	14.8%	200	80	14.9%
Sales and office occupations	40	29	4.8%	270	127	20.1%
Natural resources, construction, and maintenance occupations:	0	18	0.0%	0	18	0.0%
Production, transportation, and material moving occupations	198	111	23.9%	87	57	6.5%

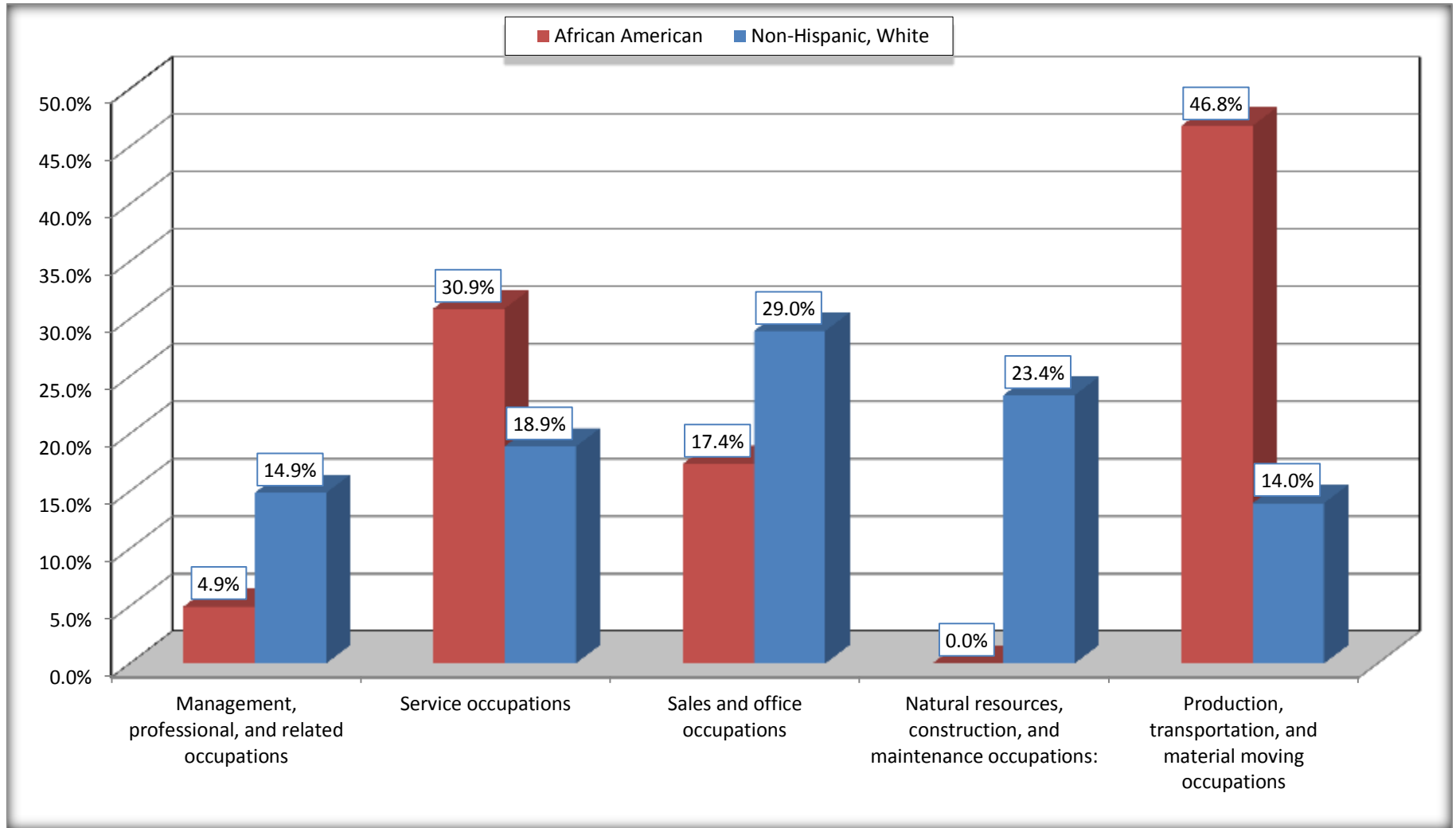
Source: U.S. Census Bureau, 2008-2012 American Community Survey

For information on confidentiality protection, sampling error, nonsampling error, and definitions, see Survey Methodology.

<http://www.census.gov/acs/www/UseData/index.htm>

# Occupation for the Civilian Employed 16 Years and Over Population

## Homeland Park CDP, South Carolina



Source: C24010. SEX BY OCCUPATION FOR THE CIVILIAN EMPLOYED POPULATION 16 YEARS AND OVER  
Data Set: 2008-2012 American Community Survey 5-Year Estimates

**B25003. TENURE - Universe: OCCUPIED HOUSING UNITS**

Data Set: 2008-2012 American Community Survey 5-Year Estimates

	Homeland Park CDP, South Carolina					
	African American	Margin of Error (+/-)	% of AA Total	White, Not Hispanic	Margin of Error (+/-)	% of NHW Total
<b>Total:</b>	<b>865</b>	<b>171</b>	<b>100.0%</b>	<b>1,722</b>	<b>223</b>	<b>100.0%</b>
Owner occupied	357	117	41.3%	1,149	169	66.7%
Renter occupied	508	175	58.7%	573	170	33.3%

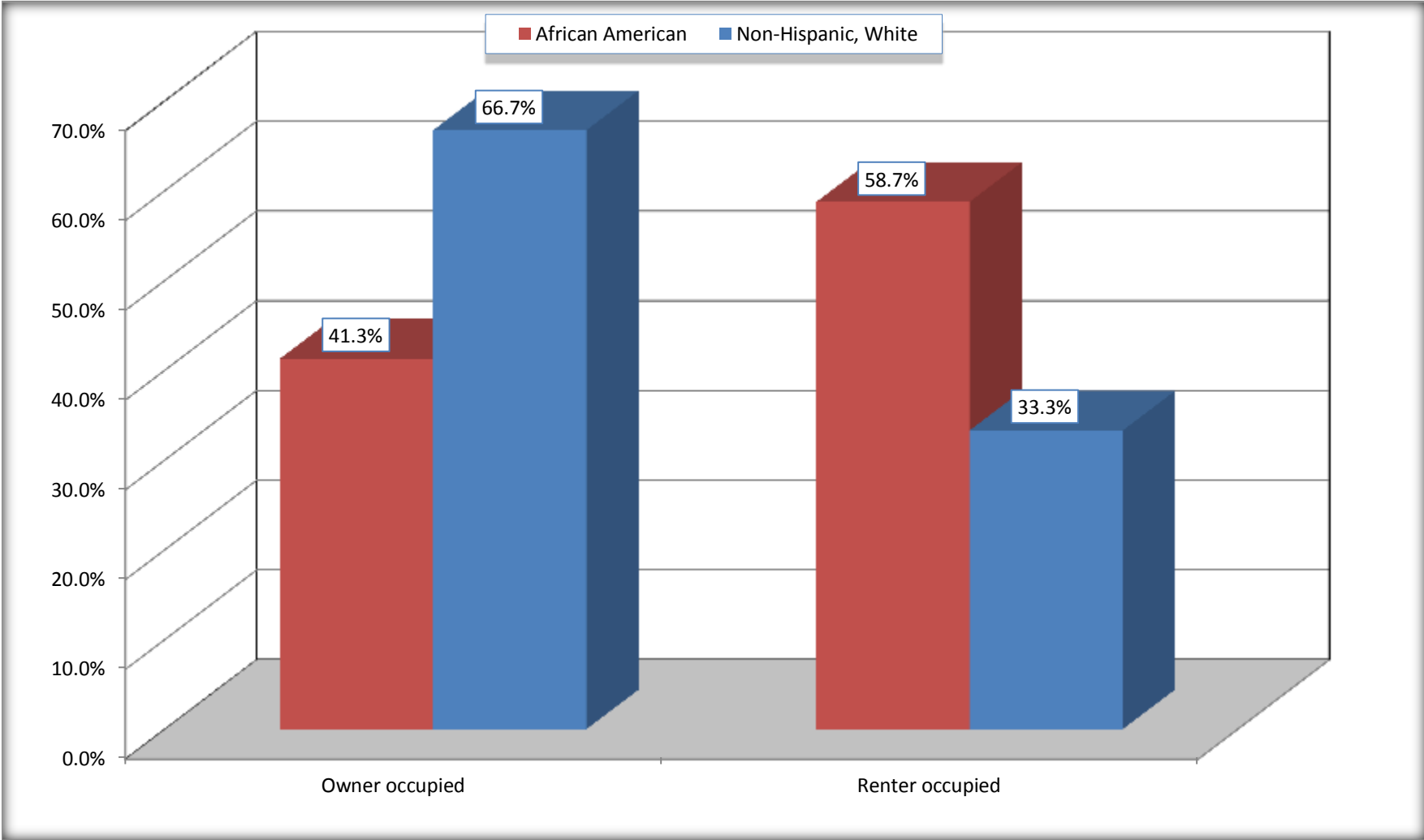
Source: U.S. Census Bureau, 2008-2012 American Community Survey

For information on confidentiality protection, sampling error, nonsampling error, and definitions, see Survey Methodology.

<http://www.census.gov/acs/www/UseData/index.h>

# Home Owners and Renters by Household

## Homeland Park CDP, South Carolina



Source: B25003. TENURE - Universe: OCCUPIED HOUSING UNITS  
Data Set: 2008-2012 American Community Survey 5-Year Estimates



**B25014. OCCUPANTS PER ROOM - Universe: OCCUPIED HOUSING UNITS**

Data Set: 2008-2012 American Community Survey 5-Year Estimates

	Homeland Park CDP, South Carolina					
	African American	Margin of Error (+/-)	% of AA Total	White, Not Hispanic	Margin of Error (+/-)	% of NHW Total
<b>Total:</b>	<b>865</b>	<b>171</b>	<b>100.0%</b>	<b>1,722</b>	<b>223</b>	<b>100.0%</b>
1.00 or less occupants per room	844	171	97.6%	1,674	224	97.2%
1.01 or more occupants per room	21	33	2.4%	48	45	2.8%

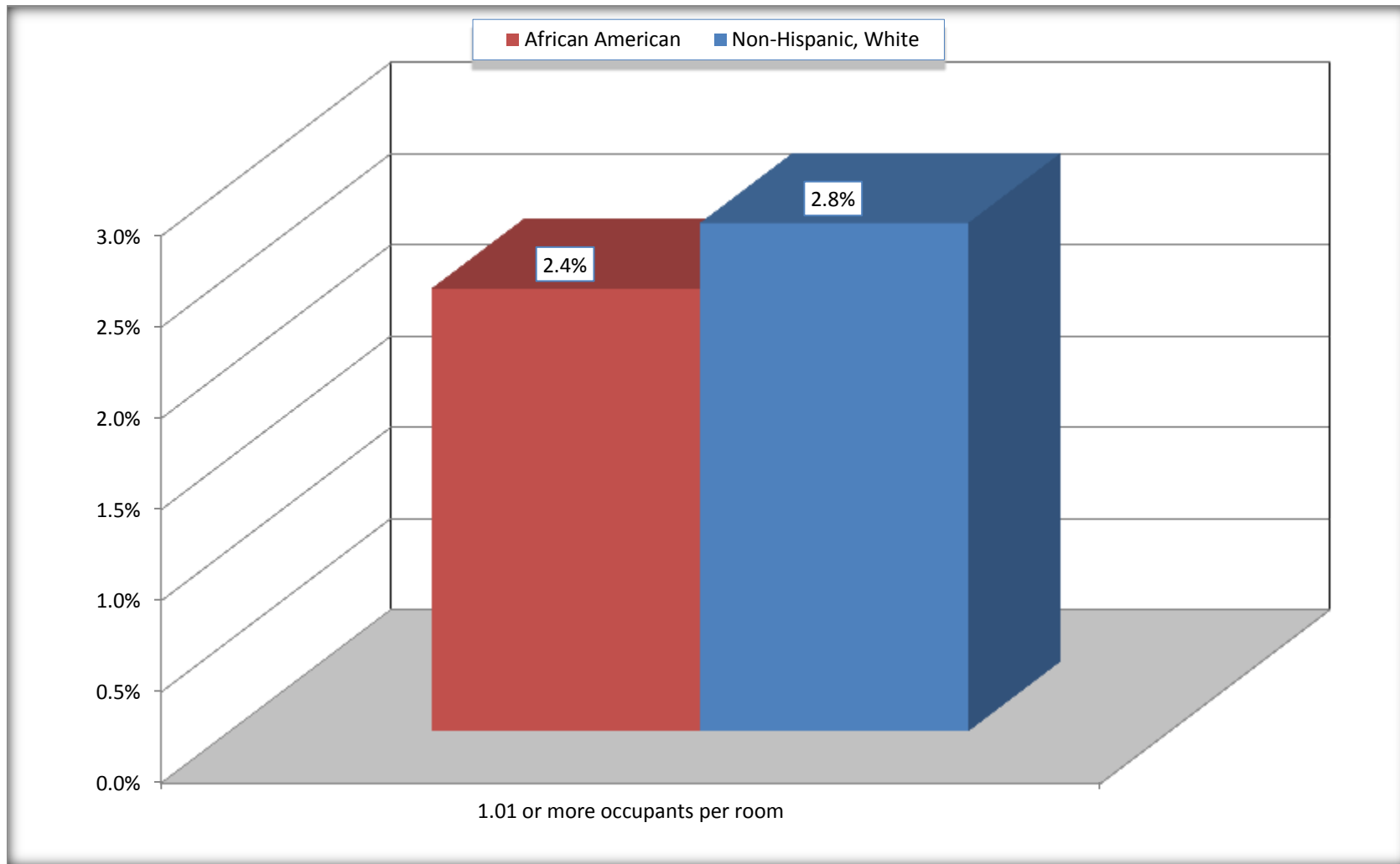
Source: U.S. Census Bureau, 2008-2012 American Community Survey

For information on confidentiality protection, sampling error, nonsampling error, and definitions, see Survey Methodology.

<http://www.census.gov/acs/www/UseData/index.ht>

# More than One Person per Room (Crowding) by Household

## Homeland Park CDP, South Carolina



Source: B25014. OCCUPANTS PER ROOM - Universe: OCCUPIED HOUSING UNITS  
Data Set: 2008-2012 American Community Survey 5-Year Estimates

**B18101. AGE BY DISABILITY STATUS**

Data Set: 2008-2012 American Community Survey 5-Year Estimates

	Homeland Park CDP, South Carolina					
	African American	Margin of Error (+/-)	% of AA Total	White, Not Hispanic	Margin of Error (+/-)	% of NHW Total
<b>Total:</b>	<b>2,294</b>	<b>501</b>	<b>100.0%</b>	<b>3,718</b>	<b>562</b>	<b>100.0%</b>
Under 18 years:	679	258	29.6%	666	18	17.9%
With a disability	43	59	1.9%	14	24	0.4%
No disability	636	236	27.7%	652	207	17.5%
18 to 64 years:	1,549	357	67.5%	2,246	403	60.4%
With a disability	214	164	9.3%	668	214	18.0%
No disability	1,335	313	58.2%	1,578	331	42.4%
65 years and over:	66	59	2.9%	806	112	21.7%
With a disability	41	34	1.8%	451	134	12.1%
No disability	25	30	1.1%	355	119	9.5%

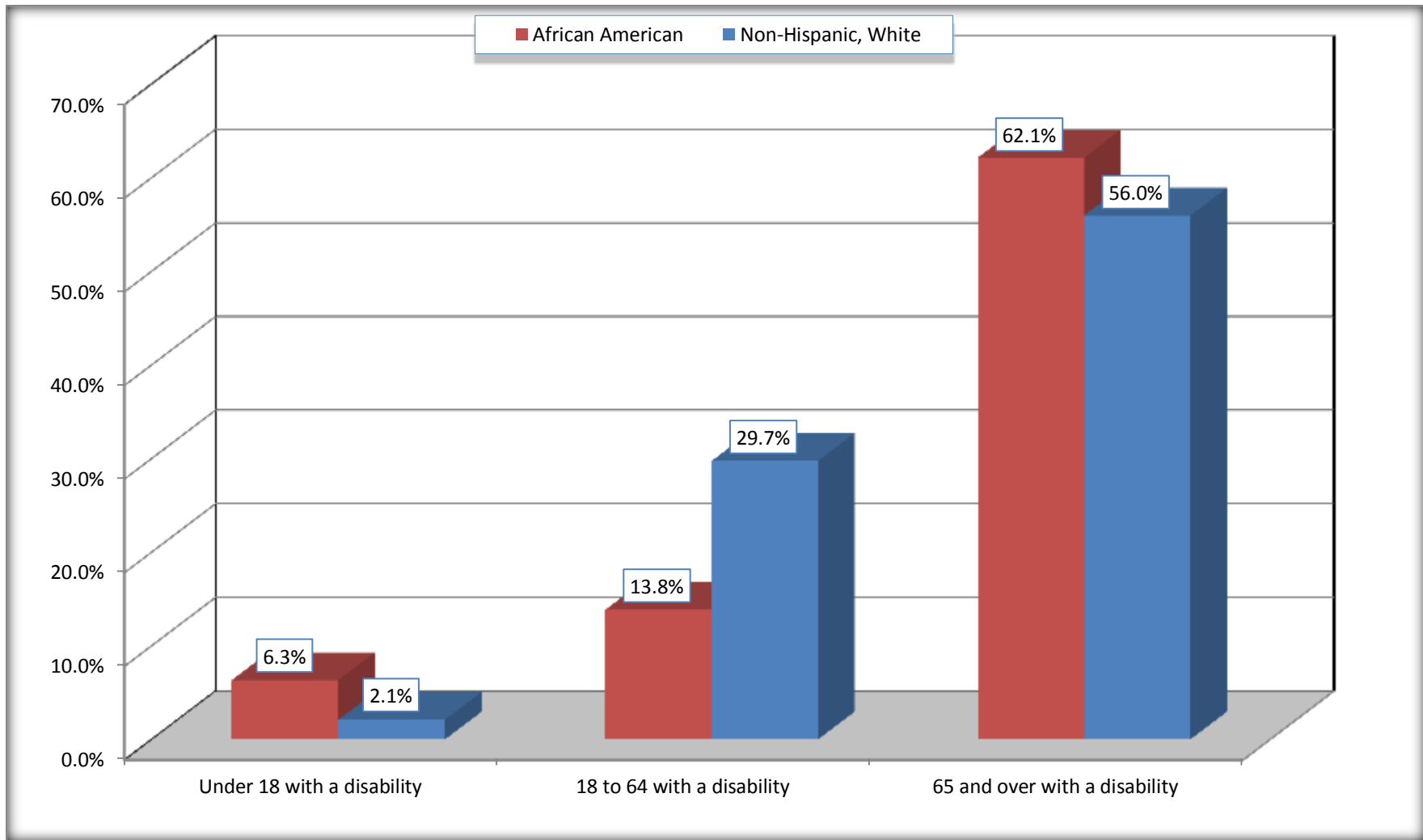
Source: U.S. Census Bureau, 2008-2012 American Community Survey

For information on confidentiality protection, sampling error, nonsampling error, and definitions, see Survey Methodology.

<http://www.census.gov/acs/www/UseData/index.htm>

# Disability by Age

## Homeland Park CDP, South Carolina



Source: B18101. AGE BY DISABILITY STATUS  
Data Set: 2008-2012 American Community Survey 5-Year Estimates

**C27001B. HEALTH INSURANCE COVERAGE STATUS BY AGE**

Data Set: 2008-2012 American Community Survey 5-Year Estimates

	Homeland Park CDP, South Carolina					
	African American	Margin of Error (+/-)	% of AA Total	White, Not Hispanic	Margin of Error (+/-)	% of NHW Total
<b>Total:</b>	<b>2,294</b>	<b>501</b>	<b>100.0%</b>	<b>3,718</b>	<b>562</b>	<b>100.0%</b>
Under 18 years:	679	258	29.6%	666	210	17.9%
With health insurance coverage	679	258	29.6%	551	166	14.8%
No health insurance coverage	0	18	0.0%	115	102	3.1%
18 to 64 years:	1,549	357	67.5%	2,246	403	60.4%
With health insurance coverage	1,167	309	50.9%	1,463	300	39.3%
No health insurance coverage	382	153	16.7%	783	279	21.1%
65 years and over:	66	59	2.9%	806	112	21.7%
With health insurance coverage	66	59	2.9%	806	112	21.7%
No health insurance coverage	0	18	0.0%	0	18	0.0%

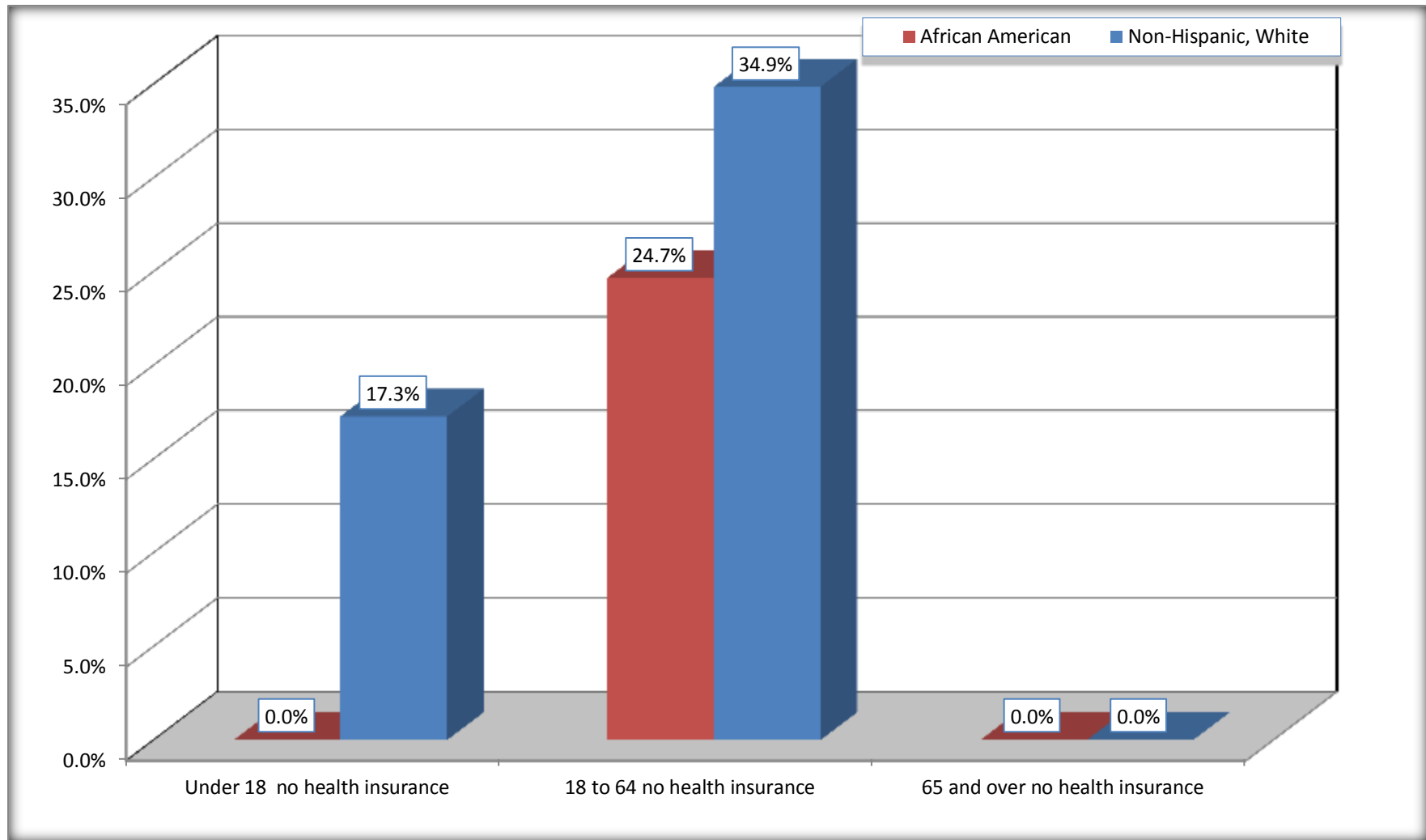
Source: U.S. Census Bureau, 2008-2012 American Community Survey

For information on confidentiality protection, sampling error, nonsampling error, and definitions, see Survey Methodology.

<http://www.census.gov/acs/www/UseData/index.htm>

# Lack of Health Insurance Coverage by Age

## Homeland Park CDP, South Carolina



Source: C27001B. HEALTH INSURANCE COVERAGE STATUS BY AGE  
Data Set: 2008-2012 American Community Survey 5-Year Estimates