

Selected Socio-Economic Data

Clover town, South Carolina

African American and White, Not Hispanic

Data Set: 2008-2012 American Community Survey 5-Year Estimates

www.fairvote2020.org

www.fairdata2000.com

[29-Dec-13](#)

C02003.DETAILED RACE - Universe: TOTAL POPULATION

Data Set: 2008-2012 American Community Survey 5-Year Estimates

	Clover town, South Carolina		
	Population	Margin of Error (+/-)	% of Total
Total:	5,135	19	100.0%
Population of one race:	5,025	123	97.9%
White	3,973	342	77.4%
Black or African American	1,052	312	20.5%
American Indian and Alaska Native	0	18	0.0%
Asian alone	0	18	0.0%
Native Hawaiian and Other Pacific Islander	0	18	0.0%
Some other race	0	18	0.0%
Population of two or more races:	110	124	2.1%
Two races including Some other race	25	34	0.5%
Two races excluding Some other race, and three or more races	85	117	1.7%
Population of two races:	110	124	2.1%
White; Black or African American	85	117	1.7%
White; American Indian and Alaska Native	0	18	0.0%
White; Asian	0	18	0.0%
Black or African American; American Indian and Alaska Native	0	18	0.0%
All other two race combinations	25	34	0.5%
Population of three races	0	18	0.0%
Population of four or more races	0	18	0.0%

Note: Hispanics may be of any race. See Table B03002 and chart.

Source: U.S. Census Bureau, 2008-2012 American Community Survey

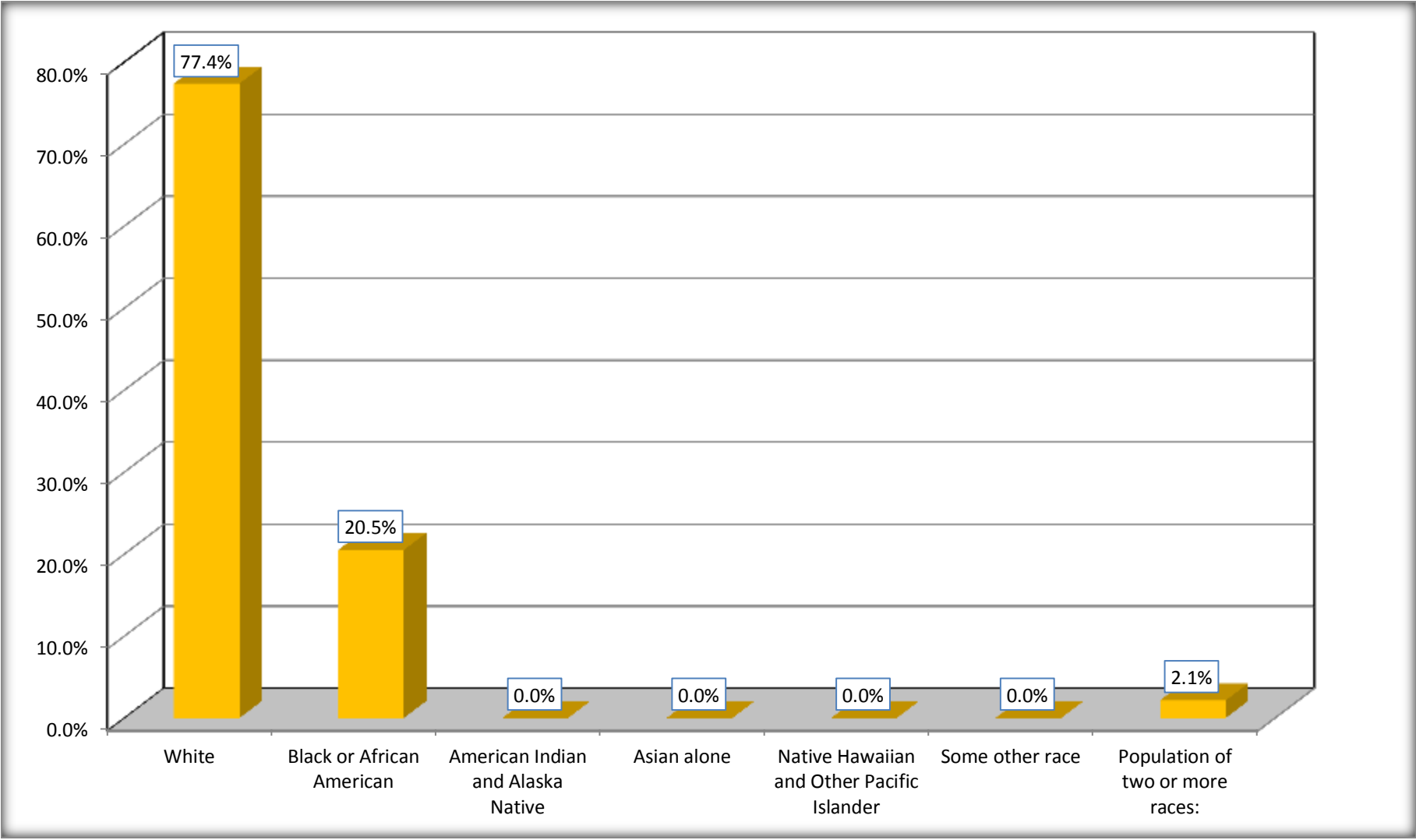
Although the American Community Survey (ACS) produces population, demographic and housing unit estimates, it is the Census Bureau's Population Estimates Program that produces and disseminates the official estimates of the population for the nation, states, counties, cities and towns and estimates of housing units for states and counties.

For information on confidentiality protection, sampling error, nonsampling error, and definitions, see Survey Methodology.

<http://www.census.gov/acs/www/UseData/index.htm>

Population by Race

Clover town, South Carolina



Source: C02003.DETAILED RACE - Universe: TOTAL POPULATION
Data Set: 2008-2012 American Community Survey 5-Year Estimates

B03002. HISPANIC OR LATINO ORIGIN BY RACE - Universe: TOTAL POPULATION

Data Set: 2008-2012 American Community Survey 5-Year Estimates

	Clover town, South Carolina		
	Population	Margin of Error (+/-)	% of Total
Total:	5,135	19	100.0%
Not Hispanic or Latino:	4,721	316	91.9%
White alone	3,705	403	72.2%
Black or African American alone	931	364	18.1%
American Indian and Alaska Native alone	0	18	0.0%
Asian alone	0	18	0.0%
Native Hawaiian and Other Pacific Islander alone	0	18	0.0%
Some other race alone	0	18	0.0%
Two or more races:	85	117	1.7%
Two races including Some other race	0	18	0.0%
Two races excluding Some other race, and three or more races	85	117	1.7%
Hispanic or Latino	414	316	8.1%

Source: U.S. Census Bureau, 2008-2012 American Community Survey

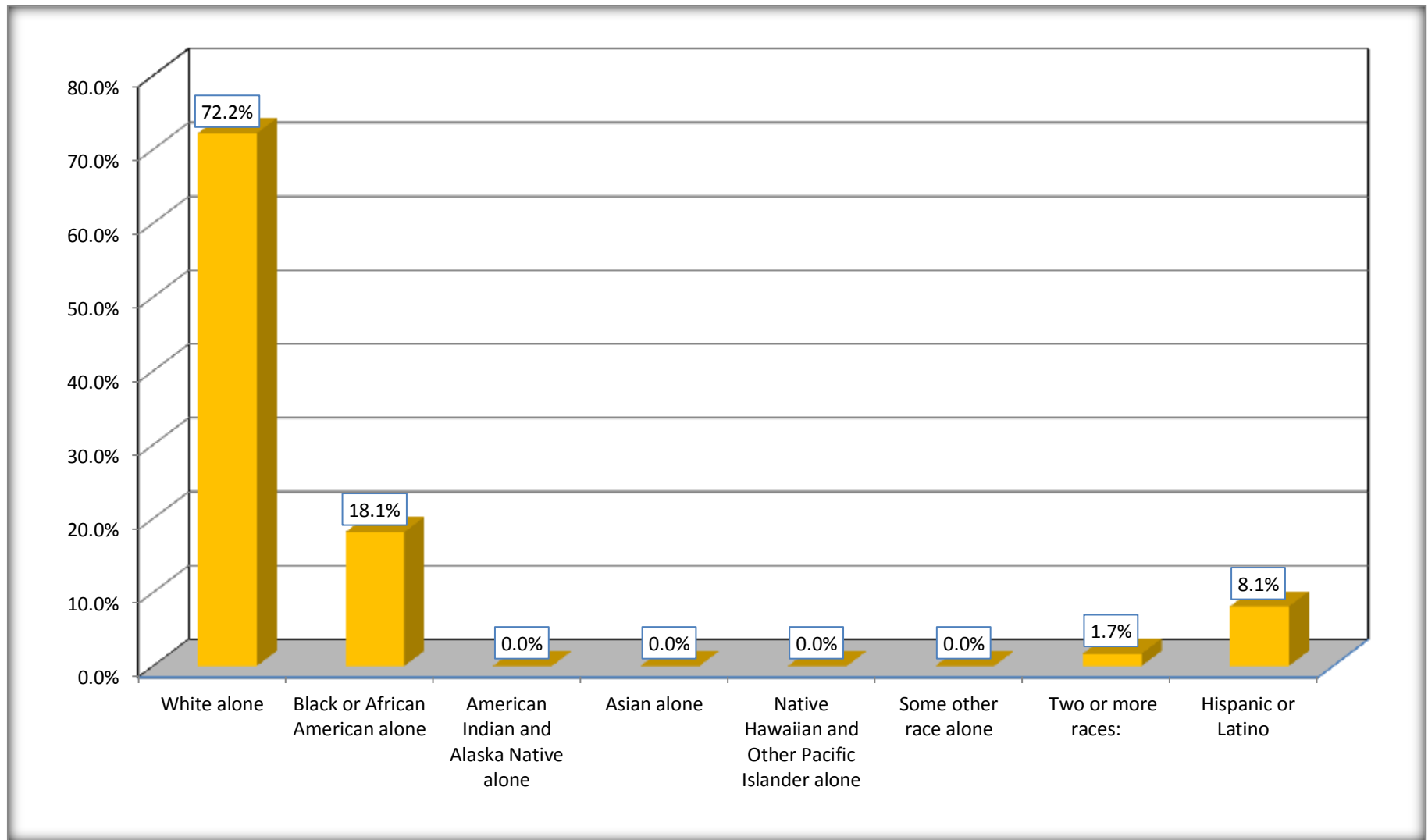
Although the American Community Survey (ACS) produces population, demographic and housing unit estimates, it is the Census Bureau's Population Estimates Program that produces and disseminates the official estimates of the population for the nation, states, counties, cities and towns and estimates of housing units for states and counties.

For information on confidentiality protection, sampling error, nonsampling error, and definitions, see Survey Methodology.

<http://www.census.gov/acs/www/UseData/index.htm>

Non-Hispanic by Race and Hispanic Population

Clover town, South Carolina



Source: B03002. HISPANIC OR LATINO ORIGIN BY RACE - Universe: TOTAL POPULATION
Data Set: 2008-2012 American Community Survey 5-Year Estimates

B03002. HISPANIC OR LATINO ORIGIN BY RACE

Data Set: 2008-2012 American Community Survey 5-Year Estimates

	Clover town, South Carolina		
	Population	Margin of Error (+/-)	% of Total
Hispanic or Latino:	414	316	100.0%
White alone	268	259	64.7%
Black or African American alone	121	171	29.2%
American Indian and Alaska Native alone	0	18	0.0%
Asian alone	0	18	0.0%
Native Hawaiian and Other Pacific Islander alone	0	18	0.0%
Some other race alone	0	18	0.0%
Two or more races:	25	34	6.0%
Two races including Some other race	25	34	6.0%
Two races excluding Some other race, and three or more races	0	18	0.0%

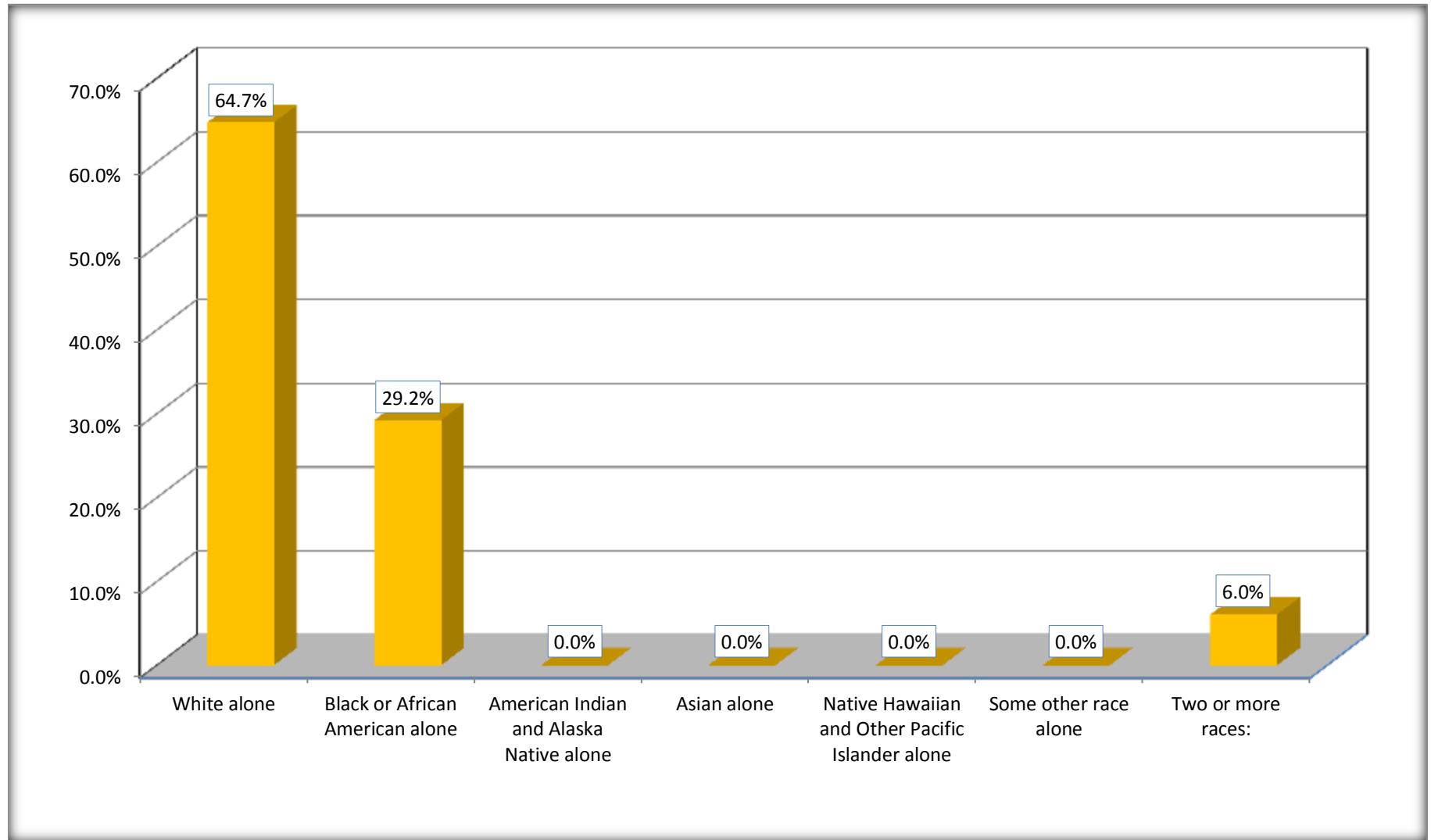
Source: U.S. Census Bureau, 2008-2012 American Community Survey

Although the American Community Survey (ACS) produces population, demographic and housing unit estimates, it is the Census Bureau's Population Estimates Program that produces and disseminates the official estimates of the population for the nation, states, counties, cities and towns and estimates of housing units for states and counties.

For information on confidentiality protection, sampling error, nonsampling error, and definitions, see Survey Methodology.

<http://www.census.gov/acs/www/UseData/index.htm>

Hispanic or Latino Origin by Race Clover town, South Carolina



Source: B03002. HISPANIC OR LATINO ORIGIN BY RACE
Data Set: 2008-2012 American Community Survey 5-Year Estimates

B01001. SEX BY AGE

Data Set: 2008-2012 American Community Survey 5-Year Estimates

	Clover town, South Carolina					
	African American	Margin of Error (+/-)	% of AA Total	White, Not Hispanic	Margin of Error (+/-)	% of NHW Total
Total:	1,052	312	100.0%	3,705	403	100.0%
Under 18 years	387	NC	36.8%	899	NC	24.3%
18 to 64 years	551	NC	52.4%	2,264	NC	61.1%
65 years and over	114	NC	10.8%	542	NC	14.6%
Male:	641	276	60.9%	1,796	389	48.5%
Under 18 years	325	NC	30.9%	565	NC	15.2%
18 to 64 years	263	NC	25.0%	989	NC	26.7%
65 years and over	53	NC	5.0%	242	NC	6.5%
Female:	411	131	39.1%	1,909	412	51.5%
Under 18 years	62	NC	5.9%	334	NC	9.0%
18 to 64 years	288	NC	27.4%	1,275	NC	34.4%
65 years and over	61	NC	5.8%	300	NC	8.1%

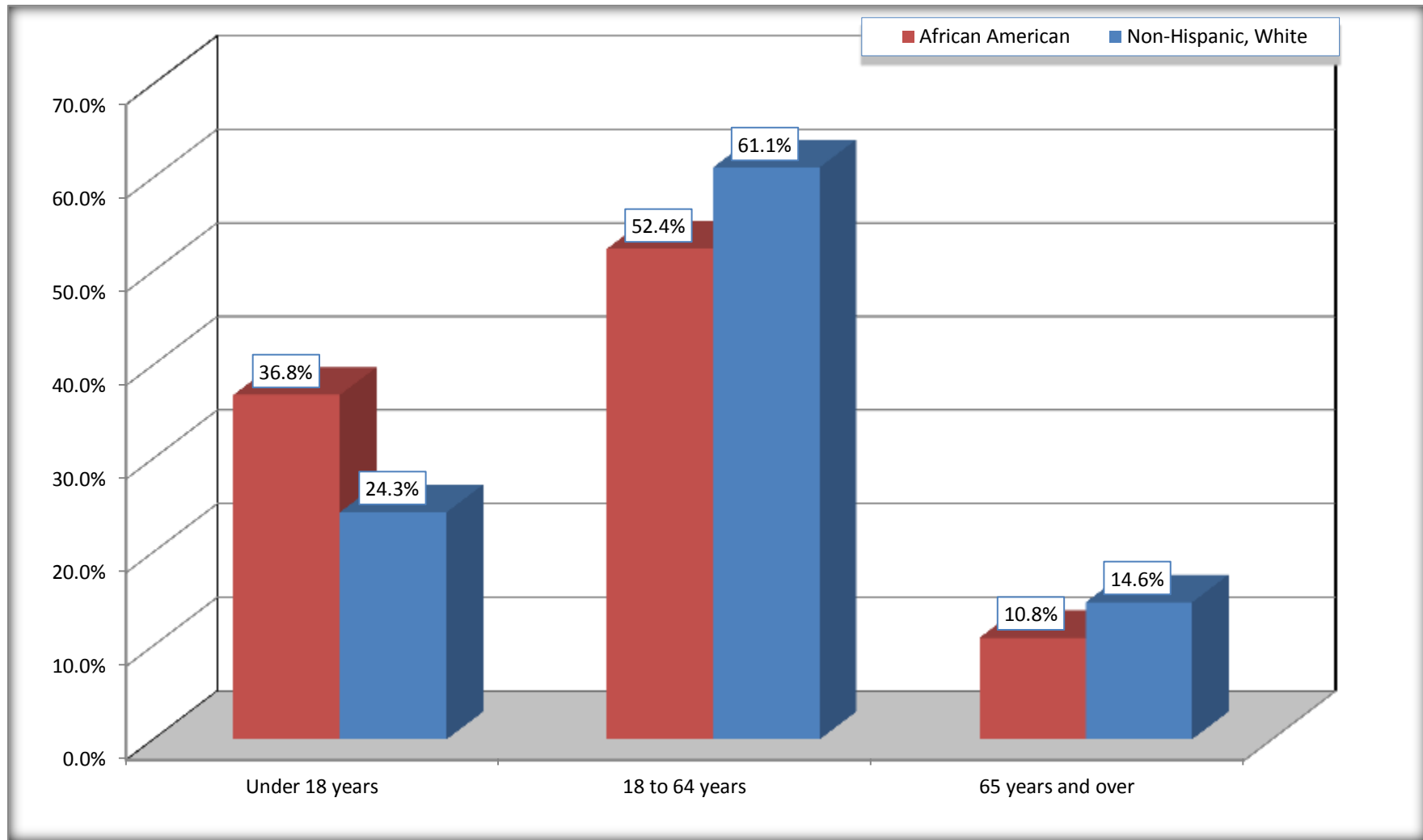
Source: U.S. Census Bureau, 2008-2012 American Community Survey

Although the American Community Survey (ACS) produces population, demographic and housing unit estimates, it is the Census Bureau's Population Estimates Program that produces and disseminates the official estimates of the population for the nation, states, counties, cities and towns and estimates of housing units for states and counties.

For information on confidentiality protection, sampling error, nonsampling error, and definitions, see Survey Methodology.
<http://www.census.gov/acs/www/UseData/index.htm>

Population by Age

Clover town, South Carolina



Source: B01001. SEX BY AGE
Data Set: 2008-2012 American Community Survey 5-Year Estimates

B05003. SEX BY AGE BY CITIZENSHIP STATUS

Data Set: 2008-2012 American Community Survey 5-Year Estimates

	Clover town, South Carolina					
	African American	Margin of Error (+/-)	% of AA Total by Age	White, Not Hispanic	Margin of Error (+/-)	% of NHW Total by Age
Total:	1,052	312	100.0%	3,705	403	100.0%
Under 18 years:	387	NC	100.0%	899	NC	100.0%
Native	387	NC	100.0%	899	NC	100.0%
Foreign born:	0	NC	0.0%	0	NC	0.0%
Naturalized U.S. citizen	0	NC	0.0%	0	NC	0.0%
Not a U.S. citizen	0	NC	0.0%	0	NC	0.0%
18 years and over:	665	NC	100.0%	2,806	NC	100.0%
Native	665	NC	100.0%	2,732	NC	97.4%
Foreign born:	0	NC	0.0%	74	NC	2.6%
Naturalized U.S. citizen	0	NC	0.0%	0	NC	0.0%
Not a U.S. citizen	0	NC	0.0%	74	NC	2.6%
Male:	641	276	60.9%	1,796	278	48.5%
Under 18 years:	325	196	100.0%	565	181	100.0%
Native	325	196	100.0%	565	181	100.0%
Foreign born:	0	18	0.0%	0	18	0.0%
Naturalized U.S. citizen	0	18	0.0%	0	18	0.0%
Not a U.S. citizen	0	18	0.0%	0	18	0.0%
18 years and over:	316	154	100.0%	1,231	192	100.0%
Native	316	154	100.0%	1,175	203	95.5%
Foreign born:	0	18	0.0%	56	70	4.5%
Naturalized U.S. citizen	0	18	0.0%	0	18	0.0%
Not a U.S. citizen	0	18	0.0%	56	70	4.5%

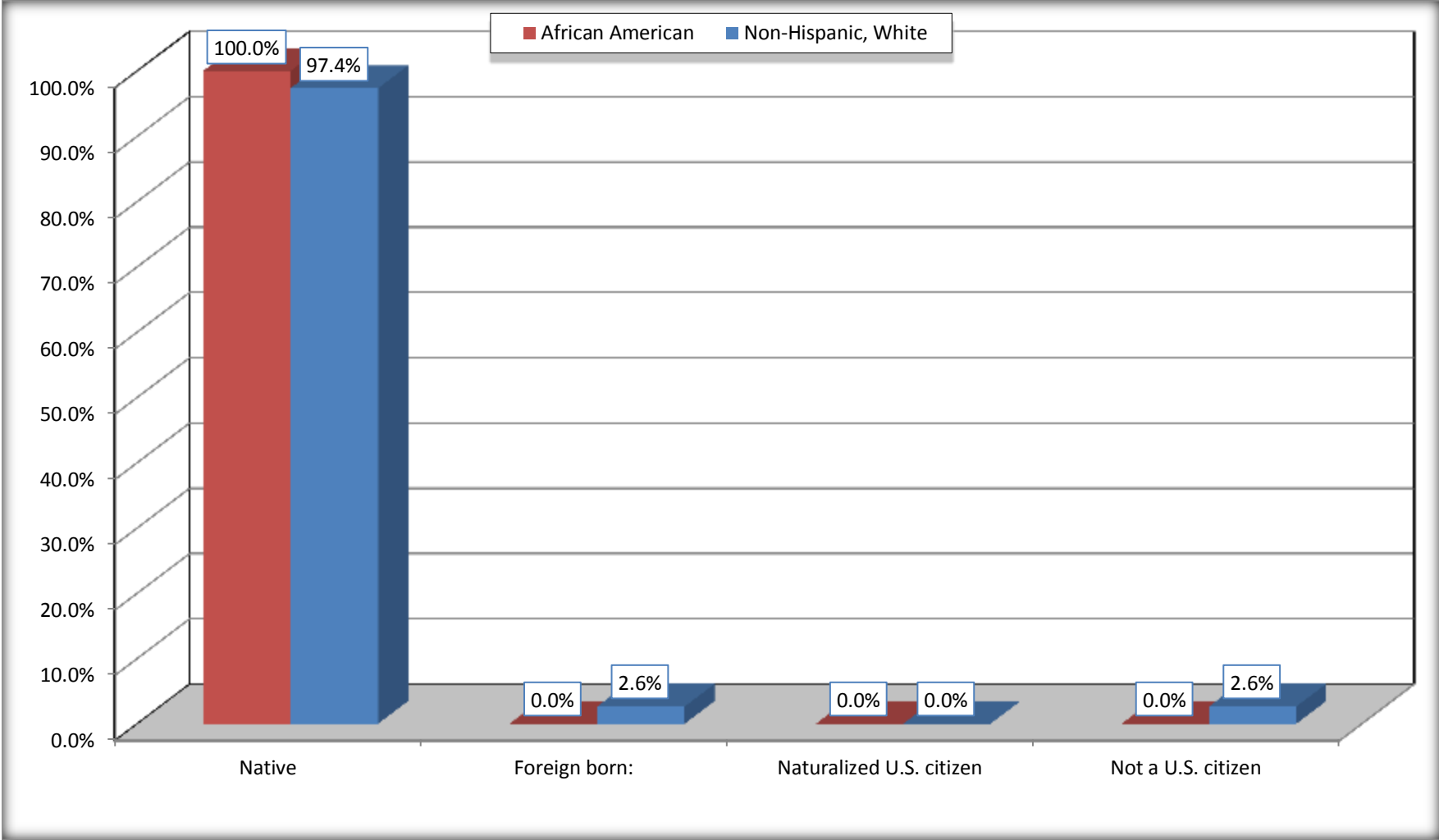
	Clover town, South Carolina					
	African American	Margin of Error (+/-)	% of AA by Age	White, Not Hispanic	Margin of Error (+/-)	% of NHW by Age
Female:	411	131	39.1%	1,909	254	51.5%
Under 18 years:	62	88	100.0%	334	141	100.0%
Native	62	88	100.0%	334	141	100.0%
Foreign born:	0	18	0.0%	0	18	0.0%
Naturalized U.S. citizen	0	18	0.0%	0	18	0.0%
Not a U.S. citizen	0	18	0.0%	0	18	0.0%
18 years and over:	349	100	100.0%	1,575	184	100.0%
Native	349	100	100.0%	1,557	189	98.9%
Foreign born:	0	18	0.0%	18	31	1.1%
Naturalized U.S. citizen	0	18	0.0%	0	18	0.0%
Not a U.S. citizen	0	18	0.0%	18	31	1.1%

Source: U.S. Census Bureau, 2008-2012 American Community Survey

For information on confidentiality protection, sampling error, nonsampling error, and definitions, see Survey Methodology.
<http://www.census.gov/acs/www/UseData/index.htm>

Citizenship Status of Voting Age Population (18 and Over)

Clover town, South Carolina



Source: B05003. SEX BY AGE BY CITIZENSHIP STATUS
Data Set: 2008-2012 American Community Survey 5-Year Estimates

**B07004. GEOGRAPHICAL MOBILITY IN THE PAST YEAR BY RACE FOR CURRENT RESIDENCE IN THE UNITED STATES - Universe:
POPULATION 1 YEAR AND OVER**

Data Set: 2008-2012 American Community Survey 5-Year Estimates

	Clover town, South Carolina					
	African American	Margin of Error (+/-)	% of AA Total	White, Not Hispanic	Margin of Error (+/-)	% of NHW Total
Total:	948	270	100.0%	3,685	395	100.0%
Same house 1 year ago	795	311	83.9%	2,970	424	80.6%
Moved within same county	61	91	6.4%	449	245	12.2%
Moved from different county within same state	0	18	0.0%	72	111	2.0%
Moved from different state	92	127	9.7%	194	166	5.3%
Moved from abroad	0	18	0.0%	0	18	0.0%

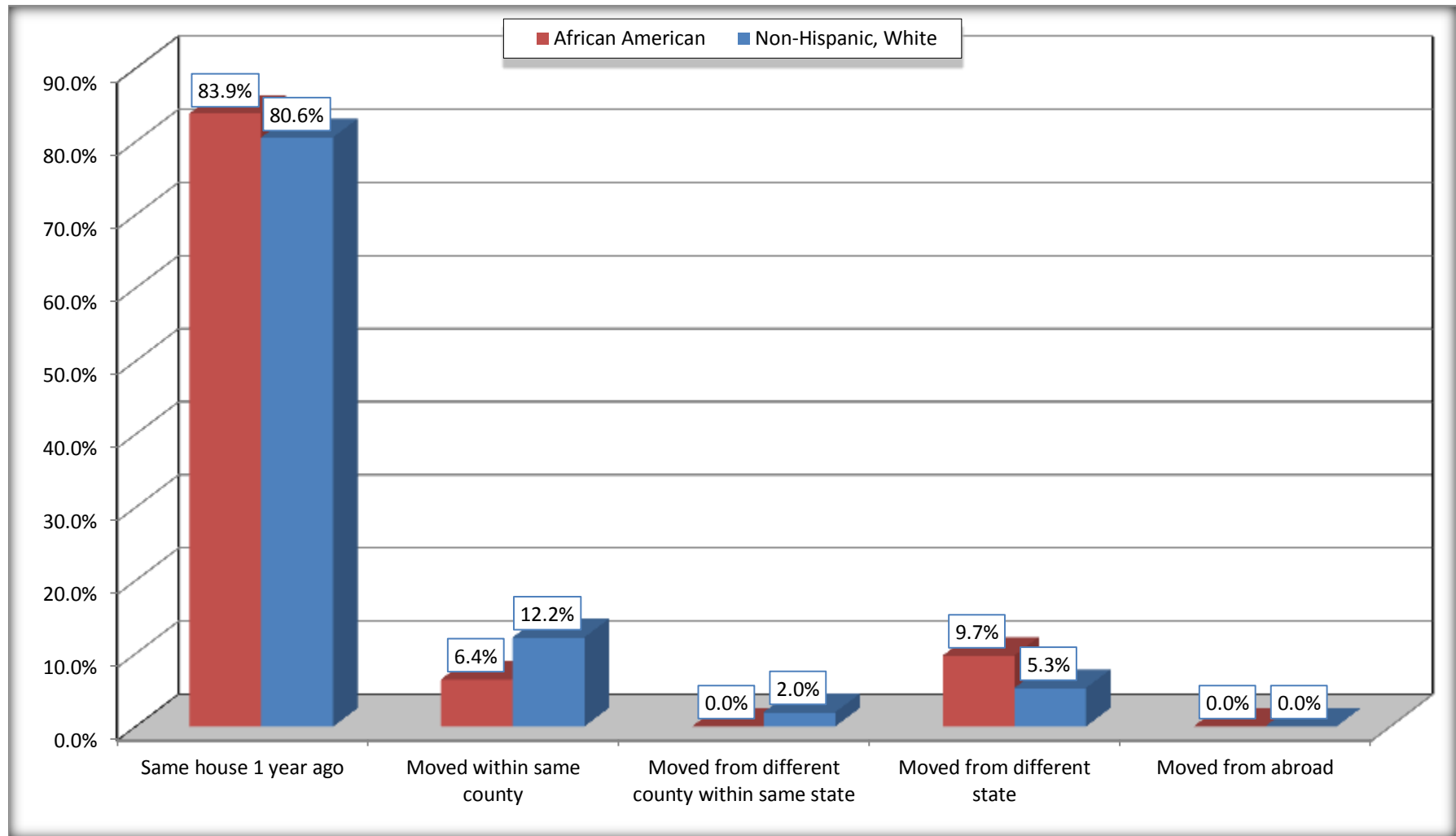
Source: U.S. Census Bureau, 2008-2012 American Community Survey

For information on confidentiality protection, sampling error, nonsampling error, and definitions, see Survey Methodology.

<http://www.census.gov/acs/www/UseData/index.htm>

Geographical Mobility in the Past Year (Population 1 Year and Over)

Clover town, South Carolina



Source: B07004. GEOGRAPHICAL MOBILITY IN THE PAST YEAR BY RACE FOR CURRENT RESIDENCE IN THE UNITED STATES - Universe: POPULATION 1 YEAR AND OVER

Data Set: 2008-2012 American Community Survey 5-Year Estimates

B08105. MEANS OF TRANSPORTATION TO WORK - Universe: WORKERS 16 YEARS AND OVER

Data Set: 2008-2012 American Community Survey 5-Year Estimates

	Clover town, South Carolina					
	African American	Margin of Error (+/-)	% of AA Total	White, Not Hispanic	Margin of Error (+/-)	% of NHW Total
Total:	254	123	100.0%	1652	229	100.0%
Car, truck, or van - drove alone	193	129	76.0%	1465	243	88.7%
Car, truck, or van - carpooled	48	42	18.9%	158	105	9.6%
Public transportation (excluding taxicab)	0	18	0.0%	0	18	0.0%
Walked	13	22	5.1%	10	18	0.6%
Taxicab, motorcycle, bicycle, or other means	0	18	0.0%	19	21	1.2%
Worked at home	0	18	0.0%	0	18	0.0%

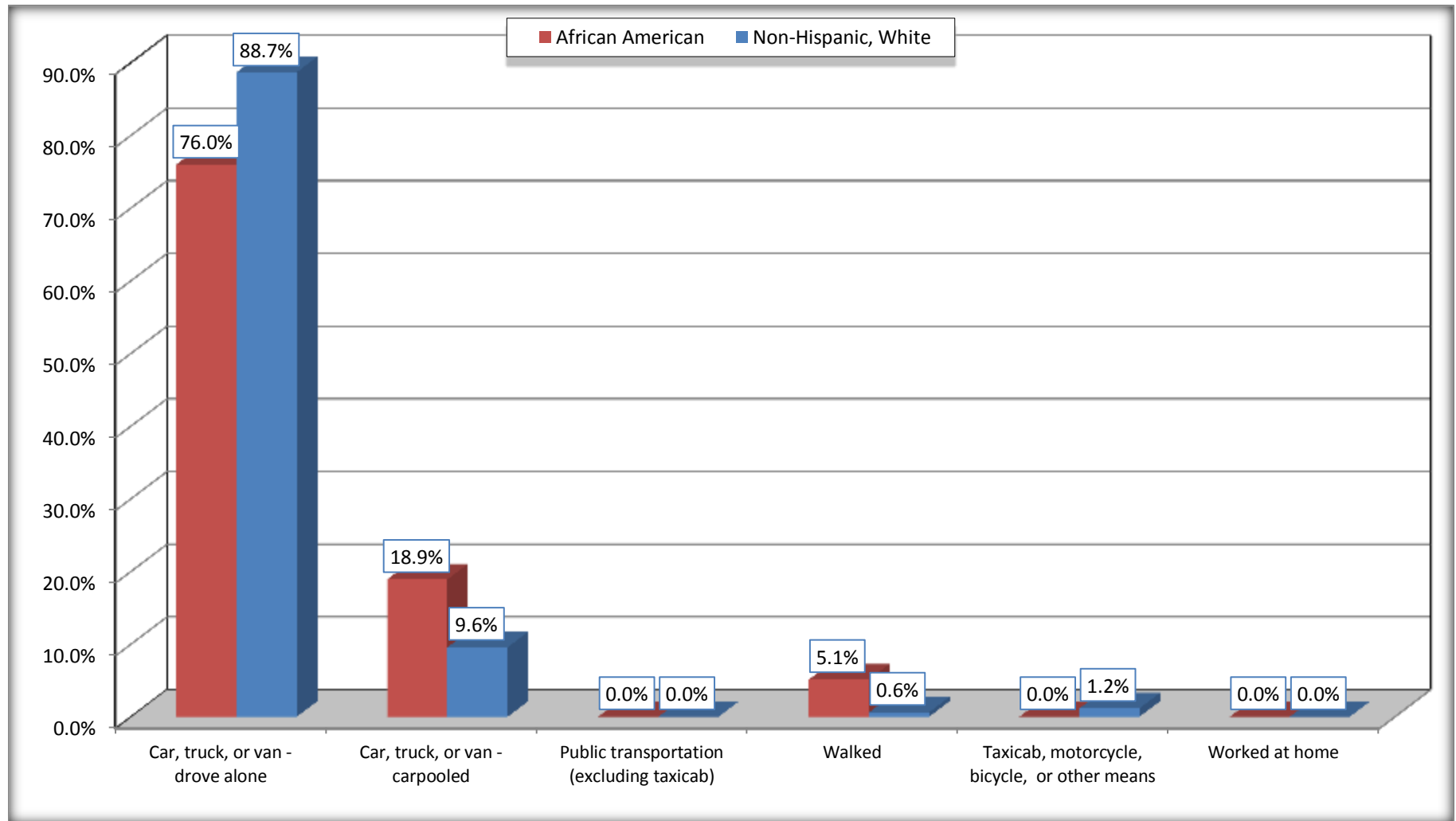
Source: U.S. Census Bureau, 2008-2012 American Community Survey

For information on confidentiality protection, sampling error, nonsampling error, and definitions, see Survey Methodology.

<http://www.census.gov/acs/www/UseData/index.htm>

Means of Transportation to Work (Workers 16 Years and Over)

Clover town, South Carolina



Source: B08105. MEANS OF TRANSPORTATION TO WORK - Universe: WORKERS 16 YEARS AND OVER
Data Set: 2008-2012 American Community Survey 5-Year Estimates

B11002. HOUSEHOLD TYPE BY RELATIVES AND NONRELATIVES FOR POPULATION IN HOUSEHOLDS

Data Set: 2008-2012 American Community Survey 5-Year Estimates

	Clover town, South Carolina					
	African American	Margin of Error (+/-)	% of AA Total	White, Not Hispanic	Margin of Error (+/-)	% of NHW Total
Total:	1049	415	100.0%	3879	375	100.0%
In family households	892	404	85.0%	3130	386	80.7%
In nonfamily households	157	112	15.0%	749	247	19.3%

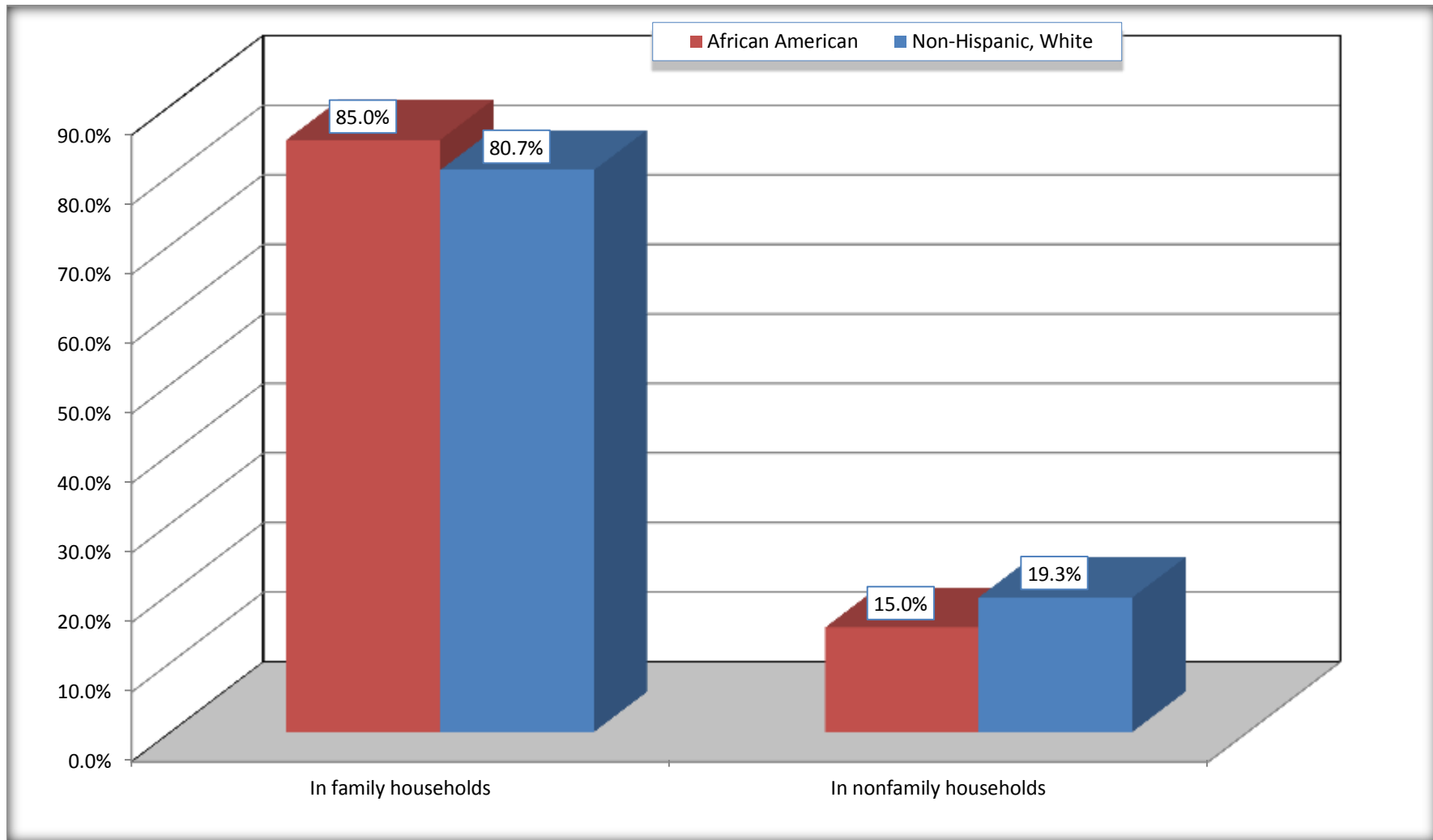
Source: U.S. Census Bureau, 2008-2012 American Community Survey

For information on confidentiality protection, sampling error, nonsampling error, and definitions, see Survey Methodology.

<http://www.census.gov/acs/www/UseData/index.htm>

Household Type for Population in Households

Clover town, South Carolina



Source: B11002. HOUSEHOLD TYPE BY RELATIVES AND NONRELATIVES FOR POPULATION IN HOUSEHOLDS
Data Set: 2008-2012 American Community Survey 5-Year Estimates

B12002. MARITAL STATUS FOR THE POPULATION 15 YEARS AND OVER

Data Set: 2008-2012 American Community Survey 5-Year Estimates

	Clover town, South Carolina					
	African American	Margin of Error (+/-)	% of AA Total	White, Not Hispanic	Margin of Error (+/-)	% of NHW Total
Total:	665	206	100.0%	2,890	267	100.0%
Never married	220	NC	33.1%	641	NC	22.2%
Now married (except separated)	217	NC	32.6%	1,404	NC	48.6%
Separated	61	NC	9.2%	126	NC	4.4%
Widowed	59	NC	8.9%	250	NC	8.7%
Divorced	108	NC	16.2%	469	NC	16.2%
Male:	316	154	47.5%	1,289	204	44.6%
Never married	136	100	20.5%	335	121	11.6%
Now married (except separated)	125	87	18.8%	653	133	22.6%
Separated	2	4	0.3%	17	28	0.6%
Widowed	0	18	0.0%	49	45	1.7%
Divorced	53	85	8.0%	235	127	8.1%
Female:	349	100	52.5%	1,601	202	55.4%
Never married	84	51	12.6%	306	150	10.6%
Now married (except separated)	92	51	13.8%	751	153	26.0%
Separated	59	62	8.9%	109	102	3.8%
Widowed	59	46	8.9%	201	95	7.0%
Divorced	55	56	8.3%	234	108	8.1%

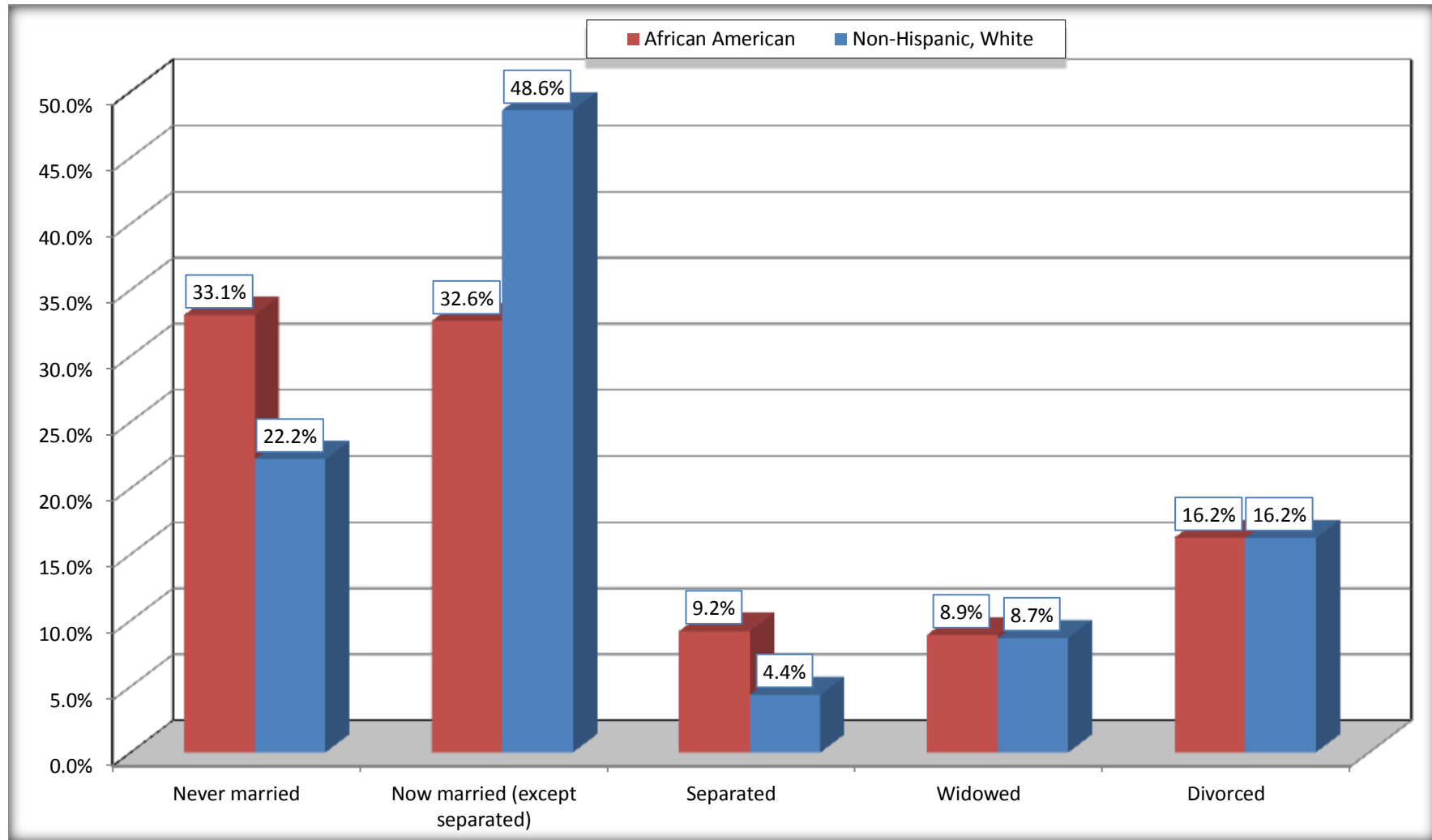
Source: U.S. Census Bureau, 2008-2012 American Community Survey

For information on confidentiality protection, sampling error, nonsampling error, and definitions, see Survey Methodology.

<http://www.census.gov/acs/www/UseData/index.htm>

Marital Status for the Population 15 Years and Over

Clover town, South Carolina



Source: B12002. MARITAL STATUS FOR THE POPULATION 15 YEARS AND OVER
Data Set: 2008-2012 American Community Survey 5-Year Estimates

C15002. SEX BY EDUCATIONAL ATTAINMENT FOR THE POPULATION 25 YEARS AND OVER

Data Set: 2008-2012 American Community Survey 5-Year Estimates

	Clover town, South Carolina					
	African American	Margin of Error (+/-)	% of AA Total	White, Not Hispanic	Margin of Error (+/-)	% of NHW Total
Total:	597	194	100.0%	2,525	256	100.0%
Less than high school diploma	184	NC	30.8%	437	NC	17.3%
High school graduate, GED, or alternative	107	NC	17.9%	878	NC	34.8%
Some college or associate's degree	243	NC	40.7%	707	NC	28.0%
Bachelor's degree or higher	63	NC	10.6%	503	NC	19.9%
Male:	248	142	41.5%	1,113	196	44.1%
Less than high school diploma	69	88	11.6%	206	104	8.2%
High school graduate, GED, or alternative	52	71	8.7%	362	123	14.3%
Some college or associate's degree	86	74	14.4%	326	146	12.9%
Bachelor's degree or higher	41	57	6.9%	219	106	8.7%
Female:	349	100	58.5%	1,412	163	55.9%
Less than high school diploma	115	57	19.3%	231	99	9.1%
High school graduate, GED, or alternative	55	62	9.2%	516	158	20.4%
Some college or associate's degree	157	76	26.3%	381	136	15.1%
Bachelor's degree or higher	22	34	3.7%	284	136	11.2%

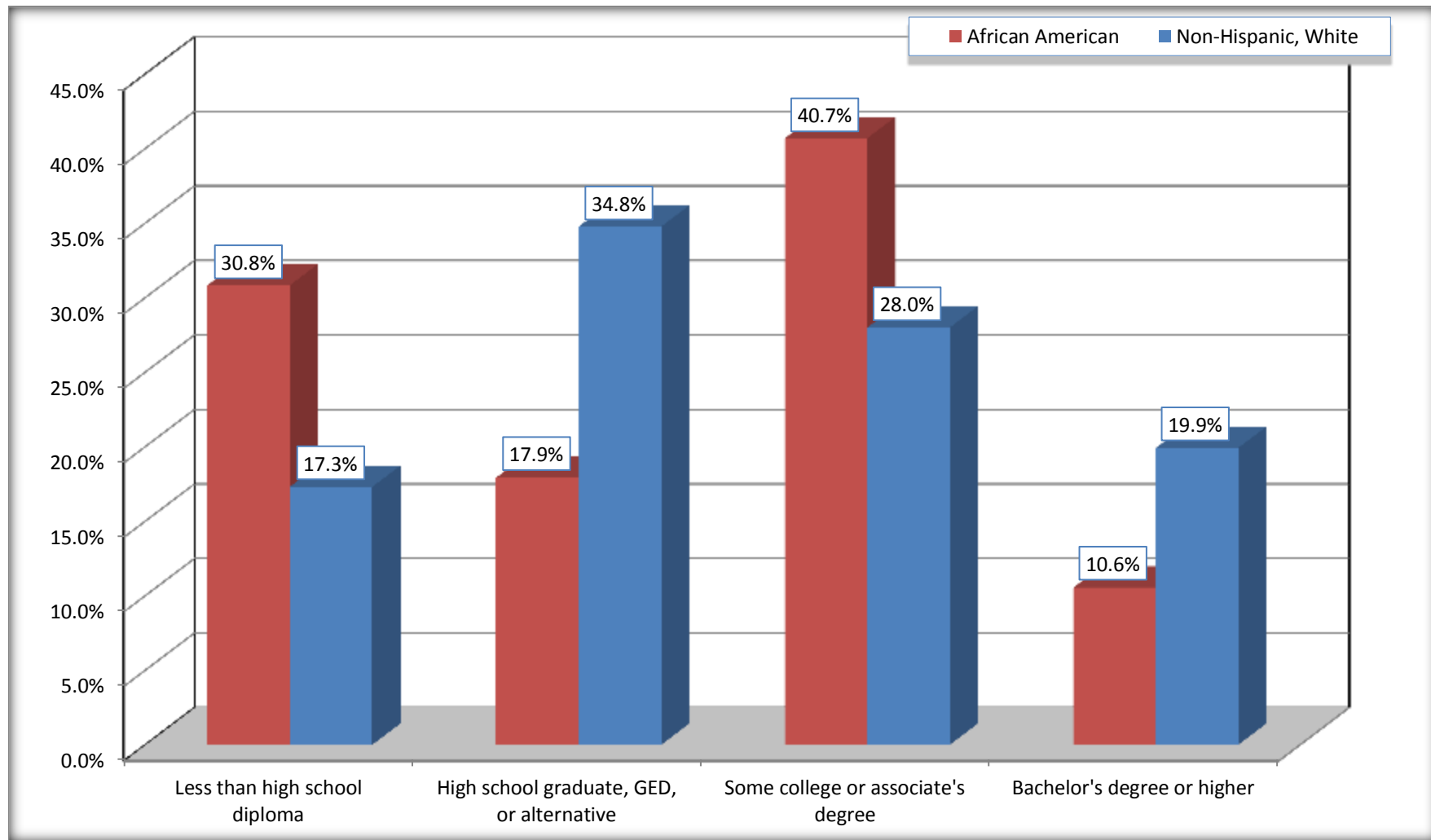
Source: U.S. Census Bureau, 2008-2012 American Community Survey

For information on confidentiality protection, sampling error, nonsampling error, and definitions, see Survey Methodology.

<http://www.census.gov/acs/www/UseData/index.htm>

Educational Attainment for the Population 25 Years and Older

Clover town, South Carolina



Source: C15002. SEX BY EDUCATIONAL ATTAINMENT FOR THE POPULATION 25 YEARS AND OVER
Data Set: 2008-2012 American Community Survey 5-Year Estimates

B17010. POVERTY STATUS IN THE PAST 12 MONTHS OF FAMILIES BY FAMILY TYPE BY PRESENCE OF RELATED CHILDREN UNDER 18 YEARS

Data Set: 2008-2012 American Community Survey 5-Year Estimates

	Clover town, South Carolina					
	African American	Margin of Error (+/-)	% of AA Total	White, Not Hispanic	Margin of Error (+/-)	% of NHW Total
Total:	274	109	100.0%	958	124	100.0%
Income in the past 12 months below poverty level:	65	56	23.7%	186	120	19.4%
Married-couple family:	0	18	0.0%	33	32	3.4%
With related children under 18 years	0	18	0.0%	33	32	3.4%
Other family:	65	56	23.7%	153	111	16.0%
Male householder, no wife present	0	18	0.0%	15	23	1.6%
With related children under 18 years	0	18	0.0%	11	21	1.1%
Female householder, no husband present	65	56	23.7%	138	107	14.4%
With related children under 18 years	28	39	10.2%	127	105	13.3%
Income in the past 12 months at or above poverty level:	209	103	76.3%	772	142	80.6%
Married-couple family:	125	87	45.6%	620	137	64.7%
With related children under 18 years	100	83	36.5%	265	102	27.7%
Other family:	84	48	30.7%	152	103	15.9%
Male householder, no wife present	0	18	0.0%	48	69	5.0%
With related children under 18 years	0	18	0.0%	48	69	5.0%
Female householder, no husband present	84	48	30.7%	104	81	10.9%
With related children under 18 years	27	41	9.9%	93	80	9.7%

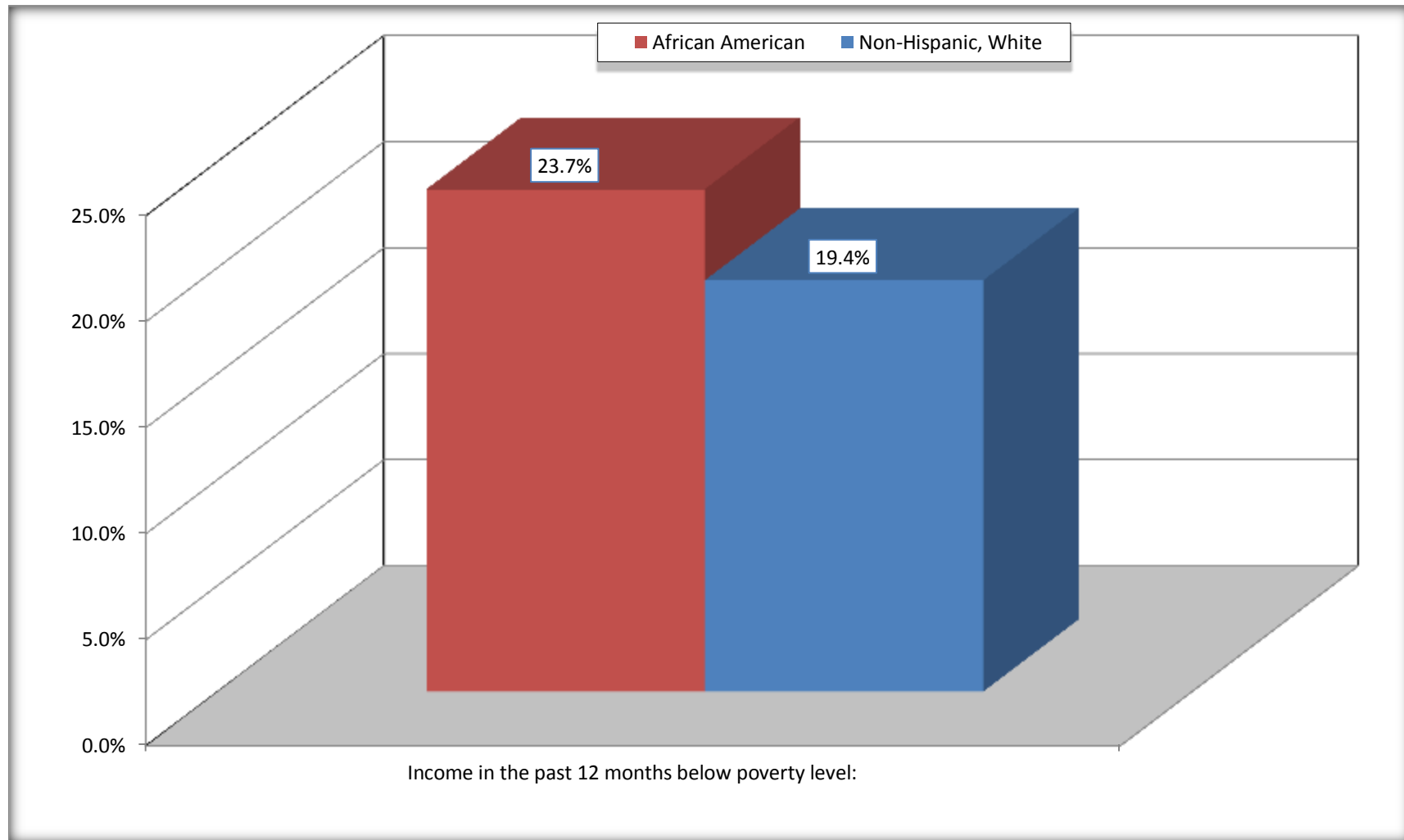
Source: U.S. Census Bureau, 2008-2012 American Community Survey

For information on confidentiality protection, sampling error, nonsampling error, and definitions, see Survey Methodology.

<http://www.census.gov/acs/www/UseData/index.htm>

Family Households Below Poverty in the Past 12 Months

Clover town, South Carolina

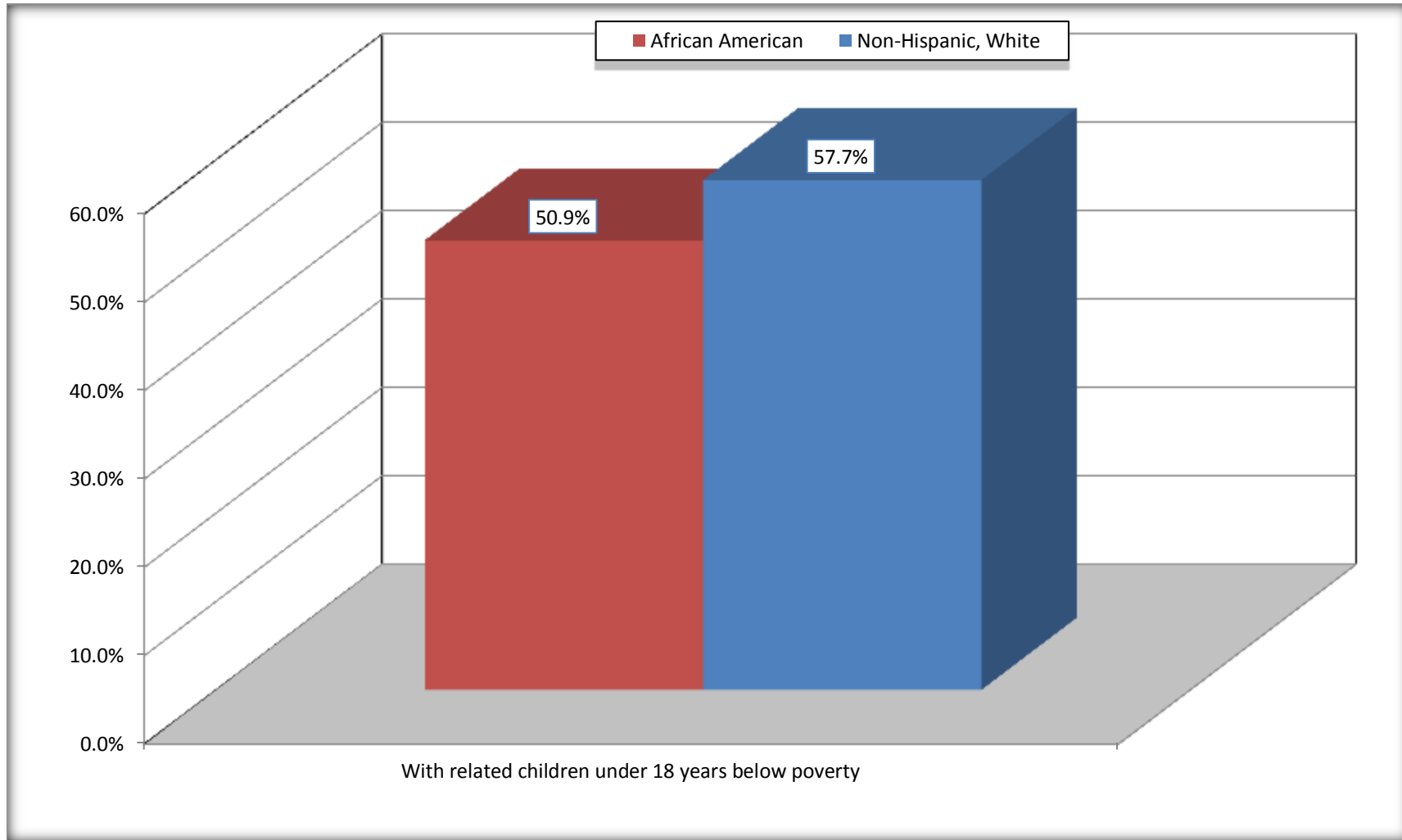


Source: B17010. POVERTY STATUS IN THE PAST 12 MONTHS OF FAMILIES BY FAMILY TYPE BY PRESENCE OF RELATED CHILDREN UNDER 18 YEARS

Data Set: 2008-2012 American Community Survey 5-Year Estimates

Female-headed Households with Related Children Below Poverty in the Past 12 Months

Clover town, South Carolina



Source: B17010. POVERTY STATUS IN THE PAST 12 MONTHS OF FAMILIES BY FAMILY TYPE BY PRESENCE OF RELATED CHILDREN UNDER 18 YEARS

Data Set: 2008-2012 American Community Survey 5-Year Estimates

B17020 POVERTY STATUS IN THE PAST 12 MONTHS BY AGE - Universe: POPULATION FOR WHOM POVERTY STATUS IS DETERMINED

Data Set: 2008-2012 American Community Survey 5-Year Estimates

	Clover town, South Carolina					
	African American	Margin of Error (+/-)	% of AA By Age	White, Not Hispanic	Margin of Error (+/-)	% of NHW By Age
Total:	1,052	312	100.0%	3,705	403	100.0%
Income in the past 12 months below poverty level:	252	176	24.0%	671	341	18.1%
Under 18 years	78	NC	20.2%	212	NC	23.6%
18 to 64 years	159	130	28.9%	403	189	17.8%
65 years and over	15	NC	13.2%	56	NC	10.3%
Income in the past 12 months at or above poverty level:	800	294	76.0%	3,034	437	81.9%
Under 18 years	309	NC	79.8%	687	NC	76.4%
18 to 64 years	392	149	71.1%	1,861	299	82.2%
65 years and over	99	NC	86.8%	486	NC	89.7%

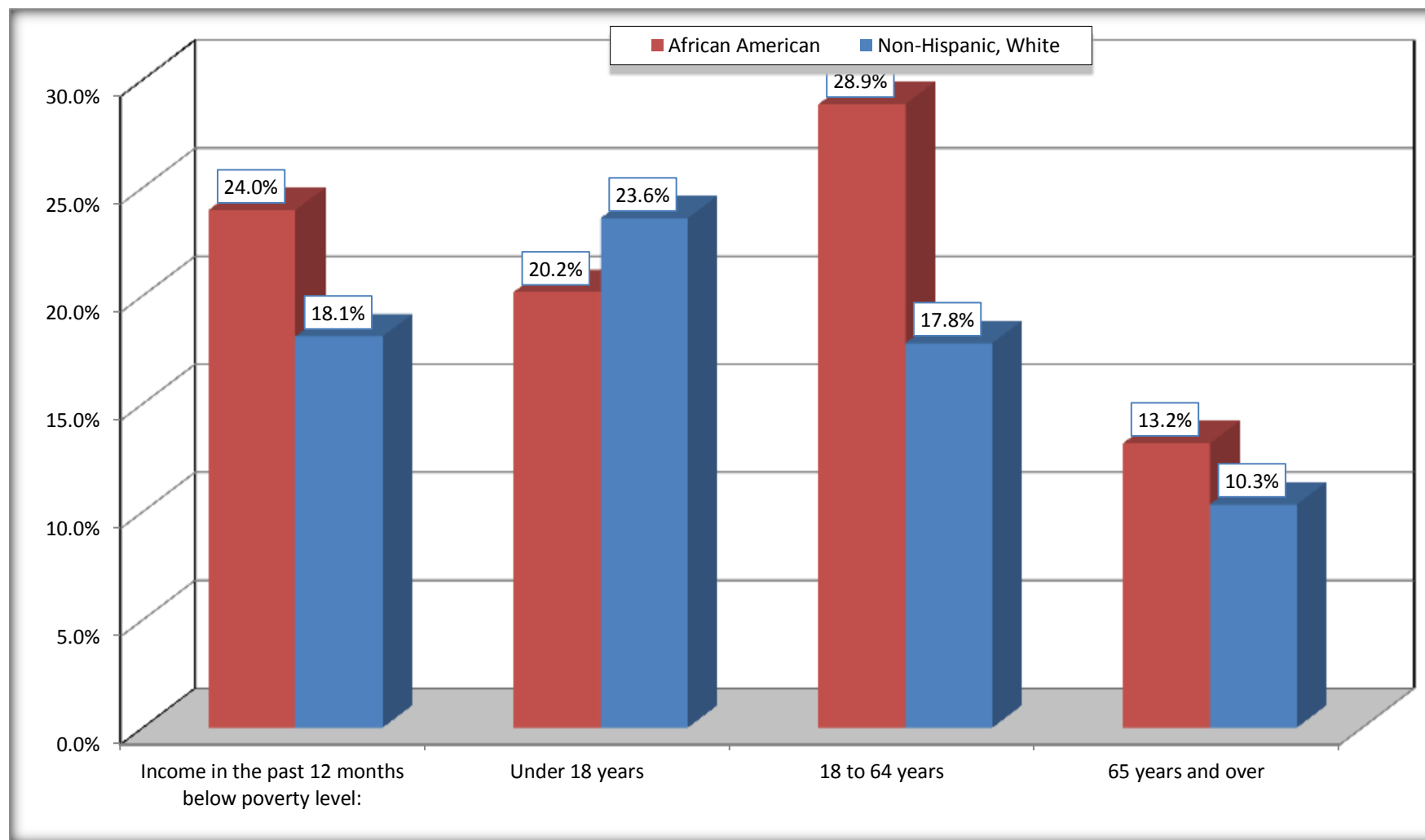
Source: U.S. Census Bureau, 2008-2012 American Community Survey

For information on confidentiality protection, sampling error, nonsampling error, and definitions, see Survey Methodology.

<http://www.census.gov/acs/www/UseData/index.htm>

Population Below Poverty in the Past 12 Months

Clover town, South Carolina



Source: B17020 POVERTY STATUS IN THE PAST 12 MONTHS BY AGE - Universe: POPULATION FOR WHOM POVERTY STATUS IS DETERMINED
Data Set: 2008-2012 American Community Survey 5-Year Estimates

B19001. HOUSEHOLD INCOME IN THE PAST 12 MONTHS (IN 2010 INFLATION-ADJUSTED DOLLARS)

Data Set: 2008-2012 American Community Survey 5-Year Estimates

	Clover town, South Carolina					
	African American	Margin of Error (+/-)	% of AA Total	White, Not Hispanic	Margin of Error (+/-)	% of NHW Total
Total:	431	155	100.0%	1,530	179	100.0%
Less than \$ 10,000	37	53	8.6%	203	118	13.3%
\$ 10,000 to \$ 14,999	121	108	28.1%	97	70	6.3%
\$ 15,000 to \$ 24,999	69	NC	16.0%	269	NC	17.6%
\$ 25,000 to \$ 34,999	55	NC	12.8%	112	NC	7.3%
\$ 35,000 to \$ 49,999	90	NC	20.9%	192	NC	12.5%
\$ 50,000 to \$ 74,999	59	NC	13.7%	214	NC	14.0%
\$ 75,000 to \$ 99,999	0	18	0.0%	157	83	10.3%
\$ 100,000 to \$ 149,999	0	NC	0.0%	175	NC	11.4%
\$ 150,000 to \$ 199,999	0	18	0.0%	75	83	4.9%
\$ 200,000 or more	0	18	0.0%	36	43	2.4%

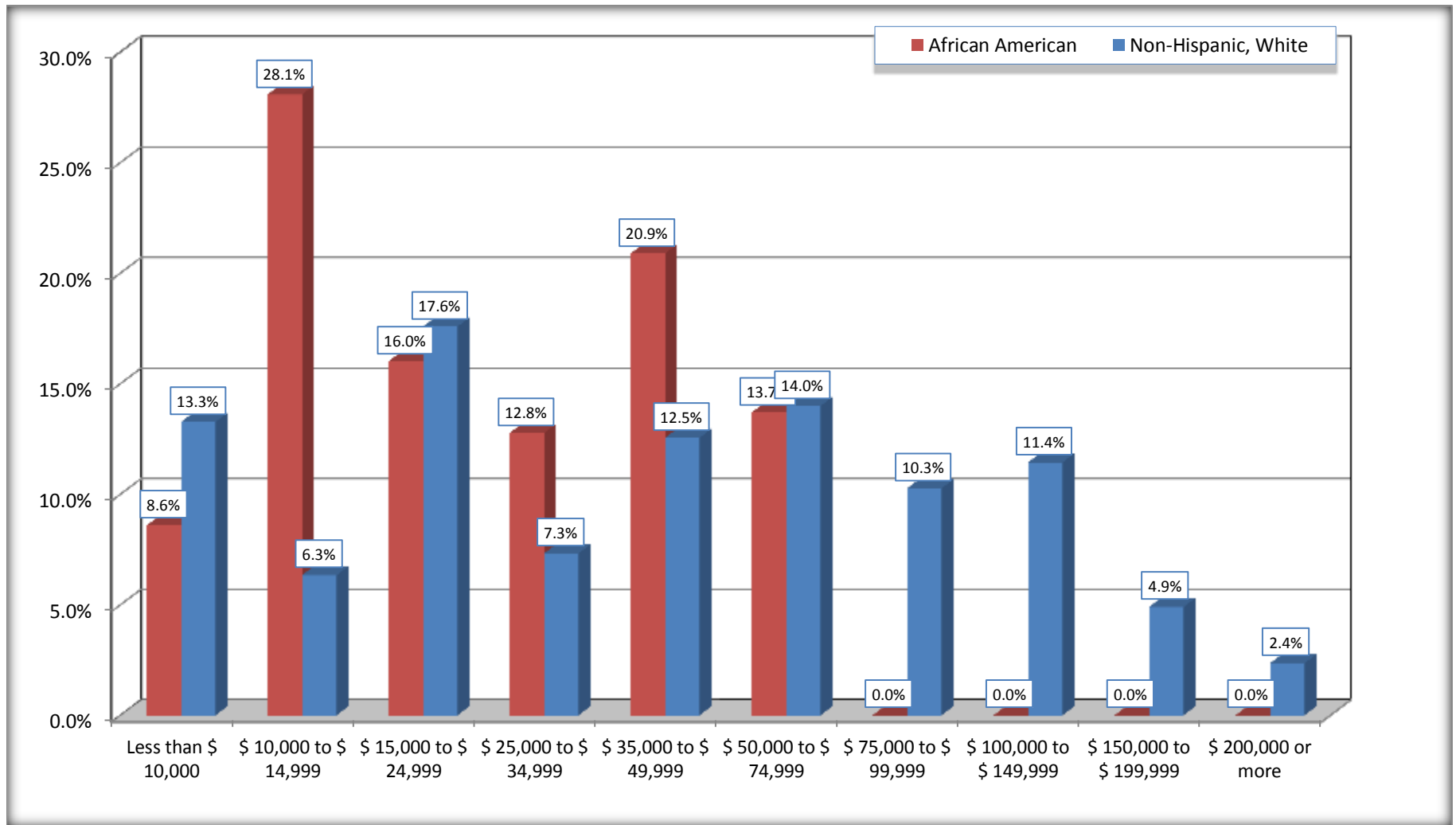
Source: U.S. Census Bureau, 2008-2012 American Community Survey

For information on confidentiality protection, sampling error, nonsampling error, and definitions, see Survey Methodology.

<http://www.census.gov/acs/www/UseData/index.htm>

Household Income in the Past 12 Months

Clover town, South Carolina



Source: B19001. HOUSEHOLD INCOME IN THE PAST 12 MONTHS (IN 2010 INFLATION-ADJUSTED DOLLARS)
Data Set: 2008-2012 American Community Survey 5-Year Estimates

B19013. MEDIAN HOUSEHOLD INCOME IN THE PAST 12 MONTHS (IN 2010 INFLATION-ADJUSTED DOLLARS)

Data Set: 2008-2012 American Community Survey 5-Year Estimates

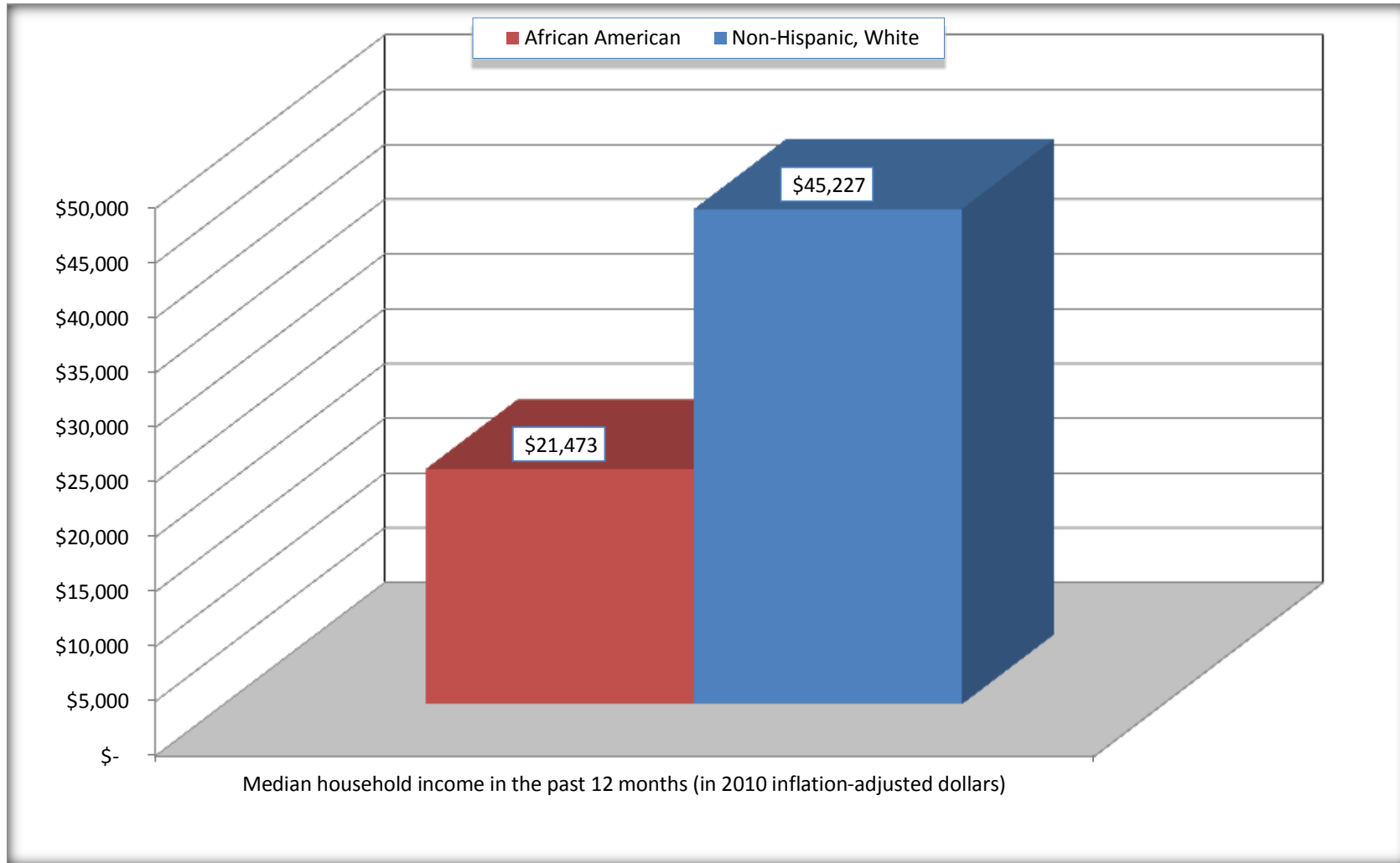
	Clover town, South Carolina			
	African American	Margin of Error (+/-)	White, Not Hispanic	Margin of Error (+/-)
Median household income in the past 12 months (in 2010 inflation-adjusted dollars)	\$ 21,473	\$ 13,377	\$ 45,227	\$ 11,315

Source: U.S. Census Bureau, 2008-2012 American Community Survey

For information on confidentiality protection, sampling error, nonsampling error, and definitions, see Survey Methodology.
<http://www.census.gov/acs/www/UseData/index.htm>

Median Household Income in the Past 12 Months

Clover town, South Carolina



Source: B19013. MEDIAN HOUSEHOLD INCOME IN THE PAST 12 MONTHS (IN 2010 INFLATION-ADJUSTED DOLLARS)
Data Set: 2008-2012 American Community Survey 5-Year Estimates

B19101. FAMILY INCOME IN THE PAST 12 MONTHS (IN 2010 INFLATION-ADJUSTED DOLLARS)

Data Set: 2008-2012 American Community Survey 5-Year Estimates

	Clover town, South Carolina					
	African American	Margin of Error (+/-)	% of AA Total	White, Not Hispanic	Margin of Error (+/-)	% of NHW Total
Total:	274	109	100.0%	958	124	100.0%
Less than \$ 10,000	37	53	13.5%	127	101	13.3%
\$ 10,000 to \$ 14,999	0	18	0.0%	26	42	2.7%
\$ 15,000 to \$ 24,999	55	NC	20.1%	61	NC	6.4%
\$ 25,000 to \$ 34,999	55	NC	20.1%	90	NC	9.4%
\$ 35,000 to \$ 49,999	68	NC	24.8%	171	NC	17.8%
\$ 50,000 to \$ 74,999	59	NC	21.5%	151	NC	15.8%
\$ 100,000 to \$ 149,999	-	NC	0.0%	162	NC	16.9%
\$ 150,000 to \$ 199,999	0	18	0.0%	23	36	2.4%
\$ 200,000 or more	0	18	0.0%	36	43	3.8%

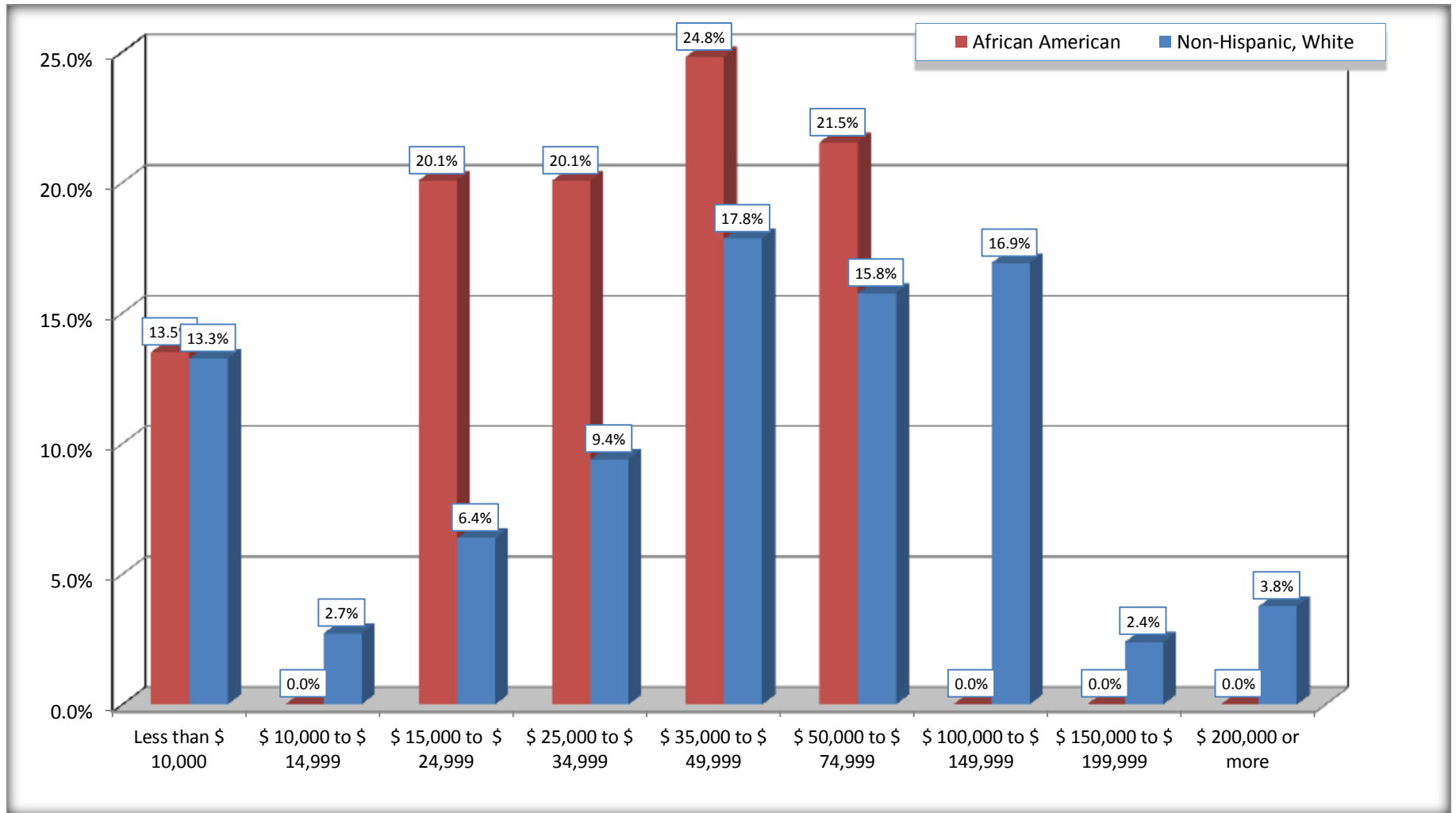
Source: U.S. Census Bureau, 2008-2012 American Community Survey

For information on confidentiality protection, sampling error, nonsampling error, and definitions, see Survey Methodology.

<http://www.census.gov/acs/www/UseData/index.htm>

Family Income in the Past 12 Months

Clover town, South Carolina



Source: B19101. FAMILY INCOME IN THE PAST 12 MONTHS (IN 2010 INFLATION-ADJUSTED DOLLARS)
Data Set: 2008-2012 American Community Survey 5-Year Estimates

B19113. MEDIAN FAMILY INCOME IN THE PAST 12 MONTHS (IN 2010 INFLATION-ADJUSTED DOLLARS)

Data Set: 2008-2012 American Community Survey 5-Year Estimates

	Clover town, South Carolina			
	African American	Margin of Error (+/-)	White, Not Hispanic	Margin of Error (+/-)
Median family income in the past 12 months (in 2010 inflation-adjusted dollars)	\$ 29,167	\$ 12,314	\$ 52,857	\$ 17,255

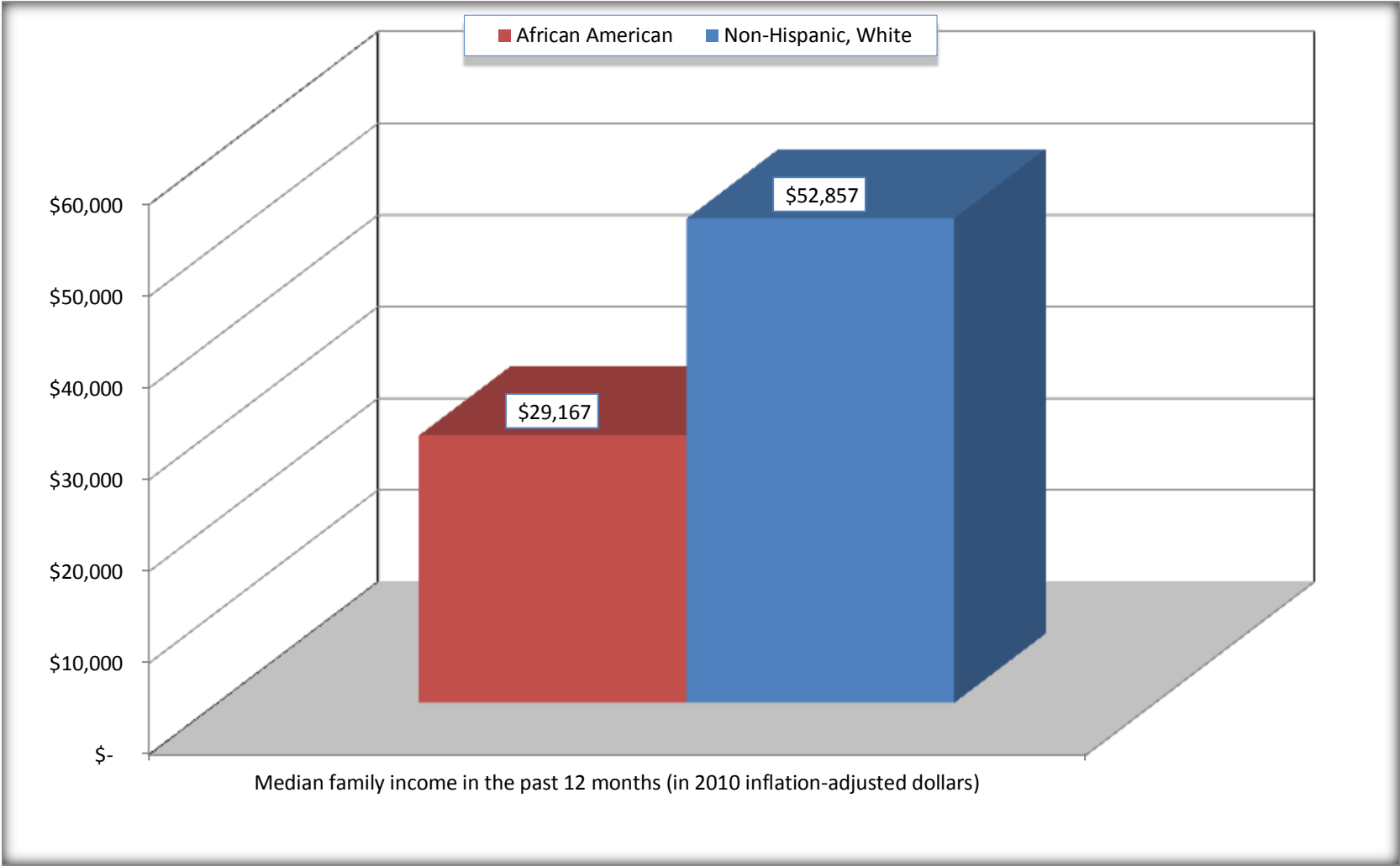
Source: U.S. Census Bureau, 2008-2012 American Community Survey

For information on confidentiality protection, sampling error, nonsampling error, and definitions, see Survey Methodology.

<http://www.census.gov/acs/www/UseData/index.htm>

Median Family Income in the Past 12 Months

Clover town, South Carolina



Source: B19113. MEDIAN FAMILY INCOME IN THE PAST 12 MONTHS (IN 2010 INFLATION-ADJUSTED DOLLARS)
Data Set: 2008-2012 American Community Survey 5-Year Estimates

B19202. MEDIAN NONFAMILY HOUSEHOLD INCOME IN THE PAST 12 MONTHS (IN 2010 INFLATION-ADJUSTED DOLLARS)

Data Set: 2008-2012 American Community Survey 5-Year Estimates

	Clover town, South Carolina			
	African American	Margin of Error (+/-)	White, Not Hispanic	Margin of Error (+/-)
Median nonfamily household income in the past 12 months (in 2010 inflation-adjusted dollars)	\$ 13,460	\$ 2,092	\$ 19,110	\$ 3,772

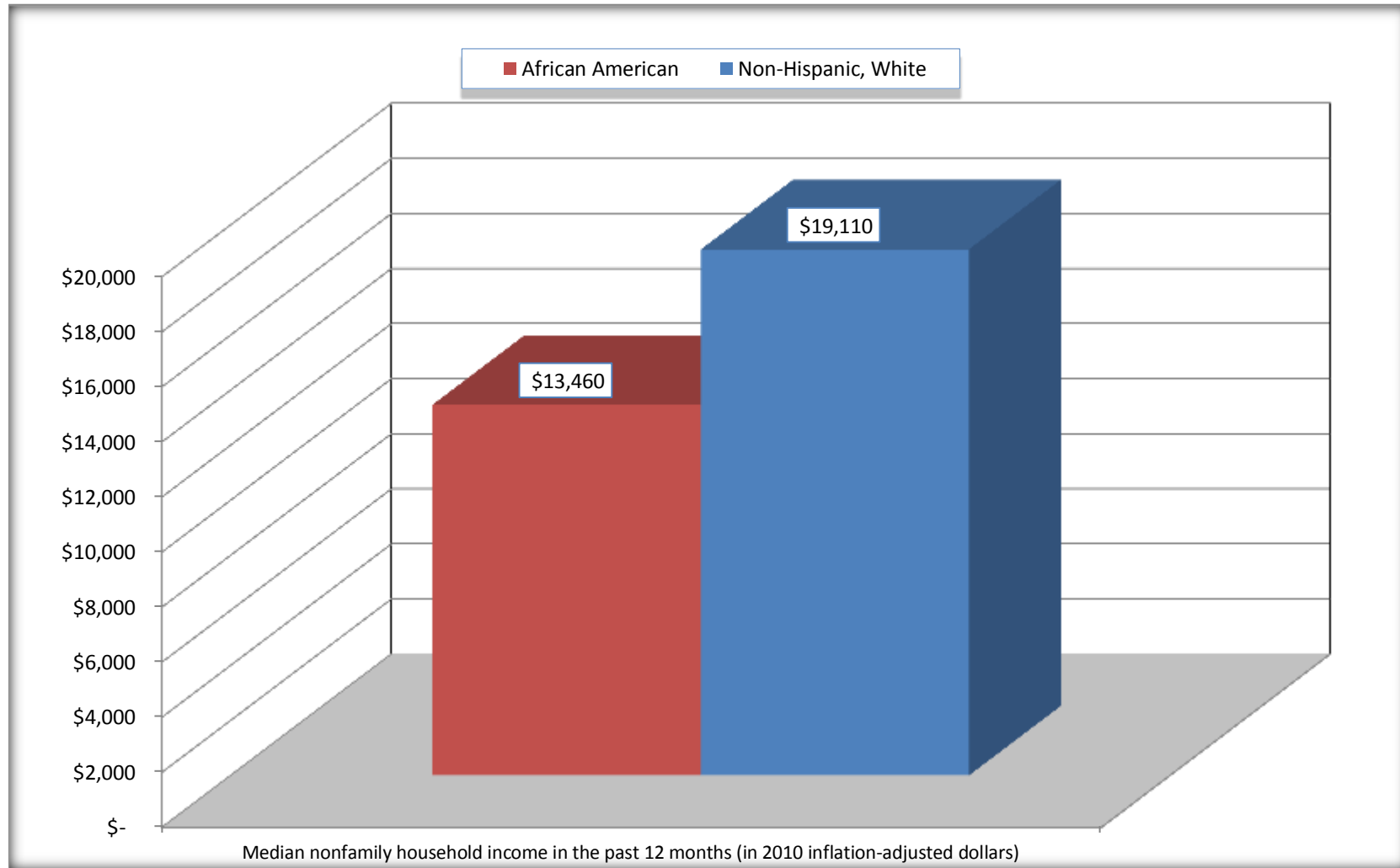
Source: U.S. Census Bureau, 2008-2012 American Community Survey

For information on confidentiality protection, sampling error, nonsampling error, and definitions, see Survey Methodology.

<http://www.census.gov/acs/www/UseData/index.htm>

Median Non-Family Income in the Past 12 Months

Clover town, South Carolina



Source: B19202. MEDIAN NONFAMILY HOUSEHOLD INCOME IN THE PAST 12 MONTHS (IN 2010 INFLATION-ADJUSTED DOLLARS)
Data Set: 2008-2012 American Community Survey 5-Year Estimates

B19301. PER CAPITA INCOME IN THE PAST 12 MONTHS (IN 2010 INFLATION-ADJUSTED DOLLARS)

Data Set: 2008-2012 American Community Survey 5-Year Estimates

	Clover town, South Carolina			
	African American	Margin of Error (+/-)	White, Not Hispanic	Margin of Error (+/-)
Per capita income in the past 12 months (in 2010 inflation-adjusted dollars)	\$ 10,900	\$ 3,010	\$ 24,051	\$ 3,981

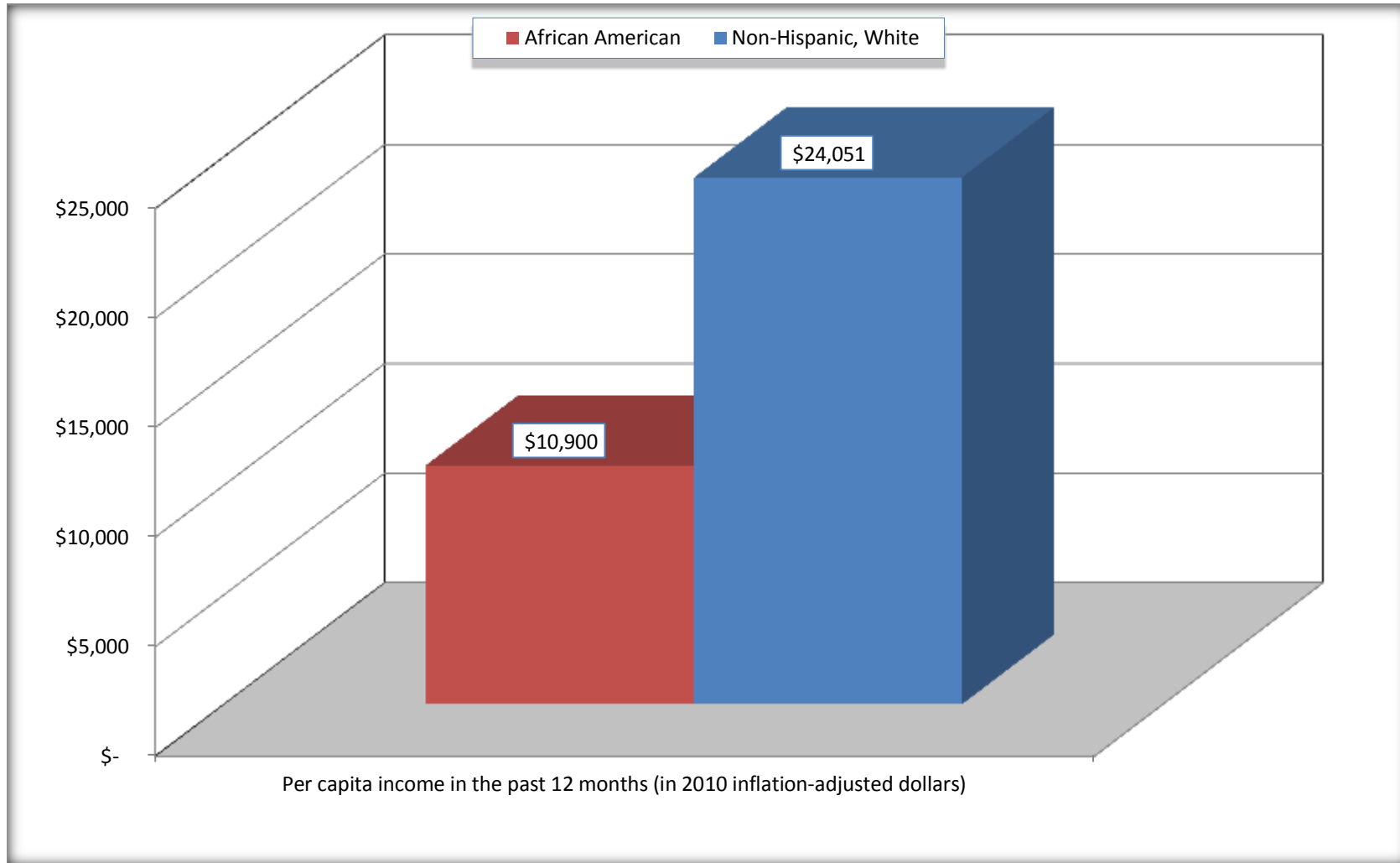
Source: U.S. Census Bureau, 2008-2012 American Community Survey

For information on confidentiality protection, sampling error, nonsampling error, and definitions, see Survey Methodology.

<http://www.census.gov/acs/www/UseData/index.htm>

Per capita Income in the Past 12 Months

Clover town, South Carolina



Source: B19301. PER CAPITA INCOME IN THE PAST 12 MONTHS (IN 2010 INFLATION-ADJUSTED DOLLARS)
Data Set: 2008-2012 American Community Survey 5-Year Estimates

B20017. MEDIAN EARNINGS IN THE PAST 12 MONTHS (IN 2010 INFLATION-ADJUSTED DOLLARS) BY SEX BY WORK EXPERIENCE IN THE PAST 12 MONTHS FOR THE POPULATION 16 YEARS AND OVER WITH EARNINGS IN THE PAST 12 MONTHS

Data Set: 2008-2012 American Community Survey 5-Year Estimates

	Clover town, South Carolina			
	African American	Margin of Error (+/-)	White, Not Hispanic	Margin of Error (+/-)
Median earnings in the past 12 months (in 2010 inflation-adjusted dollars) --				
Total:	\$ 25,822	\$ 7,021	\$ 30,455	\$ 7,511
Male --				
Total	\$ 19,556	\$ 11,966	\$ 42,009	\$ 21,416
Worked full-time, year-round in the past 12 months	\$ 22,500	\$ 11,293	\$ 54,102	\$ 11,596
Other	\$ 16,071	\$ 852	\$ 9,968	\$ 17,254
Female --				
Total	\$ 26,667	\$ 11,913	\$ 20,313	\$ 13,971
Worked full-time, year-round in the past 12 months	\$ 35,556	\$ 19,448	\$ 32,961	\$ 3,099
Other	\$ 25,385	\$ 40,302	\$ 10,167	\$ 2,365

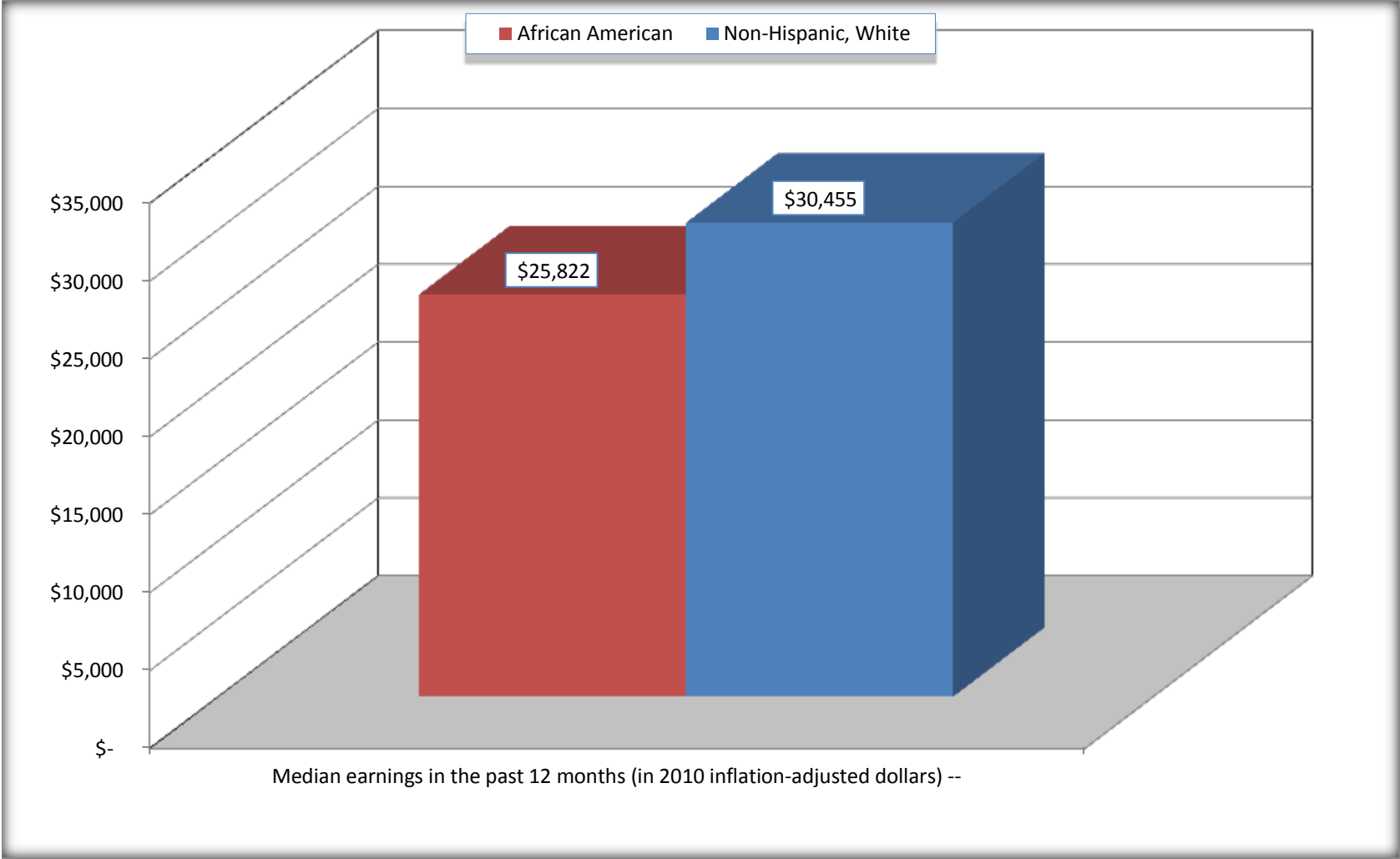
Source: U.S. Census Bureau, 2008-2012 American Community Survey

For information on confidentiality protection, sampling error, nonsampling error, and definitions, see Survey Methodology.

<http://www.census.gov/acs/www/UseData/index.htm>

Median earnings in the Past 12 Months (16 Years and Over with Earnings)

Clover town, South Carolina



Source: B20017. MEDIAN EARNINGS IN THE PAST 12 MONTHS (IN 2010 INFLATION-ADJUSTED DOLLARS) BY SEX BY WORK EXPERIENCE IN THE PAST 12 MONTHS FOR THE POPULATION 16 YEARS AND OVER WITH EARNINGS IN THE PAST 12 MONTHS
Data Set: 2008-2012 American Community Survey 5-Year Estimates

B20005. SEX BY WORK EXPERIENCE IN THE PAST 12 MONTHS BY EARNINGS IN THE PAST 12 MONTHS (IN 2010 INFLATION-ADJUSTED DOLLARS) FOR THE POPULATION 16 YEARS AND OVER

Data Set: 2008-2012 American Community Survey 5-Year Estimates

	Clover town, South Carolina					
	African American	Margin of Error (+/-)	% of AA Total	White, Not Hispanic	Margin of Error (+/-)	% of NHW Total
Total:	665	206	100.0%	2,852	267	100.0%
Worked full-time, year-round in the past 12 months:	270	NC	40.6%	1,371	NC	48.1%
No earnings	0	NC	0.0%	0	NC	0.0%
With earnings:	270	NC	40.6%	1,371	NC	48.1%
\$ 1 to \$ 9,999 or loss	21	NC	3.2%	89	NC	3.1%
\$ 10,000 to \$ 19,999	58	NC	8.7%	195	NC	6.8%
\$ 20,000 to \$ 29,999	75	NC	11.3%	135	NC	4.7%
\$ 30,000 to \$ 49,999	68	NC	10.2%	386	NC	13.5%
\$ 50,000 to \$ 74,999	48	NC	7.2%	297	NC	10.4%
\$ 75,000 or more	0	NC	0.0%	269	NC	9.4%
Other:	395	NC	59.4%	1,481	NC	51.9%
No earnings	335	NC	50.4%	936	NC	32.8%
With earnings: less than full time, year-round	60	NC	9.0%	545	NC	19.1%
Male:	316	154	47.5%	1,251	194	43.9%
Worked full-time, year-round in the past 12 months:	132	88	19.8%	699	192	24.5%
No earnings	0	18	0.0%	0	18	0.0%
With earnings:	132	88	19.8%	699	192	24.5%
\$ 1 to \$ 9,999 or loss	21	NC	3.2%	0	NC	0.0%
\$ 10,000 to \$ 19,999	45	NC	6.8%	80	NC	2.8%
\$ 20,000 to \$ 29,999	25	NC	3.8%	82	NC	2.9%
\$ 30,000 to \$ 49,999	41	NC	6.2%	109	NC	3.8%
\$ 50,000 to \$ 74,999	0	NC	0.0%	246	NC	8.6%
\$ 75,000 or more	0	NC	0.0%	182	NC	6.4%

	Clover town, South Carolina					
	African American	Margin of Error (+/-)	% of AA Total	White, Not Hispanic	Margin of Error (+/-)	% of NHW Total
Other:	184	132	27.7%	552	170	19.4%
No earnings	168	129	25.3%	365	135	12.8%
With earnings:	16	25	2.4%	187	97	6.6%
Female:	349	100	52.5%	1,601	202	56.1%
Worked full-time, year-round in the past 12 months:	138	79	20.8%	672	141	23.6%
No earnings	0	18	0.0%	0	18	0.0%
With earnings:	138	79	20.8%	672	141	23.6%
\$ 1 to \$ 9,999 or loss	0	NC	0.0%	89	NC	3.1%
\$ 10,000 to \$ 19,999	13	NC	2.0%	115	NC	4.0%
\$ 20,000 to \$ 29,999	50	NC	7.5%	53	NC	1.9%
\$ 30,000 to \$ 49,999	27	NC	4.1%	277	NC	9.7%
\$ 50,000 to \$ 74,999	48	NC	7.2%	51	NC	1.8%
\$ 75,000 or more	0	NC	0.0%	87	NC	3.1%
Other:	211	95	31.7%	929	233	32.6%
No earnings	167	88	25.1%	571	160	20.0%
With earnings:	44	49	6.6%	358	142	12.6%

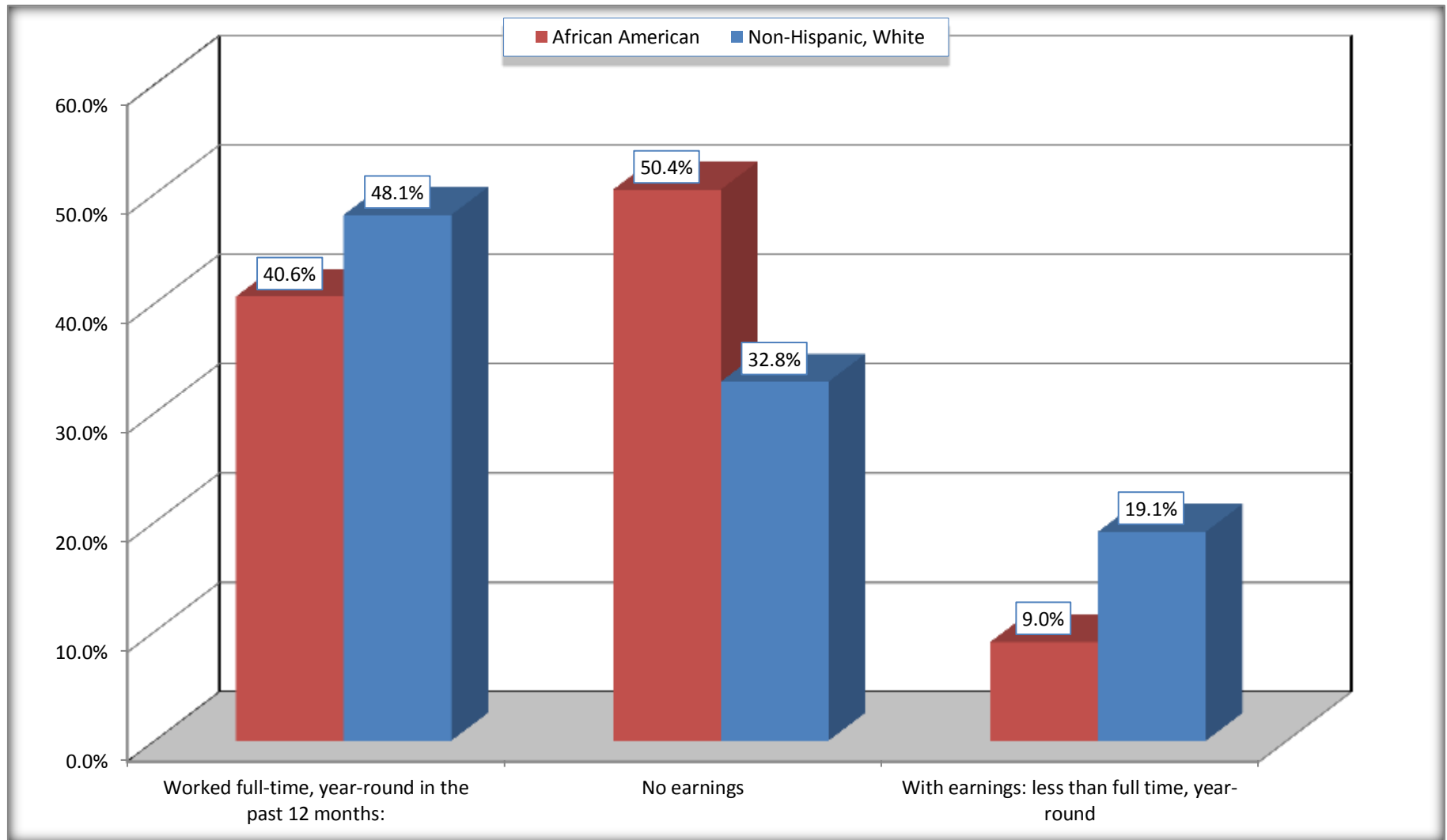
Source: U.S. Census Bureau, 2008-2012 American Community Survey

For information on confidentiality protection, sampling error, nonsampling error, and definitions, see Survey Methodology.

<http://www.census.gov/acs/www/UseData/index.htm>

Employment and Earnings in in the Past 12 Months (16 Years and Over)

Clover town, South Carolina



Source: B20005. SEX BY WORK EXPERIENCE IN THE PAST 12 MONTHS BY EARNINGS IN THE PAST 12 MONTHS (IN 2010 INFLATION-ADJUSTED DOLLARS) FOR THE POPULATION 16 YEARS AND OVER

Data Set: 2008-2012 American Community Survey 5-Year Estimates

C21001. SEX BY AGE BY VETERAN STATUS FOR THE CIVILIAN POPULATION 18 YEARS AND OVER

Data Set: 2008-2012 American Community Survey 5-Year Estimates

	Clover town, South Carolina					
	African American	Margin of Error (+/-)	% of AA Total	White, Not Hispanic	Margin of Error (+/-)	% of NHW Total
Total:	665	206	100.0%	2,806	250	100.0%
Veteran	25	NC	3.8%	301	NC	10.7%
Nonveteran	640	NC	96.2%	2,505	NC	89.3%
Male:	316	154	47.5%	1,231	192	43.9%
18 to 64 years:	263	121	39.5%	989	183	35.2%
Veteran	25	41	3.8%	134	78	4.8%
Nonveteran	238	119	35.8%	855	171	30.5%
65 years and over:	53	85	8.0%	242	93	8.6%
Veteran	0	18	0.0%	147	87	5.2%
Nonveteran	53	85	8.0%	95	64	3.4%
Female:	349	100	52.5%	1,575	184	56.1%
18 to 64 years:	288	101	43.3%	1,275	166	45.4%
Veteran	0	18	0.0%	20	25	0.7%
Nonveteran	288	101	43.3%	1,255	166	44.7%
65 years and over:	61	47	9.2%	300	87	10.7%
Veteran	0	18	0.0%	0	18	0.0%
Nonveteran	61	47	9.2%	300	87	10.7%

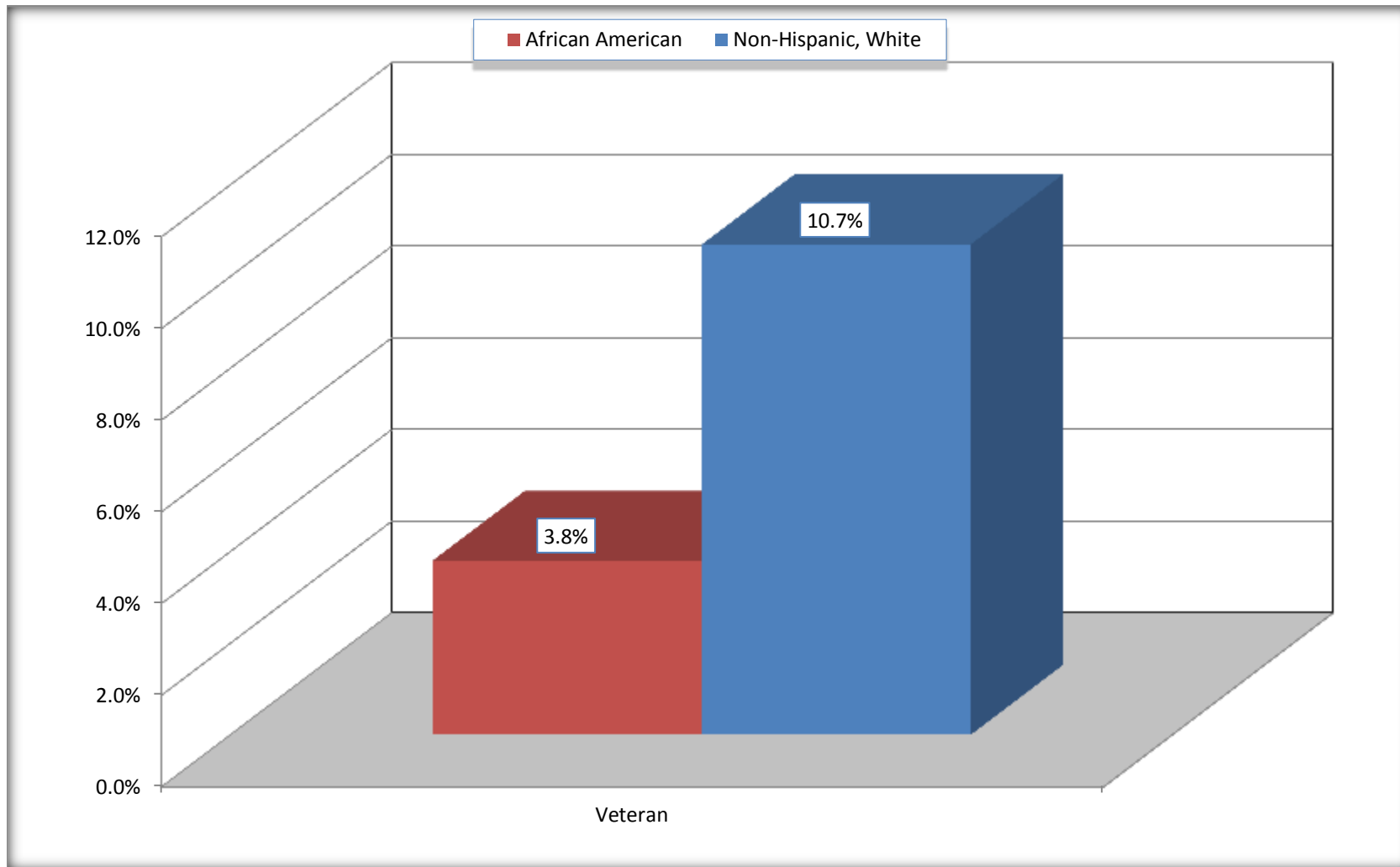
Source: U.S. Census Bureau, 2008-2012 American Community Survey

For information on confidentiality protection, sampling error, nonsampling error, and definitions, see Survey Methodology.

<http://www.census.gov/acs/www/UseData/index.htm>

Veterans in the Civilian Population 18 Years and Over

Clover town, South Carolina



Source: C21001. SEX BY AGE BY VETERAN STATUS FOR THE CIVILIAN POPULATION 18 YEARS AND OVER
Data Set: 2008-2012 American Community Survey 5-Year Estimates

B22005. RECEIPT OF FOOD STAMPS/SNAP IN THE PAST 12 MONTHS BY RACE OF HOUSEHOLDER

Data Set: 2008-2012 American Community Survey 5-Year Estimates

	Clover town, South Carolina					
	African American	Margin of Error (+/-)	% of AA Total	White, Not Hispanic	Margin of Error (+/-)	% of NHW Total
Total:	431	155	100.0%	1,530	179	100.0%
HH received Food Stamps/SNAP in the past 12 months	165	112	38.3%	117	72	7.6%
HH did not receive Food Stamps/SNAP in the past 12 months	266	120	61.7%	1,413	164	92.4%

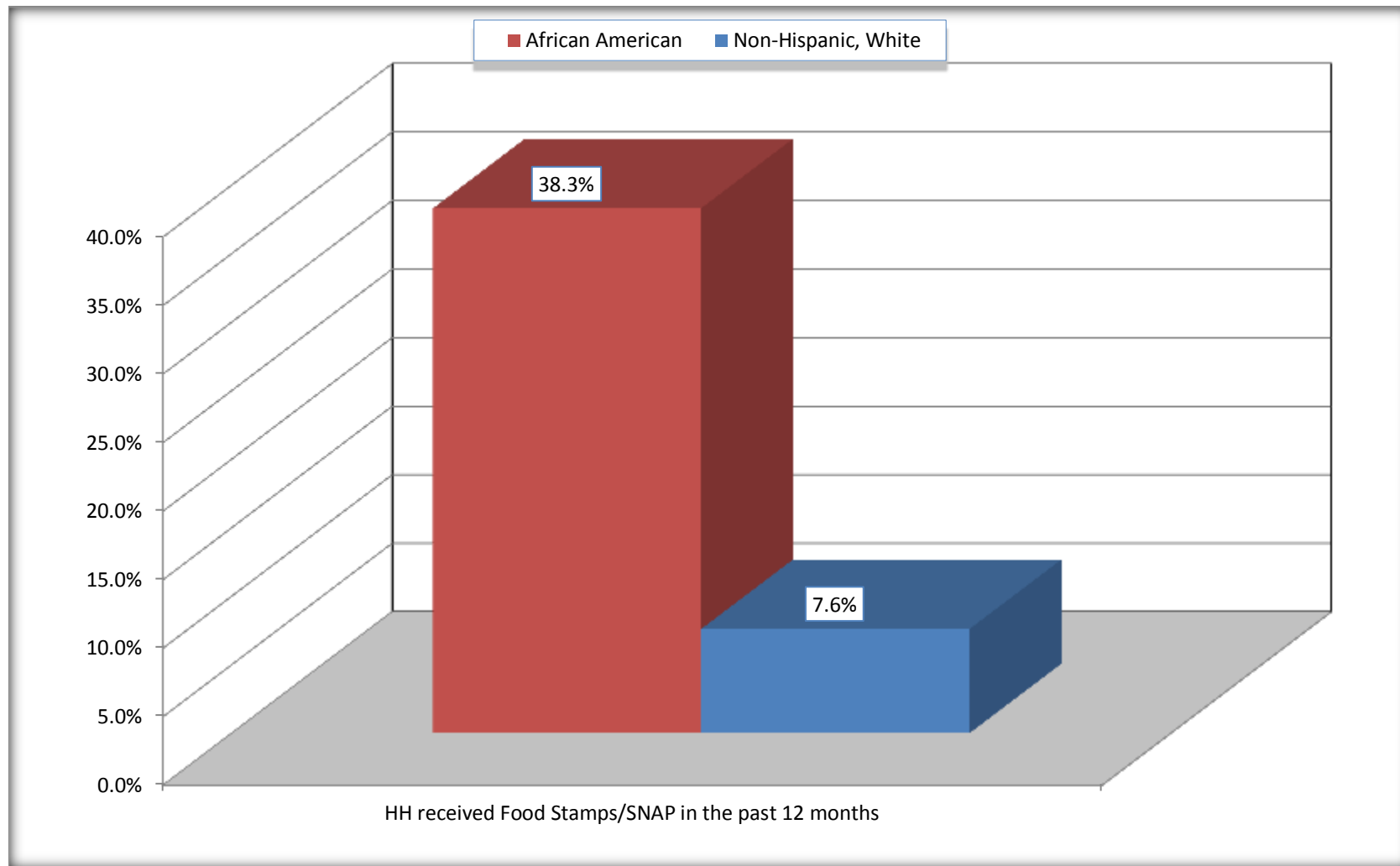
Source: U.S. Census Bureau, 2008-2012 American Community Survey

For information on confidentiality protection, sampling error, nonsampling error, and definitions, see Survey Methodology.

<http://www.census.gov/acs/www/UseData/index.htm>

Receipt of Food Stamps/SNAP in the Past 12 Months by Household

Clover town, South Carolina



Source: B22005. RECEIPT OF FOOD STAMPS/SNAP IN THE PAST 12 MONTHS BY RACE OF HOUSEHOLDER
Data Set: 2008-2012 American Community Survey 5-Year Estimates

C23002. SEX BY AGE BY EMPLOYMENT STATUS FOR THE POPULATION 16 YEARS AND OVER

Data Set: 2008-2012 American Community Survey 5-Year Estimates

	Clover town, South Carolina					
	African American	Margin of Error (+/-)	% of AA Total	White, Not Hispanic	Margin of Error (+/-)	% of NHW Total
Total:	665	206	100.0%	2,852	267	100.0%
In labor force:	366	NC	55.0%	1,942	NC	68.1%
In Armed Forces	0	NC	0.0%	0	NC	0.0%
Civilian:	366	NC	55.0%	1,920	NC	67.3%
Employed	302	NC	45.4%	1,683	NC	59.0%
Unemployed	64	NC	9.6%	259	NC	9.1%
Not in labor force	299	NC	45.0%	910	NC	31.9%
Male:	316	154	47.5%	1,251	194	43.9%
16 to 64 years:	263	121	39.5%	1,009	183	35.4%
In labor force:	210	105	31.6%	894	195	31.3%
In Armed Forces	0	18	0.0%	0	18	0.0%
Civilian:	210	105	31.6%	894	195	31.3%
Employed	146	91	22.0%	844	197	29.6%
Unemployed	64	65	9.6%	50	50	1.8%
Not in labor force	53	72	8.0%	115	74	4.0%
65 years and over:	53	85	8.0%	242	93	8.5%
In labor force:	0	18	0.0%	11	19	0.4%
Employed	0	18	0.0%	11	19	0.4%
Unemployed	0	18	0.0%	0	18	0.0%
Not in labor force	53	85	8.0%	231	94	8.1%

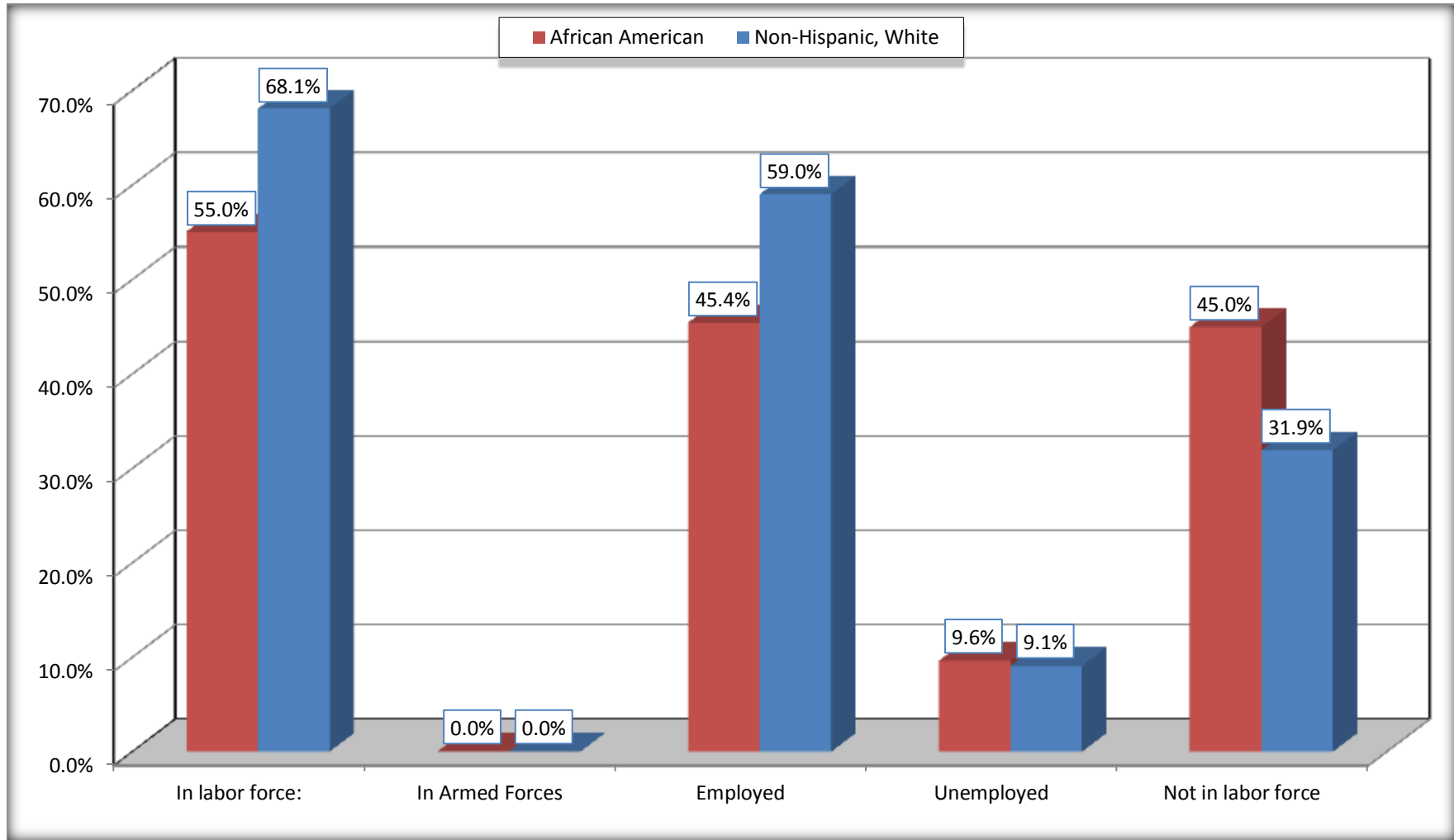
	Clover town, South Carolina					
	African American	Margin of Error (+/-)	% of AA Total	White, Not Hispanic	Margin of Error (+/-)	% of NHW Total
Female:	349	100	52.5%	1,601	202	56.1%
16 to 64 years:	288	101	43.3%	1,301	182	45.6%
In labor force:	156	83	23.5%	1,026	147	36.0%
In Armed Forces	0	18	0.0%	0	18	0.0%
Civilian:	156	83	23.5%	1,026	147	36.0%
Employed	156	83	23.5%	828	150	29.0%
Unemployed	0	18	0.0%	198	110	6.9%
Not in labor force	132	88	19.8%	275	143	9.6%
65 years and over:	61	47	9.2%	300	87	10.5%
In labor force:	0	18	0.0%	11	17	0.4%
Employed	0	18	0.0%	0	18	0.0%
Unemployed	0	18	0.0%	11	17	0.4%
Not in labor force	61	47	9.2%	289	87	10.1%

Source: U.S. Census Bureau, 2008-2012 American Community Survey

For information on confidentiality protection, sampling error, nonsampling error, and definitions, see Survey Methodology.
<http://www.census.gov/acs/www/UseData/index.htm>

Employment Status for the Population 16 years and over

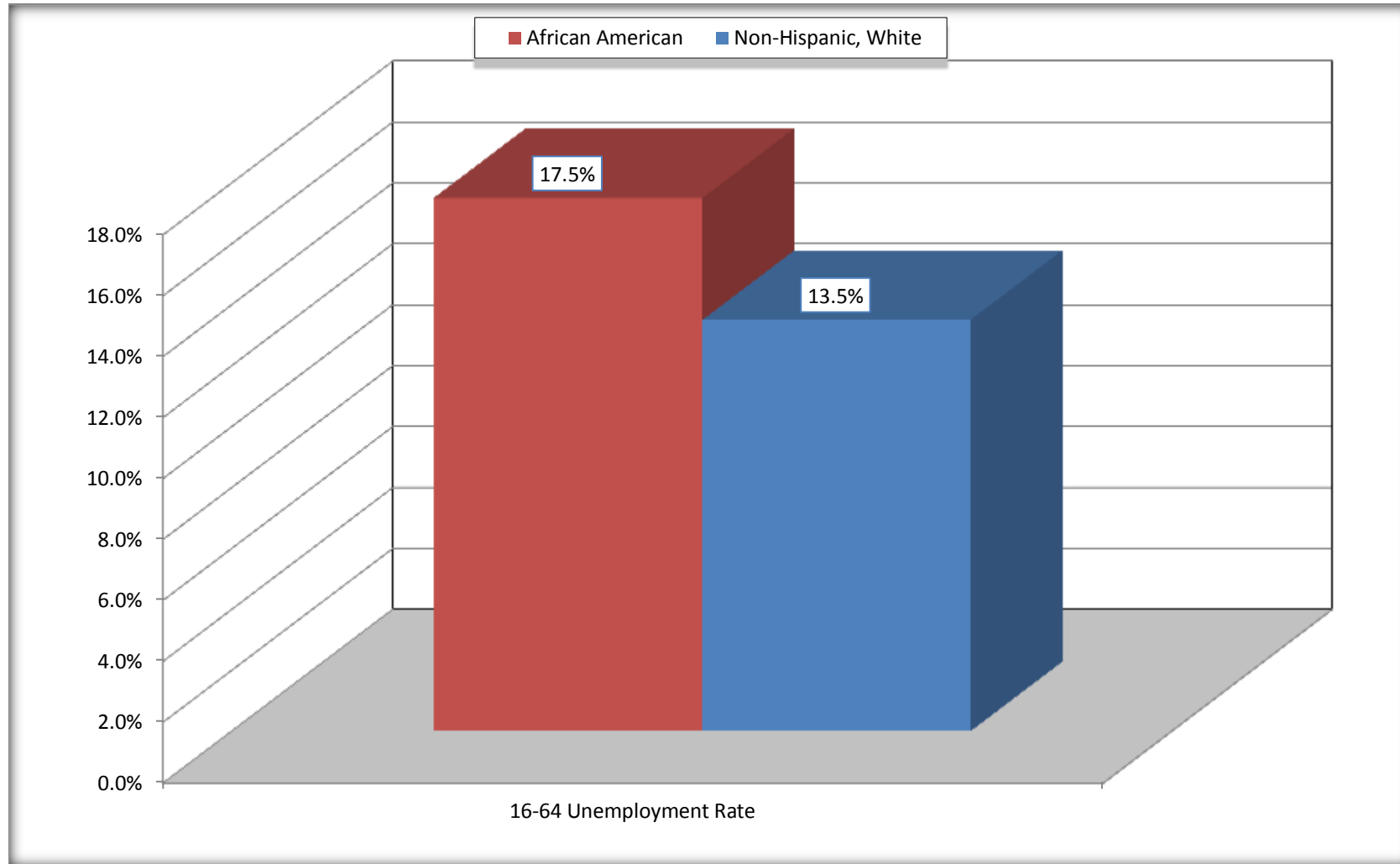
Clover town, South Carolina



Source: C23002. SEX BY AGE BY EMPLOYMENT STATUS FOR THE POPULATION 16 YEARS AND OVER
Data Set: 2008-2012 American Community Survey 5-Year Estimates

Unemployment of Working Age Population (Ages 16 to 64) (As a Percent of 16-64 Civilian Labor Force)

Clover town, South Carolina



Source: C23002. SEX BY AGE BY EMPLOYMENT STATUS FOR THE POPULATION 16 YEARS AND OVER
Data Set: 2008-2012 American Community Survey 5-Year Estimates

C24010. SEX BY OCCUPATION FOR THE CIVILIAN EMPLOYED POPULATION 16 YEARS AND OVER

Data Set: 2008-2012 American Community Survey 5-Year Estimates

	Clover town, South Carolina					
	African American	Margin of Error (+/-)	% of AA Total	White, Not Hispanic	Margin of Error (+/-)	% of NHW Total
Total:	302	128	100.0%	1,683	222	100.0%
Management, professional, and related occupations	70	NC	23.2%	595	NC	35.4%
Service occupations	93	NC	30.8%	228	NC	13.5%
Sales and office occupations	28	NC	9.3%	402	NC	23.9%
Natural resources, construction, and maintenance occupations:	25	NC	8.3%	175	NC	10.4%
Production, transportation, and material moving occupations	86	NC	28.5%	283	NC	16.8%
Male:	146	91	48.3%	855	199	50.8%
Management, business, science, and arts occupations:	0	18	0.0%	277	125	16.5%
Service occupations	35	44	11.6%	42	36	2.5%
Sales and office occupations	0	18	0.0%	148	87	8.8%
Natural resources, construction, and maintenance occupations:	25	41	8.3%	175	119	10.4%
Production, transportation, and material moving occupations	86	78	28.5%	213	122	12.7%
Female:	156	83	51.7%	828	150	49.2%
Management, professional, and related occupations	70	59	23.2%	318	134	18.9%
Service occupations	58	57	19.2%	186	115	11.1%
Sales and office occupations	28	39	9.3%	254	108	15.1%
Natural resources, construction, and maintenance occupations:	0	18	0.0%	0	18	0.0%
Production, transportation, and material moving occupations	0	18	0.0%	70	72	4.2%

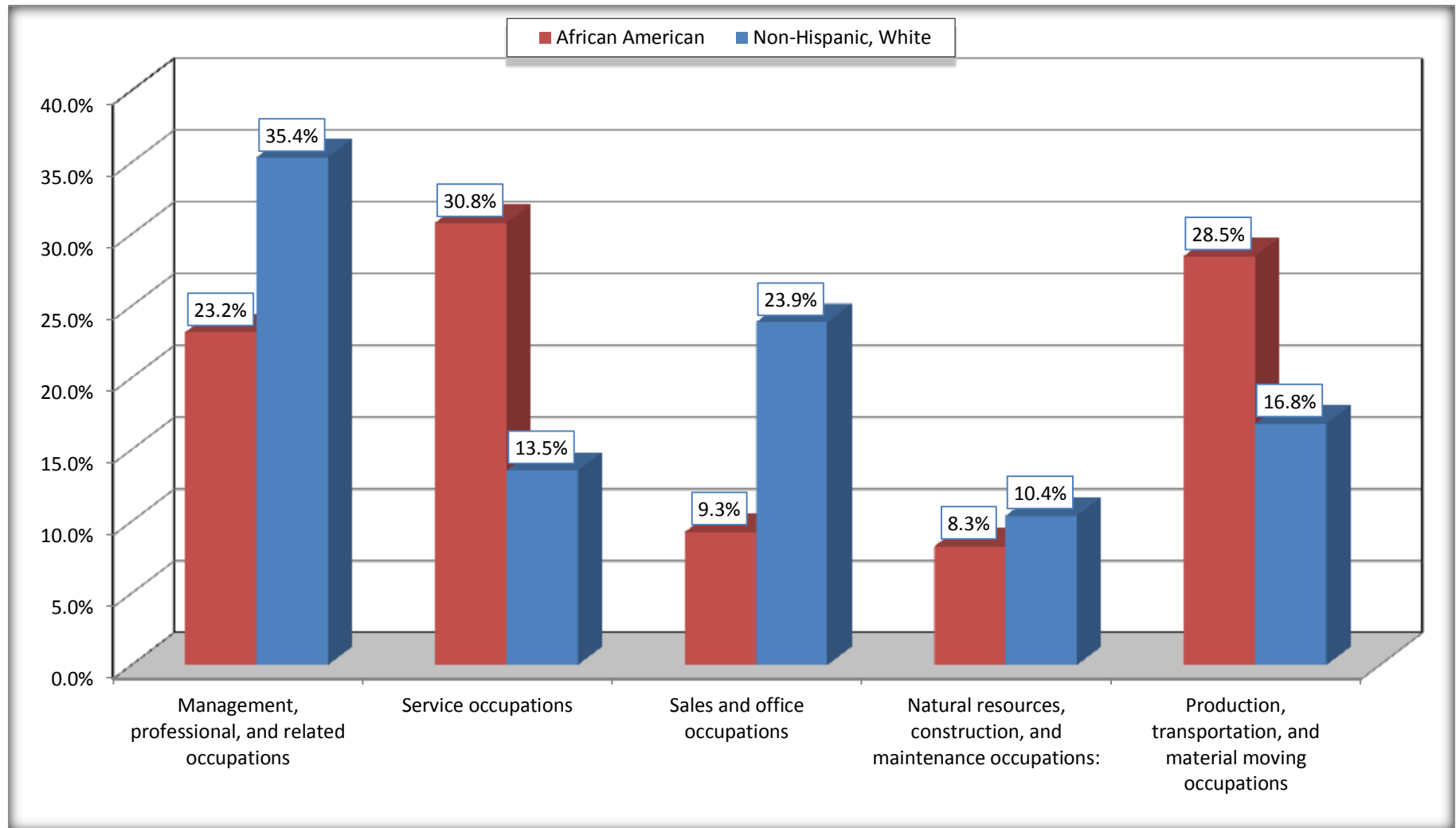
Source: U.S. Census Bureau, 2008-2012 American Community Survey

For information on confidentiality protection, sampling error, nonsampling error, and definitions, see Survey Methodology.

<http://www.census.gov/acs/www/UseData/index.htm>

Occupation for the Civilian Employed 16 Years and Over Population

Clover town, South Carolina



Source: C24010. SEX BY OCCUPATION FOR THE CIVILIAN EMPLOYED POPULATION 16 YEARS AND OVER
Data Set: 2008-2012 American Community Survey 5-Year Estimates

B25003. TENURE - Universe: OCCUPIED HOUSING UNITS

Data Set: 2008-2012 American Community Survey 5-Year Estimates

	Clover town, South Carolina					
	African American	Margin of Error (+/-)	% of AA Total	White, Not Hispanic	Margin of Error (+/-)	% of NHW Total
Total:	431	155	100.0%	1,530	179	100.0%
Owner occupied	63	78	14.6%	1,076	178	70.3%
Renter occupied	368	147	85.4%	454	172	29.7%

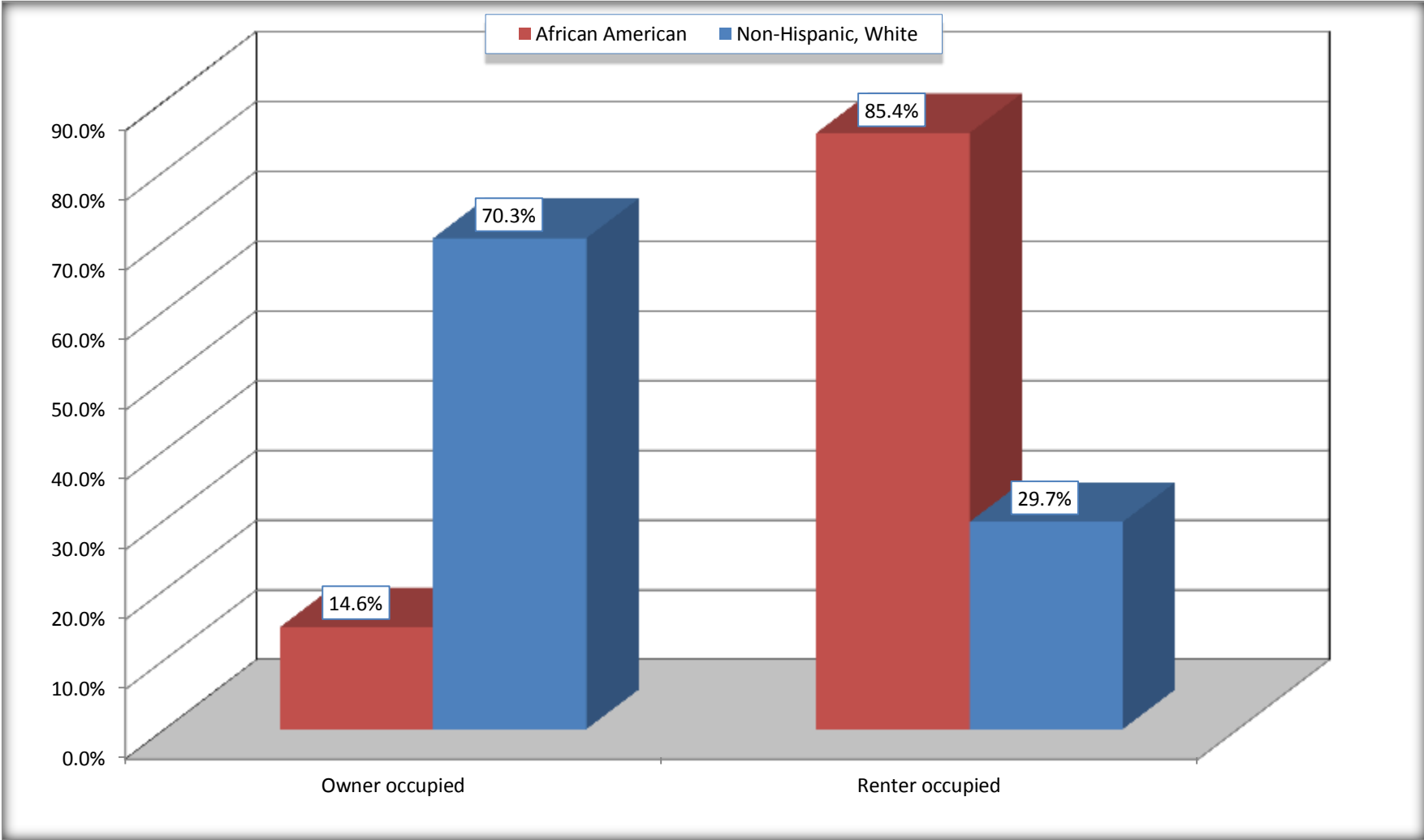
Source: U.S. Census Bureau, 2008-2012 American Community Survey

For information on confidentiality protection, sampling error, nonsampling error, and definitions, see Survey Methodology.

<http://www.census.gov/acs/www/UseData/index.h>

Home Owners and Renters by Household

Clover town, South Carolina



Source: B25003. TENURE - Universe: OCCUPIED HOUSING UNITS
Data Set: 2008-2012 American Community Survey 5-Year Estimates

B25014. OCCUPANTS PER ROOM - Universe: OCCUPIED HOUSING UNITS

Data Set: 2008-2012 American Community Survey 5-Year Estimates

	Clover town, South Carolina					
	African American	Margin of Error (+/-)	% of AA Total	White, Not Hispanic	Margin of Error (+/-)	% of NHW Total
Total:	431	155	100.0%	1,530	179	100.0%
1.00 or less occupants per room	431	155	100.0%	1,530	179	100.0%
1.01 or more occupants per room	0	18	0.0%	0	18	0.0%

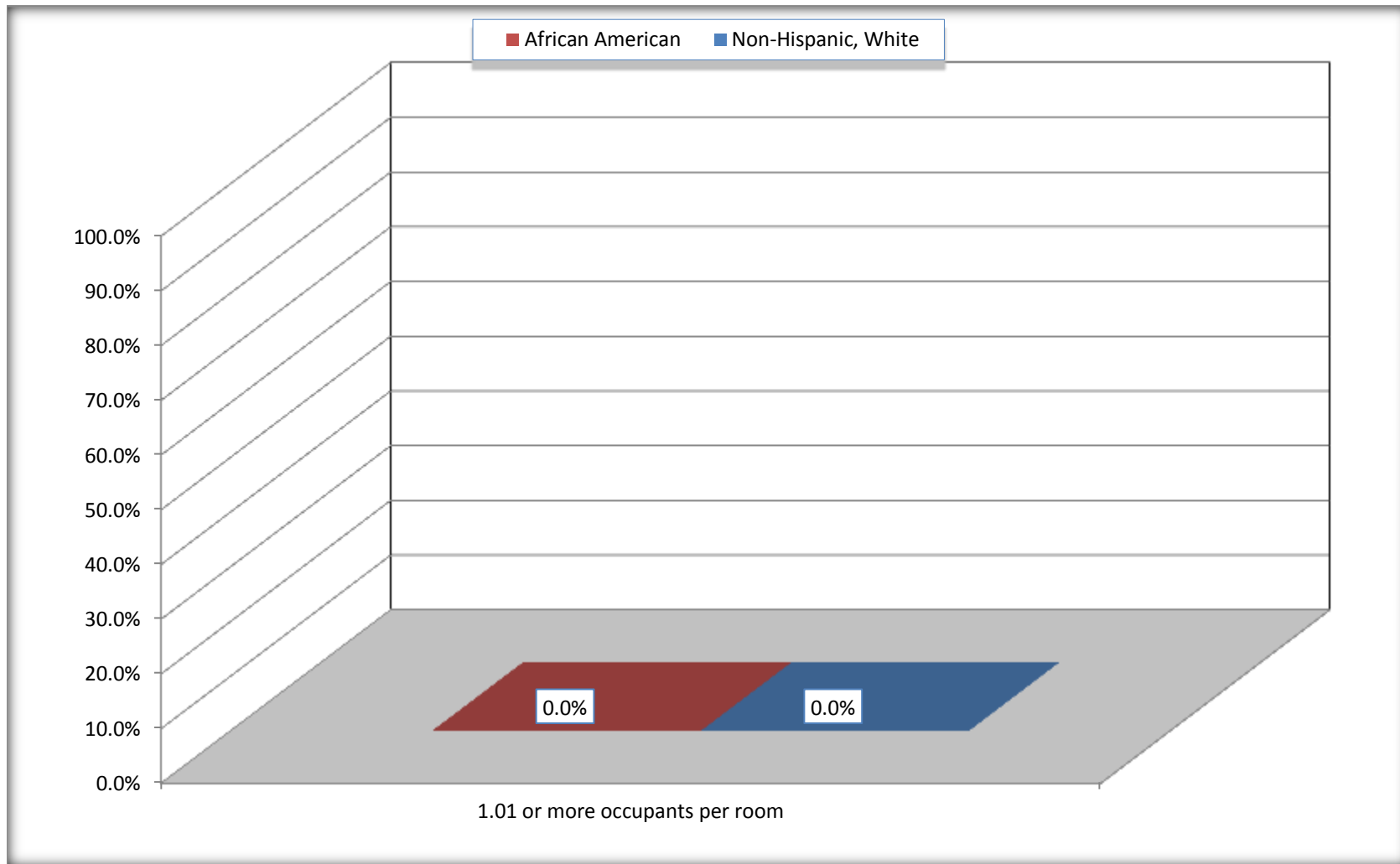
Source: U.S. Census Bureau, 2008-2012 American Community Survey

For information on confidentiality protection, sampling error, nonsampling error, and definitions, see Survey Methodology.

<http://www.census.gov/acs/www/UseData/index.ht>

More than One Person per Room (Crowding) by Household

Clover town, South Carolina



Source: B25014. OCCUPANTS PER ROOM - Universe: OCCUPIED HOUSING UNITS
Data Set: 2008-2012 American Community Survey 5-Year Estimates

B18101. AGE BY DISABILITY STATUS

Data Set: 2008-2012 American Community Survey 5-Year Estimates

	Clover town, South Carolina					
	African American	Margin of Error (+/-)	% of AA Total	White, Not Hispanic	Margin of Error (+/-)	% of NHW Total
Total:	1,052	312	100.0%	3,705	403	100.0%
Under 18 years:	387	191	36.8%	899	77	24.3%
With a disability	56	60	5.3%	46	84	1.2%
No disability	331	160	31.5%	853	232	23.0%
18 to 64 years:	551	182	52.4%	2,264	244	61.1%
With a disability	88	75	8.4%	155	116	4.2%
No disability	463	159	44.0%	2,109	225	56.9%
65 years and over:	114	102	10.8%	542	141	14.6%
With a disability	45	39	4.3%	304	113	8.2%
No disability	69	89	6.6%	238	117	6.4%

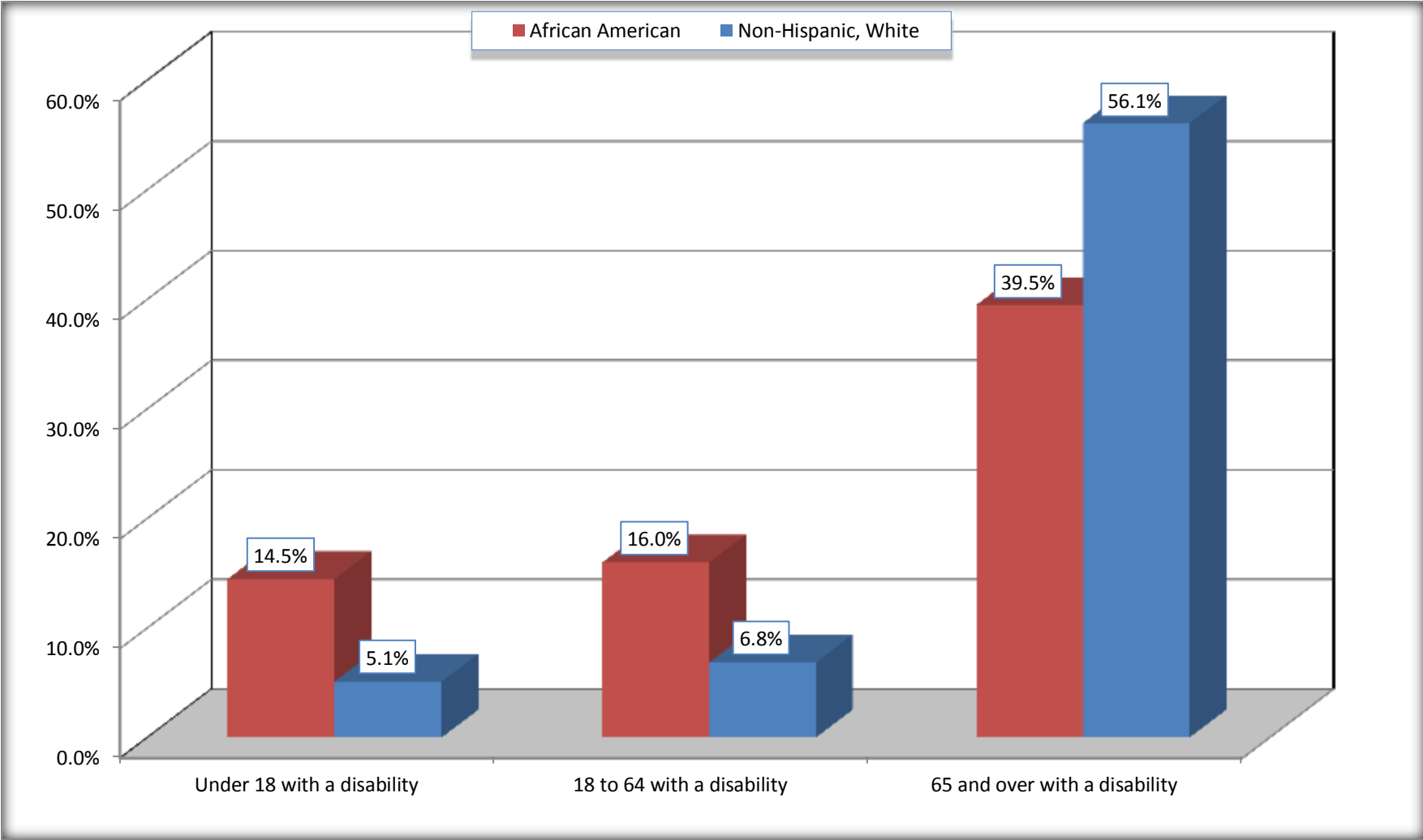
Source: U.S. Census Bureau, 2008-2012 American Community Survey

For information on confidentiality protection, sampling error, nonsampling error, and definitions, see Survey Methodology.

<http://www.census.gov/acs/www/UseData/index.htm>

Disability by Age

Clover town, South Carolina



Source: B18101. AGE BY DISABILITY STATUS
Data Set: 2008-2012 American Community Survey 5-Year Estimates

C27001B. HEALTH INSURANCE COVERAGE STATUS BY AGE

Data Set: 2008-2012 American Community Survey 5-Year Estimates

	Clover town, South Carolina					
	African American	Margin of Error (+/-)	% of AA Total	White, Not Hispanic	Margin of Error (+/-)	% of NHW Total
Total:	1,052	312	100.0%	3,705	403	100.0%
Under 18 years:	387	191	36.8%	899	247	24.3%
With health insurance coverage	387	191	36.8%	834	226	22.5%
No health insurance coverage	0	18	0.0%	65	86	1.8%
18 to 64 years:	551	182	52.4%	2,264	244	61.1%
With health insurance coverage	352	140	33.5%	1,882	274	50.8%
No health insurance coverage	199	147	18.9%	382	167	10.3%
65 years and over:	114	102	10.8%	542	141	14.6%
With health insurance coverage	114	102	10.8%	542	141	14.6%
No health insurance coverage	0	18	0.0%	0	18	0.0%

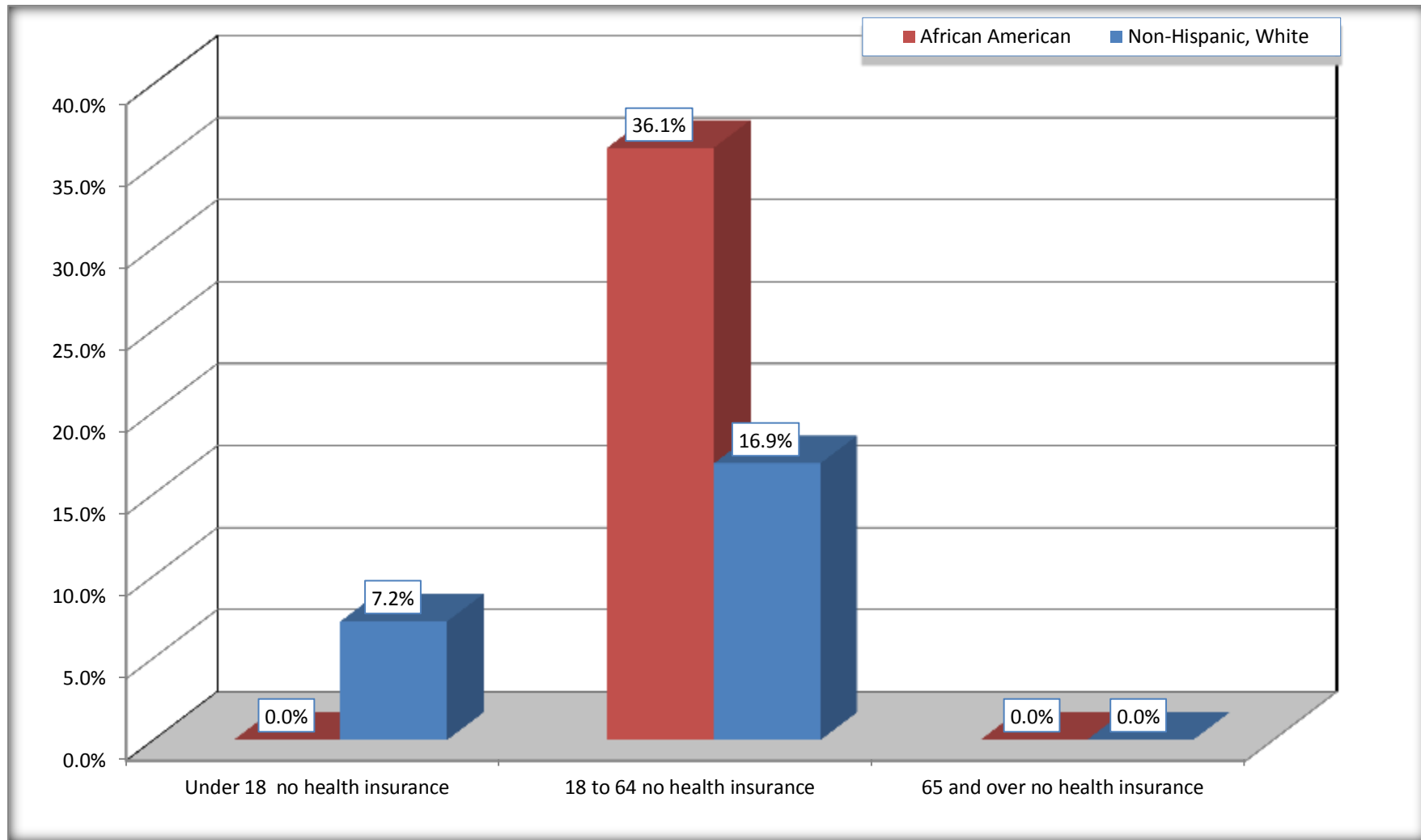
Source: U.S. Census Bureau, 2008-2012 American Community Survey

For information on confidentiality protection, sampling error, nonsampling error, and definitions, see Survey Methodology.

<http://www.census.gov/acs/www/UseData/index.htm>

Lack of Health Insurance Coverage by Age

Clover town, South Carolina



Source: C27001B. HEALTH INSURANCE COVERAGE STATUS BY AGE
Data Set: 2008-2012 American Community Survey 5-Year Estimates