

Selected Socio-Economic Data

Barnwell County, South Carolina

African American and White, Not Hispanic

Data Set: 2008-2012 American Community Survey 5-Year Estimates

www.fairvote2020.org

www.fairdata2000.com

[29-Dec-13](#)

C02003.DETAILED RACE - Universe: TOTAL POPULATION

Data Set: 2008-2012 American Community Survey 5-Year Estimates

	Barnwell County, South Carolina		
	Population	Margin of Error (+/-)	% of Total
Total:	22,523	*****	100.0%
Population of one race:	22,300	126	99.0%
White	11,888	120	52.8%
Black or African American	10,148	162	45.1%
American Indian and Alaska Native	84	88	0.4%
Asian alone	73	114	0.3%
Native Hawaiian and Other Pacific Islander	0	24	0.0%
Some other race	107	110	0.5%
Population of two or more races:	223	126	1.0%
Two races including Some other race	8	13	0.0%
Two races excluding Some other race, and three or more races	215	125	1.0%
Population of two races:	223	126	1.0%
White; Black or African American	78	68	0.3%
White; American Indian and Alaska Native	7	11	0.0%
White; Asian	20	38	0.1%
Black or African American; American Indian and Alaska Native	80	69	0.4%
All other two race combinations	38	35	0.2%
Population of three races	0	24	0.0%
Population of four or more races	0	24	0.0%

Note: Hispanics may be of any race. See Table B03002 and chart.

Source: U.S. Census Bureau, 2008-2012 American Community Survey

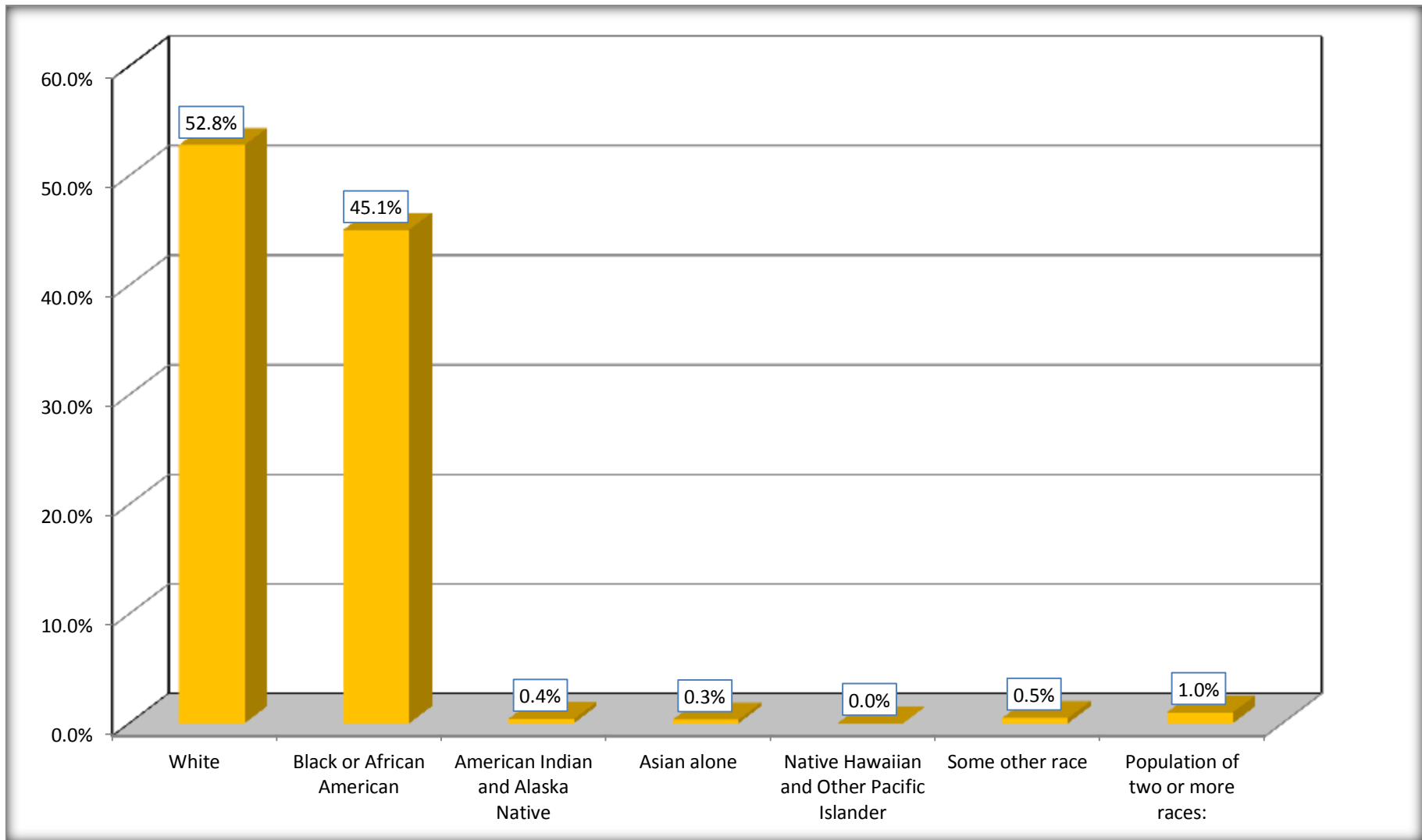
Although the American Community Survey (ACS) produces population, demographic and housing unit estimates, it is the Census Bureau's Population Estimates Program that produces and disseminates the official estimates of the population for the nation, states, counties, cities and towns and estimates of housing units for states and counties.

For information on confidentiality protection, sampling error, nonsampling error, and definitions, see Survey Methodology.

<http://www.census.gov/acs/www/UseData/index.htm>

Population by Race

Barnwell County, South Carolina



Source: C02003.DETAILED RACE - Universe: TOTAL POPULATION
Data Set: 2008-2012 American Community Survey 5-Year Estimates

B03002. HISPANIC OR LATINO ORIGIN BY RACE - Universe: TOTAL POPULATION

Data Set: 2008-2012 American Community Survey 5-Year Estimates

	Barnwell County, South Carolina		
	Population	Margin of Error (+/-)	% of Total
Total:	22,523	*****	100.0%
Not Hispanic or Latino:	22,097	*****	98.1%
White alone	11,674	13	51.8%
Black or African American alone	10,136	166	45.0%
American Indian and Alaska Native alone	62	80	0.3%
Asian alone	73	114	0.3%
Native Hawaiian and Other Pacific Islander alone	0	24	0.0%
Some other race alone	0	24	0.0%
Two or more races:	152	104	0.7%
Two races including Some other race	8	13	0.0%
Two races excluding Some other race, and three or more races	144	103	0.6%
Hispanic or Latino	426	*****	1.9%

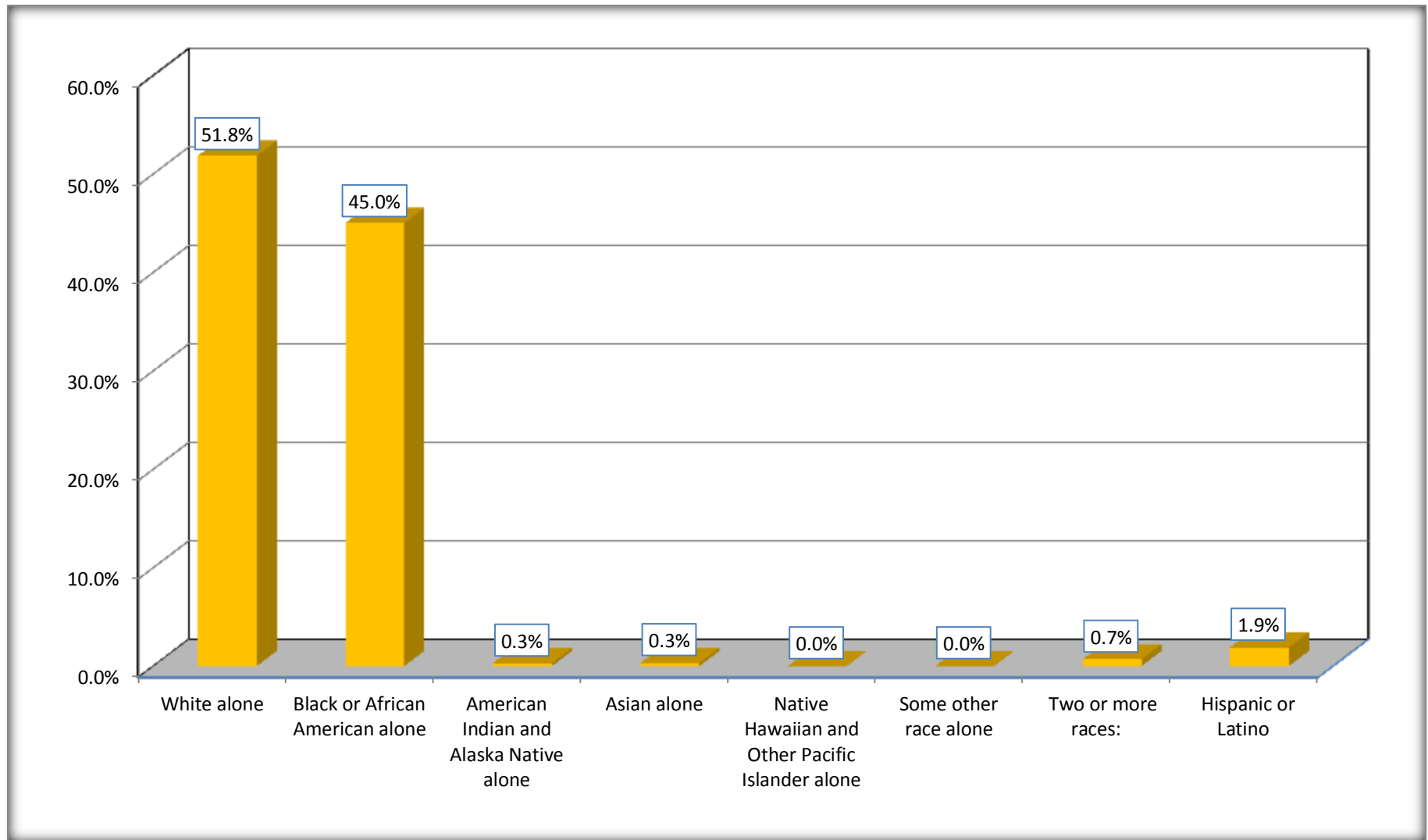
Source: U.S. Census Bureau, 2008-2012 American Community Survey

Although the American Community Survey (ACS) produces population, demographic and housing unit estimates, it is the Census Bureau's Population Estimates Program that produces and disseminates the official estimates of the population for the nation, states, counties, cities and towns and estimates of housing units for states and counties.

For information on confidentiality protection, sampling error, nonsampling error, and definitions, see Survey Methodology.

<http://www.census.gov/acs/www/UseData/index.htm>

Non-Hispanic by Race and Hispanic Population Barnwell County, South Carolina



Source: B03002. HISPANIC OR LATINO ORIGIN BY RACE - Universe: TOTAL POPULATION
Data Set: 2008-2012 American Community Survey 5-Year Estimates

B03002. HISPANIC OR LATINO ORIGIN BY RACE

Data Set: 2008-2012 American Community Survey 5-Year Estimates

	Barnwell County, South Carolina		
	Population	Margin of Error (+/-)	% of Total
Hispanic or Latino:	426	*****	100.0%
White alone	214	119	50.2%
Black or African American alone	12	22	2.8%
American Indian and Alaska Native alone	22	39	5.2%
Asian alone	0	24	0.0%
Native Hawaiian and Other Pacific Islander alone	0	24	0.0%
Some other race alone	107	110	25.1%
Two or more races:	71	49	16.7%
Two races including Some other race	0	24	0.0%
Two races excluding Some other race, and three or more races	71	49	16.7%

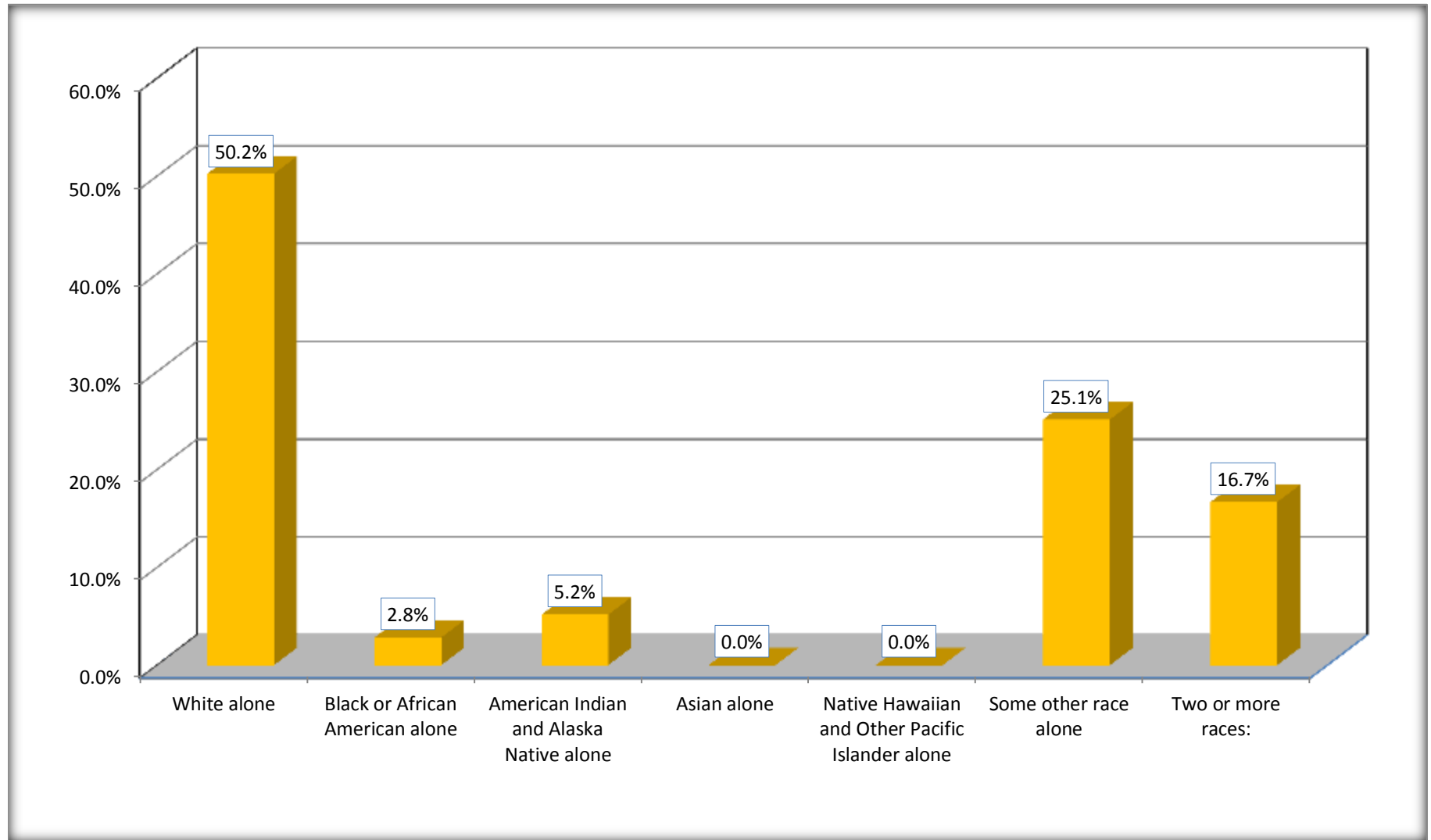
Source: U.S. Census Bureau, 2008-2012 American Community Survey

Although the American Community Survey (ACS) produces population, demographic and housing unit estimates, it is the Census Bureau's Population Estimates Program that produces and disseminates the official estimates of the population for the nation, states, counties, cities and towns and estimates of housing units for states and counties.

For information on confidentiality protection, sampling error, nonsampling error, and definitions, see Survey Methodology.

<http://www.census.gov/acs/www/UseData/index.htm>

Hispanic or Latino Origin by Race Barnwell County, South Carolina



Source: B03002. HISPANIC OR LATINO ORIGIN BY RACE
Data Set: 2008-2012 American Community Survey 5-Year Estimates

B01001. SEX BY AGE

Data Set: 2008-2012 American Community Survey 5-Year Estimates

	Barnwell County, South Carolina					
	African American	Margin of Error (+/-)	% of AA Total	White, Not Hispanic	Margin of Error (+/-)	% of NHW Total
Total:	10,148	162	100.0%	11,674	13	100.0%
Under 18 years	2,975	NC	29.3%	2,519	NC	21.6%
18 to 64 years	6,142	NC	60.5%	7,066	NC	60.5%
65 years and over	1,031	NC	10.2%	2,089	NC	17.9%
Male:	4,698	79	46.3%	5,649	389	48.4%
Under 18 years	1,551	NC	15.3%	1,280	NC	11.0%
18 to 64 years	2,763	NC	27.2%	3,473	NC	29.7%
65 years and over	384	NC	3.8%	896	NC	7.7%
Female:	5,450	104	53.7%	6,025	412	51.6%
Under 18 years	1,424	NC	14.0%	1,239	NC	10.6%
18 to 64 years	3,379	NC	33.3%	3,593	NC	30.8%
65 years and over	647	NC	6.4%	1,193	NC	10.2%

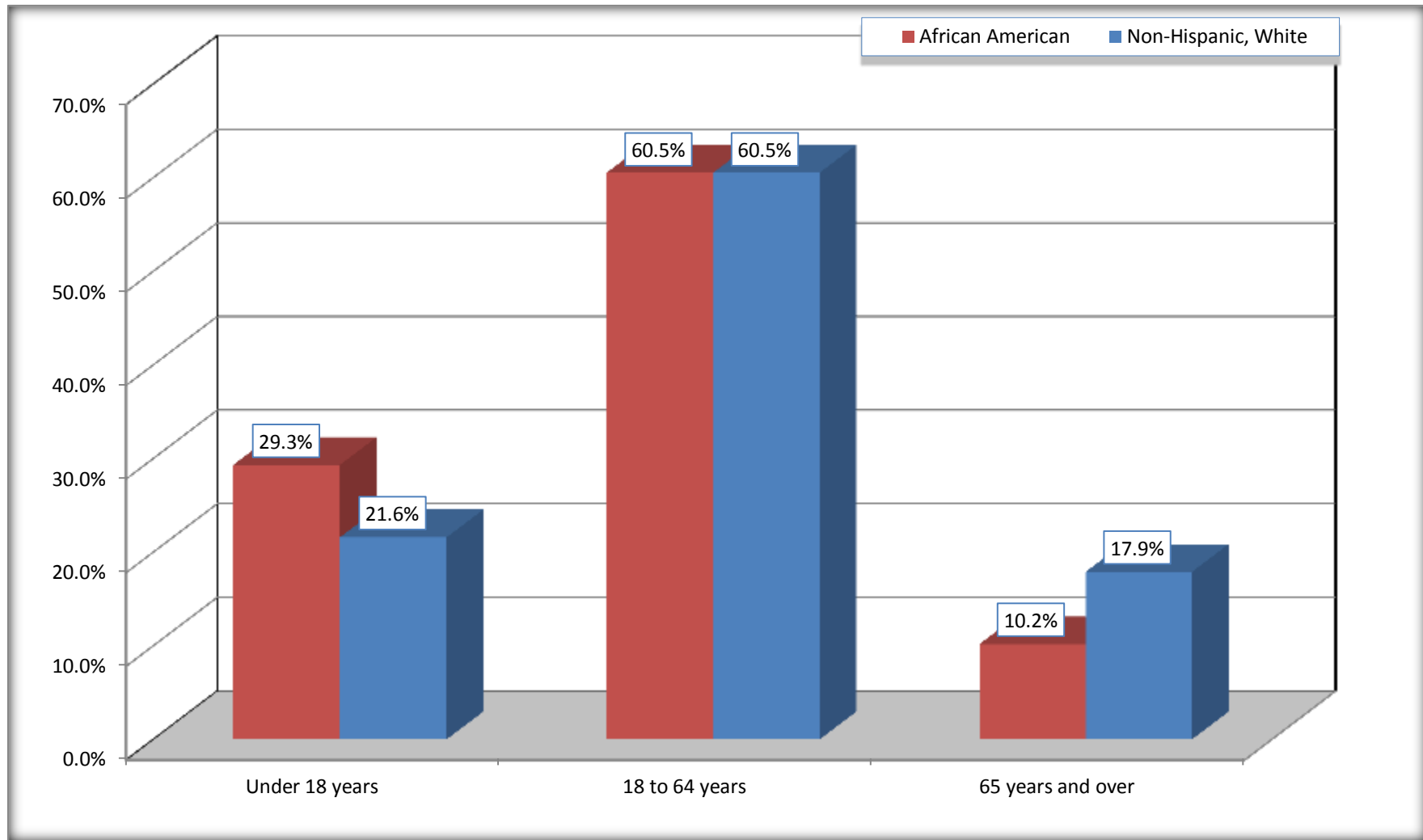
Source: U.S. Census Bureau, 2008-2012 American Community Survey

Although the American Community Survey (ACS) produces population, demographic and housing unit estimates, it is the Census Bureau's Population Estimates Program that produces and disseminates the official estimates of the population for the nation, states, counties, cities and towns and estimates of housing units for states and counties.

For information on confidentiality protection, sampling error, nonsampling error, and definitions, see Survey Methodology.
<http://www.census.gov/acs/www/UseData/index.htm>

Population by Age

Barnwell County, South Carolina



Source: B01001. SEX BY AGE
Data Set: 2008-2012 American Community Survey 5-Year Estimates

B05003. SEX BY AGE BY CITIZENSHIP STATUS

Data Set: 2008-2012 American Community Survey 5-Year Estimates

	Barnwell County, South Carolina					
	African American	Margin of Error (+/-)	% of AA Total by Age	White, Not Hispanic	Margin of Error (+/-)	% of NHW Total by Age
Total:	10,148	162	100.0%	11,674	13	100.0%
Under 18 years:	2,975	NC	100.0%	2,519	NC	100.0%
Native	2,975	NC	100.0%	2,519	NC	100.0%
Foreign born:	0	NC	0.0%	0	NC	0.0%
Naturalized U.S. citizen	0	NC	0.0%	0	NC	0.0%
Not a U.S. citizen	0	NC	0.0%	0	NC	0.0%
18 years and over:	7,173	NC	100.0%	9,155	NC	100.0%
Native	7,136	NC	99.5%	9,104	NC	99.4%
Foreign born:	37	NC	0.5%	51	NC	0.6%
Naturalized U.S. citizen	37	NC	0.5%	51	NC	0.6%
Not a U.S. citizen	0	NC	0.0%	0	NC	0.0%
Male:	4,698	79	46.3%	5,649	5	48.4%
Under 18 years:	1,551	38	100.0%	1,280	5	100.0%
Native	1,551	38	100.0%	1,280	5	100.0%
Foreign born:	0	24	0.0%	0	24	0.0%
Naturalized U.S. citizen	0	24	0.0%	0	24	0.0%
Not a U.S. citizen	0	24	0.0%	0	24	0.0%
18 years and over:	3,147	60	100.0%	4,369	24	100.0%
Native	3,116	65	99.0%	4,353	28	99.6%
Foreign born:	31	32	1.0%	16	28	0.4%
Naturalized U.S. citizen	31	32	1.0%	16	28	0.4%
Not a U.S. citizen	0	24	0.0%	0	24	0.0%

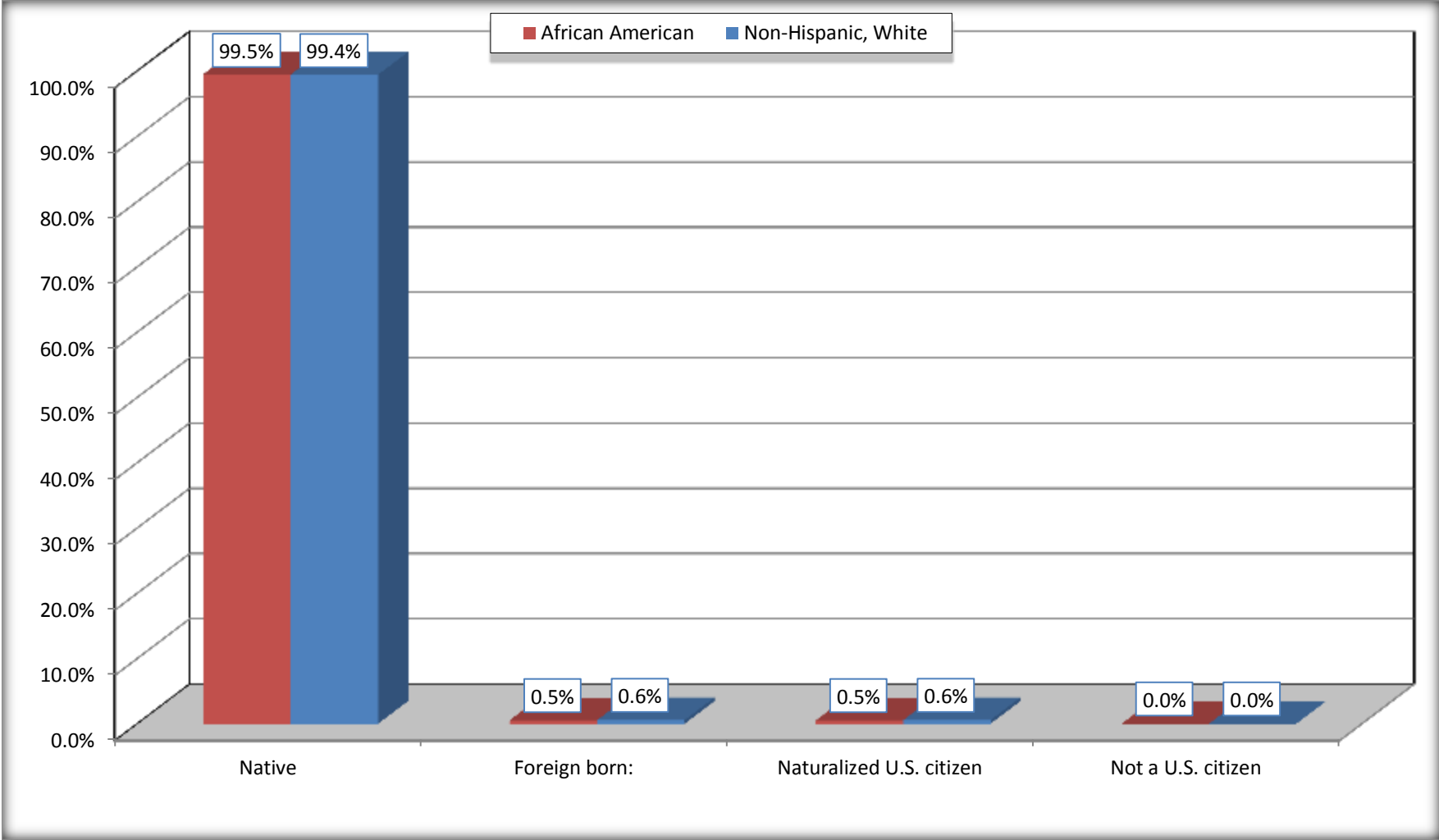
	Barnwell County, South Carolina					
	African American	Margin of Error (+/-)	% of AA by Age	White, Not Hispanic	Margin of Error (+/-)	% of NHW by Age
Female:	5,450	104	53.7%	6,025	9	51.6%
Under 18 years:	1,424	75	100.0%	1,239	9	100.0%
Native	1,424	75	100.0%	1,239	9	100.0%
Foreign born:	0	24	0.0%	0	24	0.0%
Naturalized U.S. citizen	0	24	0.0%	0	24	0.0%
Not a U.S. citizen	0	24	0.0%	0	24	0.0%
18 years and over:	4,026	43	100.0%	4,786	24	100.0%
Native	4,020	46	99.9%	4,751	41	99.3%
Foreign born:	6	11	0.1%	35	41	0.7%
Naturalized U.S. citizen	6	11	0.1%	35	41	0.7%
Not a U.S. citizen	0	24	0.0%	0	24	0.0%

Source: U.S. Census Bureau, 2008-2012 American Community Survey

For information on confidentiality protection, sampling error, nonsampling error, and definitions, see Survey Methodology.
<http://www.census.gov/acs/www/UseData/index.htm>

Citizenship Status of Voting Age Population (18 and Over)

Barnwell County, South Carolina



Source: B05003. SEX BY AGE BY CITIZENSHIP STATUS
Data Set: 2008-2012 American Community Survey 5-Year Estimates

**B07004. GEOGRAPHICAL MOBILITY IN THE PAST YEAR BY RACE FOR CURRENT RESIDENCE IN THE UNITED STATES - Universe:
POPULATION 1 YEAR AND OVER**

Data Set: 2008-2012 American Community Survey 5-Year Estimates

	Barnwell County, South Carolina					
	African American	Margin of Error (+/-)	% of AA Total	White, Not Hispanic	Margin of Error (+/-)	% of NHW Total
Total:	9,993	177	100.0%	11,574	81	100.0%
Same house 1 year ago	9,020	349	90.3%	11,001	232	95.0%
Moved within same county	692	288	6.9%	383	185	3.3%
Moved from different county within same state	205	165	2.1%	40	35	0.3%
Moved from different state	67	67	0.7%	150	94	1.3%
Moved from abroad	9	15	0.1%	0	24	0.0%

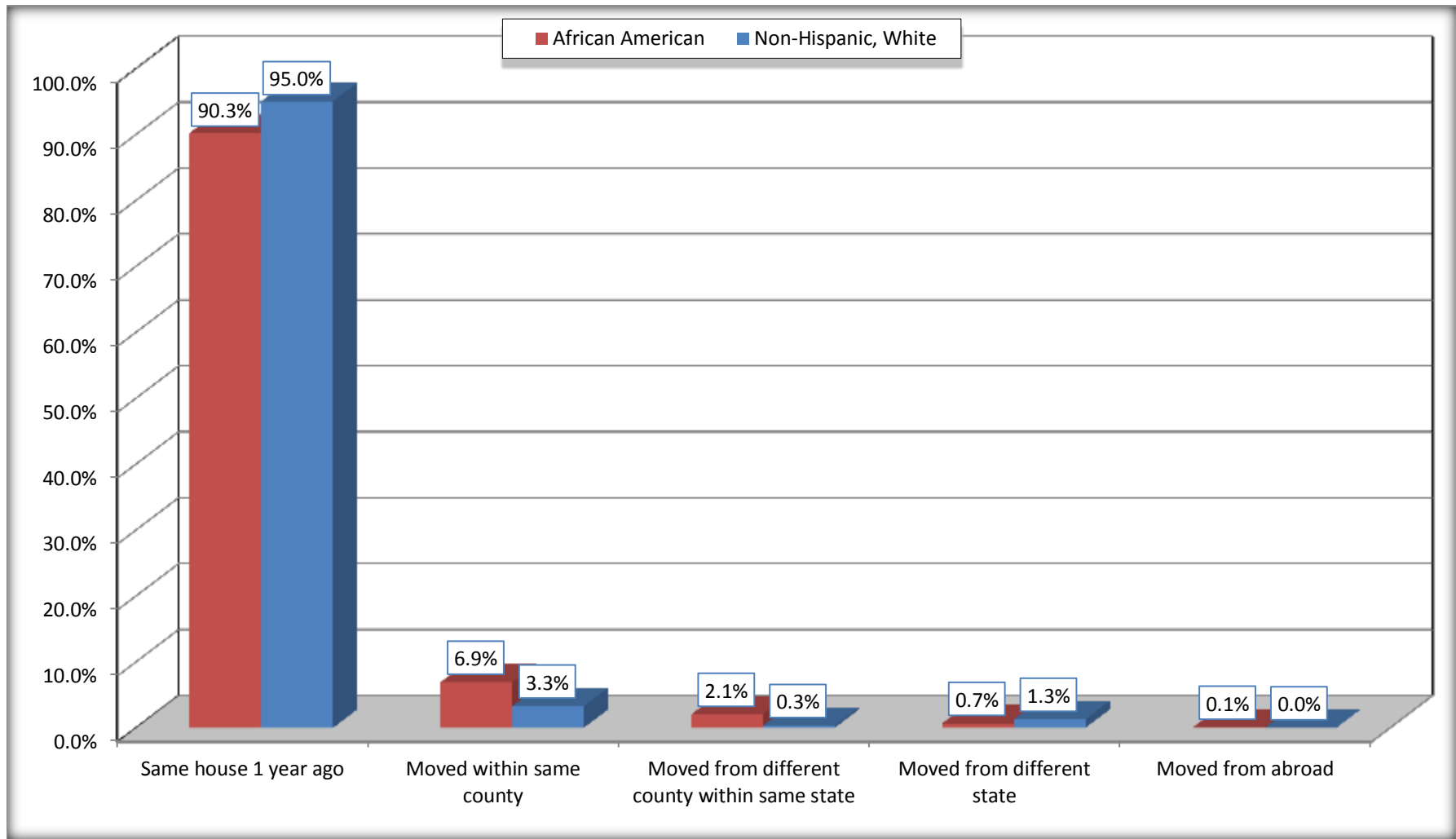
Source: U.S. Census Bureau, 2008-2012 American Community Survey

For information on confidentiality protection, sampling error, nonsampling error, and definitions, see Survey Methodology.

<http://www.census.gov/acs/www/UseData/index.htm>

Geographical Mobility in the Past Year (Population 1 Year and Over)

Barnwell County, South Carolina



Source: B07004. GEOGRAPHICAL MOBILITY IN THE PAST YEAR BY RACE FOR CURRENT RESIDENCE IN THE UNITED STATES - Universe: POPULATION 1 YEAR AND OVER

Data Set: 2008-2012 American Community Survey 5-Year Estimates

B08105. MEANS OF TRANSPORTATION TO WORK - Universe: WORKERS 16 YEARS AND OVER

Data Set: 2008-2012 American Community Survey 5-Year Estimates

	Barnwell County, South Carolina					
	African American	Margin of Error (+/-)	% of AA Total	White, Not Hispanic	Margin of Error (+/-)	% of NHW Total
Total:	2967	289	100.0%	4696	312	100.0%
Car, truck, or van - drove alone	2422	295	81.6%	4001	303	85.2%
Car, truck, or van - carpooled	319	126	10.8%	502	155	10.7%
Public transportation (excluding taxicab)	25	42	0.8%	2	4	0.0%
Walked	134	78	4.5%	41	44	0.9%
Taxicab, motorcycle, bicycle, or other means	23	31	0.8%	17	17	0.4%
Worked at home	44	28	1.5%	133	85	2.8%

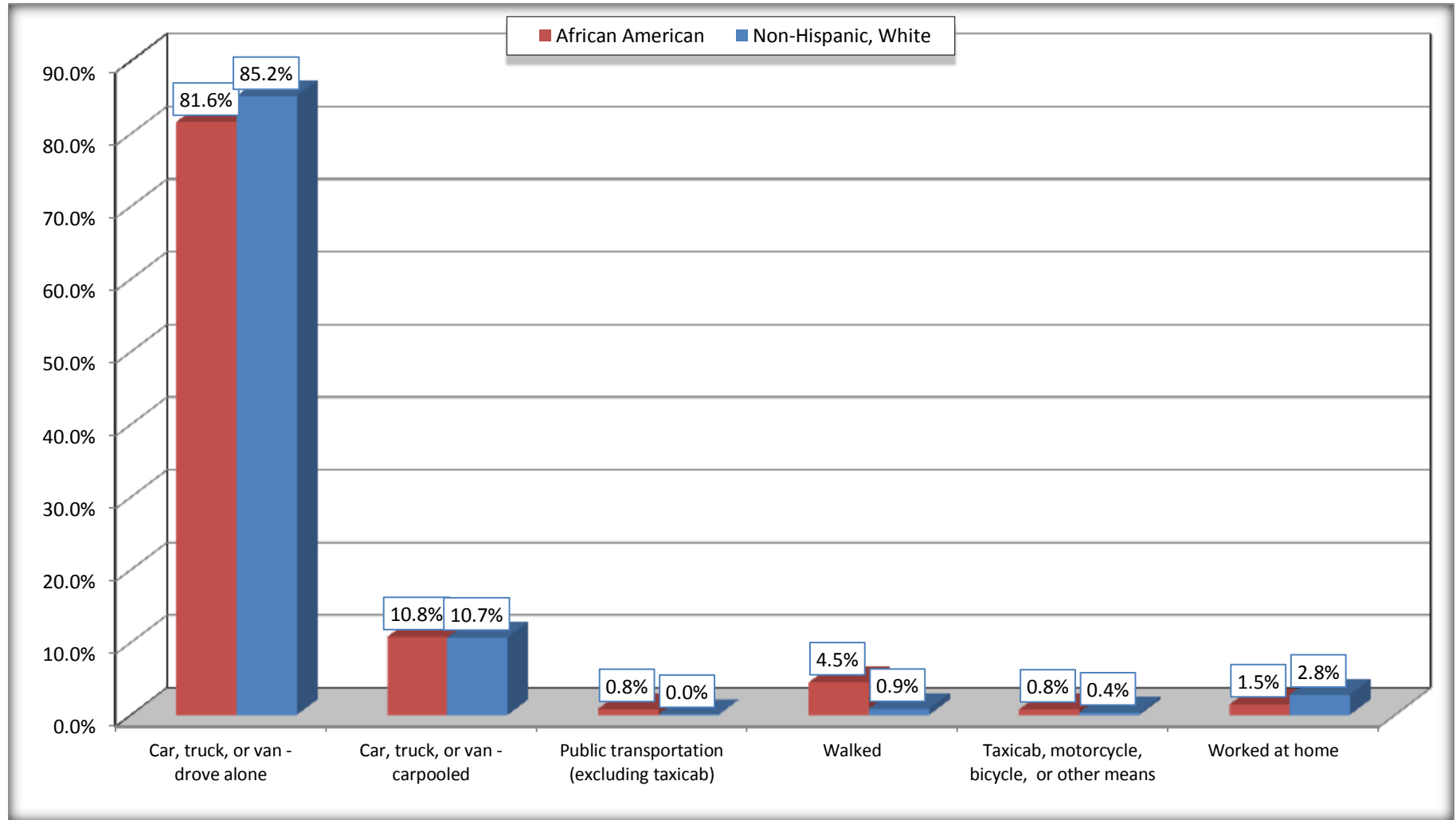
Source: U.S. Census Bureau, 2008-2012 American Community Survey

For information on confidentiality protection, sampling error, nonsampling error, and definitions, see Survey Methodology.

<http://www.census.gov/acs/www/UseData/index.htm>

Means of Transportation to Work (Workers 16 Years and Over)

Barnwell County, South Carolina



Source: B08105. MEANS OF TRANSPORTATION TO WORK - Universe: WORKERS 16 YEARS AND OVER
Data Set: 2008-2012 American Community Survey 5-Year Estimates

B11002. HOUSEHOLD TYPE BY RELATIVES AND NONRELATIVES FOR POPULATION IN HOUSEHOLDS

Data Set: 2008-2012 American Community Survey 5-Year Estimates

	Barnwell County, South Carolina					
	African American	Margin of Error (+/-)	% of AA Total	White, Not Hispanic	Margin of Error (+/-)	% of NHW Total
Total:	10016	204	100.0%	11676	156	100.0%
In family households	8733	317	87.2%	9939	334	85.1%
In nonfamily households	1283	279	12.8%	1737	321	14.9%

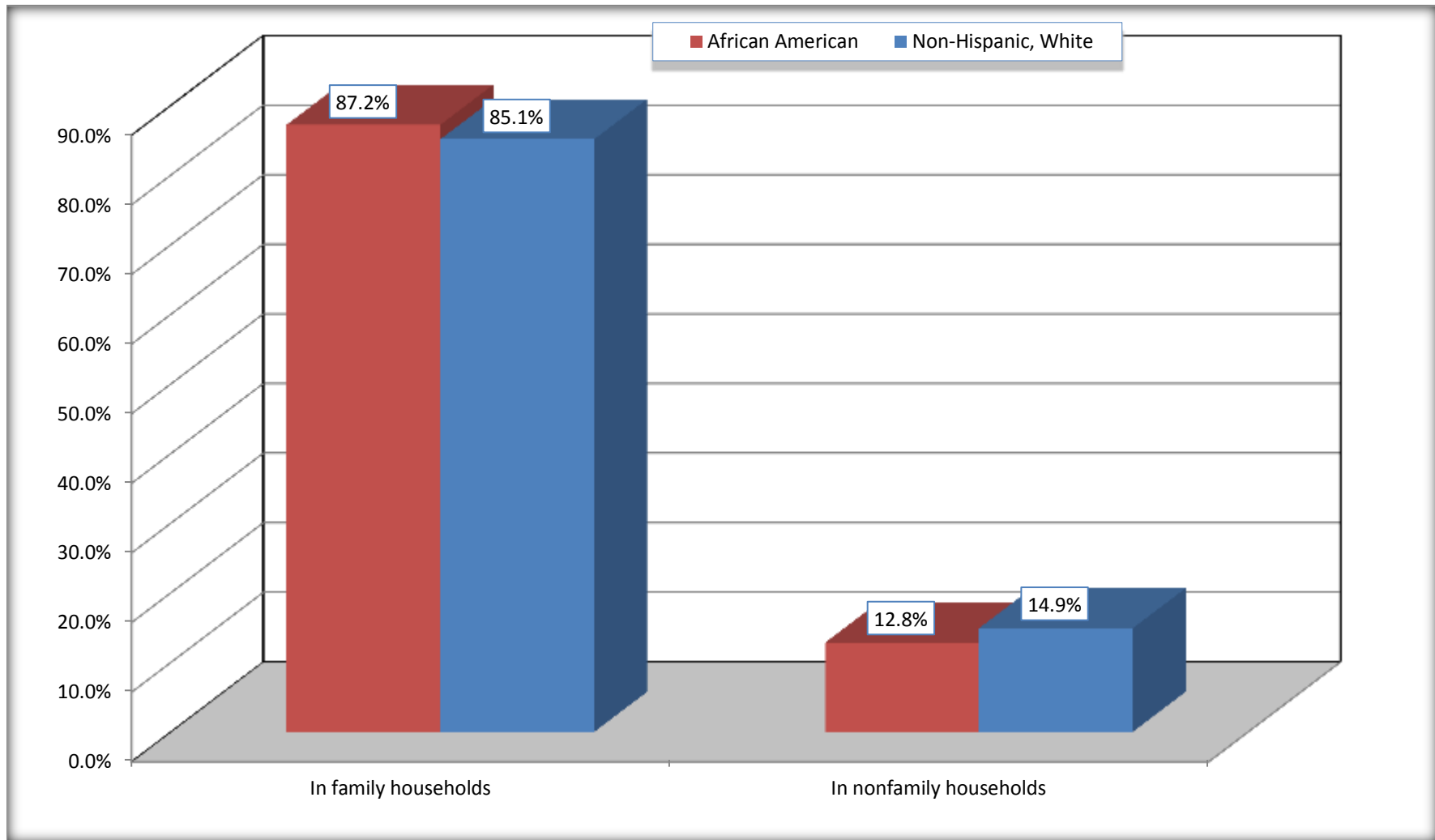
Source: U.S. Census Bureau, 2008-2012 American Community Survey

For information on confidentiality protection, sampling error, nonsampling error, and definitions, see Survey Methodology.

<http://www.census.gov/acs/www/UseData/index.htm>

Household Type for Population in Households

Barnwell County, South Carolina



Source: B11002. HOUSEHOLD TYPE BY RELATIVES AND NONRELATIVES FOR POPULATION IN HOUSEHOLDS
Data Set: 2008-2012 American Community Survey 5-Year Estimates

B12002. MARITAL STATUS FOR THE POPULATION 15 YEARS AND OVER

Data Set: 2008-2012 American Community Survey 5-Year Estimates

	Barnwell County, South Carolina					
	African American	Margin of Error (+/-)	% of AA Total	White, Not Hispanic	Margin of Error (+/-)	% of NHW Total
Total:	7,705	93	100.0%	9,650	24	100.0%
Never married	3,441	NC	44.7%	2,091	NC	21.7%
Now married (except separated)	2,605	NC	33.8%	5,371	NC	55.7%
Separated	437	NC	5.7%	287	NC	3.0%
Widowed	553	NC	7.2%	922	NC	9.6%
Divorced	669	NC	8.7%	979	NC	10.1%
Male:	3,419	66	44.4%	4,630	24	48.0%
Never married	1,573	134	20.4%	1,102	182	11.4%
Now married (except separated)	1,276	179	16.6%	2,617	227	27.1%
Separated	205	95	2.7%	221	120	2.3%
Widowed	84	56	1.1%	211	86	2.2%
Divorced	281	106	3.6%	479	140	5.0%
Female:	4,286	46	55.6%	5,020	24	52.0%
Never married	1,868	182	24.2%	989	158	10.2%
Now married (except separated)	1,329	182	17.2%	2,754	234	28.5%
Separated	232	93	3.0%	66	48	0.7%
Widowed	469	110	6.1%	711	134	7.4%
Divorced	388	109	5.0%	500	154	5.2%

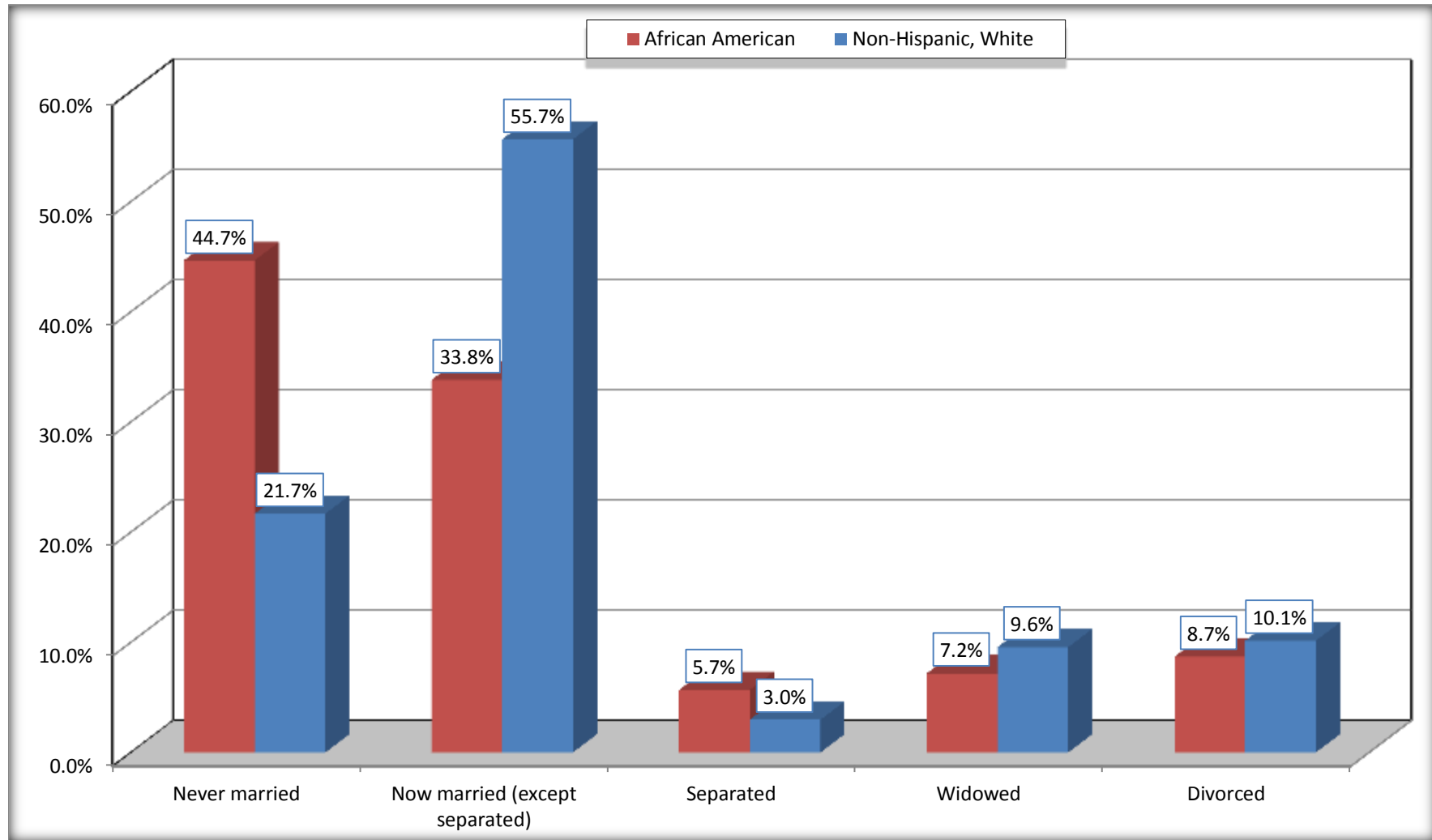
Source: U.S. Census Bureau, 2008-2012 American Community Survey

For information on confidentiality protection, sampling error, nonsampling error, and definitions, see Survey Methodology.

<http://www.census.gov/acs/www/UseData/index.htm>

Marital Status for the Population 15 Years and Over

Barnwell County, South Carolina



Source: B12002. MARITAL STATUS FOR THE POPULATION 15 YEARS AND OVER
Data Set: 2008-2012 American Community Survey 5-Year Estimates

C15002. SEX BY EDUCATIONAL ATTAINMENT FOR THE POPULATION 25 YEARS AND OVER

Data Set: 2008-2012 American Community Survey 5-Year Estimates

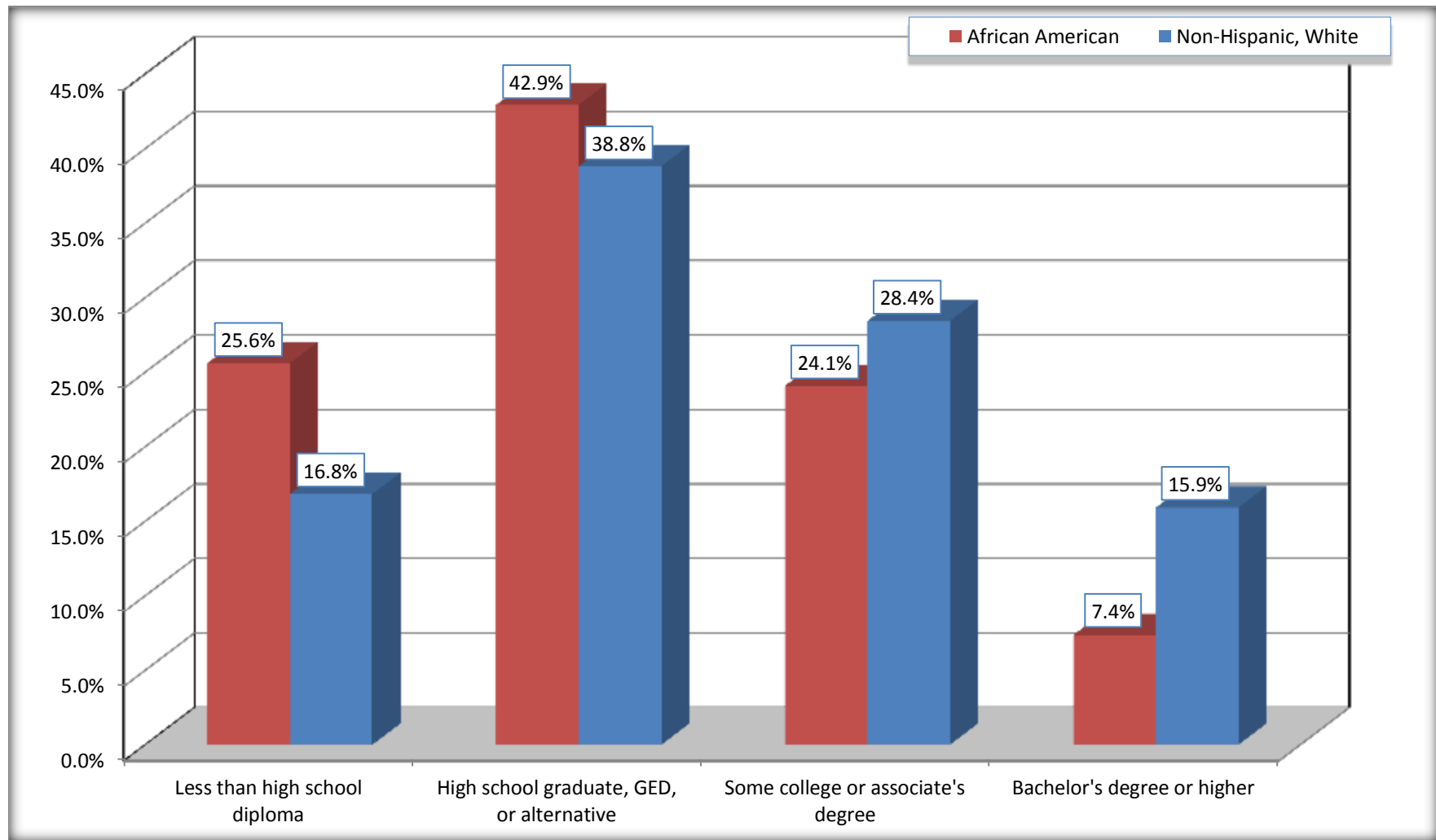
	Barnwell County, South Carolina					
	African American	Margin of Error (+/-)	% of AA Total	White, Not Hispanic	Margin of Error (+/-)	% of NHW Total
Total:	6,032	113	100.0%	8,241	24	100.0%
Less than high school diploma	1,544	NC	25.6%	1,386	NC	16.8%
High school graduate, GED, or alternative	2,590	NC	42.9%	3,199	NC	38.8%
Some college or associate's degree	1,453	NC	24.1%	2,344	NC	28.4%
Bachelor's degree or higher	445	NC	7.4%	1,312	NC	15.9%
Male:	2,539	111	42.1%	3,896	24	47.3%
Less than high school diploma	777	153	12.9%	766	164	9.3%
High school graduate, GED, or alternative	1,150	138	19.1%	1,399	177	17.0%
Some college or associate's degree	554	132	9.2%	1,113	187	13.5%
Bachelor's degree or higher	58	44	1.0%	618	125	7.5%
Female:	3,493	43	57.9%	4,345	24	52.7%
Less than high school diploma	767	153	12.7%	620	138	7.5%
High school graduate, GED, or alternative	1,440	193	23.9%	1,800	238	21.8%
Some college or associate's degree	899	156	14.9%	1,231	201	14.9%
Bachelor's degree or higher	387	107	6.4%	694	137	8.4%

Source: U.S. Census Bureau, 2008-2012 American Community Survey

For information on confidentiality protection, sampling error, nonsampling error, and definitions, see Survey Methodology.

<http://www.census.gov/acs/www/UseData/index.htm>

Educational Attainment for the Population 25 Years and Older Barnwell County, South Carolina



Source: C15002. SEX BY EDUCATIONAL ATTAINMENT FOR THE POPULATION 25 YEARS AND OVER
Data Set: 2008-2012 American Community Survey 5-Year Estimates

B16005. NATIVITY BY LANGUAGE SPOKEN AT HOME BY ABILITY TO SPEAK ENGLISH FOR THE POPULATION 5 YEARS AND OVER

Data Set: 2008-2012 American Community Survey 5-Year Estimates

	Barnwell County, South Carolina					
	African American	Margin of Error (+/-)	% of AA Total	White, Not Hispanic	Margin of Error (+/-)	% of NHW Total
Total:	9,361	127	100.0%	11,062	13	100.0%
Speak only English	9,251	NC	98.8%	10,874	NC	98.3%
Speak another language	110	NC	1.2%	188	NC	1.7%
Speak English "very well"	103	NC	1.1%	109	NC	1.0%
Speak English "less than very well"	7	NC	0.1%	79	NC	0.7%
Native:	9,324	131	99.6%	11,011	67	99.5%
Speak only English	9,214	162	98.4%	10,867	111	98.2%
Speak another language	110	101	1.2%	144	85	1.3%
Speak English "very well"	103	100	1.1%	98	66	0.9%
Speak English "less than very well"	7	11	0.1%	46	38	0.4%
Foreign born:	37	38	0.4%	51	66	0.5%
Speak only English	37	38	0.4%	7	11	0.1%
Speak another language	0	24	0.0%	44	66	0.4%
Speak English "very well"	0	24	0.0%	11	17	0.1%
Speak English "less than very well"	0	24	0.0%	33	57	0.3%

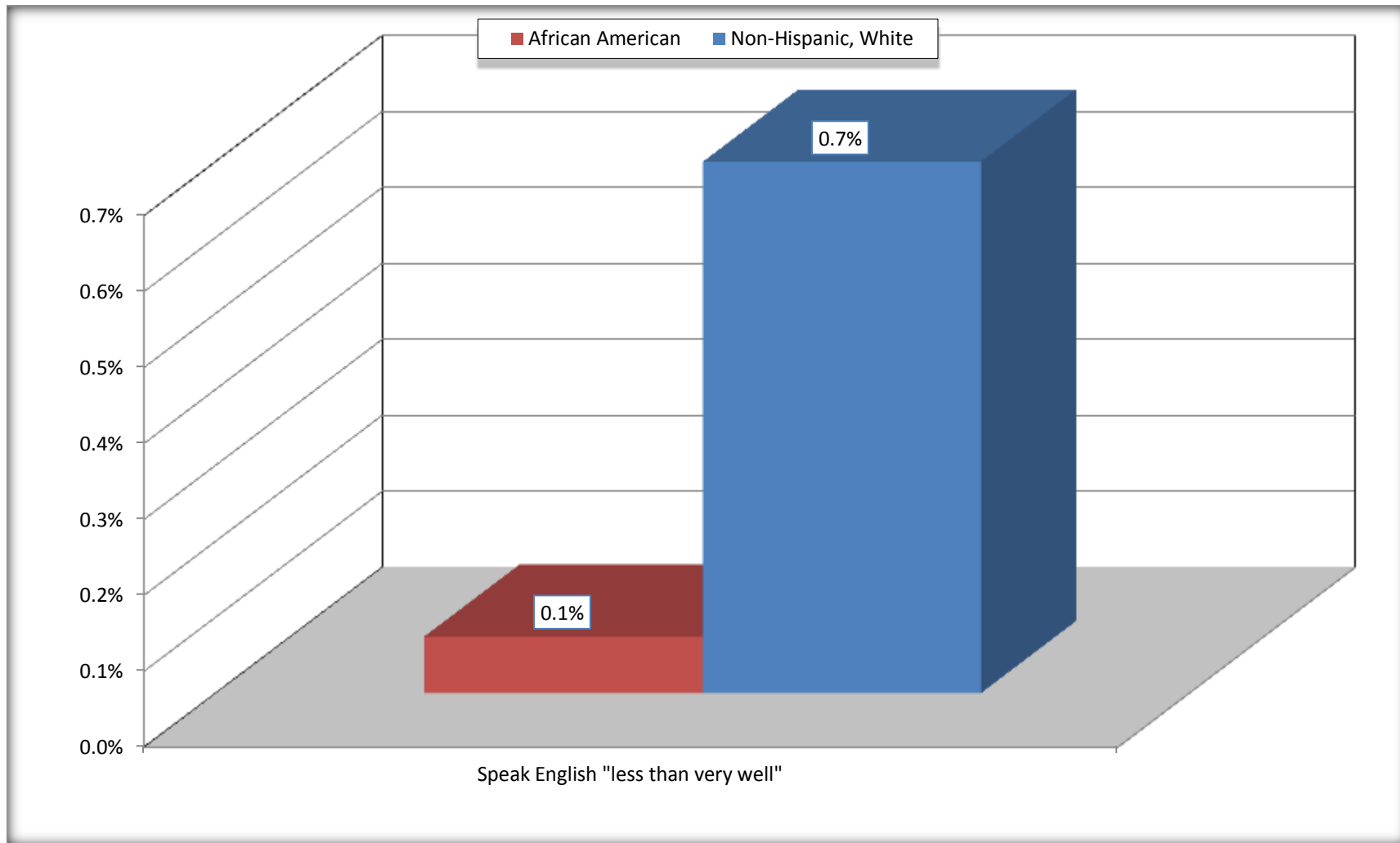
Source: U.S. Census Bureau, 2008-2012 American Community Survey

For information on confidentiality protection, sampling error, nonsampling error, and definitions, see Survey Methodology.

<http://www.census.gov/acs/www/UseData/index.htm>

Speak English "Less than Very Well" (Population 5 Years and Over)

Barnwell County, South Carolina



Source: B16005. NATIVITY BY LANGUAGE SPOKEN AT HOME BY ABILITY TO SPEAK ENGLISH FOR THE POPULATION 5 YEARS AND OVER
Data Set: 2008-2012 American Community Survey 5-Year Estimates

B17010. POVERTY STATUS IN THE PAST 12 MONTHS OF FAMILIES BY FAMILY TYPE BY PRESENCE OF RELATED CHILDREN UNDER 18 YEARS

Data Set: 2008-2012 American Community Survey 5-Year Estimates

	Barnwell County, South Carolina					
	African American	Margin of Error (+/-)	% of AA Total	White, Not Hispanic	Margin of Error (+/-)	% of NHW Total
Total:	2,328	216	100.0%	3,134	230	100.0%
Income in the past 12 months below poverty level:	830	195	35.7%	426	150	13.6%
Married-couple family:	175	73	7.5%	150	84	4.8%
With related children under 18 years	94	56	4.0%	83	62	2.6%
Other family:	655	180	28.1%	276	124	8.8%
Male householder, no wife present	51	53	2.2%	85	67	2.7%
With related children under 18 years	26	29	1.1%	84	67	2.7%
Female householder, no husband present	604	162	25.9%	191	101	6.1%
With related children under 18 years	470	141	20.2%	185	101	5.9%
Income in the past 12 months at or above poverty level:	1,498	181	64.3%	2,708	226	86.4%
Married-couple family:	1,017	150	43.7%	2,319	229	74.0%
With related children under 18 years	466	124	20.0%	851	145	27.2%
Other family:	481	138	20.7%	389	124	12.4%
Male householder, no wife present	46	41	2.0%	208	96	6.6%
With related children under 18 years	2	5	0.1%	97	67	3.1%
Female householder, no husband present	435	127	18.7%	181	95	5.8%
With related children under 18 years	291	119	12.5%	114	83	3.6%

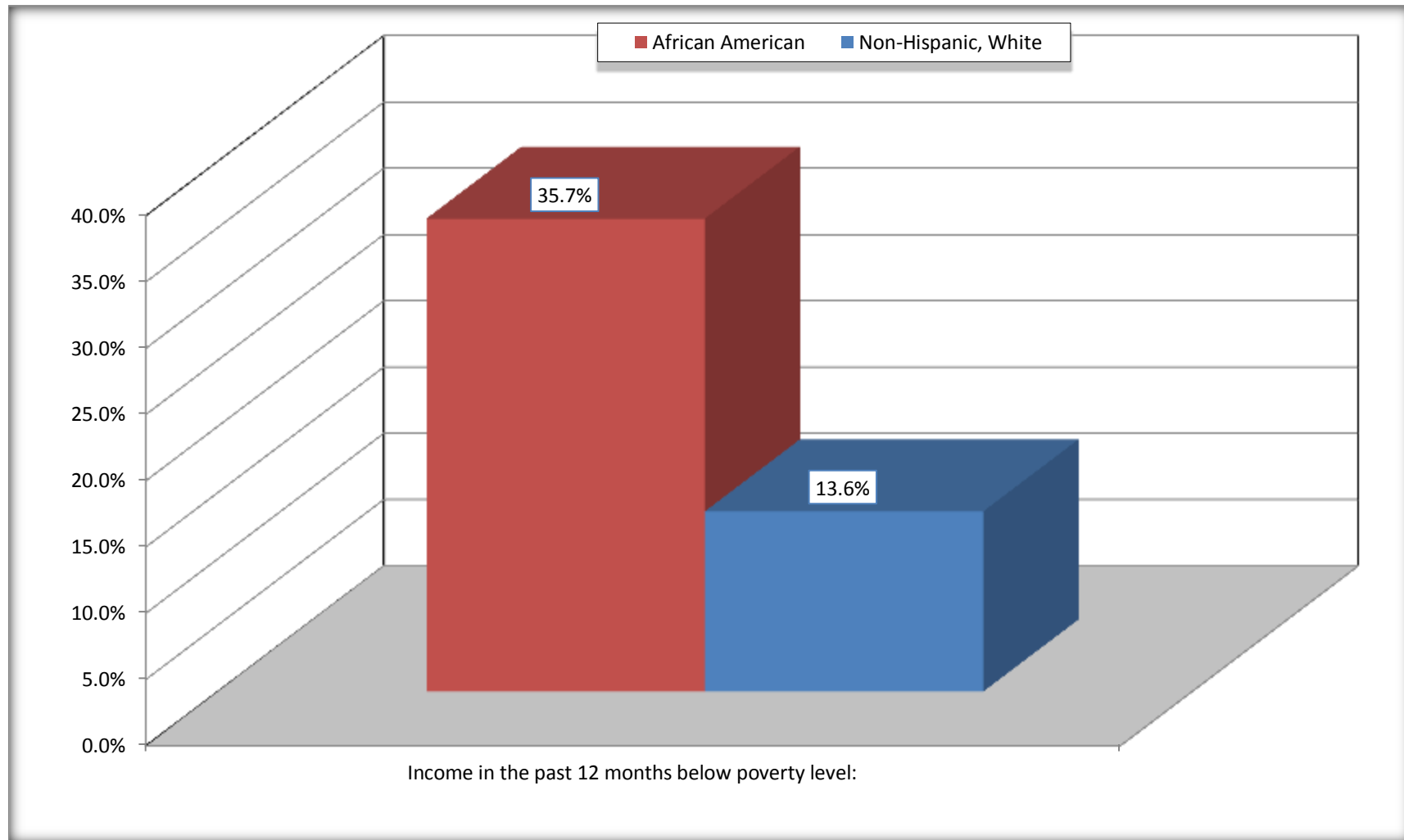
Source: U.S. Census Bureau, 2008-2012 American Community Survey

For information on confidentiality protection, sampling error, nonsampling error, and definitions, see Survey Methodology.

<http://www.census.gov/acs/www/UseData/index.htm>

Family Households Below Poverty in the Past 12 Months

Barnwell County, South Carolina

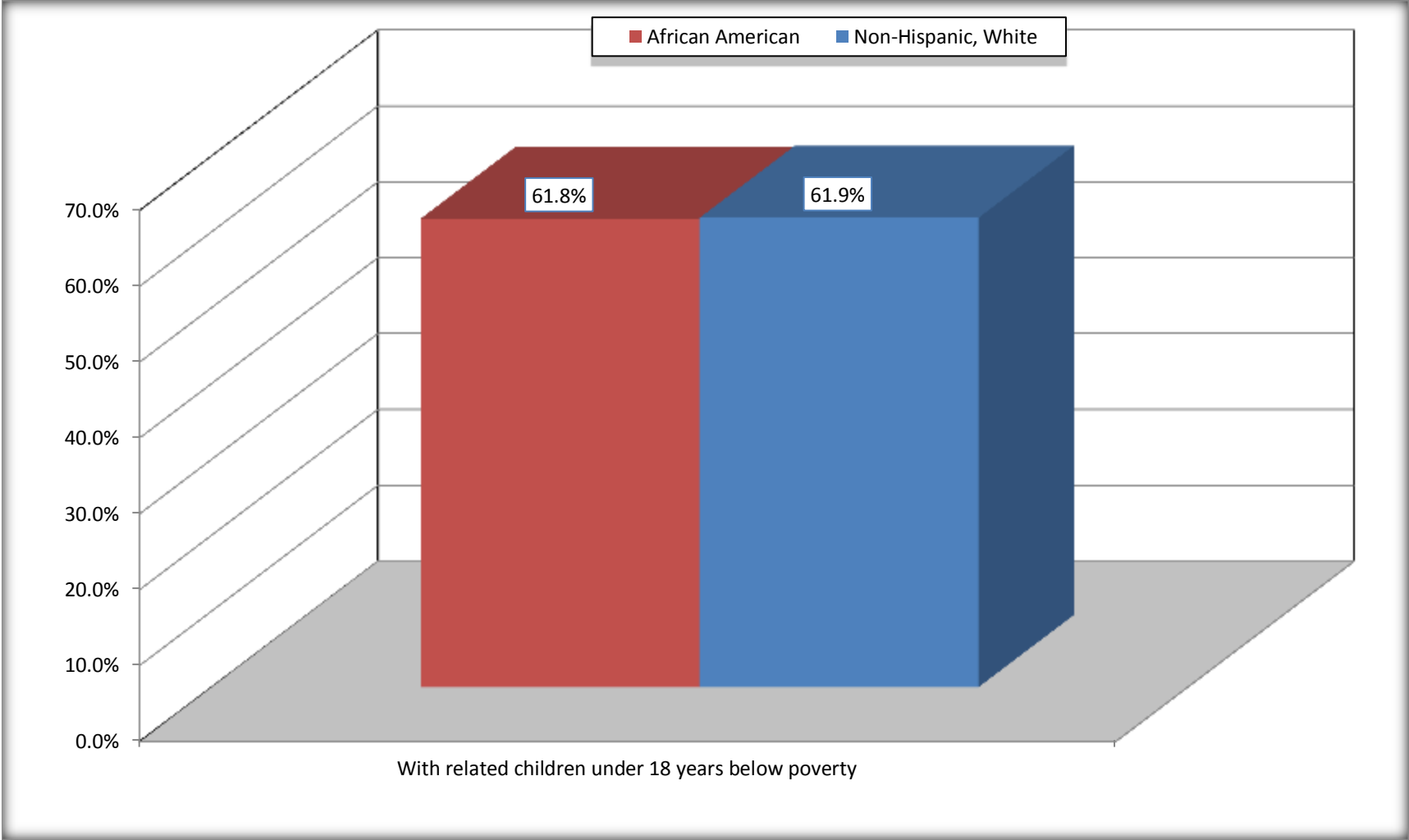


Source: B17010. POVERTY STATUS IN THE PAST 12 MONTHS OF FAMILIES BY FAMILY TYPE BY PRESENCE OF RELATED CHILDREN UNDER 18 YEARS

Data Set: 2008-2012 American Community Survey 5-Year Estimates

Female-headed Households with Related Children Below Poverty in the Past 12 Months

Barnwell County, South Carolina



Source: B17010. POVERTY STATUS IN THE PAST 12 MONTHS OF FAMILIES BY FAMILY TYPE BY PRESENCE OF RELATED CHILDREN UNDER 18 YEARS
Data Set: 2008-2012 American Community Survey 5-Year Estimates

B17020 POVERTY STATUS IN THE PAST 12 MONTHS BY AGE - Universe: POPULATION FOR WHOM POVERTY STATUS IS DETERMINED

Data Set: 2008-2012 American Community Survey 5-Year Estimates

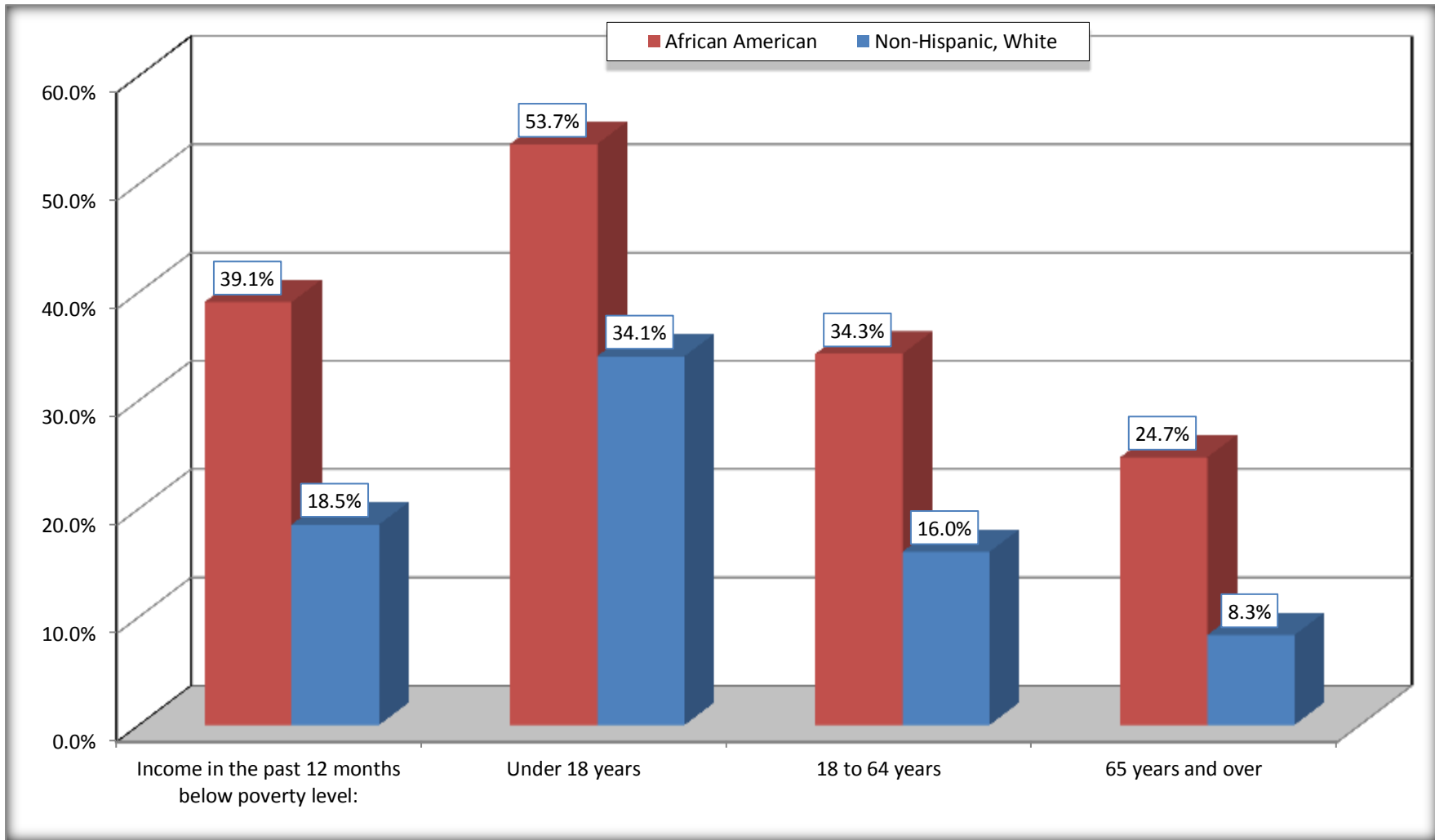
	Barnwell County, South Carolina					
	African American	Margin of Error (+/-)	% of AA By Age	White, Not Hispanic	Margin of Error (+/-)	% of NHW By Age
Total:	10,007	179	100.0%	11,498	112	100.0%
Income in the past 12 months below poverty level:	3,911	653	39.1%	2,131	476	18.5%
Under 18 years	1,584	NC	53.7%	840	NC	34.1%
18 to 64 years	2,088	391	34.3%	1,124	266	16.0%
65 years and over	239	NC	24.7%	167	NC	8.3%
Income in the past 12 months at or above poverty level:	6,096	639	60.9%	9,367	468	81.5%
Under 18 years	1,367	NC	46.3%	1,625	NC	65.9%
18 to 64 years	4,002	380	65.7%	5,900	268	84.0%
65 years and over	727	NC	75.3%	1,842	NC	91.7%

Source: U.S. Census Bureau, 2008-2012 American Community Survey

For information on confidentiality protection, sampling error, nonsampling error, and definitions, see Survey Methodology.

<http://www.census.gov/acs/www/UseData/index.htm>

Population Below Poverty in the Past 12 Months Barnwell County, South Carolina



Source: B17020 POVERTY STATUS IN THE PAST 12 MONTHS BY AGE - Universe: POPULATION FOR WHOM POVERTY STATUS IS DETERMINED
Data Set: 2008-2012 American Community Survey 5-Year Estimates

B19001. HOUSEHOLD INCOME IN THE PAST 12 MONTHS (IN 2010 INFLATION-ADJUSTED DOLLARS)

Data Set: 2008-2012 American Community Survey 5-Year Estimates

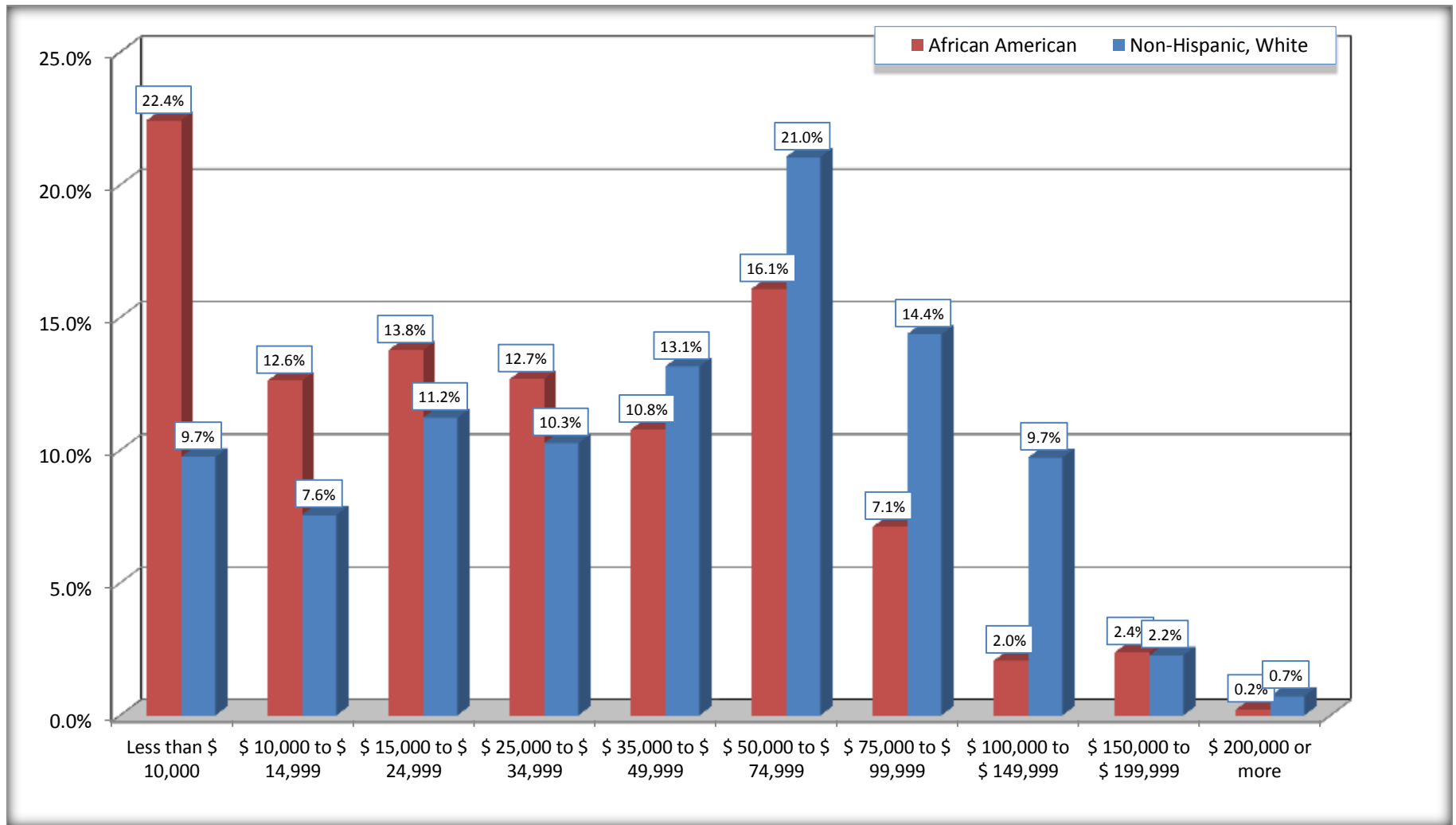
	Barnwell County, South Carolina					
	African American	Margin of Error (+/-)	% of AA Total	White, Not Hispanic	Margin of Error (+/-)	% of NHW Total
Total:	3,466	232	100.0%	4,581	207	100.0%
Less than \$ 10,000	777	172	22.4%	446	130	9.7%
\$ 10,000 to \$ 14,999	437	113	12.6%	346	118	7.6%
\$ 15,000 to \$ 24,999	477	NC	13.8%	514	NC	11.2%
\$ 25,000 to \$ 34,999	439	NC	12.7%	470	NC	10.3%
\$ 35,000 to \$ 49,999	373	NC	10.8%	602	NC	13.1%
\$ 50,000 to \$ 74,999	557	NC	16.1%	964	NC	21.0%
\$ 75,000 to \$ 99,999	246	89	7.1%	658	155	14.4%
\$ 100,000 to \$ 149,999	71	NC	2.0%	445	NC	9.7%
\$ 150,000 to \$ 199,999	82	76	2.4%	103	59	2.2%
\$ 200,000 or more	7	13	0.2%	33	30	0.7%

Source: U.S. Census Bureau, 2008-2012 American Community Survey

For information on confidentiality protection, sampling error, nonsampling error, and definitions, see Survey Methodology.

<http://www.census.gov/acs/www/UseData/index.htm>

Household Income in the Past 12 Months Barnwell County, South Carolina



Source: B19001. HOUSEHOLD INCOME IN THE PAST 12 MONTHS (IN 2010 INFLATION-ADJUSTED DOLLARS)
Data Set: 2008-2012 American Community Survey 5-Year Estimates

B19013. MEDIAN HOUSEHOLD INCOME IN THE PAST 12 MONTHS (IN 2010 INFLATION-ADJUSTED DOLLARS)

Data Set: 2008-2012 American Community Survey 5-Year Estimates

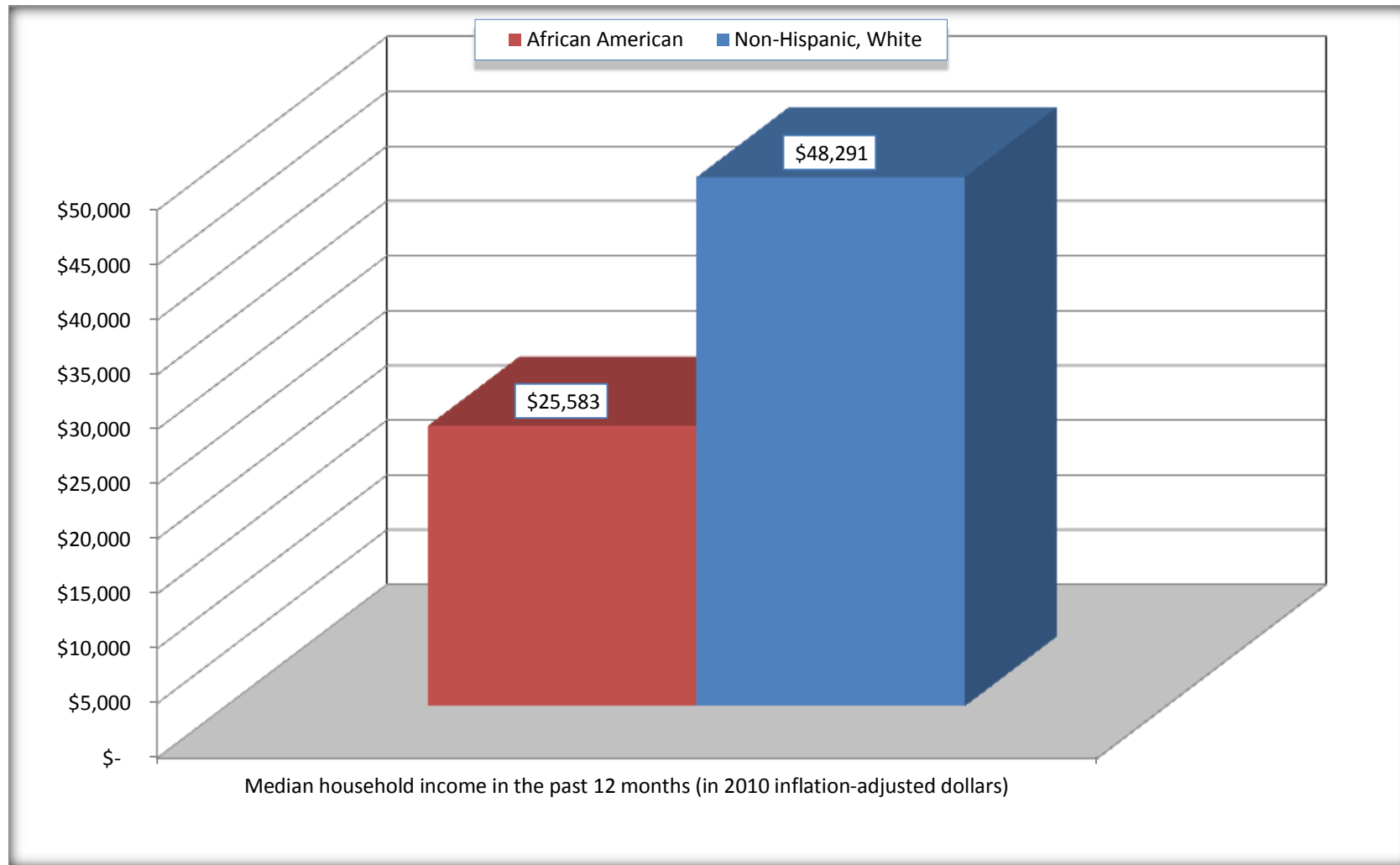
	Barnwell County, South Carolina			
	African American	Margin of Error (+/-)	White, Not Hispanic	Margin of Error (+/-)
Median household income in the past 12 months (in 2010 inflation-adjusted dollars)	\$ 25,583	\$ 2,635	\$ 48,291	\$ 5,005

Source: U.S. Census Bureau, 2008-2012 American Community Survey

For information on confidentiality protection, sampling error, nonsampling error, and definitions, see Survey Methodology.
<http://www.census.gov/acs/www/UseData/index.htm>

Median Household Income in the Past 12 Months

Barnwell County, South Carolina



Source: B19013. MEDIAN HOUSEHOLD INCOME IN THE PAST 12 MONTHS (IN 2010 INFLATION-ADJUSTED DOLLARS)
Data Set: 2008-2012 American Community Survey 5-Year Estimates

B19101. FAMILY INCOME IN THE PAST 12 MONTHS (IN 2010 INFLATION-ADJUSTED DOLLARS)

Data Set: 2008-2012 American Community Survey 5-Year Estimates

	Barnwell County, South Carolina					
	African American	Margin of Error (+/-)	% of AA Total	White, Not Hispanic	Margin of Error (+/-)	% of NHW Total
Total:	2,328	216	100.0%	3,134	230	100.0%
Less than \$ 10,000	446	151	19.2%	316	136	10.1%
\$ 10,000 to \$ 14,999	199	88	8.5%	75	56	2.4%
\$ 15,000 to \$ 24,999	334	NC	14.3%	210	NC	6.7%
\$ 25,000 to \$ 34,999	231	NC	9.9%	249	NC	7.9%
\$ 35,000 to \$ 49,999	337	NC	14.5%	414	NC	13.2%
\$ 50,000 to \$ 74,999	447	NC	19.2%	747	NC	23.8%
\$ 100,000 to \$ 149,999	68	NC	2.9%	424	NC	13.5%
\$ 150,000 to \$ 199,999	52	62	2.2%	103	59	3.3%
\$ 200,000 or more	0	24	0.0%	33	30	1.1%

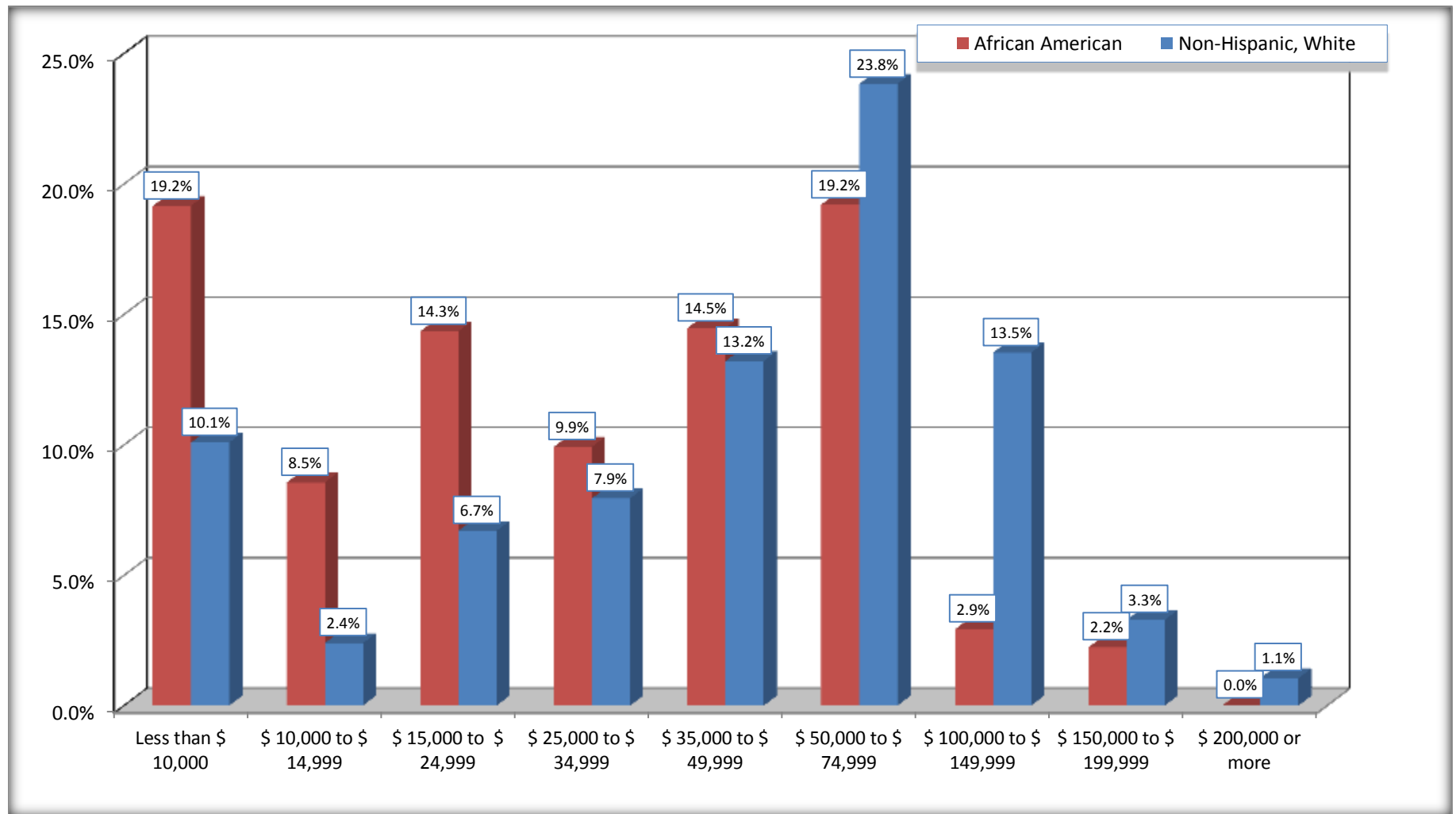
Source: U.S. Census Bureau, 2008-2012 American Community Survey

For information on confidentiality protection, sampling error, nonsampling error, and definitions, see Survey Methodology.

<http://www.census.gov/acs/www/UseData/index.htm>

Family Income in the Past 12 Months

Barnwell County, South Carolina



Source: B19101. FAMILY INCOME IN THE PAST 12 MONTHS (IN 2010 INFLATION-ADJUSTED DOLLARS)
Data Set: 2008-2012 American Community Survey 5-Year Estimates

B19113. MEDIAN FAMILY INCOME IN THE PAST 12 MONTHS (IN 2010 INFLATION-ADJUSTED DOLLARS)

Data Set: 2008-2012 American Community Survey 5-Year Estimates

	Barnwell County, South Carolina			
	African American	Margin of Error (+/-)	White, Not Hispanic	Margin of Error (+/-)
Median family income in the past 12 months (in 2010 inflation-adjusted dollars)	\$ 33,017	\$ 7,854	\$ 61,272	\$ 7,242

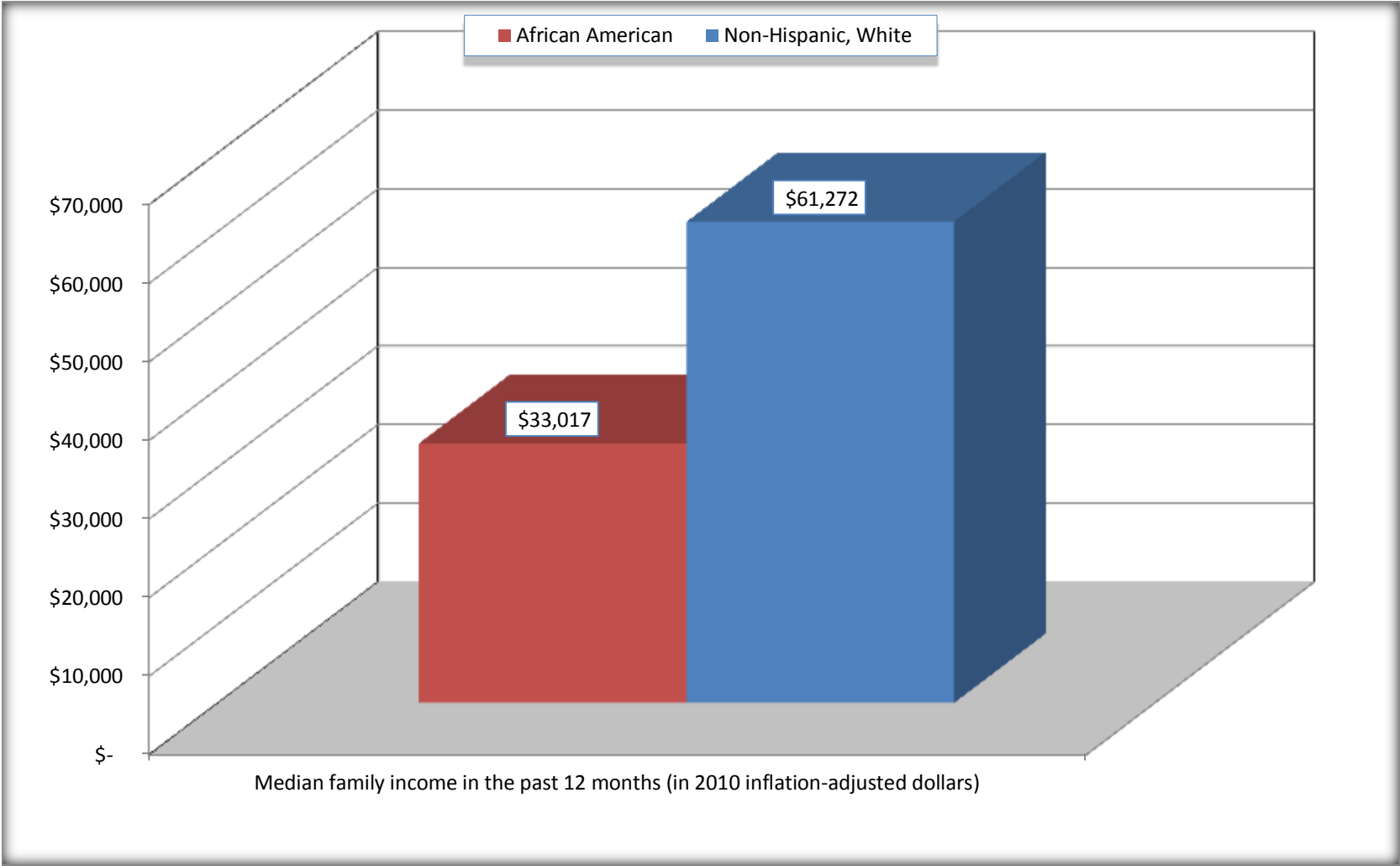
Source: U.S. Census Bureau, 2008-2012 American Community Survey

For information on confidentiality protection, sampling error, nonsampling error, and definitions, see Survey Methodology.

<http://www.census.gov/acs/www/UseData/index.htm>

Median Family Income in the Past 12 Months

Barnwell County, South Carolina



Source: B19113. MEDIAN FAMILY INCOME IN THE PAST 12 MONTHS (IN 2010 INFLATION-ADJUSTED DOLLARS)
Data Set: 2008-2012 American Community Survey 5-Year Estimates

B19202. MEDIAN NONFAMILY HOUSEHOLD INCOME IN THE PAST 12 MONTHS (IN 2010 INFLATION-ADJUSTED DOLLARS)

Data Set: 2008-2012 American Community Survey 5-Year Estimates

	Barnwell County, South Carolina			
	African American	Margin of Error (+/-)	White, Not Hispanic	Margin of Error (+/-)
Median nonfamily household income in the past 12 months (in 2010 inflation-adjusted dollars)	\$ 14,942	\$ 2,023	\$ 23,932	\$ 5,433

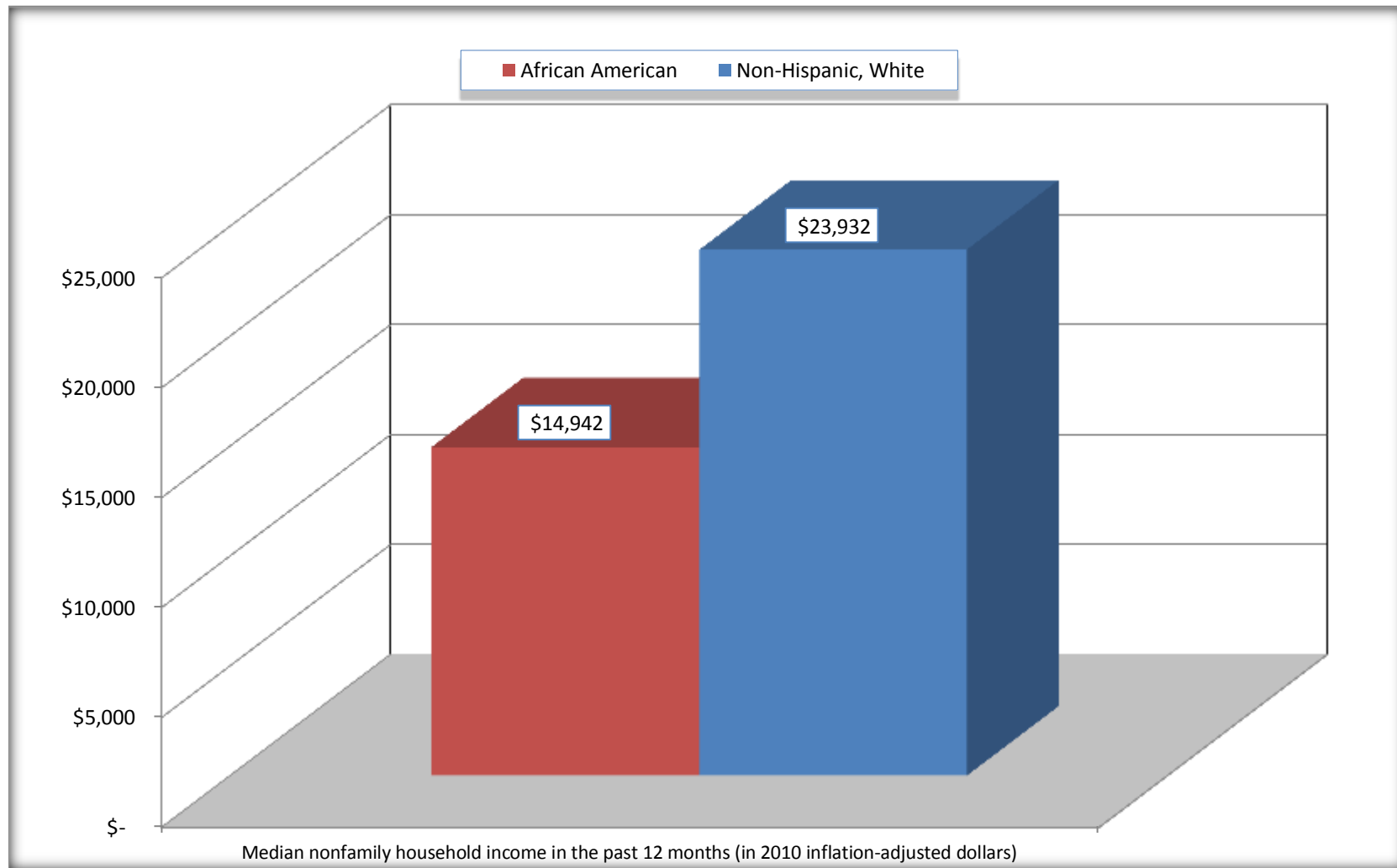
Source: U.S. Census Bureau, 2008-2012 American Community Survey

For information on confidentiality protection, sampling error, nonsampling error, and definitions, see Survey Methodology.

<http://www.census.gov/acs/www/UseData/index.htm>

Median Non-Family Income in the Past 12 Months

Barnwell County, South Carolina



Source: B19202. MEDIAN NONFAMILY HOUSEHOLD INCOME IN THE PAST 12 MONTHS (IN 2010 INFLATION-ADJUSTED DOLLARS)
Data Set: 2008-2012 American Community Survey 5-Year Estimates

B19301. PER CAPITA INCOME IN THE PAST 12 MONTHS (IN 2010 INFLATION-ADJUSTED DOLLARS)

Data Set: 2008-2012 American Community Survey 5-Year Estimates

	Barnwell County, South Carolina			
	African American	Margin of Error (+/-)	White, Not Hispanic	Margin of Error (+/-)
Per capita income in the past 12 months (in 2010 inflation-adjusted dollars)	\$ 13,127	\$ 1,483	\$ 22,756	\$ 1,696

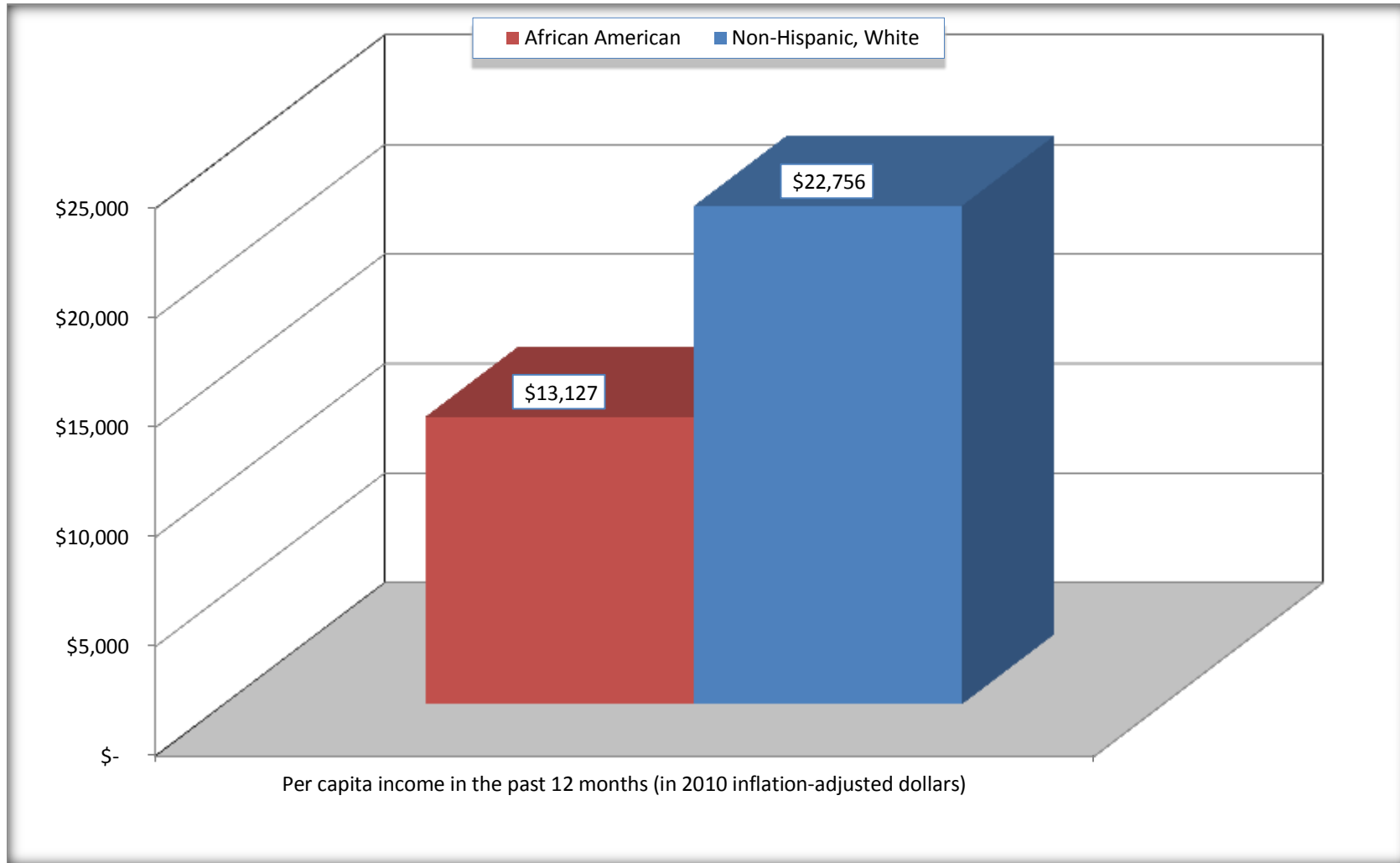
Source: U.S. Census Bureau, 2008-2012 American Community Survey

For information on confidentiality protection, sampling error, nonsampling error, and definitions, see Survey Methodology.

<http://www.census.gov/acs/www/UseData/index.htm>

Per capita Income in the Past 12 Months

Barnwell County, South Carolina



Source: B19301. PER CAPITA INCOME IN THE PAST 12 MONTHS (IN 2010 INFLATION-ADJUSTED DOLLARS)
Data Set: 2008-2012 American Community Survey 5-Year Estimates

B20017. MEDIAN EARNINGS IN THE PAST 12 MONTHS (IN 2010 INFLATION-ADJUSTED DOLLARS) BY SEX BY WORK EXPERIENCE IN THE PAST 12 MONTHS FOR THE POPULATION 16 YEARS AND OVER WITH EARNINGS IN THE PAST 12 MONTHS

Data Set: 2008-2012 American Community Survey 5-Year Estimates

	Barnwell County, South Carolina			
	African American	Margin of Error (+/-)	White, Not Hispanic	Margin of Error (+/-)
Median earnings in the past 12 months (in 2010 inflation-adjusted dollars) --				
Total:	\$ 22,245	\$ 2,101	\$ 32,308	\$ 3,483
Male --				
Total	\$ 25,137	\$ 5,067	\$ 37,473	\$ 5,196
Worked full-time, year-round in the past 12 months	\$ 32,305	\$ 12,864	\$ 48,646	\$ 3,434
Other	\$ 10,560	\$ 7,123	\$ 10,783	\$ 1,266
Female --				
Total	\$ 21,584	\$ 1,912	\$ 28,118	\$ 4,974
Worked full-time, year-round in the past 12 months	\$ 30,162	\$ 3,745	\$ 33,419	\$ 3,561
Other	\$ 12,444	\$ 3,294	\$ 9,134	\$ 2,045

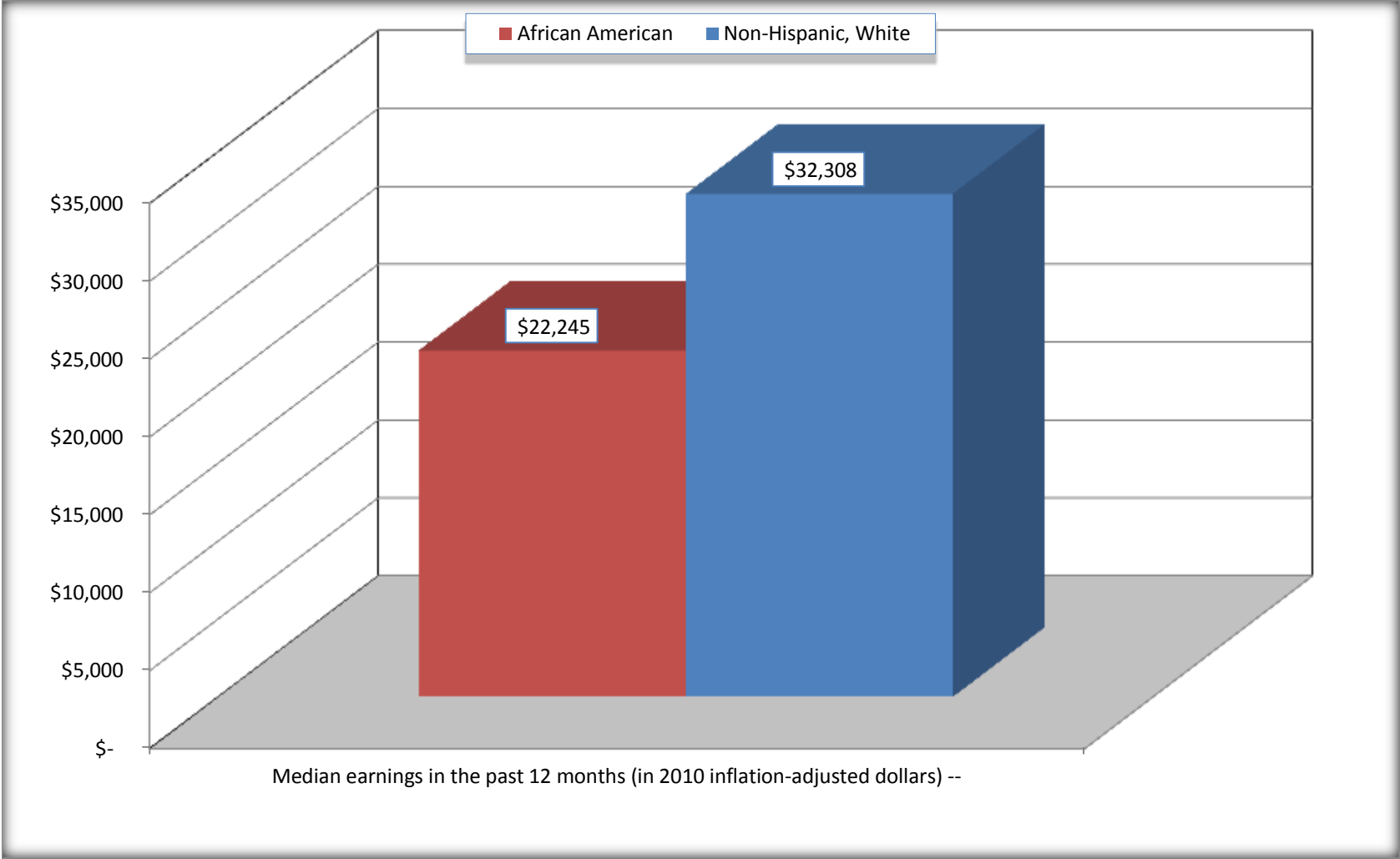
Source: U.S. Census Bureau, 2008-2012 American Community Survey

For information on confidentiality protection, sampling error, nonsampling error, and definitions, see Survey Methodology.

<http://www.census.gov/acs/www/UseData/index.htm>

Median earnings in the Past 12 Months (16 Years and Over with Earnings)

Barnwell County, South Carolina



Source: B20017. MEDIAN EARNINGS IN THE PAST 12 MONTHS (IN 2010 INFLATION-ADJUSTED DOLLARS) BY SEX BY WORK EXPERIENCE IN THE PAST 12 MONTHS FOR THE POPULATION 16 YEARS AND OVER WITH EARNINGS IN THE PAST 12 MONTHS
Data Set: 2008-2012 American Community Survey 5-Year Estimates

B20005. SEX BY WORK EXPERIENCE IN THE PAST 12 MONTHS BY EARNINGS IN THE PAST 12 MONTHS (IN 2010 INFLATION-ADJUSTED DOLLARS) FOR THE POPULATION 16 YEARS AND OVER

Data Set: 2008-2012 American Community Survey 5-Year Estimates

	Barnwell County, South Carolina					
	African American	Margin of Error (+/-)	% of AA Total	White, Not Hispanic	Margin of Error (+/-)	% of NHW Total
Total:	7,532	106	100.0%	9,466	66	100.0%
Worked full-time, year-round in the past 12 months:	2,203	NC	29.2%	3,831	NC	40.5%
No earnings	0	NC	0.0%	0	NC	0.0%
With earnings:	2,203	NC	29.2%	3,831	NC	40.5%
\$ 1 to \$ 9,999 or loss	67	NC	0.9%	130	NC	1.4%
\$ 10,000 to \$ 19,999	399	NC	5.3%	422	NC	4.5%
\$ 20,000 to \$ 29,999	569	NC	7.6%	614	NC	6.5%
\$ 30,000 to \$ 49,999	682	NC	9.1%	1,258	NC	13.3%
\$ 50,000 to \$ 74,999	358	NC	4.8%	933	NC	9.9%
\$ 75,000 or more	128	NC	1.7%	474	NC	5.0%
Other:	5,329	NC	70.8%	5,635	NC	59.5%
No earnings	3,943	NC	52.3%	4,249	NC	44.9%
With earnings: less than full time, year-round	1,386	NC	18.4%	1,386	NC	14.6%
Male:	3,325	69	44.1%	4,552	45	48.1%
Worked full-time, year-round in the past 12 months:	960	146	12.7%	2,202	245	23.3%
No earnings	0	24	0.0%	0	24	0.0%
With earnings:	960	146	12.7%	2,202	245	23.3%
\$ 1 to \$ 9,999 or loss	38	NC	0.5%	22	NC	0.2%
\$ 10,000 to \$ 19,999	136	NC	1.8%	165	NC	1.7%
\$ 20,000 to \$ 29,999	247	NC	3.3%	346	NC	3.7%
\$ 30,000 to \$ 49,999	327	NC	4.3%	633	NC	6.7%
\$ 50,000 to \$ 74,999	145	NC	1.9%	636	NC	6.7%
\$ 75,000 or more	67	NC	0.9%	400	NC	4.2%

	Barnwell County, South Carolina					
	African American	Margin of Error (+/-)	% of AA Total	White, Not Hispanic	Margin of Error (+/-)	% of NHW Total
Other:	2,365	154	31.4%	2,350	261	24.8%
No earnings	1,748	185	23.2%	1,686	212	17.8%
With earnings:	617	162	8.2%	664	136	7.0%
Female:	4,207	70	55.9%	4,914	51	51.9%
Worked full-time, year-round in the past 12 months:	1,243	172	16.5%	1,629	214	17.2%
No earnings	0	24	0.0%	0	24	0.0%
With earnings:	1,243	172	16.5%	1,629	214	17.2%
\$ 1 to \$ 9,999 or loss	29	NC	0.4%	108	NC	1.1%
\$ 10,000 to \$ 19,999	263	NC	3.5%	257	NC	2.7%
\$ 20,000 to \$ 29,999	322	NC	4.3%	268	NC	2.8%
\$ 30,000 to \$ 49,999	355	NC	4.7%	625	NC	6.6%
\$ 50,000 to \$ 74,999	213	NC	2.8%	297	NC	3.1%
\$ 75,000 or more	61	NC	0.8%	74	NC	0.8%
Other:	2,964	185	39.4%	3,285	216	34.7%
No earnings	2,195	208	29.1%	2,563	220	27.1%
With earnings:	769	166	10.2%	722	185	7.6%

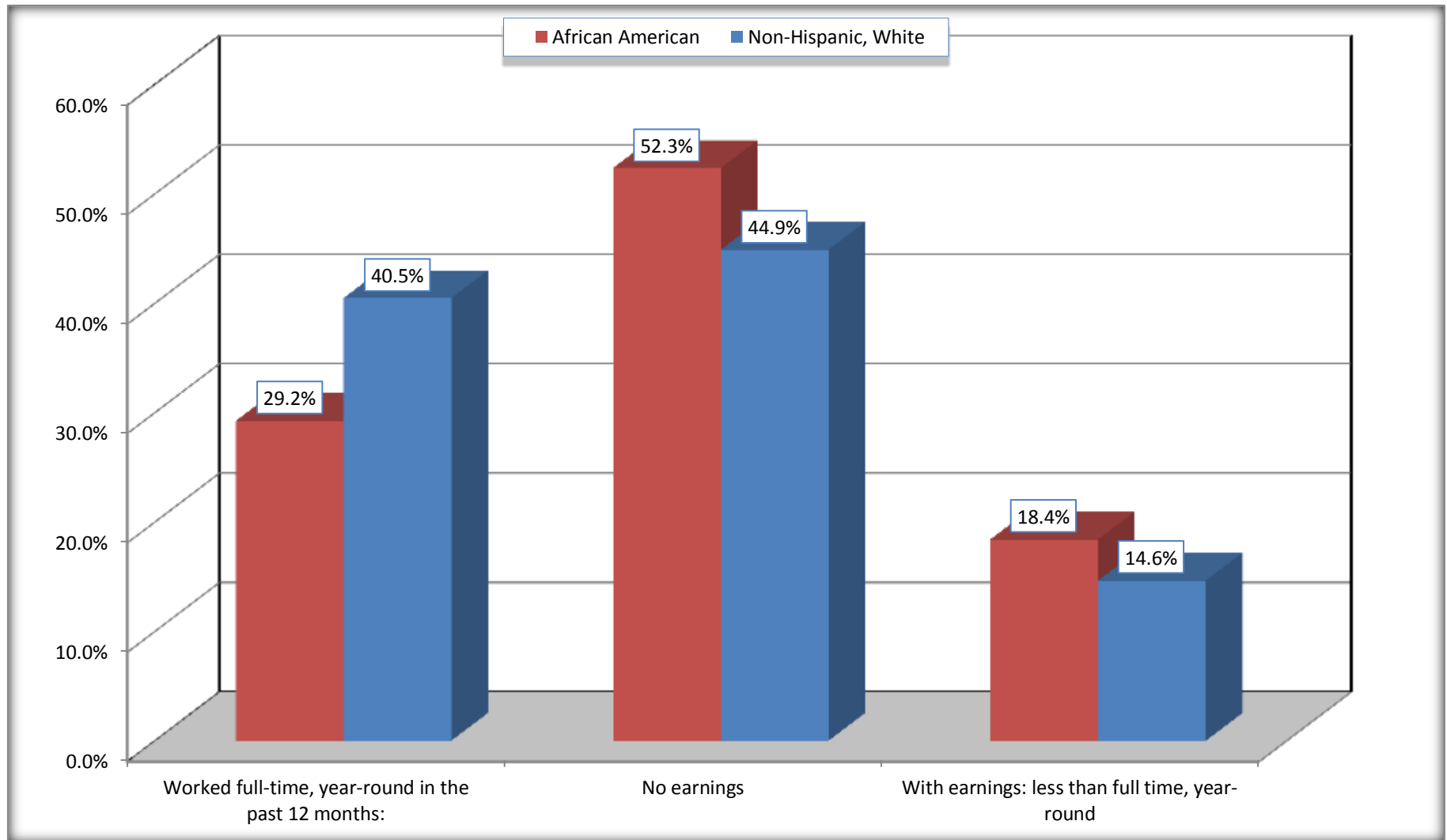
Source: U.S. Census Bureau, 2008-2012 American Community Survey

For information on confidentiality protection, sampling error, nonsampling error, and definitions, see Survey Methodology.

<http://www.census.gov/acs/www/UseData/index.htm>

Employment and Earnings in in the Past 12 Months (16 Years and Over)

Barnwell County, South Carolina



Source: B20005. SEX BY WORK EXPERIENCE IN THE PAST 12 MONTHS BY EARNINGS IN THE PAST 12 MONTHS (IN 2010 INFLATION-ADJUSTED DOLLARS) FOR THE POPULATION 16 YEARS AND OVER

Data Set: 2008-2012 American Community Survey 5-Year Estimates

C21001. SEX BY AGE BY VETERAN STATUS FOR THE CIVILIAN POPULATION 18 YEARS AND OVER

Data Set: 2008-2012 American Community Survey 5-Year Estimates

	Barnwell County, South Carolina					
	African American	Margin of Error (+/-)	% of AA Total	White, Not Hispanic	Margin of Error (+/-)	% of NHW Total
Total:	7,173	90	100.0%	9,155	24	100.0%
Veteran	665	NC	9.3%	1,027	NC	11.2%
Nonveteran	6,508	NC	90.7%	8,128	NC	88.8%
Male:	3,147	60	43.9%	4,369	24	47.7%
18 to 64 years:	2,763	49	38.5%	3,473	24	37.9%
Veteran	328	103	4.6%	639	130	7.0%
Nonveteran	2,435	103	33.9%	2,834	130	31.0%
65 years and over:	384	36	5.4%	896	24	9.8%
Veteran	139	66	1.9%	346	85	3.8%
Nonveteran	245	67	3.4%	550	85	6.0%
Female:	4,026	43	56.1%	4,786	24	52.3%
18 to 64 years:	3,379	39	47.1%	3,593	24	39.2%
Veteran	198	94	2.8%	38	34	0.4%
Nonveteran	3,181	106	44.3%	3,555	34	38.8%
65 years and over:	647	16	9.0%	1,193	24	13.0%
Veteran	0	24	0.0%	4	9	0.0%
Nonveteran	647	16	9.0%	1,189	9	13.0%

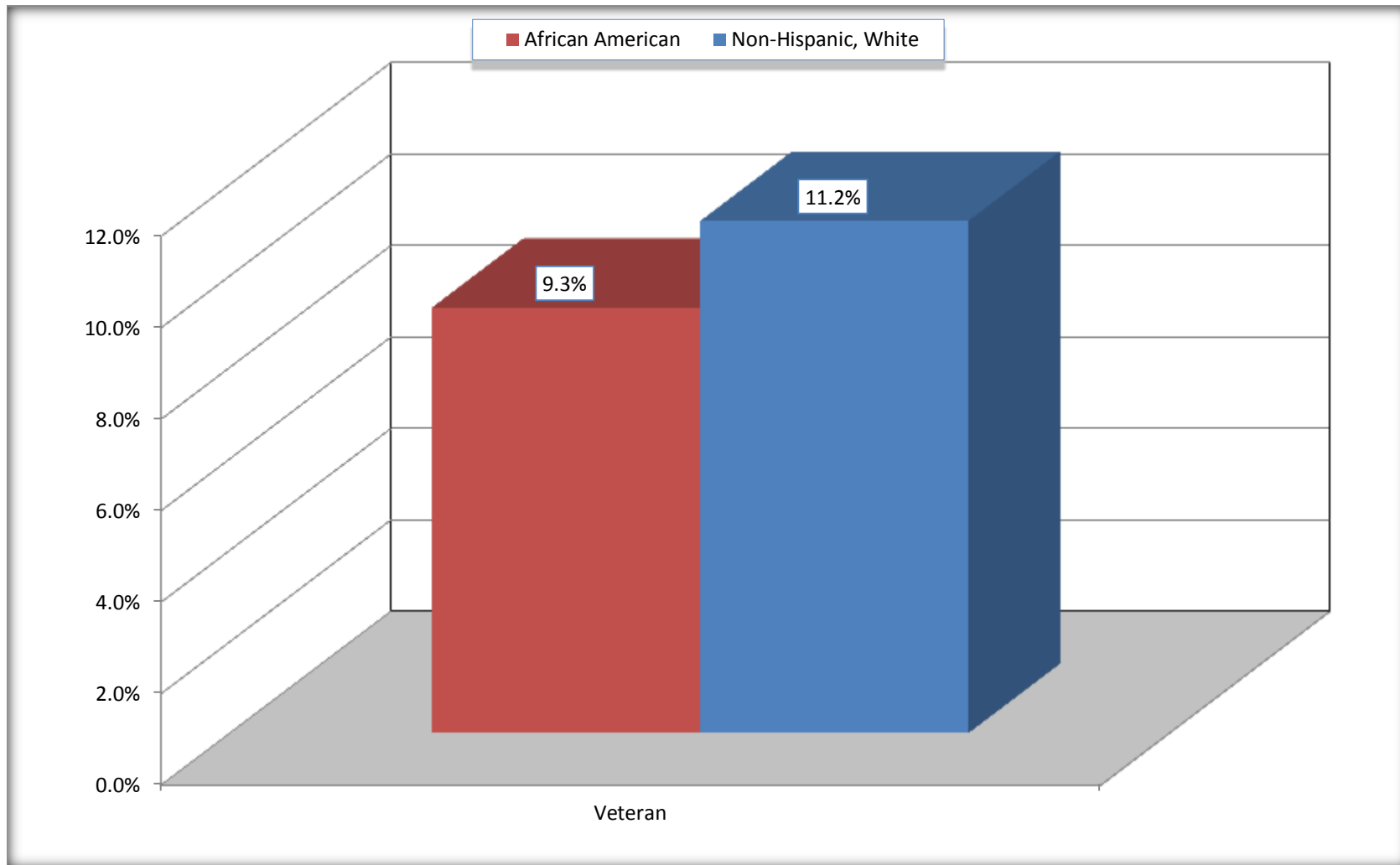
Source: U.S. Census Bureau, 2008-2012 American Community Survey

For information on confidentiality protection, sampling error, nonsampling error, and definitions, see Survey Methodology.

<http://www.census.gov/acs/www/UseData/index.htm>

Veterans in the Civilian Population 18 Years and Over

Barnwell County, South Carolina



Source: C21001. SEX BY AGE BY VETERAN STATUS FOR THE CIVILIAN POPULATION 18 YEARS AND OVER
Data Set: 2008-2012 American Community Survey 5-Year Estimates

B22005. RECEIPT OF FOOD STAMPS/SNAP IN THE PAST 12 MONTHS BY RACE OF HOUSEHOLDER

Data Set: 2008-2012 American Community Survey 5-Year Estimates

	Barnwell County, South Carolina					
	African American	Margin of Error (+/-)	% of AA Total	White, Not Hispanic	Margin of Error (+/-)	% of NHW Total
Total:	3,466	232	100.0%	4,581	207	100.0%
HH received Food Stamps/SNAP in the past 12 months	1,064	189	30.7%	541	150	11.8%
HH did not receive Food Stamps/SNAP in the past 12 months	2,402	249	69.3%	4,040	226	88.2%

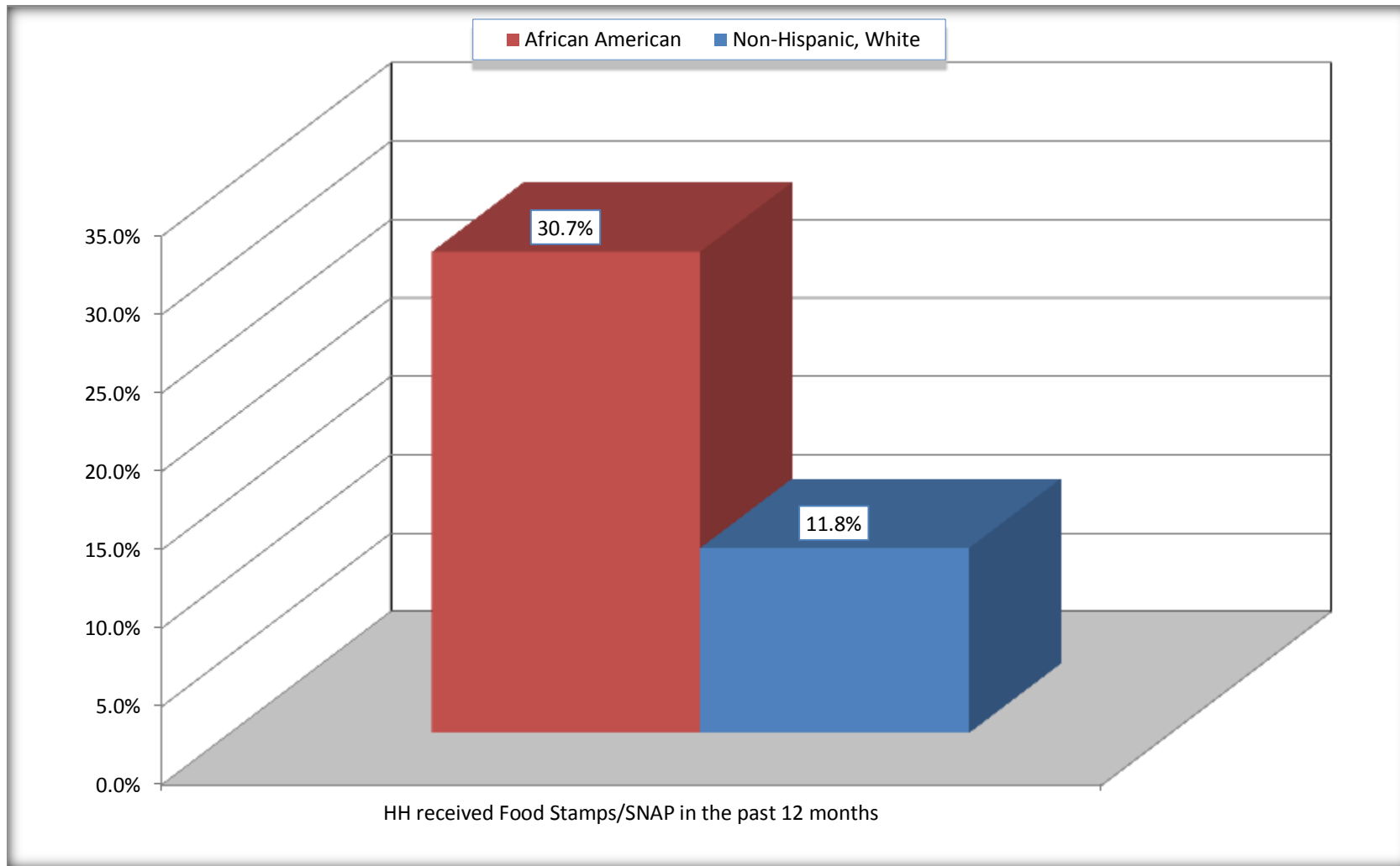
Source: U.S. Census Bureau, 2008-2012 American Community Survey

For information on confidentiality protection, sampling error, nonsampling error, and definitions, see Survey Methodology.

<http://www.census.gov/acs/www/UseData/index.htm>

Receipt of Food Stamps/SNAP in the Past 12 Months by Household

Barnwell County, South Carolina



Source: B22005. RECEIPT OF FOOD STAMPS/SNAP IN THE PAST 12 MONTHS BY RACE OF HOUSEHOLDER
Data Set: 2008-2012 American Community Survey 5-Year Estimates

C23002. SEX BY AGE BY EMPLOYMENT STATUS FOR THE POPULATION 16 YEARS AND OVER

Data Set: 2008-2012 American Community Survey 5-Year Estimates

	Barnwell County, South Carolina					
	African American	Margin of Error (+/-)	% of AA Total	White, Not Hispanic	Margin of Error (+/-)	% of NHW Total
Total:	7,532	106	100.0%	9,466	66	100.0%
In labor force:	4,319	NC	57.3%	5,330	NC	56.3%
In Armed Forces	0	NC	0.0%	0	NC	0.0%
Civilian:	4,215	NC	56.0%	5,108	NC	54.0%
Employed	3,078	NC	40.9%	4,782	NC	50.5%
Unemployed	1,241	NC	16.5%	548	NC	5.8%
Not in labor force	3,213	NC	42.7%	4,136	NC	43.7%
Male:	3,325	69	44.1%	4,552	45	48.1%
16 to 64 years:	2,941	61	39.0%	3,656	45	38.6%
In labor force:	1,910	199	25.4%	2,685	181	28.4%
In Armed Forces	0	24	0.0%	0	24	0.0%
Civilian:	1,910	199	25.4%	2,685	181	28.4%
Employed	1,291	146	17.1%	2,468	209	26.1%
Unemployed	619	184	8.2%	217	103	2.3%
Not in labor force	1,031	190	13.7%	971	196	10.3%
65 years and over:	384	36	5.1%	896	24	9.5%
In labor force:	39	34	0.5%	99	58	1.0%
Employed	39	34	0.5%	99	58	1.0%
Unemployed	0	24	0.0%	0	24	0.0%
Not in labor force	345	46	4.6%	797	58	8.4%

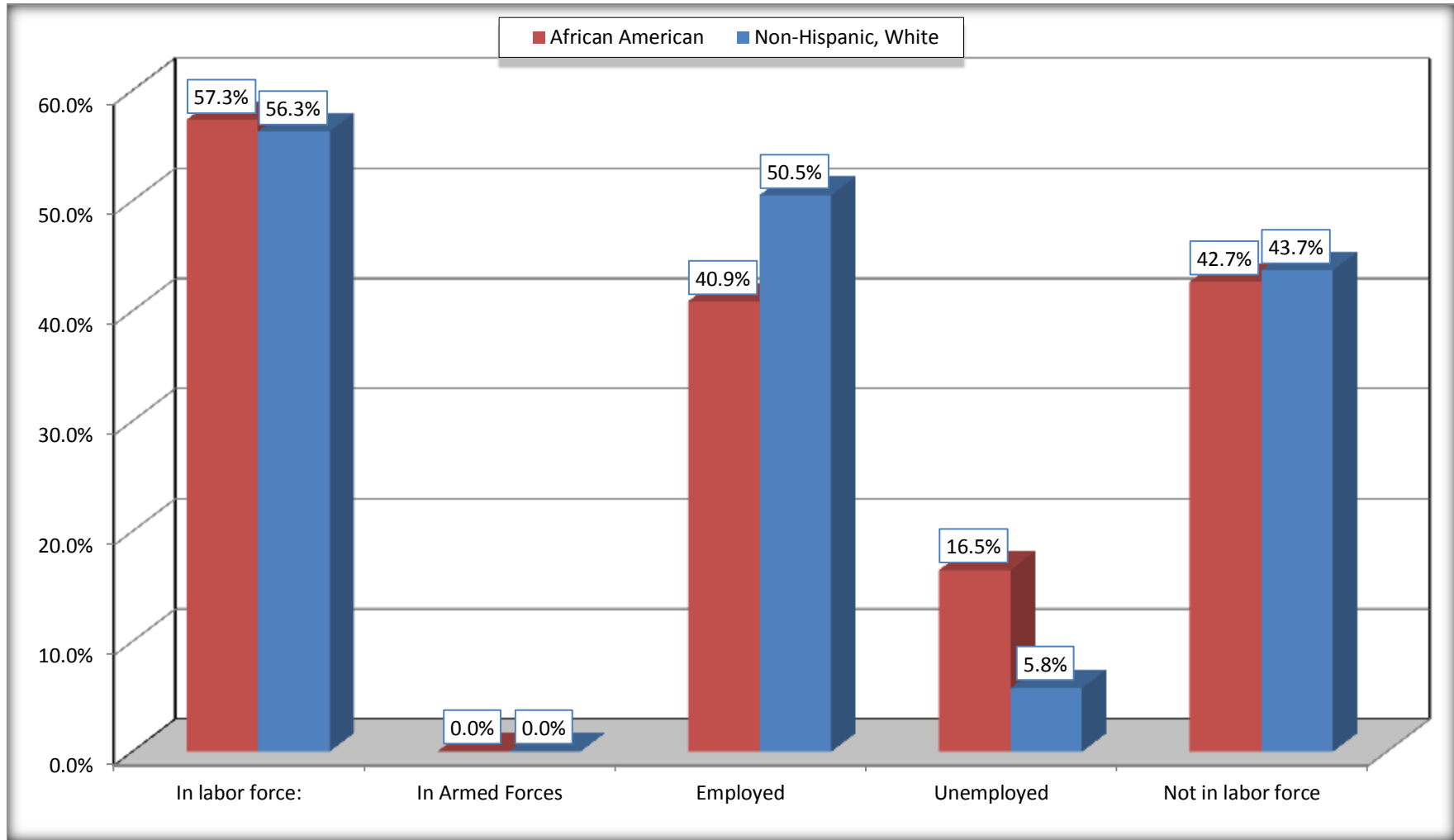
	Barnwell County, South Carolina					
	African American	Margin of Error (+/-)	% of AA Total	White, Not Hispanic	Margin of Error (+/-)	% of NHW Total
Female:	4,207	70	55.9%	4,914	51	51.9%
16 to 64 years:	3,560	65	47.3%	3,721	51	39.3%
In labor force:	2,305	226	30.6%	2,423	194	25.6%
In Armed Forces	0	24	0.0%	0	24	0.0%
Civilian:	2,305	226	30.6%	2,423	194	25.6%
Employed	1,696	202	22.5%	2,095	196	22.1%
Unemployed	609	160	8.1%	328	125	3.5%
Not in labor force	1,255	225	16.7%	1,298	196	13.7%
65 years and over:	647	16	8.6%	1,193	24	12.6%
In labor force:	65	35	0.9%	123	69	1.3%
Employed	52	30	0.7%	120	69	1.3%
Unemployed	13	22	0.2%	3	4	0.0%
Not in labor force	582	38	7.7%	1,070	69	11.3%

Source: U.S. Census Bureau, 2008-2012 American Community Survey

For information on confidentiality protection, sampling error, nonsampling error, and definitions, see Survey Methodology.
<http://www.census.gov/acs/www/UseData/index.htm>

Employment Status for the Population 16 years and over

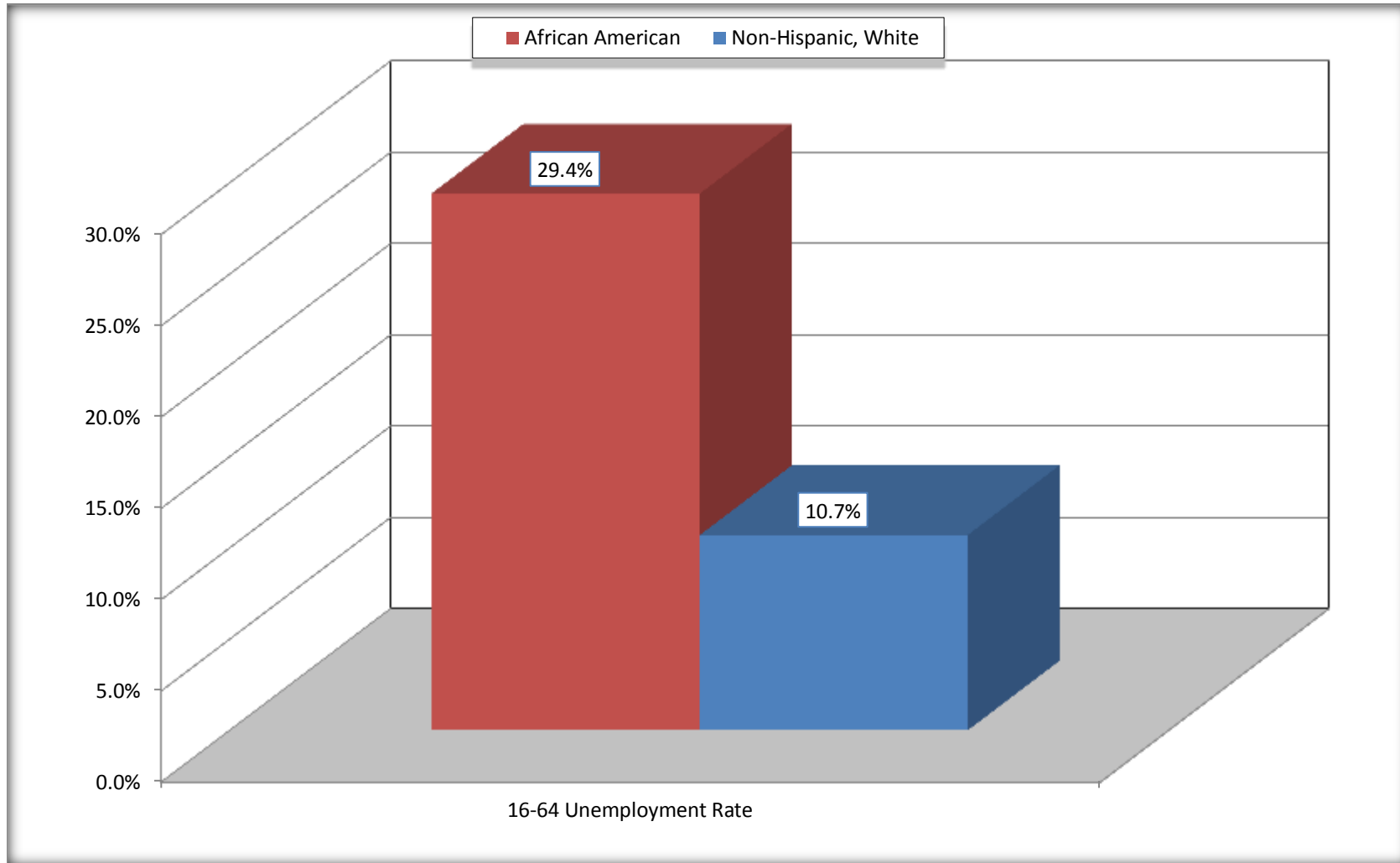
Barnwell County, South Carolina



Source: C23002. SEX BY AGE BY EMPLOYMENT STATUS FOR THE POPULATION 16 YEARS AND OVER
Data Set: 2008-2012 American Community Survey 5-Year Estimates

Unemployment of Working Age Population (Ages 16 to 64) (As a Percent of 16-64 Civilian Labor Force)

Barnwell County, South Carolina



Source: C23002. SEX BY AGE BY EMPLOYMENT STATUS FOR THE POPULATION 16 YEARS AND OVER
Data Set: 2008-2012 American Community Survey 5-Year Estimates

C24010. SEX BY OCCUPATION FOR THE CIVILIAN EMPLOYED POPULATION 16 YEARS AND OVER

Data Set: 2008-2012 American Community Survey 5-Year Estimates

	Barnwell County, South Carolina					
	African American	Margin of Error (+/-)	% of AA Total	White, Not Hispanic	Margin of Error (+/-)	% of NHW Total
Total:	3,078	278	100.0%	4,782	306	100.0%
Management, professional, and related occupations	670	NC	21.8%	1,806	NC	37.8%
Service occupations	732	NC	23.8%	682	NC	14.3%
Sales and office occupations	424	NC	13.8%	920	NC	19.2%
Natural resources, construction, and maintenance occupations:	204	NC	6.6%	578	NC	12.1%
Production, transportation, and material moving occupations	1,048	NC	34.0%	796	NC	16.6%
Male:	1,330	157	43.2%	2,567	216	53.7%
Management, business, science, and arts occupations:	141	83	4.6%	840	171	17.6%
Service occupations	195	76	6.3%	329	145	6.9%
Sales and office occupations	118	77	3.8%	202	76	4.2%
Natural resources, construction, and maintenance occupations:	204	90	6.6%	558	138	11.7%
Production, transportation, and material moving occupations	672	153	21.8%	638	128	13.3%
Female:	1,748	203	56.8%	2,215	212	46.3%
Management, professional, and related occupations	529	136	17.2%	966	171	20.2%
Service occupations	537	142	17.4%	353	110	7.4%
Sales and office occupations	306	119	9.9%	718	163	15.0%
Natural resources, construction, and maintenance occupations:	0	24	0.0%	20	25	0.4%
Production, transportation, and material moving occupations	376	132	12.2%	158	97	3.3%

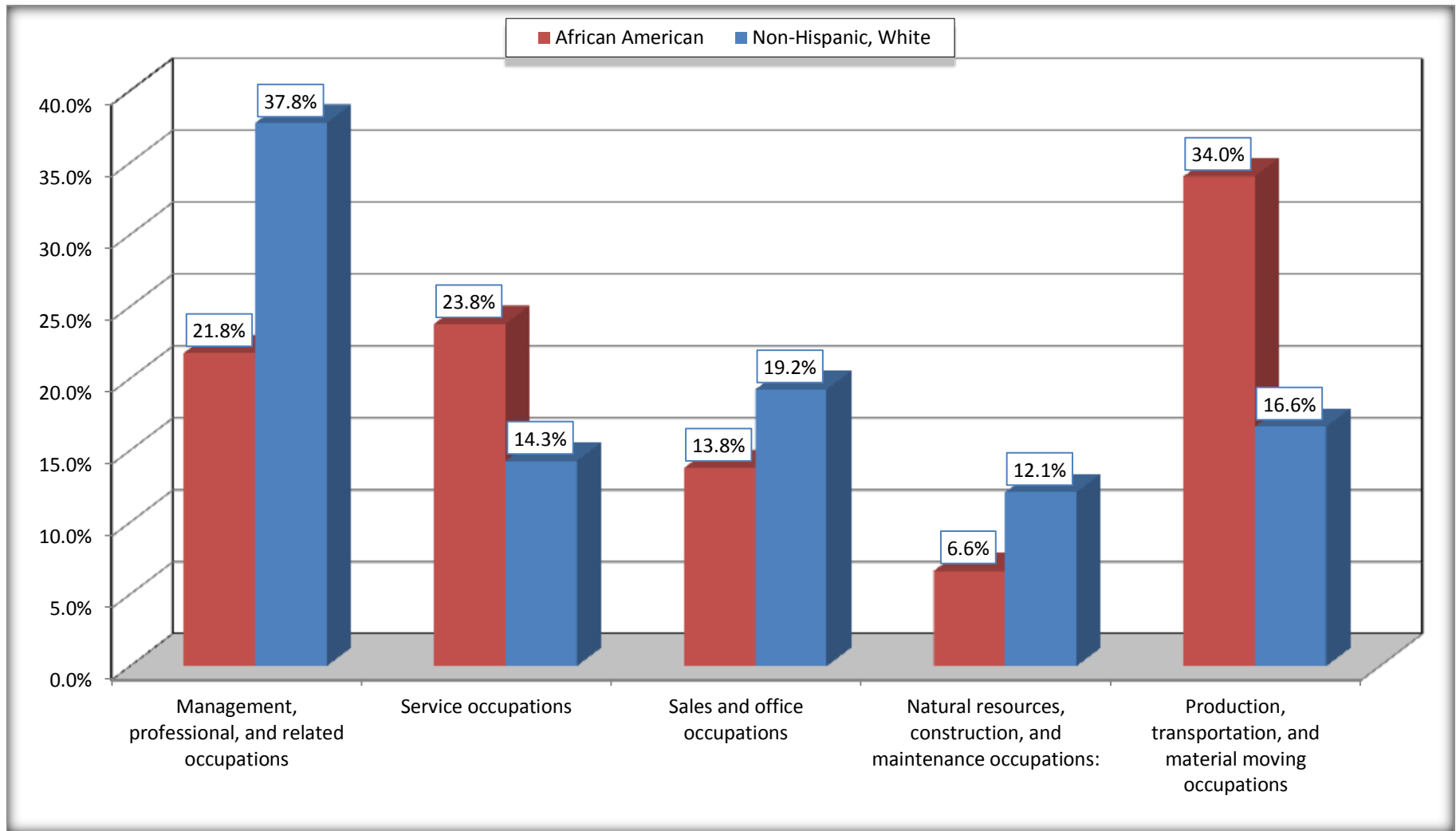
Source: U.S. Census Bureau, 2008-2012 American Community Survey

For information on confidentiality protection, sampling error, nonsampling error, and definitions, see Survey Methodology.

<http://www.census.gov/acs/www/UseData/index.htm>

Occupation for the Civilian Employed 16 Years and Over Population

Barnwell County, South Carolina



Source: C24010. SEX BY OCCUPATION FOR THE CIVILIAN EMPLOYED POPULATION 16 YEARS AND OVER
Data Set: 2008-2012 American Community Survey 5-Year Estimates

B25003. TENURE - Universe: OCCUPIED HOUSING UNITS

Data Set: 2008-2012 American Community Survey 5-Year Estimates

	Barnwell County, South Carolina					
	African American	Margin of Error (+/-)	% of AA Total	White, Not Hispanic	Margin of Error (+/-)	% of NHW Total
Total:	3,466	232	100.0%	4,581	207	100.0%
Owner occupied	2,242	221	64.7%	3,808	233	83.1%
Renter occupied	1,224	227	35.3%	773	172	16.9%

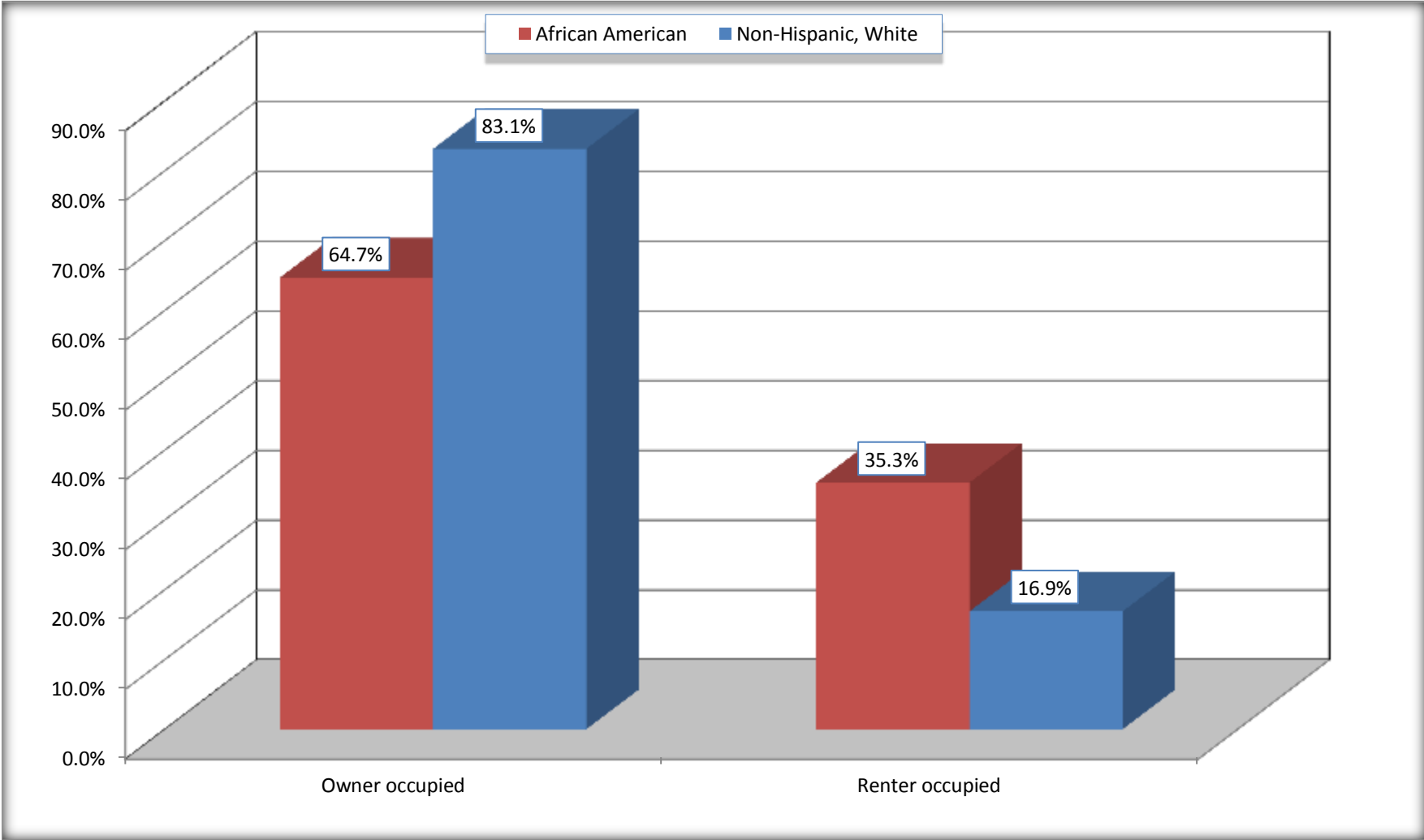
Source: U.S. Census Bureau, 2008-2012 American Community Survey

For information on confidentiality protection, sampling error, nonsampling error, and definitions, see Survey Methodology.

<http://www.census.gov/acs/www/UseData/index.h>

Home Owners and Renters by Household

Barnwell County, South Carolina



Source: B25003. TENURE - Universe: OCCUPIED HOUSING UNITS
Data Set: 2008-2012 American Community Survey 5-Year Estimates

B25014. OCCUPANTS PER ROOM - Universe: OCCUPIED HOUSING UNITS

Data Set: 2008-2012 American Community Survey 5-Year Estimates

	Barnwell County, South Carolina					
	African American	Margin of Error (+/-)	% of AA Total	White, Not Hispanic	Margin of Error (+/-)	% of NHW Total
Total:	3,466	232	100.0%	4,581	207	100.0%
1.00 or less occupants per room	3,207	237	92.5%	4,508	207	98.4%
1.01 or more occupants per room	259	113	7.5%	73	57	1.6%

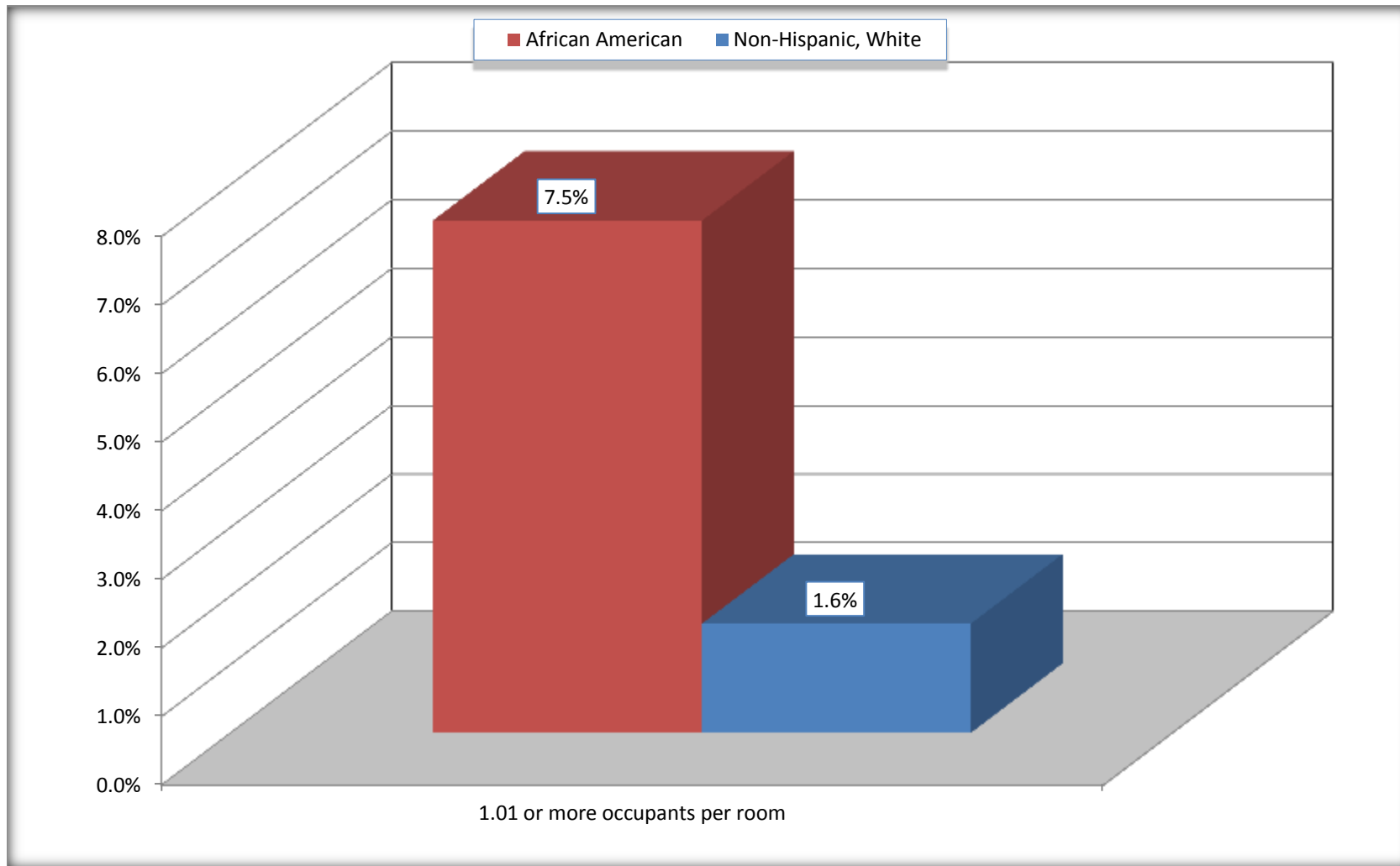
Source: U.S. Census Bureau, 2008-2012 American Community Survey

For information on confidentiality protection, sampling error, nonsampling error, and definitions, see Survey Methodology.

<http://www.census.gov/acs/www/UseData/index.ht>

More than One Person per Room (Crowding) by Household

Barnwell County, South Carolina



Source: B25014. OCCUPANTS PER ROOM - Universe: OCCUPIED HOUSING UNITS
Data Set: 2008-2012 American Community Survey 5-Year Estimates

B18101. AGE BY DISABILITY STATUS

Data Set: 2008-2012 American Community Survey 5-Year Estimates

	Barnwell County, South Carolina					
	African American	Margin of Error (+/-)	% of AA Total	White, Not Hispanic	Margin of Error (+/-)	% of NHW Total
Total:	10,031	175	100.0%	11,546	71	100.0%
Under 18 years:	2,975	95	29.7%	2,513	80	21.8%
With a disability	146	62	1.5%	137	81	1.2%
No disability	2,829	106	28.2%	2,376	81	20.6%
18 to 64 years:	6,090	80	60.7%	7,024	30	60.8%
With a disability	1,340	194	13.4%	1,238	219	10.7%
No disability	4,750	209	47.4%	5,786	222	50.1%
65 years and over:	966	53	9.6%	2,009	48	17.4%
With a disability	494	77	4.9%	1,152	129	10.0%
No disability	472	74	4.7%	857	131	7.4%

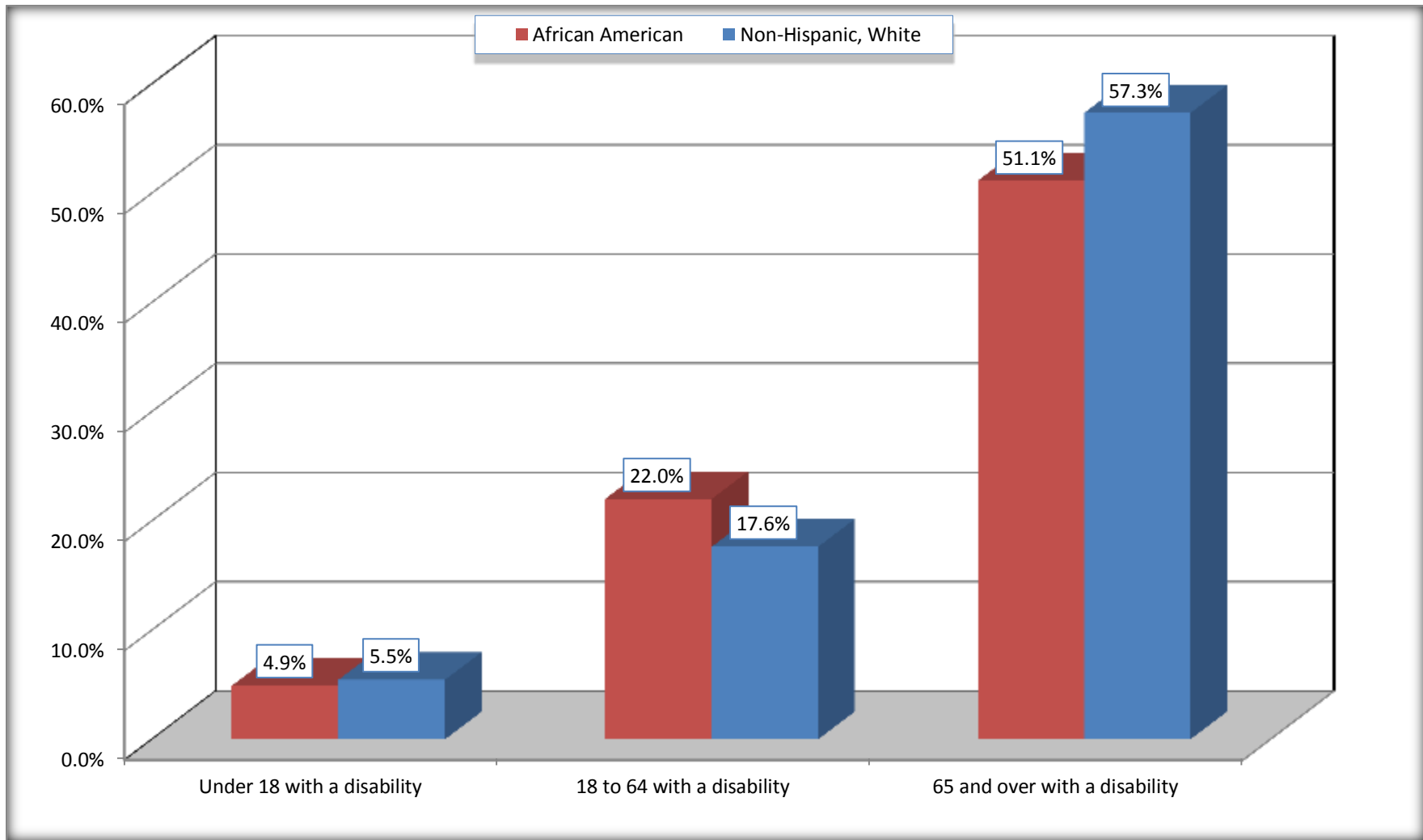
Source: U.S. Census Bureau, 2008-2012 American Community Survey

For information on confidentiality protection, sampling error, nonsampling error, and definitions, see Survey Methodology.

<http://www.census.gov/acs/www/UseData/index.htm>

Disability by Age

Barnwell County, South Carolina



Source: B18101. AGE BY DISABILITY STATUS
Data Set: 2008-2012 American Community Survey 5-Year Estimates

C27001B. HEALTH INSURANCE COVERAGE STATUS BY AGE

Data Set: 2008-2012 American Community Survey 5-Year Estimates

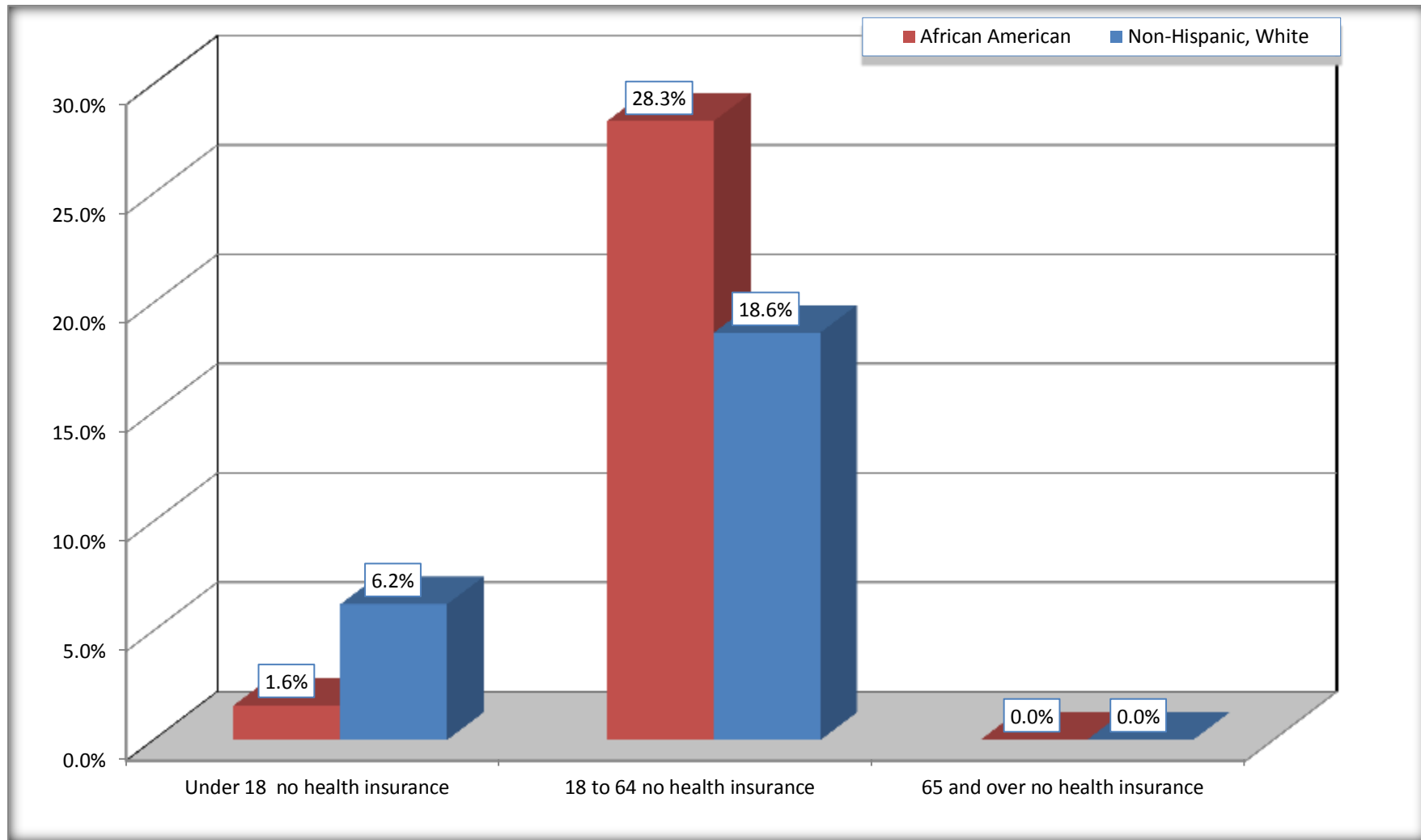
	Barnwell County, South Carolina					
	African American	Margin of Error (+/-)	% of AA Total	White, Not Hispanic	Margin of Error (+/-)	% of NHW Total
Total:	10,031	175	100.0%	11,546	71	100.0%
Under 18 years:	2,975	95	29.7%	2,513	14	21.8%
With health insurance coverage	2,928	100	29.2%	2,357	112	20.4%
No health insurance coverage	47	36	0.5%	156	112	1.4%
18 to 64 years:	6,090	80	60.7%	7,024	30	60.8%
With health insurance coverage	4,366	298	43.5%	5,715	250	49.5%
No health insurance coverage	1,724	307	17.2%	1,309	249	11.3%
65 years and over:	966	53	9.6%	2,009	48	17.4%
With health insurance coverage	966	53	9.6%	2,009	48	17.4%
No health insurance coverage	0	24	0.0%	0	24	0.0%

Source: U.S. Census Bureau, 2008-2012 American Community Survey

For information on confidentiality protection, sampling error, nonsampling error, and definitions, see Survey Methodology.

<http://www.census.gov/acs/www/UseData/index.htm>

Lack of Health Insurance Coverage by Age Barnwell County, South Carolina



Source: C27001B. HEALTH INSURANCE COVERAGE STATUS BY AGE
Data Set: 2008-2012 American Community Survey 5-Year Estimates