

# **Selected Socio-Economic Data**

## **Collingdale borough, Pennsylvania**

### **African American and White, Not Hispanic**

**Data Set: 2008-2012 American Community Survey 5-Year Estimates**

[www.fairvote2020.org](http://www.fairvote2020.org)

[www.fairdata2000.com](http://www.fairdata2000.com)

[29-Dec-13](#)

**C02003.DETAILED RACE - Universe: TOTAL POPULATION**

Data Set: 2008-2012 American Community Survey 5-Year Estimates

	Collingdale borough, Pennsylvania		
	Population	Margin of Error (+/-)	% of Total
<b>Total:</b>	<b>8,782</b>	<b>36</b>	<b>100.0%</b>
Population of one race:	8,472	177	96.5%
White	5,486	419	62.5%
Black or African American	2,633	373	30.0%
American Indian and Alaska Native	0	15	0.0%
Asian alone	245	254	2.8%
Native Hawaiian and Other Pacific Islander	0	15	0.0%
Some other race	108	149	1.2%
Population of two or more races:	310	176	3.5%
Two races including Some other race	0	15	0.0%
Two races excluding Some other race, and three or more races	310	176	3.5%
Population of two races:	310	176	3.5%
White; Black or African American	263	178	3.0%
White; American Indian and Alaska Native	27	36	0.3%
White; Asian	0	15	0.0%
Black or African American; American Indian and Alaska Native	0	15	0.0%
All other two race combinations	20	28	0.2%
Population of three races	0	15	0.0%
Population of four or more races	0	15	0.0%

Note: Hispanics may be of any race. See Table B03002 and chart.

Source: U.S. Census Bureau, 2008-2012 American Community Survey

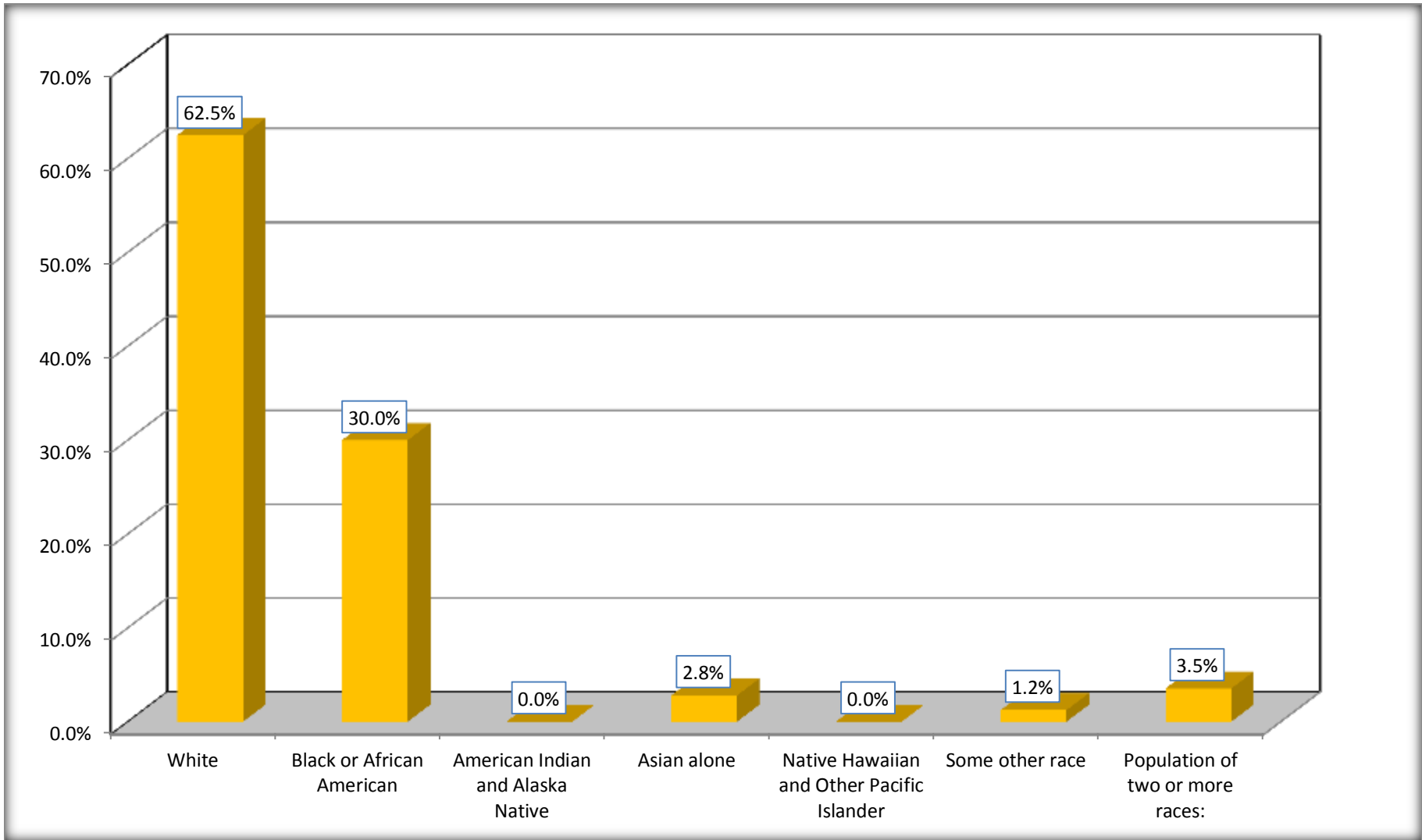
Although the American Community Survey (ACS) produces population, demographic and housing unit estimates, it is the Census Bureau's Population Estimates Program that produces and disseminates the official estimates of the population for the nation, states, counties, cities and towns and estimates of housing units for states and counties.

For information on confidentiality protection, sampling error, nonsampling error, and definitions, see Survey Methodology.

<http://www.census.gov/acs/www/UseData/index.htm>

# Population by Race

## Collingdale borough, Pennsylvania



Source: C02003.DETAILED RACE - Universe: TOTAL POPULATION  
Data Set: 2008-2012 American Community Survey 5-Year Estimates

**B03002. HISPANIC OR LATINO ORIGIN BY RACE - Universe: TOTAL POPULATION**

Data Set: 2008-2012 American Community Survey 5-Year Estimates

	Collingdale borough, Pennsylvania		
	Population	Margin of Error (+/-)	% of Total
<b>Total:</b>	8,782	36	<b>100.0%</b>
Not Hispanic or Latino:	8,555	197	97.4%
White alone	5,385	406	61.3%
Black or African American alone	2,629	373	29.9%
American Indian and Alaska Native alone	0	15	0.0%
Asian alone	245	254	2.8%
Native Hawaiian and Other Pacific Islander alone	0	15	0.0%
Some other race alone	0	15	0.0%
Two or more races:	296	163	3.4%
Two races including Some other race	0	15	0.0%
Two races excluding Some other race, and three or more races	296	163	3.4%
Hispanic or Latino	227	192	2.6%

Source: U.S. Census Bureau, 2008-2012 American Community Survey

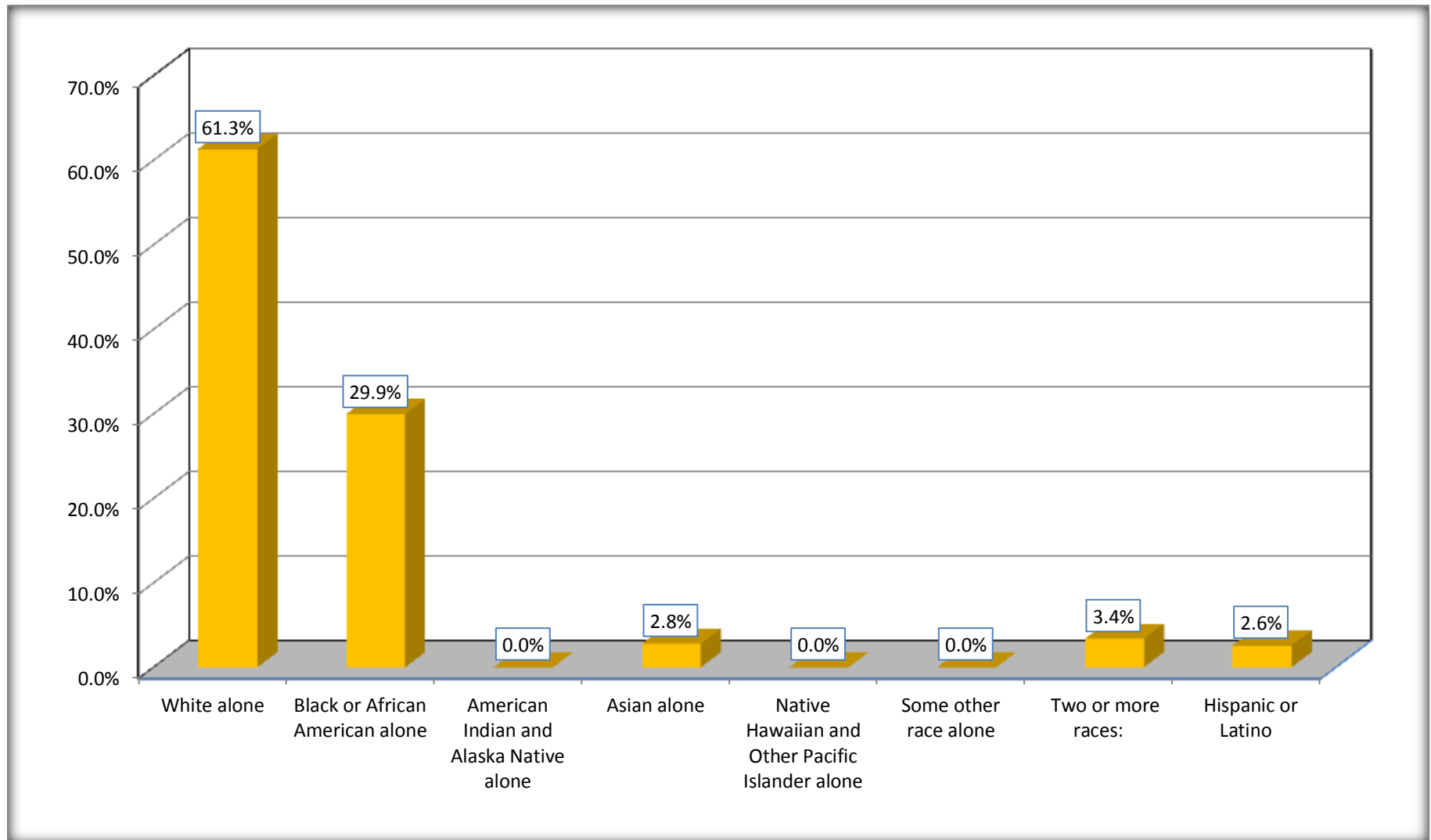
Although the American Community Survey (ACS) produces population, demographic and housing unit estimates, it is the Census Bureau's Population Estimates Program that produces and disseminates the official estimates of the population for the nation, states, counties, cities and towns and estimates of housing units for states and counties.

For information on confidentiality protection, sampling error, nonsampling error, and definitions, see Survey Methodology.

<http://www.census.gov/acs/www/UseData/index.htm>

# Non-Hispanic by Race and Hispanic Population

## Collingdale borough, Pennsylvania



Source: B03002. HISPANIC OR LATINO ORIGIN BY RACE - Universe: TOTAL POPULATION  
Data Set: 2008-2012 American Community Survey 5-Year Estimates

**B03002. HISPANIC OR LATINO ORIGIN BY RACE**

Data Set: 2008-2012 American Community Survey 5-Year Estimates

	Collingdale borough, Pennsylvania		
	Population	Margin of Error (+/-)	% of Total
Hispanic or Latino:	227	192	<b>100.0%</b>
White alone	101	99	44.5%
Black or African American alone	4	7	1.8%
American Indian and Alaska Native alone	0	15	0.0%
Asian alone	0	15	0.0%
Native Hawaiian and Other Pacific Islander alone	0	15	0.0%
Some other race alone	108	149	47.6%
Two or more races:	14	49	6.2%
Two races including Some other race	0	15	0.0%
Two races excluding Some other race, and three or more races	14	49	6.2%

Source: U.S. Census Bureau, 2008-2012 American Community Survey

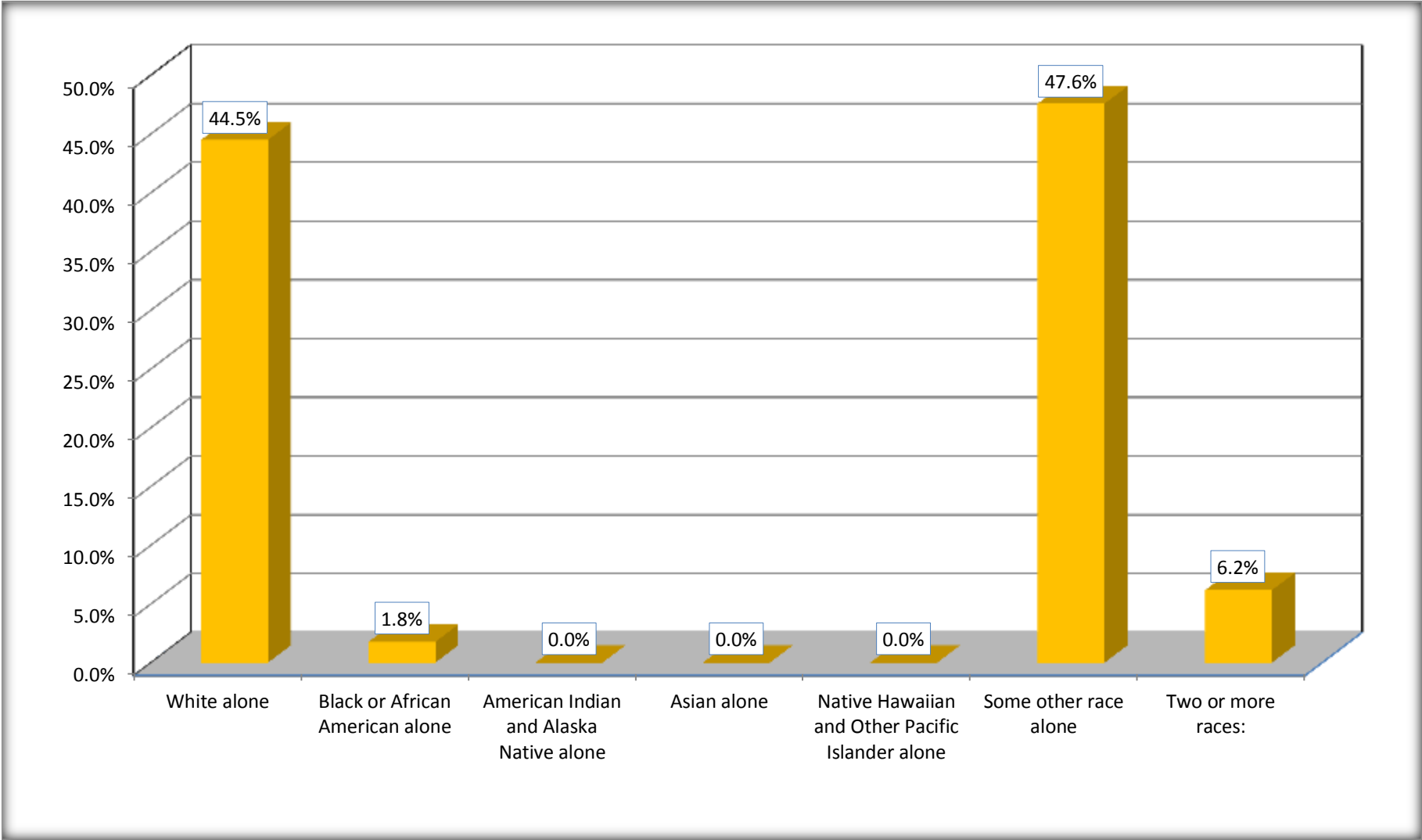
Although the American Community Survey (ACS) produces population, demographic and housing unit estimates, it is the Census Bureau's Population Estimates Program that produces and disseminates the official estimates of the population for the nation, states, counties, cities and towns and estimates of housing units for states and counties.

For information on confidentiality protection, sampling error, nonsampling error, and definitions, see Survey Methodology.

<http://www.census.gov/acs/www/UseData/index.htm>

# Hispanic or Latino Origin by Race

## Collingdale borough, Pennsylvania



Source: B03002. HISPANIC OR LATINO ORIGIN BY RACE  
Data Set: 2008-2012 American Community Survey 5-Year Estimates

**B01001. SEX BY AGE**

Data Set: 2008-2012 American Community Survey 5-Year Estimates

	Collingdale borough, Pennsylvania					
	African American	Margin of Error (+/-)	% of AA Total	White, Not Hispanic	Margin of Error (+/-)	% of NHW Total
<b>Total:</b>	<b>2,633</b>	<b>373</b>	<b>100.0%</b>	<b>5,385</b>	<b>406</b>	<b>100.0%</b>
Under 18 years	957	NC	36.3%	1,068	NC	19.8%
18 to 64 years	1,615	NC	61.3%	3,484	NC	64.7%
65 years and over	61	NC	2.3%	833	NC	15.5%
Male:	1,244	243	47.2%	2,642	389	49.1%
Under 18 years	490	NC	18.6%	611	NC	11.3%
18 to 64 years	711	NC	27.0%	1,665	NC	30.9%
65 years and over	43	NC	1.6%	366	NC	6.8%
Female:	1,389	205	52.8%	2,743	412	50.9%
Under 18 years	467	NC	17.7%	457	NC	8.5%
18 to 64 years	904	NC	34.3%	1,819	NC	33.8%
65 years and over	18	NC	0.7%	467	NC	8.7%

Source: U.S. Census Bureau, 2008-2012 American Community Survey

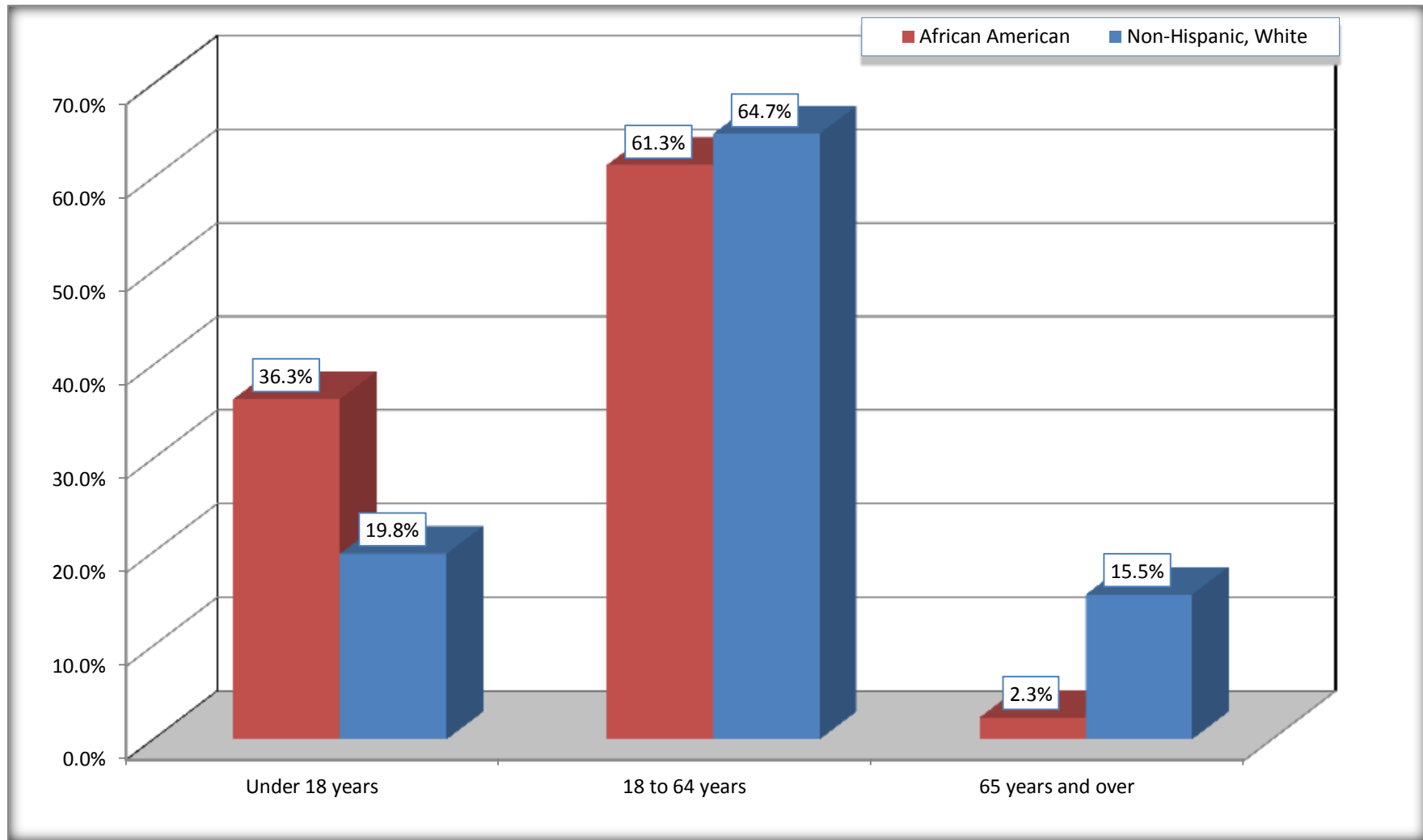
Although the American Community Survey (ACS) produces population, demographic and housing unit estimates, it is the Census Bureau's Population Estimates Program that produces and disseminates the official estimates of the population for the nation, states, counties, cities and towns and estimates of housing units for states and counties.

For information on confidentiality protection, sampling error, nonsampling error, and definitions, see Survey Methodology.  
<http://www.census.gov/acs/www/UseData/index.htm>



# Population by Age

## Collingdale borough, Pennsylvania



Source: B01001. SEX BY AGE  
Data Set: 2008-2012 American Community Survey 5-Year Estimates

**B05003. SEX BY AGE BY CITIZENSHIP STATUS**

Data Set: 2008-2012 American Community Survey 5-Year Estimates

	Collingdale borough, Pennsylvania					
	African American	Margin of Error (+/-)	% of AA Total by Age	White, Not Hispanic	Margin of Error (+/-)	% of NHW Total by Age
<b>Total:</b>	<b>2,633</b>	<b>373</b>	<b>100.0%</b>	<b>5,385</b>	<b>406</b>	<b>100.0%</b>
<b>Under 18 years:</b>	<b>957</b>	<b>NC</b>	<b>100.0%</b>	<b>1,068</b>	<b>NC</b>	<b>100.0%</b>
Native	925	NC	96.7%	1,068	NC	100.0%
Foreign born:	32	NC	3.3%	0	NC	0.0%
Naturalized U.S. citizen	28	NC	2.9%	0	NC	0.0%
Not a U.S. citizen	4	NC	0.4%	0	NC	0.0%
<b>18 years and over:</b>	<b>1,676</b>	<b>NC</b>	<b>100.0%</b>	<b>4,317</b>	<b>NC</b>	<b>100.0%</b>
Native	1,340	NC	80.0%	4,305	NC	99.7%
Foreign born:	336	NC	20.0%	12	NC	0.3%
Naturalized U.S. citizen	148	NC	8.8%	12	NC	0.3%
Not a U.S. citizen	188	NC	11.2%	0	NC	0.0%
<b>Male:</b>	<b>1,244</b>	<b>243</b>	<b>47.2%</b>	<b>2,642</b>	<b>271</b>	<b>49.1%</b>
<b>Under 18 years:</b>	<b>490</b>	<b>161</b>	<b>100.0%</b>	<b>611</b>	<b>153</b>	<b>100.0%</b>
Native	478	159	97.6%	611	153	100.0%
Foreign born:	12	18	2.4%	0	15	0.0%
Naturalized U.S. citizen	8	16	1.6%	0	15	0.0%
Not a U.S. citizen	4	8	0.8%	0	15	0.0%
<b>18 years and over:</b>	<b>754</b>	<b>173</b>	<b>100.0%</b>	<b>2,031</b>	<b>241</b>	<b>100.0%</b>
Native	595	139	78.9%	2,019	241	99.4%
Foreign born:	159	94	21.1%	12	17	0.6%
Naturalized U.S. citizen	74	68	9.8%	12	17	0.6%
Not a U.S. citizen	85	62	11.3%	0	15	0.0%

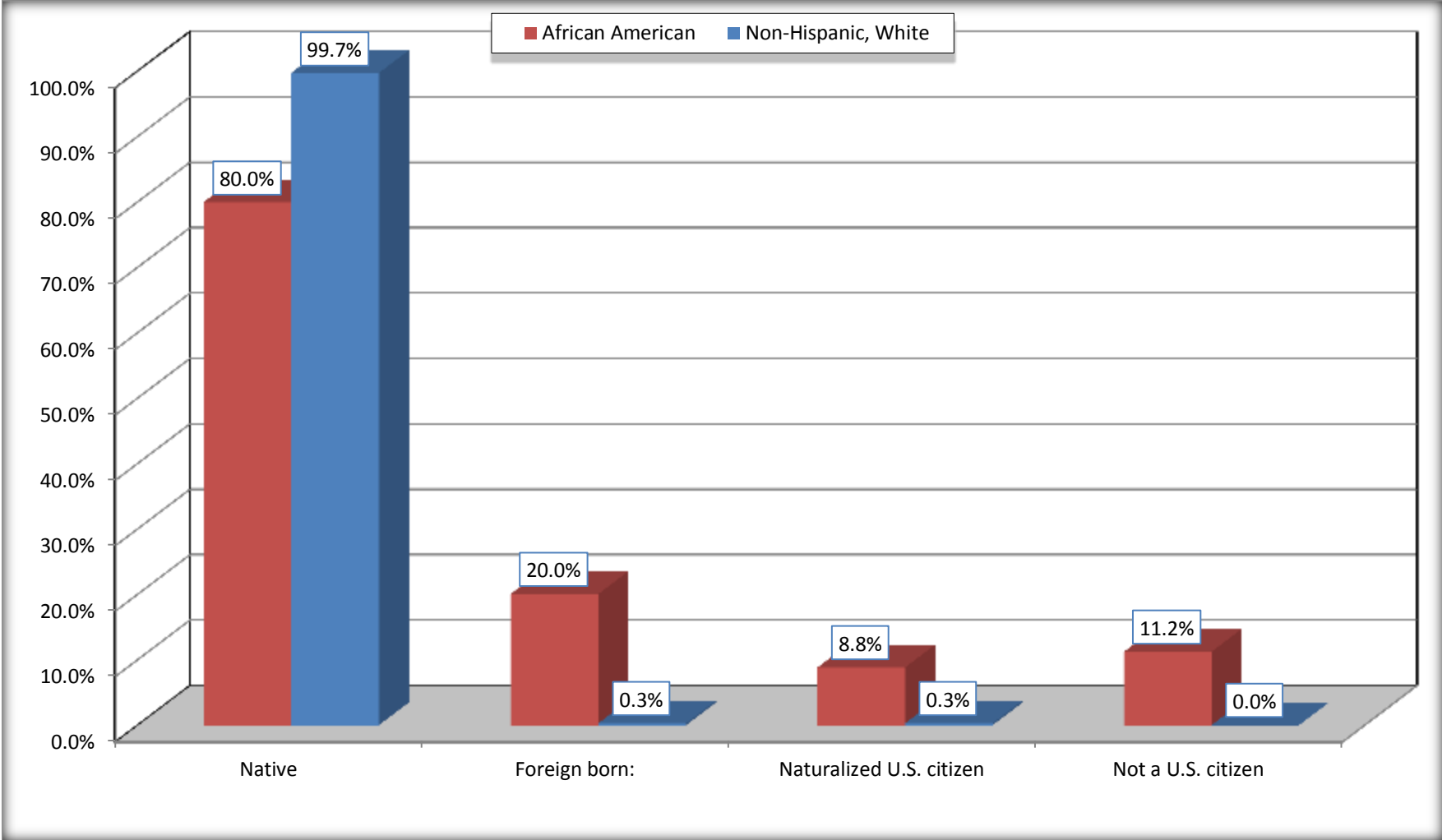
	Collingdale borough, Pennsylvania					
	African American	Margin of Error (+/-)	% of AA by Age	White, Not Hispanic	Margin of Error (+/-)	% of NHW by Age
<b>Female:</b>	1,389	205	52.8%	2,743	259	50.9%
<b>Under 18 years:</b>	<b>467</b>	<b>129</b>	<b>100.0%</b>	<b>457</b>	<b>146</b>	<b>100.0%</b>
Native	447	128	95.7%	457	146	100.0%
Foreign born:	20	22	4.3%	0	15	0.0%
Naturalized U.S. citizen	20	22	4.3%	0	15	0.0%
Not a U.S. citizen	0	15	0.0%	0	15	0.0%
<b>18 years and over:</b>	<b>922</b>	<b>167</b>	<b>100.0%</b>	<b>2,286</b>	<b>226</b>	<b>100.0%</b>
Native	745	161	80.8%	2,286	226	100.0%
Foreign born:	177	106	19.2%	0	15	0.0%
Naturalized U.S. citizen	74	43	8.0%	0	15	0.0%
Not a U.S. citizen	103	80	11.2%	0	15	0.0%

Source: U.S. Census Bureau, 2008-2012 American Community Survey

For information on confidentiality protection, sampling error, nonsampling error, and definitions, see Survey Methodology.  
<http://www.census.gov/acs/www/UseData/index.htm>

# Citizenship Status of Voting Age Population (18 and Over)

## Collingdale borough, Pennsylvania



Source: B05003. SEX BY AGE BY CITIZENSHIP STATUS  
Data Set: 2008-2012 American Community Survey 5-Year Estimates

**B07004. GEOGRAPHICAL MOBILITY IN THE PAST YEAR BY RACE FOR CURRENT RESIDENCE IN THE UNITED STATES - Universe:  
POPULATION 1 YEAR AND OVER**

Data Set: 2008-2012 American Community Survey 5-Year Estimates

	Collingdale borough, Pennsylvania					
	African American	Margin of Error (+/-)	% of AA Total	White, Not Hispanic	Margin of Error (+/-)	% of NHW Total
<b>Total:</b>	<b>2,562</b>	<b>364</b>	<b>100.0%</b>	<b>5,353</b>	<b>396</b>	<b>100.0%</b>
Same house 1 year ago	2,195	391	85.7%	5,004	389	93.5%
Moved within same county	225	141	8.8%	211	124	3.9%
Moved from different county within same state	71	73	2.8%	86	100	1.6%
Moved from different state	21	27	0.8%	52	42	1.0%
Moved from abroad	50	50	2.0%	0	15	0.0%

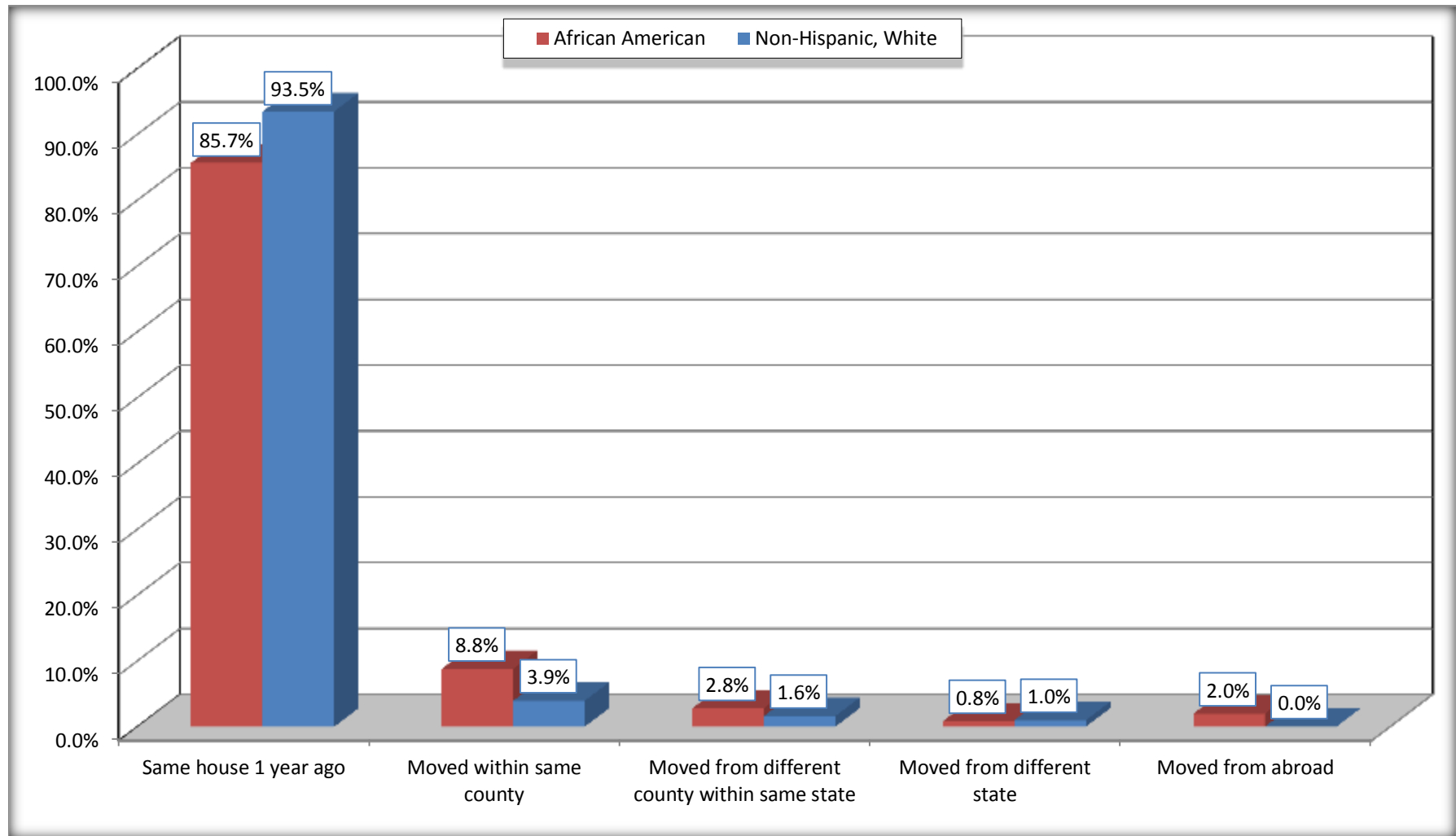
Source: U.S. Census Bureau, 2008-2012 American Community Survey

For information on confidentiality protection, sampling error, nonsampling error, and definitions, see Survey Methodology.

<http://www.census.gov/acs/www/UseData/index.htm>

# Geographical Mobility in the Past Year (Population 1 Year and Over)

## Collingdale borough, Pennsylvania



Source: B07004. GEOGRAPHICAL MOBILITY IN THE PAST YEAR BY RACE FOR CURRENT RESIDENCE IN THE UNITED STATES - Universe: POPULATION 1 YEAR AND OVER

Data Set: 2008-2012 American Community Survey 5-Year Estimates

**B08105. MEANS OF TRANSPORTATION TO WORK - Universe: WORKERS 16 YEARS AND OVER**

Data Set: 2008-2012 American Community Survey 5-Year Estimates

	Collingdale borough, Pennsylvania					
	African American	Margin of Error (+/-)	% of AA Total	White, Not Hispanic	Margin of Error (+/-)	% of NHW Total
<b>Total:</b>	1106	204	<b>100.0%</b>	2677	289	<b>100.0%</b>
Car, truck, or van - drove alone	803	169	72.6%	2214	282	82.7%
Car, truck, or van - carpooled	90	76	8.1%	160	73	6.0%
Public transportation (excluding taxicab)	154	90	13.9%	185	104	6.9%
Walked	48	54	4.3%	98	64	3.7%
Taxicab, motorcycle, bicycle, or other means	7	13	0.6%	0	15	0.0%
Worked at home	4	7	0.4%	20	22	0.7%

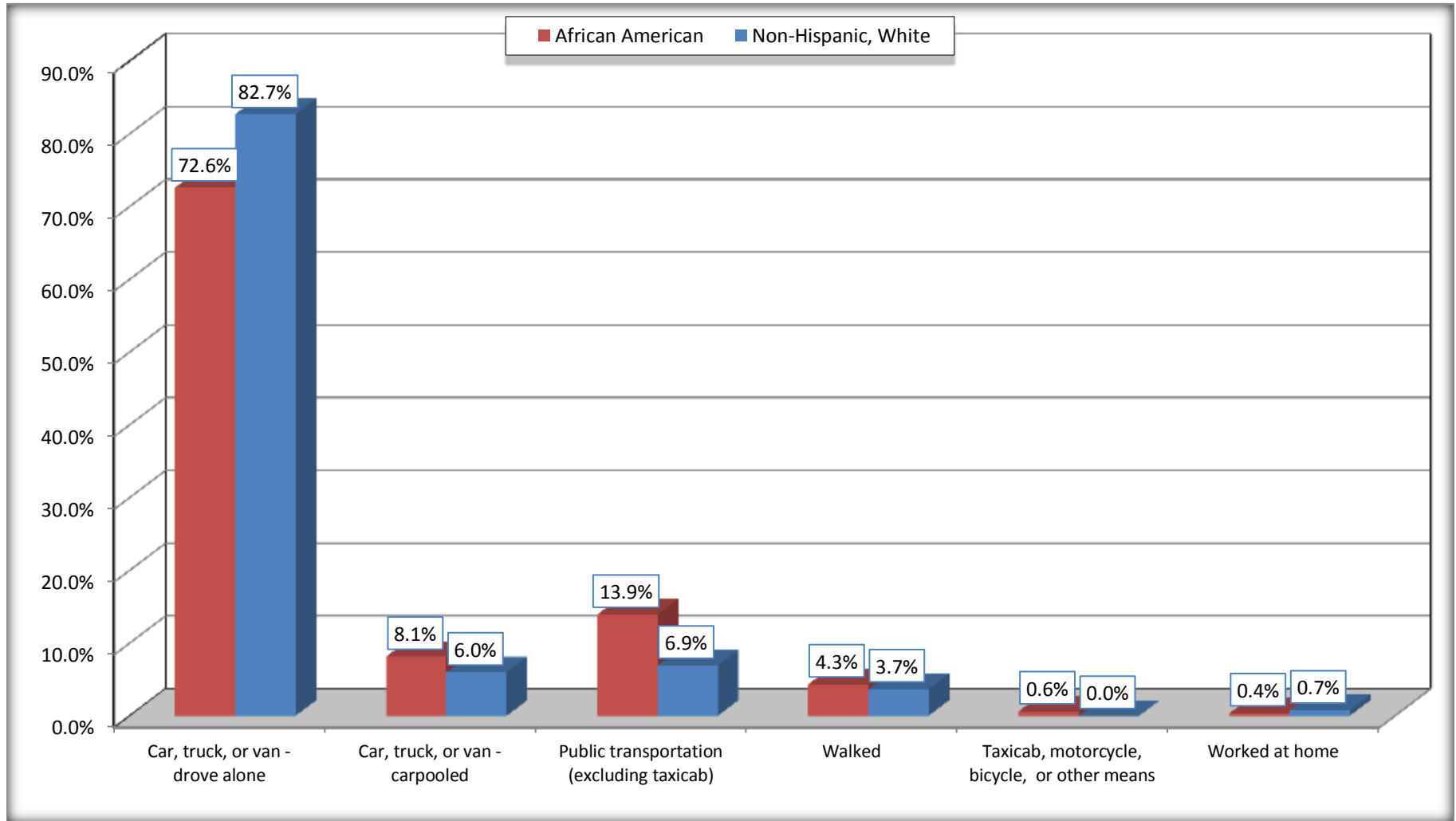
Source: U.S. Census Bureau, 2008-2012 American Community Survey

For information on confidentiality protection, sampling error, nonsampling error, and definitions, see Survey Methodology.

<http://www.census.gov/acs/www/UseData/index.htm>

# Means of Transportation to Work (Workers 16 Years and Over)

## Collingdale borough, Pennsylvania



Source: B08105. MEANS OF TRANSPORTATION TO WORK - Universe: WORKERS 16 YEARS AND OVER  
Data Set: 2008-2012 American Community Survey 5-Year Estimates



**B11002. HOUSEHOLD TYPE BY RELATIVES AND NONRELATIVES FOR POPULATION IN HOUSEHOLDS**

Data Set: 2008-2012 American Community Survey 5-Year Estimates

	Collingdale borough, Pennsylvania					
	African American	Margin of Error (+/-)	% of AA Total	White, Not Hispanic	Margin of Error (+/-)	% of NHW Total
<b>Total:</b>	2559	425	<b>100.0%</b>	5422	496	<b>100.0%</b>
In family households	2221	432	86.8%	4599	494	84.8%
In nonfamily households	338	125	13.2%	823	189	15.2%

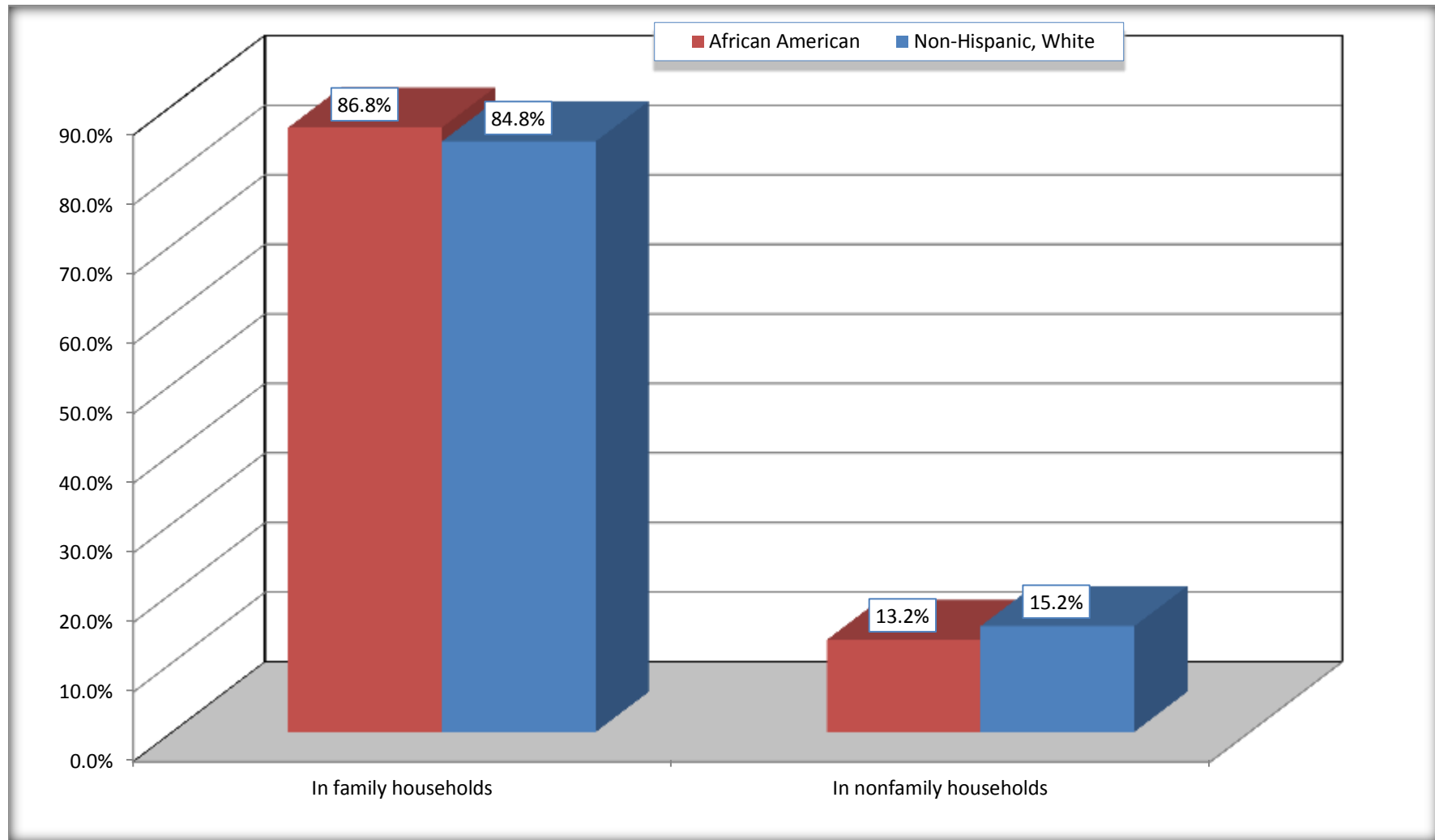
Source: U.S. Census Bureau, 2008-2012 American Community Survey

For information on confidentiality protection, sampling error, nonsampling error, and definitions, see Survey Methodology.

<http://www.census.gov/acs/www/UseData/index.htm>

# Household Type for Population in Households

## Collingdale borough, Pennsylvania



Source: B11002. HOUSEHOLD TYPE BY RELATIVES AND NONRELATIVES FOR POPULATION IN HOUSEHOLDS  
Data Set: 2008-2012 American Community Survey 5-Year Estimates

**B12002. MARITAL STATUS FOR THE POPULATION 15 YEARS AND OVER**

Data Set: 2008-2012 American Community Survey 5-Year Estimates

	Collingdale borough, Pennsylvania					
	African American	Margin of Error (+/-)	% of AA Total	White, Not Hispanic	Margin of Error (+/-)	% of NHW Total
<b>Total:</b>	<b>1,840</b>	<b>278</b>	<b>100.0%</b>	<b>4,462</b>	<b>386</b>	<b>100.0%</b>
Never married	1,031	NC	56.0%	1,420	NC	31.8%
Now married (except separated)	588	NC	32.0%	1,876	NC	42.0%
Separated	100	NC	5.4%	138	NC	3.1%
Widowed	59	NC	3.2%	424	NC	9.5%
Divorced	62	NC	3.4%	604	NC	13.5%
<b>Male:</b>	862	177	46.8%	2,136	254	47.9%
Never married	518	160	28.2%	734	154	16.5%
Now married (except separated)	298	91	16.2%	932	122	20.9%
Separated	21	28	1.1%	65	55	1.5%
Widowed	11	20	0.6%	130	57	2.9%
Divorced	14	18	0.8%	275	114	6.2%
<b>Female:</b>	978	185	53.2%	2,326	236	52.1%
Never married	513	159	27.9%	686	188	15.4%
Now married (except separated)	290	85	15.8%	944	130	21.2%
Separated	79	64	4.3%	73	50	1.6%
Widowed	48	45	2.6%	294	100	6.6%
Divorced	48	51	2.6%	329	109	7.4%

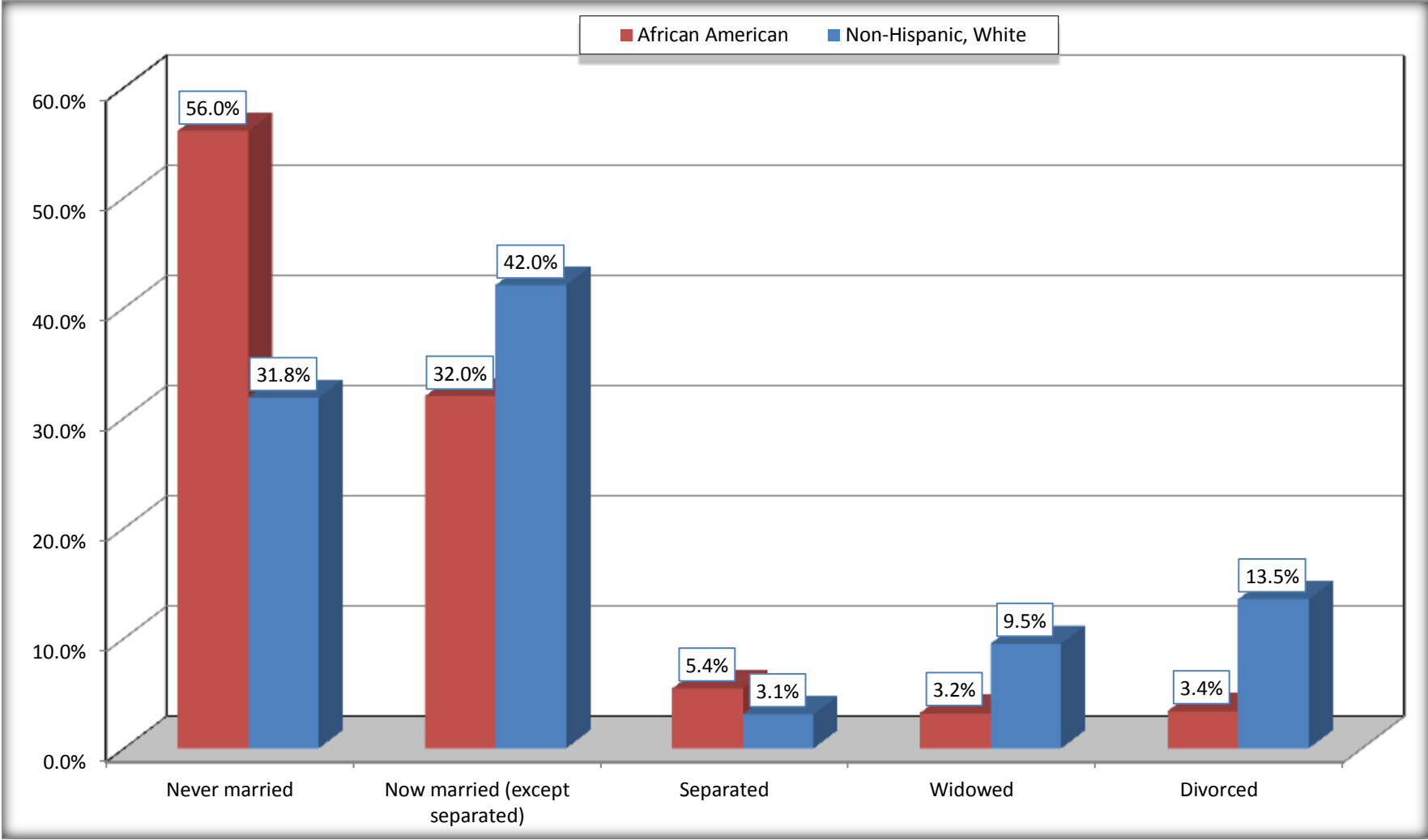
Source: U.S. Census Bureau, 2008-2012 American Community Survey

For information on confidentiality protection, sampling error, nonsampling error, and definitions, see Survey Methodology.

<http://www.census.gov/acs/www/UseData/index.htm>

# Marital Status for the Population 15 Years and Over

## Collingdale borough, Pennsylvania



Source: B12002. MARITAL STATUS FOR THE POPULATION 15 YEARS AND OVER  
Data Set: 2008-2012 American Community Survey 5-Year Estimates

**C15002. SEX BY EDUCATIONAL ATTAINMENT FOR THE POPULATION 25 YEARS AND OVER**

Data Set: 2008-2012 American Community Survey 5-Year Estimates

	Collingdale borough, Pennsylvania					
	African American	Margin of Error (+/-)	% of AA Total	White, Not Hispanic	Margin of Error (+/-)	% of NHW Total
<b>Total:</b>	<b>1,445</b>	<b>204</b>	<b>100.0%</b>	<b>3,837</b>	<b>318</b>	<b>100.0%</b>
Less than high school diploma	151	NC	10.4%	412	NC	10.7%
High school graduate, GED, or alternative	342	NC	23.7%	1,875	NC	48.9%
Some college or associate's degree	642	NC	44.4%	1,046	NC	27.3%
Bachelor's degree or higher	310	NC	21.5%	504	NC	13.1%
Male:	650	145	45.0%	1,822	224	47.5%
Less than high school diploma	32	32	2.2%	103	49	2.7%
High school graduate, GED, or alternative	196	91	13.6%	961	173	25.0%
Some college or associate's degree	304	90	21.0%	597	161	15.6%
Bachelor's degree or higher	118	86	8.2%	161	78	4.2%
Female:	795	145	55.0%	2,015	197	52.5%
Less than high school diploma	119	67	8.2%	309	117	8.1%
High school graduate, GED, or alternative	146	69	10.1%	914	163	23.8%
Some college or associate's degree	338	112	23.4%	449	117	11.7%
Bachelor's degree or higher	192	91	13.3%	343	132	8.9%

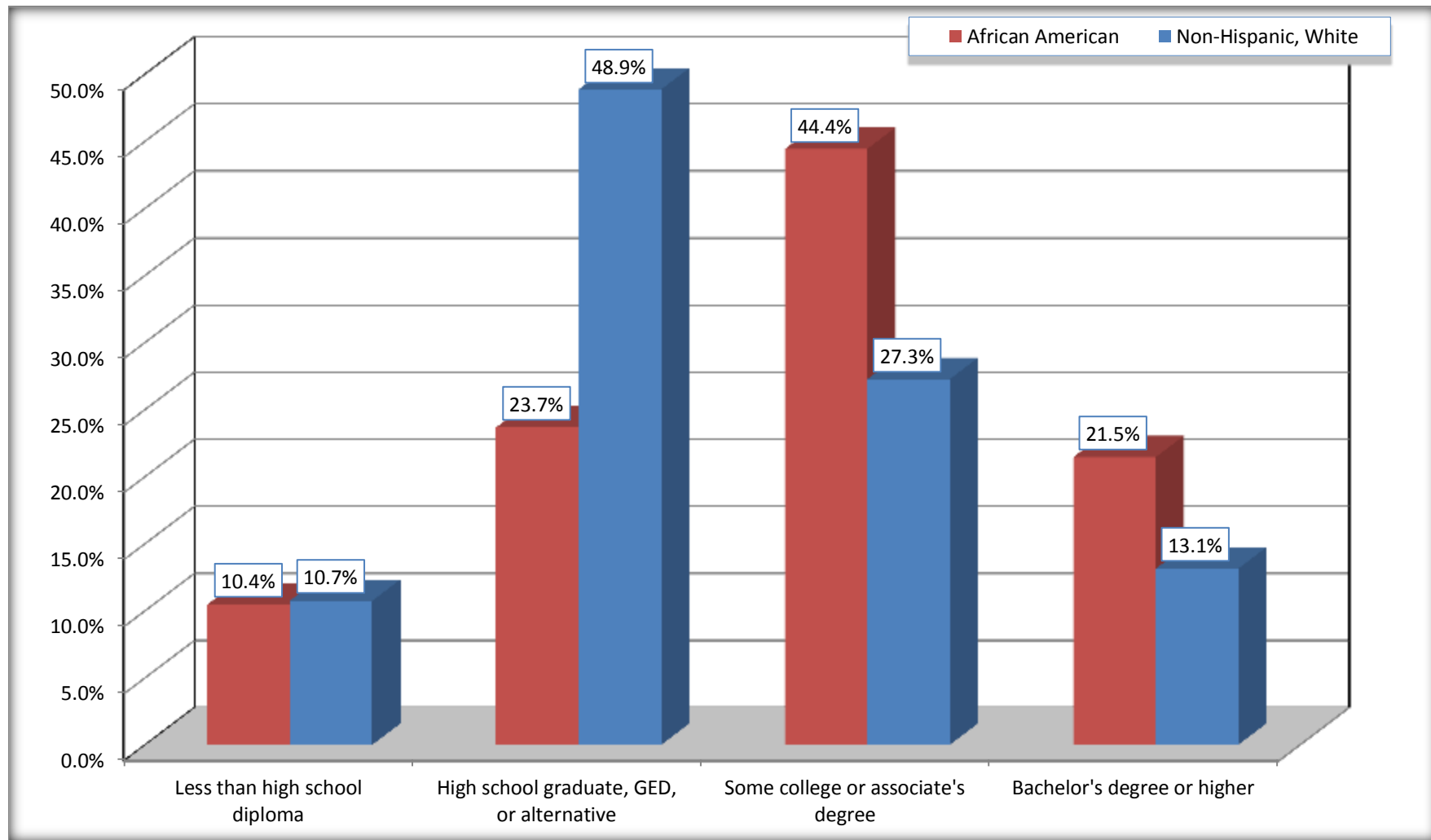
Source: U.S. Census Bureau, 2008-2012 American Community Survey

For information on confidentiality protection, sampling error, nonsampling error, and definitions, see Survey Methodology.

<http://www.census.gov/acs/www/UseData/index.htm>

# Educational Attainment for the Population 25 Years and Older

## Collingdale borough, Pennsylvania



Source: C15002. SEX BY EDUCATIONAL ATTAINMENT FOR THE POPULATION 25 YEARS AND OVER  
Data Set: 2008-2012 American Community Survey 5-Year Estimates

**B16005. NATIVITY BY LANGUAGE SPOKEN AT HOME BY ABILITY TO SPEAK ENGLISH FOR THE POPULATION 5 YEARS AND OVER**

Data Set: 2008-2012 American Community Survey 5-Year Estimates

	Collingdale borough, Pennsylvania					
	African American	Margin of Error (+/-)	% of AA Total	White, Not Hispanic	Margin of Error (+/-)	% of NHW Total
<b>Total:</b>	<b>2,385</b>	<b>370</b>	<b>100.0%</b>	<b>5,077</b>	<b>387</b>	<b>100.0%</b>
Speak only English	2,083	NC	87.3%	4,848	NC	95.5%
Speak another language	302	NC	12.7%	229	NC	4.5%
Speak English "very well"	242	NC	10.1%	229	NC	4.5%
Speak English "less than very well"	60	NC	2.5%	0	NC	0.0%
Native:	2,017	364	84.6%	5,065	386	99.8%
Speak only English	1,910	359	80.1%	4,836	373	95.3%
Speak another language	107	81	4.5%	229	102	4.5%
Speak English "very well"	96	78	4.0%	229	102	4.5%
Speak English "less than very well"	11	19	0.5%	0	15	0.0%
Foreign born:	368	189	15.4%	12	17	0.2%
Speak only English	173	133	7.3%	12	17	0.2%
Speak another language	195	131	8.2%	0	15	0.0%
Speak English "very well"	146	101	6.1%	0	15	0.0%
Speak English "less than very well"	49	47	2.1%	0	15	0.0%

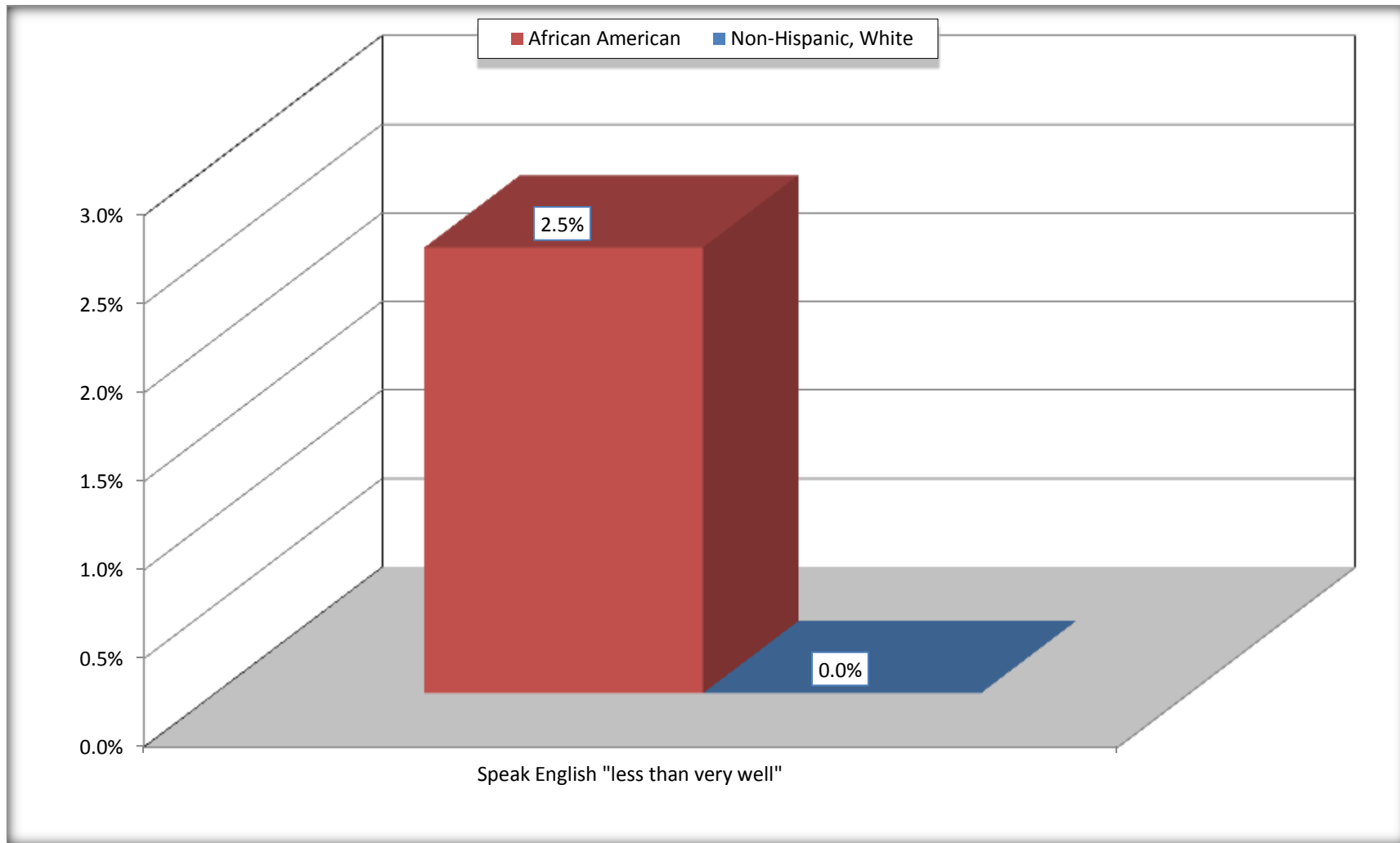
Source: U.S. Census Bureau, 2008-2012 American Community Survey

For information on confidentiality protection, sampling error, nonsampling error, and definitions, see Survey Methodology.

<http://www.census.gov/acs/www/UseData/index.htm>

# Speak English "Less than Very Well" (Population 5 Years and Over)

## Collingdale borough, Pennsylvania



Source: B16005. NATIVITY BY LANGUAGE SPOKEN AT HOME BY ABILITY TO SPEAK ENGLISH FOR THE POPULATION 5 YEARS AND OVER  
Data Set: 2008-2012 American Community Survey 5-Year Estimates



**B17010. POVERTY STATUS IN THE PAST 12 MONTHS OF FAMILIES BY FAMILY TYPE BY PRESENCE OF RELATED CHILDREN UNDER 18 YEARS**

Data Set: 2008-2012 American Community Survey 5-Year Estimates

	Collingdale borough, Pennsylvania					
	African American	Margin of Error (+/-)	% of AA Total	White, Not Hispanic	Margin of Error (+/-)	% of NHW Total
<b>Total:</b>	<b>605</b>	<b>123</b>	<b>100.0%</b>	<b>1,440</b>	<b>152</b>	<b>100.0%</b>
Income in the past 12 months below poverty level:	63	49	10.4%	149	82	10.3%
Married-couple family:	18	29	3.0%	16	24	1.1%
With related children under 18 years	18	29	3.0%	0	15	0.0%
Other family:	45	41	7.4%	133	75	9.2%
Male householder, no wife present	21	34	3.5%	28	30	1.9%
With related children under 18 years	21	34	3.5%	28	30	1.9%
Female householder, no husband present	24	24	4.0%	105	72	7.3%
With related children under 18 years	24	24	4.0%	41	38	2.8%
Income in the past 12 months at or above poverty level:	542	128	89.6%	1,291	143	89.7%
Married-couple family:	251	83	41.5%	849	124	59.0%
With related children under 18 years	209	74	34.5%	311	84	21.6%
Other family:	291	113	48.1%	442	113	30.7%
Male householder, no wife present	76	61	12.6%	162	87	11.3%
With related children under 18 years	40	39	6.6%	38	38	2.6%
Female householder, no husband present	215	92	35.5%	280	90	19.4%
With related children under 18 years	204	89	33.7%	150	82	10.4%

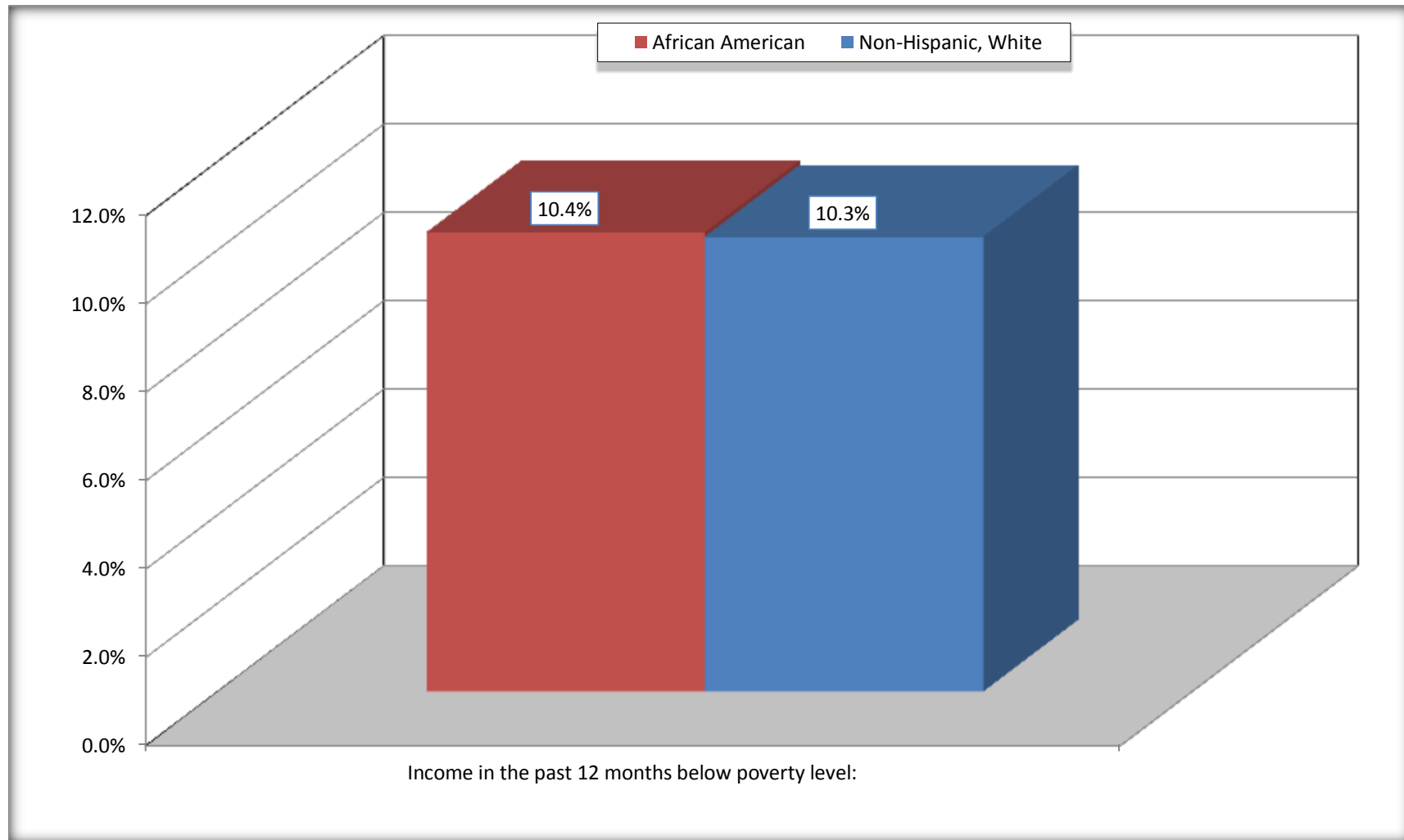
Source: U.S. Census Bureau, 2008-2012 American Community Survey

For information on confidentiality protection, sampling error, nonsampling error, and definitions, see Survey Methodology.

<http://www.census.gov/acs/www/UseData/index.htm>

# Family Households Below Poverty in the Past 12 Months

## Collingdale borough, Pennsylvania

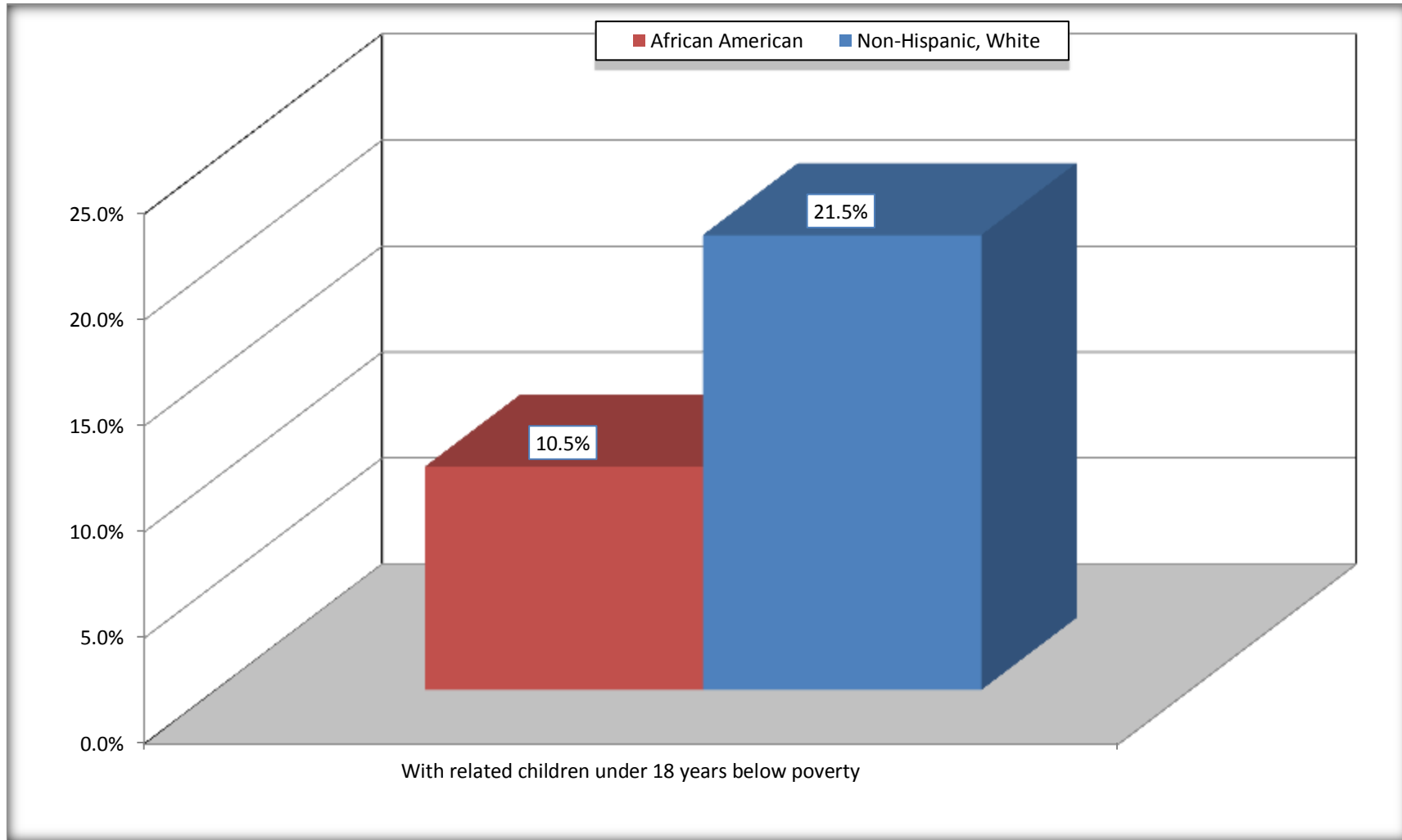


Source: B17010. POVERTY STATUS IN THE PAST 12 MONTHS OF FAMILIES BY FAMILY TYPE BY PRESENCE OF RELATED CHILDREN UNDER 18 YEARS

Data Set: 2008-2012 American Community Survey 5-Year Estimates

# Female-headed Households with Related Children Below Poverty in the Past 12 Months

## Collingdale borough, Pennsylvania



Source: B17010. POVERTY STATUS IN THE PAST 12 MONTHS OF FAMILIES BY FAMILY TYPE BY PRESENCE OF RELATED CHILDREN UNDER 18 YEARS

Data Set: 2008-2012 American Community Survey 5-Year Estimates

**B17020 POVERTY STATUS IN THE PAST 12 MONTHS BY AGE - Universe: POPULATION FOR WHOM POVERTY STATUS IS DETERMINED**

Data Set: 2008-2012 American Community Survey 5-Year Estimates

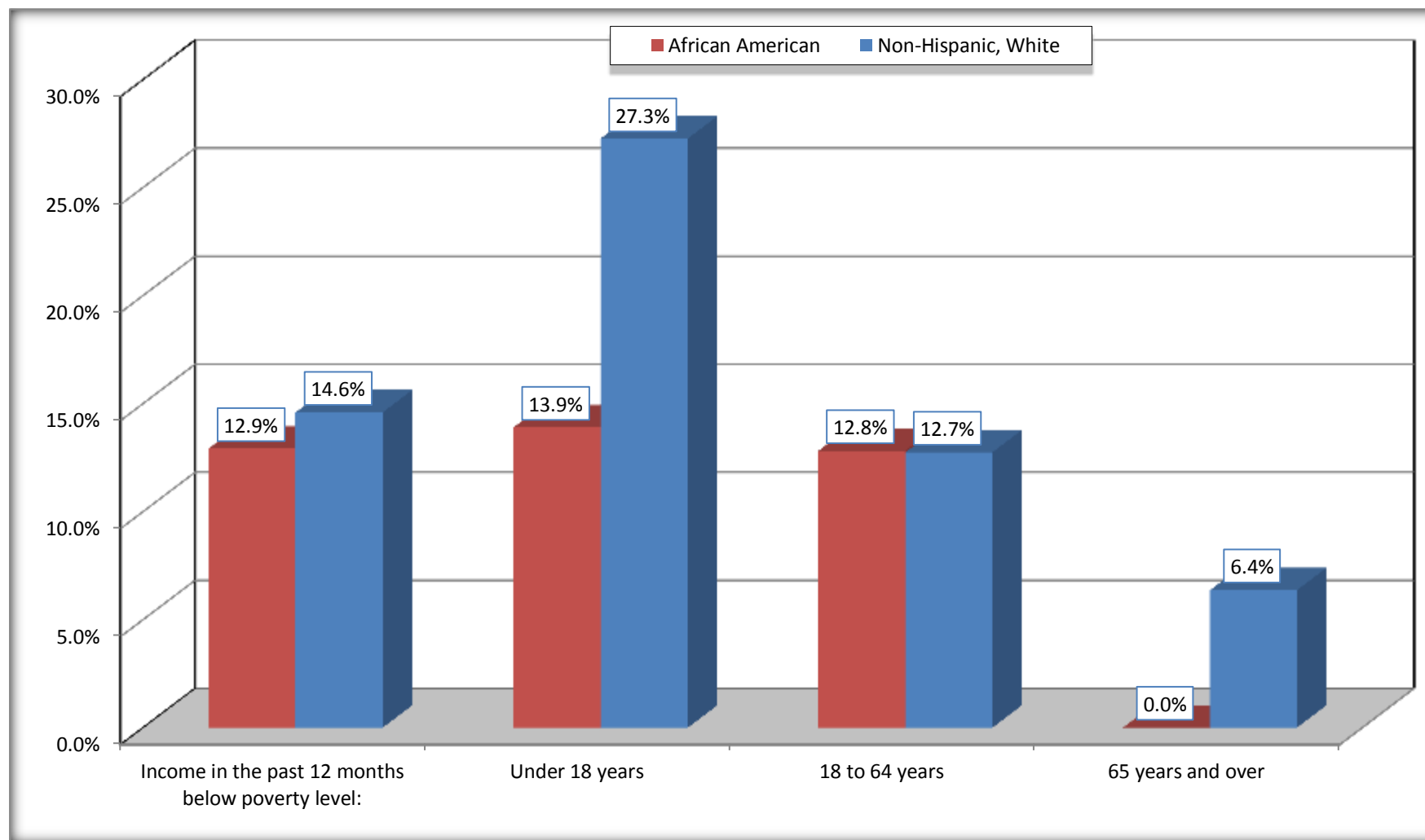
	Collingdale borough, Pennsylvania					
	African American	Margin of Error (+/-)	% of AA By Age	White, Not Hispanic	Margin of Error (+/-)	% of NHW By Age
<b>Total:</b>	<b>2,633</b>	<b>373</b>	<b>100.0%</b>	<b>5,366</b>	<b>403</b>	<b>100.0%</b>
Income in the past 12 months below poverty level:	340	200	12.9%	783	293	14.6%
<b>Under 18 years</b>	133	NC	13.9%	286	NC	27.3%
<b>18 to 64 years</b>	207	112	12.8%	444	191	12.7%
<b>65 years and over</b>	0	NC	0.0%	53	NC	6.4%
Income in the past 12 months at or above poverty level:	2,293	411	87.1%	4,583	400	85.4%
<b>Under 18 years</b>	824	NC	86.1%	763	NC	72.7%
<b>18 to 64 years</b>	1,408	255	87.2%	3,040	317	87.3%
<b>65 years and over</b>	61	NC	100.0%	780	NC	93.6%

Source: U.S. Census Bureau, 2008-2012 American Community Survey

For information on confidentiality protection, sampling error, nonsampling error, and definitions, see Survey Methodology.

<http://www.census.gov/acs/www/UseData/index.htm>

## Population Below Poverty in the Past 12 Months Collingdale borough, Pennsylvania



Source: B17020 POVERTY STATUS IN THE PAST 12 MONTHS BY AGE - Universe: POPULATION FOR WHOM POVERTY STATUS IS DETERMINED  
Data Set: 2008-2012 American Community Survey 5-Year Estimates

**B19001. HOUSEHOLD INCOME IN THE PAST 12 MONTHS (IN 2010 INFLATION-ADJUSTED DOLLARS)**

Data Set: 2008-2012 American Community Survey 5-Year Estimates

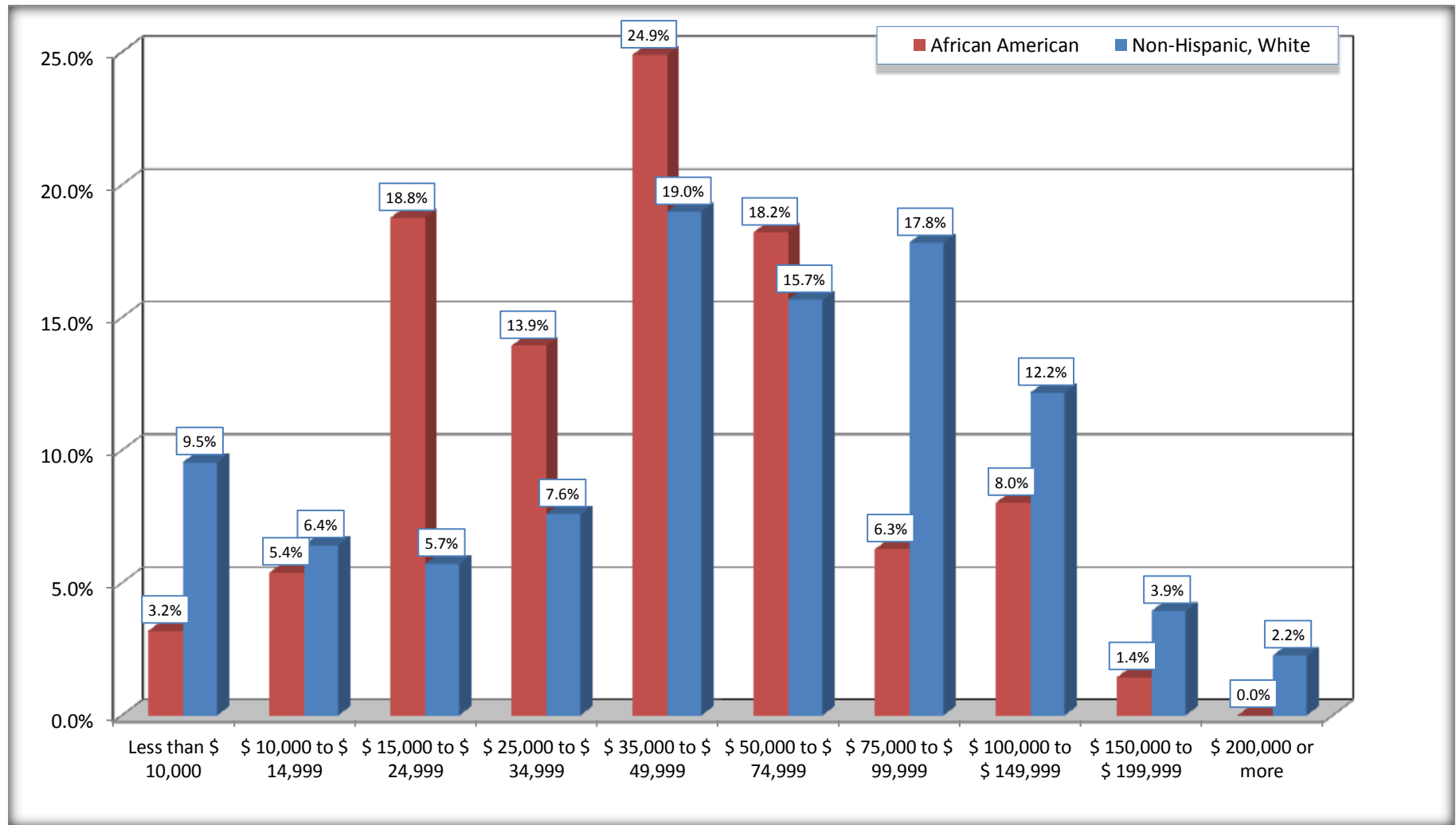
	Collingdale borough, Pennsylvania					
	African American	Margin of Error (+/-)	% of AA Total	White, Not Hispanic	Margin of Error (+/-)	% of NHW Total
<b>Total:</b>	<b>912</b>	<b>151</b>	<b>100.0%</b>	<b>2,139</b>	<b>188</b>	<b>100.0%</b>
Less than \$ 10,000	29	32	3.2%	204	89	9.5%
\$ 10,000 to \$ 14,999	49	50	5.4%	137	65	6.4%
<b>\$ 15,000 to \$ 24,999</b>	171	NC	18.8%	122	NC	5.7%
<b>\$ 25,000 to \$ 34,999</b>	127	NC	13.9%	162	NC	7.6%
<b>\$ 35,000 to \$ 49,999</b>	227	NC	24.9%	406	NC	19.0%
<b>\$ 50,000 to \$ 74,999</b>	166	NC	18.2%	335	NC	15.7%
\$ 75,000 to \$ 99,999	57	42	6.3%	381	114	17.8%
<b>\$ 100,000 to \$ 149,999</b>	73	NC	8.0%	260	NC	12.2%
\$ 150,000 to \$ 199,999	13	20	1.4%	84	58	3.9%
\$ 200,000 or more	0	15	0.0%	48	52	2.2%

Source: U.S. Census Bureau, 2008-2012 American Community Survey

For information on confidentiality protection, sampling error, nonsampling error, and definitions, see Survey Methodology.

<http://www.census.gov/acs/www/UseData/index.htm>

## Household Income in the Past 12 Months Collingdale borough, Pennsylvania



Source: B19001. HOUSEHOLD INCOME IN THE PAST 12 MONTHS (IN 2010 INFLATION-ADJUSTED DOLLARS)  
Data Set: 2008-2012 American Community Survey 5-Year Estimates

**B19013. MEDIAN HOUSEHOLD INCOME IN THE PAST 12 MONTHS (IN 2010 INFLATION-ADJUSTED DOLLARS)**

Data Set: 2008-2012 American Community Survey 5-Year Estimates

	Collingdale borough, Pennsylvania			
	African American	Margin of Error (+/-)	White, Not Hispanic	Margin of Error (+/-)
Median household income in the past 12 months (in 2010 inflation-adjusted dollars)	\$ 40,796	\$ 4,697	\$ 51,782	\$ 7,210

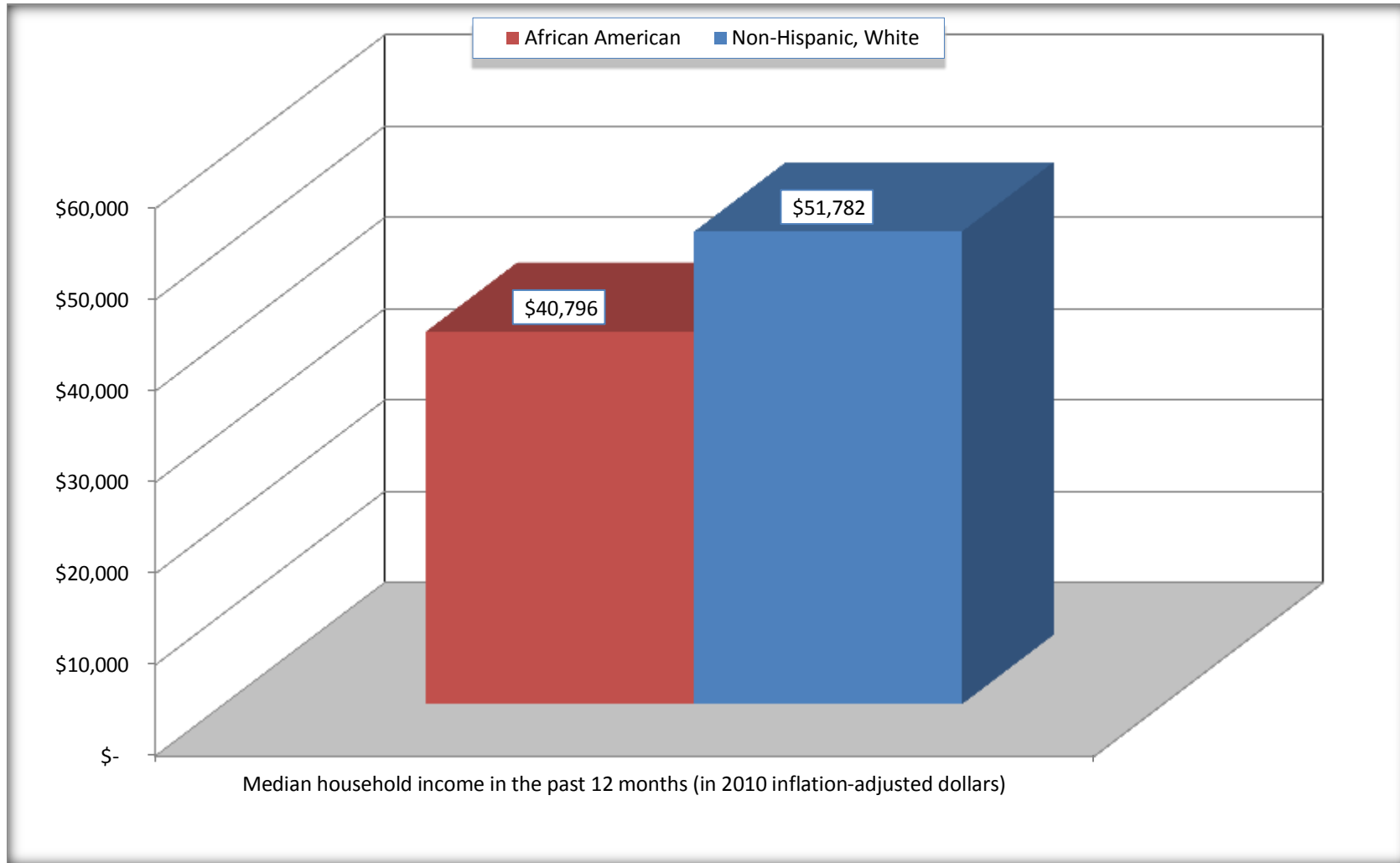
Source: U.S. Census Bureau, 2008-2012 American Community Survey

For information on confidentiality protection, sampling error, nonsampling error, and definitions, see Survey Methodology.  
<http://www.census.gov/acs/www/UseData/index.htm>



## Median Household Income in the Past 12 Months

### Collingdale borough, Pennsylvania



Source: B19013. MEDIAN HOUSEHOLD INCOME IN THE PAST 12 MONTHS (IN 2010 INFLATION-ADJUSTED DOLLARS)  
Data Set: 2008-2012 American Community Survey 5-Year Estimates

**B19101. FAMILY INCOME IN THE PAST 12 MONTHS (IN 2010 INFLATION-ADJUSTED DOLLARS)**

Data Set: 2008-2012 American Community Survey 5-Year Estimates

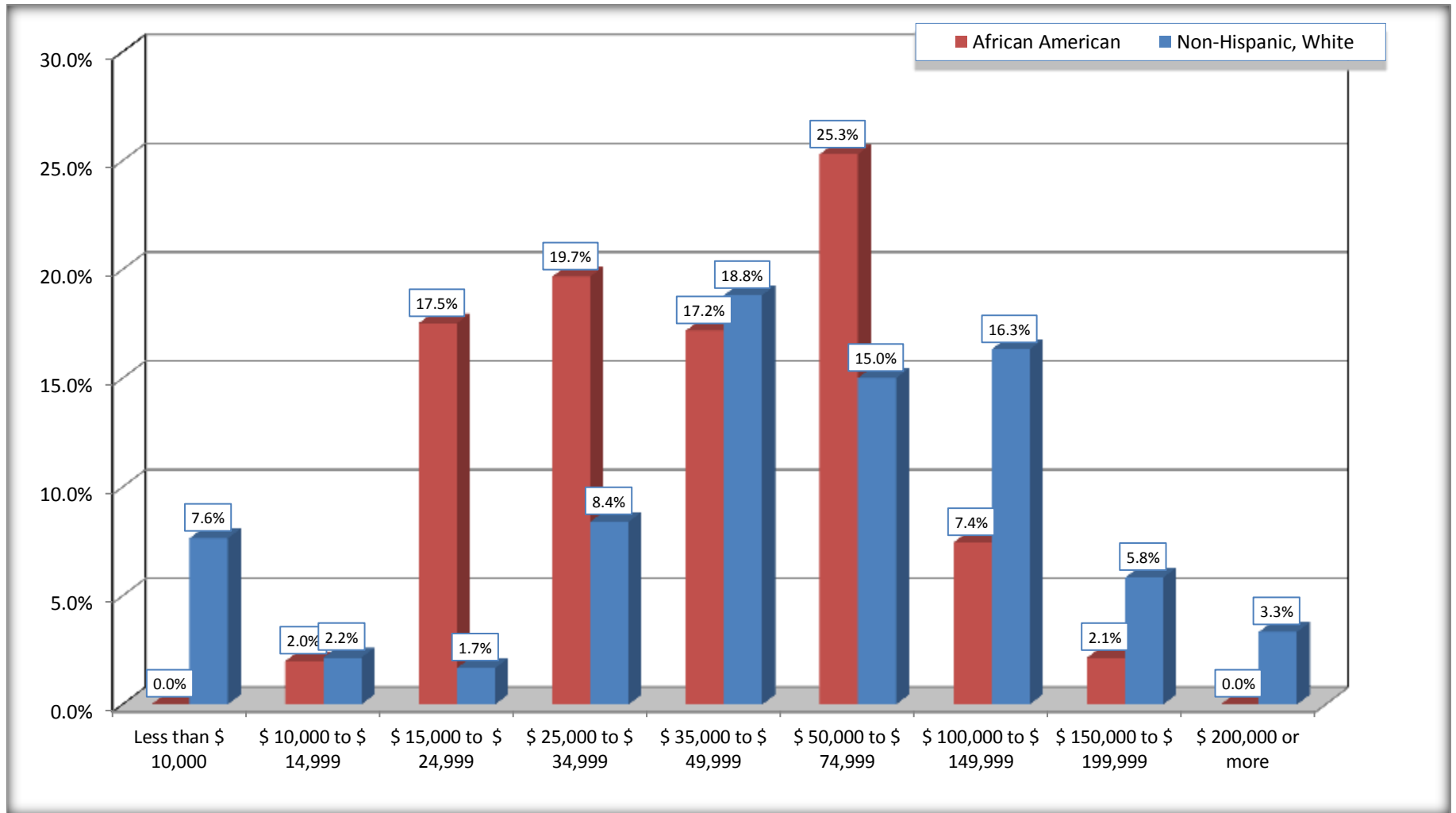
	Collingdale borough, Pennsylvania					
	African American	Margin of Error (+/-)	% of AA Total	White, Not Hispanic	Margin of Error (+/-)	% of NHW Total
<b>Total:</b>	<b>605</b>	<b>123</b>	<b>100.0%</b>	<b>1,440</b>	<b>152</b>	<b>100.0%</b>
Less than \$ 10,000	0	15	0.0%	110	73	7.6%
\$ 10,000 to \$ 14,999	12	19	2.0%	31	32	2.2%
<b>\$ 15,000 to \$ 24,999</b>	<b>106</b>	<b>NC</b>	<b>17.5%</b>	<b>24</b>	<b>NC</b>	<b>1.7%</b>
<b>\$ 25,000 to \$ 34,999</b>	<b>119</b>	<b>NC</b>	<b>19.7%</b>	<b>121</b>	<b>NC</b>	<b>8.4%</b>
<b>\$ 35,000 to \$ 49,999</b>	<b>104</b>	<b>NC</b>	<b>17.2%</b>	<b>271</b>	<b>NC</b>	<b>18.8%</b>
<b>\$ 50,000 to \$ 74,999</b>	<b>153</b>	<b>NC</b>	<b>25.3%</b>	<b>216</b>	<b>NC</b>	<b>15.0%</b>
<b>\$ 100,000 to \$ 149,999</b>	<b>45</b>	<b>NC</b>	<b>7.4%</b>	<b>235</b>	<b>NC</b>	<b>16.3%</b>
\$ 150,000 to \$ 199,999	13	20	2.1%	84	58	5.8%
\$ 200,000 or more	0	15	0.0%	48	52	3.3%

Source: U.S. Census Bureau, 2008-2012 American Community Survey

For information on confidentiality protection, sampling error, nonsampling error, and definitions, see Survey Methodology.

<http://www.census.gov/acs/www/UseData/index.htm>

## Family Income in the Past 12 Months Collingdale borough, Pennsylvania



Source: B19101. FAMILY INCOME IN THE PAST 12 MONTHS (IN 2010 INFLATION-ADJUSTED DOLLARS)  
Data Set: 2008-2012 American Community Survey 5-Year Estimates

**B19113. MEDIAN FAMILY INCOME IN THE PAST 12 MONTHS (IN 2010 INFLATION-ADJUSTED DOLLARS)**

Data Set: 2008-2012 American Community Survey 5-Year Estimates

	<b>Collingdale borough, Pennsylvania</b>			
	African American	Margin of Error (+/-)	White, Not Hispanic	Margin of Error (+/-)
Median family income in the past 12 months (in 2010 inflation-adjusted dollars)	\$ 41,629	\$ 9,462	\$ 70,288	\$ 15,081

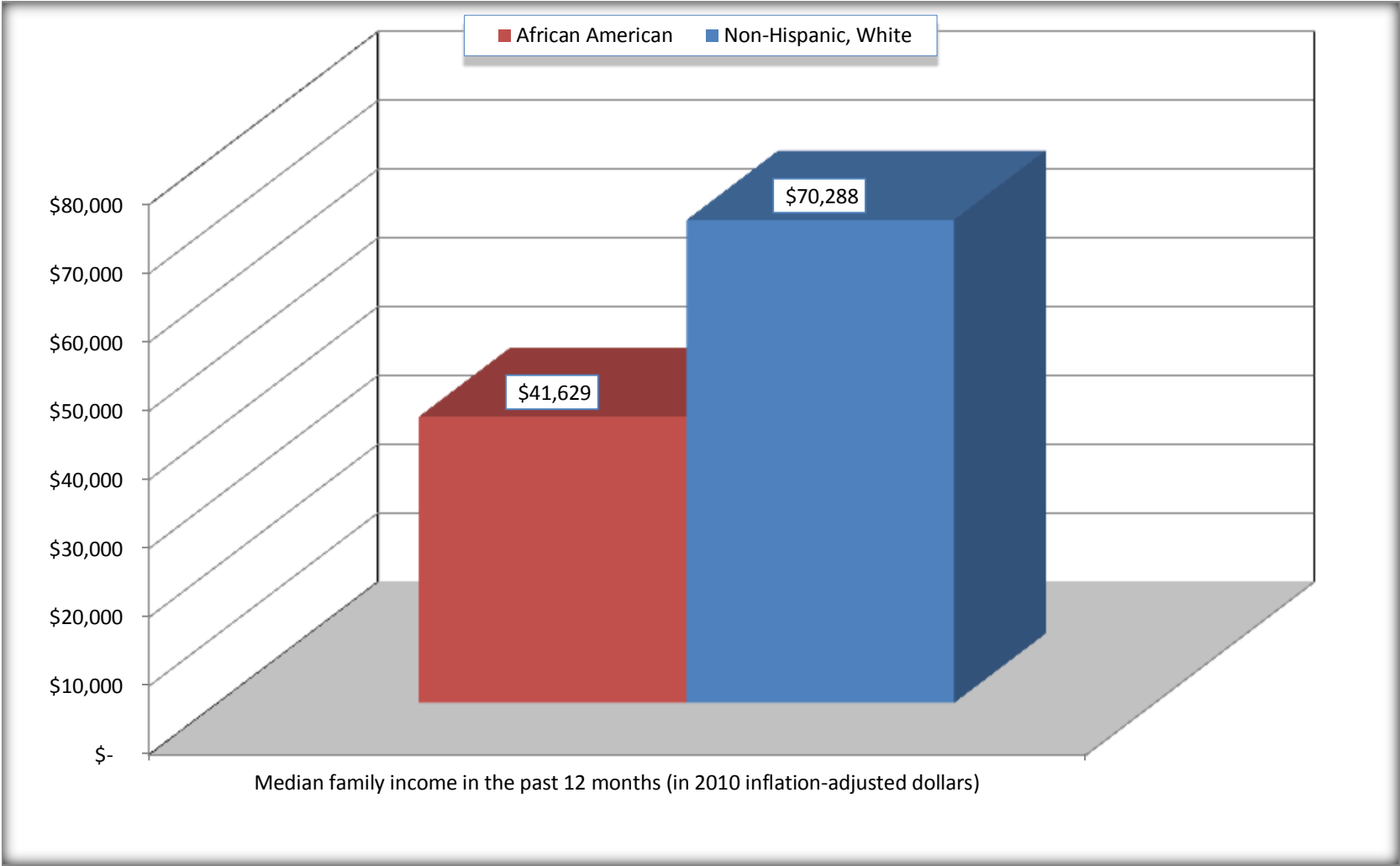
Source: U.S. Census Bureau, 2008-2012 American Community Survey

For information on confidentiality protection, sampling error, nonsampling error, and definitions, see Survey Methodology.

<http://www.census.gov/acs/www/UseData/index.htm>

# Median Family Income in the Past 12 Months

## Collingdale borough, Pennsylvania



Source: B19113. MEDIAN FAMILY INCOME IN THE PAST 12 MONTHS (IN 2010 INFLATION-ADJUSTED DOLLARS)  
Data Set: 2008-2012 American Community Survey 5-Year Estimates

**B19202. MEDIAN NONFAMILY HOUSEHOLD INCOME IN THE PAST 12 MONTHS (IN 2010 INFLATION-ADJUSTED DOLLARS)**

Data Set: 2008-2012 American Community Survey 5-Year Estimates

	<b>Collingdale borough, Pennsylvania</b>			
	African American	Margin of Error (+/-)	White, Not Hispanic	Margin of Error (+/-)
Median nonfamily household income in the past 12 months (in 2010 inflation-adjusted dollars)	\$ 39,821	\$ 27,660	\$ 35,560	\$ 11,173

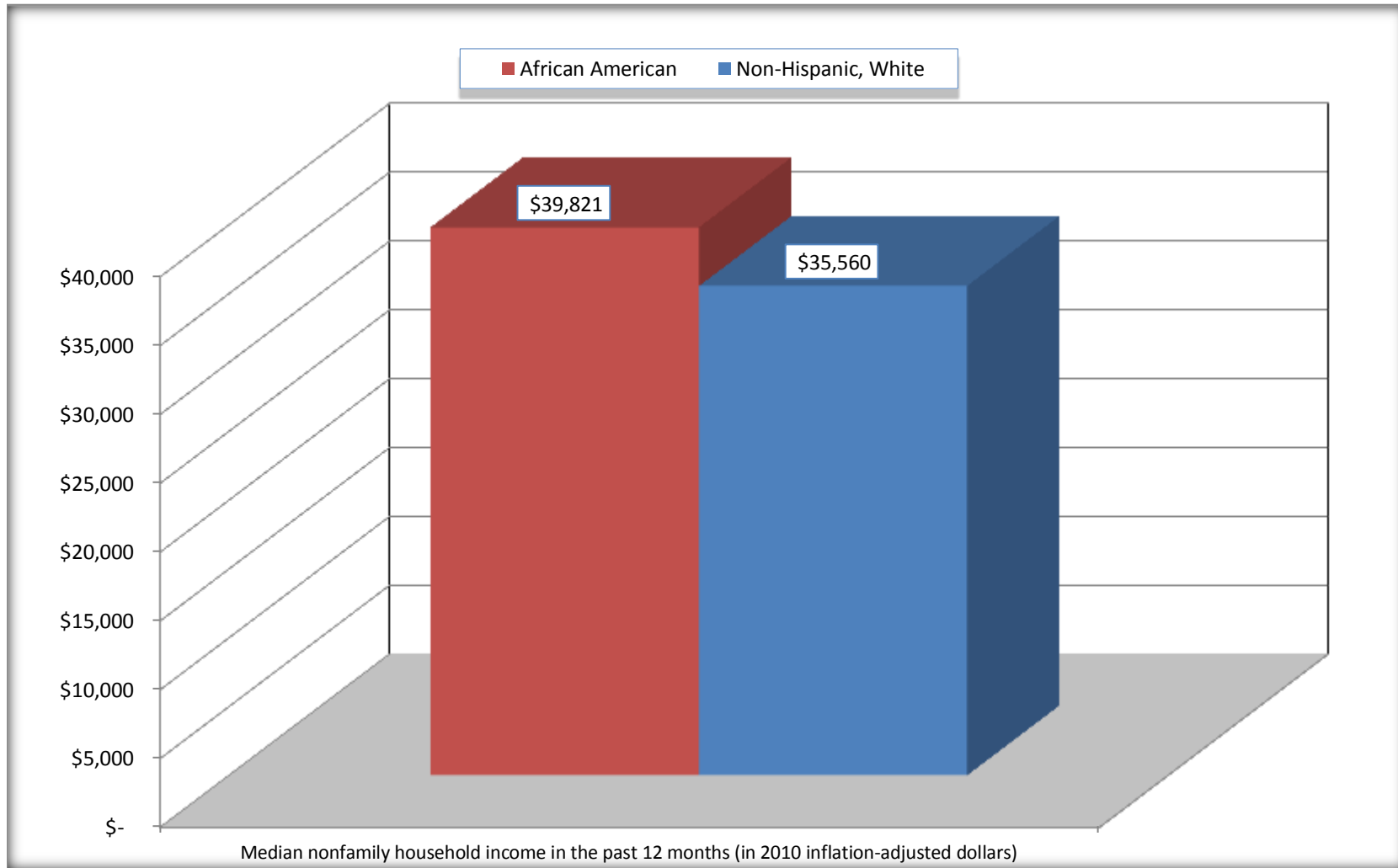
Source: U.S. Census Bureau, 2008-2012 American Community Survey

For information on confidentiality protection, sampling error, nonsampling error, and definitions, see Survey Methodology.

<http://www.census.gov/acs/www/UseData/index.htm>

# Median Non-Family Income in the Past 12 Months

## Collingdale borough, Pennsylvania



Source: B19202. MEDIAN NONFAMILY HOUSEHOLD INCOME IN THE PAST 12 MONTHS (IN 2010 INFLATION-ADJUSTED DOLLARS)  
Data Set: 2008-2012 American Community Survey 5-Year Estimates

**B19301. PER CAPITA INCOME IN THE PAST 12 MONTHS (IN 2010 INFLATION-ADJUSTED DOLLARS)**

Data Set: 2008-2012 American Community Survey 5-Year Estimates

	Collingdale borough, Pennsylvania			
	African American	Margin of Error (+/-)	White, Not Hispanic	Margin of Error (+/-)
Per capita income in the past 12 months (in 2010 inflation-adjusted dollars)	\$ 18,603	\$ 2,810	\$ 28,446	\$ 5,427

Source: U.S. Census Bureau, 2008-2012 American Community Survey

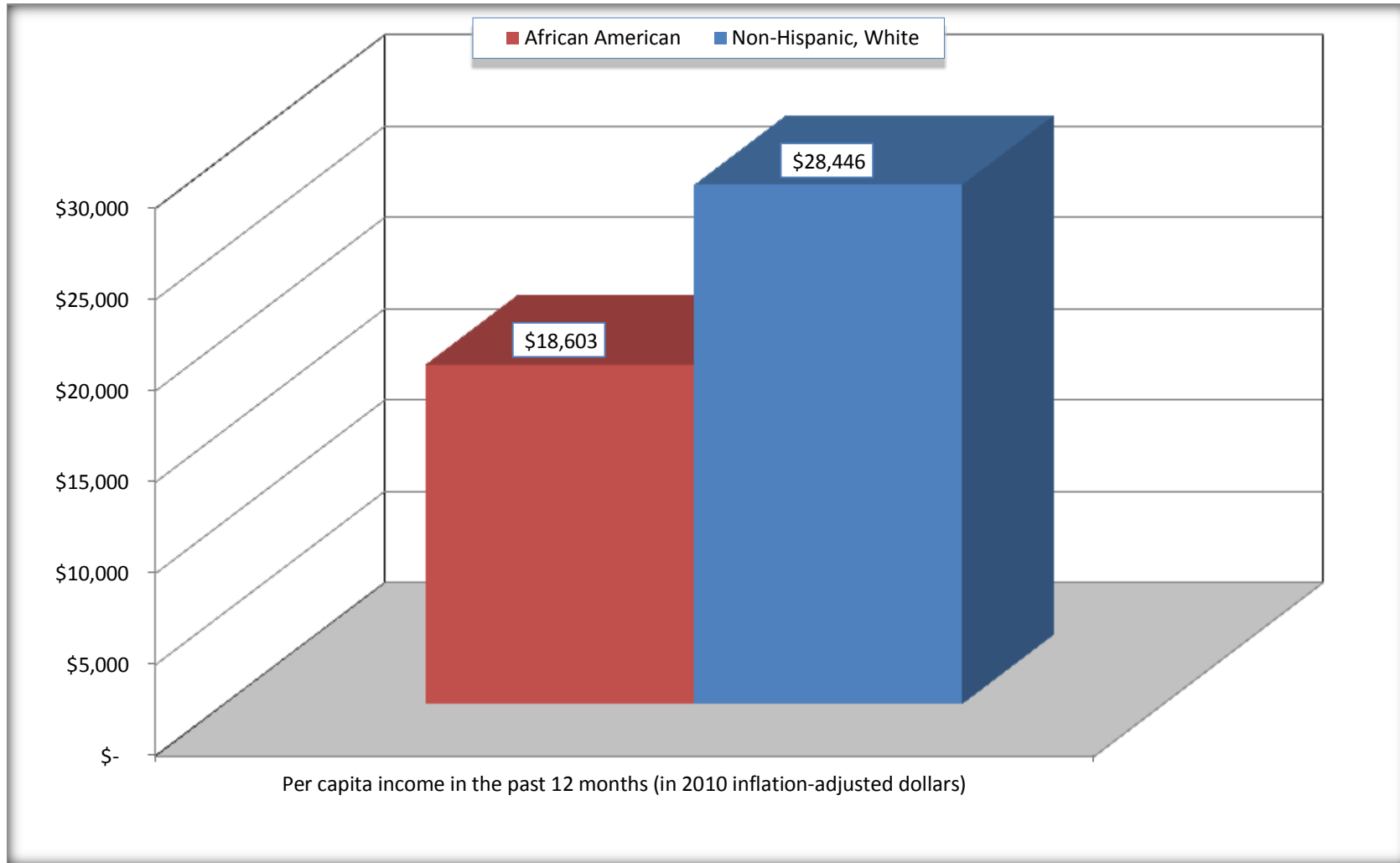
For information on confidentiality protection, sampling error, nonsampling error, and definitions, see Survey Methodology.

<http://www.census.gov/acs/www/UseData/index.htm>



# Per capita Income in the Past 12 Months

## Collingdale borough, Pennsylvania



Source: B19301. PER CAPITA INCOME IN THE PAST 12 MONTHS (IN 2010 INFLATION-ADJUSTED DOLLARS)  
Data Set: 2008-2012 American Community Survey 5-Year Estimates

**B20017. MEDIAN EARNINGS IN THE PAST 12 MONTHS (IN 2010 INFLATION-ADJUSTED DOLLARS) BY SEX BY WORK EXPERIENCE IN THE PAST 12 MONTHS FOR THE POPULATION 16 YEARS AND OVER WITH EARNINGS IN THE PAST 12 MONTHS**

Data Set: 2008-2012 American Community Survey 5-Year Estimates

	Collingdale borough, Pennsylvania			
	African American	Margin of Error (+/-)	White, Not Hispanic	Margin of Error (+/-)
Median earnings in the past 12 months (in 2010 inflation-adjusted dollars) --				
Total:	\$ 27,576	\$ 7,090	\$ 35,773	\$ 3,051
Male --				
Total	\$ 33,409	\$ 6,317	\$ 39,427	\$ 3,994
Worked full-time, year-round in the past 12 months	\$ 39,643	\$ 10,708	\$ 44,750	\$ 8,615
Other	\$ 23,036	\$ 10,596	\$ 11,838	\$ 7,838
Female --				
Total	\$ 23,464	\$ 3,801	\$ 28,690	\$ 7,570
Worked full-time, year-round in the past 12 months	\$ 33,650	\$ 9,904	\$ 41,318	\$ 8,841
Other	\$ 15,158	\$ 4,022	\$ 10,268	\$ 2,141

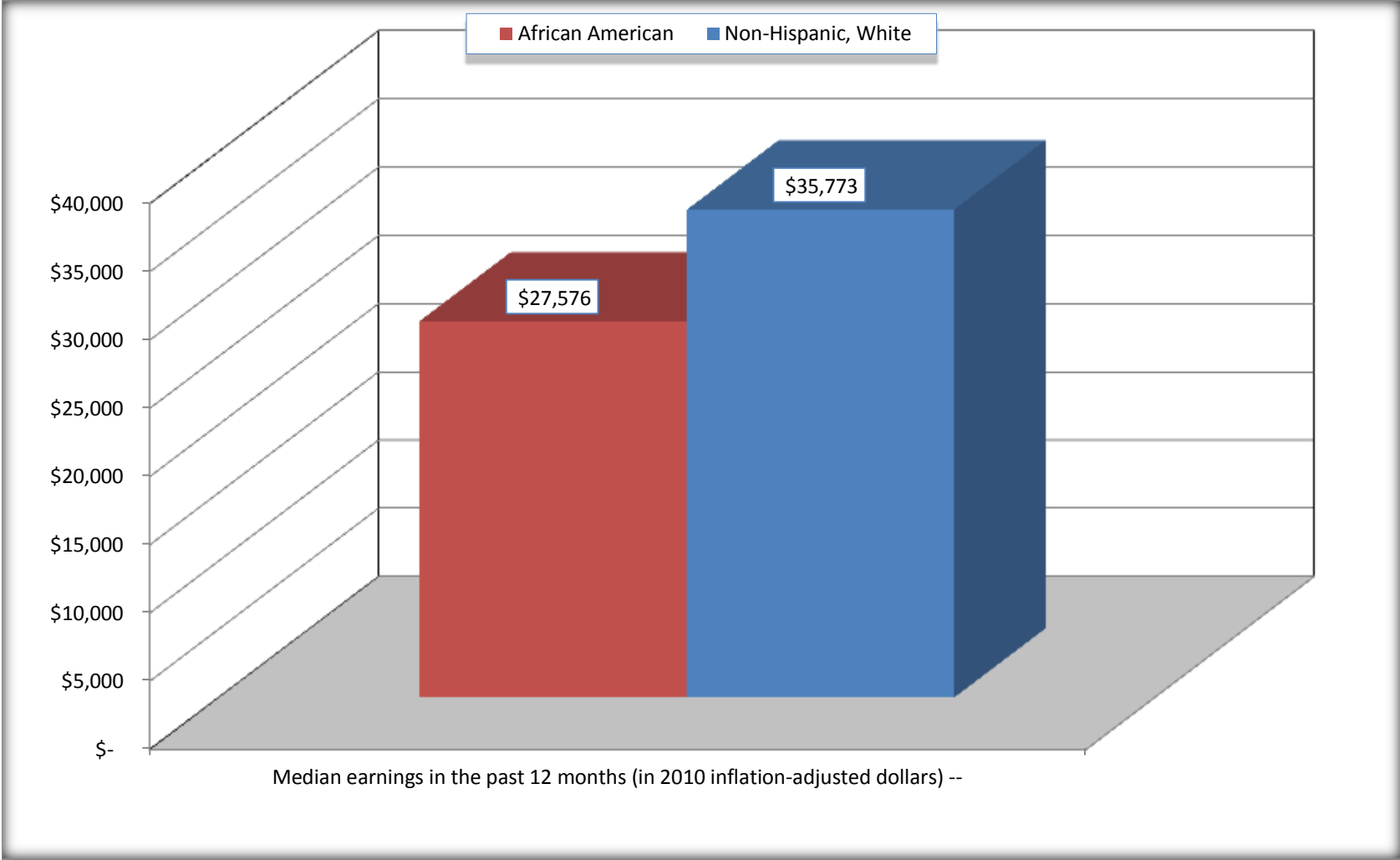
Source: U.S. Census Bureau, 2008-2012 American Community Survey

For information on confidentiality protection, sampling error, nonsampling error, and definitions, see Survey Methodology.

<http://www.census.gov/acs/www/UseData/index.htm>

# Median earnings in the Past 12 Months (16 Years and Over with Earnings)

## Collingdale borough, Pennsylvania



Source: B20017. MEDIAN EARNINGS IN THE PAST 12 MONTHS (IN 2010 INFLATION-ADJUSTED DOLLARS) BY SEX BY WORK EXPERIENCE IN THE PAST 12 MONTHS FOR THE POPULATION 16 YEARS AND OVER WITH EARNINGS IN THE PAST 12 MONTHS  
Data Set: 2008-2012 American Community Survey 5-Year Estimates

**B20005. SEX BY WORK EXPERIENCE IN THE PAST 12 MONTHS BY EARNINGS IN THE PAST 12 MONTHS (IN 2010 INFLATION-ADJUSTED DOLLARS) FOR THE POPULATION 16 YEARS AND OVER**

Data Set: 2008-2012 American Community Survey 5-Year Estimates

	Collingdale borough, Pennsylvania					
	African American	Margin of Error (+/-)	% of AA Total	White, Not Hispanic	Margin of Error (+/-)	% of NHW Total
<b>Total:</b>	<b>1,817</b>	<b>276</b>	<b>100.0%</b>	<b>4,386</b>	<b>383</b>	<b>100.0%</b>
Worked full-time, year-round in the past 12 months:	815	NC	44.9%	2,008	NC	45.8%
No earnings	0	NC	0.0%	1	NC	0.0%
With earnings:	815	NC	44.9%	2,007	NC	45.8%
\$ 1 to \$ 9,999 or loss	22	NC	1.2%	29	NC	0.7%
\$ 10,000 to \$ 19,999	98	NC	5.4%	110	NC	2.5%
\$ 20,000 to \$ 29,999	166	NC	9.1%	248	NC	5.7%
\$ 30,000 to \$ 49,999	332	NC	18.3%	796	NC	18.1%
\$ 50,000 to \$ 74,999	124	NC	6.8%	509	NC	11.6%
\$ 75,000 or more	73	NC	4.0%	315	NC	7.2%
Other:	1,002	NC	55.1%	2,378	NC	54.2%
No earnings	489	NC	26.9%	1,312	NC	29.9%
With earnings: less than full time, year-round	513	NC	28.2%	1,066	NC	24.3%
Male:	839	177	46.2%	2,069	242	47.2%
Worked full-time, year-round in the past 12 months:	356	105	19.6%	1,172	172	26.7%
No earnings	0	15	0.0%	0	15	0.0%
With earnings:	356	105	19.6%	1,172	172	26.7%
\$ 1 to \$ 9,999 or loss	0	NC	0.0%	14	NC	0.3%
\$ 10,000 to \$ 19,999	19	NC	1.0%	86	NC	2.0%
\$ 20,000 to \$ 29,999	76	NC	4.2%	119	NC	2.7%
\$ 30,000 to \$ 49,999	130	NC	7.2%	481	NC	11.0%
\$ 50,000 to \$ 74,999	70	NC	3.9%	292	NC	6.7%
\$ 75,000 or more	61	NC	3.4%	180	NC	4.1%

	Collingdale borough, Pennsylvania					
	African American	Margin of Error (+/-)	% of AA Total	White, Not Hispanic	Margin of Error (+/-)	% of NHW Total
Other:	483	145	26.6%	897	168	20.5%
No earnings	271	92	14.9%	468	122	10.7%
With earnings:	212	99	11.7%	429	112	9.8%
Female:	978	185	53.8%	2,317	232	52.8%
Worked full-time, year-round in the past 12 months:	459	126	25.3%	836	168	19.1%
No earnings	0	15	0.0%	1	3	0.0%
With earnings:	459	126	25.3%	835	168	19.0%
\$ 1 to \$ 9,999 or loss	22	NC	1.2%	15	NC	0.3%
\$ 10,000 to \$ 19,999	79	NC	4.3%	24	NC	0.5%
\$ 20,000 to \$ 29,999	90	NC	5.0%	129	NC	2.9%
\$ 30,000 to \$ 49,999	202	NC	11.1%	315	NC	7.2%
\$ 50,000 to \$ 74,999	54	NC	3.0%	217	NC	4.9%
\$ 75,000 or more	12	NC	0.7%	135	NC	3.1%
Other:	519	142	28.6%	1,481	232	33.8%
No earnings	218	109	12.0%	844	161	19.2%
With earnings:	301	128	16.6%	637	148	14.5%

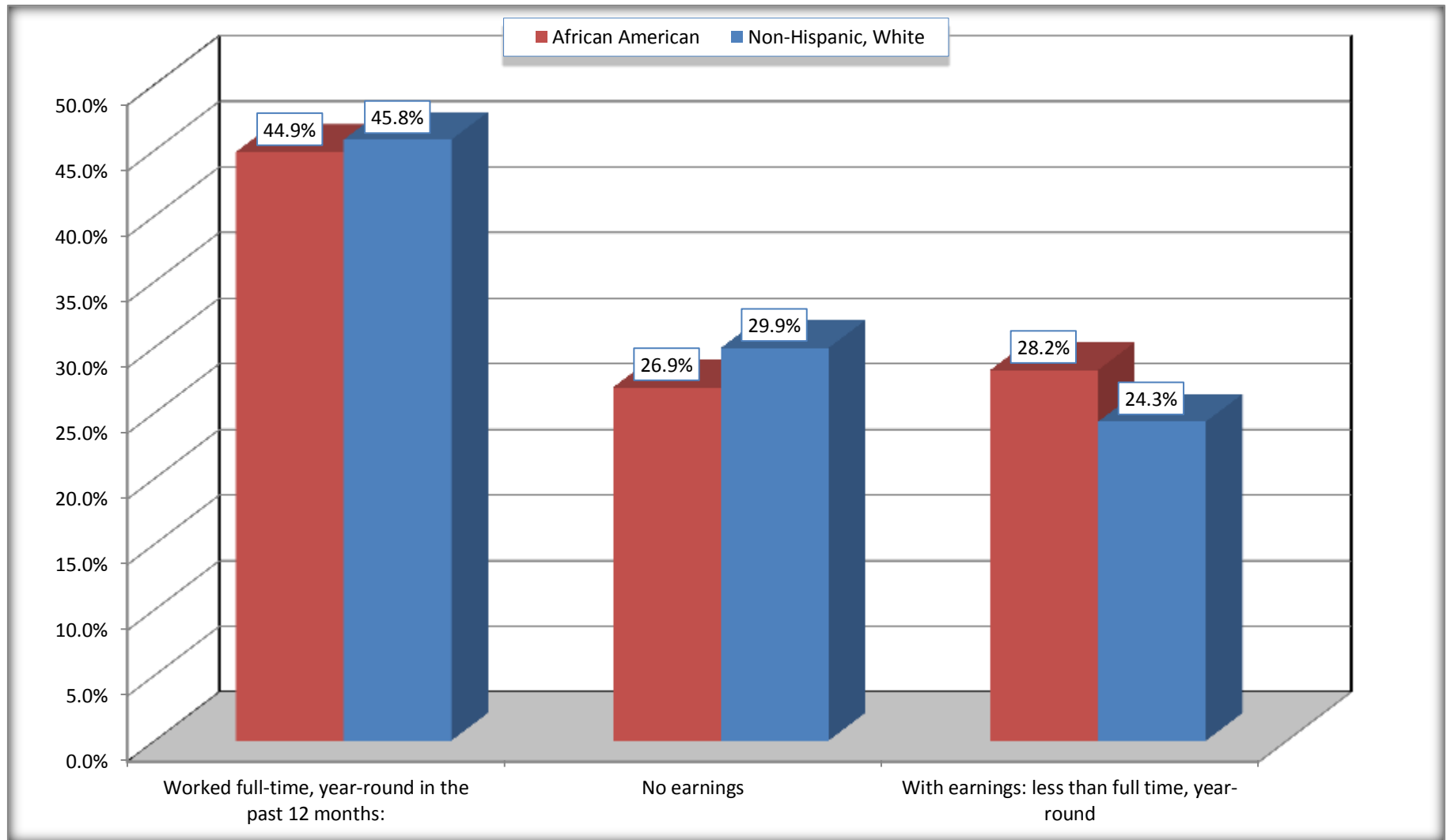
Source: U.S. Census Bureau, 2008-2012 American Community Survey

For information on confidentiality protection, sampling error, nonsampling error, and definitions, see Survey Methodology.

<http://www.census.gov/acs/www/UseData/index.htm>

# Employment and Earnings in in the Past 12 Months (16 Years and Over)

## Collingdale borough, Pennsylvania



Source: B20005. SEX BY WORK EXPERIENCE IN THE PAST 12 MONTHS BY EARNINGS IN THE PAST 12 MONTHS (IN 2010 INFLATION-ADJUSTED DOLLARS) FOR THE POPULATION 16 YEARS AND OVER

Data Set: 2008-2012 American Community Survey 5-Year Estimates

**C21001. SEX BY AGE BY VETERAN STATUS FOR THE CIVILIAN POPULATION 18 YEARS AND OVER**

Data Set: 2008-2012 American Community Survey 5-Year Estimates

	Collingdale borough, Pennsylvania					
	African American	Margin of Error (+/-)	% of AA Total	White, Not Hispanic	Margin of Error (+/-)	% of NHW Total
<b>Total:</b>	<b>1,676</b>	<b>239</b>	<b>100.0%</b>	<b>4,301</b>	<b>380</b>	<b>100.0%</b>
Veteran	267	NC	15.9%	527	NC	12.3%
Nonveteran	1,409	NC	84.1%	3,774	NC	87.7%
Male:	754	173	45.0%	2,015	242	46.8%
18 to 64 years:	711	168	42.4%	1,649	217	38.3%
Veteran	214	105	12.8%	278	100	6.5%
Nonveteran	497	128	29.7%	1,371	203	31.9%
65 years and over:	43	31	2.6%	366	100	8.5%
Veteran	24	22	1.4%	243	89	5.6%
Nonveteran	19	24	1.1%	123	55	2.9%
Female:	922	167	55.0%	2,286	226	53.2%
18 to 64 years:	904	167	53.9%	1,819	217	42.3%
Veteran	29	26	1.7%	6	10	0.1%
Nonveteran	875	170	52.2%	1,813	217	42.2%
65 years and over:	18	19	1.1%	467	115	10.9%
Veteran	0	15	0.0%	0	15	0.0%
Nonveteran	18	19	1.1%	467	115	10.9%

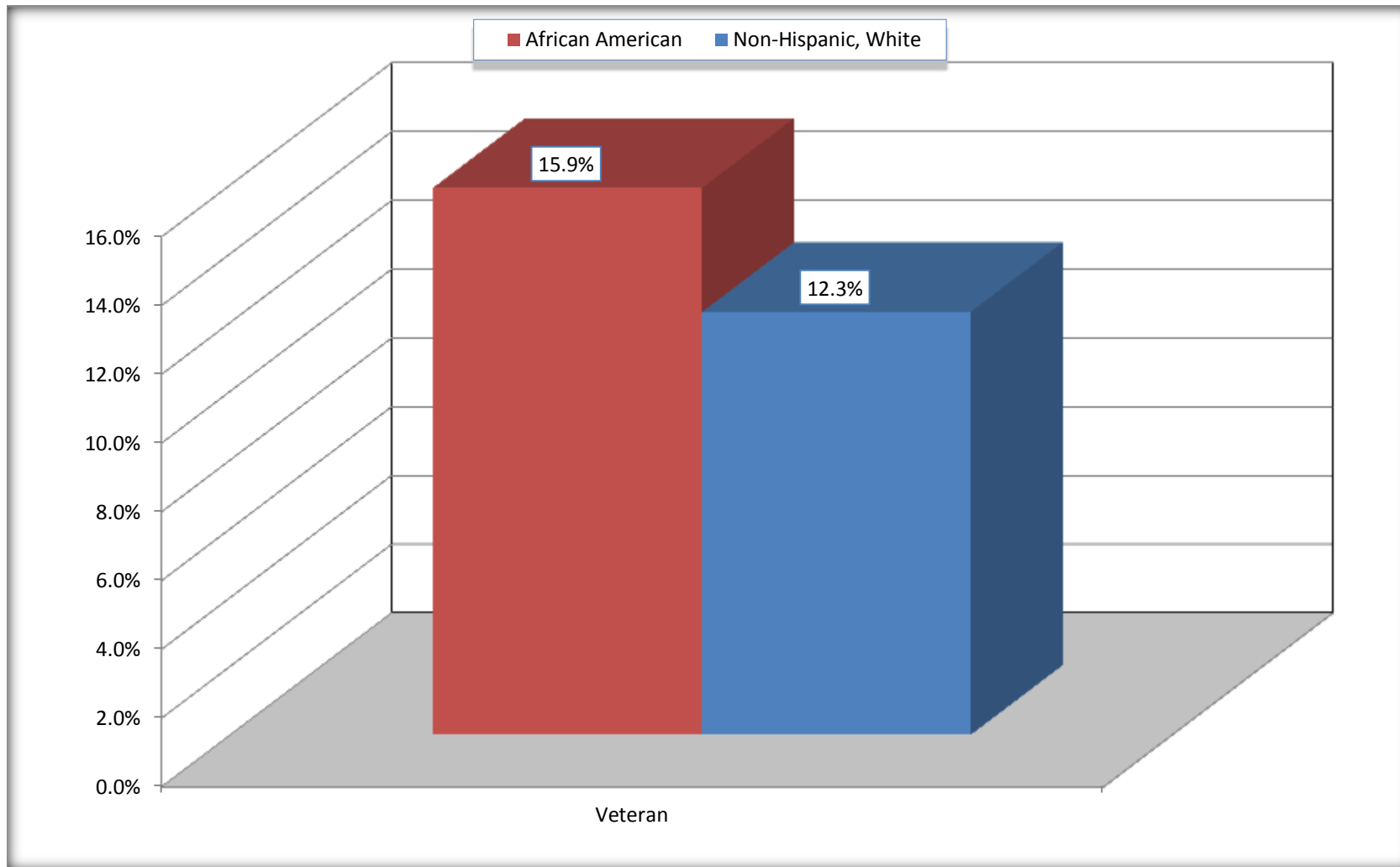
Source: U.S. Census Bureau, 2008-2012 American Community Survey

For information on confidentiality protection, sampling error, nonsampling error, and definitions, see Survey Methodology.

<http://www.census.gov/acs/www/UseData/index.htm>

# Veterans in the Civilian Population 18 Years and Over

## Collingdale borough, Pennsylvania



Source: C21001. SEX BY AGE BY VETERAN STATUS FOR THE CIVILIAN POPULATION 18 YEARS AND OVER  
Data Set: 2008-2012 American Community Survey 5-Year Estimates



**B22005. RECEIPT OF FOOD STAMPS/SNAP IN THE PAST 12 MONTHS BY RACE OF HOUSEHOLDER**

Data Set: 2008-2012 American Community Survey 5-Year Estimates

	Collingdale borough, Pennsylvania					
	African American	Margin of Error (+/-)	% of AA Total	White, Not Hispanic	Margin of Error (+/-)	% of NHW Total
<b>Total:</b>	<b>912</b>	<b>151</b>	<b>100.0%</b>	<b>2,139</b>	<b>188</b>	<b>100.0%</b>
HH received Food Stamps/SNAP in the past 12 months	182	81	20.0%	265	105	12.4%
HH did not receive Food Stamps/SNAP in the past 12 months	730	134	80.0%	1,874	179	87.6%

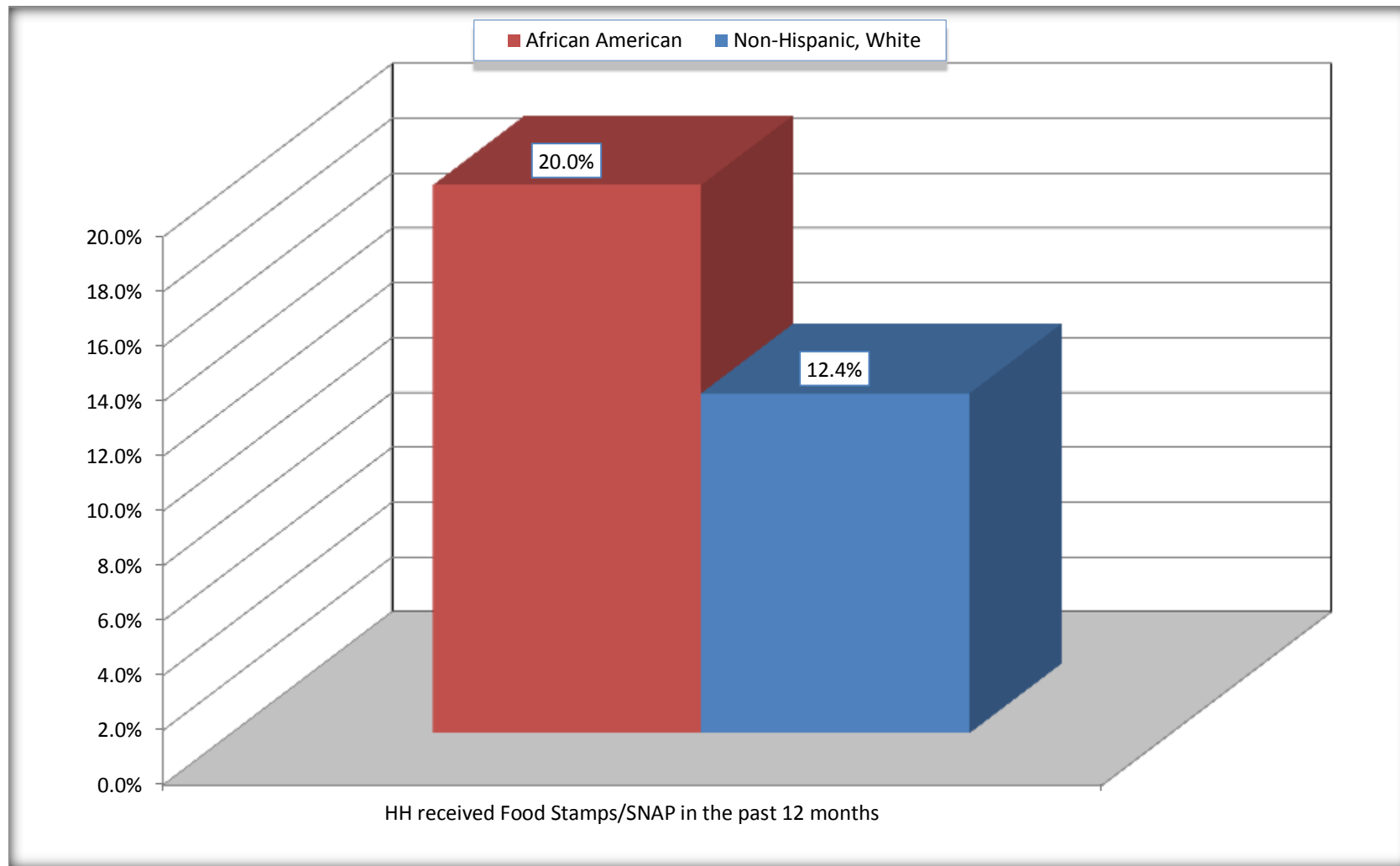
Source: U.S. Census Bureau, 2008-2012 American Community Survey

For information on confidentiality protection, sampling error, nonsampling error, and definitions, see Survey Methodology.

<http://www.census.gov/acs/www/UseData/index.htm>

# Receipt of Food Stamps/SNAP in the Past 12 Months by Household

## Collingdale borough, Pennsylvania



Source: B22005. RECEIPT OF FOOD STAMPS/SNAP IN THE PAST 12 MONTHS BY RACE OF HOUSEHOLDER  
Data Set: 2008-2012 American Community Survey 5-Year Estimates

**C23002. SEX BY AGE BY EMPLOYMENT STATUS FOR THE POPULATION 16 YEARS AND OVER**

Data Set: 2008-2012 American Community Survey 5-Year Estimates

	Collingdale borough, Pennsylvania					
	African American	Margin of Error (+/-)	% of AA Total	White, Not Hispanic	Margin of Error (+/-)	% of NHW Total
<b>Total:</b>	<b>1,817</b>	<b>276</b>	<b>100.0%</b>	<b>4,386</b>	<b>383</b>	<b>100.0%</b>
In labor force:	1,407	NC	77.4%	3,145	NC	71.7%
In Armed Forces	0	NC	0.0%	16	NC	0.4%
Civilian:	1,376	NC	75.7%	2,970	NC	67.7%
Employed	1,191	NC	65.5%	2,762	NC	63.0%
Unemployed	216	NC	11.9%	367	NC	8.4%
Not in labor force	410	NC	22.6%	1,241	NC	28.3%
Male:	839	177	46.2%	2,069	242	47.2%
16 to 64 years:	796	173	43.8%	1,703	216	38.8%
In labor force:	602	171	33.1%	1,549	198	35.3%
In Armed Forces	0	15	0.0%	16	27	0.4%
Civilian:	602	171	33.1%	1,533	198	35.0%
Employed	490	132	27.0%	1329	175	30.3%
Unemployed	112	70	6.2%	204	88	4.7%
Not in labor force	194	79	10.7%	154	80	3.5%
65 years and over:	43	31	2.4%	366	100	8.3%
In labor force:	13	19	0.7%	89	48	2.0%
Employed	13	19	0.7%	82	47	1.9%
Unemployed	0	15	0.0%	7	10	0.2%
Not in labor force	30	28	1.7%	277	85	6.3%

	Collingdale borough, Pennsylvania					
	African American	Margin of Error (+/-)	% of AA Total	White, Not Hispanic	Margin of Error (+/-)	% of NHW Total
Female:	978	185	53.8%	2,317	232	52.8%
16 to 64 years:	960	185	52.8%	1,850	221	42.2%
In labor force:	774	154	42.6%	1,437	198	32.8%
In Armed Forces	0	15	0.0%	0	15	0.0%
Civilian:	774	154	42.6%	1,437	198	32.8%
Employed	677	154	37.3%	1,289	190	29.4%
Unemployed	97	57	5.3%	148	81	3.4%
Not in labor force	186	98	10.2%	413	124	9.4%
65 years and over:	18	19	1.0%	467	115	10.6%
In labor force:	18	19	1.0%	70	43	1.6%
Employed	11	16	0.6%	62	40	1.4%
Unemployed	7	11	0.4%	8	13	0.2%
Not in labor force	0	15	0.0%	397	112	9.1%

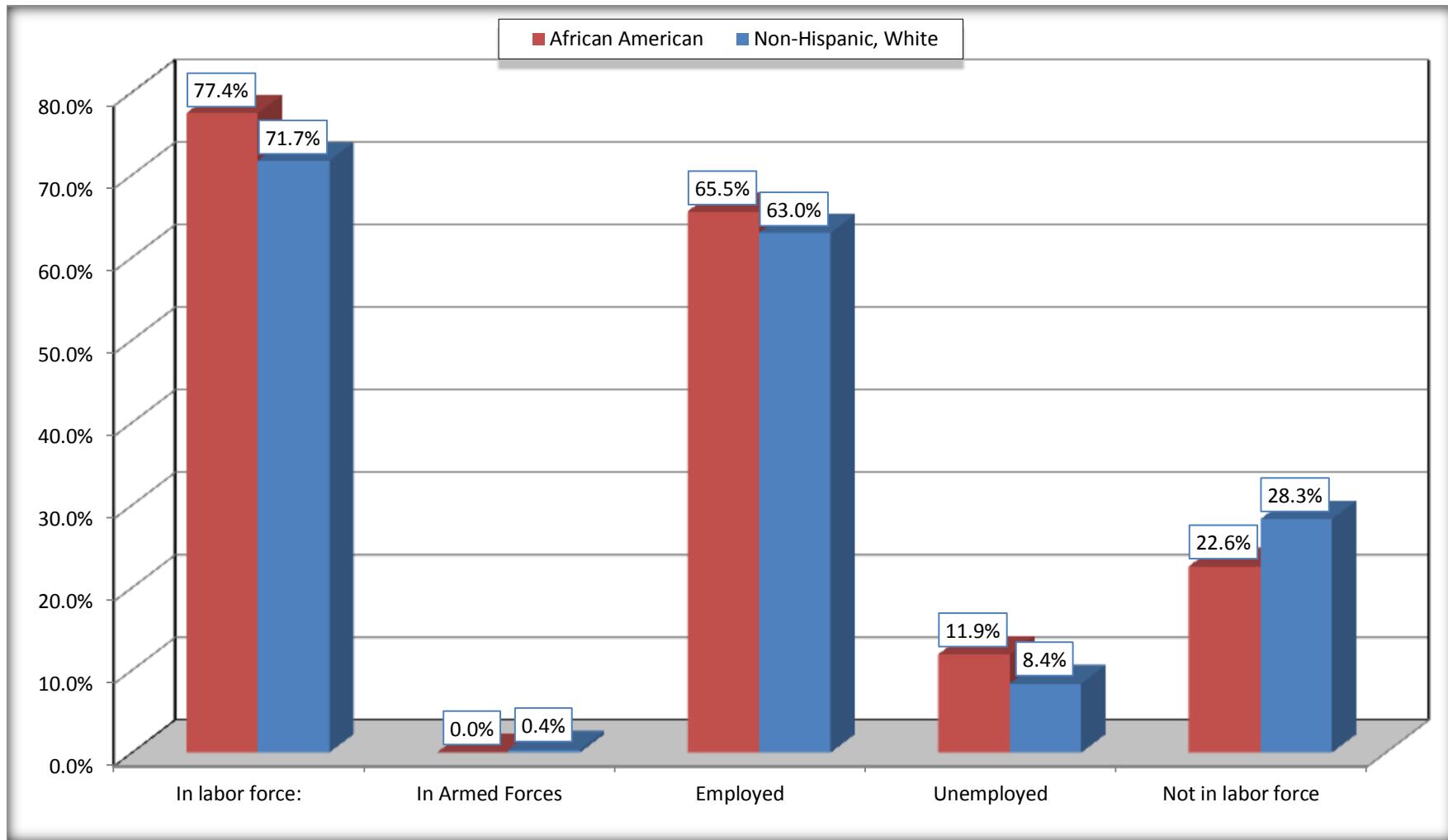
Source: U.S. Census Bureau, 2008-2012 American Community Survey

For information on confidentiality protection, sampling error, nonsampling error, and definitions, see Survey Methodology.

<http://www.census.gov/acs/www/UseData/index.htm>

# Employment Status for the Population 16 years and over

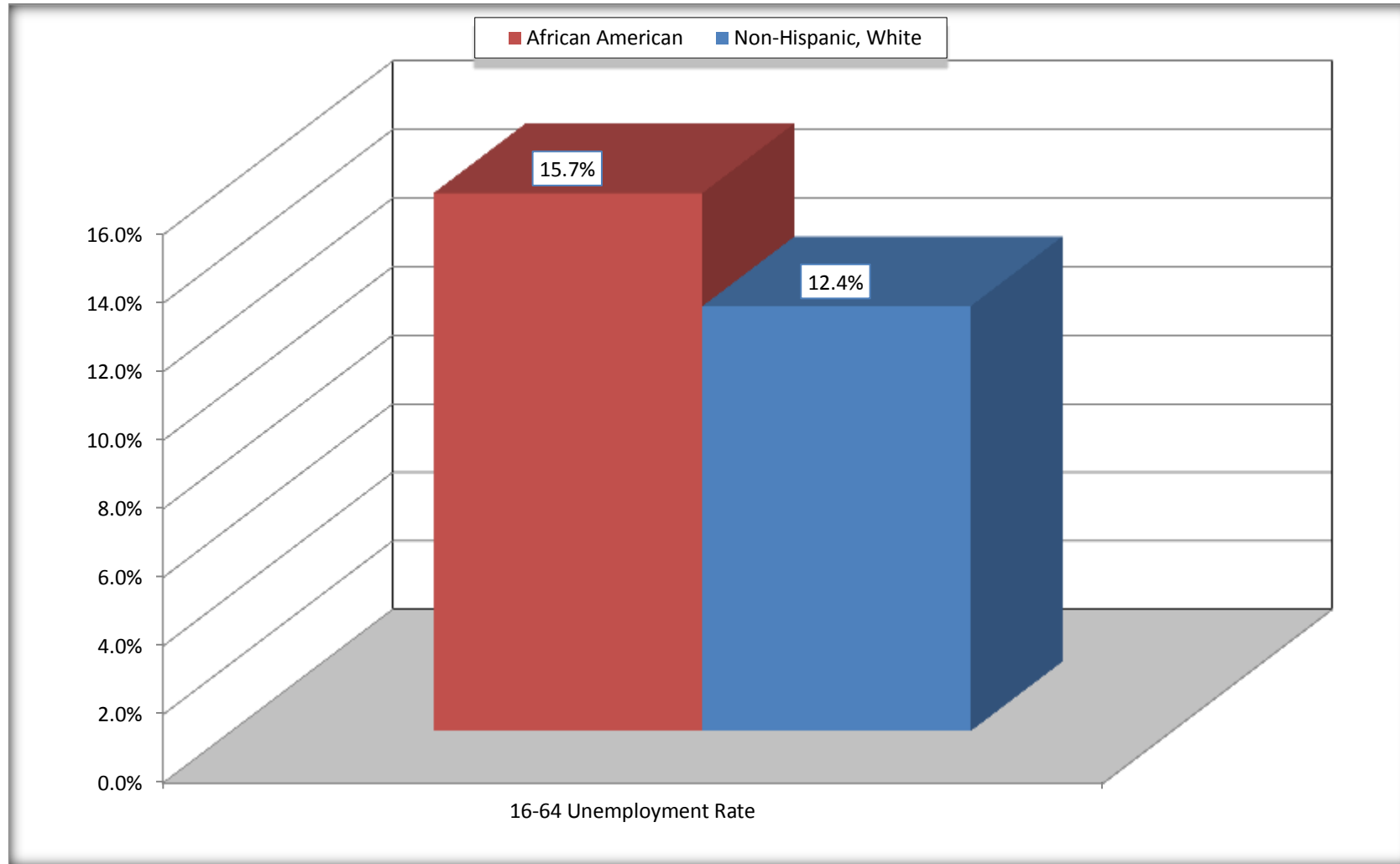
## Collingdale borough, Pennsylvania



Source: C23002. SEX BY AGE BY EMPLOYMENT STATUS FOR THE POPULATION 16 YEARS AND OVER  
Data Set: 2008-2012 American Community Survey 5-Year Estimates

# Unemployment of Working Age Population (Ages 16 to 64) (As a Percent of 16-64 Civilian Labor Force)

## Collingdale borough, Pennsylvania



Source: C23002. SEX BY AGE BY EMPLOYMENT STATUS FOR THE POPULATION 16 YEARS AND OVER  
Data Set: 2008-2012 American Community Survey 5-Year Estimates

**C24010. SEX BY OCCUPATION FOR THE CIVILIAN EMPLOYED POPULATION 16 YEARS AND OVER**

Data Set: 2008-2012 American Community Survey 5-Year Estimates

	Collingdale borough, Pennsylvania					
	African American	Margin of Error (+/-)	% of AA Total	White, Not Hispanic	Margin of Error (+/-)	% of NHW Total
<b>Total:</b>	<b>1,191</b>	<b>202</b>	<b>100.0%</b>	<b>2,762</b>	<b>298</b>	<b>100.0%</b>
Management, professional, and related occupations	375	NC	31.5%	807	NC	29.2%
Service occupations	364	NC	30.6%	452	NC	16.4%
Sales and office occupations	289	NC	24.3%	861	NC	31.2%
Natural resources, construction, and maintenance occupations:	47	NC	3.9%	154	NC	5.6%
Production, transportation, and material moving occupations	116	NC	9.7%	488	NC	17.7%
Male:	503	132	42.2%	1,411	183	51.1%
Management, business, science, and arts occupations:	178	90	14.9%	358	104	13.0%
Service occupations	154	79	12.9%	150	67	5.4%
Sales and office occupations	33	32	2.8%	382	132	13.8%
Natural resources, construction, and maintenance occupations:	47	52	3.9%	154	61	5.6%
Production, transportation, and material moving occupations	91	71	7.6%	367	108	13.3%
Female:	688	153	57.8%	1,351	186	48.9%
Management, professional, and related occupations	197	80	16.5%	449	139	16.3%
Service occupations	210	93	17.6%	302	127	10.9%
Sales and office occupations	256	100	21.5%	479	119	17.3%
Natural resources, construction, and maintenance occupations:	0	15	0.0%	0	15	0.0%
Production, transportation, and material moving occupations	25	38	2.1%	121	72	4.4%

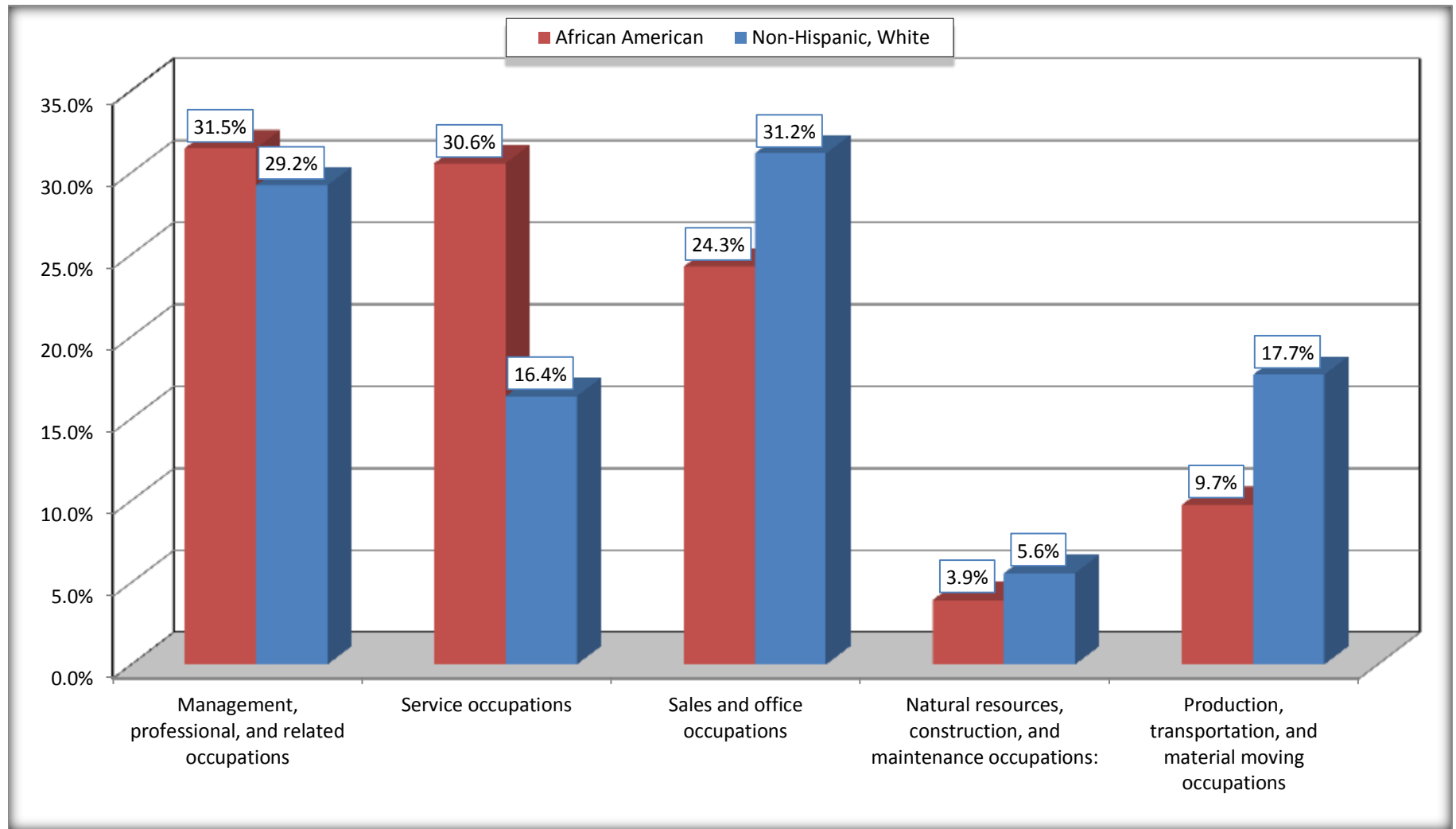
Source: U.S. Census Bureau, 2008-2012 American Community Survey

For information on confidentiality protection, sampling error, nonsampling error, and definitions, see Survey Methodology.

<http://www.census.gov/acs/www/UseData/index.htm>

# Occupation for the Civilian Employed 16 Years and Over Population

## Collingdale borough, Pennsylvania



Source: C24010. SEX BY OCCUPATION FOR THE CIVILIAN EMPLOYED POPULATION 16 YEARS AND OVER  
Data Set: 2008-2012 American Community Survey 5-Year Estimates



**B25003. TENURE - Universe: OCCUPIED HOUSING UNITS**

Data Set: 2008-2012 American Community Survey 5-Year Estimates

	Collingdale borough, Pennsylvania					
	African American	Margin of Error (+/-)	% of AA Total	White, Not Hispanic	Margin of Error (+/-)	% of NHW Total
<b>Total:</b>	<b>912</b>	<b>151</b>	<b>100.0%</b>	<b>2,139</b>	<b>188</b>	<b>100.0%</b>
Owner occupied	581	140	63.7%	1,591	166	74.4%
Renter occupied	331	111	36.3%	548	171	25.6%

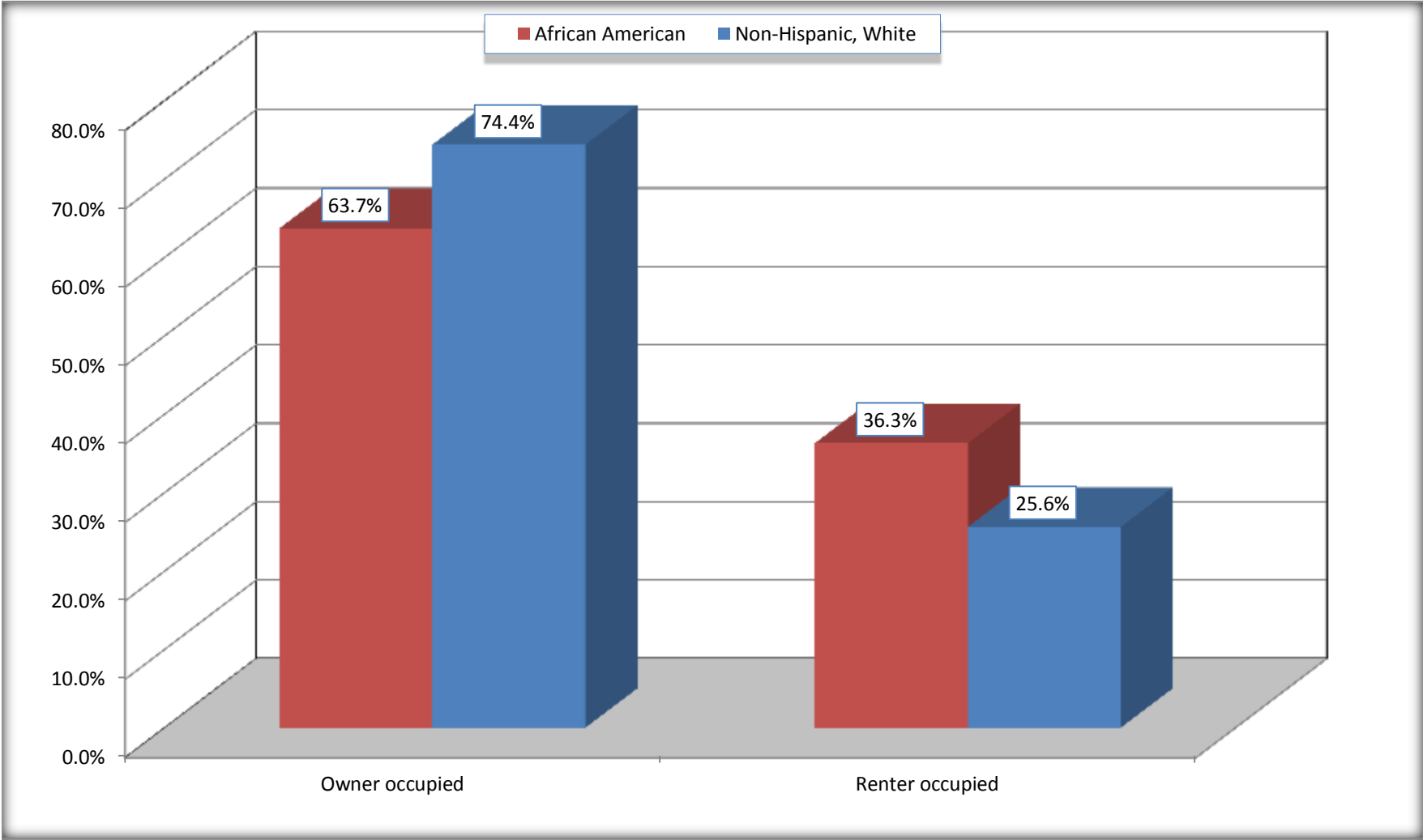
Source: U.S. Census Bureau, 2008-2012 American Community Survey

For information on confidentiality protection, sampling error, nonsampling error, and definitions, see Survey Methodology.

<http://www.census.gov/acs/www/UseData/index.h>

# Home Owners and Renters by Household

## Collingdale borough, Pennsylvania



Source: B25003. TENURE - Universe: OCCUPIED HOUSING UNITS  
Data Set: 2008-2012 American Community Survey 5-Year Estimates

**B25014. OCCUPANTS PER ROOM - Universe: OCCUPIED HOUSING UNITS**

Data Set: 2008-2012 American Community Survey 5-Year Estimates

	Collingdale borough, Pennsylvania					
	African American	Margin of Error (+/-)	% of AA Total	White, Not Hispanic	Margin of Error (+/-)	% of NHW Total
<b>Total:</b>	<b>912</b>	<b>151</b>	<b>100.0%</b>	<b>2,139</b>	<b>188</b>	<b>100.0%</b>
1.00 or less occupants per room	887	150	97.3%	2,118	187	99.0%
1.01 or more occupants per room	25	25	2.7%	21	24	1.0%

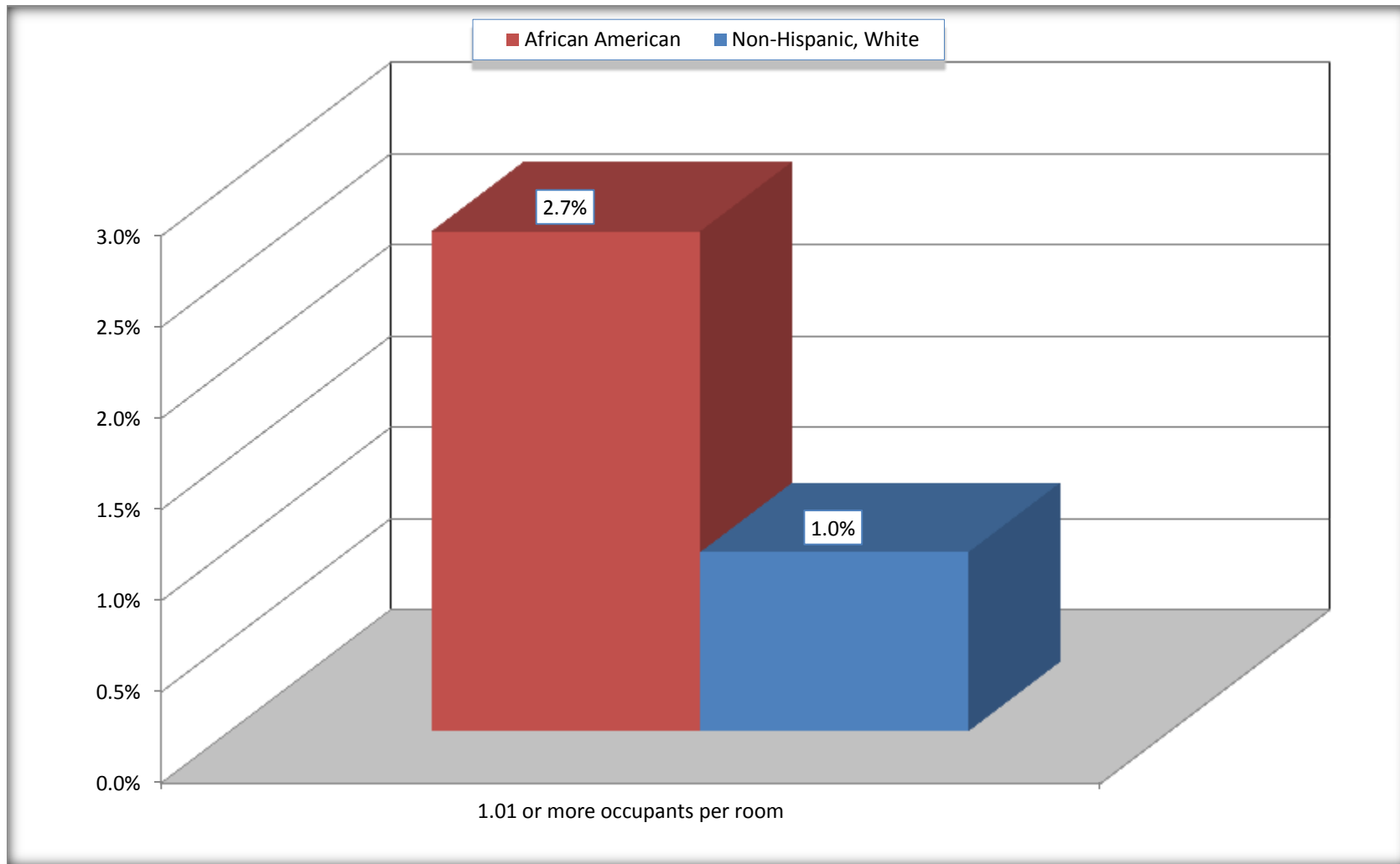
Source: U.S. Census Bureau, 2008-2012 American Community Survey

For information on confidentiality protection, sampling error, nonsampling error, and definitions, see Survey Methodology.

<http://www.census.gov/acs/www/UseData/index.ht>

# More than One Person per Room (Crowding) by Household

## Collingdale borough, Pennsylvania



Source: B25014. OCCUPANTS PER ROOM - Universe: OCCUPIED HOUSING UNITS  
Data Set: 2008-2012 American Community Survey 5-Year Estimates

**B18101. AGE BY DISABILITY STATUS**

Data Set: 2008-2012 American Community Survey 5-Year Estimates

	Collingdale borough, Pennsylvania					
	African American	Margin of Error (+/-)	% of AA Total	White, Not Hispanic	Margin of Error (+/-)	% of NHW Total
<b>Total:</b>	<b>2,633</b>	<b>373</b>	<b>100.0%</b>	<b>5,369</b>	<b>405</b>	<b>100.0%</b>
Under 18 years:	957	226	36.3%	1,068	49	19.9%
With a disability	26	33	1.0%	45	37	0.8%
No disability	931	224	35.4%	1,023	235	19.1%
18 to 64 years:	1,615	234	61.3%	3,468	357	64.6%
With a disability	164	81	6.2%	380	139	7.1%
No disability	1,451	232	55.1%	3,088	344	57.5%
65 years and over:	61	34	2.3%	833	165	15.5%
With a disability	11	16	0.4%	412	131	7.7%
No disability	50	33	1.9%	421	126	7.8%

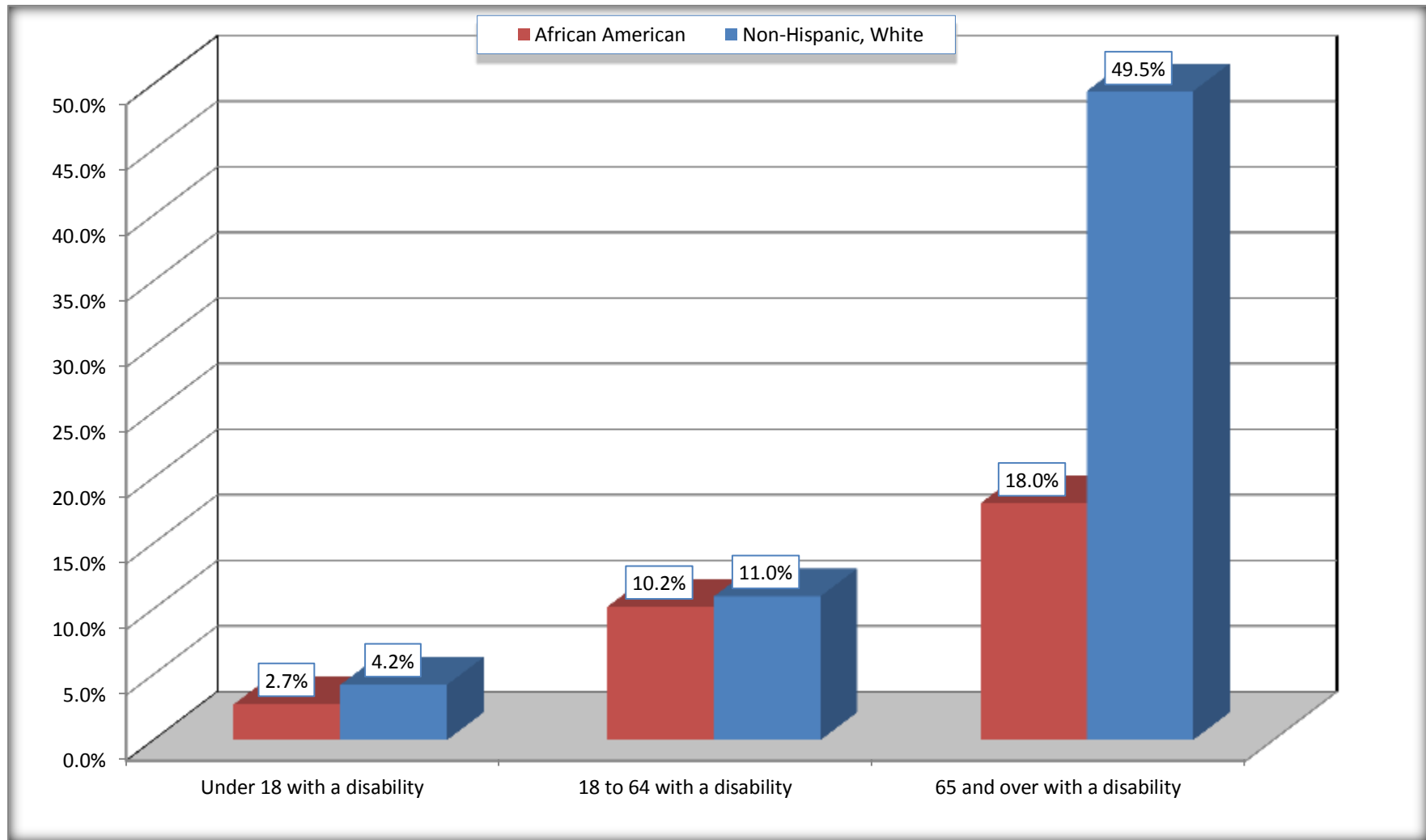
Source: U.S. Census Bureau, 2008-2012 American Community Survey

For information on confidentiality protection, sampling error, nonsampling error, and definitions, see Survey Methodology.

<http://www.census.gov/acs/www/UseData/index.htm>

## Disability by Age

### Collingdale borough, Pennsylvania



Source: B18101. AGE BY DISABILITY STATUS  
Data Set: 2008-2012 American Community Survey 5-Year Estimates

**C27001B. HEALTH INSURANCE COVERAGE STATUS BY AGE**

Data Set: 2008-2012 American Community Survey 5-Year Estimates

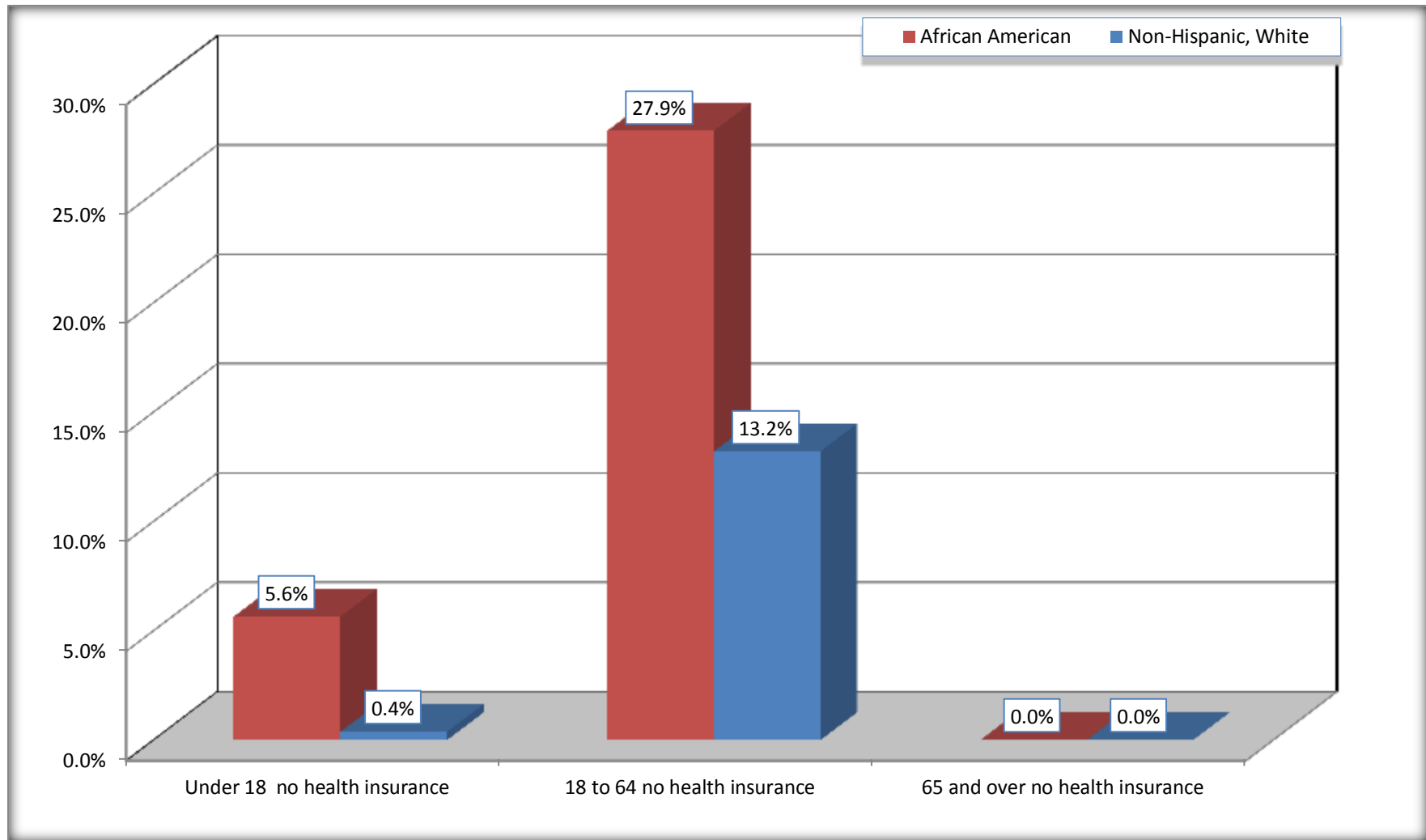
	Collingdale borough, Pennsylvania					
	African American	Margin of Error (+/-)	% of AA Total	White, Not Hispanic	Margin of Error (+/-)	% of NHW Total
<b>Total:</b>	<b>2,633</b>	<b>373</b>	<b>100.0%</b>	<b>5,369</b>	<b>405</b>	<b>100.0%</b>
Under 18 years:	957	226	36.3%	1,068	234	19.9%
With health insurance coverage	903	225	34.3%	1,064	234	19.8%
No health insurance coverage	54	66	2.1%	4	9	0.1%
18 to 64 years:	1,615	234	61.3%	3,468	357	64.6%
With health insurance coverage	1,165	183	44.2%	3,010	304	56.1%
No health insurance coverage	450	167	17.1%	458	200	8.5%
65 years and over:	61	34	2.3%	833	165	15.5%
With health insurance coverage	61	34	2.3%	833	165	15.5%
No health insurance coverage	0	15	0.0%	0	15	0.0%

Source: U.S. Census Bureau, 2008-2012 American Community Survey

For information on confidentiality protection, sampling error, nonsampling error, and definitions, see Survey Methodology.

<http://www.census.gov/acs/www/UseData/index.htm>

## Lack of Health Insurance Coverage by Age Collingdale borough, Pennsylvania



Source: C27001B. HEALTH INSURANCE COVERAGE STATUS BY AGE  
Data Set: 2008-2012 American Community Survey 5-Year Estimates