

# **Selected Socio-Economic Data**

## **Hugo city, Oklahoma**

### **African American and White, Not Hispanic**

**Data Set: 2008-2012 American Community Survey 5-Year Estimates**

[www.fairvote2020.org](http://www.fairvote2020.org)

[www.fairdata2000.com](http://www.fairdata2000.com)

[29-Dec-13](#)

**C02003.DETAILED RACE - Universe: TOTAL POPULATION**

Data Set: 2008-2012 American Community Survey 5-Year Estimates

	Hugo city, Oklahoma		
	Population	Margin of Error (+/-)	% of Total
<b>Total:</b>	<b>5,325</b>	<b>38</b>	<b>100.0%</b>
Population of one race:	4,552	270	85.5%
White	3,028	236	56.9%
Black or African American	1,095	177	20.6%
American Indian and Alaska Native	408	181	7.7%
Asian alone	0	15	0.0%
Native Hawaiian and Other Pacific Islander	0	15	0.0%
Some other race	21	26	0.4%
Population of two or more races:	773	265	14.5%
Two races including Some other race	79	77	1.5%
Two races excluding Some other race, and three or more races	694	246	13.0%
Population of two races:	756	264	14.2%
White; Black or African American	216	120	4.1%
White; American Indian and Alaska Native	386	238	7.2%
White; Asian	0	15	0.0%
Black or African American; American Indian and Alaska Native	75	81	1.4%
All other two race combinations	79	77	1.5%
Population of three races	17	20	0.3%
Population of four or more races	0	15	0.0%

Note: Hispanics may be of any race. See Table B03002 and chart.

Source: U.S. Census Bureau, 2008-2012 American Community Survey

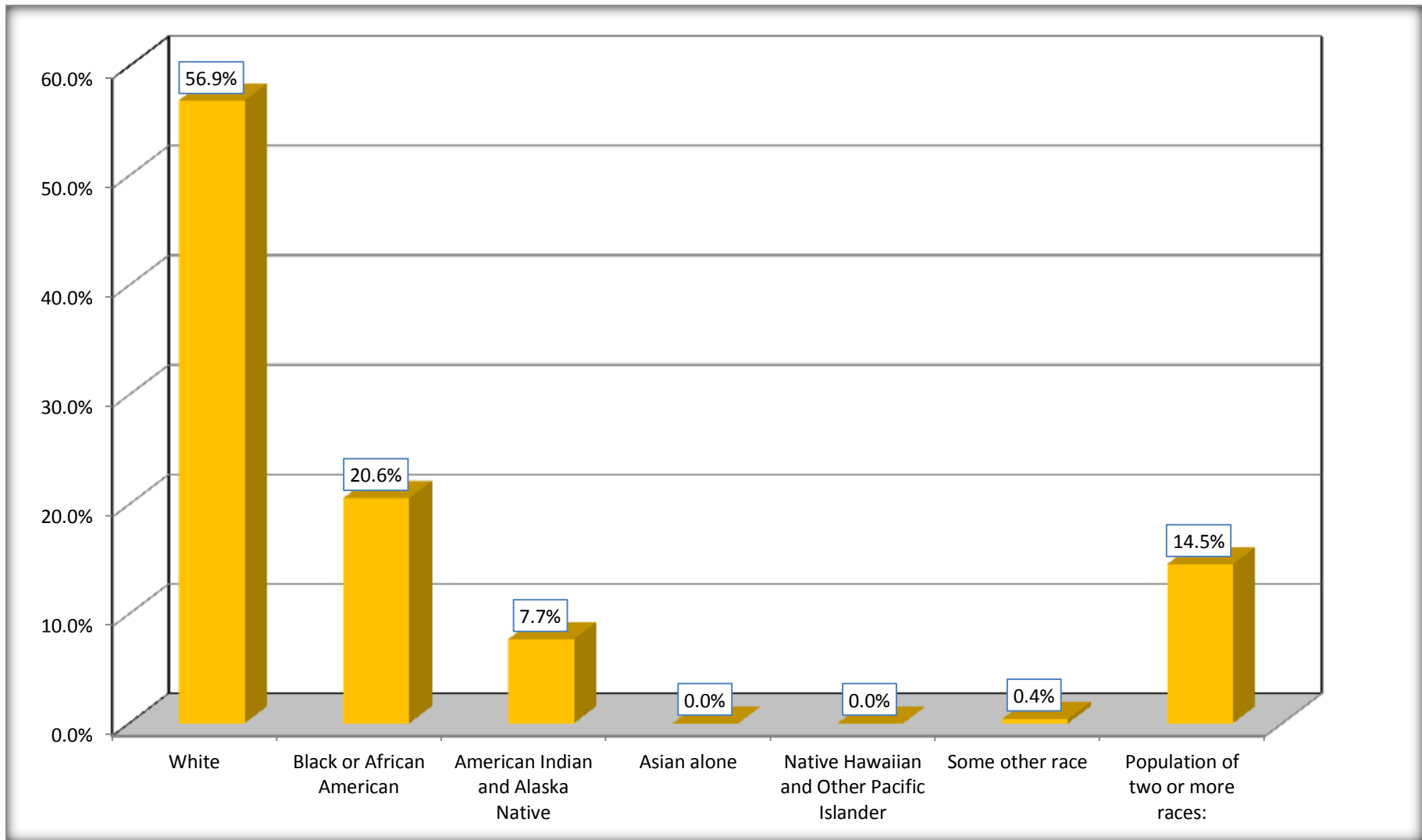
Although the American Community Survey (ACS) produces population, demographic and housing unit estimates, it is the Census Bureau's Population Estimates Program that produces and disseminates the official estimates of the population for the nation, states, counties, cities and towns and estimates of housing units for states and counties.

For information on confidentiality protection, sampling error, nonsampling error, and definitions, see Survey Methodology.

<http://www.census.gov/acs/www/UseData/index.htm>

# Population by Race

## Hugo city, Oklahoma



Source: C02003.DETAILED RACE - Universe: TOTAL POPULATION  
Data Set: 2008-2012 American Community Survey 5-Year Estimates

**B03002. HISPANIC OR LATINO ORIGIN BY RACE - Universe: TOTAL POPULATION**

Data Set: 2008-2012 American Community Survey 5-Year Estimates

	Hugo city, Oklahoma		
	Population	Margin of Error (+/-)	% of Total
<b>Total:</b>	5,325	38	<b>100.0%</b>
Not Hispanic or Latino:	5,127	81	96.3%
White alone	2,943	230	55.3%
Black or African American alone	1,088	175	20.4%
American Indian and Alaska Native alone	408	181	7.7%
Asian alone	0	15	0.0%
Native Hawaiian and Other Pacific Islander alone	0	15	0.0%
Some other race alone	0	15	0.0%
Two or more races:	688	246	12.9%
Two races including Some other race	0	15	0.0%
Two races excluding Some other race, and three or more races	688	246	12.9%
Hispanic or Latino	198	78	3.7%

Source: U.S. Census Bureau, 2008-2012 American Community Survey

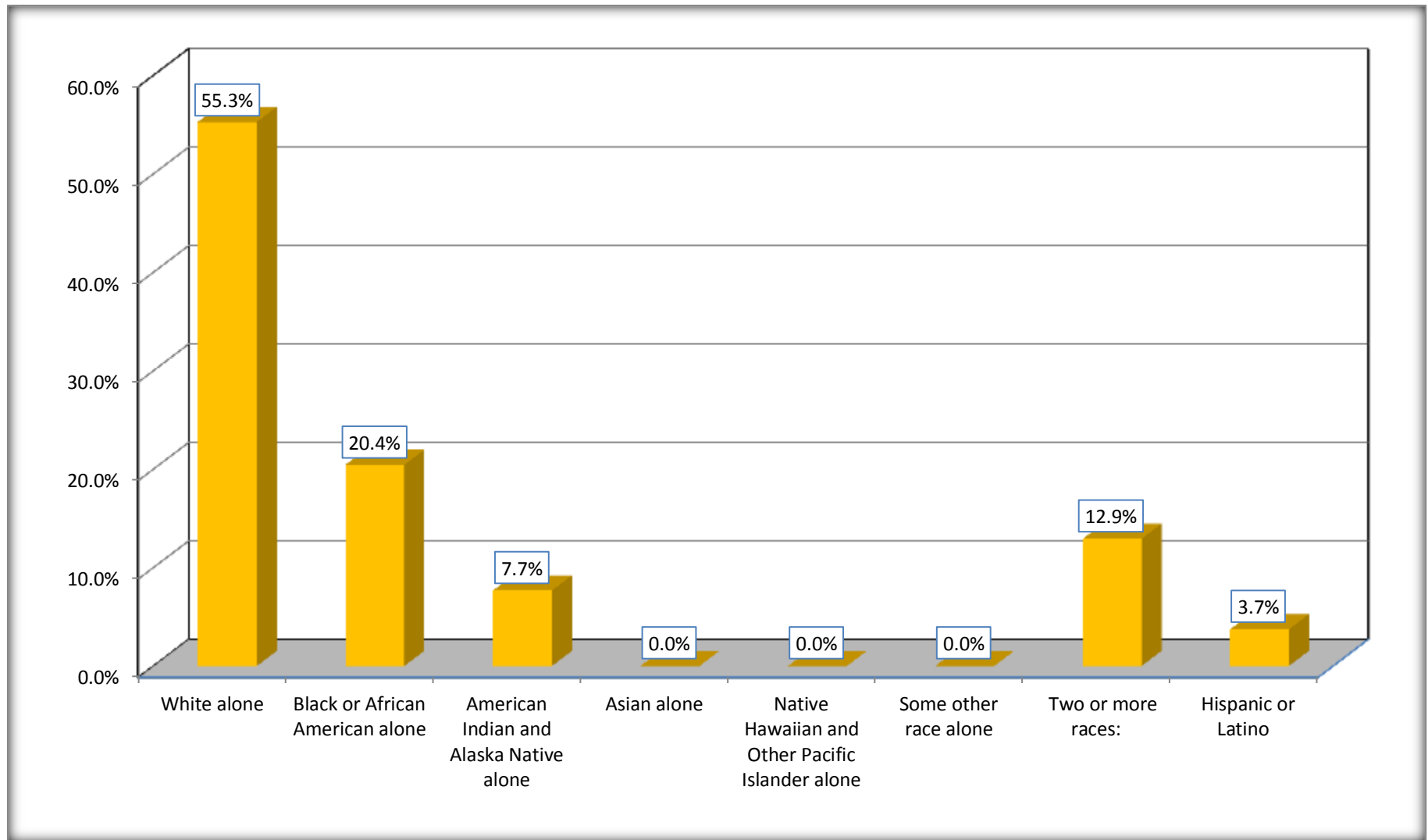
Although the American Community Survey (ACS) produces population, demographic and housing unit estimates, it is the Census Bureau's Population Estimates Program that produces and disseminates the official estimates of the population for the nation, states, counties, cities and towns and estimates of housing units for states and counties.

For information on confidentiality protection, sampling error, nonsampling error, and definitions, see Survey Methodology.

<http://www.census.gov/acs/www/UseData/index.htm>

# Non-Hispanic by Race and Hispanic Population

## Hugo city, Oklahoma



Source: B03002. HISPANIC OR LATINO ORIGIN BY RACE - Universe: TOTAL POPULATION  
Data Set: 2008-2012 American Community Survey 5-Year Estimates

**B03002. HISPANIC OR LATINO ORIGIN BY RACE**

Data Set: 2008-2012 American Community Survey 5-Year Estimates

	Hugo city, Oklahoma		
	Population	Margin of Error (+/-)	% of Total
Hispanic or Latino:	198	78	<b>100.0%</b>
White alone	85	73	42.9%
Black or African American alone	7	13	3.5%
American Indian and Alaska Native alone	0	15	0.0%
Asian alone	0	15	0.0%
Native Hawaiian and Other Pacific Islander alone	0	15	0.0%
Some other race alone	21	26	10.6%
Two or more races:	85	76	42.9%
Two races including Some other race	79	77	39.9%
Two races excluding Some other race, and three or more races	6	10	3.0%

Source: U.S. Census Bureau, 2008-2012 American Community Survey

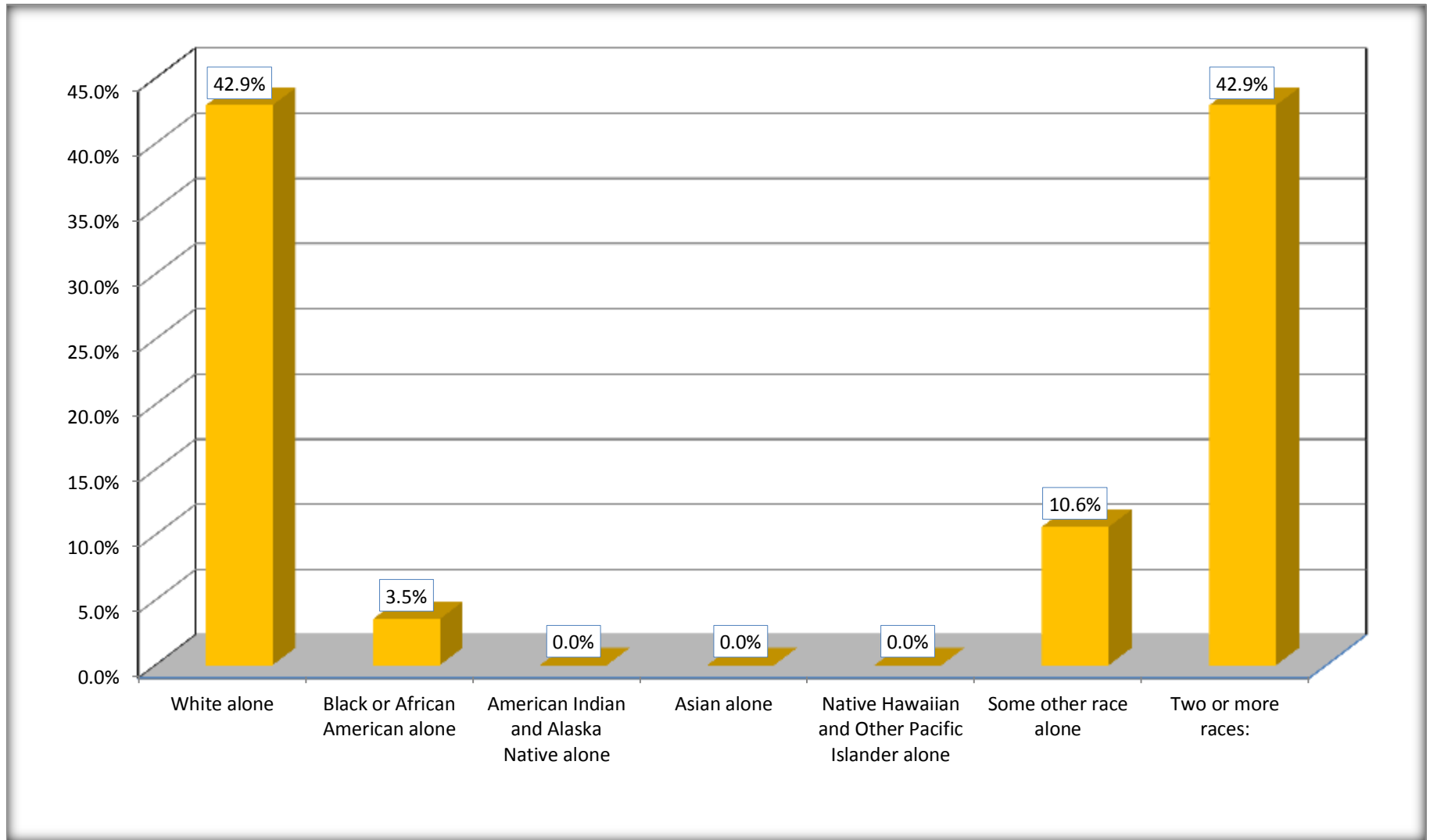
Although the American Community Survey (ACS) produces population, demographic and housing unit estimates, it is the Census Bureau's Population Estimates Program that produces and disseminates the official estimates of the population for the nation, states, counties, cities and towns and estimates of housing units for states and counties.

For information on confidentiality protection, sampling error, nonsampling error, and definitions, see Survey Methodology.

<http://www.census.gov/acs/www/UseData/index.htm>

# Hispanic or Latino Origin by Race

## Hugo city, Oklahoma



Source: B03002. HISPANIC OR LATINO ORIGIN BY RACE  
Data Set: 2008-2012 American Community Survey 5-Year Estimates

**B01001. SEX BY AGE**

Data Set: 2008-2012 American Community Survey 5-Year Estimates

	Hugo city, Oklahoma					
	African American	Margin of Error (+/-)	% of AA Total	White, Not Hispanic	Margin of Error (+/-)	% of NHW Total
<b>Total:</b>	<b>1,095</b>	<b>177</b>	<b>100.0%</b>	<b>2,943</b>	<b>230</b>	<b>100.0%</b>
Under 18 years	259	NC	23.7%	503	NC	17.1%
18 to 64 years	715	NC	65.3%	1,769	NC	60.1%
65 years and over	121	NC	11.1%	671	NC	22.8%
Male:	483	85	44.1%	1,310	389	44.5%
Under 18 years	83	NC	7.6%	193	NC	6.6%
18 to 64 years	367	NC	33.5%	850	NC	28.9%
65 years and over	33	NC	3.0%	267	NC	9.1%
Female:	612	129	55.9%	1,633	412	55.5%
Under 18 years	176	NC	16.1%	310	NC	10.5%
18 to 64 years	348	NC	31.8%	919	NC	31.2%
65 years and over	88	NC	8.0%	404	NC	13.7%

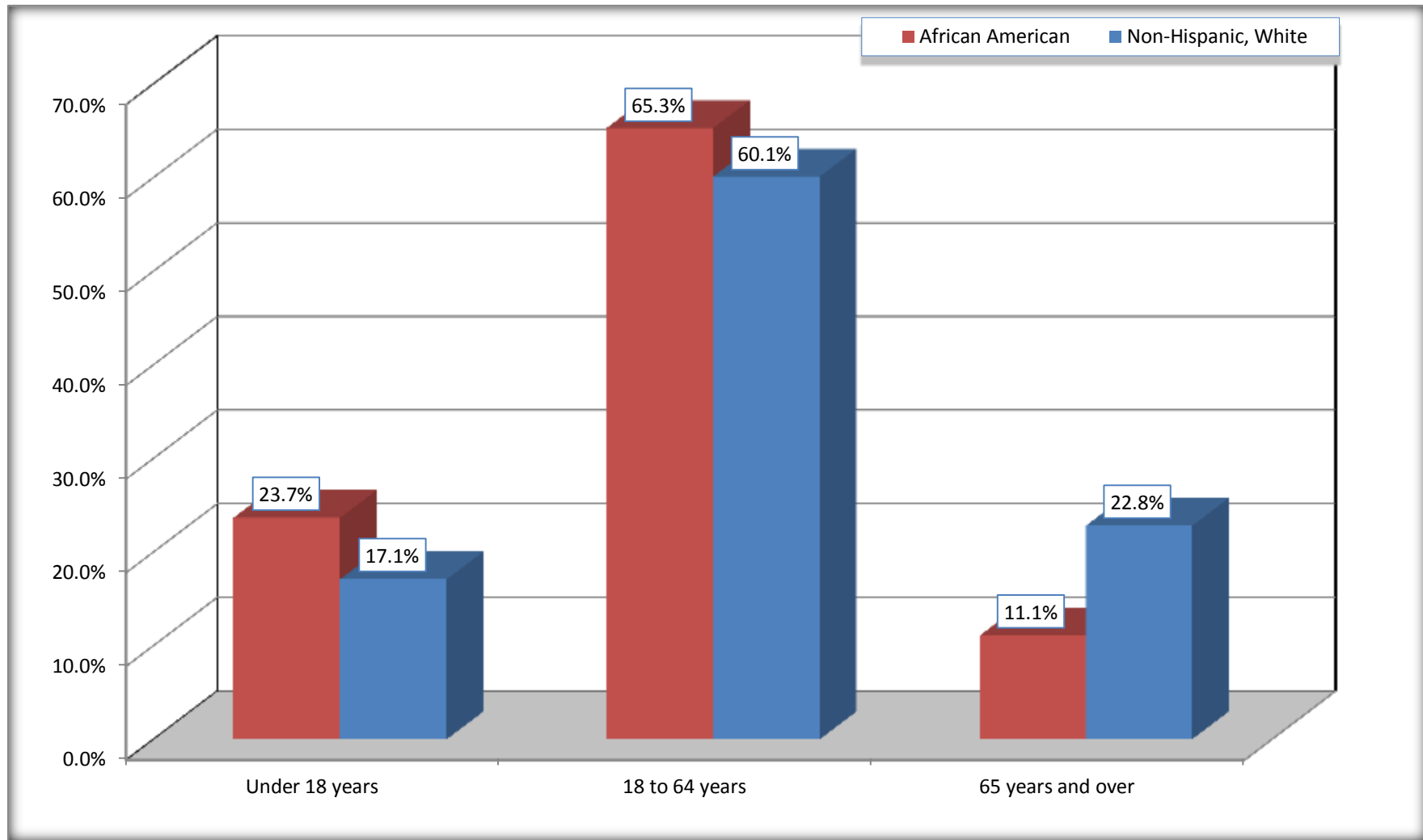
Source: U.S. Census Bureau, 2008-2012 American Community Survey

Although the American Community Survey (ACS) produces population, demographic and housing unit estimates, it is the Census Bureau's Population Estimates Program that produces and disseminates the official estimates of the population for the nation, states, counties, cities and towns and estimates of housing units for states and counties.

For information on confidentiality protection, sampling error, nonsampling error, and definitions, see Survey Methodology.  
<http://www.census.gov/acs/www/UseData/index.htm>



## Population by Age Hugo city, Oklahoma



Source: B01001. SEX BY AGE  
Data Set: 2008-2012 American Community Survey 5-Year Estimates

**B05003. SEX BY AGE BY CITIZENSHIP STATUS**

Data Set: 2008-2012 American Community Survey 5-Year Estimates

	Hugo city, Oklahoma					
	African American	Margin of Error (+/-)	% of AA Total by Age	White, Not Hispanic	Margin of Error (+/-)	% of NHW Total by Age
<b>Total:</b>	<b>1,095</b>	<b>177</b>	<b>100.0%</b>	<b>2,943</b>	<b>230</b>	<b>100.0%</b>
<b>Under 18 years:</b>	<b>259</b>	<b>NC</b>	<b>100.0%</b>	<b>503</b>	<b>NC</b>	<b>100.0%</b>
Native	259	NC	100.0%	503	NC	100.0%
Foreign born:	0	NC	0.0%	0	NC	0.0%
Naturalized U.S. citizen	0	NC	0.0%	0	NC	0.0%
Not a U.S. citizen	0	NC	0.0%	0	NC	0.0%
<b>18 years and over:</b>	<b>836</b>	<b>NC</b>	<b>100.0%</b>	<b>2,440</b>	<b>NC</b>	<b>100.0%</b>
Native	836	NC	100.0%	2,440	NC	100.0%
Foreign born:	0	NC	0.0%	0	NC	0.0%
Naturalized U.S. citizen	0	NC	0.0%	0	NC	0.0%
Not a U.S. citizen	0	NC	0.0%	0	NC	0.0%
<b>Male:</b>	<b>483</b>	<b>85</b>	<b>44.1%</b>	<b>1,310</b>	<b>157</b>	<b>44.5%</b>
<b>Under 18 years:</b>	<b>83</b>	<b>56</b>	<b>100.0%</b>	<b>193</b>	<b>85</b>	<b>100.0%</b>
Native	83	56	100.0%	193	85	100.0%
Foreign born:	0	15	0.0%	0	15	0.0%
Naturalized U.S. citizen	0	15	0.0%	0	15	0.0%
Not a U.S. citizen	0	15	0.0%	0	15	0.0%
<b>18 years and over:</b>	<b>400</b>	<b>57</b>	<b>100.0%</b>	<b>1,117</b>	<b>161</b>	<b>100.0%</b>
Native	400	57	100.0%	1,117	161	100.0%
Foreign born:	0	15	0.0%	0	15	0.0%
Naturalized U.S. citizen	0	15	0.0%	0	15	0.0%
Not a U.S. citizen	0	15	0.0%	0	15	0.0%

	Hugo city, Oklahoma					
	African American	Margin of Error (+/-)	% of AA by Age	White, Not Hispanic	Margin of Error (+/-)	% of NHW by Age
<b>Female:</b>	612	129	55.9%	1,633	180	55.5%
<b>Under 18 years:</b>	<b>176</b>	<b>91</b>	<b>100.0%</b>	<b>310</b>	<b>90</b>	<b>100.0%</b>
Native	176	91	100.0%	310	90	100.0%
Foreign born:	0	15	0.0%	0	15	0.0%
Naturalized U.S. citizen	0	15	0.0%	0	15	0.0%
Not a U.S. citizen	0	15	0.0%	0	15	0.0%
<b>18 years and over:</b>	<b>436</b>	<b>60</b>	<b>100.0%</b>	<b>1,323</b>	<b>160</b>	<b>100.0%</b>
Native	436	60	100.0%	1,323	160	100.0%
Foreign born:	0	15	0.0%	0	15	0.0%
Naturalized U.S. citizen	0	15	0.0%	0	15	0.0%
Not a U.S. citizen	0	15	0.0%	0	15	0.0%

Source: U.S. Census Bureau, 2008-2012 American Community Survey

For information on confidentiality protection, sampling error, nonsampling error, and definitions, see Survey Methodology.  
<http://www.census.gov/acs/www/UseData/index.htm>

# Citizenship Status of Voting Age Population (18 and Over)

## Hugo city, Oklahoma



Source: B05003. SEX BY AGE BY CITIZENSHIP STATUS  
Data Set: 2008-2012 American Community Survey 5-Year Estimates

**B07004. GEOGRAPHICAL MOBILITY IN THE PAST YEAR BY RACE FOR CURRENT RESIDENCE IN THE UNITED STATES - Universe:  
POPULATION 1 YEAR AND OVER**

Data Set: 2008-2012 American Community Survey 5-Year Estimates

	Hugo city, Oklahoma					
	African American	Margin of Error (+/-)	% of AA Total	White, Not Hispanic	Margin of Error (+/-)	% of NHW Total
<b>Total:</b>	<b>1,085</b>	<b>172</b>	<b>100.0%</b>	<b>2,880</b>	<b>220</b>	<b>100.0%</b>
Same house 1 year ago	881	171	81.2%	2,299	268	79.8%
Moved within same county	191	117	17.6%	395	180	13.7%
Moved from different county within same state	10	36	0.9%	96	74	3.3%
Moved from different state	3	10	0.3%	90	74	3.1%
Moved from abroad	0	15	0.0%	0	15	0.0%

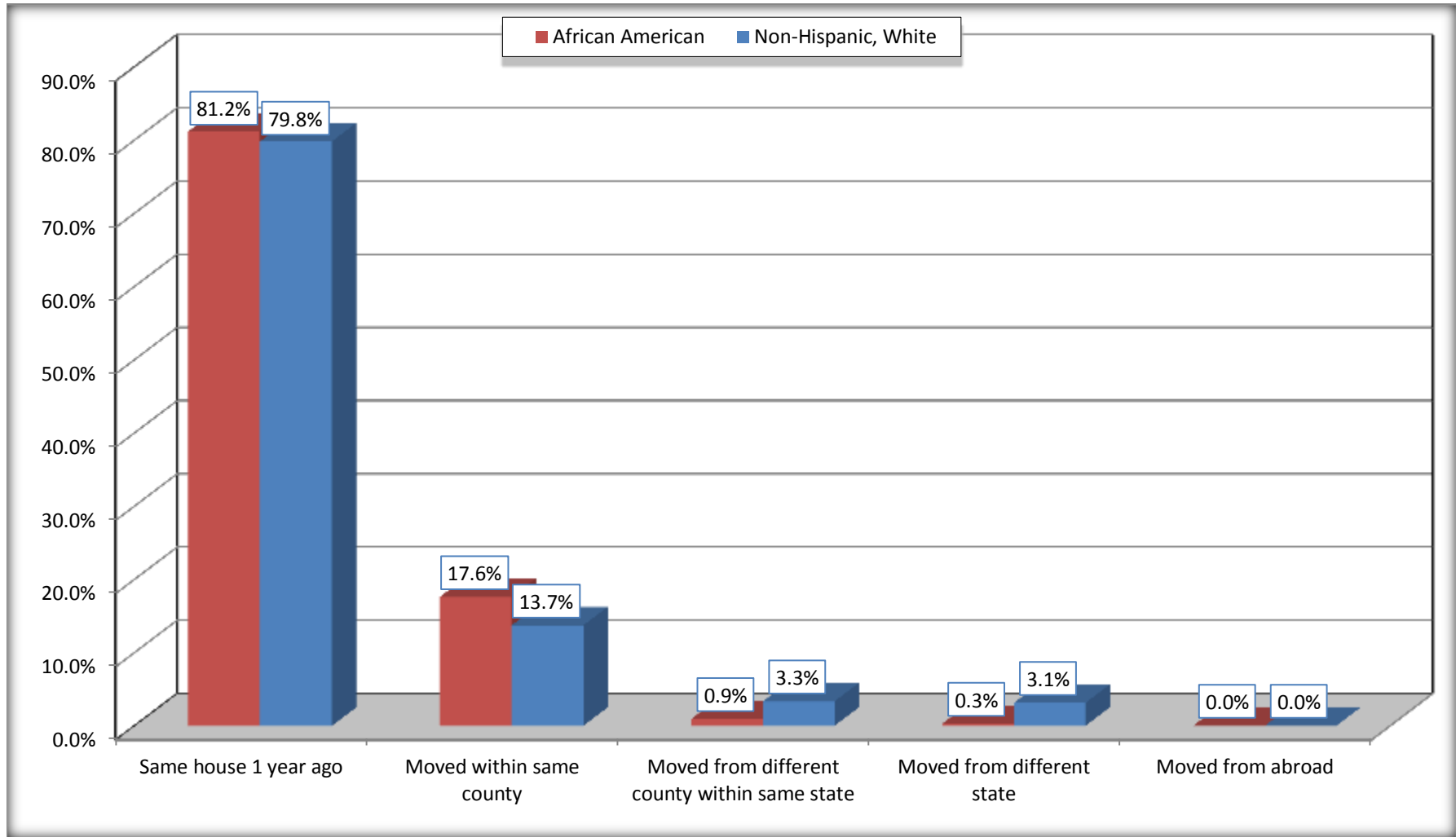
Source: U.S. Census Bureau, 2008-2012 American Community Survey

For information on confidentiality protection, sampling error, nonsampling error, and definitions, see Survey Methodology.

<http://www.census.gov/acs/www/UseData/index.htm>

# Geographical Mobility in the Past Year (Population 1 Year and Over)

## Hugo city, Oklahoma



Source: B07004. GEOGRAPHICAL MOBILITY IN THE PAST YEAR BY RACE FOR CURRENT RESIDENCE IN THE UNITED STATES - Universe: POPULATION 1 YEAR AND OVER

Data Set: 2008-2012 American Community Survey 5-Year Estimates

**B08105. MEANS OF TRANSPORTATION TO WORK - Universe: WORKERS 16 YEARS AND OVER**

Data Set: 2008-2012 American Community Survey 5-Year Estimates

	Hugo city, Oklahoma					
	African American	Margin of Error (+/-)	% of AA Total	White, Not Hispanic	Margin of Error (+/-)	% of NHW Total
<b>Total:</b>	390	108	<b>100.0%</b>	955	177	<b>100.0%</b>
Car, truck, or van - drove alone	287	113	73.6%	777	143	81.4%
Car, truck, or van - carpooled	40	44	10.3%	80	63	8.4%
Public transportation (excluding taxicab)	27	43	6.9%	0	15	0.0%
Walked	0	15	0.0%	28	28	2.9%
Taxicab, motorcycle, bicycle, or other means	36	50	9.2%	58	72	6.1%
Worked at home	0	15	0.0%	12	19	1.3%

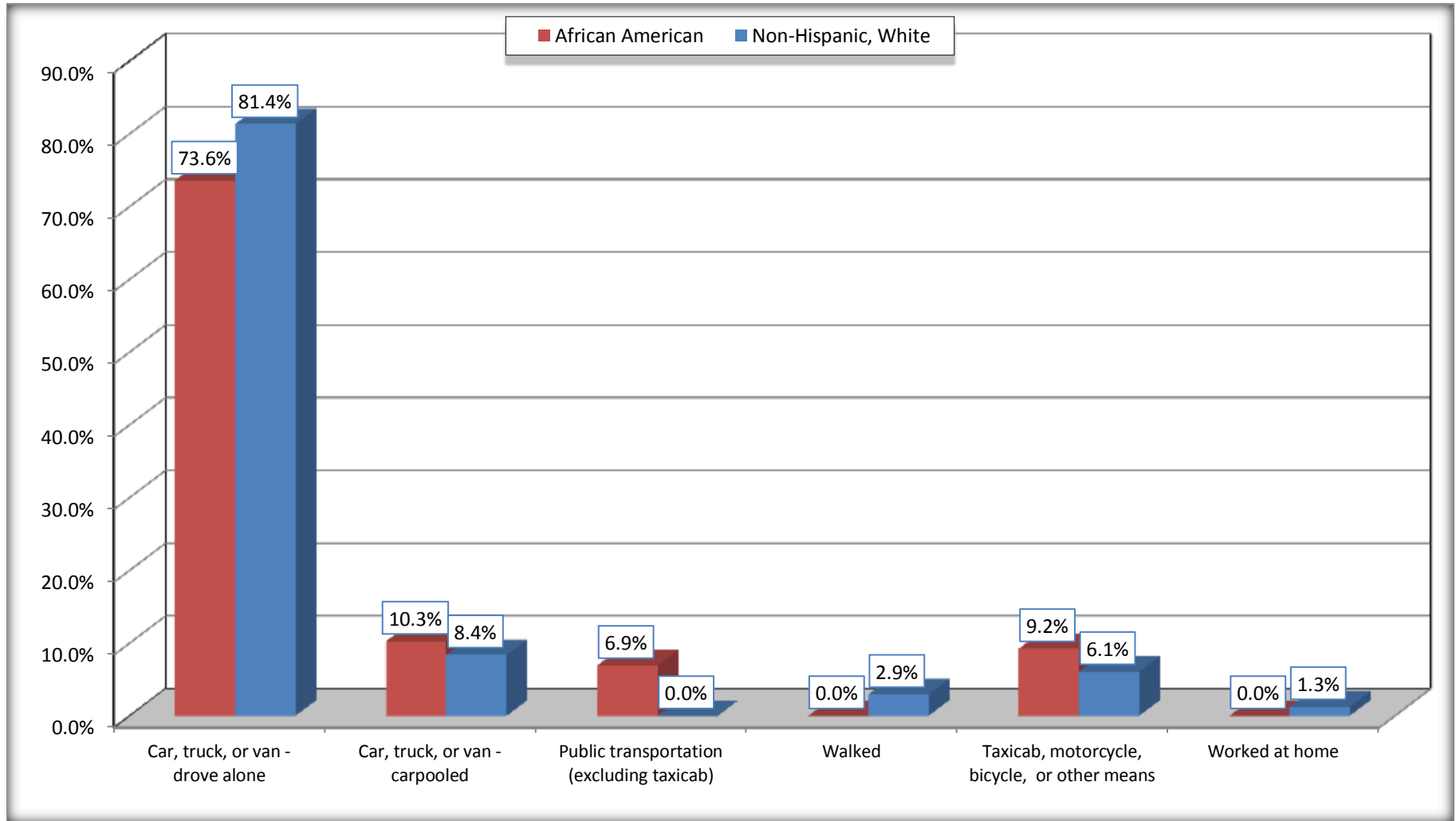
Source: U.S. Census Bureau, 2008-2012 American Community Survey

For information on confidentiality protection, sampling error, nonsampling error, and definitions, see Survey Methodology.

<http://www.census.gov/acs/www/UseData/index.htm>

# Means of Transportation to Work (Workers 16 Years and Over)

## Hugo city, Oklahoma



Source: B08105. MEANS OF TRANSPORTATION TO WORK - Universe: WORKERS 16 YEARS AND OVER  
Data Set: 2008-2012 American Community Survey 5-Year Estimates



**B11002. HOUSEHOLD TYPE BY RELATIVES AND NONRELATIVES FOR POPULATION IN HOUSEHOLDS**

Data Set: 2008-2012 American Community Survey 5-Year Estimates

	Hugo city, Oklahoma					
	African American	Margin of Error (+/-)	% of AA Total	White, Not Hispanic	Margin of Error (+/-)	% of NHW Total
<b>Total:</b>	997	189	<b>100.0%</b>	3077	313	<b>100.0%</b>
In family households	823	202	82.5%	2444	327	79.4%
In nonfamily households	174	80	17.5%	633	149	20.6%

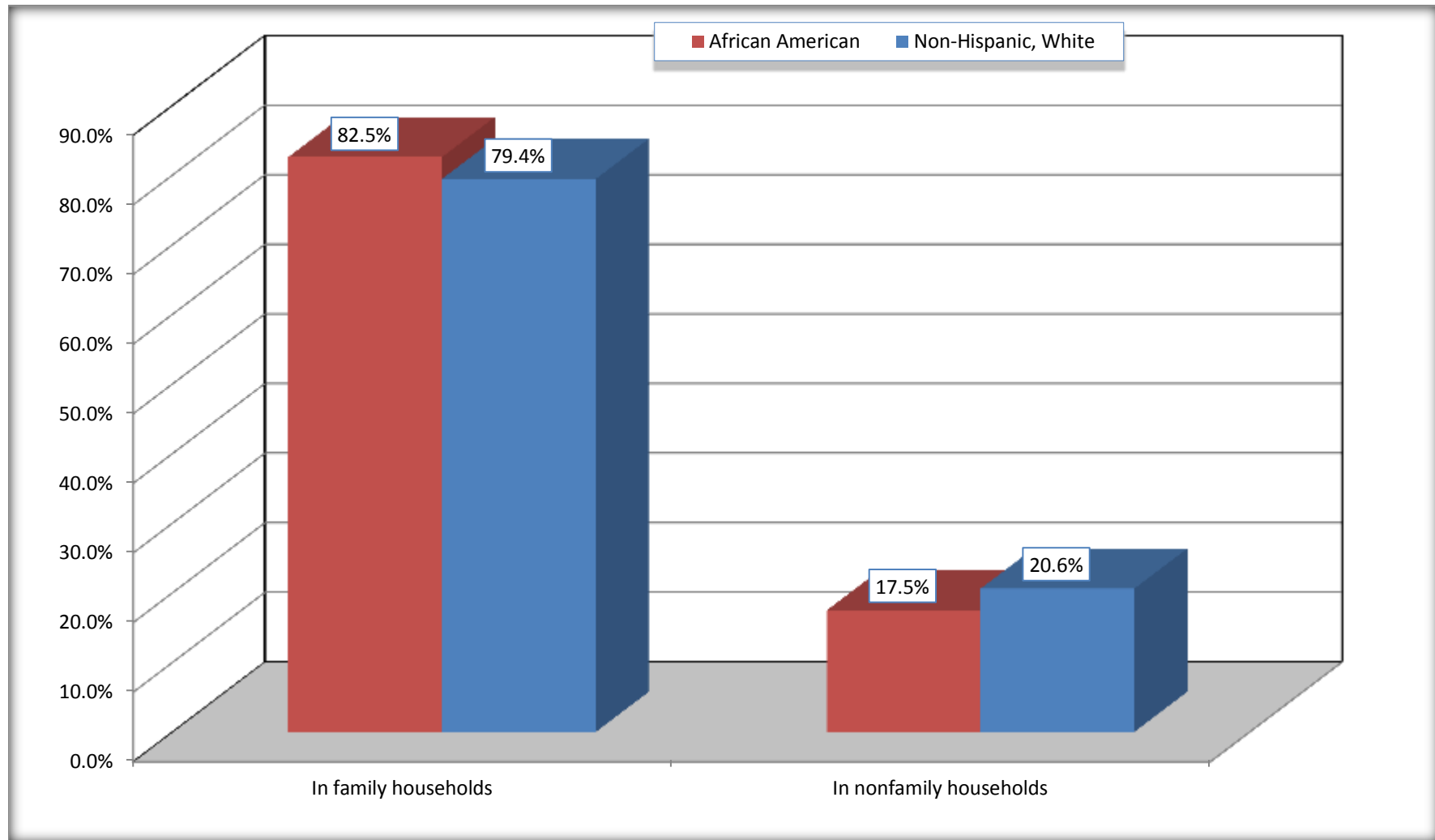
Source: U.S. Census Bureau, 2008-2012 American Community Survey

For information on confidentiality protection, sampling error, nonsampling error, and definitions, see Survey Methodology.

<http://www.census.gov/acs/www/UseData/index.htm>

# Household Type for Population in Households

## Hugo city, Oklahoma



Source: B11002. HOUSEHOLD TYPE BY RELATIVES AND NONRELATIVES FOR POPULATION IN HOUSEHOLDS  
Data Set: 2008-2012 American Community Survey 5-Year Estimates

**B12002. MARITAL STATUS FOR THE POPULATION 15 YEARS AND OVER**

Data Set: 2008-2012 American Community Survey 5-Year Estimates

	Hugo city, Oklahoma					
	African American	Margin of Error (+/-)	% of AA Total	White, Not Hispanic	Margin of Error (+/-)	% of NHW Total
<b>Total:</b>	<b>869</b>	<b>106</b>	<b>100.0%</b>	<b>2,514</b>	<b>215</b>	<b>100.0%</b>
Never married	344	NC	39.6%	671	NC	26.7%
Now married (except separated)	253	NC	29.1%	1,035	NC	41.2%
Separated	67	NC	7.7%	76	NC	3.0%
Widowed	122	NC	14.0%	313	NC	12.5%
Divorced	83	NC	9.6%	419	NC	16.7%
<b>Male:</b>	<b>417</b>	<b>60</b>	<b>48.0%</b>	<b>1,126</b>	<b>161</b>	<b>44.8%</b>
Never married	182	51	20.9%	360	109	14.3%
Now married (except separated)	103	64	11.9%	485	103	19.3%
Separated	26	26	3.0%	51	60	2.0%
Widowed	50	38	5.8%	94	45	3.7%
Divorced	56	50	6.4%	136	65	5.4%
<b>Female:</b>	<b>452</b>	<b>67</b>	<b>52.0%</b>	<b>1,388</b>	<b>163</b>	<b>55.2%</b>
Never married	162	75	18.6%	311	81	12.4%
Now married (except separated)	150	64	17.3%	550	107	21.9%
Separated	41	42	4.7%	25	21	1.0%
Widowed	72	33	8.3%	219	83	8.7%
Divorced	27	27	3.1%	283	106	11.3%

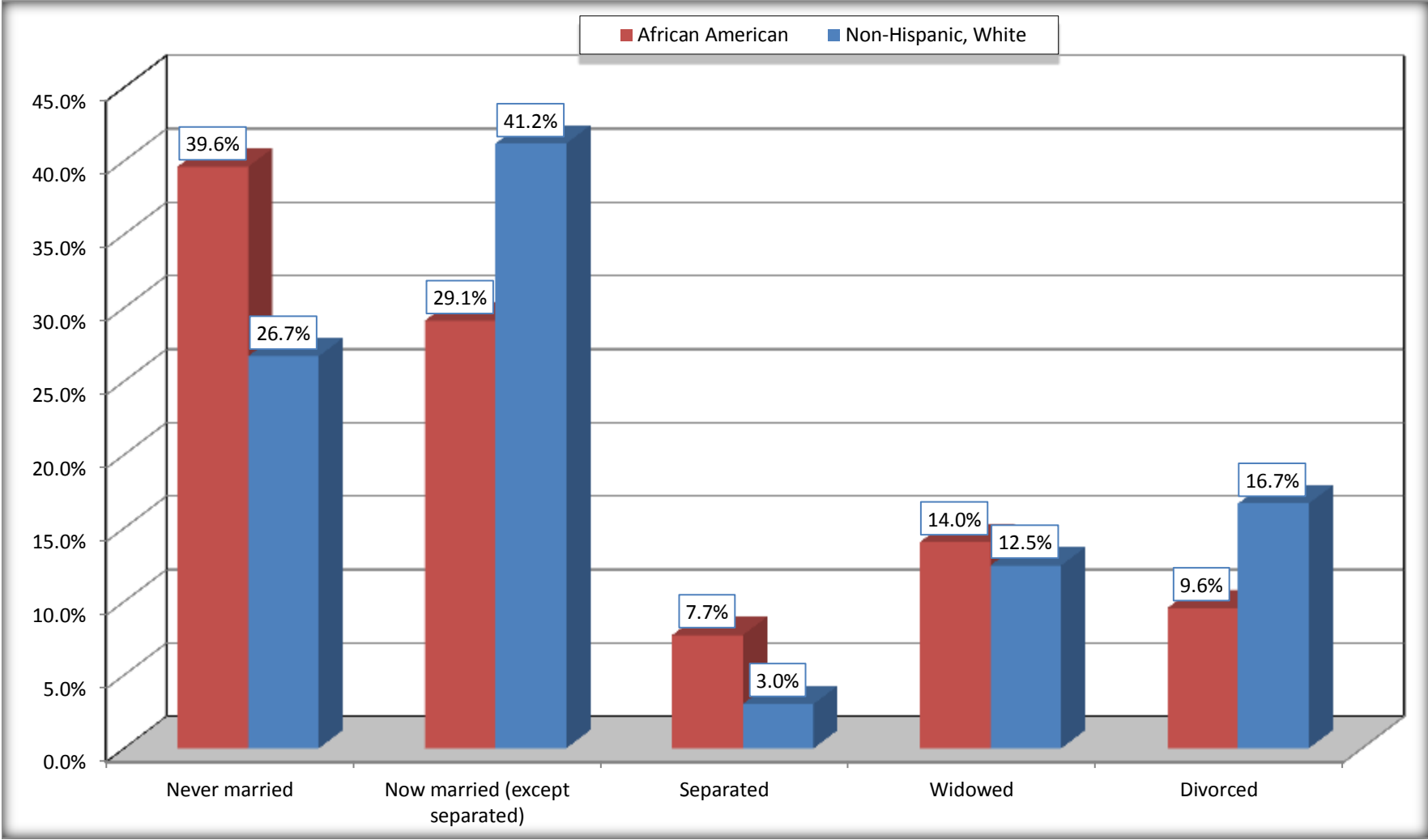
Source: U.S. Census Bureau, 2008-2012 American Community Survey

For information on confidentiality protection, sampling error, nonsampling error, and definitions, see Survey Methodology.

<http://www.census.gov/acs/www/UseData/index.htm>

# Marital Status for the Population 15 Years and Over

## Hugo city, Oklahoma



Source: B12002. MARITAL STATUS FOR THE POPULATION 15 YEARS AND OVER  
Data Set: 2008-2012 American Community Survey 5-Year Estimates

**C15002. SEX BY EDUCATIONAL ATTAINMENT FOR THE POPULATION 25 YEARS AND OVER**

Data Set: 2008-2012 American Community Survey 5-Year Estimates

	Hugo city, Oklahoma					
	African American	Margin of Error (+/-)	% of AA Total	White, Not Hispanic	Margin of Error (+/-)	% of NHW Total
<b>Total:</b>	<b>698</b>	<b>97</b>	<b>100.0%</b>	<b>2,190</b>	<b>209</b>	<b>100.0%</b>
Less than high school diploma	179	NC	25.6%	497	NC	22.7%
High school graduate, GED, or alternative	289	NC	41.4%	848	NC	38.7%
Some college or associate's degree	147	NC	21.1%	685	NC	31.3%
Bachelor's degree or higher	83	NC	11.9%	160	NC	7.3%
Male:	325	62	46.6%	976	157	44.6%
Less than high school diploma	41	32	5.9%	206	110	9.4%
High school graduate, GED, or alternative	198	80	28.4%	416	123	19.0%
Some college or associate's degree	75	57	10.7%	274	100	12.5%
Bachelor's degree or higher	11	18	1.6%	80	50	3.7%
Female:	373	57	53.4%	1,214	163	55.4%
Less than high school diploma	138	77	19.8%	291	91	13.3%
High school graduate, GED, or alternative	91	53	13.0%	432	131	19.7%
Some college or associate's degree	72	44	10.3%	411	152	18.8%
Bachelor's degree or higher	72	61	10.3%	80	47	3.7%

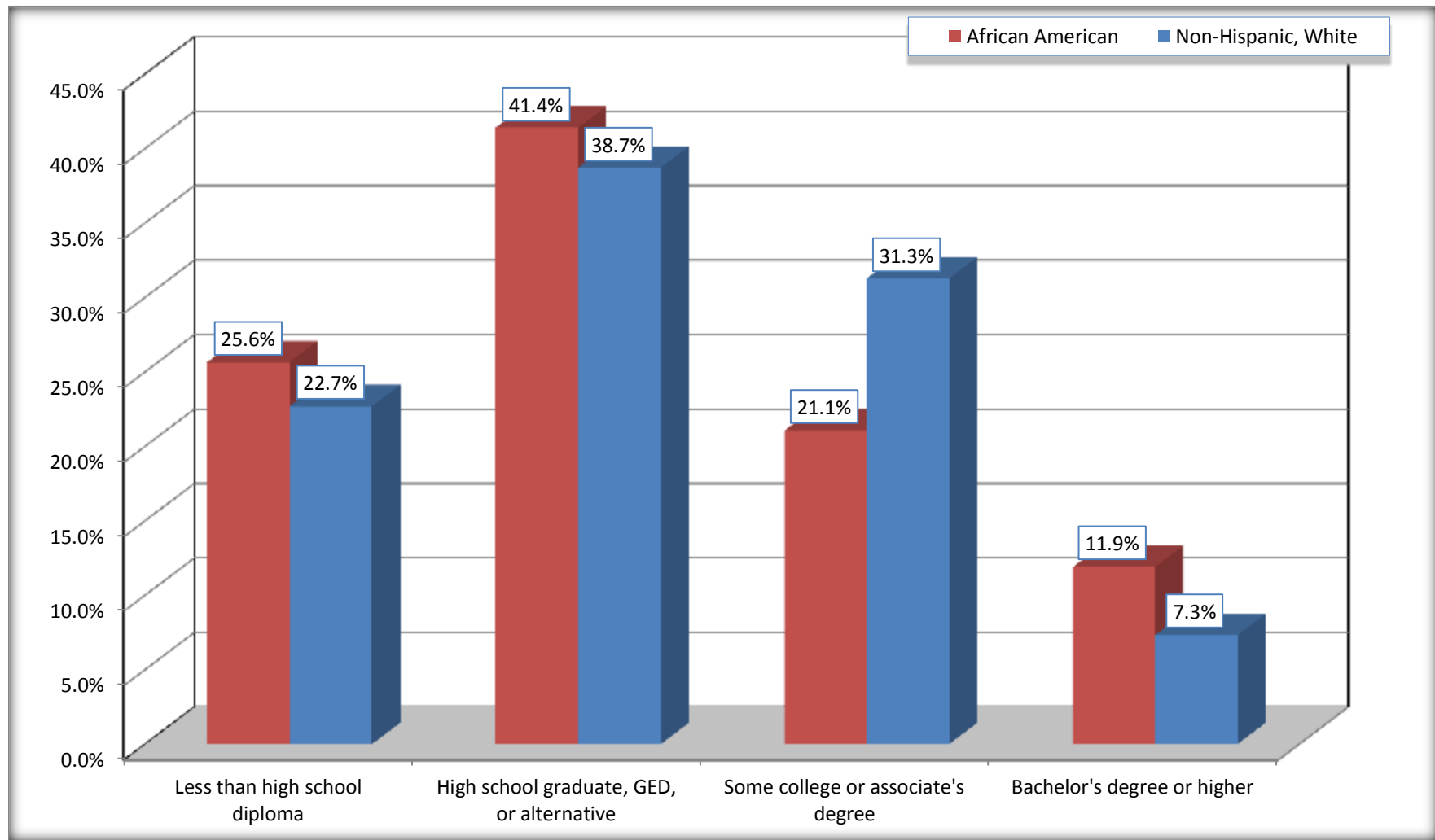
Source: U.S. Census Bureau, 2008-2012 American Community Survey

For information on confidentiality protection, sampling error, nonsampling error, and definitions, see Survey Methodology.

<http://www.census.gov/acs/www/UseData/index.htm>

# Educational Attainment for the Population 25 Years and Older

## Hugo city, Oklahoma



Source: C15002. SEX BY EDUCATIONAL ATTAINMENT FOR THE POPULATION 25 YEARS AND OVER  
Data Set: 2008-2012 American Community Survey 5-Year Estimates

**B17010. POVERTY STATUS IN THE PAST 12 MONTHS OF FAMILIES BY FAMILY TYPE BY PRESENCE OF RELATED CHILDREN UNDER 18 YEARS**

Data Set: 2008-2012 American Community Survey 5-Year Estimates

	Hugo city, Oklahoma					
	African American	Margin of Error (+/-)	% of AA Total	White, Not Hispanic	Margin of Error (+/-)	% of NHW Total
<b>Total:</b>	<b>295</b>	<b>78</b>	<b>100.0%</b>	<b>681</b>	<b>101</b>	<b>100.0%</b>
Income in the past 12 months below poverty level:	90	55	30.5%	199	79	29.2%
Married-couple family:	0	15	0.0%	11	11	1.6%
With related children under 18 years	0	15	0.0%	7	11	1.0%
Other family:	90	55	30.5%	188	79	27.6%
Male householder, no wife present	8	15	2.7%	0	15	0.0%
With related children under 18 years	8	15	2.7%	0	15	0.0%
Female householder, no husband present	82	53	27.8%	188	79	27.6%
With related children under 18 years	63	50	21.4%	143	72	21.0%
Income in the past 12 months at or above poverty level:	205	70	69.5%	482	115	70.8%
Married-couple family:	112	64	38.0%	381	97	55.9%
With related children under 18 years	13	21	4.4%	125	61	18.4%
Other family:	93	57	31.5%	101	56	14.8%
Male householder, no wife present	32	32	10.8%	34	39	5.0%
With related children under 18 years	32	32	10.8%	0	15	0.0%
Female householder, no husband present	61	43	20.7%	67	41	9.8%
With related children under 18 years	51	42	17.3%	27	23	4.0%

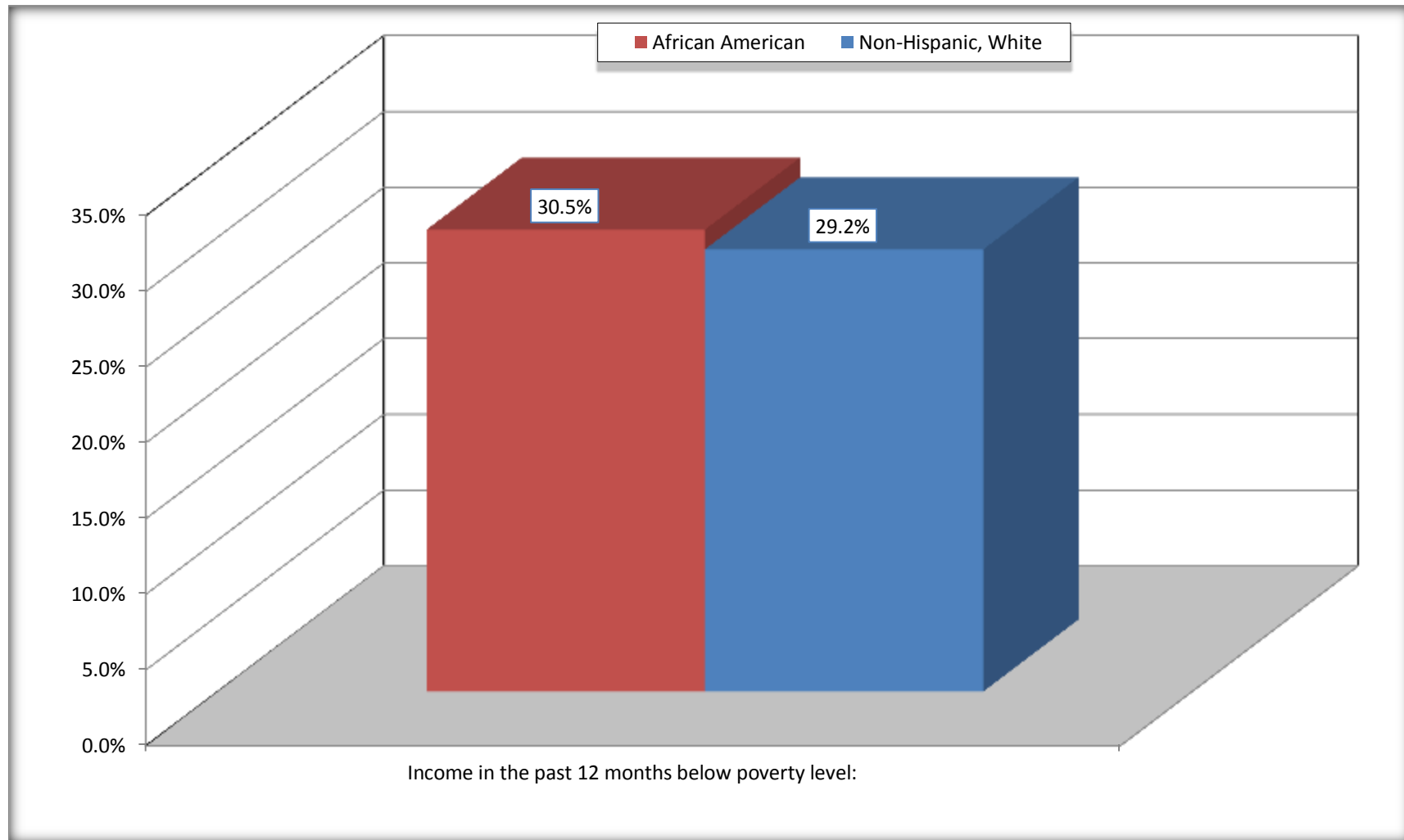
Source: U.S. Census Bureau, 2008-2012 American Community Survey

For information on confidentiality protection, sampling error, nonsampling error, and definitions, see Survey Methodology.

<http://www.census.gov/acs/www/UseData/index.htm>

# Family Households Below Poverty in the Past 12 Months

## Hugo city, Oklahoma



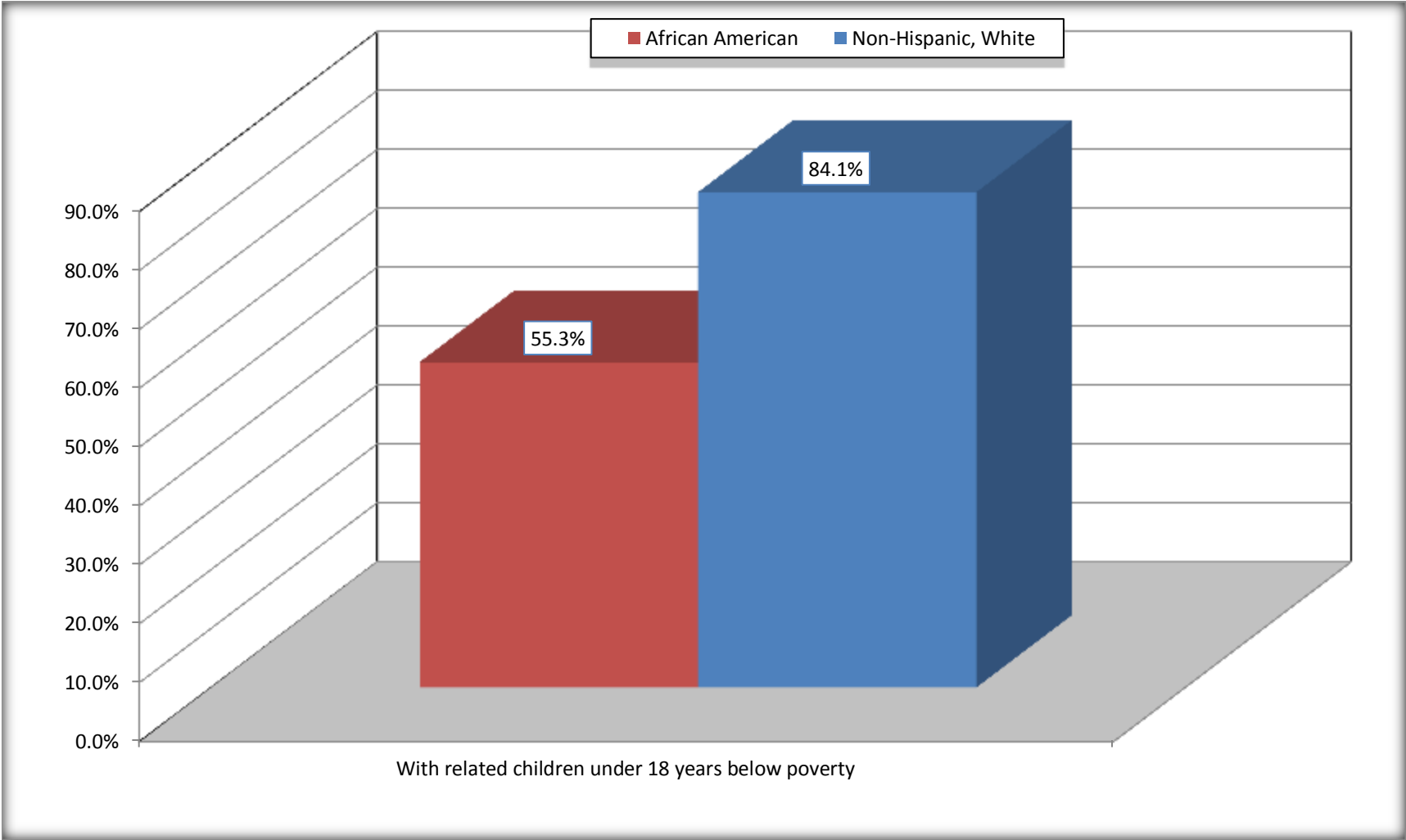
Source: B17010. POVERTY STATUS IN THE PAST 12 MONTHS OF FAMILIES BY FAMILY TYPE BY PRESENCE OF RELATED CHILDREN UNDER 18 YEARS

Data Set: 2008-2012 American Community Survey 5-Year Estimates



# Female-headed Households with Related Children Below Poverty in the Past 12 Months

## Hugo city, Oklahoma



Source: B17010. POVERTY STATUS IN THE PAST 12 MONTHS OF FAMILIES BY FAMILY TYPE BY PRESENCE OF RELATED CHILDREN UNDER 18 YEARS

Data Set: 2008-2012 American Community Survey 5-Year Estimates

**B17020 POVERTY STATUS IN THE PAST 12 MONTHS BY AGE - Universe: POPULATION FOR WHOM POVERTY STATUS IS DETERMINED**

Data Set: 2008-2012 American Community Survey 5-Year Estimates

	Hugo city, Oklahoma					
	African American	Margin of Error (+/-)	% of AA By Age	White, Not Hispanic	Margin of Error (+/-)	% of NHW By Age
<b>Total:</b>	<b>1,064</b>	<b>186</b>	<b>100.0%</b>	<b>2,813</b>	<b>238</b>	<b>100.0%</b>
Income in the past 12 months below poverty level:	334	138	31.4%	987	328	35.1%
<b>Under 18 years</b>	112	NC	43.6%	218	NC	43.4%
<b>18 to 64 years</b>	214	91	31.1%	639	236	37.0%
<b>65 years and over</b>	8	NC	6.7%	130	NC	22.3%
Income in the past 12 months at or above poverty level:	730	179	68.6%	1,826	327	64.9%
<b>Under 18 years</b>	145	NC	56.4%	284	NC	56.6%
<b>18 to 64 years</b>	474	110	68.9%	1,088	241	63.0%
<b>65 years and over</b>	111	NC	93.3%	454	NC	77.7%

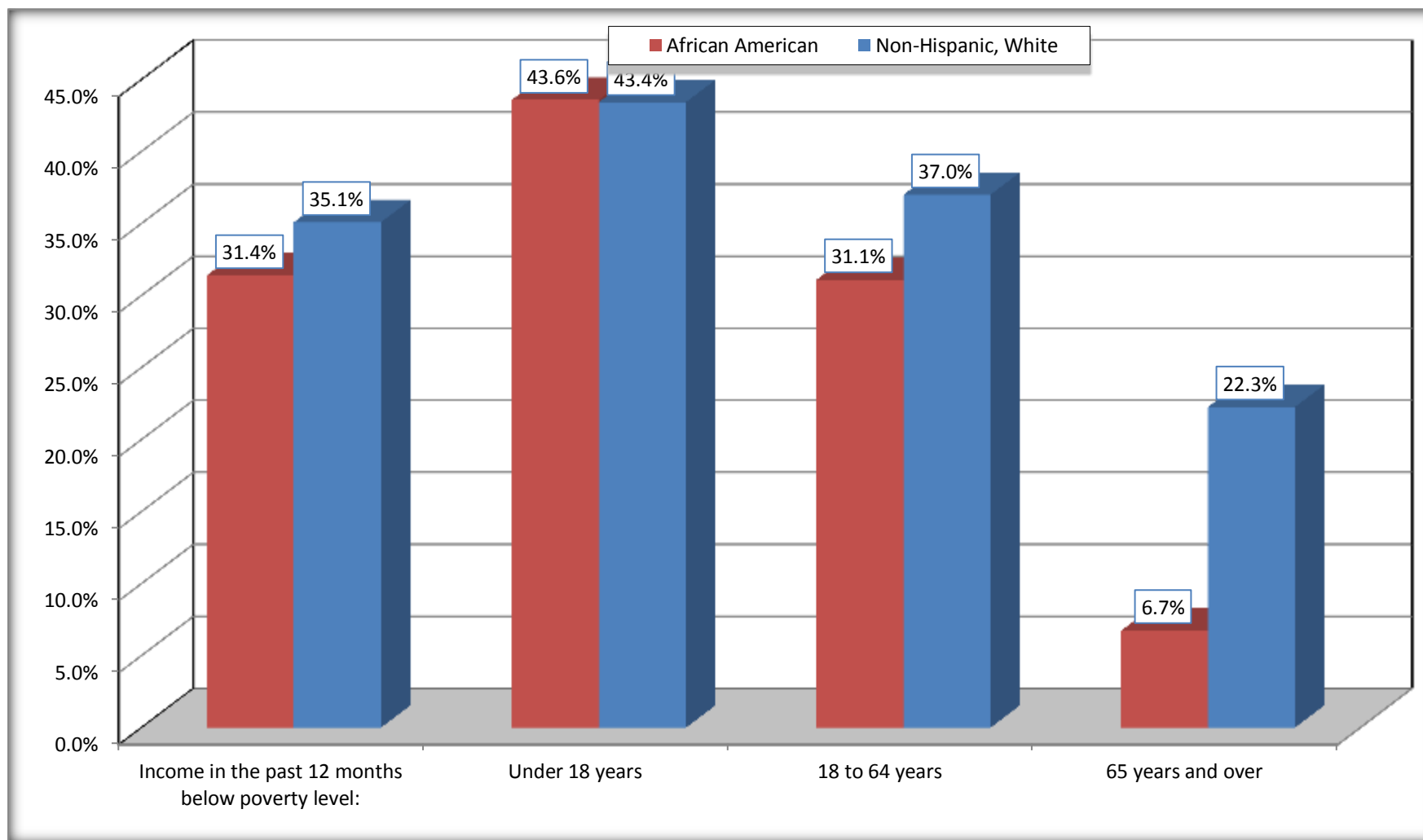
Source: U.S. Census Bureau, 2008-2012 American Community Survey

For information on confidentiality protection, sampling error, nonsampling error, and definitions, see Survey Methodology.

<http://www.census.gov/acs/www/UseData/index.htm>

# Population Below Poverty in the Past 12 Months

## Hugo city, Oklahoma



Source: B17020 POVERTY STATUS IN THE PAST 12 MONTHS BY AGE - Universe: POPULATION FOR WHOM POVERTY STATUS IS DETERMINED  
Data Set: 2008-2012 American Community Survey 5-Year Estimates

**B19001. HOUSEHOLD INCOME IN THE PAST 12 MONTHS (IN 2010 INFLATION-ADJUSTED DOLLARS)**

Data Set: 2008-2012 American Community Survey 5-Year Estimates

	Hugo city, Oklahoma					
	African American	Margin of Error (+/-)	% of AA Total	White, Not Hispanic	Margin of Error (+/-)	% of NHW Total
<b>Total:</b>	<b>469</b>	<b>92</b>	<b>100.0%</b>	<b>1,257</b>	<b>155</b>	<b>100.0%</b>
Less than \$ 10,000	94	54	20.0%	194	76	15.4%
\$ 10,000 to \$ 14,999	75	48	16.0%	294	114	23.4%
<b>\$ 15,000 to \$ 24,999</b>	32	NC	6.8%	214	NC	17.0%
<b>\$ 25,000 to \$ 34,999</b>	131	NC	27.9%	135	NC	10.7%
<b>\$ 35,000 to \$ 49,999</b>	52	NC	11.1%	189	NC	15.0%
<b>\$ 50,000 to \$ 74,999</b>	13	NC	2.8%	139	NC	11.1%
\$ 75,000 to \$ 99,999	60	49	12.8%	37	34	2.9%
<b>\$ 100,000 to \$ 149,999</b>	0	NC	0.0%	48	NC	3.8%
\$ 150,000 to \$ 199,999	0	15	0.0%	7	12	0.6%
\$ 200,000 or more	12	19	2.6%	0	15	0.0%

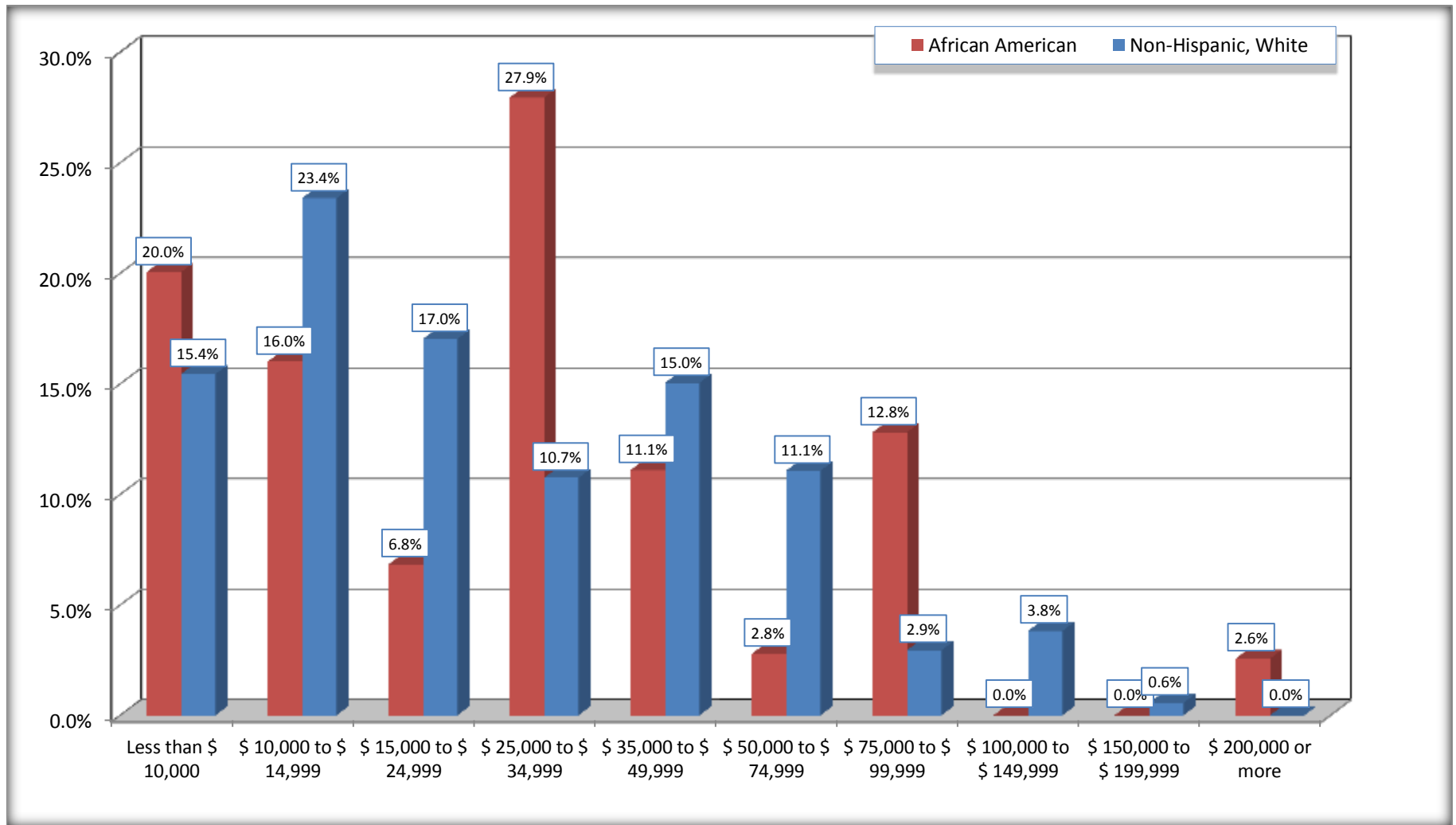
Source: U.S. Census Bureau, 2008-2012 American Community Survey

For information on confidentiality protection, sampling error, nonsampling error, and definitions, see Survey Methodology.

<http://www.census.gov/acs/www/UseData/index.htm>

# Household Income in the Past 12 Months

## Hugo city, Oklahoma



Source: B19001. HOUSEHOLD INCOME IN THE PAST 12 MONTHS (IN 2010 INFLATION-ADJUSTED DOLLARS)

Data Set: 2008-2012 American Community Survey 5-Year Estimates

**B19013. MEDIAN HOUSEHOLD INCOME IN THE PAST 12 MONTHS (IN 2010 INFLATION-ADJUSTED DOLLARS)**

Data Set: 2008-2012 American Community Survey 5-Year Estimates

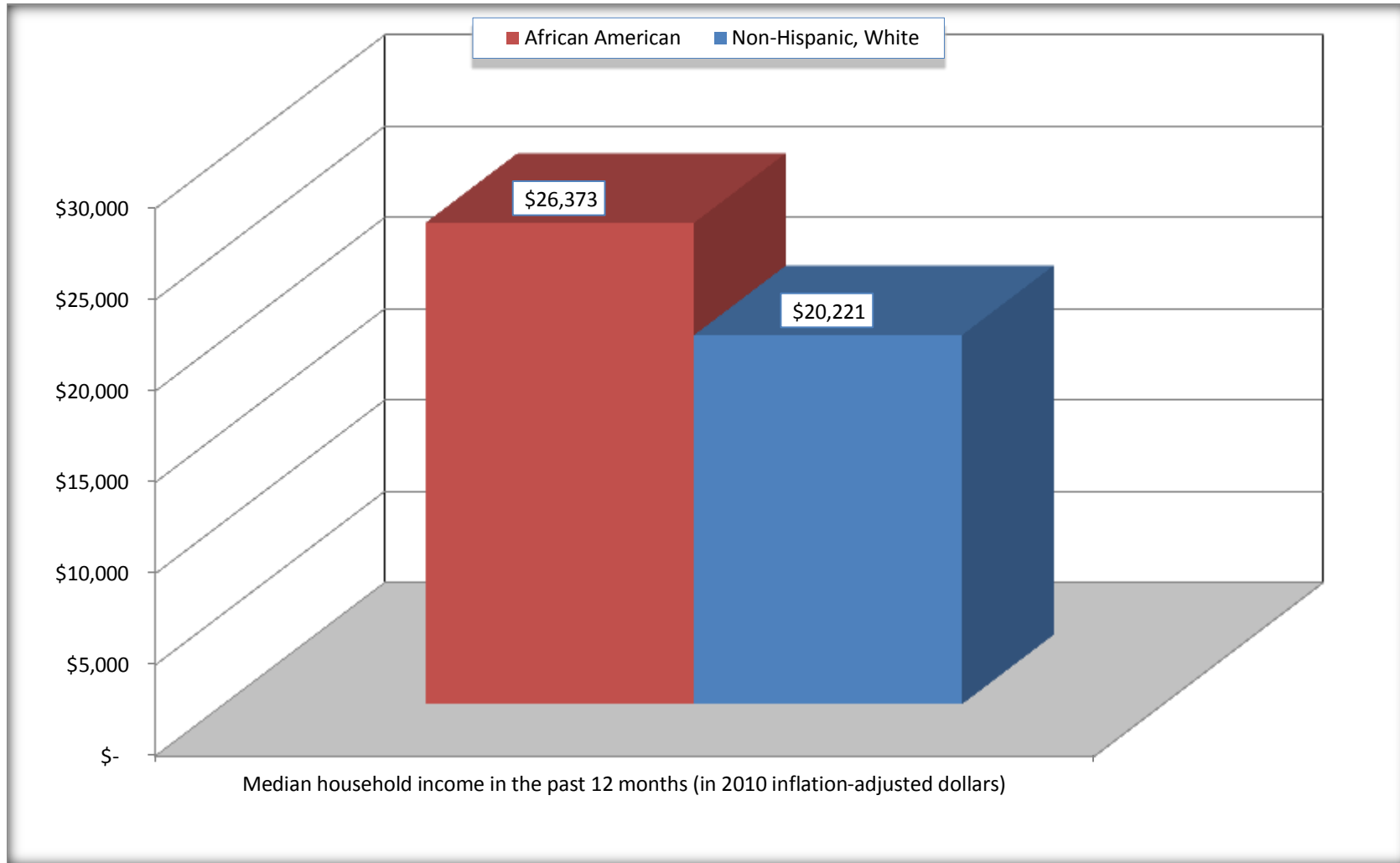
	<b>Hugo city, Oklahoma</b>			
	African American	Margin of Error (+/-)	White, Not Hispanic	Margin of Error (+/-)
Median household income in the past 12 months (in 2010 inflation-adjusted dollars)	\$ 26,373	\$ 6,617	\$ 20,221	\$ 5,152

Source: U.S. Census Bureau, 2008-2012 American Community Survey

For information on confidentiality protection, sampling error, nonsampling error, and definitions, see Survey Methodology.  
<http://www.census.gov/acs/www/UseData/index.htm>

# Median Household Income in the Past 12 Months

## Hugo city, Oklahoma



Source: B19013. MEDIAN HOUSEHOLD INCOME IN THE PAST 12 MONTHS (IN 2010 INFLATION-ADJUSTED DOLLARS)  
Data Set: 2008-2012 American Community Survey 5-Year Estimates

**B19101. FAMILY INCOME IN THE PAST 12 MONTHS (IN 2010 INFLATION-ADJUSTED DOLLARS)**

Data Set: 2008-2012 American Community Survey 5-Year Estimates

	Hugo city, Oklahoma					
	African American	Margin of Error (+/-)	% of AA Total	White, Not Hispanic	Margin of Error (+/-)	% of NHW Total
<b>Total:</b>	<b>295</b>	<b>78</b>	<b>100.0%</b>	<b>681</b>	<b>101</b>	<b>100.0%</b>
Less than \$ 10,000	65	47	22.0%	37	27	5.4%
\$ 10,000 to \$ 14,999	19	23	6.4%	116	72	17.0%
<b>\$ 15,000 to \$ 24,999</b>	<b>14</b>	<b>NC</b>	<b>4.7%</b>	<b>117</b>	<b>NC</b>	<b>17.2%</b>
<b>\$ 25,000 to \$ 34,999</b>	<b>63</b>	<b>NC</b>	<b>21.4%</b>	<b>93</b>	<b>NC</b>	<b>13.7%</b>
<b>\$ 35,000 to \$ 49,999</b>	<b>49</b>	<b>NC</b>	<b>16.6%</b>	<b>131</b>	<b>NC</b>	<b>19.2%</b>
<b>\$ 50,000 to \$ 74,999</b>	<b>13</b>	<b>NC</b>	<b>4.4%</b>	<b>107</b>	<b>NC</b>	<b>15.7%</b>
<b>\$ 100,000 to \$ 149,999</b>	<b>-</b>	<b>NC</b>	<b>0.0%</b>	<b>36</b>	<b>NC</b>	<b>5.3%</b>
\$ 150,000 to \$ 199,999	0	15	0.0%	7	12	1.0%
\$ 200,000 or more	12	19	4.1%	0	15	0.0%

Source: U.S. Census Bureau, 2008-2012 American Community Survey

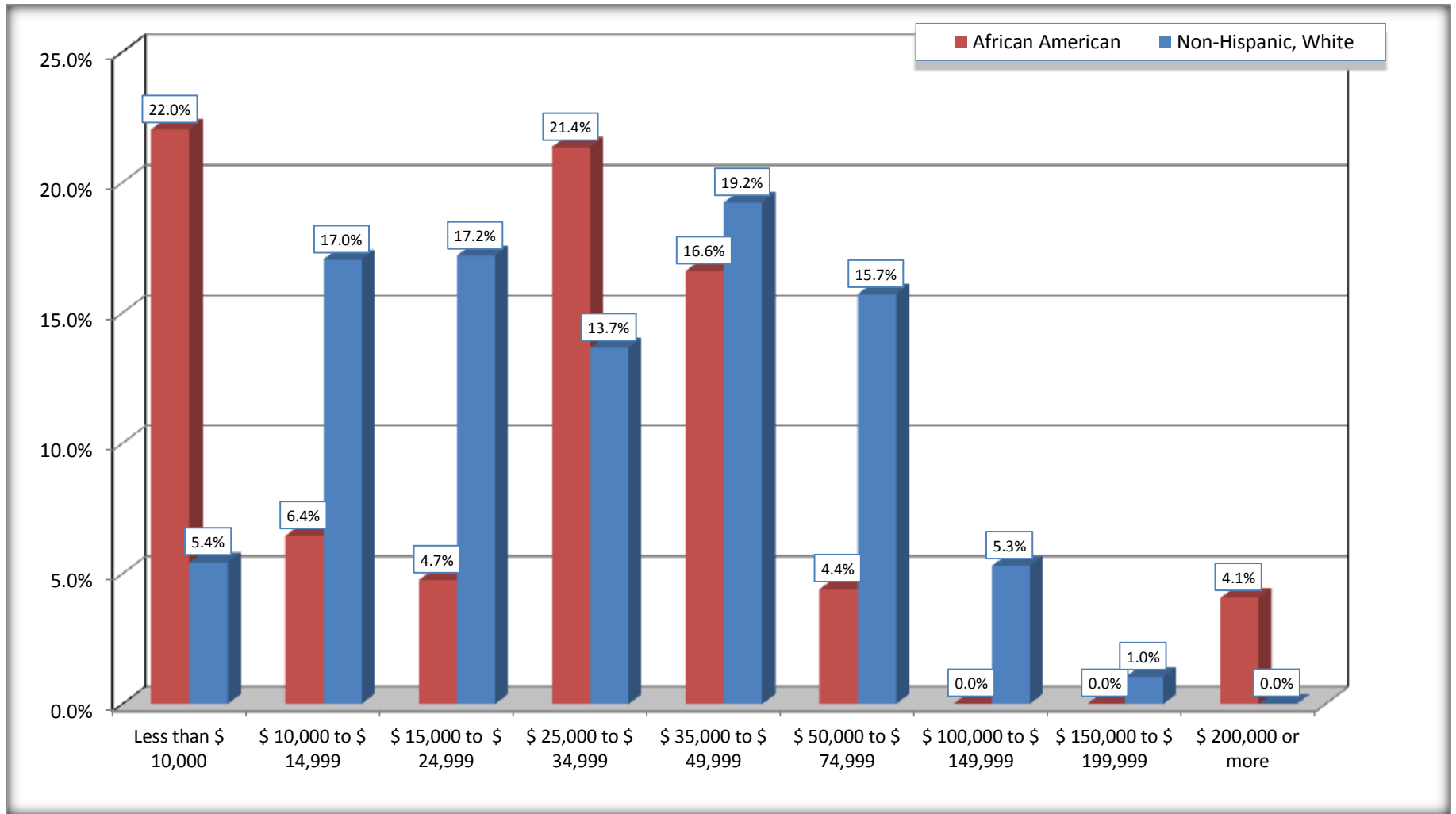
For information on confidentiality protection, sampling error, nonsampling error, and definitions, see Survey Methodology.

<http://www.census.gov/acs/www/UseData/index.htm>



# Family Income in the Past 12 Months

## Hugo city, Oklahoma



Source: B19101. FAMILY INCOME IN THE PAST 12 MONTHS (IN 2010 INFLATION-ADJUSTED DOLLARS)  
Data Set: 2008-2012 American Community Survey 5-Year Estimates

**B19113. MEDIAN FAMILY INCOME IN THE PAST 12 MONTHS (IN 2010 INFLATION-ADJUSTED DOLLARS)**

Data Set: 2008-2012 American Community Survey 5-Year Estimates

	Hugo city, Oklahoma			
	African American	Margin of Error (+/-)	White, Not Hispanic	Margin of Error (+/-)
Median family income in the past 12 months (in 2010 inflation-adjusted dollars)	\$ 29,958	\$ 11,452	\$ 31,771	\$ 11,266

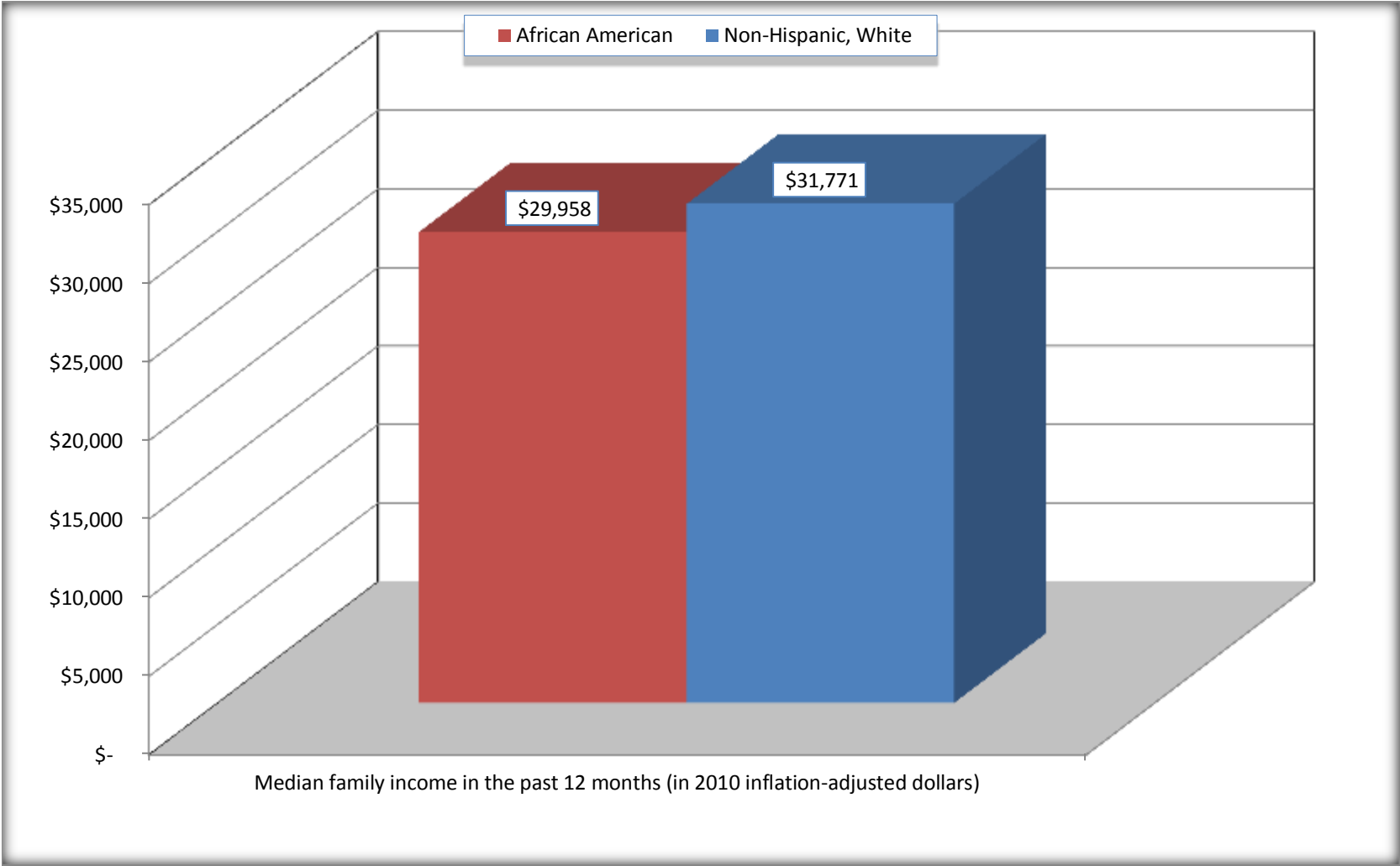
Source: U.S. Census Bureau, 2008-2012 American Community Survey

For information on confidentiality protection, sampling error, nonsampling error, and definitions, see Survey Methodology.

<http://www.census.gov/acs/www/UseData/index.htm>

# Median Family Income in the Past 12 Months

## Hugo city, Oklahoma



Source: B19113. MEDIAN FAMILY INCOME IN THE PAST 12 MONTHS (IN 2010 INFLATION-ADJUSTED DOLLARS)  
Data Set: 2008-2012 American Community Survey 5-Year Estimates

**B19202. MEDIAN NONFAMILY HOUSEHOLD INCOME IN THE PAST 12 MONTHS (IN 2010 INFLATION-ADJUSTED DOLLARS)**

Data Set: 2008-2012 American Community Survey 5-Year Estimates

	<b>Hugo city, Oklahoma</b>			
	African American	Margin of Error (+/-)	White, Not Hispanic	Margin of Error (+/-)
Median nonfamily household income in the past 12 months (in 2010 inflation-adjusted dollars)	\$ 15,625	\$ 11,598	\$ 13,560	\$ 1,961

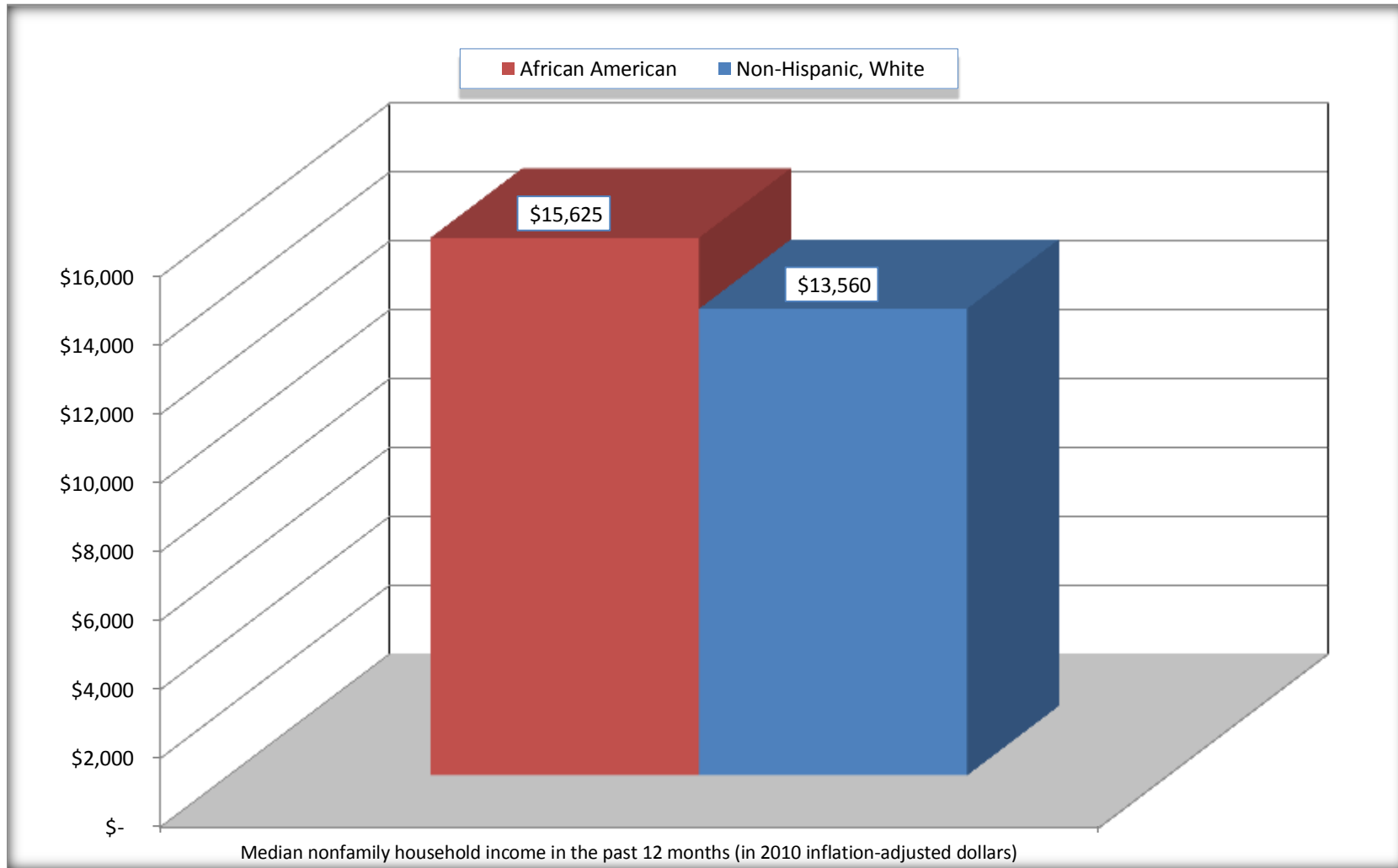
Source: U.S. Census Bureau, 2008-2012 American Community Survey

For information on confidentiality protection, sampling error, nonsampling error, and definitions, see Survey Methodology.

<http://www.census.gov/acs/www/UseData/index.htm>

# Median Non-Family Income in the Past 12 Months

## Hugo city, Oklahoma



Source: B19202. MEDIAN NONFAMILY HOUSEHOLD INCOME IN THE PAST 12 MONTHS (IN 2010 INFLATION-ADJUSTED DOLLARS)  
Data Set: 2008-2012 American Community Survey 5-Year Estimates

**B19301. PER CAPITA INCOME IN THE PAST 12 MONTHS (IN 2010 INFLATION-ADJUSTED DOLLARS)**

Data Set: 2008-2012 American Community Survey 5-Year Estimates

	Hugo city, Oklahoma			
	African American	Margin of Error (+/-)	White, Not Hispanic	Margin of Error (+/-)
Per capita income in the past 12 months (in 2010 inflation-adjusted dollars)	\$ 15,966	\$ 5,332	\$ 15,484	\$ 2,311

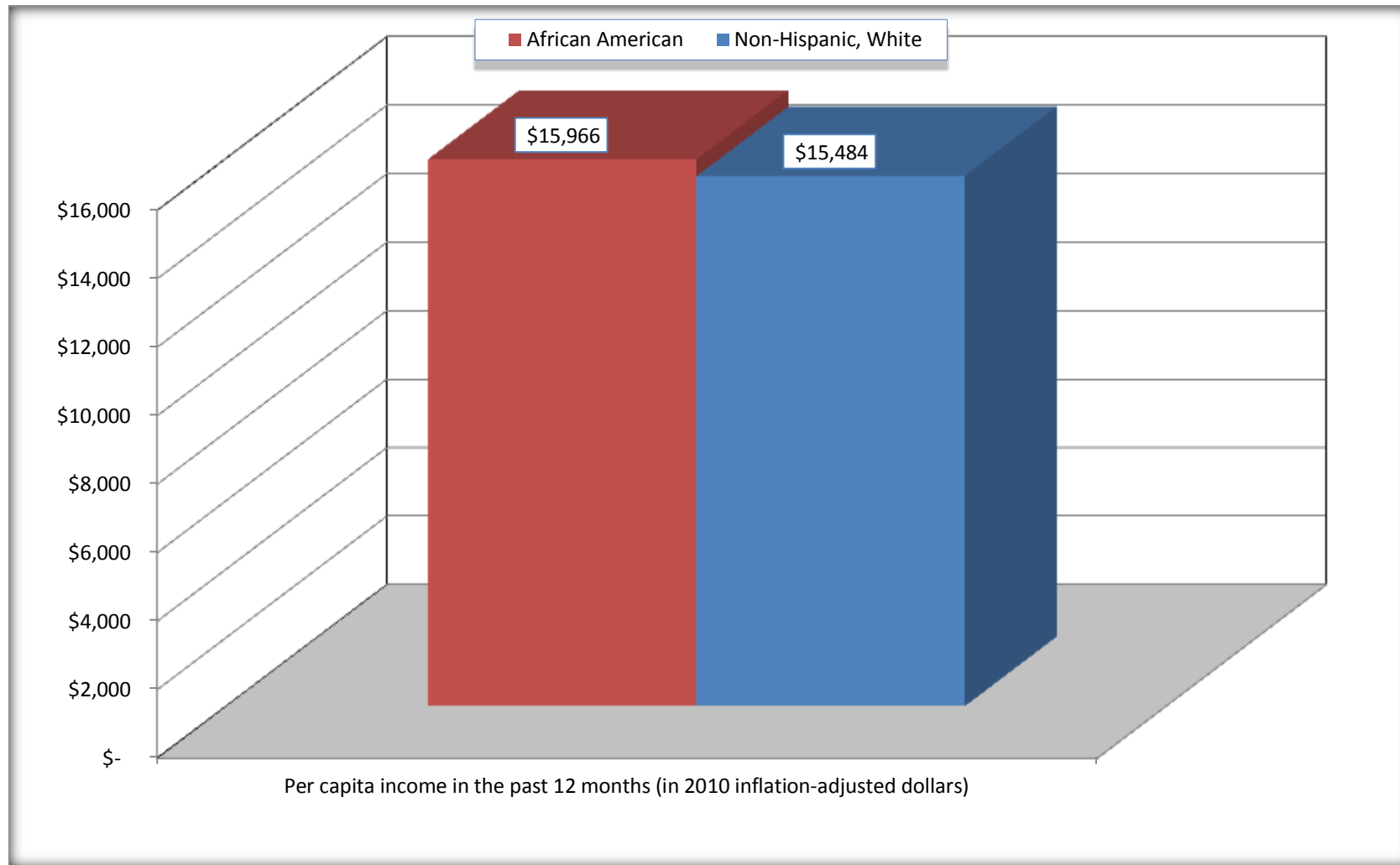
Source: U.S. Census Bureau, 2008-2012 American Community Survey

For information on confidentiality protection, sampling error, nonsampling error, and definitions, see Survey Methodology.

<http://www.census.gov/acs/www/UseData/index.htm>

## Per capita Income in the Past 12 Months

### Hugo city, Oklahoma



Source: B19301. PER CAPITA INCOME IN THE PAST 12 MONTHS (IN 2010 INFLATION-ADJUSTED DOLLARS)  
Data Set: 2008-2012 American Community Survey 5-Year Estimates

**B20017. MEDIAN EARNINGS IN THE PAST 12 MONTHS (IN 2010 INFLATION-ADJUSTED DOLLARS) BY SEX BY WORK EXPERIENCE IN THE PAST 12 MONTHS FOR THE POPULATION 16 YEARS AND OVER WITH EARNINGS IN THE PAST 12 MONTHS**

Data Set: 2008-2012 American Community Survey 5-Year Estimates

	Hugo city, Oklahoma			
	African American	Margin of Error (+/-)	White, Not Hispanic	Margin of Error (+/-)
Median earnings in the past 12 months (in 2010 inflation-adjusted dollars) --				
Total:	\$ 25,472	\$ 13,719	\$ 18,559	\$ 5,011
Male --				
Total	\$ 26,392	\$ 6,740	\$ 21,620	\$ 2,963
Worked full-time, year-round in the past 12 months	\$ 30,703	\$ 8,360	\$ 28,359	\$ 9,478
Other	\$ 13,056	\$ 8,198	\$ 12,696	\$ 2,401
Female --				
Total	\$ 17,784	\$ 16,818	\$ 12,832	\$ 2,575
Worked full-time, year-round in the past 12 months	\$ 30,094	\$ 25,587	\$ 21,458	\$ 3,958
Other	\$ -	\$ -	\$ 6,675	\$ 1,119

Source: U.S. Census Bureau, 2008-2012 American Community Survey

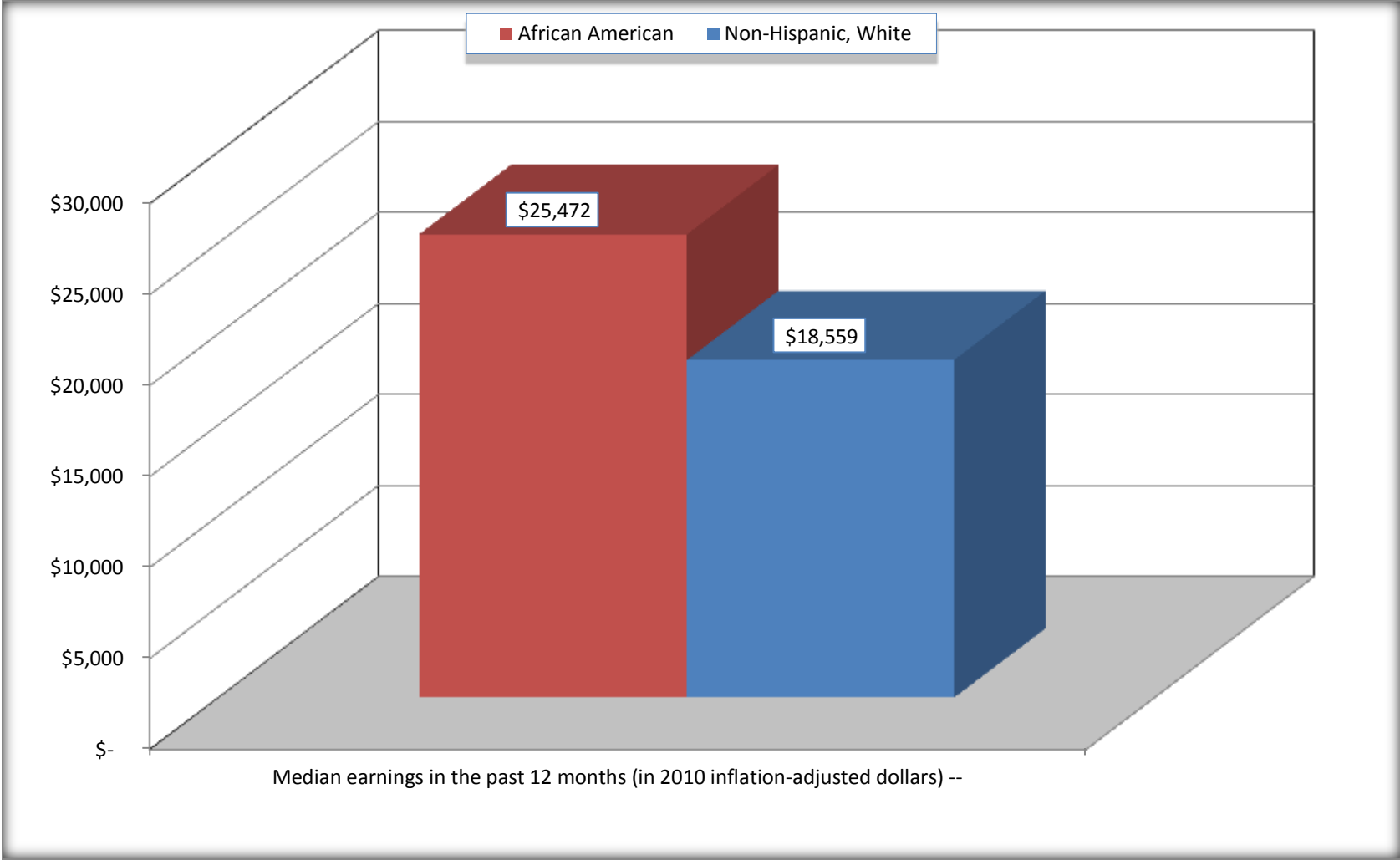
For information on confidentiality protection, sampling error, nonsampling error, and definitions, see Survey Methodology.

<http://www.census.gov/acs/www/UseData/index.htm>



# Median earnings in the Past 12 Months (16 Years and Over with Earnings)

## Hugo city, Oklahoma



Source: B20017. MEDIAN EARNINGS IN THE PAST 12 MONTHS (IN 2010 INFLATION-ADJUSTED DOLLARS) BY SEX BY WORK EXPERIENCE IN THE PAST 12 MONTHS FOR THE POPULATION 16 YEARS AND OVER WITH EARNINGS IN THE PAST 12 MONTHS  
Data Set: 2008-2012 American Community Survey 5-Year Estimates

**B20005. SEX BY WORK EXPERIENCE IN THE PAST 12 MONTHS BY EARNINGS IN THE PAST 12 MONTHS (IN 2010 INFLATION-ADJUSTED DOLLARS) FOR THE POPULATION 16 YEARS AND OVER**

Data Set: 2008-2012 American Community Survey 5-Year Estimates

	Hugo city, Oklahoma					
	African American	Margin of Error (+/-)	% of AA Total	White, Not Hispanic	Margin of Error (+/-)	% of NHW Total
<b>Total:</b>	<b>853</b>	<b>101</b>	<b>100.0%</b>	<b>2,478</b>	<b>220</b>	<b>100.0%</b>
Worked full-time, year-round in the past 12 months:	300	NC	35.2%	586	NC	23.6%
No earnings	0	NC	0.0%	0	NC	0.0%
With earnings:	300	NC	35.2%	586	NC	23.6%
\$ 1 to \$ 9,999 or loss	65	NC	7.6%	0	NC	0.0%
\$ 10,000 to \$ 19,999	26	NC	3.0%	152	NC	6.1%
\$ 20,000 to \$ 29,999	53	NC	6.2%	219	NC	8.8%
\$ 30,000 to \$ 49,999	112	NC	13.1%	107	NC	4.3%
\$ 50,000 to \$ 74,999	11	NC	1.3%	101	NC	4.1%
\$ 75,000 or more	33	NC	3.9%	7	NC	0.3%
Other:	553	NC	64.8%	1,892	NC	76.4%
No earnings	405	NC	47.5%	1,252	NC	50.5%
With earnings: less than full time, year-round	148	NC	17.4%	640	NC	25.8%
Male:	417	60	48.9%	1,125	161	45.4%
Worked full-time, year-round in the past 12 months:	139	77	16.3%	359	100	14.5%
No earnings	0	15	0.0%	0	15	0.0%
With earnings:	139	77	16.3%	359	100	14.5%
\$ 1 to \$ 9,999 or loss	12	NC	1.4%	0	NC	0.0%
\$ 10,000 to \$ 19,999	0	NC	0.0%	56	NC	2.3%
\$ 20,000 to \$ 29,999	53	NC	6.2%	134	NC	5.4%
\$ 30,000 to \$ 49,999	41	NC	4.8%	74	NC	3.0%
\$ 50,000 to \$ 74,999	0	NC	0.0%	88	NC	3.6%
\$ 75,000 or more	33	NC	3.9%	7	NC	0.3%

	Hugo city, Oklahoma					
	African American	Margin of Error (+/-)	% of AA Total	White, Not Hispanic	Margin of Error (+/-)	% of NHW Total
Other:	278	91	32.6%	766	167	30.9%
No earnings	188	76	22.0%	446	114	18.0%
With earnings:	90	55	10.6%	320	110	12.9%
Female:	436	60	51.1%	1,353	163	54.6%
Worked full-time, year-round in the past 12 months:	161	76	18.9%	227	80	9.2%
No earnings	0	15	0.0%	0	15	0.0%
With earnings:	161	76	18.9%	227	80	9.2%
\$ 1 to \$ 9,999 or loss	53	NC	6.2%	0	NC	0.0%
\$ 10,000 to \$ 19,999	26	NC	3.0%	96	NC	3.9%
\$ 20,000 to \$ 29,999	0	NC	0.0%	85	NC	3.4%
\$ 30,000 to \$ 49,999	71	NC	8.3%	33	NC	1.3%
\$ 50,000 to \$ 74,999	11	NC	1.3%	13	NC	0.5%
\$ 75,000 or more	0	NC	0.0%	0	NC	0.0%
Other:	275	79	32.2%	1,126	174	45.4%
No earnings	217	74	25.4%	806	161	32.5%
With earnings:	58	45	6.8%	320	107	12.9%

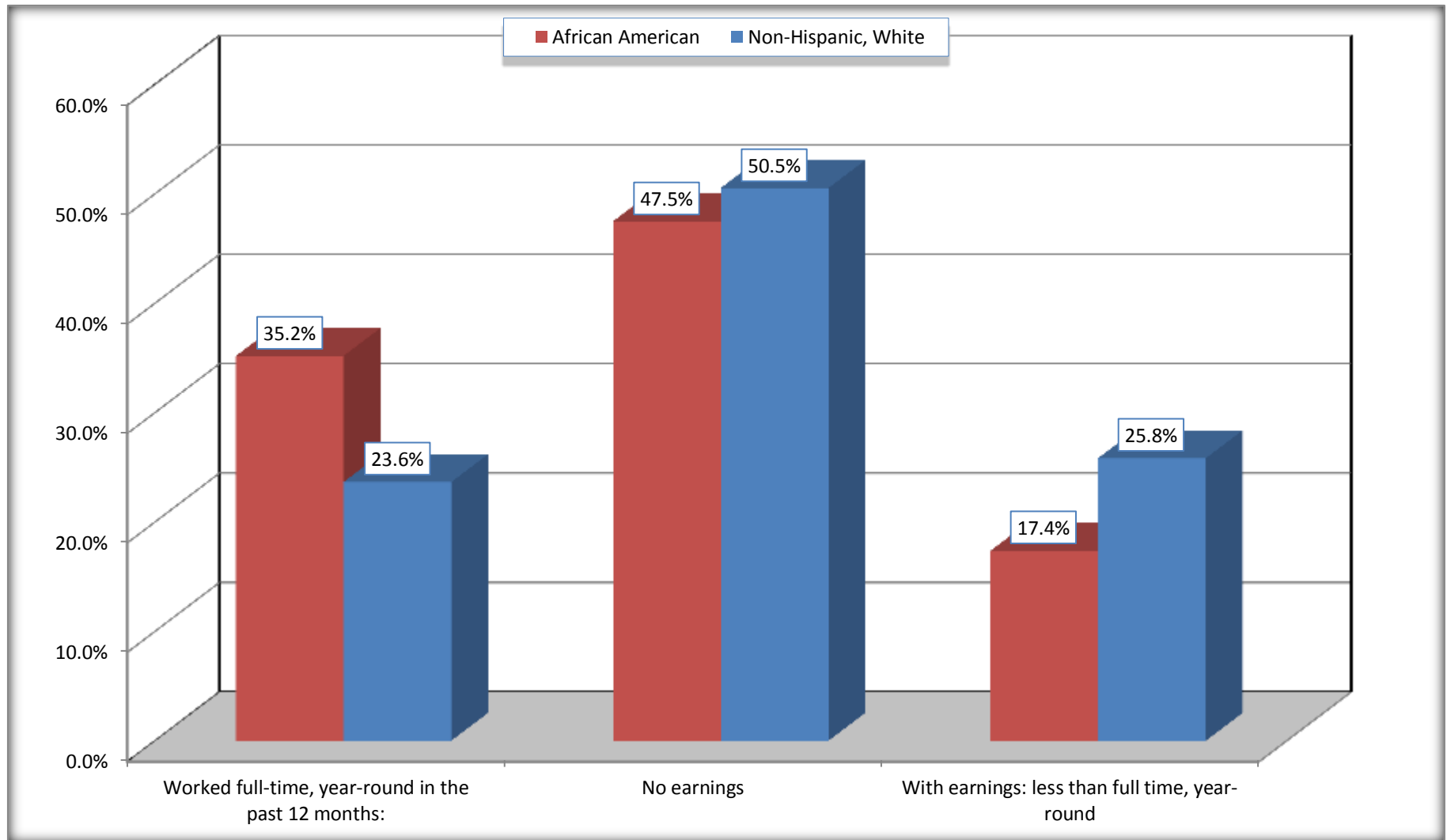
Source: U.S. Census Bureau, 2008-2012 American Community Survey

For information on confidentiality protection, sampling error, nonsampling error, and definitions, see Survey Methodology.

<http://www.census.gov/acs/www/UseData/index.htm>

# Employment and Earnings in in the Past 12 Months (16 Years and Over)

## Hugo city, Oklahoma



Source: B20005. SEX BY WORK EXPERIENCE IN THE PAST 12 MONTHS BY EARNINGS IN THE PAST 12 MONTHS (IN 2010 INFLATION-ADJUSTED DOLLARS) FOR THE POPULATION 16 YEARS AND OVER

Data Set: 2008-2012 American Community Survey 5-Year Estimates

**C21001. SEX BY AGE BY VETERAN STATUS FOR THE CIVILIAN POPULATION 18 YEARS AND OVER**

Data Set: 2008-2012 American Community Survey 5-Year Estimates

	Hugo city, Oklahoma					
	African American	Margin of Error (+/-)	% of AA Total	White, Not Hispanic	Margin of Error (+/-)	% of NHW Total
<b>Total:</b>	<b>836</b>	<b>99</b>	<b>100.0%</b>	<b>2,440</b>	<b>219</b>	<b>100.0%</b>
Veteran	66	NC	7.9%	268	NC	11.0%
Nonveteran	770	NC	92.1%	2,172	NC	89.0%
Male:	400	57	47.8%	1,117	161	45.8%
18 to 64 years:	367	46	43.9%	850	142	34.8%
Veteran	66	53	7.9%	90	50	3.7%
Nonveteran	301	66	36.0%	760	152	31.1%
65 years and over:	33	31	3.9%	267	84	10.9%
Veteran	0	15	0.0%	137	56	5.6%
Nonveteran	33	31	3.9%	130	57	5.3%
Female:	436	60	52.2%	1,323	160	54.2%
18 to 64 years:	348	56	41.6%	919	135	37.7%
Veteran	0	15	0.0%	41	36	1.7%
Nonveteran	348	56	41.6%	878	142	36.0%
65 years and over:	88	28	10.5%	404	83	16.6%
Veteran	0	15	0.0%	0	15	0.0%
Nonveteran	88	28	10.5%	404	83	16.6%

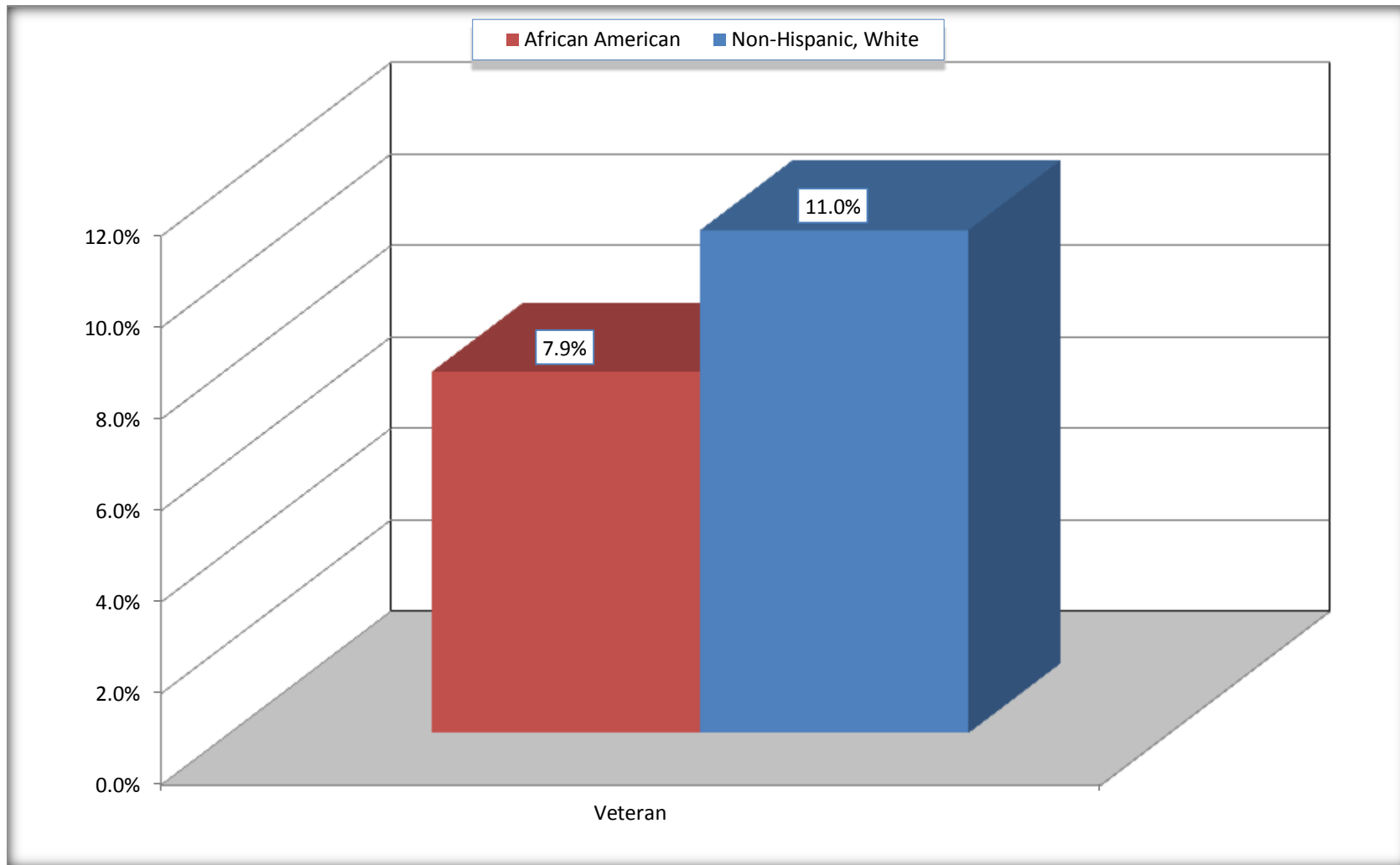
Source: U.S. Census Bureau, 2008-2012 American Community Survey

For information on confidentiality protection, sampling error, nonsampling error, and definitions, see Survey Methodology.

<http://www.census.gov/acs/www/UseData/index.htm>

# Veterans in the Civilian Population 18 Years and Over

## Hugo city, Oklahoma



Source: C21001. SEX BY AGE BY VETERAN STATUS FOR THE CIVILIAN POPULATION 18 YEARS AND OVER  
Data Set: 2008-2012 American Community Survey 5-Year Estimates

**B22005. RECEIPT OF FOOD STAMPS/SNAP IN THE PAST 12 MONTHS BY RACE OF HOUSEHOLDER**

Data Set: 2008-2012 American Community Survey 5-Year Estimates

	Hugo city, Oklahoma					
	African American	Margin of Error (+/-)	% of AA Total	White, Not Hispanic	Margin of Error (+/-)	% of NHW Total
<b>Total:</b>	<b>469</b>	<b>92</b>	<b>100.0%</b>	<b>1,257</b>	<b>155</b>	<b>100.0%</b>
HH received Food Stamps/SNAP in the past 12 months	157	77	33.5%	402	101	32.0%
HH did not receive Food Stamps/SNAP in the past 12 months	312	98	66.5%	855	161	68.0%

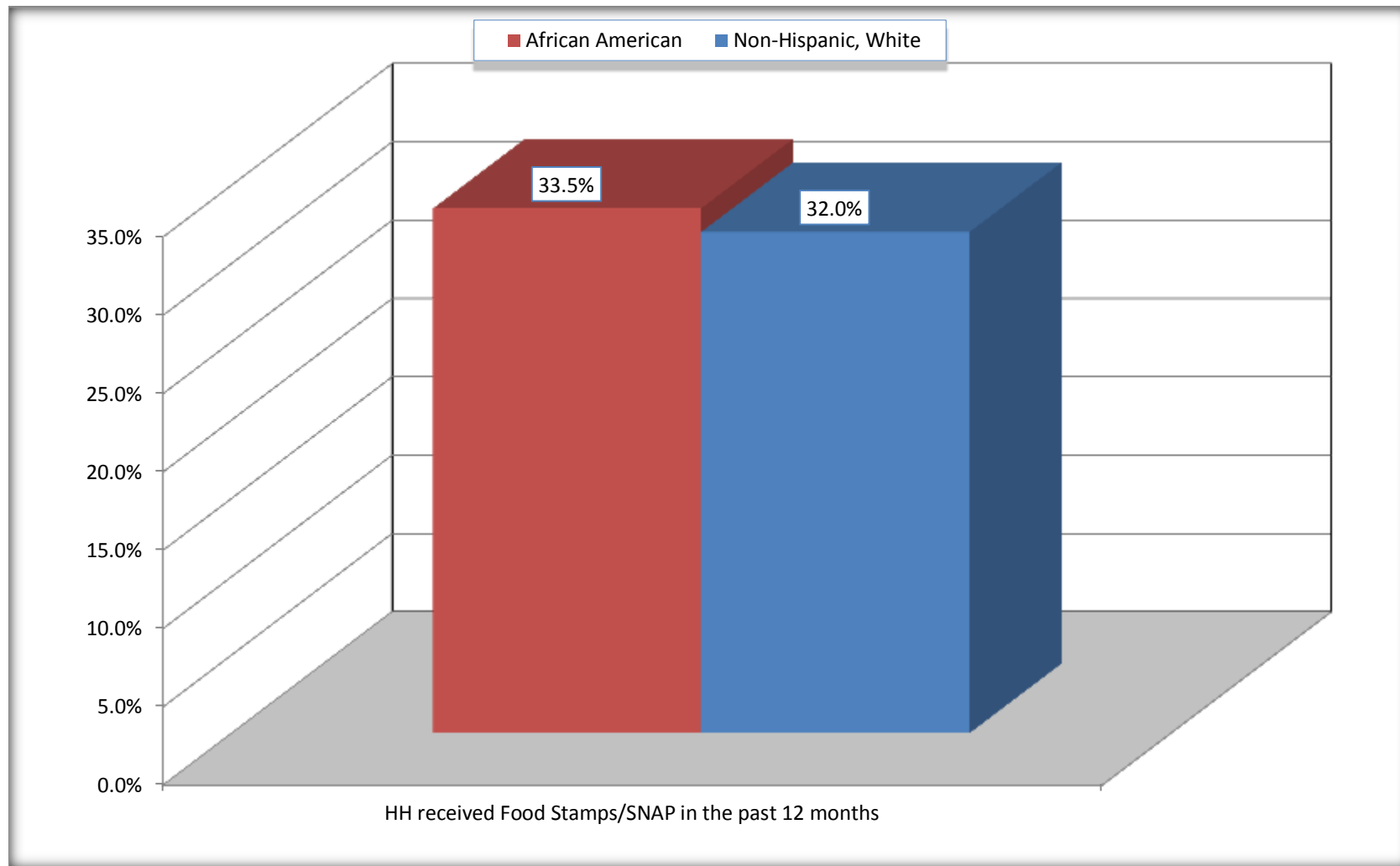
Source: U.S. Census Bureau, 2008-2012 American Community Survey

For information on confidentiality protection, sampling error, nonsampling error, and definitions, see Survey Methodology.

<http://www.census.gov/acs/www/UseData/index.htm>

# Receipt of Food Stamps/SNAP in the Past 12 Months by Household

## Hugo city, Oklahoma



Source: B22005. RECEIPT OF FOOD STAMPS/SNAP IN THE PAST 12 MONTHS BY RACE OF HOUSEHOLDER  
Data Set: 2008-2012 American Community Survey 5-Year Estimates



**C23002. SEX BY AGE BY EMPLOYMENT STATUS FOR THE POPULATION 16 YEARS AND OVER**

Data Set: 2008-2012 American Community Survey 5-Year Estimates

	Hugo city, Oklahoma					
	African American	Margin of Error (+/-)	% of AA Total	White, Not Hispanic	Margin of Error (+/-)	% of NHW Total
<b>Total:</b>	<b>853</b>	<b>101</b>	<b>100.0%</b>	<b>2,478</b>	<b>220</b>	<b>100.0%</b>
In labor force:	466	NC	54.6%	1,102	NC	44.5%
In Armed Forces	0	NC	0.0%	0	NC	0.0%
Civilian:	466	NC	54.6%	1,046	NC	42.2%
Employed	397	NC	46.5%	968	NC	39.1%
Unemployed	69	NC	8.1%	134	NC	5.4%
Not in labor force	387	NC	45.4%	1,376	NC	55.5%
Male:	417	60	48.9%	1,125	161	45.4%
16 to 64 years:	384	52	45.0%	858	141	34.6%
In labor force:	250	73	29.3%	613	121	24.7%
In Armed Forces	0	15	0.0%	0	15	0.0%
Civilian:	250	73	29.3%	613	121	24.7%
Employed	218	76	25.6%	554	117	22.4%
Unemployed	32	35	3.8%	59	47	2.4%
Not in labor force	134	74	15.7%	245	86	9.9%
65 years and over:	33	31	3.9%	267	84	10.8%
In labor force:	0	15	0.0%	39	44	1.6%
Employed	0	15	0.0%	39	44	1.6%
Unemployed	0	15	0.0%	0	15	0.0%
Not in labor force	33	31	3.9%	228	75	9.2%

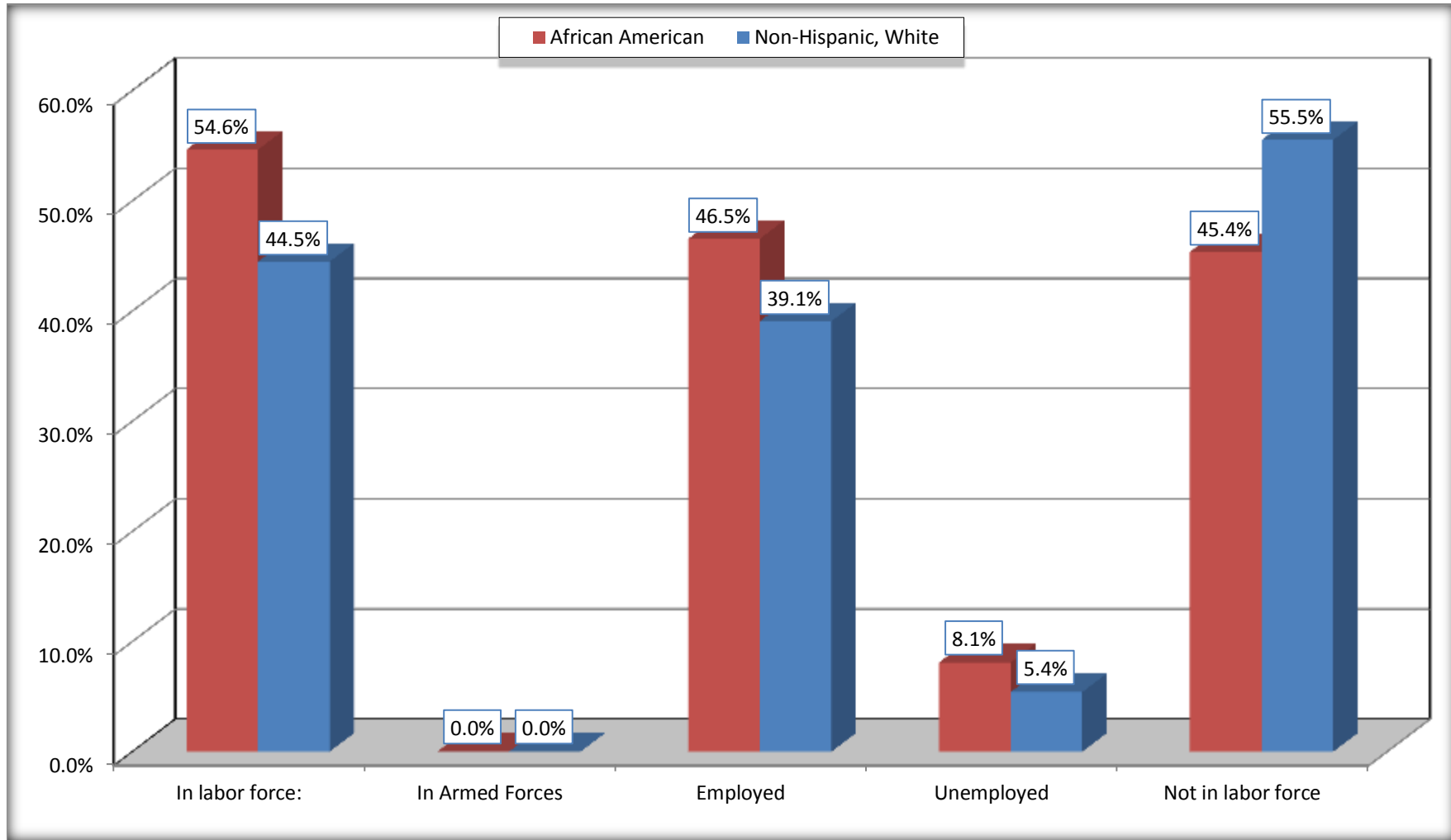
	Hugo city, Oklahoma					
	African American	Margin of Error (+/-)	% of AA Total	White, Not Hispanic	Margin of Error (+/-)	% of NHW Total
Female:	436	60	51.1%	1,353	163	54.6%
16 to 64 years:	348	56	40.8%	949	140	38.3%
In labor force:	216	79	25.3%	433	97	17.5%
In Armed Forces	0	15	0.0%	0	15	0.0%
Civilian:	216	79	25.3%	433	97	17.5%
Employed	179	81	21.0%	358	100	14.4%
Unemployed	37	32	4.3%	75	54	3.0%
Not in labor force	132	63	15.5%	516	144	20.8%
65 years and over:	88	28	10.3%	404	83	16.3%
In labor force:	0	15	0.0%	17	19	0.7%
Employed	0	15	0.0%	17	19	0.7%
Unemployed	0	15	0.0%	0	15	0.0%
Not in labor force	88	28	10.3%	387	79	15.6%

Source: U.S. Census Bureau, 2008-2012 American Community Survey

For information on confidentiality protection, sampling error, nonsampling error, and definitions, see Survey Methodology.  
<http://www.census.gov/acs/www/UseData/index.htm>

# Employment Status for the Population 16 years and over

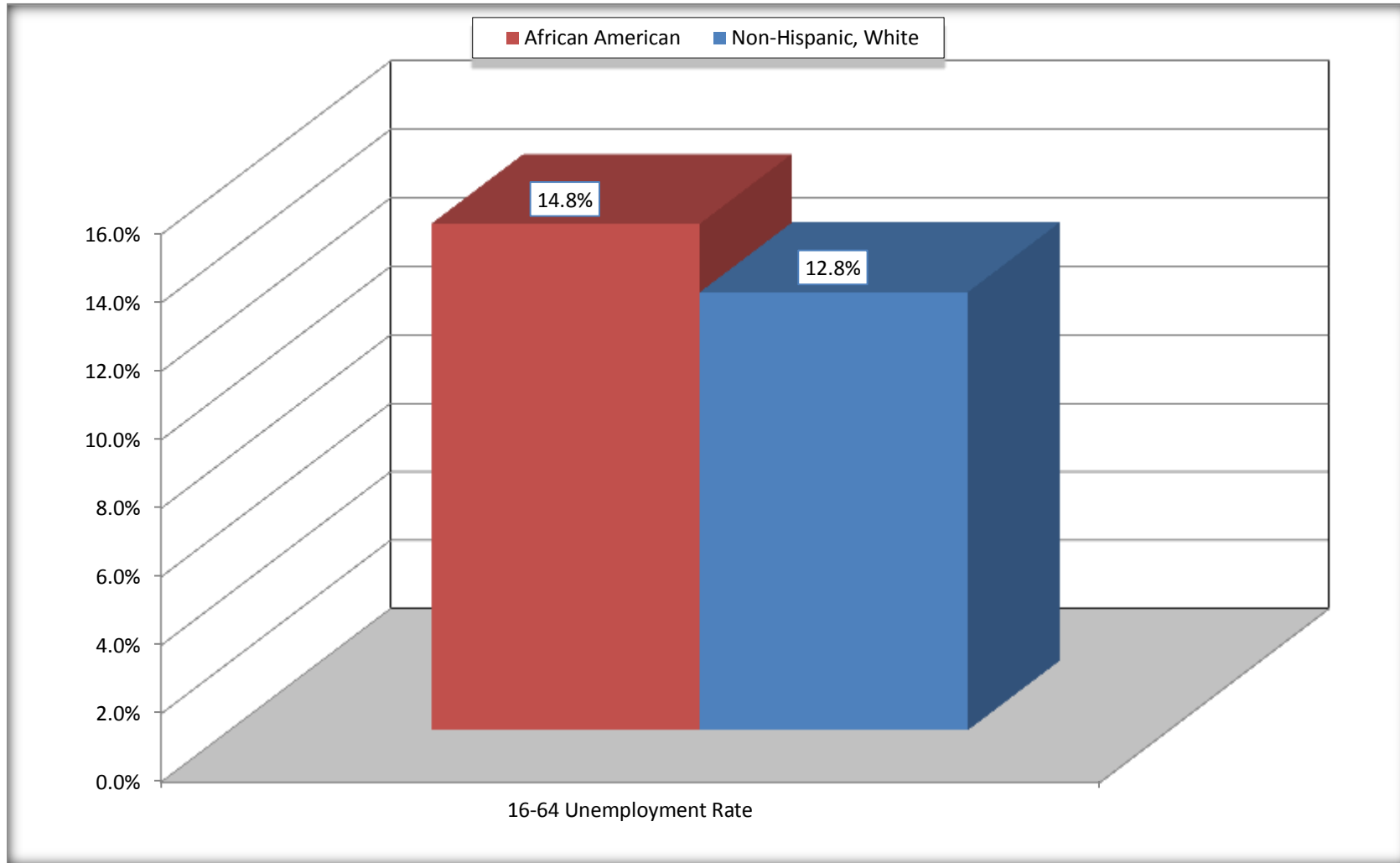
## Hugo city, Oklahoma



Source: C23002. SEX BY AGE BY EMPLOYMENT STATUS FOR THE POPULATION 16 YEARS AND OVER  
Data Set: 2008-2012 American Community Survey 5-Year Estimates

# Unemployment of Working Age Population (Ages 16 to 64) (As a Percent of 16-64 Civilian Labor Force)

## Hugo city, Oklahoma



Source: C23002. SEX BY AGE BY EMPLOYMENT STATUS FOR THE POPULATION 16 YEARS AND OVER  
Data Set: 2008-2012 American Community Survey 5-Year Estimates

**C24010. SEX BY OCCUPATION FOR THE CIVILIAN EMPLOYED POPULATION 16 YEARS AND OVER**

Data Set: 2008-2012 American Community Survey 5-Year Estimates

	Hugo city, Oklahoma					
	African American	Margin of Error (+/-)	% of AA Total	White, Not Hispanic	Margin of Error (+/-)	% of NHW Total
<b>Total:</b>	<b>397</b>	<b>106</b>	<b>100.0%</b>	<b>968</b>	<b>177</b>	<b>100.0%</b>
Management, professional, and related occupations	82	NC	20.7%	162	NC	16.7%
Service occupations	139	NC	35.0%	165	NC	17.0%
Sales and office occupations	47	NC	11.8%	247	NC	25.5%
Natural resources, construction, and maintenance occupations:	12	NC	3.0%	191	NC	19.7%
Production, transportation, and material moving occupations	117	NC	29.5%	203	NC	21.0%
Male:	218	76	54.9%	593	127	61.3%
Management, business, science, and arts occupations:	39	43	9.8%	67	40	6.9%
Service occupations	83	60	20.9%	44	34	4.5%
Sales and office occupations	11	23	2.8%	119	92	12.3%
Natural resources, construction, and maintenance occupations:	12	17	3.0%	191	95	19.7%
Production, transportation, and material moving occupations	73	52	18.4%	172	114	17.8%
Female:	179	81	45.1%	375	102	38.7%
Management, professional, and related occupations	43	50	10.8%	95	52	9.8%
Service occupations	56	42	14.1%	121	53	12.5%
Sales and office occupations	36	37	9.1%	128	58	13.2%
Natural resources, construction, and maintenance occupations:	0	15	0.0%	0	15	0.0%
Production, transportation, and material moving occupations	44	48	11.1%	31	35	3.2%

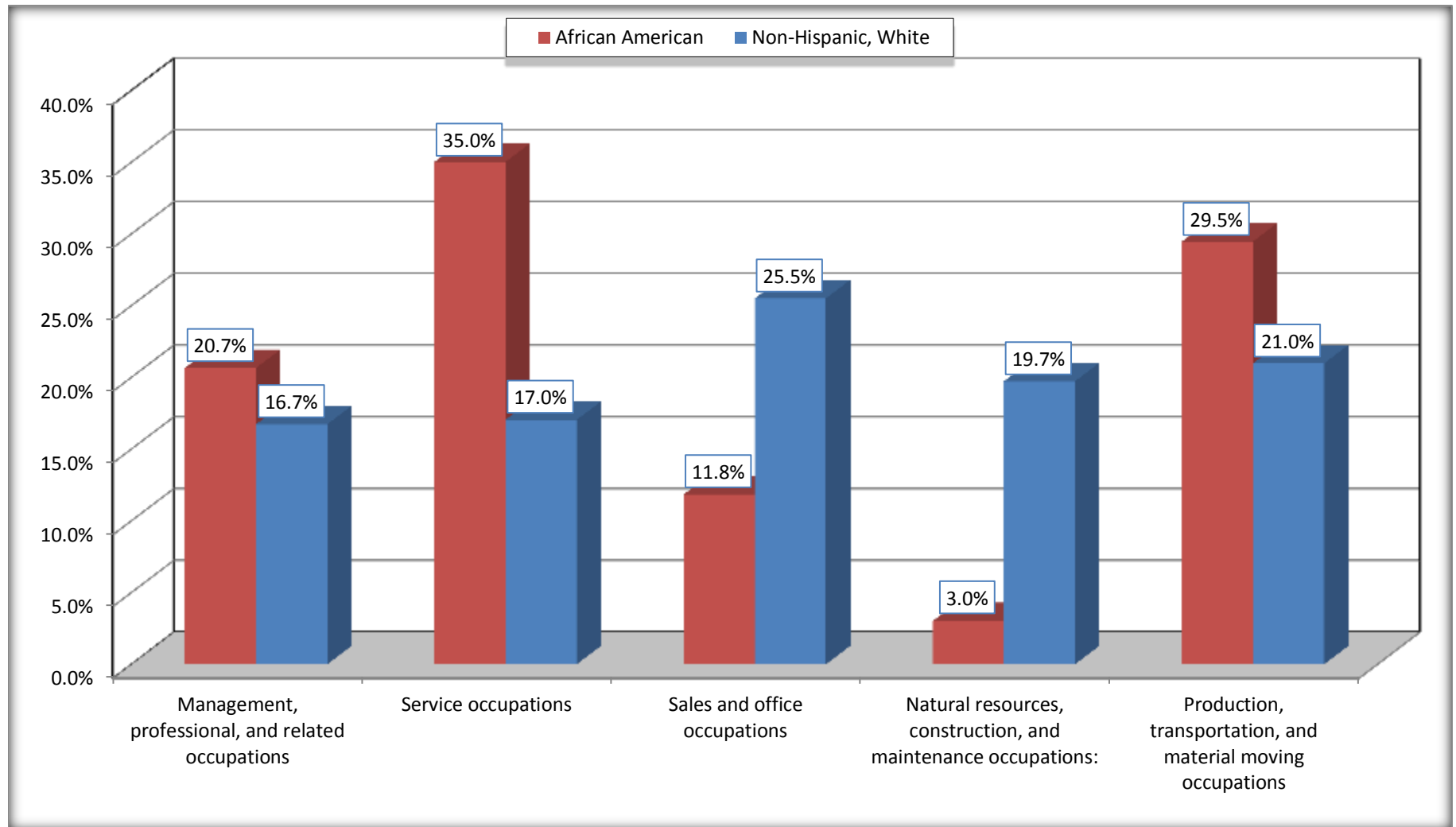
Source: U.S. Census Bureau, 2008-2012 American Community Survey

For information on confidentiality protection, sampling error, nonsampling error, and definitions, see Survey Methodology.

<http://www.census.gov/acs/www/UseData/index.htm>

# Occupation for the Civilian Employed 16 Years and Over Population

## Hugo city, Oklahoma



Source: C24010. SEX BY OCCUPATION FOR THE CIVILIAN EMPLOYED POPULATION 16 YEARS AND OVER  
Data Set: 2008-2012 American Community Survey 5-Year Estimates

**B25003. TENURE - Universe: OCCUPIED HOUSING UNITS**

Data Set: 2008-2012 American Community Survey 5-Year Estimates

	Hugo city, Oklahoma					
	African American	Margin of Error (+/-)	% of AA Total	White, Not Hispanic	Margin of Error (+/-)	% of NHW Total
<b>Total:</b>	<b>469</b>	<b>92</b>	<b>100.0%</b>	<b>1,257</b>	<b>155</b>	<b>100.0%</b>
Owner occupied	199	62	42.4%	774	110	61.6%
Renter occupied	270	89	57.6%	483	132	38.4%

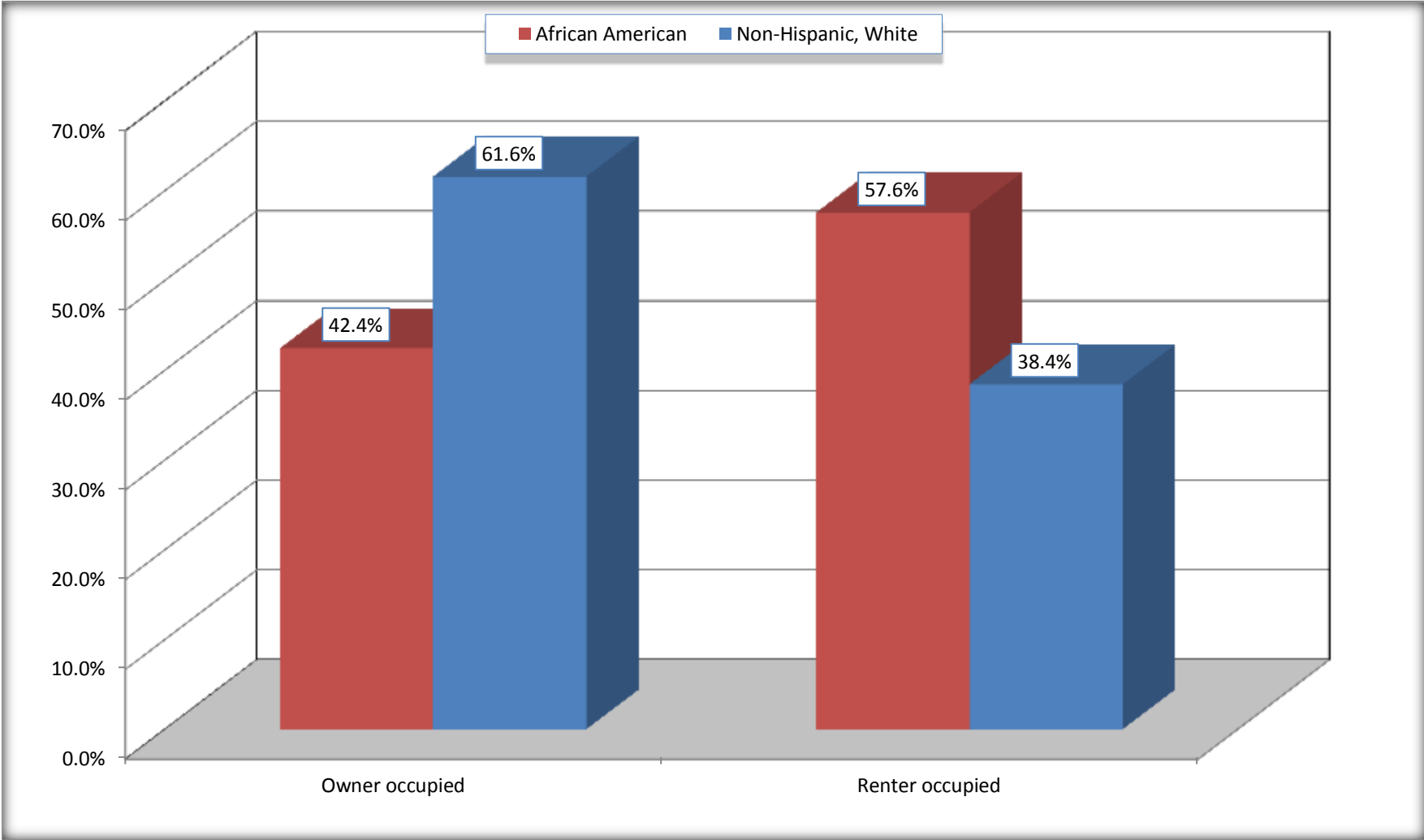
Source: U.S. Census Bureau, 2008-2012 American Community Survey

For information on confidentiality protection, sampling error, nonsampling error, and definitions, see Survey Methodology.

<http://www.census.gov/acs/www/UseData/index.h>

# Home Owners and Renters by Household

## Hugo city, Oklahoma



Source: B25003. TENURE - Universe: OCCUPIED HOUSING UNITS  
Data Set: 2008-2012 American Community Survey 5-Year Estimates



**B25014. OCCUPANTS PER ROOM - Universe: OCCUPIED HOUSING UNITS**

Data Set: 2008-2012 American Community Survey 5-Year Estimates

	Hugo city, Oklahoma					
	African American	Margin of Error (+/-)	% of AA Total	White, Not Hispanic	Margin of Error (+/-)	% of NHW Total
<b>Total:</b>	<b>469</b>	<b>92</b>	<b>100.0%</b>	<b>1,257</b>	<b>155</b>	<b>100.0%</b>
1.00 or less occupants per room	469	92	100.0%	1,243	160	98.9%
1.01 or more occupants per room	0	15	0.0%	14	22	1.1%

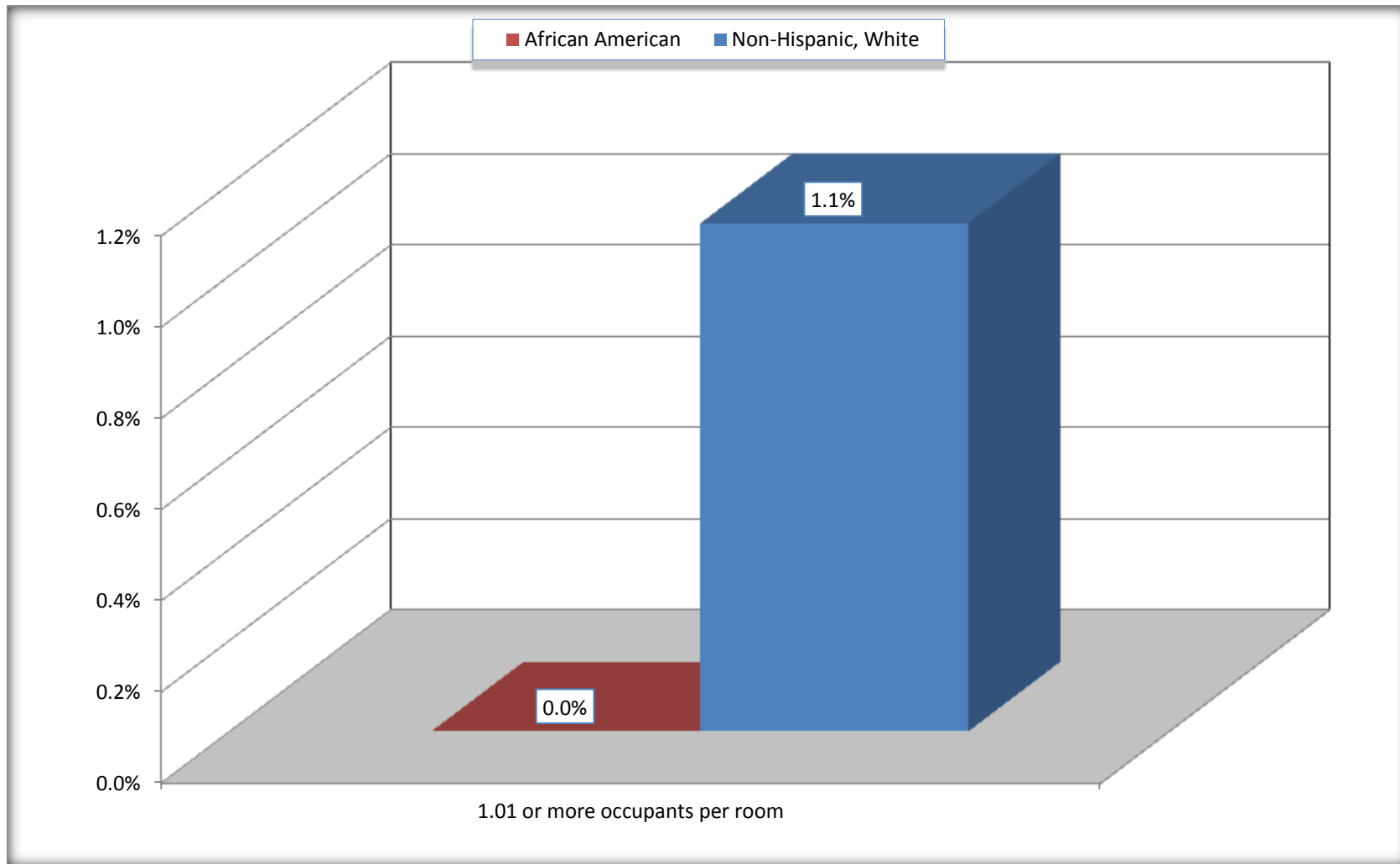
Source: U.S. Census Bureau, 2008-2012 American Community Survey

For information on confidentiality protection, sampling error, nonsampling error, and definitions, see Survey Methodology.

<http://www.census.gov/acs/www/UseData/index.ht>

# More than One Person per Room (Crowding) by Household

## Hugo city, Oklahoma



Source: B25014. OCCUPANTS PER ROOM - Universe: OCCUPIED HOUSING UNITS  
Data Set: 2008-2012 American Community Survey 5-Year Estimates

**B18101. AGE BY DISABILITY STATUS**

Data Set: 2008-2012 American Community Survey 5-Year Estimates

	Hugo city, Oklahoma					
	African American	Margin of Error (+/-)	% of AA Total	White, Not Hispanic	Margin of Error (+/-)	% of NHW Total
<b>Total:</b>	<b>1,066</b>	<b>186</b>	<b>100.0%</b>	<b>2,813</b>	<b>238</b>	<b>100.0%</b>
Under 18 years:	259	123	24.3%	502	17	17.8%
With a disability	2	6	0.2%	71	60	2.5%
No disability	257	121	24.1%	431	125	15.3%
18 to 64 years:	688	96	64.5%	1,727	202	61.4%
With a disability	147	82	13.8%	529	116	18.8%
No disability	541	105	50.8%	1,198	165	42.6%
65 years and over:	119	47	11.2%	584	129	20.8%
With a disability	81	43	7.6%	378	105	13.4%
No disability	38	38	3.6%	206	68	7.3%

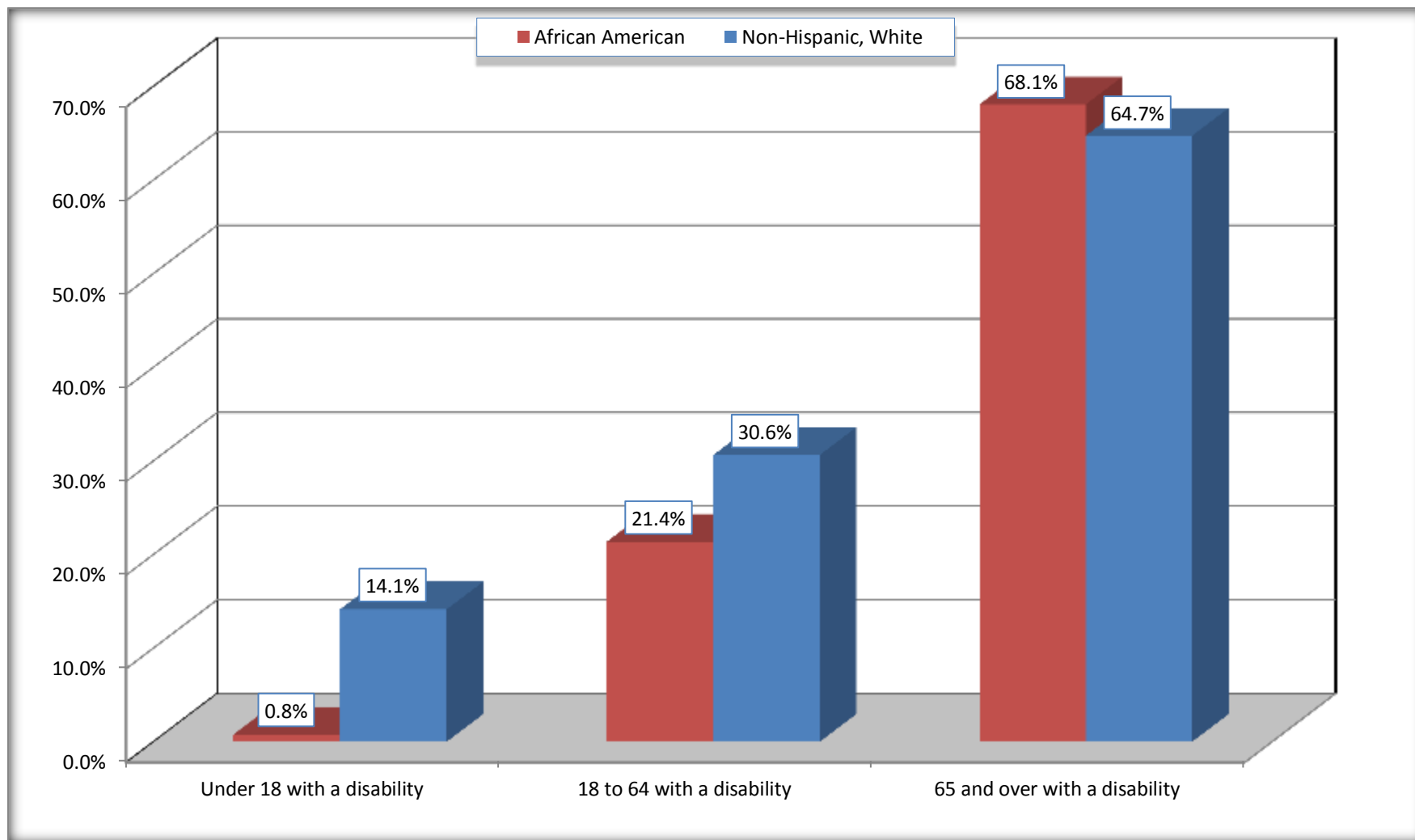
Source: U.S. Census Bureau, 2008-2012 American Community Survey

For information on confidentiality protection, sampling error, nonsampling error, and definitions, see Survey Methodology.

<http://www.census.gov/acs/www/UseData/index.htm>

## Disability by Age

### Hugo city, Oklahoma



Source: B18101. AGE BY DISABILITY STATUS  
Data Set: 2008-2012 American Community Survey 5-Year Estimates

**C27001B. HEALTH INSURANCE COVERAGE STATUS BY AGE**

Data Set: 2008-2012 American Community Survey 5-Year Estimates

	<b>Hugo city, Oklahoma</b>					
	African American	Margin of Error (+/-)	% of AA Total	White, Not Hispanic	Margin of Error (+/-)	% of NHW Total
<b>Total:</b>	<b>1,066</b>	<b>186</b>	<b>100.0%</b>	<b>2,813</b>	<b>238</b>	<b>100.0%</b>
Under 18 years:	259	123	24.3%	502	135	17.8%
With health insurance coverage	256	121	24.0%	457	122	16.2%
No health insurance coverage	3	8	0.3%	45	50	1.6%
18 to 64 years:	688	96	64.5%	1,727	202	61.4%
With health insurance coverage	565	109	53.0%	1,187	185	42.2%
No health insurance coverage	123	67	11.5%	540	141	19.2%
65 years and over:	119	47	11.2%	584	129	20.8%
With health insurance coverage	119	47	11.2%	584	129	20.8%
No health insurance coverage	0	15	0.0%	0	15	0.0%

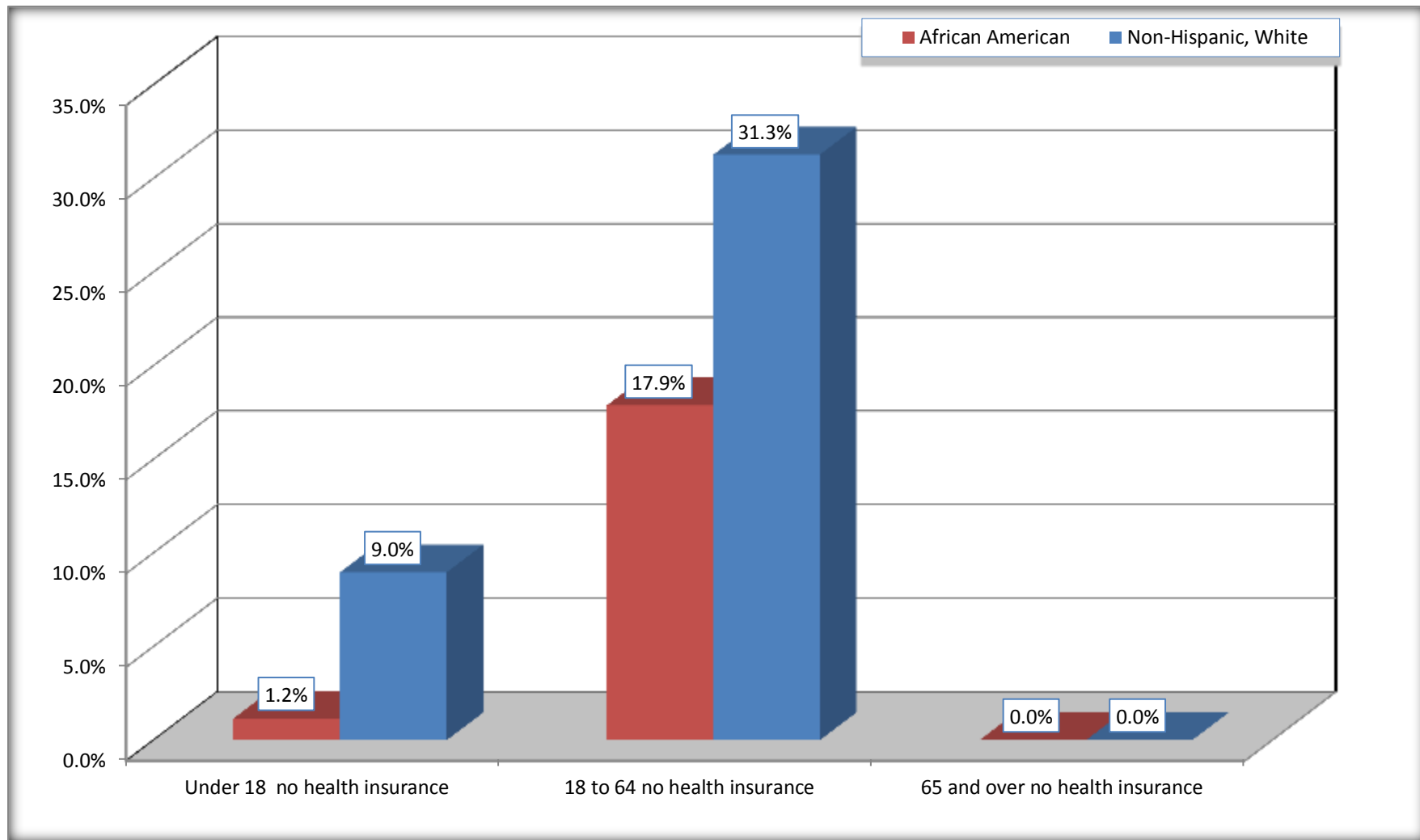
Source: U.S. Census Bureau, 2008-2012 American Community Survey

For information on confidentiality protection, sampling error, nonsampling error, and definitions, see Survey Methodology.

<http://www.census.gov/acs/www/UseData/index.htm>

# Lack of Health Insurance Coverage by Age

## Hugo city, Oklahoma



Source: C27001B. HEALTH INSURANCE COVERAGE STATUS BY AGE  
Data Set: 2008-2012 American Community Survey 5-Year Estimates