

# **Selected Socio-Economic Data**

## **Trotwood city, Ohio**

### **African American and White, Not Hispanic**

**Data Set: 2008-2012 American Community Survey 5-Year Estimates**

[www.fairvote2020.org](http://www.fairvote2020.org)

[www.fairdata2000.com](http://www.fairdata2000.com)

[29-Dec-13](#)

**C02003.DETAILED RACE - Universe: TOTAL POPULATION**

Data Set: 2008-2012 American Community Survey 5-Year Estimates

	Trotwood city, Ohio		
	Population	Margin of Error (+/-)	% of Total
<b>Total:</b>	<b>24,536</b>	<b>49</b>	<b>100.0%</b>
Population of one race:	23,984	272	97.8%
White	7,130	585	29.1%
Black or African American	16,491	637	67.2%
American Indian and Alaska Native	132	140	0.5%
Asian alone	150	121	0.6%
Native Hawaiian and Other Pacific Islander	0	21	0.0%
Some other race	81	60	0.3%
Population of two or more races:	552	264	2.2%
Two races including Some other race	48	42	0.2%
Two races excluding Some other race, and three or more races	504	262	2.1%
Population of two races:	483	252	2.0%
White; Black or African American	278	190	1.1%
White; American Indian and Alaska Native	63	82	0.3%
White; Asian	11	12	0.0%
Black or African American; American Indian and Alaska Native	27	23	0.1%
All other two race combinations	104	93	0.4%
Population of three races	69	75	0.3%
Population of four or more races	0	21	0.0%

Note: Hispanics may be of any race. See Table B03002 and chart.

Source: U.S. Census Bureau, 2008-2012 American Community Survey

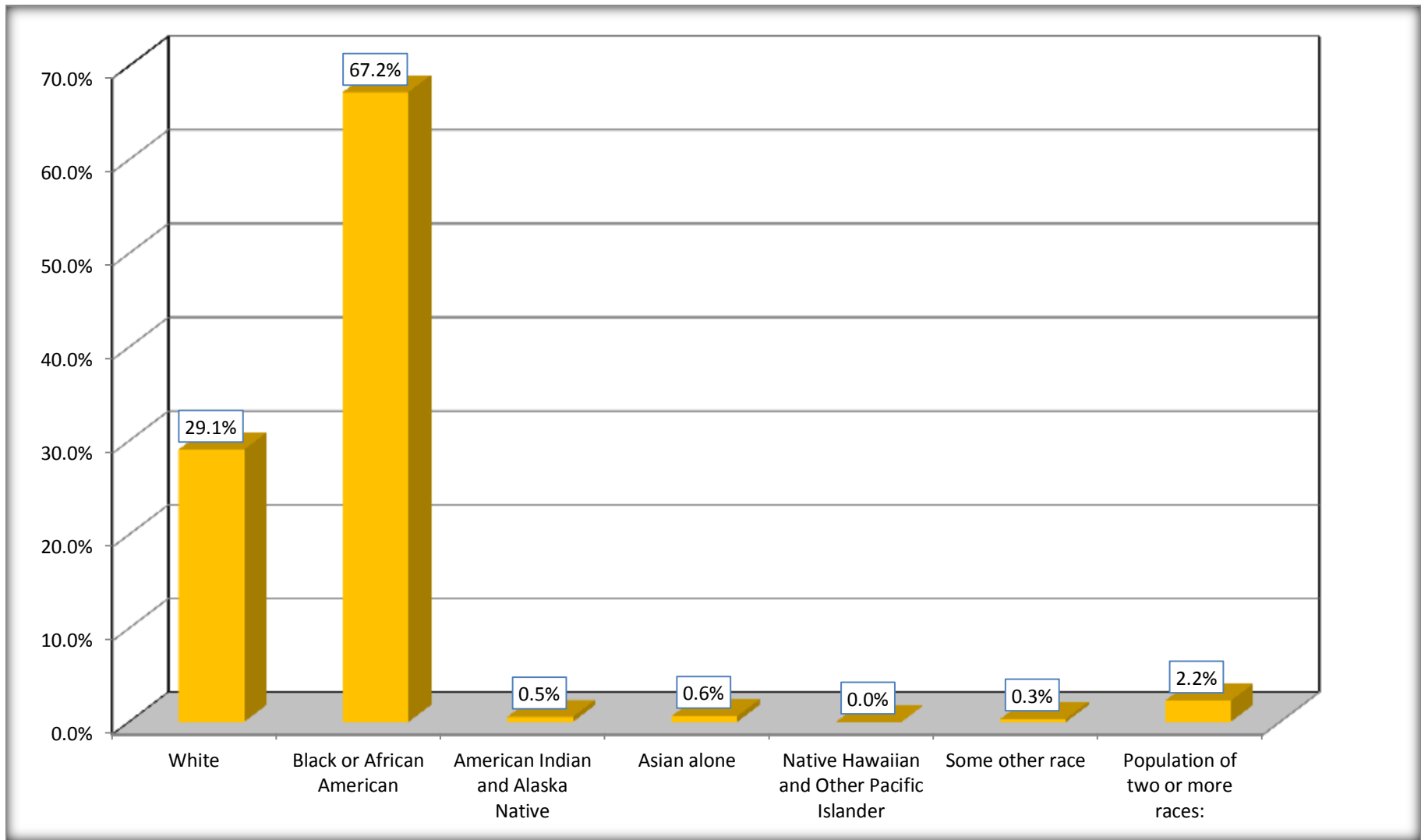
Although the American Community Survey (ACS) produces population, demographic and housing unit estimates, it is the Census Bureau's Population Estimates Program that produces and disseminates the official estimates of the population for the nation, states, counties, cities and towns and estimates of housing units for states and counties.

For information on confidentiality protection, sampling error, nonsampling error, and definitions, see Survey Methodology.

<http://www.census.gov/acs/www/UseData/index.htm>

# Population by Race

## Trotwood city, Ohio



Source: C02003.DETAILED RACE - Universe: TOTAL POPULATION  
Data Set: 2008-2012 American Community Survey 5-Year Estimates

**B03002. HISPANIC OR LATINO ORIGIN BY RACE - Universe: TOTAL POPULATION**

Data Set: 2008-2012 American Community Survey 5-Year Estimates

	Trotwood city, Ohio		
	Population	Margin of Error (+/-)	% of Total
<b>Total:</b>	24,536	49	<b>100.0%</b>
Not Hispanic or Latino:	24,105	303	98.2%
White alone	6,833	598	27.8%
Black or African American alone	16,491	637	67.2%
American Indian and Alaska Native alone	125	140	0.5%
Asian alone	150	121	0.6%
Native Hawaiian and Other Pacific Islander alone	0	21	0.0%
Some other race alone	60	57	0.2%
Two or more races:	446	203	1.8%
Two races including Some other race	41	40	0.2%
Two races excluding Some other race, and three or more races	405	202	1.7%
Hispanic or Latino	431	306	1.8%

Source: U.S. Census Bureau, 2008-2012 American Community Survey

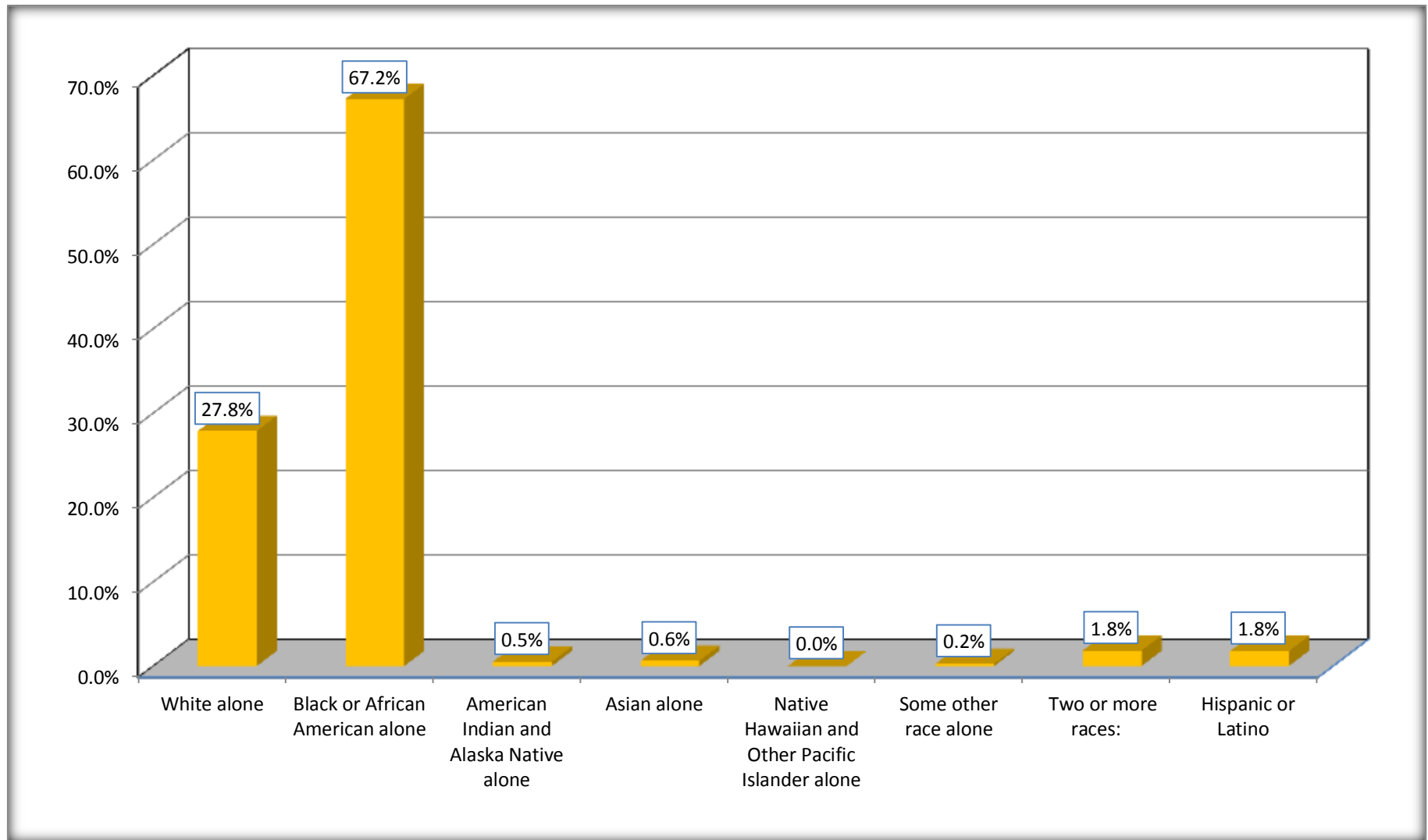
Although the American Community Survey (ACS) produces population, demographic and housing unit estimates, it is the Census Bureau's Population Estimates Program that produces and disseminates the official estimates of the population for the nation, states, counties, cities and towns and estimates of housing units for states and counties.

For information on confidentiality protection, sampling error, nonsampling error, and definitions, see Survey Methodology.

<http://www.census.gov/acs/www/UseData/index.htm>

# Non-Hispanic by Race and Hispanic Population

## Trotwood city, Ohio



Source: B03002. HISPANIC OR LATINO ORIGIN BY RACE - Universe: TOTAL POPULATION  
Data Set: 2008-2012 American Community Survey 5-Year Estimates

**B03002. HISPANIC OR LATINO ORIGIN BY RACE**

Data Set: 2008-2012 American Community Survey 5-Year Estimates

	Trotwood city, Ohio		
	Population	Margin of Error (+/-)	% of Total
Hispanic or Latino:	431	306	<b>100.0%</b>
White alone	297	270	68.9%
Black or African American alone	0	21	0.0%
American Indian and Alaska Native alone	7	12	1.6%
Asian alone	0	21	0.0%
Native Hawaiian and Other Pacific Islander alone	0	21	0.0%
Some other race alone	21	22	4.9%
Two or more races:	106	145	24.6%
Two races including Some other race	7	13	1.6%
Two races excluding Some other race, and three or more races	99	144	23.0%

Source: U.S. Census Bureau, 2008-2012 American Community Survey

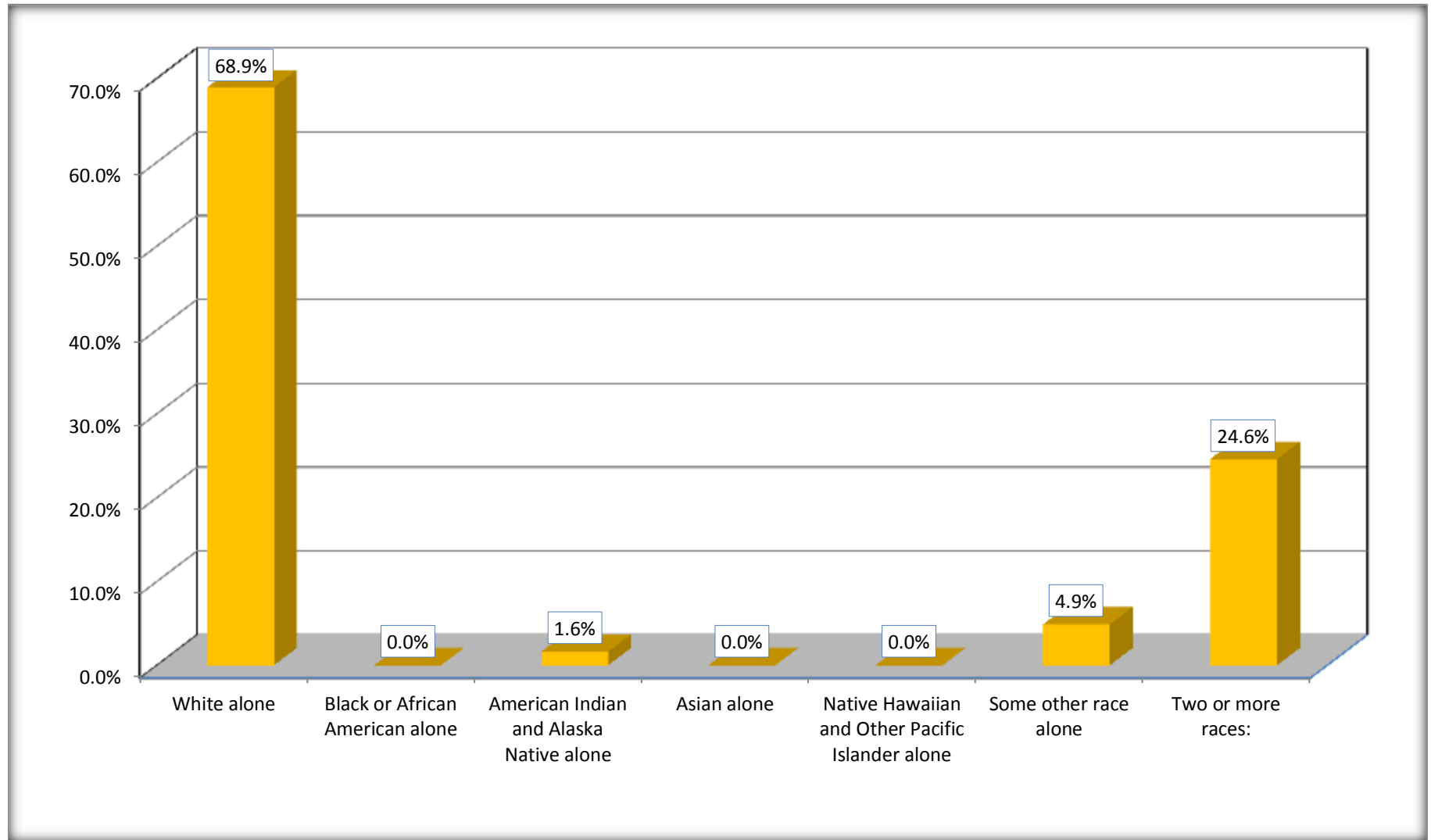
Although the American Community Survey (ACS) produces population, demographic and housing unit estimates, it is the Census Bureau's Population Estimates Program that produces and disseminates the official estimates of the population for the nation, states, counties, cities and towns and estimates of housing units for states and counties.

For information on confidentiality protection, sampling error, nonsampling error, and definitions, see Survey Methodology.

<http://www.census.gov/acs/www/UseData/index.htm>

# Hispanic or Latino Origin by Race

## Trotwood city, Ohio



Source: B03002. HISPANIC OR LATINO ORIGIN BY RACE  
Data Set: 2008-2012 American Community Survey 5-Year Estimates

**B01001. SEX BY AGE**

Data Set: 2008-2012 American Community Survey 5-Year Estimates

	Trotwood city, Ohio					
	African American	Margin of Error (+/-)	% of AA Total	White, Not Hispanic	Margin of Error (+/-)	% of NHW Total
<b>Total:</b>	<b>16,491</b>	<b>637</b>	<b>100.0%</b>	<b>6,833</b>	<b>598</b>	<b>100.0%</b>
Under 18 years	4,396	NC	26.7%	900	NC	13.2%
18 to 64 years	9,972	NC	60.5%	3,894	NC	57.0%
65 years and over	2,123	NC	12.9%	2,039	NC	29.8%
Male:	7,393	450	44.8%	3,314	389	48.5%
Under 18 years	2099	NC	12.7%	475	NC	7.0%
18 to 64 years	4,400	NC	26.7%	1,977	NC	28.9%
65 years and over	894	NC	5.4%	862	NC	12.6%
Female:	9,098	531	55.2%	3,519	412	51.5%
Under 18 years	2,297	NC	13.9%	425	NC	6.2%
18 to 64 years	5,572	NC	33.8%	1,917	NC	28.1%
65 years and over	1,229	NC	7.5%	1,177	NC	17.2%

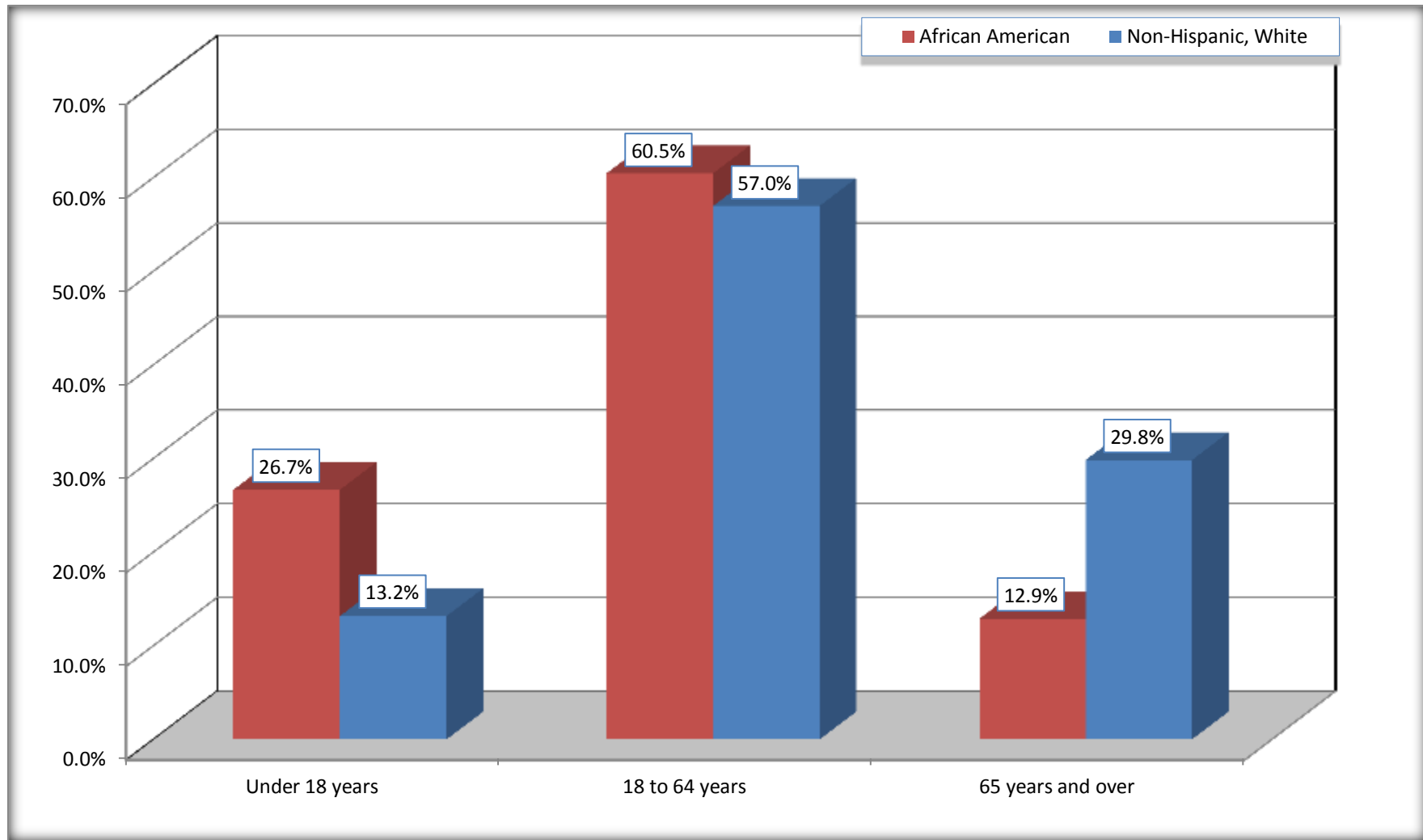
Source: U.S. Census Bureau, 2008-2012 American Community Survey

Although the American Community Survey (ACS) produces population, demographic and housing unit estimates, it is the Census Bureau's Population Estimates Program that produces and disseminates the official estimates of the population for the nation, states, counties, cities and towns and estimates of housing units for states and counties.

For information on confidentiality protection, sampling error, nonsampling error, and definitions, see Survey Methodology.  
<http://www.census.gov/acs/www/UseData/index.htm>



## Population by Age Trotwood city, Ohio



Source: B01001. SEX BY AGE  
Data Set: 2008-2012 American Community Survey 5-Year Estimates

**B05003. SEX BY AGE BY CITIZENSHIP STATUS**

Data Set: 2008-2012 American Community Survey 5-Year Estimates

	Trotwood city, Ohio					
	African American	Margin of Error (+/-)	% of AA Total by Age	White, Not Hispanic	Margin of Error (+/-)	% of NHW Total by Age
<b>Total:</b>	<b>16,491</b>	<b>637</b>	<b>100.0%</b>	<b>6,833</b>	<b>598</b>	<b>100.0%</b>
<b>Under 18 years:</b>	<b>4,396</b>	<b>NC</b>	<b>100.0%</b>	<b>900</b>	<b>NC</b>	<b>100.0%</b>
Native	4,396	NC	100.0%	900	NC	100.0%
Foreign born:	0	NC	0.0%	0	NC	0.0%
Naturalized U.S. citizen	0	NC	0.0%	0	NC	0.0%
Not a U.S. citizen	0	NC	0.0%	0	NC	0.0%
<b>18 years and over:</b>	<b>12,095</b>	<b>NC</b>	<b>100.0%</b>	<b>5,933</b>	<b>NC</b>	<b>100.0%</b>
Native	11,798	NC	97.5%	5,881	NC	99.1%
Foreign born:	297	NC	2.5%	52	NC	0.9%
Naturalized U.S. citizen	196	NC	1.6%	38	NC	0.6%
Not a U.S. citizen	101	NC	0.8%	14	NC	0.2%
<b>Male:</b>	<b>7,393</b>	<b>450</b>	<b>44.8%</b>	<b>3,314</b>	<b>326</b>	<b>48.5%</b>
<b>Under 18 years:</b>	<b>2,099</b>	<b>267</b>	<b>100.0%</b>	<b>475</b>	<b>139</b>	<b>100.0%</b>
Native	2,099	267	100.0%	475	139	100.0%
Foreign born:	0	21	0.0%	0	21	0.0%
Naturalized U.S. citizen	0	21	0.0%	0	21	0.0%
Not a U.S. citizen	0	21	0.0%	0	21	0.0%
<b>18 years and over:</b>	<b>5,294</b>	<b>364</b>	<b>100.0%</b>	<b>2,839</b>	<b>279</b>	<b>100.0%</b>
Native	5,143	367	97.1%	2,819	281	99.3%
Foreign born:	151	78	2.9%	20	16	0.7%
Naturalized U.S. citizen	112	71	2.1%	14	16	0.5%
Not a U.S. citizen	39	35	0.7%	6	11	0.2%

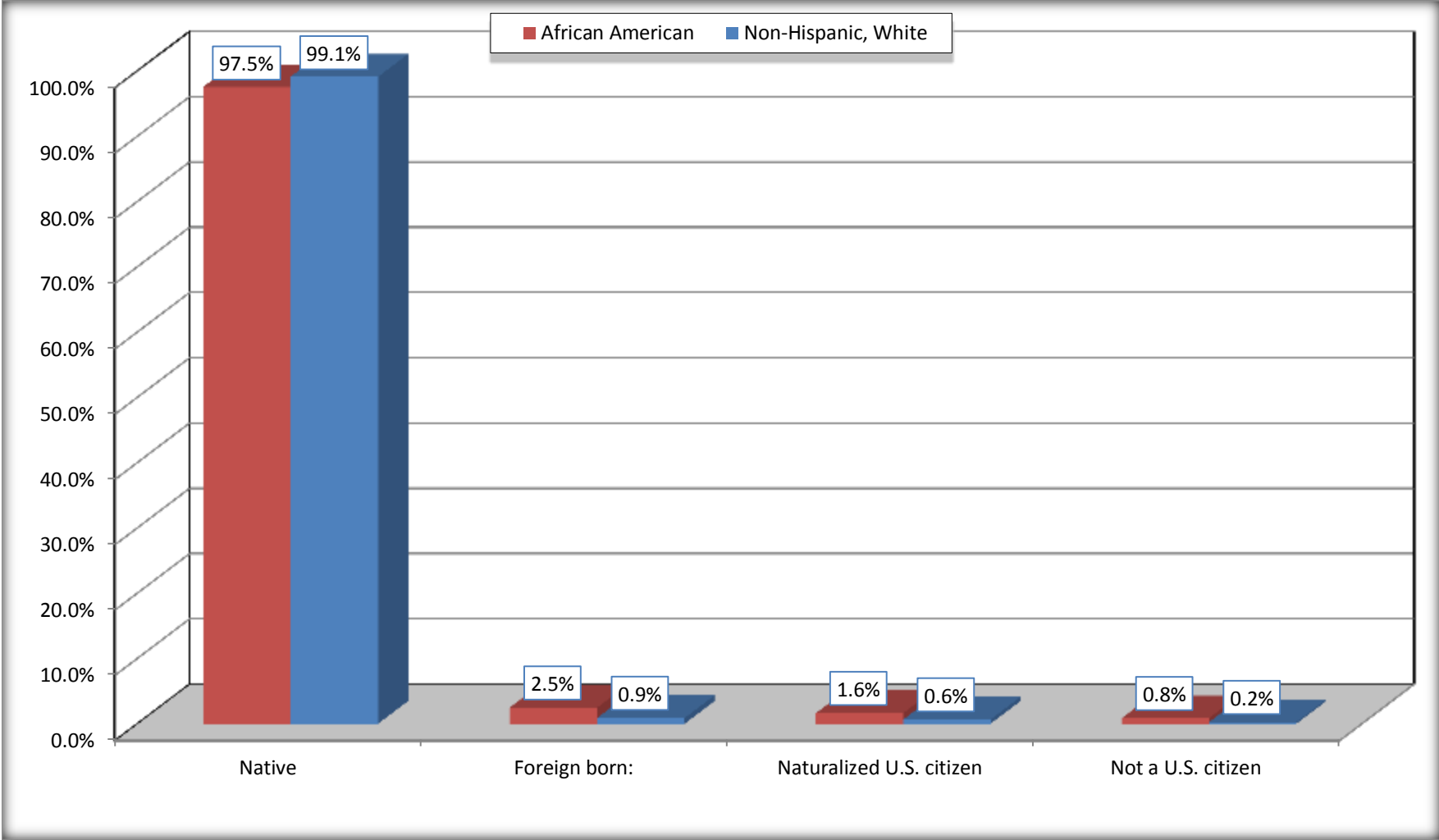
	Trotwood city, Ohio					
	African American	Margin of Error (+/-)	% of AA by Age	White, Not Hispanic	Margin of Error (+/-)	% of NHW by Age
<b>Female:</b>	9,098	531	55.2%	3,519	350	51.5%
<b>Under 18 years:</b>	<b>2,297</b>	<b>369</b>	<b>100.0%</b>	<b>425</b>	<b>137</b>	<b>100.0%</b>
Native	2,297	369	100.0%	425	137	100.0%
Foreign born:	0	21	0.0%	0	21	0.0%
Naturalized U.S. citizen	0	21	0.0%	0	21	0.0%
Not a U.S. citizen	0	21	0.0%	0	21	0.0%
<b>18 years and over:</b>	<b>6,801</b>	<b>348</b>	<b>100.0%</b>	<b>3,094</b>	<b>279</b>	<b>100.0%</b>
Native	6,655	355	97.9%	3,062	279	99.0%
Foreign born:	146	76	2.1%	32	23	1.0%
Naturalized U.S. citizen	84	55	1.2%	24	16	0.8%
Not a U.S. citizen	62	55	0.9%	8	15	0.3%

Source: U.S. Census Bureau, 2008-2012 American Community Survey

For information on confidentiality protection, sampling error, nonsampling error, and definitions, see Survey Methodology.  
<http://www.census.gov/acs/www/UseData/index.htm>

# Citizenship Status of Voting Age Population (18 and Over)

## Trotwood city, Ohio



Source: B05003. SEX BY AGE BY CITIZENSHIP STATUS  
Data Set: 2008-2012 American Community Survey 5-Year Estimates

**B07004. GEOGRAPHICAL MOBILITY IN THE PAST YEAR BY RACE FOR CURRENT RESIDENCE IN THE UNITED STATES - Universe:  
POPULATION 1 YEAR AND OVER**

Data Set: 2008-2012 American Community Survey 5-Year Estimates

	Trotwood city, Ohio					
	African American	Margin of Error (+/-)	% of AA Total	White, Not Hispanic	Margin of Error (+/-)	% of NHW Total
<b>Total:</b>	<b>16,380</b>	<b>635</b>	<b>100.0%</b>	<b>6,784</b>	<b>588</b>	<b>100.0%</b>
Same house 1 year ago	13,174	688	80.4%	5,976	535	88.1%
Moved within same county	2,653	550	16.2%	604	210	8.9%
Moved from different county within same state	236	190	1.4%	102	60	1.5%
Moved from different state	224	204	1.4%	102	104	1.5%
Moved from abroad	93	124	0.6%	0	21	0.0%

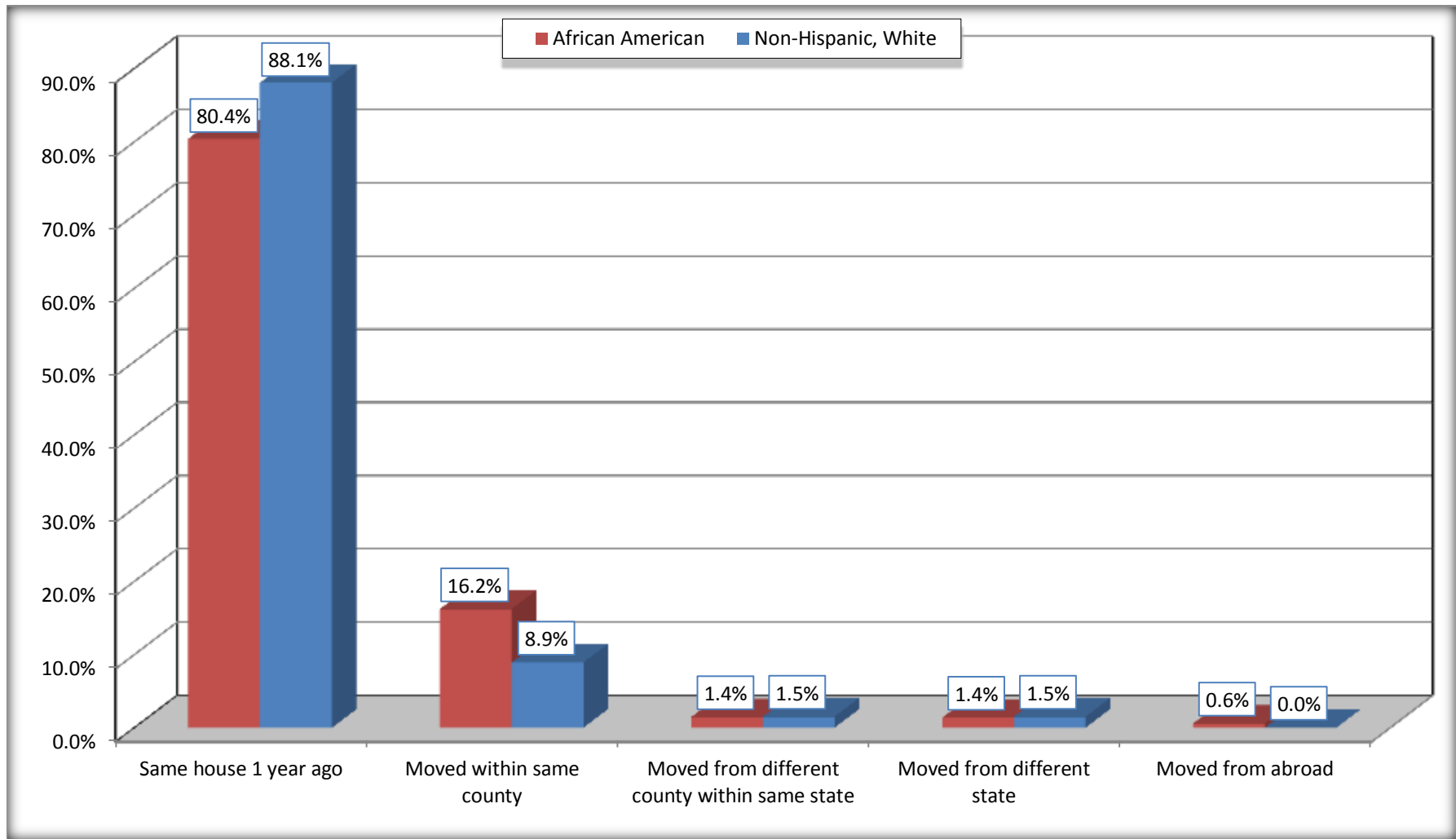
Source: U.S. Census Bureau, 2008-2012 American Community Survey

For information on confidentiality protection, sampling error, nonsampling error, and definitions, see Survey Methodology.

<http://www.census.gov/acs/www/UseData/index.htm>

# Geographical Mobility in the Past Year (Population 1 Year and Over)

## Trotwood city, Ohio



Source: B07004. GEOGRAPHICAL MOBILITY IN THE PAST YEAR BY RACE FOR CURRENT RESIDENCE IN THE UNITED STATES - Universe: POPULATION 1 YEAR AND OVER

Data Set: 2008-2012 American Community Survey 5-Year Estimates

**B08105. MEANS OF TRANSPORTATION TO WORK - Universe: WORKERS 16 YEARS AND OVER**

Data Set: 2008-2012 American Community Survey 5-Year Estimates

	Trotwood city, Ohio					
	African American	Margin of Error (+/-)	% of AA Total	White, Not Hispanic	Margin of Error (+/-)	% of NHW Total
<b>Total:</b>	6894	480	<b>100.0%</b>	2288	330	<b>100.0%</b>
Car, truck, or van - drove alone	5730	408	83.1%	1794	288	78.4%
Car, truck, or van - carpooled	675	207	9.8%	352	96	15.4%
Public transportation (excluding taxicab)	334	141	4.8%	25	30	1.1%
Walked	95	78	1.4%	29	25	1.3%
Taxicab, motorcycle, bicycle, or other means	34	44	0.5%	26	28	1.1%
Worked at home	26	36	0.4%	62	45	2.7%

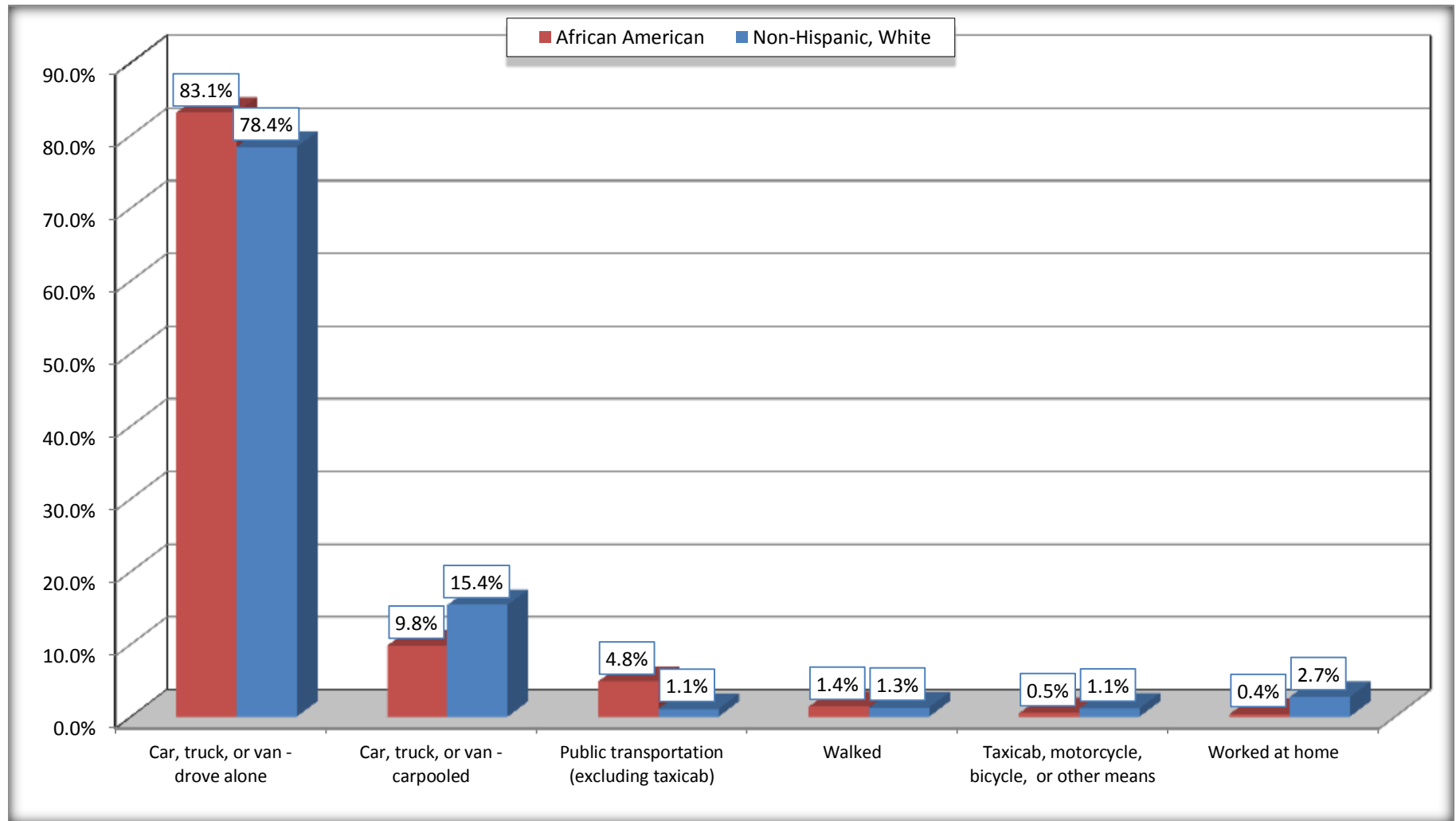
Source: U.S. Census Bureau, 2008-2012 American Community Survey

For information on confidentiality protection, sampling error, nonsampling error, and definitions, see Survey Methodology.

<http://www.census.gov/acs/www/UseData/index.htm>

# Means of Transportation to Work (Workers 16 Years and Over)

## Trotwood city, Ohio



Source: B08105. MEANS OF TRANSPORTATION TO WORK - Universe: WORKERS 16 YEARS AND OVER  
Data Set: 2008-2012 American Community Survey 5-Year Estimates



**B11002. HOUSEHOLD TYPE BY RELATIVES AND NONRELATIVES FOR POPULATION IN HOUSEHOLDS**

Data Set: 2008-2012 American Community Survey 5-Year Estimates

	Trotwood city, Ohio					
	African American	Margin of Error (+/-)	% of AA Total	White, Not Hispanic	Margin of Error (+/-)	% of NHW Total
<b>Total:</b>	16318	635	<b>100.0%</b>	6446	630	<b>100.0%</b>
In family households	13566	741	83.1%	4870	611	75.6%
In nonfamily households	2752	314	16.9%	1576	285	24.4%

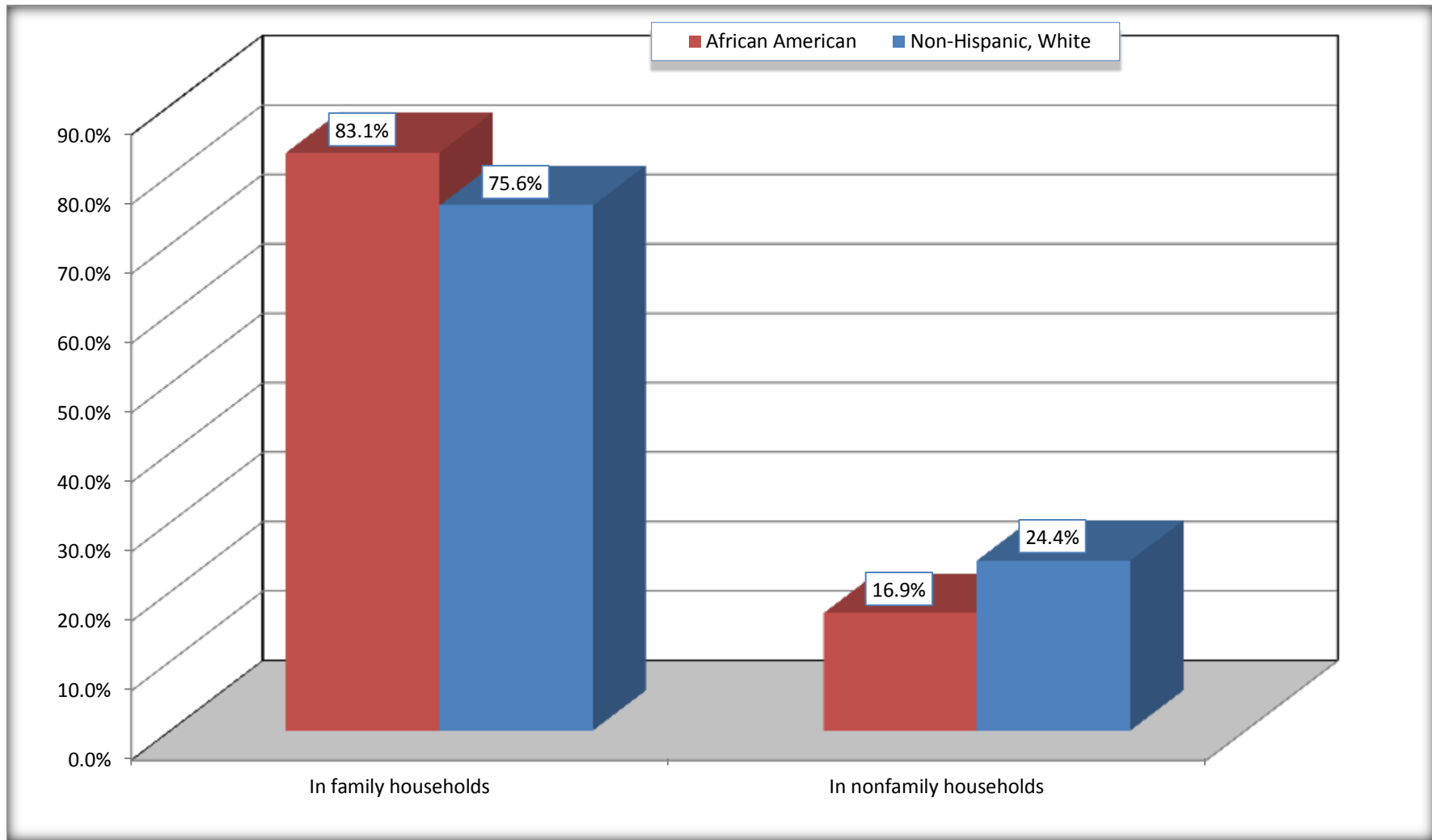
Source: U.S. Census Bureau, 2008-2012 American Community Survey

For information on confidentiality protection, sampling error, nonsampling error, and definitions, see Survey Methodology.

<http://www.census.gov/acs/www/UseData/index.htm>

# Household Type for Population in Households

## Trotwood city, Ohio



Source: B11002. HOUSEHOLD TYPE BY RELATIVES AND NONRELATIVES FOR POPULATION IN HOUSEHOLDS  
Data Set: 2008-2012 American Community Survey 5-Year Estimates

**B12002. MARITAL STATUS FOR THE POPULATION 15 YEARS AND OVER**

Data Set: 2008-2012 American Community Survey 5-Year Estimates

	Trotwood city, Ohio					
	African American	Margin of Error (+/-)	% of AA Total	White, Not Hispanic	Margin of Error (+/-)	% of NHW Total
<b>Total:</b>	<b>13,105</b>	<b>575</b>	<b>100.0%</b>	<b>6,170</b>	<b>494</b>	<b>100.0%</b>
Never married	5,287	NC	40.3%	1,722	NC	27.9%
Now married (except separated)	4,539	NC	34.6%	2,358	NC	38.2%
Separated	326	NC	2.5%	91	NC	1.5%
Widowed	1,125	NC	8.6%	864	NC	14.0%
Divorced	1,828	NC	13.9%	1,135	NC	18.4%
<b>Male:</b>	<b>5,757</b>	<b>402</b>	<b>43.9%</b>	<b>2,994</b>	<b>294</b>	<b>48.5%</b>
Never married	2,316	376	17.7%	1,023	200	16.6%
Now married (except separated)	2,324	216	17.7%	1,172	172	19.0%
Separated	110	72	0.8%	62	46	1.0%
Widowed	368	139	2.8%	170	59	2.8%
Divorced	639	169	4.9%	567	174	9.2%
<b>Female:</b>	<b>7,348</b>	<b>434</b>	<b>56.1%</b>	<b>3,176</b>	<b>284</b>	<b>51.5%</b>
Never married	2,971	404	22.7%	699	178	11.3%
Now married (except separated)	2,215	226	16.9%	1,186	178	19.2%
Separated	216	81	1.6%	29	24	0.5%
Widowed	757	195	5.8%	694	133	11.2%
Divorced	1,189	217	9.1%	568	142	9.2%

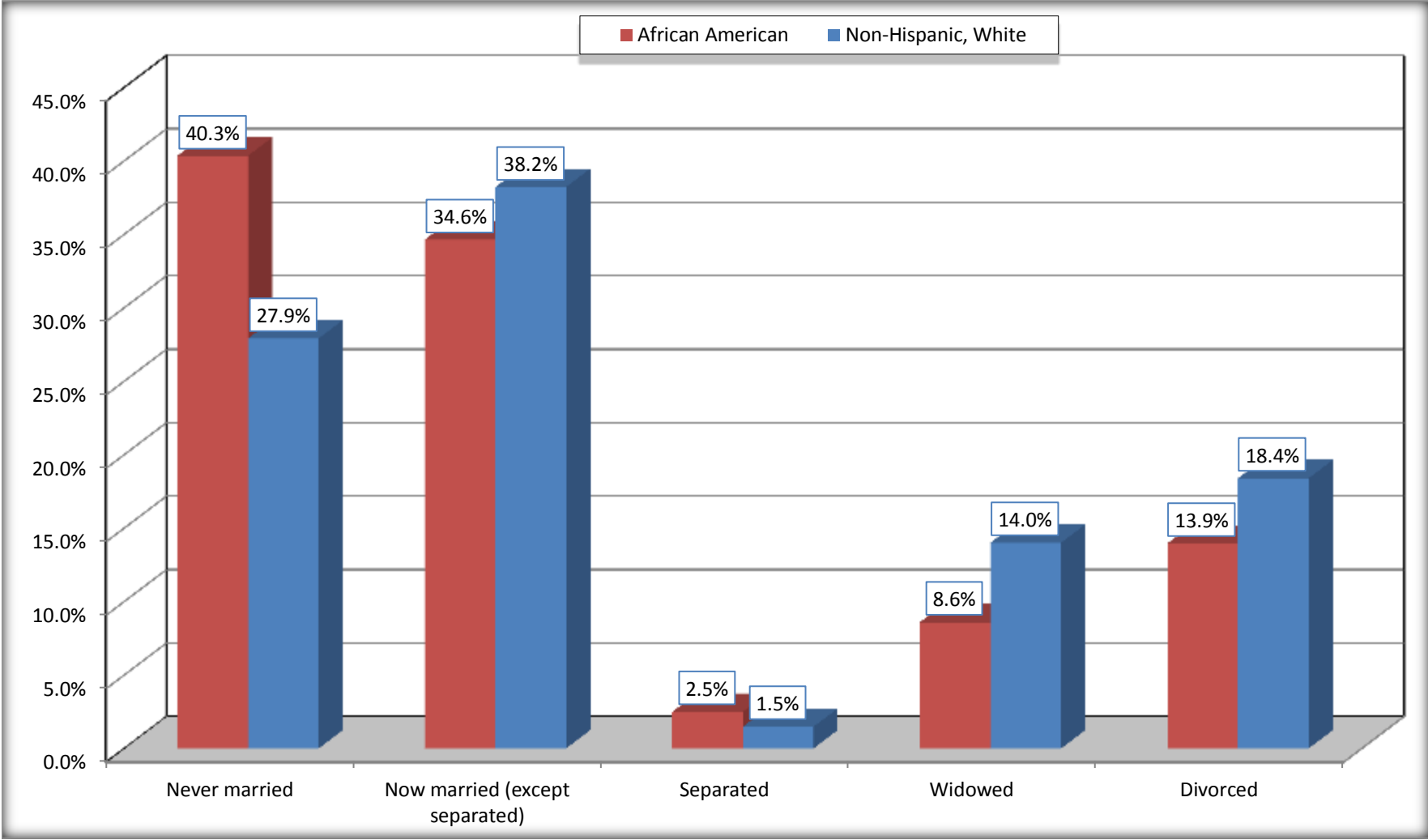
Source: U.S. Census Bureau, 2008-2012 American Community Survey

For information on confidentiality protection, sampling error, nonsampling error, and definitions, see Survey Methodology.

<http://www.census.gov/acs/www/UseData/index.htm>

# Marital Status for the Population 15 Years and Over

## Trotwood city, Ohio



Source: B12002. MARITAL STATUS FOR THE POPULATION 15 YEARS AND OVER  
Data Set: 2008-2012 American Community Survey 5-Year Estimates

**C15002. SEX BY EDUCATIONAL ATTAINMENT FOR THE POPULATION 25 YEARS AND OVER**

Data Set: 2008-2012 American Community Survey 5-Year Estimates

	Trotwood city, Ohio					
	African American	Margin of Error (+/-)	% of AA Total	White, Not Hispanic	Margin of Error (+/-)	% of NHW Total
<b>Total:</b>	<b>10,643</b>	<b>402</b>	<b>100.0%</b>	<b>5,463</b>	<b>424</b>	<b>100.0%</b>
Less than high school diploma	1,356	NC	12.7%	1,324	NC	24.2%
High school graduate, GED, or alternative	2,966	NC	27.9%	1,802	NC	33.0%
Some college or associate's degree	4,431	NC	41.6%	1,718	NC	31.4%
Bachelor's degree or higher	1,890	NC	17.8%	619	NC	11.3%
Male:	4,482	328	42.1%	2,558	245	46.8%
Less than high school diploma	673	191	6.3%	656	139	12.0%
High school graduate, GED, or alternative	1,268	248	11.9%	809	168	14.8%
Some college or associate's degree	1,968	245	18.5%	804	189	14.7%
Bachelor's degree or higher	573	147	5.4%	289	90	5.3%
Female:	6,161	307	57.9%	2,905	260	53.2%
Less than high school diploma	683	164	6.4%	668	126	12.2%
High school graduate, GED, or alternative	1,698	241	16.0%	993	201	18.2%
Some college or associate's degree	2,463	287	23.1%	914	168	16.7%
Bachelor's degree or higher	1,317	209	12.4%	330	89	6.0%

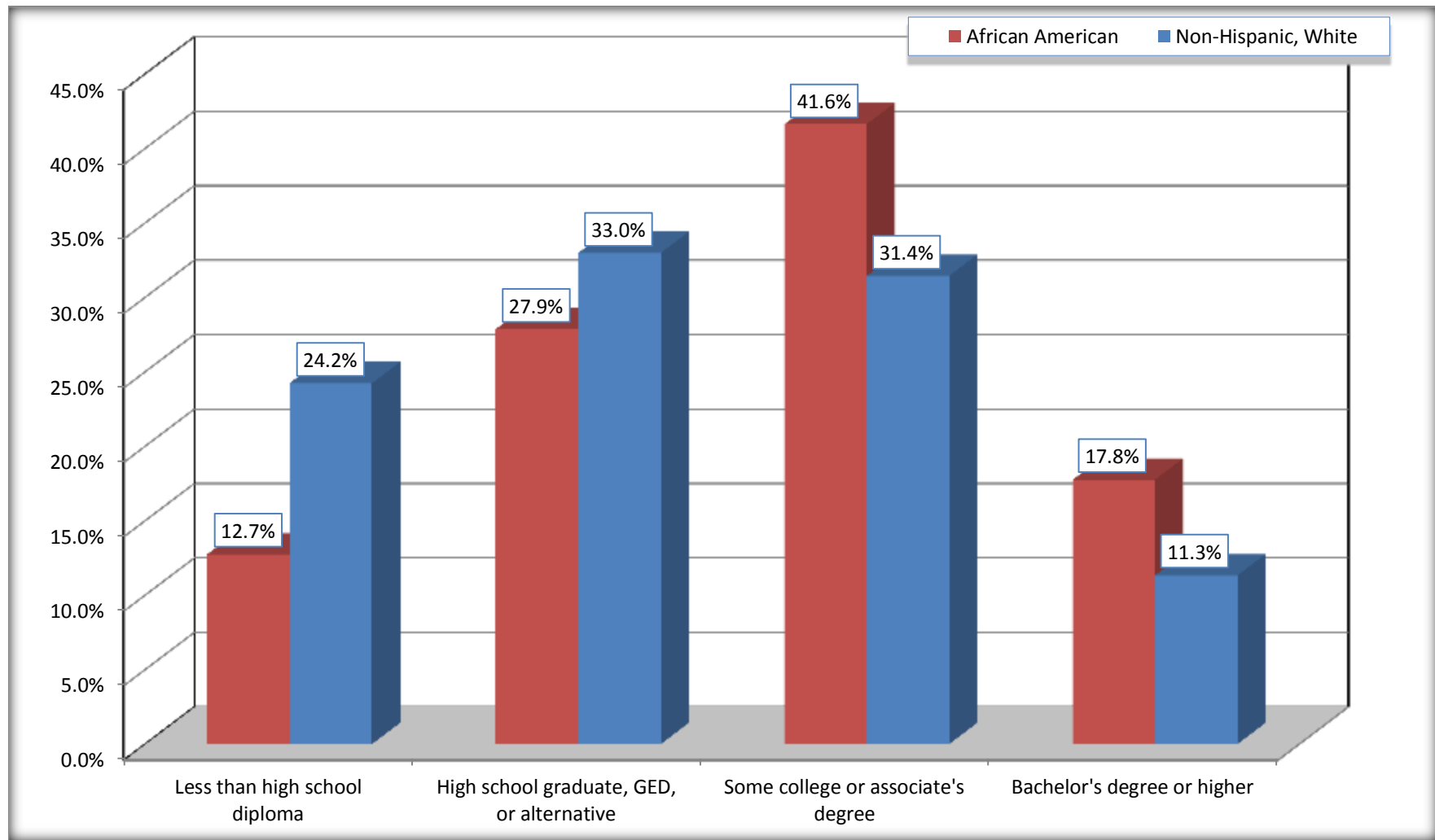
Source: U.S. Census Bureau, 2008-2012 American Community Survey

For information on confidentiality protection, sampling error, nonsampling error, and definitions, see Survey Methodology.

<http://www.census.gov/acs/www/UseData/index.htm>

# Educational Attainment for the Population 25 Years and Older

## Trotwood city, Ohio



Source: C15002. SEX BY EDUCATIONAL ATTAINMENT FOR THE POPULATION 25 YEARS AND OVER  
Data Set: 2008-2012 American Community Survey 5-Year Estimates

**B16005. NATIVITY BY LANGUAGE SPOKEN AT HOME BY ABILITY TO SPEAK ENGLISH FOR THE POPULATION 5 YEARS AND OVER**

Data Set: 2008-2012 American Community Survey 5-Year Estimates

	Trotwood city, Ohio					
	African American	Margin of Error (+/-)	% of AA Total	White, Not Hispanic	Margin of Error (+/-)	% of NHW Total
<b>Total:</b>	<b>15,678</b>	<b>635</b>	<b>100.0%</b>	<b>6,570</b>	<b>557</b>	<b>100.0%</b>
Speak only English	15,264	NC	97.4%	6,475	NC	98.6%
Speak another language	414	NC	2.6%	95	NC	1.4%
Speak English "very well"	397	NC	2.5%	74	NC	1.1%
Speak English "less than very well"	17	NC	0.1%	21	NC	0.3%
Native:	15,381	662	98.1%	6,518	560	99.2%
Speak only English	15,159	649	96.7%	6,459	557	98.3%
Speak another language	222	133	1.4%	59	36	0.9%
Speak English "very well"	205	134	1.3%	52	34	0.8%
Speak English "less than very well"	17	21	0.1%	7	11	0.1%
Foreign born:	297	114	1.9%	52	29	0.8%
Speak only English	105	55	0.7%	16	20	0.2%
Speak another language	192	114	1.2%	36	29	0.5%
Speak English "very well"	192	114	1.2%	22	23	0.3%
Speak English "less than very well"	0	21	0.0%	14	21	0.2%

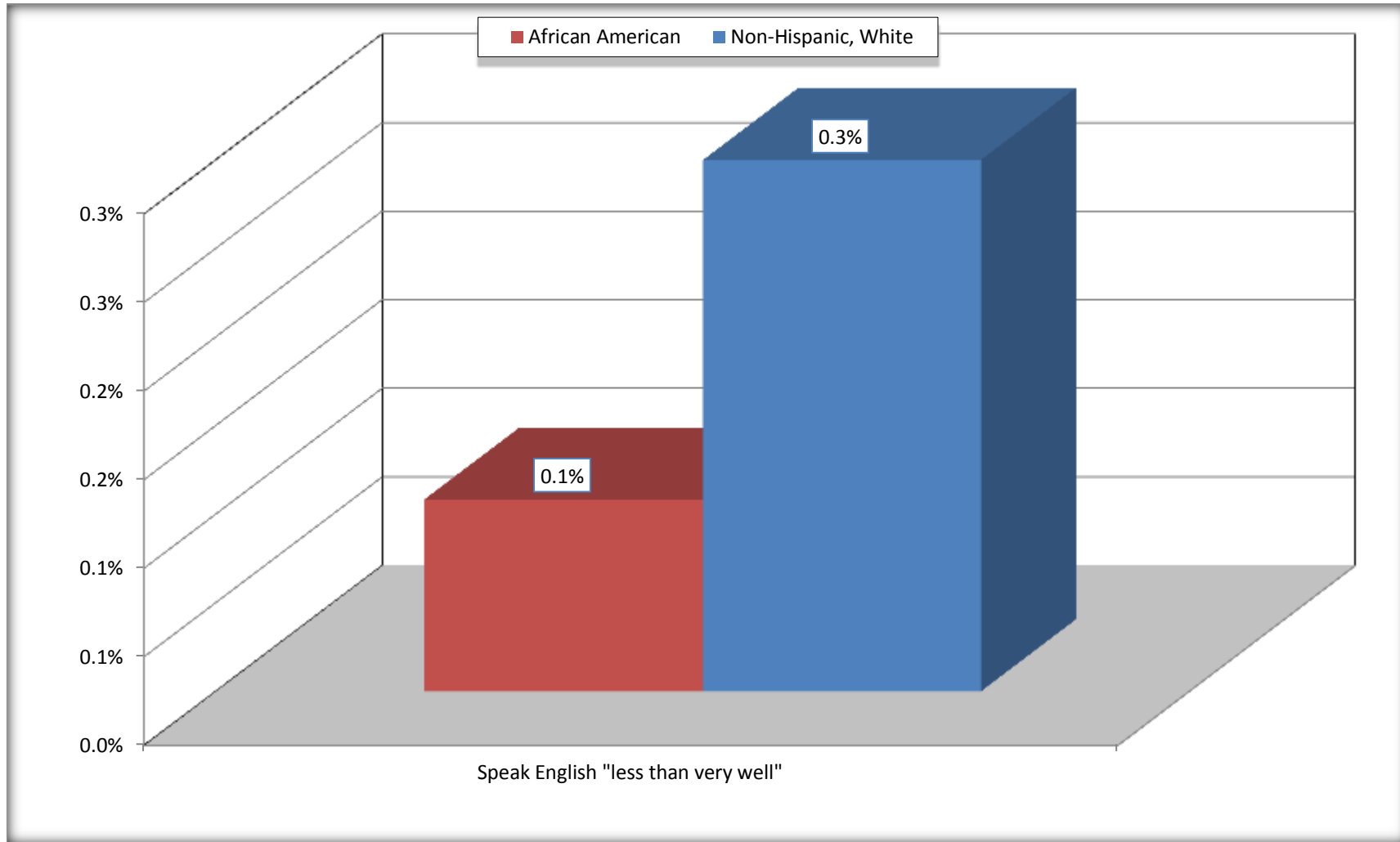
Source: U.S. Census Bureau, 2008-2012 American Community Survey

For information on confidentiality protection, sampling error, nonsampling error, and definitions, see Survey Methodology.

<http://www.census.gov/acs/www/UseData/index.htm>

# Speak English "Less than Very Well" (Population 5 Years and Over)

## Trotwood city, Ohio



Source: B16005. NATIVITY BY LANGUAGE SPOKEN AT HOME BY ABILITY TO SPEAK ENGLISH FOR THE POPULATION 5 YEARS AND OVER  
Data Set: 2008-2012 American Community Survey 5-Year Estimates



**B17010. POVERTY STATUS IN THE PAST 12 MONTHS OF FAMILIES BY FAMILY TYPE BY PRESENCE OF RELATED CHILDREN UNDER 18 YEARS**

Data Set: 2008-2012 American Community Survey 5-Year Estimates

	Trotwood city, Ohio					
	African American	Margin of Error (+/-)	% of AA Total	White, Not Hispanic	Margin of Error (+/-)	% of NHW Total
<b>Total:</b>	<b>4,356</b>	<b>286</b>	<b>100.0%</b>	<b>1,631</b>	<b>192</b>	<b>100.0%</b>
Income in the past 12 months below poverty level:	740	183	17.0%	181	62	11.1%
Married-couple family:	108	64	2.5%	20	25	1.2%
With related children under 18 years	59	58	1.4%	13	22	0.8%
Other family:	632	177	14.5%	161	56	9.9%
Male householder, no wife present	102	88	2.3%	88	53	5.4%
With related children under 18 years	90	85	2.1%	38	35	2.3%
Female householder, no husband present	530	145	12.2%	73	38	4.5%
With related children under 18 years	474	138	10.9%	65	37	4.0%
Income in the past 12 months at or above poverty level:	3,616	289	83.0%	1,450	190	88.9%
Married-couple family:	2,059	196	47.3%	1,065	165	65.3%
With related children under 18 years	718	170	16.5%	261	93	16.0%
Other family:	1,557	230	35.7%	385	100	23.6%
Male householder, no wife present	210	97	4.8%	106	54	6.5%
With related children under 18 years	72	57	1.7%	18	23	1.1%
Female householder, no husband present	1,347	220	30.9%	279	79	17.1%
With related children under 18 years	929	205	21.3%	115	51	7.1%

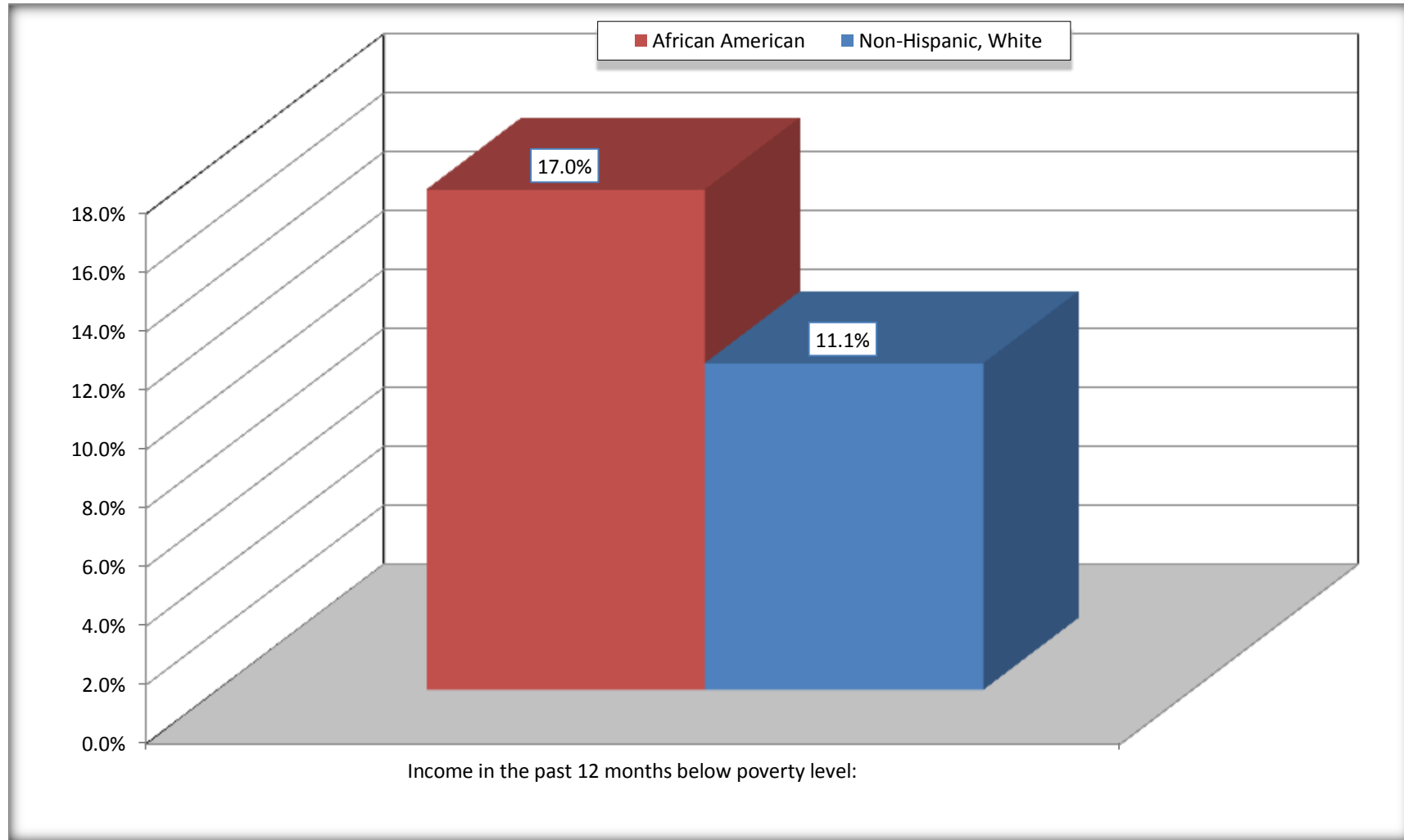
Source: U.S. Census Bureau, 2008-2012 American Community Survey

For information on confidentiality protection, sampling error, nonsampling error, and definitions, see Survey Methodology.

<http://www.census.gov/acs/www/UseData/index.htm>

# Family Households Below Poverty in the Past 12 Months

## Trotwood city, Ohio

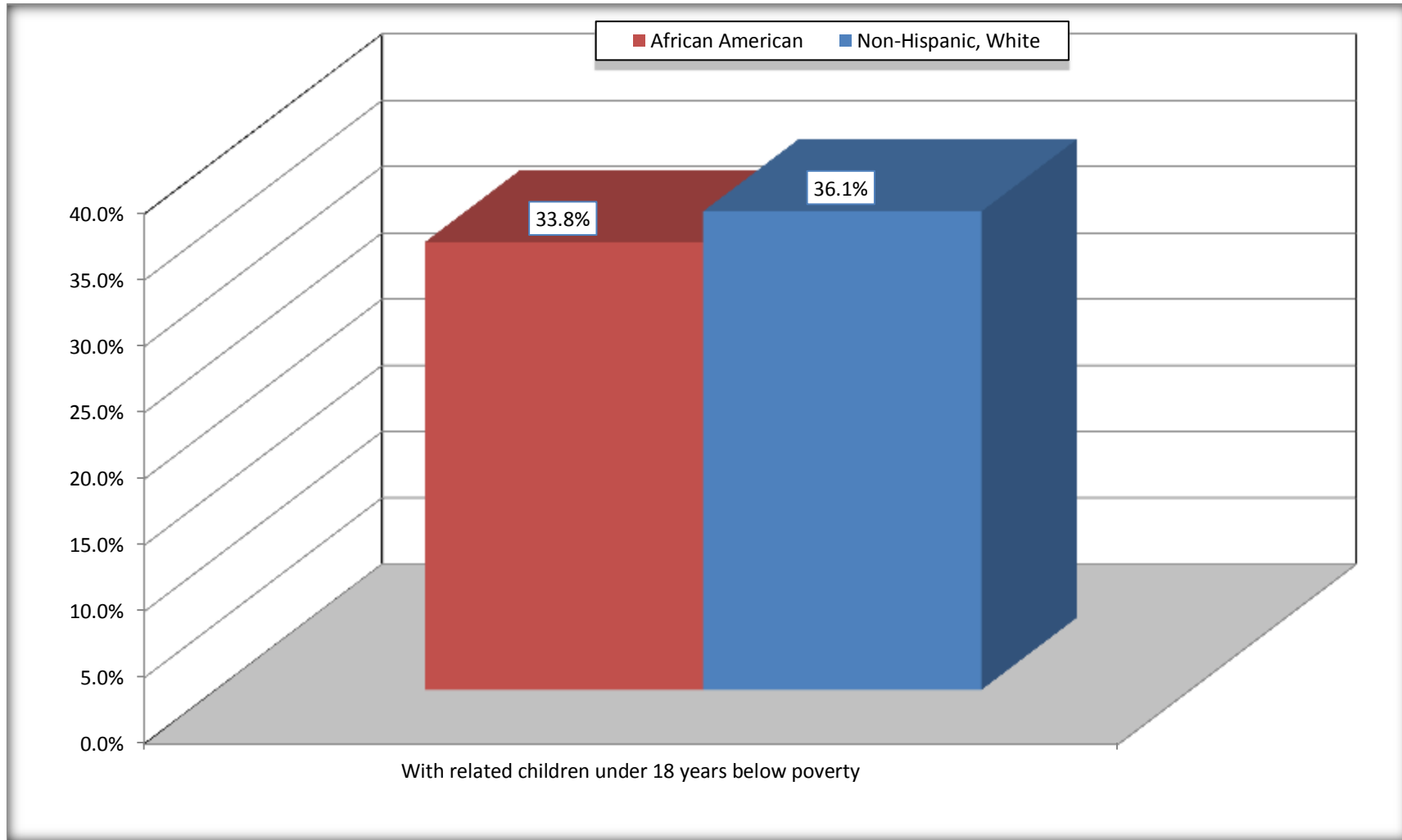


Source: B17010. POVERTY STATUS IN THE PAST 12 MONTHS OF FAMILIES BY FAMILY TYPE BY PRESENCE OF RELATED CHILDREN UNDER 18 YEARS

Data Set: 2008-2012 American Community Survey 5-Year Estimates

# Female-headed Households with Related Children Below Poverty in the Past 12 Months

## Trotwood city, Ohio



Source: B17010. POVERTY STATUS IN THE PAST 12 MONTHS OF FAMILIES BY FAMILY TYPE BY PRESENCE OF RELATED CHILDREN UNDER 18 YEARS

Data Set: 2008-2012 American Community Survey 5-Year Estimates

**B17020 POVERTY STATUS IN THE PAST 12 MONTHS BY AGE - Universe: POPULATION FOR WHOM POVERTY STATUS IS DETERMINED**

Data Set: 2008-2012 American Community Survey 5-Year Estimates

	Trotwood city, Ohio					
	African American	Margin of Error (+/-)	% of AA By Age	White, Not Hispanic	Margin of Error (+/-)	% of NHW By Age
<b>Total:</b>	<b>16,274</b>	<b>645</b>	<b>100.0%</b>	<b>6,531</b>	<b>619</b>	<b>100.0%</b>
Income in the past 12 months below poverty level:	2,997	553	18.4%	1,031	206	15.8%
<b>Under 18 years</b>	1,045	NC	24.0%	197	NC	21.9%
<b>18 to 64 years</b>	1,693	313	17.0%	614	185	16.2%
<b>65 years and over</b>	259	NC	13.1%	220	NC	12.0%
Income in the past 12 months at or above poverty level:	13,277	796	81.6%	5,500	617	84.2%
<b>Under 18 years</b>	3,314	NC	76.0%	701	NC	78.1%
<b>18 to 64 years</b>	8,247	596	83.0%	3,186	443	83.8%
<b>65 years and over</b>	1,716	NC	86.9%	1,613	NC	88.0%

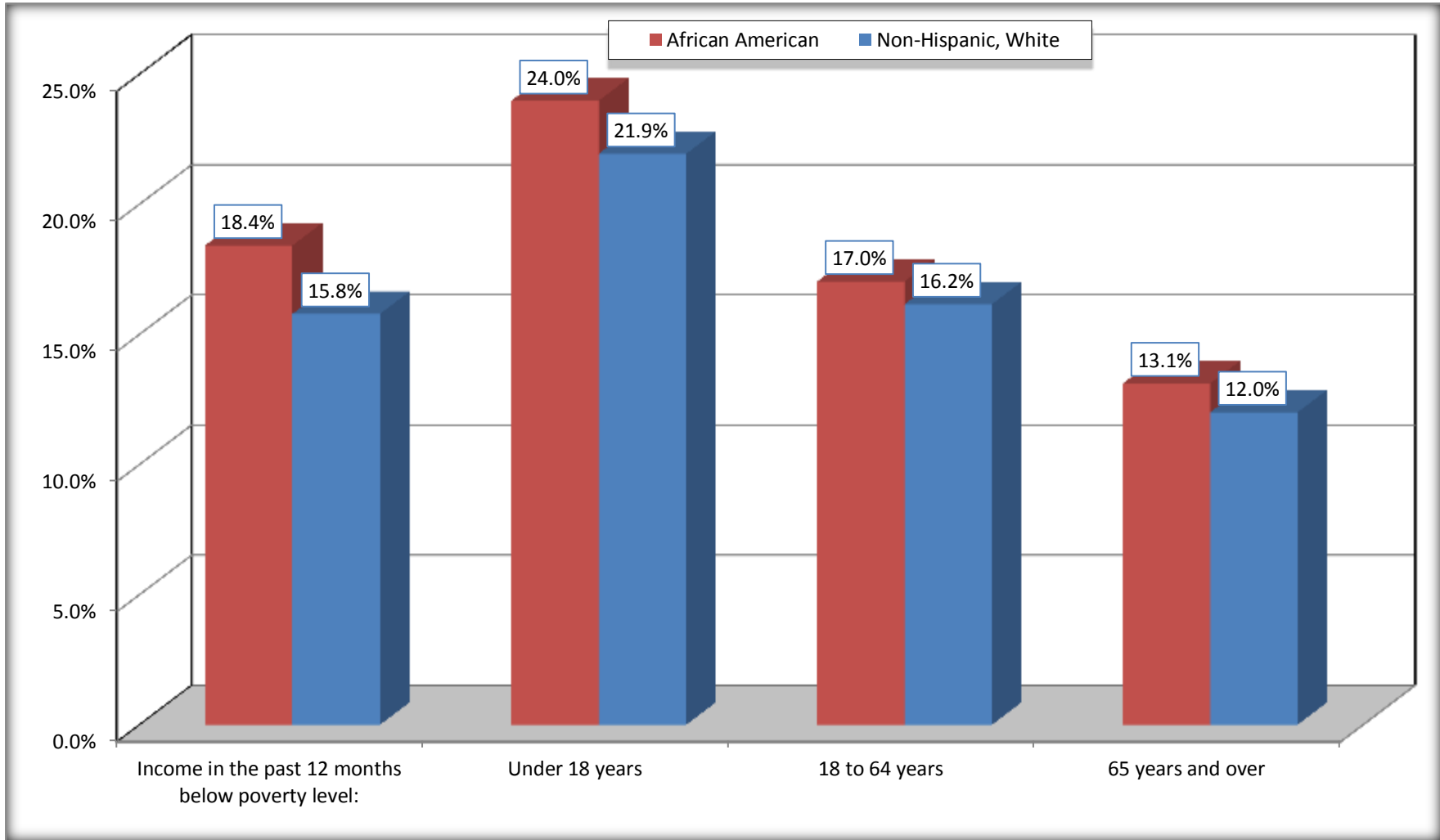
Source: U.S. Census Bureau, 2008-2012 American Community Survey

For information on confidentiality protection, sampling error, nonsampling error, and definitions, see Survey Methodology.

<http://www.census.gov/acs/www/UseData/index.htm>

# Population Below Poverty in the Past 12 Months

## Trotwood city, Ohio



Source: B17020 POVERTY STATUS IN THE PAST 12 MONTHS BY AGE - Universe: POPULATION FOR WHOM POVERTY STATUS IS DETERMINED  
Data Set: 2008-2012 American Community Survey 5-Year Estimates

**B19001. HOUSEHOLD INCOME IN THE PAST 12 MONTHS (IN 2010 INFLATION-ADJUSTED DOLLARS)**

Data Set: 2008-2012 American Community Survey 5-Year Estimates

	Trotwood city, Ohio					
	African American	Margin of Error (+/-)	% of AA Total	White, Not Hispanic	Margin of Error (+/-)	% of NHW Total
<b>Total:</b>	<b>6,853</b>	<b>273</b>	<b>100.0%</b>	<b>3,004</b>	<b>250</b>	<b>100.0%</b>
Less than \$ 10,000	803	165	11.7%	231	99	7.7%
\$ 10,000 to \$ 14,999	485	175	7.1%	297	104	9.9%
<b>\$ 15,000 to \$ 24,999</b>	900	NC	13.1%	450	NC	15.0%
<b>\$ 25,000 to \$ 34,999</b>	935	NC	13.6%	387	NC	12.9%
<b>\$ 35,000 to \$ 49,999</b>	1,428	NC	20.8%	602	NC	20.0%
<b>\$ 50,000 to \$ 74,999</b>	1,085	NC	15.8%	455	NC	15.1%
\$ 75,000 to \$ 99,999	580	150	8.5%	302	99	10.1%
<b>\$ 100,000 to \$ 149,999</b>	494	NC	7.2%	194	NC	6.5%
\$ 150,000 to \$ 199,999	40	31	0.6%	43	38	1.4%
\$ 200,000 or more	103	61	1.5%	43	38	1.4%

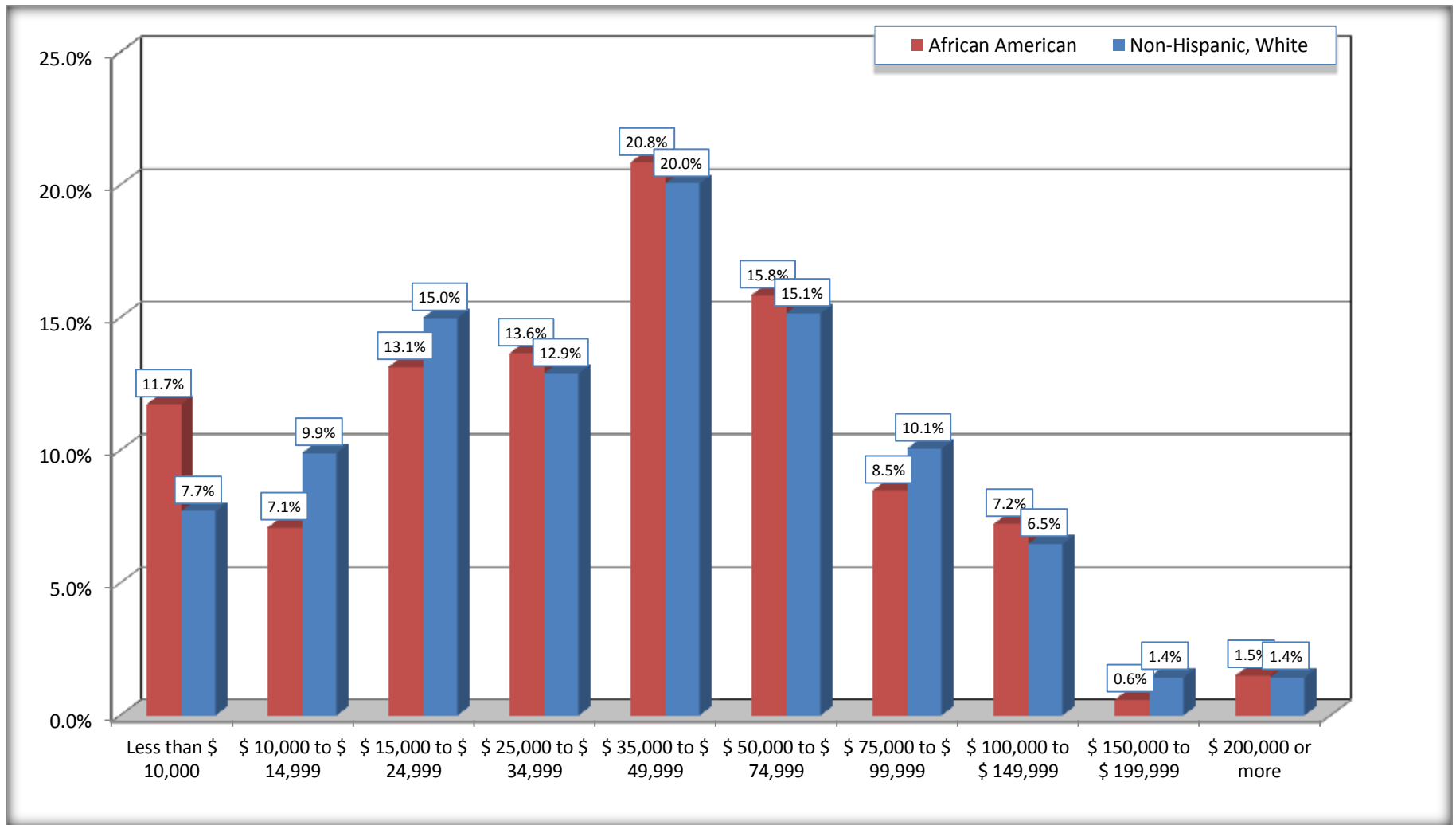
Source: U.S. Census Bureau, 2008-2012 American Community Survey

For information on confidentiality protection, sampling error, nonsampling error, and definitions, see Survey Methodology.

<http://www.census.gov/acs/www/UseData/index.htm>

# Household Income in the Past 12 Months

## Trotwood city, Ohio



Source: B19001. HOUSEHOLD INCOME IN THE PAST 12 MONTHS (IN 2010 INFLATION-ADJUSTED DOLLARS)  
Data Set: 2008-2012 American Community Survey 5-Year Estimates

**B19013. MEDIAN HOUSEHOLD INCOME IN THE PAST 12 MONTHS (IN 2010 INFLATION-ADJUSTED DOLLARS)**

Data Set: 2008-2012 American Community Survey 5-Year Estimates

	Trotwood city, Ohio			
	African American	Margin of Error (+/-)	White, Not Hispanic	Margin of Error (+/-)
Median household income in the past 12 months (in 2010 inflation-adjusted dollars)	\$ 37,952	\$ 2,224	\$ 37,552	\$ 2,605

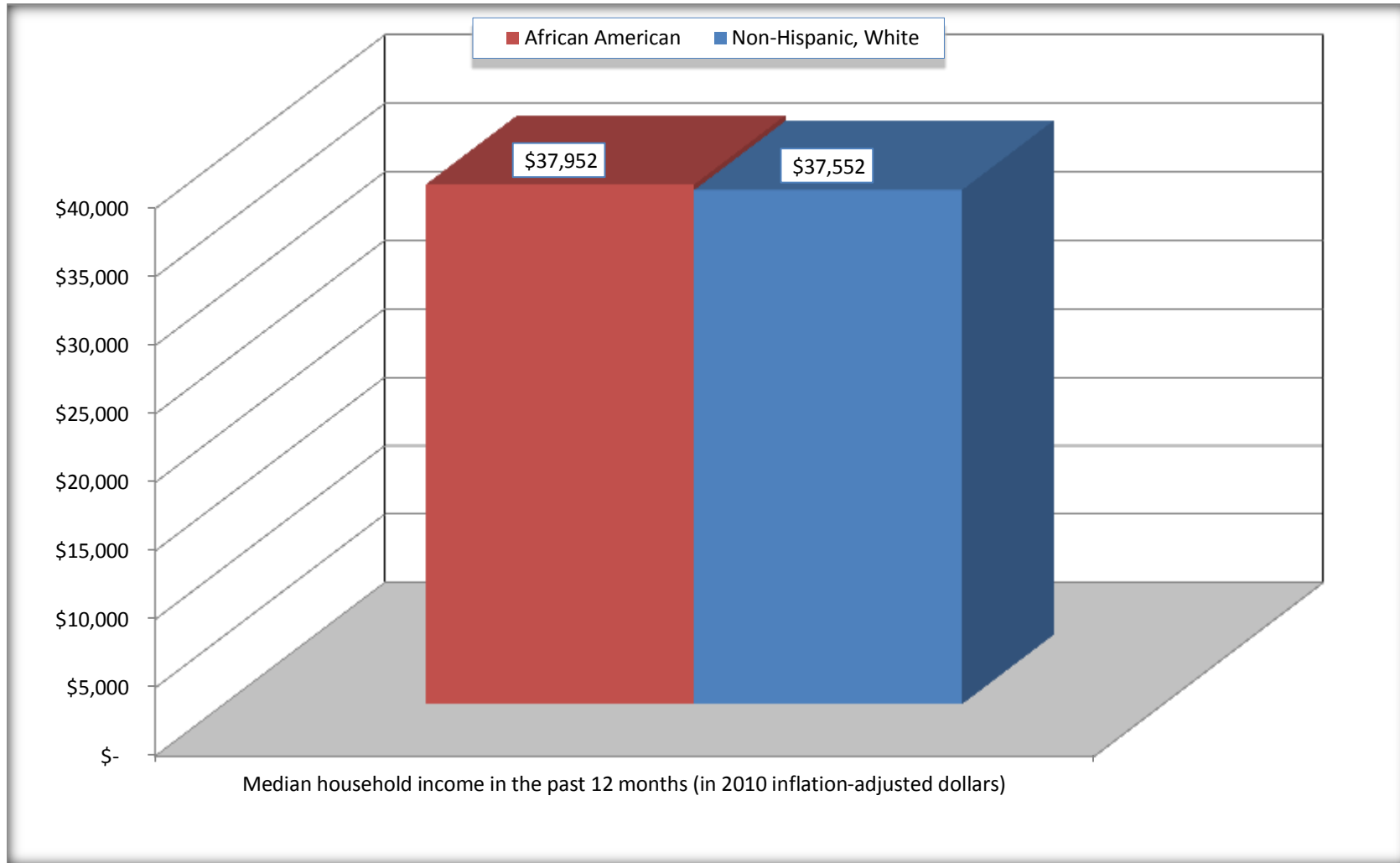
Source: U.S. Census Bureau, 2008-2012 American Community Survey

For information on confidentiality protection, sampling error, nonsampling error, and definitions, see Survey Methodology.  
<http://www.census.gov/acs/www/UseData/index.htm>



# Median Household Income in the Past 12 Months

## Trotwood city, Ohio



Source: B19013. MEDIAN HOUSEHOLD INCOME IN THE PAST 12 MONTHS (IN 2010 INFLATION-ADJUSTED DOLLARS)  
Data Set: 2008-2012 American Community Survey 5-Year Estimates

**B19101. FAMILY INCOME IN THE PAST 12 MONTHS (IN 2010 INFLATION-ADJUSTED DOLLARS)**

Data Set: 2008-2012 American Community Survey 5-Year Estimates

	Trotwood city, Ohio					
	African American	Margin of Error (+/-)	% of AA Total	White, Not Hispanic	Margin of Error (+/-)	% of NHW Total
<b>Total:</b>	<b>4,356</b>	<b>286</b>	<b>100.0%</b>	<b>1,631</b>	<b>192</b>	<b>100.0%</b>
Less than \$ 10,000	446	138	10.2%	84	41	5.2%
\$ 10,000 to \$ 14,999	182	90	4.2%	76	49	4.7%
<b>\$ 15,000 to \$ 24,999</b>	<b>463</b>	<b>NC</b>	<b>10.6%</b>	<b>194</b>	<b>NC</b>	<b>11.9%</b>
<b>\$ 25,000 to \$ 34,999</b>	<b>634</b>	<b>NC</b>	<b>14.6%</b>	<b>182</b>	<b>NC</b>	<b>11.2%</b>
<b>\$ 35,000 to \$ 49,999</b>	<b>937</b>	<b>NC</b>	<b>21.5%</b>	<b>372</b>	<b>NC</b>	<b>22.8%</b>
<b>\$ 50,000 to \$ 74,999</b>	<b>641</b>	<b>NC</b>	<b>14.7%</b>	<b>296</b>	<b>NC</b>	<b>18.1%</b>
<b>\$ 100,000 to \$ 149,999</b>	<b>421</b>	<b>NC</b>	<b>9.7%</b>	<b>150</b>	<b>NC</b>	<b>9.2%</b>
\$ 150,000 to \$ 199,999	40	31	0.9%	43	38	2.6%
\$ 200,000 or more	103	61	2.4%	32	34	2.0%

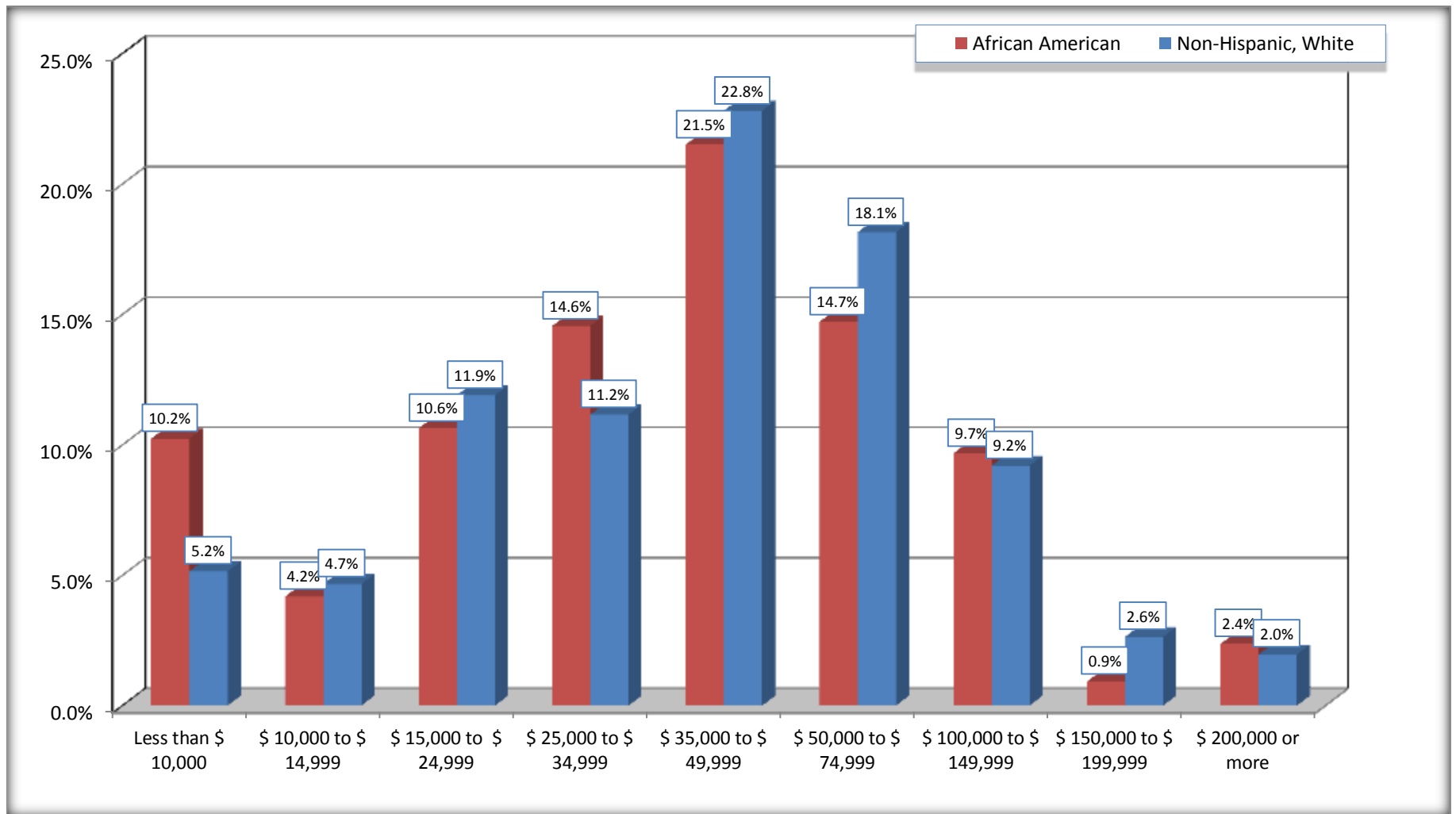
Source: U.S. Census Bureau, 2008-2012 American Community Survey

For information on confidentiality protection, sampling error, nonsampling error, and definitions, see Survey Methodology.

<http://www.census.gov/acs/www/UseData/index.htm>

# Family Income in the Past 12 Months

## Trotwood city, Ohio



Source: B19101. FAMILY INCOME IN THE PAST 12 MONTHS (IN 2010 INFLATION-ADJUSTED DOLLARS)  
Data Set: 2008-2012 American Community Survey 5-Year Estimates

**B19113. MEDIAN FAMILY INCOME IN THE PAST 12 MONTHS (IN 2010 INFLATION-ADJUSTED DOLLARS)**

Data Set: 2008-2012 American Community Survey 5-Year Estimates

	Trotwood city, Ohio			
	African American	Margin of Error (+/-)	White, Not Hispanic	Margin of Error (+/-)
Median family income in the past 12 months (in 2010 inflation-adjusted dollars)	\$ 41,514	\$ 2,564	\$ 45,778	\$ 4,471

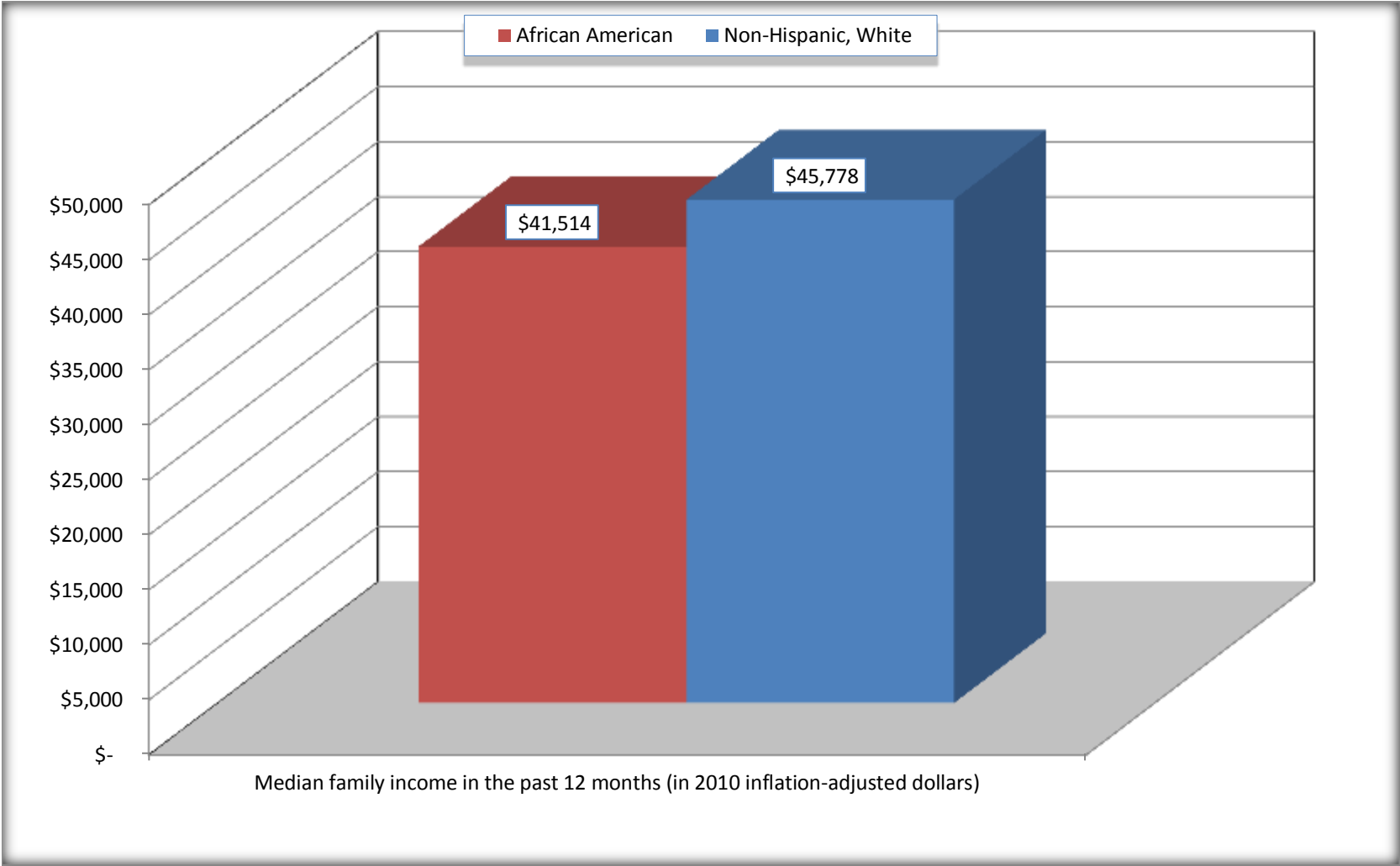
Source: U.S. Census Bureau, 2008-2012 American Community Survey

For information on confidentiality protection, sampling error, nonsampling error, and definitions, see Survey Methodology.

<http://www.census.gov/acs/www/UseData/index.htm>

# Median Family Income in the Past 12 Months

## Trotwood city, Ohio



Source: B19113. MEDIAN FAMILY INCOME IN THE PAST 12 MONTHS (IN 2010 INFLATION-ADJUSTED DOLLARS)  
Data Set: 2008-2012 American Community Survey 5-Year Estimates

**B19202. MEDIAN NONFAMILY HOUSEHOLD INCOME IN THE PAST 12 MONTHS (IN 2010 INFLATION-ADJUSTED DOLLARS)**

Data Set: 2008-2012 American Community Survey 5-Year Estimates

	Trotwood city, Ohio			
	African American	Margin of Error (+/-)	White, Not Hispanic	Margin of Error (+/-)
Median nonfamily household income in the past 12 months (in 2010 inflation-adjusted dollars)	\$ 30,206	\$ 4,945	\$ 26,382	\$ 7,089

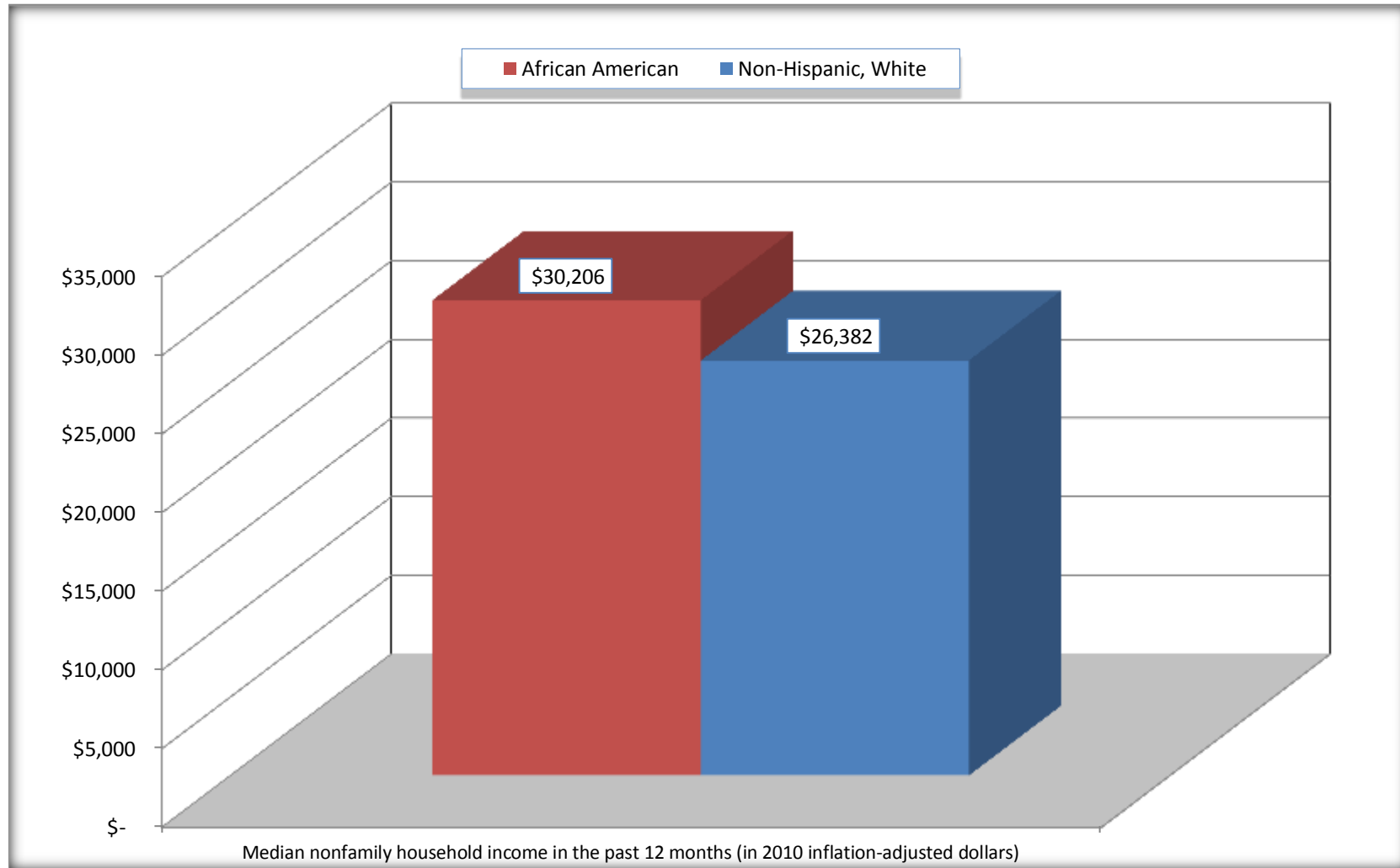
Source: U.S. Census Bureau, 2008-2012 American Community Survey

For information on confidentiality protection, sampling error, nonsampling error, and definitions, see Survey Methodology.

<http://www.census.gov/acs/www/UseData/index.htm>

# Median Non-Family Income in the Past 12 Months

## Trotwood city, Ohio



Source: B19202. MEDIAN NONFAMILY HOUSEHOLD INCOME IN THE PAST 12 MONTHS (IN 2010 INFLATION-ADJUSTED DOLLARS)  
Data Set: 2008-2012 American Community Survey 5-Year Estimates

**B19301. PER CAPITA INCOME IN THE PAST 12 MONTHS (IN 2010 INFLATION-ADJUSTED DOLLARS)**

Data Set: 2008-2012 American Community Survey 5-Year Estimates

	Trotwood city, Ohio			
	African American	Margin of Error (+/-)	White, Not Hispanic	Margin of Error (+/-)
Per capita income in the past 12 months (in 2010 inflation-adjusted dollars)	\$ 20,517	\$ 1,606	\$ 22,392	\$ 1,801

Source: U.S. Census Bureau, 2008-2012 American Community Survey

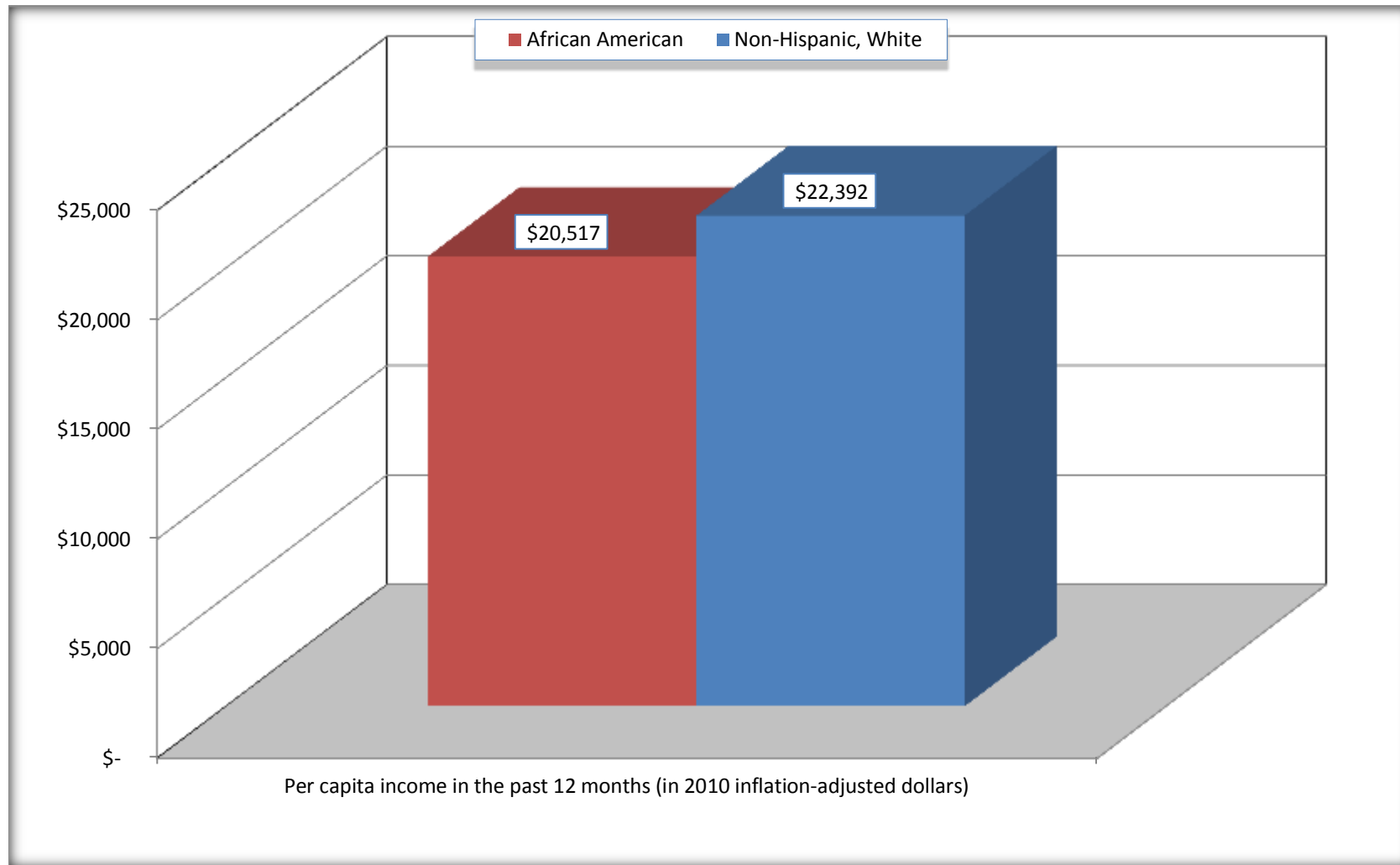
For information on confidentiality protection, sampling error, nonsampling error, and definitions, see Survey Methodology.

<http://www.census.gov/acs/www/UseData/index.htm>



## Per capita Income in the Past 12 Months

### Trotwood city, Ohio



Source: B19301. PER CAPITA INCOME IN THE PAST 12 MONTHS (IN 2010 INFLATION-ADJUSTED DOLLARS)  
Data Set: 2008-2012 American Community Survey 5-Year Estimates

**B20017. MEDIAN EARNINGS IN THE PAST 12 MONTHS (IN 2010 INFLATION-ADJUSTED DOLLARS) BY SEX BY WORK EXPERIENCE IN THE PAST 12 MONTHS FOR THE POPULATION 16 YEARS AND OVER WITH EARNINGS IN THE PAST 12 MONTHS**

Data Set: 2008-2012 American Community Survey 5-Year Estimates

	Trotwood city, Ohio			
	African American	Margin of Error (+/-)	White, Not Hispanic	Margin of Error (+/-)
Median earnings in the past 12 months (in 2010 inflation-adjusted dollars) --				
Total:	\$ 24,478	\$ 3,530	\$ 25,310	\$ 2,109
Male --				
Total	\$ 22,616	\$ 4,227	\$ 26,880	\$ 5,098
Worked full-time, year-round in the past 12 months	\$ 36,175	\$ 4,331	\$ 45,221	\$ 6,598
Other	\$ 8,096	\$ 1,715	\$ 11,619	\$ 6,795
Female --				
Total	\$ 26,163	\$ 4,917	\$ 22,869	\$ 3,113
Worked full-time, year-round in the past 12 months	\$ 36,193	\$ 2,578	\$ 31,226	\$ 4,432
Other	\$ 8,775	\$ 2,396	\$ 11,469	\$ 2,027

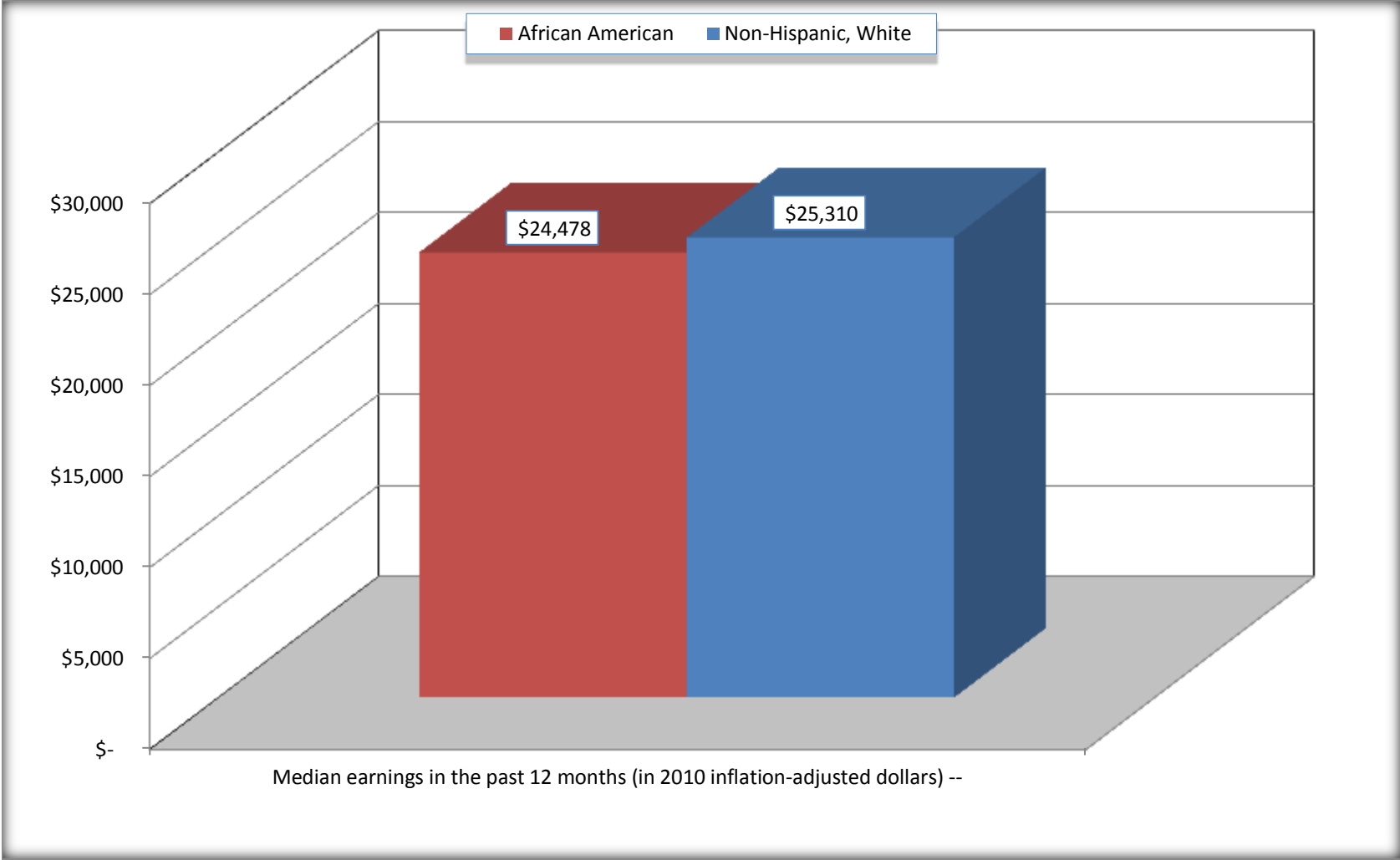
Source: U.S. Census Bureau, 2008-2012 American Community Survey

For information on confidentiality protection, sampling error, nonsampling error, and definitions, see Survey Methodology.

<http://www.census.gov/acs/www/UseData/index.htm>

# Median earnings in the Past 12 Months (16 Years and Over with Earnings)

## Trotwood city, Ohio



Source: B20017. MEDIAN EARNINGS IN THE PAST 12 MONTHS (IN 2010 INFLATION-ADJUSTED DOLLARS) BY SEX BY WORK EXPERIENCE IN THE PAST 12 MONTHS FOR THE POPULATION 16 YEARS AND OVER WITH EARNINGS IN THE PAST 12 MONTHS  
Data Set: 2008-2012 American Community Survey 5-Year Estimates

**B20005. SEX BY WORK EXPERIENCE IN THE PAST 12 MONTHS BY EARNINGS IN THE PAST 12 MONTHS (IN 2010 INFLATION-ADJUSTED DOLLARS) FOR THE POPULATION 16 YEARS AND OVER**

Data Set: 2008-2012 American Community Survey 5-Year Estimates

	Trotwood city, Ohio					
	African American	Margin of Error (+/-)	% of AA Total	White, Not Hispanic	Margin of Error (+/-)	% of NHW Total
<b>Total:</b>	<b>12,772</b>	<b>567</b>	<b>100.0%</b>	<b>6,118</b>	<b>486</b>	<b>100.0%</b>
Worked full-time, year-round in the past 12 months:	4,602	NC	36.0%	1,606	NC	26.3%
No earnings	0	NC	0.0%	0	NC	0.0%
With earnings:	4,602	NC	36.0%	1,606	NC	26.3%
\$ 1 to \$ 9,999 or loss	190	NC	1.5%	28	NC	0.5%
\$ 10,000 to \$ 19,999	631	NC	4.9%	153	NC	2.5%
\$ 20,000 to \$ 29,999	870	NC	6.8%	451	NC	7.4%
\$ 30,000 to \$ 49,999	1,623	NC	12.7%	438	NC	7.2%
\$ 50,000 to \$ 74,999	901	NC	7.1%	435	NC	7.1%
\$ 75,000 or more	387	NC	3.0%	101	NC	1.7%
Other:	8,170	NC	64.0%	4,512	NC	73.7%
No earnings	4,856	NC	38.0%	3,273	NC	53.5%
With earnings: less than full time, year-round	3,314	NC	25.9%	1,239	NC	20.3%
<b>Male:</b>	<b>5,602</b>	<b>397</b>	<b>43.9%</b>	<b>2,974</b>	<b>295</b>	<b>48.6%</b>
Worked full-time, year-round in the past 12 months:	1,904	301	14.9%	896	195	14.6%
No earnings	0	21	0.0%	0	21	0.0%
With earnings:	1,904	301	14.9%	896	195	14.6%
\$ 1 to \$ 9,999 or loss	125	NC	1.0%	23	NC	0.4%
\$ 10,000 to \$ 19,999	224	NC	1.8%	74	NC	1.2%
\$ 20,000 to \$ 29,999	391	NC	3.1%	206	NC	3.4%
\$ 30,000 to \$ 49,999	622	NC	4.9%	186	NC	3.0%
\$ 50,000 to \$ 74,999	417	NC	3.3%	316	NC	5.2%
\$ 75,000 or more	125	NC	1.0%	91	NC	1.5%

	Trotwood city, Ohio					
	African American	Margin of Error (+/-)	% of AA Total	White, Not Hispanic	Margin of Error (+/-)	% of NHW Total
Other:	3,698	361	29.0%	2,078	266	34.0%
No earnings	2,178	271	17.1%	1,487	206	24.3%
With earnings:	1,520	261	11.9%	591	173	9.7%
Female:	7,170	422	56.1%	3,144	277	51.4%
Worked full-time, year-round in the past 12 months:	2,698	316	21.1%	710	166	11.6%
No earnings	0	21	0.0%	0	21	0.0%
With earnings:	2,698	316	21.1%	710	166	11.6%
\$ 1 to \$ 9,999 or loss	65	NC	0.5%	5	NC	0.1%
\$ 10,000 to \$ 19,999	407	NC	3.2%	79	NC	1.3%
\$ 20,000 to \$ 29,999	479	NC	3.8%	245	NC	4.0%
\$ 30,000 to \$ 49,999	1,001	NC	7.8%	252	NC	4.1%
\$ 50,000 to \$ 74,999	484	NC	3.8%	119	NC	1.9%
\$ 75,000 or more	262	NC	2.1%	10	NC	0.2%
Other:	4,472	366	35.0%	2,434	230	39.8%
No earnings	2,678	290	21.0%	1,786	209	29.2%
With earnings:	1,794	257	14.0%	648	139	10.6%

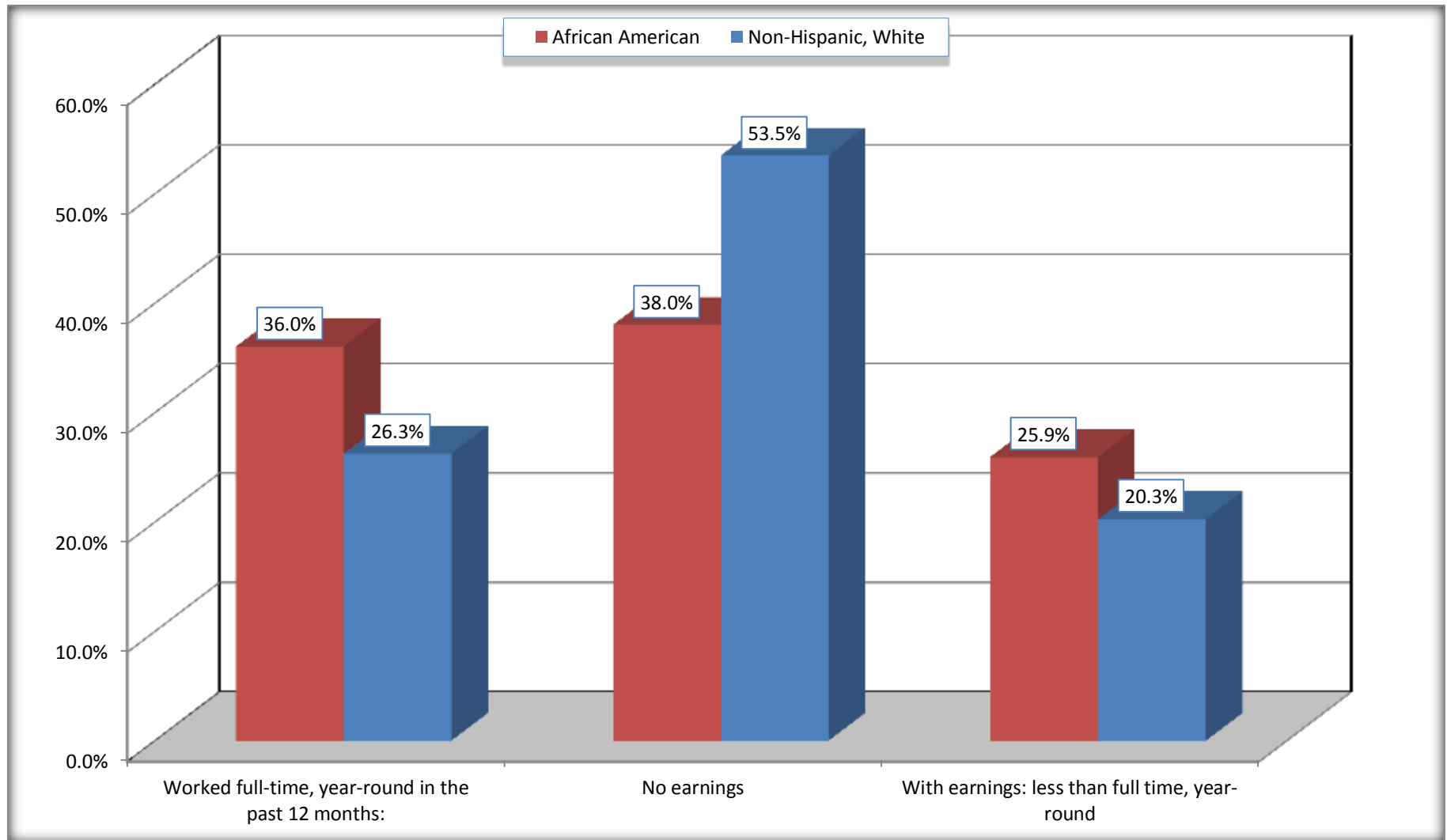
Source: U.S. Census Bureau, 2008-2012 American Community Survey

For information on confidentiality protection, sampling error, nonsampling error, and definitions, see Survey Methodology.

<http://www.census.gov/acs/www/UseData/index.htm>

# Employment and Earnings in in the Past 12 Months (16 Years and Over)

## Trotwood city, Ohio



Source: B20005. SEX BY WORK EXPERIENCE IN THE PAST 12 MONTHS BY EARNINGS IN THE PAST 12 MONTHS (IN 2010 INFLATION-ADJUSTED DOLLARS) FOR THE POPULATION 16 YEARS AND OVER

Data Set: 2008-2012 American Community Survey 5-Year Estimates

**C21001. SEX BY AGE BY VETERAN STATUS FOR THE CIVILIAN POPULATION 18 YEARS AND OVER**

Data Set: 2008-2012 American Community Survey 5-Year Estimates

	Trotwood city, Ohio					
	African American	Margin of Error (+/-)	% of AA Total	White, Not Hispanic	Margin of Error (+/-)	% of NHW Total
<b>Total:</b>	<b>12,095</b>	<b>499</b>	<b>100.0%</b>	<b>5,933</b>	<b>466</b>	<b>100.0%</b>
Veteran	1,230	NC	10.2%	956	NC	16.1%
Nonveteran	10,865	NC	89.8%	4,977	NC	83.9%
Male:	5,294	364	43.8%	2,839	279	47.9%
18 to 64 years:	4,400	380	36.4%	1,977	258	33.3%
Veteran	730	185	6.0%	391	110	6.6%
Nonveteran	3,670	392	30.3%	1,586	236	26.7%
65 years and over:	894	151	7.4%	862	131	14.5%
Veteran	349	97	2.9%	523	114	8.8%
Nonveteran	545	125	4.5%	339	81	5.7%
Female:	6,801	348	56.2%	3,094	279	52.1%
18 to 64 years:	5,572	348	46.1%	1,917	257	32.3%
Veteran	127	77	1.1%	37	32	0.6%
Nonveteran	5,445	352	45.0%	1,880	253	31.7%
65 years and over:	1,229	183	10.2%	1,177	176	19.8%
Veteran	24	26	0.2%	5	8	0.1%
Nonveteran	1,205	179	10.0%	1,172	175	19.8%

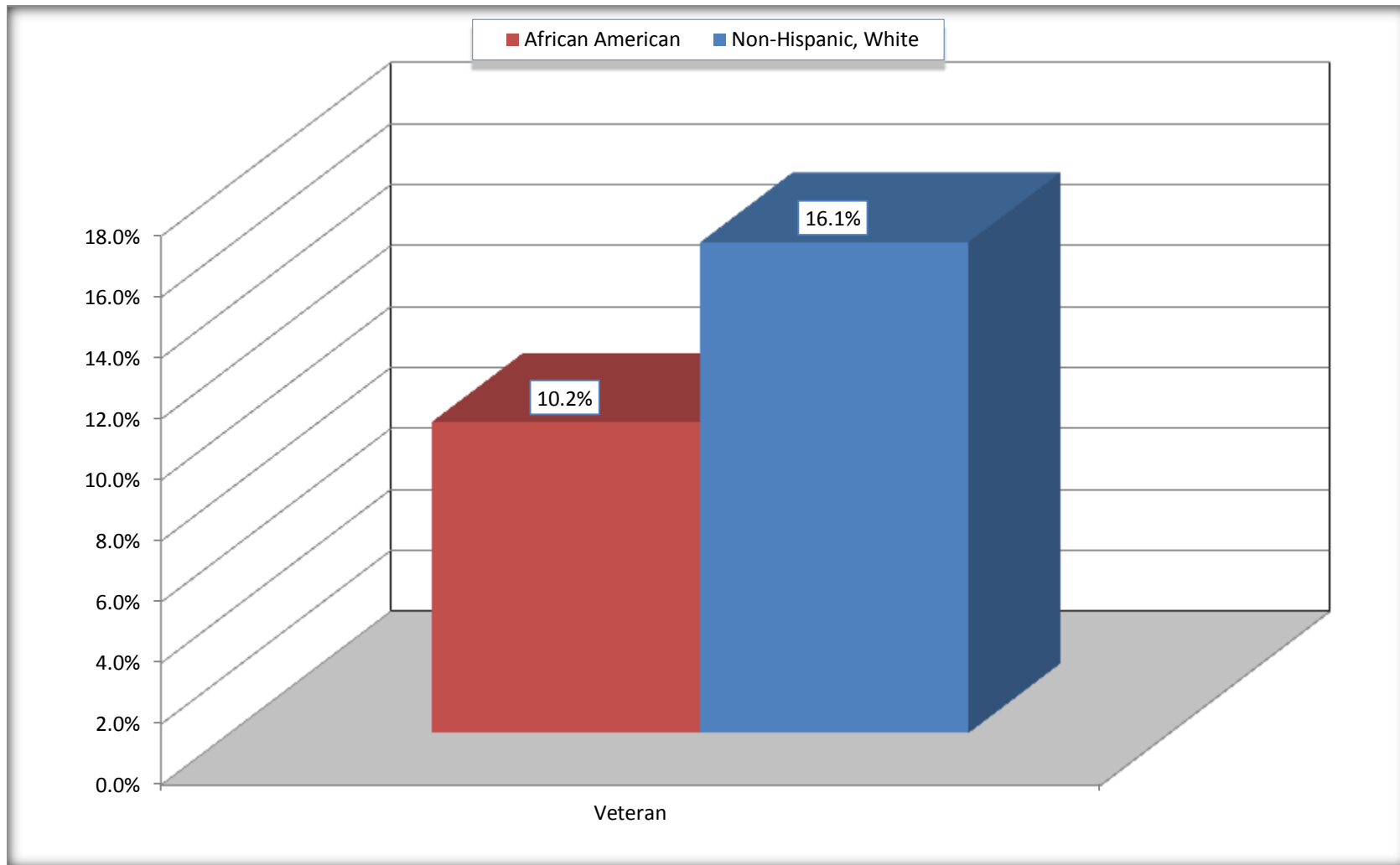
Source: U.S. Census Bureau, 2008-2012 American Community Survey

For information on confidentiality protection, sampling error, nonsampling error, and definitions, see Survey Methodology.

<http://www.census.gov/acs/www/UseData/index.htm>

# Veterans in the Civilian Population 18 Years and Over

## Trotwood city, Ohio



Source: C21001. SEX BY AGE BY VETERAN STATUS FOR THE CIVILIAN POPULATION 18 YEARS AND OVER  
Data Set: 2008-2012 American Community Survey 5-Year Estimates



**B22005. RECEIPT OF FOOD STAMPS/SNAP IN THE PAST 12 MONTHS BY RACE OF HOUSEHOLDER**

Data Set: 2008-2012 American Community Survey 5-Year Estimates

	Trotwood city, Ohio					
	African American	Margin of Error (+/-)	% of AA Total	White, Not Hispanic	Margin of Error (+/-)	% of NHW Total
<b>Total:</b>	<b>6,853</b>	<b>273</b>	<b>100.0%</b>	<b>3,004</b>	<b>250</b>	<b>100.0%</b>
HH received Food Stamps/SNAP in the past 12 months	1,509	223	22.0%	469	88	15.6%
HH did not receive Food Stamps/SNAP in the past 12 months	5,344	281	78.0%	2,535	248	84.4%

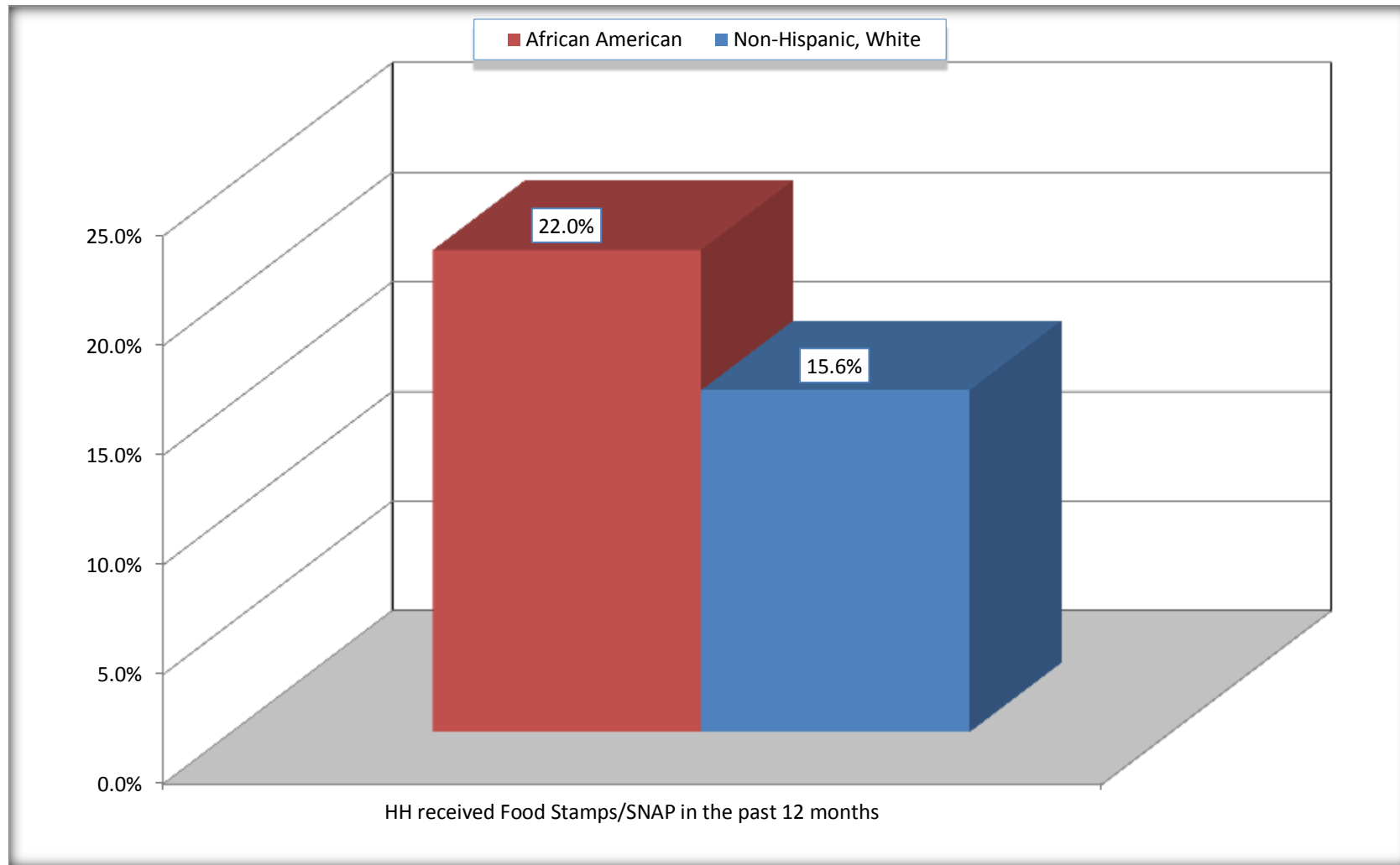
Source: U.S. Census Bureau, 2008-2012 American Community Survey

For information on confidentiality protection, sampling error, nonsampling error, and definitions, see Survey Methodology.

<http://www.census.gov/acs/www/UseData/index.htm>

# Receipt of Food Stamps/SNAP in the Past 12 Months by Household

## Trotwood city, Ohio



Source: B22005. RECEIPT OF FOOD STAMPS/SNAP IN THE PAST 12 MONTHS BY RACE OF HOUSEHOLDER  
Data Set: 2008-2012 American Community Survey 5-Year Estimates

**C23002. SEX BY AGE BY EMPLOYMENT STATUS FOR THE POPULATION 16 YEARS AND OVER**

Data Set: 2008-2012 American Community Survey 5-Year Estimates

	Trotwood city, Ohio					
	African American	Margin of Error (+/-)	% of AA Total	White, Not Hispanic	Margin of Error (+/-)	% of NHW Total
<b>Total:</b>	<b>12,772</b>	<b>567</b>	<b>100.0%</b>	<b>6,118</b>	<b>486</b>	<b>100.0%</b>
In labor force:	8,085	NC	63.3%	2,731	NC	44.6%
In Armed Forces	0	NC	0.0%	0	NC	0.0%
Civilian:	7,793	NC	61.0%	2,574	NC	42.1%
Employed	7,042	NC	55.1%	2,406	NC	39.3%
Unemployed	1,043	NC	8.2%	325	NC	5.3%
Not in labor force	4,687	NC	36.7%	3,387	NC	55.4%
Male:	5,602	397	43.9%	2,974	295	48.6%
16 to 64 years:	4,708	415	36.9%	2,112	275	34.5%
In labor force:	3,402	347	26.6%	1,395	234	22.8%
In Armed Forces	0	21	0.0%	0	21	0.0%
Civilian:	3,402	347	26.6%	1,395	234	22.8%
Employed	2,794	342	21.9%	1,212	220	19.8%
Unemployed	608	192	4.8%	183	83	3.0%
Not in labor force	1,306	217	10.2%	717	151	11.7%
65 years and over:	894	151	7.0%	862	131	14.1%
In labor force:	168	82	1.3%	62	43	1.0%
Employed	150	78	1.2%	62	43	1.0%
Unemployed	18	28	0.1%	0	21	0.0%
Not in labor force	726	146	5.7%	800	136	13.1%

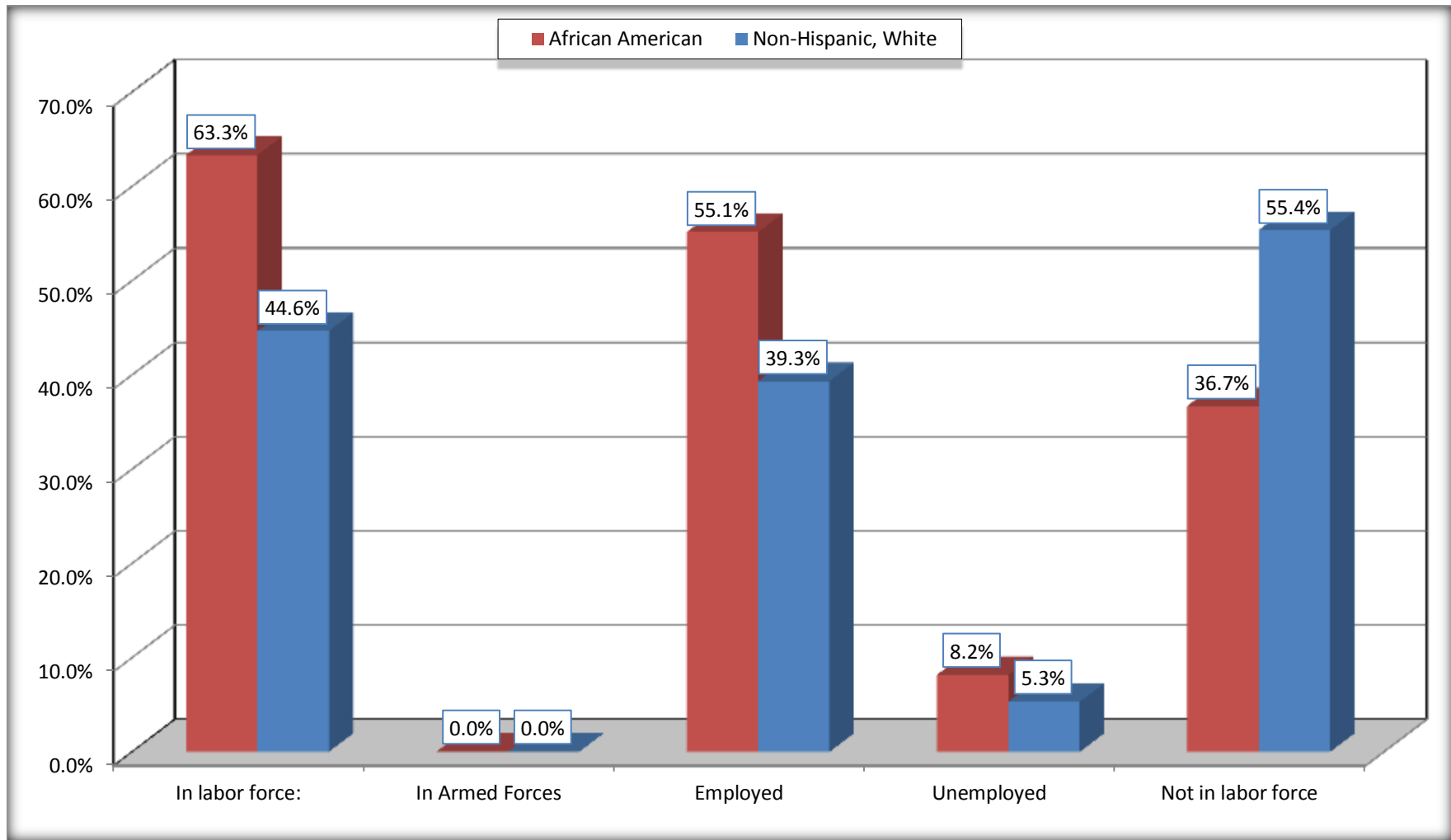
	Trotwood city, Ohio					
	African American	Margin of Error (+/-)	% of AA Total	White, Not Hispanic	Margin of Error (+/-)	% of NHW Total
Female:	7,170	422	56.1%	3,144	277	51.4%
16 to 64 years:	5,941	429	46.5%	1,967	260	32.2%
In labor force:	4,391	348	34.4%	1,179	216	19.3%
In Armed Forces	0	21	0.0%	0	21	0.0%
Civilian:	4,391	348	34.4%	1,179	216	19.3%
Employed	3,999	316	31.3%	1,037	211	16.9%
Unemployed	392	139	3.1%	142	68	2.3%
Not in labor force	1,550	249	12.1%	788	168	12.9%
65 years and over:	1,229	183	9.6%	1,177	176	19.2%
In labor force:	124	50	1.0%	95	45	1.6%
Employed	99	43	0.8%	95	45	1.6%
Unemployed	25	23	0.2%	0	21	0.0%
Not in labor force	1,105	190	8.7%	1,082	174	17.7%

Source: U.S. Census Bureau, 2008-2012 American Community Survey

For information on confidentiality protection, sampling error, nonsampling error, and definitions, see Survey Methodology.  
<http://www.census.gov/acs/www/UseData/index.htm>

# Employment Status for the Population 16 years and over

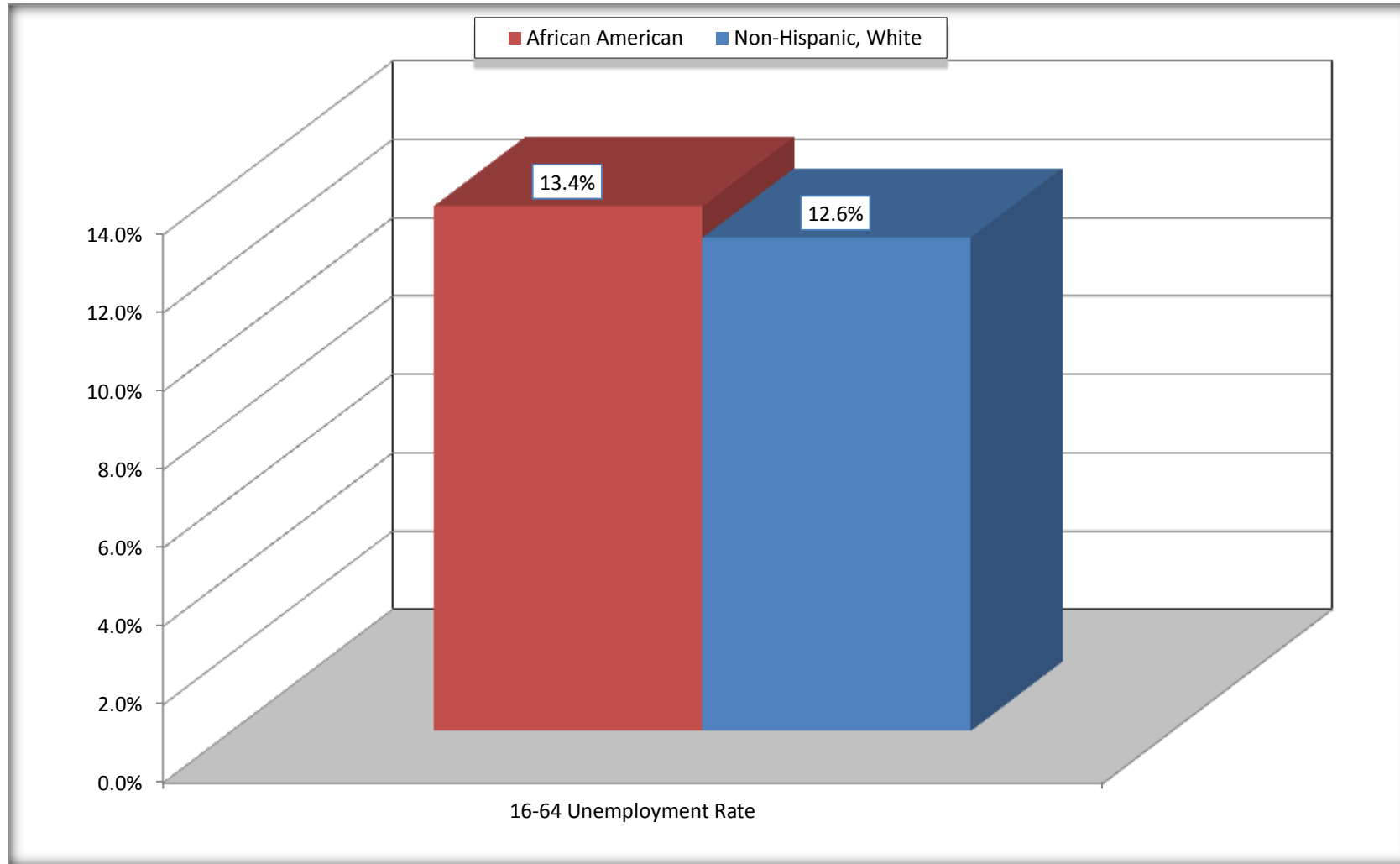
## Trotwood city, Ohio



Source: C23002. SEX BY AGE BY EMPLOYMENT STATUS FOR THE POPULATION 16 YEARS AND OVER  
Data Set: 2008-2012 American Community Survey 5-Year Estimates

# Unemployment of Working Age Population (Ages 16 to 64) (As a Percent of 16-64 Civilian Labor Force)

## Trotwood city, Ohio



Source: C23002. SEX BY AGE BY EMPLOYMENT STATUS FOR THE POPULATION 16 YEARS AND OVER  
Data Set: 2008-2012 American Community Survey 5-Year Estimates

**C24010. SEX BY OCCUPATION FOR THE CIVILIAN EMPLOYED POPULATION 16 YEARS AND OVER**

Data Set: 2008-2012 American Community Survey 5-Year Estimates

	Trotwood city, Ohio					
	African American	Margin of Error (+/-)	% of AA Total	White, Not Hispanic	Margin of Error (+/-)	% of NHW Total
<b>Total:</b>	<b>7,042</b>	<b>473</b>	<b>100.0%</b>	<b>2,406</b>	<b>371</b>	<b>100.0%</b>
Management, professional, and related occupations	2,199	NC	31.2%	741	NC	30.8%
Service occupations	1,469	NC	20.9%	281	NC	11.7%
Sales and office occupations	1,953	NC	27.7%	711	NC	29.6%
Natural resources, construction, and maintenance occupations:	344	NC	4.9%	244	NC	10.1%
Production, transportation, and material moving occupations	1,077	NC	15.3%	429	NC	17.8%
Male:	2,944	343	41.8%	1,274	230	53.0%
Management, business, science, and arts occupations:	594	142	8.4%	364	107	15.1%
Service occupations	643	184	9.1%	110	64	4.6%
Sales and office occupations	693	214	9.8%	240	102	10.0%
Natural resources, construction, and maintenance occupations:	322	131	4.6%	244	82	10.1%
Production, transportation, and material moving occupations	692	182	9.8%	316	126	13.1%
Female:	4,098	314	58.2%	1,132	209	47.0%
Management, professional, and related occupations	1,605	232	22.8%	377	131	15.7%
Service occupations	826	171	11.7%	171	82	7.1%
Sales and office occupations	1,260	185	17.9%	471	137	19.6%
Natural resources, construction, and maintenance occupations:	22	25	0.3%	0	21	0.0%
Production, transportation, and material moving occupations	385	124	5.5%	113	59	4.7%

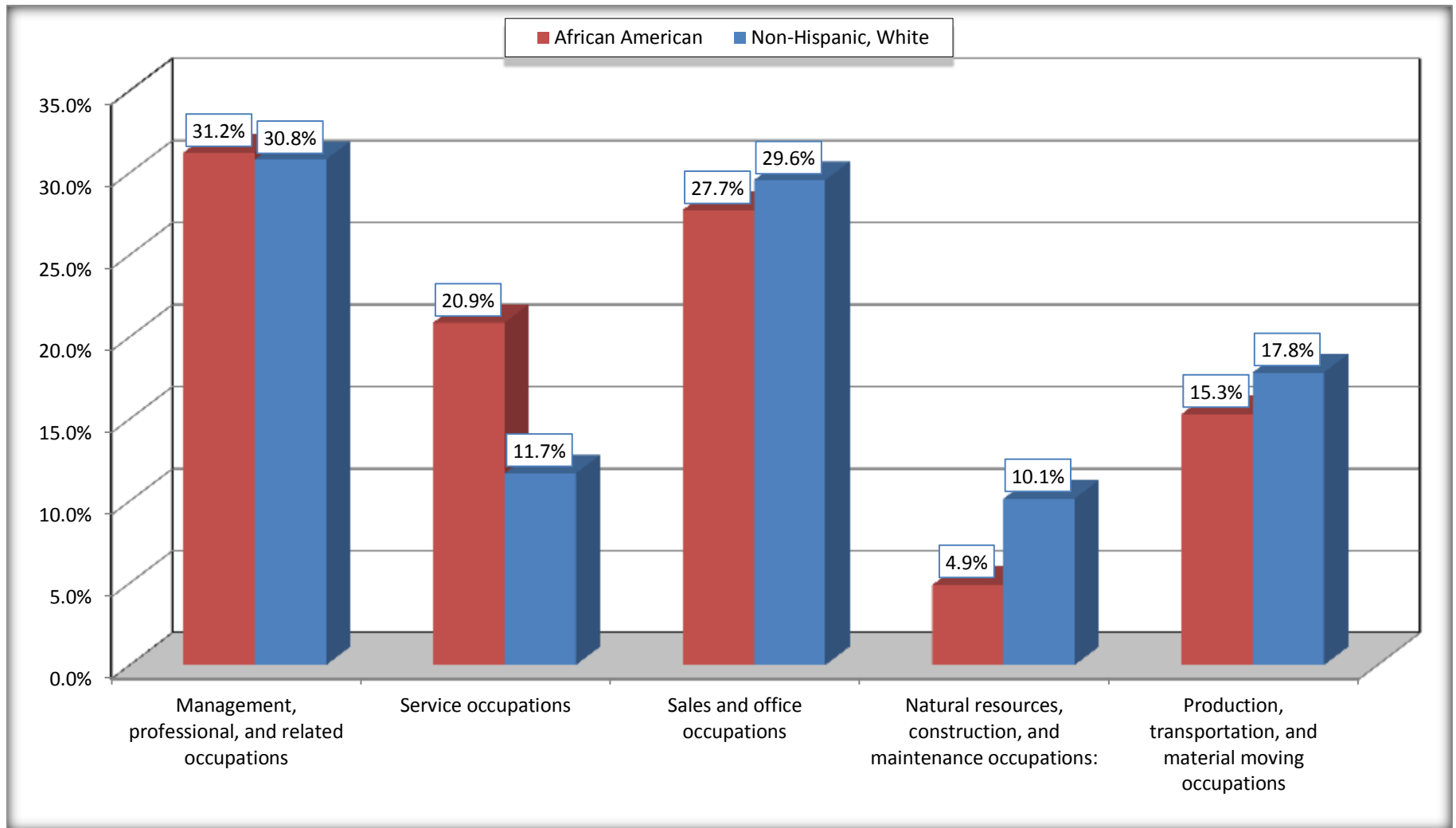
Source: U.S. Census Bureau, 2008-2012 American Community Survey

For information on confidentiality protection, sampling error, nonsampling error, and definitions, see Survey Methodology.

<http://www.census.gov/acs/www/UseData/index.htm>

# Occupation for the Civilian Employed 16 Years and Over Population

## Trotwood city, Ohio



Source: C24010. SEX BY OCCUPATION FOR THE CIVILIAN EMPLOYED POPULATION 16 YEARS AND OVER  
Data Set: 2008-2012 American Community Survey 5-Year Estimates



**B25003. TENURE - Universe: OCCUPIED HOUSING UNITS**

Data Set: 2008-2012 American Community Survey 5-Year Estimates

	Trotwood city, Ohio					
	African American	Margin of Error (+/-)	% of AA Total	White, Not Hispanic	Margin of Error (+/-)	% of NHW Total
<b>Total:</b>	<b>6,853</b>	<b>273</b>	<b>100.0%</b>	<b>3,004</b>	<b>250</b>	<b>100.0%</b>
Owner occupied	3,545	272	51.7%	2,225	219	74.1%
Renter occupied	3,308	277	48.3%	779	139	25.9%

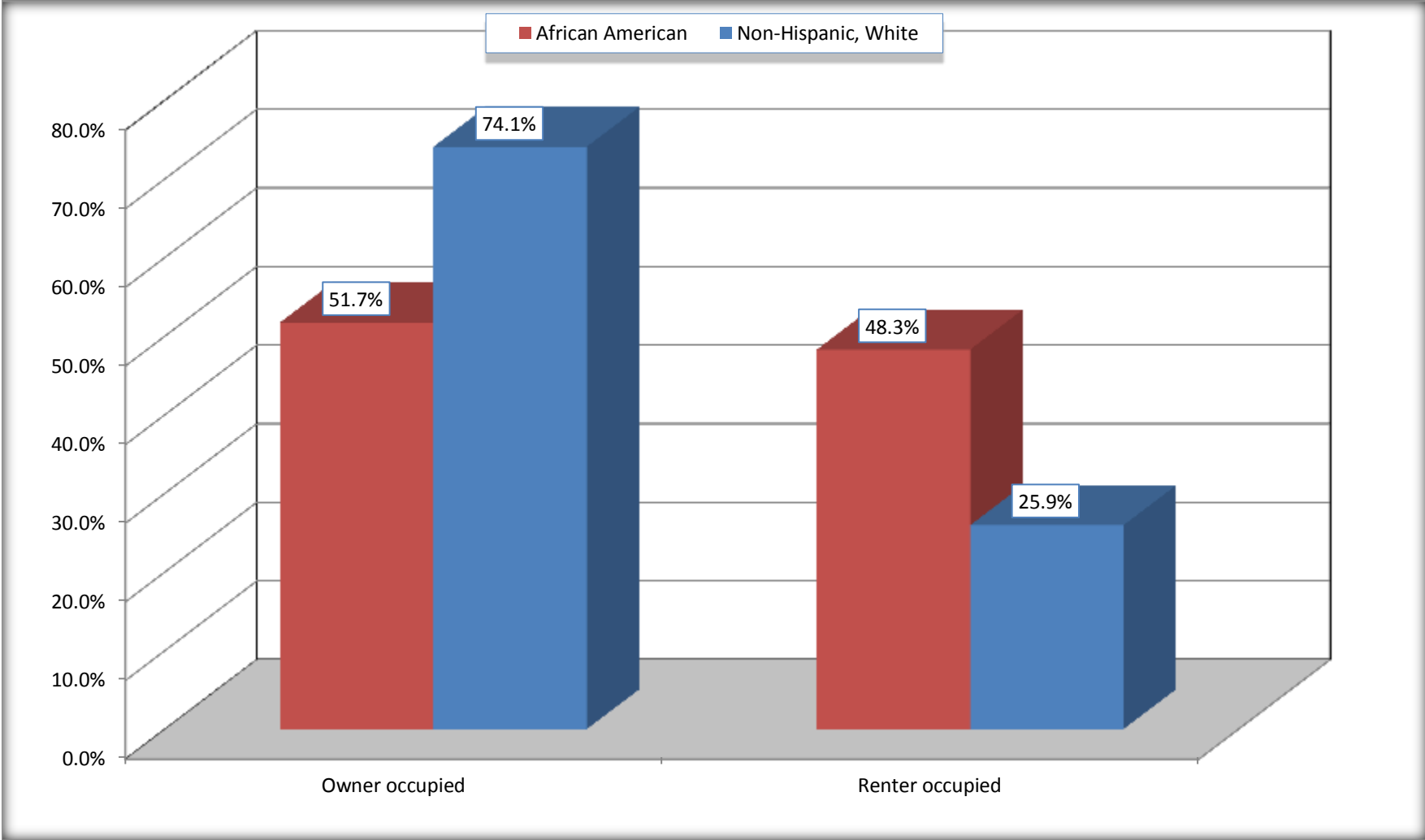
Source: U.S. Census Bureau, 2008-2012 American Community Survey

For information on confidentiality protection, sampling error, nonsampling error, and definitions, see Survey Methodology.

<http://www.census.gov/acs/www/UseData/index.h>

# Home Owners and Renters by Household

## Trotwood city, Ohio



Source: B25003. TENURE - Universe: OCCUPIED HOUSING UNITS  
Data Set: 2008-2012 American Community Survey 5-Year Estimates

**B25014. OCCUPANTS PER ROOM - Universe: OCCUPIED HOUSING UNITS**

Data Set: 2008-2012 American Community Survey 5-Year Estimates

	Trotwood city, Ohio					
	African American	Margin of Error (+/-)	% of AA Total	White, Not Hispanic	Margin of Error (+/-)	% of NHW Total
<b>Total:</b>	<b>6,853</b>	<b>273</b>	<b>100.0%</b>	<b>3,004</b>	<b>250</b>	<b>100.0%</b>
1.00 or less occupants per room	6,791	279	99.1%	2,967	255	98.8%
1.01 or more occupants per room	62	41	0.9%	37	32	1.2%

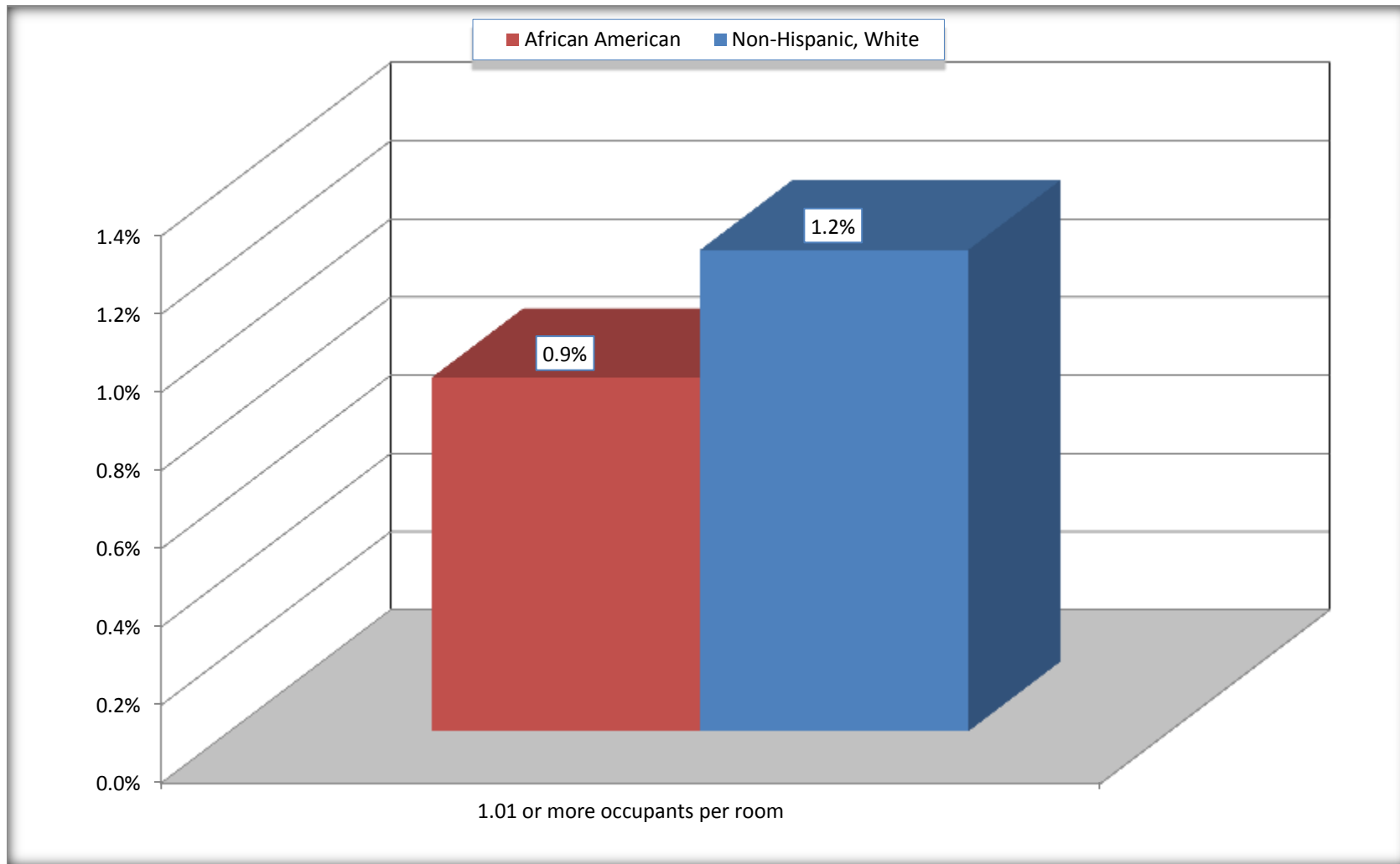
Source: U.S. Census Bureau, 2008-2012 American Community Survey

For information on confidentiality protection, sampling error, nonsampling error, and definitions, see Survey Methodology.

<http://www.census.gov/acs/www/UseData/index.ht>

# More than One Person per Room (Crowding) by Household

## Trotwood city, Ohio



Source: B25014. OCCUPANTS PER ROOM - Universe: OCCUPIED HOUSING UNITS  
Data Set: 2008-2012 American Community Survey 5-Year Estimates

**B18101. AGE BY DISABILITY STATUS**

Data Set: 2008-2012 American Community Survey 5-Year Estimates

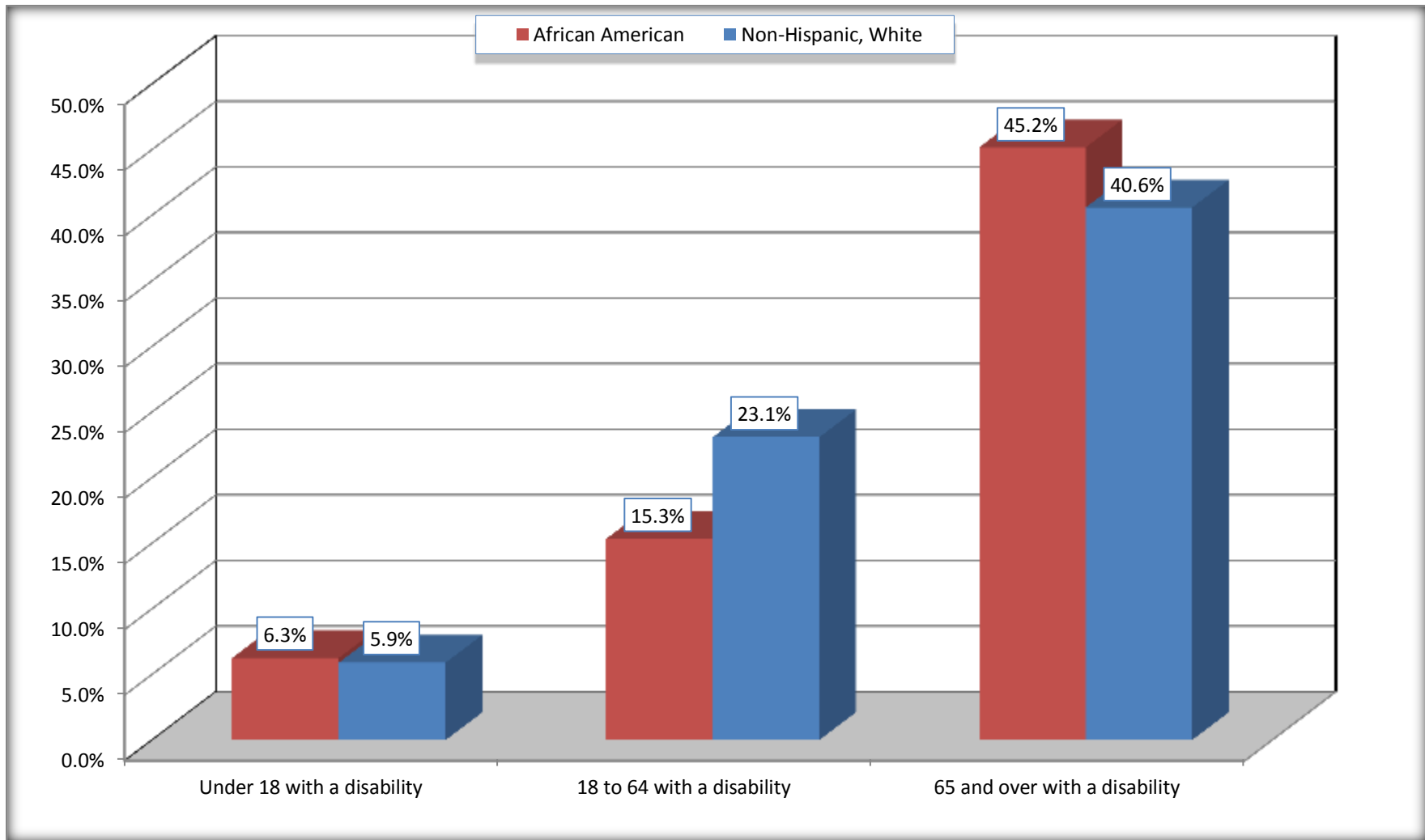
	Trotwood city, Ohio					
	African American	Margin of Error (+/-)	% of AA Total	White, Not Hispanic	Margin of Error (+/-)	% of NHW Total
<b>Total:</b>	<b>16,311</b>	<b>649</b>	<b>100.0%</b>	<b>6,531</b>	<b>619</b>	<b>100.0%</b>
Under 18 years:	4,396	434	27.0%	898	35	13.7%
With a disability	275	138	1.7%	53	47	0.8%
No disability	4,121	401	25.3%	845	216	12.9%
18 to 64 years:	9,940	521	60.9%	3,800	461	58.2%
With a disability	1,523	282	9.3%	877	211	13.4%
No disability	8,417	485	51.6%	2,923	383	44.8%
65 years and over:	1,975	235	12.1%	1,833	238	28.1%
With a disability	892	206	5.5%	744	156	11.4%
No disability	1,083	169	6.6%	1,089	202	16.7%

Source: U.S. Census Bureau, 2008-2012 American Community Survey

For information on confidentiality protection, sampling error, nonsampling error, and definitions, see Survey Methodology.

<http://www.census.gov/acs/www/UseData/index.htm>

## Disability by Age Trotwood city, Ohio



Source: B18101. AGE BY DISABILITY STATUS  
Data Set: 2008-2012 American Community Survey 5-Year Estimates

**C27001B. HEALTH INSURANCE COVERAGE STATUS BY AGE**

Data Set: 2008-2012 American Community Survey 5-Year Estimates

	Trotwood city, Ohio					
	African American	Margin of Error (+/-)	% of AA Total	White, Not Hispanic	Margin of Error (+/-)	% of NHW Total
<b>Total:</b>	<b>16,311</b>	<b>649</b>	<b>100.0%</b>	<b>6,531</b>	<b>619</b>	<b>100.0%</b>
Under 18 years:	4,396	434	27.0%	898	226	13.7%
With health insurance coverage	4,008	434	24.6%	890	224	13.6%
No health insurance coverage	388	171	2.4%	8	14	0.1%
18 to 64 years:	9,940	521	60.9%	3,800	461	58.2%
With health insurance coverage	7,876	449	48.3%	3,049	415	46.7%
No health insurance coverage	2,064	384	12.7%	751	177	11.5%
65 years and over:	1,975	235	12.1%	1,833	238	28.1%
With health insurance coverage	1,975	235	12.1%	1,833	238	28.1%
No health insurance coverage	0	21	0.0%	0	21	0.0%

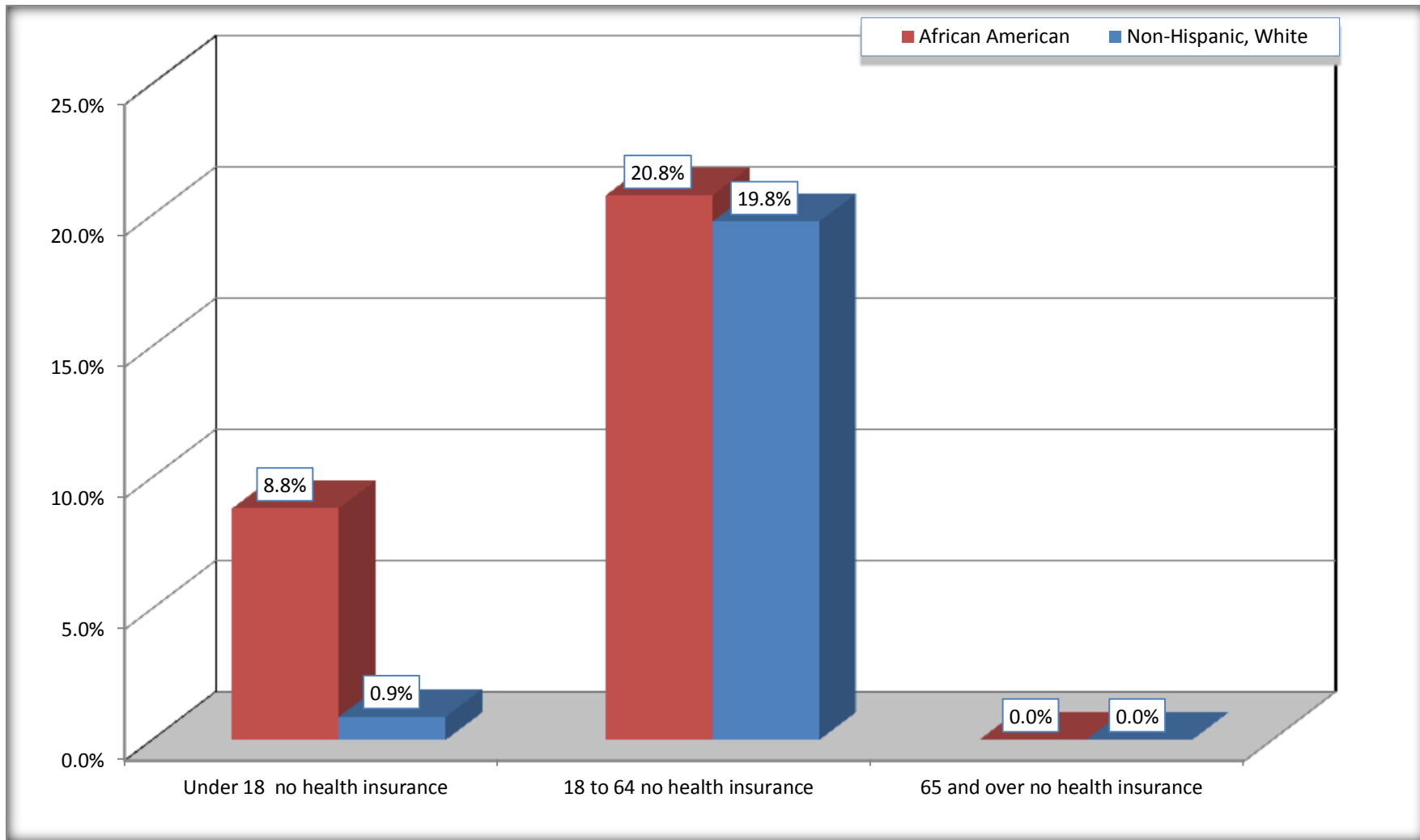
Source: U.S. Census Bureau, 2008-2012 American Community Survey

For information on confidentiality protection, sampling error, nonsampling error, and definitions, see Survey Methodology.

<http://www.census.gov/acs/www/UseData/index.htm>

# Lack of Health Insurance Coverage by Age

## Trotwood city, Ohio



Source: C27001B. HEALTH INSURANCE COVERAGE STATUS BY AGE  
Data Set: 2008-2012 American Community Survey 5-Year Estimates