

# **Selected Socio-Economic Data**

## **Steubenville city, Ohio**

### **African American and White, Not Hispanic**

**Data Set: 2008-2012 American Community Survey 5-Year Estimates**

[www.fairvote2020.org](http://www.fairvote2020.org)

[www.fairdata2000.com](http://www.fairdata2000.com)

[29-Dec-13](#)

**C02003.DETAILED RACE - Universe: TOTAL POPULATION**

Data Set: 2008-2012 American Community Survey 5-Year Estimates

	<b>Steubenville city, Ohio</b>		
	Population	Margin of Error (+/-)	% of Total
<b>Total:</b>	<b>18,564</b>	<b>25</b>	<b>100.0%</b>
Population of one race:	17,872	268	96.3%
White	14,832	346	79.9%
Black or African American	2,878	293	15.5%
American Indian and Alaska Native	38	36	0.2%
Asian alone	65	55	0.4%
Native Hawaiian and Other Pacific Islander	9	14	0.0%
Some other race	50	41	0.3%
Population of two or more races:	692	267	3.7%
Two races including Some other race	0	18	0.0%
Two races excluding Some other race, and three or more races	692	267	3.7%
Population of two races:	565	220	3.0%
White; Black or African American	421	212	2.3%
White; American Indian and Alaska Native	103	60	0.6%
White; Asian	7	11	0.0%
Black or African American; American Indian and Alaska Native	26	25	0.1%
All other two race combinations	8	16	0.0%
Population of three races	127	137	0.7%
Population of four or more races	0	18	0.0%

Note: Hispanics may be of any race. See Table B03002 and chart.

Source: U.S. Census Bureau, 2008-2012 American Community Survey

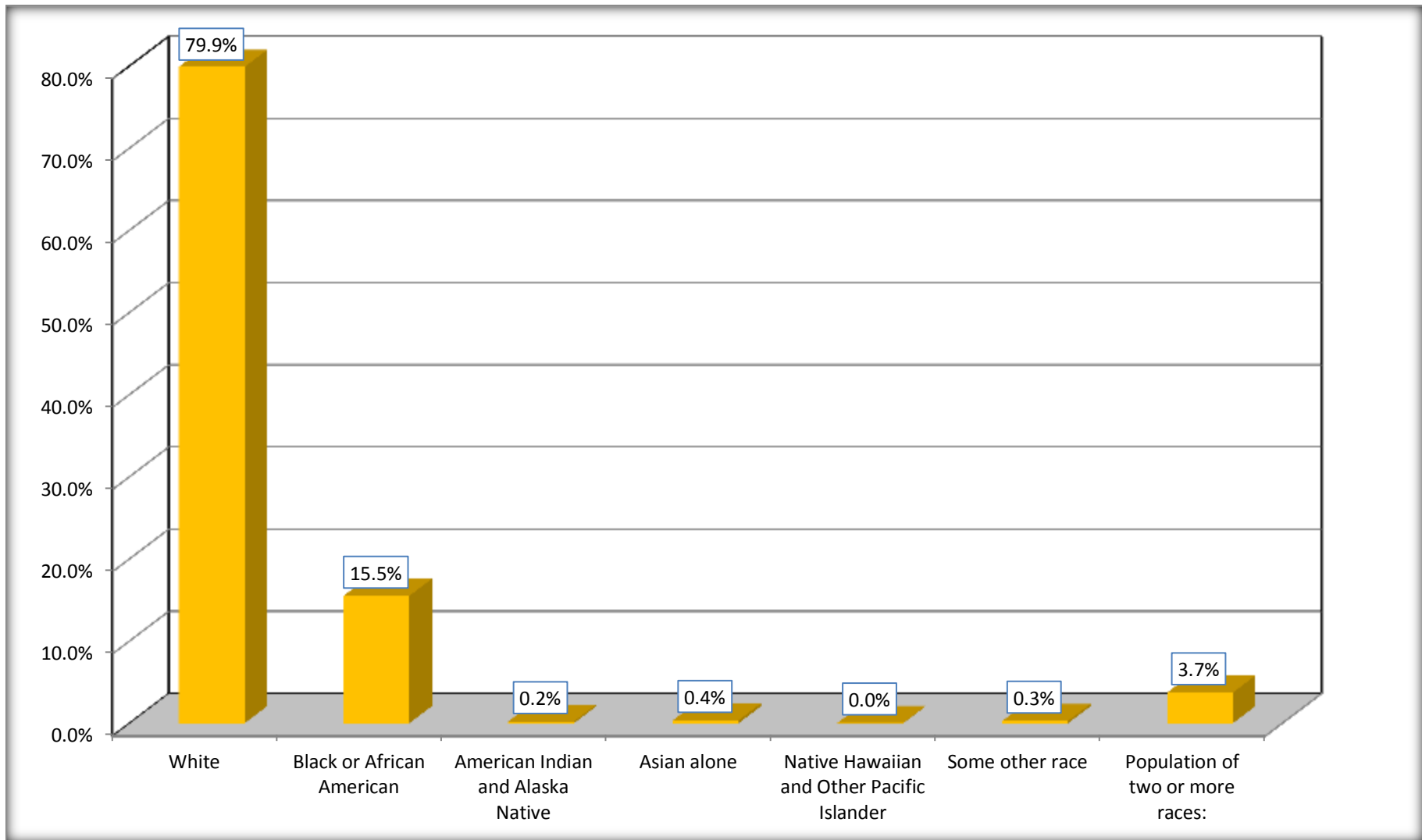
Although the American Community Survey (ACS) produces population, demographic and housing unit estimates, it is the Census Bureau's Population Estimates Program that produces and disseminates the official estimates of the population for the nation, states, counties, cities and towns and estimates of housing units for states and counties.

For information on confidentiality protection, sampling error, nonsampling error, and definitions, see Survey Methodology.

<http://www.census.gov/acs/www/UseData/index.htm>

# Population by Race

## Steubenville city, Ohio



Source: C02003.DETAILED RACE - Universe: TOTAL POPULATION  
Data Set: 2008-2012 American Community Survey 5-Year Estimates

**B03002. HISPANIC OR LATINO ORIGIN BY RACE - Universe: TOTAL POPULATION**

Data Set: 2008-2012 American Community Survey 5-Year Estimates

	Steubenville city, Ohio		
	Population	Margin of Error (+/-)	% of Total
<b>Total:</b>	18,564	25	<b>100.0%</b>
Not Hispanic or Latino:	18,104	151	97.5%
White alone	14,557	359	78.4%
Black or African American alone	2,840	301	15.3%
American Indian and Alaska Native alone	38	36	0.2%
Asian alone	65	55	0.4%
Native Hawaiian and Other Pacific Islander alone	9	14	0.0%
Some other race alone	19	21	0.1%
Two or more races:	576	222	3.1%
Two races including Some other race	0	18	0.0%
Two races excluding Some other race, and three or more races	576	222	3.1%
Hispanic or Latino	460	148	2.5%

Source: U.S. Census Bureau, 2008-2012 American Community Survey

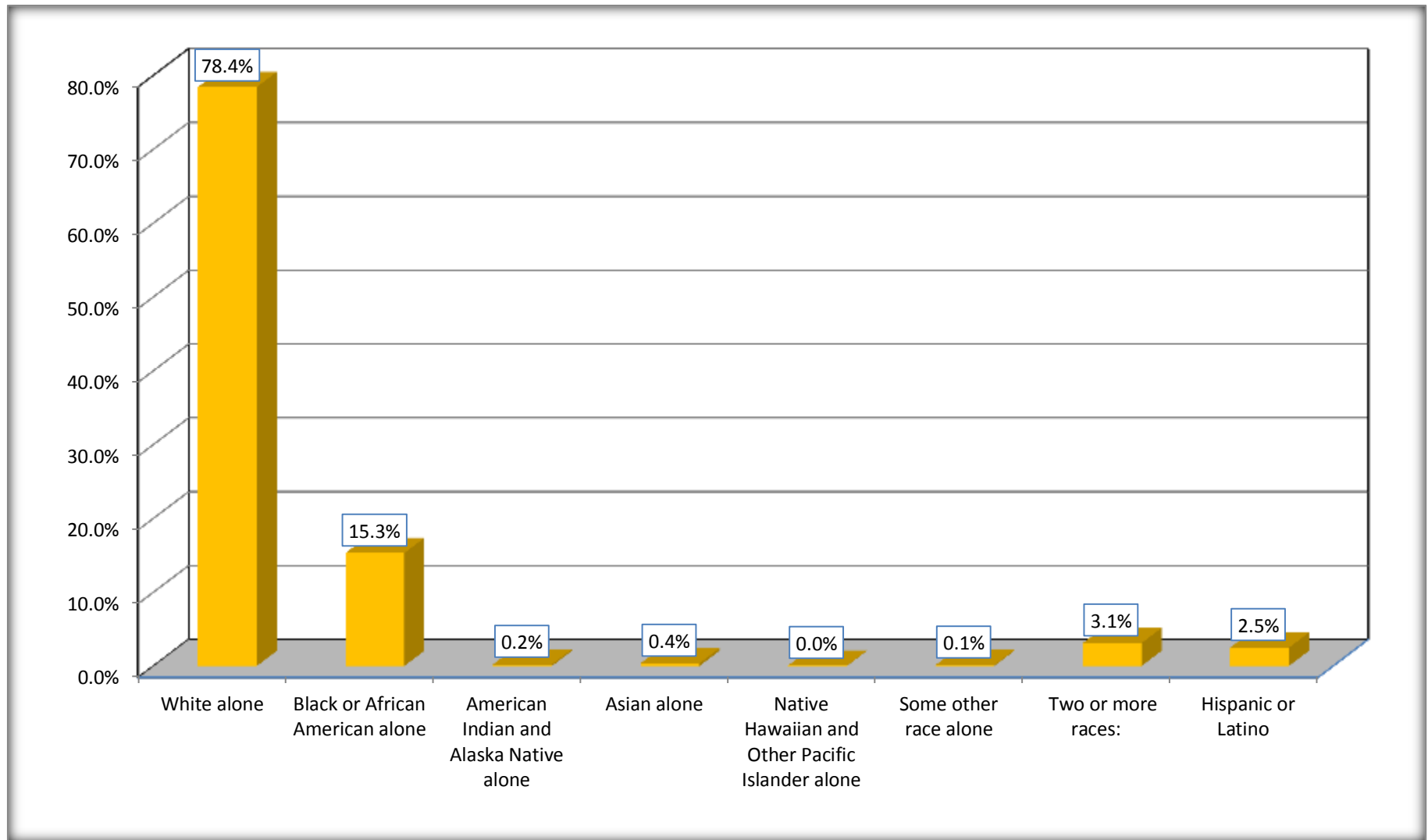
Although the American Community Survey (ACS) produces population, demographic and housing unit estimates, it is the Census Bureau's Population Estimates Program that produces and disseminates the official estimates of the population for the nation, states, counties, cities and towns and estimates of housing units for states and counties.

For information on confidentiality protection, sampling error, nonsampling error, and definitions, see Survey Methodology.

<http://www.census.gov/acs/www/UseData/index.htm>

# Non-Hispanic by Race and Hispanic Population

## Steubenville city, Ohio



Source: B03002. HISPANIC OR LATINO ORIGIN BY RACE - Universe: TOTAL POPULATION  
Data Set: 2008-2012 American Community Survey 5-Year Estimates

**B03002. HISPANIC OR LATINO ORIGIN BY RACE**

Data Set: 2008-2012 American Community Survey 5-Year Estimates

	Steubenville city, Ohio		
	Population	Margin of Error (+/-)	% of Total
Hispanic or Latino:	460	148	<b>100.0%</b>
White alone	275	130	59.8%
Black or African American alone	38	39	8.3%
American Indian and Alaska Native alone	0	18	0.0%
Asian alone	0	18	0.0%
Native Hawaiian and Other Pacific Islander alone	0	18	0.0%
Some other race alone	31	36	6.7%
Two or more races:	116	135	25.2%
Two races including Some other race	0	18	0.0%
Two races excluding Some other race, and three or more races	116	135	25.2%

Source: U.S. Census Bureau, 2008-2012 American Community Survey

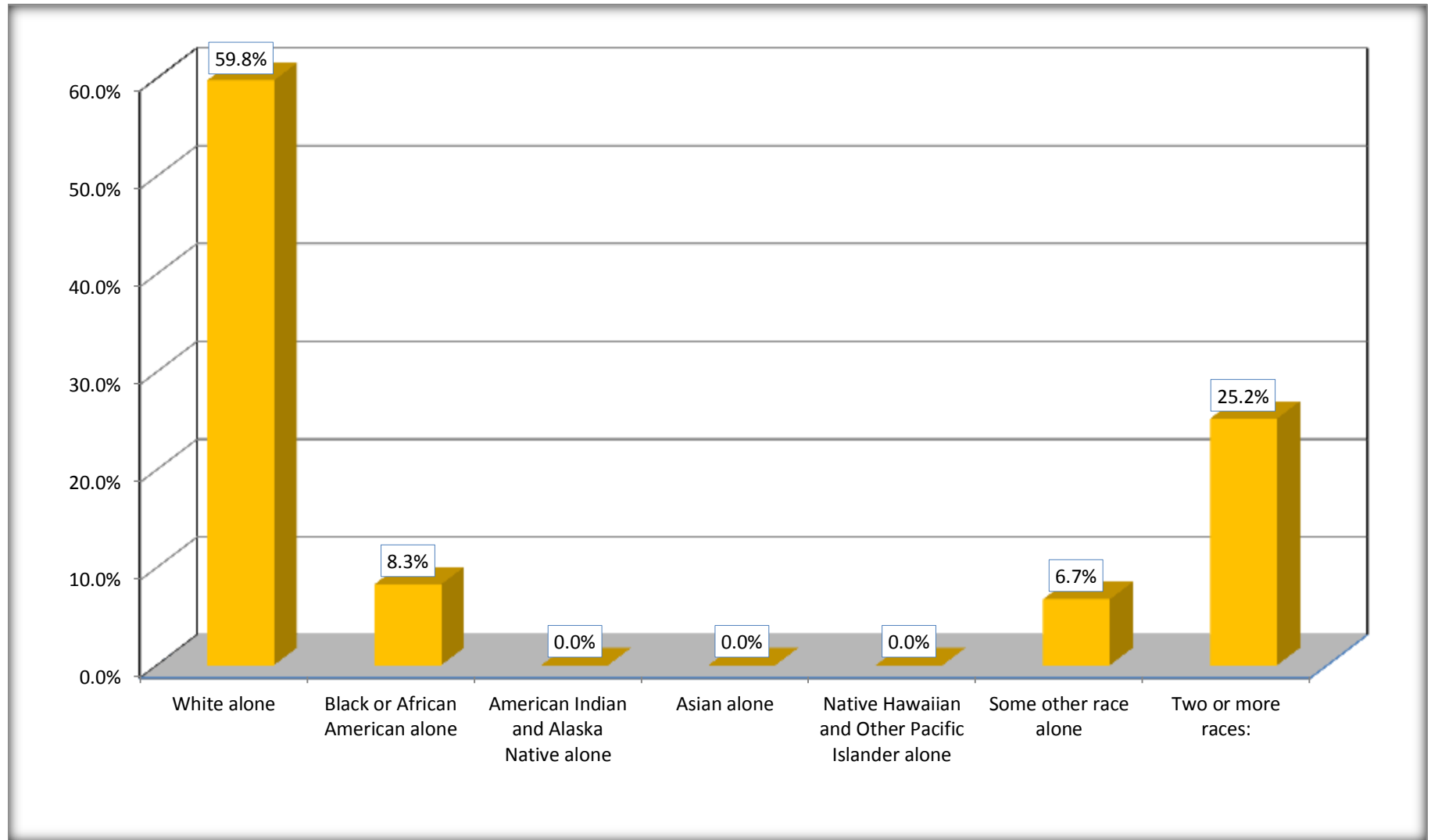
Although the American Community Survey (ACS) produces population, demographic and housing unit estimates, it is the Census Bureau's Population Estimates Program that produces and disseminates the official estimates of the population for the nation, states, counties, cities and towns and estimates of housing units for states and counties.

For information on confidentiality protection, sampling error, nonsampling error, and definitions, see Survey Methodology.

<http://www.census.gov/acs/www/UseData/index.htm>

# Hispanic or Latino Origin by Race

## Steubenville city, Ohio



Source: B03002. HISPANIC OR LATINO ORIGIN BY RACE  
Data Set: 2008-2012 American Community Survey 5-Year Estimates

**B01001. SEX BY AGE**

Data Set: 2008-2012 American Community Survey 5-Year Estimates

	Steubenville city, Ohio					
	African American	Margin of Error (+/-)	% of AA Total	White, Not Hispanic	Margin of Error (+/-)	% of NHW Total
<b>Total:</b>	<b>2,878</b>	<b>293</b>	<b>100.0%</b>	<b>14,557</b>	<b>359</b>	<b>100.0%</b>
Under 18 years	779	NC	27.1%	2,486	NC	17.1%
18 to 64 years	1,669	NC	58.0%	9,201	NC	63.2%
65 years and over	430	NC	14.9%	2,870	NC	19.7%
Male:	1,281	190	44.5%	6,785	389	46.6%
Under 18 years	327	NC	11.4%	1,284	NC	8.8%
18 to 64 years	804	NC	27.9%	4,370	NC	30.0%
65 years and over	150	NC	5.2%	1,131	NC	7.8%
Female:	1,597	191	55.5%	7,772	412	53.4%
Under 18 years	452	NC	15.7%	1,202	NC	8.3%
18 to 64 years	865	NC	30.1%	4,831	NC	33.2%
65 years and over	280	NC	9.7%	1,739	NC	11.9%

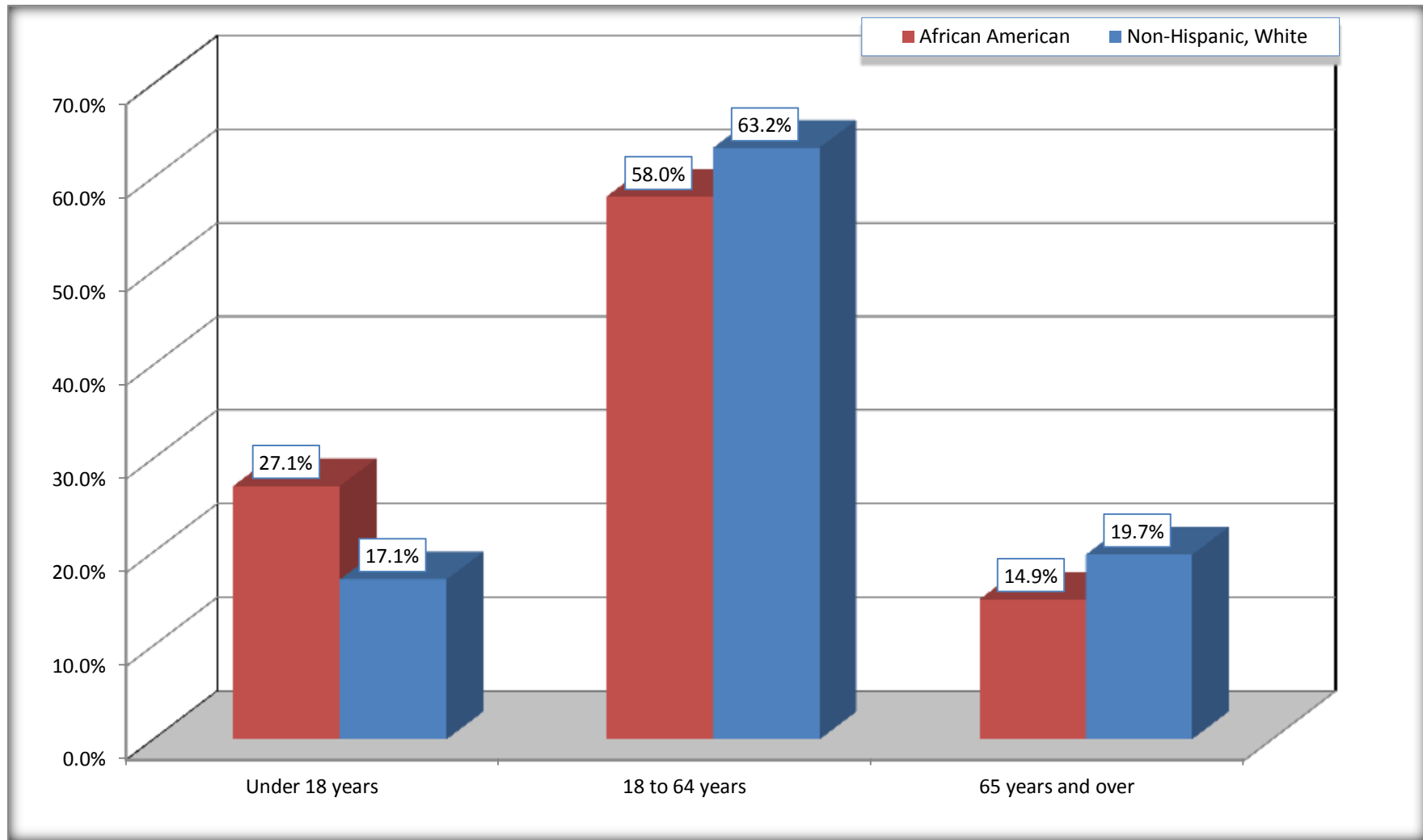
Source: U.S. Census Bureau, 2008-2012 American Community Survey

Although the American Community Survey (ACS) produces population, demographic and housing unit estimates, it is the Census Bureau's Population Estimates Program that produces and disseminates the official estimates of the population for the nation, states, counties, cities and towns and estimates of housing units for states and counties.

For information on confidentiality protection, sampling error, nonsampling error, and definitions, see Survey Methodology.  
<http://www.census.gov/acs/www/UseData/index.htm>



## Population by Age Steubenville city, Ohio



Source: B01001. SEX BY AGE  
Data Set: 2008-2012 American Community Survey 5-Year Estimates

**B05003. SEX BY AGE BY CITIZENSHIP STATUS**

Data Set: 2008-2012 American Community Survey 5-Year Estimates

	Steubenville city, Ohio					
	African American	Margin of Error (+/-)	% of AA Total by Age	White, Not Hispanic	Margin of Error (+/-)	% of NHW Total by Age
<b>Total:</b>	<b>2,878</b>	<b>293</b>	<b>100.0%</b>	<b>14,557</b>	<b>359</b>	<b>100.0%</b>
<b>Under 18 years:</b>	<b>779</b>	<b>NC</b>	<b>100.0%</b>	<b>2,486</b>	<b>NC</b>	<b>100.0%</b>
Native	779	NC	100.0%	2,486	NC	100.0%
Foreign born:	0	NC	0.0%	0	NC	0.0%
Naturalized U.S. citizen	0	NC	0.0%	0	NC	0.0%
Not a U.S. citizen	0	NC	0.0%	0	NC	0.0%
<b>18 years and over:</b>	<b>2,099</b>	<b>NC</b>	<b>100.0%</b>	<b>12,071</b>	<b>NC</b>	<b>100.0%</b>
Native	2,085	NC	99.3%	11,845	NC	98.1%
Foreign born:	14	NC	0.7%	226	NC	1.9%
Naturalized U.S. citizen	0	NC	0.0%	148	NC	1.2%
Not a U.S. citizen	14	NC	0.7%	78	NC	0.6%
<b>Male:</b>	<b>1,281</b>	<b>190</b>	<b>44.5%</b>	<b>6,785</b>	<b>321</b>	<b>46.6%</b>
<b>Under 18 years:</b>	<b>327</b>	<b>97</b>	<b>100.0%</b>	<b>1,284</b>	<b>196</b>	<b>100.0%</b>
Native	327	97	100.0%	1,284	196	100.0%
Foreign born:	0	18	0.0%	0	18	0.0%
Naturalized U.S. citizen	0	18	0.0%	0	18	0.0%
Not a U.S. citizen	0	18	0.0%	0	18	0.0%
<b>18 years and over:</b>	<b>954</b>	<b>129</b>	<b>100.0%</b>	<b>5,501</b>	<b>283</b>	<b>100.0%</b>
Native	954	129	100.0%	5,402	284	98.2%
Foreign born:	0	18	0.0%	99	53	1.8%
Naturalized U.S. citizen	0	18	0.0%	75	45	1.4%
Not a U.S. citizen	0	18	0.0%	24	29	0.4%

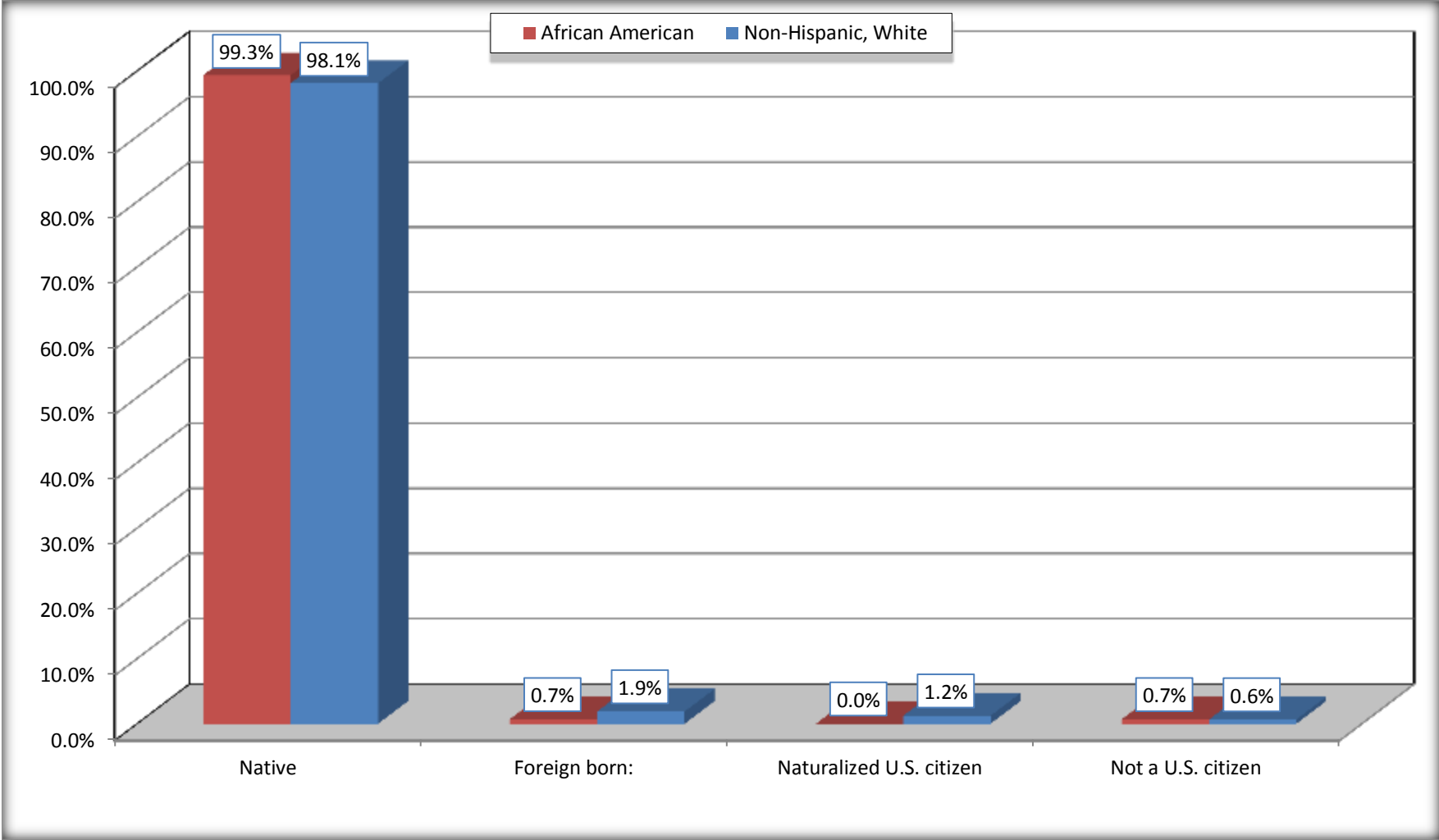
	Steubenville city, Ohio					
	African American	Margin of Error (+/-)	% of AA by Age	White, Not Hispanic	Margin of Error (+/-)	% of NHW by Age
<b>Female:</b>	1,597	191	55.5%	7,772	335	53.4%
<b>Under 18 years:</b>	<b>452</b>	<b>133</b>	<b>100.0%</b>	<b>1,202</b>	<b>189</b>	<b>100.0%</b>
Native	452	133	100.0%	1,202	189	100.0%
Foreign born:	0	18	0.0%	0	18	0.0%
Naturalized U.S. citizen	0	18	0.0%	0	18	0.0%
Not a U.S. citizen	0	18	0.0%	0	18	0.0%
<b>18 years and over:</b>	<b>1,145</b>	<b>123</b>	<b>100.0%</b>	<b>6,570</b>	<b>291</b>	<b>100.0%</b>
Native	1,131	122	98.8%	6,443	290	98.1%
Foreign born:	14	24	1.2%	127	61	1.9%
Naturalized U.S. citizen	0	18	0.0%	73	42	1.1%
Not a U.S. citizen	14	24	1.2%	54	41	0.8%

Source: U.S. Census Bureau, 2008-2012 American Community Survey

For information on confidentiality protection, sampling error, nonsampling error, and definitions, see Survey Methodology.  
<http://www.census.gov/acs/www/UseData/index.htm>

# Citizenship Status of Voting Age Population (18 and Over)

## Steubenville city, Ohio



Source: B05003. SEX BY AGE BY CITIZENSHIP STATUS  
Data Set: 2008-2012 American Community Survey 5-Year Estimates

**B07004. GEOGRAPHICAL MOBILITY IN THE PAST YEAR BY RACE FOR CURRENT RESIDENCE IN THE UNITED STATES - Universe:  
POPULATION 1 YEAR AND OVER**

Data Set: 2008-2012 American Community Survey 5-Year Estimates

	Steubenville city, Ohio					
	African American	Margin of Error (+/-)	% of AA Total	White, Not Hispanic	Margin of Error (+/-)	% of NHW Total
<b>Total:</b>	<b>2,845</b>	<b>294</b>	<b>100.0%</b>	<b>14,393</b>	<b>357</b>	<b>100.0%</b>
Same house 1 year ago	2,418	328	85.0%	12,139	471	84.3%
Moved within same county	218	118	7.7%	1,105	337	7.7%
Moved from different county within same state	110	53	3.9%	369	126	2.6%
Moved from different state	93	78	3.3%	723	260	5.0%
Moved from abroad	6	10	0.2%	57	50	0.4%

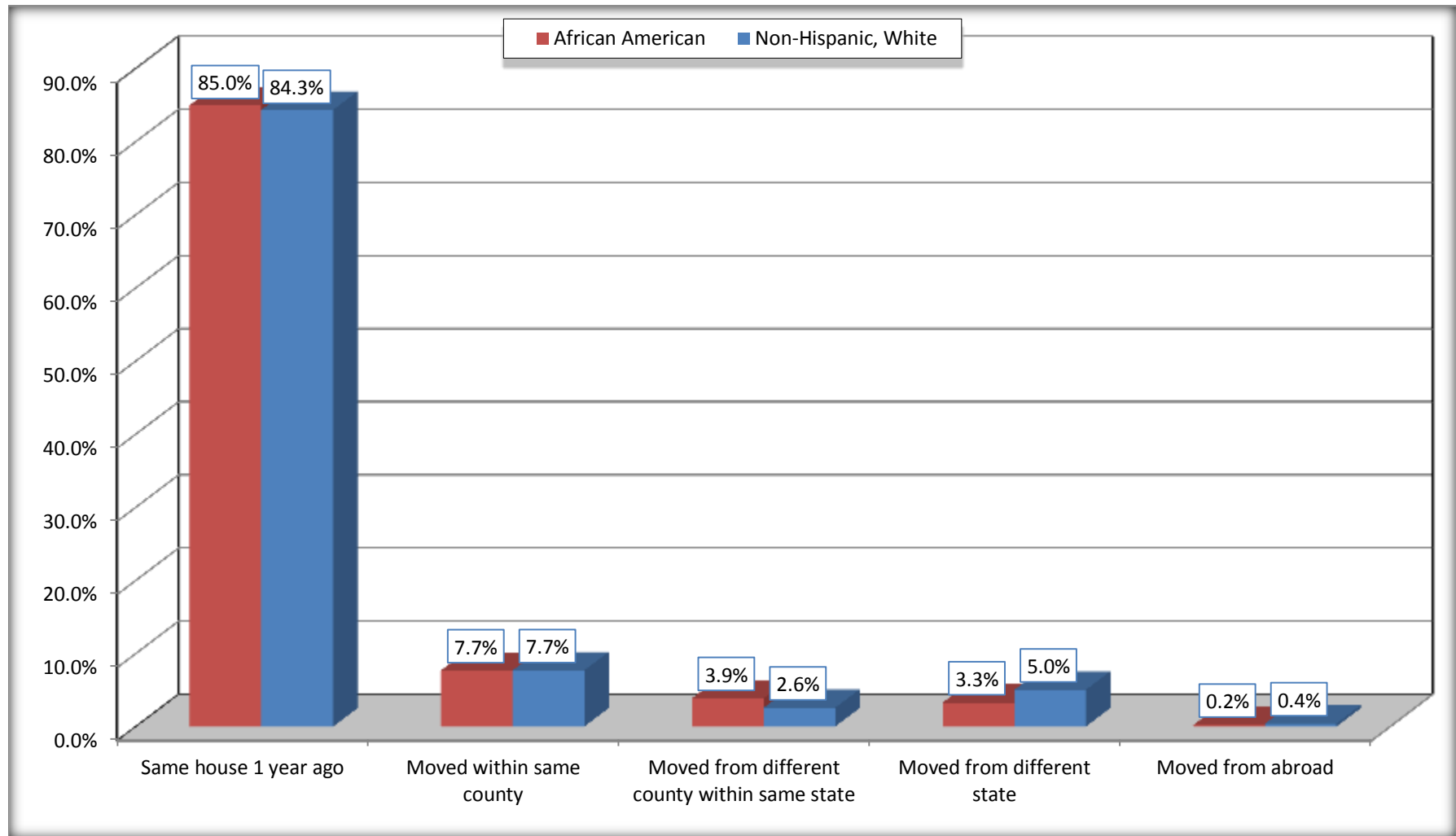
Source: U.S. Census Bureau, 2008-2012 American Community Survey

For information on confidentiality protection, sampling error, nonsampling error, and definitions, see Survey Methodology.

<http://www.census.gov/acs/www/UseData/index.htm>

# Geographical Mobility in the Past Year (Population 1 Year and Over)

## Steubenville city, Ohio



Source: B07004. GEOGRAPHICAL MOBILITY IN THE PAST YEAR BY RACE FOR CURRENT RESIDENCE IN THE UNITED STATES - Universe: POPULATION 1 YEAR AND OVER

Data Set: 2008-2012 American Community Survey 5-Year Estimates

**B08105. MEANS OF TRANSPORTATION TO WORK - Universe: WORKERS 16 YEARS AND OVER**

Data Set: 2008-2012 American Community Survey 5-Year Estimates

	Steubenville city, Ohio					
	African American	Margin of Error (+/-)	% of AA Total	White, Not Hispanic	Margin of Error (+/-)	% of NHW Total
<b>Total:</b>	667	165	<b>100.0%</b>	5792	390	<b>100.0%</b>
Car, truck, or van - drove alone	450	163	67.5%	4366	439	75.4%
Car, truck, or van - carpooled	92	54	13.8%	415	134	7.2%
Public transportation (excluding taxicab)	18	14	2.7%	113	79	2.0%
Walked	78	43	11.7%	518	163	8.9%
Taxicab, motorcycle, bicycle, or other means	15	25	2.2%	22	25	0.4%
Worked at home	14	21	2.1%	358	147	6.2%

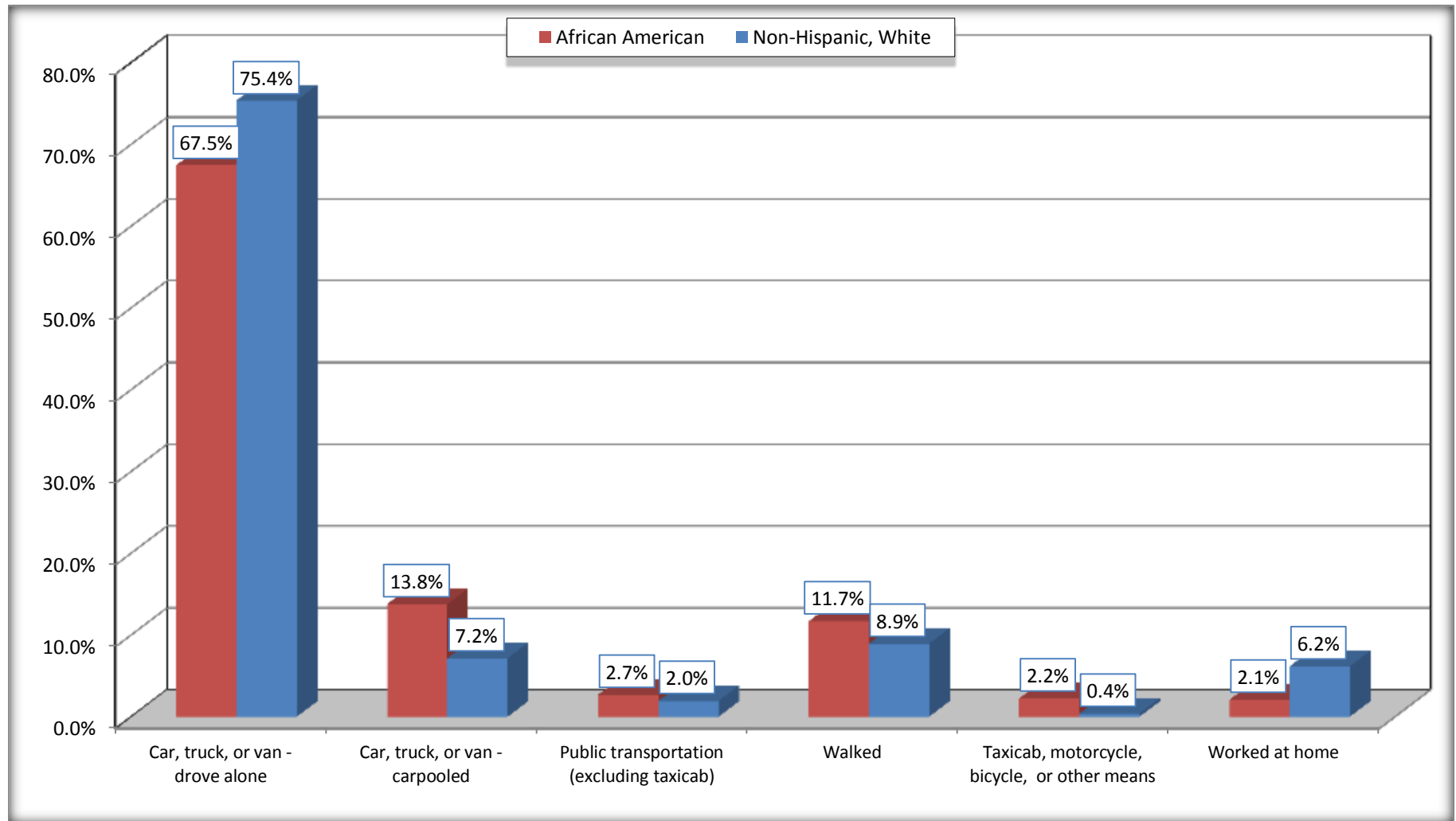
Source: U.S. Census Bureau, 2008-2012 American Community Survey

For information on confidentiality protection, sampling error, nonsampling error, and definitions, see Survey Methodology.

<http://www.census.gov/acs/www/UseData/index.htm>

# Means of Transportation to Work (Workers 16 Years and Over)

## Steubenville city, Ohio



Source: B08105. MEANS OF TRANSPORTATION TO WORK - Universe: WORKERS 16 YEARS AND OVER  
Data Set: 2008-2012 American Community Survey 5-Year Estimates



**B11002. HOUSEHOLD TYPE BY RELATIVES AND NONRELATIVES FOR POPULATION IN HOUSEHOLDS**

Data Set: 2008-2012 American Community Survey 5-Year Estimates

	Steubenville city, Ohio					
	African American	Margin of Error (+/-)	% of AA Total	White, Not Hispanic	Margin of Error (+/-)	% of NHW Total
<b>Total:</b>	2536	322	<b>100.0%</b>	13434	441	<b>100.0%</b>
In family households	1862	306	73.4%	10495	493	78.1%
In nonfamily households	674	141	26.6%	2939	343	21.9%

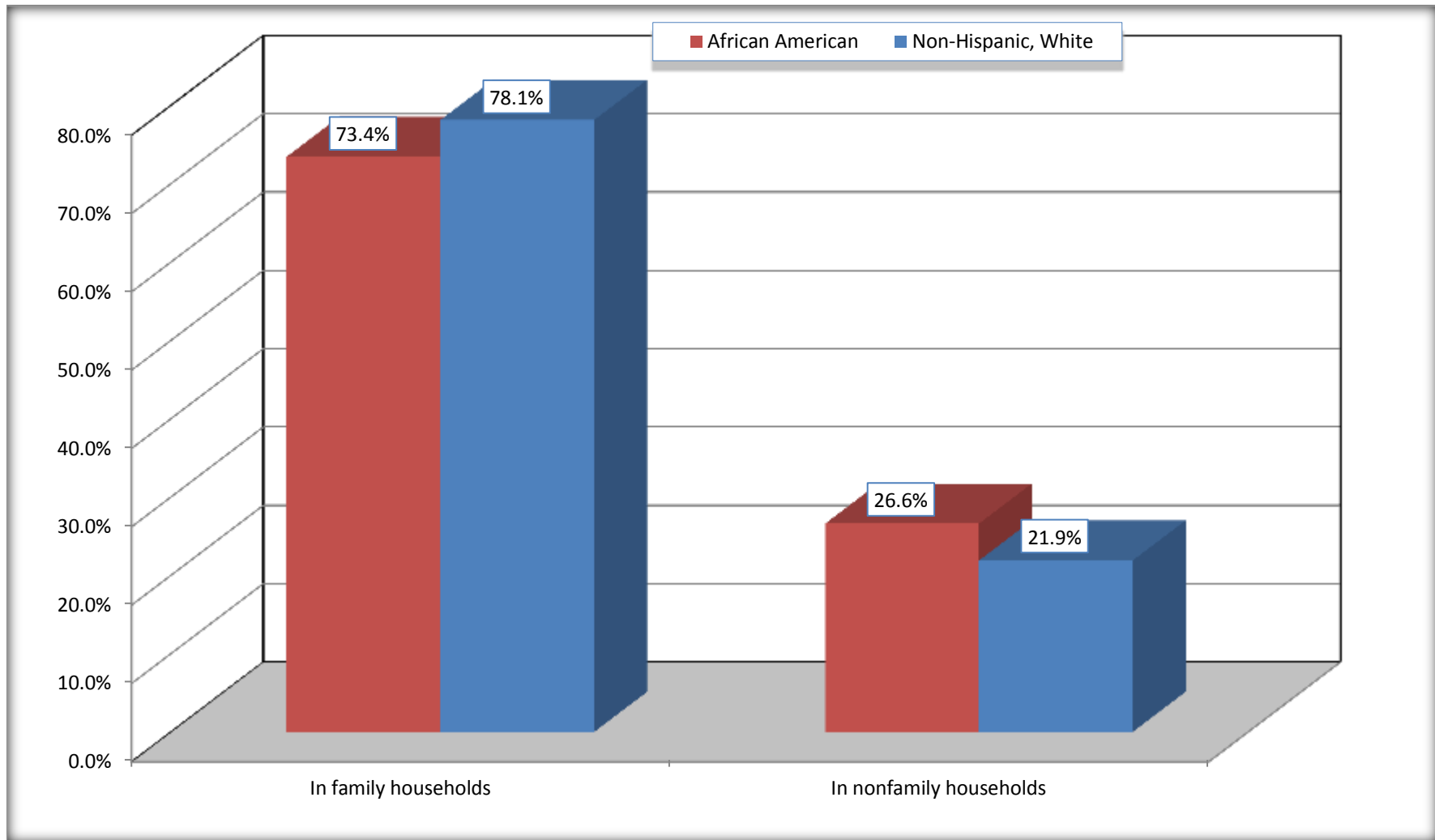
Source: U.S. Census Bureau, 2008-2012 American Community Survey

For information on confidentiality protection, sampling error, nonsampling error, and definitions, see Survey Methodology.

<http://www.census.gov/acs/www/UseData/index.htm>

# Household Type for Population in Households

## Steubenville city, Ohio



Source: B11002. HOUSEHOLD TYPE BY RELATIVES AND NONRELATIVES FOR POPULATION IN HOUSEHOLDS  
Data Set: 2008-2012 American Community Survey 5-Year Estimates

**B12002. MARITAL STATUS FOR THE POPULATION 15 YEARS AND OVER**

Data Set: 2008-2012 American Community Survey 5-Year Estimates

	Steubenville city, Ohio					
	African American	Margin of Error (+/-)	% of AA Total	White, Not Hispanic	Margin of Error (+/-)	% of NHW Total
<b>Total:</b>	<b>2,274</b>	<b>227</b>	<b>100.0%</b>	<b>12,513</b>	<b>349</b>	<b>100.0%</b>
Never married	1,196	NC	52.6%	4,284	NC	34.2%
Now married (except separated)	601	NC	26.4%	5,167	NC	41.3%
Separated	68	NC	3.0%	322	NC	2.6%
Widowed	170	NC	7.5%	1,191	NC	9.5%
Divorced	239	NC	10.5%	1,549	NC	12.4%
<b>Male:</b>	<b>1,008</b>	<b>143</b>	<b>44.3%</b>	<b>5,666</b>	<b>280</b>	<b>45.3%</b>
Never married	488	123	21.5%	2,055	272	16.4%
Now married (except separated)	327	84	14.4%	2,589	214	20.7%
Separated	35	37	1.5%	122	84	1.0%
Widowed	26	24	1.1%	245	92	2.0%
Divorced	132	54	5.8%	655	158	5.2%
<b>Female:</b>	<b>1,266</b>	<b>142</b>	<b>55.7%</b>	<b>6,847</b>	<b>299</b>	<b>54.7%</b>
Never married	708	154	31.1%	2,229	294	17.8%
Now married (except separated)	274	92	12.0%	2,578	186	20.6%
Separated	33	49	1.5%	200	88	1.6%
Widowed	144	58	6.3%	946	122	7.6%
Divorced	107	54	4.7%	894	183	7.1%

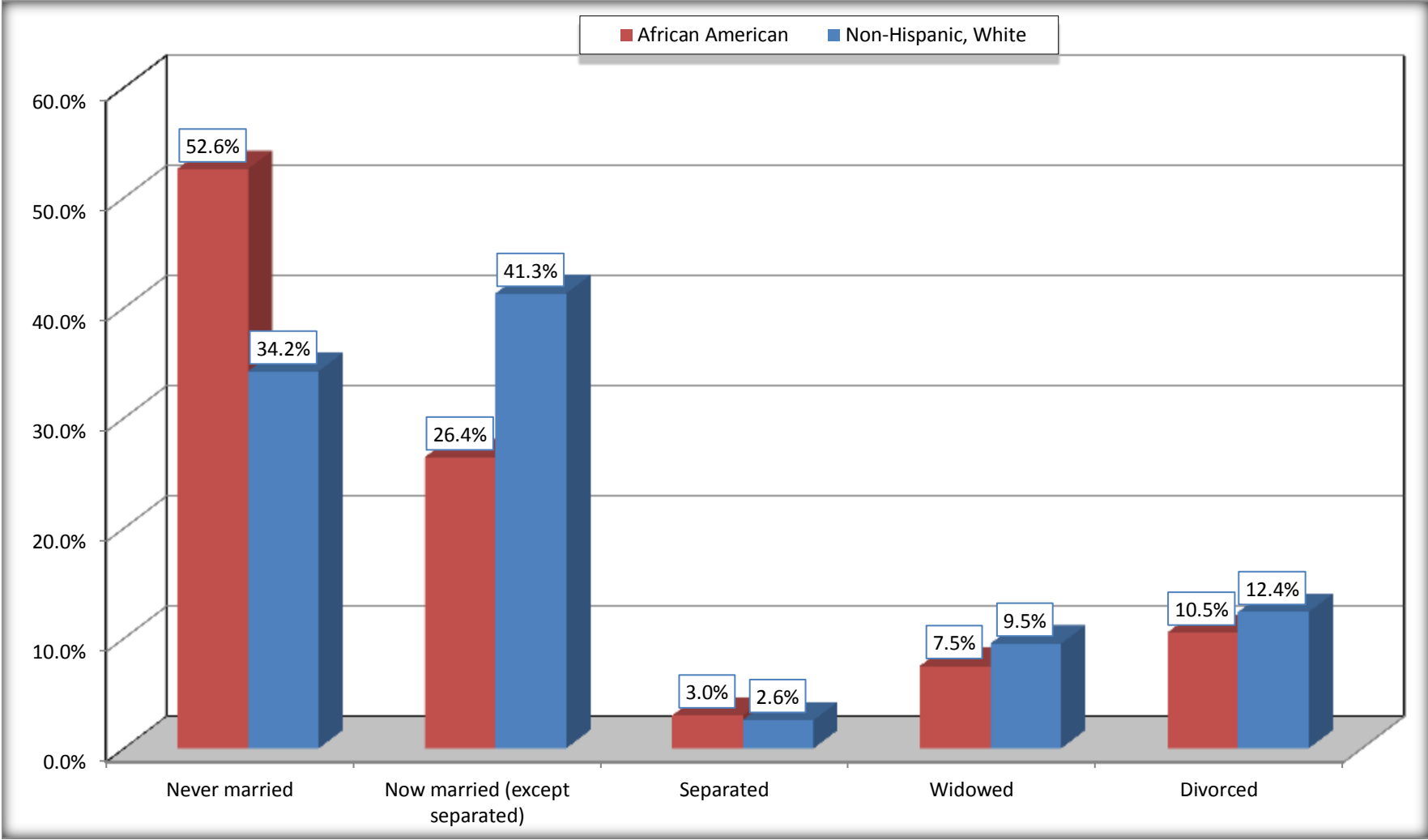
Source: U.S. Census Bureau, 2008-2012 American Community Survey

For information on confidentiality protection, sampling error, nonsampling error, and definitions, see Survey Methodology.

<http://www.census.gov/acs/www/UseData/index.htm>

# Marital Status for the Population 15 Years and Over

## Steubenville city, Ohio



Source: B12002. MARITAL STATUS FOR THE POPULATION 15 YEARS AND OVER  
Data Set: 2008-2012 American Community Survey 5-Year Estimates

**C15002. SEX BY EDUCATIONAL ATTAINMENT FOR THE POPULATION 25 YEARS AND OVER**

Data Set: 2008-2012 American Community Survey 5-Year Estimates

	Steubenville city, Ohio					
	African American	Margin of Error (+/-)	% of AA Total	White, Not Hispanic	Margin of Error (+/-)	% of NHW Total
<b>Total:</b>	<b>1,787</b>	<b>191</b>	<b>100.0%</b>	<b>9,755</b>	<b>386</b>	<b>100.0%</b>
Less than high school diploma	261	NC	14.6%	1,106	NC	11.3%
High school graduate, GED, or alternative	675	NC	37.8%	3,648	NC	37.4%
Some college or associate's degree	751	NC	42.0%	2,754	NC	28.2%
Bachelor's degree or higher	100	NC	5.6%	2,247	NC	23.0%
Male:	802	104	44.9%	4,441	261	45.5%
Less than high school diploma	84	46	4.7%	541	150	5.5%
High school graduate, GED, or alternative	310	71	17.3%	1,553	232	15.9%
Some college or associate's degree	338	100	18.9%	1,258	216	12.9%
Bachelor's degree or higher	70	48	3.9%	1,089	183	11.2%
Female:	985	131	55.1%	5,314	221	54.5%
Less than high school diploma	177	58	9.9%	565	127	5.8%
High school graduate, GED, or alternative	365	114	20.4%	2,095	213	21.5%
Some college or associate's degree	413	112	23.1%	1,496	191	15.3%
Bachelor's degree or higher	30	24	1.7%	1,158	184	11.9%

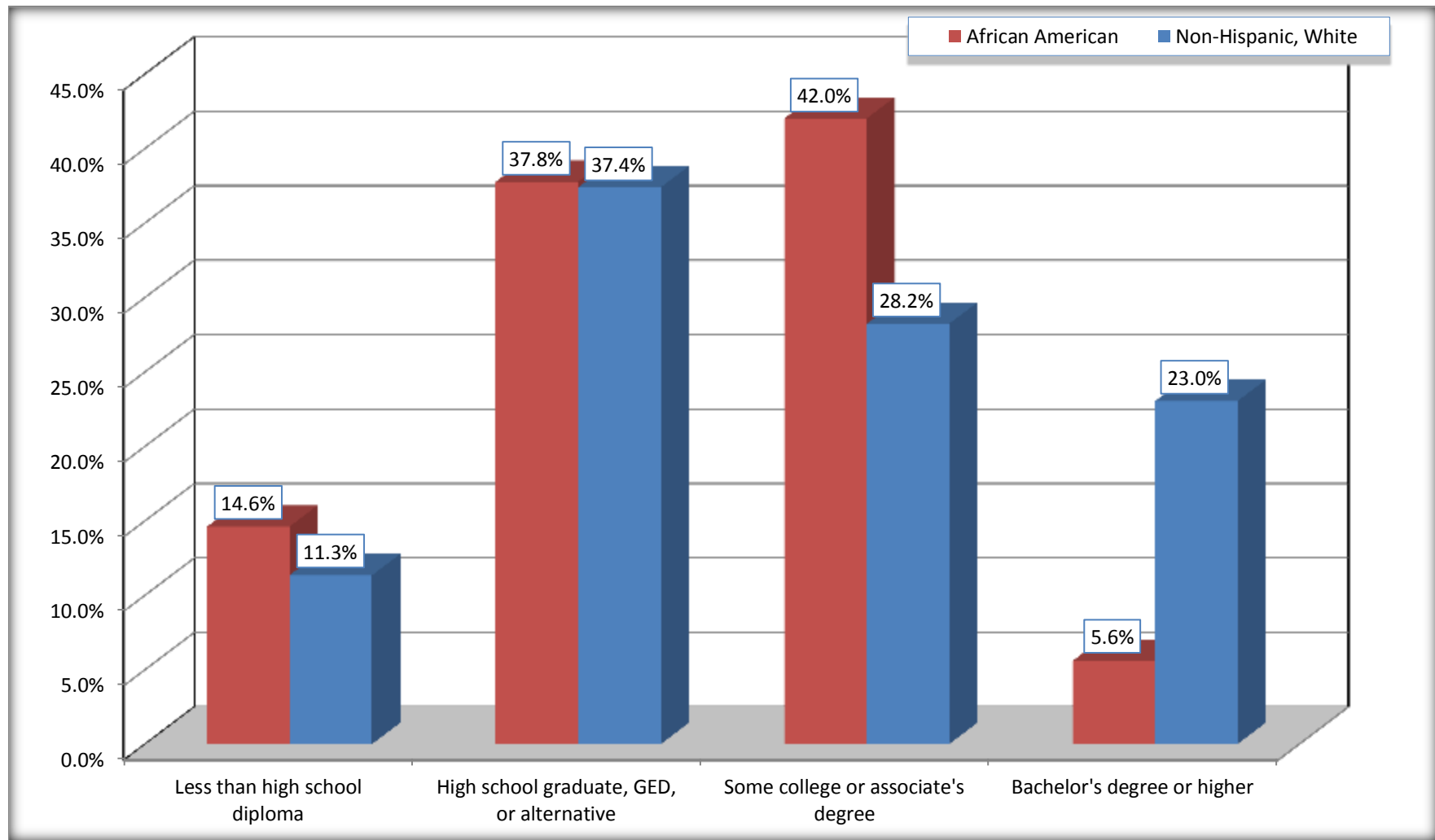
Source: U.S. Census Bureau, 2008-2012 American Community Survey

For information on confidentiality protection, sampling error, nonsampling error, and definitions, see Survey Methodology.

<http://www.census.gov/acs/www/UseData/index.htm>

# Educational Attainment for the Population 25 Years and Older

## Steubenville city, Ohio



Source: C15002. SEX BY EDUCATIONAL ATTAINMENT FOR THE POPULATION 25 YEARS AND OVER  
Data Set: 2008-2012 American Community Survey 5-Year Estimates

**B17010. POVERTY STATUS IN THE PAST 12 MONTHS OF FAMILIES BY FAMILY TYPE BY PRESENCE OF RELATED CHILDREN UNDER 18 YEARS**

Data Set: 2008-2012 American Community Survey 5-Year Estimates

	Steubenville city, Ohio					
	African American	Margin of Error (+/-)	% of AA Total	White, Not Hispanic	Margin of Error (+/-)	% of NHW Total
<b>Total:</b>	<b>588</b>	<b>120</b>	<b>100.0%</b>	<b>3,461</b>	<b>186</b>	<b>100.0%</b>
Income in the past 12 months below poverty level:	193	104	32.8%	538	118	15.5%
Married-couple family:	4	9	0.7%	125	58	3.6%
With related children under 18 years	4	9	0.7%	54	42	1.6%
Other family:	189	103	32.1%	413	123	11.9%
Male householder, no wife present	26	24	4.4%	37	28	1.1%
With related children under 18 years	5	8	0.9%	27	26	0.8%
Female householder, no husband present	163	100	27.7%	376	122	10.9%
With related children under 18 years	135	97	23.0%	357	121	10.3%
Income in the past 12 months at or above poverty level:	395	114	67.2%	2,923	193	84.5%
Married-couple family:	234	75	39.8%	2,351	195	67.9%
With related children under 18 years	142	66	24.1%	685	126	19.8%
Other family:	161	93	27.4%	572	130	16.5%
Male householder, no wife present	33	38	5.6%	132	74	3.8%
With related children under 18 years	6	10	1.0%	62	61	1.8%
Female householder, no husband present	128	81	21.8%	440	100	12.7%
With related children under 18 years	81	68	13.8%	117	55	3.4%

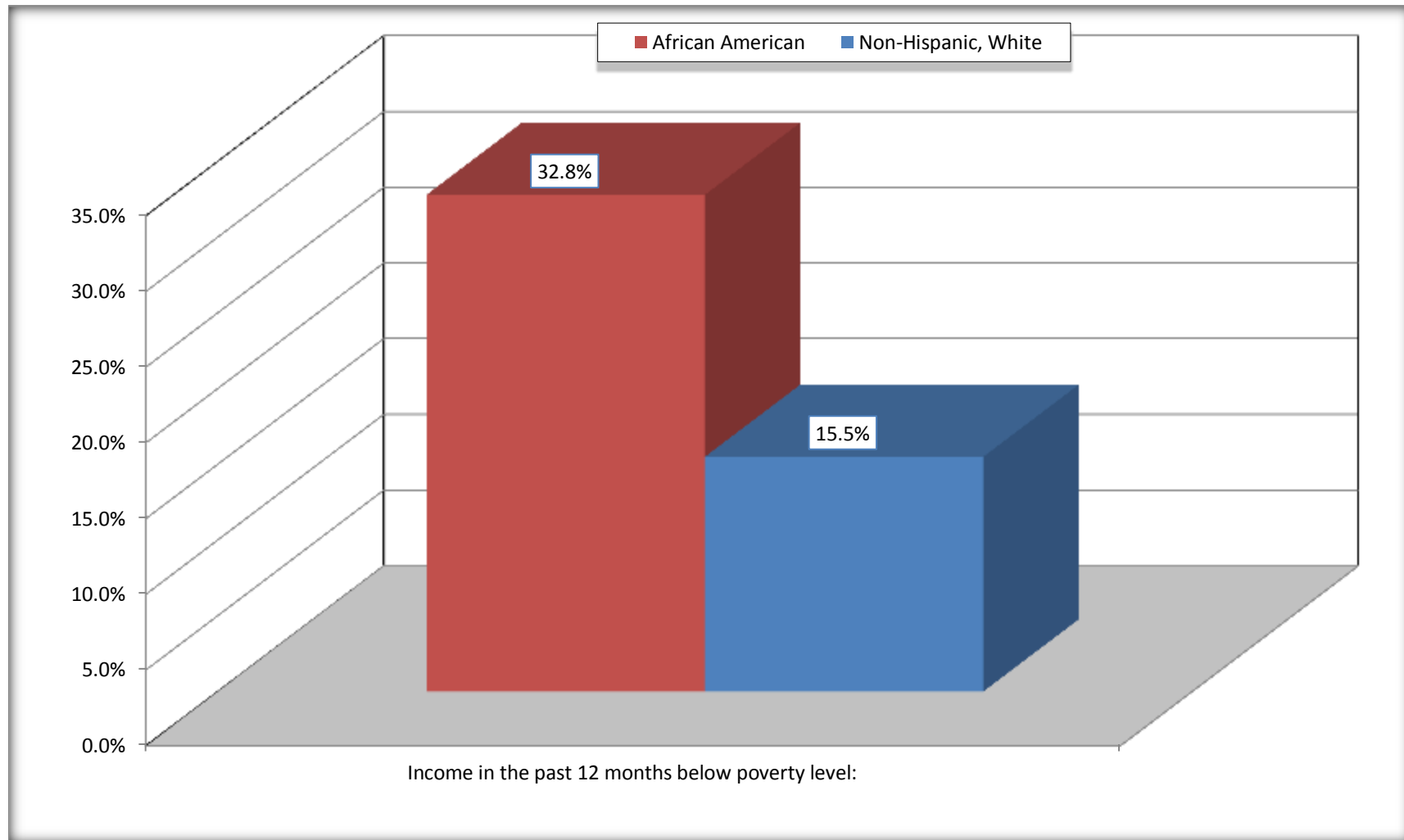
Source: U.S. Census Bureau, 2008-2012 American Community Survey

For information on confidentiality protection, sampling error, nonsampling error, and definitions, see Survey Methodology.

<http://www.census.gov/acs/www/UseData/index.htm>

# Family Households Below Poverty in the Past 12 Months

## Steubenville city, Ohio



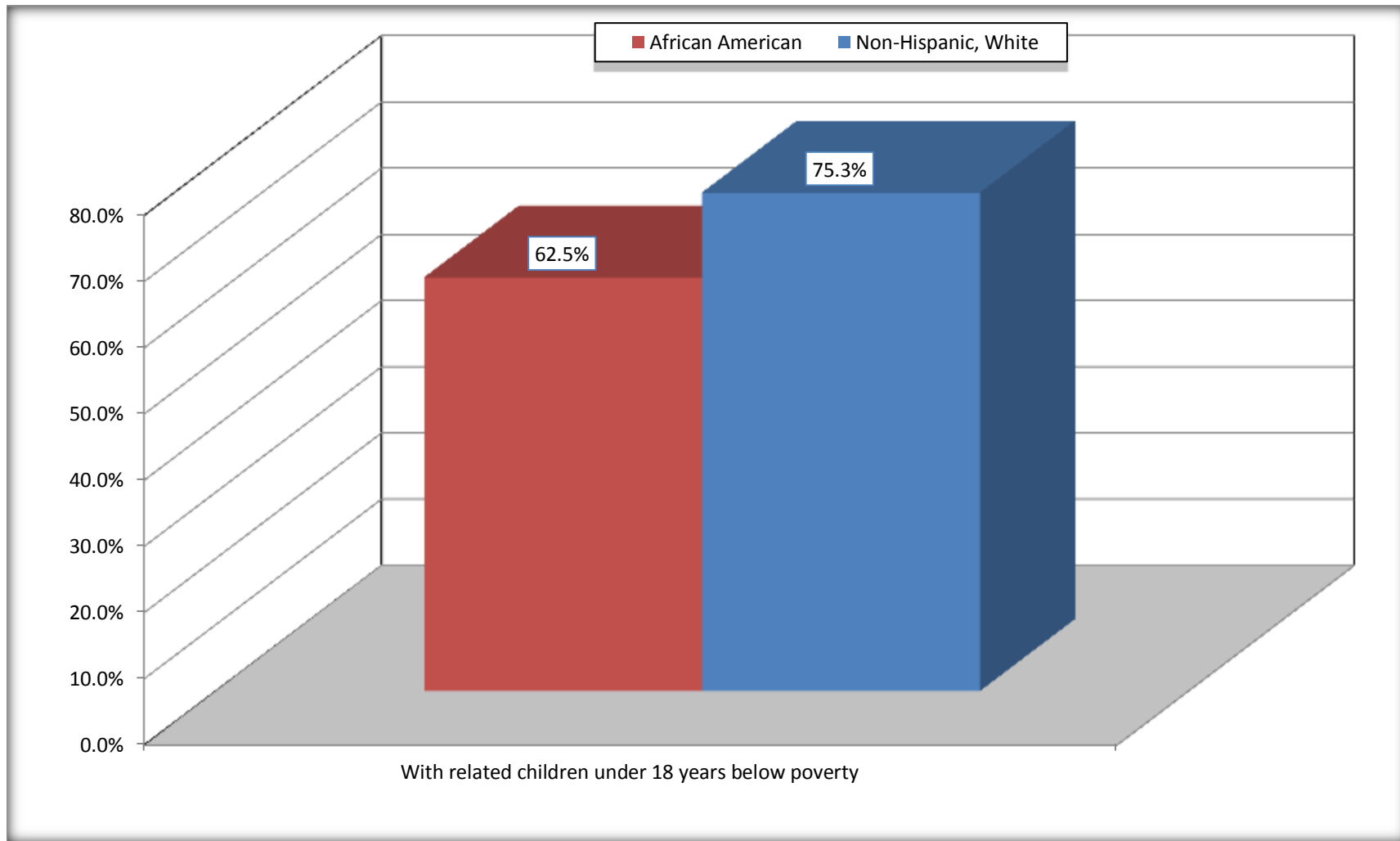
Source: B17010. POVERTY STATUS IN THE PAST 12 MONTHS OF FAMILIES BY FAMILY TYPE BY PRESENCE OF RELATED CHILDREN UNDER 18 YEARS

Data Set: 2008-2012 American Community Survey 5-Year Estimates



# Female-headed Households with Related Children Below Poverty in the Past 12 Months

## Steubenville city, Ohio



Source: B17010. POVERTY STATUS IN THE PAST 12 MONTHS OF FAMILIES BY FAMILY TYPE BY PRESENCE OF RELATED CHILDREN UNDER 18 YEARS

Data Set: 2008-2012 American Community Survey 5-Year Estimates

**B17020 POVERTY STATUS IN THE PAST 12 MONTHS BY AGE - Universe: POPULATION FOR WHOM POVERTY STATUS IS DETERMINED**

Data Set: 2008-2012 American Community Survey 5-Year Estimates

	Steubenville city, Ohio					
	African American	Margin of Error (+/-)	% of AA By Age	White, Not Hispanic	Margin of Error (+/-)	% of NHW By Age
<b>Total:</b>	<b>2,681</b>	<b>286</b>	<b>100.0%</b>	<b>13,170</b>	<b>449</b>	<b>100.0%</b>
Income in the past 12 months below poverty level:	1,212	307	45.2%	2,953	514	22.4%
<b>Under 18 years</b>	401	NC	54.9%	897	NC	36.9%
<b>18 to 64 years</b>	694	173	45.5%	1,798	313	22.3%
<b>65 years and over</b>	117	NC	27.6%	258	NC	9.6%
Income in the past 12 months at or above poverty level:	1,469	297	54.8%	10,217	560	77.6%
<b>Under 18 years</b>	330	NC	45.1%	1,532	NC	63.1%
<b>18 to 64 years</b>	832	171	54.5%	6,268	415	77.7%
<b>65 years and over</b>	307	NC	72.4%	2,417	NC	90.4%

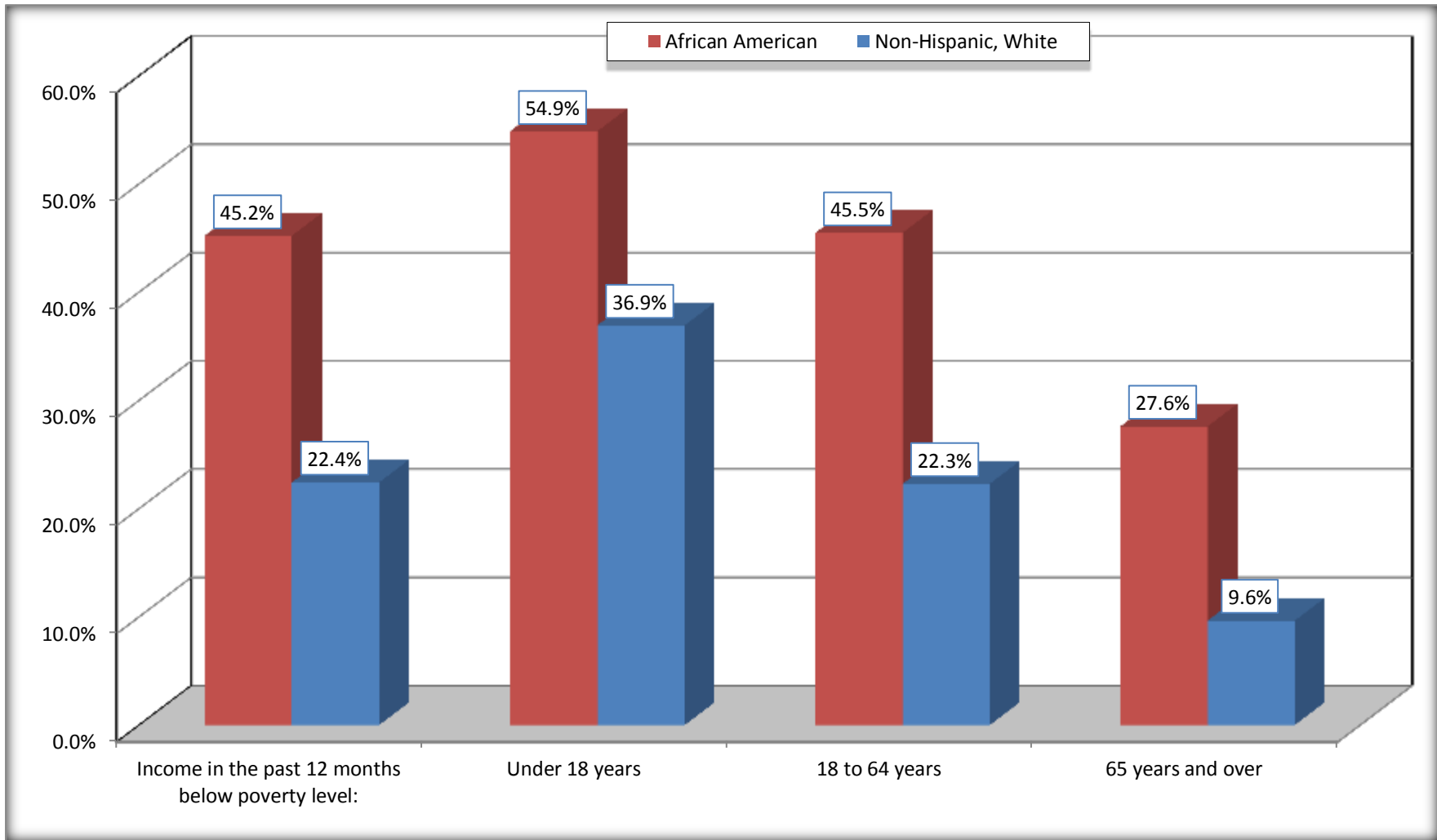
Source: U.S. Census Bureau, 2008-2012 American Community Survey

For information on confidentiality protection, sampling error, nonsampling error, and definitions, see Survey Methodology.

<http://www.census.gov/acs/www/UseData/index.htm>

# Population Below Poverty in the Past 12 Months

## Steubenville city, Ohio



Source: B17020 POVERTY STATUS IN THE PAST 12 MONTHS BY AGE - Universe: POPULATION FOR WHOM POVERTY STATUS IS DETERMINED  
Data Set: 2008-2012 American Community Survey 5-Year Estimates

**B19001. HOUSEHOLD INCOME IN THE PAST 12 MONTHS (IN 2010 INFLATION-ADJUSTED DOLLARS)**

Data Set: 2008-2012 American Community Survey 5-Year Estimates

	Steubenville city, Ohio					
	African American	Margin of Error (+/-)	% of AA Total	White, Not Hispanic	Margin of Error (+/-)	% of NHW Total
<b>Total:</b>	<b>1,230</b>	<b>174</b>	<b>100.0%</b>	<b>5,946</b>	<b>261</b>	<b>100.0%</b>
Less than \$ 10,000	448	142	36.4%	819	165	13.8%
\$ 10,000 to \$ 14,999	112	53	9.1%	541	124	9.1%
<b>\$ 15,000 to \$ 24,999</b>	237	NC	19.3%	692	NC	11.6%
<b>\$ 25,000 to \$ 34,999</b>	132	NC	10.7%	585	NC	9.8%
<b>\$ 35,000 to \$ 49,999</b>	113	NC	9.2%	1,060	NC	17.8%
<b>\$ 50,000 to \$ 74,999</b>	108	NC	8.8%	930	NC	15.6%
\$ 75,000 to \$ 99,999	22	23	1.8%	512	125	8.6%
<b>\$ 100,000 to \$ 149,999</b>	45	NC	3.7%	459	NC	7.7%
\$ 150,000 to \$ 199,999	5	9	0.4%	177	105	3.0%
\$ 200,000 or more	8	12	0.7%	171	88	2.9%

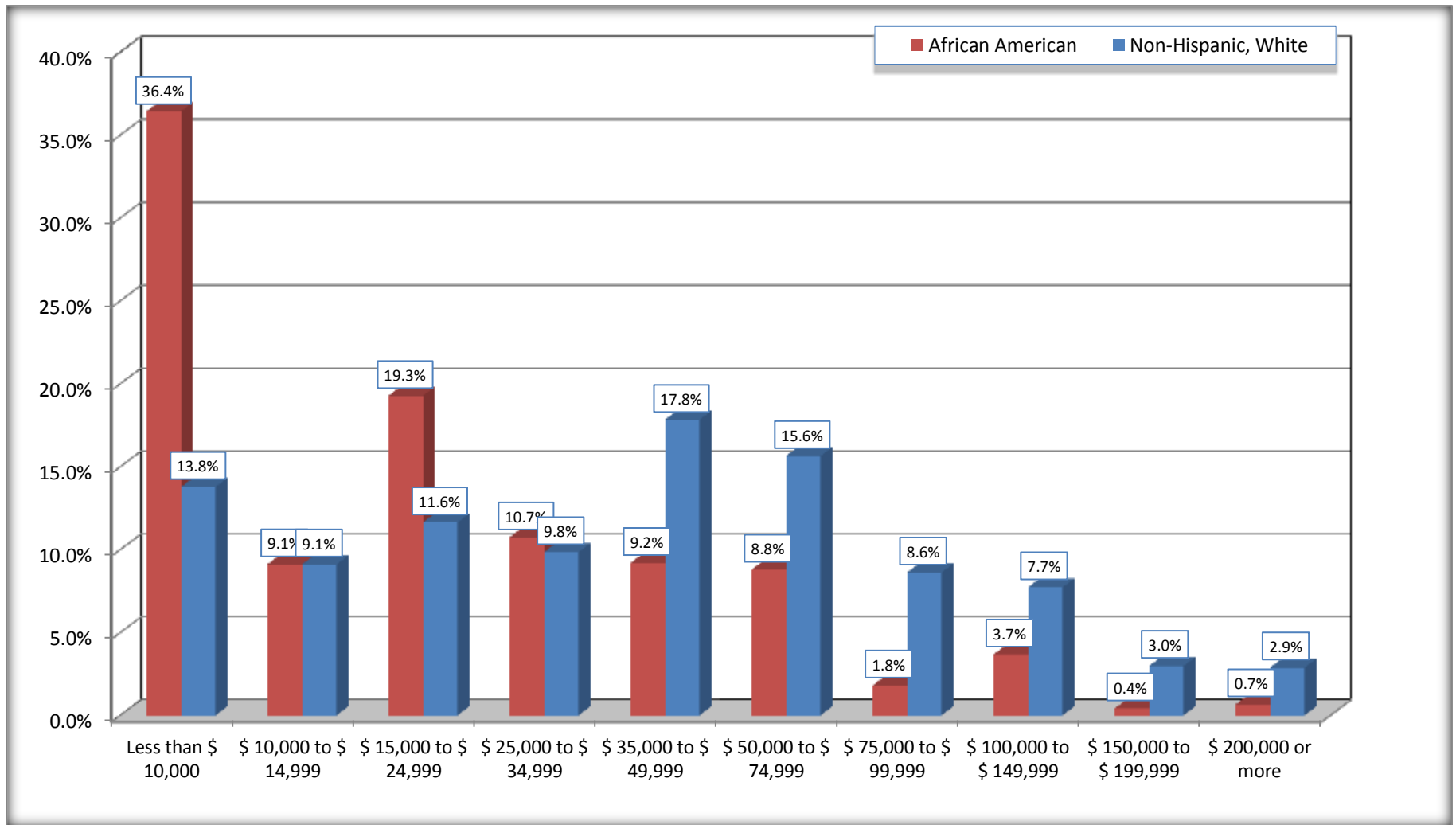
Source: U.S. Census Bureau, 2008-2012 American Community Survey

For information on confidentiality protection, sampling error, nonsampling error, and definitions, see Survey Methodology.

<http://www.census.gov/acs/www/UseData/index.htm>

# Household Income in the Past 12 Months

## Steubenville city, Ohio



Source: B19001. HOUSEHOLD INCOME IN THE PAST 12 MONTHS (IN 2010 INFLATION-ADJUSTED DOLLARS)  
Data Set: 2008-2012 American Community Survey 5-Year Estimates

**B19013. MEDIAN HOUSEHOLD INCOME IN THE PAST 12 MONTHS (IN 2010 INFLATION-ADJUSTED DOLLARS)**

Data Set: 2008-2012 American Community Survey 5-Year Estimates

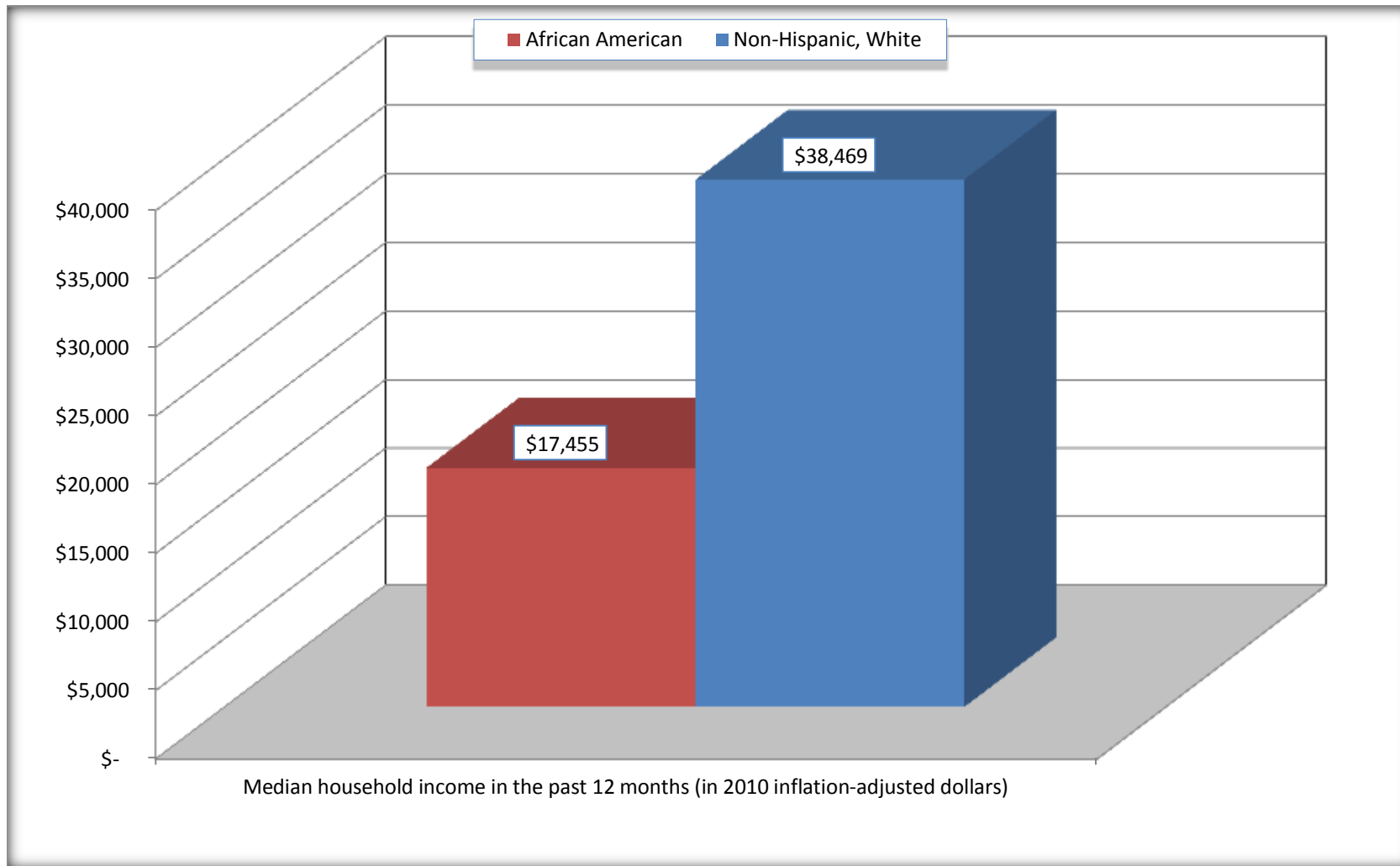
	Steubenville city, Ohio			
	African American	Margin of Error (+/-)	White, Not Hispanic	Margin of Error (+/-)
Median household income in the past 12 months (in 2010 inflation-adjusted dollars)	\$ 17,455	\$ 4,557	\$ 38,469	\$ 1,833

Source: U.S. Census Bureau, 2008-2012 American Community Survey

For information on confidentiality protection, sampling error, nonsampling error, and definitions, see Survey Methodology.  
<http://www.census.gov/acs/www/UseData/index.htm>

## Median Household Income in the Past 12 Months

### Steubenville city, Ohio



Source: B19013. MEDIAN HOUSEHOLD INCOME IN THE PAST 12 MONTHS (IN 2010 INFLATION-ADJUSTED DOLLARS)  
Data Set: 2008-2012 American Community Survey 5-Year Estimates

**B19101. FAMILY INCOME IN THE PAST 12 MONTHS (IN 2010 INFLATION-ADJUSTED DOLLARS)**

Data Set: 2008-2012 American Community Survey 5-Year Estimates

	Steubenville city, Ohio					
	African American	Margin of Error (+/-)	% of AA Total	White, Not Hispanic	Margin of Error (+/-)	% of NHW Total
<b>Total:</b>	<b>588</b>	<b>120</b>	<b>100.0%</b>	<b>3,461</b>	<b>186</b>	<b>100.0%</b>
Less than \$ 10,000	134	103	22.8%	217	86	6.3%
\$ 10,000 to \$ 14,999	57	35	9.7%	244	99	7.0%
<b>\$ 15,000 to \$ 24,999</b>	<b>61</b>	<b>NC</b>	<b>10.4%</b>	<b>257</b>	<b>NC</b>	<b>7.4%</b>
<b>\$ 25,000 to \$ 34,999</b>	<b>80</b>	<b>NC</b>	<b>13.6%</b>	<b>264</b>	<b>NC</b>	<b>7.6%</b>
<b>\$ 35,000 to \$ 49,999</b>	<b>95</b>	<b>NC</b>	<b>16.2%</b>	<b>607</b>	<b>NC</b>	<b>17.5%</b>
<b>\$ 50,000 to \$ 74,999</b>	<b>81</b>	<b>NC</b>	<b>13.8%</b>	<b>680</b>	<b>NC</b>	<b>19.6%</b>
<b>\$ 100,000 to \$ 149,999</b>	<b>45</b>	<b>NC</b>	<b>7.7%</b>	<b>443</b>	<b>NC</b>	<b>12.8%</b>
\$ 150,000 to \$ 199,999	5	9	0.9%	167	99	4.8%
\$ 200,000 or more	8	12	1.4%	149	76	4.3%

Source: U.S. Census Bureau, 2008-2012 American Community Survey

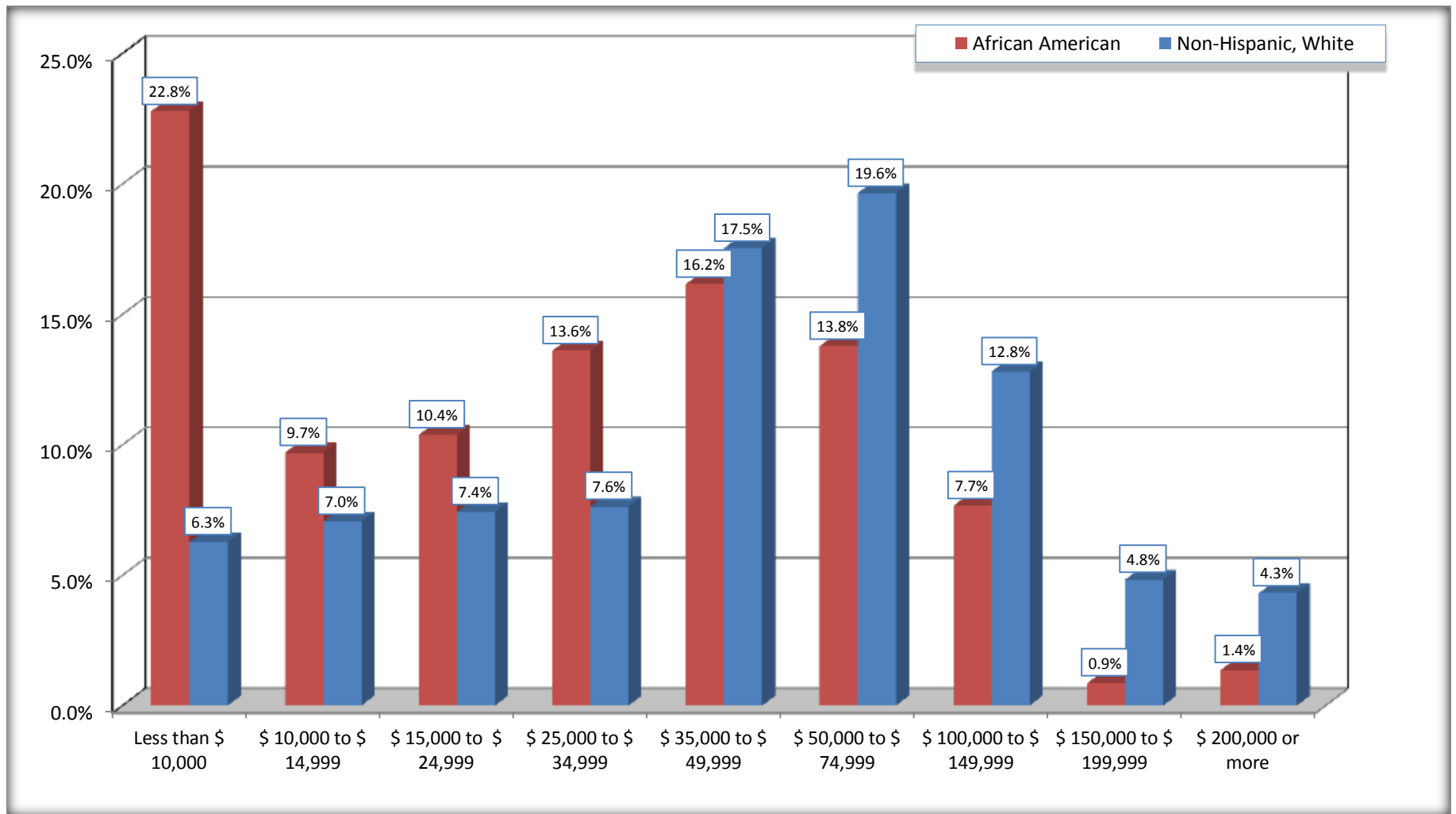
For information on confidentiality protection, sampling error, nonsampling error, and definitions, see Survey Methodology.

<http://www.census.gov/acs/www/UseData/index.htm>



# Family Income in the Past 12 Months

## Steubenville city, Ohio



Source: B19101. FAMILY INCOME IN THE PAST 12 MONTHS (IN 2010 INFLATION-ADJUSTED DOLLARS)  
Data Set: 2008-2012 American Community Survey 5-Year Estimates

**B19113. MEDIAN FAMILY INCOME IN THE PAST 12 MONTHS (IN 2010 INFLATION-ADJUSTED DOLLARS)**

Data Set: 2008-2012 American Community Survey 5-Year Estimates

	<b>Steubenville city, Ohio</b>			
	African American	Margin of Error (+/-)	White, Not Hispanic	Margin of Error (+/-)
Median family income in the past 12 months (in 2010 inflation-adjusted dollars)	\$ 26,694	\$ 7,657	\$ 53,309	\$ 5,019

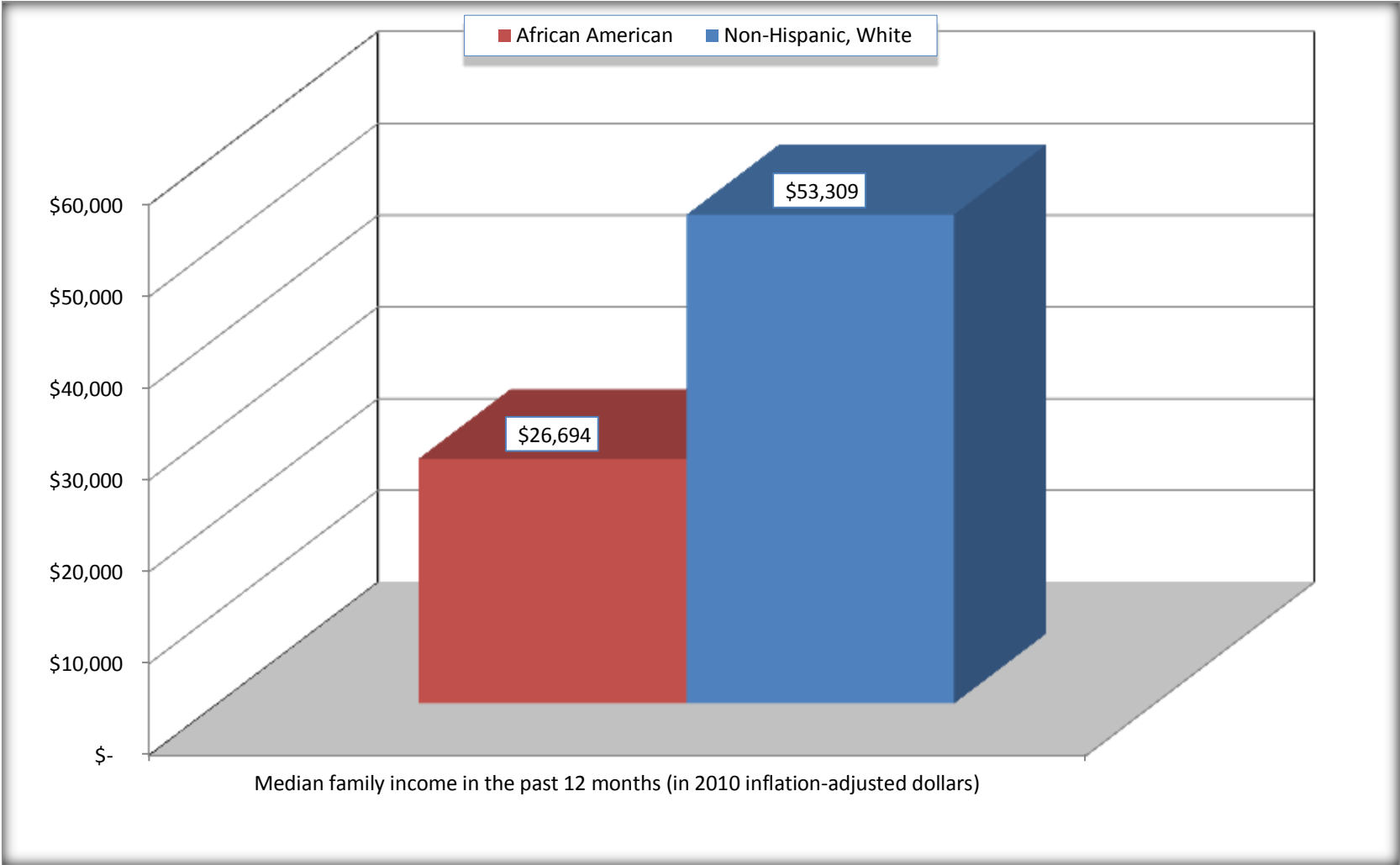
Source: U.S. Census Bureau, 2008-2012 American Community Survey

For information on confidentiality protection, sampling error, nonsampling error, and definitions, see Survey Methodology.

<http://www.census.gov/acs/www/UseData/index.htm>

# Median Family Income in the Past 12 Months

## Steubenville city, Ohio



Source: B19113. MEDIAN FAMILY INCOME IN THE PAST 12 MONTHS (IN 2010 INFLATION-ADJUSTED DOLLARS)  
Data Set: 2008-2012 American Community Survey 5-Year Estimates

**B19202. MEDIAN NONFAMILY HOUSEHOLD INCOME IN THE PAST 12 MONTHS (IN 2010 INFLATION-ADJUSTED DOLLARS)**

Data Set: 2008-2012 American Community Survey 5-Year Estimates

	<b>Steubenville city, Ohio</b>			
	African American	Margin of Error (+/-)	White, Not Hispanic	Margin of Error (+/-)
Median nonfamily household income in the past 12 months (in 2010 inflation-adjusted dollars)	\$ 10,192	\$ 4,615	\$ 21,193	\$ 2,992

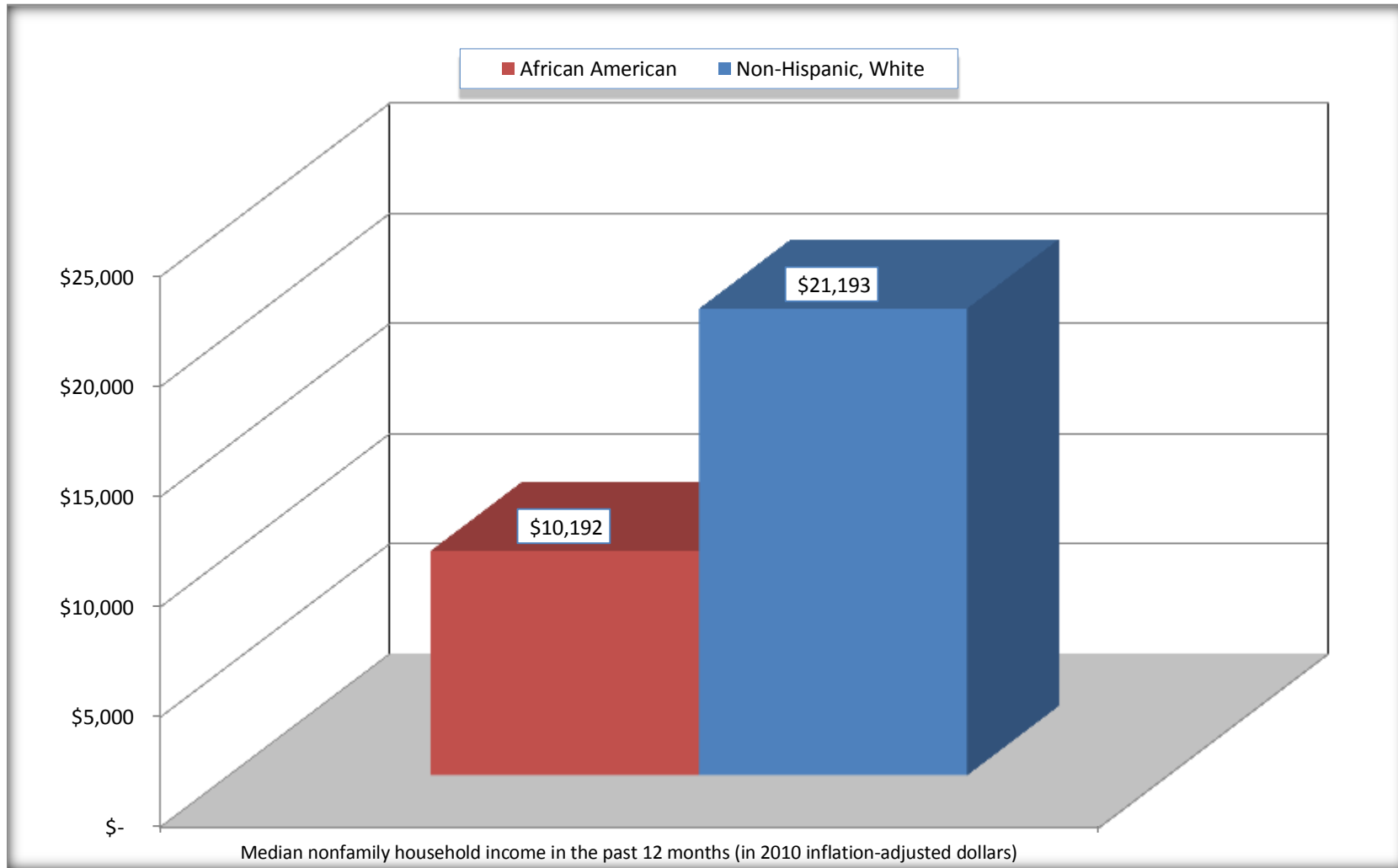
Source: U.S. Census Bureau, 2008-2012 American Community Survey

For information on confidentiality protection, sampling error, nonsampling error, and definitions, see Survey Methodology.

<http://www.census.gov/acs/www/UseData/index.htm>

# Median Non-Family Income in the Past 12 Months

## Steubenville city, Ohio



Source: B19202. MEDIAN NONFAMILY HOUSEHOLD INCOME IN THE PAST 12 MONTHS (IN 2010 INFLATION-ADJUSTED DOLLARS)  
Data Set: 2008-2012 American Community Survey 5-Year Estimates

**B19301. PER CAPITA INCOME IN THE PAST 12 MONTHS (IN 2010 INFLATION-ADJUSTED DOLLARS)**

Data Set: 2008-2012 American Community Survey 5-Year Estimates

	Steubenville city, Ohio			
	African American	Margin of Error (+/-)	White, Not Hispanic	Margin of Error (+/-)
Per capita income in the past 12 months (in 2010 inflation-adjusted dollars)	\$ 12,872	\$ 2,900	\$ 22,548	\$ 1,957

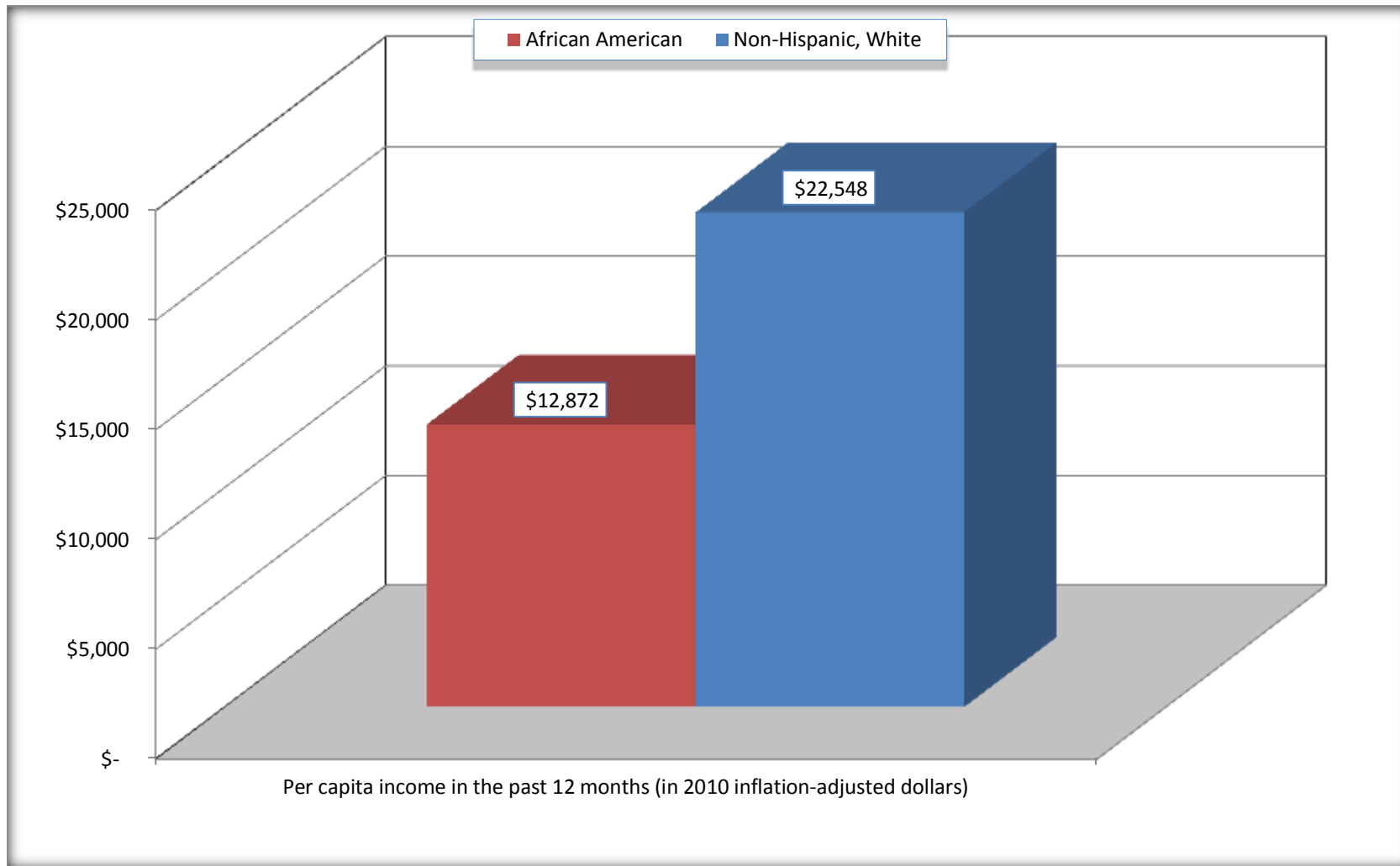
Source: U.S. Census Bureau, 2008-2012 American Community Survey

For information on confidentiality protection, sampling error, nonsampling error, and definitions, see Survey Methodology.

<http://www.census.gov/acs/www/UseData/index.htm>

## Per capita Income in the Past 12 Months

### Steubenville city, Ohio



Source: B19301. PER CAPITA INCOME IN THE PAST 12 MONTHS (IN 2010 INFLATION-ADJUSTED DOLLARS)  
Data Set: 2008-2012 American Community Survey 5-Year Estimates

**B20017. MEDIAN EARNINGS IN THE PAST 12 MONTHS (IN 2010 INFLATION-ADJUSTED DOLLARS) BY SEX BY WORK EXPERIENCE IN THE PAST 12 MONTHS FOR THE POPULATION 16 YEARS AND OVER WITH EARNINGS IN THE PAST 12 MONTHS**

Data Set: 2008-2012 American Community Survey 5-Year Estimates

	Steubenville city, Ohio			
	African American	Margin of Error (+/-)	White, Not Hispanic	Margin of Error (+/-)
Median earnings in the past 12 months (in 2010 inflation-adjusted dollars) --				
Total:	\$ 23,403	\$ 5,332	\$ 19,517	\$ 3,349
Male --				
Total	\$ 23,257	\$ 6,074	\$ 29,496	\$ 4,588
Worked full-time, year-round in the past 12 months	\$ 33,214	\$ 8,350	\$ 49,777	\$ 4,032
Other	\$ 4,792	\$ 6,715	\$ 7,883	\$ 1,804
Female --				
Total	\$ 23,750	\$ 14,573	\$ 15,000	\$ 3,169
Worked full-time, year-round in the past 12 months	\$ 28,333	\$ 29,034	\$ 33,171	\$ 2,979
Other	\$ 8,906	\$ 4,487	\$ 5,704	\$ 1,473

Source: U.S. Census Bureau, 2008-2012 American Community Survey

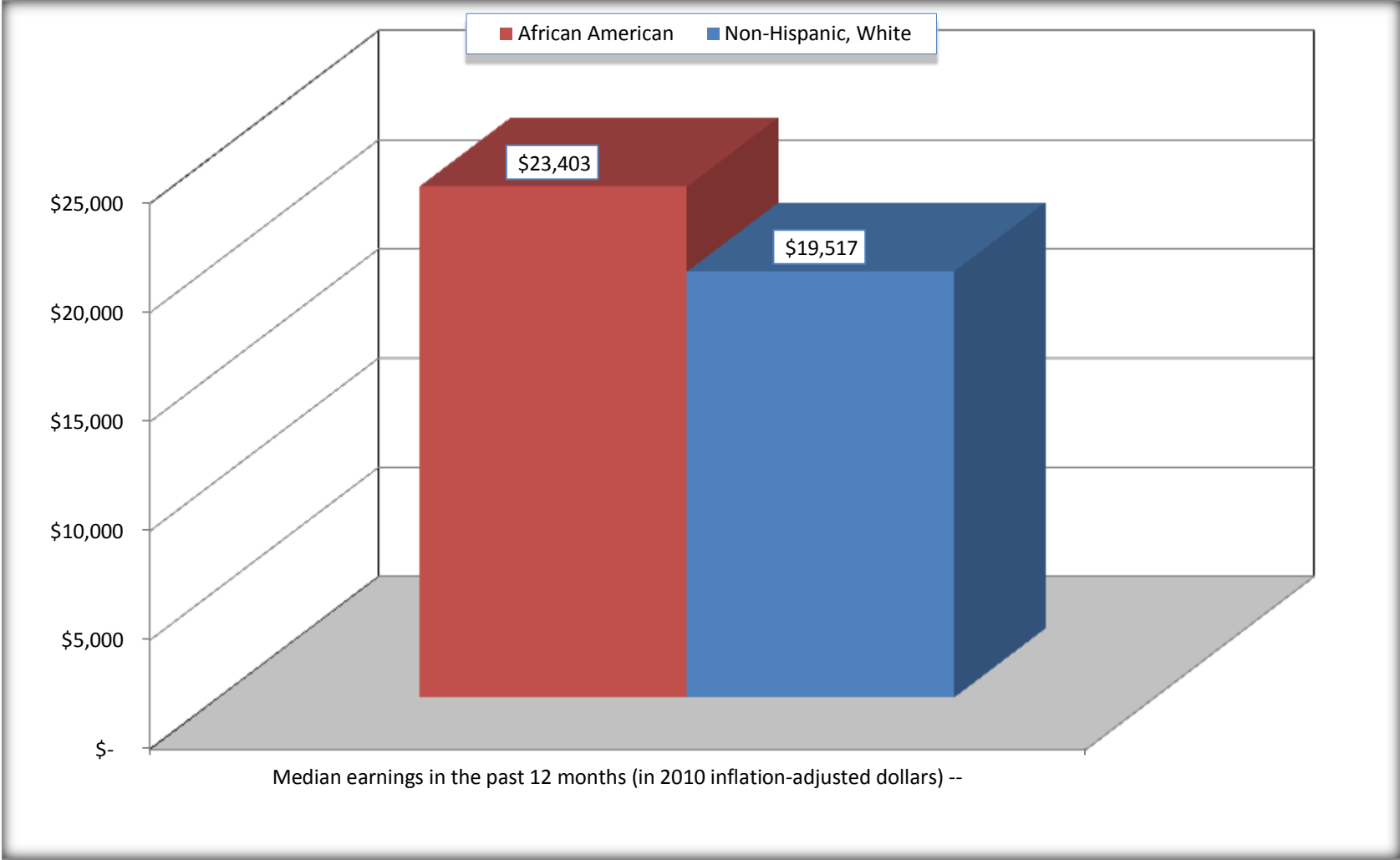
For information on confidentiality protection, sampling error, nonsampling error, and definitions, see Survey Methodology.

<http://www.census.gov/acs/www/UseData/index.htm>



# Median earnings in the Past 12 Months (16 Years and Over with Earnings)

## Steubenville city, Ohio



Source: B20017. MEDIAN EARNINGS IN THE PAST 12 MONTHS (IN 2010 INFLATION-ADJUSTED DOLLARS) BY SEX BY WORK EXPERIENCE IN THE PAST 12 MONTHS FOR THE POPULATION 16 YEARS AND OVER WITH EARNINGS IN THE PAST 12 MONTHS  
Data Set: 2008-2012 American Community Survey 5-Year Estimates

**B20005. SEX BY WORK EXPERIENCE IN THE PAST 12 MONTHS BY EARNINGS IN THE PAST 12 MONTHS (IN 2010 INFLATION-ADJUSTED DOLLARS) FOR THE POPULATION 16 YEARS AND OVER**

Data Set: 2008-2012 American Community Survey 5-Year Estimates

	Steubenville city, Ohio					
	African American	Margin of Error (+/-)	% of AA Total	White, Not Hispanic	Margin of Error (+/-)	% of NHW Total
<b>Total:</b>	<b>2,171</b>	<b>216</b>	<b>100.0%</b>	<b>12,455</b>	<b>350</b>	<b>100.0%</b>
Worked full-time, year-round in the past 12 months:	490	NC	22.6%	3,758	NC	30.2%
No earnings	0	NC	0.0%	0	NC	0.0%
With earnings:	490	NC	22.6%	3,758	NC	30.2%
\$ 1 to \$ 9,999 or loss	10	NC	0.5%	107	NC	0.9%
\$ 10,000 to \$ 19,999	52	NC	2.4%	556	NC	4.5%
\$ 20,000 to \$ 29,999	144	NC	6.6%	469	NC	3.8%
\$ 30,000 to \$ 49,999	163	NC	7.5%	1,215	NC	9.8%
\$ 50,000 to \$ 74,999	50	NC	2.3%	987	NC	7.9%
\$ 75,000 or more	71	NC	3.3%	424	NC	3.4%
Other:	1,681	NC	77.4%	8,697	NC	69.8%
No earnings	1,330	NC	61.3%	5,492	NC	44.1%
With earnings: less than full time, year-round	351	NC	16.2%	3,205	NC	25.7%
Male:	954	129	43.9%	5,649	280	45.4%
Worked full-time, year-round in the past 12 months:	268	72	12.3%	1,959	210	15.7%
No earnings	0	18	0.0%	0	18	0.0%
With earnings:	268	72	12.3%	1,959	210	15.7%
\$ 1 to \$ 9,999 or loss	10	NC	0.5%	33	NC	0.3%
\$ 10,000 to \$ 19,999	8	NC	0.4%	182	NC	1.5%
\$ 20,000 to \$ 29,999	75	NC	3.5%	182	NC	1.5%
\$ 30,000 to \$ 49,999	125	NC	5.8%	589	NC	4.7%
\$ 50,000 to \$ 74,999	50	NC	2.3%	647	NC	5.2%
\$ 75,000 or more	0	NC	0.0%	326	NC	2.6%

	Steubenville city, Ohio					
	African American	Margin of Error (+/-)	% of AA Total	White, Not Hispanic	Margin of Error (+/-)	% of NHW Total
Other:	686	114	31.6%	3,690	316	29.6%
No earnings	513	113	23.6%	2,208	247	17.7%
With earnings:	173	71	8.0%	1,482	227	11.9%
Female:	1,217	127	56.1%	6,806	294	54.6%
Worked full-time, year-round in the past 12 months:	222	109	10.2%	1,799	257	14.4%
No earnings	0	18	0.0%	0	18	0.0%
With earnings:	222	109	10.2%	1,799	257	14.4%
\$ 1 to \$ 9,999 or loss	0	NC	0.0%	74	NC	0.6%
\$ 10,000 to \$ 19,999	44	NC	2.0%	374	NC	3.0%
\$ 20,000 to \$ 29,999	69	NC	3.2%	287	NC	2.3%
\$ 30,000 to \$ 49,999	38	NC	1.8%	626	NC	5.0%
\$ 50,000 to \$ 74,999	0	NC	0.0%	340	NC	2.7%
\$ 75,000 or more	71	NC	3.3%	98	NC	0.8%
Other:	995	147	45.8%	5,007	288	40.2%
No earnings	817	133	37.6%	3,284	256	26.4%
With earnings:	178	63	8.2%	1,723	270	13.8%

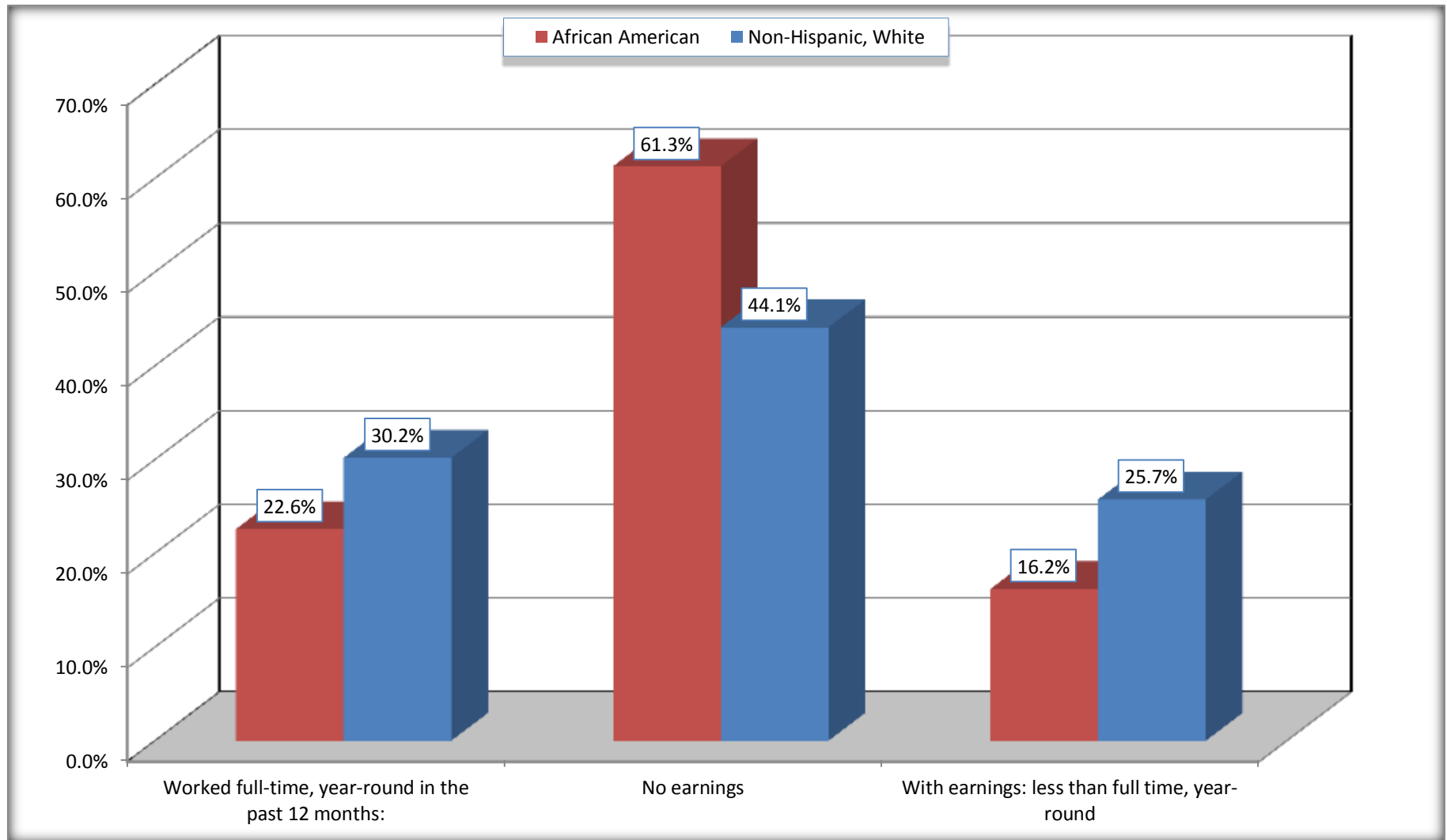
Source: U.S. Census Bureau, 2008-2012 American Community Survey

For information on confidentiality protection, sampling error, nonsampling error, and definitions, see Survey Methodology.

<http://www.census.gov/acs/www/UseData/index.htm>

# Employment and Earnings in in the Past 12 Months (16 Years and Over)

## Steubenville city, Ohio



Source: B20005. SEX BY WORK EXPERIENCE IN THE PAST 12 MONTHS BY EARNINGS IN THE PAST 12 MONTHS (IN 2010 INFLATION-ADJUSTED DOLLARS) FOR THE POPULATION 16 YEARS AND OVER

Data Set: 2008-2012 American Community Survey 5-Year Estimates

**C21001. SEX BY AGE BY VETERAN STATUS FOR THE CIVILIAN POPULATION 18 YEARS AND OVER**

Data Set: 2008-2012 American Community Survey 5-Year Estimates

	Steubenville city, Ohio					
	African American	Margin of Error (+/-)	% of AA Total	White, Not Hispanic	Margin of Error (+/-)	% of NHW Total
<b>Total:</b>	<b>2,099</b>	<b>208</b>	<b>100.0%</b>	<b>12,071</b>	<b>344</b>	<b>100.0%</b>
Veteran	215	NC	10.2%	1,397	NC	11.6%
Nonveteran	1,884	NC	89.8%	10,674	NC	88.4%
Male:	954	129	45.5%	5,501	283	45.6%
18 to 64 years:	804	121	38.3%	4,370	276	36.2%
Veteran	113	51	5.4%	656	135	5.4%
Nonveteran	691	130	32.9%	3,714	269	30.8%
65 years and over:	150	31	7.1%	1,131	127	9.4%
Veteran	102	30	4.9%	685	127	5.7%
Nonveteran	48	31	2.3%	446	111	3.7%
Female:	1,145	123	54.5%	6,570	291	54.4%
18 to 64 years:	865	107	41.2%	4,831	305	40.0%
Veteran	0	18	0.0%	47	37	0.4%
Nonveteran	865	107	41.2%	4,784	304	39.6%
65 years and over:	280	47	13.3%	1,739	154	14.4%
Veteran	0	18	0.0%	9	21	0.1%
Nonveteran	280	47	13.3%	1,730	155	14.3%

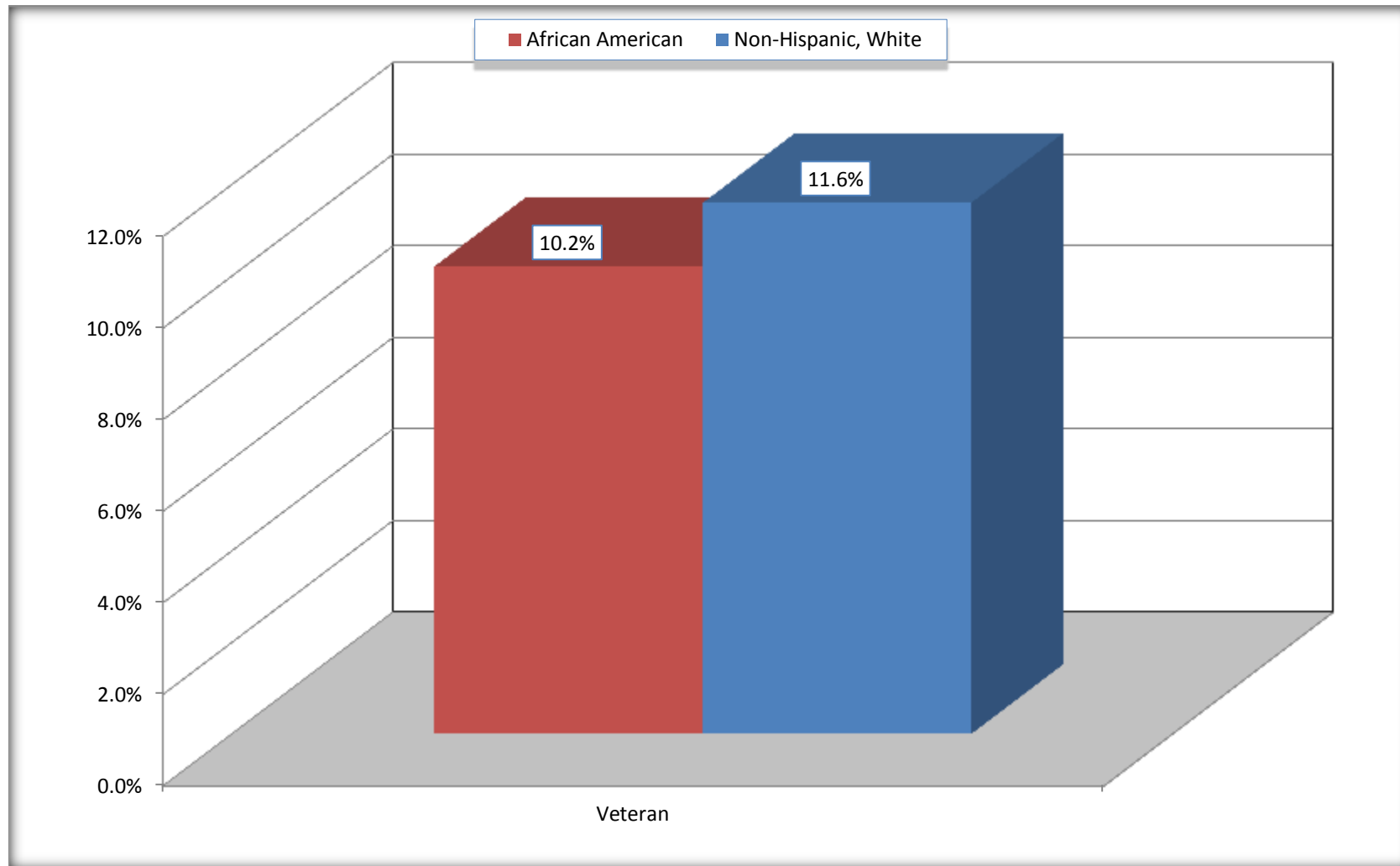
Source: U.S. Census Bureau, 2008-2012 American Community Survey

For information on confidentiality protection, sampling error, nonsampling error, and definitions, see Survey Methodology.

<http://www.census.gov/acs/www/UseData/index.htm>

# Veterans in the Civilian Population 18 Years and Over

## Steubenville city, Ohio



Source: C21001. SEX BY AGE BY VETERAN STATUS FOR THE CIVILIAN POPULATION 18 YEARS AND OVER  
Data Set: 2008-2012 American Community Survey 5-Year Estimates

**B22005. RECEIPT OF FOOD STAMPS/SNAP IN THE PAST 12 MONTHS BY RACE OF HOUSEHOLDER**

Data Set: 2008-2012 American Community Survey 5-Year Estimates

	Steubenville city, Ohio					
	African American	Margin of Error (+/-)	% of AA Total	White, Not Hispanic	Margin of Error (+/-)	% of NHW Total
<b>Total:</b>	<b>1,230</b>	<b>174</b>	<b>100.0%</b>	<b>5,946</b>	<b>261</b>	<b>100.0%</b>
HH received Food Stamps/SNAP in the past 12 months	574	159	46.7%	1,109	179	18.7%
HH did not receive Food Stamps/SNAP in the past 12 months	656	134	53.3%	4,837	271	81.3%

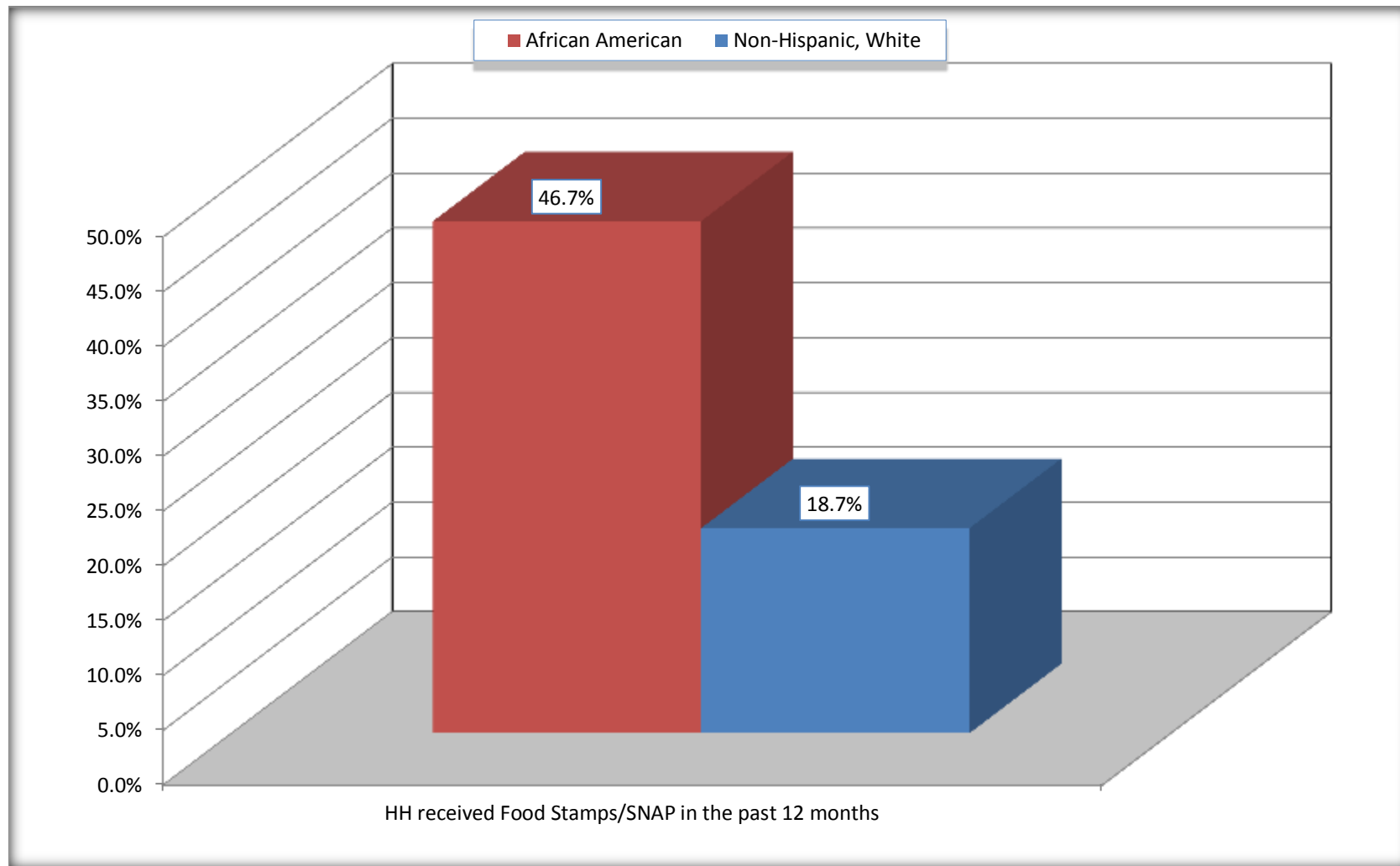
Source: U.S. Census Bureau, 2008-2012 American Community Survey

For information on confidentiality protection, sampling error, nonsampling error, and definitions, see Survey Methodology.

<http://www.census.gov/acs/www/UseData/index.htm>

# Receipt of Food Stamps/SNAP in the Past 12 Months by Household

## Steubenville city, Ohio



Source: B22005. RECEIPT OF FOOD STAMPS/SNAP IN THE PAST 12 MONTHS BY RACE OF HOUSEHOLDER  
Data Set: 2008-2012 American Community Survey 5-Year Estimates



**C23002. SEX BY AGE BY EMPLOYMENT STATUS FOR THE POPULATION 16 YEARS AND OVER**

Data Set: 2008-2012 American Community Survey 5-Year Estimates

	Steubenville city, Ohio					
	African American	Margin of Error (+/-)	% of AA Total	White, Not Hispanic	Margin of Error (+/-)	% of NHW Total
<b>Total:</b>	<b>2,171</b>	<b>216</b>	<b>100.0%</b>	<b>12,455</b>	<b>350</b>	<b>100.0%</b>
In labor force:	858	NC	39.5%	6,444	NC	51.7%
In Armed Forces	0	NC	0.0%	0	NC	0.0%
Civilian:	783	NC	36.1%	6,208	NC	49.8%
Employed	671	NC	30.9%	5,910	NC	47.5%
Unemployed	187	NC	8.6%	534	NC	4.3%
Not in labor force	1,313	NC	60.5%	6,011	NC	48.3%
Male:	954	129	43.9%	5,649	280	45.4%
16 to 64 years:	804	121	37.0%	4,518	275	36.3%
In labor force:	363	97	16.7%	3,033	264	24.4%
In Armed Forces	0	18	0.0%	0	18	0.0%
Civilian:	363	97	16.7%	3,033	264	24.4%
Employed	321	92	14.8%	2,681	242	21.5%
Unemployed	42	28	1.9%	352	144	2.8%
Not in labor force	441	116	20.3%	1,485	234	11.9%
65 years and over:	150	31	6.9%	1,131	127	9.1%
In labor force:	13	17	0.6%	161	58	1.3%
Employed	13	17	0.6%	156	58	1.3%
Unemployed	0	18	0.0%	5	8	0.0%
Not in labor force	137	37	6.3%	970	123	7.8%

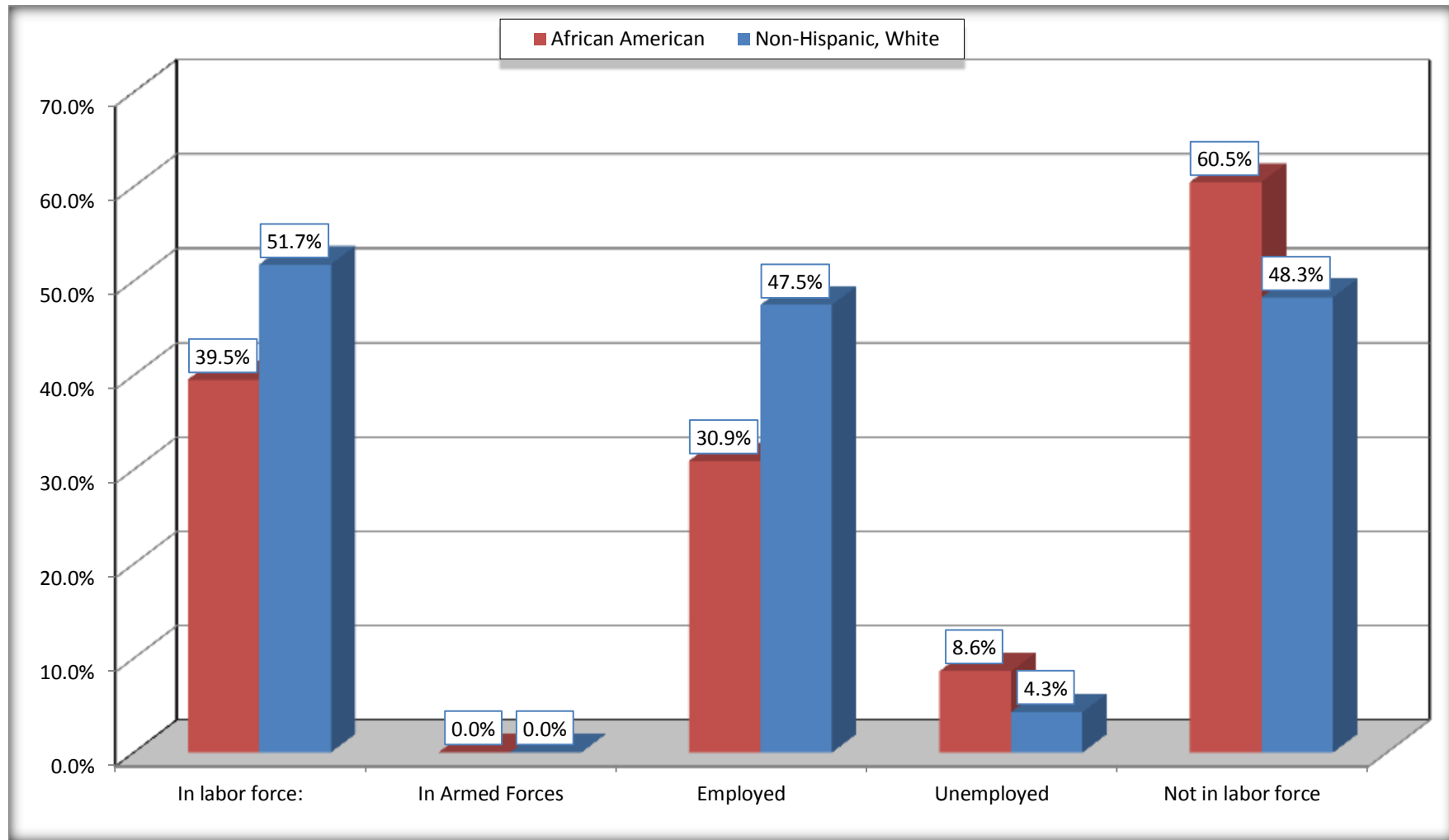
	Steubenville city, Ohio					
	African American	Margin of Error (+/-)	% of AA Total	White, Not Hispanic	Margin of Error (+/-)	% of NHW Total
Female:	1,217	127	56.1%	6,806	294	54.6%
16 to 64 years:	937	115	43.2%	5,067	314	40.7%
In labor force:	420	113	19.3%	3,175	291	25.5%
In Armed Forces	0	18	0.0%	0	18	0.0%
Civilian:	420	113	19.3%	3,175	291	25.5%
Employed	314	107	14.5%	2,998	292	24.1%
Unemployed	106	55	4.9%	177	64	1.4%
Not in labor force	517	129	23.8%	1,892	254	15.2%
65 years and over:	280	47	12.9%	1,739	154	14.0%
In labor force:	62	47	2.9%	75	43	0.6%
Employed	23	27	1.1%	75	43	0.6%
Unemployed	39	42	1.8%	0	18	0.0%
Not in labor force	218	57	10.0%	1,664	153	13.4%

Source: U.S. Census Bureau, 2008-2012 American Community Survey

For information on confidentiality protection, sampling error, nonsampling error, and definitions, see Survey Methodology.  
<http://www.census.gov/acs/www/UseData/index.htm>

# Employment Status for the Population 16 years and over

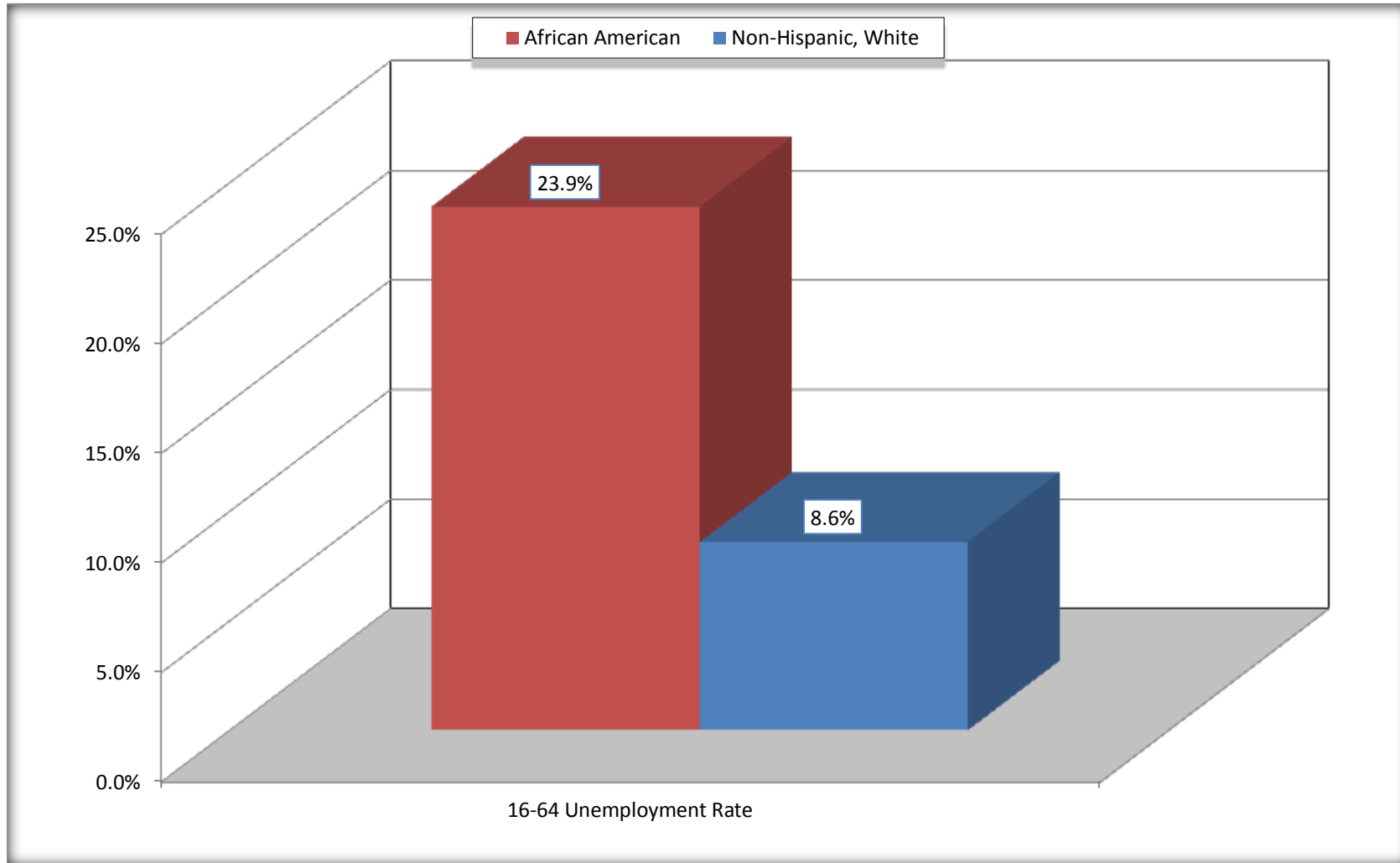
## Steubenville city, Ohio



Source: C23002. SEX BY AGE BY EMPLOYMENT STATUS FOR THE POPULATION 16 YEARS AND OVER  
Data Set: 2008-2012 American Community Survey 5-Year Estimates

# Unemployment of Working Age Population (Ages 16 to 64) (As a Percent of 16-64 Civilian Labor Force)

## Steubenville city, Ohio



Source: C23002. SEX BY AGE BY EMPLOYMENT STATUS FOR THE POPULATION 16 YEARS AND OVER  
Data Set: 2008-2012 American Community Survey 5-Year Estimates

**C24010. SEX BY OCCUPATION FOR THE CIVILIAN EMPLOYED POPULATION 16 YEARS AND OVER**

Data Set: 2008-2012 American Community Survey 5-Year Estimates

	Steubenville city, Ohio					
	African American	Margin of Error (+/-)	% of AA Total	White, Not Hispanic	Margin of Error (+/-)	% of NHW Total
<b>Total:</b>	<b>671</b>	<b>166</b>	<b>100.0%</b>	<b>5,910</b>	<b>392</b>	<b>100.0%</b>
Management, professional, and related occupations	133	NC	19.8%	2,092	NC	35.4%
Service occupations	186	NC	27.7%	1,125	NC	19.0%
Sales and office occupations	188	NC	28.0%	1,596	NC	27.0%
Natural resources, construction, and maintenance occupations:	29	NC	4.3%	374	NC	6.3%
Production, transportation, and material moving occupations	135	NC	20.1%	723	NC	12.2%
Male:	334	93	49.8%	2,837	257	48.0%
Management, business, science, and arts occupations:	51	36	7.6%	959	149	16.2%
Service occupations	41	29	6.1%	407	110	6.9%
Sales and office occupations	101	58	15.1%	543	171	9.2%
Natural resources, construction, and maintenance occupations:	29	26	4.3%	364	107	6.2%
Production, transportation, and material moving occupations	112	62	16.7%	564	150	9.5%
Female:	337	114	50.2%	3,073	291	52.0%
Management, professional, and related occupations	82	82	12.2%	1,133	180	19.2%
Service occupations	145	76	21.6%	718	180	12.1%
Sales and office occupations	87	48	13.0%	1,053	190	17.8%
Natural resources, construction, and maintenance occupations:	0	18	0.0%	10	16	0.2%
Production, transportation, and material moving occupations	23	24	3.4%	159	78	2.7%

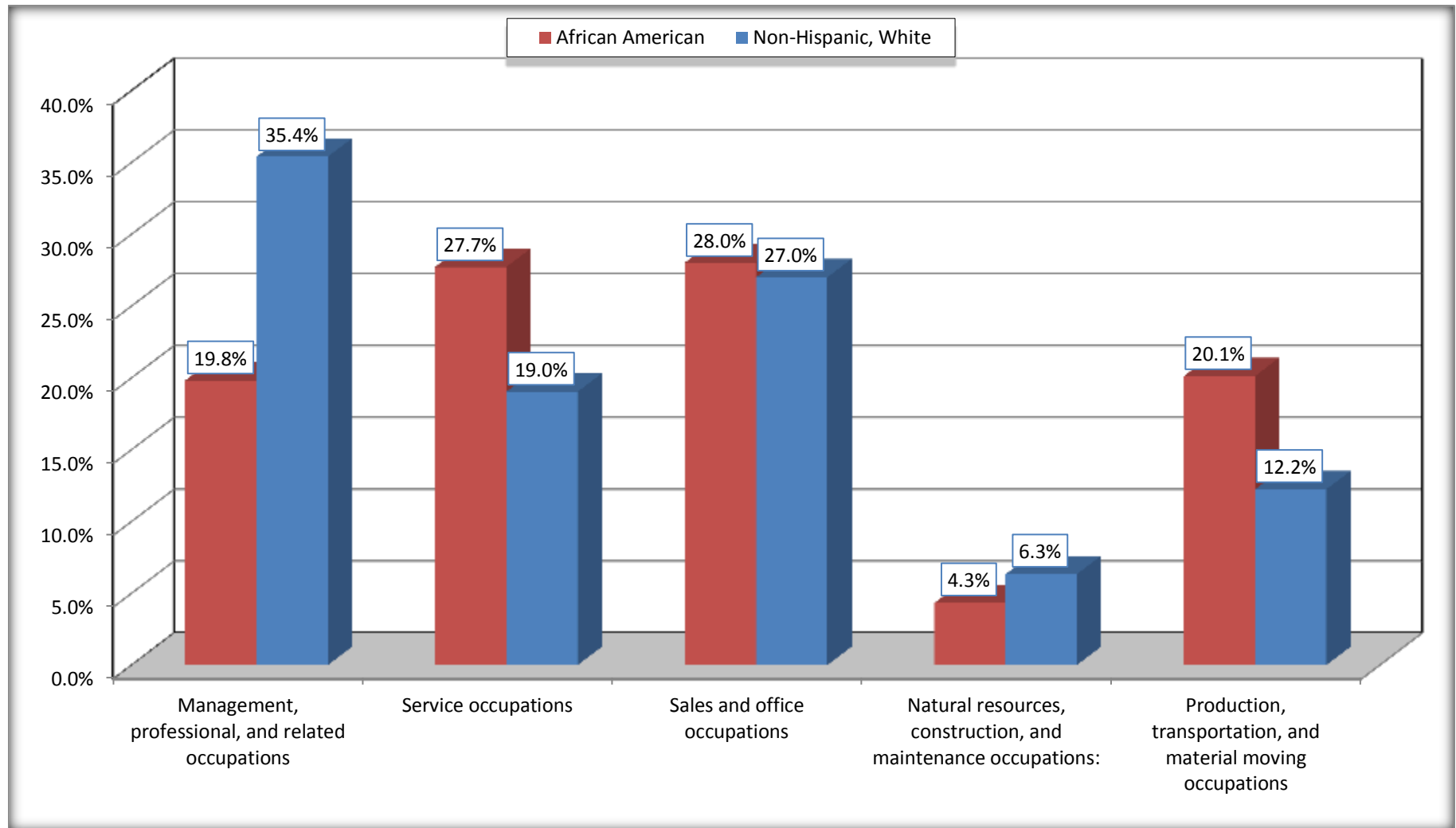
Source: U.S. Census Bureau, 2008-2012 American Community Survey

For information on confidentiality protection, sampling error, nonsampling error, and definitions, see Survey Methodology.

<http://www.census.gov/acs/www/UseData/index.htm>

# Occupation for the Civilian Employed 16 Years and Over Population

## Steubenville city, Ohio



Source: C24010. SEX BY OCCUPATION FOR THE CIVILIAN EMPLOYED POPULATION 16 YEARS AND OVER  
Data Set: 2008-2012 American Community Survey 5-Year Estimates

**B25003. TENURE - Universe: OCCUPIED HOUSING UNITS**

Data Set: 2008-2012 American Community Survey 5-Year Estimates

	Steubenville city, Ohio					
	African American	Margin of Error (+/-)	% of AA Total	White, Not Hispanic	Margin of Error (+/-)	% of NHW Total
<b>Total:</b>	<b>1,230</b>	<b>174</b>	<b>100.0%</b>	<b>5,946</b>	<b>261</b>	<b>100.0%</b>
Owner occupied	393	92	32.0%	3,750	250	63.1%
Renter occupied	837	177	68.0%	2,196	210	36.9%

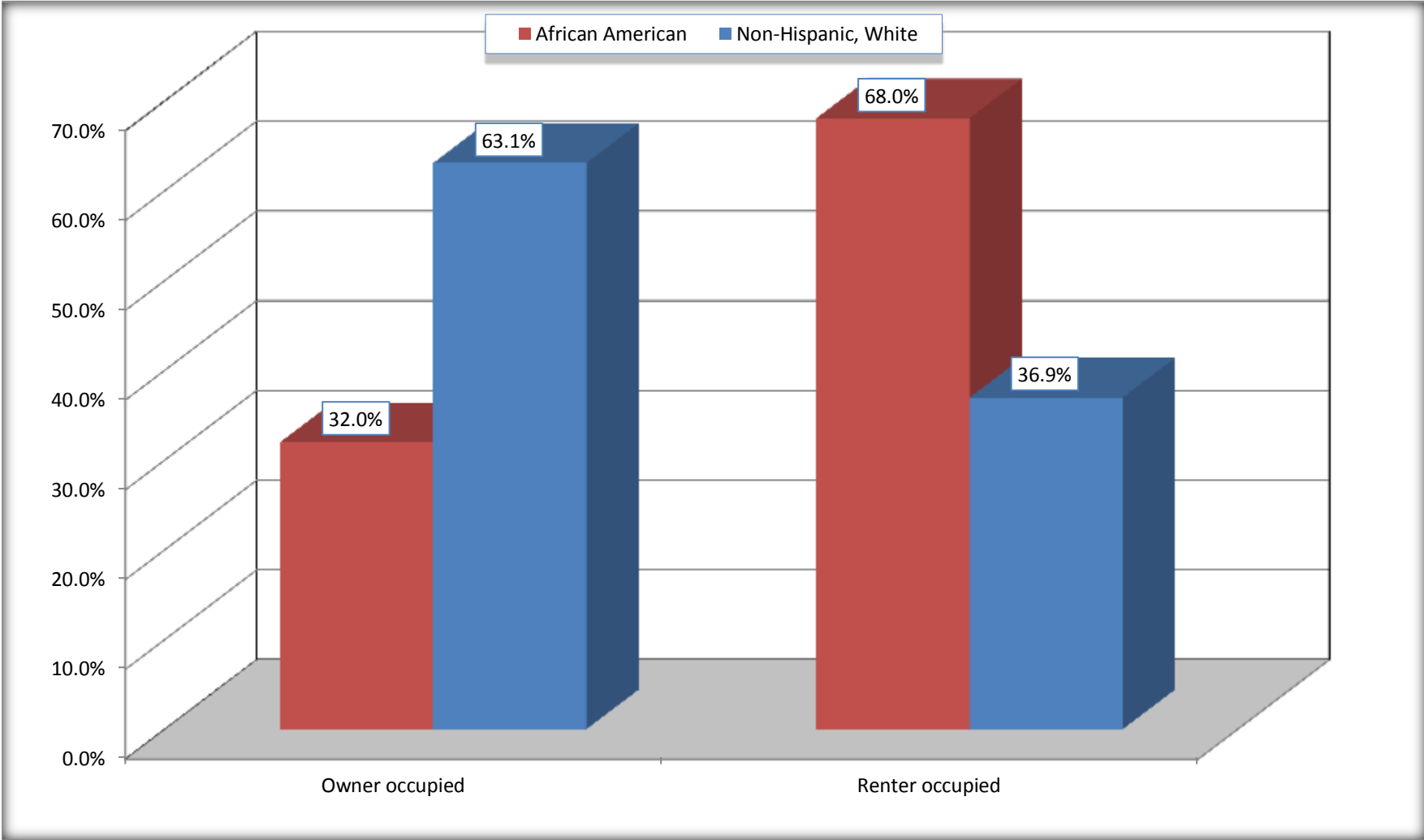
Source: U.S. Census Bureau, 2008-2012 American Community Survey

For information on confidentiality protection, sampling error, nonsampling error, and definitions, see Survey Methodology.

<http://www.census.gov/acs/www/UseData/index.h>

# Home Owners and Renters by Household

## Steubenville city, Ohio



Source: B25003. TENURE - Universe: OCCUPIED HOUSING UNITS  
Data Set: 2008-2012 American Community Survey 5-Year Estimates



**B25014. OCCUPANTS PER ROOM - Universe: OCCUPIED HOUSING UNITS**

Data Set: 2008-2012 American Community Survey 5-Year Estimates

	Steubenville city, Ohio					
	African American	Margin of Error (+/-)	% of AA Total	White, Not Hispanic	Margin of Error (+/-)	% of NHW Total
<b>Total:</b>	<b>1,230</b>	<b>174</b>	<b>100.0%</b>	<b>5,946</b>	<b>261</b>	<b>100.0%</b>
1.00 or less occupants per room	1,219	175	99.1%	5,916	262	99.5%
1.01 or more occupants per room	11	15	0.9%	30	21	0.5%

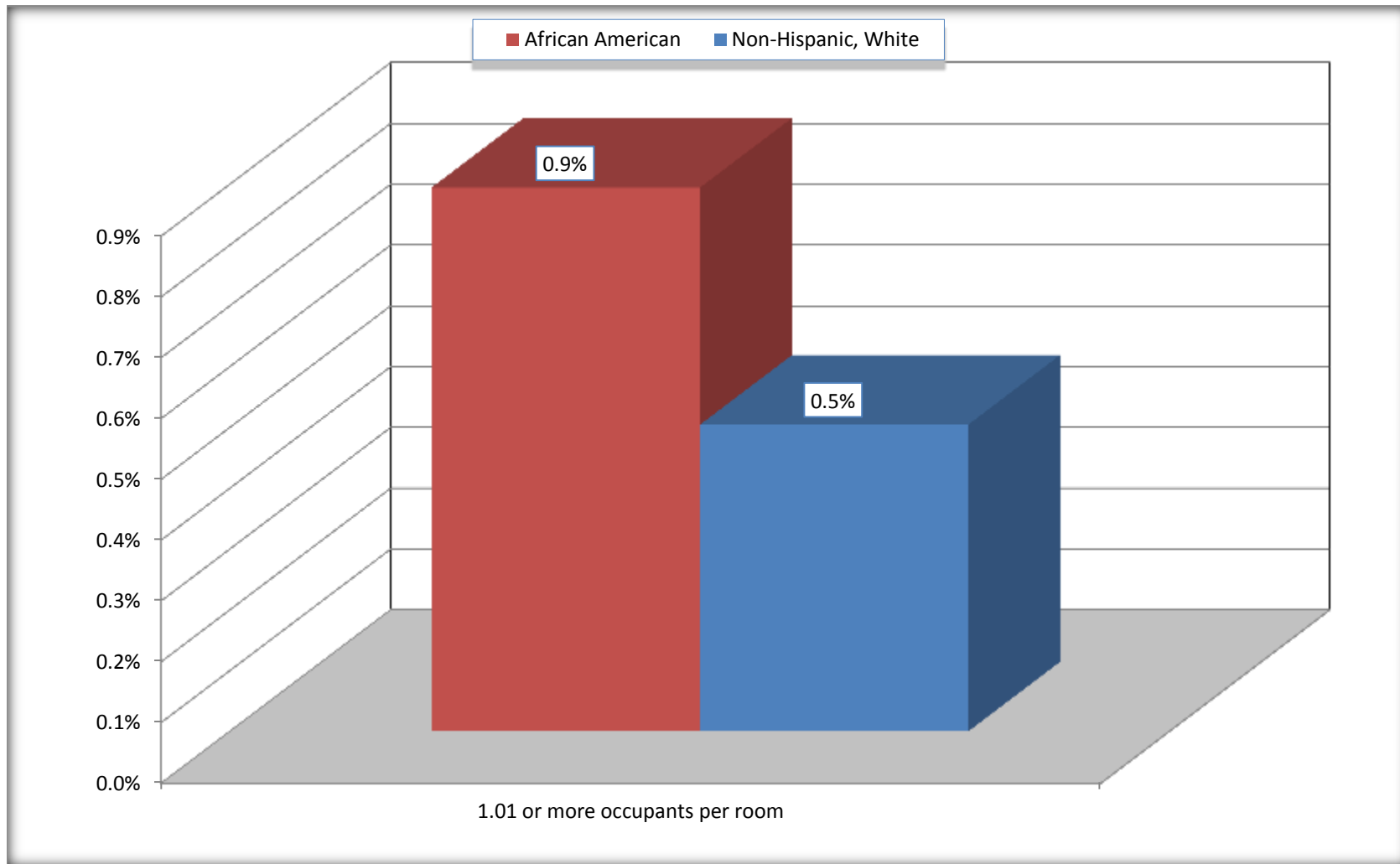
Source: U.S. Census Bureau, 2008-2012 American Community Survey

For information on confidentiality protection, sampling error, nonsampling error, and definitions, see Survey Methodology.

<http://www.census.gov/acs/www/UseData/index.ht>

# More than One Person per Room (Crowding) by Household

## Steubenville city, Ohio



Source: B25014. OCCUPANTS PER ROOM - Universe: OCCUPIED HOUSING UNITS  
Data Set: 2008-2012 American Community Survey 5-Year Estimates

**B18101. AGE BY DISABILITY STATUS**

Data Set: 2008-2012 American Community Survey 5-Year Estimates

	Steubenville city, Ohio					
	African American	Margin of Error (+/-)	% of AA Total	White, Not Hispanic	Margin of Error (+/-)	% of NHW Total
<b>Total:</b>	<b>2,765</b>	<b>288</b>	<b>100.0%</b>	<b>14,166</b>	<b>375</b>	<b>100.0%</b>
Under 18 years:	779	169	28.2%	2,474	89	17.5%
With a disability	36	29	1.3%	86	68	0.6%
No disability	743	168	26.9%	2,388	254	16.9%
18 to 64 years:	1,562	186	56.5%	9,017	355	63.7%
With a disability	288	87	10.4%	1,126	220	7.9%
No disability	1,274	182	46.1%	7,891	374	55.7%
65 years and over:	424	64	15.3%	2,675	212	18.9%
With a disability	200	53	7.2%	931	145	6.6%
No disability	224	63	8.1%	1,744	192	12.3%

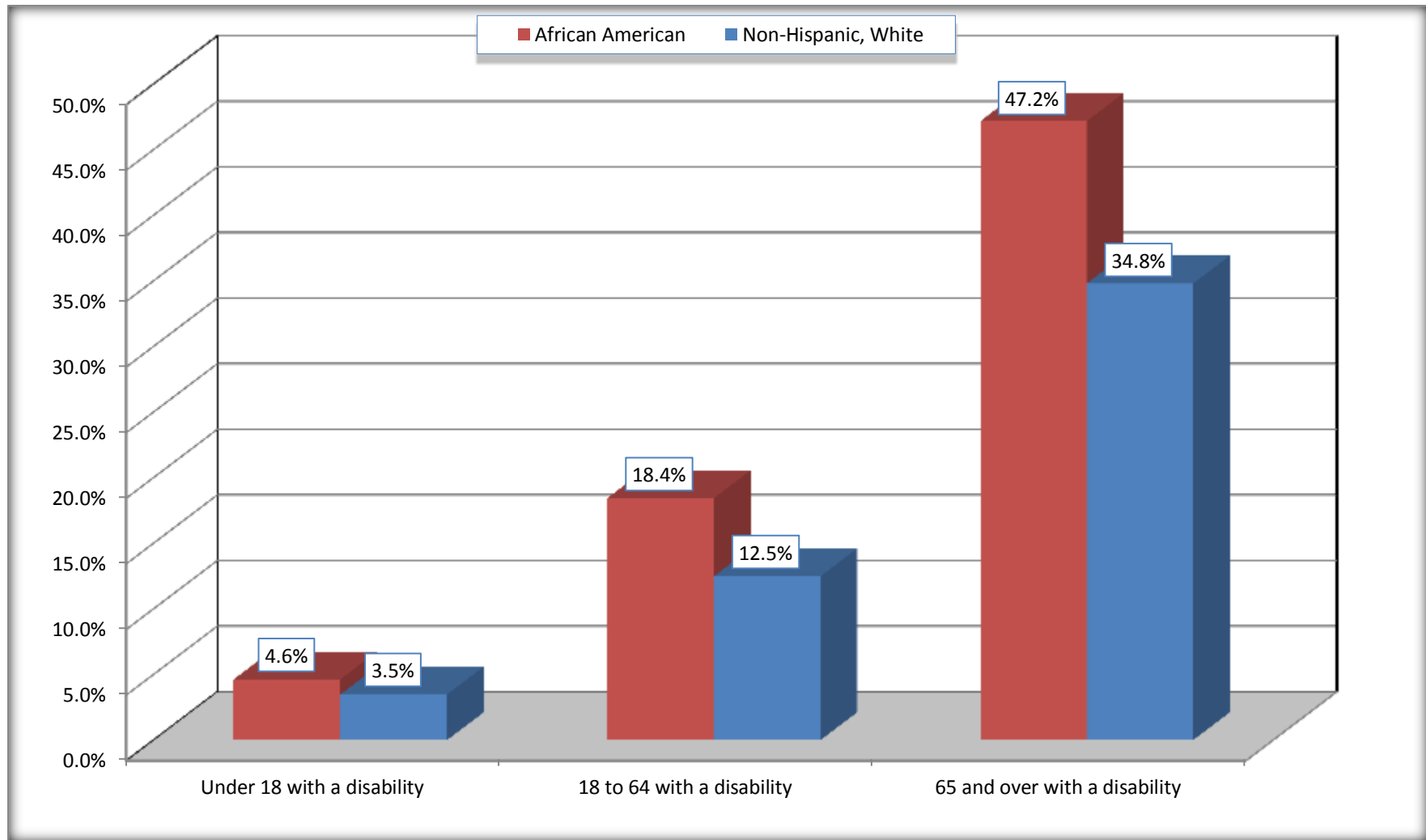
Source: U.S. Census Bureau, 2008-2012 American Community Survey

For information on confidentiality protection, sampling error, nonsampling error, and definitions, see Survey Methodology.

<http://www.census.gov/acs/www/UseData/index.htm>

## Disability by Age

### Steubenville city, Ohio



Source: B18101. AGE BY DISABILITY STATUS  
Data Set: 2008-2012 American Community Survey 5-Year Estimates

**C27001B. HEALTH INSURANCE COVERAGE STATUS BY AGE**

Data Set: 2008-2012 American Community Survey 5-Year Estimates

	Steubenville city, Ohio					
	African American	Margin of Error (+/-)	% of AA Total	White, Not Hispanic	Margin of Error (+/-)	% of NHW Total
Total:	<b>2,765</b>	<b>288</b>	<b>100.0%</b>	<b>14,166</b>	<b>375</b>	<b>100.0%</b>
Under 18 years:	779	169	28.2%	2,474	261	17.5%
With health insurance coverage	765	173	27.7%	2,302	273	16.3%
No health insurance coverage	14	25	0.5%	172	114	1.2%
18 to 64 years:	1,562	186	56.5%	9,017	355	63.7%
With health insurance coverage	1,232	175	44.6%	7,570	383	53.4%
No health insurance coverage	330	104	11.9%	1,447	282	10.2%
65 years and over:	424	64	15.3%	2,675	212	18.9%
With health insurance coverage	424	64	15.3%	2,665	214	18.8%
No health insurance coverage	0	18	0.0%	10	16	0.1%

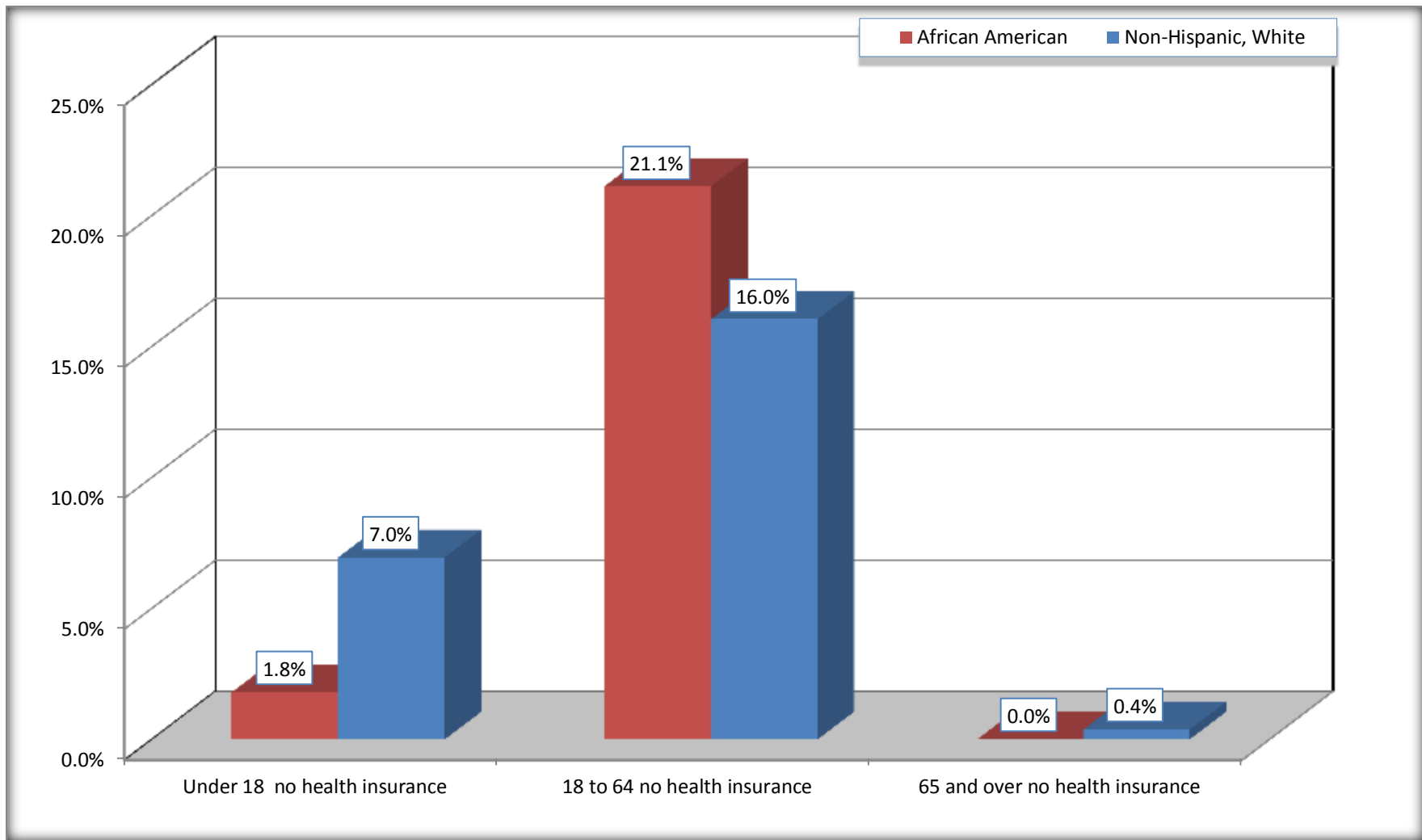
Source: U.S. Census Bureau, 2008-2012 American Community Survey

For information on confidentiality protection, sampling error, nonsampling error, and definitions, see Survey Methodology.

<http://www.census.gov/acs/www/UseData/index.htm>

# Lack of Health Insurance Coverage by Age

## Steubenville city, Ohio



Source: C27001B. HEALTH INSURANCE COVERAGE STATUS BY AGE  
Data Set: 2008-2012 American Community Survey 5-Year Estimates