

# **Selected Socio-Economic Data**

## **Campbell city, Ohio**

### **African American and White, Not Hispanic**

**Data Set: 2008-2012 American Community Survey 5-Year Estimates**

[www.fairvote2020.org](http://www.fairvote2020.org)

[www.fairdata2000.com](http://www.fairdata2000.com)

[29-Dec-13](#)

**C02003.DETAILED RACE - Universe: TOTAL POPULATION**

Data Set: 2008-2012 American Community Survey 5-Year Estimates

	Campbell city, Ohio		
	Population	Margin of Error (+/-)	% of Total
<b>Total:</b>	<b>8,252</b>	<b>27</b>	<b>100.0%</b>
Population of one race:	7,971	179	96.6%
White	5,524	289	66.9%
Black or African American	2,075	250	25.1%
American Indian and Alaska Native	18	27	0.2%
Asian alone	0	16	0.0%
Native Hawaiian and Other Pacific Islander	6	10	0.1%
Some other race	348	164	4.2%
Population of two or more races:	281	176	3.4%
Two races including Some other race	141	137	1.7%
Two races excluding Some other race, and three or more races	140	115	1.7%
Population of two races:	267	175	3.2%
White; Black or African American	88	77	1.1%
White; American Indian and Alaska Native	38	56	0.5%
White; Asian	0	16	0.0%
Black or African American; American Indian and Alaska Native	0	16	0.0%
All other two race combinations	141	137	1.7%
Population of three races	14	25	0.2%
Population of four or more races	0	16	0.0%

Note: Hispanics may be of any race. See Table B03002 and chart.

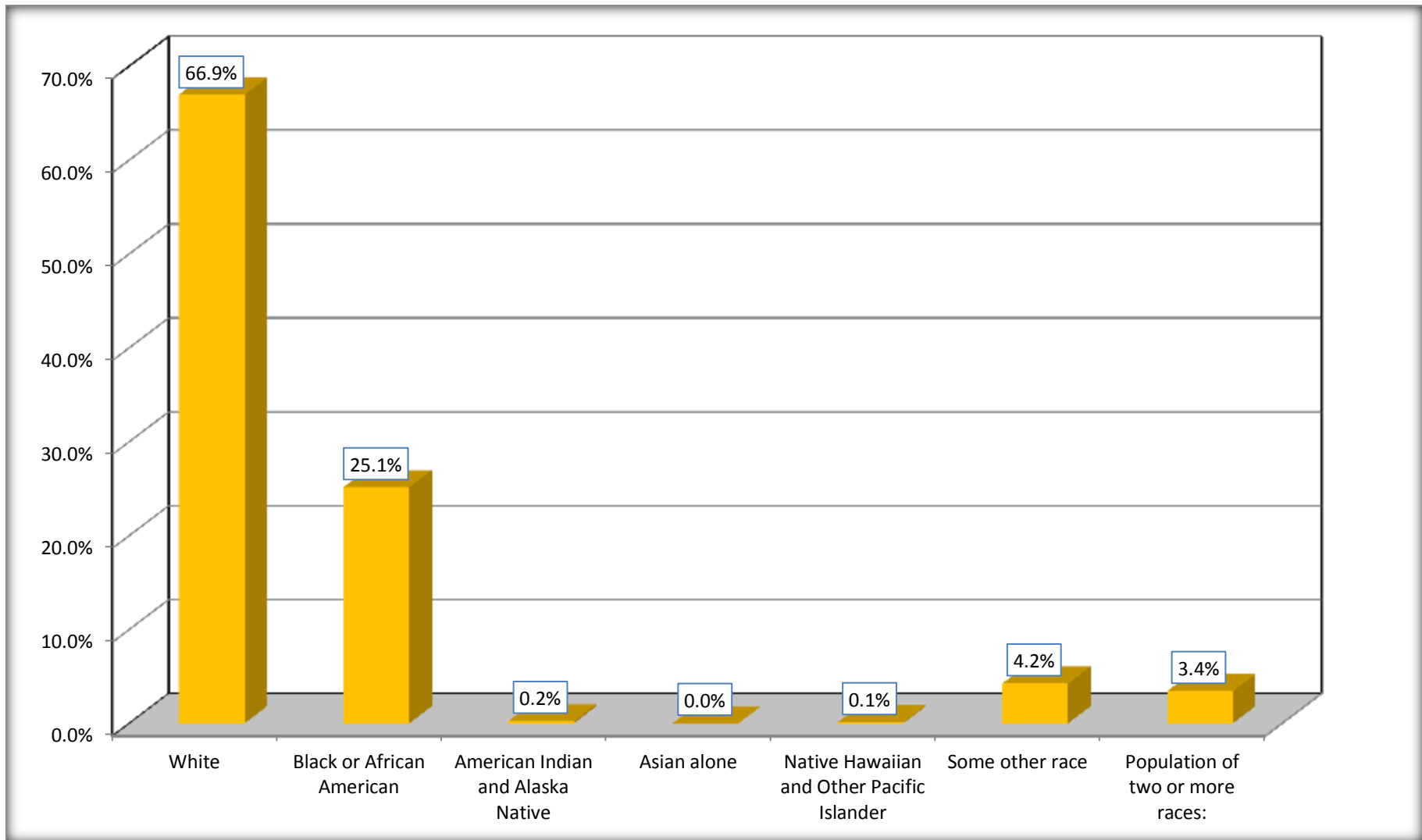
Source: U.S. Census Bureau, 2008-2012 American Community Survey

Although the American Community Survey (ACS) produces population, demographic and housing unit estimates, it is the Census Bureau's Population Estimates Program that produces and disseminates the official estimates of the population for the nation, states, counties, cities and towns and estimates of housing units for states and counties.

For information on confidentiality protection, sampling error, nonsampling error, and definitions, see Survey Methodology.

<http://www.census.gov/acs/www/UseData/index.htm>

## Population by Race Campbell city, Ohio



Source: C02003.DETAILED RACE - Universe: TOTAL POPULATION  
Data Set: 2008-2012 American Community Survey 5-Year Estimates

**B03002. HISPANIC OR LATINO ORIGIN BY RACE - Universe: TOTAL POPULATION**

Data Set: 2008-2012 American Community Survey 5-Year Estimates

	Campbell city, Ohio		
	Population	Margin of Error (+/-)	% of Total
<b>Total:</b>	8,252	27	<b>100.0%</b>
Not Hispanic or Latino:	7,034	293	85.2%
White alone	4,881	351	59.1%
Black or African American alone	1,940	264	23.5%
American Indian and Alaska Native alone	0	16	0.0%
Asian alone	0	16	0.0%
Native Hawaiian and Other Pacific Islander alone	6	10	0.1%
Some other race alone	0	16	0.0%
Two or more races:	207	170	2.5%
Two races including Some other race	85	131	1.0%
Two races excluding Some other race, and three or more races	122	107	1.5%
Hispanic or Latino	1,218	294	14.8%

Source: U.S. Census Bureau, 2008-2012 American Community Survey

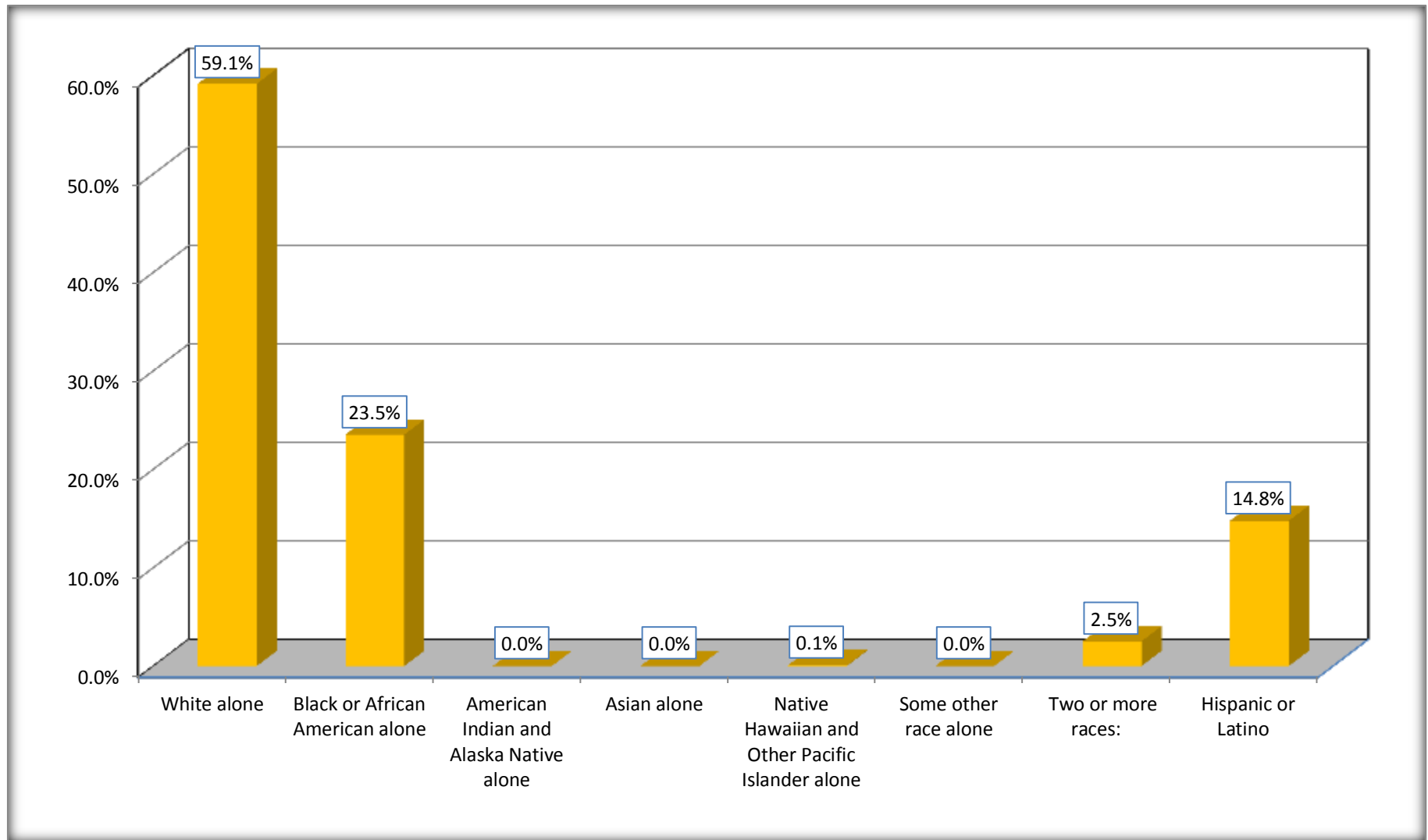
Although the American Community Survey (ACS) produces population, demographic and housing unit estimates, it is the Census Bureau's Population Estimates Program that produces and disseminates the official estimates of the population for the nation, states, counties, cities and towns and estimates of housing units for states and counties.

For information on confidentiality protection, sampling error, nonsampling error, and definitions, see Survey Methodology.

<http://www.census.gov/acs/www/UseData/index.htm>

# Non-Hispanic by Race and Hispanic Population

## Campbell city, Ohio



Source: B03002. HISPANIC OR LATINO ORIGIN BY RACE - Universe: TOTAL POPULATION  
Data Set: 2008-2012 American Community Survey 5-Year Estimates

**B03002. HISPANIC OR LATINO ORIGIN BY RACE**

Data Set: 2008-2012 American Community Survey 5-Year Estimates

	Campbell city, Ohio		
	Population	Margin of Error (+/-)	% of Total
Hispanic or Latino:	1,218	294	<b>100.0%</b>
White alone	643	206	52.8%
Black or African American alone	135	93	11.1%
American Indian and Alaska Native alone	18	27	1.5%
Asian alone	0	16	0.0%
Native Hawaiian and Other Pacific Islander alone	0	16	0.0%
Some other race alone	348	164	28.6%
Two or more races:	74	60	6.1%
Two races including Some other race	56	55	4.6%
Two races excluding Some other race, and three or more races	18	20	1.5%

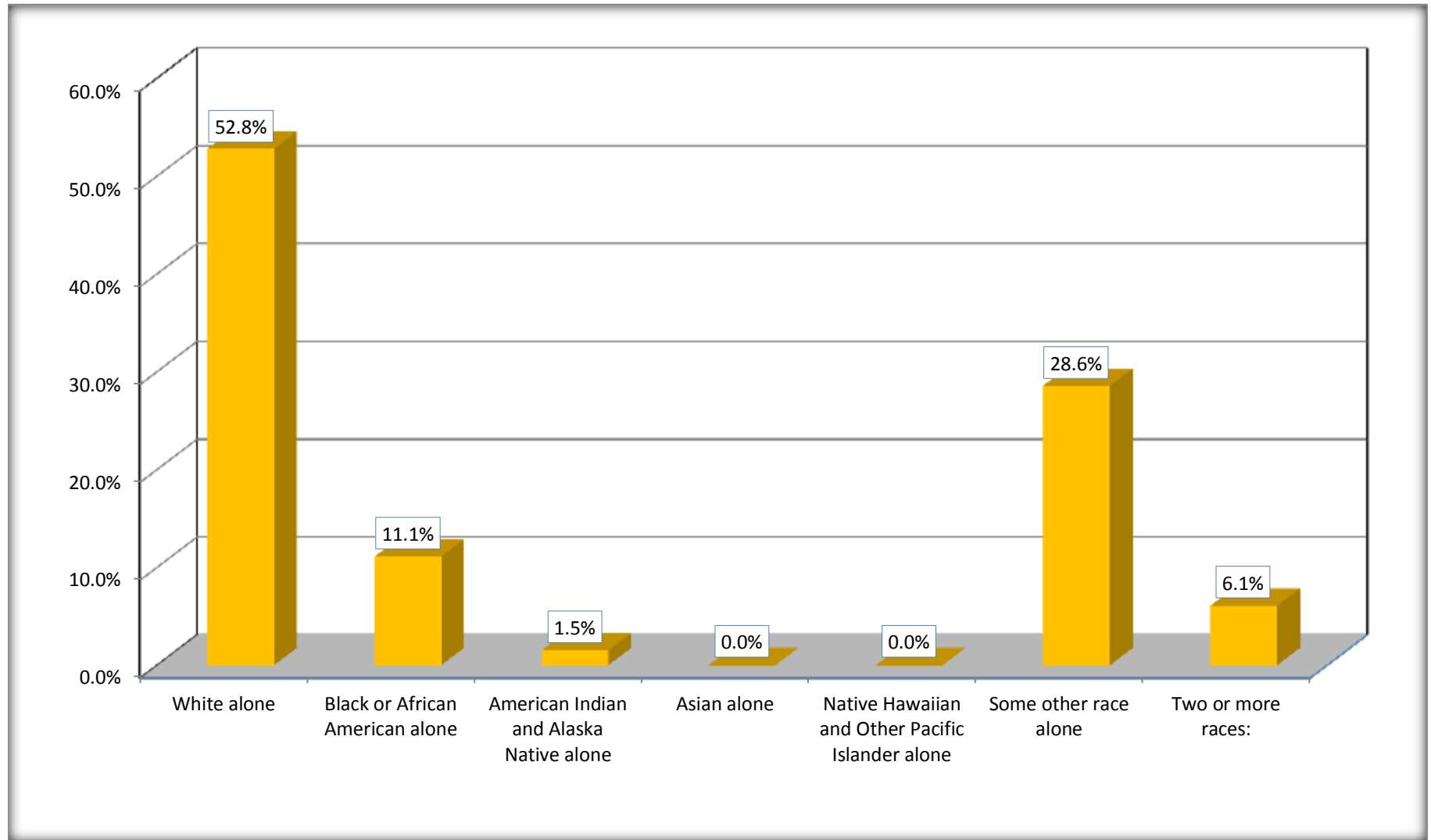
Source: U.S. Census Bureau, 2008-2012 American Community Survey

Although the American Community Survey (ACS) produces population, demographic and housing unit estimates, it is the Census Bureau's Population Estimates Program that produces and disseminates the official estimates of the population for the nation, states, counties, cities and towns and estimates of housing units for states and counties.

For information on confidentiality protection, sampling error, nonsampling error, and definitions, see Survey Methodology.

<http://www.census.gov/acs/www/UseData/index.htm>

## Hispanic or Latino Origin by Race Campbell city, Ohio



Source: B03002. HISPANIC OR LATINO ORIGIN BY RACE  
Data Set: 2008-2012 American Community Survey 5-Year Estimates

**B01001. SEX BY AGE**

Data Set: 2008-2012 American Community Survey 5-Year Estimates

	Campbell city, Ohio					
	African American	Margin of Error (+/-)	% of AA Total	White, Not Hispanic	Margin of Error (+/-)	% of NHW Total
<b>Total:</b>	<b>2,075</b>	<b>250</b>	<b>100.0%</b>	<b>4,881</b>	<b>351</b>	<b>100.0%</b>
Under 18 years	663	NC	32.0%	929	NC	19.0%
18 to 64 years	1,218	NC	58.7%	2,614	NC	53.6%
65 years and over	194	NC	9.3%	1,338	NC	27.4%
Male:	1,031	174	49.7%	2,282	389	46.8%
Under 18 years	356	NC	17.2%	478	NC	9.8%
18 to 64 years	621	NC	29.9%	1,270	NC	26.0%
65 years and over	54	NC	2.6%	534	NC	10.9%
Female:	1,044	167	50.3%	2,599	412	53.2%
Under 18 years	307	NC	14.8%	451	NC	9.2%
18 to 64 years	597	NC	28.8%	1,344	NC	27.5%
65 years and over	140	NC	6.7%	804	NC	16.5%

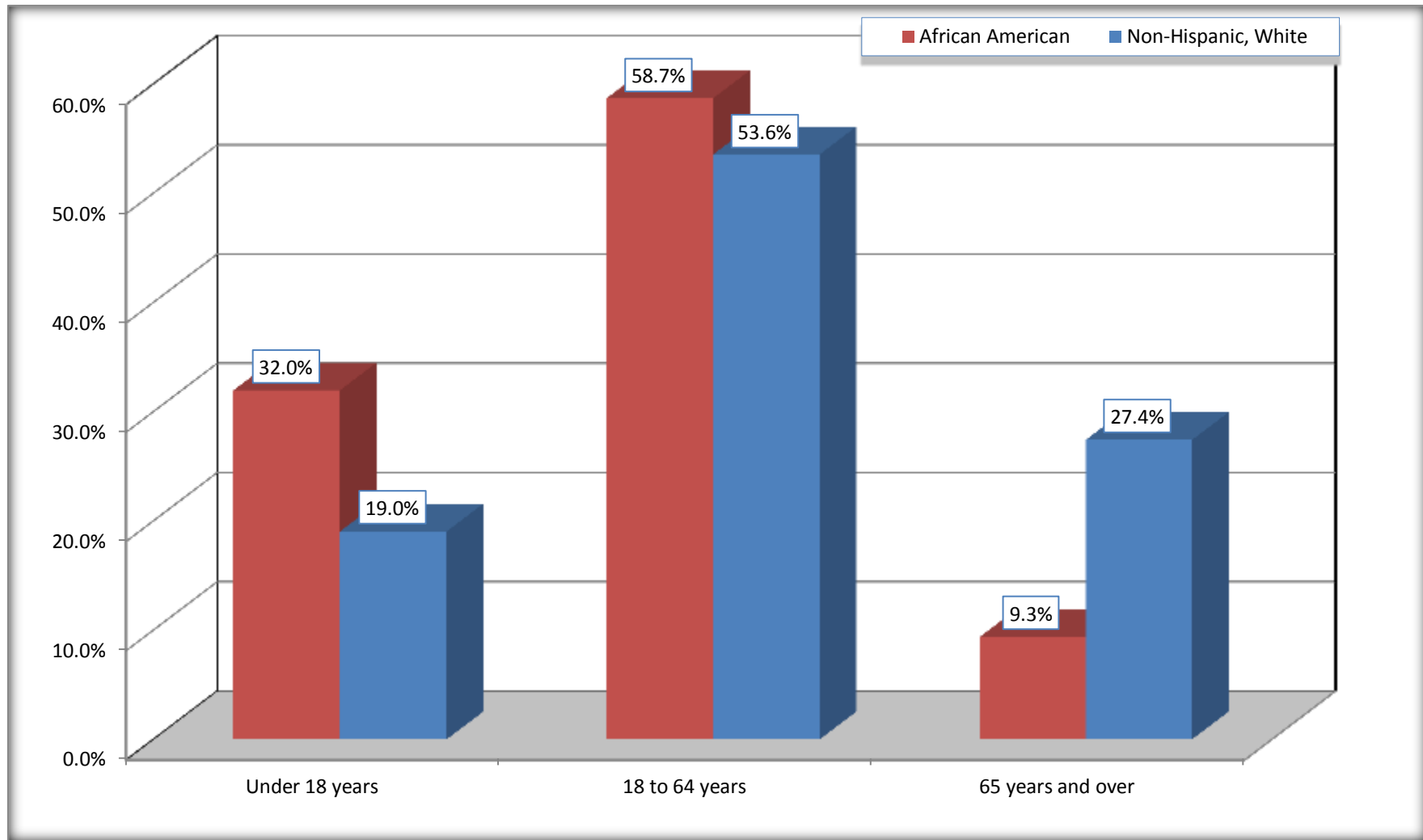
Source: U.S. Census Bureau, 2008-2012 American Community Survey

Although the American Community Survey (ACS) produces population, demographic and housing unit estimates, it is the Census Bureau's Population Estimates Program that produces and disseminates the official estimates of the population for the nation, states, counties, cities and towns and estimates of housing units for states and counties.

For information on confidentiality protection, sampling error, nonsampling error, and definitions, see Survey Methodology.  
<http://www.census.gov/acs/www/UseData/index.htm>



## Population by Age Campbell city, Ohio



Source: B01001. SEX BY AGE  
Data Set: 2008-2012 American Community Survey 5-Year Estimates

**B05003. SEX BY AGE BY CITIZENSHIP STATUS**

Data Set: 2008-2012 American Community Survey 5-Year Estimates

	Campbell city, Ohio					
	African American	Margin of Error (+/-)	% of AA Total by Age	White, Not Hispanic	Margin of Error (+/-)	% of NHW Total by Age
<b>Total:</b>	<b>2,075</b>	<b>250</b>	<b>100.0%</b>	<b>4,881</b>	<b>351</b>	<b>100.0%</b>
<b>Under 18 years:</b>	<b>663</b>	<b>NC</b>	<b>100.0%</b>	<b>929</b>	<b>NC</b>	<b>100.0%</b>
Native	663	NC	100.0%	920	NC	99.0%
Foreign born:	0	NC	0.0%	9	NC	1.0%
Naturalized U.S. citizen	0	NC	0.0%	9	NC	1.0%
Not a U.S. citizen	0	NC	0.0%	0	NC	0.0%
<b>18 years and over:</b>	<b>1,412</b>	<b>NC</b>	<b>100.0%</b>	<b>3,952</b>	<b>NC</b>	<b>100.0%</b>
Native	1,412	NC	100.0%	3,715	NC	94.0%
Foreign born:	0	NC	0.0%	237	NC	6.0%
Naturalized U.S. citizen	0	NC	0.0%	175	NC	4.4%
Not a U.S. citizen	0	NC	0.0%	62	NC	1.6%
<b>Male:</b>	<b>1,031</b>	<b>174</b>	<b>49.7%</b>	<b>2,282</b>	<b>219</b>	<b>46.8%</b>
<b>Under 18 years:</b>	<b>356</b>	<b>128</b>	<b>100.0%</b>	<b>478</b>	<b>159</b>	<b>100.0%</b>
Native	356	128	100.0%	478	159	100.0%
Foreign born:	0	16	0.0%	0	16	0.0%
Naturalized U.S. citizen	0	16	0.0%	0	16	0.0%
Not a U.S. citizen	0	16	0.0%	0	16	0.0%
<b>18 years and over:</b>	<b>675</b>	<b>121</b>	<b>100.0%</b>	<b>1,804</b>	<b>196</b>	<b>100.0%</b>
Native	675	121	100.0%	1,673	198	92.7%
Foreign born:	0	16	0.0%	131	53	7.3%
Naturalized U.S. citizen	0	16	0.0%	101	45	5.6%
Not a U.S. citizen	0	16	0.0%	30	24	1.7%

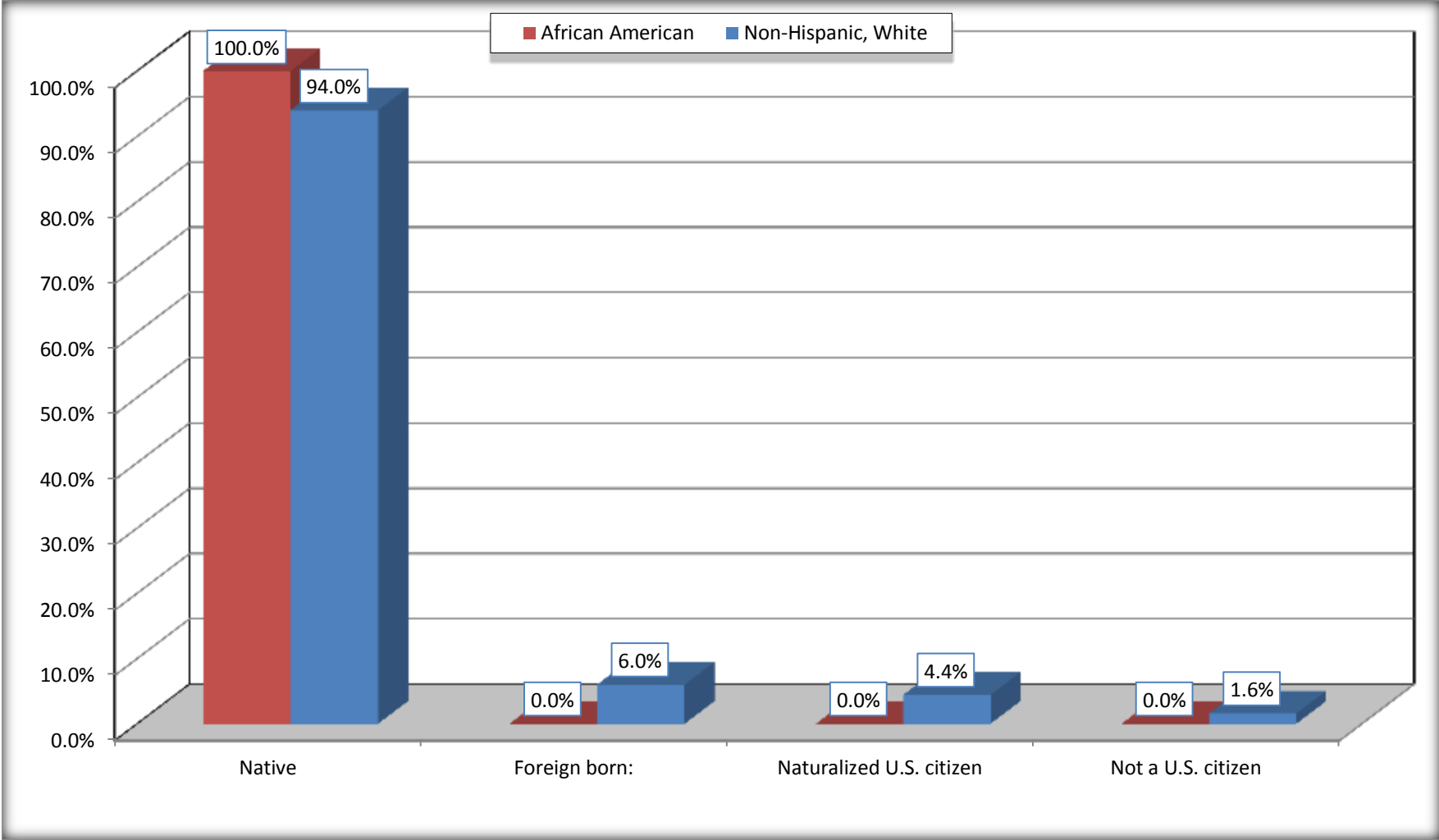
	Campbell city, Ohio					
	African American	Margin of Error (+/-)	% of AA by Age	White, Not Hispanic	Margin of Error (+/-)	% of NHW by Age
<b>Female:</b>	1,044	167	50.3%	2,599	249	53.2%
<b>Under 18 years:</b>	<b>307</b>	<b>100</b>	<b>100.0%</b>	<b>451</b>	<b>127</b>	<b>100.0%</b>
Native	307	100	100.0%	442	127	98.0%
Foreign born:	0	16	0.0%	9	14	2.0%
Naturalized U.S. citizen	0	16	0.0%	9	14	2.0%
Not a U.S. citizen	0	16	0.0%	0	16	0.0%
<b>18 years and over:</b>	<b>737</b>	<b>127</b>	<b>100.0%</b>	<b>2,148</b>	<b>194</b>	<b>100.0%</b>
Native	737	127	100.0%	2,042	196	95.1%
Foreign born:	0	16	0.0%	106	47	4.9%
Naturalized U.S. citizen	0	16	0.0%	74	36	3.4%
Not a U.S. citizen	0	16	0.0%	32	27	1.5%

Source: U.S. Census Bureau, 2008-2012 American Community Survey

For information on confidentiality protection, sampling error, nonsampling error, and definitions, see Survey Methodology.  
<http://www.census.gov/acs/www/UseData/index.htm>

# Citizenship Status of Voting Age Population (18 and Over)

## Campbell city, Ohio



Source: B05003. SEX BY AGE BY CITIZENSHIP STATUS  
Data Set: 2008-2012 American Community Survey 5-Year Estimates

**B07004. GEOGRAPHICAL MOBILITY IN THE PAST YEAR BY RACE FOR CURRENT RESIDENCE IN THE UNITED STATES - Universe:  
POPULATION 1 YEAR AND OVER**

Data Set: 2008-2012 American Community Survey 5-Year Estimates

	Campbell city, Ohio					
	African American	Margin of Error (+/-)	% of AA Total	White, Not Hispanic	Margin of Error (+/-)	% of NHW Total
Total:	<b>1,979</b>	<b>234</b>	<b>100.0%</b>	<b>4,876</b>	<b>351</b>	<b>100.0%</b>
Same house 1 year ago	1,732	278	87.5%	4,518	359	92.7%
Moved within same county	229	148	11.6%	166	88	3.4%
Moved from different county within same state	18	24	0.9%	46	49	0.9%
Moved from different state	0	16	0.0%	101	142	2.1%
Moved from abroad	0	16	0.0%	45	50	0.9%

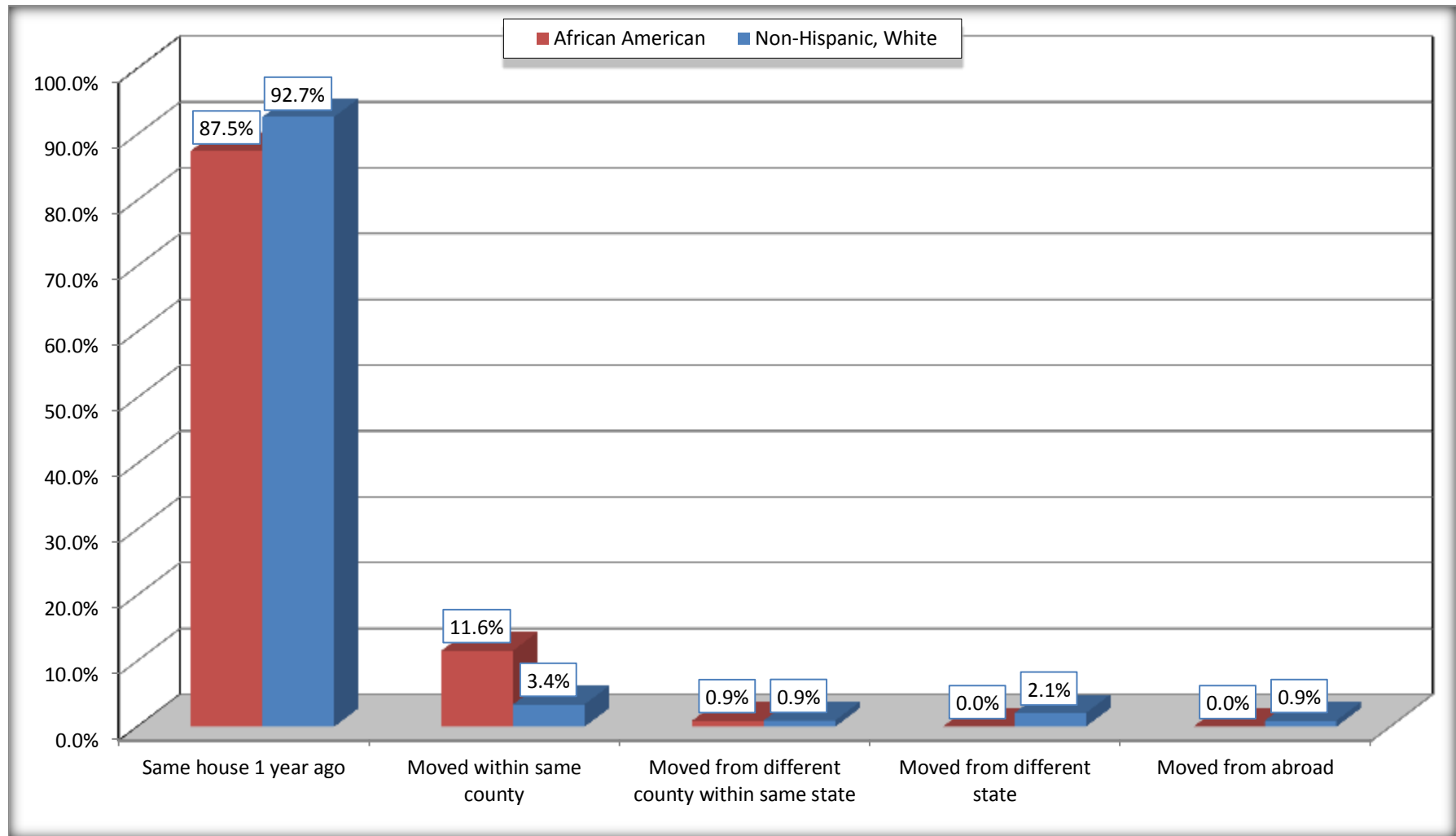
Source: U.S. Census Bureau, 2008-2012 American Community Survey

For information on confidentiality protection, sampling error, nonsampling error, and definitions, see Survey Methodology.

<http://www.census.gov/acs/www/UseData/index.htm>

# Geographical Mobility in the Past Year (Population 1 Year and Over)

## Campbell city, Ohio



Source: B07004. GEOGRAPHICAL MOBILITY IN THE PAST YEAR BY RACE FOR CURRENT RESIDENCE IN THE UNITED STATES - Universe: POPULATION 1 YEAR AND OVER

Data Set: 2008-2012 American Community Survey 5-Year Estimates

**B08105. MEANS OF TRANSPORTATION TO WORK - Universe: WORKERS 16 YEARS AND OVER**

Data Set: 2008-2012 American Community Survey 5-Year Estimates

	Campbell city, Ohio					
	African American	Margin of Error (+/-)	% of AA Total	White, Not Hispanic	Margin of Error (+/-)	% of NHW Total
<b>Total:</b>	553	119	<b>100.0%</b>	1635	214	<b>100.0%</b>
Car, truck, or van - drove alone	474	105	85.7%	1440	199	88.1%
Car, truck, or van - carpooled	38	27	6.9%	132	92	8.1%
Public transportation (excluding taxicab)	15	24	2.7%	18	20	1.1%
Walked	0	16	0.0%	0	16	0.0%
Taxicab, motorcycle, bicycle, or other means	22	25	4.0%	26	40	1.6%
Worked at home	4	6	0.7%	19	14	1.2%

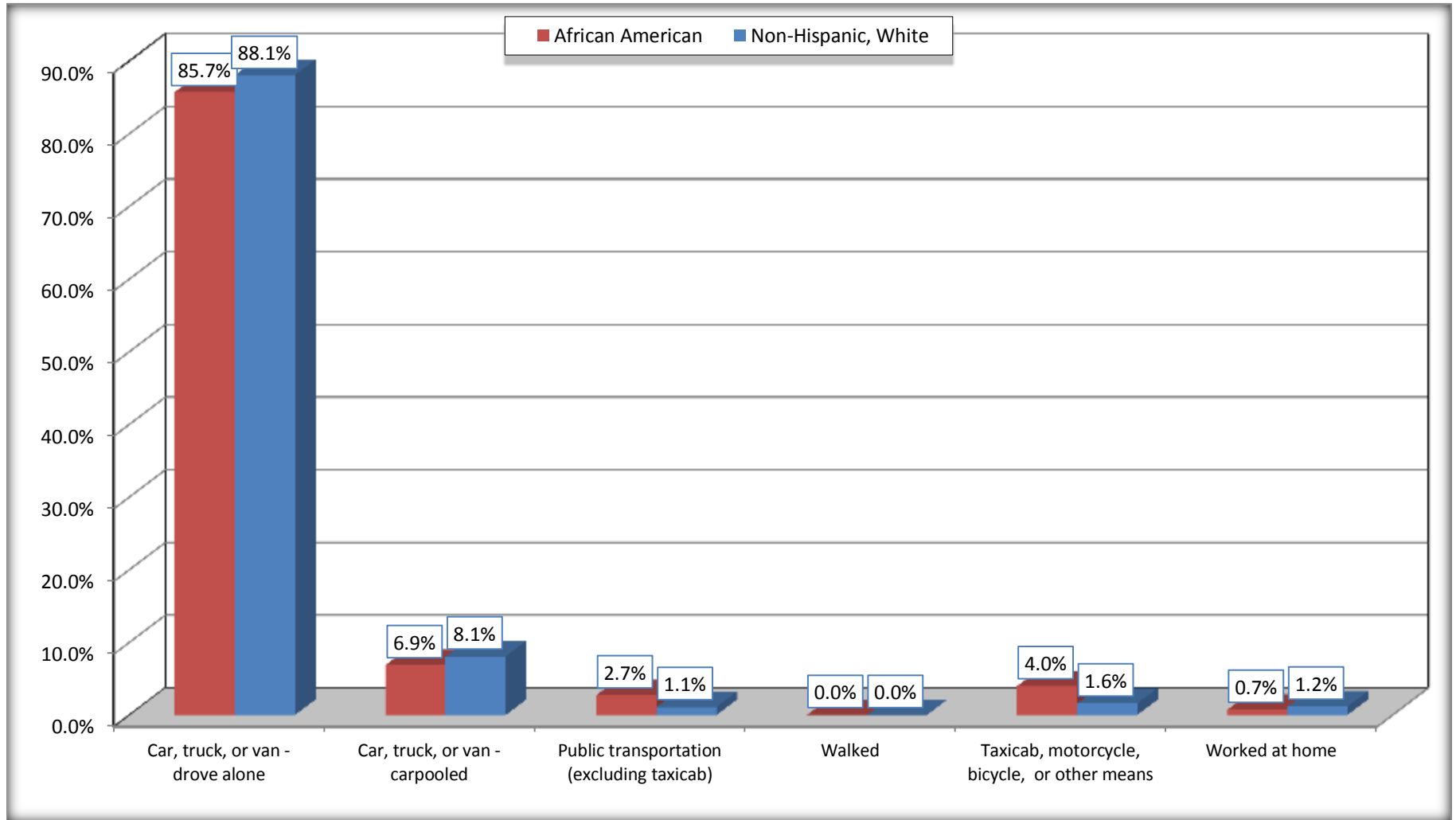
Source: U.S. Census Bureau, 2008-2012 American Community Survey

For information on confidentiality protection, sampling error, nonsampling error, and definitions, see Survey Methodology.

<http://www.census.gov/acs/www/UseData/index.htm>

# Means of Transportation to Work (Workers 16 Years and Over)

## Campbell city, Ohio



Source: B08105. MEANS OF TRANSPORTATION TO WORK - Universe: WORKERS 16 YEARS AND OVER  
Data Set: 2008-2012 American Community Survey 5-Year Estimates



**B11002. HOUSEHOLD TYPE BY RELATIVES AND NONRELATIVES FOR POPULATION IN HOUSEHOLDS**

Data Set: 2008-2012 American Community Survey 5-Year Estimates

	Campbell city, Ohio					
	African American	Margin of Error (+/-)	% of AA Total	White, Not Hispanic	Margin of Error (+/-)	% of NHW Total
<b>Total:</b>	1894	297	<b>100.0%</b>	4855	414	<b>100.0%</b>
In family households	1584	301	83.6%	3886	434	80.0%
In nonfamily households	310	90	16.4%	969	173	20.0%

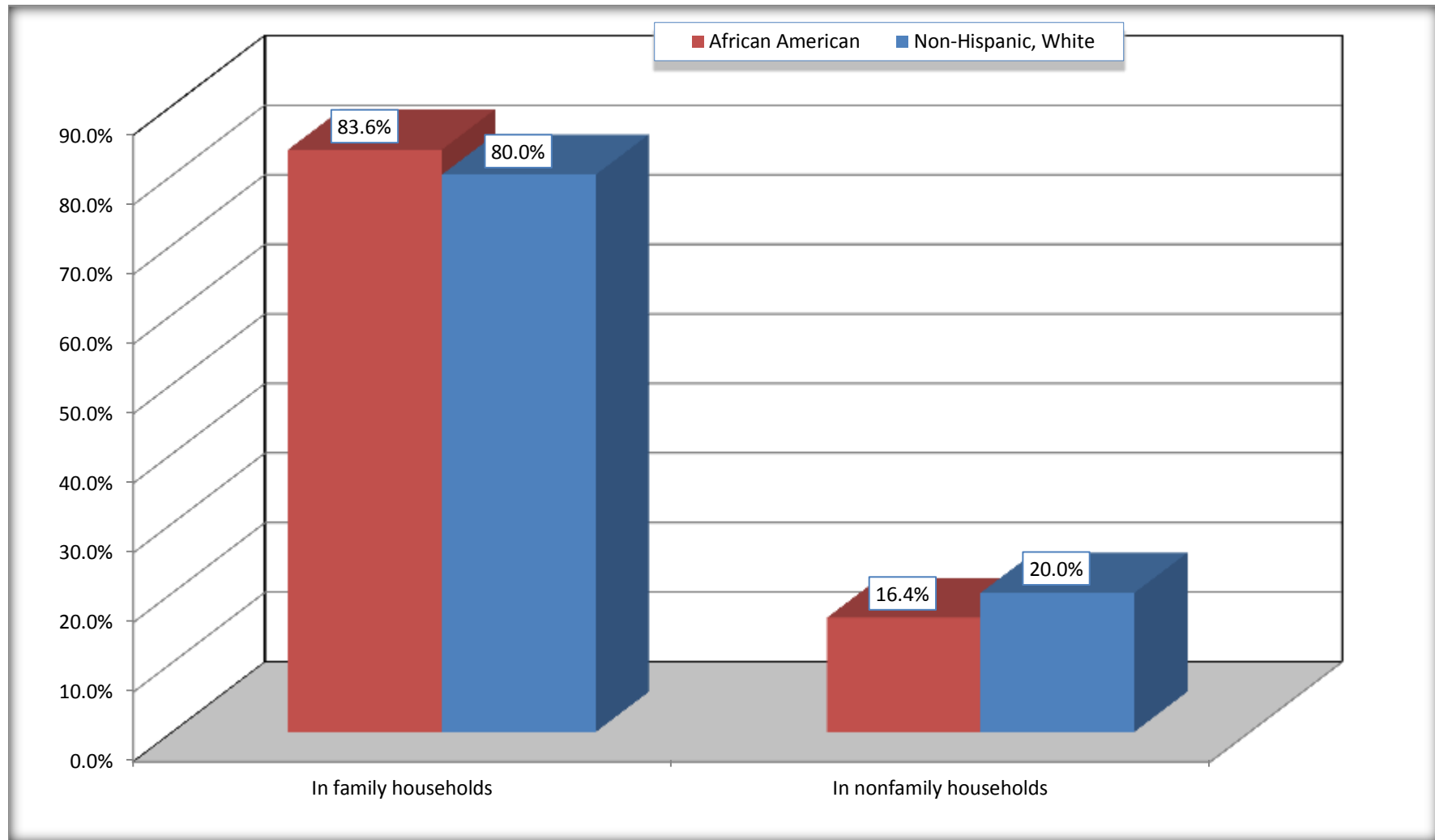
Source: U.S. Census Bureau, 2008-2012 American Community Survey

For information on confidentiality protection, sampling error, nonsampling error, and definitions, see Survey Methodology.

<http://www.census.gov/acs/www/UseData/index.htm>

# Household Type for Population in Households

## Campbell city, Ohio



Source: B11002. HOUSEHOLD TYPE BY RELATIVES AND NONRELATIVES FOR POPULATION IN HOUSEHOLDS  
Data Set: 2008-2012 American Community Survey 5-Year Estimates

**B12002. MARITAL STATUS FOR THE POPULATION 15 YEARS AND OVER**

Data Set: 2008-2012 American Community Survey 5-Year Estimates

	Campbell city, Ohio					
	African American	Margin of Error (+/-)	% of AA Total	White, Not Hispanic	Margin of Error (+/-)	% of NHW Total
<b>Total:</b>	<b>1,604</b>	<b>177</b>	<b>100.0%</b>	<b>4,063</b>	<b>288</b>	<b>100.0%</b>
Never married	995	NC	62.0%	1,070	NC	26.3%
Now married (except separated)	329	NC	20.5%	1,969	NC	48.5%
Separated	16	NC	1.0%	117	NC	2.9%
Widowed	105	NC	6.5%	511	NC	12.6%
Divorced	159	NC	9.9%	396	NC	9.7%
<b>Male:</b>	<b>727</b>	<b>121</b>	<b>45.3%</b>	<b>1,864</b>	<b>202</b>	<b>45.9%</b>
Never married	474	112	29.6%	556	172	13.7%
Now married (except separated)	183	73	11.4%	967	139	23.8%
Separated	16	19	1.0%	36	31	0.9%
Widowed	33	34	2.1%	122	59	3.0%
Divorced	21	19	1.3%	183	79	4.5%
<b>Female:</b>	<b>877</b>	<b>127</b>	<b>54.7%</b>	<b>2,199</b>	<b>212</b>	<b>54.1%</b>
Never married	521	117	32.5%	514	158	12.7%
Now married (except separated)	146	66	9.1%	1,002	150	24.7%
Separated	0	16	0.0%	81	66	2.0%
Widowed	72	29	4.5%	389	98	9.6%
Divorced	138	57	8.6%	213	84	5.2%

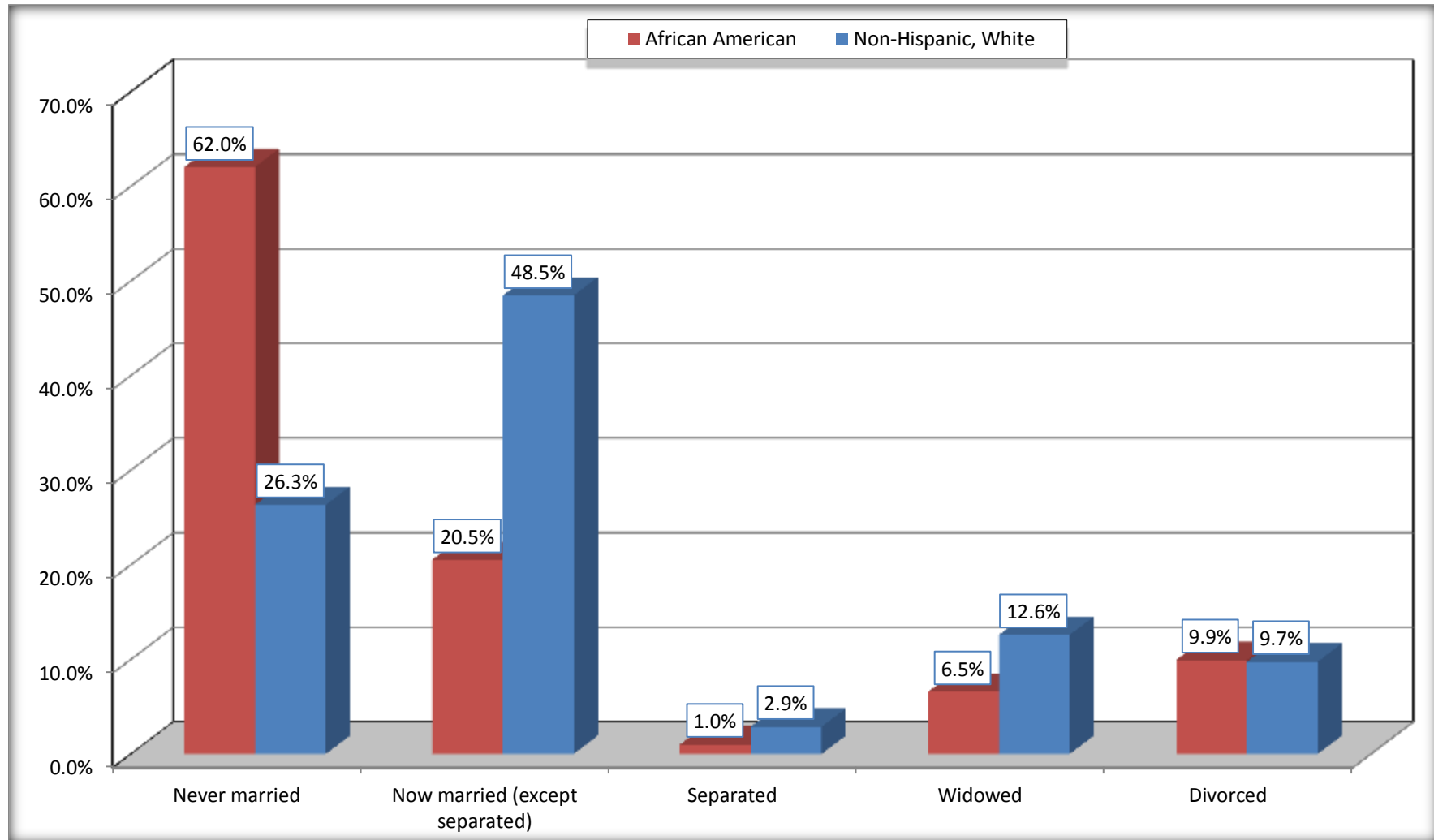
Source: U.S. Census Bureau, 2008-2012 American Community Survey

For information on confidentiality protection, sampling error, nonsampling error, and definitions, see Survey Methodology.

<http://www.census.gov/acs/www/UseData/index.htm>

# Marital Status for the Population 15 Years and Over

## Campbell city, Ohio



Source: B12002. MARITAL STATUS FOR THE POPULATION 15 YEARS AND OVER  
Data Set: 2008-2012 American Community Survey 5-Year Estimates

**C15002. SEX BY EDUCATIONAL ATTAINMENT FOR THE POPULATION 25 YEARS AND OVER**

Data Set: 2008-2012 American Community Survey 5-Year Estimates

	Campbell city, Ohio					
	African American	Margin of Error (+/-)	% of AA Total	White, Not Hispanic	Margin of Error (+/-)	% of NHW Total
<b>Total:</b>	<b>1,171</b>	<b>153</b>	<b>100.0%</b>	<b>3,657</b>	<b>255</b>	<b>100.0%</b>
Less than high school diploma	176	NC	15.0%	592	NC	16.2%
High school graduate, GED, or alternative	549	NC	46.9%	1,912	NC	52.3%
Some college or associate's degree	360	NC	30.7%	735	NC	20.1%
Bachelor's degree or higher	86	NC	7.3%	418	NC	11.4%
Male:	585	118	50.0%	1,666	174	45.6%
Less than high school diploma	31	25	2.6%	235	82	6.4%
High school graduate, GED, or alternative	286	128	24.4%	887	144	24.3%
Some college or associate's degree	220	80	18.8%	381	109	10.4%
Bachelor's degree or higher	48	36	4.1%	163	77	4.5%
Female:	586	101	50.0%	1,991	182	54.4%
Less than high school diploma	145	73	12.4%	357	97	9.8%
High school graduate, GED, or alternative	263	79	22.5%	1,025	163	28.0%
Some college or associate's degree	140	67	12.0%	354	101	9.7%
Bachelor's degree or higher	38	30	3.2%	255	105	7.0%

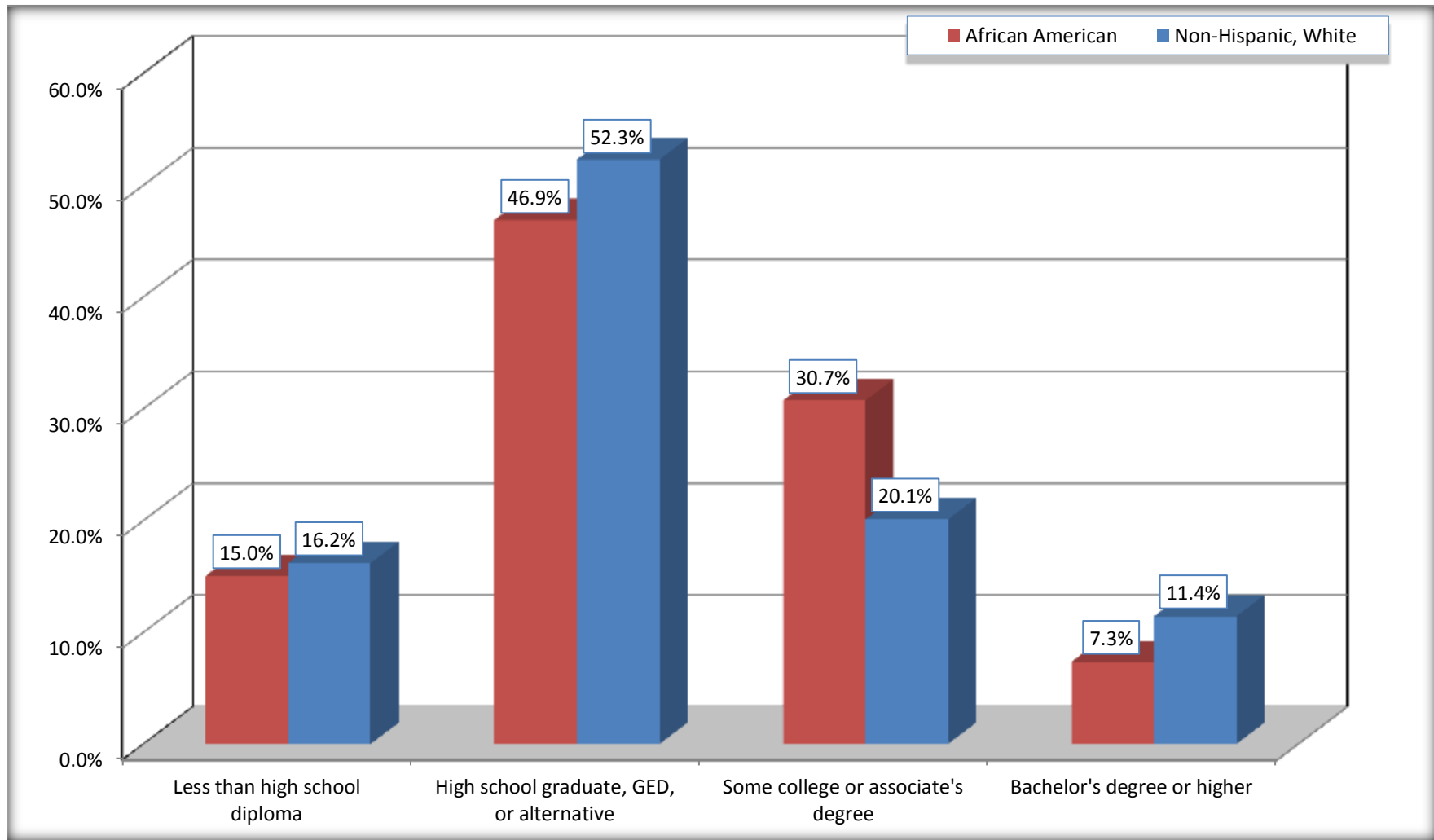
Source: U.S. Census Bureau, 2008-2012 American Community Survey

For information on confidentiality protection, sampling error, nonsampling error, and definitions, see Survey Methodology.

<http://www.census.gov/acs/www/UseData/index.htm>

# Educational Attainment for the Population 25 Years and Older

## Campbell city, Ohio



Source: C15002. SEX BY EDUCATIONAL ATTAINMENT FOR THE POPULATION 25 YEARS AND OVER  
Data Set: 2008-2012 American Community Survey 5-Year Estimates

**B17010. POVERTY STATUS IN THE PAST 12 MONTHS OF FAMILIES BY FAMILY TYPE BY PRESENCE OF RELATED CHILDREN UNDER 18 YEARS**

Data Set: 2008-2012 American Community Survey 5-Year Estimates

	Campbell city, Ohio					
	African American	Margin of Error (+/-)	% of AA Total	White, Not Hispanic	Margin of Error (+/-)	% of NHW Total
<b>Total:</b>	<b>381</b>	<b>73</b>	<b>100.0%</b>	<b>1,320</b>	<b>141</b>	<b>100.0%</b>
Income in the past 12 months below poverty level:	97	57	25.5%	182	78	13.8%
Married-couple family:	3	6	0.8%	46	27	3.5%
With related children under 18 years	3	6	0.8%	29	23	2.2%
Other family:	94	57	24.7%	136	79	10.3%
Male householder, no wife present	0	16	0.0%	42	56	3.2%
With related children under 18 years	0	16	0.0%	42	56	3.2%
Female householder, no husband present	94	57	24.7%	94	57	7.1%
With related children under 18 years	89	56	23.4%	86	60	6.5%
Income in the past 12 months at or above poverty level:	284	60	74.5%	1,138	155	86.2%
Married-couple family:	142	62	37.3%	900	156	68.2%
With related children under 18 years	52	40	13.6%	286	103	21.7%
Other family:	142	61	37.3%	238	83	18.0%
Male householder, no wife present	33	34	8.7%	85	49	6.4%
With related children under 18 years	28	33	7.3%	13	23	1.0%
Female householder, no husband present	109	49	28.6%	153	62	11.6%
With related children under 18 years	82	40	21.5%	51	44	3.9%

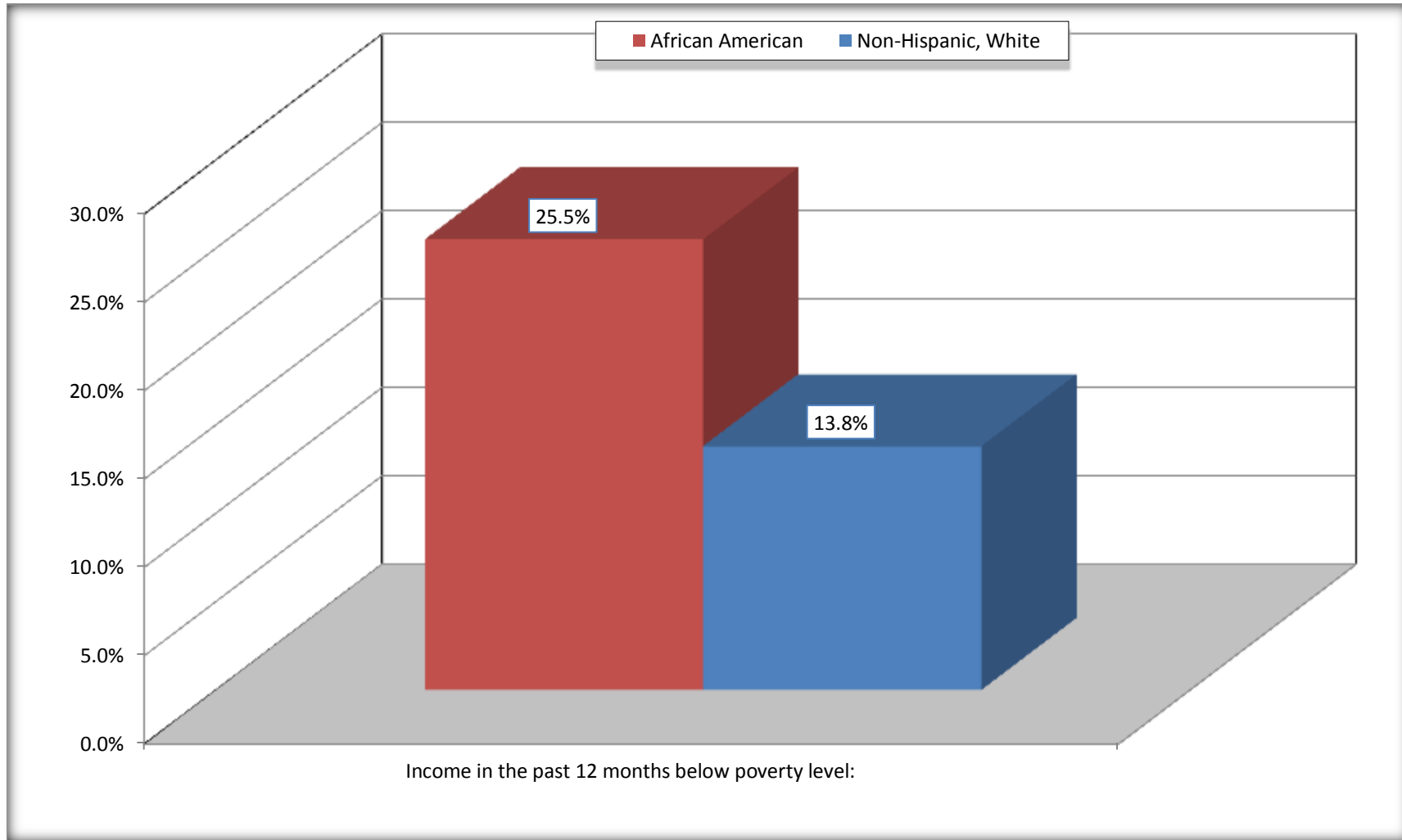
Source: U.S. Census Bureau, 2008-2012 American Community Survey

For information on confidentiality protection, sampling error, nonsampling error, and definitions, see Survey Methodology.

<http://www.census.gov/acs/www/UseData/index.htm>

# Family Households Below Poverty in the Past 12 Months

## Campbell city, Ohio



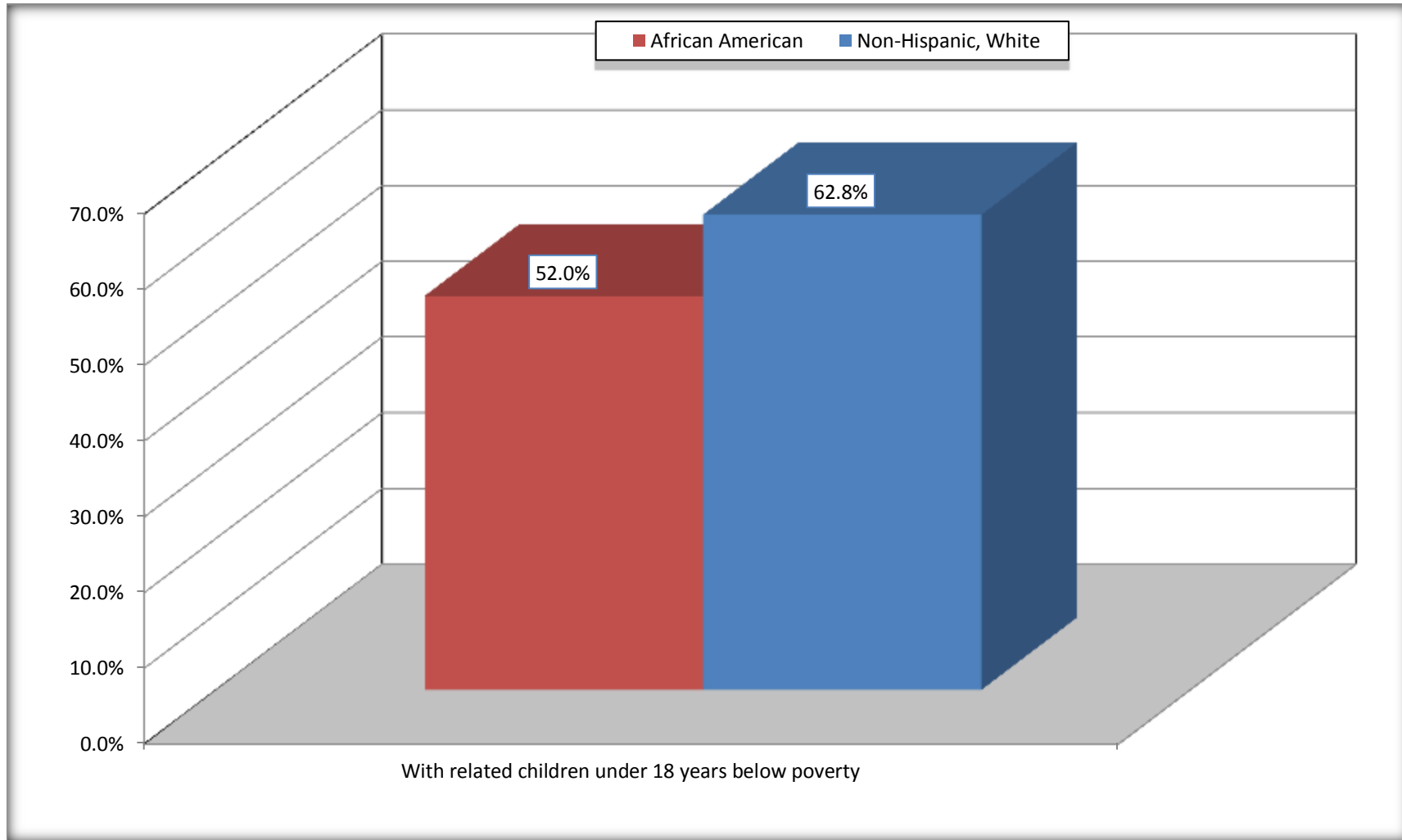
Source: B17010. POVERTY STATUS IN THE PAST 12 MONTHS OF FAMILIES BY FAMILY TYPE BY PRESENCE OF RELATED CHILDREN UNDER 18 YEARS

Data Set: 2008-2012 American Community Survey 5-Year Estimates



# Female-headed Households with Related Children Below Poverty in the Past 12 Months

## Campbell city, Ohio



Source: B17010. POVERTY STATUS IN THE PAST 12 MONTHS OF FAMILIES BY FAMILY TYPE BY PRESENCE OF RELATED CHILDREN UNDER 18 YEARS  
Data Set: 2008-2012 American Community Survey 5-Year Estimates

**B17020 POVERTY STATUS IN THE PAST 12 MONTHS BY AGE - Universe: POPULATION FOR WHOM POVERTY STATUS IS DETERMINED**

Data Set: 2008-2012 American Community Survey 5-Year Estimates

	Campbell city, Ohio					
	African American	Margin of Error (+/-)	% of AA By Age	White, Not Hispanic	Margin of Error (+/-)	% of NHW By Age
<b>Total:</b>	<b>2,075</b>	<b>250</b>	<b>100.0%</b>	<b>4,881</b>	<b>351</b>	<b>100.0%</b>
Income in the past 12 months below poverty level:	654	286	31.5%	828	280	17.0%
<b>Under 18 years</b>	247	NC	37.3%	299	NC	32.2%
<b>18 to 64 years</b>	341	137	28.0%	401	126	15.3%
<b>65 years and over</b>	66	NC	34.0%	128	NC	9.6%
Income in the past 12 months at or above poverty level:	1,421	237	68.5%	4,053	387	83.0%
<b>Under 18 years</b>	416	NC	62.7%	630	NC	67.8%
<b>18 to 64 years</b>	877	162	72.0%	2,213	231	84.7%
<b>65 years and over</b>	128	NC	66.0%	1,210	NC	90.4%

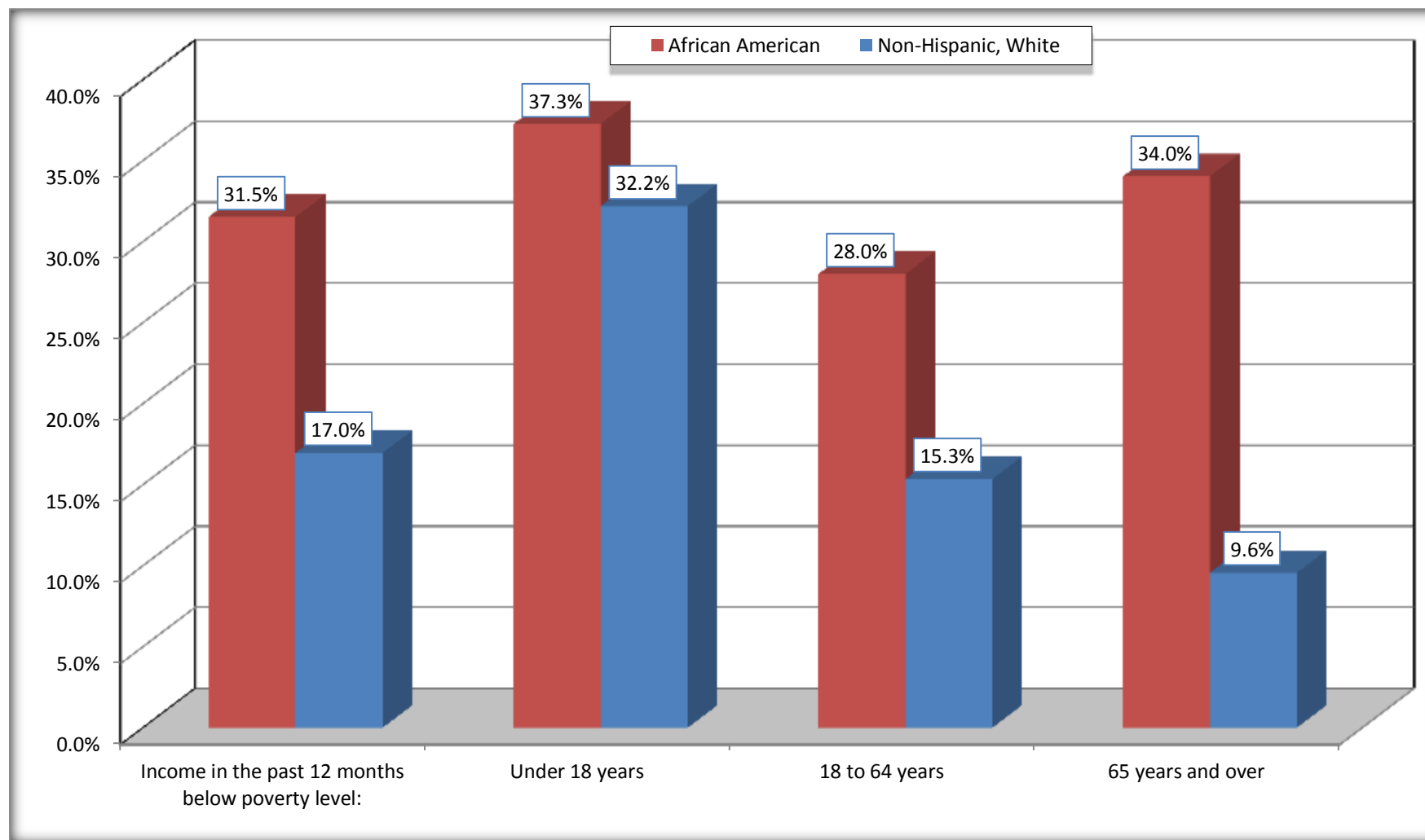
Source: U.S. Census Bureau, 2008-2012 American Community Survey

For information on confidentiality protection, sampling error, nonsampling error, and definitions, see Survey Methodology.

<http://www.census.gov/acs/www/UseData/index.htm>

# Population Below Poverty in the Past 12 Months

## Campbell city, Ohio



Source: B17020 POVERTY STATUS IN THE PAST 12 MONTHS BY AGE - Universe: POPULATION FOR WHOM POVERTY STATUS IS DETERMINED  
Data Set: 2008-2012 American Community Survey 5-Year Estimates

**B19001. HOUSEHOLD INCOME IN THE PAST 12 MONTHS (IN 2010 INFLATION-ADJUSTED DOLLARS)**

Data Set: 2008-2012 American Community Survey 5-Year Estimates

	Campbell city, Ohio					
	African American	Margin of Error (+/-)	% of AA Total	White, Not Hispanic	Margin of Error (+/-)	% of NHW Total
<b>Total:</b>	<b>691</b>	<b>116</b>	<b>100.0%</b>	<b>2,256</b>	<b>183</b>	<b>100.0%</b>
Less than \$ 10,000	195	75	28.2%	179	64	7.9%
\$ 10,000 to \$ 14,999	58	42	8.4%	164	66	7.3%
<b>\$ 15,000 to \$ 24,999</b>	76	NC	11.0%	542	NC	24.0%
<b>\$ 25,000 to \$ 34,999</b>	76	NC	11.0%	379	NC	16.8%
<b>\$ 35,000 to \$ 49,999</b>	95	NC	13.7%	254	NC	11.3%
<b>\$ 50,000 to \$ 74,999</b>	79	NC	11.4%	474	NC	21.0%
\$ 75,000 to \$ 99,999	107	53	15.5%	165	82	7.3%
<b>\$ 100,000 to \$ 149,999</b>	0	NC	0.0%	79	NC	3.5%
\$ 150,000 to \$ 199,999	5	9	0.7%	12	15	0.5%
\$ 200,000 or more	0	16	0.0%	8	13	0.4%

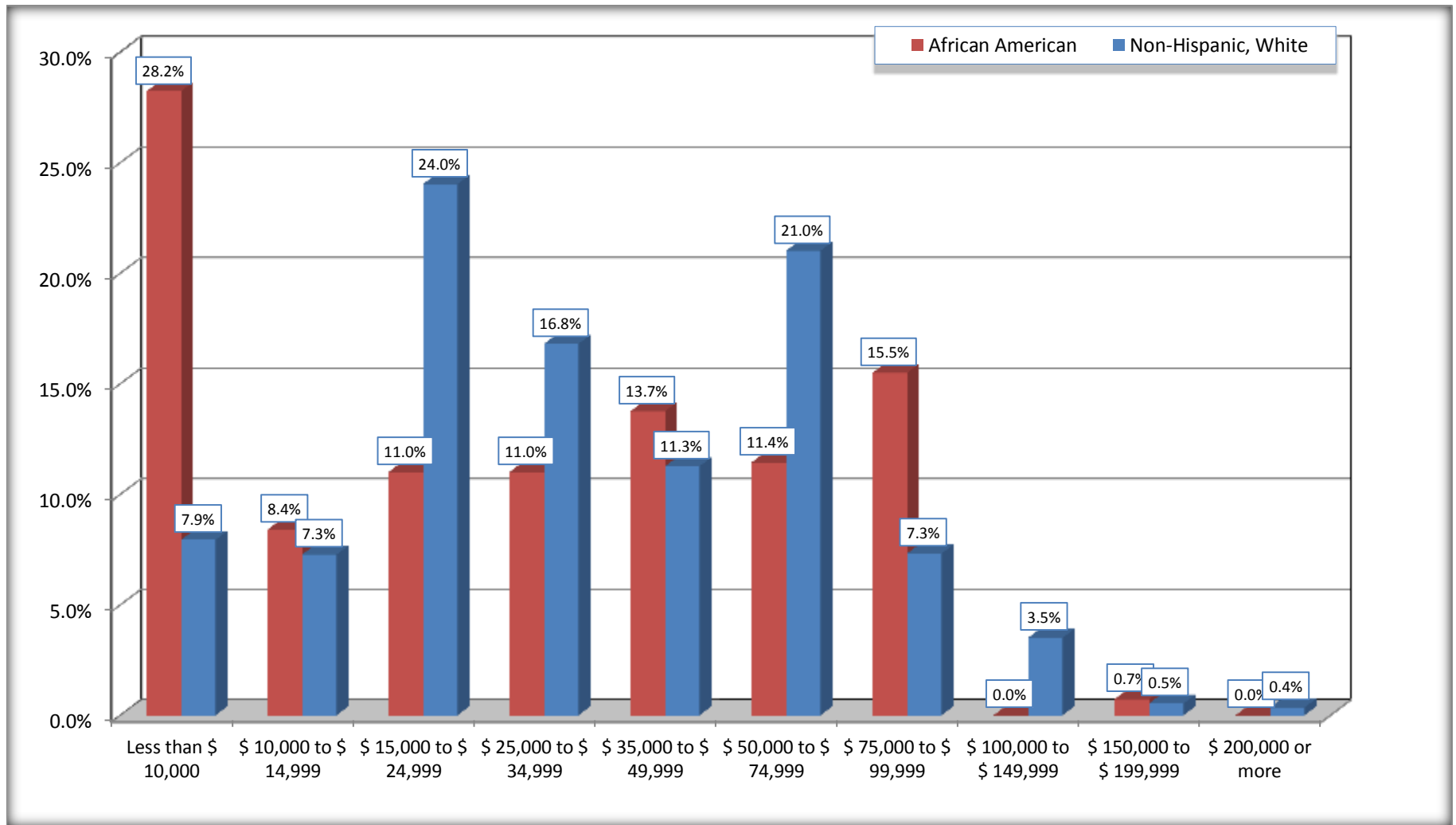
Source: U.S. Census Bureau, 2008-2012 American Community Survey

For information on confidentiality protection, sampling error, nonsampling error, and definitions, see Survey Methodology.

<http://www.census.gov/acs/www/UseData/index.htm>

# Household Income in the Past 12 Months

## Campbell city, Ohio



Source: B19001. HOUSEHOLD INCOME IN THE PAST 12 MONTHS (IN 2010 INFLATION-ADJUSTED DOLLARS)

Data Set: 2008-2012 American Community Survey 5-Year Estimates

**B19013. MEDIAN HOUSEHOLD INCOME IN THE PAST 12 MONTHS (IN 2010 INFLATION-ADJUSTED DOLLARS)**

Data Set: 2008-2012 American Community Survey 5-Year Estimates

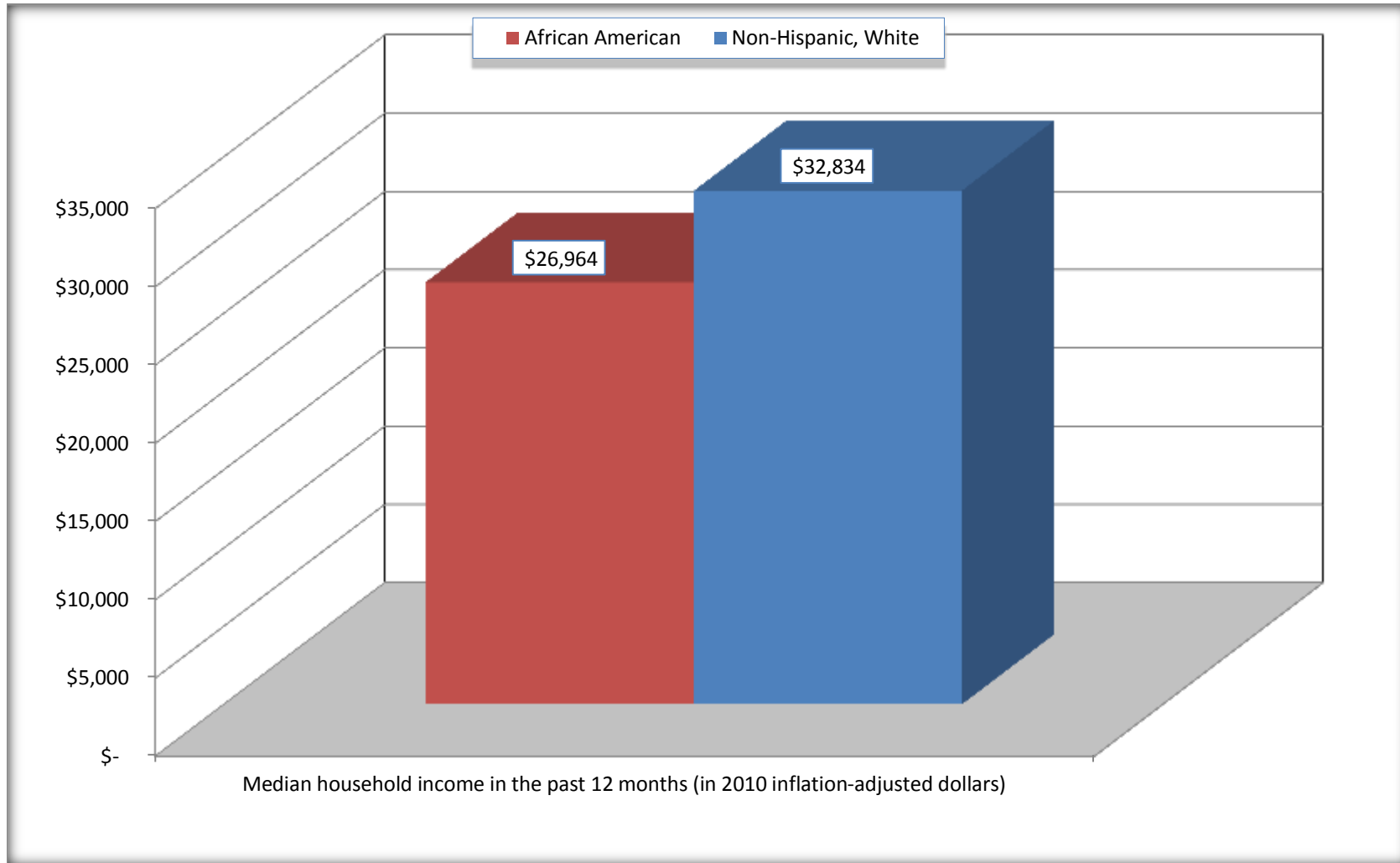
	<b>Campbell city, Ohio</b>			
	African American	Margin of Error (+/-)	White, Not Hispanic	Margin of Error (+/-)
Median household income in the past 12 months (in 2010 inflation-adjusted dollars)	\$ 26,964	\$ 9,582	\$ 32,834	\$ 3,967

Source: U.S. Census Bureau, 2008-2012 American Community Survey

For information on confidentiality protection, sampling error, nonsampling error, and definitions, see Survey Methodology.  
<http://www.census.gov/acs/www/UseData/index.htm>

# Median Household Income in the Past 12 Months

## Campbell city, Ohio



Source: B19013. MEDIAN HOUSEHOLD INCOME IN THE PAST 12 MONTHS (IN 2010 INFLATION-ADJUSTED DOLLARS)  
Data Set: 2008-2012 American Community Survey 5-Year Estimates

**B19101. FAMILY INCOME IN THE PAST 12 MONTHS (IN 2010 INFLATION-ADJUSTED DOLLARS)**

Data Set: 2008-2012 American Community Survey 5-Year Estimates

	Campbell city, Ohio					
	African American	Margin of Error (+/-)	% of AA Total	White, Not Hispanic	Margin of Error (+/-)	% of NHW Total
<b>Total:</b>	<b>381</b>	<b>73</b>	<b>100.0%</b>	<b>1,320</b>	<b>141</b>	<b>100.0%</b>
Less than \$ 10,000	30	27	7.9%	59	35	4.5%
\$ 10,000 to \$ 14,999	33	37	8.7%	63	56	4.8%
<b>\$ 15,000 to \$ 24,999</b>	<b>34</b>	<b>NC</b>	<b>8.9%</b>	<b>254</b>	<b>NC</b>	<b>19.2%</b>
<b>\$ 25,000 to \$ 34,999</b>	<b>36</b>	<b>NC</b>	<b>9.4%</b>	<b>198</b>	<b>NC</b>	<b>15.0%</b>
<b>\$ 35,000 to \$ 49,999</b>	<b>70</b>	<b>NC</b>	<b>18.4%</b>	<b>158</b>	<b>NC</b>	<b>12.0%</b>
<b>\$ 50,000 to \$ 74,999</b>	<b>66</b>	<b>NC</b>	<b>17.3%</b>	<b>353</b>	<b>NC</b>	<b>26.7%</b>
<b>\$ 100,000 to \$ 149,999</b>	<b>-</b>	<b>NC</b>	<b>0.0%</b>	<b>79</b>	<b>NC</b>	<b>6.0%</b>
\$ 150,000 to \$ 199,999	5	9	1.3%	12	15	0.9%
\$ 200,000 or more	0	16	0.0%	8	13	0.6%

Source: U.S. Census Bureau, 2008-2012 American Community Survey

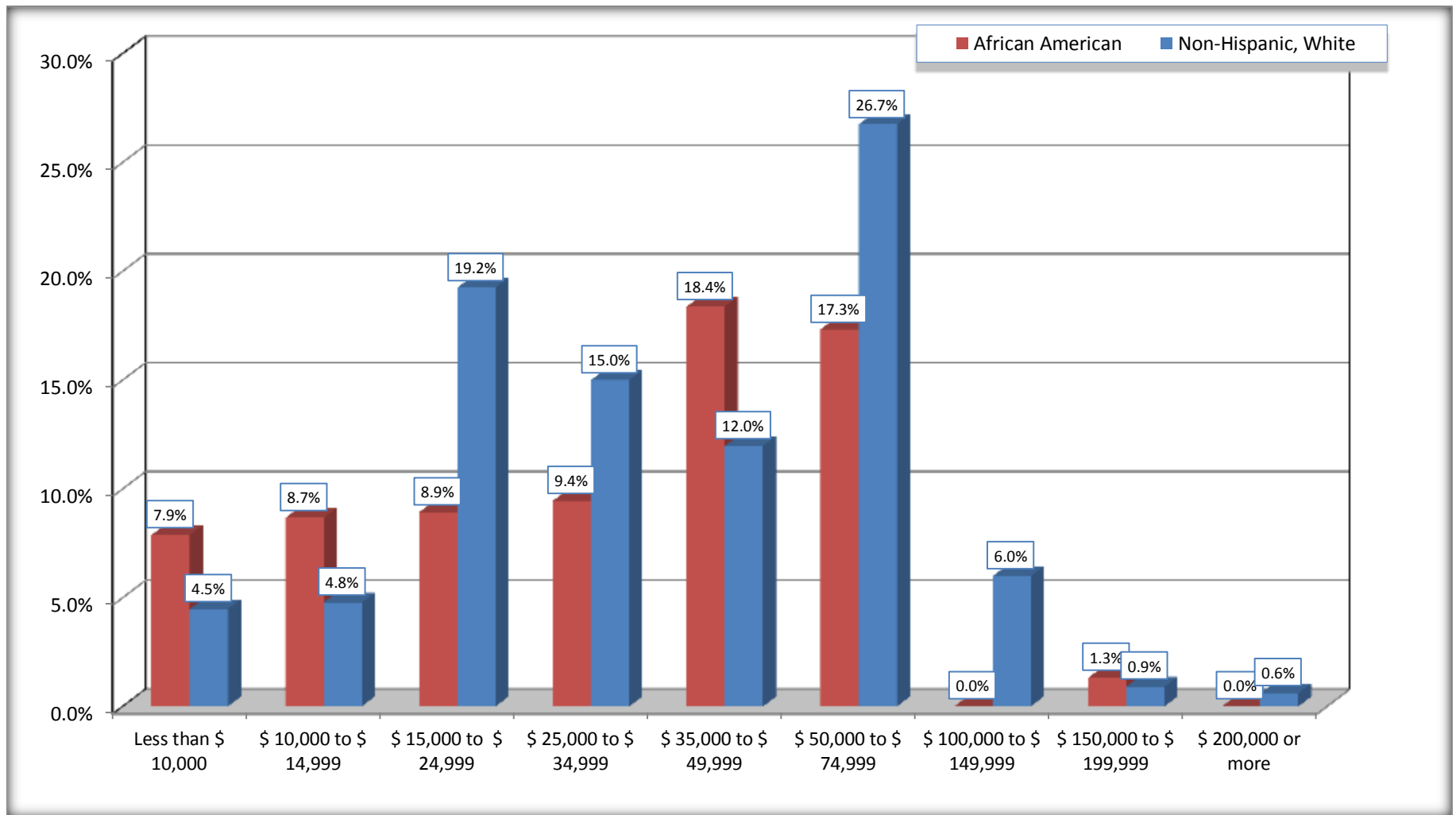
For information on confidentiality protection, sampling error, nonsampling error, and definitions, see Survey Methodology.

<http://www.census.gov/acs/www/UseData/index.htm>



# Family Income in the Past 12 Months

## Campbell city, Ohio



Source: B19101. FAMILY INCOME IN THE PAST 12 MONTHS (IN 2010 INFLATION-ADJUSTED DOLLARS)  
Data Set: 2008-2012 American Community Survey 5-Year Estimates

**B19113. MEDIAN FAMILY INCOME IN THE PAST 12 MONTHS (IN 2010 INFLATION-ADJUSTED DOLLARS)**

Data Set: 2008-2012 American Community Survey 5-Year Estimates

	Campbell city, Ohio			
	African American	Margin of Error (+/-)	White, Not Hispanic	Margin of Error (+/-)
Median family income in the past 12 months (in 2010 inflation-adjusted dollars)	\$ 45,096	\$ 20,832	\$ 43,873	\$ 7,228

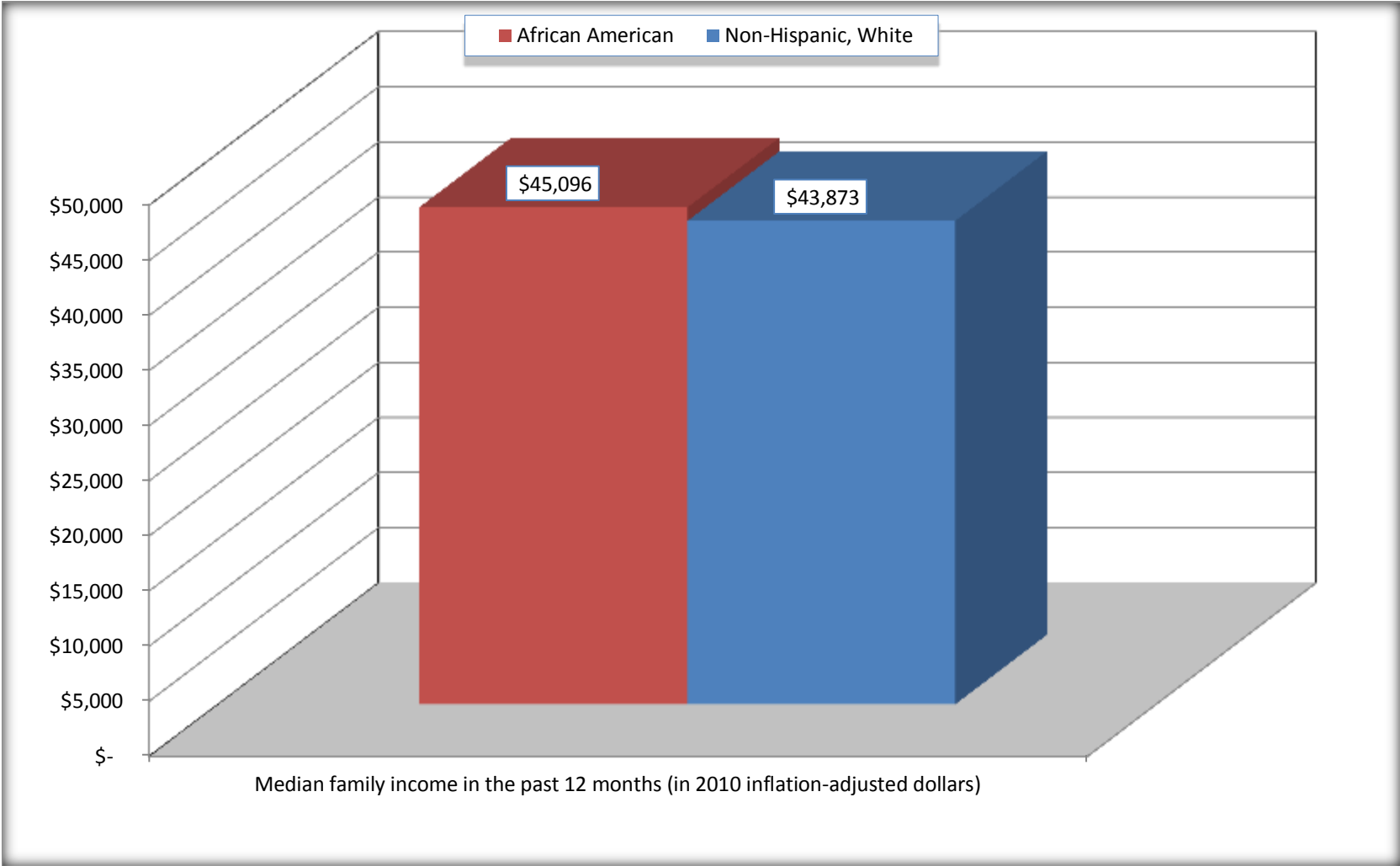
Source: U.S. Census Bureau, 2008-2012 American Community Survey

For information on confidentiality protection, sampling error, nonsampling error, and definitions, see Survey Methodology.

<http://www.census.gov/acs/www/UseData/index.htm>

# Median Family Income in the Past 12 Months

## Campbell city, Ohio



Source: B19113. MEDIAN FAMILY INCOME IN THE PAST 12 MONTHS (IN 2010 INFLATION-ADJUSTED DOLLARS)  
Data Set: 2008-2012 American Community Survey 5-Year Estimates

**B19202. MEDIAN NONFAMILY HOUSEHOLD INCOME IN THE PAST 12 MONTHS (IN 2010 INFLATION-ADJUSTED DOLLARS)**

Data Set: 2008-2012 American Community Survey 5-Year Estimates

	Campbell city, Ohio			
	African American	Margin of Error (+/-)	White, Not Hispanic	Margin of Error (+/-)
Median nonfamily household income in the past 12 months (in 2010 inflation-adjusted dollars)	\$ 9,620	\$ 2,516	\$ 19,942	\$ 4,355

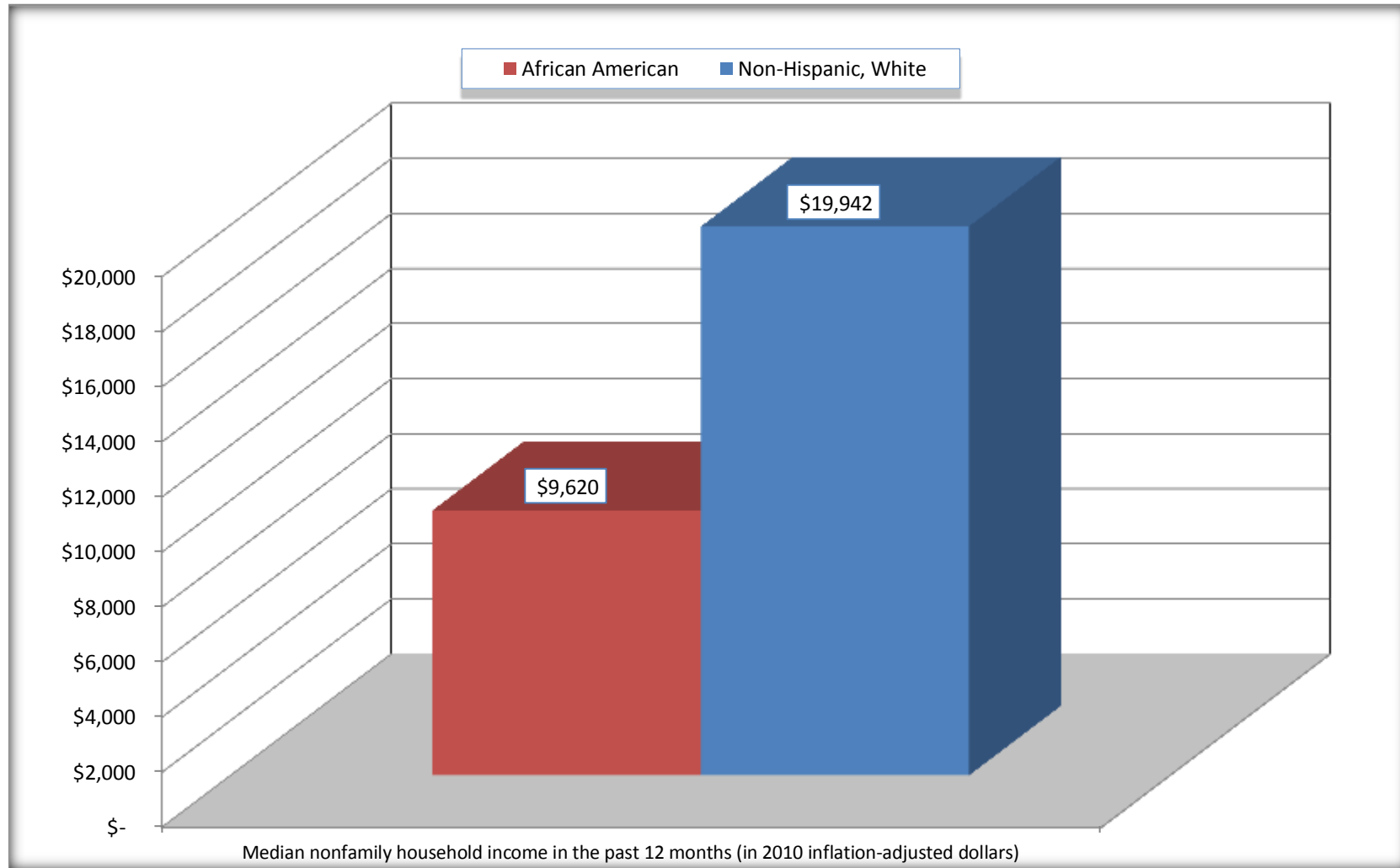
Source: U.S. Census Bureau, 2008-2012 American Community Survey

For information on confidentiality protection, sampling error, nonsampling error, and definitions, see Survey Methodology.

<http://www.census.gov/acs/www/UseData/index.htm>

# Median Non-Family Income in the Past 12 Months

## Campbell city, Ohio



Source: B19202. MEDIAN NONFAMILY HOUSEHOLD INCOME IN THE PAST 12 MONTHS (IN 2010 INFLATION-ADJUSTED DOLLARS)  
Data Set: 2008-2012 American Community Survey 5-Year Estimates

**B19301. PER CAPITA INCOME IN THE PAST 12 MONTHS (IN 2010 INFLATION-ADJUSTED DOLLARS)**

Data Set: 2008-2012 American Community Survey 5-Year Estimates

	Campbell city, Ohio			
	African American	Margin of Error (+/-)	White, Not Hispanic	Margin of Error (+/-)
Per capita income in the past 12 months (in 2010 inflation-adjusted dollars)	\$ 12,909	\$ 1,989	\$ 19,708	\$ 2,151

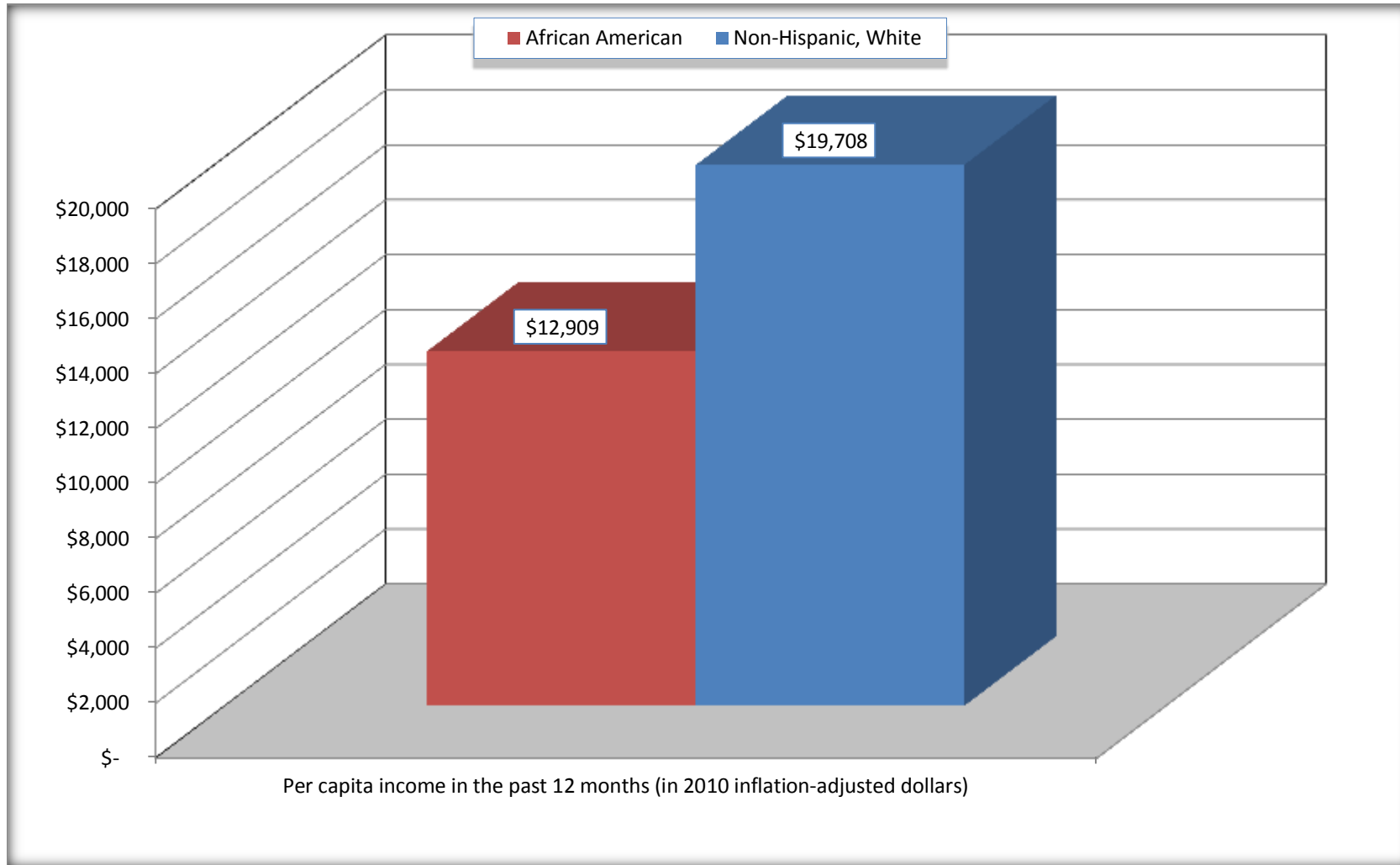
Source: U.S. Census Bureau, 2008-2012 American Community Survey

For information on confidentiality protection, sampling error, nonsampling error, and definitions, see Survey Methodology.

<http://www.census.gov/acs/www/UseData/index.htm>

## Per capita Income in the Past 12 Months

### Campbell city, Ohio



Source: B19301. PER CAPITA INCOME IN THE PAST 12 MONTHS (IN 2010 INFLATION-ADJUSTED DOLLARS)  
Data Set: 2008-2012 American Community Survey 5-Year Estimates

**B20017. MEDIAN EARNINGS IN THE PAST 12 MONTHS (IN 2010 INFLATION-ADJUSTED DOLLARS) BY SEX BY WORK EXPERIENCE IN THE PAST 12 MONTHS FOR THE POPULATION 16 YEARS AND OVER WITH EARNINGS IN THE PAST 12 MONTHS**

Data Set: 2008-2012 American Community Survey 5-Year Estimates

	Campbell city, Ohio			
	African American	Margin of Error (+/-)	White, Not Hispanic	Margin of Error (+/-)
Median earnings in the past 12 months (in 2010 inflation-adjusted dollars) --				
Total:	\$ 16,267	\$ 1,326	\$ 30,137	\$ 4,165
Male --				
Total	\$ 15,996	\$ 1,121	\$ 40,885	\$ 10,936
Worked full-time, year-round in the past 12 months	\$ 32,604	\$ 25,698	\$ 44,127	\$ 4,646
Other	\$ 8,517	\$ 2,120	\$ 17,734	\$ 7,342
Female --				
Total	\$ 18,333	\$ 7,264	\$ 22,472	\$ 7,551
Worked full-time, year-round in the past 12 months	\$ 39,907	\$ 5,526	\$ 32,576	\$ 3,185
Other	\$ 5,063	\$ 2,139	\$ 10,912	\$ 2,807

Source: U.S. Census Bureau, 2008-2012 American Community Survey

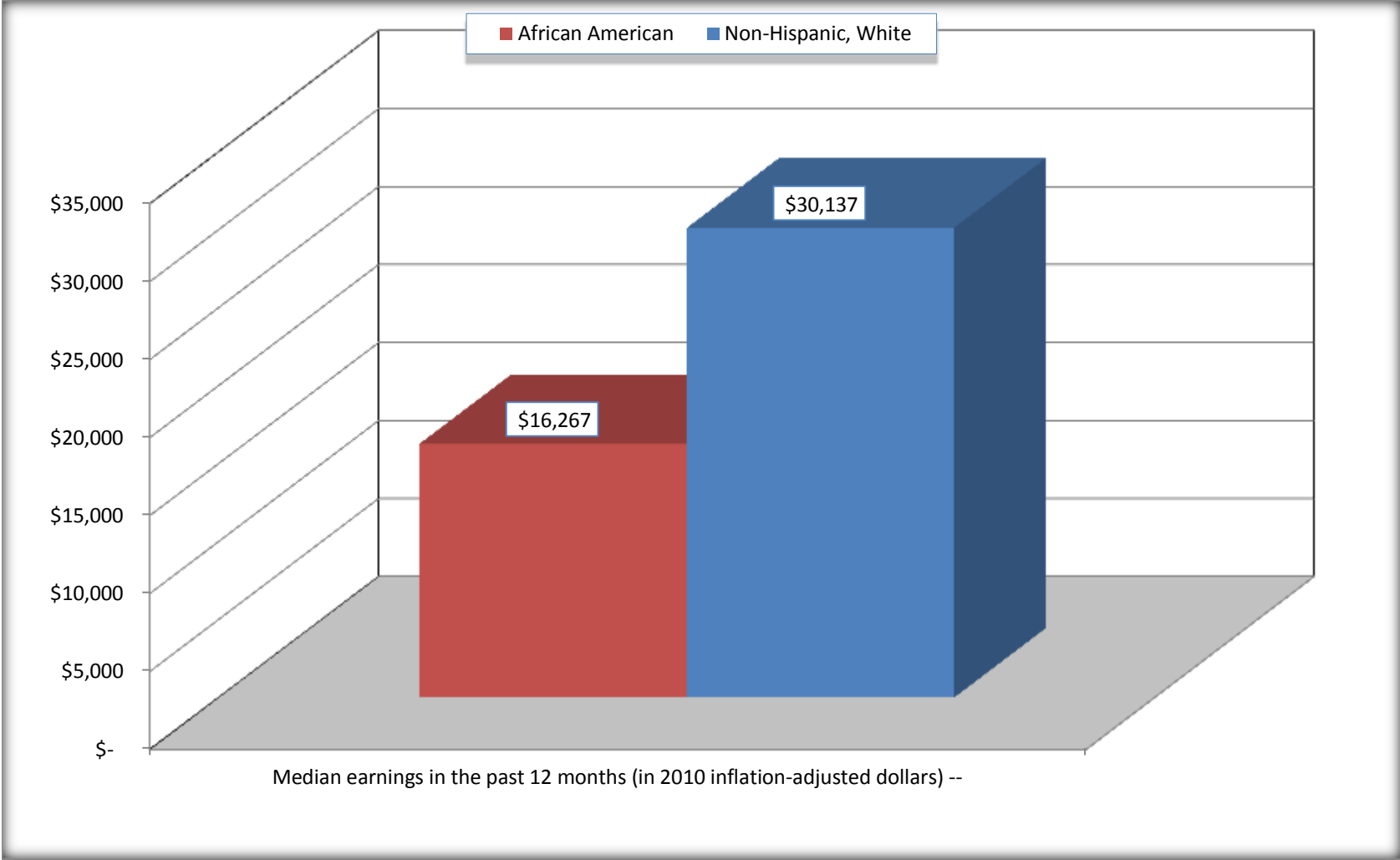
For information on confidentiality protection, sampling error, nonsampling error, and definitions, see Survey Methodology.

<http://www.census.gov/acs/www/UseData/index.htm>



# Median earnings in the Past 12 Months (16 Years and Over with Earnings)

## Campbell city, Ohio



Source: B20017. MEDIAN EARNINGS IN THE PAST 12 MONTHS (IN 2010 INFLATION-ADJUSTED DOLLARS) BY SEX BY WORK EXPERIENCE IN THE PAST 12 MONTHS FOR THE POPULATION 16 YEARS AND OVER WITH EARNINGS IN THE PAST 12 MONTHS  
Data Set: 2008-2012 American Community Survey 5-Year Estimates

**B20005. SEX BY WORK EXPERIENCE IN THE PAST 12 MONTHS BY EARNINGS IN THE PAST 12 MONTHS (IN 2010 INFLATION-ADJUSTED DOLLARS) FOR THE POPULATION 16 YEARS AND OVER**

Data Set: 2008-2012 American Community Survey 5-Year Estimates

	Campbell city, Ohio					
	African American	Margin of Error (+/-)	% of AA Total	White, Not Hispanic	Margin of Error (+/-)	% of NHW Total
<b>Total:</b>	<b>1,539</b>	<b>190</b>	<b>100.0%</b>	<b>4,006</b>	<b>284</b>	<b>100.0%</b>
Worked full-time, year-round in the past 12 months:	405	NC	26.3%	1,257	NC	31.4%
No earnings	0	NC	0.0%	0	NC	0.0%
With earnings:	405	NC	26.3%	1,257	NC	31.4%
\$ 1 to \$ 9,999 or loss	0	NC	0.0%	15	NC	0.4%
\$ 10,000 to \$ 19,999	82	NC	5.3%	172	NC	4.3%
\$ 20,000 to \$ 29,999	69	NC	4.5%	248	NC	6.2%
\$ 30,000 to \$ 49,999	148	NC	9.6%	439	NC	11.0%
\$ 50,000 to \$ 74,999	102	NC	6.6%	293	NC	7.3%
\$ 75,000 or more	4	NC	0.3%	90	NC	2.2%
Other:	1,134	NC	73.7%	2,749	NC	68.6%
No earnings	661	NC	42.9%	2,155	NC	53.8%
With earnings: less than full time, year-round	473	NC	30.7%	594	NC	14.8%
Male:	721	120	46.8%	1,851	197	46.2%
Worked full-time, year-round in the past 12 months:	195	64	12.7%	643	123	16.1%
No earnings	0	16	0.0%	0	16	0.0%
With earnings:	195	64	12.7%	643	123	16.1%
\$ 1 to \$ 9,999 or loss	0	NC	0.0%	12	NC	0.3%
\$ 10,000 to \$ 19,999	65	NC	4.2%	51	NC	1.3%
\$ 20,000 to \$ 29,999	32	NC	2.1%	116	NC	2.9%
\$ 30,000 to \$ 49,999	69	NC	4.5%	195	NC	4.9%
\$ 50,000 to \$ 74,999	25	NC	1.6%	186	NC	4.6%
\$ 75,000 or more	4	NC	0.3%	83	NC	2.1%

	Campbell city, Ohio					
	African American	Margin of Error (+/-)	% of AA Total	White, Not Hispanic	Margin of Error (+/-)	% of NHW Total
Other:	526	108	34.2%	1,208	188	30.2%
No earnings	297	100	19.3%	971	153	24.2%
With earnings:	229	94	14.9%	237	93	5.9%
Female:	818	137	53.2%	2,155	197	53.8%
Worked full-time, year-round in the past 12 months:	210	63	13.6%	614	160	15.3%
No earnings	0	16	0.0%	0	16	0.0%
With earnings:	210	63	13.6%	614	160	15.3%
\$ 1 to \$ 9,999 or loss	0	NC	0.0%	3	NC	0.1%
\$ 10,000 to \$ 19,999	17	NC	1.1%	121	NC	3.0%
\$ 20,000 to \$ 29,999	37	NC	2.4%	132	NC	3.3%
\$ 30,000 to \$ 49,999	79	NC	5.1%	244	NC	6.1%
\$ 50,000 to \$ 74,999	77	NC	5.0%	107	NC	2.7%
\$ 75,000 or more	0	NC	0.0%	7	NC	0.2%
Other:	608	141	39.5%	1,541	187	38.5%
No earnings	364	98	23.7%	1,184	174	29.6%
With earnings:	244	81	15.9%	357	94	8.9%

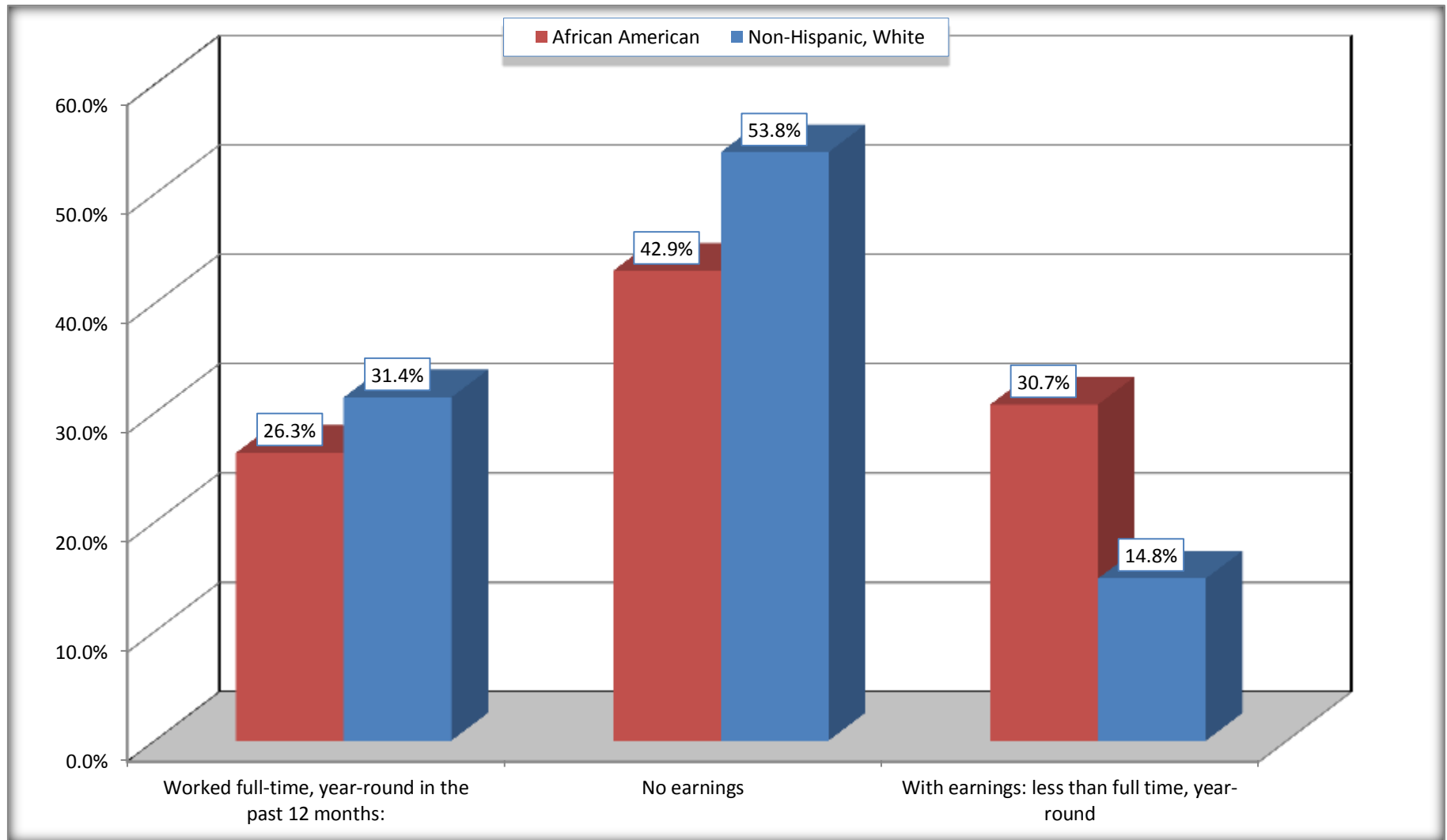
Source: U.S. Census Bureau, 2008-2012 American Community Survey

For information on confidentiality protection, sampling error, nonsampling error, and definitions, see Survey Methodology.

<http://www.census.gov/acs/www/UseData/index.htm>

# Employment and Earnings in in the Past 12 Months (16 Years and Over)

## Campbell city, Ohio



Source: B20005. SEX BY WORK EXPERIENCE IN THE PAST 12 MONTHS BY EARNINGS IN THE PAST 12 MONTHS (IN 2010 INFLATION-ADJUSTED DOLLARS) FOR THE POPULATION 16 YEARS AND OVER

Data Set: 2008-2012 American Community Survey 5-Year Estimates

**C21001. SEX BY AGE BY VETERAN STATUS FOR THE CIVILIAN POPULATION 18 YEARS AND OVER**

Data Set: 2008-2012 American Community Survey 5-Year Estimates

	Campbell city, Ohio					
	African American	Margin of Error (+/-)	% of AA Total	White, Not Hispanic	Margin of Error (+/-)	% of NHW Total
<b>Total:</b>	<b>1,412</b>	<b>174</b>	<b>100.0%</b>	<b>3,952</b>	<b>280</b>	<b>100.0%</b>
Veteran	136	NC	9.6%	485	NC	12.3%
Nonveteran	1,276	NC	90.4%	3,467	NC	87.7%
Male:	675	121	47.8%	1,804	196	45.6%
18 to 64 years:	621	117	44.0%	1,270	184	32.1%
Veteran	93	56	6.6%	169	84	4.3%
Nonveteran	528	101	37.4%	1,101	175	27.9%
65 years and over:	54	40	3.8%	534	96	13.5%
Veteran	38	36	2.7%	308	82	7.8%
Nonveteran	16	19	1.1%	226	61	5.7%
Female:	737	127	52.2%	2,148	194	54.4%
18 to 64 years:	597	119	42.3%	1,344	148	34.0%
Veteran	0	16	0.0%	0	16	0.0%
Nonveteran	597	119	42.3%	1,344	148	34.0%
65 years and over:	140	52	9.9%	804	116	20.3%
Veteran	5	7	0.4%	8	13	0.2%
Nonveteran	135	54	9.6%	796	117	20.1%

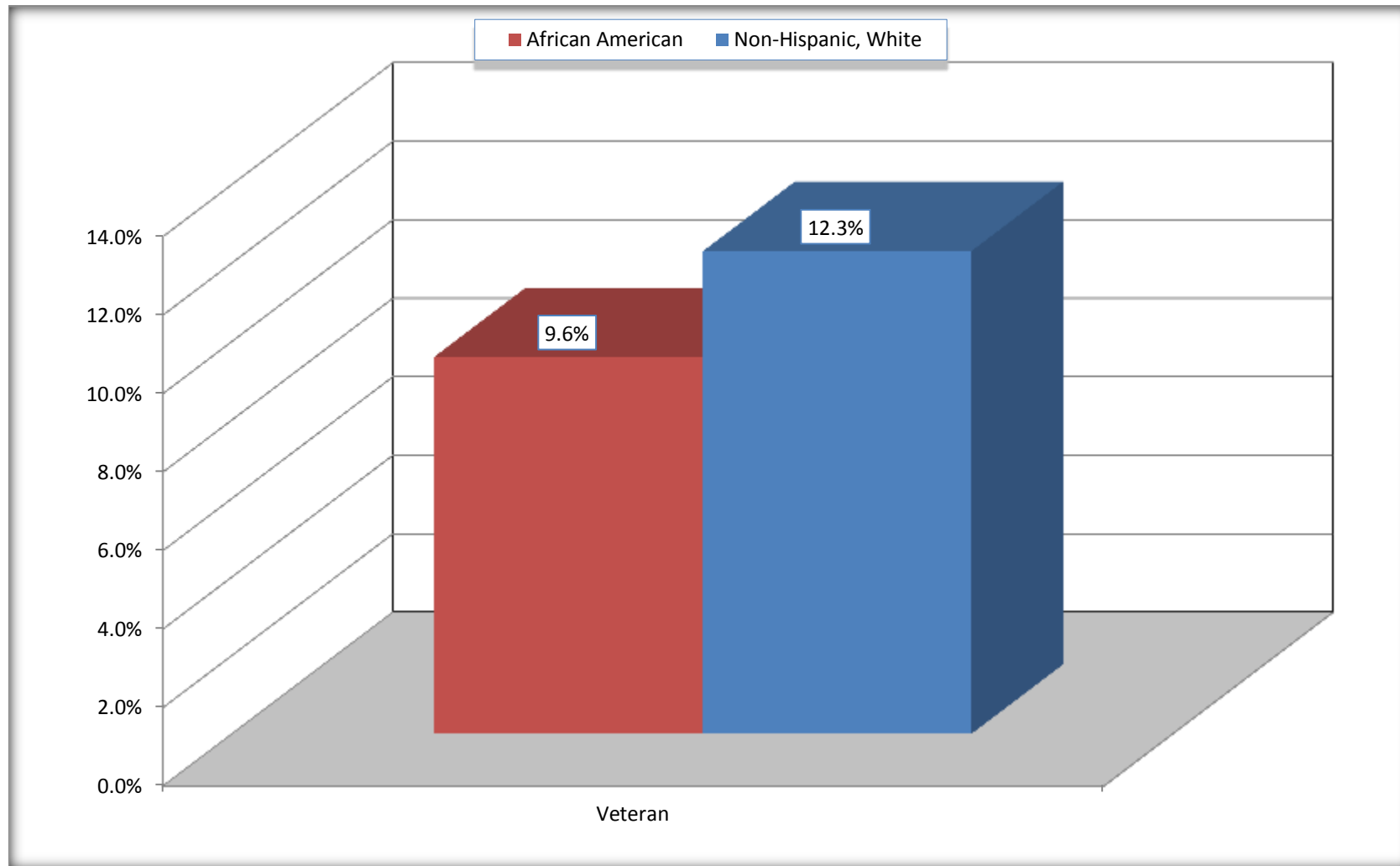
Source: U.S. Census Bureau, 2008-2012 American Community Survey

For information on confidentiality protection, sampling error, nonsampling error, and definitions, see Survey Methodology.

<http://www.census.gov/acs/www/UseData/index.htm>

# Veterans in the Civilian Population 18 Years and Over

## Campbell city, Ohio



Source: C21001. SEX BY AGE BY VETERAN STATUS FOR THE CIVILIAN POPULATION 18 YEARS AND OVER  
Data Set: 2008-2012 American Community Survey 5-Year Estimates

**B22005. RECEIPT OF FOOD STAMPS/SNAP IN THE PAST 12 MONTHS BY RACE OF HOUSEHOLDER**

Data Set: 2008-2012 American Community Survey 5-Year Estimates

	Campbell city, Ohio					
	African American	Margin of Error (+/-)	% of AA Total	White, Not Hispanic	Margin of Error (+/-)	% of NHW Total
<b>Total:</b>	<b>691</b>	<b>116</b>	<b>100.0%</b>	<b>2,256</b>	<b>183</b>	<b>100.0%</b>
HH received Food Stamps/SNAP in the past 12 months	361	92	52.2%	365	92	16.2%
HH did not receive Food Stamps/SNAP in the past 12 months	330	82	47.8%	1,891	190	83.8%

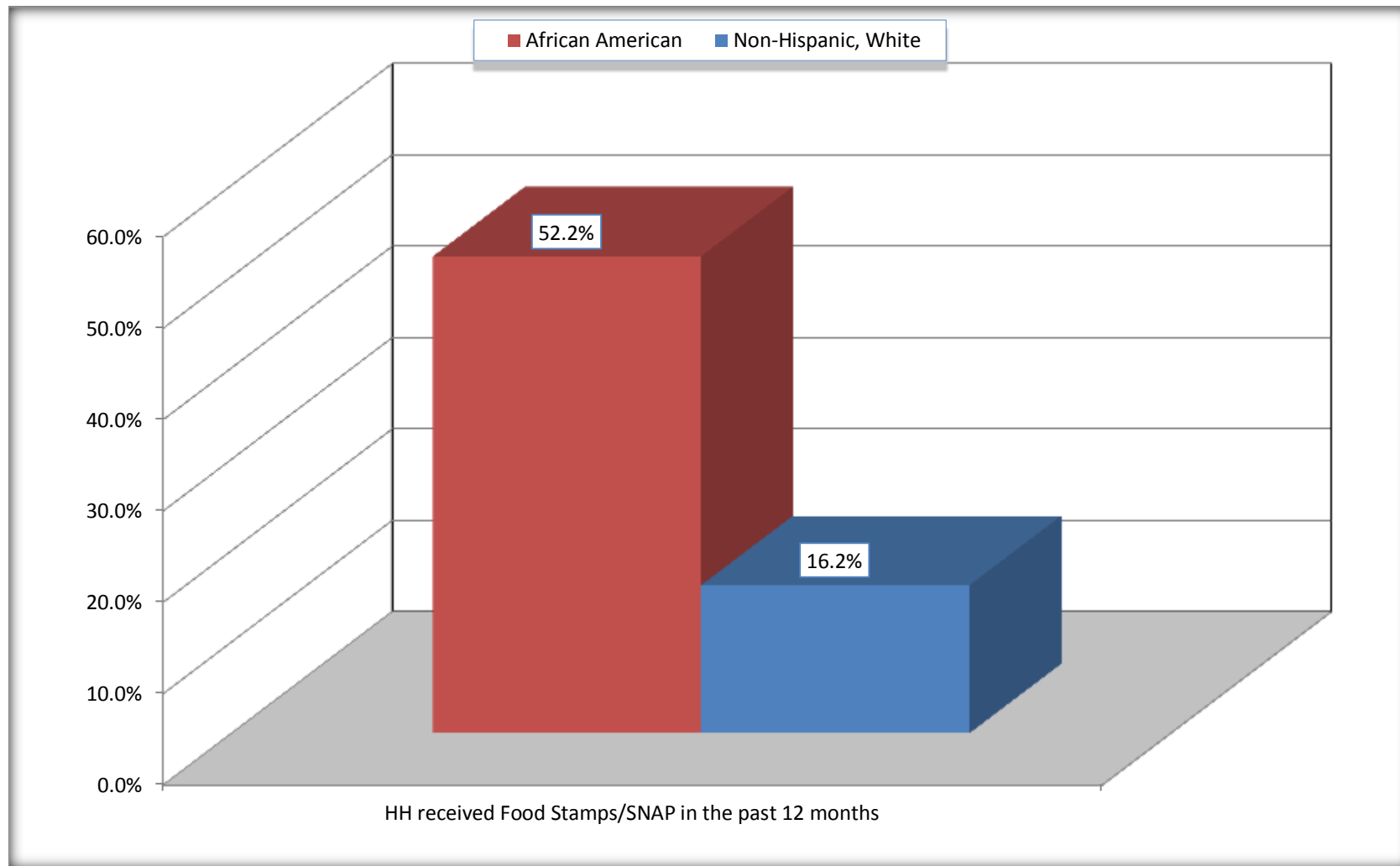
Source: U.S. Census Bureau, 2008-2012 American Community Survey

For information on confidentiality protection, sampling error, nonsampling error, and definitions, see Survey Methodology.

<http://www.census.gov/acs/www/UseData/index.htm>

# Receipt of Food Stamps/SNAP in the Past 12 Months by Household

## Campbell city, Ohio



Source: B22005. RECEIPT OF FOOD STAMPS/SNAP IN THE PAST 12 MONTHS BY RACE OF HOUSEHOLDER  
Data Set: 2008-2012 American Community Survey 5-Year Estimates



**C23002. SEX BY AGE BY EMPLOYMENT STATUS FOR THE POPULATION 16 YEARS AND OVER**

Data Set: 2008-2012 American Community Survey 5-Year Estimates

	Campbell city, Ohio					
	African American	Margin of Error (+/-)	% of AA Total	White, Not Hispanic	Margin of Error (+/-)	% of NHW Total
<b>Total:</b>	<b>1,539</b>	<b>190</b>	<b>100.0%</b>	<b>4,006</b>	<b>284</b>	<b>100.0%</b>
In labor force:	901	NC	58.5%	2,023	NC	50.5%
In Armed Forces	0	NC	0.0%	0	NC	0.0%
Civilian:	885	NC	57.5%	1,918	NC	47.9%
Employed	584	NC	37.9%	1,673	NC	41.8%
Unemployed	317	NC	20.6%	350	NC	8.7%
Not in labor force	638	NC	41.5%	1,983	NC	49.5%
Male:	721	120	46.8%	1,851	197	46.2%
16 to 64 years:	667	116	43.3%	1,317	186	32.9%
In labor force:	415	77	27.0%	945	139	23.6%
In Armed Forces	0	16	0.0%	0	16	0.0%
Civilian:	415	77	27.0%	945	139	23.6%
Employed	295	70	19.2%	745	126	18.6%
Unemployed	120	61	7.8%	200	91	5.0%
Not in labor force	252	100	16.4%	372	140	9.3%
65 years and over:	54	40	3.5%	534	96	13.3%
In labor force:	9	18	0.6%	15	18	0.4%
Employed	9	18	0.6%	15	18	0.4%
Unemployed	0	16	0.0%	0	16	0.0%
Not in labor force	45	39	2.9%	519	99	13.0%

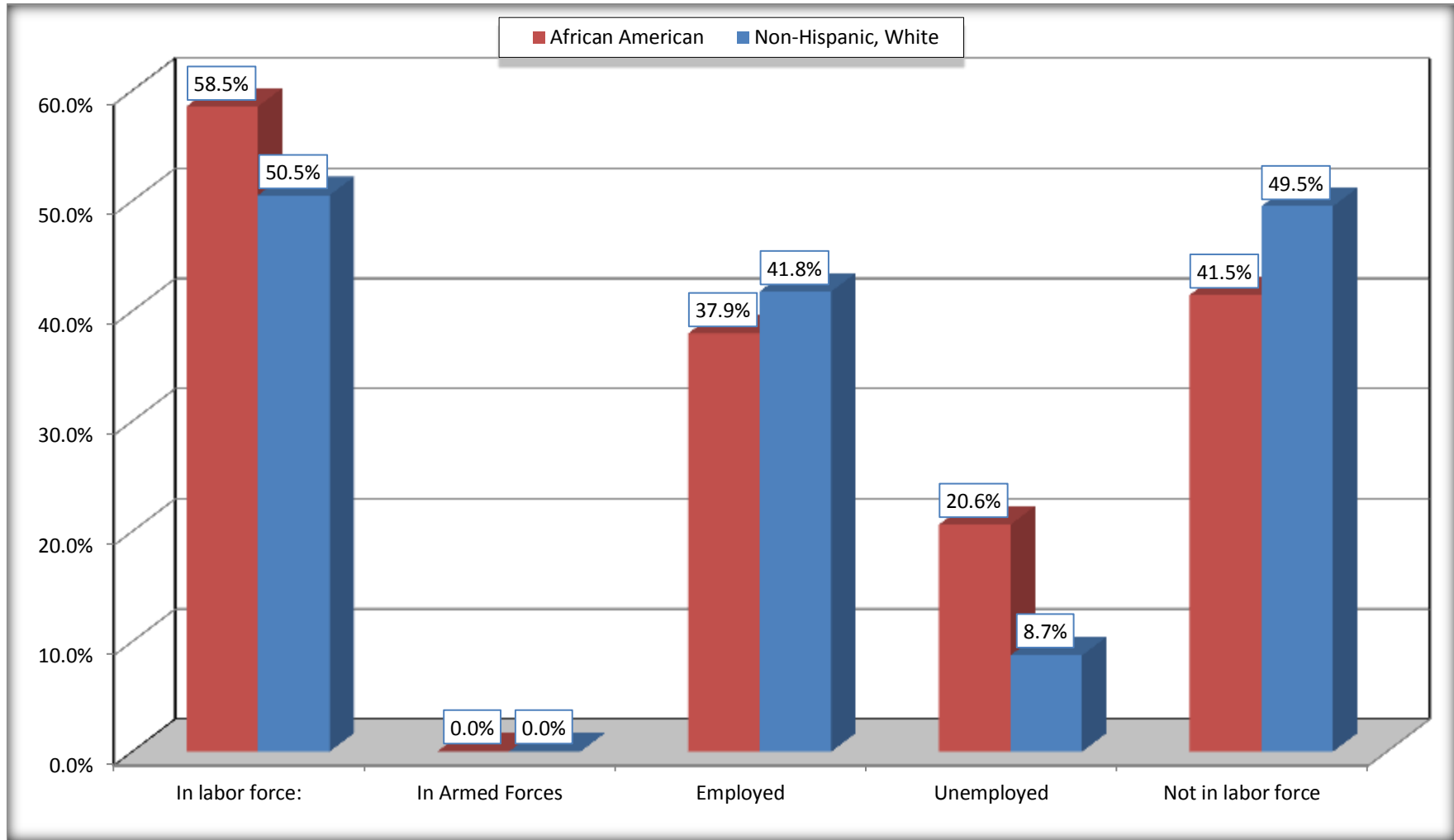
	Campbell city, Ohio					
	African American	Margin of Error (+/-)	% of AA Total	White, Not Hispanic	Margin of Error (+/-)	% of NHW Total
Female:	818	137	53.2%	2,155	197	53.8%
16 to 64 years:	678	125	44.1%	1,351	150	33.7%
In labor force:	470	97	30.5%	973	168	24.3%
In Armed Forces	0	16	0.0%	0	16	0.0%
Civilian:	470	97	30.5%	973	168	24.3%
Employed	273	76	17.7%	823	171	20.5%
Unemployed	197	73	12.8%	150	74	3.7%
Not in labor force	208	83	13.5%	378	112	9.4%
65 years and over:	140	52	9.1%	804	116	20.1%
In labor force:	7	11	0.5%	90	85	2.2%
Employed	7	11	0.5%	90	85	2.2%
Unemployed	0	16	0.0%	0	16	0.0%
Not in labor force	133	48	8.6%	714	104	17.8%

Source: U.S. Census Bureau, 2008-2012 American Community Survey

For information on confidentiality protection, sampling error, nonsampling error, and definitions, see Survey Methodology.  
<http://www.census.gov/acs/www/UseData/index.htm>

# Employment Status for the Population 16 years and over

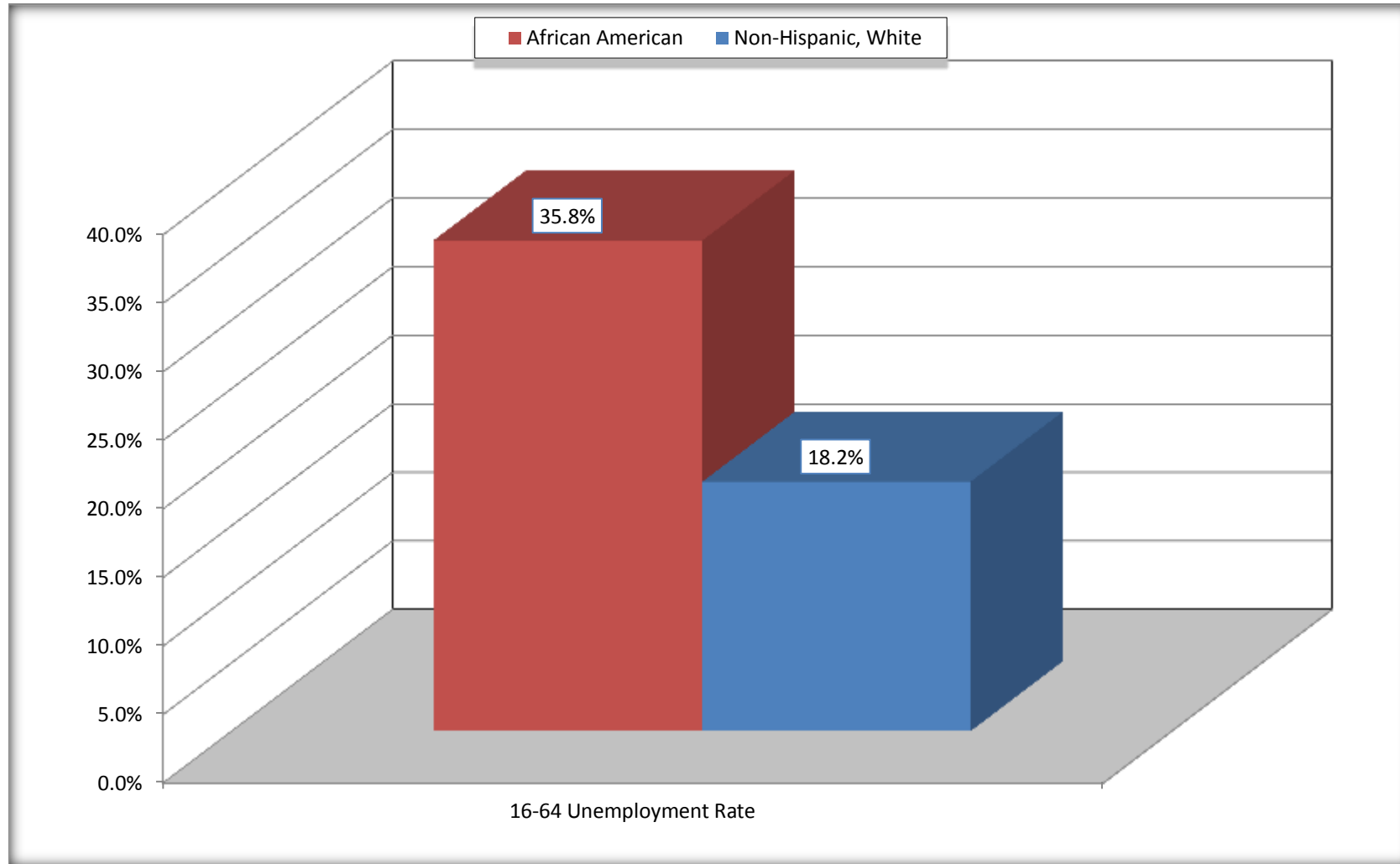
## Campbell city, Ohio



Source: C23002. SEX BY AGE BY EMPLOYMENT STATUS FOR THE POPULATION 16 YEARS AND OVER  
Data Set: 2008-2012 American Community Survey 5-Year Estimates

# Unemployment of Working Age Population (Ages 16 to 64) (As a Percent of 16-64 Civilian Labor Force)

## Campbell city, Ohio



Source: C23002. SEX BY AGE BY EMPLOYMENT STATUS FOR THE POPULATION 16 YEARS AND OVER  
Data Set: 2008-2012 American Community Survey 5-Year Estimates

**C24010. SEX BY OCCUPATION FOR THE CIVILIAN EMPLOYED POPULATION 16 YEARS AND OVER**

Data Set: 2008-2012 American Community Survey 5-Year Estimates

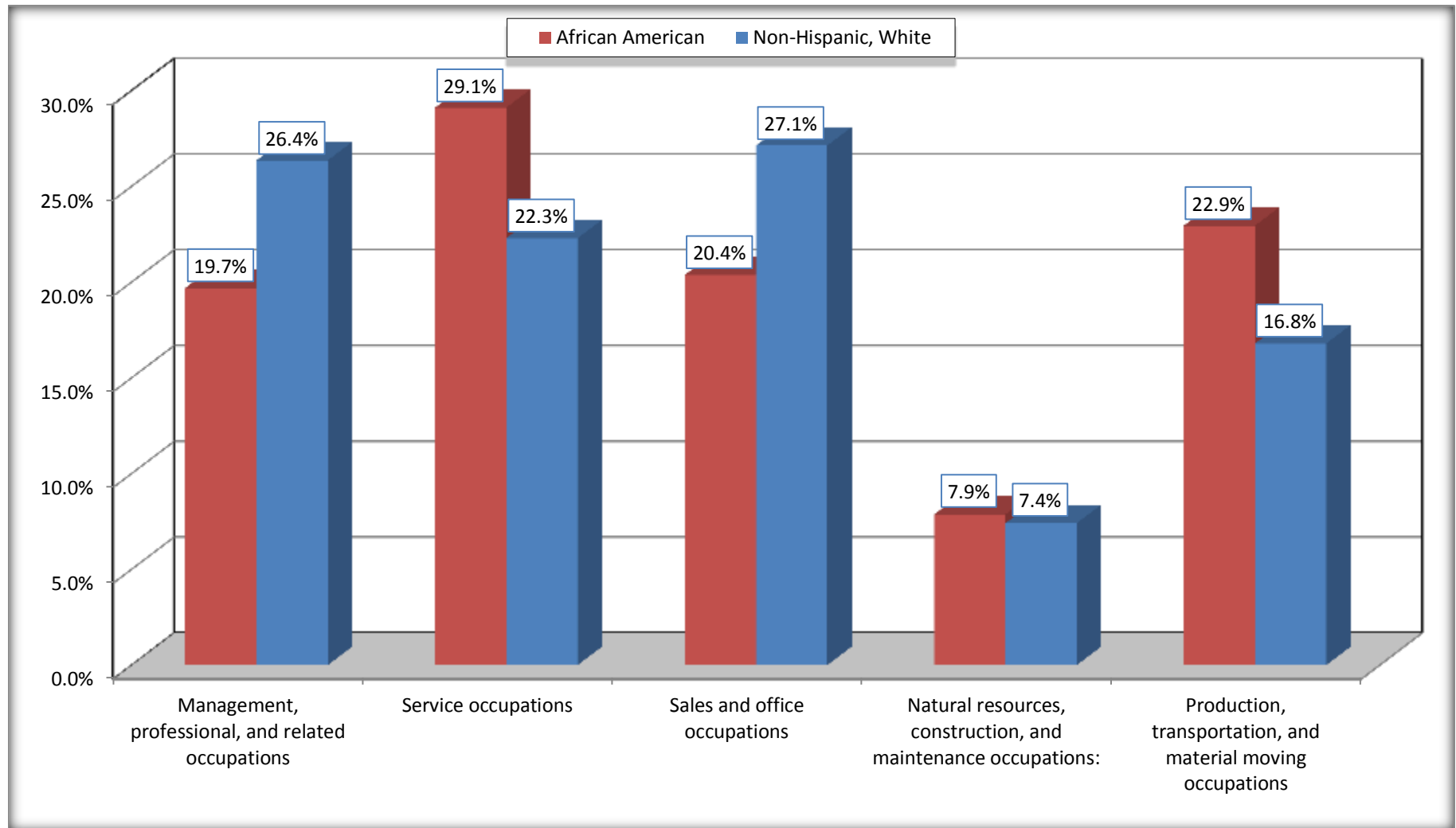
	Campbell city, Ohio					
	African American	Margin of Error (+/-)	% of AA Total	White, Not Hispanic	Margin of Error (+/-)	% of NHW Total
<b>Total:</b>	<b>584</b>	<b>115</b>	<b>100.0%</b>	<b>1,673</b>	<b>215</b>	<b>100.0%</b>
Management, professional, and related occupations	115	NC	19.7%	441	NC	26.4%
Service occupations	170	NC	29.1%	373	NC	22.3%
Sales and office occupations	119	NC	20.4%	454	NC	27.1%
Natural resources, construction, and maintenance occupations:	46	NC	7.9%	124	NC	7.4%
Production, transportation, and material moving occupations	134	NC	22.9%	281	NC	16.8%
Male:	304	71	52.1%	760	128	45.4%
Management, business, science, and arts occupations:	24	25	4.1%	151	84	9.0%
Service occupations	60	48	10.3%	103	67	6.2%
Sales and office occupations	40	36	6.8%	190	99	11.4%
Natural resources, construction, and maintenance occupations:	46	45	7.9%	124	65	7.4%
Production, transportation, and material moving occupations	134	66	22.9%	192	65	11.5%
Female:	280	75	47.9%	913	190	54.6%
Management, professional, and related occupations	91	49	15.6%	290	136	17.3%
Service occupations	110	69	18.8%	270	109	16.1%
Sales and office occupations	79	48	13.5%	264	89	15.8%
Natural resources, construction, and maintenance occupations:	0	16	0.0%	0	16	0.0%
Production, transportation, and material moving occupations	0	16	0.0%	89	48	5.3%

Source: U.S. Census Bureau, 2008-2012 American Community Survey

For information on confidentiality protection, sampling error, nonsampling error, and definitions, see Survey Methodology.

<http://www.census.gov/acs/www/UseData/index.htm>

## Occupation for the Civilian Employed 16 Years and Over Population Campbell city, Ohio



Source: C24010. SEX BY OCCUPATION FOR THE CIVILIAN EMPLOYED POPULATION 16 YEARS AND OVER  
 Data Set: 2008-2012 American Community Survey 5-Year Estimates

**B25003. TENURE - Universe: OCCUPIED HOUSING UNITS**

Data Set: 2008-2012 American Community Survey 5-Year Estimates

	Campbell city, Ohio					
	African American	Margin of Error (+/-)	% of AA Total	White, Not Hispanic	Margin of Error (+/-)	% of NHW Total
<b>Total:</b>	<b>691</b>	<b>116</b>	<b>100.0%</b>	<b>2,256</b>	<b>183</b>	<b>100.0%</b>
Owner occupied	297	90	43.0%	1,751	179	77.6%
Renter occupied	394	87	57.0%	505	143	22.4%

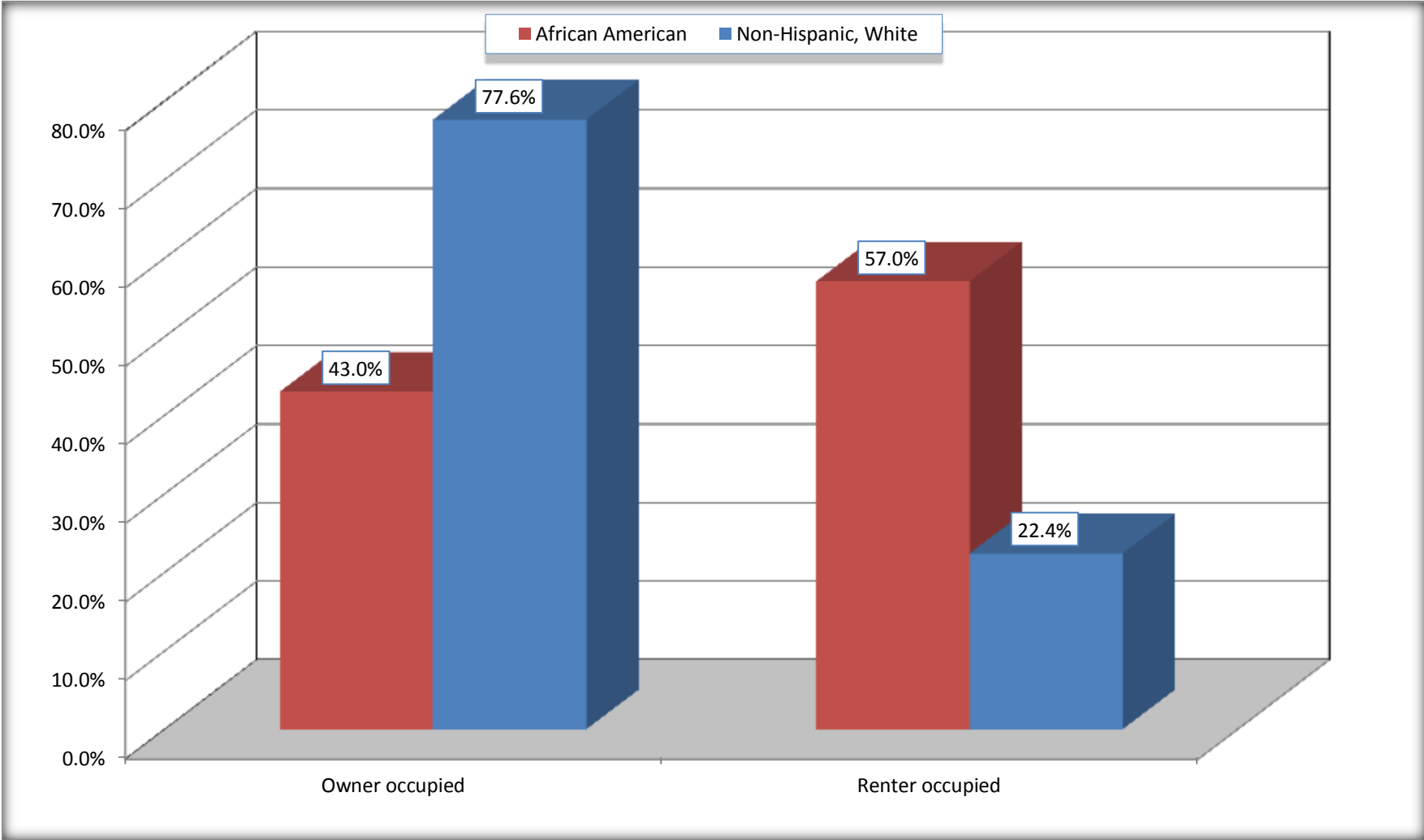
Source: U.S. Census Bureau, 2008-2012 American Community Survey

For information on confidentiality protection, sampling error, nonsampling error, and definitions, see Survey Methodology.

<http://www.census.gov/acs/www/UseData/index.h>

# Home Owners and Renters by Household

## Campbell city, Ohio



Source: B25003. TENURE - Universe: OCCUPIED HOUSING UNITS  
Data Set: 2008-2012 American Community Survey 5-Year Estimates



**B25014. OCCUPANTS PER ROOM - Universe: OCCUPIED HOUSING UNITS**

Data Set: 2008-2012 American Community Survey 5-Year Estimates

	Campbell city, Ohio					
	African American	Margin of Error (+/-)	% of AA Total	White, Not Hispanic	Margin of Error (+/-)	% of NHW Total
<b>Total:</b>	<b>691</b>	<b>116</b>	<b>100.0%</b>	<b>2,256</b>	<b>183</b>	<b>100.0%</b>
1.00 or less occupants per room	674	118	97.5%	2,226	186	98.7%
1.01 or more occupants per room	17	27	2.5%	30	26	1.3%

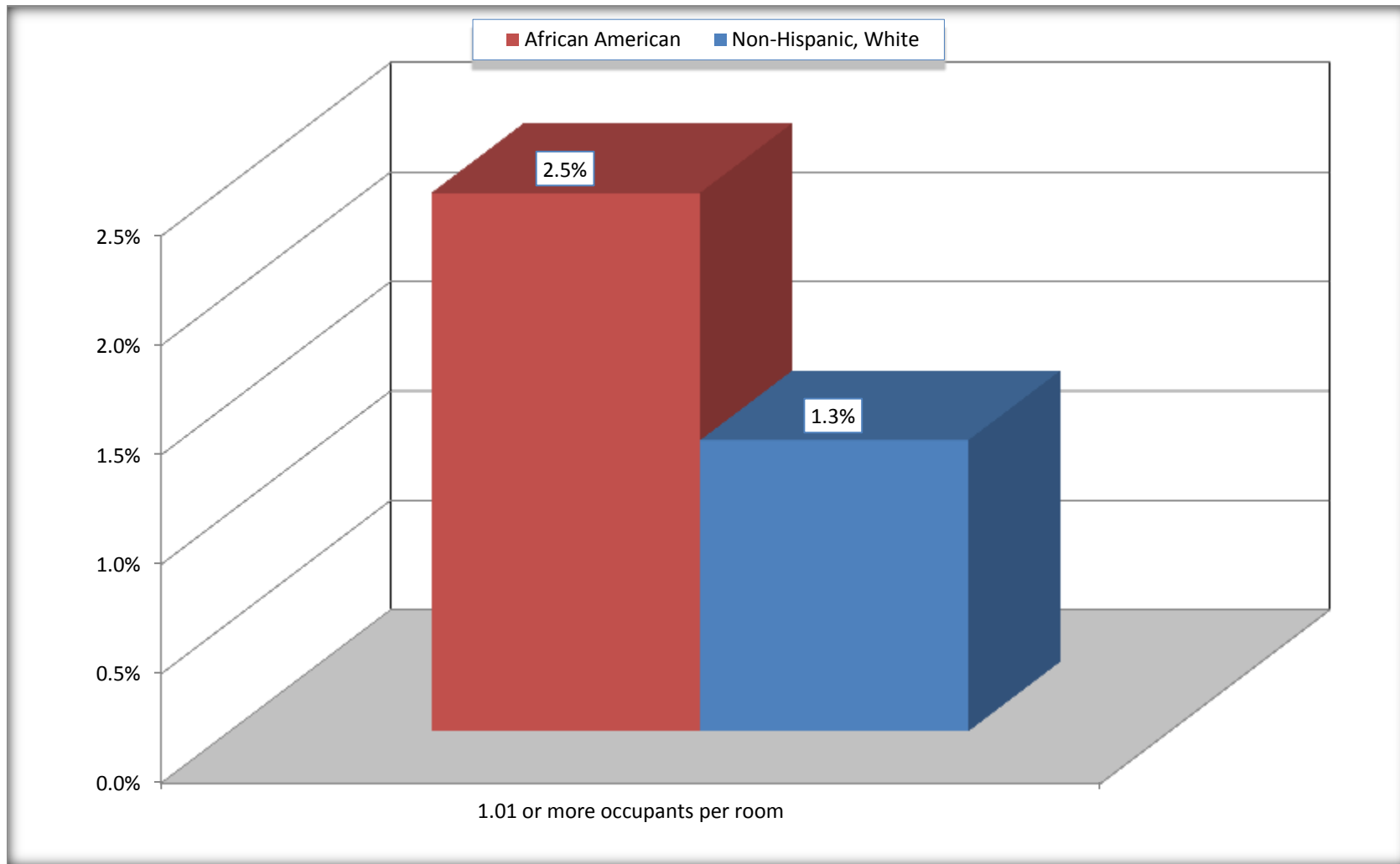
Source: U.S. Census Bureau, 2008-2012 American Community Survey

For information on confidentiality protection, sampling error, nonsampling error, and definitions, see Survey Methodology.

<http://www.census.gov/acs/www/UseData/index.ht>

# More than One Person per Room (Crowding) by Household

## Campbell city, Ohio



Source: B25014. OCCUPANTS PER ROOM - Universe: OCCUPIED HOUSING UNITS  
Data Set: 2008-2012 American Community Survey 5-Year Estimates

**B18101. AGE BY DISABILITY STATUS**

Data Set: 2008-2012 American Community Survey 5-Year Estimates

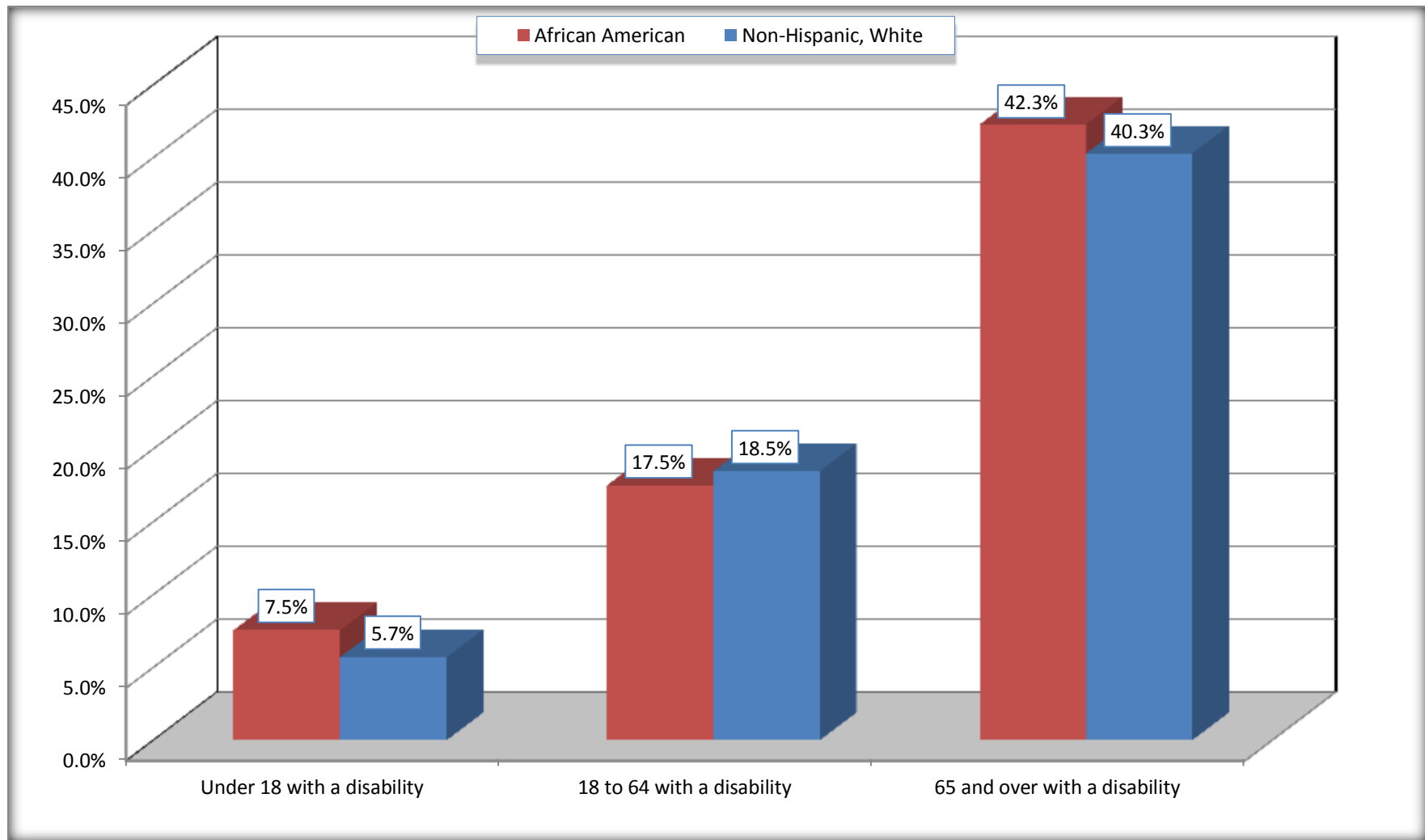
	Campbell city, Ohio					
	African American	Margin of Error (+/-)	% of AA Total	White, Not Hispanic	Margin of Error (+/-)	% of NHW Total
<b>Total:</b>	<b>2,075</b>	<b>250</b>	<b>100.0%</b>	<b>4,881</b>	<b>351</b>	<b>100.0%</b>
Under 18 years:	663	171	32.0%	929	84	19.0%
With a disability	50	45	2.4%	53	39	1.1%
No disability	613	178	29.5%	876	205	17.9%
18 to 64 years:	1,218	160	58.7%	2,614	221	53.6%
With a disability	213	70	10.3%	483	128	9.9%
No disability	1,005	155	48.4%	2,131	233	43.7%
65 years and over:	194	69	9.3%	1,338	153	27.4%
With a disability	82	48	4.0%	539	130	11.0%
No disability	112	64	5.4%	799	140	16.4%

Source: U.S. Census Bureau, 2008-2012 American Community Survey

For information on confidentiality protection, sampling error, nonsampling error, and definitions, see Survey Methodology.

<http://www.census.gov/acs/www/UseData/index.htm>

## Disability by Age Campbell city, Ohio



Source: B18101. AGE BY DISABILITY STATUS  
Data Set: 2008-2012 American Community Survey 5-Year Estimates

**C27001B. HEALTH INSURANCE COVERAGE STATUS BY AGE**

Data Set: 2008-2012 American Community Survey 5-Year Estimates

	Campbell city, Ohio					
	African American	Margin of Error (+/-)	% of AA Total	White, Not Hispanic	Margin of Error (+/-)	% of NHW Total
<b>Total:</b>	<b>2,075</b>	<b>250</b>	<b>100.0%</b>	<b>4,881</b>	<b>351</b>	<b>100.0%</b>
Under 18 years:	663	171	32.0%	929	212	19.0%
With health insurance coverage	641	173	30.9%	929	212	19.0%
No health insurance coverage	22	35	1.1%	0	16	0.0%
18 to 64 years:	1,218	160	58.7%	2,614	221	53.6%
With health insurance coverage	925	183	44.6%	2,216	241	45.4%
No health insurance coverage	293	97	14.1%	398	135	8.2%
65 years and over:	194	69	9.3%	1,338	153	27.4%
With health insurance coverage	194	69	9.3%	1,338	153	27.4%
No health insurance coverage	0	16	0.0%	0	16	0.0%

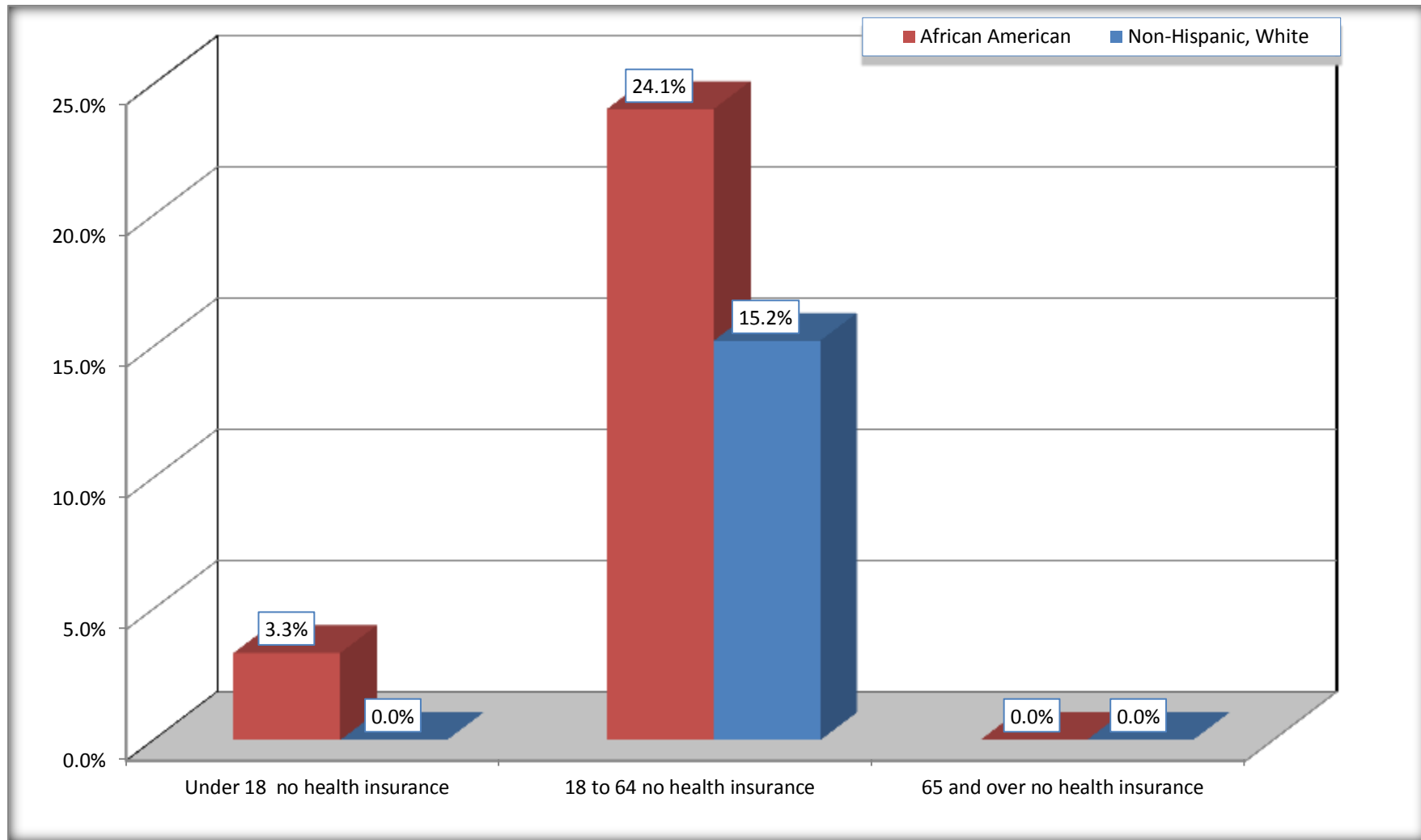
Source: U.S. Census Bureau, 2008-2012 American Community Survey

For information on confidentiality protection, sampling error, nonsampling error, and definitions, see Survey Methodology.

<http://www.census.gov/acs/www/UseData/index.htm>

# Lack of Health Insurance Coverage by Age

## Campbell city, Ohio



Source: C27001B. HEALTH INSURANCE COVERAGE STATUS BY AGE  
Data Set: 2008-2012 American Community Survey 5-Year Estimates