

Selected Socio-Economic Data

Blacklick Estates CDP, Ohio

African American and White, Not Hispanic

Data Set: 2008-2012 American Community Survey 5-Year Estimates

www.fairvote2020.org

www.fairdata2000.com

[29-Dec-13](#)

C02003.DETAILED RACE - Universe: TOTAL POPULATION

Data Set: 2008-2012 American Community Survey 5-Year Estimates

	Blacklick Estates CDP, Ohio		
	Population	Margin of Error (+/-)	% of Total
Total:	8,452	716	100.0%
Population of one race:	8,141	651	96.3%
White	6,644	606	78.6%
Black or African American	1,489	401	17.6%
American Indian and Alaska Native	0	16	0.0%
Asian alone	8	14	0.1%
Native Hawaiian and Other Pacific Islander	0	16	0.0%
Some other race	0	16	0.0%
Population of two or more races:	311	228	3.7%
Two races including Some other race	0	16	0.0%
Two races excluding Some other race, and three or more races	311	228	3.7%
Population of two races:	311	228	3.7%
White; Black or African American	156	160	1.8%
White; American Indian and Alaska Native	141	199	1.7%
White; Asian	14	27	0.2%
Black or African American; American Indian and Alaska Native	0	16	0.0%
All other two race combinations	0	16	0.0%
Population of three races	0	16	0.0%
Population of four or more races	0	16	0.0%

Note: Hispanics may be of any race. See Table B03002 and chart.

Source: U.S. Census Bureau, 2008-2012 American Community Survey

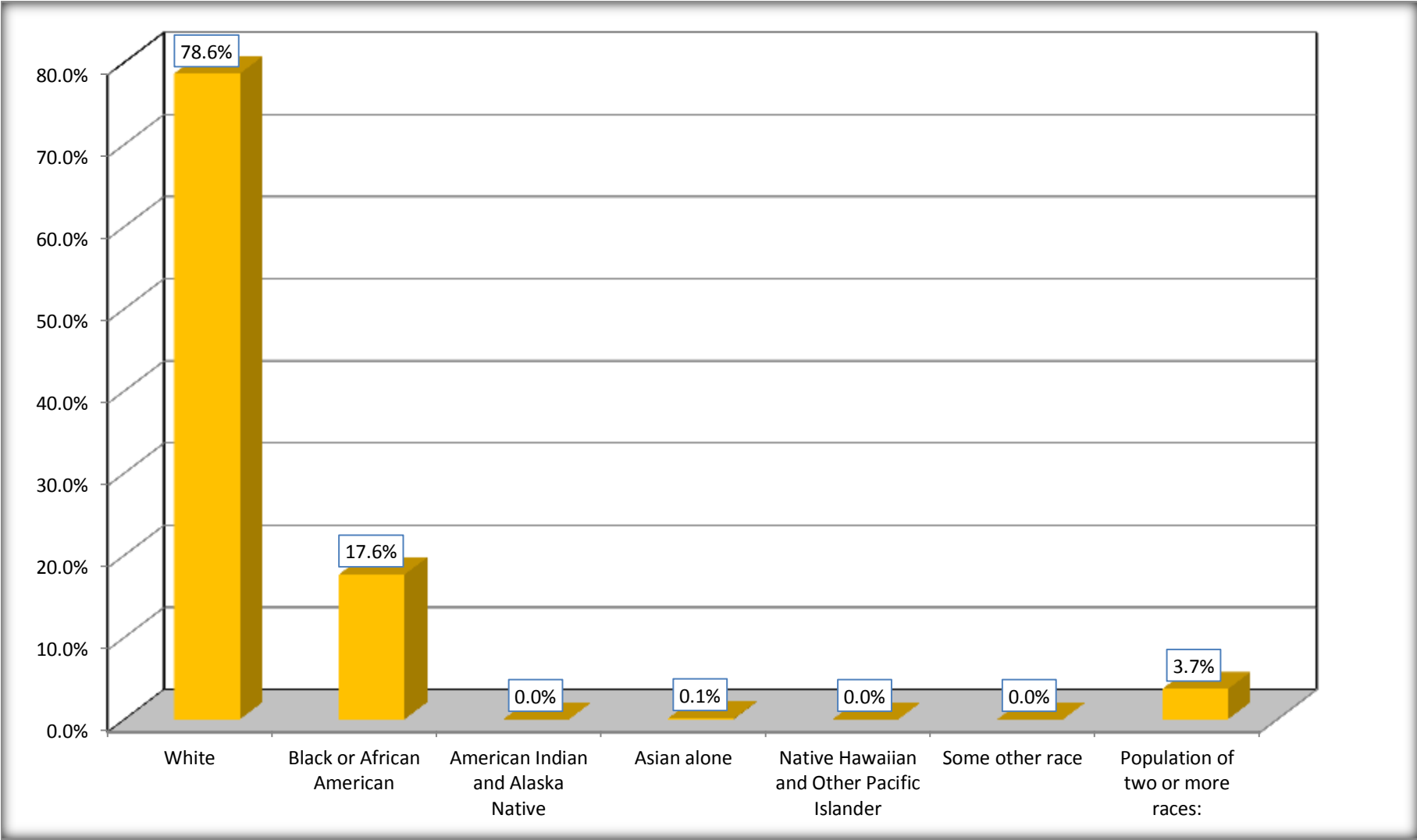
Although the American Community Survey (ACS) produces population, demographic and housing unit estimates, it is the Census Bureau's Population Estimates Program that produces and disseminates the official estimates of the population for the nation, states, counties, cities and towns and estimates of housing units for states and counties.

For information on confidentiality protection, sampling error, nonsampling error, and definitions, see Survey Methodology.

<http://www.census.gov/acs/www/UseData/index.htm>

Population by Race

Blacklick Estates CDP, Ohio



Source: C02003.DETAILED RACE - Universe: TOTAL POPULATION
Data Set: 2008-2012 American Community Survey 5-Year Estimates

B03002. HISPANIC OR LATINO ORIGIN BY RACE - Universe: TOTAL POPULATION

Data Set: 2008-2012 American Community Survey 5-Year Estimates

	Blacklick Estates CDP, Ohio		
	Population	Margin of Error (+/-)	% of Total
Total:	8,452	716	100.0%
Not Hispanic or Latino:	8,343	691	98.7%
White alone	6,535	576	77.3%
Black or African American alone	1,489	401	17.6%
American Indian and Alaska Native alone	0	16	0.0%
Asian alone	8	14	0.1%
Native Hawaiian and Other Pacific Islander alone	0	16	0.0%
Some other race alone	0	16	0.0%
Two or more races:	311	228	3.7%
Two races including Some other race	0	16	0.0%
Two races excluding Some other race, and three or more races	311	228	3.7%
Hispanic or Latino	109	115	1.3%

Source: U.S. Census Bureau, 2008-2012 American Community Survey

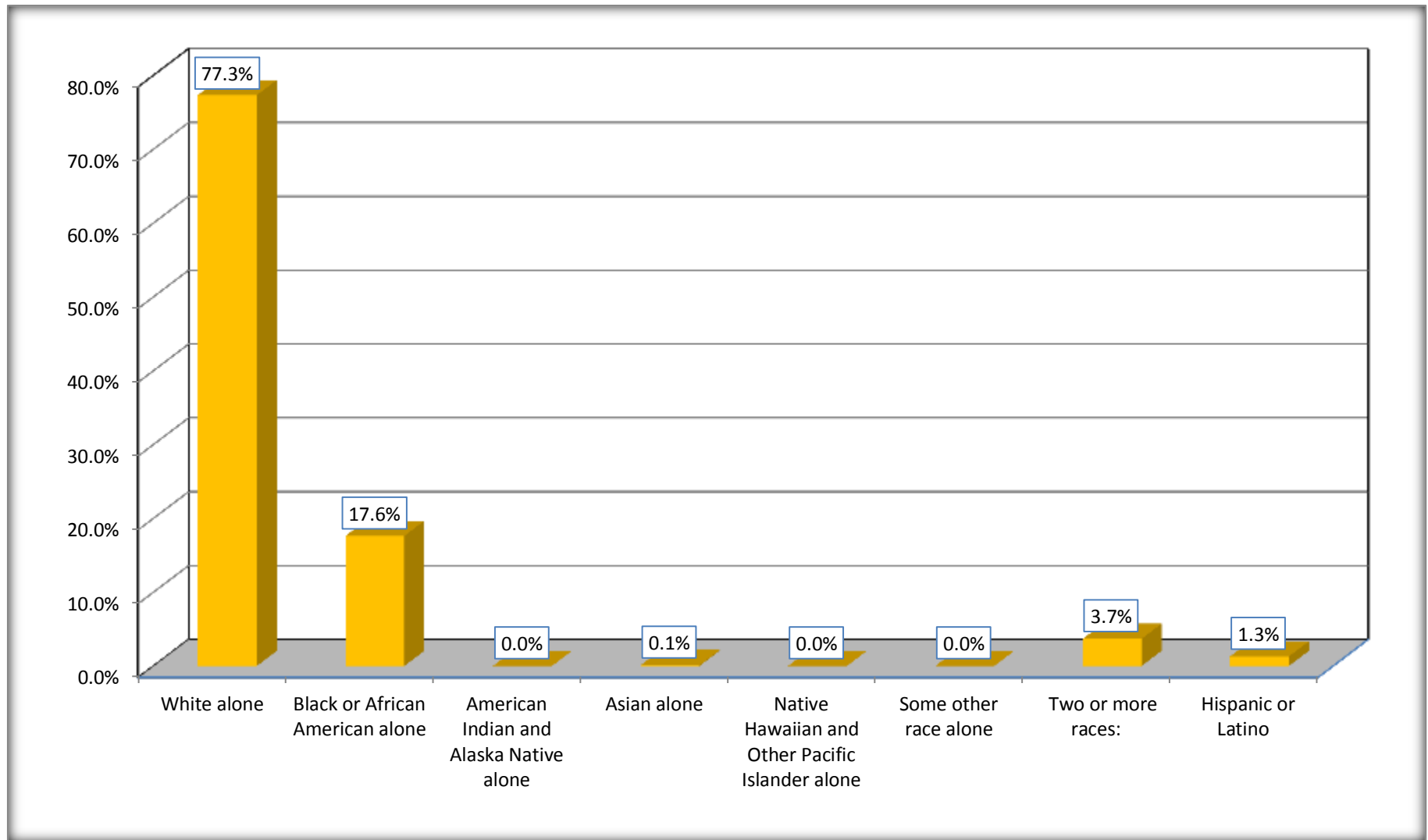
Although the American Community Survey (ACS) produces population, demographic and housing unit estimates, it is the Census Bureau's Population Estimates Program that produces and disseminates the official estimates of the population for the nation, states, counties, cities and towns and estimates of housing units for states and counties.

For information on confidentiality protection, sampling error, nonsampling error, and definitions, see Survey Methodology.

<http://www.census.gov/acs/www/UseData/index.htm>

Non-Hispanic by Race and Hispanic Population

Blacklick Estates CDP, Ohio



Source: B03002. HISPANIC OR LATINO ORIGIN BY RACE - Universe: TOTAL POPULATION
Data Set: 2008-2012 American Community Survey 5-Year Estimates

B03002. HISPANIC OR LATINO ORIGIN BY RACE

Data Set: 2008-2012 American Community Survey 5-Year Estimates

	Blacklick Estates CDP, Ohio		
	Population	Margin of Error (+/-)	% of Total
Hispanic or Latino:	109	115	100.0%
White alone	109	115	100.0%
Black or African American alone	0	16	0.0%
American Indian and Alaska Native alone	0	16	0.0%
Asian alone	0	16	0.0%
Native Hawaiian and Other Pacific Islander alone	0	16	0.0%
Some other race alone	0	16	0.0%
Two or more races:	0	16	0.0%
Two races including Some other race	0	16	0.0%
Two races excluding Some other race, and three or more races	0	16	0.0%

Source: U.S. Census Bureau, 2008-2012 American Community Survey

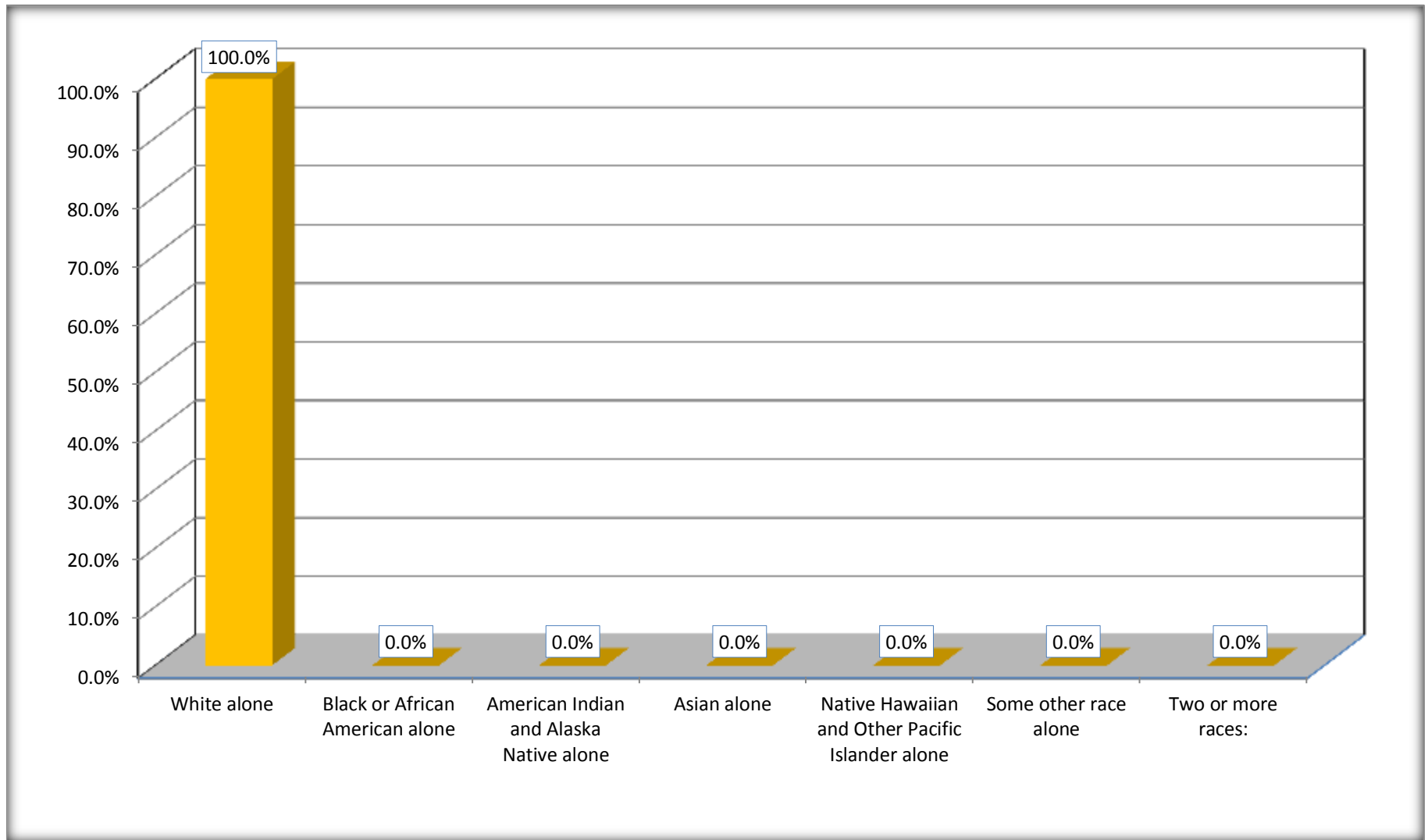
Although the American Community Survey (ACS) produces population, demographic and housing unit estimates, it is the Census Bureau's Population Estimates Program that produces and disseminates the official estimates of the population for the nation, states, counties, cities and towns and estimates of housing units for states and counties.

For information on confidentiality protection, sampling error, nonsampling error, and definitions, see Survey Methodology.

<http://www.census.gov/acs/www/UseData/index.htm>

Hispanic or Latino Origin by Race

Blacklick Estates CDP, Ohio



Source: B03002. HISPANIC OR LATINO ORIGIN BY RACE
Data Set: 2008-2012 American Community Survey 5-Year Estimates

B01001. SEX BY AGE

Data Set: 2008-2012 American Community Survey 5-Year Estimates

	Blacklick Estates CDP, Ohio					
	African American	Margin of Error (+/-)	% of AA Total	White, Not Hispanic	Margin of Error (+/-)	% of NHW Total
Total:	1,489	401	100.0%	6,535	576	100.0%
Under 18 years	666	NC	44.7%	1,560	NC	23.9%
18 to 64 years	773	NC	51.9%	4,078	NC	62.4%
65 years and over	50	NC	3.4%	897	NC	13.7%
Male:	649	202	43.6%	3,376	389	51.7%
Under 18 years	279	NC	18.7%	828	NC	12.7%
18 to 64 years	336	NC	22.6%	2,107	NC	32.2%
65 years and over	34	NC	2.3%	441	NC	6.7%
Female:	840	272	56.4%	3,159	412	48.3%
Under 18 years	387	NC	26.0%	732	NC	11.2%
18 to 64 years	437	NC	29.3%	1,971	NC	30.2%
65 years and over	16	NC	1.1%	456	NC	7.0%

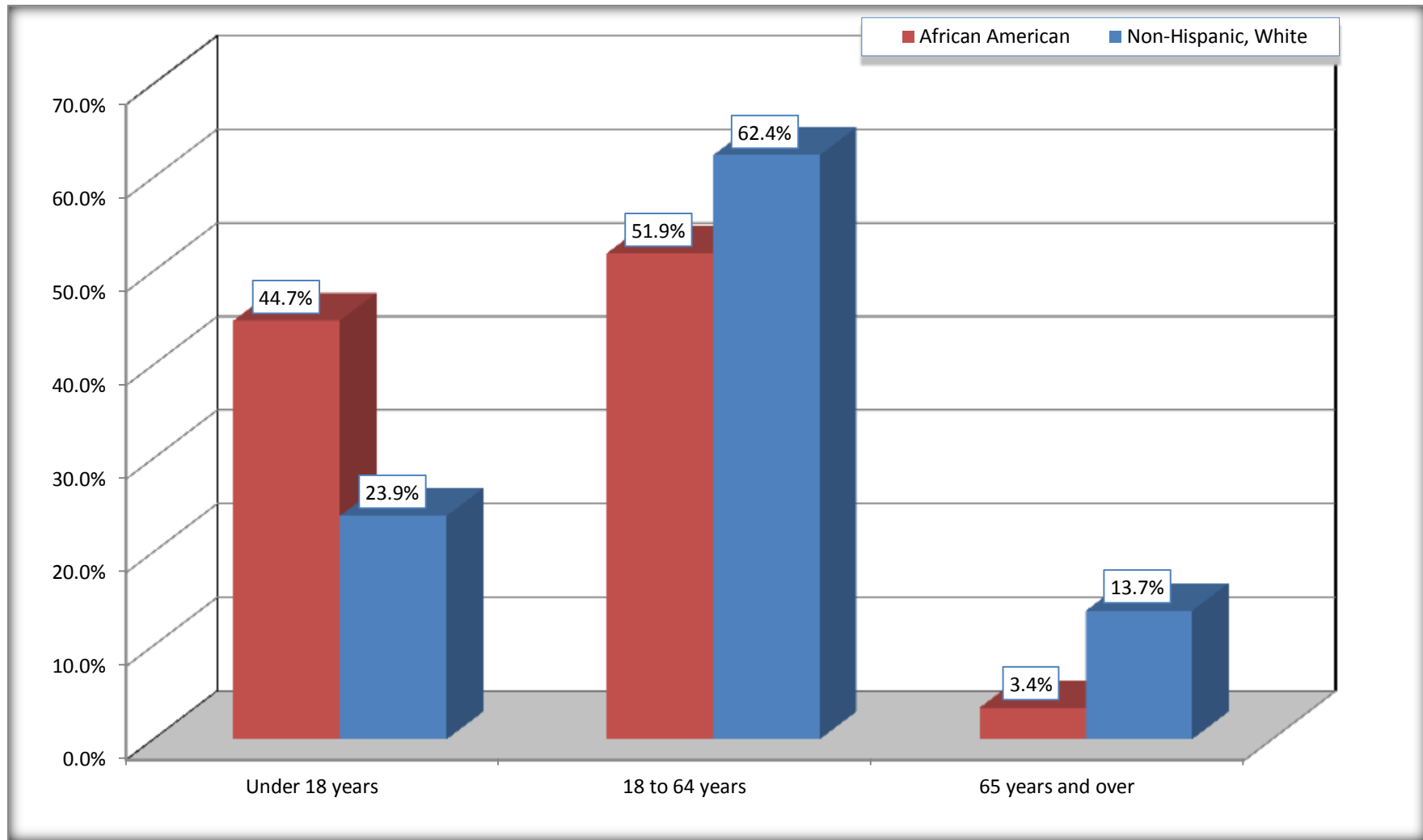
Source: U.S. Census Bureau, 2008-2012 American Community Survey

Although the American Community Survey (ACS) produces population, demographic and housing unit estimates, it is the Census Bureau's Population Estimates Program that produces and disseminates the official estimates of the population for the nation, states, counties, cities and towns and estimates of housing units for states and counties.

For information on confidentiality protection, sampling error, nonsampling error, and definitions, see Survey Methodology.
<http://www.census.gov/acs/www/UseData/index.htm>

Population by Age

Blacklick Estates CDP, Ohio



Source: B01001. SEX BY AGE
Data Set: 2008-2012 American Community Survey 5-Year Estimates

B05003. SEX BY AGE BY CITIZENSHIP STATUS

Data Set: 2008-2012 American Community Survey 5-Year Estimates

	Blacklick Estates CDP, Ohio					
	African American	Margin of Error (+/-)	% of AA Total by Age	White, Not Hispanic	Margin of Error (+/-)	% of NHW Total by Age
Total:	1,489	401	100.0%	6,535	576	100.0%
Under 18 years:	666	NC	100.0%	1,560	NC	100.0%
Native	666	NC	100.0%	1,560	NC	100.0%
Foreign born:	0	NC	0.0%	0	NC	0.0%
Naturalized U.S. citizen	0	NC	0.0%	0	NC	0.0%
Not a U.S. citizen	0	NC	0.0%	0	NC	0.0%
18 years and over:	823	NC	100.0%	4,975	NC	100.0%
Native	794	NC	96.5%	4,919	NC	98.9%
Foreign born:	29	NC	3.5%	56	NC	1.1%
Naturalized U.S. citizen	0	NC	0.0%	32	NC	0.6%
Not a U.S. citizen	29	NC	3.5%	24	NC	0.5%
Male:	649	202	43.6%	3,376	348	51.7%
Under 18 years:	279	120	100.0%	828	197	100.0%
Native	279	120	100.0%	828	197	100.0%
Foreign born:	0	16	0.0%	0	16	0.0%
Naturalized U.S. citizen	0	16	0.0%	0	16	0.0%
Not a U.S. citizen	0	16	0.0%	0	16	0.0%
18 years and over:	370	154	100.0%	2,548	273	100.0%
Native	354	151	95.7%	2,548	273	100.0%
Foreign born:	16	27	4.3%	0	16	0.0%
Naturalized U.S. citizen	0	16	0.0%	0	16	0.0%
Not a U.S. citizen	16	27	4.3%	0	16	0.0%

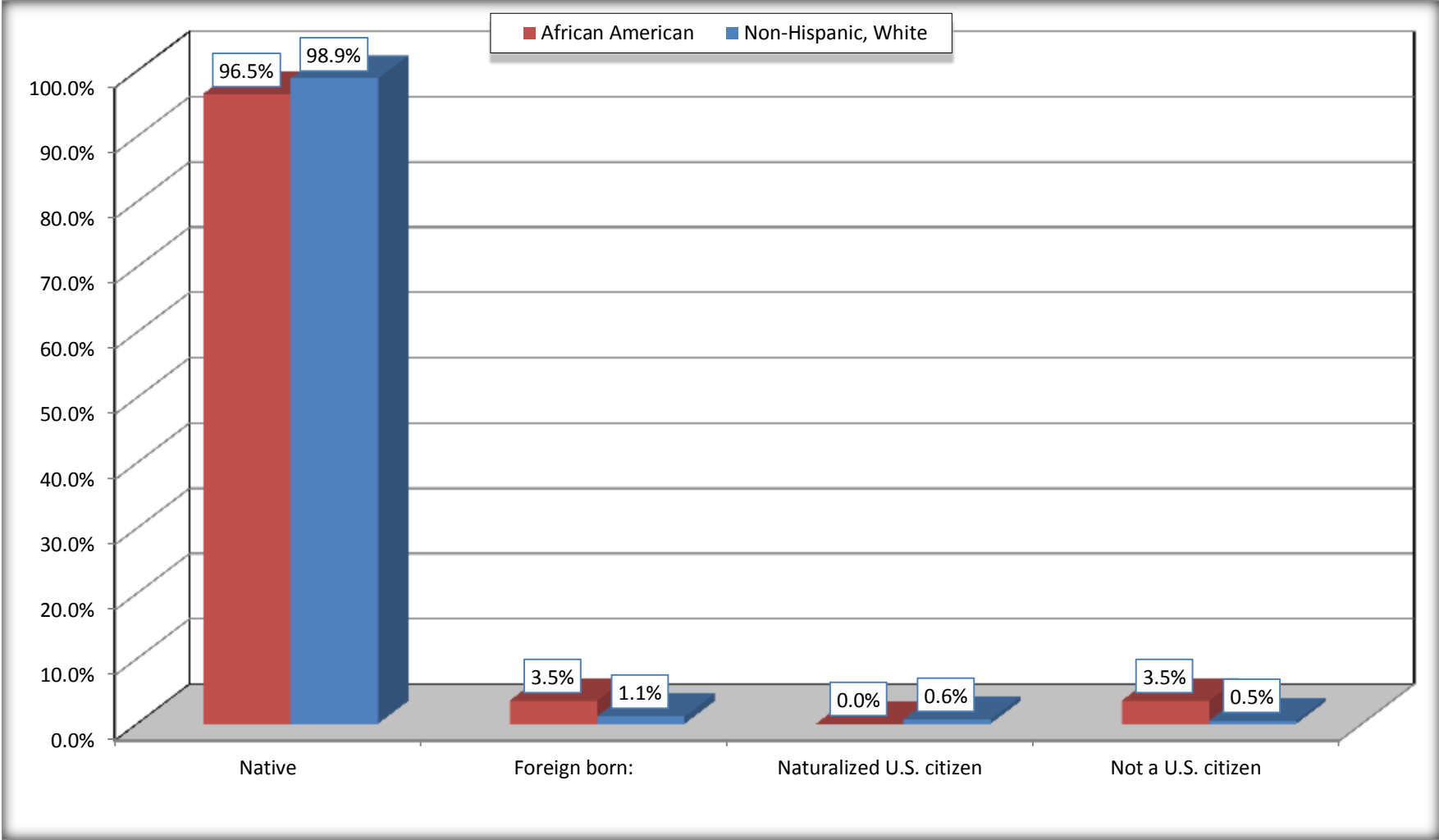
	Blacklick Estates CDP, Ohio					
	African American	Margin of Error (+/-)	% of AA by Age	White, Not Hispanic	Margin of Error (+/-)	% of NHW by Age
Female:	840	272	56.4%	3,159	353	48.3%
Under 18 years:	387	184	100.0%	732	184	100.0%
Native	387	184	100.0%	732	184	100.0%
Foreign born:	0	16	0.0%	0	16	0.0%
Naturalized U.S. citizen	0	16	0.0%	0	16	0.0%
Not a U.S. citizen	0	16	0.0%	0	16	0.0%
18 years and over:	453	135	100.0%	2,427	253	100.0%
Native	440	137	97.1%	2,371	250	97.7%
Foreign born:	13	23	2.9%	56	35	2.3%
Naturalized U.S. citizen	0	16	0.0%	32	31	1.3%
Not a U.S. citizen	13	23	2.9%	24	26	1.0%

Source: U.S. Census Bureau, 2008-2012 American Community Survey

For information on confidentiality protection, sampling error, nonsampling error, and definitions, see Survey Methodology.
<http://www.census.gov/acs/www/UseData/index.htm>

Citizenship Status of Voting Age Population (18 and Over)

Blacklick Estates CDP, Ohio



Source: B05003. SEX BY AGE BY CITIZENSHIP STATUS
Data Set: 2008-2012 American Community Survey 5-Year Estimates

**B07004. GEOGRAPHICAL MOBILITY IN THE PAST YEAR BY RACE FOR CURRENT RESIDENCE IN THE UNITED STATES - Universe:
POPULATION 1 YEAR AND OVER**

Data Set: 2008-2012 American Community Survey 5-Year Estimates

	Blacklick Estates CDP, Ohio					
	African American	Margin of Error (+/-)	% of AA Total	White, Not Hispanic	Margin of Error (+/-)	% of NHW Total
Total:	1,467	402	100.0%	6,462	576	100.0%
Same house 1 year ago	1,289	428	87.9%	5,356	572	82.9%
Moved within same county	149	141	10.2%	731	349	11.3%
Moved from different county within same state	29	50	2.0%	352	254	5.4%
Moved from different state	0	16	0.0%	23	27	0.4%
Moved from abroad	0	16	0.0%	0	16	0.0%

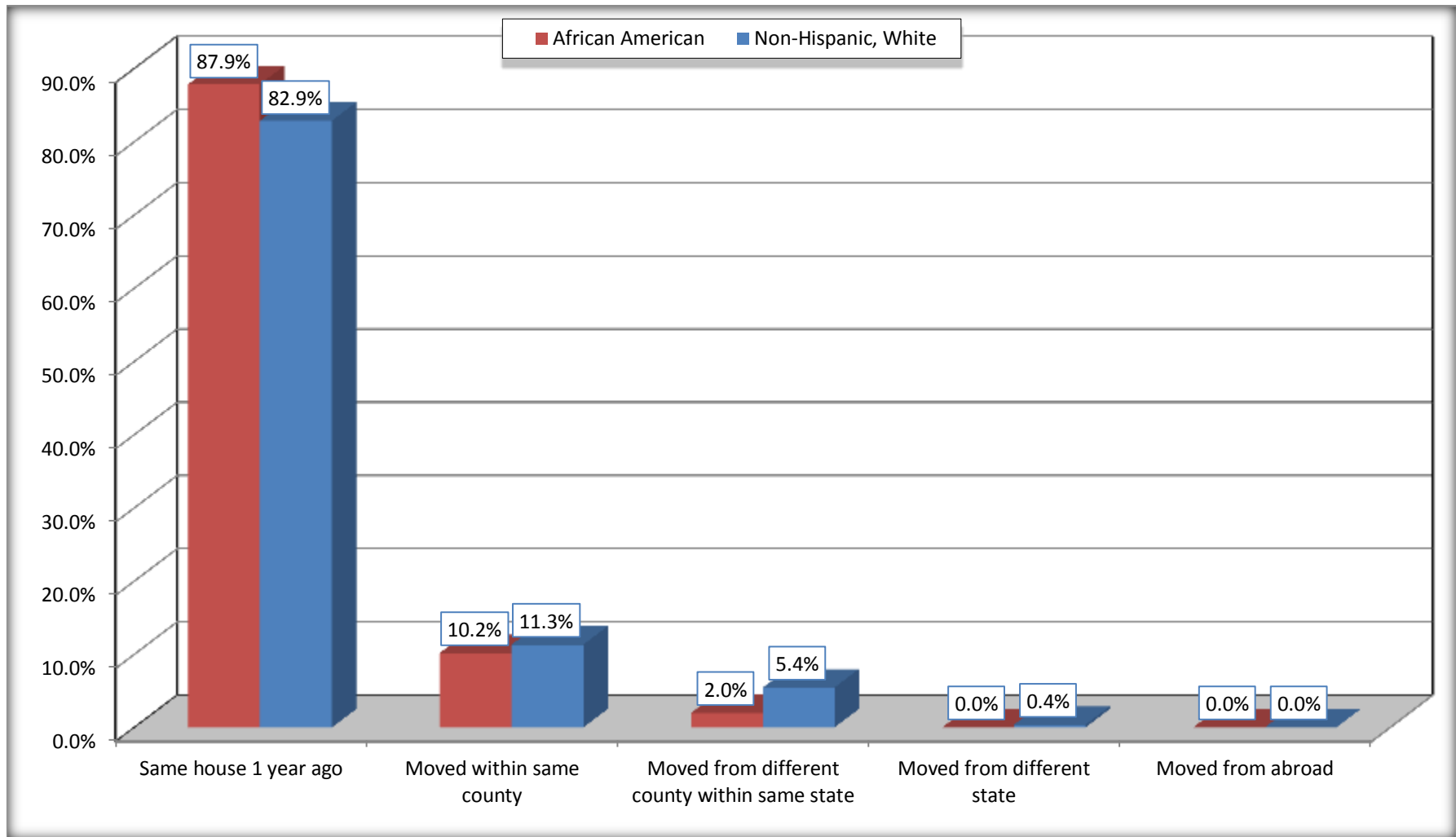
Source: U.S. Census Bureau, 2008-2012 American Community Survey

For information on confidentiality protection, sampling error, nonsampling error, and definitions, see Survey Methodology.

<http://www.census.gov/acs/www/UseData/index.htm>

Geographical Mobility in the Past Year (Population 1 Year and Over)

Blacklick Estates CDP, Ohio



Source: B07004. GEOGRAPHICAL MOBILITY IN THE PAST YEAR BY RACE FOR CURRENT RESIDENCE IN THE UNITED STATES - Universe: POPULATION 1 YEAR AND OVER

Data Set: 2008-2012 American Community Survey 5-Year Estimates

B08105. MEANS OF TRANSPORTATION TO WORK - Universe: WORKERS 16 YEARS AND OVER

Data Set: 2008-2012 American Community Survey 5-Year Estimates

	Blacklick Estates CDP, Ohio					
	African American	Margin of Error (+/-)	% of AA Total	White, Not Hispanic	Margin of Error (+/-)	% of NHW Total
Total:	495	156	100.0%	3156	330	100.0%
Car, truck, or van - drove alone	375	167	75.8%	2948	330	93.4%
Car, truck, or van - carpooled	93	60	18.8%	130	80	4.1%
Public transportation (excluding taxicab)	0	16	0.0%	37	42	1.2%
Walked	27	44	5.5%	0	16	0.0%
Taxicab, motorcycle, bicycle, or other means	0	16	0.0%	0	16	0.0%
Worked at home	0	16	0.0%	41	57	1.3%

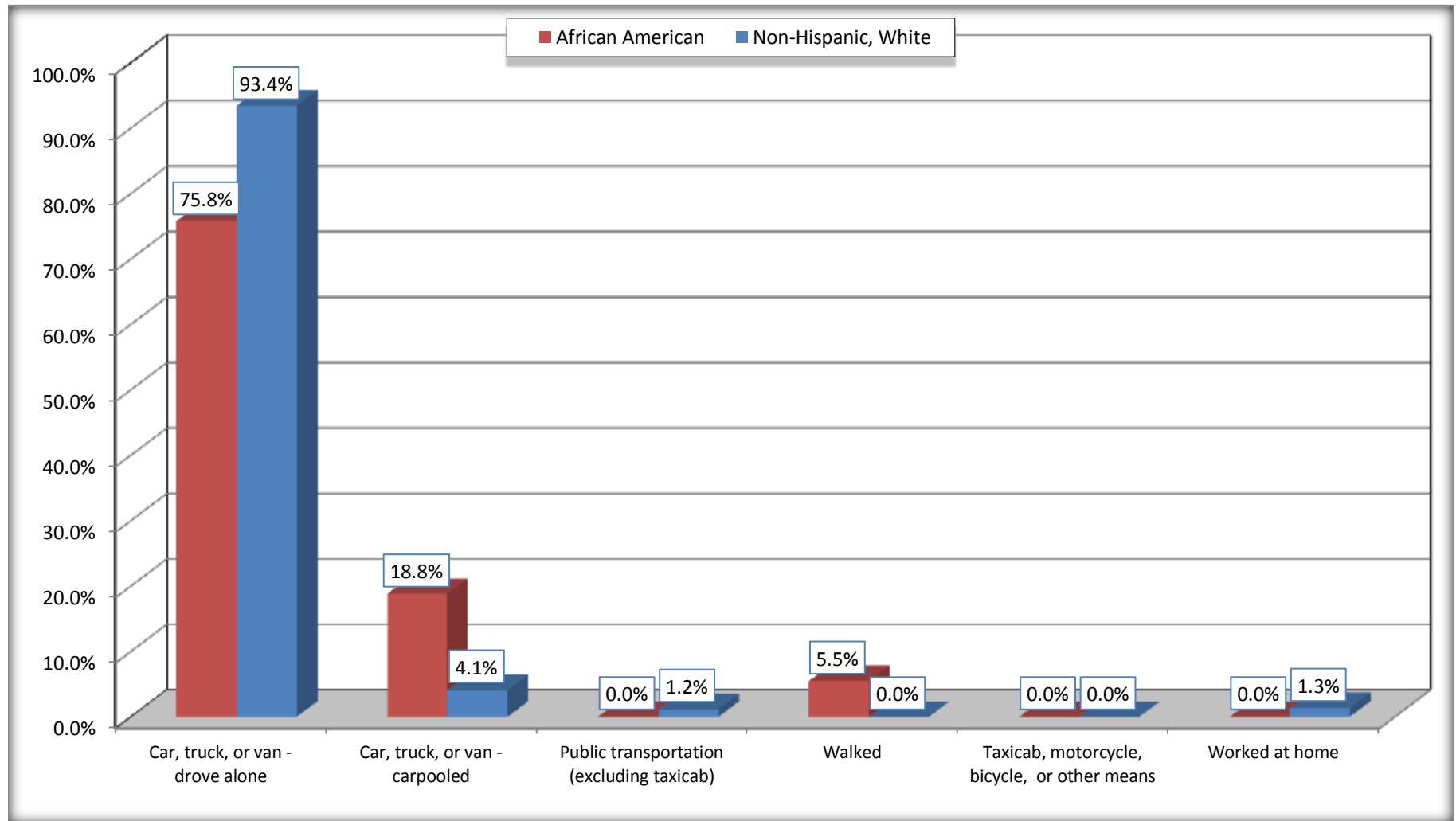
Source: U.S. Census Bureau, 2008-2012 American Community Survey

For information on confidentiality protection, sampling error, nonsampling error, and definitions, see Survey Methodology.

<http://www.census.gov/acs/www/UseData/index.htm>

Means of Transportation to Work (Workers 16 Years and Over)

Blacklick Estates CDP, Ohio



Source: B08105. MEANS OF TRANSPORTATION TO WORK - Universe: WORKERS 16 YEARS AND OVER
Data Set: 2008-2012 American Community Survey 5-Year Estimates

B11002. HOUSEHOLD TYPE BY RELATIVES AND NONRELATIVES FOR POPULATION IN HOUSEHOLDS

Data Set: 2008-2012 American Community Survey 5-Year Estimates

	Blacklick Estates CDP, Ohio					
	African American	Margin of Error (+/-)	% of AA Total	White, Not Hispanic	Margin of Error (+/-)	% of NHW Total
Total:	1565	449	100.0%	6657	574	100.0%
In family households	1373	472	87.7%	5665	601	85.1%
In nonfamily households	192	146	12.3%	992	301	14.9%

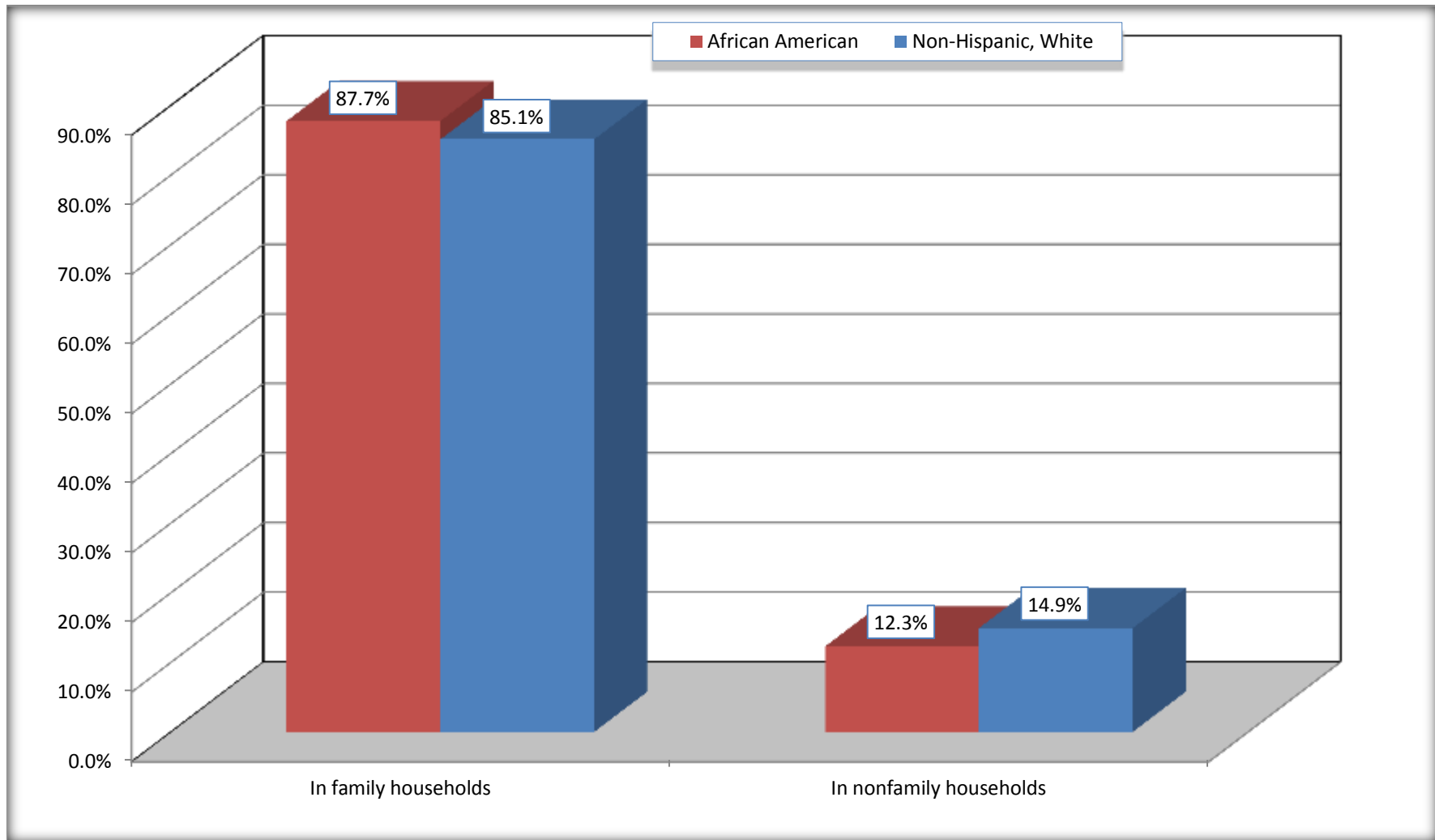
Source: U.S. Census Bureau, 2008-2012 American Community Survey

For information on confidentiality protection, sampling error, nonsampling error, and definitions, see Survey Methodology.

<http://www.census.gov/acs/www/UseData/index.htm>

Household Type for Population in Households

Blacklick Estates CDP, Ohio



Source: B11002. HOUSEHOLD TYPE BY RELATIVES AND NONRELATIVES FOR POPULATION IN HOUSEHOLDS
Data Set: 2008-2012 American Community Survey 5-Year Estimates

B12002. MARITAL STATUS FOR THE POPULATION 15 YEARS AND OVER

Data Set: 2008-2012 American Community Survey 5-Year Estimates

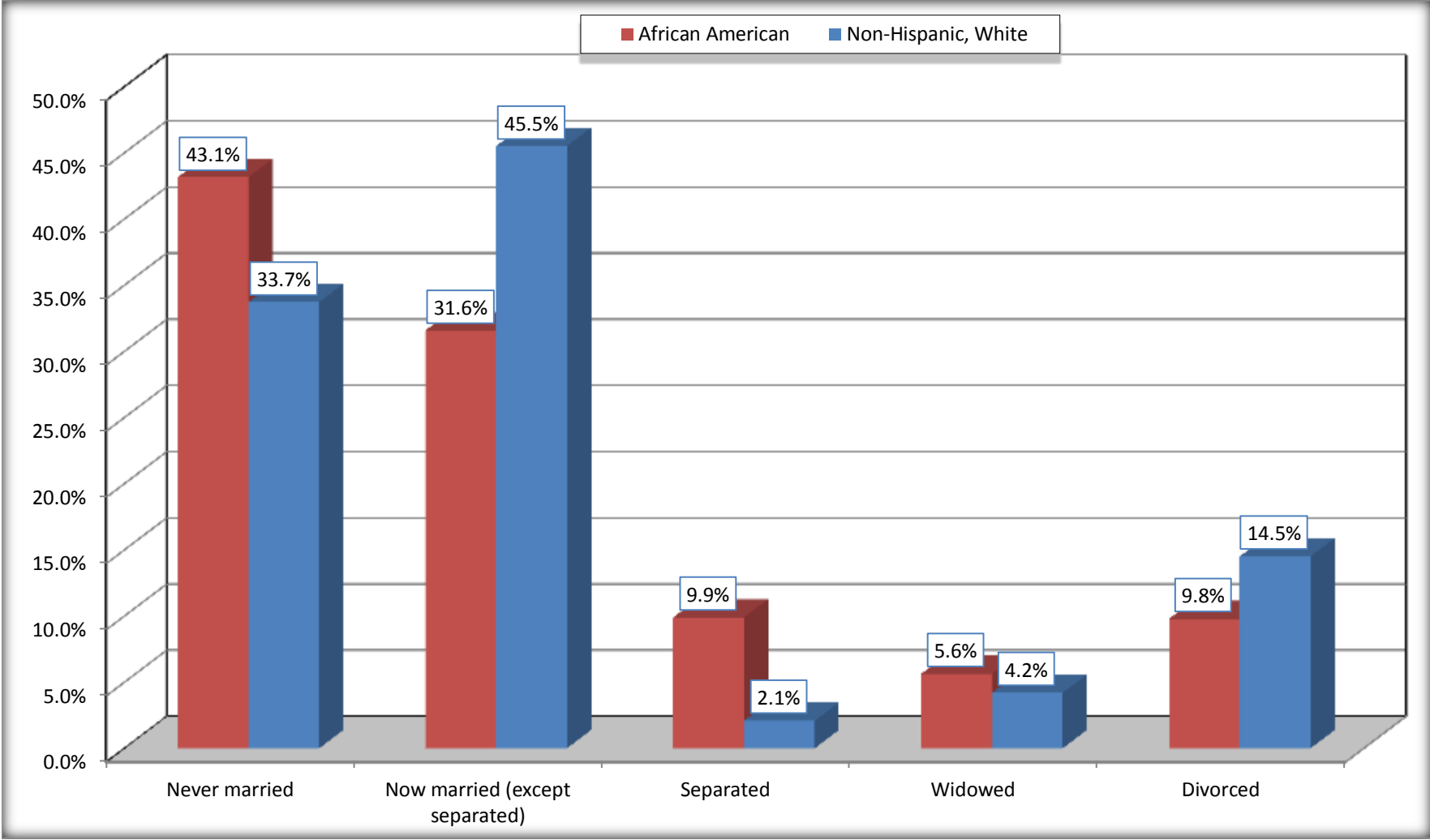
	Blacklick Estates CDP, Ohio					
	African American	Margin of Error (+/-)	% of AA Total	White, Not Hispanic	Margin of Error (+/-)	% of NHW Total
Total:	890	216	100.0%	5,322	453	100.0%
Never married	384	NC	43.1%	1,794	NC	33.7%
Now married (except separated)	281	NC	31.6%	2,422	NC	45.5%
Separated	88	NC	9.9%	111	NC	2.1%
Widowed	50	NC	5.6%	223	NC	4.2%
Divorced	87	NC	9.8%	772	NC	14.5%
Male:	370	154	41.6%	2,703	303	50.8%
Never married	96	86	10.8%	1,048	251	19.7%
Now married (except separated)	183	97	20.6%	1,223	161	23.0%
Separated	25	37	2.8%	59	47	1.1%
Widowed	34	43	3.8%	68	64	1.3%
Divorced	32	35	3.6%	305	117	5.7%
Female:	520	151	58.4%	2,619	276	49.2%
Never married	288	113	32.4%	746	178	14.0%
Now married (except separated)	98	61	11.0%	1,199	159	22.5%
Separated	63	51	7.1%	52	51	1.0%
Widowed	16	25	1.8%	155	75	2.9%
Divorced	55	39	6.2%	467	131	8.8%

Source: U.S. Census Bureau, 2008-2012 American Community Survey

For information on confidentiality protection, sampling error, nonsampling error, and definitions, see Survey Methodology.

<http://www.census.gov/acs/www/UseData/index.htm>

Marital Status for the Population 15 Years and Over
Blacklick Estates CDP, Ohio



Source: B12002. MARITAL STATUS FOR THE POPULATION 15 YEARS AND OVER
Data Set: 2008-2012 American Community Survey 5-Year Estimates

C15002. SEX BY EDUCATIONAL ATTAINMENT FOR THE POPULATION 25 YEARS AND OVER

Data Set: 2008-2012 American Community Survey 5-Year Estimates

	Blacklick Estates CDP, Ohio					
	African American	Margin of Error (+/-)	% of AA Total	White, Not Hispanic	Margin of Error (+/-)	% of NHW Total
Total:	812	225	100.0%	4,333	363	100.0%
Less than high school diploma	91	NC	11.2%	606	NC	14.0%
High school graduate, GED, or alternative	345	NC	42.5%	2,255	NC	52.0%
Some college or associate's degree	277	NC	34.1%	1,068	NC	24.6%
Bachelor's degree or higher	99	NC	12.2%	404	NC	9.3%
Male:	359	153	44.2%	2,144	249	49.5%
Less than high school diploma	18	29	2.2%	287	93	6.6%
High school graduate, GED, or alternative	171	116	21.1%	1,221	209	28.2%
Some college or associate's degree	110	68	13.5%	460	144	10.6%
Bachelor's degree or higher	60	46	7.4%	176	75	4.1%
Female:	453	135	55.8%	2,189	219	50.5%
Less than high school diploma	73	59	9.0%	319	119	7.4%
High school graduate, GED, or alternative	174	73	21.4%	1,034	217	23.9%
Some college or associate's degree	167	87	20.6%	608	162	14.0%
Bachelor's degree or higher	39	42	4.8%	228	92	5.3%

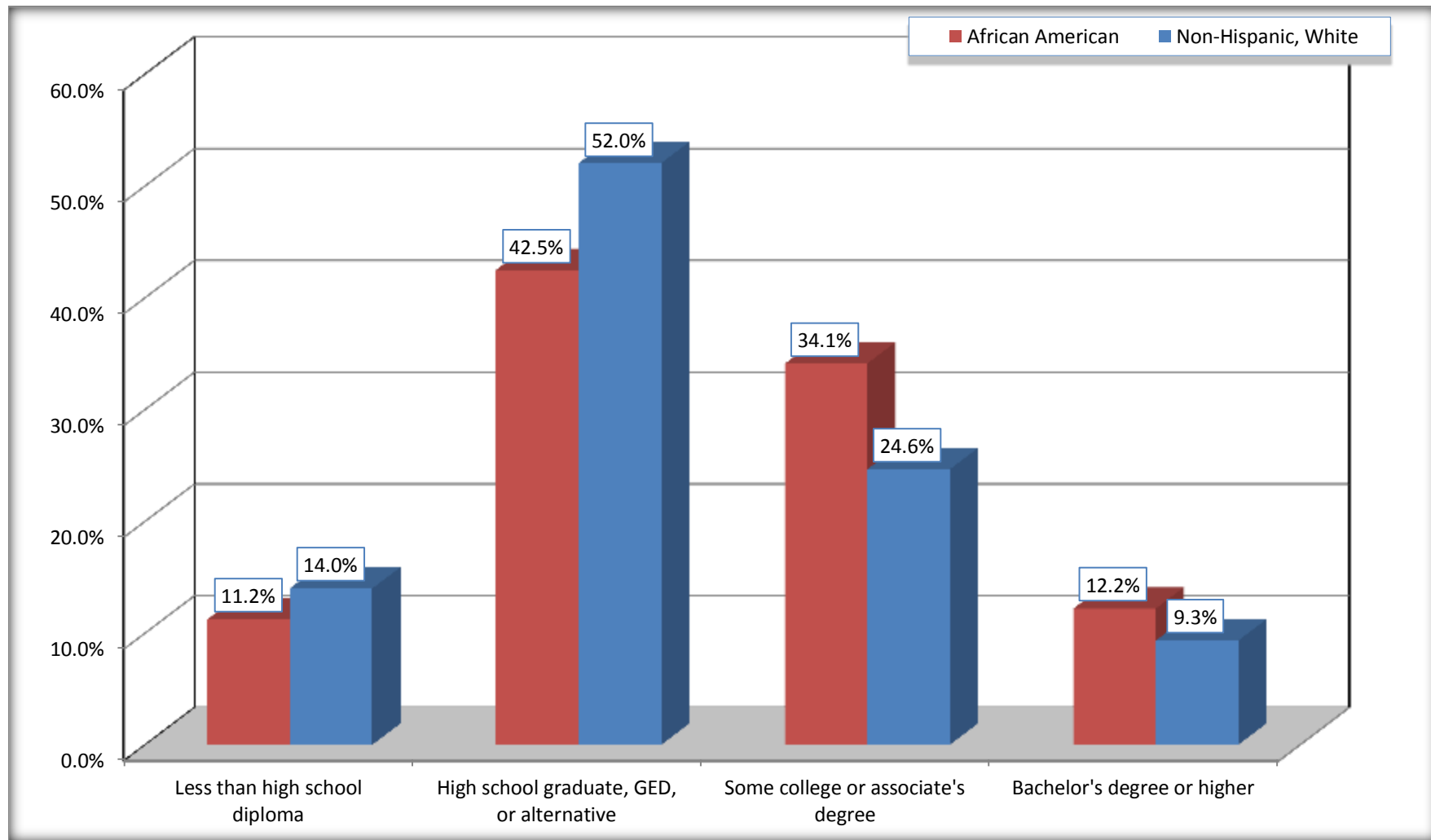
Source: U.S. Census Bureau, 2008-2012 American Community Survey

For information on confidentiality protection, sampling error, nonsampling error, and definitions, see Survey Methodology.

<http://www.census.gov/acs/www/UseData/index.htm>

Educational Attainment for the Population 25 Years and Older

Blacklick Estates CDP, Ohio



Source: C15002. SEX BY EDUCATIONAL ATTAINMENT FOR THE POPULATION 25 YEARS AND OVER
Data Set: 2008-2012 American Community Survey 5-Year Estimates

B17010. POVERTY STATUS IN THE PAST 12 MONTHS OF FAMILIES BY FAMILY TYPE BY PRESENCE OF RELATED CHILDREN UNDER 18 YEARS

Data Set: 2008-2012 American Community Survey 5-Year Estimates

	Blacklick Estates CDP, Ohio					
	African American	Margin of Error (+/-)	% of AA Total	White, Not Hispanic	Margin of Error (+/-)	% of NHW Total
Total:	348	107	100.0%	1,631	169	100.0%
Income in the past 12 months below poverty level:	63	52	18.1%	154	85	9.4%
Married-couple family:	8	12	2.3%	22	27	1.3%
With related children under 18 years	8	12	2.3%	15	24	0.9%
Other family:	55	51	15.8%	132	82	8.1%
Male householder, no wife present	0	16	0.0%	19	23	1.2%
With related children under 18 years	0	16	0.0%	19	23	1.2%
Female householder, no husband present	55	51	15.8%	113	81	6.9%
With related children under 18 years	55	51	15.8%	113	81	6.9%
Income in the past 12 months at or above poverty level:	285	101	81.9%	1,477	167	90.6%
Married-couple family:	135	85	38.8%	1,102	163	67.6%
With related children under 18 years	85	73	24.4%	427	120	26.2%
Other family:	150	65	43.1%	375	141	23.0%
Male householder, no wife present	24	33	6.9%	134	93	8.2%
With related children under 18 years	24	33	6.9%	116	88	7.1%
Female householder, no husband present	126	63	36.2%	241	107	14.8%
With related children under 18 years	102	55	29.3%	170	100	10.4%

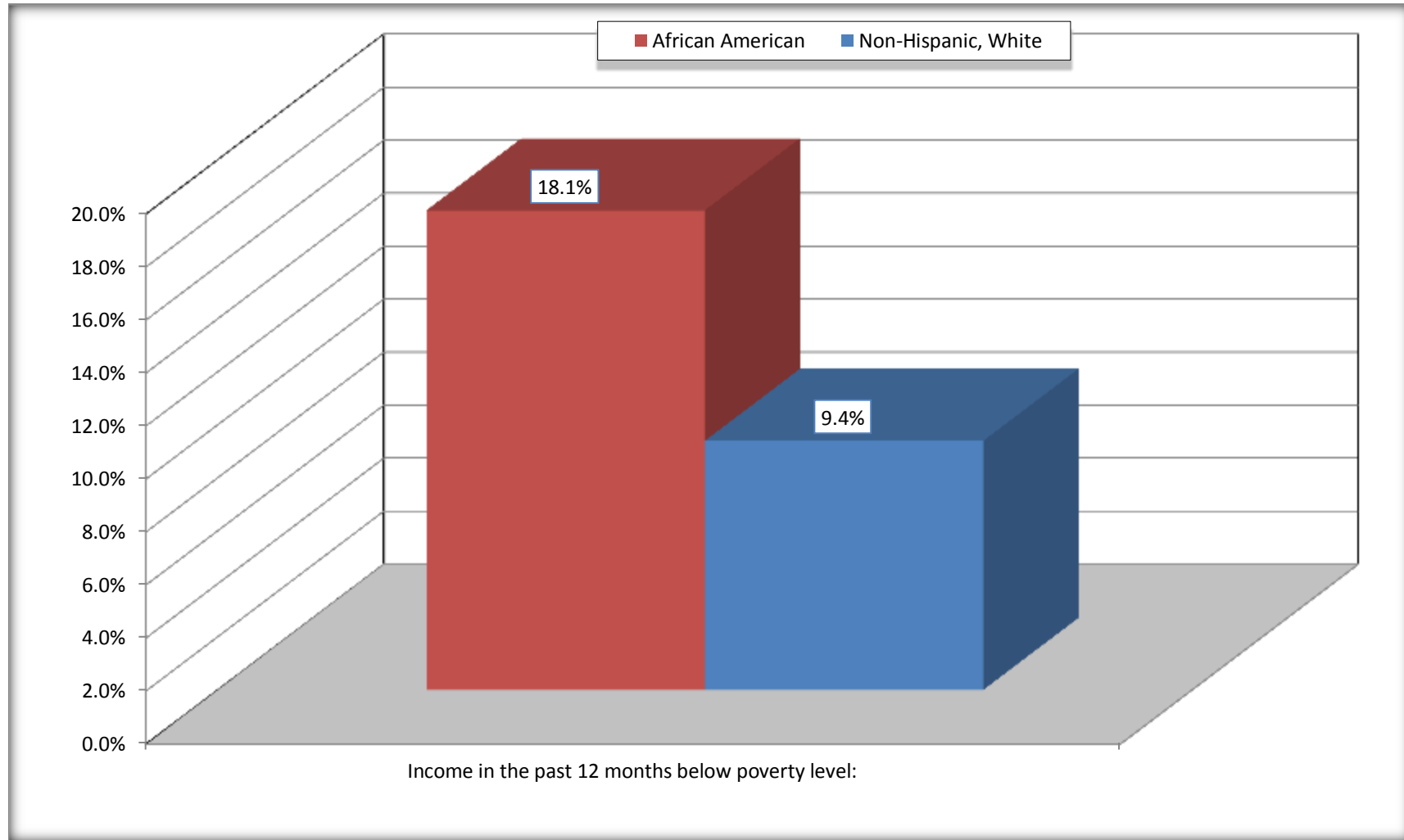
Source: U.S. Census Bureau, 2008-2012 American Community Survey

For information on confidentiality protection, sampling error, nonsampling error, and definitions, see Survey Methodology.

<http://www.census.gov/acs/www/UseData/index.htm>

Family Households Below Poverty in the Past 12 Months

Blacklick Estates CDP, Ohio

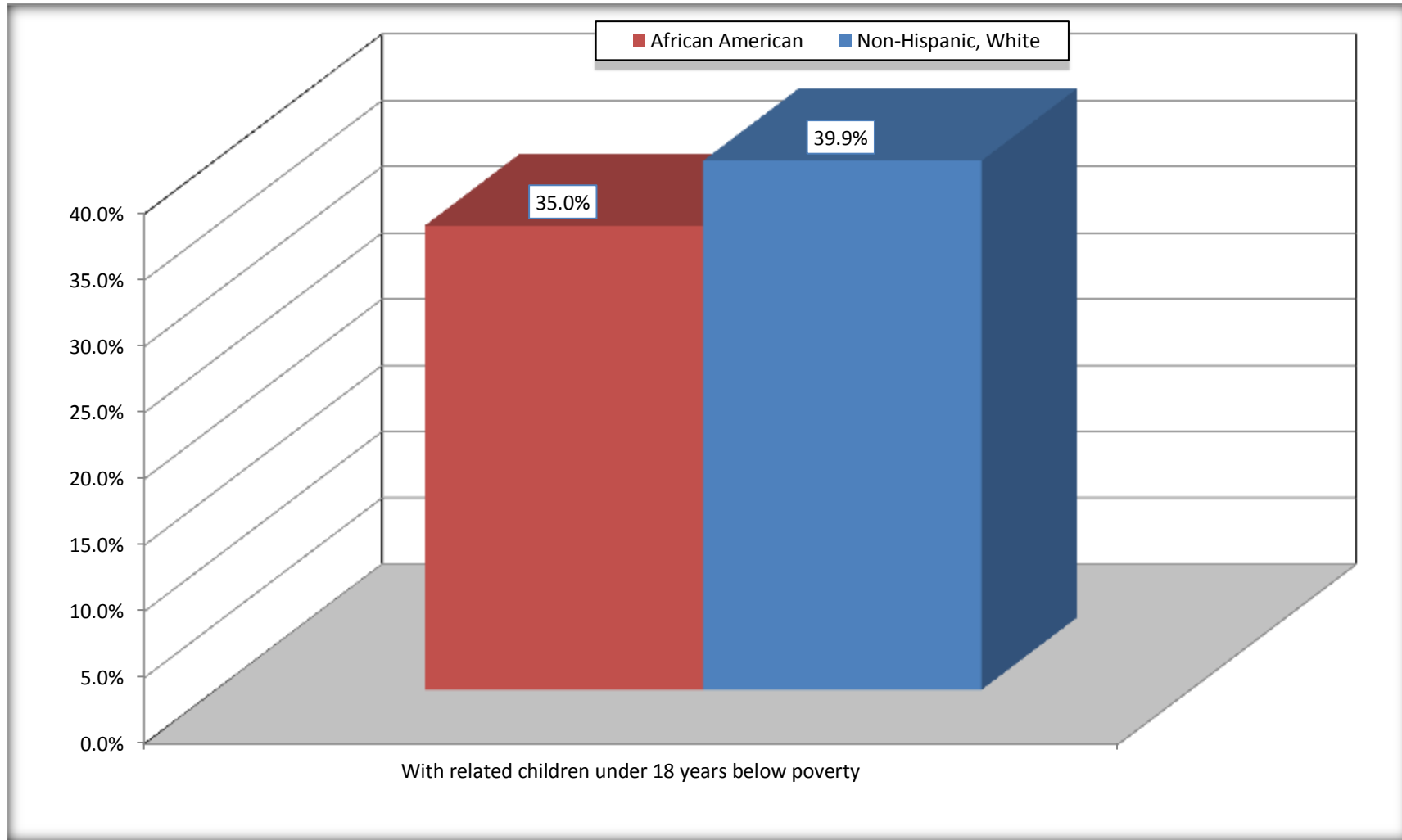


Source: B17010. POVERTY STATUS IN THE PAST 12 MONTHS OF FAMILIES BY FAMILY TYPE BY PRESENCE OF RELATED CHILDREN UNDER 18 YEARS

Data Set: 2008-2012 American Community Survey 5-Year Estimates

Female-headed Households with Related Children Below Poverty in the Past 12 Months

Blacklick Estates CDP, Ohio



Source: B17010. POVERTY STATUS IN THE PAST 12 MONTHS OF FAMILIES BY FAMILY TYPE BY PRESENCE OF RELATED CHILDREN UNDER 18 YEARS

Data Set: 2008-2012 American Community Survey 5-Year Estimates

B17020 POVERTY STATUS IN THE PAST 12 MONTHS BY AGE - Universe: POPULATION FOR WHOM POVERTY STATUS IS DETERMINED

Data Set: 2008-2012 American Community Survey 5-Year Estimates

	Blacklick Estates CDP, Ohio					
	African American	Margin of Error (+/-)	% of AA By Age	White, Not Hispanic	Margin of Error (+/-)	% of NHW By Age
Total:	1,470	386	100.0%	6,419	570	100.0%
Income in the past 12 months below poverty level:	539	348	36.7%	551	234	8.6%
Under 18 years	279	NC	43.1%	184	NC	12.7%
18 to 64 years	243	157	31.4%	353	154	8.7%
65 years and over	17	NC	34.0%	14	NC	1.6%
Income in the past 12 months at or above poverty level:	931	245	63.3%	5,868	560	91.4%
Under 18 years	368	NC	56.9%	1,260	NC	87.3%
18 to 64 years	530	166	68.6%	3,725	361	91.3%
65 years and over	33	NC	66.0%	883	NC	98.4%

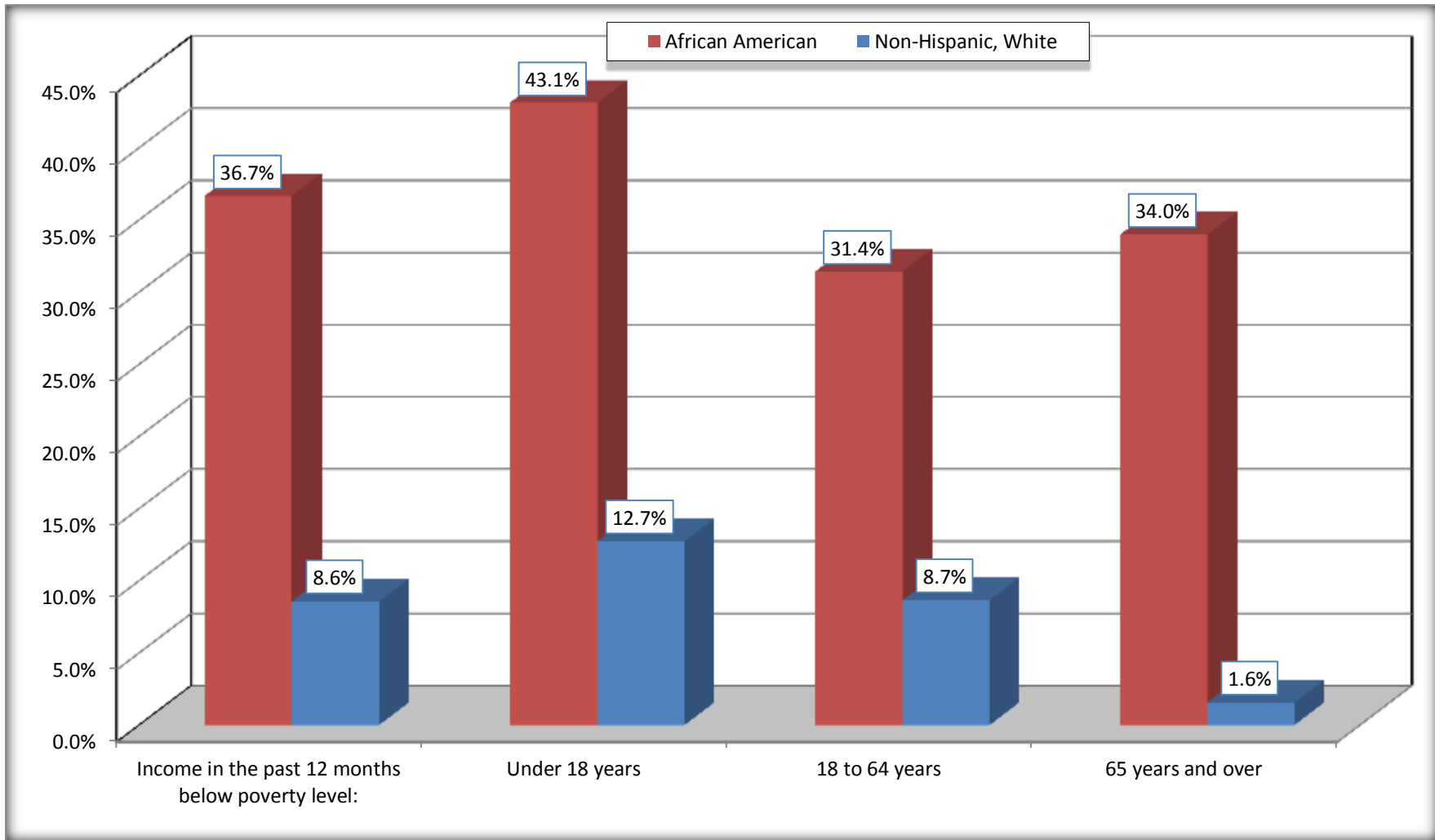
Source: U.S. Census Bureau, 2008-2012 American Community Survey

For information on confidentiality protection, sampling error, nonsampling error, and definitions, see Survey Methodology.

<http://www.census.gov/acs/www/UseData/index.htm>

Population Below Poverty in the Past 12 Months

Blacklick Estates CDP, Ohio



Source: B17020 POVERTY STATUS IN THE PAST 12 MONTHS BY AGE - Universe: POPULATION FOR WHOM POVERTY STATUS IS DETERMINED
Data Set: 2008-2012 American Community Survey 5-Year Estimates

B19001. HOUSEHOLD INCOME IN THE PAST 12 MONTHS (IN 2010 INFLATION-ADJUSTED DOLLARS)

Data Set: 2008-2012 American Community Survey 5-Year Estimates

	Blacklick Estates CDP, Ohio					
	African American	Margin of Error (+/-)	% of AA Total	White, Not Hispanic	Margin of Error (+/-)	% of NHW Total
Total:	504	125	100.0%	2,318	211	100.0%
Less than \$ 10,000	108	74	21.4%	102	70	4.4%
\$ 10,000 to \$ 14,999	11	19	2.2%	47	45	2.0%
\$ 15,000 to \$ 24,999	30	NC	6.0%	241	NC	10.4%
\$ 25,000 to \$ 34,999	110	NC	21.8%	158	NC	6.8%
\$ 35,000 to \$ 49,999	78	NC	15.5%	436	NC	18.8%
\$ 50,000 to \$ 74,999	61	NC	12.1%	650	NC	28.0%
\$ 75,000 to \$ 99,999	46	37	9.1%	514	133	22.2%
\$ 100,000 to \$ 149,999	36	NC	7.1%	159	NC	6.9%
\$ 150,000 to \$ 199,999	24	30	4.8%	11	17	0.5%
\$ 200,000 or more	0	16	0.0%	0	16	0.0%

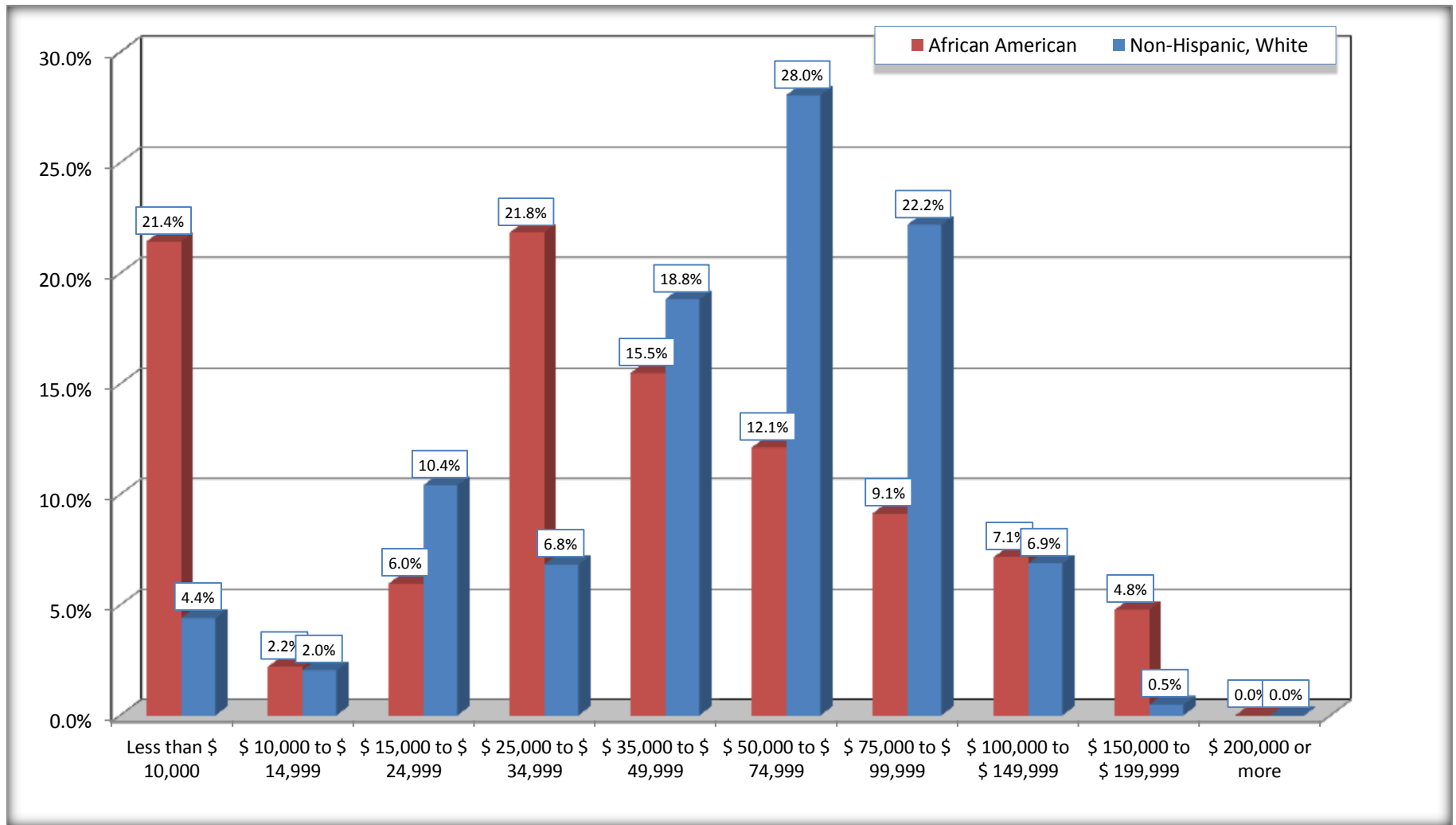
Source: U.S. Census Bureau, 2008-2012 American Community Survey

For information on confidentiality protection, sampling error, nonsampling error, and definitions, see Survey Methodology.

<http://www.census.gov/acs/www/UseData/index.htm>

Household Income in the Past 12 Months

Blacklick Estates CDP, Ohio



Source: B19001. HOUSEHOLD INCOME IN THE PAST 12 MONTHS (IN 2010 INFLATION-ADJUSTED DOLLARS)
Data Set: 2008-2012 American Community Survey 5-Year Estimates

B19013. MEDIAN HOUSEHOLD INCOME IN THE PAST 12 MONTHS (IN 2010 INFLATION-ADJUSTED DOLLARS)

Data Set: 2008-2012 American Community Survey 5-Year Estimates

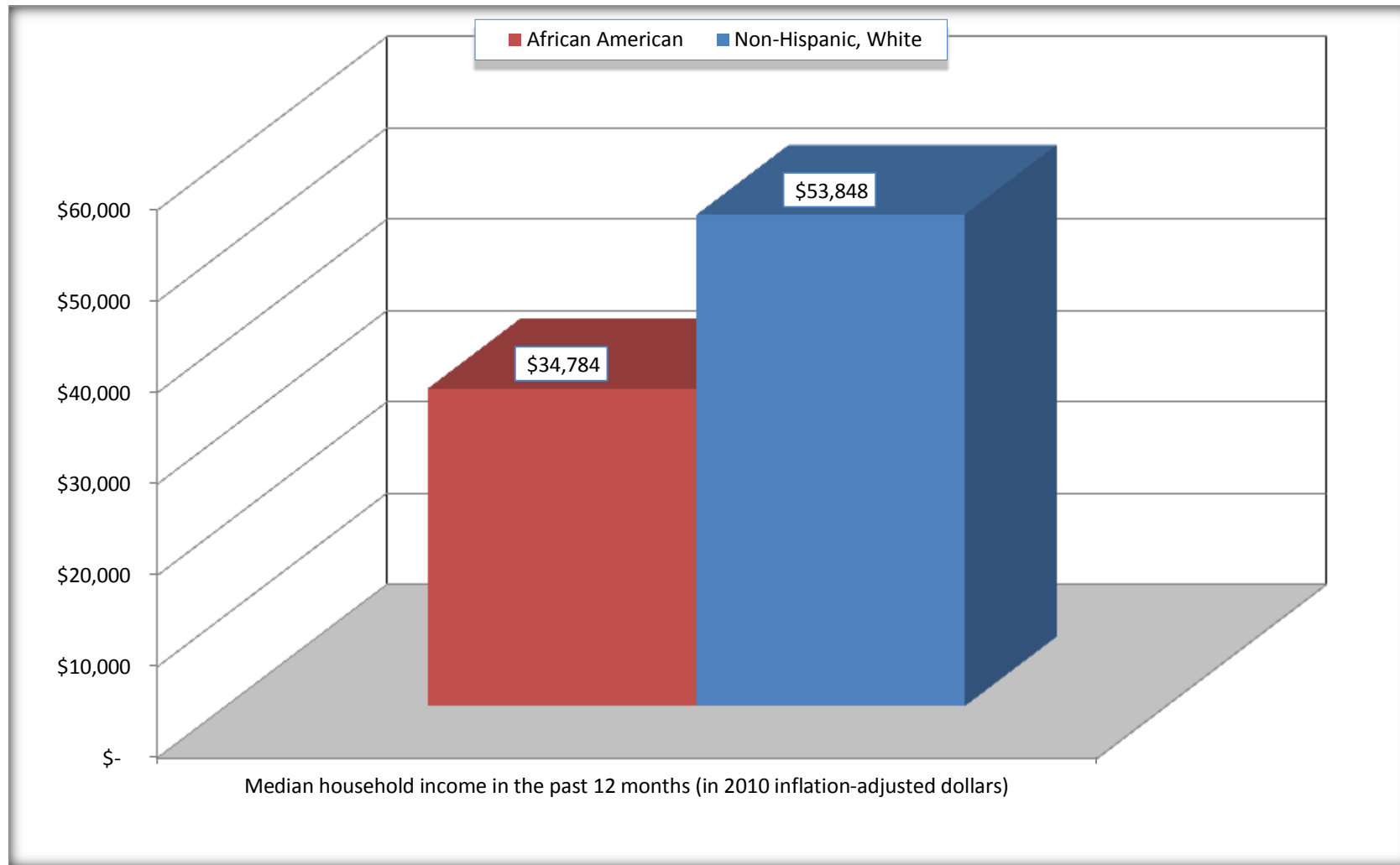
	Blacklick Estates CDP, Ohio			
	African American	Margin of Error (+/-)	White, Not Hispanic	Margin of Error (+/-)
Median household income in the past 12 months (in 2010 inflation-adjusted dollars)	\$ 34,784	\$ 5,469	\$ 53,848	\$ 2,896

Source: U.S. Census Bureau, 2008-2012 American Community Survey

For information on confidentiality protection, sampling error, nonsampling error, and definitions, see Survey Methodology.
<http://www.census.gov/acs/www/UseData/index.htm>

Median Household Income in the Past 12 Months

Blacklick Estates CDP, Ohio



Source: B19013. MEDIAN HOUSEHOLD INCOME IN THE PAST 12 MONTHS (IN 2010 INFLATION-ADJUSTED DOLLARS)
Data Set: 2008-2012 American Community Survey 5-Year Estimates

B19101. FAMILY INCOME IN THE PAST 12 MONTHS (IN 2010 INFLATION-ADJUSTED DOLLARS)

Data Set: 2008-2012 American Community Survey 5-Year Estimates

	Blacklick Estates CDP, Ohio					
	African American	Margin of Error (+/-)	% of AA Total	White, Not Hispanic	Margin of Error (+/-)	% of NHW Total
Total:	348	107	100.0%	1,631	169	100.0%
Less than \$ 10,000	37	46	10.6%	82	72	5.0%
\$ 10,000 to \$ 14,999	0	16	0.0%	0	16	0.0%
\$ 15,000 to \$ 24,999	18	NC	5.2%	208	NC	12.8%
\$ 25,000 to \$ 34,999	87	NC	25.0%	79	NC	4.8%
\$ 35,000 to \$ 49,999	44	NC	12.6%	279	NC	17.1%
\$ 50,000 to \$ 74,999	67	NC	19.3%	398	NC	24.4%
\$ 100,000 to \$ 149,999	36	NC	10.3%	153	NC	9.4%
\$ 150,000 to \$ 199,999	24	30	6.9%	11	17	0.7%
\$ 200,000 or more	0	16	0.0%	0	16	0.0%

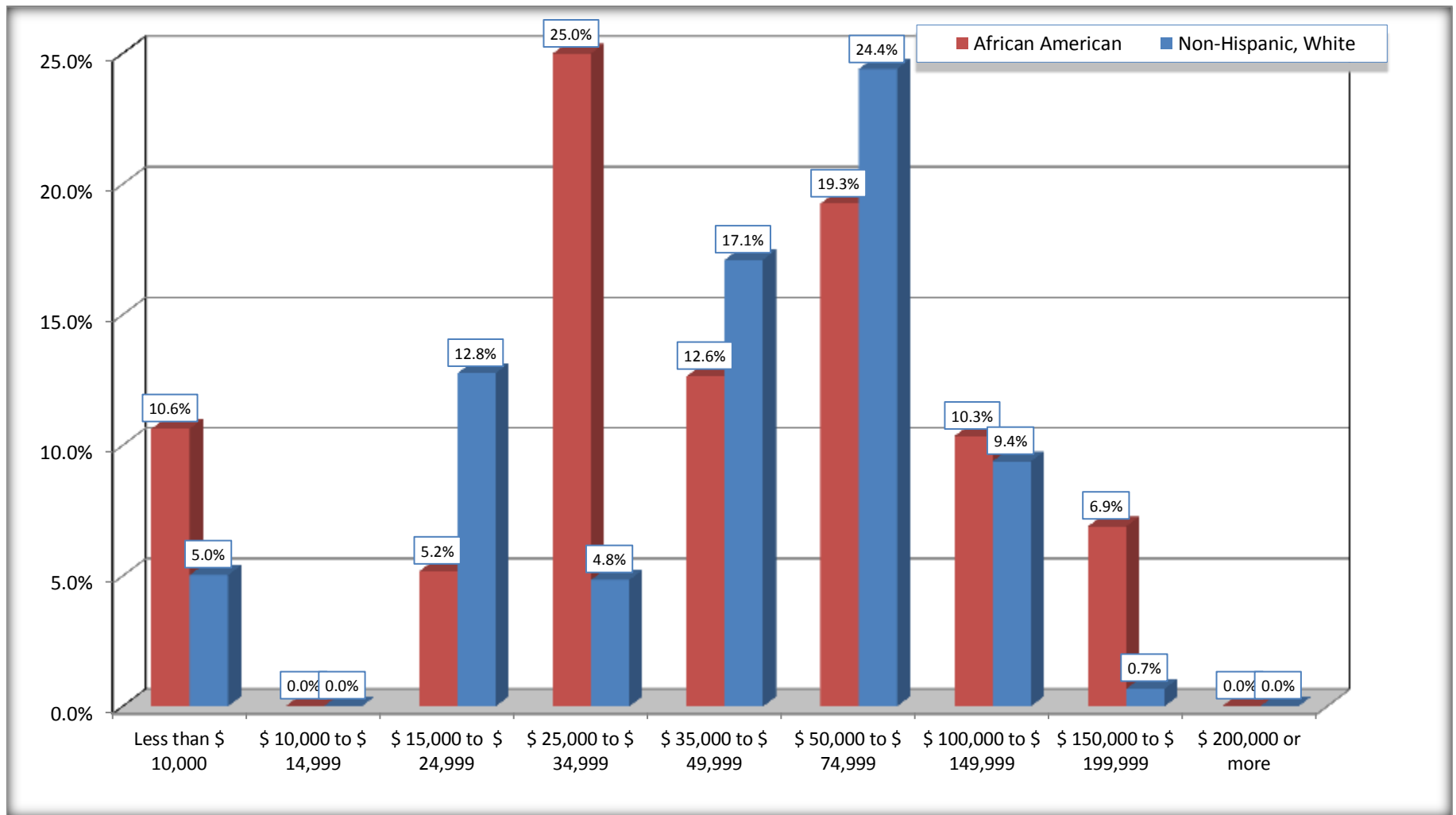
Source: U.S. Census Bureau, 2008-2012 American Community Survey

For information on confidentiality protection, sampling error, nonsampling error, and definitions, see Survey Methodology.

<http://www.census.gov/acs/www/UseData/index.htm>

Family Income in the Past 12 Months

Blacklick Estates CDP, Ohio



Source: B19101. FAMILY INCOME IN THE PAST 12 MONTHS (IN 2010 INFLATION-ADJUSTED DOLLARS)
Data Set: 2008-2012 American Community Survey 5-Year Estimates

B19113. MEDIAN FAMILY INCOME IN THE PAST 12 MONTHS (IN 2010 INFLATION-ADJUSTED DOLLARS)

Data Set: 2008-2012 American Community Survey 5-Year Estimates

	Blacklick Estates CDP, Ohio			
	African American	Margin of Error (+/-)	White, Not Hispanic	Margin of Error (+/-)
Median family income in the past 12 months (in 2010 inflation-adjusted dollars)	\$ 48,125	\$ 16,690	\$ 56,895	\$ 7,891

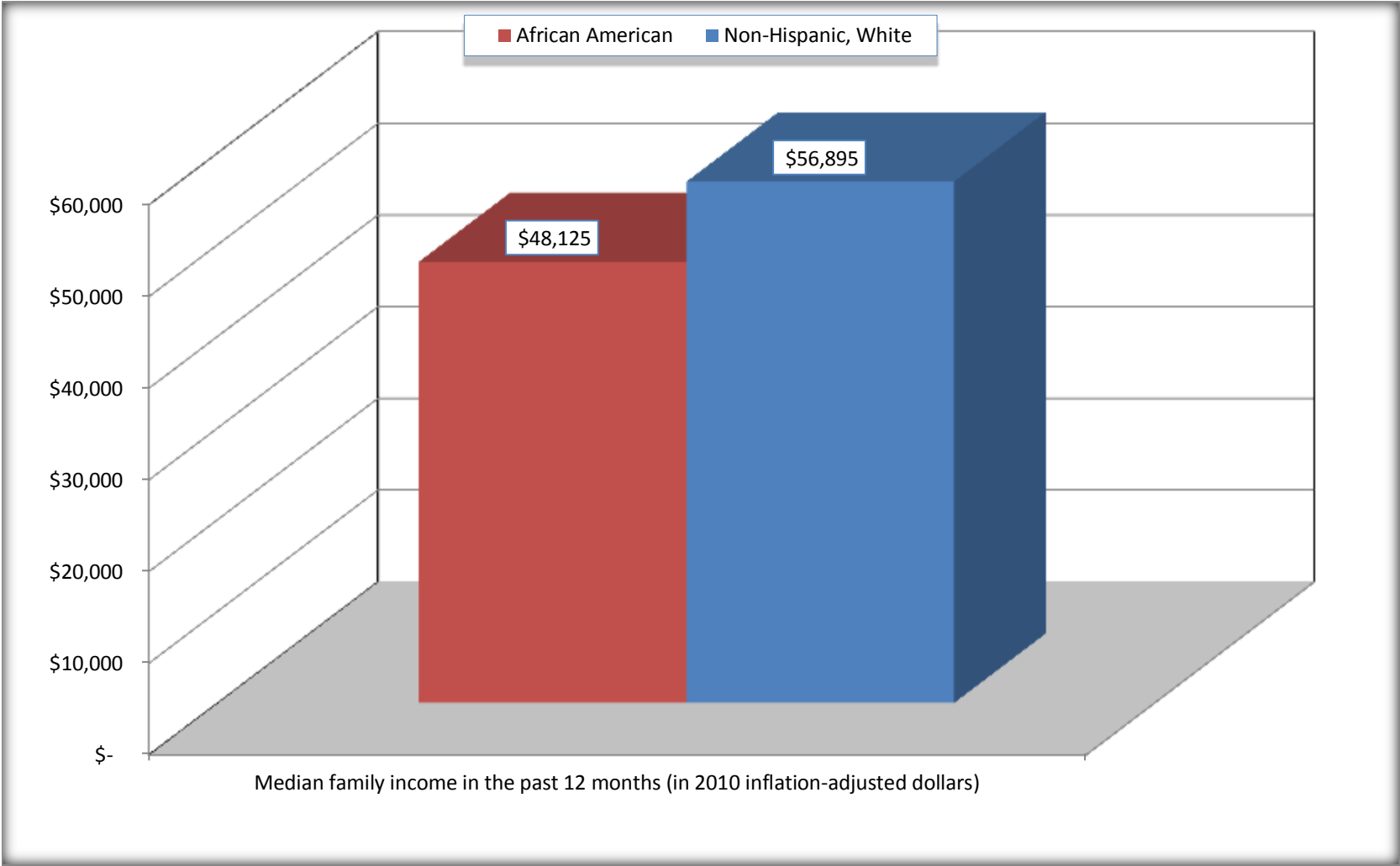
Source: U.S. Census Bureau, 2008-2012 American Community Survey

For information on confidentiality protection, sampling error, nonsampling error, and definitions, see Survey Methodology.

<http://www.census.gov/acs/www/UseData/index.htm>

Median Family Income in the Past 12 Months

Blacklick Estates CDP, Ohio



Source: B19113. MEDIAN FAMILY INCOME IN THE PAST 12 MONTHS (IN 2010 INFLATION-ADJUSTED DOLLARS)
Data Set: 2008-2012 American Community Survey 5-Year Estimates

B19202. MEDIAN NONFAMILY HOUSEHOLD INCOME IN THE PAST 12 MONTHS (IN 2010 INFLATION-ADJUSTED DOLLARS)

Data Set: 2008-2012 American Community Survey 5-Year Estimates

	Blacklick Estates CDP, Ohio			
	African American	Margin of Error (+/-)	White, Not Hispanic	Margin of Error (+/-)
Median nonfamily household income in the past 12 months (in 2010 inflation-adjusted dollars)	\$ 11,591	\$ 32,256	\$ 39,806	\$ 7,691

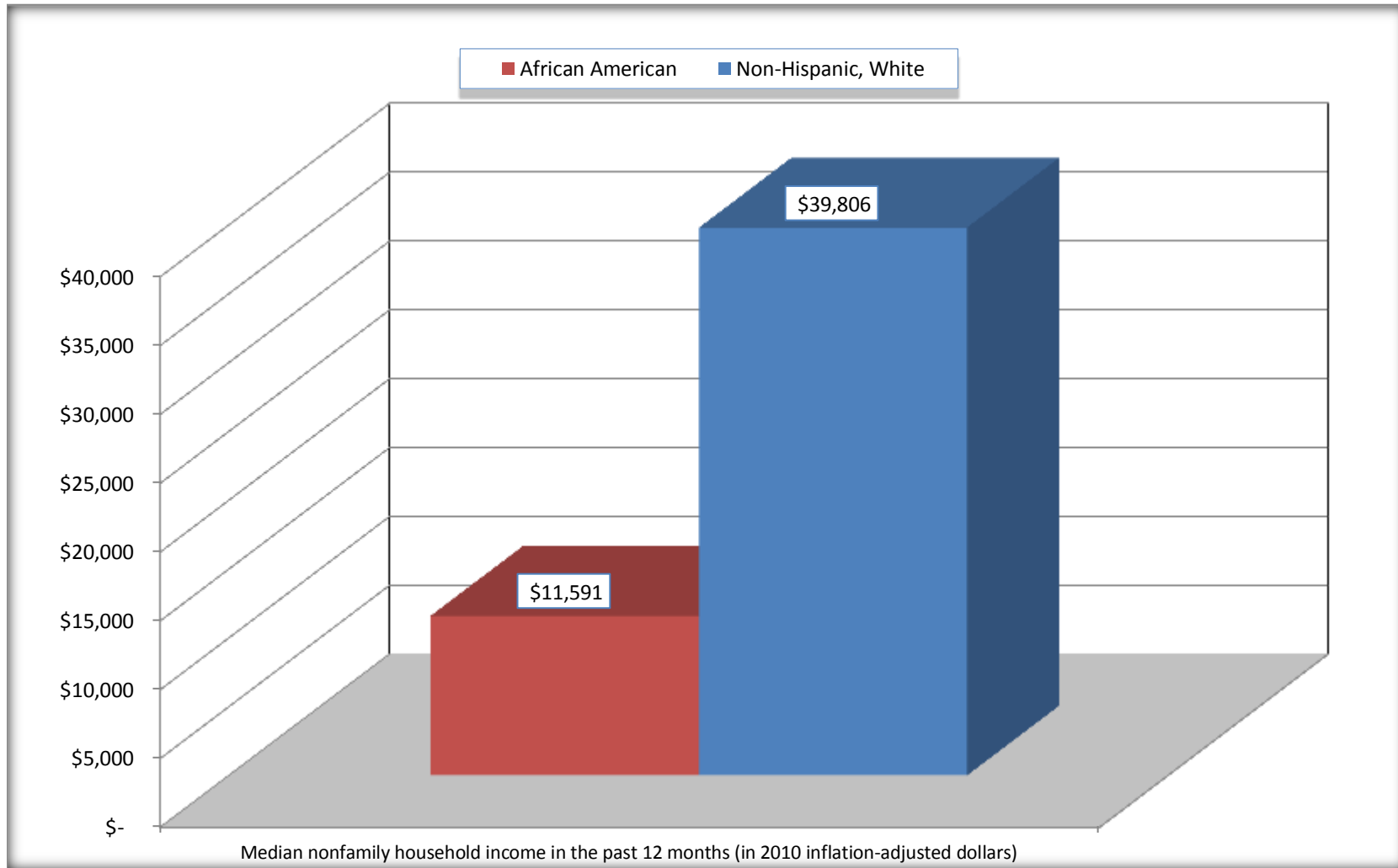
Source: U.S. Census Bureau, 2008-2012 American Community Survey

For information on confidentiality protection, sampling error, nonsampling error, and definitions, see Survey Methodology.

<http://www.census.gov/acs/www/UseData/index.htm>

Median Non-Family Income in the Past 12 Months

Blacklick Estates CDP, Ohio



Source: B19202. MEDIAN NONFAMILY HOUSEHOLD INCOME IN THE PAST 12 MONTHS (IN 2010 INFLATION-ADJUSTED DOLLARS)
Data Set: 2008-2012 American Community Survey 5-Year Estimates

B19301. PER CAPITA INCOME IN THE PAST 12 MONTHS (IN 2010 INFLATION-ADJUSTED DOLLARS)

Data Set: 2008-2012 American Community Survey 5-Year Estimates

	Blacklick Estates CDP, Ohio			
	African American	Margin of Error (+/-)	White, Not Hispanic	Margin of Error (+/-)
Per capita income in the past 12 months (in 2010 inflation-adjusted dollars)	\$ 16,346	\$ 5,736	\$ 20,969	\$ 1,552

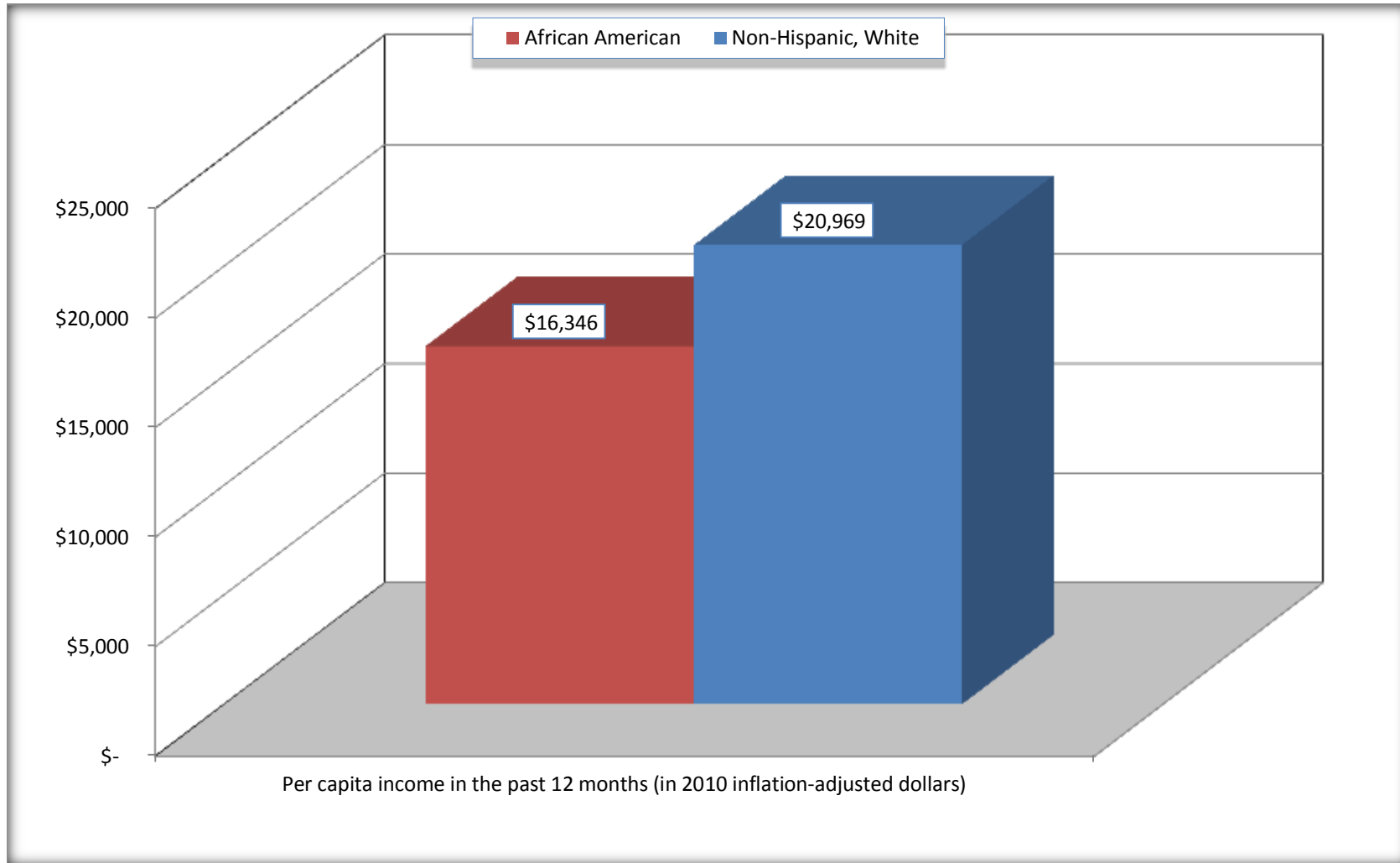
Source: U.S. Census Bureau, 2008-2012 American Community Survey

For information on confidentiality protection, sampling error, nonsampling error, and definitions, see Survey Methodology.

<http://www.census.gov/acs/www/UseData/index.htm>

Per capita Income in the Past 12 Months

Blacklick Estates CDP, Ohio



Source: B19301. PER CAPITA INCOME IN THE PAST 12 MONTHS (IN 2010 INFLATION-ADJUSTED DOLLARS)
Data Set: 2008-2012 American Community Survey 5-Year Estimates

B20017. MEDIAN EARNINGS IN THE PAST 12 MONTHS (IN 2010 INFLATION-ADJUSTED DOLLARS) BY SEX BY WORK EXPERIENCE IN THE PAST 12 MONTHS FOR THE POPULATION 16 YEARS AND OVER WITH EARNINGS IN THE PAST 12 MONTHS

Data Set: 2008-2012 American Community Survey 5-Year Estimates

	Blacklick Estates CDP, Ohio			
	African American	Margin of Error (+/-)	White, Not Hispanic	Margin of Error (+/-)
Median earnings in the past 12 months (in 2010 inflation-adjusted dollars) --				
Total:	\$ 28,303	\$ 4,640	\$ 25,744	\$ 2,492
Male --				
Total	\$ 32,219	\$ 15,169	\$ 27,722	\$ 6,311
Worked full-time, year-round in the past 12 months	\$ 37,981	\$ 15,112	\$ 37,281	\$ 3,766
Other	\$ -	\$ -	\$ 8,807	\$ 3,198
Female --				
Total	\$ 24,537	\$ 6,476	\$ 25,055	\$ 3,312
Worked full-time, year-round in the past 12 months	\$ 29,792	\$ 12,285	\$ 33,160	\$ 7,355
Other	\$ 9,318	\$ 12,045	\$ 13,523	\$ 6,996

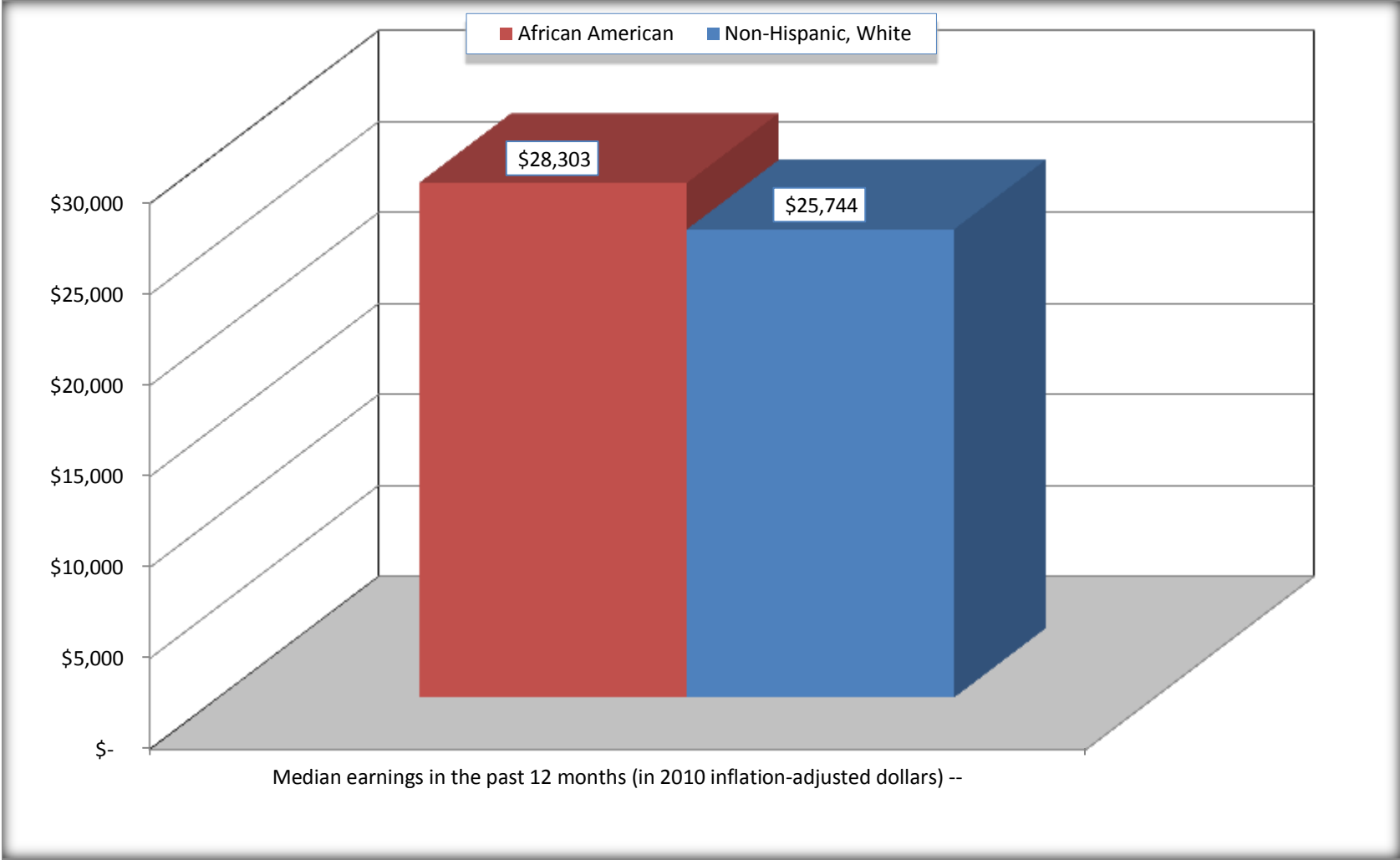
Source: U.S. Census Bureau, 2008-2012 American Community Survey

For information on confidentiality protection, sampling error, nonsampling error, and definitions, see Survey Methodology.

<http://www.census.gov/acs/www/UseData/index.htm>

Median earnings in the Past 12 Months (16 Years and Over with Earnings)

Blacklick Estates CDP, Ohio



Source: B20017. MEDIAN EARNINGS IN THE PAST 12 MONTHS (IN 2010 INFLATION-ADJUSTED DOLLARS) BY SEX BY WORK EXPERIENCE IN THE PAST 12 MONTHS FOR THE POPULATION 16 YEARS AND OVER WITH EARNINGS IN THE PAST 12 MONTHS
Data Set: 2008-2012 American Community Survey 5-Year Estimates

B20005. SEX BY WORK EXPERIENCE IN THE PAST 12 MONTHS BY EARNINGS IN THE PAST 12 MONTHS (IN 2010 INFLATION-ADJUSTED DOLLARS) FOR THE POPULATION 16 YEARS AND OVER

Data Set: 2008-2012 American Community Survey 5-Year Estimates

	Blacklick Estates CDP, Ohio					
	African American	Margin of Error (+/-)	% of AA Total	White, Not Hispanic	Margin of Error (+/-)	% of NHW Total
Total:	890	216	100.0%	5,162	423	100.0%
Worked full-time, year-round in the past 12 months:	429	NC	48.2%	2,181	NC	42.3%
No earnings	0	NC	0.0%	0	NC	0.0%
With earnings:	429	NC	48.2%	2,181	NC	42.3%
\$ 1 to \$ 9,999 or loss	0	NC	0.0%	43	NC	0.8%
\$ 10,000 to \$ 19,999	56	NC	6.3%	212	NC	4.1%
\$ 20,000 to \$ 29,999	113	NC	12.7%	557	NC	10.8%
\$ 30,000 to \$ 49,999	114	NC	12.8%	864	NC	16.7%
\$ 50,000 to \$ 74,999	69	NC	7.8%	358	NC	6.9%
\$ 75,000 or more	77	NC	8.7%	147	NC	2.8%
Other:	461	NC	51.8%	2,981	NC	57.7%
No earnings	241	NC	27.1%	1,451	NC	28.1%
With earnings: less than full time, year-round	220	NC	24.7%	1,530	NC	29.6%
Male:	370	154	41.6%	2,615	293	50.7%
Worked full-time, year-round in the past 12 months:	195	100	21.9%	1,205	228	23.3%
No earnings	0	16	0.0%	0	16	0.0%
With earnings:	195	100	21.9%	1,205	228	23.3%
\$ 1 to \$ 9,999 or loss	0	NC	0.0%	43	NC	0.8%
\$ 10,000 to \$ 19,999	19	NC	2.1%	68	NC	1.3%
\$ 20,000 to \$ 29,999	27	NC	3.0%	246	NC	4.8%
\$ 30,000 to \$ 49,999	83	NC	9.3%	533	NC	10.3%
\$ 50,000 to \$ 74,999	18	NC	2.0%	194	NC	3.8%
\$ 75,000 or more	48	NC	5.4%	121	NC	2.3%

	Blacklick Estates CDP, Ohio					
	African American	Margin of Error (+/-)	% of AA Total	White, Not Hispanic	Margin of Error (+/-)	% of NHW Total
Other:	175	116	19.7%	1,410	287	27.3%
No earnings	159	110	17.9%	653	169	12.7%
With earnings:	16	28	1.8%	757	213	14.7%
Female:	520	151	58.4%	2,547	252	49.3%
Worked full-time, year-round in the past 12 months:	234	127	26.3%	976	161	18.9%
No earnings	0	16	0.0%	0	16	0.0%
With earnings:	234	127	26.3%	976	161	18.9%
\$ 1 to \$ 9,999 or less	0	NC	0.0%	0	NC	0.0%
\$ 10,000 to \$ 19,999	37	NC	4.2%	144	NC	2.8%
\$ 20,000 to \$ 29,999	86	NC	9.7%	311	NC	6.0%
\$ 30,000 to \$ 49,999	31	NC	3.5%	331	NC	6.4%
\$ 50,000 to \$ 74,999	51	NC	5.7%	164	NC	3.2%
\$ 75,000 or more	29	NC	3.3%	26	NC	0.5%
Other:	286	152	32.1%	1,571	207	30.4%
No earnings	82	61	9.2%	798	155	15.5%
With earnings:	204	124	22.9%	773	161	15.0%

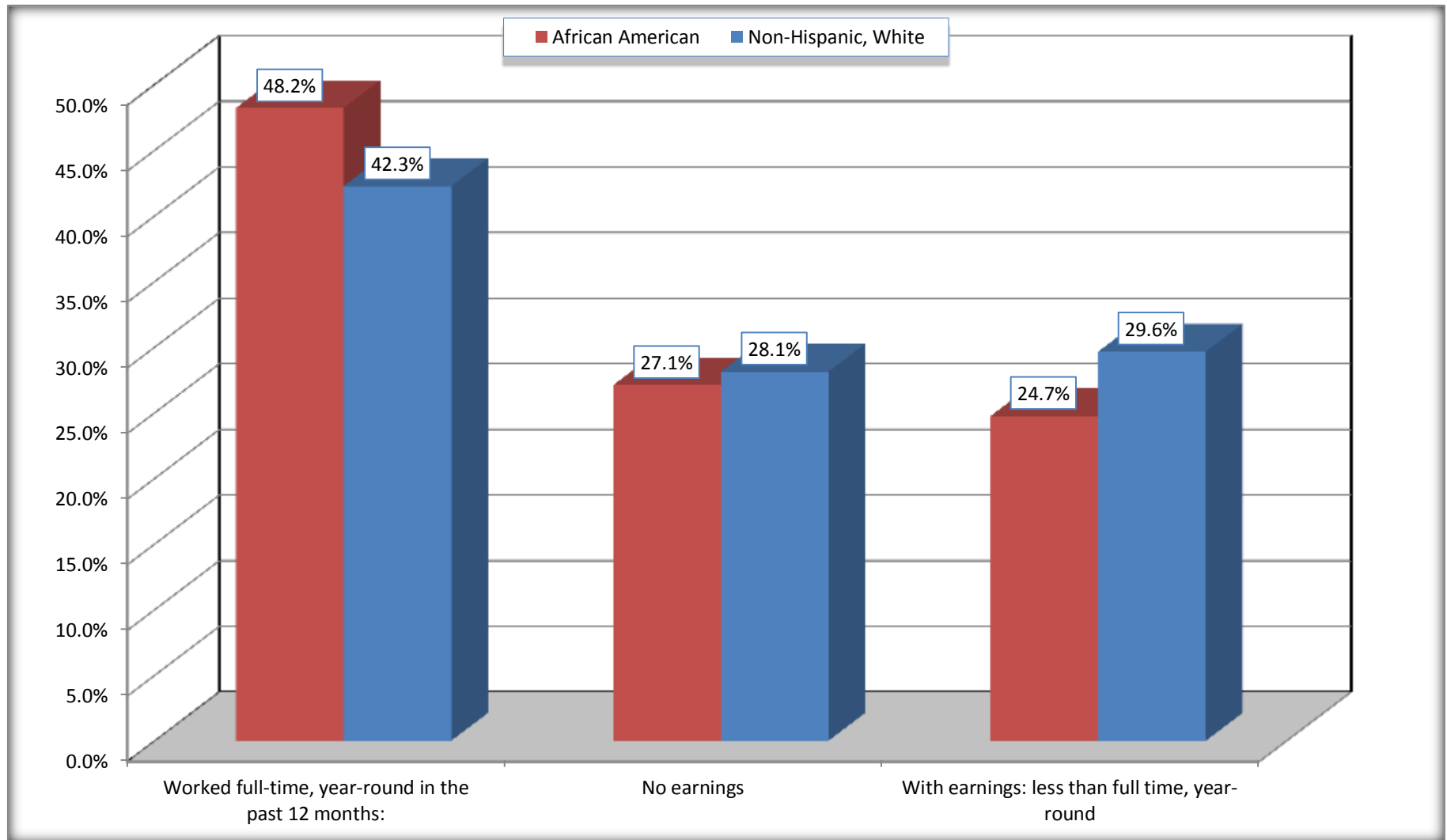
Source: U.S. Census Bureau, 2008-2012 American Community Survey

For information on confidentiality protection, sampling error, nonsampling error, and definitions, see Survey Methodology.

<http://www.census.gov/acs/www/UseData/index.htm>

Employment and Earnings in in the Past 12 Months (16 Years and Over)

Blacklick Estates CDP, Ohio



Source: B20005. SEX BY WORK EXPERIENCE IN THE PAST 12 MONTHS BY EARNINGS IN THE PAST 12 MONTHS (IN 2010 INFLATION-ADJUSTED DOLLARS) FOR THE POPULATION 16 YEARS AND OVER

Data Set: 2008-2012 American Community Survey 5-Year Estimates

C21001. SEX BY AGE BY VETERAN STATUS FOR THE CIVILIAN POPULATION 18 YEARS AND OVER

Data Set: 2008-2012 American Community Survey 5-Year Estimates

	Blacklick Estates CDP, Ohio					
	African American	Margin of Error (+/-)	% of AA Total	White, Not Hispanic	Margin of Error (+/-)	% of NHW Total
Total:	823	226	100.0%	4,975	404	100.0%
Veteran	66	NC	8.0%	531	NC	10.7%
Nonveteran	757	NC	92.0%	4,444	NC	89.3%
Male:	370	154	45.0%	2,548	273	51.2%
18 to 64 years:	336	143	40.8%	2,107	251	42.4%
Veteran	32	30	3.9%	316	125	6.4%
Nonveteran	304	147	36.9%	1,791	239	36.0%
65 years and over:	34	43	4.1%	441	91	8.9%
Veteran	34	43	4.1%	201	91	4.0%
Nonveteran	0	16	0.0%	240	87	4.8%
Female:	453	135	55.0%	2,427	253	48.8%
18 to 64 years:	437	125	53.1%	1,971	222	39.6%
Veteran	0	16	0.0%	14	22	0.3%
Nonveteran	437	125	53.1%	1,957	220	39.3%
65 years and over:	16	25	1.9%	456	94	9.2%
Veteran	0	16	0.0%	0	16	0.0%
Nonveteran	16	25	1.9%	456	94	9.2%

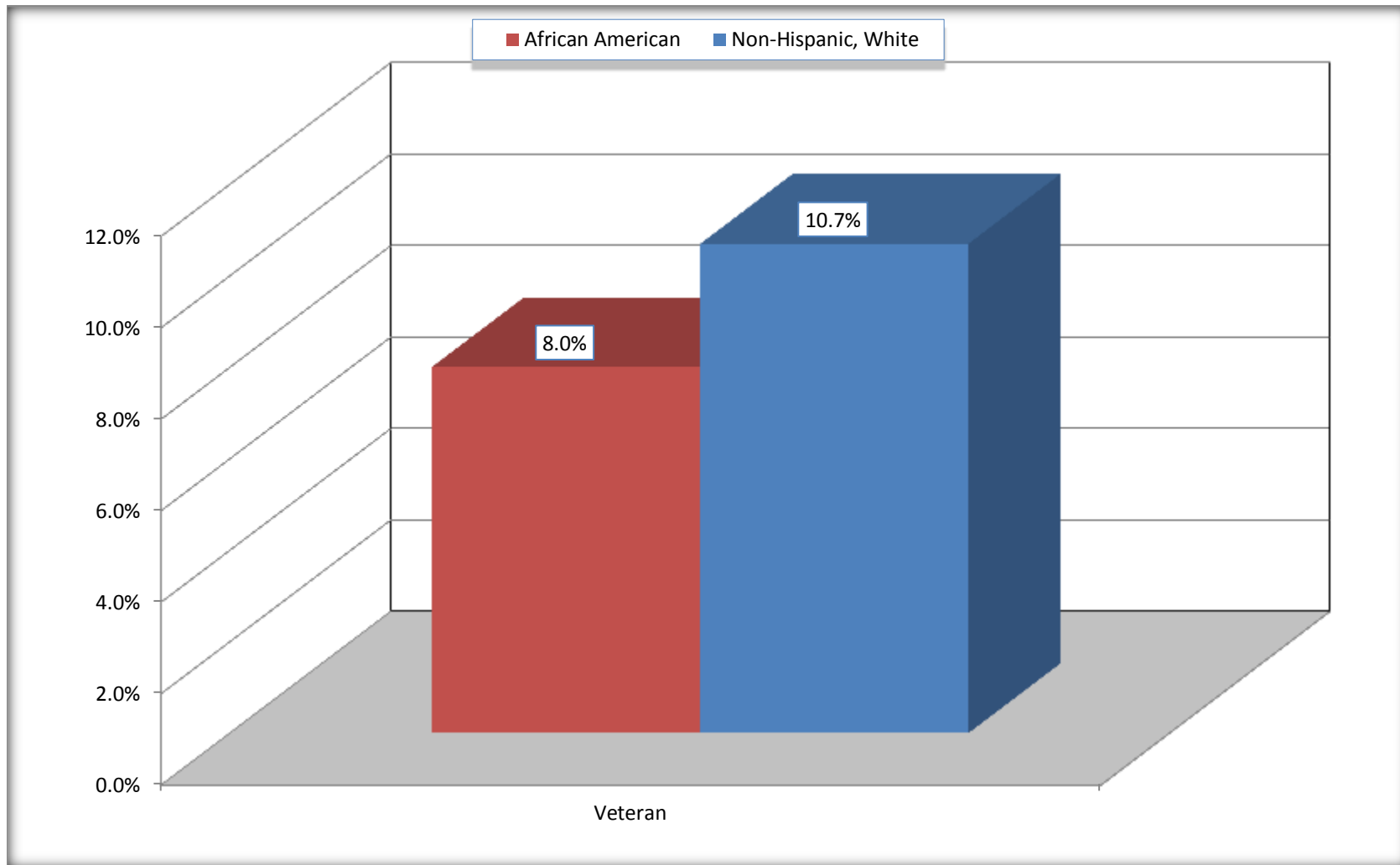
Source: U.S. Census Bureau, 2008-2012 American Community Survey

For information on confidentiality protection, sampling error, nonsampling error, and definitions, see Survey Methodology.

<http://www.census.gov/acs/www/UseData/index.htm>

Veterans in the Civilian Population 18 Years and Over

Blacklick Estates CDP, Ohio



Source: C21001. SEX BY AGE BY VETERAN STATUS FOR THE CIVILIAN POPULATION 18 YEARS AND OVER
Data Set: 2008-2012 American Community Survey 5-Year Estimates

B22005. RECEIPT OF FOOD STAMPS/SNAP IN THE PAST 12 MONTHS BY RACE OF HOUSEHOLDER

Data Set: 2008-2012 American Community Survey 5-Year Estimates

	Blacklick Estates CDP, Ohio					
	African American	Margin of Error (+/-)	% of AA Total	White, Not Hispanic	Margin of Error (+/-)	% of NHW Total
Total:	504	125	100.0%	2,318	211	100.0%
HH received Food Stamps/SNAP in the past 12 months	232	83	46.0%	201	93	8.7%
HH did not receive Food Stamps/SNAP in the past 12 months	272	114	54.0%	2,117	196	91.3%

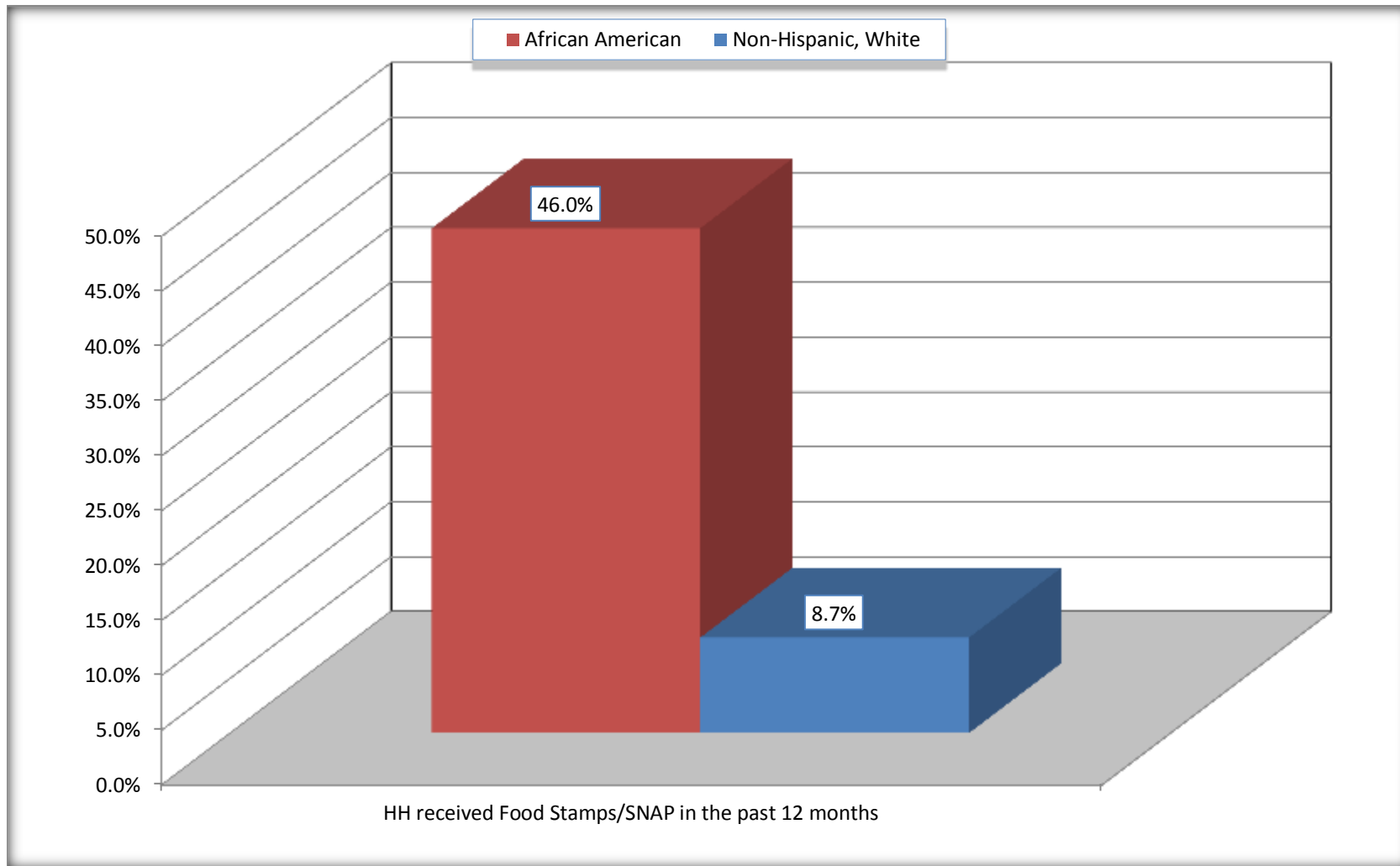
Source: U.S. Census Bureau, 2008-2012 American Community Survey

For information on confidentiality protection, sampling error, nonsampling error, and definitions, see Survey Methodology.

<http://www.census.gov/acs/www/UseData/index.htm>

Receipt of Food Stamps/SNAP in the Past 12 Months by Household

Blacklick Estates CDP, Ohio



Source: B22005. RECEIPT OF FOOD STAMPS/SNAP IN THE PAST 12 MONTHS BY RACE OF HOUSEHOLDER
Data Set: 2008-2012 American Community Survey 5-Year Estimates

C23002. SEX BY AGE BY EMPLOYMENT STATUS FOR THE POPULATION 16 YEARS AND OVER

Data Set: 2008-2012 American Community Survey 5-Year Estimates

	Blacklick Estates CDP, Ohio					
	African American	Margin of Error (+/-)	% of AA Total	White, Not Hispanic	Margin of Error (+/-)	% of NHW Total
Total:	890	216	100.0%	5,162	423	100.0%
In labor force:	739	NC	83.0%	3,580	NC	69.4%
In Armed Forces	0	NC	0.0%	0	NC	0.0%
Civilian:	739	NC	83.0%	3,392	NC	65.7%
Employed	549	NC	61.7%	3,195	NC	61.9%
Unemployed	190	NC	21.3%	385	NC	7.5%
Not in labor force	151	NC	17.0%	1,582	NC	30.6%
Male:	370	154	41.6%	2,615	293	50.7%
16 to 64 years:	336	143	37.8%	2,174	271	42.1%
In labor force:	263	118	29.6%	1,767	246	34.2%
In Armed Forces	0	16	0.0%	0	16	0.0%
Civilian:	263	118	29.6%	1,767	246	34.2%
Employed	195	100	21.9%	1,616	249	31.3%
Unemployed	68	63	7.6%	151	86	2.9%
Not in labor force	73	77	8.2%	407	163	7.9%
65 years and over:	34	43	3.8%	441	91	8.5%
In labor force:	0	16	0.0%	101	66	2.0%
Employed	0	16	0.0%	101	66	2.0%
Unemployed	0	16	0.0%	0	16	0.0%
Not in labor force	34	43	3.8%	340	90	6.6%

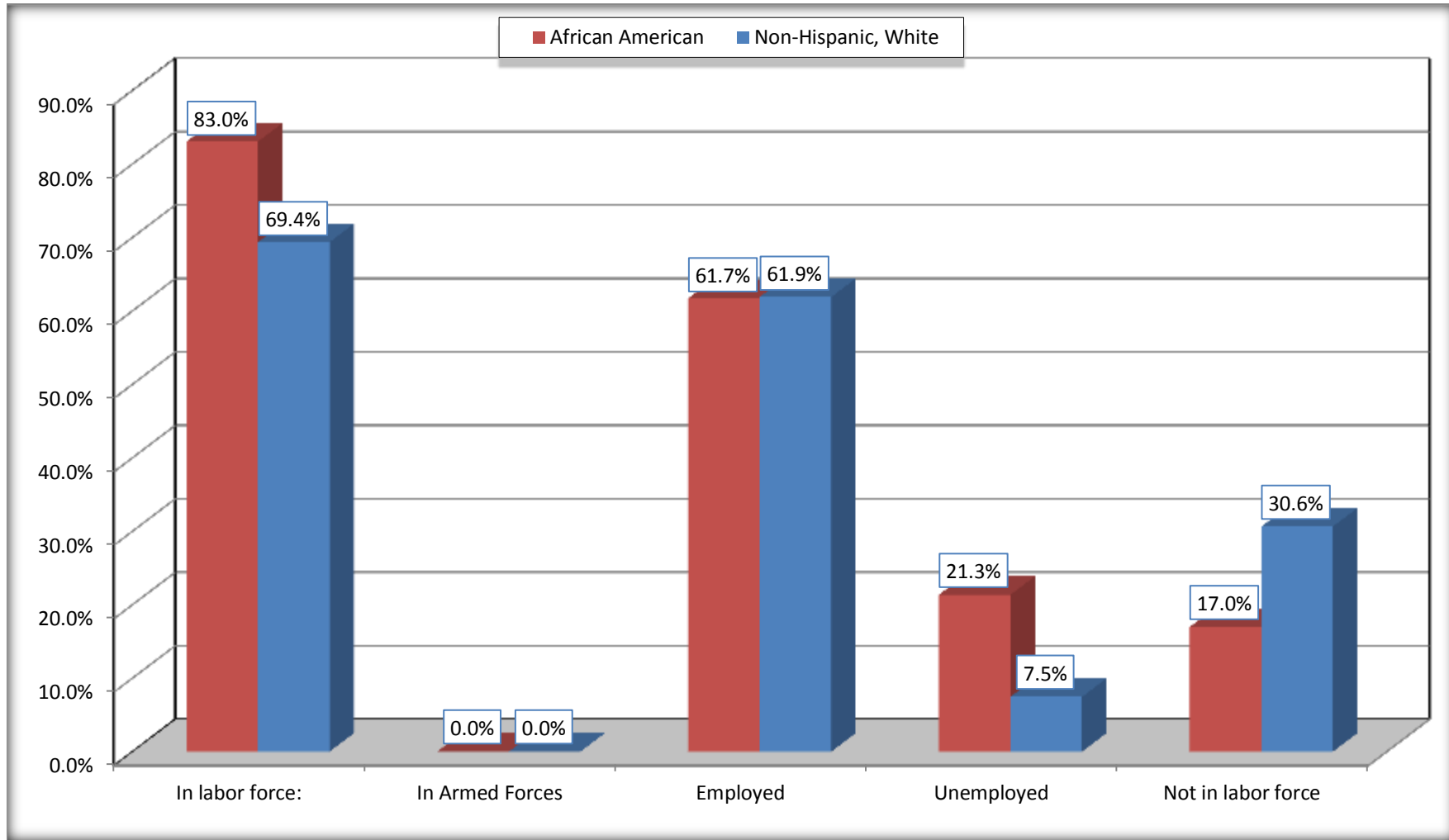
	Blacklick Estates CDP, Ohio					
	African American	Margin of Error (+/-)	% of AA Total	White, Not Hispanic	Margin of Error (+/-)	% of NHW Total
Female:	520	151	58.4%	2,547	252	49.3%
16 to 64 years:	504	142	56.6%	2,091	222	40.5%
In labor force:	476	131	53.5%	1,625	219	31.5%
In Armed Forces	0	16	0.0%	0	16	0.0%
Civilian:	476	131	53.5%	1,625	219	31.5%
Employed	354	132	39.8%	1,391	219	26.9%
Unemployed	122	84	13.7%	234	139	4.5%
Not in labor force	28	33	3.1%	466	133	9.0%
65 years and over:	16	25	1.8%	456	94	8.8%
In labor force:	0	16	0.0%	87	68	1.7%
Employed	0	16	0.0%	87	68	1.7%
Unemployed	0	16	0.0%	0	16	0.0%
Not in labor force	16	25	1.8%	369	83	7.1%

Source: U.S. Census Bureau, 2008-2012 American Community Survey

For information on confidentiality protection, sampling error, nonsampling error, and definitions, see Survey Methodology.
<http://www.census.gov/acs/www/UseData/index.htm>

Employment Status for the Population 16 years and over

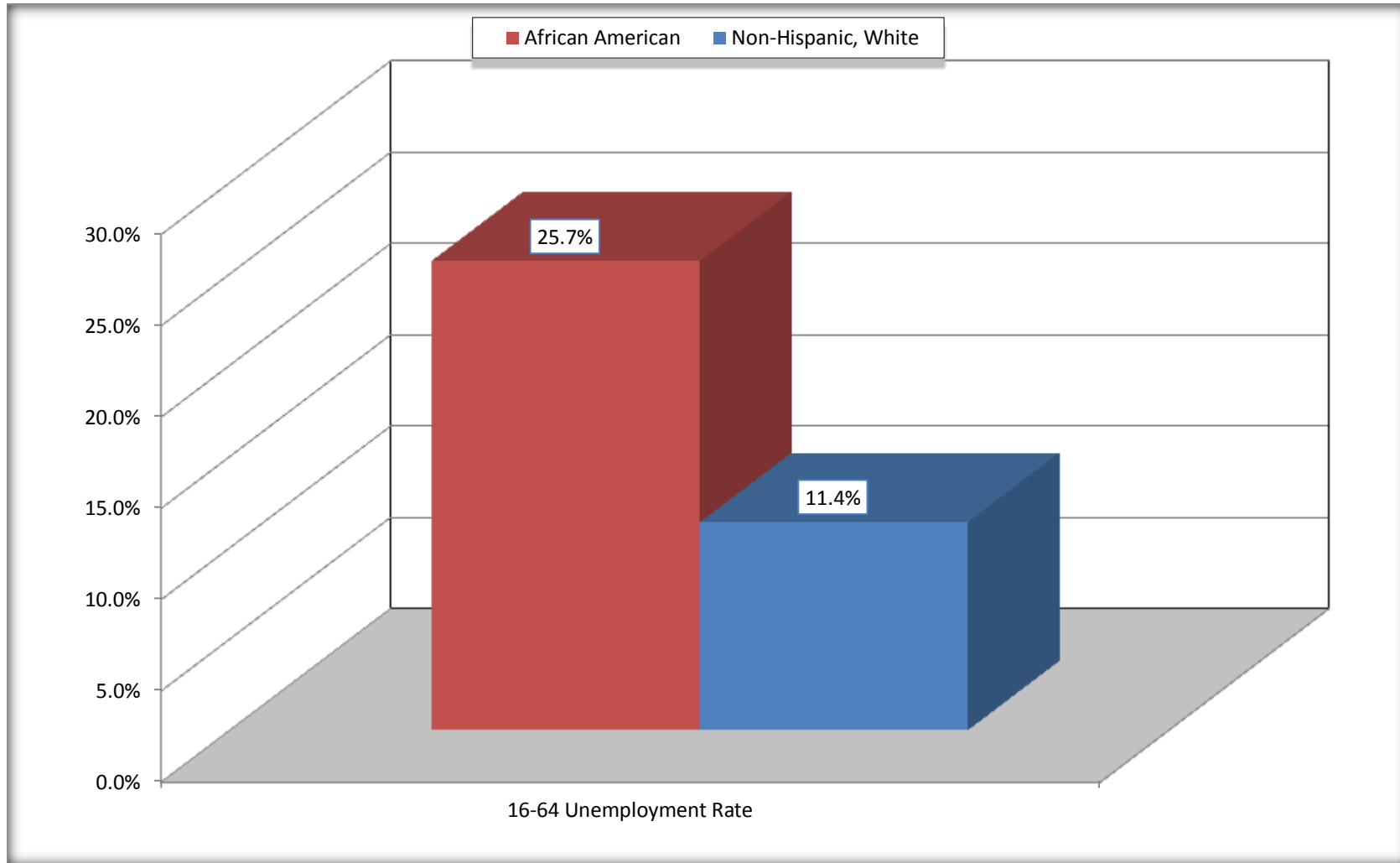
Blacklick Estates CDP, Ohio



Source: C23002. SEX BY AGE BY EMPLOYMENT STATUS FOR THE POPULATION 16 YEARS AND OVER
Data Set: 2008-2012 American Community Survey 5-Year Estimates

Unemployment of Working Age Population (Ages 16 to 64) (As a Percent of 16-64 Civilian Labor Force)

Blacklick Estates CDP, Ohio



Source: C23002. SEX BY AGE BY EMPLOYMENT STATUS FOR THE POPULATION 16 YEARS AND OVER
Data Set: 2008-2012 American Community Survey 5-Year Estimates

C24010. SEX BY OCCUPATION FOR THE CIVILIAN EMPLOYED POPULATION 16 YEARS AND OVER

Data Set: 2008-2012 American Community Survey 5-Year Estimates

	Blacklick Estates CDP, Ohio					
	African American	Margin of Error (+/-)	% of AA Total	White, Not Hispanic	Margin of Error (+/-)	% of NHW Total
Total:	549	157	100.0%	3,195	329	100.0%
Management, professional, and related occupations	110	NC	20.0%	599	NC	18.7%
Service occupations	188	NC	34.2%	497	NC	15.6%
Sales and office occupations	189	NC	34.4%	1,164	NC	36.4%
Natural resources, construction, and maintenance occupations:	20	NC	3.6%	392	NC	12.3%
Production, transportation, and material moving occupations	42	NC	7.7%	543	NC	17.0%
Male:	195	100	35.5%	1,717	268	53.7%
Management, business, science, and arts occupations:	48	45	8.7%	267	97	8.4%
Service occupations	56	57	10.2%	205	96	6.4%
Sales and office occupations	29	24	5.3%	489	195	15.3%
Natural resources, construction, and maintenance occupations:	20	24	3.6%	380	147	11.9%
Production, transportation, and material moving occupations	42	43	7.7%	376	119	11.8%
Female:	354	132	64.5%	1,478	229	46.3%
Management, professional, and related occupations	62	48	11.3%	332	123	10.4%
Service occupations	132	94	24.0%	292	94	9.1%
Sales and office occupations	160	103	29.1%	675	186	21.1%
Natural resources, construction, and maintenance occupations:	0	16	0.0%	12	19	0.4%
Production, transportation, and material moving occupations	0	16	0.0%	167	102	5.2%

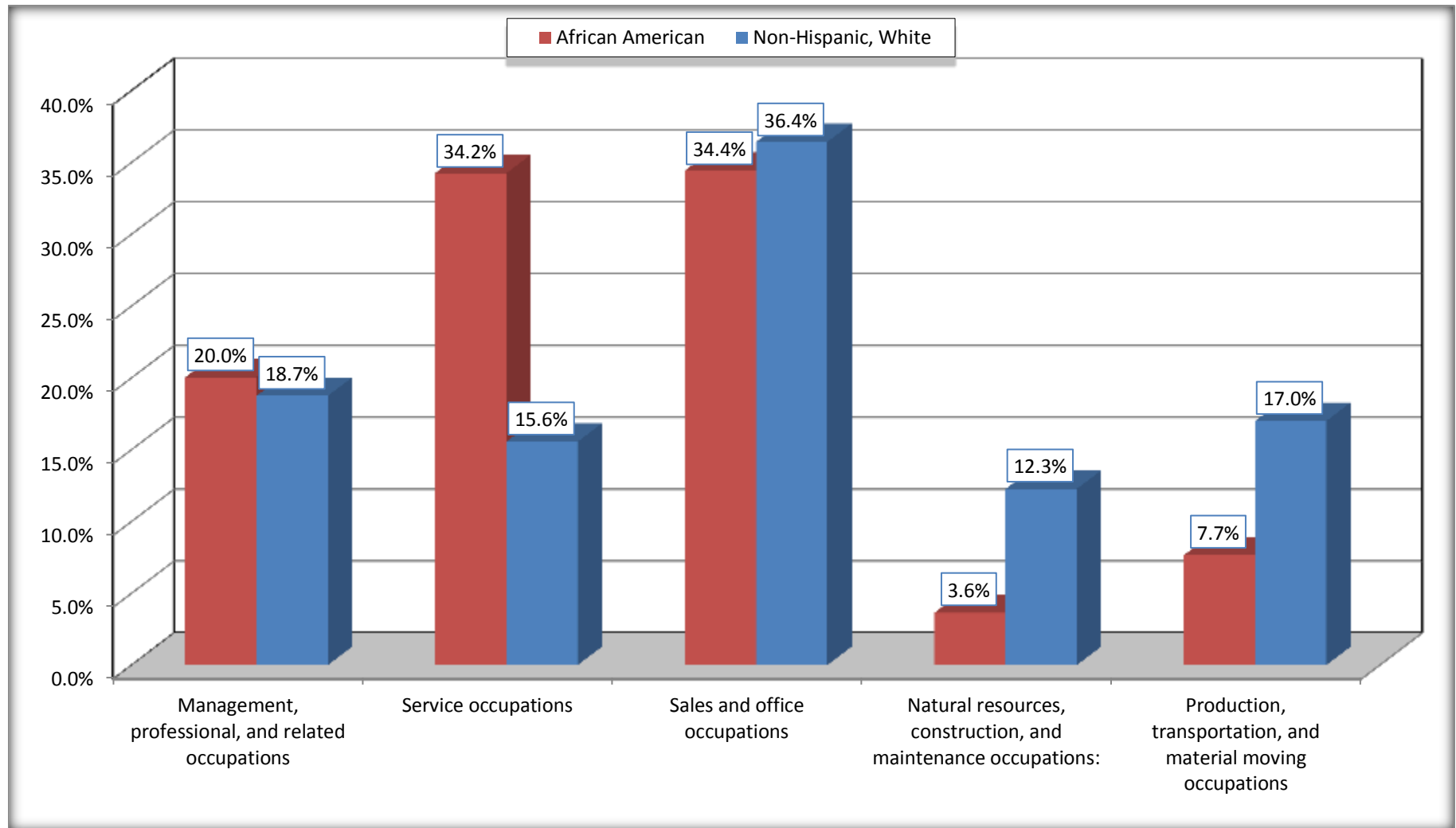
Source: U.S. Census Bureau, 2008-2012 American Community Survey

For information on confidentiality protection, sampling error, nonsampling error, and definitions, see Survey Methodology.

<http://www.census.gov/acs/www/UseData/index.htm>

Occupation for the Civilian Employed 16 Years and Over Population

Blacklick Estates CDP, Ohio



Source: C24010. SEX BY OCCUPATION FOR THE CIVILIAN EMPLOYED POPULATION 16 YEARS AND OVER
Data Set: 2008-2012 American Community Survey 5-Year Estimates

B25003. TENURE - Universe: OCCUPIED HOUSING UNITS

Data Set: 2008-2012 American Community Survey 5-Year Estimates

	Blacklick Estates CDP, Ohio					
	African American	Margin of Error (+/-)	% of AA Total	White, Not Hispanic	Margin of Error (+/-)	% of NHW Total
Total:	504	125	100.0%	2,318	211	100.0%
Owner occupied	260	123	51.6%	1,757	186	75.8%
Renter occupied	244	102	48.4%	561	163	24.2%

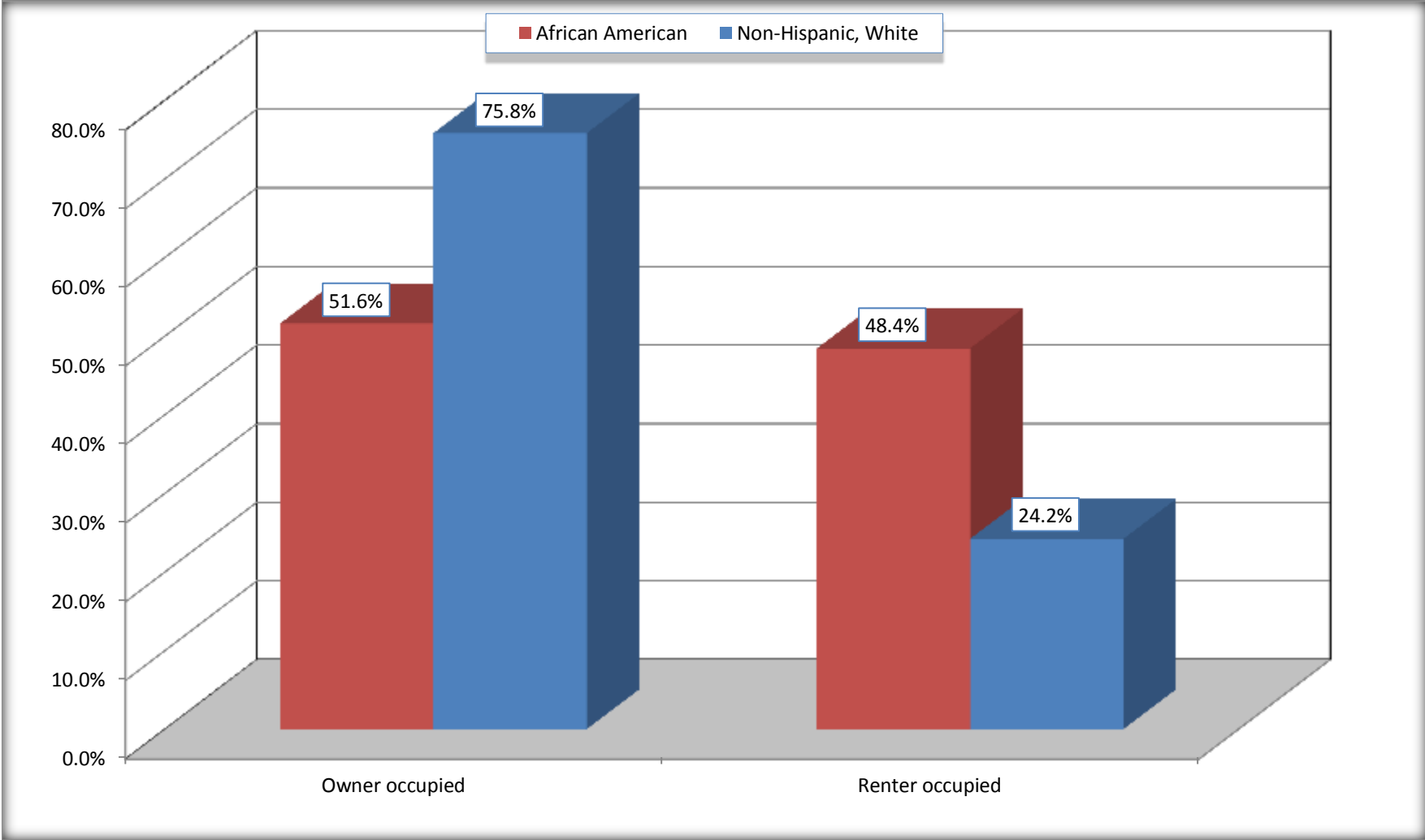
Source: U.S. Census Bureau, 2008-2012 American Community Survey

For information on confidentiality protection, sampling error, nonsampling error, and definitions, see Survey Methodology.

<http://www.census.gov/acs/www/UseData/index.h>

Home Owners and Renters by Household

Blacklick Estates CDP, Ohio



Source: B25003. TENURE - Universe: OCCUPIED HOUSING UNITS
Data Set: 2008-2012 American Community Survey 5-Year Estimates

B25014. OCCUPANTS PER ROOM - Universe: OCCUPIED HOUSING UNITS

Data Set: 2008-2012 American Community Survey 5-Year Estimates

	Blacklick Estates CDP, Ohio					
	African American	Margin of Error (+/-)	% of AA Total	White, Not Hispanic	Margin of Error (+/-)	% of NHW Total
Total:	504	125	100.0%	2,318	211	100.0%
1.00 or less occupants per room	504	125	100.0%	2,271	209	98.0%
1.01 or more occupants per room	0	16	0.0%	47	44	2.0%

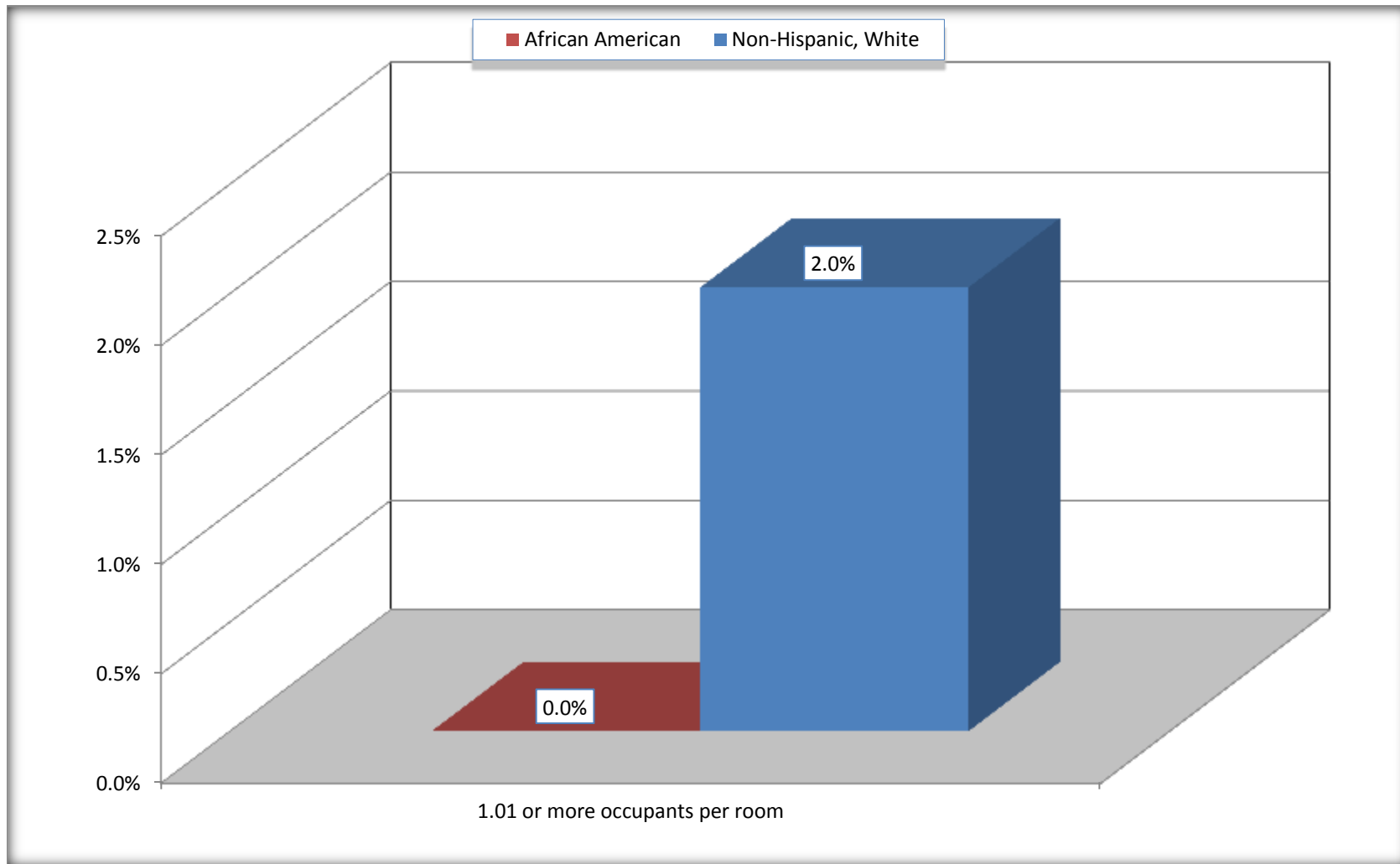
Source: U.S. Census Bureau, 2008-2012 American Community Survey

For information on confidentiality protection, sampling error, nonsampling error, and definitions, see Survey Methodology.

<http://www.census.gov/acs/www/UseData/index.ht>

More than One Person per Room (Crowding) by Household

Blacklick Estates CDP, Ohio



Source: B25014. OCCUPANTS PER ROOM - Universe: OCCUPIED HOUSING UNITS
Data Set: 2008-2012 American Community Survey 5-Year Estimates

B18101. AGE BY DISABILITY STATUS

Data Set: 2008-2012 American Community Survey 5-Year Estimates

	Blacklick Estates CDP, Ohio					
	African American	Margin of Error (+/-)	% of AA Total	White, Not Hispanic	Margin of Error (+/-)	% of NHW Total
Total:	1,489	401	100.0%	6,535	576	100.0%
Under 18 years:	666	287	44.7%	1,560	55	23.9%
With a disability	73	53	4.9%	64	69	1.0%
No disability	593	274	39.8%	1,496	259	22.9%
18 to 64 years:	773	208	51.9%	4,078	367	62.4%
With a disability	103	56	6.9%	604	188	9.2%
No disability	670	225	45.0%	3,474	362	53.2%
65 years and over:	50	53	3.4%	897	142	13.7%
With a disability	16	25	1.1%	263	112	4.0%
No disability	34	43	2.3%	634	158	9.7%

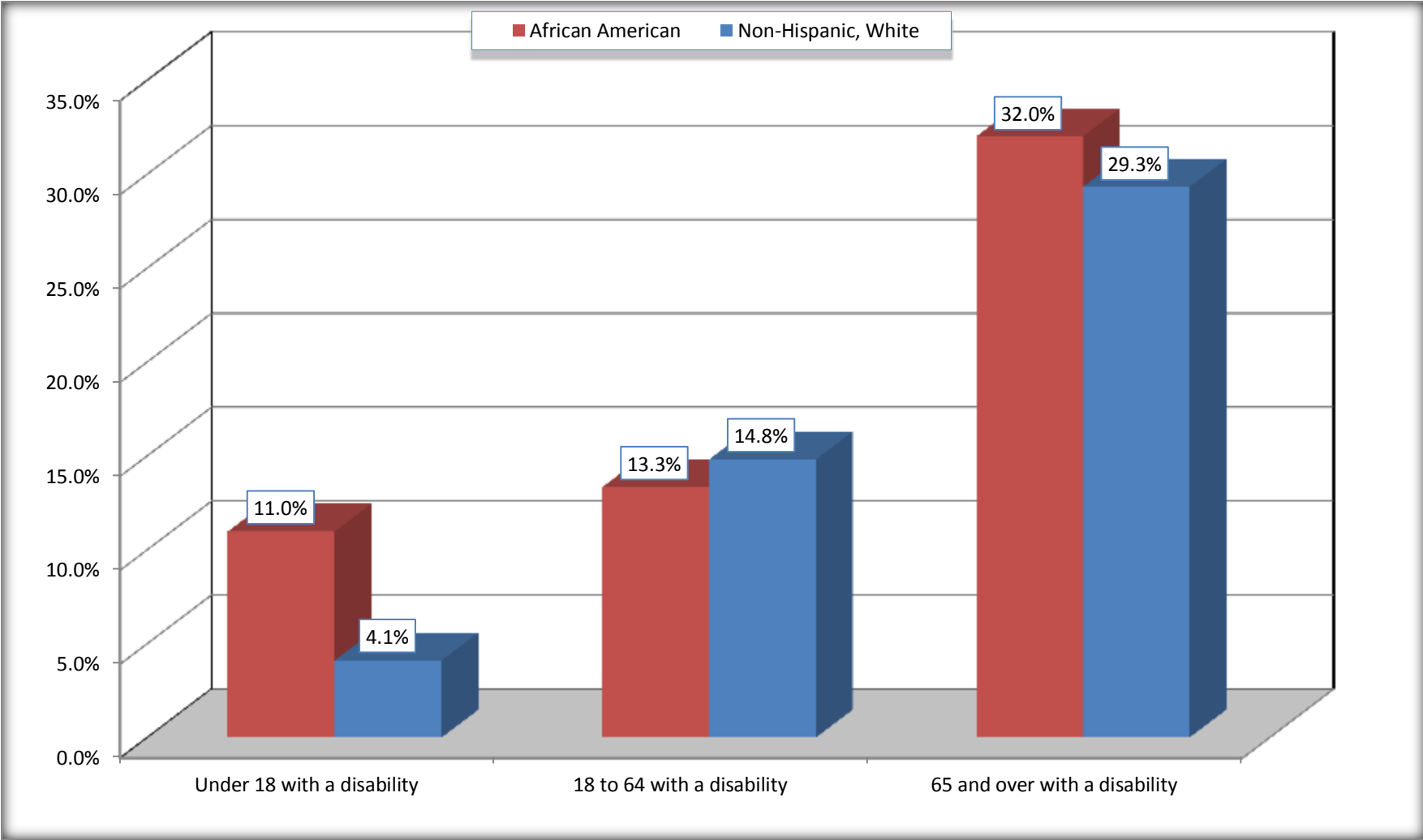
Source: U.S. Census Bureau, 2008-2012 American Community Survey

For information on confidentiality protection, sampling error, nonsampling error, and definitions, see Survey Methodology.

<http://www.census.gov/acs/www/UseData/index.htm>

Disability by Age

Blacklick Estates CDP, Ohio



Source: B18101. AGE BY DISABILITY STATUS
Data Set: 2008-2012 American Community Survey 5-Year Estimates

C27001B. HEALTH INSURANCE COVERAGE STATUS BY AGE

Data Set: 2008-2012 American Community Survey 5-Year Estimates

	Blacklick Estates CDP, Ohio					
	African American	Margin of Error (+/-)	% of AA Total	White, Not Hispanic	Margin of Error (+/-)	% of NHW Total
Total:	1,489	401	100.0%	6,535	576	100.0%
Under 18 years:	666	287	44.7%	1,560	292	23.9%
With health insurance coverage	589	265	39.6%	1,455	298	22.3%
No health insurance coverage	77	102	5.2%	105	82	1.6%
18 to 64 years:	773	208	51.9%	4,078	367	62.4%
With health insurance coverage	567	165	38.1%	3,202	350	49.0%
No health insurance coverage	206	112	13.8%	876	253	13.4%
65 years and over:	50	53	3.4%	897	142	13.7%
With health insurance coverage	50	53	3.4%	897	142	13.7%
No health insurance coverage	0	16	0.0%	0	16	0.0%

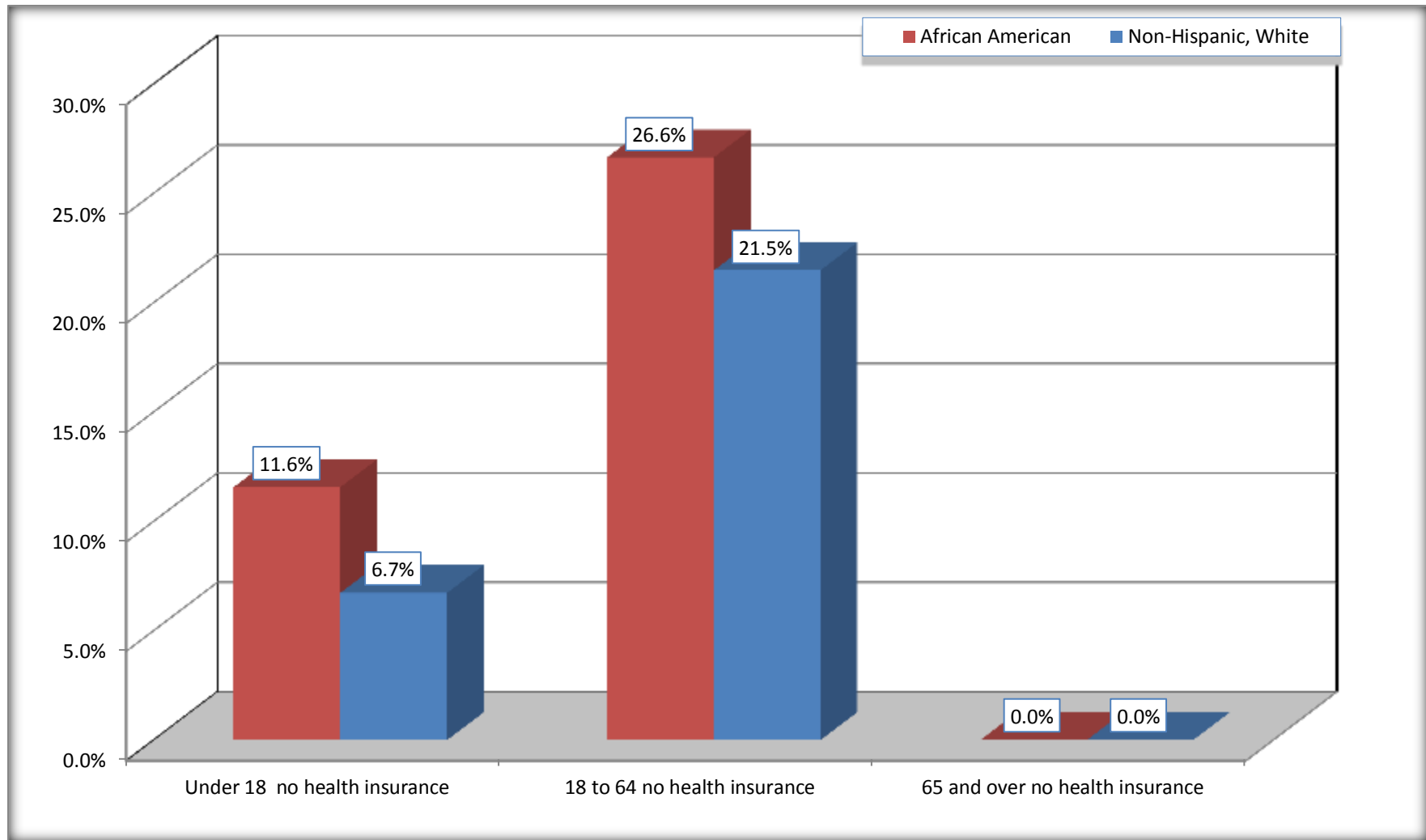
Source: U.S. Census Bureau, 2008-2012 American Community Survey

For information on confidentiality protection, sampling error, nonsampling error, and definitions, see Survey Methodology.

<http://www.census.gov/acs/www/UseData/index.htm>

Lack of Health Insurance Coverage by Age

Blacklick Estates CDP, Ohio



Source: C27001B. HEALTH INSURANCE COVERAGE STATUS BY AGE
Data Set: 2008-2012 American Community Survey 5-Year Estimates