

Selected Socio-Economic Data

Whiteville city, North Carolina

African American and White, Not Hispanic

Data Set: 2008-2012 American Community Survey 5-Year Estimates

www.fairvote2020.org

www.fairdata2000.com

[29-Dec-13](#)

C02003.DETAILED RACE - Universe: TOTAL POPULATION

Data Set: 2008-2012 American Community Survey 5-Year Estimates

	Whiteville city, North Carolina		
	Population	Margin of Error (+/-)	% of Total
Total:	5,347	45	100.0%
Population of one race:	5,214	96	97.5%
White	2,574	403	48.1%
Black or African American	2,224	435	41.6%
American Indian and Alaska Native	99	85	1.9%
Asian alone	22	24	0.4%
Native Hawaiian and Other Pacific Islander	0	18	0.0%
Some other race	295	381	5.5%
Population of two or more races:	133	84	2.5%
Two races including Some other race	0	18	0.0%
Two races excluding Some other race, and three or more races	133	84	2.5%
Population of two races:	94	69	1.8%
White; Black or African American	0	18	0.0%
White; American Indian and Alaska Native	28	32	0.5%
White; Asian	66	73	1.2%
Black or African American; American Indian and Alaska Native	0	18	0.0%
All other two race combinations	0	18	0.0%
Population of three races	39	49	0.7%
Population of four or more races	0	18	0.0%

Note: Hispanics may be of any race. See Table B03002 and chart.

Source: U.S. Census Bureau, 2008-2012 American Community Survey

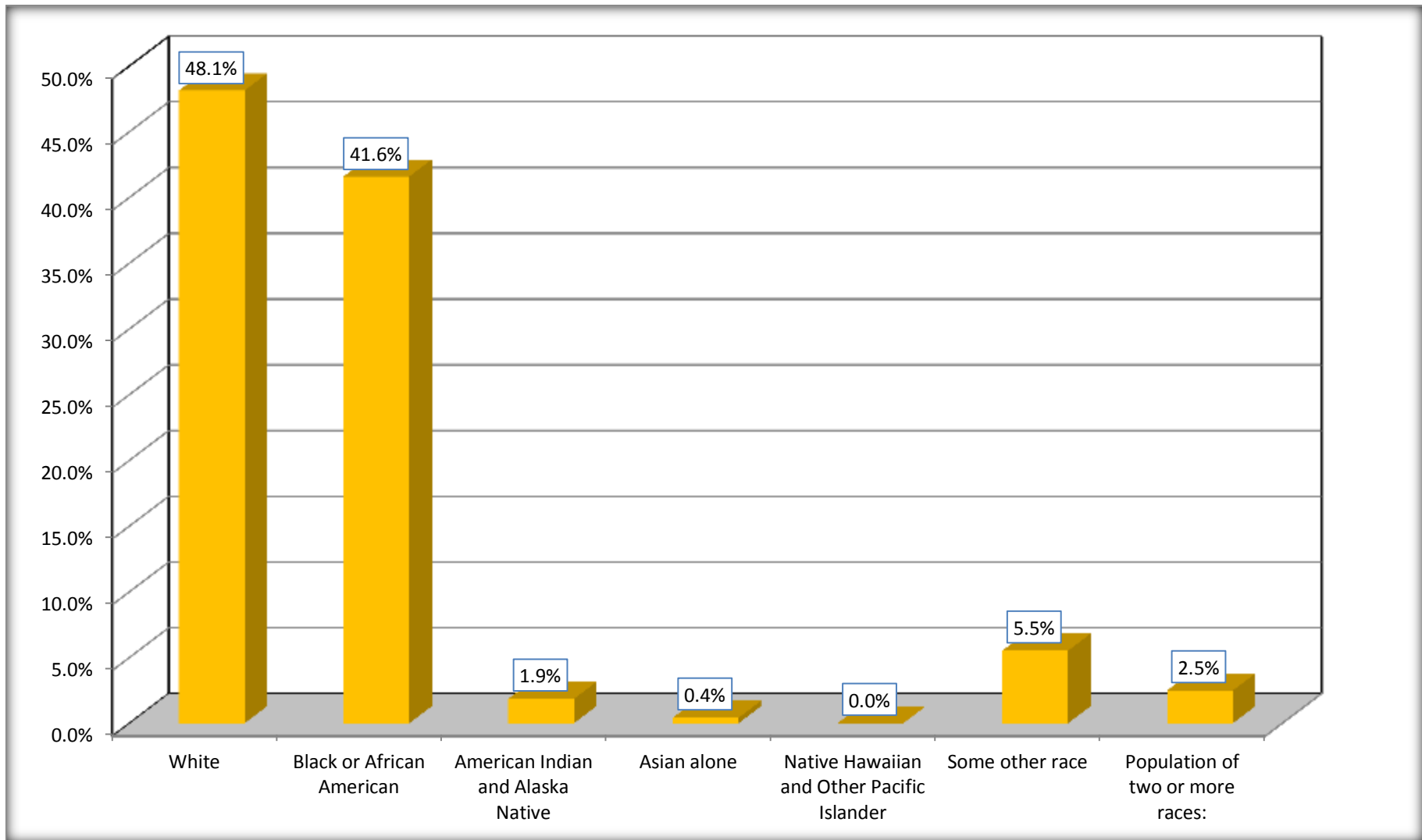
Although the American Community Survey (ACS) produces population, demographic and housing unit estimates, it is the Census Bureau's Population Estimates Program that produces and disseminates the official estimates of the population for the nation, states, counties, cities and towns and estimates of housing units for states and counties.

For information on confidentiality protection, sampling error, nonsampling error, and definitions, see Survey Methodology.

<http://www.census.gov/acs/www/UseData/index.htm>

Population by Race

Whiteville city, North Carolina



Source: C02003.DETAILED RACE - Universe: TOTAL POPULATION
Data Set: 2008-2012 American Community Survey 5-Year Estimates

B03002. HISPANIC OR LATINO ORIGIN BY RACE - Universe: TOTAL POPULATION

Data Set: 2008-2012 American Community Survey 5-Year Estimates

	Whiteville city, North Carolina		
	Population	Margin of Error (+/-)	% of Total
Total:	5,347	45	100.0%
Not Hispanic or Latino:	5,042	384	94.3%
White alone	2,564	403	48.0%
Black or African American alone	2,224	435	41.6%
American Indian and Alaska Native alone	99	85	1.9%
Asian alone	22	24	0.4%
Native Hawaiian and Other Pacific Islander alone	0	18	0.0%
Some other race alone	0	18	0.0%
Two or more races:	133	84	2.5%
Two races including Some other race	0	18	0.0%
Two races excluding Some other race, and three or more races	133	84	2.5%
Hispanic or Latino	305	380	5.7%

Source: U.S. Census Bureau, 2008-2012 American Community Survey

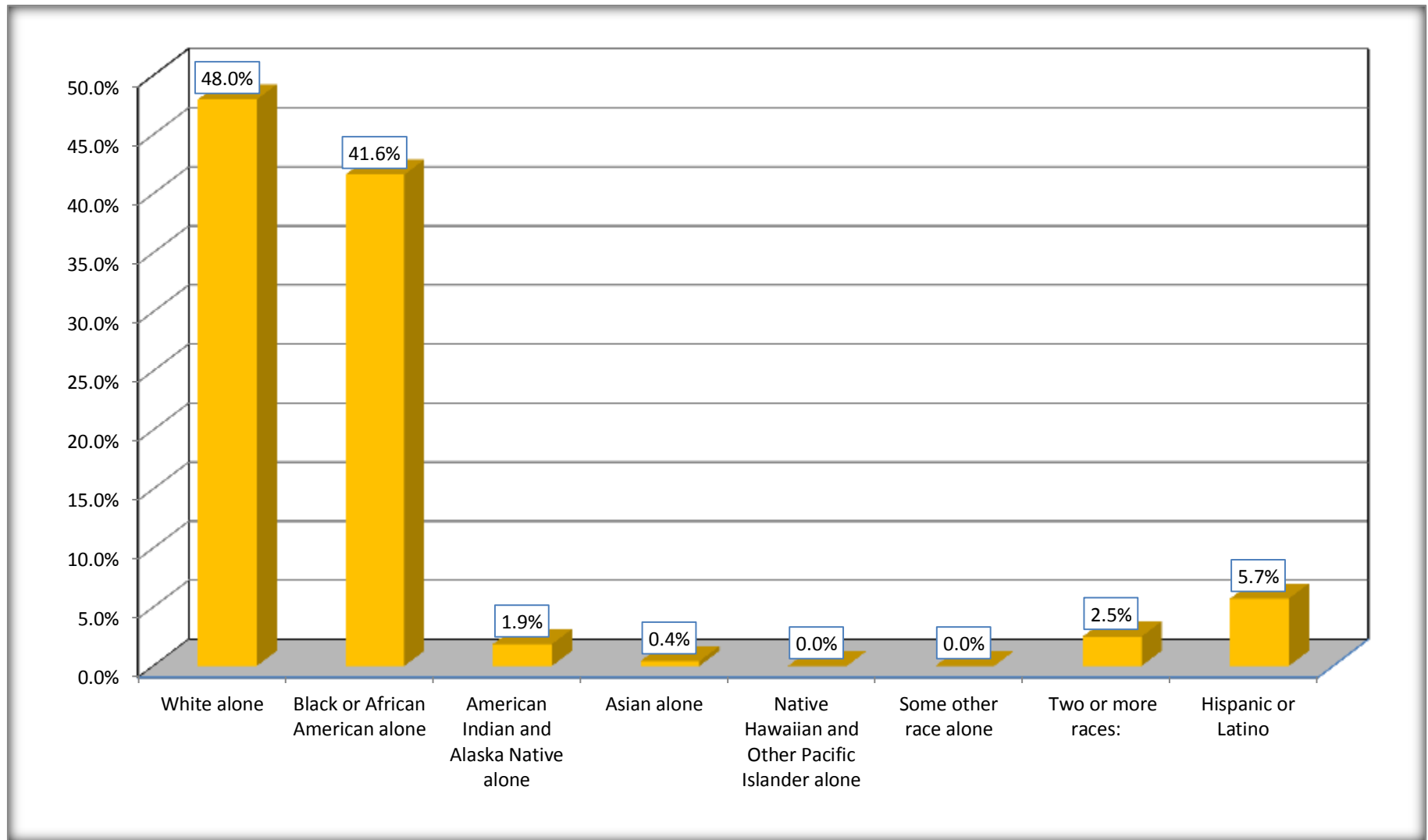
Although the American Community Survey (ACS) produces population, demographic and housing unit estimates, it is the Census Bureau's Population Estimates Program that produces and disseminates the official estimates of the population for the nation, states, counties, cities and towns and estimates of housing units for states and counties.

For information on confidentiality protection, sampling error, nonsampling error, and definitions, see Survey Methodology.

<http://www.census.gov/acs/www/UseData/index.htm>

Non-Hispanic by Race and Hispanic Population

Whiteville city, North Carolina



Source: B03002. HISPANIC OR LATINO ORIGIN BY RACE - Universe: TOTAL POPULATION
Data Set: 2008-2012 American Community Survey 5-Year Estimates

B03002. HISPANIC OR LATINO ORIGIN BY RACE

Data Set: 2008-2012 American Community Survey 5-Year Estimates

	Whiteville city, North Carolina		
	Population	Margin of Error (+/-)	% of Total
Hispanic or Latino:	305	380	100.0%
White alone	10	11	3.3%
Black or African American alone	0	18	0.0%
American Indian and Alaska Native alone	0	18	0.0%
Asian alone	0	18	0.0%
Native Hawaiian and Other Pacific Islander alone	0	18	0.0%
Some other race alone	295	381	96.7%
Two or more races:	0	18	0.0%
Two races including Some other race	0	18	0.0%
Two races excluding Some other race, and three or more races	0	18	0.0%

Source: U.S. Census Bureau, 2008-2012 American Community Survey

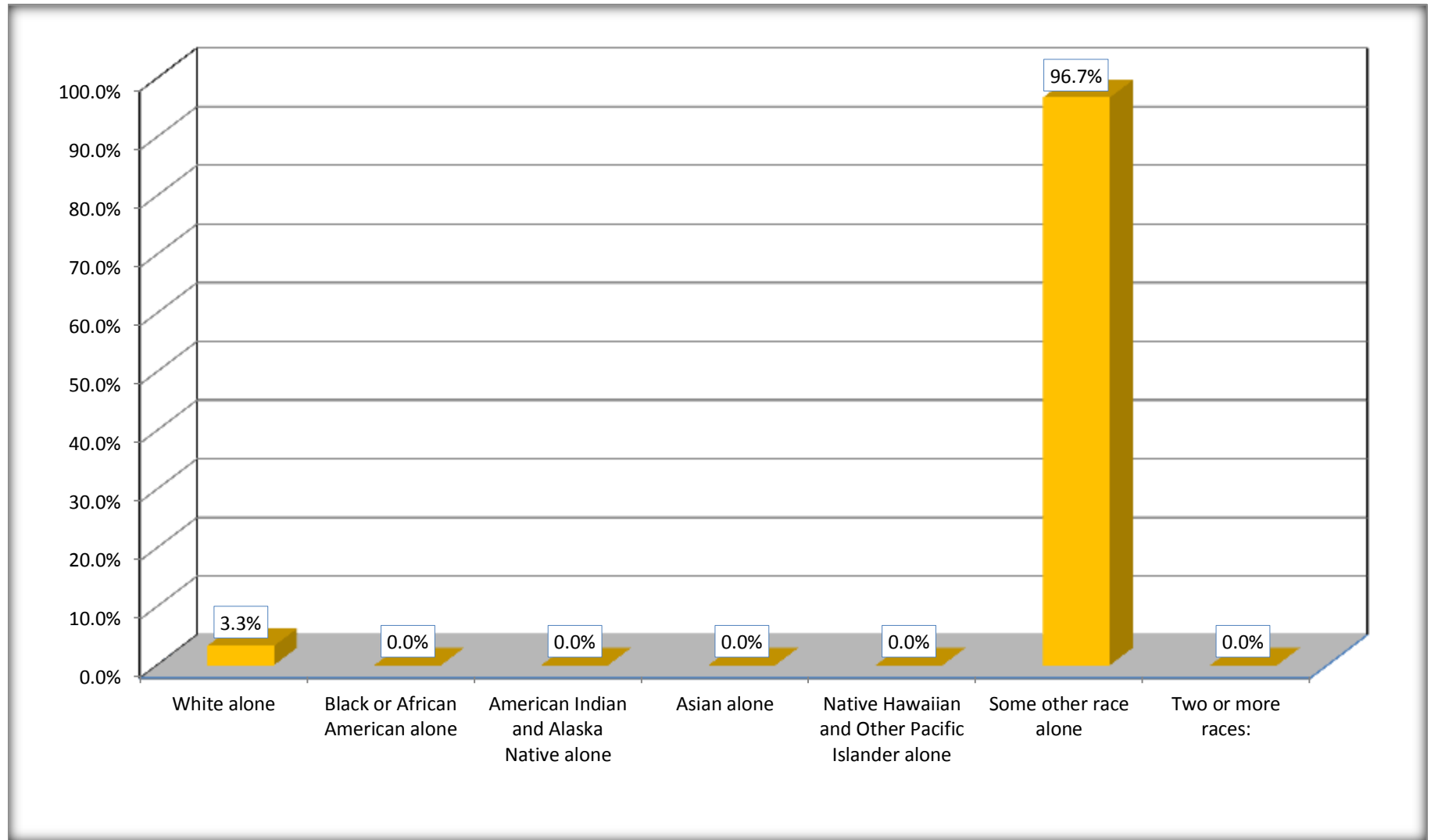
Although the American Community Survey (ACS) produces population, demographic and housing unit estimates, it is the Census Bureau's Population Estimates Program that produces and disseminates the official estimates of the population for the nation, states, counties, cities and towns and estimates of housing units for states and counties.

For information on confidentiality protection, sampling error, nonsampling error, and definitions, see Survey Methodology.

<http://www.census.gov/acs/www/UseData/index.htm>

Hispanic or Latino Origin by Race

Whiteville city, North Carolina



Source: B03002. HISPANIC OR LATINO ORIGIN BY RACE
Data Set: 2008-2012 American Community Survey 5-Year Estimates

B01001. SEX BY AGE

Data Set: 2008-2012 American Community Survey 5-Year Estimates

	Whiteville city, North Carolina					
	African American	Margin of Error (+/-)	% of AA Total	White, Not Hispanic	Margin of Error (+/-)	% of NHW Total
Total:	2,224	435	100.0%	2,564	403	100.0%
Under 18 years	492	NC	22.1%	331	NC	12.9%
18 to 64 years	1,259	NC	56.6%	1,587	NC	61.9%
65 years and over	473	NC	21.3%	646	NC	25.2%
Male:	916	216	41.2%	1,136	389	44.3%
Under 18 years	185	NC	8.3%	133	NC	5.2%
18 to 64 years	533	NC	24.0%	816	NC	31.8%
65 years and over	198	NC	8.9%	187	NC	7.3%
Female:	1,308	319	58.8%	1,428	412	55.7%
Under 18 years	307	NC	13.8%	198	NC	7.7%
18 to 64 years	726	NC	32.6%	771	NC	30.1%
65 years and over	275	NC	12.4%	459	NC	17.9%

Source: U.S. Census Bureau, 2008-2012 American Community Survey

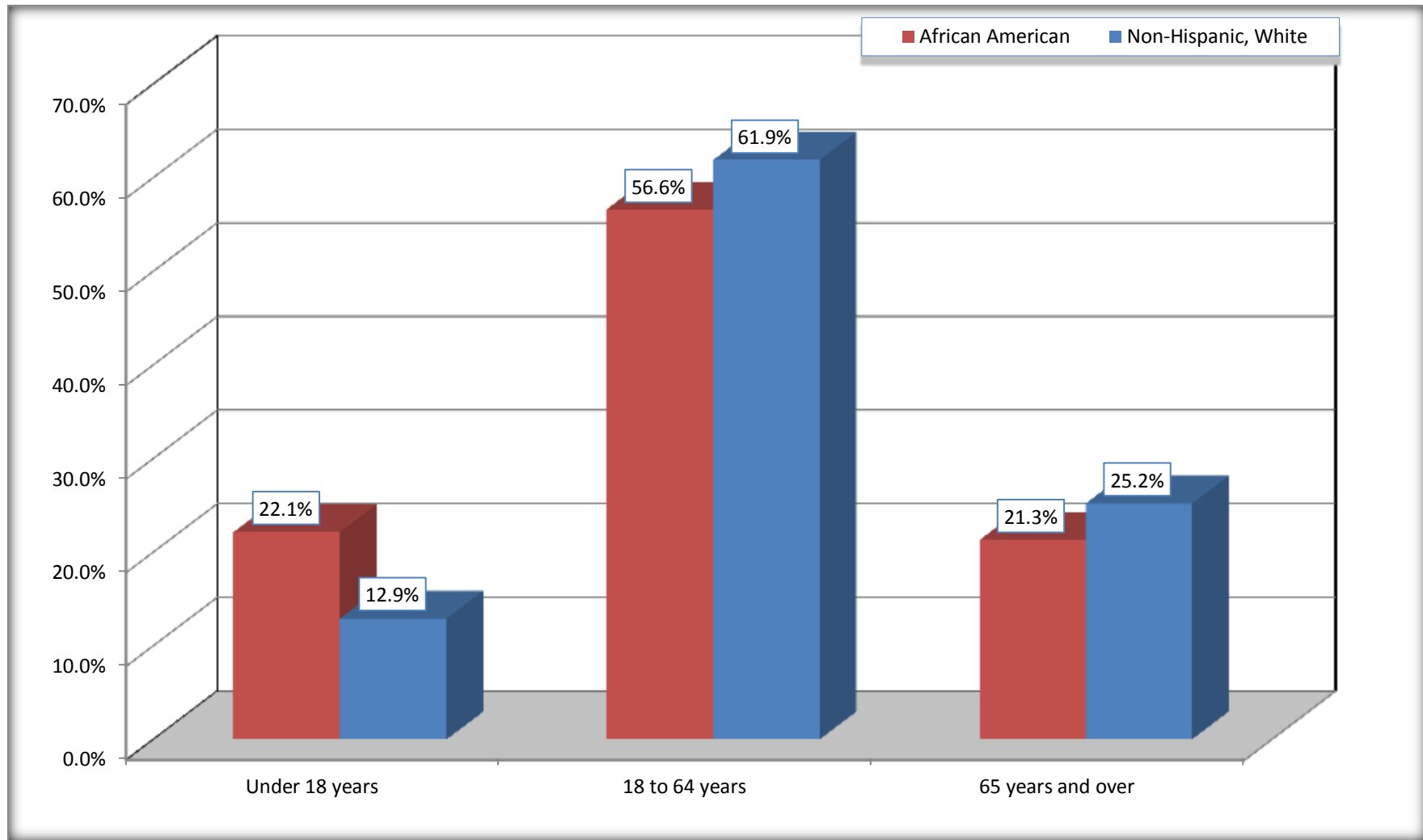
Although the American Community Survey (ACS) produces population, demographic and housing unit estimates, it is the Census Bureau's Population Estimates Program that produces and disseminates the official estimates of the population for the nation, states, counties, cities and towns and estimates of housing units for states and counties.

For information on confidentiality protection, sampling error, nonsampling error, and definitions, see Survey Methodology.

<http://www.census.gov/acs/www/UseData/index.htm>

Population by Age

Whiteville city, North Carolina



Source: B01001. SEX BY AGE
Data Set: 2008-2012 American Community Survey 5-Year Estimates

B05003. SEX BY AGE BY CITIZENSHIP STATUS

Data Set: 2008-2012 American Community Survey 5-Year Estimates

	Whiteville city, North Carolina					
	African American	Margin of Error (+/-)	% of AA Total by Age	White, Not Hispanic	Margin of Error (+/-)	% of NHW Total by Age
Total:	2,224	435	100.0%	2,564	403	100.0%
Under 18 years:	492	NC	100.0%	331	NC	100.0%
Native	492	NC	100.0%	331	NC	100.0%
Foreign born:	0	NC	0.0%	0	NC	0.0%
Naturalized U.S. citizen	0	NC	0.0%	0	NC	0.0%
Not a U.S. citizen	0	NC	0.0%	0	NC	0.0%
18 years and over:	1,732	NC	100.0%	2,233	NC	100.0%
Native	1,729	NC	99.8%	2,224	NC	99.6%
Foreign born:	3	NC	0.2%	9	NC	0.4%
Naturalized U.S. citizen	3	NC	0.2%	9	NC	0.4%
Not a U.S. citizen	0	NC	0.0%	0	NC	0.0%
Male:	916	216	41.2%	1,136	220	44.3%
Under 18 years:	185	155	100.0%	133	71	100.0%
Native	185	155	100.0%	133	71	100.0%
Foreign born:	0	18	0.0%	0	18	0.0%
Naturalized U.S. citizen	0	18	0.0%	0	18	0.0%
Not a U.S. citizen	0	18	0.0%	0	18	0.0%
18 years and over:	731	157	100.0%	1,003	207	100.0%
Native	728	158	99.6%	1,003	207	100.0%
Foreign born:	3	6	0.4%	0	18	0.0%
Naturalized U.S. citizen	3	6	0.4%	0	18	0.0%
Not a U.S. citizen	0	18	0.0%	0	18	0.0%

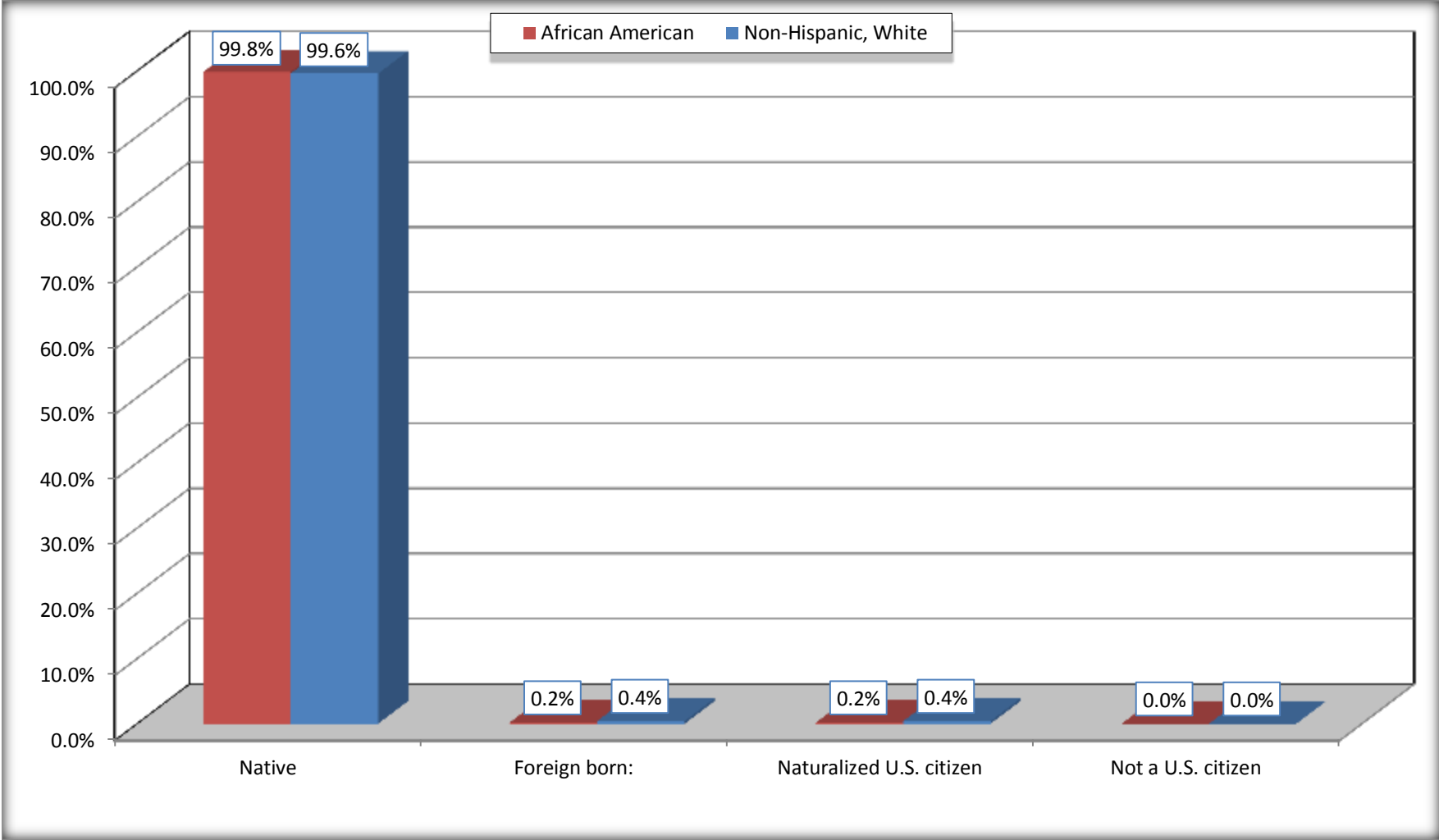
	Whiteville city, North Carolina					
	African American	Margin of Error (+/-)	% of AA by Age	White, Not Hispanic	Margin of Error (+/-)	% of NHW by Age
Female:	1,308	319	58.8%	1,428	271	55.7%
Under 18 years:	307	151	100.0%	198	103	100.0%
Native	307	151	100.0%	198	103	100.0%
Foreign born:	0	18	0.0%	0	18	0.0%
Naturalized U.S. citizen	0	18	0.0%	0	18	0.0%
Not a U.S. citizen	0	18	0.0%	0	18	0.0%
18 years and over:	1,001	218	100.0%	1,230	243	100.0%
Native	1,001	218	100.0%	1,221	245	99.3%
Foreign born:	0	18	0.0%	9	16	0.7%
Naturalized U.S. citizen	0	18	0.0%	9	16	0.7%
Not a U.S. citizen	0	18	0.0%	0	18	0.0%

Source: U.S. Census Bureau, 2008-2012 American Community Survey

For information on confidentiality protection, sampling error, nonsampling error, and definitions, see Survey Methodology.
<http://www.census.gov/acs/www/UseData/index.htm>

Citizenship Status of Voting Age Population (18 and Over)

Whiteville city, North Carolina



Source: B05003. SEX BY AGE BY CITIZENSHIP STATUS
Data Set: 2008-2012 American Community Survey 5-Year Estimates

**B07004. GEOGRAPHICAL MOBILITY IN THE PAST YEAR BY RACE FOR CURRENT RESIDENCE IN THE UNITED STATES - Universe:
POPULATION 1 YEAR AND OVER**

Data Set: 2008-2012 American Community Survey 5-Year Estimates

	Whiteville city, North Carolina					
	African American	Margin of Error (+/-)	% of AA Total	White, Not Hispanic	Margin of Error (+/-)	% of NHW Total
Total:	2,148	385	100.0%	2,564	403	100.0%
Same house 1 year ago	2,055	391	95.7%	2,163	393	84.4%
Moved within same county	57	50	2.7%	352	250	13.7%
Moved from different county within same state	36	24	1.7%	26	24	1.0%
Moved from different state	0	18	0.0%	23	36	0.9%
Moved from abroad	0	18	0.0%	0	18	0.0%

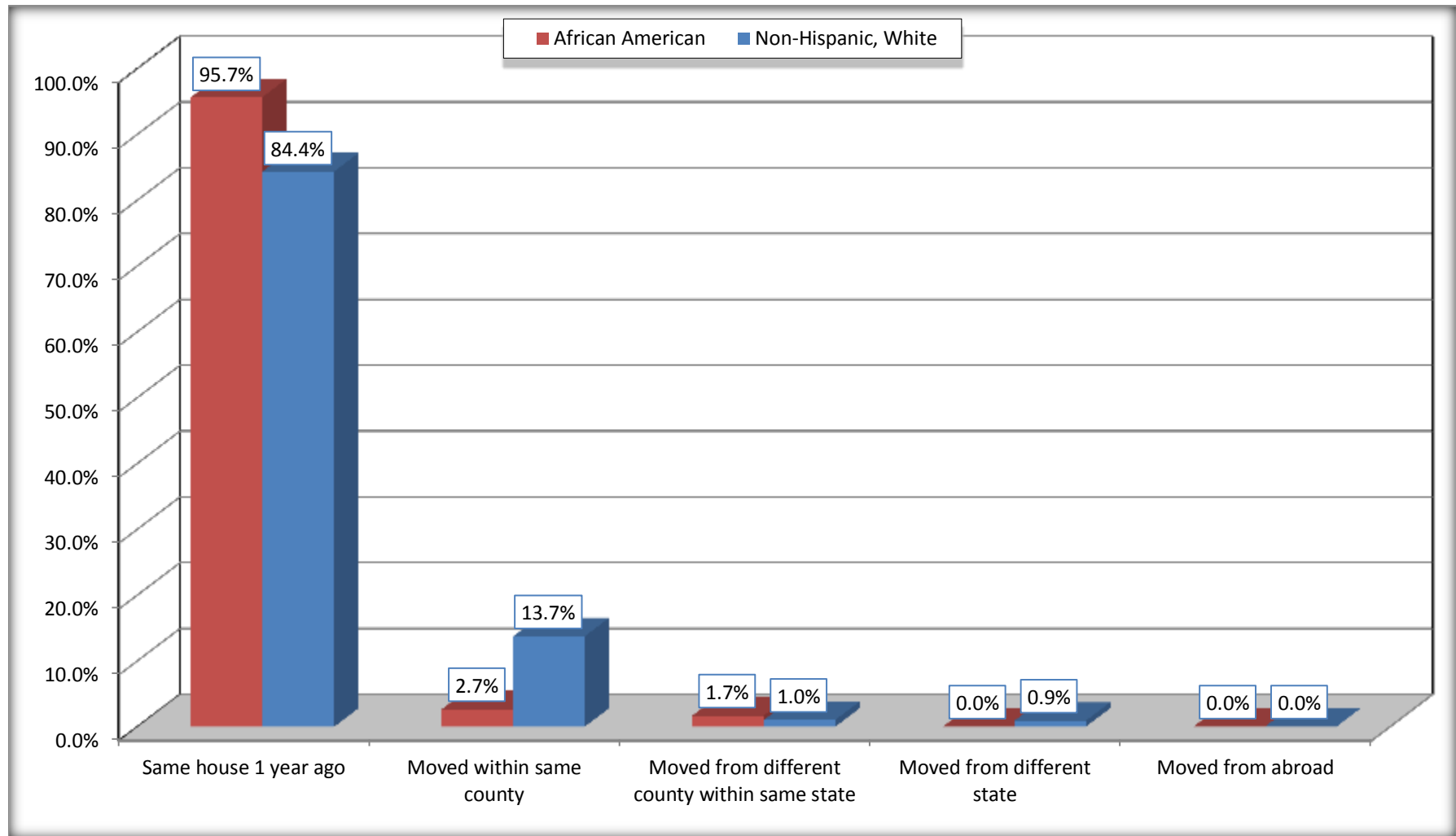
Source: U.S. Census Bureau, 2008-2012 American Community Survey

For information on confidentiality protection, sampling error, nonsampling error, and definitions, see Survey Methodology.

<http://www.census.gov/acs/www/UseData/index.htm>

Geographical Mobility in the Past Year (Population 1 Year and Over)

Whiteville city, North Carolina



Source: B07004. GEOGRAPHICAL MOBILITY IN THE PAST YEAR BY RACE FOR CURRENT RESIDENCE IN THE UNITED STATES - Universe: POPULATION 1 YEAR AND OVER

Data Set: 2008-2012 American Community Survey 5-Year Estimates

B08105. MEANS OF TRANSPORTATION TO WORK - Universe: WORKERS 16 YEARS AND OVER

Data Set: 2008-2012 American Community Survey 5-Year Estimates

	Whiteville city, North Carolina					
	African American	Margin of Error (+/-)	% of AA Total	White, Not Hispanic	Margin of Error (+/-)	% of NHW Total
Total:	691	205	100.0%	1098	297	100.0%
Car, truck, or van - drove alone	512	162	74.1%	982	298	89.4%
Car, truck, or van - carpooled	143	101	20.7%	105	76	9.6%
Public transportation (excluding taxicab)	0	18	0.0%	0	18	0.0%
Walked	0	18	0.0%	0	18	0.0%
Taxicab, motorcycle, bicycle, or other means	36	56	5.2%	0	18	0.0%
Worked at home	0	18	0.0%	11	18	1.0%

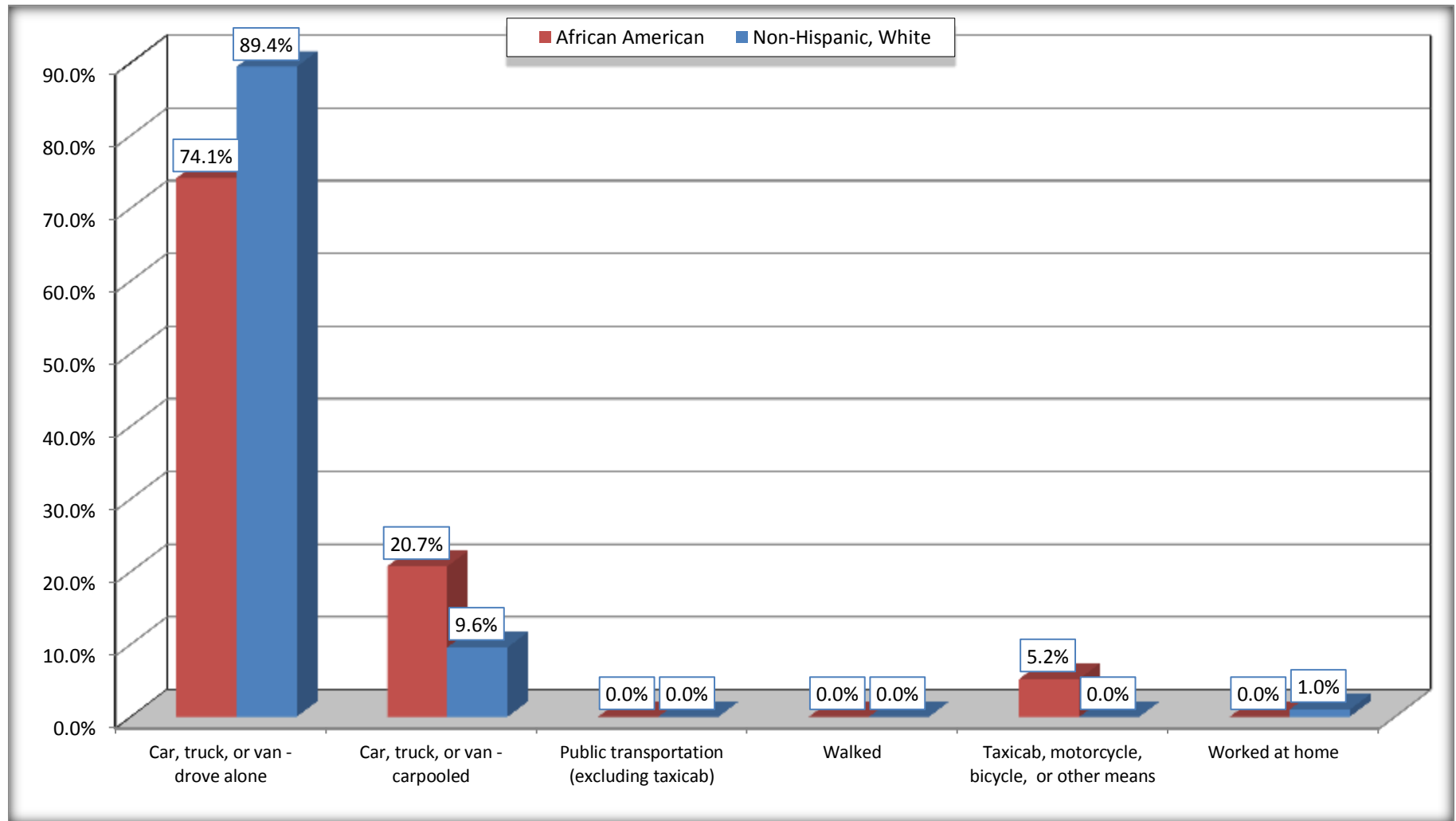
Source: U.S. Census Bureau, 2008-2012 American Community Survey

For information on confidentiality protection, sampling error, nonsampling error, and definitions, see Survey Methodology.

<http://www.census.gov/acs/www/UseData/index.htm>

Means of Transportation to Work (Workers 16 Years and Over)

Whiteville city, North Carolina



Source: B08105. MEANS OF TRANSPORTATION TO WORK - Universe: WORKERS 16 YEARS AND OVER
Data Set: 2008-2012 American Community Survey 5-Year Estimates

B11002. HOUSEHOLD TYPE BY RELATIVES AND NONRELATIVES FOR POPULATION IN HOUSEHOLDS

Data Set: 2008-2012 American Community Survey 5-Year Estimates

	Whiteville city, North Carolina					
	African American	Margin of Error (+/-)	% of AA Total	White, Not Hispanic	Margin of Error (+/-)	% of NHW Total
Total:	2077	449	100.0%	2459	393	100.0%
In family households	1672	453	80.5%	1615	377	65.7%
In nonfamily households	405	186	19.5%	844	286	34.3%

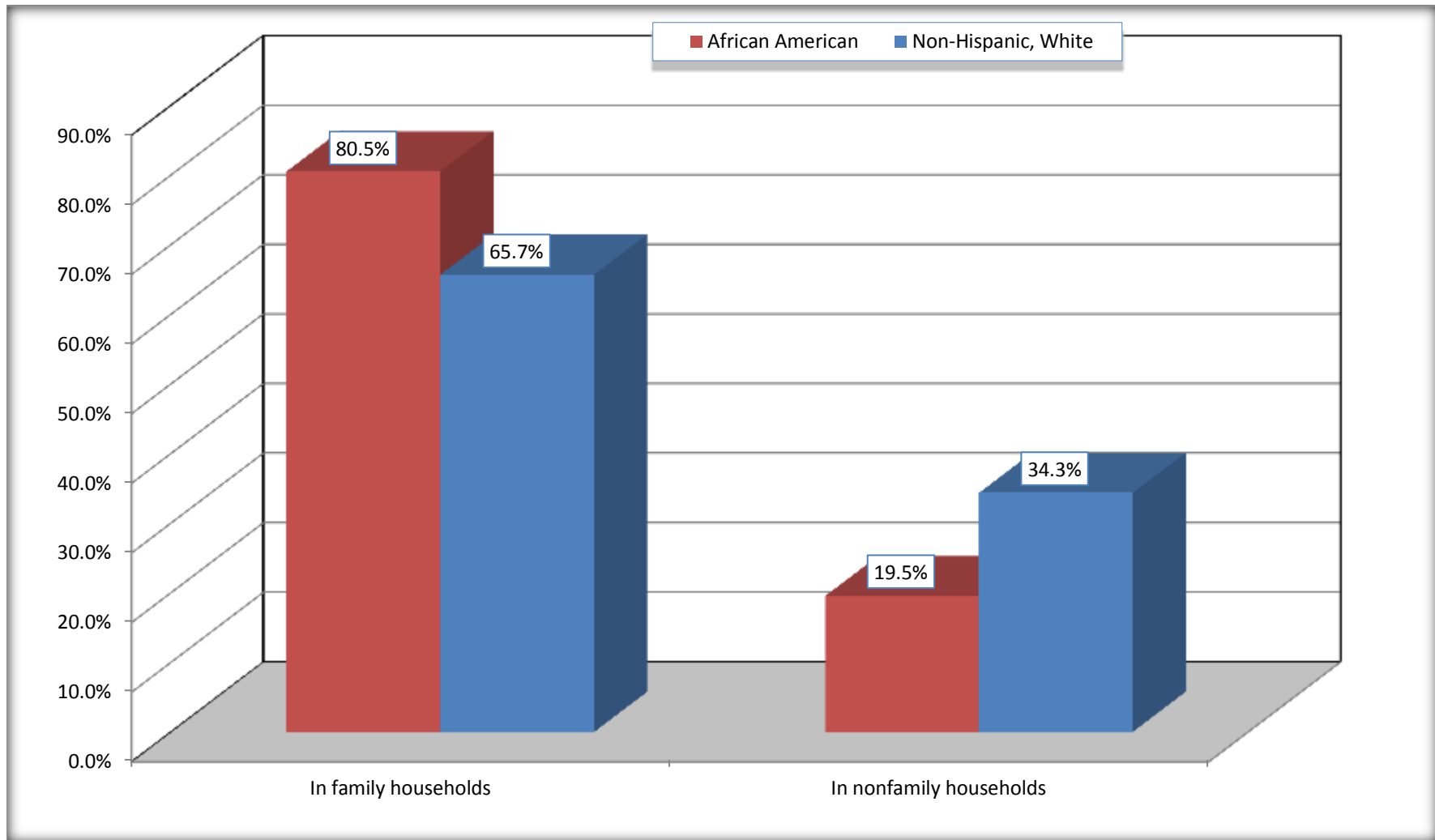
Source: U.S. Census Bureau, 2008-2012 American Community Survey

For information on confidentiality protection, sampling error, nonsampling error, and definitions, see Survey Methodology.

<http://www.census.gov/acs/www/UseData/index.htm>

Household Type for Population in Households

Whiteville city, North Carolina



Source: B11002. HOUSEHOLD TYPE BY RELATIVES AND NONRELATIVES FOR POPULATION IN HOUSEHOLDS
Data Set: 2008-2012 American Community Survey 5-Year Estimates

B12002. MARITAL STATUS FOR THE POPULATION 15 YEARS AND OVER

Data Set: 2008-2012 American Community Survey 5-Year Estimates

	Whiteville city, North Carolina					
	African American	Margin of Error (+/-)	% of AA Total	White, Not Hispanic	Margin of Error (+/-)	% of NHW Total
Total:	1,819	305	100.0%	2,277	371	100.0%
Never married	868	NC	47.7%	496	NC	21.8%
Now married (except separated)	554	NC	30.5%	810	NC	35.6%
Separated	52	NC	2.9%	101	NC	4.4%
Widowed	96	NC	5.3%	416	NC	18.3%
Divorced	249	NC	13.7%	454	NC	19.9%
Male:	731	157	40.2%	1,006	207	44.2%
Never married	343	150	18.9%	270	133	11.9%
Now married (except separated)	211	90	11.6%	445	148	19.5%
Separated	33	52	1.8%	42	52	1.8%
Widowed	17	23	0.9%	53	42	2.3%
Divorced	127	84	7.0%	196	104	8.6%
Female:	1,088	252	59.8%	1,271	255	55.8%
Never married	525	212	28.9%	226	143	9.9%
Now married (except separated)	343	136	18.9%	365	113	16.0%
Separated	19	31	1.0%	59	69	2.6%
Widowed	79	53	4.3%	363	117	15.9%
Divorced	122	71	6.7%	258	103	11.3%

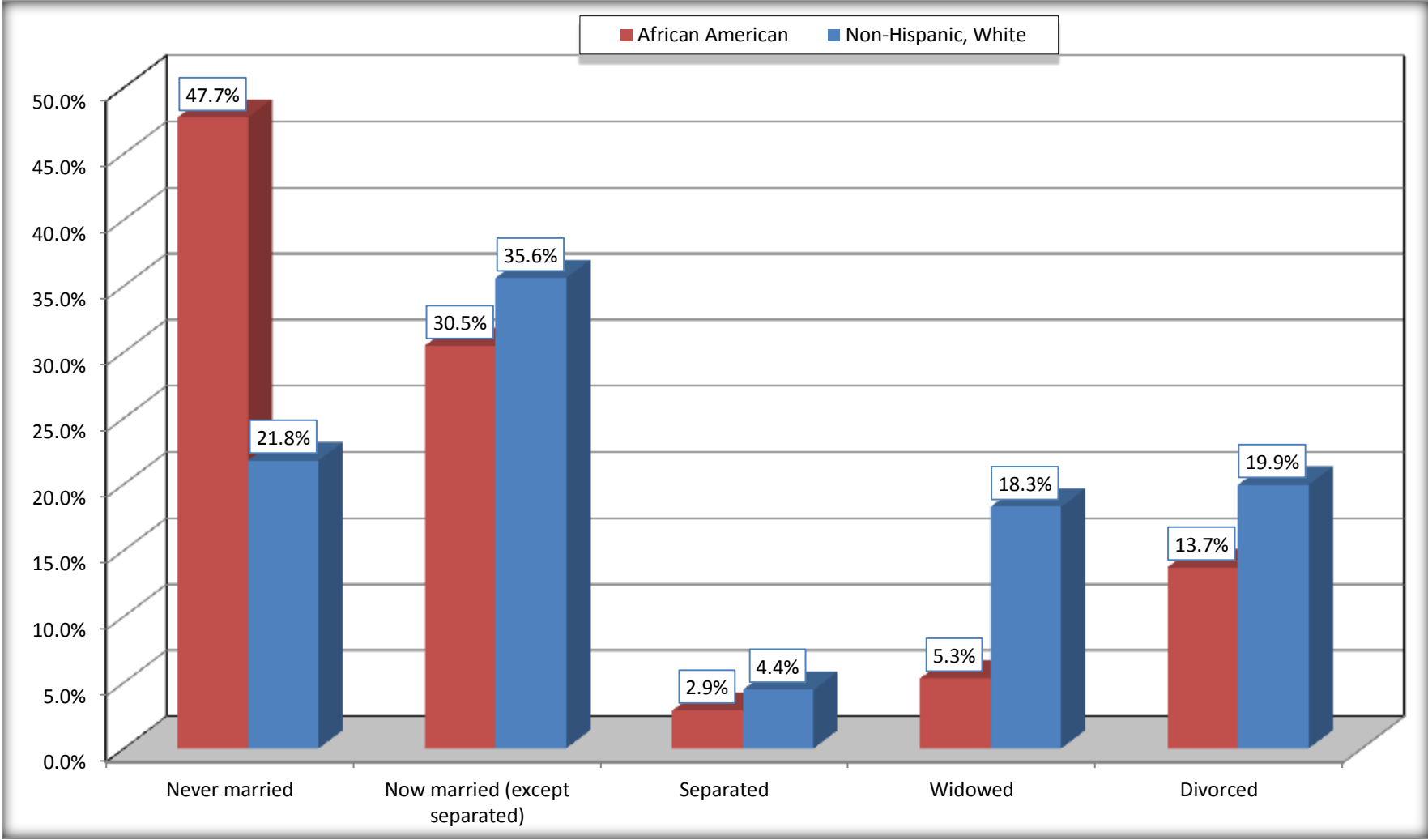
Source: U.S. Census Bureau, 2008-2012 American Community Survey

For information on confidentiality protection, sampling error, nonsampling error, and definitions, see Survey Methodology.

<http://www.census.gov/acs/www/UseData/index.htm>

Marital Status for the Population 15 Years and Over

Whiteville city, North Carolina



Source: B12002. MARITAL STATUS FOR THE POPULATION 15 YEARS AND OVER
Data Set: 2008-2012 American Community Survey 5-Year Estimates

C15002. SEX BY EDUCATIONAL ATTAINMENT FOR THE POPULATION 25 YEARS AND OVER

Data Set: 2008-2012 American Community Survey 5-Year Estimates

	Whiteville city, North Carolina					
	African American	Margin of Error (+/-)	% of AA Total	White, Not Hispanic	Margin of Error (+/-)	% of NHW Total
Total:	1,635	271	100.0%	2,095	302	100.0%
Less than high school diploma	502	NC	30.7%	410	NC	19.6%
High school graduate, GED, or alternative	545	NC	33.3%	448	NC	21.4%
Some college or associate's degree	492	NC	30.1%	743	NC	35.5%
Bachelor's degree or higher	96	NC	5.9%	494	NC	23.6%
Male:	687	163	42.0%	962	204	45.9%
Less than high school diploma	205	101	12.5%	208	147	9.9%
High school graduate, GED, or alternative	306	130	18.7%	267	118	12.7%
Some college or associate's degree	151	90	9.2%	285	156	13.6%
Bachelor's degree or higher	25	38	1.5%	202	78	9.6%
Female:	948	204	58.0%	1,133	184	54.1%
Less than high school diploma	297	156	18.2%	202	105	9.6%
High school graduate, GED, or alternative	239	109	14.6%	181	80	8.6%
Some college or associate's degree	341	142	20.9%	458	146	21.9%
Bachelor's degree or higher	71	56	4.3%	292	90	13.9%

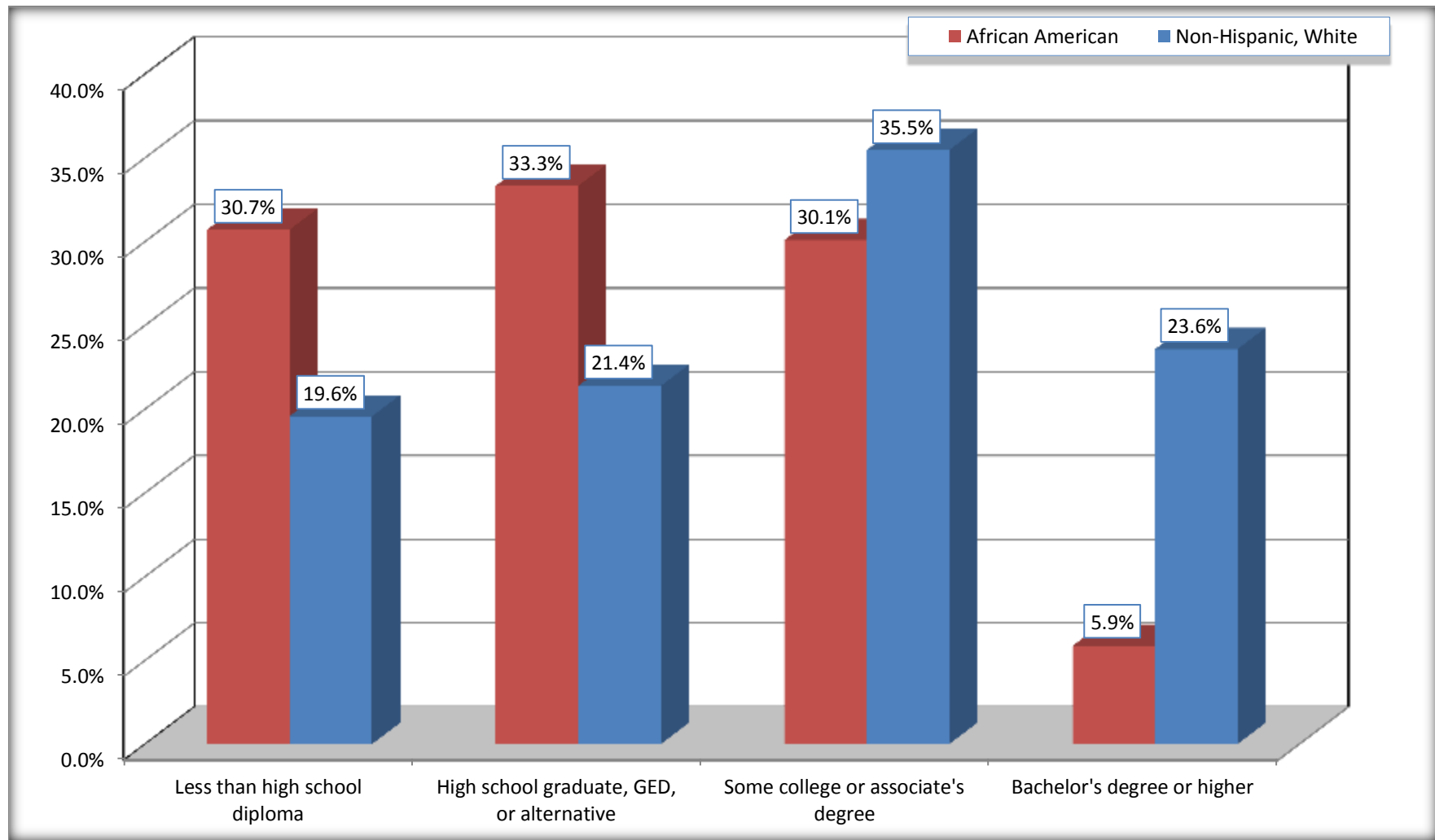
Source: U.S. Census Bureau, 2008-2012 American Community Survey

For information on confidentiality protection, sampling error, nonsampling error, and definitions, see Survey Methodology.

<http://www.census.gov/acs/www/UseData/index.htm>

Educational Attainment for the Population 25 Years and Older

Whiteville city, North Carolina



Source: C15002. SEX BY EDUCATIONAL ATTAINMENT FOR THE POPULATION 25 YEARS AND OVER
Data Set: 2008-2012 American Community Survey 5-Year Estimates

B17010. POVERTY STATUS IN THE PAST 12 MONTHS OF FAMILIES BY FAMILY TYPE BY PRESENCE OF RELATED CHILDREN UNDER 18 YEARS

Data Set: 2008-2012 American Community Survey 5-Year Estimates

	Whiteville city, North Carolina					
	African American	Margin of Error (+/-)	% of AA Total	White, Not Hispanic	Margin of Error (+/-)	% of NHW Total
Total:	577	144	100.0%	545	135	100.0%
Income in the past 12 months below poverty level:	250	127	43.3%	77	49	14.1%
Married-couple family:	74	58	12.8%	12	19	2.2%
With related children under 18 years	25	39	4.3%	0	18	0.0%
Other family:	176	116	30.5%	65	46	11.9%
Male householder, no wife present	16	23	2.8%	11	17	2.0%
With related children under 18 years	16	23	2.8%	0	18	0.0%
Female householder, no husband present	160	99	27.7%	54	42	9.9%
With related children under 18 years	160	99	27.7%	54	42	9.9%
Income in the past 12 months at or above poverty level:	327	111	56.7%	468	132	85.9%
Married-couple family:	144	81	25.0%	334	114	61.3%
With related children under 18 years	0	18	0.0%	107	63	19.6%
Other family:	183	92	31.7%	134	89	24.6%
Male householder, no wife present	31	35	5.4%	34	37	6.2%
With related children under 18 years	0	18	0.0%	11	23	2.0%
Female householder, no husband present	152	93	26.3%	100	78	18.3%
With related children under 18 years	115	84	19.9%	25	30	4.6%

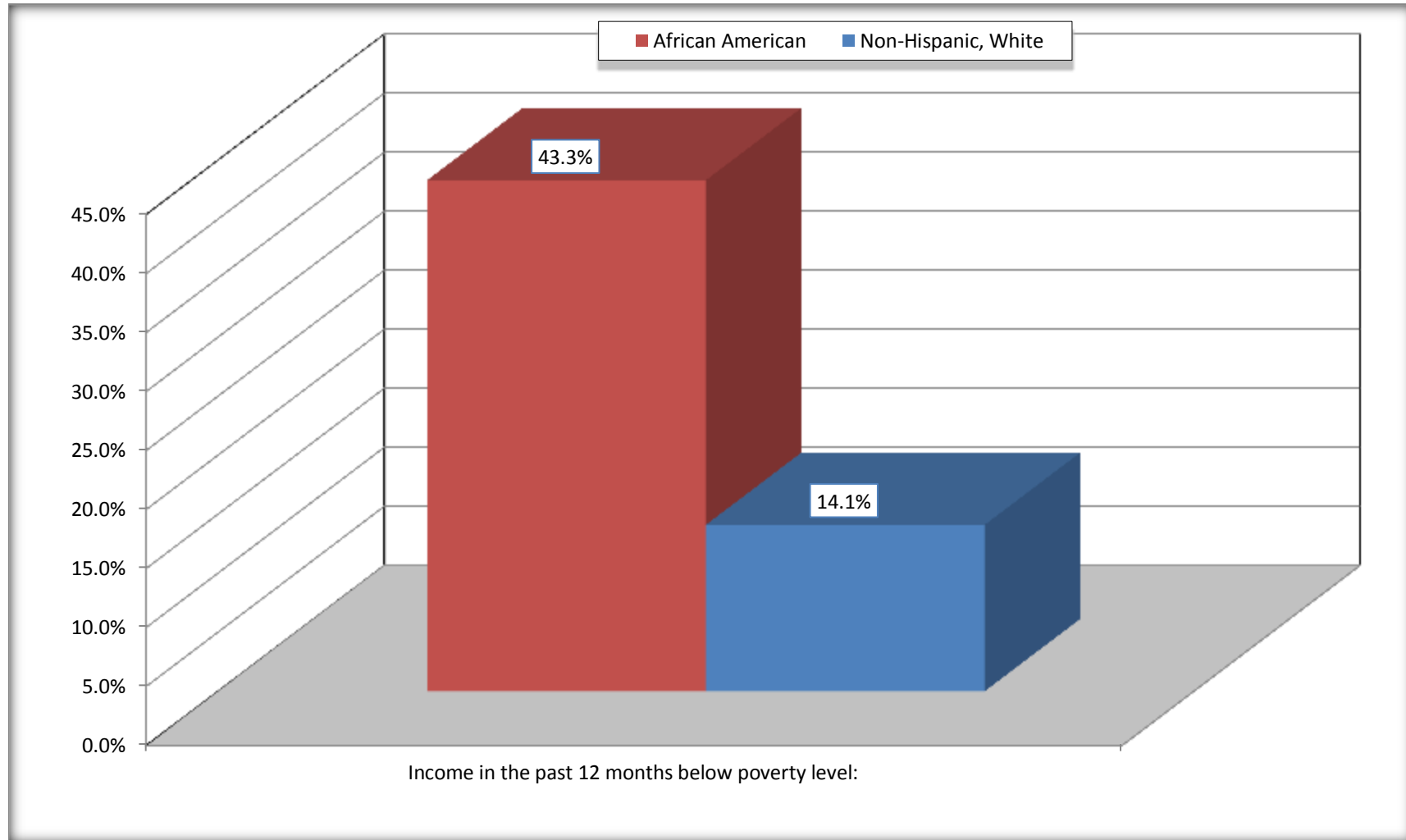
Source: U.S. Census Bureau, 2008-2012 American Community Survey

For information on confidentiality protection, sampling error, nonsampling error, and definitions, see Survey Methodology.

<http://www.census.gov/acs/www/UseData/index.htm>

Family Households Below Poverty in the Past 12 Months

Whiteville city, North Carolina

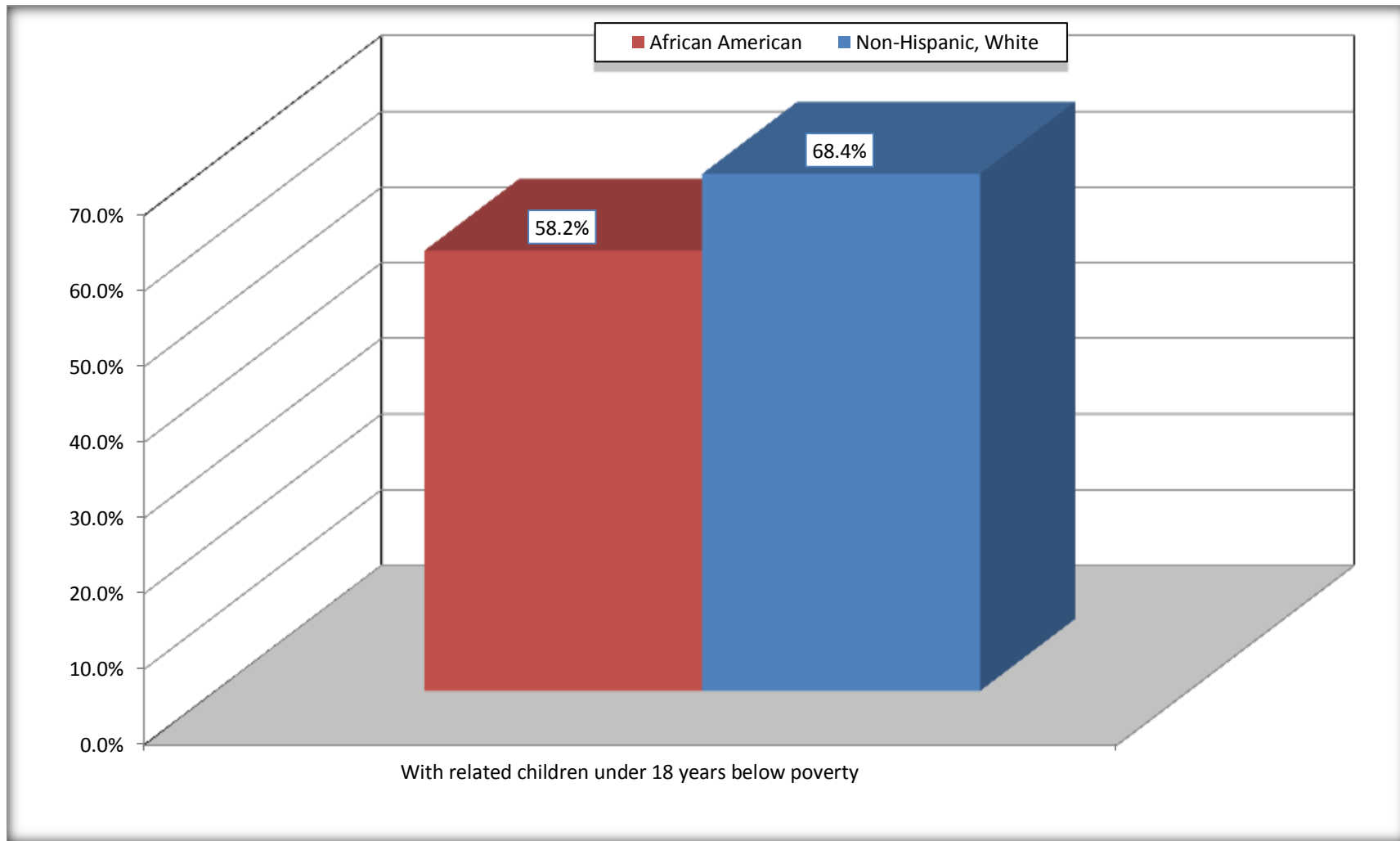


Source: B17010. POVERTY STATUS IN THE PAST 12 MONTHS OF FAMILIES BY FAMILY TYPE BY PRESENCE OF RELATED CHILDREN UNDER 18 YEARS

Data Set: 2008-2012 American Community Survey 5-Year Estimates

Female-headed Households with Related Children Below Poverty in the Past 12 Months

Whiteville city, North Carolina



Source: B17010. POVERTY STATUS IN THE PAST 12 MONTHS OF FAMILIES BY FAMILY TYPE BY PRESENCE OF RELATED CHILDREN UNDER 18 YEARS

Data Set: 2008-2012 American Community Survey 5-Year Estimates

B17020 POVERTY STATUS IN THE PAST 12 MONTHS BY AGE - Universe: POPULATION FOR WHOM POVERTY STATUS IS DETERMINED

Data Set: 2008-2012 American Community Survey 5-Year Estimates

	Whiteville city, North Carolina					
	African American	Margin of Error (+/-)	% of AA By Age	White, Not Hispanic	Margin of Error (+/-)	% of NHW By Age
Total:	2,129	452	100.0%	2,465	396	100.0%
Income in the past 12 months below poverty level:	1,115	458	52.4%	583	226	23.7%
Under 18 years	360	NC	73.2%	71	NC	21.6%
18 to 64 years	610	232	51.7%	449	202	29.2%
65 years and over	145	NC	31.7%	63	NC	10.5%
Income in the past 12 months at or above poverty level:	1,014	290	47.6%	1,882	355	76.3%
Under 18 years	132	NC	26.8%	257	NC	78.4%
18 to 64 years	569	188	48.3%	1,087	282	70.8%
65 years and over	313	NC	68.3%	538	NC	89.5%

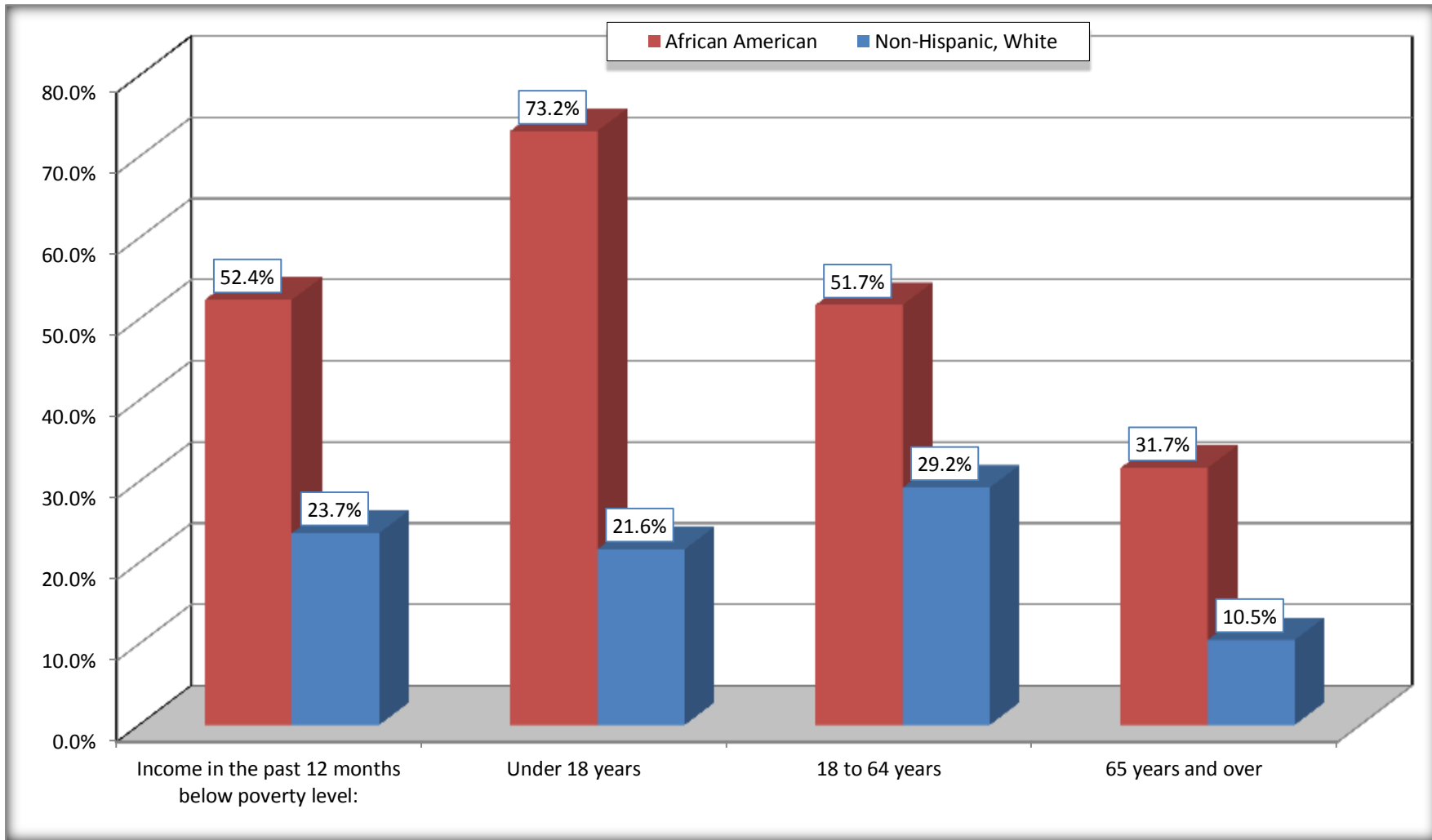
Source: U.S. Census Bureau, 2008-2012 American Community Survey

For information on confidentiality protection, sampling error, nonsampling error, and definitions, see Survey Methodology.

<http://www.census.gov/acs/www/UseData/index.htm>

Population Below Poverty in the Past 12 Months

Whiteville city, North Carolina



Source: B17020 POVERTY STATUS IN THE PAST 12 MONTHS BY AGE - Universe: POPULATION FOR WHOM POVERTY STATUS IS DETERMINED
Data Set: 2008-2012 American Community Survey 5-Year Estimates

B19001. HOUSEHOLD INCOME IN THE PAST 12 MONTHS (IN 2010 INFLATION-ADJUSTED DOLLARS)

Data Set: 2008-2012 American Community Survey 5-Year Estimates

	Whiteville city, North Carolina					
	African American	Margin of Error (+/-)	% of AA Total	White, Not Hispanic	Margin of Error (+/-)	% of NHW Total
Total:	974	212	100.0%	1,264	209	100.0%
Less than \$ 10,000	240	120	24.6%	228	128	18.0%
\$ 10,000 to \$ 14,999	123	83	12.6%	89	64	7.0%
\$ 15,000 to \$ 24,999	192	NC	19.7%	197	NC	15.6%
\$ 25,000 to \$ 34,999	209	NC	21.5%	100	NC	7.9%
\$ 35,000 to \$ 49,999	140	NC	14.4%	200	NC	15.8%
\$ 50,000 to \$ 74,999	53	NC	5.4%	104	NC	8.2%
\$ 75,000 to \$ 99,999	10	17	1.0%	176	103	13.9%
\$ 100,000 to \$ 149,999	7	NC	0.7%	86	NC	6.8%
\$ 150,000 to \$ 199,999	0	18	0.0%	45	38	3.6%
\$ 200,000 or more	0	18	0.0%	39	35	3.1%

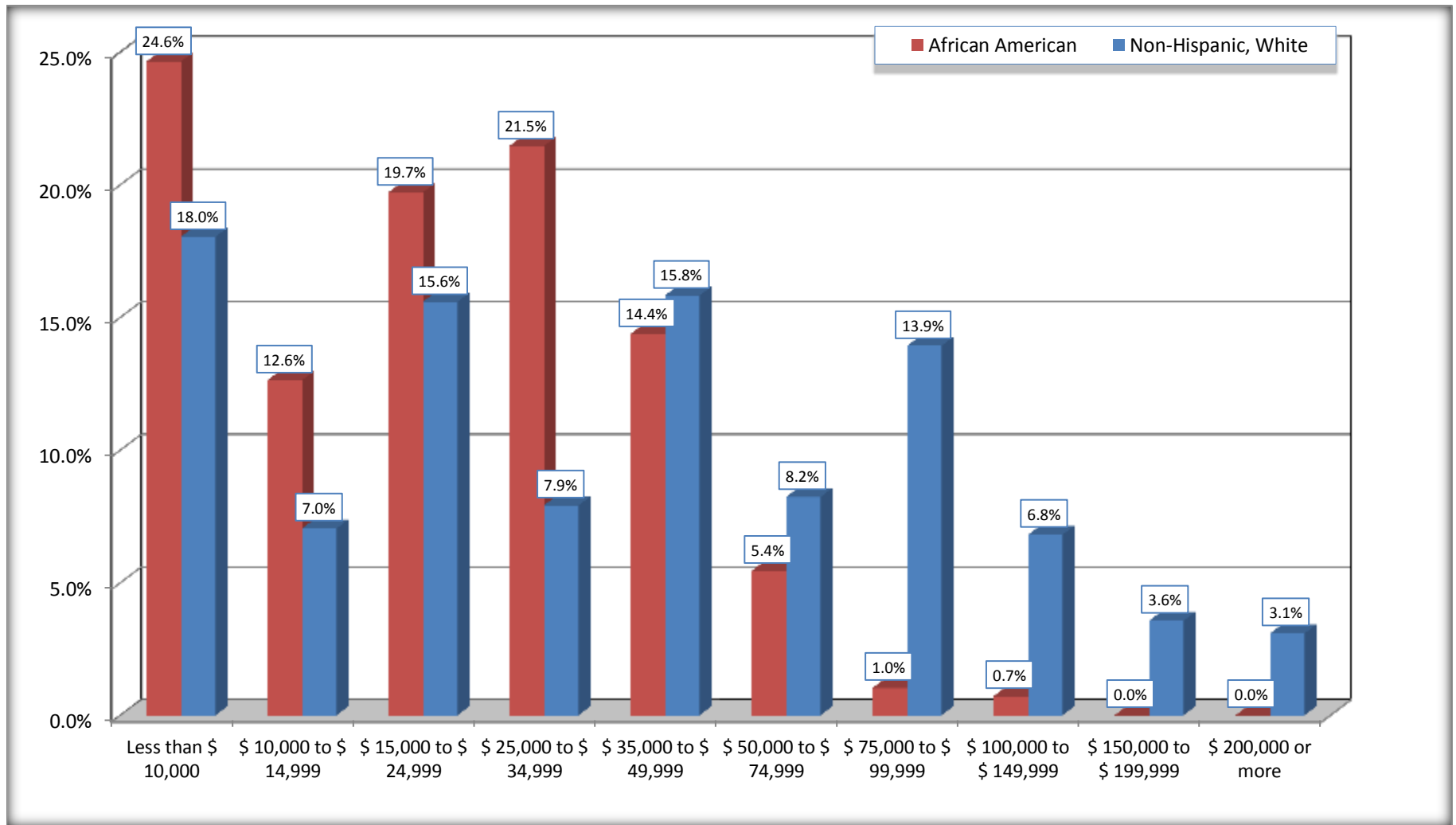
Source: U.S. Census Bureau, 2008-2012 American Community Survey

For information on confidentiality protection, sampling error, nonsampling error, and definitions, see Survey Methodology.

<http://www.census.gov/acs/www/UseData/index.htm>

Household Income in the Past 12 Months

Whiteville city, North Carolina



Source: B19001. HOUSEHOLD INCOME IN THE PAST 12 MONTHS (IN 2010 INFLATION-ADJUSTED DOLLARS)

Data Set: 2008-2012 American Community Survey 5-Year Estimates

B19013. MEDIAN HOUSEHOLD INCOME IN THE PAST 12 MONTHS (IN 2010 INFLATION-ADJUSTED DOLLARS)

Data Set: 2008-2012 American Community Survey 5-Year Estimates

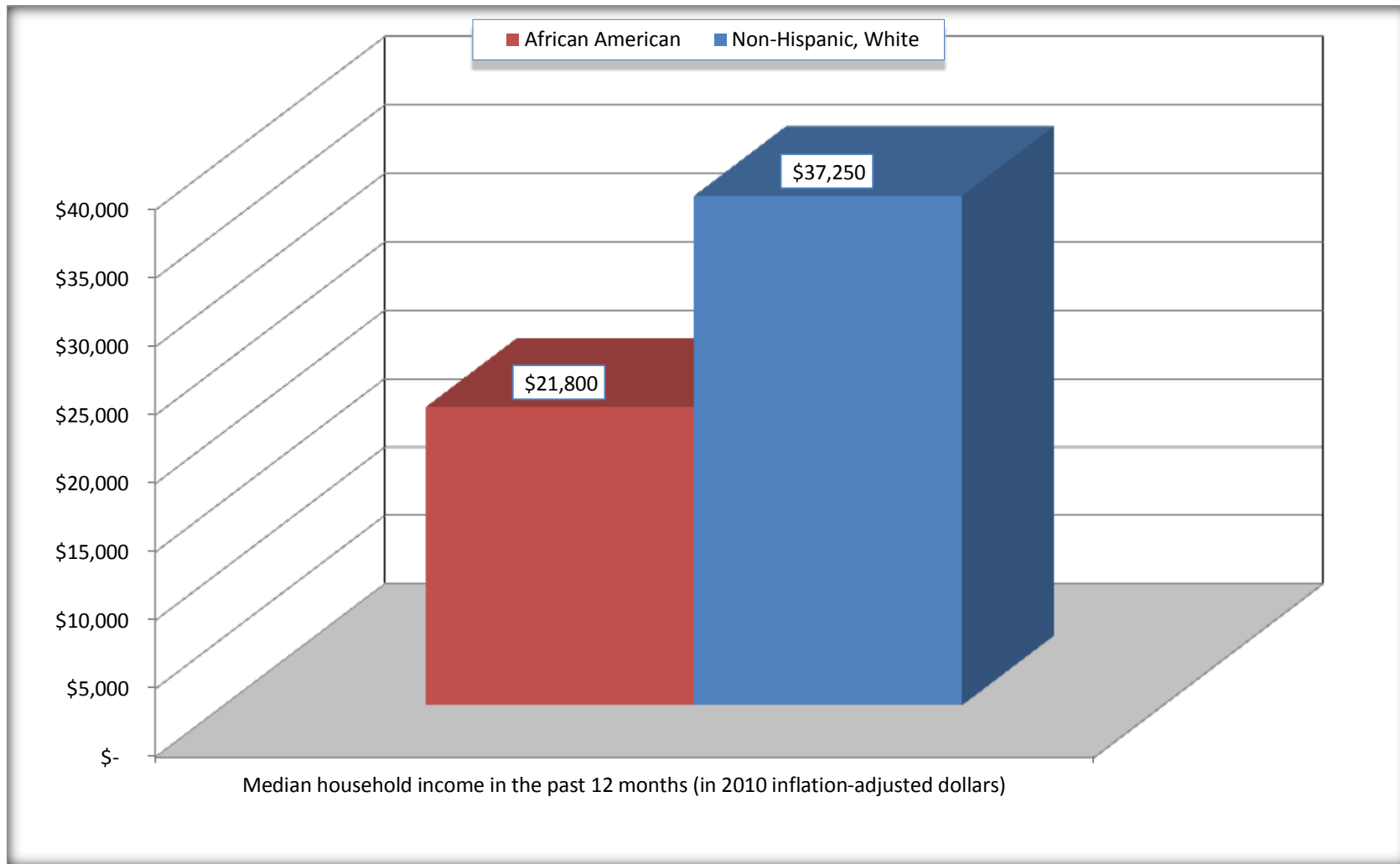
	Whiteville city, North Carolina			
	African American	Margin of Error (+/-)	White, Not Hispanic	Margin of Error (+/-)
Median household income in the past 12 months (in 2010 inflation-adjusted dollars)	\$ 21,800	\$ 8,206	\$ 37,250	\$ 13,929

Source: U.S. Census Bureau, 2008-2012 American Community Survey

For information on confidentiality protection, sampling error, nonsampling error, and definitions, see Survey Methodology.
<http://www.census.gov/acs/www/UseData/index.htm>

Median Household Income in the Past 12 Months

Whiteville city, North Carolina



Source: B19013. MEDIAN HOUSEHOLD INCOME IN THE PAST 12 MONTHS (IN 2010 INFLATION-ADJUSTED DOLLARS)
Data Set: 2008-2012 American Community Survey 5-Year Estimates

B19101. FAMILY INCOME IN THE PAST 12 MONTHS (IN 2010 INFLATION-ADJUSTED DOLLARS)

Data Set: 2008-2012 American Community Survey 5-Year Estimates

	Whiteville city, North Carolina					
	African American	Margin of Error (+/-)	% of AA Total	White, Not Hispanic	Margin of Error (+/-)	% of NHW Total
Total:	577	144	100.0%	545	135	100.0%
Less than \$ 10,000	119	85	20.6%	25	28	4.6%
\$ 10,000 to \$ 14,999	65	58	11.3%	52	41	9.5%
\$ 15,000 to \$ 24,999	157	NC	27.2%	29	NC	5.3%
\$ 25,000 to \$ 34,999	133	NC	23.1%	8	NC	1.5%
\$ 35,000 to \$ 49,999	61	NC	10.6%	109	NC	20.0%
\$ 50,000 to \$ 74,999	35	NC	6.1%	61	NC	11.2%
\$ 100,000 to \$ 149,999	7	NC	1.2%	60	NC	11.0%
\$ 150,000 to \$ 199,999	0	18	0.0%	45	38	8.3%
\$ 200,000 or more	0	18	0.0%	22	24	4.0%

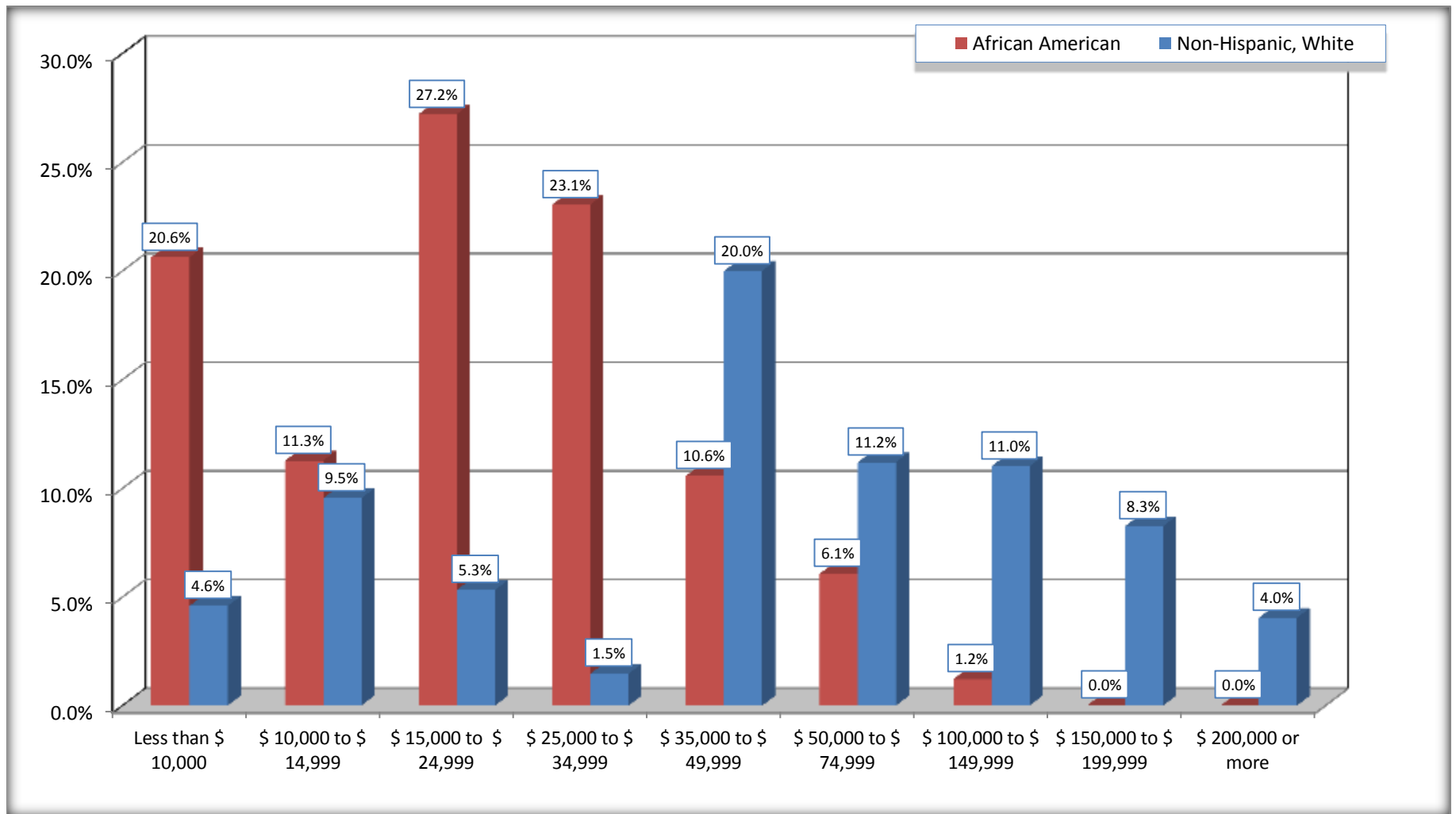
Source: U.S. Census Bureau, 2008-2012 American Community Survey

For information on confidentiality protection, sampling error, nonsampling error, and definitions, see Survey Methodology.

<http://www.census.gov/acs/www/UseData/index.htm>

Family Income in the Past 12 Months

Whiteville city, North Carolina



Source: B19101. FAMILY INCOME IN THE PAST 12 MONTHS (IN 2010 INFLATION-ADJUSTED DOLLARS)
Data Set: 2008-2012 American Community Survey 5-Year Estimates

B19113. MEDIAN FAMILY INCOME IN THE PAST 12 MONTHS (IN 2010 INFLATION-ADJUSTED DOLLARS)

Data Set: 2008-2012 American Community Survey 5-Year Estimates

	Whiteville city, North Carolina			
	African American	Margin of Error (+/-)	White, Not Hispanic	Margin of Error (+/-)
Median family income in the past 12 months (in 2010 inflation-adjusted dollars)	\$ 21,150	\$ 7,508	\$ 73,203	\$ 15,774

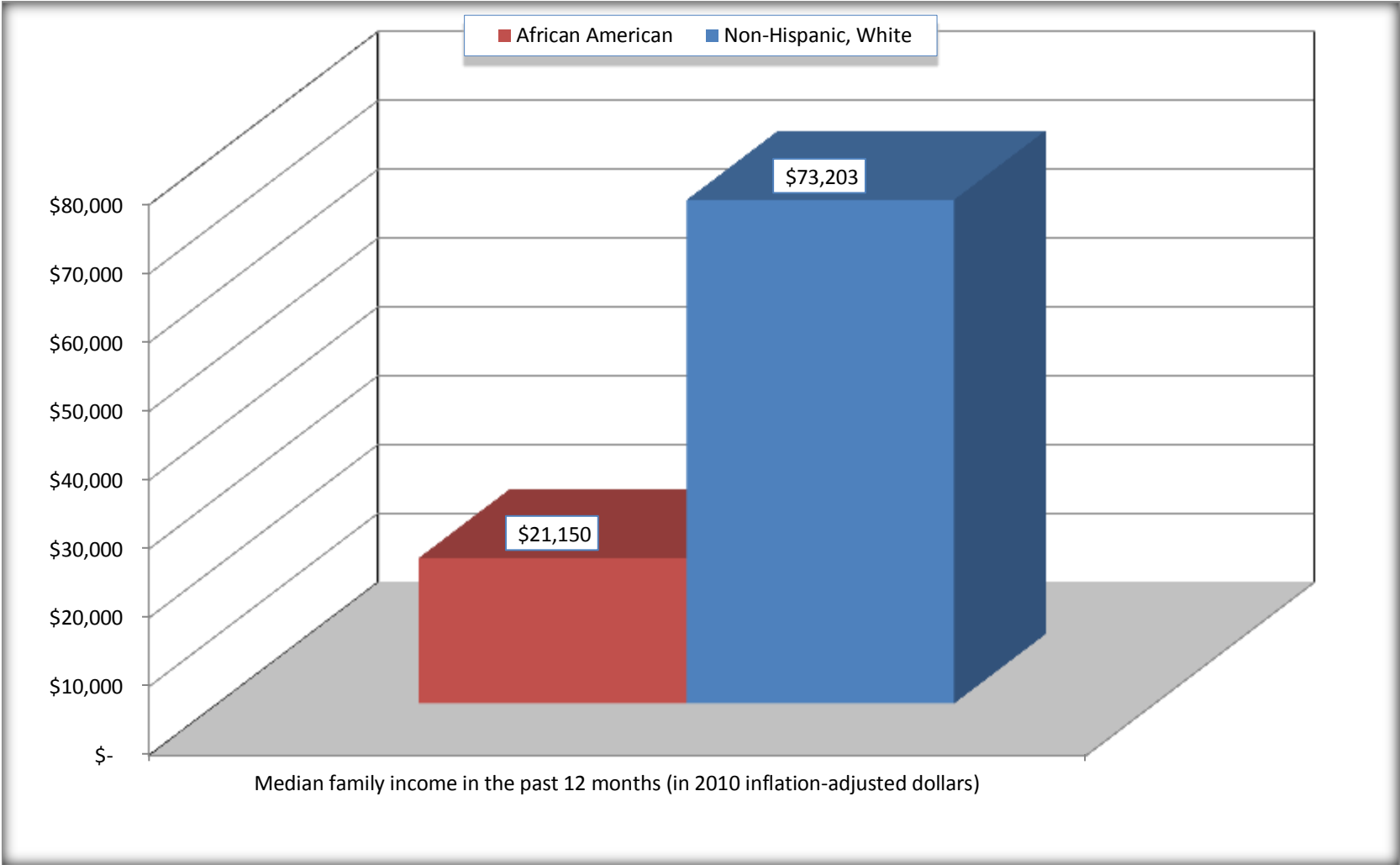
Source: U.S. Census Bureau, 2008-2012 American Community Survey

For information on confidentiality protection, sampling error, nonsampling error, and definitions, see Survey Methodology.

<http://www.census.gov/acs/www/UseData/index.htm>

Median Family Income in the Past 12 Months

Whiteville city, North Carolina



Source: B19113. MEDIAN FAMILY INCOME IN THE PAST 12 MONTHS (IN 2010 INFLATION-ADJUSTED DOLLARS)
Data Set: 2008-2012 American Community Survey 5-Year Estimates

B19202. MEDIAN NONFAMILY HOUSEHOLD INCOME IN THE PAST 12 MONTHS (IN 2010 INFLATION-ADJUSTED DOLLARS)

Data Set: 2008-2012 American Community Survey 5-Year Estimates

	Whiteville city, North Carolina			
	African American	Margin of Error (+/-)	White, Not Hispanic	Margin of Error (+/-)
Median nonfamily household income in the past 12 months (in 2010 inflation-adjusted dollars)	\$ 23,239	\$ 21,639	\$ 22,976	\$ 7,566

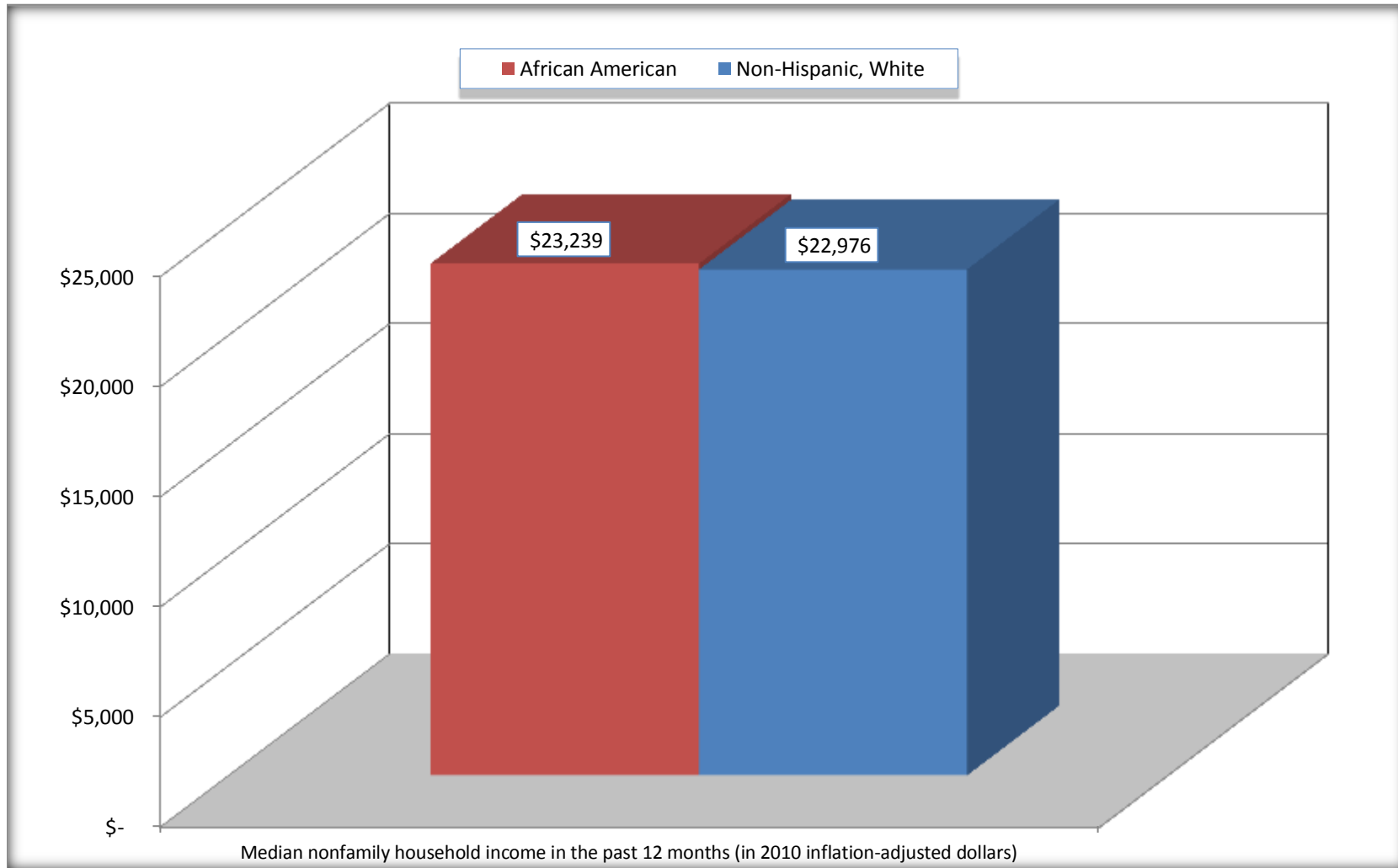
Source: U.S. Census Bureau, 2008-2012 American Community Survey

For information on confidentiality protection, sampling error, nonsampling error, and definitions, see Survey Methodology.

<http://www.census.gov/acs/www/UseData/index.htm>

Median Non-Family Income in the Past 12 Months

Whiteville city, North Carolina



Source: B19202. MEDIAN NONFAMILY HOUSEHOLD INCOME IN THE PAST 12 MONTHS (IN 2010 INFLATION-ADJUSTED DOLLARS)
Data Set: 2008-2012 American Community Survey 5-Year Estimates

B19301. PER CAPITA INCOME IN THE PAST 12 MONTHS (IN 2010 INFLATION-ADJUSTED DOLLARS)

Data Set: 2008-2012 American Community Survey 5-Year Estimates

	Whiteville city, North Carolina			
	African American	Margin of Error (+/-)	White, Not Hispanic	Margin of Error (+/-)
Per capita income in the past 12 months (in 2010 inflation-adjusted dollars)	\$ 11,706	\$ 2,929	\$ 29,185	\$ 6,654

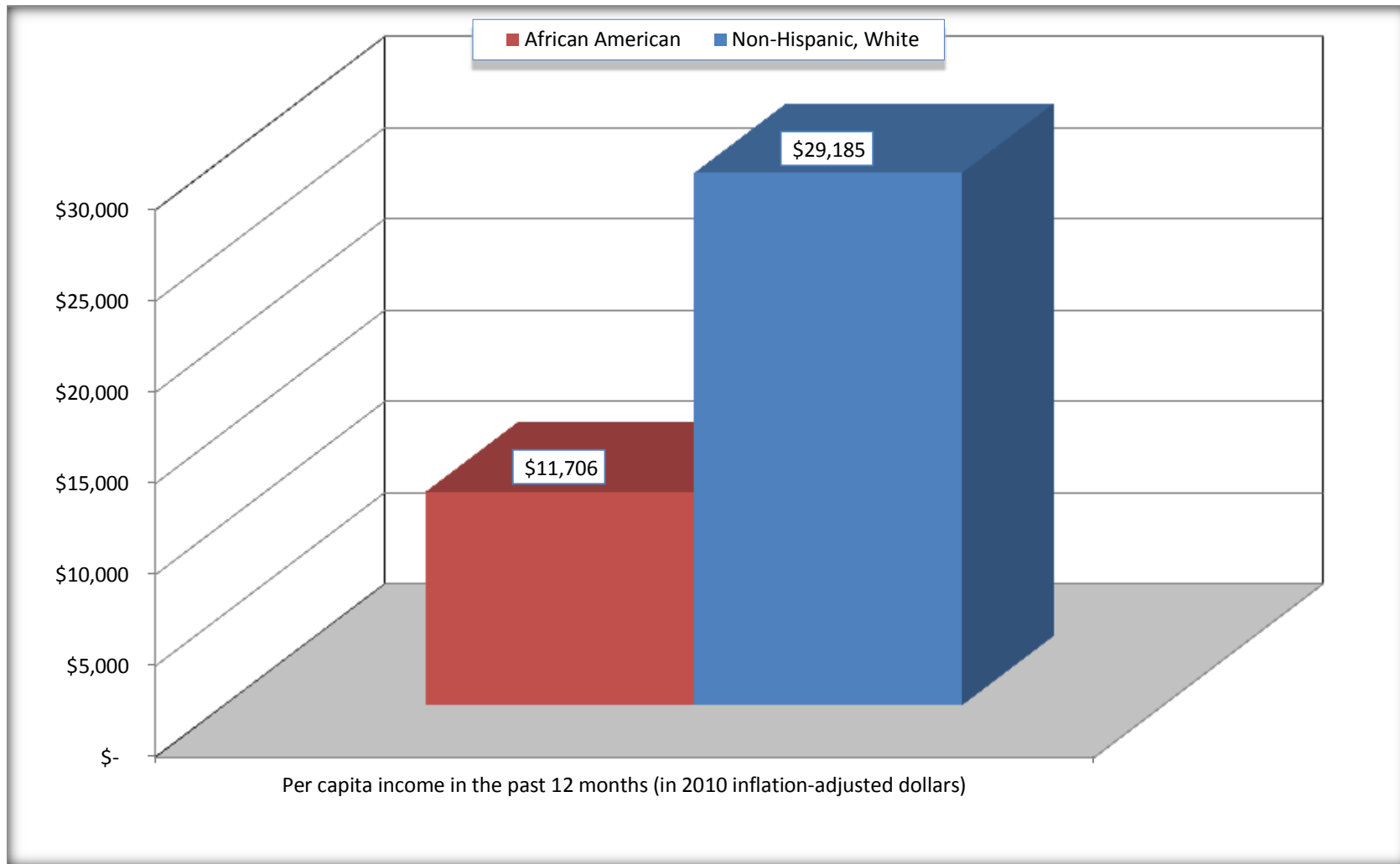
Source: U.S. Census Bureau, 2008-2012 American Community Survey

For information on confidentiality protection, sampling error, nonsampling error, and definitions, see Survey Methodology.

<http://www.census.gov/acs/www/UseData/index.htm>

Per capita Income in the Past 12 Months

Whiteville city, North Carolina



Source: B19301. PER CAPITA INCOME IN THE PAST 12 MONTHS (IN 2010 INFLATION-ADJUSTED DOLLARS)
Data Set: 2008-2012 American Community Survey 5-Year Estimates

B20017. MEDIAN EARNINGS IN THE PAST 12 MONTHS (IN 2010 INFLATION-ADJUSTED DOLLARS) BY SEX BY WORK EXPERIENCE IN THE PAST 12 MONTHS FOR THE POPULATION 16 YEARS AND OVER WITH EARNINGS IN THE PAST 12 MONTHS

Data Set: 2008-2012 American Community Survey 5-Year Estimates

	Whiteville city, North Carolina			
	African American	Margin of Error (+/-)	White, Not Hispanic	Margin of Error (+/-)
Median earnings in the past 12 months (in 2010 inflation-adjusted dollars) --				
Total:	\$ 16,573	\$ 1,429	\$ 20,400	\$ 10,049
Male --				
Total	\$ 19,191	\$ 13,445	\$ 21,429	\$ 19,184
Worked full-time, year-round in the past 12 months	\$ 29,125	\$ 21,493	\$ 36,597	\$ 42,397
Other	\$ 2,667	\$ 2,459	\$ 10,282	\$ 5,243
Female --				
Total	\$ 16,378	\$ 1,176	\$ 20,000	\$ 19,778
Worked full-time, year-round in the past 12 months	\$ 18,713	\$ 14,930	\$ 47,642	\$ 9,319
Other	\$ 4,785	\$ 2,913	\$ 5,132	\$ 1,915

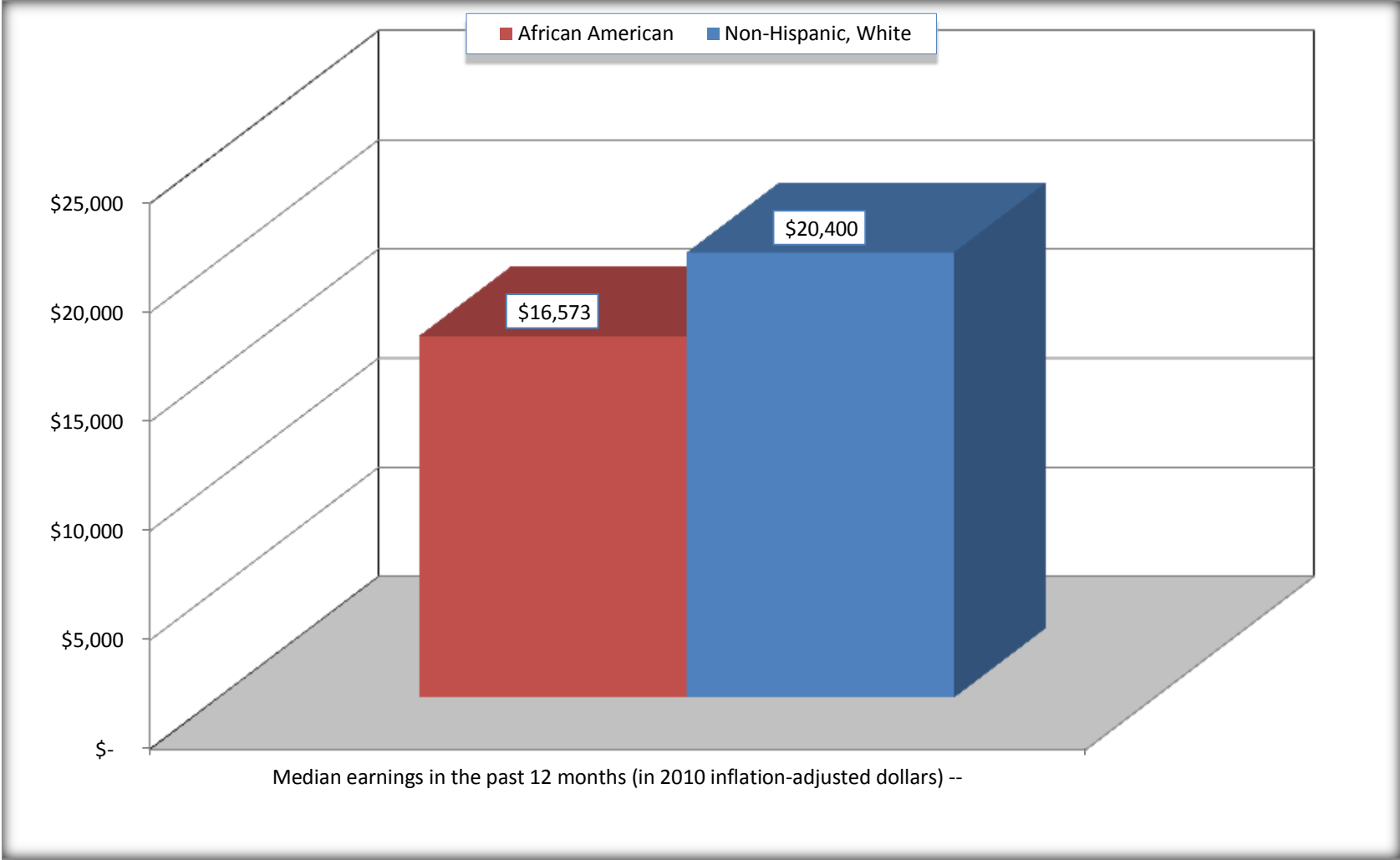
Source: U.S. Census Bureau, 2008-2012 American Community Survey

For information on confidentiality protection, sampling error, nonsampling error, and definitions, see Survey Methodology.

<http://www.census.gov/acs/www/UseData/index.htm>

Median earnings in the Past 12 Months (16 Years and Over with Earnings)

Whiteville city, North Carolina



Source: B20017. MEDIAN EARNINGS IN THE PAST 12 MONTHS (IN 2010 INFLATION-ADJUSTED DOLLARS) BY SEX BY WORK EXPERIENCE IN THE PAST 12 MONTHS FOR THE POPULATION 16 YEARS AND OVER WITH EARNINGS IN THE PAST 12 MONTHS
Data Set: 2008-2012 American Community Survey 5-Year Estimates

B20005. SEX BY WORK EXPERIENCE IN THE PAST 12 MONTHS BY EARNINGS IN THE PAST 12 MONTHS (IN 2010 INFLATION-ADJUSTED DOLLARS) FOR THE POPULATION 16 YEARS AND OVER

Data Set: 2008-2012 American Community Survey 5-Year Estimates

	Whiteville city, North Carolina					
	African American	Margin of Error (+/-)	% of AA Total	White, Not Hispanic	Margin of Error (+/-)	% of NHW Total
Total:	1,797	305	100.0%	2,277	371	100.0%
Worked full-time, year-round in the past 12 months:	504	NC	28.0%	667	NC	29.3%
No earnings	0	NC	0.0%	0	NC	0.0%
With earnings:	504	NC	28.0%	667	NC	29.3%
\$ 1 to \$ 9,999 or loss	24	NC	1.3%	64	NC	2.8%
\$ 10,000 to \$ 19,999	206	NC	11.5%	39	NC	1.7%
\$ 20,000 to \$ 29,999	104	NC	5.8%	78	NC	3.4%
\$ 30,000 to \$ 49,999	134	NC	7.5%	218	NC	9.6%
\$ 50,000 to \$ 74,999	29	NC	1.6%	152	NC	6.7%
\$ 75,000 or more	7	NC	0.4%	116	NC	5.1%
Other:	1,293	NC	72.0%	1,610	NC	70.7%
No earnings	976	NC	54.3%	923	NC	40.5%
With earnings: less than full time, year-round	317	NC	17.6%	687	NC	30.2%
Male:	731	157	40.7%	1,006	207	44.2%
Worked full-time, year-round in the past 12 months:	133	80	7.4%	309	122	13.6%
No earnings	0	18	0.0%	0	18	0.0%
With earnings:	133	80	7.4%	309	122	13.6%
\$ 1 to \$ 9,999 or loss	0	NC	0.0%	41	NC	1.8%
\$ 10,000 to \$ 19,999	27	NC	1.5%	11	NC	0.5%
\$ 20,000 to \$ 29,999	50	NC	2.8%	66	NC	2.9%
\$ 30,000 to \$ 49,999	42	NC	2.3%	52	NC	2.3%
\$ 50,000 to \$ 74,999	7	NC	0.4%	66	NC	2.9%
\$ 75,000 or more	7	NC	0.4%	73	NC	3.2%

	Whiteville city, North Carolina					
	African American	Margin of Error (+/-)	% of AA Total	White, Not Hispanic	Margin of Error (+/-)	% of NHW Total
Other:	598	150	33.3%	697	179	30.6%
No earnings	508	154	28.3%	404	138	17.7%
With earnings:	90	75	5.0%	293	151	12.9%
Female:	1,066	252	59.3%	1,271	255	55.8%
Worked full-time, year-round in the past 12 months:	371	175	20.6%	358	127	15.7%
No earnings	0	18	0.0%	0	18	0.0%
With earnings:	371	175	20.6%	358	127	15.7%
\$ 1 to \$ 9,999 or loss	24	NC	1.3%	23	NC	1.0%
\$ 10,000 to \$ 19,999	179	NC	10.0%	28	NC	1.2%
\$ 20,000 to \$ 29,999	54	NC	3.0%	12	NC	0.5%
\$ 30,000 to \$ 49,999	92	NC	5.1%	166	NC	7.3%
\$ 50,000 to \$ 74,999	22	NC	1.2%	86	NC	3.8%
\$ 75,000 or more	0	NC	0.0%	43	NC	1.9%
Other:	695	187	38.7%	913	197	40.1%
No earnings	468	151	26.0%	519	121	22.8%
With earnings:	227	118	12.6%	394	163	17.3%

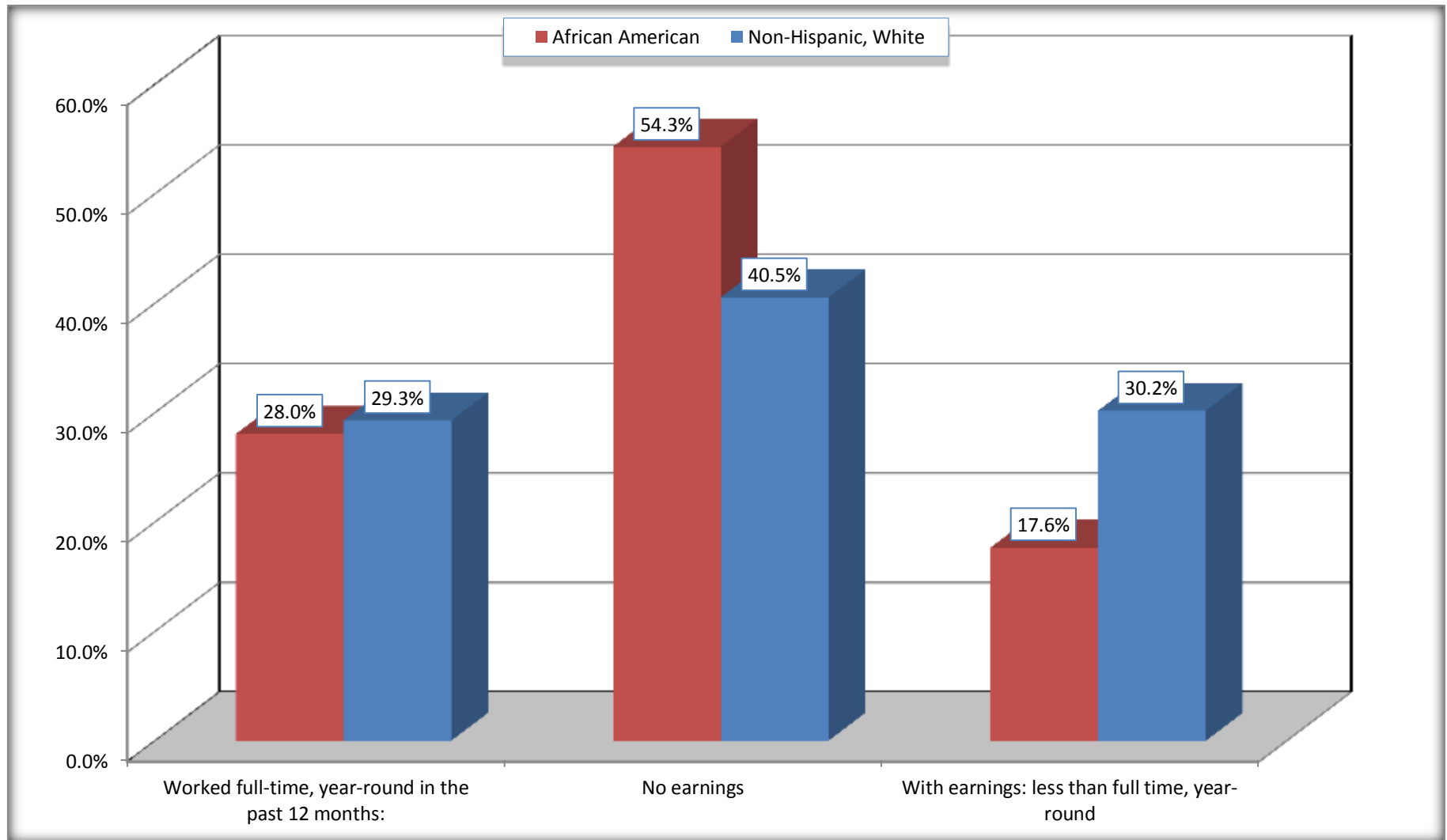
Source: U.S. Census Bureau, 2008-2012 American Community Survey

For information on confidentiality protection, sampling error, nonsampling error, and definitions, see Survey Methodology.

<http://www.census.gov/acs/www/UseData/index.htm>

Employment and Earnings in in the Past 12 Months (16 Years and Over)

Whiteville city, North Carolina



Source: B20005. SEX BY WORK EXPERIENCE IN THE PAST 12 MONTHS BY EARNINGS IN THE PAST 12 MONTHS (IN 2010 INFLATION-ADJUSTED DOLLARS) FOR THE POPULATION 16 YEARS AND OVER

Data Set: 2008-2012 American Community Survey 5-Year Estimates

C21001. SEX BY AGE BY VETERAN STATUS FOR THE CIVILIAN POPULATION 18 YEARS AND OVER

Data Set: 2008-2012 American Community Survey 5-Year Estimates

	Whiteville city, North Carolina					
	African American	Margin of Error (+/-)	% of AA Total	White, Not Hispanic	Margin of Error (+/-)	% of NHW Total
Total:	1,732	277	100.0%	2,233	355	100.0%
Veteran	145	NC	8.4%	233	NC	10.4%
Nonveteran	1,587	NC	91.6%	2,000	NC	89.6%
Male:	731	157	42.2%	1,003	207	44.9%
18 to 64 years:	533	151	30.8%	816	195	36.5%
Veteran	89	64	5.1%	162	109	7.3%
Nonveteran	444	152	25.6%	654	191	29.3%
65 years and over:	198	77	11.4%	187	68	8.4%
Veteran	49	44	2.8%	60	45	2.7%
Nonveteran	149	83	8.6%	127	63	5.7%
Female:	1,001	218	57.8%	1,230	243	55.1%
18 to 64 years:	726	197	41.9%	771	220	34.5%
Veteran	7	12	0.4%	11	18	0.5%
Nonveteran	719	197	41.5%	760	221	34.0%
65 years and over:	275	134	15.9%	459	114	20.6%
Veteran	0	18	0.0%	0	18	0.0%
Nonveteran	275	134	15.9%	459	114	20.6%

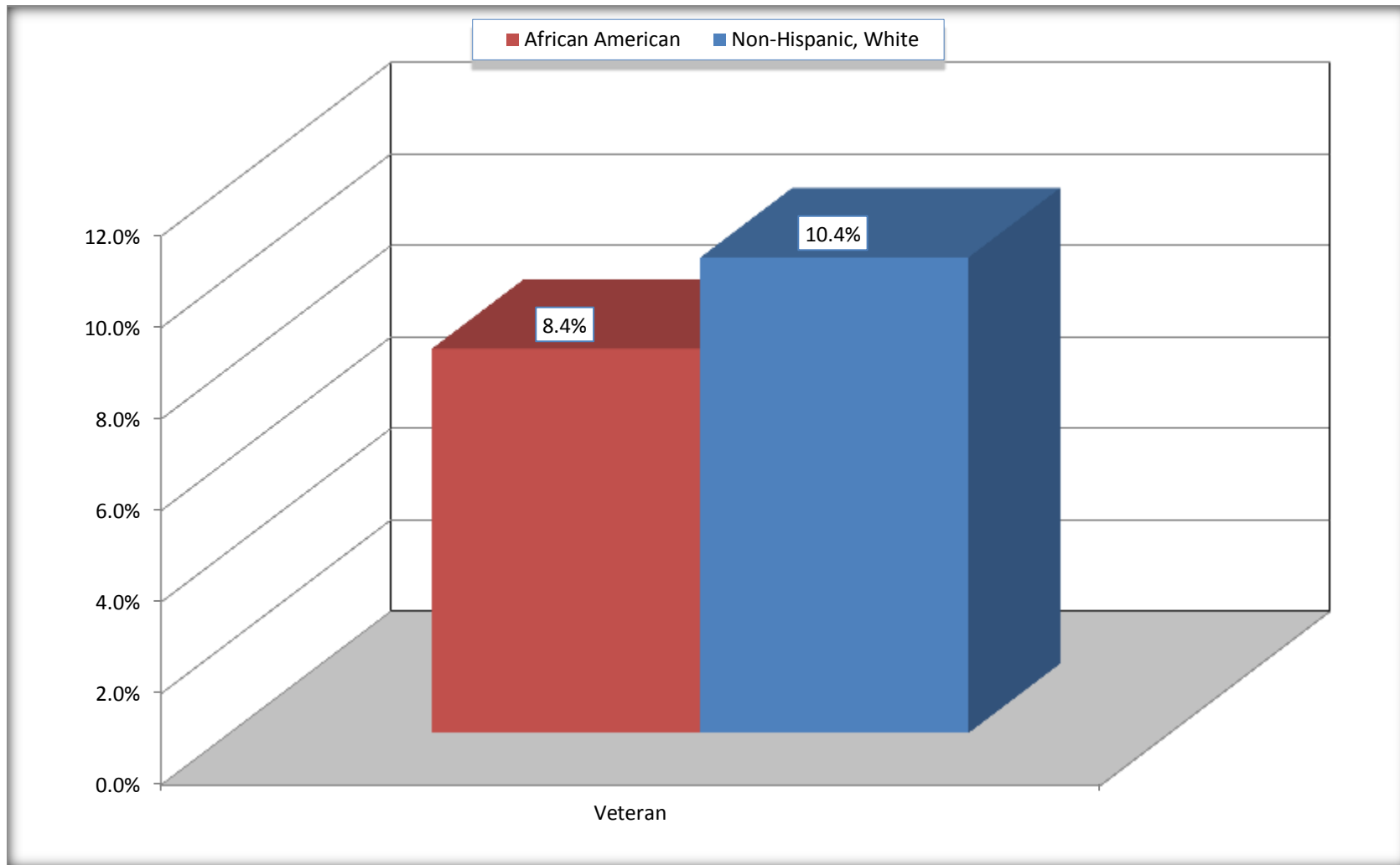
Source: U.S. Census Bureau, 2008-2012 American Community Survey

For information on confidentiality protection, sampling error, nonsampling error, and definitions, see Survey Methodology.

<http://www.census.gov/acs/www/UseData/index.htm>

Veterans in the Civilian Population 18 Years and Over

Whiteville city, North Carolina



Source: C21001. SEX BY AGE BY VETERAN STATUS FOR THE CIVILIAN POPULATION 18 YEARS AND OVER
Data Set: 2008-2012 American Community Survey 5-Year Estimates

B22005. RECEIPT OF FOOD STAMPS/SNAP IN THE PAST 12 MONTHS BY RACE OF HOUSEHOLDER

Data Set: 2008-2012 American Community Survey 5-Year Estimates

	Whiteville city, North Carolina					
	African American	Margin of Error (+/-)	% of AA Total	White, Not Hispanic	Margin of Error (+/-)	% of NHW Total
Total:	974	212	100.0%	1,264	209	100.0%
HH received Food Stamps/SNAP in the past 12 months	324	137	33.3%	189	128	15.0%
HH did not receive Food Stamps/SNAP in the past 12 months	650	200	66.7%	1,075	178	85.0%

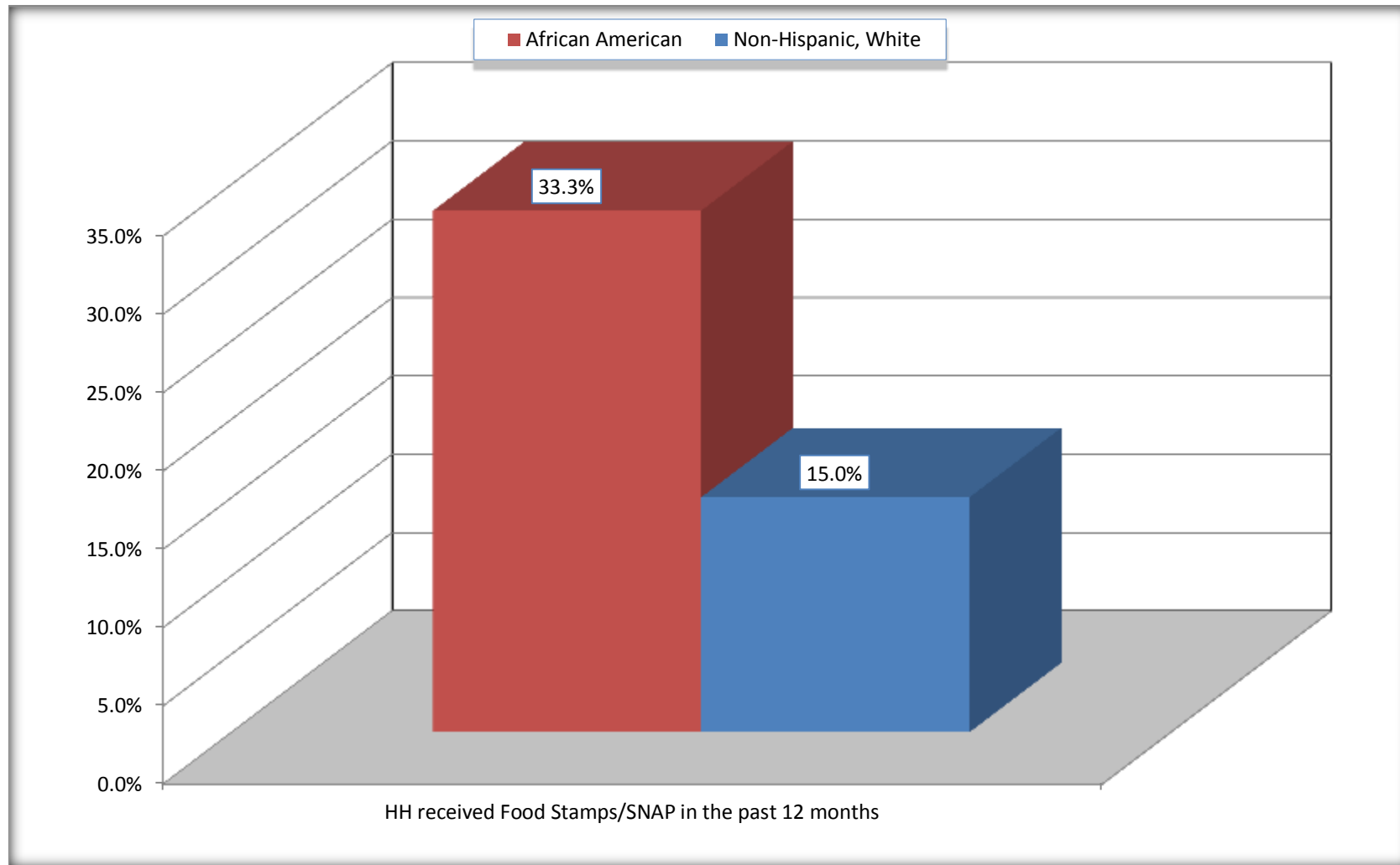
Source: U.S. Census Bureau, 2008-2012 American Community Survey

For information on confidentiality protection, sampling error, nonsampling error, and definitions, see Survey Methodology.

<http://www.census.gov/acs/www/UseData/index.htm>

Receipt of Food Stamps/SNAP in the Past 12 Months by Household

Whiteville city, North Carolina



Source: B22005. RECEIPT OF FOOD STAMPS/SNAP IN THE PAST 12 MONTHS BY RACE OF HOUSEHOLDER
Data Set: 2008-2012 American Community Survey 5-Year Estimates

C23002. SEX BY AGE BY EMPLOYMENT STATUS FOR THE POPULATION 16 YEARS AND OVER

Data Set: 2008-2012 American Community Survey 5-Year Estimates

	Whiteville city, North Carolina					
	African American	Margin of Error (+/-)	% of AA Total	White, Not Hispanic	Margin of Error (+/-)	% of NHW Total
Total:	1,797	305	100.0%	2,277	371	100.0%
In labor force:	872	NC	48.5%	1,288	NC	56.6%
In Armed Forces	0	NC	0.0%	0	NC	0.0%
Civilian:	754	NC	42.0%	1,189	NC	52.2%
Employed	691	NC	38.5%	1,125	NC	49.4%
Unemployed	181	NC	10.1%	163	NC	7.2%
Not in labor force	925	NC	51.5%	989	NC	43.4%
Male:	731	157	40.7%	1,006	207	44.2%
16 to 64 years:	533	151	29.7%	819	196	36.0%
In labor force:	244	132	13.6%	538	172	23.6%
In Armed Forces	0	18	0.0%	0	18	0.0%
Civilian:	244	132	13.6%	538	172	23.6%
Employed	144	94	8.0%	390	134	17.1%
Unemployed	100	120	5.6%	148	118	6.5%
Not in labor force	289	112	16.1%	281	132	12.3%
65 years and over:	198	77	11.0%	187	68	8.2%
In labor force:	17	27	0.9%	43	46	1.9%
Employed	17	27	0.9%	43	46	1.9%
Unemployed	0	18	0.0%	0	18	0.0%
Not in labor force	181	77	10.1%	144	58	6.3%

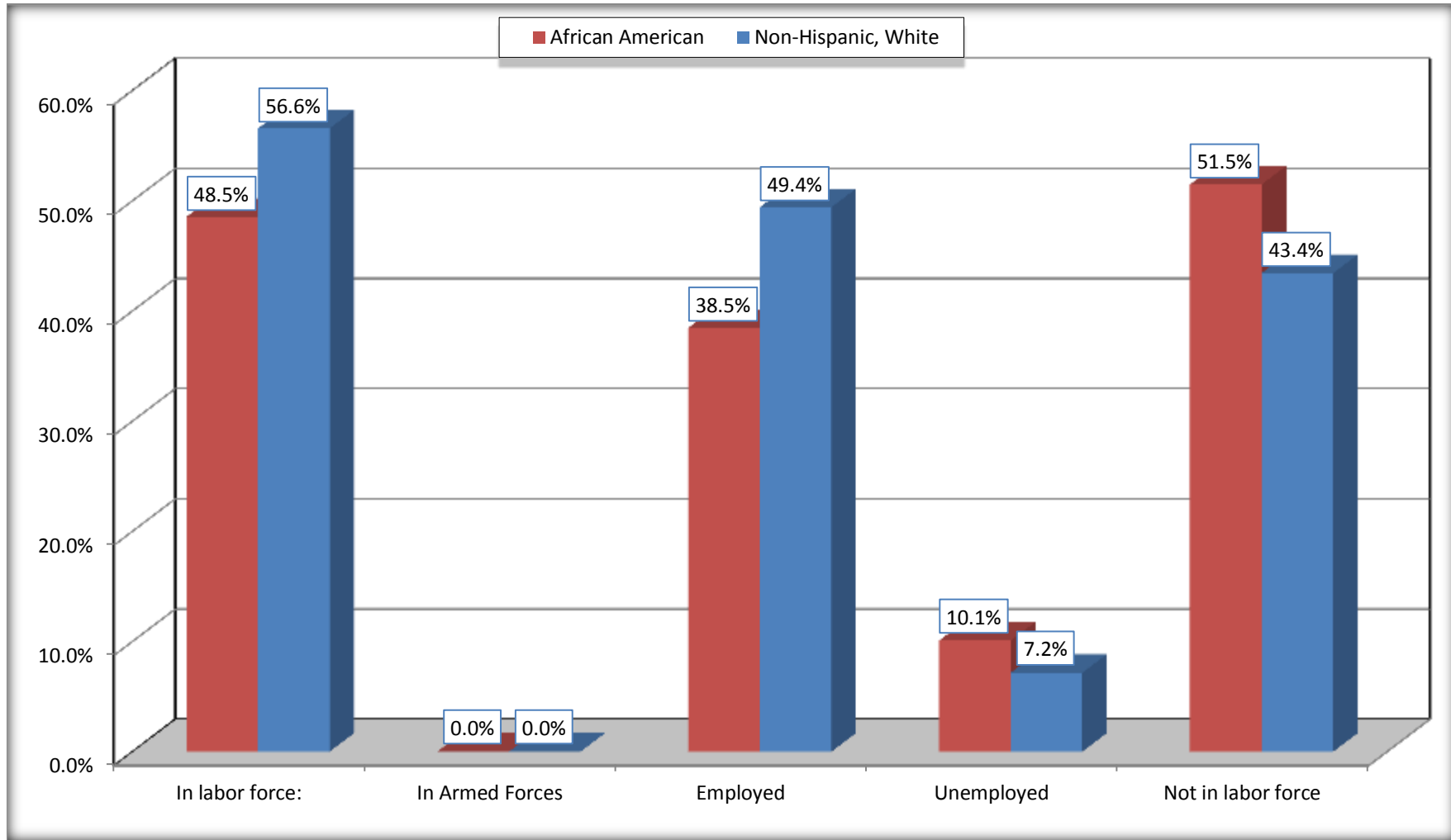
	Whiteville city, North Carolina					
	African American	Margin of Error (+/-)	% of AA Total	White, Not Hispanic	Margin of Error (+/-)	% of NHW Total
Female:	1,066	252	59.3%	1,271	255	55.8%
16 to 64 years:	791	238	44.0%	812	233	35.7%
In labor force:	510	154	28.4%	651	238	28.6%
In Armed Forces	0	18	0.0%	0	18	0.0%
Civilian:	510	154	28.4%	651	238	28.6%
Employed	429	155	23.9%	636	241	27.9%
Unemployed	81	82	4.5%	15	22	0.7%
Not in labor force	281	126	15.6%	161	86	7.1%
65 years and over:	275	134	15.3%	459	114	20.2%
In labor force:	101	99	5.6%	56	46	2.5%
Employed	101	99	5.6%	56	46	2.5%
Unemployed	0	18	0.0%	0	18	0.0%
Not in labor force	174	82	9.7%	403	102	17.7%

Source: U.S. Census Bureau, 2008-2012 American Community Survey

For information on confidentiality protection, sampling error, nonsampling error, and definitions, see Survey Methodology.
<http://www.census.gov/acs/www/UseData/index.htm>

Employment Status for the Population 16 years and over

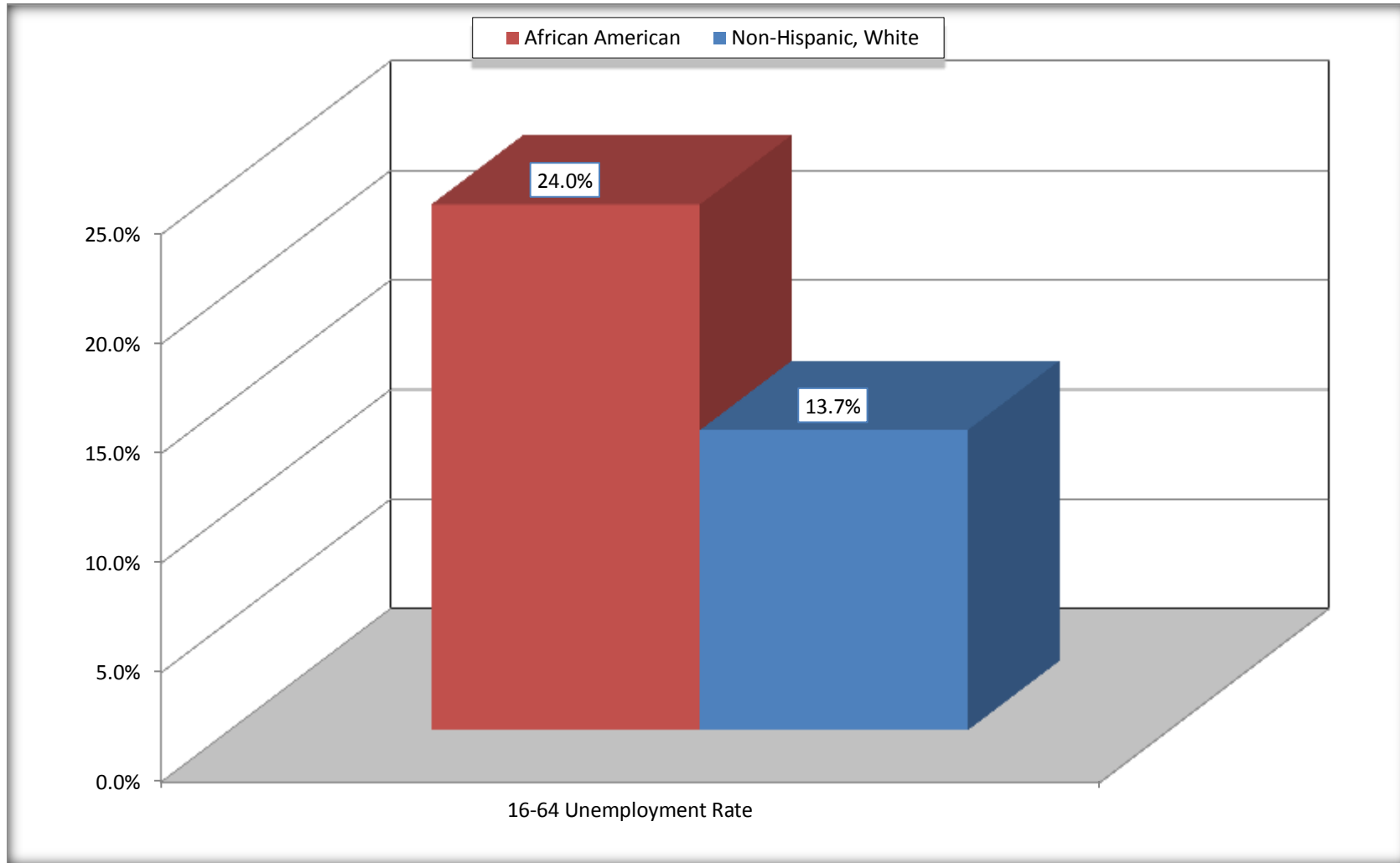
Whiteville city, North Carolina



Source: C23002. SEX BY AGE BY EMPLOYMENT STATUS FOR THE POPULATION 16 YEARS AND OVER
Data Set: 2008-2012 American Community Survey 5-Year Estimates

Unemployment of Working Age Population (Ages 16 to 64) (As a Percent of 16-64 Civilian Labor Force)

Whiteville city, North Carolina



Source: C23002. SEX BY AGE BY EMPLOYMENT STATUS FOR THE POPULATION 16 YEARS AND OVER
Data Set: 2008-2012 American Community Survey 5-Year Estimates

C24010. SEX BY OCCUPATION FOR THE CIVILIAN EMPLOYED POPULATION 16 YEARS AND OVER

Data Set: 2008-2012 American Community Survey 5-Year Estimates

	Whiteville city, North Carolina					
	African American	Margin of Error (+/-)	% of AA Total	White, Not Hispanic	Margin of Error (+/-)	% of NHW Total
Total:	691	205	100.0%	1,125	295	100.0%
Management, professional, and related occupations	139	NC	20.1%	362	NC	32.2%
Service occupations	259	NC	37.5%	154	NC	13.7%
Sales and office occupations	138	NC	20.0%	444	NC	39.5%
Natural resources, construction, and maintenance occupations:	28	NC	4.1%	96	NC	8.5%
Production, transportation, and material moving occupations	127	NC	18.4%	69	NC	6.1%
Male:	161	97	23.3%	433	145	38.5%
Management, business, science, and arts occupations:	0	18	0.0%	90	65	8.0%
Service occupations	44	59	6.4%	76	67	6.8%
Sales and office occupations	30	34	4.3%	161	102	14.3%
Natural resources, construction, and maintenance occupations:	28	37	4.1%	96	63	8.5%
Production, transportation, and material moving occupations	59	66	8.5%	10	17	0.9%
Female:	530	181	76.7%	692	244	61.5%
Management, professional, and related occupations	139	90	20.1%	272	114	24.2%
Service occupations	215	121	31.1%	78	61	6.9%
Sales and office occupations	108	104	15.6%	283	193	25.2%
Natural resources, construction, and maintenance occupations:	0	18	0.0%	0	18	0.0%
Production, transportation, and material moving occupations	68	81	9.8%	59	61	5.2%

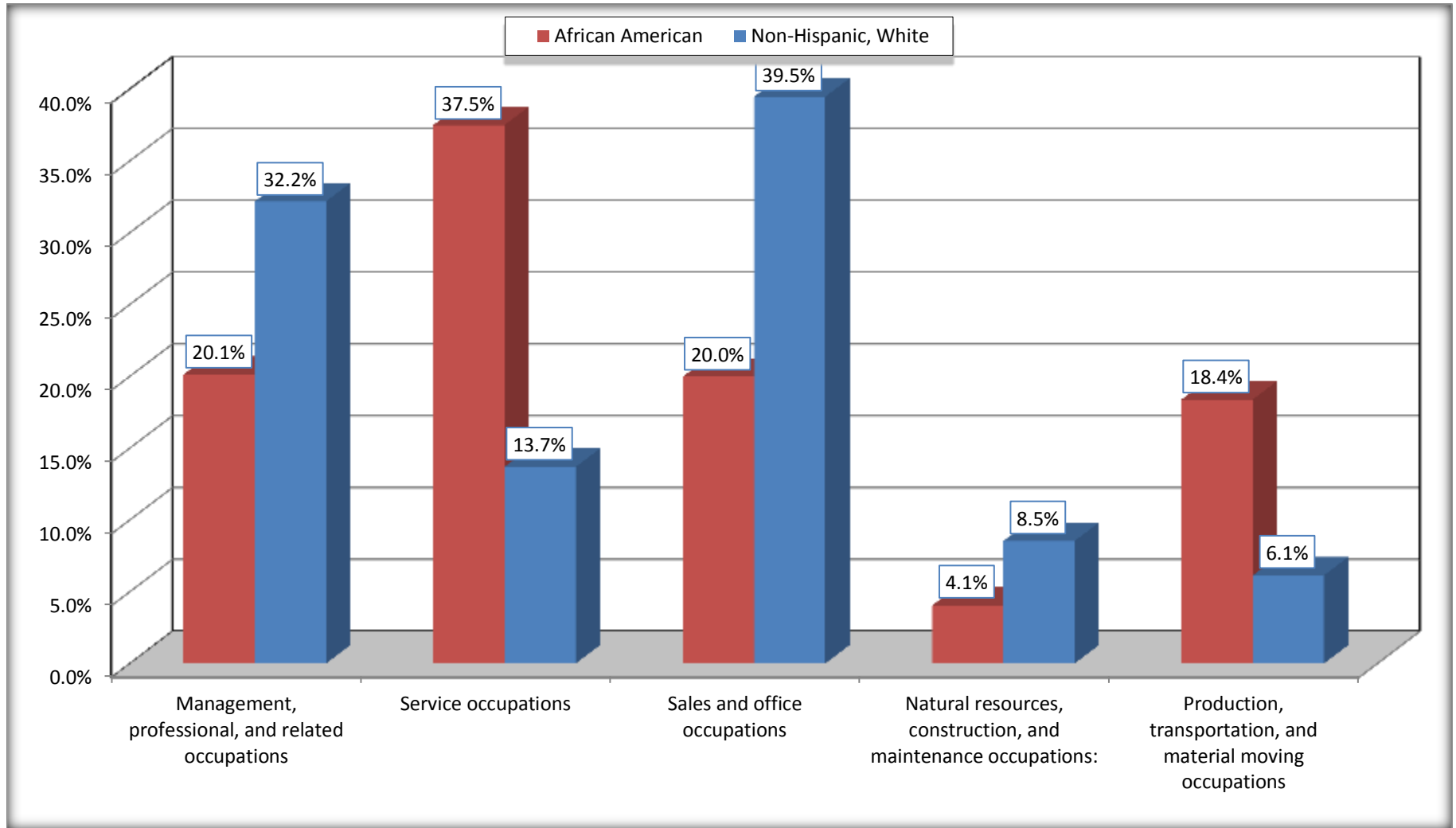
Source: U.S. Census Bureau, 2008-2012 American Community Survey

For information on confidentiality protection, sampling error, nonsampling error, and definitions, see Survey Methodology.

<http://www.census.gov/acs/www/UseData/index.htm>

Occupation for the Civilian Employed 16 Years and Over Population

Whiteville city, North Carolina



Source: C24010. SEX BY OCCUPATION FOR THE CIVILIAN EMPLOYED POPULATION 16 YEARS AND OVER
Data Set: 2008-2012 American Community Survey 5-Year Estimates

B25003. TENURE - Universe: OCCUPIED HOUSING UNITS

Data Set: 2008-2012 American Community Survey 5-Year Estimates

	Whiteville city, North Carolina					
	African American	Margin of Error (+/-)	% of AA Total	White, Not Hispanic	Margin of Error (+/-)	% of NHW Total
Total:	974	212	100.0%	1,264	209	100.0%
Owner occupied	441	166	45.3%	721	153	57.0%
Renter occupied	533	173	54.7%	543	185	43.0%

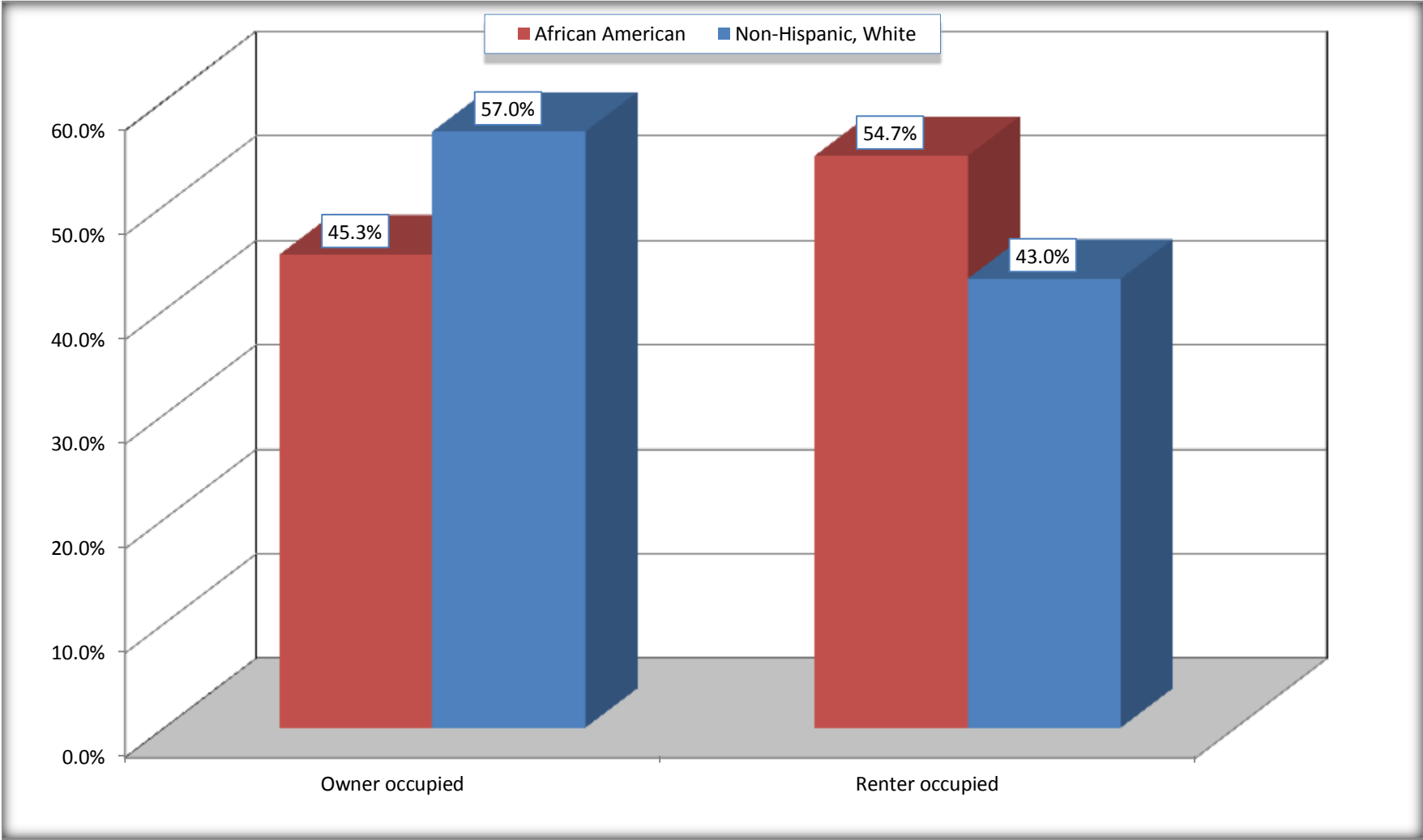
Source: U.S. Census Bureau, 2008-2012 American Community Survey

For information on confidentiality protection, sampling error, nonsampling error, and definitions, see Survey Methodology.

<http://www.census.gov/acs/www/UseData/index.h>

Home Owners and Renters by Household

Whiteville city, North Carolina



Source: B25003. TENURE - Universe: OCCUPIED HOUSING UNITS
Data Set: 2008-2012 American Community Survey 5-Year Estimates

B25014. OCCUPANTS PER ROOM - Universe: OCCUPIED HOUSING UNITS

Data Set: 2008-2012 American Community Survey 5-Year Estimates

	Whiteville city, North Carolina					
	African American	Margin of Error (+/-)	% of AA Total	White, Not Hispanic	Margin of Error (+/-)	% of NHW Total
Total:	974	212	100.0%	1,264	209	100.0%
1.00 or less occupants per room	974	212	100.0%	1,264	209	100.0%
1.01 or more occupants per room	0	18	0.0%	0	18	0.0%

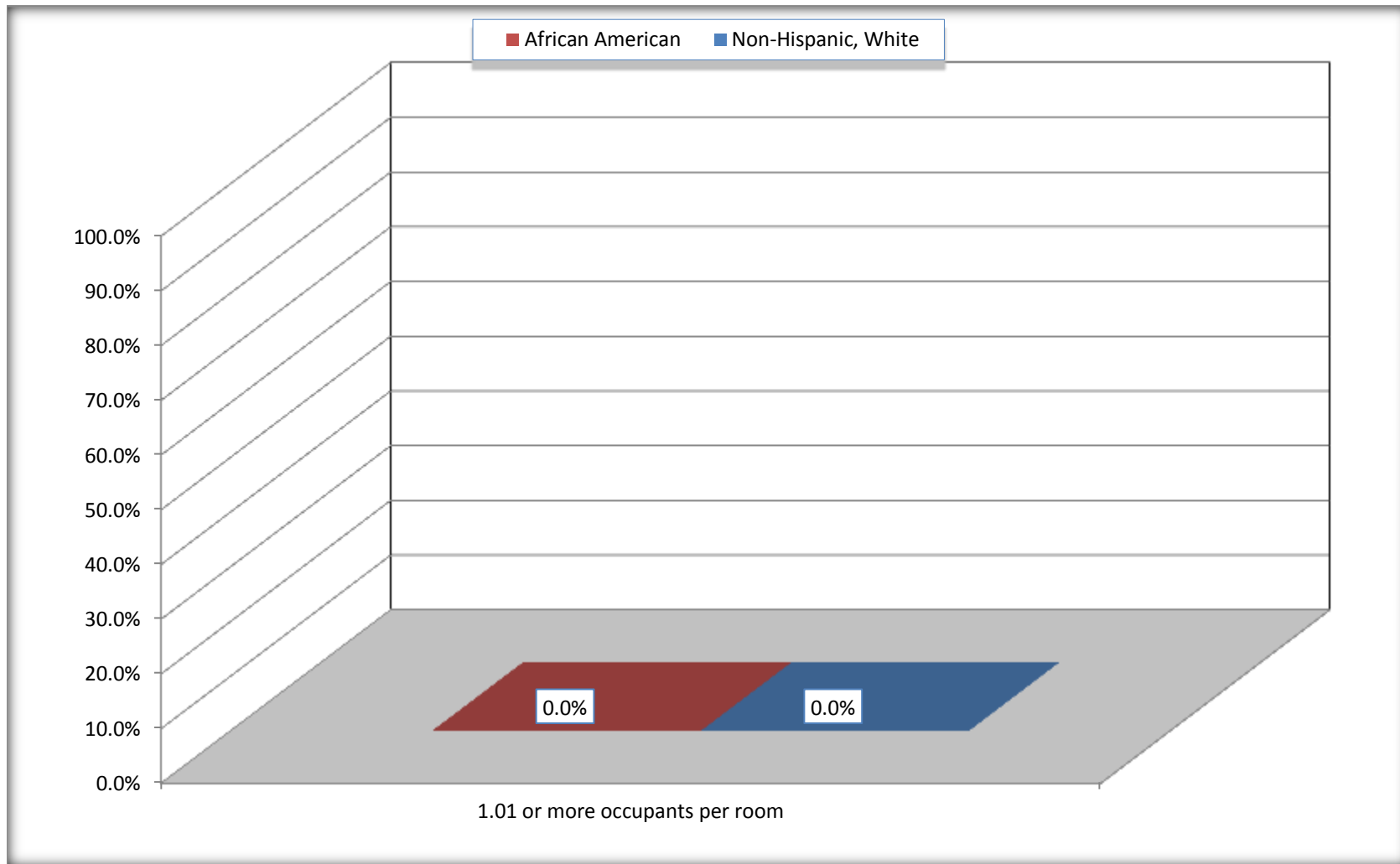
Source: U.S. Census Bureau, 2008-2012 American Community Survey

For information on confidentiality protection, sampling error, nonsampling error, and definitions, see Survey Methodology.

<http://www.census.gov/acs/www/UseData/index.ht>

More than One Person per Room (Crowding) by Household

Whiteville city, North Carolina



Source: B25014. OCCUPANTS PER ROOM - Universe: OCCUPIED HOUSING UNITS
Data Set: 2008-2012 American Community Survey 5-Year Estimates

B18101. AGE BY DISABILITY STATUS

Data Set: 2008-2012 American Community Survey 5-Year Estimates

	Whiteville city, North Carolina					
	African American	Margin of Error (+/-)	% of AA Total	White, Not Hispanic	Margin of Error (+/-)	% of NHW Total
Total:	2,129	452	100.0%	2,465	396	100.0%
Under 18 years:	492	263	23.1%	328	18	13.3%
With a disability	64	95	3.0%	0	18	0.0%
No disability	428	192	20.1%	328	154	13.3%
18 to 64 years:	1,179	275	55.4%	1,536	314	62.3%
With a disability	358	162	16.8%	284	131	11.5%
No disability	821	206	38.6%	1,252	320	50.8%
65 years and over:	458	173	21.5%	601	151	24.4%
With a disability	203	103	9.5%	229	95	9.3%
No disability	255	139	12.0%	372	116	15.1%

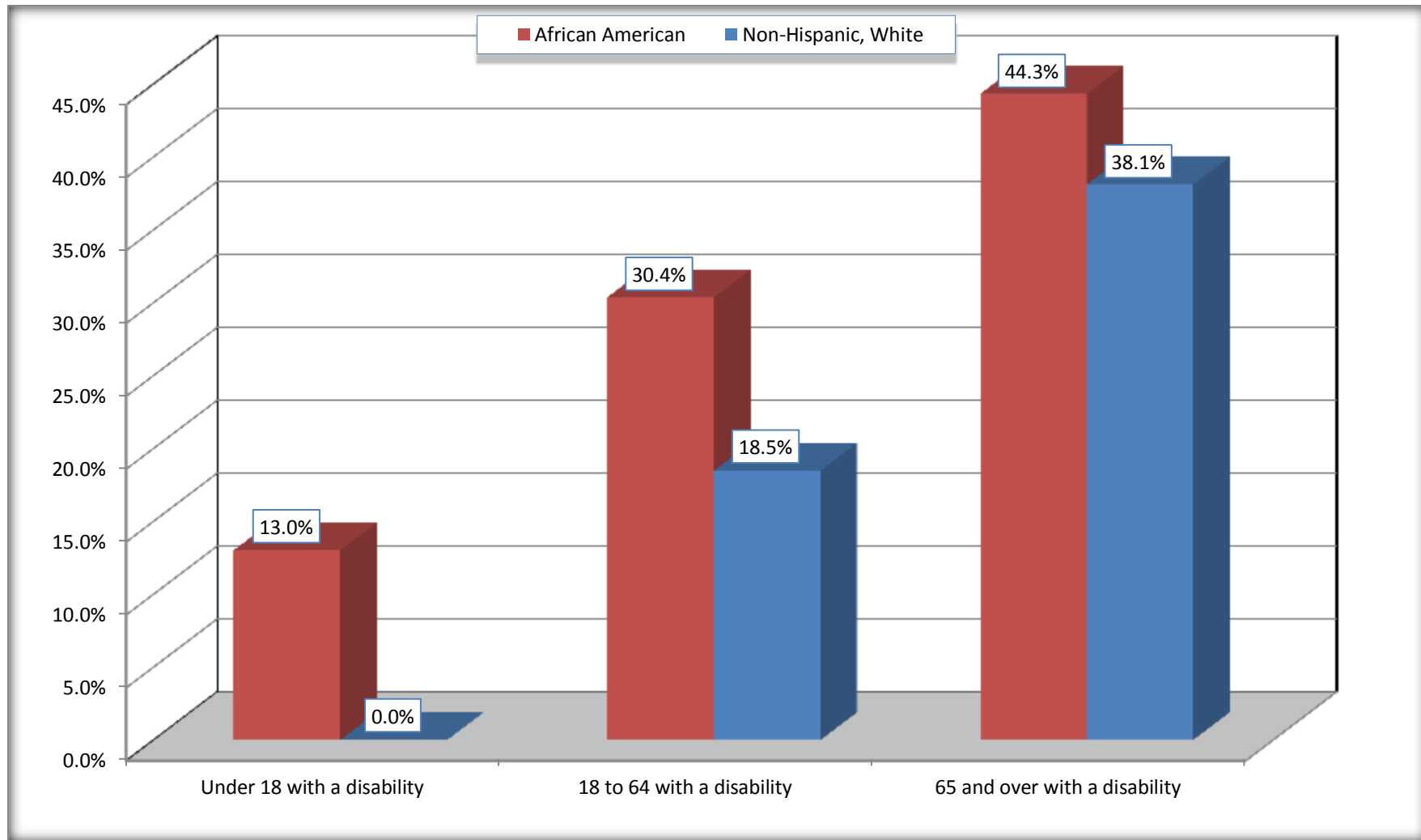
Source: U.S. Census Bureau, 2008-2012 American Community Survey

For information on confidentiality protection, sampling error, nonsampling error, and definitions, see Survey Methodology.

<http://www.census.gov/acs/www/UseData/index.htm>

Disability by Age

Whiteville city, North Carolina



Source: B18101. AGE BY DISABILITY STATUS
Data Set: 2008-2012 American Community Survey 5-Year Estimates

C27001B. HEALTH INSURANCE COVERAGE STATUS BY AGE

Data Set: 2008-2012 American Community Survey 5-Year Estimates

	Whiteville city, North Carolina					
	African American	Margin of Error (+/-)	% of AA Total	White, Not Hispanic	Margin of Error (+/-)	% of NHW Total
Total:	2,129	452	100.0%	2,465	396	100.0%
Under 18 years:	492	263	23.1%	328	154	13.3%
With health insurance coverage	492	263	23.1%	315	154	12.8%
No health insurance coverage	0	18	0.0%	13	25	0.5%
18 to 64 years:	1,179	275	55.4%	1,536	314	62.3%
With health insurance coverage	965	256	45.3%	1,029	230	41.7%
No health insurance coverage	214	119	10.1%	507	208	20.6%
65 years and over:	458	173	21.5%	601	151	24.4%
With health insurance coverage	458	173	21.5%	601	151	24.4%
No health insurance coverage	0	18	0.0%	0	18	0.0%

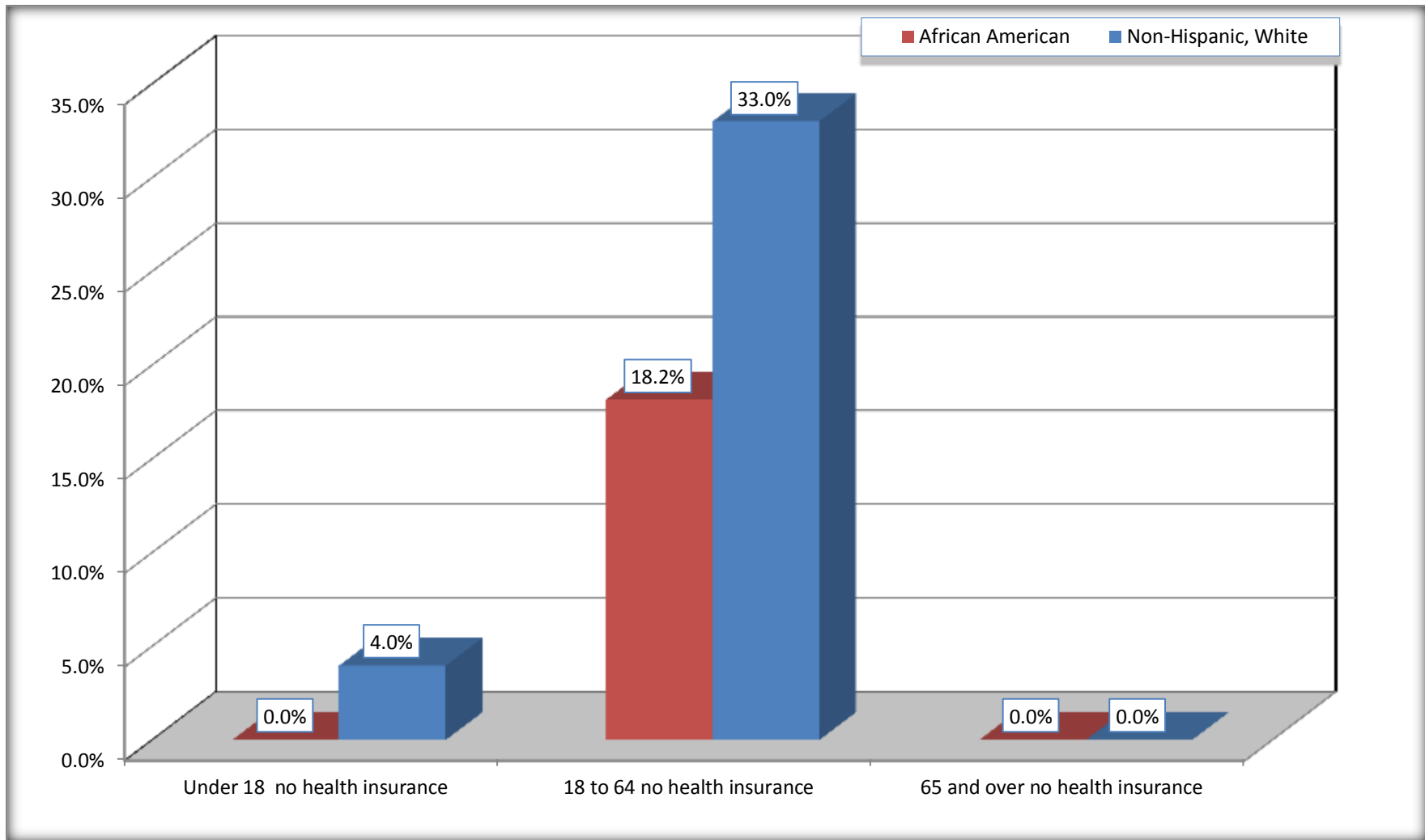
Source: U.S. Census Bureau, 2008-2012 American Community Survey

For information on confidentiality protection, sampling error, nonsampling error, and definitions, see Survey Methodology.

<http://www.census.gov/acs/www/UseData/index.htm>

Lack of Health Insurance Coverage by Age

Whiteville city, North Carolina



Source: C27001B. HEALTH INSURANCE COVERAGE STATUS BY AGE
Data Set: 2008-2012 American Community Survey 5-Year Estimates