

# **Selected Socio-Economic Data**

## **Wendell town, North Carolina**

### **African American and White, Not Hispanic**

**Data Set: 2008-2012 American Community Survey 5-Year Estimates**

[www.fairvote2020.org](http://www.fairvote2020.org)

[www.fairdata2000.com](http://www.fairdata2000.com)

[29-Dec-13](#)

**C02003.DETAILED RACE - Universe: TOTAL POPULATION**

Data Set: 2008-2012 American Community Survey 5-Year Estimates

	Wendell town, North Carolina		
	Population	Margin of Error (+/-)	% of Total
<b>Total:</b>	<b>5,892</b>	<b>25</b>	<b>100.0%</b>
Population of one race:	5,700	170	96.7%
White	3,991	391	67.7%
Black or African American	1,434	368	24.3%
American Indian and Alaska Native	0	18	0.0%
Asian alone	115	151	2.0%
Native Hawaiian and Other Pacific Islander	0	18	0.0%
Some other race	160	133	2.7%
Population of two or more races:	192	169	3.3%
Two races including Some other race	75	132	1.3%
Two races excluding Some other race, and three or more races	117	110	2.0%
Population of two races:	192	169	3.3%
White; Black or African American	49	75	0.8%
White; American Indian and Alaska Native	8	15	0.1%
White; Asian	60	65	1.0%
Black or African American; American Indian and Alaska Native	0	18	0.0%
All other two race combinations	75	132	1.3%
Population of three races	0	18	0.0%
Population of four or more races	0	18	0.0%

Note: Hispanics may be of any race. See Table B03002 and chart.

Source: U.S. Census Bureau, 2008-2012 American Community Survey

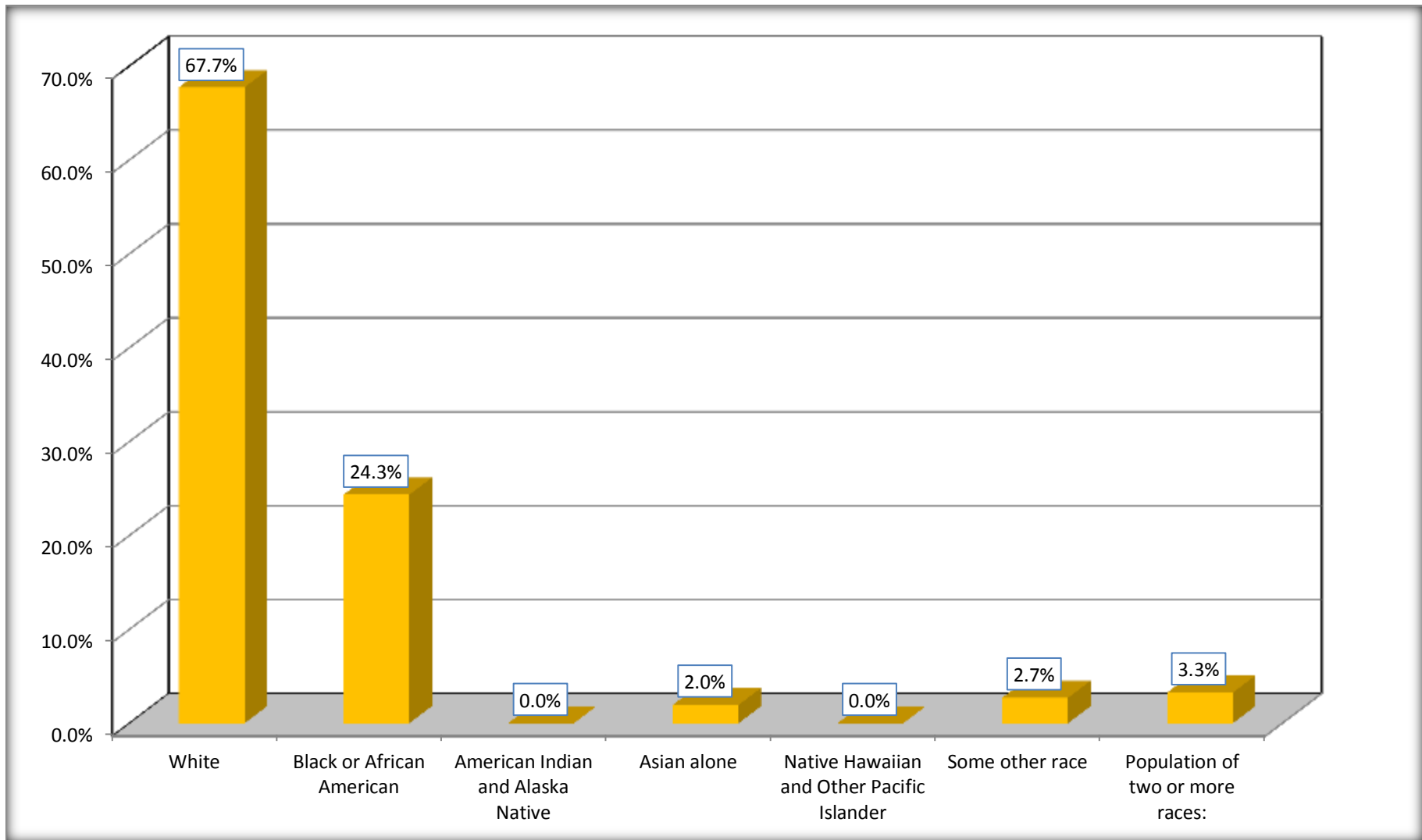
Although the American Community Survey (ACS) produces population, demographic and housing unit estimates, it is the Census Bureau's Population Estimates Program that produces and disseminates the official estimates of the population for the nation, states, counties, cities and towns and estimates of housing units for states and counties.

For information on confidentiality protection, sampling error, nonsampling error, and definitions, see Survey Methodology.

<http://www.census.gov/acs/www/UseData/index.htm>

# Population by Race

## Wendell town, North Carolina



Source: C02003.DETAILED RACE - Universe: TOTAL POPULATION  
Data Set: 2008-2012 American Community Survey 5-Year Estimates

**B03002. HISPANIC OR LATINO ORIGIN BY RACE - Universe: TOTAL POPULATION**

Data Set: 2008-2012 American Community Survey 5-Year Estimates

	Wendell town, North Carolina		
	Population	Margin of Error (+/-)	% of Total
<b>Total:</b>	5,892	25	<b>100.0%</b>
Not Hispanic or Latino:	5,132	356	87.1%
White alone	3,515	430	59.7%
Black or African American alone	1,434	368	24.3%
American Indian and Alaska Native alone	0	18	0.0%
Asian alone	115	151	2.0%
Native Hawaiian and Other Pacific Islander alone	0	18	0.0%
Some other race alone	0	18	0.0%
Two or more races:	68	67	1.2%
Two races including Some other race	0	18	0.0%
Two races excluding Some other race, and three or more races	68	67	1.2%
Hispanic or Latino	760	355	12.9%

Source: U.S. Census Bureau, 2008-2012 American Community Survey

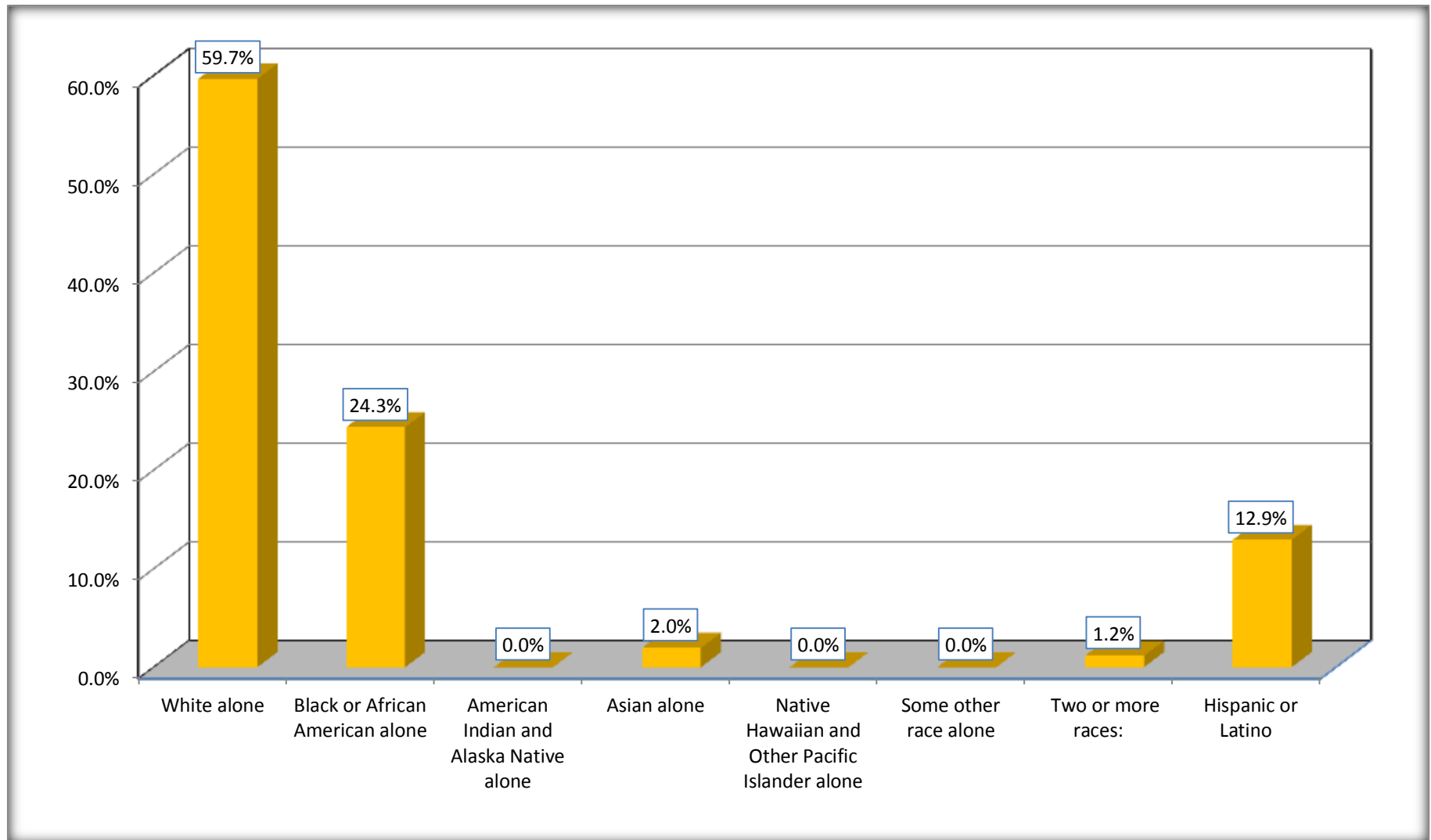
Although the American Community Survey (ACS) produces population, demographic and housing unit estimates, it is the Census Bureau's Population Estimates Program that produces and disseminates the official estimates of the population for the nation, states, counties, cities and towns and estimates of housing units for states and counties.

For information on confidentiality protection, sampling error, nonsampling error, and definitions, see Survey Methodology.

<http://www.census.gov/acs/www/UseData/index.htm>

# Non-Hispanic by Race and Hispanic Population

## Wendell town, North Carolina



Source: B03002. HISPANIC OR LATINO ORIGIN BY RACE - Universe: TOTAL POPULATION  
Data Set: 2008-2012 American Community Survey 5-Year Estimates

**B03002. HISPANIC OR LATINO ORIGIN BY RACE**

Data Set: 2008-2012 American Community Survey 5-Year Estimates

	Wendell town, North Carolina		
	Population	Margin of Error (+/-)	% of Total
Hispanic or Latino:	760	355	<b>100.0%</b>
White alone	476	311	62.6%
Black or African American alone	0	18	0.0%
American Indian and Alaska Native alone	0	18	0.0%
Asian alone	0	18	0.0%
Native Hawaiian and Other Pacific Islander alone	0	18	0.0%
Some other race alone	160	133	21.1%
Two or more races:	124	147	16.3%
Two races including Some other race	75	132	9.9%
Two races excluding Some other race, and three or more races	49	75	6.4%

Source: U.S. Census Bureau, 2008-2012 American Community Survey

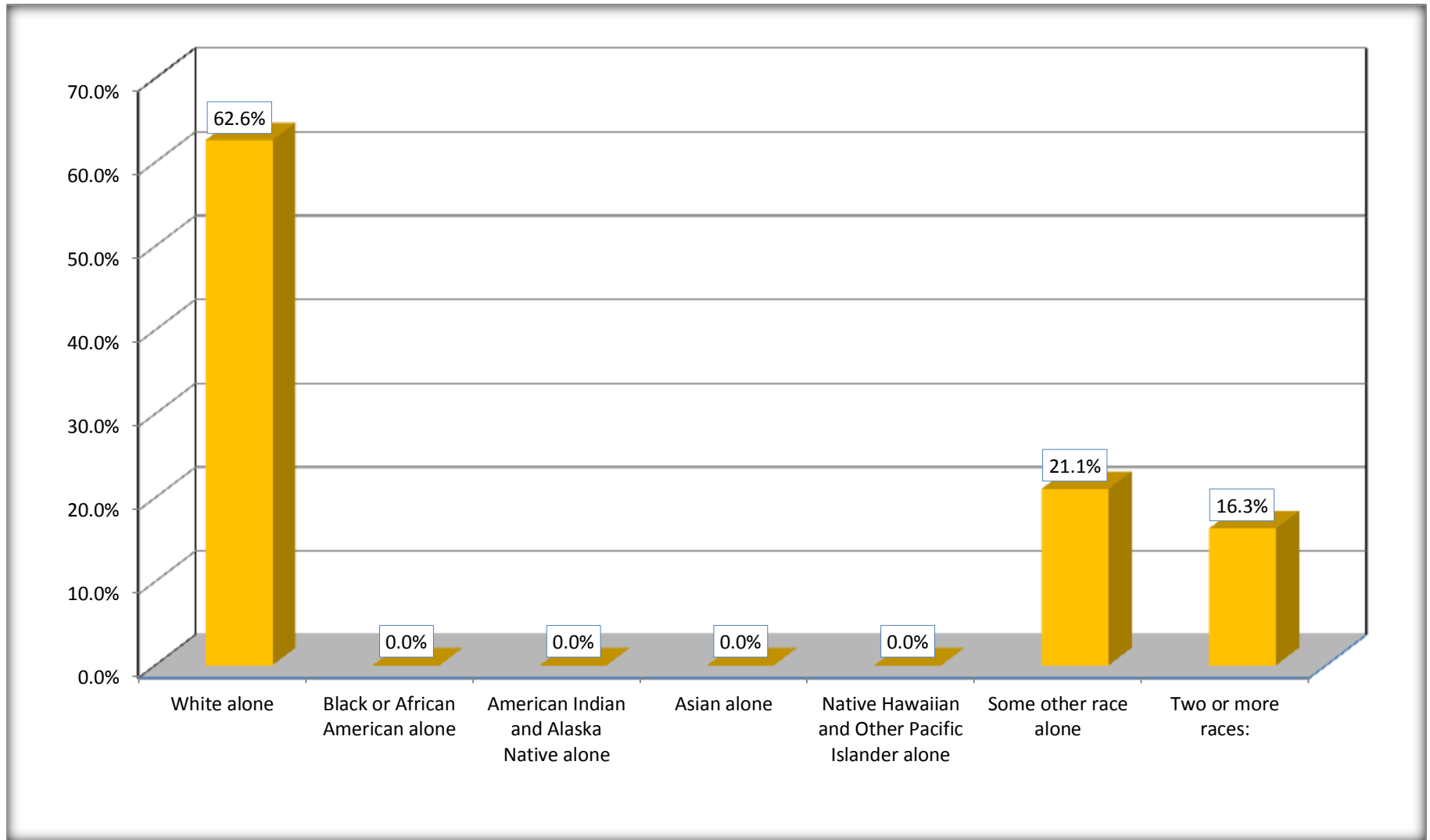
Although the American Community Survey (ACS) produces population, demographic and housing unit estimates, it is the Census Bureau's Population Estimates Program that produces and disseminates the official estimates of the population for the nation, states, counties, cities and towns and estimates of housing units for states and counties.

For information on confidentiality protection, sampling error, nonsampling error, and definitions, see Survey Methodology.

<http://www.census.gov/acs/www/UseData/index.htm>

# Hispanic or Latino Origin by Race

## Wendell town, North Carolina



Source: B03002. HISPANIC OR LATINO ORIGIN BY RACE  
Data Set: 2008-2012 American Community Survey 5-Year Estimates

**B01001. SEX BY AGE**

Data Set: 2008-2012 American Community Survey 5-Year Estimates

	Wendell town, North Carolina					
	African American	Margin of Error (+/-)	% of AA Total	White, Not Hispanic	Margin of Error (+/-)	% of NHW Total
<b>Total:</b>	<b>1,434</b>	<b>368</b>	<b>100.0%</b>	<b>3,515</b>	<b>430</b>	<b>100.0%</b>
Under 18 years	362	NC	25.2%	691	NC	19.7%
18 to 64 years	837	NC	58.4%	2,122	NC	60.4%
65 years and over	235	NC	16.4%	702	NC	20.0%
Male:	734	235	51.2%	1,484	389	42.2%
Under 18 years	256	NC	17.9%	339	NC	9.6%
18 to 64 years	374	NC	26.1%	879	NC	25.0%
65 years and over	104	NC	7.3%	266	NC	7.6%
Female:	700	248	48.8%	2,031	412	57.8%
Under 18 years	106	NC	7.4%	352	NC	10.0%
18 to 64 years	463	NC	32.3%	1,243	NC	35.4%
65 years and over	131	NC	9.1%	436	NC	12.4%

Source: U.S. Census Bureau, 2008-2012 American Community Survey

Although the American Community Survey (ACS) produces population, demographic and housing unit estimates, it is the Census Bureau's Population Estimates Program that produces and disseminates the official estimates of the population for the nation, states, counties, cities and towns and estimates of housing units for states and counties.

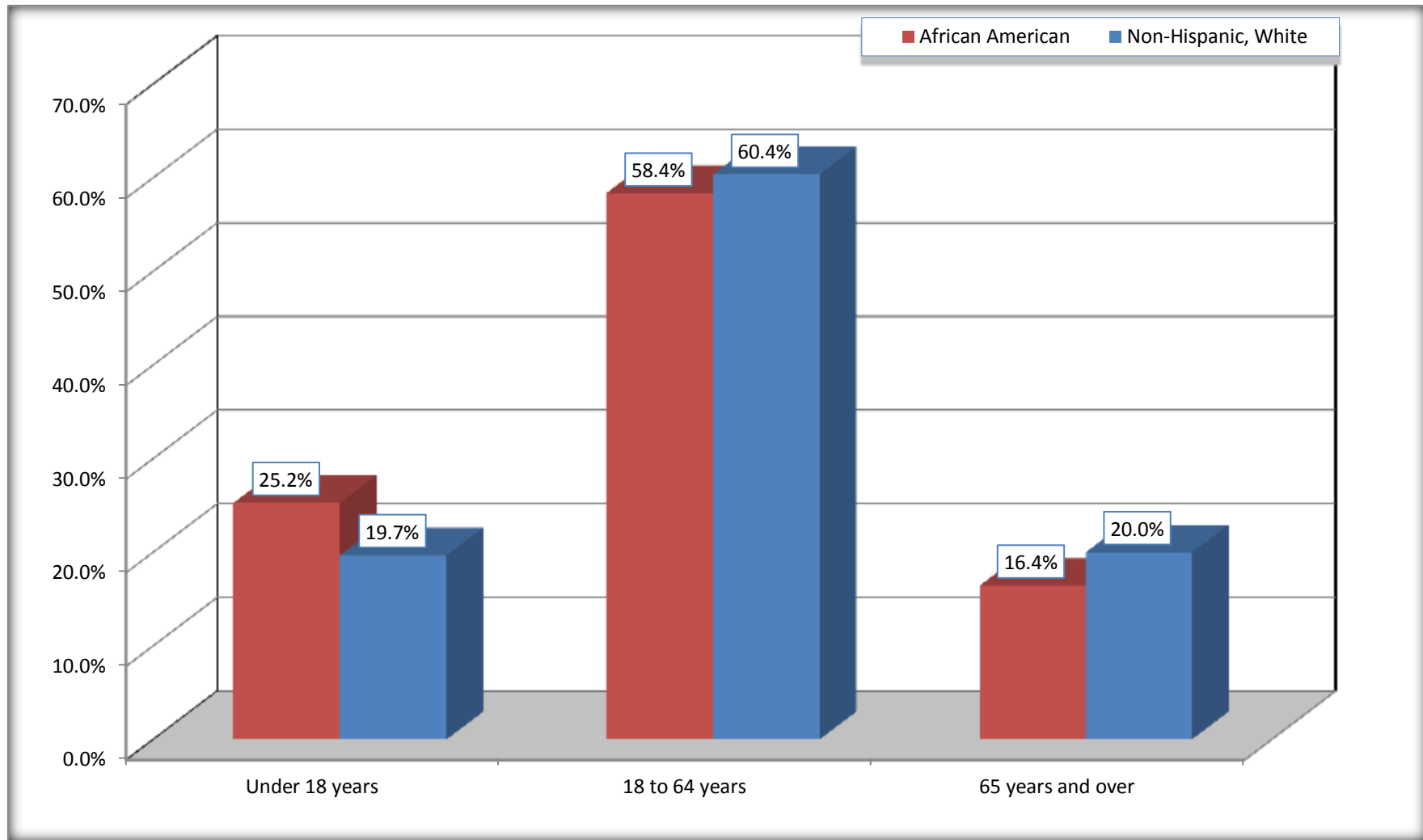
For information on confidentiality protection, sampling error, nonsampling error, and definitions, see Survey Methodology.

<http://www.census.gov/acs/www/UseData/index.htm>



# Population by Age

## Wendell town, North Carolina



Source: B01001. SEX BY AGE  
Data Set: 2008-2012 American Community Survey 5-Year Estimates

**B05003. SEX BY AGE BY CITIZENSHIP STATUS**

Data Set: 2008-2012 American Community Survey 5-Year Estimates

	Wendell town, North Carolina					
	African American	Margin of Error (+/-)	% of AA Total by Age	White, Not Hispanic	Margin of Error (+/-)	% of NHW Total by Age
<b>Total:</b>	<b>1,434</b>	<b>368</b>	<b>100.0%</b>	<b>3,515</b>	<b>430</b>	<b>100.0%</b>
<b>Under 18 years:</b>	<b>362</b>	<b>NC</b>	<b>100.0%</b>	<b>691</b>	<b>NC</b>	<b>100.0%</b>
Native	362	NC	100.0%	691	NC	100.0%
Foreign born:	0	NC	0.0%	0	NC	0.0%
Naturalized U.S. citizen	0	NC	0.0%	0	NC	0.0%
Not a U.S. citizen	0	NC	0.0%	0	NC	0.0%
<b>18 years and over:</b>	<b>1,072</b>	<b>NC</b>	<b>100.0%</b>	<b>2,824</b>	<b>NC</b>	<b>100.0%</b>
Native	1,015	NC	94.7%	2,800	NC	99.2%
Foreign born:	57	NC	5.3%	24	NC	0.8%
Naturalized U.S. citizen	57	NC	5.3%	12	NC	0.4%
Not a U.S. citizen	0	NC	0.0%	12	NC	0.4%
<b>Male:</b>	<b>734</b>	<b>235</b>	<b>51.2%</b>	<b>1,484</b>	<b>243</b>	<b>42.2%</b>
<b>Under 18 years:</b>	<b>256</b>	<b>158</b>	<b>100.0%</b>	<b>339</b>	<b>129</b>	<b>100.0%</b>
Native	256	158	100.0%	339	129	100.0%
Foreign born:	0	18	0.0%	0	18	0.0%
Naturalized U.S. citizen	0	18	0.0%	0	18	0.0%
Not a U.S. citizen	0	18	0.0%	0	18	0.0%
<b>18 years and over:</b>	<b>478</b>	<b>183</b>	<b>100.0%</b>	<b>1,145</b>	<b>188</b>	<b>100.0%</b>
Native	444	170	92.9%	1,133	190	99.0%
Foreign born:	34	56	7.1%	12	19	1.0%
Naturalized U.S. citizen	34	56	7.1%	0	18	0.0%
Not a U.S. citizen	0	18	0.0%	12	19	1.0%

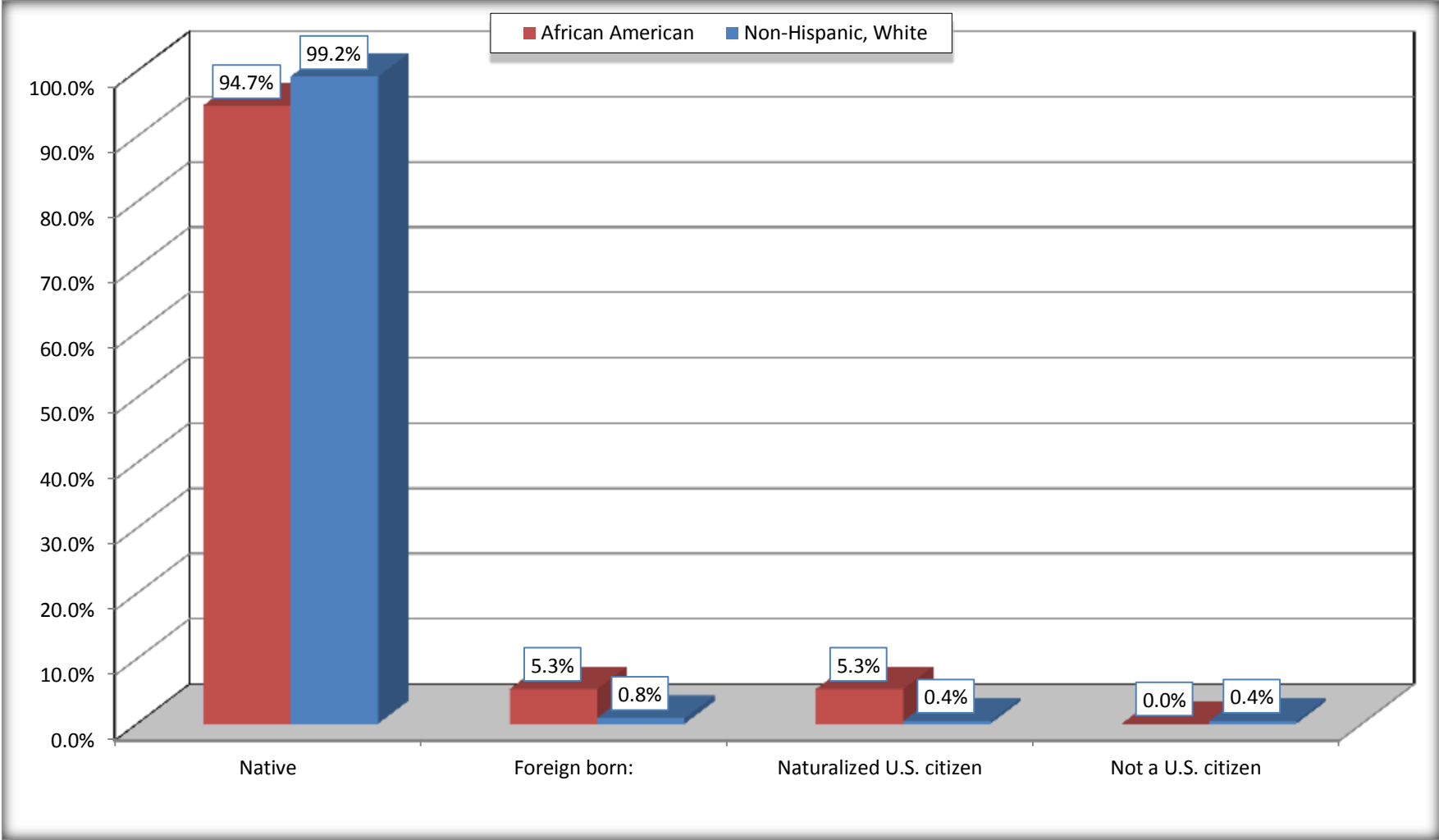
	Wendell town, North Carolina					
	African American	Margin of Error (+/-)	% of AA by Age	White, Not Hispanic	Margin of Error (+/-)	% of NHW by Age
<b>Female:</b>	700	248	48.8%	2,031	301	57.8%
<b>Under 18 years:</b>	<b>106</b>	<b>71</b>	<b>100.0%</b>	<b>352</b>	<b>140</b>	<b>100.0%</b>
Native	106	71	100.0%	352	140	100.0%
Foreign born:	0	18	0.0%	0	18	0.0%
Naturalized U.S. citizen	0	18	0.0%	0	18	0.0%
Not a U.S. citizen	0	18	0.0%	0	18	0.0%
<b>18 years and over:</b>	<b>594</b>	<b>247</b>	<b>100.0%</b>	<b>1,679</b>	<b>257</b>	<b>100.0%</b>
Native	571	245	96.1%	1,667	257	99.3%
Foreign born:	23	37	3.9%	12	18	0.7%
Naturalized U.S. citizen	23	37	3.9%	12	18	0.7%
Not a U.S. citizen	0	18	0.0%	0	18	0.0%

Source: U.S. Census Bureau, 2008-2012 American Community Survey

For information on confidentiality protection, sampling error, nonsampling error, and definitions, see Survey Methodology.  
<http://www.census.gov/acs/www/UseData/index.htm>

# Citizenship Status of Voting Age Population (18 and Over)

## Wendell town, North Carolina



Source: B05003. SEX BY AGE BY CITIZENSHIP STATUS  
Data Set: 2008-2012 American Community Survey 5-Year Estimates

**B07004. GEOGRAPHICAL MOBILITY IN THE PAST YEAR BY RACE FOR CURRENT RESIDENCE IN THE UNITED STATES - Universe:  
POPULATION 1 YEAR AND OVER**

Data Set: 2008-2012 American Community Survey 5-Year Estimates

	Wendell town, North Carolina					
	African American	Margin of Error (+/-)	% of AA Total	White, Not Hispanic	Margin of Error (+/-)	% of NHW Total
<b>Total:</b>	<b>1,434</b>	<b>368</b>	<b>100.0%</b>	<b>3,479</b>	<b>422</b>	<b>100.0%</b>
Same house 1 year ago	1,161	365	81.0%	3,166	417	91.0%
Moved within same county	249	202	17.4%	162	107	4.7%
Moved from different county within same state	0	18	0.0%	126	121	3.6%
Moved from different state	24	37	1.7%	0	18	0.0%
Moved from abroad	0	18	0.0%	25	39	0.7%

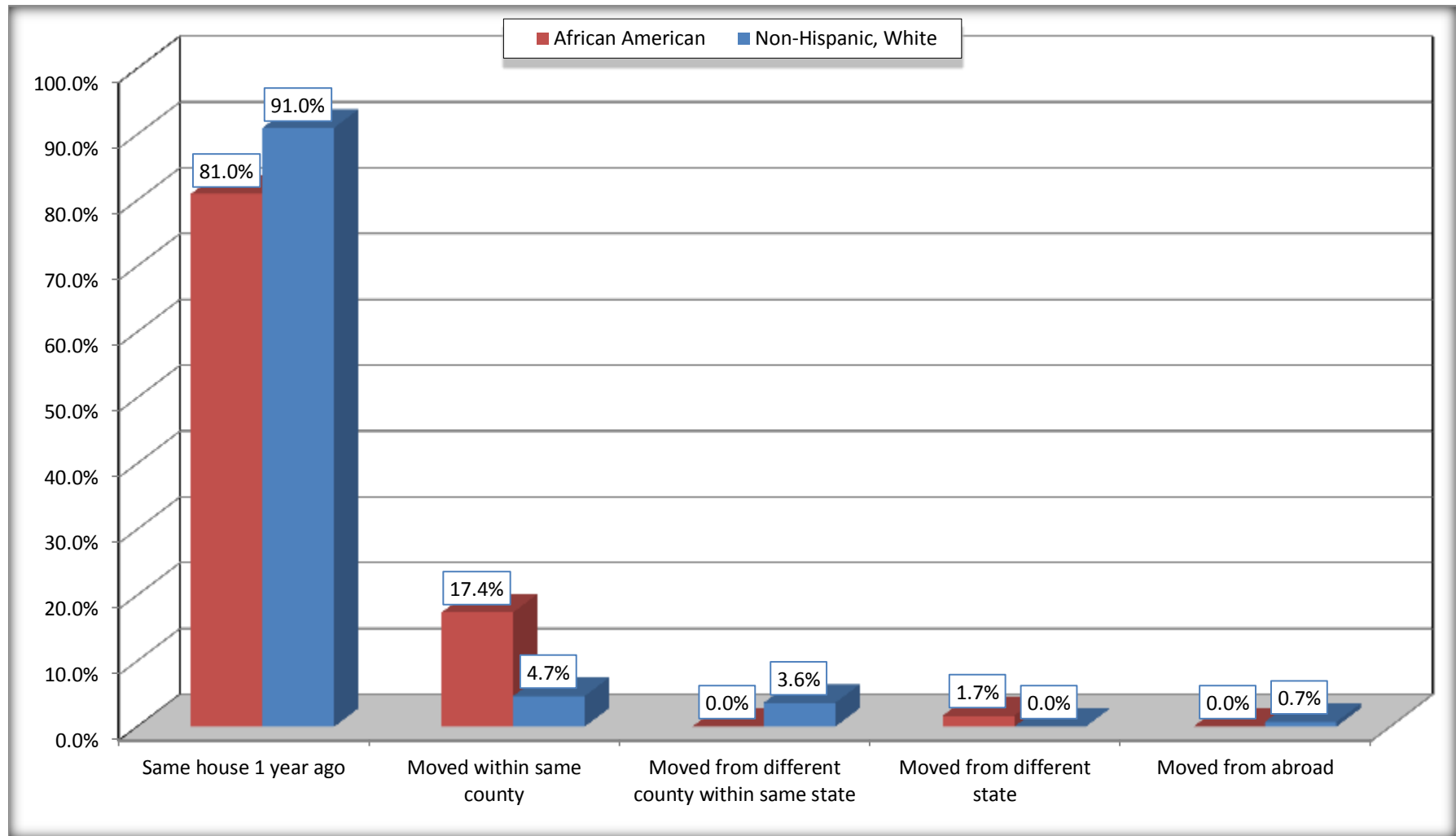
Source: U.S. Census Bureau, 2008-2012 American Community Survey

For information on confidentiality protection, sampling error, nonsampling error, and definitions, see Survey Methodology.

<http://www.census.gov/acs/www/UseData/index.htm>

# Geographical Mobility in the Past Year (Population 1 Year and Over)

## Wendell town, North Carolina



Source: B07004. GEOGRAPHICAL MOBILITY IN THE PAST YEAR BY RACE FOR CURRENT RESIDENCE IN THE UNITED STATES - Universe: POPULATION 1 YEAR AND OVER

Data Set: 2008-2012 American Community Survey 5-Year Estimates

**B08105. MEANS OF TRANSPORTATION TO WORK - Universe: WORKERS 16 YEARS AND OVER**

Data Set: 2008-2012 American Community Survey 5-Year Estimates

	Wendell town, North Carolina					
	African American	Margin of Error (+/-)	% of AA Total	White, Not Hispanic	Margin of Error (+/-)	% of NHW Total
<b>Total:</b>	561	214	<b>100.0%</b>	1617	285	<b>100.0%</b>
Car, truck, or van - drove alone	456	172	81.3%	1493	280	92.3%
Car, truck, or van - carpooled	51	59	9.1%	72	54	4.5%
Public transportation (excluding taxicab)	0	18	0.0%	0	18	0.0%
Walked	42	65	7.5%	0	18	0.0%
Taxicab, motorcycle, bicycle, or other means	0	18	0.0%	0	18	0.0%
Worked at home	12	19	2.1%	52	50	3.2%

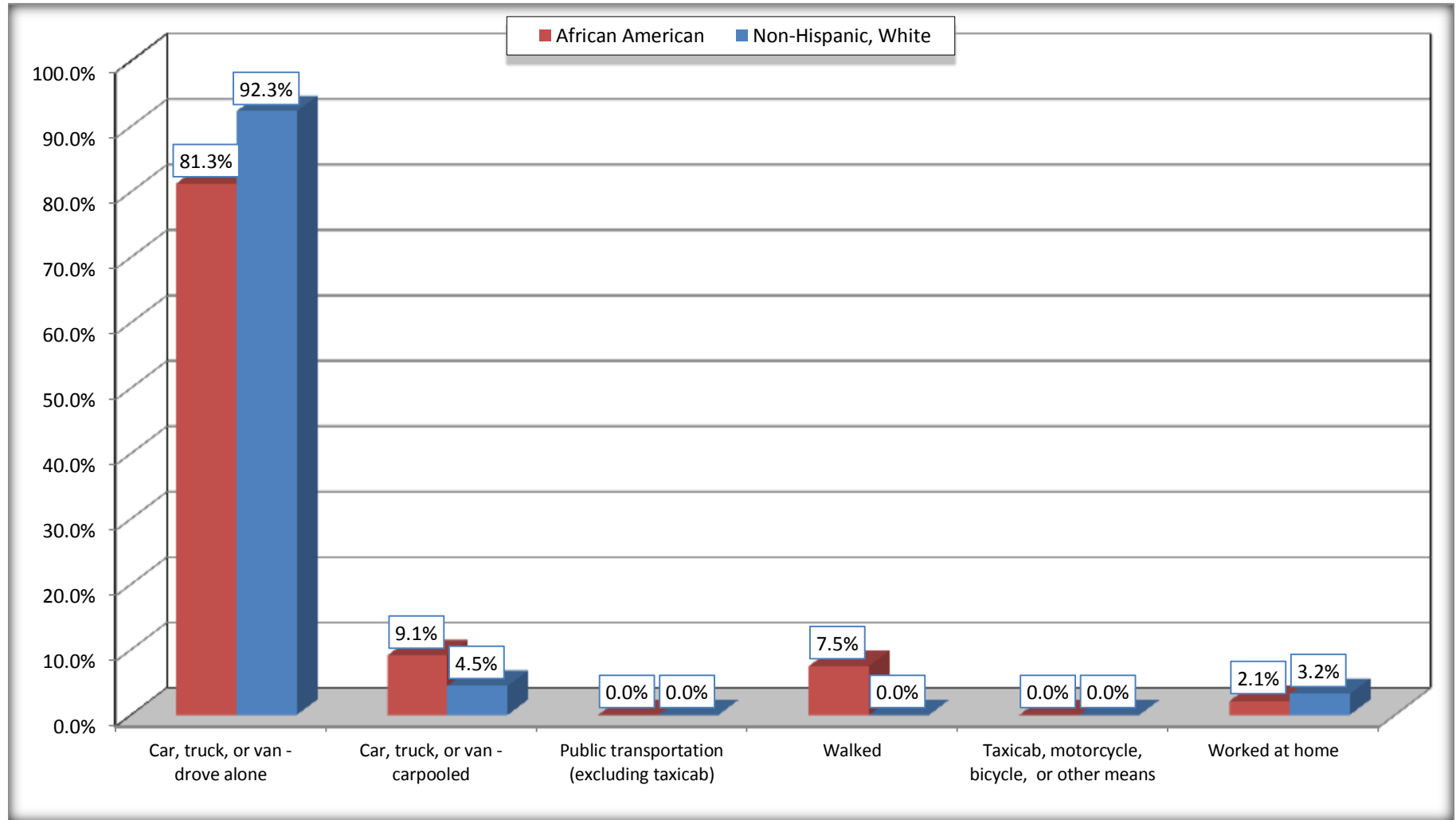
Source: U.S. Census Bureau, 2008-2012 American Community Survey

For information on confidentiality protection, sampling error, nonsampling error, and definitions, see Survey Methodology.

<http://www.census.gov/acs/www/UseData/index.htm>

# Means of Transportation to Work (Workers 16 Years and Over)

## Wendell town, North Carolina



Source: B08105. MEANS OF TRANSPORTATION TO WORK - Universe: WORKERS 16 YEARS AND OVER  
Data Set: 2008-2012 American Community Survey 5-Year Estimates



**B11002. HOUSEHOLD TYPE BY RELATIVES AND NONRELATIVES FOR POPULATION IN HOUSEHOLDS**

Data Set: 2008-2012 American Community Survey 5-Year Estimates

	Wendell town, North Carolina					
	African American	Margin of Error (+/-)	% of AA Total	White, Not Hispanic	Margin of Error (+/-)	% of NHW Total
<b>Total:</b>	1421	367	<b>100.0%</b>	3622	438	<b>100.0%</b>
In family households	860	350	60.5%	2830	447	78.1%
In nonfamily households	561	228	39.5%	792	245	21.9%

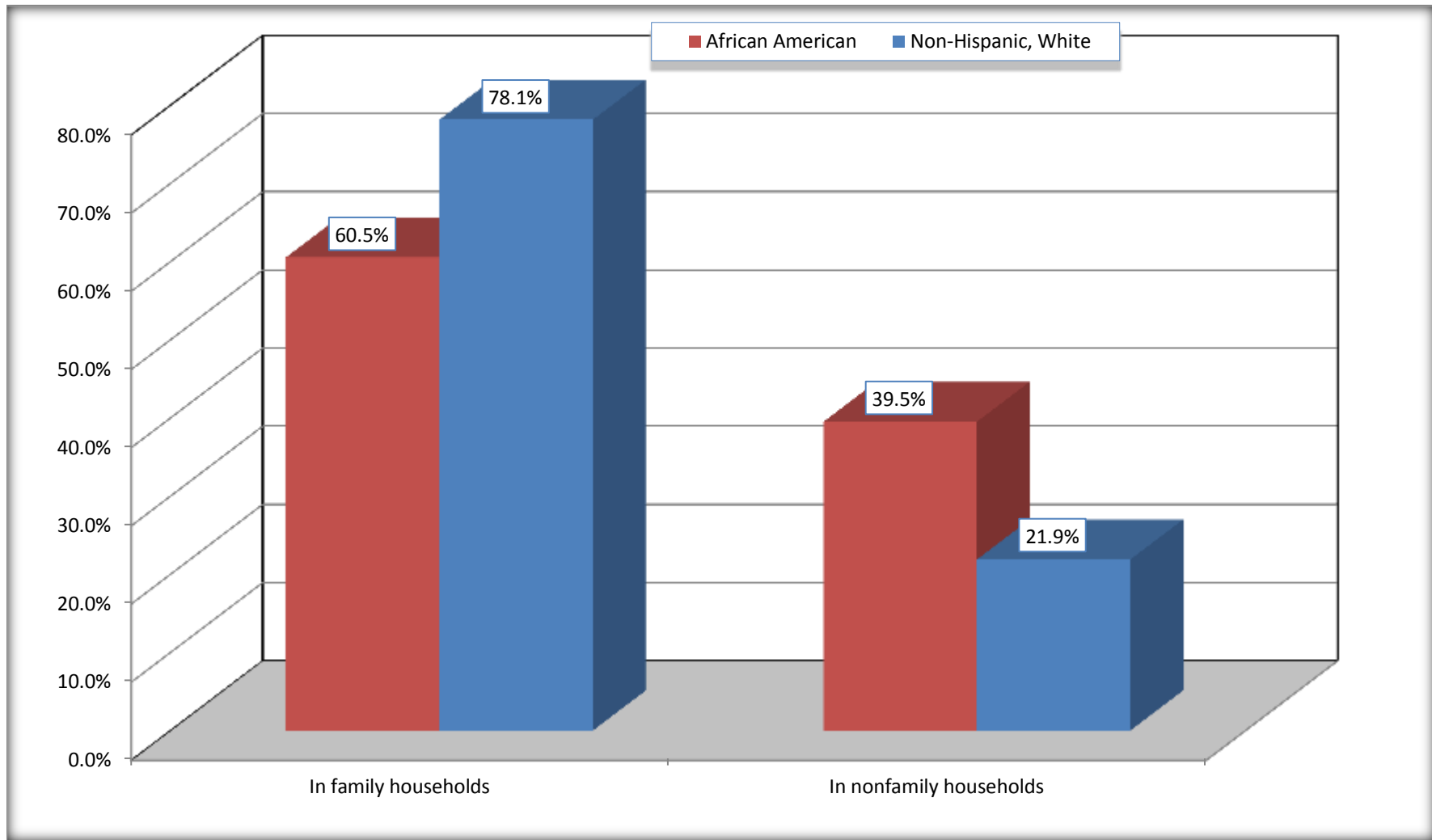
Source: U.S. Census Bureau, 2008-2012 American Community Survey

For information on confidentiality protection, sampling error, nonsampling error, and definitions, see Survey Methodology.

<http://www.census.gov/acs/www/UseData/index.htm>

# Household Type for Population in Households

## Wendell town, North Carolina



Source: B11002. HOUSEHOLD TYPE BY RELATIVES AND NONRELATIVES FOR POPULATION IN HOUSEHOLDS  
Data Set: 2008-2012 American Community Survey 5-Year Estimates

**B12002. MARITAL STATUS FOR THE POPULATION 15 YEARS AND OVER**

Data Set: 2008-2012 American Community Survey 5-Year Estimates

	Wendell town, North Carolina					
	African American	Margin of Error (+/-)	% of AA Total	White, Not Hispanic	Margin of Error (+/-)	% of NHW Total
<b>Total:</b>	<b>1,200</b>	<b>337</b>	<b>100.0%</b>	<b>2,913</b>	<b>379</b>	<b>100.0%</b>
Never married	519	NC	43.3%	518	NC	17.8%
Now married (except separated)	114	NC	9.5%	1,782	NC	61.2%
Separated	97	NC	8.1%	37	NC	1.3%
Widowed	197	NC	16.4%	272	NC	9.3%
Divorced	273	NC	22.8%	304	NC	10.4%
<b>Male:</b>	<b>557</b>	<b>214</b>	<b>46.4%</b>	<b>1,197</b>	<b>205</b>	<b>41.1%</b>
Never married	190	112	15.8%	203	130	7.0%
Now married (except separated)	64	50	5.3%	867	169	29.8%
Separated	71	78	5.9%	0	18	0.0%
Widowed	129	103	10.8%	41	41	1.4%
Divorced	103	79	8.6%	86	75	3.0%
<b>Female:</b>	<b>643</b>	<b>257</b>	<b>53.6%</b>	<b>1,716</b>	<b>255</b>	<b>58.9%</b>
Never married	329	165	27.4%	315	131	10.8%
Now married (except separated)	50	44	4.2%	915	173	31.4%
Separated	26	43	2.2%	37	43	1.3%
Widowed	68	60	5.7%	231	122	7.9%
Divorced	170	137	14.2%	218	103	7.5%

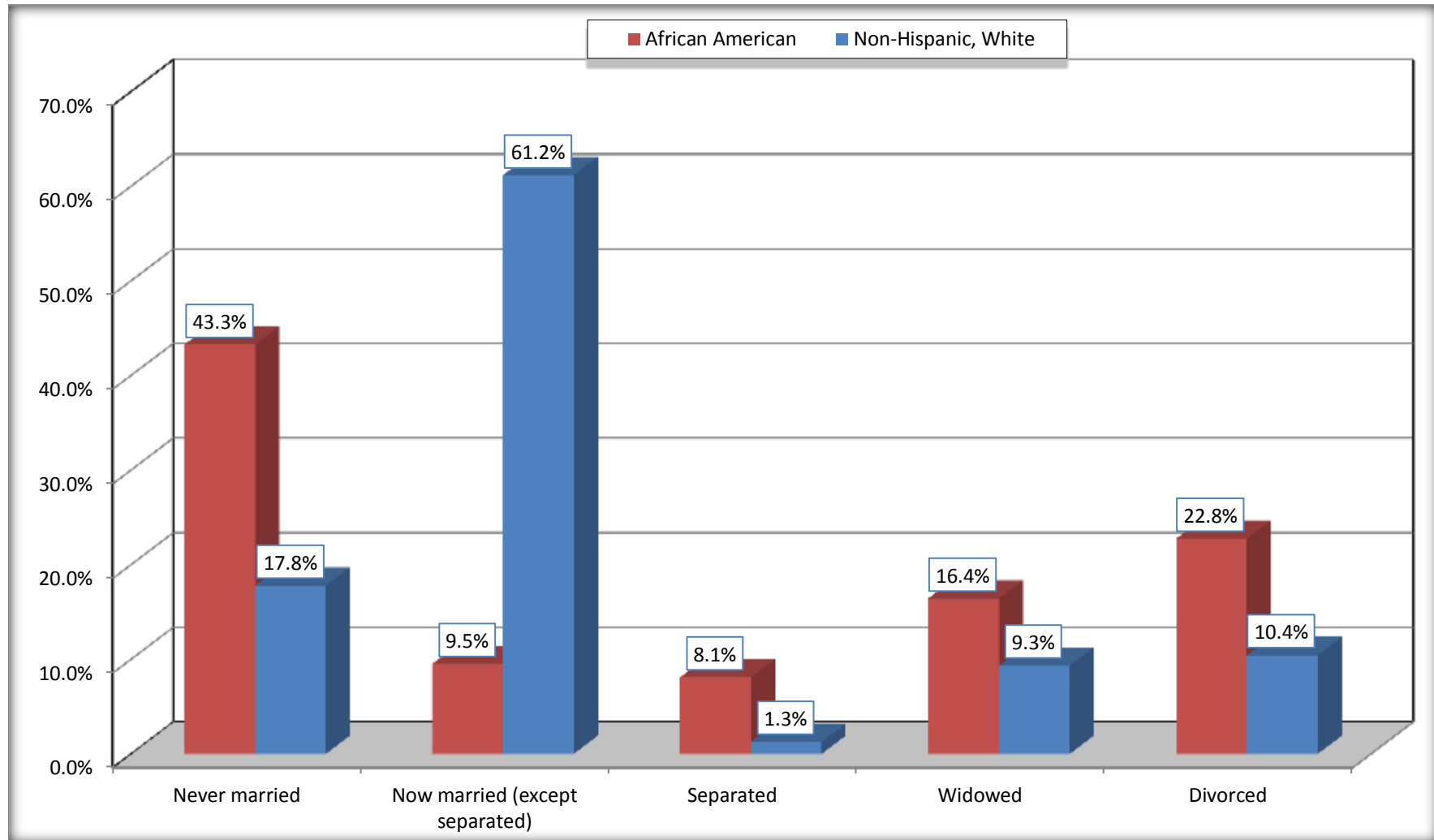
Source: U.S. Census Bureau, 2008-2012 American Community Survey

For information on confidentiality protection, sampling error, nonsampling error, and definitions, see Survey Methodology.

<http://www.census.gov/acs/www/UseData/index.htm>

# Marital Status for the Population 15 Years and Over

## Wendell town, North Carolina



Source: B12002. MARITAL STATUS FOR THE POPULATION 15 YEARS AND OVER  
Data Set: 2008-2012 American Community Survey 5-Year Estimates

**C15002. SEX BY EDUCATIONAL ATTAINMENT FOR THE POPULATION 25 YEARS AND OVER**

Data Set: 2008-2012 American Community Survey 5-Year Estimates

	Wendell town, North Carolina					
	African American	Margin of Error (+/-)	% of AA Total	White, Not Hispanic	Margin of Error (+/-)	% of NHW Total
<b>Total:</b>	<b>966</b>	<b>309</b>	<b>100.0%</b>	<b>2,684</b>	<b>337</b>	<b>100.0%</b>
Less than high school diploma	178	NC	18.4%	195	NC	7.3%
High school graduate, GED, or alternative	470	NC	48.7%	579	NC	21.6%
Some college or associate's degree	201	NC	20.8%	886	NC	33.0%
Bachelor's degree or higher	117	NC	12.1%	1,024	NC	38.2%
Male:	449	173	46.5%	1,122	185	41.8%
Less than high school diploma	82	64	8.5%	87	61	3.2%
High school graduate, GED, or alternative	211	129	21.8%	284	117	10.6%
Some college or associate's degree	93	94	9.6%	358	158	13.3%
Bachelor's degree or higher	63	53	6.5%	393	132	14.6%
Female:	517	249	53.5%	1,562	232	58.2%
Less than high school diploma	96	103	9.9%	108	77	4.0%
High school graduate, GED, or alternative	259	127	26.8%	295	113	11.0%
Some college or associate's degree	108	120	11.2%	528	205	19.7%
Bachelor's degree or higher	54	52	5.6%	631	195	23.5%

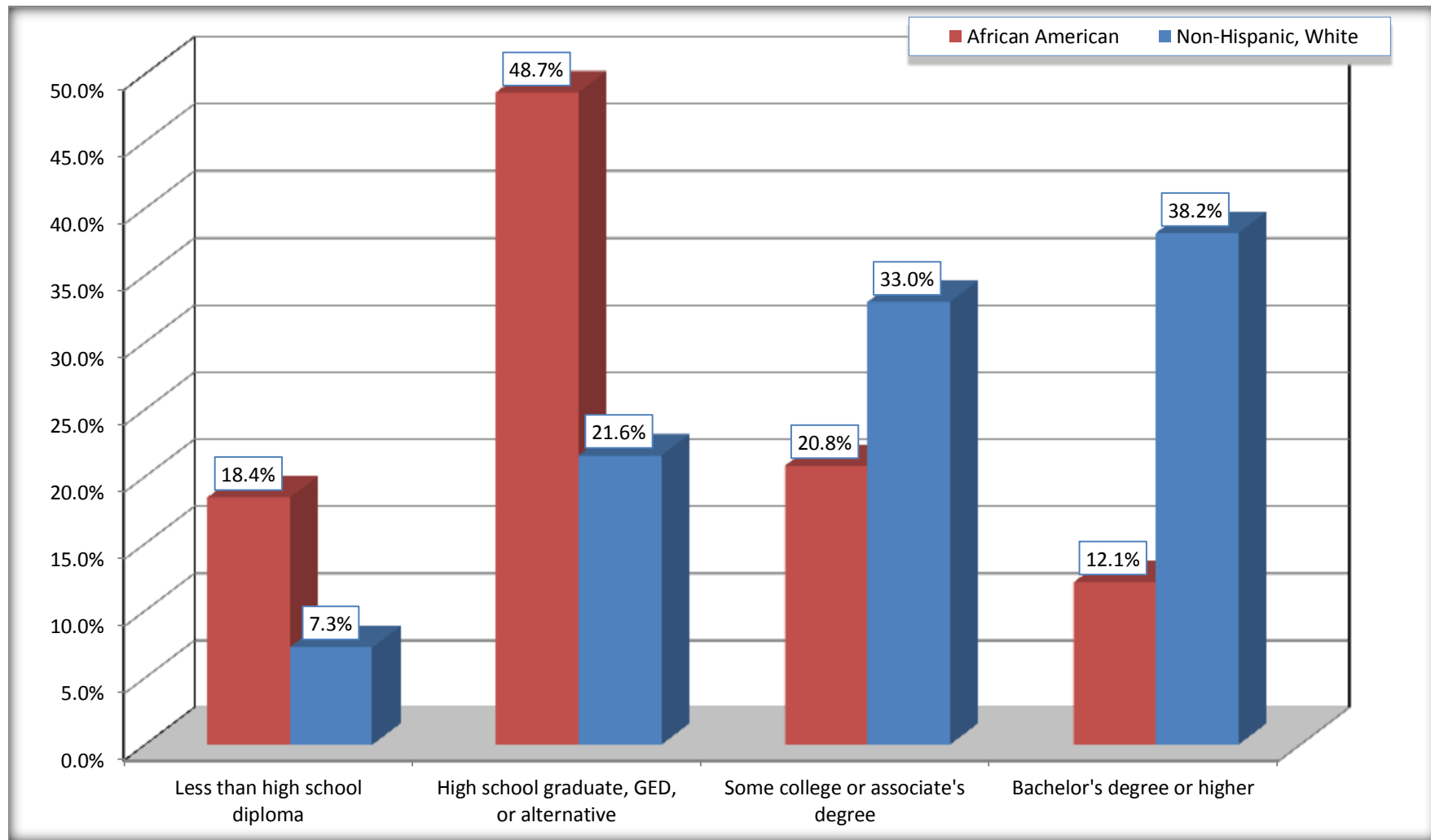
Source: U.S. Census Bureau, 2008-2012 American Community Survey

For information on confidentiality protection, sampling error, nonsampling error, and definitions, see Survey Methodology.

<http://www.census.gov/acs/www/UseData/index.htm>

# Educational Attainment for the Population 25 Years and Older

## Wendell town, North Carolina



Source: C15002. SEX BY EDUCATIONAL ATTAINMENT FOR THE POPULATION 25 YEARS AND OVER  
Data Set: 2008-2012 American Community Survey 5-Year Estimates

**B17010. POVERTY STATUS IN THE PAST 12 MONTHS OF FAMILIES BY FAMILY TYPE BY PRESENCE OF RELATED CHILDREN UNDER 18 YEARS**

Data Set: 2008-2012 American Community Survey 5-Year Estimates

	Wendell town, North Carolina					
	African American	Margin of Error (+/-)	% of AA Total	White, Not Hispanic	Margin of Error (+/-)	% of NHW Total
<b>Total:</b>	<b>316</b>	<b>140</b>	<b>100.0%</b>	<b>951</b>	<b>166</b>	<b>100.0%</b>
Income in the past 12 months below poverty level:	152	124	48.1%	21	30	2.2%
Married-couple family:	0	18	0.0%	7	19	0.7%
With related children under 18 years	0	18	0.0%	0	18	0.0%
Other family:	152	124	48.1%	14	23	1.5%
Male householder, no wife present	0	18	0.0%	0	18	0.0%
With related children under 18 years	0	18	0.0%	0	18	0.0%
Female householder, no husband present	152	124	48.1%	14	23	1.5%
With related children under 18 years	92	87	29.1%	14	23	1.5%
Income in the past 12 months at or above poverty level:	164	99	51.9%	930	167	97.8%
Married-couple family:	50	44	15.8%	856	165	90.0%
With related children under 18 years	10	17	3.2%	455	144	47.8%
Other family:	114	86	36.1%	74	54	7.8%
Male householder, no wife present	40	46	12.7%	17	24	1.8%
With related children under 18 years	40	46	12.7%	9	17	0.9%
Female householder, no husband present	74	76	23.4%	57	52	6.0%
With related children under 18 years	74	76	23.4%	21	32	2.2%

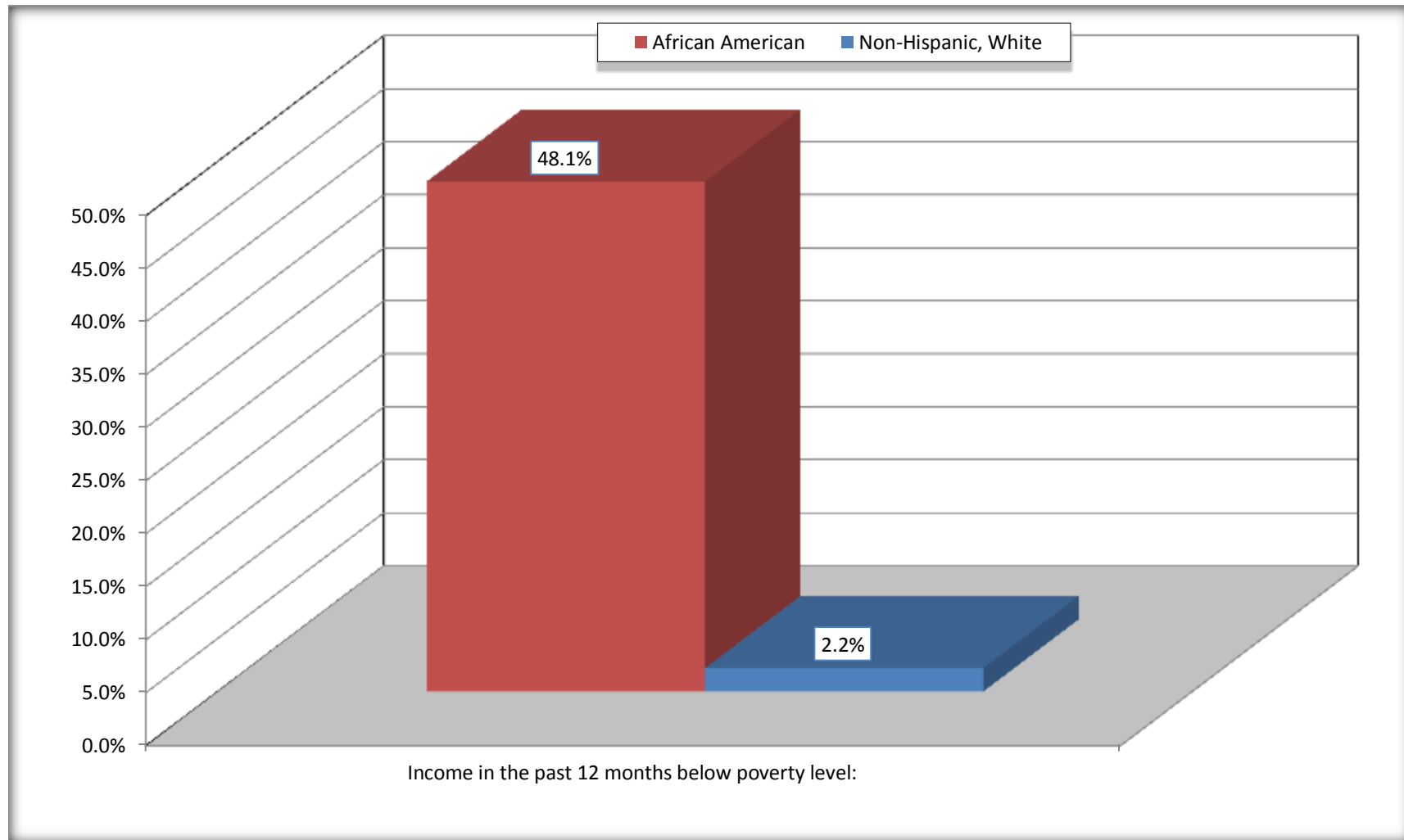
Source: U.S. Census Bureau, 2008-2012 American Community Survey

For information on confidentiality protection, sampling error, nonsampling error, and definitions, see Survey Methodology.

<http://www.census.gov/acs/www/UseData/index.htm>

# Family Households Below Poverty in the Past 12 Months

## Wendell town, North Carolina



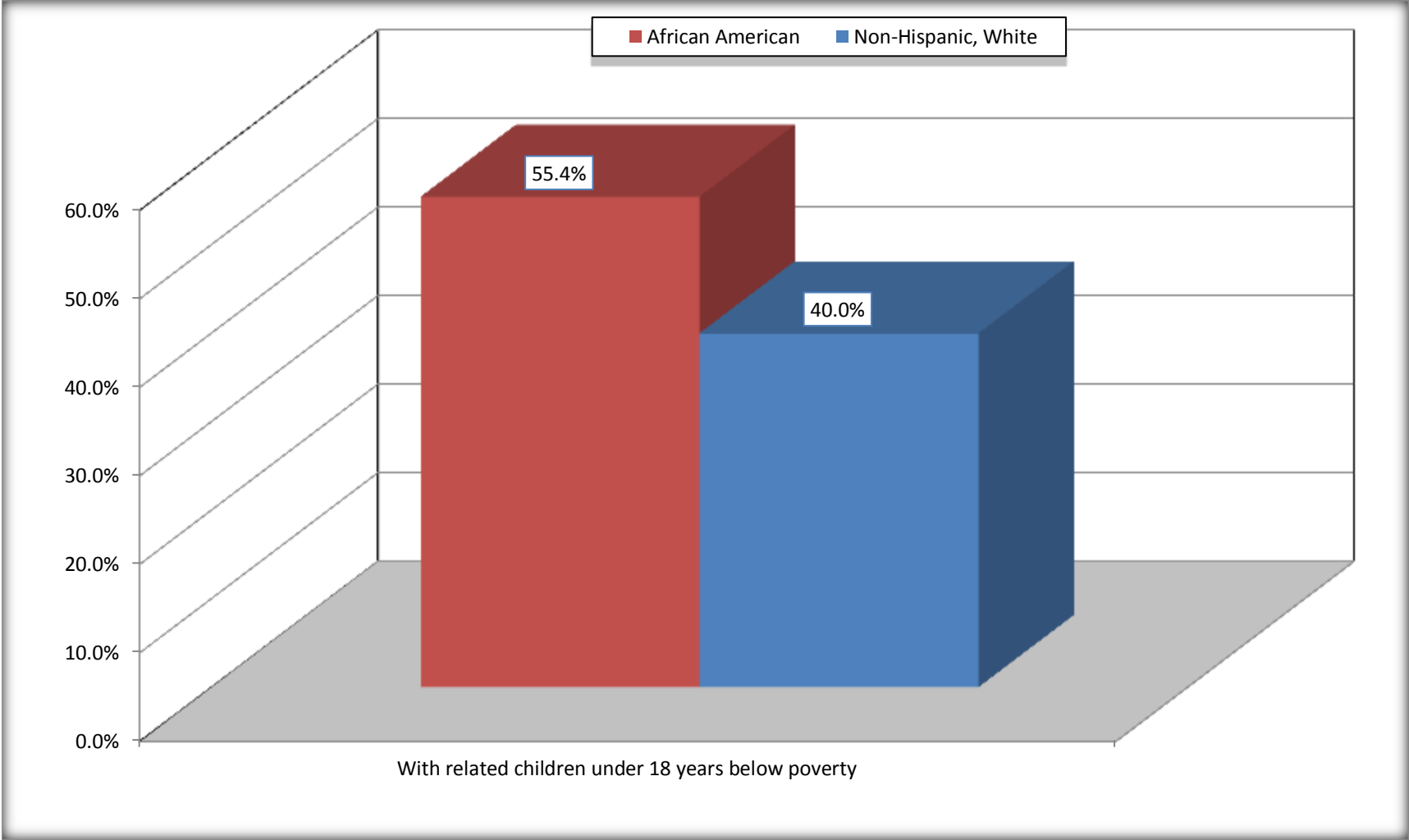
Source: B17010. POVERTY STATUS IN THE PAST 12 MONTHS OF FAMILIES BY FAMILY TYPE BY PRESENCE OF RELATED CHILDREN UNDER 18 YEARS

Data Set: 2008-2012 American Community Survey 5-Year Estimates



# Female-headed Households with Related Children Below Poverty in the Past 12 Months

## Wendell town, North Carolina



Source: B17010. POVERTY STATUS IN THE PAST 12 MONTHS OF FAMILIES BY FAMILY TYPE BY PRESENCE OF RELATED CHILDREN UNDER 18 YEARS

Data Set: 2008-2012 American Community Survey 5-Year Estimates

**B17020 POVERTY STATUS IN THE PAST 12 MONTHS BY AGE - Universe: POPULATION FOR WHOM POVERTY STATUS IS DETERMINED**

Data Set: 2008-2012 American Community Survey 5-Year Estimates

	Wendell town, North Carolina					
	African American	Margin of Error (+/-)	% of AA By Age	White, Not Hispanic	Margin of Error (+/-)	% of NHW By Age
<b>Total:</b>	<b>1,434</b>	<b>368</b>	<b>100.0%</b>	<b>3,515</b>	<b>430</b>	<b>100.0%</b>
Income in the past 12 months below poverty level:	539	314	37.6%	166	108	4.7%
<b>Under 18 years</b>	190	NC	52.5%	14	NC	2.0%
<b>18 to 64 years</b>	235	150	28.1%	89	71	4.2%
<b>65 years and over</b>	114	NC	48.5%	63	NC	9.0%
Income in the past 12 months at or above poverty level:	895	314	62.4%	3,349	420	95.3%
<b>Under 18 years</b>	172	NC	47.5%	677	NC	98.0%
<b>18 to 64 years</b>	602	226	71.9%	2,033	329	95.8%
<b>65 years and over</b>	121	NC	51.5%	639	NC	91.0%

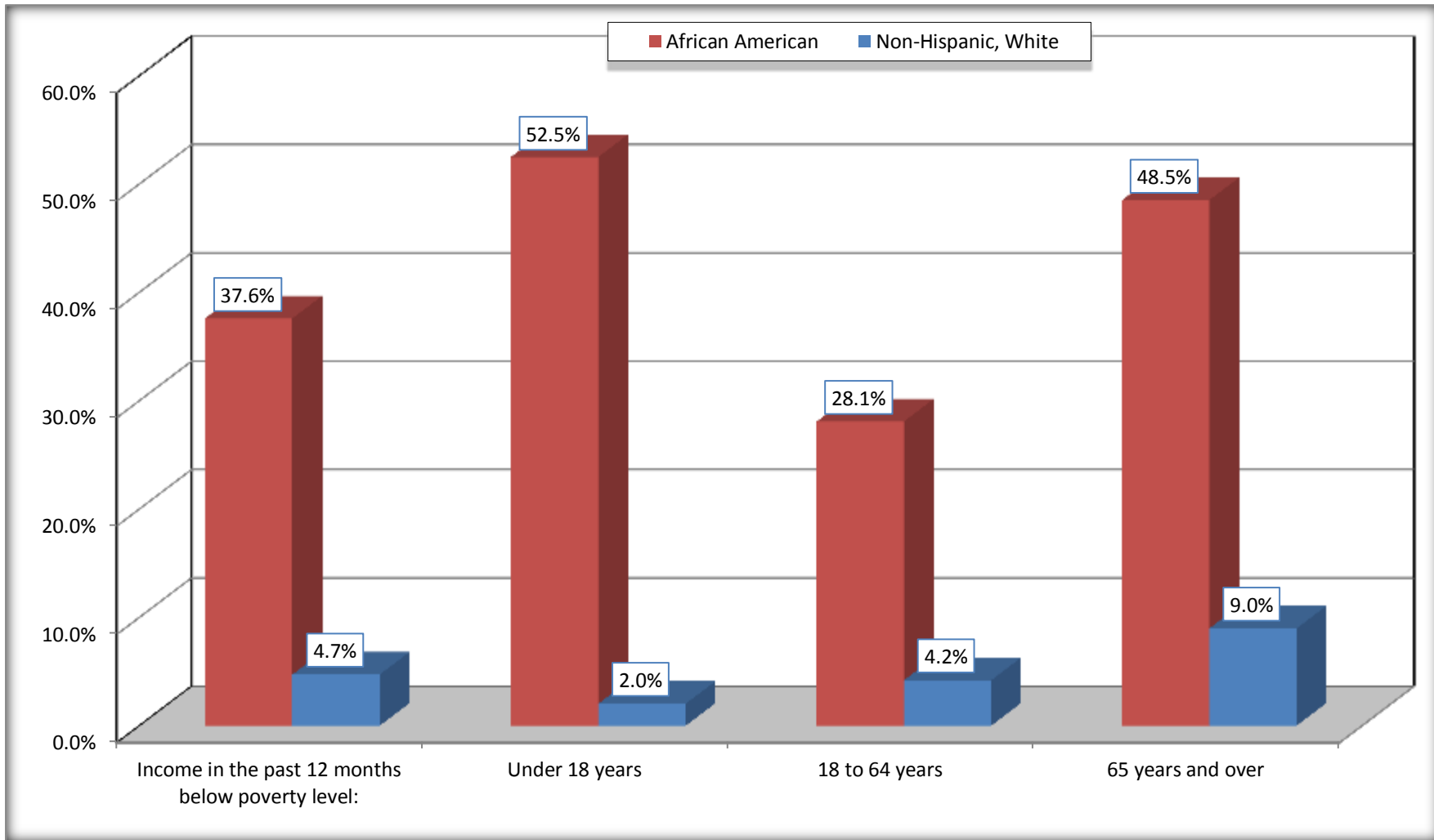
Source: U.S. Census Bureau, 2008-2012 American Community Survey

For information on confidentiality protection, sampling error, nonsampling error, and definitions, see Survey Methodology.

<http://www.census.gov/acs/www/UseData/index.htm>

# Population Below Poverty in the Past 12 Months

## Wendell town, North Carolina



Source: B17020 POVERTY STATUS IN THE PAST 12 MONTHS BY AGE - Universe: POPULATION FOR WHOM POVERTY STATUS IS DETERMINED  
Data Set: 2008-2012 American Community Survey 5-Year Estimates

**B19001. HOUSEHOLD INCOME IN THE PAST 12 MONTHS (IN 2010 INFLATION-ADJUSTED DOLLARS)**

Data Set: 2008-2012 American Community Survey 5-Year Estimates

	Wendell town, North Carolina					
	African American	Margin of Error (+/-)	% of AA Total	White, Not Hispanic	Margin of Error (+/-)	% of NHW Total
<b>Total:</b>	<b>801</b>	<b>202</b>	<b>100.0%</b>	<b>1,691</b>	<b>246</b>	<b>100.0%</b>
Less than \$ 10,000	89	98	11.1%	61	58	3.6%
\$ 10,000 to \$ 14,999	106	96	13.2%	95	69	5.6%
<b>\$ 15,000 to \$ 24,999</b>	175	NC	21.8%	264	NC	15.6%
<b>\$ 25,000 to \$ 34,999</b>	137	NC	17.1%	183	NC	10.8%
<b>\$ 35,000 to \$ 49,999</b>	196	NC	24.5%	330	NC	19.5%
<b>\$ 50,000 to \$ 74,999</b>	84	NC	10.5%	274	NC	16.2%
\$ 75,000 to \$ 99,999	14	22	1.7%	228	128	13.5%
<b>\$ 100,000 to \$ 149,999</b>	0	NC	0.0%	199	NC	11.8%
\$ 150,000 to \$ 199,999	0	18	0.0%	29	32	1.7%
\$ 200,000 or more	0	18	0.0%	28	34	1.7%

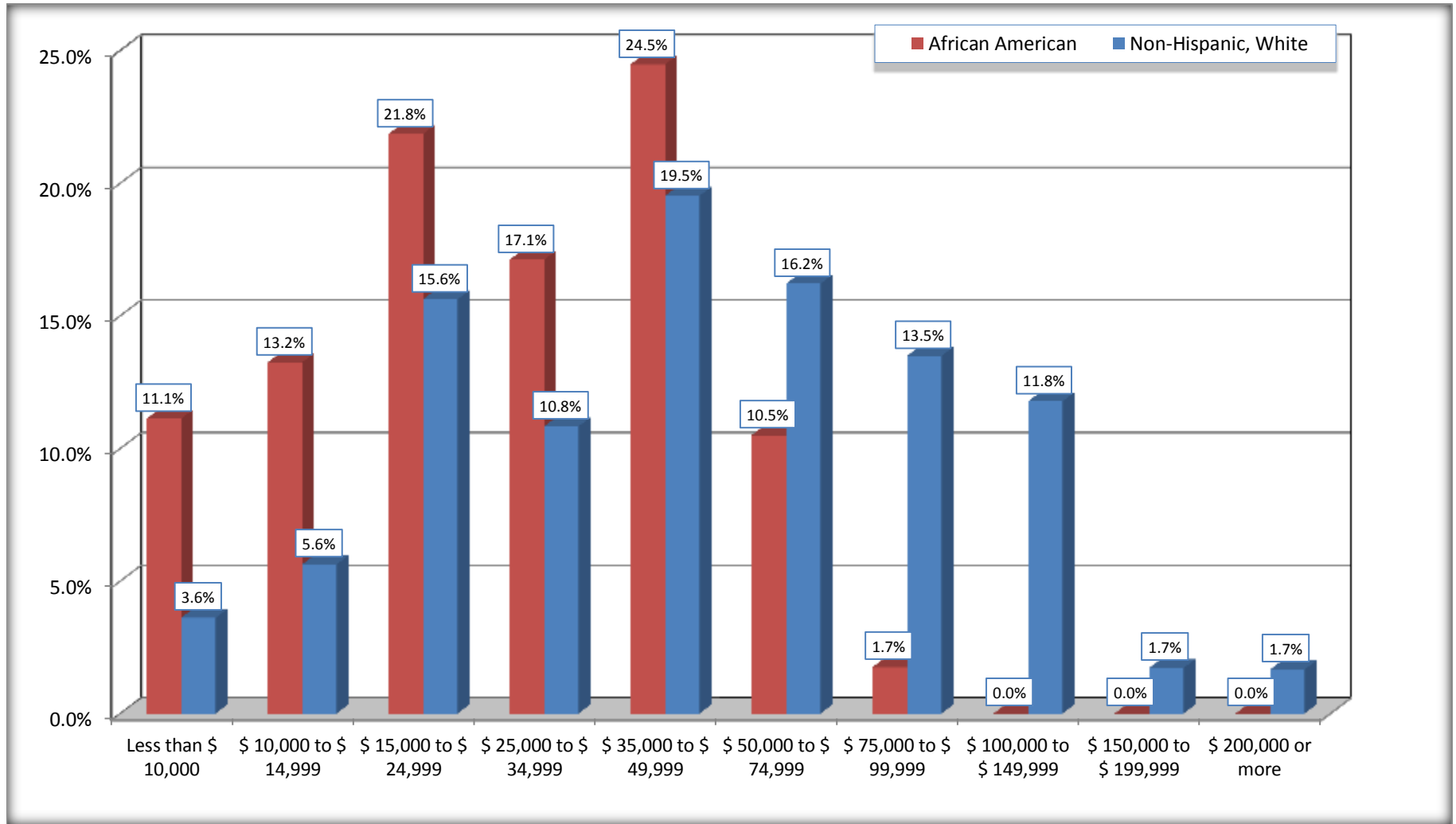
Source: U.S. Census Bureau, 2008-2012 American Community Survey

For information on confidentiality protection, sampling error, nonsampling error, and definitions, see Survey Methodology.

<http://www.census.gov/acs/www/UseData/index.htm>

# Household Income in the Past 12 Months

## Wendell town, North Carolina



Source: B19001. HOUSEHOLD INCOME IN THE PAST 12 MONTHS (IN 2010 INFLATION-ADJUSTED DOLLARS)  
Data Set: 2008-2012 American Community Survey 5-Year Estimates

**B19013. MEDIAN HOUSEHOLD INCOME IN THE PAST 12 MONTHS (IN 2010 INFLATION-ADJUSTED DOLLARS)**

Data Set: 2008-2012 American Community Survey 5-Year Estimates

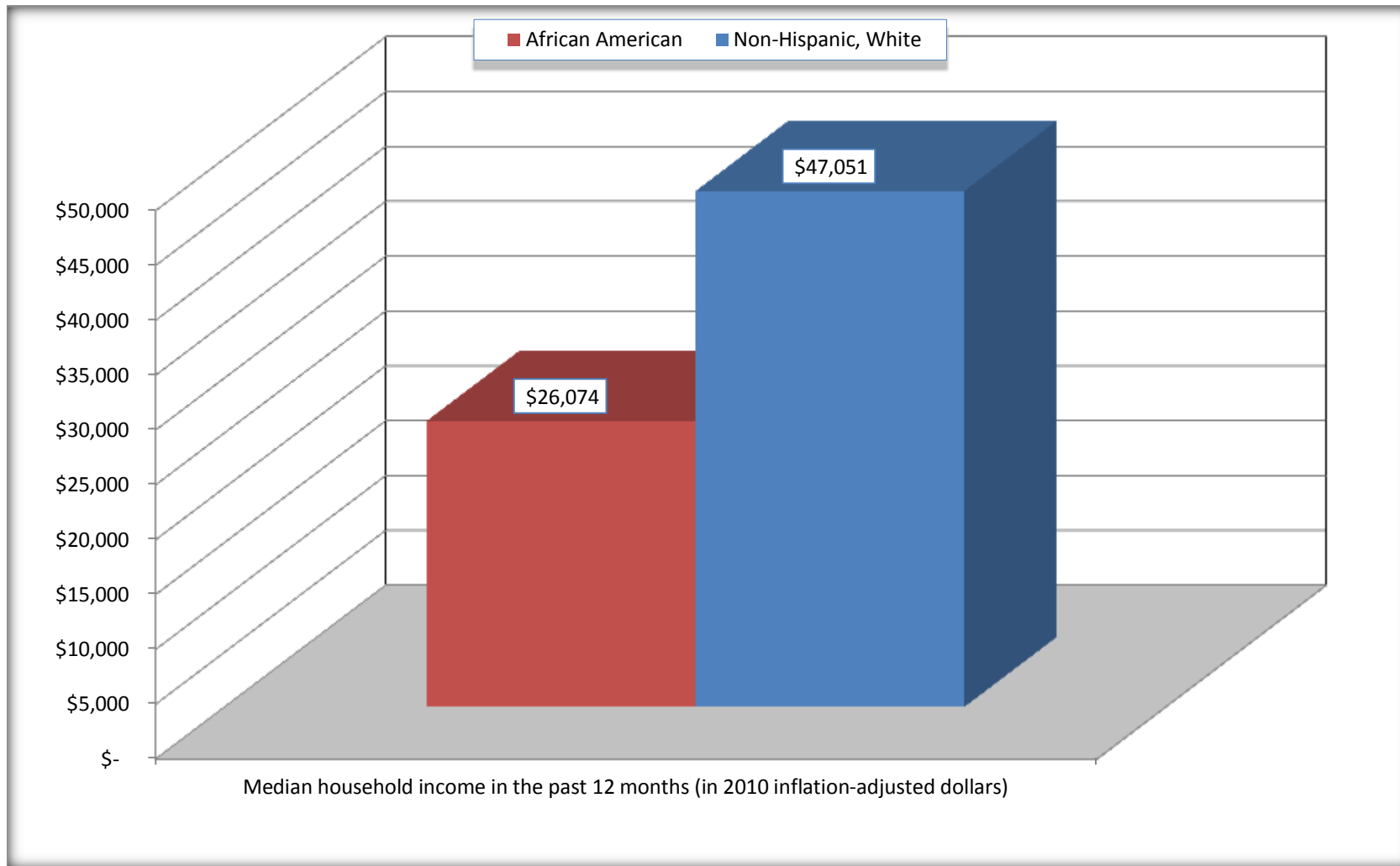
	Wendell town, North Carolina			
	African American	Margin of Error (+/-)	White, Not Hispanic	Margin of Error (+/-)
Median household income in the past 12 months (in 2010 inflation-adjusted dollars)	\$ 26,074	\$ 7,659	\$ 47,051	\$ 5,249

Source: U.S. Census Bureau, 2008-2012 American Community Survey

For information on confidentiality protection, sampling error, nonsampling error, and definitions, see Survey Methodology.  
<http://www.census.gov/acs/www/UseData/index.htm>

## Median Household Income in the Past 12 Months

### Wendell town, North Carolina



Source: B19013. MEDIAN HOUSEHOLD INCOME IN THE PAST 12 MONTHS (IN 2010 INFLATION-ADJUSTED DOLLARS)  
Data Set: 2008-2012 American Community Survey 5-Year Estimates

**B19101. FAMILY INCOME IN THE PAST 12 MONTHS (IN 2010 INFLATION-ADJUSTED DOLLARS)**

Data Set: 2008-2012 American Community Survey 5-Year Estimates

	Wendell town, North Carolina					
	African American	Margin of Error (+/-)	% of AA Total	White, Not Hispanic	Margin of Error (+/-)	% of NHW Total
<b>Total:</b>	<b>316</b>	<b>140</b>	<b>100.0%</b>	<b>951</b>	<b>166</b>	<b>100.0%</b>
Less than \$ 10,000	60	91	19.0%	0	18	0.0%
\$ 10,000 to \$ 14,999	56	78	17.7%	21	30	2.2%
<b>\$ 15,000 to \$ 24,999</b>	<b>36</b>	<b>NC</b>	<b>11.4%</b>	<b>29</b>	<b>NC</b>	<b>3.0%</b>
<b>\$ 25,000 to \$ 34,999</b>	<b>54</b>	<b>NC</b>	<b>17.1%</b>	<b>74</b>	<b>NC</b>	<b>7.8%</b>
<b>\$ 35,000 to \$ 49,999</b>	<b>48</b>	<b>NC</b>	<b>15.2%</b>	<b>210</b>	<b>NC</b>	<b>22.1%</b>
<b>\$ 50,000 to \$ 74,999</b>	<b>48</b>	<b>NC</b>	<b>15.2%</b>	<b>220</b>	<b>NC</b>	<b>23.1%</b>
<b>\$ 100,000 to \$ 149,999</b>	<b>-</b>	<b>NC</b>	<b>0.0%</b>	<b>199</b>	<b>NC</b>	<b>20.9%</b>
\$ 150,000 to \$ 199,999	0	18	0.0%	17	27	1.8%
\$ 200,000 or more	0	18	0.0%	28	34	2.9%

Source: U.S. Census Bureau, 2008-2012 American Community Survey

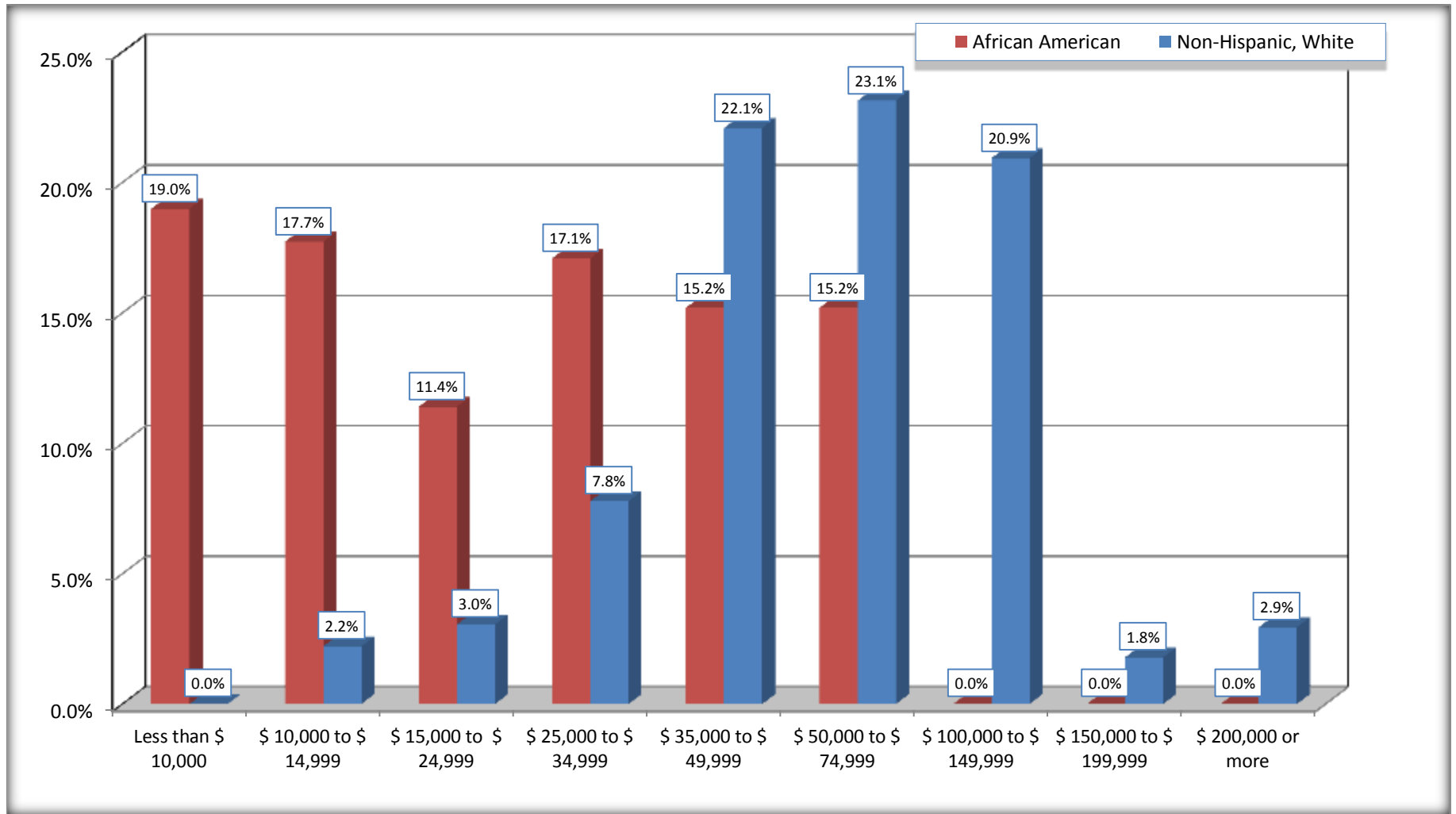
For information on confidentiality protection, sampling error, nonsampling error, and definitions, see Survey Methodology.

<http://www.census.gov/acs/www/UseData/index.htm>



# Family Income in the Past 12 Months

## Wendell town, North Carolina



Source: B19101. FAMILY INCOME IN THE PAST 12 MONTHS (IN 2010 INFLATION-ADJUSTED DOLLARS)  
Data Set: 2008-2012 American Community Survey 5-Year Estimates

**B19113. MEDIAN FAMILY INCOME IN THE PAST 12 MONTHS (IN 2010 INFLATION-ADJUSTED DOLLARS)**

Data Set: 2008-2012 American Community Survey 5-Year Estimates

	Wendell town, North Carolina			
	African American	Margin of Error (+/-)	White, Not Hispanic	Margin of Error (+/-)
Median family income in the past 12 months (in 2010 inflation-adjusted dollars)	\$ 25,278	\$ 20,917	\$ 66,629	\$ 9,848

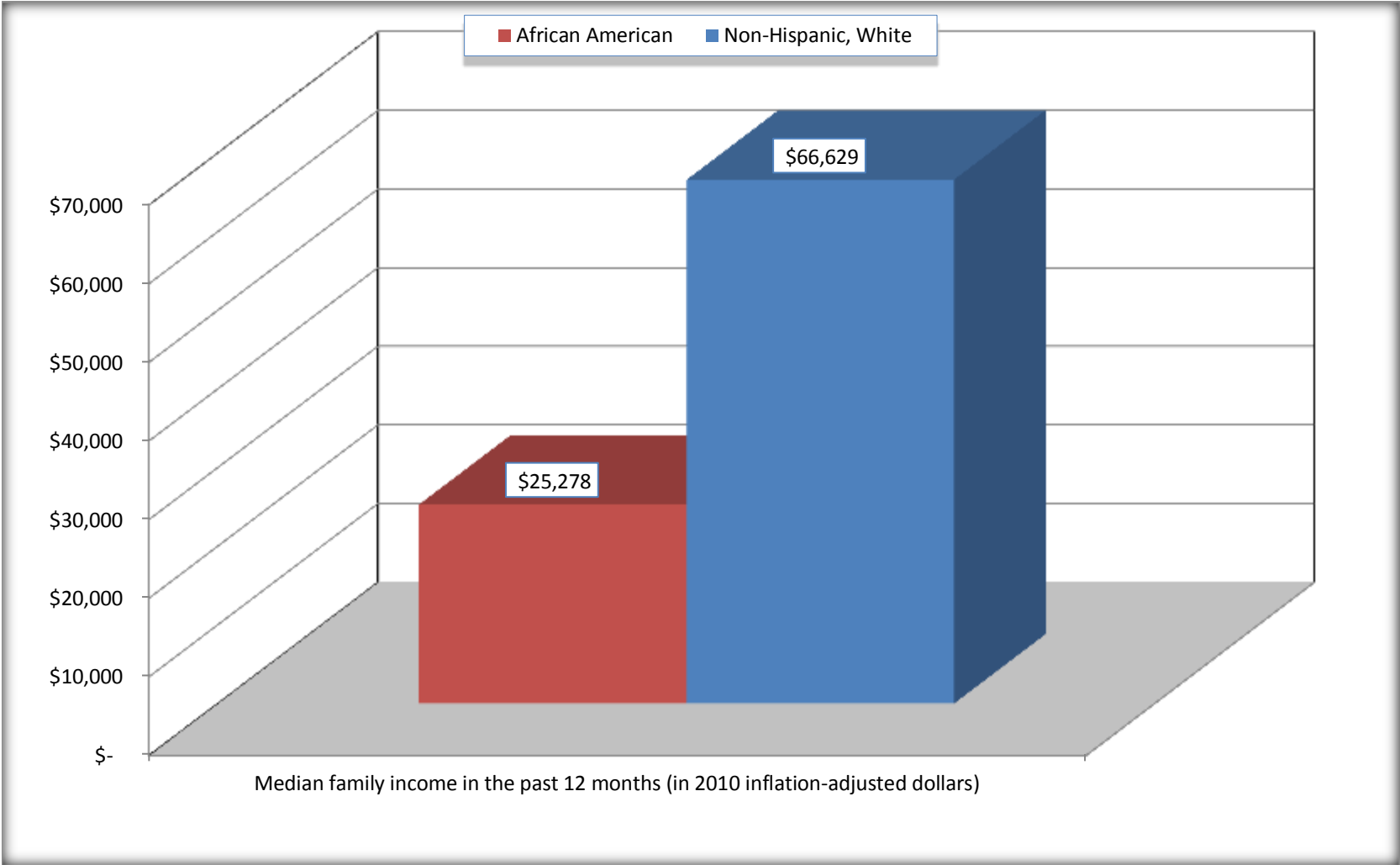
Source: U.S. Census Bureau, 2008-2012 American Community Survey

For information on confidentiality protection, sampling error, nonsampling error, and definitions, see Survey Methodology.

<http://www.census.gov/acs/www/UseData/index.htm>

# Median Family Income in the Past 12 Months

## Wendell town, North Carolina



Source: B19113. MEDIAN FAMILY INCOME IN THE PAST 12 MONTHS (IN 2010 INFLATION-ADJUSTED DOLLARS)  
Data Set: 2008-2012 American Community Survey 5-Year Estimates

**B19202. MEDIAN NONFAMILY HOUSEHOLD INCOME IN THE PAST 12 MONTHS (IN 2010 INFLATION-ADJUSTED DOLLARS)**

Data Set: 2008-2012 American Community Survey 5-Year Estimates

	Wendell town, North Carolina			
	African American	Margin of Error (+/-)	White, Not Hispanic	Margin of Error (+/-)
Median nonfamily household income in the past 12 months (in 2010 inflation-adjusted dollars)	\$ 30,417	\$ 11,298	\$ 25,000	\$ 9,217

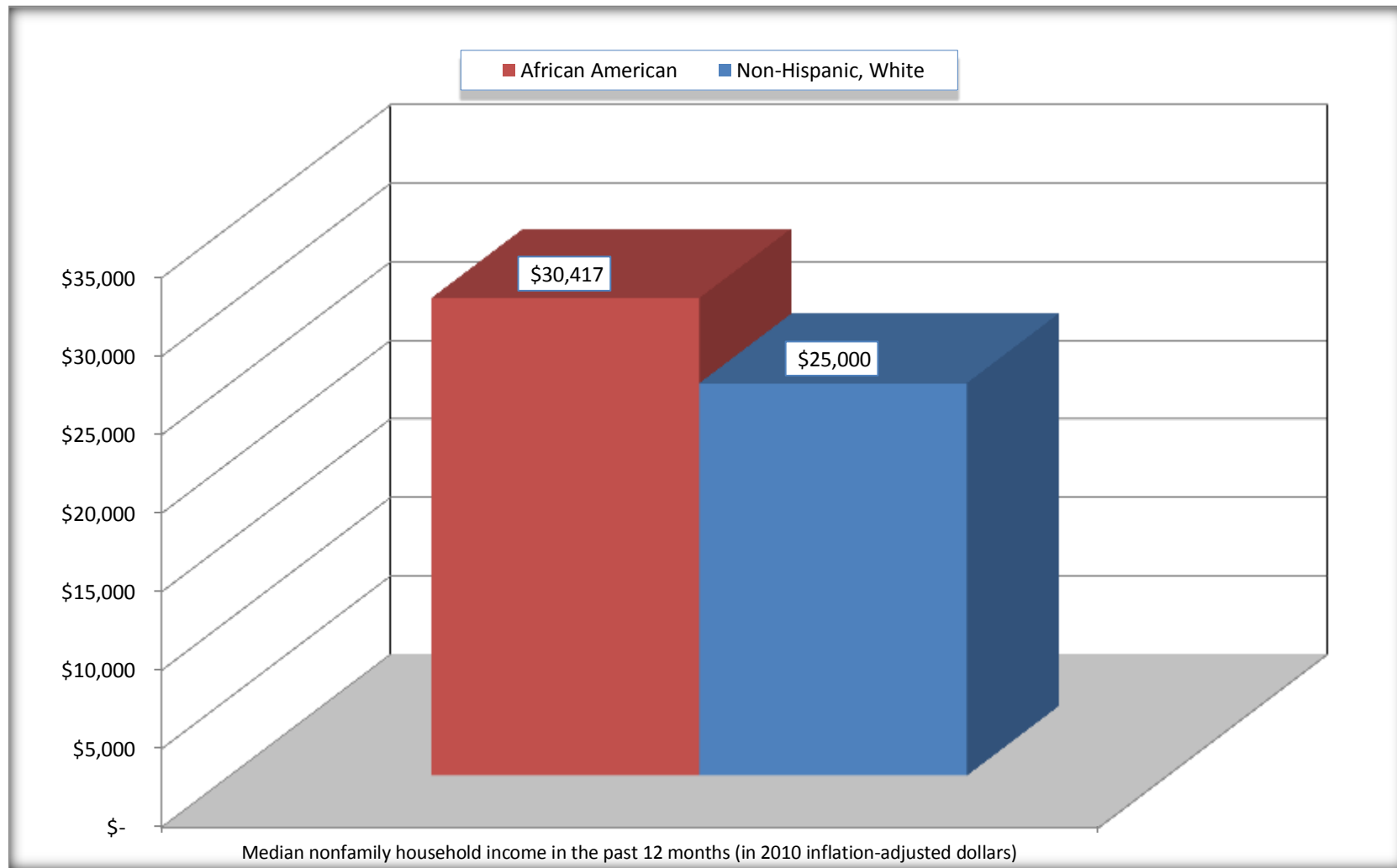
Source: U.S. Census Bureau, 2008-2012 American Community Survey

For information on confidentiality protection, sampling error, nonsampling error, and definitions, see Survey Methodology.

<http://www.census.gov/acs/www/UseData/index.htm>

# Median Non-Family Income in the Past 12 Months

## Wendell town, North Carolina



Source: B19202. MEDIAN NONFAMILY HOUSEHOLD INCOME IN THE PAST 12 MONTHS (IN 2010 INFLATION-ADJUSTED DOLLARS)  
Data Set: 2008-2012 American Community Survey 5-Year Estimates

**B19301. PER CAPITA INCOME IN THE PAST 12 MONTHS (IN 2010 INFLATION-ADJUSTED DOLLARS)**

Data Set: 2008-2012 American Community Survey 5-Year Estimates

	Wendell town, North Carolina			
	African American	Margin of Error (+/-)	White, Not Hispanic	Margin of Error (+/-)
Per capita income in the past 12 months (in 2010 inflation-adjusted dollars)	\$ 17,899	\$ 4,230	\$ 28,437	\$ 3,489

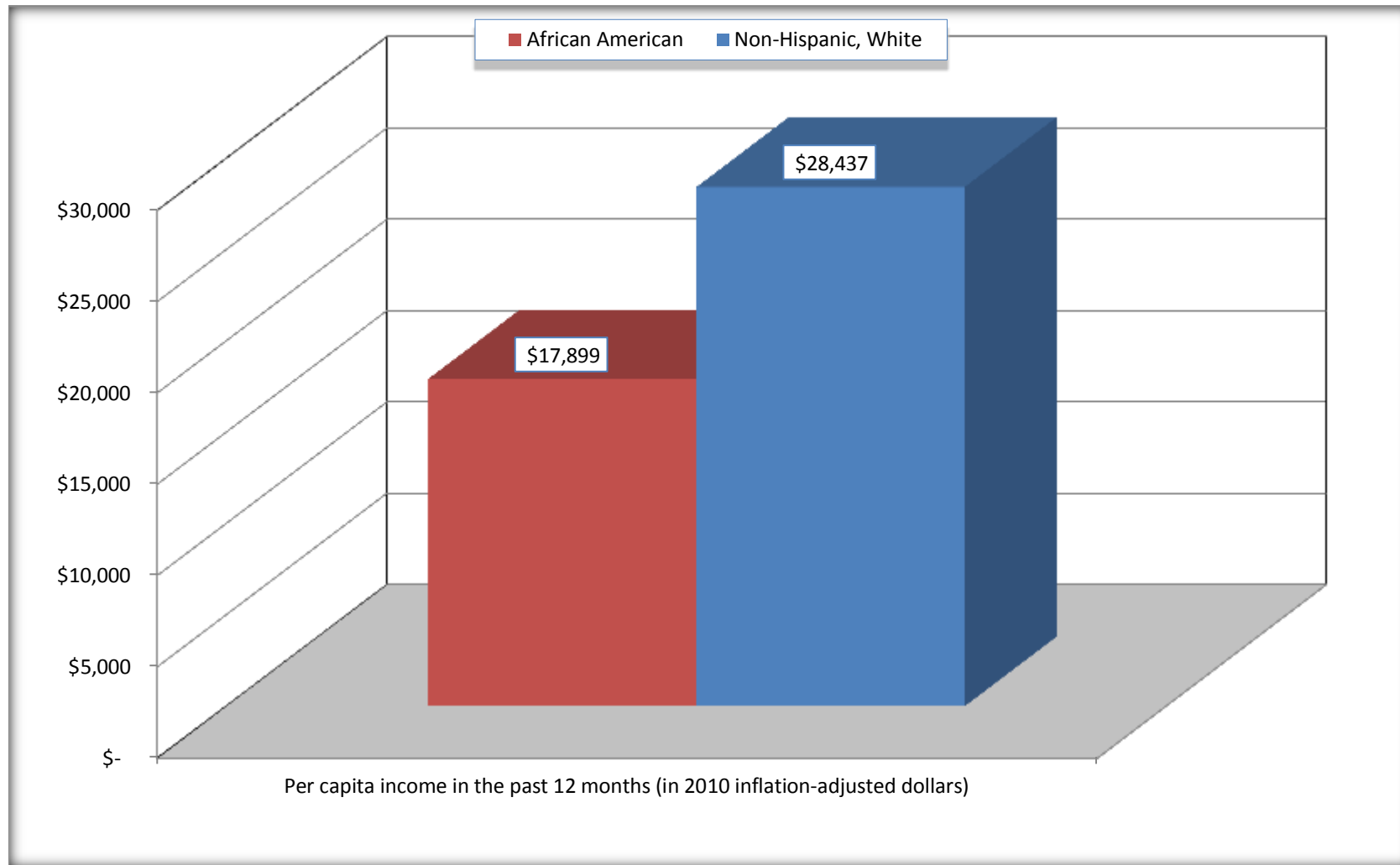
Source: U.S. Census Bureau, 2008-2012 American Community Survey

For information on confidentiality protection, sampling error, nonsampling error, and definitions, see Survey Methodology.

<http://www.census.gov/acs/www/UseData/index.htm>

## Per capita Income in the Past 12 Months

### Wendell town, North Carolina



Source: B19301. PER CAPITA INCOME IN THE PAST 12 MONTHS (IN 2010 INFLATION-ADJUSTED DOLLARS)  
Data Set: 2008-2012 American Community Survey 5-Year Estimates

**B20017. MEDIAN EARNINGS IN THE PAST 12 MONTHS (IN 2010 INFLATION-ADJUSTED DOLLARS) BY SEX BY WORK EXPERIENCE IN THE PAST 12 MONTHS FOR THE POPULATION 16 YEARS AND OVER WITH EARNINGS IN THE PAST 12 MONTHS**

Data Set: 2008-2012 American Community Survey 5-Year Estimates

	Wendell town, North Carolina			
	African American	Margin of Error (+/-)	White, Not Hispanic	Margin of Error (+/-)
Median earnings in the past 12 months (in 2010 inflation-adjusted dollars) --				
Total:	\$ 24,250	\$ 3,693	\$ 35,444	\$ 7,852
Male --				
Total	\$ 37,642	\$ 26,896	\$ 38,947	\$ 17,302
Worked full-time, year-round in the past 12 months	\$ 37,614	\$ 27,230	\$ 51,786	\$ 10,306
Other	\$ 42,525	\$ 80,030	\$ 17,639	\$ 12,802
Female --				
Total	\$ 20,327	\$ 9,839	\$ 31,404	\$ 7,571
Worked full-time, year-round in the past 12 months	\$ 25,391	\$ 8,475	\$ 41,679	\$ 3,692
Other	\$ 13,229	\$ 13,323	\$ 13,233	\$ 7,242

Source: U.S. Census Bureau, 2008-2012 American Community Survey

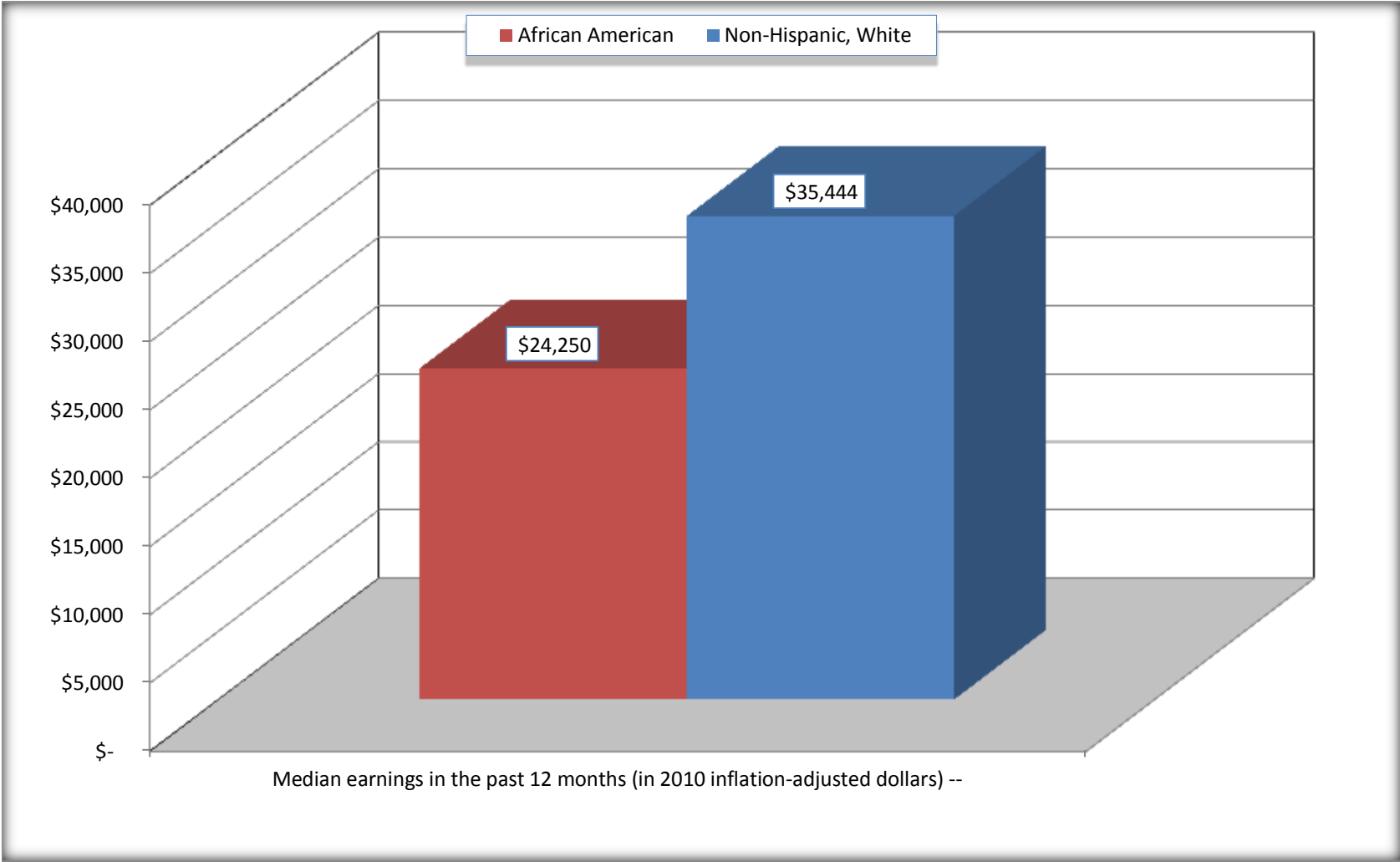
For information on confidentiality protection, sampling error, nonsampling error, and definitions, see Survey Methodology.

<http://www.census.gov/acs/www/UseData/index.htm>



# Median earnings in the Past 12 Months (16 Years and Over with Earnings)

## Wendell town, North Carolina



Source: B20017. MEDIAN EARNINGS IN THE PAST 12 MONTHS (IN 2010 INFLATION-ADJUSTED DOLLARS) BY SEX BY WORK EXPERIENCE IN THE PAST 12 MONTHS FOR THE POPULATION 16 YEARS AND OVER WITH EARNINGS IN THE PAST 12 MONTHS  
Data Set: 2008-2012 American Community Survey 5-Year Estimates

**B20005. SEX BY WORK EXPERIENCE IN THE PAST 12 MONTHS BY EARNINGS IN THE PAST 12 MONTHS (IN 2010 INFLATION-ADJUSTED DOLLARS) FOR THE POPULATION 16 YEARS AND OVER**

Data Set: 2008-2012 American Community Survey 5-Year Estimates

	Wendell town, North Carolina					
	African American	Margin of Error (+/-)	% of AA Total	White, Not Hispanic	Margin of Error (+/-)	% of NHW Total
<b>Total:</b>	<b>1,185</b>	<b>336</b>	<b>100.0%</b>	<b>2,900</b>	<b>376</b>	<b>100.0%</b>
Worked full-time, year-round in the past 12 months:	454	NC	38.3%	1,349	NC	46.5%
No earnings	0	NC	0.0%	0	NC	0.0%
With earnings:	454	NC	38.3%	1,349	NC	46.5%
\$ 1 to \$ 9,999 or loss	56	NC	4.7%	0	NC	0.0%
\$ 10,000 to \$ 19,999	0	NC	0.0%	84	NC	2.9%
\$ 20,000 to \$ 29,999	223	NC	18.8%	220	NC	7.6%
\$ 30,000 to \$ 49,999	152	NC	12.8%	460	NC	15.9%
\$ 50,000 to \$ 74,999	23	NC	1.9%	409	NC	14.1%
\$ 75,000 or more	0	NC	0.0%	176	NC	6.1%
Other:	731	NC	61.7%	1,551	NC	53.5%
No earnings	537	NC	45.3%	1,024	NC	35.3%
With earnings: less than full time, year-round	194	NC	16.4%	527	NC	18.2%
Male:	557	214	47.0%	1,184	201	40.8%
Worked full-time, year-round in the past 12 months:	238	128	20.1%	692	174	23.9%
No earnings	0	18	0.0%	0	18	0.0%
With earnings:	238	128	20.1%	692	174	23.9%
\$ 1 to \$ 9,999 or loss	0	NC	0.0%	0	NC	0.0%
\$ 10,000 to \$ 19,999	0	NC	0.0%	12	NC	0.4%
\$ 20,000 to \$ 29,999	117	NC	9.9%	117	NC	4.0%
\$ 30,000 to \$ 49,999	109	NC	9.2%	172	NC	5.9%
\$ 50,000 to \$ 74,999	12	NC	1.0%	264	NC	9.1%
\$ 75,000 or more	0	NC	0.0%	127	NC	4.4%

	Wendell town, North Carolina					
	African American	Margin of Error (+/-)	% of AA Total	White, Not Hispanic	Margin of Error (+/-)	% of NHW Total
Other:	319	152	26.9%	492	141	17.0%
No earnings	218	116	18.4%	312	125	10.8%
With earnings:	101	95	8.5%	180	91	6.2%
Female:	628	255	53.0%	1,716	255	59.2%
Worked full-time, year-round in the past 12 months:	216	128	18.2%	657	164	22.7%
No earnings	0	18	0.0%	0	18	0.0%
With earnings:	216	128	18.2%	657	164	22.7%
\$ 1 to \$ 9,999 or loss	56	NC	4.7%	0	NC	0.0%
\$ 10,000 to \$ 19,999	0	NC	0.0%	72	NC	2.5%
\$ 20,000 to \$ 29,999	106	NC	8.9%	103	NC	3.6%
\$ 30,000 to \$ 49,999	43	NC	3.6%	288	NC	9.9%
\$ 50,000 to \$ 74,999	11	NC	0.9%	145	NC	5.0%
\$ 75,000 or more	0	NC	0.0%	49	NC	1.7%
Other:	412	244	34.8%	1,059	216	36.5%
No earnings	319	224	26.9%	712	179	24.6%
With earnings:	93	78	7.8%	347	133	12.0%

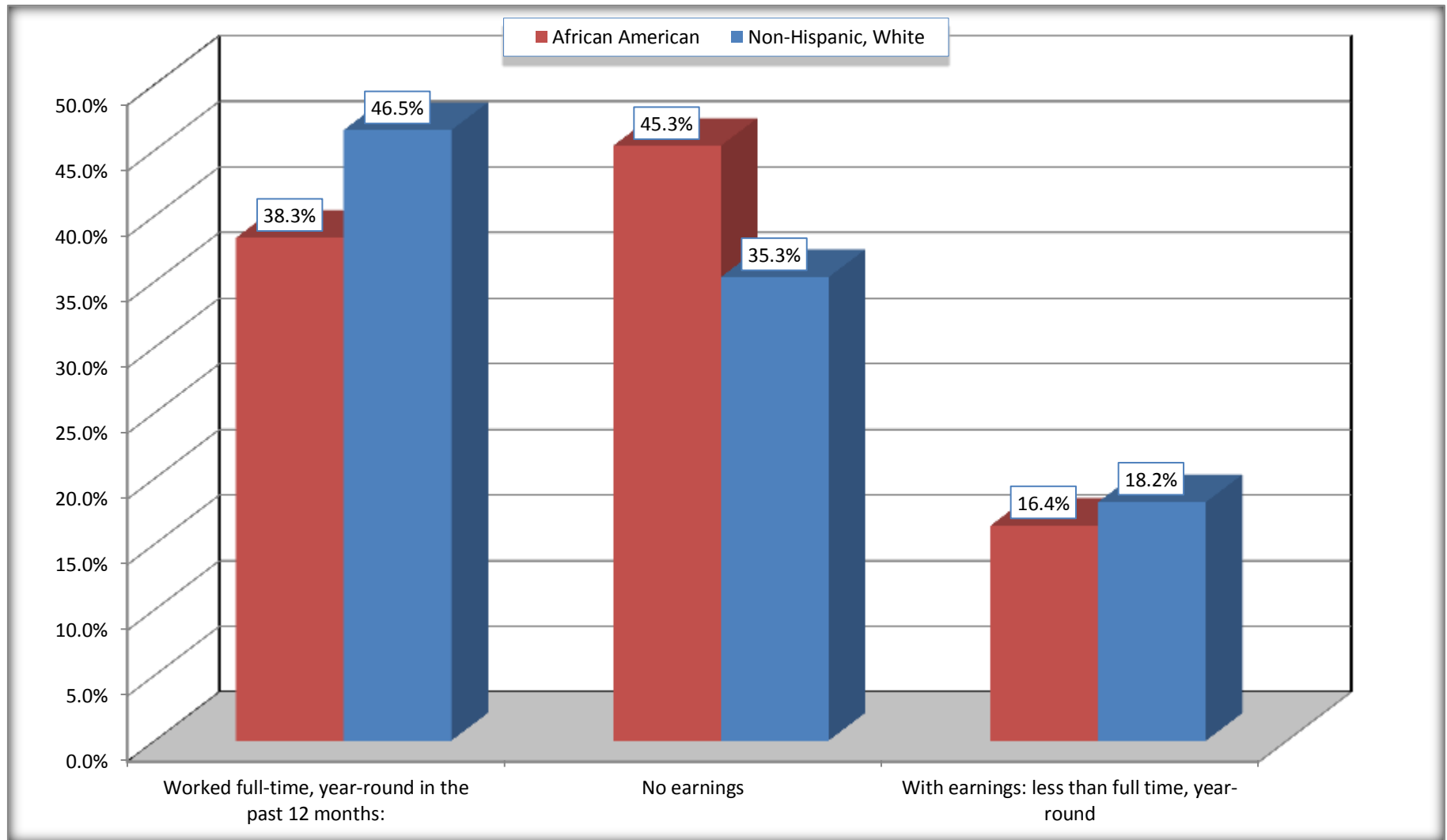
Source: U.S. Census Bureau, 2008-2012 American Community Survey

For information on confidentiality protection, sampling error, nonsampling error, and definitions, see Survey Methodology.

<http://www.census.gov/acs/www/UseData/index.htm>

# Employment and Earnings in in the Past 12 Months (16 Years and Over)

## Wendell town, North Carolina



Source: B20005. SEX BY WORK EXPERIENCE IN THE PAST 12 MONTHS BY EARNINGS IN THE PAST 12 MONTHS (IN 2010 INFLATION-ADJUSTED DOLLARS) FOR THE POPULATION 16 YEARS AND OVER

Data Set: 2008-2012 American Community Survey 5-Year Estimates

**C21001. SEX BY AGE BY VETERAN STATUS FOR THE CIVILIAN POPULATION 18 YEARS AND OVER**

Data Set: 2008-2012 American Community Survey 5-Year Estimates

	Wendell town, North Carolina					
	African American	Margin of Error (+/-)	% of AA Total	White, Not Hispanic	Margin of Error (+/-)	% of NHW Total
<b>Total:</b>	<b>1,072</b>	<b>302</b>	<b>100.0%</b>	<b>2,824</b>	<b>365</b>	<b>100.0%</b>
Veteran	236	NC	22.0%	254	NC	9.0%
Nonveteran	836	NC	78.0%	2,570	NC	91.0%
Male:	478	183	44.6%	1,145	188	40.5%
18 to 64 years:	374	161	34.9%	879	191	31.1%
Veteran	189	113	17.6%	83	55	2.9%
Nonveteran	185	124	17.3%	796	178	28.2%
65 years and over:	104	73	9.7%	266	113	9.4%
Veteran	36	44	3.4%	138	71	4.9%
Nonveteran	68	66	6.3%	128	88	4.5%
Female:	594	247	55.4%	1,679	257	59.5%
18 to 64 years:	463	178	43.2%	1,243	226	44.0%
Veteran	11	17	1.0%	33	37	1.2%
Nonveteran	452	176	42.2%	1,210	223	42.8%
65 years and over:	131	107	12.2%	436	157	15.4%
Veteran	0	18	0.0%	0	18	0.0%
Nonveteran	131	107	12.2%	436	157	15.4%

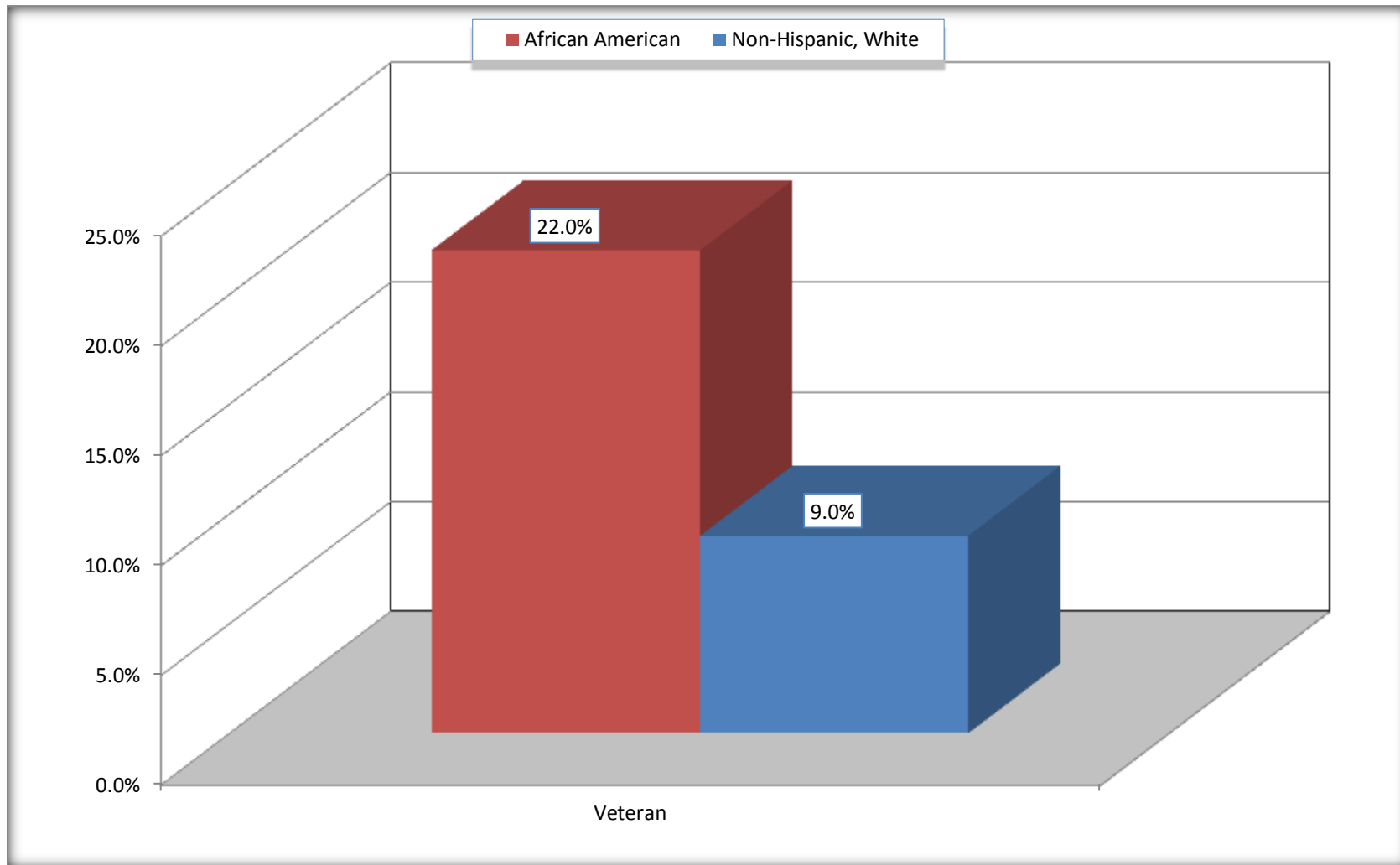
Source: U.S. Census Bureau, 2008-2012 American Community Survey

For information on confidentiality protection, sampling error, nonsampling error, and definitions, see Survey Methodology.

<http://www.census.gov/acs/www/UseData/index.htm>

# Veterans in the Civilian Population 18 Years and Over

## Wendell town, North Carolina



Source: C21001. SEX BY AGE BY VETERAN STATUS FOR THE CIVILIAN POPULATION 18 YEARS AND OVER  
Data Set: 2008-2012 American Community Survey 5-Year Estimates

**B22005. RECEIPT OF FOOD STAMPS/SNAP IN THE PAST 12 MONTHS BY RACE OF HOUSEHOLDER**

Data Set: 2008-2012 American Community Survey 5-Year Estimates

	Wendell town, North Carolina					
	African American	Margin of Error (+/-)	% of AA Total	White, Not Hispanic	Margin of Error (+/-)	% of NHW Total
<b>Total:</b>	<b>801</b>	<b>202</b>	<b>100.0%</b>	<b>1,691</b>	<b>246</b>	<b>100.0%</b>
HH received Food Stamps/SNAP in the past 12 months	294	126	36.7%	89	72	5.3%
HH did not receive Food Stamps/SNAP in the past 12 months	507	190	63.3%	1,602	238	94.7%

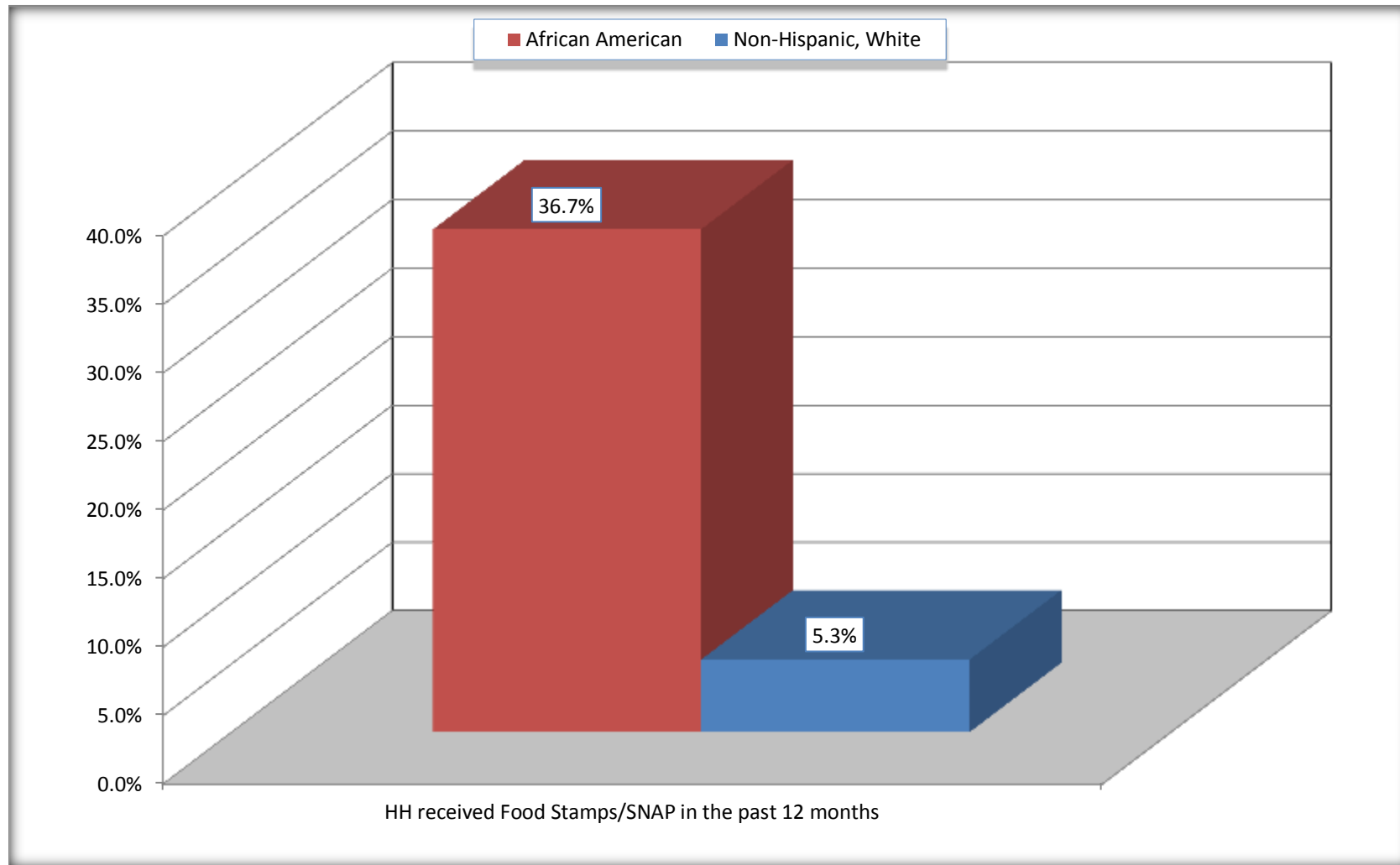
Source: U.S. Census Bureau, 2008-2012 American Community Survey

For information on confidentiality protection, sampling error, nonsampling error, and definitions, see Survey Methodology.

<http://www.census.gov/acs/www/UseData/index.htm>

# Receipt of Food Stamps/SNAP in the Past 12 Months by Household

## Wendell town, North Carolina



Source: B22005. RECEIPT OF FOOD STAMPS/SNAP IN THE PAST 12 MONTHS BY RACE OF HOUSEHOLDER  
Data Set: 2008-2012 American Community Survey 5-Year Estimates



**C23002. SEX BY AGE BY EMPLOYMENT STATUS FOR THE POPULATION 16 YEARS AND OVER**

Data Set: 2008-2012 American Community Survey 5-Year Estimates

	Wendell town, North Carolina					
	African American	Margin of Error (+/-)	% of AA Total	White, Not Hispanic	Margin of Error (+/-)	% of NHW Total
<b>Total:</b>	<b>1,185</b>	<b>336</b>	<b>100.0%</b>	<b>2,900</b>	<b>376</b>	<b>100.0%</b>
In labor force:	661	NC	55.8%	1,788	NC	61.7%
In Armed Forces	0	NC	0.0%	0	NC	0.0%
Civilian:	661	NC	55.8%	1,714	NC	59.1%
Employed	612	NC	51.6%	1,666	NC	57.4%
Unemployed	49	NC	4.1%	122	NC	4.2%
Not in labor force	524	NC	44.2%	1,112	NC	38.3%
Male:	557	214	47.0%	1,184	201	40.8%
16 to 64 years:	453	193	38.2%	918	200	31.7%
In labor force:	352	164	29.7%	820	189	28.3%
In Armed Forces	0	18	0.0%	0	18	0.0%
Civilian:	352	164	29.7%	820	189	28.3%
Employed	339	165	28.6%	758	189	26.1%
Unemployed	13	21	1.1%	62	50	2.1%
Not in labor force	101	87	8.5%	98	67	3.4%
65 years and over:	104	73	8.8%	266	113	9.2%
In labor force:	0	18	0.0%	56	40	1.9%
Employed	0	18	0.0%	47	34	1.6%
Unemployed	0	18	0.0%	9	17	0.3%
Not in labor force	104	73	8.8%	210	104	7.2%

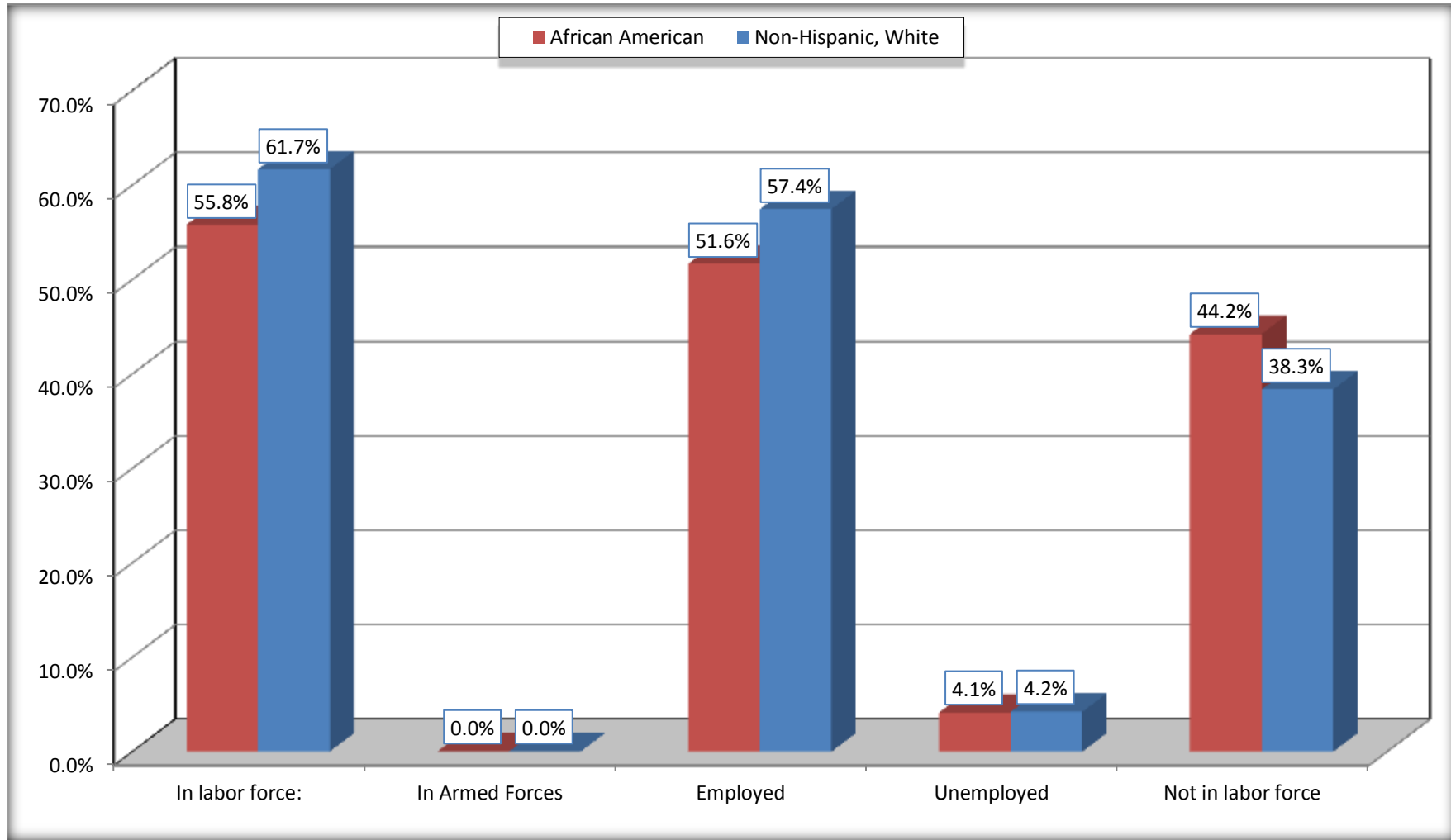
	Wendell town, North Carolina					
	African American	Margin of Error (+/-)	% of AA Total	White, Not Hispanic	Margin of Error (+/-)	% of NHW Total
Female:	628	255	53.0%	1,716	255	59.2%
16 to 64 years:	497	190	41.9%	1,280	227	44.1%
In labor force:	309	134	26.1%	894	196	30.8%
In Armed Forces	0	18	0.0%	0	18	0.0%
Civilian:	309	134	26.1%	894	196	30.8%
Employed	273	132	23.0%	843	181	29.1%
Unemployed	36	54	3.0%	51	51	1.8%
Not in labor force	188	139	15.9%	386	150	13.3%
65 years and over:	131	107	11.1%	436	157	15.0%
In labor force:	0	18	0.0%	18	28	0.6%
Employed	0	18	0.0%	18	28	0.6%
Unemployed	0	18	0.0%	0	18	0.0%
Not in labor force	131	107	11.1%	418	150	14.4%

Source: U.S. Census Bureau, 2008-2012 American Community Survey

For information on confidentiality protection, sampling error, nonsampling error, and definitions, see Survey Methodology.  
<http://www.census.gov/acs/www/UseData/index.htm>

# Employment Status for the Population 16 years and over

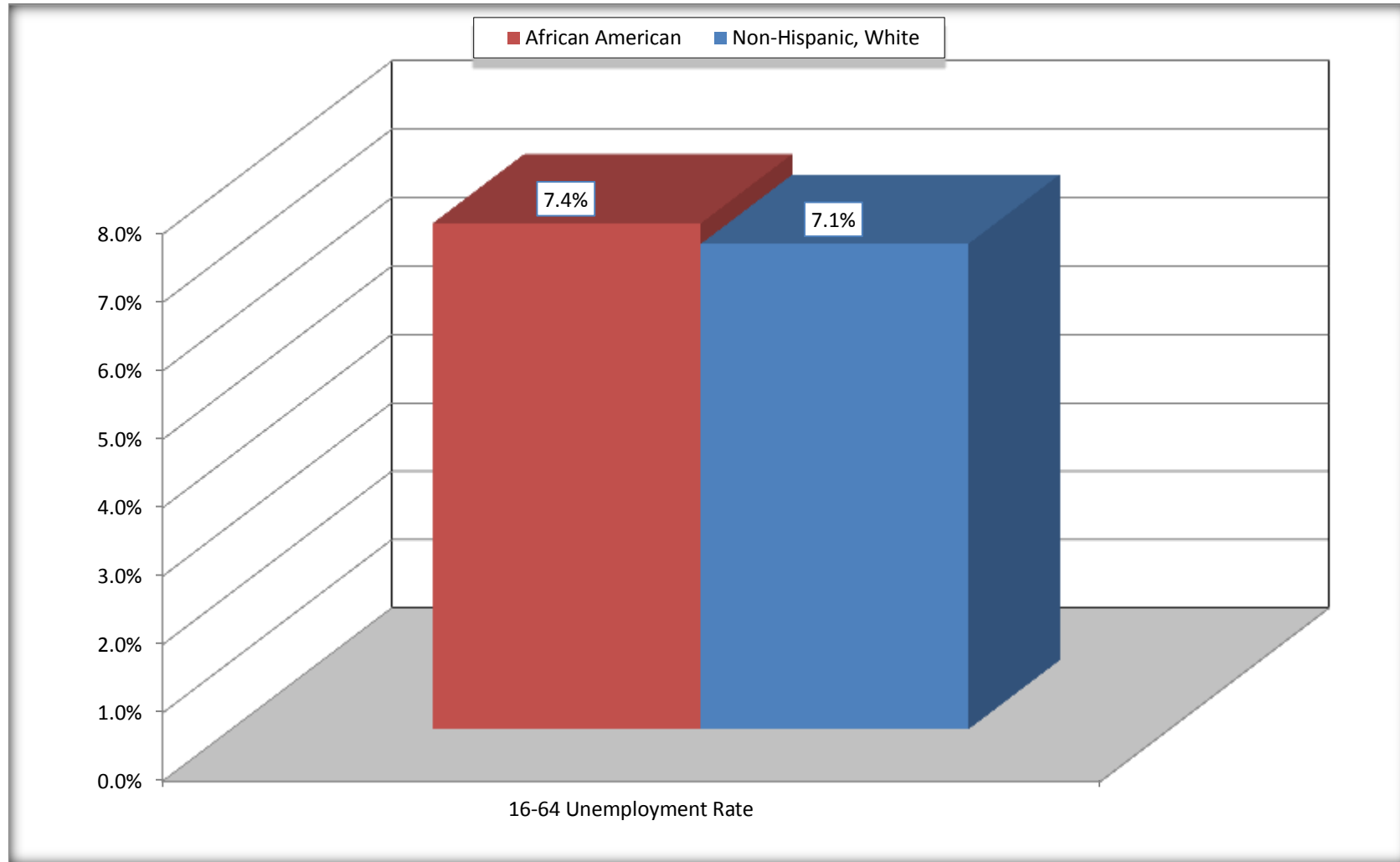
## Wendell town, North Carolina



Source: C23002. SEX BY AGE BY EMPLOYMENT STATUS FOR THE POPULATION 16 YEARS AND OVER  
Data Set: 2008-2012 American Community Survey 5-Year Estimates

# Unemployment of Working Age Population (Ages 16 to 64) (As a Percent of 16-64 Civilian Labor Force)

## Wendell town, North Carolina



Source: C23002. SEX BY AGE BY EMPLOYMENT STATUS FOR THE POPULATION 16 YEARS AND OVER  
Data Set: 2008-2012 American Community Survey 5-Year Estimates

**C24010. SEX BY OCCUPATION FOR THE CIVILIAN EMPLOYED POPULATION 16 YEARS AND OVER**

Data Set: 2008-2012 American Community Survey 5-Year Estimates

	Wendell town, North Carolina					
	African American	Margin of Error (+/-)	% of AA Total	White, Not Hispanic	Margin of Error (+/-)	% of NHW Total
<b>Total:</b>	<b>612</b>	<b>235</b>	<b>100.0%</b>	<b>1,666</b>	<b>286</b>	<b>100.0%</b>
Management, professional, and related occupations	105	NC	17.2%	560	NC	33.6%
Service occupations	128	NC	20.9%	322	NC	19.3%
Sales and office occupations	147	NC	24.0%	554	NC	33.3%
Natural resources, construction, and maintenance occupations:	88	NC	14.4%	99	NC	5.9%
Production, transportation, and material moving occupations	144	NC	23.5%	131	NC	7.9%
Male:	339	165	55.4%	805	190	48.3%
Management, business, science, and arts occupations:	44	43	7.2%	264	135	15.8%
Service occupations	46	72	7.5%	152	112	9.1%
Sales and office occupations	59	69	9.6%	170	99	10.2%
Natural resources, construction, and maintenance occupations:	88	87	14.4%	99	84	5.9%
Production, transportation, and material moving occupations	102	97	16.7%	120	76	7.2%
Female:	273	132	44.6%	861	184	51.7%
Management, professional, and related occupations	61	71	10.0%	296	114	17.8%
Service occupations	82	66	13.4%	170	99	10.2%
Sales and office occupations	88	85	14.4%	384	145	23.0%
Natural resources, construction, and maintenance occupations:	0	18	0.0%	0	18	0.0%
Production, transportation, and material moving occupations	42	65	6.9%	11	18	0.7%

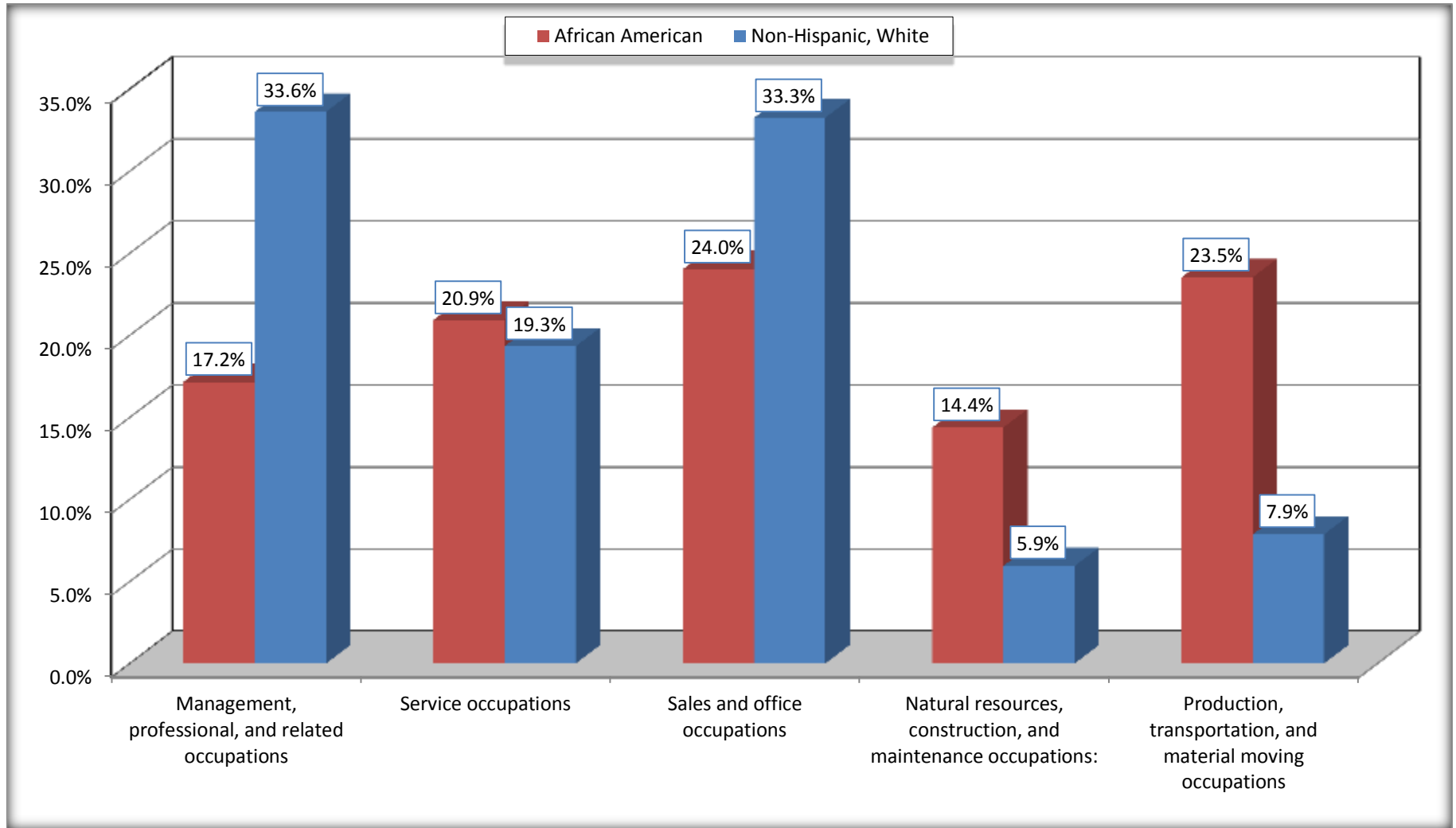
Source: U.S. Census Bureau, 2008-2012 American Community Survey

For information on confidentiality protection, sampling error, nonsampling error, and definitions, see Survey Methodology.

<http://www.census.gov/acs/www/UseData/index.htm>

# Occupation for the Civilian Employed 16 Years and Over Population

## Wendell town, North Carolina



Source: C24010. SEX BY OCCUPATION FOR THE CIVILIAN EMPLOYED POPULATION 16 YEARS AND OVER  
Data Set: 2008-2012 American Community Survey 5-Year Estimates

**B25003. TENURE - Universe: OCCUPIED HOUSING UNITS**

Data Set: 2008-2012 American Community Survey 5-Year Estimates

	Wendell town, North Carolina					
	African American	Margin of Error (+/-)	% of AA Total	White, Not Hispanic	Margin of Error (+/-)	% of NHW Total
<b>Total:</b>	<b>801</b>	<b>202</b>	<b>100.0%</b>	<b>1,691</b>	<b>246</b>	<b>100.0%</b>
Owner occupied	295	143	36.8%	1,195	185	70.7%
Renter occupied	506	165	63.2%	496	180	29.3%

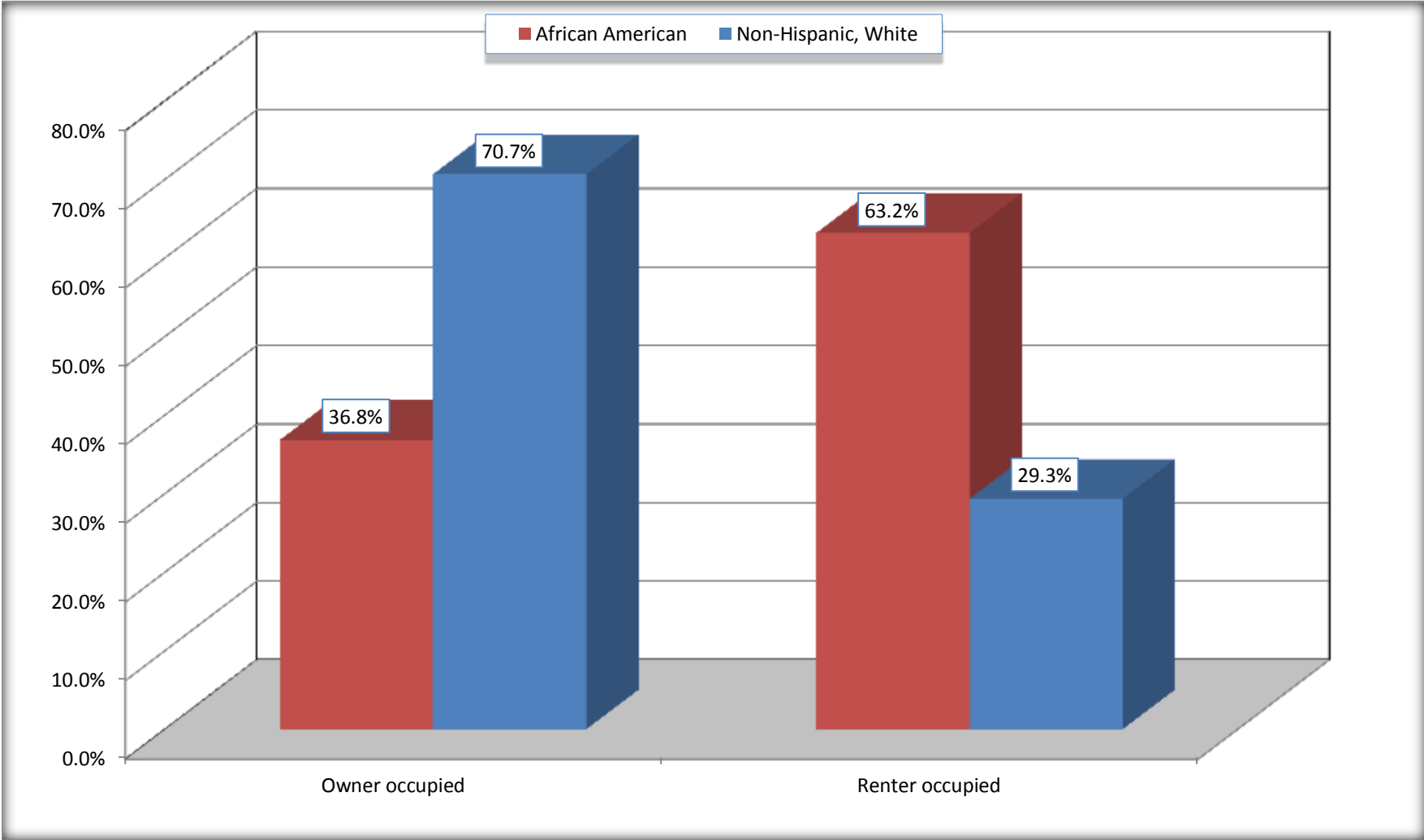
Source: U.S. Census Bureau, 2008-2012 American Community Survey

For information on confidentiality protection, sampling error, nonsampling error, and definitions, see Survey Methodology.

<http://www.census.gov/acs/www/UseData/index.h>

# Home Owners and Renters by Household

## Wendell town, North Carolina



Source: B25003. TENURE - Universe: OCCUPIED HOUSING UNITS  
Data Set: 2008-2012 American Community Survey 5-Year Estimates



**B25014. OCCUPANTS PER ROOM - Universe: OCCUPIED HOUSING UNITS**

Data Set: 2008-2012 American Community Survey 5-Year Estimates

	Wendell town, North Carolina					
	African American	Margin of Error (+/-)	% of AA Total	White, Not Hispanic	Margin of Error (+/-)	% of NHW Total
<b>Total:</b>	<b>801</b>	<b>202</b>	<b>100.0%</b>	<b>1,691</b>	<b>246</b>	<b>100.0%</b>
1.00 or less occupants per room	776	201	96.9%	1,691	246	100.0%
1.01 or more occupants per room	25	40	3.1%	0	18	0.0%

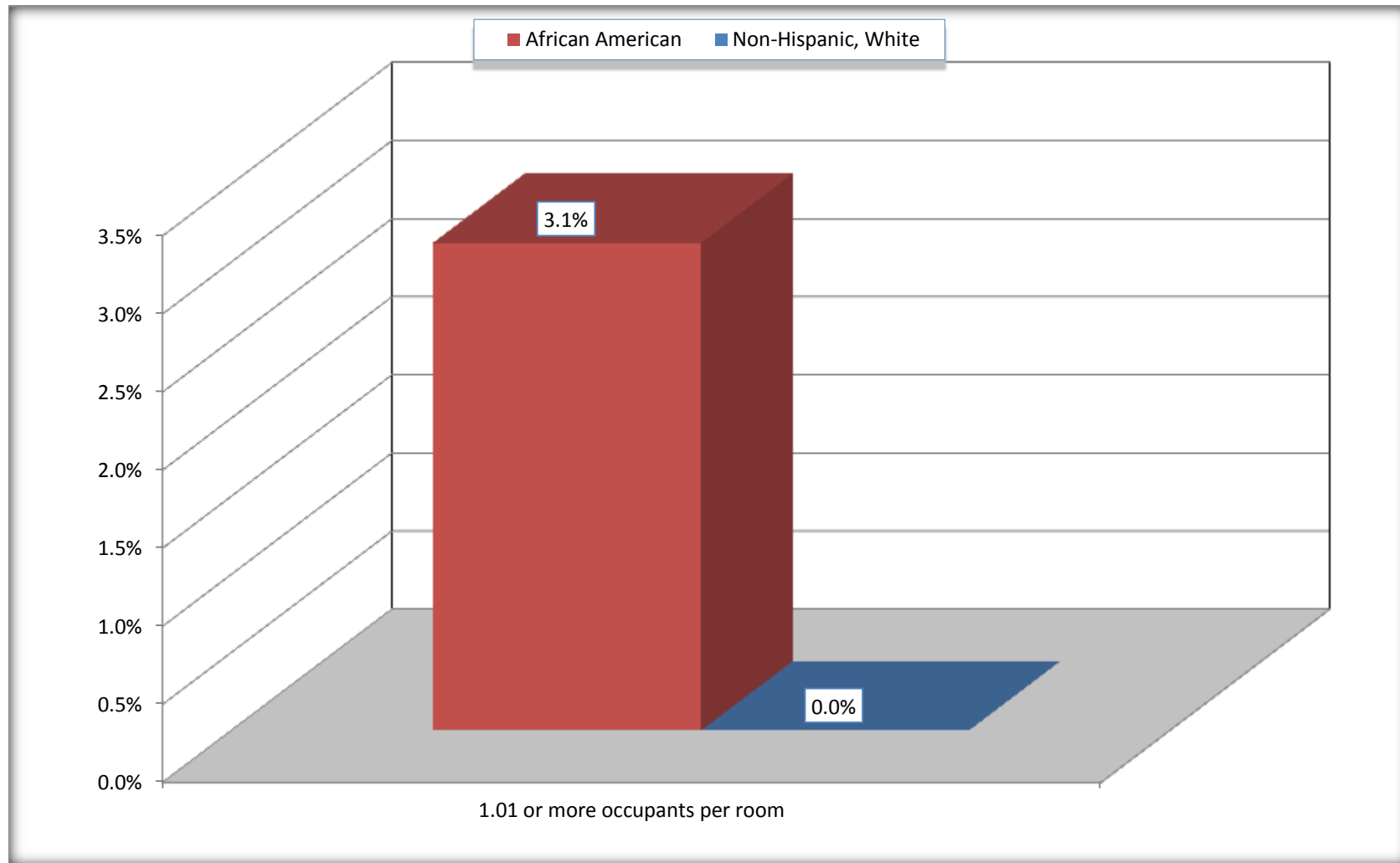
Source: U.S. Census Bureau, 2008-2012 American Community Survey

For information on confidentiality protection, sampling error, nonsampling error, and definitions, see Survey Methodology.

<http://www.census.gov/acs/www/UseData/index.ht>

# More than One Person per Room (Crowding) by Household

## Wendell town, North Carolina



Source: B25014. OCCUPANTS PER ROOM - Universe: OCCUPIED HOUSING UNITS  
Data Set: 2008-2012 American Community Survey 5-Year Estimates

**B18101. AGE BY DISABILITY STATUS**

Data Set: 2008-2012 American Community Survey 5-Year Estimates

	Wendell town, North Carolina					
	African American	Margin of Error (+/-)	% of AA Total	White, Not Hispanic	Margin of Error (+/-)	% of NHW Total
<b>Total:</b>	<b>1,434</b>	<b>368</b>	<b>100.0%</b>	<b>3,515</b>	<b>430</b>	<b>100.0%</b>
Under 18 years:	362	183	25.2%	691	75	19.7%
With a disability	47	55	3.3%	11	19	0.3%
No disability	315	159	22.0%	680	184	19.3%
18 to 64 years:	837	252	58.4%	2,122	342	60.4%
With a disability	165	139	11.5%	255	126	7.3%
No disability	672	219	46.9%	1,867	316	53.1%
65 years and over:	235	130	16.4%	702	244	20.0%
With a disability	116	102	8.1%	296	145	8.4%
No disability	119	84	8.3%	406	171	11.6%

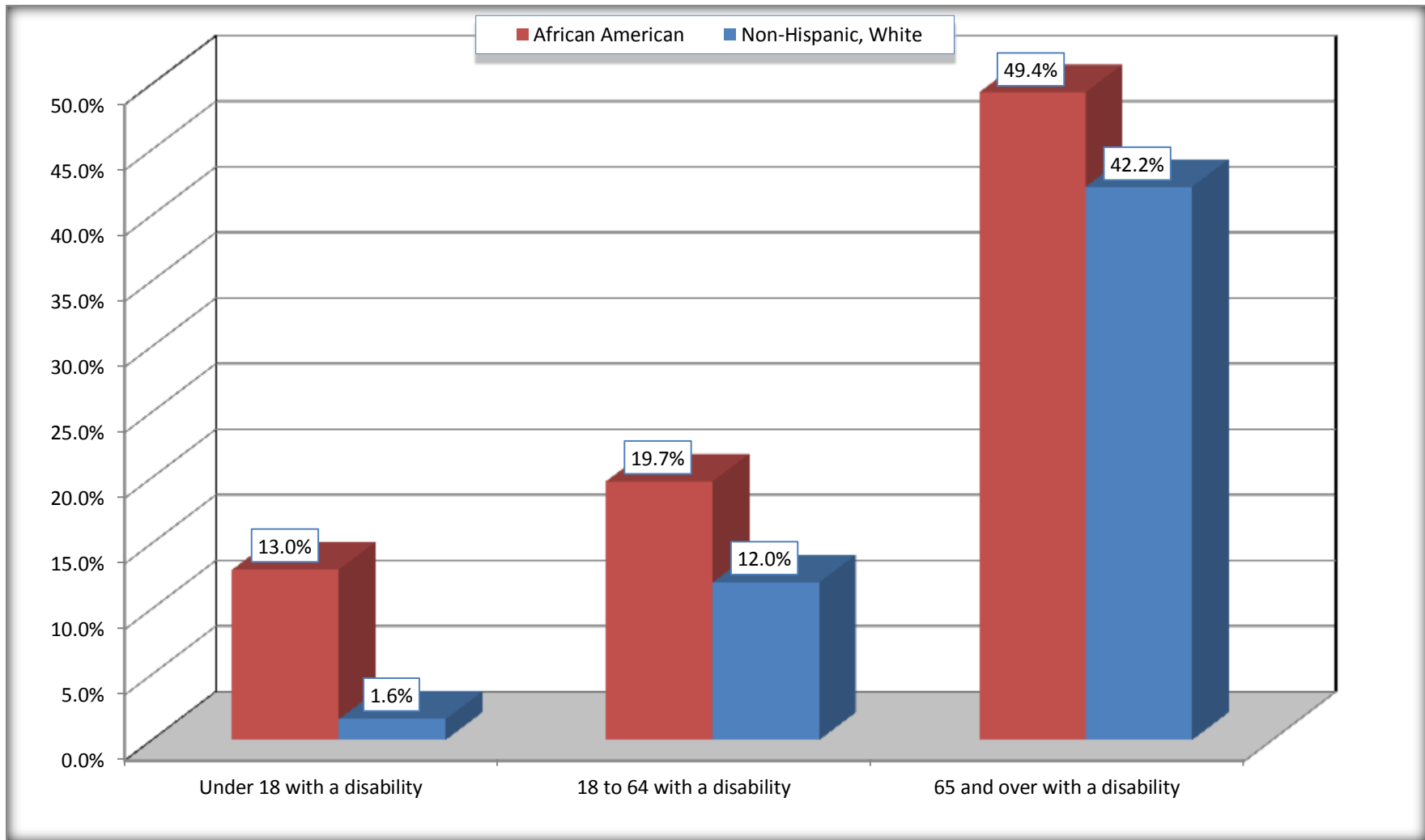
Source: U.S. Census Bureau, 2008-2012 American Community Survey

For information on confidentiality protection, sampling error, nonsampling error, and definitions, see Survey Methodology.

<http://www.census.gov/acs/www/UseData/index.htm>

# Disability by Age

## Wendell town, North Carolina



Source: B18101. AGE BY DISABILITY STATUS  
Data Set: 2008-2012 American Community Survey 5-Year Estimates

**C27001B. HEALTH INSURANCE COVERAGE STATUS BY AGE**

Data Set: 2008-2012 American Community Survey 5-Year Estimates

	Wendell town, North Carolina					
	African American	Margin of Error (+/-)	% of AA Total	White, Not Hispanic	Margin of Error (+/-)	% of NHW Total
<b>Total:</b>	<b>1,434</b>	<b>368</b>	<b>100.0%</b>	<b>3,515</b>	<b>430</b>	<b>100.0%</b>
Under 18 years:	362	183	25.2%	691	190	19.7%
With health insurance coverage	288	195	20.1%	691	190	19.7%
No health insurance coverage	74	96	5.2%	0	18	0.0%
18 to 64 years:	837	252	58.4%	2,122	342	60.4%
With health insurance coverage	624	214	43.5%	1,798	317	51.2%
No health insurance coverage	213	130	14.9%	324	171	9.2%
65 years and over:	235	130	16.4%	702	244	20.0%
With health insurance coverage	235	130	16.4%	702	244	20.0%
No health insurance coverage	0	18	0.0%	0	18	0.0%

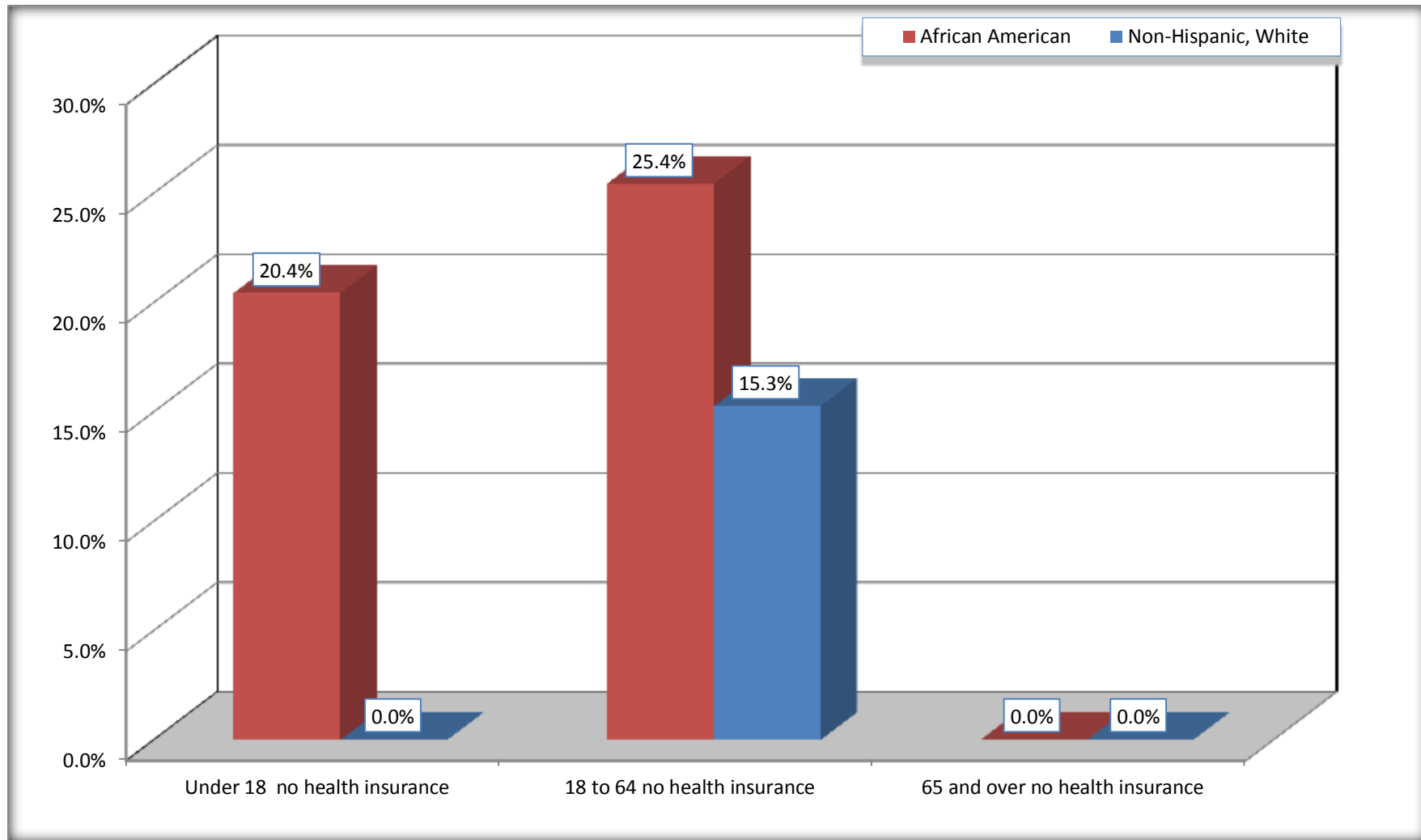
Source: U.S. Census Bureau, 2008-2012 American Community Survey

For information on confidentiality protection, sampling error, nonsampling error, and definitions, see Survey Methodology.

<http://www.census.gov/acs/www/UseData/index.htm>

## Lack of Health Insurance Coverage by Age

### Wendell town, North Carolina



Source: C27001B. HEALTH INSURANCE COVERAGE STATUS BY AGE  
Data Set: 2008-2012 American Community Survey 5-Year Estimates