

Selected Socio-Economic Data

Rockingham city, North Carolina

African American and White, Not Hispanic

Data Set: 2008-2012 American Community Survey 5-Year Estimates

www.fairvote2020.org

www.fairdata2000.com

[29-Dec-13](#)

C02003.DETAILED RACE - Universe: TOTAL POPULATION
 Data Set: 2008-2012 American Community Survey 5-Year Estimates

	Rockingham city, North Carolina		
	Population	Margin of Error (+/-)	% of Total
Total:	9,524	33	100.0%
Population of one race:	9,242	217	97.0%
White	5,885	474	61.8%
Black or African American	3,102	481	32.6%
American Indian and Alaska Native	91	80	1.0%
Asian alone	69	74	0.7%
Native Hawaiian and Other Pacific Islander	0	18	0.0%
Some other race	95	98	1.0%
Population of two or more races:	282	213	3.0%
Two races including Some other race	0	18	0.0%
Two races excluding Some other race, and three or more races	282	213	3.0%
Population of two races:	183	158	1.9%
White; Black or African American	54	72	0.6%
White; American Indian and Alaska Native	0	18	0.0%
White; Asian	115	149	1.2%
Black or African American; American Indian and Alaska Native	14	28	0.1%
All other two race combinations	0	18	0.0%
Population of three races	99	150	1.0%
Population of four or more races	0	18	0.0%

Note: Hispanics may be of any race. See Table B03002 and chart.

Source: U.S. Census Bureau, 2008-2012 American Community Survey

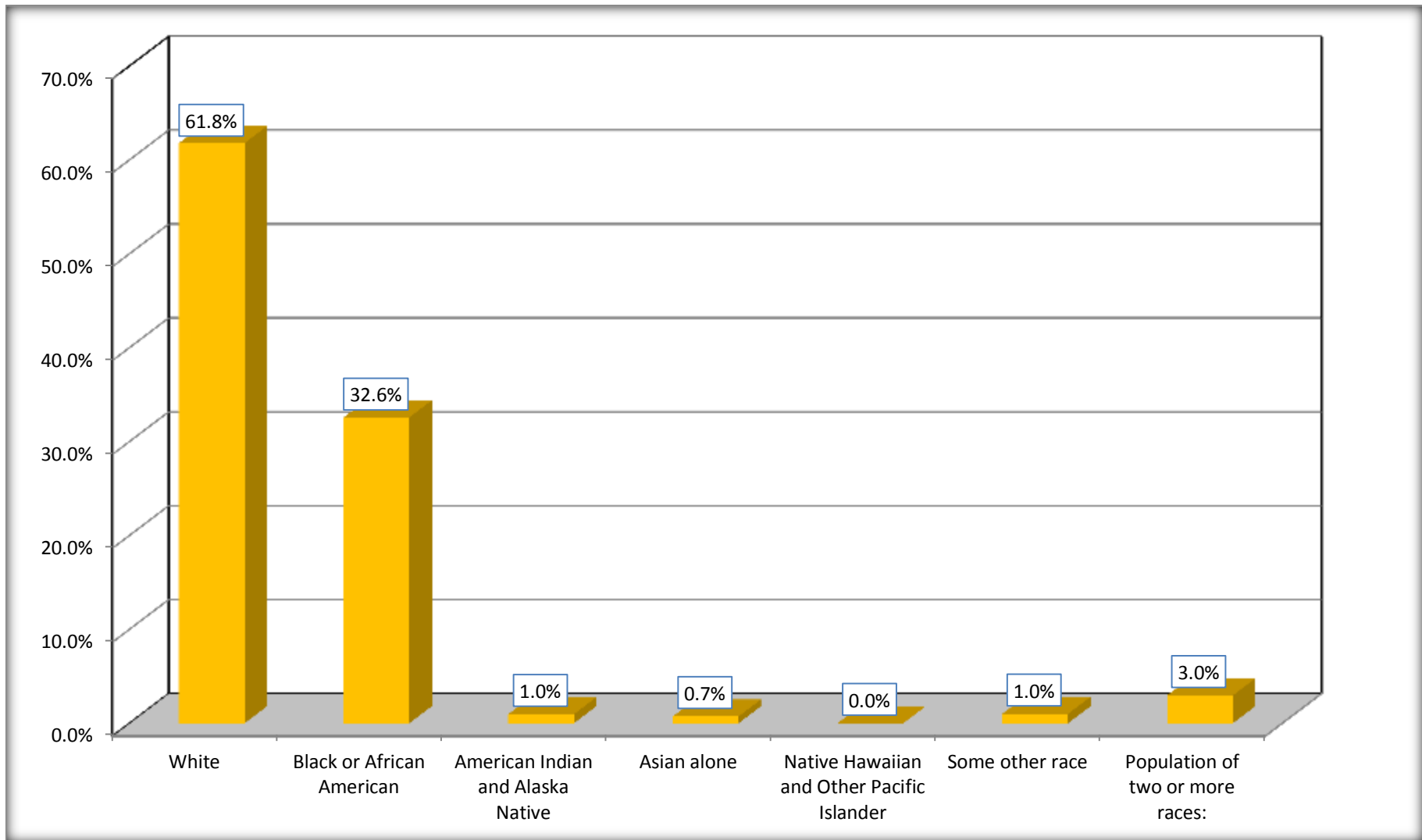
Although the American Community Survey (ACS) produces population, demographic and housing unit estimates, it is the Census Bureau's Population Estimates Program that produces and disseminates the official estimates of the population for the nation, states, counties, cities and towns and estimates of housing units for states and counties.

For information on confidentiality protection, sampling error, nonsampling error, and definitions, see Survey Methodology.

<http://www.census.gov/acs/www/UseData/index.htm>

Population by Race

Rockingham city, North Carolina



Source: C02003.DETAILED RACE - Universe: TOTAL POPULATION
Data Set: 2008-2012 American Community Survey 5-Year Estimates

B03002. HISPANIC OR LATINO ORIGIN BY RACE - Universe: TOTAL POPULATION

Data Set: 2008-2012 American Community Survey 5-Year Estimates

	Rockingham city, North Carolina		
	Population	Margin of Error (+/-)	% of Total
Total:	9,524	33	100.0%
Not Hispanic or Latino:	9,095	273	95.5%
White alone	5,551	532	58.3%
Black or African American alone	3,102	481	32.6%
American Indian and Alaska Native alone	91	80	1.0%
Asian alone	69	74	0.7%
Native Hawaiian and Other Pacific Islander alone	0	18	0.0%
Some other race alone	0	18	0.0%
Two or more races:	282	213	3.0%
Two races including Some other race	0	18	0.0%
Two races excluding Some other race, and three or more races	282	213	3.0%
Hispanic or Latino	429	272	4.5%

Source: U.S. Census Bureau, 2008-2012 American Community Survey

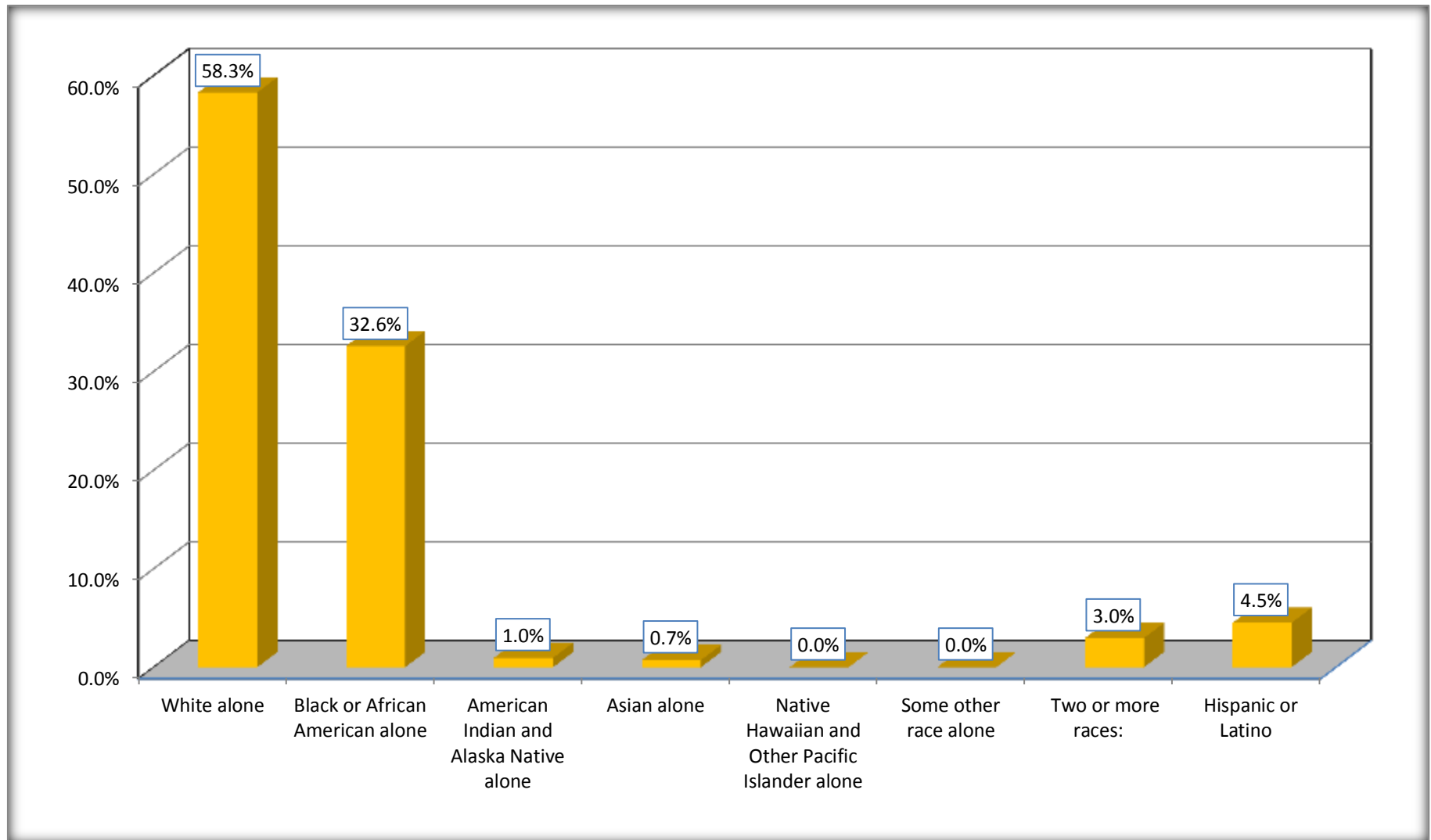
Although the American Community Survey (ACS) produces population, demographic and housing unit estimates, it is the Census Bureau's Population Estimates Program that produces and disseminates the official estimates of the population for the nation, states, counties, cities and towns and estimates of housing units for states and counties.

For information on confidentiality protection, sampling error, nonsampling error, and definitions, see Survey Methodology.

<http://www.census.gov/acs/www/UseData/index.htm>

Non-Hispanic by Race and Hispanic Population

Rockingham city, North Carolina



Source: B03002. HISPANIC OR LATINO ORIGIN BY RACE - Universe: TOTAL POPULATION
Data Set: 2008-2012 American Community Survey 5-Year Estimates

B03002. HISPANIC OR LATINO ORIGIN BY RACE

Data Set: 2008-2012 American Community Survey 5-Year Estimates

	Rockingham city, North Carolina		
	Population	Margin of Error (+/-)	% of Total
Hispanic or Latino:	429	272	100.0%
White alone	334	249	77.9%
Black or African American alone	0	18	0.0%
American Indian and Alaska Native alone	0	18	0.0%
Asian alone	0	18	0.0%
Native Hawaiian and Other Pacific Islander alone	0	18	0.0%
Some other race alone	95	98	22.1%
Two or more races:	0	18	0.0%
Two races including Some other race	0	18	0.0%
Two races excluding Some other race, and three or more races	0	18	0.0%

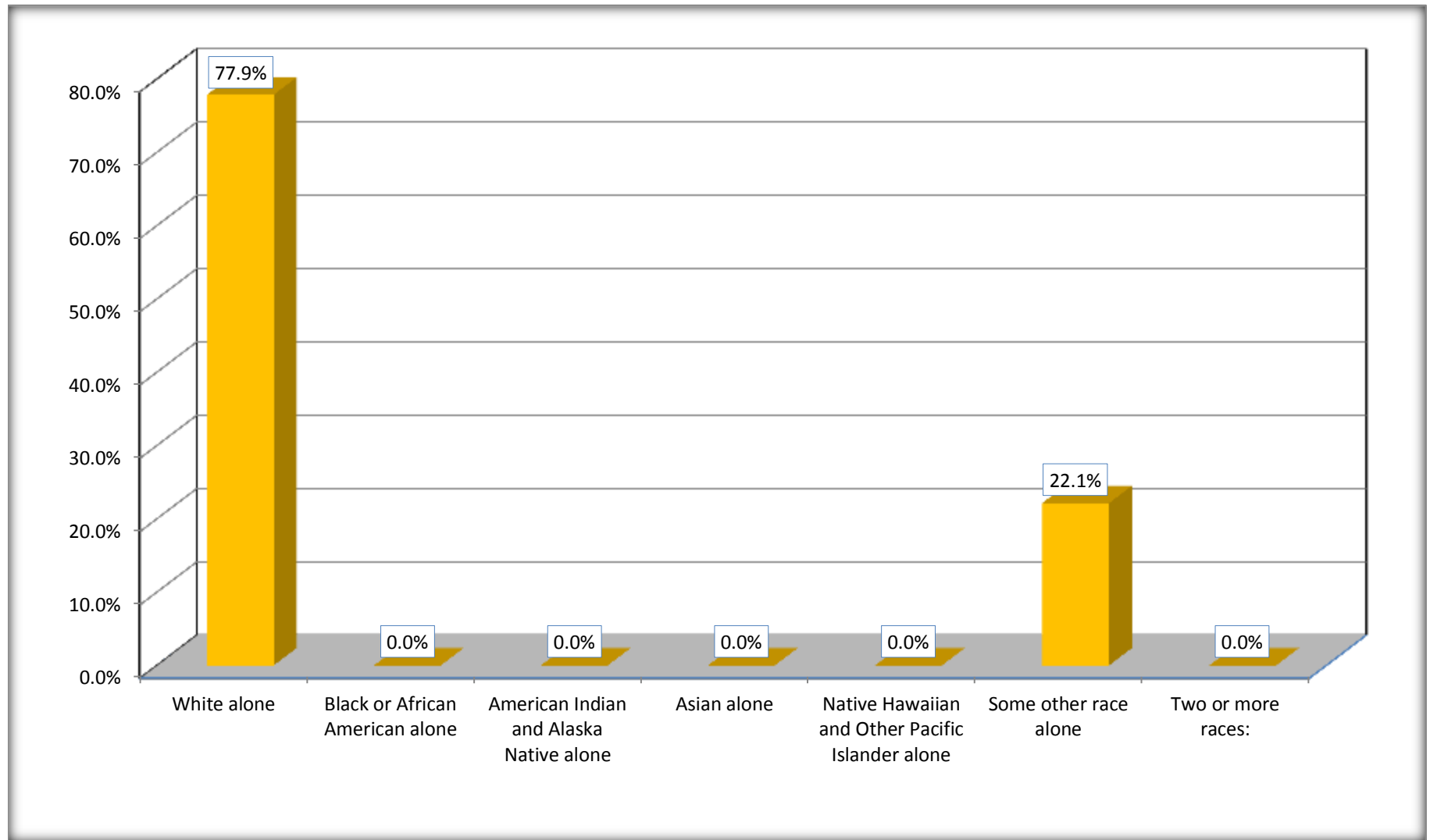
Source: U.S. Census Bureau, 2008-2012 American Community Survey

Although the American Community Survey (ACS) produces population, demographic and housing unit estimates, it is the Census Bureau's Population Estimates Program that produces and disseminates the official estimates of the population for the nation, states, counties, cities and towns and estimates of housing units for states and counties.

For information on confidentiality protection, sampling error, nonsampling error, and definitions, see Survey Methodology.

<http://www.census.gov/acs/www/UseData/index.htm>

Hispanic or Latino Origin by Race Rockingham city, North Carolina



Source: B03002. HISPANIC OR LATINO ORIGIN BY RACE
Data Set: 2008-2012 American Community Survey 5-Year Estimates

B01001. SEX BY AGE

Data Set: 2008-2012 American Community Survey 5-Year Estimates

	Rockingham city, North Carolina					
	African American	Margin of Error (+/-)	% of AA Total	White, Not Hispanic	Margin of Error (+/-)	% of NHW Total
Total:	3,102	481	100.0%	5,551	532	100.0%
Under 18 years	822	NC	26.5%	1,067	NC	19.2%
18 to 64 years	2,020	NC	65.1%	3,218	NC	58.0%
65 years and over	260	NC	8.4%	1,266	NC	22.8%
Male:	1,515	301	48.8%	2,646	389	47.7%
Under 18 years	428	NC	13.8%	562	NC	10.1%
18 to 64 years	1,006	NC	32.4%	1,567	NC	28.2%
65 years and over	81	NC	2.6%	517	NC	9.3%
Female:	1,587	278	51.2%	2,905	412	52.3%
Under 18 years	394	NC	12.7%	505	NC	9.1%
18 to 64 years	1,014	NC	32.7%	1,651	NC	29.7%
65 years and over	179	NC	5.8%	749	NC	13.5%

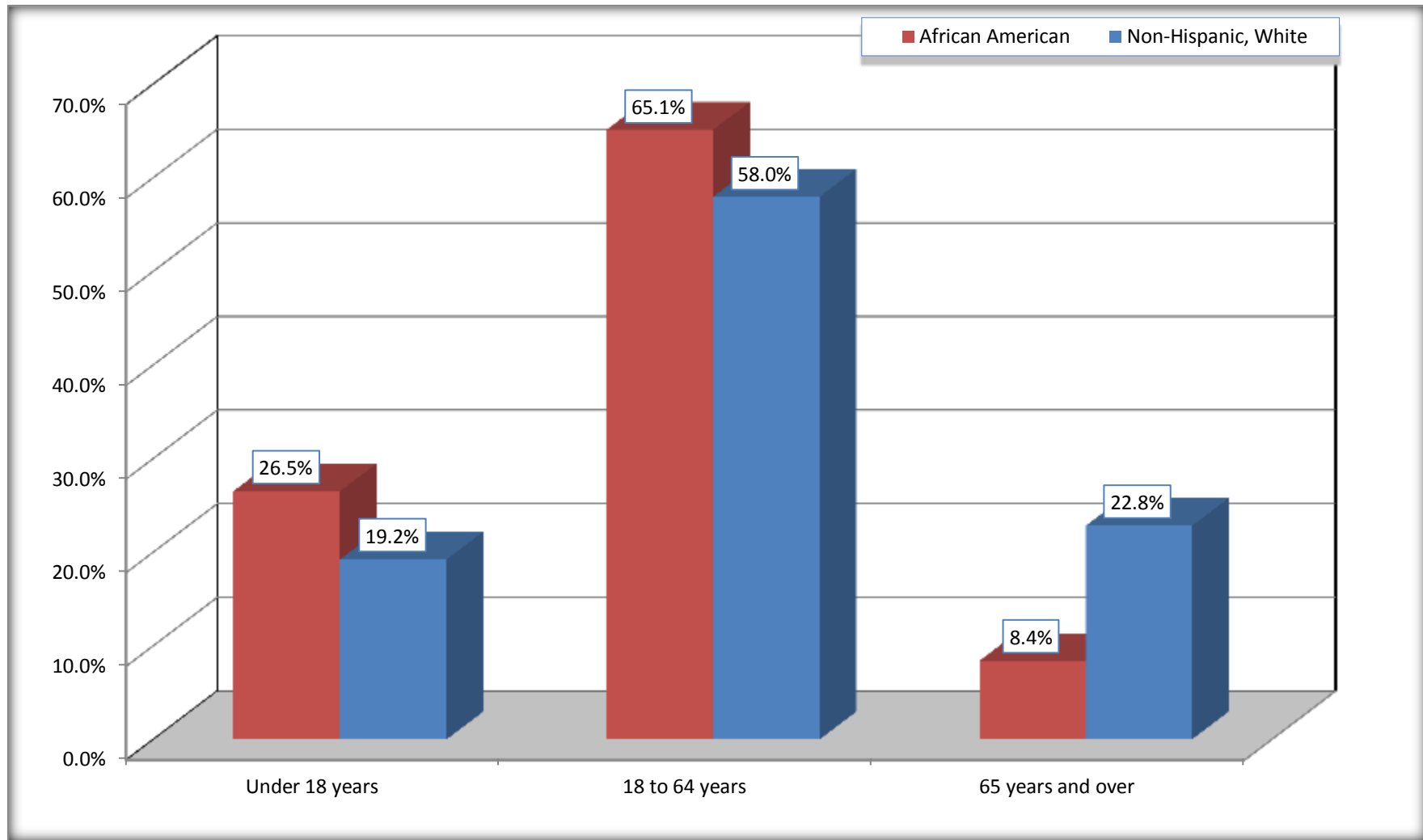
Source: U.S. Census Bureau, 2008-2012 American Community Survey

Although the American Community Survey (ACS) produces population, demographic and housing unit estimates, it is the Census Bureau's Population Estimates Program that produces and disseminates the official estimates of the population for the nation, states, counties, cities and towns and estimates of housing units for states and counties.

For information on confidentiality protection, sampling error, nonsampling error, and definitions, see Survey Methodology.
<http://www.census.gov/acs/www/UseData/index.htm>

Population by Age

Rockingham city, North Carolina



Source: B01001. SEX BY AGE
Data Set: 2008-2012 American Community Survey 5-Year Estimates

B05003. SEX BY AGE BY CITIZENSHIP STATUS

Data Set: 2008-2012 American Community Survey 5-Year Estimates

	Rockingham city, North Carolina					
	African American	Margin of Error (+/-)	% of AA Total by Age	White, Not Hispanic	Margin of Error (+/-)	% of NHW Total by Age
Total:	3,102	481	100.0%	5,551	532	100.0%
Under 18 years:	822	NC	100.0%	1,067	NC	100.0%
Native	822	NC	100.0%	1,067	NC	100.0%
Foreign born:	0	NC	0.0%	0	NC	0.0%
Naturalized U.S. citizen	0	NC	0.0%	0	NC	0.0%
Not a U.S. citizen	0	NC	0.0%	0	NC	0.0%
18 years and over:	2,280	NC	100.0%	4,484	NC	100.0%
Native	2,254	NC	98.9%	4,456	NC	99.4%
Foreign born:	26	NC	1.1%	28	NC	0.6%
Naturalized U.S. citizen	26	NC	1.1%	28	NC	0.6%
Not a U.S. citizen	0	NC	0.0%	0	NC	0.0%
Male:	1,515	301	48.8%	2,646	330	47.7%
Under 18 years:	428	170	100.0%	562	159	100.0%
Native	428	170	100.0%	562	159	100.0%
Foreign born:	0	18	0.0%	0	18	0.0%
Naturalized U.S. citizen	0	18	0.0%	0	18	0.0%
Not a U.S. citizen	0	18	0.0%	0	18	0.0%
18 years and over:	1,087	224	100.0%	2,084	262	100.0%
Native	1,076	222	99.0%	2,068	260	99.2%
Foreign born:	11	18	1.0%	16	26	0.8%
Naturalized U.S. citizen	11	18	1.0%	16	26	0.8%
Not a U.S. citizen	0	18	0.0%	0	18	0.0%

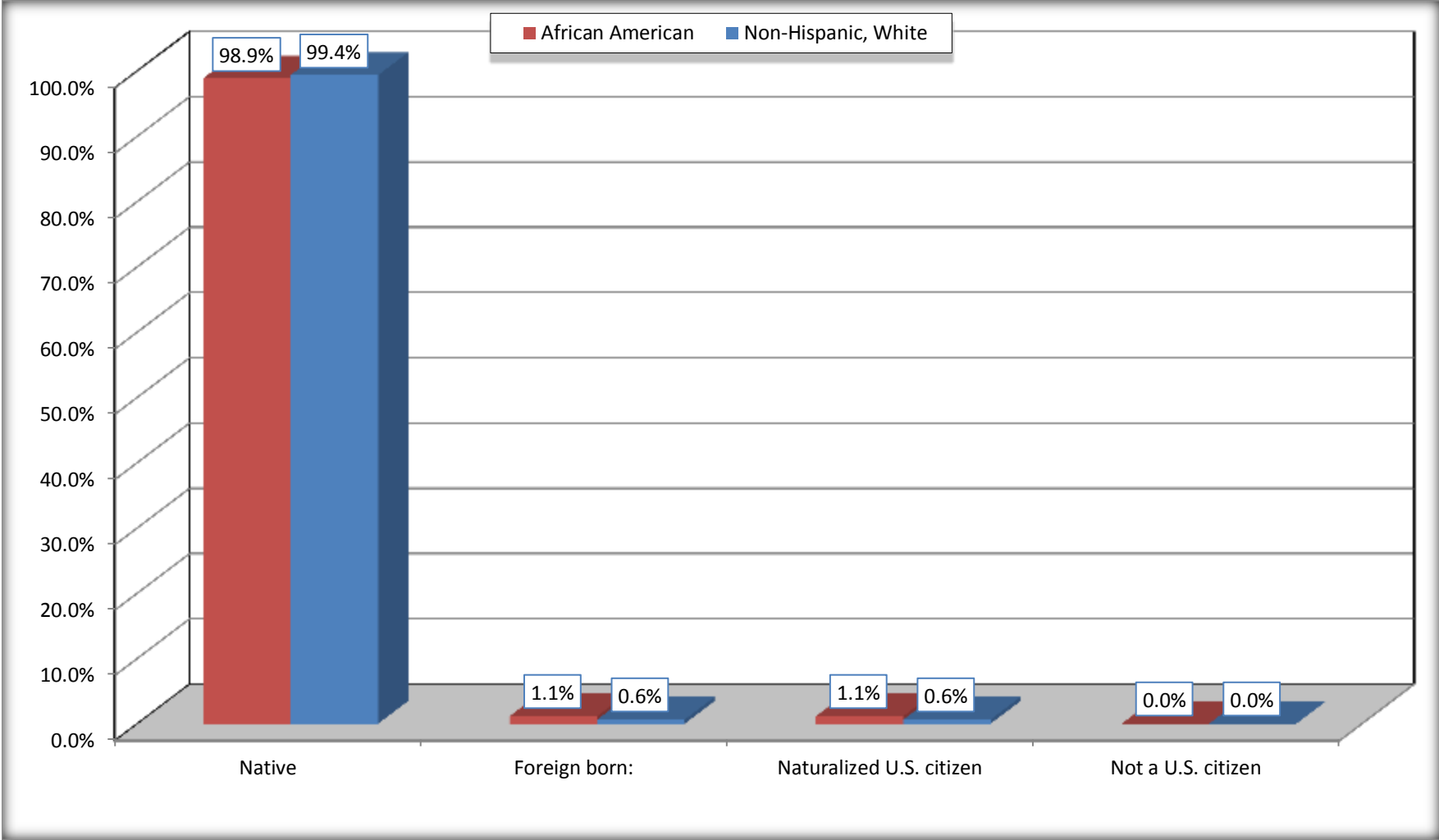
	Rockingham city, North Carolina					
	African American	Margin of Error (+/-)	% of AA by Age	White, Not Hispanic	Margin of Error (+/-)	% of NHW by Age
Female:	1,587	278	51.2%	2,905	323	52.3%
Under 18 years:	394	157	100.0%	505	124	100.0%
Native	394	157	100.0%	505	124	100.0%
Foreign born:	0	18	0.0%	0	18	0.0%
Naturalized U.S. citizen	0	18	0.0%	0	18	0.0%
Not a U.S. citizen	0	18	0.0%	0	18	0.0%
18 years and over:	1,193	192	100.0%	2,400	266	100.0%
Native	1,178	192	98.7%	2,388	266	99.5%
Foreign born:	15	23	1.3%	12	20	0.5%
Naturalized U.S. citizen	15	23	1.3%	12	20	0.5%
Not a U.S. citizen	0	18	0.0%	0	18	0.0%

Source: U.S. Census Bureau, 2008-2012 American Community Survey

For information on confidentiality protection, sampling error, nonsampling error, and definitions, see Survey Methodology.
<http://www.census.gov/acs/www/UseData/index.htm>

Citizenship Status of Voting Age Population (18 and Over)

Rockingham city, North Carolina



Source: B05003. SEX BY AGE BY CITIZENSHIP STATUS
Data Set: 2008-2012 American Community Survey 5-Year Estimates

**B07004. GEOGRAPHICAL MOBILITY IN THE PAST YEAR BY RACE FOR CURRENT RESIDENCE IN THE UNITED STATES - Universe:
POPULATION 1 YEAR AND OVER**

Data Set: 2008-2012 American Community Survey 5-Year Estimates

	Rockingham city, North Carolina					
	African American	Margin of Error (+/-)	% of AA Total	White, Not Hispanic	Margin of Error (+/-)	% of NHW Total
Total:	3,031	460	100.0%	5,514	529	100.0%
Same house 1 year ago	2,364	375	78.0%	4,876	498	88.4%
Moved within same county	565	338	18.6%	497	231	9.0%
Moved from different county within same state	69	35	2.3%	64	53	1.2%
Moved from different state	33	36	1.1%	77	86	1.4%
Moved from abroad	0	18	0.0%	0	18	0.0%

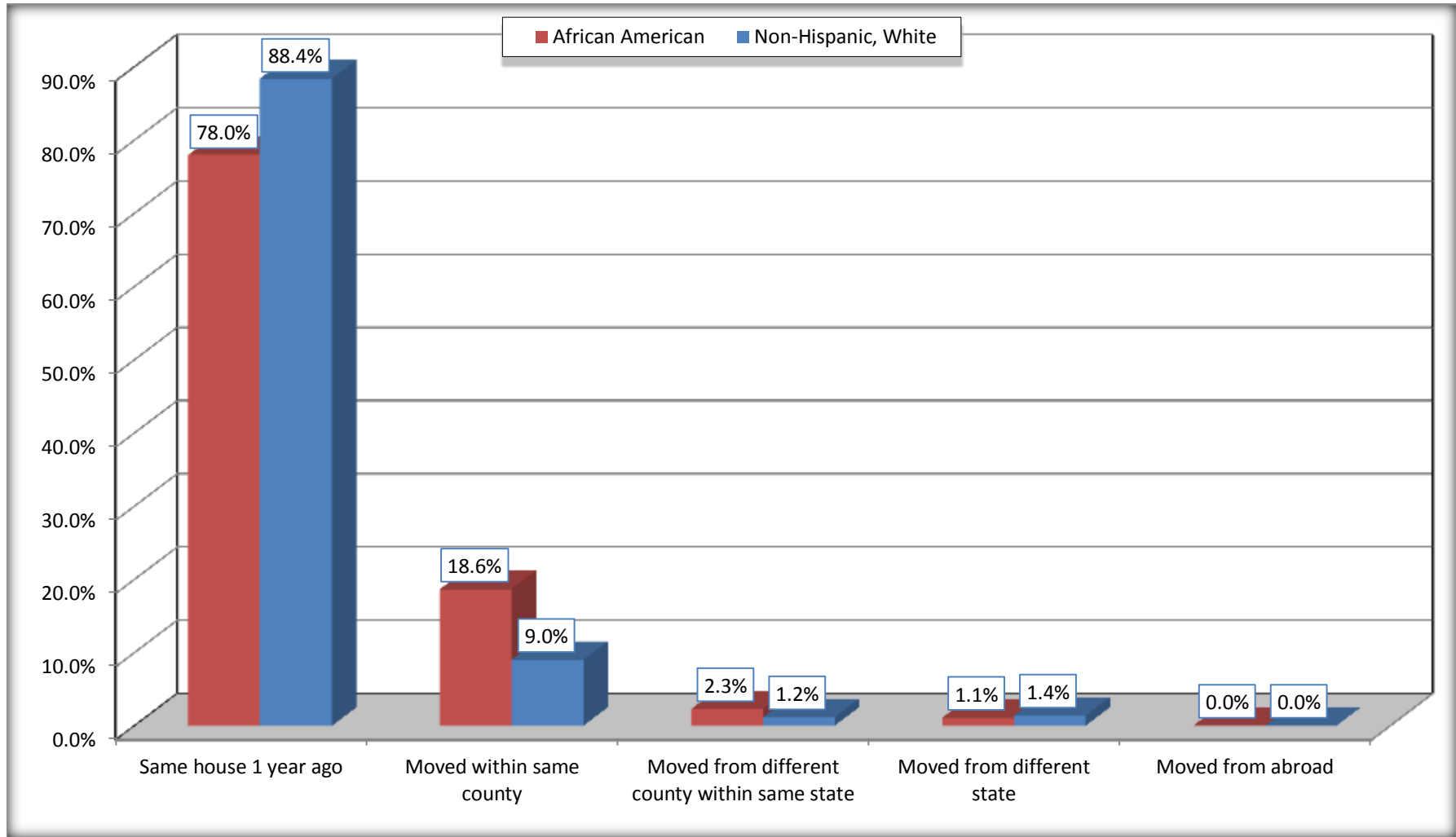
Source: U.S. Census Bureau, 2008-2012 American Community Survey

For information on confidentiality protection, sampling error, nonsampling error, and definitions, see Survey Methodology.

<http://www.census.gov/acs/www/UseData/index.htm>

Geographical Mobility in the Past Year (Population 1 Year and Over)

Rockingham city, North Carolina



Source: B07004. GEOGRAPHICAL MOBILITY IN THE PAST YEAR BY RACE FOR CURRENT RESIDENCE IN THE UNITED STATES - Universe: POPULATION 1 YEAR AND OVER

Data Set: 2008-2012 American Community Survey 5-Year Estimates

B08105. MEANS OF TRANSPORTATION TO WORK - Universe: WORKERS 16 YEARS AND OVER

Data Set: 2008-2012 American Community Survey 5-Year Estimates

	Rockingham city, North Carolina					
	African American	Margin of Error (+/-)	% of AA Total	White, Not Hispanic	Margin of Error (+/-)	% of NHW Total
Total:	986	254	100.0%	2100	326	100.0%
Car, truck, or van - drove alone	912	252	92.5%	1883	295	89.7%
Car, truck, or van - carpooled	54	67	5.5%	109	69	5.2%
Public transportation (excluding taxicab)	0	18	0.0%	0	18	0.0%
Walked	20	27	2.0%	0	18	0.0%
Taxicab, motorcycle, bicycle, or other means	0	18	0.0%	0	18	0.0%
Worked at home	0	18	0.0%	108	82	5.1%

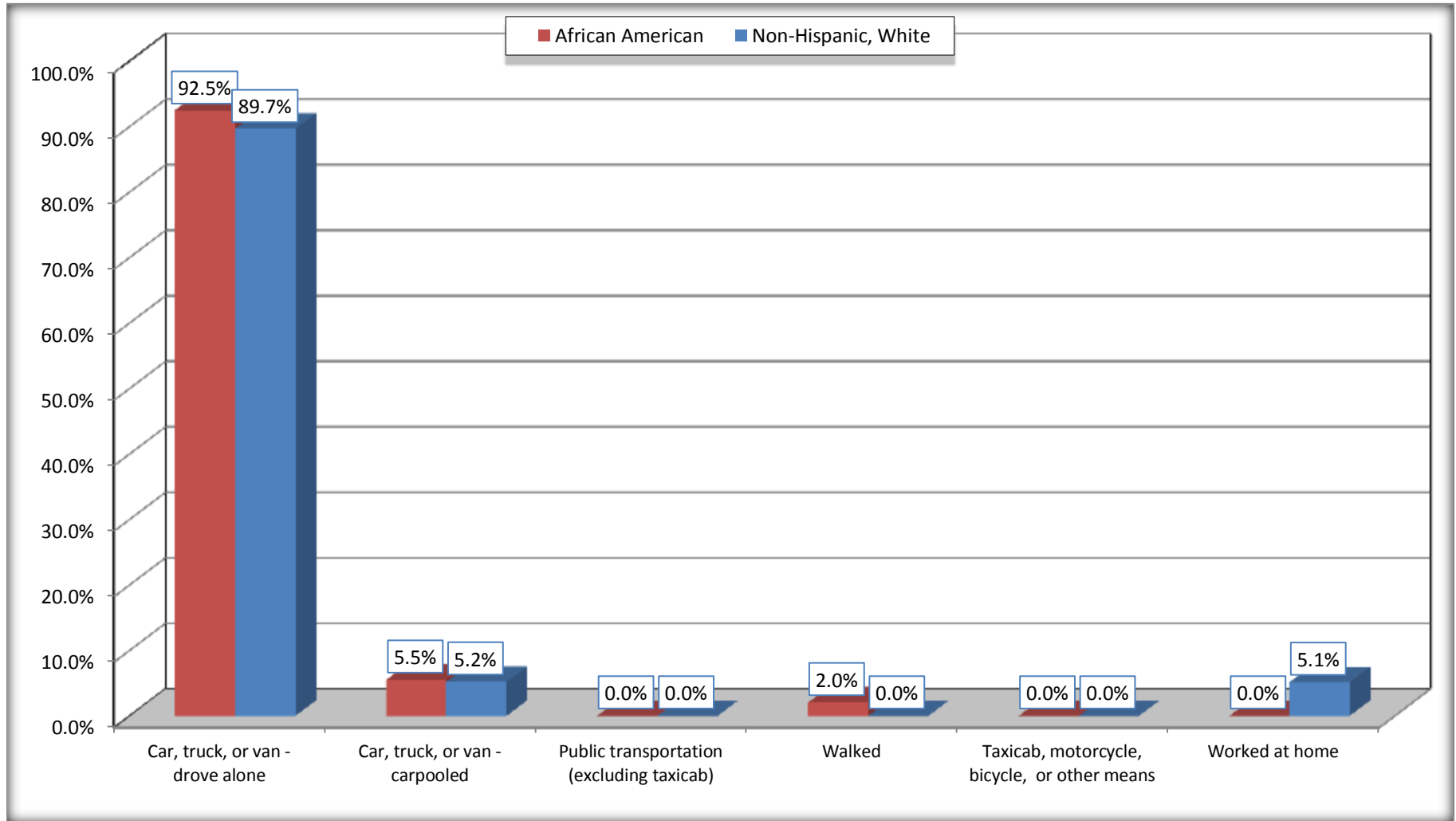
Source: U.S. Census Bureau, 2008-2012 American Community Survey

For information on confidentiality protection, sampling error, nonsampling error, and definitions, see Survey Methodology.

<http://www.census.gov/acs/www/UseData/index.htm>

Means of Transportation to Work (Workers 16 Years and Over)

Rockingham city, North Carolina



Source: B08105. MEANS OF TRANSPORTATION TO WORK - Universe: WORKERS 16 YEARS AND OVER
Data Set: 2008-2012 American Community Survey 5-Year Estimates

B11002. HOUSEHOLD TYPE BY RELATIVES AND NONRELATIVES FOR POPULATION IN HOUSEHOLDS

Data Set: 2008-2012 American Community Survey 5-Year Estimates

	Rockingham city, North Carolina					
	African American	Margin of Error (+/-)	% of AA Total	White, Not Hispanic	Margin of Error (+/-)	% of NHW Total
Total:	2993	483	100.0%	5707	560	100.0%
In family households	2325	541	77.7%	4810	522	84.3%
In nonfamily households	668	239	22.3%	897	200	15.7%

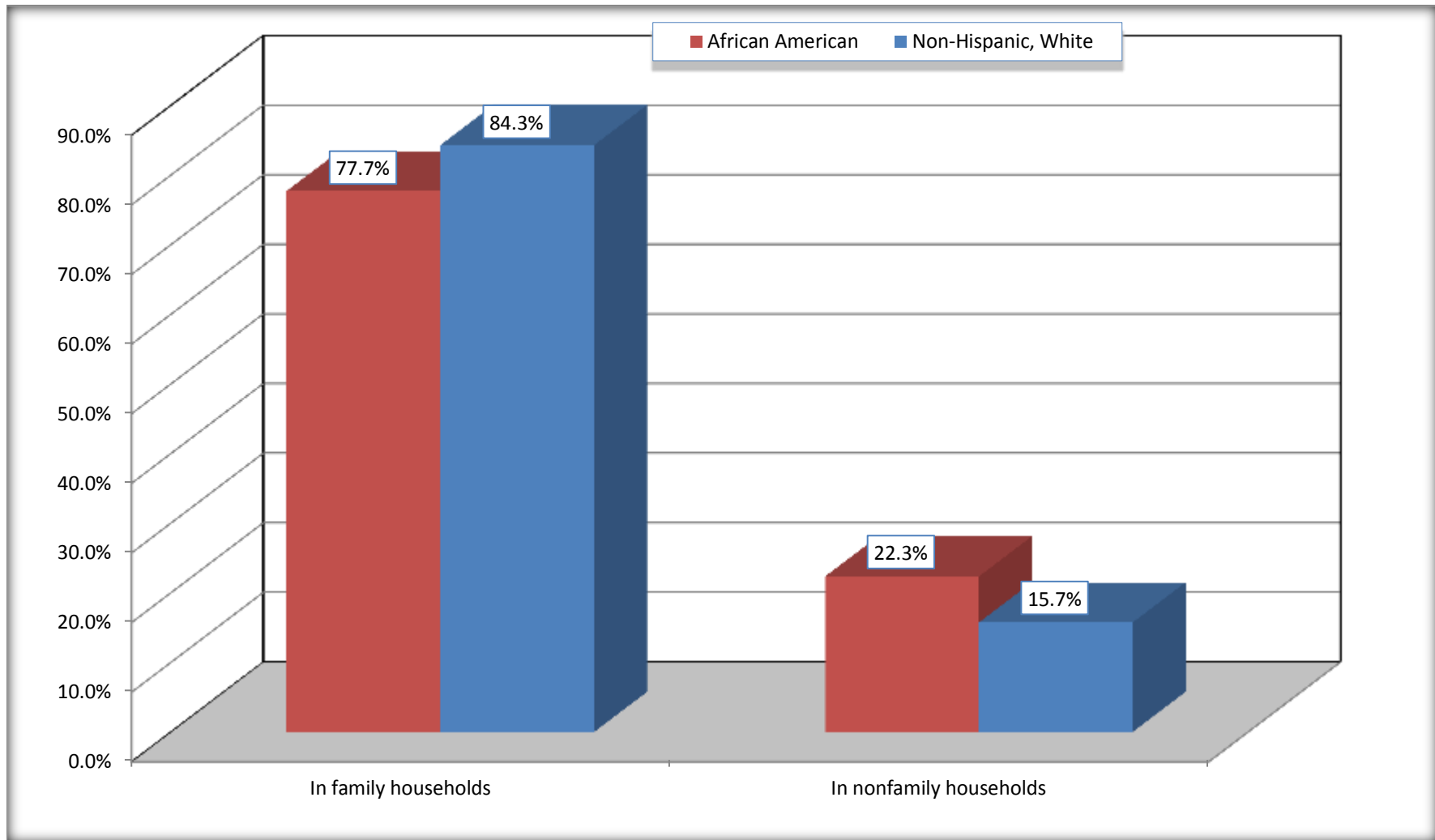
Source: U.S. Census Bureau, 2008-2012 American Community Survey

For information on confidentiality protection, sampling error, nonsampling error, and definitions, see Survey Methodology.

<http://www.census.gov/acs/www/UseData/index.htm>

Household Type for Population in Households

Rockingham city, North Carolina



Source: B11002. HOUSEHOLD TYPE BY RELATIVES AND NONRELATIVES FOR POPULATION IN HOUSEHOLDS
Data Set: 2008-2012 American Community Survey 5-Year Estimates

B12002. MARITAL STATUS FOR THE POPULATION 15 YEARS AND OVER

Data Set: 2008-2012 American Community Survey 5-Year Estimates

	Rockingham city, North Carolina					
	African American	Margin of Error (+/-)	% of AA Total	White, Not Hispanic	Margin of Error (+/-)	% of NHW Total
Total:	2,513	380	100.0%	4,664	432	100.0%
Never married	1,415	NC	56.3%	1,072	NC	23.0%
Now married (except separated)	492	NC	19.6%	2,425	NC	52.0%
Separated	231	NC	9.2%	229	NC	4.9%
Widowed	166	NC	6.6%	500	NC	10.7%
Divorced	209	NC	8.3%	438	NC	9.4%
Male:	1,190	239	47.4%	2,146	268	46.0%
Never married	681	191	27.1%	562	199	12.0%
Now married (except separated)	237	101	9.4%	1,177	165	25.2%
Separated	157	98	6.2%	86	75	1.8%
Widowed	47	46	1.9%	69	52	1.5%
Divorced	68	39	2.7%	252	108	5.4%
Female:	1,323	231	52.6%	2,518	277	54.0%
Never married	734	219	29.2%	510	178	10.9%
Now married (except separated)	255	105	10.1%	1,248	167	26.8%
Separated	74	54	2.9%	143	61	3.1%
Widowed	119	64	4.7%	431	120	9.2%
Divorced	141	66	5.6%	186	71	4.0%

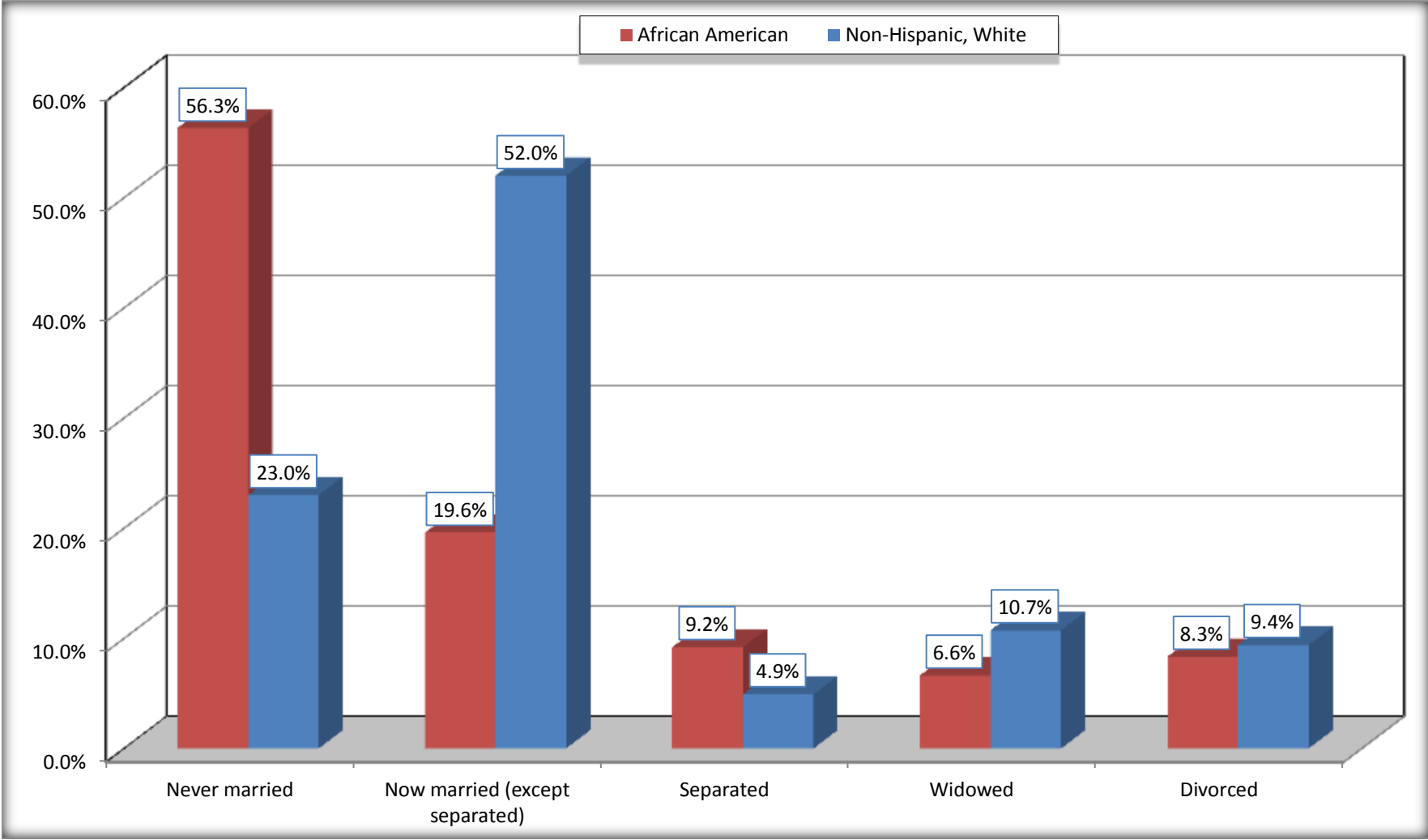
Source: U.S. Census Bureau, 2008-2012 American Community Survey

For information on confidentiality protection, sampling error, nonsampling error, and definitions, see Survey Methodology.

<http://www.census.gov/acs/www/UseData/index.htm>

Marital Status for the Population 15 Years and Over

Rockingham city, North Carolina



Source: B12002. MARITAL STATUS FOR THE POPULATION 15 YEARS AND OVER
Data Set: 2008-2012 American Community Survey 5-Year Estimates

C15002. SEX BY EDUCATIONAL ATTAINMENT FOR THE POPULATION 25 YEARS AND OVER

Data Set: 2008-2012 American Community Survey 5-Year Estimates

	Rockingham city, North Carolina					
	African American	Margin of Error (+/-)	% of AA Total	White, Not Hispanic	Margin of Error (+/-)	% of NHW Total
Total:	1,843	269	100.0%	4,073	382	100.0%
Less than high school diploma	483	NC	26.2%	664	NC	16.3%
High school graduate, GED, or alternative	619	NC	33.6%	1,339	NC	32.9%
Some college or associate's degree	516	NC	28.0%	1,312	NC	32.2%
Bachelor's degree or higher	225	NC	12.2%	758	NC	18.6%
Male:	796	176	43.2%	1,959	256	48.1%
Less than high school diploma	220	92	11.9%	405	168	9.9%
High school graduate, GED, or alternative	339	129	18.4%	581	141	14.3%
Some college or associate's degree	138	85	7.5%	683	143	16.8%
Bachelor's degree or higher	99	92	5.4%	290	96	7.1%
Female:	1,047	162	56.8%	2,114	226	51.9%
Less than high school diploma	263	93	14.3%	259	94	6.4%
High school graduate, GED, or alternative	280	115	15.2%	758	133	18.6%
Some college or associate's degree	378	131	20.5%	629	157	15.4%
Bachelor's degree or higher	126	64	6.8%	468	112	11.5%

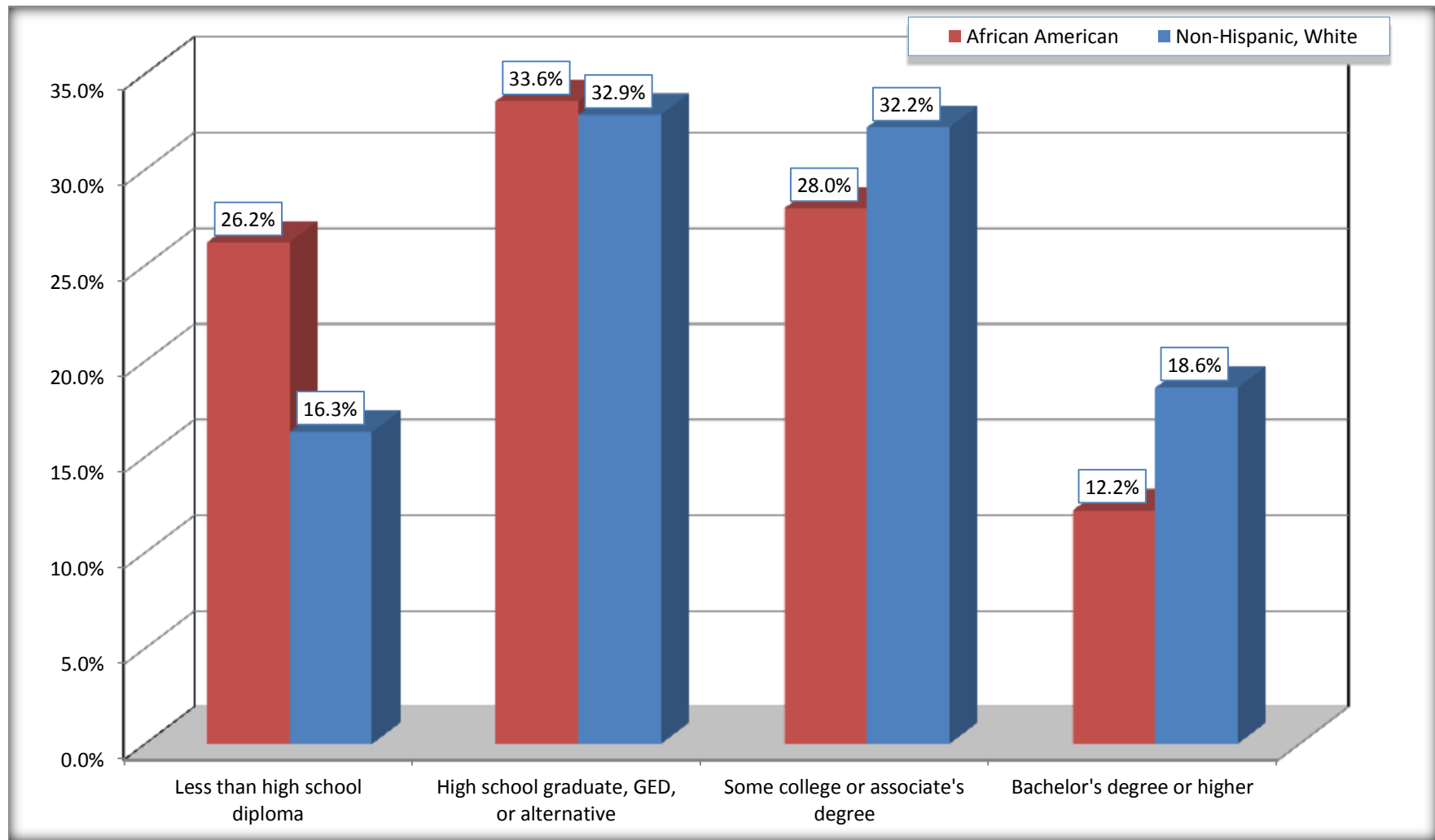
Source: U.S. Census Bureau, 2008-2012 American Community Survey

For information on confidentiality protection, sampling error, nonsampling error, and definitions, see Survey Methodology.

<http://www.census.gov/acs/www/UseData/index.htm>

Educational Attainment for the Population 25 Years and Older

Rockingham city, North Carolina



Source: C15002. SEX BY EDUCATIONAL ATTAINMENT FOR THE POPULATION 25 YEARS AND OVER
Data Set: 2008-2012 American Community Survey 5-Year Estimates

B17010. POVERTY STATUS IN THE PAST 12 MONTHS OF FAMILIES BY FAMILY TYPE BY PRESENCE OF RELATED CHILDREN UNDER 18 YEARS

Data Set: 2008-2012 American Community Survey 5-Year Estimates

	Rockingham city, North Carolina					
	African American	Margin of Error (+/-)	% of AA Total	White, Not Hispanic	Margin of Error (+/-)	% of NHW Total
Total:	668	163	100.0%	1,589	185	100.0%
Income in the past 12 months below poverty level:	369	155	55.2%	207	94	13.0%
Married-couple family:	72	53	10.8%	55	41	3.5%
With related children under 18 years	11	17	1.6%	32	34	2.0%
Other family:	297	141	44.5%	152	83	9.6%
Male householder, no wife present	34	51	5.1%	35	53	2.2%
With related children under 18 years	0	18	0.0%	0	18	0.0%
Female householder, no husband present	263	130	39.4%	117	71	7.4%
With related children under 18 years	194	114	29.0%	117	71	7.4%
Income in the past 12 months at or above poverty level:	299	104	44.8%	1,382	180	87.0%
Married-couple family:	76	47	11.4%	1,143	161	71.9%
With related children under 18 years	52	37	7.8%	359	103	22.6%
Other family:	223	107	33.4%	239	97	15.0%
Male householder, no wife present	75	69	11.2%	100	85	6.3%
With related children under 18 years	45	56	6.7%	59	75	3.7%
Female householder, no husband present	148	84	22.2%	139	61	8.7%
With related children under 18 years	28	25	4.2%	82	48	5.2%

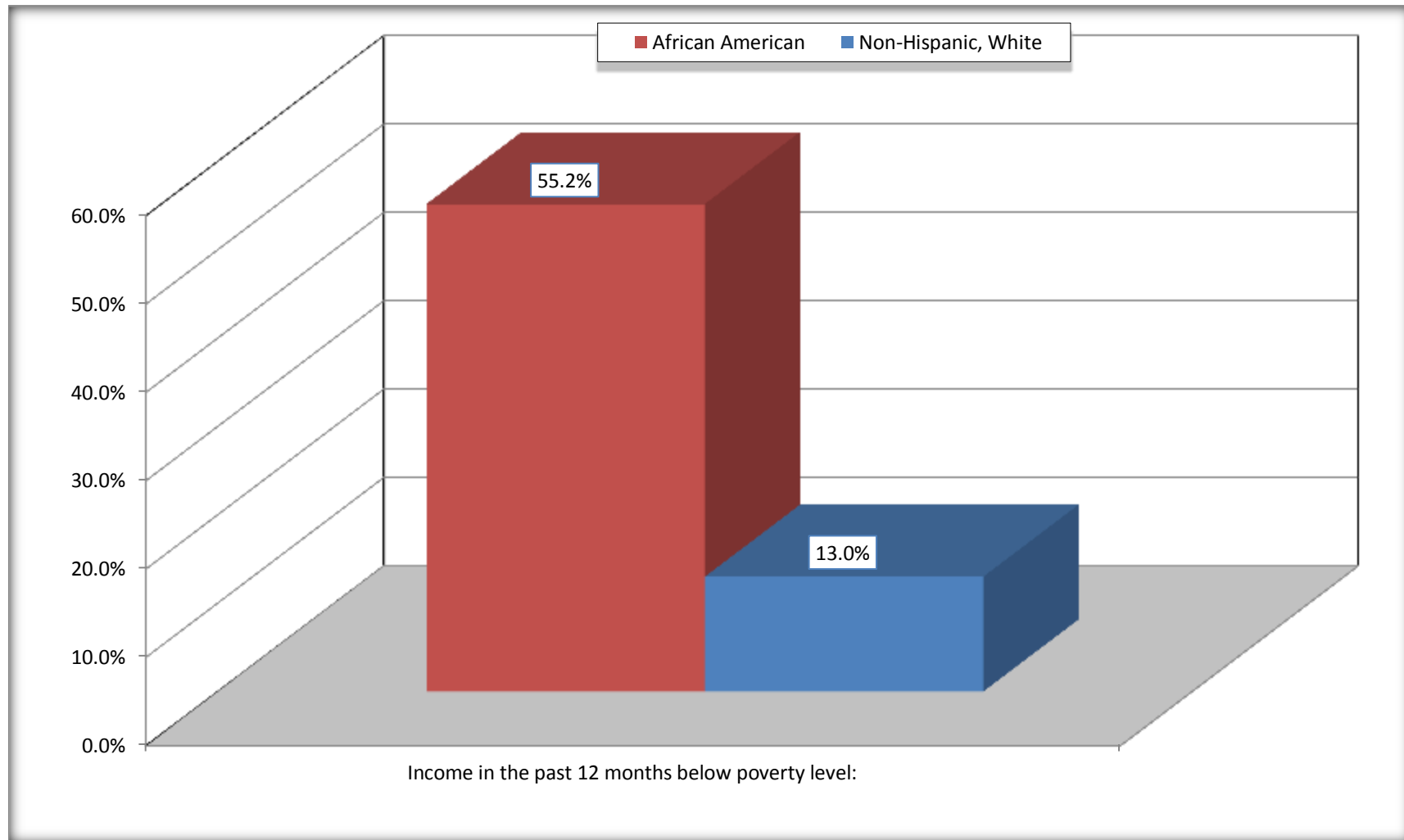
Source: U.S. Census Bureau, 2008-2012 American Community Survey

For information on confidentiality protection, sampling error, nonsampling error, and definitions, see Survey Methodology.

<http://www.census.gov/acs/www/UseData/index.htm>

Family Households Below Poverty in the Past 12 Months

Rockingham city, North Carolina

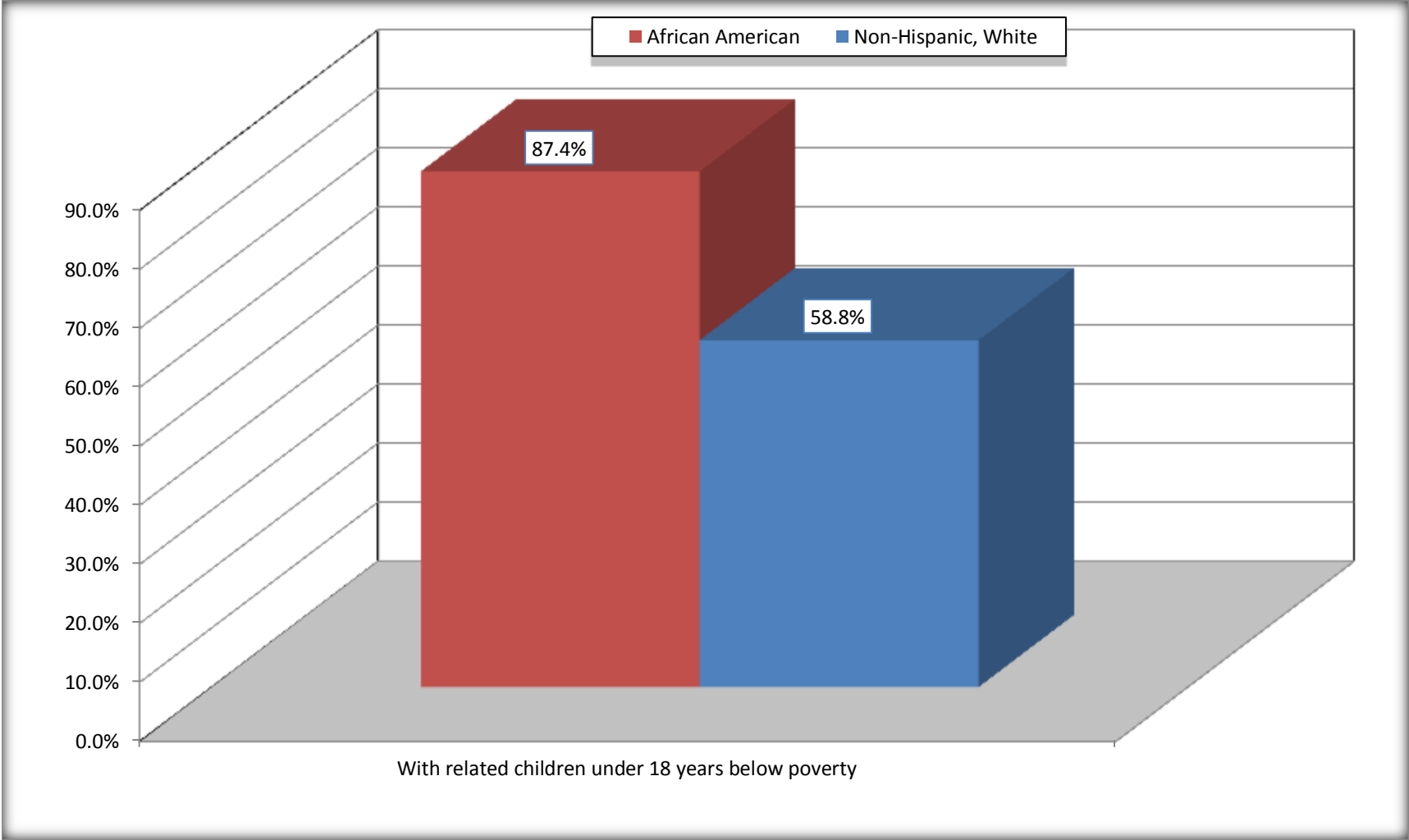


Source: B17010. POVERTY STATUS IN THE PAST 12 MONTHS OF FAMILIES BY FAMILY TYPE BY PRESENCE OF RELATED CHILDREN UNDER 18 YEARS

Data Set: 2008-2012 American Community Survey 5-Year Estimates

Female-headed Households with Related Children Below Poverty in the Past 12 Months

Rockingham city, North Carolina



Source: B17010. POVERTY STATUS IN THE PAST 12 MONTHS OF FAMILIES BY FAMILY TYPE BY PRESENCE OF RELATED CHILDREN UNDER 18 YEARS

Data Set: 2008-2012 American Community Survey 5-Year Estimates

B17020 POVERTY STATUS IN THE PAST 12 MONTHS BY AGE - Universe: POPULATION FOR WHOM POVERTY STATUS IS DETERMINED

Data Set: 2008-2012 American Community Survey 5-Year Estimates

	Rockingham city, North Carolina					
	African American	Margin of Error (+/-)	% of AA By Age	White, Not Hispanic	Margin of Error (+/-)	% of NHW By Age
Total:	3,004	473	100.0%	5,410	546	100.0%
Income in the past 12 months below poverty level:	1,604	490	53.4%	952	322	17.6%
Under 18 years	517	NC	63.7%	287	NC	27.4%
18 to 64 years	1,028	325	52.6%	490	178	15.6%
65 years and over	59	NC	25.0%	175	NC	14.4%
Income in the past 12 months at or above poverty level:	1,400	352	46.6%	4,458	530	82.4%
Under 18 years	295	NC	36.3%	761	NC	72.6%
18 to 64 years	928	257	47.4%	2,654	369	84.4%
65 years and over	177	NC	75.0%	1,043	NC	85.6%

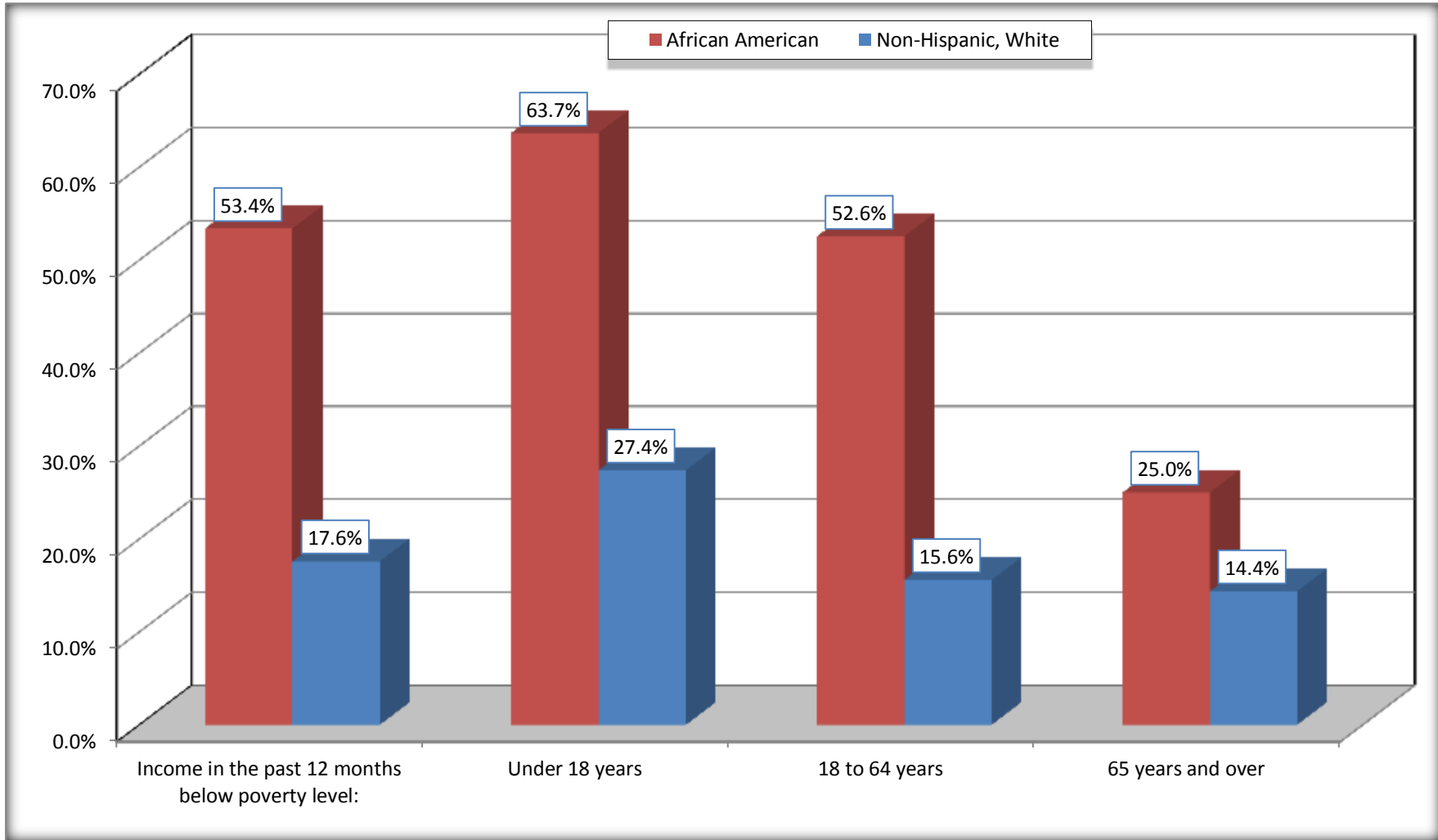
Source: U.S. Census Bureau, 2008-2012 American Community Survey

For information on confidentiality protection, sampling error, nonsampling error, and definitions, see Survey Methodology.

<http://www.census.gov/acs/www/UseData/index.htm>

Population Below Poverty in the Past 12 Months

Rockingham city, North Carolina



Source: B17020 POVERTY STATUS IN THE PAST 12 MONTHS BY AGE - Universe: POPULATION FOR WHOM POVERTY STATUS IS DETERMINED
Data Set: 2008-2012 American Community Survey 5-Year Estimates

B19001. HOUSEHOLD INCOME IN THE PAST 12 MONTHS (IN 2010 INFLATION-ADJUSTED DOLLARS)

Data Set: 2008-2012 American Community Survey 5-Year Estimates

	Rockingham city, North Carolina					
	African American	Margin of Error (+/-)	% of AA Total	White, Not Hispanic	Margin of Error (+/-)	% of NHW Total
Total:	1,228	175	100.0%	2,409	261	100.0%
Less than \$ 10,000	355	137	28.9%	205	92	8.5%
\$ 10,000 to \$ 14,999	190	100	15.5%	217	85	9.0%
\$ 15,000 to \$ 24,999	212	NC	17.3%	326	NC	13.5%
\$ 25,000 to \$ 34,999	226	NC	18.4%	299	NC	12.4%
\$ 35,000 to \$ 49,999	111	NC	9.0%	386	NC	16.0%
\$ 50,000 to \$ 74,999	78	NC	6.4%	439	NC	18.2%
\$ 75,000 to \$ 99,999	24	27	2.0%	249	95	10.3%
\$ 100,000 to \$ 149,999	32	NC	2.6%	224	NC	9.3%
\$ 150,000 to \$ 199,999	0	18	0.0%	41	46	1.7%
\$ 200,000 or more	0	18	0.0%	23	20	1.0%

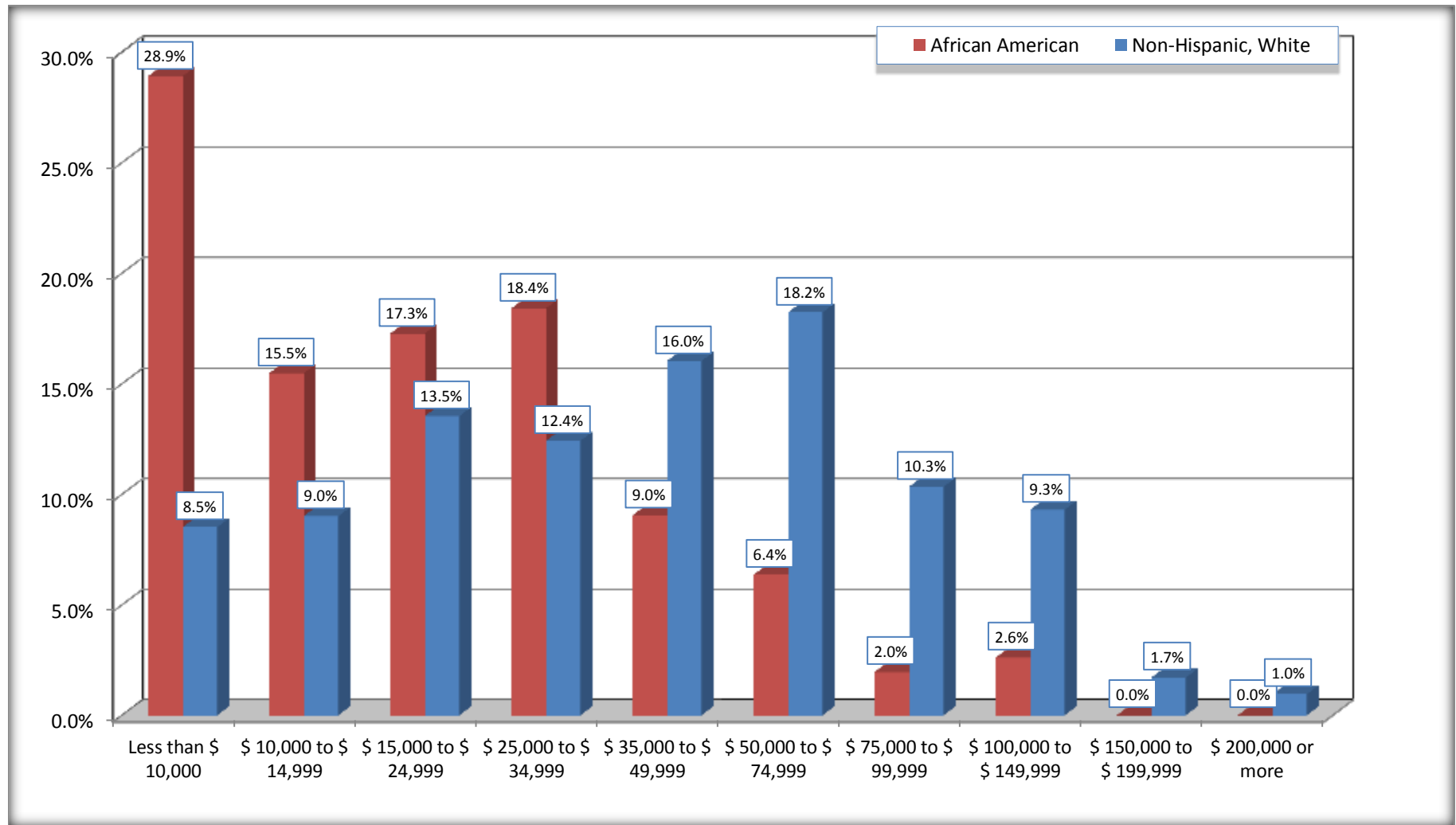
Source: U.S. Census Bureau, 2008-2012 American Community Survey

For information on confidentiality protection, sampling error, nonsampling error, and definitions, see Survey Methodology.

<http://www.census.gov/acs/www/UseData/index.htm>

Household Income in the Past 12 Months

Rockingham city, North Carolina



Source: B19001. HOUSEHOLD INCOME IN THE PAST 12 MONTHS (IN 2010 INFLATION-ADJUSTED DOLLARS)
 Data Set: 2008-2012 American Community Survey 5-Year Estimates

B19013. MEDIAN HOUSEHOLD INCOME IN THE PAST 12 MONTHS (IN 2010 INFLATION-ADJUSTED DOLLARS)

Data Set: 2008-2012 American Community Survey 5-Year Estimates

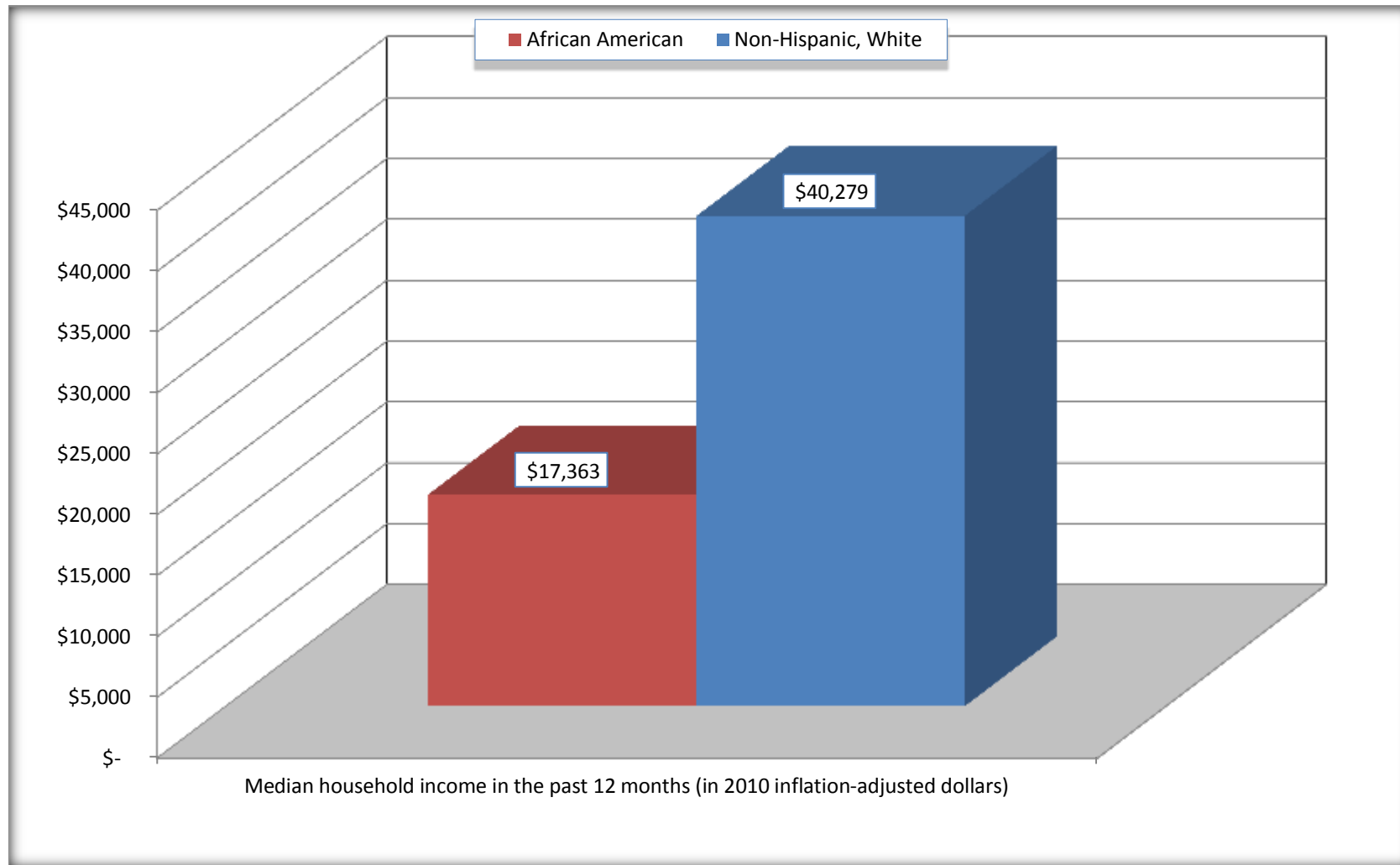
	Rockingham city, North Carolina			
	African American	Margin of Error (+/-)	White, Not Hispanic	Margin of Error (+/-)
Median household income in the past 12 months (in 2010 inflation-adjusted dollars)	\$ 17,363	\$ 4,421	\$ 40,279	\$ 3,469

Source: U.S. Census Bureau, 2008-2012 American Community Survey

For information on confidentiality protection, sampling error, nonsampling error, and definitions, see Survey Methodology.
<http://www.census.gov/acs/www/UseData/index.htm>

Median Household Income in the Past 12 Months

Rockingham city, North Carolina



Source: B19013. MEDIAN HOUSEHOLD INCOME IN THE PAST 12 MONTHS (IN 2010 INFLATION-ADJUSTED DOLLARS)
Data Set: 2008-2012 American Community Survey 5-Year Estimates

B19101. FAMILY INCOME IN THE PAST 12 MONTHS (IN 2010 INFLATION-ADJUSTED DOLLARS)

Data Set: 2008-2012 American Community Survey 5-Year Estimates

	Rockingham city, North Carolina					
	African American	Margin of Error (+/-)	% of AA Total	White, Not Hispanic	Margin of Error (+/-)	% of NHW Total
Total:	668	163	100.0%	1,589	185	100.0%
Less than \$ 10,000	192	99	28.7%	109	70	6.9%
\$ 10,000 to \$ 14,999	108	88	16.2%	35	32	2.2%
\$ 15,000 to \$ 24,999	128	NC	19.2%	115	NC	7.2%
\$ 25,000 to \$ 34,999	148	NC	22.2%	202	NC	12.7%
\$ 35,000 to \$ 49,999	25	NC	3.7%	221	NC	13.9%
\$ 50,000 to \$ 74,999	42	NC	6.3%	394	NC	24.8%
\$ 100,000 to \$ 149,999	14	NC	2.1%	213	NC	13.4%
\$ 150,000 to \$ 199,999	0	18	0.0%	41	46	2.6%
\$ 200,000 or more	0	18	0.0%	23	20	1.4%

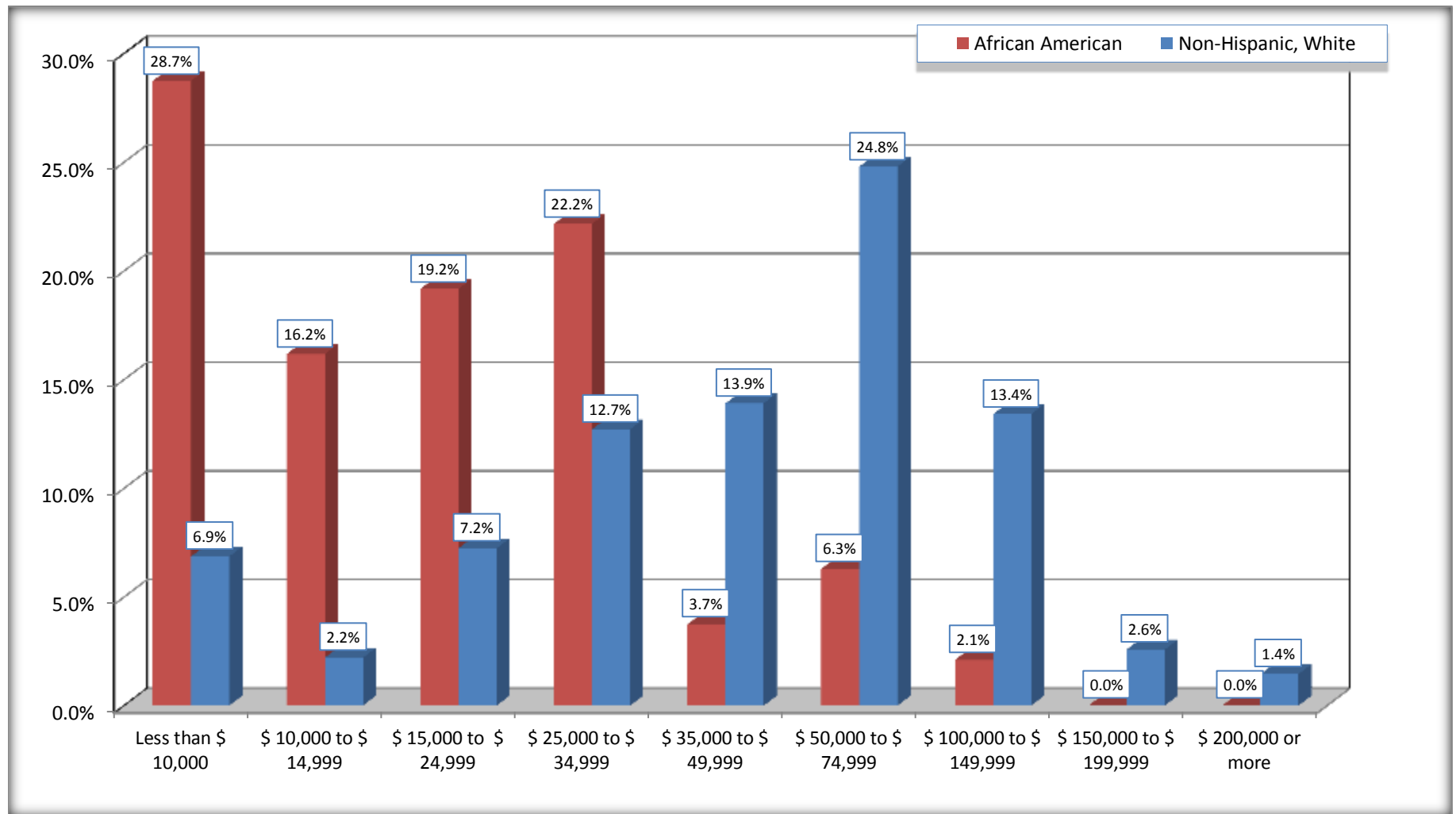
Source: U.S. Census Bureau, 2008-2012 American Community Survey

For information on confidentiality protection, sampling error, nonsampling error, and definitions, see Survey Methodology.

<http://www.census.gov/acs/www/UseData/index.htm>

Family Income in the Past 12 Months

Rockingham city, North Carolina



Source: B19101. FAMILY INCOME IN THE PAST 12 MONTHS (IN 2010 INFLATION-ADJUSTED DOLLARS)
Data Set: 2008-2012 American Community Survey 5-Year Estimates

B19113. MEDIAN FAMILY INCOME IN THE PAST 12 MONTHS (IN 2010 INFLATION-ADJUSTED DOLLARS)

Data Set: 2008-2012 American Community Survey 5-Year Estimates

	Rockingham city, North Carolina			
	African American	Margin of Error (+/-)	White, Not Hispanic	Margin of Error (+/-)
Median family income in the past 12 months (in 2010 inflation-adjusted dollars)	\$ 17,992	\$ 4,891	\$ 54,784	\$ 9,431

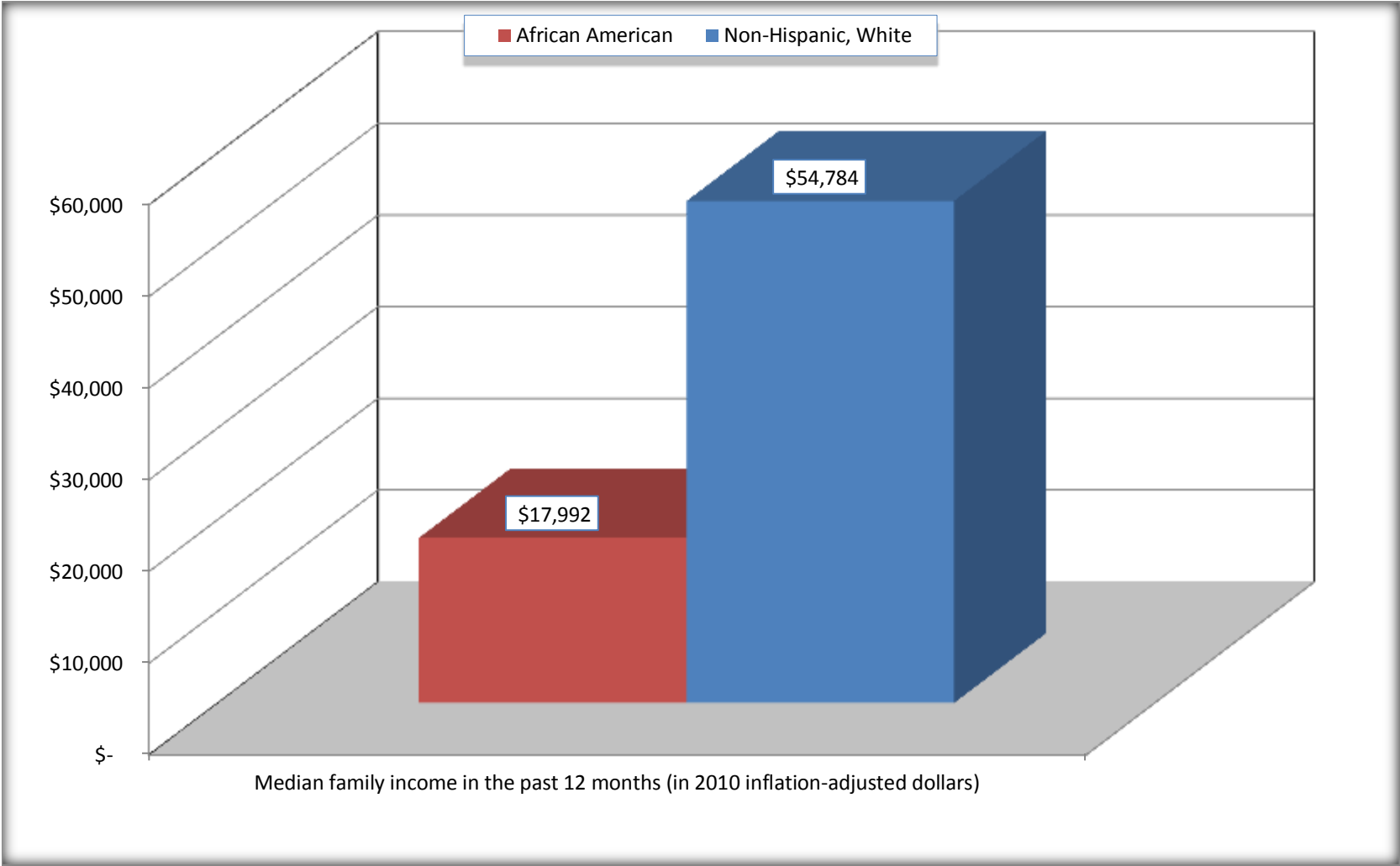
Source: U.S. Census Bureau, 2008-2012 American Community Survey

For information on confidentiality protection, sampling error, nonsampling error, and definitions, see Survey Methodology.

<http://www.census.gov/acs/www/UseData/index.htm>

Median Family Income in the Past 12 Months

Rockingham city, North Carolina



Source: B19113. MEDIAN FAMILY INCOME IN THE PAST 12 MONTHS (IN 2010 INFLATION-ADJUSTED DOLLARS)
Data Set: 2008-2012 American Community Survey 5-Year Estimates

B19202. MEDIAN NONFAMILY HOUSEHOLD INCOME IN THE PAST 12 MONTHS (IN 2010 INFLATION-ADJUSTED DOLLARS)

Data Set: 2008-2012 American Community Survey 5-Year Estimates

	Rockingham city, North Carolina			
	African American	Margin of Error (+/-)	White, Not Hispanic	Margin of Error (+/-)
Median nonfamily household income in the past 12 months (in 2010 inflation-adjusted dollars)	\$ 16,716	\$ 10,585	\$ 19,667	\$ 5,750

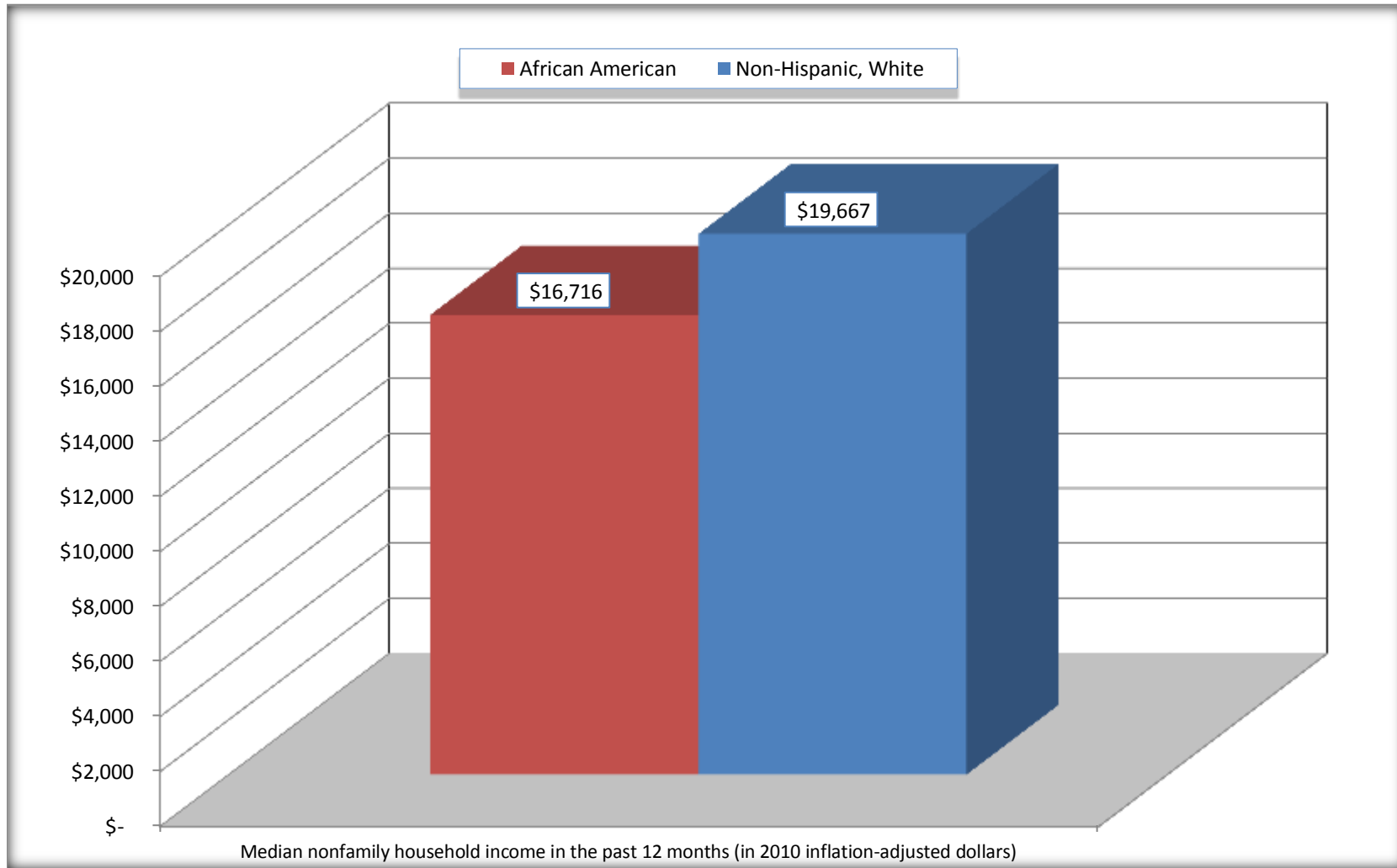
Source: U.S. Census Bureau, 2008-2012 American Community Survey

For information on confidentiality protection, sampling error, nonsampling error, and definitions, see Survey Methodology.

<http://www.census.gov/acs/www/UseData/index.htm>

Median Non-Family Income in the Past 12 Months

Rockingham city, North Carolina



Source: B19202. MEDIAN NONFAMILY HOUSEHOLD INCOME IN THE PAST 12 MONTHS (IN 2010 INFLATION-ADJUSTED DOLLARS)
Data Set: 2008-2012 American Community Survey 5-Year Estimates

B19301. PER CAPITA INCOME IN THE PAST 12 MONTHS (IN 2010 INFLATION-ADJUSTED DOLLARS)

Data Set: 2008-2012 American Community Survey 5-Year Estimates

	Rockingham city, North Carolina			
	African American	Margin of Error (+/-)	White, Not Hispanic	Margin of Error (+/-)
Per capita income in the past 12 months (in 2010 inflation-adjusted dollars)	\$ 10,611	\$ 2,073	\$ 22,968	\$ 2,601

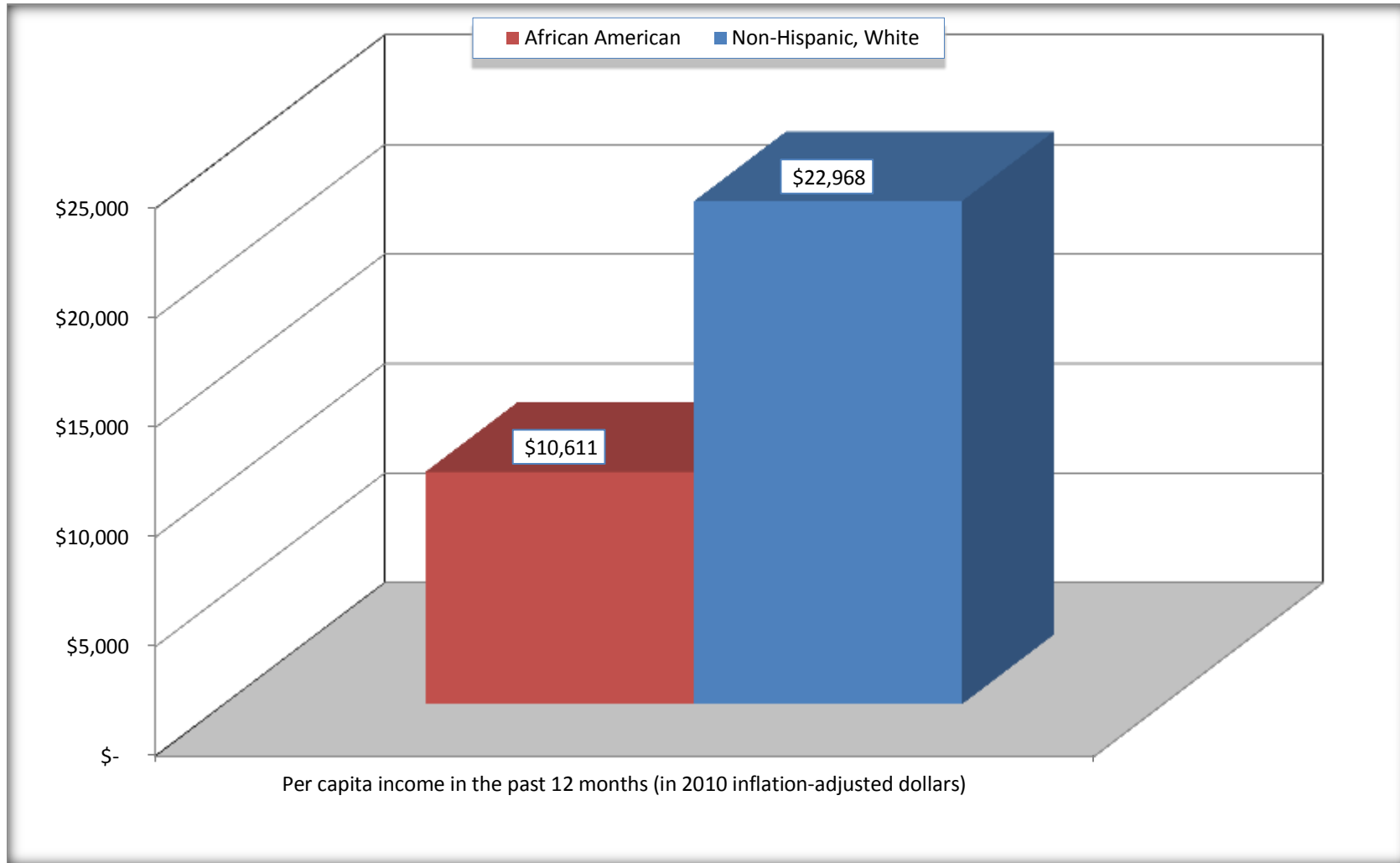
Source: U.S. Census Bureau, 2008-2012 American Community Survey

For information on confidentiality protection, sampling error, nonsampling error, and definitions, see Survey Methodology.

<http://www.census.gov/acs/www/UseData/index.htm>

Per capita Income in the Past 12 Months

Rockingham city, North Carolina



Source: B19301. PER CAPITA INCOME IN THE PAST 12 MONTHS (IN 2010 INFLATION-ADJUSTED DOLLARS)
Data Set: 2008-2012 American Community Survey 5-Year Estimates

B20017. MEDIAN EARNINGS IN THE PAST 12 MONTHS (IN 2010 INFLATION-ADJUSTED DOLLARS) BY SEX BY WORK EXPERIENCE IN THE PAST 12 MONTHS FOR THE POPULATION 16 YEARS AND OVER WITH EARNINGS IN THE PAST 12 MONTHS

Data Set: 2008-2012 American Community Survey 5-Year Estimates

	Rockingham city, North Carolina			
	African American	Margin of Error (+/-)	White, Not Hispanic	Margin of Error (+/-)
Median earnings in the past 12 months (in 2010 inflation-adjusted dollars) --				
Total:	\$ 11,433	\$ 4,415	\$ 30,444	\$ 4,328
Male --				
Total	\$ 12,675	\$ 8,474	\$ 34,297	\$ 4,852
Worked full-time, year-round in the past 12 months	\$ 43,250	\$ 34,032	\$ 43,750	\$ 7,516
Other	\$ 6,475	\$ 2,324	\$ 7,109	\$ 14,576
Female --				
Total	\$ 11,317	\$ 6,285	\$ 26,491	\$ 4,266
Worked full-time, year-round in the past 12 months	\$ 27,440	\$ 7,391	\$ 35,203	\$ 4,599
Other	\$ 9,031	\$ 1,382	\$ 10,329	\$ 5,726

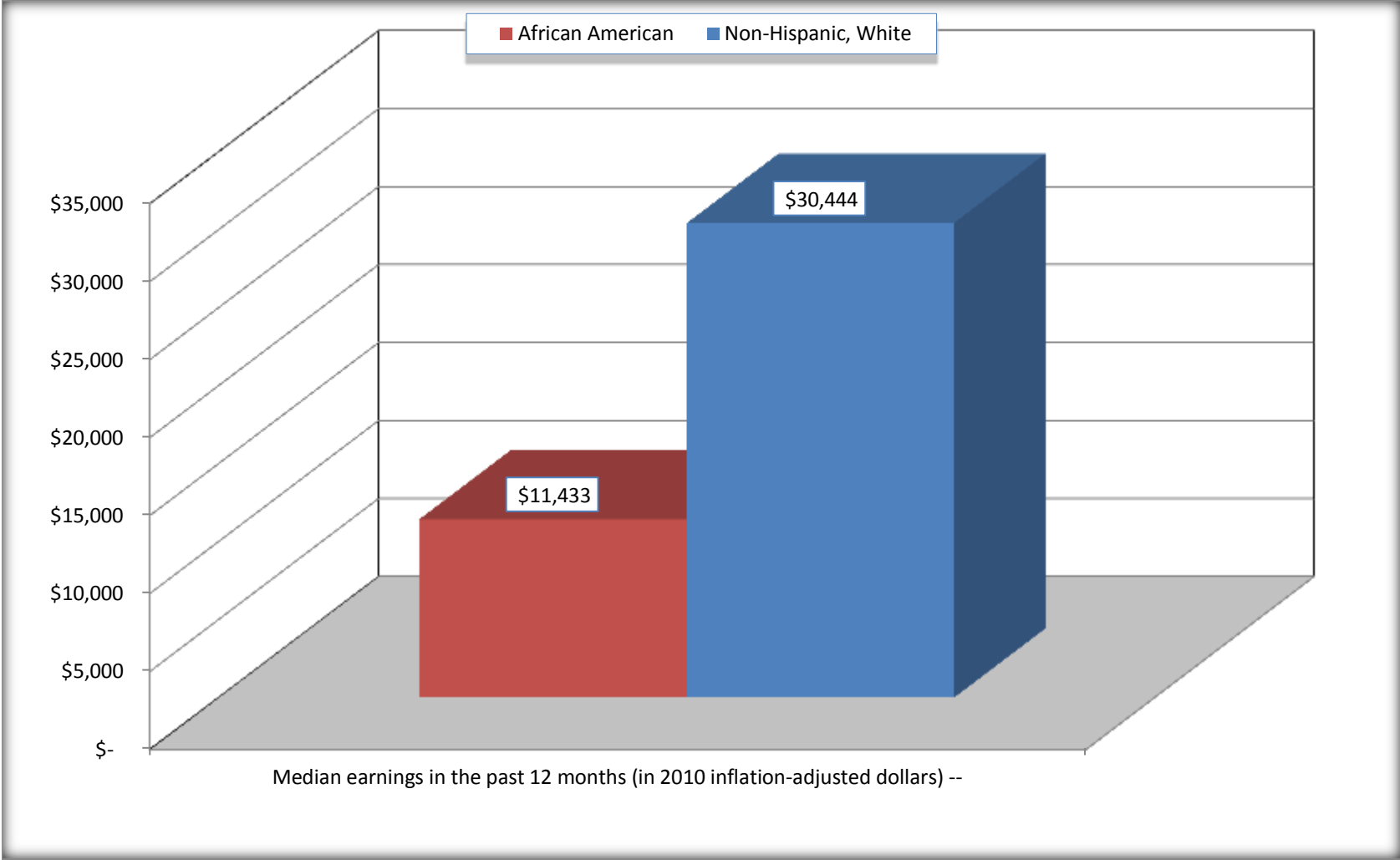
Source: U.S. Census Bureau, 2008-2012 American Community Survey

For information on confidentiality protection, sampling error, nonsampling error, and definitions, see Survey Methodology.

<http://www.census.gov/acs/www/UseData/index.htm>

Median earnings in the Past 12 Months (16 Years and Over with Earnings)

Rockingham city, North Carolina



Source: B20017. MEDIAN EARNINGS IN THE PAST 12 MONTHS (IN 2010 INFLATION-ADJUSTED DOLLARS) BY SEX BY WORK EXPERIENCE IN THE PAST 12 MONTHS FOR THE POPULATION 16 YEARS AND OVER WITH EARNINGS IN THE PAST 12 MONTHS
Data Set: 2008-2012 American Community Survey 5-Year Estimates

B20005. SEX BY WORK EXPERIENCE IN THE PAST 12 MONTHS BY EARNINGS IN THE PAST 12 MONTHS (IN 2010 INFLATION-ADJUSTED DOLLARS) FOR THE POPULATION 16 YEARS AND OVER

Data Set: 2008-2012 American Community Survey 5-Year Estimates

	Rockingham city, North Carolina					
	African American	Margin of Error (+/-)	% of AA Total	White, Not Hispanic	Margin of Error (+/-)	% of NHW Total
Total:	2,477	371	100.0%	4,575	421	100.0%
Worked full-time, year-round in the past 12 months:	471	NC	19.0%	1,536	NC	33.6%
No earnings	0	NC	0.0%	0	NC	0.0%
With earnings:	471	NC	19.0%	1,536	NC	33.6%
\$ 1 to \$ 9,999 or loss	40	NC	1.6%	17	NC	0.4%
\$ 10,000 to \$ 19,999	99	NC	4.0%	103	NC	2.3%
\$ 20,000 to \$ 29,999	127	NC	5.1%	335	NC	7.3%
\$ 30,000 to \$ 49,999	131	NC	5.3%	576	NC	12.6%
\$ 50,000 to \$ 74,999	31	NC	1.3%	326	NC	7.1%
\$ 75,000 or more	43	NC	1.7%	179	NC	3.9%
Other:	2,006	NC	81.0%	3,039	NC	66.4%
No earnings	1,199	NC	48.4%	2,051	NC	44.8%
With earnings: less than full time, year-round	807	NC	32.6%	988	NC	21.6%
Male:	1,154	229	46.6%	2,109	266	46.1%
Worked full-time, year-round in the past 12 months:	212	101	8.6%	850	171	18.6%
No earnings	0	18	0.0%	0	18	0.0%
With earnings:	212	101	8.6%	850	171	18.6%
\$ 1 to \$ 9,999 or loss	0	NC	0.0%	9	NC	0.2%
\$ 10,000 to \$ 19,999	45	NC	1.8%	32	NC	0.7%
\$ 20,000 to \$ 29,999	52	NC	2.1%	173	NC	3.8%
\$ 30,000 to \$ 49,999	61	NC	2.5%	281	NC	6.1%
\$ 50,000 to \$ 74,999	11	NC	0.4%	219	NC	4.8%
\$ 75,000 or more	43	NC	1.7%	136	NC	3.0%

	Rockingham city, North Carolina					
	African American	Margin of Error (+/-)	% of AA Total	White, Not Hispanic	Margin of Error (+/-)	% of NHW Total
Other:	942	209	38.0%	1,259	225	27.5%
No earnings	525	160	21.2%	792	203	17.3%
With earnings:	417	165	16.8%	467	159	10.2%
Female:	1,323	231	53.4%	2,466	270	53.9%
Worked full-time, year-round in the past 12 months:	259	102	10.5%	686	163	15.0%
No earnings	0	18	0.0%	0	18	0.0%
With earnings:	259	102	10.5%	686	163	15.0%
\$ 1 to \$ 9,999 or loss	40	NC	1.6%	8	NC	0.2%
\$ 10,000 to \$ 19,999	54	NC	2.2%	71	NC	1.6%
\$ 20,000 to \$ 29,999	75	NC	3.0%	162	NC	3.5%
\$ 30,000 to \$ 49,999	70	NC	2.8%	295	NC	6.4%
\$ 50,000 to \$ 74,999	20	NC	0.8%	107	NC	2.3%
\$ 75,000 or more	0	NC	0.0%	43	NC	0.9%
Other:	1,064	217	43.0%	1,780	201	38.9%
No earnings	674	154	27.2%	1,259	187	27.5%
With earnings:	390	151	15.7%	521	136	11.4%

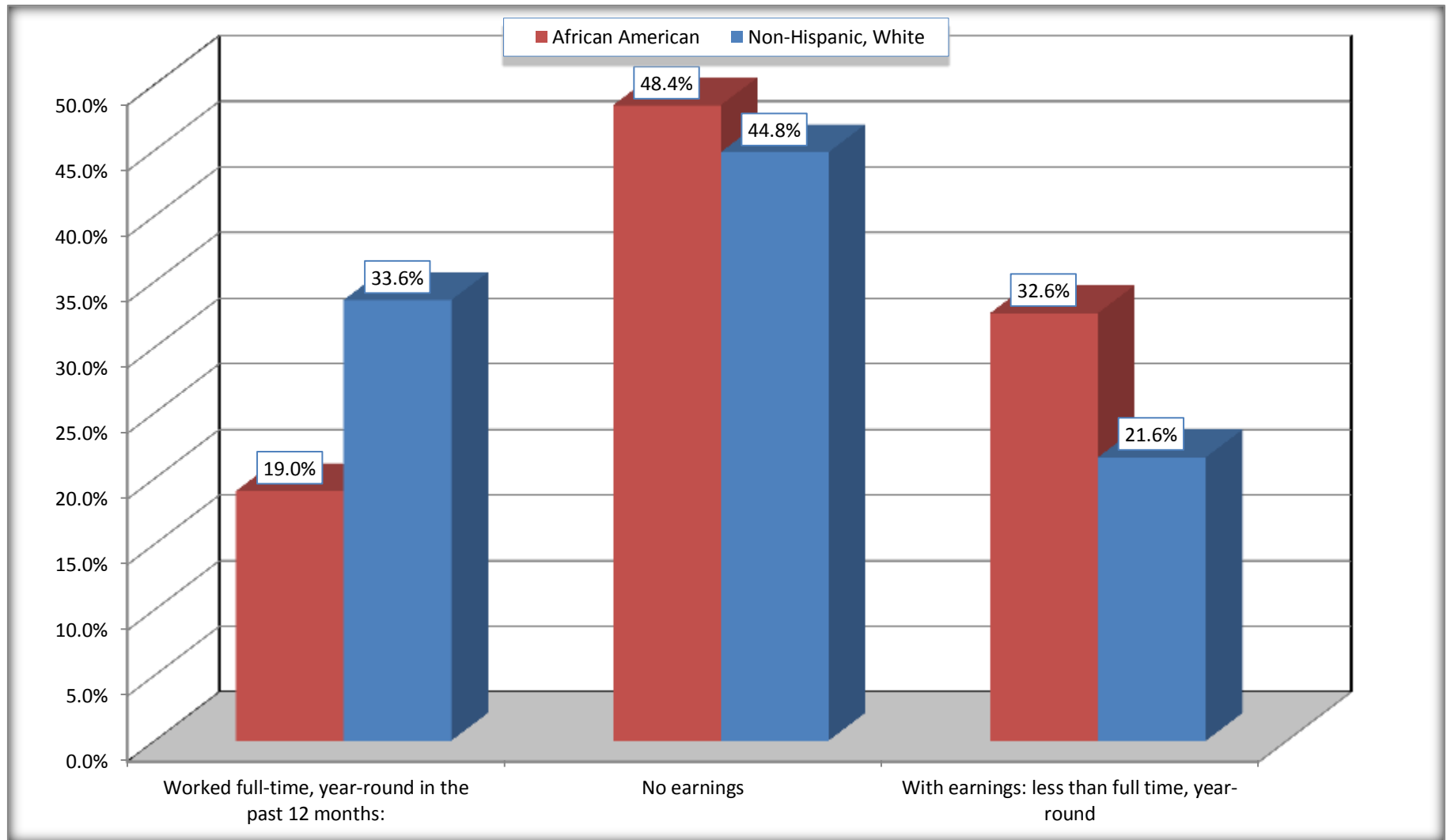
Source: U.S. Census Bureau, 2008-2012 American Community Survey

For information on confidentiality protection, sampling error, nonsampling error, and definitions, see Survey Methodology.

<http://www.census.gov/acs/www/UseData/index.htm>

Employment and Earnings in in the Past 12 Months (16 Years and Over)

Rockingham city, North Carolina



Source: B20005. SEX BY WORK EXPERIENCE IN THE PAST 12 MONTHS BY EARNINGS IN THE PAST 12 MONTHS (IN 2010 INFLATION-ADJUSTED DOLLARS) FOR THE POPULATION 16 YEARS AND OVER

Data Set: 2008-2012 American Community Survey 5-Year Estimates

C21001. SEX BY AGE BY VETERAN STATUS FOR THE CIVILIAN POPULATION 18 YEARS AND OVER

Data Set: 2008-2012 American Community Survey 5-Year Estimates

	Rockingham city, North Carolina					
	African American	Margin of Error (+/-)	% of AA Total	White, Not Hispanic	Margin of Error (+/-)	% of NHW Total
Total:	2,280	346	100.0%	4,484	420	100.0%
Veteran	128	NC	5.6%	496	NC	11.1%
Nonveteran	2,152	NC	94.4%	3,988	NC	88.9%
Male:	1,087	224	47.7%	2,084	262	46.5%
18 to 64 years:	1,006	212	44.1%	1,567	238	34.9%
Veteran	105	61	4.6%	230	81	5.1%
Nonveteran	901	200	39.5%	1,337	216	29.8%
65 years and over:	81	51	3.6%	517	98	11.5%
Veteran	0	18	0.0%	248	84	5.5%
Nonveteran	81	51	3.6%	269	85	6.0%
Female:	1,193	192	52.3%	2,400	266	53.5%
18 to 64 years:	1,014	197	44.5%	1,651	239	36.8%
Veteran	23	22	1.0%	9	16	0.2%
Nonveteran	991	194	43.5%	1,642	240	36.6%
65 years and over:	179	74	7.9%	749	128	16.7%
Veteran	0	18	0.0%	9	15	0.2%
Nonveteran	179	74	7.9%	740	126	16.5%

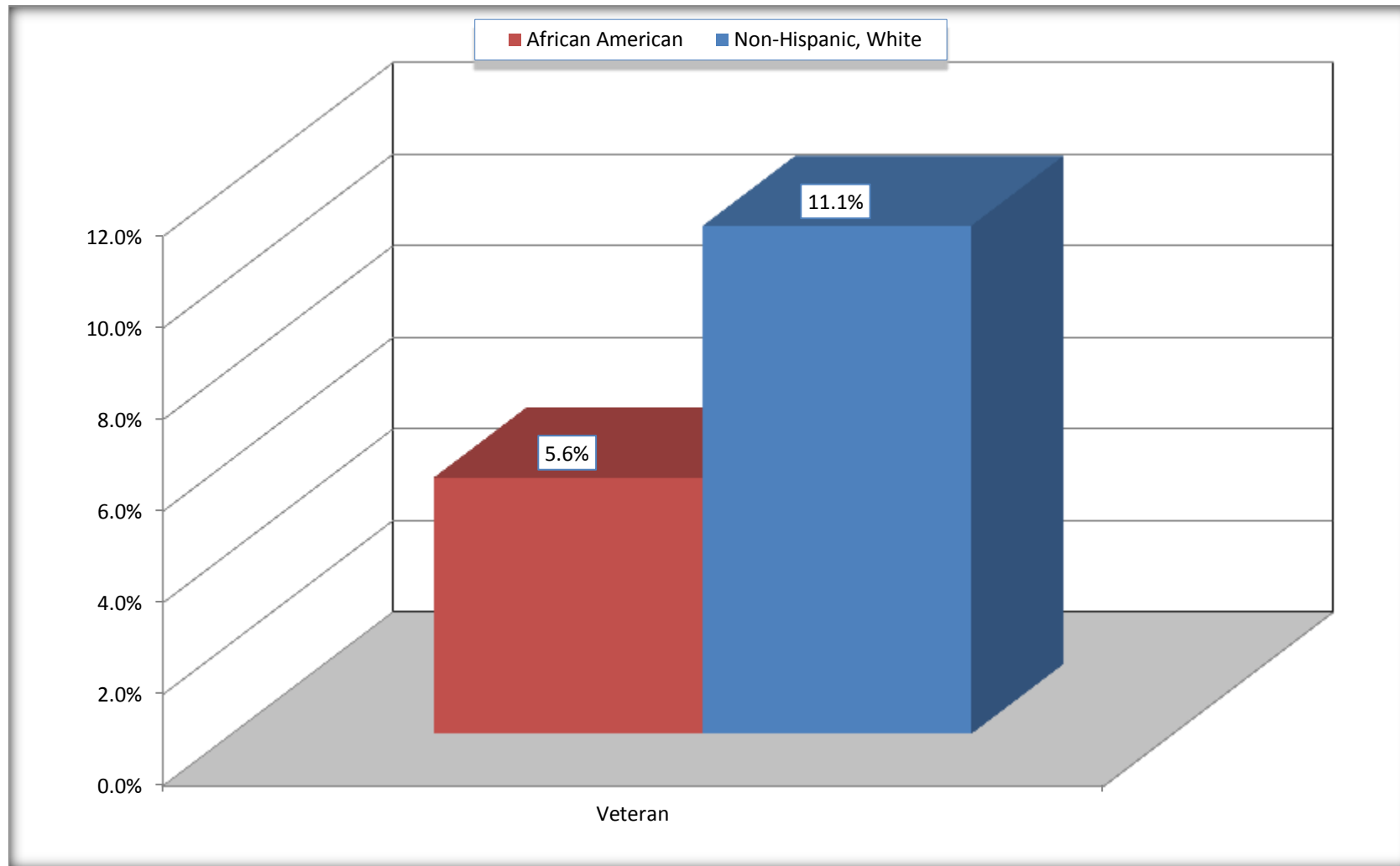
Source: U.S. Census Bureau, 2008-2012 American Community Survey

For information on confidentiality protection, sampling error, nonsampling error, and definitions, see Survey Methodology.

<http://www.census.gov/acs/www/UseData/index.htm>

Veterans in the Civilian Population 18 Years and Over

Rockingham city, North Carolina



Source: C21001. SEX BY AGE BY VETERAN STATUS FOR THE CIVILIAN POPULATION 18 YEARS AND OVER
Data Set: 2008-2012 American Community Survey 5-Year Estimates

B22005. RECEIPT OF FOOD STAMPS/SNAP IN THE PAST 12 MONTHS BY RACE OF HOUSEHOLDER

Data Set: 2008-2012 American Community Survey 5-Year Estimates

	Rockingham city, North Carolina					
	African American	Margin of Error (+/-)	% of AA Total	White, Not Hispanic	Margin of Error (+/-)	% of NHW Total
Total:	1,228	175	100.0%	2,409	261	100.0%
HH received Food Stamps/SNAP in the past 12 months	445	129	36.2%	298	116	12.4%
HH did not receive Food Stamps/SNAP in the past 12 months	783	181	63.8%	2,111	268	87.6%

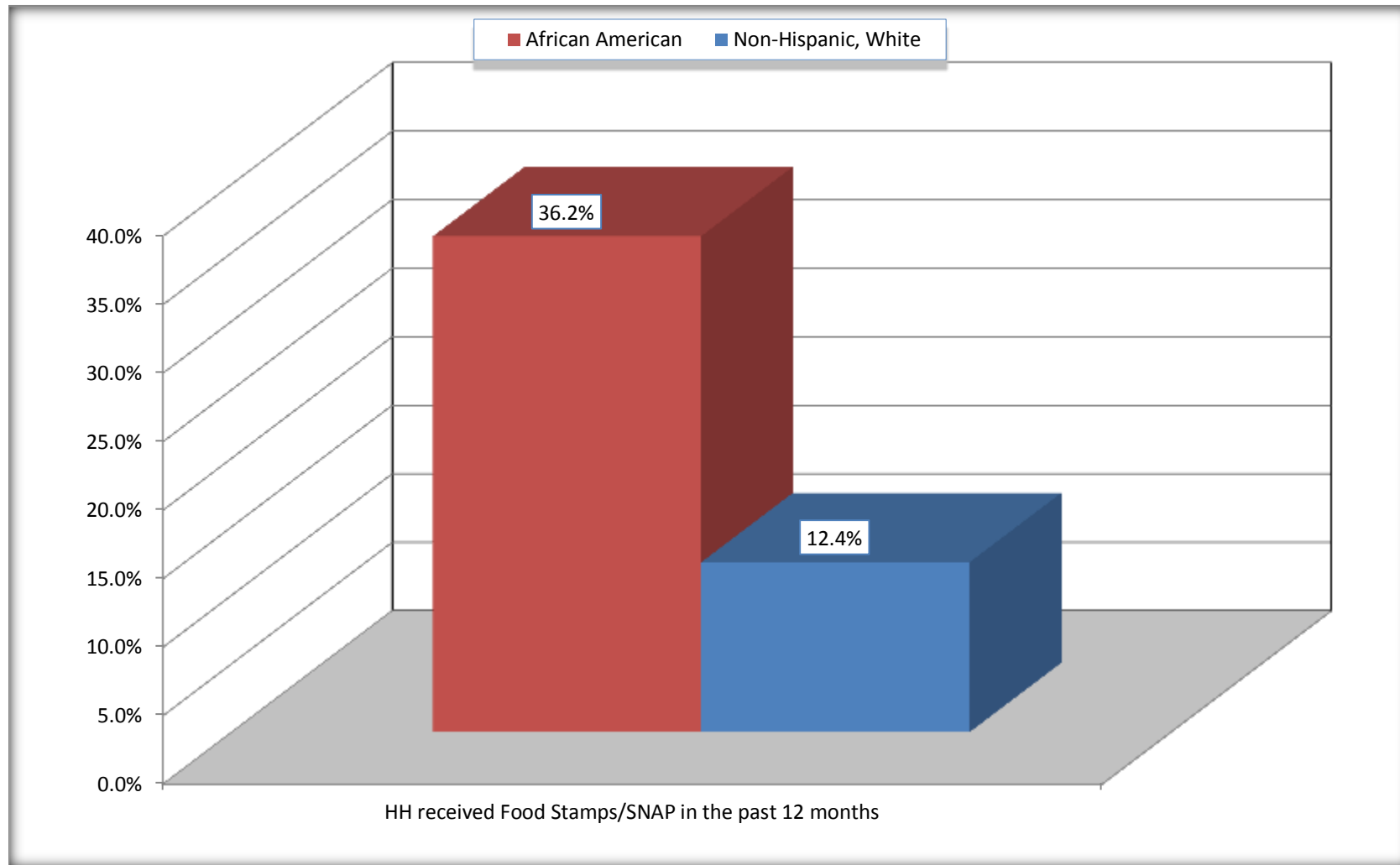
Source: U.S. Census Bureau, 2008-2012 American Community Survey

For information on confidentiality protection, sampling error, nonsampling error, and definitions, see Survey Methodology.

<http://www.census.gov/acs/www/UseData/index.htm>

Receipt of Food Stamps/SNAP in the Past 12 Months by Household

Rockingham city, North Carolina



Source: B22005. RECEIPT OF FOOD STAMPS/SNAP IN THE PAST 12 MONTHS BY RACE OF HOUSEHOLDER
Data Set: 2008-2012 American Community Survey 5-Year Estimates

C23002. SEX BY AGE BY EMPLOYMENT STATUS FOR THE POPULATION 16 YEARS AND OVER

Data Set: 2008-2012 American Community Survey 5-Year Estimates

	Rockingham city, North Carolina					
	African American	Margin of Error (+/-)	% of AA Total	White, Not Hispanic	Margin of Error (+/-)	% of NHW Total
Total:	2,477	371	100.0%	4,575	421	100.0%
In labor force:	1,456	NC	58.8%	2,349	NC	51.3%
In Armed Forces	0	NC	0.0%	0	NC	0.0%
Civilian:	1,435	NC	57.9%	2,183	NC	47.7%
Employed	986	NC	39.8%	2,137	NC	46.7%
Unemployed	470	NC	19.0%	212	NC	4.6%
Not in labor force	1,021	NC	41.2%	2,226	NC	48.7%
Male:	1,154	229	46.6%	2,109	266	46.1%
16 to 64 years:	1,073	218	43.3%	1,592	244	34.8%
In labor force:	740	186	29.9%	1,185	225	25.9%
In Armed Forces	0	18	0.0%	0	18	0.0%
Civilian:	740	186	29.9%	1,185	225	25.9%
Employed	438	150	17.7%	1,071	210	23.4%
Unemployed	302	139	12.2%	114	57	2.5%
Not in labor force	333	141	13.4%	407	170	8.9%
65 years and over:	81	51	3.3%	517	98	11.3%
In labor force:	21	33	0.8%	94	56	2.1%
Employed	21	33	0.8%	75	45	1.6%
Unemployed	0	18	0.0%	19	32	0.4%
Not in labor force	60	44	2.4%	423	89	9.2%

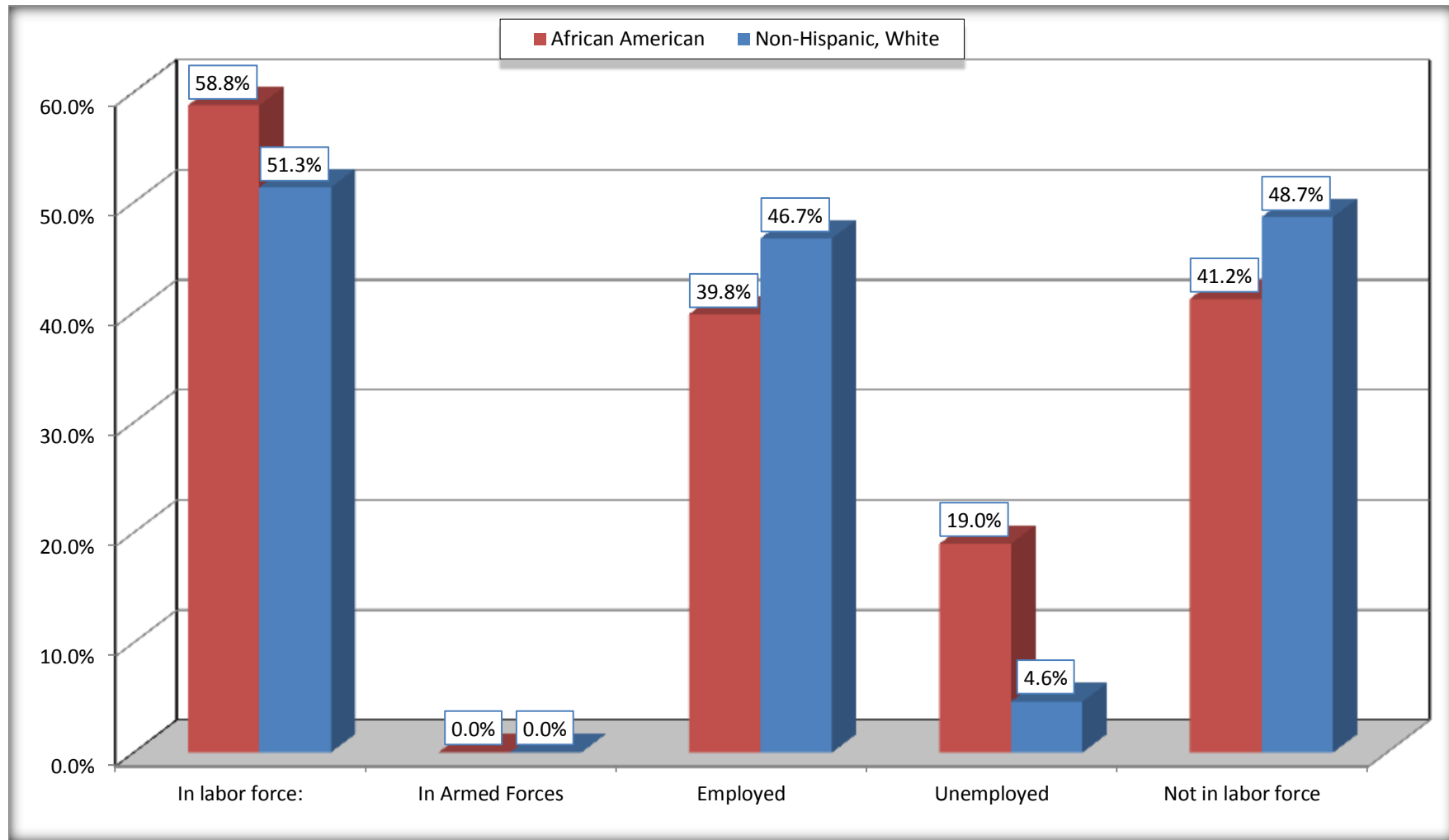
	Rockingham city, North Carolina					
	African American	Margin of Error (+/-)	% of AA Total	White, Not Hispanic	Margin of Error (+/-)	% of NHW Total
Female:	1,323	231	53.4%	2,466	270	53.9%
16 to 64 years:	1,144	238	46.2%	1,717	246	37.5%
In labor force:	695	184	28.1%	998	197	21.8%
In Armed Forces	0	18	0.0%	0	18	0.0%
Civilian:	695	184	28.1%	998	197	21.8%
Employed	527	152	21.3%	919	177	20.1%
Unemployed	168	102	6.8%	79	54	1.7%
Not in labor force	449	135	18.1%	719	162	15.7%
65 years and over:	179	74	7.2%	749	128	16.4%
In labor force:	0	18	0.0%	72	44	1.6%
Employed	0	18	0.0%	72	44	1.6%
Unemployed	0	18	0.0%	0	18	0.0%
Not in labor force	179	74	7.2%	677	127	14.8%

Source: U.S. Census Bureau, 2008-2012 American Community Survey

For information on confidentiality protection, sampling error, nonsampling error, and definitions, see Survey Methodology.
<http://www.census.gov/acs/www/UseData/index.htm>

Employment Status for the Population 16 years and over

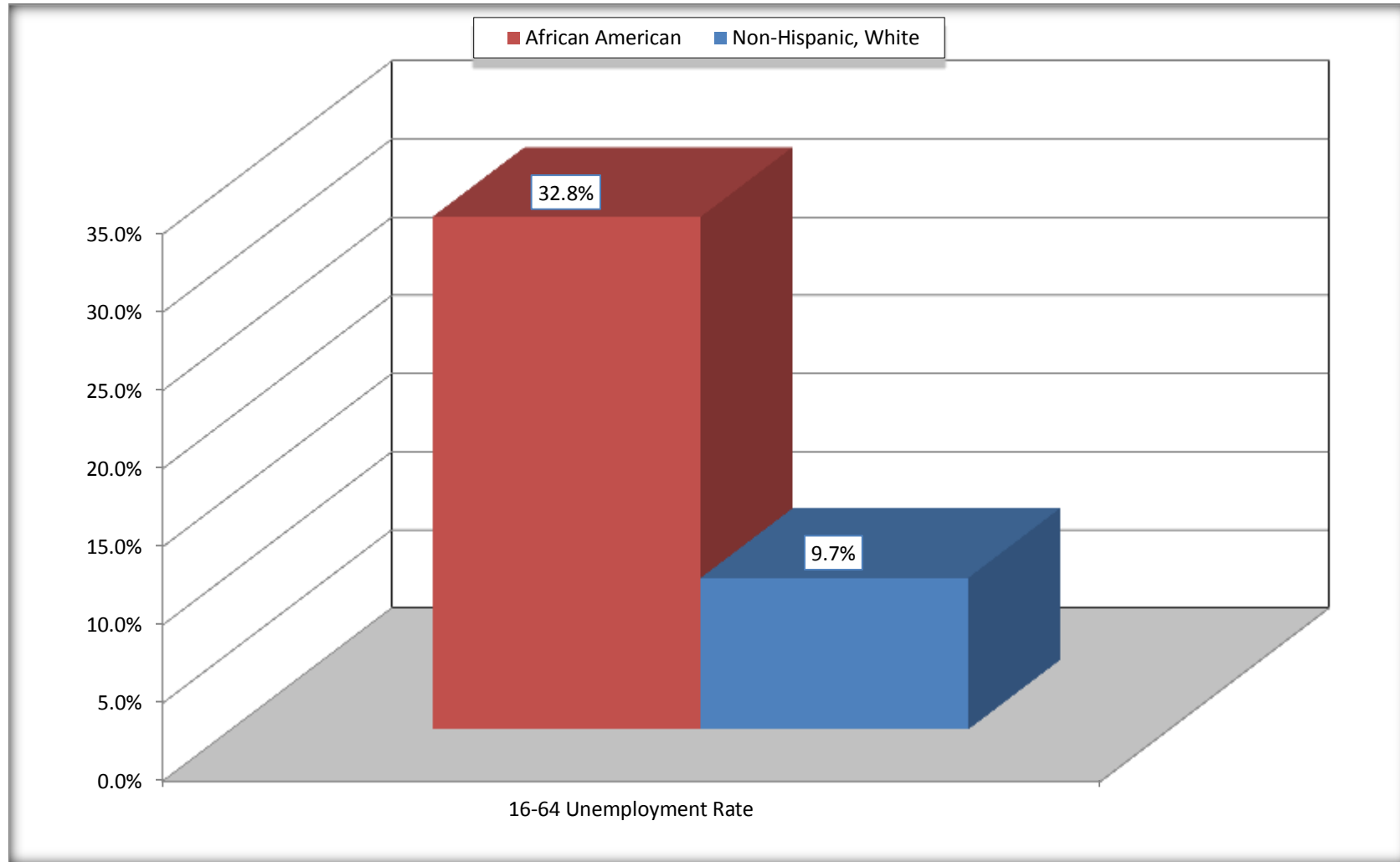
Rockingham city, North Carolina



Source: C23002. SEX BY AGE BY EMPLOYMENT STATUS FOR THE POPULATION 16 YEARS AND OVER
Data Set: 2008-2012 American Community Survey 5-Year Estimates

Unemployment of Working Age Population (Ages 16 to 64) (As a Percent of 16-64 Civilian Labor Force)

Rockingham city, North Carolina



Source: C23002. SEX BY AGE BY EMPLOYMENT STATUS FOR THE POPULATION 16 YEARS AND OVER
Data Set: 2008-2012 American Community Survey 5-Year Estimates

C24010. SEX BY OCCUPATION FOR THE CIVILIAN EMPLOYED POPULATION 16 YEARS AND OVER

Data Set: 2008-2012 American Community Survey 5-Year Estimates

	Rockingham city, North Carolina					
	African American	Margin of Error (+/-)	% of AA Total	White, Not Hispanic	Margin of Error (+/-)	% of NHW Total
Total:	986	254	100.0%	2,137	329	100.0%
Management, professional, and related occupations	298	NC	30.2%	710	NC	33.2%
Service occupations	400	NC	40.6%	327	NC	15.3%
Sales and office occupations	99	NC	10.0%	566	NC	26.5%
Natural resources, construction, and maintenance occupations:	27	NC	2.7%	281	NC	13.1%
Production, transportation, and material moving occupations	162	NC	16.4%	253	NC	11.8%
Male:	459	155	46.6%	1,146	214	53.6%
Management, business, science, and arts occupations:	116	96	11.8%	207	76	9.7%
Service occupations	167	99	16.9%	180	76	8.4%
Sales and office occupations	10	17	1.0%	250	92	11.7%
Natural resources, construction, and maintenance occupations:	27	39	2.7%	270	106	12.6%
Production, transportation, and material moving occupations	139	77	14.1%	239	109	11.2%
Female:	527	152	53.4%	991	185	46.4%
Management, professional, and related occupations	182	88	18.5%	503	123	23.5%
Service occupations	233	124	23.6%	147	76	6.9%
Sales and office occupations	89	63	9.0%	316	100	14.8%
Natural resources, construction, and maintenance occupations:	0	18	0.0%	11	20	0.5%
Production, transportation, and material moving occupations	23	26	2.3%	14	17	0.7%

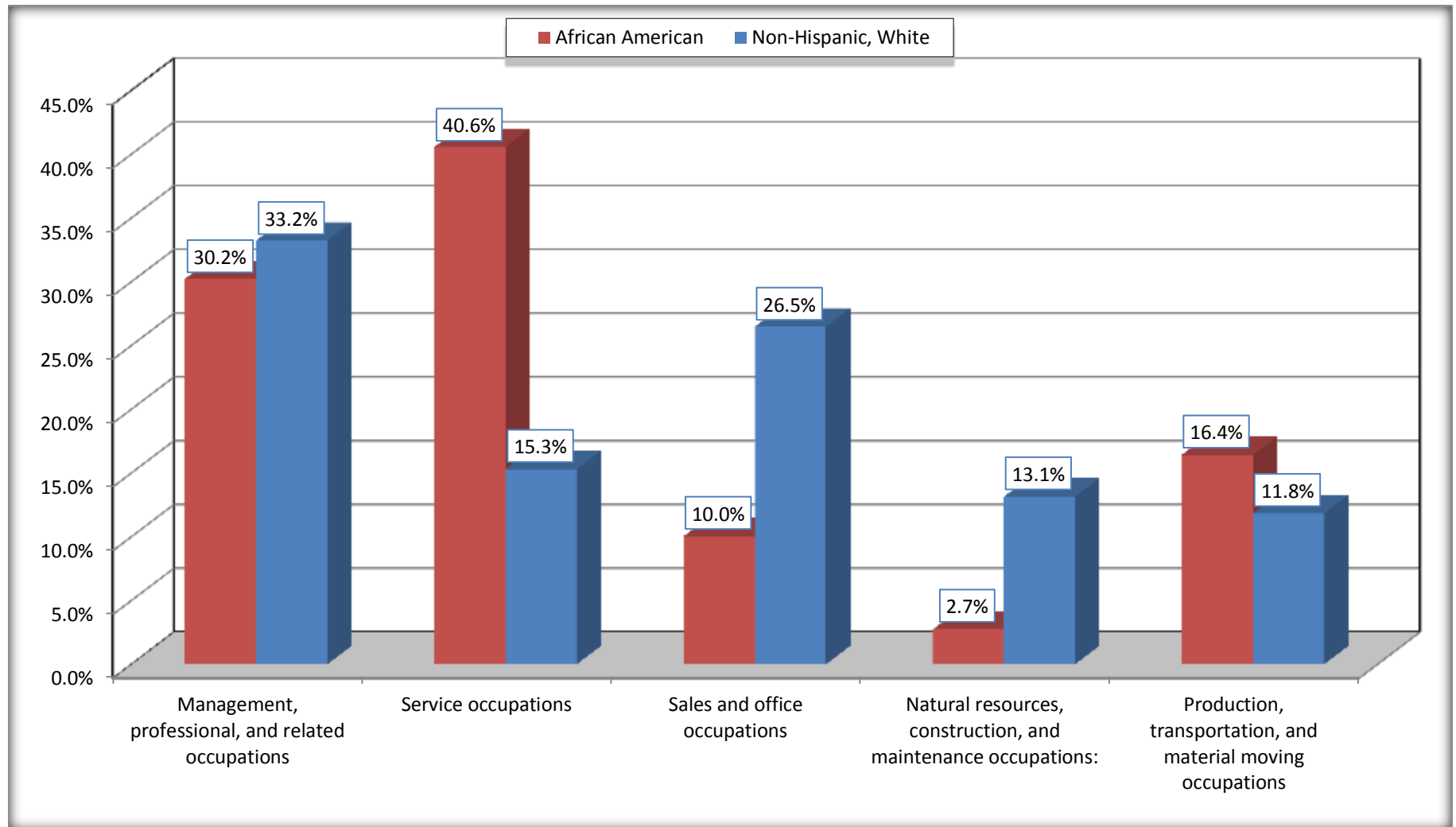
Source: U.S. Census Bureau, 2008-2012 American Community Survey

For information on confidentiality protection, sampling error, nonsampling error, and definitions, see Survey Methodology.

<http://www.census.gov/acs/www/UseData/index.htm>

Occupation for the Civilian Employed 16 Years and Over Population

Rockingham city, North Carolina



Source: C24010. SEX BY OCCUPATION FOR THE CIVILIAN EMPLOYED POPULATION 16 YEARS AND OVER
Data Set: 2008-2012 American Community Survey 5-Year Estimates

B25003. TENURE - Universe: OCCUPIED HOUSING UNITS

Data Set: 2008-2012 American Community Survey 5-Year Estimates

	Rockingham city, North Carolina					
	African American	Margin of Error (+/-)	% of AA Total	White, Not Hispanic	Margin of Error (+/-)	% of NHW Total
Total:	1,228	175	100.0%	2,409	261	100.0%
Owner occupied	307	100	25.0%	1,842	200	76.5%
Renter occupied	921	170	75.0%	567	170	23.5%

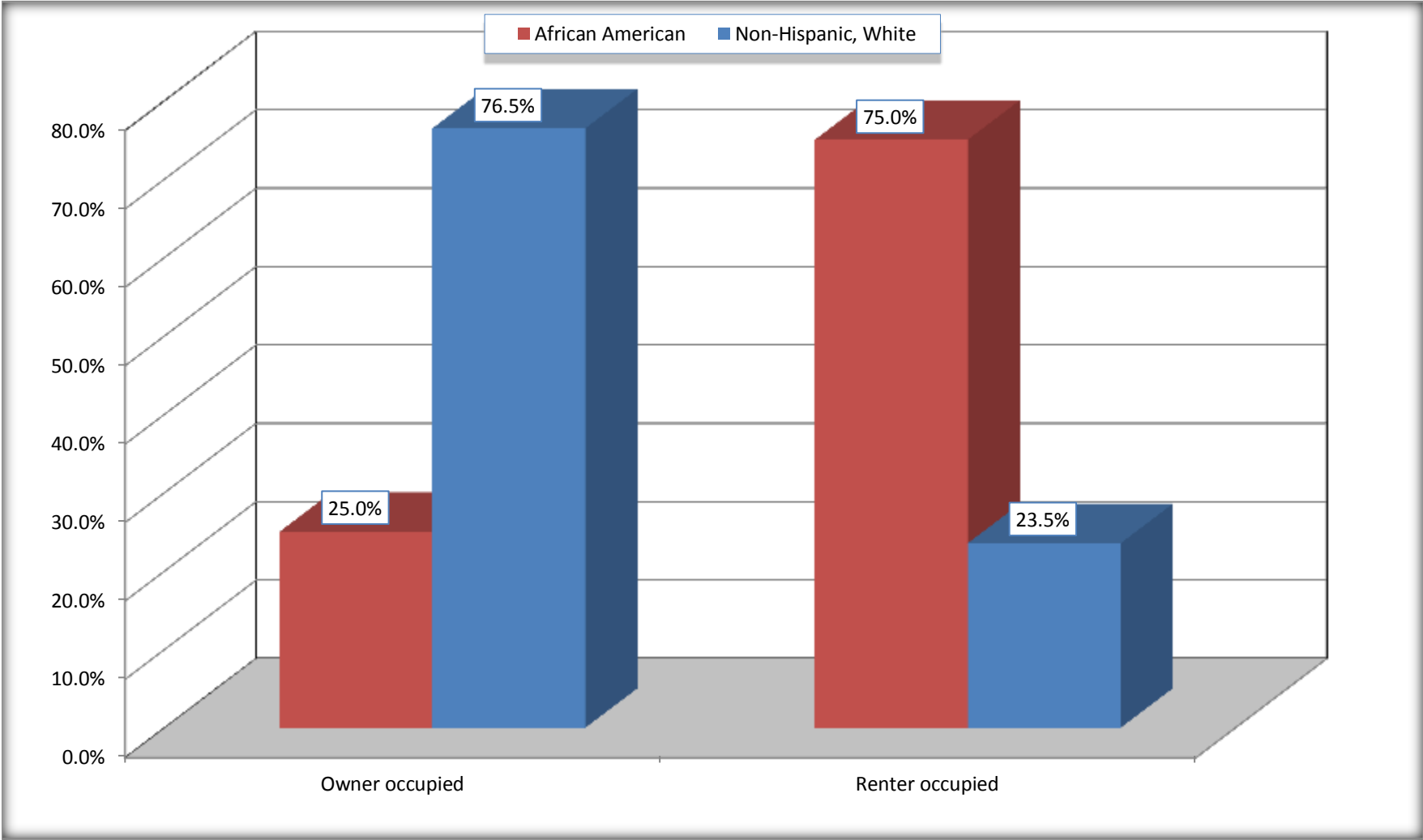
Source: U.S. Census Bureau, 2008-2012 American Community Survey

For information on confidentiality protection, sampling error, nonsampling error, and definitions, see Survey Methodology.

<http://www.census.gov/acs/www/UseData/index.h>

Home Owners and Renters by Household

Rockingham city, North Carolina



Source: B25003. TENURE - Universe: OCCUPIED HOUSING UNITS
Data Set: 2008-2012 American Community Survey 5-Year Estimates

B25014. OCCUPANTS PER ROOM - Universe: OCCUPIED HOUSING UNITS

Data Set: 2008-2012 American Community Survey 5-Year Estimates

	Rockingham city, North Carolina					
	African American	Margin of Error (+/-)	% of AA Total	White, Not Hispanic	Margin of Error (+/-)	% of NHW Total
Total:	1,228	175	100.0%	2,409	261	100.0%
1.00 or less occupants per room	1,164	181	94.8%	2,383	264	98.9%
1.01 or more occupants per room	64	70	5.2%	26	30	1.1%

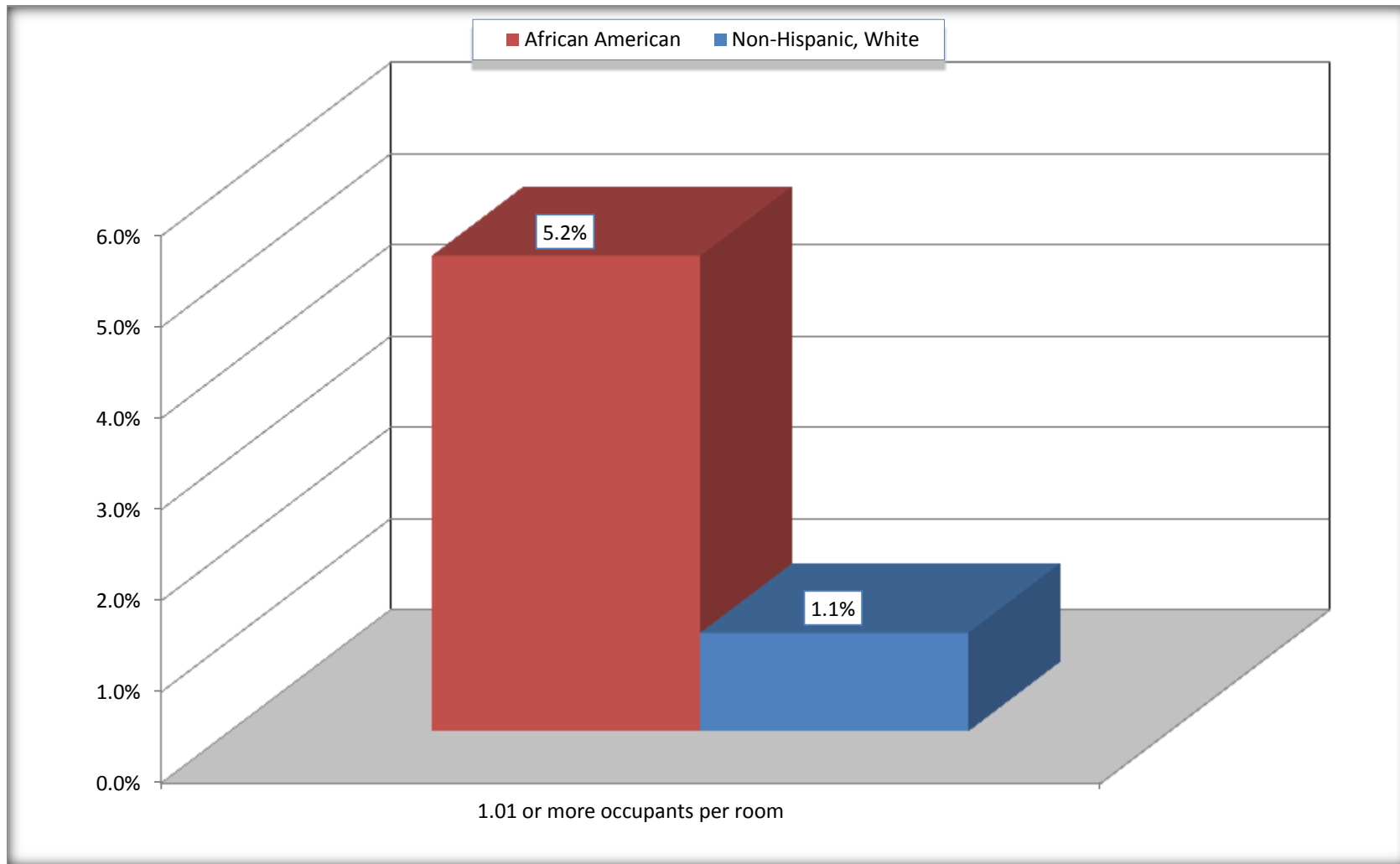
Source: U.S. Census Bureau, 2008-2012 American Community Survey

For information on confidentiality protection, sampling error, nonsampling error, and definitions, see Survey Methodology.

<http://www.census.gov/acs/www/UseData/index.ht>

More than One Person per Room (Crowding) by Household

Rockingham city, North Carolina



Source: B25014. OCCUPANTS PER ROOM - Universe: OCCUPIED HOUSING UNITS
Data Set: 2008-2012 American Community Survey 5-Year Estimates

B18101. AGE BY DISABILITY STATUS

Data Set: 2008-2012 American Community Survey 5-Year Estimates

	Rockingham city, North Carolina					
	African American	Margin of Error (+/-)	% of AA Total	White, Not Hispanic	Margin of Error (+/-)	% of NHW Total
Total:	3,004	473	100.0%	5,429	548	100.0%
Under 18 years:	812	272	27.0%	1,067	55	19.7%
With a disability	67	62	2.2%	94	53	1.7%
No disability	745	265	24.8%	973	205	17.9%
18 to 64 years:	1,956	335	65.1%	3,144	395	57.9%
With a disability	244	93	8.1%	548	173	10.1%
No disability	1,712	312	57.0%	2,596	360	47.8%
65 years and over:	236	92	7.9%	1,218	169	22.4%
With a disability	148	72	4.9%	431	114	7.9%
No disability	88	61	2.9%	787	145	14.5%

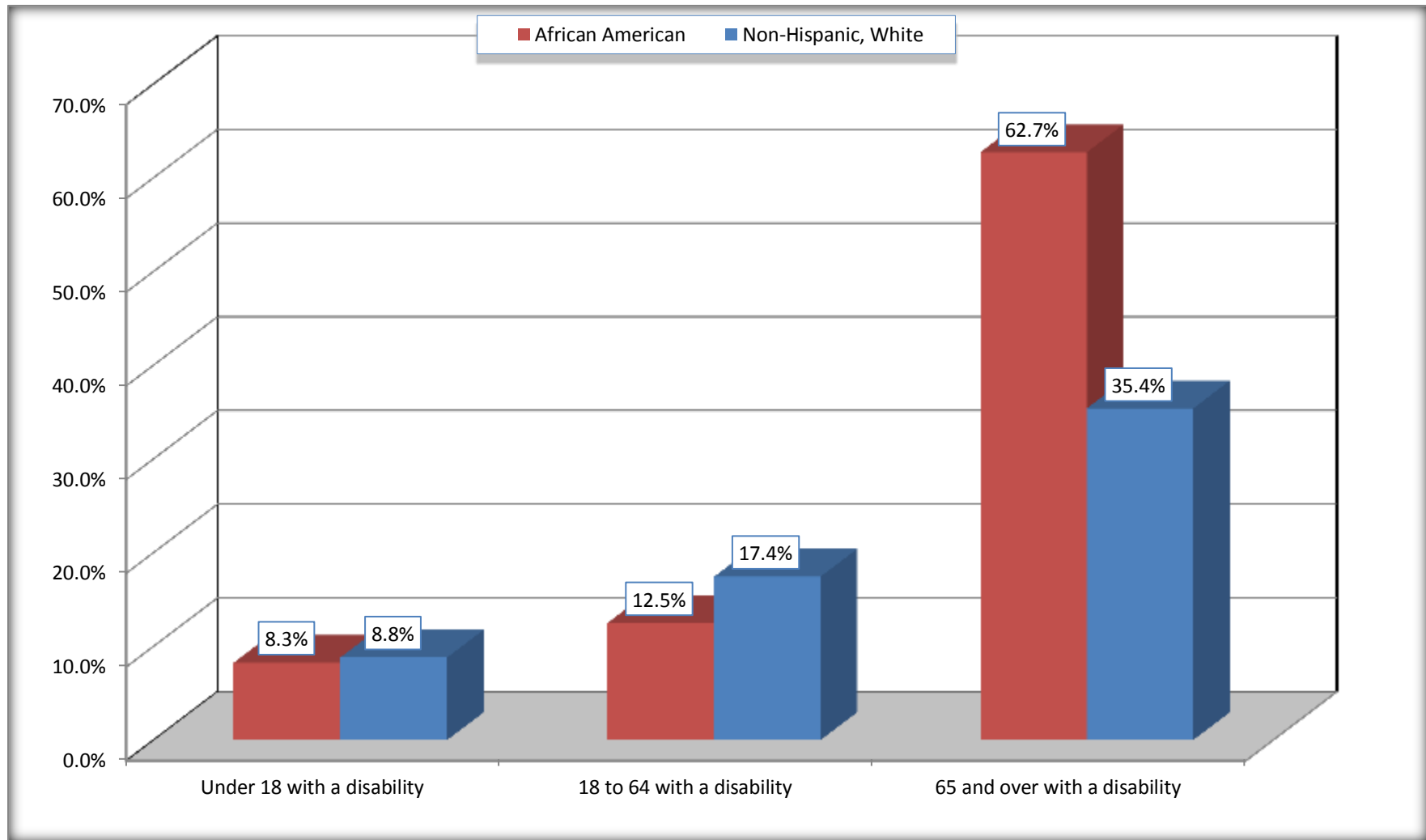
Source: U.S. Census Bureau, 2008-2012 American Community Survey

For information on confidentiality protection, sampling error, nonsampling error, and definitions, see Survey Methodology.

<http://www.census.gov/acs/www/UseData/index.htm>

Disability by Age

Rockingham city, North Carolina



Source: B18101. AGE BY DISABILITY STATUS
Data Set: 2008-2012 American Community Survey 5-Year Estimates

C27001B. HEALTH INSURANCE COVERAGE STATUS BY AGE

Data Set: 2008-2012 American Community Survey 5-Year Estimates

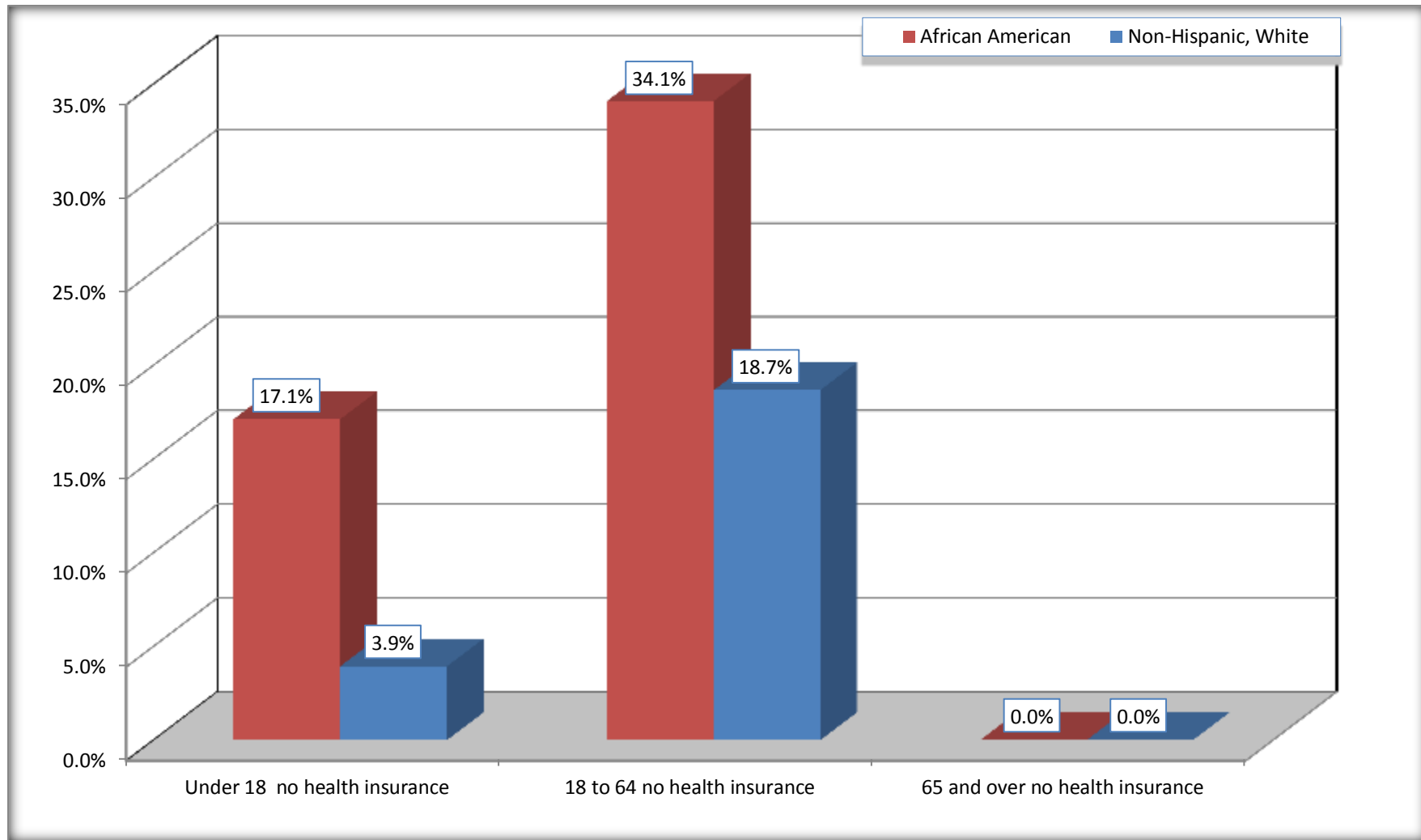
	Rockingham city, North Carolina					
	African American	Margin of Error (+/-)	% of AA Total	White, Not Hispanic	Margin of Error (+/-)	% of NHW Total
Total:	3,004	473	100.0%	5,429	548	100.0%
Under 18 years:	812	272	27.0%	1,067	215	19.7%
With health insurance coverage	673	270	22.4%	1,025	204	18.9%
No health insurance coverage	139	100	4.6%	42	64	0.8%
18 to 64 years:	1,956	335	65.1%	3,144	395	57.9%
With health insurance coverage	1,289	275	42.9%	2,557	319	47.1%
No health insurance coverage	667	270	22.2%	587	230	10.8%
65 years and over:	236	92	7.9%	1,218	169	22.4%
With health insurance coverage	236	92	7.9%	1,218	169	22.4%
No health insurance coverage	0	18	0.0%	0	18	0.0%

Source: U.S. Census Bureau, 2008-2012 American Community Survey

For information on confidentiality protection, sampling error, nonsampling error, and definitions, see Survey Methodology.

<http://www.census.gov/acs/www/UseData/index.htm>

Lack of Health Insurance Coverage by Age Rockingham city, North Carolina



Source: C27001B. HEALTH INSURANCE COVERAGE STATUS BY AGE
Data Set: 2008-2012 American Community Survey 5-Year Estimates