

Selected Socio-Economic Data

Pineville town, North Carolina

African American and White, Not Hispanic

Data Set: 2008-2012 American Community Survey 5-Year Estimates

www.fairvote2020.org

www.fairdata2000.com

[29-Dec-13](#)

C02003.DETAILED RACE - Universe: TOTAL POPULATION

Data Set: 2008-2012 American Community Survey 5-Year Estimates

	Pineville town, North Carolina		
	Population	Margin of Error (+/-)	% of Total
Total:	7,562	21	100.0%
Population of one race:	7,504	71	99.2%
White	4,505	546	59.6%
Black or African American	2,241	591	29.6%
American Indian and Alaska Native	0	18	0.0%
Asian alone	400	315	5.3%
Native Hawaiian and Other Pacific Islander	0	18	0.0%
Some other race	358	297	4.7%
Population of two or more races:	58	73	0.8%
Two races including Some other race	0	18	0.0%
Two races excluding Some other race, and three or more races	58	73	0.8%
Population of two races:	58	73	0.8%
White; Black or African American	29	63	0.4%
White; American Indian and Alaska Native	0	18	0.0%
White; Asian	14	34	0.2%
Black or African American; American Indian and Alaska Native	0	18	0.0%
All other two race combinations	15	24	0.2%
Population of three races	0	18	0.0%
Population of four or more races	0	18	0.0%

Note: Hispanics may be of any race. See Table B03002 and chart.

Source: U.S. Census Bureau, 2008-2012 American Community Survey

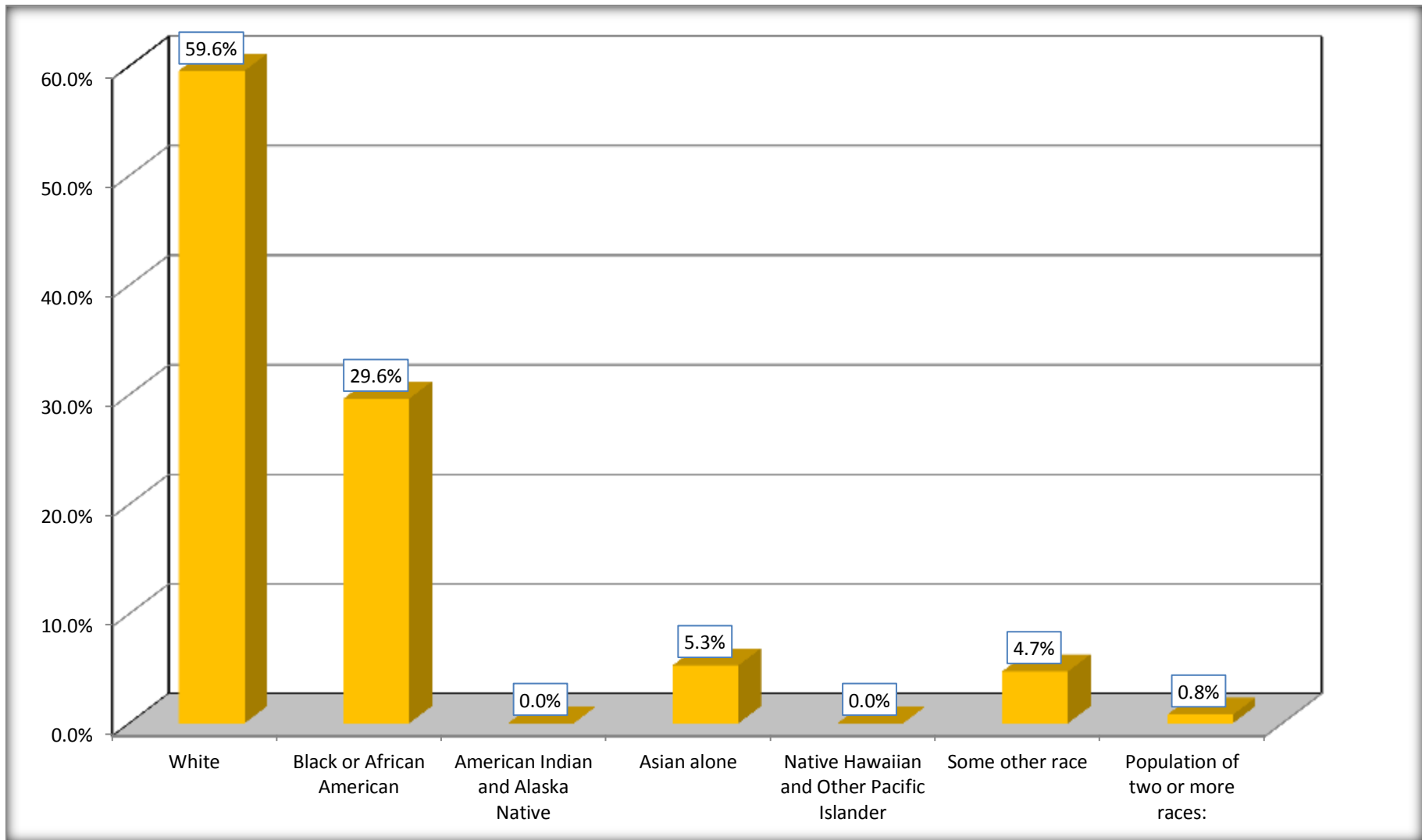
Although the American Community Survey (ACS) produces population, demographic and housing unit estimates, it is the Census Bureau's Population Estimates Program that produces and disseminates the official estimates of the population for the nation, states, counties, cities and towns and estimates of housing units for states and counties.

For information on confidentiality protection, sampling error, nonsampling error, and definitions, see Survey Methodology.

<http://www.census.gov/acs/www/UseData/index.htm>

Population by Race

Pineville town, North Carolina



Source: C02003.DETAILED RACE - Universe: TOTAL POPULATION
Data Set: 2008-2012 American Community Survey 5-Year Estimates

B03002. HISPANIC OR LATINO ORIGIN BY RACE - Universe: TOTAL POPULATION

Data Set: 2008-2012 American Community Survey 5-Year Estimates

	Pineville town, North Carolina		
	Population	Margin of Error (+/-)	% of Total
Total:	7,562	21	100.0%
Not Hispanic or Latino:	6,003	651	79.4%
White alone	3,713	542	49.1%
Black or African American alone	1,846	616	24.4%
American Indian and Alaska Native alone	0	18	0.0%
Asian alone	400	315	5.3%
Native Hawaiian and Other Pacific Islander alone	0	18	0.0%
Some other race alone	0	18	0.0%
Two or more races:	44	52	0.6%
Two races including Some other race	0	18	0.0%
Two races excluding Some other race, and three or more races	44	52	0.6%
Hispanic or Latino	1,559	657	20.6%

Source: U.S. Census Bureau, 2008-2012 American Community Survey

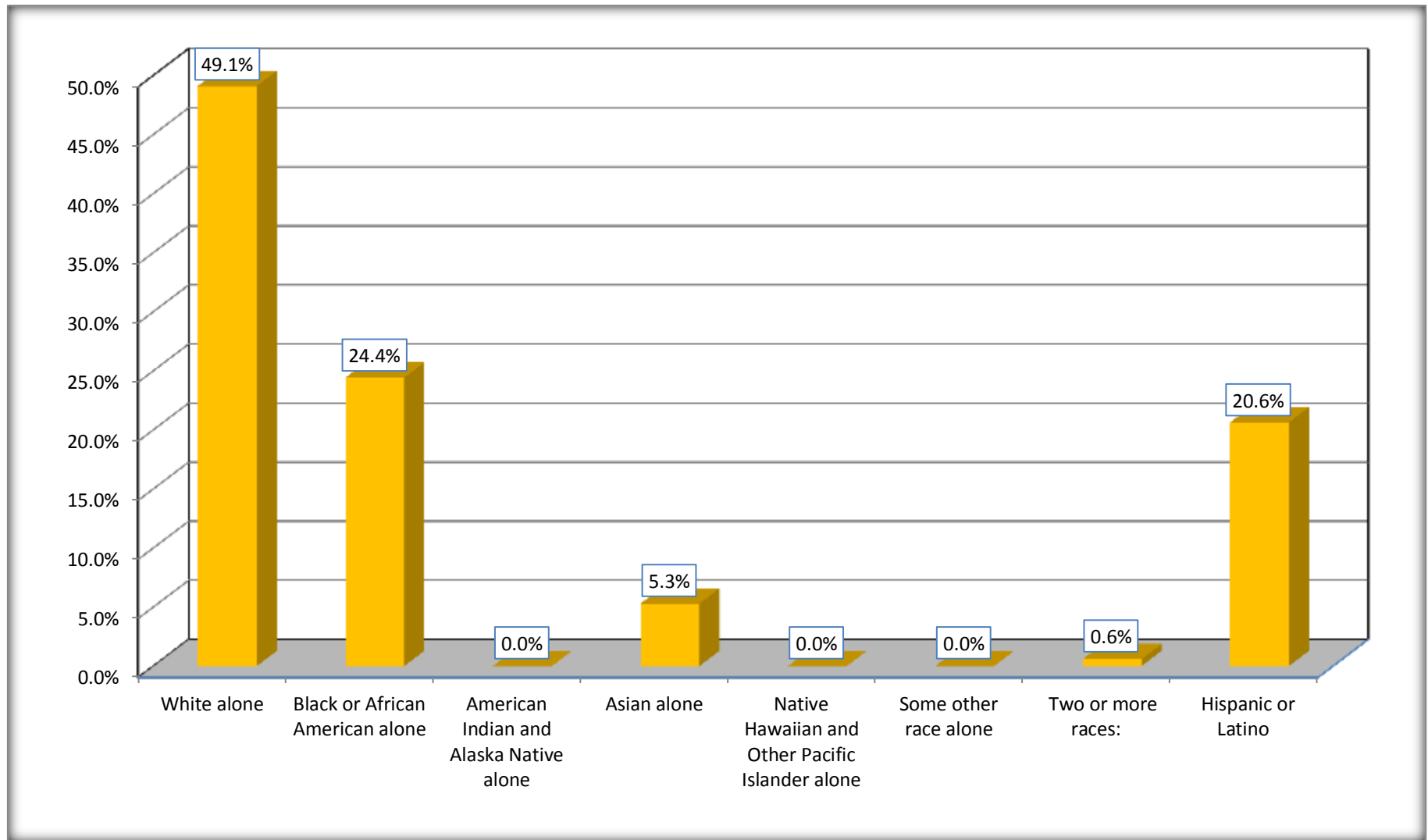
Although the American Community Survey (ACS) produces population, demographic and housing unit estimates, it is the Census Bureau's Population Estimates Program that produces and disseminates the official estimates of the population for the nation, states, counties, cities and towns and estimates of housing units for states and counties.

For information on confidentiality protection, sampling error, nonsampling error, and definitions, see Survey Methodology.

<http://www.census.gov/acs/www/UseData/index.htm>

Non-Hispanic by Race and Hispanic Population

Pineville town, North Carolina



Source: B03002. HISPANIC OR LATINO ORIGIN BY RACE - Universe: TOTAL POPULATION
Data Set: 2008-2012 American Community Survey 5-Year Estimates

B03002. HISPANIC OR LATINO ORIGIN BY RACE

Data Set: 2008-2012 American Community Survey 5-Year Estimates

	Pineville town, North Carolina		
	Population	Margin of Error (+/-)	% of Total
Hispanic or Latino:	1,559	657	100.0%
White alone	792	483	50.8%
Black or African American alone	395	407	25.3%
American Indian and Alaska Native alone	0	18	0.0%
Asian alone	0	18	0.0%
Native Hawaiian and Other Pacific Islander alone	0	18	0.0%
Some other race alone	358	297	23.0%
Two or more races:	14	30	0.9%
Two races including Some other race	0	18	0.0%
Two races excluding Some other race, and three or more races	14	30	0.9%

Source: U.S. Census Bureau, 2008-2012 American Community Survey

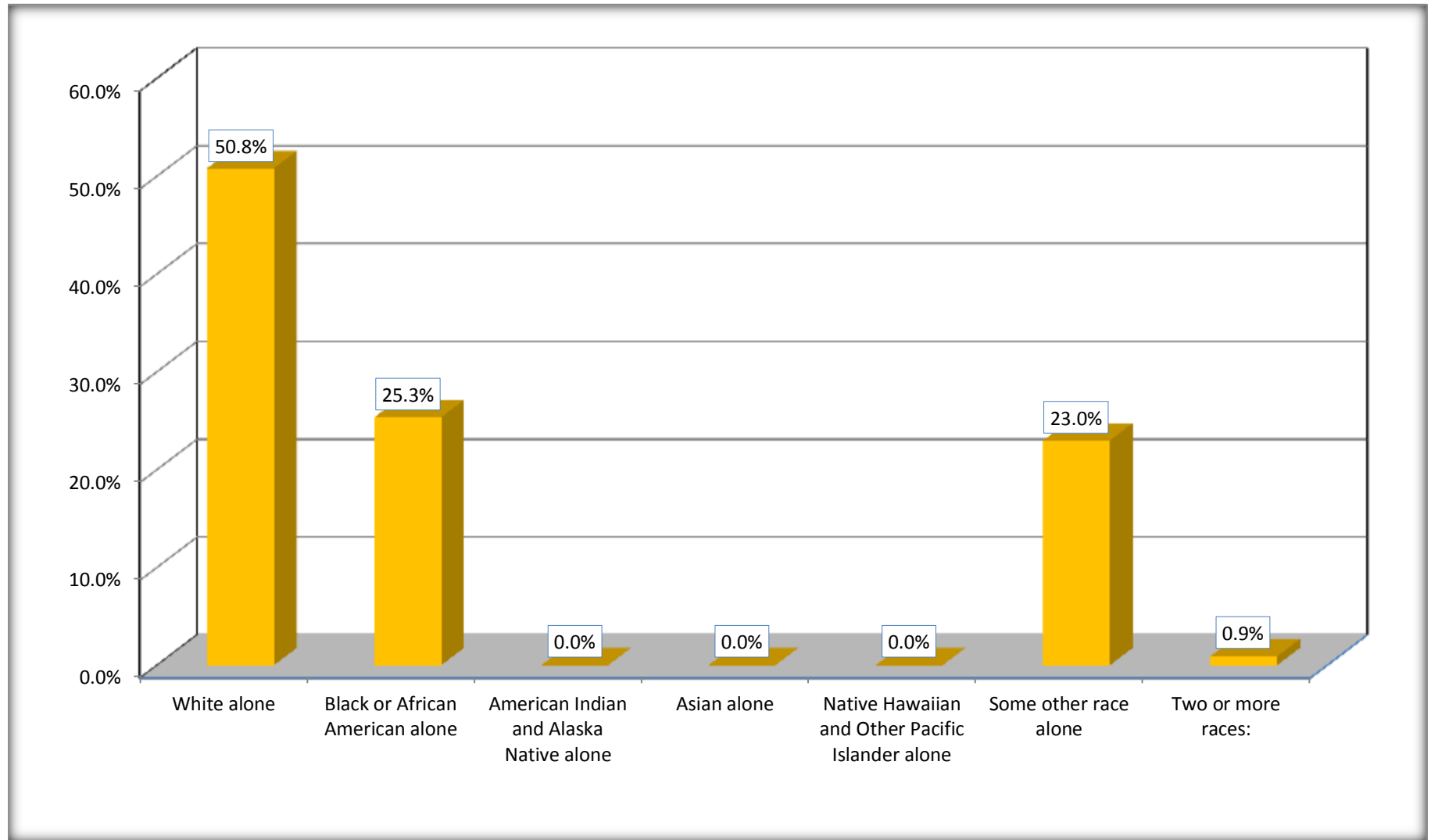
Although the American Community Survey (ACS) produces population, demographic and housing unit estimates, it is the Census Bureau's Population Estimates Program that produces and disseminates the official estimates of the population for the nation, states, counties, cities and towns and estimates of housing units for states and counties.

For information on confidentiality protection, sampling error, nonsampling error, and definitions, see Survey Methodology.

<http://www.census.gov/acs/www/UseData/index.htm>

Hispanic or Latino Origin by Race

Pineville town, North Carolina



Source: B03002. HISPANIC OR LATINO ORIGIN BY RACE
Data Set: 2008-2012 American Community Survey 5-Year Estimates

B01001. SEX BY AGE

Data Set: 2008-2012 American Community Survey 5-Year Estimates

	Pineville town, North Carolina					
	African American	Margin of Error (+/-)	% of AA Total	White, Not Hispanic	Margin of Error (+/-)	% of NHW Total
Total:	2,241	591	100.0%	3,713	542	100.0%
Under 18 years	701	NC	31.3%	336	NC	9.0%
18 to 64 years	1,455	NC	64.9%	2,119	NC	57.1%
65 years and over	85	NC	3.8%	1,258	NC	33.9%
Male:	946	344	42.2%	1,571	389	42.3%
Under 18 years	254	NC	11.3%	136	NC	3.7%
18 to 64 years	662	NC	29.5%	1,062	NC	28.6%
65 years and over	30	NC	1.3%	373	NC	10.0%
Female:	1,295	334	57.8%	2,142	412	57.7%
Under 18 years	447	NC	19.9%	200	NC	5.4%
18 to 64 years	793	NC	35.4%	1,057	NC	28.5%
65 years and over	55	NC	2.5%	885	NC	23.8%

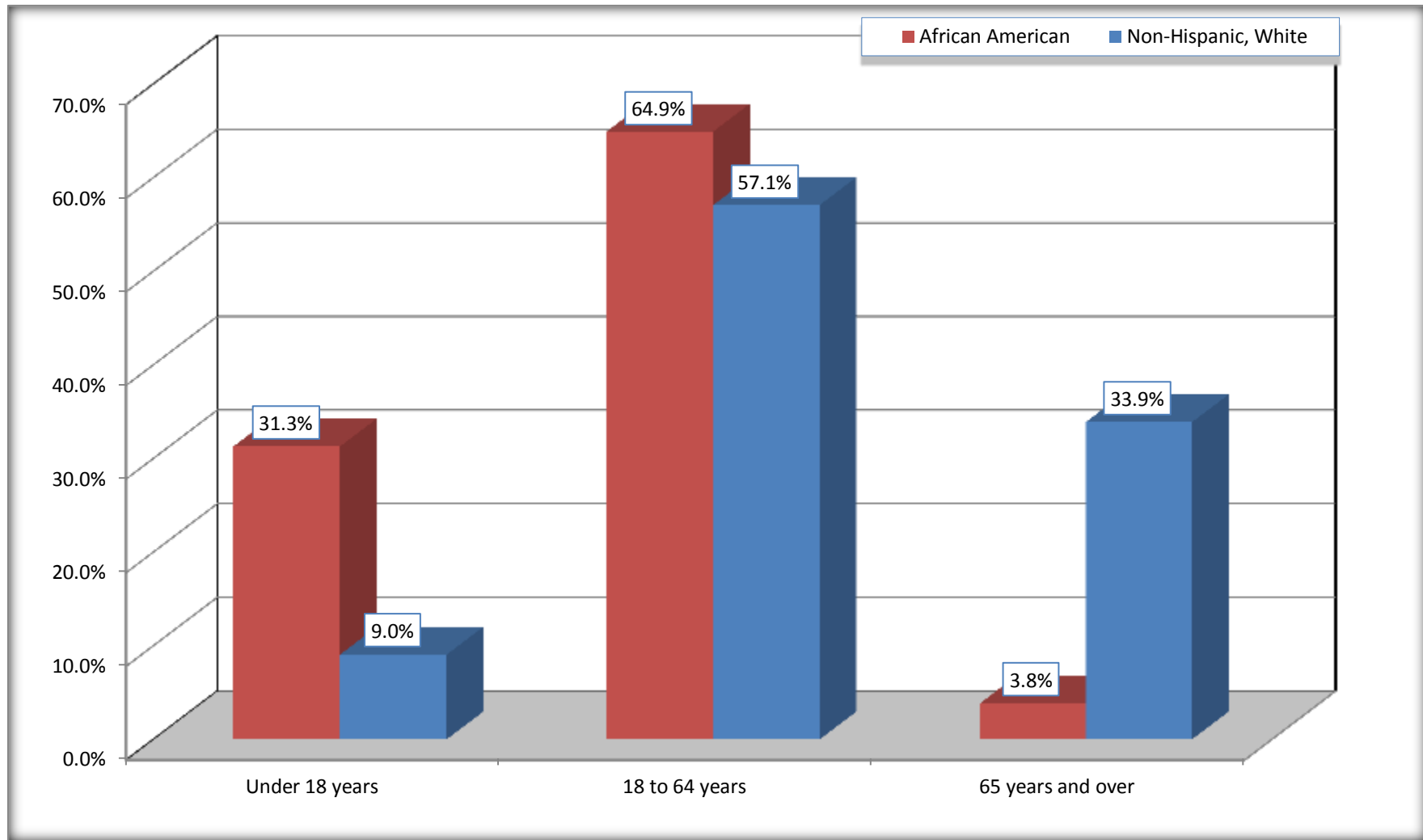
Source: U.S. Census Bureau, 2008-2012 American Community Survey

Although the American Community Survey (ACS) produces population, demographic and housing unit estimates, it is the Census Bureau's Population Estimates Program that produces and disseminates the official estimates of the population for the nation, states, counties, cities and towns and estimates of housing units for states and counties.

For information on confidentiality protection, sampling error, nonsampling error, and definitions, see Survey Methodology.
<http://www.census.gov/acs/www/UseData/index.htm>

Population by Age

Pineville town, North Carolina



Source: B01001. SEX BY AGE
Data Set: 2008-2012 American Community Survey 5-Year Estimates

B05003. SEX BY AGE BY CITIZENSHIP STATUS

Data Set: 2008-2012 American Community Survey 5-Year Estimates

	Pineville town, North Carolina					
	African American	Margin of Error (+/-)	% of AA Total by Age	White, Not Hispanic	Margin of Error (+/-)	% of NHW Total by Age
Total:	2,241	591	100.0%	3,713	542	100.0%
Under 18 years:	701	NC	100.0%	336	NC	100.0%
Native	701	NC	100.0%	336	NC	100.0%
Foreign born:	0	NC	0.0%	0	NC	0.0%
Naturalized U.S. citizen	0	NC	0.0%	0	NC	0.0%
Not a U.S. citizen	0	NC	0.0%	0	NC	0.0%
18 years and over:	1,540	NC	100.0%	3,377	NC	100.0%
Native	1,368	NC	88.8%	3,355	NC	99.3%
Foreign born:	172	NC	11.2%	22	NC	0.7%
Naturalized U.S. citizen	7	NC	0.5%	14	NC	0.4%
Not a U.S. citizen	165	NC	10.7%	8	NC	0.2%
Male:	946	344	42.2%	1,571	385	42.3%
Under 18 years:	254	239	100.0%	136	87	100.0%
Native	254	239	100.0%	136	87	100.0%
Foreign born:	0	18	0.0%	0	18	0.0%
Naturalized U.S. citizen	0	18	0.0%	0	18	0.0%
Not a U.S. citizen	0	18	0.0%	0	18	0.0%
18 years and over:	692	196	100.0%	1,435	358	100.0%
Native	623	207	90.0%	1,421	354	99.0%
Foreign born:	69	72	10.0%	14	23	1.0%
Naturalized U.S. citizen	7	22	1.0%	14	23	1.0%
Not a U.S. citizen	62	66	9.0%	0	18	0.0%

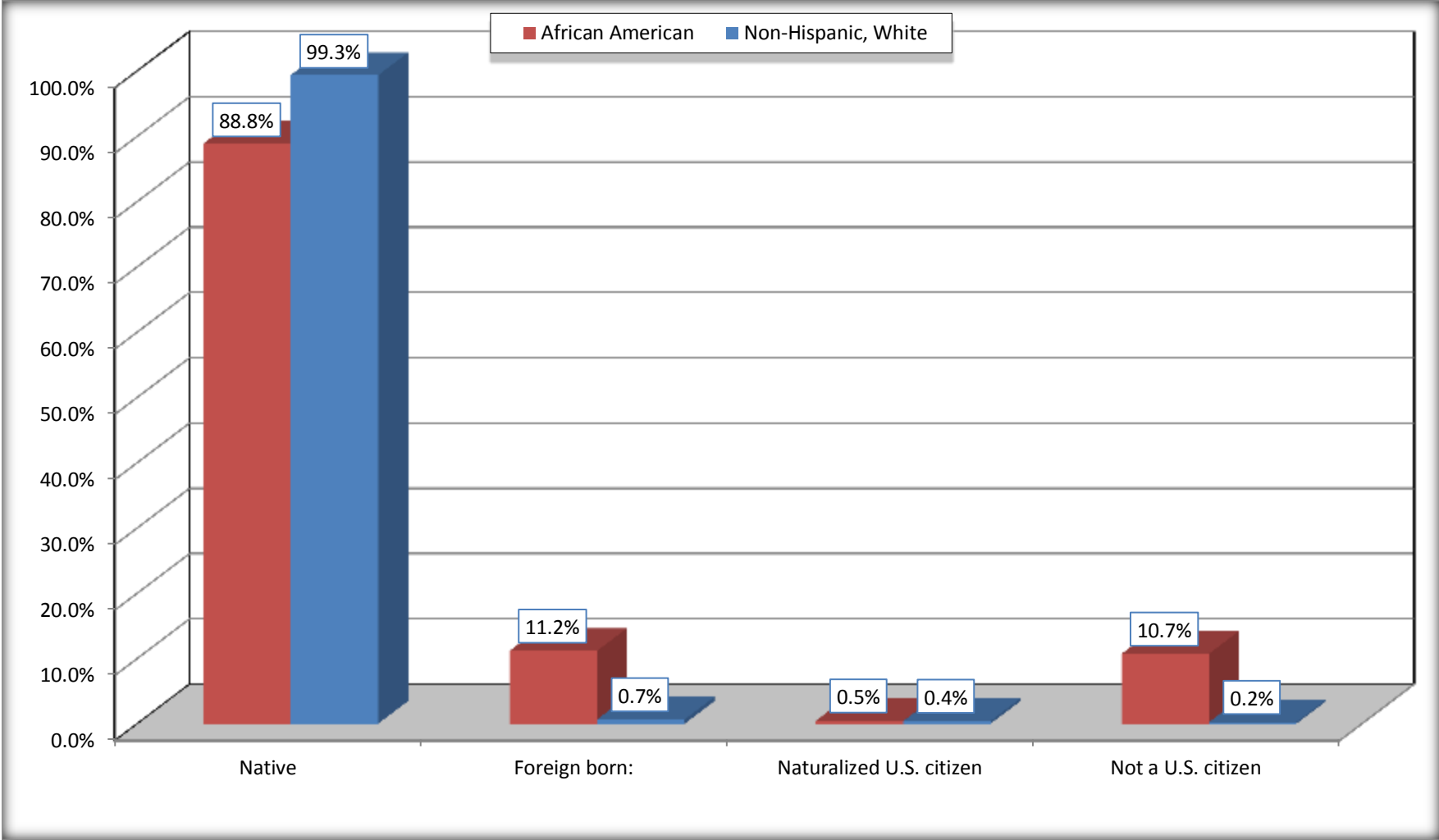
	Pineville town, North Carolina					
	African American	Margin of Error (+/-)	% of AA by Age	White, Not Hispanic	Margin of Error (+/-)	% of NHW by Age
Female:	1,295	334	57.8%	2,142	321	57.7%
Under 18 years:	447	258	100.0%	200	136	100.0%
Native	447	258	100.0%	200	136	100.0%
Foreign born:	0	18	0.0%	0	18	0.0%
Naturalized U.S. citizen	0	18	0.0%	0	18	0.0%
Not a U.S. citizen	0	18	0.0%	0	18	0.0%
18 years and over:	848	183	100.0%	1,942	276	100.0%
Native	745	195	87.9%	1,934	276	99.6%
Foreign born:	103	87	12.1%	8	13	0.4%
Naturalized U.S. citizen	0	18	0.0%	0	18	0.0%
Not a U.S. citizen	103	87	12.1%	8	13	0.4%

Source: U.S. Census Bureau, 2008-2012 American Community Survey

For information on confidentiality protection, sampling error, nonsampling error, and definitions, see Survey Methodology.
<http://www.census.gov/acs/www/UseData/index.htm>

Citizenship Status of Voting Age Population (18 and Over)

Pineville town, North Carolina



Source: B05003. SEX BY AGE BY CITIZENSHIP STATUS
Data Set: 2008-2012 American Community Survey 5-Year Estimates

**B07004. GEOGRAPHICAL MOBILITY IN THE PAST YEAR BY RACE FOR CURRENT RESIDENCE IN THE UNITED STATES - Universe:
POPULATION 1 YEAR AND OVER**

Data Set: 2008-2012 American Community Survey 5-Year Estimates

	Pineville town, North Carolina					
	African American	Margin of Error (+/-)	% of AA Total	White, Not Hispanic	Margin of Error (+/-)	% of NHW Total
Total:	2,241	591	100.0%	3,690	538	100.0%
Same house 1 year ago	1,310	577	58.5%	2,855	478	77.4%
Moved within same county	586	360	26.1%	314	158	8.5%
Moved from different county within same state	88	99	3.9%	223	209	6.0%
Moved from different state	251	229	11.2%	291	171	7.9%
Moved from abroad	6	12	0.3%	7	11	0.2%

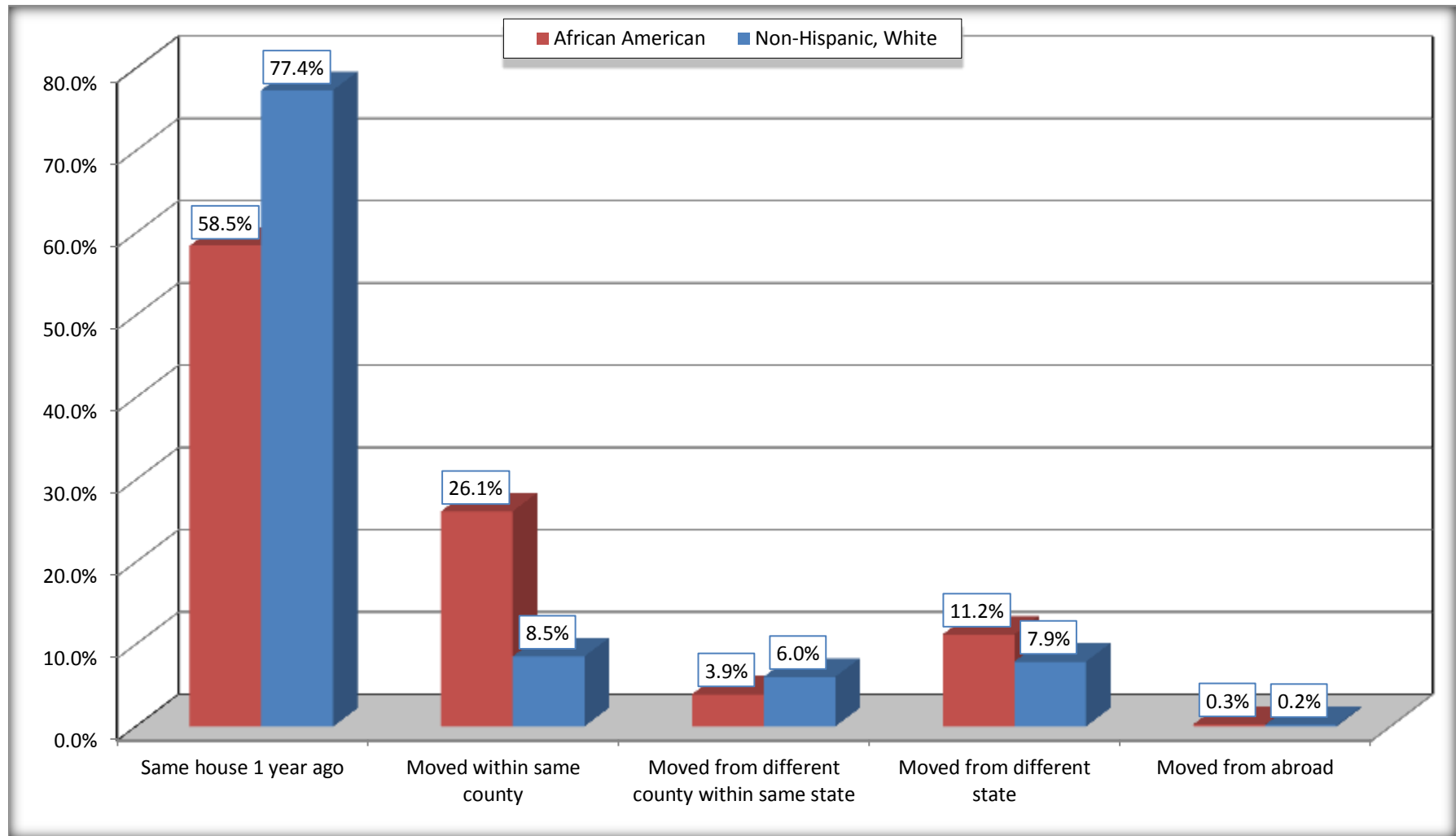
Source: U.S. Census Bureau, 2008-2012 American Community Survey

For information on confidentiality protection, sampling error, nonsampling error, and definitions, see Survey Methodology.

<http://www.census.gov/acs/www/UseData/index.htm>

Geographical Mobility in the Past Year (Population 1 Year and Over)

Pineville town, North Carolina



Source: B07004. GEOGRAPHICAL MOBILITY IN THE PAST YEAR BY RACE FOR CURRENT RESIDENCE IN THE UNITED STATES - Universe: POPULATION 1 YEAR AND OVER

Data Set: 2008-2012 American Community Survey 5-Year Estimates

B08105. MEANS OF TRANSPORTATION TO WORK - Universe: WORKERS 16 YEARS AND OVER

Data Set: 2008-2012 American Community Survey 5-Year Estimates

	Pineville town, North Carolina					
	African American	Margin of Error (+/-)	% of AA Total	White, Not Hispanic	Margin of Error (+/-)	% of NHW Total
Total:	936	251	100.0%	1749	351	100.0%
Car, truck, or van - drove alone	662	223	70.7%	1531	307	87.5%
Car, truck, or van - carpooled	101	103	10.8%	169	133	9.7%
Public transportation (excluding taxicab)	62	66	6.6%	15	27	0.9%
Walked	111	107	11.9%	0	18	0.0%
Taxicab, motorcycle, bicycle, or other means	0	18	0.0%	7	11	0.4%
Worked at home	0	18	0.0%	27	35	1.5%

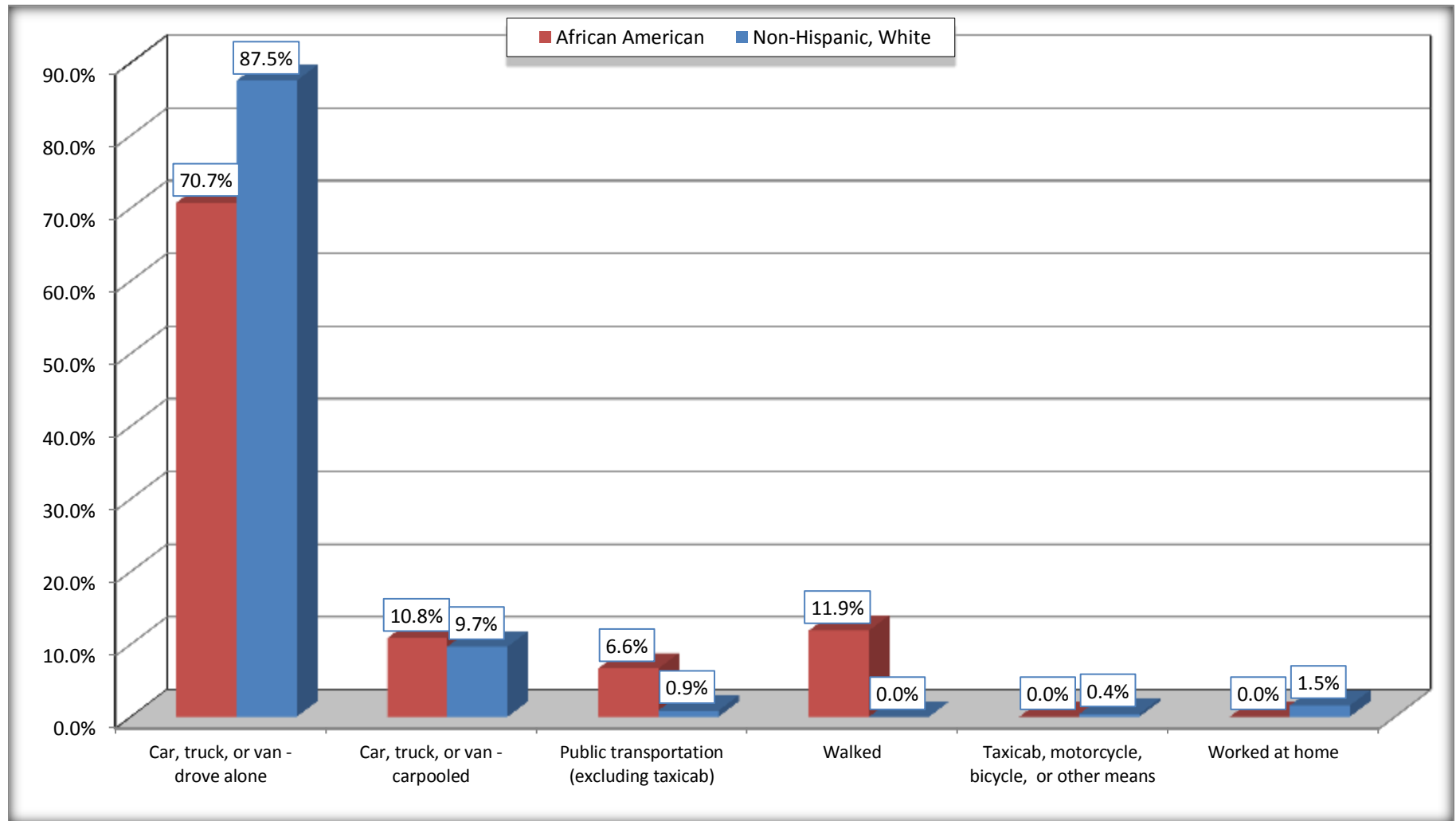
Source: U.S. Census Bureau, 2008-2012 American Community Survey

For information on confidentiality protection, sampling error, nonsampling error, and definitions, see Survey Methodology.

<http://www.census.gov/acs/www/UseData/index.htm>

Means of Transportation to Work (Workers 16 Years and Over)

Pineville town, North Carolina



Source: B08105. MEANS OF TRANSPORTATION TO WORK - Universe: WORKERS 16 YEARS AND OVER
Data Set: 2008-2012 American Community Survey 5-Year Estimates

B11002. HOUSEHOLD TYPE BY RELATIVES AND NONRELATIVES FOR POPULATION IN HOUSEHOLDS

Data Set: 2008-2012 American Community Survey 5-Year Estimates

	Pineville town, North Carolina					
	African American	Margin of Error (+/-)	% of AA Total	White, Not Hispanic	Margin of Error (+/-)	% of NHW Total
Total:	2157	629	100.0%	3793	572	100.0%
In family households	1810	668	83.9%	1889	486	49.8%
In nonfamily households	347	158	16.1%	1904	435	50.2%

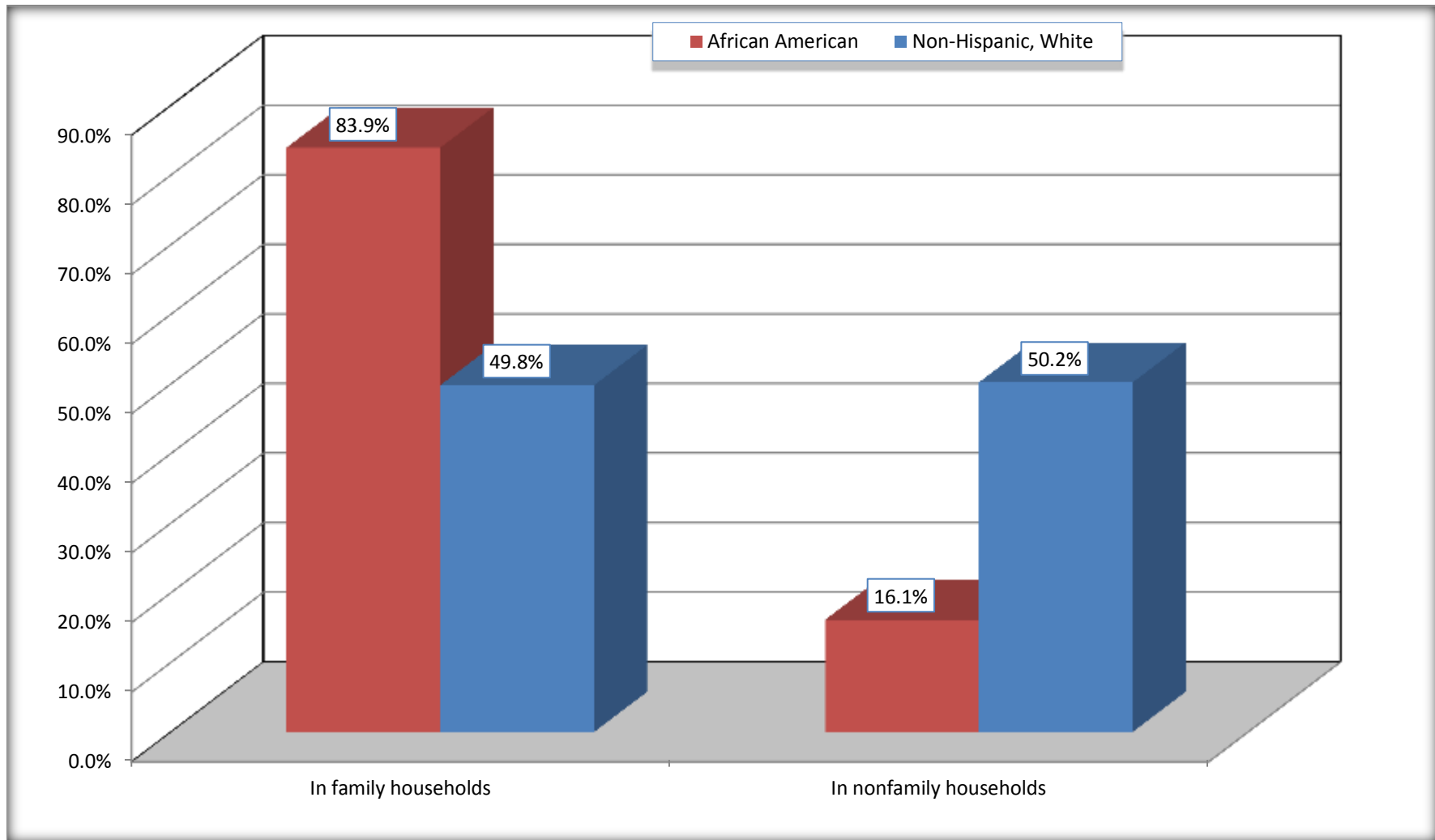
Source: U.S. Census Bureau, 2008-2012 American Community Survey

For information on confidentiality protection, sampling error, nonsampling error, and definitions, see Survey Methodology.

<http://www.census.gov/acs/www/UseData/index.htm>

Household Type for Population in Households

Pineville town, North Carolina



Source: B11002. HOUSEHOLD TYPE BY RELATIVES AND NONRELATIVES FOR POPULATION IN HOUSEHOLDS
Data Set: 2008-2012 American Community Survey 5-Year Estimates

B12002. MARITAL STATUS FOR THE POPULATION 15 YEARS AND OVER

Data Set: 2008-2012 American Community Survey 5-Year Estimates

	Pineville town, North Carolina					
	African American	Margin of Error (+/-)	% of AA Total	White, Not Hispanic	Margin of Error (+/-)	% of NHW Total
Total:	1,582	338	100.0%	3,420	477	100.0%
Never married	808	NC	51.1%	853	NC	24.9%
Now married (except separated)	415	NC	26.2%	1,027	NC	30.0%
Separated	14	NC	0.9%	278	NC	8.1%
Widowed	62	NC	3.9%	613	NC	17.9%
Divorced	283	NC	17.9%	649	NC	19.0%
Male:	692	196	43.7%	1,453	364	42.5%
Never married	375	173	23.7%	494	233	14.4%
Now married (except separated)	216	104	13.7%	521	169	15.2%
Separated	0	18	0.0%	201	124	5.9%
Widowed	26	30	1.6%	64	67	1.9%
Divorced	75	94	4.7%	173	91	5.1%
Female:	890	202	56.3%	1,967	288	57.5%
Never married	433	202	27.4%	359	169	10.5%
Now married (except separated)	199	111	12.6%	506	165	14.8%
Separated	14	28	0.9%	77	85	2.3%
Widowed	36	52	2.3%	549	190	16.1%
Divorced	208	111	13.1%	476	176	13.9%

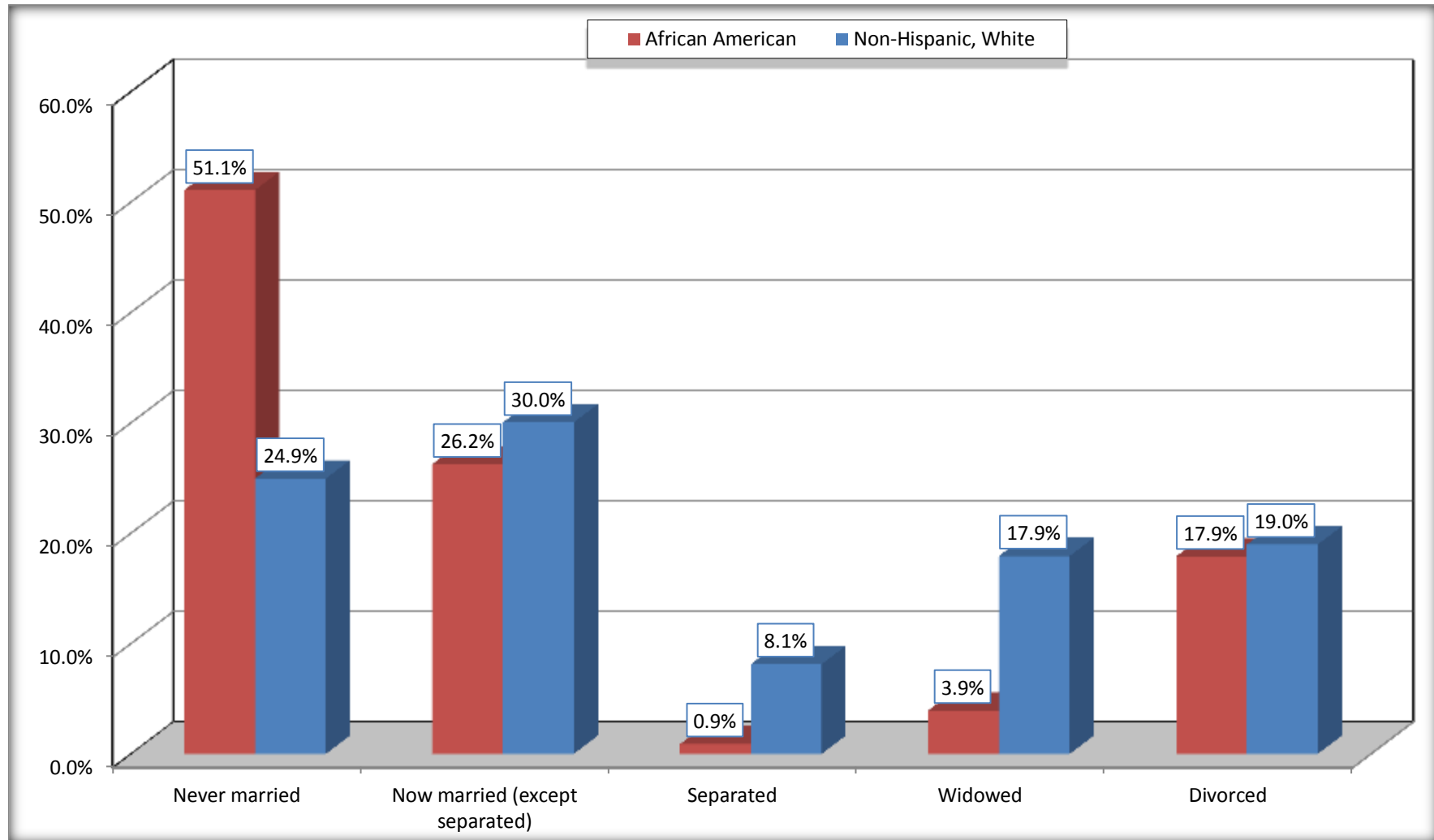
Source: U.S. Census Bureau, 2008-2012 American Community Survey

For information on confidentiality protection, sampling error, nonsampling error, and definitions, see Survey Methodology.

<http://www.census.gov/acs/www/UseData/index.htm>

Marital Status for the Population 15 Years and Over

Pineville town, North Carolina



Source: B12002. MARITAL STATUS FOR THE POPULATION 15 YEARS AND OVER
Data Set: 2008-2012 American Community Survey 5-Year Estimates

C15002. SEX BY EDUCATIONAL ATTAINMENT FOR THE POPULATION 25 YEARS AND OVER

Data Set: 2008-2012 American Community Survey 5-Year Estimates

	Pineville town, North Carolina					
	African American	Margin of Error (+/-)	% of AA Total	White, Not Hispanic	Margin of Error (+/-)	% of NHW Total
Total:	1,340	315	100.0%	3,261	471	100.0%
Less than high school diploma	408	NC	30.4%	348	NC	10.7%
High school graduate, GED, or alternative	317	NC	23.7%	936	NC	28.7%
Some college or associate's degree	306	NC	22.8%	1,093	NC	33.5%
Bachelor's degree or higher	309	NC	23.1%	884	NC	27.1%
Male:	631	196	47.1%	1,410	359	43.2%
Less than high school diploma	258	177	19.3%	161	116	4.9%
High school graduate, GED, or alternative	180	141	13.4%	422	142	12.9%
Some college or associate's degree	68	70	5.1%	356	197	10.9%
Bachelor's degree or higher	125	107	9.3%	471	181	14.4%
Female:	709	186	52.9%	1,851	271	56.8%
Less than high school diploma	150	144	11.2%	187	91	5.7%
High school graduate, GED, or alternative	137	101	10.2%	514	175	15.8%
Some college or associate's degree	238	109	17.8%	737	212	22.6%
Bachelor's degree or higher	184	129	13.7%	413	118	12.7%

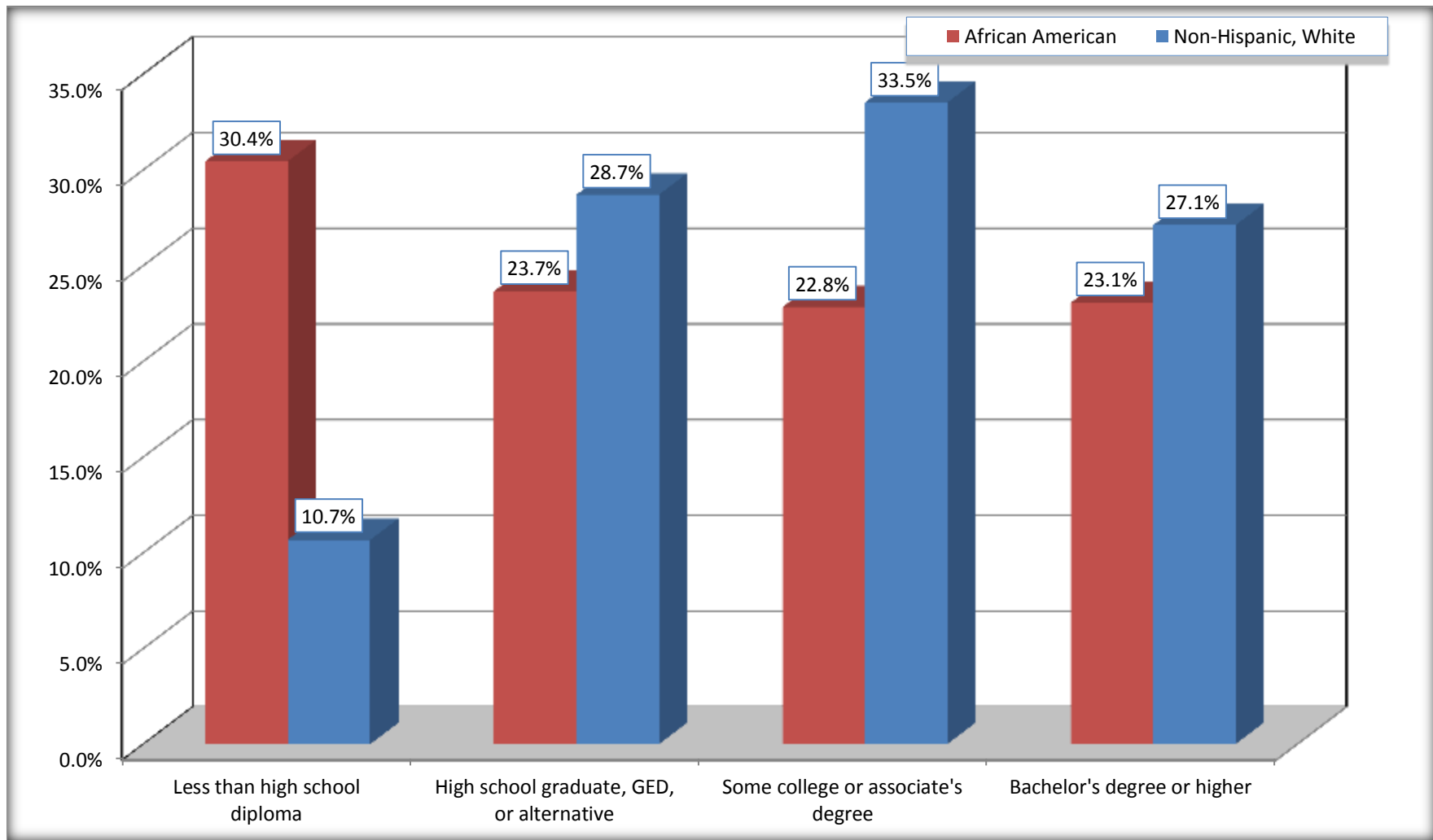
Source: U.S. Census Bureau, 2008-2012 American Community Survey

For information on confidentiality protection, sampling error, nonsampling error, and definitions, see Survey Methodology.

<http://www.census.gov/acs/www/UseData/index.htm>

Educational Attainment for the Population 25 Years and Older

Pineville town, North Carolina



Source: C15002. SEX BY EDUCATIONAL ATTAINMENT FOR THE POPULATION 25 YEARS AND OVER
Data Set: 2008-2012 American Community Survey 5-Year Estimates

B17010. POVERTY STATUS IN THE PAST 12 MONTHS OF FAMILIES BY FAMILY TYPE BY PRESENCE OF RELATED CHILDREN UNDER 18 YEARS

Data Set: 2008-2012 American Community Survey 5-Year Estimates

	Pineville town, North Carolina					
	African American	Margin of Error (+/-)	% of AA Total	White, Not Hispanic	Margin of Error (+/-)	% of NHW Total
Total:	541	177	100.0%	721	174	100.0%
Income in the past 12 months below poverty level:	117	138	21.6%	80	70	11.1%
Married-couple family:	0	18	0.0%	38	43	5.3%
With related children under 18 years	0	18	0.0%	38	43	5.3%
Other family:	117	138	21.6%	42	55	5.8%
Male householder, no wife present	78	126	14.4%	0	18	0.0%
With related children under 18 years	78	126	14.4%	0	18	0.0%
Female householder, no husband present	39	61	7.2%	42	55	5.8%
With related children under 18 years	39	61	7.2%	42	55	5.8%
Income in the past 12 months at or above poverty level:	424	167	78.4%	641	164	88.9%
Married-couple family:	198	115	36.6%	435	151	60.3%
With related children under 18 years	90	65	16.6%	111	78	15.4%
Other family:	226	146	41.8%	206	78	28.6%
Male householder, no wife present	24	38	4.4%	47	46	6.5%
With related children under 18 years	24	38	4.4%	20	33	2.8%
Female householder, no husband present	202	138	37.3%	159	79	22.1%
With related children under 18 years	50	63	9.2%	23	27	3.2%

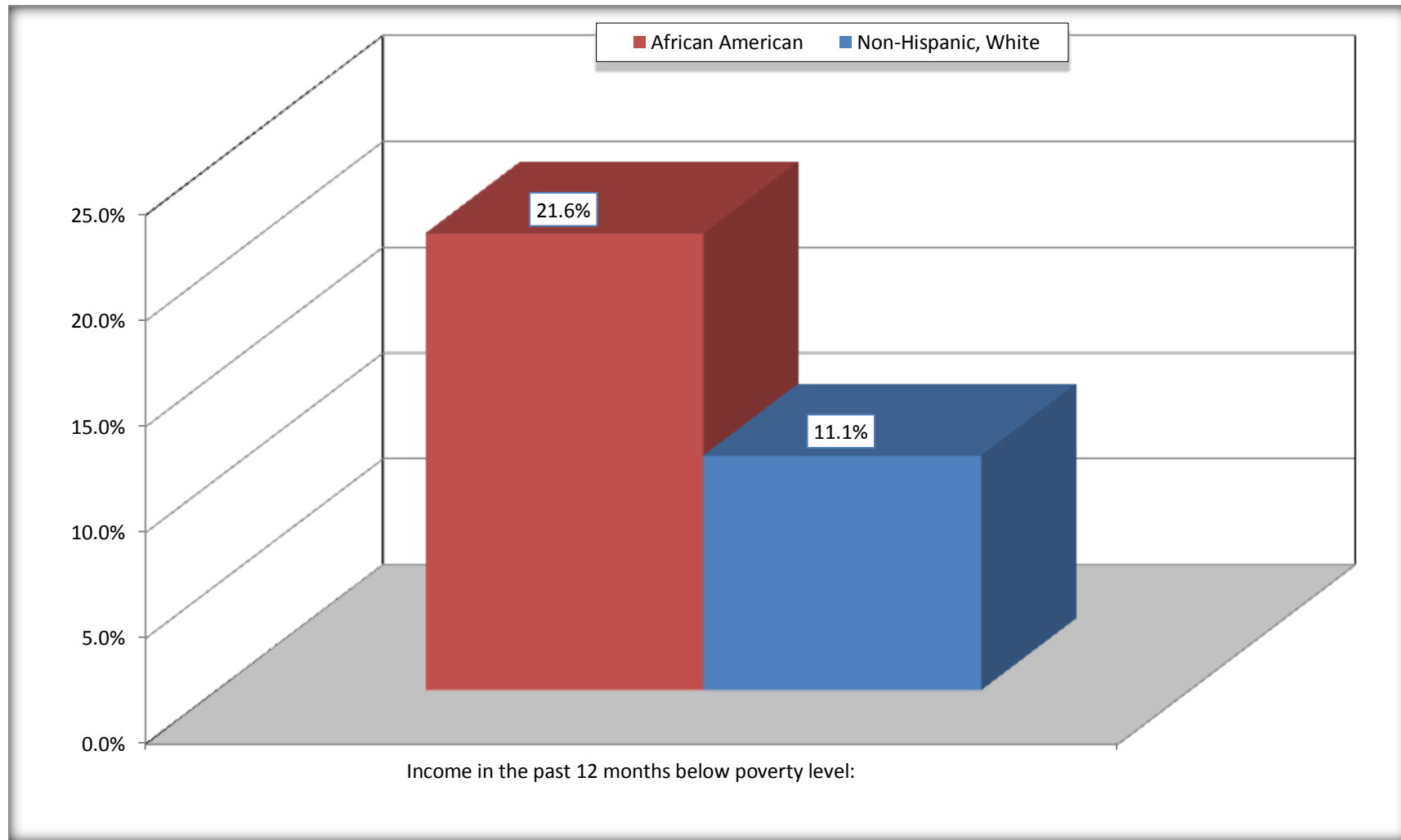
Source: U.S. Census Bureau, 2008-2012 American Community Survey

For information on confidentiality protection, sampling error, nonsampling error, and definitions, see Survey Methodology.

<http://www.census.gov/acs/www/UseData/index.htm>

Family Households Below Poverty in the Past 12 Months

Pineville town, North Carolina

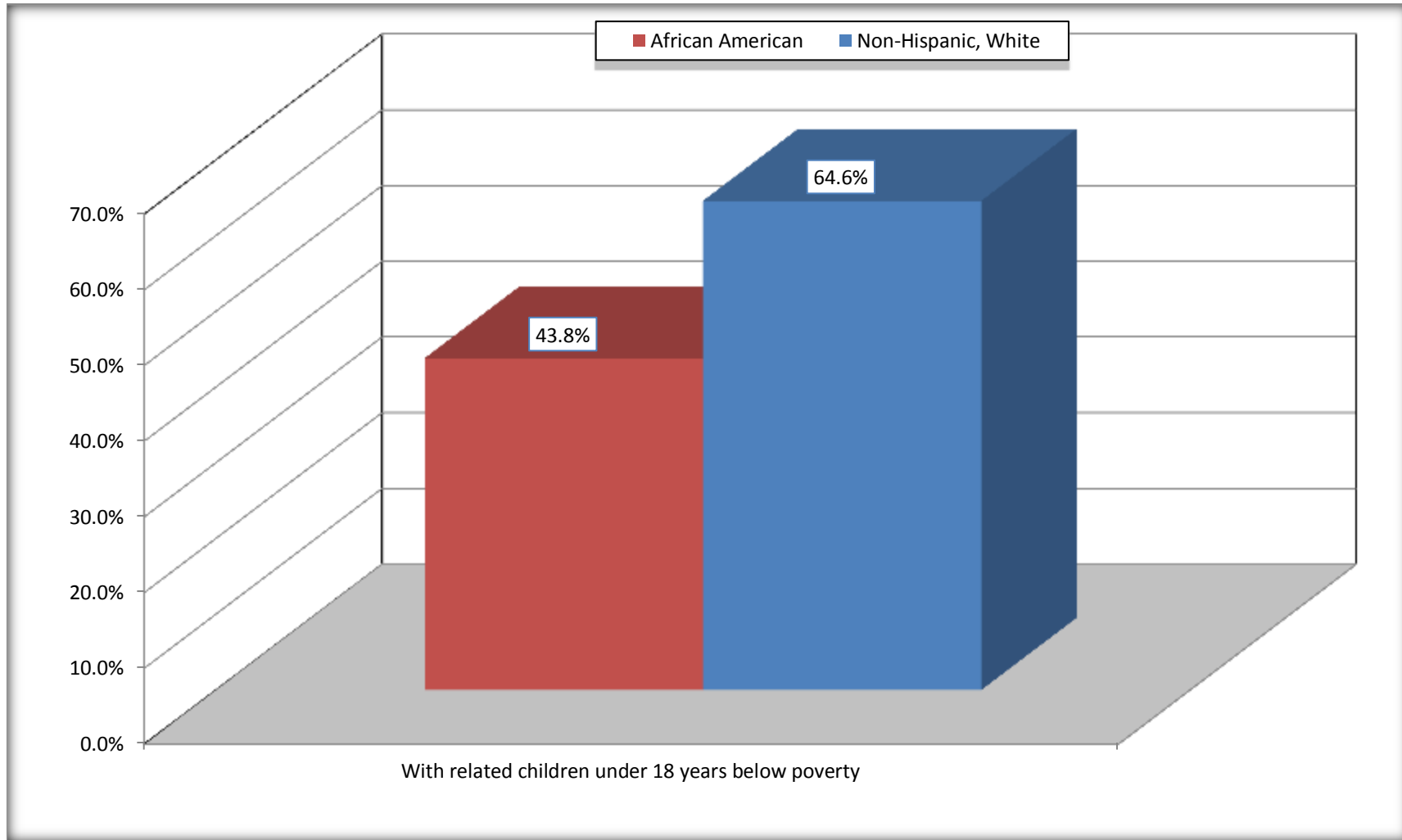


Source: B17010. POVERTY STATUS IN THE PAST 12 MONTHS OF FAMILIES BY FAMILY TYPE BY PRESENCE OF RELATED CHILDREN UNDER 18 YEARS

Data Set: 2008-2012 American Community Survey 5-Year Estimates

Female-headed Households with Related Children Below Poverty in the Past 12 Months

Pineville town, North Carolina



Source: B17010. POVERTY STATUS IN THE PAST 12 MONTHS OF FAMILIES BY FAMILY TYPE BY PRESENCE OF RELATED CHILDREN UNDER 18 YEARS

Data Set: 2008-2012 American Community Survey 5-Year Estimates

B17020 POVERTY STATUS IN THE PAST 12 MONTHS BY AGE - Universe: POPULATION FOR WHOM POVERTY STATUS IS DETERMINED

Data Set: 2008-2012 American Community Survey 5-Year Estimates

	Pineville town, North Carolina					
	African American	Margin of Error (+/-)	% of AA By Age	White, Not Hispanic	Margin of Error (+/-)	% of NHW By Age
Total:	2,173	598	100.0%	3,618	559	100.0%
Income in the past 12 months below poverty level:	673	643	31.0%	473	269	13.1%
Under 18 years	314	NC	44.8%	125	NC	37.2%
18 to 64 years	359	275	24.7%	243	130	11.5%
65 years and over	0	NC	0.0%	105	NC	8.9%
Income in the past 12 months at or above poverty level:	1,500	463	69.0%	3,145	492	86.9%
Under 18 years	387	NC	55.2%	211	NC	62.8%
18 to 64 years	1,092	352	75.3%	1,864	363	88.5%
65 years and over	21	NC	100.0%	1,070	NC	91.1%

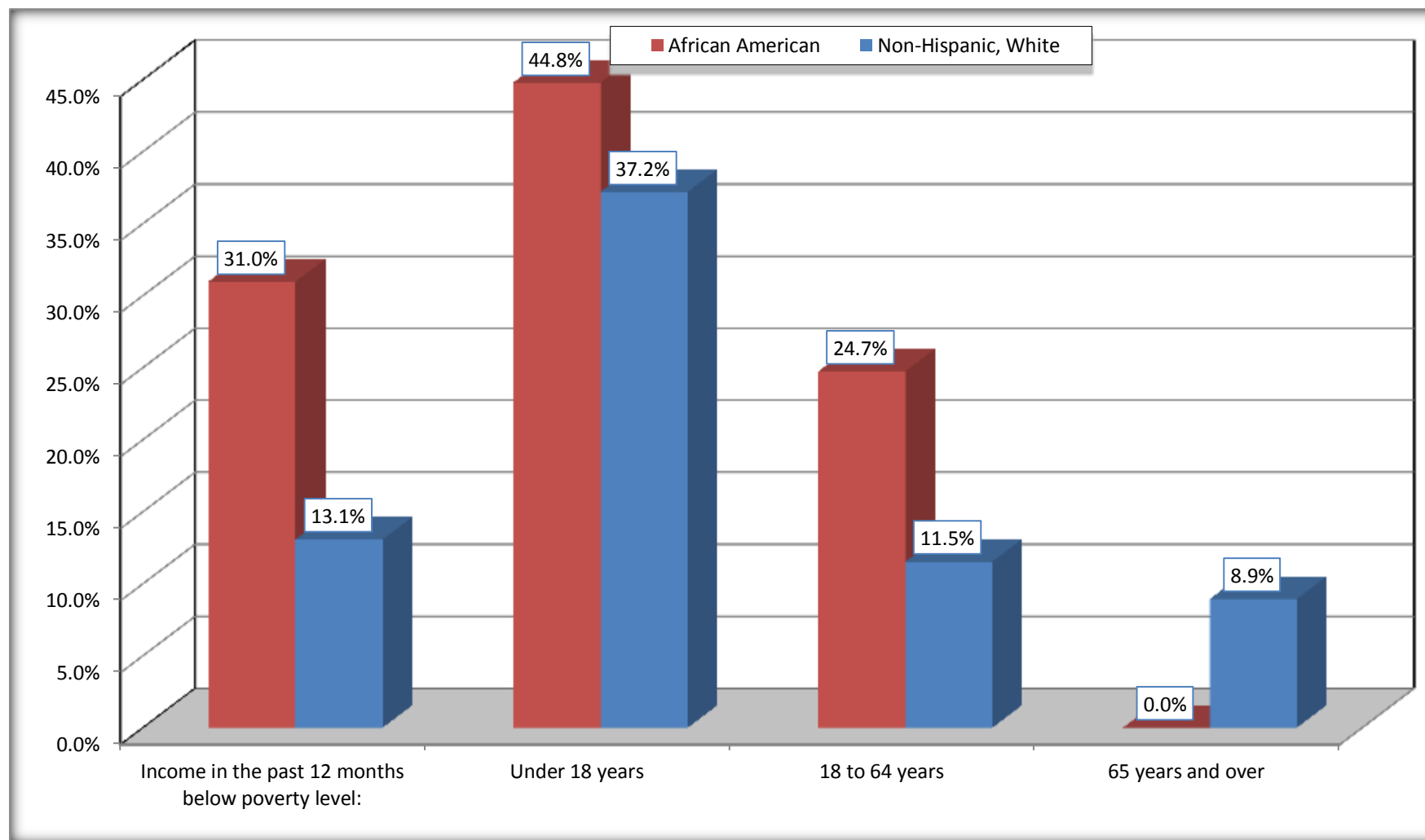
Source: U.S. Census Bureau, 2008-2012 American Community Survey

For information on confidentiality protection, sampling error, nonsampling error, and definitions, see Survey Methodology.

<http://www.census.gov/acs/www/UseData/index.htm>

Population Below Poverty in the Past 12 Months

Pineville town, North Carolina



Source: B17020 POVERTY STATUS IN THE PAST 12 MONTHS BY AGE - Universe: POPULATION FOR WHOM POVERTY STATUS IS DETERMINED
Data Set: 2008-2012 American Community Survey 5-Year Estimates

B19001. HOUSEHOLD INCOME IN THE PAST 12 MONTHS (IN 2010 INFLATION-ADJUSTED DOLLARS)

Data Set: 2008-2012 American Community Survey 5-Year Estimates

	Pineville town, North Carolina					
	African American	Margin of Error (+/-)	% of AA Total	White, Not Hispanic	Margin of Error (+/-)	% of NHW Total
Total:	875	185	100.0%	2,266	350	100.0%
Less than \$ 10,000	99	87	11.3%	175	110	7.7%
\$ 10,000 to \$ 14,999	51	85	5.8%	97	78	4.3%
\$ 15,000 to \$ 24,999	171	NC	19.5%	457	NC	20.2%
\$ 25,000 to \$ 34,999	185	NC	21.1%	440	NC	19.4%
\$ 35,000 to \$ 49,999	182	NC	20.8%	354	NC	15.6%
\$ 50,000 to \$ 74,999	115	NC	13.1%	274	NC	12.1%
\$ 75,000 to \$ 99,999	0	18	0.0%	185	106	8.2%
\$ 100,000 to \$ 149,999	46	NC	5.3%	209	NC	9.2%
\$ 150,000 to \$ 199,999	0	18	0.0%	75	66	3.3%
\$ 200,000 or more	26	36	3.0%	0	18	0.0%

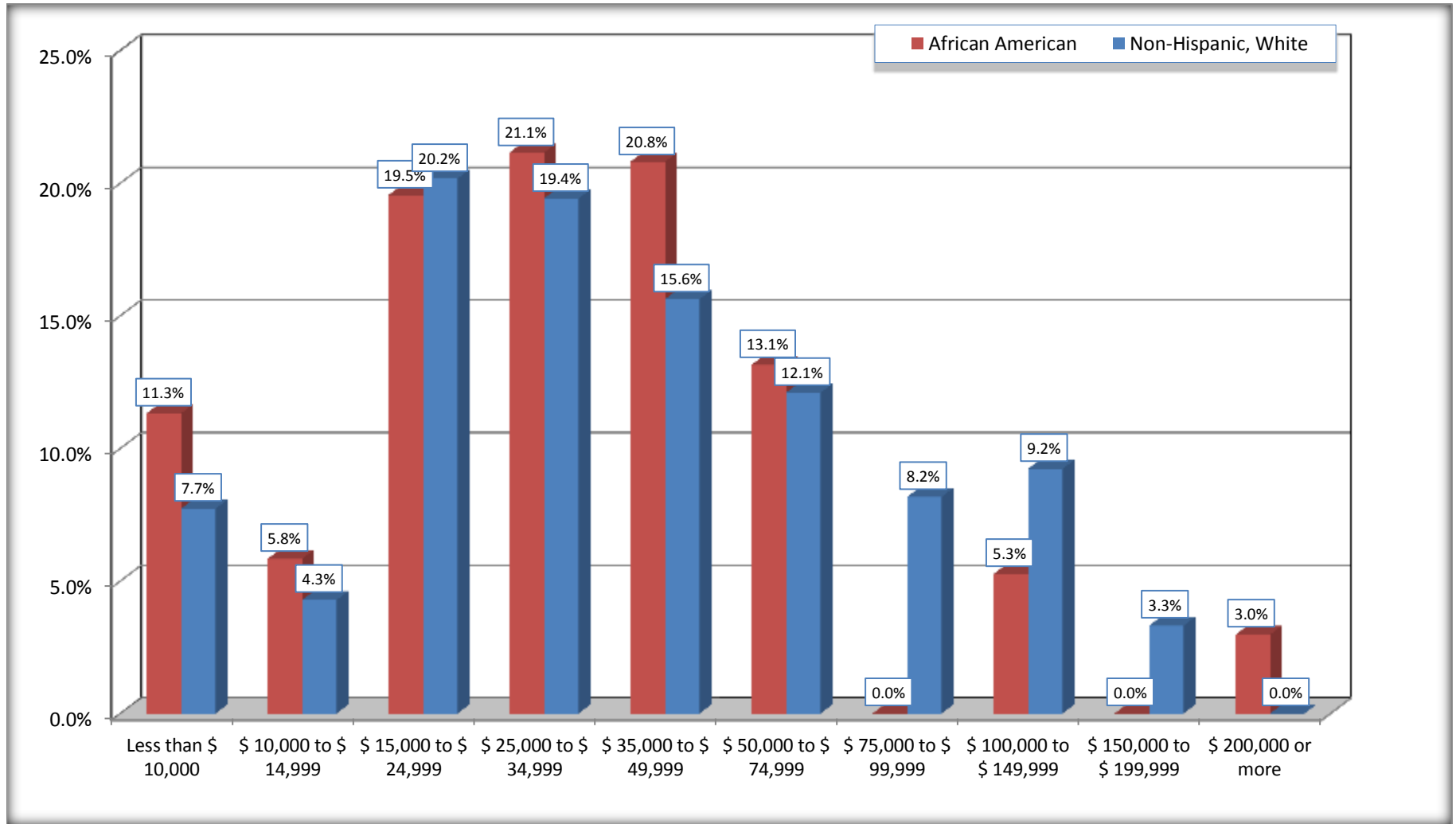
Source: U.S. Census Bureau, 2008-2012 American Community Survey

For information on confidentiality protection, sampling error, nonsampling error, and definitions, see Survey Methodology.

<http://www.census.gov/acs/www/UseData/index.htm>

Household Income in the Past 12 Months

Pineville town, North Carolina



Source: B19001. HOUSEHOLD INCOME IN THE PAST 12 MONTHS (IN 2010 INFLATION-ADJUSTED DOLLARS)
Data Set: 2008-2012 American Community Survey 5-Year Estimates

B19013. MEDIAN HOUSEHOLD INCOME IN THE PAST 12 MONTHS (IN 2010 INFLATION-ADJUSTED DOLLARS)

Data Set: 2008-2012 American Community Survey 5-Year Estimates

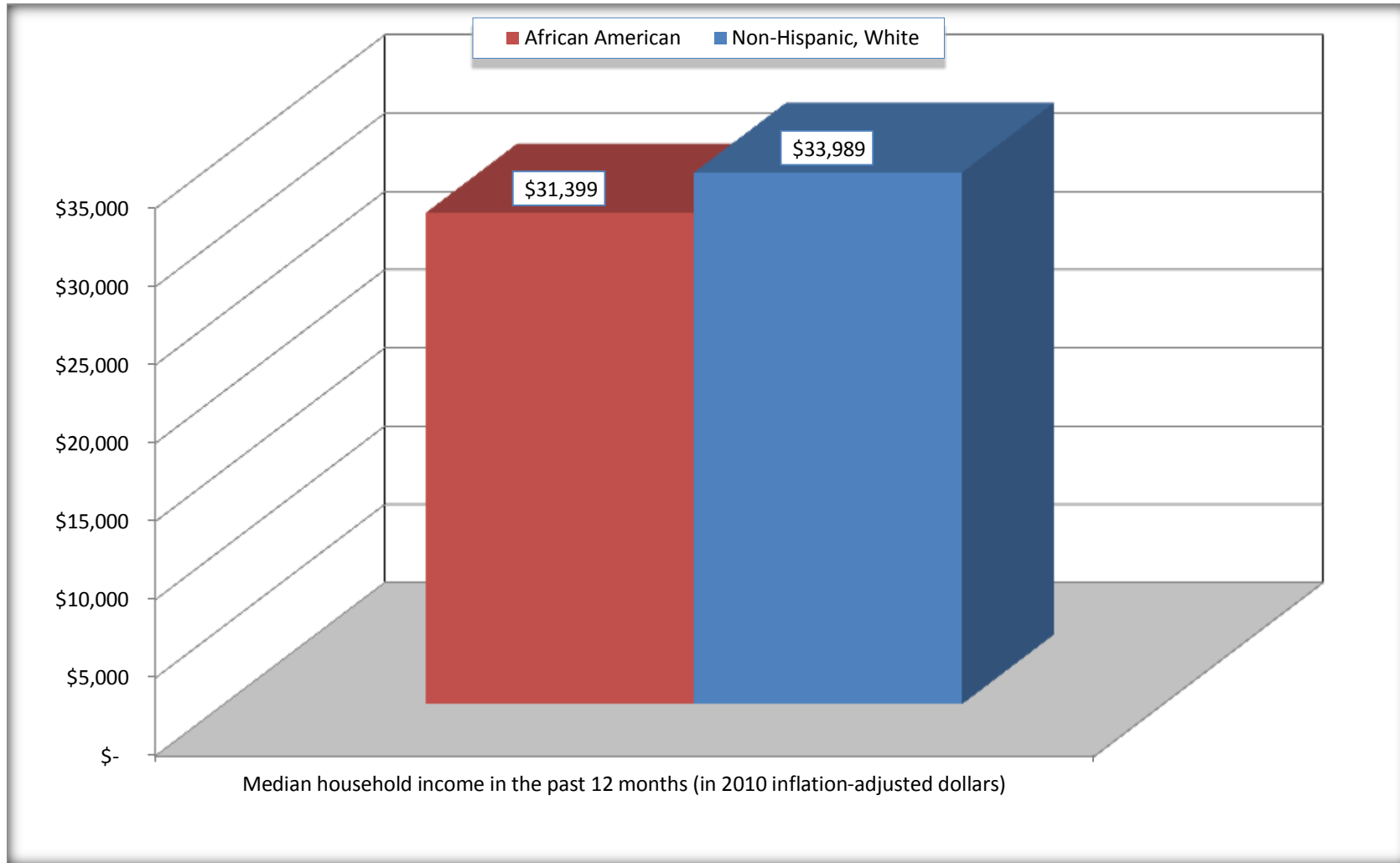
	Pineville town, North Carolina			
	African American	Margin of Error (+/-)	White, Not Hispanic	Margin of Error (+/-)
Median household income in the past 12 months (in 2010 inflation-adjusted dollars)	\$ 31,399	\$ 9,193	\$ 33,989	\$ 6,753

Source: U.S. Census Bureau, 2008-2012 American Community Survey

For information on confidentiality protection, sampling error, nonsampling error, and definitions, see Survey Methodology.
<http://www.census.gov/acs/www/UseData/index.htm>

Median Household Income in the Past 12 Months

Pineville town, North Carolina



Source: B19013. MEDIAN HOUSEHOLD INCOME IN THE PAST 12 MONTHS (IN 2010 INFLATION-ADJUSTED DOLLARS)
Data Set: 2008-2012 American Community Survey 5-Year Estimates

B19101. FAMILY INCOME IN THE PAST 12 MONTHS (IN 2010 INFLATION-ADJUSTED DOLLARS)

Data Set: 2008-2012 American Community Survey 5-Year Estimates

	Pineville town, North Carolina					
	African American	Margin of Error (+/-)	% of AA Total	White, Not Hispanic	Margin of Error (+/-)	% of NHW Total
Total:	541	177	100.0%	721	174	100.0%
Less than \$ 10,000	39	61	7.2%	67	68	9.3%
\$ 10,000 to \$ 14,999	0	18	0.0%	0	18	0.0%
\$ 15,000 to \$ 24,999	150	NC	27.7%	43	NC	6.0%
\$ 25,000 to \$ 34,999	98	NC	18.1%	47	NC	6.5%
\$ 35,000 to \$ 49,999	92	NC	17.0%	159	NC	22.1%
\$ 50,000 to \$ 74,999	115	NC	21.3%	170	NC	23.6%
\$ 100,000 to \$ 149,999	21	NC	3.9%	63	NC	8.7%
\$ 150,000 to \$ 199,999	0	18	0.0%	75	66	10.4%
\$ 200,000 or more	26	36	4.8%	0	18	0.0%

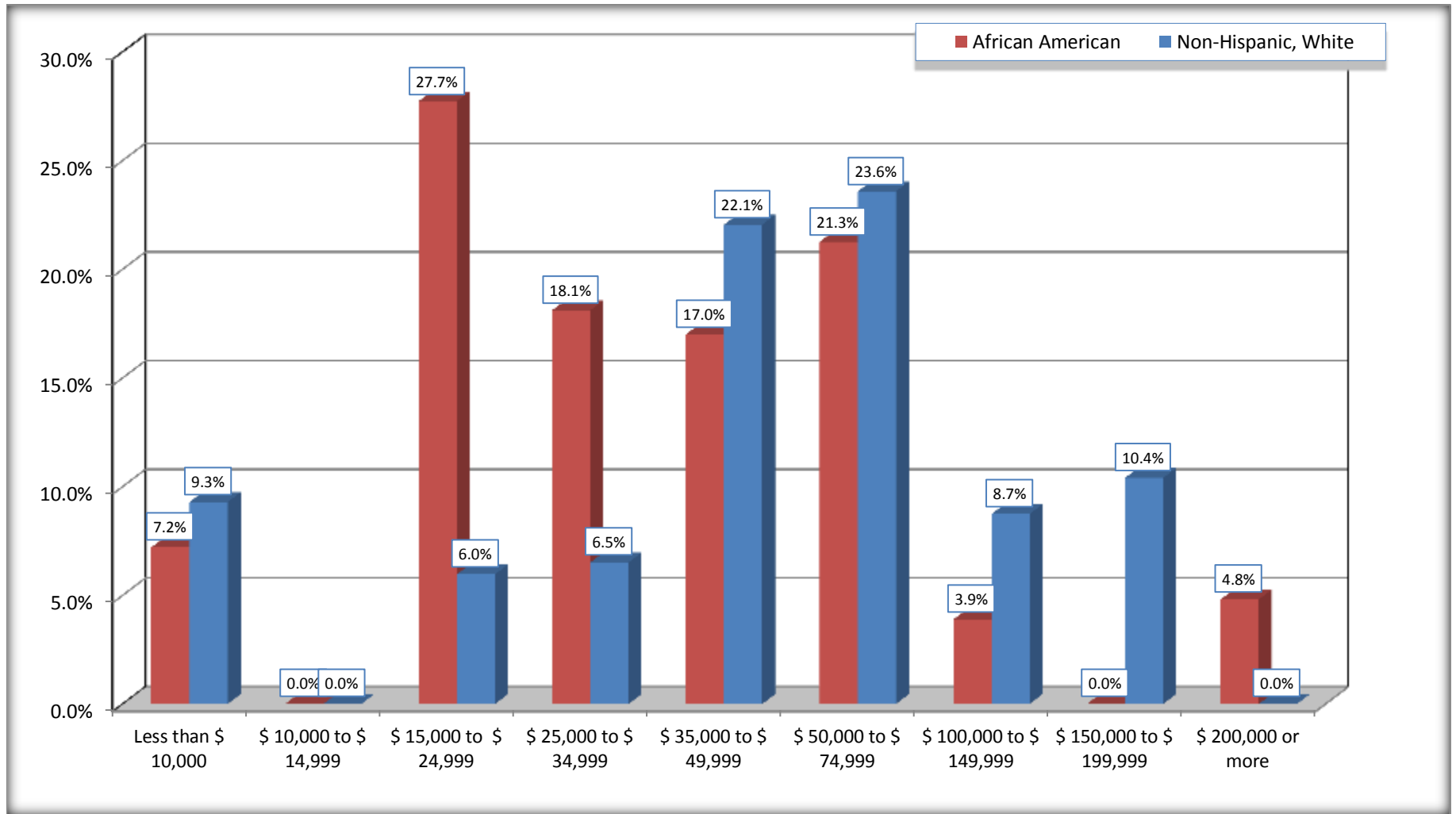
Source: U.S. Census Bureau, 2008-2012 American Community Survey

For information on confidentiality protection, sampling error, nonsampling error, and definitions, see Survey Methodology.

<http://www.census.gov/acs/www/UseData/index.htm>

Family Income in the Past 12 Months

Pineville town, North Carolina



Source: B19101. FAMILY INCOME IN THE PAST 12 MONTHS (IN 2010 INFLATION-ADJUSTED DOLLARS)
Data Set: 2008-2012 American Community Survey 5-Year Estimates

B19113. MEDIAN FAMILY INCOME IN THE PAST 12 MONTHS (IN 2010 INFLATION-ADJUSTED DOLLARS)

Data Set: 2008-2012 American Community Survey 5-Year Estimates

	Pineville town, North Carolina			
	African American	Margin of Error (+/-)	White, Not Hispanic	Margin of Error (+/-)
Median family income in the past 12 months (in 2010 inflation-adjusted dollars)	\$ 31,824	\$ 19,388	\$ 57,386	\$ 11,986

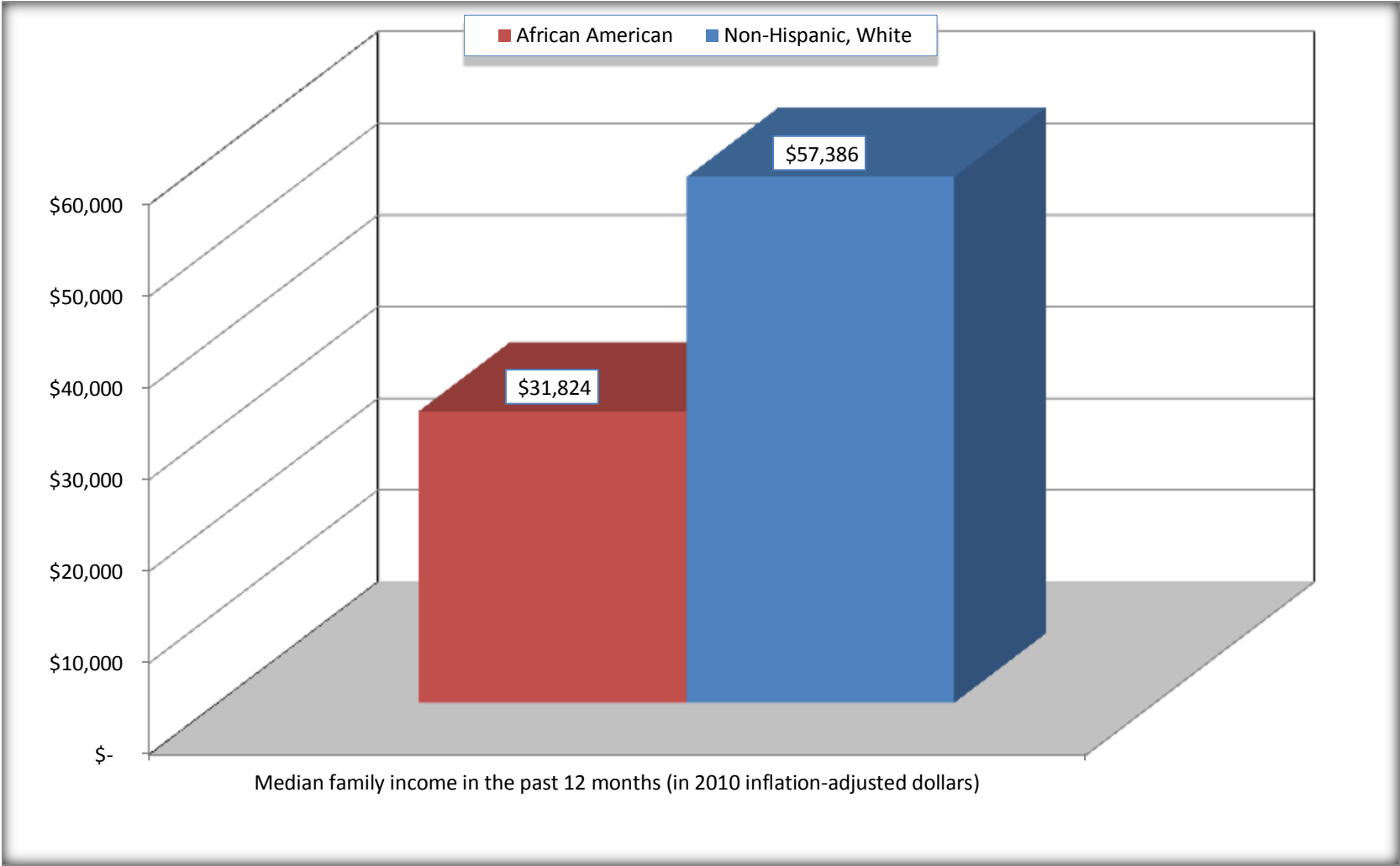
Source: U.S. Census Bureau, 2008-2012 American Community Survey

For information on confidentiality protection, sampling error, nonsampling error, and definitions, see Survey Methodology.

<http://www.census.gov/acs/www/UseData/index.htm>

Median Family Income in the Past 12 Months

Pineville town, North Carolina



Source: B19113. MEDIAN FAMILY INCOME IN THE PAST 12 MONTHS (IN 2010 INFLATION-ADJUSTED DOLLARS)
Data Set: 2008-2012 American Community Survey 5-Year Estimates

B19202. MEDIAN NONFAMILY HOUSEHOLD INCOME IN THE PAST 12 MONTHS (IN 2010 INFLATION-ADJUSTED DOLLARS)

Data Set: 2008-2012 American Community Survey 5-Year Estimates

	Pineville town, North Carolina			
	African American	Margin of Error (+/-)	White, Not Hispanic	Margin of Error (+/-)
Median nonfamily household income in the past 12 months (in 2010 inflation-adjusted dollars)	\$ 30,750	\$ 13,354	\$ 27,688	\$ 3,368

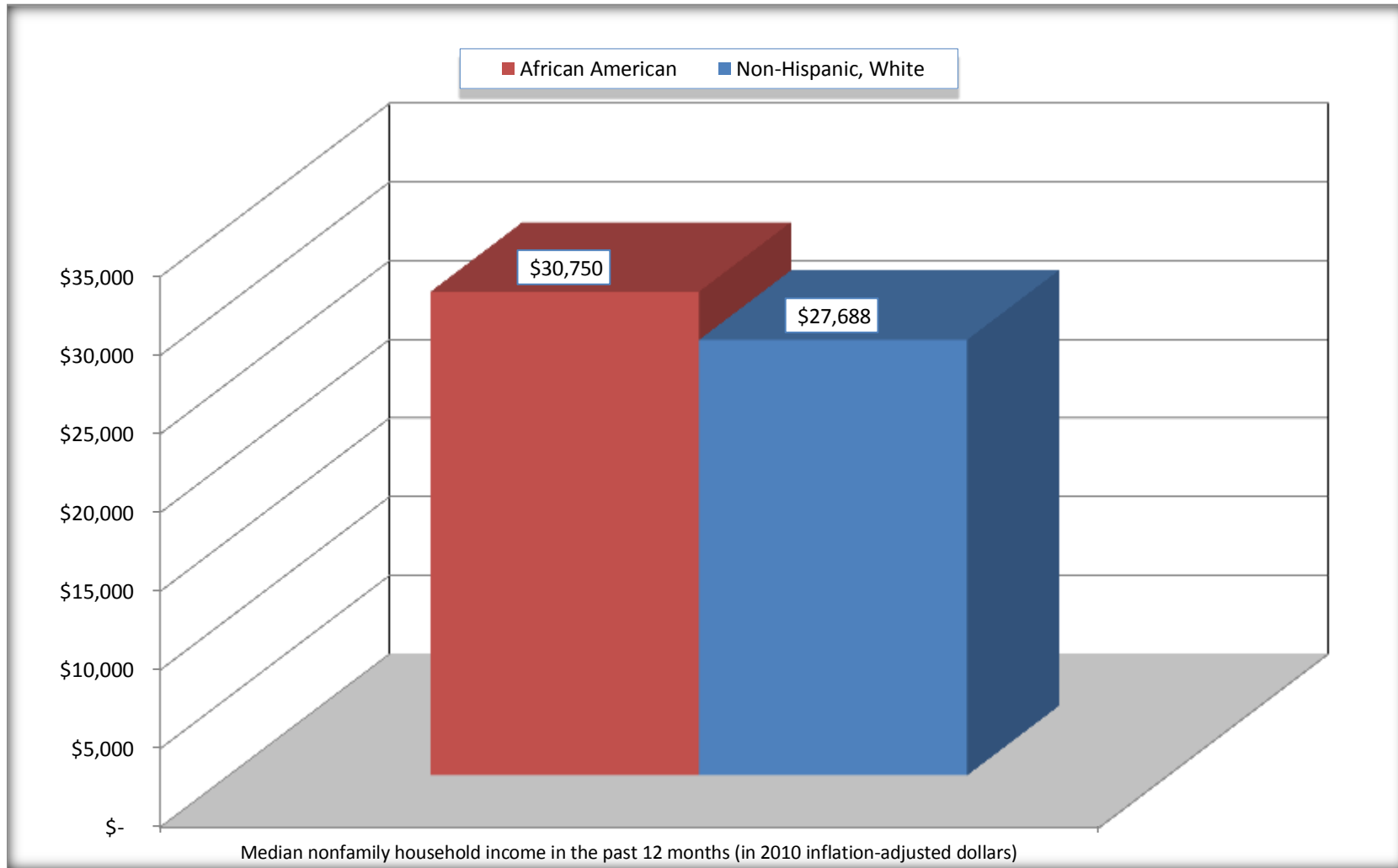
Source: U.S. Census Bureau, 2008-2012 American Community Survey

For information on confidentiality protection, sampling error, nonsampling error, and definitions, see Survey Methodology.

<http://www.census.gov/acs/www/UseData/index.htm>

Median Non-Family Income in the Past 12 Months

Pineville town, North Carolina



Source: B19202. MEDIAN NONFAMILY HOUSEHOLD INCOME IN THE PAST 12 MONTHS (IN 2010 INFLATION-ADJUSTED DOLLARS)
Data Set: 2008-2012 American Community Survey 5-Year Estimates

B19301. PER CAPITA INCOME IN THE PAST 12 MONTHS (IN 2010 INFLATION-ADJUSTED DOLLARS)

Data Set: 2008-2012 American Community Survey 5-Year Estimates

	Pineville town, North Carolina			
	African American	Margin of Error (+/-)	White, Not Hispanic	Margin of Error (+/-)
Per capita income in the past 12 months (in 2010 inflation-adjusted dollars)	\$ 17,181	\$ 6,801	\$ 30,403	\$ 3,587

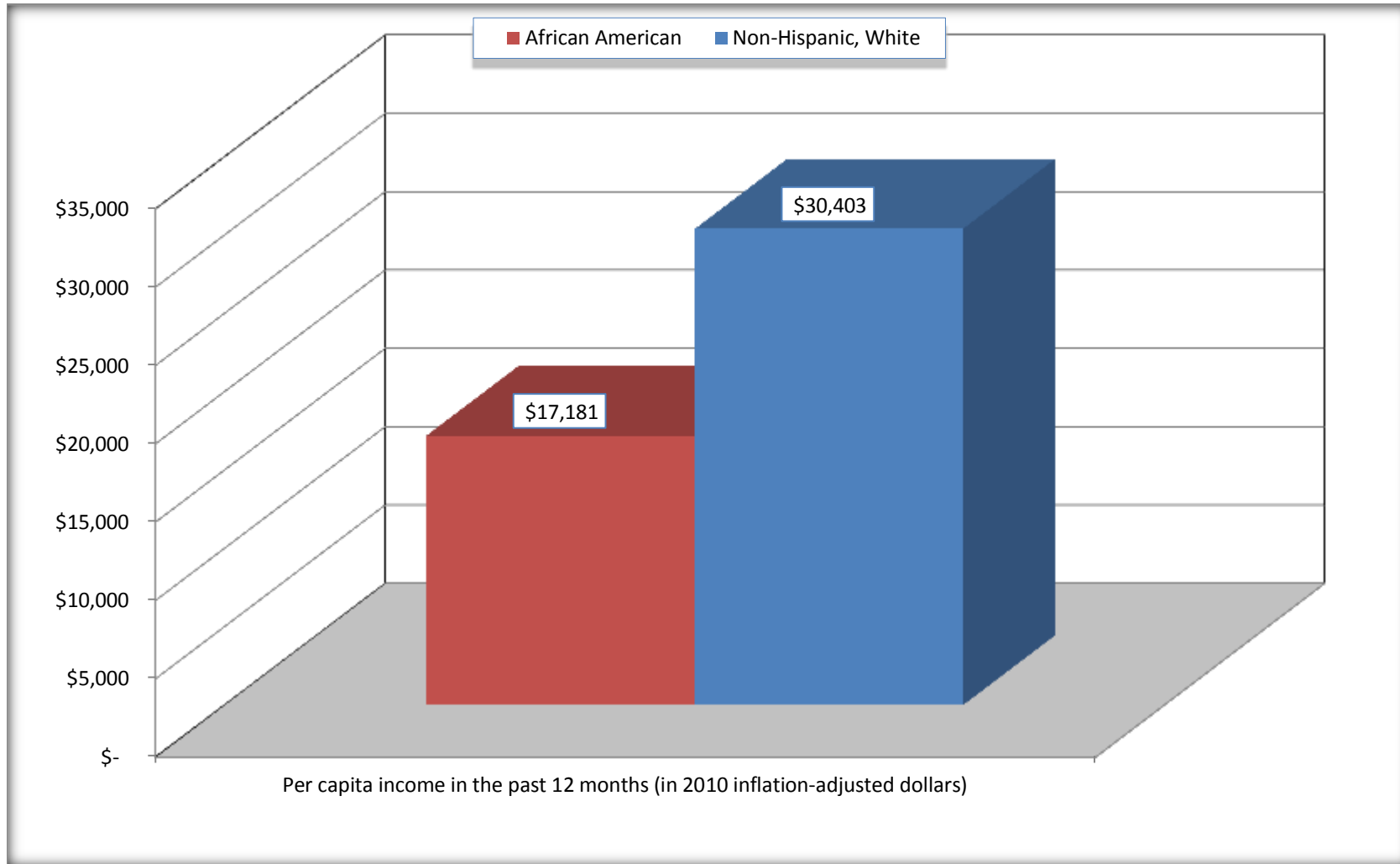
Source: U.S. Census Bureau, 2008-2012 American Community Survey

For information on confidentiality protection, sampling error, nonsampling error, and definitions, see Survey Methodology.

<http://www.census.gov/acs/www/UseData/index.htm>

Per capita Income in the Past 12 Months

Pineville town, North Carolina



Source: B19301. PER CAPITA INCOME IN THE PAST 12 MONTHS (IN 2010 INFLATION-ADJUSTED DOLLARS)
Data Set: 2008-2012 American Community Survey 5-Year Estimates

B20017. MEDIAN EARNINGS IN THE PAST 12 MONTHS (IN 2010 INFLATION-ADJUSTED DOLLARS) BY SEX BY WORK EXPERIENCE IN THE PAST 12 MONTHS FOR THE POPULATION 16 YEARS AND OVER WITH EARNINGS IN THE PAST 12 MONTHS

Data Set: 2008-2012 American Community Survey 5-Year Estimates

	Pineville town, North Carolina			
	African American	Margin of Error (+/-)	White, Not Hispanic	Margin of Error (+/-)
Median earnings in the past 12 months (in 2010 inflation-adjusted dollars) --				
Total:	\$ 29,397	\$ 7,655	\$ 34,296	\$ 5,302
Male --				
Total	\$ 22,188	\$ 17,444	\$ 34,726	\$ 9,960
Worked full-time, year-round in the past 12 months	\$ 29,859	\$ 12,034	\$ 47,188	\$ 21,695
Other	\$ 11,319	\$ 18,207	\$ 7,992	\$ 12,958
Female --				
Total	\$ 32,725	\$ 6,471	\$ 33,790	\$ 5,874
Worked full-time, year-round in the past 12 months	\$ 33,074	\$ 6,022	\$ 38,359	\$ 6,586
Other	\$ 19,423	\$ 30,948	\$ 16,466	\$ 10,541

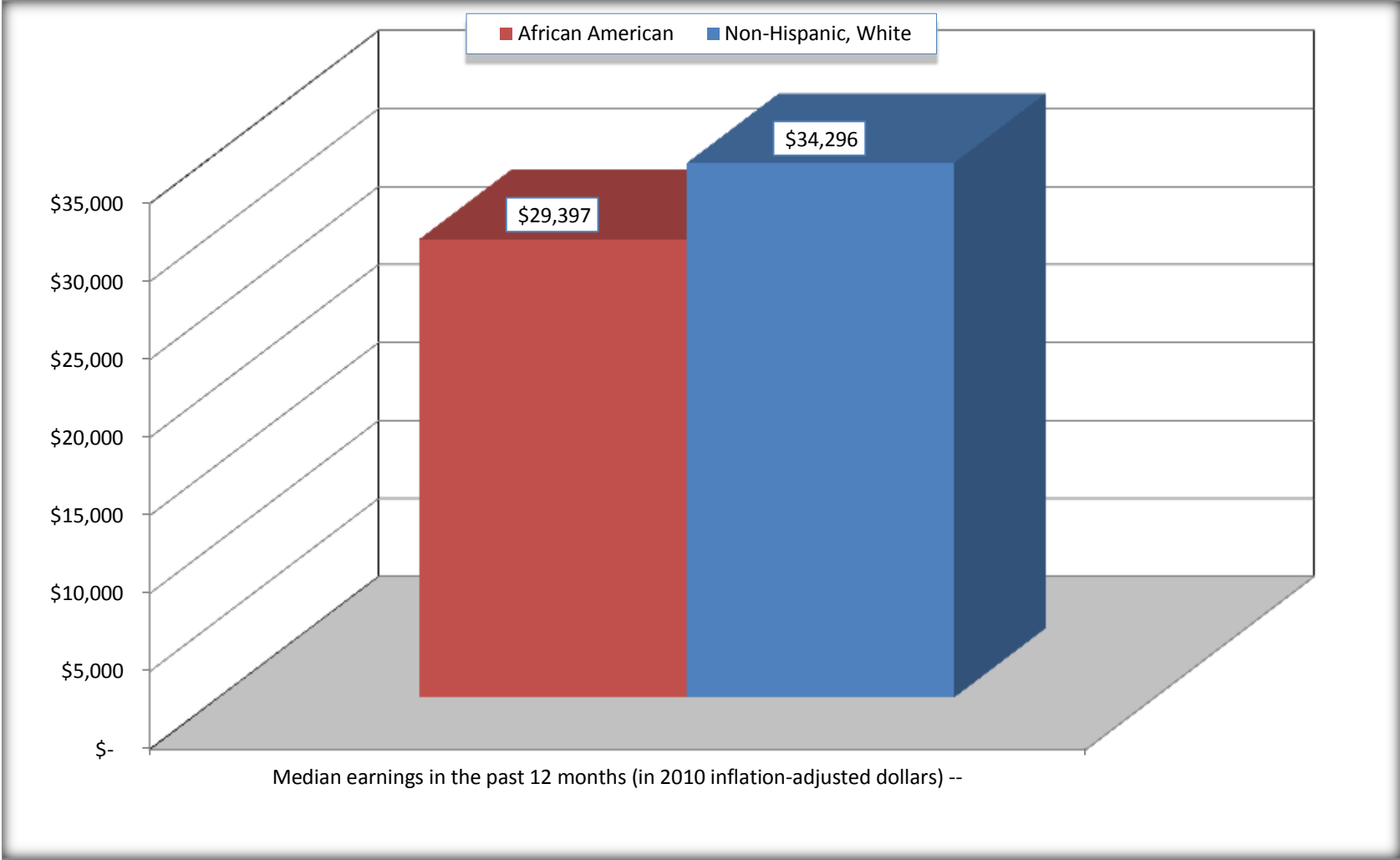
Source: U.S. Census Bureau, 2008-2012 American Community Survey

For information on confidentiality protection, sampling error, nonsampling error, and definitions, see Survey Methodology.

<http://www.census.gov/acs/www/UseData/index.htm>

Median earnings in the Past 12 Months (16 Years and Over with Earnings)

Pineville town, North Carolina



Source: B20017. MEDIAN EARNINGS IN THE PAST 12 MONTHS (IN 2010 INFLATION-ADJUSTED DOLLARS) BY SEX BY WORK EXPERIENCE IN THE PAST 12 MONTHS FOR THE POPULATION 16 YEARS AND OVER WITH EARNINGS IN THE PAST 12 MONTHS
Data Set: 2008-2012 American Community Survey 5-Year Estimates

B20005. SEX BY WORK EXPERIENCE IN THE PAST 12 MONTHS BY EARNINGS IN THE PAST 12 MONTHS (IN 2010 INFLATION-ADJUSTED DOLLARS) FOR THE POPULATION 16 YEARS AND OVER

Data Set: 2008-2012 American Community Survey 5-Year Estimates

	Pineville town, North Carolina					
	African American	Margin of Error (+/-)	% of AA Total	White, Not Hispanic	Margin of Error (+/-)	% of NHW Total
Total:	1,582	338	100.0%	3,420	477	100.0%
Worked full-time, year-round in the past 12 months:	766	NC	48.4%	1,383	NC	40.4%
No earnings	0	NC	0.0%	0	NC	0.0%
With earnings:	766	NC	48.4%	1,383	NC	40.4%
\$ 1 to \$ 9,999 or loss	0	NC	0.0%	38	NC	1.1%
\$ 10,000 to \$ 19,999	129	NC	8.2%	58	NC	1.7%
\$ 20,000 to \$ 29,999	210	NC	13.3%	241	NC	7.0%
\$ 30,000 to \$ 49,999	312	NC	19.7%	536	NC	15.7%
\$ 50,000 to \$ 74,999	65	NC	4.1%	246	NC	7.2%
\$ 75,000 or more	50	NC	3.2%	264	NC	7.7%
Other:	816	NC	51.6%	2,037	NC	59.6%
No earnings	481	NC	30.4%	1,420	NC	41.5%
With earnings: less than full time, year-round	335	NC	21.2%	617	NC	18.0%
Male:	692	196	43.7%	1,453	364	42.5%
Worked full-time, year-round in the past 12 months:	423	154	26.7%	759	230	22.2%
No earnings	0	18	0.0%	0	18	0.0%
With earnings:	423	154	26.7%	759	230	22.2%
\$ 1 to \$ 9,999 or loss	0	NC	0.0%	25	NC	0.7%
\$ 10,000 to \$ 19,999	129	NC	8.2%	40	NC	1.2%
\$ 20,000 to \$ 29,999	86	NC	5.4%	119	NC	3.5%
\$ 30,000 to \$ 49,999	165	NC	10.4%	198	NC	5.8%
\$ 50,000 to \$ 74,999	18	NC	1.1%	190	NC	5.6%
\$ 75,000 or more	25	NC	1.6%	187	NC	5.5%

	Pineville town, North Carolina					
	African American	Margin of Error (+/-)	% of AA Total	White, Not Hispanic	Margin of Error (+/-)	% of NHW Total
Other:	269	164	17.0%	694	217	20.3%
No earnings	146	124	9.2%	381	123	11.1%
With earnings:	123	108	7.8%	313	140	9.2%
Female:	890	202	56.3%	1,967	288	57.5%
Worked full-time, year-round in the past 12 months:	343	160	21.7%	624	214	18.2%
No earnings	0	18	0.0%	0	18	0.0%
With earnings:	343	160	21.7%	624	214	18.2%
\$ 1 to \$ 9,999 or loss	0	NC	0.0%	13	NC	0.4%
\$ 10,000 to \$ 19,999	0	NC	0.0%	18	NC	0.5%
\$ 20,000 to \$ 29,999	124	NC	7.8%	122	NC	3.6%
\$ 30,000 to \$ 49,999	147	NC	9.3%	338	NC	9.9%
\$ 50,000 to \$ 74,999	47	NC	3.0%	56	NC	1.6%
\$ 75,000 or more	25	NC	1.6%	77	NC	2.3%
Other:	547	192	34.6%	1,343	267	39.3%
No earnings	335	174	21.2%	1,039	222	30.4%
With earnings:	212	122	13.4%	304	135	8.9%

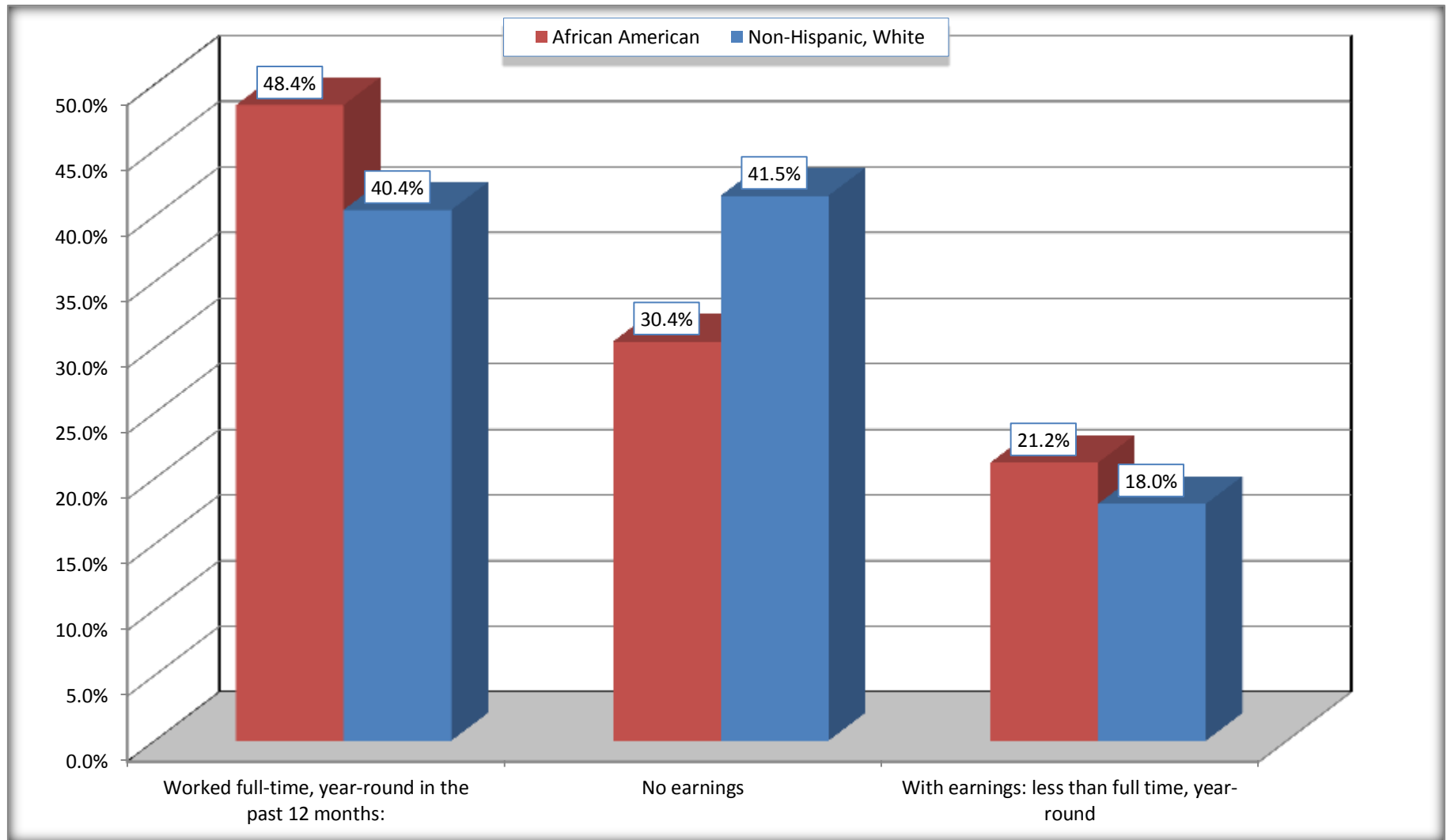
Source: U.S. Census Bureau, 2008-2012 American Community Survey

For information on confidentiality protection, sampling error, nonsampling error, and definitions, see Survey Methodology.

<http://www.census.gov/acs/www/UseData/index.htm>

Employment and Earnings in in the Past 12 Months (16 Years and Over)

Pineville town, North Carolina



Source: B20005. SEX BY WORK EXPERIENCE IN THE PAST 12 MONTHS BY EARNINGS IN THE PAST 12 MONTHS (IN 2010 INFLATION-ADJUSTED DOLLARS) FOR THE POPULATION 16 YEARS AND OVER

Data Set: 2008-2012 American Community Survey 5-Year Estimates

C21001. SEX BY AGE BY VETERAN STATUS FOR THE CIVILIAN POPULATION 18 YEARS AND OVER

Data Set: 2008-2012 American Community Survey 5-Year Estimates

	Pineville town, North Carolina					
	African American	Margin of Error (+/-)	% of AA Total	White, Not Hispanic	Margin of Error (+/-)	% of NHW Total
Total:	1,515	322	100.0%	3,377	468	100.0%
Veteran	30	NC	2.0%	421	NC	12.5%
Nonveteran	1,485	NC	98.0%	2,956	NC	87.5%
Male:	667	197	44.0%	1,435	358	42.5%
18 to 64 years:	637	200	42.0%	1,062	284	31.4%
Veteran	0	18	0.0%	185	115	5.5%
Nonveteran	637	200	42.0%	877	255	26.0%
65 years and over:	30	32	2.0%	373	131	11.0%
Veteran	4	9	0.3%	215	112	6.4%
Nonveteran	26	31	1.7%	158	119	4.7%
Female:	848	183	56.0%	1,942	276	57.5%
18 to 64 years:	793	188	52.3%	1,057	212	31.3%
Veteran	26	36	1.7%	0	18	0.0%
Nonveteran	767	188	50.6%	1,057	212	31.3%
65 years and over:	55	65	3.6%	885	201	26.2%
Veteran	0	18	0.0%	21	31	0.6%
Nonveteran	55	65	3.6%	864	197	25.6%

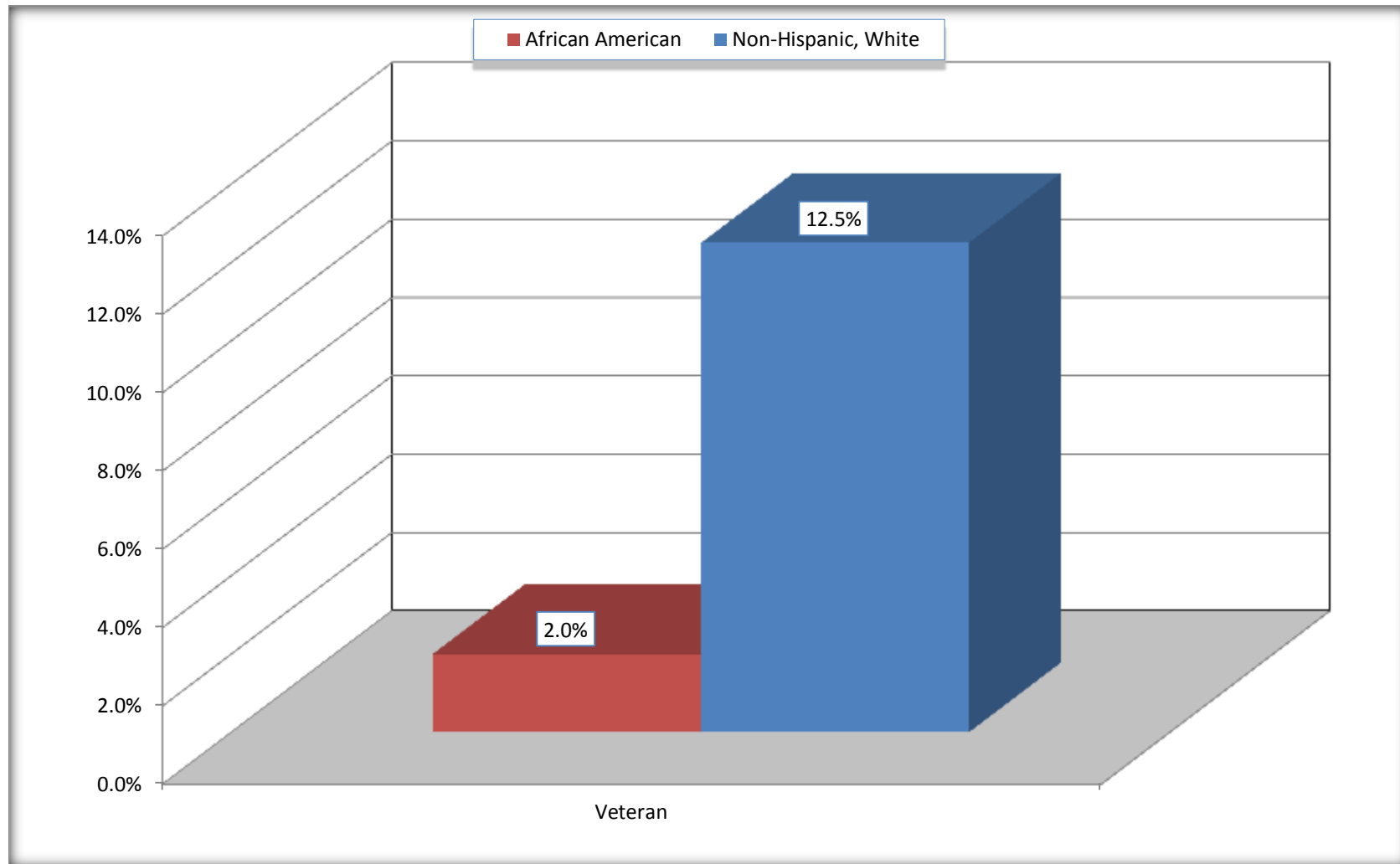
Source: U.S. Census Bureau, 2008-2012 American Community Survey

For information on confidentiality protection, sampling error, nonsampling error, and definitions, see Survey Methodology.

<http://www.census.gov/acs/www/UseData/index.htm>

Veterans in the Civilian Population 18 Years and Over

Pineville town, North Carolina



Source: C21001. SEX BY AGE BY VETERAN STATUS FOR THE CIVILIAN POPULATION 18 YEARS AND OVER
Data Set: 2008-2012 American Community Survey 5-Year Estimates

B22005. RECEIPT OF FOOD STAMPS/SNAP IN THE PAST 12 MONTHS BY RACE OF HOUSEHOLDER

Data Set: 2008-2012 American Community Survey 5-Year Estimates

	Pineville town, North Carolina					
	African American	Margin of Error (+/-)	% of AA Total	White, Not Hispanic	Margin of Error (+/-)	% of NHW Total
Total:	875	185	100.0%	2,266	350	100.0%
HH received Food Stamps/SNAP in the past 12 months	228	170	26.1%	160	90	7.1%
HH did not receive Food Stamps/SNAP in the past 12 months	647	209	73.9%	2,106	342	92.9%

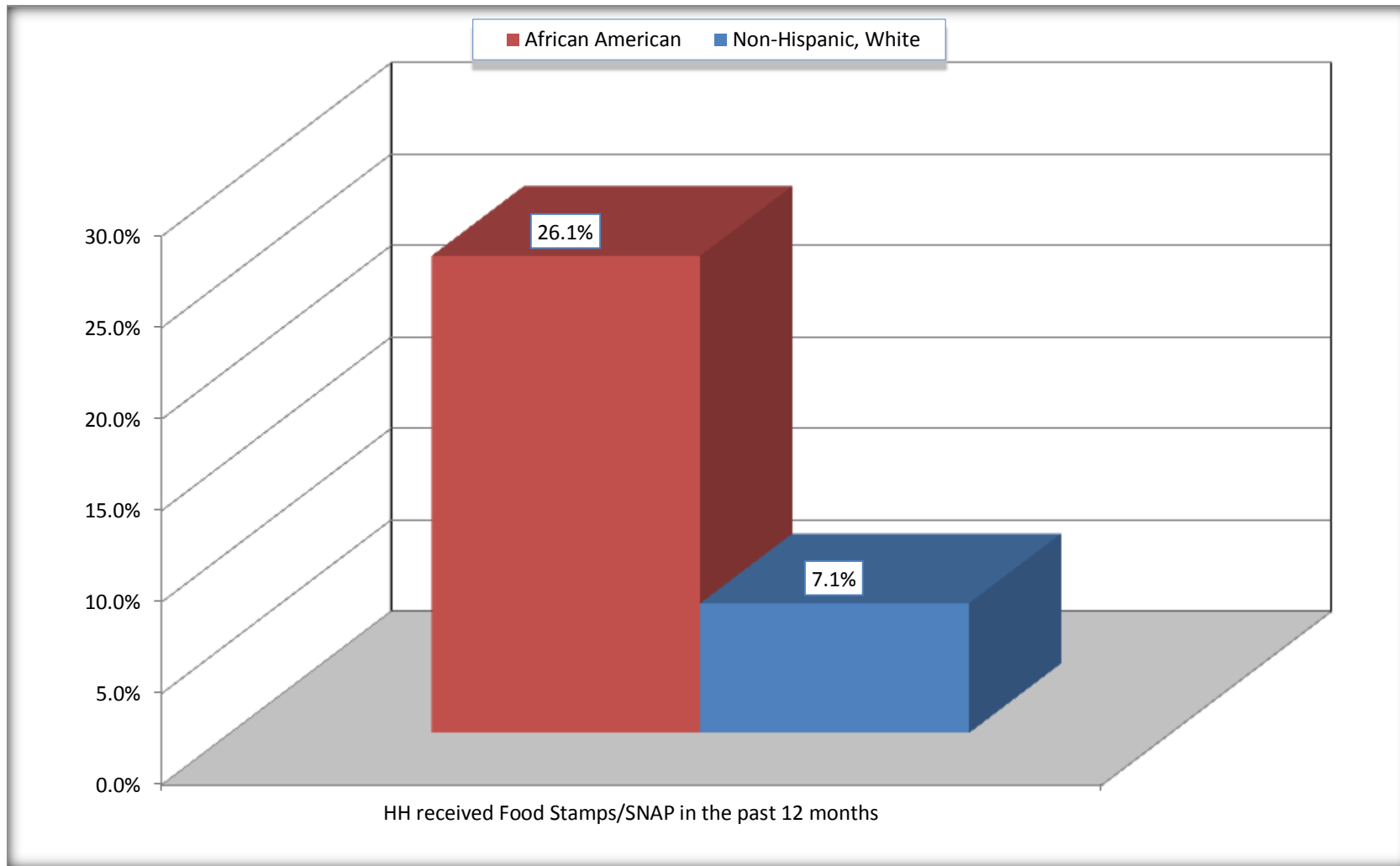
Source: U.S. Census Bureau, 2008-2012 American Community Survey

For information on confidentiality protection, sampling error, nonsampling error, and definitions, see Survey Methodology.

<http://www.census.gov/acs/www/UseData/index.htm>

Receipt of Food Stamps/SNAP in the Past 12 Months by Household

Pineville town, North Carolina



Source: B22005. RECEIPT OF FOOD STAMPS/SNAP IN THE PAST 12 MONTHS BY RACE OF HOUSEHOLDER
Data Set: 2008-2012 American Community Survey 5-Year Estimates

C23002. SEX BY AGE BY EMPLOYMENT STATUS FOR THE POPULATION 16 YEARS AND OVER

Data Set: 2008-2012 American Community Survey 5-Year Estimates

	Pineville town, North Carolina					
	African American	Margin of Error (+/-)	% of AA Total	White, Not Hispanic	Margin of Error (+/-)	% of NHW Total
Total:	1,582	338	100.0%	3,420	477	100.0%
In labor force:	1,118	NC	70.7%	1,936	NC	56.6%
In Armed Forces	25	NC	1.6%	0	NC	0.0%
Civilian:	1,093	NC	69.1%	1,836	NC	53.7%
Employed	911	NC	57.6%	1,783	NC	52.1%
Unemployed	182	NC	11.5%	153	NC	4.5%
Not in labor force	464	NC	29.3%	1,484	NC	43.4%
Male:	692	196	43.7%	1,453	364	42.5%
16 to 64 years:	662	198	41.8%	1,080	290	31.6%
In labor force:	576	183	36.4%	975	278	28.5%
In Armed Forces	25	34	1.6%	0	18	0.0%
Civilian:	551	185	34.8%	975	278	28.5%
Employed	508	178	32.1%	907	274	26.5%
Unemployed	43	55	2.7%	68	65	2.0%
Not in labor force	86	115	5.4%	105	70	3.1%
65 years and over:	30	32	1.9%	373	131	10.9%
In labor force:	0	18	0.0%	27	32	0.8%
Employed	0	18	0.0%	27	32	0.8%
Unemployed	0	18	0.0%	0	18	0.0%
Not in labor force	30	32	1.9%	346	127	10.1%

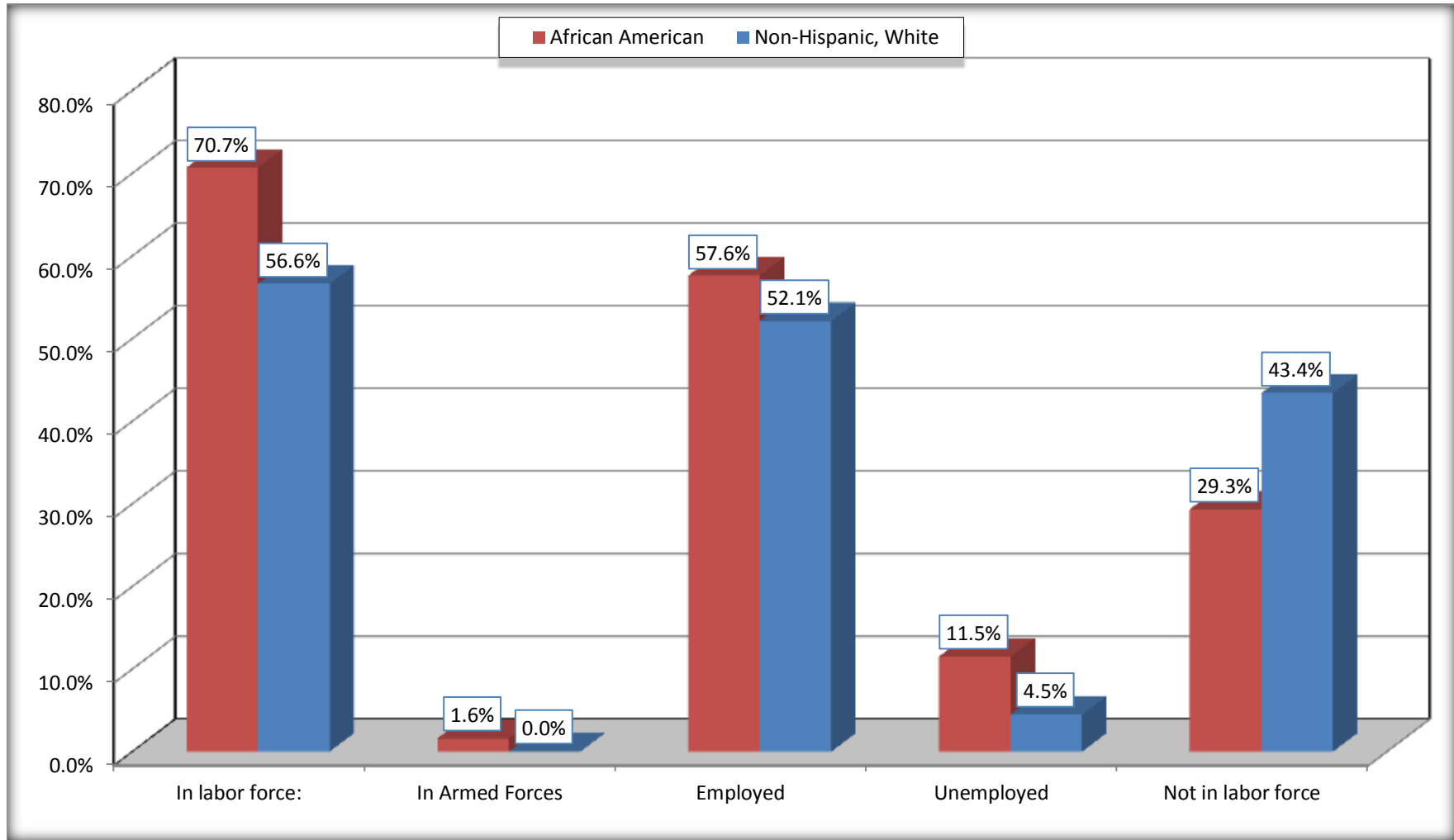
	Pineville town, North Carolina					
	African American	Margin of Error (+/-)	% of AA Total	White, Not Hispanic	Margin of Error (+/-)	% of NHW Total
Female:	890	202	56.3%	1,967	288	57.5%
16 to 64 years:	835	208	52.8%	1,082	223	31.6%
In labor force:	542	198	34.3%	861	213	25.2%
In Armed Forces	0	18	0.0%	0	18	0.0%
Civilian:	542	198	34.3%	861	213	25.2%
Employed	403	180	25.5%	776	206	22.7%
Unemployed	139	141	8.8%	85	72	2.5%
Not in labor force	293	148	18.5%	221	116	6.5%
65 years and over:	55	65	3.5%	885	201	25.9%
In labor force:	0	18	0.0%	73	62	2.1%
Employed	0	18	0.0%	73	62	2.1%
Unemployed	0	18	0.0%	0	18	0.0%
Not in labor force	55	65	3.5%	812	199	23.7%

Source: U.S. Census Bureau, 2008-2012 American Community Survey

For information on confidentiality protection, sampling error, nonsampling error, and definitions, see Survey Methodology.
<http://www.census.gov/acs/www/UseData/index.htm>

Employment Status for the Population 16 years and over

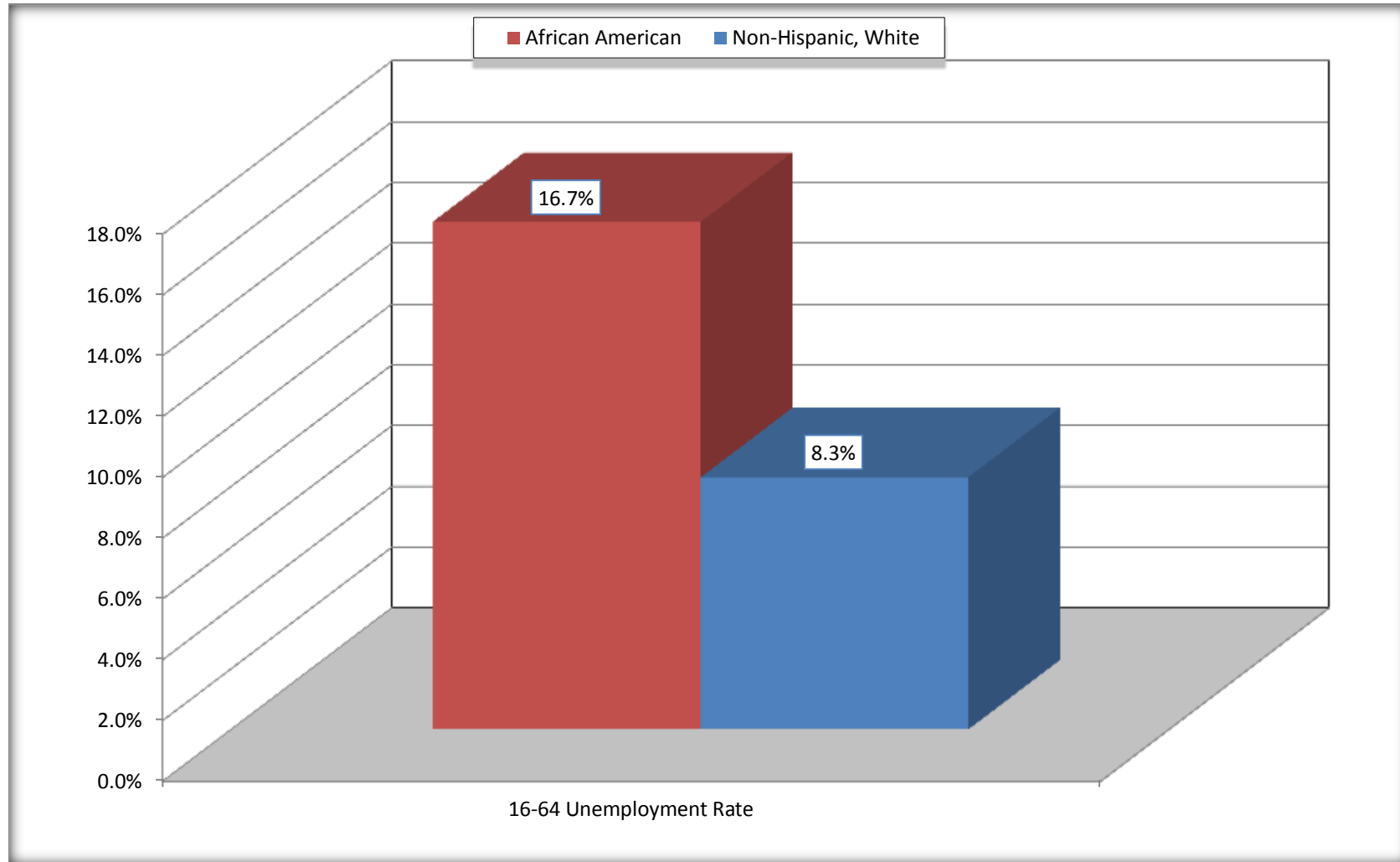
Pineville town, North Carolina



Source: C23002. SEX BY AGE BY EMPLOYMENT STATUS FOR THE POPULATION 16 YEARS AND OVER
Data Set: 2008-2012 American Community Survey 5-Year Estimates

Unemployment of Working Age Population (Ages 16 to 64) (As a Percent of 16-64 Civilian Labor Force)

Pineville town, North Carolina



Source: C23002. SEX BY AGE BY EMPLOYMENT STATUS FOR THE POPULATION 16 YEARS AND OVER
Data Set: 2008-2012 American Community Survey 5-Year Estimates

C24010. SEX BY OCCUPATION FOR THE CIVILIAN EMPLOYED POPULATION 16 YEARS AND OVER

Data Set: 2008-2012 American Community Survey 5-Year Estimates

	Pineville town, North Carolina					
	African American	Margin of Error (+/-)	% of AA Total	White, Not Hispanic	Margin of Error (+/-)	% of NHW Total
Total:	911	247	100.0%	1,783	355	100.0%
Management, professional, and related occupations	222	NC	24.4%	811	NC	45.5%
Service occupations	160	NC	17.6%	214	NC	12.0%
Sales and office occupations	378	NC	41.5%	493	NC	27.7%
Natural resources, construction, and maintenance occupations:	0	NC	0.0%	74	NC	4.2%
Production, transportation, and material moving occupations	151	NC	16.6%	191	NC	10.7%
Male:	508	178	55.8%	934	280	52.4%
Management, business, science, and arts occupations:	115	111	12.6%	392	154	22.0%
Service occupations	99	104	10.9%	90	76	5.0%
Sales and office occupations	154	118	16.9%	213	122	11.9%
Natural resources, construction, and maintenance occupations:	0	18	0.0%	74	56	4.2%
Production, transportation, and material moving occupations	140	132	15.4%	165	126	9.3%
Female:	403	180	44.2%	849	224	47.6%
Management, professional, and related occupations	107	90	11.7%	419	172	23.5%
Service occupations	61	70	6.7%	124	94	7.0%
Sales and office occupations	224	124	24.6%	280	119	15.7%
Natural resources, construction, and maintenance occupations:	0	18	0.0%	0	18	0.0%
Production, transportation, and material moving occupations	11	24	1.2%	26	30	1.5%

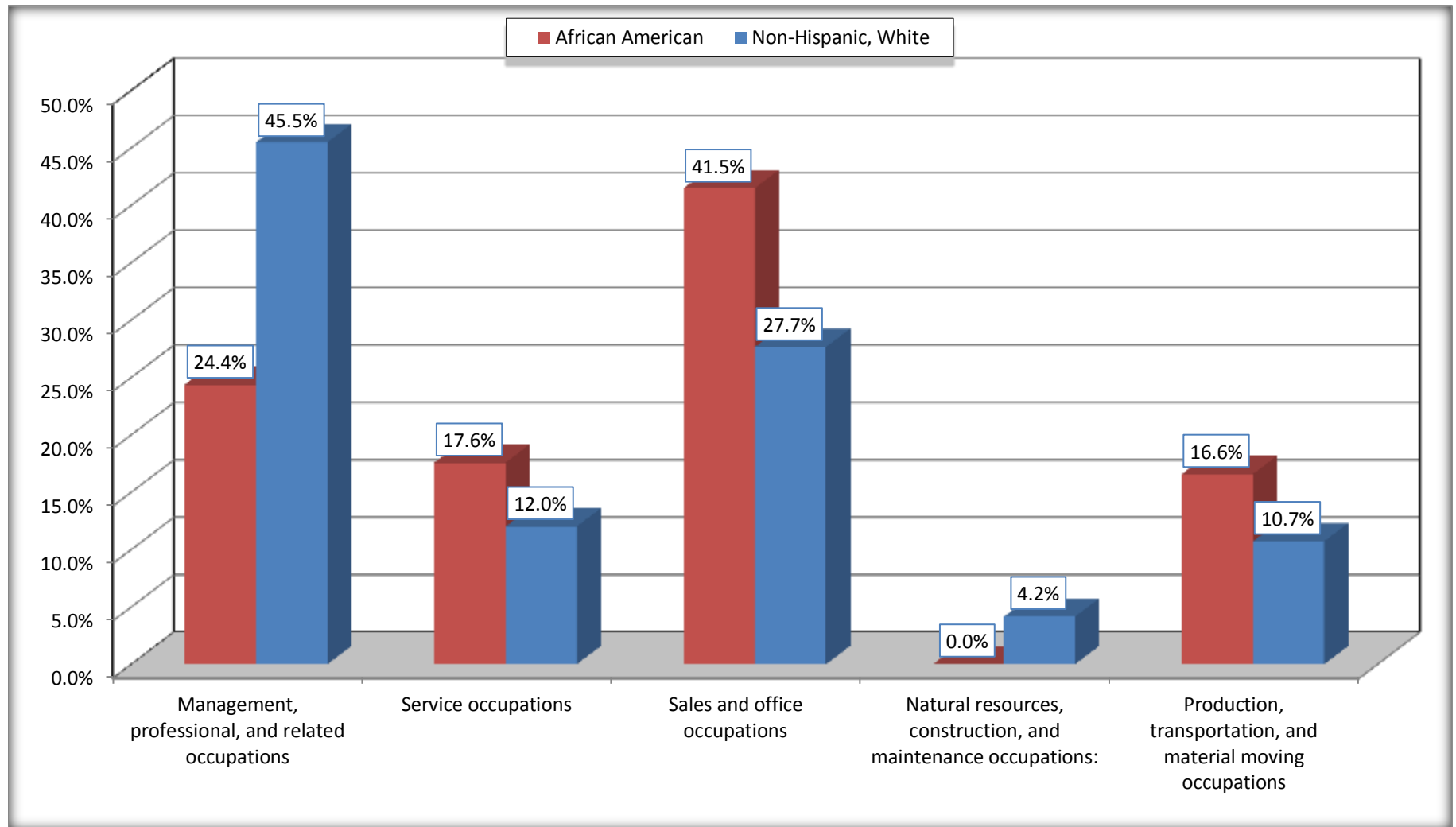
Source: U.S. Census Bureau, 2008-2012 American Community Survey

For information on confidentiality protection, sampling error, nonsampling error, and definitions, see Survey Methodology.

<http://www.census.gov/acs/www/UseData/index.htm>

Occupation for the Civilian Employed 16 Years and Over Population

Pineville town, North Carolina



Source: C24010. SEX BY OCCUPATION FOR THE CIVILIAN EMPLOYED POPULATION 16 YEARS AND OVER
Data Set: 2008-2012 American Community Survey 5-Year Estimates

B25003. TENURE - Universe: OCCUPIED HOUSING UNITS

Data Set: 2008-2012 American Community Survey 5-Year Estimates

	Pineville town, North Carolina					
	African American	Margin of Error (+/-)	% of AA Total	White, Not Hispanic	Margin of Error (+/-)	% of NHW Total
Total:	875	185	100.0%	2,266	350	100.0%
Owner occupied	135	88	15.4%	1,034	192	45.6%
Renter occupied	740	182	84.6%	1,232	264	54.4%

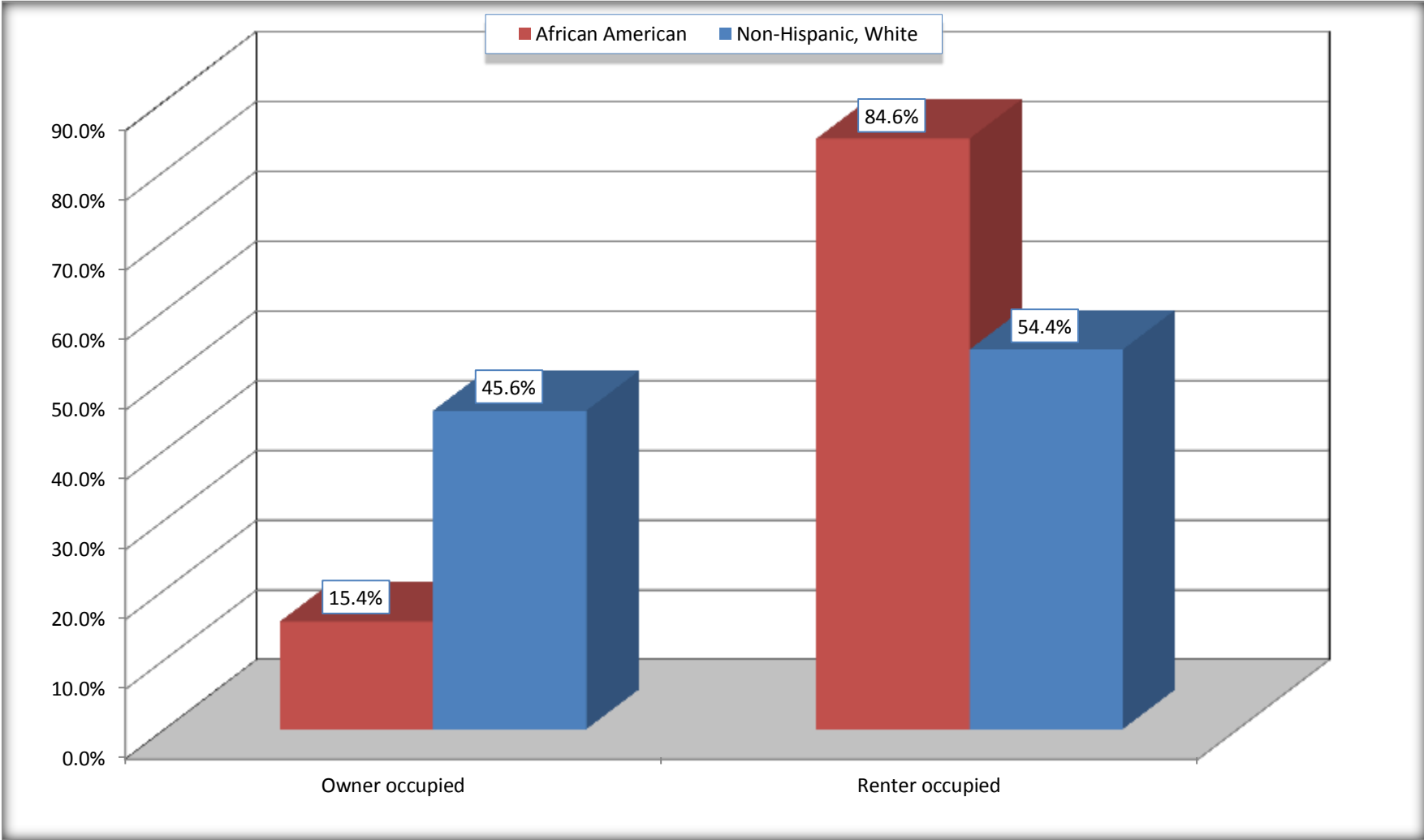
Source: U.S. Census Bureau, 2008-2012 American Community Survey

For information on confidentiality protection, sampling error, nonsampling error, and definitions, see Survey Methodology.

<http://www.census.gov/acs/www/UseData/index.h>

Home Owners and Renters by Household

Pineville town, North Carolina



Source: B25003. TENURE - Universe: OCCUPIED HOUSING UNITS
Data Set: 2008-2012 American Community Survey 5-Year Estimates

B25014. OCCUPANTS PER ROOM - Universe: OCCUPIED HOUSING UNITS

Data Set: 2008-2012 American Community Survey 5-Year Estimates

	Pineville town, North Carolina					
	African American	Margin of Error (+/-)	% of AA Total	White, Not Hispanic	Margin of Error (+/-)	% of NHW Total
Total:	875	185	100.0%	2,266	350	100.0%
1.00 or less occupants per room	792	200	90.5%	2,225	353	98.2%
1.01 or more occupants per room	83	59	9.5%	41	55	1.8%

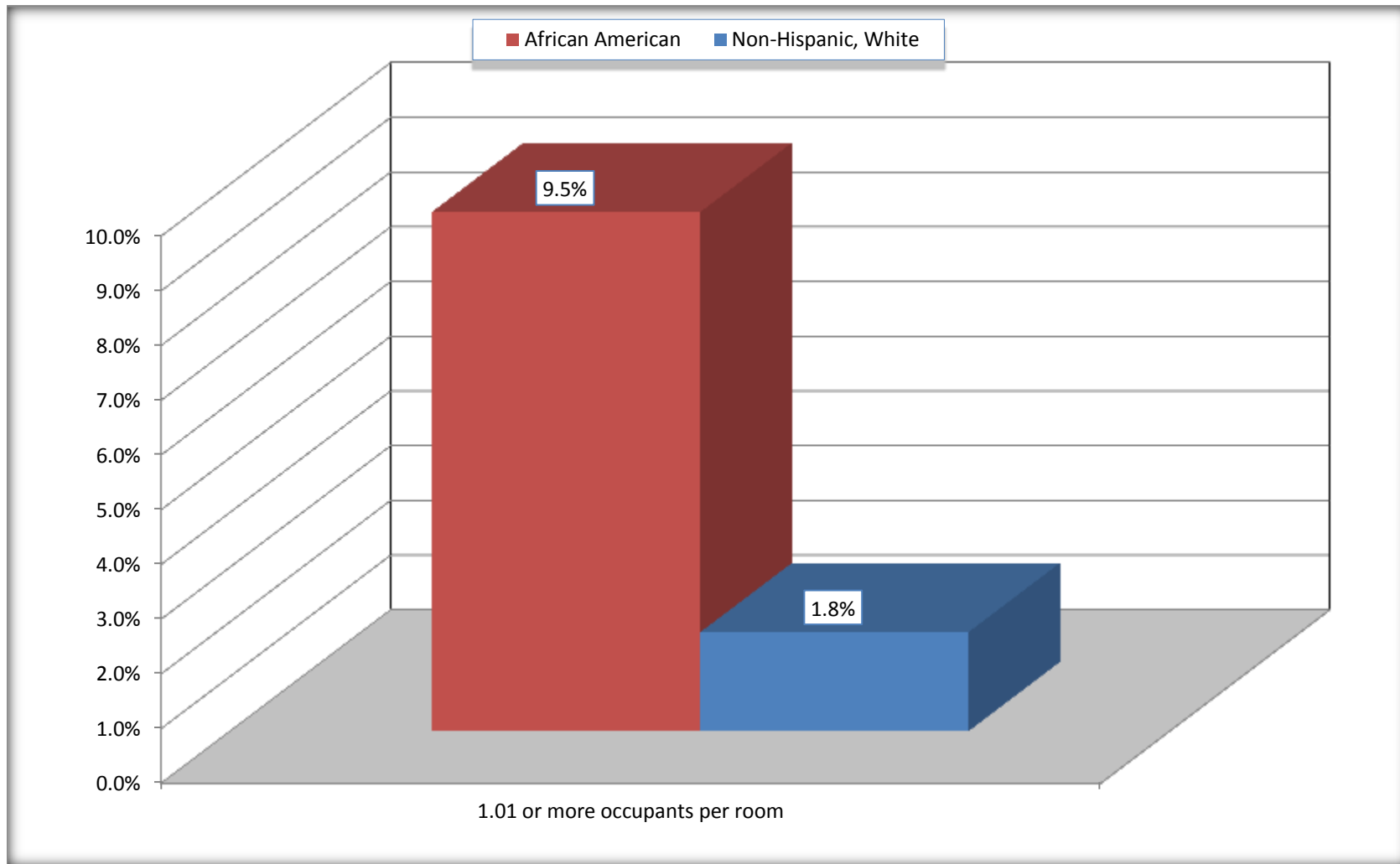
Source: U.S. Census Bureau, 2008-2012 American Community Survey

For information on confidentiality protection, sampling error, nonsampling error, and definitions, see Survey Methodology.

<http://www.census.gov/acs/www/UseData/index.ht>

More than One Person per Room (Crowding) by Household

Pineville town, North Carolina



Source: B25014. OCCUPANTS PER ROOM - Universe: OCCUPIED HOUSING UNITS
Data Set: 2008-2012 American Community Survey 5-Year Estimates

B18101. AGE BY DISABILITY STATUS

Data Set: 2008-2012 American Community Survey 5-Year Estimates

	Pineville town, North Carolina					
	African American	Margin of Error (+/-)	% of AA Total	White, Not Hispanic	Margin of Error (+/-)	% of NHW Total
Total:	2,148	600	100.0%	3,618	559	100.0%
Under 18 years:	701	429	32.6%	336	17	9.3%
With a disability	75	68	3.5%	0	18	0.0%
No disability	626	407	29.1%	336	181	9.3%
18 to 64 years:	1,426	327	66.4%	2,107	380	58.2%
With a disability	237	171	11.0%	190	109	5.3%
No disability	1,189	272	55.4%	1,917	362	53.0%
65 years and over:	21	34	1.0%	1,175	240	32.5%
With a disability	21	34	1.0%	561	206	15.5%
No disability	0	18	0.0%	614	168	17.0%

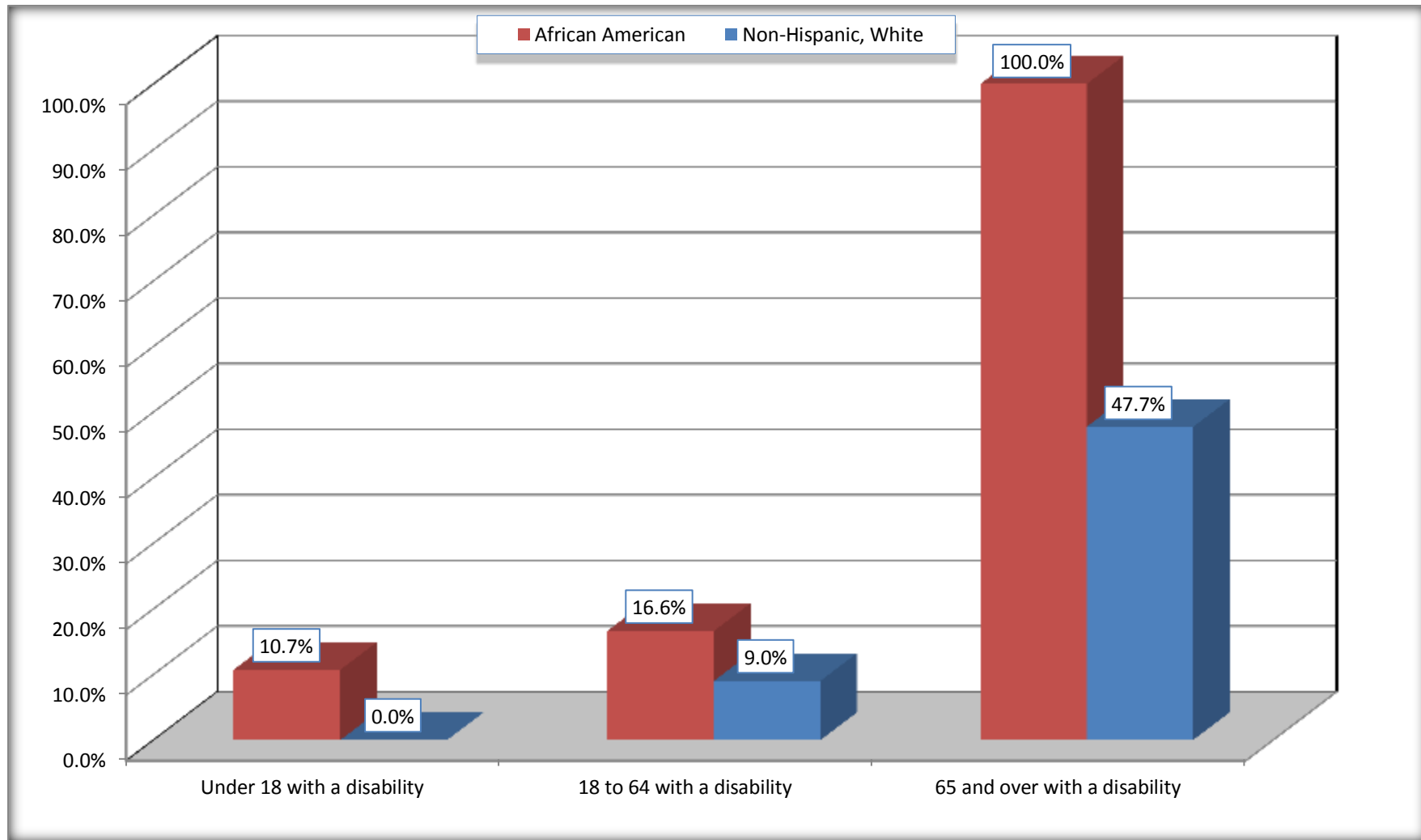
Source: U.S. Census Bureau, 2008-2012 American Community Survey

For information on confidentiality protection, sampling error, nonsampling error, and definitions, see Survey Methodology.

<http://www.census.gov/acs/www/UseData/index.htm>

Disability by Age

Pineville town, North Carolina



Source: B18101. AGE BY DISABILITY STATUS
Data Set: 2008-2012 American Community Survey 5-Year Estimates

C27001B. HEALTH INSURANCE COVERAGE STATUS BY AGE

Data Set: 2008-2012 American Community Survey 5-Year Estimates

	Pineville town, North Carolina					
	African American	Margin of Error (+/-)	% of AA Total	White, Not Hispanic	Margin of Error (+/-)	% of NHW Total
Total:	2,148	600	100.0%	3,618	559	100.0%
Under 18 years:	701	429	32.6%	336	181	9.3%
With health insurance coverage	661	429	30.8%	236	118	6.5%
No health insurance coverage	40	62	1.9%	100	136	2.8%
18 to 64 years:	1,426	327	66.4%	2,107	380	58.2%
With health insurance coverage	859	231	40.0%	1,575	347	43.5%
No health insurance coverage	567	231	26.4%	532	197	14.7%
65 years and over:	21	34	1.0%	1,175	240	32.5%
With health insurance coverage	21	34	1.0%	1,175	240	32.5%
No health insurance coverage	0	18	0.0%	0	18	0.0%

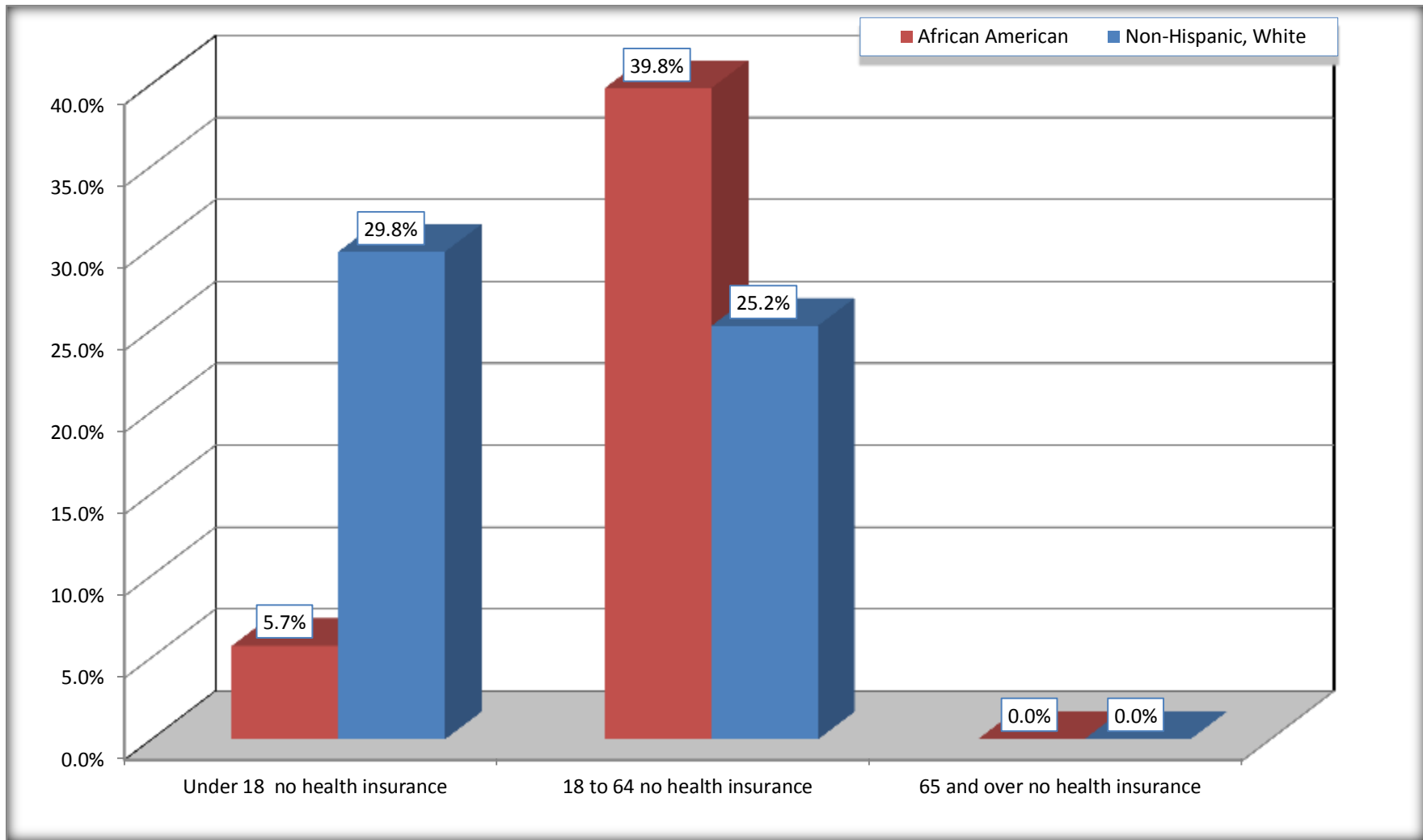
Source: U.S. Census Bureau, 2008-2012 American Community Survey

For information on confidentiality protection, sampling error, nonsampling error, and definitions, see Survey Methodology.

<http://www.census.gov/acs/www/UseData/index.htm>

Lack of Health Insurance Coverage by Age

Pineville town, North Carolina



Source: C27001B. HEALTH INSURANCE COVERAGE STATUS BY AGE
Data Set: 2008-2012 American Community Survey 5-Year Estimates