

# **Selected Socio-Economic Data**

## **Lexington city, North Carolina**

### **African American and White, Not Hispanic**

**Data Set: 2008-2012 American Community Survey 5-Year Estimates**

[www.fairvote2020.org](http://www.fairvote2020.org)

[www.fairdata2000.com](http://www.fairdata2000.com)

[29-Dec-13](#)

**C02003.DETAILED RACE - Universe: TOTAL POPULATION**

Data Set: 2008-2012 American Community Survey 5-Year Estimates

	Lexington city, North Carolina		
	Population	Margin of Error (+/-)	% of Total
<b>Total:</b>	<b>19,038</b>	<b>46</b>	<b>100.0%</b>
Population of one race:	18,512	250	97.2%
White	11,433	696	60.1%
Black or African American	5,504	510	28.9%
American Indian and Alaska Native	115	77	0.6%
Asian alone	959	301	5.0%
Native Hawaiian and Other Pacific Islander	22	28	0.1%
Some other race	479	269	2.5%
Population of two or more races:	526	247	2.8%
Two races including Some other race	139	114	0.7%
Two races excluding Some other race, and three or more races	387	218	2.0%
Population of two races:	496	233	2.6%
White; Black or African American	111	92	0.6%
White; American Indian and Alaska Native	97	123	0.5%
White; Asian	94	108	0.5%
Black or African American; American Indian and Alaska Native	25	30	0.1%
All other two race combinations	169	122	0.9%
Population of three races	30	50	0.2%
Population of four or more races	0	20	0.0%

Note: Hispanics may be of any race. See Table B03002 and chart.

Source: U.S. Census Bureau, 2008-2012 American Community Survey

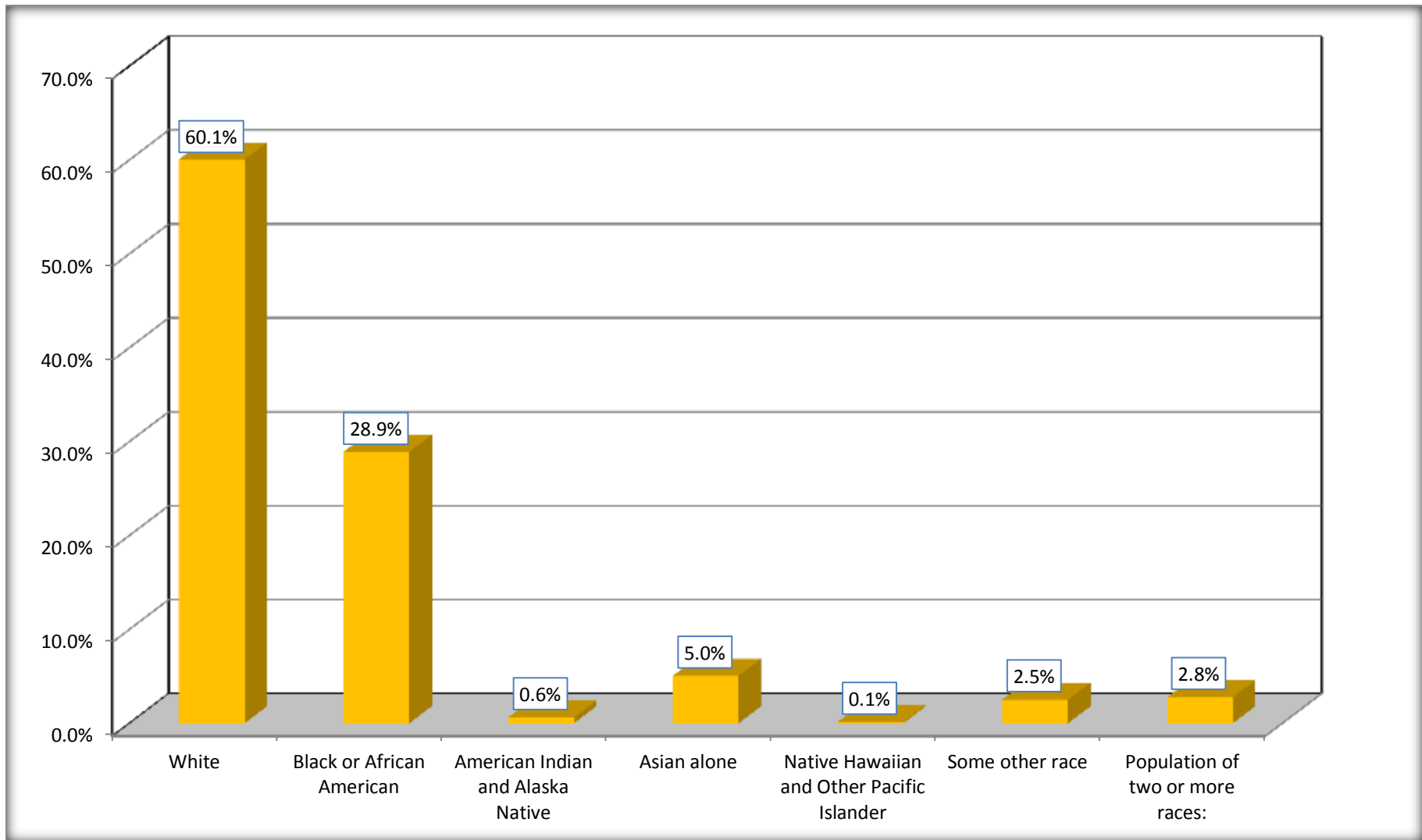
Although the American Community Survey (ACS) produces population, demographic and housing unit estimates, it is the Census Bureau's Population Estimates Program that produces and disseminates the official estimates of the population for the nation, states, counties, cities and towns and estimates of housing units for states and counties.

For information on confidentiality protection, sampling error, nonsampling error, and definitions, see Survey Methodology.

<http://www.census.gov/acs/www/UseData/index.htm>

# Population by Race

## Lexington city, North Carolina



Source: C02003.DETAILED RACE - Universe: TOTAL POPULATION  
Data Set: 2008-2012 American Community Survey 5-Year Estimates

**B03002. HISPANIC OR LATINO ORIGIN BY RACE - Universe: TOTAL POPULATION**

Data Set: 2008-2012 American Community Survey 5-Year Estimates

	Lexington city, North Carolina		
	Population	Margin of Error (+/-)	% of Total
<b>Total:</b>	19,038	46	<b>100.0%</b>
Not Hispanic or Latino:	16,267	632	85.4%
White alone	9,355	619	49.1%
Black or African American alone	5,486	509	28.8%
American Indian and Alaska Native alone	115	77	0.6%
Asian alone	864	247	4.5%
Native Hawaiian and Other Pacific Islander alone	22	28	0.1%
Some other race alone	0	20	0.0%
Two or more races:	425	222	2.2%
Two races including Some other race	38	51	0.2%
Two races excluding Some other race, and three or more races	387	218	2.0%
Hispanic or Latino	2,771	624	14.6%

Source: U.S. Census Bureau, 2008-2012 American Community Survey

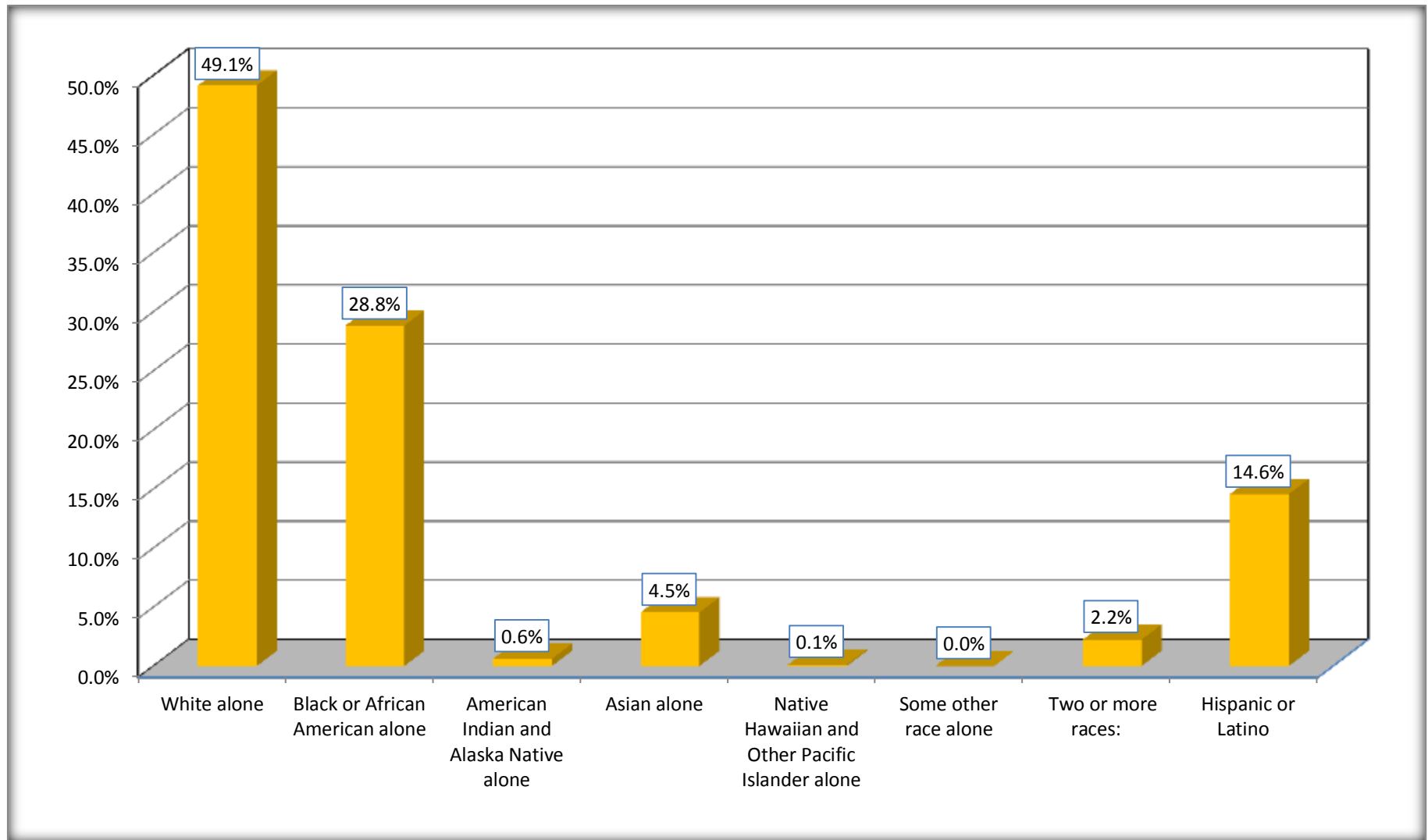
Although the American Community Survey (ACS) produces population, demographic and housing unit estimates, it is the Census Bureau's Population Estimates Program that produces and disseminates the official estimates of the population for the nation, states, counties, cities and towns and estimates of housing units for states and counties.

For information on confidentiality protection, sampling error, nonsampling error, and definitions, see Survey Methodology.

<http://www.census.gov/acs/www/UseData/index.htm>

# Non-Hispanic by Race and Hispanic Population

## Lexington city, North Carolina



Source: B03002. HISPANIC OR LATINO ORIGIN BY RACE - Universe: TOTAL POPULATION  
Data Set: 2008-2012 American Community Survey 5-Year Estimates

**B03002. HISPANIC OR LATINO ORIGIN BY RACE**

Data Set: 2008-2012 American Community Survey 5-Year Estimates

	Lexington city, North Carolina		
	Population	Margin of Error (+/-)	% of Total
Hispanic or Latino:	2,771	624	<b>100.0%</b>
White alone	2,078	702	75.0%
Black or African American alone	18	29	0.6%
American Indian and Alaska Native alone	0	20	0.0%
Asian alone	95	158	3.4%
Native Hawaiian and Other Pacific Islander alone	0	20	0.0%
Some other race alone	479	269	17.3%
Two or more races:	101	98	3.6%
Two races including Some other race	101	98	3.6%
Two races excluding Some other race, and three or more races	0	20	0.0%

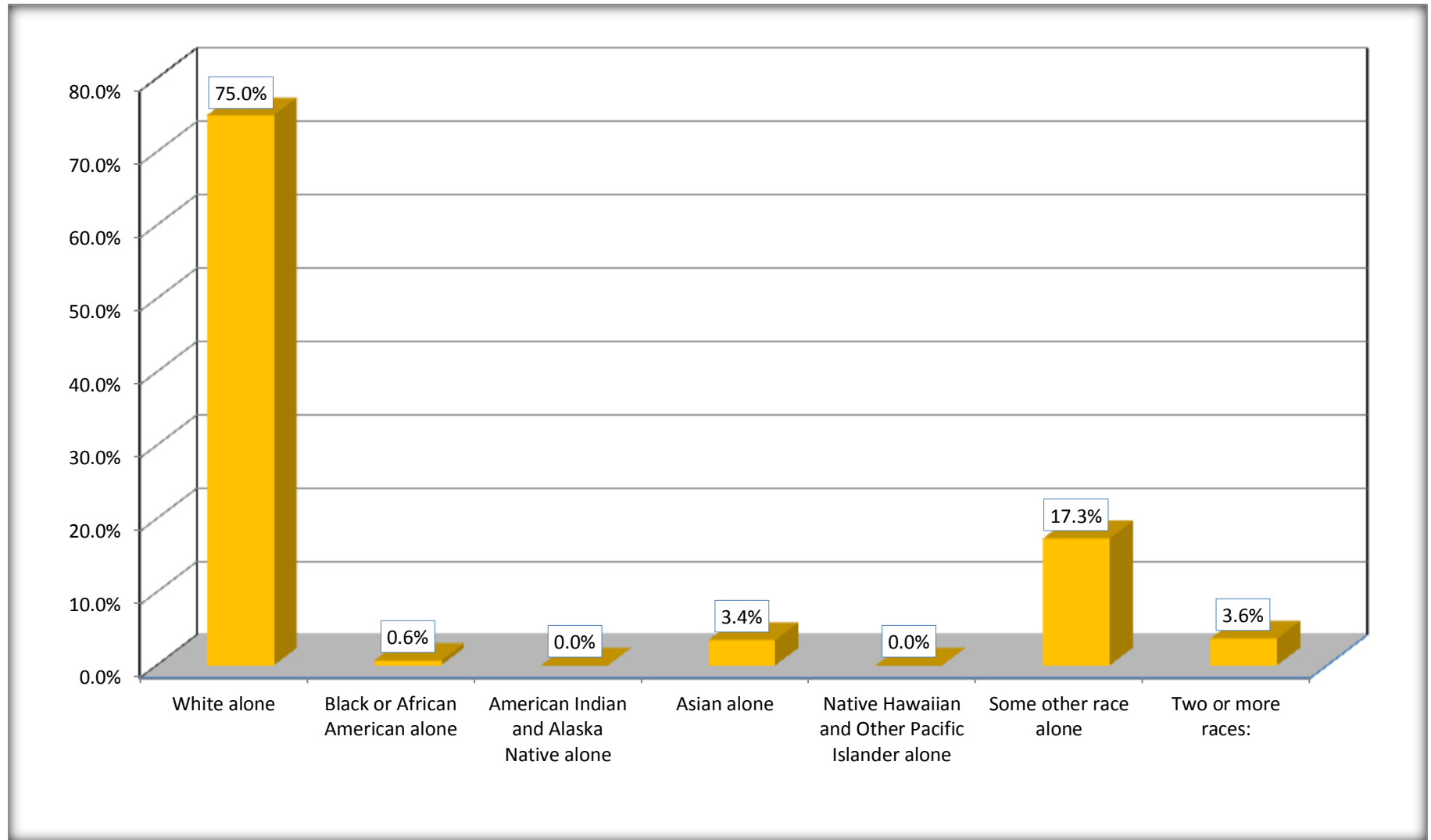
Source: U.S. Census Bureau, 2008-2012 American Community Survey

Although the American Community Survey (ACS) produces population, demographic and housing unit estimates, it is the Census Bureau's Population Estimates Program that produces and disseminates the official estimates of the population for the nation, states, counties, cities and towns and estimates of housing units for states and counties.

For information on confidentiality protection, sampling error, nonsampling error, and definitions, see Survey Methodology.

<http://www.census.gov/acs/www/UseData/index.htm>

## Hispanic or Latino Origin by Race Lexington city, North Carolina



Source: B03002. HISPANIC OR LATINO ORIGIN BY RACE  
Data Set: 2008-2012 American Community Survey 5-Year Estimates

**B01001. SEX BY AGE**

Data Set: 2008-2012 American Community Survey 5-Year Estimates

	Lexington city, North Carolina					
	African American	Margin of Error (+/-)	% of AA Total	White, Not Hispanic	Margin of Error (+/-)	% of NHW Total
<b>Total:</b>	<b>5,504</b>	<b>510</b>	<b>100.0%</b>	<b>9,355</b>	<b>619</b>	<b>100.0%</b>
Under 18 years	1,366	NC	24.8%	1,700	NC	18.2%
18 to 64 years	3,541	NC	64.3%	5,488	NC	58.7%
65 years and over	597	NC	10.8%	2,167	NC	23.2%
Male:	2,565	338	46.6%	4,510	389	48.2%
Under 18 years	643	NC	11.7%	823	NC	8.8%
18 to 64 years	1,801	NC	32.7%	2,779	NC	29.7%
65 years and over	121	NC	2.2%	908	NC	9.7%
Female:	2,939	321	53.4%	4,845	412	51.8%
Under 18 years	723	NC	13.1%	877	NC	9.4%
18 to 64 years	1,740	NC	31.6%	2,709	NC	29.0%
65 years and over	476	NC	8.6%	1,259	NC	13.5%

Source: U.S. Census Bureau, 2008-2012 American Community Survey

Although the American Community Survey (ACS) produces population, demographic and housing unit estimates, it is the Census Bureau's Population Estimates Program that produces and disseminates the official estimates of the population for the nation, states, counties, cities and towns and estimates of housing units for states and counties.

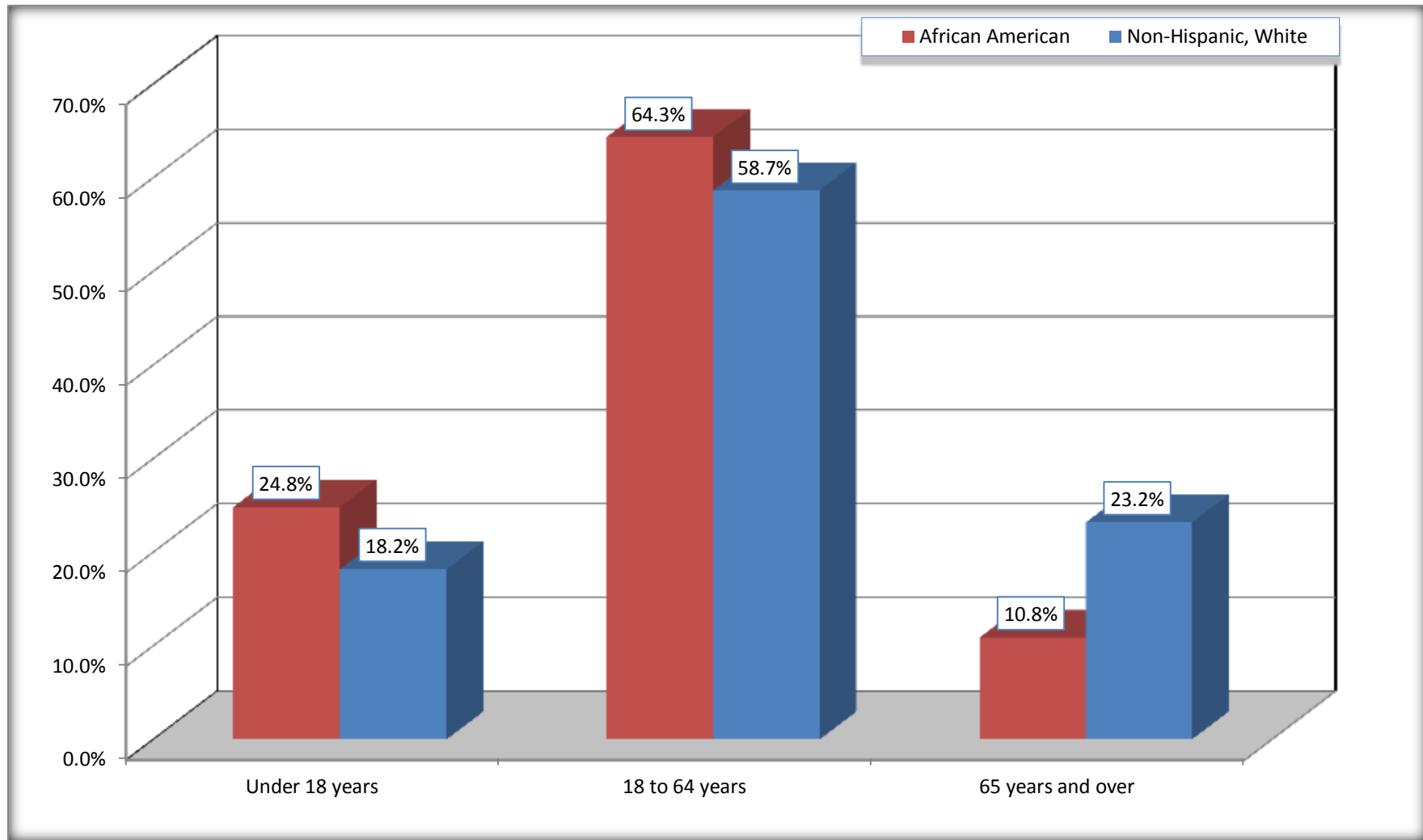
For information on confidentiality protection, sampling error, nonsampling error, and definitions, see Survey Methodology.

<http://www.census.gov/acs/www/UseData/index.htm>



# Population by Age

## Lexington city, North Carolina



Source: B01001. SEX BY AGE  
Data Set: 2008-2012 American Community Survey 5-Year Estimates

**B05003. SEX BY AGE BY CITIZENSHIP STATUS**

Data Set: 2008-2012 American Community Survey 5-Year Estimates

	Lexington city, North Carolina					
	African American	Margin of Error (+/-)	% of AA Total by Age	White, Not Hispanic	Margin of Error (+/-)	% of NHW Total by Age
<b>Total:</b>	<b>5,504</b>	<b>510</b>	<b>100.0%</b>	<b>9,355</b>	<b>619</b>	<b>100.0%</b>
<b>Under 18 years:</b>	<b>1,366</b>	<b>NC</b>	<b>100.0%</b>	<b>1,700</b>	<b>NC</b>	<b>100.0%</b>
Native	1,366	NC	100.0%	1,700	NC	100.0%
Foreign born:	0	NC	0.0%	0	NC	0.0%
Naturalized U.S. citizen	0	NC	0.0%	0	NC	0.0%
Not a U.S. citizen	0	NC	0.0%	0	NC	0.0%
<b>18 years and over:</b>	<b>4,138</b>	<b>NC</b>	<b>100.0%</b>	<b>7,655</b>	<b>NC</b>	<b>100.0%</b>
Native	4,124	NC	99.7%	7,527	NC	98.3%
Foreign born:	14	NC	0.3%	128	NC	1.7%
Naturalized U.S. citizen	0	NC	0.0%	38	NC	0.5%
Not a U.S. citizen	14	NC	0.3%	90	NC	1.2%
<b>Male:</b>	<b>2,565</b>	<b>338</b>	<b>46.6%</b>	<b>4,510</b>	<b>436</b>	<b>48.2%</b>
<b>Under 18 years:</b>	<b>643</b>	<b>174</b>	<b>100.0%</b>	<b>823</b>	<b>230</b>	<b>100.0%</b>
Native	643	174	100.0%	823	230	100.0%
Foreign born:	0	20	0.0%	0	20	0.0%
Naturalized U.S. citizen	0	20	0.0%	0	20	0.0%
Not a U.S. citizen	0	20	0.0%	0	20	0.0%
<b>18 years and over:</b>	<b>1,922</b>	<b>287</b>	<b>100.0%</b>	<b>3,687</b>	<b>392</b>	<b>100.0%</b>
Native	1,917	287	99.7%	3,624	389	98.3%
Foreign born:	5	8	0.3%	63	56	1.7%
Naturalized U.S. citizen	0	20	0.0%	22	22	0.6%
Not a U.S. citizen	5	8	0.3%	41	51	1.1%

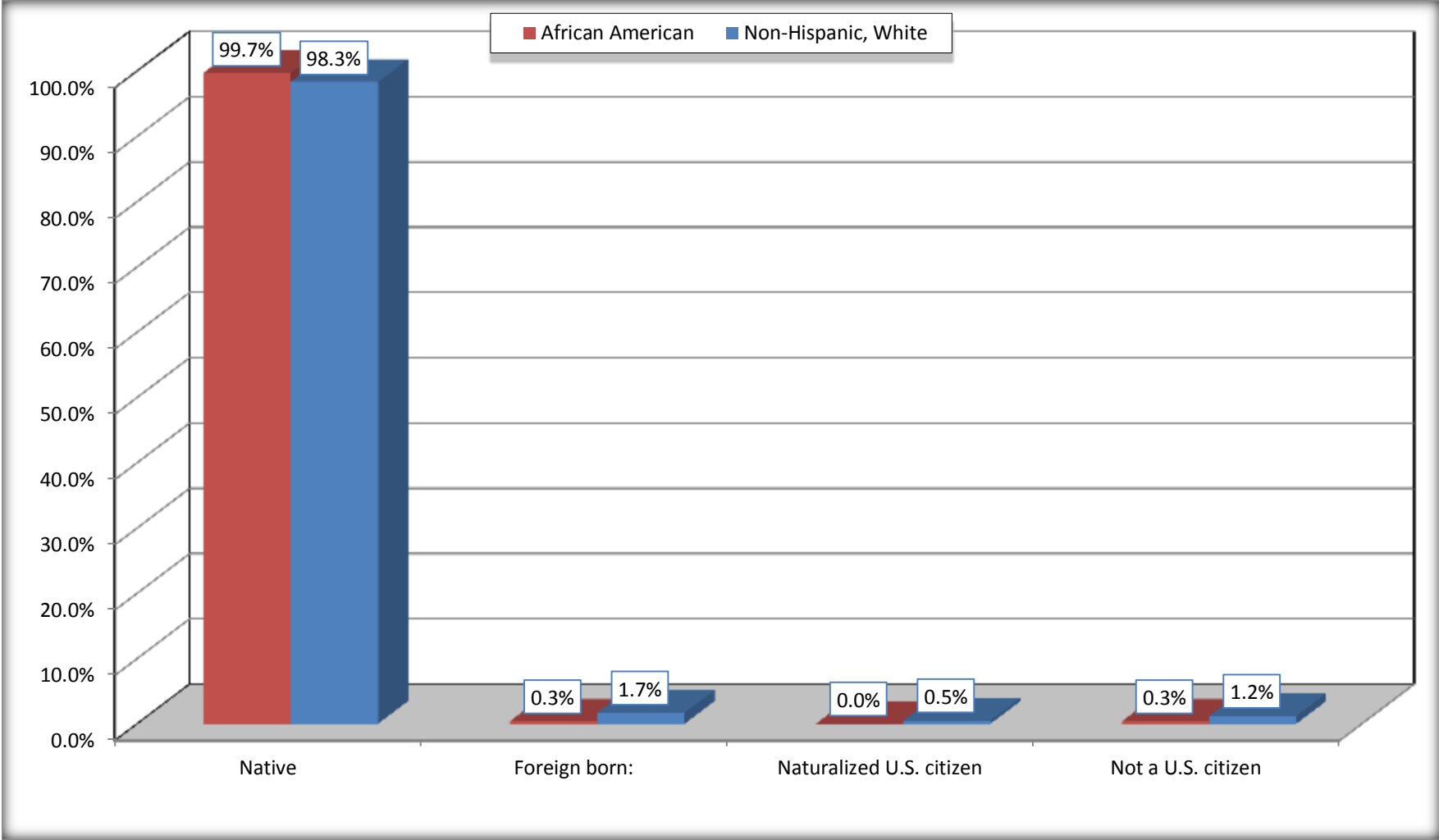
	Lexington city, North Carolina					
	African American	Margin of Error (+/-)	% of AA by Age	White, Not Hispanic	Margin of Error (+/-)	% of NHW by Age
<b>Female:</b>	2,939	321	53.4%	4,845	370	51.8%
<b>Under 18 years:</b>	<b>723</b>	<b>207</b>	<b>100.0%</b>	<b>877</b>	<b>207</b>	<b>100.0%</b>
Native	723	207	100.0%	877	207	100.0%
Foreign born:	0	20	0.0%	0	20	0.0%
Naturalized U.S. citizen	0	20	0.0%	0	20	0.0%
Not a U.S. citizen	0	20	0.0%	0	20	0.0%
<b>18 years and over:</b>	<b>2,216</b>	<b>251</b>	<b>100.0%</b>	<b>3,968</b>	<b>300</b>	<b>100.0%</b>
Native	2,207	251	99.6%	3,903	305	98.4%
Foreign born:	9	11	0.4%	65	58	1.6%
Naturalized U.S. citizen	0	20	0.0%	16	18	0.4%
Not a U.S. citizen	9	11	0.4%	49	54	1.2%

Source: U.S. Census Bureau, 2008-2012 American Community Survey

For information on confidentiality protection, sampling error, nonsampling error, and definitions, see Survey Methodology.  
<http://www.census.gov/acs/www/UseData/index.htm>

# Citizenship Status of Voting Age Population (18 and Over)

## Lexington city, North Carolina



Source: B05003. SEX BY AGE BY CITIZENSHIP STATUS  
Data Set: 2008-2012 American Community Survey 5-Year Estimates

**B07004. GEOGRAPHICAL MOBILITY IN THE PAST YEAR BY RACE FOR CURRENT RESIDENCE IN THE UNITED STATES - Universe:  
POPULATION 1 YEAR AND OVER**

Data Set: 2008-2012 American Community Survey 5-Year Estimates

	Lexington city, North Carolina					
	African American	Margin of Error (+/-)	% of AA Total	White, Not Hispanic	Margin of Error (+/-)	% of NHW Total
<b>Total:</b>	<b>5,361</b>	<b>485</b>	<b>100.0%</b>	<b>9,287</b>	<b>623</b>	<b>100.0%</b>
Same house 1 year ago	4,083	489	76.2%	6,950	564	74.8%
Moved within same county	924	343	17.2%	1,423	446	15.3%
Moved from different county within same state	303	133	5.7%	700	314	7.5%
Moved from different state	51	40	1.0%	150	78	1.6%
Moved from abroad	0	20	0.0%	64	86	0.7%

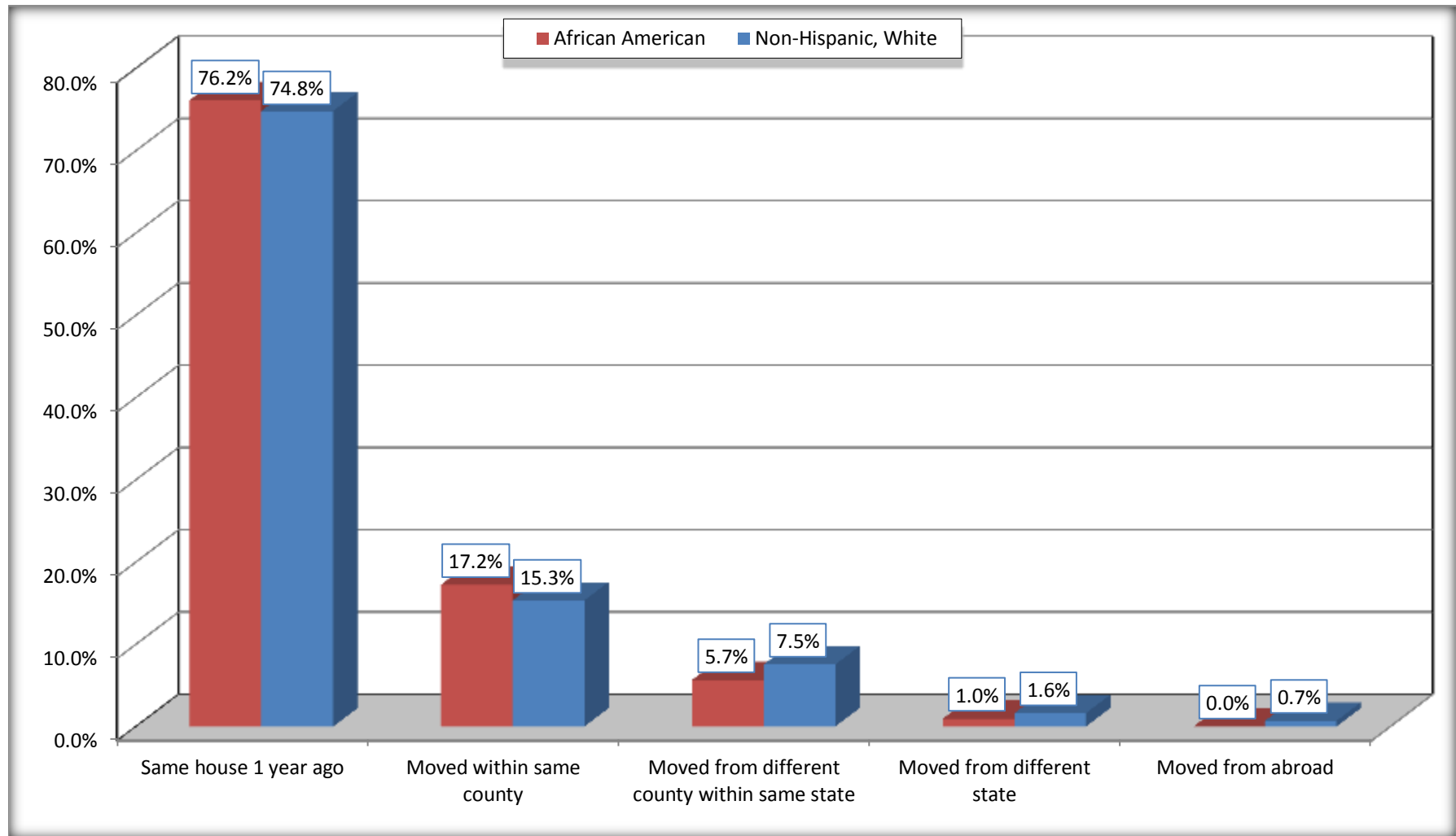
Source: U.S. Census Bureau, 2008-2012 American Community Survey

For information on confidentiality protection, sampling error, nonsampling error, and definitions, see Survey Methodology.

<http://www.census.gov/acs/www/UseData/index.htm>

# Geographical Mobility in the Past Year (Population 1 Year and Over)

## Lexington city, North Carolina



Source: B07004. GEOGRAPHICAL MOBILITY IN THE PAST YEAR BY RACE FOR CURRENT RESIDENCE IN THE UNITED STATES - Universe: POPULATION 1 YEAR AND OVER

Data Set: 2008-2012 American Community Survey 5-Year Estimates

**B08105. MEANS OF TRANSPORTATION TO WORK - Universe: WORKERS 16 YEARS AND OVER**

Data Set: 2008-2012 American Community Survey 5-Year Estimates

	Lexington city, North Carolina					
	African American	Margin of Error (+/-)	% of AA Total	White, Not Hispanic	Margin of Error (+/-)	% of NHW Total
<b>Total:</b>	1945	338	<b>100.0%</b>	3109	404	<b>100.0%</b>
Car, truck, or van - drove alone	1580	343	81.2%	2564	331	82.5%
Car, truck, or van - carpooled	232	131	11.9%	463	197	14.9%
Public transportation (excluding taxicab)	4	8	0.2%	0	20	0.0%
Walked	92	138	4.7%	6	9	0.2%
Taxicab, motorcycle, bicycle, or other means	9	14	0.5%	12	19	0.4%
Worked at home	28	35	1.4%	64	48	2.1%

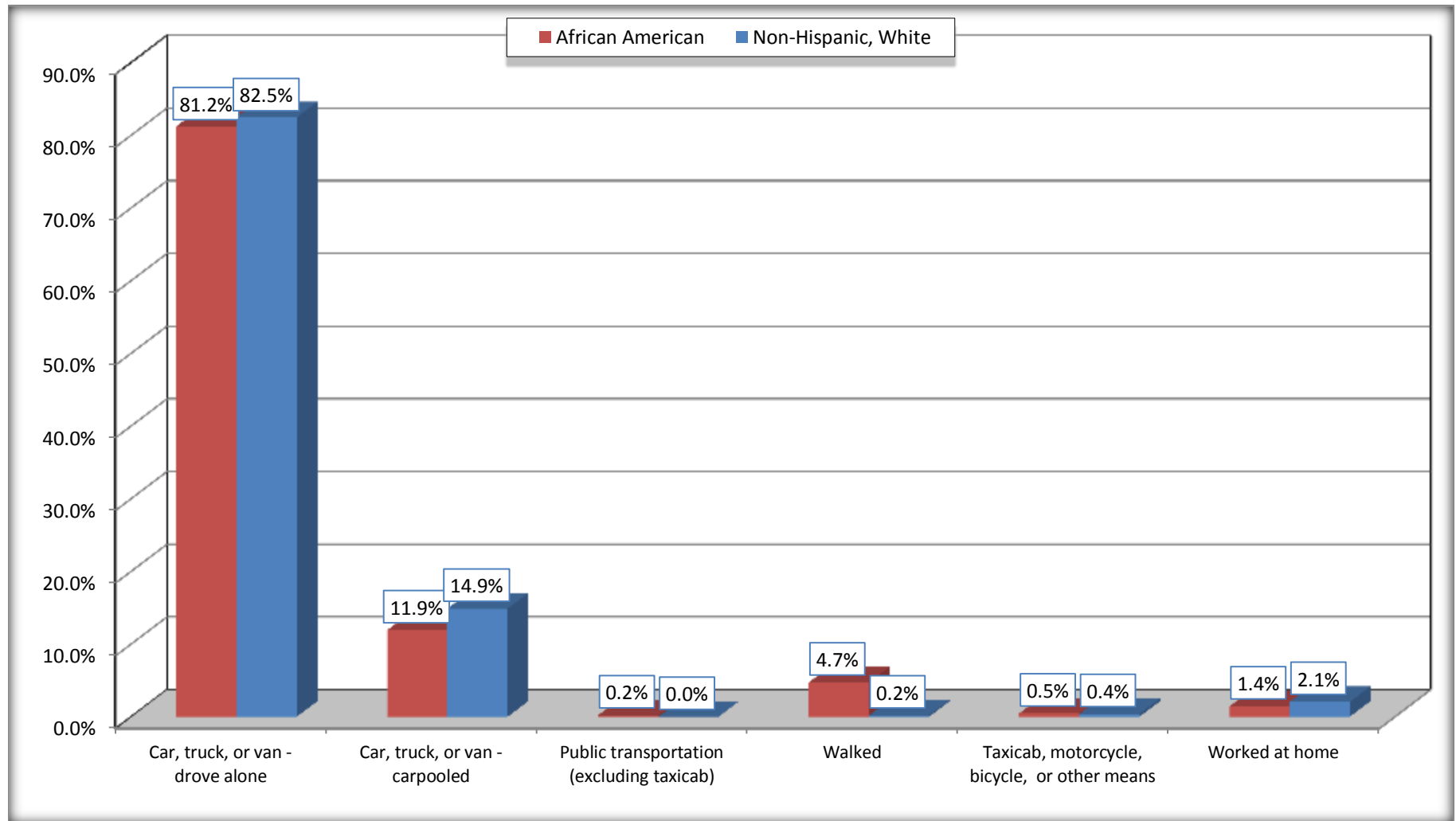
Source: U.S. Census Bureau, 2008-2012 American Community Survey

For information on confidentiality protection, sampling error, nonsampling error, and definitions, see Survey Methodology.

<http://www.census.gov/acs/www/UseData/index.htm>

# Means of Transportation to Work (Workers 16 Years and Over)

## Lexington city, North Carolina



Source: B08105. MEANS OF TRANSPORTATION TO WORK - Universe: WORKERS 16 YEARS AND OVER  
Data Set: 2008-2012 American Community Survey 5-Year Estimates



**B11002. HOUSEHOLD TYPE BY RELATIVES AND NONRELATIVES FOR POPULATION IN HOUSEHOLDS**

Data Set: 2008-2012 American Community Survey 5-Year Estimates

	Lexington city, North Carolina					
	African American	Margin of Error (+/-)	% of AA Total	White, Not Hispanic	Margin of Error (+/-)	% of NHW Total
<b>Total:</b>	4960	534	<b>100.0%</b>	9326	694	<b>100.0%</b>
In family households	3782	524	76.3%	7321	705	78.5%
In nonfamily households	1178	282	23.8%	2005	335	21.5%

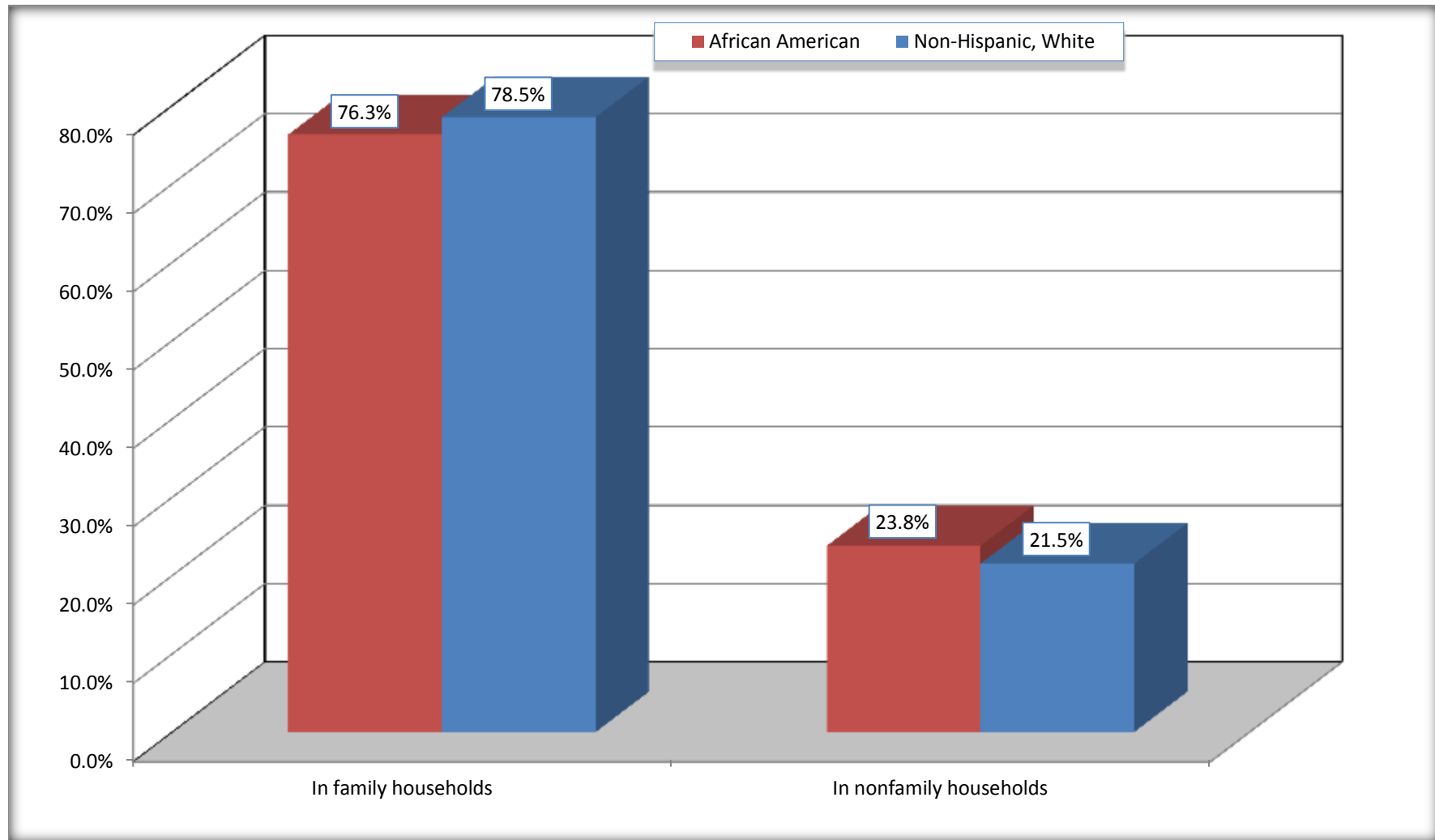
Source: U.S. Census Bureau, 2008-2012 American Community Survey

For information on confidentiality protection, sampling error, nonsampling error, and definitions, see Survey Methodology.

<http://www.census.gov/acs/www/UseData/index.htm>

# Household Type for Population in Households

## Lexington city, North Carolina



Source: B11002. HOUSEHOLD TYPE BY RELATIVES AND NONRELATIVES FOR POPULATION IN HOUSEHOLDS  
Data Set: 2008-2012 American Community Survey 5-Year Estimates

**B12002. MARITAL STATUS FOR THE POPULATION 15 YEARS AND OVER**

Data Set: 2008-2012 American Community Survey 5-Year Estimates

	Lexington city, North Carolina					
	African American	Margin of Error (+/-)	% of AA Total	White, Not Hispanic	Margin of Error (+/-)	% of NHW Total
<b>Total:</b>	<b>4,405</b>	<b>418</b>	<b>100.0%</b>	<b>7,927</b>	<b>531</b>	<b>100.0%</b>
Never married	2,111	NC	47.9%	1,498	NC	18.9%
Now married (except separated)	1,011	NC	23.0%	3,946	NC	49.8%
Separated	243	NC	5.5%	381	NC	4.8%
Widowed	403	NC	9.1%	826	NC	10.4%
Divorced	637	NC	14.5%	1,276	NC	16.1%
<b>Male:</b>	2,122	291	48.2%	3,757	389	47.4%
Never married	1,208	236	27.4%	752	188	9.5%
Now married (except separated)	545	171	12.4%	2,042	223	25.8%
Separated	26	31	0.6%	129	69	1.6%
Widowed	17	28	0.4%	158	105	2.0%
Divorced	326	133	7.4%	676	210	8.5%
<b>Female:</b>	2,283	259	51.8%	4,170	326	52.6%
Never married	903	207	20.5%	746	185	9.4%
Now married (except separated)	466	130	10.6%	1,904	239	24.0%
Separated	217	108	4.9%	252	103	3.2%
Widowed	386	119	8.8%	668	150	8.4%
Divorced	311	133	7.1%	600	194	7.6%

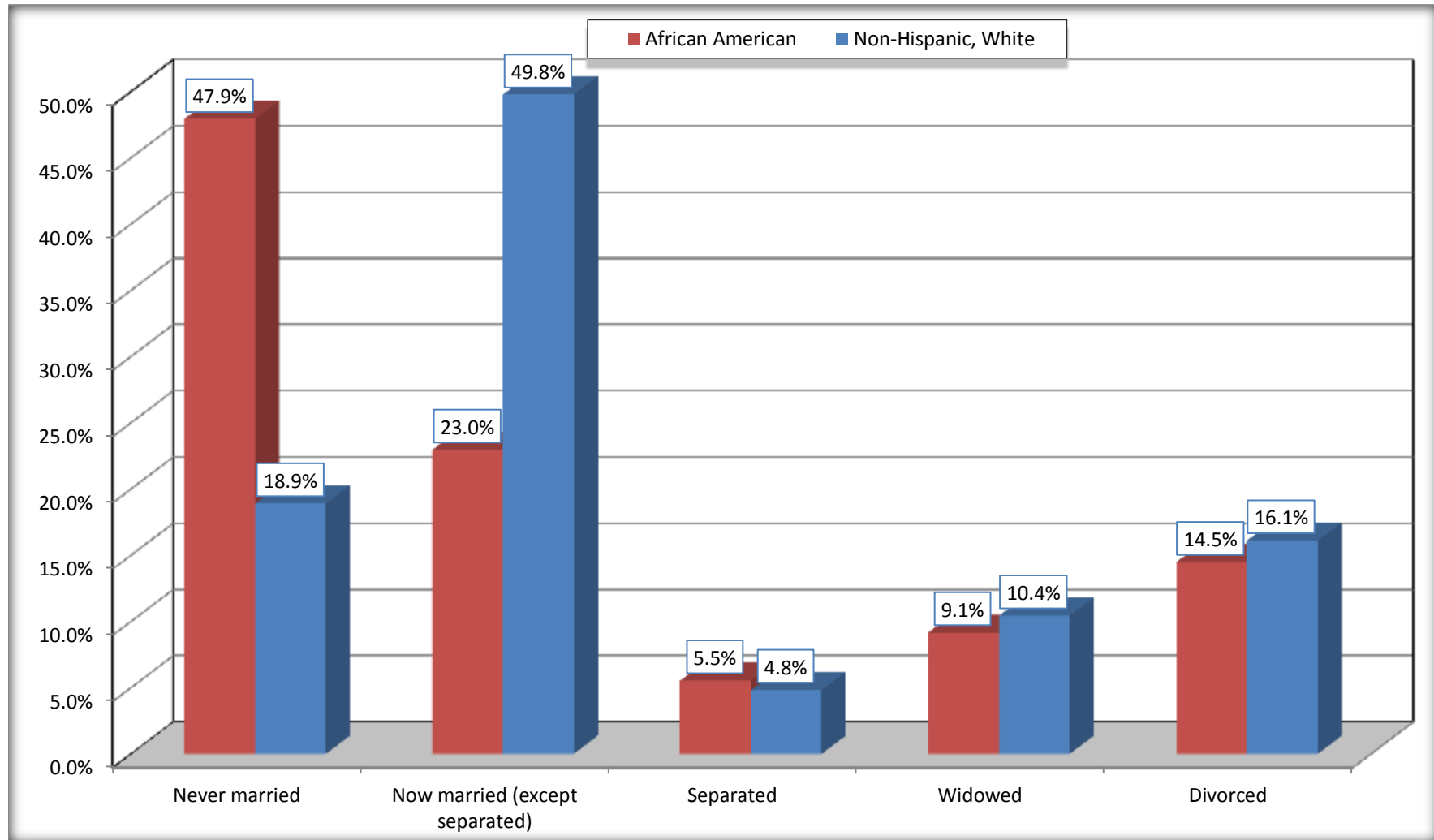
Source: U.S. Census Bureau, 2008-2012 American Community Survey

For information on confidentiality protection, sampling error, nonsampling error, and definitions, see Survey Methodology.

<http://www.census.gov/acs/www/UseData/index.htm>

# Marital Status for the Population 15 Years and Over

## Lexington city, North Carolina



Source: B12002. MARITAL STATUS FOR THE POPULATION 15 YEARS AND OVER  
Data Set: 2008-2012 American Community Survey 5-Year Estimates

**C15002. SEX BY EDUCATIONAL ATTAINMENT FOR THE POPULATION 25 YEARS AND OVER**

Data Set: 2008-2012 American Community Survey 5-Year Estimates

	Lexington city, North Carolina					
	African American	Margin of Error (+/-)	% of AA Total	White, Not Hispanic	Margin of Error (+/-)	% of NHW Total
<b>Total:</b>	<b>3,558</b>	<b>331</b>	<b>100.0%</b>	<b>7,073</b>	<b>456</b>	<b>100.0%</b>
Less than high school diploma	990	NC	27.8%	1,835	NC	25.9%
High school graduate, GED, or alternative	1,515	NC	42.6%	2,062	NC	29.2%
Some college or associate's degree	922	NC	25.9%	1,883	NC	26.6%
Bachelor's degree or higher	131	NC	3.7%	1,293	NC	18.3%
Male:	1,547	227	43.5%	3,345	319	47.3%
Less than high school diploma	456	152	12.8%	881	191	12.5%
High school graduate, GED, or alternative	724	153	20.3%	1,009	206	14.3%
Some college or associate's degree	273	113	7.7%	840	202	11.9%
Bachelor's degree or higher	94	83	2.6%	615	133	8.7%
Female:	2,011	240	56.5%	3,728	292	52.7%
Less than high school diploma	534	145	15.0%	954	181	13.5%
High school graduate, GED, or alternative	791	181	22.2%	1,053	200	14.9%
Some college or associate's degree	649	176	18.2%	1,043	226	14.7%
Bachelor's degree or higher	37	33	1.0%	678	160	9.6%

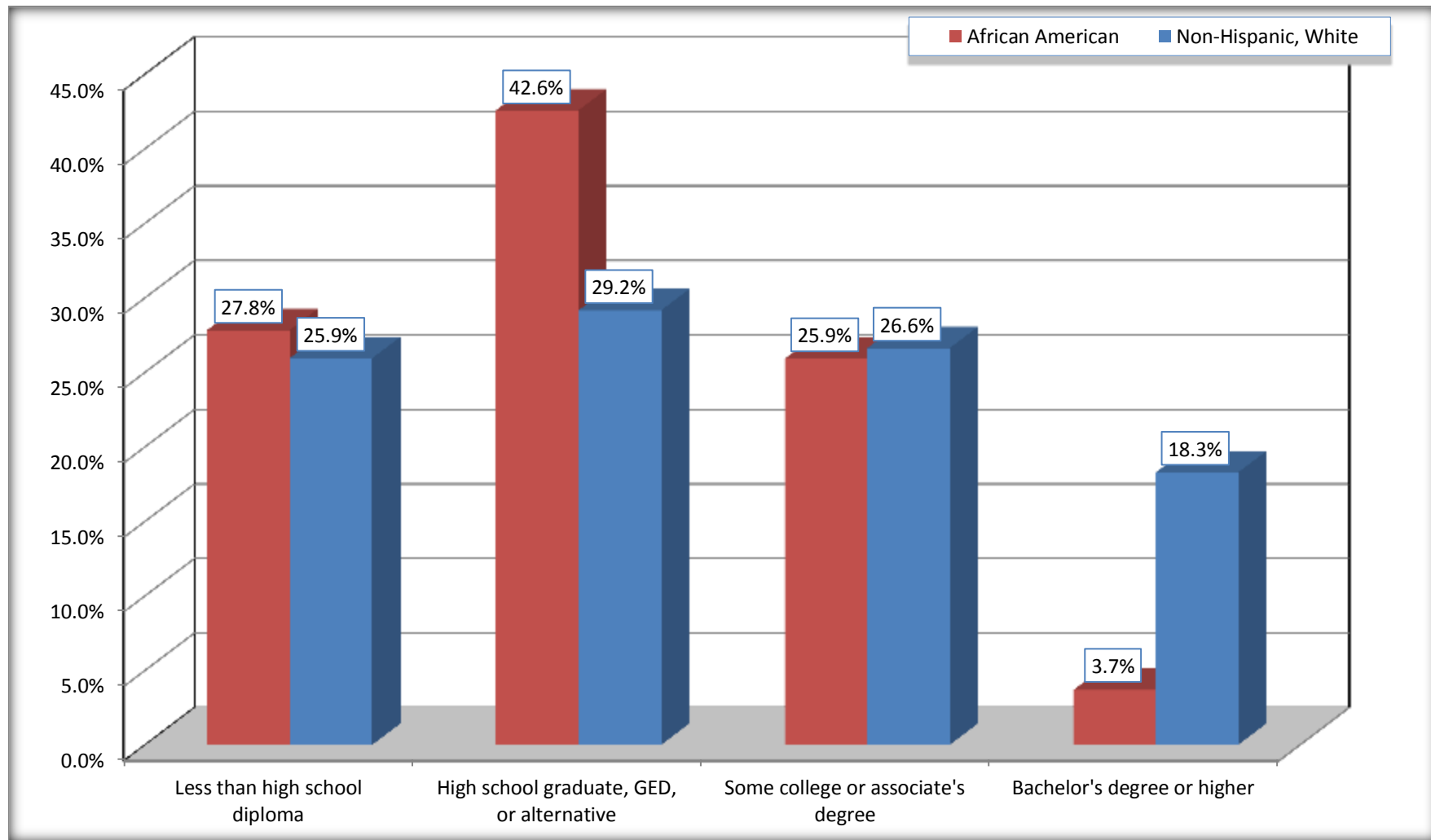
Source: U.S. Census Bureau, 2008-2012 American Community Survey

For information on confidentiality protection, sampling error, nonsampling error, and definitions, see Survey Methodology.

<http://www.census.gov/acs/www/UseData/index.htm>

# Educational Attainment for the Population 25 Years and Older

## Lexington city, North Carolina



Source: C15002. SEX BY EDUCATIONAL ATTAINMENT FOR THE POPULATION 25 YEARS AND OVER  
Data Set: 2008-2012 American Community Survey 5-Year Estimates

**B17010. POVERTY STATUS IN THE PAST 12 MONTHS OF FAMILIES BY FAMILY TYPE BY PRESENCE OF RELATED CHILDREN UNDER 18 YEARS**

Data Set: 2008-2012 American Community Survey 5-Year Estimates

	Lexington city, North Carolina					
	African American	Margin of Error (+/-)	% of AA Total	White, Not Hispanic	Margin of Error (+/-)	% of NHW Total
<b>Total:</b>	<b>1,170</b>	<b>198</b>	<b>100.0%</b>	<b>2,593</b>	<b>245</b>	<b>100.0%</b>
Income in the past 12 months below poverty level:	328	114	28.0%	399	151	15.4%
Married-couple family:	6	10	0.5%	180	78	6.9%
With related children under 18 years	0	20	0.0%	133	70	5.1%
Other family:	322	114	27.5%	219	132	8.4%
Male householder, no wife present	40	48	3.4%	3	7	0.1%
With related children under 18 years	40	48	3.4%	3	7	0.1%
Female householder, no husband present	282	105	24.1%	216	133	8.3%
With related children under 18 years	227	87	19.4%	212	130	8.2%
Income in the past 12 months at or above poverty level:	842	182	72.0%	2,194	257	84.6%
Married-couple family:	403	142	34.4%	1,727	228	66.6%
With related children under 18 years	161	74	13.8%	482	140	18.6%
Other family:	439	153	37.5%	467	151	18.0%
Male householder, no wife present	35	52	3.0%	154	109	5.9%
With related children under 18 years	8	16	0.7%	13	19	0.5%
Female householder, no husband present	404	140	34.5%	313	139	12.1%
With related children under 18 years	152	93	13.0%	157	98	6.1%

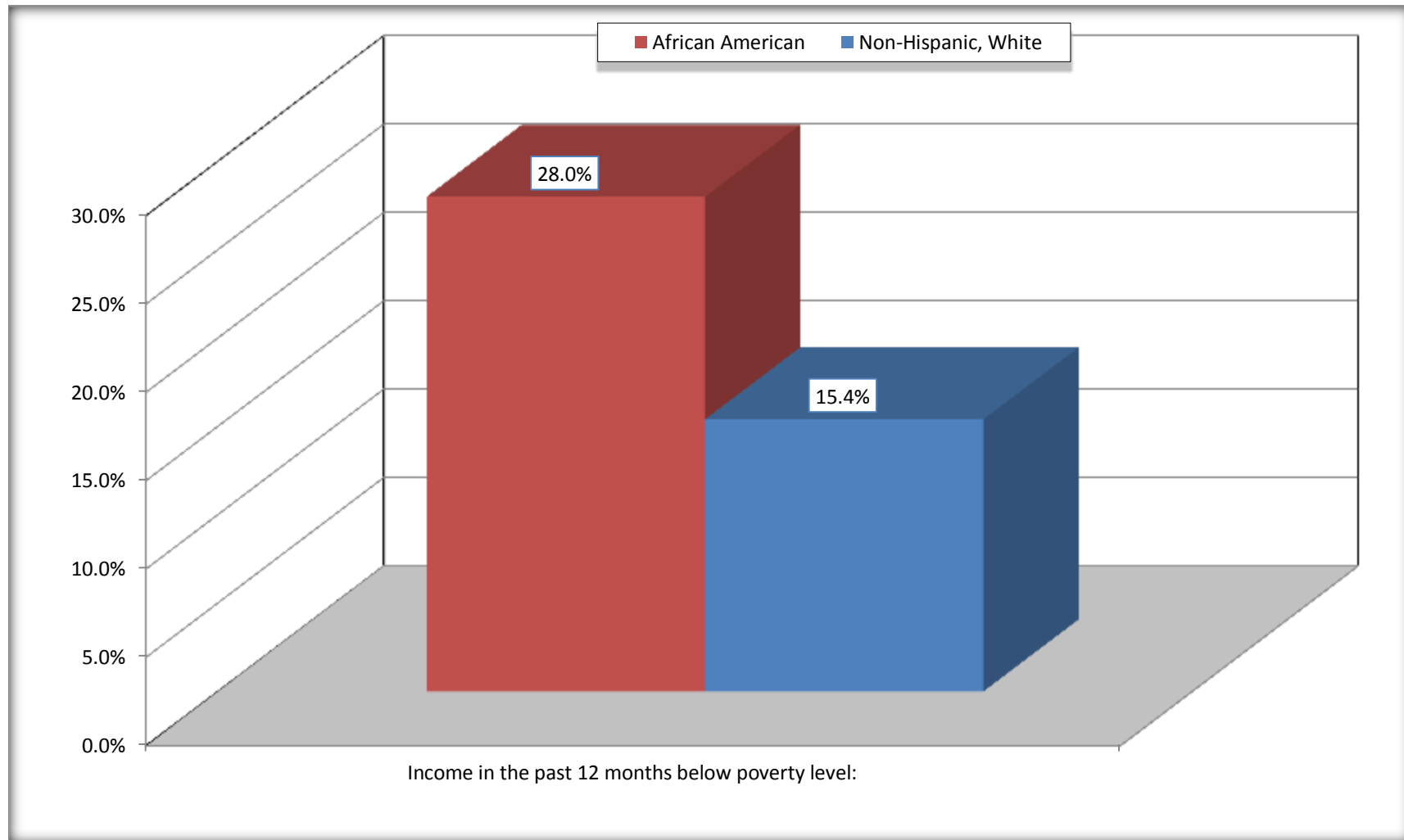
Source: U.S. Census Bureau, 2008-2012 American Community Survey

For information on confidentiality protection, sampling error, nonsampling error, and definitions, see Survey Methodology.

<http://www.census.gov/acs/www/UseData/index.htm>

# Family Households Below Poverty in the Past 12 Months

## Lexington city, North Carolina



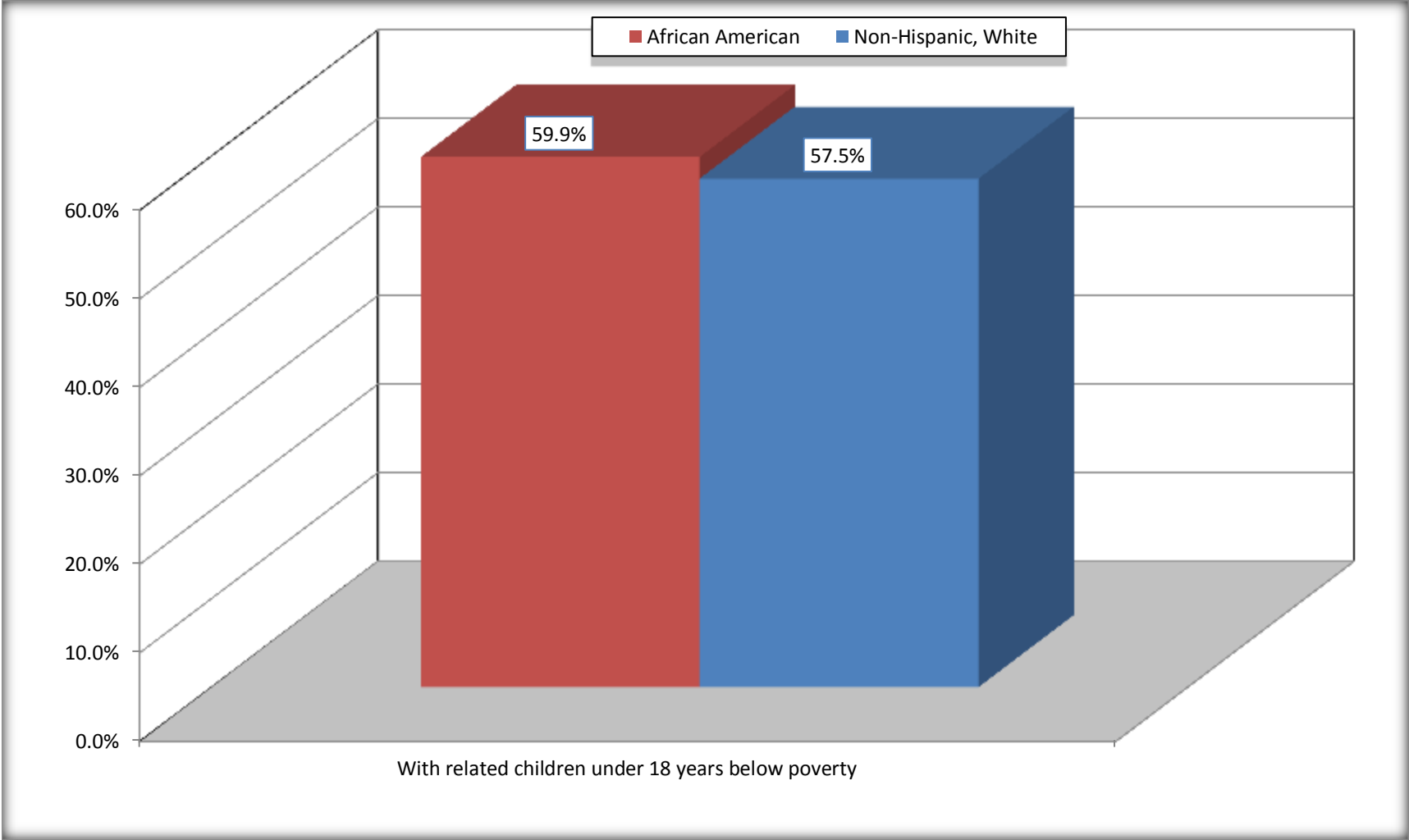
Source: B17010. POVERTY STATUS IN THE PAST 12 MONTHS OF FAMILIES BY FAMILY TYPE BY PRESENCE OF RELATED CHILDREN UNDER 18 YEARS

Data Set: 2008-2012 American Community Survey 5-Year Estimates



# Female-headed Households with Related Children Below Poverty in the Past 12 Months

## Lexington city, North Carolina



Source: B17010. POVERTY STATUS IN THE PAST 12 MONTHS OF FAMILIES BY FAMILY TYPE BY PRESENCE OF RELATED CHILDREN UNDER 18 YEARS

Data Set: 2008-2012 American Community Survey 5-Year Estimates

**B17020 POVERTY STATUS IN THE PAST 12 MONTHS BY AGE - Universe: POPULATION FOR WHOM POVERTY STATUS IS DETERMINED**

Data Set: 2008-2012 American Community Survey 5-Year Estimates

	Lexington city, North Carolina					
	African American	Margin of Error (+/-)	% of AA By Age	White, Not Hispanic	Margin of Error (+/-)	% of NHW By Age
<b>Total:</b>	<b>5,043</b>	<b>498</b>	<b>100.0%</b>	<b>8,890</b>	<b>619</b>	<b>100.0%</b>
Income in the past 12 months below poverty level:	1,599	401	31.7%	1,846	525	20.8%
<b>Under 18 years</b>	675	NC	51.9%	640	NC	37.8%
<b>18 to 64 years</b>	801	237	25.3%	995	233	19.5%
<b>65 years and over</b>	123	NC	21.2%	211	NC	10.1%
Income in the past 12 months at or above poverty level:	3,444	466	68.3%	7,044	671	79.2%
<b>Under 18 years</b>	626	NC	48.1%	1,051	NC	62.2%
<b>18 to 64 years</b>	2,362	389	74.7%	4,115	487	80.5%
<b>65 years and over</b>	456	NC	78.8%	1,878	NC	89.9%

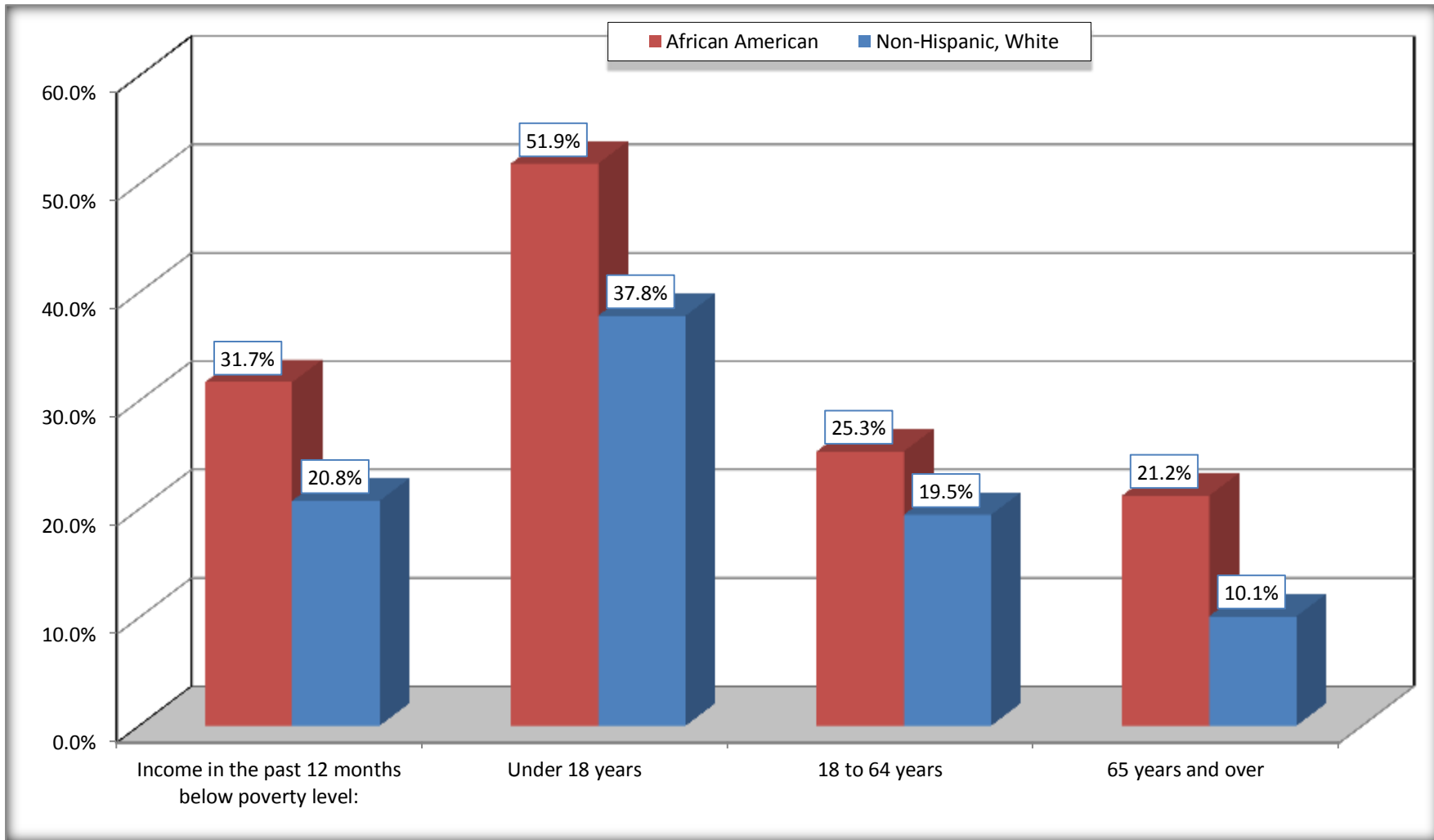
Source: U.S. Census Bureau, 2008-2012 American Community Survey

For information on confidentiality protection, sampling error, nonsampling error, and definitions, see Survey Methodology.

<http://www.census.gov/acs/www/UseData/index.htm>

# Population Below Poverty in the Past 12 Months

## Lexington city, North Carolina



Source: B17020 POVERTY STATUS IN THE PAST 12 MONTHS BY AGE - Universe: POPULATION FOR WHOM POVERTY STATUS IS DETERMINED  
Data Set: 2008-2012 American Community Survey 5-Year Estimates

**B19001. HOUSEHOLD INCOME IN THE PAST 12 MONTHS (IN 2010 INFLATION-ADJUSTED DOLLARS)**

Data Set: 2008-2012 American Community Survey 5-Year Estimates

	Lexington city, North Carolina					
	African American	Margin of Error (+/-)	% of AA Total	White, Not Hispanic	Margin of Error (+/-)	% of NHW Total
<b>Total:</b>	<b>2,259</b>	<b>264</b>	<b>100.0%</b>	<b>4,416</b>	<b>363</b>	<b>100.0%</b>
Less than \$ 10,000	492	152	21.8%	421	145	9.5%
\$ 10,000 to \$ 14,999	321	137	14.2%	535	138	12.1%
<b>\$ 15,000 to \$ 24,999</b>	348	NC	15.4%	832	NC	18.8%
<b>\$ 25,000 to \$ 34,999</b>	332	NC	14.7%	592	NC	13.4%
<b>\$ 35,000 to \$ 49,999</b>	345	NC	15.3%	718	NC	16.3%
<b>\$ 50,000 to \$ 74,999</b>	345	NC	15.3%	732	NC	16.6%
\$ 75,000 to \$ 99,999	48	45	2.1%	224	93	5.1%
<b>\$ 100,000 to \$ 149,999</b>	28	NC	1.2%	185	NC	4.2%
\$ 150,000 to \$ 199,999	0	20	0.0%	82	51	1.9%
\$ 200,000 or more	0	20	0.0%	95	58	2.2%

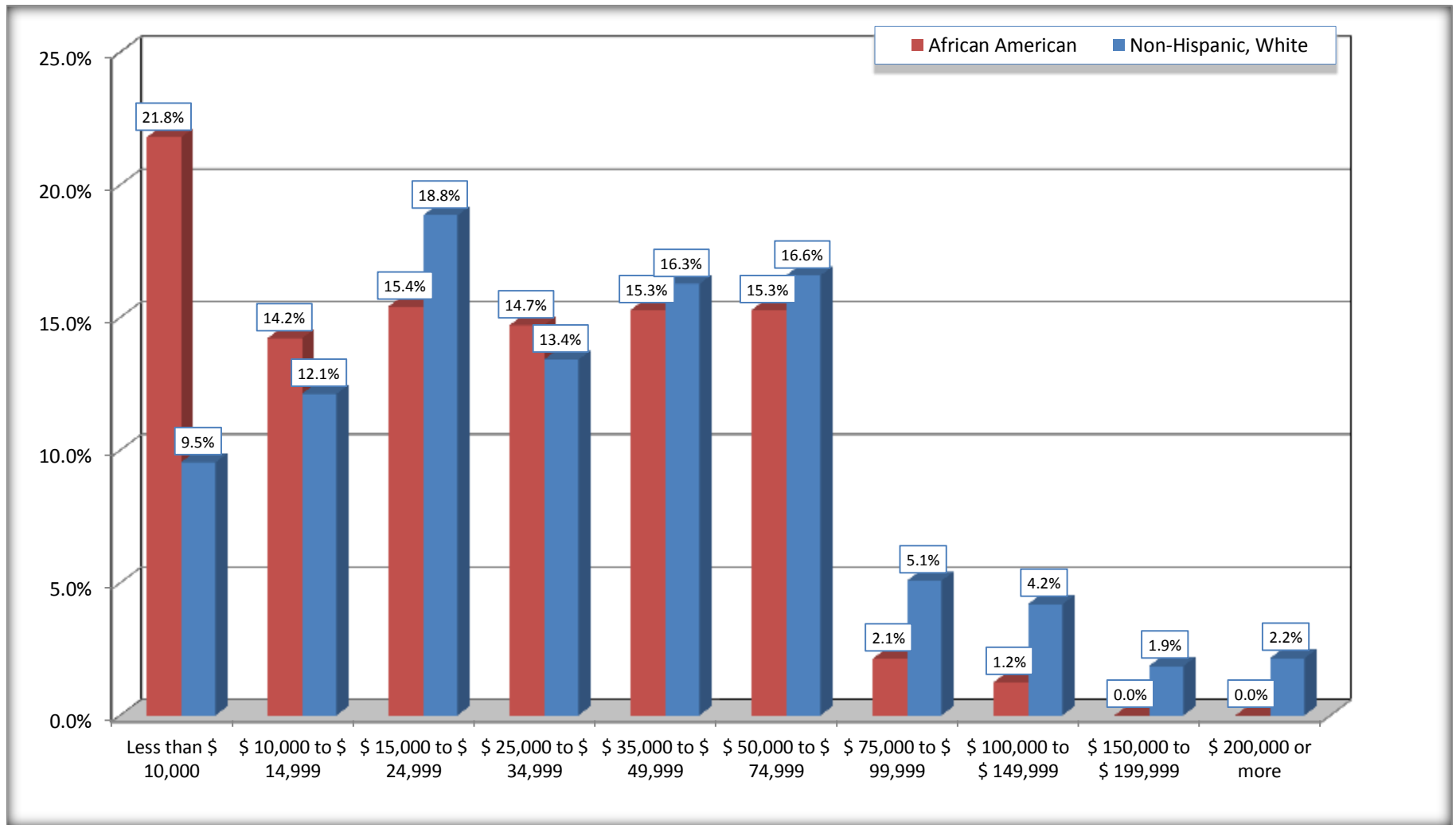
Source: U.S. Census Bureau, 2008-2012 American Community Survey

For information on confidentiality protection, sampling error, nonsampling error, and definitions, see Survey Methodology.

<http://www.census.gov/acs/www/UseData/index.htm>

# Household Income in the Past 12 Months

## Lexington city, North Carolina



Source: B19001. HOUSEHOLD INCOME IN THE PAST 12 MONTHS (IN 2010 INFLATION-ADJUSTED DOLLARS)

Data Set: 2008-2012 American Community Survey 5-Year Estimates

**B19013. MEDIAN HOUSEHOLD INCOME IN THE PAST 12 MONTHS (IN 2010 INFLATION-ADJUSTED DOLLARS)**

Data Set: 2008-2012 American Community Survey 5-Year Estimates

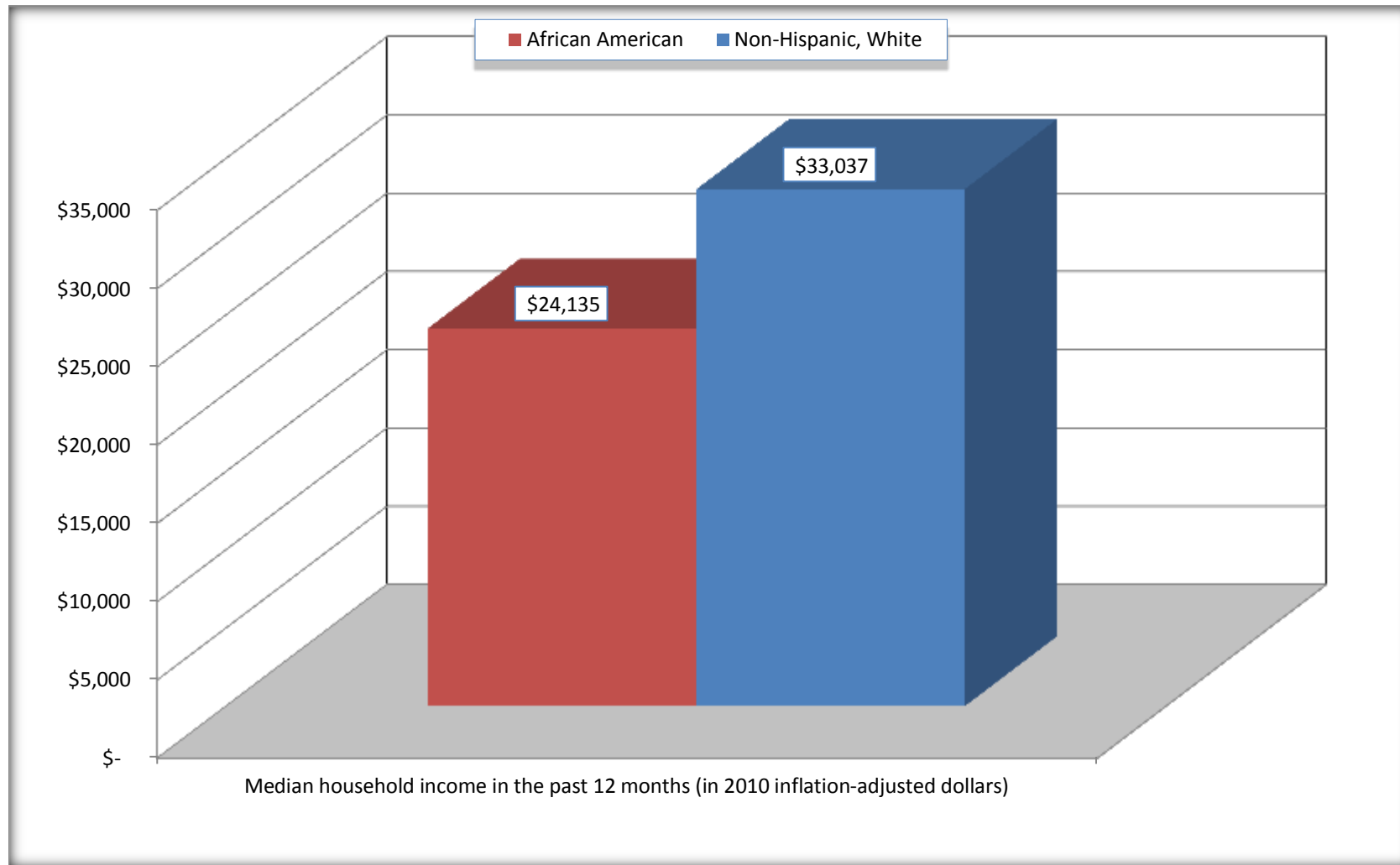
	Lexington city, North Carolina			
	African American	Margin of Error (+/-)	White, Not Hispanic	Margin of Error (+/-)
Median household income in the past 12 months (in 2010 inflation-adjusted dollars)	\$ 24,135	\$ 4,763	\$ 33,037	\$ 2,550

Source: U.S. Census Bureau, 2008-2012 American Community Survey

For information on confidentiality protection, sampling error, nonsampling error, and definitions, see Survey Methodology.  
<http://www.census.gov/acs/www/UseData/index.htm>

## Median Household Income in the Past 12 Months

### Lexington city, North Carolina



Source: B19013. MEDIAN HOUSEHOLD INCOME IN THE PAST 12 MONTHS (IN 2010 INFLATION-ADJUSTED DOLLARS)  
Data Set: 2008-2012 American Community Survey 5-Year Estimates

**B19101. FAMILY INCOME IN THE PAST 12 MONTHS (IN 2010 INFLATION-ADJUSTED DOLLARS)**

Data Set: 2008-2012 American Community Survey 5-Year Estimates

	Lexington city, North Carolina					
	African American	Margin of Error (+/-)	% of AA Total	White, Not Hispanic	Margin of Error (+/-)	% of NHW Total
<b>Total:</b>	<b>1,170</b>	<b>198</b>	<b>100.0%</b>	<b>2,593</b>	<b>245</b>	<b>100.0%</b>
Less than \$ 10,000	260	109	22.2%	181	110	7.0%
\$ 10,000 to \$ 14,999	51	39	4.4%	134	62	5.2%
<b>\$ 15,000 to \$ 24,999</b>	<b>138</b>	<b>NC</b>	<b>11.8%</b>	<b>362</b>	<b>NC</b>	<b>14.0%</b>
<b>\$ 25,000 to \$ 34,999</b>	<b>163</b>	<b>NC</b>	<b>13.9%</b>	<b>431</b>	<b>NC</b>	<b>16.6%</b>
<b>\$ 35,000 to \$ 49,999</b>	<b>218</b>	<b>NC</b>	<b>18.6%</b>	<b>448</b>	<b>NC</b>	<b>17.3%</b>
<b>\$ 50,000 to \$ 74,999</b>	<b>264</b>	<b>NC</b>	<b>22.6%</b>	<b>496</b>	<b>NC</b>	<b>19.1%</b>
<b>\$ 100,000 to \$ 149,999</b>	<b>28</b>	<b>NC</b>	<b>2.4%</b>	<b>161</b>	<b>NC</b>	<b>6.2%</b>
\$ 150,000 to \$ 199,999	0	20	0.0%	67	48	2.6%
\$ 200,000 or more	0	20	0.0%	89	58	3.4%

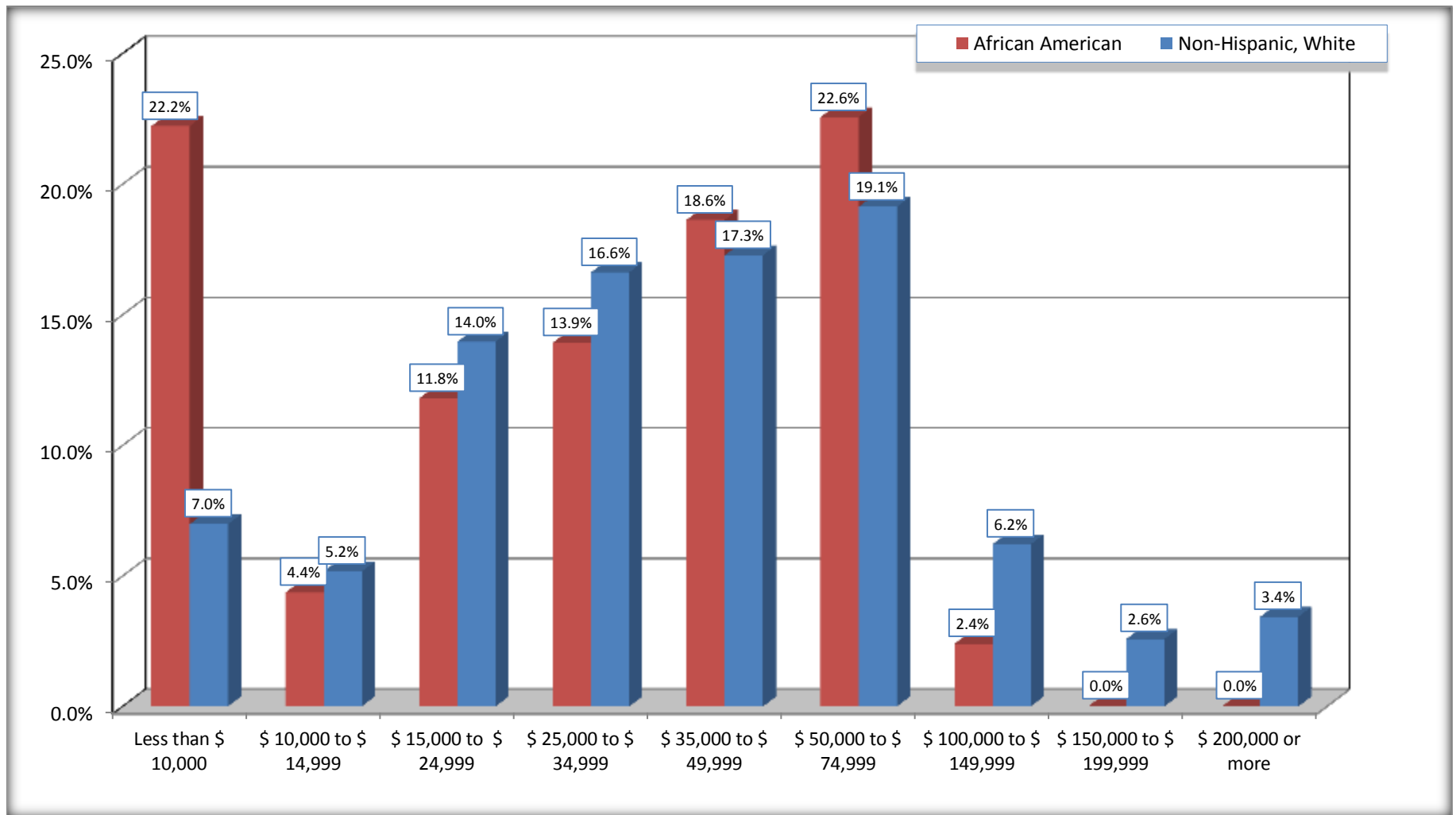
Source: U.S. Census Bureau, 2008-2012 American Community Survey

For information on confidentiality protection, sampling error, nonsampling error, and definitions, see Survey Methodology.

<http://www.census.gov/acs/www/UseData/index.htm>



## Family Income in the Past 12 Months Lexington city, North Carolina



Source: B19101. FAMILY INCOME IN THE PAST 12 MONTHS (IN 2010 INFLATION-ADJUSTED DOLLARS)  
Data Set: 2008-2012 American Community Survey 5-Year Estimates

**B19113. MEDIAN FAMILY INCOME IN THE PAST 12 MONTHS (IN 2010 INFLATION-ADJUSTED DOLLARS)**

Data Set: 2008-2012 American Community Survey 5-Year Estimates

	Lexington city, North Carolina			
	African American	Margin of Error (+/-)	White, Not Hispanic	Margin of Error (+/-)
Median family income in the past 12 months (in 2010 inflation-adjusted dollars)	\$ 33,313	\$ 10,240	\$ 40,096	\$ 6,262

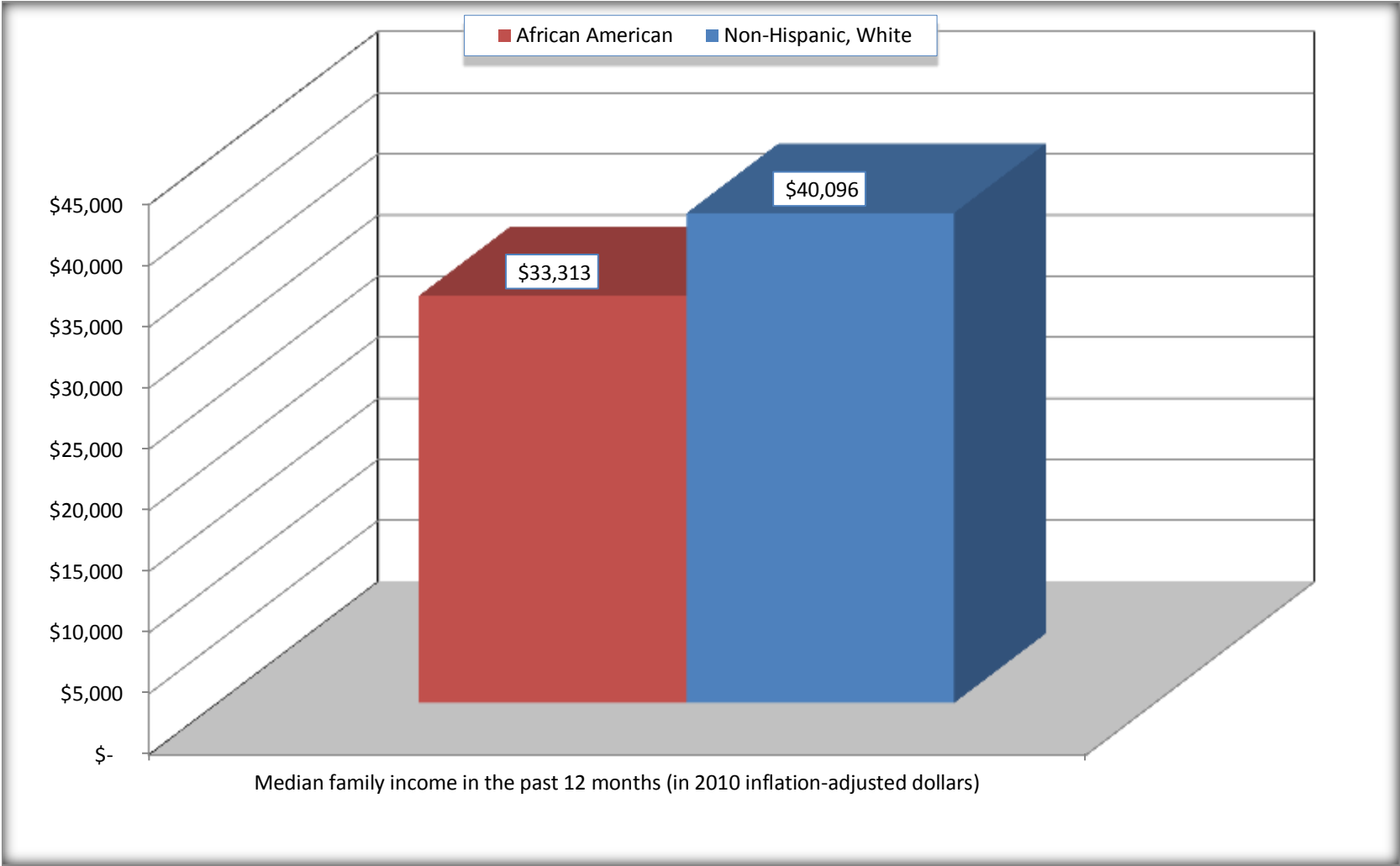
Source: U.S. Census Bureau, 2008-2012 American Community Survey

For information on confidentiality protection, sampling error, nonsampling error, and definitions, see Survey Methodology.

<http://www.census.gov/acs/www/UseData/index.htm>

# Median Family Income in the Past 12 Months

## Lexington city, North Carolina



Source: B19113. MEDIAN FAMILY INCOME IN THE PAST 12 MONTHS (IN 2010 INFLATION-ADJUSTED DOLLARS)  
Data Set: 2008-2012 American Community Survey 5-Year Estimates

**B19202. MEDIAN NONFAMILY HOUSEHOLD INCOME IN THE PAST 12 MONTHS (IN 2010 INFLATION-ADJUSTED DOLLARS)**

Data Set: 2008-2012 American Community Survey 5-Year Estimates

	Lexington city, North Carolina			
	African American	Margin of Error (+/-)	White, Not Hispanic	Margin of Error (+/-)
Median nonfamily household income in the past 12 months (in 2010 inflation-adjusted dollars)	\$ 15,175	\$ 2,644	\$ 20,800	\$ 1,794

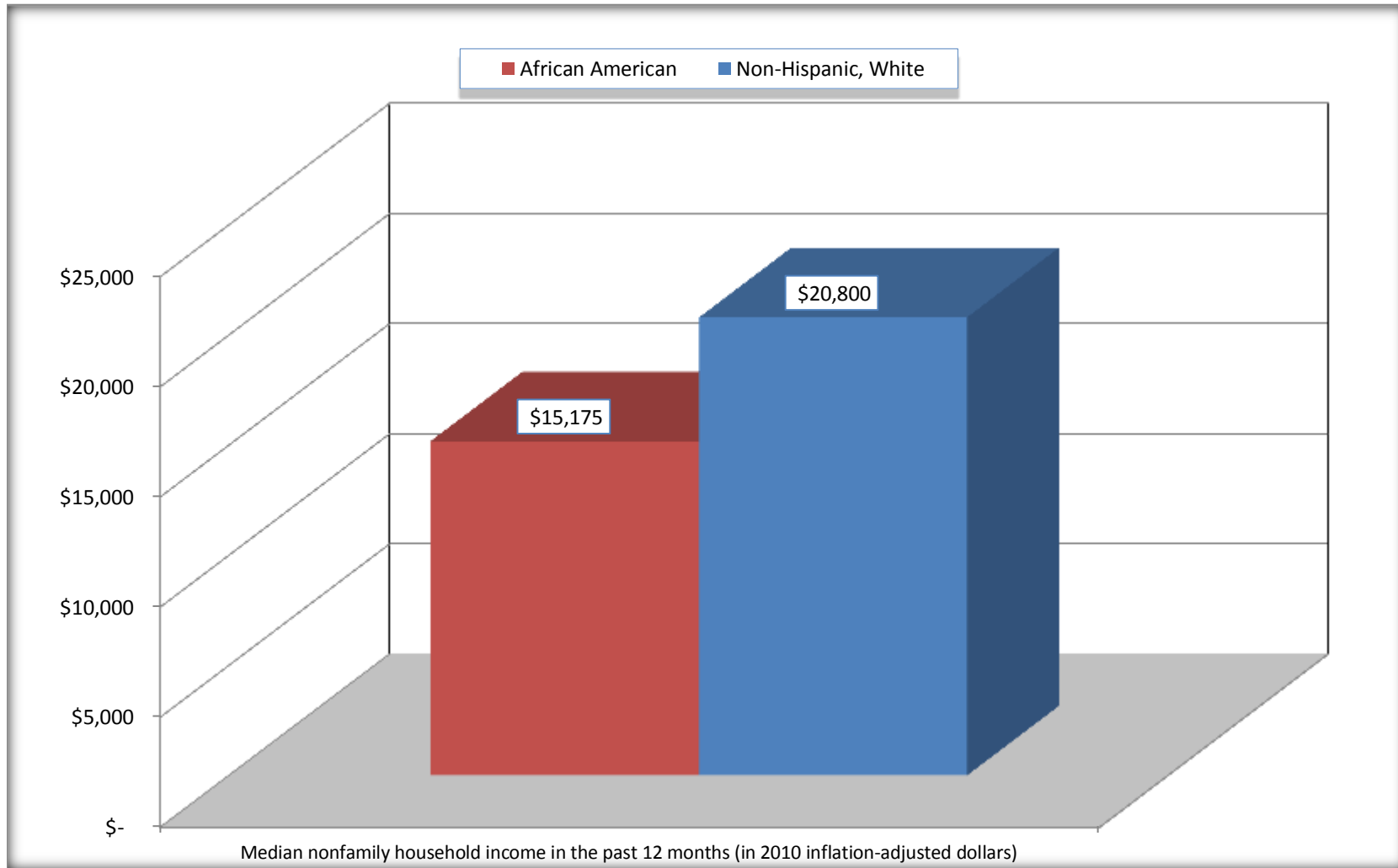
Source: U.S. Census Bureau, 2008-2012 American Community Survey

For information on confidentiality protection, sampling error, nonsampling error, and definitions, see Survey Methodology.

<http://www.census.gov/acs/www/UseData/index.htm>

# Median Non-Family Income in the Past 12 Months

## Lexington city, North Carolina



Source: B19202. MEDIAN NONFAMILY HOUSEHOLD INCOME IN THE PAST 12 MONTHS (IN 2010 INFLATION-ADJUSTED DOLLARS)  
Data Set: 2008-2012 American Community Survey 5-Year Estimates

**B19301. PER CAPITA INCOME IN THE PAST 12 MONTHS (IN 2010 INFLATION-ADJUSTED DOLLARS)**

Data Set: 2008-2012 American Community Survey 5-Year Estimates

	Lexington city, North Carolina			
	African American	Margin of Error (+/-)	White, Not Hispanic	Margin of Error (+/-)
Per capita income in the past 12 months (in 2010 inflation-adjusted dollars)	\$ 12,685	\$ 1,519	\$ 21,587	\$ 2,326

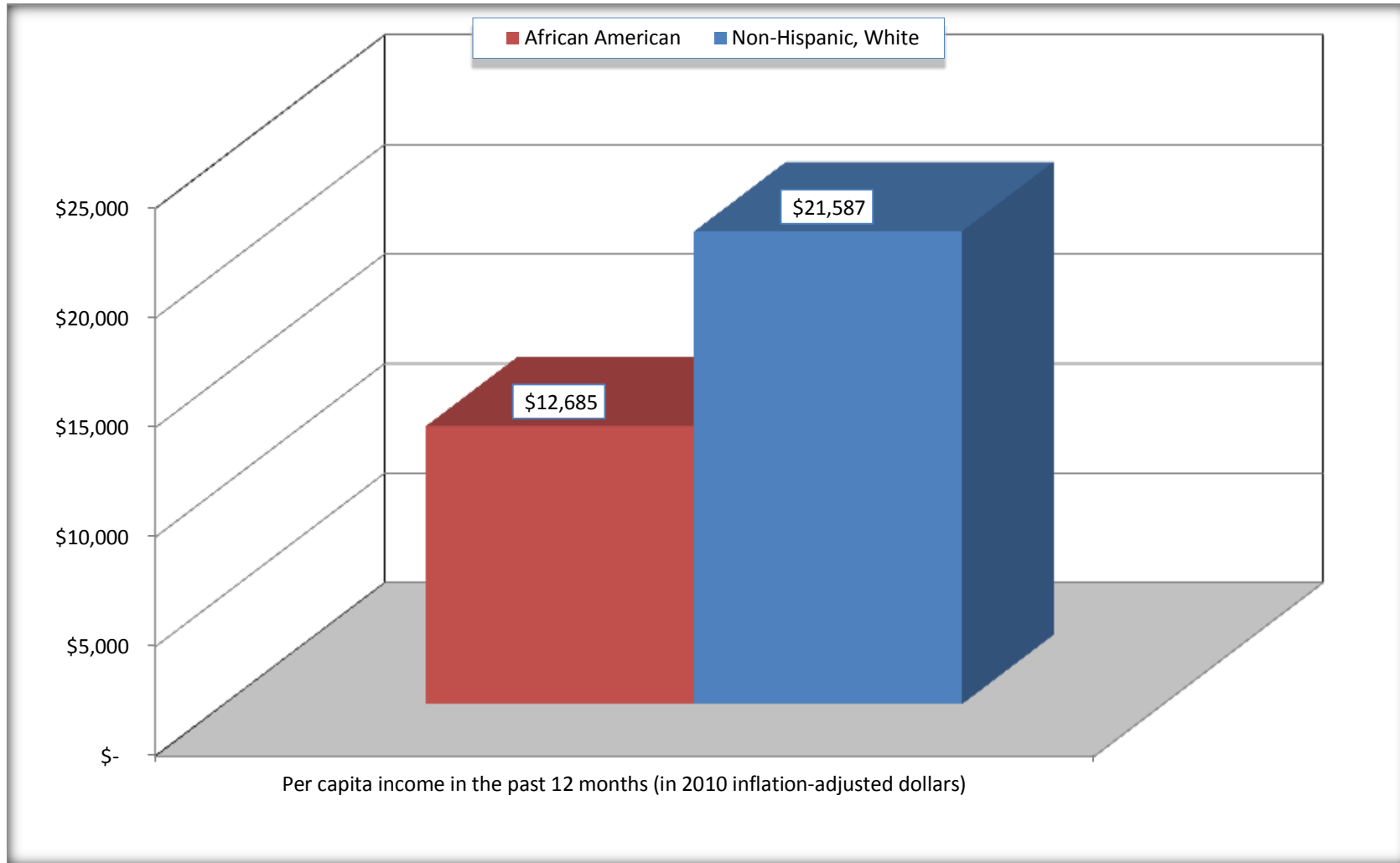
Source: U.S. Census Bureau, 2008-2012 American Community Survey

For information on confidentiality protection, sampling error, nonsampling error, and definitions, see Survey Methodology.

<http://www.census.gov/acs/www/UseData/index.htm>

## Per capita Income in the Past 12 Months

### Lexington city, North Carolina



Source: B19301. PER CAPITA INCOME IN THE PAST 12 MONTHS (IN 2010 INFLATION-ADJUSTED DOLLARS)  
Data Set: 2008-2012 American Community Survey 5-Year Estimates

**B20017. MEDIAN EARNINGS IN THE PAST 12 MONTHS (IN 2010 INFLATION-ADJUSTED DOLLARS) BY SEX BY WORK EXPERIENCE IN THE PAST 12 MONTHS FOR THE POPULATION 16 YEARS AND OVER WITH EARNINGS IN THE PAST 12 MONTHS**

Data Set: 2008-2012 American Community Survey 5-Year Estimates

	Lexington city, North Carolina			
	African American	Margin of Error (+/-)	White, Not Hispanic	Margin of Error (+/-)
Median earnings in the past 12 months (in 2010 inflation-adjusted dollars) --				
Total:	\$ 19,731	\$ 2,553	\$ 24,611	\$ 3,470
Male --				
Total	\$ 22,201	\$ 4,895	\$ 30,692	\$ 3,858
Worked full-time, year-round in the past 12 months	\$ 27,730	\$ 3,706	\$ 35,798	\$ 5,383
Other	\$ 5,833	\$ 4,208	\$ 17,073	\$ 7,130
Female --				
Total	\$ 18,364	\$ 3,100	\$ 20,068	\$ 2,451
Worked full-time, year-round in the past 12 months	\$ 25,417	\$ 3,002	\$ 28,914	\$ 6,011
Other	\$ 9,495	\$ 1,556	\$ 9,789	\$ 2,378

Source: U.S. Census Bureau, 2008-2012 American Community Survey

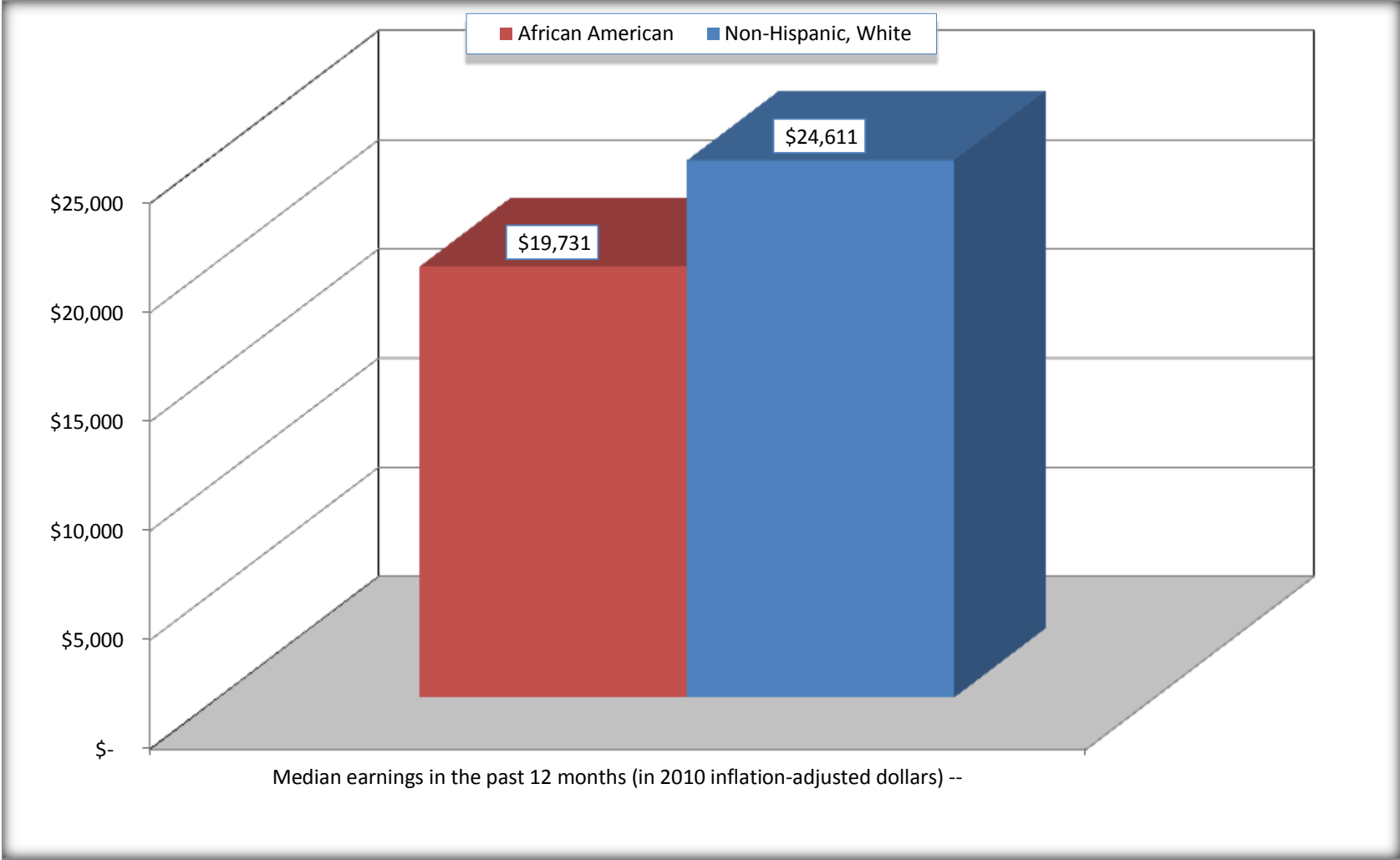
For information on confidentiality protection, sampling error, nonsampling error, and definitions, see Survey Methodology.

<http://www.census.gov/acs/www/UseData/index.htm>



# Median earnings in the Past 12 Months (16 Years and Over with Earnings)

## Lexington city, North Carolina



Source: B20017. MEDIAN EARNINGS IN THE PAST 12 MONTHS (IN 2010 INFLATION-ADJUSTED DOLLARS) BY SEX BY WORK EXPERIENCE IN THE PAST 12 MONTHS FOR THE POPULATION 16 YEARS AND OVER WITH EARNINGS IN THE PAST 12 MONTHS  
Data Set: 2008-2012 American Community Survey 5-Year Estimates

**B20005. SEX BY WORK EXPERIENCE IN THE PAST 12 MONTHS BY EARNINGS IN THE PAST 12 MONTHS (IN 2010 INFLATION-ADJUSTED DOLLARS) FOR THE POPULATION 16 YEARS AND OVER**

Data Set: 2008-2012 American Community Survey 5-Year Estimates

	Lexington city, North Carolina					
	African American	Margin of Error (+/-)	% of AA Total	White, Not Hispanic	Margin of Error (+/-)	% of NHW Total
<b>Total:</b>	<b>4,391</b>	<b>425</b>	<b>100.0%</b>	<b>7,790</b>	<b>522</b>	<b>100.0%</b>
Worked full-time, year-round in the past 12 months:	1,442	NC	32.8%	2,340	NC	30.0%
No earnings	0	NC	0.0%	0	NC	0.0%
With earnings:	1,442	NC	32.8%	2,340	NC	30.0%
\$ 1 to \$ 9,999 or loss	61	NC	1.4%	78	NC	1.0%
\$ 10,000 to \$ 19,999	335	NC	7.6%	542	NC	7.0%
\$ 20,000 to \$ 29,999	617	NC	14.1%	398	NC	5.1%
\$ 30,000 to \$ 49,999	303	NC	6.9%	745	NC	9.6%
\$ 50,000 to \$ 74,999	126	NC	2.9%	319	NC	4.1%
\$ 75,000 or more	0	NC	0.0%	258	NC	3.3%
Other:	2,949	NC	67.2%	5,450	NC	70.0%
No earnings	2,116	NC	48.2%	4,023	NC	51.6%
With earnings: less than full time, year-round	833	NC	19.0%	1,427	NC	18.3%
Male:	2,108	297	48.0%	3,738	390	48.0%
Worked full-time, year-round in the past 12 months:	674	203	15.3%	1,351	281	17.3%
No earnings	0	20	0.0%	0	20	0.0%
With earnings:	674	203	15.3%	1,351	281	17.3%
\$ 1 to \$ 9,999 or loss	6	NC	0.1%	31	NC	0.4%
\$ 10,000 to \$ 19,999	144	NC	3.3%	278	NC	3.6%
\$ 20,000 to \$ 29,999	276	NC	6.3%	188	NC	2.4%
\$ 30,000 to \$ 49,999	191	NC	4.3%	522	NC	6.7%
\$ 50,000 to \$ 74,999	57	NC	1.3%	168	NC	2.2%
\$ 75,000 or more	0	NC	0.0%	164	NC	2.1%

	Lexington city, North Carolina					
	African American	Margin of Error (+/-)	% of AA Total	White, Not Hispanic	Margin of Error (+/-)	% of NHW Total
Other:	1,434	251	32.7%	2,387	313	30.6%
No earnings	1,130	254	25.7%	1,723	275	22.1%
With earnings:	304	124	6.9%	664	153	8.5%
Female:	2,283	259	52.0%	4,052	297	52.0%
Worked full-time, year-round in the past 12 months:	768	197	17.5%	989	167	12.7%
No earnings	0	20	0.0%	0	20	0.0%
With earnings:	768	197	17.5%	989	167	12.7%
\$ 1 to \$ 9,999 or loss	55	NC	1.3%	47	NC	0.6%
\$ 10,000 to \$ 19,999	191	NC	4.3%	264	NC	3.4%
\$ 20,000 to \$ 29,999	341	NC	7.8%	210	NC	2.7%
\$ 30,000 to \$ 49,999	112	NC	2.6%	223	NC	2.9%
\$ 50,000 to \$ 74,999	69	NC	1.6%	151	NC	1.9%
\$ 75,000 or more	0	NC	0.0%	94	NC	1.2%
Other:	1,515	248	34.5%	3,063	248	39.3%
No earnings	986	234	22.5%	2,300	244	29.5%
With earnings:	529	170	12.0%	763	160	9.8%

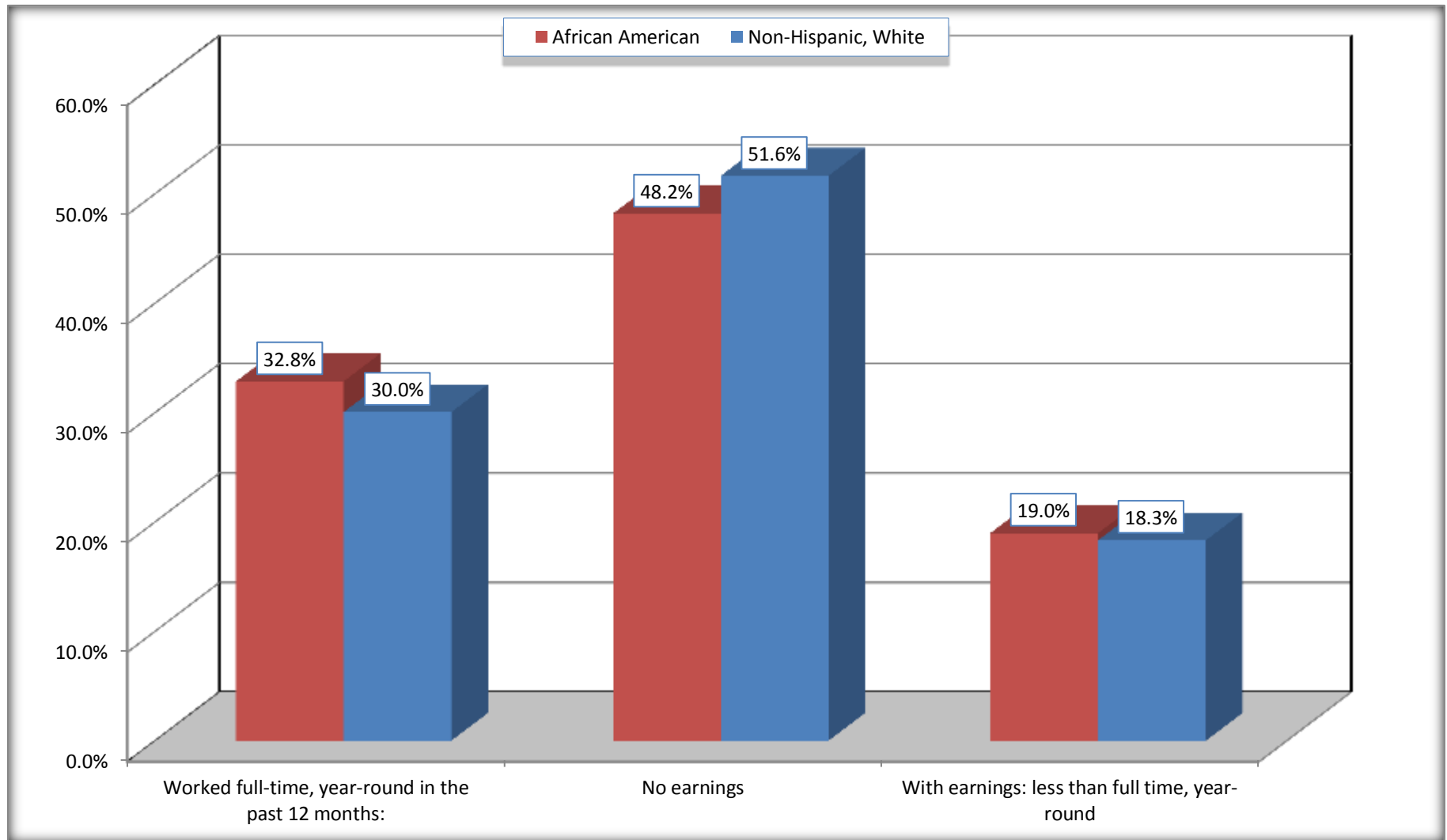
Source: U.S. Census Bureau, 2008-2012 American Community Survey

For information on confidentiality protection, sampling error, nonsampling error, and definitions, see Survey Methodology.

<http://www.census.gov/acs/www/UseData/index.htm>

# Employment and Earnings in in the Past 12 Months (16 Years and Over)

## Lexington city, North Carolina



Source: B20005. SEX BY WORK EXPERIENCE IN THE PAST 12 MONTHS BY EARNINGS IN THE PAST 12 MONTHS (IN 2010 INFLATION-ADJUSTED DOLLARS) FOR THE POPULATION 16 YEARS AND OVER

Data Set: 2008-2012 American Community Survey 5-Year Estimates

**C21001. SEX BY AGE BY VETERAN STATUS FOR THE CIVILIAN POPULATION 18 YEARS AND OVER**

Data Set: 2008-2012 American Community Survey 5-Year Estimates

	Lexington city, North Carolina					
	African American	Margin of Error (+/-)	% of AA Total	White, Not Hispanic	Margin of Error (+/-)	% of NHW Total
<b>Total:</b>	<b>4,138</b>	<b>402</b>	<b>100.0%</b>	<b>7,646</b>	<b>520</b>	<b>100.0%</b>
Veteran	415	NC	10.0%	964	NC	12.6%
Nonveteran	3,723	NC	90.0%	6,682	NC	87.4%
Male:	1,922	287	46.4%	3,678	391	48.1%
18 to 64 years:	1,801	284	43.5%	2,770	372	36.2%
Veteran	280	106	6.8%	442	144	5.8%
Nonveteran	1,521	270	36.8%	2,328	340	30.4%
65 years and over:	121	61	2.9%	908	157	11.9%
Veteran	49	43	1.2%	486	113	6.4%
Nonveteran	72	45	1.7%	422	123	5.5%
Female:	2,216	251	53.6%	3,968	300	51.9%
18 to 64 years:	1,740	235	42.0%	2,709	254	35.4%
Veteran	75	63	1.8%	35	30	0.5%
Nonveteran	1,665	228	40.2%	2,674	251	35.0%
65 years and over:	476	112	11.5%	1,259	161	16.5%
Veteran	11	16	0.3%	1	3	0.0%
Nonveteran	465	114	11.2%	1,258	161	16.5%

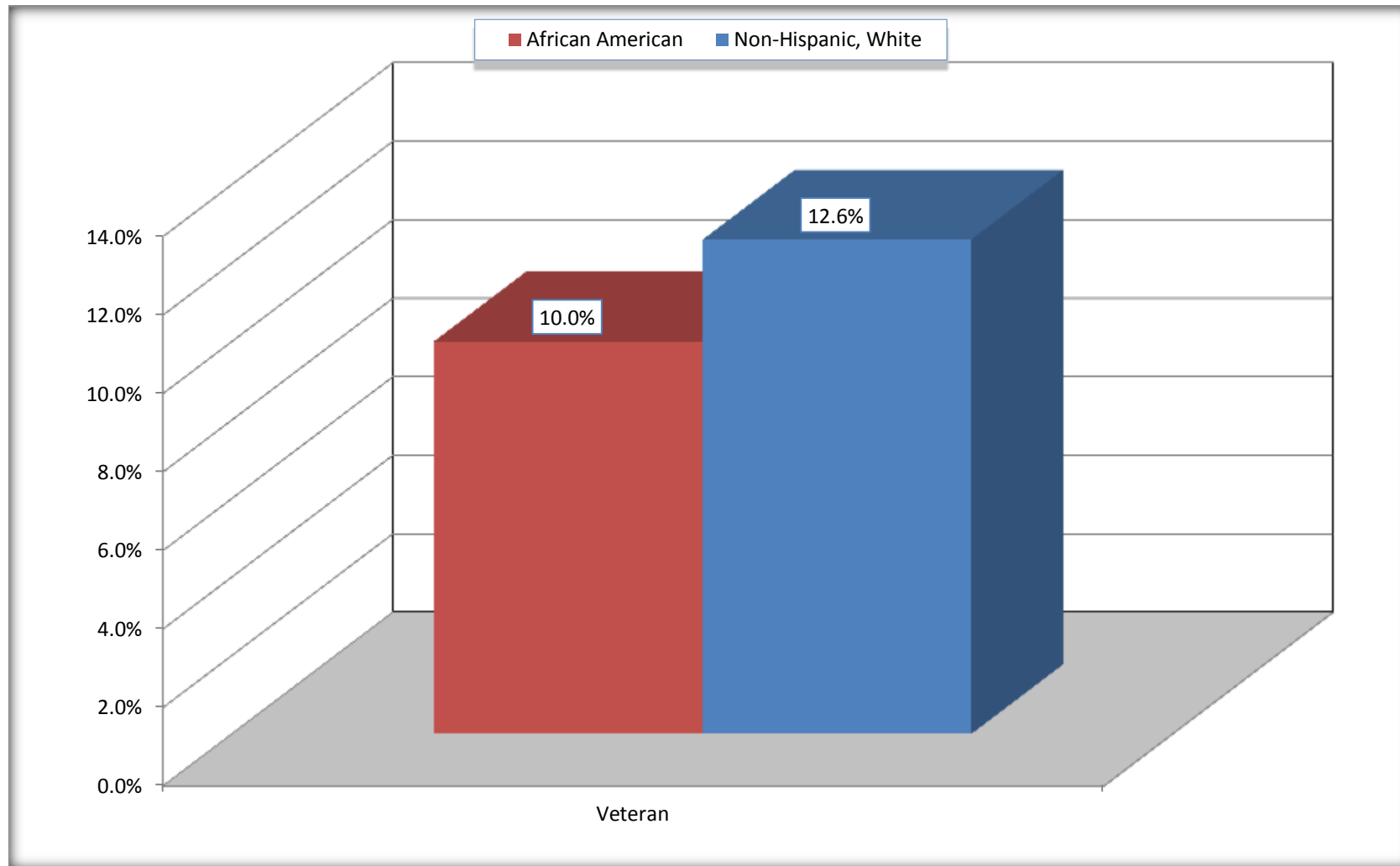
Source: U.S. Census Bureau, 2008-2012 American Community Survey

For information on confidentiality protection, sampling error, nonsampling error, and definitions, see Survey Methodology.

<http://www.census.gov/acs/www/UseData/index.htm>

# Veterans in the Civilian Population 18 Years and Over

## Lexington city, North Carolina



Source: C21001. SEX BY AGE BY VETERAN STATUS FOR THE CIVILIAN POPULATION 18 YEARS AND OVER  
Data Set: 2008-2012 American Community Survey 5-Year Estimates

**B22005. RECEIPT OF FOOD STAMPS/SNAP IN THE PAST 12 MONTHS BY RACE OF HOUSEHOLDER**

Data Set: 2008-2012 American Community Survey 5-Year Estimates

	Lexington city, North Carolina					
	African American	Margin of Error (+/-)	% of AA Total	White, Not Hispanic	Margin of Error (+/-)	% of NHW Total
<b>Total:</b>	<b>2,259</b>	<b>264</b>	<b>100.0%</b>	<b>4,416</b>	<b>363</b>	<b>100.0%</b>
HH received Food Stamps/SNAP in the past 12 months	640	177	28.3%	888	200	20.1%
HH did not receive Food Stamps/SNAP in the past 12 months	1,619	228	71.7%	3,528	380	79.9%

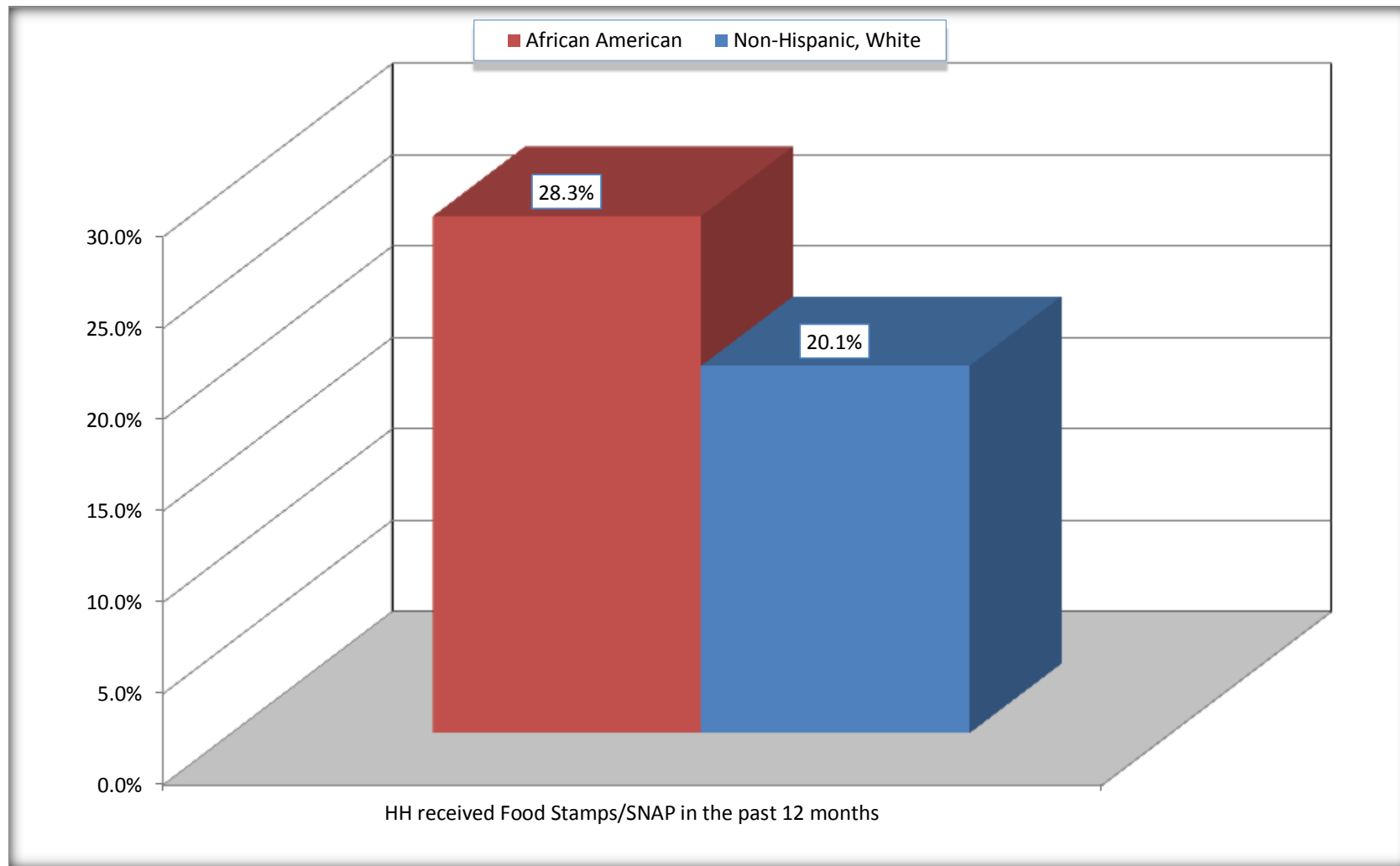
Source: U.S. Census Bureau, 2008-2012 American Community Survey

For information on confidentiality protection, sampling error, nonsampling error, and definitions, see Survey Methodology.

<http://www.census.gov/acs/www/UseData/index.htm>

# Receipt of Food Stamps/SNAP in the Past 12 Months by Household

## Lexington city, North Carolina



Source: B22005. RECEIPT OF FOOD STAMPS/SNAP IN THE PAST 12 MONTHS BY RACE OF HOUSEHOLDER  
Data Set: 2008-2012 American Community Survey 5-Year Estimates



**C23002. SEX BY AGE BY EMPLOYMENT STATUS FOR THE POPULATION 16 YEARS AND OVER**

Data Set: 2008-2012 American Community Survey 5-Year Estimates

	Lexington city, North Carolina					
	African American	Margin of Error (+/-)	% of AA Total	White, Not Hispanic	Margin of Error (+/-)	% of NHW Total
<b>Total:</b>	<b>4,391</b>	<b>425</b>	<b>100.0%</b>	<b>7,790</b>	<b>522</b>	<b>100.0%</b>
In labor force:	2,459	NC	56.0%	3,632	NC	46.6%
In Armed Forces	0	NC	0.0%	9	NC	0.1%
Civilian:	2,359	NC	53.7%	3,338	NC	42.8%
Employed	1,985	NC	45.2%	3,129	NC	40.2%
Unemployed	474	NC	10.8%	494	NC	6.3%
Not in labor force	1,932	NC	44.0%	4,158	NC	53.4%
Male:	2,108	297	48.0%	3,738	390	48.0%
16 to 64 years:	1,987	298	45.3%	2,830	373	36.3%
In labor force:	1,071	264	24.4%	1,842	326	23.6%
In Armed Forces	0	20	0.0%	9	15	0.1%
Civilian:	1,071	264	24.4%	1,833	327	23.5%
Employed	834	253	19.0%	1492	294	19.2%
Unemployed	237	113	5.4%	341	123	4.4%
Not in labor force	916	248	20.9%	988	227	12.7%
65 years and over:	121	61	2.8%	908	157	11.7%
In labor force:	12	21	0.3%	156	79	2.0%
Employed	12	21	0.3%	156	79	2.0%
Unemployed	0	20	0.0%	0	20	0.0%
Not in labor force	109	60	2.5%	752	156	9.7%

	Lexington city, North Carolina					
	African American	Margin of Error (+/-)	% of AA Total	White, Not Hispanic	Margin of Error (+/-)	% of NHW Total
Female:	2,283	259	52.0%	4,052	297	52.0%
16 to 64 years:	1,807	243	41.2%	2,793	256	35.9%
In labor force:	1,288	215	29.3%	1,505	196	19.3%
In Armed Forces	0	20	0.0%	0	20	0.0%
Civilian:	1,288	215	29.3%	1,505	196	19.3%
Employed	1,051	210	23.9%	1,352	189	17.4%
Unemployed	237	102	5.4%	153	71	2.0%
Not in labor force	519	177	11.8%	1,288	205	16.5%
65 years and over:	476	112	10.8%	1,259	161	16.2%
In labor force:	88	73	2.0%	129	67	1.7%
Employed	88	73	2.0%	129	67	1.7%
Unemployed	0	20	0.0%	0	20	0.0%
Not in labor force	388	110	8.8%	1,130	145	14.5%

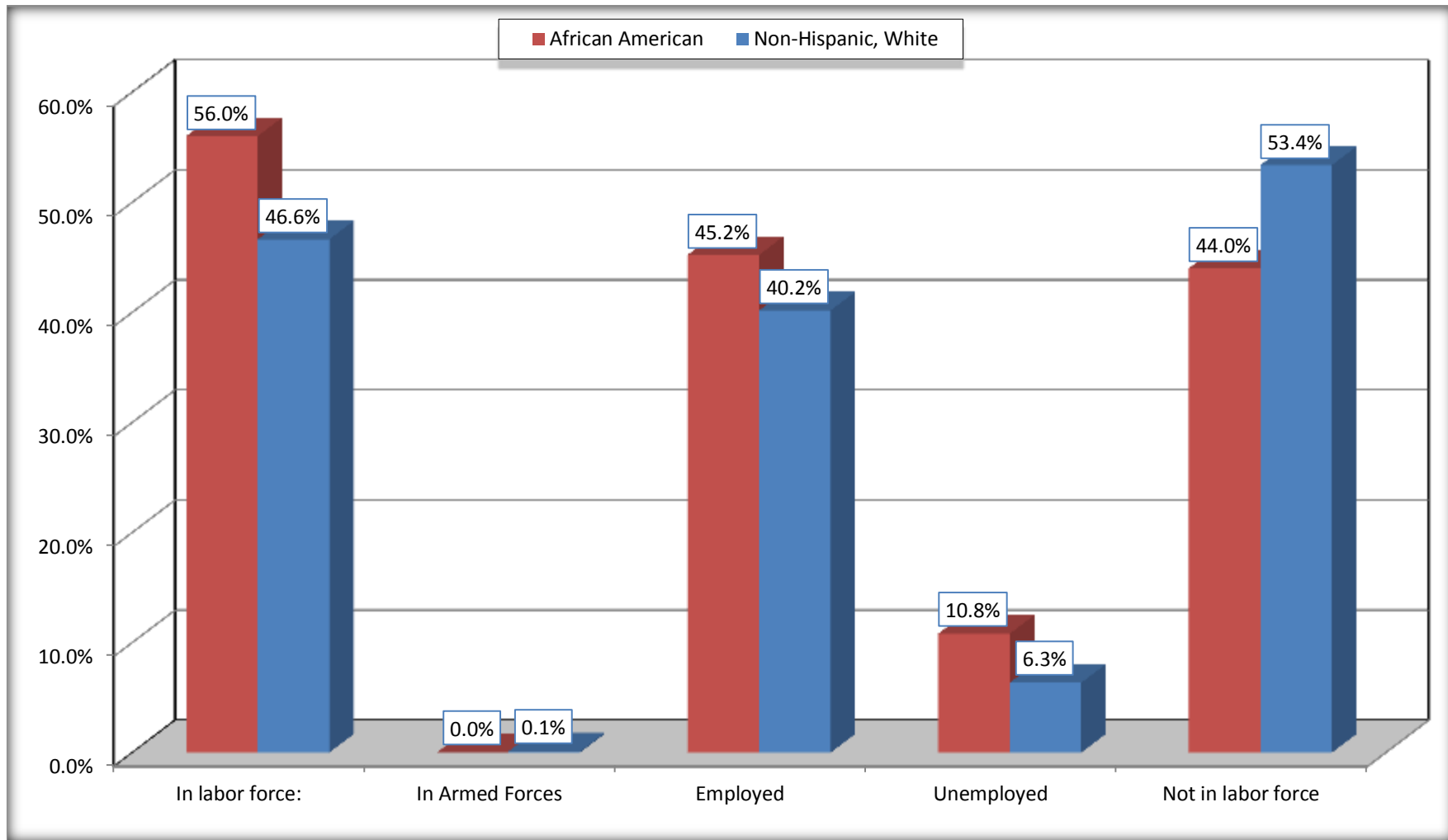
Source: U.S. Census Bureau, 2008-2012 American Community Survey

For information on confidentiality protection, sampling error, nonsampling error, and definitions, see Survey Methodology.

<http://www.census.gov/acs/www/UseData/index.htm>

# Employment Status for the Population 16 years and over

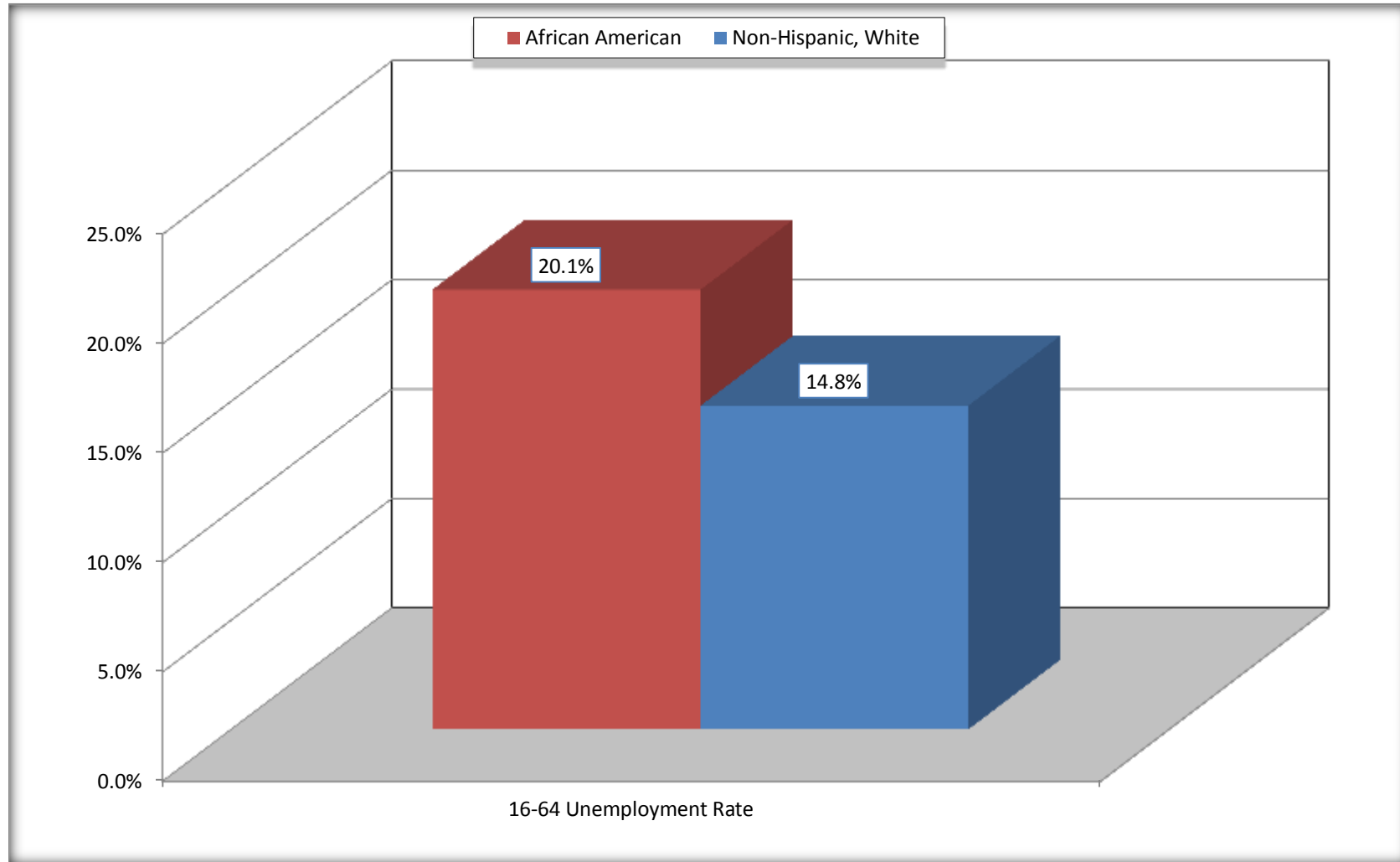
## Lexington city, North Carolina



Source: C23002. SEX BY AGE BY EMPLOYMENT STATUS FOR THE POPULATION 16 YEARS AND OVER  
Data Set: 2008-2012 American Community Survey 5-Year Estimates

# Unemployment of Working Age Population (Ages 16 to 64) (As a Percent of 16-64 Civilian Labor Force)

## Lexington city, North Carolina



Source: C23002. SEX BY AGE BY EMPLOYMENT STATUS FOR THE POPULATION 16 YEARS AND OVER  
Data Set: 2008-2012 American Community Survey 5-Year Estimates

**C24010. SEX BY OCCUPATION FOR THE CIVILIAN EMPLOYED POPULATION 16 YEARS AND OVER**

Data Set: 2008-2012 American Community Survey 5-Year Estimates

	Lexington city, North Carolina					
	African American	Margin of Error (+/-)	% of AA Total	White, Not Hispanic	Margin of Error (+/-)	% of NHW Total
<b>Total:</b>	<b>1,985</b>	<b>336</b>	<b>100.0%</b>	<b>3,129</b>	<b>405</b>	<b>100.0%</b>
Management, professional, and related occupations	130	NC	6.5%	806	NC	25.8%
Service occupations	660	NC	33.2%	569	NC	18.2%
Sales and office occupations	430	NC	21.7%	734	NC	23.5%
Natural resources, construction, and maintenance occupations:	192	NC	9.7%	214	NC	6.8%
Production, transportation, and material moving occupations	573	NC	28.9%	806	NC	25.8%
Male:	846	254	42.6%	1,648	307	52.7%
Management, business, science, and arts occupations:	8	16	0.4%	408	126	13.0%
Service occupations	206	135	10.4%	261	127	8.3%
Sales and office occupations	206	133	10.4%	153	71	4.9%
Natural resources, construction, and maintenance occupations:	165	99	8.3%	214	79	6.8%
Production, transportation, and material moving occupations	261	130	13.1%	612	250	19.6%
Female:	1,139	211	57.4%	1,481	200	47.3%
Management, professional, and related occupations	122	78	6.1%	398	107	12.7%
Service occupations	454	129	22.9%	308	104	9.8%
Sales and office occupations	224	117	11.3%	581	140	18.6%
Natural resources, construction, and maintenance occupations:	27	42	1.4%	0	20	0.0%
Production, transportation, and material moving occupations	312	152	15.7%	194	90	6.2%

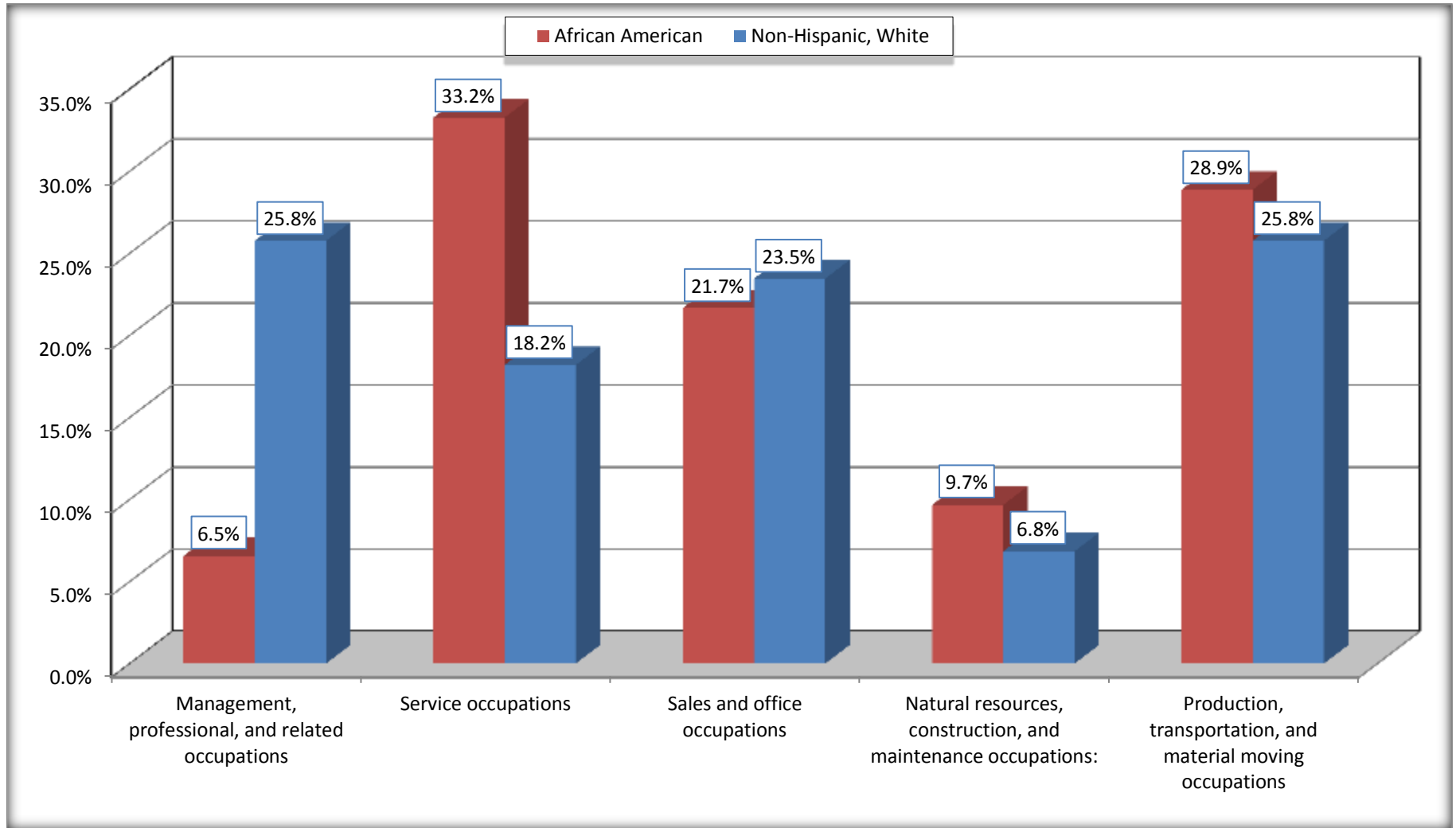
Source: U.S. Census Bureau, 2008-2012 American Community Survey

For information on confidentiality protection, sampling error, nonsampling error, and definitions, see Survey Methodology.

<http://www.census.gov/acs/www/UseData/index.htm>

# Occupation for the Civilian Employed 16 Years and Over Population

## Lexington city, North Carolina



Source: C24010. SEX BY OCCUPATION FOR THE CIVILIAN EMPLOYED POPULATION 16 YEARS AND OVER  
Data Set: 2008-2012 American Community Survey 5-Year Estimates

**B25003. TENURE - Universe: OCCUPIED HOUSING UNITS**

Data Set: 2008-2012 American Community Survey 5-Year Estimates

	Lexington city, North Carolina					
	African American	Margin of Error (+/-)	% of AA Total	White, Not Hispanic	Margin of Error (+/-)	% of NHW Total
<b>Total:</b>	<b>2,259</b>	<b>264</b>	<b>100.0%</b>	<b>4,416</b>	<b>363</b>	<b>100.0%</b>
Owner occupied	681	175	30.1%	2,373	281	53.7%
Renter occupied	1,578	264	69.9%	2,043	264	46.3%

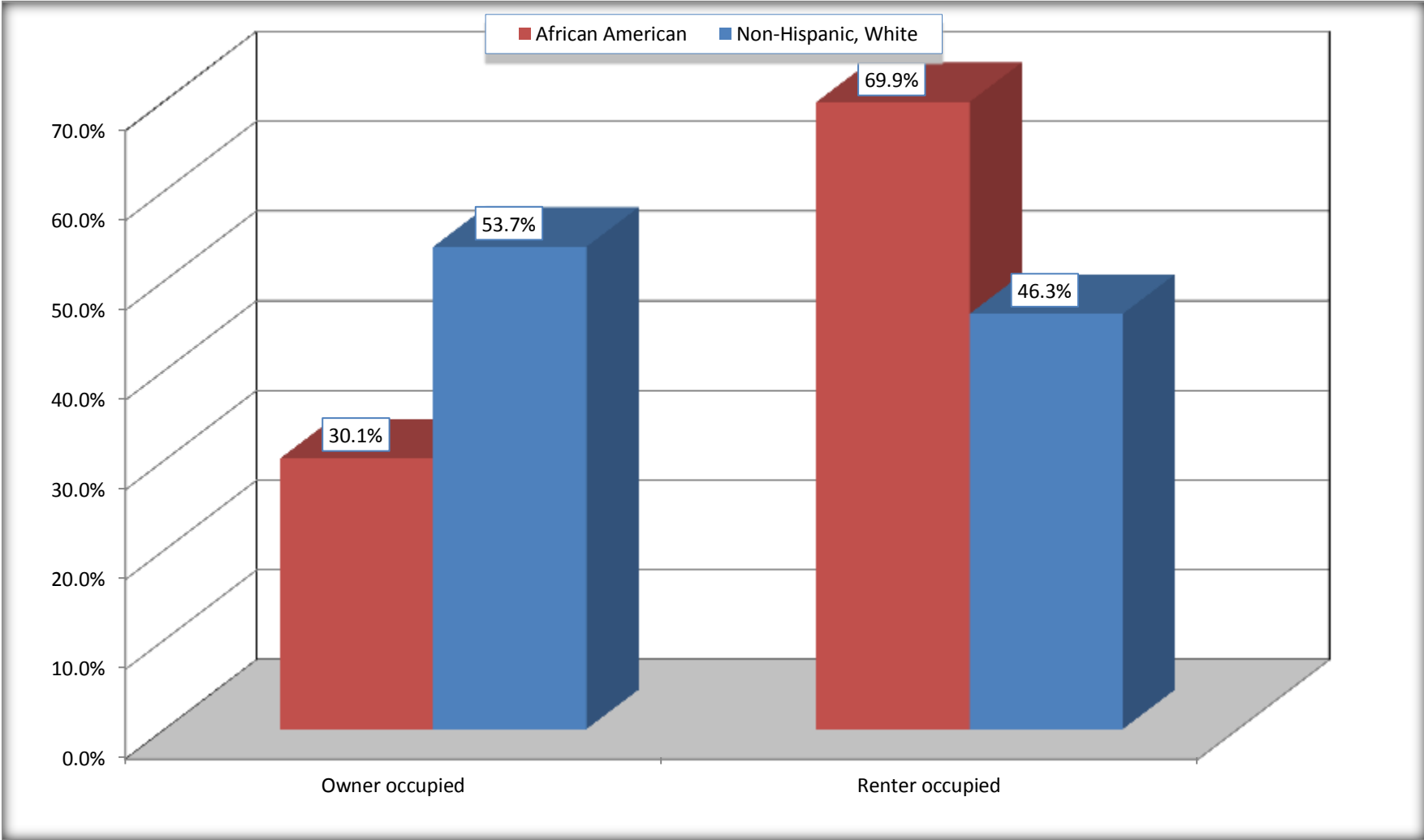
Source: U.S. Census Bureau, 2008-2012 American Community Survey

For information on confidentiality protection, sampling error, nonsampling error, and definitions, see Survey Methodology.

<http://www.census.gov/acs/www/UseData/index.h>

# Home Owners and Renters by Household

## Lexington city, North Carolina



Source: B25003. TENURE - Universe: OCCUPIED HOUSING UNITS  
Data Set: 2008-2012 American Community Survey 5-Year Estimates



**B25014. OCCUPANTS PER ROOM - Universe: OCCUPIED HOUSING UNITS**

Data Set: 2008-2012 American Community Survey 5-Year Estimates

	Lexington city, North Carolina					
	African American	Margin of Error (+/-)	% of AA Total	White, Not Hispanic	Margin of Error (+/-)	% of NHW Total
<b>Total:</b>	<b>2,259</b>	<b>264</b>	<b>100.0%</b>	<b>4,416</b>	<b>363</b>	<b>100.0%</b>
1.00 or less occupants per room	2,230	258	98.7%	4,390	362	99.4%
1.01 or more occupants per room	29	32	1.3%	26	28	0.6%

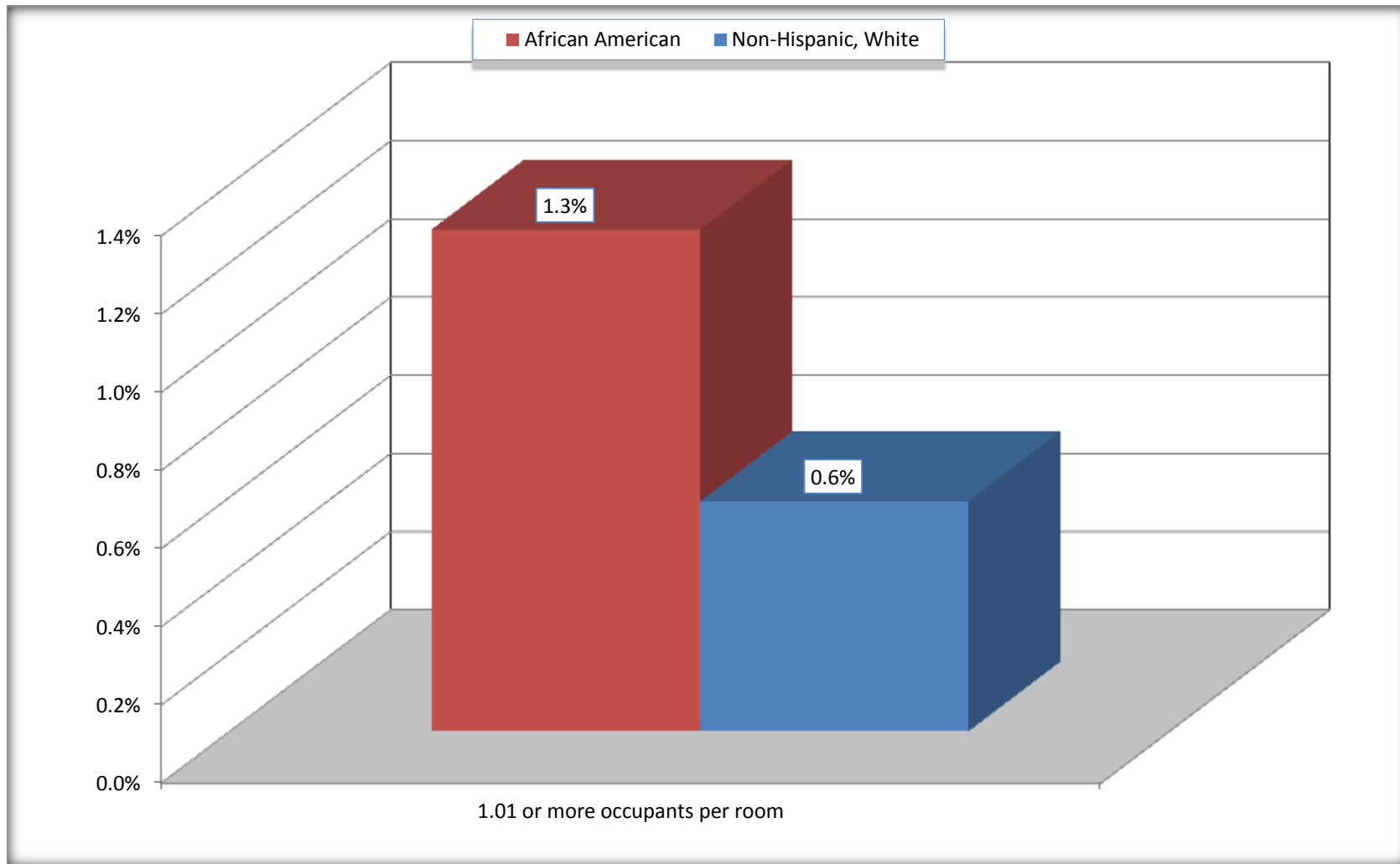
Source: U.S. Census Bureau, 2008-2012 American Community Survey

For information on confidentiality protection, sampling error, nonsampling error, and definitions, see Survey Methodology.

<http://www.census.gov/acs/www/UseData/index.ht>

# More than One Person per Room (Crowding) by Household

## Lexington city, North Carolina



Source: B25014. OCCUPANTS PER ROOM - Universe: OCCUPIED HOUSING UNITS  
Data Set: 2008-2012 American Community Survey 5-Year Estimates

**B18101. AGE BY DISABILITY STATUS**

Data Set: 2008-2012 American Community Survey 5-Year Estimates

	Lexington city, North Carolina					
	African American	Margin of Error (+/-)	% of AA Total	White, Not Hispanic	Margin of Error (+/-)	% of NHW Total
<b>Total:</b>	<b>5,107</b>	<b>506</b>	<b>100.0%</b>	<b>8,881</b>	<b>618</b>	<b>100.0%</b>
Under 18 years:	1,365	309	26.7%	1,691	39	19.0%
With a disability	114	82	2.2%	63	56	0.7%
No disability	1,251	288	24.5%	1,628	337	18.3%
18 to 64 years:	3,163	383	61.9%	5,101	455	57.4%
With a disability	481	171	9.4%	1,266	263	14.3%
No disability	2,682	367	52.5%	3,835	420	43.2%
65 years and over:	579	126	11.3%	2,089	247	23.5%
With a disability	238	112	4.7%	819	139	9.2%
No disability	341	112	6.7%	1,270	251	14.3%

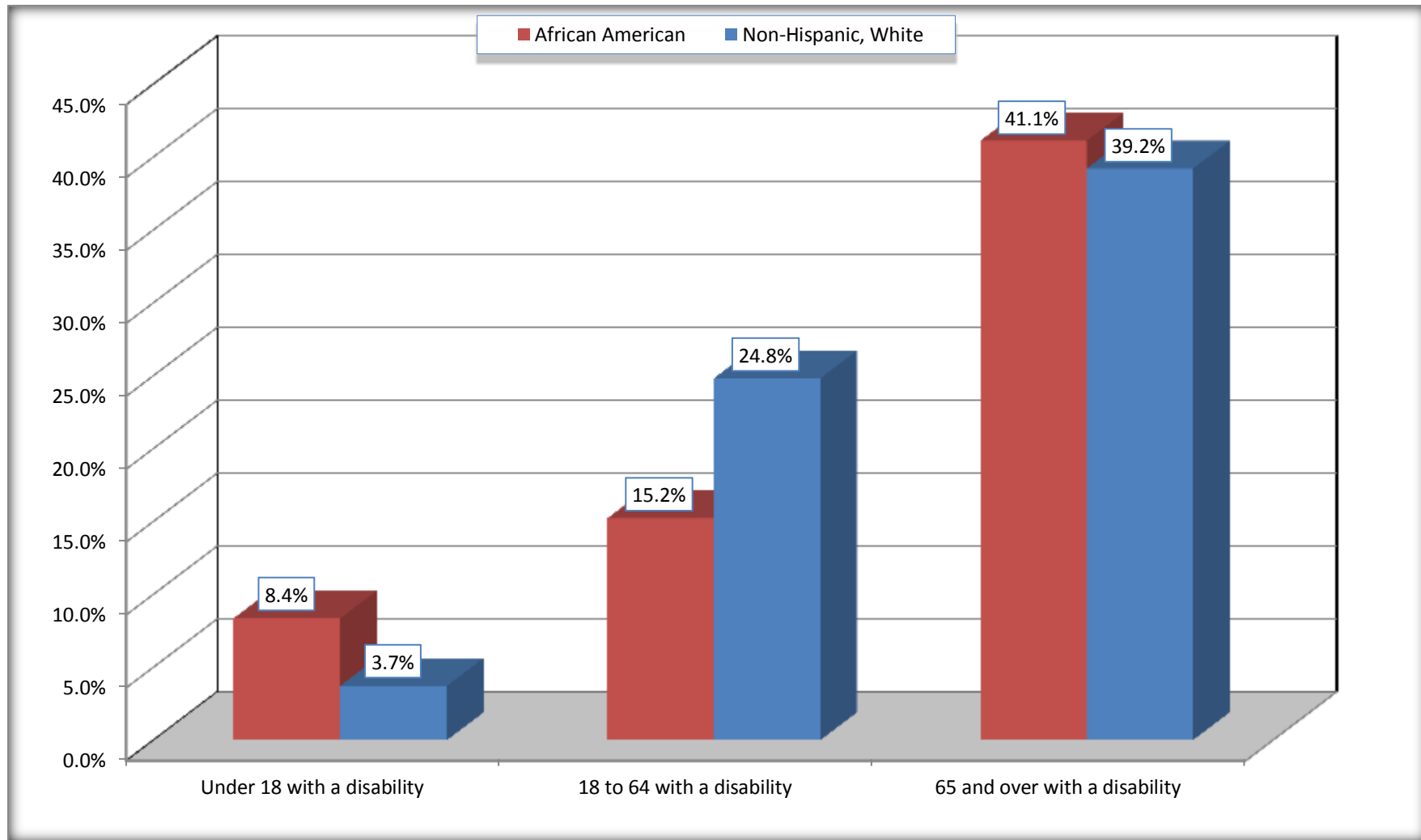
Source: U.S. Census Bureau, 2008-2012 American Community Survey

For information on confidentiality protection, sampling error, nonsampling error, and definitions, see Survey Methodology.

<http://www.census.gov/acs/www/UseData/index.htm>

# Disability by Age

## Lexington city, North Carolina



Source: B18101. AGE BY DISABILITY STATUS  
Data Set: 2008-2012 American Community Survey 5-Year Estimates

**C27001B. HEALTH INSURANCE COVERAGE STATUS BY AGE**

Data Set: 2008-2012 American Community Survey 5-Year Estimates

	Lexington city, North Carolina					
	African American	Margin of Error (+/-)	% of AA Total	White, Not Hispanic	Margin of Error (+/-)	% of NHW Total
<b>Total:</b>	<b>5,107</b>	<b>506</b>	<b>100.0%</b>	<b>8,881</b>	<b>618</b>	<b>100.0%</b>
Under 18 years:	1,365	309	26.7%	1,691	345	19.0%
With health insurance coverage	1,318	321	25.8%	1,653	351	18.6%
No health insurance coverage	47	46	0.9%	38	45	0.4%
18 to 64 years:	3,163	383	61.9%	5,101	455	57.4%
With health insurance coverage	2,141	349	41.9%	3,900	400	43.9%
No health insurance coverage	1,022	226	20.0%	1,201	259	13.5%
65 years and over:	579	126	11.3%	2,089	247	23.5%
With health insurance coverage	579	126	11.3%	2,089	247	23.5%
No health insurance coverage	0	20	0.0%	0	20	0.0%

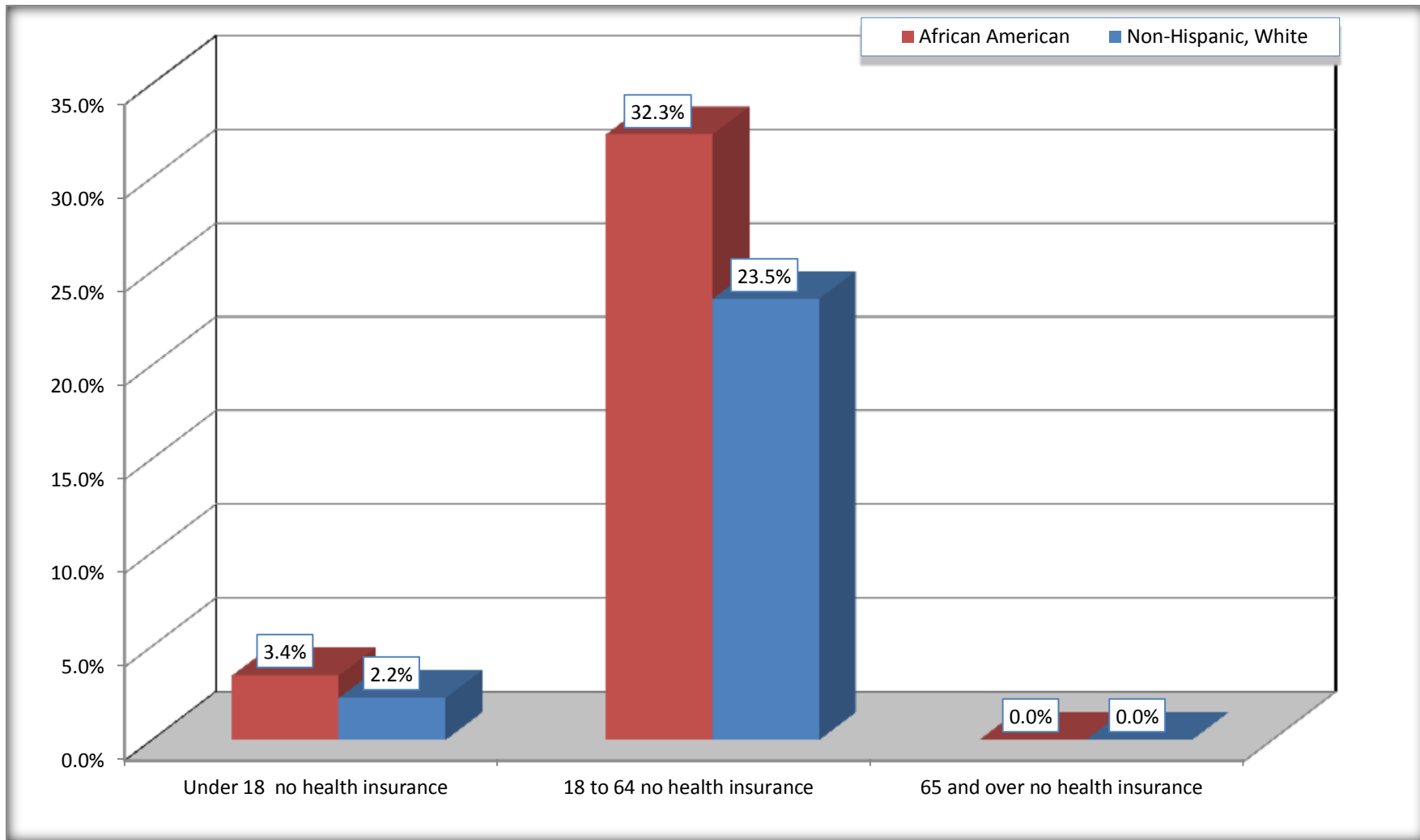
Source: U.S. Census Bureau, 2008-2012 American Community Survey

For information on confidentiality protection, sampling error, nonsampling error, and definitions, see Survey Methodology.

<http://www.census.gov/acs/www/UseData/index.htm>

# Lack of Health Insurance Coverage by Age

## Lexington city, North Carolina



Source: C27001B. HEALTH INSURANCE COVERAGE STATUS BY AGE  
Data Set: 2008-2012 American Community Survey 5-Year Estimates