

Selected Socio-Economic Data

Graham city, North Carolina

African American and White, Not Hispanic

Data Set: 2008-2012 American Community Survey 5-Year Estimates

www.fairvote2020.org

www.fairdata2000.com

[29-Dec-13](#)

C02003.DETAILED RACE - Universe: TOTAL POPULATION

Data Set: 2008-2012 American Community Survey 5-Year Estimates

	Graham city, North Carolina		
	Population	Margin of Error (+/-)	% of Total
Total:	14,152	47	100.0%
Population of one race:	13,898	150	98.2%
White	8,276	709	58.5%
Black or African American	2,819	408	19.9%
American Indian and Alaska Native	33	31	0.2%
Asian alone	194	142	1.4%
Native Hawaiian and Other Pacific Islander	15	25	0.1%
Some other race	2,561	800	18.1%
Population of two or more races:	254	142	1.8%
Two races including Some other race	8	18	0.1%
Two races excluding Some other race, and three or more races	246	137	1.7%
Population of two races:	254	142	1.8%
White; Black or African American	139	102	1.0%
White; American Indian and Alaska Native	29	43	0.2%
White; Asian	0	20	0.0%
Black or African American; American Indian and Alaska Native	49	57	0.3%
All other two race combinations	37	50	0.3%
Population of three races	0	20	0.0%
Population of four or more races	0	20	0.0%

Note: Hispanics may be of any race. See Table B03002 and chart.

Source: U.S. Census Bureau, 2008-2012 American Community Survey

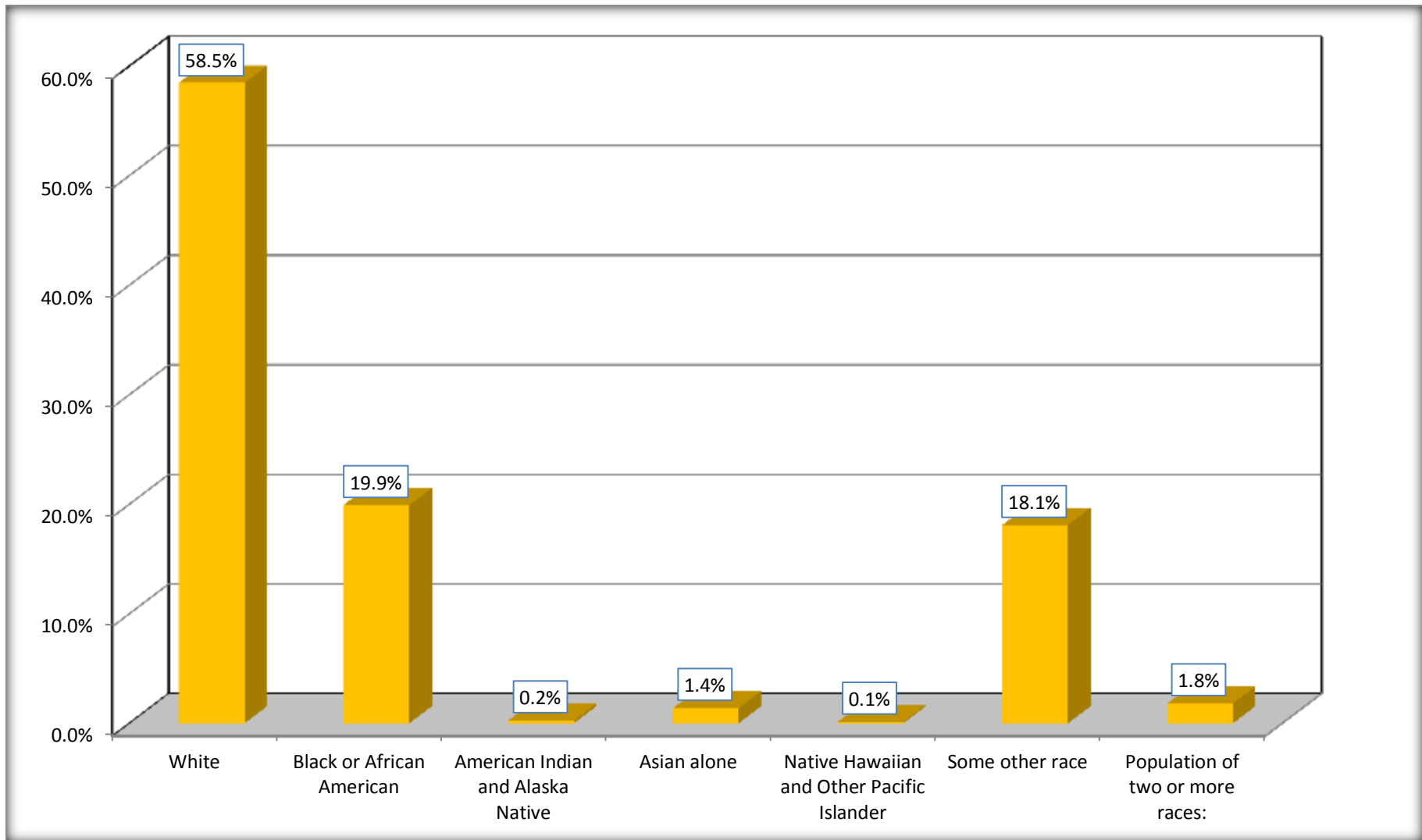
Although the American Community Survey (ACS) produces population, demographic and housing unit estimates, it is the Census Bureau's Population Estimates Program that produces and disseminates the official estimates of the population for the nation, states, counties, cities and towns and estimates of housing units for states and counties.

For information on confidentiality protection, sampling error, nonsampling error, and definitions, see Survey Methodology.

<http://www.census.gov/acs/www/UseData/index.htm>

Population by Race

Graham city, North Carolina



Source: C02003.DETAILED RACE - Universe: TOTAL POPULATION
Data Set: 2008-2012 American Community Survey 5-Year Estimates

B03002. HISPANIC OR LATINO ORIGIN BY RACE - Universe: TOTAL POPULATION

Data Set: 2008-2012 American Community Survey 5-Year Estimates

	Graham city, North Carolina		
	Population	Margin of Error (+/-)	% of Total
Total:	14,152	47	100.0%
Not Hispanic or Latino:	11,202	758	79.2%
White alone	7,939	680	56.1%
Black or African American alone	2,770	411	19.6%
American Indian and Alaska Native alone	30	29	0.2%
Asian alone	194	142	1.4%
Native Hawaiian and Other Pacific Islander alone	15	25	0.1%
Some other race alone	0	20	0.0%
Two or more races:	254	142	1.8%
Two races including Some other race	8	18	0.1%
Two races excluding Some other race, and three or more races	246	137	1.7%
Hispanic or Latino	2,950	764	20.8%

Source: U.S. Census Bureau, 2008-2012 American Community Survey

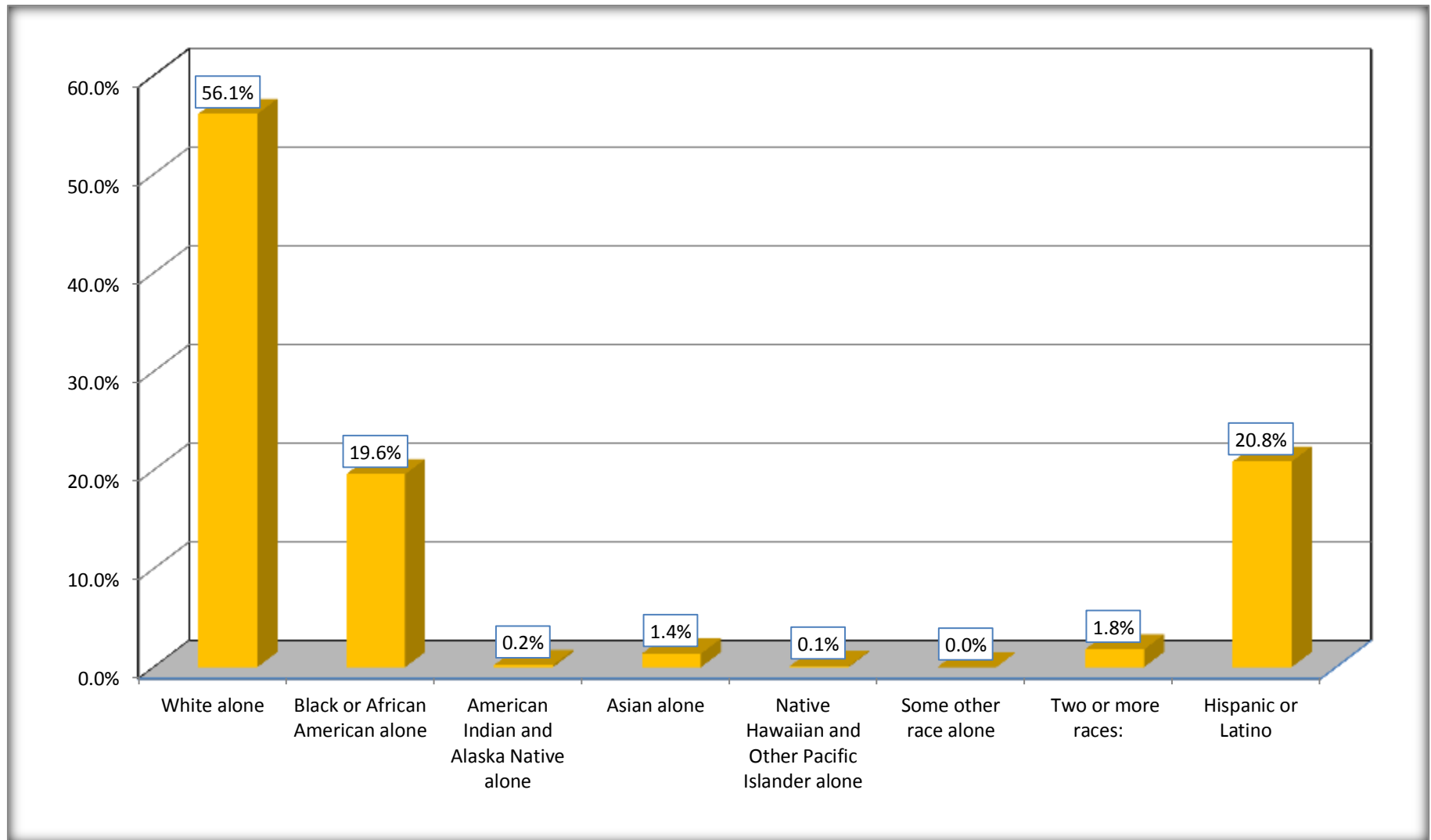
Although the American Community Survey (ACS) produces population, demographic and housing unit estimates, it is the Census Bureau's Population Estimates Program that produces and disseminates the official estimates of the population for the nation, states, counties, cities and towns and estimates of housing units for states and counties.

For information on confidentiality protection, sampling error, nonsampling error, and definitions, see Survey Methodology.

<http://www.census.gov/acs/www/UseData/index.htm>

Non-Hispanic by Race and Hispanic Population

Graham city, North Carolina



Source: B03002. HISPANIC OR LATINO ORIGIN BY RACE - Universe: TOTAL POPULATION
Data Set: 2008-2012 American Community Survey 5-Year Estimates

B03002. HISPANIC OR LATINO ORIGIN BY RACE

Data Set: 2008-2012 American Community Survey 5-Year Estimates

	Graham city, North Carolina		
	Population	Margin of Error (+/-)	% of Total
Hispanic or Latino:	2,950	764	100.0%
White alone	337	223	11.4%
Black or African American alone	49	56	1.7%
American Indian and Alaska Native alone	3	7	0.1%
Asian alone	0	20	0.0%
Native Hawaiian and Other Pacific Islander alone	0	20	0.0%
Some other race alone	2,561	800	86.8%
Two or more races:	0	20	0.0%
Two races including Some other race	0	20	0.0%
Two races excluding Some other race, and three or more races	0	20	0.0%

Source: U.S. Census Bureau, 2008-2012 American Community Survey

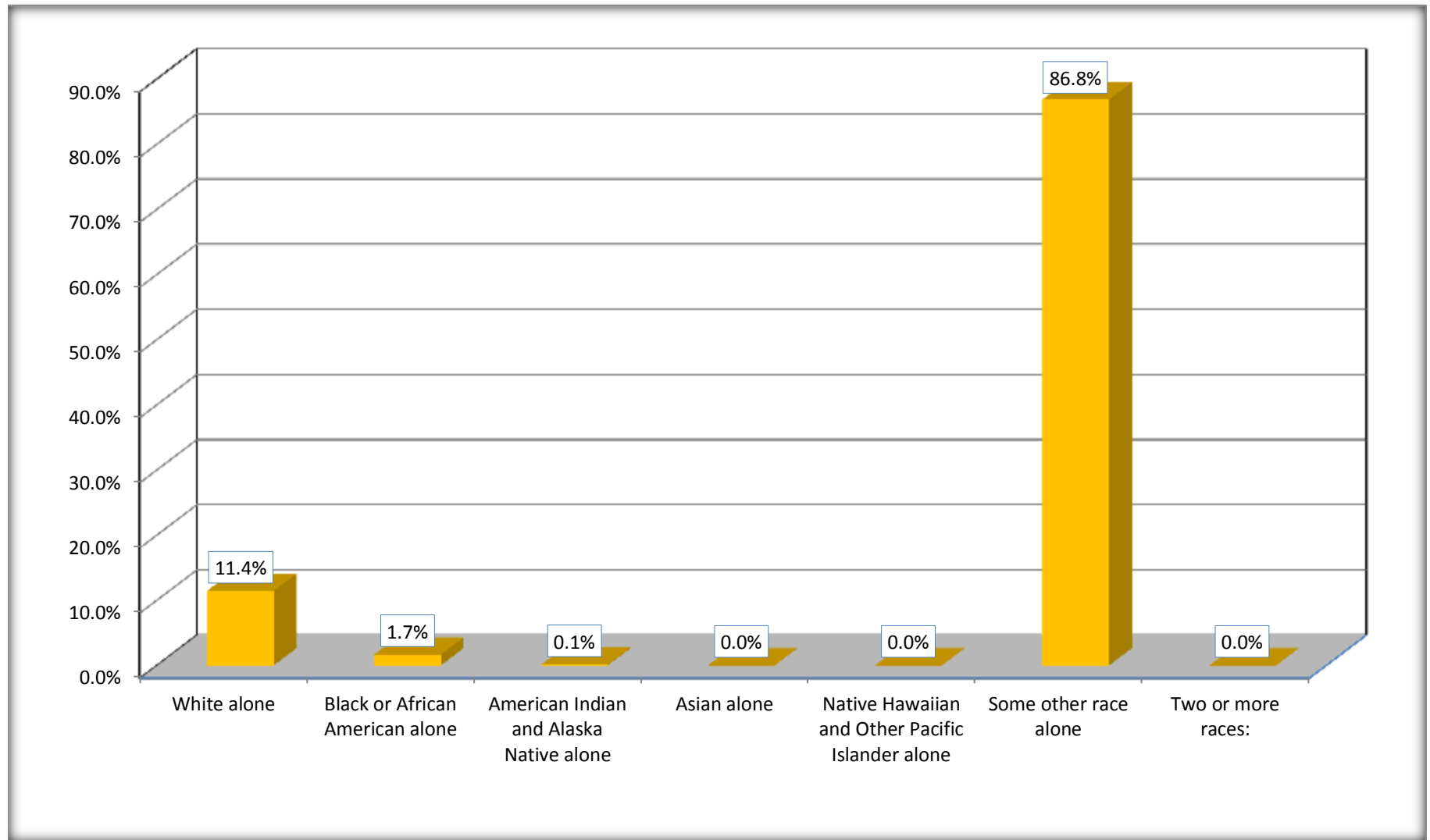
Although the American Community Survey (ACS) produces population, demographic and housing unit estimates, it is the Census Bureau's Population Estimates Program that produces and disseminates the official estimates of the population for the nation, states, counties, cities and towns and estimates of housing units for states and counties.

For information on confidentiality protection, sampling error, nonsampling error, and definitions, see Survey Methodology.

<http://www.census.gov/acs/www/UseData/index.htm>

Hispanic or Latino Origin by Race

Graham city, North Carolina



Source: B03002. HISPANIC OR LATINO ORIGIN BY RACE
Data Set: 2008-2012 American Community Survey 5-Year Estimates

B01001. SEX BY AGE

Data Set: 2008-2012 American Community Survey 5-Year Estimates

	Graham city, North Carolina					
	African American	Margin of Error (+/-)	% of AA Total	White, Not Hispanic	Margin of Error (+/-)	% of NHW Total
Total:	2,819	408	100.0%	7,939	680	100.0%
Under 18 years	527	NC	18.7%	1,564	NC	19.7%
18 to 64 years	2,002	NC	71.0%	4,731	NC	59.6%
65 years and over	290	NC	10.3%	1,644	NC	20.7%
Male:	1,519	271	53.9%	3,785	389	47.7%
Under 18 years	332	NC	11.8%	767	NC	9.7%
18 to 64 years	1,058	NC	37.5%	2,391	NC	30.1%
65 years and over	129	NC	4.6%	627	NC	7.9%
Female:	1,300	215	46.1%	4,154	412	52.3%
Under 18 years	195	NC	6.9%	797	NC	10.0%
18 to 64 years	944	NC	33.5%	2,340	NC	29.5%
65 years and over	161	NC	5.7%	1,017	NC	12.8%

Source: U.S. Census Bureau, 2008-2012 American Community Survey

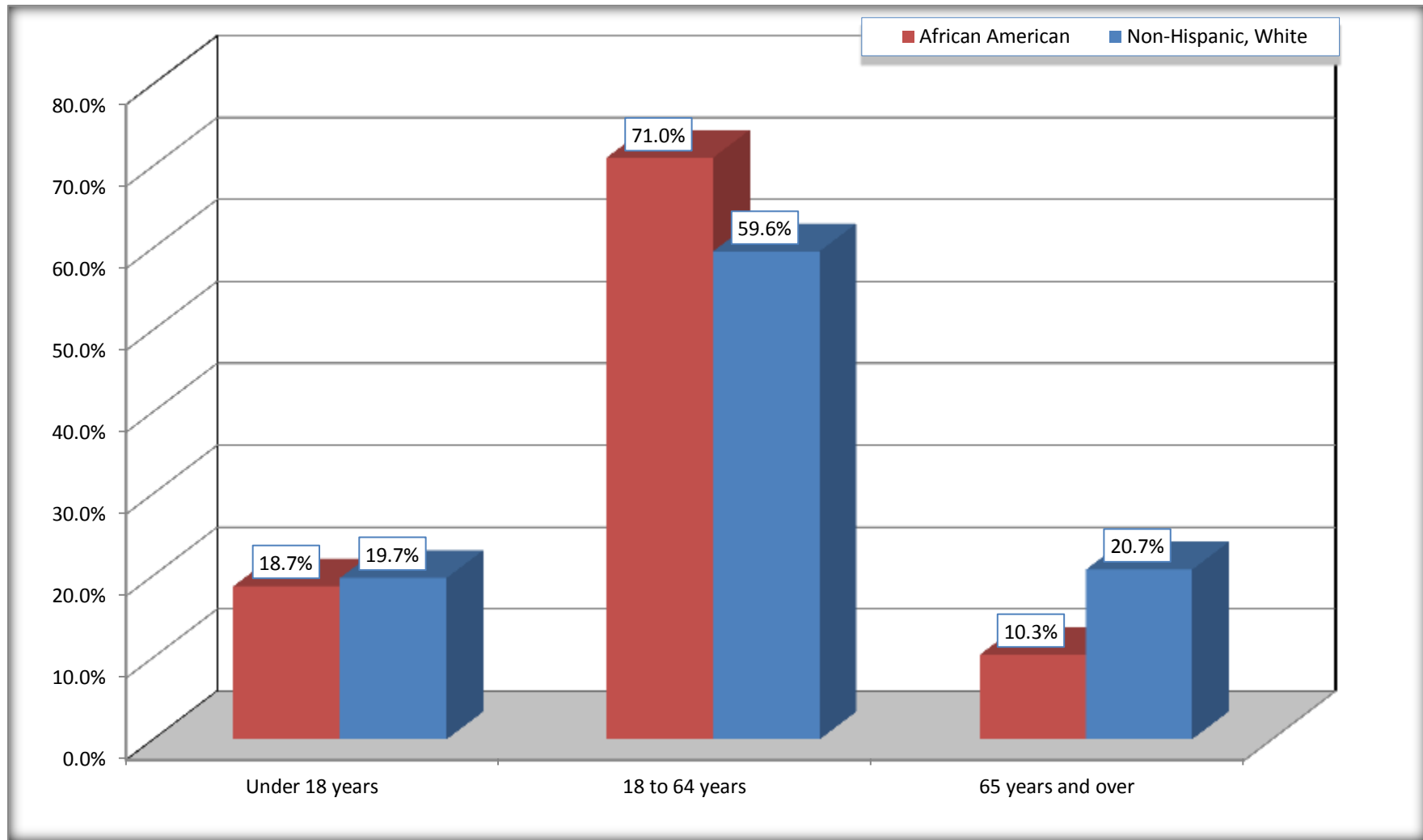
Although the American Community Survey (ACS) produces population, demographic and housing unit estimates, it is the Census Bureau's Population Estimates Program that produces and disseminates the official estimates of the population for the nation, states, counties, cities and towns and estimates of housing units for states and counties.

For information on confidentiality protection, sampling error, nonsampling error, and definitions, see Survey Methodology.

<http://www.census.gov/acs/www/UseData/index.htm>

Population by Age

Graham city, North Carolina



Source: B01001. SEX BY AGE
Data Set: 2008-2012 American Community Survey 5-Year Estimates

B05003. SEX BY AGE BY CITIZENSHIP STATUS

Data Set: 2008-2012 American Community Survey 5-Year Estimates

	Graham city, North Carolina					
	African American	Margin of Error (+/-)	% of AA Total by Age	White, Not Hispanic	Margin of Error (+/-)	% of NHW Total by Age
Total:	2,819	408	100.0%	7,939	680	100.0%
Under 18 years:	527	NC	100.0%	1,564	NC	100.0%
Native	527	NC	100.0%	1,564	NC	100.0%
Foreign born:	0	NC	0.0%	0	NC	0.0%
Naturalized U.S. citizen	0	NC	0.0%	0	NC	0.0%
Not a U.S. citizen	0	NC	0.0%	0	NC	0.0%
18 years and over:	2,292	NC	100.0%	6,375	NC	100.0%
Native	2,292	NC	100.0%	6,260	NC	98.2%
Foreign born:	0	NC	0.0%	115	NC	1.8%
Naturalized U.S. citizen	0	NC	0.0%	102	NC	1.6%
Not a U.S. citizen	0	NC	0.0%	13	NC	0.2%
Male:	1,519	271	53.9%	3,785	367	47.7%
Under 18 years:	332	116	100.0%	767	206	100.0%
Native	332	116	100.0%	767	206	100.0%
Foreign born:	0	20	0.0%	0	20	0.0%
Naturalized U.S. citizen	0	20	0.0%	0	20	0.0%
Not a U.S. citizen	0	20	0.0%	0	20	0.0%
18 years and over:	1,187	216	100.0%	3,018	340	100.0%
Native	1,187	216	100.0%	2,973	346	98.5%
Foreign born:	0	20	0.0%	45	41	1.5%
Naturalized U.S. citizen	0	20	0.0%	32	35	1.1%
Not a U.S. citizen	0	20	0.0%	13	21	0.4%

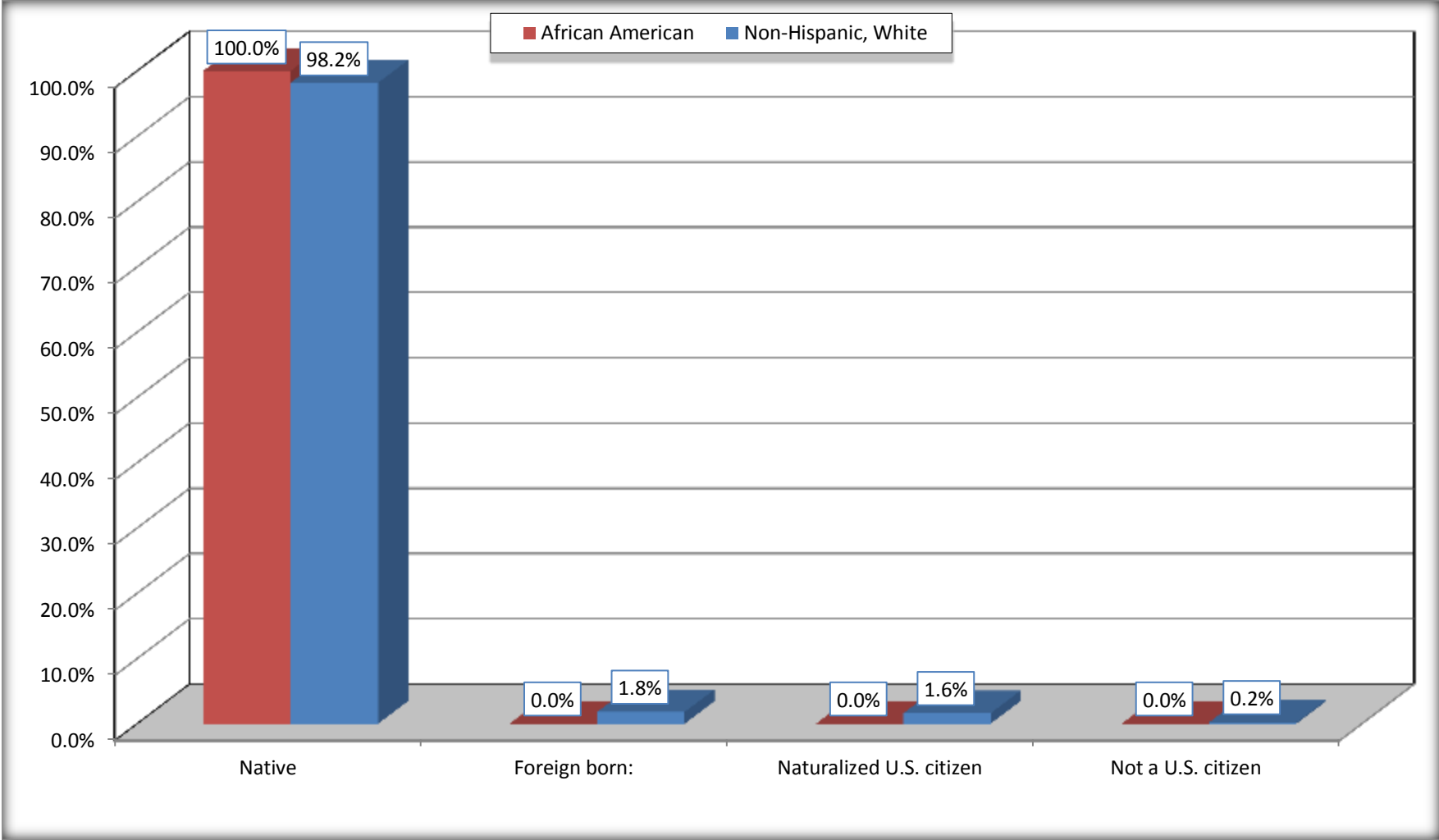
	Graham city, North Carolina					
	African American	Margin of Error (+/-)	% of AA by Age	White, Not Hispanic	Margin of Error (+/-)	% of NHW by Age
Female:	1,300	215	46.1%	4,154	428	52.3%
Under 18 years:	195	84	100.0%	797	233	100.0%
Native	195	84	100.0%	797	233	100.0%
Foreign born:	0	20	0.0%	0	20	0.0%
Naturalized U.S. citizen	0	20	0.0%	0	20	0.0%
Not a U.S. citizen	0	20	0.0%	0	20	0.0%
18 years and over:	1,105	177	100.0%	3,357	303	100.0%
Native	1,105	177	100.0%	3,287	305	97.9%
Foreign born:	0	20	0.0%	70	76	2.1%
Naturalized U.S. citizen	0	20	0.0%	70	76	2.1%
Not a U.S. citizen	0	20	0.0%	0	20	0.0%

Source: U.S. Census Bureau, 2008-2012 American Community Survey

For information on confidentiality protection, sampling error, nonsampling error, and definitions, see Survey Methodology.
<http://www.census.gov/acs/www/UseData/index.htm>

Citizenship Status of Voting Age Population (18 and Over)

Graham city, North Carolina



Source: B05003. SEX BY AGE BY CITIZENSHIP STATUS
Data Set: 2008-2012 American Community Survey 5-Year Estimates

**B07004. GEOGRAPHICAL MOBILITY IN THE PAST YEAR BY RACE FOR CURRENT RESIDENCE IN THE UNITED STATES - Universe:
POPULATION 1 YEAR AND OVER**

Data Set: 2008-2012 American Community Survey 5-Year Estimates

	Graham city, North Carolina					
	African American	Margin of Error (+/-)	% of AA Total	White, Not Hispanic	Margin of Error (+/-)	% of NHW Total
Total:	2,791	408	100.0%	7,870	672	100.0%
Same house 1 year ago	2,261	303	81.0%	6,516	623	82.8%
Moved within same county	417	256	14.9%	1,085	404	13.8%
Moved from different county within same state	100	126	3.6%	92	80	1.2%
Moved from different state	13	23	0.5%	142	162	1.8%
Moved from abroad	0	20	0.0%	35	52	0.4%

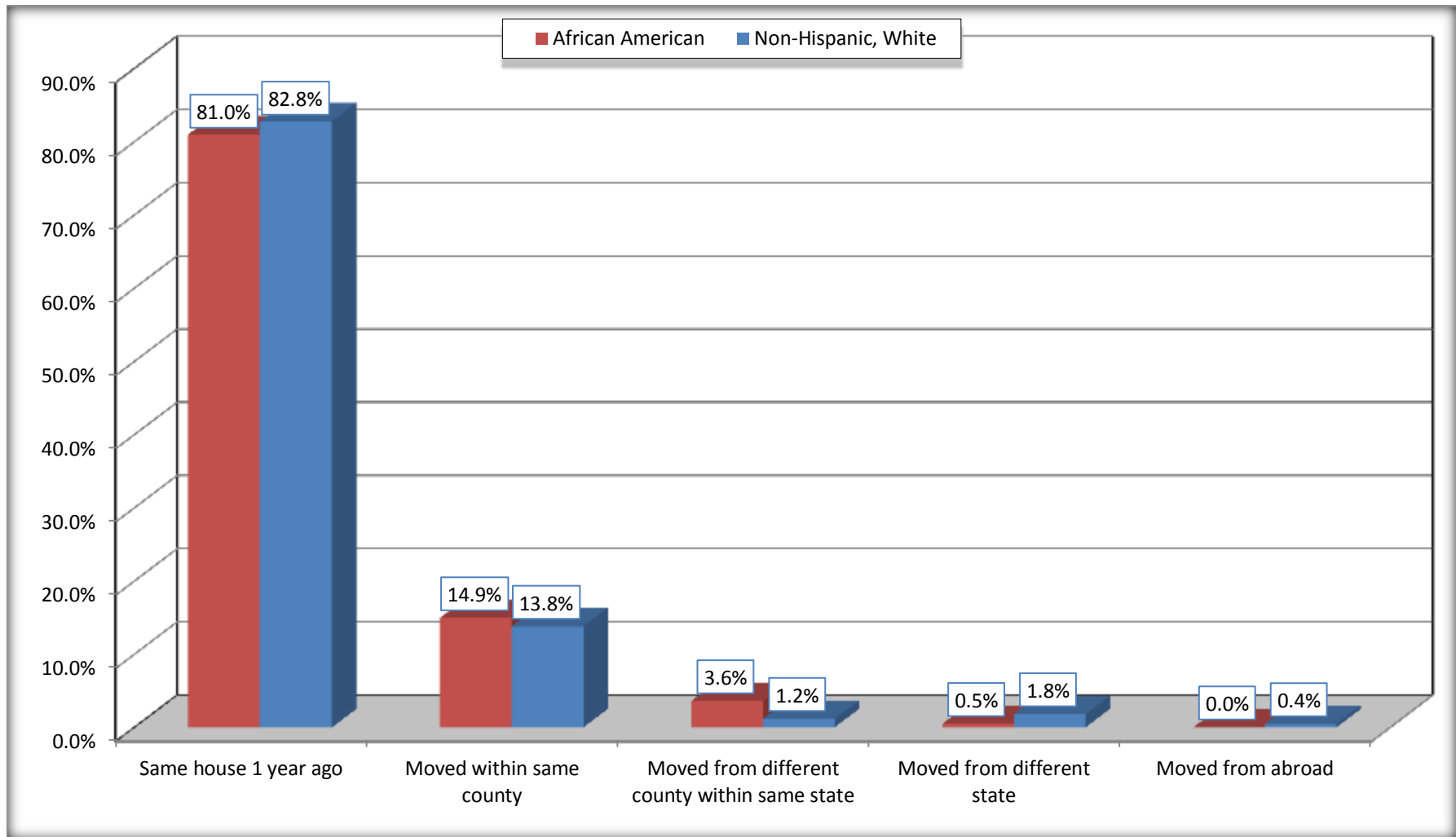
Source: U.S. Census Bureau, 2008-2012 American Community Survey

For information on confidentiality protection, sampling error, nonsampling error, and definitions, see Survey Methodology.

<http://www.census.gov/acs/www/UseData/index.htm>

Geographical Mobility in the Past Year (Population 1 Year and Over)

Graham city, North Carolina



Source: B07004. GEOGRAPHICAL MOBILITY IN THE PAST YEAR BY RACE FOR CURRENT RESIDENCE IN THE UNITED STATES - Universe: POPULATION 1 YEAR AND OVER

Data Set: 2008-2012 American Community Survey 5-Year Estimates

B08105. MEANS OF TRANSPORTATION TO WORK - Universe: WORKERS 16 YEARS AND OVER

Data Set: 2008-2012 American Community Survey 5-Year Estimates

	Graham city, North Carolina					
	African American	Margin of Error (+/-)	% of AA Total	White, Not Hispanic	Margin of Error (+/-)	% of NHW Total
Total:	1342	300	100.0%	3755	388	100.0%
Car, truck, or van - drove alone	1207	302	89.9%	3250	361	86.6%
Car, truck, or van - carpooled	135	73	10.1%	278	125	7.4%
Public transportation (excluding taxicab)	0	20	0.0%	1	3	0.0%
Walked	0	20	0.0%	38	45	1.0%
Taxicab, motorcycle, bicycle, or other means	0	20	0.0%	33	38	0.9%
Worked at home	0	20	0.0%	155	69	4.1%

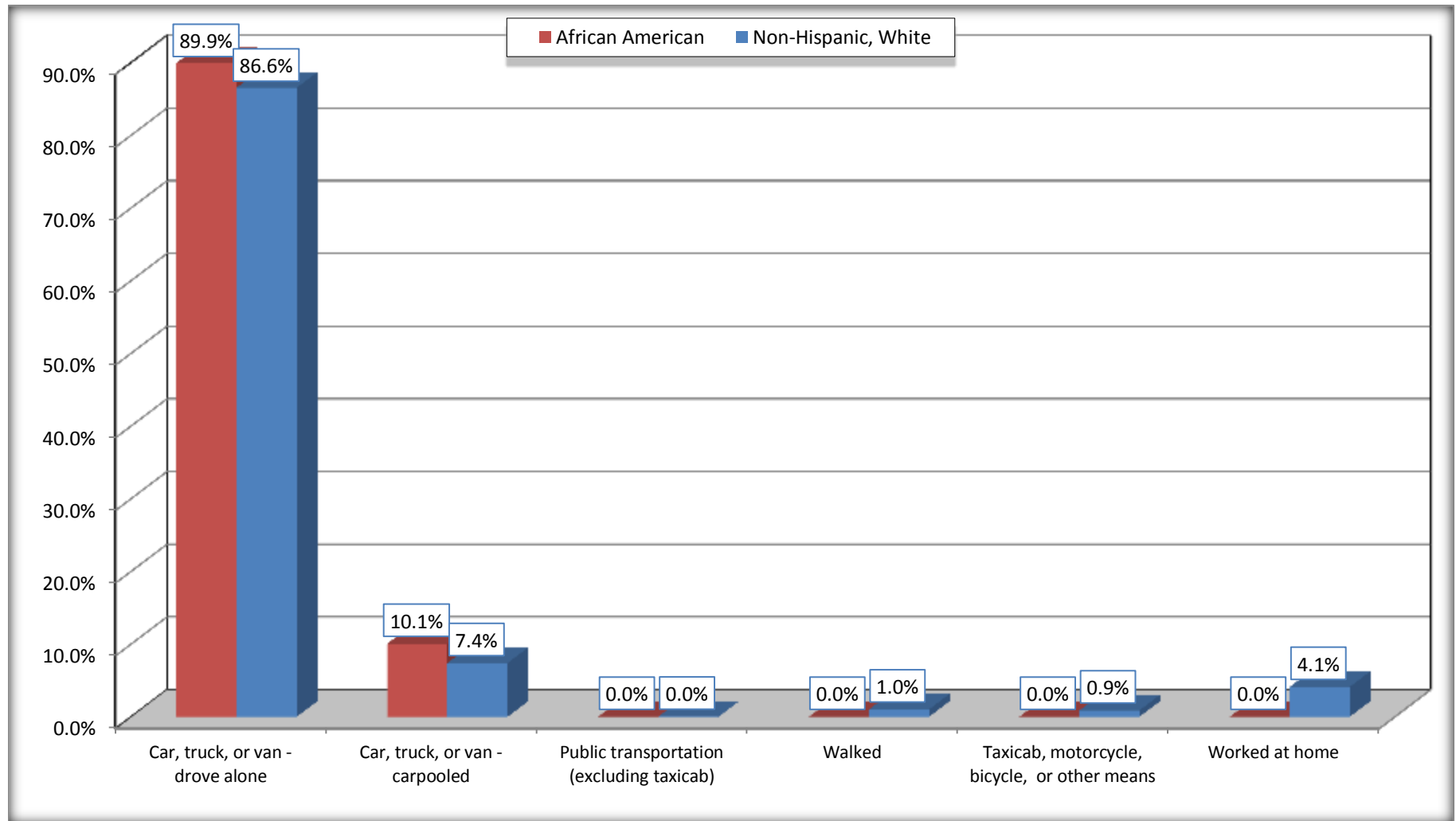
Source: U.S. Census Bureau, 2008-2012 American Community Survey

For information on confidentiality protection, sampling error, nonsampling error, and definitions, see Survey Methodology.

<http://www.census.gov/acs/www/UseData/index.htm>

Means of Transportation to Work (Workers 16 Years and Over)

Graham city, North Carolina



Source: B08105. MEANS OF TRANSPORTATION TO WORK - Universe: WORKERS 16 YEARS AND OVER
Data Set: 2008-2012 American Community Survey 5-Year Estimates

B11002. HOUSEHOLD TYPE BY RELATIVES AND NONRELATIVES FOR POPULATION IN HOUSEHOLDS

Data Set: 2008-2012 American Community Survey 5-Year Estimates

	Graham city, North Carolina					
	African American	Margin of Error (+/-)	% of AA Total	White, Not Hispanic	Margin of Error (+/-)	% of NHW Total
Total:	2879	407	100.0%	7904	689	100.0%
In family households	2303	366	80.0%	6457	717	81.7%
In nonfamily households	576	169	20.0%	1447	314	18.3%

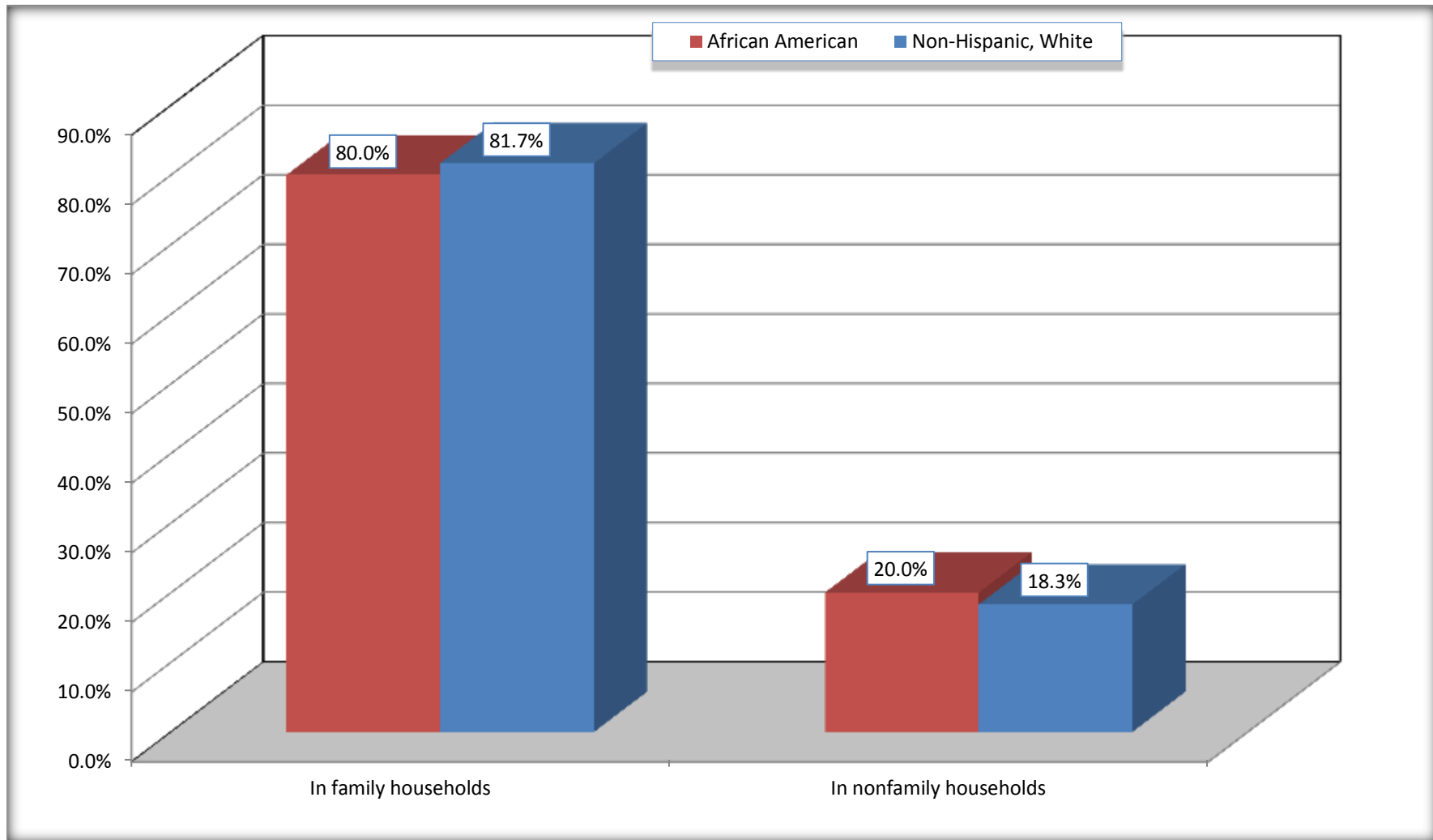
Source: U.S. Census Bureau, 2008-2012 American Community Survey

For information on confidentiality protection, sampling error, nonsampling error, and definitions, see Survey Methodology.

<http://www.census.gov/acs/www/UseData/index.htm>

Household Type for Population in Households

Graham city, North Carolina



Source: B11002. HOUSEHOLD TYPE BY RELATIVES AND NONRELATIVES FOR POPULATION IN HOUSEHOLDS
Data Set: 2008-2012 American Community Survey 5-Year Estimates

B12002. MARITAL STATUS FOR THE POPULATION 15 YEARS AND OVER

Data Set: 2008-2012 American Community Survey 5-Year Estimates

	Graham city, North Carolina					
	African American	Margin of Error (+/-)	% of AA Total	White, Not Hispanic	Margin of Error (+/-)	% of NHW Total
Total:	2,342	307	100.0%	6,544	537	100.0%
Never married	778	NC	33.2%	1,298	NC	19.8%
Now married (except separated)	902	NC	38.5%	3,469	NC	53.0%
Separated	140	NC	6.0%	243	NC	3.7%
Widowed	102	NC	4.4%	792	NC	12.1%
Divorced	420	NC	17.9%	742	NC	11.3%
Male:	1,214	214	51.8%	3,111	350	47.5%
Never married	463	164	19.8%	788	263	12.0%
Now married (except separated)	435	123	18.6%	1,791	219	27.4%
Separated	39	44	1.7%	55	51	0.8%
Widowed	6	13	0.3%	189	91	2.9%
Divorced	271	138	11.6%	288	104	4.4%
Female:	1,128	186	48.2%	3,433	317	52.5%
Never married	315	123	13.5%	510	148	7.8%
Now married (except separated)	467	137	19.9%	1,678	198	25.6%
Separated	101	72	4.3%	188	90	2.9%
Widowed	96	53	4.1%	603	149	9.2%
Divorced	149	74	6.4%	454	128	6.9%

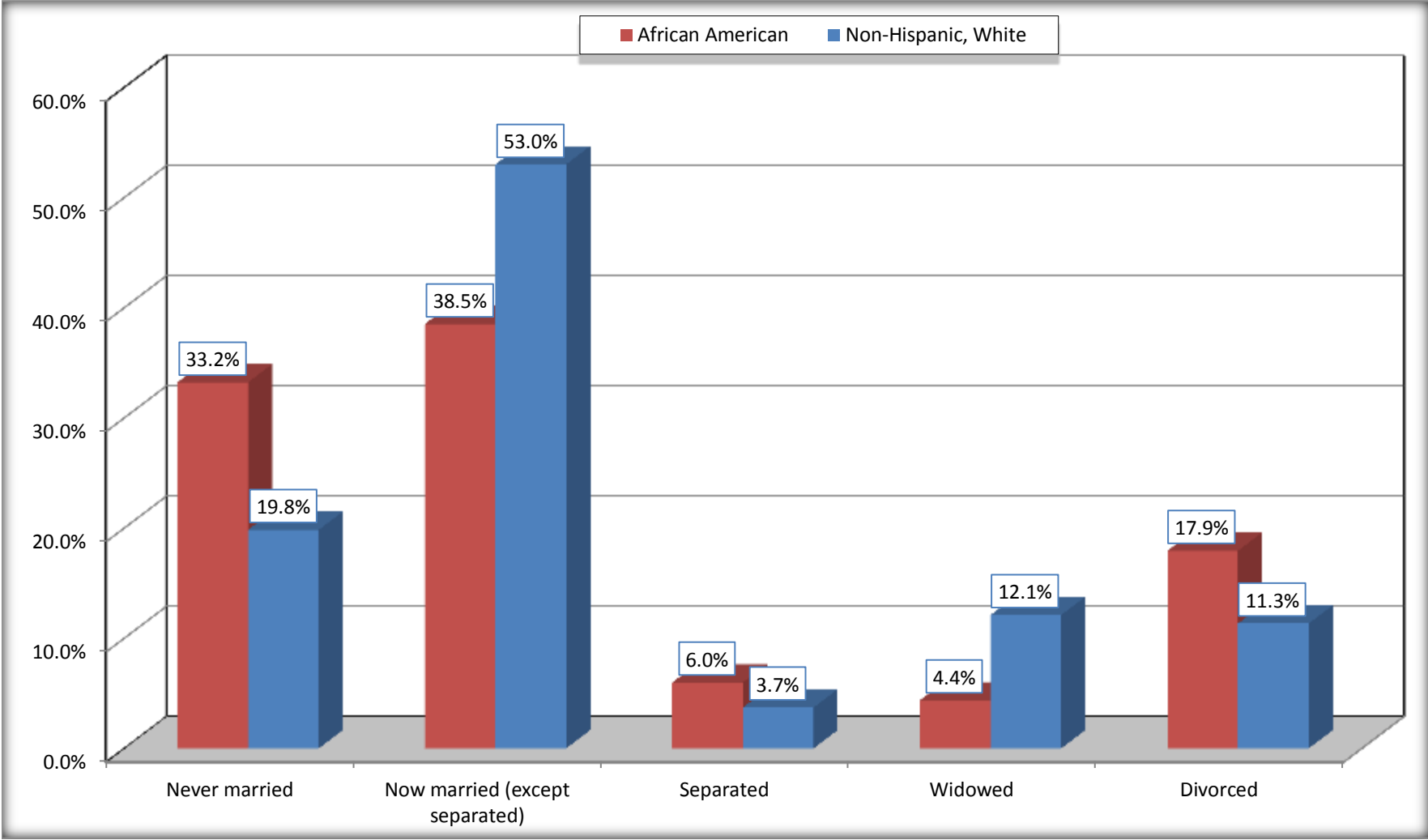
Source: U.S. Census Bureau, 2008-2012 American Community Survey

For information on confidentiality protection, sampling error, nonsampling error, and definitions, see Survey Methodology.

<http://www.census.gov/acs/www/UseData/index.htm>

Marital Status for the Population 15 Years and Over

Graham city, North Carolina



Source: B12002. MARITAL STATUS FOR THE POPULATION 15 YEARS AND OVER
Data Set: 2008-2012 American Community Survey 5-Year Estimates

C15002. SEX BY EDUCATIONAL ATTAINMENT FOR THE POPULATION 25 YEARS AND OVER

Data Set: 2008-2012 American Community Survey 5-Year Estimates

	Graham city, North Carolina					
	African American	Margin of Error (+/-)	% of AA Total	White, Not Hispanic	Margin of Error (+/-)	% of NHW Total
Total:	2,081	304	100.0%	5,761	471	100.0%
Less than high school diploma	358	NC	17.2%	854	NC	14.8%
High school graduate, GED, or alternative	573	NC	27.5%	1,618	NC	28.1%
Some college or associate's degree	808	NC	38.8%	2,174	NC	37.7%
Bachelor's degree or higher	342	NC	16.4%	1,115	NC	19.4%
Male:	1,079	200	51.9%	2,653	278	46.1%
Less than high school diploma	210	113	10.1%	401	132	7.0%
High school graduate, GED, or alternative	289	108	13.9%	835	184	14.5%
Some college or associate's degree	349	110	16.8%	849	198	14.7%
Bachelor's degree or higher	231	101	11.1%	568	134	9.9%
Female:	1,002	184	48.1%	3,108	271	53.9%
Less than high school diploma	148	87	7.1%	453	133	7.9%
High school graduate, GED, or alternative	284	103	13.6%	783	176	13.6%
Some college or associate's degree	459	133	22.1%	1,325	208	23.0%
Bachelor's degree or higher	111	63	5.3%	547	125	9.5%

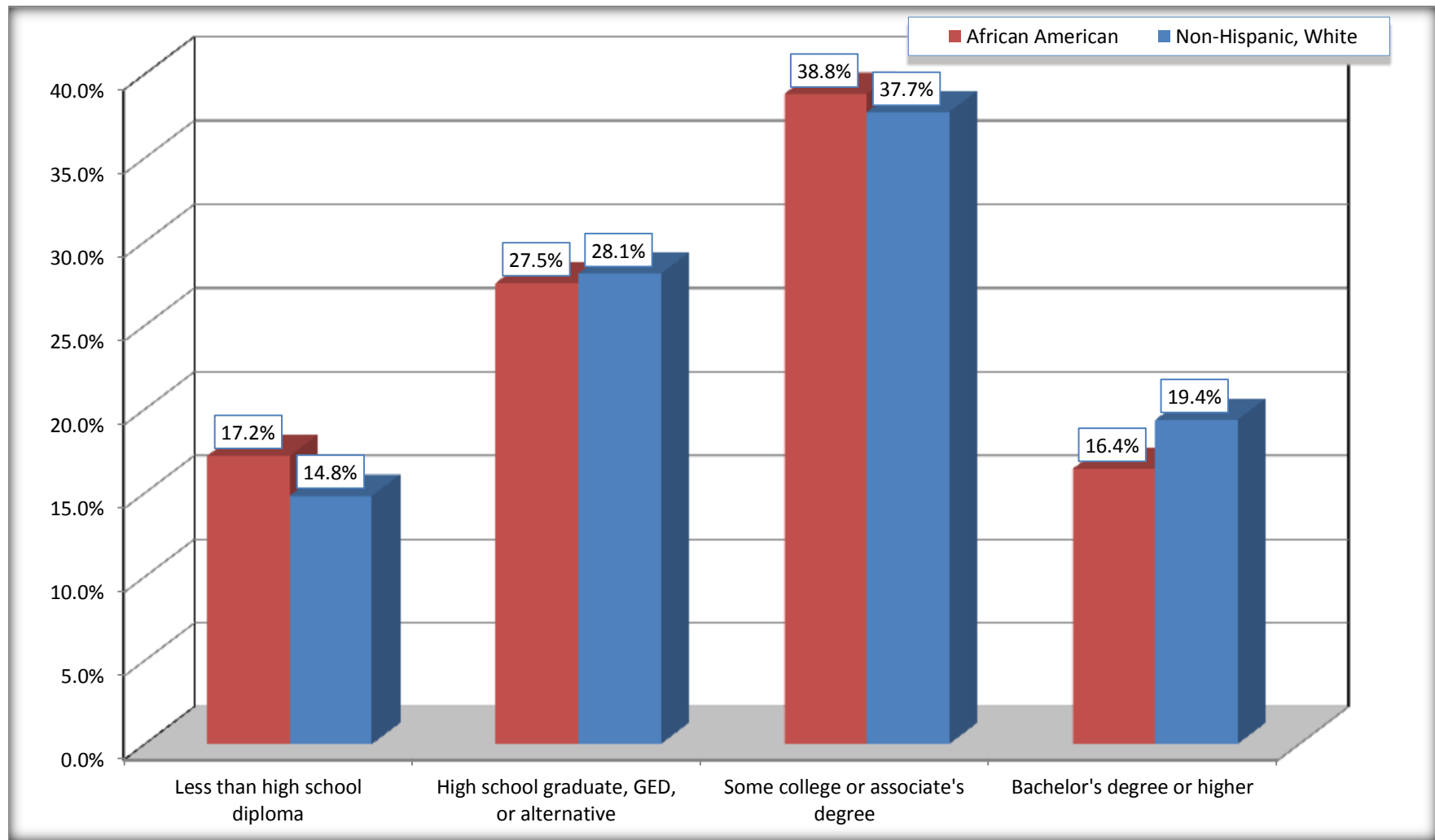
Source: U.S. Census Bureau, 2008-2012 American Community Survey

For information on confidentiality protection, sampling error, nonsampling error, and definitions, see Survey Methodology.

<http://www.census.gov/acs/www/UseData/index.htm>

Educational Attainment for the Population 25 Years and Older

Graham city, North Carolina



Source: C15002. SEX BY EDUCATIONAL ATTAINMENT FOR THE POPULATION 25 YEARS AND OVER
Data Set: 2008-2012 American Community Survey 5-Year Estimates

B17010. POVERTY STATUS IN THE PAST 12 MONTHS OF FAMILIES BY FAMILY TYPE BY PRESENCE OF RELATED CHILDREN UNDER 18 YEARS

Data Set: 2008-2012 American Community Survey 5-Year Estimates

	Graham city, North Carolina					
	African American	Margin of Error (+/-)	% of AA Total	White, Not Hispanic	Margin of Error (+/-)	% of NHW Total
Total:	812	136	100.0%	2,205	230	100.0%
Income in the past 12 months below poverty level:	155	83	19.1%	217	87	9.8%
Married-couple family:	60	63	7.4%	78	57	3.5%
With related children under 18 years	49	59	6.0%	64	54	2.9%
Other family:	95	58	11.7%	139	72	6.3%
Male householder, no wife present	0	20	0.0%	25	20	1.1%
With related children under 18 years	0	20	0.0%	16	15	0.7%
Female householder, no husband present	95	58	11.7%	114	68	5.2%
With related children under 18 years	95	58	11.7%	114	68	5.2%
Income in the past 12 months at or above poverty level:	657	110	80.9%	1,988	231	90.2%
Married-couple family:	377	114	46.4%	1,532	199	69.5%
With related children under 18 years	82	54	10.1%	534	135	24.2%
Other family:	280	116	34.5%	456	142	20.7%
Male householder, no wife present	101	81	12.4%	132	92	6.0%
With related children under 18 years	51	66	6.3%	31	30	1.4%
Female householder, no husband present	179	82	22.0%	324	118	14.7%
With related children under 18 years	133	68	16.4%	167	97	7.6%

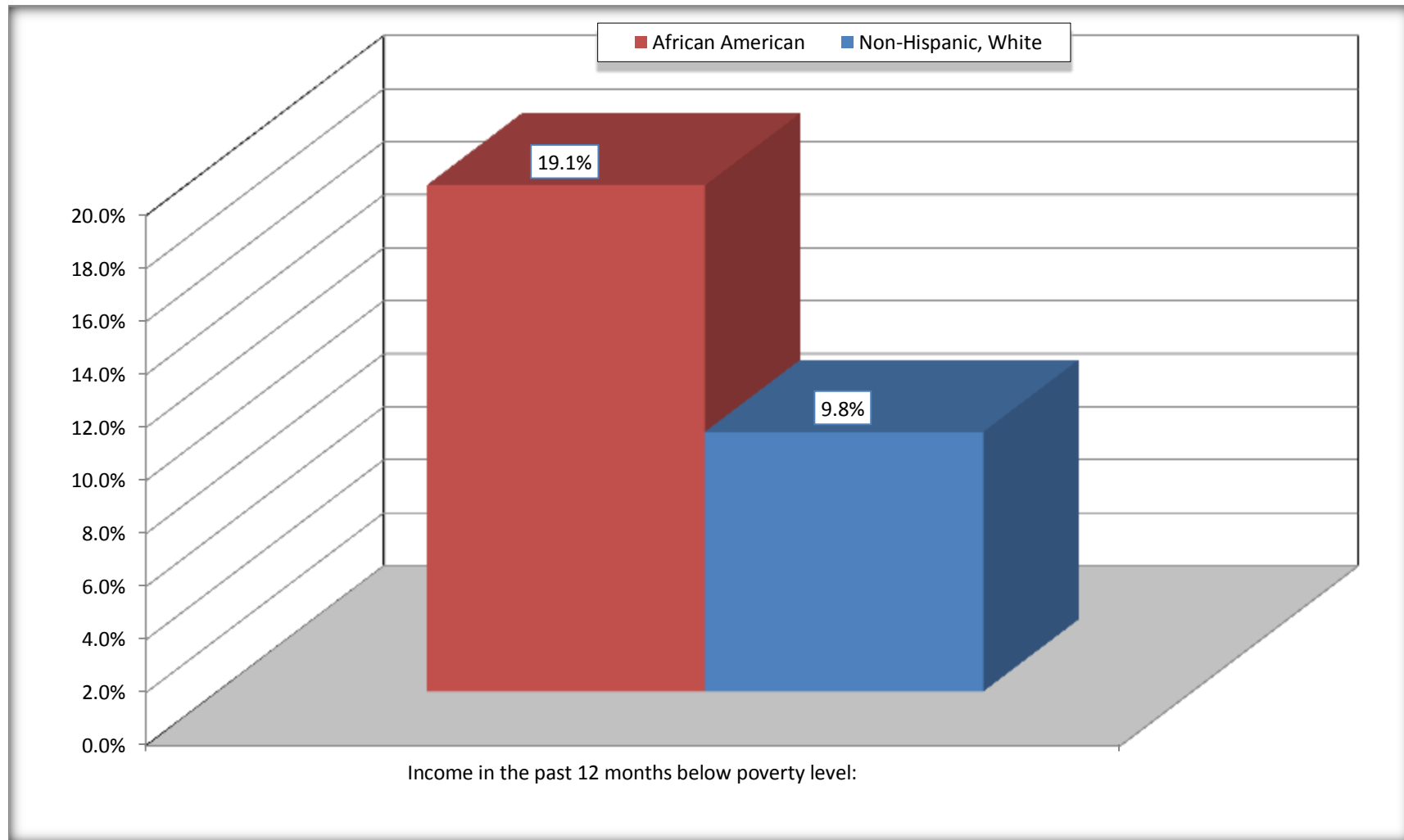
Source: U.S. Census Bureau, 2008-2012 American Community Survey

For information on confidentiality protection, sampling error, nonsampling error, and definitions, see Survey Methodology.

<http://www.census.gov/acs/www/UseData/index.htm>

Family Households Below Poverty in the Past 12 Months

Graham city, North Carolina

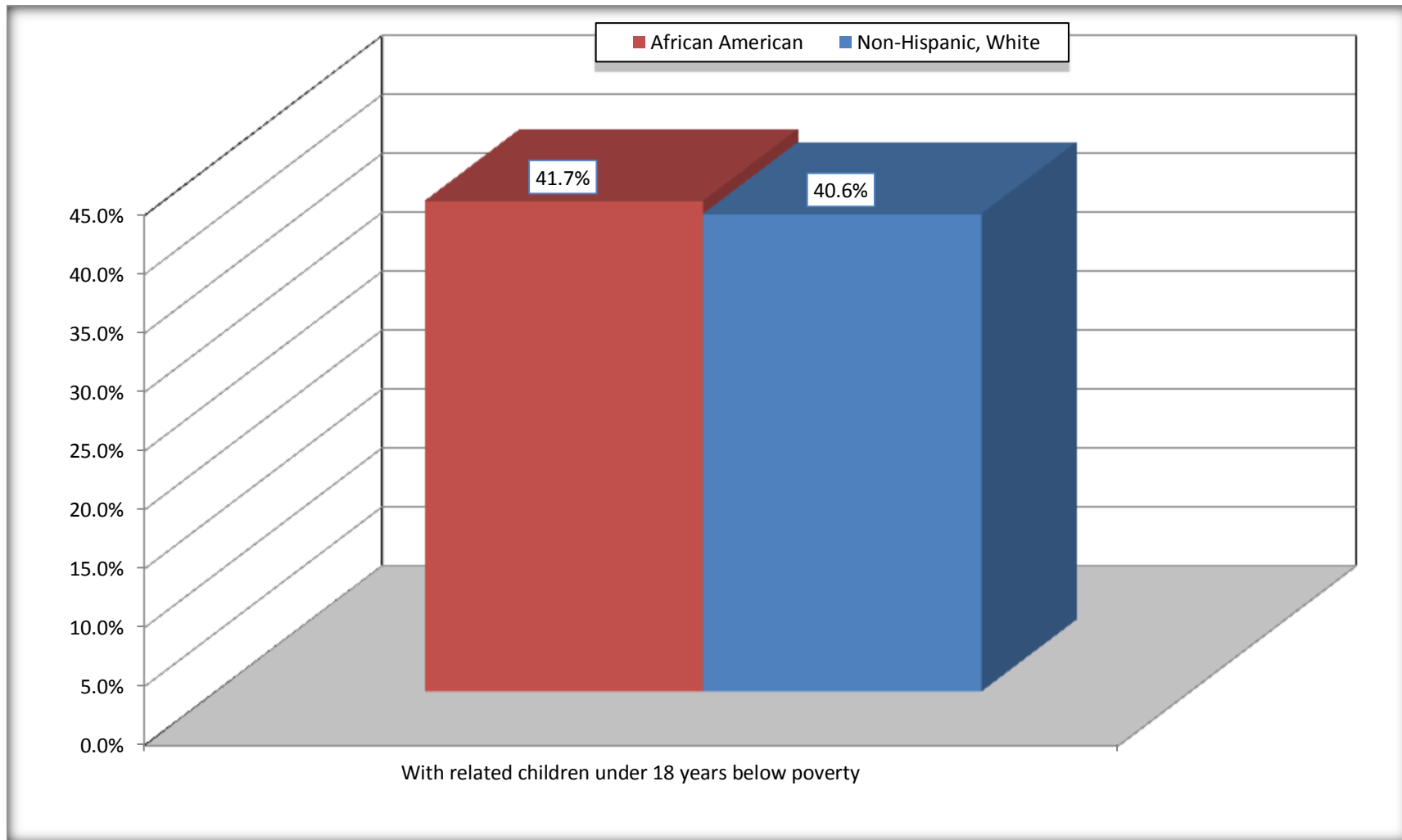


Source: B17010. POVERTY STATUS IN THE PAST 12 MONTHS OF FAMILIES BY FAMILY TYPE BY PRESENCE OF RELATED CHILDREN UNDER 18 YEARS

Data Set: 2008-2012 American Community Survey 5-Year Estimates

Female-headed Households with Related Children Below Poverty in the Past 12 Months

Graham city, North Carolina



Source: B17010. POVERTY STATUS IN THE PAST 12 MONTHS OF FAMILIES BY FAMILY TYPE BY PRESENCE OF RELATED CHILDREN UNDER 18 YEARS

Data Set: 2008-2012 American Community Survey 5-Year Estimates

B17020 POVERTY STATUS IN THE PAST 12 MONTHS BY AGE - Universe: POPULATION FOR WHOM POVERTY STATUS IS DETERMINED

Data Set: 2008-2012 American Community Survey 5-Year Estimates

	Graham city, North Carolina					
	African American	Margin of Error (+/-)	% of AA By Age	White, Not Hispanic	Margin of Error (+/-)	% of NHW By Age
Total:	2,769	409	100.0%	7,800	674	100.0%
Income in the past 12 months below poverty level:	623	270	22.5%	1,059	280	13.6%
Under 18 years	224	NC	42.8%	284	NC	18.2%
18 to 64 years	355	154	18.0%	567	180	12.1%
65 years and over	44	NC	16.1%	208	NC	13.6%
Income in the past 12 months at or above poverty level:	2,146	294	77.5%	6,741	681	86.4%
Under 18 years	299	NC	57.2%	1,276	NC	81.8%
18 to 64 years	1,617	249	82.0%	4,138	432	87.9%
65 years and over	230	NC	83.9%	1,327	NC	86.4%

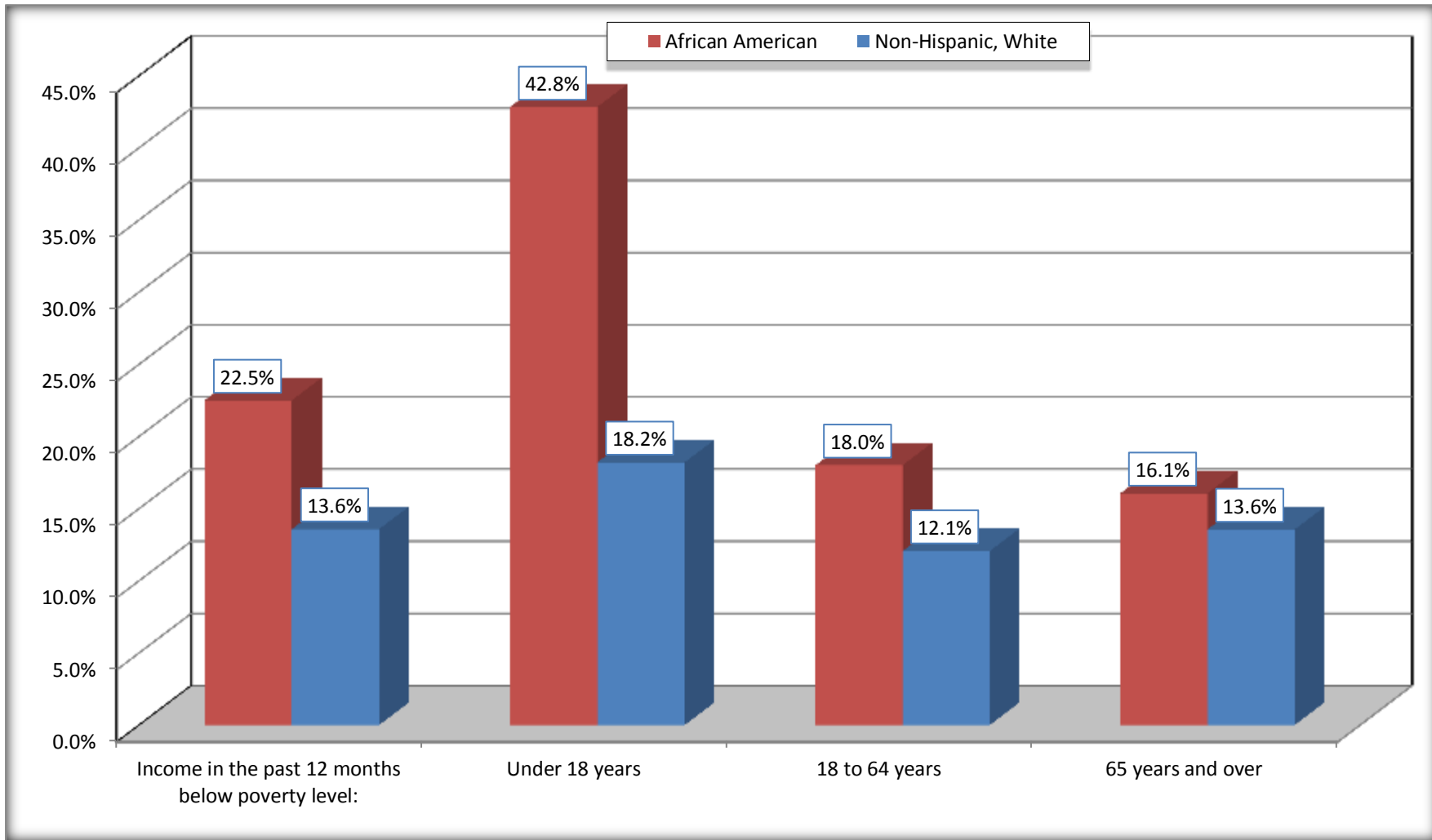
Source: U.S. Census Bureau, 2008-2012 American Community Survey

For information on confidentiality protection, sampling error, nonsampling error, and definitions, see Survey Methodology.

<http://www.census.gov/acs/www/UseData/index.htm>

Population Below Poverty in the Past 12 Months

Graham city, North Carolina



Source: B17020 POVERTY STATUS IN THE PAST 12 MONTHS BY AGE - Universe: POPULATION FOR WHOM POVERTY STATUS IS DETERMINED
Data Set: 2008-2012 American Community Survey 5-Year Estimates

B19001. HOUSEHOLD INCOME IN THE PAST 12 MONTHS (IN 2010 INFLATION-ADJUSTED DOLLARS)

Data Set: 2008-2012 American Community Survey 5-Year Estimates

	Graham city, North Carolina					
	African American	Margin of Error (+/-)	% of AA Total	White, Not Hispanic	Margin of Error (+/-)	% of NHW Total
Total:	1,347	216	100.0%	3,467	297	100.0%
Less than \$ 10,000	119	56	8.8%	283	96	8.2%
\$ 10,000 to \$ 14,999	118	84	8.8%	236	96	6.8%
\$ 15,000 to \$ 24,999	331	NC	24.6%	491	NC	14.2%
\$ 25,000 to \$ 34,999	189	NC	14.0%	316	NC	9.1%
\$ 35,000 to \$ 49,999	288	NC	21.4%	376	NC	10.8%
\$ 50,000 to \$ 74,999	53	NC	3.9%	685	NC	19.8%
\$ 75,000 to \$ 99,999	78	49	5.8%	547	121	15.8%
\$ 100,000 to \$ 149,999	171	NC	12.7%	461	NC	13.3%
\$ 150,000 to \$ 199,999	0	20	0.0%	37	36	1.1%
\$ 200,000 or more	0	20	0.0%	35	34	1.0%

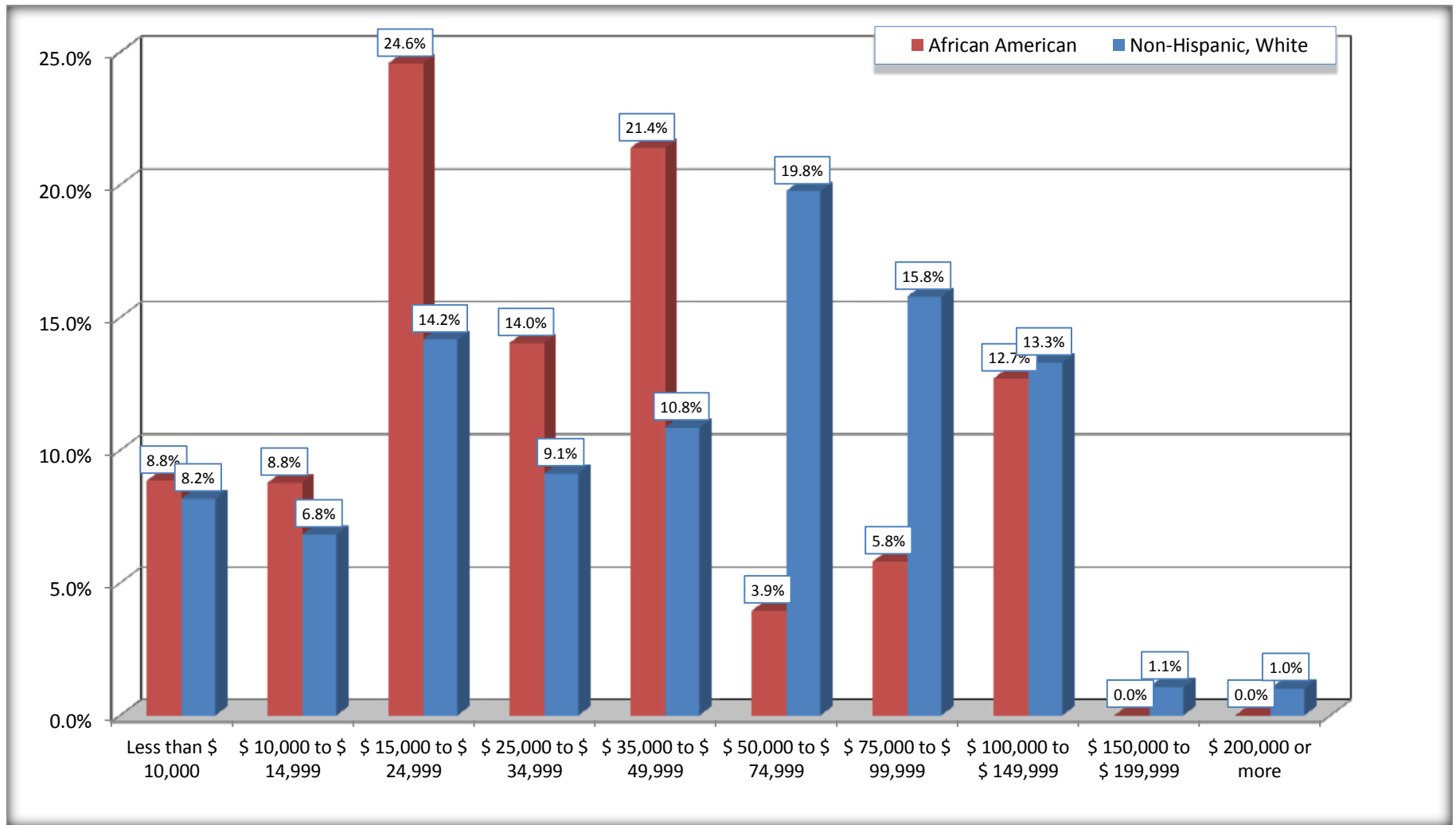
Source: U.S. Census Bureau, 2008-2012 American Community Survey

For information on confidentiality protection, sampling error, nonsampling error, and definitions, see Survey Methodology.

<http://www.census.gov/acs/www/UseData/index.htm>

Household Income in the Past 12 Months

Graham city, North Carolina



Source: B19001. HOUSEHOLD INCOME IN THE PAST 12 MONTHS (IN 2010 INFLATION-ADJUSTED DOLLARS)
Data Set: 2008-2012 American Community Survey 5-Year Estimates

B19013. MEDIAN HOUSEHOLD INCOME IN THE PAST 12 MONTHS (IN 2010 INFLATION-ADJUSTED DOLLARS)

Data Set: 2008-2012 American Community Survey 5-Year Estimates

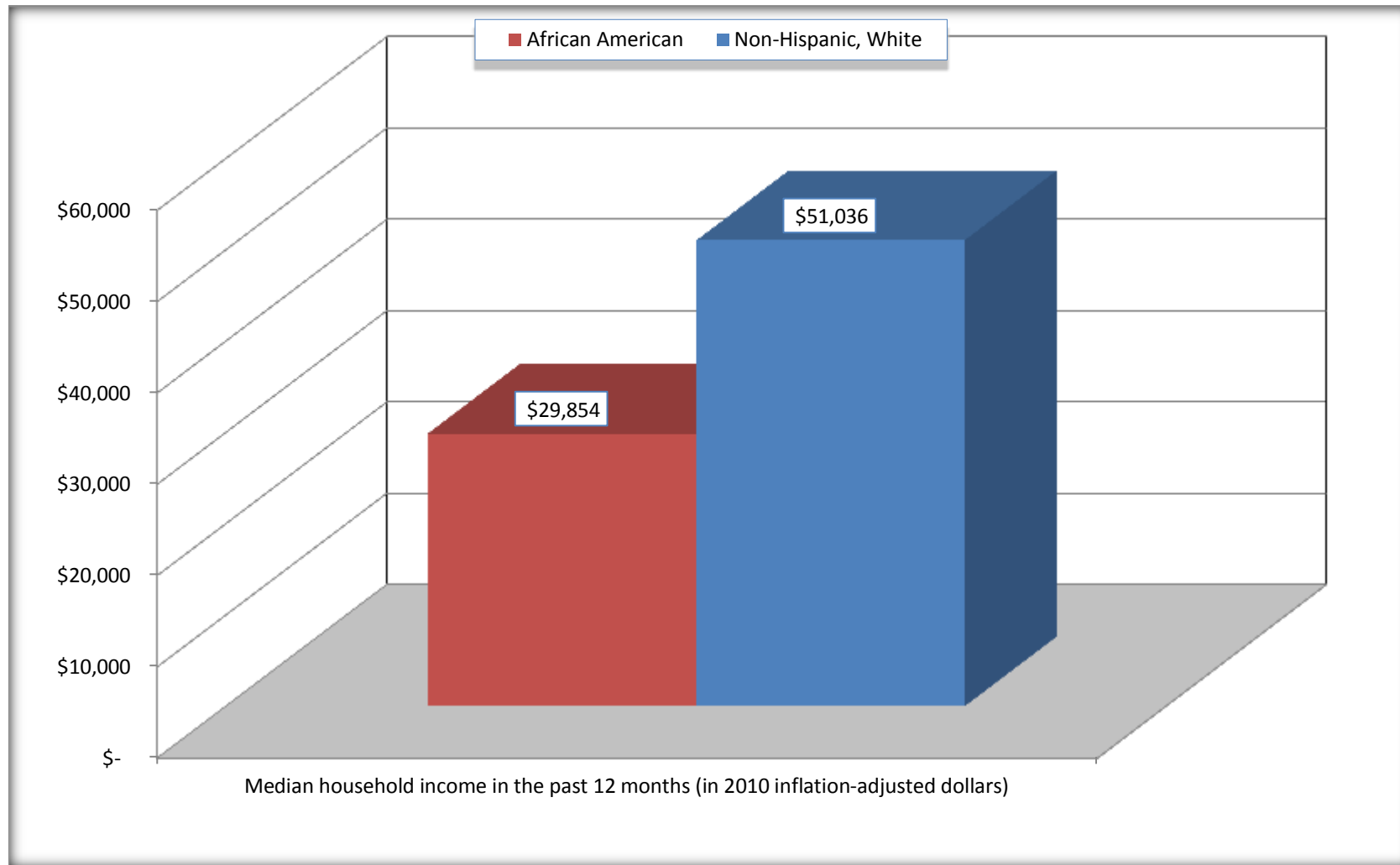
	Graham city, North Carolina			
	African American	Margin of Error (+/-)	White, Not Hispanic	Margin of Error (+/-)
Median household income in the past 12 months (in 2010 inflation-adjusted dollars)	\$ 29,854	\$ 5,307	\$ 51,036	\$ 5,565

Source: U.S. Census Bureau, 2008-2012 American Community Survey

For information on confidentiality protection, sampling error, nonsampling error, and definitions, see Survey Methodology.
<http://www.census.gov/acs/www/UseData/index.htm>

Median Household Income in the Past 12 Months

Graham city, North Carolina



Source: B19013. MEDIAN HOUSEHOLD INCOME IN THE PAST 12 MONTHS (IN 2010 INFLATION-ADJUSTED DOLLARS)
Data Set: 2008-2012 American Community Survey 5-Year Estimates

B19101. FAMILY INCOME IN THE PAST 12 MONTHS (IN 2010 INFLATION-ADJUSTED DOLLARS)

Data Set: 2008-2012 American Community Survey 5-Year Estimates

	Graham city, North Carolina					
	African American	Margin of Error (+/-)	% of AA Total	White, Not Hispanic	Margin of Error (+/-)	% of NHW Total
Total:	812	136	100.0%	2,205	230	100.0%
Less than \$ 10,000	59	41	7.3%	96	54	4.4%
\$ 10,000 to \$ 14,999	47	55	5.8%	42	40	1.9%
\$ 15,000 to \$ 24,999	183	NC	22.5%	196	NC	8.9%
\$ 25,000 to \$ 34,999	121	NC	14.9%	215	NC	9.8%
\$ 35,000 to \$ 49,999	124	NC	15.3%	246	NC	11.2%
\$ 50,000 to \$ 74,999	43	NC	5.3%	528	NC	23.9%
\$ 100,000 to \$ 149,999	157	NC	19.3%	360	NC	16.3%
\$ 150,000 to \$ 199,999	0	20	0.0%	37	36	1.7%
\$ 200,000 or more	0	20	0.0%	35	34	1.6%

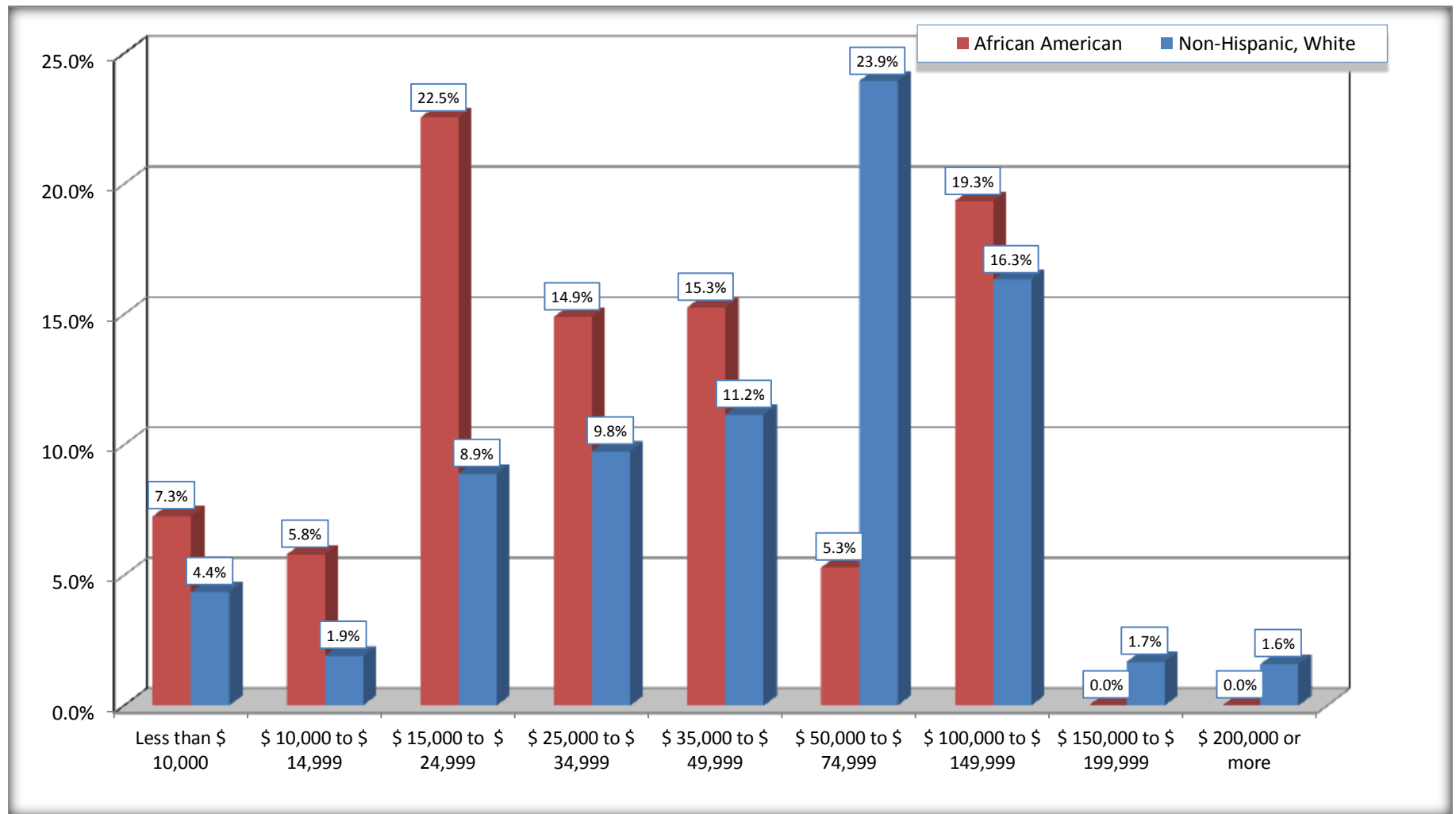
Source: U.S. Census Bureau, 2008-2012 American Community Survey

For information on confidentiality protection, sampling error, nonsampling error, and definitions, see Survey Methodology.

<http://www.census.gov/acs/www/UseData/index.htm>

Family Income in the Past 12 Months

Graham city, North Carolina



Source: B19101. FAMILY INCOME IN THE PAST 12 MONTHS (IN 2010 INFLATION-ADJUSTED DOLLARS)
Data Set: 2008-2012 American Community Survey 5-Year Estimates

B19113. MEDIAN FAMILY INCOME IN THE PAST 12 MONTHS (IN 2010 INFLATION-ADJUSTED DOLLARS)

Data Set: 2008-2012 American Community Survey 5-Year Estimates

	Graham city, North Carolina			
	African American	Margin of Error (+/-)	White, Not Hispanic	Margin of Error (+/-)
Median family income in the past 12 months (in 2010 inflation-adjusted dollars)	\$ 32,222	\$ 18,268	\$ 59,527	\$ 6,935

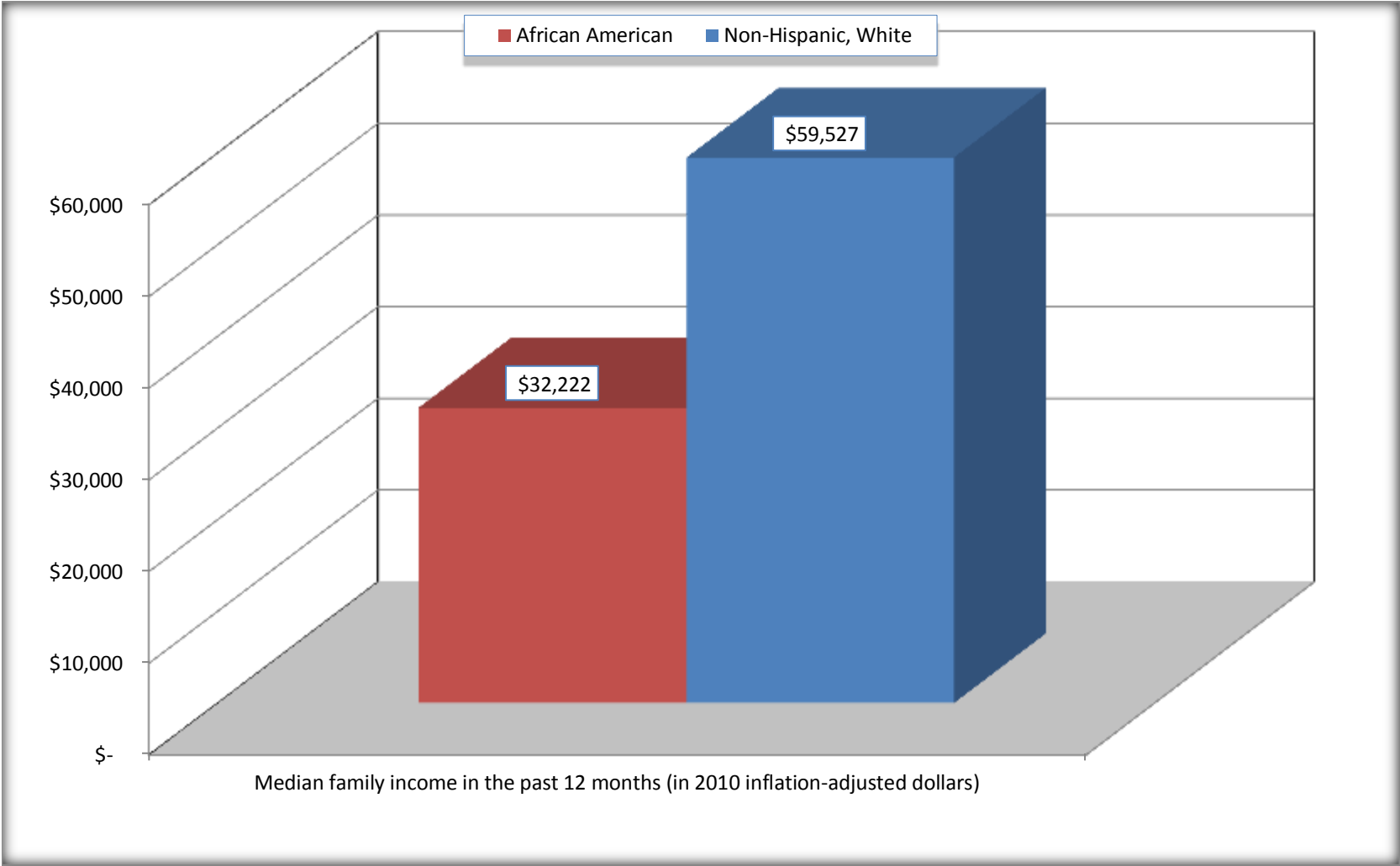
Source: U.S. Census Bureau, 2008-2012 American Community Survey

For information on confidentiality protection, sampling error, nonsampling error, and definitions, see Survey Methodology.

<http://www.census.gov/acs/www/UseData/index.htm>

Median Family Income in the Past 12 Months

Graham city, North Carolina



Source: B19113. MEDIAN FAMILY INCOME IN THE PAST 12 MONTHS (IN 2010 INFLATION-ADJUSTED DOLLARS)
Data Set: 2008-2012 American Community Survey 5-Year Estimates

B19202. MEDIAN NONFAMILY HOUSEHOLD INCOME IN THE PAST 12 MONTHS (IN 2010 INFLATION-ADJUSTED DOLLARS)

Data Set: 2008-2012 American Community Survey 5-Year Estimates

	Graham city, North Carolina			
	African American	Margin of Error (+/-)	White, Not Hispanic	Margin of Error (+/-)
Median nonfamily household income in the past 12 months (in 2010 inflation-adjusted dollars)	\$ 22,412	\$ 7,469	\$ 23,291	\$ 4,639

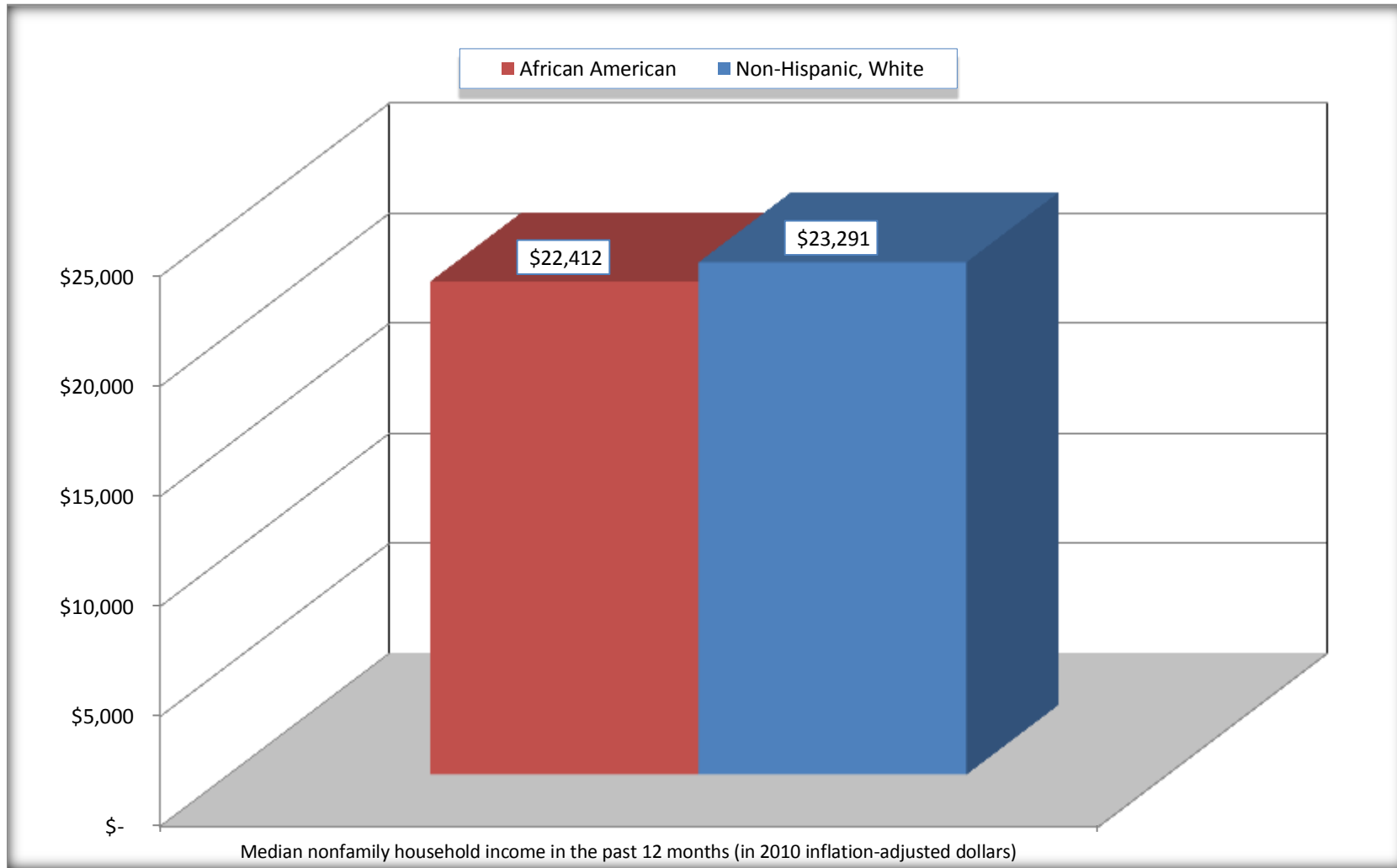
Source: U.S. Census Bureau, 2008-2012 American Community Survey

For information on confidentiality protection, sampling error, nonsampling error, and definitions, see Survey Methodology.

<http://www.census.gov/acs/www/UseData/index.htm>

Median Non-Family Income in the Past 12 Months

Graham city, North Carolina



Source: B19202. MEDIAN NONFAMILY HOUSEHOLD INCOME IN THE PAST 12 MONTHS (IN 2010 INFLATION-ADJUSTED DOLLARS)
Data Set: 2008-2012 American Community Survey 5-Year Estimates

B19301. PER CAPITA INCOME IN THE PAST 12 MONTHS (IN 2010 INFLATION-ADJUSTED DOLLARS)

Data Set: 2008-2012 American Community Survey 5-Year Estimates

	Graham city, North Carolina			
	African American	Margin of Error (+/-)	White, Not Hispanic	Margin of Error (+/-)
Per capita income in the past 12 months (in 2010 inflation-adjusted dollars)	\$ 20,819	\$ 2,967	\$ 24,946	\$ 1,813

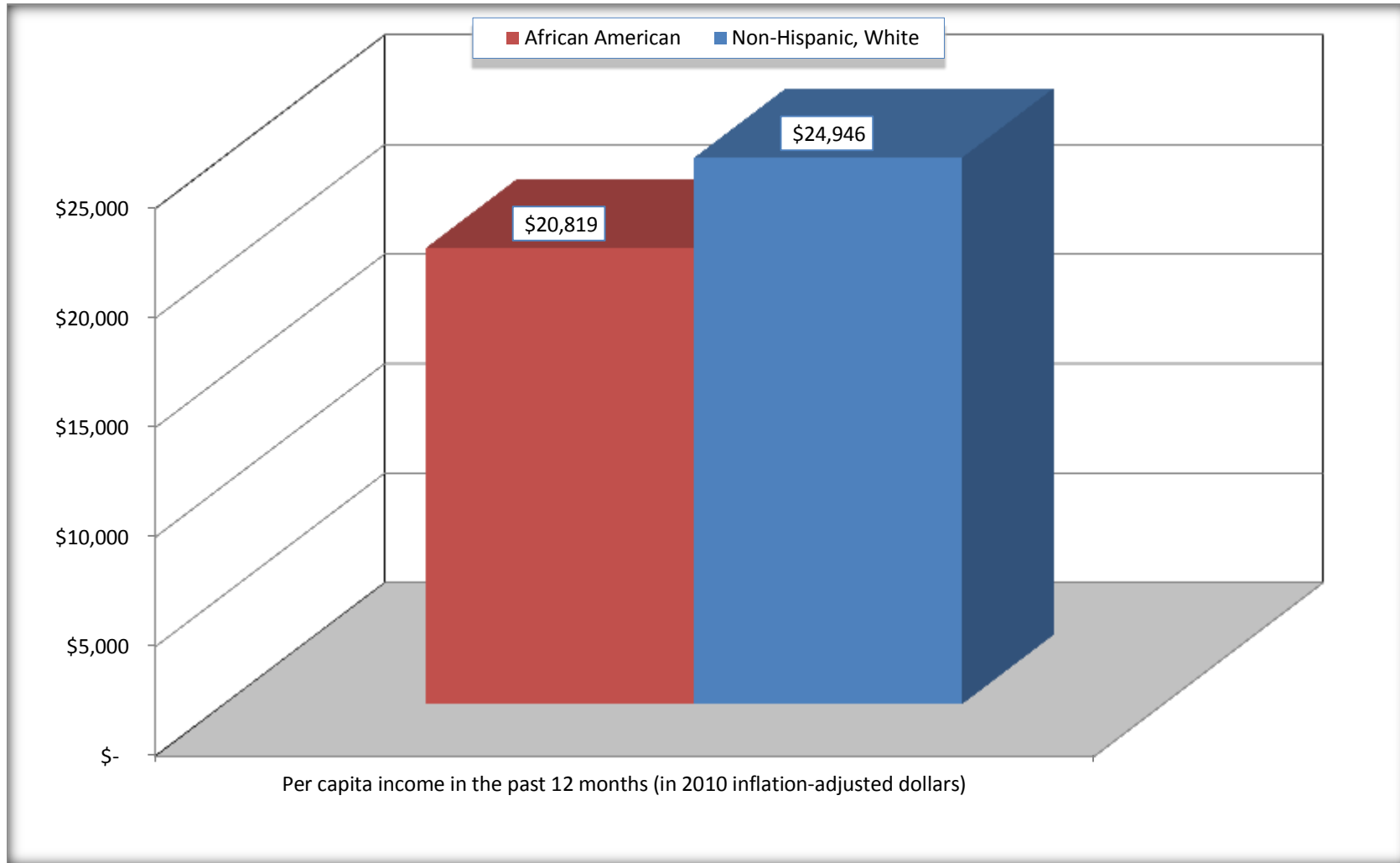
Source: U.S. Census Bureau, 2008-2012 American Community Survey

For information on confidentiality protection, sampling error, nonsampling error, and definitions, see Survey Methodology.

<http://www.census.gov/acs/www/UseData/index.htm>

Per capita Income in the Past 12 Months

Graham city, North Carolina



Source: B19301. PER CAPITA INCOME IN THE PAST 12 MONTHS (IN 2010 INFLATION-ADJUSTED DOLLARS)
Data Set: 2008-2012 American Community Survey 5-Year Estimates

B20017. MEDIAN EARNINGS IN THE PAST 12 MONTHS (IN 2010 INFLATION-ADJUSTED DOLLARS) BY SEX BY WORK EXPERIENCE IN THE PAST 12 MONTHS FOR THE POPULATION 16 YEARS AND OVER WITH EARNINGS IN THE PAST 12 MONTHS

Data Set: 2008-2012 American Community Survey 5-Year Estimates

	Graham city, North Carolina			
	African American	Margin of Error (+/-)	White, Not Hispanic	Margin of Error (+/-)
Median earnings in the past 12 months (in 2010 inflation-adjusted dollars) --				
Total:	\$ 26,809	\$ 7,874	\$ 31,494	\$ 3,520
Male --				
Total	\$ 31,250	\$ 7,469	\$ 36,475	\$ 5,590
Worked full-time, year-round in the past 12 months	\$ 40,798	\$ 5,007	\$ 43,991	\$ 1,541
Other	\$ 7,045	\$ 5,166	\$ 11,505	\$ 1,145
Female --				
Total	\$ 22,794	\$ 6,137	\$ 26,328	\$ 5,156
Worked full-time, year-round in the past 12 months	\$ 38,218	\$ 8,117	\$ 35,089	\$ 5,772
Other	\$ 7,875	\$ 6,985	\$ 13,092	\$ 4,214

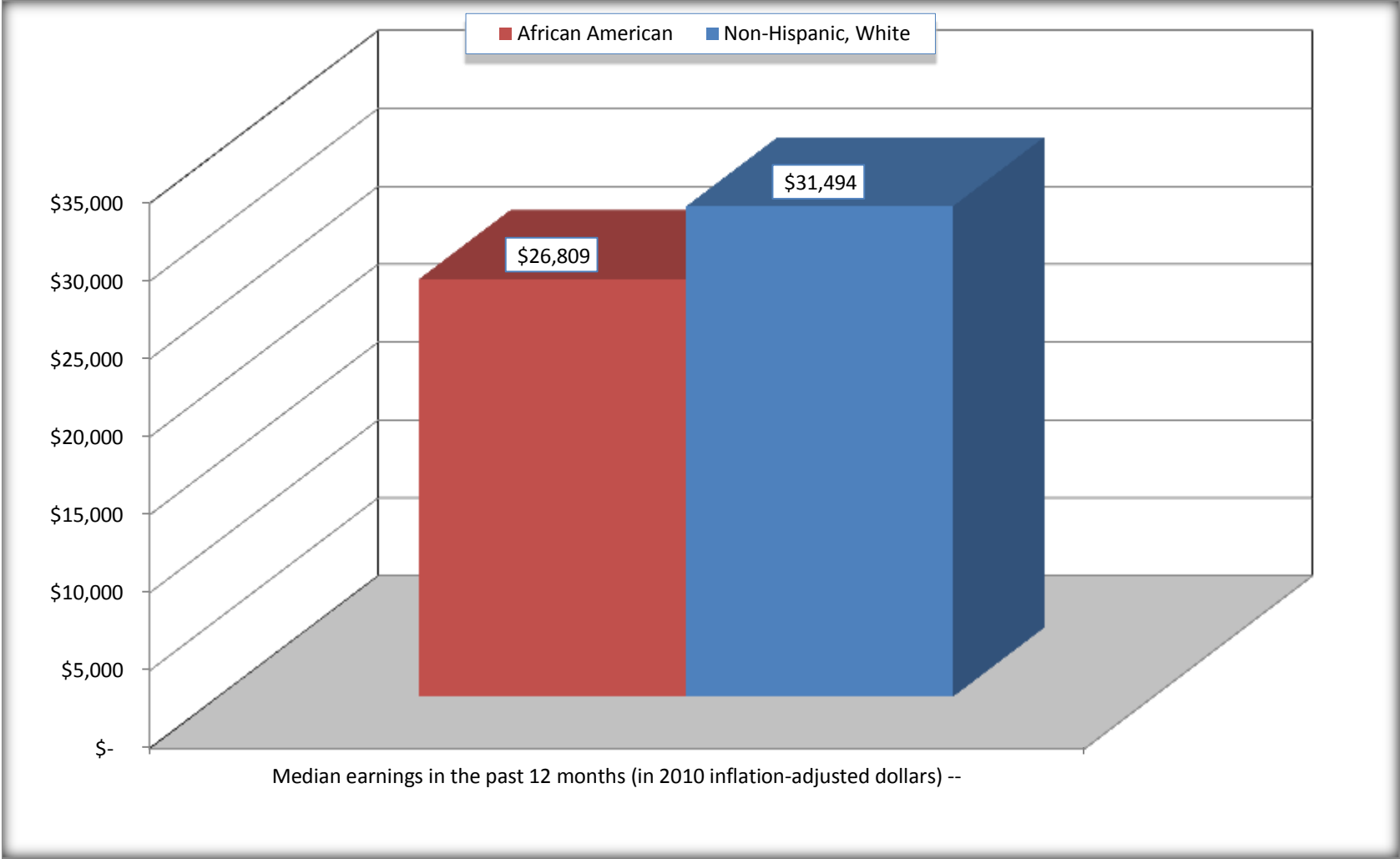
Source: U.S. Census Bureau, 2008-2012 American Community Survey

For information on confidentiality protection, sampling error, nonsampling error, and definitions, see Survey Methodology.

<http://www.census.gov/acs/www/UseData/index.htm>

Median earnings in the Past 12 Months (16 Years and Over with Earnings)

Graham city, North Carolina



Source: B20017. MEDIAN EARNINGS IN THE PAST 12 MONTHS (IN 2010 INFLATION-ADJUSTED DOLLARS) BY SEX BY WORK EXPERIENCE IN THE PAST 12 MONTHS FOR THE POPULATION 16 YEARS AND OVER WITH EARNINGS IN THE PAST 12 MONTHS
Data Set: 2008-2012 American Community Survey 5-Year Estimates

B20005. SEX BY WORK EXPERIENCE IN THE PAST 12 MONTHS BY EARNINGS IN THE PAST 12 MONTHS (IN 2010 INFLATION-ADJUSTED DOLLARS) FOR THE POPULATION 16 YEARS AND OVER

Data Set: 2008-2012 American Community Survey 5-Year Estimates

	Graham city, North Carolina					
	African American	Margin of Error (+/-)	% of AA Total	White, Not Hispanic	Margin of Error (+/-)	% of NHW Total
Total:	2,329	306	100.0%	6,478	534	100.0%
Worked full-time, year-round in the past 12 months:	1,083	NC	46.5%	2,835	NC	43.8%
No earnings	0	NC	0.0%	0	NC	0.0%
With earnings:	1,083	NC	46.5%	2,835	NC	43.8%
\$ 1 to \$ 9,999 or loss	32	NC	1.4%	68	NC	1.0%
\$ 10,000 to \$ 19,999	94	NC	4.0%	374	NC	5.8%
\$ 20,000 to \$ 29,999	180	NC	7.7%	415	NC	6.4%
\$ 30,000 to \$ 49,999	498	NC	21.4%	1,161	NC	17.9%
\$ 50,000 to \$ 74,999	213	NC	9.1%	457	NC	7.1%
\$ 75,000 or more	66	NC	2.8%	360	NC	5.6%
Other:	1,246	NC	53.5%	3,643	NC	56.2%
No earnings	647	NC	27.8%	2,296	NC	35.4%
With earnings: less than full time, year-round	599	NC	25.7%	1,347	NC	20.8%
Male:	1,214	214	52.1%	3,065	347	47.3%
Worked full-time, year-round in the past 12 months:	608	198	26.1%	1,626	267	25.1%
No earnings	0	20	0.0%	0	20	0.0%
With earnings:	608	198	26.1%	1,626	267	25.1%
\$ 1 to \$ 9,999 or loss	14	NC	0.6%	29	NC	0.4%
\$ 10,000 to \$ 19,999	9	NC	0.4%	155	NC	2.4%
\$ 20,000 to \$ 29,999	110	NC	4.7%	217	NC	3.3%
\$ 30,000 to \$ 49,999	308	NC	13.2%	653	NC	10.1%
\$ 50,000 to \$ 74,999	139	NC	6.0%	312	NC	4.8%
\$ 75,000 or more	28	NC	1.2%	260	NC	4.0%

	Graham city, North Carolina					
	African American	Margin of Error (+/-)	% of AA Total	White, Not Hispanic	Margin of Error (+/-)	% of NHW Total
Other:	606	174	26.0%	1,439	254	22.2%
No earnings	340	122	14.6%	874	196	13.5%
With earnings:	266	113	11.4%	565	166	8.7%
Female:	1,115	181	47.9%	3,413	317	52.7%
Worked full-time, year-round in the past 12 months:	475	136	20.4%	1,209	175	18.7%
No earnings	0	20	0.0%	0	20	0.0%
With earnings:	475	136	20.4%	1,209	175	18.7%
\$ 1 to \$ 9,999 or loss	18	NC	0.8%	39	NC	0.6%
\$ 10,000 to \$ 19,999	85	NC	3.6%	219	NC	3.4%
\$ 20,000 to \$ 29,999	70	NC	3.0%	198	NC	3.1%
\$ 30,000 to \$ 49,999	190	NC	8.2%	508	NC	7.8%
\$ 50,000 to \$ 74,999	74	NC	3.2%	145	NC	2.2%
\$ 75,000 or more	38	NC	1.6%	100	NC	1.5%
Other:	640	152	27.5%	2,204	286	34.0%
No earnings	307	103	13.2%	1,422	208	22.0%
With earnings:	333	116	14.3%	782	188	12.1%

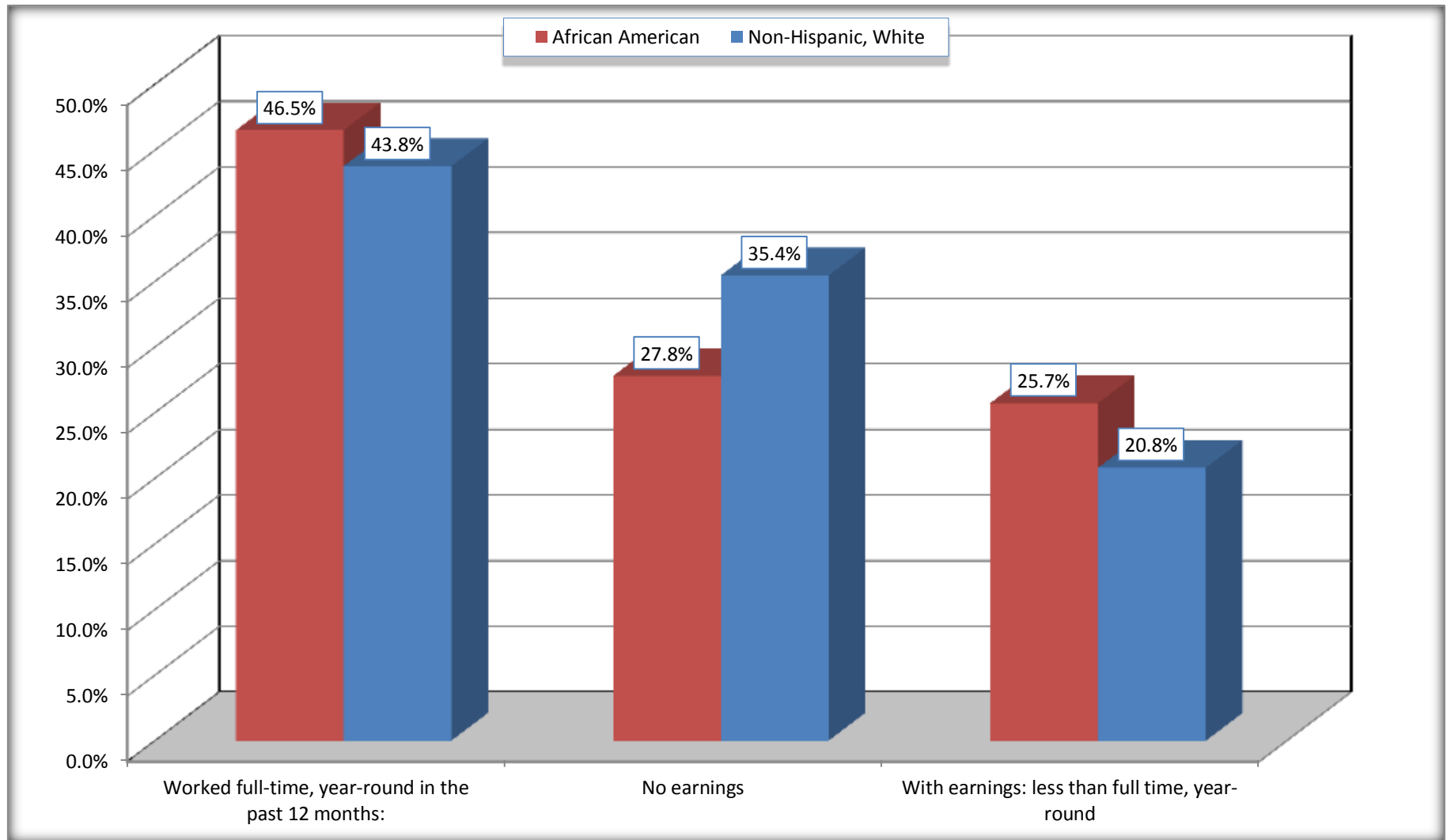
Source: U.S. Census Bureau, 2008-2012 American Community Survey

For information on confidentiality protection, sampling error, nonsampling error, and definitions, see Survey Methodology.

<http://www.census.gov/acs/www/UseData/index.htm>

Employment and Earnings in in the Past 12 Months (16 Years and Over)

Graham city, North Carolina



Source: B20005. SEX BY WORK EXPERIENCE IN THE PAST 12 MONTHS BY EARNINGS IN THE PAST 12 MONTHS (IN 2010 INFLATION-ADJUSTED DOLLARS) FOR THE POPULATION 16 YEARS AND OVER

Data Set: 2008-2012 American Community Survey 5-Year Estimates

C21001. SEX BY AGE BY VETERAN STATUS FOR THE CIVILIAN POPULATION 18 YEARS AND OVER

Data Set: 2008-2012 American Community Survey 5-Year Estimates

	Graham city, North Carolina					
	African American	Margin of Error (+/-)	% of AA Total	White, Not Hispanic	Margin of Error (+/-)	% of NHW Total
Total:	2,292	309	100.0%	6,375	520	100.0%
Veteran	195	NC	8.5%	637	NC	10.0%
Nonveteran	2,097	NC	91.5%	5,738	NC	90.0%
Male:	1,187	216	51.8%	3,018	340	47.3%
18 to 64 years:	1,058	210	46.2%	2,391	298	37.5%
Veteran	119	66	5.2%	297	98	4.7%
Nonveteran	939	217	41.0%	2,094	276	32.8%
65 years and over:	129	66	5.6%	627	142	9.8%
Veteran	51	41	2.2%	311	101	4.9%
Nonveteran	78	54	3.4%	316	109	5.0%
Female:	1,105	177	48.2%	3,357	303	52.7%
18 to 64 years:	944	160	41.2%	2,340	262	36.7%
Veteran	25	36	1.1%	17	19	0.3%
Nonveteran	919	161	40.1%	2,323	264	36.4%
65 years and over:	161	66	7.0%	1,017	196	16.0%
Veteran	0	20	0.0%	12	20	0.2%
Nonveteran	161	66	7.0%	1,005	188	15.8%

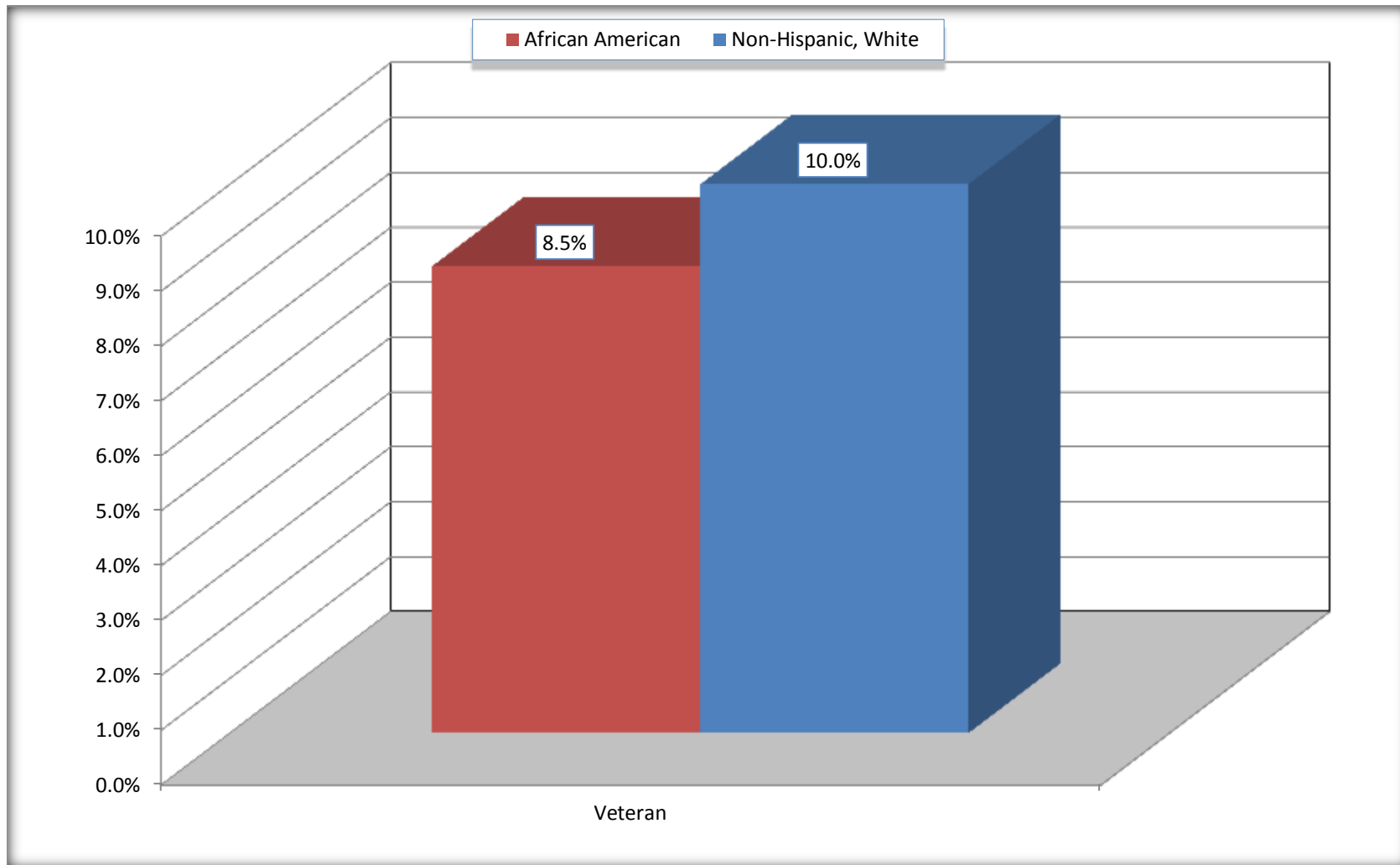
Source: U.S. Census Bureau, 2008-2012 American Community Survey

For information on confidentiality protection, sampling error, nonsampling error, and definitions, see Survey Methodology.

<http://www.census.gov/acs/www/UseData/index.htm>

Veterans in the Civilian Population 18 Years and Over

Graham city, North Carolina



Source: C21001. SEX BY AGE BY VETERAN STATUS FOR THE CIVILIAN POPULATION 18 YEARS AND OVER
Data Set: 2008-2012 American Community Survey 5-Year Estimates

B22005. RECEIPT OF FOOD STAMPS/SNAP IN THE PAST 12 MONTHS BY RACE OF HOUSEHOLDER

Data Set: 2008-2012 American Community Survey 5-Year Estimates

	Graham city, North Carolina					
	African American	Margin of Error (+/-)	% of AA Total	White, Not Hispanic	Margin of Error (+/-)	% of NHW Total
Total:	1,347	216	100.0%	3,467	297	100.0%
HH received Food Stamps/SNAP in the past 12 months	305	101	22.6%	461	118	13.3%
HH did not receive Food Stamps/SNAP in the past 12 months	1,042	200	77.4%	3,006	291	86.7%

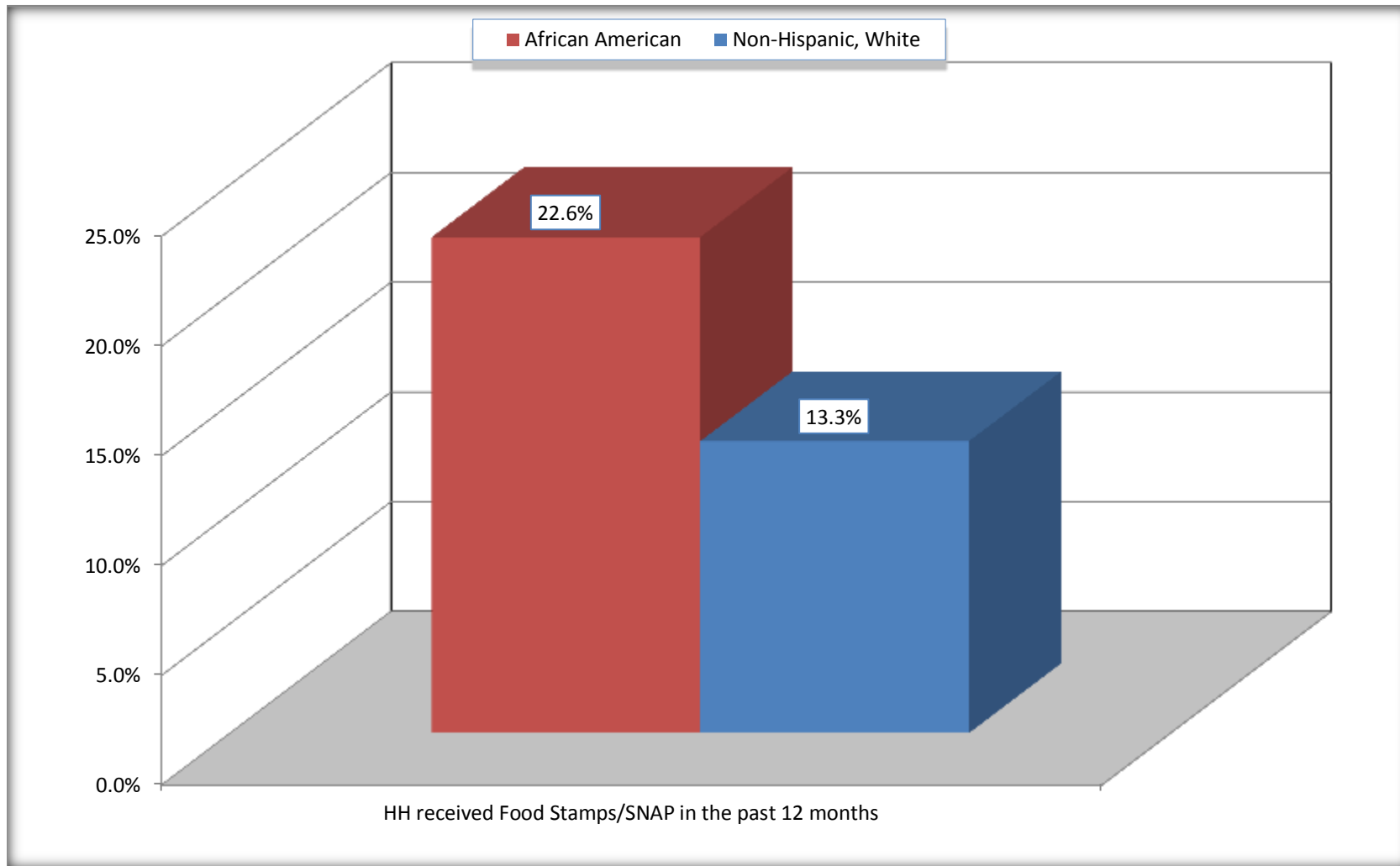
Source: U.S. Census Bureau, 2008-2012 American Community Survey

For information on confidentiality protection, sampling error, nonsampling error, and definitions, see Survey Methodology.

<http://www.census.gov/acs/www/UseData/index.htm>

Receipt of Food Stamps/SNAP in the Past 12 Months by Household

Graham city, North Carolina



Source: B22005. RECEIPT OF FOOD STAMPS/SNAP IN THE PAST 12 MONTHS BY RACE OF HOUSEHOLDER
Data Set: 2008-2012 American Community Survey 5-Year Estimates

C23002. SEX BY AGE BY EMPLOYMENT STATUS FOR THE POPULATION 16 YEARS AND OVER

Data Set: 2008-2012 American Community Survey 5-Year Estimates

	Graham city, North Carolina					
	African American	Margin of Error (+/-)	% of AA Total	White, Not Hispanic	Margin of Error (+/-)	% of NHW Total
Total:	2,329	306	100.0%	6,478	534	100.0%
In labor force:	1,600	NC	68.7%	4,149	NC	64.0%
In Armed Forces	0	NC	0.0%	0	NC	0.0%
Civilian:	1,571	NC	67.5%	3,829	NC	59.1%
Employed	1,353	NC	58.1%	3,792	NC	58.5%
Unemployed	247	NC	10.6%	357	NC	5.5%
Not in labor force	729	NC	31.3%	2,329	NC	36.0%
Male:	1,214	214	52.1%	3,065	347	47.3%
16 to 64 years:	1,085	208	46.6%	2,438	304	37.6%
In labor force:	827	215	35.5%	2,011	265	31.0%
In Armed Forces	0	20	0.0%	0	20	0.0%
Civilian:	827	215	35.5%	2,011	265	31.0%
Employed	713	225	30.6%	1,879	264	29.0%
Unemployed	114	81	4.9%	132	68	2.0%
Not in labor force	258	140	11.1%	427	128	6.6%
65 years and over:	129	66	5.5%	627	142	9.7%
In labor force:	9	16	0.4%	154	77	2.4%
Employed	9	16	0.4%	128	74	2.0%
Unemployed	0	20	0.0%	26	35	0.4%
Not in labor force	120	63	5.2%	473	135	7.3%

	Graham city, North Carolina					
	African American	Margin of Error (+/-)	% of AA Total	White, Not Hispanic	Margin of Error (+/-)	% of NHW Total
Female:	1,115	181	47.9%	3,413	317	52.7%
16 to 64 years:	954	165	41.0%	2,396	280	37.0%
In labor force:	744	167	31.9%	1,818	234	28.1%
In Armed Forces	0	20	0.0%	0	20	0.0%
Civilian:	744	167	31.9%	1,818	234	28.1%
Employed	620	153	26.6%	1,653	218	25.5%
Unemployed	124	88	5.3%	165	82	2.5%
Not in labor force	210	110	9.0%	578	142	8.9%
65 years and over:	161	66	6.9%	1,017	196	15.7%
In labor force:	20	21	0.9%	166	84	2.6%
Employed	11	16	0.5%	132	69	2.0%
Unemployed	9	14	0.4%	34	41	0.5%
Not in labor force	141	67	6.1%	851	164	13.1%

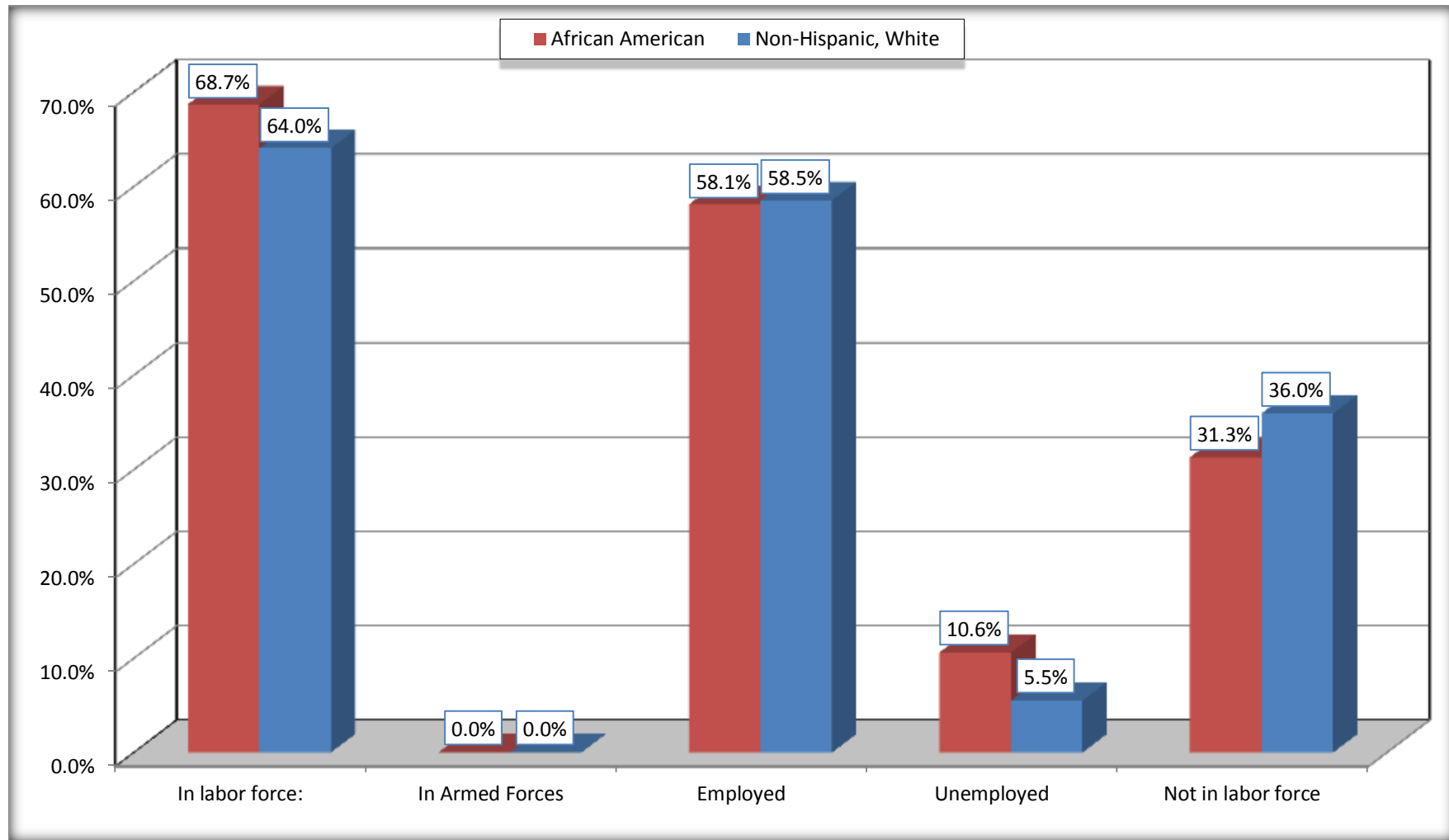
Source: U.S. Census Bureau, 2008-2012 American Community Survey

For information on confidentiality protection, sampling error, nonsampling error, and definitions, see Survey Methodology.

<http://www.census.gov/acs/www/UseData/index.htm>

Employment Status for the Population 16 years and over

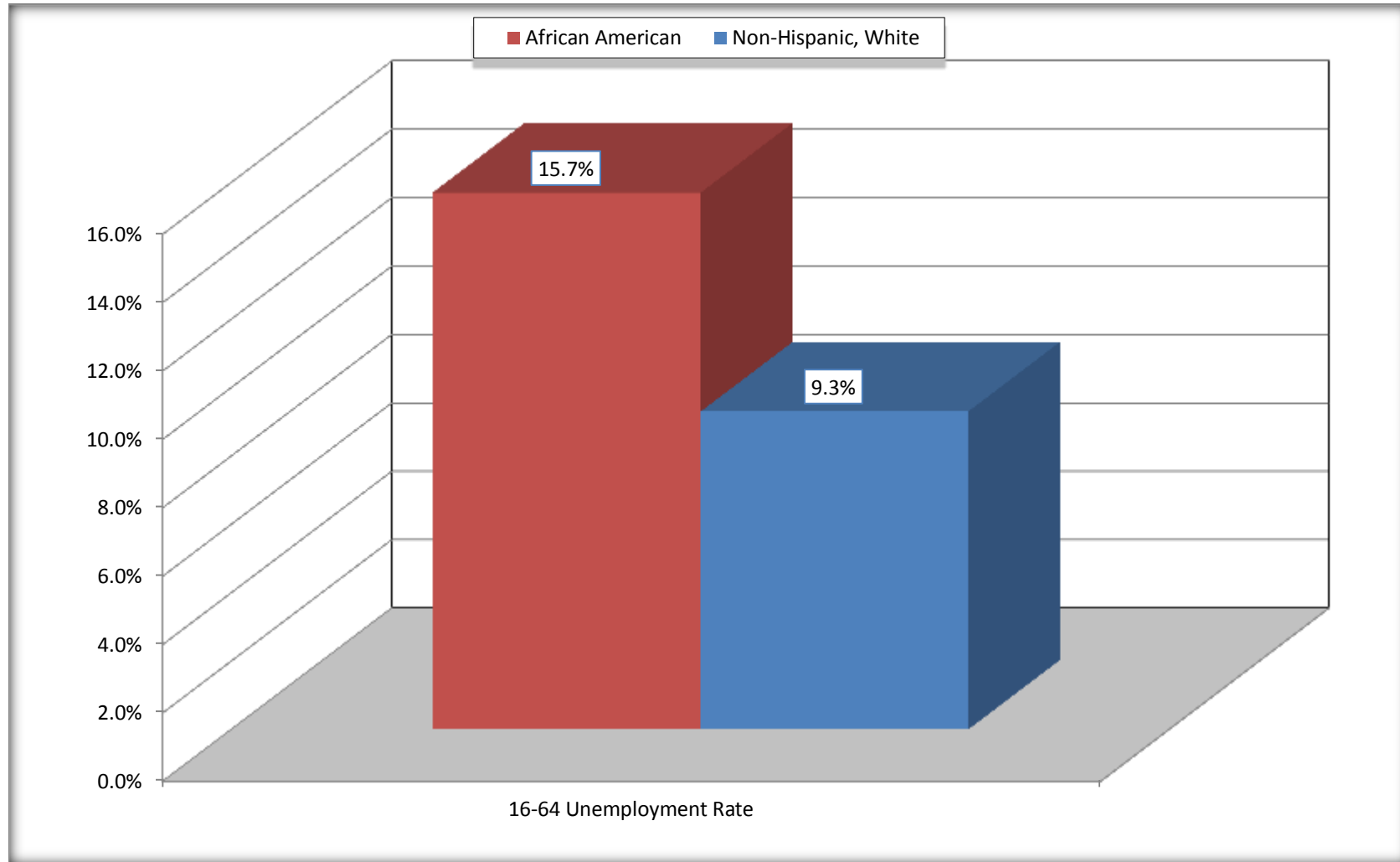
Graham city, North Carolina



Source: C23002. SEX BY AGE BY EMPLOYMENT STATUS FOR THE POPULATION 16 YEARS AND OVER
Data Set: 2008-2012 American Community Survey 5-Year Estimates

Unemployment of Working Age Population (Ages 16 to 64) (As a Percent of 16-64 Civilian Labor Force)

Graham city, North Carolina



Source: C23002. SEX BY AGE BY EMPLOYMENT STATUS FOR THE POPULATION 16 YEARS AND OVER
Data Set: 2008-2012 American Community Survey 5-Year Estimates

C24010. SEX BY OCCUPATION FOR THE CIVILIAN EMPLOYED POPULATION 16 YEARS AND OVER

Data Set: 2008-2012 American Community Survey 5-Year Estimates

	Graham city, North Carolina					
	African American	Margin of Error (+/-)	% of AA Total	White, Not Hispanic	Margin of Error (+/-)	% of NHW Total
Total:	1,353	304	100.0%	3,792	388	100.0%
Management, professional, and related occupations	406	NC	30.0%	1,066	NC	28.1%
Service occupations	151	NC	11.2%	642	NC	16.9%
Sales and office occupations	500	NC	37.0%	1,120	NC	29.5%
Natural resources, construction, and maintenance occupations:	110	NC	8.1%	450	NC	11.9%
Production, transportation, and material moving occupations	186	NC	13.7%	514	NC	13.6%
Male:	722	226	53.4%	2,007	279	52.9%
Management, business, science, and arts occupations:	267	149	19.7%	446	131	11.8%
Service occupations	95	89	7.0%	294	115	7.8%
Sales and office occupations	171	103	12.6%	368	106	9.7%
Natural resources, construction, and maintenance occupations:	110	77	8.1%	450	160	11.9%
Production, transportation, and material moving occupations	79	51	5.8%	449	141	11.8%
Female:	631	151	46.6%	1,785	217	47.1%
Management, professional, and related occupations	139	76	10.3%	620	136	16.4%
Service occupations	56	41	4.1%	348	131	9.2%
Sales and office occupations	329	141	24.3%	752	184	19.8%
Natural resources, construction, and maintenance occupations:	0	20	0.0%	0	20	0.0%
Production, transportation, and material moving occupations	107	69	7.9%	65	43	1.7%

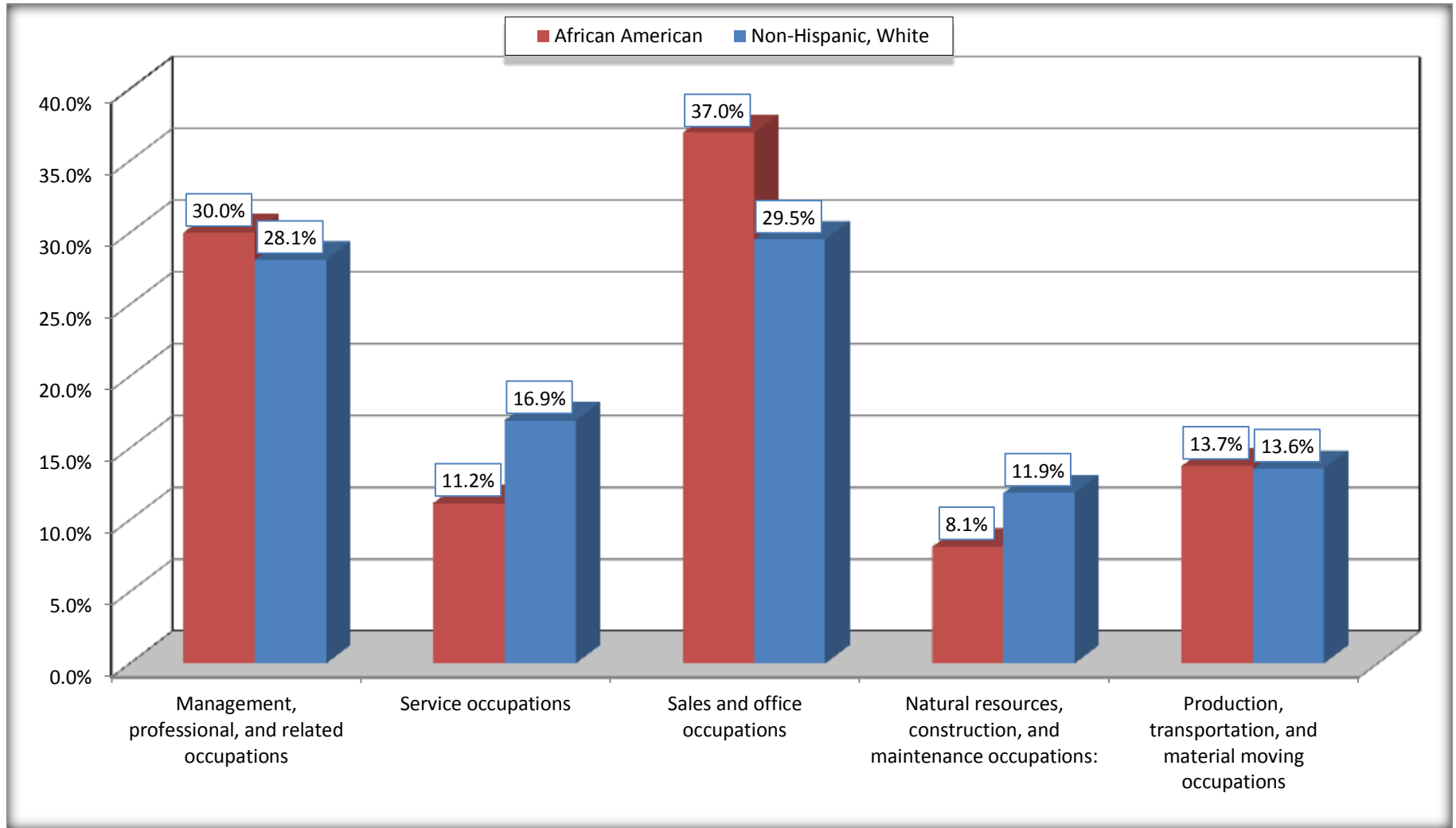
Source: U.S. Census Bureau, 2008-2012 American Community Survey

For information on confidentiality protection, sampling error, nonsampling error, and definitions, see Survey Methodology.

<http://www.census.gov/acs/www/UseData/index.htm>

Occupation for the Civilian Employed 16 Years and Over Population

Graham city, North Carolina



Source: C24010. SEX BY OCCUPATION FOR THE CIVILIAN EMPLOYED POPULATION 16 YEARS AND OVER
Data Set: 2008-2012 American Community Survey 5-Year Estimates

B25003. TENURE - Universe: OCCUPIED HOUSING UNITS

Data Set: 2008-2012 American Community Survey 5-Year Estimates

	Graham city, North Carolina					
	African American	Margin of Error (+/-)	% of AA Total	White, Not Hispanic	Margin of Error (+/-)	% of NHW Total
Total:	1,347	216	100.0%	3,467	297	100.0%
Owner occupied	579	141	43.0%	2,418	263	69.7%
Renter occupied	768	177	57.0%	1,049	183	30.3%

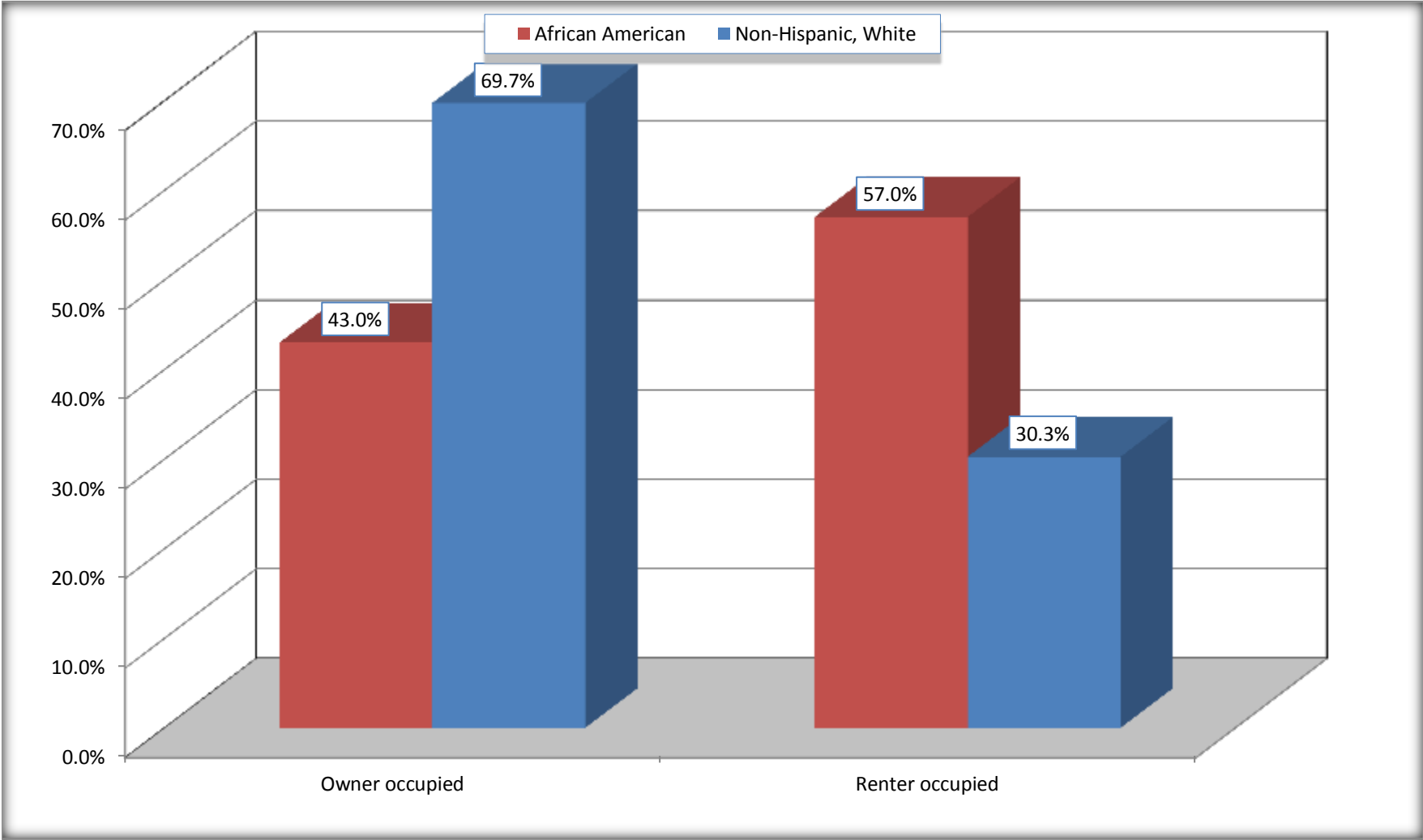
Source: U.S. Census Bureau, 2008-2012 American Community Survey

For information on confidentiality protection, sampling error, nonsampling error, and definitions, see Survey Methodology.

<http://www.census.gov/acs/www/UseData/index.h>

Home Owners and Renters by Household

Graham city, North Carolina



Source: B25003. TENURE - Universe: OCCUPIED HOUSING UNITS
Data Set: 2008-2012 American Community Survey 5-Year Estimates

B25014. OCCUPANTS PER ROOM - Universe: OCCUPIED HOUSING UNITS

Data Set: 2008-2012 American Community Survey 5-Year Estimates

	Graham city, North Carolina					
	African American	Margin of Error (+/-)	% of AA Total	White, Not Hispanic	Margin of Error (+/-)	% of NHW Total
Total:	1,347	216	100.0%	3,467	297	100.0%
1.00 or less occupants per room	1,337	214	99.3%	3,420	305	98.6%
1.01 or more occupants per room	10	16	0.7%	47	46	1.4%

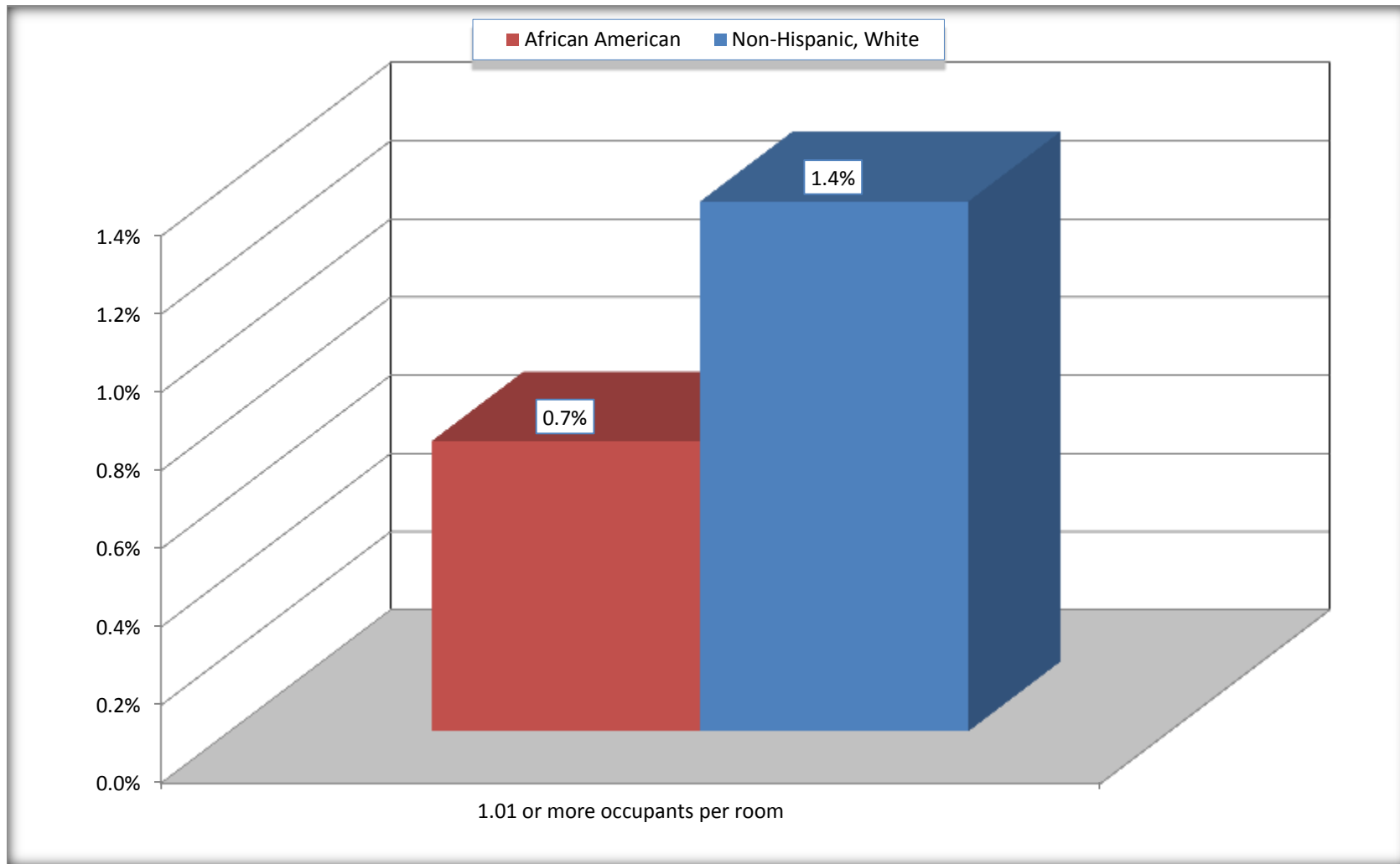
Source: U.S. Census Bureau, 2008-2012 American Community Survey

For information on confidentiality protection, sampling error, nonsampling error, and definitions, see Survey Methodology.

<http://www.census.gov/acs/www/UseData/index.ht>

More than One Person per Room (Crowding) by Household

Graham city, North Carolina



Source: B25014. OCCUPANTS PER ROOM - Universe: OCCUPIED HOUSING UNITS
Data Set: 2008-2012 American Community Survey 5-Year Estimates

B18101. AGE BY DISABILITY STATUS

Data Set: 2008-2012 American Community Survey 5-Year Estimates

	Graham city, North Carolina					
	African American	Margin of Error (+/-)	% of AA Total	White, Not Hispanic	Margin of Error (+/-)	% of NHW Total
Total:	2,769	409	100.0%	7,800	674	100.0%
Under 18 years:	523	168	18.9%	1,560	48	20.0%
With a disability	57	57	2.1%	82	46	1.1%
No disability	466	140	16.8%	1,478	346	18.9%
18 to 64 years:	1,972	286	71.2%	4,705	435	60.3%
With a disability	243	103	8.8%	608	178	7.8%
No disability	1,729	290	62.4%	4,097	415	52.5%
65 years and over:	274	104	9.9%	1,535	269	19.7%
With a disability	75	45	2.7%	612	159	7.8%
No disability	199	96	7.2%	923	188	11.8%

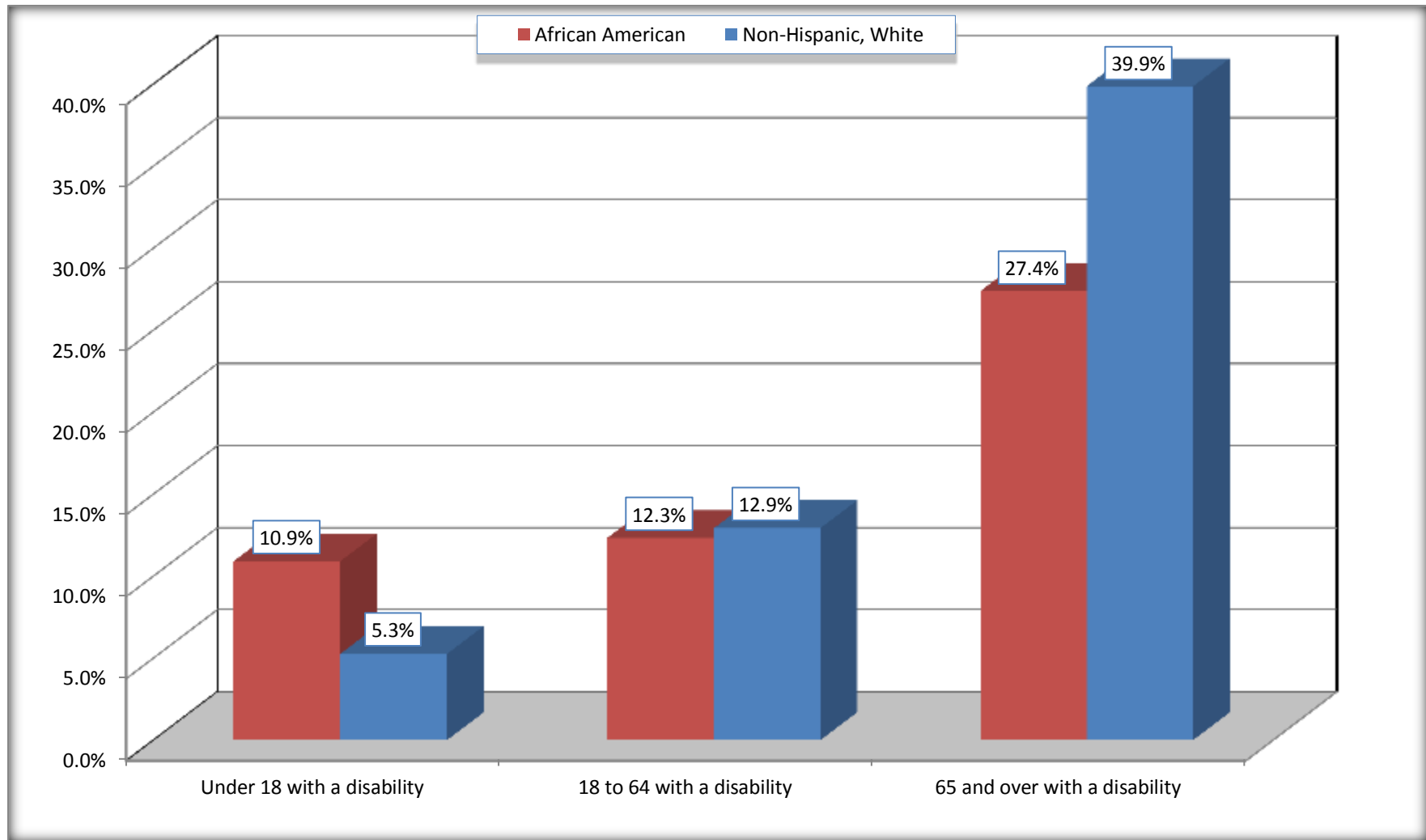
Source: U.S. Census Bureau, 2008-2012 American Community Survey

For information on confidentiality protection, sampling error, nonsampling error, and definitions, see Survey Methodology.

<http://www.census.gov/acs/www/UseData/index.htm>

Disability by Age

Graham city, North Carolina



Source: B18101. AGE BY DISABILITY STATUS
Data Set: 2008-2012 American Community Survey 5-Year Estimates

C27001B. HEALTH INSURANCE COVERAGE STATUS BY AGE

Data Set: 2008-2012 American Community Survey 5-Year Estimates

	Graham city, North Carolina					
	African American	Margin of Error (+/-)	% of AA Total	White, Not Hispanic	Margin of Error (+/-)	% of NHW Total
Total:	2,769	409	100.0%	7,800	674	100.0%
Under 18 years:	523	168	18.9%	1,560	355	20.0%
With health insurance coverage	523	168	18.9%	1,404	312	18.0%
No health insurance coverage	0	20	0.0%	156	105	2.0%
18 to 64 years:	1,972	286	71.2%	4,705	435	60.3%
With health insurance coverage	1,499	283	54.1%	3,576	371	45.8%
No health insurance coverage	473	169	17.1%	1,129	261	14.5%
65 years and over:	274	104	9.9%	1,535	269	19.7%
With health insurance coverage	274	104	9.9%	1,535	269	19.7%
No health insurance coverage	0	20	0.0%	0	20	0.0%

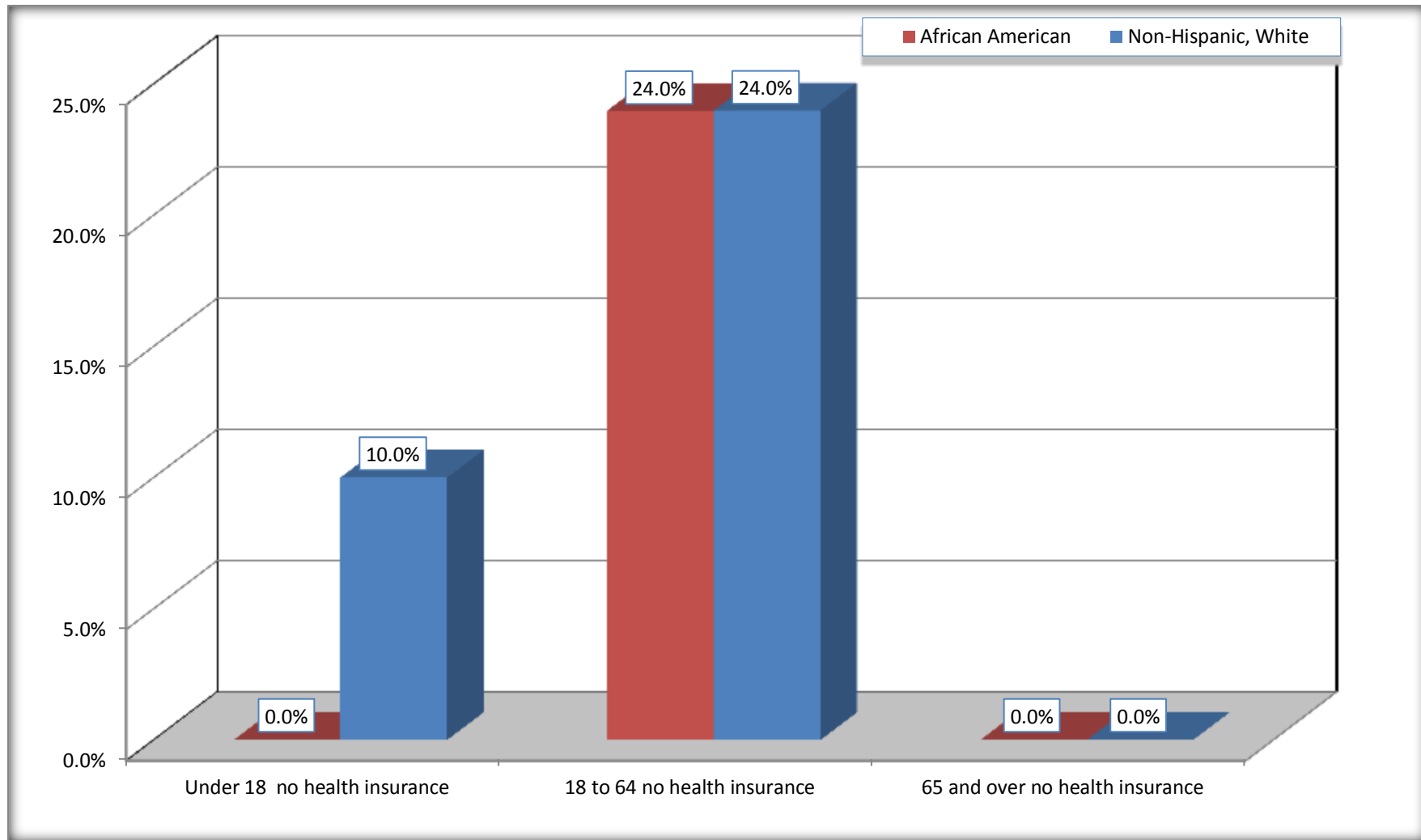
Source: U.S. Census Bureau, 2008-2012 American Community Survey

For information on confidentiality protection, sampling error, nonsampling error, and definitions, see Survey Methodology.

<http://www.census.gov/acs/www/UseData/index.htm>

Lack of Health Insurance Coverage by Age

Graham city, North Carolina



Source: C27001B. HEALTH INSURANCE COVERAGE STATUS BY AGE
Data Set: 2008-2012 American Community Survey 5-Year Estimates