

Selected Socio-Economic Data

Gates County, North Carolina

African American and White, Not Hispanic

Data Set: 2008-2012 American Community Survey 5-Year Estimates

www.fairvote2020.org

www.fairdata2000.com

[29-Dec-13](#)

C02003.DETAILED RACE - Universe: TOTAL POPULATION
 Data Set: 2008-2012 American Community Survey 5-Year Estimates

	Gates County, North Carolina		
	Population	Margin of Error (+/-)	% of Total
Total:	12,069	*****	100.0%
Population of one race:	11,942	93	98.9%
White	7,666	87	63.5%
Black or African American	4,129	109	34.2%
American Indian and Alaska Native	21	24	0.2%
Asian alone	39	46	0.3%
Native Hawaiian and Other Pacific Islander	0	20	0.0%
Some other race	87	87	0.7%
Population of two or more races:	127	93	1.1%
Two races including Some other race	0	20	0.0%
Two races excluding Some other race, and three or more races	127	93	1.1%
Population of two races:	105	74	0.9%
White; Black or African American	18	18	0.1%
White; American Indian and Alaska Native	61	60	0.5%
White; Asian	1	2	0.0%
Black or African American; American Indian and Alaska Native	0	20	0.0%
All other two race combinations	25	36	0.2%
Population of three races	22	30	0.2%
Population of four or more races	0	20	0.0%

Note: Hispanics may be of any race. See Table B03002 and chart.

Source: U.S. Census Bureau, 2008-2012 American Community Survey

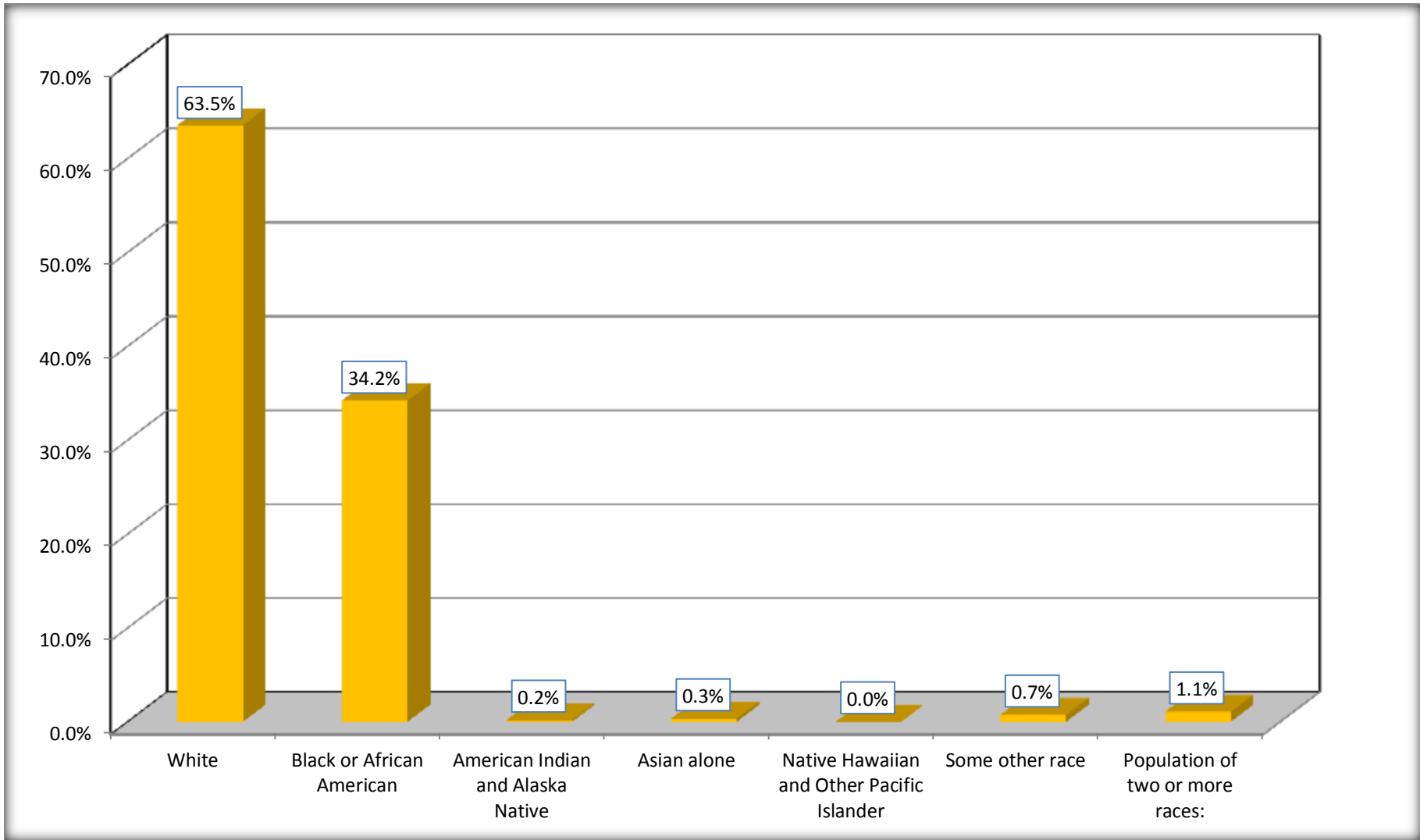
Although the American Community Survey (ACS) produces population, demographic and housing unit estimates, it is the Census Bureau's Population Estimates Program that produces and disseminates the official estimates of the population for the nation, states, counties, cities and towns and estimates of housing units for states and counties.

For information on confidentiality protection, sampling error, nonsampling error, and definitions, see Survey Methodology.

<http://www.census.gov/acs/www/UseData/index.htm>

Population by Race

Gates County, North Carolina



Source: C02003.DETAILED RACE - Universe: TOTAL POPULATION
Data Set: 2008-2012 American Community Survey 5-Year Estimates

B03002. HISPANIC OR LATINO ORIGIN BY RACE - Universe: TOTAL POPULATION

Data Set: 2008-2012 American Community Survey 5-Year Estimates

	Gates County, North Carolina		
	Population	Margin of Error (+/-)	% of Total
Total:	12,069	*****	100.0%
Not Hispanic or Latino:	11,892	*****	98.5%
White alone	7,576	20	62.8%
Black or African American alone	4,129	109	34.2%
American Indian and Alaska Native alone	21	24	0.2%
Asian alone	39	46	0.3%
Native Hawaiian and Other Pacific Islander alone	0	20	0.0%
Some other race alone	0	20	0.0%
Two or more races:	127	93	1.1%
Two races including Some other race	0	20	0.0%
Two races excluding Some other race, and three or more races	127	93	1.1%
Hispanic or Latino	177	*****	1.5%

Source: U.S. Census Bureau, 2008-2012 American Community Survey

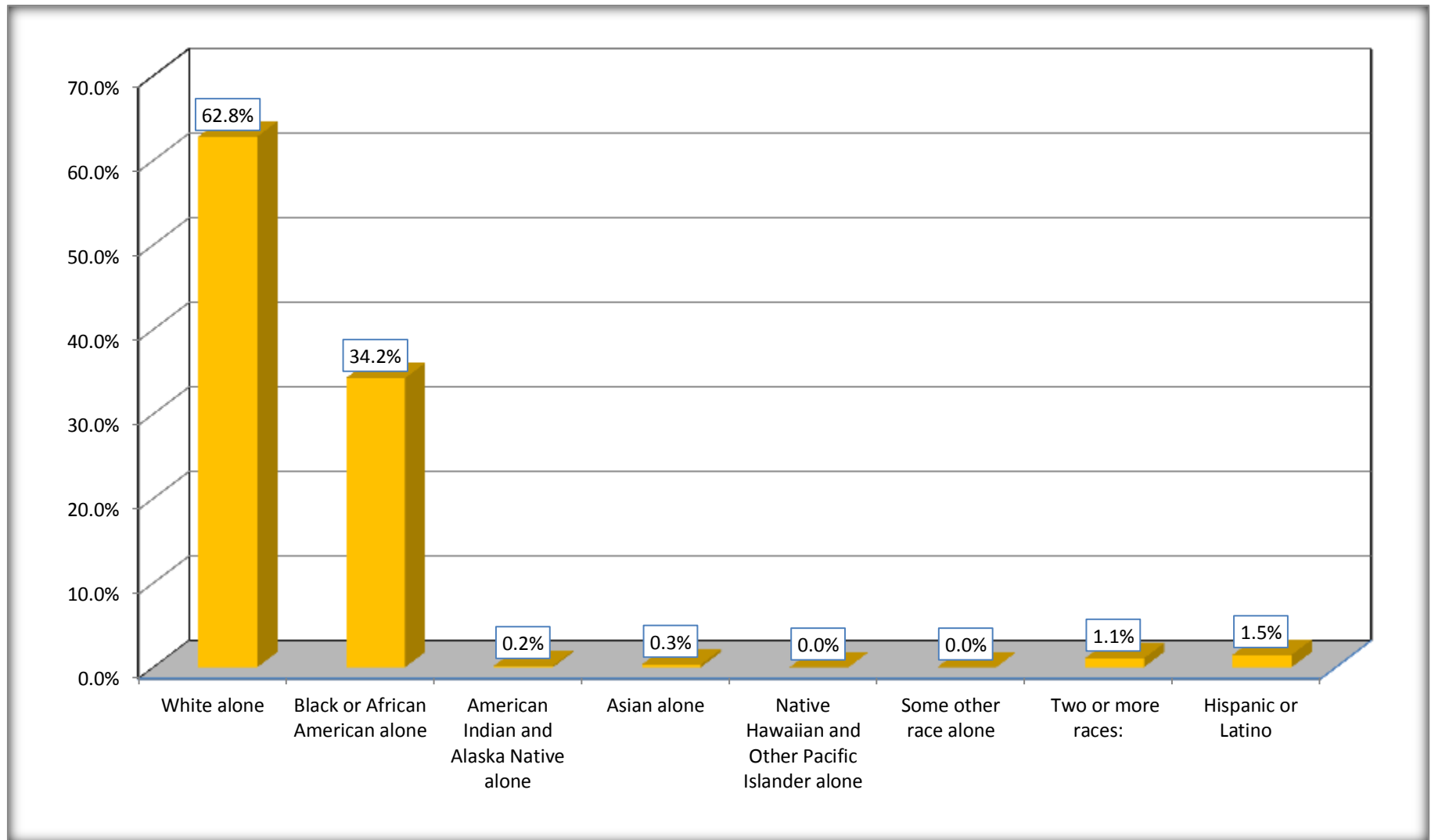
Although the American Community Survey (ACS) produces population, demographic and housing unit estimates, it is the Census Bureau's Population Estimates Program that produces and disseminates the official estimates of the population for the nation, states, counties, cities and towns and estimates of housing units for states and counties.

For information on confidentiality protection, sampling error, nonsampling error, and definitions, see Survey Methodology.

<http://www.census.gov/acs/www/UseData/index.htm>

Non-Hispanic by Race and Hispanic Population

Gates County, North Carolina



Source: B03002. HISPANIC OR LATINO ORIGIN BY RACE - Universe: TOTAL POPULATION
Data Set: 2008-2012 American Community Survey 5-Year Estimates

B03002. HISPANIC OR LATINO ORIGIN BY RACE

Data Set: 2008-2012 American Community Survey 5-Year Estimates

	Gates County, North Carolina		
	Population	Margin of Error (+/-)	% of Total
Hispanic or Latino:	177	*****	100.0%
White alone	90	87	50.8%
Black or African American alone	0	20	0.0%
American Indian and Alaska Native alone	0	20	0.0%
Asian alone	0	20	0.0%
Native Hawaiian and Other Pacific Islander alone	0	20	0.0%
Some other race alone	87	87	49.2%
Two or more races:	0	20	0.0%
Two races including Some other race	0	20	0.0%
Two races excluding Some other race, and three or more races	0	20	0.0%

Source: U.S. Census Bureau, 2008-2012 American Community Survey

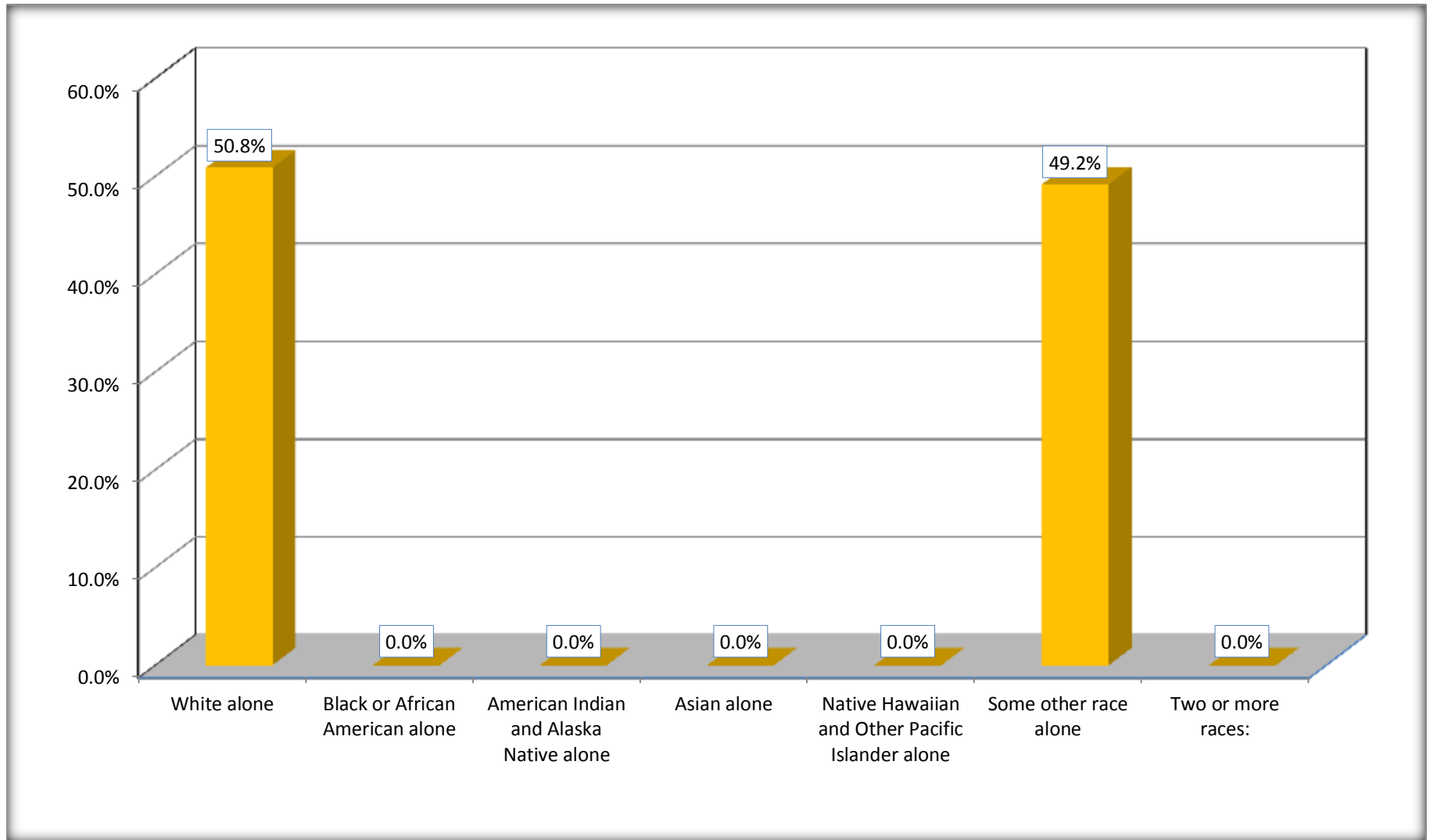
Although the American Community Survey (ACS) produces population, demographic and housing unit estimates, it is the Census Bureau's Population Estimates Program that produces and disseminates the official estimates of the population for the nation, states, counties, cities and towns and estimates of housing units for states and counties.

For information on confidentiality protection, sampling error, nonsampling error, and definitions, see Survey Methodology.

<http://www.census.gov/acs/www/UseData/index.htm>

Hispanic or Latino Origin by Race

Gates County, North Carolina



Source: B03002. HISPANIC OR LATINO ORIGIN BY RACE
Data Set: 2008-2012 American Community Survey 5-Year Estimates

B01001. SEX BY AGE

Data Set: 2008-2012 American Community Survey 5-Year Estimates

	Gates County, North Carolina					
	African American	Margin of Error (+/-)	% of AA Total	White, Not Hispanic	Margin of Error (+/-)	% of NHW Total
Total:	4,129	109	100.0%	7,576	20	100.0%
Under 18 years	970	NC	23.5%	1,730	NC	22.8%
18 to 64 years	2,499	NC	60.5%	4,702	NC	62.1%
65 years and over	660	NC	16.0%	1,144	NC	15.1%
Male:	2,050	70	49.6%	3,773	389	49.8%
Under 18 years	593	NC	14.4%	905	NC	11.9%
18 to 64 years	1,175	NC	28.5%	2,328	NC	30.7%
65 years and over	282	NC	6.8%	540	NC	7.1%
Female:	2,079	91	50.4%	3,803	412	50.2%
Under 18 years	377	NC	9.1%	825	NC	10.9%
18 to 64 years	1,324	NC	32.1%	2,374	NC	31.3%
65 years and over	378	NC	9.2%	604	NC	8.0%

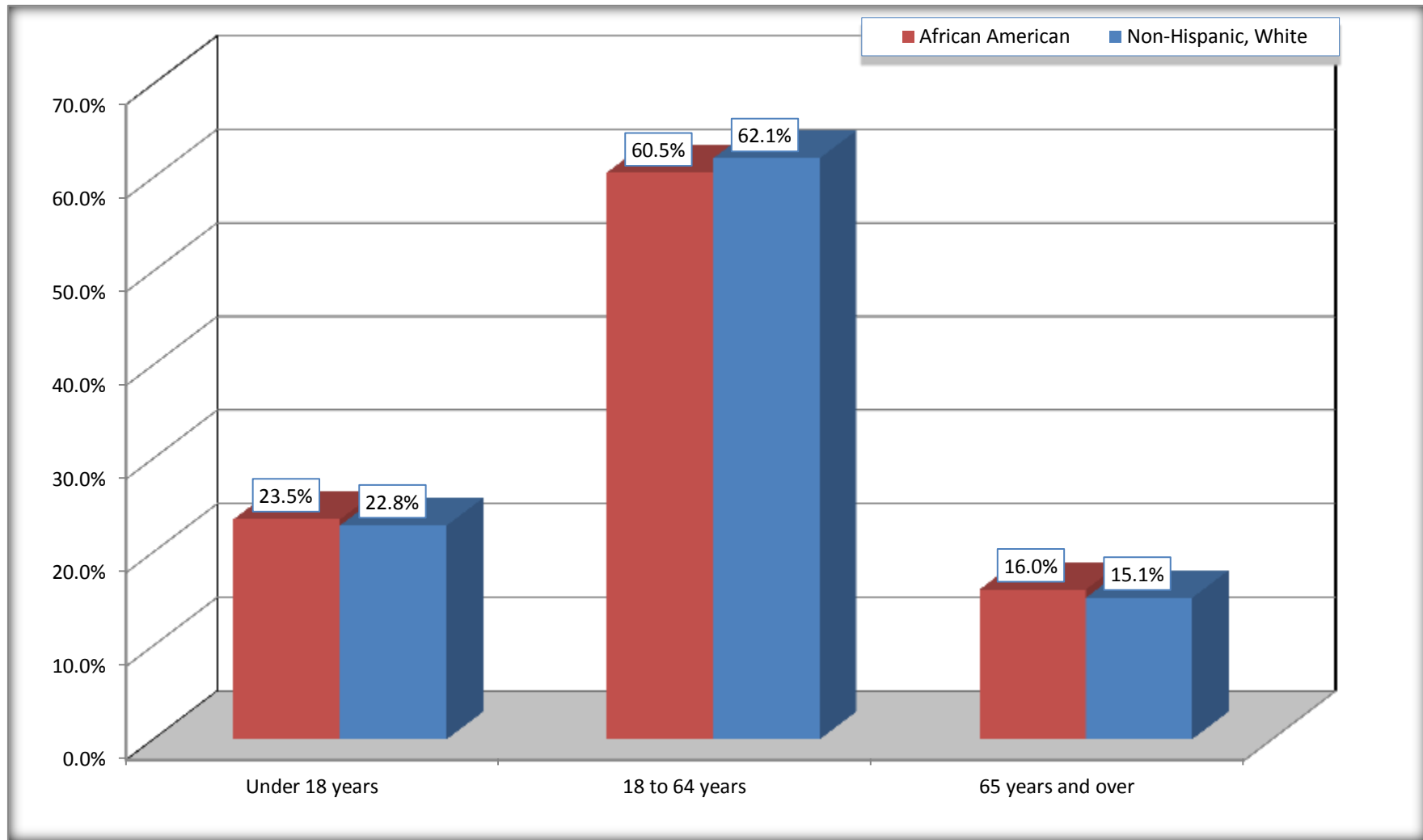
Source: U.S. Census Bureau, 2008-2012 American Community Survey

Although the American Community Survey (ACS) produces population, demographic and housing unit estimates, it is the Census Bureau's Population Estimates Program that produces and disseminates the official estimates of the population for the nation, states, counties, cities and towns and estimates of housing units for states and counties.

For information on confidentiality protection, sampling error, nonsampling error, and definitions, see Survey Methodology.
<http://www.census.gov/acs/www/UseData/index.htm>

Population by Age

Gates County, North Carolina



Source: B01001. SEX BY AGE
Data Set: 2008-2012 American Community Survey 5-Year Estimates

B05003. SEX BY AGE BY CITIZENSHIP STATUS

Data Set: 2008-2012 American Community Survey 5-Year Estimates

	Gates County, North Carolina					
	African American	Margin of Error (+/-)	% of AA Total by Age	White, Not Hispanic	Margin of Error (+/-)	% of NHW Total by Age
Total:	4,129	109	100.0%	7,576	20	100.0%
Under 18 years:	970	NC	100.0%	1,730	NC	100.0%
Native	970	NC	100.0%	1,730	NC	100.0%
Foreign born:	0	NC	0.0%	0	NC	0.0%
Naturalized U.S. citizen	0	NC	0.0%	0	NC	0.0%
Not a U.S. citizen	0	NC	0.0%	0	NC	0.0%
18 years and over:	3,159	NC	100.0%	5,846	NC	100.0%
Native	3,159	NC	100.0%	5,807	NC	99.3%
Foreign born:	0	NC	0.0%	39	NC	0.7%
Naturalized U.S. citizen	0	NC	0.0%	39	NC	0.7%
Not a U.S. citizen	0	NC	0.0%	0	NC	0.0%
Male:	2,050	70	49.6%	3,773	20	49.8%
Under 18 years:	593	55	100.0%	905	20	100.0%
Native	593	55	100.0%	905	20	100.0%
Foreign born:	0	20	0.0%	0	20	0.0%
Naturalized U.S. citizen	0	20	0.0%	0	20	0.0%
Not a U.S. citizen	0	20	0.0%	0	20	0.0%
18 years and over:	1,457	41	100.0%	2,868	20	100.0%
Native	1,457	41	100.0%	2,862	11	99.8%
Foreign born:	0	20	0.0%	6	11	0.2%
Naturalized U.S. citizen	0	20	0.0%	6	11	0.2%
Not a U.S. citizen	0	20	0.0%	0	20	0.0%

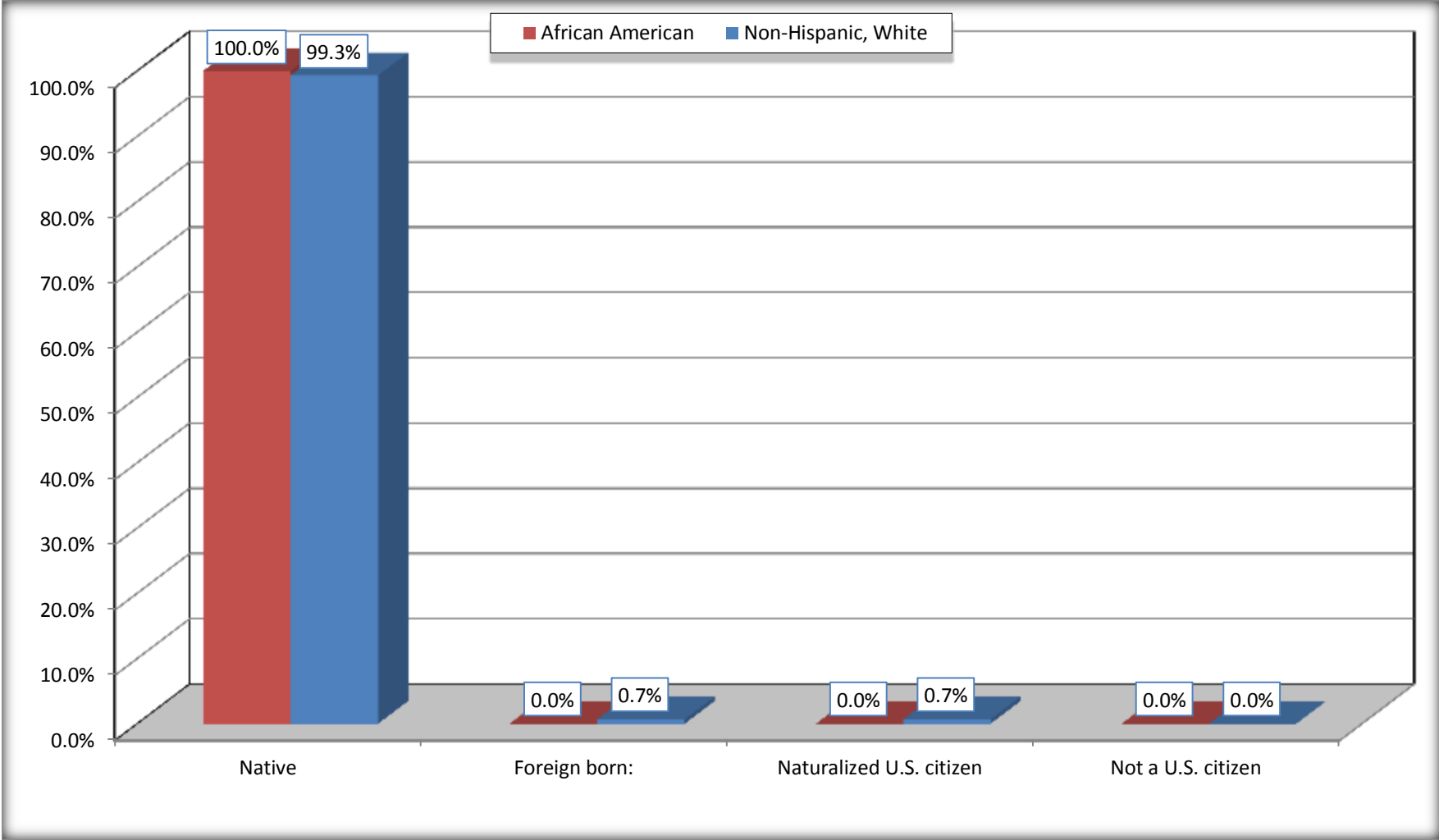
	Gates County, North Carolina					
	African American	Margin of Error (+/-)	% of AA by Age	White, Not Hispanic	Margin of Error (+/-)	% of NHW by Age
Female:	2,079	91	50.4%	3,803	20	50.2%
Under 18 years:	377	64	100.0%	825	20	100.0%
Native	377	64	100.0%	825	20	100.0%
Foreign born:	0	20	0.0%	0	20	0.0%
Naturalized U.S. citizen	0	20	0.0%	0	20	0.0%
Not a U.S. citizen	0	20	0.0%	0	20	0.0%
18 years and over:	1,702	44	100.0%	2,978	20	100.0%
Native	1,702	44	100.0%	2,945	43	98.9%
Foreign born:	0	20	0.0%	33	43	1.1%
Naturalized U.S. citizen	0	20	0.0%	33	43	1.1%
Not a U.S. citizen	0	20	0.0%	0	20	0.0%

Source: U.S. Census Bureau, 2008-2012 American Community Survey

For information on confidentiality protection, sampling error, nonsampling error, and definitions, see Survey Methodology.
<http://www.census.gov/acs/www/UseData/index.htm>

Citizenship Status of Voting Age Population (18 and Over)

Gates County, North Carolina



Source: B05003. SEX BY AGE BY CITIZENSHIP STATUS
Data Set: 2008-2012 American Community Survey 5-Year Estimates

**B07004. GEOGRAPHICAL MOBILITY IN THE PAST YEAR BY RACE FOR CURRENT RESIDENCE IN THE UNITED STATES - Universe:
POPULATION 1 YEAR AND OVER**

Data Set: 2008-2012 American Community Survey 5-Year Estimates

	Gates County, North Carolina					
	African American	Margin of Error (+/-)	% of AA Total	White, Not Hispanic	Margin of Error (+/-)	% of NHW Total
Total:	4,112	111	100.0%	7,447	46	100.0%
Same house 1 year ago	3,799	174	92.4%	6,937	222	93.2%
Moved within same county	136	104	3.3%	115	78	1.5%
Moved from different county within same state	126	91	3.1%	33	31	0.4%
Moved from different state	35	46	0.9%	333	202	4.5%
Moved from abroad	16	22	0.4%	29	34	0.4%

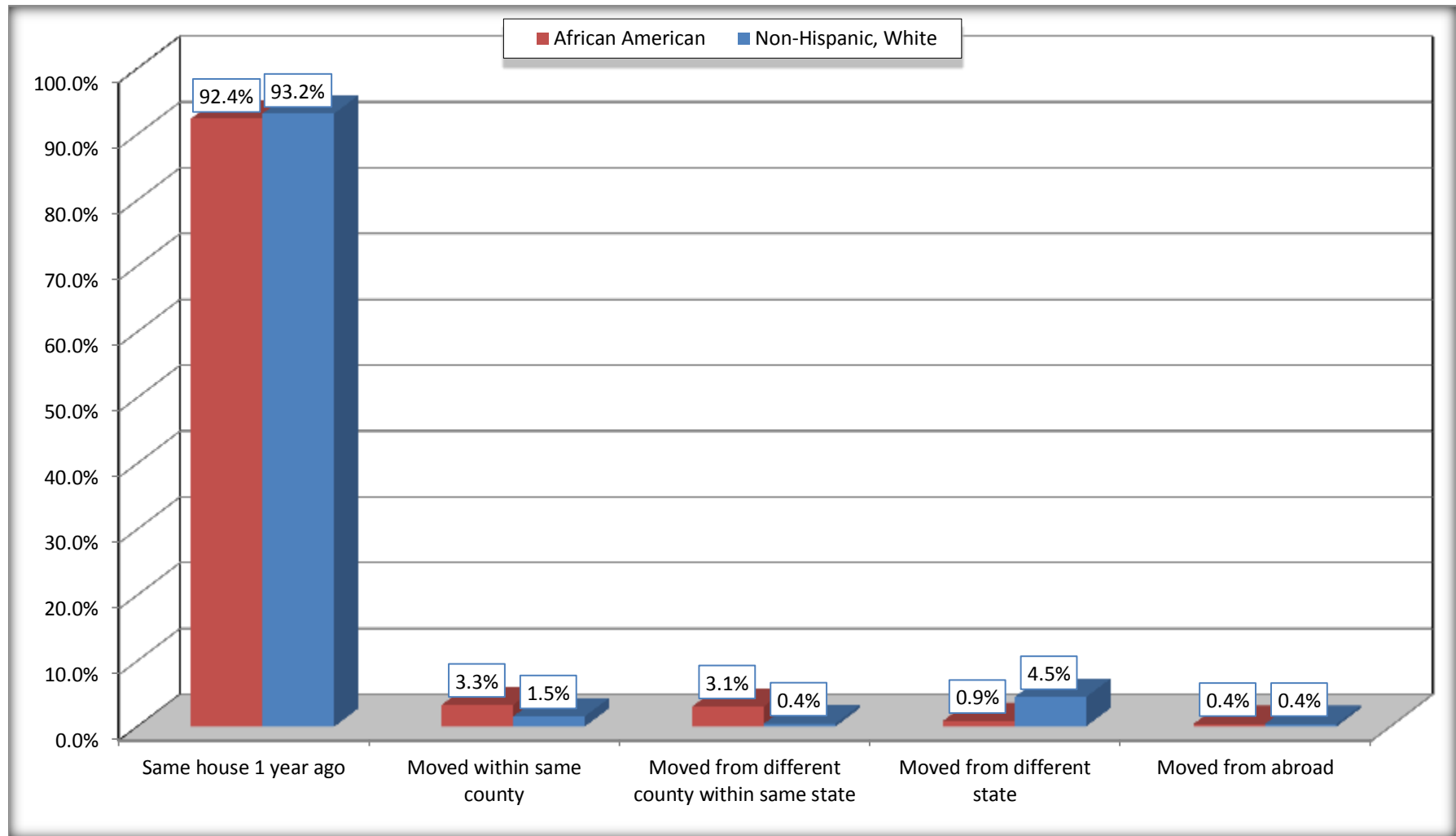
Source: U.S. Census Bureau, 2008-2012 American Community Survey

For information on confidentiality protection, sampling error, nonsampling error, and definitions, see Survey Methodology.

<http://www.census.gov/acs/www/UseData/index.htm>

Geographical Mobility in the Past Year (Population 1 Year and Over)

Gates County, North Carolina



Source: B07004. GEOGRAPHICAL MOBILITY IN THE PAST YEAR BY RACE FOR CURRENT RESIDENCE IN THE UNITED STATES - Universe: POPULATION 1 YEAR AND OVER

Data Set: 2008-2012 American Community Survey 5-Year Estimates

B08105. MEANS OF TRANSPORTATION TO WORK - Universe: WORKERS 16 YEARS AND OVER

Data Set: 2008-2012 American Community Survey 5-Year Estimates

	Gates County, North Carolina					
	African American	Margin of Error (+/-)	% of AA Total	White, Not Hispanic	Margin of Error (+/-)	% of NHW Total
Total:	1632	164	100.0%	3400	195	100.0%
Car, truck, or van - drove alone	1357	164	83.1%	2892	200	85.1%
Car, truck, or van - carpooled	234	80	14.3%	304	128	8.9%
Public transportation (excluding taxicab)	0	20	0.0%	0	20	0.0%
Walked	0	20	0.0%	54	38	1.6%
Taxicab, motorcycle, bicycle, or other means	27	29	1.7%	85	74	2.5%
Worked at home	14	18	0.9%	65	38	1.9%

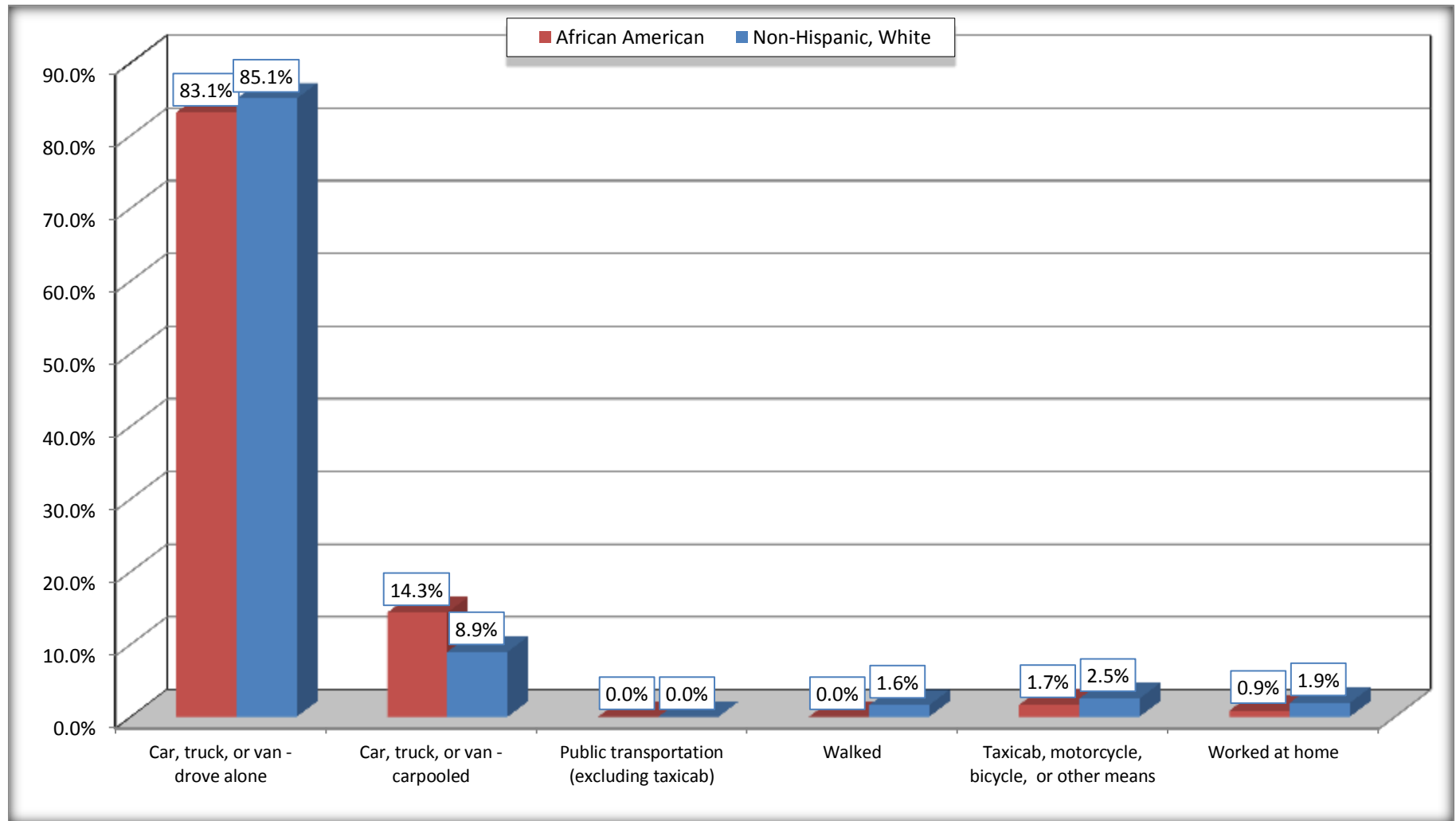
Source: U.S. Census Bureau, 2008-2012 American Community Survey

For information on confidentiality protection, sampling error, nonsampling error, and definitions, see Survey Methodology.

<http://www.census.gov/acs/www/UseData/index.htm>

Means of Transportation to Work (Workers 16 Years and Over)

Gates County, North Carolina



Source: B08105. MEANS OF TRANSPORTATION TO WORK - Universe: WORKERS 16 YEARS AND OVER
Data Set: 2008-2012 American Community Survey 5-Year Estimates

B11002. HOUSEHOLD TYPE BY RELATIVES AND NONRELATIVES FOR POPULATION IN HOUSEHOLDS

Data Set: 2008-2012 American Community Survey 5-Year Estimates

	Gates County, North Carolina					
	African American	Margin of Error (+/-)	% of AA Total	White, Not Hispanic	Margin of Error (+/-)	% of NHW Total
Total:	4118	121	100.0%	7491	78	100.0%
In family households	3710	202	90.1%	6560	175	87.6%
In nonfamily households	408	147	9.9%	931	177	12.4%

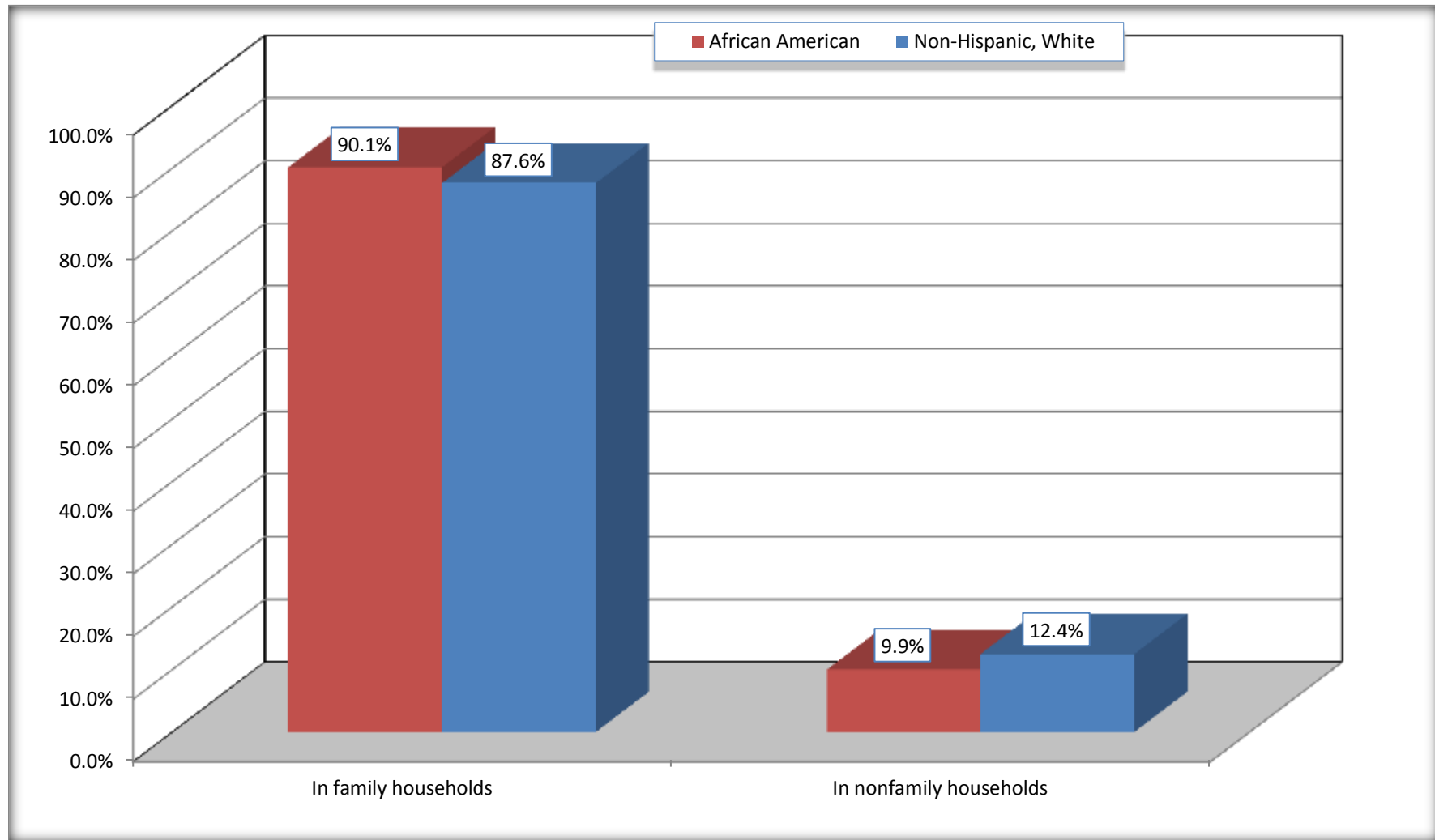
Source: U.S. Census Bureau, 2008-2012 American Community Survey

For information on confidentiality protection, sampling error, nonsampling error, and definitions, see Survey Methodology.

<http://www.census.gov/acs/www/UseData/index.htm>

Household Type for Population in Households

Gates County, North Carolina



Source: B11002. HOUSEHOLD TYPE BY RELATIVES AND NONRELATIVES FOR POPULATION IN HOUSEHOLDS
Data Set: 2008-2012 American Community Survey 5-Year Estimates

B12002. MARITAL STATUS FOR THE POPULATION 15 YEARS AND OVER

Data Set: 2008-2012 American Community Survey 5-Year Estimates

	Gates County, North Carolina					
	African American	Margin of Error (+/-)	% of AA Total	White, Not Hispanic	Margin of Error (+/-)	% of NHW Total
Total:	3,355	81	100.0%	6,180	20	100.0%
Never married	1,268	NC	37.8%	1,176	NC	19.0%
Now married (except separated)	1,425	NC	42.5%	3,724	NC	60.3%
Separated	86	NC	2.6%	130	NC	2.1%
Widowed	259	NC	7.7%	529	NC	8.6%
Divorced	317	NC	9.4%	621	NC	10.0%
Male:	1,589	58	47.4%	3,037	20	49.1%
Never married	646	85	19.3%	648	77	10.5%
Now married (except separated)	696	94	20.7%	1,888	126	30.6%
Separated	68	52	2.0%	28	24	0.5%
Widowed	46	43	1.4%	189	71	3.1%
Divorced	133	62	4.0%	284	109	4.6%
Female:	1,766	53	52.6%	3,143	20	50.9%
Never married	622	90	18.5%	528	105	8.5%
Now married (except separated)	729	122	21.7%	1,836	144	29.7%
Separated	18	29	0.5%	102	69	1.7%
Widowed	213	68	6.3%	340	88	5.5%
Divorced	184	78	5.5%	337	130	5.5%

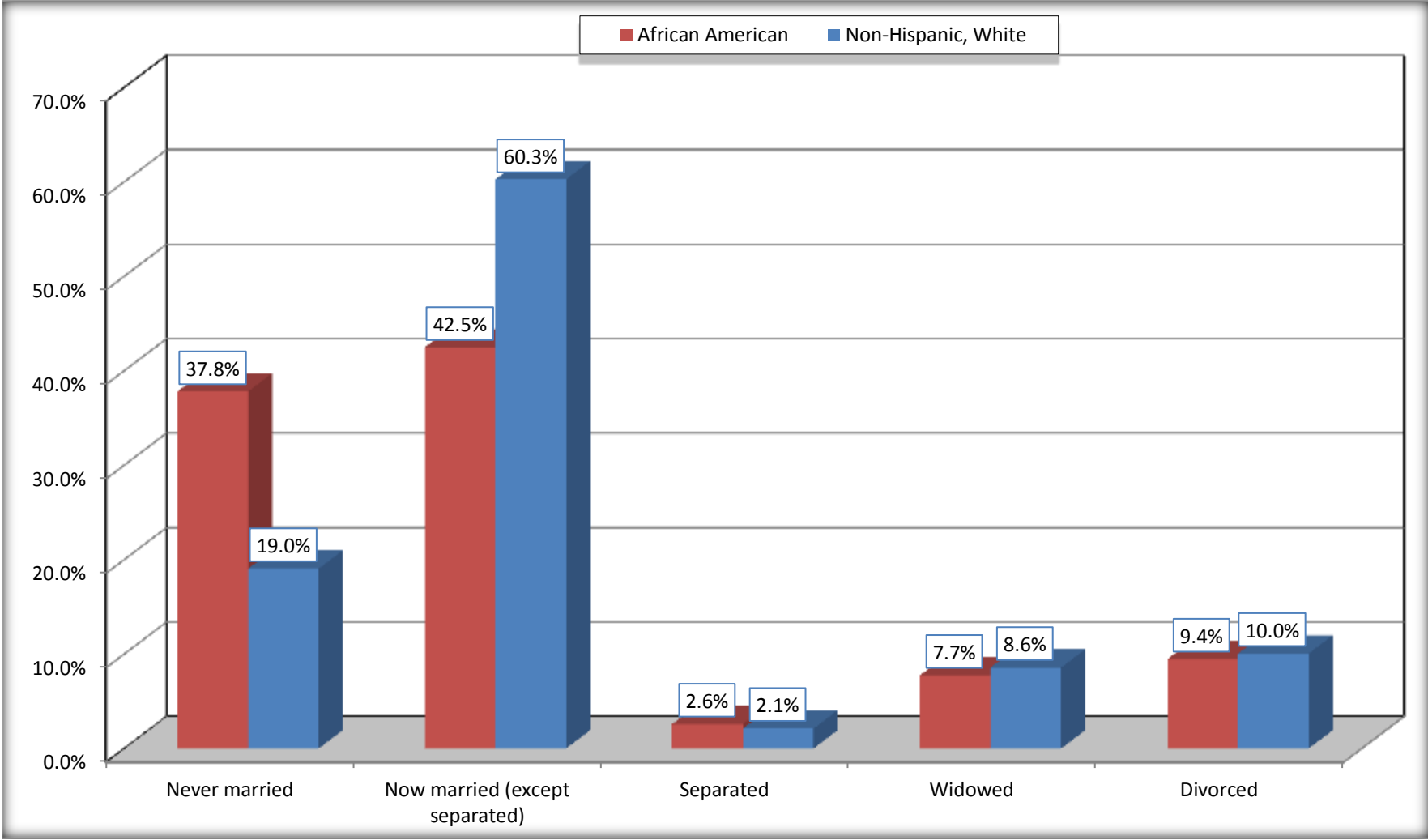
Source: U.S. Census Bureau, 2008-2012 American Community Survey

For information on confidentiality protection, sampling error, nonsampling error, and definitions, see Survey Methodology.

<http://www.census.gov/acs/www/UseData/index.htm>

Marital Status for the Population 15 Years and Over

Gates County, North Carolina



Source: B12002. MARITAL STATUS FOR THE POPULATION 15 YEARS AND OVER
Data Set: 2008-2012 American Community Survey 5-Year Estimates

C15002. SEX BY EDUCATIONAL ATTAINMENT FOR THE POPULATION 25 YEARS AND OVER

Data Set: 2008-2012 American Community Survey 5-Year Estimates

	Gates County, North Carolina					
	African American	Margin of Error (+/-)	% of AA Total	White, Not Hispanic	Margin of Error (+/-)	% of NHW Total
Total:	2,806	74	100.0%	5,293	20	100.0%
Less than high school diploma	513	NC	18.3%	780	NC	14.7%
High school graduate, GED, or alternative	1,143	NC	40.7%	1,863	NC	35.2%
Some college or associate's degree	893	NC	31.8%	1,950	NC	36.8%
Bachelor's degree or higher	257	NC	9.2%	700	NC	13.2%
Male:	1,285	29	45.8%	2,588	20	48.9%
Less than high school diploma	247	72	8.8%	455	114	8.6%
High school graduate, GED, or alternative	632	125	22.5%	972	128	18.4%
Some college or associate's degree	303	89	10.8%	904	136	17.1%
Bachelor's degree or higher	103	74	3.7%	257	79	4.9%
Female:	1,521	57	54.2%	2,705	20	51.1%
Less than high school diploma	266	83	9.5%	325	102	6.1%
High school graduate, GED, or alternative	511	104	18.2%	891	176	16.8%
Some college or associate's degree	590	100	21.0%	1,046	172	19.8%
Bachelor's degree or higher	154	70	5.5%	443	106	8.4%

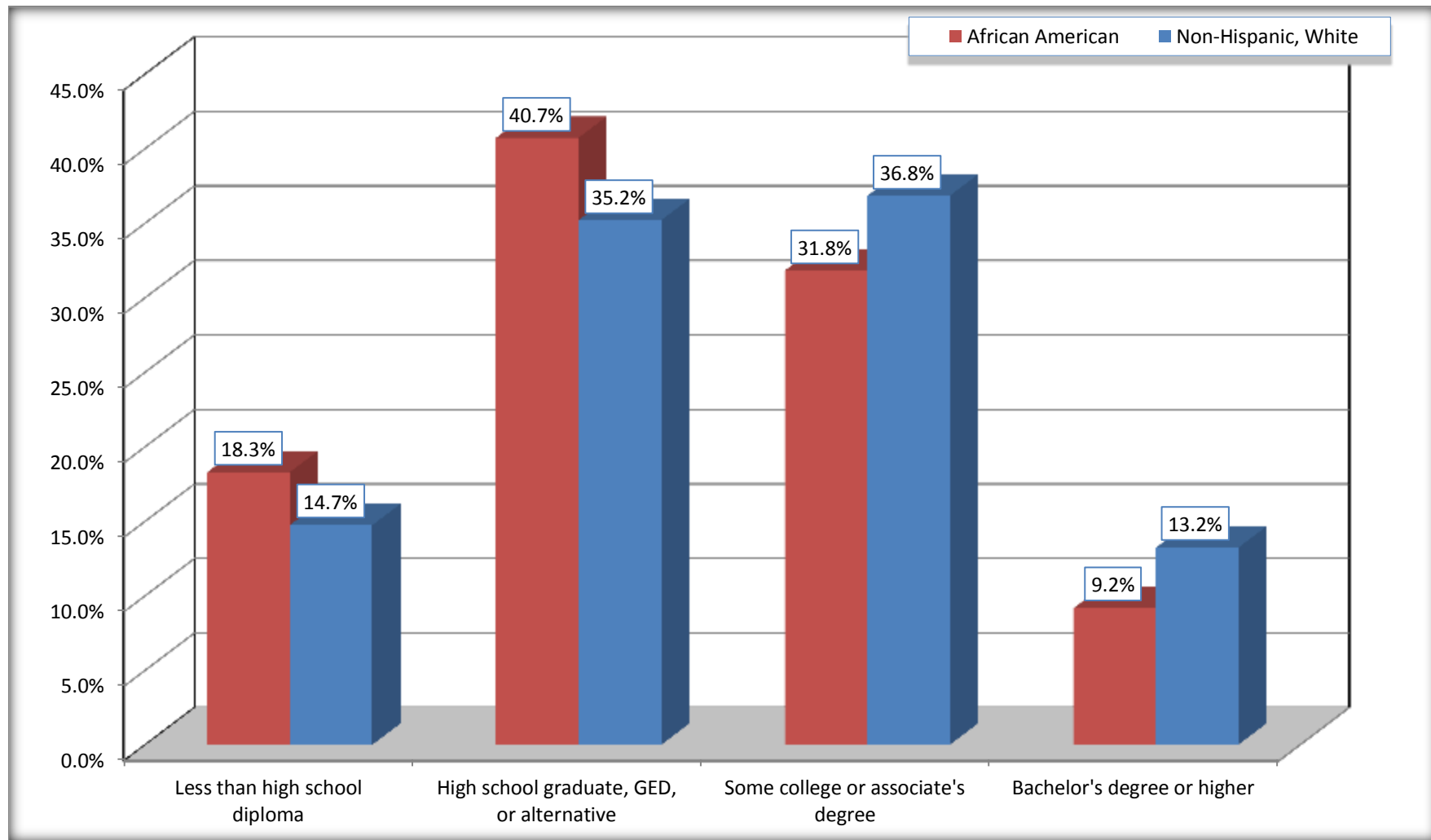
Source: U.S. Census Bureau, 2008-2012 American Community Survey

For information on confidentiality protection, sampling error, nonsampling error, and definitions, see Survey Methodology.

<http://www.census.gov/acs/www/UseData/index.htm>

Educational Attainment for the Population 25 Years and Older

Gates County, North Carolina



Source: C15002. SEX BY EDUCATIONAL ATTAINMENT FOR THE POPULATION 25 YEARS AND OVER
Data Set: 2008-2012 American Community Survey 5-Year Estimates

B17010. POVERTY STATUS IN THE PAST 12 MONTHS OF FAMILIES BY FAMILY TYPE BY PRESENCE OF RELATED CHILDREN UNDER 18 YEARS

Data Set: 2008-2012 American Community Survey 5-Year Estimates

	Gates County, North Carolina					
	African American	Margin of Error (+/-)	% of AA Total	White, Not Hispanic	Margin of Error (+/-)	% of NHW Total
Total:	1,102	135	100.0%	2,085	128	100.0%
Income in the past 12 months below poverty level:	277	94	25.1%	204	99	9.8%
Married-couple family:	58	39	5.3%	61	41	2.9%
With related children under 18 years	26	29	2.4%	25	22	1.2%
Other family:	219	83	19.9%	143	95	6.9%
Male householder, no wife present	19	27	1.7%	47	62	2.3%
With related children under 18 years	19	27	1.7%	47	62	2.3%
Female householder, no husband present	200	80	18.1%	96	64	4.6%
With related children under 18 years	190	81	17.2%	96	64	4.6%
Income in the past 12 months at or above poverty level:	825	114	74.9%	1,881	128	90.2%
Married-couple family:	594	114	53.9%	1,732	124	83.1%
With related children under 18 years	216	83	19.6%	699	129	33.5%
Other family:	231	85	21.0%	149	83	7.1%
Male householder, no wife present	48	35	4.4%	11	18	0.5%
With related children under 18 years	23	24	2.1%	11	18	0.5%
Female householder, no husband present	183	80	16.6%	138	77	6.6%
With related children under 18 years	102	64	9.3%	94	66	4.5%

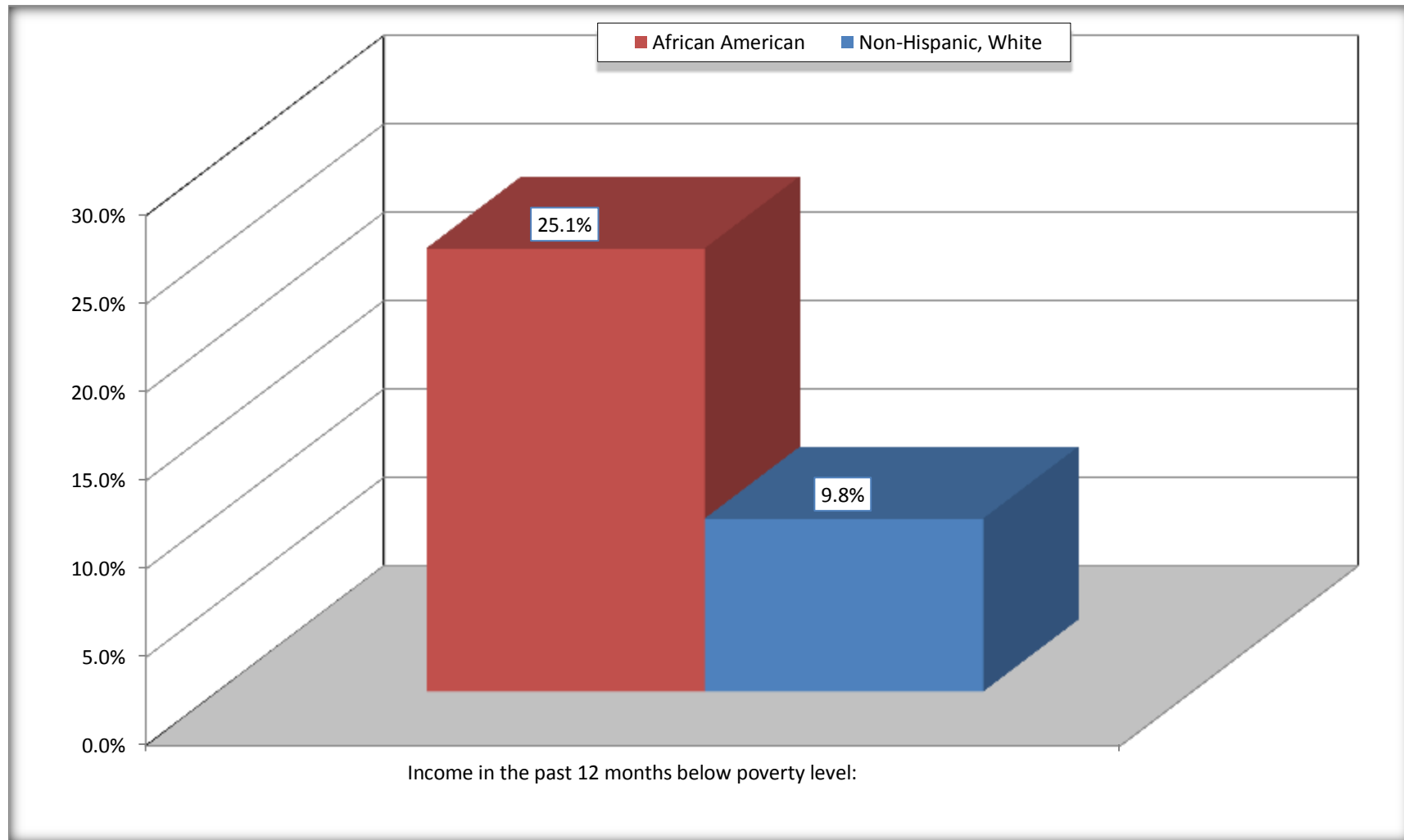
Source: U.S. Census Bureau, 2008-2012 American Community Survey

For information on confidentiality protection, sampling error, nonsampling error, and definitions, see Survey Methodology.

<http://www.census.gov/acs/www/UseData/index.htm>

Family Households Below Poverty in the Past 12 Months

Gates County, North Carolina

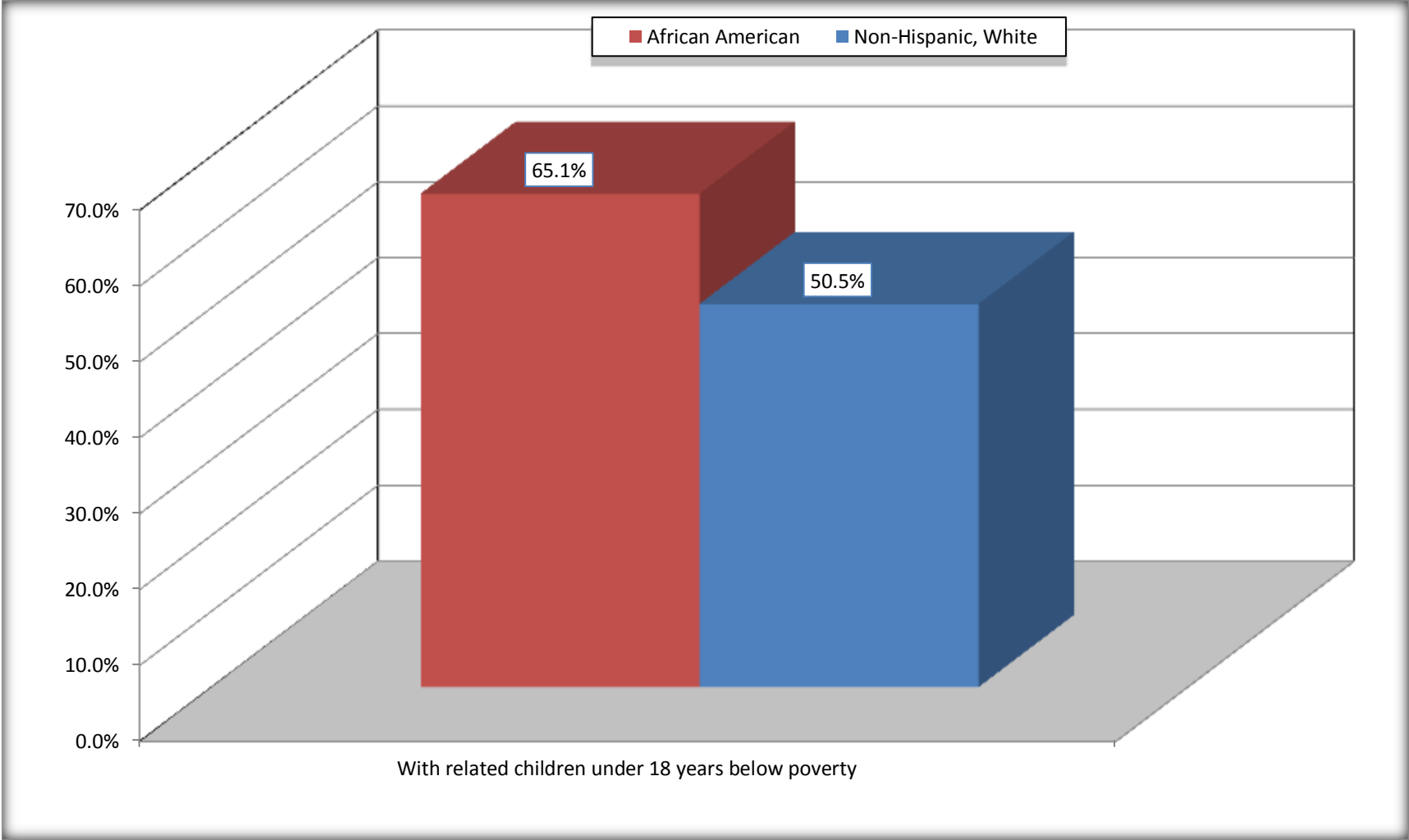


Source: B17010. POVERTY STATUS IN THE PAST 12 MONTHS OF FAMILIES BY FAMILY TYPE BY PRESENCE OF RELATED CHILDREN UNDER 18 YEARS

Data Set: 2008-2012 American Community Survey 5-Year Estimates

Female-headed Households with Related Children Below Poverty in the Past 12 Months

Gates County, North Carolina



Source: B17010. POVERTY STATUS IN THE PAST 12 MONTHS OF FAMILIES BY FAMILY TYPE BY PRESENCE OF RELATED CHILDREN UNDER 18 YEARS
Data Set: 2008-2012 American Community Survey 5-Year Estimates

B17020 POVERTY STATUS IN THE PAST 12 MONTHS BY AGE - Universe: POPULATION FOR WHOM POVERTY STATUS IS DETERMINED

Data Set: 2008-2012 American Community Survey 5-Year Estimates

	Gates County, North Carolina					
	African American	Margin of Error (+/-)	% of AA By Age	White, Not Hispanic	Margin of Error (+/-)	% of NHW By Age
Total:	4,081	131	100.0%	7,520	36	100.0%
Income in the past 12 months below poverty level:	1,292	317	31.7%	857	301	11.4%
Under 18 years	543	NC	56.0%	275	NC	15.9%
18 to 64 years	572	181	23.3%	462	170	9.9%
65 years and over	177	NC	27.0%	120	NC	10.9%
Income in the past 12 months at or above poverty level:	2,789	321	68.3%	6,663	308	88.6%
Under 18 years	427	NC	44.0%	1,455	NC	84.1%
18 to 64 years	1,884	198	76.7%	4,223	172	90.1%
65 years and over	478	NC	73.0%	985	NC	89.1%

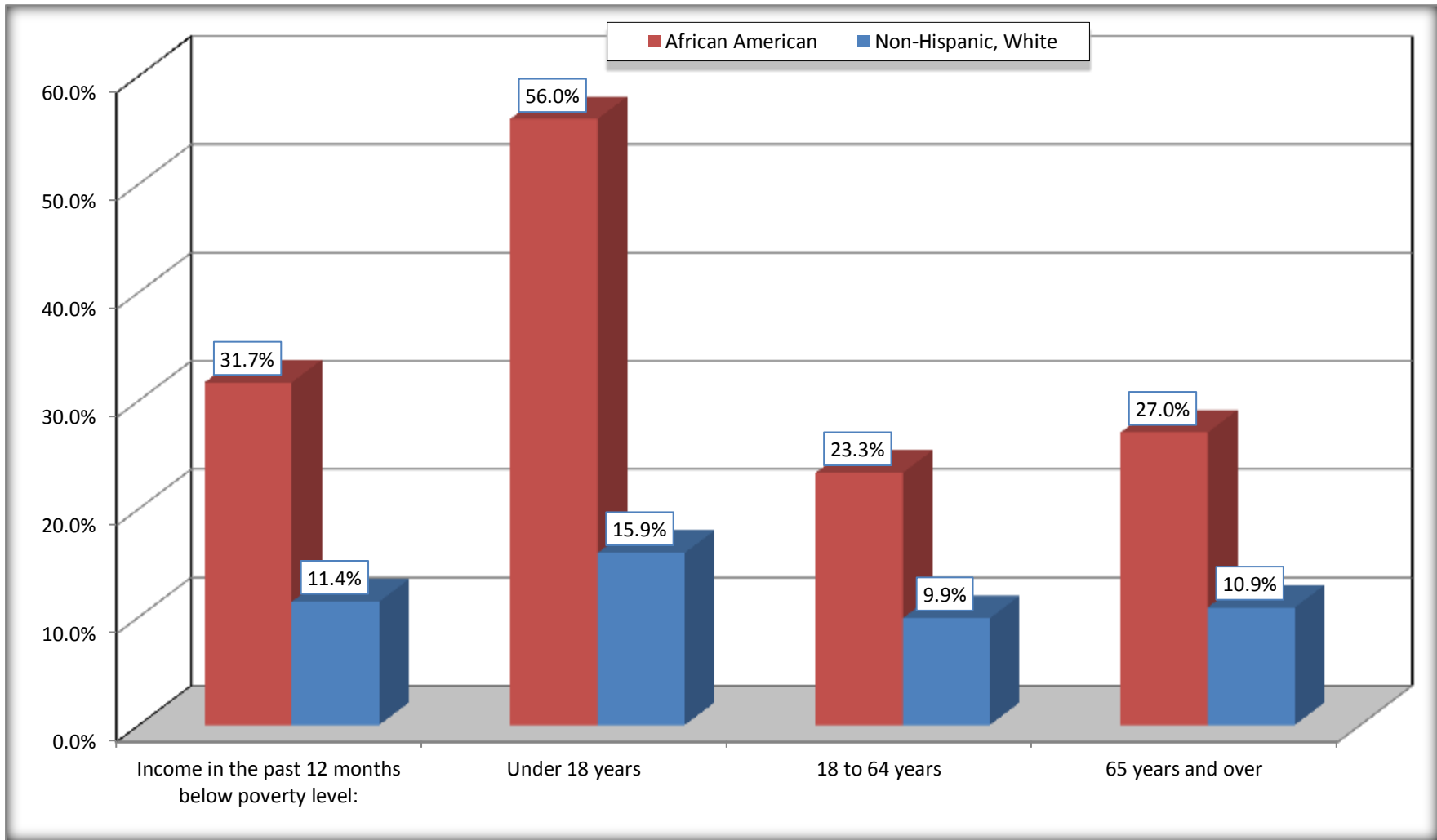
Source: U.S. Census Bureau, 2008-2012 American Community Survey

For information on confidentiality protection, sampling error, nonsampling error, and definitions, see Survey Methodology.

<http://www.census.gov/acs/www/UseData/index.htm>

Population Below Poverty in the Past 12 Months

Gates County, North Carolina



Source: B17020 POVERTY STATUS IN THE PAST 12 MONTHS BY AGE - Universe: POPULATION FOR WHOM POVERTY STATUS IS DETERMINED
Data Set: 2008-2012 American Community Survey 5-Year Estimates

B19001. HOUSEHOLD INCOME IN THE PAST 12 MONTHS (IN 2010 INFLATION-ADJUSTED DOLLARS)

Data Set: 2008-2012 American Community Survey 5-Year Estimates

	Gates County, North Carolina					
	African American	Margin of Error (+/-)	% of AA Total	White, Not Hispanic	Margin of Error (+/-)	% of NHW Total
Total:	1,451	145	100.0%	2,897	128	100.0%
Less than \$ 10,000	189	83	13.0%	121	53	4.2%
\$ 10,000 to \$ 14,999	147	75	10.1%	163	78	5.6%
\$ 15,000 to \$ 24,999	262	NC	18.1%	359	NC	12.4%
\$ 25,000 to \$ 34,999	175	NC	12.1%	272	NC	9.4%
\$ 35,000 to \$ 49,999	177	NC	12.2%	506	NC	17.5%
\$ 50,000 to \$ 74,999	272	NC	18.7%	539	NC	18.6%
\$ 75,000 to \$ 99,999	136	76	9.4%	415	111	14.3%
\$ 100,000 to \$ 149,999	86	NC	5.9%	417	NC	14.4%
\$ 150,000 to \$ 199,999	7	11	0.5%	61	43	2.1%
\$ 200,000 or more	0	20	0.0%	44	35	1.5%

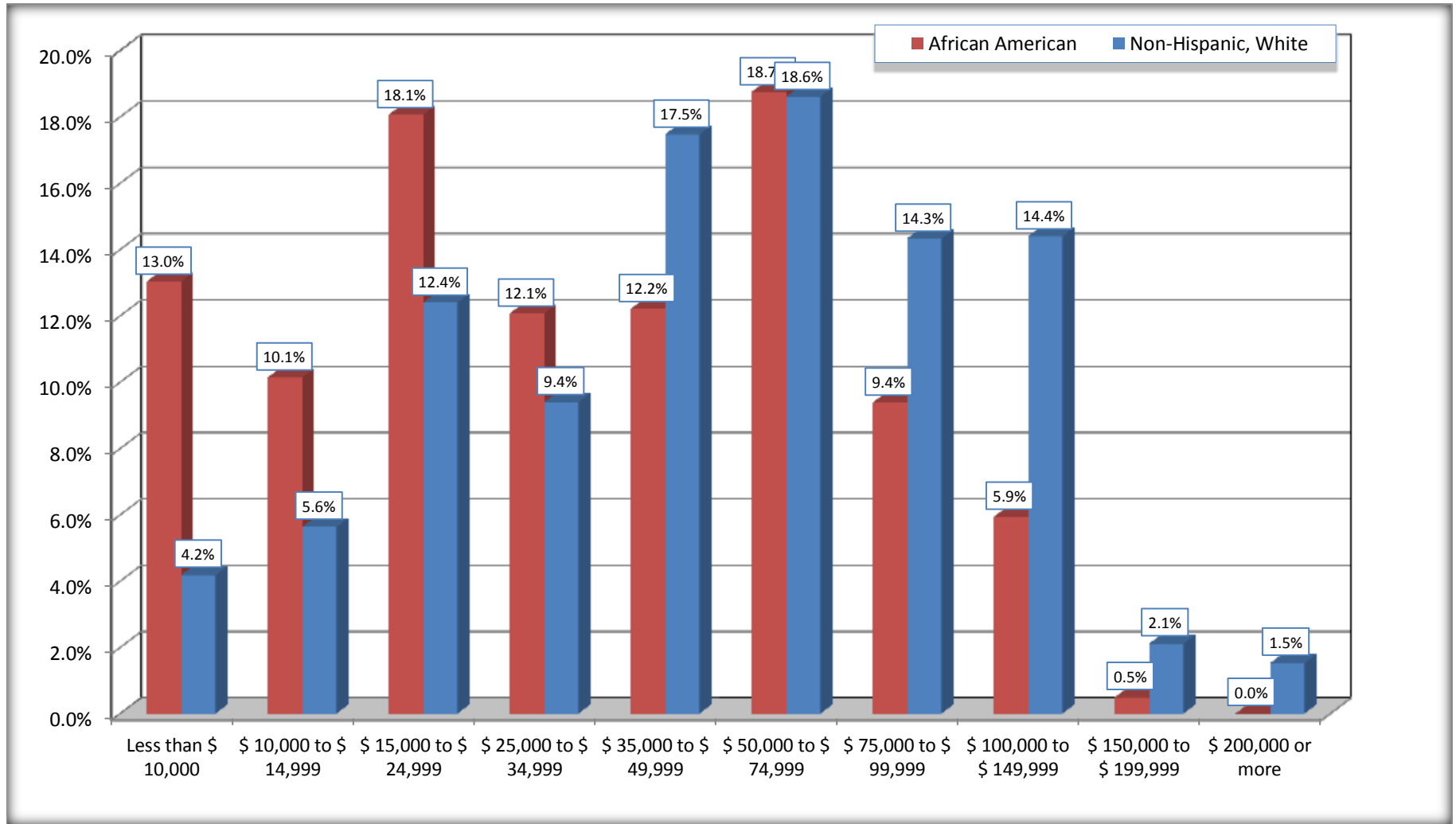
Source: U.S. Census Bureau, 2008-2012 American Community Survey

For information on confidentiality protection, sampling error, nonsampling error, and definitions, see Survey Methodology.

<http://www.census.gov/acs/www/UseData/index.htm>

Household Income in the Past 12 Months

Gates County, North Carolina



Source: B19001. HOUSEHOLD INCOME IN THE PAST 12 MONTHS (IN 2010 INFLATION-ADJUSTED DOLLARS)
Data Set: 2008-2012 American Community Survey 5-Year Estimates

B19013. MEDIAN HOUSEHOLD INCOME IN THE PAST 12 MONTHS (IN 2010 INFLATION-ADJUSTED DOLLARS)

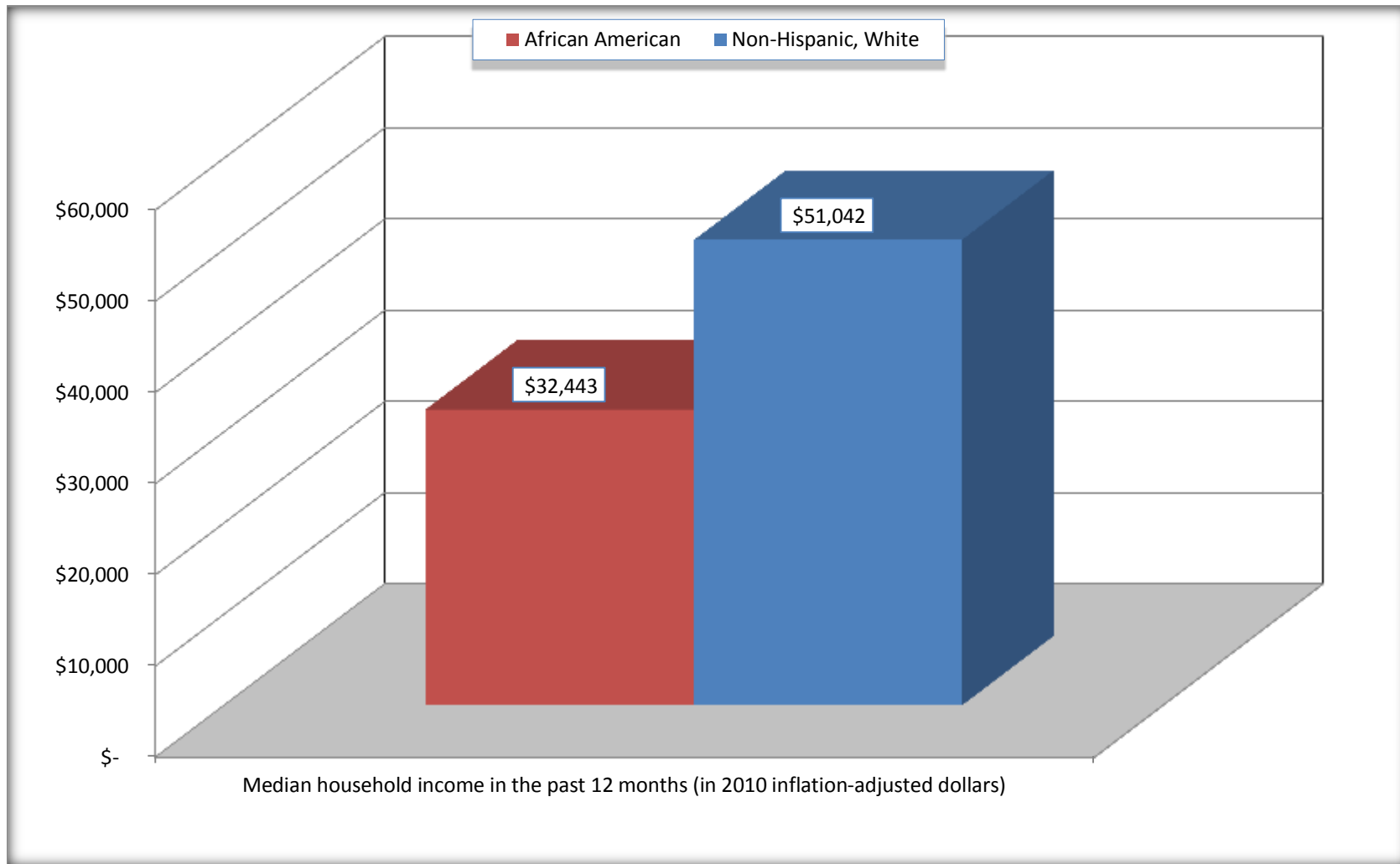
Data Set: 2008-2012 American Community Survey 5-Year Estimates

	Gates County, North Carolina			
	African American	Margin of Error (+/-)	White, Not Hispanic	Margin of Error (+/-)
Median household income in the past 12 months (in 2010 inflation-adjusted dollars)	\$ 32,443	\$ 7,987	\$ 51,042	\$ 5,722

Source: U.S. Census Bureau, 2008-2012 American Community Survey

For information on confidentiality protection, sampling error, nonsampling error, and definitions, see Survey Methodology.
<http://www.census.gov/acs/www/UseData/index.htm>

Median Household Income in the Past 12 Months Gates County, North Carolina



Source: B19013. MEDIAN HOUSEHOLD INCOME IN THE PAST 12 MONTHS (IN 2010 INFLATION-ADJUSTED DOLLARS)
Data Set: 2008-2012 American Community Survey 5-Year Estimates

B19101. FAMILY INCOME IN THE PAST 12 MONTHS (IN 2010 INFLATION-ADJUSTED DOLLARS)

Data Set: 2008-2012 American Community Survey 5-Year Estimates

	Gates County, North Carolina					
	African American	Margin of Error (+/-)	% of AA Total	White, Not Hispanic	Margin of Error (+/-)	% of NHW Total
Total:	1,102	135	100.0%	2,085	128	100.0%
Less than \$ 10,000	104	60	9.4%	73	42	3.5%
\$ 10,000 to \$ 14,999	75	49	6.8%	102	85	4.9%
\$ 15,000 to \$ 24,999	185	NC	16.8%	123	NC	5.9%
\$ 25,000 to \$ 34,999	148	NC	13.4%	113	NC	5.4%
\$ 35,000 to \$ 49,999	120	NC	10.9%	324	NC	15.5%
\$ 50,000 to \$ 74,999	251	NC	22.8%	442	NC	21.2%
\$ 100,000 to \$ 149,999	86	NC	7.8%	417	NC	20.0%
\$ 150,000 to \$ 199,999	7	11	0.6%	61	43	2.9%
\$ 200,000 or more	0	20	0.0%	44	35	2.1%

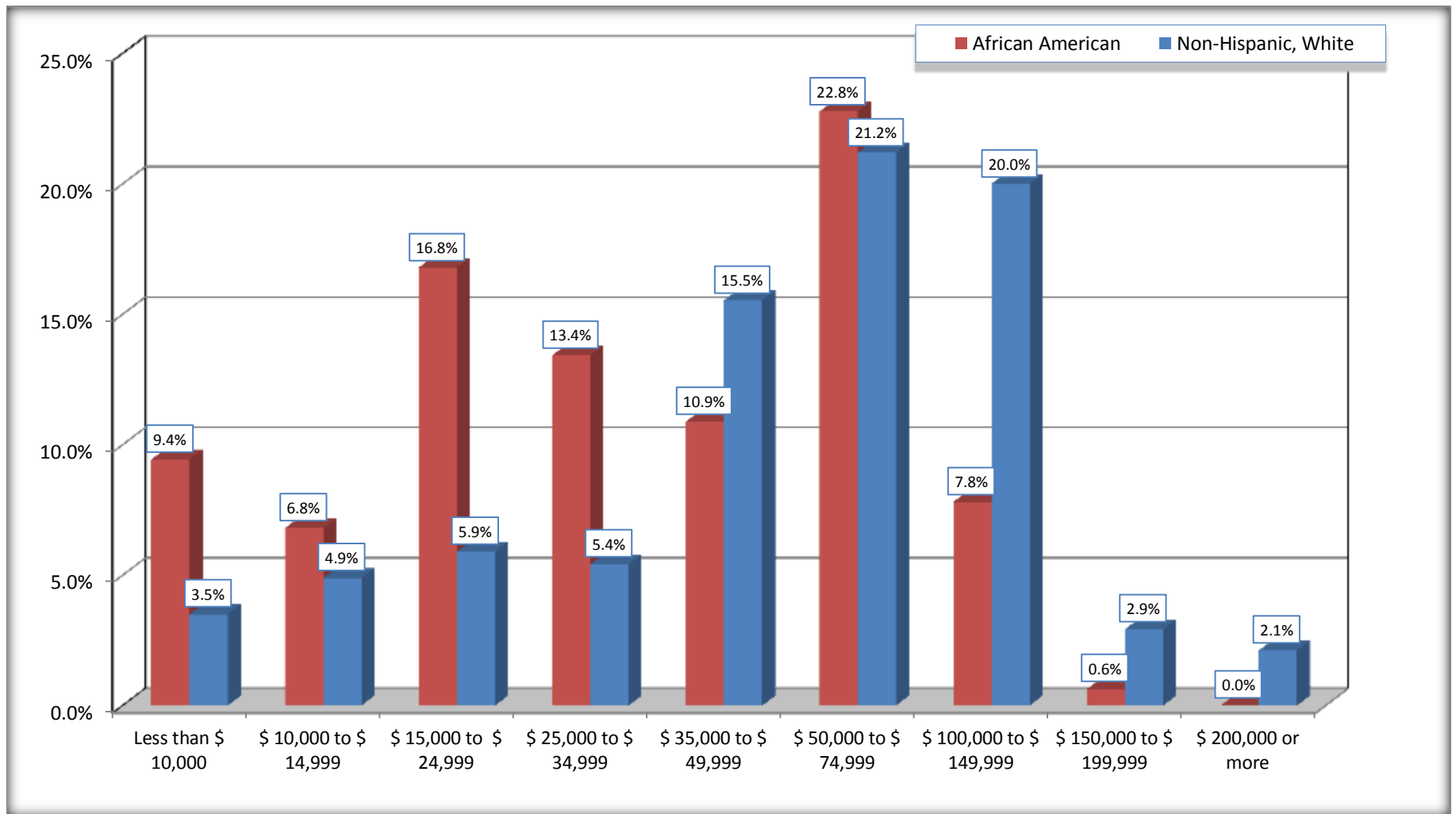
Source: U.S. Census Bureau, 2008-2012 American Community Survey

For information on confidentiality protection, sampling error, nonsampling error, and definitions, see Survey Methodology.

<http://www.census.gov/acs/www/UseData/index.htm>

Family Income in the Past 12 Months

Gates County, North Carolina



Source: B19101. FAMILY INCOME IN THE PAST 12 MONTHS (IN 2010 INFLATION-ADJUSTED DOLLARS)
Data Set: 2008-2012 American Community Survey 5-Year Estimates

B19113. MEDIAN FAMILY INCOME IN THE PAST 12 MONTHS (IN 2010 INFLATION-ADJUSTED DOLLARS)

Data Set: 2008-2012 American Community Survey 5-Year Estimates

	Gates County, North Carolina			
	African American	Margin of Error (+/-)	White, Not Hispanic	Margin of Error (+/-)
Median family income in the past 12 months (in 2010 inflation-adjusted dollars)	\$ 39,643	\$ 10,913	\$ 65,096	\$ 4,429

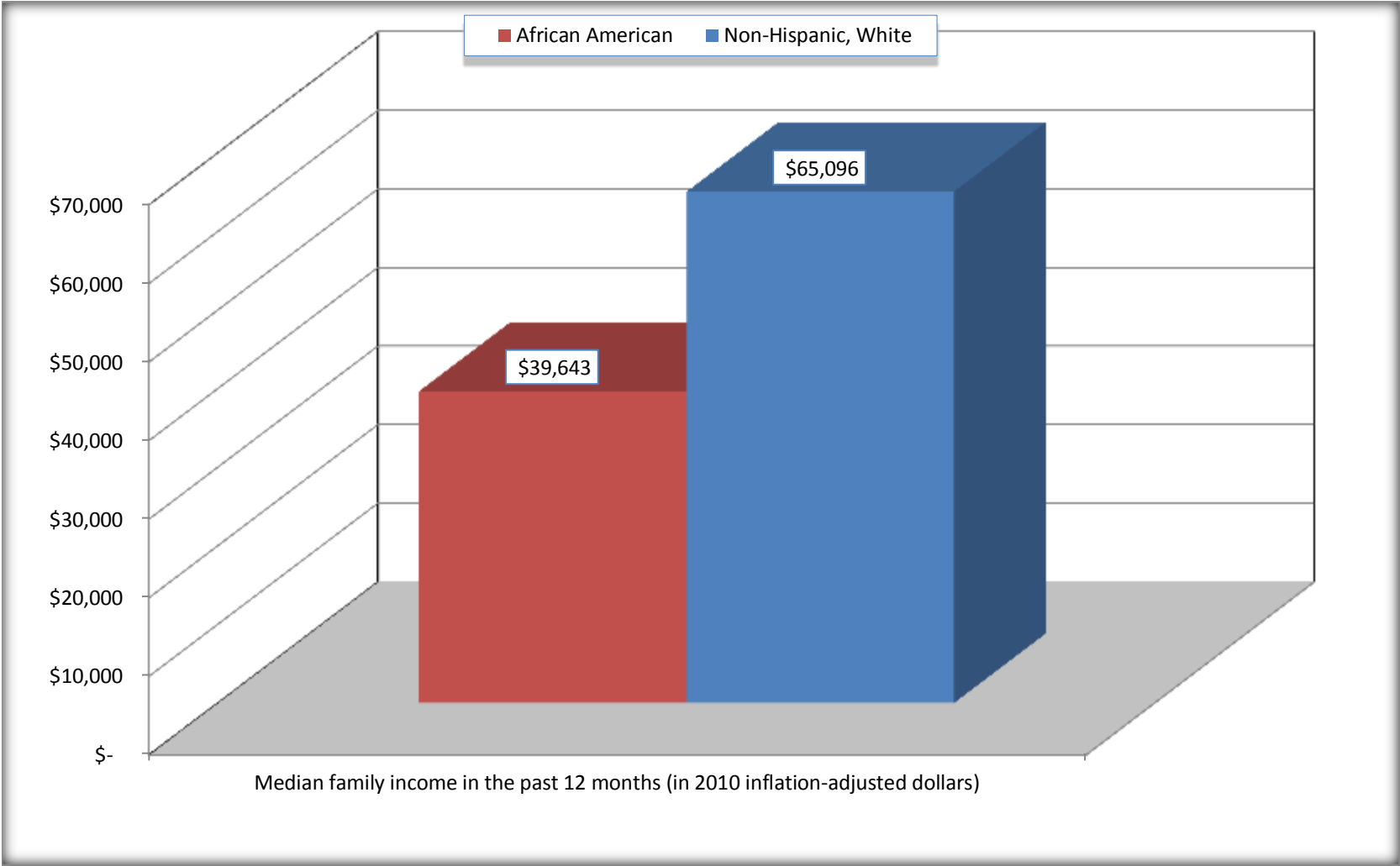
Source: U.S. Census Bureau, 2008-2012 American Community Survey

For information on confidentiality protection, sampling error, nonsampling error, and definitions, see Survey Methodology.

<http://www.census.gov/acs/www/UseData/index.htm>

Median Family Income in the Past 12 Months

Gates County, North Carolina



Source: B19113. MEDIAN FAMILY INCOME IN THE PAST 12 MONTHS (IN 2010 INFLATION-ADJUSTED DOLLARS)
Data Set: 2008-2012 American Community Survey 5-Year Estimates

B19202. MEDIAN NONFAMILY HOUSEHOLD INCOME IN THE PAST 12 MONTHS (IN 2010 INFLATION-ADJUSTED DOLLARS)

Data Set: 2008-2012 American Community Survey 5-Year Estimates

	Gates County, North Carolina			
	African American	Margin of Error (+/-)	White, Not Hispanic	Margin of Error (+/-)
Median nonfamily household income in the past 12 months (in 2010 inflation-adjusted dollars)	\$ 16,367	\$ 4,436	\$ 26,419	\$ 3,905

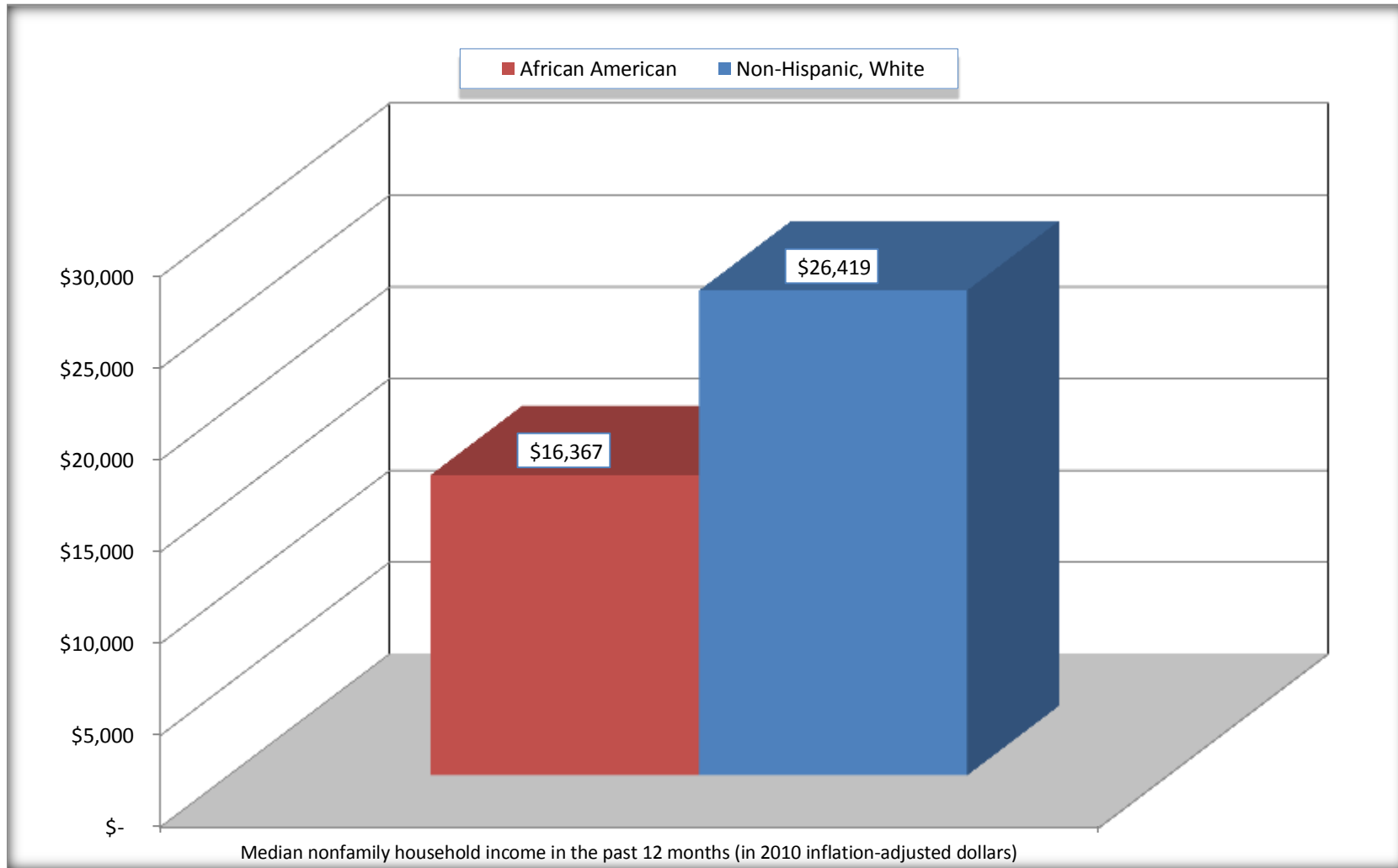
Source: U.S. Census Bureau, 2008-2012 American Community Survey

For information on confidentiality protection, sampling error, nonsampling error, and definitions, see Survey Methodology.

<http://www.census.gov/acs/www/UseData/index.htm>

Median Non-Family Income in the Past 12 Months

Gates County, North Carolina



Source: B19202. MEDIAN NONFAMILY HOUSEHOLD INCOME IN THE PAST 12 MONTHS (IN 2010 INFLATION-ADJUSTED DOLLARS)
Data Set: 2008-2012 American Community Survey 5-Year Estimates

B19301. PER CAPITA INCOME IN THE PAST 12 MONTHS (IN 2010 INFLATION-ADJUSTED DOLLARS)

Data Set: 2008-2012 American Community Survey 5-Year Estimates

	Gates County, North Carolina			
	African American	Margin of Error (+/-)	White, Not Hispanic	Margin of Error (+/-)
Per capita income in the past 12 months (in 2010 inflation-adjusted dollars)	\$ 15,313	\$ 1,593	\$ 24,732	\$ 1,718

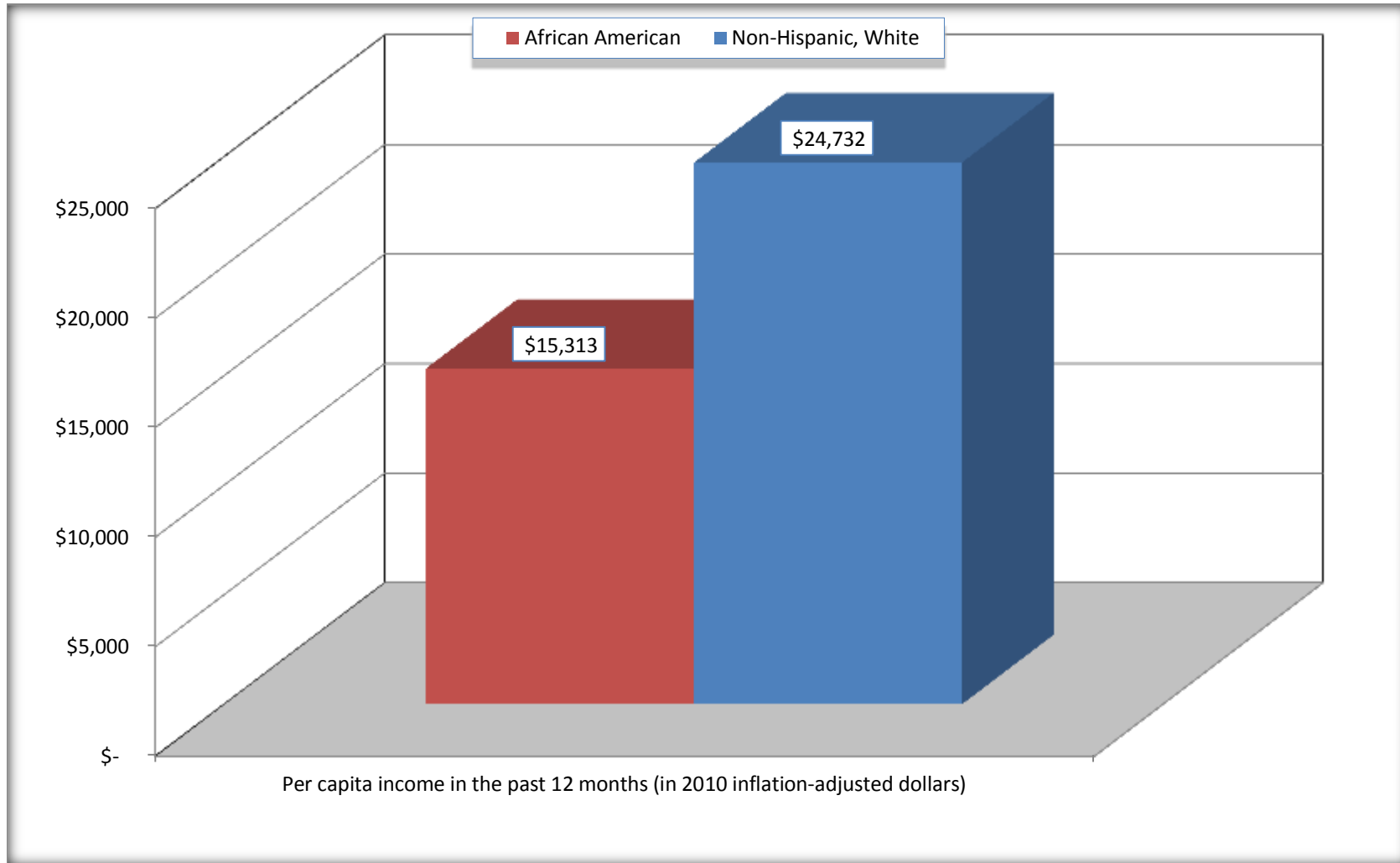
Source: U.S. Census Bureau, 2008-2012 American Community Survey

For information on confidentiality protection, sampling error, nonsampling error, and definitions, see Survey Methodology.

<http://www.census.gov/acs/www/UseData/index.htm>

Per capita Income in the Past 12 Months

Gates County, North Carolina



Source: B19301. PER CAPITA INCOME IN THE PAST 12 MONTHS (IN 2010 INFLATION-ADJUSTED DOLLARS)
Data Set: 2008-2012 American Community Survey 5-Year Estimates

B20017. MEDIAN EARNINGS IN THE PAST 12 MONTHS (IN 2010 INFLATION-ADJUSTED DOLLARS) BY SEX BY WORK EXPERIENCE IN THE PAST 12 MONTHS FOR THE POPULATION 16 YEARS AND OVER WITH EARNINGS IN THE PAST 12 MONTHS

Data Set: 2008-2012 American Community Survey 5-Year Estimates

	Gates County, North Carolina			
	African American	Margin of Error (+/-)	White, Not Hispanic	Margin of Error (+/-)
Median earnings in the past 12 months (in 2010 inflation-adjusted dollars) --				
Total:	\$ 28,797	\$ 6,559	\$ 31,605	\$ 1,713
Male --				
Total	\$ 32,515	\$ 1,998	\$ 36,833	\$ 7,232
Worked full-time, year-round in the past 12 months	\$ 40,121	\$ 11,402	\$ 50,000	\$ 5,184
Other	\$ 5,208	\$ 4,477	\$ 11,357	\$ 1,579
Female --				
Total	\$ 17,418	\$ 4,991	\$ 25,511	\$ 3,298
Worked full-time, year-round in the past 12 months	\$ 31,927	\$ 2,637	\$ 32,352	\$ 7,590
Other	\$ 7,266	\$ 1,874	\$ 12,758	\$ 3,622

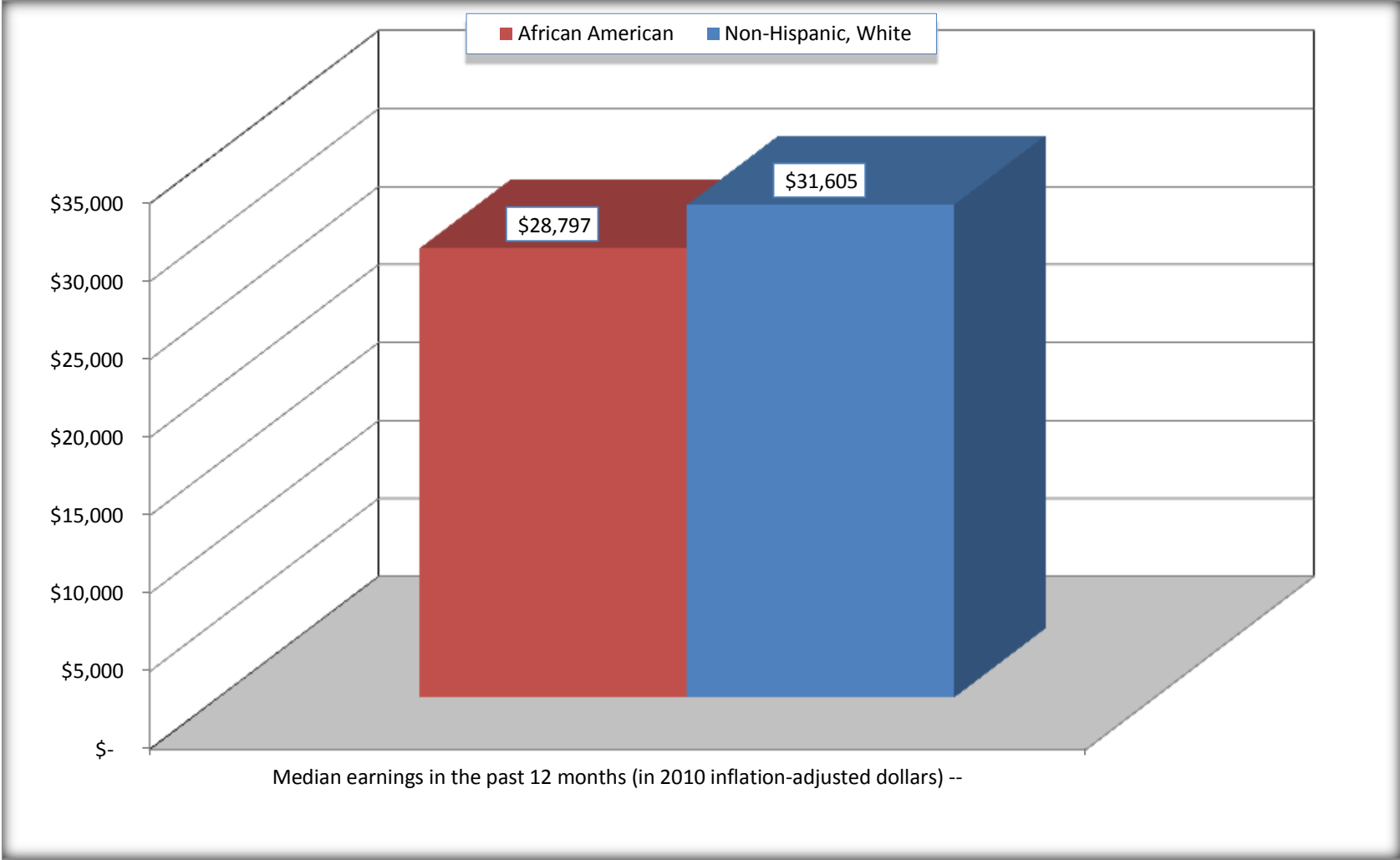
Source: U.S. Census Bureau, 2008-2012 American Community Survey

For information on confidentiality protection, sampling error, nonsampling error, and definitions, see Survey Methodology.

<http://www.census.gov/acs/www/UseData/index.htm>

Median earnings in the Past 12 Months (16 Years and Over with Earnings)

Gates County, North Carolina



Source: B20017. MEDIAN EARNINGS IN THE PAST 12 MONTHS (IN 2010 INFLATION-ADJUSTED DOLLARS) BY SEX BY WORK EXPERIENCE IN THE PAST 12 MONTHS FOR THE POPULATION 16 YEARS AND OVER WITH EARNINGS IN THE PAST 12 MONTHS
Data Set: 2008-2012 American Community Survey 5-Year Estimates

B20005. SEX BY WORK EXPERIENCE IN THE PAST 12 MONTHS BY EARNINGS IN THE PAST 12 MONTHS (IN 2010 INFLATION-ADJUSTED DOLLARS) FOR THE POPULATION 16 YEARS AND OVER

Data Set: 2008-2012 American Community Survey 5-Year Estimates

	Gates County, North Carolina					
	African American	Margin of Error (+/-)	% of AA Total	White, Not Hispanic	Margin of Error (+/-)	% of NHW Total
Total:	3,279	84	100.0%	6,070	42	100.0%
Worked full-time, year-round in the past 12 months:	1,158	NC	35.3%	2,451	NC	40.4%
No earnings	0	NC	0.0%	0	NC	0.0%
With earnings:	1,158	NC	35.3%	2,451	NC	40.4%
\$ 1 to \$ 9,999 or loss	0	NC	0.0%	18	NC	0.3%
\$ 10,000 to \$ 19,999	197	NC	6.0%	228	NC	3.8%
\$ 20,000 to \$ 29,999	134	NC	4.1%	443	NC	7.3%
\$ 30,000 to \$ 49,999	712	NC	21.7%	728	NC	12.0%
\$ 50,000 to \$ 74,999	88	NC	2.7%	711	NC	11.7%
\$ 75,000 or more	27	NC	0.8%	323	NC	5.3%
Other:	2,121	NC	64.7%	3,619	NC	59.6%
No earnings	1,522	NC	46.4%	2,239	NC	36.9%
With earnings: less than full time, year-round	599	NC	18.3%	1,380	NC	22.7%
Male:	1,519	54	46.3%	3,007	29	49.5%
Worked full-time, year-round in the past 12 months:	571	105	17.4%	1,488	143	24.5%
No earnings	0	20	0.0%	0	20	0.0%
With earnings:	571	105	17.4%	1,488	143	24.5%
\$ 1 to \$ 9,999 or loss	0	NC	0.0%	0	NC	0.0%
\$ 10,000 to \$ 19,999	23	NC	0.7%	80	NC	1.3%
\$ 20,000 to \$ 29,999	70	NC	2.1%	199	NC	3.3%
\$ 30,000 to \$ 49,999	398	NC	12.1%	465	NC	7.7%
\$ 50,000 to \$ 74,999	53	NC	1.6%	453	NC	7.5%
\$ 75,000 or more	27	NC	0.8%	291	NC	4.8%

	Gates County, North Carolina					
	African American	Margin of Error (+/-)	% of AA Total	White, Not Hispanic	Margin of Error (+/-)	% of NHW Total
Other:	948	120	28.9%	1,519	143	25.0%
No earnings	758	120	23.1%	909	117	15.0%
With earnings:	190	72	5.8%	610	123	10.0%
Female:	1,760	53	53.7%	3,063	31	50.5%
Worked full-time, year-round in the past 12 months:	587	111	17.9%	963	127	15.9%
No earnings	0	20	0.0%	0	20	0.0%
With earnings:	587	111	17.9%	963	127	15.9%
\$ 1 to \$ 9,999 or loss	0	NC	0.0%	18	NC	0.3%
\$ 10,000 to \$ 19,999	174	NC	5.3%	148	NC	2.4%
\$ 20,000 to \$ 29,999	64	NC	2.0%	244	NC	4.0%
\$ 30,000 to \$ 49,999	314	NC	9.6%	263	NC	4.3%
\$ 50,000 to \$ 74,999	35	NC	1.1%	258	NC	4.3%
\$ 75,000 or more	0	NC	0.0%	32	NC	0.5%
Other:	1,173	127	35.8%	2,100	135	34.6%
No earnings	764	105	23.3%	1,330	137	21.9%
With earnings:	409	89	12.5%	770	144	12.7%

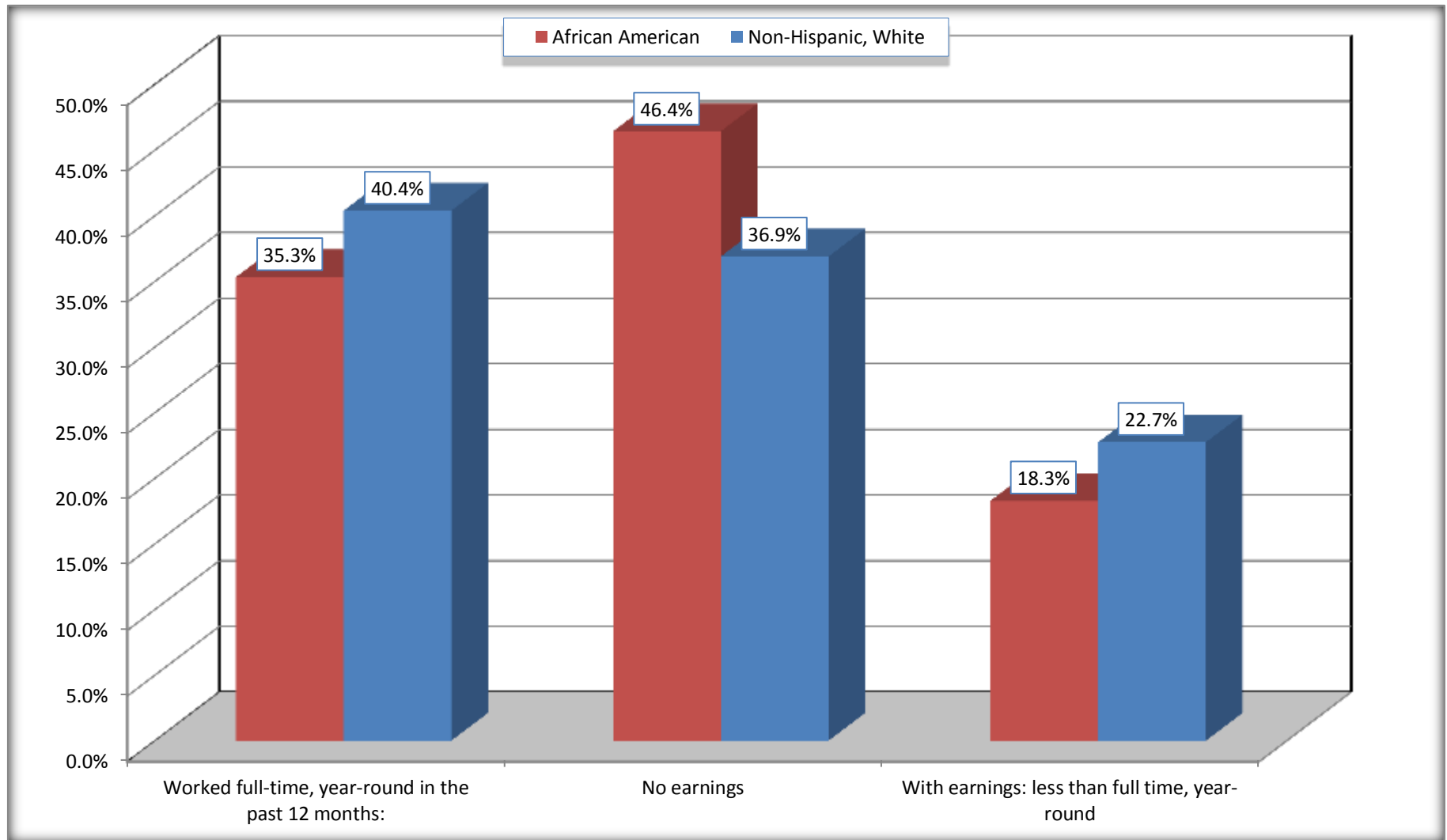
Source: U.S. Census Bureau, 2008-2012 American Community Survey

For information on confidentiality protection, sampling error, nonsampling error, and definitions, see Survey Methodology.

<http://www.census.gov/acs/www/UseData/index.htm>

Employment and Earnings in in the Past 12 Months (16 Years and Over)

Gates County, North Carolina



Source: B20005. SEX BY WORK EXPERIENCE IN THE PAST 12 MONTHS BY EARNINGS IN THE PAST 12 MONTHS (IN 2010 INFLATION-ADJUSTED DOLLARS) FOR THE POPULATION 16 YEARS AND OVER

Data Set: 2008-2012 American Community Survey 5-Year Estimates

C21001. SEX BY AGE BY VETERAN STATUS FOR THE CIVILIAN POPULATION 18 YEARS AND OVER

Data Set: 2008-2012 American Community Survey 5-Year Estimates

	Gates County, North Carolina					
	African American	Margin of Error (+/-)	% of AA Total	White, Not Hispanic	Margin of Error (+/-)	% of NHW Total
Total:	3,159	72	100.0%	5,820	22	100.0%
Veteran	297	NC	9.4%	915	NC	15.7%
Nonveteran	2,862	NC	90.6%	4,905	NC	84.3%
Male:	1,457	41	46.1%	2,842	22	48.8%
18 to 64 years:	1,175	34	37.2%	2,302	22	39.6%
Veteran	183	77	5.8%	511	101	8.8%
Nonveteran	992	85	31.4%	1,791	104	30.8%
65 years and over:	282	13	8.9%	540	20	9.3%
Veteran	108	47	3.4%	307	79	5.3%
Nonveteran	174	49	5.5%	233	79	4.0%
Female:	1,702	44	53.9%	2,978	20	51.2%
18 to 64 years:	1,324	34	41.9%	2,374	20	40.8%
Veteran	6	11	0.2%	97	63	1.7%
Nonveteran	1,318	33	41.7%	2,277	63	39.1%
65 years and over:	378	21	12.0%	604	20	10.4%
Veteran	0	20	0.0%	0	20	0.0%
Nonveteran	378	21	12.0%	604	20	10.4%

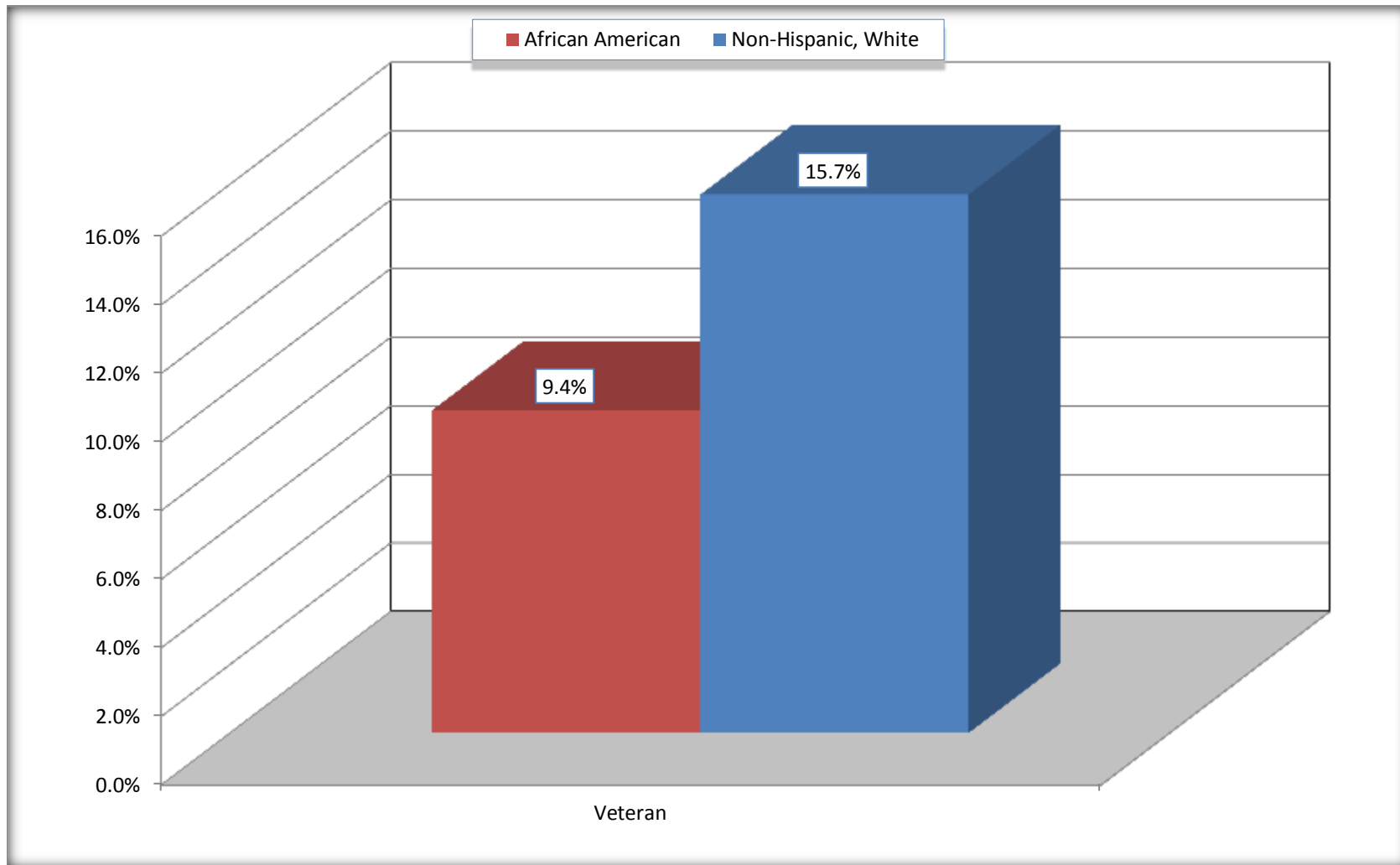
Source: U.S. Census Bureau, 2008-2012 American Community Survey

For information on confidentiality protection, sampling error, nonsampling error, and definitions, see Survey Methodology.

<http://www.census.gov/acs/www/UseData/index.htm>

Veterans in the Civilian Population 18 Years and Over

Gates County, North Carolina



Source: C21001. SEX BY AGE BY VETERAN STATUS FOR THE CIVILIAN POPULATION 18 YEARS AND OVER
Data Set: 2008-2012 American Community Survey 5-Year Estimates

B22005. RECEIPT OF FOOD STAMPS/SNAP IN THE PAST 12 MONTHS BY RACE OF HOUSEHOLDER

Data Set: 2008-2012 American Community Survey 5-Year Estimates

	Gates County, North Carolina					
	African American	Margin of Error (+/-)	% of AA Total	White, Not Hispanic	Margin of Error (+/-)	% of NHW Total
Total:	1,451	145	100.0%	2,897	128	100.0%
HH received Food Stamps/SNAP in the past 12 months	388	109	26.7%	329	115	11.4%
HH did not receive Food Stamps/SNAP in the past 12 months	1,063	127	73.3%	2,568	152	88.6%

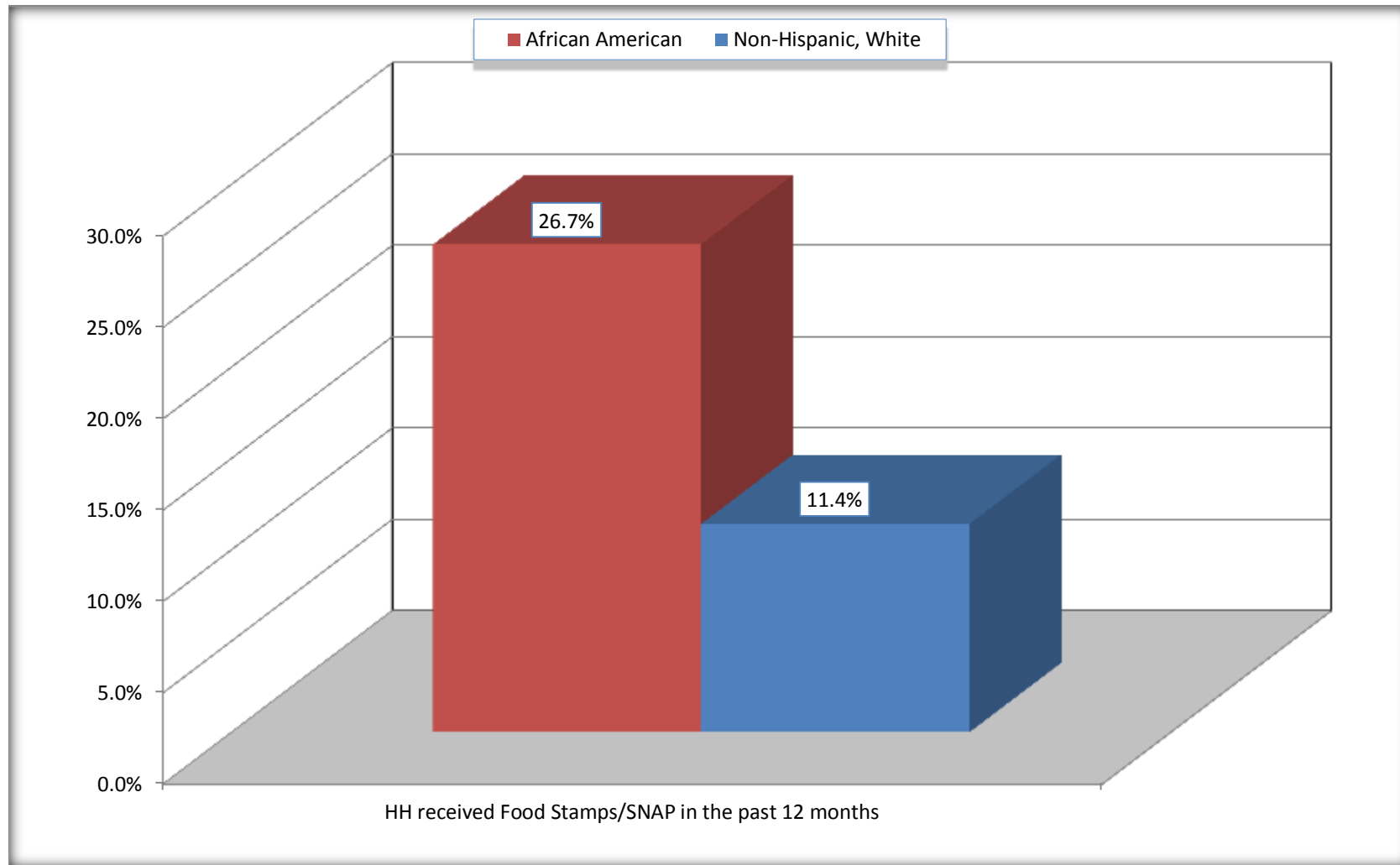
Source: U.S. Census Bureau, 2008-2012 American Community Survey

For information on confidentiality protection, sampling error, nonsampling error, and definitions, see Survey Methodology.

<http://www.census.gov/acs/www/UseData/index.htm>

Receipt of Food Stamps/SNAP in the Past 12 Months by Household

Gates County, North Carolina



Source: B22005. RECEIPT OF FOOD STAMPS/SNAP IN THE PAST 12 MONTHS BY RACE OF HOUSEHOLDER
Data Set: 2008-2012 American Community Survey 5-Year Estimates

C23002. SEX BY AGE BY EMPLOYMENT STATUS FOR THE POPULATION 16 YEARS AND OVER

Data Set: 2008-2012 American Community Survey 5-Year Estimates

	Gates County, North Carolina					
	African American	Margin of Error (+/-)	% of AA Total	White, Not Hispanic	Margin of Error (+/-)	% of NHW Total
Total:	3,279	84	100.0%	6,070	42	100.0%
In labor force:	1,938	NC	59.1%	3,690	NC	60.8%
In Armed Forces	0	NC	0.0%	26	NC	0.4%
Civilian:	1,876	NC	57.2%	3,505	NC	57.7%
Employed	1,641	NC	50.0%	3,419	NC	56.3%
Unemployed	297	NC	9.1%	245	NC	4.0%
Not in labor force	1,341	NC	40.9%	2,380	NC	39.2%
Male:	1,519	54	46.3%	3,007	29	49.5%
16 to 64 years:	1,237	48	37.7%	2,467	29	40.6%
In labor force:	836	115	25.5%	1,919	103	31.6%
In Armed Forces	0	20	0.0%	26	22	0.4%
Civilian:	836	115	25.5%	1,893	105	31.2%
Employed	696	112	21.2%	1,781	116	29.3%
Unemployed	140	62	4.3%	112	48	1.8%
Not in labor force	401	125	12.2%	548	103	9.0%
65 years and over:	282	13	8.6%	540	20	8.9%
In labor force:	6	11	0.2%	109	51	1.8%
Employed	6	11	0.2%	109	51	1.8%
Unemployed	0	20	0.0%	0	20	0.0%
Not in labor force	276	17	8.4%	431	51	7.1%

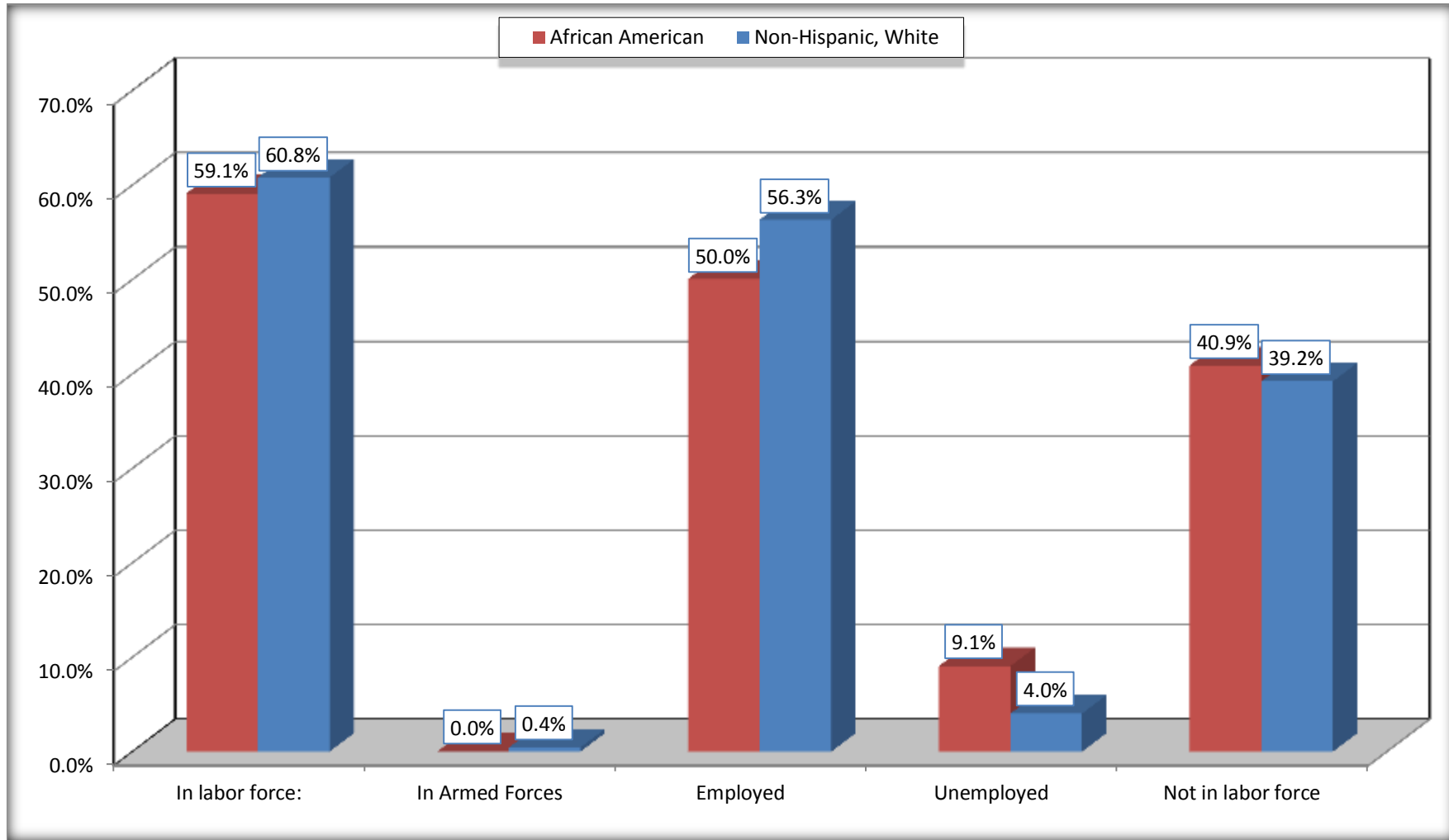
	Gates County, North Carolina					
	African American	Margin of Error (+/-)	% of AA Total	White, Not Hispanic	Margin of Error (+/-)	% of NHW Total
Female:	1,760	53	53.7%	3,063	31	50.5%
16 to 64 years:	1,382	45	42.1%	2,459	31	40.5%
In labor force:	1,040	78	31.7%	1,612	149	26.6%
In Armed Forces	0	20	0.0%	0	20	0.0%
Civilian:	1,040	78	31.7%	1,612	149	26.6%
Employed	893	99	27.2%	1,479	150	24.4%
Unemployed	147	69	4.5%	133	65	2.2%
Not in labor force	342	83	10.4%	847	147	14.0%
65 years and over:	378	21	11.5%	604	20	10.0%
In labor force:	56	38	1.7%	50	34	0.8%
Employed	46	34	1.4%	50	34	0.8%
Unemployed	10	18	0.3%	0	20	0.0%
Not in labor force	322	43	9.8%	554	34	9.1%

Source: U.S. Census Bureau, 2008-2012 American Community Survey

For information on confidentiality protection, sampling error, nonsampling error, and definitions, see Survey Methodology.
<http://www.census.gov/acs/www/UseData/index.htm>

Employment Status for the Population 16 years and over

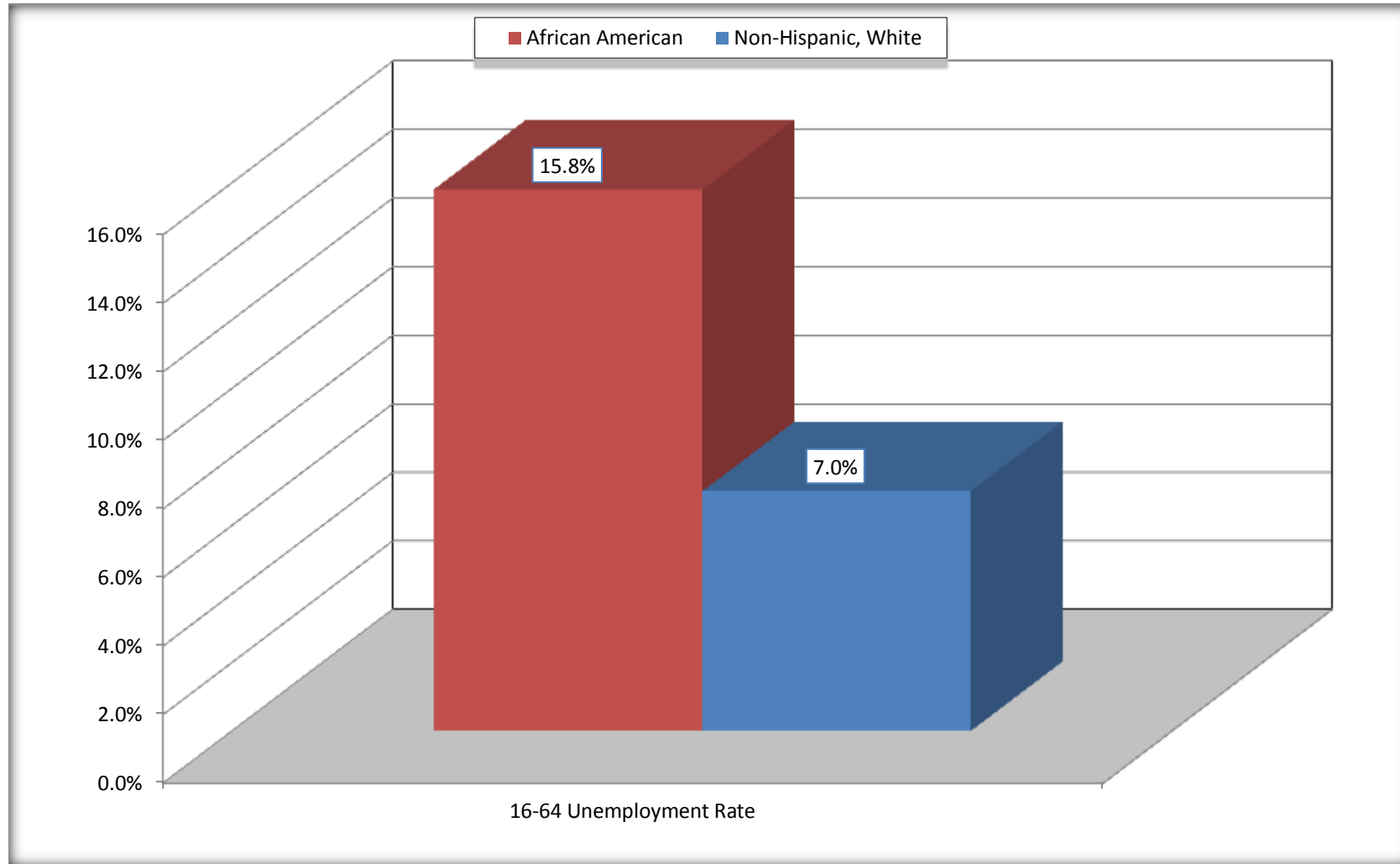
Gates County, North Carolina



Source: C23002. SEX BY AGE BY EMPLOYMENT STATUS FOR THE POPULATION 16 YEARS AND OVER
Data Set: 2008-2012 American Community Survey 5-Year Estimates

Unemployment of Working Age Population (Ages 16 to 64) (As a Percent of 16-64 Civilian Labor Force)

Gates County, North Carolina



Source: C23002. SEX BY AGE BY EMPLOYMENT STATUS FOR THE POPULATION 16 YEARS AND OVER
Data Set: 2008-2012 American Community Survey 5-Year Estimates

C24010. SEX BY OCCUPATION FOR THE CIVILIAN EMPLOYED POPULATION 16 YEARS AND OVER

Data Set: 2008-2012 American Community Survey 5-Year Estimates

	Gates County, North Carolina					
	African American	Margin of Error (+/-)	% of AA Total	White, Not Hispanic	Margin of Error (+/-)	% of NHW Total
Total:	1,641	166	100.0%	3,419	189	100.0%
Management, professional, and related occupations	470	NC	28.6%	1,029	NC	30.1%
Service occupations	368	NC	22.4%	411	NC	12.0%
Sales and office occupations	249	NC	15.2%	818	NC	23.9%
Natural resources, construction, and maintenance occupations:	262	NC	16.0%	704	NC	20.6%
Production, transportation, and material moving occupations	292	NC	17.8%	457	NC	13.4%
Male:	702	112	42.8%	1,890	120	55.3%
Management, business, science, and arts occupations:	145	82	8.8%	406	118	11.9%
Service occupations	57	38	3.5%	152	70	4.4%
Sales and office occupations	24	24	1.5%	213	75	6.2%
Natural resources, construction, and maintenance occupations:	238	89	14.5%	690	129	20.2%
Production, transportation, and material moving occupations	238	96	14.5%	429	125	12.5%
Female:	939	99	57.2%	1,529	147	44.7%
Management, professional, and related occupations	325	97	19.8%	623	142	18.2%
Service occupations	311	98	19.0%	259	89	7.6%
Sales and office occupations	225	78	13.7%	605	110	17.7%
Natural resources, construction, and maintenance occupations:	24	36	1.5%	14	17	0.4%
Production, transportation, and material moving occupations	54	38	3.3%	28	28	0.8%

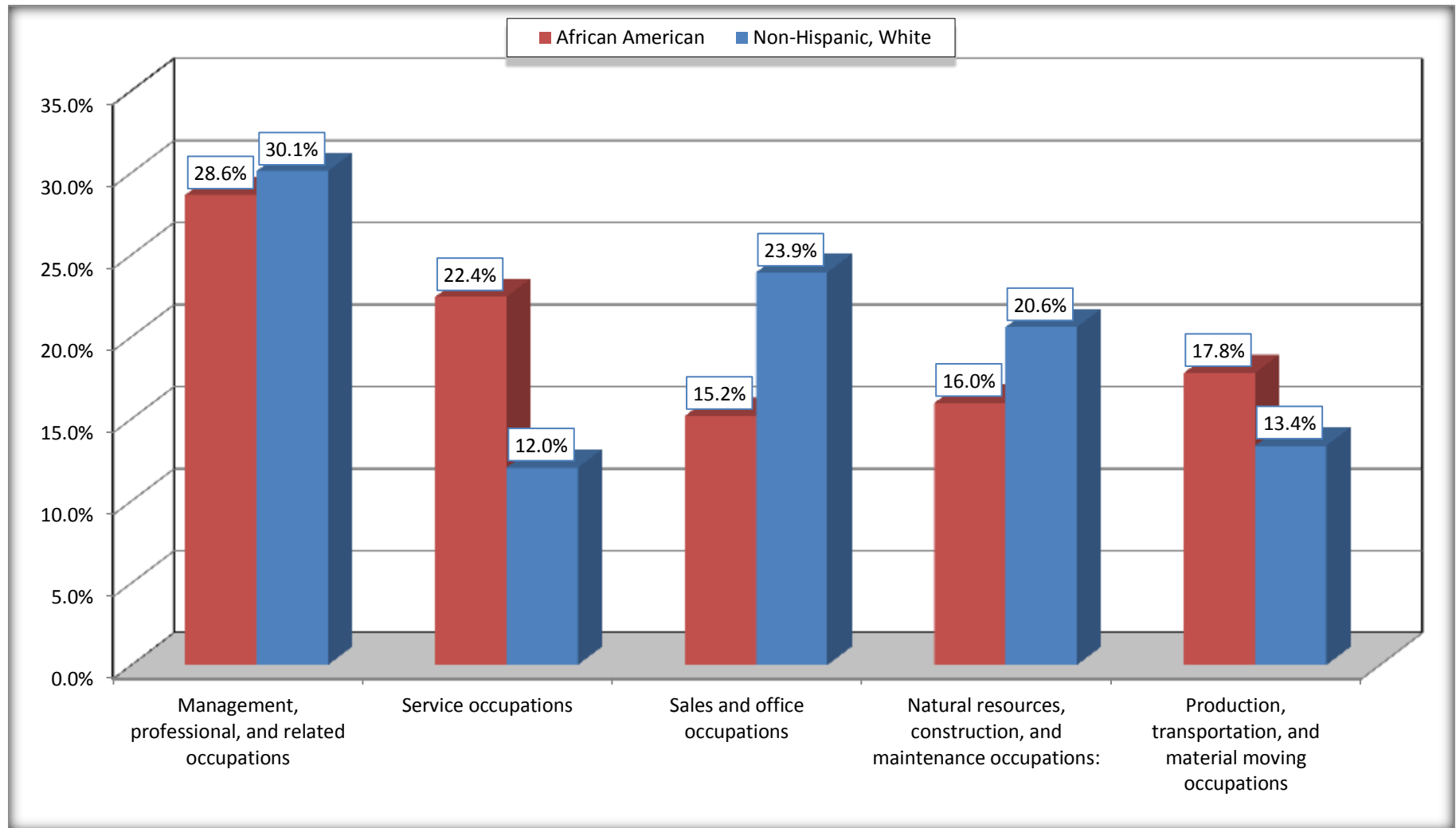
Source: U.S. Census Bureau, 2008-2012 American Community Survey

For information on confidentiality protection, sampling error, nonsampling error, and definitions, see Survey Methodology.

<http://www.census.gov/acs/www/UseData/index.htm>

Occupation for the Civilian Employed 16 Years and Over Population

Gates County, North Carolina



Source: C24010. SEX BY OCCUPATION FOR THE CIVILIAN EMPLOYED POPULATION 16 YEARS AND OVER
Data Set: 2008-2012 American Community Survey 5-Year Estimates

B25003. TENURE - Universe: OCCUPIED HOUSING UNITS

Data Set: 2008-2012 American Community Survey 5-Year Estimates

	Gates County, North Carolina					
	African American	Margin of Error (+/-)	% of AA Total	White, Not Hispanic	Margin of Error (+/-)	% of NHW Total
Total:	1,451	145	100.0%	2,897	128	100.0%
Owner occupied	1,132	126	78.0%	2,424	133	83.7%
Renter occupied	319	112	22.0%	473	118	16.3%

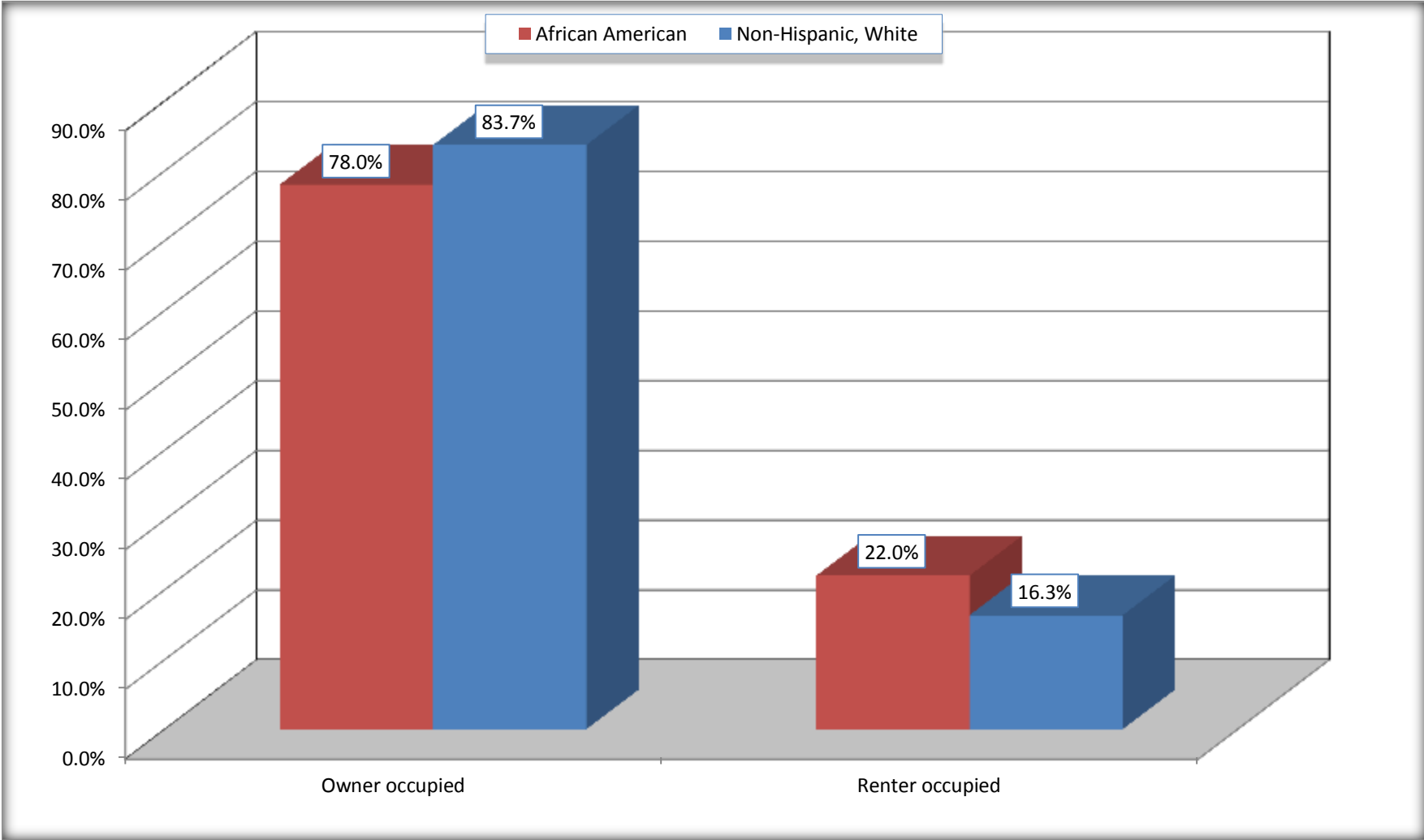
Source: U.S. Census Bureau, 2008-2012 American Community Survey

For information on confidentiality protection, sampling error, nonsampling error, and definitions, see Survey Methodology.

<http://www.census.gov/acs/www/UseData/index.h>

Home Owners and Renters by Household

Gates County, North Carolina



Source: B25003. TENURE - Universe: OCCUPIED HOUSING UNITS
Data Set: 2008-2012 American Community Survey 5-Year Estimates

B25014. OCCUPANTS PER ROOM - Universe: OCCUPIED HOUSING UNITS

Data Set: 2008-2012 American Community Survey 5-Year Estimates

	Gates County, North Carolina					
	African American	Margin of Error (+/-)	% of AA Total	White, Not Hispanic	Margin of Error (+/-)	% of NHW Total
Total:	1,451	145	100.0%	2,897	128	100.0%
1.00 or less occupants per room	1,389	138	95.7%	2,887	133	99.7%
1.01 or more occupants per room	62	38	4.3%	10	18	0.3%

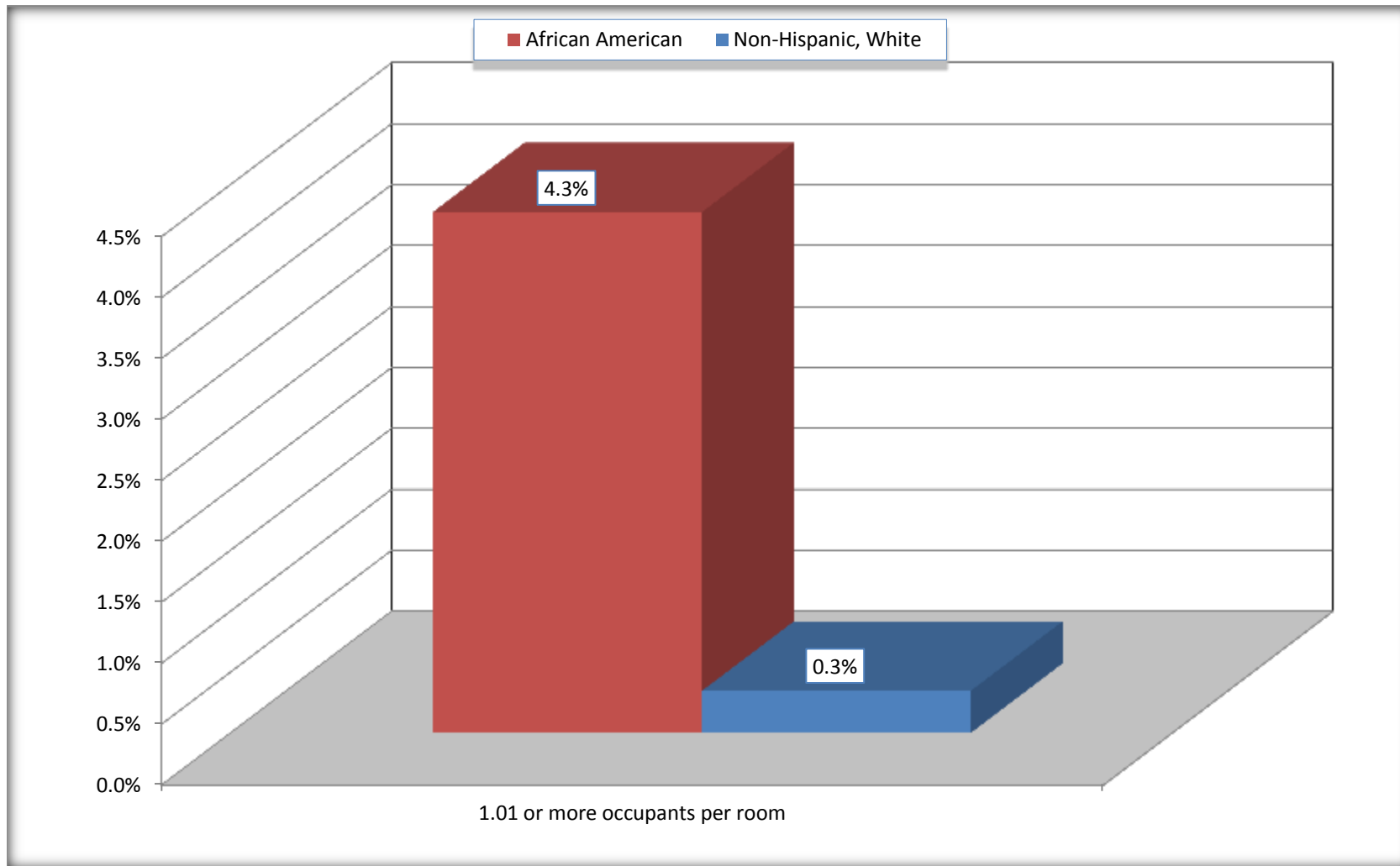
Source: U.S. Census Bureau, 2008-2012 American Community Survey

For information on confidentiality protection, sampling error, nonsampling error, and definitions, see Survey Methodology.

<http://www.census.gov/acs/www/UseData/index.ht>

More than One Person per Room (Crowding) by Household

Gates County, North Carolina



Source: B25014. OCCUPANTS PER ROOM - Universe: OCCUPIED HOUSING UNITS
Data Set: 2008-2012 American Community Survey 5-Year Estimates

B18101. AGE BY DISABILITY STATUS

Data Set: 2008-2012 American Community Survey 5-Year Estimates

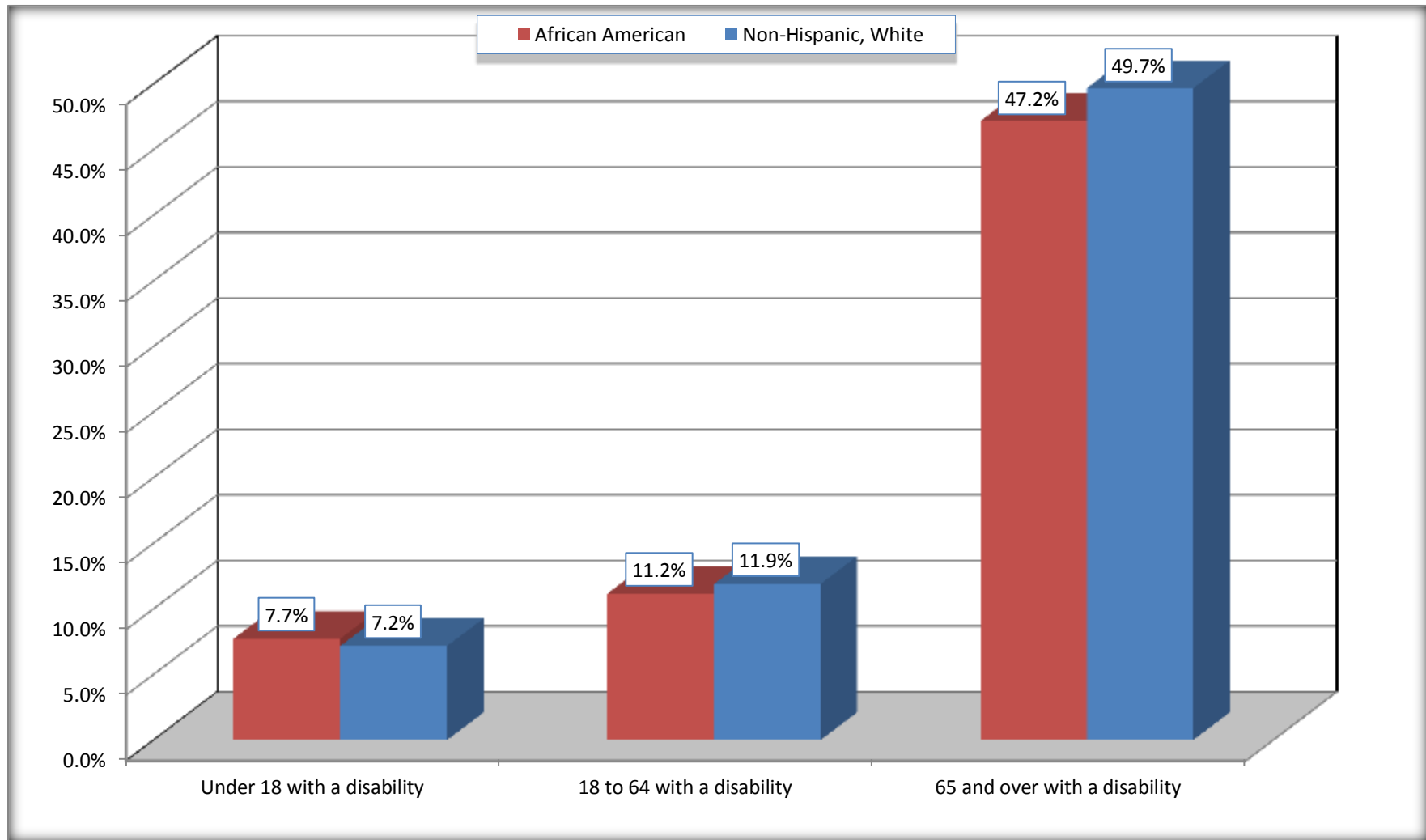
	Gates County, North Carolina					
	African American	Margin of Error (+/-)	% of AA Total	White, Not Hispanic	Margin of Error (+/-)	% of NHW Total
Total:	4,081	131	100.0%	7,494	41	100.0%
Under 18 years:	970	55	23.8%	1,730	68	23.1%
With a disability	75	50	1.8%	124	72	1.7%
No disability	895	75	21.9%	1,606	72	21.4%
18 to 64 years:	2,456	78	60.2%	4,659	26	62.2%
With a disability	274	88	6.7%	554	129	7.4%
No disability	2,182	114	53.5%	4,105	128	54.8%
65 years and over:	655	33	16.0%	1,105	33	14.7%
With a disability	309	70	7.6%	549	91	7.3%
No disability	346	78	8.5%	556	90	7.4%

Source: U.S. Census Bureau, 2008-2012 American Community Survey

For information on confidentiality protection, sampling error, nonsampling error, and definitions, see Survey Methodology.

<http://www.census.gov/acs/www/UseData/index.htm>

Disability by Age Gates County, North Carolina



Source: B18101. AGE BY DISABILITY STATUS
Data Set: 2008-2012 American Community Survey 5-Year Estimates

C27001B. HEALTH INSURANCE COVERAGE STATUS BY AGE

Data Set: 2008-2012 American Community Survey 5-Year Estimates

	Gates County, North Carolina					
	African American	Margin of Error (+/-)	% of AA Total	White, Not Hispanic	Margin of Error (+/-)	% of NHW Total
Total:	4,081	131	100.0%	7,494	41	100.0%
Under 18 years:	970	55	23.8%	1,730	20	23.1%
With health insurance coverage	970	55	23.8%	1,712	19	22.8%
No health insurance coverage	0	20	0.0%	18	19	0.2%
18 to 64 years:	2,456	78	60.2%	4,659	26	62.2%
With health insurance coverage	1,972	159	48.3%	3,925	226	52.4%
No health insurance coverage	484	152	11.9%	734	219	9.8%
65 years and over:	655	33	16.0%	1,105	33	14.7%
With health insurance coverage	655	33	16.0%	1,105	33	14.7%
No health insurance coverage	0	20	0.0%	0	20	0.0%

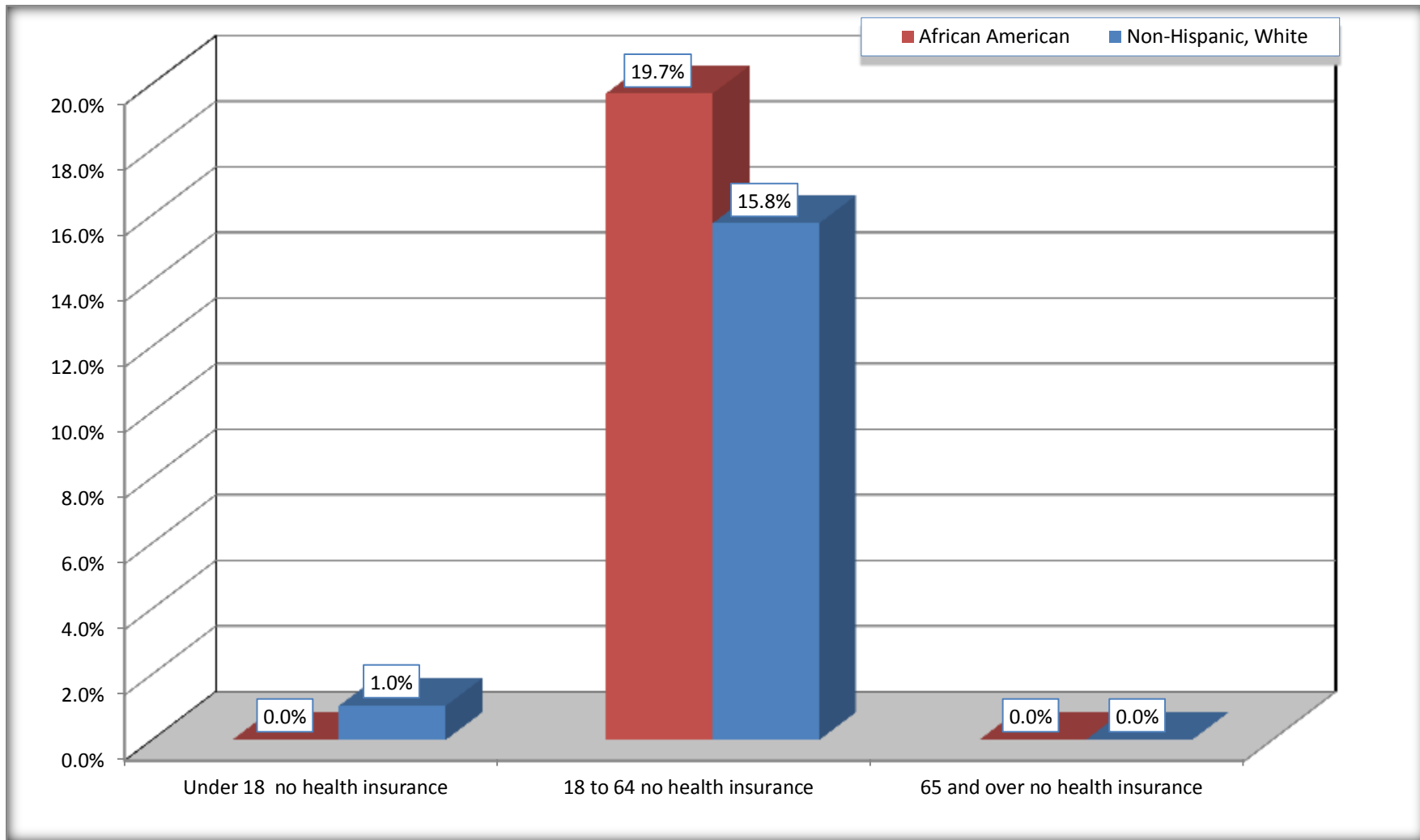
Source: U.S. Census Bureau, 2008-2012 American Community Survey

For information on confidentiality protection, sampling error, nonsampling error, and definitions, see Survey Methodology.

<http://www.census.gov/acs/www/UseData/index.htm>

Lack of Health Insurance Coverage by Age

Gates County, North Carolina



Source: C27001B. HEALTH INSURANCE COVERAGE STATUS BY AGE
Data Set: 2008-2012 American Community Survey 5-Year Estimates