

Selected Socio-Economic Data

Forest City town, North Carolina

African American and White, Not Hispanic

Data Set: 2008-2012 American Community Survey 5-Year Estimates

www.fairvote2020.org

www.fairdata2000.com

[29-Dec-13](#)

C02003.DETAILED RACE - Universe: TOTAL POPULATION
 Data Set: 2008-2012 American Community Survey 5-Year Estimates

	Forest City town, North Carolina		
	Population	Margin of Error (+/-)	% of Total
Total:	7,480	72	100.0%
Population of one race:	7,258	140	97.0%
White	5,044	361	67.4%
Black or African American	1,974	332	26.4%
American Indian and Alaska Native	95	78	1.3%
Asian alone	10	16	0.1%
Native Hawaiian and Other Pacific Islander	0	18	0.0%
Some other race	135	125	1.8%
Population of two or more races:	222	130	3.0%
Two races including Some other race	38	41	0.5%
Two races excluding Some other race, and three or more races	184	122	2.5%
Population of two races:	222	130	3.0%
White; Black or African American	92	91	1.2%
White; American Indian and Alaska Native	68	75	0.9%
White; Asian	24	36	0.3%
Black or African American; American Indian and Alaska Native	0	18	0.0%
All other two race combinations	38	41	0.5%
Population of three races	0	18	0.0%
Population of four or more races	0	18	0.0%

Note: Hispanics may be of any race. See Table B03002 and chart.

Source: U.S. Census Bureau, 2008-2012 American Community Survey

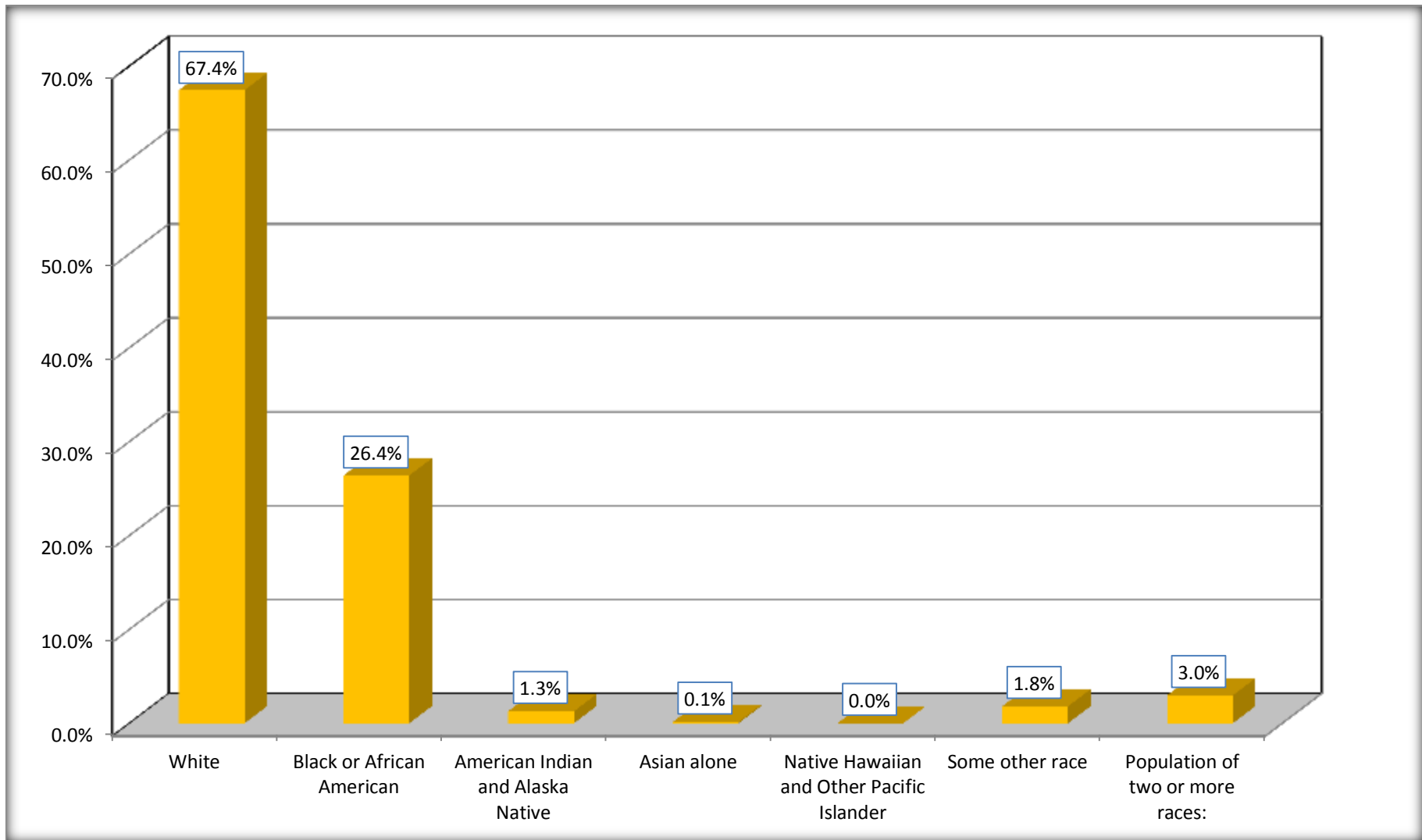
Although the American Community Survey (ACS) produces population, demographic and housing unit estimates, it is the Census Bureau's Population Estimates Program that produces and disseminates the official estimates of the population for the nation, states, counties, cities and towns and estimates of housing units for states and counties.

For information on confidentiality protection, sampling error, nonsampling error, and definitions, see Survey Methodology.

<http://www.census.gov/acs/www/UseData/index.htm>

Population by Race

Forest City town, North Carolina



Source: C02003.DETAILED RACE - Universe: TOTAL POPULATION
Data Set: 2008-2012 American Community Survey 5-Year Estimates

B03002. HISPANIC OR LATINO ORIGIN BY RACE - Universe: TOTAL POPULATION

Data Set: 2008-2012 American Community Survey 5-Year Estimates

	Forest City town, North Carolina		
	Population	Margin of Error (+/-)	% of Total
Total:	7,480	72	100.0%
Not Hispanic or Latino:	6,960	316	93.0%
White alone	4,793	416	64.1%
Black or African American alone	1,913	331	25.6%
American Indian and Alaska Native alone	95	78	1.3%
Asian alone	10	16	0.1%
Native Hawaiian and Other Pacific Islander alone	0	18	0.0%
Some other race alone	6	15	0.1%
Two or more races:	143	96	1.9%
Two races including Some other race	8	14	0.1%
Two races excluding Some other race, and three or more races	135	93	1.8%
Hispanic or Latino	520	298	7.0%

Source: U.S. Census Bureau, 2008-2012 American Community Survey

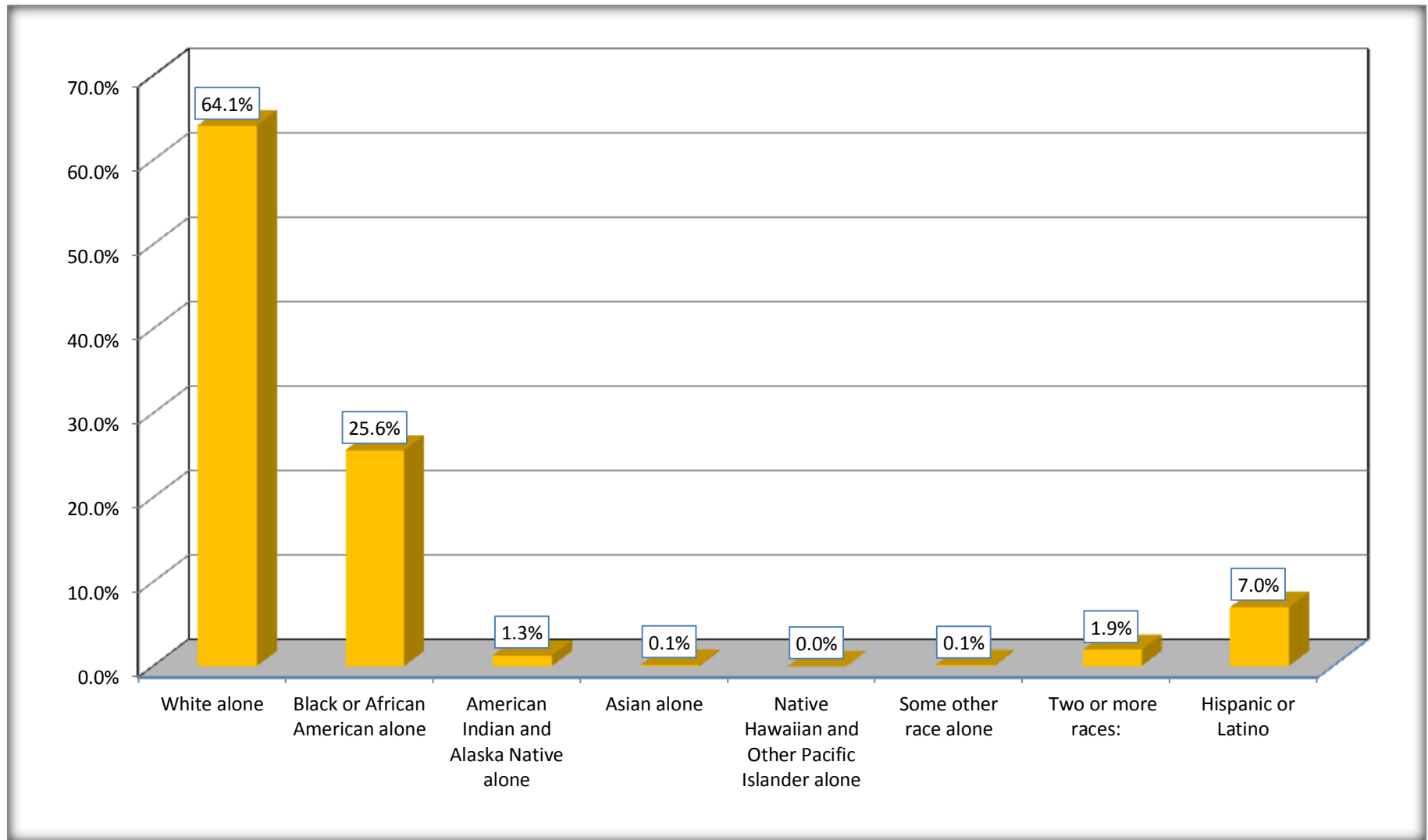
Although the American Community Survey (ACS) produces population, demographic and housing unit estimates, it is the Census Bureau's Population Estimates Program that produces and disseminates the official estimates of the population for the nation, states, counties, cities and towns and estimates of housing units for states and counties.

For information on confidentiality protection, sampling error, nonsampling error, and definitions, see Survey Methodology.

<http://www.census.gov/acs/www/UseData/index.htm>

Non-Hispanic by Race and Hispanic Population

Forest City town, North Carolina



Source: B03002. HISPANIC OR LATINO ORIGIN BY RACE - Universe: TOTAL POPULATION
Data Set: 2008-2012 American Community Survey 5-Year Estimates

B03002. HISPANIC OR LATINO ORIGIN BY RACE

Data Set: 2008-2012 American Community Survey 5-Year Estimates

	Forest City town, North Carolina		
	Population	Margin of Error (+/-)	% of Total
Hispanic or Latino:	520	298	100.0%
White alone	251	180	48.3%
Black or African American alone	61	94	11.7%
American Indian and Alaska Native alone	0	18	0.0%
Asian alone	0	18	0.0%
Native Hawaiian and Other Pacific Islander alone	0	18	0.0%
Some other race alone	129	127	24.8%
Two or more races:	79	86	15.2%
Two races including Some other race	30	39	5.8%
Two races excluding Some other race, and three or more races	49	78	9.4%

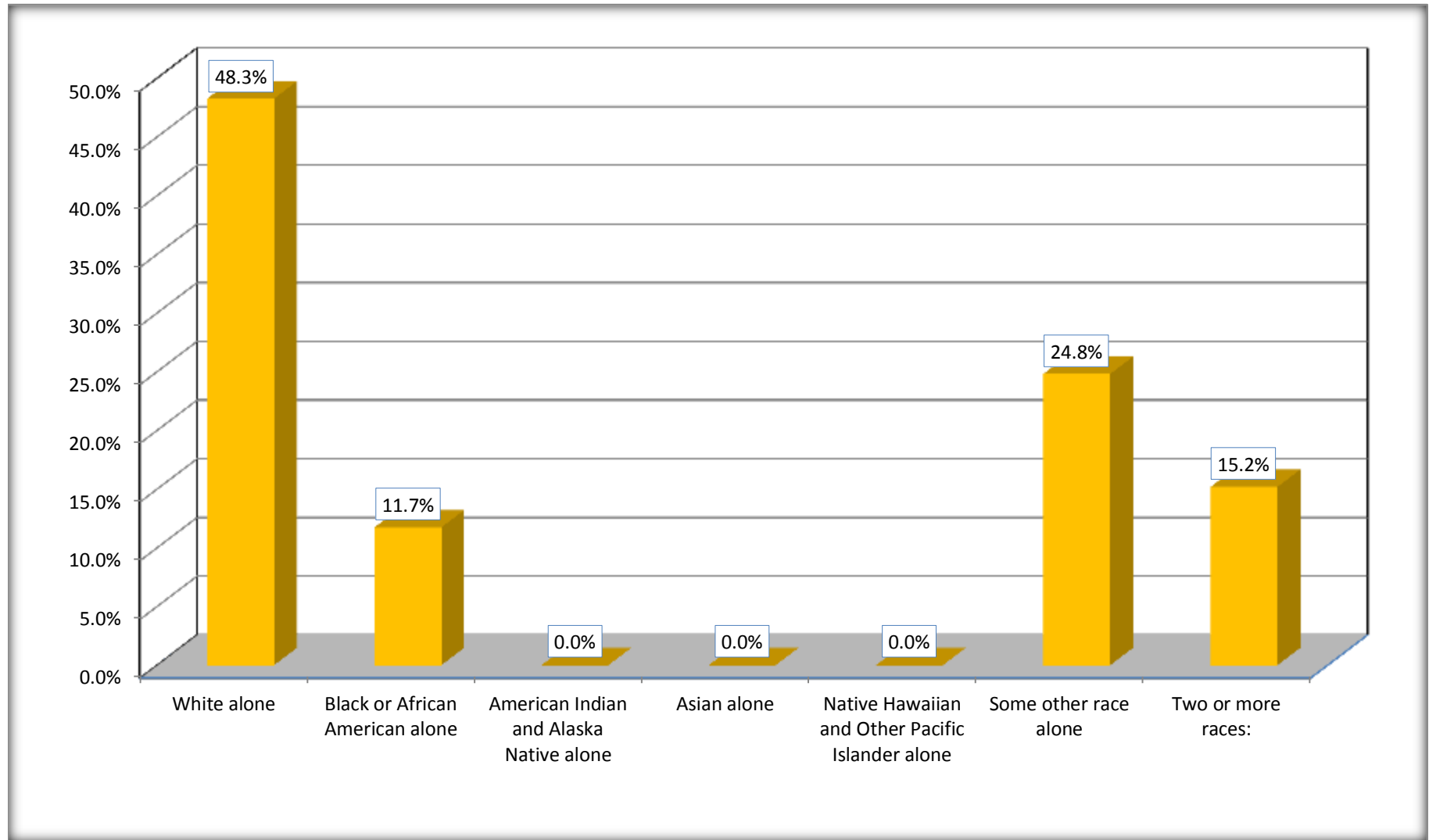
Source: U.S. Census Bureau, 2008-2012 American Community Survey

Although the American Community Survey (ACS) produces population, demographic and housing unit estimates, it is the Census Bureau's Population Estimates Program that produces and disseminates the official estimates of the population for the nation, states, counties, cities and towns and estimates of housing units for states and counties.

For information on confidentiality protection, sampling error, nonsampling error, and definitions, see Survey Methodology.

<http://www.census.gov/acs/www/UseData/index.htm>

Hispanic or Latino Origin by Race Forest City town, North Carolina



Source: B03002. HISPANIC OR LATINO ORIGIN BY RACE
Data Set: 2008-2012 American Community Survey 5-Year Estimates

B01001. SEX BY AGE

Data Set: 2008-2012 American Community Survey 5-Year Estimates

	Forest City town, North Carolina					
	African American	Margin of Error (+/-)	% of AA Total	White, Not Hispanic	Margin of Error (+/-)	% of NHW Total
Total:	1,974	332	100.0%	4,793	416	100.0%
Under 18 years	636	NC	32.2%	852	NC	17.8%
18 to 64 years	1,099	NC	55.7%	2,628	NC	54.8%
65 years and over	239	NC	12.1%	1,313	NC	27.4%
Male:	758	186	38.4%	1,851	389	38.6%
Under 18 years	246	NC	12.5%	265	NC	5.5%
18 to 64 years	429	NC	21.7%	1,225	NC	25.6%
65 years and over	83	NC	4.2%	361	NC	7.5%
Female:	1,216	234	61.6%	2,942	412	61.4%
Under 18 years	390	NC	19.8%	587	NC	12.2%
18 to 64 years	670	NC	33.9%	1,403	NC	29.3%
65 years and over	156	NC	7.9%	952	NC	19.9%

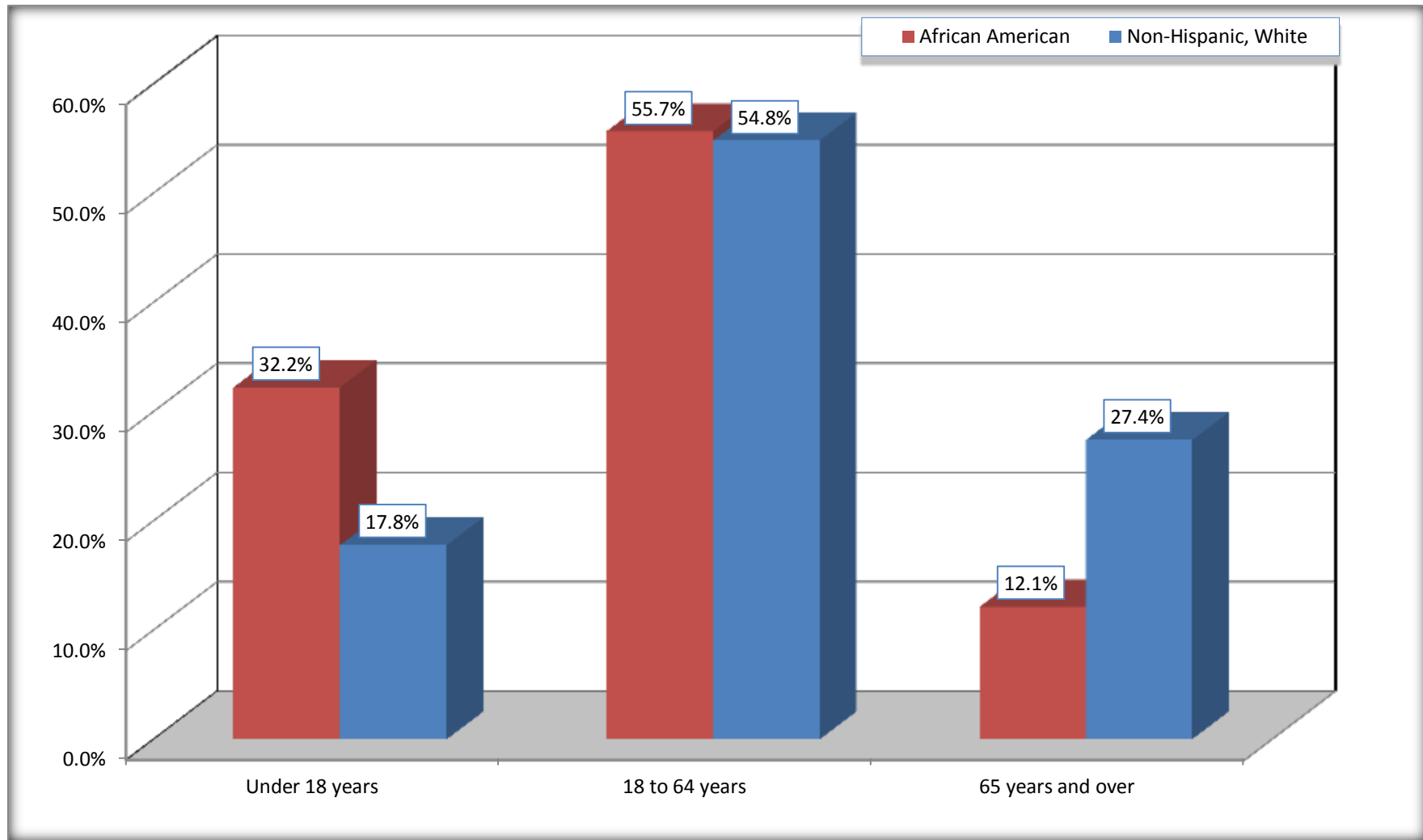
Source: U.S. Census Bureau, 2008-2012 American Community Survey

Although the American Community Survey (ACS) produces population, demographic and housing unit estimates, it is the Census Bureau's Population Estimates Program that produces and disseminates the official estimates of the population for the nation, states, counties, cities and towns and estimates of housing units for states and counties.

For information on confidentiality protection, sampling error, nonsampling error, and definitions, see Survey Methodology.
<http://www.census.gov/acs/www/UseData/index.htm>

Population by Age

Forest City town, North Carolina



Source: B01001. SEX BY AGE
Data Set: 2008-2012 American Community Survey 5-Year Estimates

B05003. SEX BY AGE BY CITIZENSHIP STATUS

Data Set: 2008-2012 American Community Survey 5-Year Estimates

	Forest City town, North Carolina					
	African American	Margin of Error (+/-)	% of AA Total by Age	White, Not Hispanic	Margin of Error (+/-)	% of NHW Total by Age
Total:	1,974	332	100.0%	4,793	416	100.0%
Under 18 years:	636	NC	100.0%	852	NC	100.0%
Native	636	NC	100.0%	852	NC	100.0%
Foreign born:	0	NC	0.0%	0	NC	0.0%
Naturalized U.S. citizen	0	NC	0.0%	0	NC	0.0%
Not a U.S. citizen	0	NC	0.0%	0	NC	0.0%
18 years and over:	1,338	NC	100.0%	3,941	NC	100.0%
Native	1,338	NC	100.0%	3,928	NC	99.7%
Foreign born:	0	NC	0.0%	13	NC	0.3%
Naturalized U.S. citizen	0	NC	0.0%	12	NC	0.3%
Not a U.S. citizen	0	NC	0.0%	1	NC	0.0%
Male:	758	186	38.4%	1,851	235	38.6%
Under 18 years:	246	110	100.0%	265	103	100.0%
Native	246	110	100.0%	265	103	100.0%
Foreign born:	0	18	0.0%	0	18	0.0%
Naturalized U.S. citizen	0	18	0.0%	0	18	0.0%
Not a U.S. citizen	0	18	0.0%	0	18	0.0%
18 years and over:	512	158	100.0%	1,586	218	100.0%
Native	512	158	100.0%	1,574	218	99.2%
Foreign born:	0	18	0.0%	12	19	0.8%
Naturalized U.S. citizen	0	18	0.0%	12	19	0.8%
Not a U.S. citizen	0	18	0.0%	0	18	0.0%

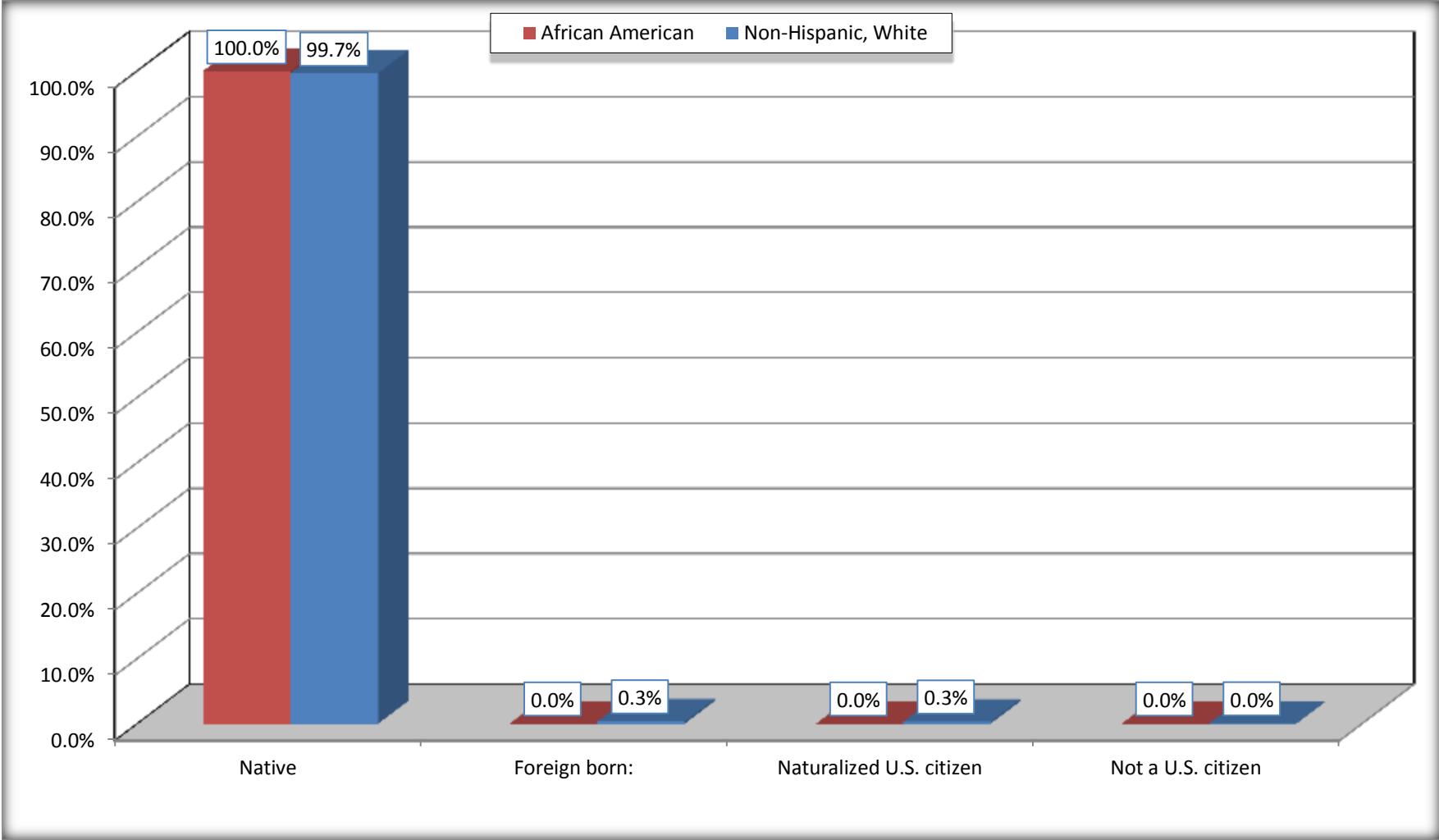
	Forest City town, North Carolina					
	African American	Margin of Error (+/-)	% of AA by Age	White, Not Hispanic	Margin of Error (+/-)	% of NHW by Age
Female:	1,216	234	61.6%	2,942	312	61.4%
Under 18 years:	390	129	100.0%	587	188	100.0%
Native	390	129	100.0%	587	188	100.0%
Foreign born:	0	18	0.0%	0	18	0.0%
Naturalized U.S. citizen	0	18	0.0%	0	18	0.0%
Not a U.S. citizen	0	18	0.0%	0	18	0.0%
18 years and over:	826	168	100.0%	2,355	257	100.0%
Native	826	168	100.0%	2,354	257	100.0%
Foreign born:	0	18	0.0%	1	5	0.0%
Naturalized U.S. citizen	0	18	0.0%	0	18	0.0%
Not a U.S. citizen	0	18	0.0%	1	5	0.0%

Source: U.S. Census Bureau, 2008-2012 American Community Survey

For information on confidentiality protection, sampling error, nonsampling error, and definitions, see Survey Methodology.
<http://www.census.gov/acs/www/UseData/index.htm>

Citizenship Status of Voting Age Population (18 and Over)

Forest City town, North Carolina



Source: B05003. SEX BY AGE BY CITIZENSHIP STATUS
Data Set: 2008-2012 American Community Survey 5-Year Estimates

**B07004. GEOGRAPHICAL MOBILITY IN THE PAST YEAR BY RACE FOR CURRENT RESIDENCE IN THE UNITED STATES - Universe:
POPULATION 1 YEAR AND OVER**

Data Set: 2008-2012 American Community Survey 5-Year Estimates

	Forest City town, North Carolina					
	African American	Margin of Error (+/-)	% of AA Total	White, Not Hispanic	Margin of Error (+/-)	% of NHW Total
Total:	1,951	329	100.0%	4,755	407	100.0%
Same house 1 year ago	1,550	278	79.4%	4,098	510	86.2%
Moved within same county	380	217	19.5%	533	301	11.2%
Moved from different county within same state	1	2	0.1%	124	80	2.6%
Moved from different state	20	31	1.0%	0	18	0.0%
Moved from abroad	0	18	0.0%	0	18	0.0%

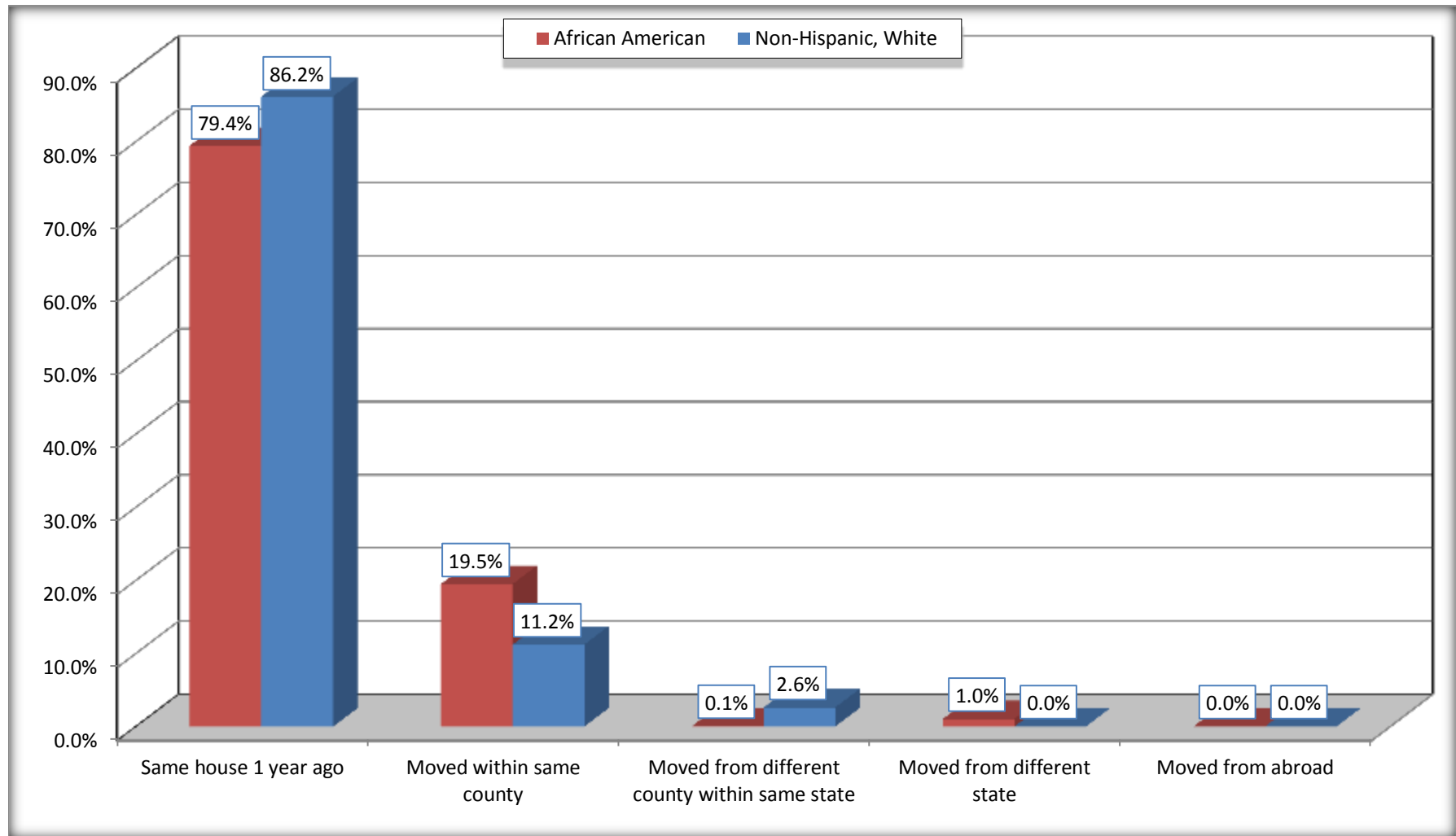
Source: U.S. Census Bureau, 2008-2012 American Community Survey

For information on confidentiality protection, sampling error, nonsampling error, and definitions, see Survey Methodology.

<http://www.census.gov/acs/www/UseData/index.htm>

Geographical Mobility in the Past Year (Population 1 Year and Over)

Forest City town, North Carolina



Source: B07004. GEOGRAPHICAL MOBILITY IN THE PAST YEAR BY RACE FOR CURRENT RESIDENCE IN THE UNITED STATES - Universe: POPULATION 1 YEAR AND OVER

Data Set: 2008-2012 American Community Survey 5-Year Estimates

B08105. MEANS OF TRANSPORTATION TO WORK - Universe: WORKERS 16 YEARS AND OVER

Data Set: 2008-2012 American Community Survey 5-Year Estimates

	Forest City town, North Carolina					
	African American	Margin of Error (+/-)	% of AA Total	White, Not Hispanic	Margin of Error (+/-)	% of NHW Total
Total:	483	170	100.0%	1739	320	100.0%
Car, truck, or van - drove alone	403	161	83.4%	1504	300	86.5%
Car, truck, or van - carpooled	60	80	12.4%	190	209	10.9%
Public transportation (excluding taxicab)	0	18	0.0%	12	19	0.7%
Walked	4	12	0.8%	0	18	0.0%
Taxicab, motorcycle, bicycle, or other means	16	21	3.3%	0	18	0.0%
Worked at home	0	18	0.0%	33	29	1.9%

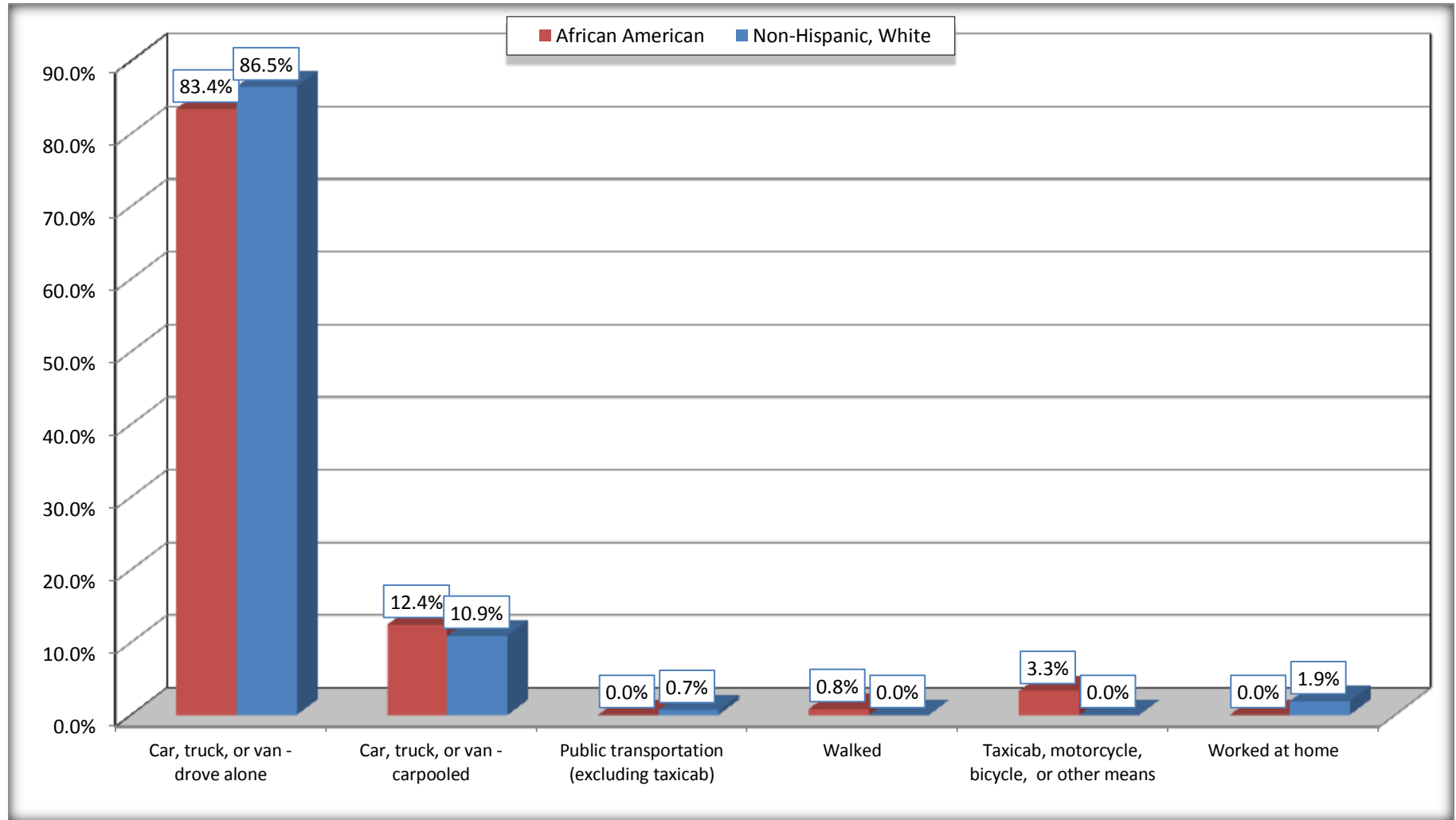
Source: U.S. Census Bureau, 2008-2012 American Community Survey

For information on confidentiality protection, sampling error, nonsampling error, and definitions, see Survey Methodology.

<http://www.census.gov/acs/www/UseData/index.htm>

Means of Transportation to Work (Workers 16 Years and Over)

Forest City town, North Carolina



Source: B08105. MEANS OF TRANSPORTATION TO WORK - Universe: WORKERS 16 YEARS AND OVER
Data Set: 2008-2012 American Community Survey 5-Year Estimates

B11002. HOUSEHOLD TYPE BY RELATIVES AND NONRELATIVES FOR POPULATION IN HOUSEHOLDS

Data Set: 2008-2012 American Community Survey 5-Year Estimates

	Forest City town, North Carolina					
	African American	Margin of Error (+/-)	% of AA Total	White, Not Hispanic	Margin of Error (+/-)	% of NHW Total
Total:	1945	340	100.0%	4728	427	100.0%
In family households	1641	370	84.4%	3555	486	75.2%
In nonfamily households	304	167	15.6%	1173	279	24.8%

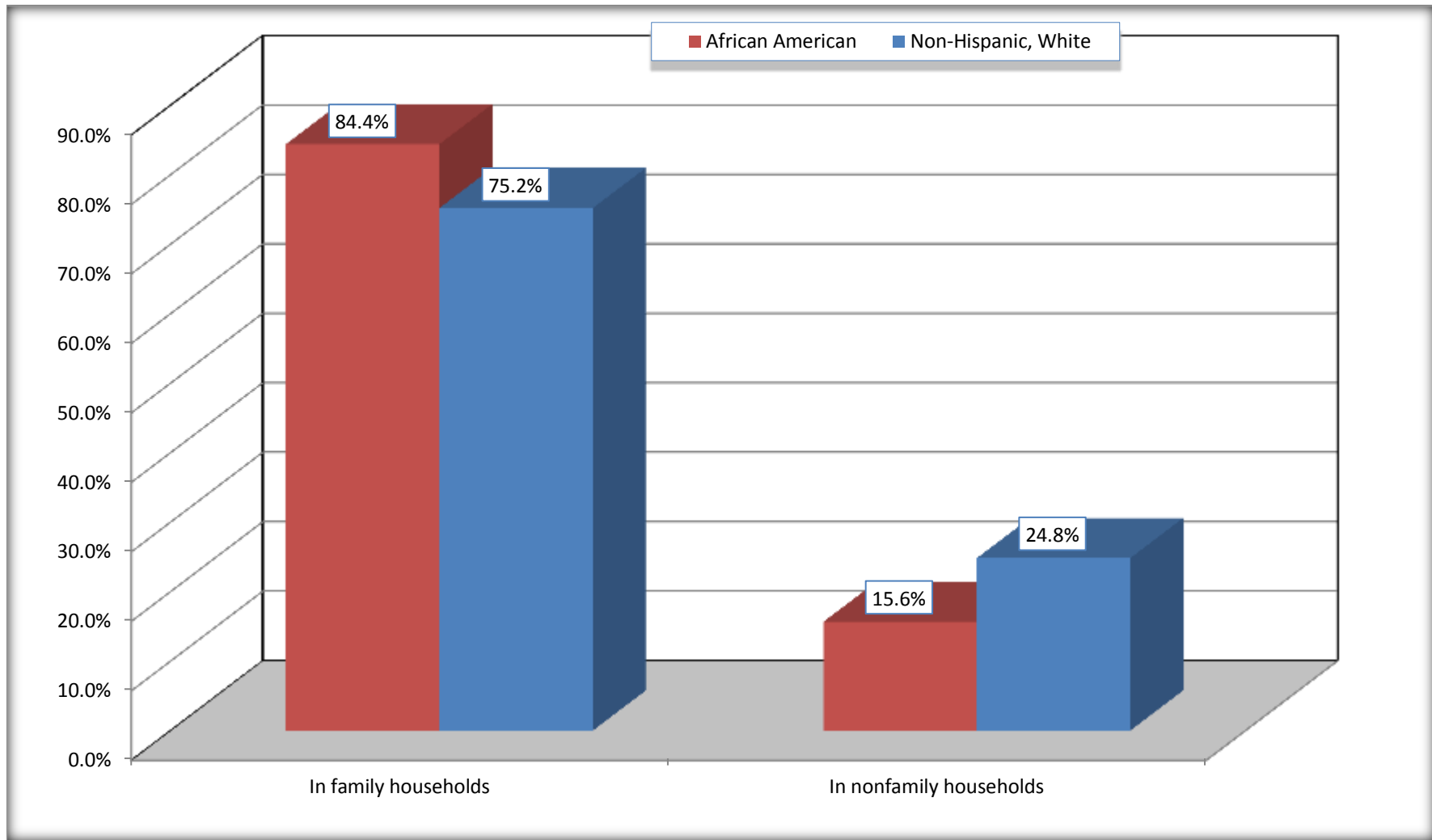
Source: U.S. Census Bureau, 2008-2012 American Community Survey

For information on confidentiality protection, sampling error, nonsampling error, and definitions, see Survey Methodology.

<http://www.census.gov/acs/www/UseData/index.htm>

Household Type for Population in Households

Forest City town, North Carolina



Source: B11002. HOUSEHOLD TYPE BY RELATIVES AND NONRELATIVES FOR POPULATION IN HOUSEHOLDS
Data Set: 2008-2012 American Community Survey 5-Year Estimates

B12002. MARITAL STATUS FOR THE POPULATION 15 YEARS AND OVER

Data Set: 2008-2012 American Community Survey 5-Year Estimates

	Forest City town, North Carolina					
	African American	Margin of Error (+/-)	% of AA Total	White, Not Hispanic	Margin of Error (+/-)	% of NHW Total
Total:	1,508	273	100.0%	4,130	374	100.0%
Never married	579	NC	38.4%	881	NC	21.3%
Now married (except separated)	569	NC	37.7%	1,901	NC	46.0%
Separated	57	NC	3.8%	201	NC	4.9%
Widowed	87	NC	5.8%	706	NC	17.1%
Divorced	216	NC	14.3%	441	NC	10.7%
Male:	548	178	36.3%	1,646	224	39.9%
Never married	214	123	14.2%	410	146	9.9%
Now married (except separated)	312	125	20.7%	961	178	23.3%
Separated	22	30	1.5%	57	50	1.4%
Widowed	0	18	0.0%	98	75	2.4%
Divorced	0	18	0.0%	120	71	2.9%
Female:	960	183	63.7%	2,484	277	60.1%
Never married	365	130	24.2%	471	159	11.4%
Now married (except separated)	257	97	17.0%	940	177	22.8%
Separated	35	40	2.3%	144	103	3.5%
Widowed	87	74	5.8%	608	180	14.7%
Divorced	216	128	14.3%	321	143	7.8%

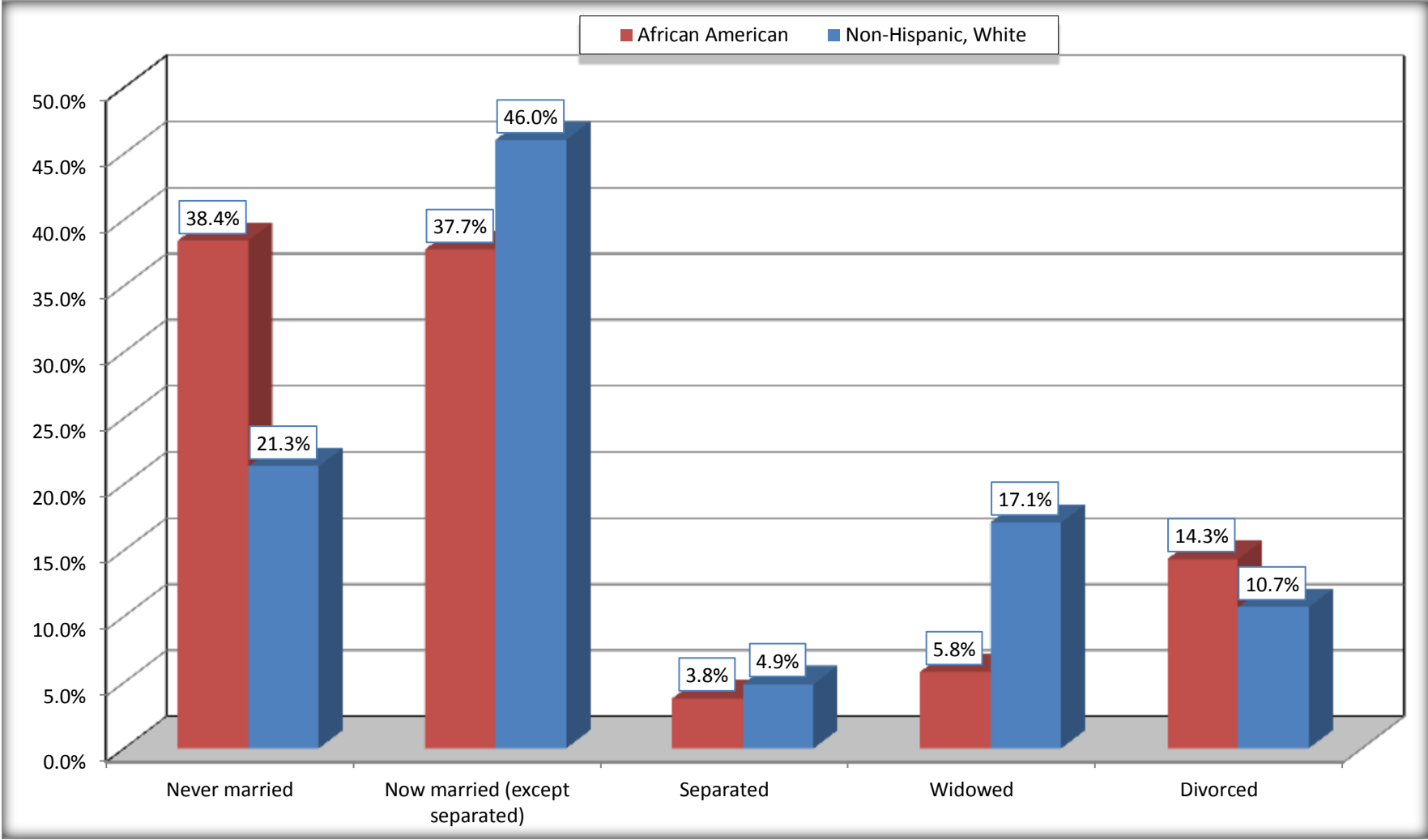
Source: U.S. Census Bureau, 2008-2012 American Community Survey

For information on confidentiality protection, sampling error, nonsampling error, and definitions, see Survey Methodology.

<http://www.census.gov/acs/www/UseData/index.htm>

Marital Status for the Population 15 Years and Over

Forest City town, North Carolina



Source: B12002. MARITAL STATUS FOR THE POPULATION 15 YEARS AND OVER
Data Set: 2008-2012 American Community Survey 5-Year Estimates

C15002. SEX BY EDUCATIONAL ATTAINMENT FOR THE POPULATION 25 YEARS AND OVER

Data Set: 2008-2012 American Community Survey 5-Year Estimates

	Forest City town, North Carolina					
	African American	Margin of Error (+/-)	% of AA Total	White, Not Hispanic	Margin of Error (+/-)	% of NHW Total
Total:	1,157	216	100.0%	3,581	356	100.0%
Less than high school diploma	447	NC	38.6%	939	NC	26.2%
High school graduate, GED, or alternative	284	NC	24.5%	819	NC	22.9%
Some college or associate's degree	425	NC	36.7%	1,137	NC	31.8%
Bachelor's degree or higher	1	NC	0.1%	686	NC	19.2%
Male:	450	150	38.9%	1,480	200	41.3%
Less than high school diploma	141	78	12.2%	414	149	11.6%
High school graduate, GED, or alternative	172	118	14.9%	271	107	7.6%
Some college or associate's degree	136	85	11.8%	464	174	13.0%
Bachelor's degree or higher	1	2	0.1%	331	121	9.2%
Female:	707	140	61.1%	2,101	265	58.7%
Less than high school diploma	306	127	26.4%	525	168	14.7%
High school graduate, GED, or alternative	112	60	9.7%	548	136	15.3%
Some college or associate's degree	289	142	25.0%	673	198	18.8%
Bachelor's degree or higher	0	18	0.0%	355	120	9.9%

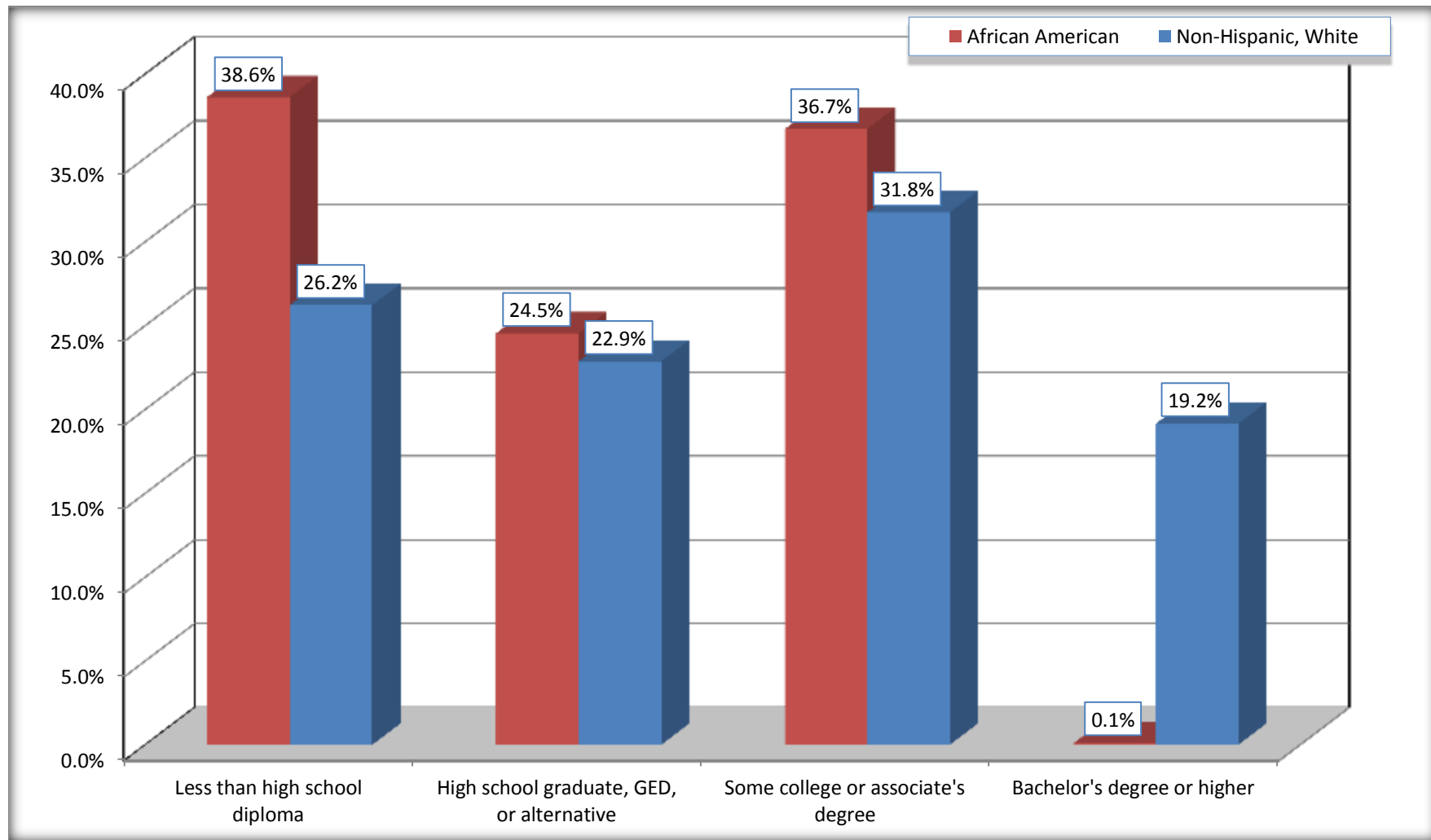
Source: U.S. Census Bureau, 2008-2012 American Community Survey

For information on confidentiality protection, sampling error, nonsampling error, and definitions, see Survey Methodology.

<http://www.census.gov/acs/www/UseData/index.htm>

Educational Attainment for the Population 25 Years and Older

Forest City town, North Carolina



Source: C15002. SEX BY EDUCATIONAL ATTAINMENT FOR THE POPULATION 25 YEARS AND OVER
Data Set: 2008-2012 American Community Survey 5-Year Estimates

B17010. POVERTY STATUS IN THE PAST 12 MONTHS OF FAMILIES BY FAMILY TYPE BY PRESENCE OF RELATED CHILDREN UNDER 18 YEARS

Data Set: 2008-2012 American Community Survey 5-Year Estimates

	Forest City town, North Carolina					
	African American	Margin of Error (+/-)	% of AA Total	White, Not Hispanic	Margin of Error (+/-)	% of NHW Total
Total:	563	158	100.0%	1,246	192	100.0%
Income in the past 12 months below poverty level:	227	140	40.3%	304	126	24.4%
Married-couple family:	34	48	6.0%	177	87	14.2%
With related children under 18 years	34	48	6.0%	134	77	10.8%
Other family:	193	129	34.3%	127	89	10.2%
Male householder, no wife present	22	27	3.9%	18	30	1.4%
With related children under 18 years	22	27	3.9%	0	18	0.0%
Female householder, no husband present	171	131	30.4%	109	82	8.7%
With related children under 18 years	121	108	21.5%	96	78	7.7%
Income in the past 12 months at or above poverty level:	336	92	59.7%	942	198	75.6%
Married-couple family:	239	94	42.5%	743	174	59.6%
With related children under 18 years	39	43	6.9%	187	85	15.0%
Other family:	97	47	17.2%	199	105	16.0%
Male householder, no wife present	0	18	0.0%	26	36	2.1%
With related children under 18 years	0	18	0.0%	22	36	1.8%
Female householder, no husband present	97	47	17.2%	173	101	13.9%
With related children under 18 years	81	41	14.4%	62	71	5.0%

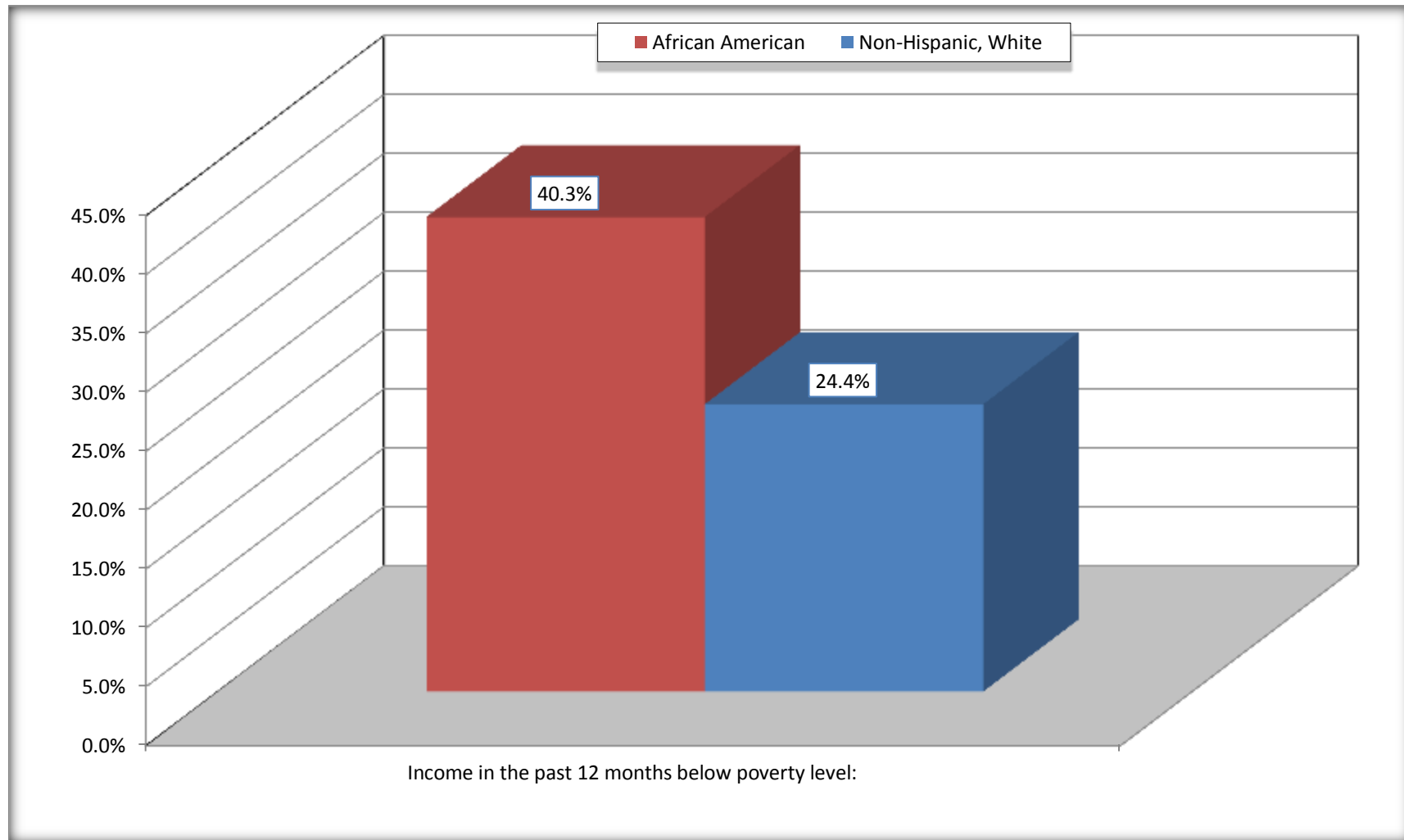
Source: U.S. Census Bureau, 2008-2012 American Community Survey

For information on confidentiality protection, sampling error, nonsampling error, and definitions, see Survey Methodology.

<http://www.census.gov/acs/www/UseData/index.htm>

Family Households Below Poverty in the Past 12 Months

Forest City town, North Carolina

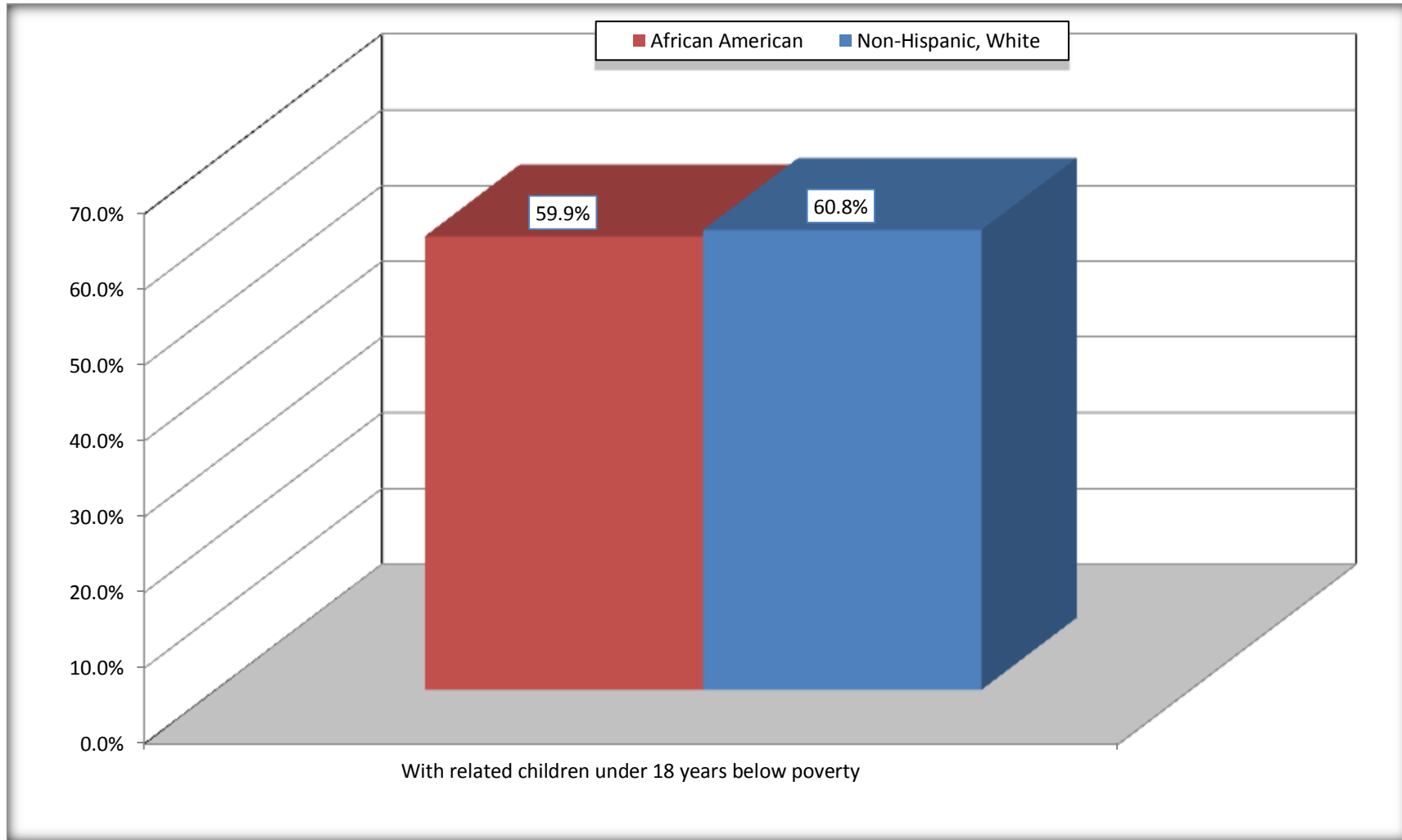


Source: B17010. POVERTY STATUS IN THE PAST 12 MONTHS OF FAMILIES BY FAMILY TYPE BY PRESENCE OF RELATED CHILDREN UNDER 18 YEARS

Data Set: 2008-2012 American Community Survey 5-Year Estimates

Female-headed Households with Related Children Below Poverty in the Past 12 Months

Forest City town, North Carolina



Source: B17010. POVERTY STATUS IN THE PAST 12 MONTHS OF FAMILIES BY FAMILY TYPE BY PRESENCE OF RELATED CHILDREN UNDER 18 YEARS

Data Set: 2008-2012 American Community Survey 5-Year Estimates

B17020 POVERTY STATUS IN THE PAST 12 MONTHS BY AGE - Universe: POPULATION FOR WHOM POVERTY STATUS IS DETERMINED

Data Set: 2008-2012 American Community Survey 5-Year Estimates

	Forest City town, North Carolina					
	African American	Margin of Error (+/-)	% of AA By Age	White, Not Hispanic	Margin of Error (+/-)	% of NHW By Age
Total:	1,939	338	100.0%	4,702	413	100.0%
Income in the past 12 months below poverty level:	969	339	50.0%	1,366	435	29.1%
Under 18 years	413	NC	66.3%	472	NC	55.5%
18 to 64 years	504	196	46.4%	785	274	30.0%
65 years and over	52	NC	22.7%	109	NC	8.8%
Income in the past 12 months at or above poverty level:	970	246	50.0%	3,336	478	70.9%
Under 18 years	210	NC	33.7%	378	NC	44.5%
18 to 64 years	583	172	53.6%	1,834	346	70.0%
65 years and over	177	NC	77.3%	1,124	NC	91.2%

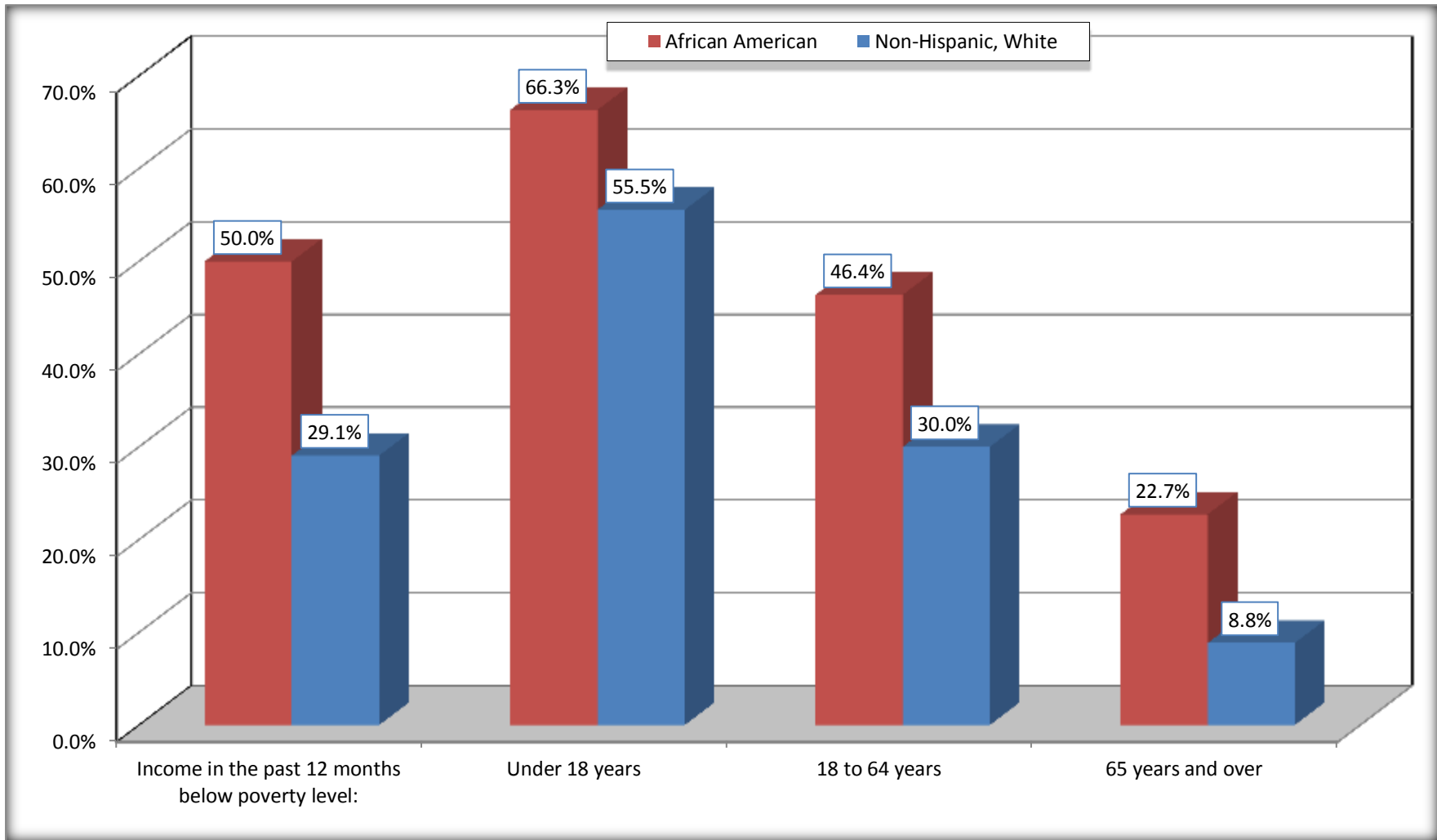
Source: U.S. Census Bureau, 2008-2012 American Community Survey

For information on confidentiality protection, sampling error, nonsampling error, and definitions, see Survey Methodology.

<http://www.census.gov/acs/www/UseData/index.htm>

Population Below Poverty in the Past 12 Months

Forest City town, North Carolina



Source: B17020 POVERTY STATUS IN THE PAST 12 MONTHS BY AGE - Universe: POPULATION FOR WHOM POVERTY STATUS IS DETERMINED
Data Set: 2008-2012 American Community Survey 5-Year Estimates

B19001. HOUSEHOLD INCOME IN THE PAST 12 MONTHS (IN 2010 INFLATION-ADJUSTED DOLLARS)

Data Set: 2008-2012 American Community Survey 5-Year Estimates

	Forest City town, North Carolina					
	African American	Margin of Error (+/-)	% of AA Total	White, Not Hispanic	Margin of Error (+/-)	% of NHW Total
Total:	854	164	100.0%	2,342	244	100.0%
Less than \$ 10,000	259	131	30.3%	212	111	9.1%
\$ 10,000 to \$ 14,999	197	117	23.1%	443	179	18.9%
\$ 15,000 to \$ 24,999	128	NC	15.0%	377	NC	16.1%
\$ 25,000 to \$ 34,999	50	NC	5.9%	324	NC	13.8%
\$ 35,000 to \$ 49,999	73	NC	8.5%	412	NC	17.6%
\$ 50,000 to \$ 74,999	136	NC	15.9%	318	NC	13.6%
\$ 75,000 to \$ 99,999	0	18	0.0%	133	101	5.7%
\$ 100,000 to \$ 149,999	11	NC	1.3%	85	NC	3.6%
\$ 150,000 to \$ 199,999	0	18	0.0%	19	23	0.8%
\$ 200,000 or more	0	18	0.0%	19	25	0.8%

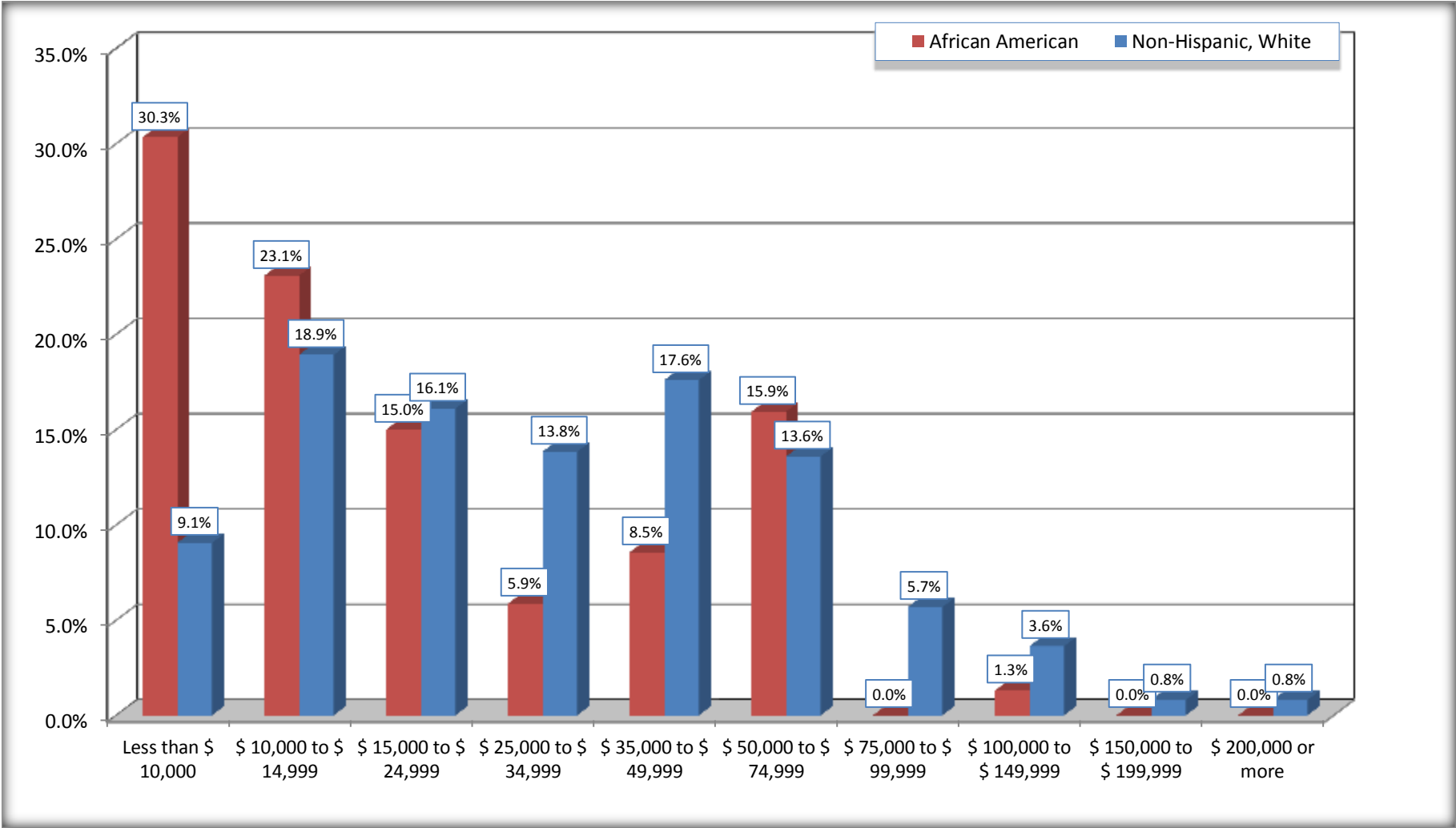
Source: U.S. Census Bureau, 2008-2012 American Community Survey

For information on confidentiality protection, sampling error, nonsampling error, and definitions, see Survey Methodology.

<http://www.census.gov/acs/www/UseData/index.htm>

Household Income in the Past 12 Months

Forest City town, North Carolina



Source: B19001. HOUSEHOLD INCOME IN THE PAST 12 MONTHS (IN 2010 INFLATION-ADJUSTED DOLLARS)
Data Set: 2008-2012 American Community Survey 5-Year Estimates

B19013. MEDIAN HOUSEHOLD INCOME IN THE PAST 12 MONTHS (IN 2010 INFLATION-ADJUSTED DOLLARS)

Data Set: 2008-2012 American Community Survey 5-Year Estimates

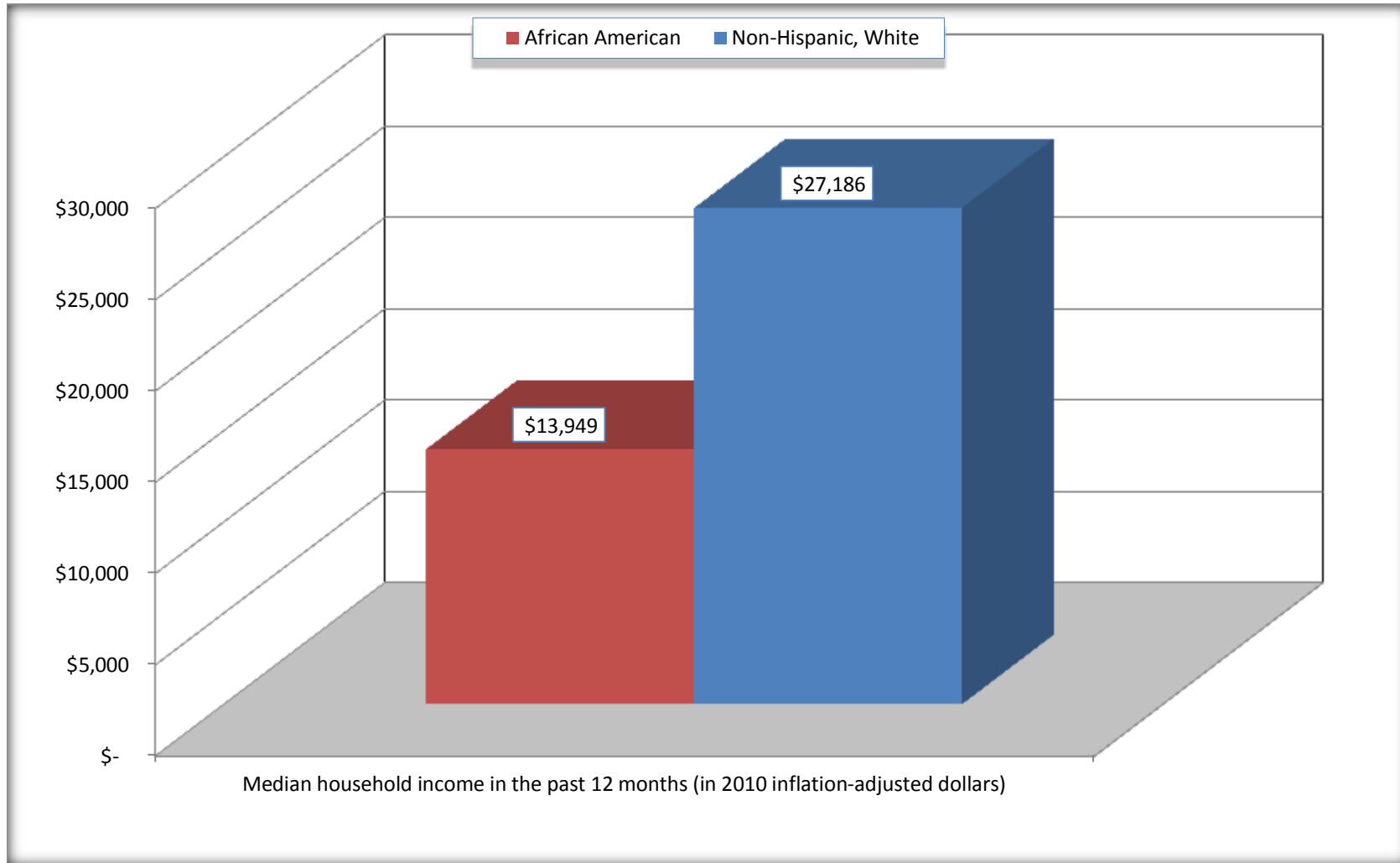
	Forest City town, North Carolina			
	African American	Margin of Error (+/-)	White, Not Hispanic	Margin of Error (+/-)
Median household income in the past 12 months (in 2010 inflation-adjusted dollars)	\$ 13,949	\$ 3,776	\$ 27,186	\$ 3,768

Source: U.S. Census Bureau, 2008-2012 American Community Survey

For information on confidentiality protection, sampling error, nonsampling error, and definitions, see Survey Methodology.
<http://www.census.gov/acs/www/UseData/index.htm>

Median Household Income in the Past 12 Months

Forest City town, North Carolina



Source: B19013. MEDIAN HOUSEHOLD INCOME IN THE PAST 12 MONTHS (IN 2010 INFLATION-ADJUSTED DOLLARS)
Data Set: 2008-2012 American Community Survey 5-Year Estimates

B19101. FAMILY INCOME IN THE PAST 12 MONTHS (IN 2010 INFLATION-ADJUSTED DOLLARS)

Data Set: 2008-2012 American Community Survey 5-Year Estimates

	Forest City town, North Carolina					
	African American	Margin of Error (+/-)	% of AA Total	White, Not Hispanic	Margin of Error (+/-)	% of NHW Total
Total:	563	158	100.0%	1,246	192	100.0%
Less than \$ 10,000	92	94	16.3%	93	83	7.5%
\$ 10,000 to \$ 14,999	137	85	24.3%	142	90	11.4%
\$ 15,000 to \$ 24,999	84	NC	14.9%	184	NC	14.8%
\$ 25,000 to \$ 34,999	50	NC	8.9%	145	NC	11.6%
\$ 35,000 to \$ 49,999	53	NC	9.4%	219	NC	17.6%
\$ 50,000 to \$ 74,999	136	NC	24.2%	249	NC	20.0%
\$ 100,000 to \$ 149,999	11	NC	2.0%	85	NC	6.8%
\$ 150,000 to \$ 199,999	0	18	0.0%	19	23	1.5%
\$ 200,000 or more	0	18	0.0%	19	25	1.5%

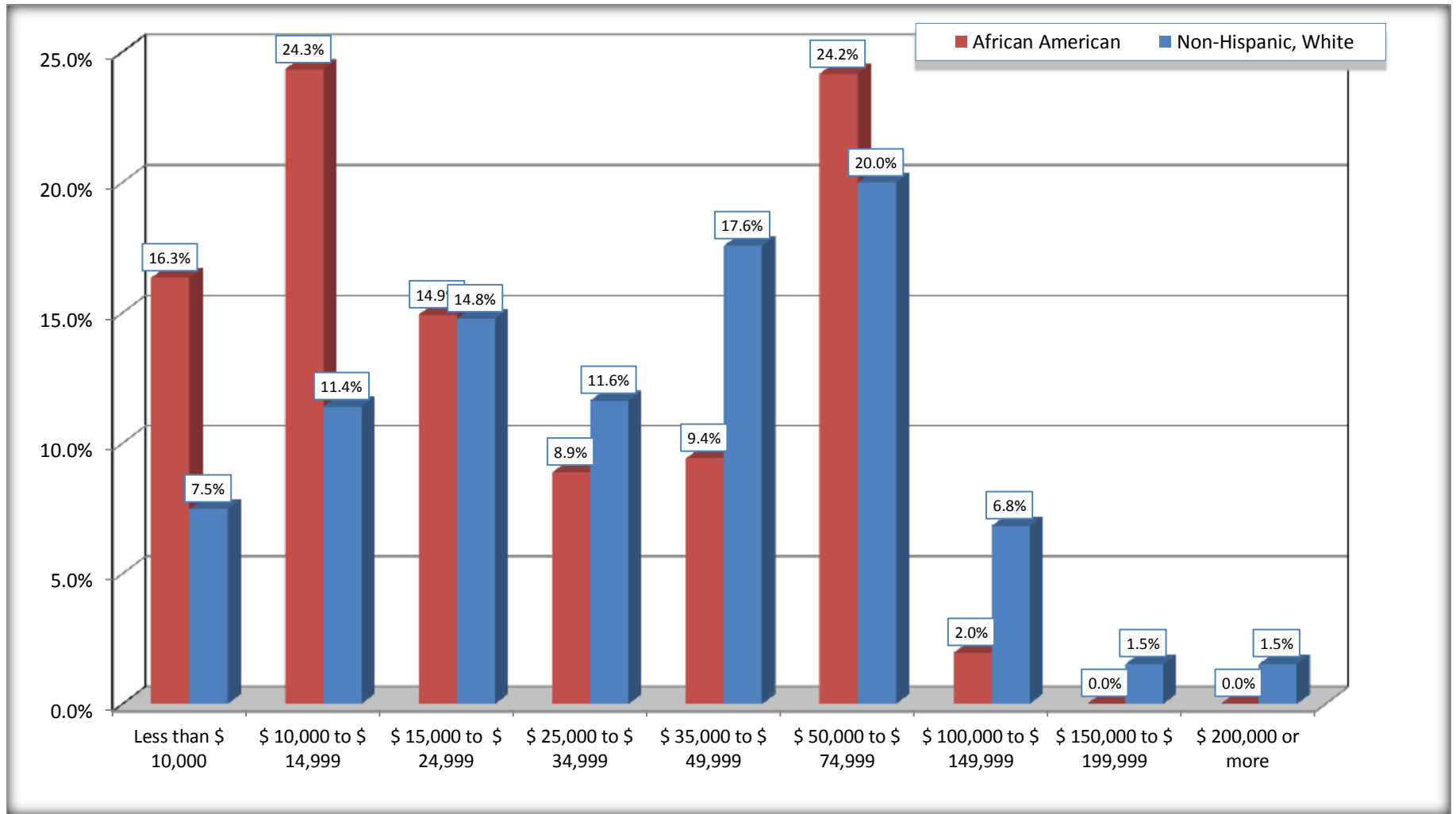
Source: U.S. Census Bureau, 2008-2012 American Community Survey

For information on confidentiality protection, sampling error, nonsampling error, and definitions, see Survey Methodology.

<http://www.census.gov/acs/www/UseData/index.htm>

Family Income in the Past 12 Months

Forest City town, North Carolina



Source: B19101. FAMILY INCOME IN THE PAST 12 MONTHS (IN 2010 INFLATION-ADJUSTED DOLLARS)
Data Set: 2008-2012 American Community Survey 5-Year Estimates

B19113. MEDIAN FAMILY INCOME IN THE PAST 12 MONTHS (IN 2010 INFLATION-ADJUSTED DOLLARS)

Data Set: 2008-2012 American Community Survey 5-Year Estimates

	Forest City town, North Carolina			
	African American	Margin of Error (+/-)	White, Not Hispanic	Margin of Error (+/-)
Median family income in the past 12 months (in 2010 inflation-adjusted dollars)	\$ 18,811	\$ 15,457	\$ 41,822	\$ 7,664

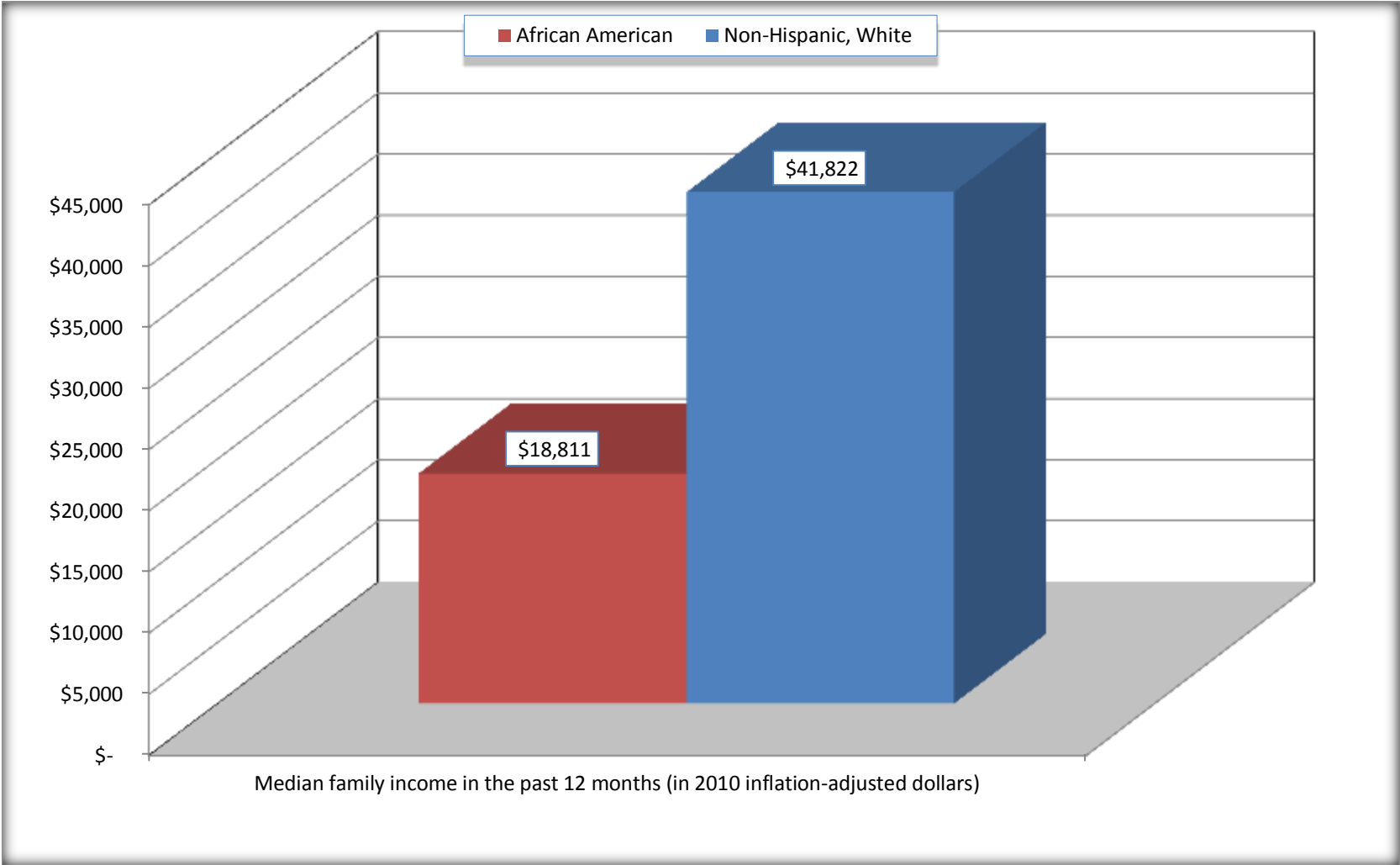
Source: U.S. Census Bureau, 2008-2012 American Community Survey

For information on confidentiality protection, sampling error, nonsampling error, and definitions, see Survey Methodology.

<http://www.census.gov/acs/www/UseData/index.htm>

Median Family Income in the Past 12 Months

Forest City town, North Carolina



Source: B19113. MEDIAN FAMILY INCOME IN THE PAST 12 MONTHS (IN 2010 INFLATION-ADJUSTED DOLLARS)
Data Set: 2008-2012 American Community Survey 5-Year Estimates

B19202. MEDIAN NONFAMILY HOUSEHOLD INCOME IN THE PAST 12 MONTHS (IN 2010 INFLATION-ADJUSTED DOLLARS)

Data Set: 2008-2012 American Community Survey 5-Year Estimates

	Forest City town, North Carolina			
	African American	Margin of Error (+/-)	White, Not Hispanic	Margin of Error (+/-)
Median nonfamily household income in the past 12 months (in 2010 inflation-adjusted dollars)	\$ 9,360	\$ 1,888	\$ 20,758	\$ 8,290

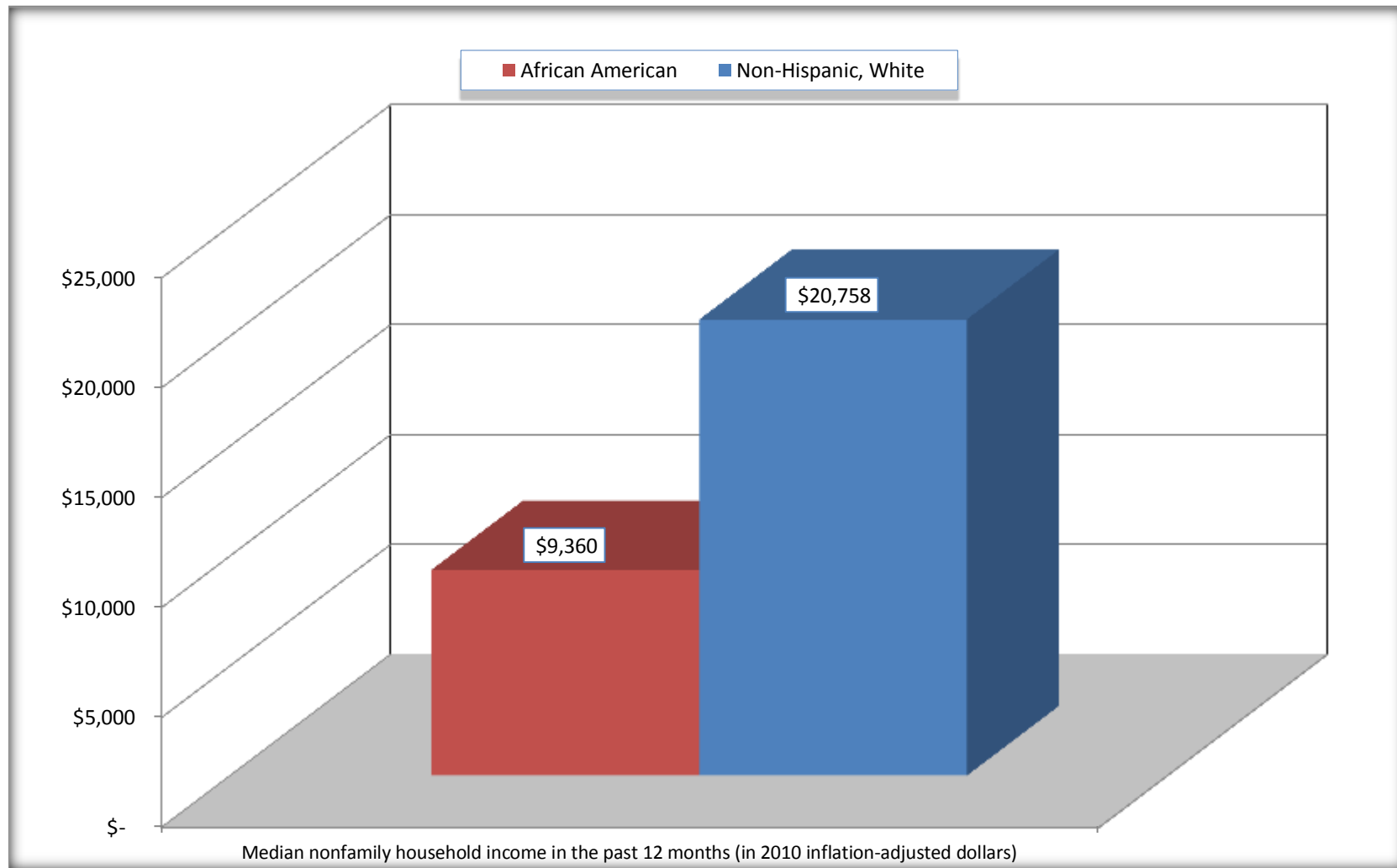
Source: U.S. Census Bureau, 2008-2012 American Community Survey

For information on confidentiality protection, sampling error, nonsampling error, and definitions, see Survey Methodology.

<http://www.census.gov/acs/www/UseData/index.htm>

Median Non-Family Income in the Past 12 Months

Forest City town, North Carolina



Source: B19202. MEDIAN NONFAMILY HOUSEHOLD INCOME IN THE PAST 12 MONTHS (IN 2010 INFLATION-ADJUSTED DOLLARS)
Data Set: 2008-2012 American Community Survey 5-Year Estimates

B19301. PER CAPITA INCOME IN THE PAST 12 MONTHS (IN 2010 INFLATION-ADJUSTED DOLLARS)

Data Set: 2008-2012 American Community Survey 5-Year Estimates

	Forest City town, North Carolina			
	African American	Margin of Error (+/-)	White, Not Hispanic	Margin of Error (+/-)
Per capita income in the past 12 months (in 2010 inflation-adjusted dollars)	\$ 10,201	\$ 2,201	\$ 18,844	\$ 2,286

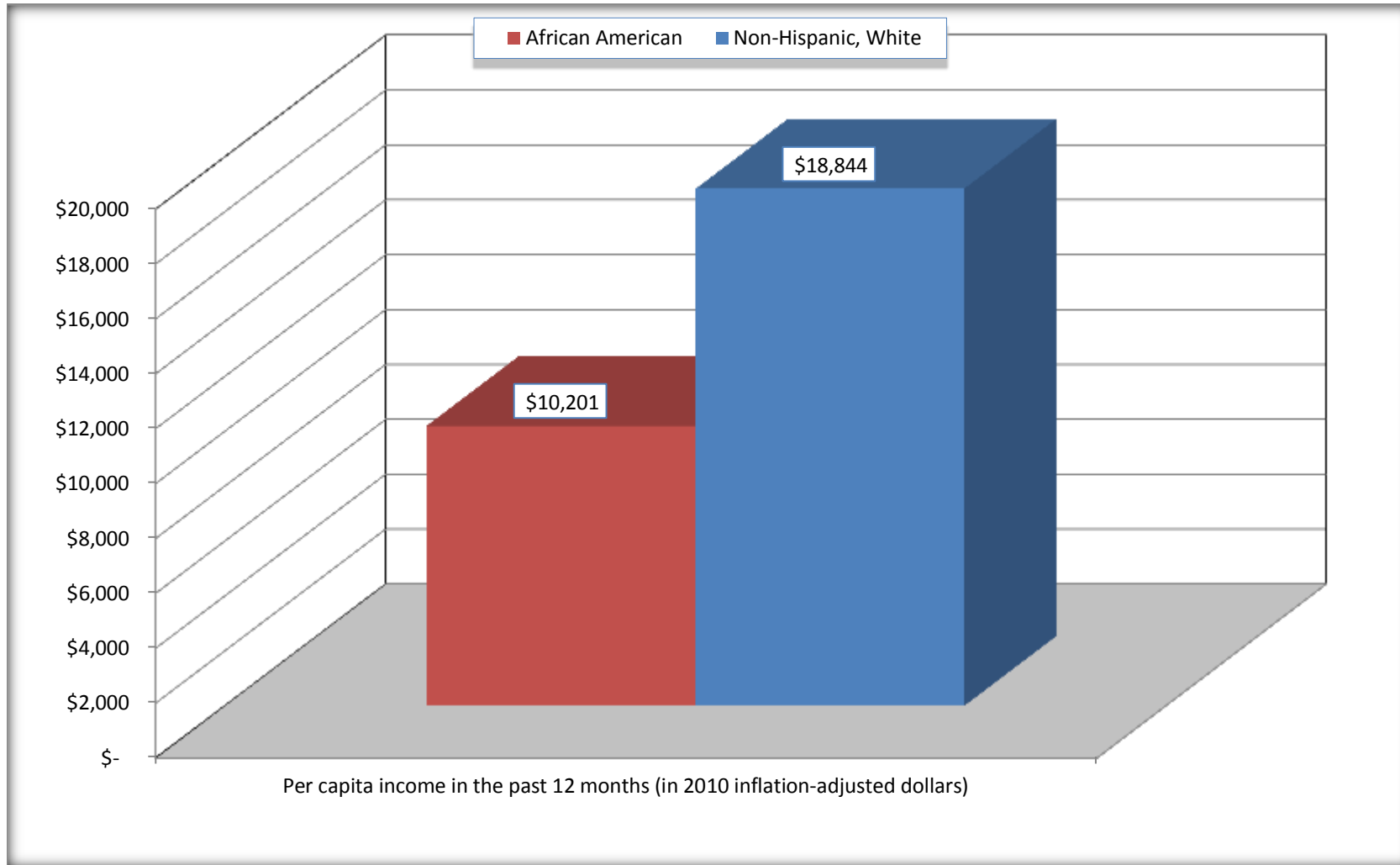
Source: U.S. Census Bureau, 2008-2012 American Community Survey

For information on confidentiality protection, sampling error, nonsampling error, and definitions, see Survey Methodology.

<http://www.census.gov/acs/www/UseData/index.htm>

Per capita Income in the Past 12 Months

Forest City town, North Carolina



Source: B19301. PER CAPITA INCOME IN THE PAST 12 MONTHS (IN 2010 INFLATION-ADJUSTED DOLLARS)
Data Set: 2008-2012 American Community Survey 5-Year Estimates

B20017. MEDIAN EARNINGS IN THE PAST 12 MONTHS (IN 2010 INFLATION-ADJUSTED DOLLARS) BY SEX BY WORK EXPERIENCE IN THE PAST 12 MONTHS FOR THE POPULATION 16 YEARS AND OVER WITH EARNINGS IN THE PAST 12 MONTHS

Data Set: 2008-2012 American Community Survey 5-Year Estimates

	Forest City town, North Carolina			
	African American	Margin of Error (+/-)	White, Not Hispanic	Margin of Error (+/-)
Median earnings in the past 12 months (in 2010 inflation-adjusted dollars) --				
Total:	\$ 19,365	\$ 4,405	\$ 18,520	\$ 6,866
Male --				
Total	\$ 21,442	\$ 17,194	\$ 33,698	\$ 3,327
Worked full-time, year-round in the past 12 months	\$ 32,440	\$ 9,187	\$ 37,152	\$ 3,547
Other	\$ 15,331	\$ 11,755	\$ 6,563	\$ 4,354
Female --				
Total	\$ 18,750	\$ 4,093	\$ 10,821	\$ 4,327
Worked full-time, year-round in the past 12 months	\$ 19,853	\$ 17,288	\$ 23,525	\$ 5,063
Other	\$ 8,828	\$ 15,271	\$ 4,564	\$ 1,363

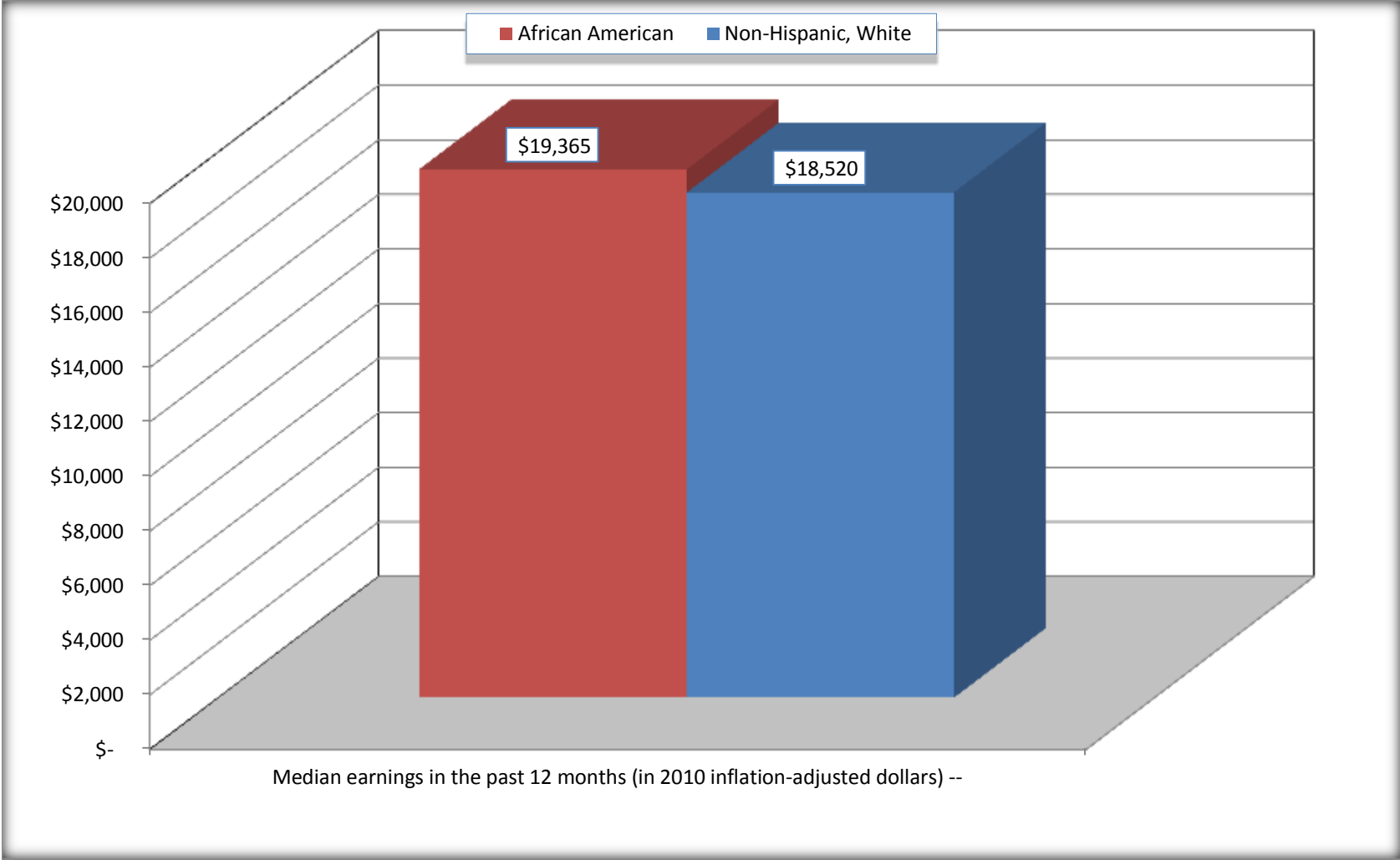
Source: U.S. Census Bureau, 2008-2012 American Community Survey

For information on confidentiality protection, sampling error, nonsampling error, and definitions, see Survey Methodology.

<http://www.census.gov/acs/www/UseData/index.htm>

Median earnings in the Past 12 Months (16 Years and Over with Earnings)

Forest City town, North Carolina



Source: B20017. MEDIAN EARNINGS IN THE PAST 12 MONTHS (IN 2010 INFLATION-ADJUSTED DOLLARS) BY SEX BY WORK EXPERIENCE IN THE PAST 12 MONTHS FOR THE POPULATION 16 YEARS AND OVER WITH EARNINGS IN THE PAST 12 MONTHS
Data Set: 2008-2012 American Community Survey 5-Year Estimates

B20005. SEX BY WORK EXPERIENCE IN THE PAST 12 MONTHS BY EARNINGS IN THE PAST 12 MONTHS (IN 2010 INFLATION-ADJUSTED DOLLARS) FOR THE POPULATION 16 YEARS AND OVER

Data Set: 2008-2012 American Community Survey 5-Year Estimates

	Forest City town, North Carolina					
	African American	Margin of Error (+/-)	% of AA Total	White, Not Hispanic	Margin of Error (+/-)	% of NHW Total
Total:	1,463	250	100.0%	4,082	374	100.0%
Worked full-time, year-round in the past 12 months:	319	NC	21.8%	1,172	NC	28.7%
No earnings	0	NC	0.0%	0	NC	0.0%
With earnings:	319	NC	21.8%	1,172	NC	28.7%
\$ 1 to \$ 9,999 or loss	0	NC	0.0%	37	NC	0.9%
\$ 10,000 to \$ 19,999	118	NC	8.1%	220	NC	5.4%
\$ 20,000 to \$ 29,999	40	NC	2.7%	253	NC	6.2%
\$ 30,000 to \$ 49,999	147	NC	10.0%	423	NC	10.4%
\$ 50,000 to \$ 74,999	0	NC	0.0%	126	NC	3.1%
\$ 75,000 or more	14	NC	1.0%	113	NC	2.8%
Other:	1,144	NC	78.2%	2,910	NC	71.3%
No earnings	888	NC	60.7%	1,926	NC	47.2%
With earnings: less than full time, year-round	256	NC	17.5%	984	NC	24.1%
Male:	548	178	37.5%	1,610	224	39.4%
Worked full-time, year-round in the past 12 months:	133	65	9.1%	696	153	17.1%
No earnings	0	18	0.0%	0	18	0.0%
With earnings:	133	65	9.1%	696	153	17.1%
\$ 1 to \$ 9,999 or loss	0	NC	0.0%	6	NC	0.1%
\$ 10,000 to \$ 19,999	22	NC	1.5%	53	NC	1.3%
\$ 20,000 to \$ 29,999	24	NC	1.6%	115	NC	2.8%
\$ 30,000 to \$ 49,999	87	NC	5.9%	334	NC	8.2%
\$ 50,000 to \$ 74,999	0	NC	0.0%	75	NC	1.8%
\$ 75,000 or more	0	NC	0.0%	113	NC	2.8%

	Forest City town, North Carolina					
	African American	Margin of Error (+/-)	% of AA Total	White, Not Hispanic	Margin of Error (+/-)	% of NHW Total
Other:	415	167	28.4%	914	173	22.4%
No earnings	260	154	17.8%	648	145	15.9%
With earnings:	155	90	10.6%	266	124	6.5%
Female:	915	175	62.5%	2,472	272	60.6%
Worked full-time, year-round in the past 12 months:	186	106	12.7%	476	156	11.7%
No earnings	0	18	0.0%	0	18	0.0%
With earnings:	186	106	12.7%	476	156	11.7%
\$ 1 to \$ 9,999 or loss	0	NC	0.0%	31	NC	0.8%
\$ 10,000 to \$ 19,999	96	NC	6.6%	167	NC	4.1%
\$ 20,000 to \$ 29,999	16	NC	1.1%	138	NC	3.4%
\$ 30,000 to \$ 49,999	60	NC	4.1%	89	NC	2.2%
\$ 50,000 to \$ 74,999	0	NC	0.0%	51	NC	1.2%
\$ 75,000 or more	14	NC	1.0%	0	NC	0.0%
Other:	729	180	49.8%	1,996	263	48.9%
No earnings	628	183	42.9%	1,278	247	31.3%
With earnings:	101	72	6.9%	718	189	17.6%

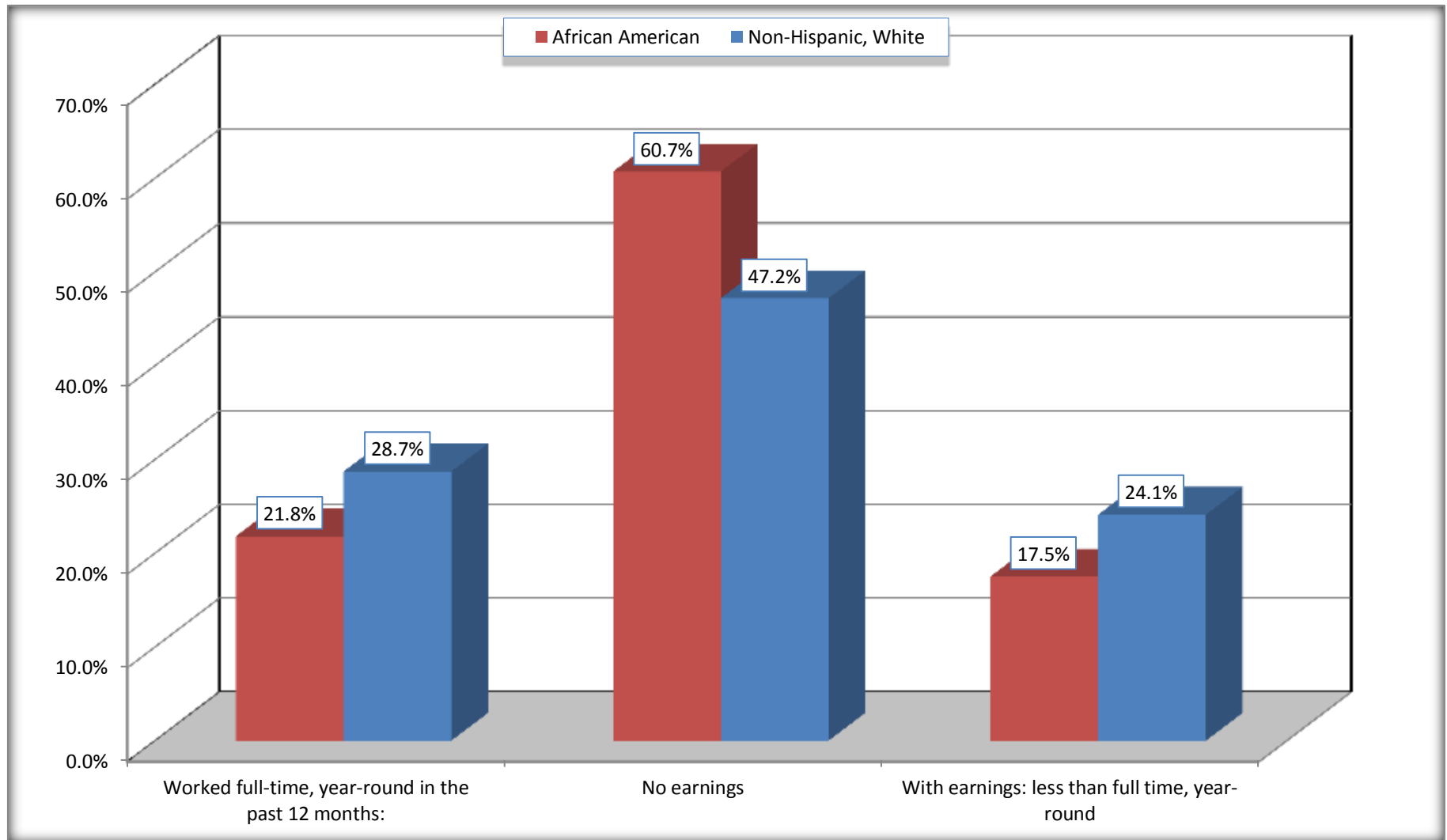
Source: U.S. Census Bureau, 2008-2012 American Community Survey

For information on confidentiality protection, sampling error, nonsampling error, and definitions, see Survey Methodology.

<http://www.census.gov/acs/www/UseData/index.htm>

Employment and Earnings in in the Past 12 Months (16 Years and Over)

Forest City town, North Carolina



Source: B20005. SEX BY WORK EXPERIENCE IN THE PAST 12 MONTHS BY EARNINGS IN THE PAST 12 MONTHS (IN 2010 INFLATION-ADJUSTED DOLLARS) FOR THE POPULATION 16 YEARS AND OVER

Data Set: 2008-2012 American Community Survey 5-Year Estimates

C21001. SEX BY AGE BY VETERAN STATUS FOR THE CIVILIAN POPULATION 18 YEARS AND OVER

Data Set: 2008-2012 American Community Survey 5-Year Estimates

	Forest City town, North Carolina					
	African American	Margin of Error (+/-)	% of AA Total	White, Not Hispanic	Margin of Error (+/-)	% of NHW Total
Total:	1,338	231	100.0%	3,941	369	100.0%
Veteran	0	NC	0.0%	379	NC	9.6%
Nonveteran	1,338	NC	100.0%	3,562	NC	90.4%
Male:	512	158	38.3%	1,586	218	40.2%
18 to 64 years:	429	152	32.1%	1,225	197	31.1%
Veteran	0	18	0.0%	164	84	4.2%
Nonveteran	429	152	32.1%	1,061	207	26.9%
65 years and over:	83	58	6.2%	361	115	9.2%
Veteran	0	18	0.0%	190	77	4.8%
Nonveteran	83	58	6.2%	171	104	4.3%
Female:	826	168	61.7%	2,355	257	59.8%
18 to 64 years:	670	154	50.1%	1,403	231	35.6%
Veteran	0	18	0.0%	25	29	0.6%
Nonveteran	670	154	50.1%	1,378	238	35.0%
65 years and over:	156	75	11.7%	952	209	24.2%
Veteran	0	18	0.0%	0	18	0.0%
Nonveteran	156	75	11.7%	952	209	24.2%

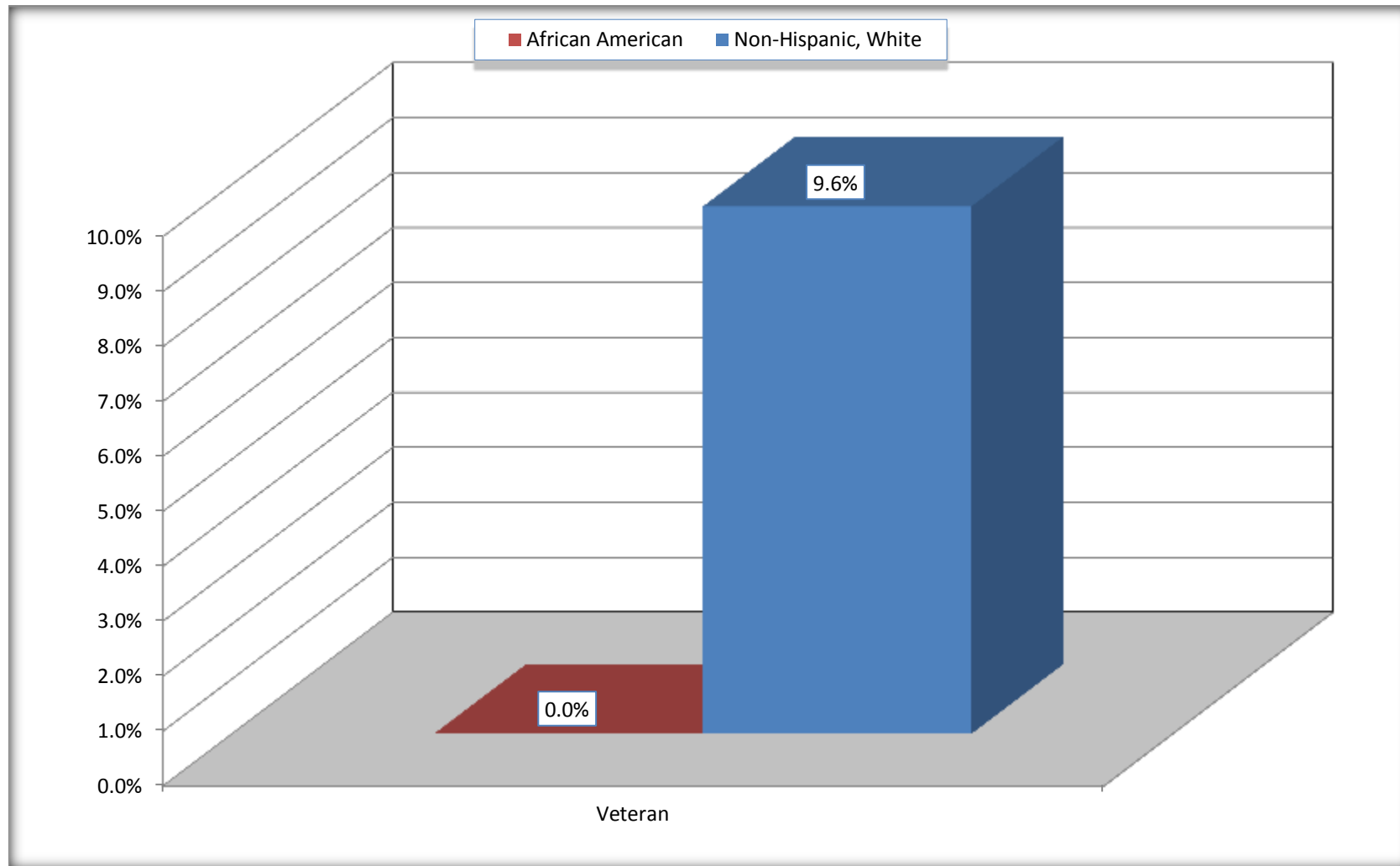
Source: U.S. Census Bureau, 2008-2012 American Community Survey

For information on confidentiality protection, sampling error, nonsampling error, and definitions, see Survey Methodology.

<http://www.census.gov/acs/www/UseData/index.htm>

Veterans in the Civilian Population 18 Years and Over

Forest City town, North Carolina



Source: C21001. SEX BY AGE BY VETERAN STATUS FOR THE CIVILIAN POPULATION 18 YEARS AND OVER
Data Set: 2008-2012 American Community Survey 5-Year Estimates

B22005. RECEIPT OF FOOD STAMPS/SNAP IN THE PAST 12 MONTHS BY RACE OF HOUSEHOLDER

Data Set: 2008-2012 American Community Survey 5-Year Estimates

	Forest City town, North Carolina					
	African American	Margin of Error (+/-)	% of AA Total	White, Not Hispanic	Margin of Error (+/-)	% of NHW Total
Total:	854	164	100.0%	2,342	244	100.0%
HH received Food Stamps/SNAP in the past 12 months	442	154	51.8%	658	163	28.1%
HH did not receive Food Stamps/SNAP in the past 12 months	412	123	48.2%	1,684	268	71.9%

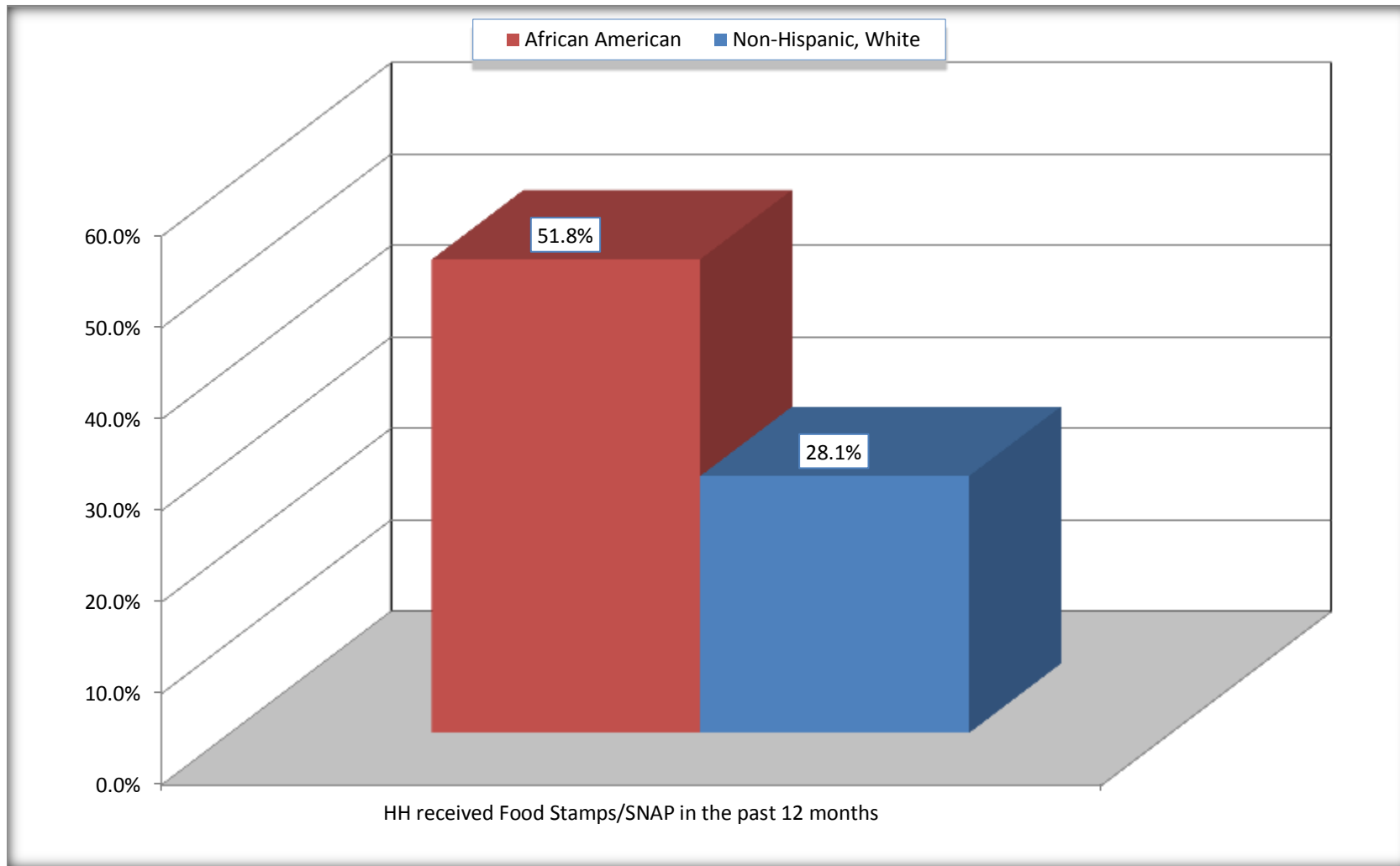
Source: U.S. Census Bureau, 2008-2012 American Community Survey

For information on confidentiality protection, sampling error, nonsampling error, and definitions, see Survey Methodology.

<http://www.census.gov/acs/www/UseData/index.htm>

Receipt of Food Stamps/SNAP in the Past 12 Months by Household

Forest City town, North Carolina



Source: B22005. RECEIPT OF FOOD STAMPS/SNAP IN THE PAST 12 MONTHS BY RACE OF HOUSEHOLDER
Data Set: 2008-2012 American Community Survey 5-Year Estimates

C23002. SEX BY AGE BY EMPLOYMENT STATUS FOR THE POPULATION 16 YEARS AND OVER

Data Set: 2008-2012 American Community Survey 5-Year Estimates

	Forest City town, North Carolina					
	African American	Margin of Error (+/-)	% of AA Total	White, Not Hispanic	Margin of Error (+/-)	% of NHW Total
Total:	1,463	250	100.0%	4,082	374	100.0%
In labor force:	673	NC	46.0%	2,052	NC	50.3%
In Armed Forces	0	NC	0.0%	0	NC	0.0%
Civilian:	647	NC	44.2%	1,907	NC	46.7%
Employed	483	NC	33.0%	1,780	NC	43.6%
Unemployed	190	NC	13.0%	272	NC	6.7%
Not in labor force	790	NC	54.0%	2,030	NC	49.7%
Male:	548	178	37.5%	1,610	224	39.4%
16 to 64 years:	465	173	31.8%	1,249	201	30.6%
In labor force:	322	120	22.0%	876	193	21.5%
In Armed Forces	0	18	0.0%	0	18	0.0%
Civilian:	322	120	22.0%	876	193	21.5%
Employed	174	83	11.9%	794	183	19.5%
Unemployed	148	81	10.1%	82	55	2.0%
Not in labor force	143	120	9.8%	373	117	9.1%
65 years and over:	83	58	5.7%	361	115	8.8%
In labor force:	26	39	1.8%	72	74	1.8%
Employed	26	39	1.8%	72	74	1.8%
Unemployed	0	18	0.0%	0	18	0.0%
Not in labor force	57	55	3.9%	289	88	7.1%

	Forest City town, North Carolina					
	African American	Margin of Error (+/-)	% of AA Total	White, Not Hispanic	Margin of Error (+/-)	% of NHW Total
Female:	915	175	62.5%	2,472	272	60.6%
16 to 64 years:	759	164	51.9%	1,520	260	37.2%
In labor force:	325	126	22.2%	1,031	235	25.3%
In Armed Forces	0	18	0.0%	0	18	0.0%
Civilian:	325	126	22.2%	1,031	235	25.3%
Employed	283	123	19.3%	841	199	20.6%
Unemployed	42	48	2.9%	190	156	4.7%
Not in labor force	434	166	29.7%	489	139	12.0%
65 years and over:	156	75	10.7%	952	209	23.3%
In labor force:	0	18	0.0%	73	73	1.8%
Employed	0	18	0.0%	73	73	1.8%
Unemployed	0	18	0.0%	0	18	0.0%
Not in labor force	156	75	10.7%	879	208	21.5%

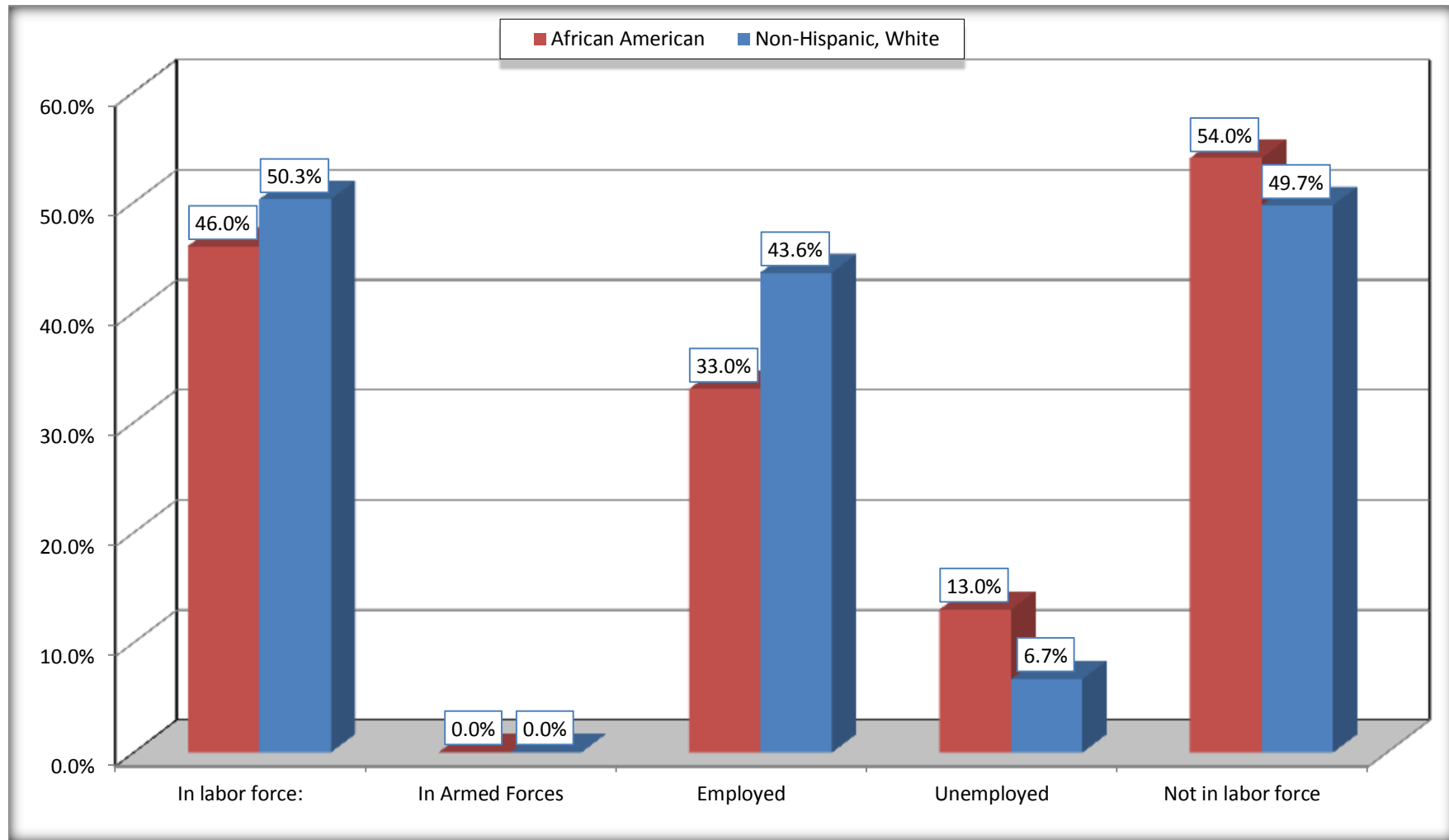
Source: U.S. Census Bureau, 2008-2012 American Community Survey

For information on confidentiality protection, sampling error, nonsampling error, and definitions, see Survey Methodology.

<http://www.census.gov/acs/www/UseData/index.htm>

Employment Status for the Population 16 years and over

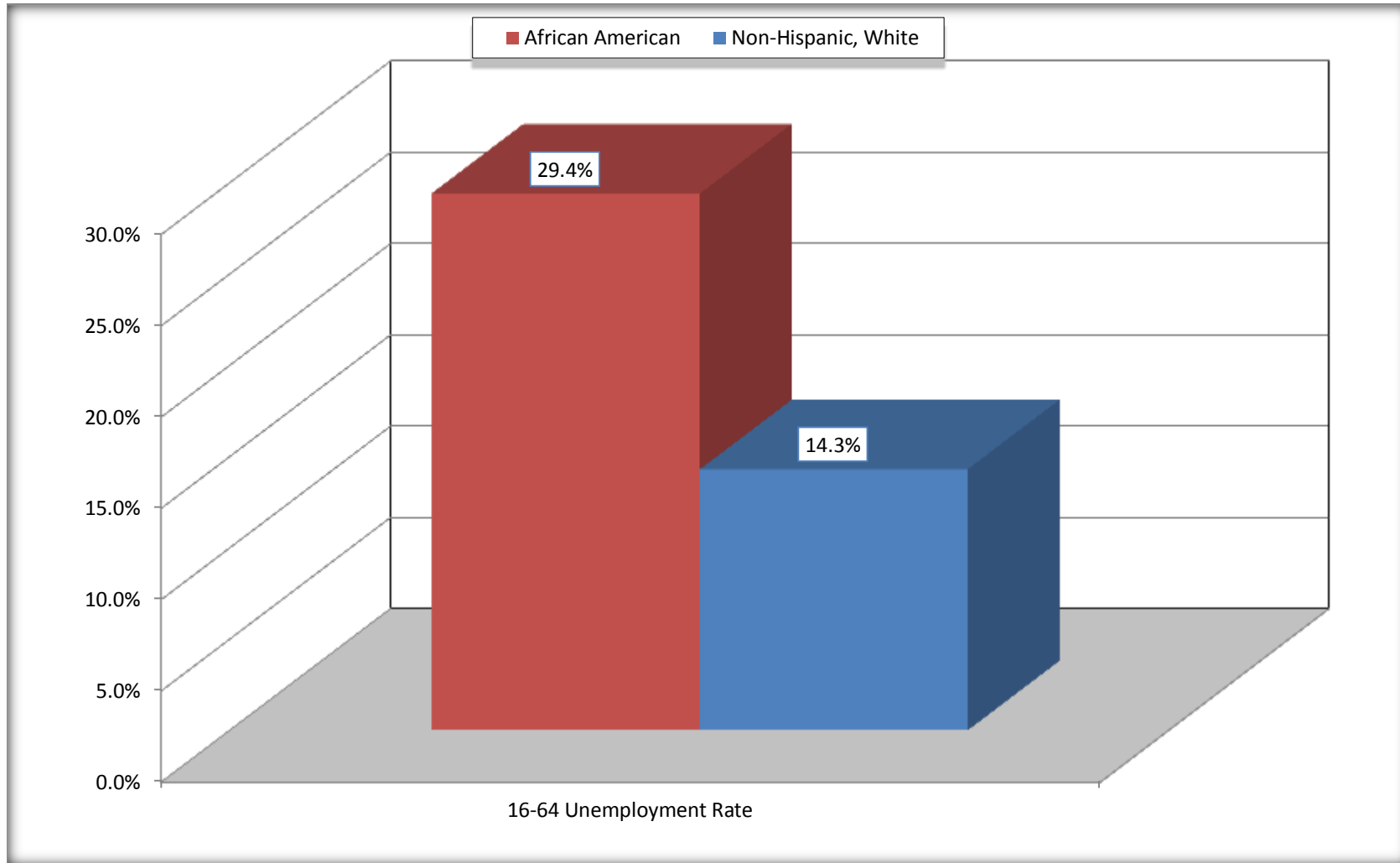
Forest City town, North Carolina



Source: C23002. SEX BY AGE BY EMPLOYMENT STATUS FOR THE POPULATION 16 YEARS AND OVER
Data Set: 2008-2012 American Community Survey 5-Year Estimates

Unemployment of Working Age Population (Ages 16 to 64) (As a Percent of 16-64 Civilian Labor Force)

Forest City town, North Carolina



Source: C23002. SEX BY AGE BY EMPLOYMENT STATUS FOR THE POPULATION 16 YEARS AND OVER
Data Set: 2008-2012 American Community Survey 5-Year Estimates

C24010. SEX BY OCCUPATION FOR THE CIVILIAN EMPLOYED POPULATION 16 YEARS AND OVER

Data Set: 2008-2012 American Community Survey 5-Year Estimates

	Forest City town, North Carolina					
	African American	Margin of Error (+/-)	% of AA Total	White, Not Hispanic	Margin of Error (+/-)	% of NHW Total
Total:	483	170	100.0%	1,780	325	100.0%
Management, professional, and related occupations	42	NC	8.7%	605	NC	34.0%
Service occupations	138	NC	28.6%	194	NC	10.9%
Sales and office occupations	46	NC	9.5%	455	NC	25.6%
Natural resources, construction, and maintenance occupations:	87	NC	18.0%	155	NC	8.7%
Production, transportation, and material moving occupations	170	NC	35.2%	371	NC	20.8%
Male:	200	93	41.4%	866	192	48.7%
Management, business, science, and arts occupations:	17	30	3.5%	216	94	12.1%
Service occupations	22	27	4.6%	57	41	3.2%
Sales and office occupations	0	18	0.0%	196	120	11.0%
Natural resources, construction, and maintenance occupations:	87	75	18.0%	155	106	8.7%
Production, transportation, and material moving occupations	74	55	15.3%	242	100	13.6%
Female:	283	123	58.6%	914	208	51.3%
Management, professional, and related occupations	25	29	5.2%	389	129	21.9%
Service occupations	116	81	24.0%	137	83	7.7%
Sales and office occupations	46	57	9.5%	259	116	14.6%
Natural resources, construction, and maintenance occupations:	0	18	0.0%	0	18	0.0%
Production, transportation, and material moving occupations	96	75	19.9%	129	108	7.2%

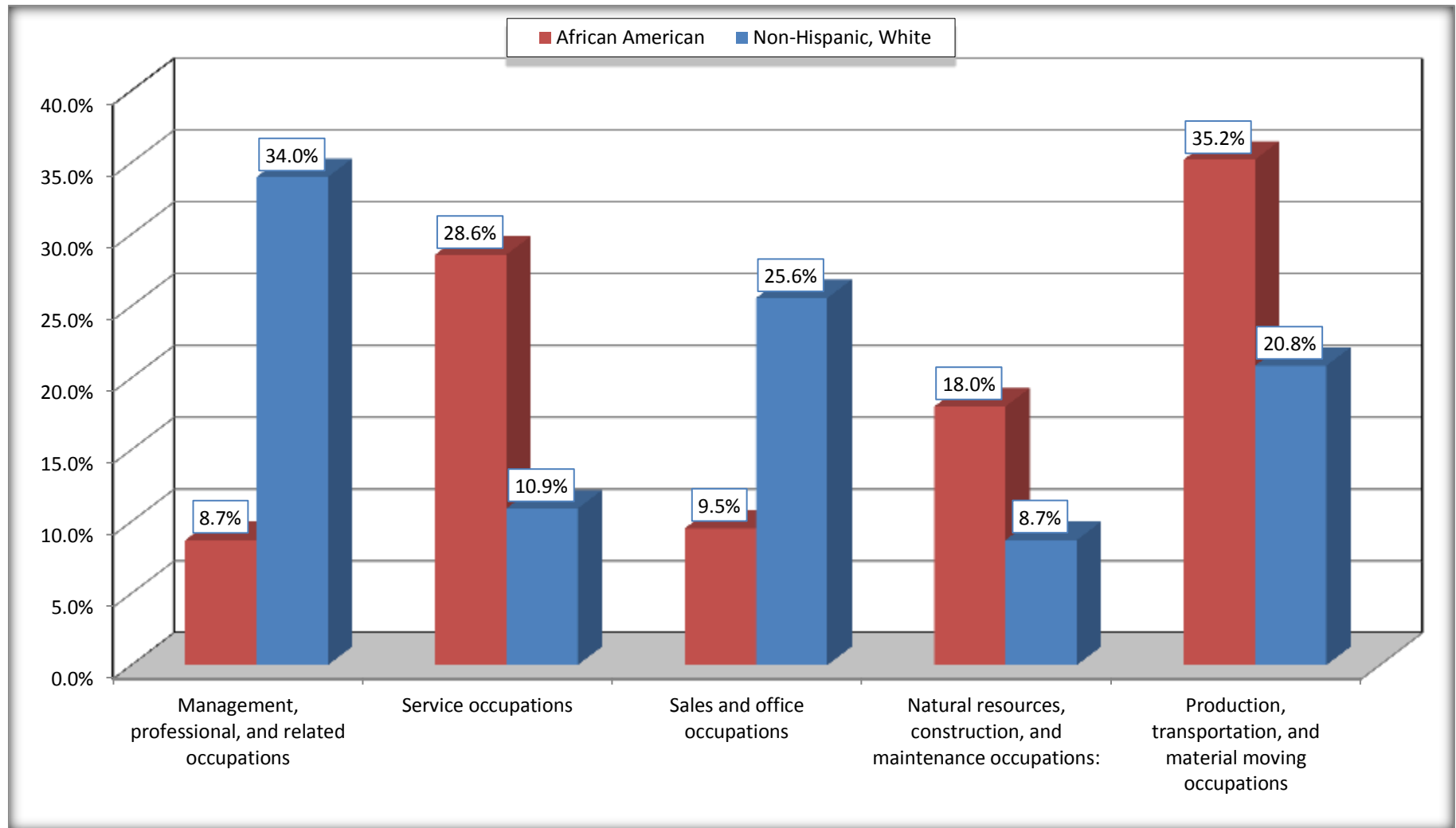
Source: U.S. Census Bureau, 2008-2012 American Community Survey

For information on confidentiality protection, sampling error, nonsampling error, and definitions, see Survey Methodology.

<http://www.census.gov/acs/www/UseData/index.htm>

Occupation for the Civilian Employed 16 Years and Over Population

Forest City town, North Carolina



Source: C24010. SEX BY OCCUPATION FOR THE CIVILIAN EMPLOYED POPULATION 16 YEARS AND OVER
Data Set: 2008-2012 American Community Survey 5-Year Estimates

B25003. TENURE - Universe: OCCUPIED HOUSING UNITS

Data Set: 2008-2012 American Community Survey 5-Year Estimates

	Forest City town, North Carolina					
	African American	Margin of Error (+/-)	% of AA Total	White, Not Hispanic	Margin of Error (+/-)	% of NHW Total
Total:	854	164	100.0%	2,342	244	100.0%
Owner occupied	278	96	32.6%	1,361	221	58.1%
Renter occupied	576	171	67.4%	981	203	41.9%

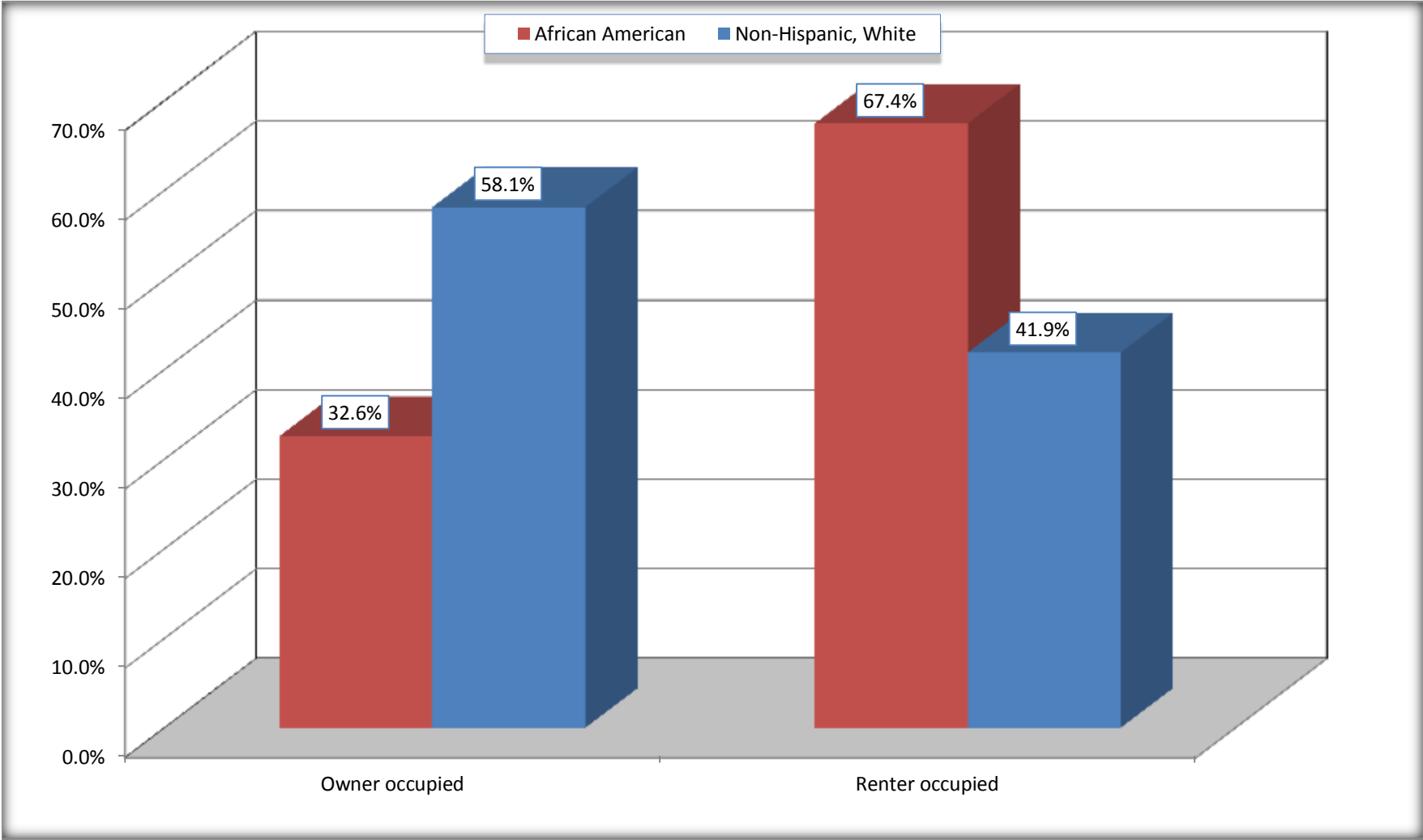
Source: U.S. Census Bureau, 2008-2012 American Community Survey

For information on confidentiality protection, sampling error, nonsampling error, and definitions, see Survey Methodology.

<http://www.census.gov/acs/www/UseData/index.h>

Home Owners and Renters by Household

Forest City town, North Carolina



Source: B25003. TENURE - Universe: OCCUPIED HOUSING UNITS
Data Set: 2008-2012 American Community Survey 5-Year Estimates

B25014. OCCUPANTS PER ROOM - Universe: OCCUPIED HOUSING UNITS

Data Set: 2008-2012 American Community Survey 5-Year Estimates

	Forest City town, North Carolina					
	African American	Margin of Error (+/-)	% of AA Total	White, Not Hispanic	Margin of Error (+/-)	% of NHW Total
Total:	854	164	100.0%	2,342	244	100.0%
1.00 or less occupants per room	788	178	92.3%	2,332	242	99.6%
1.01 or more occupants per room	66	47	7.7%	10	16	0.4%

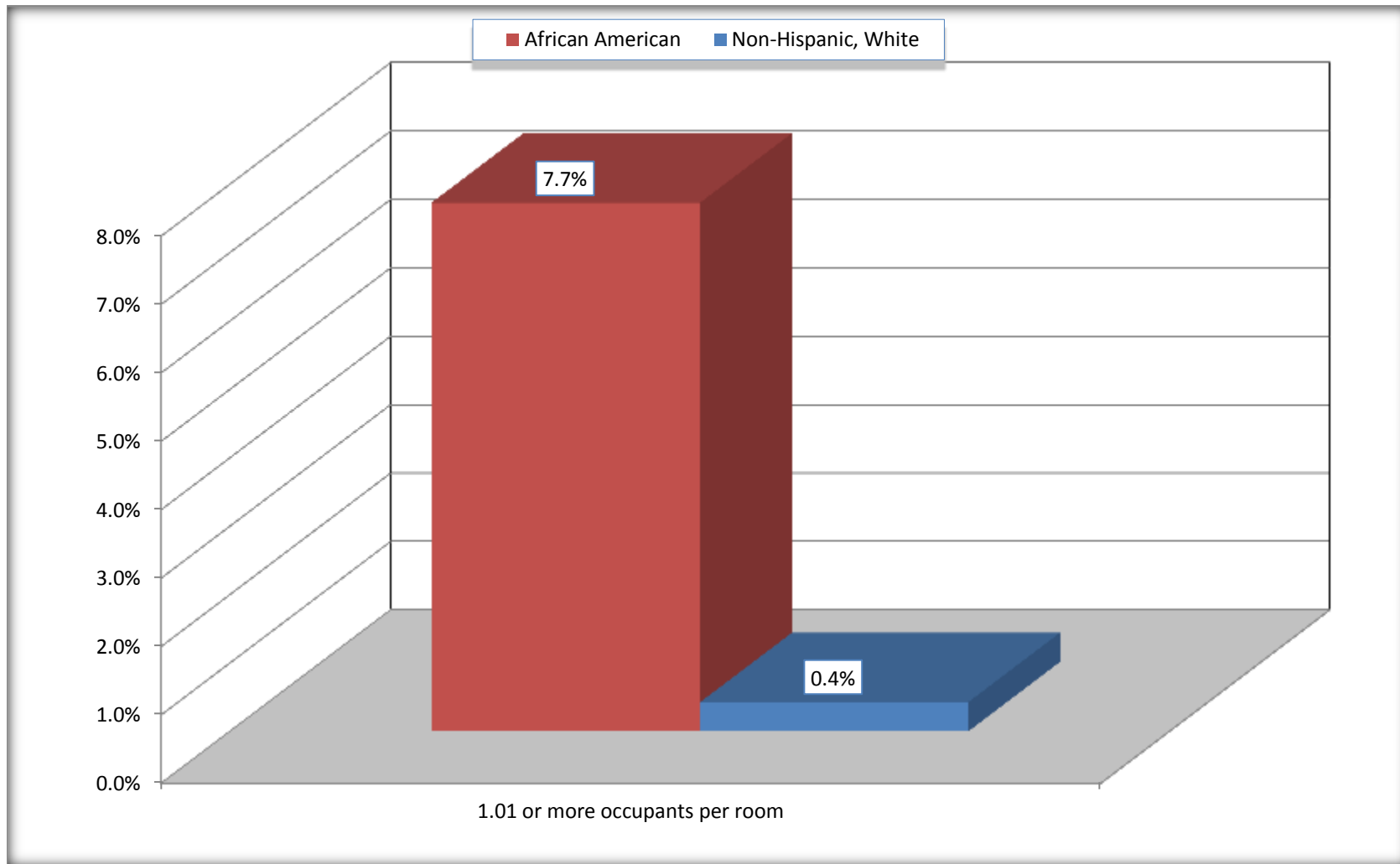
Source: U.S. Census Bureau, 2008-2012 American Community Survey

For information on confidentiality protection, sampling error, nonsampling error, and definitions, see Survey Methodology.

<http://www.census.gov/acs/www/UseData/index.ht>

More than One Person per Room (Crowding) by Household

Forest City town, North Carolina



Source: B25014. OCCUPANTS PER ROOM - Universe: OCCUPIED HOUSING UNITS
Data Set: 2008-2012 American Community Survey 5-Year Estimates

B18101. AGE BY DISABILITY STATUS

Data Set: 2008-2012 American Community Survey 5-Year Estimates

	Forest City town, North Carolina					
	African American	Margin of Error (+/-)	% of AA Total	White, Not Hispanic	Margin of Error (+/-)	% of NHW Total
Total:	1,951	335	100.0%	4,702	413	100.0%
Under 18 years:	635	209	32.5%	850	16	18.1%
With a disability	12	23	0.6%	112	91	2.4%
No disability	623	210	31.9%	738	192	15.7%
18 to 64 years:	1,087	214	55.7%	2,619	335	55.7%
With a disability	337	155	17.3%	553	151	11.8%
No disability	750	193	38.4%	2,066	314	43.9%
65 years and over:	229	114	11.7%	1,233	225	26.2%
With a disability	111	79	5.7%	685	199	14.6%
No disability	118	67	6.0%	548	153	11.7%

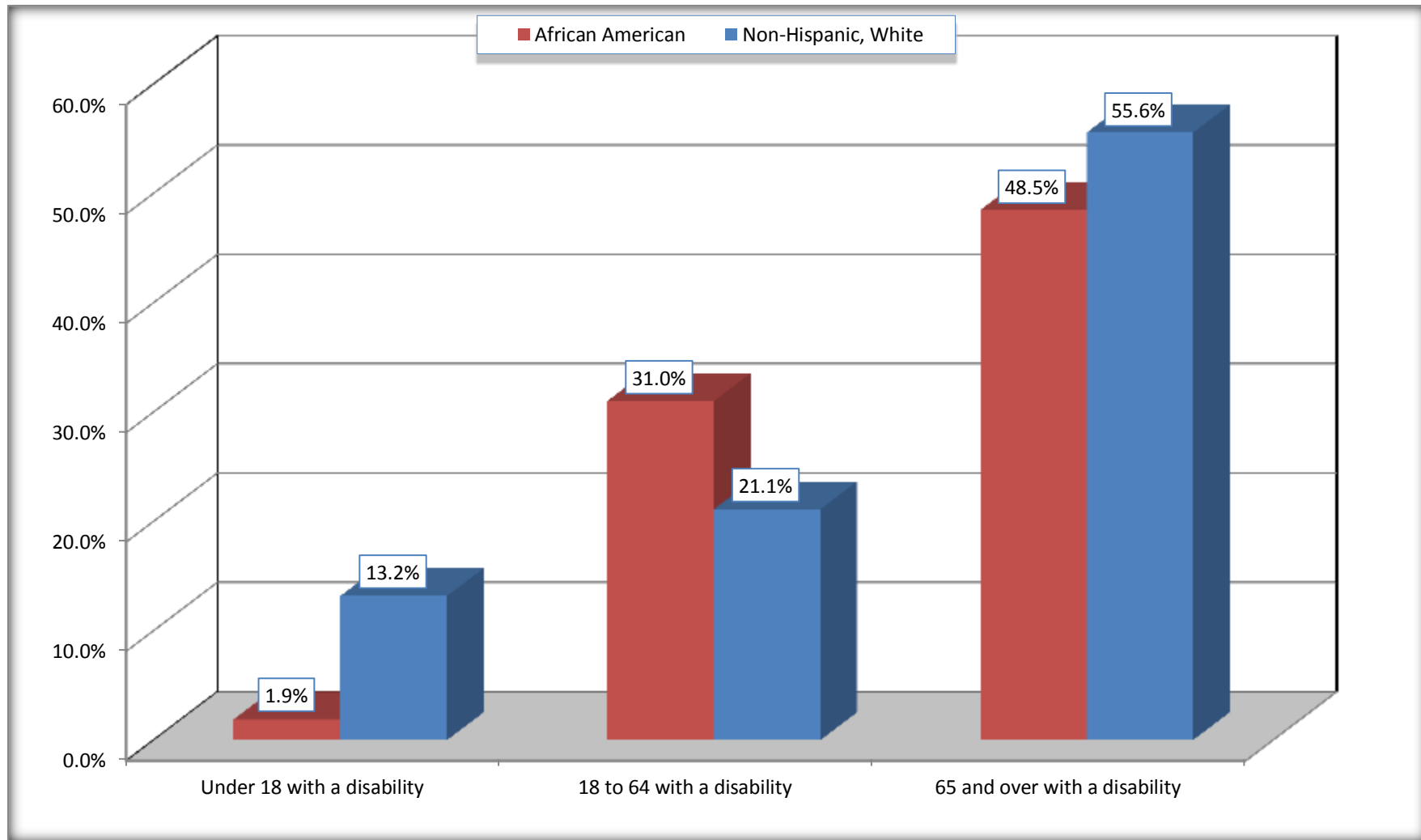
Source: U.S. Census Bureau, 2008-2012 American Community Survey

For information on confidentiality protection, sampling error, nonsampling error, and definitions, see Survey Methodology.

<http://www.census.gov/acs/www/UseData/index.htm>

Disability by Age

Forest City town, North Carolina



Source: B18101. AGE BY DISABILITY STATUS
Data Set: 2008-2012 American Community Survey 5-Year Estimates

C27001B. HEALTH INSURANCE COVERAGE STATUS BY AGE

Data Set: 2008-2012 American Community Survey 5-Year Estimates

	Forest City town, North Carolina					
	African American	Margin of Error (+/-)	% of AA Total	White, Not Hispanic	Margin of Error (+/-)	% of NHW Total
Total:	1,951	335	100.0%	4,702	413	100.0%
Under 18 years:	635	209	32.5%	850	215	18.1%
With health insurance coverage	573	213	29.4%	810	212	17.2%
No health insurance coverage	62	49	3.2%	40	47	0.9%
18 to 64 years:	1,087	214	55.7%	2,619	335	55.7%
With health insurance coverage	779	196	39.9%	2,013	263	42.8%
No health insurance coverage	308	119	15.8%	606	227	12.9%
65 years and over:	229	114	11.7%	1,233	225	26.2%
With health insurance coverage	229	114	11.7%	1,233	225	26.2%
No health insurance coverage	0	18	0.0%	0	18	0.0%

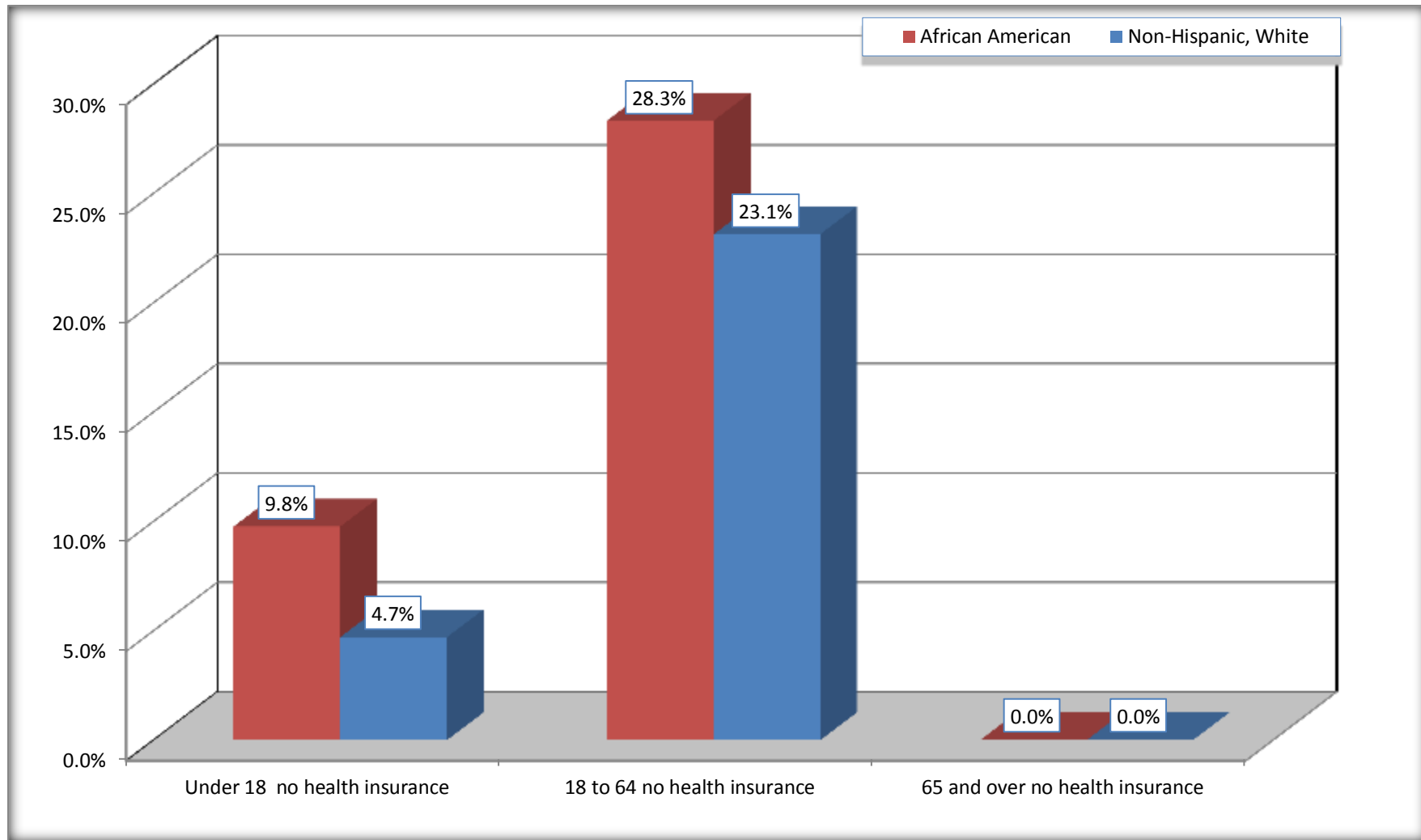
Source: U.S. Census Bureau, 2008-2012 American Community Survey

For information on confidentiality protection, sampling error, nonsampling error, and definitions, see Survey Methodology.

<http://www.census.gov/acs/www/UseData/index.htm>

Lack of Health Insurance Coverage by Age

Forest City town, North Carolina



Source: C27001B. HEALTH INSURANCE COVERAGE STATUS BY AGE
Data Set: 2008-2012 American Community Survey 5-Year Estimates