

# **Selected Socio-Economic Data**

## **Clinton city, North Carolina**

### **African American and White, Not Hispanic**

**Data Set: 2008-2012 American Community Survey 5-Year Estimates**

[www.fairvote2020.org](http://www.fairvote2020.org)

[www.fairdata2000.com](http://www.fairdata2000.com)

[29-Dec-13](#)

**C02003.DETAILED RACE - Universe: TOTAL POPULATION**

Data Set: 2008-2012 American Community Survey 5-Year Estimates

	Clinton city, North Carolina		
	Population	Margin of Error (+/-)	% of Total
<b>Total:</b>	<b>8,640</b>	<b>58</b>	<b>100.0%</b>
Population of one race:	8,485	75	98.2%
White	4,468	319	51.7%
Black or African American	3,426	309	39.7%
American Indian and Alaska Native	72	42	0.8%
Asian alone	56	43	0.6%
Native Hawaiian and Other Pacific Islander	0	18	0.0%
Some other race	463	170	5.4%
Population of two or more races:	155	63	1.8%
Two races including Some other race	7	12	0.1%
Two races excluding Some other race, and three or more races	148	63	1.7%
Population of two races:	130	58	1.5%
White; Black or African American	66	40	0.8%
White; American Indian and Alaska Native	28	33	0.3%
White; Asian	3	6	0.0%
Black or African American; American Indian and Alaska Native	18	24	0.2%
All other two race combinations	15	16	0.2%
Population of three races	25	25	0.3%
Population of four or more races	0	18	0.0%

Note: Hispanics may be of any race. See Table B03002 and chart.

Source: U.S. Census Bureau, 2008-2012 American Community Survey

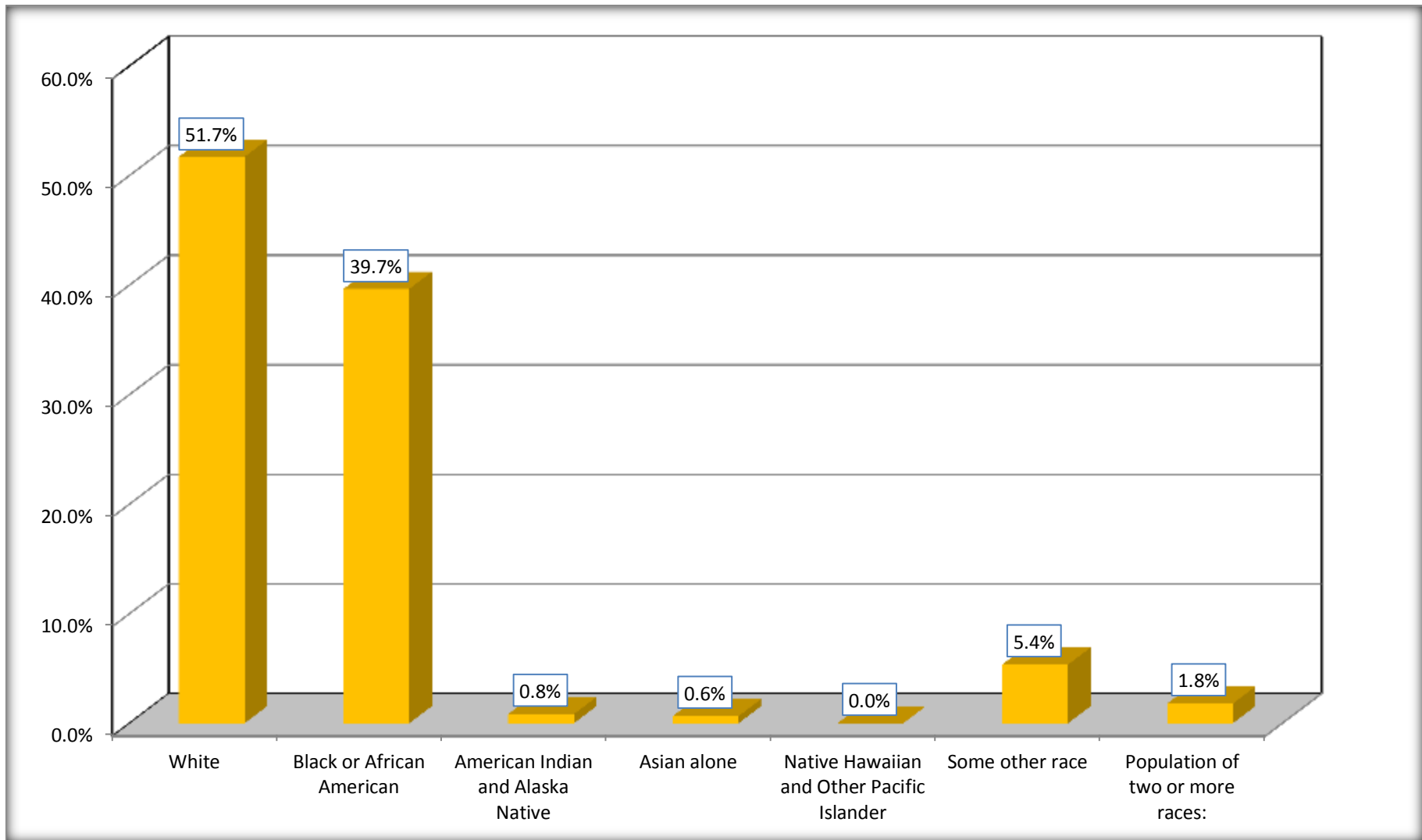
Although the American Community Survey (ACS) produces population, demographic and housing unit estimates, it is the Census Bureau's Population Estimates Program that produces and disseminates the official estimates of the population for the nation, states, counties, cities and towns and estimates of housing units for states and counties.

For information on confidentiality protection, sampling error, nonsampling error, and definitions, see Survey Methodology.

<http://www.census.gov/acs/www/UseData/index.htm>

# Population by Race

## Clinton city, North Carolina



Source: C02003.DETAILED RACE - Universe: TOTAL POPULATION  
Data Set: 2008-2012 American Community Survey 5-Year Estimates

**B03002. HISPANIC OR LATINO ORIGIN BY RACE - Universe: TOTAL POPULATION**

Data Set: 2008-2012 American Community Survey 5-Year Estimates

	Clinton city, North Carolina		
	Population	Margin of Error (+/-)	% of Total
<b>Total:</b>	8,640	58	<b>100.0%</b>
Not Hispanic or Latino:	7,939	200	91.9%
White alone	4,327	308	50.1%
Black or African American alone	3,372	302	39.0%
American Indian and Alaska Native alone	48	31	0.6%
Asian alone	56	43	0.6%
Native Hawaiian and Other Pacific Islander alone	0	18	0.0%
Some other race alone	10	14	0.1%
Two or more races:	126	55	1.5%
Two races including Some other race	0	18	0.0%
Two races excluding Some other race, and three or more races	126	55	1.5%
Hispanic or Latino	701	192	8.1%

Source: U.S. Census Bureau, 2008-2012 American Community Survey

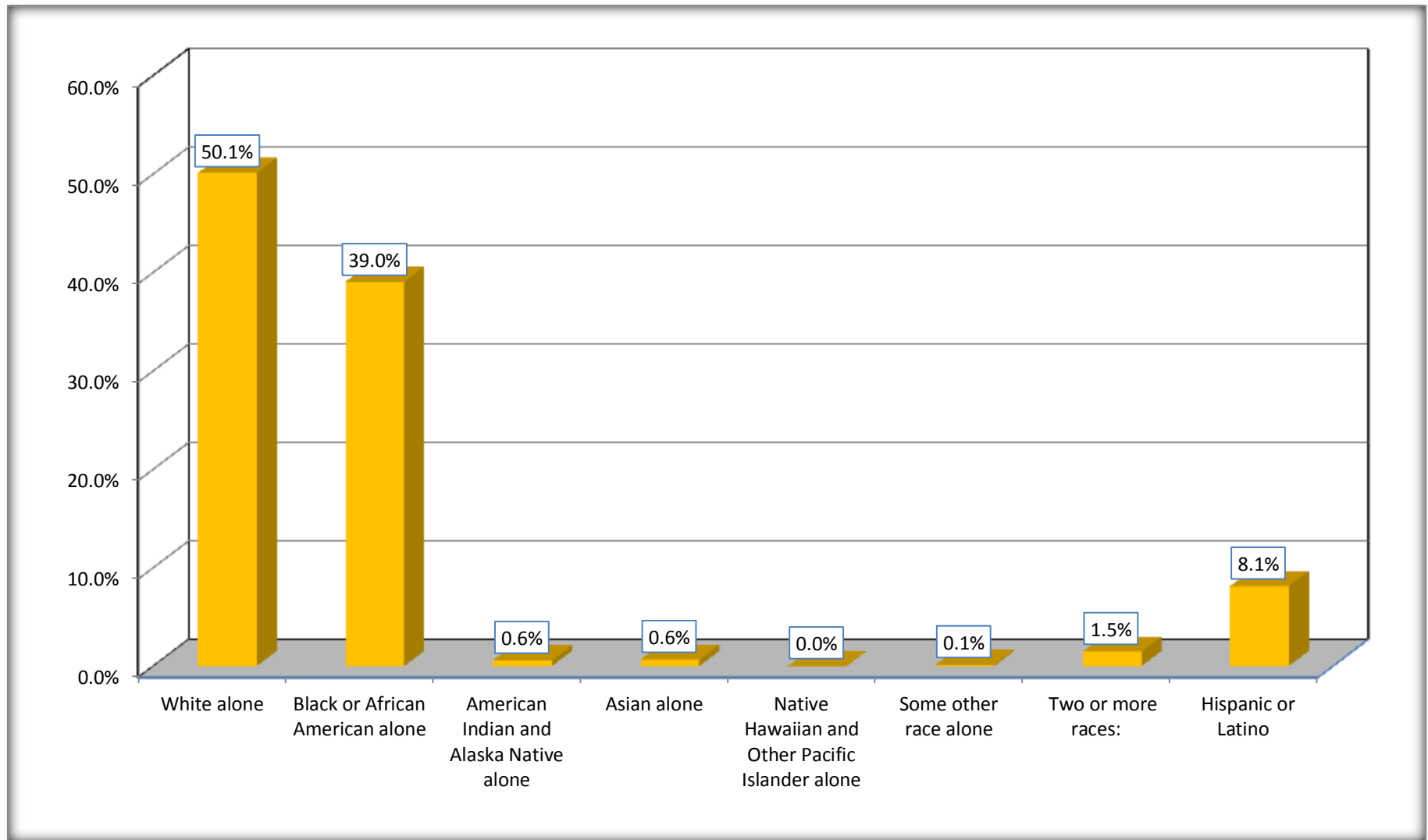
Although the American Community Survey (ACS) produces population, demographic and housing unit estimates, it is the Census Bureau's Population Estimates Program that produces and disseminates the official estimates of the population for the nation, states, counties, cities and towns and estimates of housing units for states and counties.

For information on confidentiality protection, sampling error, nonsampling error, and definitions, see Survey Methodology.

<http://www.census.gov/acs/www/UseData/index.htm>

# Non-Hispanic by Race and Hispanic Population

## Clinton city, North Carolina



Source: B03002. HISPANIC OR LATINO ORIGIN BY RACE - Universe: TOTAL POPULATION  
Data Set: 2008-2012 American Community Survey 5-Year Estimates

**B03002. HISPANIC OR LATINO ORIGIN BY RACE**

Data Set: 2008-2012 American Community Survey 5-Year Estimates

	Clinton city, North Carolina		
	Population	Margin of Error (+/-)	% of Total
Hispanic or Latino:	701	192	<b>100.0%</b>
White alone	141	77	20.1%
Black or African American alone	54	61	7.7%
American Indian and Alaska Native alone	24	35	3.4%
Asian alone	0	18	0.0%
Native Hawaiian and Other Pacific Islander alone	0	18	0.0%
Some other race alone	453	168	64.6%
Two or more races:	29	28	4.1%
Two races including Some other race	7	12	1.0%
Two races excluding Some other race, and three or more races	22	25	3.1%

Source: U.S. Census Bureau, 2008-2012 American Community Survey

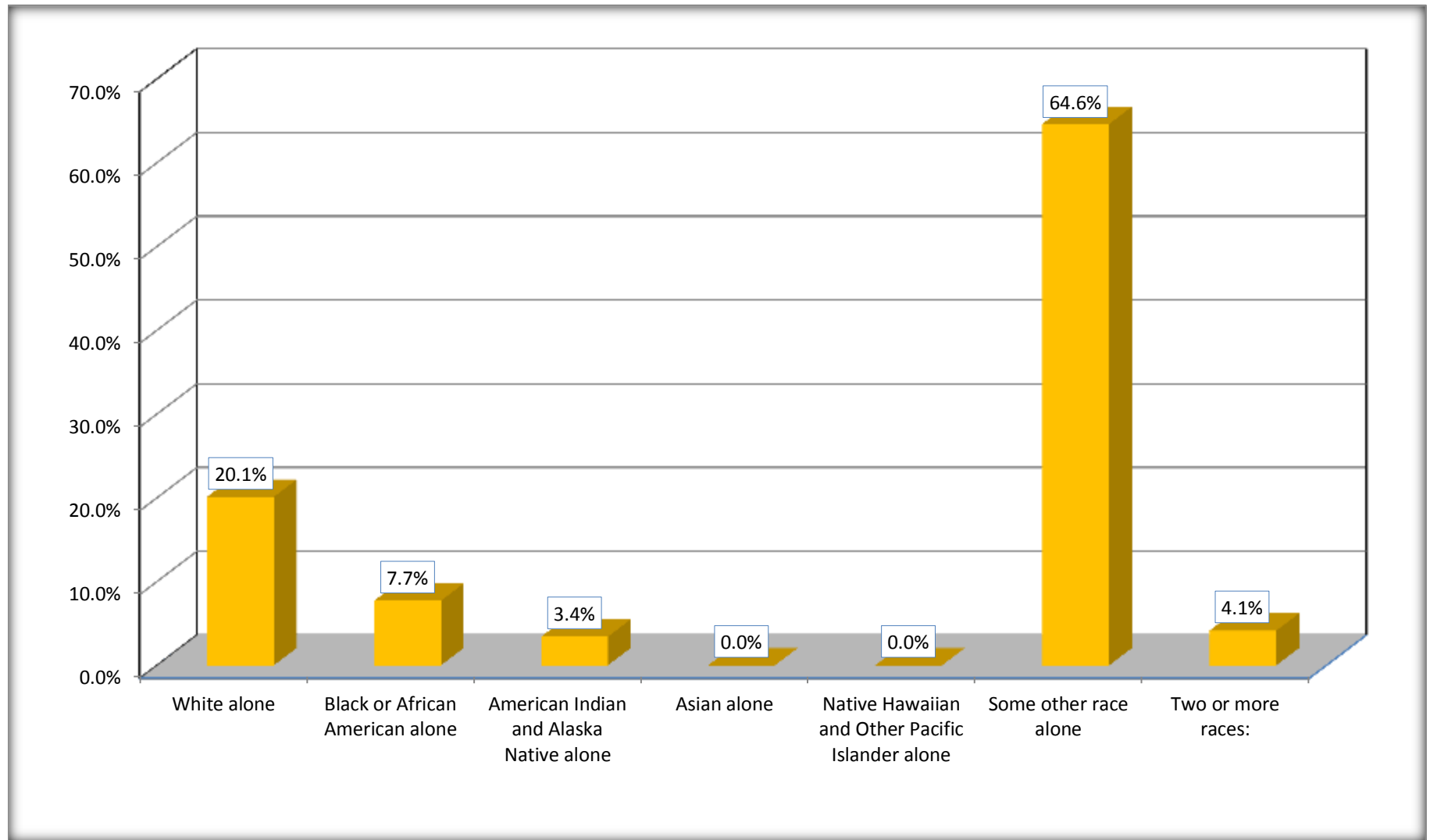
Although the American Community Survey (ACS) produces population, demographic and housing unit estimates, it is the Census Bureau's Population Estimates Program that produces and disseminates the official estimates of the population for the nation, states, counties, cities and towns and estimates of housing units for states and counties.

For information on confidentiality protection, sampling error, nonsampling error, and definitions, see Survey Methodology.

<http://www.census.gov/acs/www/UseData/index.htm>

# Hispanic or Latino Origin by Race

## Clinton city, North Carolina



Source: B03002. HISPANIC OR LATINO ORIGIN BY RACE  
Data Set: 2008-2012 American Community Survey 5-Year Estimates

**B01001. SEX BY AGE**

Data Set: 2008-2012 American Community Survey 5-Year Estimates

	Clinton city, North Carolina					
	African American	Margin of Error (+/-)	% of AA Total	White, Not Hispanic	Margin of Error (+/-)	% of NHW Total
<b>Total:</b>	<b>3,426</b>	<b>309</b>	<b>100.0%</b>	<b>4,327</b>	<b>308</b>	<b>100.0%</b>
Under 18 years	852	NC	24.9%	620	NC	14.3%
18 to 64 years	1,989	NC	58.1%	2,396	NC	55.4%
65 years and over	585	NC	17.1%	1,311	NC	30.3%
Male:	1,502	191	43.8%	1,919	389	44.3%
Under 18 years	368	NC	10.7%	300	NC	6.9%
18 to 64 years	912	NC	26.6%	1,093	NC	25.3%
65 years and over	222	NC	6.5%	526	NC	12.2%
Female:	1,924	222	56.2%	2,408	412	55.7%
Under 18 years	484	NC	14.1%	320	NC	7.4%
18 to 64 years	1,077	NC	31.4%	1,303	NC	30.1%
65 years and over	363	NC	10.6%	785	NC	18.1%

Source: U.S. Census Bureau, 2008-2012 American Community Survey

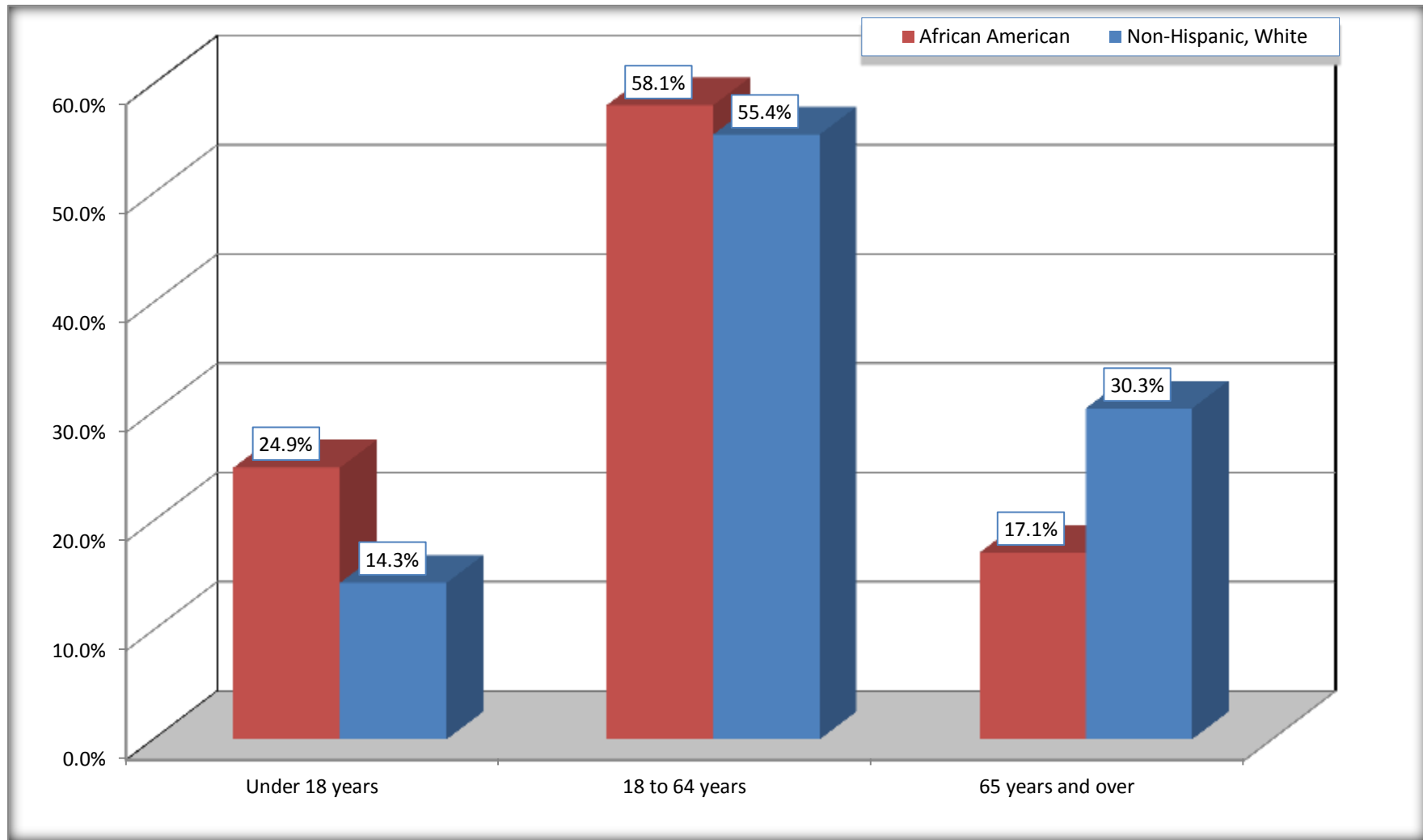
Although the American Community Survey (ACS) produces population, demographic and housing unit estimates, it is the Census Bureau's Population Estimates Program that produces and disseminates the official estimates of the population for the nation, states, counties, cities and towns and estimates of housing units for states and counties.

For information on confidentiality protection, sampling error, nonsampling error, and definitions, see Survey Methodology.  
<http://www.census.gov/acs/www/UseData/index.htm>



# Population by Age

## Clinton city, North Carolina



Source: B01001. SEX BY AGE  
Data Set: 2008-2012 American Community Survey 5-Year Estimates

**B05003. SEX BY AGE BY CITIZENSHIP STATUS**

Data Set: 2008-2012 American Community Survey 5-Year Estimates

	Clinton city, North Carolina					
	African American	Margin of Error (+/-)	% of AA Total by Age	White, Not Hispanic	Margin of Error (+/-)	% of NHW Total by Age
<b>Total:</b>	<b>3,426</b>	<b>309</b>	<b>100.0%</b>	<b>4,327</b>	<b>308</b>	<b>100.0%</b>
<b>Under 18 years:</b>	<b>852</b>	<b>NC</b>	<b>100.0%</b>	<b>620</b>	<b>NC</b>	<b>100.0%</b>
Native	833	NC	97.8%	620	NC	100.0%
Foreign born:	19	NC	2.2%	0	NC	0.0%
Naturalized U.S. citizen	12	NC	1.4%	0	NC	0.0%
Not a U.S. citizen	7	NC	0.8%	0	NC	0.0%
<b>18 years and over:</b>	<b>2,574</b>	<b>NC</b>	<b>100.0%</b>	<b>3,707</b>	<b>NC</b>	<b>100.0%</b>
Native	2,500	NC	97.1%	3,690	NC	99.5%
Foreign born:	74	NC	2.9%	17	NC	0.5%
Naturalized U.S. citizen	26	NC	1.0%	6	NC	0.2%
Not a U.S. citizen	48	NC	1.9%	11	NC	0.3%
<b>Male:</b>	<b>1,502</b>	<b>191</b>	<b>43.8%</b>	<b>1,919</b>	<b>181</b>	<b>44.3%</b>
<b>Under 18 years:</b>	<b>368</b>	<b>119</b>	<b>100.0%</b>	<b>300</b>	<b>83</b>	<b>100.0%</b>
Native	368	119	100.0%	300	83	100.0%
Foreign born:	0	18	0.0%	0	18	0.0%
Naturalized U.S. citizen	0	18	0.0%	0	18	0.0%
Not a U.S. citizen	0	18	0.0%	0	18	0.0%
<b>18 years and over:</b>	<b>1,134</b>	<b>143</b>	<b>100.0%</b>	<b>1,619</b>	<b>161</b>	<b>100.0%</b>
Native	1,093	139	96.4%	1,605	161	99.1%
Foreign born:	41	32	3.6%	14	14	0.9%
Naturalized U.S. citizen	14	24	1.2%	6	10	0.4%
Not a U.S. citizen	27	21	2.4%	8	7	0.5%

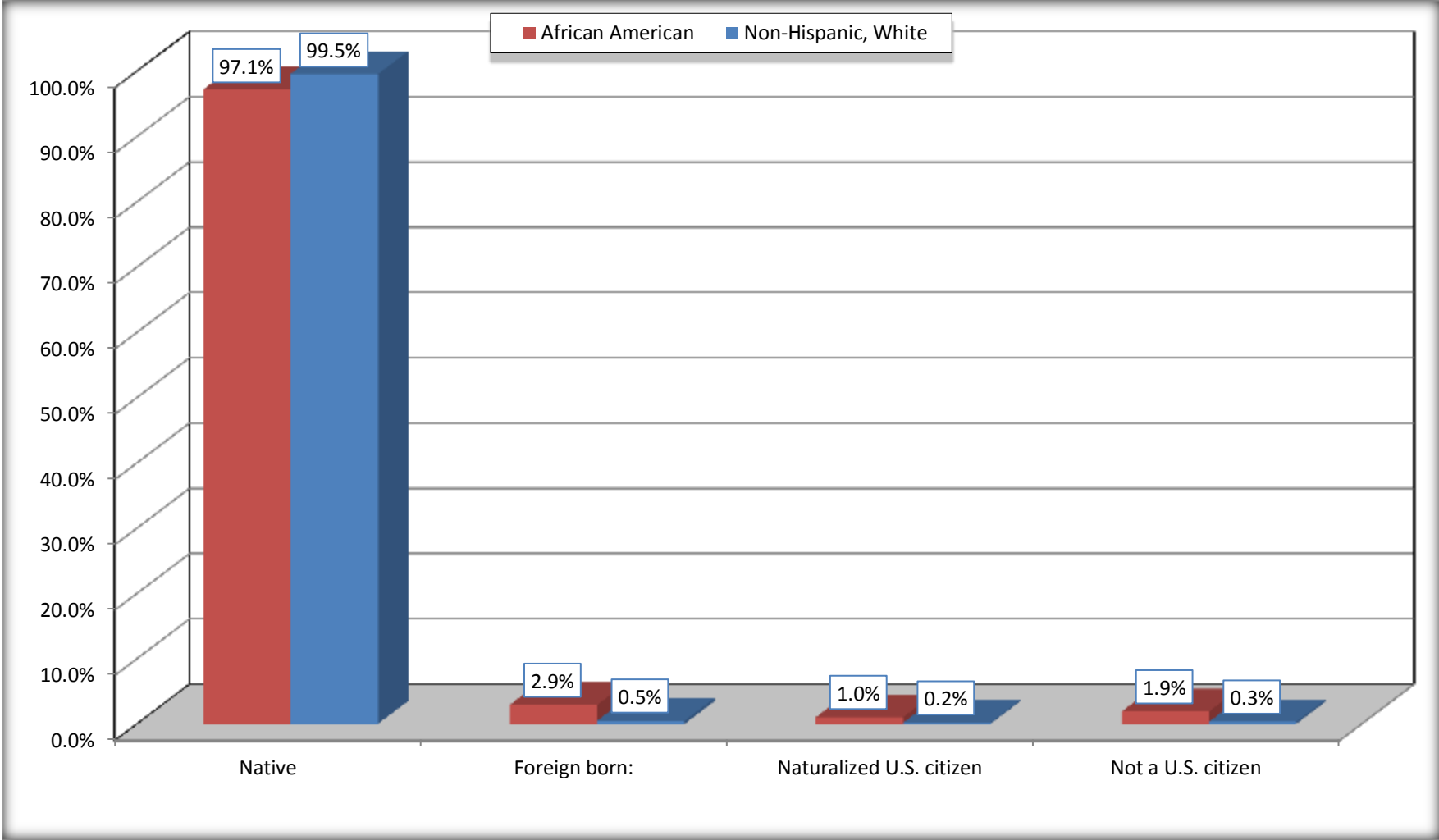
	Clinton city, North Carolina					
	African American	Margin of Error (+/-)	% of AA by Age	White, Not Hispanic	Margin of Error (+/-)	% of NHW by Age
<b>Female:</b>	1,924	222	56.2%	2,408	199	55.7%
<b>Under 18 years:</b>	<b>484</b>	<b>115</b>	<b>100.0%</b>	<b>320</b>	<b>80</b>	<b>100.0%</b>
Native	465	113	96.1%	320	80	100.0%
Foreign born:	19	23	3.9%	0	18	0.0%
Naturalized U.S. citizen	12	19	2.5%	0	18	0.0%
Not a U.S. citizen	7	12	1.4%	0	18	0.0%
<b>18 years and over:</b>	<b>1,440</b>	<b>166</b>	<b>100.0%</b>	<b>2,088</b>	<b>165</b>	<b>100.0%</b>
Native	1,407	165	97.7%	2,085	164	99.9%
Foreign born:	33	28	2.3%	3	4	0.1%
Naturalized U.S. citizen	12	16	0.8%	0	18	0.0%
Not a U.S. citizen	21	23	1.5%	3	4	0.1%

Source: U.S. Census Bureau, 2008-2012 American Community Survey

For information on confidentiality protection, sampling error, nonsampling error, and definitions, see Survey Methodology.  
<http://www.census.gov/acs/www/UseData/index.htm>

# Citizenship Status of Voting Age Population (18 and Over)

## Clinton city, North Carolina



Source: B05003. SEX BY AGE BY CITIZENSHIP STATUS  
Data Set: 2008-2012 American Community Survey 5-Year Estimates

**B07004. GEOGRAPHICAL MOBILITY IN THE PAST YEAR BY RACE FOR CURRENT RESIDENCE IN THE UNITED STATES - Universe:  
POPULATION 1 YEAR AND OVER**

Data Set: 2008-2012 American Community Survey 5-Year Estimates

	Clinton city, North Carolina					
	African American	Margin of Error (+/-)	% of AA Total	White, Not Hispanic	Margin of Error (+/-)	% of NHW Total
<b>Total:</b>	<b>3,394</b>	<b>310</b>	<b>100.0%</b>	<b>4,303</b>	<b>305</b>	<b>100.0%</b>
Same house 1 year ago	2,572	281	75.8%	3,711	279	86.2%
Moved within same county	521	182	15.4%	373	90	8.7%
Moved from different county within same state	215	111	6.3%	123	65	2.9%
Moved from different state	86	76	2.5%	65	53	1.5%
Moved from abroad	0	18	0.0%	31	41	0.7%

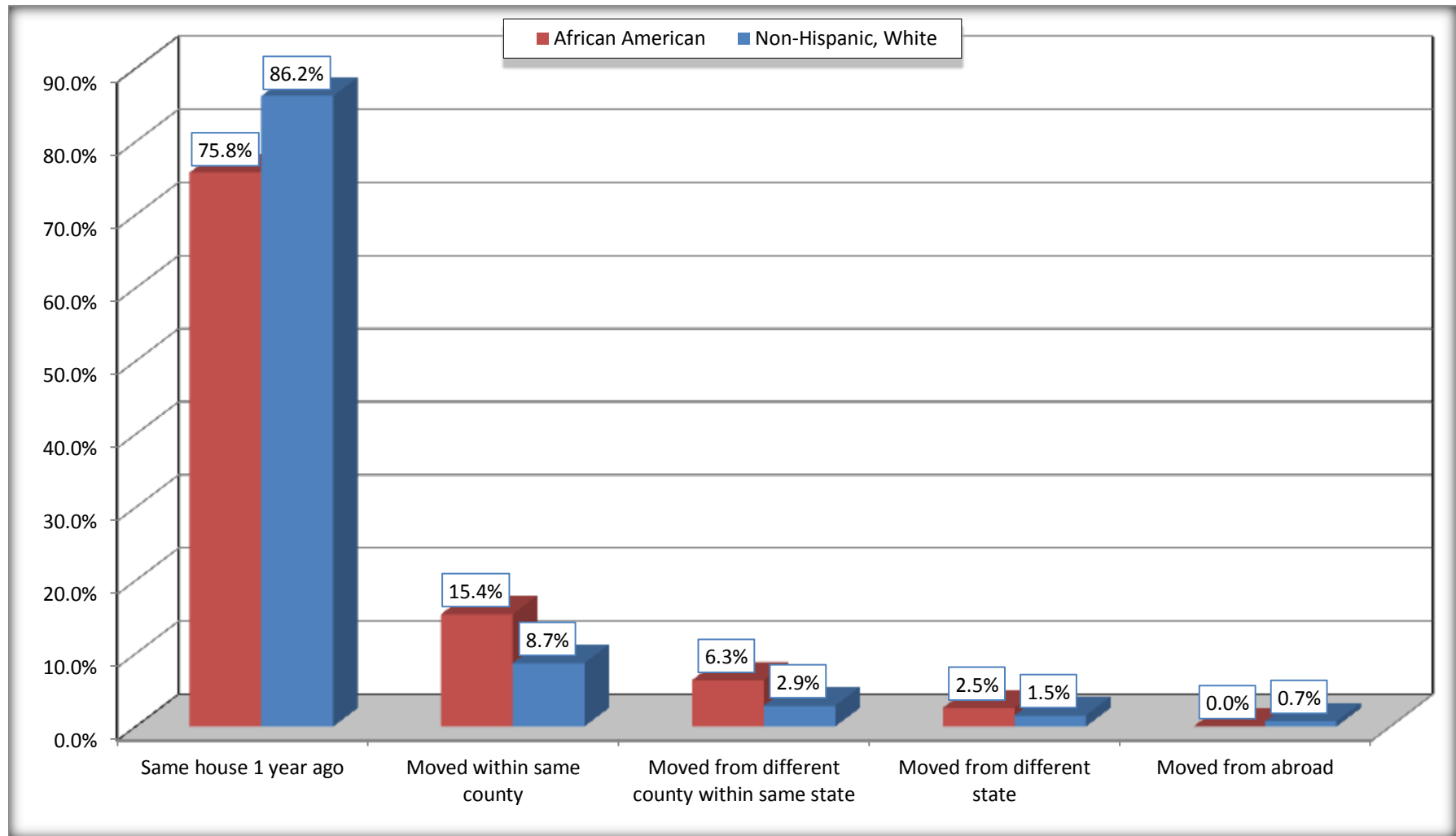
Source: U.S. Census Bureau, 2008-2012 American Community Survey

For information on confidentiality protection, sampling error, nonsampling error, and definitions, see Survey Methodology.

<http://www.census.gov/acs/www/UseData/index.htm>

# Geographical Mobility in the Past Year (Population 1 Year and Over)

## Clinton city, North Carolina



Source: B07004. GEOGRAPHICAL MOBILITY IN THE PAST YEAR BY RACE FOR CURRENT RESIDENCE IN THE UNITED STATES - Universe: POPULATION 1 YEAR AND OVER

Data Set: 2008-2012 American Community Survey 5-Year Estimates

**B08105. MEANS OF TRANSPORTATION TO WORK - Universe: WORKERS 16 YEARS AND OVER**

Data Set: 2008-2012 American Community Survey 5-Year Estimates

	Clinton city, North Carolina					
	African American	Margin of Error (+/-)	% of AA Total	White, Not Hispanic	Margin of Error (+/-)	% of NHW Total
<b>Total:</b>	1045	153	<b>100.0%</b>	2074	208	<b>100.0%</b>
Car, truck, or van - drove alone	838	125	80.2%	1877	203	90.5%
Car, truck, or van - carpooled	112	71	10.7%	113	40	5.4%
Public transportation (excluding taxicab)	5	8	0.5%	2	5	0.1%
Walked	42	24	4.0%	14	12	0.7%
Taxicab, motorcycle, bicycle, or other means	40	48	3.8%	8	7	0.4%
Worked at home	8	12	0.8%	60	28	2.9%

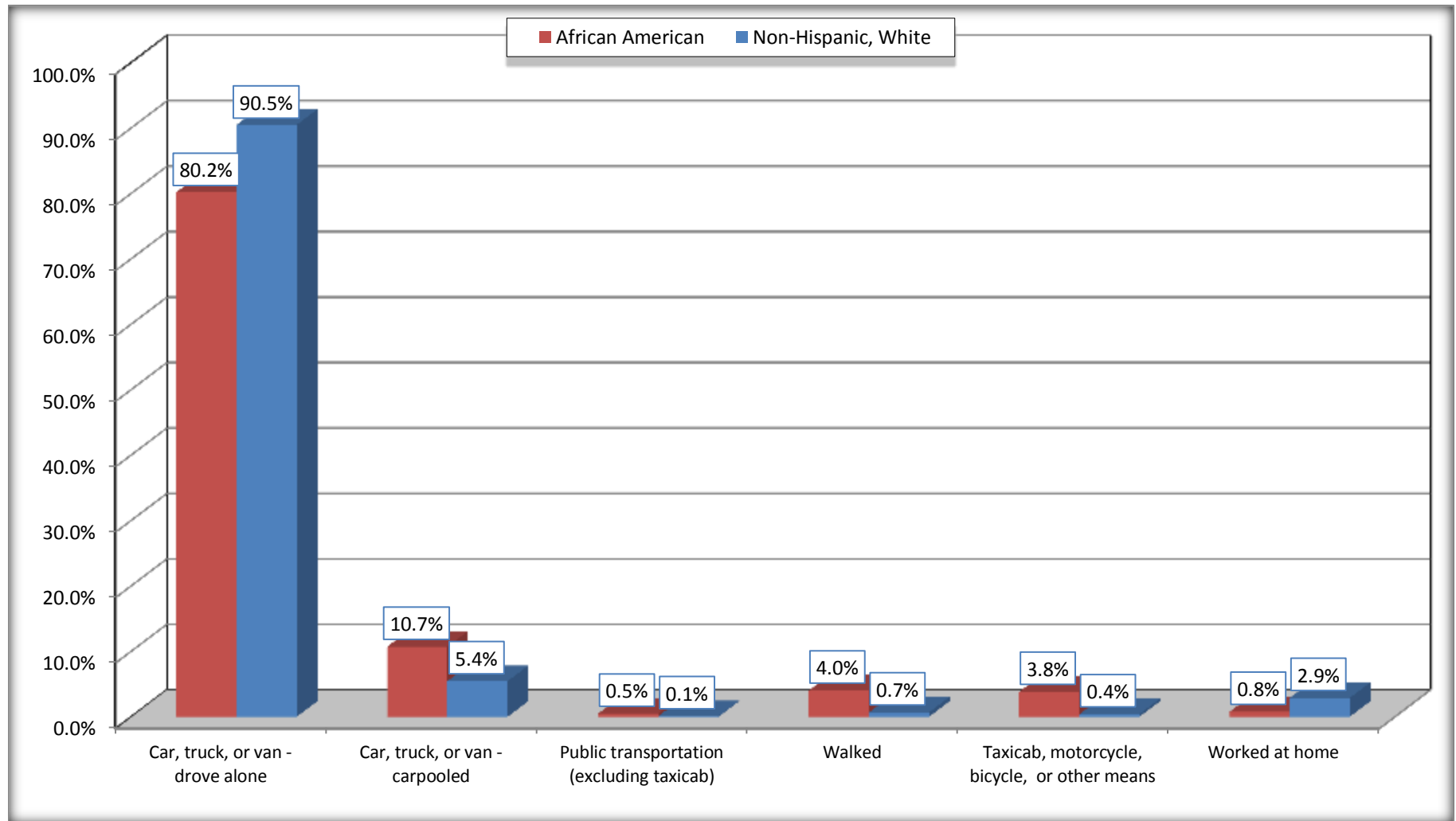
Source: U.S. Census Bureau, 2008-2012 American Community Survey

For information on confidentiality protection, sampling error, nonsampling error, and definitions, see Survey Methodology.

<http://www.census.gov/acs/www/UseData/index.htm>

# Means of Transportation to Work (Workers 16 Years and Over)

## Clinton city, North Carolina



Source: B08105. MEANS OF TRANSPORTATION TO WORK - Universe: WORKERS 16 YEARS AND OVER  
Data Set: 2008-2012 American Community Survey 5-Year Estimates



**B11002. HOUSEHOLD TYPE BY RELATIVES AND NONRELATIVES FOR POPULATION IN HOUSEHOLDS**

Data Set: 2008-2012 American Community Survey 5-Year Estimates

	Clinton city, North Carolina					
	African American	Margin of Error (+/-)	% of AA Total	White, Not Hispanic	Margin of Error (+/-)	% of NHW Total
<b>Total:</b>	3185	319	<b>100.0%</b>	4144	312	<b>100.0%</b>
In family households	2468	324	77.5%	3176	290	76.6%
In nonfamily households	717	109	22.5%	968	132	23.4%

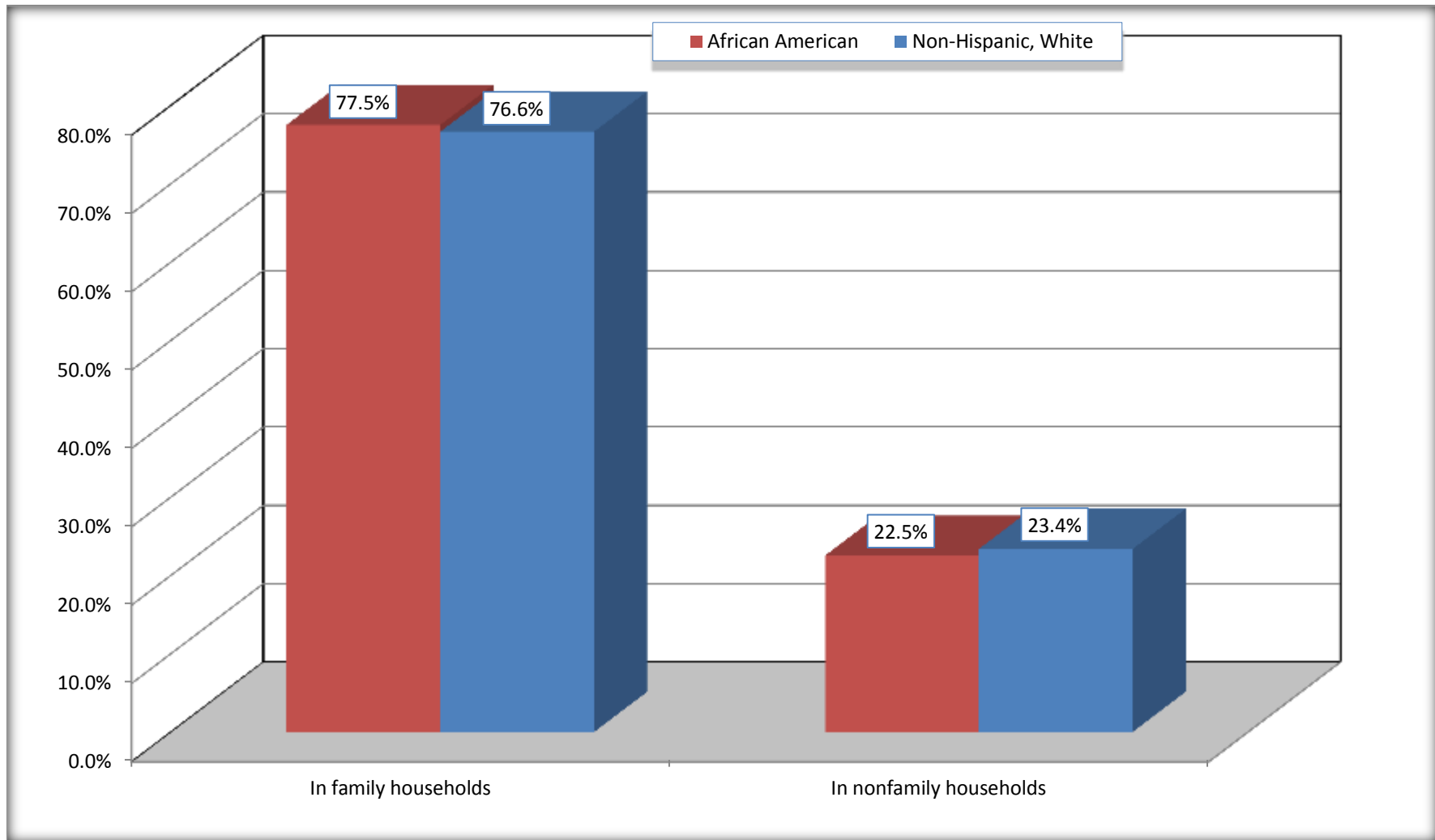
Source: U.S. Census Bureau, 2008-2012 American Community Survey

For information on confidentiality protection, sampling error, nonsampling error, and definitions, see Survey Methodology.

<http://www.census.gov/acs/www/UseData/index.htm>

# Household Type for Population in Households

## Clinton city, North Carolina



Source: B11002. HOUSEHOLD TYPE BY RELATIVES AND NONRELATIVES FOR POPULATION IN HOUSEHOLDS  
Data Set: 2008-2012 American Community Survey 5-Year Estimates

**B12002. MARITAL STATUS FOR THE POPULATION 15 YEARS AND OVER**

Data Set: 2008-2012 American Community Survey 5-Year Estimates

	Clinton city, North Carolina					
	African American	Margin of Error (+/-)	% of AA Total	White, Not Hispanic	Margin of Error (+/-)	% of NHW Total
<b>Total:</b>	<b>2,744</b>	<b>232</b>	<b>100.0%</b>	<b>3,814</b>	<b>263</b>	<b>100.0%</b>
Never married	1,274	NC	46.4%	711	NC	18.6%
Now married (except separated)	659	NC	24.0%	2,011	NC	52.7%
Separated	216	NC	7.9%	88	NC	2.3%
Widowed	285	NC	10.4%	531	NC	13.9%
Divorced	310	NC	11.3%	473	NC	12.4%
<b>Male:</b>	<b>1,199</b>	<b>145</b>	<b>43.7%</b>	<b>1,671</b>	<b>164</b>	<b>43.8%</b>
Never married	598	116	21.8%	368	92	9.6%
Now married (except separated)	358	85	13.0%	1,013	116	26.6%
Separated	61	33	2.2%	23	16	0.6%
Widowed	40	23	1.5%	109	53	2.9%
Divorced	142	60	5.2%	158	68	4.1%
<b>Female:</b>	<b>1,545</b>	<b>171</b>	<b>56.3%</b>	<b>2,143</b>	<b>171</b>	<b>56.2%</b>
Never married	676	131	24.6%	343	78	9.0%
Now married (except separated)	301	78	11.0%	998	105	26.2%
Separated	155	51	5.6%	65	39	1.7%
Widowed	245	67	8.9%	422	84	11.1%
Divorced	168	51	6.1%	315	65	8.3%

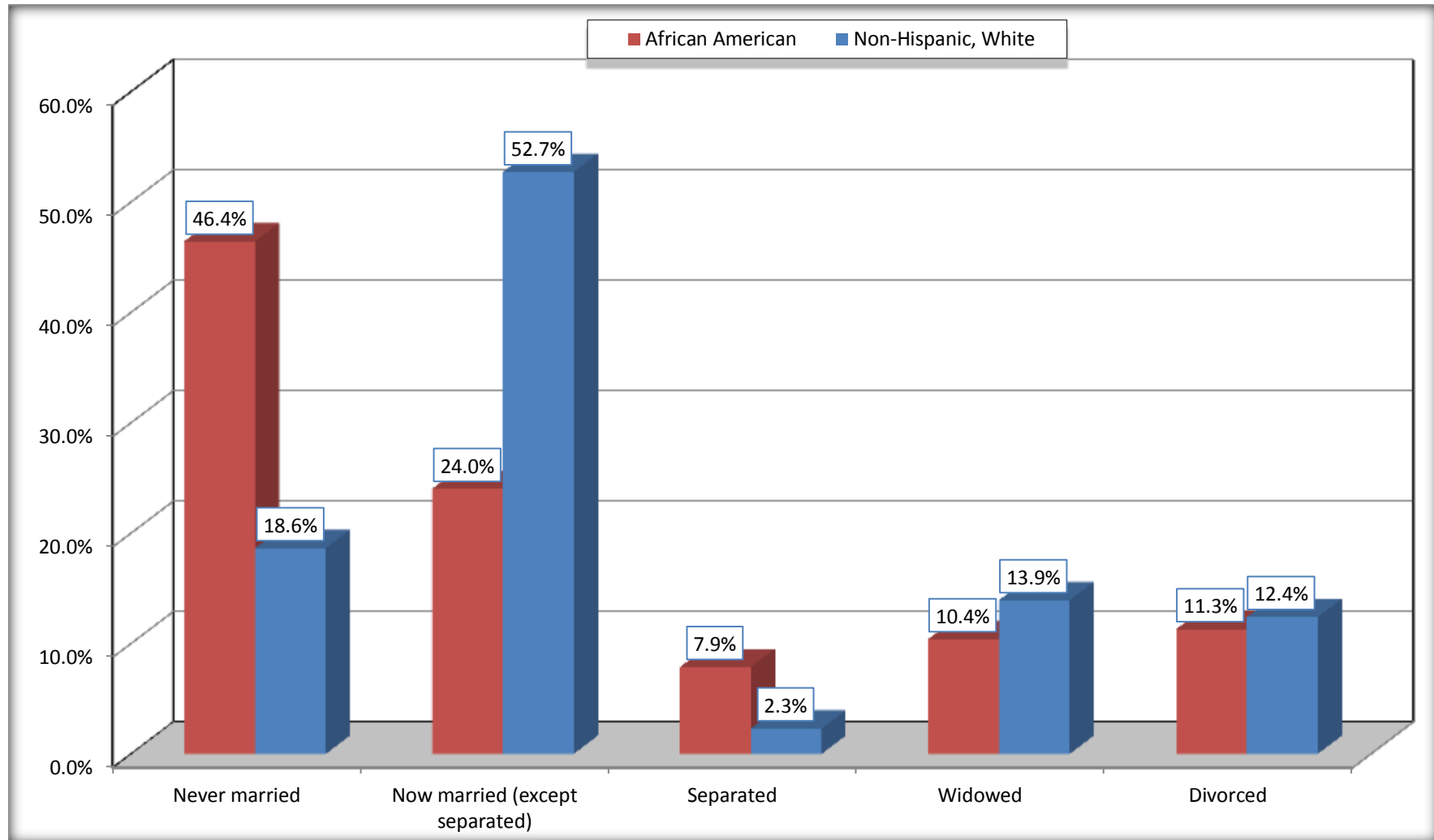
Source: U.S. Census Bureau, 2008-2012 American Community Survey

For information on confidentiality protection, sampling error, nonsampling error, and definitions, see Survey Methodology.

<http://www.census.gov/acs/www/UseData/index.htm>

# Marital Status for the Population 15 Years and Over

## Clinton city, North Carolina



Source: B12002. MARITAL STATUS FOR THE POPULATION 15 YEARS AND OVER  
Data Set: 2008-2012 American Community Survey 5-Year Estimates

**C15002. SEX BY EDUCATIONAL ATTAINMENT FOR THE POPULATION 25 YEARS AND OVER**

Data Set: 2008-2012 American Community Survey 5-Year Estimates

	Clinton city, North Carolina					
	African American	Margin of Error (+/-)	% of AA Total	White, Not Hispanic	Margin of Error (+/-)	% of NHW Total
<b>Total:</b>	<b>2,275</b>	<b>190</b>	<b>100.0%</b>	<b>3,418</b>	<b>243</b>	<b>100.0%</b>
Less than high school diploma	570	NC	25.1%	461	NC	13.5%
High school graduate, GED, or alternative	759	NC	33.4%	867	NC	25.4%
Some college or associate's degree	714	NC	31.4%	1,095	NC	32.0%
Bachelor's degree or higher	232	NC	10.2%	995	NC	29.1%
Male:	1,018	124	44.7%	1,495	144	43.7%
Less than high school diploma	296	81	13.0%	225	57	6.6%
High school graduate, GED, or alternative	344	82	15.1%	383	85	11.2%
Some college or associate's degree	272	71	12.0%	376	92	11.0%
Bachelor's degree or higher	106	41	4.7%	511	79	15.0%
Female:	1,257	142	55.3%	1,923	157	56.3%
Less than high school diploma	274	69	12.0%	236	67	6.9%
High school graduate, GED, or alternative	415	96	18.2%	484	100	14.2%
Some college or associate's degree	442	77	19.4%	719	96	21.0%
Bachelor's degree or higher	126	46	5.5%	484	78	14.2%

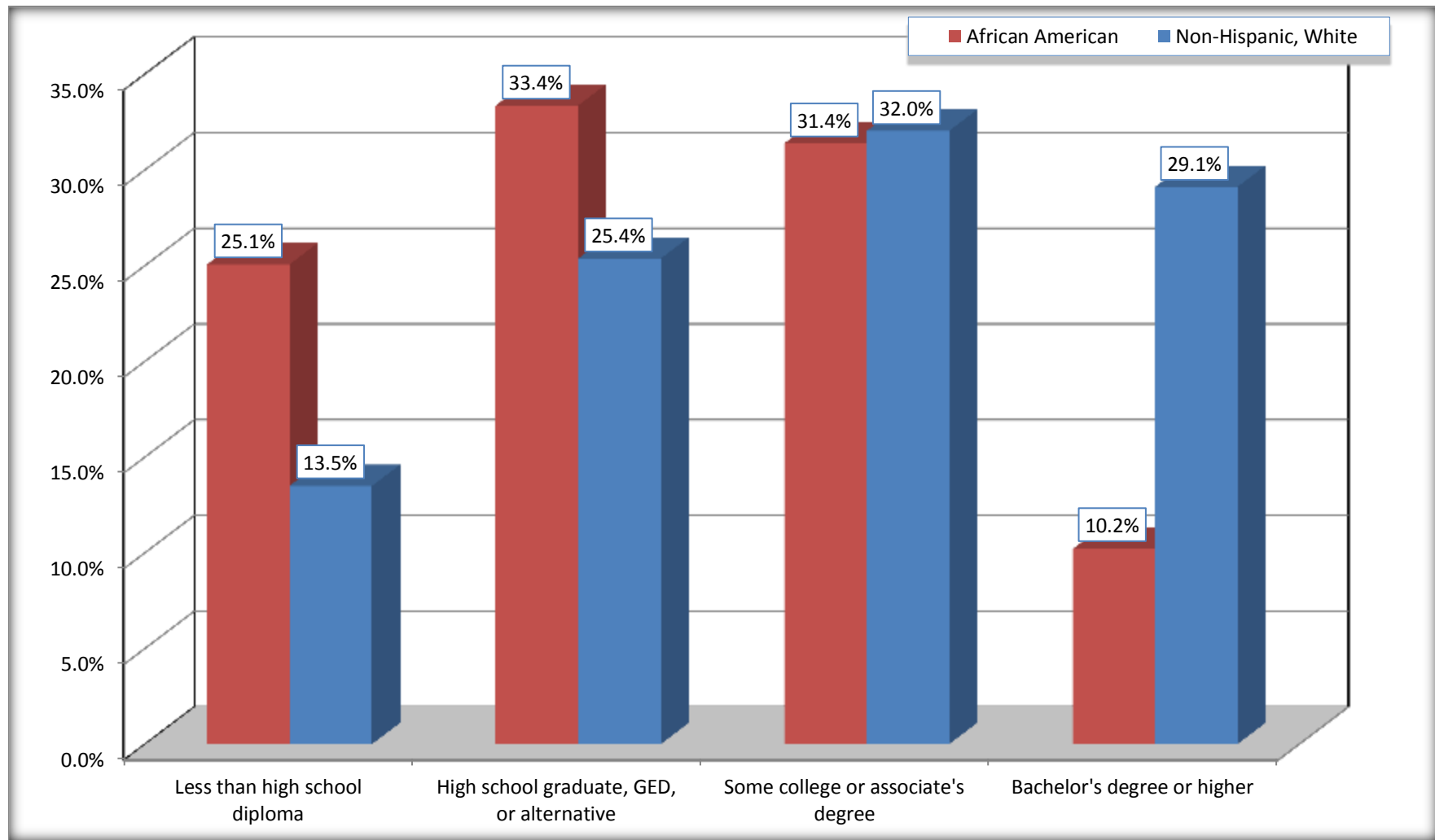
Source: U.S. Census Bureau, 2008-2012 American Community Survey

For information on confidentiality protection, sampling error, nonsampling error, and definitions, see Survey Methodology.

<http://www.census.gov/acs/www/UseData/index.htm>

# Educational Attainment for the Population 25 Years and Older

## Clinton city, North Carolina



Source: C15002. SEX BY EDUCATIONAL ATTAINMENT FOR THE POPULATION 25 YEARS AND OVER  
Data Set: 2008-2012 American Community Survey 5-Year Estimates

**B17010. POVERTY STATUS IN THE PAST 12 MONTHS OF FAMILIES BY FAMILY TYPE BY PRESENCE OF RELATED CHILDREN UNDER 18 YEARS**

Data Set: 2008-2012 American Community Survey 5-Year Estimates

	Clinton city, North Carolina					
	African American	Margin of Error (+/-)	% of AA Total	White, Not Hispanic	Margin of Error (+/-)	% of NHW Total
<b>Total:</b>	<b>724</b>	<b>101</b>	<b>100.0%</b>	<b>1,094</b>	<b>115</b>	<b>100.0%</b>
Income in the past 12 months below poverty level:	240	56	33.1%	31	24	2.8%
Married-couple family:	15	10	2.1%	6	7	0.5%
With related children under 18 years	11	8	1.5%	0	18	0.0%
Other family:	225	57	31.1%	25	23	2.3%
Male householder, no wife present	23	25	3.2%	3	6	0.3%
With related children under 18 years	19	24	2.6%	3	6	0.3%
Female householder, no husband present	202	52	27.9%	22	22	2.0%
With related children under 18 years	190	52	26.2%	22	22	2.0%
Income in the past 12 months at or above poverty level:	484	91	66.9%	1,063	115	97.2%
Married-couple family:	223	69	30.8%	933	109	85.3%
With related children under 18 years	64	33	8.8%	299	67	27.3%
Other family:	261	60	36.0%	130	47	11.9%
Male householder, no wife present	42	30	5.8%	19	15	1.7%
With related children under 18 years	7	9	1.0%	10	12	0.9%
Female householder, no husband present	219	55	30.2%	111	44	10.1%
With related children under 18 years	102	35	14.1%	71	39	6.5%

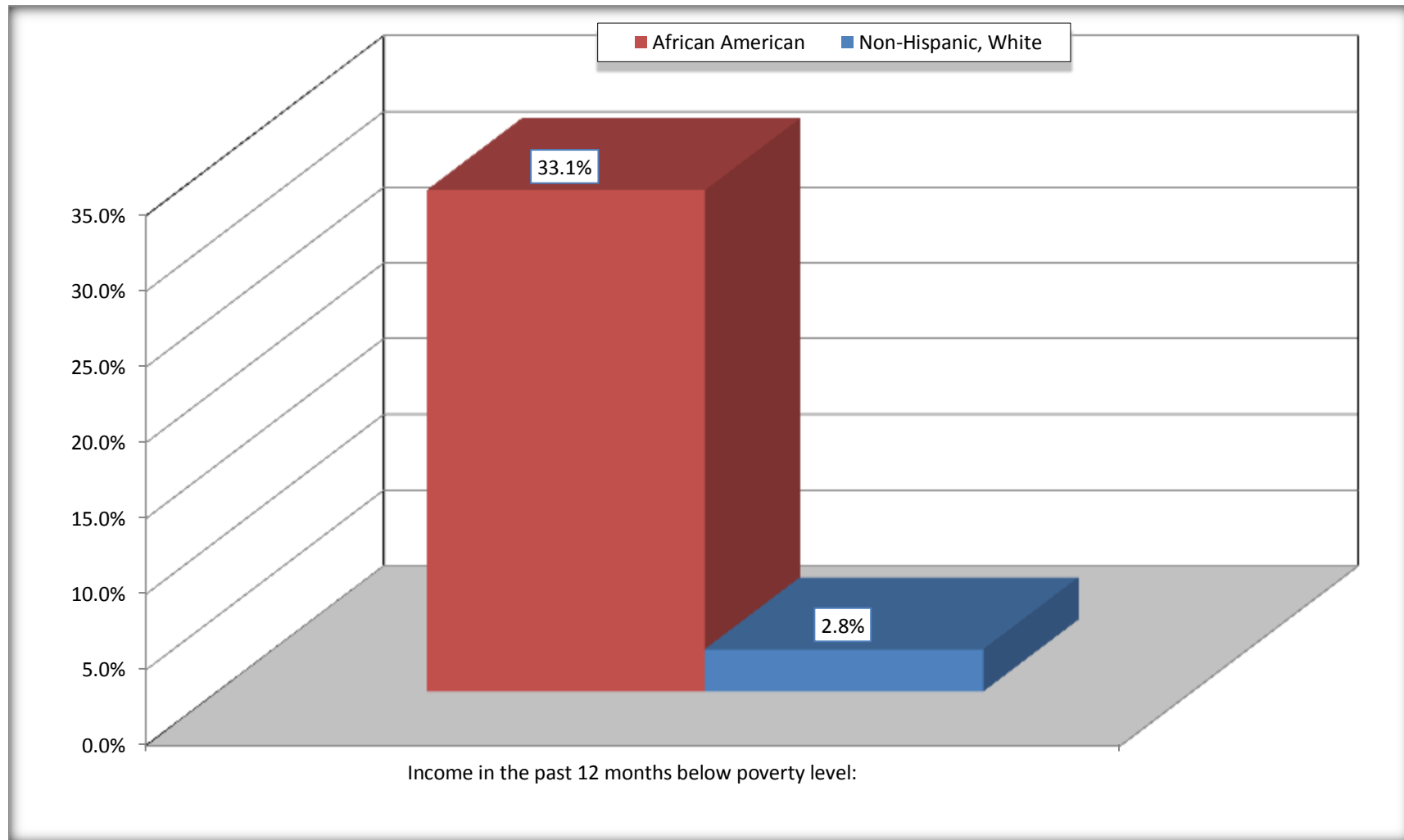
Source: U.S. Census Bureau, 2008-2012 American Community Survey

For information on confidentiality protection, sampling error, nonsampling error, and definitions, see Survey Methodology.

<http://www.census.gov/acs/www/UseData/index.htm>

# Family Households Below Poverty in the Past 12 Months

## Clinton city, North Carolina



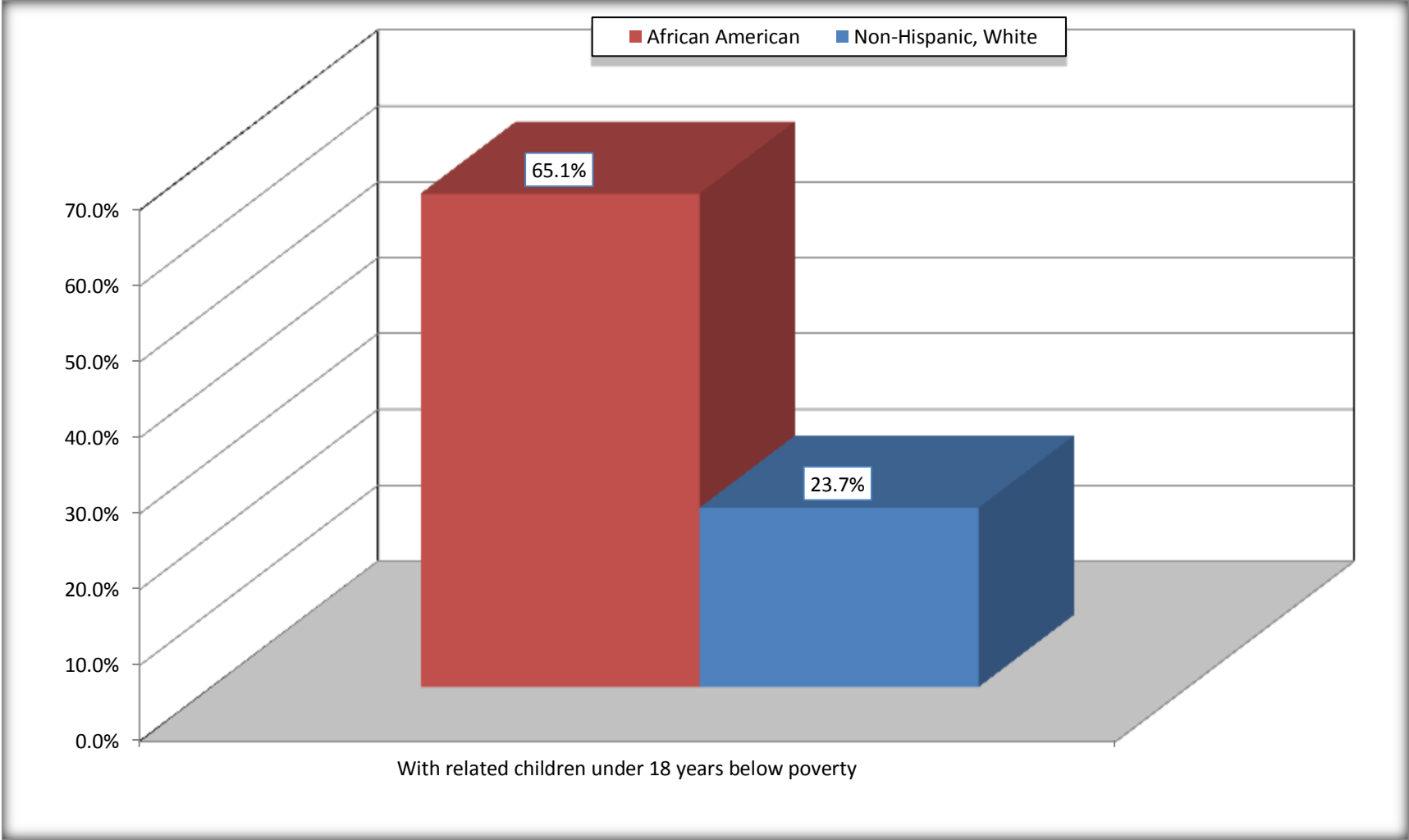
Source: B17010. POVERTY STATUS IN THE PAST 12 MONTHS OF FAMILIES BY FAMILY TYPE BY PRESENCE OF RELATED CHILDREN UNDER 18 YEARS

Data Set: 2008-2012 American Community Survey 5-Year Estimates



# Female-headed Households with Related Children Below Poverty in the Past 12 Months

## Clinton city, North Carolina



Source: B17010. POVERTY STATUS IN THE PAST 12 MONTHS OF FAMILIES BY FAMILY TYPE BY PRESENCE OF RELATED CHILDREN UNDER 18 YEARS

Data Set: 2008-2012 American Community Survey 5-Year Estimates

**B17020 POVERTY STATUS IN THE PAST 12 MONTHS BY AGE - Universe: POPULATION FOR WHOM POVERTY STATUS IS DETERMINED**

Data Set: 2008-2012 American Community Survey 5-Year Estimates

	Clinton city, North Carolina					
	African American	Margin of Error (+/-)	% of AA By Age	White, Not Hispanic	Margin of Error (+/-)	% of NHW By Age
<b>Total:</b>	<b>3,224</b>	<b>317</b>	<b>100.0%</b>	<b>4,077</b>	<b>319</b>	<b>100.0%</b>
Income in the past 12 months below poverty level:	1,428	281	44.3%	307	100	7.5%
<b>Under 18 years</b>	537	NC	63.5%	24	NC	3.9%
<b>18 to 64 years</b>	736	144	39.4%	141	65	6.1%
<b>65 years and over</b>	155	NC	30.5%	142	NC	12.6%
Income in the past 12 months at or above poverty level:	1,796	269	55.7%	3,770	310	92.5%
<b>Under 18 years</b>	309	NC	36.5%	596	NC	96.1%
<b>18 to 64 years</b>	1,134	191	60.6%	2,189	222	93.9%
<b>65 years and over</b>	353	NC	69.5%	985	NC	87.4%

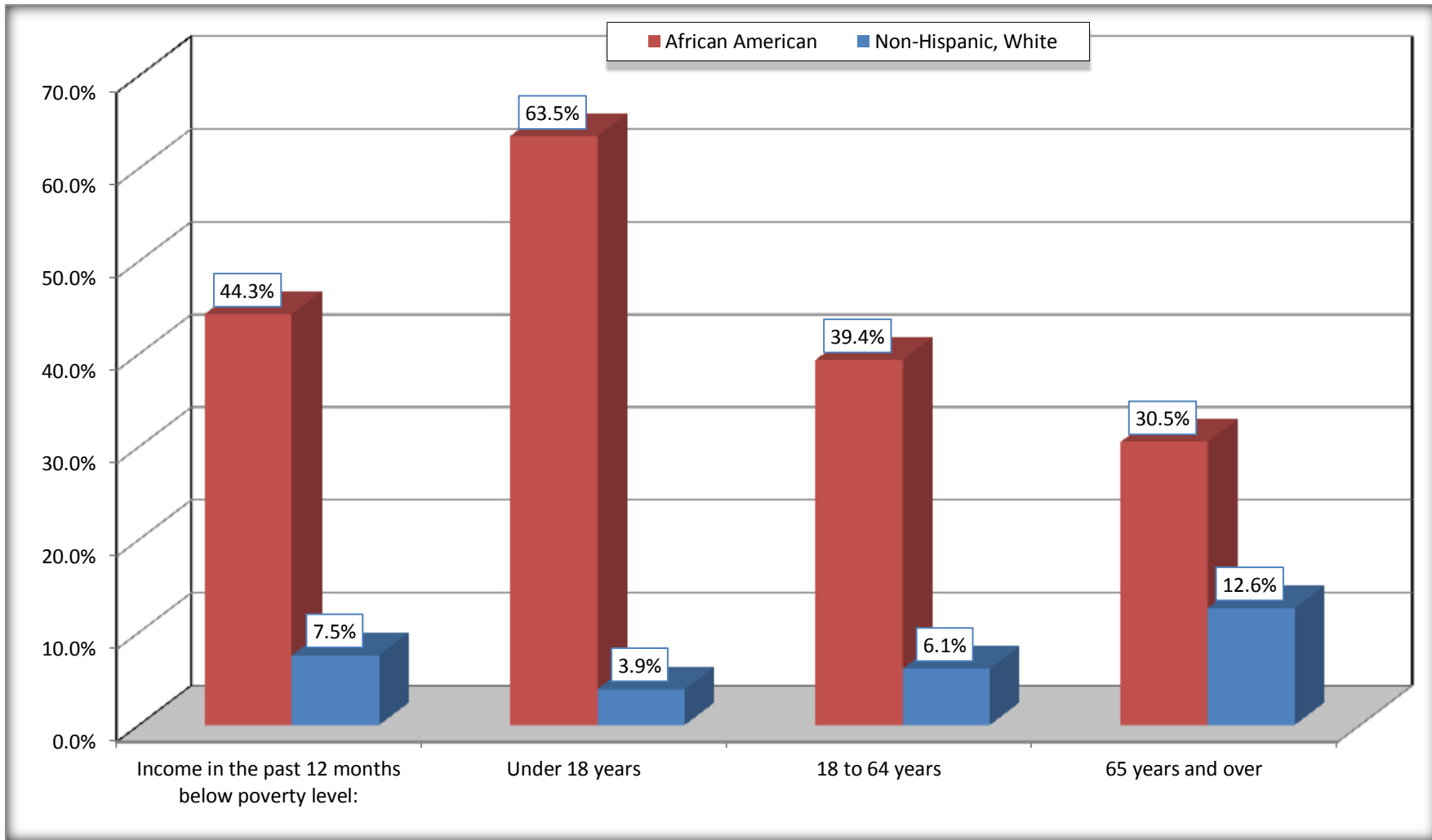
Source: U.S. Census Bureau, 2008-2012 American Community Survey

For information on confidentiality protection, sampling error, nonsampling error, and definitions, see Survey Methodology.

<http://www.census.gov/acs/www/UseData/index.htm>

# Population Below Poverty in the Past 12 Months

## Clinton city, North Carolina



Source: B17020 POVERTY STATUS IN THE PAST 12 MONTHS BY AGE - Universe: POPULATION FOR WHOM POVERTY STATUS IS DETERMINED  
Data Set: 2008-2012 American Community Survey 5-Year Estimates

**B19001. HOUSEHOLD INCOME IN THE PAST 12 MONTHS (IN 2010 INFLATION-ADJUSTED DOLLARS)**

Data Set: 2008-2012 American Community Survey 5-Year Estimates

	Clinton city, North Carolina					
	African American	Margin of Error (+/-)	% of AA Total	White, Not Hispanic	Margin of Error (+/-)	% of NHW Total
<b>Total:</b>	<b>1,363</b>	<b>123</b>	<b>100.0%</b>	<b>1,993</b>	<b>164</b>	<b>100.0%</b>
Less than \$ 10,000	426	88	31.3%	138	45	6.9%
\$ 10,000 to \$ 14,999	177	55	13.0%	161	49	8.1%
<b>\$ 15,000 to \$ 24,999</b>	204	NC	15.0%	210	NC	10.5%
<b>\$ 25,000 to \$ 34,999</b>	146	NC	10.7%	212	NC	10.6%
<b>\$ 35,000 to \$ 49,999</b>	161	NC	11.8%	290	NC	14.6%
<b>\$ 50,000 to \$ 74,999</b>	144	NC	10.6%	335	NC	16.8%
\$ 75,000 to \$ 99,999	72	33	5.3%	241	76	12.1%
<b>\$ 100,000 to \$ 149,999</b>	26	NC	1.9%	213	NC	10.7%
\$ 150,000 to \$ 199,999	2	4	0.1%	72	33	3.6%
\$ 200,000 or more	5	6	0.4%	121	40	6.1%

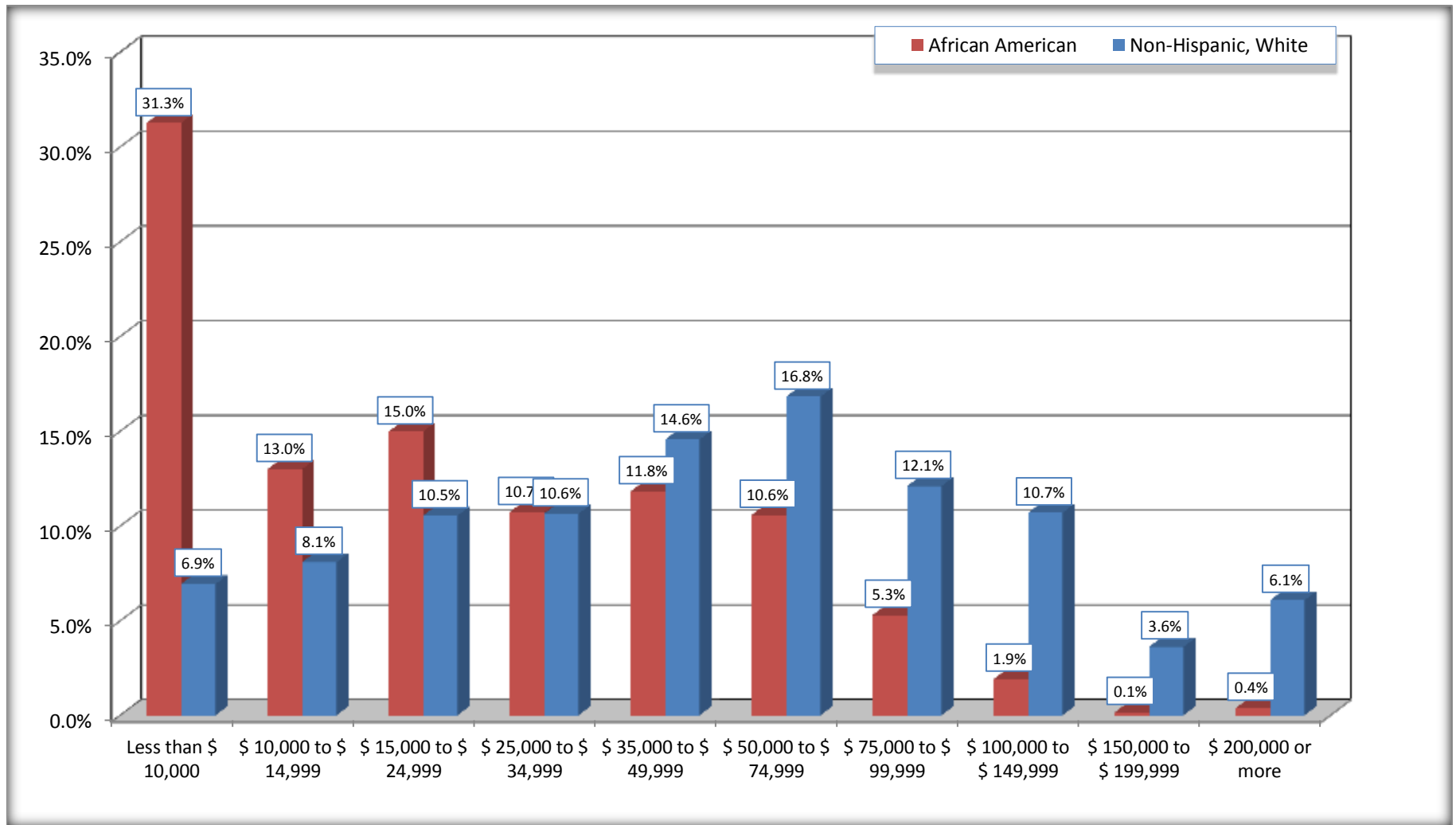
Source: U.S. Census Bureau, 2008-2012 American Community Survey

For information on confidentiality protection, sampling error, nonsampling error, and definitions, see Survey Methodology.

<http://www.census.gov/acs/www/UseData/index.htm>

# Household Income in the Past 12 Months

## Clinton city, North Carolina



Source: B19001. HOUSEHOLD INCOME IN THE PAST 12 MONTHS (IN 2010 INFLATION-ADJUSTED DOLLARS)  
Data Set: 2008-2012 American Community Survey 5-Year Estimates

**B19013. MEDIAN HOUSEHOLD INCOME IN THE PAST 12 MONTHS (IN 2010 INFLATION-ADJUSTED DOLLARS)**

Data Set: 2008-2012 American Community Survey 5-Year Estimates

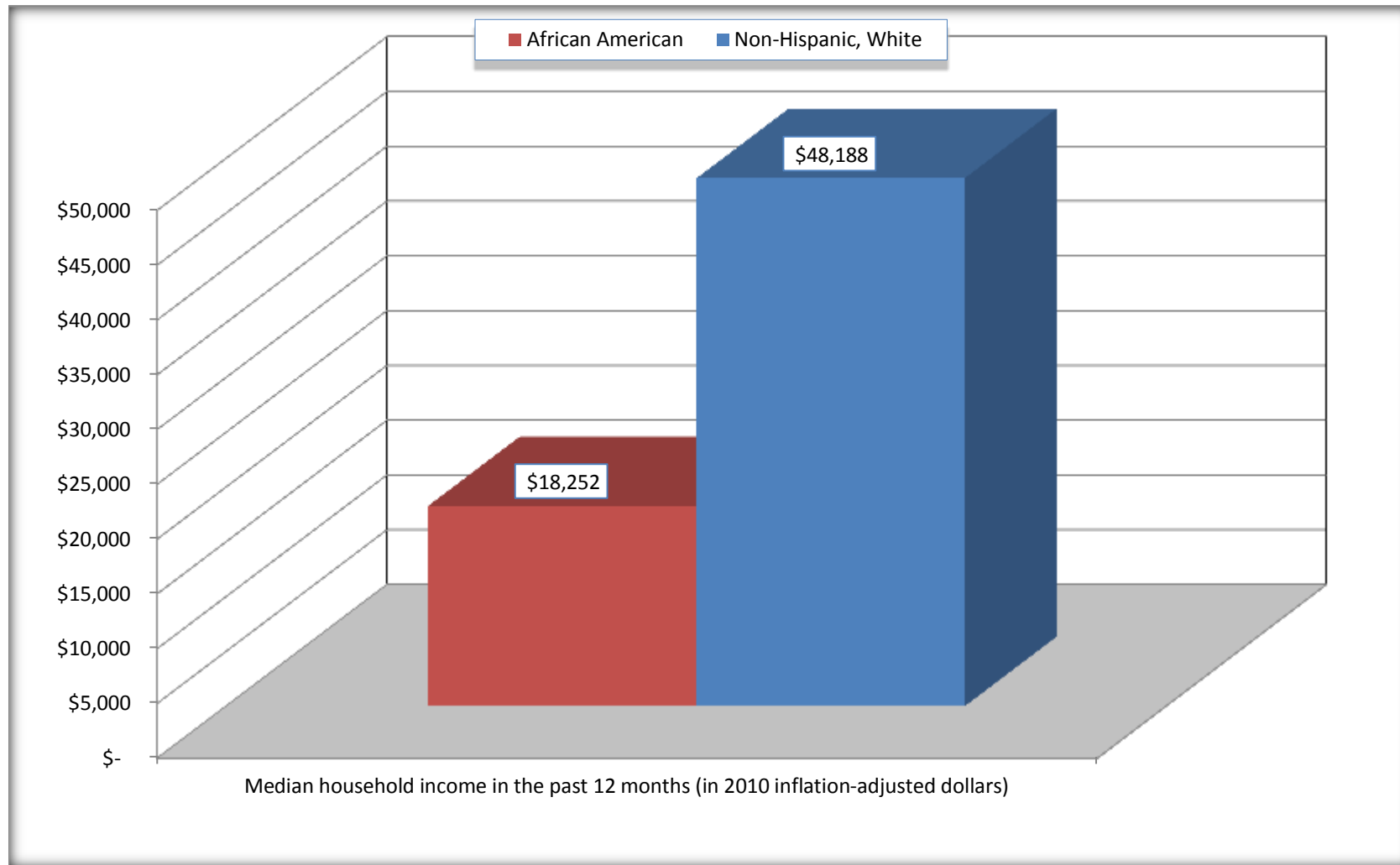
	Clinton city, North Carolina			
	African American	Margin of Error (+/-)	White, Not Hispanic	Margin of Error (+/-)
Median household income in the past 12 months (in 2010 inflation-adjusted dollars)	\$ 18,252	\$ 1,988	\$ 48,188	\$ 7,287

Source: U.S. Census Bureau, 2008-2012 American Community Survey

For information on confidentiality protection, sampling error, nonsampling error, and definitions, see Survey Methodology.  
<http://www.census.gov/acs/www/UseData/index.htm>

## Median Household Income in the Past 12 Months

### Clinton city, North Carolina



Source: B19013. MEDIAN HOUSEHOLD INCOME IN THE PAST 12 MONTHS (IN 2010 INFLATION-ADJUSTED DOLLARS)  
Data Set: 2008-2012 American Community Survey 5-Year Estimates

**B19101. FAMILY INCOME IN THE PAST 12 MONTHS (IN 2010 INFLATION-ADJUSTED DOLLARS)**

Data Set: 2008-2012 American Community Survey 5-Year Estimates

	Clinton city, North Carolina					
	African American	Margin of Error (+/-)	% of AA Total	White, Not Hispanic	Margin of Error (+/-)	% of NHW Total
<b>Total:</b>	<b>724</b>	<b>101</b>	<b>100.0%</b>	<b>1,094</b>	<b>115</b>	<b>100.0%</b>
Less than \$ 10,000	103	36	14.2%	6	8	0.5%
\$ 10,000 to \$ 14,999	85	39	11.7%	13	13	1.2%
<b>\$ 15,000 to \$ 24,999</b>	<b>114</b>	<b>NC</b>	<b>15.7%</b>	<b>69</b>	<b>NC</b>	<b>6.3%</b>
<b>\$ 25,000 to \$ 34,999</b>	<b>116</b>	<b>NC</b>	<b>16.0%</b>	<b>87</b>	<b>NC</b>	<b>8.0%</b>
<b>\$ 35,000 to \$ 49,999</b>	<b>91</b>	<b>NC</b>	<b>12.6%</b>	<b>134</b>	<b>NC</b>	<b>12.2%</b>
<b>\$ 50,000 to \$ 74,999</b>	<b>130</b>	<b>NC</b>	<b>18.0%</b>	<b>211</b>	<b>NC</b>	<b>19.3%</b>
<b>\$ 100,000 to \$ 149,999</b>	<b>13</b>	<b>NC</b>	<b>1.8%</b>	<b>197</b>	<b>NC</b>	<b>18.0%</b>
\$ 150,000 to \$ 199,999	2	4	0.3%	69	33	6.3%
\$ 200,000 or more	2	3	0.3%	94	32	8.6%

Source: U.S. Census Bureau, 2008-2012 American Community Survey

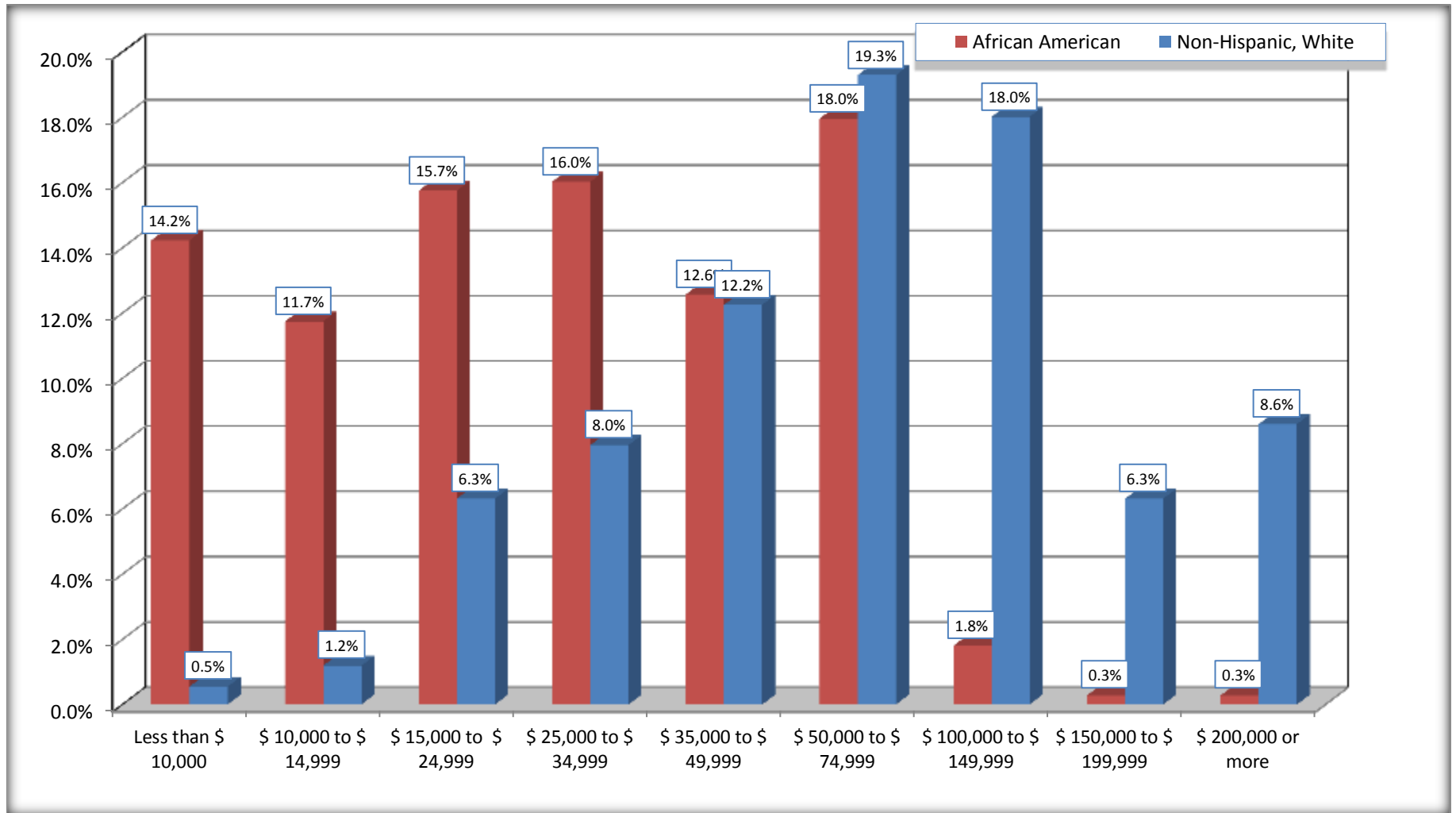
For information on confidentiality protection, sampling error, nonsampling error, and definitions, see Survey Methodology.

<http://www.census.gov/acs/www/UseData/index.htm>



# Family Income in the Past 12 Months

## Clinton city, North Carolina



Source: B19101. FAMILY INCOME IN THE PAST 12 MONTHS (IN 2010 INFLATION-ADJUSTED DOLLARS)  
Data Set: 2008-2012 American Community Survey 5-Year Estimates

**B19113. MEDIAN FAMILY INCOME IN THE PAST 12 MONTHS (IN 2010 INFLATION-ADJUSTED DOLLARS)**

Data Set: 2008-2012 American Community Survey 5-Year Estimates

	Clinton city, North Carolina			
	African American	Margin of Error (+/-)	White, Not Hispanic	Margin of Error (+/-)
Median family income in the past 12 months (in 2010 inflation-adjusted dollars)	\$ 30,188	\$ 3,414	\$ 76,164	\$ 3,869

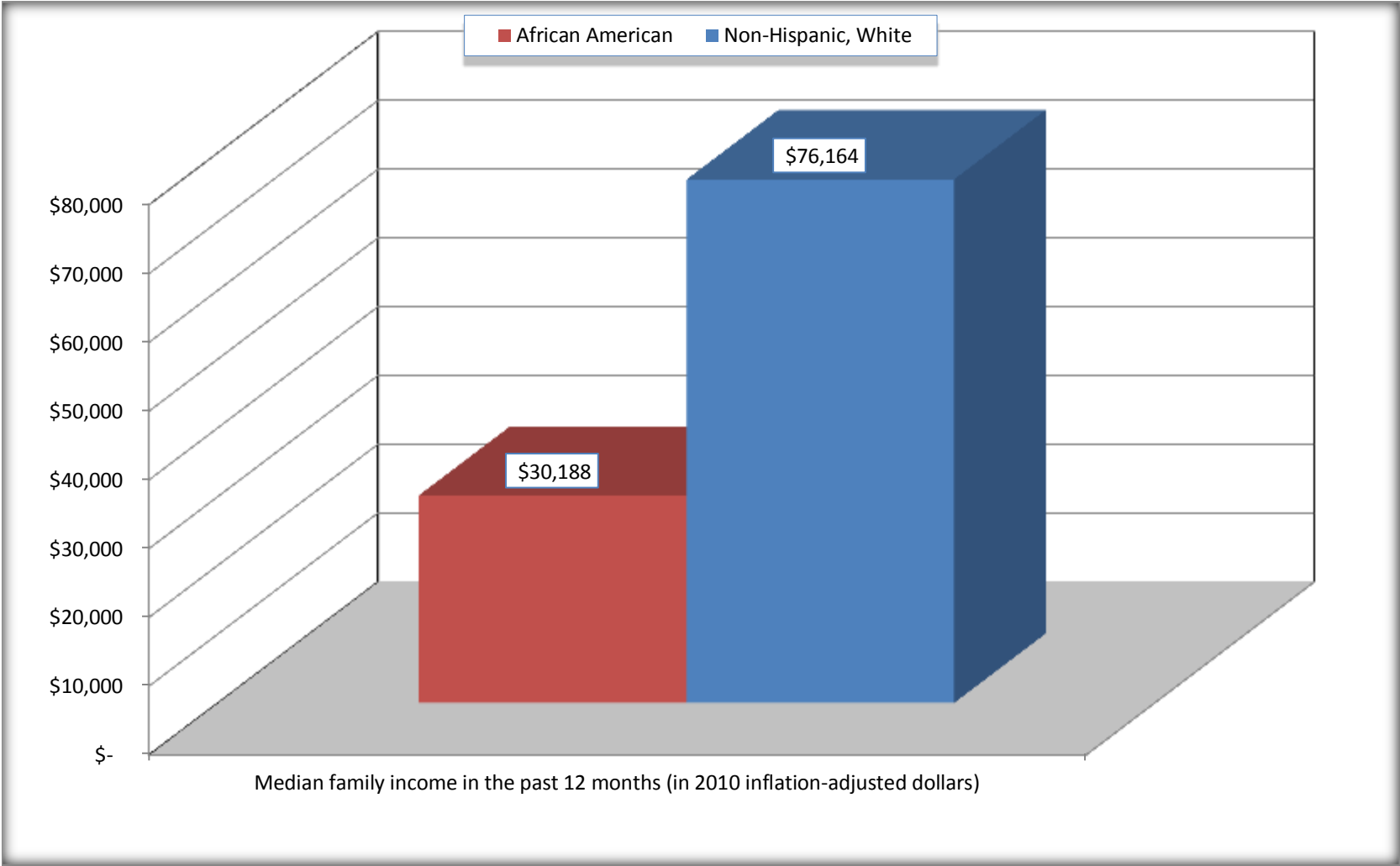
Source: U.S. Census Bureau, 2008-2012 American Community Survey

For information on confidentiality protection, sampling error, nonsampling error, and definitions, see Survey Methodology.

<http://www.census.gov/acs/www/UseData/index.htm>

# Median Family Income in the Past 12 Months

## Clinton city, North Carolina



Source: B19113. MEDIAN FAMILY INCOME IN THE PAST 12 MONTHS (IN 2010 INFLATION-ADJUSTED DOLLARS)  
Data Set: 2008-2012 American Community Survey 5-Year Estimates

**B19202. MEDIAN NONFAMILY HOUSEHOLD INCOME IN THE PAST 12 MONTHS (IN 2010 INFLATION-ADJUSTED DOLLARS)**

Data Set: 2008-2012 American Community Survey 5-Year Estimates

	Clinton city, North Carolina			
	African American	Margin of Error (+/-)	White, Not Hispanic	Margin of Error (+/-)
Median nonfamily household income in the past 12 months (in 2010 inflation-adjusted dollars)	\$ 9,956	\$ 1,894	\$ 26,179	\$ 4,780

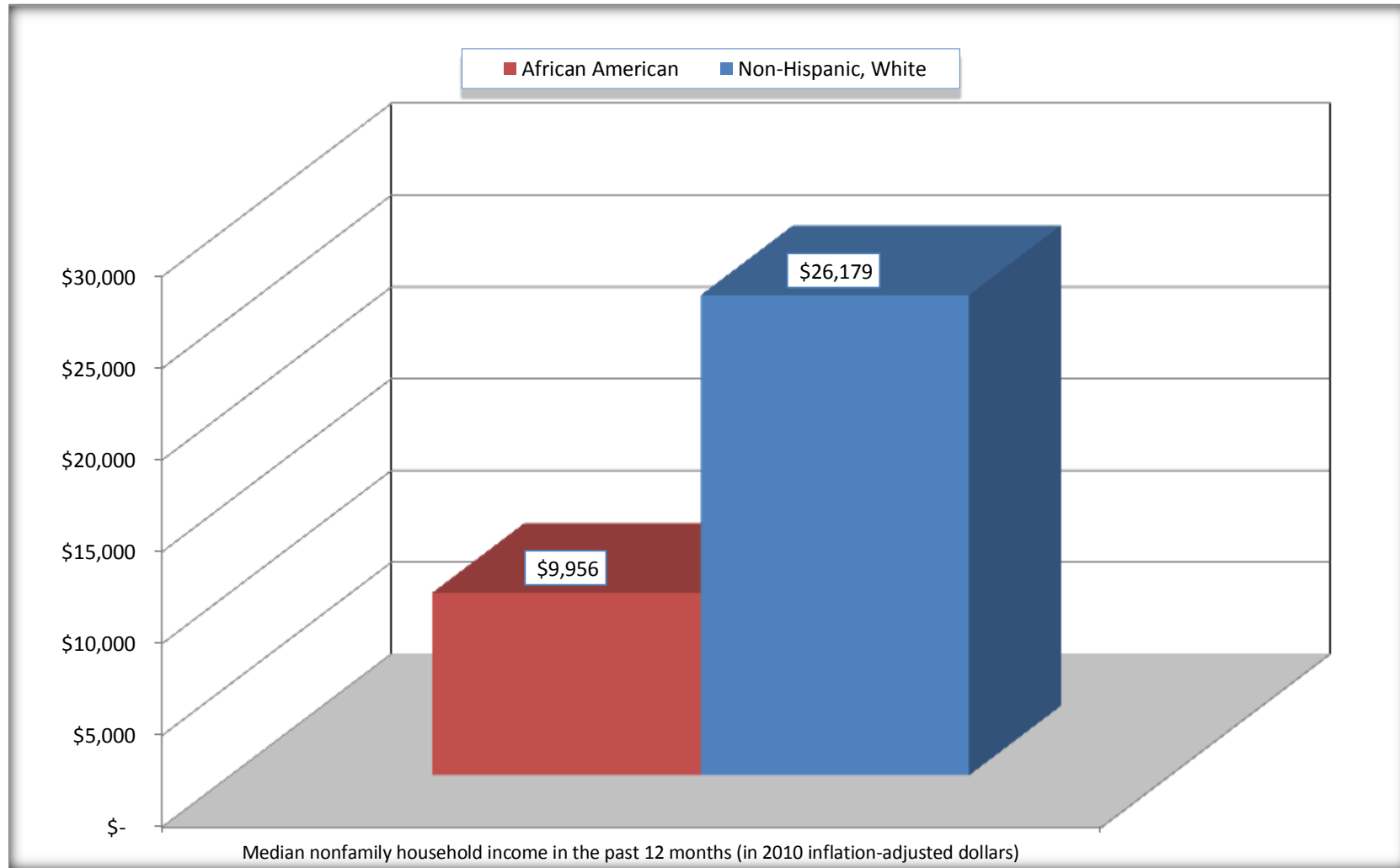
Source: U.S. Census Bureau, 2008-2012 American Community Survey

For information on confidentiality protection, sampling error, nonsampling error, and definitions, see Survey Methodology.

<http://www.census.gov/acs/www/UseData/index.htm>

# Median Non-Family Income in the Past 12 Months

## Clinton city, North Carolina



Source: B19202. MEDIAN NONFAMILY HOUSEHOLD INCOME IN THE PAST 12 MONTHS (IN 2010 INFLATION-ADJUSTED DOLLARS)  
Data Set: 2008-2012 American Community Survey 5-Year Estimates

**B19301. PER CAPITA INCOME IN THE PAST 12 MONTHS (IN 2010 INFLATION-ADJUSTED DOLLARS)**

Data Set: 2008-2012 American Community Survey 5-Year Estimates

	Clinton city, North Carolina			
	African American	Margin of Error (+/-)	White, Not Hispanic	Margin of Error (+/-)
Per capita income in the past 12 months (in 2010 inflation-adjusted dollars)	\$ 14,134	\$ 2,611	\$ 36,141	\$ 4,027

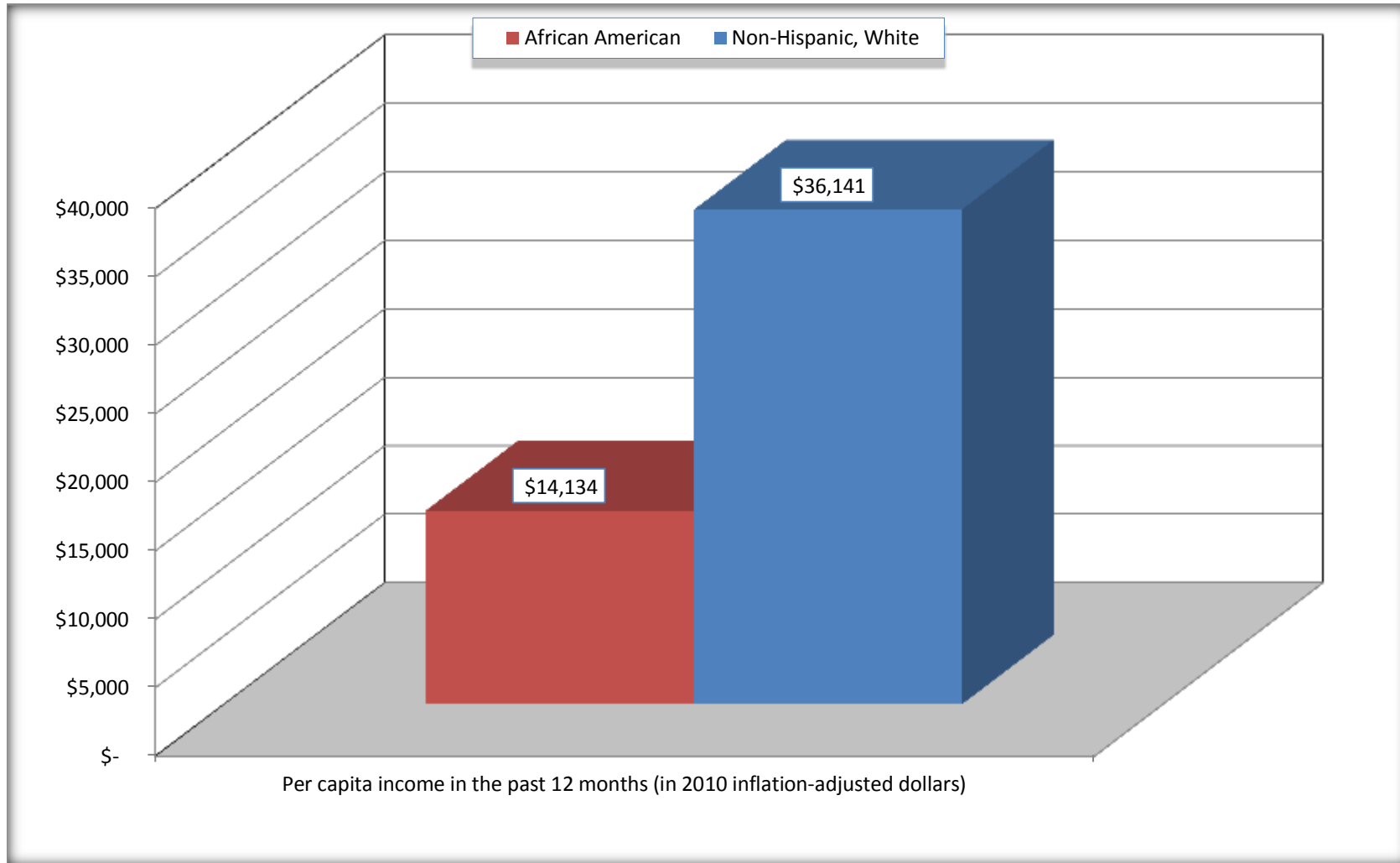
Source: U.S. Census Bureau, 2008-2012 American Community Survey

For information on confidentiality protection, sampling error, nonsampling error, and definitions, see Survey Methodology.

<http://www.census.gov/acs/www/UseData/index.htm>

## Per capita Income in the Past 12 Months

### Clinton city, North Carolina



Source: B19301. PER CAPITA INCOME IN THE PAST 12 MONTHS (IN 2010 INFLATION-ADJUSTED DOLLARS)  
Data Set: 2008-2012 American Community Survey 5-Year Estimates

**B20017. MEDIAN EARNINGS IN THE PAST 12 MONTHS (IN 2010 INFLATION-ADJUSTED DOLLARS) BY SEX BY WORK EXPERIENCE IN THE PAST 12 MONTHS FOR THE POPULATION 16 YEARS AND OVER WITH EARNINGS IN THE PAST 12 MONTHS**

Data Set: 2008-2012 American Community Survey 5-Year Estimates

	Clinton city, North Carolina			
	African American	Margin of Error (+/-)	White, Not Hispanic	Margin of Error (+/-)
Median earnings in the past 12 months (in 2010 inflation-adjusted dollars) --				
Total:	\$ 17,457	\$ 3,403	\$ 31,945	\$ 1,292
Male --				
Total	\$ 19,135	\$ 9,218	\$ 42,188	\$ 6,332
Worked full-time, year-round in the past 12 months	\$ 32,297	\$ 5,768	\$ 47,204	\$ 5,525
Other	\$ 4,239	\$ 2,403	\$ 14,474	\$ 4,766
Female --				
Total	\$ 16,582	\$ 2,803	\$ 25,402	\$ 2,932
Worked full-time, year-round in the past 12 months	\$ 22,776	\$ 3,009	\$ 33,063	\$ 2,694
Other	\$ 8,780	\$ 2,468	\$ 11,250	\$ 1,414

Source: U.S. Census Bureau, 2008-2012 American Community Survey

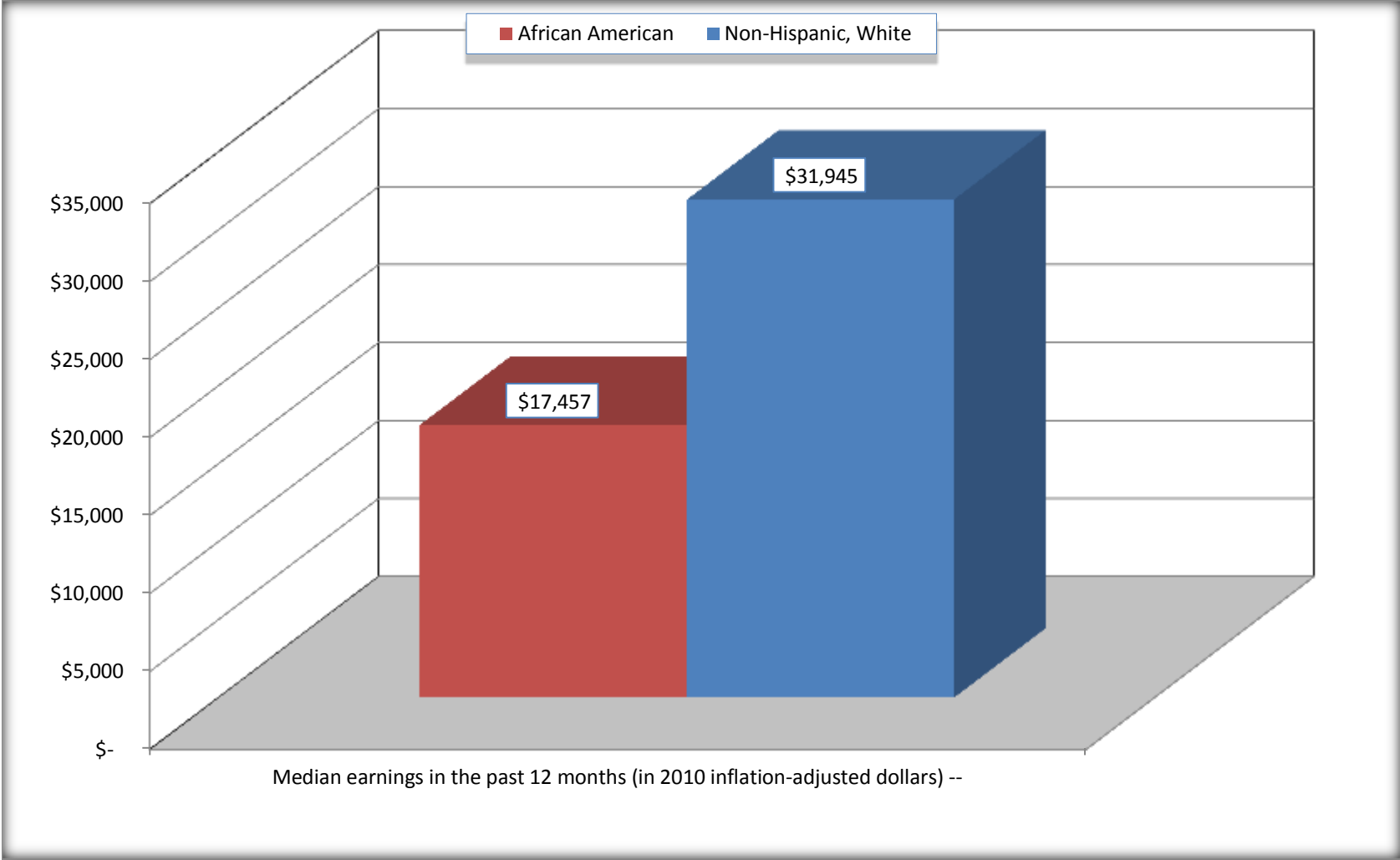
For information on confidentiality protection, sampling error, nonsampling error, and definitions, see Survey Methodology.

<http://www.census.gov/acs/www/UseData/index.htm>



# Median earnings in the Past 12 Months (16 Years and Over with Earnings)

## Clinton city, North Carolina



Source: B20017. MEDIAN EARNINGS IN THE PAST 12 MONTHS (IN 2010 INFLATION-ADJUSTED DOLLARS) BY SEX BY WORK EXPERIENCE IN THE PAST 12 MONTHS FOR THE POPULATION 16 YEARS AND OVER WITH EARNINGS IN THE PAST 12 MONTHS  
Data Set: 2008-2012 American Community Survey 5-Year Estimates

**B20005. SEX BY WORK EXPERIENCE IN THE PAST 12 MONTHS BY EARNINGS IN THE PAST 12 MONTHS (IN 2010 INFLATION-ADJUSTED DOLLARS) FOR THE POPULATION 16 YEARS AND OVER**

Data Set: 2008-2012 American Community Survey 5-Year Estimates

	Clinton city, North Carolina					
	African American	Margin of Error (+/-)	% of AA Total	White, Not Hispanic	Margin of Error (+/-)	% of NHW Total
<b>Total:</b>	<b>2,692</b>	<b>228</b>	<b>100.0%</b>	<b>3,793</b>	<b>264</b>	<b>100.0%</b>
Worked full-time, year-round in the past 12 months:	739	NC	27.5%	1,575	NC	41.5%
No earnings	0	NC	0.0%	0	NC	0.0%
With earnings:	739	NC	27.5%	1,575	NC	41.5%
\$ 1 to \$ 9,999 or loss	60	NC	2.2%	28	NC	0.7%
\$ 10,000 to \$ 19,999	217	NC	8.1%	173	NC	4.6%
\$ 20,000 to \$ 29,999	156	NC	5.8%	229	NC	6.0%
\$ 30,000 to \$ 49,999	245	NC	9.1%	573	NC	15.1%
\$ 50,000 to \$ 74,999	58	NC	2.2%	297	NC	7.8%
\$ 75,000 or more	3	NC	0.1%	275	NC	7.3%
Other:	1,953	NC	72.5%	2,218	NC	58.5%
No earnings	1,378	NC	51.2%	1,498	NC	39.5%
With earnings: less than full time, year-round	575	NC	21.4%	720	NC	19.0%
Male:	1,178	146	43.8%	1,655	163	43.6%
Worked full-time, year-round in the past 12 months:	336	87	12.5%	915	119	24.1%
No earnings	0	18	0.0%	0	18	0.0%
With earnings:	336	87	12.5%	915	119	24.1%
\$ 1 to \$ 9,999 or loss	33	NC	1.2%	9	NC	0.2%
\$ 10,000 to \$ 19,999	71	NC	2.6%	69	NC	1.8%
\$ 20,000 to \$ 29,999	30	NC	1.1%	104	NC	2.7%
\$ 30,000 to \$ 49,999	165	NC	6.1%	295	NC	7.8%
\$ 50,000 to \$ 74,999	34	NC	1.3%	201	NC	5.3%
\$ 75,000 or more	3	NC	0.1%	237	NC	6.2%

	Clinton city, North Carolina					
	African American	Margin of Error (+/-)	% of AA Total	White, Not Hispanic	Margin of Error (+/-)	% of NHW Total
Other:	842	122	31.3%	740	119	19.5%
No earnings	616	109	22.9%	488	95	12.9%
With earnings:	226	77	8.4%	252	63	6.6%
Female:	1,514	168	56.2%	2,138	170	56.4%
Worked full-time, year-round in the past 12 months:	403	94	15.0%	660	110	17.4%
No earnings	0	18	0.0%	0	18	0.0%
With earnings:	403	94	15.0%	660	110	17.4%
\$ 1 to \$ 9,999 or loss	27	NC	1.0%	19	NC	0.5%
\$ 10,000 to \$ 19,999	146	NC	5.4%	104	NC	2.7%
\$ 20,000 to \$ 29,999	126	NC	4.7%	125	NC	3.3%
\$ 30,000 to \$ 49,999	80	NC	3.0%	278	NC	7.3%
\$ 50,000 to \$ 74,999	24	NC	0.9%	96	NC	2.5%
\$ 75,000 or more	0	NC	0.0%	38	NC	1.0%
Other:	1,111	124	41.3%	1,478	155	39.0%
No earnings	762	106	28.3%	1,010	134	26.6%
With earnings:	349	85	13.0%	468	85	12.3%

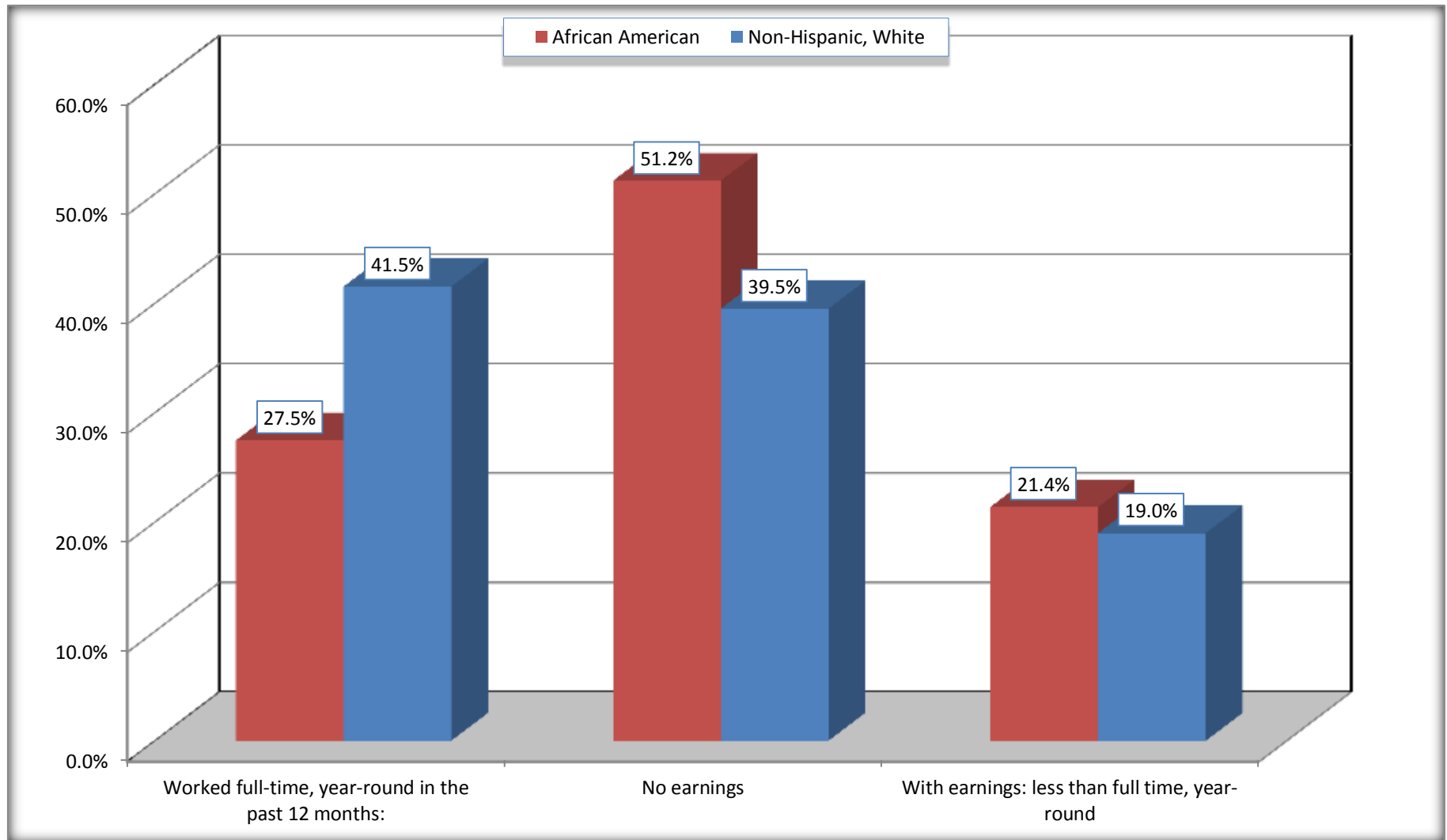
Source: U.S. Census Bureau, 2008-2012 American Community Survey

For information on confidentiality protection, sampling error, nonsampling error, and definitions, see Survey Methodology.

<http://www.census.gov/acs/www/UseData/index.htm>

# Employment and Earnings in in the Past 12 Months (16 Years and Over)

## Clinton city, North Carolina



Source: B20005. SEX BY WORK EXPERIENCE IN THE PAST 12 MONTHS BY EARNINGS IN THE PAST 12 MONTHS (IN 2010 INFLATION-ADJUSTED DOLLARS) FOR THE POPULATION 16 YEARS AND OVER

Data Set: 2008-2012 American Community Survey 5-Year Estimates

**C21001. SEX BY AGE BY VETERAN STATUS FOR THE CIVILIAN POPULATION 18 YEARS AND OVER**

Data Set: 2008-2012 American Community Survey 5-Year Estimates

	Clinton city, North Carolina					
	African American	Margin of Error (+/-)	% of AA Total	White, Not Hispanic	Margin of Error (+/-)	% of NHW Total
<b>Total:</b>	<b>2,574</b>	<b>220</b>	<b>100.0%</b>	<b>3,707</b>	<b>264</b>	<b>100.0%</b>
Veteran	194	NC	7.5%	383	NC	10.3%
Nonveteran	2,380	NC	92.5%	3,324	NC	89.7%
Male:	1,134	143	44.1%	1,619	161	43.7%
18 to 64 years:	912	135	35.4%	1,093	138	29.5%
Veteran	103	41	4.0%	112	36	3.0%
Nonveteran	809	134	31.4%	981	135	26.5%
65 years and over:	222	59	8.6%	526	95	14.2%
Veteran	68	28	2.6%	255	58	6.9%
Nonveteran	154	51	6.0%	271	73	7.3%
Female:	1,440	166	55.9%	2,088	165	56.3%
18 to 64 years:	1,077	138	41.8%	1,303	133	35.1%
Veteran	23	14	0.9%	16	12	0.4%
Nonveteran	1,054	139	40.9%	1,287	133	34.7%
65 years and over:	363	80	14.1%	785	114	21.2%
Veteran	0	18	0.0%	0	18	0.0%
Nonveteran	363	80	14.1%	785	114	21.2%

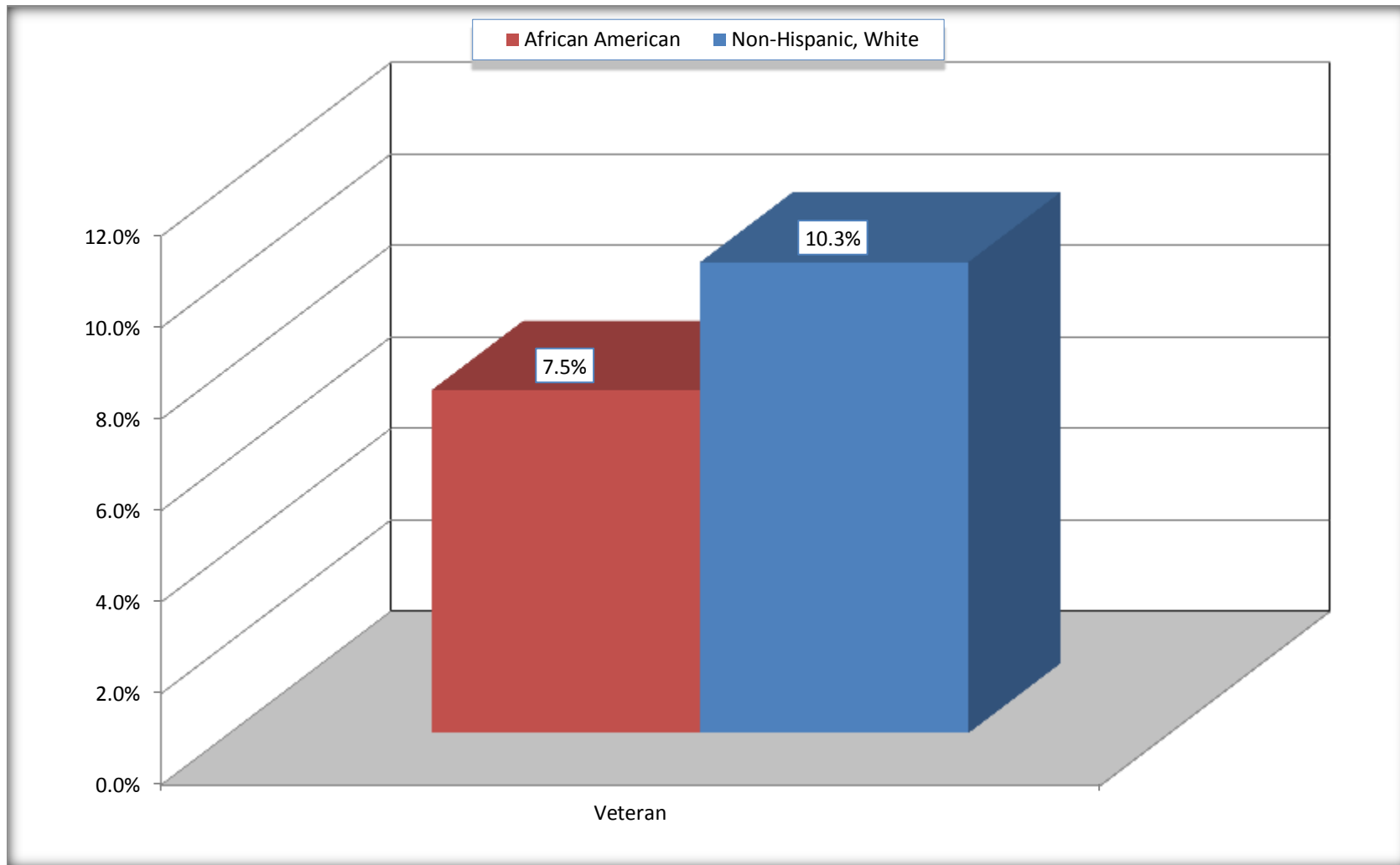
Source: U.S. Census Bureau, 2008-2012 American Community Survey

For information on confidentiality protection, sampling error, nonsampling error, and definitions, see Survey Methodology.

<http://www.census.gov/acs/www/UseData/index.htm>

# Veterans in the Civilian Population 18 Years and Over

## Clinton city, North Carolina



Source: C21001. SEX BY AGE BY VETERAN STATUS FOR THE CIVILIAN POPULATION 18 YEARS AND OVER  
Data Set: 2008-2012 American Community Survey 5-Year Estimates

**B22005. RECEIPT OF FOOD STAMPS/SNAP IN THE PAST 12 MONTHS BY RACE OF HOUSEHOLDER**

Data Set: 2008-2012 American Community Survey 5-Year Estimates

	Clinton city, North Carolina					
	African American	Margin of Error (+/-)	% of AA Total	White, Not Hispanic	Margin of Error (+/-)	% of NHW Total
<b>Total:</b>	<b>1,363</b>	<b>123</b>	<b>100.0%</b>	<b>1,993</b>	<b>164</b>	<b>100.0%</b>
HH received Food Stamps/SNAP in the past 12 months	564	86	41.4%	194	57	9.7%
HH did not receive Food Stamps/SNAP in the past 12 months	799	114	58.6%	1,799	161	90.3%

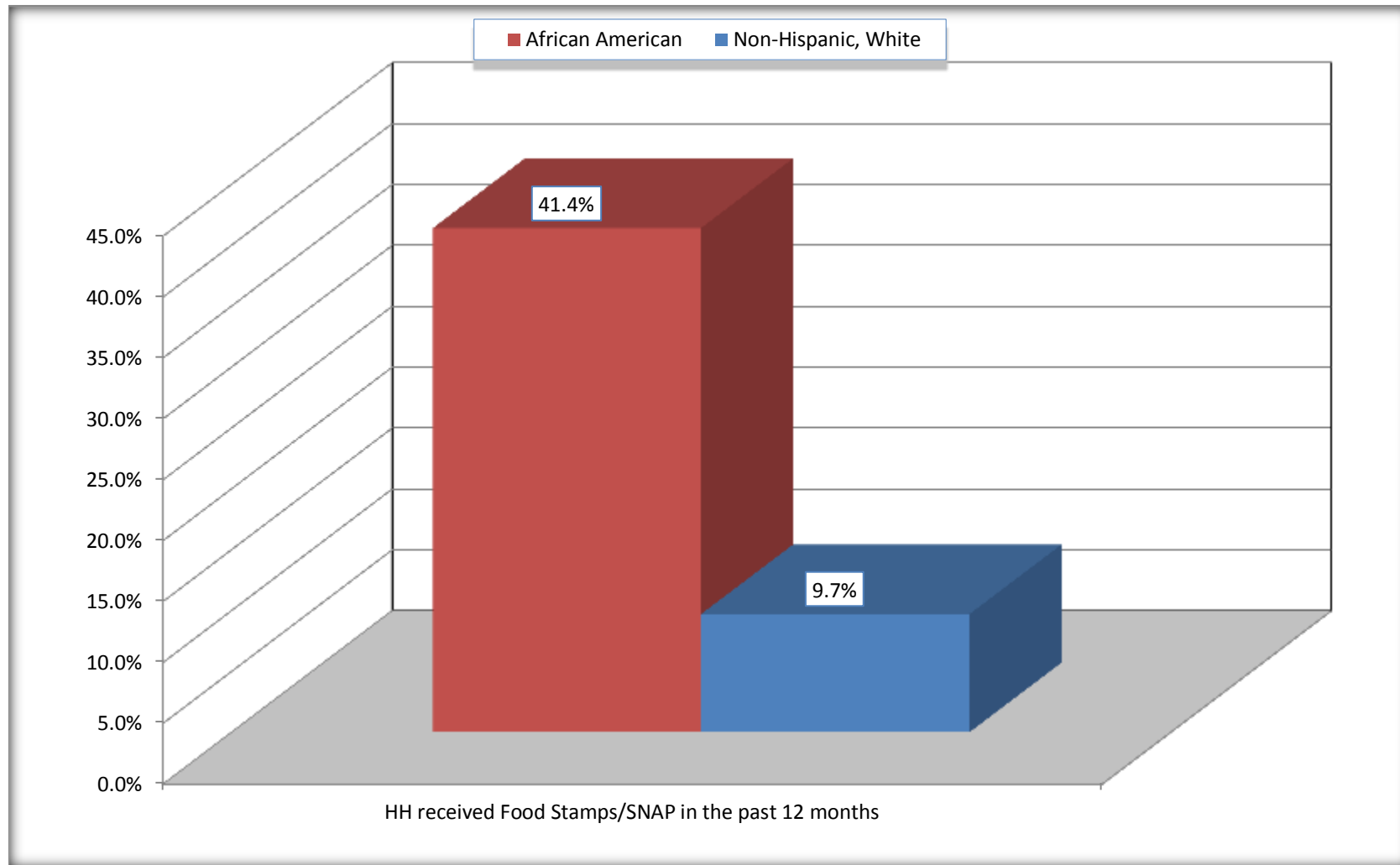
Source: U.S. Census Bureau, 2008-2012 American Community Survey

For information on confidentiality protection, sampling error, nonsampling error, and definitions, see Survey Methodology.

<http://www.census.gov/acs/www/UseData/index.htm>

# Receipt of Food Stamps/SNAP in the Past 12 Months by Household

## Clinton city, North Carolina



Source: B22005. RECEIPT OF FOOD STAMPS/SNAP IN THE PAST 12 MONTHS BY RACE OF HOUSEHOLDER  
Data Set: 2008-2012 American Community Survey 5-Year Estimates



**C23002. SEX BY AGE BY EMPLOYMENT STATUS FOR THE POPULATION 16 YEARS AND OVER**

Data Set: 2008-2012 American Community Survey 5-Year Estimates

	Clinton city, North Carolina					
	African American	Margin of Error (+/-)	% of AA Total	White, Not Hispanic	Margin of Error (+/-)	% of NHW Total
<b>Total:</b>	<b>2,692</b>	<b>228</b>	<b>100.0%</b>	<b>3,793</b>	<b>264</b>	<b>100.0%</b>
In labor force:	1,376	NC	51.1%	2,182	NC	57.5%
In Armed Forces	0	NC	0.0%	0	NC	0.0%
Civilian:	1,337	NC	49.7%	1,928	NC	50.8%
Employed	1,085	NC	40.3%	2,098	NC	55.3%
Unemployed	291	NC	10.8%	84	NC	2.2%
Not in labor force	1,316	NC	48.9%	1,611	NC	42.5%
Male:	1,178	146	43.8%	1,655	163	43.6%
16 to 64 years:	956	142	35.5%	1,129	140	29.8%
In labor force:	562	107	20.9%	957	118	25.2%
In Armed Forces	0	18	0.0%	0	18	0.0%
Civilian:	562	107	20.9%	957	118	25.2%
Employed	414	95	15.4%	908	115	23.9%
Unemployed	148	50	5.5%	49	26	1.3%
Not in labor force	394	101	14.6%	172	65	4.5%
65 years and over:	222	59	8.2%	526	95	13.9%
In labor force:	20	19	0.7%	161	49	4.2%
Employed	20	19	0.7%	157	49	4.1%
Unemployed	0	18	0.0%	4	6	0.1%
Not in labor force	202	55	7.5%	365	91	9.6%

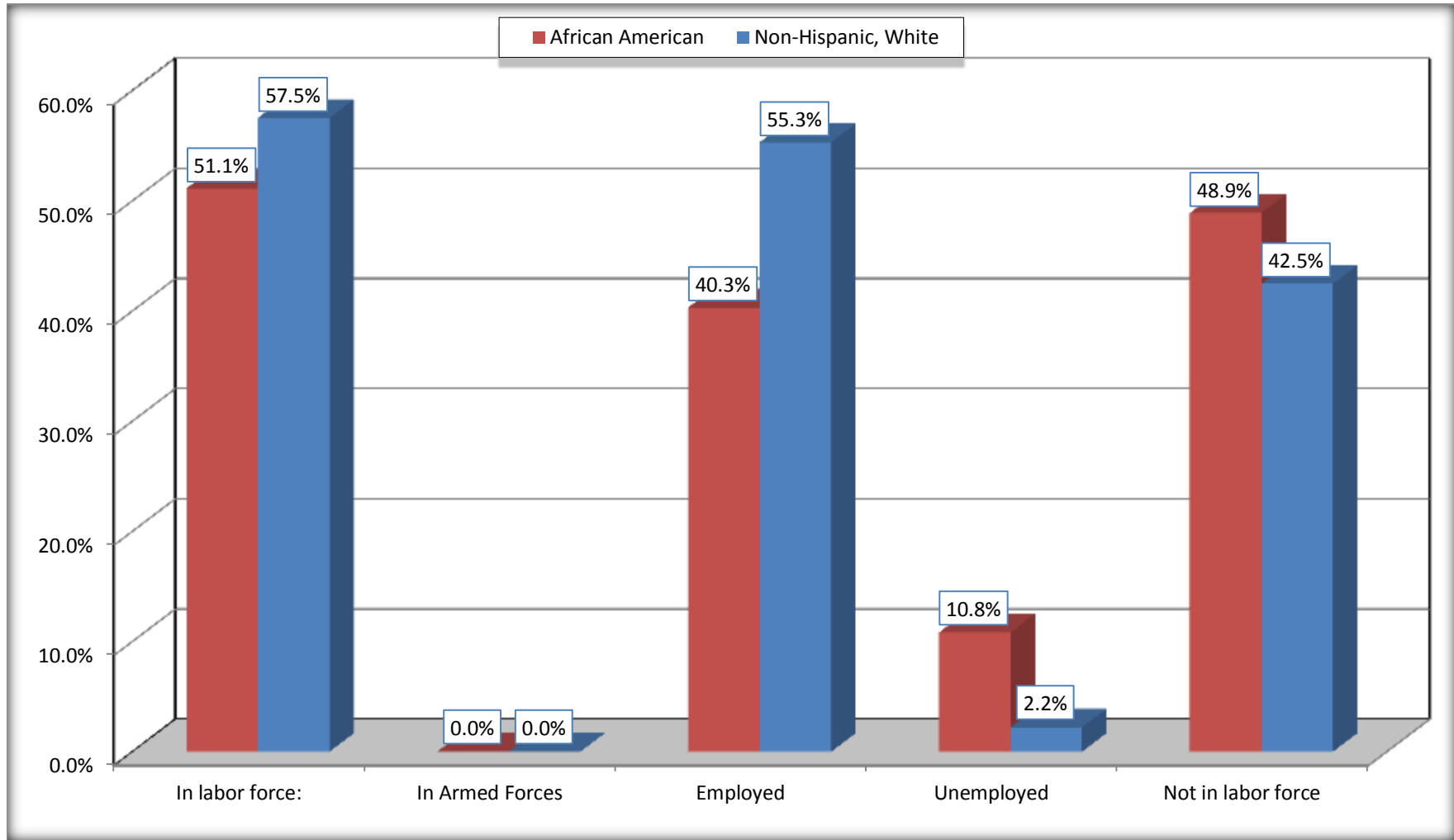
	Clinton city, North Carolina					
	African American	Margin of Error (+/-)	% of AA Total	White, Not Hispanic	Margin of Error (+/-)	% of NHW Total
Female:	1,514	168	56.2%	2,138	170	56.4%
16 to 64 years:	1,151	143	42.8%	1,353	142	35.7%
In labor force:	775	129	28.8%	971	132	25.6%
In Armed Forces	0	18	0.0%	0	18	0.0%
Civilian:	775	129	28.8%	971	132	25.6%
Employed	634	112	23.6%	940	126	24.8%
Unemployed	141	51	5.2%	31	25	0.8%
Not in labor force	376	72	14.0%	382	77	10.1%
65 years and over:	363	80	13.5%	785	114	20.7%
In labor force:	19	17	0.7%	93	32	2.5%
Employed	17	15	0.6%	93	32	2.5%
Unemployed	2	5	0.1%	0	18	0.0%
Not in labor force	344	78	12.8%	692	110	18.2%

Source: U.S. Census Bureau, 2008-2012 American Community Survey

For information on confidentiality protection, sampling error, nonsampling error, and definitions, see Survey Methodology.  
<http://www.census.gov/acs/www/UseData/index.htm>

# Employment Status for the Population 16 years and over

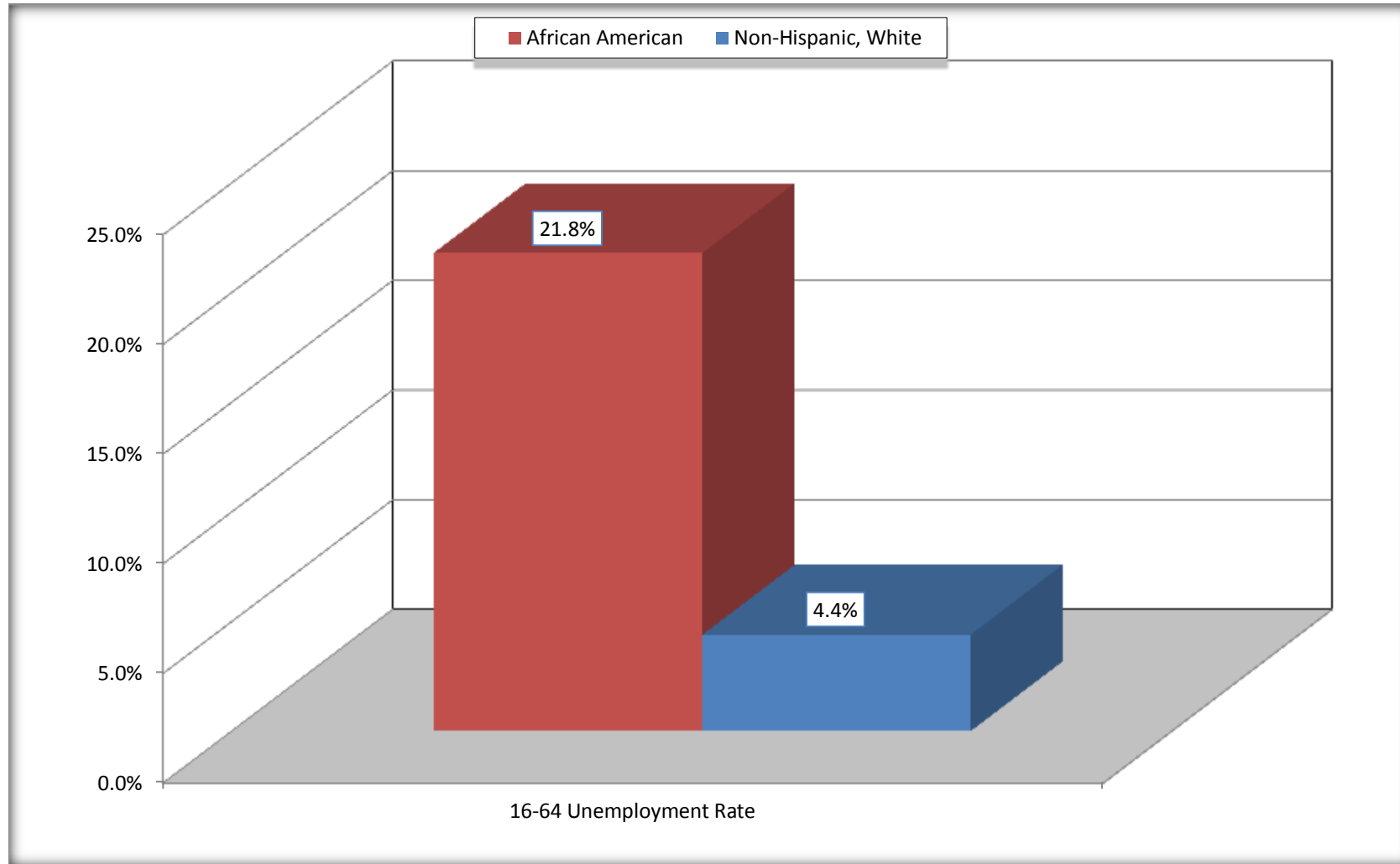
## Clinton city, North Carolina



Source: C23002. SEX BY AGE BY EMPLOYMENT STATUS FOR THE POPULATION 16 YEARS AND OVER  
Data Set: 2008-2012 American Community Survey 5-Year Estimates

# Unemployment of Working Age Population (Ages 16 to 64) (As a Percent of 16-64 Civilian Labor Force)

## Clinton city, North Carolina



Source: C23002. SEX BY AGE BY EMPLOYMENT STATUS FOR THE POPULATION 16 YEARS AND OVER  
Data Set: 2008-2012 American Community Survey 5-Year Estimates

**C24010. SEX BY OCCUPATION FOR THE CIVILIAN EMPLOYED POPULATION 16 YEARS AND OVER**

Data Set: 2008-2012 American Community Survey 5-Year Estimates

	Clinton city, North Carolina					
	African American	Margin of Error (+/-)	% of AA Total	White, Not Hispanic	Margin of Error (+/-)	% of NHW Total
<b>Total:</b>	<b>1,085</b>	<b>154</b>	<b>100.0%</b>	<b>2,098</b>	<b>208</b>	<b>100.0%</b>
Management, professional, and related occupations	178	NC	16.4%	978	NC	46.6%
Service occupations	304	NC	28.0%	288	NC	13.7%
Sales and office occupations	189	NC	17.4%	524	NC	25.0%
Natural resources, construction, and maintenance occupations:	13	NC	1.2%	114	NC	5.4%
Production, transportation, and material moving occupations	401	NC	37.0%	194	NC	9.2%
Male:	434	96	40.0%	1,065	127	50.8%
Management, business, science, and arts occupations:	50	34	4.6%	516	91	24.6%
Service occupations	74	33	6.8%	128	50	6.1%
Sales and office occupations	52	32	4.8%	155	38	7.4%
Natural resources, construction, and maintenance occupations:	13	16	1.2%	114	38	5.4%
Production, transportation, and material moving occupations	245	77	22.6%	152	45	7.2%
Female:	651	115	60.0%	1,033	129	49.2%
Management, professional, and related occupations	128	50	11.8%	462	77	22.0%
Service occupations	230	68	21.2%	160	51	7.6%
Sales and office occupations	137	49	12.6%	369	78	17.6%
Natural resources, construction, and maintenance occupations:	0	18	0.0%	0	18	0.0%
Production, transportation, and material moving occupations	156	58	14.4%	42	31	2.0%

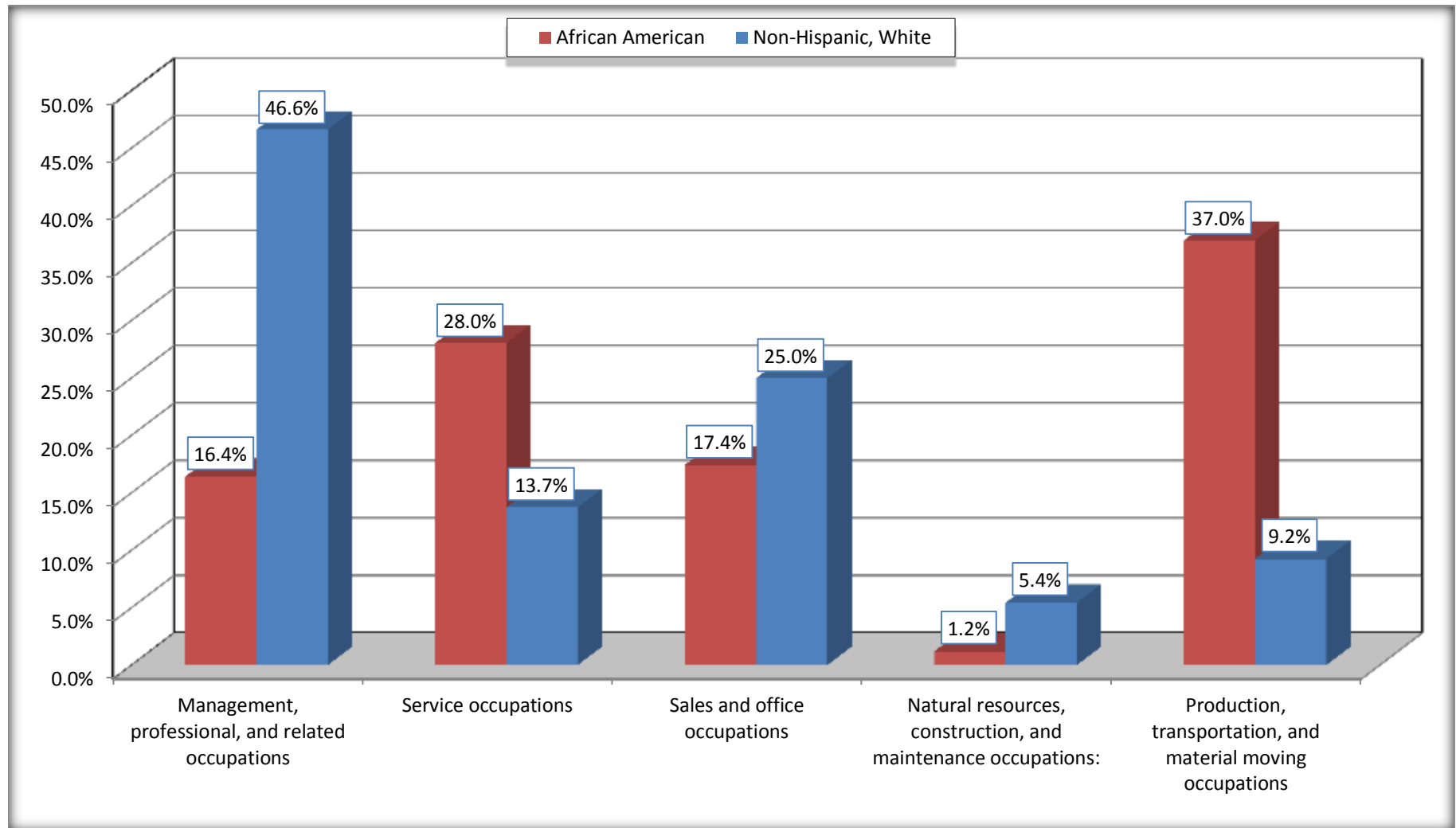
Source: U.S. Census Bureau, 2008-2012 American Community Survey

For information on confidentiality protection, sampling error, nonsampling error, and definitions, see Survey Methodology.

<http://www.census.gov/acs/www/UseData/index.htm>

# Occupation for the Civilian Employed 16 Years and Over Population

## Clinton city, North Carolina



Source: C24010. SEX BY OCCUPATION FOR THE CIVILIAN EMPLOYED POPULATION 16 YEARS AND OVER  
Data Set: 2008-2012 American Community Survey 5-Year Estimates

**B25003. TENURE - Universe: OCCUPIED HOUSING UNITS**

Data Set: 2008-2012 American Community Survey 5-Year Estimates

	Clinton city, North Carolina					
	African American	Margin of Error (+/-)	% of AA Total	White, Not Hispanic	Margin of Error (+/-)	% of NHW Total
<b>Total:</b>	<b>1,363</b>	<b>123</b>	<b>100.0%</b>	<b>1,993</b>	<b>164</b>	<b>100.0%</b>
Owner occupied	478	103	35.1%	1,356	130	68.0%
Renter occupied	885	113	64.9%	637	104	32.0%

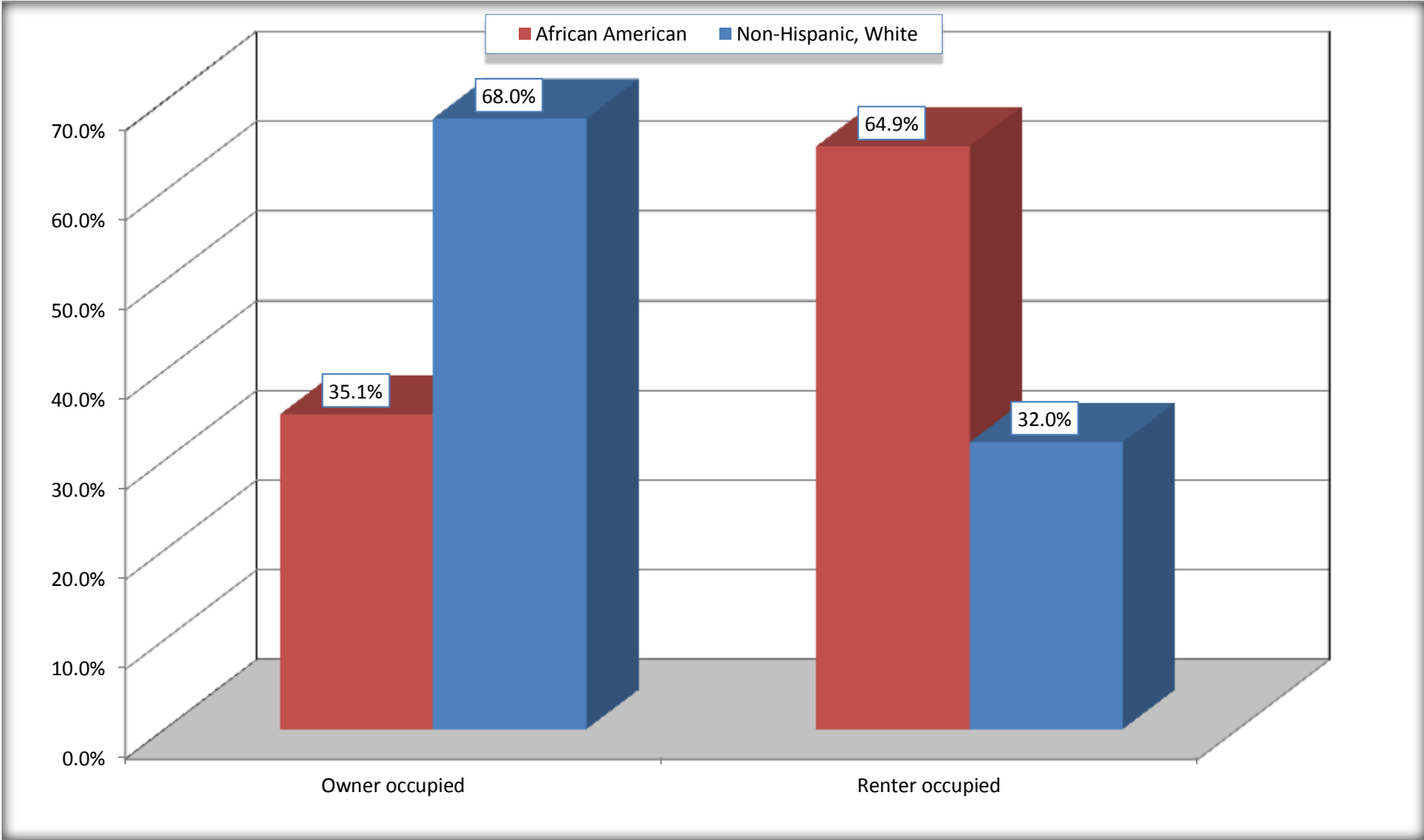
Source: U.S. Census Bureau, 2008-2012 American Community Survey

For information on confidentiality protection, sampling error, nonsampling error, and definitions, see Survey Methodology.

<http://www.census.gov/acs/www/UseData/index.h>

# Home Owners and Renters by Household

## Clinton city, North Carolina



Source: B25003. TENURE - Universe: OCCUPIED HOUSING UNITS  
Data Set: 2008-2012 American Community Survey 5-Year Estimates



**B25014. OCCUPANTS PER ROOM - Universe: OCCUPIED HOUSING UNITS**

Data Set: 2008-2012 American Community Survey 5-Year Estimates

	Clinton city, North Carolina					
	African American	Margin of Error (+/-)	% of AA Total	White, Not Hispanic	Margin of Error (+/-)	% of NHW Total
<b>Total:</b>	<b>1,363</b>	<b>123</b>	<b>100.0%</b>	<b>1,993</b>	<b>164</b>	<b>100.0%</b>
1.00 or less occupants per room	1,316	127	96.6%	1,987	164	99.7%
1.01 or more occupants per room	47	32	3.4%	6	7	0.3%

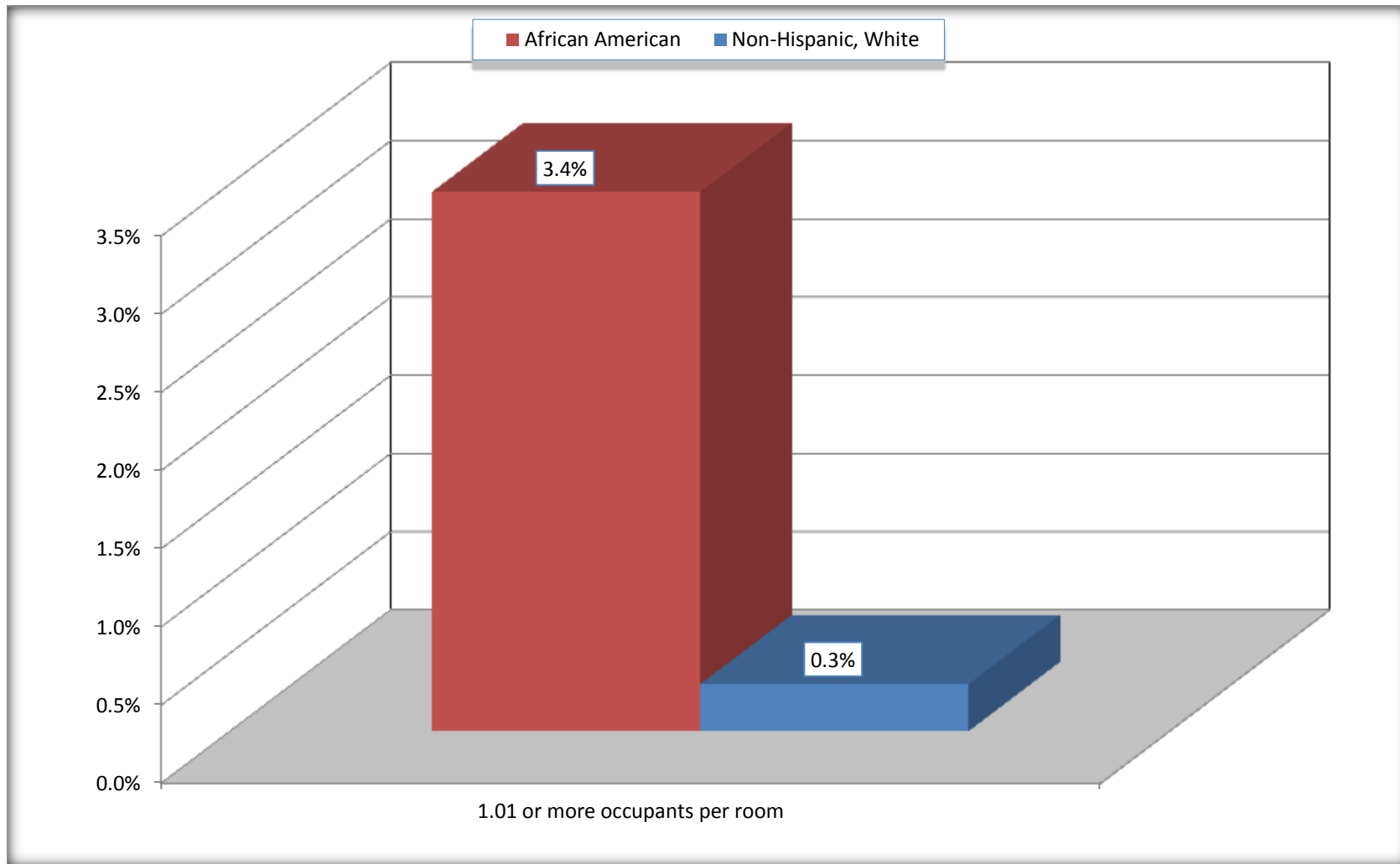
Source: U.S. Census Bureau, 2008-2012 American Community Survey

For information on confidentiality protection, sampling error, nonsampling error, and definitions, see Survey Methodology.

<http://www.census.gov/acs/www/UseData/index.ht>

# More than One Person per Room (Crowding) by Household

## Clinton city, North Carolina



Source: B25014. OCCUPANTS PER ROOM - Universe: OCCUPIED HOUSING UNITS  
Data Set: 2008-2012 American Community Survey 5-Year Estimates

**B18101. AGE BY DISABILITY STATUS**

Data Set: 2008-2012 American Community Survey 5-Year Estimates

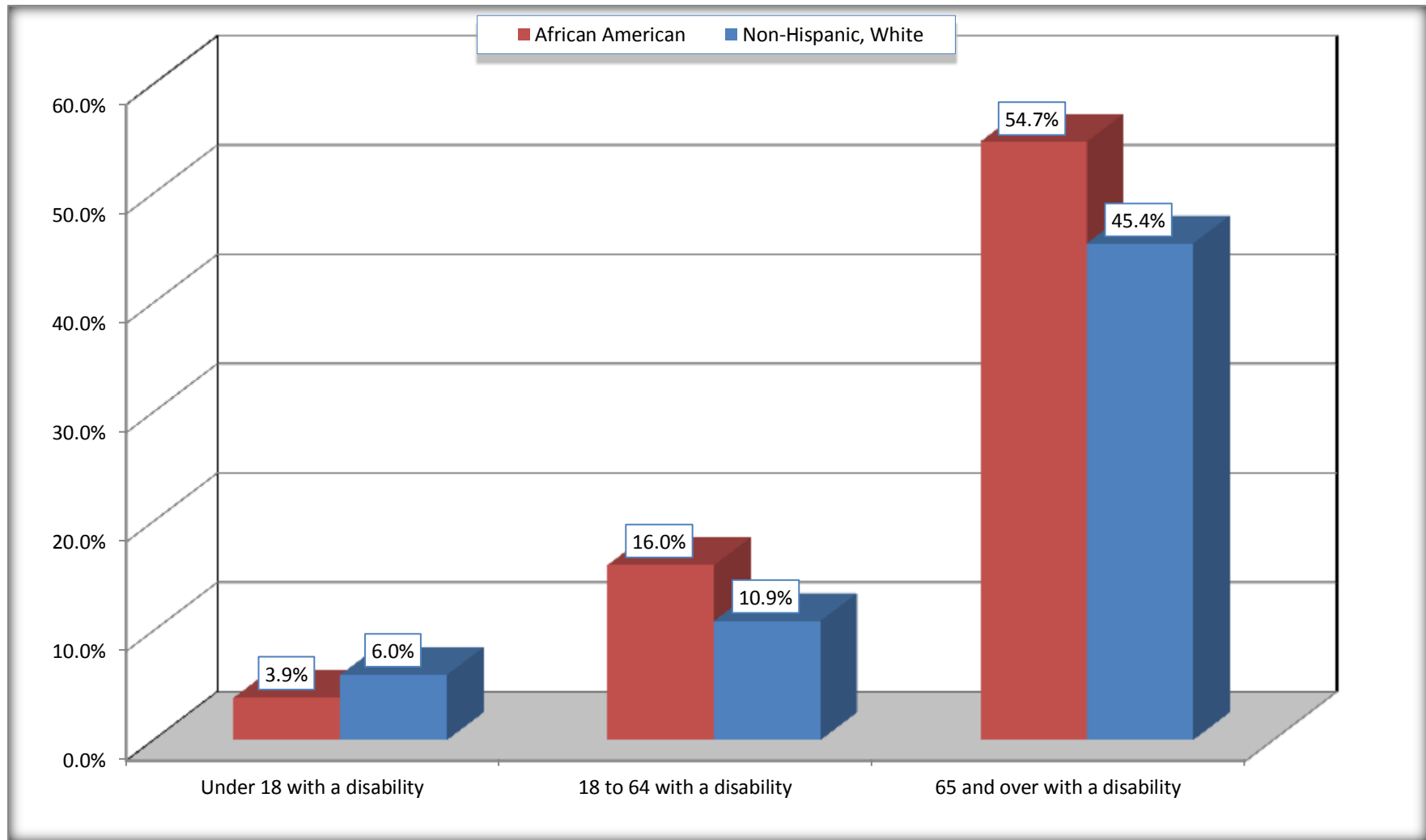
	Clinton city, North Carolina					
	African American	Margin of Error (+/-)	% of AA Total	White, Not Hispanic	Margin of Error (+/-)	% of NHW Total
<b>Total:</b>	<b>3,230</b>	<b>318</b>	<b>100.0%</b>	<b>4,077</b>	<b>319</b>	<b>100.0%</b>
Under 18 years:	852	198	26.4%	620	29	15.2%
With a disability	33	21	1.0%	37	25	0.9%
No disability	819	194	25.4%	583	120	14.3%
18 to 64 years:	1,870	199	57.9%	2,330	222	57.1%
With a disability	299	84	9.3%	254	76	6.2%
No disability	1,571	191	48.6%	2,076	211	50.9%
65 years and over:	508	101	15.7%	1,127	126	27.6%
With a disability	278	70	8.6%	512	84	12.6%
No disability	230	62	7.1%	615	109	15.1%

Source: U.S. Census Bureau, 2008-2012 American Community Survey

For information on confidentiality protection, sampling error, nonsampling error, and definitions, see Survey Methodology.

<http://www.census.gov/acs/www/UseData/index.htm>

## Disability by Age Clinton city, North Carolina



Source: B18101. AGE BY DISABILITY STATUS  
Data Set: 2008-2012 American Community Survey 5-Year Estimates

**C27001B. HEALTH INSURANCE COVERAGE STATUS BY AGE**

Data Set: 2008-2012 American Community Survey 5-Year Estimates

	Clinton city, North Carolina					
	African American	Margin of Error (+/-)	% of AA Total	White, Not Hispanic	Margin of Error (+/-)	% of NHW Total
<b>Total:</b>	<b>3,230</b>	<b>318</b>	<b>100.0%</b>	<b>4,077</b>	<b>319</b>	<b>100.0%</b>
Under 18 years:	852	198	26.4%	620	128	15.2%
With health insurance coverage	810	197	25.1%	599	126	14.7%
No health insurance coverage	42	29	1.3%	21	20	0.5%
18 to 64 years:	1,870	199	57.9%	2,330	222	57.1%
With health insurance coverage	1,295	187	40.1%	2,047	208	50.2%
No health insurance coverage	575	124	17.8%	283	75	6.9%
65 years and over:	508	101	15.7%	1,127	126	27.6%
With health insurance coverage	508	101	15.7%	1,127	126	27.6%
No health insurance coverage	0	18	0.0%	0	18	0.0%

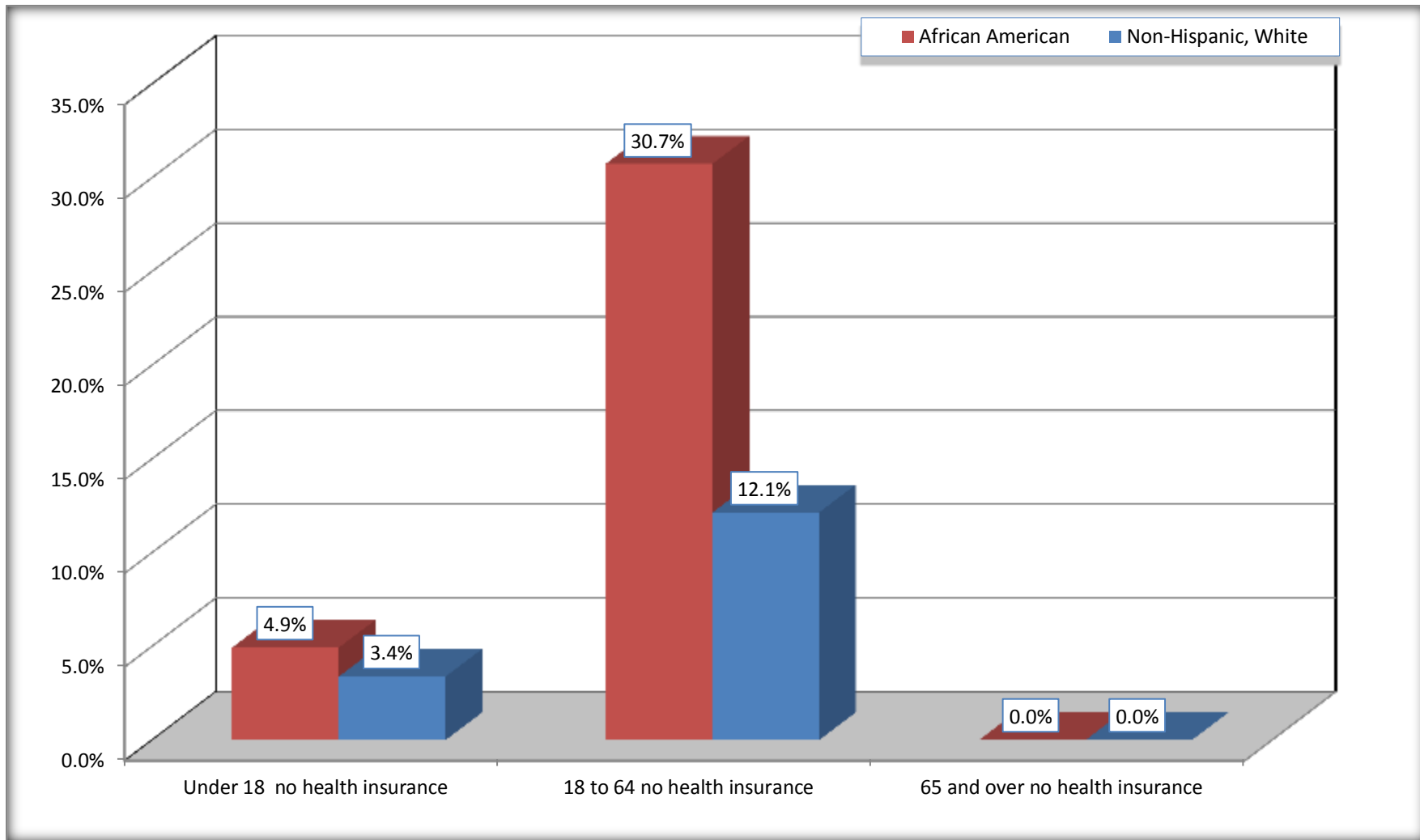
Source: U.S. Census Bureau, 2008-2012 American Community Survey

For information on confidentiality protection, sampling error, nonsampling error, and definitions, see Survey Methodology.

<http://www.census.gov/acs/www/UseData/index.htm>

# Lack of Health Insurance Coverage by Age

## Clinton city, North Carolina



Source: C27001B. HEALTH INSURANCE COVERAGE STATUS BY AGE  
Data Set: 2008-2012 American Community Survey 5-Year Estimates