

Selected Socio-Economic Data

Chowan County, North Carolina

African American and White, Not Hispanic

Data Set: 2008-2012 American Community Survey 5-Year Estimates

www.fairvote2020.org

www.fairdata2000.com

[29-Dec-13](#)

C02003.DETAILED RACE - Universe: TOTAL POPULATION

Data Set: 2008-2012 American Community Survey 5-Year Estimates

	Chowan County, North Carolina		
	Population	Margin of Error (+/-)	% of Total
Total:	14,825	*****	100.0%
Population of one race:	14,792	41	99.8%
White	9,323	204	62.9%
Black or African American	5,064	162	34.2%
American Indian and Alaska Native	124	130	0.8%
Asian alone	109	102	0.7%
Native Hawaiian and Other Pacific Islander	0	20	0.0%
Some other race	172	204	1.2%
Population of two or more races:	33	41	0.2%
Two races including Some other race	0	20	0.0%
Two races excluding Some other race, and three or more races	33	41	0.2%
Population of two races:	33	41	0.2%
White; Black or African American	18	28	0.1%
White; American Indian and Alaska Native	8	15	0.1%
White; Asian	0	20	0.0%
Black or African American; American Indian and Alaska Native	7	15	0.0%
All other two race combinations	0	20	0.0%
Population of three races	0	20	0.0%
Population of four or more races	0	20	0.0%

Note: Hispanics may be of any race. See Table B03002 and chart.

Source: U.S. Census Bureau, 2008-2012 American Community Survey

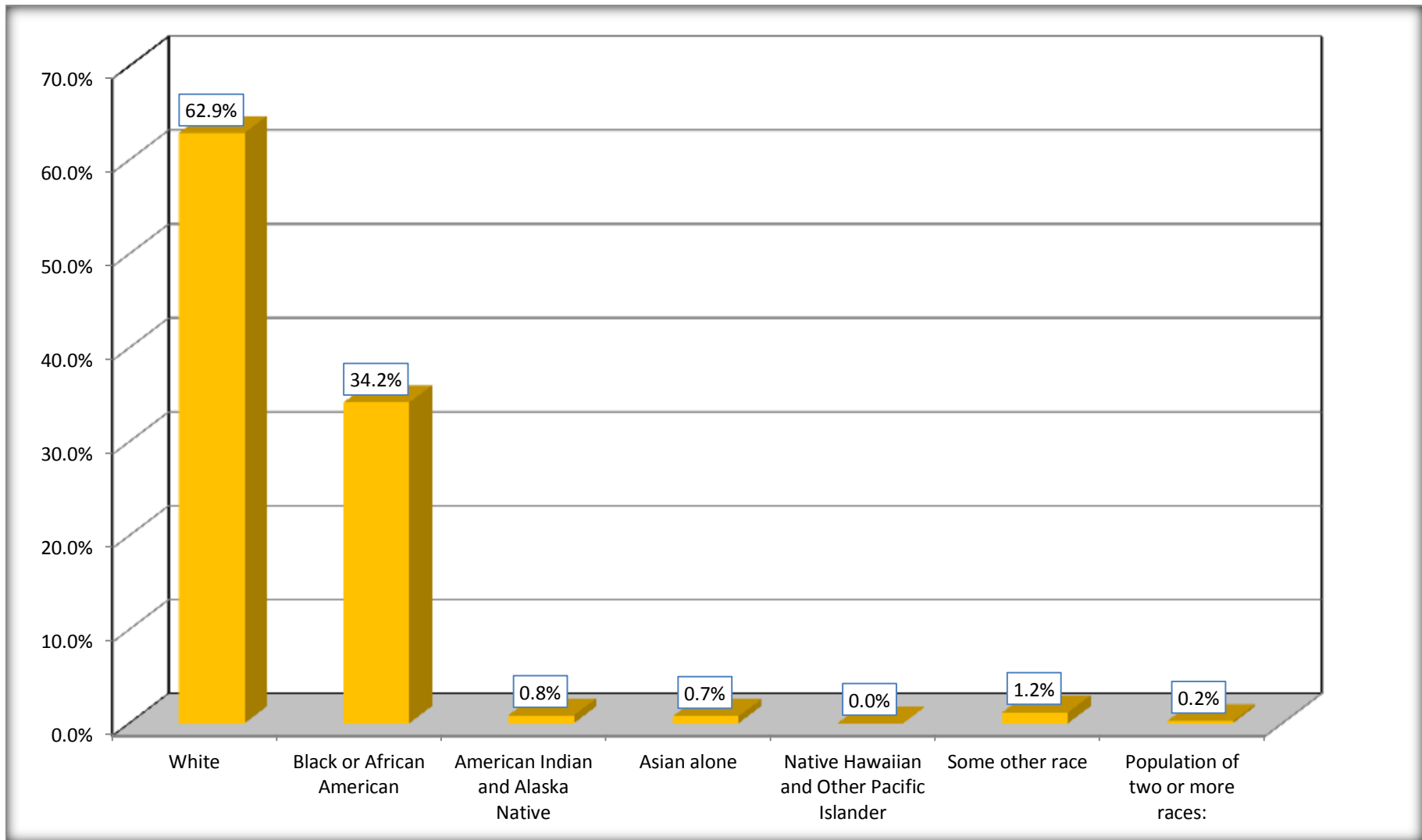
Although the American Community Survey (ACS) produces population, demographic and housing unit estimates, it is the Census Bureau's Population Estimates Program that produces and disseminates the official estimates of the population for the nation, states, counties, cities and towns and estimates of housing units for states and counties.

For information on confidentiality protection, sampling error, nonsampling error, and definitions, see Survey Methodology.

<http://www.census.gov/acs/www/UseData/index.htm>

Population by Race

Chowan County, North Carolina



Source: C02003.DETAILED RACE - Universe: TOTAL POPULATION
Data Set: 2008-2012 American Community Survey 5-Year Estimates

B03002. HISPANIC OR LATINO ORIGIN BY RACE - Universe: TOTAL POPULATION

Data Set: 2008-2012 American Community Survey 5-Year Estimates

	Chowan County, North Carolina		
	Population	Margin of Error (+/-)	% of Total
Total:	14,825	*****	100.0%
Not Hispanic or Latino:	14,345	*****	96.8%
White alone	9,015	20	60.8%
Black or African American alone	5,064	162	34.2%
American Indian and Alaska Native alone	124	130	0.8%
Asian alone	109	102	0.7%
Native Hawaiian and Other Pacific Islander alone	0	20	0.0%
Some other race alone	0	20	0.0%
Two or more races:	33	41	0.2%
Two races including Some other race	0	20	0.0%
Two races excluding Some other race, and three or more races	33	41	0.2%
Hispanic or Latino	480	*****	3.2%

Source: U.S. Census Bureau, 2008-2012 American Community Survey

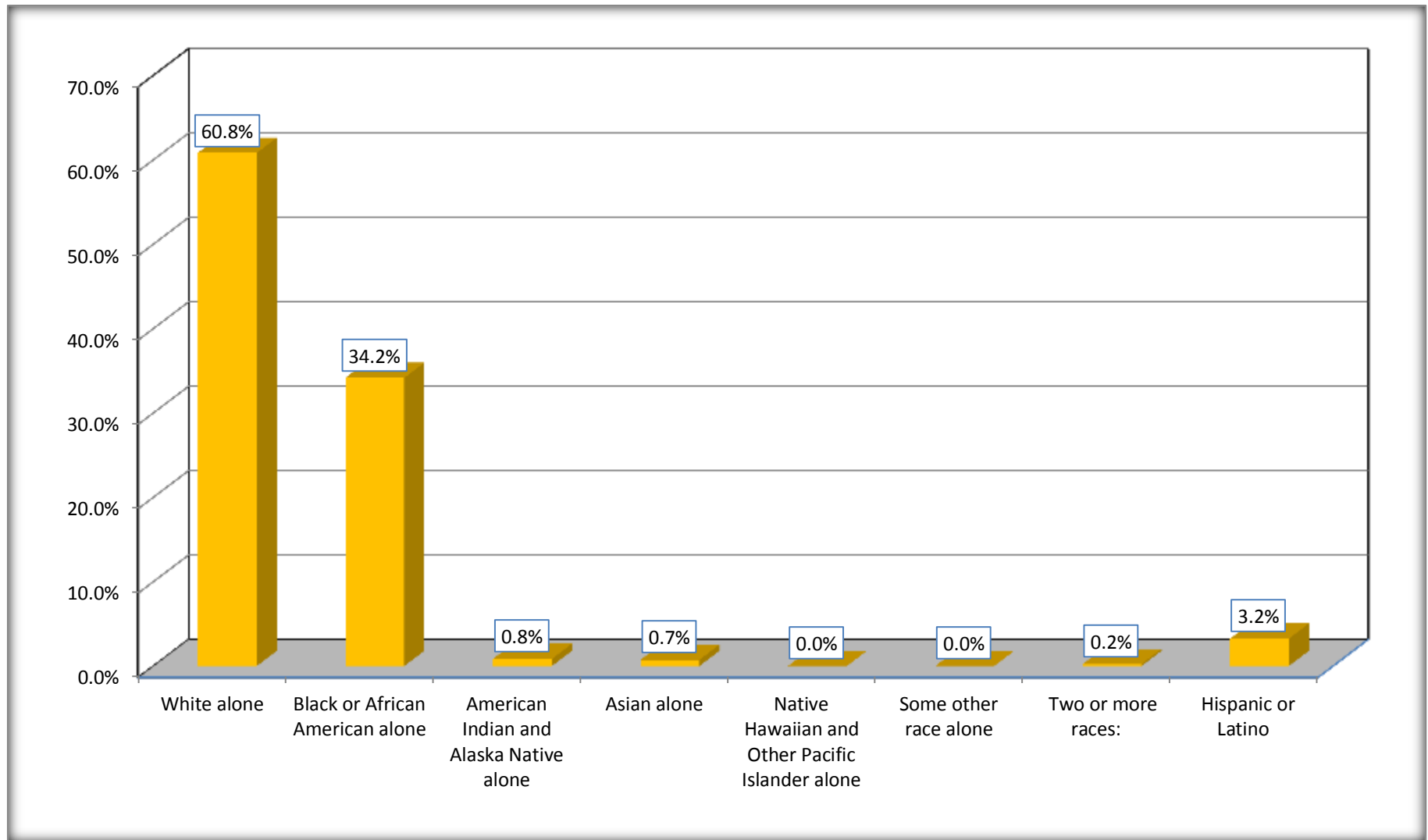
Although the American Community Survey (ACS) produces population, demographic and housing unit estimates, it is the Census Bureau's Population Estimates Program that produces and disseminates the official estimates of the population for the nation, states, counties, cities and towns and estimates of housing units for states and counties.

For information on confidentiality protection, sampling error, nonsampling error, and definitions, see Survey Methodology.

<http://www.census.gov/acs/www/UseData/index.htm>

Non-Hispanic by Race and Hispanic Population

Chowan County, North Carolina



Source: B03002. HISPANIC OR LATINO ORIGIN BY RACE - Universe: TOTAL POPULATION
Data Set: 2008-2012 American Community Survey 5-Year Estimates

B03002. HISPANIC OR LATINO ORIGIN BY RACE

Data Set: 2008-2012 American Community Survey 5-Year Estimates

	Chowan County, North Carolina		
	Population	Margin of Error (+/-)	% of Total
Hispanic or Latino:	480	*****	100.0%
White alone	308	204	64.2%
Black or African American alone	0	20	0.0%
American Indian and Alaska Native alone	0	20	0.0%
Asian alone	0	20	0.0%
Native Hawaiian and Other Pacific Islander alone	0	20	0.0%
Some other race alone	172	204	35.8%
Two or more races:	0	20	0.0%
Two races including Some other race	0	20	0.0%
Two races excluding Some other race, and three or more races	0	20	0.0%

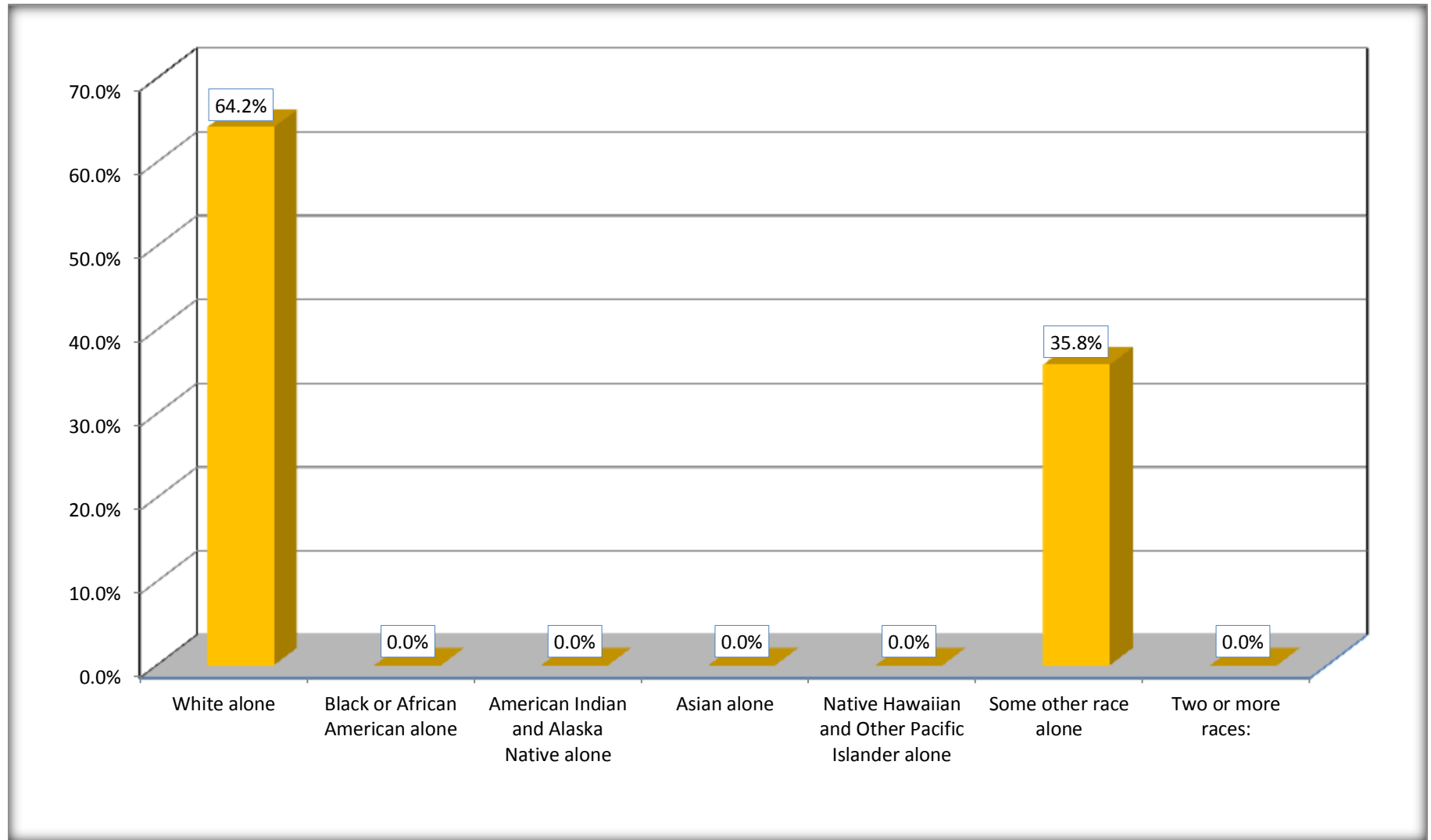
Source: U.S. Census Bureau, 2008-2012 American Community Survey

Although the American Community Survey (ACS) produces population, demographic and housing unit estimates, it is the Census Bureau's Population Estimates Program that produces and disseminates the official estimates of the population for the nation, states, counties, cities and towns and estimates of housing units for states and counties.

For information on confidentiality protection, sampling error, nonsampling error, and definitions, see Survey Methodology.

<http://www.census.gov/acs/www/UseData/index.htm>

Hispanic or Latino Origin by Race Chowan County, North Carolina



Source: B03002. HISPANIC OR LATINO ORIGIN BY RACE
Data Set: 2008-2012 American Community Survey 5-Year Estimates

B01001. SEX BY AGE

Data Set: 2008-2012 American Community Survey 5-Year Estimates

	Chowan County, North Carolina					
	African American	Margin of Error (+/-)	% of AA Total	White, Not Hispanic	Margin of Error (+/-)	% of NHW Total
Total:	5,064	162	100.0%	9,015	20	100.0%
Under 18 years	1,321	NC	26.1%	1,714	NC	19.0%
18 to 64 years	2,974	NC	58.7%	5,175	NC	57.4%
65 years and over	769	NC	15.2%	2,126	NC	23.6%
Male:	2,287	124	45.2%	4,303	389	47.7%
Under 18 years	658	NC	13.0%	842	NC	9.3%
18 to 64 years	1,318	NC	26.0%	2,531	NC	28.1%
65 years and over	311	NC	6.1%	930	NC	10.3%
Female:	2,777	142	54.8%	4,712	412	52.3%
Under 18 years	663	NC	13.1%	872	NC	9.7%
18 to 64 years	1,656	NC	32.7%	2,644	NC	29.3%
65 years and over	458	NC	9.0%	1,196	NC	13.3%

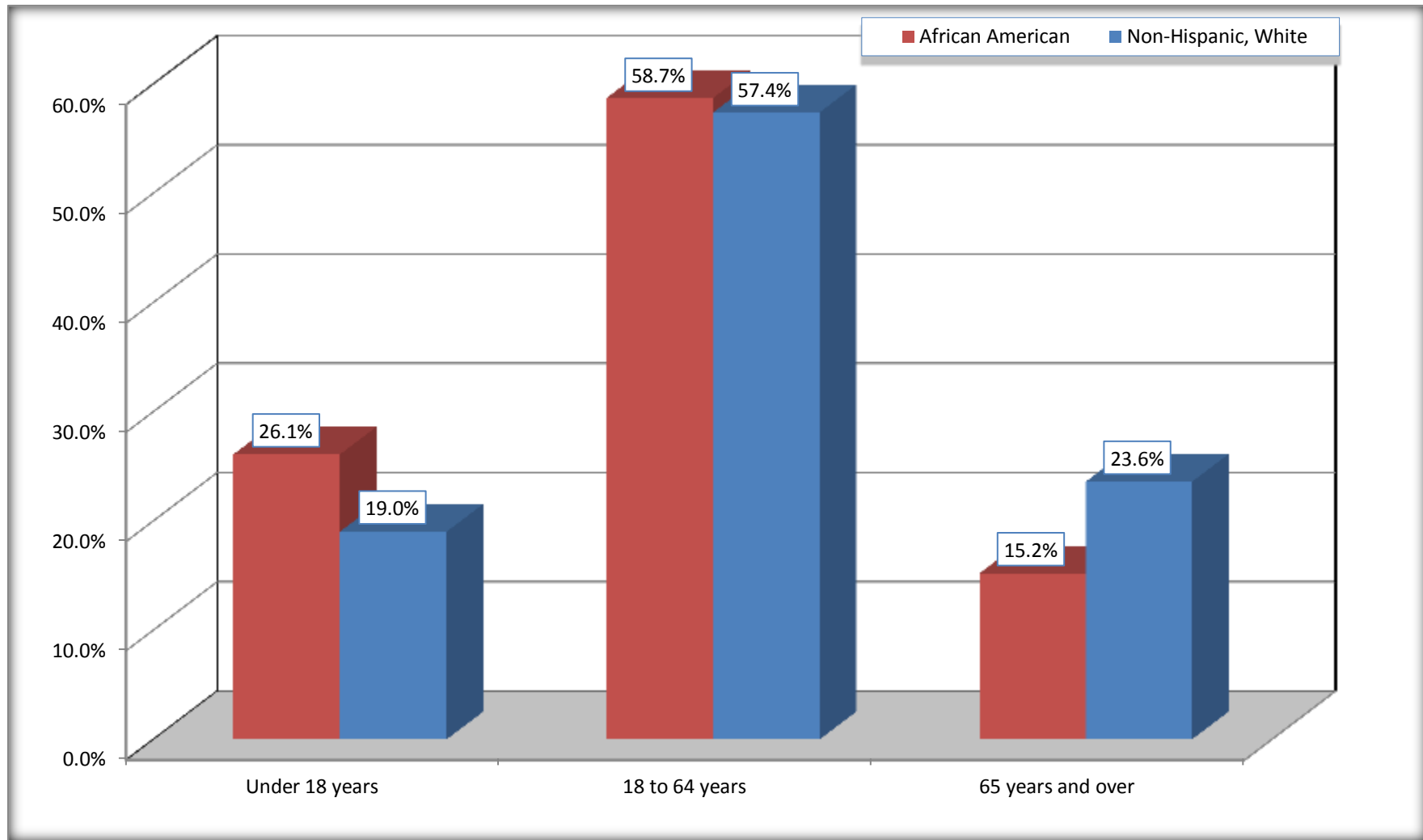
Source: U.S. Census Bureau, 2008-2012 American Community Survey

Although the American Community Survey (ACS) produces population, demographic and housing unit estimates, it is the Census Bureau's Population Estimates Program that produces and disseminates the official estimates of the population for the nation, states, counties, cities and towns and estimates of housing units for states and counties.

For information on confidentiality protection, sampling error, nonsampling error, and definitions, see Survey Methodology.
<http://www.census.gov/acs/www/UseData/index.htm>

Population by Age

Chowan County, North Carolina



Source: B01001. SEX BY AGE
Data Set: 2008-2012 American Community Survey 5-Year Estimates

B05003. SEX BY AGE BY CITIZENSHIP STATUS

Data Set: 2008-2012 American Community Survey 5-Year Estimates

	Chowan County, North Carolina					
	African American	Margin of Error (+/-)	% of AA Total by Age	White, Not Hispanic	Margin of Error (+/-)	% of NHW Total by Age
Total:	5,064	162	100.0%	9,015	20	100.0%
Under 18 years:	1,321	NC	100.0%	1,714	NC	100.0%
Native	1,321	NC	100.0%	1,714	NC	100.0%
Foreign born:	0	NC	0.0%	0	NC	0.0%
Naturalized U.S. citizen	0	NC	0.0%	0	NC	0.0%
Not a U.S. citizen	0	NC	0.0%	0	NC	0.0%
18 years and over:	3,743	NC	100.0%	7,301	NC	100.0%
Native	3,743	NC	100.0%	7,065	NC	96.8%
Foreign born:	0	NC	0.0%	236	NC	3.2%
Naturalized U.S. citizen	0	NC	0.0%	185	NC	2.5%
Not a U.S. citizen	0	NC	0.0%	51	NC	0.7%
Male:	2,287	124	45.2%	4,303	82	47.7%
Under 18 years:	658	108	100.0%	842	82	100.0%
Native	658	108	100.0%	842	82	100.0%
Foreign born:	0	20	0.0%	0	20	0.0%
Naturalized U.S. citizen	0	20	0.0%	0	20	0.0%
Not a U.S. citizen	0	20	0.0%	0	20	0.0%
18 years and over:	1,629	47	100.0%	3,461	20	100.0%
Native	1,629	47	100.0%	3,403	62	98.3%
Foreign born:	0	20	0.0%	58	62	1.7%
Naturalized U.S. citizen	0	20	0.0%	58	62	1.7%
Not a U.S. citizen	0	20	0.0%	0	20	0.0%

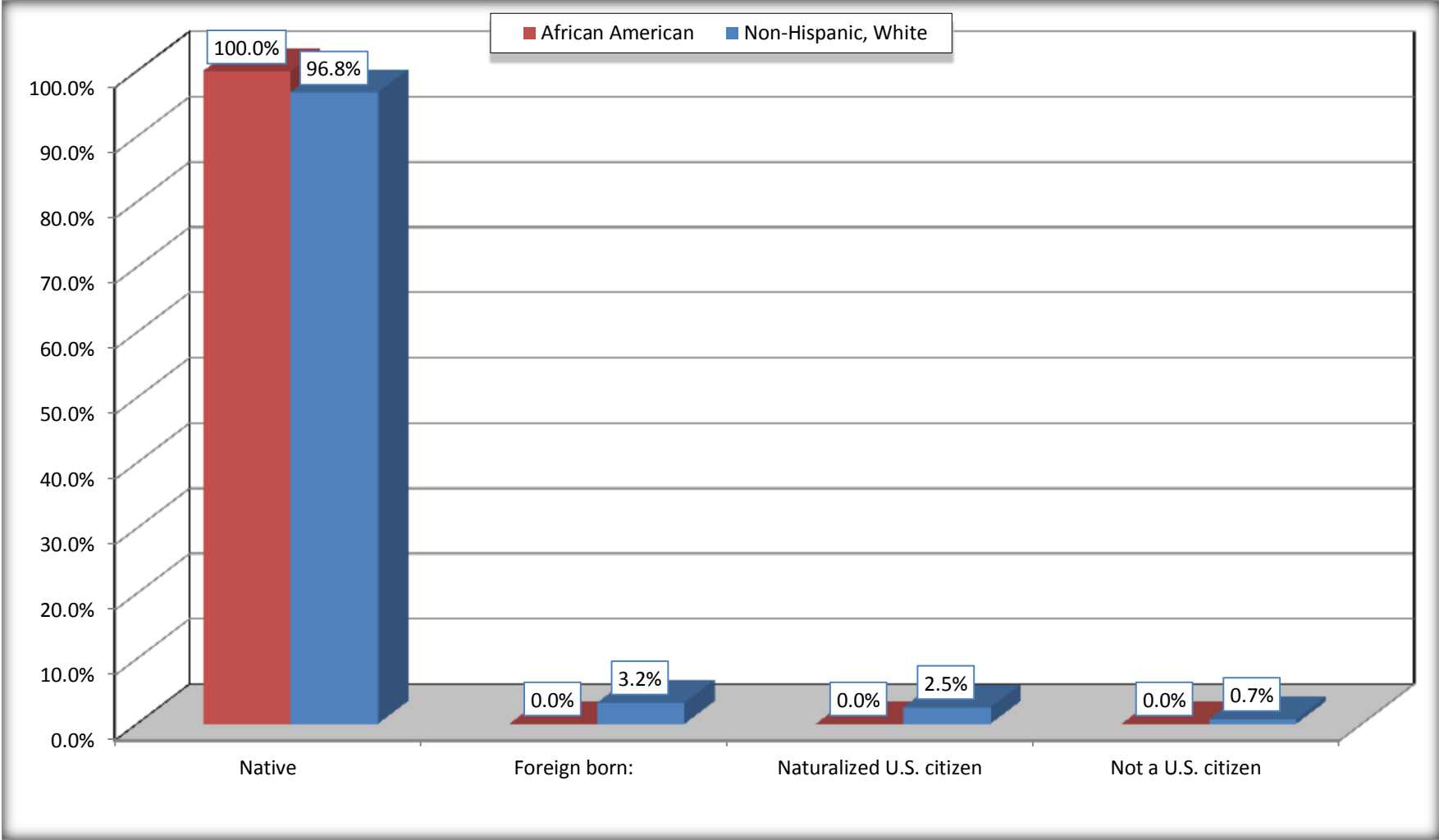
	Chowan County, North Carolina					
	African American	Margin of Error (+/-)	% of AA by Age	White, Not Hispanic	Margin of Error (+/-)	% of NHW by Age
Female:	2,777	142	54.8%	4,712	82	52.3%
Under 18 years:	663	124	100.0%	872	82	100.0%
Native	663	124	100.0%	872	82	100.0%
Foreign born:	0	20	0.0%	0	20	0.0%
Naturalized U.S. citizen	0	20	0.0%	0	20	0.0%
Not a U.S. citizen	0	20	0.0%	0	20	0.0%
18 years and over:	2,114	68	100.0%	3,840	20	100.0%
Native	2,114	68	100.0%	3,662	129	95.4%
Foreign born:	0	20	0.0%	178	129	4.6%
Naturalized U.S. citizen	0	20	0.0%	127	84	3.3%
Not a U.S. citizen	0	20	0.0%	51	65	1.3%

Source: U.S. Census Bureau, 2008-2012 American Community Survey

For information on confidentiality protection, sampling error, nonsampling error, and definitions, see Survey Methodology.
<http://www.census.gov/acs/www/UseData/index.htm>

Citizenship Status of Voting Age Population (18 and Over)

Chowan County, North Carolina



Source: B05003. SEX BY AGE BY CITIZENSHIP STATUS
Data Set: 2008-2012 American Community Survey 5-Year Estimates

**B07004. GEOGRAPHICAL MOBILITY IN THE PAST YEAR BY RACE FOR CURRENT RESIDENCE IN THE UNITED STATES - Universe:
POPULATION 1 YEAR AND OVER**

Data Set: 2008-2012 American Community Survey 5-Year Estimates

	Chowan County, North Carolina					
	African American	Margin of Error (+/-)	% of AA Total	White, Not Hispanic	Margin of Error (+/-)	% of NHW Total
Total:	5,034	170	100.0%	8,985	34	100.0%
Same house 1 year ago	3,958	368	78.6%	8,097	343	90.1%
Moved within same county	700	350	13.9%	546	293	6.1%
Moved from different county within same state	256	155	5.1%	125	105	1.4%
Moved from different state	120	79	2.4%	217	137	2.4%
Moved from abroad	0	20	0.0%	0	20	0.0%

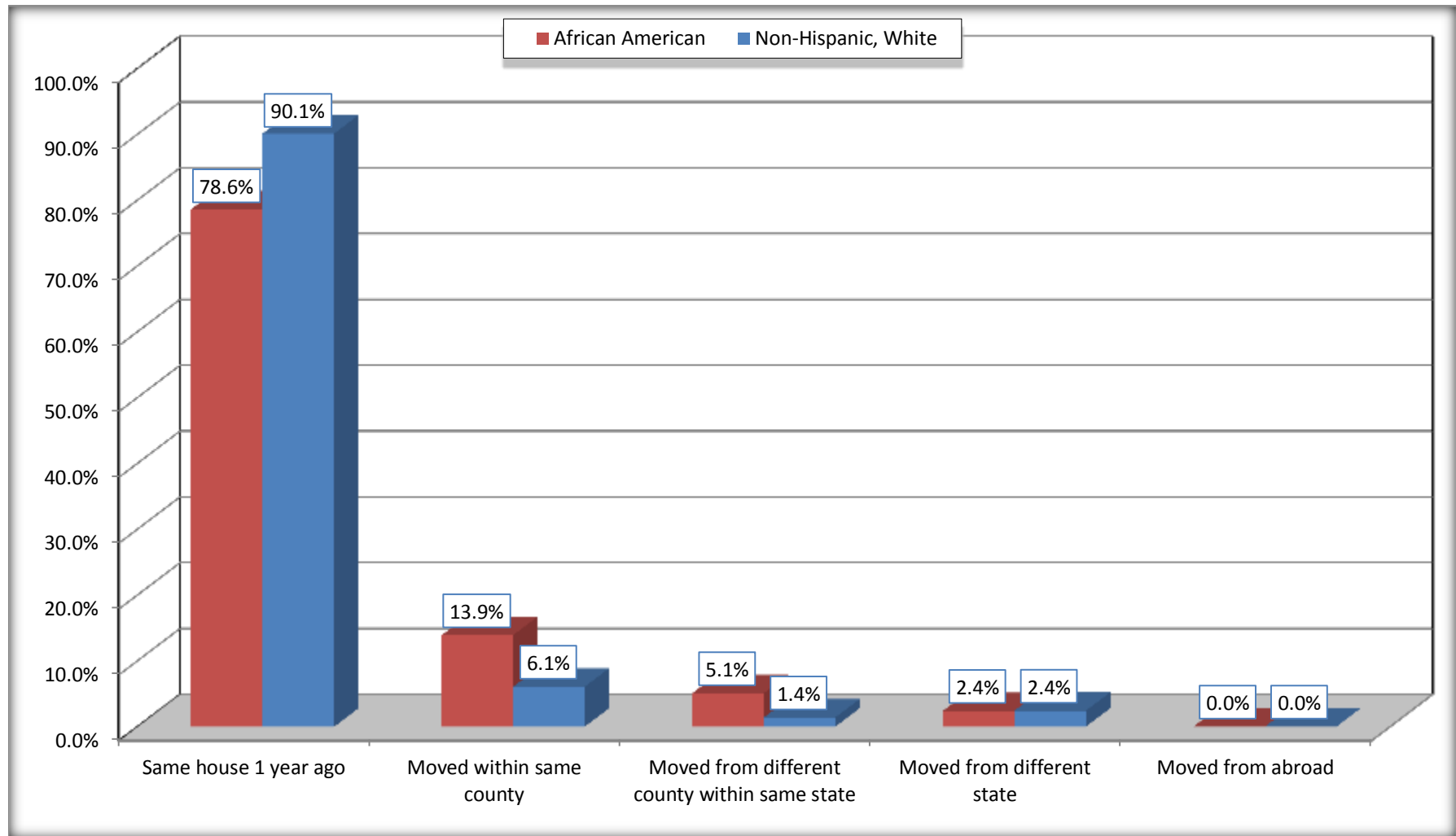
Source: U.S. Census Bureau, 2008-2012 American Community Survey

For information on confidentiality protection, sampling error, nonsampling error, and definitions, see Survey Methodology.

<http://www.census.gov/acs/www/UseData/index.htm>

Geographical Mobility in the Past Year (Population 1 Year and Over)

Chowan County, North Carolina



Source: B07004. GEOGRAPHICAL MOBILITY IN THE PAST YEAR BY RACE FOR CURRENT RESIDENCE IN THE UNITED STATES - Universe: POPULATION 1 YEAR AND OVER

Data Set: 2008-2012 American Community Survey 5-Year Estimates

B08105. MEANS OF TRANSPORTATION TO WORK - Universe: WORKERS 16 YEARS AND OVER

Data Set: 2008-2012 American Community Survey 5-Year Estimates

	Chowan County, North Carolina					
	African American	Margin of Error (+/-)	% of AA Total	White, Not Hispanic	Margin of Error (+/-)	% of NHW Total
Total:	1828	280	100.0%	3411	303	100.0%
Car, truck, or van - drove alone	1225	208	67.0%	2791	293	81.8%
Car, truck, or van - carpooled	408	198	22.3%	372	141	10.9%
Public transportation (excluding taxicab)	8	14	0.4%	0	20	0.0%
Walked	69	81	3.8%	61	63	1.8%
Taxicab, motorcycle, bicycle, or other means	111	84	6.1%	76	76	2.2%
Worked at home	7	12	0.4%	111	84	3.3%

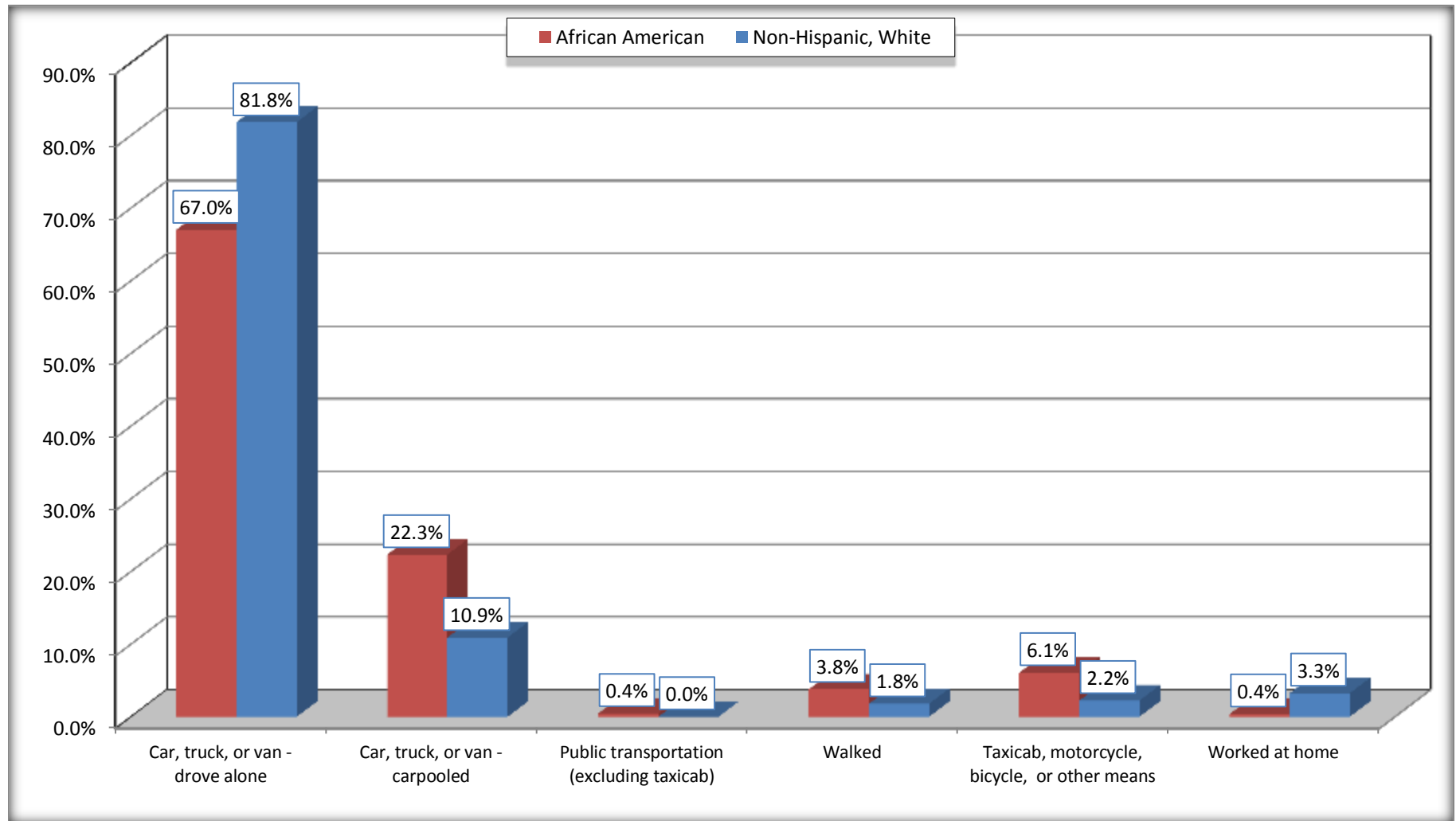
Source: U.S. Census Bureau, 2008-2012 American Community Survey

For information on confidentiality protection, sampling error, nonsampling error, and definitions, see Survey Methodology.

<http://www.census.gov/acs/www/UseData/index.htm>

Means of Transportation to Work (Workers 16 Years and Over)

Chowan County, North Carolina



Source: B08105. MEANS OF TRANSPORTATION TO WORK - Universe: WORKERS 16 YEARS AND OVER
Data Set: 2008-2012 American Community Survey 5-Year Estimates

B11002. HOUSEHOLD TYPE BY RELATIVES AND NONRELATIVES FOR POPULATION IN HOUSEHOLDS

Data Set: 2008-2012 American Community Survey 5-Year Estimates

	Chowan County, North Carolina					
	African American	Margin of Error (+/-)	% of AA Total	White, Not Hispanic	Margin of Error (+/-)	% of NHW Total
Total:	4880	215	100.0%	8700	112	100.0%
In family households	4130	279	84.6%	7272	279	83.6%
In nonfamily households	750	198	15.4%	1428	266	16.4%

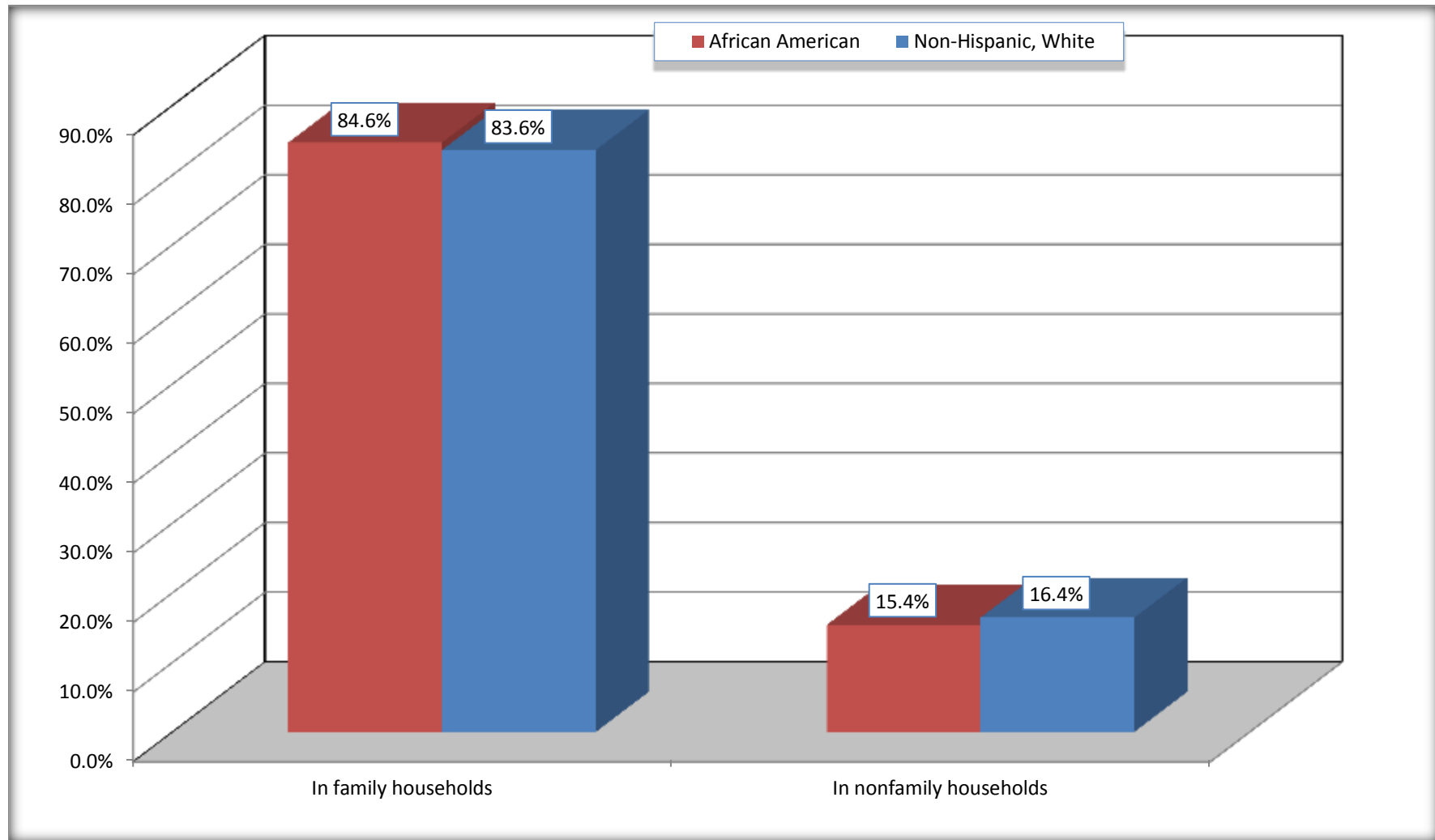
Source: U.S. Census Bureau, 2008-2012 American Community Survey

For information on confidentiality protection, sampling error, nonsampling error, and definitions, see Survey Methodology.

<http://www.census.gov/acs/www/UseData/index.htm>

Household Type for Population in Households

Chowan County, North Carolina



Source: B11002. HOUSEHOLD TYPE BY RELATIVES AND NONRELATIVES FOR POPULATION IN HOUSEHOLDS
Data Set: 2008-2012 American Community Survey 5-Year Estimates

B12002. MARITAL STATUS FOR THE POPULATION 15 YEARS AND OVER

Data Set: 2008-2012 American Community Survey 5-Year Estimates

	Chowan County, North Carolina					
	African American	Margin of Error (+/-)	% of AA Total	White, Not Hispanic	Margin of Error (+/-)	% of NHW Total
Total:	3,849	119	100.0%	7,640	2	100.0%
Never married	1,738	NC	45.2%	1,401	NC	18.3%
Now married (except separated)	902	NC	23.4%	4,211	NC	55.1%
Separated	182	NC	4.7%	258	NC	3.4%
Widowed	507	NC	13.2%	923	NC	12.1%
Divorced	520	NC	13.5%	847	NC	11.1%
Male:	1,735	85	45.1%	3,664	69	48.0%
Never married	941	152	24.4%	731	151	9.6%
Now married (except separated)	413	156	10.7%	2,189	199	28.7%
Separated	81	61	2.1%	139	110	1.8%
Widowed	133	82	3.5%	161	80	2.1%
Divorced	167	111	4.3%	444	159	5.8%
Female:	2,114	68	54.9%	3,976	69	52.0%
Never married	797	142	20.7%	670	141	8.8%
Now married (except separated)	489	143	12.7%	2,022	226	26.5%
Separated	101	71	2.6%	119	96	1.6%
Widowed	374	84	9.7%	762	129	10.0%
Divorced	353	135	9.2%	403	147	5.3%

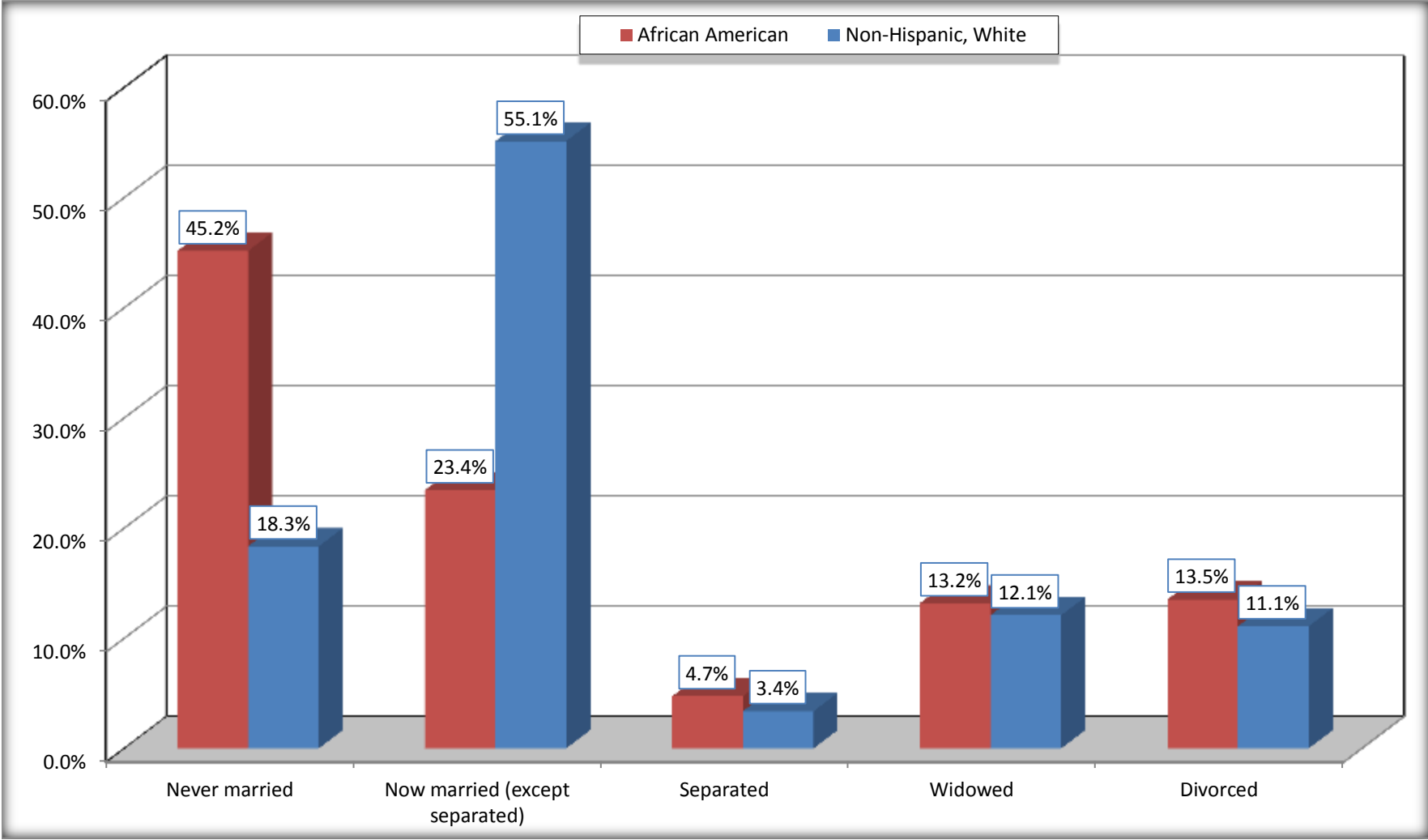
Source: U.S. Census Bureau, 2008-2012 American Community Survey

For information on confidentiality protection, sampling error, nonsampling error, and definitions, see Survey Methodology.

<http://www.census.gov/acs/www/UseData/index.htm>

Marital Status for the Population 15 Years and Over

Chowan County, North Carolina



Source: B12002. MARITAL STATUS FOR THE POPULATION 15 YEARS AND OVER
Data Set: 2008-2012 American Community Survey 5-Year Estimates

C15002. SEX BY EDUCATIONAL ATTAINMENT FOR THE POPULATION 25 YEARS AND OVER

Data Set: 2008-2012 American Community Survey 5-Year Estimates

	Chowan County, North Carolina					
	African American	Margin of Error (+/-)	% of AA Total	White, Not Hispanic	Margin of Error (+/-)	% of NHW Total
Total:	3,123	107	100.0%	6,649	97	100.0%
Less than high school diploma	864	NC	27.7%	1,224	NC	18.4%
High school graduate, GED, or alternative	1,156	NC	37.0%	2,188	NC	32.9%
Some college or associate's degree	677	NC	21.7%	1,826	NC	27.5%
Bachelor's degree or higher	426	NC	13.6%	1,411	NC	21.2%
Male:	1,346	58	43.1%	3,161	68	47.5%
Less than high school diploma	413	149	13.2%	741	241	11.1%
High school graduate, GED, or alternative	607	145	19.4%	928	201	14.0%
Some college or associate's degree	242	114	7.7%	859	216	12.9%
Bachelor's degree or higher	84	66	2.7%	633	179	9.5%
Female:	1,777	77	56.9%	3,488	68	52.5%
Less than high school diploma	451	131	14.4%	483	187	7.3%
High school graduate, GED, or alternative	549	169	17.6%	1,260	220	19.0%
Some college or associate's degree	435	133	13.9%	967	183	14.5%
Bachelor's degree or higher	342	150	11.0%	778	163	11.7%

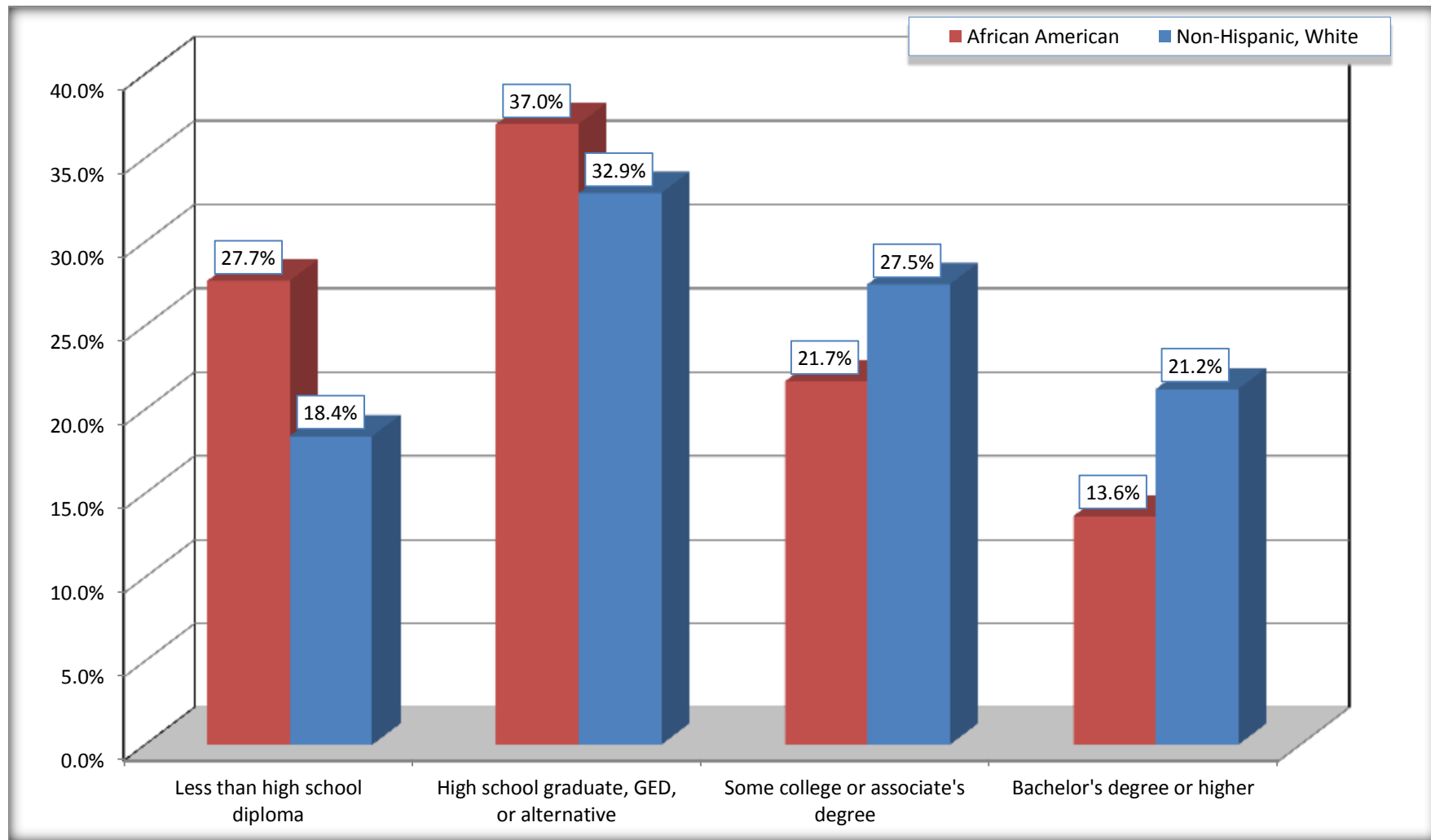
Source: U.S. Census Bureau, 2008-2012 American Community Survey

For information on confidentiality protection, sampling error, nonsampling error, and definitions, see Survey Methodology.

<http://www.census.gov/acs/www/UseData/index.htm>

Educational Attainment for the Population 25 Years and Older

Chowan County, North Carolina



Source: C15002. SEX BY EDUCATIONAL ATTAINMENT FOR THE POPULATION 25 YEARS AND OVER
Data Set: 2008-2012 American Community Survey 5-Year Estimates

B17010. POVERTY STATUS IN THE PAST 12 MONTHS OF FAMILIES BY FAMILY TYPE BY PRESENCE OF RELATED CHILDREN UNDER 18 YEARS

Data Set: 2008-2012 American Community Survey 5-Year Estimates

	Chowan County, North Carolina					
	African American	Margin of Error (+/-)	% of AA Total	White, Not Hispanic	Margin of Error (+/-)	% of NHW Total
Total:	1,278	162	100.0%	2,399	186	100.0%
Income in the past 12 months below poverty level:	400	125	31.3%	200	99	8.3%
Married-couple family:	40	36	3.1%	139	88	5.8%
With related children under 18 years	24	31	1.9%	99	75	4.1%
Other family:	360	116	28.2%	61	48	2.5%
Male householder, no wife present	6	11	0.5%	19	31	0.8%
With related children under 18 years	6	11	0.5%	19	31	0.8%
Female householder, no husband present	354	115	27.7%	42	41	1.8%
With related children under 18 years	294	118	23.0%	32	35	1.3%
Income in the past 12 months at or above poverty level:	878	173	68.7%	2,199	198	91.7%
Married-couple family:	367	138	28.7%	1,794	178	74.8%
With related children under 18 years	43	35	3.4%	468	117	19.5%
Other family:	511	139	40.0%	405	137	16.9%
Male householder, no wife present	115	92	9.0%	143	97	6.0%
With related children under 18 years	18	32	1.4%	76	93	3.2%
Female householder, no husband present	396	135	31.0%	262	102	10.9%
With related children under 18 years	229	105	17.9%	119	71	5.0%

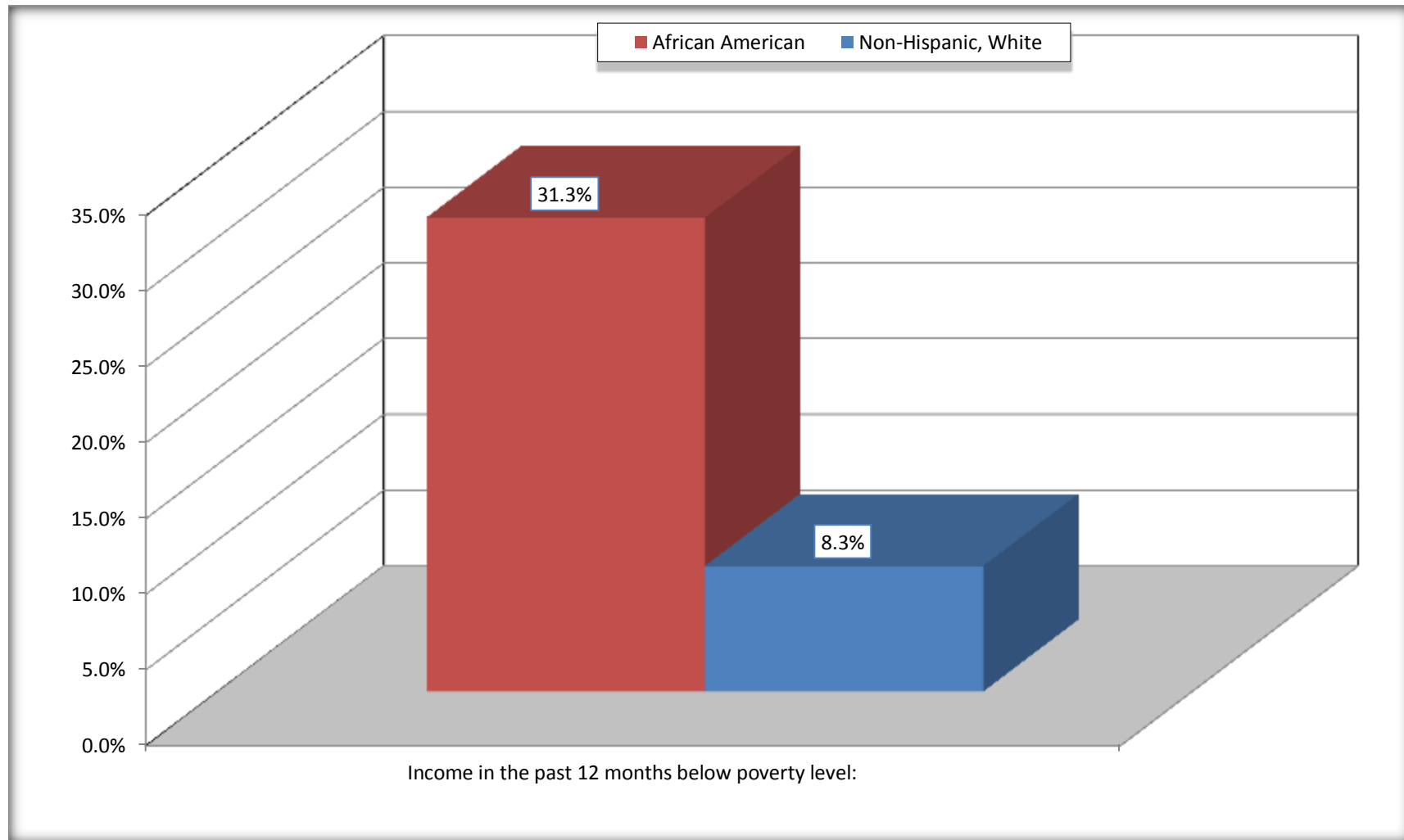
Source: U.S. Census Bureau, 2008-2012 American Community Survey

For information on confidentiality protection, sampling error, nonsampling error, and definitions, see Survey Methodology.

<http://www.census.gov/acs/www/UseData/index.htm>

Family Households Below Poverty in the Past 12 Months

Chowan County, North Carolina

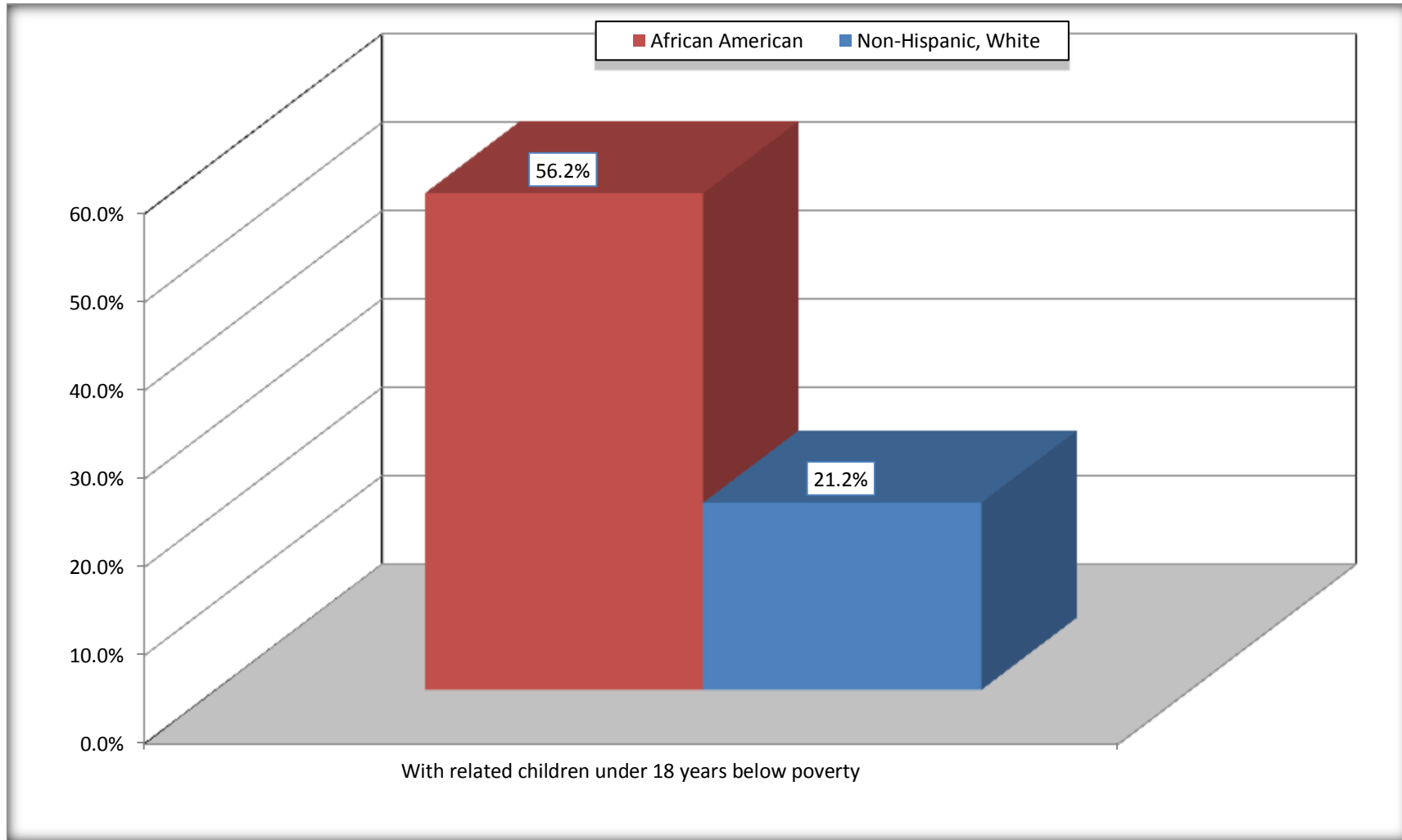


Source: B17010. POVERTY STATUS IN THE PAST 12 MONTHS OF FAMILIES BY FAMILY TYPE BY PRESENCE OF RELATED CHILDREN UNDER 18 YEARS

Data Set: 2008-2012 American Community Survey 5-Year Estimates

Female-headed Households with Related Children Below Poverty in the Past 12 Months

Chowan County, North Carolina



Source: B17010. POVERTY STATUS IN THE PAST 12 MONTHS OF FAMILIES BY FAMILY TYPE BY PRESENCE OF RELATED CHILDREN UNDER 18 YEARS

Data Set: 2008-2012 American Community Survey 5-Year Estimates

B17020 POVERTY STATUS IN THE PAST 12 MONTHS BY AGE - Universe: POPULATION FOR WHOM POVERTY STATUS IS DETERMINED

Data Set: 2008-2012 American Community Survey 5-Year Estimates

	Chowan County, North Carolina					
	African American	Margin of Error (+/-)	% of AA By Age	White, Not Hispanic	Margin of Error (+/-)	% of NHW By Age
Total:	4,890	213	100.0%	8,776	54	100.0%
Income in the past 12 months below poverty level:	1,908	349	39.0%	1,644	576	18.7%
Under 18 years	802	NC	61.6%	398	NC	23.3%
18 to 64 years	947	196	32.9%	839	262	16.5%
65 years and over	159	NC	22.5%	407	NC	20.4%
Income in the past 12 months at or above poverty level:	2,982	384	61.0%	7,132	584	81.3%
Under 18 years	499	NC	38.4%	1,313	NC	76.7%
18 to 64 years	1,934	217	67.1%	4,235	272	83.5%
65 years and over	549	NC	77.5%	1,584	NC	79.6%

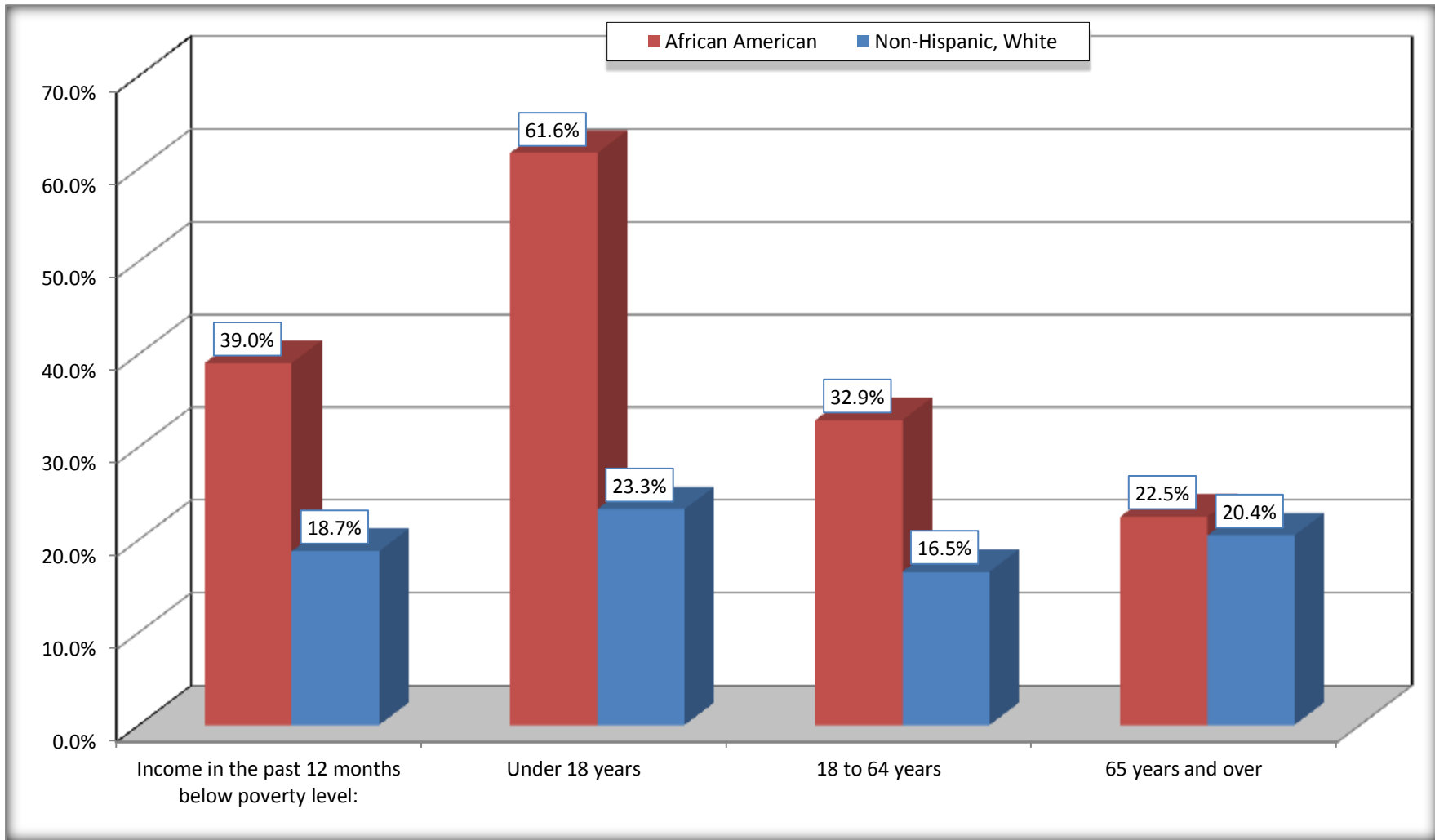
Source: U.S. Census Bureau, 2008-2012 American Community Survey

For information on confidentiality protection, sampling error, nonsampling error, and definitions, see Survey Methodology.

<http://www.census.gov/acs/www/UseData/index.htm>

Population Below Poverty in the Past 12 Months

Chowan County, North Carolina



Source: B17020 POVERTY STATUS IN THE PAST 12 MONTHS BY AGE - Universe: POPULATION FOR WHOM POVERTY STATUS IS DETERMINED
Data Set: 2008-2012 American Community Survey 5-Year Estimates

B19001. HOUSEHOLD INCOME IN THE PAST 12 MONTHS (IN 2010 INFLATION-ADJUSTED DOLLARS)

Data Set: 2008-2012 American Community Survey 5-Year Estimates

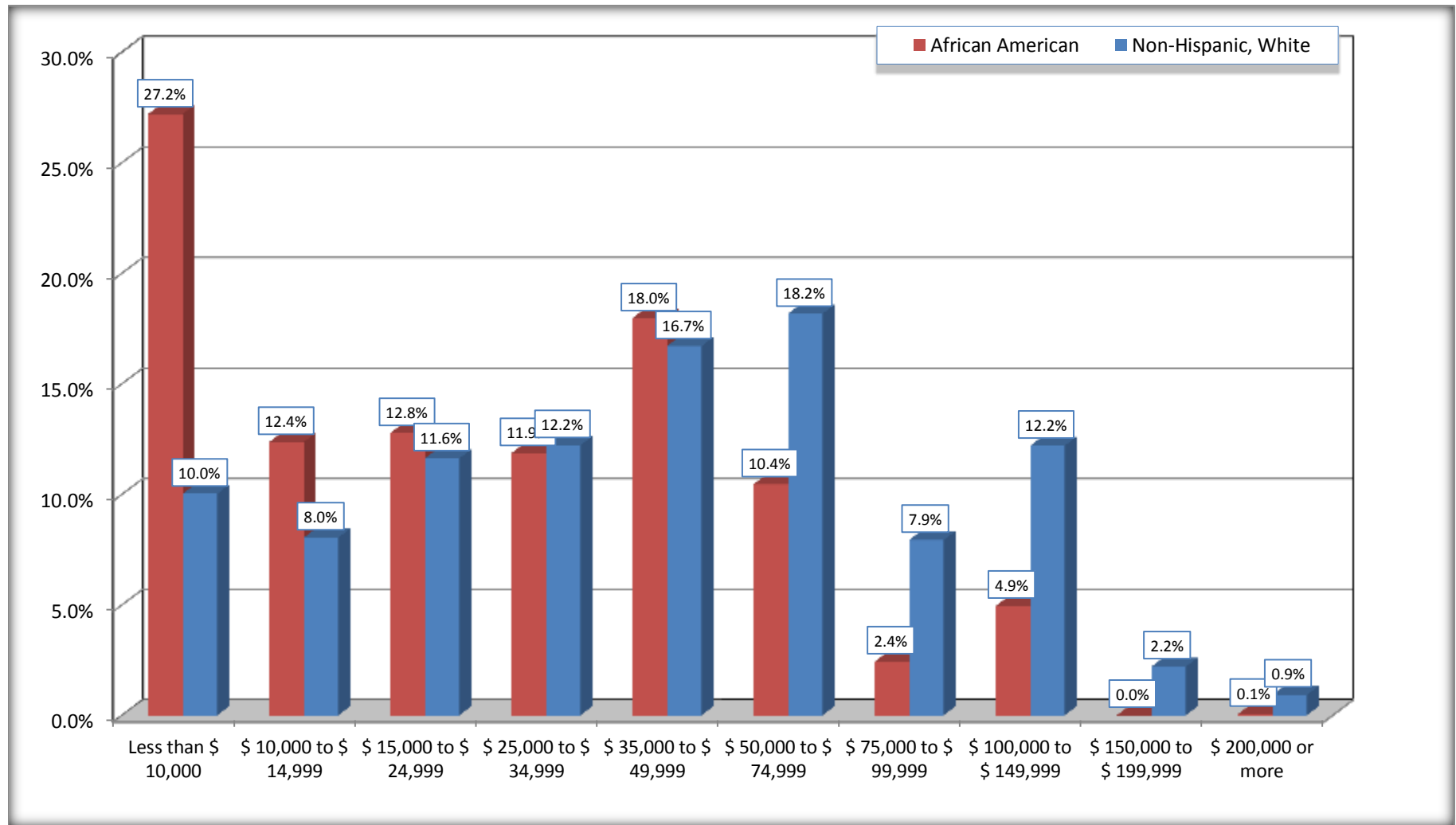
	Chowan County, North Carolina					
	African American	Margin of Error (+/-)	% of AA Total	White, Not Hispanic	Margin of Error (+/-)	% of NHW Total
Total:	1,982	189	100.0%	3,683	218	100.0%
Less than \$ 10,000	539	168	27.2%	369	160	10.0%
\$ 10,000 to \$ 14,999	245	128	12.4%	296	119	8.0%
\$ 15,000 to \$ 24,999	253	NC	12.8%	428	NC	11.6%
\$ 25,000 to \$ 34,999	235	NC	11.9%	450	NC	12.2%
\$ 35,000 to \$ 49,999	356	NC	18.0%	615	NC	16.7%
\$ 50,000 to \$ 74,999	207	NC	10.4%	669	NC	18.2%
\$ 75,000 to \$ 99,999	48	48	2.4%	292	104	7.9%
\$ 100,000 to \$ 149,999	98	NC	4.9%	449	NC	12.2%
\$ 150,000 to \$ 199,999	0	20	0.0%	81	52	2.2%
\$ 200,000 or more	1	8	0.1%	34	43	0.9%

Source: U.S. Census Bureau, 2008-2012 American Community Survey

For information on confidentiality protection, sampling error, nonsampling error, and definitions, see Survey Methodology.

<http://www.census.gov/acs/www/UseData/index.htm>

Household Income in the Past 12 Months Chowan County, North Carolina



Source: B19001. HOUSEHOLD INCOME IN THE PAST 12 MONTHS (IN 2010 INFLATION-ADJUSTED DOLLARS)
Data Set: 2008-2012 American Community Survey 5-Year Estimates

B19013. MEDIAN HOUSEHOLD INCOME IN THE PAST 12 MONTHS (IN 2010 INFLATION-ADJUSTED DOLLARS)

Data Set: 2008-2012 American Community Survey 5-Year Estimates

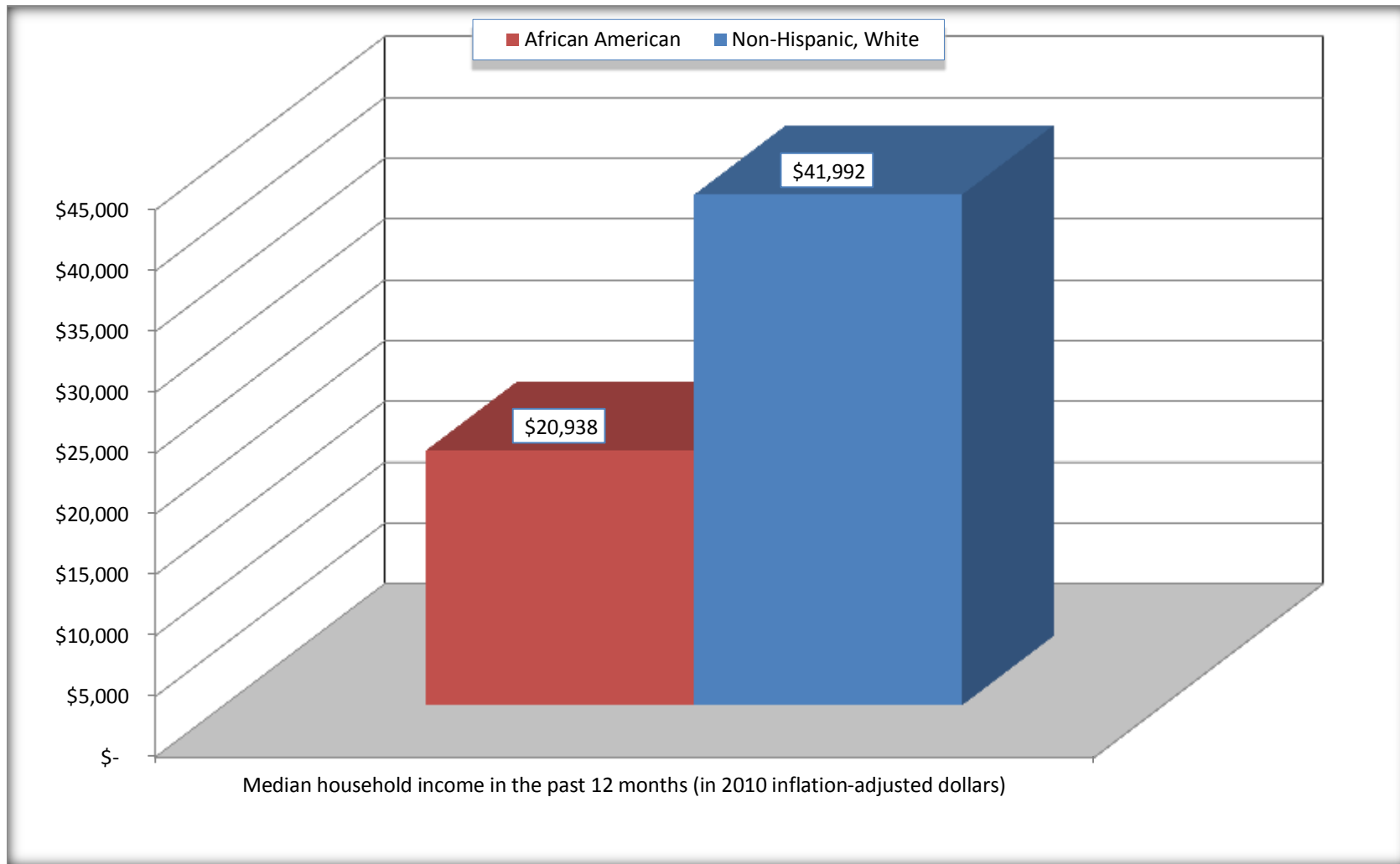
	Chowan County, North Carolina			
	African American	Margin of Error (+/-)	White, Not Hispanic	Margin of Error (+/-)
Median household income in the past 12 months (in 2010 inflation-adjusted dollars)	\$ 20,938	\$ 8,598	\$ 41,992	\$ 3,700

Source: U.S. Census Bureau, 2008-2012 American Community Survey

For information on confidentiality protection, sampling error, nonsampling error, and definitions, see Survey Methodology.
<http://www.census.gov/acs/www/UseData/index.htm>

Median Household Income in the Past 12 Months

Chowan County, North Carolina



Source: B19013. MEDIAN HOUSEHOLD INCOME IN THE PAST 12 MONTHS (IN 2010 INFLATION-ADJUSTED DOLLARS)
Data Set: 2008-2012 American Community Survey 5-Year Estimates

B19101. FAMILY INCOME IN THE PAST 12 MONTHS (IN 2010 INFLATION-ADJUSTED DOLLARS)

Data Set: 2008-2012 American Community Survey 5-Year Estimates

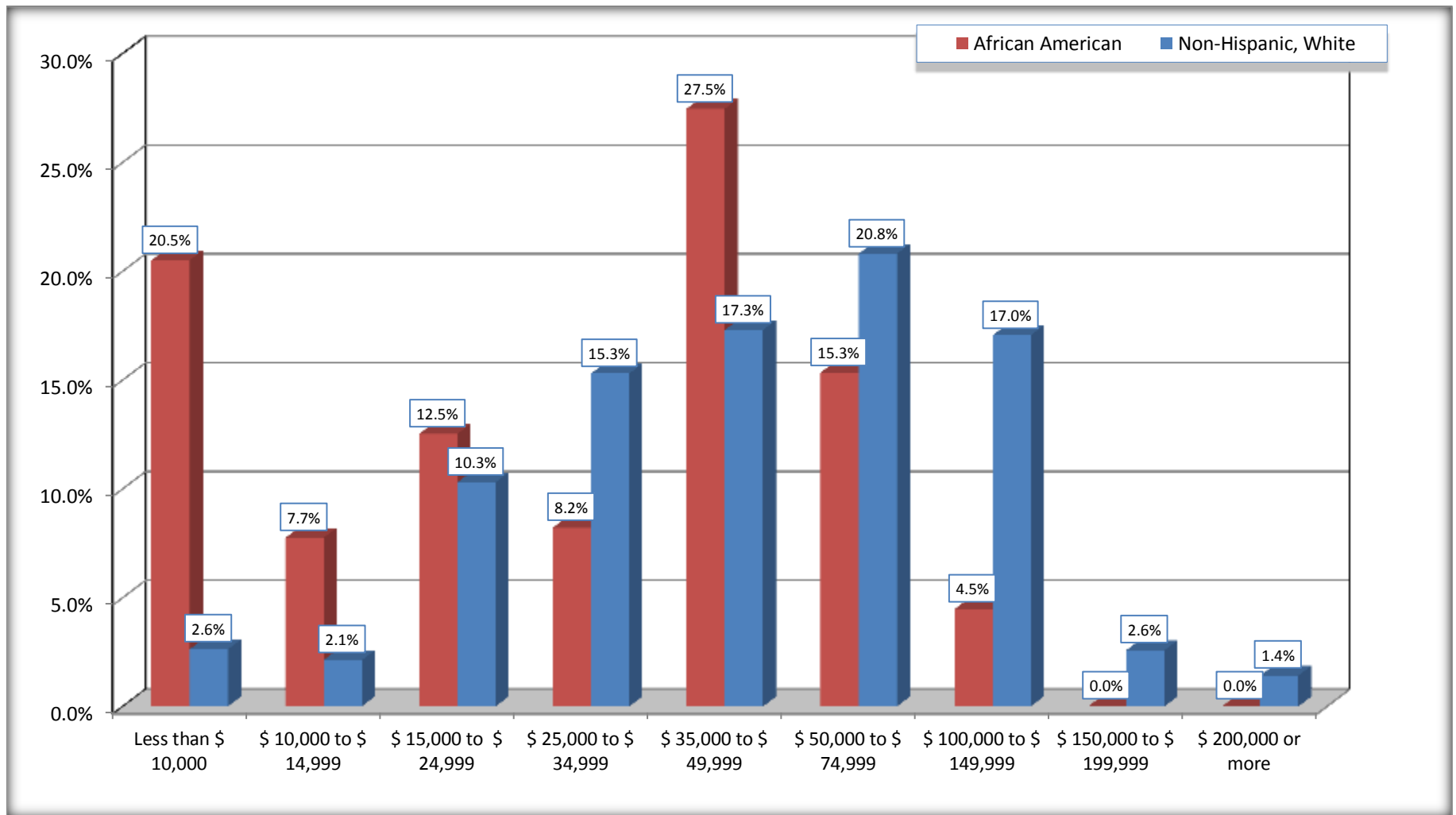
	Chowan County, North Carolina					
	African American	Margin of Error (+/-)	% of AA Total	White, Not Hispanic	Margin of Error (+/-)	% of NHW Total
Total:	1,278	162	100.0%	2,399	186	100.0%
Less than \$ 10,000	262	102	20.5%	63	58	2.6%
\$ 10,000 to \$ 14,999	99	78	7.7%	51	50	2.1%
\$ 15,000 to \$ 24,999	160	NC	12.5%	247	NC	10.3%
\$ 25,000 to \$ 34,999	105	NC	8.2%	367	NC	15.3%
\$ 35,000 to \$ 49,999	351	NC	27.5%	415	NC	17.3%
\$ 50,000 to \$ 74,999	196	NC	15.3%	499	NC	20.8%
\$ 100,000 to \$ 149,999	57	NC	4.5%	409	NC	17.0%
\$ 150,000 to \$ 199,999	0	20	0.0%	62	45	2.6%
\$ 200,000 or more	0	20	0.0%	34	43	1.4%

Source: U.S. Census Bureau, 2008-2012 American Community Survey

For information on confidentiality protection, sampling error, nonsampling error, and definitions, see Survey Methodology.

<http://www.census.gov/acs/www/UseData/index.htm>

Family Income in the Past 12 Months Chowan County, North Carolina



Source: B19101. FAMILY INCOME IN THE PAST 12 MONTHS (IN 2010 INFLATION-ADJUSTED DOLLARS)
Data Set: 2008-2012 American Community Survey 5-Year Estimates

B19113. MEDIAN FAMILY INCOME IN THE PAST 12 MONTHS (IN 2010 INFLATION-ADJUSTED DOLLARS)

Data Set: 2008-2012 American Community Survey 5-Year Estimates

	Chowan County, North Carolina			
	African American	Margin of Error (+/-)	White, Not Hispanic	Margin of Error (+/-)
Median family income in the past 12 months (in 2010 inflation-adjusted dollars)	\$ 35,580	\$ 12,705	\$ 53,199	\$ 6,323

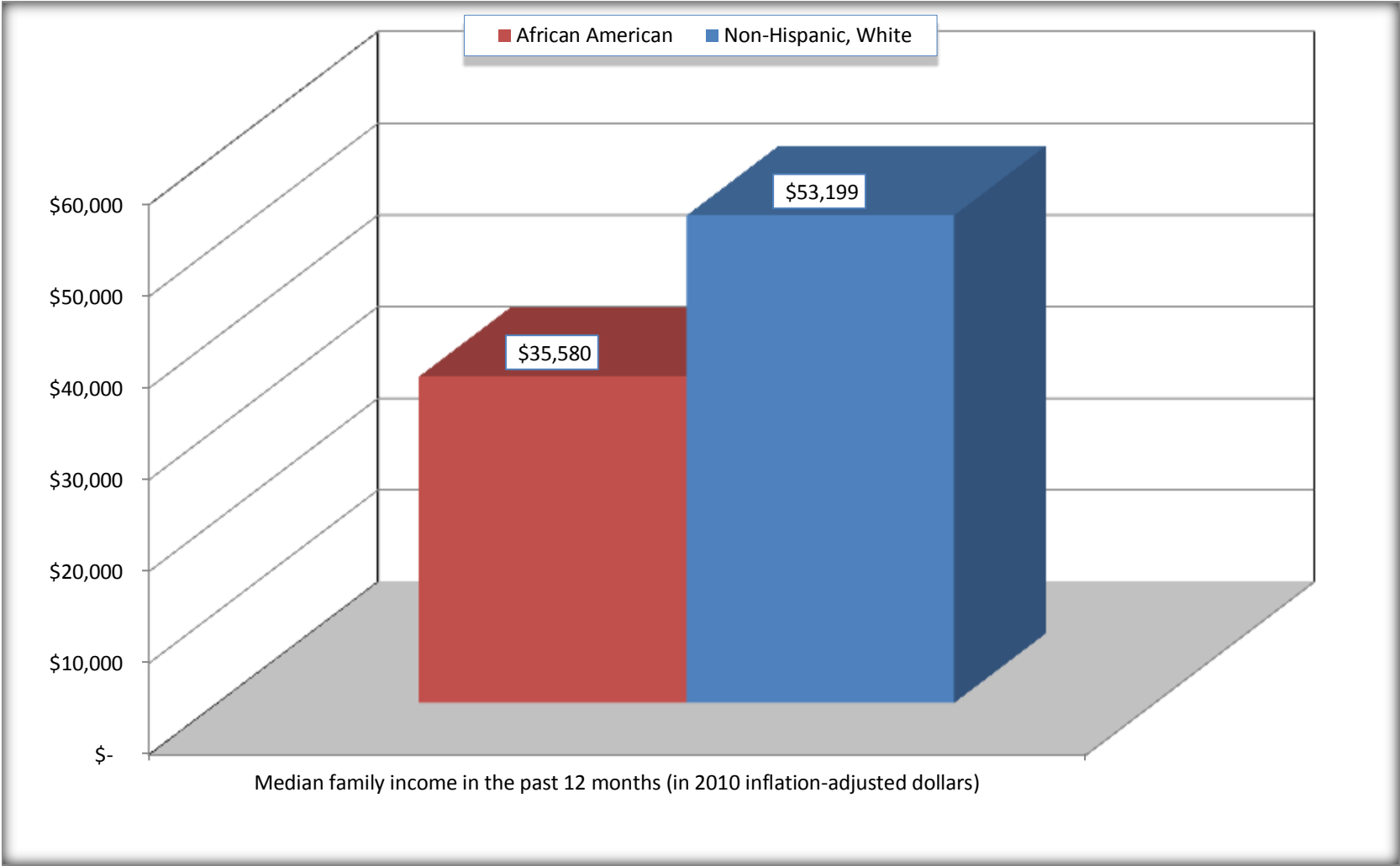
Source: U.S. Census Bureau, 2008-2012 American Community Survey

For information on confidentiality protection, sampling error, nonsampling error, and definitions, see Survey Methodology.

<http://www.census.gov/acs/www/UseData/index.htm>

Median Family Income in the Past 12 Months

Chowan County, North Carolina



Source: B19113. MEDIAN FAMILY INCOME IN THE PAST 12 MONTHS (IN 2010 INFLATION-ADJUSTED DOLLARS)
Data Set: 2008-2012 American Community Survey 5-Year Estimates

B19202. MEDIAN NONFAMILY HOUSEHOLD INCOME IN THE PAST 12 MONTHS (IN 2010 INFLATION-ADJUSTED DOLLARS)

Data Set: 2008-2012 American Community Survey 5-Year Estimates

	Chowan County, North Carolina			
	African American	Margin of Error (+/-)	White, Not Hispanic	Margin of Error (+/-)
Median nonfamily household income in the past 12 months (in 2010 inflation-adjusted dollars)	\$ 11,302	\$ 2,514	\$ 17,216	\$ 6,954

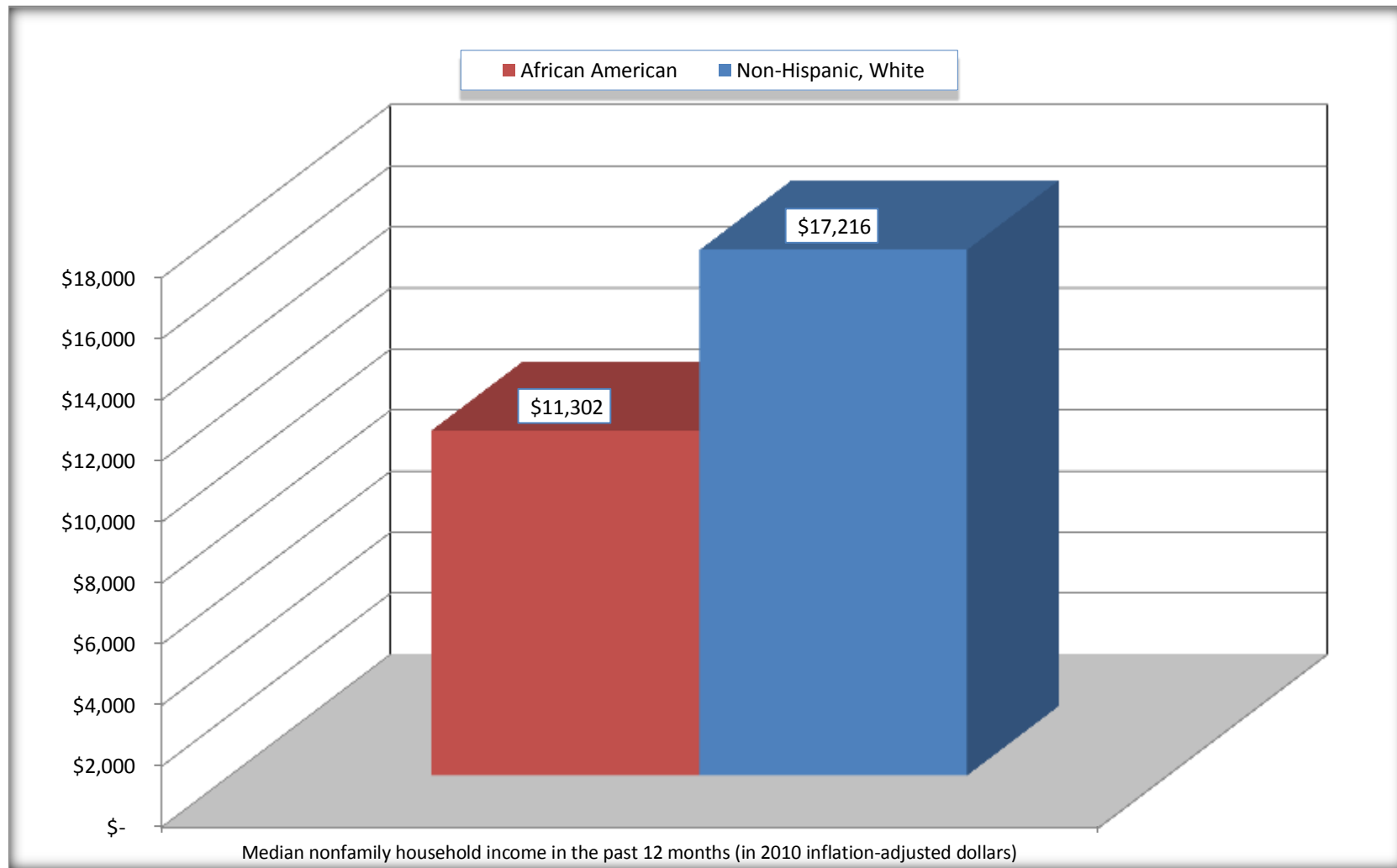
Source: U.S. Census Bureau, 2008-2012 American Community Survey

For information on confidentiality protection, sampling error, nonsampling error, and definitions, see Survey Methodology.

<http://www.census.gov/acs/www/UseData/index.htm>

Median Non-Family Income in the Past 12 Months

Chowan County, North Carolina



Source: B19202. MEDIAN NONFAMILY HOUSEHOLD INCOME IN THE PAST 12 MONTHS (IN 2010 INFLATION-ADJUSTED DOLLARS)
Data Set: 2008-2012 American Community Survey 5-Year Estimates

B19301. PER CAPITA INCOME IN THE PAST 12 MONTHS (IN 2010 INFLATION-ADJUSTED DOLLARS)

Data Set: 2008-2012 American Community Survey 5-Year Estimates

	Chowan County, North Carolina			
	African American	Margin of Error (+/-)	White, Not Hispanic	Margin of Error (+/-)
Per capita income in the past 12 months (in 2010 inflation-adjusted dollars)	\$ 12,472	\$ 1,486	\$ 23,112	\$ 1,970

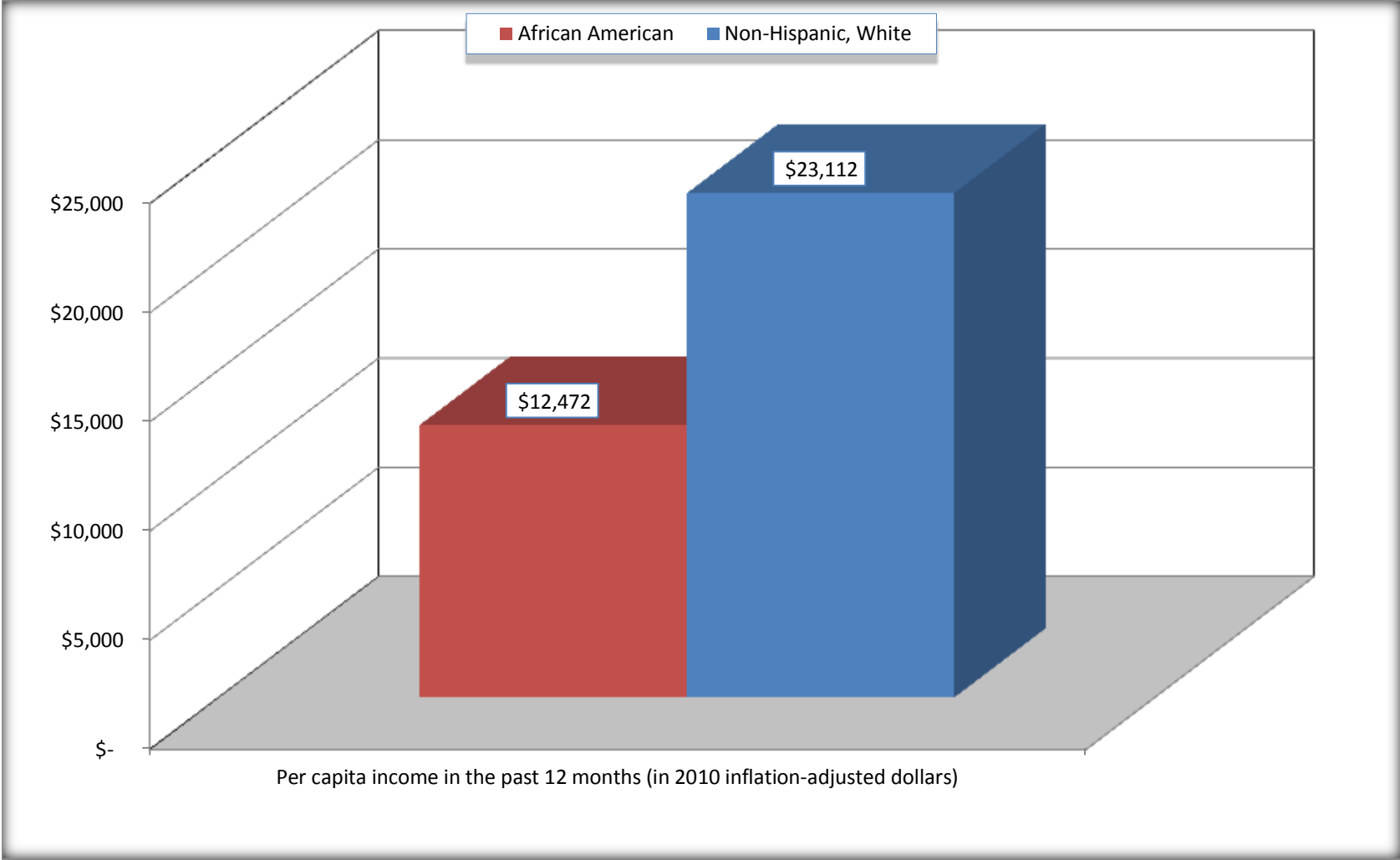
Source: U.S. Census Bureau, 2008-2012 American Community Survey

For information on confidentiality protection, sampling error, nonsampling error, and definitions, see Survey Methodology.

<http://www.census.gov/acs/www/UseData/index.htm>

Per capita Income in the Past 12 Months

Chowan County, North Carolina



Source: B19301. PER CAPITA INCOME IN THE PAST 12 MONTHS (IN 2010 INFLATION-ADJUSTED DOLLARS)
Data Set: 2008-2012 American Community Survey 5-Year Estimates

B20017. MEDIAN EARNINGS IN THE PAST 12 MONTHS (IN 2010 INFLATION-ADJUSTED DOLLARS) BY SEX BY WORK EXPERIENCE IN THE PAST 12 MONTHS FOR THE POPULATION 16 YEARS AND OVER WITH EARNINGS IN THE PAST 12 MONTHS

Data Set: 2008-2012 American Community Survey 5-Year Estimates

	Chowan County, North Carolina			
	African American	Margin of Error (+/-)	White, Not Hispanic	Margin of Error (+/-)
Median earnings in the past 12 months (in 2010 inflation-adjusted dollars) --				
Total:	\$ 17,259	\$ 5,167	\$ 24,844	\$ 2,838
Male --				
Total	\$ 12,292	\$ 11,241	\$ 29,942	\$ 6,214
Worked full-time, year-round in the past 12 months	\$ 28,304	\$ 11,067	\$ 37,361	\$ 7,375
Other	\$ 7,257	\$ 1,925	\$ 12,736	\$ 5,254
Female --				
Total	\$ 19,138	\$ 8,006	\$ 16,602	\$ 4,486
Worked full-time, year-round in the past 12 months	\$ 26,924	\$ 6,298	\$ 27,201	\$ 5,850
Other	\$ 6,732	\$ 1,574	\$ 8,681	\$ 3,494

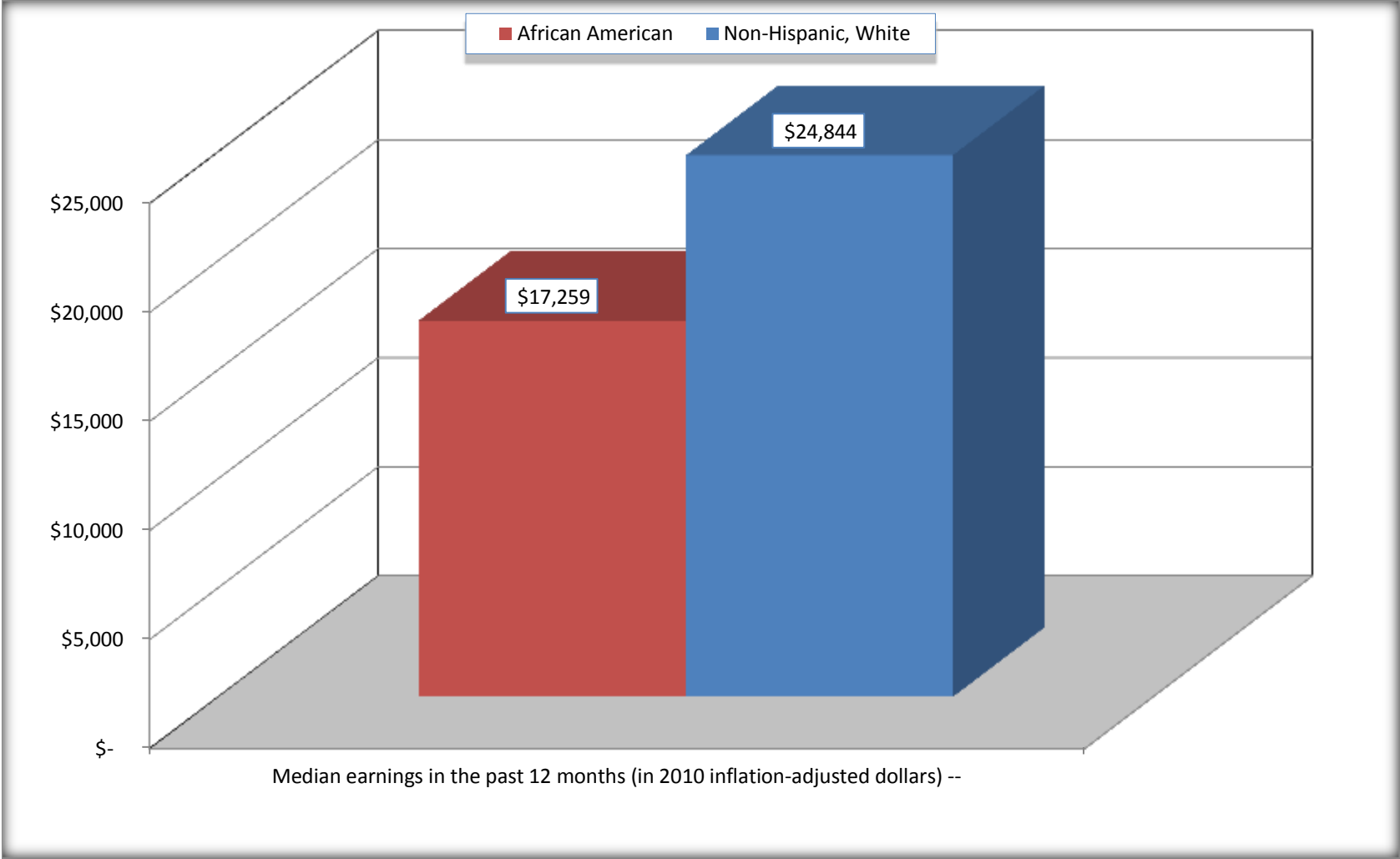
Source: U.S. Census Bureau, 2008-2012 American Community Survey

For information on confidentiality protection, sampling error, nonsampling error, and definitions, see Survey Methodology.

<http://www.census.gov/acs/www/UseData/index.htm>

Median earnings in the Past 12 Months (16 Years and Over with Earnings)

Chowan County, North Carolina



Source: B20017. MEDIAN EARNINGS IN THE PAST 12 MONTHS (IN 2010 INFLATION-ADJUSTED DOLLARS) BY SEX BY WORK EXPERIENCE IN THE PAST 12 MONTHS FOR THE POPULATION 16 YEARS AND OVER WITH EARNINGS IN THE PAST 12 MONTHS
Data Set: 2008-2012 American Community Survey 5-Year Estimates

B20005. SEX BY WORK EXPERIENCE IN THE PAST 12 MONTHS BY EARNINGS IN THE PAST 12 MONTHS (IN 2010 INFLATION-ADJUSTED DOLLARS) FOR THE POPULATION 16 YEARS AND OVER

Data Set: 2008-2012 American Community Survey 5-Year Estimates

	Chowan County, North Carolina					
	African American	Margin of Error (+/-)	% of AA Total	White, Not Hispanic	Margin of Error (+/-)	% of NHW Total
Total:	3,837	118	100.0%	7,623	31	100.0%
Worked full-time, year-round in the past 12 months:	958	NC	25.0%	2,187	NC	28.7%
No earnings	0	NC	0.0%	0	NC	0.0%
With earnings:	958	NC	25.0%	2,187	NC	28.7%
\$ 1 to \$ 9,999 or loss	18	NC	0.5%	99	NC	1.3%
\$ 10,000 to \$ 19,999	151	NC	3.9%	314	NC	4.1%
\$ 20,000 to \$ 29,999	346	NC	9.0%	456	NC	6.0%
\$ 30,000 to \$ 49,999	364	NC	9.5%	662	NC	8.7%
\$ 50,000 to \$ 74,999	32	NC	0.8%	353	NC	4.6%
\$ 75,000 or more	47	NC	1.2%	303	NC	4.0%
Other:	2,879	NC	75.0%	5,436	NC	71.3%
No earnings	1,737	NC	45.3%	3,416	NC	44.8%
With earnings: less than full time, year-round	1,142	NC	29.8%	2,020	NC	26.5%
Male:	1,723	84	44.9%	3,647	67	47.8%
Worked full-time, year-round in the past 12 months:	295	117	7.7%	1,248	208	16.4%
No earnings	0	20	0.0%	0	20	0.0%
With earnings:	295	117	7.7%	1,248	208	16.4%
\$ 1 to \$ 9,999 or loss	0	NC	0.0%	20	NC	0.3%
\$ 10,000 to \$ 19,999	27	NC	0.7%	100	NC	1.3%
\$ 20,000 to \$ 29,999	130	NC	3.4%	246	NC	3.2%
\$ 30,000 to \$ 49,999	89	NC	2.3%	448	NC	5.9%
\$ 50,000 to \$ 74,999	22	NC	0.6%	209	NC	2.7%
\$ 75,000 or more	27	NC	0.7%	225	NC	3.0%

	Chowan County, North Carolina					
	African American	Margin of Error (+/-)	% of AA Total	White, Not Hispanic	Margin of Error (+/-)	% of NHW Total
Other:	1,428	154	37.2%	2,399	198	31.5%
No earnings	725	197	18.9%	1,499	231	19.7%
With earnings:	703	177	18.3%	900	215	11.8%
Female:	2,114	68	55.1%	3,976	69	52.2%
Worked full-time, year-round in the past 12 months:	663	151	17.3%	939	159	12.3%
No earnings	0	20	0.0%	0	20	0.0%
With earnings:	663	151	17.3%	939	159	12.3%
\$ 1 to \$ 9,999 or less	18	NC	0.5%	79	NC	1.0%
\$ 10,000 to \$ 19,999	124	NC	3.2%	214	NC	2.8%
\$ 20,000 to \$ 29,999	216	NC	5.6%	210	NC	2.8%
\$ 30,000 to \$ 49,999	275	NC	7.2%	214	NC	2.8%
\$ 50,000 to \$ 74,999	10	NC	0.3%	144	NC	1.9%
\$ 75,000 or more	20	NC	0.5%	78	NC	1.0%
Other:	1,451	146	37.8%	3,037	180	39.8%
No earnings	1,012	144	26.4%	1,917	210	25.1%
With earnings:	439	125	11.4%	1,120	218	14.7%

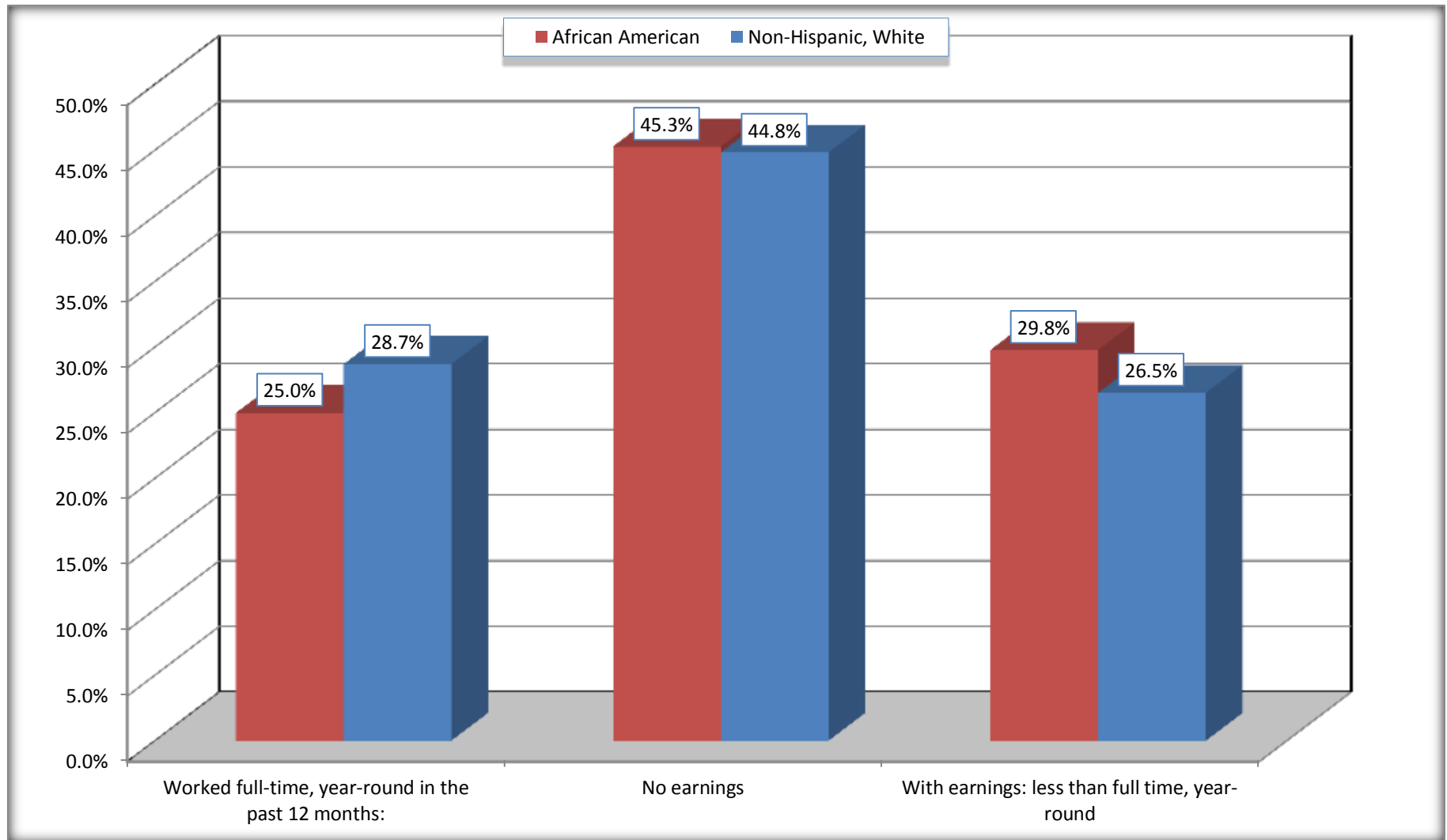
Source: U.S. Census Bureau, 2008-2012 American Community Survey

For information on confidentiality protection, sampling error, nonsampling error, and definitions, see Survey Methodology.

<http://www.census.gov/acs/www/UseData/index.htm>

Employment and Earnings in in the Past 12 Months (16 Years and Over)

Chowan County, North Carolina



Source: B20005. SEX BY WORK EXPERIENCE IN THE PAST 12 MONTHS BY EARNINGS IN THE PAST 12 MONTHS (IN 2010 INFLATION-ADJUSTED DOLLARS) FOR THE POPULATION 16 YEARS AND OVER

Data Set: 2008-2012 American Community Survey 5-Year Estimates

C21001. SEX BY AGE BY VETERAN STATUS FOR THE CIVILIAN POPULATION 18 YEARS AND OVER

Data Set: 2008-2012 American Community Survey 5-Year Estimates

	Chowan County, North Carolina					
	African American	Margin of Error (+/-)	% of AA Total	White, Not Hispanic	Margin of Error (+/-)	% of NHW Total
Total:	3,743	99	100.0%	7,288	20	100.0%
Veteran	280	NC	7.5%	990	NC	13.6%
Nonveteran	3,463	NC	92.5%	6,298	NC	86.4%
Male:	1,629	47	43.5%	3,461	20	47.5%
18 to 64 years:	1,318	47	35.2%	2,531	20	34.7%
Veteran	204	95	5.5%	451	142	6.2%
Nonveteran	1,114	110	29.8%	2,080	142	28.5%
65 years and over:	311	14	8.3%	930	20	12.8%
Veteran	42	41	1.1%	489	100	6.7%
Nonveteran	269	44	7.2%	441	100	6.1%
Female:	2,114	68	56.5%	3,827	20	52.5%
18 to 64 years:	1,656	63	44.2%	2,631	20	36.1%
Veteran	34	49	0.9%	29	35	0.4%
Nonveteran	1,622	72	43.3%	2,602	37	35.7%
65 years and over:	458	25	12.2%	1,196	20	16.4%
Veteran	0	20	0.0%	21	33	0.3%
Nonveteran	458	25	12.2%	1,175	33	16.1%

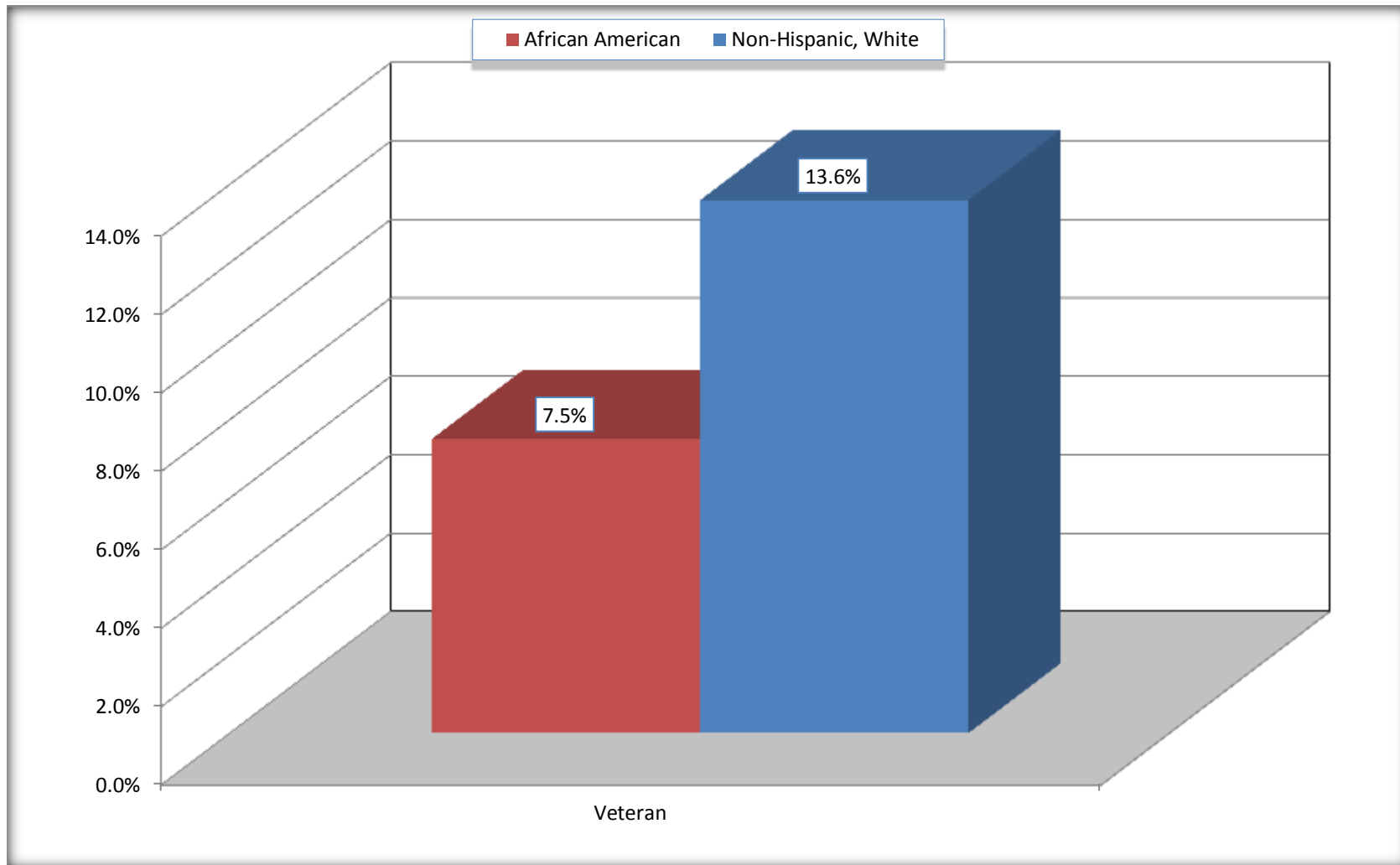
Source: U.S. Census Bureau, 2008-2012 American Community Survey

For information on confidentiality protection, sampling error, nonsampling error, and definitions, see Survey Methodology.

<http://www.census.gov/acs/www/UseData/index.htm>

Veterans in the Civilian Population 18 Years and Over

Chowan County, North Carolina



Source: C21001. SEX BY AGE BY VETERAN STATUS FOR THE CIVILIAN POPULATION 18 YEARS AND OVER
Data Set: 2008-2012 American Community Survey 5-Year Estimates

B22005. RECEIPT OF FOOD STAMPS/SNAP IN THE PAST 12 MONTHS BY RACE OF HOUSEHOLDER

Data Set: 2008-2012 American Community Survey 5-Year Estimates

	Chowan County, North Carolina					
	African American	Margin of Error (+/-)	% of AA Total	White, Not Hispanic	Margin of Error (+/-)	% of NHW Total
Total:	1,982	189	100.0%	3,683	218	100.0%
HH received Food Stamps/SNAP in the past 12 months	670	221	33.8%	359	127	9.7%
HH did not receive Food Stamps/SNAP in the past 12 months	1,312	204	66.2%	3,324	226	90.3%

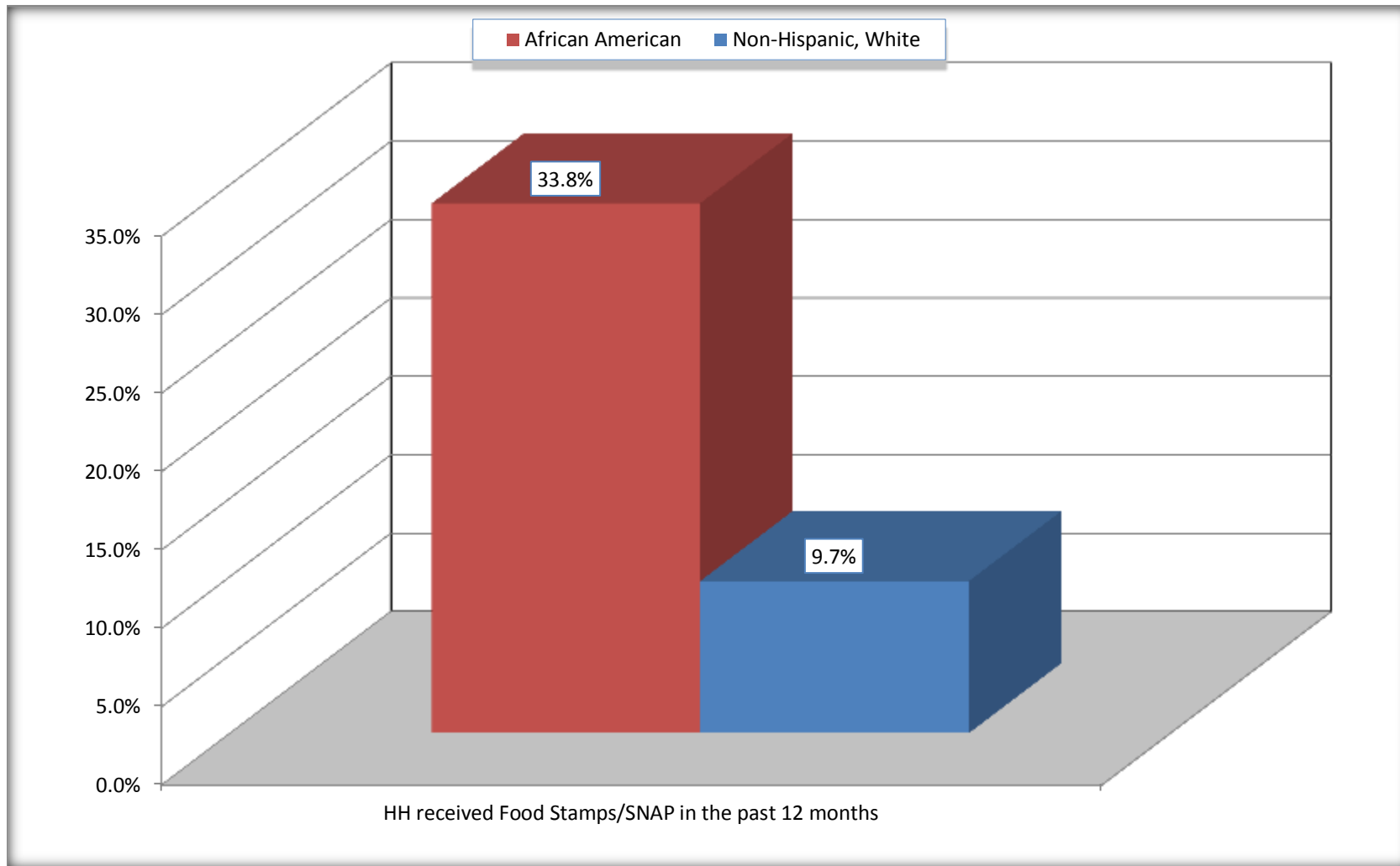
Source: U.S. Census Bureau, 2008-2012 American Community Survey

For information on confidentiality protection, sampling error, nonsampling error, and definitions, see Survey Methodology.

<http://www.census.gov/acs/www/UseData/index.htm>

Receipt of Food Stamps/SNAP in the Past 12 Months by Household

Chowan County, North Carolina



Source: B22005. RECEIPT OF FOOD STAMPS/SNAP IN THE PAST 12 MONTHS BY RACE OF HOUSEHOLDER
Data Set: 2008-2012 American Community Survey 5-Year Estimates

C23002. SEX BY AGE BY EMPLOYMENT STATUS FOR THE POPULATION 16 YEARS AND OVER

Data Set: 2008-2012 American Community Survey 5-Year Estimates

	Chowan County, North Carolina					
	African American	Margin of Error (+/-)	% of AA Total	White, Not Hispanic	Margin of Error (+/-)	% of NHW Total
Total:	3,837	118	100.0%	7,623	31	100.0%
In labor force:	2,100	NC	54.7%	3,999	NC	52.5%
In Armed Forces	0	NC	0.0%	13	NC	0.2%
Civilian:	1,983	NC	51.7%	3,659	NC	48.0%
Employed	1,884	NC	49.1%	3,432	NC	45.0%
Unemployed	216	NC	5.6%	554	NC	7.3%
Not in labor force	1,737	NC	45.3%	3,624	NC	47.5%
Male:	1,723	84	44.9%	3,647	67	47.8%
16 to 64 years:	1,412	82	36.8%	2,717	67	35.6%
In labor force:	938	155	24.4%	1,999	163	26.2%
In Armed Forces	0	20	0.0%	0	20	0.0%
Civilian:	938	155	24.4%	1,999	163	26.2%
Employed	831	163	21.7%	1590	189	20.9%
Unemployed	107	74	2.8%	409	142	5.4%
Not in labor force	474	168	12.4%	718	168	9.4%
65 years and over:	311	14	8.1%	930	20	12.2%
In labor force:	74	49	1.9%	196	81	2.6%
Employed	74	49	1.9%	196	81	2.6%
Unemployed	0	20	0.0%	0	20	0.0%
Not in labor force	237	52	6.2%	734	81	9.6%

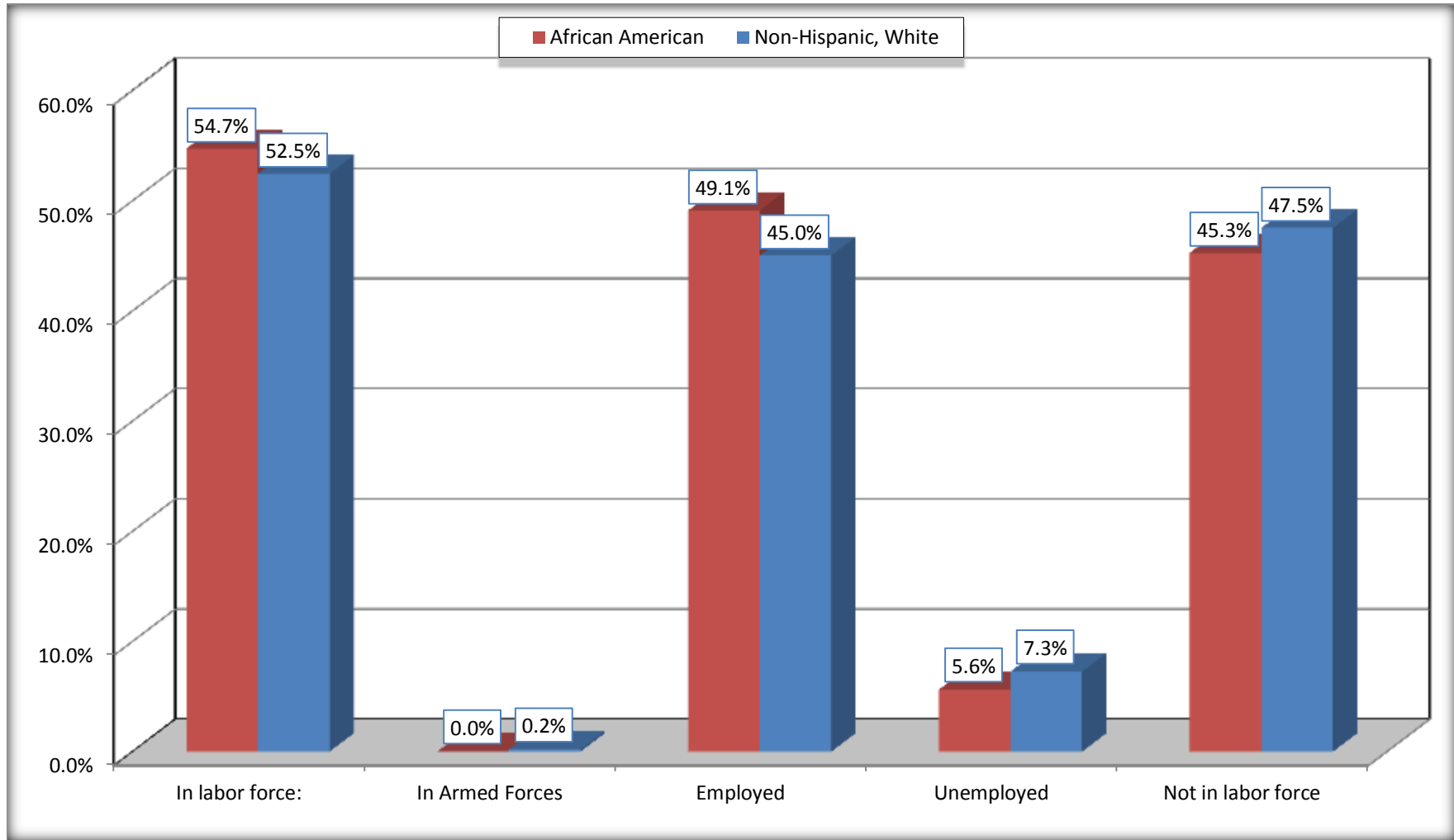
	Chowan County, North Carolina					
	African American	Margin of Error (+/-)	% of AA Total	White, Not Hispanic	Margin of Error (+/-)	% of NHW Total
Female:	2,114	68	55.1%	3,976	69	52.2%
16 to 64 years:	1,656	63	43.2%	2,780	69	36.5%
In labor force:	1,045	147	27.2%	1,673	174	21.9%
In Armed Forces	0	20	0.0%	13	20	0.2%
Civilian:	1,045	147	27.2%	1,660	174	21.8%
Employed	936	148	24.4%	1,533	175	20.1%
Unemployed	109	71	2.8%	127	76	1.7%
Not in labor force	611	143	15.9%	1,107	189	14.5%
65 years and over:	458	25	11.9%	1,196	20	15.7%
In labor force:	43	42	1.1%	131	68	1.7%
Employed	43	42	1.1%	113	63	1.5%
Unemployed	0	20	0.0%	18	28	0.2%
Not in labor force	415	49	10.8%	1,065	68	14.0%

Source: U.S. Census Bureau, 2008-2012 American Community Survey

For information on confidentiality protection, sampling error, nonsampling error, and definitions, see Survey Methodology.
<http://www.census.gov/acs/www/UseData/index.htm>

Employment Status for the Population 16 years and over

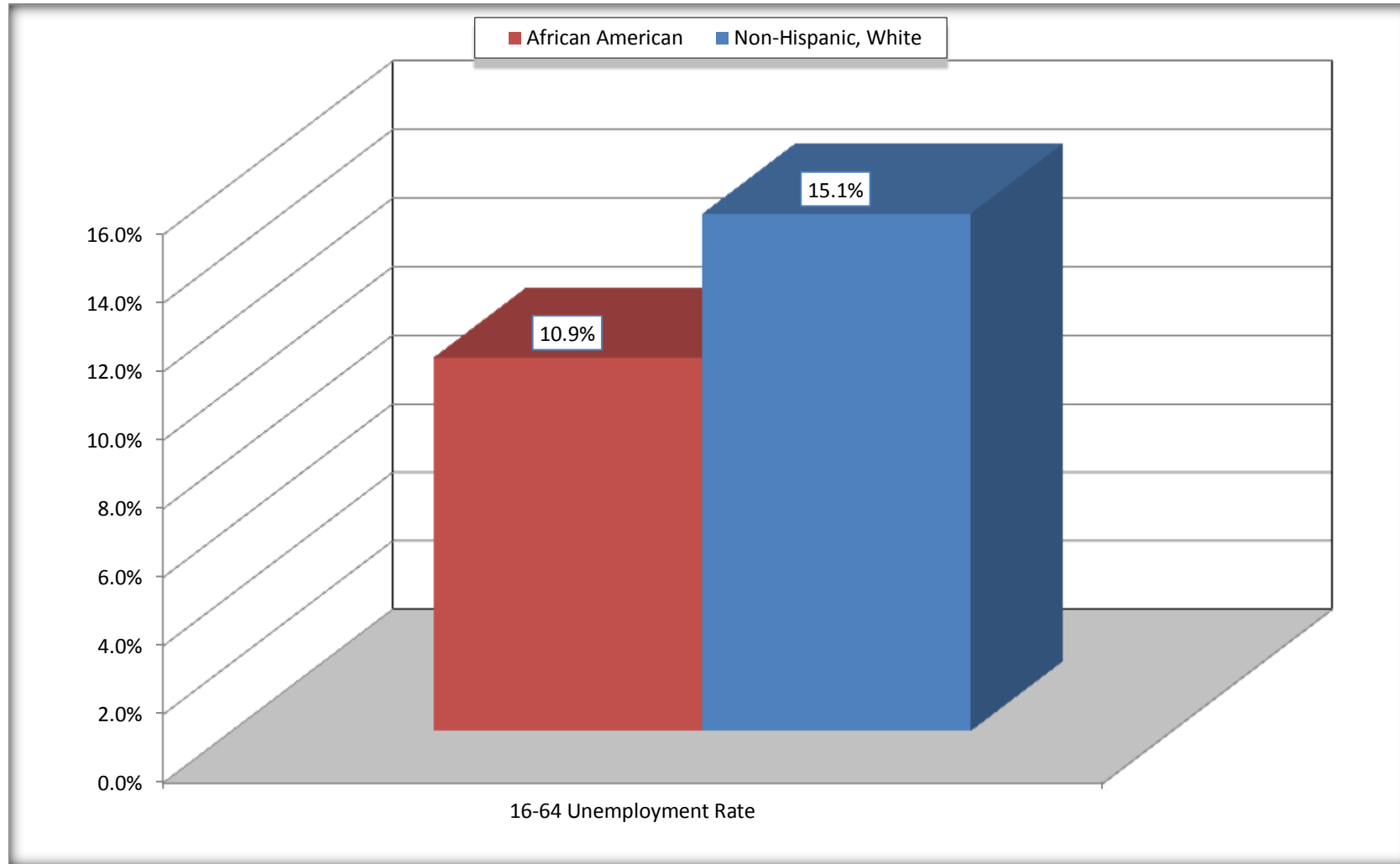
Chowan County, North Carolina



Source: C23002. SEX BY AGE BY EMPLOYMENT STATUS FOR THE POPULATION 16 YEARS AND OVER
Data Set: 2008-2012 American Community Survey 5-Year Estimates

Unemployment of Working Age Population (Ages 16 to 64) (As a Percent of 16-64 Civilian Labor Force)

Chowan County, North Carolina



Source: C23002. SEX BY AGE BY EMPLOYMENT STATUS FOR THE POPULATION 16 YEARS AND OVER
Data Set: 2008-2012 American Community Survey 5-Year Estimates

C24010. SEX BY OCCUPATION FOR THE CIVILIAN EMPLOYED POPULATION 16 YEARS AND OVER

Data Set: 2008-2012 American Community Survey 5-Year Estimates

	Chowan County, North Carolina					
	African American	Margin of Error (+/-)	% of AA Total	White, Not Hispanic	Margin of Error (+/-)	% of NHW Total
Total:	1,884	267	100.0%	3,432	297	100.0%
Management, professional, and related occupations	429	NC	22.8%	1,146	NC	33.4%
Service occupations	511	NC	27.1%	440	NC	12.8%
Sales and office occupations	382	NC	20.3%	970	NC	28.3%
Natural resources, construction, and maintenance occupations:	247	NC	13.1%	330	NC	9.6%
Production, transportation, and material moving occupations	315	NC	16.7%	546	NC	15.9%
Male:	905	176	48.0%	1,786	201	52.0%
Management, business, science, and arts occupations:	45	43	2.4%	635	183	18.5%
Service occupations	237	122	12.6%	116	63	3.4%
Sales and office occupations	188	107	10.0%	326	109	9.5%
Natural resources, construction, and maintenance occupations:	247	152	13.1%	316	117	9.2%
Production, transportation, and material moving occupations	188	113	10.0%	393	143	11.5%
Female:	979	155	52.0%	1,646	186	48.0%
Management, professional, and related occupations	384	153	20.4%	511	133	14.9%
Service occupations	274	143	14.5%	324	120	9.4%
Sales and office occupations	194	112	10.3%	644	143	18.8%
Natural resources, construction, and maintenance occupations:	0	20	0.0%	14	26	0.4%
Production, transportation, and material moving occupations	127	99	6.7%	153	109	4.5%

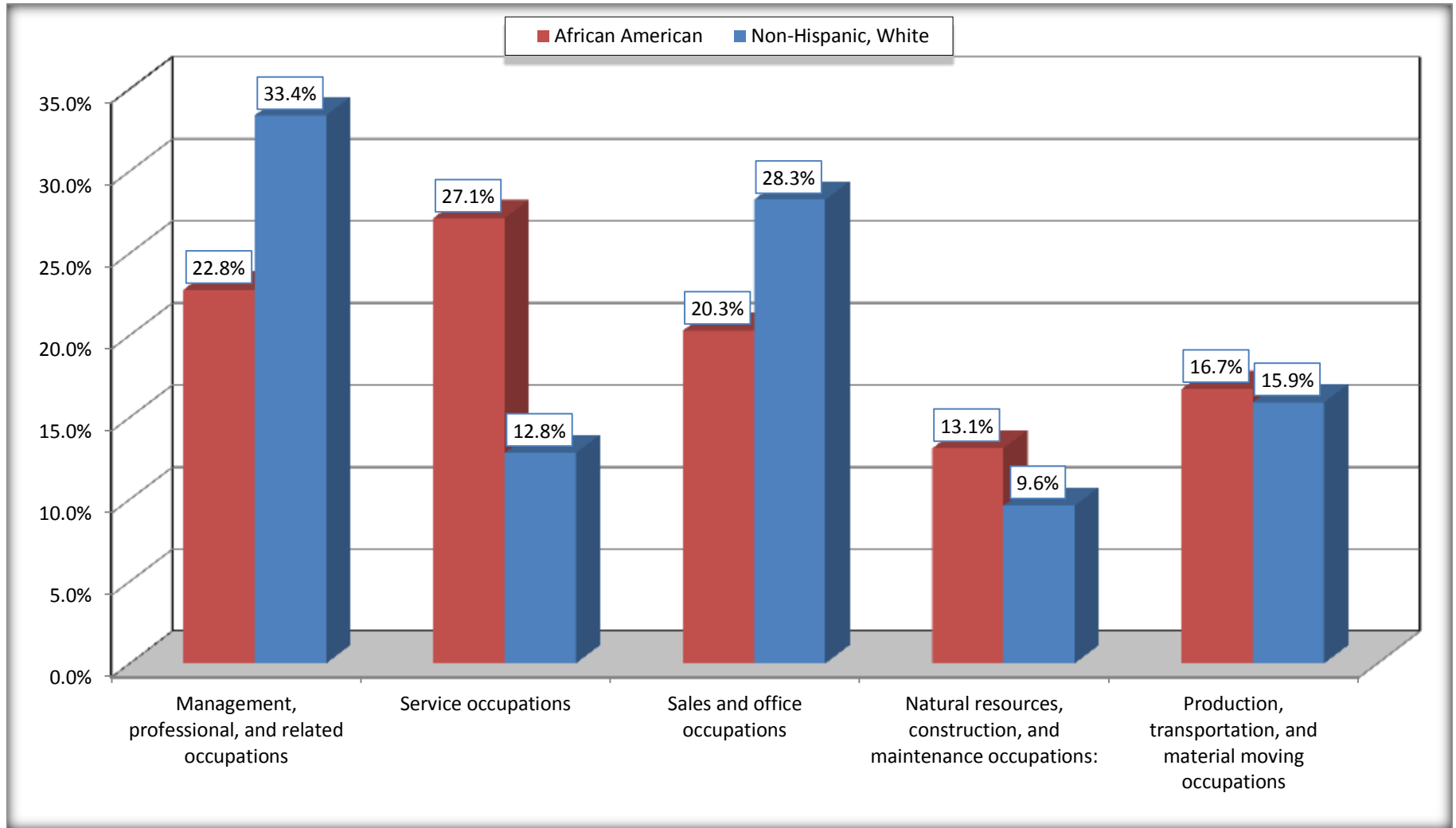
Source: U.S. Census Bureau, 2008-2012 American Community Survey

For information on confidentiality protection, sampling error, nonsampling error, and definitions, see Survey Methodology.

<http://www.census.gov/acs/www/UseData/index.htm>

Occupation for the Civilian Employed 16 Years and Over Population

Chowan County, North Carolina



Source: C24010. SEX BY OCCUPATION FOR THE CIVILIAN EMPLOYED POPULATION 16 YEARS AND OVER
Data Set: 2008-2012 American Community Survey 5-Year Estimates

B25003. TENURE - Universe: OCCUPIED HOUSING UNITS

Data Set: 2008-2012 American Community Survey 5-Year Estimates

	Chowan County, North Carolina					
	African American	Margin of Error (+/-)	% of AA Total	White, Not Hispanic	Margin of Error (+/-)	% of NHW Total
Total:	1,982	189	100.0%	3,683	218	100.0%
Owner occupied	935	182	47.2%	2,840	223	77.1%
Renter occupied	1,047	240	52.8%	843	200	22.9%

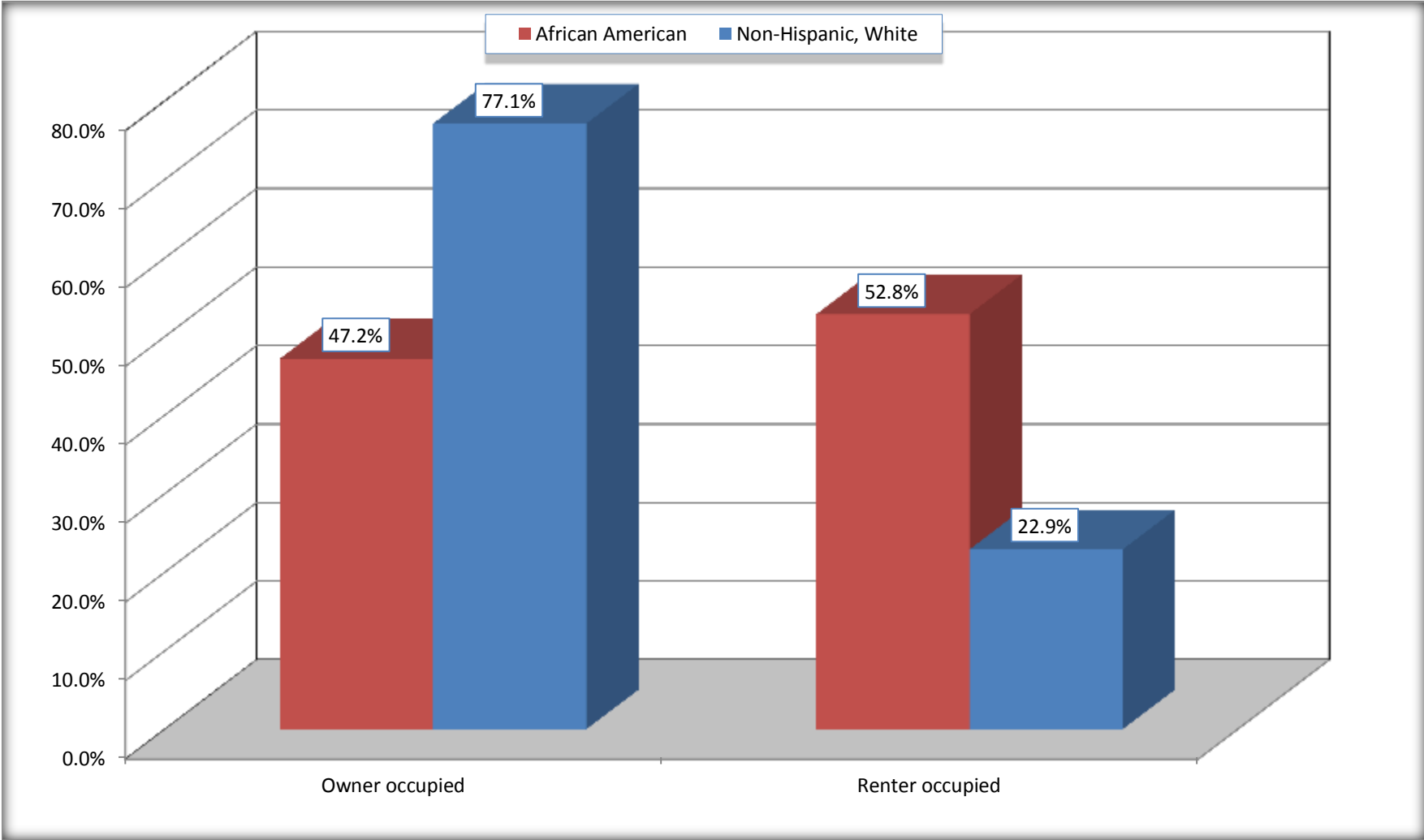
Source: U.S. Census Bureau, 2008-2012 American Community Survey

For information on confidentiality protection, sampling error, nonsampling error, and definitions, see Survey Methodology.

<http://www.census.gov/acs/www/UseData/index.h>

Home Owners and Renters by Household

Chowan County, North Carolina



Source: B25003. TENURE - Universe: OCCUPIED HOUSING UNITS
Data Set: 2008-2012 American Community Survey 5-Year Estimates

B25014. OCCUPANTS PER ROOM - Universe: OCCUPIED HOUSING UNITS

Data Set: 2008-2012 American Community Survey 5-Year Estimates

	Chowan County, North Carolina					
	African American	Margin of Error (+/-)	% of AA Total	White, Not Hispanic	Margin of Error (+/-)	% of NHW Total
Total:	1,982	189	100.0%	3,683	218	100.0%
1.00 or less occupants per room	1,935	192	97.6%	3,627	236	98.5%
1.01 or more occupants per room	47	49	2.4%	56	54	1.5%

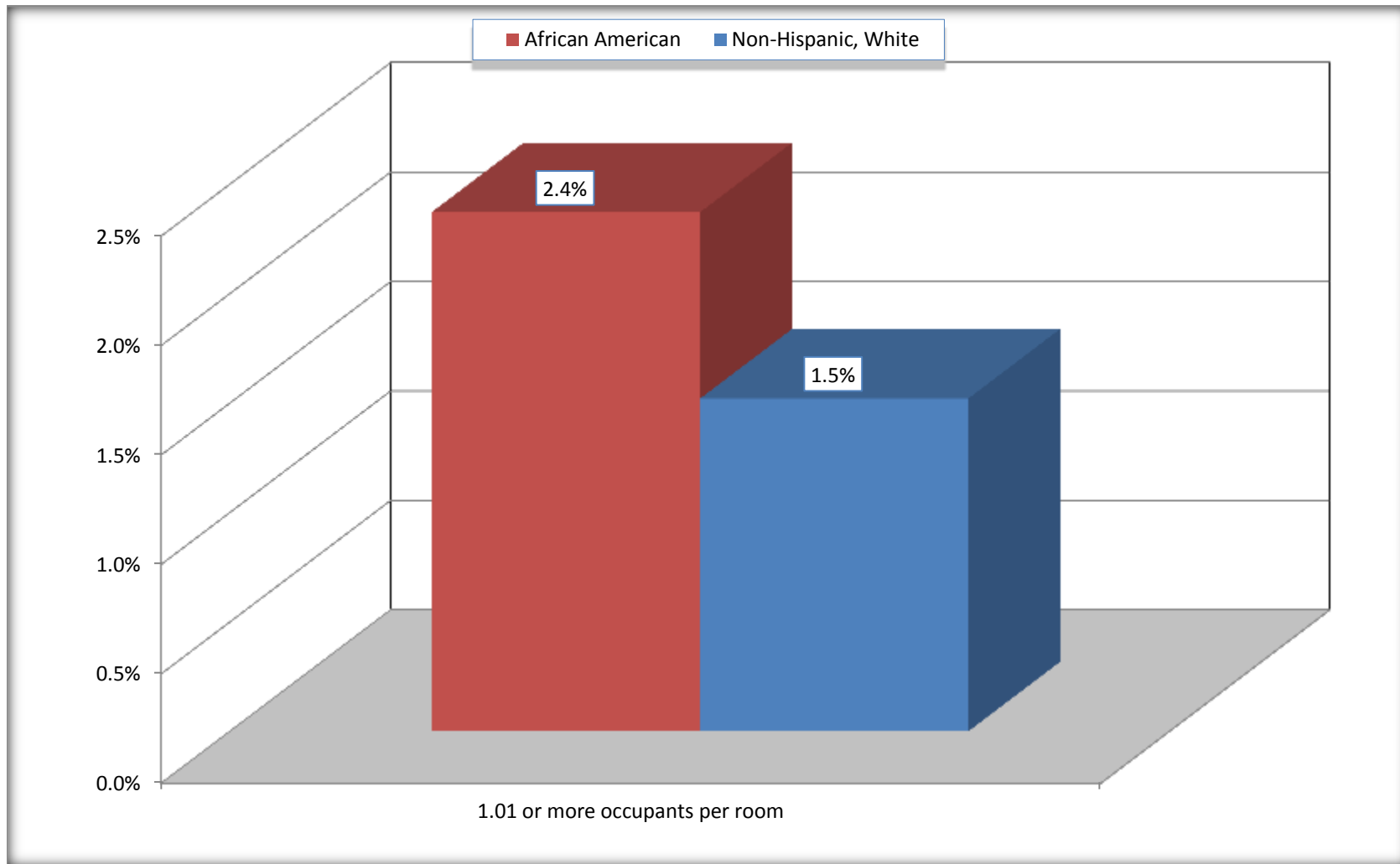
Source: U.S. Census Bureau, 2008-2012 American Community Survey

For information on confidentiality protection, sampling error, nonsampling error, and definitions, see Survey Methodology.

<http://www.census.gov/acs/www/UseData/index.ht>

More than One Person per Room (Crowding) by Household

Chowan County, North Carolina



Source: B25014. OCCUPANTS PER ROOM - Universe: OCCUPIED HOUSING UNITS
Data Set: 2008-2012 American Community Survey 5-Year Estimates

B18101. AGE BY DISABILITY STATUS

Data Set: 2008-2012 American Community Survey 5-Year Estimates

	Chowan County, North Carolina					
	African American	Margin of Error (+/-)	% of AA Total	White, Not Hispanic	Margin of Error (+/-)	% of NHW Total
Total:	4,962	177	100.0%	8,851	50	100.0%
Under 18 years:	1,309	84	26.4%	1,711	52	19.3%
With a disability	203	184	4.1%	87	80	1.0%
No disability	1,106	187	22.3%	1,624	81	18.3%
18 to 64 years:	2,945	99	59.4%	5,149	25	58.2%
With a disability	540	145	10.9%	631	190	7.1%
No disability	2,405	172	48.5%	4,518	191	51.0%
65 years and over:	708	58	14.3%	1,991	48	22.5%
With a disability	236	108	4.8%	681	127	7.7%
No disability	472	109	9.5%	1,310	112	14.8%

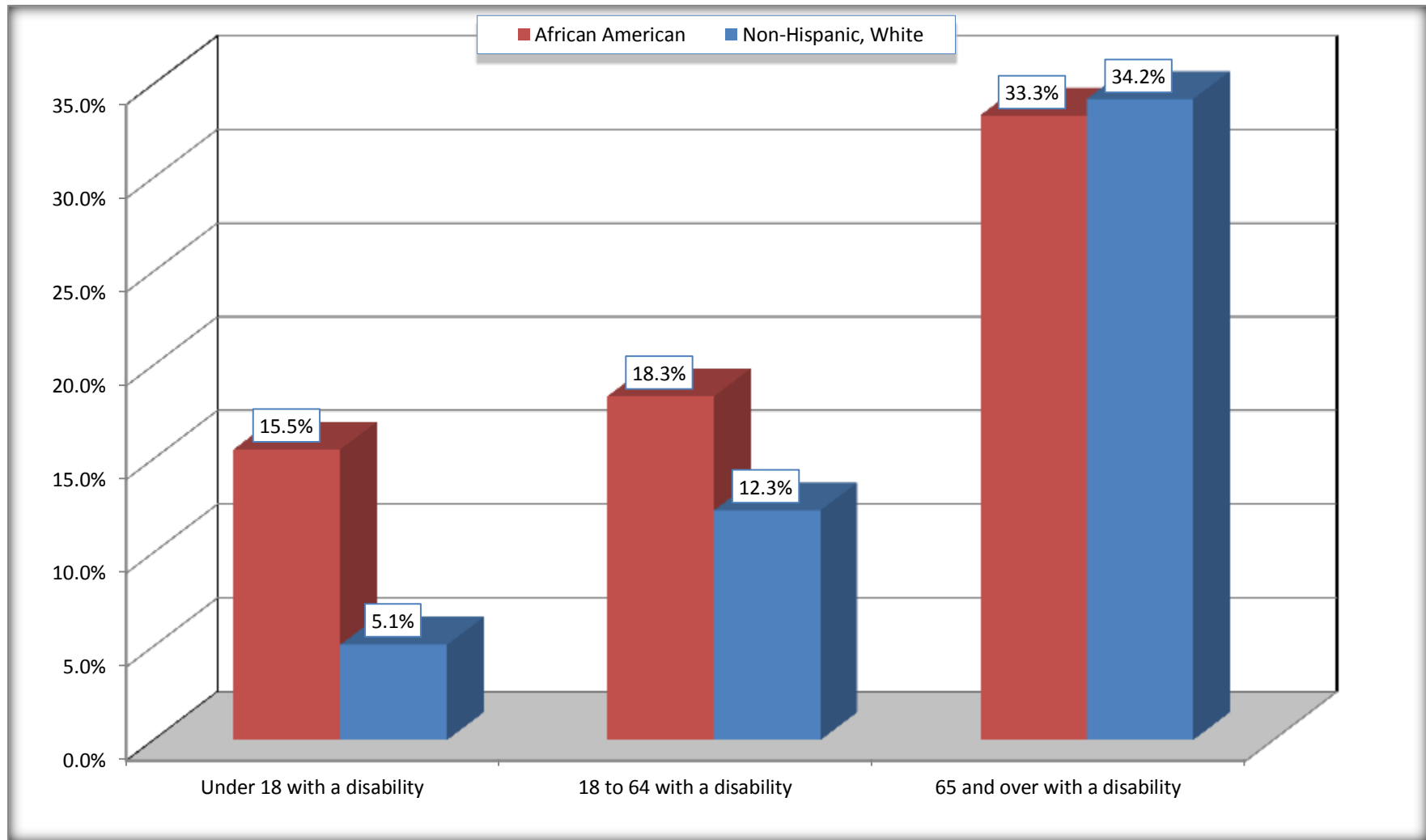
Source: U.S. Census Bureau, 2008-2012 American Community Survey

For information on confidentiality protection, sampling error, nonsampling error, and definitions, see Survey Methodology.

<http://www.census.gov/acs/www/UseData/index.htm>

Disability by Age

Chowan County, North Carolina



Source: B18101. AGE BY DISABILITY STATUS
Data Set: 2008-2012 American Community Survey 5-Year Estimates

C27001B. HEALTH INSURANCE COVERAGE STATUS BY AGE

Data Set: 2008-2012 American Community Survey 5-Year Estimates

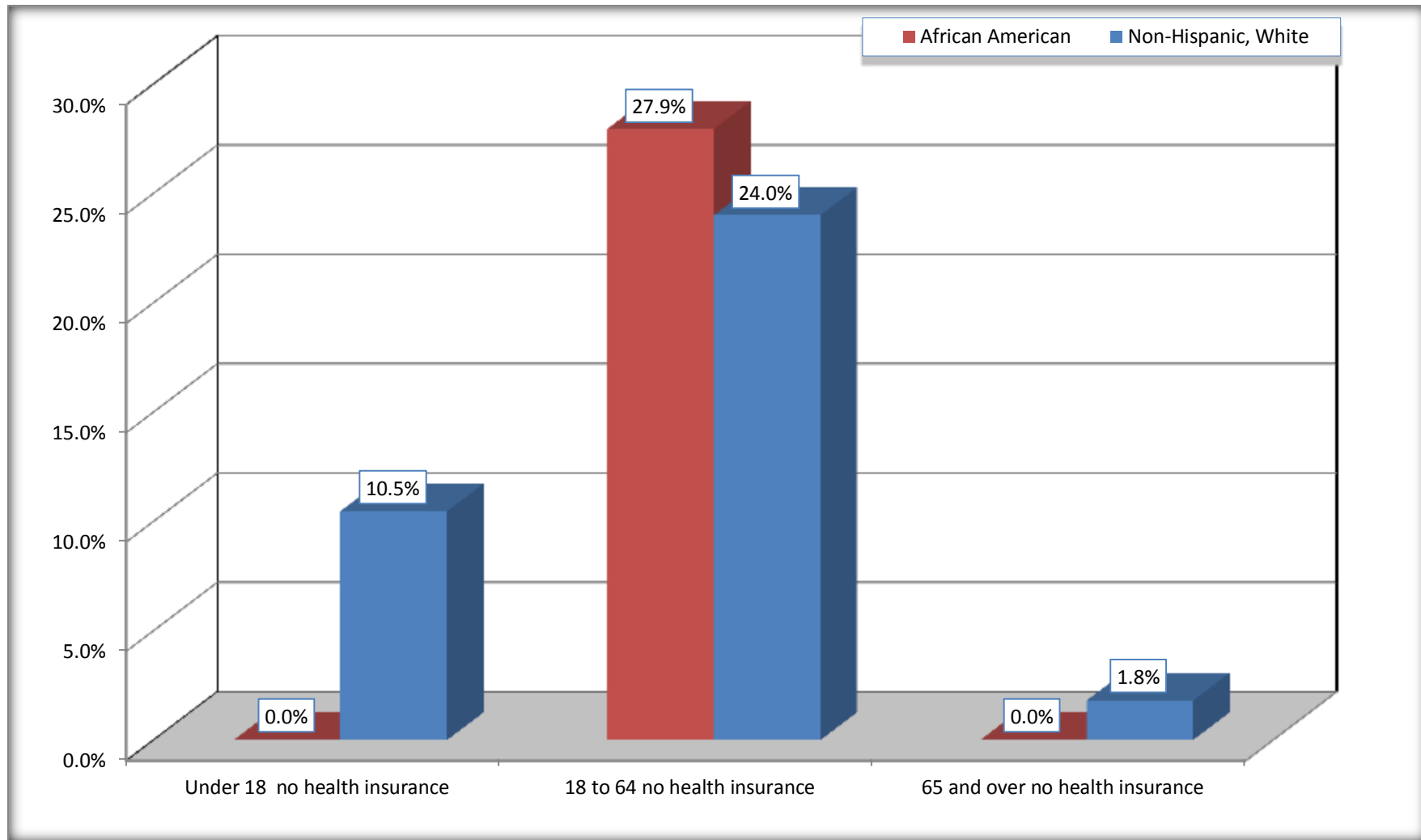
	Chowan County, North Carolina					
	African American	Margin of Error (+/-)	% of AA Total	White, Not Hispanic	Margin of Error (+/-)	% of NHW Total
Total:	4,962	177	100.0%	8,851	50	100.0%
Under 18 years:	1,309	84	26.4%	1,711	6	19.3%
With health insurance coverage	1,309	84	26.4%	1,532	127	17.3%
No health insurance coverage	0	20	0.0%	179	127	2.0%
18 to 64 years:	2,945	99	59.4%	5,149	25	58.2%
With health insurance coverage	2,122	253	42.8%	3,913	286	44.2%
No health insurance coverage	823	242	16.6%	1,236	286	14.0%
65 years and over:	708	58	14.3%	1,991	48	22.5%
With health insurance coverage	708	58	14.3%	1,955	74	22.1%
No health insurance coverage	0	20	0.0%	36	56	0.4%

Source: U.S. Census Bureau, 2008-2012 American Community Survey

For information on confidentiality protection, sampling error, nonsampling error, and definitions, see Survey Methodology.

<http://www.census.gov/acs/www/UseData/index.htm>

Lack of Health Insurance Coverage by Age Chowan County, North Carolina



Source: C27001B. HEALTH INSURANCE COVERAGE STATUS BY AGE
Data Set: 2008-2012 American Community Survey 5-Year Estimates