

# **Selected Socio-Economic Data**

## **Ayden town, North Carolina**

### **African American and White, Not Hispanic**

**Data Set: 2008-2012 American Community Survey 5-Year Estimates**

[www.fairvote2020.org](http://www.fairvote2020.org)

[www.fairdata2000.com](http://www.fairdata2000.com)

[29-Dec-13](#)

**C02003.DETAILED RACE - Universe: TOTAL POPULATION**

Data Set: 2008-2012 American Community Survey 5-Year Estimates

	Ayden town, North Carolina		
	Population	Margin of Error (+/-)	% of Total
<b>Total:</b>	<b>4,942</b>	<b>43</b>	<b>100.0%</b>
Population of one race:	4,899	66	99.1%
White	2,209	284	44.7%
Black or African American	2,553	290	51.7%
American Indian and Alaska Native	0	18	0.0%
Asian alone	8	13	0.2%
Native Hawaiian and Other Pacific Islander	0	18	0.0%
Some other race	129	178	2.6%
Population of two or more races:	43	54	0.9%
Two races including Some other race	0	18	0.0%
Two races excluding Some other race, and three or more races	43	54	0.9%
Population of two races:	43	54	0.9%
White; Black or African American	31	50	0.6%
White; American Indian and Alaska Native	5	12	0.1%
White; Asian	7	11	0.1%
Black or African American; American Indian and Alaska Native	0	18	0.0%
All other two race combinations	0	18	0.0%
Population of three races	0	18	0.0%
Population of four or more races	0	18	0.0%

Note: Hispanics may be of any race. See Table B03002 and chart.

Source: U.S. Census Bureau, 2008-2012 American Community Survey

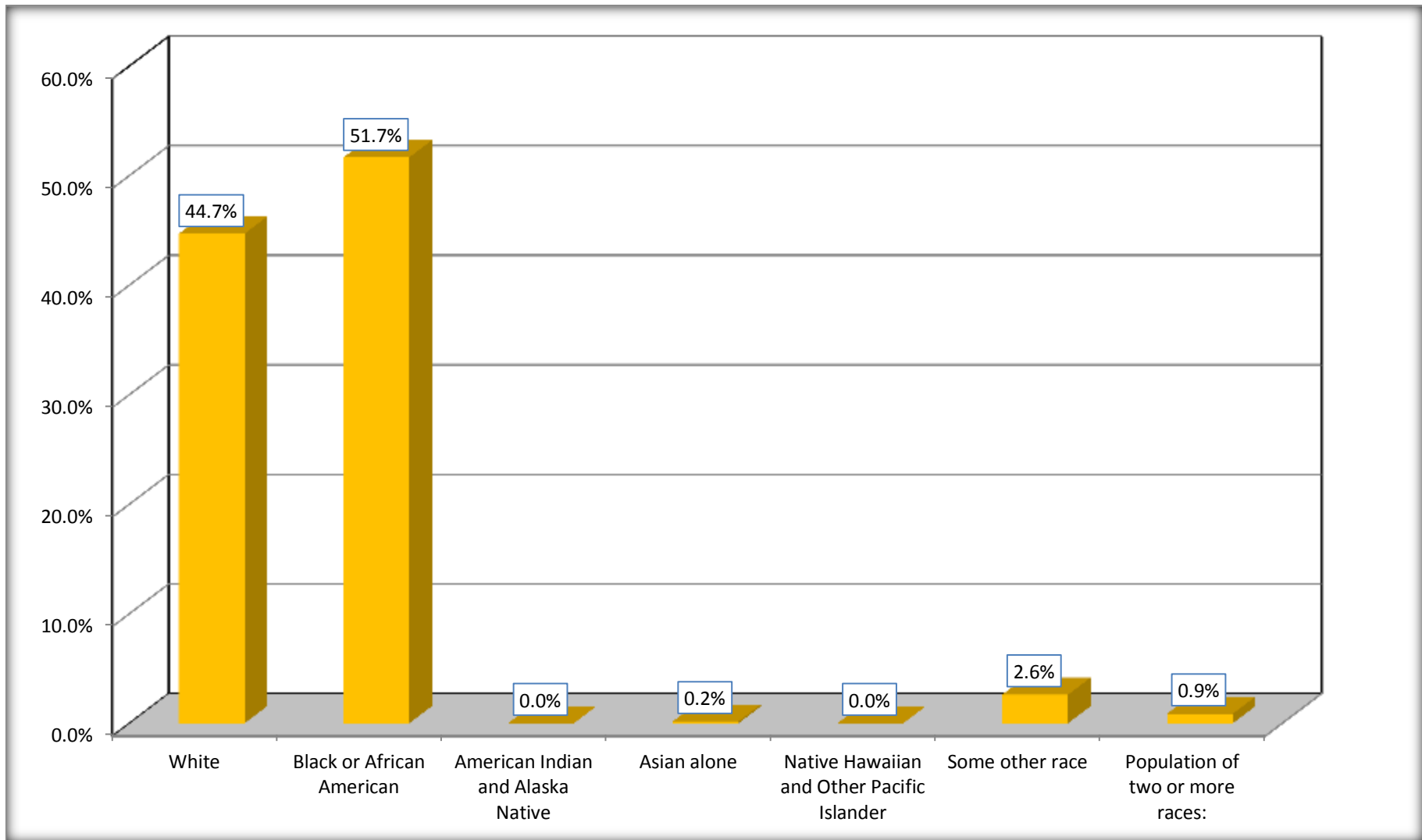
Although the American Community Survey (ACS) produces population, demographic and housing unit estimates, it is the Census Bureau's Population Estimates Program that produces and disseminates the official estimates of the population for the nation, states, counties, cities and towns and estimates of housing units for states and counties.

For information on confidentiality protection, sampling error, nonsampling error, and definitions, see Survey Methodology.

<http://www.census.gov/acs/www/UseData/index.htm>

# Population by Race

## Ayden town, North Carolina



Source: C02003.DETAILED RACE - Universe: TOTAL POPULATION  
Data Set: 2008-2012 American Community Survey 5-Year Estimates

**B03002. HISPANIC OR LATINO ORIGIN BY RACE - Universe: TOTAL POPULATION**

Data Set: 2008-2012 American Community Survey 5-Year Estimates

	Ayden town, North Carolina		
	Population	Margin of Error (+/-)	% of Total
<b>Total:</b>	4,942	43	<b>100.0%</b>
Not Hispanic or Latino:	4,697	202	95.0%
White alone	2,122	278	42.9%
Black or African American alone	2,531	282	51.2%
American Indian and Alaska Native alone	0	18	0.0%
Asian alone	8	13	0.2%
Native Hawaiian and Other Pacific Islander alone	0	18	0.0%
Some other race alone	0	18	0.0%
Two or more races:	36	52	0.7%
Two races including Some other race	0	18	0.0%
Two races excluding Some other race, and three or more races	36	52	0.7%
Hispanic or Latino	245	202	5.0%

Source: U.S. Census Bureau, 2008-2012 American Community Survey

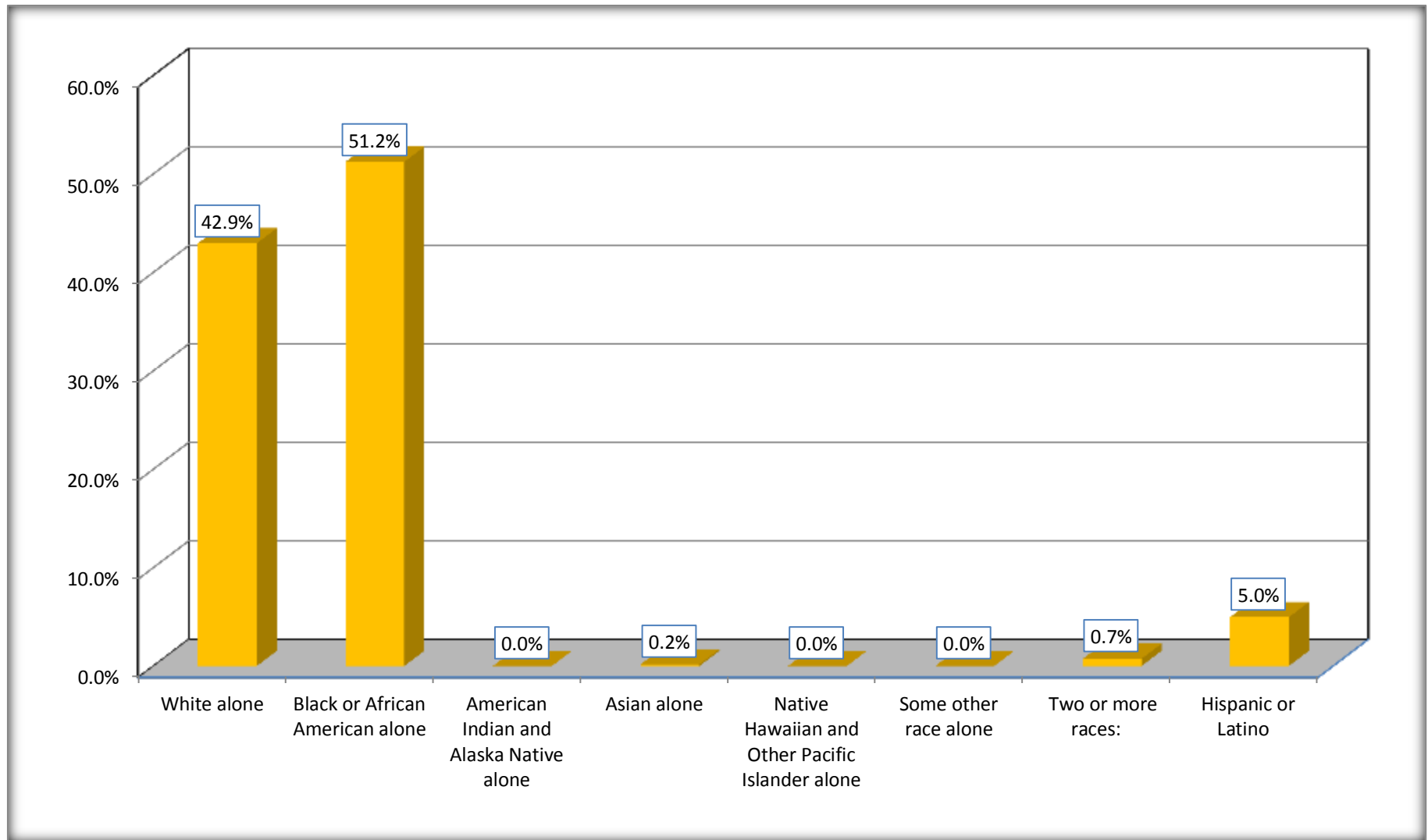
Although the American Community Survey (ACS) produces population, demographic and housing unit estimates, it is the Census Bureau's Population Estimates Program that produces and disseminates the official estimates of the population for the nation, states, counties, cities and towns and estimates of housing units for states and counties.

For information on confidentiality protection, sampling error, nonsampling error, and definitions, see Survey Methodology.

<http://www.census.gov/acs/www/UseData/index.htm>

# Non-Hispanic by Race and Hispanic Population

## Ayden town, North Carolina



Source: B03002. HISPANIC OR LATINO ORIGIN BY RACE - Universe: TOTAL POPULATION  
Data Set: 2008-2012 American Community Survey 5-Year Estimates

**B03002. HISPANIC OR LATINO ORIGIN BY RACE**

Data Set: 2008-2012 American Community Survey 5-Year Estimates

	Ayden town, North Carolina		
	Population	Margin of Error (+/-)	% of Total
Hispanic or Latino:	245	202	<b>100.0%</b>
White alone	87	95	35.5%
Black or African American alone	22	38	9.0%
American Indian and Alaska Native alone	0	18	0.0%
Asian alone	0	18	0.0%
Native Hawaiian and Other Pacific Islander alone	0	18	0.0%
Some other race alone	129	178	52.7%
Two or more races:	7	11	2.9%
Two races including Some other race	0	18	0.0%
Two races excluding Some other race, and three or more races	7	11	2.9%

Source: U.S. Census Bureau, 2008-2012 American Community Survey

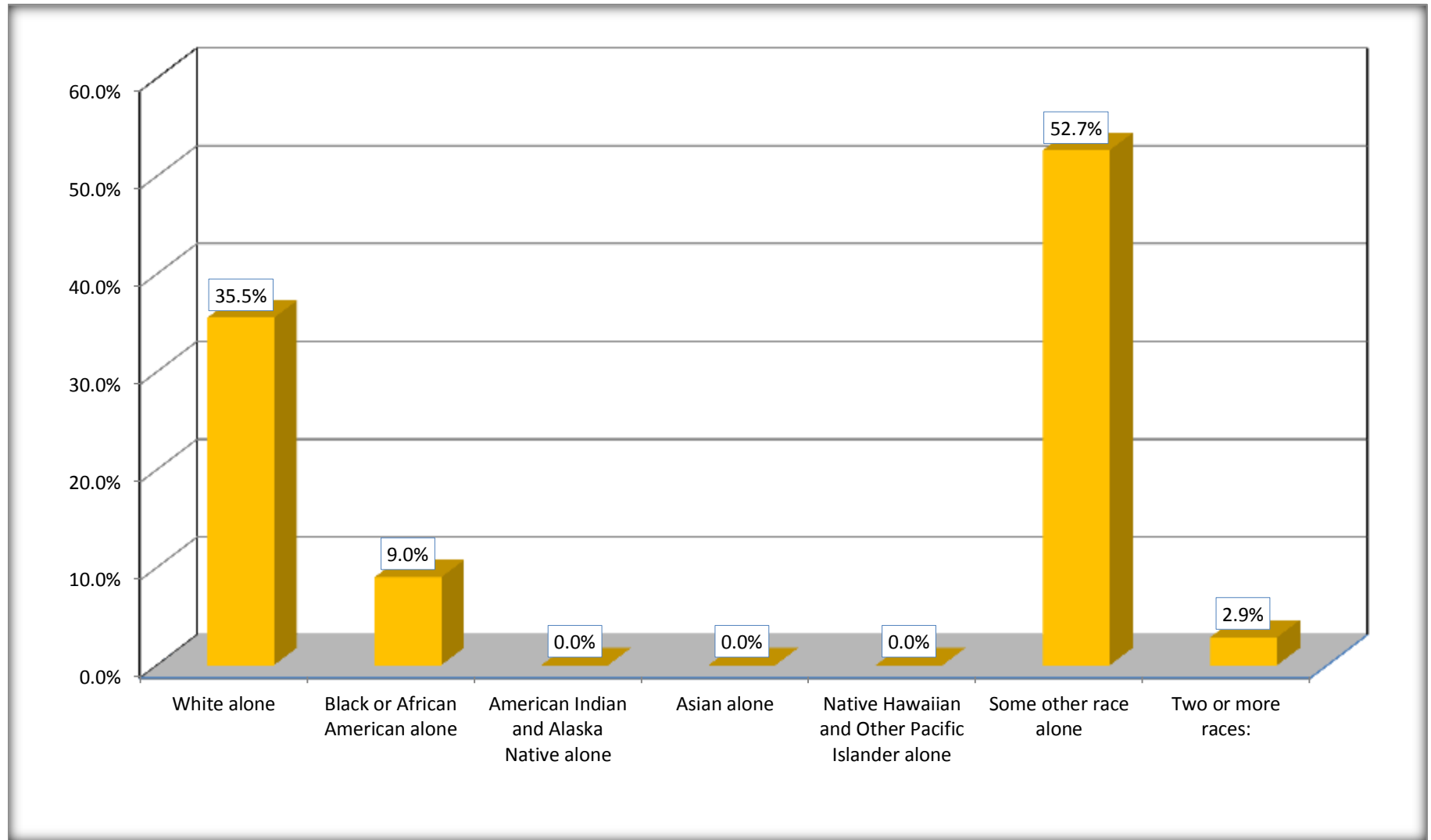
Although the American Community Survey (ACS) produces population, demographic and housing unit estimates, it is the Census Bureau's Population Estimates Program that produces and disseminates the official estimates of the population for the nation, states, counties, cities and towns and estimates of housing units for states and counties.

For information on confidentiality protection, sampling error, nonsampling error, and definitions, see Survey Methodology.

<http://www.census.gov/acs/www/UseData/index.htm>

## Hispanic or Latino Origin by Race

### Ayden town, North Carolina



Source: B03002. HISPANIC OR LATINO ORIGIN BY RACE  
Data Set: 2008-2012 American Community Survey 5-Year Estimates

**B01001. SEX BY AGE**

Data Set: 2008-2012 American Community Survey 5-Year Estimates

	Ayden town, North Carolina					
	African American	Margin of Error (+/-)	% of AA Total	White, Not Hispanic	Margin of Error (+/-)	% of NHW Total
<b>Total:</b>	<b>2,553</b>	<b>290</b>	<b>100.0%</b>	<b>2,122</b>	<b>278</b>	<b>100.0%</b>
Under 18 years	959	NC	37.6%	330	NC	15.6%
18 to 64 years	1,255	NC	49.2%	1,160	NC	54.7%
65 years and over	339	NC	13.3%	632	NC	29.8%
Male:	906	177	35.5%	895	389	42.2%
Under 18 years	415	NC	16.3%	123	NC	5.8%
18 to 64 years	455	NC	17.8%	545	NC	25.7%
65 years and over	36	NC	1.4%	227	NC	10.7%
Female:	1,647	228	64.5%	1,227	412	57.8%
Under 18 years	544	NC	21.3%	207	NC	9.8%
18 to 64 years	800	NC	31.3%	615	NC	29.0%
65 years and over	303	NC	11.9%	405	NC	19.1%

Source: U.S. Census Bureau, 2008-2012 American Community Survey

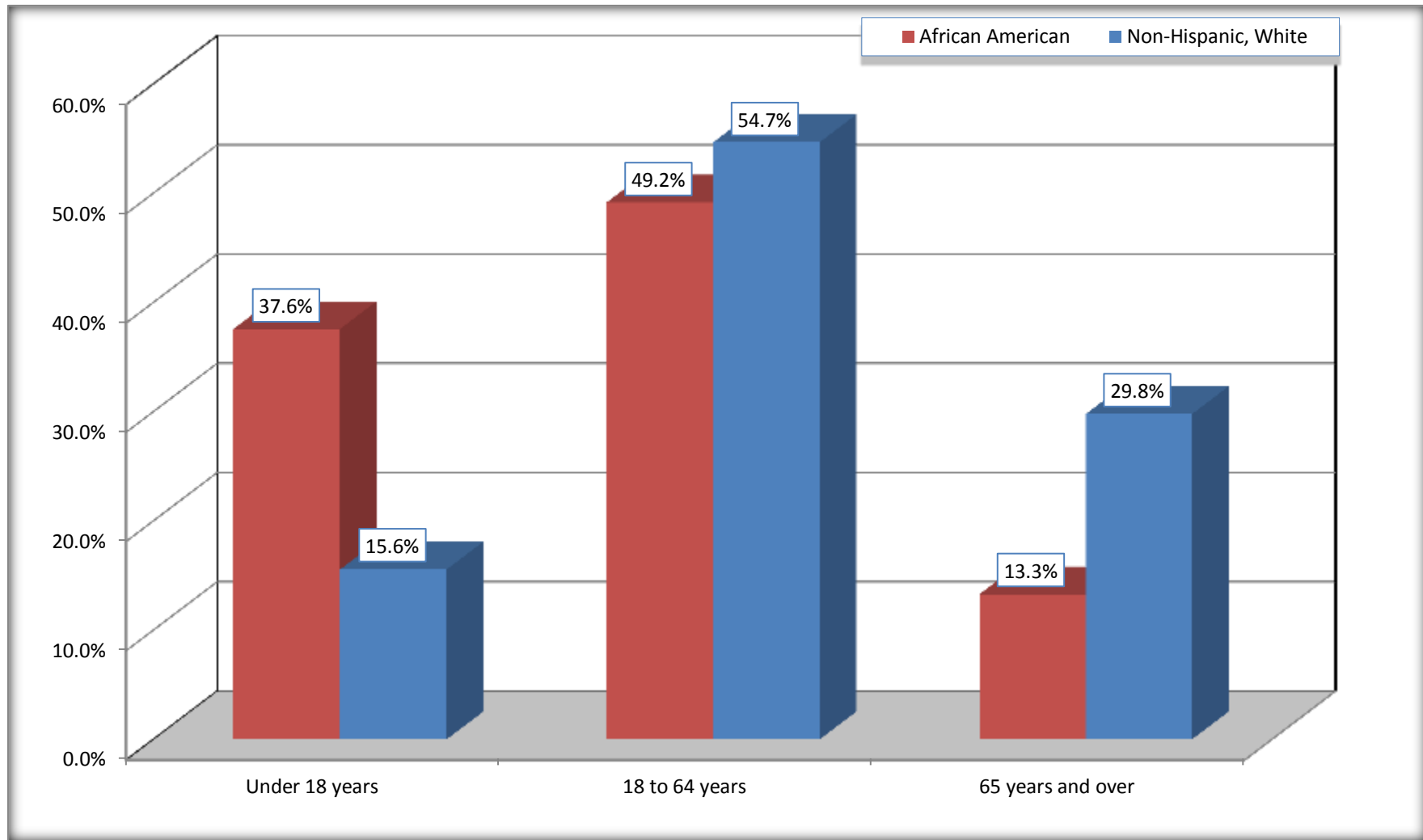
Although the American Community Survey (ACS) produces population, demographic and housing unit estimates, it is the Census Bureau's Population Estimates Program that produces and disseminates the official estimates of the population for the nation, states, counties, cities and towns and estimates of housing units for states and counties.

For information on confidentiality protection, sampling error, nonsampling error, and definitions, see Survey Methodology.  
<http://www.census.gov/acs/www/UseData/index.htm>



# Population by Age

## Ayden town, North Carolina



Source: B01001. SEX BY AGE  
Data Set: 2008-2012 American Community Survey 5-Year Estimates

**B05003. SEX BY AGE BY CITIZENSHIP STATUS**

Data Set: 2008-2012 American Community Survey 5-Year Estimates

	Ayden town, North Carolina					
	African American	Margin of Error (+/-)	% of AA Total by Age	White, Not Hispanic	Margin of Error (+/-)	% of NHW Total by Age
<b>Total:</b>	<b>2,553</b>	<b>290</b>	<b>100.0%</b>	<b>2,122</b>	<b>278</b>	<b>100.0%</b>
<b>Under 18 years:</b>	<b>959</b>	<b>NC</b>	<b>100.0%</b>	<b>330</b>	<b>NC</b>	<b>100.0%</b>
Native	959	NC	100.0%	330	NC	100.0%
Foreign born:	0	NC	0.0%	0	NC	0.0%
Naturalized U.S. citizen	0	NC	0.0%	0	NC	0.0%
Not a U.S. citizen	0	NC	0.0%	0	NC	0.0%
<b>18 years and over:</b>	<b>1,594</b>	<b>NC</b>	<b>100.0%</b>	<b>1,792</b>	<b>NC</b>	<b>100.0%</b>
Native	1,594	NC	100.0%	1,777	NC	99.2%
Foreign born:	0	NC	0.0%	15	NC	0.8%
Naturalized U.S. citizen	0	NC	0.0%	0	NC	0.0%
Not a U.S. citizen	0	NC	0.0%	15	NC	0.8%
<b>Male:</b>	<b>906</b>	<b>177</b>	<b>35.5%</b>	<b>895</b>	<b>174</b>	<b>42.2%</b>
<b>Under 18 years:</b>	<b>415</b>	<b>138</b>	<b>100.0%</b>	<b>123</b>	<b>61</b>	<b>100.0%</b>
Native	415	138	100.0%	123	61	100.0%
Foreign born:	0	18	0.0%	0	18	0.0%
Naturalized U.S. citizen	0	18	0.0%	0	18	0.0%
Not a U.S. citizen	0	18	0.0%	0	18	0.0%
<b>18 years and over:</b>	<b>491</b>	<b>142</b>	<b>100.0%</b>	<b>772</b>	<b>152</b>	<b>100.0%</b>
Native	491	142	100.0%	772	152	100.0%
Foreign born:	0	18	0.0%	0	18	0.0%
Naturalized U.S. citizen	0	18	0.0%	0	18	0.0%
Not a U.S. citizen	0	18	0.0%	0	18	0.0%

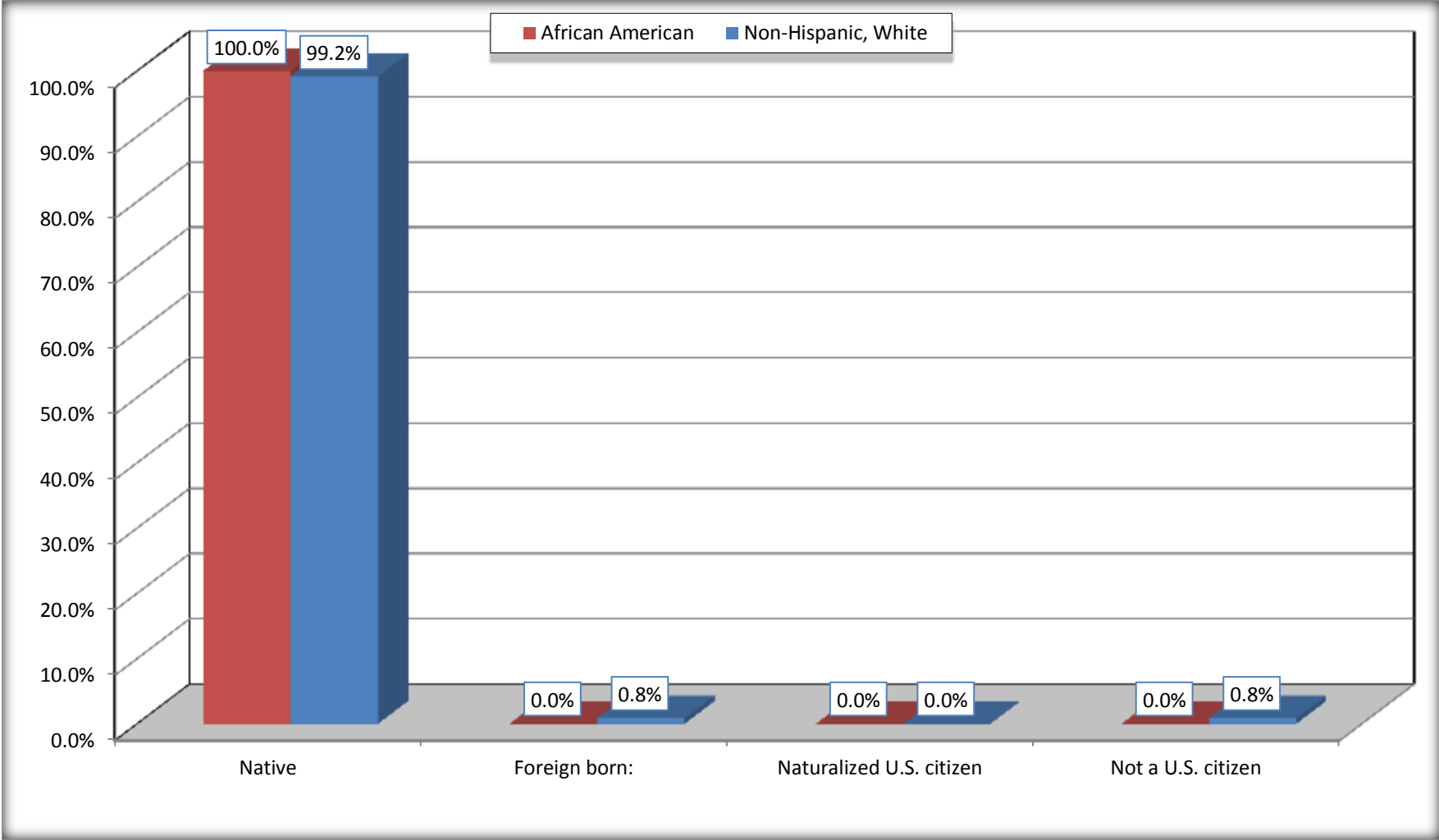
	Ayden town, North Carolina					
	African American	Margin of Error (+/-)	% of AA by Age	White, Not Hispanic	Margin of Error (+/-)	% of NHW by Age
<b>Female:</b>	1,647	228	64.5%	1,227	182	57.8%
<b>Under 18 years:</b>	<b>544</b>	<b>126</b>	<b>100.0%</b>	<b>207</b>	<b>89</b>	<b>100.0%</b>
Native	544	126	100.0%	207	89	100.0%
Foreign born:	0	18	0.0%	0	18	0.0%
Naturalized U.S. citizen	0	18	0.0%	0	18	0.0%
Not a U.S. citizen	0	18	0.0%	0	18	0.0%
<b>18 years and over:</b>	<b>1,103</b>	<b>190</b>	<b>100.0%</b>	<b>1,020</b>	<b>158</b>	<b>100.0%</b>
Native	1,103	190	100.0%	1,005	159	98.5%
Foreign born:	0	18	0.0%	15	18	1.5%
Naturalized U.S. citizen	0	18	0.0%	0	18	0.0%
Not a U.S. citizen	0	18	0.0%	15	18	1.5%

Source: U.S. Census Bureau, 2008-2012 American Community Survey

For information on confidentiality protection, sampling error, nonsampling error, and definitions, see Survey Methodology.  
<http://www.census.gov/acs/www/UseData/index.htm>

# Citizenship Status of Voting Age Population (18 and Over)

## Ayden town, North Carolina



Source: B05003. SEX BY AGE BY CITIZENSHIP STATUS  
Data Set: 2008-2012 American Community Survey 5-Year Estimates

**B07004. GEOGRAPHICAL MOBILITY IN THE PAST YEAR BY RACE FOR CURRENT RESIDENCE IN THE UNITED STATES - Universe:  
POPULATION 1 YEAR AND OVER**

Data Set: 2008-2012 American Community Survey 5-Year Estimates

	Ayden town, North Carolina					
	African American	Margin of Error (+/-)	% of AA Total	White, Not Hispanic	Margin of Error (+/-)	% of NHW Total
<b>Total:</b>	<b>2,486</b>	<b>278</b>	<b>100.0%</b>	<b>2,122</b>	<b>278</b>	<b>100.0%</b>
Same house 1 year ago	2,017	302	81.1%	1,813	286	85.4%
Moved within same county	343	170	13.8%	181	105	8.5%
Moved from different county within same state	55	60	2.2%	77	101	3.6%
Moved from different state	71	64	2.9%	46	46	2.2%
Moved from abroad	0	18	0.0%	5	8	0.2%

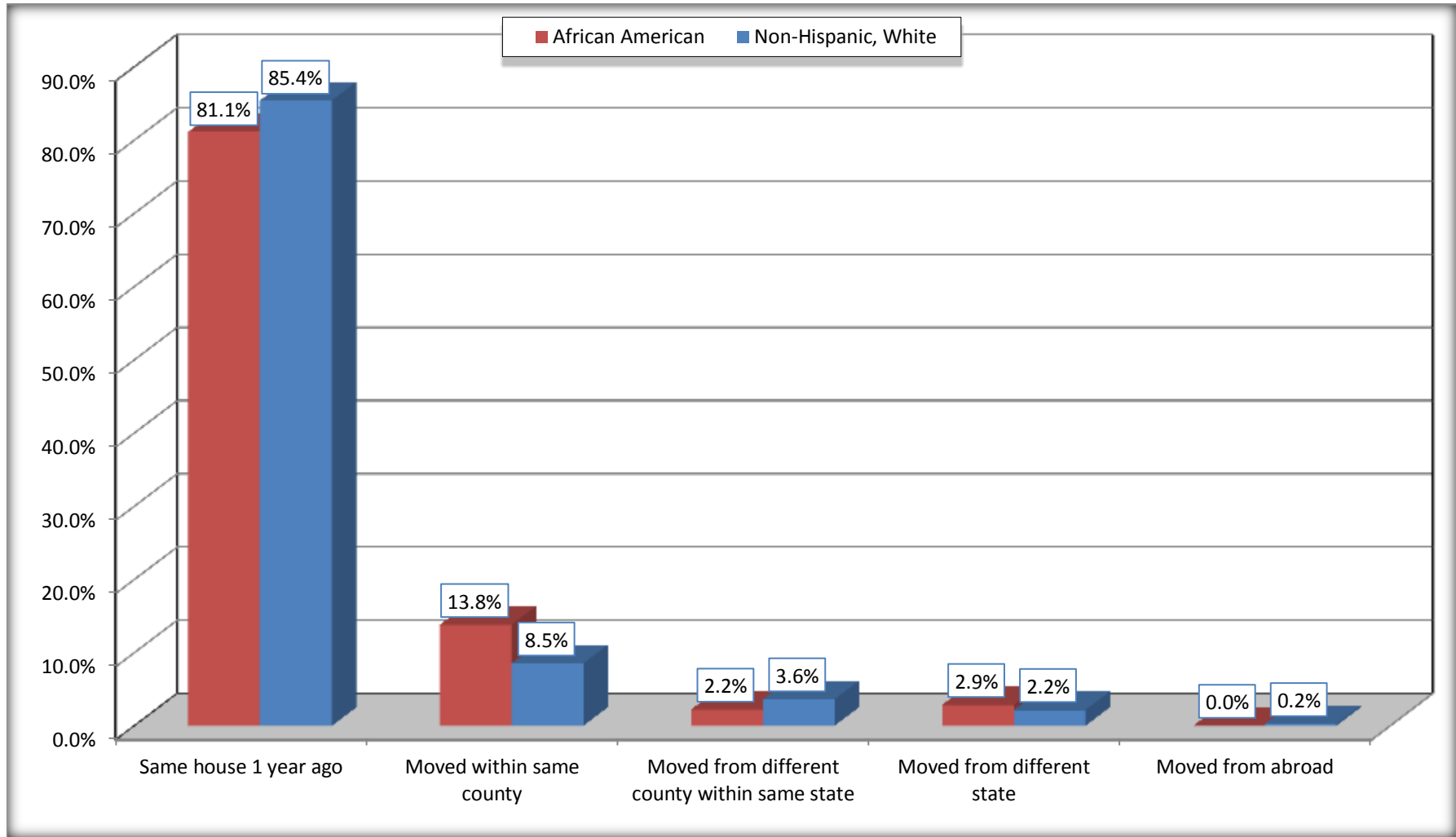
Source: U.S. Census Bureau, 2008-2012 American Community Survey

For information on confidentiality protection, sampling error, nonsampling error, and definitions, see Survey Methodology.

<http://www.census.gov/acs/www/UseData/index.htm>

# Geographical Mobility in the Past Year (Population 1 Year and Over)

## Ayden town, North Carolina



Source: B07004. GEOGRAPHICAL MOBILITY IN THE PAST YEAR BY RACE FOR CURRENT RESIDENCE IN THE UNITED STATES - Universe: POPULATION 1 YEAR AND OVER

Data Set: 2008-2012 American Community Survey 5-Year Estimates

**B08105. MEANS OF TRANSPORTATION TO WORK - Universe: WORKERS 16 YEARS AND OVER**

Data Set: 2008-2012 American Community Survey 5-Year Estimates

	Ayden town, North Carolina					
	African American	Margin of Error (+/-)	% of AA Total	White, Not Hispanic	Margin of Error (+/-)	% of NHW Total
<b>Total:</b>	872	149	<b>100.0%</b>	905	179	<b>100.0%</b>
Car, truck, or van - drove alone	679	169	77.9%	758	151	83.8%
Car, truck, or van - carpooled	142	93	16.3%	100	62	11.0%
Public transportation (excluding taxicab)	0	18	0.0%	0	18	0.0%
Walked	23	38	2.6%	9	13	1.0%
Taxicab, motorcycle, bicycle, or other means	0	18	0.0%	9	15	1.0%
Worked at home	28	45	3.2%	29	34	3.2%

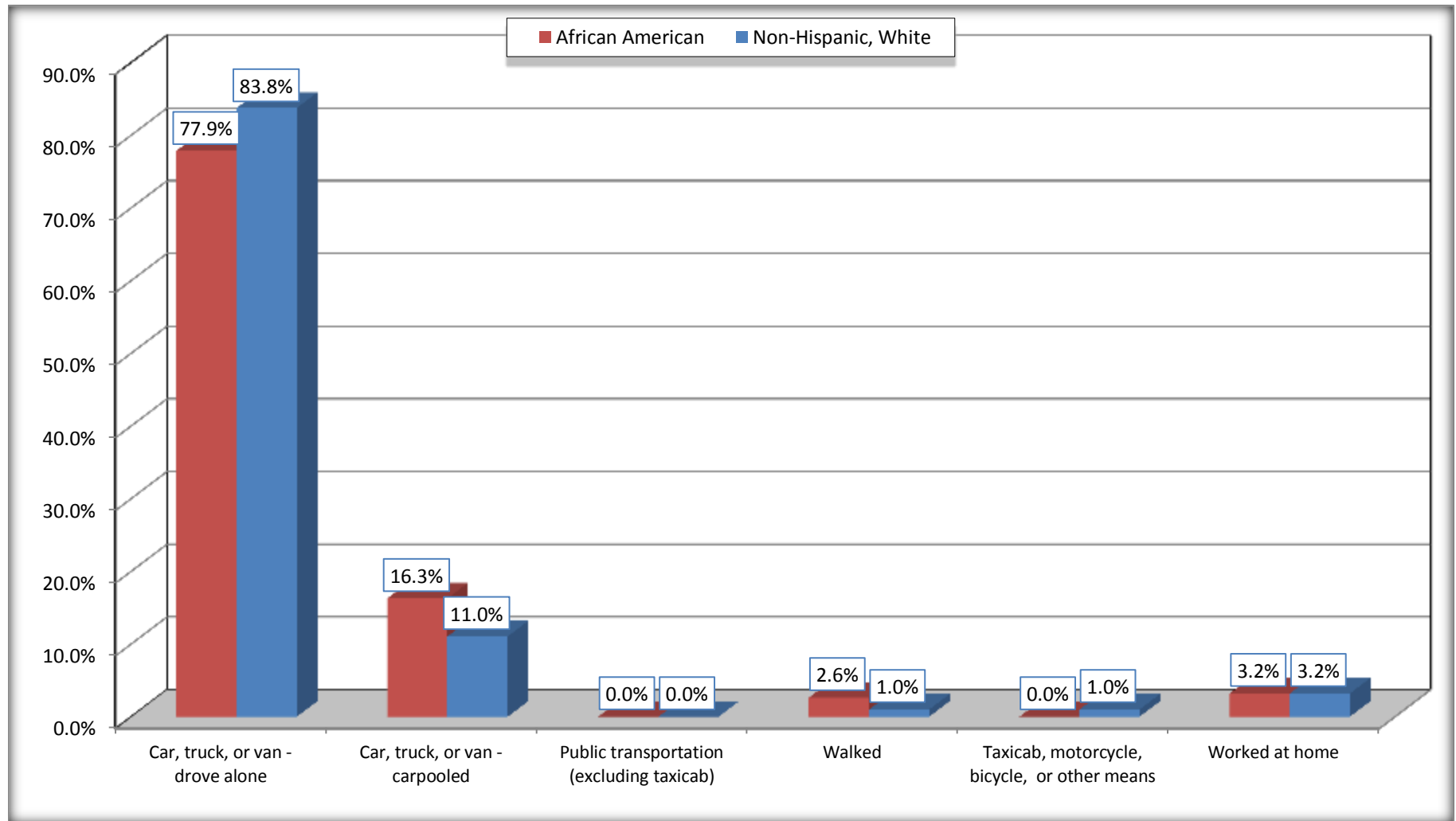
Source: U.S. Census Bureau, 2008-2012 American Community Survey

For information on confidentiality protection, sampling error, nonsampling error, and definitions, see Survey Methodology.

<http://www.census.gov/acs/www/UseData/index.htm>

# Means of Transportation to Work (Workers 16 Years and Over)

## Ayden town, North Carolina



Source: B08105. MEANS OF TRANSPORTATION TO WORK - Universe: WORKERS 16 YEARS AND OVER  
Data Set: 2008-2012 American Community Survey 5-Year Estimates



**B11002. HOUSEHOLD TYPE BY RELATIVES AND NONRELATIVES FOR POPULATION IN HOUSEHOLDS**

Data Set: 2008-2012 American Community Survey 5-Year Estimates

	Ayden town, North Carolina					
	African American	Margin of Error (+/-)	% of AA Total	White, Not Hispanic	Margin of Error (+/-)	% of NHW Total
<b>Total:</b>	2510	302	<b>100.0%</b>	2095	292	<b>100.0%</b>
In family households	2145	316	85.5%	1602	290	76.5%
In nonfamily households	365	136	14.5%	493	143	23.5%

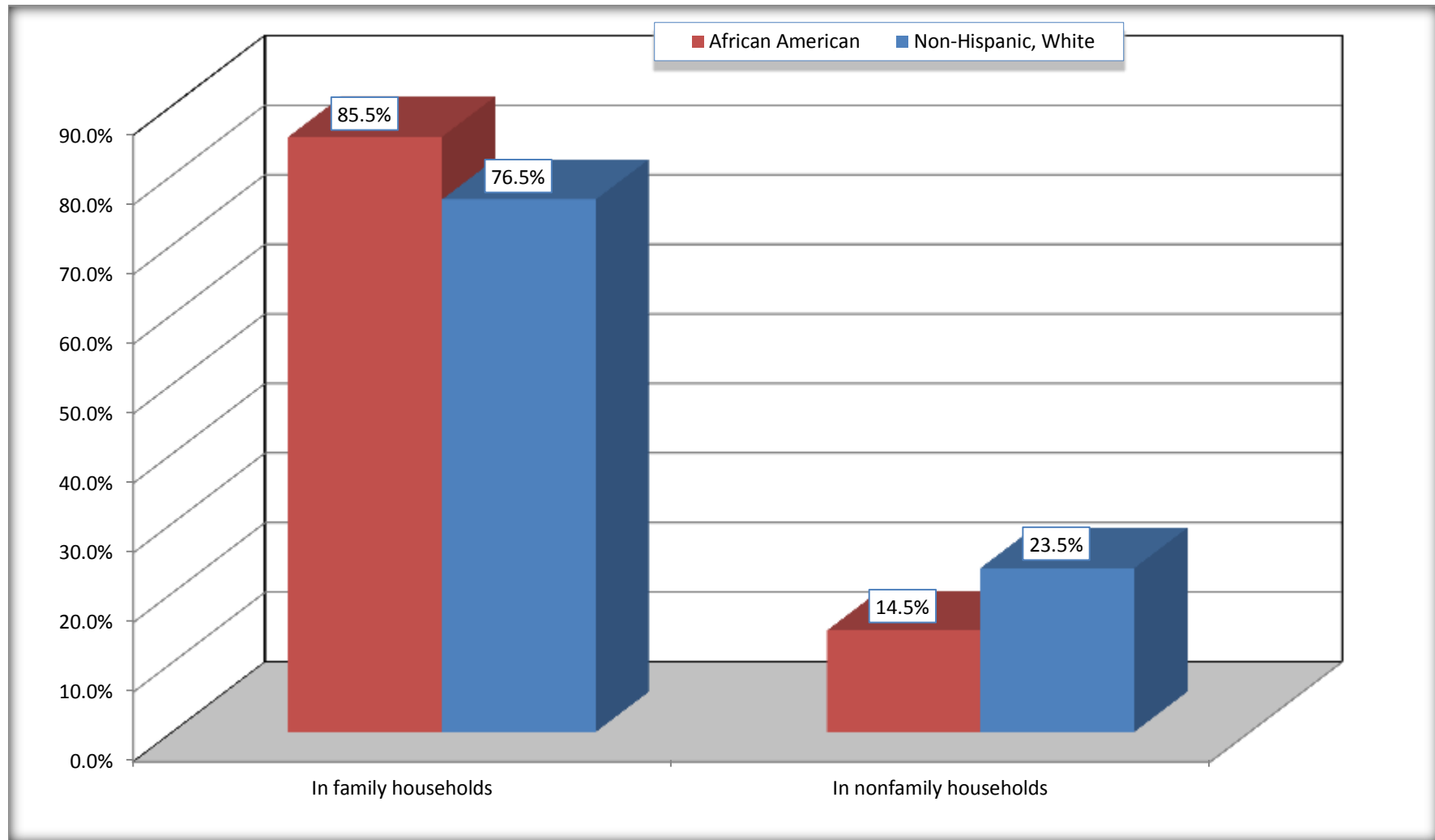
Source: U.S. Census Bureau, 2008-2012 American Community Survey

For information on confidentiality protection, sampling error, nonsampling error, and definitions, see Survey Methodology.

<http://www.census.gov/acs/www/UseData/index.htm>

# Household Type for Population in Households

## Ayden town, North Carolina



Source: B11002. HOUSEHOLD TYPE BY RELATIVES AND NONRELATIVES FOR POPULATION IN HOUSEHOLDS  
Data Set: 2008-2012 American Community Survey 5-Year Estimates

**B12002. MARITAL STATUS FOR THE POPULATION 15 YEARS AND OVER**

Data Set: 2008-2012 American Community Survey 5-Year Estimates

	Ayden town, North Carolina					
	African American	Margin of Error (+/-)	% of AA Total	White, Not Hispanic	Margin of Error (+/-)	% of NHW Total
<b>Total:</b>	<b>1,718</b>	<b>217</b>	<b>100.0%</b>	<b>1,825</b>	<b>237</b>	<b>100.0%</b>
Never married	719	NC	41.9%	432	NC	23.7%
Now married (except separated)	413	NC	24.0%	845	NC	46.3%
Separated	110	NC	6.4%	86	NC	4.7%
Widowed	297	NC	17.3%	245	NC	13.4%
Divorced	179	NC	10.4%	217	NC	11.9%
<b>Male:</b>	539	160	31.4%	783	153	42.9%
Never married	286	148	16.6%	226	95	12.4%
Now married (except separated)	208	104	12.1%	412	111	22.6%
Separated	14	21	0.8%	41	48	2.2%
Widowed	5	8	0.3%	30	30	1.6%
Divorced	26	42	1.5%	74	42	4.1%
<b>Female:</b>	1,179	207	68.6%	1,042	168	57.1%
Never married	433	123	25.2%	206	98	11.3%
Now married (except separated)	205	94	11.9%	433	112	23.7%
Separated	96	57	5.6%	45	38	2.5%
Widowed	292	127	17.0%	215	95	11.8%
Divorced	153	99	8.9%	143	66	7.8%

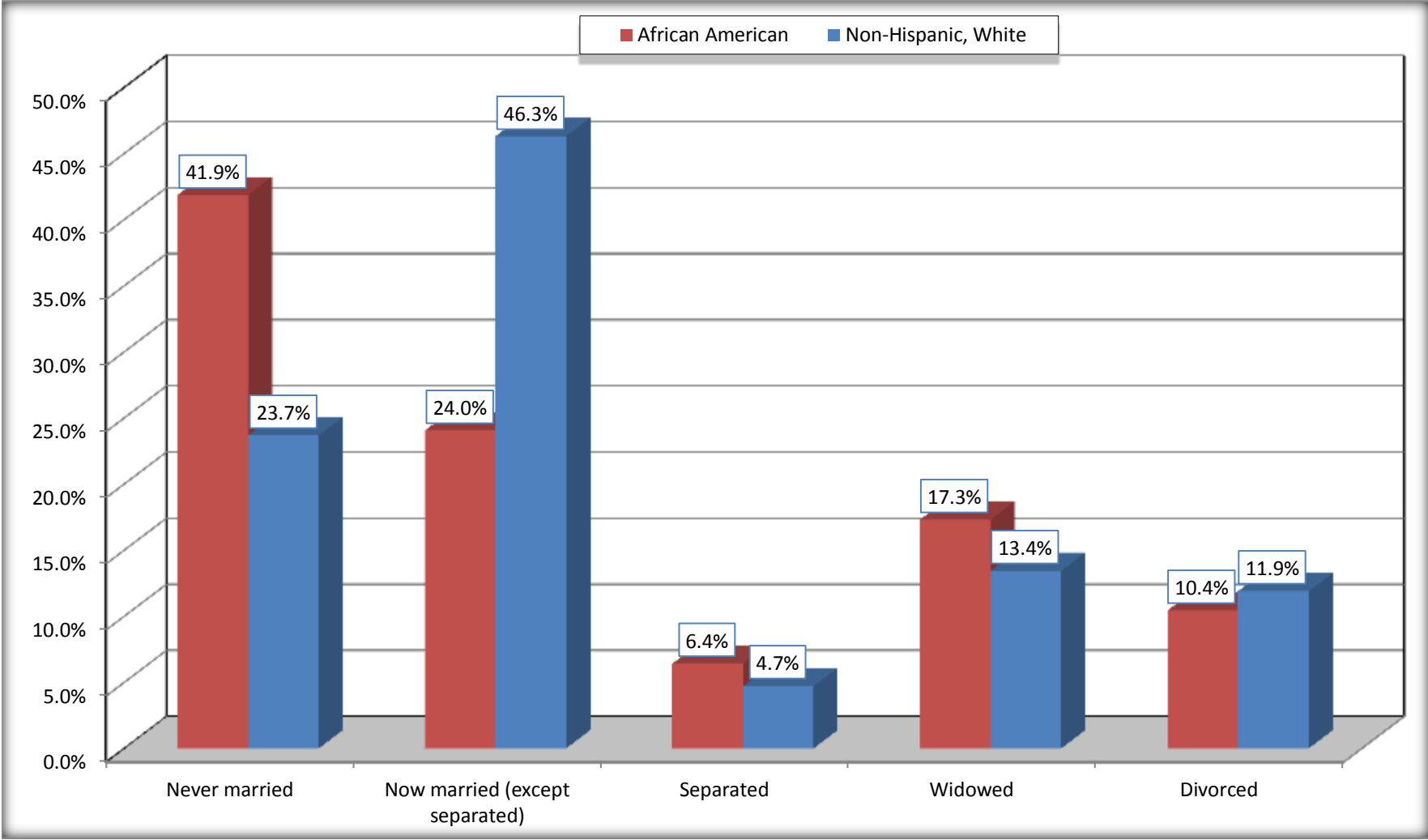
Source: U.S. Census Bureau, 2008-2012 American Community Survey

For information on confidentiality protection, sampling error, nonsampling error, and definitions, see Survey Methodology.

<http://www.census.gov/acs/www/UseData/index.htm>

# Marital Status for the Population 15 Years and Over

## Ayden town, North Carolina



Source: B12002. MARITAL STATUS FOR THE POPULATION 15 YEARS AND OVER  
Data Set: 2008-2012 American Community Survey 5-Year Estimates

**C15002. SEX BY EDUCATIONAL ATTAINMENT FOR THE POPULATION 25 YEARS AND OVER**

Data Set: 2008-2012 American Community Survey 5-Year Estimates

	Ayden town, North Carolina					
	African American	Margin of Error (+/-)	% of AA Total	White, Not Hispanic	Margin of Error (+/-)	% of NHW Total
<b>Total:</b>	<b>1,425</b>	<b>206</b>	<b>100.0%</b>	<b>1,596</b>	<b>227</b>	<b>100.0%</b>
Less than high school diploma	408	NC	28.6%	321	NC	20.1%
High school graduate, GED, or alternative	422	NC	29.6%	474	NC	29.7%
Some college or associate's degree	516	NC	36.2%	458	NC	28.7%
Bachelor's degree or higher	79	NC	5.5%	343	NC	21.5%
Male:	419	139	29.4%	689	136	43.2%
Less than high school diploma	109	73	7.6%	121	63	7.6%
High school graduate, GED, or alternative	120	69	8.4%	244	98	15.3%
Some college or associate's degree	163	85	11.4%	156	67	9.8%
Bachelor's degree or higher	27	39	1.9%	168	80	10.5%
Female:	1,006	187	70.6%	907	150	56.8%
Less than high school diploma	299	140	21.0%	200	87	12.5%
High school graduate, GED, or alternative	302	104	21.2%	230	88	14.4%
Some college or associate's degree	353	132	24.8%	302	83	18.9%
Bachelor's degree or higher	52	41	3.6%	175	80	11.0%

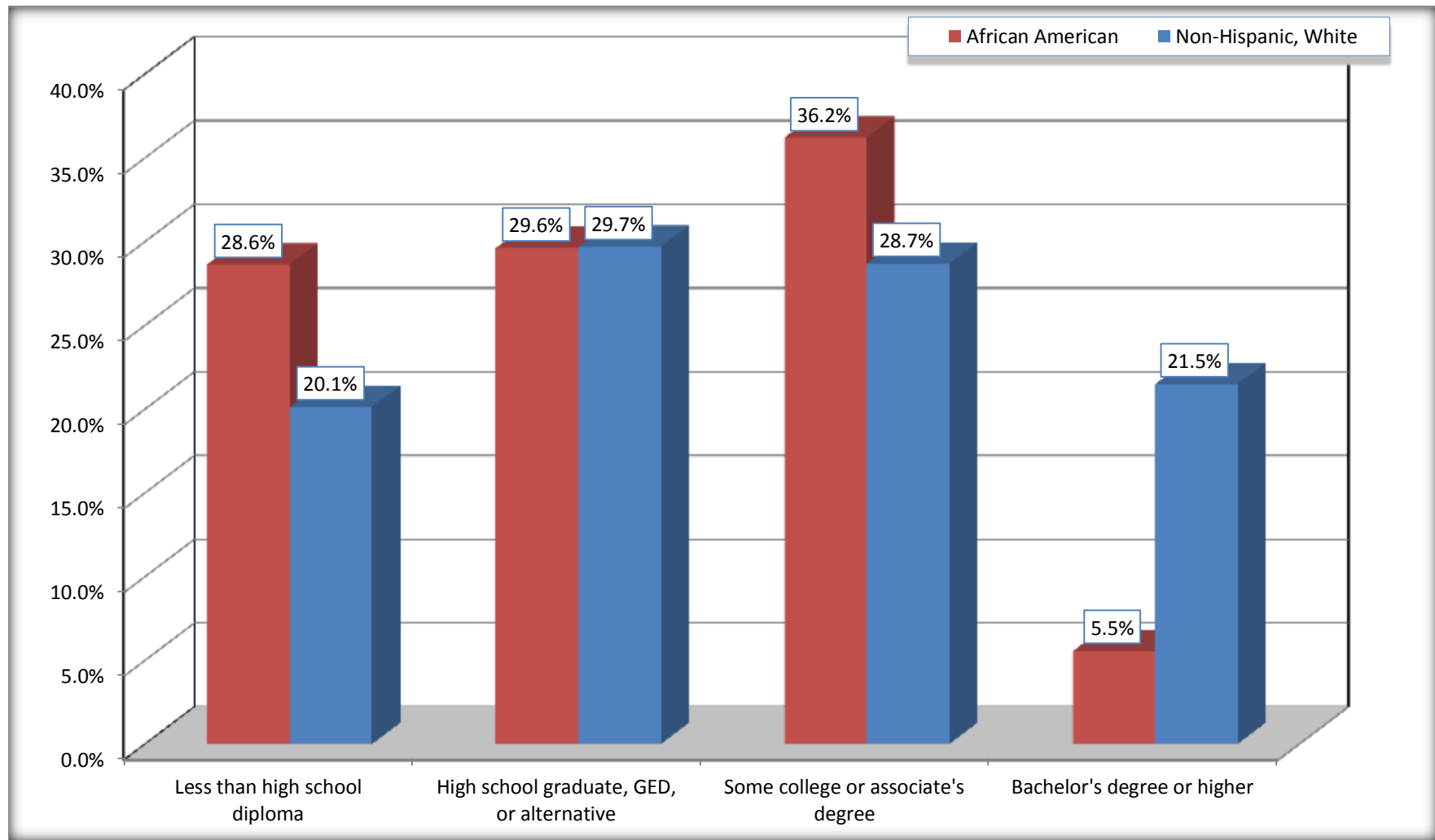
Source: U.S. Census Bureau, 2008-2012 American Community Survey

For information on confidentiality protection, sampling error, nonsampling error, and definitions, see Survey Methodology.

<http://www.census.gov/acs/www/UseData/index.htm>

# Educational Attainment for the Population 25 Years and Older

## Ayden town, North Carolina



Source: C15002. SEX BY EDUCATIONAL ATTAINMENT FOR THE POPULATION 25 YEARS AND OVER  
Data Set: 2008-2012 American Community Survey 5-Year Estimates

**B17010. POVERTY STATUS IN THE PAST 12 MONTHS OF FAMILIES BY FAMILY TYPE BY PRESENCE OF RELATED CHILDREN UNDER 18 YEARS**

Data Set: 2008-2012 American Community Survey 5-Year Estimates

	Ayden town, North Carolina					
	African American	Margin of Error (+/-)	% of AA Total	White, Not Hispanic	Margin of Error (+/-)	% of NHW Total
<b>Total:</b>	<b>598</b>	<b>118</b>	<b>100.0%</b>	<b>532</b>	<b>97</b>	<b>100.0%</b>
Income in the past 12 months below poverty level:	148	66	24.7%	39	30	7.3%
Married-couple family:	27	27	4.5%	31	27	5.8%
With related children under 18 years	20	27	3.3%	11	14	2.1%
Other family:	121	60	20.2%	8	12	1.5%
Male householder, no wife present	5	8	0.8%	0	18	0.0%
With related children under 18 years	5	8	0.8%	0	18	0.0%
Female householder, no husband present	116	59	19.4%	8	12	1.5%
With related children under 18 years	107	56	17.9%	8	12	1.5%
Income in the past 12 months at or above poverty level:	450	122	75.3%	493	101	92.7%
Married-couple family:	154	87	25.8%	371	110	69.7%
With related children under 18 years	56	52	9.4%	134	63	25.2%
Other family:	296	115	49.5%	122	58	22.9%
Male householder, no wife present	0	18	0.0%	10	15	1.9%
With related children under 18 years	0	18	0.0%	10	15	1.9%
Female householder, no husband present	296	115	49.5%	112	57	21.1%
With related children under 18 years	167	85	27.9%	69	46	13.0%

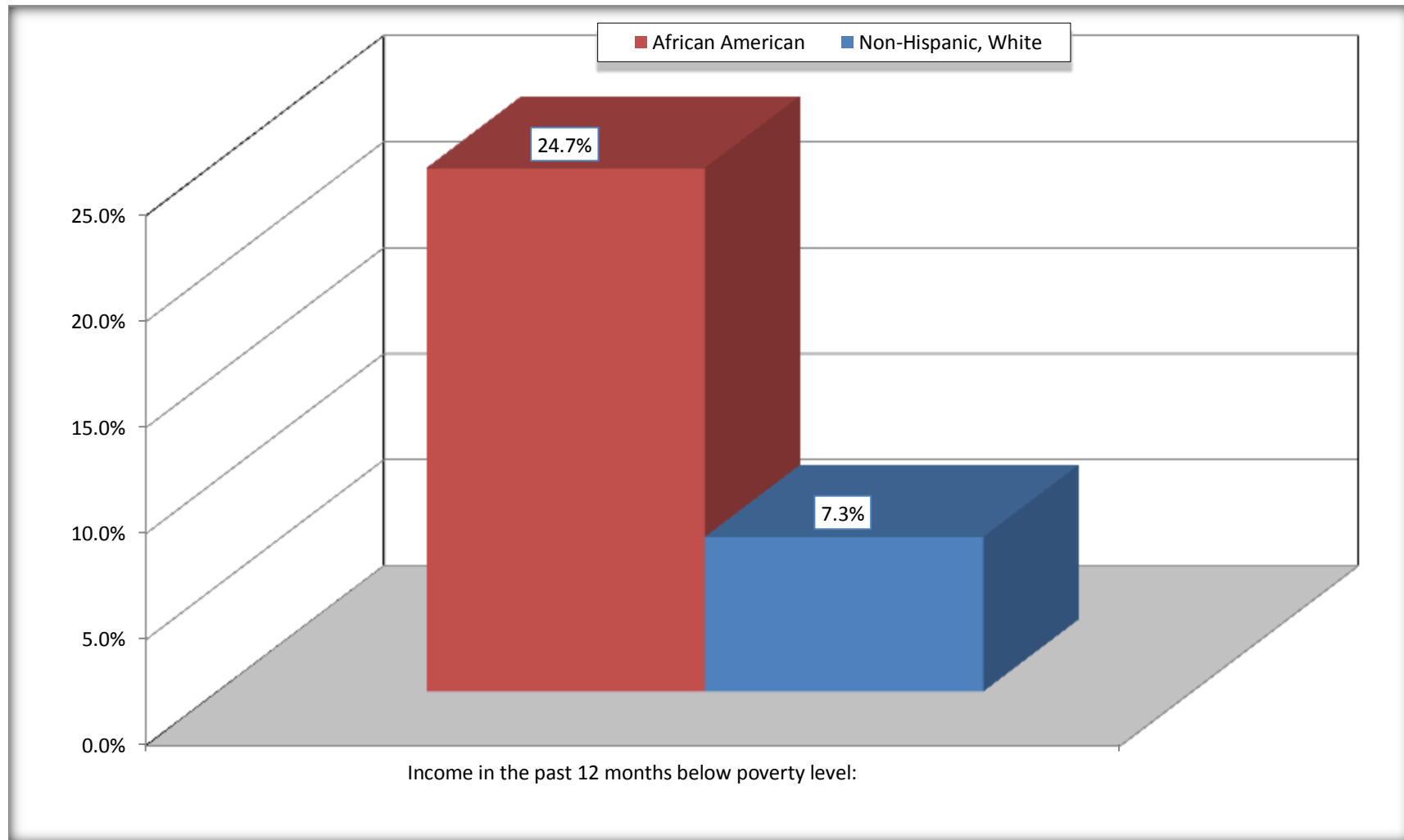
Source: U.S. Census Bureau, 2008-2012 American Community Survey

For information on confidentiality protection, sampling error, nonsampling error, and definitions, see Survey Methodology.

<http://www.census.gov/acs/www/UseData/index.htm>

# Family Households Below Poverty in the Past 12 Months

## Ayden town, North Carolina



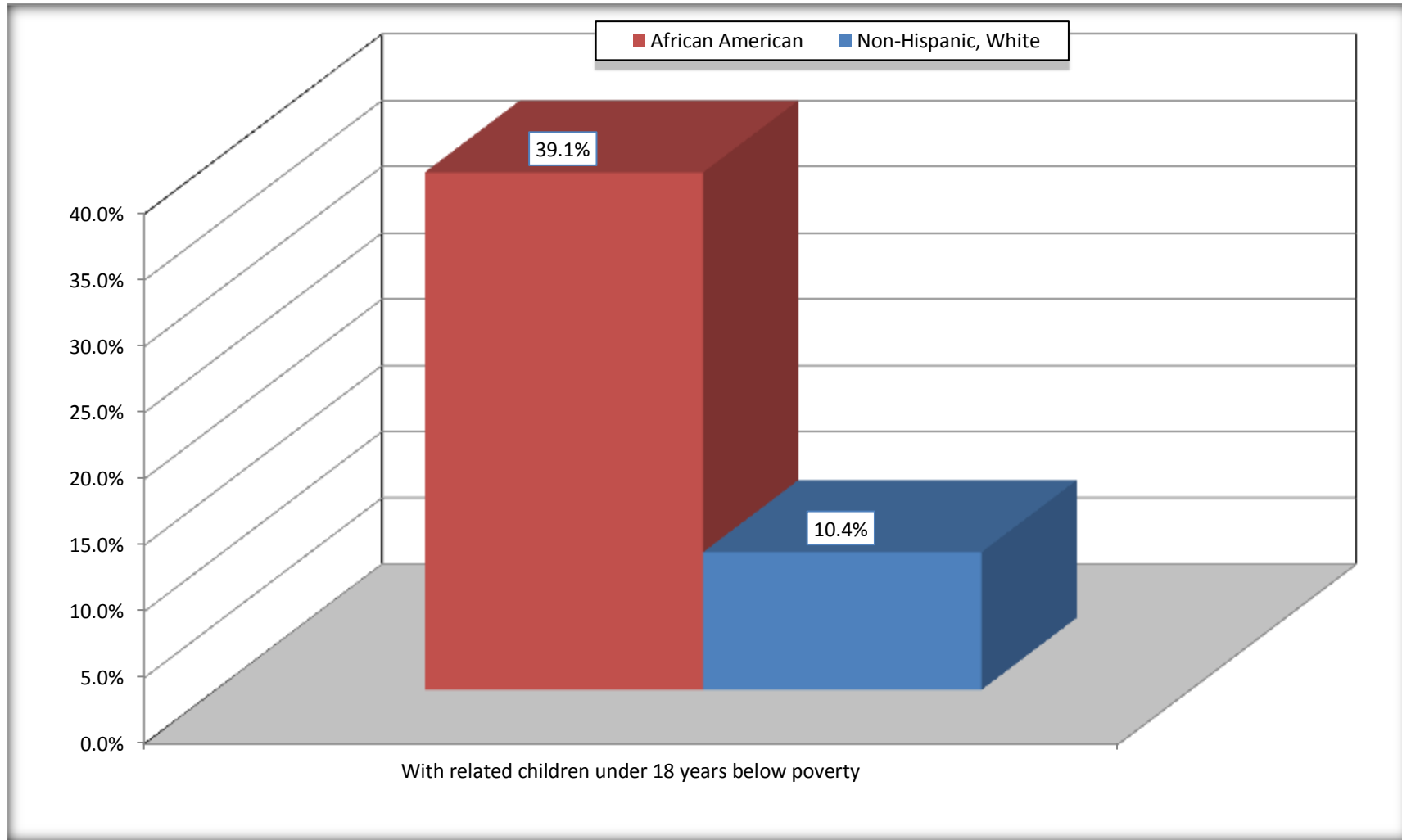
Source: B17010. POVERTY STATUS IN THE PAST 12 MONTHS OF FAMILIES BY FAMILY TYPE BY PRESENCE OF RELATED CHILDREN UNDER 18 YEARS

Data Set: 2008-2012 American Community Survey 5-Year Estimates



# Female-headed Households with Related Children Below Poverty in the Past 12 Months

## Ayden town, North Carolina



Source: B17010. POVERTY STATUS IN THE PAST 12 MONTHS OF FAMILIES BY FAMILY TYPE BY PRESENCE OF RELATED CHILDREN UNDER 18 YEARS

Data Set: 2008-2012 American Community Survey 5-Year Estimates

**B17020 POVERTY STATUS IN THE PAST 12 MONTHS BY AGE - Universe: POPULATION FOR WHOM POVERTY STATUS IS DETERMINED**

Data Set: 2008-2012 American Community Survey 5-Year Estimates

	Ayden town, North Carolina					
	African American	Margin of Error (+/-)	% of AA By Age	White, Not Hispanic	Margin of Error (+/-)	% of NHW By Age
<b>Total:</b>	<b>2,522</b>	<b>300</b>	<b>100.0%</b>	<b>2,073</b>	<b>284</b>	<b>100.0%</b>
Income in the past 12 months below poverty level:	791	300	31.4%	326	146	15.7%
<b>Under 18 years</b>	400	NC	41.7%	63	NC	19.6%
<b>18 to 64 years</b>	324	160	25.9%	143	83	12.4%
<b>65 years and over</b>	67	NC	21.5%	120	NC	20.0%
Income in the past 12 months at or above poverty level:	1,731	359	68.6%	1,747	269	84.3%
<b>Under 18 years</b>	559	NC	58.3%	259	NC	80.4%
<b>18 to 64 years</b>	927	211	74.1%	1,008	199	87.6%
<b>65 years and over</b>	245	NC	78.5%	480	NC	80.0%

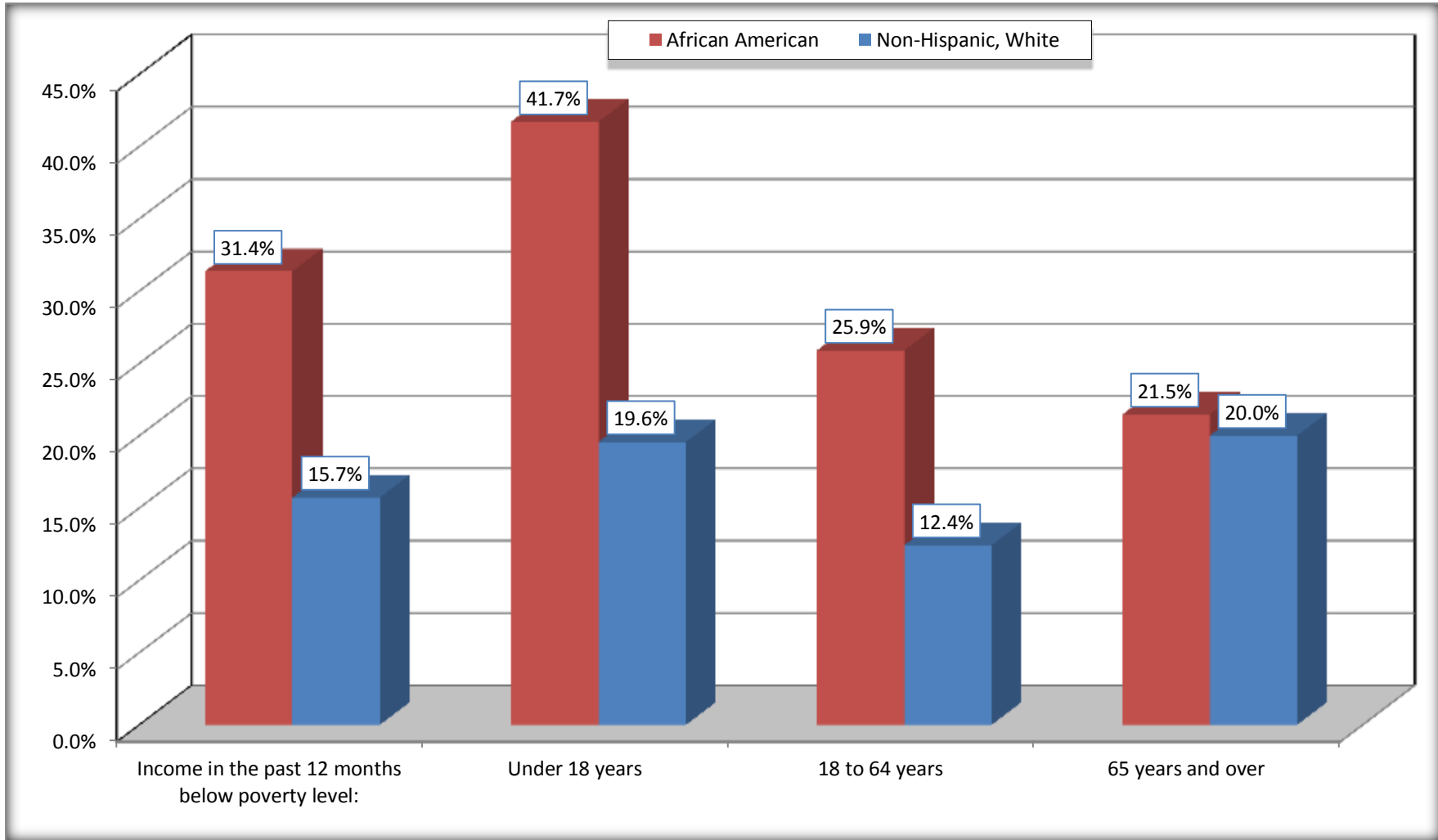
Source: U.S. Census Bureau, 2008-2012 American Community Survey

For information on confidentiality protection, sampling error, nonsampling error, and definitions, see Survey Methodology.

<http://www.census.gov/acs/www/UseData/index.htm>

# Population Below Poverty in the Past 12 Months

## Ayden town, North Carolina



Source: B17020 POVERTY STATUS IN THE PAST 12 MONTHS BY AGE - Universe: POPULATION FOR WHOM POVERTY STATUS IS DETERMINED  
Data Set: 2008-2012 American Community Survey 5-Year Estimates

**B19001. HOUSEHOLD INCOME IN THE PAST 12 MONTHS (IN 2010 INFLATION-ADJUSTED DOLLARS)**

Data Set: 2008-2012 American Community Survey 5-Year Estimates

	Ayden town, North Carolina					
	African American	Margin of Error (+/-)	% of AA Total	White, Not Hispanic	Margin of Error (+/-)	% of NHW Total
<b>Total:</b>	<b>950</b>	<b>156</b>	<b>100.0%</b>	<b>970</b>	<b>143</b>	<b>100.0%</b>
Less than \$ 10,000	183	76	19.3%	113	68	11.6%
\$ 10,000 to \$ 14,999	58	55	6.1%	128	65	13.2%
<b>\$ 15,000 to \$ 24,999</b>	224	NC	23.6%	123	NC	12.7%
<b>\$ 25,000 to \$ 34,999</b>	179	NC	18.8%	126	NC	13.0%
<b>\$ 35,000 to \$ 49,999</b>	172	NC	18.1%	149	NC	15.4%
<b>\$ 50,000 to \$ 74,999</b>	77	NC	8.1%	130	NC	13.4%
\$ 75,000 to \$ 99,999	14	27	1.5%	134	66	13.8%
<b>\$ 100,000 to \$ 149,999</b>	19	NC	2.0%	45	NC	4.6%
\$ 150,000 to \$ 199,999	0	18	0.0%	14	16	1.4%
\$ 200,000 or more	24	37	2.5%	8	12	0.8%

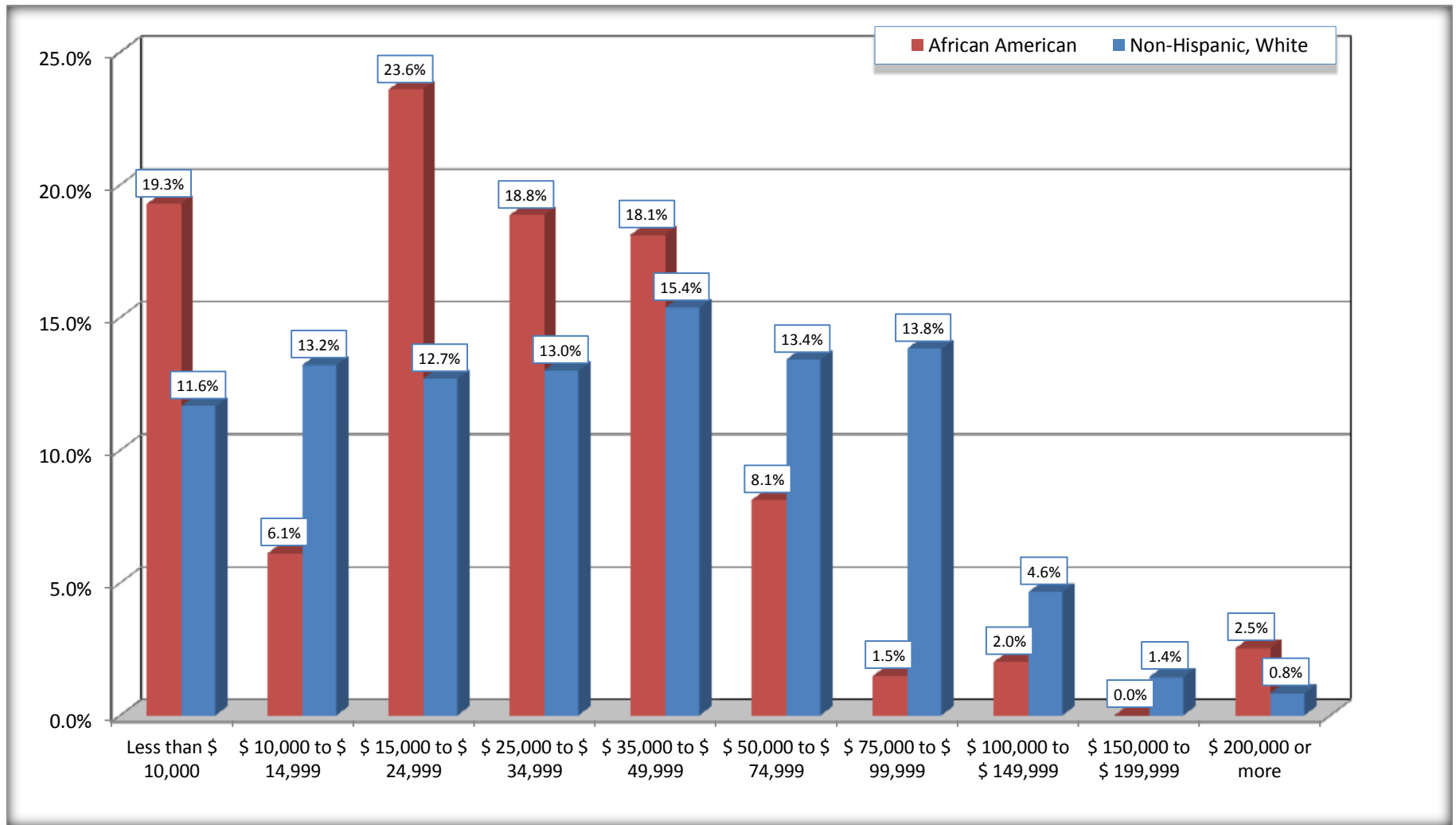
Source: U.S. Census Bureau, 2008-2012 American Community Survey

For information on confidentiality protection, sampling error, nonsampling error, and definitions, see Survey Methodology.

<http://www.census.gov/acs/www/UseData/index.htm>

# Household Income in the Past 12 Months

## Ayden town, North Carolina



Source: B19001. HOUSEHOLD INCOME IN THE PAST 12 MONTHS (IN 2010 INFLATION-ADJUSTED DOLLARS)

Data Set: 2008-2012 American Community Survey 5-Year Estimates

**B19013. MEDIAN HOUSEHOLD INCOME IN THE PAST 12 MONTHS (IN 2010 INFLATION-ADJUSTED DOLLARS)**

Data Set: 2008-2012 American Community Survey 5-Year Estimates

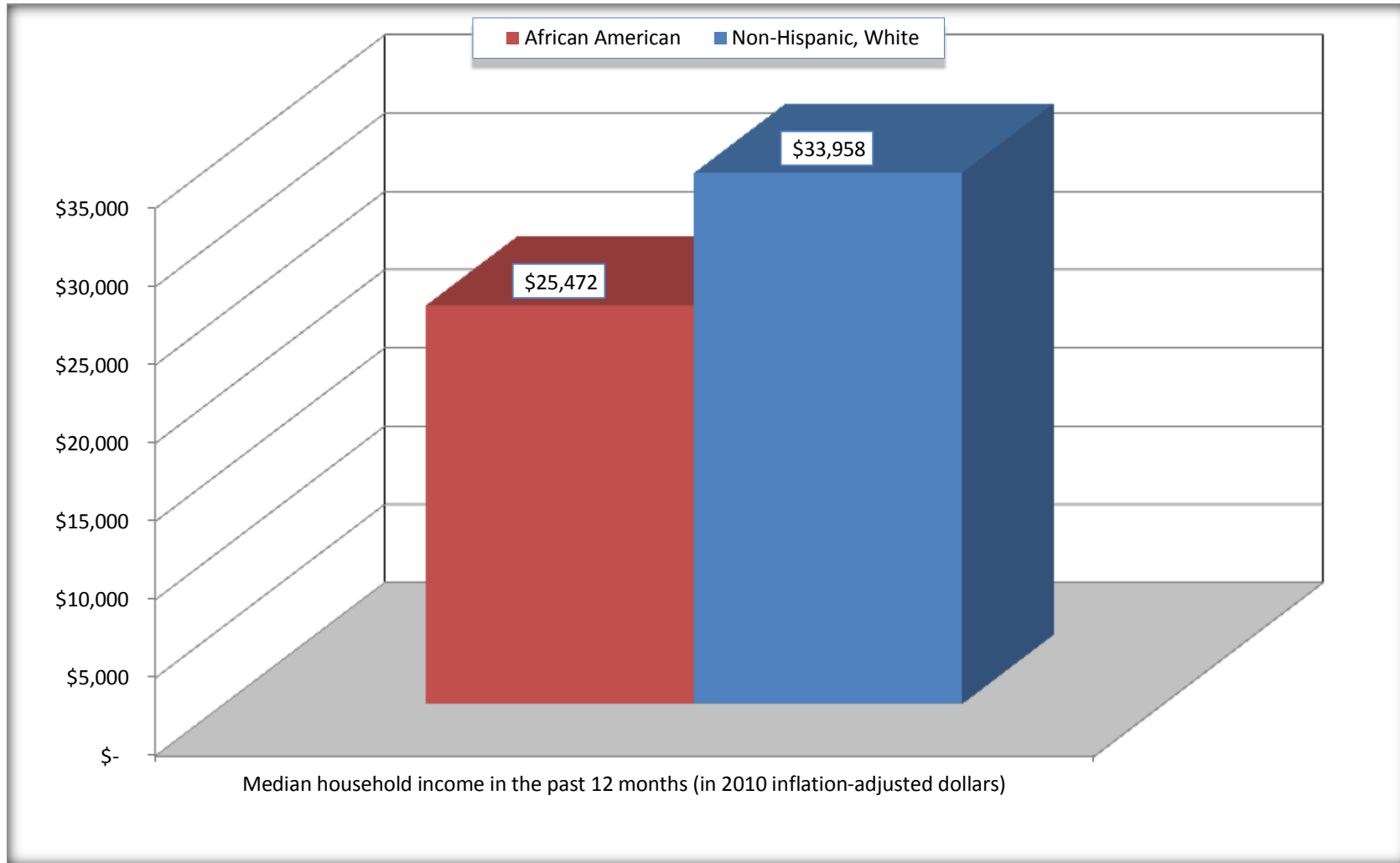
	Ayden town, North Carolina			
	African American	Margin of Error (+/-)	White, Not Hispanic	Margin of Error (+/-)
Median household income in the past 12 months (in 2010 inflation-adjusted dollars)	\$ 25,472	\$ 4,705	\$ 33,958	\$ 10,517

Source: U.S. Census Bureau, 2008-2012 American Community Survey

For information on confidentiality protection, sampling error, nonsampling error, and definitions, see Survey Methodology.  
<http://www.census.gov/acs/www/UseData/index.htm>

# Median Household Income in the Past 12 Months

## Ayden town, North Carolina



Source: B19013. MEDIAN HOUSEHOLD INCOME IN THE PAST 12 MONTHS (IN 2010 INFLATION-ADJUSTED DOLLARS)  
Data Set: 2008-2012 American Community Survey 5-Year Estimates

**B19101. FAMILY INCOME IN THE PAST 12 MONTHS (IN 2010 INFLATION-ADJUSTED DOLLARS)**

Data Set: 2008-2012 American Community Survey 5-Year Estimates

	Ayden town, North Carolina					
	African American	Margin of Error (+/-)	% of AA Total	White, Not Hispanic	Margin of Error (+/-)	% of NHW Total
<b>Total:</b>	<b>598</b>	<b>118</b>	<b>100.0%</b>	<b>532</b>	<b>97</b>	<b>100.0%</b>
Less than \$ 10,000	85	45	14.2%	32	28	6.0%
\$ 10,000 to \$ 14,999	40	45	6.7%	0	18	0.0%
<b>\$ 15,000 to \$ 24,999</b>	<b>164</b>	<b>NC</b>	<b>27.4%</b>	<b>36</b>	<b>NC</b>	<b>6.8%</b>
<b>\$ 25,000 to \$ 34,999</b>	<b>101</b>	<b>NC</b>	<b>16.9%</b>	<b>97</b>	<b>NC</b>	<b>18.2%</b>
<b>\$ 35,000 to \$ 49,999</b>	<b>87</b>	<b>NC</b>	<b>14.5%</b>	<b>110</b>	<b>NC</b>	<b>20.7%</b>
<b>\$ 50,000 to \$ 74,999</b>	<b>64</b>	<b>NC</b>	<b>10.7%</b>	<b>88</b>	<b>NC</b>	<b>16.5%</b>
<b>\$ 100,000 to \$ 149,999</b>	<b>19</b>	<b>NC</b>	<b>3.2%</b>	<b>45</b>	<b>NC</b>	<b>8.5%</b>
\$ 150,000 to \$ 199,999	0	18	0.0%	14	16	2.6%
\$ 200,000 or more	24	37	4.0%	0	18	0.0%

Source: U.S. Census Bureau, 2008-2012 American Community Survey

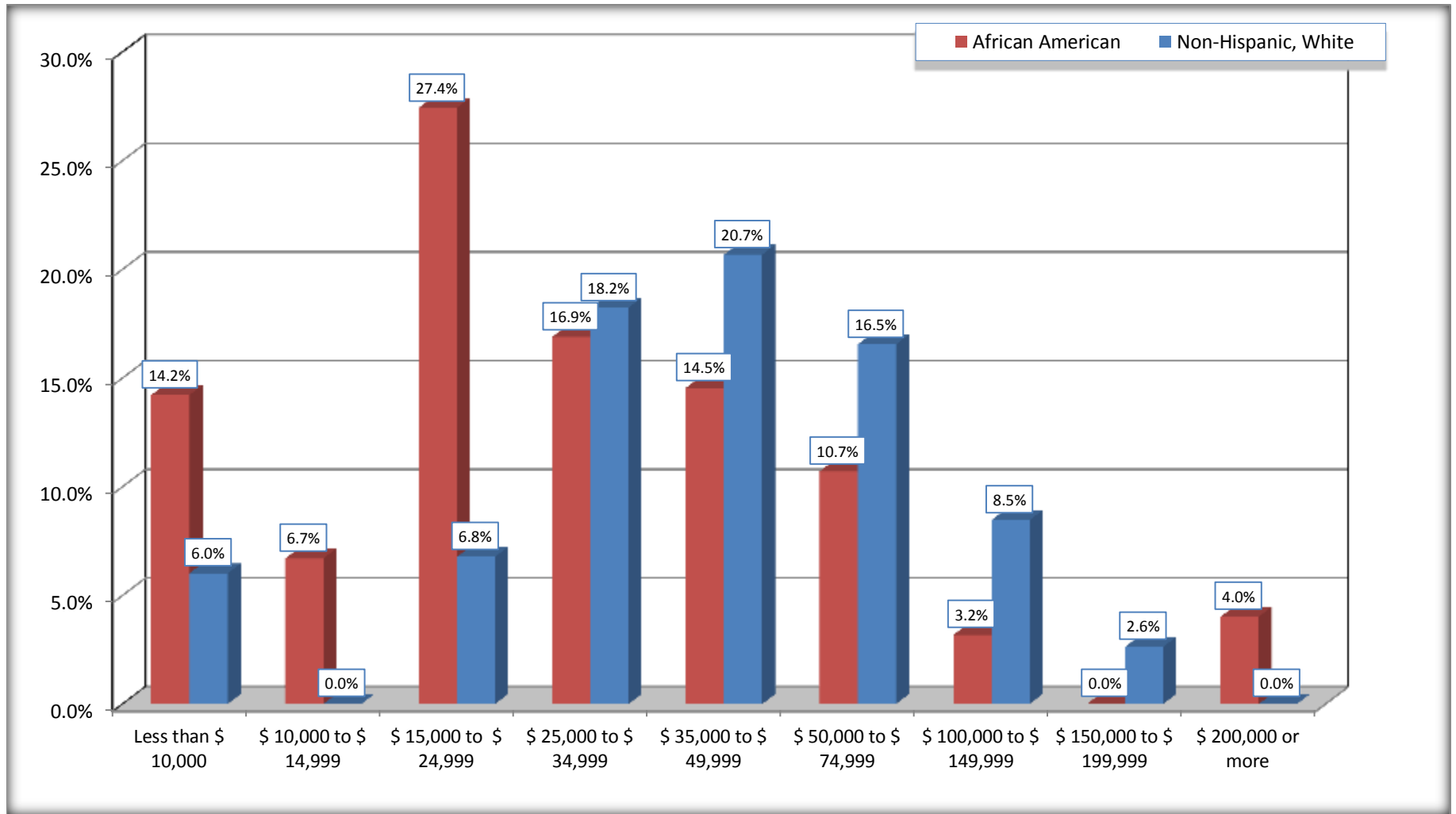
For information on confidentiality protection, sampling error, nonsampling error, and definitions, see Survey Methodology.

<http://www.census.gov/acs/www/UseData/index.htm>



# Family Income in the Past 12 Months

## Ayden town, North Carolina



Source: B19101. FAMILY INCOME IN THE PAST 12 MONTHS (IN 2010 INFLATION-ADJUSTED DOLLARS)  
Data Set: 2008-2012 American Community Survey 5-Year Estimates

**B19113. MEDIAN FAMILY INCOME IN THE PAST 12 MONTHS (IN 2010 INFLATION-ADJUSTED DOLLARS)**

Data Set: 2008-2012 American Community Survey 5-Year Estimates

	<b>Ayden town, North Carolina</b>			
	African American	Margin of Error (+/-)	White, Not Hispanic	Margin of Error (+/-)
Median family income in the past 12 months (in 2010 inflation-adjusted dollars)	\$ 25,833	\$ 6,264	\$ 47,750	\$ 12,596

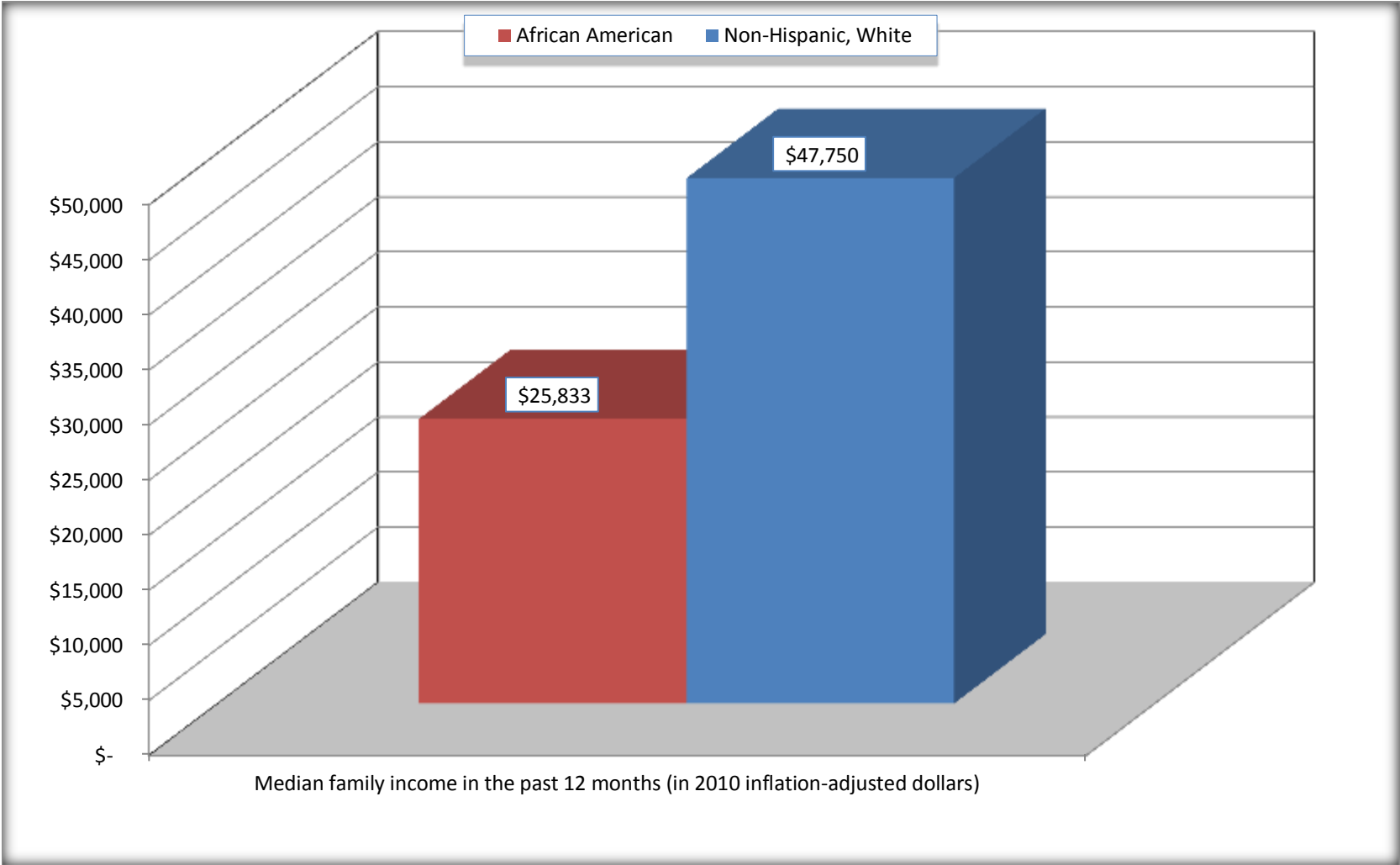
Source: U.S. Census Bureau, 2008-2012 American Community Survey

For information on confidentiality protection, sampling error, nonsampling error, and definitions, see Survey Methodology.

<http://www.census.gov/acs/www/UseData/index.htm>

# Median Family Income in the Past 12 Months

## Ayden town, North Carolina



Source: B19113. MEDIAN FAMILY INCOME IN THE PAST 12 MONTHS (IN 2010 INFLATION-ADJUSTED DOLLARS)  
Data Set: 2008-2012 American Community Survey 5-Year Estimates

**B19202. MEDIAN NONFAMILY HOUSEHOLD INCOME IN THE PAST 12 MONTHS (IN 2010 INFLATION-ADJUSTED DOLLARS)**

Data Set: 2008-2012 American Community Survey 5-Year Estimates

	<b>Ayden town, North Carolina</b>			
	African American	Margin of Error (+/-)	White, Not Hispanic	Margin of Error (+/-)
Median nonfamily household income in the past 12 months (in 2010 inflation-adjusted dollars)	\$ 22,500	\$ 16,224	\$ 15,926	\$ 4,377

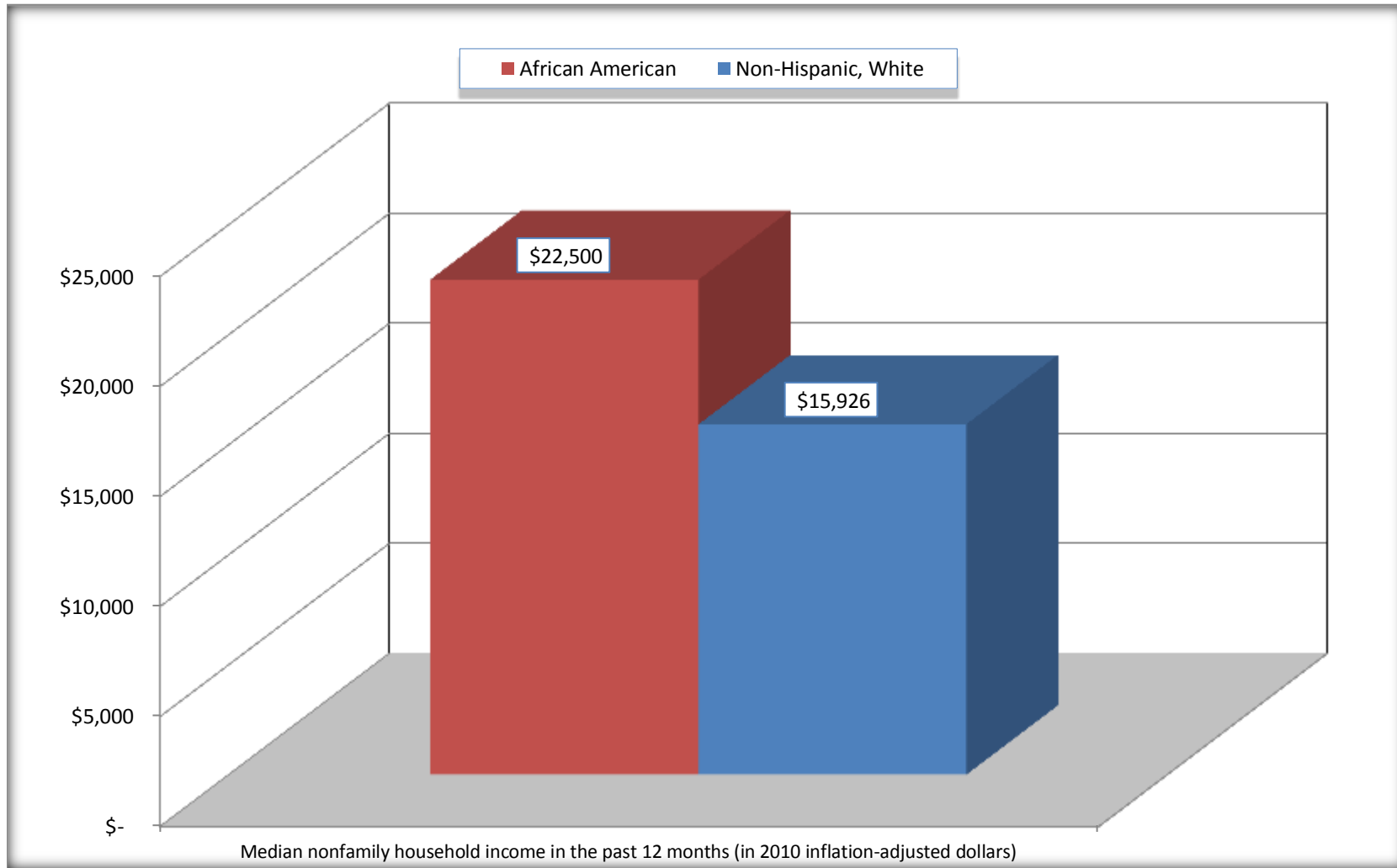
Source: U.S. Census Bureau, 2008-2012 American Community Survey

For information on confidentiality protection, sampling error, nonsampling error, and definitions, see Survey Methodology.

<http://www.census.gov/acs/www/UseData/index.htm>

# Median Non-Family Income in the Past 12 Months

## Ayden town, North Carolina



Source: B19202. MEDIAN NONFAMILY HOUSEHOLD INCOME IN THE PAST 12 MONTHS (IN 2010 INFLATION-ADJUSTED DOLLARS)  
Data Set: 2008-2012 American Community Survey 5-Year Estimates

**B19301. PER CAPITA INCOME IN THE PAST 12 MONTHS (IN 2010 INFLATION-ADJUSTED DOLLARS)**

Data Set: 2008-2012 American Community Survey 5-Year Estimates

	Ayden town, North Carolina			
	African American	Margin of Error (+/-)	White, Not Hispanic	Margin of Error (+/-)
Per capita income in the past 12 months (in 2010 inflation-adjusted dollars)	\$ 13,440	\$ 3,121	\$ 21,814	\$ 2,966

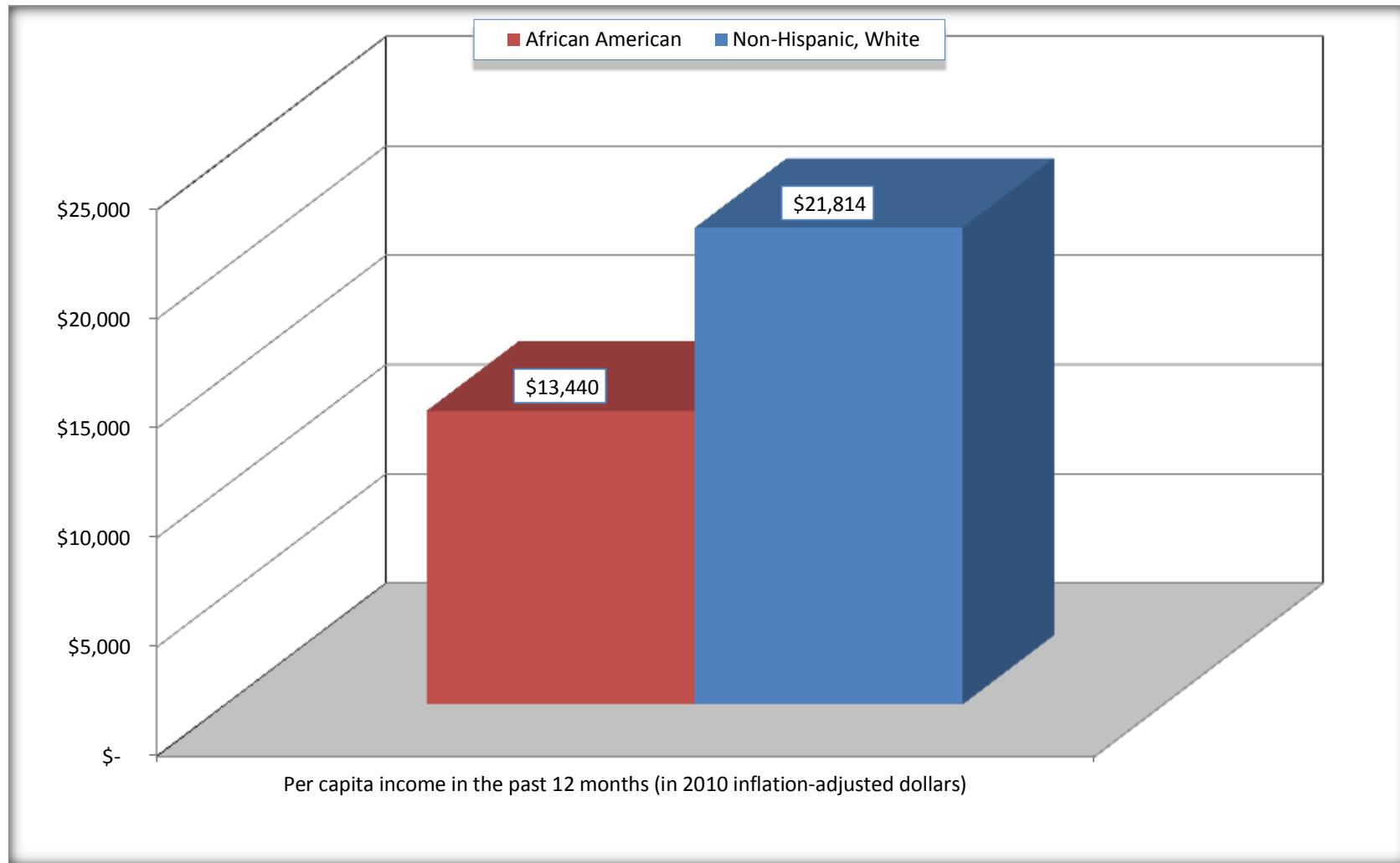
Source: U.S. Census Bureau, 2008-2012 American Community Survey

For information on confidentiality protection, sampling error, nonsampling error, and definitions, see Survey Methodology.

<http://www.census.gov/acs/www/UseData/index.htm>

## Per capita Income in the Past 12 Months

### Ayden town, North Carolina



Source: B19301. PER CAPITA INCOME IN THE PAST 12 MONTHS (IN 2010 INFLATION-ADJUSTED DOLLARS)  
Data Set: 2008-2012 American Community Survey 5-Year Estimates

**B20017. MEDIAN EARNINGS IN THE PAST 12 MONTHS (IN 2010 INFLATION-ADJUSTED DOLLARS) BY SEX BY WORK EXPERIENCE IN THE PAST 12 MONTHS FOR THE POPULATION 16 YEARS AND OVER WITH EARNINGS IN THE PAST 12 MONTHS**

Data Set: 2008-2012 American Community Survey 5-Year Estimates

	Ayden town, North Carolina			
	African American	Margin of Error (+/-)	White, Not Hispanic	Margin of Error (+/-)
Median earnings in the past 12 months (in 2010 inflation-adjusted dollars) --				
Total:	\$ 21,907	\$ 5,030	\$ 26,667	\$ 3,441
Male --				
Total	\$ 22,848	\$ 10,664	\$ 27,865	\$ 5,873
Worked full-time, year-round in the past 12 months	\$ 37,697	\$ 29,772	\$ 42,763	\$ 9,353
Other	\$ 6,477	\$ 8,369	\$ 14,659	\$ 3,725
Female --				
Total	\$ 21,222	\$ 7,414	\$ 26,094	\$ 4,012
Worked full-time, year-round in the past 12 months	\$ 26,793	\$ 8,395	\$ 32,008	\$ 17,611
Other	\$ 6,143	\$ 3,161	\$ 15,566	\$ 5,832

Source: U.S. Census Bureau, 2008-2012 American Community Survey

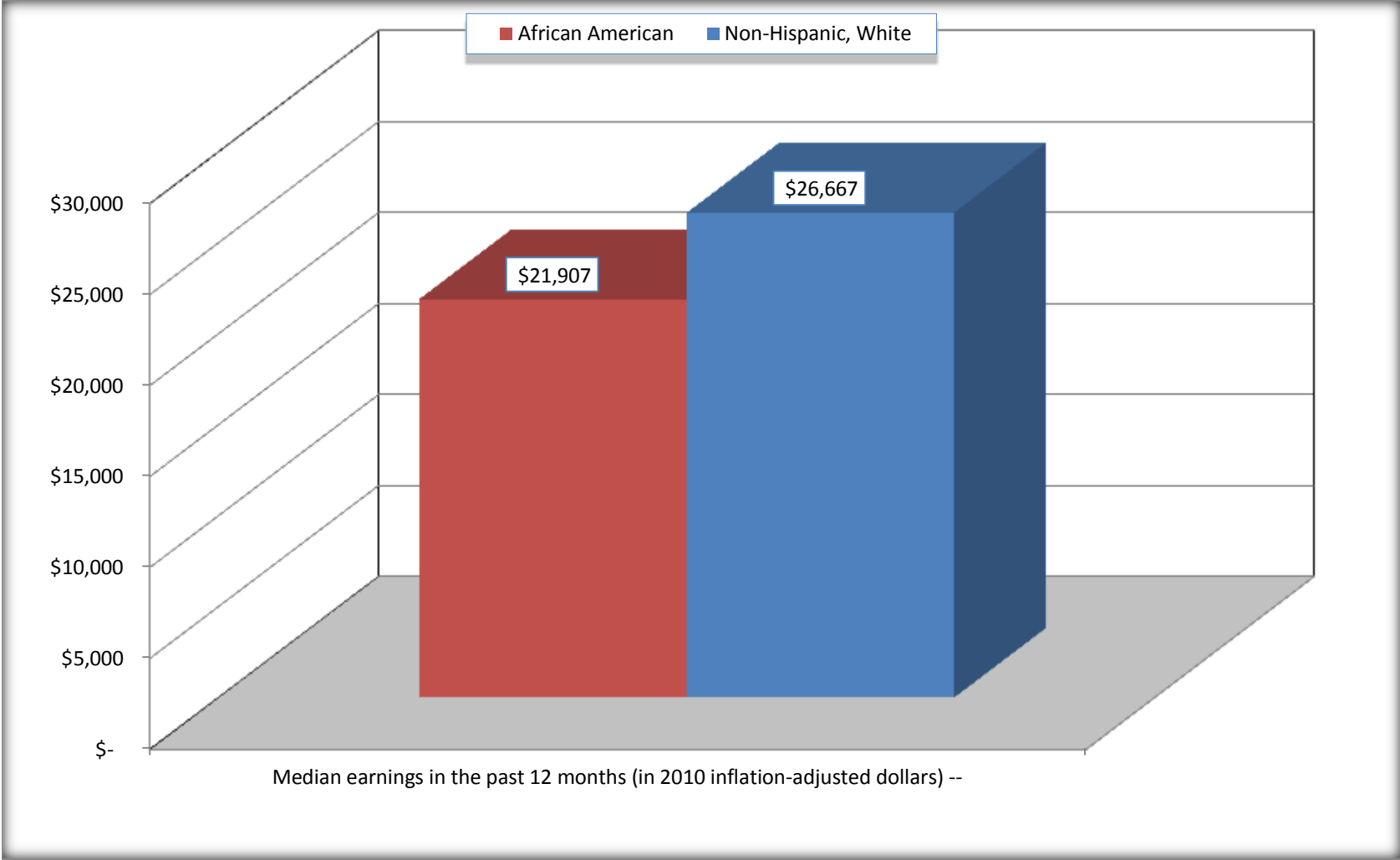
For information on confidentiality protection, sampling error, nonsampling error, and definitions, see Survey Methodology.

<http://www.census.gov/acs/www/UseData/index.htm>



# Median earnings in the Past 12 Months (16 Years and Over with Earnings)

## Ayden town, North Carolina



Source: B20017. MEDIAN EARNINGS IN THE PAST 12 MONTHS (IN 2010 INFLATION-ADJUSTED DOLLARS) BY SEX BY WORK EXPERIENCE IN THE PAST 12 MONTHS FOR THE POPULATION 16 YEARS AND OVER WITH EARNINGS IN THE PAST 12 MONTHS  
Data Set: 2008-2012 American Community Survey 5-Year Estimates

**B20005. SEX BY WORK EXPERIENCE IN THE PAST 12 MONTHS BY EARNINGS IN THE PAST 12 MONTHS (IN 2010 INFLATION-ADJUSTED DOLLARS) FOR THE POPULATION 16 YEARS AND OVER**

Data Set: 2008-2012 American Community Survey 5-Year Estimates

	Ayden town, North Carolina					
	African American	Margin of Error (+/-)	% of AA Total	White, Not Hispanic	Margin of Error (+/-)	% of NHW Total
<b>Total:</b>	<b>1,713</b>	<b>218</b>	<b>100.0%</b>	<b>1,809</b>	<b>233</b>	<b>100.0%</b>
Worked full-time, year-round in the past 12 months:	564	NC	32.9%	627	NC	34.7%
No earnings	0	NC	0.0%	0	NC	0.0%
With earnings:	564	NC	32.9%	627	NC	34.7%
\$ 1 to \$ 9,999 or loss	54	NC	3.2%	14	NC	0.8%
\$ 10,000 to \$ 19,999	61	NC	3.6%	54	NC	3.0%
\$ 20,000 to \$ 29,999	172	NC	10.0%	172	NC	9.5%
\$ 30,000 to \$ 49,999	190	NC	11.1%	184	NC	10.2%
\$ 50,000 to \$ 74,999	63	NC	3.7%	135	NC	7.5%
\$ 75,000 or more	24	NC	1.4%	68	NC	3.8%
Other:	1,149	NC	67.1%	1,182	NC	65.3%
No earnings	729	NC	42.6%	825	NC	45.6%
With earnings: less than full time, year-round	420	NC	24.5%	357	NC	19.7%
Male:	534	159	31.2%	783	153	43.3%
Worked full-time, year-round in the past 12 months:	269	111	15.7%	292	95	16.1%
No earnings	0	18	0.0%	0	18	0.0%
With earnings:	269	111	15.7%	292	95	16.1%
\$ 1 to \$ 9,999 or loss	25	NC	1.5%	14	NC	0.8%
\$ 10,000 to \$ 19,999	36	NC	2.1%	7	NC	0.4%
\$ 20,000 to \$ 29,999	72	NC	4.2%	78	NC	4.3%
\$ 30,000 to \$ 49,999	92	NC	5.4%	96	NC	5.3%
\$ 50,000 to \$ 74,999	44	NC	2.6%	89	NC	4.9%
\$ 75,000 or more	0	NC	0.0%	8	NC	0.4%

	Ayden town, North Carolina					
	African American	Margin of Error (+/-)	% of AA Total	White, Not Hispanic	Margin of Error (+/-)	% of NHW Total
Other:	265	136	15.5%	491	125	27.1%
No earnings	139	81	8.1%	322	103	17.8%
With earnings:	126	82	7.4%	169	68	9.3%
Female:	1,179	207	68.8%	1,026	159	56.7%
Worked full-time, year-round in the past 12 months:	295	112	17.2%	335	100	18.5%
No earnings	0	18	0.0%	0	18	0.0%
With earnings:	295	112	17.2%	335	100	18.5%
\$ 1 to \$ 9,999 or loss	29	NC	1.7%	0	NC	0.0%
\$ 10,000 to \$ 19,999	25	NC	1.5%	47	NC	2.6%
\$ 20,000 to \$ 29,999	100	NC	5.8%	94	NC	5.2%
\$ 30,000 to \$ 49,999	98	NC	5.7%	88	NC	4.9%
\$ 50,000 to \$ 74,999	19	NC	1.1%	46	NC	2.5%
\$ 75,000 or more	24	NC	1.4%	60	NC	3.3%
Other:	884	200	51.6%	691	124	38.2%
No earnings	590	176	34.4%	503	115	27.8%
With earnings:	294	121	17.2%	188	71	10.4%

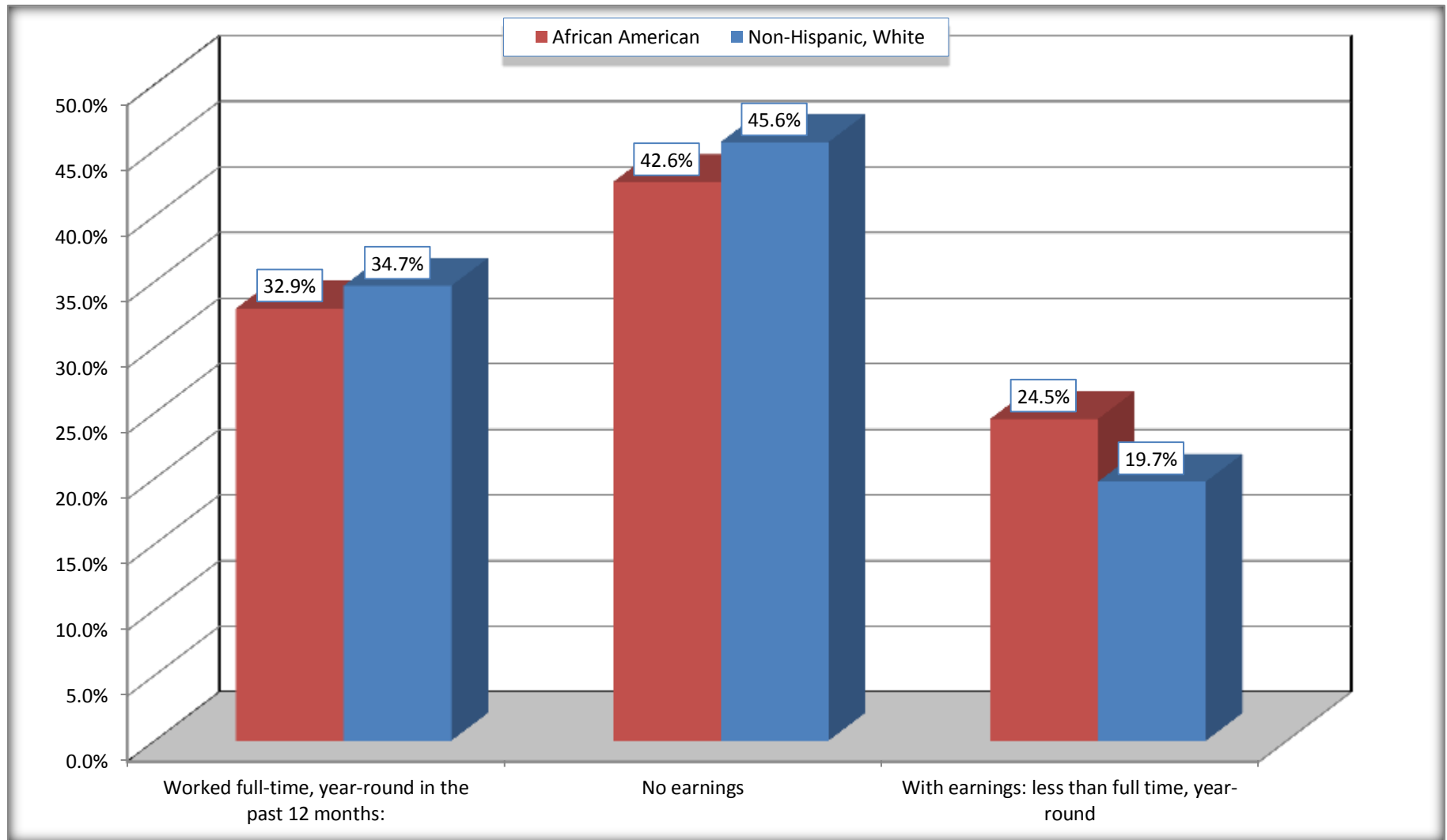
Source: U.S. Census Bureau, 2008-2012 American Community Survey

For information on confidentiality protection, sampling error, nonsampling error, and definitions, see Survey Methodology.

<http://www.census.gov/acs/www/UseData/index.htm>

# Employment and Earnings in in the Past 12 Months (16 Years and Over)

## Ayden town, North Carolina



Source: B20005. SEX BY WORK EXPERIENCE IN THE PAST 12 MONTHS BY EARNINGS IN THE PAST 12 MONTHS (IN 2010 INFLATION-ADJUSTED DOLLARS) FOR THE POPULATION 16 YEARS AND OVER

Data Set: 2008-2012 American Community Survey 5-Year Estimates

**C21001. SEX BY AGE BY VETERAN STATUS FOR THE CIVILIAN POPULATION 18 YEARS AND OVER**

Data Set: 2008-2012 American Community Survey 5-Year Estimates

	Ayden town, North Carolina					
	African American	Margin of Error (+/-)	% of AA Total	White, Not Hispanic	Margin of Error (+/-)	% of NHW Total
<b>Total:</b>	<b>1,594</b>	<b>200</b>	<b>100.0%</b>	<b>1,792</b>	<b>233</b>	<b>100.0%</b>
Veteran	130	NC	8.2%	212	NC	11.8%
Nonveteran	1,464	NC	91.8%	1,580	NC	88.2%
Male:	491	142	30.8%	772	152	43.1%
18 to 64 years:	455	144	28.5%	545	141	30.4%
Veteran	95	68	6.0%	75	45	4.2%
Nonveteran	360	133	22.6%	470	133	26.2%
65 years and over:	36	28	2.3%	227	90	12.7%
Veteran	11	17	0.7%	137	75	7.6%
Nonveteran	25	22	1.6%	90	44	5.0%
Female:	1,103	190	69.2%	1,020	158	56.9%
18 to 64 years:	800	163	50.2%	615	125	34.3%
Veteran	24	37	1.5%	0	18	0.0%
Nonveteran	776	167	48.7%	615	125	34.3%
65 years and over:	303	134	19.0%	405	116	22.6%
Veteran	0	18	0.0%	0	18	0.0%
Nonveteran	303	134	19.0%	405	116	22.6%

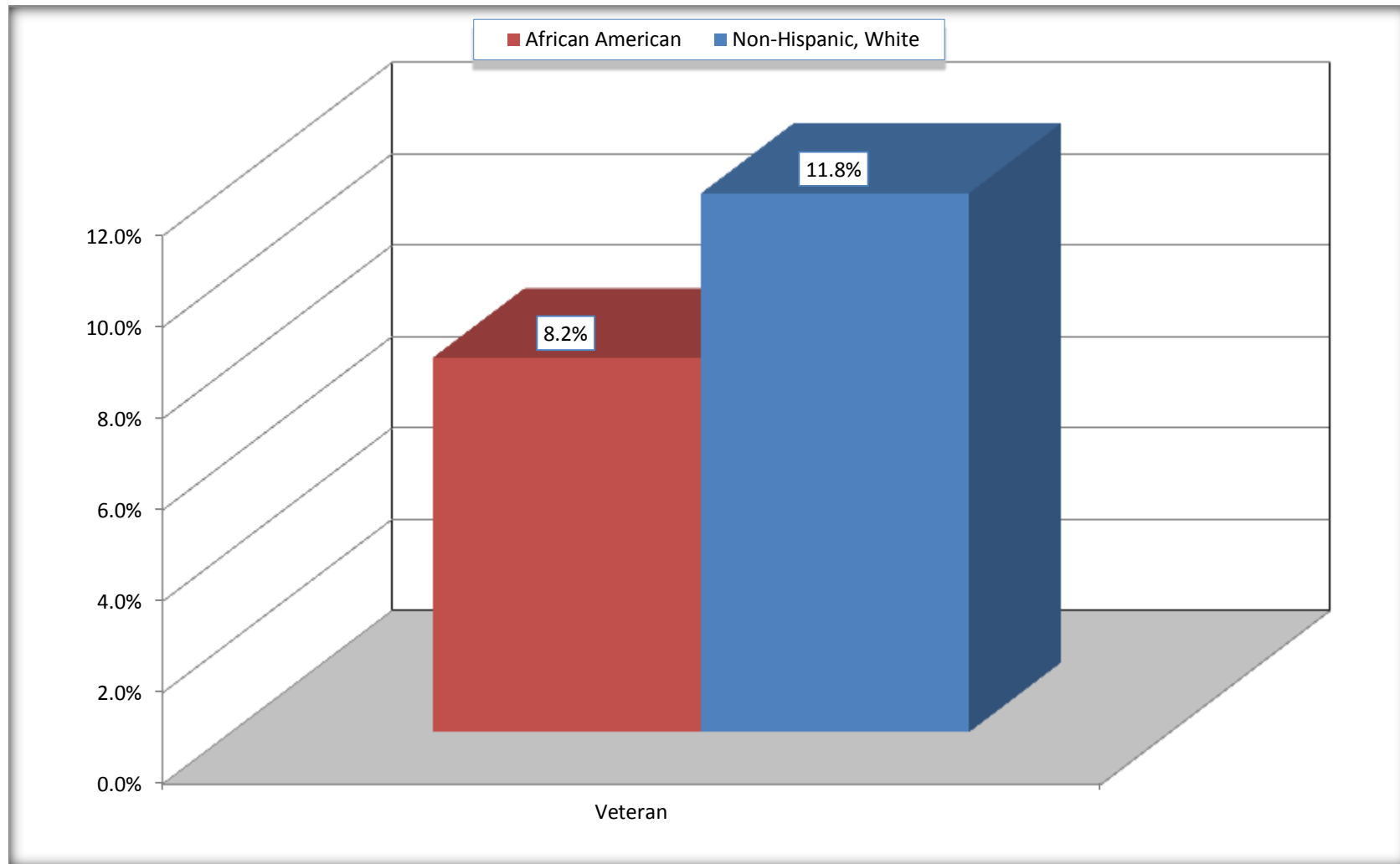
Source: U.S. Census Bureau, 2008-2012 American Community Survey

For information on confidentiality protection, sampling error, nonsampling error, and definitions, see Survey Methodology.

<http://www.census.gov/acs/www/UseData/index.htm>

# Veterans in the Civilian Population 18 Years and Over

## Ayden town, North Carolina



Source: C21001. SEX BY AGE BY VETERAN STATUS FOR THE CIVILIAN POPULATION 18 YEARS AND OVER  
Data Set: 2008-2012 American Community Survey 5-Year Estimates

**B22005. RECEIPT OF FOOD STAMPS/SNAP IN THE PAST 12 MONTHS BY RACE OF HOUSEHOLDER**

Data Set: 2008-2012 American Community Survey 5-Year Estimates

	Ayden town, North Carolina					
	African American	Margin of Error (+/-)	% of AA Total	White, Not Hispanic	Margin of Error (+/-)	% of NHW Total
<b>Total:</b>	<b>950</b>	<b>156</b>	<b>100.0%</b>	<b>970</b>	<b>143</b>	<b>100.0%</b>
HH received Food Stamps/SNAP in the past 12 months	376	109	39.6%	85	64	8.8%
HH did not receive Food Stamps/SNAP in the past 12 months	574	135	60.4%	885	138	91.2%

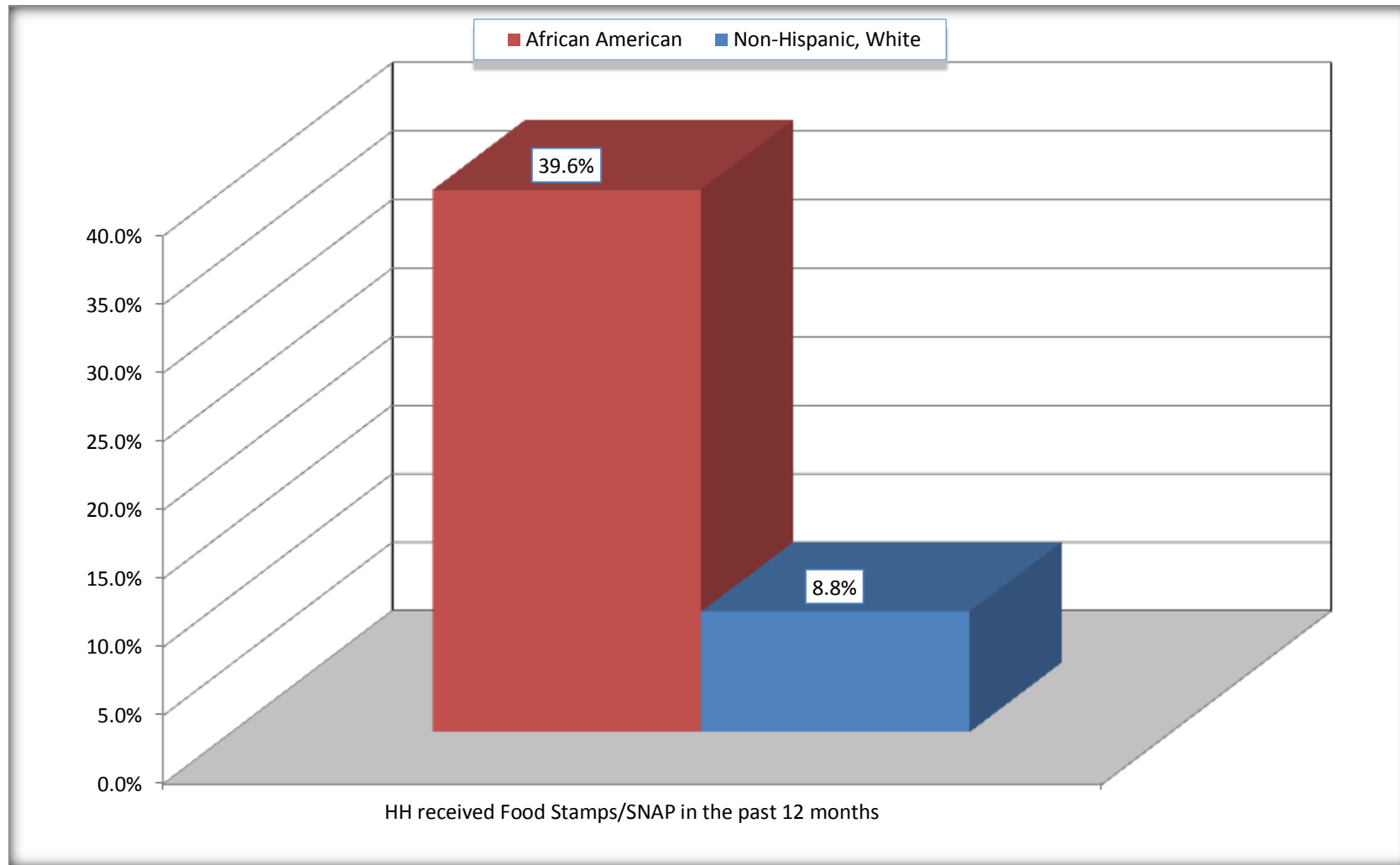
Source: U.S. Census Bureau, 2008-2012 American Community Survey

For information on confidentiality protection, sampling error, nonsampling error, and definitions, see Survey Methodology.

<http://www.census.gov/acs/www/UseData/index.htm>

# Receipt of Food Stamps/SNAP in the Past 12 Months by Household

## Ayden town, North Carolina



Source: B22005. RECEIPT OF FOOD STAMPS/SNAP IN THE PAST 12 MONTHS BY RACE OF HOUSEHOLDER  
Data Set: 2008-2012 American Community Survey 5-Year Estimates



**C23002. SEX BY AGE BY EMPLOYMENT STATUS FOR THE POPULATION 16 YEARS AND OVER**

Data Set: 2008-2012 American Community Survey 5-Year Estimates

	Ayden town, North Carolina					
	African American	Margin of Error (+/-)	% of AA Total	White, Not Hispanic	Margin of Error (+/-)	% of NHW Total
<b>Total:</b>	<b>1,713</b>	<b>218</b>	<b>100.0%</b>	<b>1,809</b>	<b>233</b>	<b>100.0%</b>
In labor force:	1,024	NC	59.8%	986	NC	54.5%
In Armed Forces	0	NC	0.0%	0	NC	0.0%
Civilian:	990	NC	57.8%	938	NC	51.9%
Employed	895	NC	52.2%	905	NC	50.0%
Unemployed	129	NC	7.5%	81	NC	4.5%
Not in labor force	689	NC	40.2%	823	NC	45.5%
Male:	534	159	31.2%	783	153	43.3%
16 to 64 years:	498	161	29.1%	556	142	30.7%
In labor force:	382	134	22.3%	458	117	25.3%
In Armed Forces	0	18	0.0%	0	18	0.0%
Civilian:	382	134	22.3%	458	117	25.3%
Employed	358	128	20.9%	391	107	21.6%
Unemployed	24	32	1.4%	67	45	3.7%
Not in labor force	116	73	6.8%	98	63	5.4%
65 years and over:	36	28	2.1%	227	90	12.5%
In labor force:	25	22	1.5%	12	16	0.7%
Employed	25	22	1.5%	12	16	0.7%
Unemployed	0	18	0.0%	0	18	0.0%
Not in labor force	11	17	0.6%	215	89	11.9%

	Ayden town, North Carolina					
	African American	Margin of Error (+/-)	% of AA Total	White, Not Hispanic	Margin of Error (+/-)	% of NHW Total
Female:	1,179	207	68.8%	1,026	159	56.7%
16 to 64 years:	876	183	51.1%	621	127	34.3%
In labor force:	608	177	35.5%	480	107	26.5%
In Armed Forces	0	18	0.0%	0	18	0.0%
Civilian:	608	177	35.5%	480	107	26.5%
Employed	503	138	29.4%	466	107	25.8%
Unemployed	105	80	6.1%	14	16	0.8%
Not in labor force	268	114	15.6%	141	59	7.8%
65 years and over:	303	134	17.7%	405	116	22.4%
In labor force:	9	14	0.5%	36	28	2.0%
Employed	9	14	0.5%	36	28	2.0%
Unemployed	0	18	0.0%	0	18	0.0%
Not in labor force	294	135	17.2%	369	112	20.4%

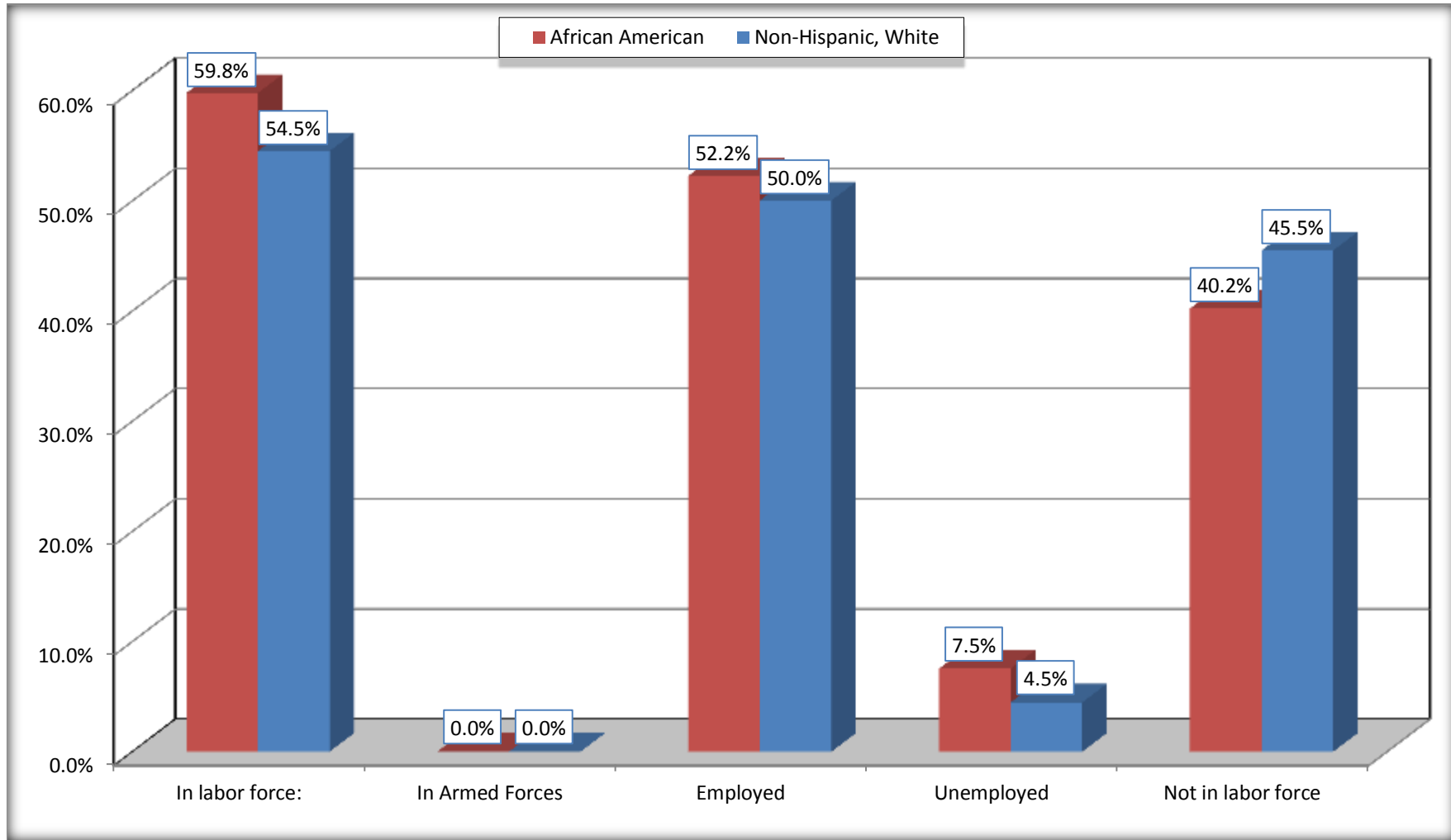
Source: U.S. Census Bureau, 2008-2012 American Community Survey

For information on confidentiality protection, sampling error, nonsampling error, and definitions, see Survey Methodology.

<http://www.census.gov/acs/www/UseData/index.htm>

# Employment Status for the Population 16 years and over

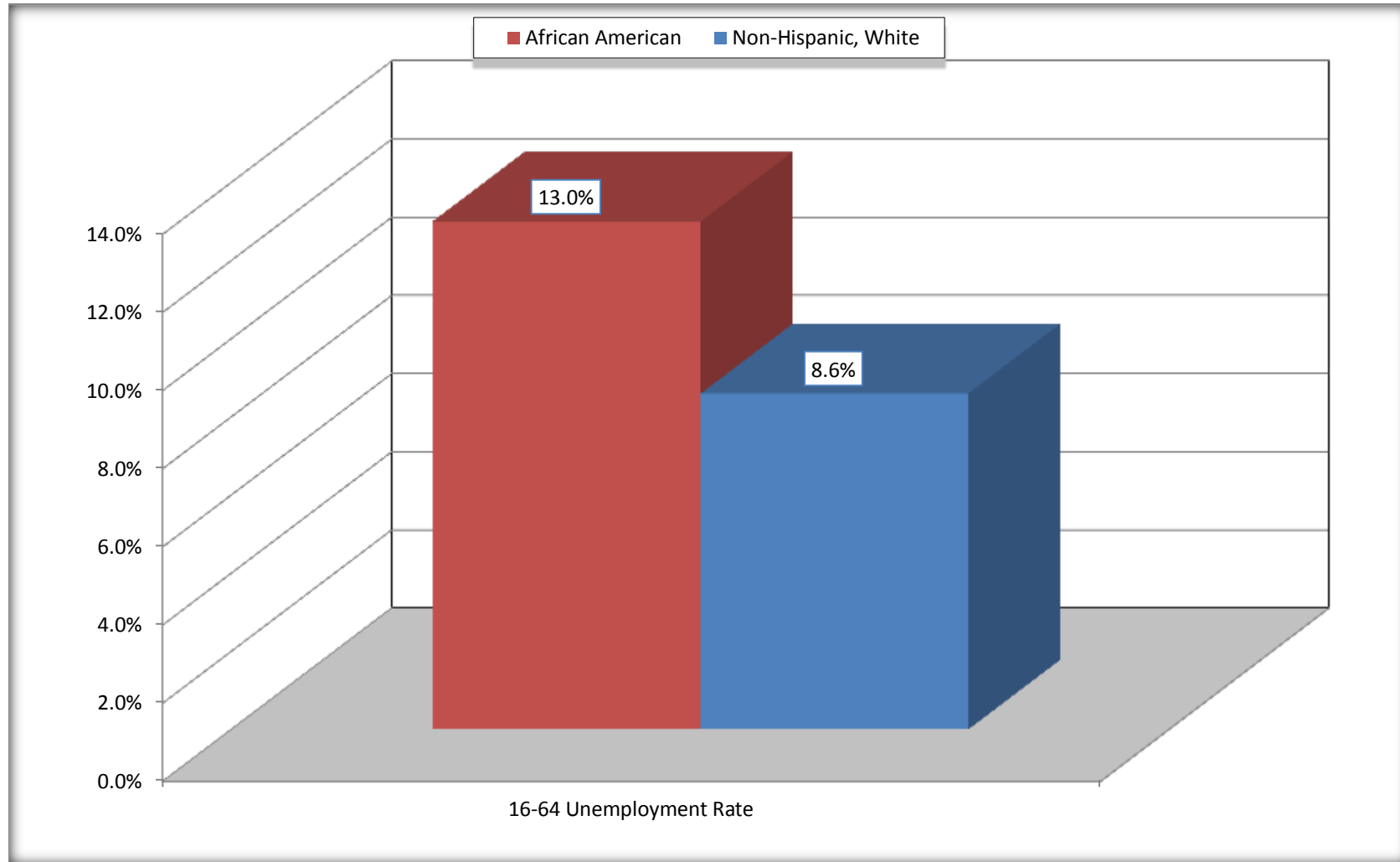
## Ayden town, North Carolina



Source: C23002. SEX BY AGE BY EMPLOYMENT STATUS FOR THE POPULATION 16 YEARS AND OVER  
Data Set: 2008-2012 American Community Survey 5-Year Estimates

# Unemployment of Working Age Population (Ages 16 to 64) (As a Percent of 16-64 Civilian Labor Force)

## Ayden town, North Carolina



Source: C23002. SEX BY AGE BY EMPLOYMENT STATUS FOR THE POPULATION 16 YEARS AND OVER  
Data Set: 2008-2012 American Community Survey 5-Year Estimates

**C24010. SEX BY OCCUPATION FOR THE CIVILIAN EMPLOYED POPULATION 16 YEARS AND OVER**

Data Set: 2008-2012 American Community Survey 5-Year Estimates

	Ayden town, North Carolina					
	African American	Margin of Error (+/-)	% of AA Total	White, Not Hispanic	Margin of Error (+/-)	% of NHW Total
<b>Total:</b>	<b>895</b>	<b>150</b>	<b>100.0%</b>	<b>905</b>	<b>179</b>	<b>100.0%</b>
Management, professional, and related occupations	213	NC	23.8%	340	NC	37.6%
Service occupations	182	NC	20.3%	138	NC	15.2%
Sales and office occupations	193	NC	21.6%	235	NC	26.0%
Natural resources, construction, and maintenance occupations:	99	NC	11.1%	101	NC	11.2%
Production, transportation, and material moving occupations	208	NC	23.2%	91	NC	10.1%
Male:	383	126	42.8%	403	108	44.5%
Management, business, science, and arts occupations:	35	39	3.9%	143	62	15.8%
Service occupations	105	79	11.7%	48	41	5.3%
Sales and office occupations	0	18	0.0%	20	25	2.2%
Natural resources, construction, and maintenance occupations:	99	79	11.1%	101	53	11.2%
Production, transportation, and material moving occupations	144	77	16.1%	91	56	10.1%
Female:	512	138	57.2%	502	106	55.5%
Management, professional, and related occupations	178	95	19.9%	197	73	21.8%
Service occupations	77	43	8.6%	90	56	9.9%
Sales and office occupations	193	101	21.6%	215	85	23.8%
Natural resources, construction, and maintenance occupations:	0	18	0.0%	0	18	0.0%
Production, transportation, and material moving occupations	64	62	7.2%	0	18	0.0%

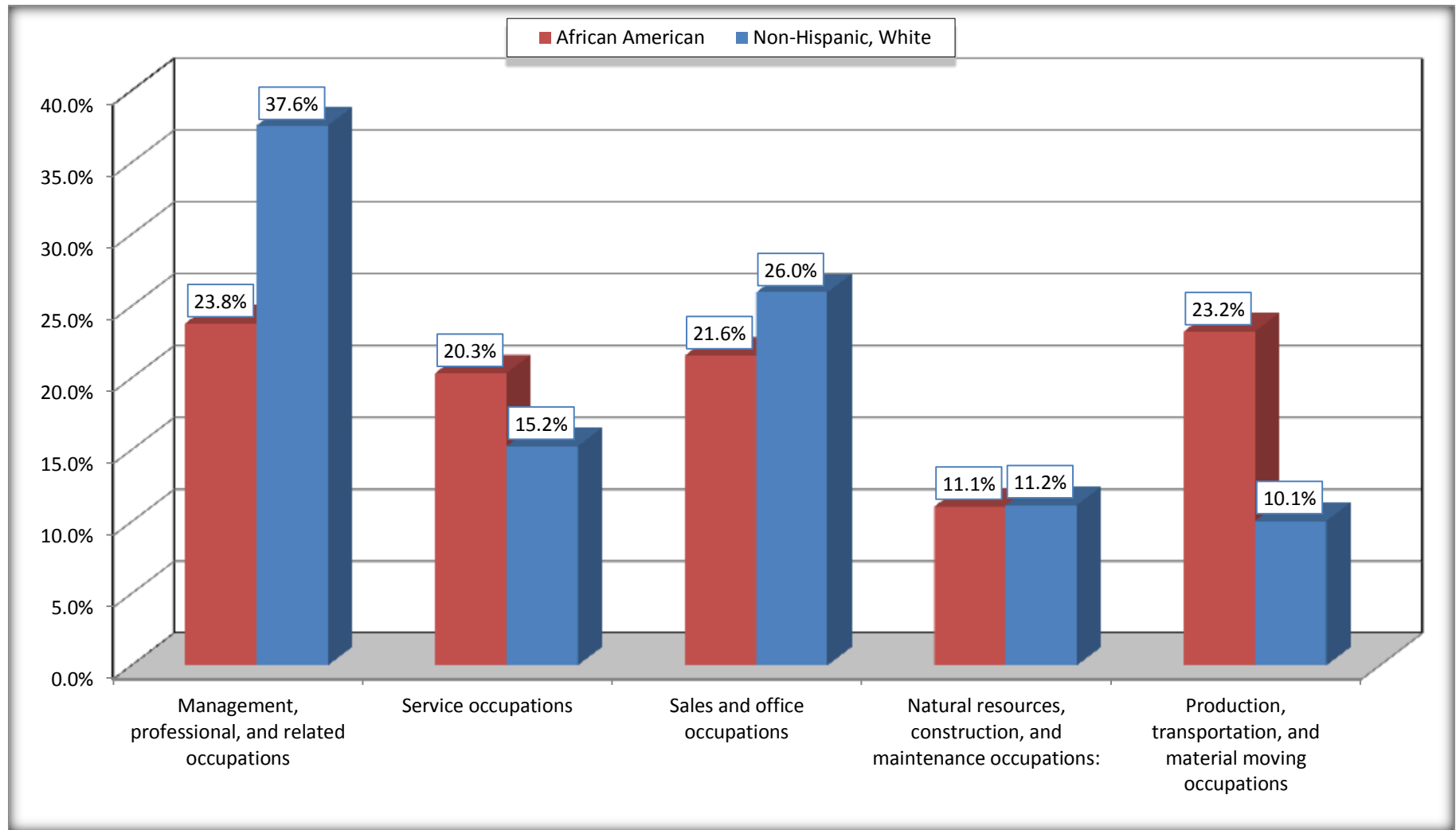
Source: U.S. Census Bureau, 2008-2012 American Community Survey

For information on confidentiality protection, sampling error, nonsampling error, and definitions, see Survey Methodology.

<http://www.census.gov/acs/www/UseData/index.htm>

# Occupation for the Civilian Employed 16 Years and Over Population

## Ayden town, North Carolina



Source: C24010. SEX BY OCCUPATION FOR THE CIVILIAN EMPLOYED POPULATION 16 YEARS AND OVER  
Data Set: 2008-2012 American Community Survey 5-Year Estimates

**B25003. TENURE - Universe: OCCUPIED HOUSING UNITS**

Data Set: 2008-2012 American Community Survey 5-Year Estimates

	Ayden town, North Carolina					
	African American	Margin of Error (+/-)	% of AA Total	White, Not Hispanic	Margin of Error (+/-)	% of NHW Total
<b>Total:</b>	<b>950</b>	<b>156</b>	<b>100.0%</b>	<b>970</b>	<b>143</b>	<b>100.0%</b>
Owner occupied	280	84	29.5%	600	125	61.9%
Renter occupied	670	144	70.5%	370	92	38.1%

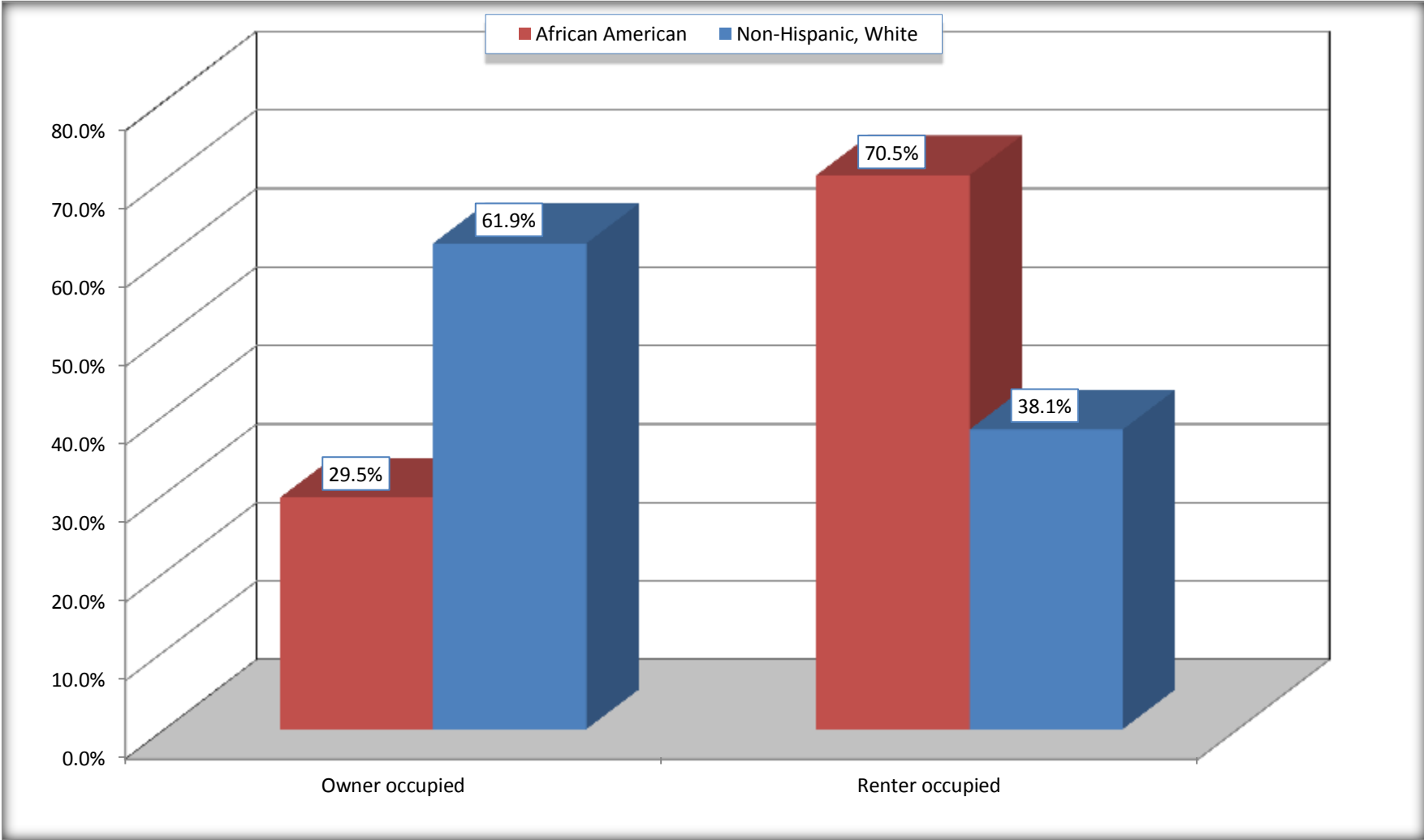
Source: U.S. Census Bureau, 2008-2012 American Community Survey

For information on confidentiality protection, sampling error, nonsampling error, and definitions, see Survey Methodology.

<http://www.census.gov/acs/www/UseData/index.h>

# Home Owners and Renters by Household

## Ayden town, North Carolina



Source: B25003. TENURE - Universe: OCCUPIED HOUSING UNITS  
Data Set: 2008-2012 American Community Survey 5-Year Estimates



**B25014. OCCUPANTS PER ROOM - Universe: OCCUPIED HOUSING UNITS**

Data Set: 2008-2012 American Community Survey 5-Year Estimates

	Ayden town, North Carolina					
	African American	Margin of Error (+/-)	% of AA Total	White, Not Hispanic	Margin of Error (+/-)	% of NHW Total
<b>Total:</b>	<b>950</b>	<b>156</b>	<b>100.0%</b>	<b>970</b>	<b>143</b>	<b>100.0%</b>
1.00 or less occupants per room	917	161	96.5%	964	141	99.4%
1.01 or more occupants per room	33	31	3.5%	6	10	0.6%

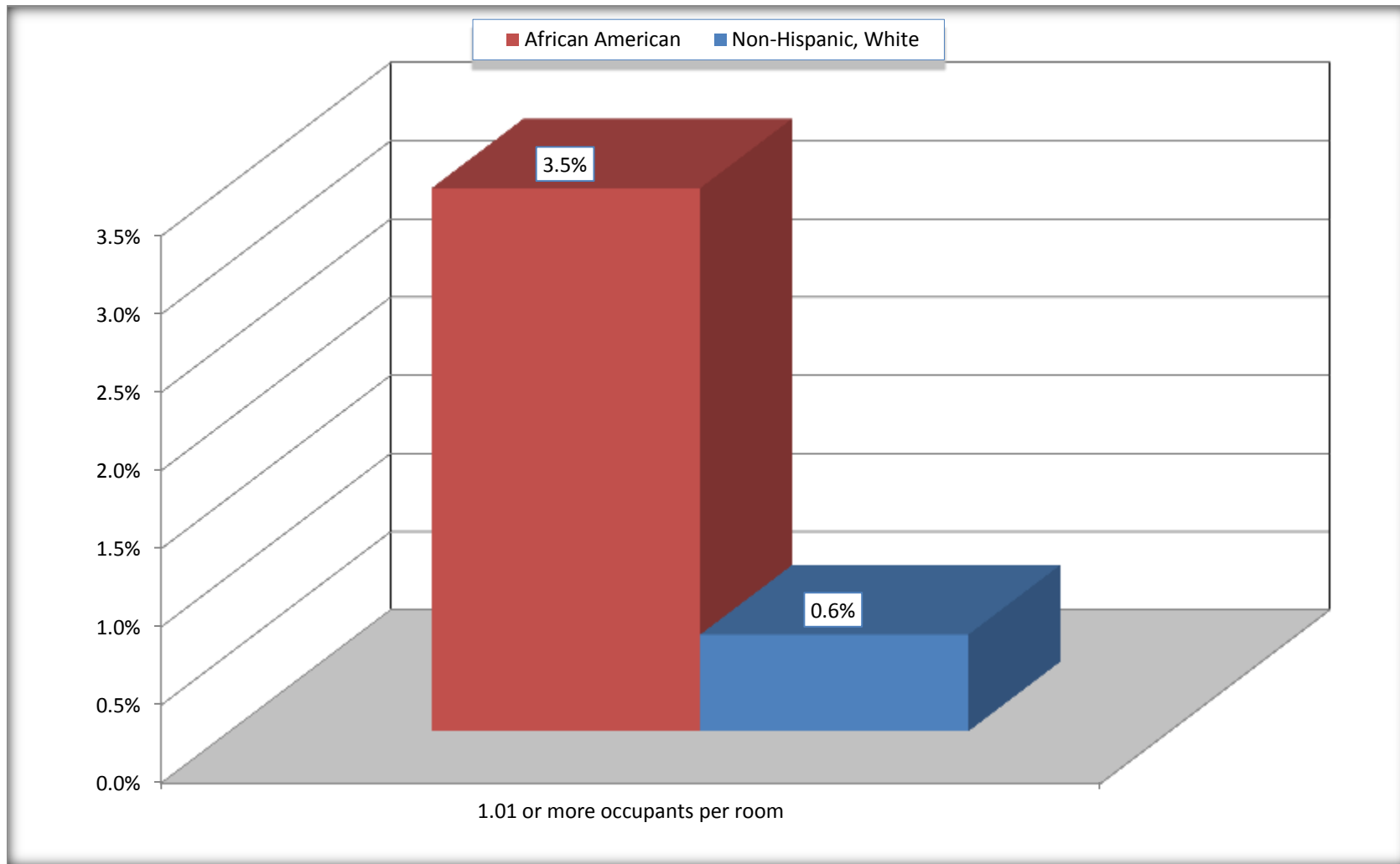
Source: U.S. Census Bureau, 2008-2012 American Community Survey

For information on confidentiality protection, sampling error, nonsampling error, and definitions, see Survey Methodology.

<http://www.census.gov/acs/www/UseData/index.ht>

# More than One Person per Room (Crowding) by Household

## Ayden town, North Carolina



Source: B25014. OCCUPANTS PER ROOM - Universe: OCCUPIED HOUSING UNITS  
Data Set: 2008-2012 American Community Survey 5-Year Estimates

**B18101. AGE BY DISABILITY STATUS**

Data Set: 2008-2012 American Community Survey 5-Year Estimates

	Ayden town, North Carolina					
	African American	Margin of Error (+/-)	% of AA Total	White, Not Hispanic	Margin of Error (+/-)	% of NHW Total
<b>Total:</b>	<b>2,522</b>	<b>300</b>	<b>100.0%</b>	<b>2,081</b>	<b>284</b>	<b>100.0%</b>
Under 18 years:	959	204	38.0%	330	24	15.9%
With a disability	28	32	1.1%	15	19	0.7%
No disability	931	201	36.9%	315	120	15.1%
18 to 64 years:	1,251	191	49.6%	1,151	209	55.3%
With a disability	239	111	9.5%	176	95	8.5%
No disability	1,012	187	40.1%	975	197	46.9%
65 years and over:	312	139	12.4%	600	173	28.8%
With a disability	185	112	7.3%	271	106	13.0%
No disability	127	73	5.0%	329	142	15.8%

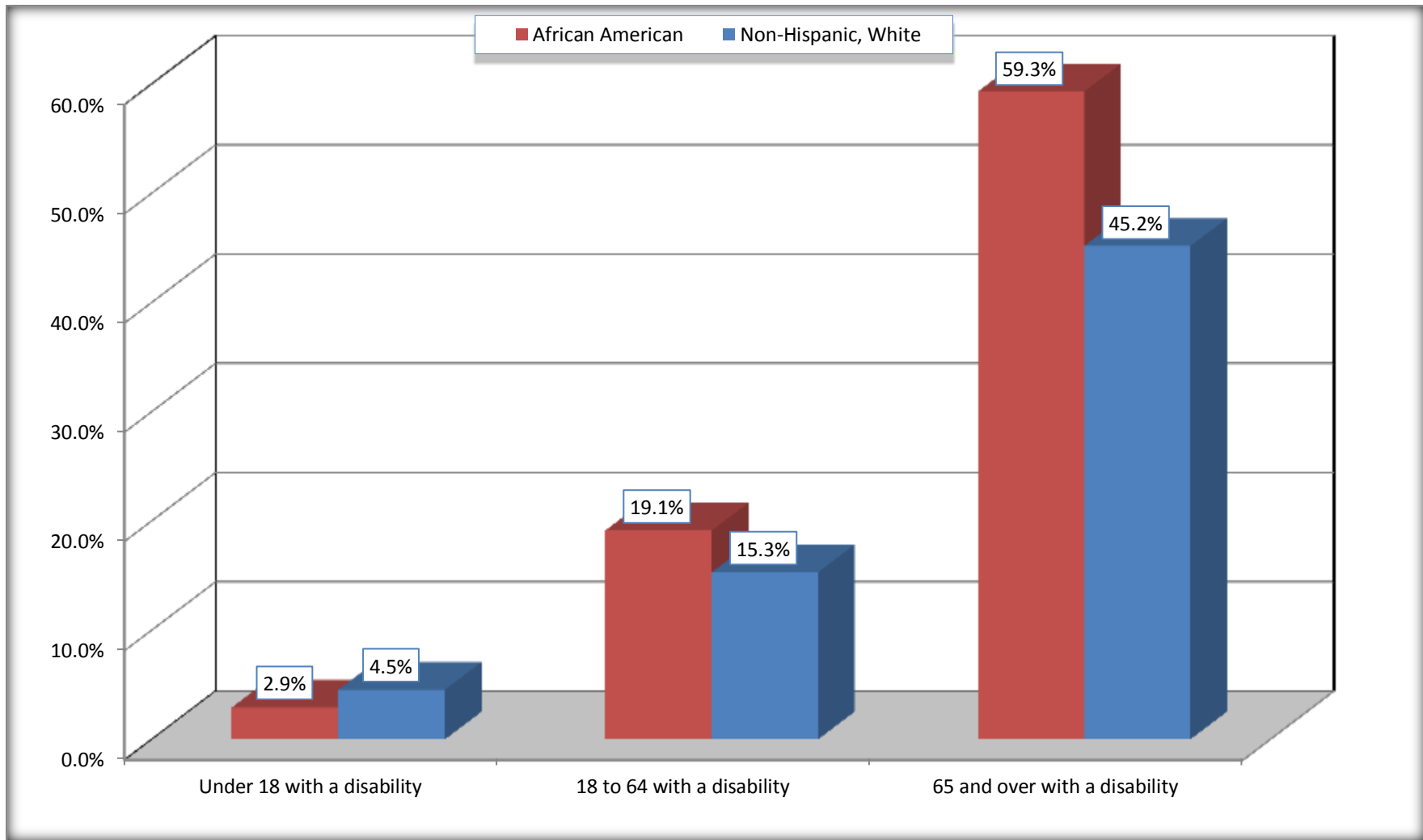
Source: U.S. Census Bureau, 2008-2012 American Community Survey

For information on confidentiality protection, sampling error, nonsampling error, and definitions, see Survey Methodology.

<http://www.census.gov/acs/www/UseData/index.htm>

# Disability by Age

## Ayden town, North Carolina



Source: B18101. AGE BY DISABILITY STATUS  
Data Set: 2008-2012 American Community Survey 5-Year Estimates

**C27001B. HEALTH INSURANCE COVERAGE STATUS BY AGE**

Data Set: 2008-2012 American Community Survey 5-Year Estimates

	<b>Ayden town, North Carolina</b>					
	African American	Margin of Error (+/-)	% of AA Total	White, Not Hispanic	Margin of Error (+/-)	% of NHW Total
<b>Total:</b>	<b>2,522</b>	<b>300</b>	<b>100.0%</b>	<b>2,081</b>	<b>284</b>	<b>100.0%</b>
Under 18 years:	959	204	38.0%	330	120	15.9%
With health insurance coverage	828	181	32.8%	294	113	14.1%
No health insurance coverage	131	133	5.2%	36	50	1.7%
18 to 64 years:	1,251	191	49.6%	1,151	209	55.3%
With health insurance coverage	843	184	33.4%	803	175	38.6%
No health insurance coverage	408	137	16.2%	348	110	16.7%
65 years and over:	312	139	12.4%	600	173	28.8%
With health insurance coverage	312	139	12.4%	600	173	28.8%
No health insurance coverage	0	18	0.0%	0	18	0.0%

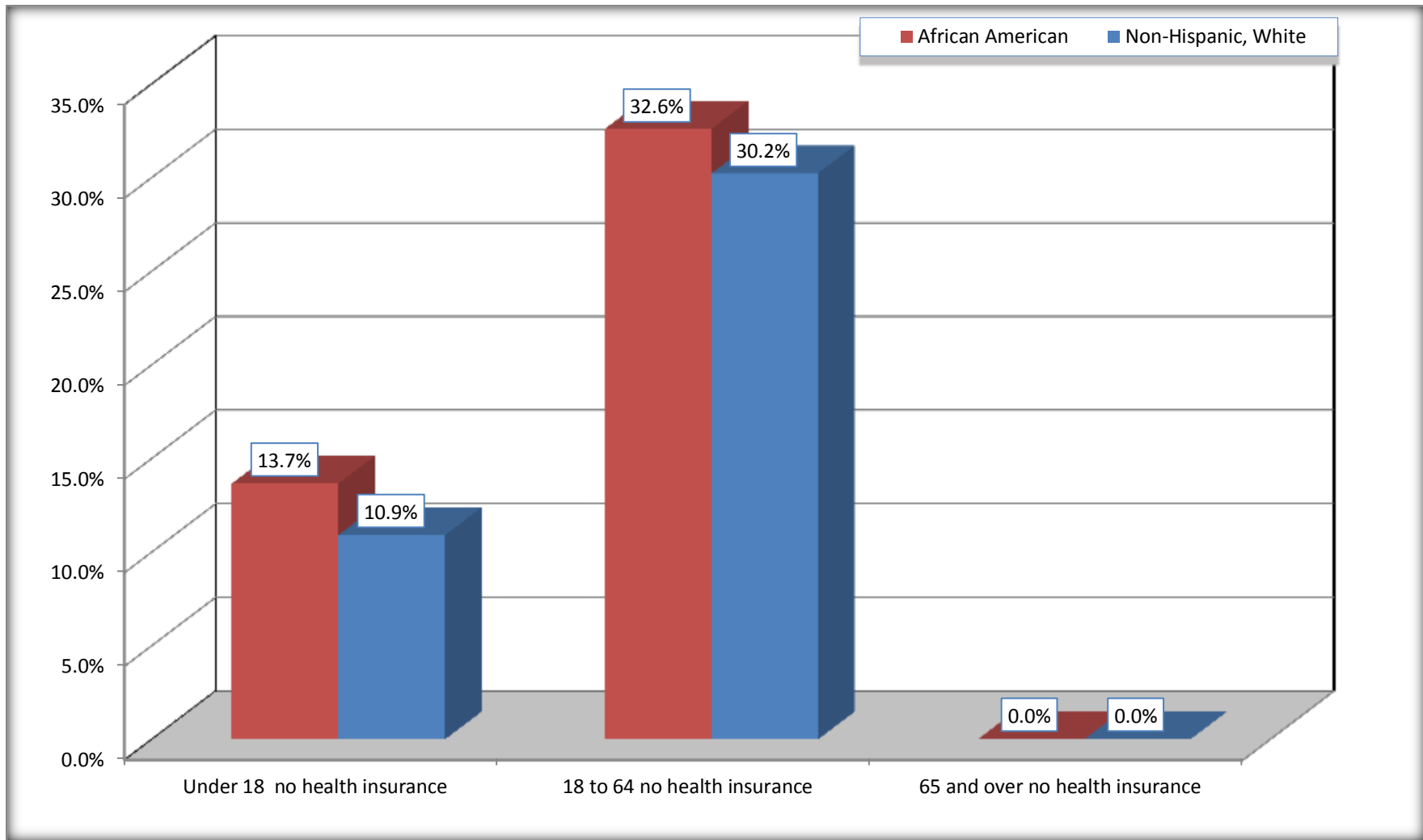
Source: U.S. Census Bureau, 2008-2012 American Community Survey

For information on confidentiality protection, sampling error, nonsampling error, and definitions, see Survey Methodology.

<http://www.census.gov/acs/www/UseData/index.htm>

# Lack of Health Insurance Coverage by Age

## Ayden town, North Carolina



Source: C27001B. HEALTH INSURANCE COVERAGE STATUS BY AGE  
Data Set: 2008-2012 American Community Survey 5-Year Estimates