

# **Selected Socio-Economic Data**

## **Old Jamestown CDP, Missouri**

### **African American and White, Not Hispanic**

**Data Set: 2008-2012 American Community Survey 5-Year Estimates**

[www.fairvote2020.org](http://www.fairvote2020.org)

[www.fairdata2000.com](http://www.fairdata2000.com)

[29-Dec-13](#)

**C02003.DETAILED RACE - Universe: TOTAL POPULATION**

Data Set: 2008-2012 American Community Survey 5-Year Estimates

	Old Jamestown CDP, Missouri		
	Population	Margin of Error (+/-)	% of Total
<b>Total:</b>	<b>19,543</b>	<b>871</b>	<b>100.0%</b>
Population of one race:	19,025	908	97.3%
White	8,260	773	42.3%
Black or African American	10,376	930	53.1%
American Indian and Alaska Native	95	95	0.5%
Asian alone	210	175	1.1%
Native Hawaiian and Other Pacific Islander	0	18	0.0%
Some other race	84	95	0.4%
Population of two or more races:	518	231	2.7%
Two races including Some other race	19	30	0.1%
Two races excluding Some other race, and three or more races	499	227	2.6%
Population of two races:	483	225	2.5%
White; Black or African American	257	154	1.3%
White; American Indian and Alaska Native	100	114	0.5%
White; Asian	42	65	0.2%
Black or African American; American Indian and Alaska Native	65	58	0.3%
All other two race combinations	19	30	0.1%
Population of three races	35	35	0.2%
Population of four or more races	0	18	0.0%

Note: Hispanics may be of any race. See Table B03002 and chart.

Source: U.S. Census Bureau, 2008-2012 American Community Survey

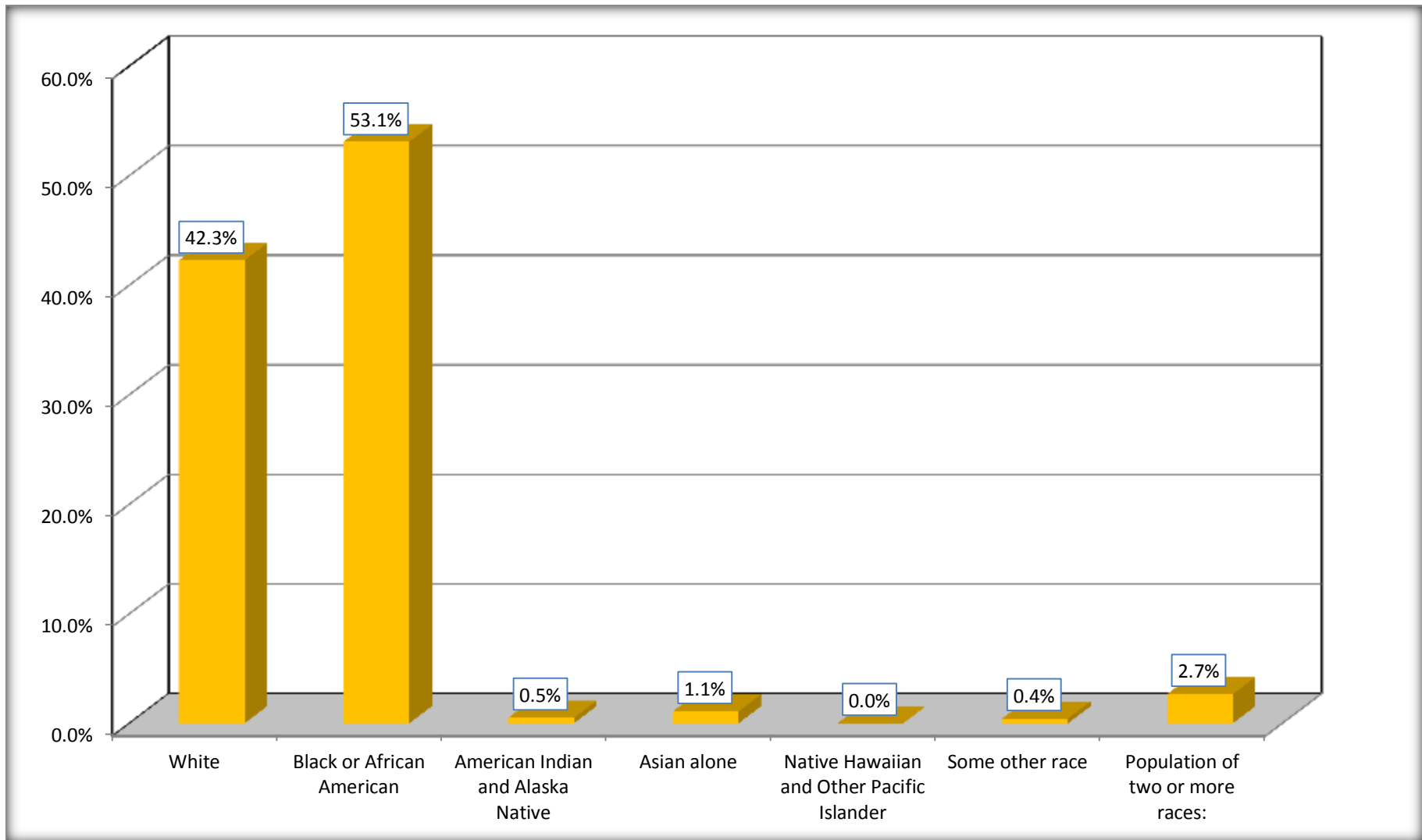
Although the American Community Survey (ACS) produces population, demographic and housing unit estimates, it is the Census Bureau's Population Estimates Program that produces and disseminates the official estimates of the population for the nation, states, counties, cities and towns and estimates of housing units for states and counties.

For information on confidentiality protection, sampling error, nonsampling error, and definitions, see Survey Methodology.

<http://www.census.gov/acs/www/UseData/index.htm>

# Population by Race

## Old Jamestown CDP, Missouri



Source: C02003.DETAILED RACE - Universe: TOTAL POPULATION  
Data Set: 2008-2012 American Community Survey 5-Year Estimates

**B03002. HISPANIC OR LATINO ORIGIN BY RACE - Universe: TOTAL POPULATION**

Data Set: 2008-2012 American Community Survey 5-Year Estimates

	Old Jamestown CDP, Missouri		
	Population	Margin of Error (+/-)	% of Total
<b>Total:</b>	19,543	871	<b>100.0%</b>
Not Hispanic or Latino:	19,189	884	98.2%
White alone	8,082	770	41.4%
Black or African American alone	10,278	925	52.6%
American Indian and Alaska Native alone	95	95	0.5%
Asian alone	210	175	1.1%
Native Hawaiian and Other Pacific Islander alone	0	18	0.0%
Some other race alone	6	9	0.0%
Two or more races:	518	231	2.7%
Two races including Some other race	19	30	0.1%
Two races excluding Some other race, and three or more races	499	227	2.6%
Hispanic or Latino	354	246	1.8%

Source: U.S. Census Bureau, 2008-2012 American Community Survey

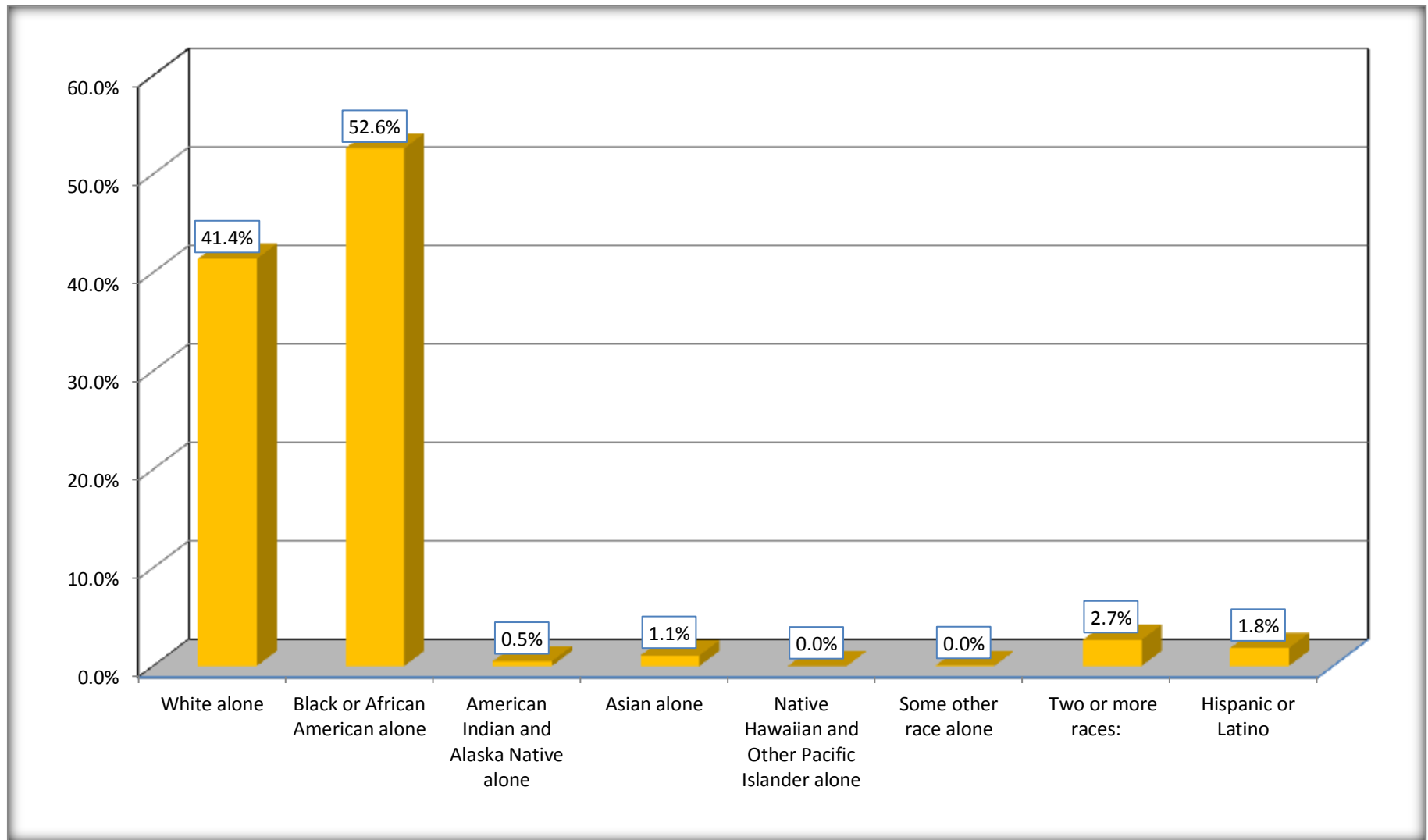
Although the American Community Survey (ACS) produces population, demographic and housing unit estimates, it is the Census Bureau's Population Estimates Program that produces and disseminates the official estimates of the population for the nation, states, counties, cities and towns and estimates of housing units for states and counties.

For information on confidentiality protection, sampling error, nonsampling error, and definitions, see Survey Methodology.

<http://www.census.gov/acs/www/UseData/index.htm>

# Non-Hispanic by Race and Hispanic Population

## Old Jamestown CDP, Missouri



Source: B03002. HISPANIC OR LATINO ORIGIN BY RACE - Universe: TOTAL POPULATION  
Data Set: 2008-2012 American Community Survey 5-Year Estimates

**B03002. HISPANIC OR LATINO ORIGIN BY RACE**

Data Set: 2008-2012 American Community Survey 5-Year Estimates

	Old Jamestown CDP, Missouri		
	Population	Margin of Error (+/-)	% of Total
Hispanic or Latino:	354	246	<b>100.0%</b>
White alone	178	167	50.3%
Black or African American alone	98	115	27.7%
American Indian and Alaska Native alone	0	18	0.0%
Asian alone	0	18	0.0%
Native Hawaiian and Other Pacific Islander alone	0	18	0.0%
Some other race alone	78	94	22.0%
Two or more races:	0	18	0.0%
Two races including Some other race	0	18	0.0%
Two races excluding Some other race, and three or more races	0	18	0.0%

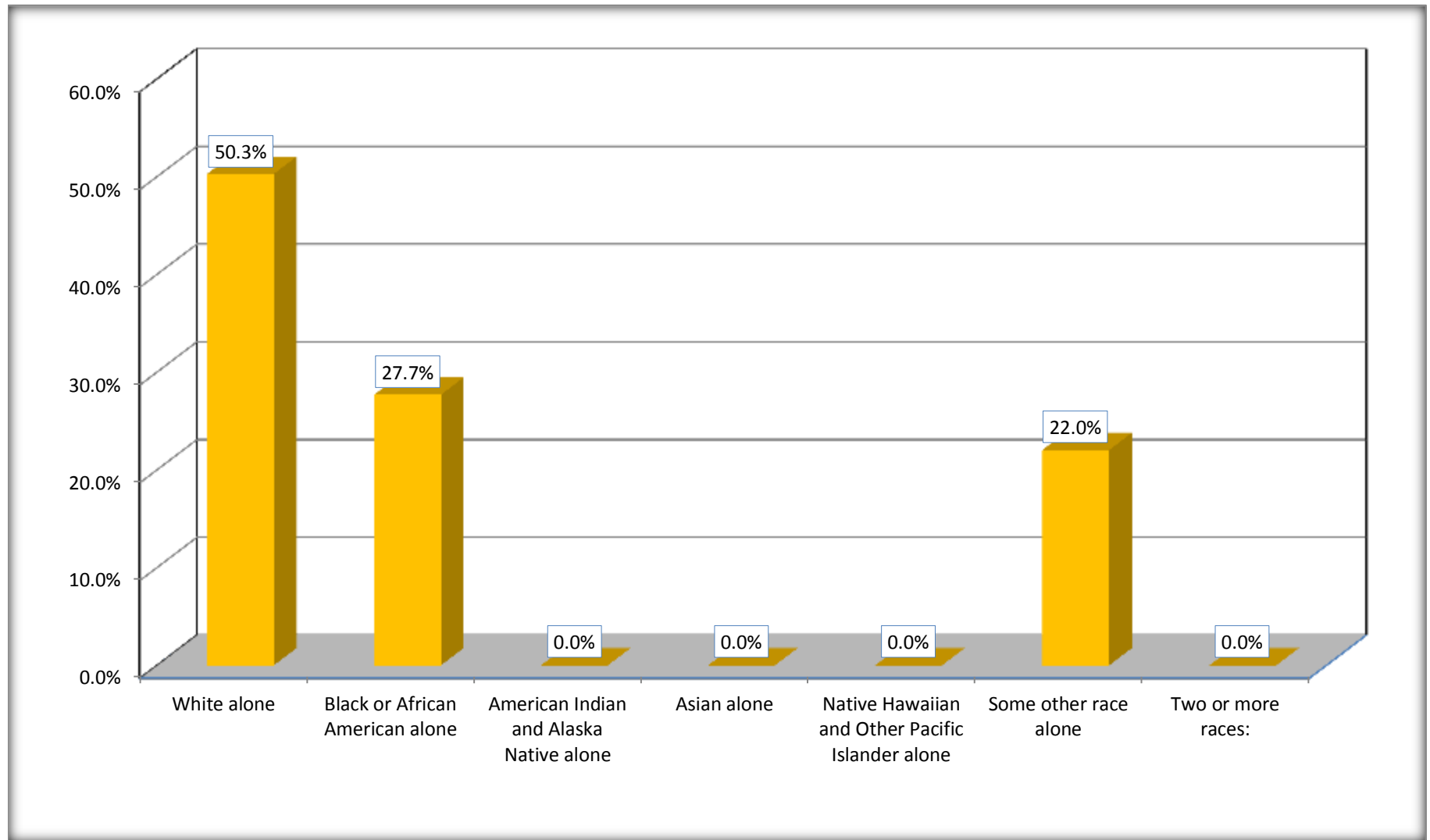
Source: U.S. Census Bureau, 2008-2012 American Community Survey

Although the American Community Survey (ACS) produces population, demographic and housing unit estimates, it is the Census Bureau's Population Estimates Program that produces and disseminates the official estimates of the population for the nation, states, counties, cities and towns and estimates of housing units for states and counties.

For information on confidentiality protection, sampling error, nonsampling error, and definitions, see Survey Methodology.

<http://www.census.gov/acs/www/UseData/index.htm>

## Hispanic or Latino Origin by Race Old Jamestown CDP, Missouri



Source: B03002. HISPANIC OR LATINO ORIGIN BY RACE  
Data Set: 2008-2012 American Community Survey 5-Year Estimates

**B01001. SEX BY AGE**

Data Set: 2008-2012 American Community Survey 5-Year Estimates

	Old Jamestown CDP, Missouri					
	African American	Margin of Error (+/-)	% of AA Total	White, Not Hispanic	Margin of Error (+/-)	% of NHW Total
<b>Total:</b>	<b>10,376</b>	<b>930</b>	<b>100.0%</b>	<b>8,082</b>	<b>770</b>	<b>100.0%</b>
Under 18 years	2,541	NC	24.5%	1,485	NC	18.4%
18 to 64 years	6,893	NC	66.4%	4,770	NC	59.0%
65 years and over	942	NC	9.1%	1,827	NC	22.6%
Male:	4,915	611	47.4%	3,806	389	47.1%
Under 18 years	1481	NC	14.3%	901	NC	11.1%
18 to 64 years	2,967	NC	28.6%	2,153	NC	26.6%
65 years and over	467	NC	4.5%	752	NC	9.3%
Female:	5,461	544	52.6%	4,276	412	52.9%
Under 18 years	1,060	NC	10.2%	584	NC	7.2%
18 to 64 years	3,926	NC	37.8%	2,617	NC	32.4%
65 years and over	475	NC	4.6%	1,075	NC	13.3%

Source: U.S. Census Bureau, 2008-2012 American Community Survey

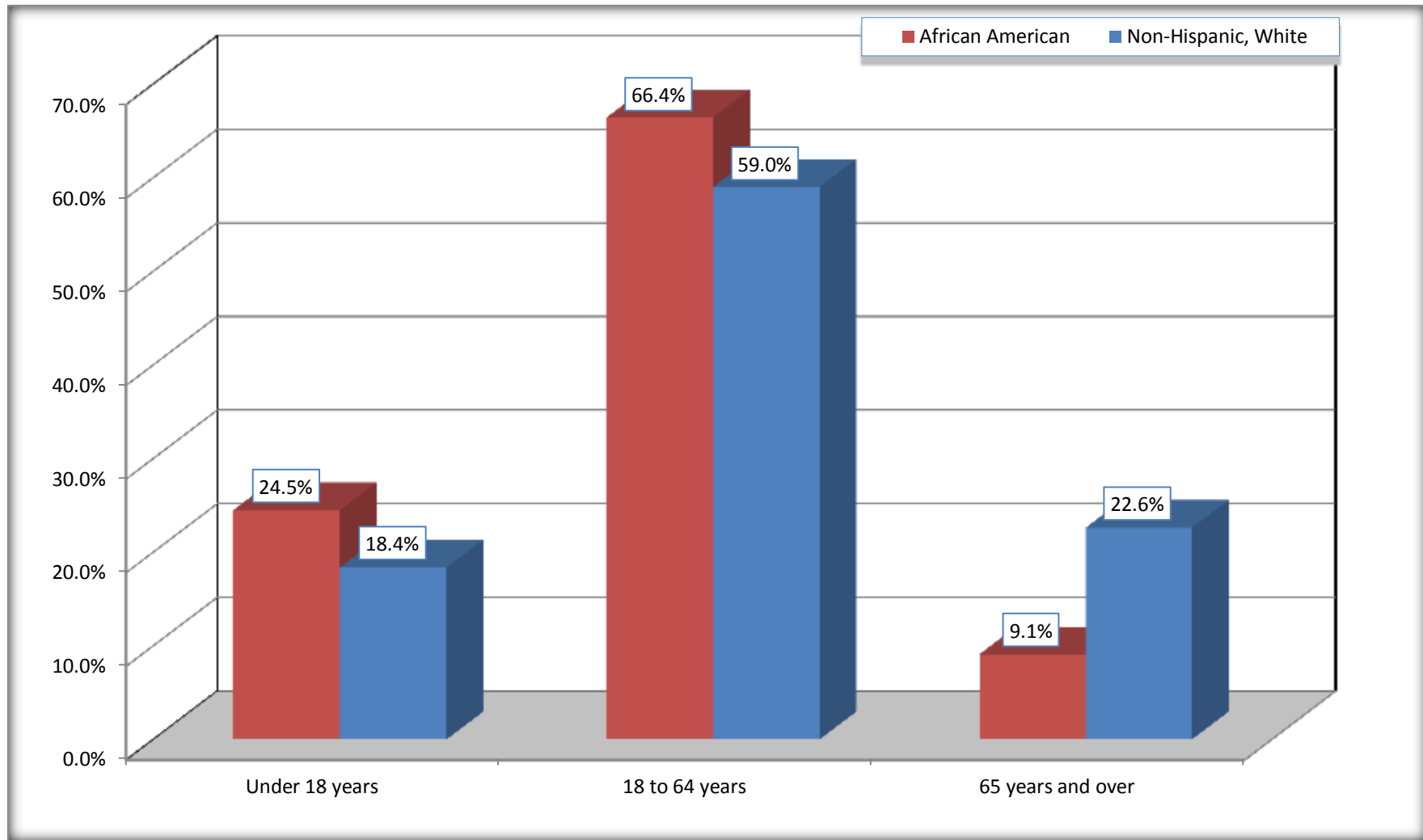
Although the American Community Survey (ACS) produces population, demographic and housing unit estimates, it is the Census Bureau's Population Estimates Program that produces and disseminates the official estimates of the population for the nation, states, counties, cities and towns and estimates of housing units for states and counties.

For information on confidentiality protection, sampling error, nonsampling error, and definitions, see Survey Methodology.  
<http://www.census.gov/acs/www/UseData/index.htm>



# Population by Age

## Old Jamestown CDP, Missouri



Source: B01001. SEX BY AGE  
Data Set: 2008-2012 American Community Survey 5-Year Estimates

**B05003. SEX BY AGE BY CITIZENSHIP STATUS**

Data Set: 2008-2012 American Community Survey 5-Year Estimates

	Old Jamestown CDP, Missouri					
	African American	Margin of Error (+/-)	% of AA Total by Age	White, Not Hispanic	Margin of Error (+/-)	% of NHW Total by Age
<b>Total:</b>	<b>10,376</b>	<b>930</b>	<b>100.0%</b>	<b>8,082</b>	<b>770</b>	<b>100.0%</b>
<b>Under 18 years:</b>	<b>2,541</b>	<b>NC</b>	<b>100.0%</b>	<b>1,485</b>	<b>NC</b>	<b>100.0%</b>
Native	2,508	NC	98.7%	1,485	NC	100.0%
Foreign born:	33	NC	1.3%	0	NC	0.0%
Naturalized U.S. citizen	0	NC	0.0%	0	NC	0.0%
Not a U.S. citizen	33	NC	1.3%	0	NC	0.0%
<b>18 years and over:</b>	<b>7,835</b>	<b>NC</b>	<b>100.0%</b>	<b>6,597</b>	<b>NC</b>	<b>100.0%</b>
Native	7,624	NC	97.3%	6,546	NC	99.2%
Foreign born:	211	NC	2.7%	51	NC	0.8%
Naturalized U.S. citizen	101	NC	1.3%	24	NC	0.4%
Not a U.S. citizen	110	NC	1.4%	27	NC	0.4%
<b>Male:</b>	<b>4,915</b>	<b>611</b>	<b>47.4%</b>	<b>3,806</b>	<b>478</b>	<b>47.1%</b>
<b>Under 18 years:</b>	<b>1,481</b>	<b>377</b>	<b>100.0%</b>	<b>901</b>	<b>330</b>	<b>100.0%</b>
Native	1,481	377	100.0%	901	330	100.0%
Foreign born:	0	18	0.0%	0	18	0.0%
Naturalized U.S. citizen	0	18	0.0%	0	18	0.0%
Not a U.S. citizen	0	18	0.0%	0	18	0.0%
<b>18 years and over:</b>	<b>3,434</b>	<b>365</b>	<b>100.0%</b>	<b>2,905</b>	<b>322</b>	<b>100.0%</b>
Native	3,310	367	96.4%	2,855	325	98.3%
Foreign born:	124	77	3.6%	50	43	1.7%
Naturalized U.S. citizen	55	49	1.6%	23	23	0.8%
Not a U.S. citizen	69	66	2.0%	27	35	0.9%

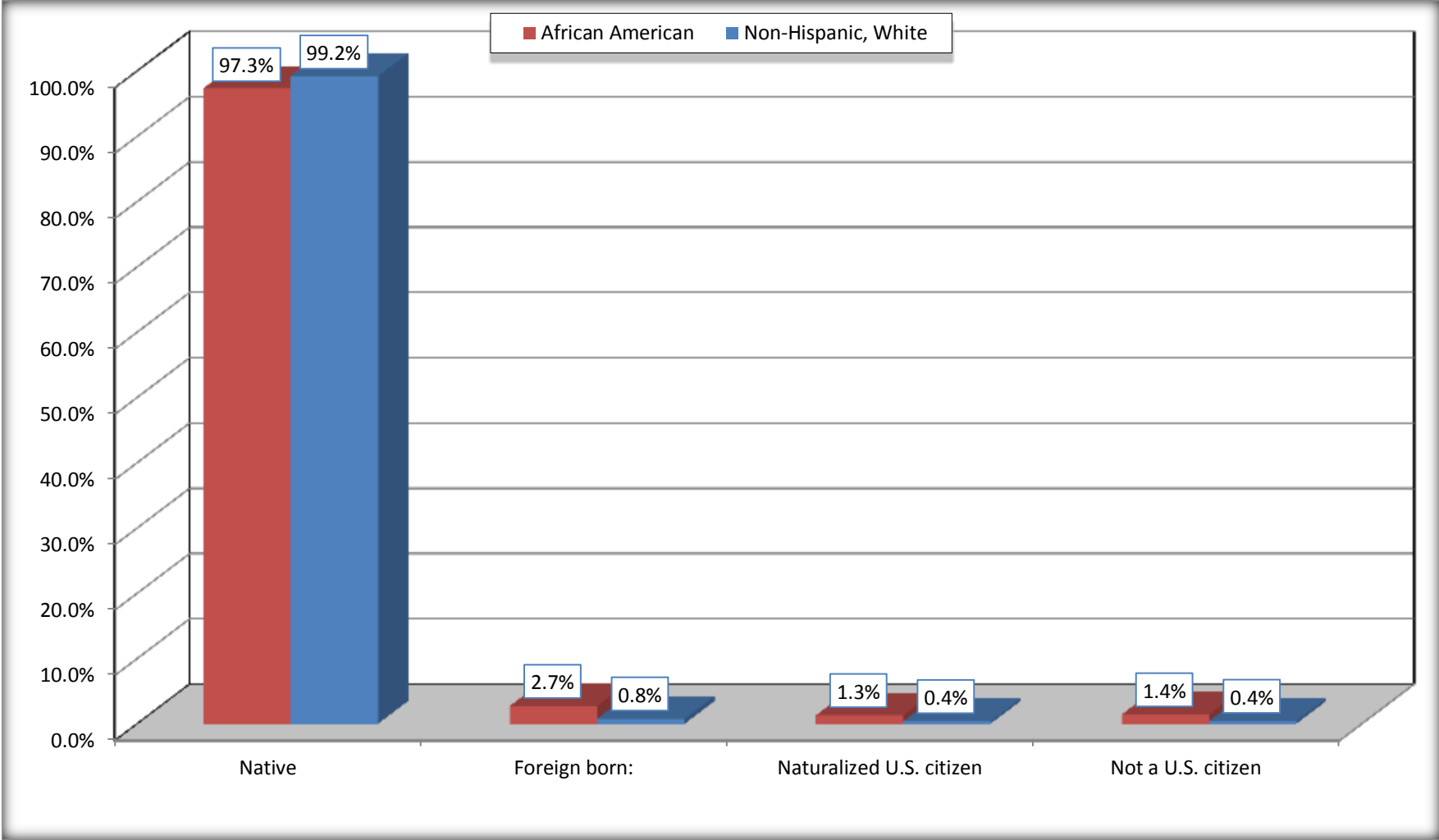
	Old Jamestown CDP, Missouri					
	African American	Margin of Error (+/-)	% of AA by Age	White, Not Hispanic	Margin of Error (+/-)	% of NHW by Age
<b>Female:</b>	5,461	544	52.6%	4,276	440	52.9%
<b>Under 18 years:</b>	<b>1,060</b>	<b>298</b>	<b>100.0%</b>	<b>584</b>	<b>197</b>	<b>100.0%</b>
Native	1,027	280	96.9%	584	197	100.0%
Foreign born:	33	52	3.1%	0	18	0.0%
Naturalized U.S. citizen	0	18	0.0%	0	18	0.0%
Not a U.S. citizen	33	52	3.1%	0	18	0.0%
<b>18 years and over:</b>	<b>4,401</b>	<b>380</b>	<b>100.0%</b>	<b>3,692</b>	<b>341</b>	<b>100.0%</b>
Native	4,314	370	98.0%	3,691	341	100.0%
Foreign born:	87	70	2.0%	1	3	0.0%
Naturalized U.S. citizen	46	52	1.0%	1	3	0.0%
Not a U.S. citizen	41	46	0.9%	0	18	0.0%

Source: U.S. Census Bureau, 2008-2012 American Community Survey

For information on confidentiality protection, sampling error, nonsampling error, and definitions, see Survey Methodology.  
<http://www.census.gov/acs/www/UseData/index.htm>

# Citizenship Status of Voting Age Population (18 and Over)

## Old Jamestown CDP, Missouri



Source: B05003. SEX BY AGE BY CITIZENSHIP STATUS  
Data Set: 2008-2012 American Community Survey 5-Year Estimates

**B07004. GEOGRAPHICAL MOBILITY IN THE PAST YEAR BY RACE FOR CURRENT RESIDENCE IN THE UNITED STATES - Universe:  
POPULATION 1 YEAR AND OVER**

Data Set: 2008-2012 American Community Survey 5-Year Estimates

	Old Jamestown CDP, Missouri					
	African American	Margin of Error (+/-)	% of AA Total	White, Not Hispanic	Margin of Error (+/-)	% of NHW Total
<b>Total:</b>	<b>10,310</b>	<b>930</b>	<b>100.0%</b>	<b>8,082</b>	<b>770</b>	<b>100.0%</b>
Same house 1 year ago	9,444	906	91.6%	7,586	716	93.9%
Moved within same county	551	251	5.3%	241	196	3.0%
Moved from different county within same state	249	263	2.4%	211	203	2.6%
Moved from different state	42	49	0.4%	44	46	0.5%
Moved from abroad	24	38	0.2%	0	18	0.0%

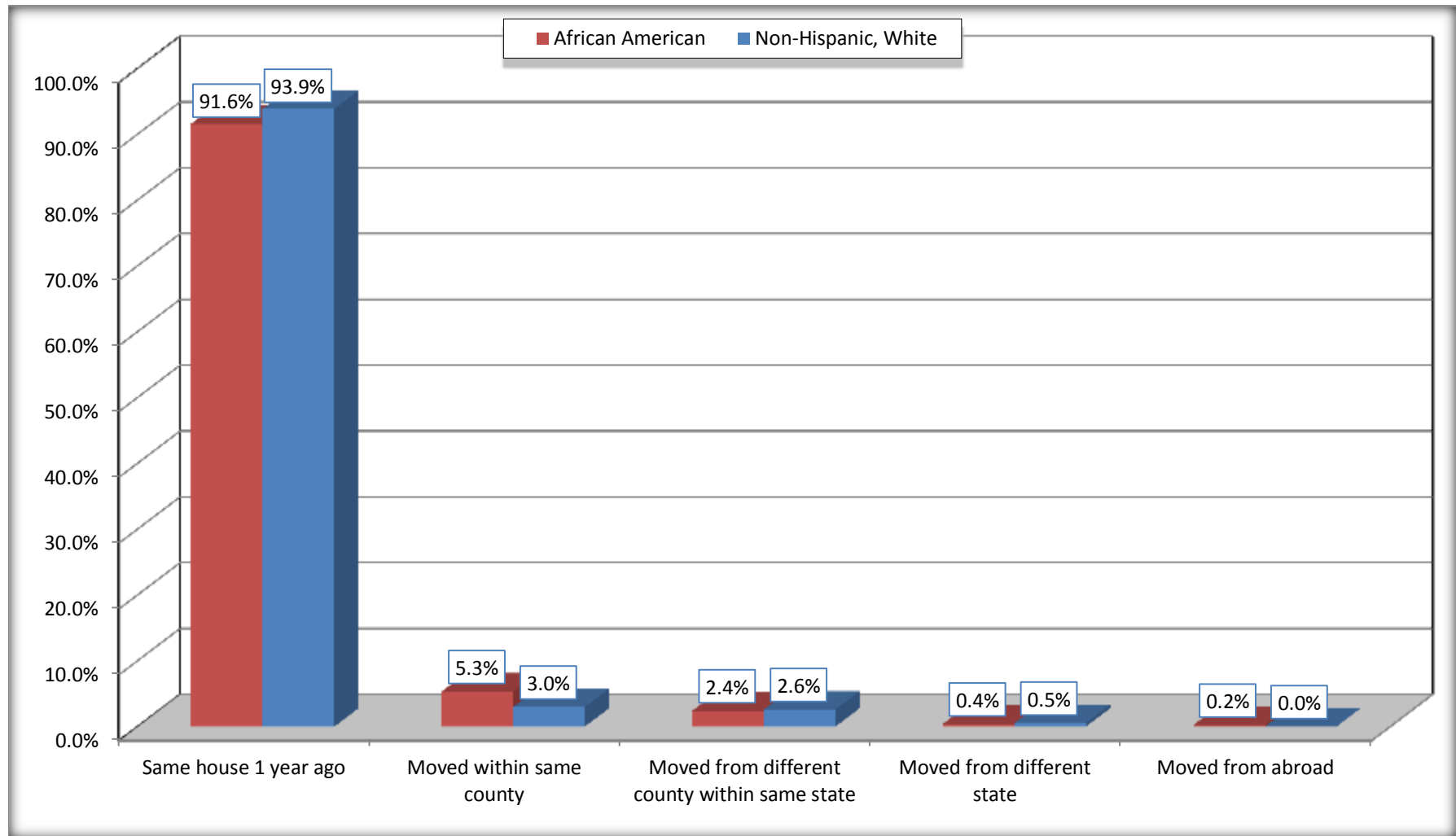
Source: U.S. Census Bureau, 2008-2012 American Community Survey

For information on confidentiality protection, sampling error, nonsampling error, and definitions, see Survey Methodology.

<http://www.census.gov/acs/www/UseData/index.htm>

# Geographical Mobility in the Past Year (Population 1 Year and Over)

## Old Jamestown CDP, Missouri



Source: B07004. GEOGRAPHICAL MOBILITY IN THE PAST YEAR BY RACE FOR CURRENT RESIDENCE IN THE UNITED STATES - Universe: POPULATION 1 YEAR AND OVER

Data Set: 2008-2012 American Community Survey 5-Year Estimates

**B08105. MEANS OF TRANSPORTATION TO WORK - Universe: WORKERS 16 YEARS AND OVER**

Data Set: 2008-2012 American Community Survey 5-Year Estimates

	Old Jamestown CDP, Missouri					
	African American	Margin of Error (+/-)	% of AA Total	White, Not Hispanic	Margin of Error (+/-)	% of NHW Total
<b>Total:</b>	5051	440	<b>100.0%</b>	3946	418	<b>100.0%</b>
Car, truck, or van - drove alone	4349	455	86.1%	3583	411	90.8%
Car, truck, or van - carpooled	369	190	7.3%	149	85	3.8%
Public transportation (excluding taxicab)	93	77	1.8%	16	24	0.4%
Walked	24	34	0.5%	27	31	0.7%
Taxicab, motorcycle, bicycle, or other means	44	47	0.9%	22	28	0.6%
Worked at home	172	117	3.4%	149	79	3.8%

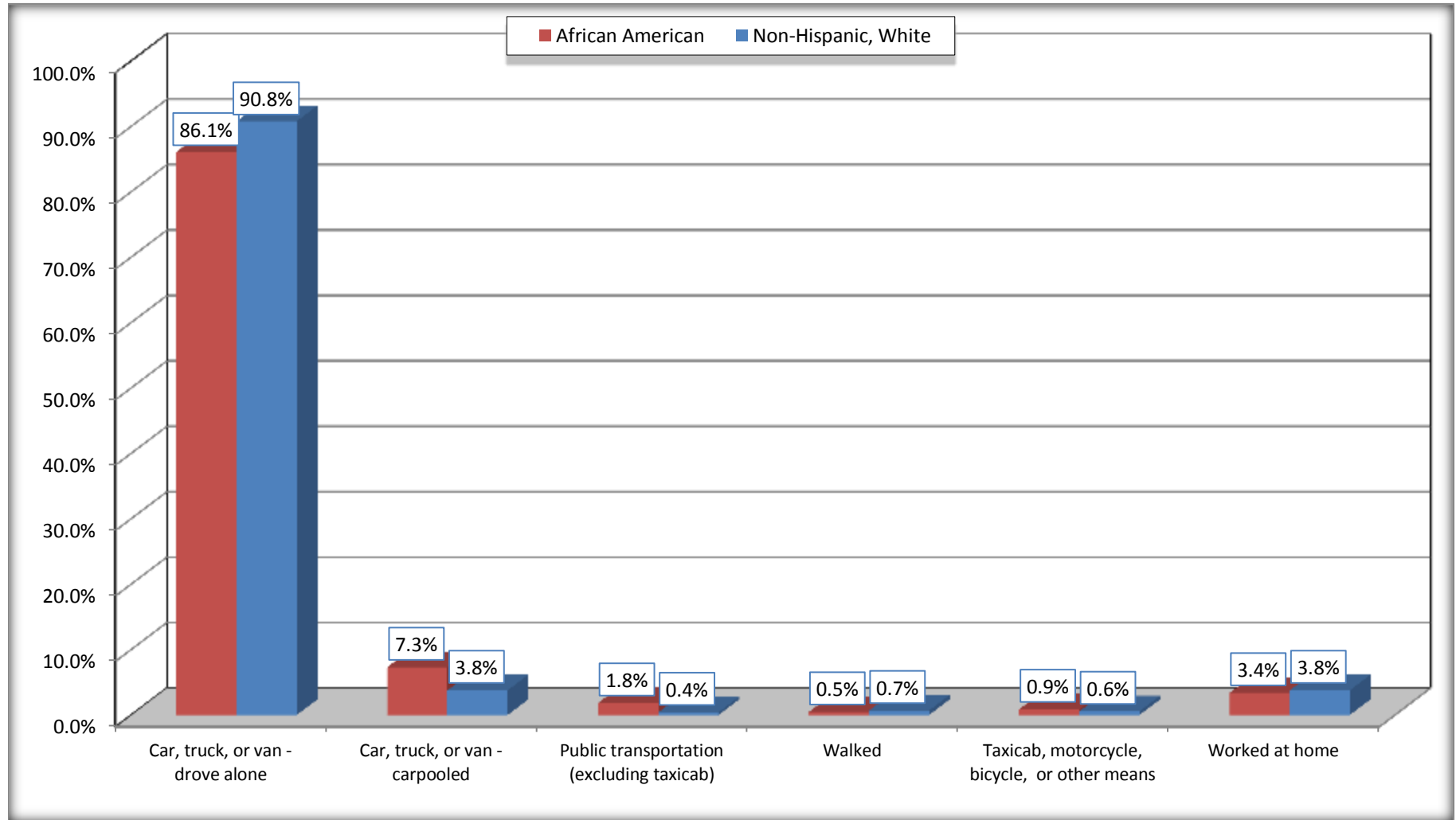
Source: U.S. Census Bureau, 2008-2012 American Community Survey

For information on confidentiality protection, sampling error, nonsampling error, and definitions, see Survey Methodology.

<http://www.census.gov/acs/www/UseData/index.htm>

# Means of Transportation to Work (Workers 16 Years and Over)

## Old Jamestown CDP, Missouri



Source: B08105. MEANS OF TRANSPORTATION TO WORK - Universe: WORKERS 16 YEARS AND OVER  
Data Set: 2008-2012 American Community Survey 5-Year Estimates



**B11002. HOUSEHOLD TYPE BY RELATIVES AND NONRELATIVES FOR POPULATION IN HOUSEHOLDS**

Data Set: 2008-2012 American Community Survey 5-Year Estimates

	Old Jamestown CDP, Missouri					
	African American	Margin of Error (+/-)	% of AA Total	White, Not Hispanic	Margin of Error (+/-)	% of NHW Total
<b>Total:</b>	10595	969	<b>100.0%</b>	8070	791	<b>100.0%</b>
In family households	9744	989	92.0%	7034	808	87.2%
In nonfamily households	851	219	8.0%	1036	222	12.8%

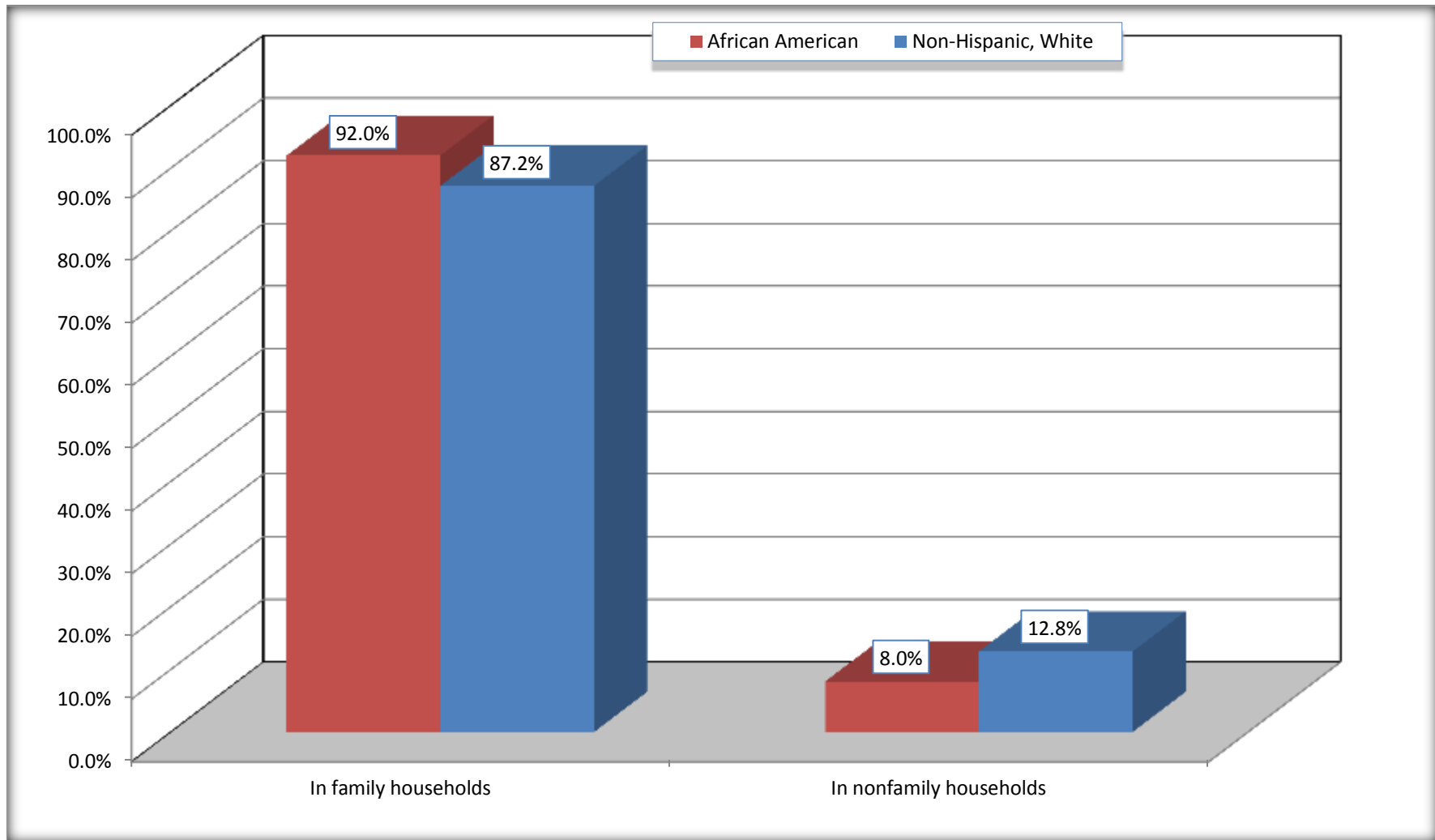
Source: U.S. Census Bureau, 2008-2012 American Community Survey

For information on confidentiality protection, sampling error, nonsampling error, and definitions, see Survey Methodology.

<http://www.census.gov/acs/www/UseData/index.htm>

# Household Type for Population in Households

## Old Jamestown CDP, Missouri



Source: B11002. HOUSEHOLD TYPE BY RELATIVES AND NONRELATIVES FOR POPULATION IN HOUSEHOLDS  
Data Set: 2008-2012 American Community Survey 5-Year Estimates

**B12002. MARITAL STATUS FOR THE POPULATION 15 YEARS AND OVER**

Data Set: 2008-2012 American Community Survey 5-Year Estimates

	Old Jamestown CDP, Missouri					
	African American	Margin of Error (+/-)	% of AA Total	White, Not Hispanic	Margin of Error (+/-)	% of NHW Total
<b>Total:</b>	<b>8,471</b>	<b>695</b>	<b>100.0%</b>	<b>7,058</b>	<b>557</b>	<b>100.0%</b>
Never married	2,695	NC	31.8%	1,736	NC	24.6%
Now married (except separated)	4,486	NC	53.0%	4,078	NC	57.8%
Separated	99	NC	1.2%	22	NC	0.3%
Widowed	338	NC	4.0%	551	NC	7.8%
Divorced	853	NC	10.1%	671	NC	9.5%
<b>Male:</b>	<b>3,824</b>	<b>471</b>	<b>45.1%</b>	<b>3,247</b>	<b>346</b>	<b>46.0%</b>
Never married	1,220	371	14.4%	853	198	12.1%
Now married (except separated)	2,288	272	27.0%	1,992	196	28.2%
Separated	41	45	0.5%	8	12	0.1%
Widowed	57	47	0.7%	116	66	1.6%
Divorced	218	93	2.6%	278	146	3.9%
<b>Female:</b>	<b>4,647</b>	<b>439</b>	<b>54.9%</b>	<b>3,811</b>	<b>360</b>	<b>54.0%</b>
Never married	1,475	290	17.4%	883	242	12.5%
Now married (except separated)	2,198	270	25.9%	2,086	201	29.6%
Separated	58	54	0.7%	14	22	0.2%
Widowed	281	134	3.3%	435	137	6.2%
Divorced	635	194	7.5%	393	154	5.6%

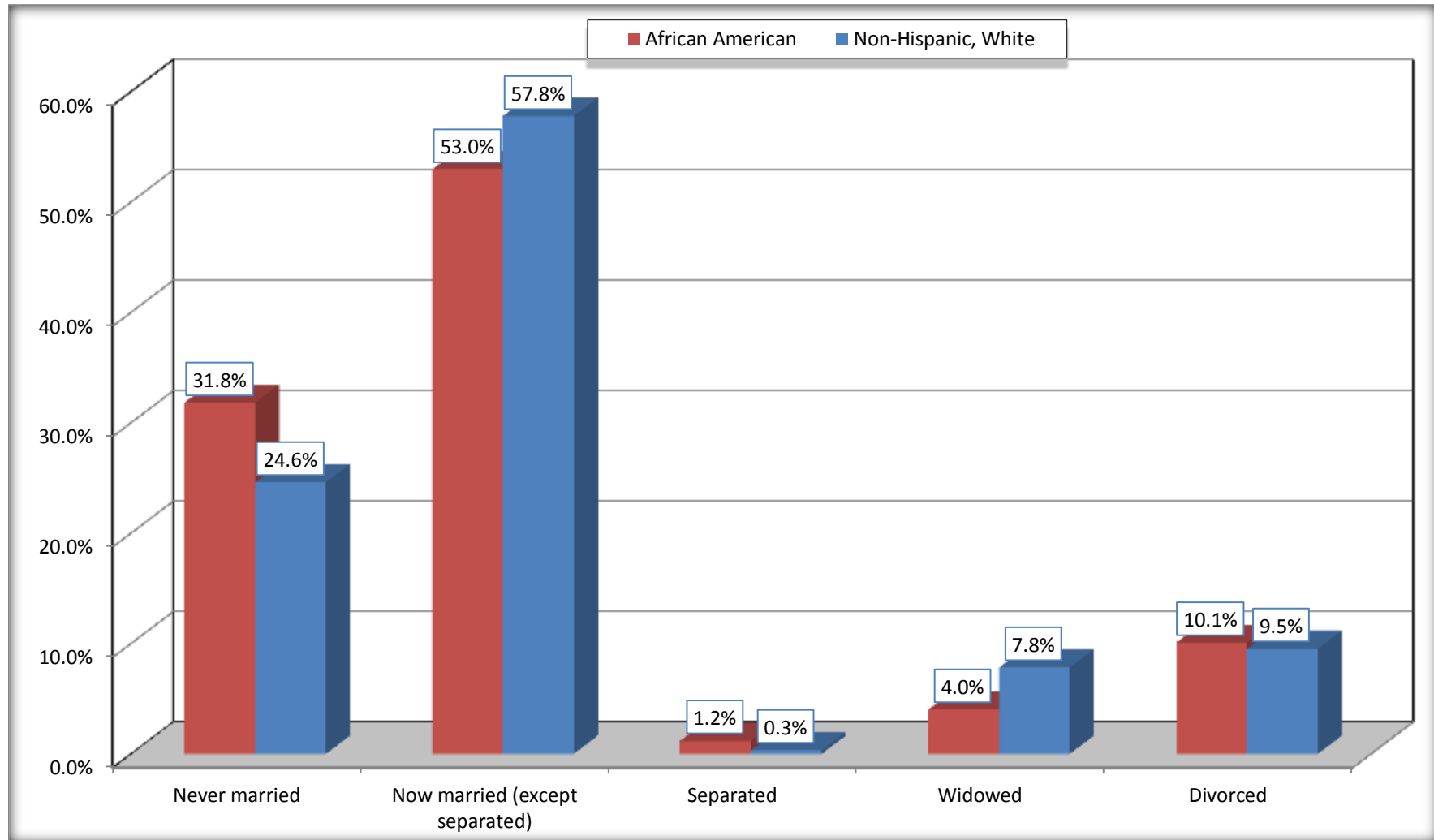
Source: U.S. Census Bureau, 2008-2012 American Community Survey

For information on confidentiality protection, sampling error, nonsampling error, and definitions, see Survey Methodology.

<http://www.census.gov/acs/www/UseData/index.htm>

# Marital Status for the Population 15 Years and Over

## Old Jamestown CDP, Missouri



Source: B12002. MARITAL STATUS FOR THE POPULATION 15 YEARS AND OVER  
Data Set: 2008-2012 American Community Survey 5-Year Estimates

**C15002. SEX BY EDUCATIONAL ATTAINMENT FOR THE POPULATION 25 YEARS AND OVER**

Data Set: 2008-2012 American Community Survey 5-Year Estimates

	Old Jamestown CDP, Missouri					
	African American	Margin of Error (+/-)	% of AA Total	White, Not Hispanic	Margin of Error (+/-)	% of NHW Total
<b>Total:</b>	<b>6,782</b>	<b>515</b>	<b>100.0%</b>	<b>6,033</b>	<b>446</b>	<b>100.0%</b>
Less than high school diploma	283	NC	4.2%	471	NC	7.8%
High school graduate, GED, or alternative	1,390	NC	20.5%	1,787	NC	29.6%
Some college or associate's degree	2,548	NC	37.6%	1,785	NC	29.6%
Bachelor's degree or higher	2,561	NC	37.8%	1,990	NC	33.0%
Male:	2,922	267	43.1%	2,637	259	43.7%
Less than high school diploma	124	98	1.8%	183	85	3.0%
High school graduate, GED, or alternative	682	200	10.1%	740	147	12.3%
Some college or associate's degree	1,211	238	17.9%	807	170	13.4%
Bachelor's degree or higher	905	171	13.3%	907	152	15.0%
Female:	3,860	337	56.9%	3,396	285	56.3%
Less than high school diploma	159	106	2.3%	288	107	4.8%
High school graduate, GED, or alternative	708	230	10.4%	1,047	188	17.4%
Some college or associate's degree	1,337	216	19.7%	978	177	16.2%
Bachelor's degree or higher	1,656	268	24.4%	1,083	209	18.0%

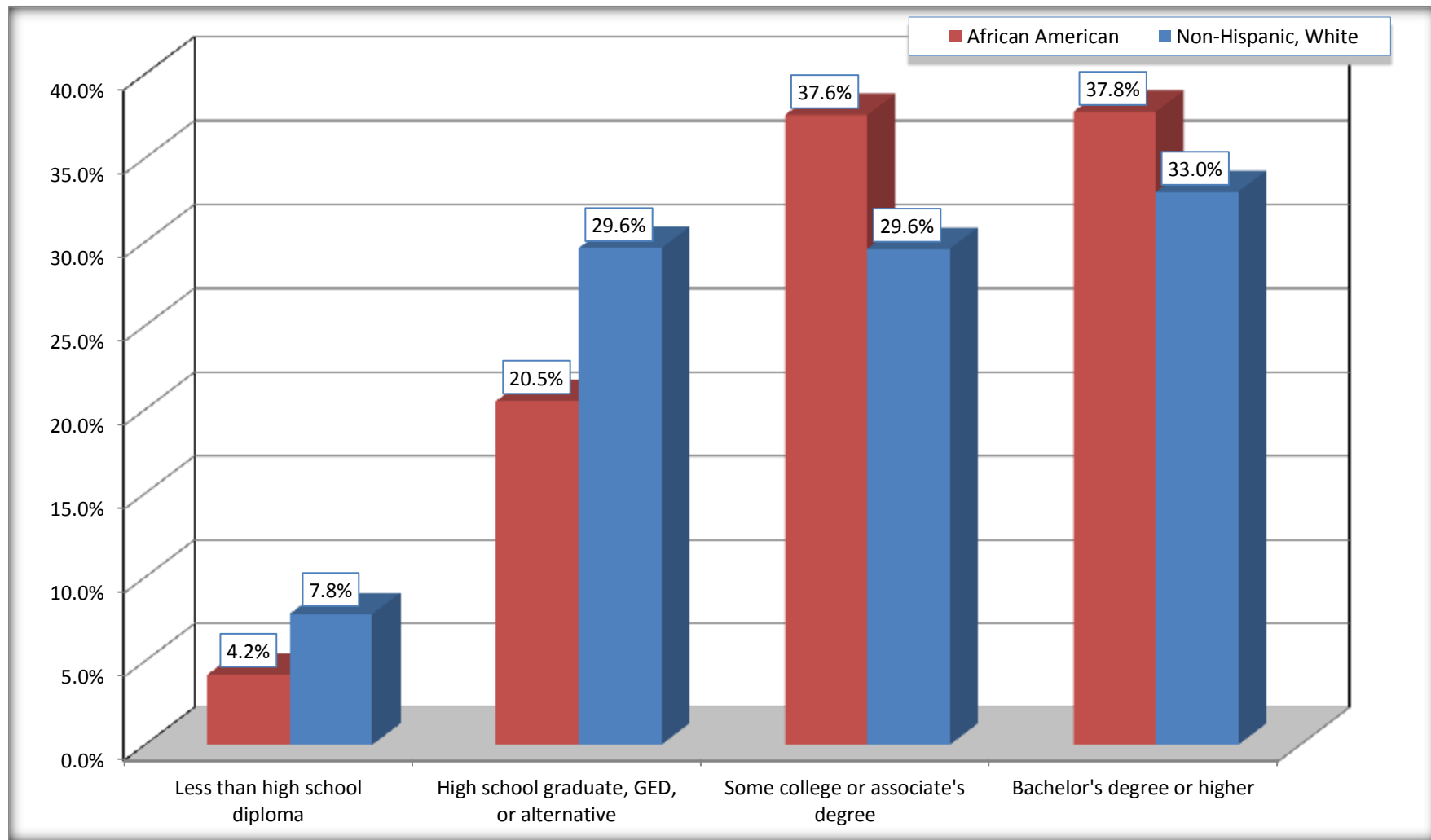
Source: U.S. Census Bureau, 2008-2012 American Community Survey

For information on confidentiality protection, sampling error, nonsampling error, and definitions, see Survey Methodology.

<http://www.census.gov/acs/www/UseData/index.htm>

# Educational Attainment for the Population 25 Years and Older

## Old Jamestown CDP, Missouri



Source: C15002. SEX BY EDUCATIONAL ATTAINMENT FOR THE POPULATION 25 YEARS AND OVER  
Data Set: 2008-2012 American Community Survey 5-Year Estimates

**B16005. NATIVITY BY LANGUAGE SPOKEN AT HOME BY ABILITY TO SPEAK ENGLISH FOR THE POPULATION 5 YEARS AND OVER**

Data Set: 2008-2012 American Community Survey 5-Year Estimates

	Old Jamestown CDP, Missouri					
	African American	Margin of Error (+/-)	% of AA Total	White, Not Hispanic	Margin of Error (+/-)	% of NHW Total
<b>Total:</b>	<b>9,925</b>	<b>903</b>	<b>100.0%</b>	<b>7,994</b>	<b>735</b>	<b>100.0%</b>
Speak only English	9,645	NC	97.2%	7,834	NC	98.0%
Speak another language	280	NC	2.8%	160	NC	2.0%
Speak English "very well"	196	NC	2.0%	125	NC	1.6%
Speak English "less than very well"	84	NC	0.8%	35	NC	0.4%
Native:	9,714	917	97.9%	7,943	735	99.4%
Speak only English	9,593	923	96.7%	7,798	712	97.5%
Speak another language	121	94	1.2%	145	91	1.8%
Speak English "very well"	101	88	1.0%	116	85	1.5%
Speak English "less than very well"	20	29	0.2%	29	41	0.4%
Foreign born:	211	114	2.1%	51	43	0.6%
Speak only English	52	58	0.5%	36	38	0.5%
Speak another language	159	108	1.6%	15	19	0.2%
Speak English "very well"	95	66	1.0%	9	15	0.1%
Speak English "less than very well"	64	62	0.6%	6	12	0.1%

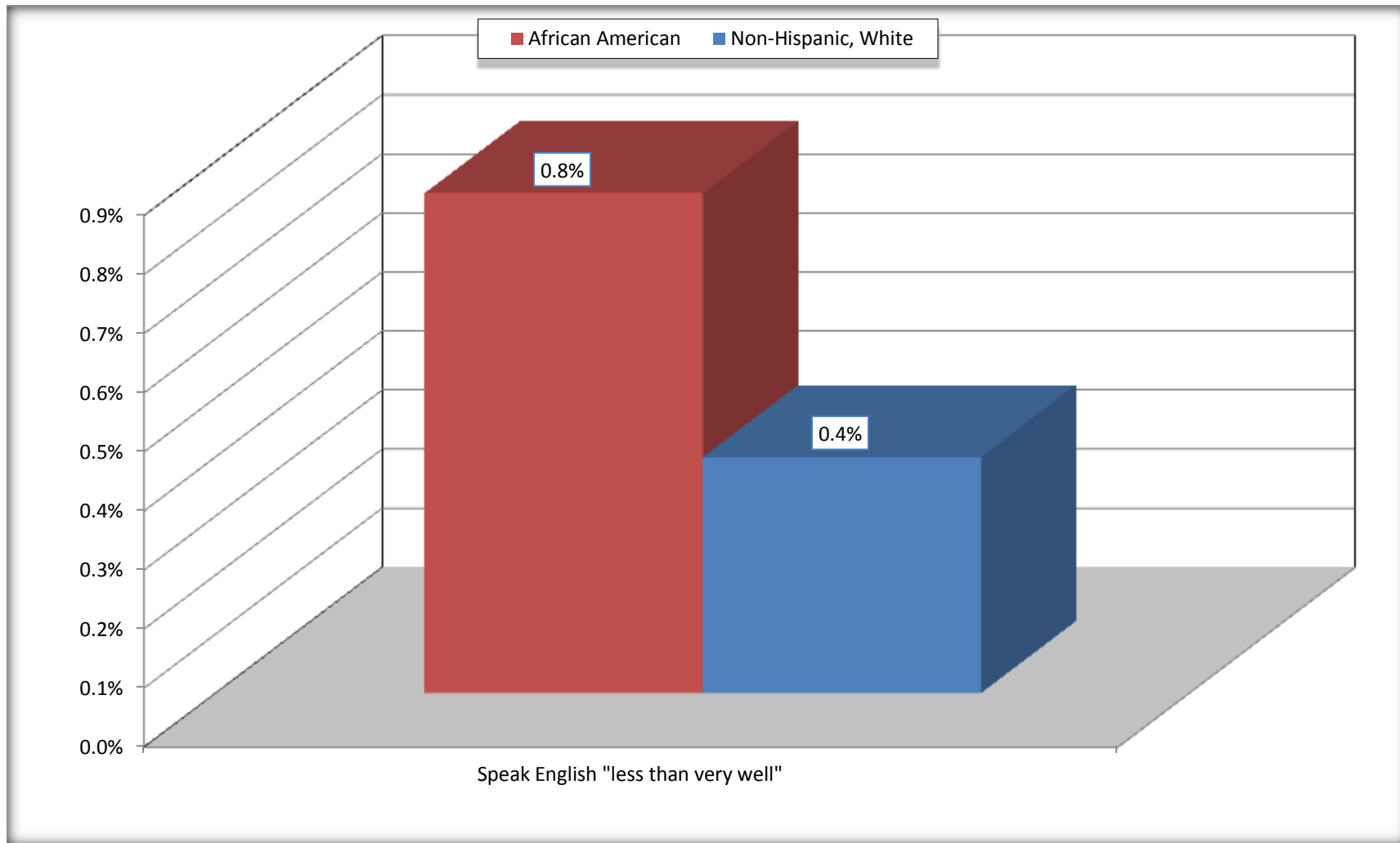
Source: U.S. Census Bureau, 2008-2012 American Community Survey

For information on confidentiality protection, sampling error, nonsampling error, and definitions, see Survey Methodology.

<http://www.census.gov/acs/www/UseData/index.htm>

# Speak English "Less than Very Well" (Population 5 Years and Over)

## Old Jamestown CDP, Missouri



Source: B16005. NATIVITY BY LANGUAGE SPOKEN AT HOME BY ABILITY TO SPEAK ENGLISH FOR THE POPULATION 5 YEARS AND OVER  
Data Set: 2008-2012 American Community Survey 5-Year Estimates



**B17010. POVERTY STATUS IN THE PAST 12 MONTHS OF FAMILIES BY FAMILY TYPE BY PRESENCE OF RELATED CHILDREN UNDER 18 YEARS**

Data Set: 2008-2012 American Community Survey 5-Year Estimates

	Old Jamestown CDP, Missouri					
	African American	Margin of Error (+/-)	% of AA Total	White, Not Hispanic	Margin of Error (+/-)	% of NHW Total
<b>Total:</b>	<b>3,058</b>	<b>278</b>	<b>100.0%</b>	<b>2,330</b>	<b>227</b>	<b>100.0%</b>
Income in the past 12 months below poverty level:	67	46	2.2%	10	16	0.4%
Married-couple family:	17	25	0.6%	0	18	0.0%
With related children under 18 years	17	25	0.6%	0	18	0.0%
Other family:	50	37	1.6%	10	16	0.4%
Male householder, no wife present	13	23	0.4%	10	16	0.4%
With related children under 18 years	0	18	0.0%	0	18	0.0%
Female householder, no husband present	37	40	1.2%	0	18	0.0%
With related children under 18 years	37	40	1.2%	0	18	0.0%
Income in the past 12 months at or above poverty level:	2,991	274	97.8%	2,320	228	99.6%
Married-couple family:	2,139	263	69.9%	2,009	209	86.2%
With related children under 18 years	941	209	30.8%	611	156	26.2%
Other family:	852	172	27.9%	311	115	13.3%
Male householder, no wife present	108	71	3.5%	67	62	2.9%
With related children under 18 years	49	46	1.6%	44	42	1.9%
Female householder, no husband present	744	169	24.3%	244	113	10.5%
With related children under 18 years	448	147	14.7%	164	94	7.0%

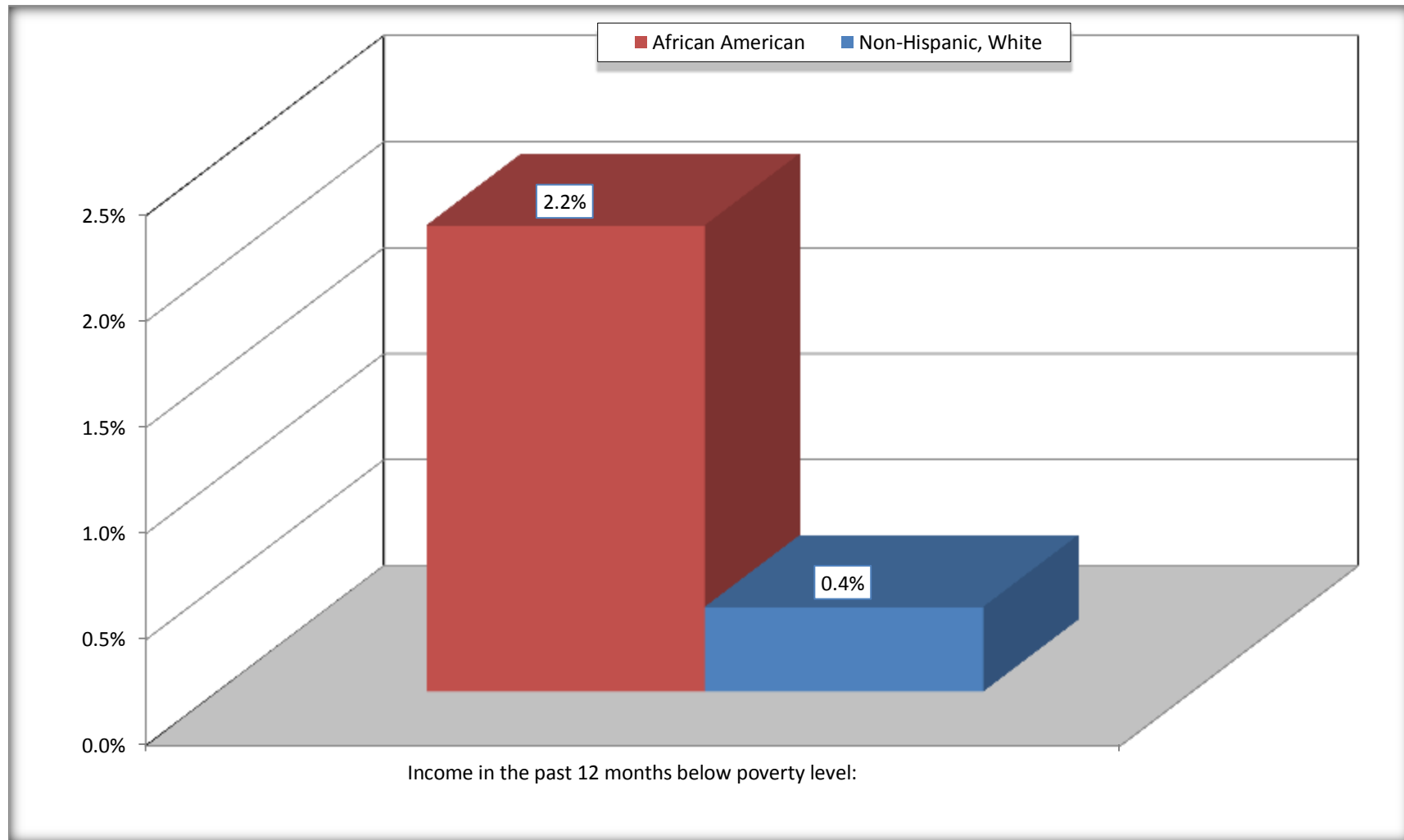
Source: U.S. Census Bureau, 2008-2012 American Community Survey

For information on confidentiality protection, sampling error, nonsampling error, and definitions, see Survey Methodology.

<http://www.census.gov/acs/www/UseData/index.htm>

## Family Households Below Poverty in the Past 12 Months

### Old Jamestown CDP, Missouri

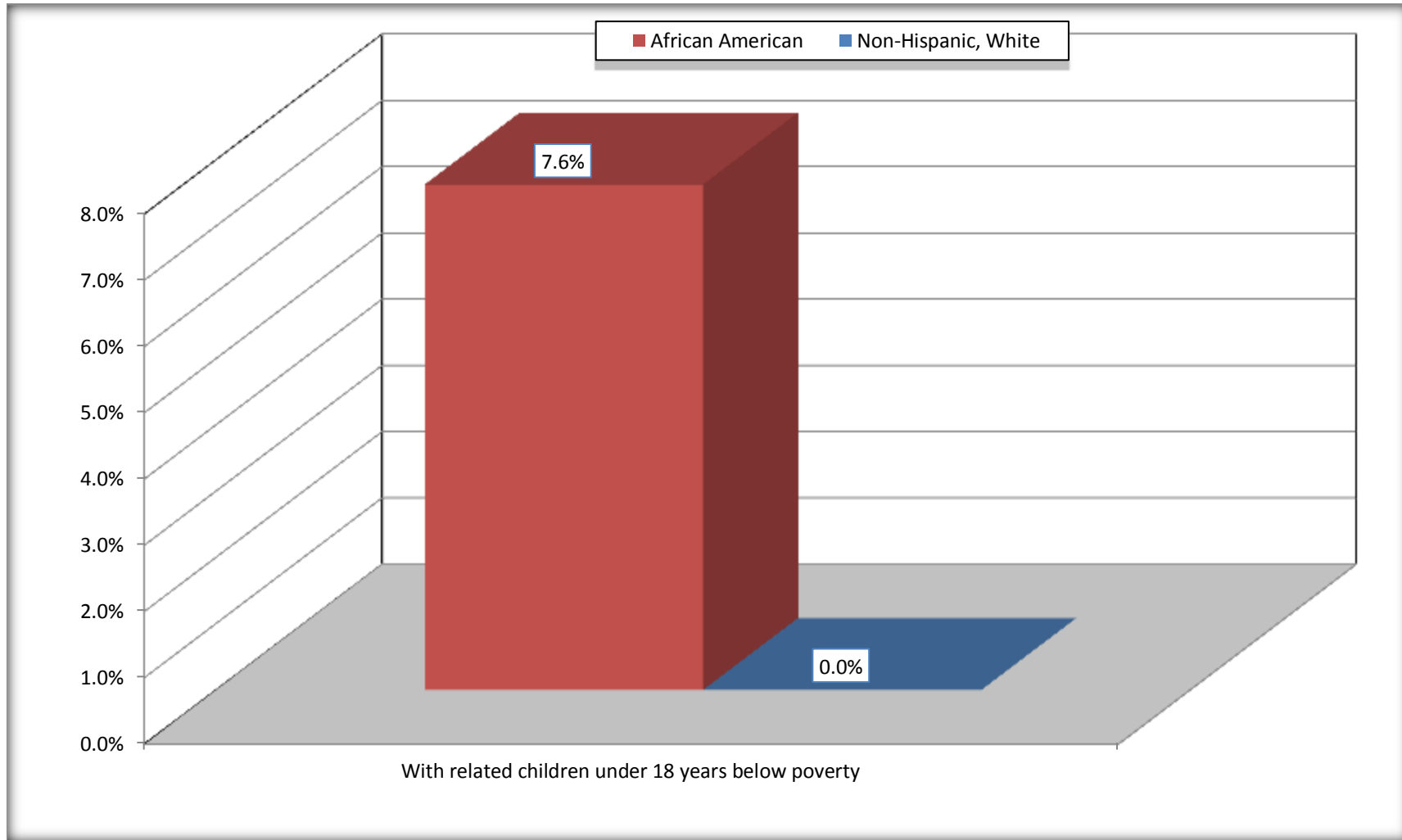


Source: B17010. POVERTY STATUS IN THE PAST 12 MONTHS OF FAMILIES BY FAMILY TYPE BY PRESENCE OF RELATED CHILDREN UNDER 18 YEARS

Data Set: 2008-2012 American Community Survey 5-Year Estimates

# Female-headed Households with Related Children Below Poverty in the Past 12 Months

## Old Jamestown CDP, Missouri



Source: B17010. POVERTY STATUS IN THE PAST 12 MONTHS OF FAMILIES BY FAMILY TYPE BY PRESENCE OF RELATED CHILDREN UNDER 18 YEARS  
Data Set: 2008-2012 American Community Survey 5-Year Estimates

**B17020 POVERTY STATUS IN THE PAST 12 MONTHS BY AGE - Universe: POPULATION FOR WHOM POVERTY STATUS IS DETERMINED**

Data Set: 2008-2012 American Community Survey 5-Year Estimates

	Old Jamestown CDP, Missouri					
	African American	Margin of Error (+/-)	% of AA By Age	White, Not Hispanic	Margin of Error (+/-)	% of NHW By Age
<b>Total:</b>	<b>10,314</b>	<b>932</b>	<b>100.0%</b>	<b>8,070</b>	<b>770</b>	<b>100.0%</b>
Income in the past 12 months below poverty level:	338	152	3.3%	242	132	3.0%
<b>Under 18 years</b>	79	NC	3.1%	0	NC	0.0%
<b>18 to 64 years</b>	228	93	3.3%	171	114	3.6%
<b>65 years and over</b>	31	NC	3.4%	71	NC	3.9%
Income in the past 12 months at or above poverty level:	9,976	946	96.7%	7,828	754	97.0%
<b>Under 18 years</b>	2,454	NC	96.9%	1,484	NC	100.0%
<b>18 to 64 years</b>	6,644	514	96.7%	4,599	496	96.4%
<b>65 years and over</b>	878	NC	96.6%	1,745	NC	96.1%

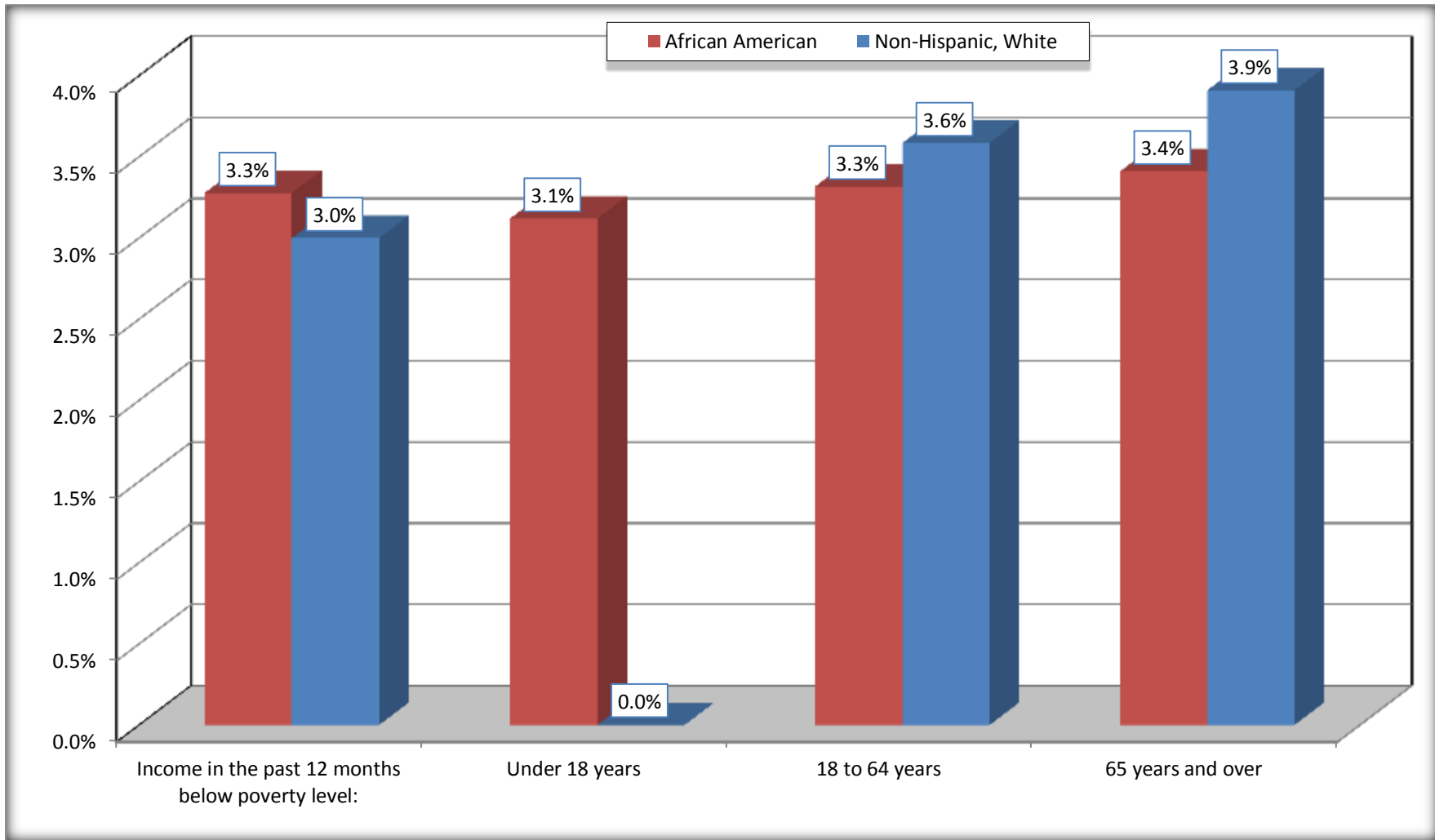
Source: U.S. Census Bureau, 2008-2012 American Community Survey

For information on confidentiality protection, sampling error, nonsampling error, and definitions, see Survey Methodology.

<http://www.census.gov/acs/www/UseData/index.htm>

# Population Below Poverty in the Past 12 Months

## Old Jamestown CDP, Missouri



Source: B17020 POVERTY STATUS IN THE PAST 12 MONTHS BY AGE - Universe: POPULATION FOR WHOM POVERTY STATUS IS DETERMINED  
Data Set: 2008-2012 American Community Survey 5-Year Estimates

**B19001. HOUSEHOLD INCOME IN THE PAST 12 MONTHS (IN 2010 INFLATION-ADJUSTED DOLLARS)**

Data Set: 2008-2012 American Community Survey 5-Year Estimates

	Old Jamestown CDP, Missouri					
	African American	Margin of Error (+/-)	% of AA Total	White, Not Hispanic	Margin of Error (+/-)	% of NHW Total
<b>Total:</b>	<b>3,839</b>	<b>259</b>	<b>100.0%</b>	<b>3,219</b>	<b>235</b>	<b>100.0%</b>
Less than \$ 10,000	84	60	2.2%	93	65	2.9%
\$ 10,000 to \$ 14,999	56	48	1.5%	33	31	1.0%
<b>\$ 15,000 to \$ 24,999</b>	203	NC	5.3%	281	NC	8.7%
<b>\$ 25,000 to \$ 34,999</b>	410	NC	10.7%	286	NC	8.9%
<b>\$ 35,000 to \$ 49,999</b>	420	NC	10.9%	341	NC	10.6%
<b>\$ 50,000 to \$ 74,999</b>	764	NC	19.9%	618	NC	19.2%
\$ 75,000 to \$ 99,999	819	231	21.3%	482	141	15.0%
<b>\$ 100,000 to \$ 149,999</b>	726	NC	18.9%	542	NC	16.8%
\$ 150,000 to \$ 199,999	231	97	6.0%	356	104	11.1%
\$ 200,000 or more	126	76	3.3%	187	90	5.8%

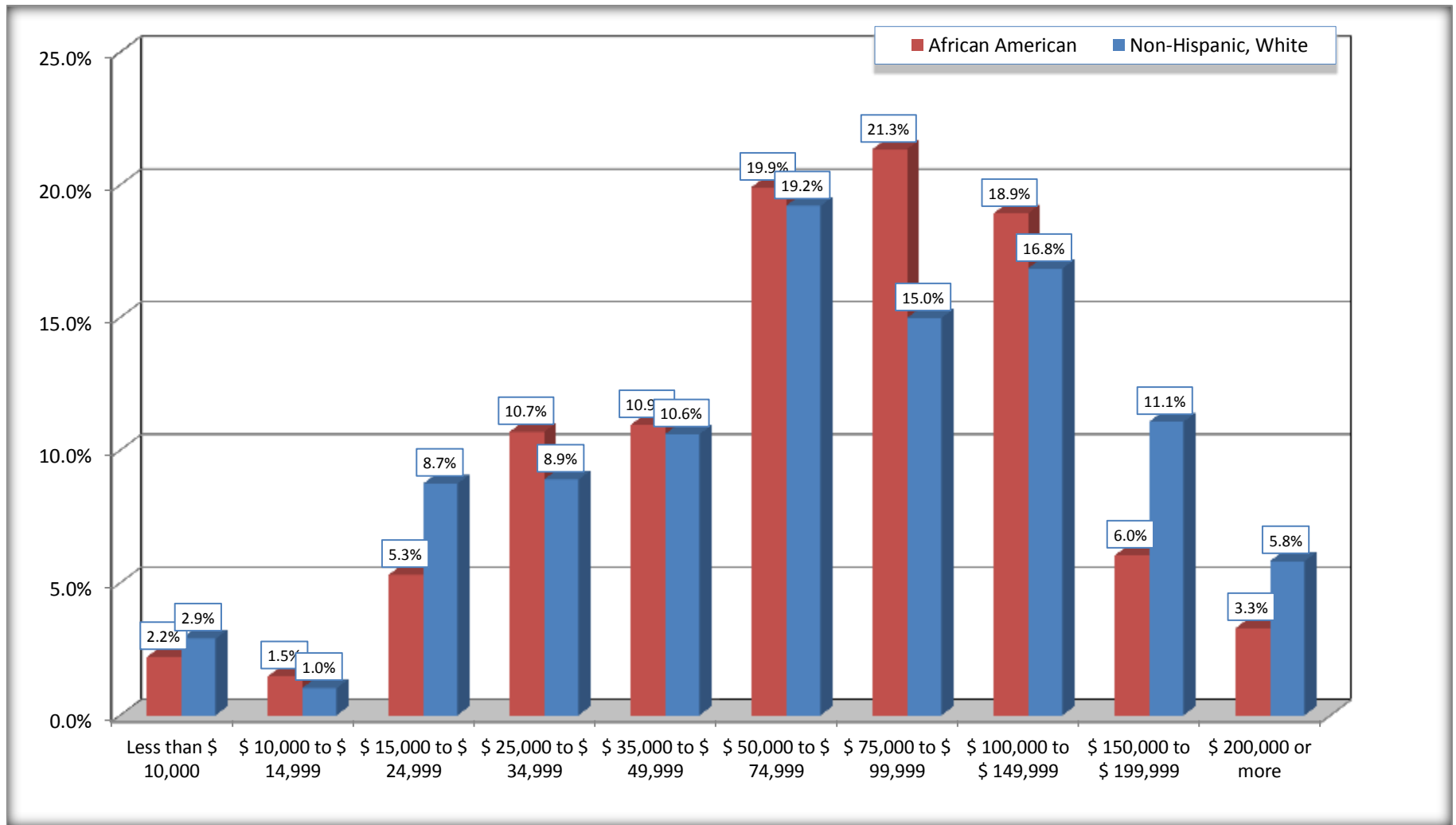
Source: U.S. Census Bureau, 2008-2012 American Community Survey

For information on confidentiality protection, sampling error, nonsampling error, and definitions, see Survey Methodology.

<http://www.census.gov/acs/www/UseData/index.htm>

## Household Income in the Past 12 Months

### Old Jamestown CDP, Missouri



Source: B19001. HOUSEHOLD INCOME IN THE PAST 12 MONTHS (IN 2010 INFLATION-ADJUSTED DOLLARS)

Data Set: 2008-2012 American Community Survey 5-Year Estimates

**B19013. MEDIAN HOUSEHOLD INCOME IN THE PAST 12 MONTHS (IN 2010 INFLATION-ADJUSTED DOLLARS)**

Data Set: 2008-2012 American Community Survey 5-Year Estimates

	Old Jamestown CDP, Missouri			
	African American	Margin of Error (+/-)	White, Not Hispanic	Margin of Error (+/-)
Median household income in the past 12 months (in 2010 inflation-adjusted dollars)	\$ 72,813	\$ 13,396	\$ 73,460	\$ 5,818

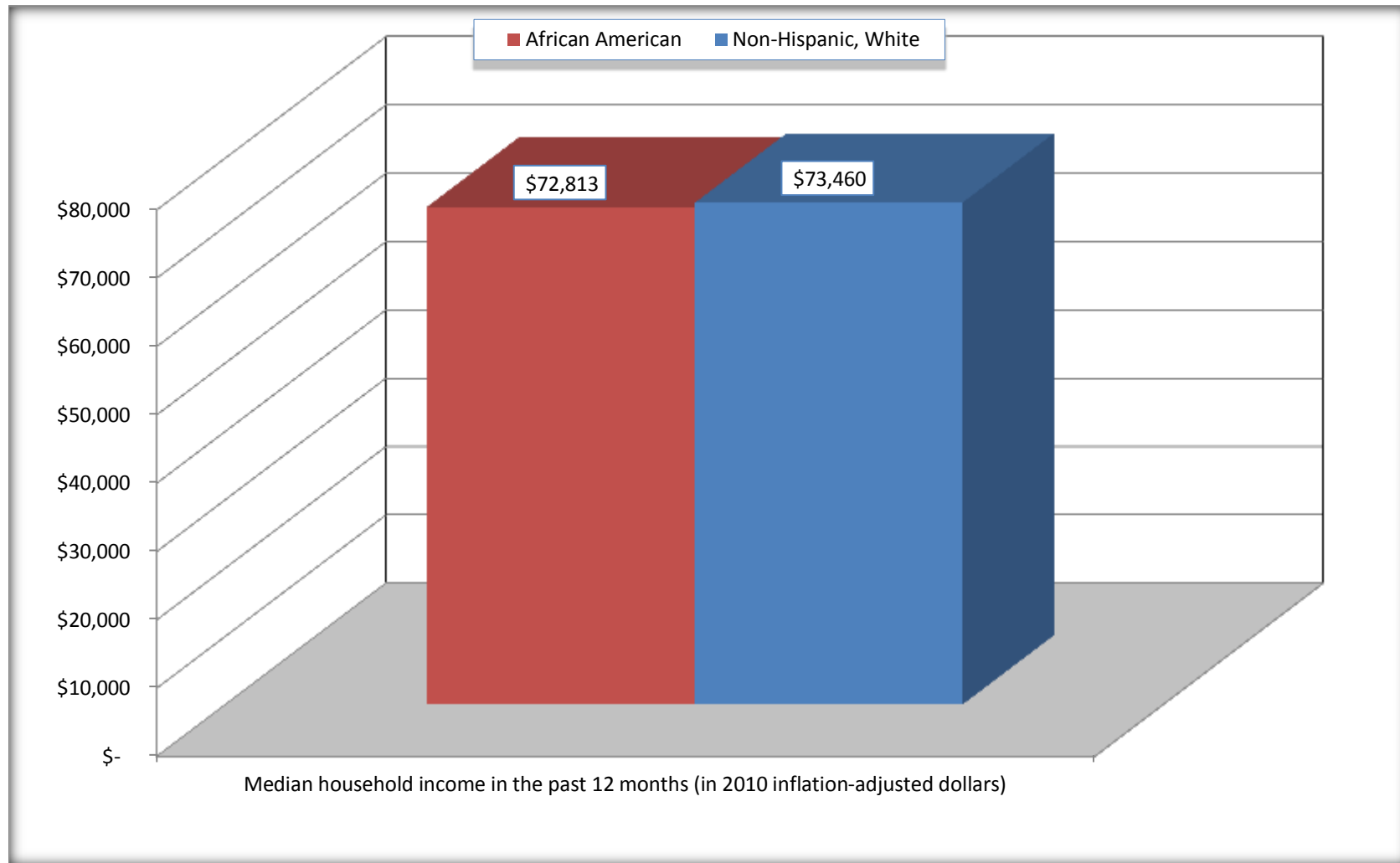
Source: U.S. Census Bureau, 2008-2012 American Community Survey

For information on confidentiality protection, sampling error, nonsampling error, and definitions, see Survey Methodology.  
<http://www.census.gov/acs/www/UseData/index.htm>



## Median Household Income in the Past 12 Months

### Old Jamestown CDP, Missouri



Source: B19013. MEDIAN HOUSEHOLD INCOME IN THE PAST 12 MONTHS (IN 2010 INFLATION-ADJUSTED DOLLARS)  
Data Set: 2008-2012 American Community Survey 5-Year Estimates

**B19101. FAMILY INCOME IN THE PAST 12 MONTHS (IN 2010 INFLATION-ADJUSTED DOLLARS)**

Data Set: 2008-2012 American Community Survey 5-Year Estimates

	Old Jamestown CDP, Missouri					
	African American	Margin of Error (+/-)	% of AA Total	White, Not Hispanic	Margin of Error (+/-)	% of NHW Total
<b>Total:</b>	<b>3,058</b>	<b>278</b>	<b>100.0%</b>	<b>2,330</b>	<b>227</b>	<b>100.0%</b>
Less than \$ 10,000	25	29	0.8%	10	16	0.4%
\$ 10,000 to \$ 14,999	29	36	0.9%	0	18	0.0%
<b>\$ 15,000 to \$ 24,999</b>	<b>144</b>	<b>NC</b>	<b>4.7%</b>	<b>91</b>	<b>NC</b>	<b>3.9%</b>
<b>\$ 25,000 to \$ 34,999</b>	<b>267</b>	<b>NC</b>	<b>8.7%</b>	<b>110</b>	<b>NC</b>	<b>4.7%</b>
<b>\$ 35,000 to \$ 49,999</b>	<b>240</b>	<b>NC</b>	<b>7.8%</b>	<b>287</b>	<b>NC</b>	<b>12.3%</b>
<b>\$ 50,000 to \$ 74,999</b>	<b>694</b>	<b>NC</b>	<b>22.7%</b>	<b>416</b>	<b>NC</b>	<b>17.9%</b>
<b>\$ 100,000 to \$ 149,999</b>	<b>675</b>	<b>NC</b>	<b>22.1%</b>	<b>488</b>	<b>NC</b>	<b>20.9%</b>
\$ 150,000 to \$ 199,999	181	75	5.9%	326	99	14.0%
\$ 200,000 or more	126	76	4.1%	175	87	7.5%

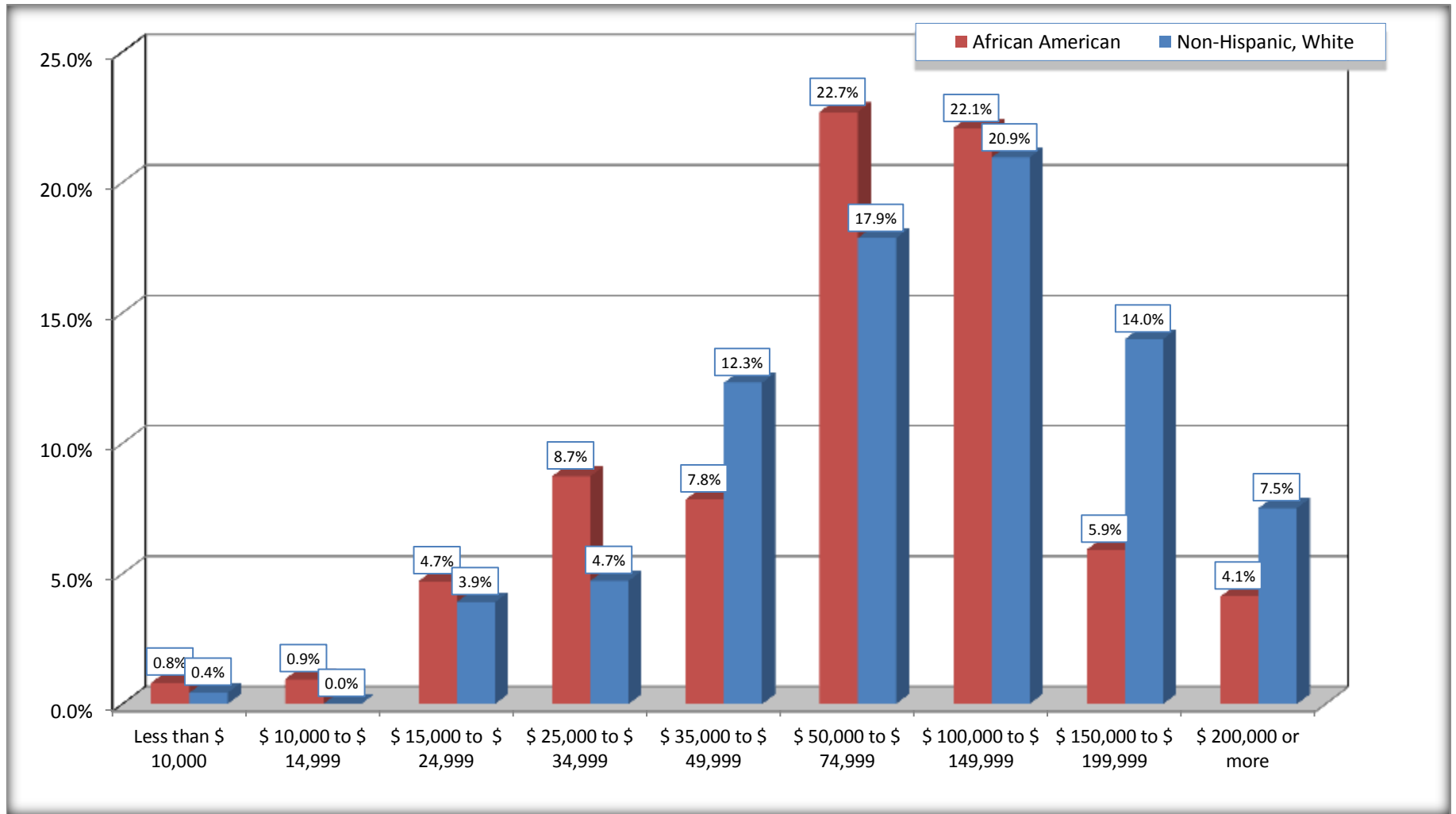
Source: U.S. Census Bureau, 2008-2012 American Community Survey

For information on confidentiality protection, sampling error, nonsampling error, and definitions, see Survey Methodology.

<http://www.census.gov/acs/www/UseData/index.htm>

# Family Income in the Past 12 Months

## Old Jamestown CDP, Missouri



Source: B19101. FAMILY INCOME IN THE PAST 12 MONTHS (IN 2010 INFLATION-ADJUSTED DOLLARS)  
Data Set: 2008-2012 American Community Survey 5-Year Estimates

**B19113. MEDIAN FAMILY INCOME IN THE PAST 12 MONTHS (IN 2010 INFLATION-ADJUSTED DOLLARS)**

Data Set: 2008-2012 American Community Survey 5-Year Estimates

	Old Jamestown CDP, Missouri			
	African American	Margin of Error (+/-)	White, Not Hispanic	Margin of Error (+/-)
Median family income in the past 12 months (in 2010 inflation-adjusted dollars)	\$ 80,350	\$ 7,097	\$ 84,628	\$ 13,997

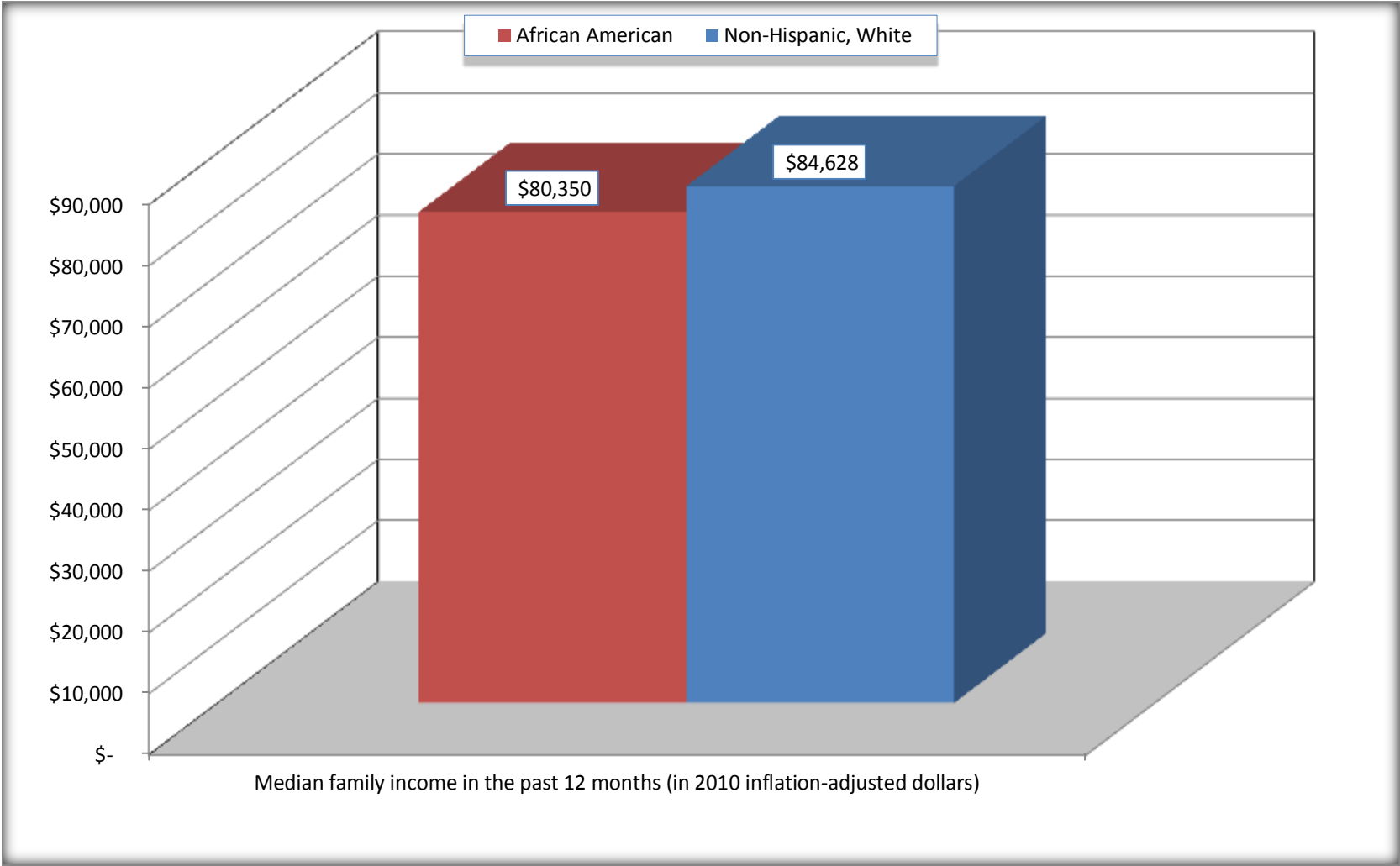
Source: U.S. Census Bureau, 2008-2012 American Community Survey

For information on confidentiality protection, sampling error, nonsampling error, and definitions, see Survey Methodology.

<http://www.census.gov/acs/www/UseData/index.htm>

# Median Family Income in the Past 12 Months

## Old Jamestown CDP, Missouri



Source: B19113. MEDIAN FAMILY INCOME IN THE PAST 12 MONTHS (IN 2010 INFLATION-ADJUSTED DOLLARS)  
Data Set: 2008-2012 American Community Survey 5-Year Estimates

**B19202. MEDIAN NONFAMILY HOUSEHOLD INCOME IN THE PAST 12 MONTHS (IN 2010 INFLATION-ADJUSTED DOLLARS)**

Data Set: 2008-2012 American Community Survey 5-Year Estimates

	Old Jamestown CDP, Missouri			
	African American	Margin of Error (+/-)	White, Not Hispanic	Margin of Error (+/-)
Median nonfamily household income in the past 12 months (in 2010 inflation-adjusted dollars)	\$ 43,807	\$ 10,733	\$ 32,873	\$ 3,790

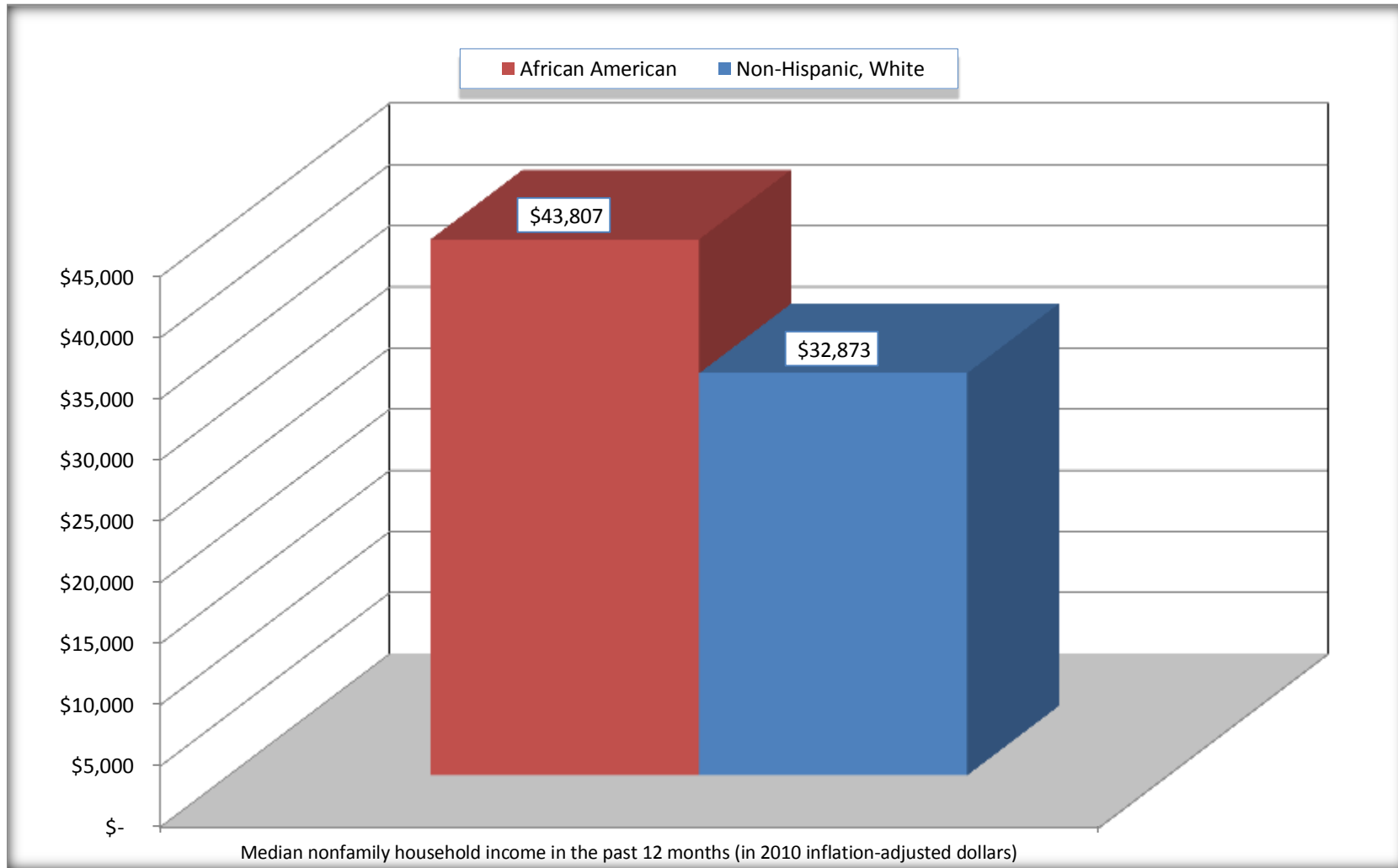
Source: U.S. Census Bureau, 2008-2012 American Community Survey

For information on confidentiality protection, sampling error, nonsampling error, and definitions, see Survey Methodology.

<http://www.census.gov/acs/www/UseData/index.htm>

# Median Non-Family Income in the Past 12 Months

## Old Jamestown CDP, Missouri



Source: B19202. MEDIAN NONFAMILY HOUSEHOLD INCOME IN THE PAST 12 MONTHS (IN 2010 INFLATION-ADJUSTED DOLLARS)  
Data Set: 2008-2012 American Community Survey 5-Year Estimates

**B19301. PER CAPITA INCOME IN THE PAST 12 MONTHS (IN 2010 INFLATION-ADJUSTED DOLLARS)**

Data Set: 2008-2012 American Community Survey 5-Year Estimates

	Old Jamestown CDP, Missouri			
	African American	Margin of Error (+/-)	White, Not Hispanic	Margin of Error (+/-)
Per capita income in the past 12 months (in 2010 inflation-adjusted dollars)	\$ 30,630	\$ 2,863	\$ 35,997	\$ 3,407

Source: U.S. Census Bureau, 2008-2012 American Community Survey

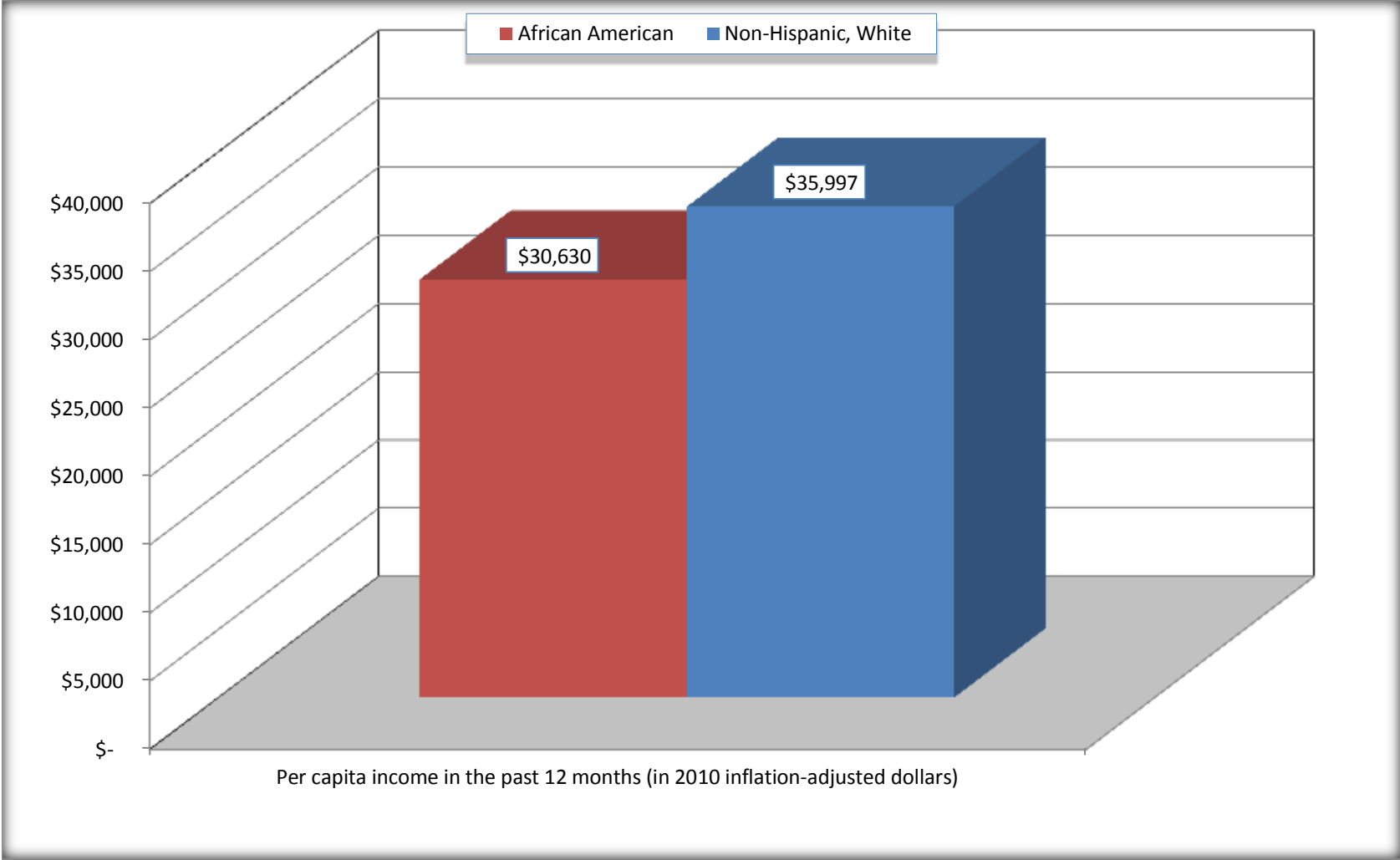
For information on confidentiality protection, sampling error, nonsampling error, and definitions, see Survey Methodology.

<http://www.census.gov/acs/www/UseData/index.htm>



# Per capita Income in the Past 12 Months

## Old Jamestown CDP, Missouri



Source: B19301. PER CAPITA INCOME IN THE PAST 12 MONTHS (IN 2010 INFLATION-ADJUSTED DOLLARS)  
Data Set: 2008-2012 American Community Survey 5-Year Estimates

**B20017. MEDIAN EARNINGS IN THE PAST 12 MONTHS (IN 2010 INFLATION-ADJUSTED DOLLARS) BY SEX BY WORK EXPERIENCE IN THE PAST 12 MONTHS FOR THE POPULATION 16 YEARS AND OVER WITH EARNINGS IN THE PAST 12 MONTHS**

Data Set: 2008-2012 American Community Survey 5-Year Estimates

	Old Jamestown CDP, Missouri			
	African American	Margin of Error (+/-)	White, Not Hispanic	Margin of Error (+/-)
Median earnings in the past 12 months (in 2010 inflation-adjusted dollars) --				
Total:	\$ 36,288	\$ 3,624	\$ 39,972	\$ 6,274
Male --				
Total	\$ 38,591	\$ 6,935	\$ 51,907	\$ 7,596
Worked full-time, year-round in the past 12 months	\$ 48,866	\$ 10,174	\$ 70,357	\$ 10,684
Other	\$ 12,114	\$ 2,713	\$ 16,875	\$ 7,486
Female --				
Total	\$ 35,481	\$ 3,628	\$ 31,037	\$ 6,375
Worked full-time, year-round in the past 12 months	\$ 46,406	\$ 7,772	\$ 50,977	\$ 8,930
Other	\$ 12,544	\$ 4,400	\$ 6,923	\$ 2,954

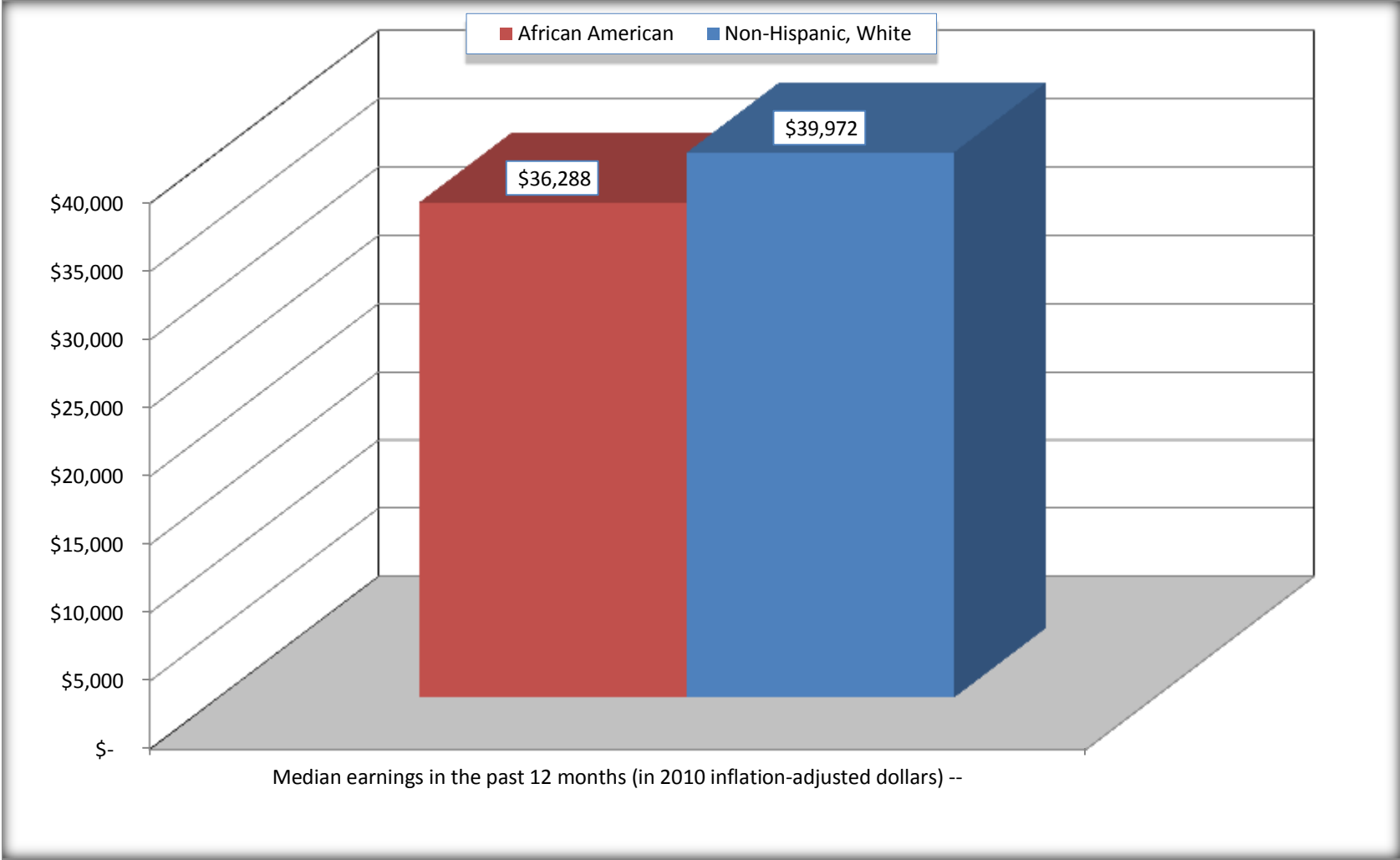
Source: U.S. Census Bureau, 2008-2012 American Community Survey

For information on confidentiality protection, sampling error, nonsampling error, and definitions, see Survey Methodology.

<http://www.census.gov/acs/www/UseData/index.htm>

# Median earnings in the Past 12 Months (16 Years and Over with Earnings)

## Old Jamestown CDP, Missouri



Source: B20017. MEDIAN EARNINGS IN THE PAST 12 MONTHS (IN 2010 INFLATION-ADJUSTED DOLLARS) BY SEX BY WORK EXPERIENCE IN THE PAST 12 MONTHS FOR THE POPULATION 16 YEARS AND OVER WITH EARNINGS IN THE PAST 12 MONTHS  
Data Set: 2008-2012 American Community Survey 5-Year Estimates

**B20005. SEX BY WORK EXPERIENCE IN THE PAST 12 MONTHS BY EARNINGS IN THE PAST 12 MONTHS (IN 2010 INFLATION-ADJUSTED DOLLARS) FOR THE POPULATION 16 YEARS AND OVER**

Data Set: 2008-2012 American Community Survey 5-Year Estimates

	Old Jamestown CDP, Missouri					
	African American	Margin of Error (+/-)	% of AA Total	White, Not Hispanic	Margin of Error (+/-)	% of NHW Total
<b>Total:</b>	<b>8,271</b>	<b>656</b>	<b>100.0%</b>	<b>6,956</b>	<b>559</b>	<b>100.0%</b>
Worked full-time, year-round in the past 12 months:	4,039	NC	48.8%	2,783	NC	40.0%
No earnings	0	NC	0.0%	0	NC	0.0%
With earnings:	4,039	NC	48.8%	2,783	NC	40.0%
\$ 1 to \$ 9,999 or loss	62	NC	0.7%	58	NC	0.8%
\$ 10,000 to \$ 19,999	235	NC	2.8%	137	NC	2.0%
\$ 20,000 to \$ 29,999	508	NC	6.1%	248	NC	3.6%
\$ 30,000 to \$ 49,999	1,280	NC	15.5%	617	NC	8.9%
\$ 50,000 to \$ 74,999	1,089	NC	13.2%	728	NC	10.5%
\$ 75,000 or more	865	NC	10.5%	995	NC	14.3%
Other:	4,232	NC	51.2%	4,173	NC	60.0%
No earnings	2,275	NC	27.5%	2,403	NC	34.5%
With earnings: less than full time, year-round	1,957	NC	23.7%	1,770	NC	25.4%
Male:	3,712	444	44.9%	3,152	343	45.3%
Worked full-time, year-round in the past 12 months:	1,825	267	22.1%	1,404	222	20.2%
No earnings	0	18	0.0%	0	18	0.0%
With earnings:	1,825	267	22.1%	1,404	222	20.2%
\$ 1 to \$ 9,999 or loss	44	NC	0.5%	10	NC	0.1%
\$ 10,000 to \$ 19,999	94	NC	1.1%	67	NC	1.0%
\$ 20,000 to \$ 29,999	191	NC	2.3%	117	NC	1.7%
\$ 30,000 to \$ 49,999	603	NC	7.3%	189	NC	2.7%
\$ 50,000 to \$ 74,999	478	NC	5.8%	355	NC	5.1%
\$ 75,000 or more	415	NC	5.0%	666	NC	9.6%

	Old Jamestown CDP, Missouri					
	African American	Margin of Error (+/-)	% of AA Total	White, Not Hispanic	Margin of Error (+/-)	% of NHW Total
Other:	1,887	336	22.8%	1,748	267	25.1%
No earnings	1,021	243	12.3%	962	175	13.8%
With earnings:	866	199	10.5%	786	192	11.3%
Female:	4,559	410	55.1%	3,804	362	54.7%
Worked full-time, year-round in the past 12 months:	2,214	311	26.8%	1,379	251	19.8%
No earnings	0	18	0.0%	0	18	0.0%
With earnings:	2,214	311	26.8%	1,379	251	19.8%
\$ 1 to \$ 9,999 or loss	18	NC	0.2%	48	NC	0.7%
\$ 10,000 to \$ 19,999	141	NC	1.7%	70	NC	1.0%
\$ 20,000 to \$ 29,999	317	NC	3.8%	131	NC	1.9%
\$ 30,000 to \$ 49,999	677	NC	8.2%	428	NC	6.2%
\$ 50,000 to \$ 74,999	611	NC	7.4%	373	NC	5.4%
\$ 75,000 or more	450	NC	5.4%	329	NC	4.7%
Other:	2,345	381	28.4%	2,425	294	34.9%
No earnings	1,254	293	15.2%	1,441	247	20.7%
With earnings:	1,091	218	13.2%	984	192	14.1%

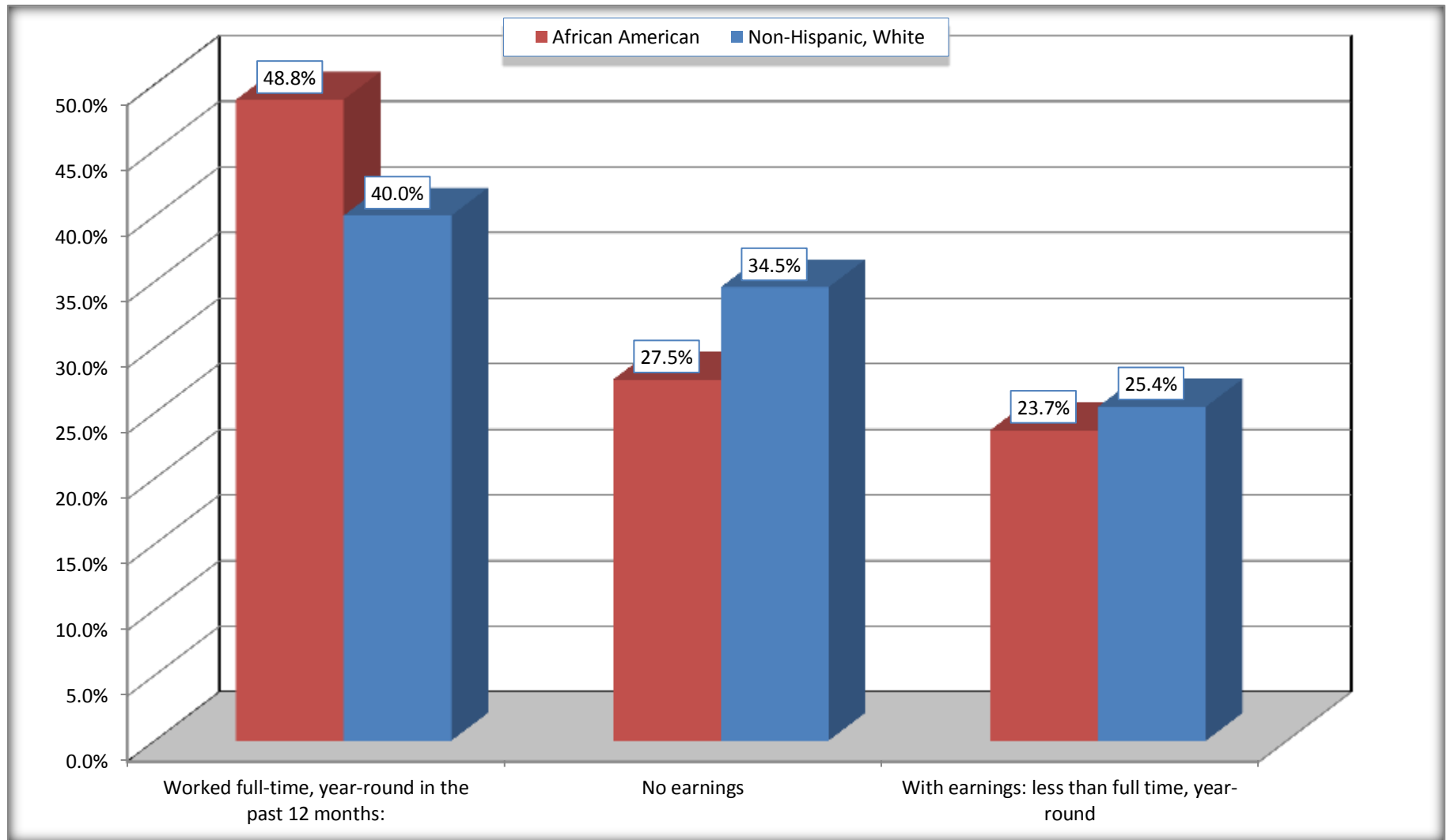
Source: U.S. Census Bureau, 2008-2012 American Community Survey

For information on confidentiality protection, sampling error, nonsampling error, and definitions, see Survey Methodology.

<http://www.census.gov/acs/www/UseData/index.htm>

## Employment and Earnings in in the Past 12 Months (16 Years and Over)

### Old Jamestown CDP, Missouri



Source: B20005. SEX BY WORK EXPERIENCE IN THE PAST 12 MONTHS BY EARNINGS IN THE PAST 12 MONTHS (IN 2010 INFLATION-ADJUSTED DOLLARS) FOR THE POPULATION 16 YEARS AND OVER

Data Set: 2008-2012 American Community Survey 5-Year Estimates

**C21001. SEX BY AGE BY VETERAN STATUS FOR THE CIVILIAN POPULATION 18 YEARS AND OVER**

Data Set: 2008-2012 American Community Survey 5-Year Estimates

	Old Jamestown CDP, Missouri					
	African American	Margin of Error (+/-)	% of AA Total	White, Not Hispanic	Margin of Error (+/-)	% of NHW Total
<b>Total:</b>	<b>7,793</b>	<b>566</b>	<b>100.0%</b>	<b>6,597</b>	<b>527</b>	<b>100.0%</b>
Veteran	949	NC	12.2%	937	NC	14.2%
Nonveteran	6,844	NC	87.8%	5,660	NC	85.8%
Male:	3,392	359	43.5%	2,905	322	44.0%
18 to 64 years:	2,925	359	37.5%	2,153	306	32.6%
Veteran	576	169	7.4%	381	109	5.8%
Nonveteran	2,349	391	30.1%	1,772	295	26.9%
65 years and over:	467	148	6.0%	752	140	11.4%
Veteran	260	107	3.3%	470	116	7.1%
Nonveteran	207	96	2.7%	282	113	4.3%
Female:	4,401	380	56.5%	3,692	341	56.0%
18 to 64 years:	3,926	332	50.4%	2,617	314	39.7%
Veteran	113	64	1.5%	55	41	0.8%
Nonveteran	3,813	339	48.9%	2,562	310	38.8%
65 years and over:	475	156	6.1%	1,075	178	16.3%
Veteran	0	18	0.0%	31	33	0.5%
Nonveteran	475	156	6.1%	1,044	173	15.8%

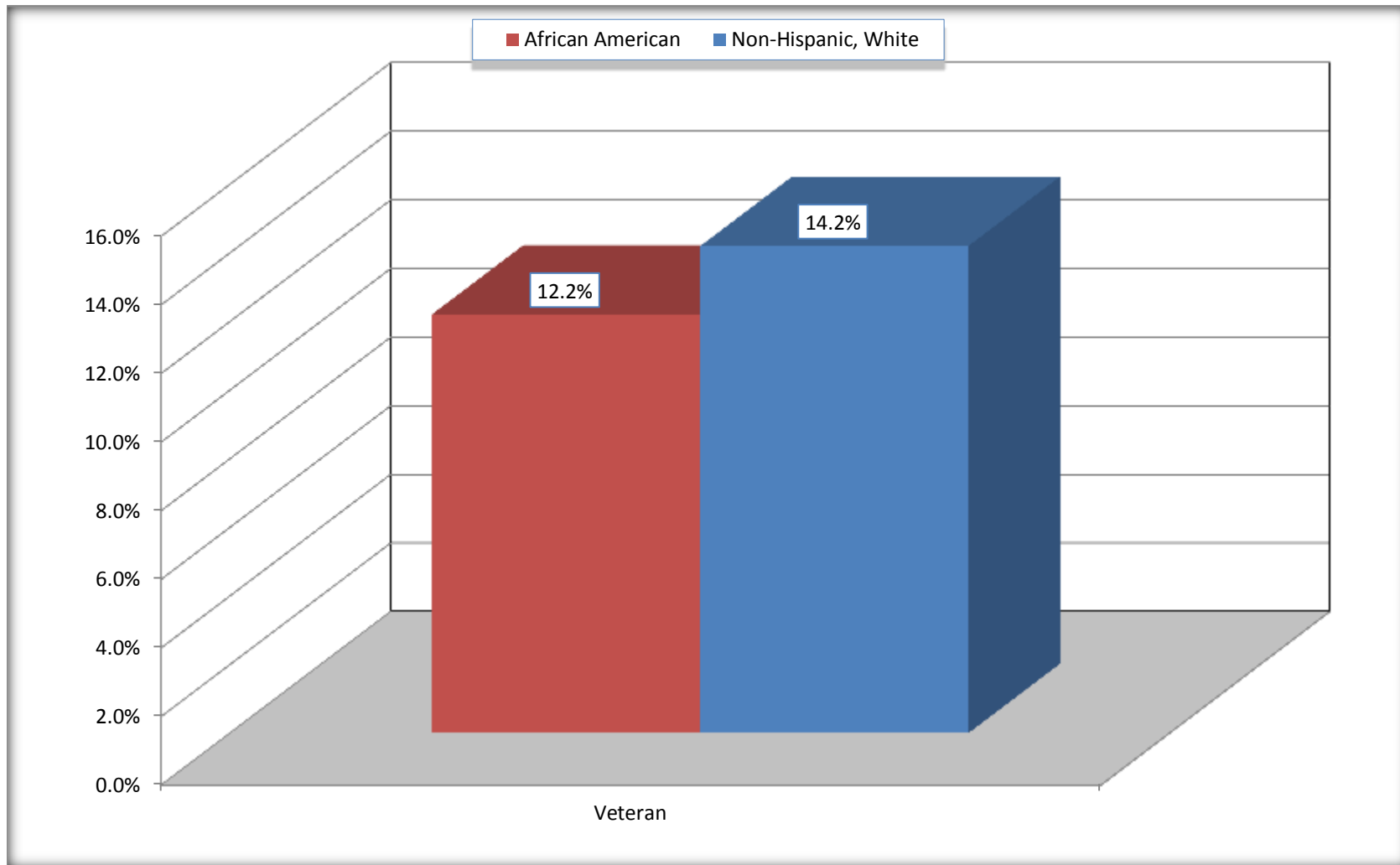
Source: U.S. Census Bureau, 2008-2012 American Community Survey

For information on confidentiality protection, sampling error, nonsampling error, and definitions, see Survey Methodology.

<http://www.census.gov/acs/www/UseData/index.htm>

# Veterans in the Civilian Population 18 Years and Over

## Old Jamestown CDP, Missouri



Source: C21001. SEX BY AGE BY VETERAN STATUS FOR THE CIVILIAN POPULATION 18 YEARS AND OVER  
Data Set: 2008-2012 American Community Survey 5-Year Estimates



**B22005. RECEIPT OF FOOD STAMPS/SNAP IN THE PAST 12 MONTHS BY RACE OF HOUSEHOLDER**

Data Set: 2008-2012 American Community Survey 5-Year Estimates

	Old Jamestown CDP, Missouri					
	African American	Margin of Error (+/-)	% of AA Total	White, Not Hispanic	Margin of Error (+/-)	% of NHW Total
<b>Total:</b>	<b>3,839</b>	<b>259</b>	<b>100.0%</b>	<b>3,219</b>	<b>235</b>	<b>100.0%</b>
HH received Food Stamps/SNAP in the past 12 months	202	98	5.3%	101	58	3.1%
HH did not receive Food Stamps/SNAP in the past 12 months	3,637	268	94.7%	3,118	231	96.9%

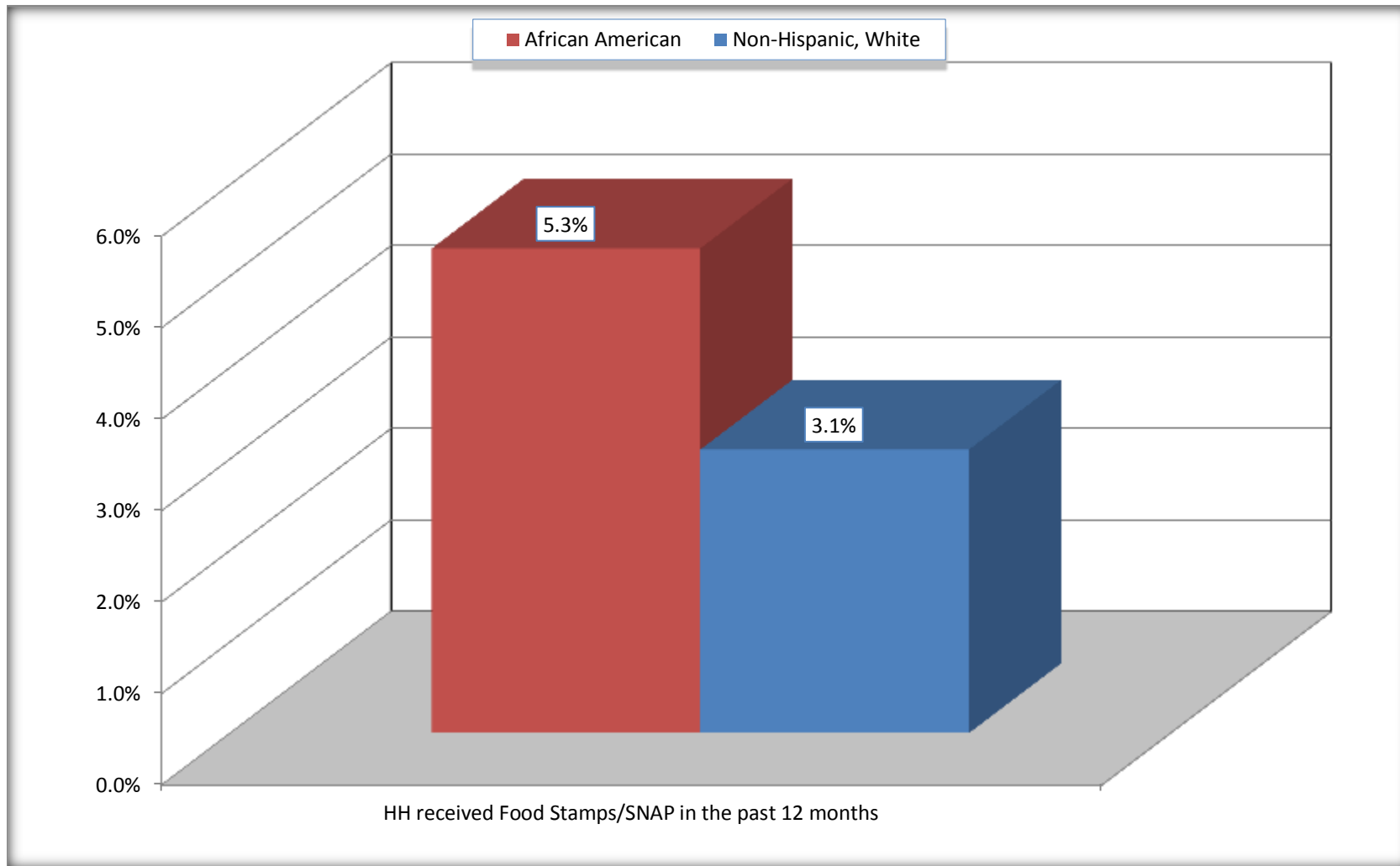
Source: U.S. Census Bureau, 2008-2012 American Community Survey

For information on confidentiality protection, sampling error, nonsampling error, and definitions, see Survey Methodology.

<http://www.census.gov/acs/www/UseData/index.htm>

# Receipt of Food Stamps/SNAP in the Past 12 Months by Household

## Old Jamestown CDP, Missouri



Source: B22005. RECEIPT OF FOOD STAMPS/SNAP IN THE PAST 12 MONTHS BY RACE OF HOUSEHOLDER  
Data Set: 2008-2012 American Community Survey 5-Year Estimates

**C23002. SEX BY AGE BY EMPLOYMENT STATUS FOR THE POPULATION 16 YEARS AND OVER**

Data Set: 2008-2012 American Community Survey 5-Year Estimates

	Old Jamestown CDP, Missouri					
	African American	Margin of Error (+/-)	% of AA Total	White, Not Hispanic	Margin of Error (+/-)	% of NHW Total
<b>Total:</b>	<b>8,271</b>	<b>656</b>	<b>100.0%</b>	<b>6,956</b>	<b>559</b>	<b>100.0%</b>
In labor force:	5,783	NC	69.9%	4,296	NC	61.8%
In Armed Forces	42	NC	0.5%	0	NC	0.0%
Civilian:	5,618	NC	67.9%	4,069	NC	58.5%
Employed	5,134	NC	62.1%	4,004	NC	57.6%
Unemployed	607	NC	7.3%	292	NC	4.2%
Not in labor force	2,488	NC	30.1%	2,660	NC	38.2%
Male:	3,712	444	44.9%	3,152	343	45.3%
16 to 64 years:	3,245	447	39.2%	2,400	335	34.5%
In labor force:	2,511	299	30.4%	1,969	274	28.3%
In Armed Forces	42	41	0.5%	0	18	0.0%
Civilian:	2,469	292	29.9%	1,969	274	28.3%
Employed	2,074	278	25.1%	1,755	245	25.2%
Unemployed	395	142	4.8%	214	115	3.1%
Not in labor force	734	277	8.9%	431	134	6.2%
65 years and over:	467	148	5.6%	752	140	10.8%
In labor force:	46	38	0.6%	133	65	1.9%
Employed	46	38	0.6%	122	64	1.8%
Unemployed	0	18	0.0%	11	19	0.2%
Not in labor force	421	139	5.1%	619	133	8.9%

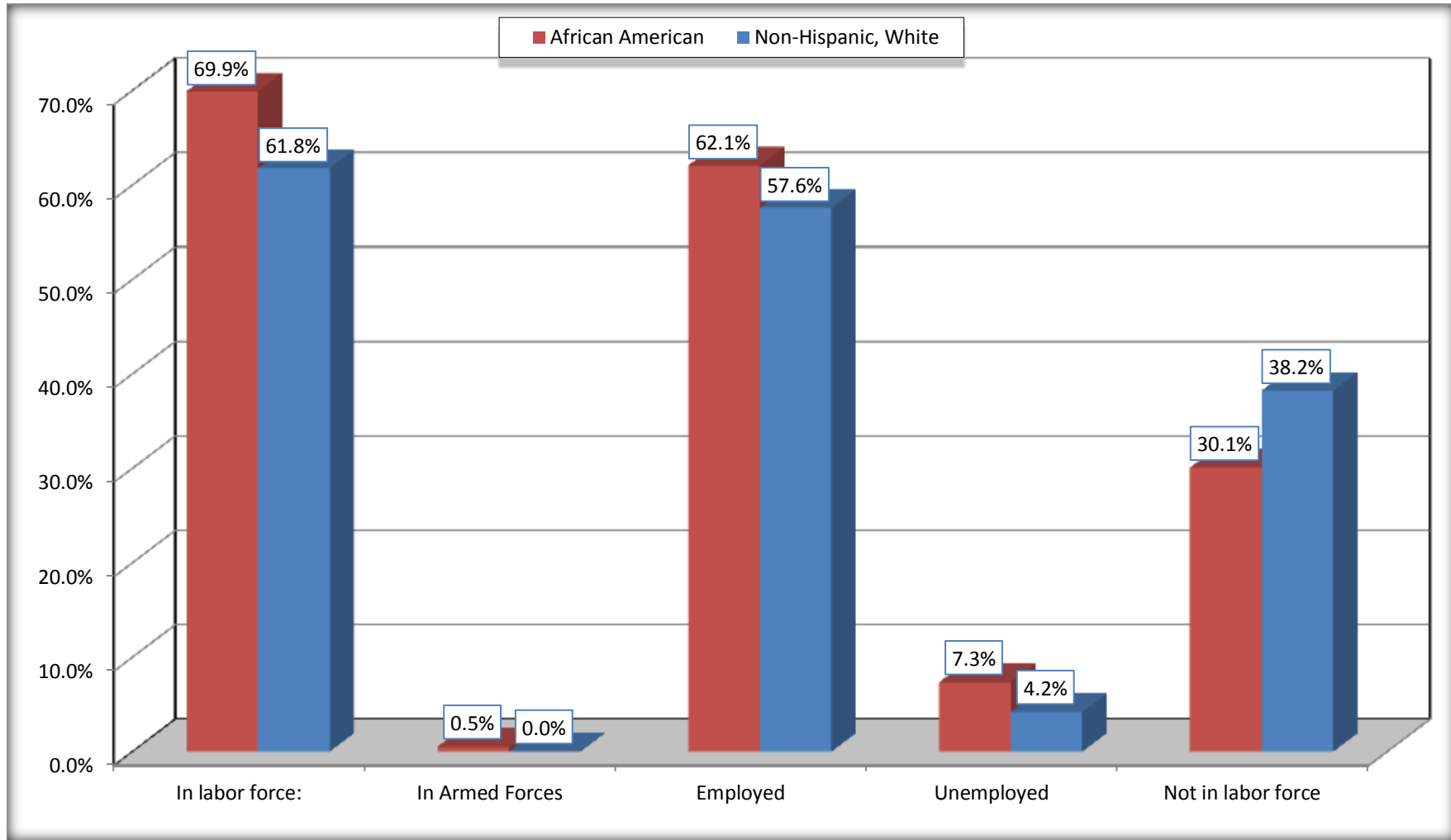
	Old Jamestown CDP, Missouri					
	African American	Margin of Error (+/-)	% of AA Total	White, Not Hispanic	Margin of Error (+/-)	% of NHW Total
Female:	4,559	410	55.1%	3,804	362	54.7%
16 to 64 years:	4,084	366	49.4%	2,729	336	39.2%
In labor force:	3,149	329	38.1%	2,100	324	30.2%
In Armed Forces	0	18	0.0%	0	18	0.0%
Civilian:	3,149	329	38.1%	2,100	324	30.2%
Employed	2,937	319	35.5%	2,033	309	29.2%
Unemployed	212	101	2.6%	67	59	1.0%
Not in labor force	935	230	11.3%	629	170	9.0%
65 years and over:	475	156	5.7%	1,075	178	15.5%
In labor force:	77	59	0.9%	94	53	1.4%
Employed	77	59	0.9%	94	53	1.4%
Unemployed	0	18	0.0%	0	18	0.0%
Not in labor force	398	152	4.8%	981	167	14.1%

Source: U.S. Census Bureau, 2008-2012 American Community Survey

For information on confidentiality protection, sampling error, nonsampling error, and definitions, see Survey Methodology.  
<http://www.census.gov/acs/www/UseData/index.htm>

# Employment Status for the Population 16 years and over

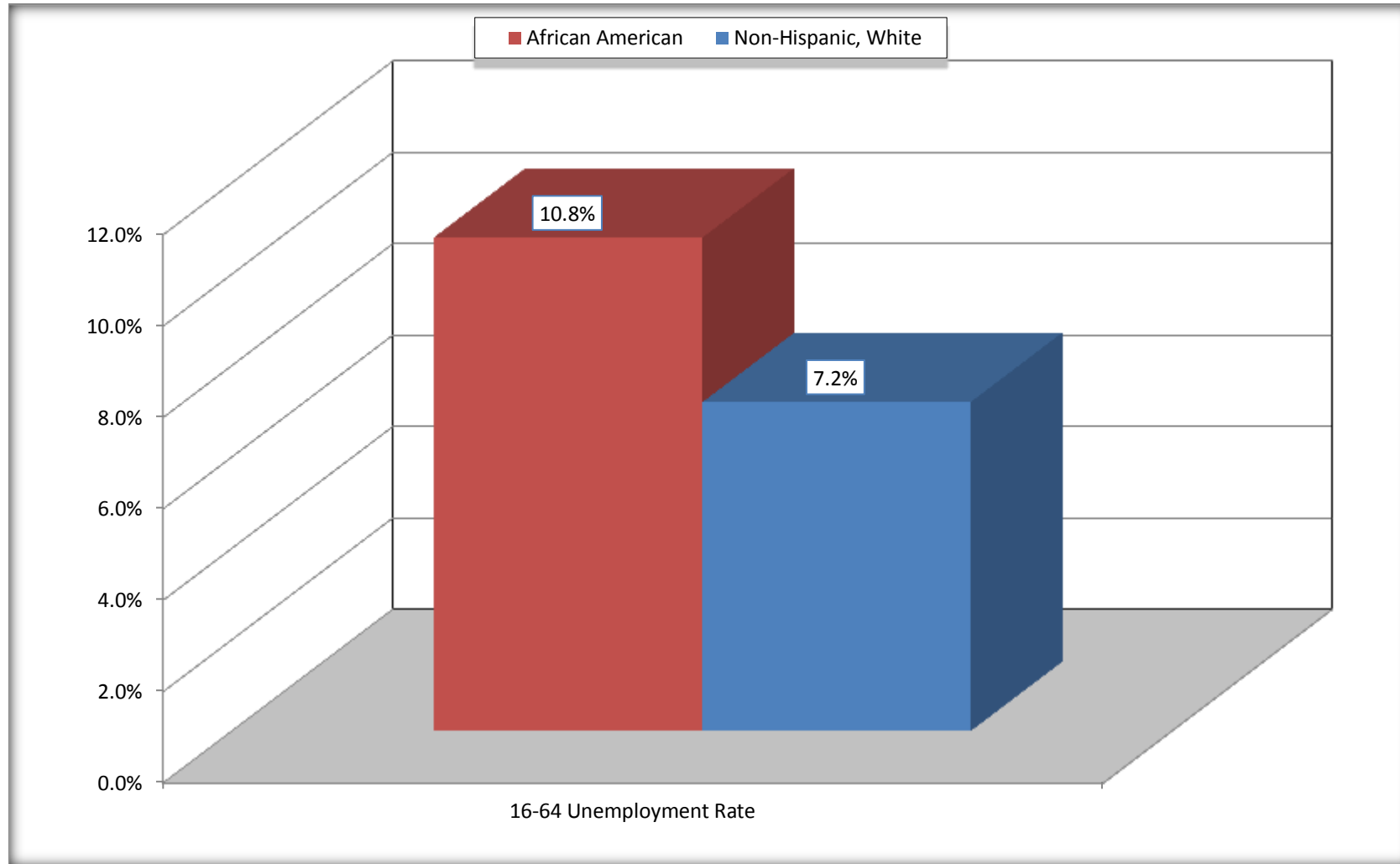
## Old Jamestown CDP, Missouri



Source: C23002. SEX BY AGE BY EMPLOYMENT STATUS FOR THE POPULATION 16 YEARS AND OVER  
Data Set: 2008-2012 American Community Survey 5-Year Estimates

# Unemployment of Working Age Population (Ages 16 to 64) (As a Percent of 16-64 Civilian Labor Force)

## Old Jamestown CDP, Missouri



Source: C23002. SEX BY AGE BY EMPLOYMENT STATUS FOR THE POPULATION 16 YEARS AND OVER  
Data Set: 2008-2012 American Community Survey 5-Year Estimates

**C24010. SEX BY OCCUPATION FOR THE CIVILIAN EMPLOYED POPULATION 16 YEARS AND OVER**

Data Set: 2008-2012 American Community Survey 5-Year Estimates

	Old Jamestown CDP, Missouri					
	African American	Margin of Error (+/-)	% of AA Total	White, Not Hispanic	Margin of Error (+/-)	% of NHW Total
<b>Total:</b>	<b>5,134</b>	<b>453</b>	<b>100.0%</b>	<b>4,004</b>	<b>422</b>	<b>100.0%</b>
Management, professional, and related occupations	2,322	NC	45.2%	1,882	NC	47.0%
Service occupations	736	NC	14.3%	438	NC	10.9%
Sales and office occupations	1,509	NC	29.4%	1,040	NC	26.0%
Natural resources, construction, and maintenance occupations:	192	NC	3.7%	252	NC	6.3%
Production, transportation, and material moving occupations	375	NC	7.3%	392	NC	9.8%
Male:	2,120	281	41.3%	1,877	245	46.9%
Management, business, science, and arts occupations:	863	238	16.8%	775	154	19.4%
Service occupations	382	141	7.4%	191	89	4.8%
Sales and office occupations	403	151	7.8%	329	116	8.2%
Natural resources, construction, and maintenance occupations:	192	110	3.7%	242	123	6.0%
Production, transportation, and material moving occupations	280	125	5.5%	340	123	8.5%
Female:	3,014	321	58.7%	2,127	303	53.1%
Management, professional, and related occupations	1,459	272	28.4%	1,107	223	27.6%
Service occupations	354	152	6.9%	247	96	6.2%
Sales and office occupations	1,106	242	21.5%	711	201	17.8%
Natural resources, construction, and maintenance occupations:	0	18	0.0%	10	15	0.2%
Production, transportation, and material moving occupations	95	72	1.9%	52	48	1.3%

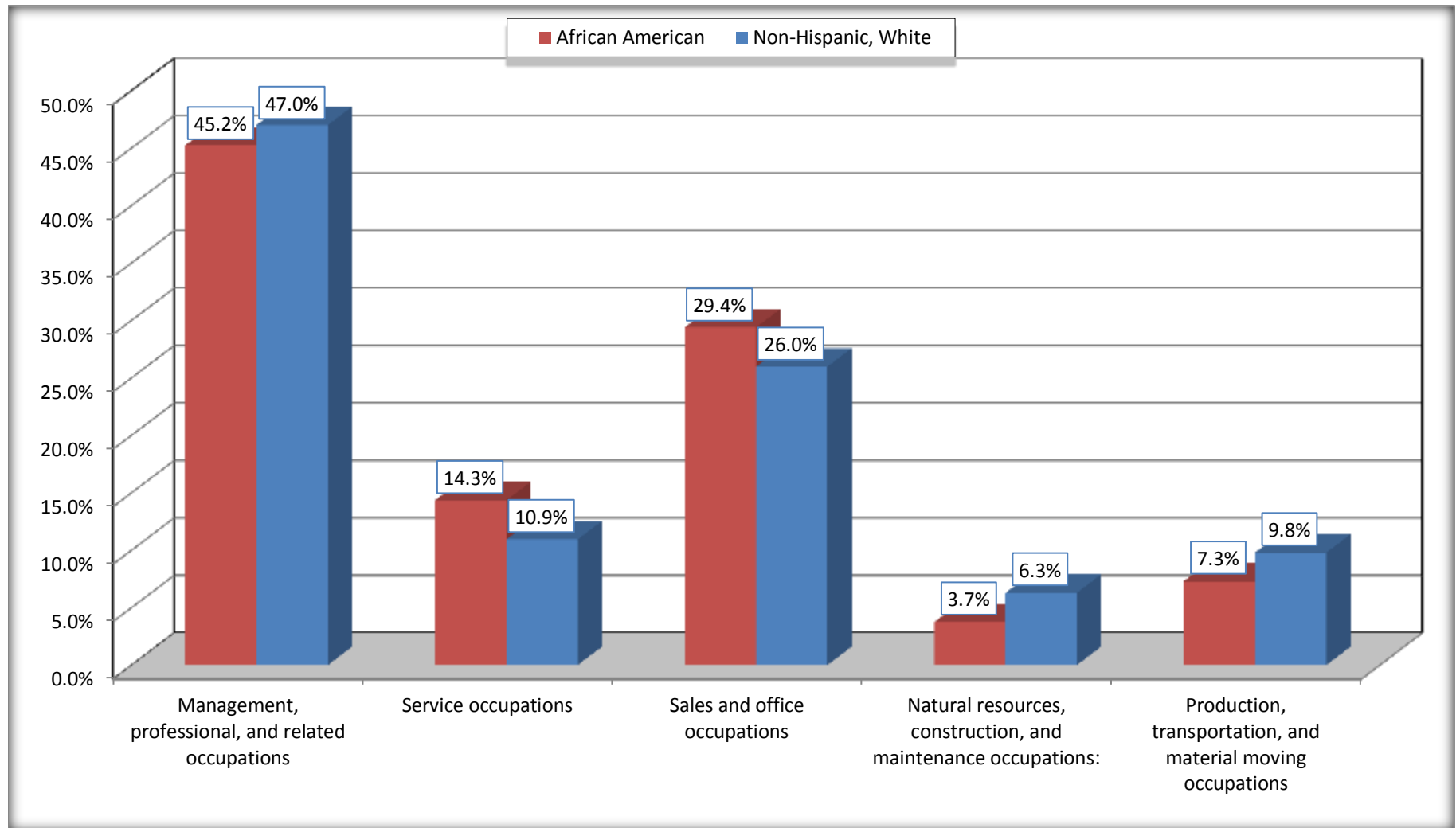
Source: U.S. Census Bureau, 2008-2012 American Community Survey

For information on confidentiality protection, sampling error, nonsampling error, and definitions, see Survey Methodology.

<http://www.census.gov/acs/www/UseData/index.htm>

# Occupation for the Civilian Employed 16 Years and Over Population

## Old Jamestown CDP, Missouri



Source: C24010. SEX BY OCCUPATION FOR THE CIVILIAN EMPLOYED POPULATION 16 YEARS AND OVER  
Data Set: 2008-2012 American Community Survey 5-Year Estimates



**B25003. TENURE - Universe: OCCUPIED HOUSING UNITS**

Data Set: 2008-2012 American Community Survey 5-Year Estimates

	Old Jamestown CDP, Missouri					
	African American	Margin of Error (+/-)	% of AA Total	White, Not Hispanic	Margin of Error (+/-)	% of NHW Total
<b>Total:</b>	<b>3,839</b>	<b>259</b>	<b>100.0%</b>	<b>3,219</b>	<b>235</b>	<b>100.0%</b>
Owner occupied	3,409	268	88.8%	3,100	222	96.3%
Renter occupied	430	199	11.2%	119	88	3.7%

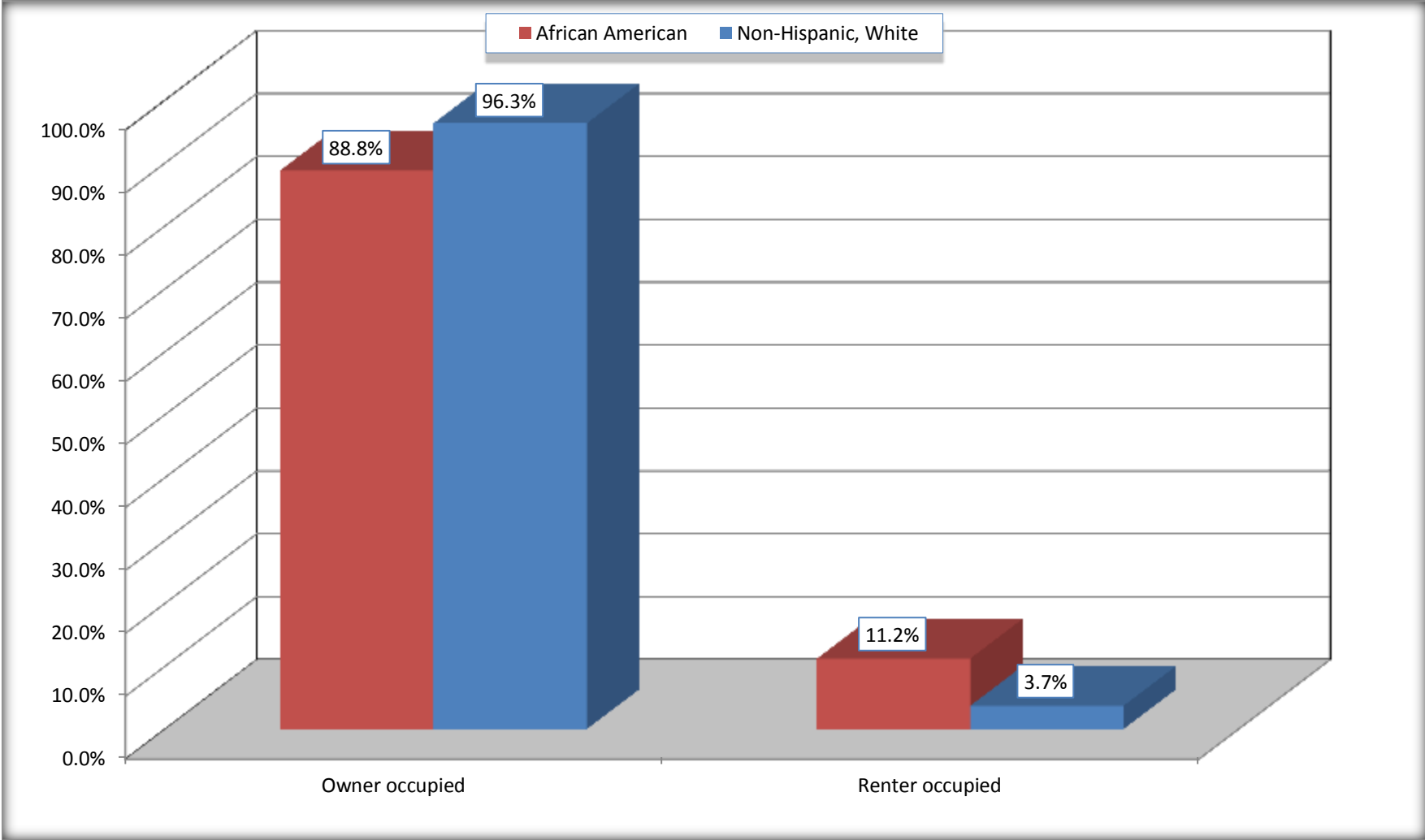
Source: U.S. Census Bureau, 2008-2012 American Community Survey

For information on confidentiality protection, sampling error, nonsampling error, and definitions, see Survey Methodology.

<http://www.census.gov/acs/www/UseData/index.h>

# Home Owners and Renters by Household

## Old Jamestown CDP, Missouri



Source: B25003. TENURE - Universe: OCCUPIED HOUSING UNITS  
Data Set: 2008-2012 American Community Survey 5-Year Estimates

**B25014. OCCUPANTS PER ROOM - Universe: OCCUPIED HOUSING UNITS**

Data Set: 2008-2012 American Community Survey 5-Year Estimates

	Old Jamestown CDP, Missouri					
	African American	Margin of Error (+/-)	% of AA Total	White, Not Hispanic	Margin of Error (+/-)	% of NHW Total
<b>Total:</b>	<b>3,839</b>	<b>259</b>	<b>100.0%</b>	<b>3,219</b>	<b>235</b>	<b>100.0%</b>
1.00 or less occupants per room	3,793	258	98.8%	3,183	236	98.9%
1.01 or more occupants per room	46	56	1.2%	36	47	1.1%

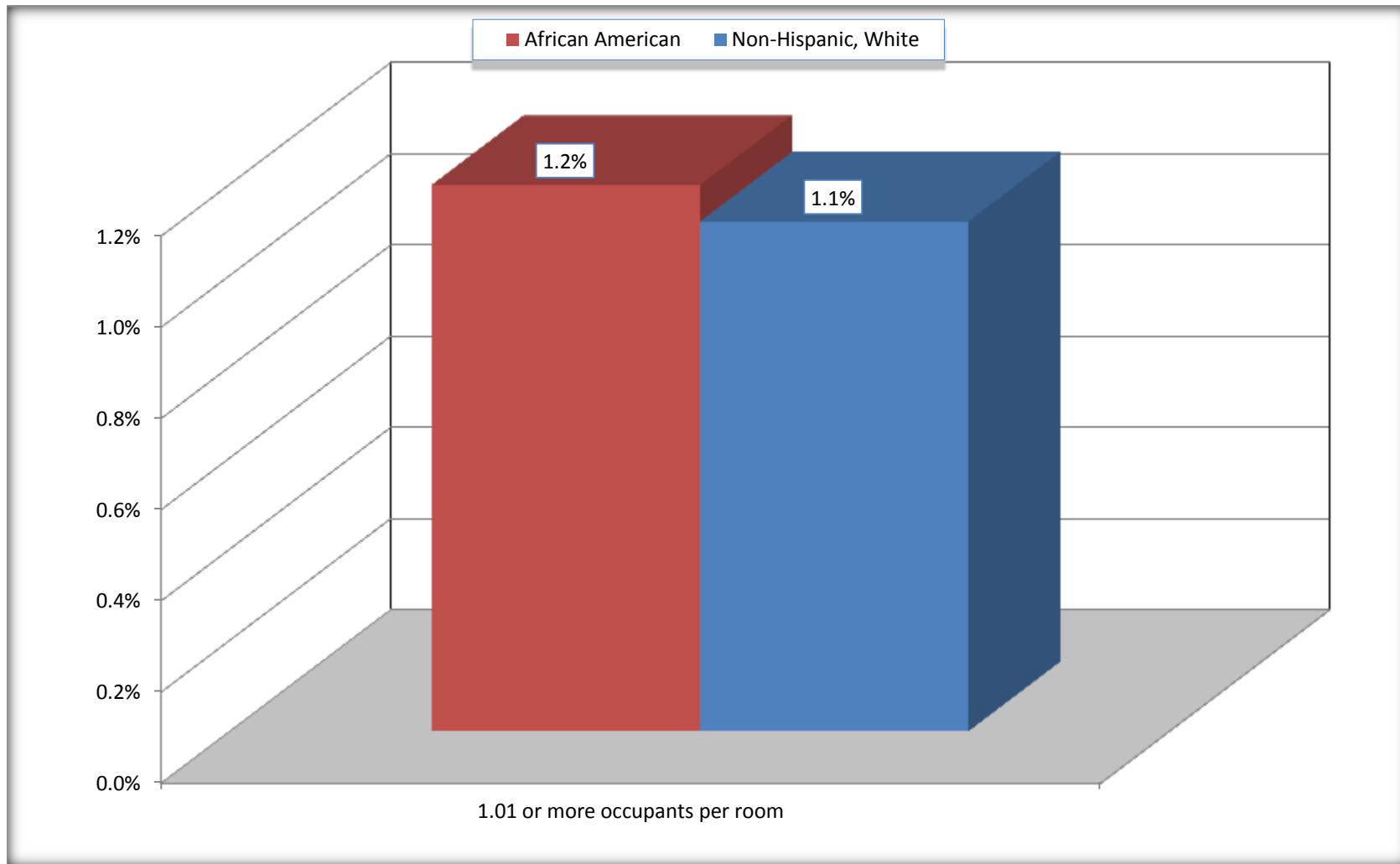
Source: U.S. Census Bureau, 2008-2012 American Community Survey

For information on confidentiality protection, sampling error, nonsampling error, and definitions, see Survey Methodology.

<http://www.census.gov/acs/www/UseData/index.ht>

# More than One Person per Room (Crowding) by Household

## Old Jamestown CDP, Missouri



Source: B25014. OCCUPANTS PER ROOM - Universe: OCCUPIED HOUSING UNITS  
Data Set: 2008-2012 American Community Survey 5-Year Estimates

**B18101. AGE BY DISABILITY STATUS**

Data Set: 2008-2012 American Community Survey 5-Year Estimates

	Old Jamestown CDP, Missouri					
	African American	Margin of Error (+/-)	% of AA Total	White, Not Hispanic	Margin of Error (+/-)	% of NHW Total
<b>Total:</b>	<b>10,280</b>	<b>927</b>	<b>100.0%</b>	<b>8,071</b>	<b>770</b>	<b>100.0%</b>
Under 18 years:	2,541	565	24.7%	1,485	57	18.4%
With a disability	173	114	1.7%	126	96	1.6%
No disability	2,368	538	23.0%	1,359	422	16.8%
18 to 64 years:	6,830	507	66.4%	4,770	504	59.1%
With a disability	644	200	6.3%	515	159	6.4%
No disability	6,186	494	60.2%	4,255	494	52.7%
65 years and over:	909	242	8.8%	1,816	267	22.5%
With a disability	180	98	1.8%	553	153	6.9%
No disability	729	185	7.1%	1,263	217	15.6%

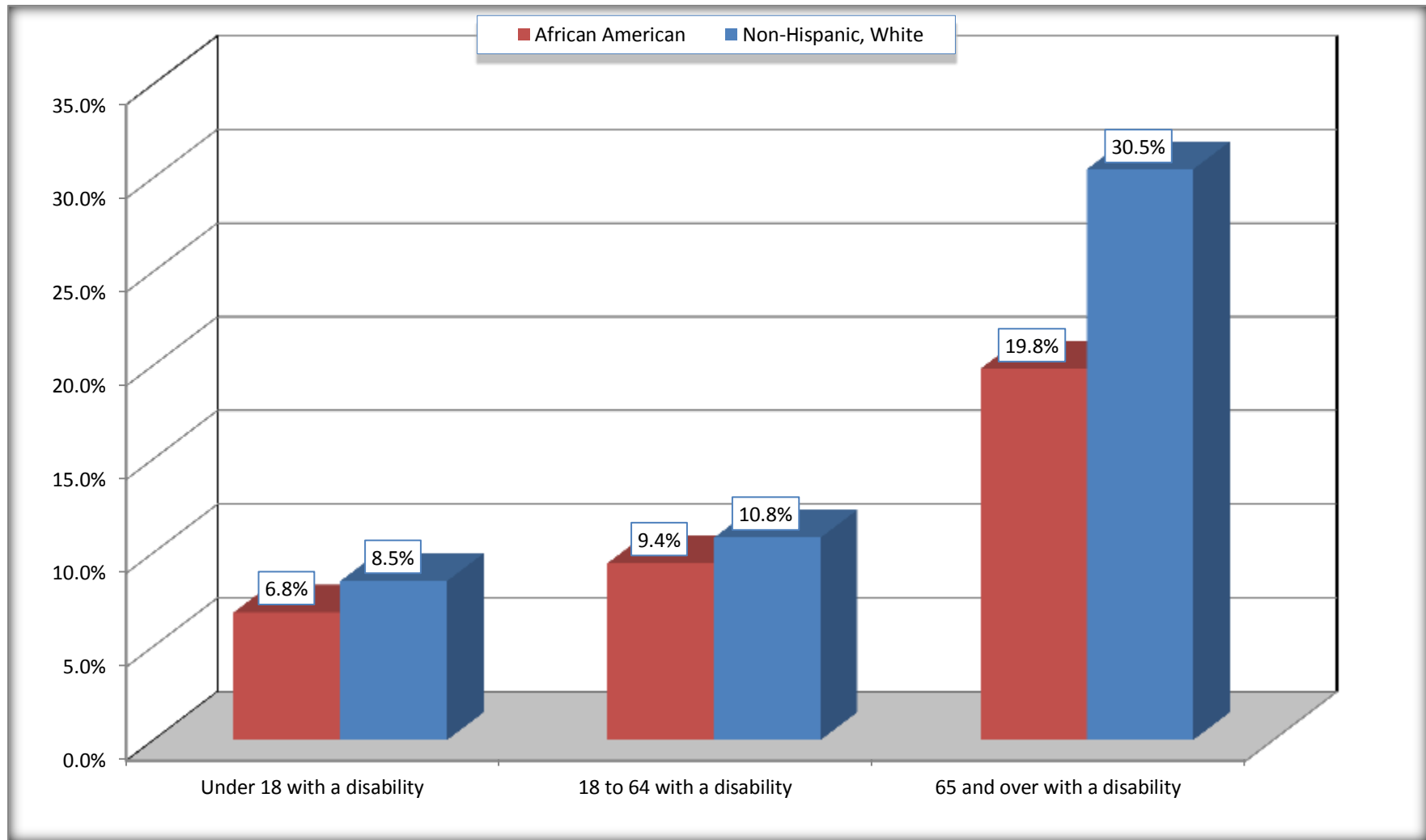
Source: U.S. Census Bureau, 2008-2012 American Community Survey

For information on confidentiality protection, sampling error, nonsampling error, and definitions, see Survey Methodology.

<http://www.census.gov/acs/www/UseData/index.htm>

# Disability by Age

## Old Jamestown CDP, Missouri



Source: B18101. AGE BY DISABILITY STATUS  
Data Set: 2008-2012 American Community Survey 5-Year Estimates

**C27001B. HEALTH INSURANCE COVERAGE STATUS BY AGE**

Data Set: 2008-2012 American Community Survey 5-Year Estimates

	Old Jamestown CDP, Missouri					
	African American	Margin of Error (+/-)	% of AA Total	White, Not Hispanic	Margin of Error (+/-)	% of NHW Total
<b>Total:</b>	<b>10,280</b>	<b>927</b>	<b>100.0%</b>	<b>8,071</b>	<b>770</b>	<b>100.0%</b>
Under 18 years:	2,541	565	24.7%	1,485	443	18.4%
With health insurance coverage	2,398	504	23.3%	1,485	443	18.4%
No health insurance coverage	143	124	1.4%	0	18	0.0%
18 to 64 years:	6,830	507	66.4%	4,770	504	59.1%
With health insurance coverage	6,047	517	58.8%	4,440	482	55.0%
No health insurance coverage	783	220	7.6%	330	136	4.1%
65 years and over:	909	242	8.8%	1,816	267	22.5%
With health insurance coverage	909	242	8.8%	1,816	267	22.5%
No health insurance coverage	0	18	0.0%	0	18	0.0%

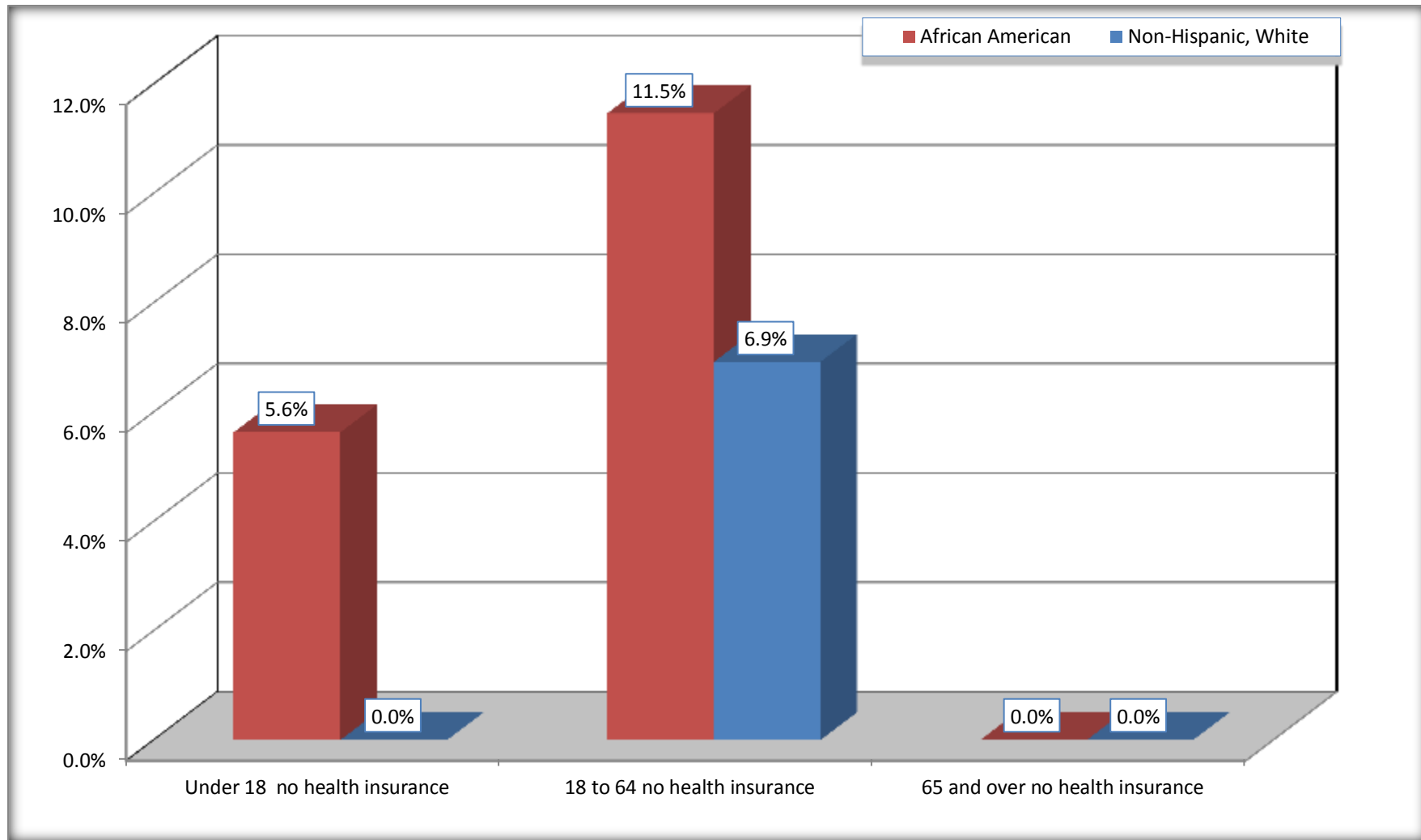
Source: U.S. Census Bureau, 2008-2012 American Community Survey

For information on confidentiality protection, sampling error, nonsampling error, and definitions, see Survey Methodology.

<http://www.census.gov/acs/www/UseData/index.htm>

# Lack of Health Insurance Coverage by Age

## Old Jamestown CDP, Missouri



Source: C27001B. HEALTH INSURANCE COVERAGE STATUS BY AGE  
Data Set: 2008-2012 American Community Survey 5-Year Estimates