

Selected Socio-Economic Data

West Point city, Mississippi

African American and White, Not Hispanic

Data Set: 2008-2012 American Community Survey 5-Year Estimates

www.fairvote2020.org

www.fairdata2000.com

[29-Dec-13](#)

C02003.DETAILED RACE - Universe: TOTAL POPULATION

Data Set: 2008-2012 American Community Survey 5-Year Estimates

	West Point city, Mississippi		
	Population	Margin of Error (+/-)	% of Total
Total:	11,317	21	100.0%
Population of one race:	11,235	65	99.3%
White	4,515	323	39.9%
Black or African American	6,652	350	58.8%
American Indian and Alaska Native	21	34	0.2%
Asian alone	36	57	0.3%
Native Hawaiian and Other Pacific Islander	0	19	0.0%
Some other race	11	16	0.1%
Population of two or more races:	82	66	0.7%
Two races including Some other race	11	18	0.1%
Two races excluding Some other race, and three or more races	71	58	0.6%
Population of two races:	82	66	0.7%
White; Black or African American	6	10	0.1%
White; American Indian and Alaska Native	39	47	0.3%
White; Asian	0	19	0.0%
Black or African American; American Indian and Alaska Native	26	30	0.2%
All other two race combinations	11	18	0.1%
Population of three races	0	19	0.0%
Population of four or more races	0	19	0.0%

Note: Hispanics may be of any race. See Table B03002 and chart.

Source: U.S. Census Bureau, 2008-2012 American Community Survey

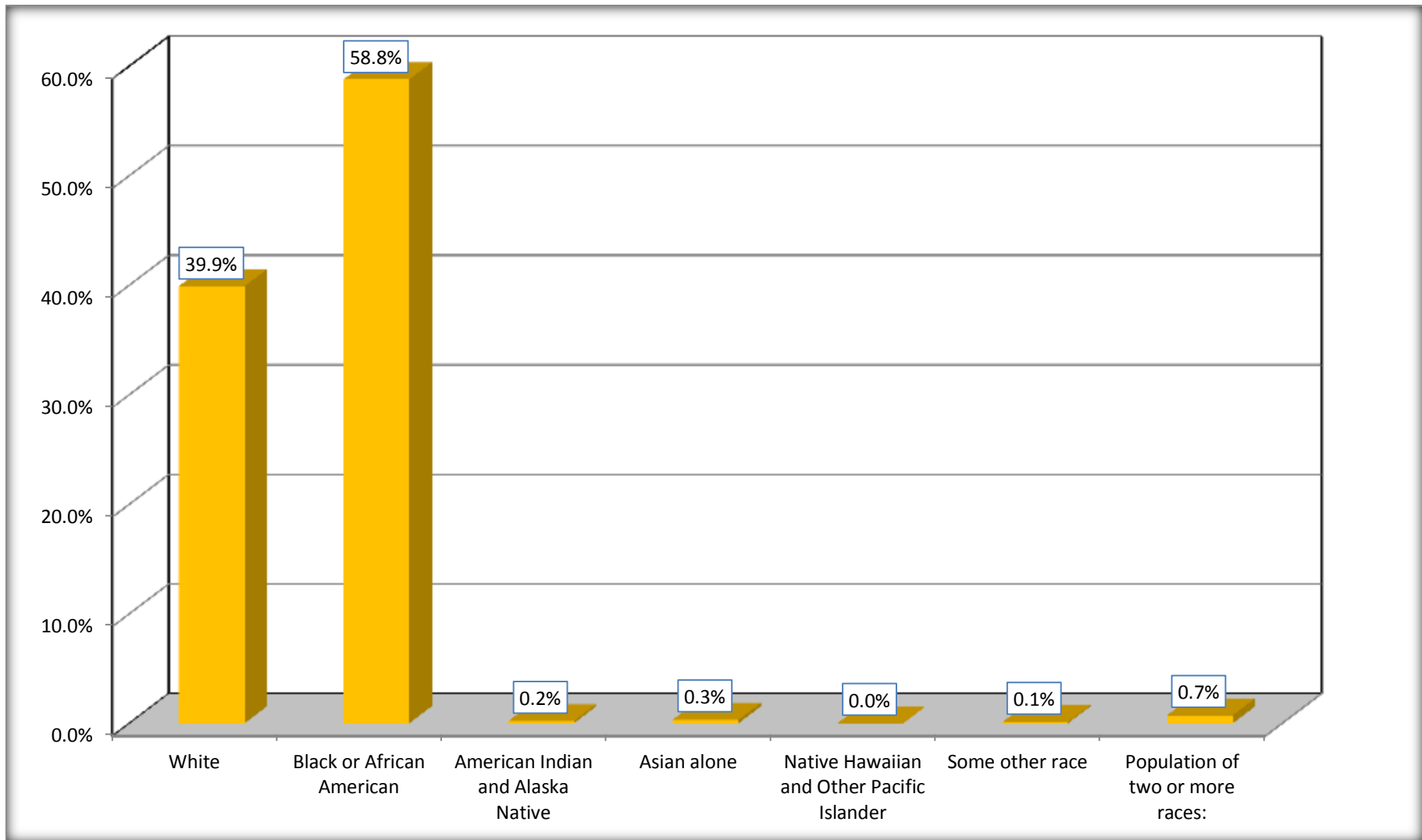
Although the American Community Survey (ACS) produces population, demographic and housing unit estimates, it is the Census Bureau's Population Estimates Program that produces and disseminates the official estimates of the population for the nation, states, counties, cities and towns and estimates of housing units for states and counties.

For information on confidentiality protection, sampling error, nonsampling error, and definitions, see Survey Methodology.

<http://www.census.gov/acs/www/UseData/index.htm>

Population by Race

West Point city, Mississippi



Source: C02003.DETAILED RACE - Universe: TOTAL POPULATION
Data Set: 2008-2012 American Community Survey 5-Year Estimates

B03002. HISPANIC OR LATINO ORIGIN BY RACE - Universe: TOTAL POPULATION

Data Set: 2008-2012 American Community Survey 5-Year Estimates

	West Point city, Mississippi		
	Population	Margin of Error (+/-)	% of Total
Total:	11,317	21	100.0%
Not Hispanic or Latino:	11,199	82	99.0%
White alone	4,455	313	39.4%
Black or African American alone	6,630	344	58.6%
American Indian and Alaska Native alone	21	34	0.2%
Asian alone	36	57	0.3%
Native Hawaiian and Other Pacific Islander alone	0	19	0.0%
Some other race alone	0	19	0.0%
Two or more races:	57	55	0.5%
Two races including Some other race	0	19	0.0%
Two races excluding Some other race, and three or more races	57	55	0.5%
Hispanic or Latino	118	81	1.0%

Source: U.S. Census Bureau, 2008-2012 American Community Survey

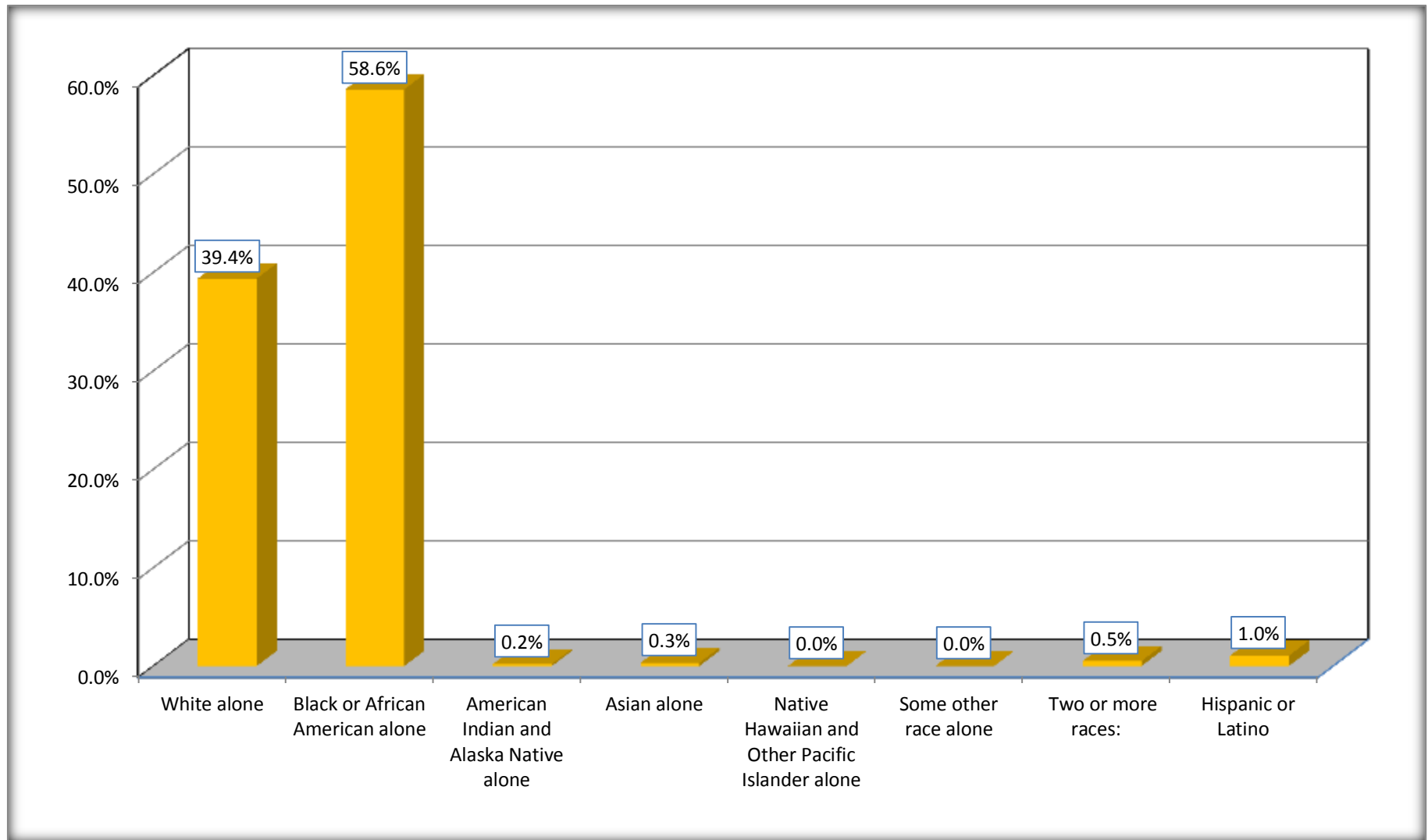
Although the American Community Survey (ACS) produces population, demographic and housing unit estimates, it is the Census Bureau's Population Estimates Program that produces and disseminates the official estimates of the population for the nation, states, counties, cities and towns and estimates of housing units for states and counties.

For information on confidentiality protection, sampling error, nonsampling error, and definitions, see Survey Methodology.

<http://www.census.gov/acs/www/UseData/index.htm>

Non-Hispanic by Race and Hispanic Population

West Point city, Mississippi



Source: B03002. HISPANIC OR LATINO ORIGIN BY RACE - Universe: TOTAL POPULATION
Data Set: 2008-2012 American Community Survey 5-Year Estimates

B03002. HISPANIC OR LATINO ORIGIN BY RACE

Data Set: 2008-2012 American Community Survey 5-Year Estimates

	West Point city, Mississippi		
	Population	Margin of Error (+/-)	% of Total
Hispanic or Latino:	118	81	100.0%
White alone	60	60	50.8%
Black or African American alone	22	28	18.6%
American Indian and Alaska Native alone	0	19	0.0%
Asian alone	0	19	0.0%
Native Hawaiian and Other Pacific Islander alone	0	19	0.0%
Some other race alone	11	16	9.3%
Two or more races:	25	28	21.2%
Two races including Some other race	11	18	9.3%
Two races excluding Some other race, and three or more races	14	21	11.9%

Source: U.S. Census Bureau, 2008-2012 American Community Survey

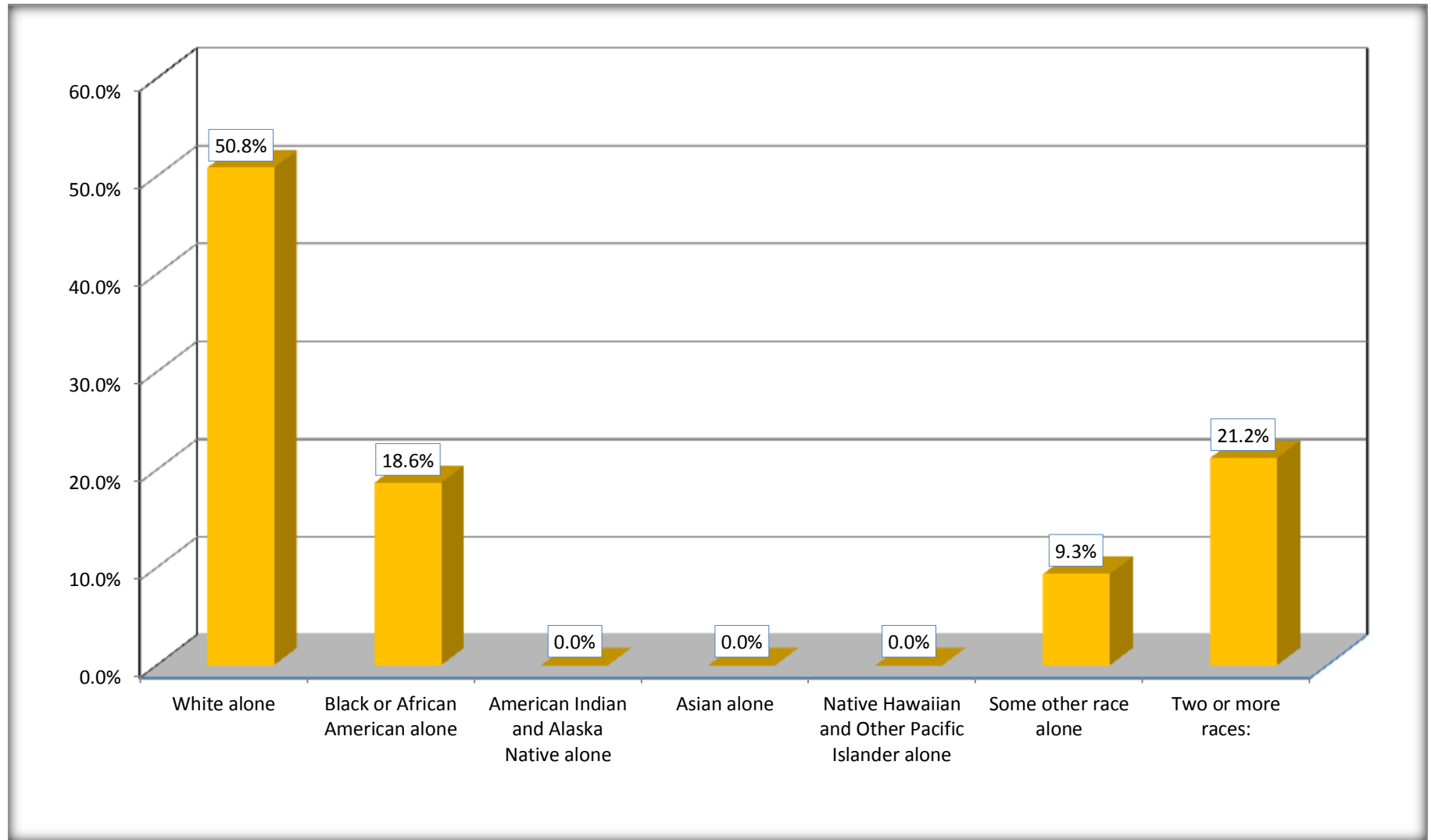
Although the American Community Survey (ACS) produces population, demographic and housing unit estimates, it is the Census Bureau's Population Estimates Program that produces and disseminates the official estimates of the population for the nation, states, counties, cities and towns and estimates of housing units for states and counties.

For information on confidentiality protection, sampling error, nonsampling error, and definitions, see Survey Methodology.

<http://www.census.gov/acs/www/UseData/index.htm>

Hispanic or Latino Origin by Race

West Point city, Mississippi



Source: B03002. HISPANIC OR LATINO ORIGIN BY RACE
Data Set: 2008-2012 American Community Survey 5-Year Estimates

B01001. SEX BY AGE

Data Set: 2008-2012 American Community Survey 5-Year Estimates

	West Point city, Mississippi					
	African American	Margin of Error (+/-)	% of AA Total	White, Not Hispanic	Margin of Error (+/-)	% of NHW Total
Total:	6,652	350	100.0%	4,455	313	100.0%
Under 18 years	2,289	NC	34.4%	851	NC	19.1%
18 to 64 years	3,692	NC	55.5%	2,512	NC	56.4%
65 years and over	671	NC	10.1%	1,092	NC	24.5%
Male:	2,984	231	44.9%	2,227	389	50.0%
Under 18 years	1,221	NC	18.4%	474	NC	10.6%
18 to 64 years	1,532	NC	23.0%	1,301	NC	29.2%
65 years and over	231	NC	3.5%	452	NC	10.1%
Female:	3,668	248	55.1%	2,228	412	50.0%
Under 18 years	1,068	NC	16.1%	377	NC	8.5%
18 to 64 years	2,160	NC	32.5%	1,211	NC	27.2%
65 years and over	440	NC	6.6%	640	NC	14.4%

Source: U.S. Census Bureau, 2008-2012 American Community Survey

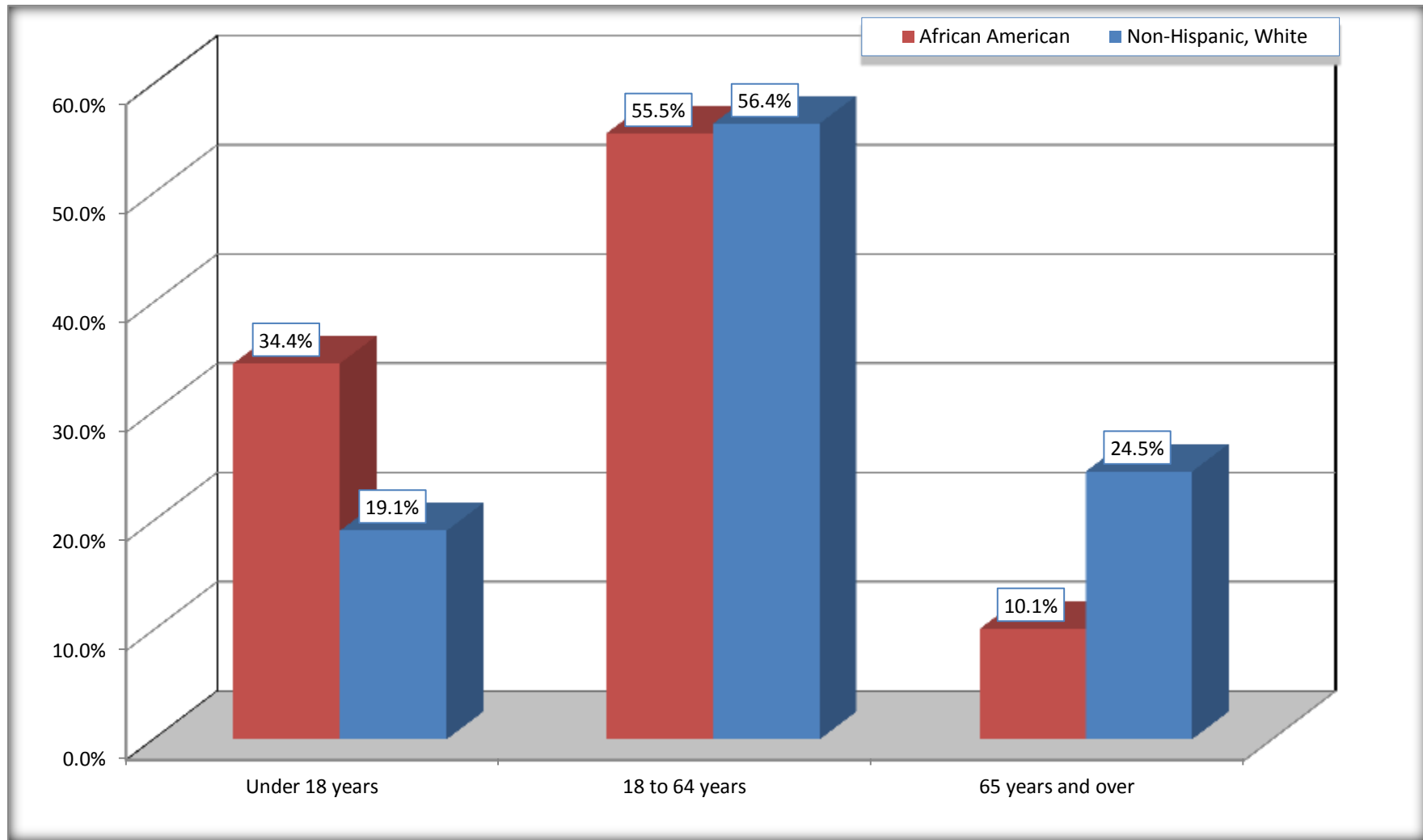
Although the American Community Survey (ACS) produces population, demographic and housing unit estimates, it is the Census Bureau's Population Estimates Program that produces and disseminates the official estimates of the population for the nation, states, counties, cities and towns and estimates of housing units for states and counties.

For information on confidentiality protection, sampling error, nonsampling error, and definitions, see Survey Methodology.

<http://www.census.gov/acs/www/UseData/index.htm>

Population by Age

West Point city, Mississippi



Source: B01001. SEX BY AGE
Data Set: 2008-2012 American Community Survey 5-Year Estimates

B05003. SEX BY AGE BY CITIZENSHIP STATUS

Data Set: 2008-2012 American Community Survey 5-Year Estimates

	West Point city, Mississippi					
	African American	Margin of Error (+/-)	% of AA Total by Age	White, Not Hispanic	Margin of Error (+/-)	% of NHW Total by Age
Total:	6,652	350	100.0%	4,455	313	100.0%
Under 18 years:	2,289	NC	100.0%	851	NC	100.0%
Native	2,277	NC	99.5%	851	NC	100.0%
Foreign born:	12	NC	0.5%	0	NC	0.0%
Naturalized U.S. citizen	12	NC	0.5%	0	NC	0.0%
Not a U.S. citizen	0	NC	0.0%	0	NC	0.0%
18 years and over:	4,363	NC	100.0%	3,604	NC	100.0%
Native	4,363	NC	100.0%	3,604	NC	100.0%
Foreign born:	0	NC	0.0%	0	NC	0.0%
Naturalized U.S. citizen	0	NC	0.0%	0	NC	0.0%
Not a U.S. citizen	0	NC	0.0%	0	NC	0.0%
Male:	2,984	231	44.9%	2,227	187	50.0%
Under 18 years:	1,221	129	100.0%	474	114	100.0%
Native	1,209	131	99.0%	474	114	100.0%
Foreign born:	12	22	1.0%	0	19	0.0%
Naturalized U.S. citizen	12	22	1.0%	0	19	0.0%
Not a U.S. citizen	0	19	0.0%	0	19	0.0%
18 years and over:	1,763	195	100.0%	1,753	139	100.0%
Native	1,763	195	100.0%	1,753	139	100.0%
Foreign born:	0	19	0.0%	0	19	0.0%
Naturalized U.S. citizen	0	19	0.0%	0	19	0.0%
Not a U.S. citizen	0	19	0.0%	0	19	0.0%

	West Point city, Mississippi					
	African American	Margin of Error (+/-)	% of AA by Age	White, Not Hispanic	Margin of Error (+/-)	% of NHW by Age
Female:	3,668	248	55.1%	2,228	190	50.0%
Under 18 years:	1,068	141	100.0%	377	106	100.0%
Native	1,068	141	100.0%	377	106	100.0%
Foreign born:	0	19	0.0%	0	19	0.0%
Naturalized U.S. citizen	0	19	0.0%	0	19	0.0%
Not a U.S. citizen	0	19	0.0%	0	19	0.0%
18 years and over:	2,600	196	100.0%	1,851	150	100.0%
Native	2,600	196	100.0%	1,851	150	100.0%
Foreign born:	0	19	0.0%	0	19	0.0%
Naturalized U.S. citizen	0	19	0.0%	0	19	0.0%
Not a U.S. citizen	0	19	0.0%	0	19	0.0%

Source: U.S. Census Bureau, 2008-2012 American Community Survey

For information on confidentiality protection, sampling error, nonsampling error, and definitions, see Survey Methodology.
<http://www.census.gov/acs/www/UseData/index.htm>

Citizenship Status of Voting Age Population (18 and Over)

West Point city, Mississippi



Source: B05003. SEX BY AGE BY CITIZENSHIP STATUS
Data Set: 2008-2012 American Community Survey 5-Year Estimates

**B07004. GEOGRAPHICAL MOBILITY IN THE PAST YEAR BY RACE FOR CURRENT RESIDENCE IN THE UNITED STATES - Universe:
POPULATION 1 YEAR AND OVER**

Data Set: 2008-2012 American Community Survey 5-Year Estimates

	West Point city, Mississippi					
	African American	Margin of Error (+/-)	% of AA Total	White, Not Hispanic	Margin of Error (+/-)	% of NHW Total
Total:	6,576	358	100.0%	4,407	306	100.0%
Same house 1 year ago	5,690	469	86.5%	3,785	340	85.9%
Moved within same county	613	261	9.3%	256	152	5.8%
Moved from different county within same state	245	134	3.7%	366	181	8.3%
Moved from different state	15	20	0.2%	0	19	0.0%
Moved from abroad	13	21	0.2%	0	19	0.0%

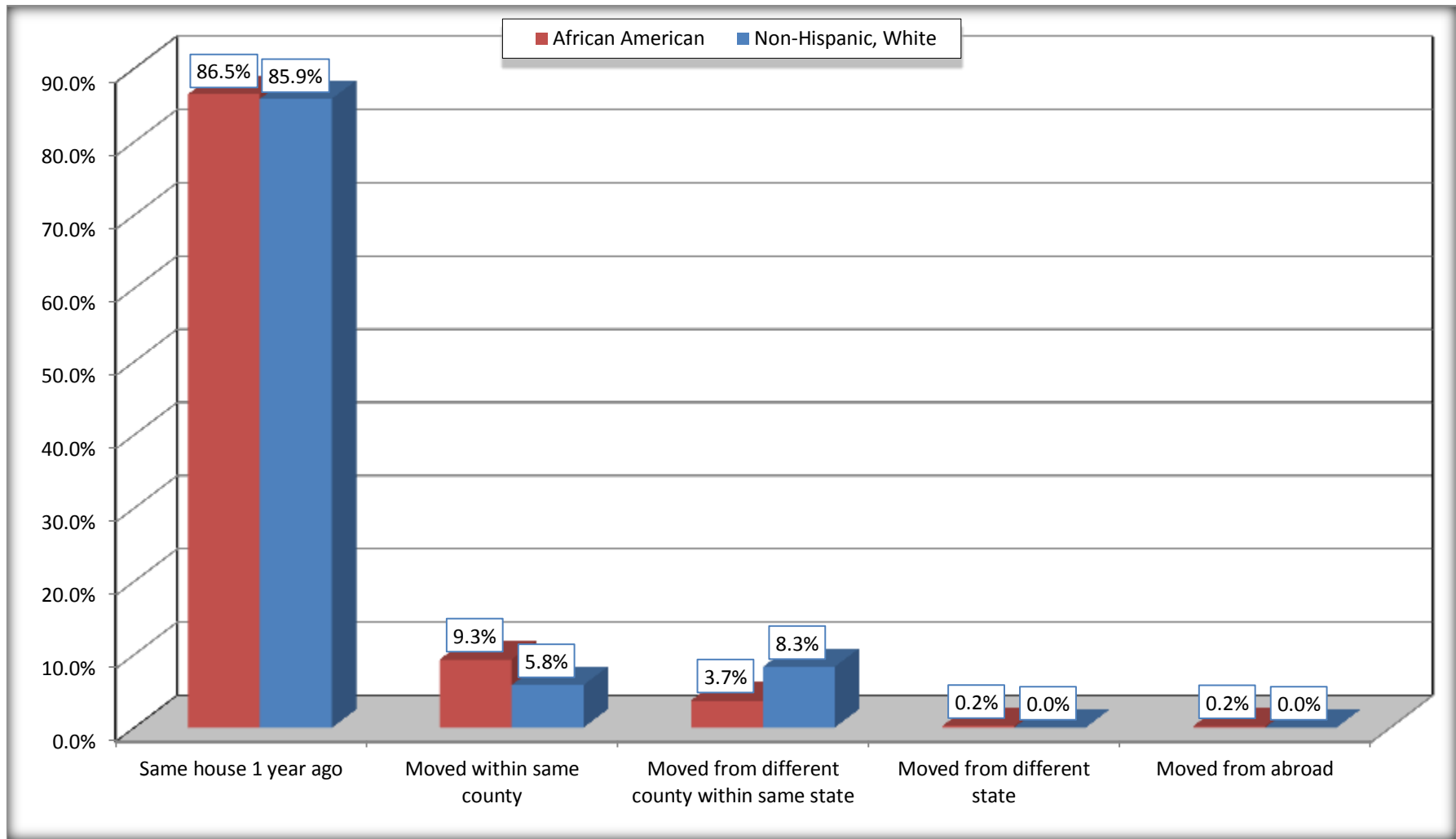
Source: U.S. Census Bureau, 2008-2012 American Community Survey

For information on confidentiality protection, sampling error, nonsampling error, and definitions, see Survey Methodology.

<http://www.census.gov/acs/www/UseData/index.htm>

Geographical Mobility in the Past Year (Population 1 Year and Over)

West Point city, Mississippi



Source: B07004. GEOGRAPHICAL MOBILITY IN THE PAST YEAR BY RACE FOR CURRENT RESIDENCE IN THE UNITED STATES - Universe: POPULATION 1 YEAR AND OVER

Data Set: 2008-2012 American Community Survey 5-Year Estimates

B08105. MEANS OF TRANSPORTATION TO WORK - Universe: WORKERS 16 YEARS AND OVER

Data Set: 2008-2012 American Community Survey 5-Year Estimates

	West Point city, Mississippi					
	African American	Margin of Error (+/-)	% of AA Total	White, Not Hispanic	Margin of Error (+/-)	% of NHW Total
Total:	1988	298	100.0%	1880	226	100.0%
Car, truck, or van - drove alone	1574	290	79.2%	1605	207	85.4%
Car, truck, or van - carpooled	304	140	15.3%	197	110	10.5%
Public transportation (excluding taxicab)	9	16	0.5%	0	19	0.0%
Walked	83	64	4.2%	10	16	0.5%
Taxicab, motorcycle, bicycle, or other means	6	10	0.3%	37	41	2.0%
Worked at home	12	19	0.6%	31	25	1.6%

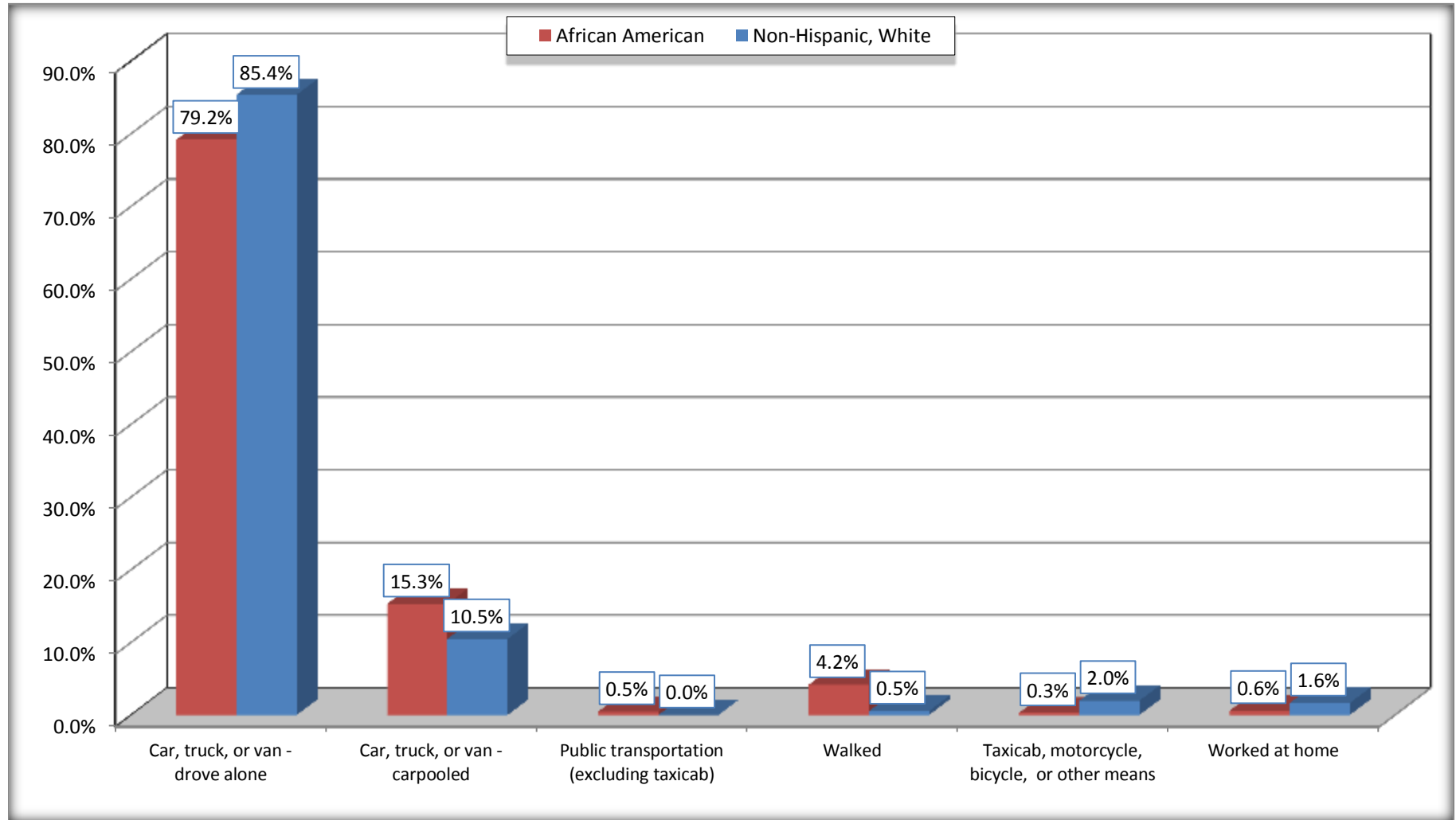
Source: U.S. Census Bureau, 2008-2012 American Community Survey

For information on confidentiality protection, sampling error, nonsampling error, and definitions, see Survey Methodology.

<http://www.census.gov/acs/www/UseData/index.htm>

Means of Transportation to Work (Workers 16 Years and Over)

West Point city, Mississippi



Source: B08105. MEANS OF TRANSPORTATION TO WORK - Universe: WORKERS 16 YEARS AND OVER
Data Set: 2008-2012 American Community Survey 5-Year Estimates

B11002. HOUSEHOLD TYPE BY RELATIVES AND NONRELATIVES FOR POPULATION IN HOUSEHOLDS

Data Set: 2008-2012 American Community Survey 5-Year Estimates

	West Point city, Mississippi					
	African American	Margin of Error (+/-)	% of AA Total	White, Not Hispanic	Margin of Error (+/-)	% of NHW Total
Total:	6446	367	100.0%	4313	311	100.0%
In family households	5820	364	90.3%	3817	320	88.5%
In nonfamily households	626	183	9.7%	496	124	11.5%

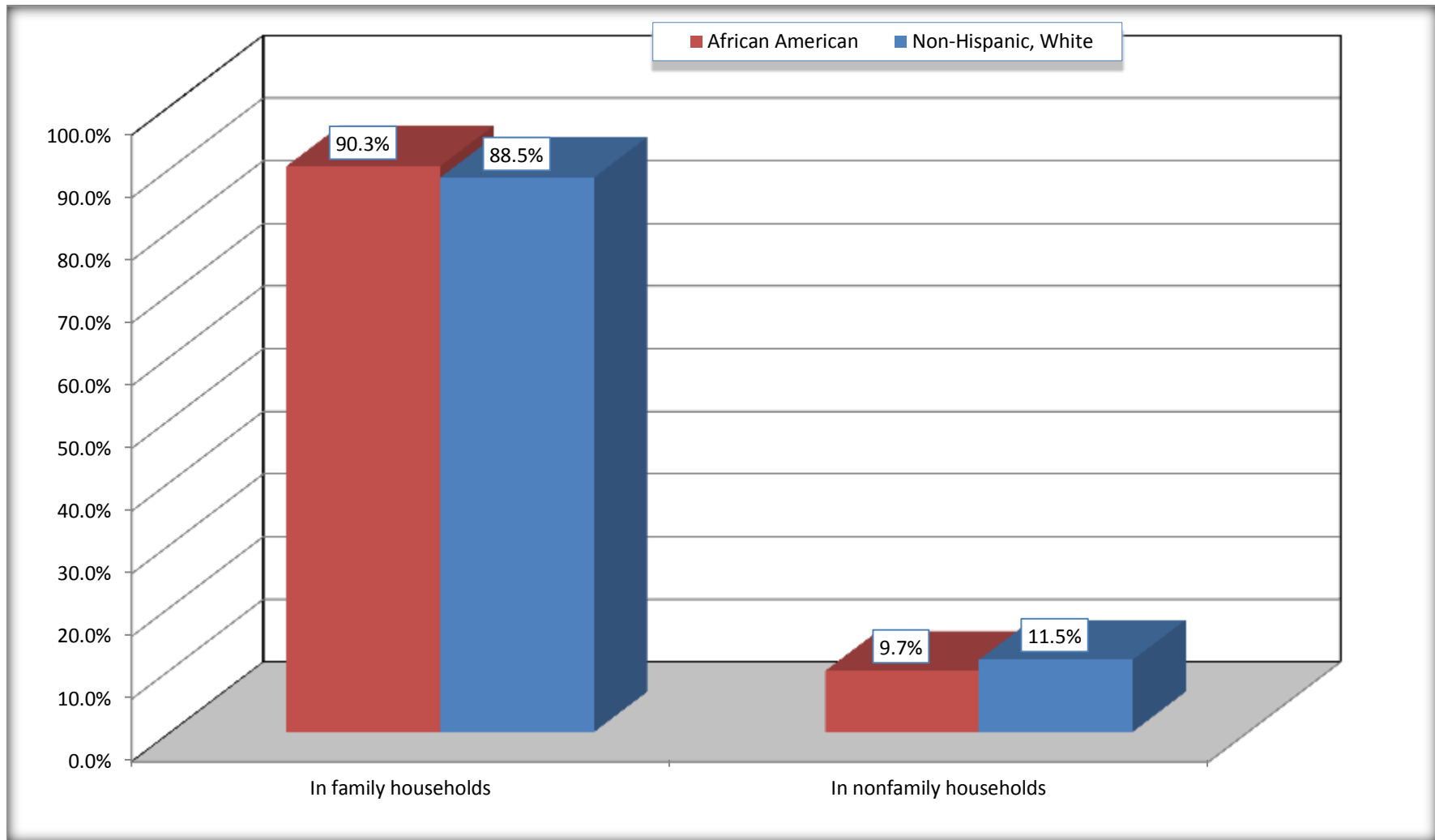
Source: U.S. Census Bureau, 2008-2012 American Community Survey

For information on confidentiality protection, sampling error, nonsampling error, and definitions, see Survey Methodology.

<http://www.census.gov/acs/www/UseData/index.htm>

Household Type for Population in Households

West Point city, Mississippi



Source: B11002. HOUSEHOLD TYPE BY RELATIVES AND NONRELATIVES FOR POPULATION IN HOUSEHOLDS
Data Set: 2008-2012 American Community Survey 5-Year Estimates

B12002. MARITAL STATUS FOR THE POPULATION 15 YEARS AND OVER

Data Set: 2008-2012 American Community Survey 5-Year Estimates

	West Point city, Mississippi					
	African American	Margin of Error (+/-)	% of AA Total	White, Not Hispanic	Margin of Error (+/-)	% of NHW Total
Total:	4,639	342	100.0%	3,787	256	100.0%
Never married	2,073	NC	44.7%	776	NC	20.5%
Now married (except separated)	1,446	NC	31.2%	2,329	NC	61.5%
Separated	202	NC	4.4%	22	NC	0.6%
Widowed	338	NC	7.3%	290	NC	7.7%
Divorced	580	NC	12.5%	370	NC	9.8%
Male:	1,946	222	41.9%	1,880	142	49.6%
Never married	942	154	20.3%	468	112	12.4%
Now married (except separated)	735	155	15.8%	1,189	148	31.4%
Separated	38	52	0.8%	8	17	0.2%
Widowed	62	52	1.3%	59	54	1.6%
Divorced	169	78	3.6%	156	66	4.1%
Female:	2,693	204	58.1%	1,907	156	50.4%
Never married	1,131	196	24.4%	308	100	8.1%
Now married (except separated)	711	196	15.3%	1,140	157	30.1%
Separated	164	70	3.5%	14	21	0.4%
Widowed	276	92	5.9%	231	78	6.1%
Divorced	411	94	8.9%	214	84	5.7%

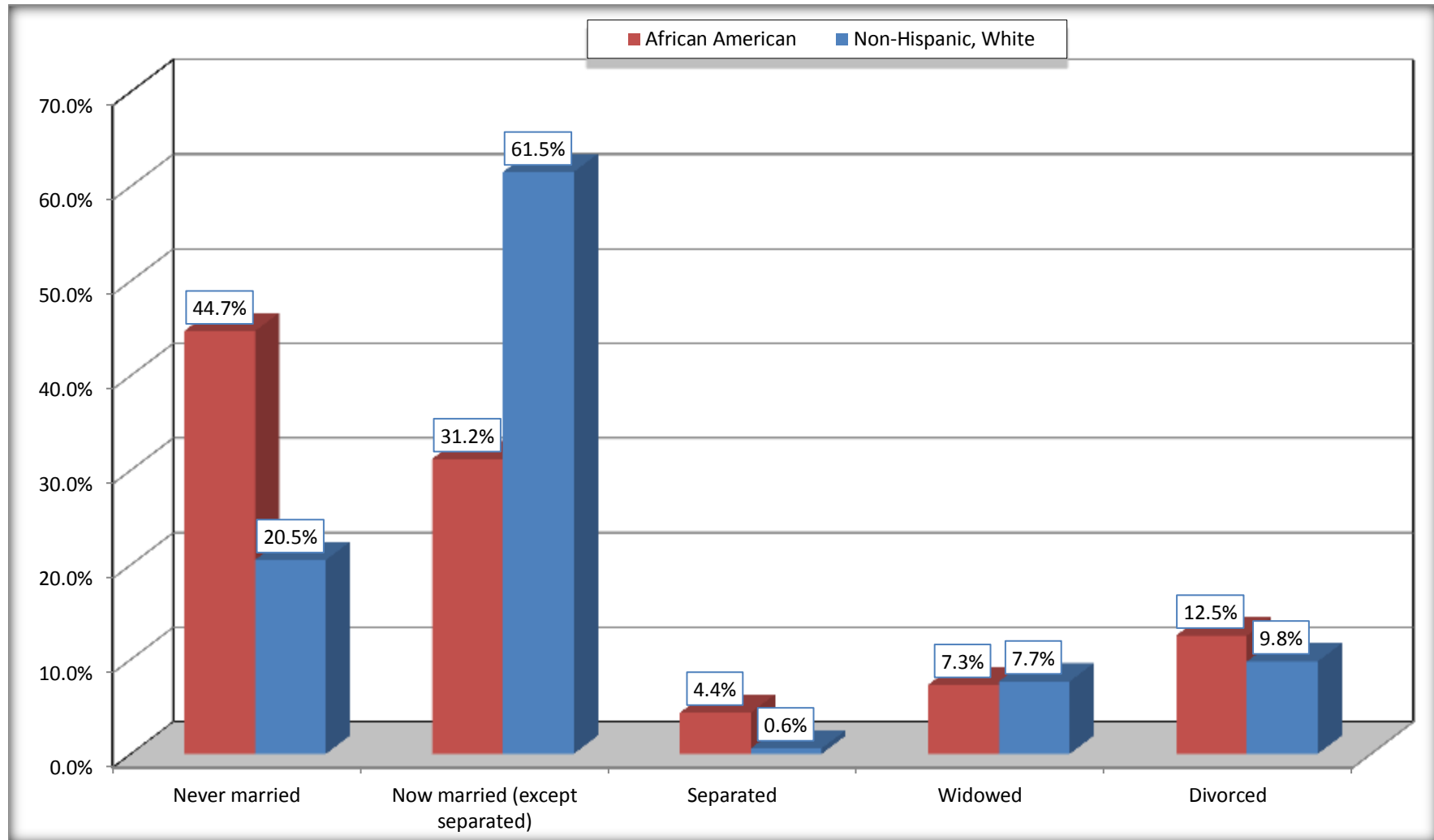
Source: U.S. Census Bureau, 2008-2012 American Community Survey

For information on confidentiality protection, sampling error, nonsampling error, and definitions, see Survey Methodology.

<http://www.census.gov/acs/www/UseData/index.htm>

Marital Status for the Population 15 Years and Over

West Point city, Mississippi



Source: B12002. MARITAL STATUS FOR THE POPULATION 15 YEARS AND OVER
Data Set: 2008-2012 American Community Survey 5-Year Estimates

C15002. SEX BY EDUCATIONAL ATTAINMENT FOR THE POPULATION 25 YEARS AND OVER

Data Set: 2008-2012 American Community Survey 5-Year Estimates

	West Point city, Mississippi					
	African American	Margin of Error (+/-)	% of AA Total	White, Not Hispanic	Margin of Error (+/-)	% of NHW Total
Total:	3,698	299	100.0%	3,368	235	100.0%
Less than high school diploma	956	NC	25.9%	560	NC	16.6%
High school graduate, GED, or alternative	1,107	NC	29.9%	1,065	NC	31.6%
Some college or associate's degree	1,261	NC	34.1%	889	NC	26.4%
Bachelor's degree or higher	374	NC	10.1%	854	NC	25.4%
Male:	1,442	189	39.0%	1,611	137	47.8%
Less than high school diploma	363	117	9.8%	320	114	9.5%
High school graduate, GED, or alternative	551	158	14.9%	415	114	12.3%
Some college or associate's degree	404	159	10.9%	489	130	14.5%
Bachelor's degree or higher	124	94	3.4%	387	116	11.5%
Female:	2,256	183	61.0%	1,757	134	52.2%
Less than high school diploma	593	140	16.0%	240	88	7.1%
High school graduate, GED, or alternative	556	150	15.0%	650	130	19.3%
Some college or associate's degree	857	195	23.2%	400	119	11.9%
Bachelor's degree or higher	250	98	6.8%	467	104	13.9%

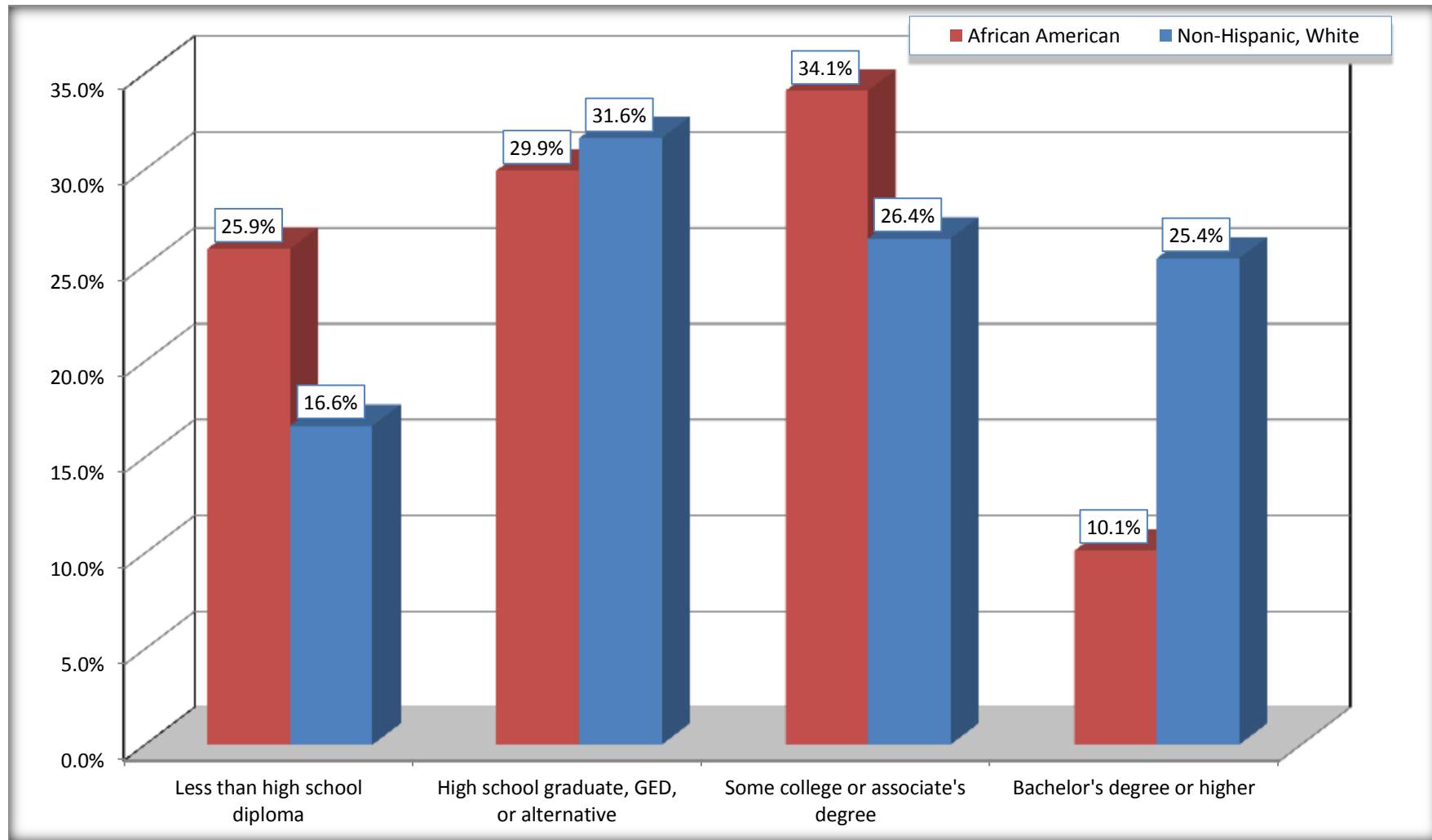
Source: U.S. Census Bureau, 2008-2012 American Community Survey

For information on confidentiality protection, sampling error, nonsampling error, and definitions, see Survey Methodology.

<http://www.census.gov/acs/www/UseData/index.htm>

Educational Attainment for the Population 25 Years and Older

West Point city, Mississippi



Source: C15002. SEX BY EDUCATIONAL ATTAINMENT FOR THE POPULATION 25 YEARS AND OVER
Data Set: 2008-2012 American Community Survey 5-Year Estimates

B17010. POVERTY STATUS IN THE PAST 12 MONTHS OF FAMILIES BY FAMILY TYPE BY PRESENCE OF RELATED CHILDREN UNDER 18 YEARS

Data Set: 2008-2012 American Community Survey 5-Year Estimates

	West Point city, Mississippi					
	African American	Margin of Error (+/-)	% of AA Total	White, Not Hispanic	Margin of Error (+/-)	% of NHW Total
Total:	1,719	174	100.0%	1,341	134	100.0%
Income in the past 12 months below poverty level:	613	152	35.7%	110	68	8.2%
Married-couple family:	71	51	4.1%	71	47	5.3%
With related children under 18 years	40	39	2.3%	8	13	0.6%
Other family:	542	151	31.5%	39	47	2.9%
Male householder, no wife present	81	74	4.7%	0	19	0.0%
With related children under 18 years	70	72	4.1%	0	19	0.0%
Female householder, no husband present	461	135	26.8%	39	47	2.9%
With related children under 18 years	413	132	24.0%	28	36	2.1%
Income in the past 12 months at or above poverty level:	1,106	161	64.3%	1,231	133	91.8%
Married-couple family:	617	164	35.9%	1,046	131	78.0%
With related children under 18 years	200	104	11.6%	365	90	27.2%
Other family:	489	115	28.4%	185	82	13.8%
Male householder, no wife present	37	29	2.2%	17	20	1.3%
With related children under 18 years	0	19	0.0%	6	11	0.4%
Female householder, no husband present	452	114	26.3%	168	78	12.5%
With related children under 18 years	269	89	15.6%	88	54	6.6%

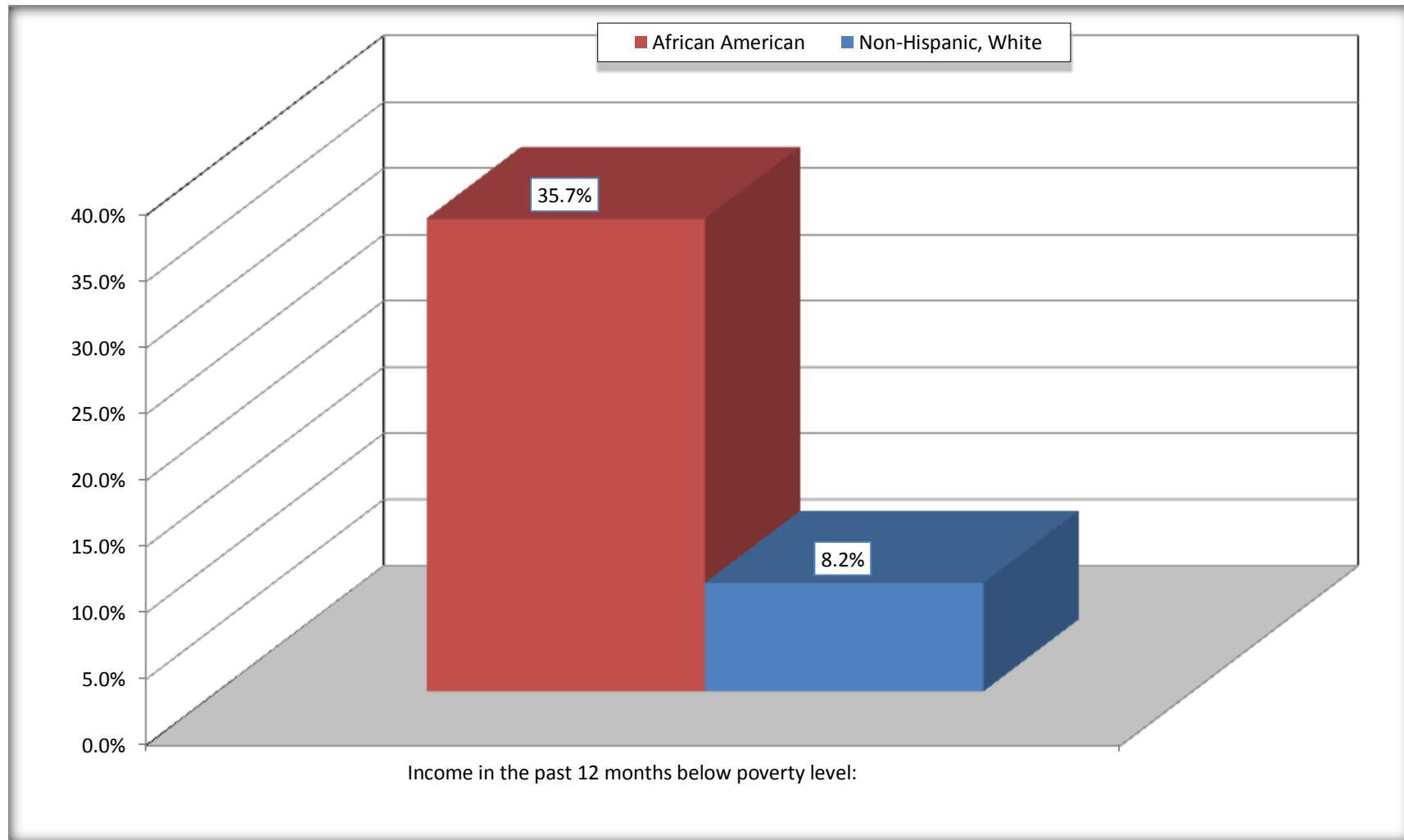
Source: U.S. Census Bureau, 2008-2012 American Community Survey

For information on confidentiality protection, sampling error, nonsampling error, and definitions, see Survey Methodology.

<http://www.census.gov/acs/www/UseData/index.htm>

Family Households Below Poverty in the Past 12 Months

West Point city, Mississippi

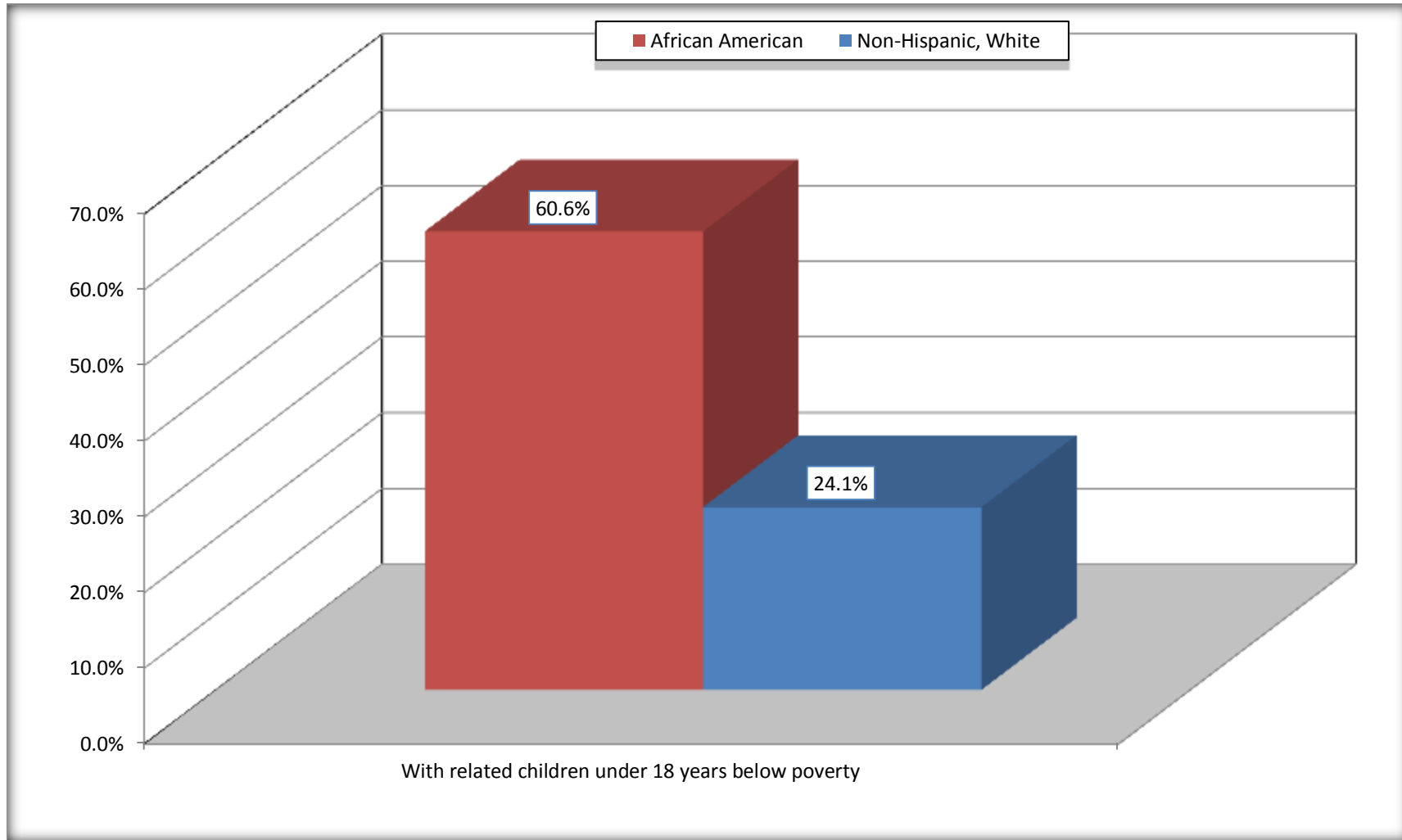


Source: B17010. POVERTY STATUS IN THE PAST 12 MONTHS OF FAMILIES BY FAMILY TYPE BY PRESENCE OF RELATED CHILDREN UNDER 18 YEARS

Data Set: 2008-2012 American Community Survey 5-Year Estimates

Female-headed Households with Related Children Below Poverty in the Past 12 Months

West Point city, Mississippi



Source: B17010. POVERTY STATUS IN THE PAST 12 MONTHS OF FAMILIES BY FAMILY TYPE BY PRESENCE OF RELATED CHILDREN UNDER 18 YEARS

Data Set: 2008-2012 American Community Survey 5-Year Estimates

B17020 POVERTY STATUS IN THE PAST 12 MONTHS BY AGE - Universe: POPULATION FOR WHOM POVERTY STATUS IS DETERMINED

Data Set: 2008-2012 American Community Survey 5-Year Estimates

	West Point city, Mississippi					
	African American	Margin of Error (+/-)	% of AA By Age	White, Not Hispanic	Margin of Error (+/-)	% of NHW By Age
Total:	6,514	347	100.0%	4,310	309	100.0%
Income in the past 12 months below poverty level:	2,257	454	34.6%	367	162	8.5%
Under 18 years	1,100	NC	48.3%	52	NC	6.1%
18 to 64 years	1,069	191	29.6%	217	117	8.9%
65 years and over	88	NC	14.1%	98	NC	9.5%
Income in the past 12 months at or above poverty level:	4,257	498	65.4%	3,943	337	91.5%
Under 18 years	1,179	NC	51.7%	794	NC	93.9%
18 to 64 years	2,542	308	70.4%	2,211	261	91.1%
65 years and over	536	NC	85.9%	938	NC	90.5%

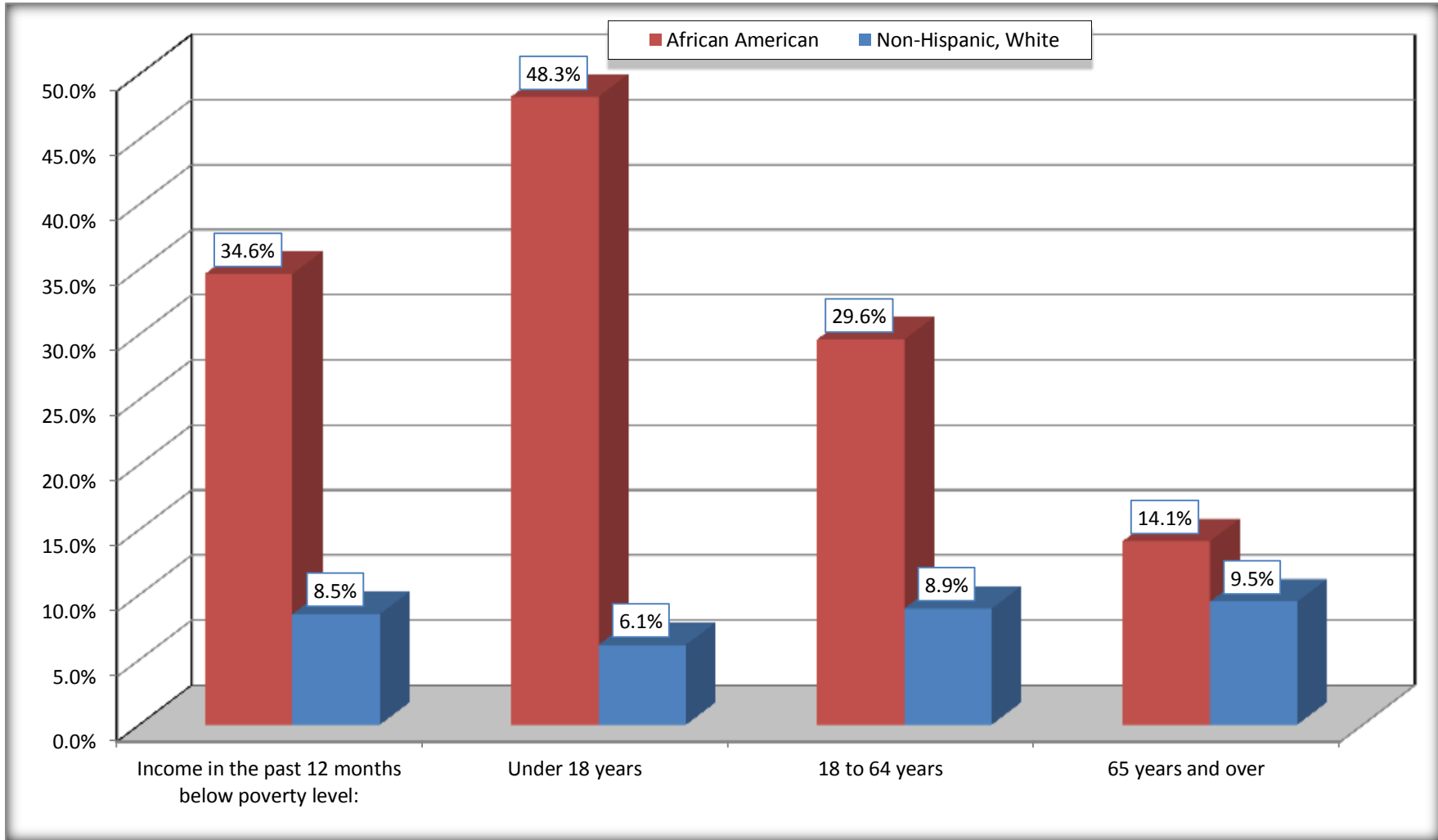
Source: U.S. Census Bureau, 2008-2012 American Community Survey

For information on confidentiality protection, sampling error, nonsampling error, and definitions, see Survey Methodology.

<http://www.census.gov/acs/www/UseData/index.htm>

Population Below Poverty in the Past 12 Months

West Point city, Mississippi



Source: B17020 POVERTY STATUS IN THE PAST 12 MONTHS BY AGE - Universe: POPULATION FOR WHOM POVERTY STATUS IS DETERMINED
Data Set: 2008-2012 American Community Survey 5-Year Estimates

B19001. HOUSEHOLD INCOME IN THE PAST 12 MONTHS (IN 2010 INFLATION-ADJUSTED DOLLARS)

Data Set: 2008-2012 American Community Survey 5-Year Estimates

	West Point city, Mississippi					
	African American	Margin of Error (+/-)	% of AA Total	White, Not Hispanic	Margin of Error (+/-)	% of NHW Total
Total:	2,320	213	100.0%	1,805	150	100.0%
Less than \$ 10,000	499	123	21.5%	122	66	6.8%
\$ 10,000 to \$ 14,999	299	135	12.9%	109	61	6.0%
\$ 15,000 to \$ 24,999	538	NC	23.2%	232	NC	12.9%
\$ 25,000 to \$ 34,999	295	NC	12.7%	126	NC	7.0%
\$ 35,000 to \$ 49,999	282	NC	12.2%	288	NC	16.0%
\$ 50,000 to \$ 74,999	200	NC	8.6%	406	NC	22.5%
\$ 75,000 to \$ 99,999	143	99	6.2%	141	66	7.8%
\$ 100,000 to \$ 149,999	22	NC	0.9%	201	NC	11.1%
\$ 150,000 to \$ 199,999	42	52	1.8%	69	47	3.8%
\$ 200,000 or more	0	19	0.0%	111	52	6.1%

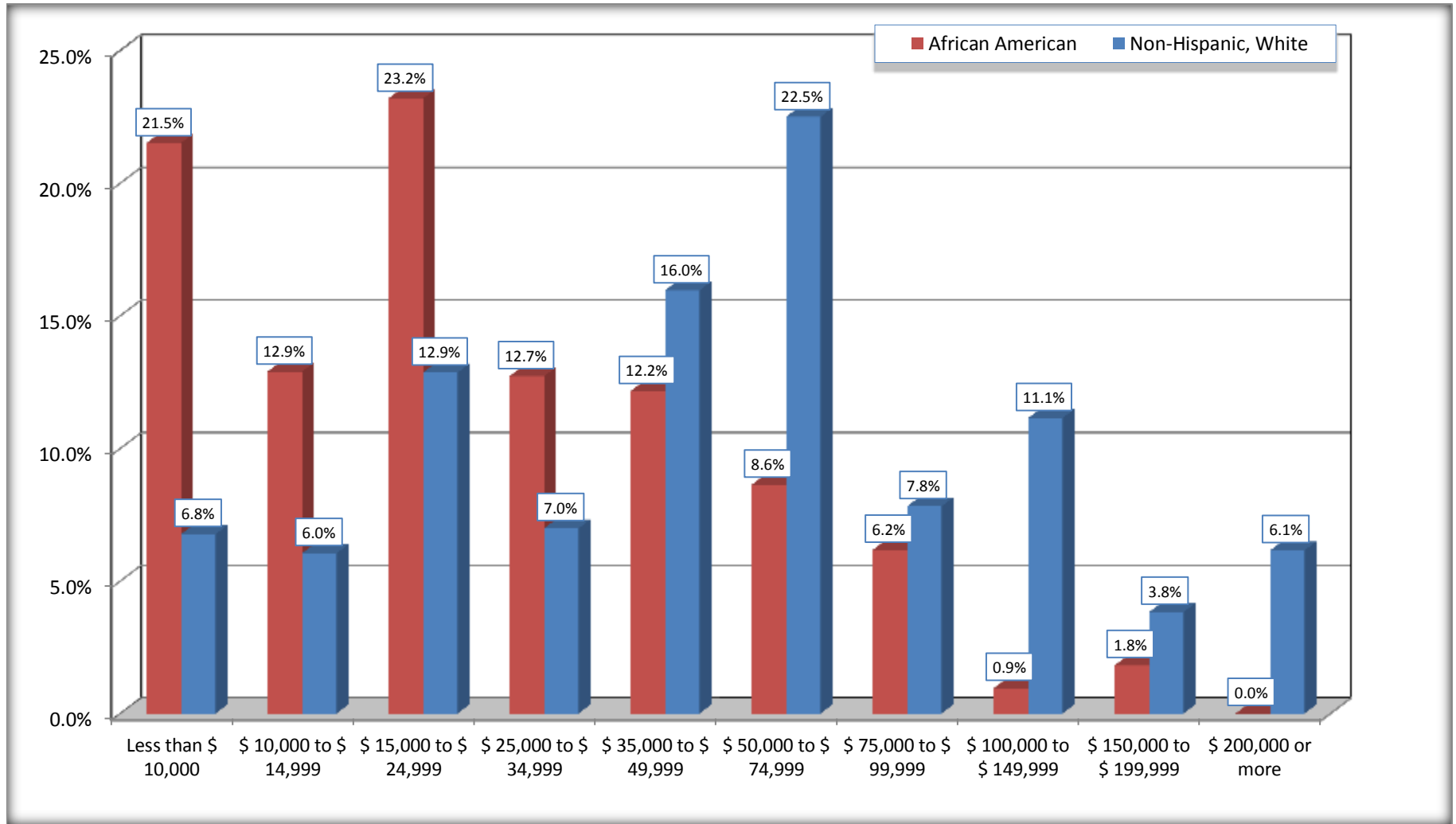
Source: U.S. Census Bureau, 2008-2012 American Community Survey

For information on confidentiality protection, sampling error, nonsampling error, and definitions, see Survey Methodology.

<http://www.census.gov/acs/www/UseData/index.htm>

Household Income in the Past 12 Months

West Point city, Mississippi



Source: B19001. HOUSEHOLD INCOME IN THE PAST 12 MONTHS (IN 2010 INFLATION-ADJUSTED DOLLARS)
Data Set: 2008-2012 American Community Survey 5-Year Estimates

B19013. MEDIAN HOUSEHOLD INCOME IN THE PAST 12 MONTHS (IN 2010 INFLATION-ADJUSTED DOLLARS)

Data Set: 2008-2012 American Community Survey 5-Year Estimates

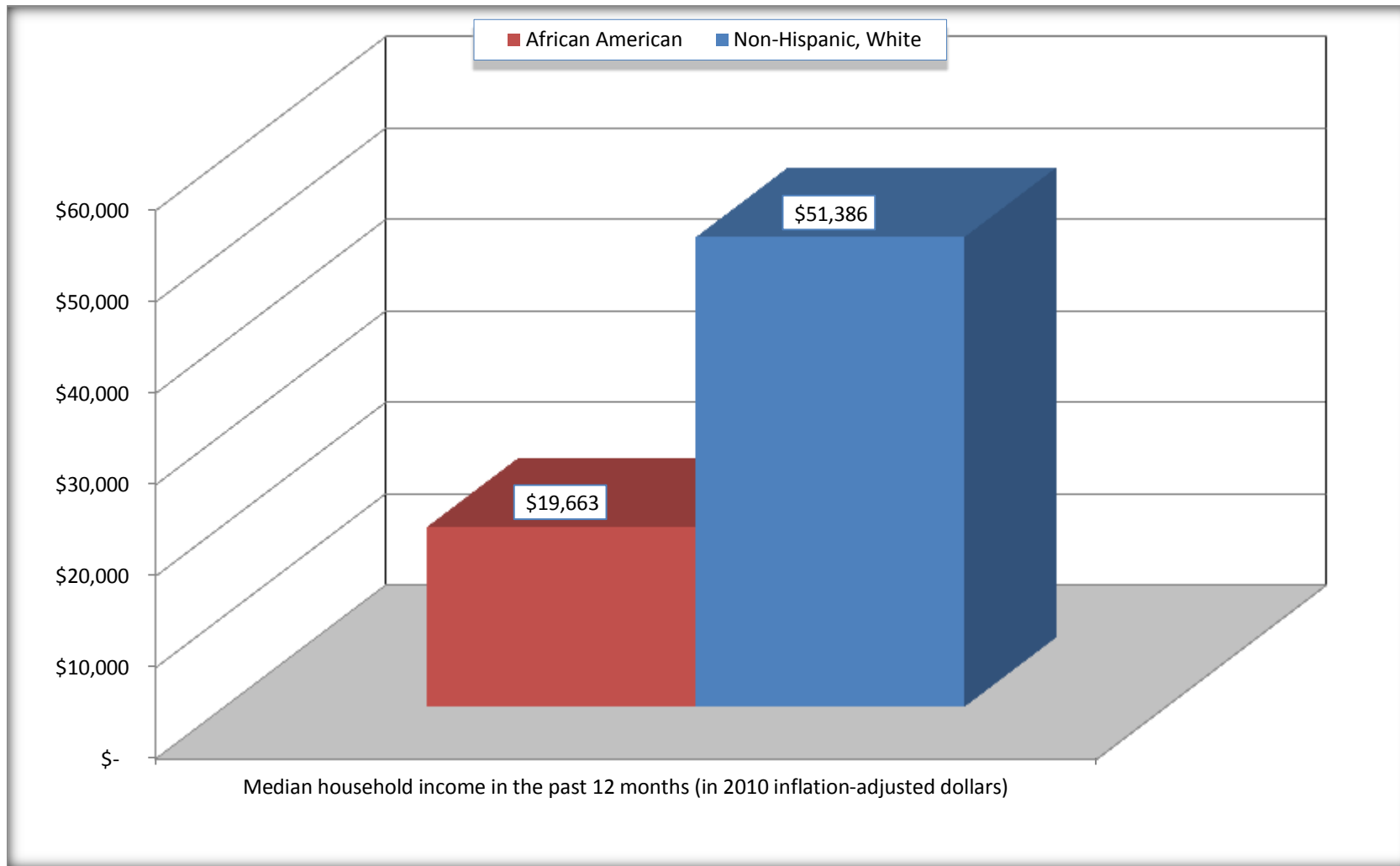
	West Point city, Mississippi			
	African American	Margin of Error (+/-)	White, Not Hispanic	Margin of Error (+/-)
Median household income in the past 12 months (in 2010 inflation-adjusted dollars)	\$ 19,663	\$ 2,743	\$ 51,386	\$ 8,665

Source: U.S. Census Bureau, 2008-2012 American Community Survey

For information on confidentiality protection, sampling error, nonsampling error, and definitions, see Survey Methodology.
<http://www.census.gov/acs/www/UseData/index.htm>

Median Household Income in the Past 12 Months

West Point city, Mississippi



Source: B19013. MEDIAN HOUSEHOLD INCOME IN THE PAST 12 MONTHS (IN 2010 INFLATION-ADJUSTED DOLLARS)
Data Set: 2008-2012 American Community Survey 5-Year Estimates

B19101. FAMILY INCOME IN THE PAST 12 MONTHS (IN 2010 INFLATION-ADJUSTED DOLLARS)

Data Set: 2008-2012 American Community Survey 5-Year Estimates

	West Point city, Mississippi					
	African American	Margin of Error (+/-)	% of AA Total	White, Not Hispanic	Margin of Error (+/-)	% of NHW Total
Total:	1,719	174	100.0%	1,341	134	100.0%
Less than \$ 10,000	338	112	19.7%	78	61	5.8%
\$ 10,000 to \$ 14,999	216	119	12.6%	32	31	2.4%
\$ 15,000 to \$ 24,999	275	NC	16.0%	104	NC	7.8%
\$ 25,000 to \$ 34,999	229	NC	13.3%	98	NC	7.3%
\$ 35,000 to \$ 49,999	254	NC	14.8%	227	NC	16.9%
\$ 50,000 to \$ 74,999	200	NC	11.6%	331	NC	24.7%
\$ 100,000 to \$ 149,999	22	NC	1.3%	192	NC	14.3%
\$ 150,000 to \$ 199,999	42	52	2.4%	69	47	5.1%
\$ 200,000 or more	0	19	0.0%	104	50	7.8%

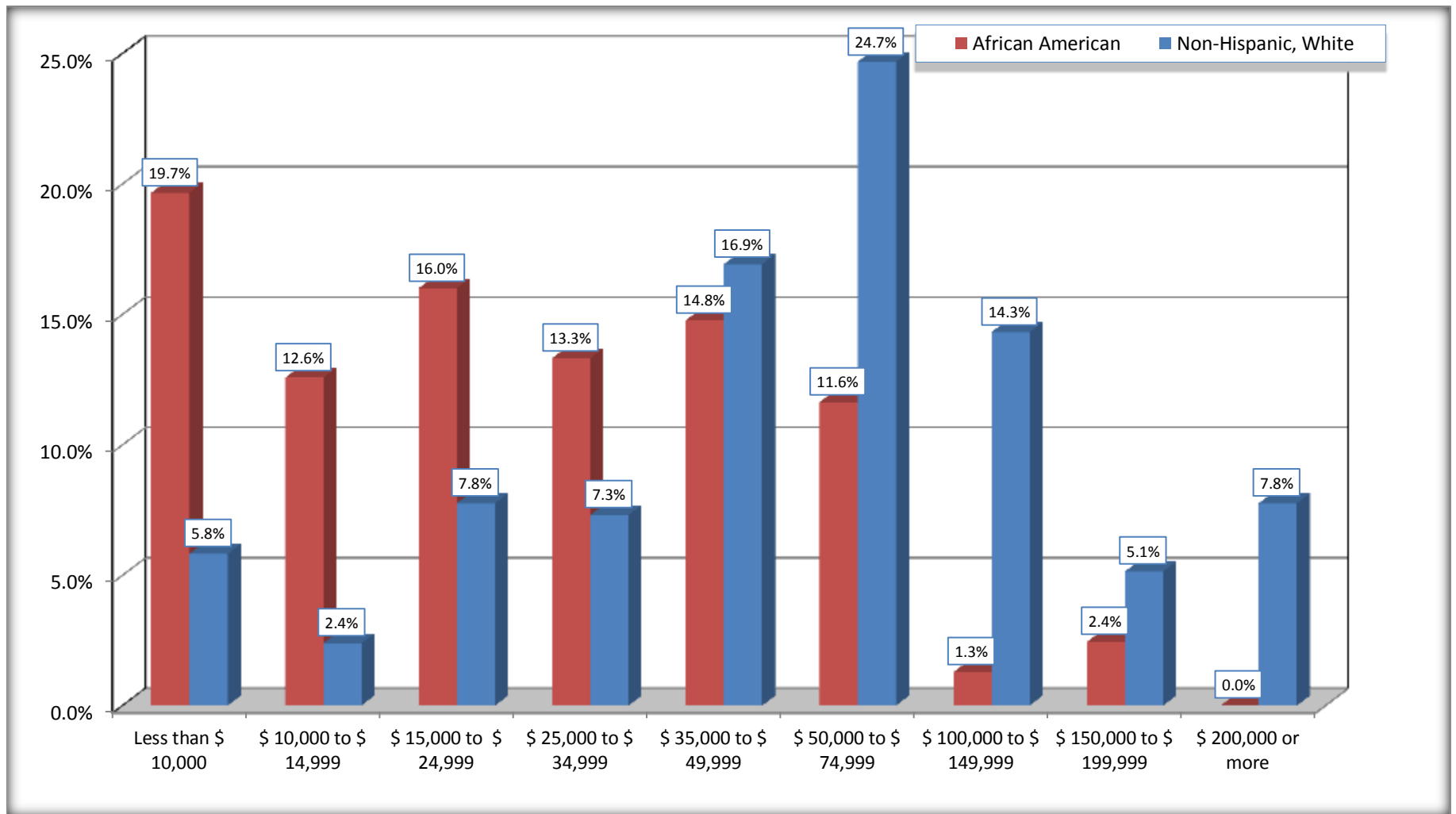
Source: U.S. Census Bureau, 2008-2012 American Community Survey

For information on confidentiality protection, sampling error, nonsampling error, and definitions, see Survey Methodology.

<http://www.census.gov/acs/www/UseData/index.htm>

Family Income in the Past 12 Months

West Point city, Mississippi



Source: B19101. FAMILY INCOME IN THE PAST 12 MONTHS (IN 2010 INFLATION-ADJUSTED DOLLARS)
Data Set: 2008-2012 American Community Survey 5-Year Estimates

B19113. MEDIAN FAMILY INCOME IN THE PAST 12 MONTHS (IN 2010 INFLATION-ADJUSTED DOLLARS)

Data Set: 2008-2012 American Community Survey 5-Year Estimates

	West Point city, Mississippi			
	African American	Margin of Error (+/-)	White, Not Hispanic	Margin of Error (+/-)
Median family income in the past 12 months (in 2010 inflation-adjusted dollars)	\$ 26,315	\$ 8,351	\$ 60,788	\$ 9,849

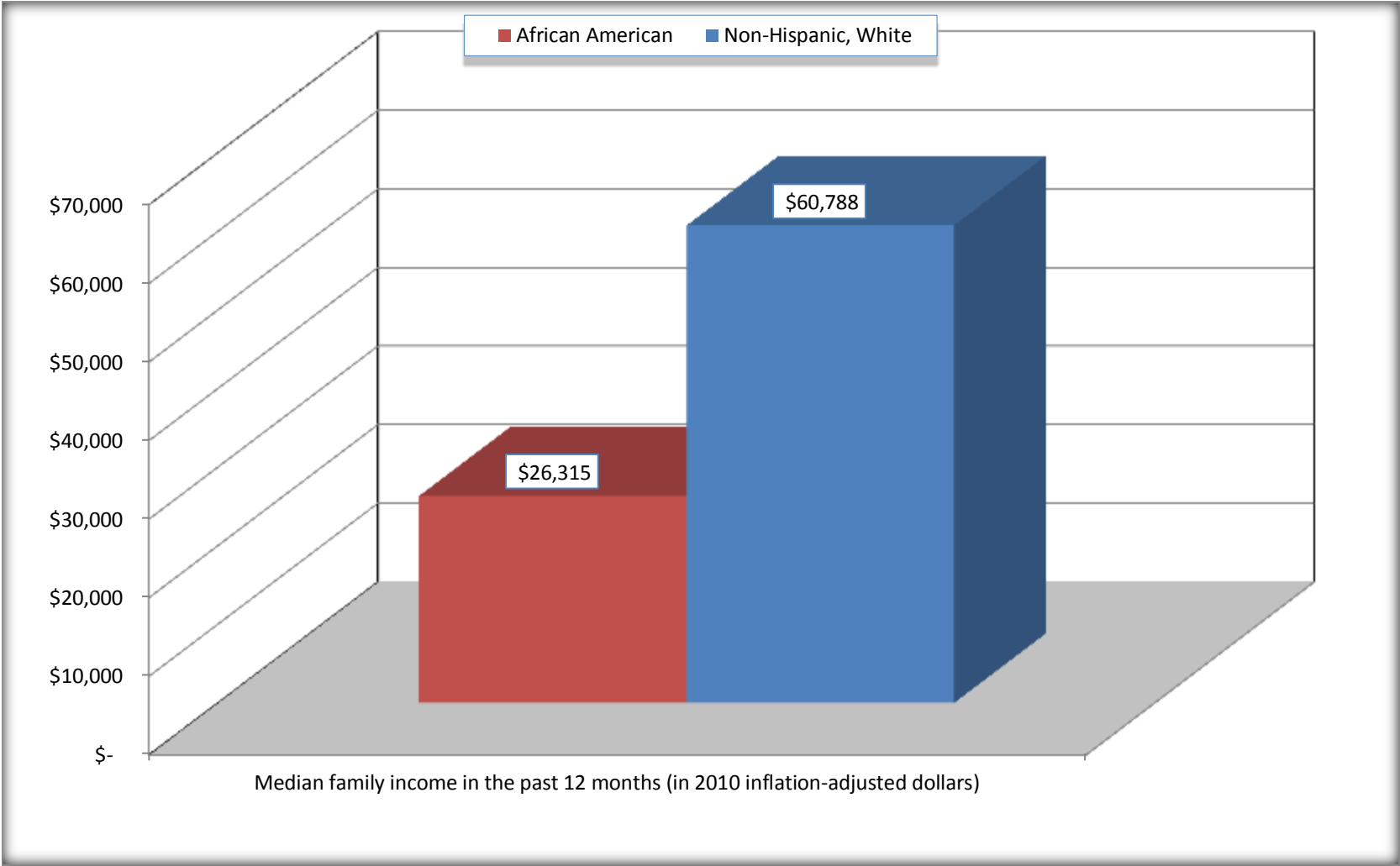
Source: U.S. Census Bureau, 2008-2012 American Community Survey

For information on confidentiality protection, sampling error, nonsampling error, and definitions, see Survey Methodology.

<http://www.census.gov/acs/www/UseData/index.htm>

Median Family Income in the Past 12 Months

West Point city, Mississippi



Source: B19113. MEDIAN FAMILY INCOME IN THE PAST 12 MONTHS (IN 2010 INFLATION-ADJUSTED DOLLARS)
Data Set: 2008-2012 American Community Survey 5-Year Estimates

B19202. MEDIAN NONFAMILY HOUSEHOLD INCOME IN THE PAST 12 MONTHS (IN 2010 INFLATION-ADJUSTED DOLLARS)

Data Set: 2008-2012 American Community Survey 5-Year Estimates

	West Point city, Mississippi			
	African American	Margin of Error (+/-)	White, Not Hispanic	Margin of Error (+/-)
Median nonfamily household income in the past 12 months (in 2010 inflation-adjusted dollars)	\$ 15,378	\$ 2,171	\$ 21,855	\$ 5,493

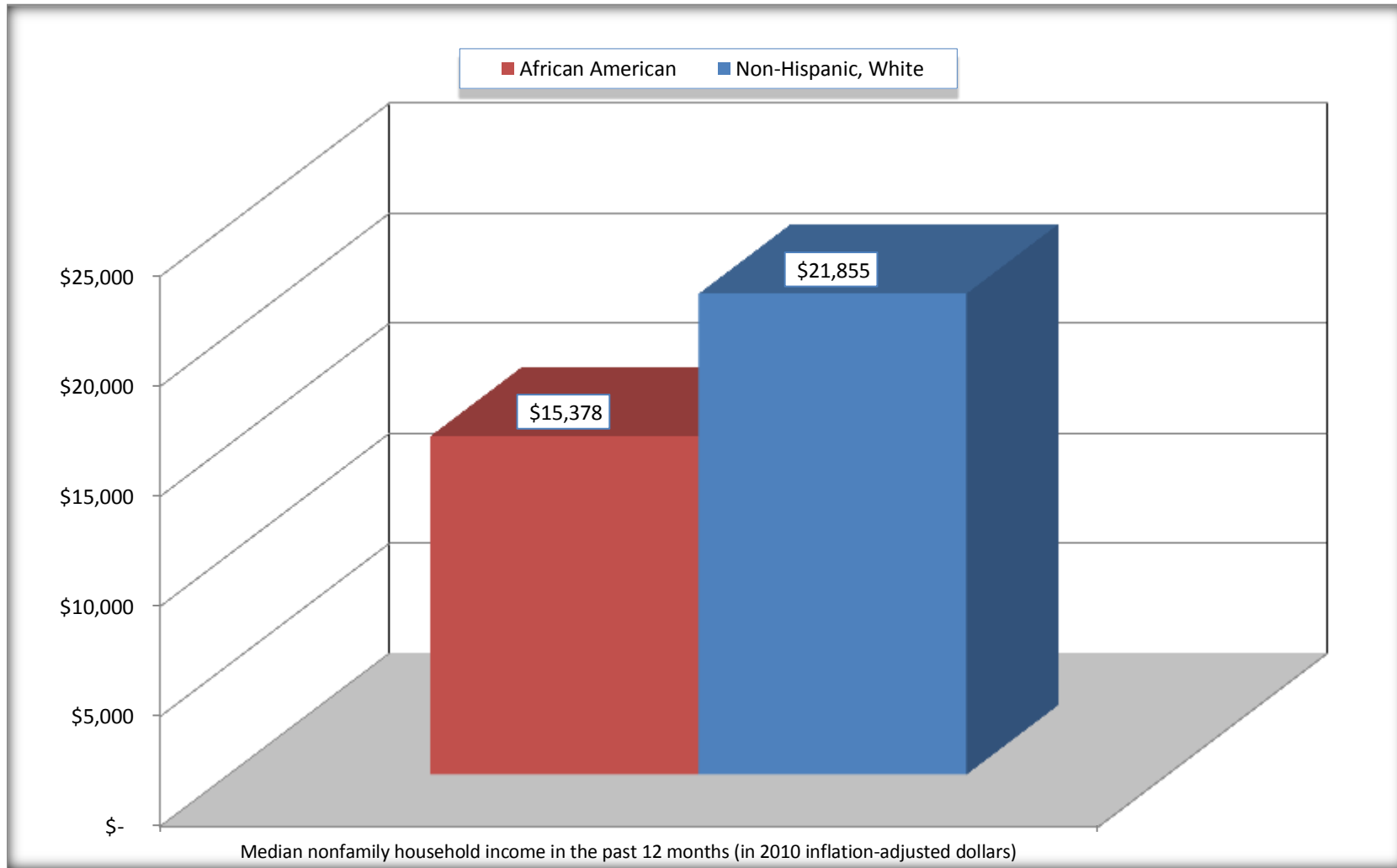
Source: U.S. Census Bureau, 2008-2012 American Community Survey

For information on confidentiality protection, sampling error, nonsampling error, and definitions, see Survey Methodology.

<http://www.census.gov/acs/www/UseData/index.htm>

Median Non-Family Income in the Past 12 Months

West Point city, Mississippi



Source: B19202. MEDIAN NONFAMILY HOUSEHOLD INCOME IN THE PAST 12 MONTHS (IN 2010 INFLATION-ADJUSTED DOLLARS)
Data Set: 2008-2012 American Community Survey 5-Year Estimates

B19301. PER CAPITA INCOME IN THE PAST 12 MONTHS (IN 2010 INFLATION-ADJUSTED DOLLARS)

Data Set: 2008-2012 American Community Survey 5-Year Estimates

	West Point city, Mississippi			
	African American	Margin of Error (+/-)	White, Not Hispanic	Margin of Error (+/-)
Per capita income in the past 12 months (in 2010 inflation-adjusted dollars)	\$ 10,929	\$ 1,591	\$ 31,517	\$ 4,085

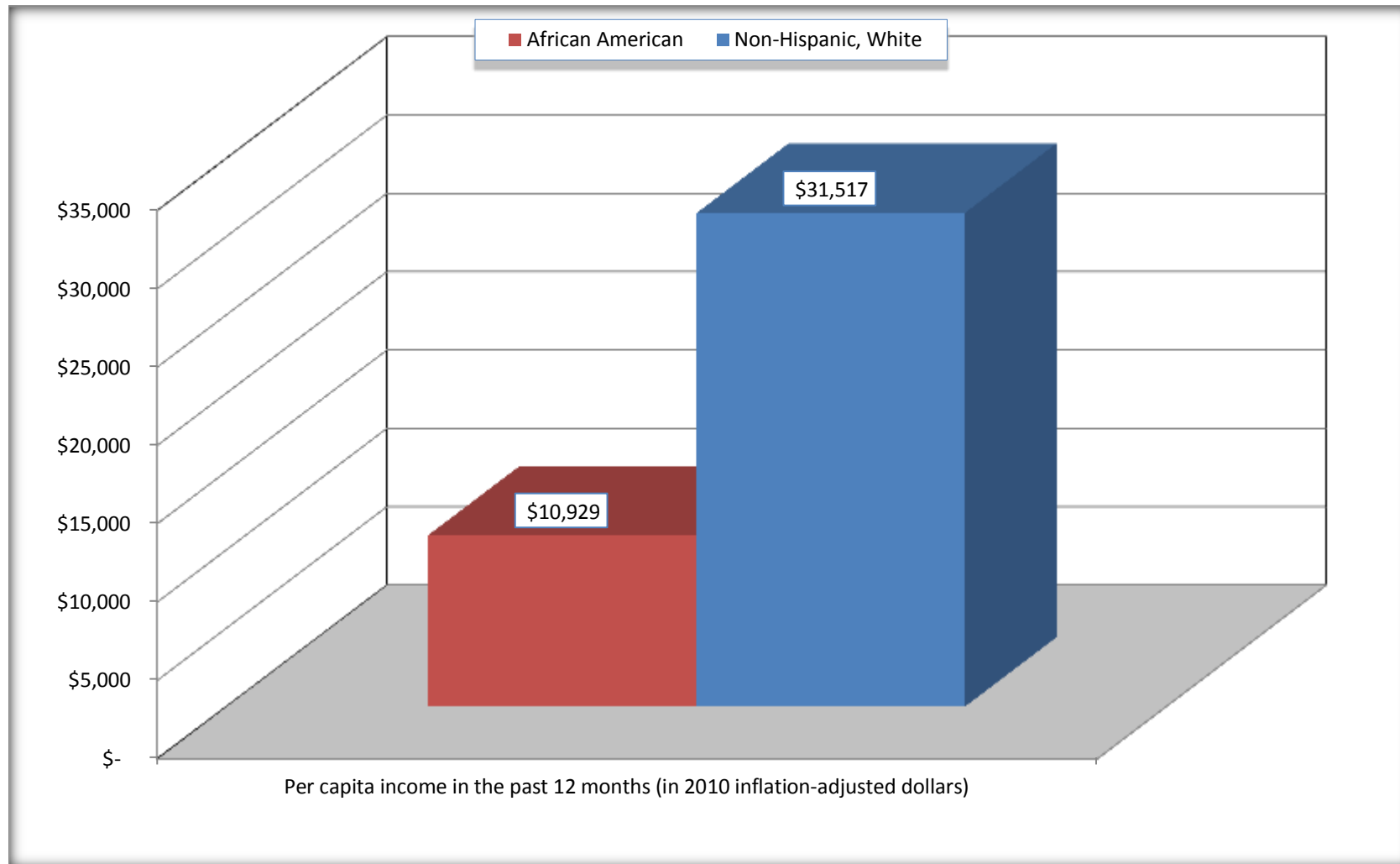
Source: U.S. Census Bureau, 2008-2012 American Community Survey

For information on confidentiality protection, sampling error, nonsampling error, and definitions, see Survey Methodology.

<http://www.census.gov/acs/www/UseData/index.htm>

Per capita Income in the Past 12 Months

West Point city, Mississippi



Source: B19301. PER CAPITA INCOME IN THE PAST 12 MONTHS (IN 2010 INFLATION-ADJUSTED DOLLARS)
Data Set: 2008-2012 American Community Survey 5-Year Estimates

B20017. MEDIAN EARNINGS IN THE PAST 12 MONTHS (IN 2010 INFLATION-ADJUSTED DOLLARS) BY SEX BY WORK EXPERIENCE IN THE PAST 12 MONTHS FOR THE POPULATION 16 YEARS AND OVER WITH EARNINGS IN THE PAST 12 MONTHS

Data Set: 2008-2012 American Community Survey 5-Year Estimates

	West Point city, Mississippi			
	African American	Margin of Error (+/-)	White, Not Hispanic	Margin of Error (+/-)
Median earnings in the past 12 months (in 2010 inflation-adjusted dollars) --				
Total:	\$ 15,935	\$ 1,053	\$ 35,370	\$ 5,781
Male --				
Total	\$ 18,714	\$ 6,464	\$ 41,202	\$ 3,257
Worked full-time, year-round in the past 12 months	\$ 33,961	\$ 3,679	\$ 45,286	\$ 4,573
Other	\$ 3,645	\$ 2,442	\$ 14,868	\$ 4,237
Female --				
Total	\$ 15,688	\$ 904	\$ 29,152	\$ 7,896
Worked full-time, year-round in the past 12 months	\$ 20,637	\$ 6,056	\$ 40,917	\$ 9,548
Other	\$ 11,354	\$ 1,327	\$ 10,026	\$ 3,118

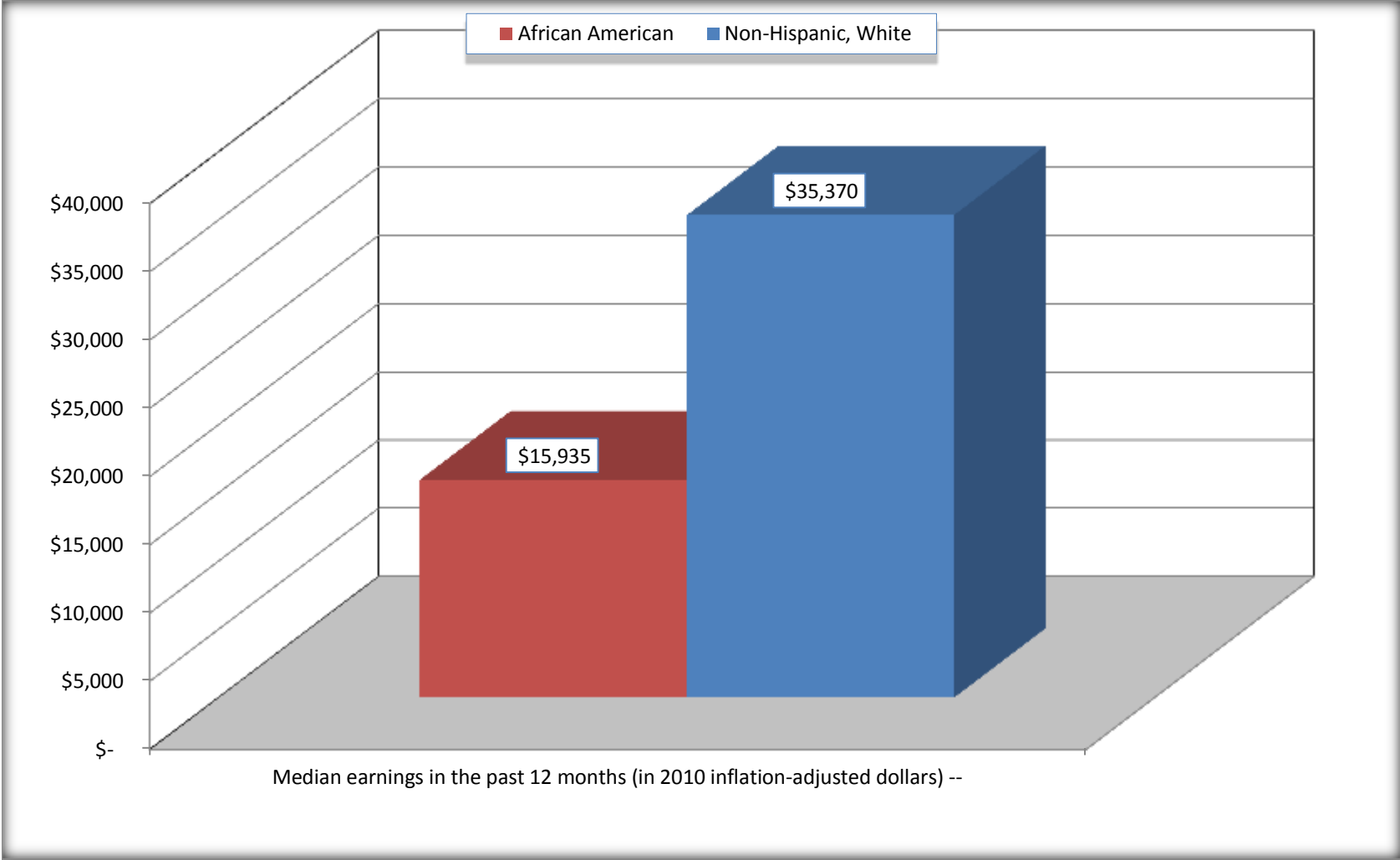
Source: U.S. Census Bureau, 2008-2012 American Community Survey

For information on confidentiality protection, sampling error, nonsampling error, and definitions, see Survey Methodology.

<http://www.census.gov/acs/www/UseData/index.htm>

Median earnings in the Past 12 Months (16 Years and Over with Earnings)

West Point city, Mississippi



Source: B20017. MEDIAN EARNINGS IN THE PAST 12 MONTHS (IN 2010 INFLATION-ADJUSTED DOLLARS) BY SEX BY WORK EXPERIENCE IN THE PAST 12 MONTHS FOR THE POPULATION 16 YEARS AND OVER WITH EARNINGS IN THE PAST 12 MONTHS
Data Set: 2008-2012 American Community Survey 5-Year Estimates

B20005. SEX BY WORK EXPERIENCE IN THE PAST 12 MONTHS BY EARNINGS IN THE PAST 12 MONTHS (IN 2010 INFLATION-ADJUSTED DOLLARS) FOR THE POPULATION 16 YEARS AND OVER

Data Set: 2008-2012 American Community Survey 5-Year Estimates

	West Point city, Mississippi					
	African American	Margin of Error (+/-)	% of AA Total	White, Not Hispanic	Margin of Error (+/-)	% of NHW Total
Total:	4,548	332	100.0%	3,702	255	100.0%
Worked full-time, year-round in the past 12 months:	1,277	NC	28.1%	1,425	NC	38.5%
No earnings	0	NC	0.0%	0	NC	0.0%
With earnings:	1,277	NC	28.1%	1,425	NC	38.5%
\$ 1 to \$ 9,999 or loss	44	NC	1.0%	28	NC	0.8%
\$ 10,000 to \$ 19,999	425	NC	9.3%	127	NC	3.4%
\$ 20,000 to \$ 29,999	234	NC	5.1%	184	NC	5.0%
\$ 30,000 to \$ 49,999	338	NC	7.4%	568	NC	15.3%
\$ 50,000 to \$ 74,999	187	NC	4.1%	211	NC	5.7%
\$ 75,000 or more	49	NC	1.1%	307	NC	8.3%
Other:	3,271	NC	71.9%	2,277	NC	61.5%
No earnings	1,988	NC	43.7%	1,568	NC	42.4%
With earnings: less than full time, year-round	1,283	NC	28.2%	709	NC	19.2%
Male:	1,932	220	42.5%	1,802	145	48.7%
Worked full-time, year-round in the past 12 months:	498	157	10.9%	837	139	22.6%
No earnings	0	19	0.0%	0	19	0.0%
With earnings:	498	157	10.9%	837	139	22.6%
\$ 1 to \$ 9,999 or loss	17	NC	0.4%	17	NC	0.5%
\$ 10,000 to \$ 19,999	76	NC	1.7%	29	NC	0.8%
\$ 20,000 to \$ 29,999	103	NC	2.3%	110	NC	3.0%
\$ 30,000 to \$ 49,999	156	NC	3.4%	340	NC	9.2%
\$ 50,000 to \$ 74,999	140	NC	3.1%	125	NC	3.4%
\$ 75,000 or more	6	NC	0.1%	216	NC	5.8%

	West Point city, Mississippi					
	African American	Margin of Error (+/-)	% of AA Total	White, Not Hispanic	Margin of Error (+/-)	% of NHW Total
Other:	1,434	211	31.5%	965	156	26.1%
No earnings	948	187	20.8%	603	109	16.3%
With earnings:	486	135	10.7%	362	122	9.8%
Female:	2,616	197	57.5%	1,900	157	51.3%
Worked full-time, year-round in the past 12 months:	779	183	17.1%	588	125	15.9%
No earnings	0	19	0.0%	0	19	0.0%
With earnings:	779	183	17.1%	588	125	15.9%
\$ 1 to \$ 9,999 or loss	27	NC	0.6%	11	NC	0.3%
\$ 10,000 to \$ 19,999	349	NC	7.7%	98	NC	2.6%
\$ 20,000 to \$ 29,999	131	NC	2.9%	74	NC	2.0%
\$ 30,000 to \$ 49,999	182	NC	4.0%	228	NC	6.2%
\$ 50,000 to \$ 74,999	47	NC	1.0%	86	NC	2.3%
\$ 75,000 or more	43	NC	0.9%	91	NC	2.5%
Other:	1,837	208	40.4%	1,312	145	35.4%
No earnings	1,040	153	22.9%	965	127	26.1%
With earnings:	797	176	17.5%	347	93	9.4%

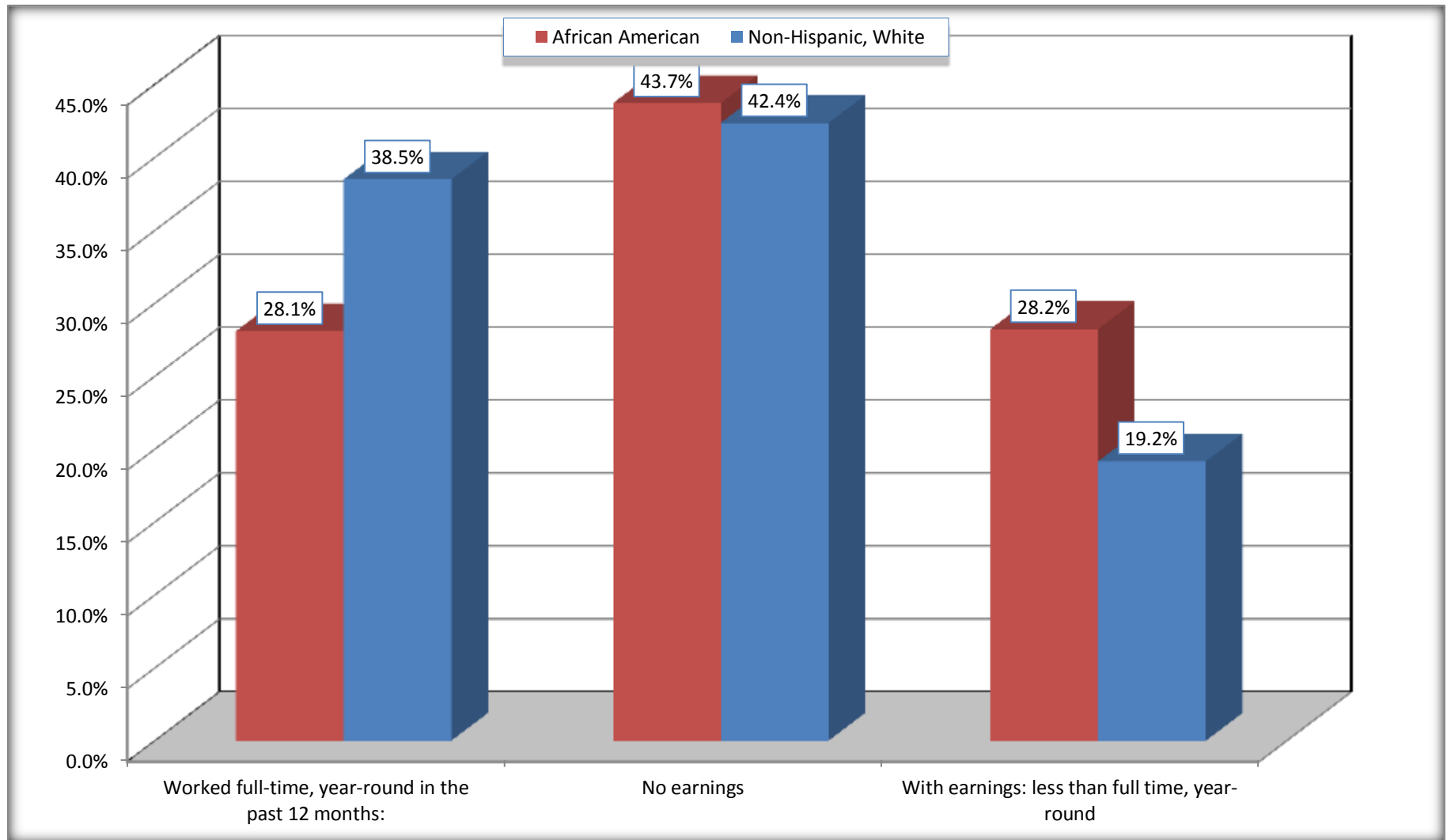
Source: U.S. Census Bureau, 2008-2012 American Community Survey

For information on confidentiality protection, sampling error, nonsampling error, and definitions, see Survey Methodology.

<http://www.census.gov/acs/www/UseData/index.htm>

Employment and Earnings in in the Past 12 Months (16 Years and Over)

West Point city, Mississippi



Source: B20005. SEX BY WORK EXPERIENCE IN THE PAST 12 MONTHS BY EARNINGS IN THE PAST 12 MONTHS (IN 2010 INFLATION-ADJUSTED DOLLARS) FOR THE POPULATION 16 YEARS AND OVER

Data Set: 2008-2012 American Community Survey 5-Year Estimates

C21001. SEX BY AGE BY VETERAN STATUS FOR THE CIVILIAN POPULATION 18 YEARS AND OVER

Data Set: 2008-2012 American Community Survey 5-Year Estimates

	West Point city, Mississippi					
	African American	Margin of Error (+/-)	% of AA Total	White, Not Hispanic	Margin of Error (+/-)	% of NHW Total
Total:	4,350	312	100.0%	3,604	249	100.0%
Veteran	175	NC	4.0%	519	NC	14.4%
Nonveteran	4,175	NC	96.0%	3,085	NC	85.6%
Male:	1,750	197	40.2%	1,753	139	48.6%
18 to 64 years:	1,519	186	34.9%	1,301	142	36.1%
Veteran	75	59	1.7%	250	86	6.9%
Nonveteran	1,444	190	33.2%	1,051	141	29.2%
65 years and over:	231	78	5.3%	452	65	12.5%
Veteran	78	62	1.8%	261	72	7.2%
Nonveteran	153	60	3.5%	191	61	5.3%
Female:	2,600	196	59.8%	1,851	150	51.4%
18 to 64 years:	2,160	180	49.7%	1,211	132	33.6%
Veteran	22	37	0.5%	8	13	0.2%
Nonveteran	2,138	176	49.1%	1,203	130	33.4%
65 years and over:	440	82	10.1%	640	68	17.8%
Veteran	0	19	0.0%	0	19	0.0%
Nonveteran	440	82	10.1%	640	68	17.8%

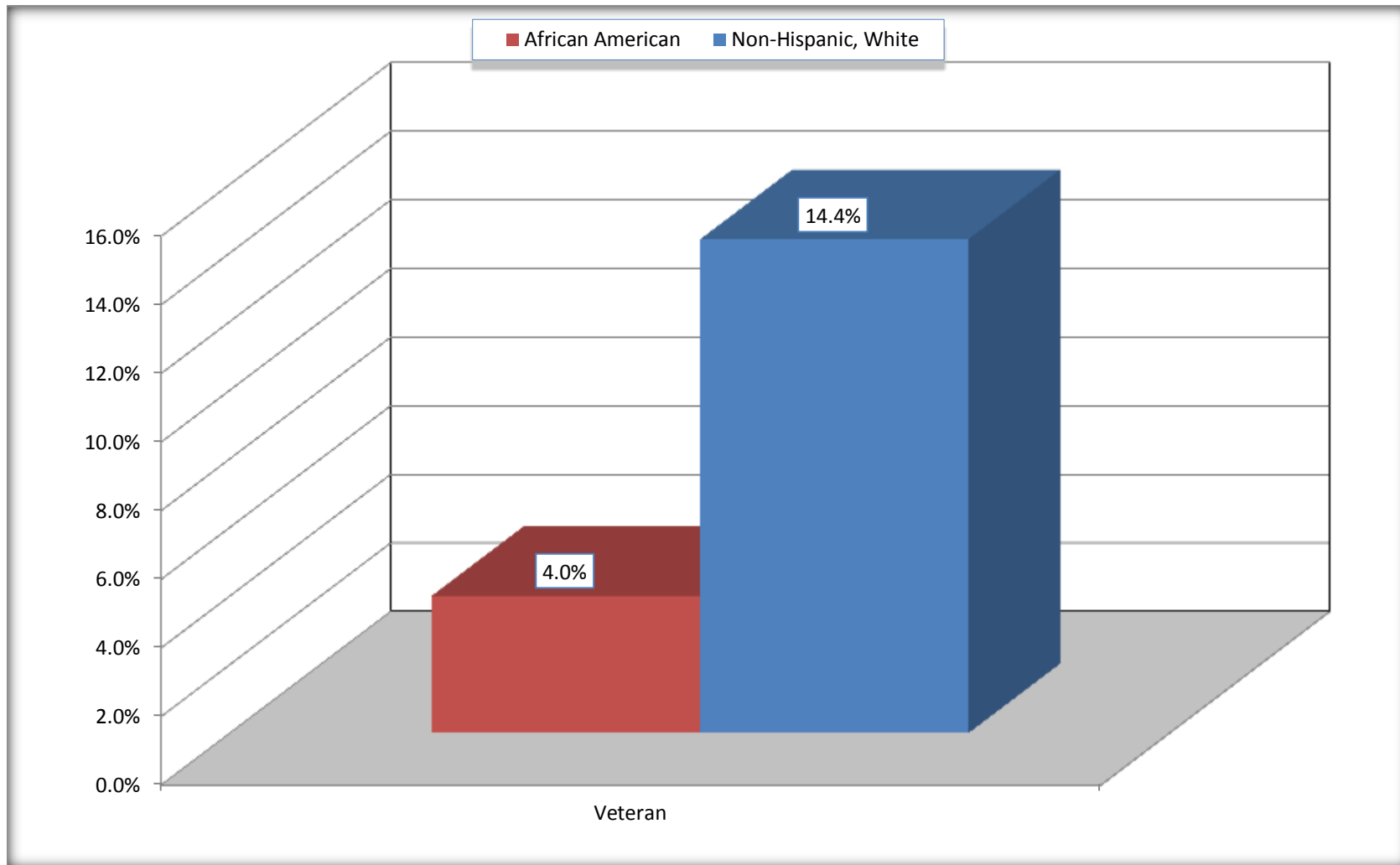
Source: U.S. Census Bureau, 2008-2012 American Community Survey

For information on confidentiality protection, sampling error, nonsampling error, and definitions, see Survey Methodology.

<http://www.census.gov/acs/www/UseData/index.htm>

Veterans in the Civilian Population 18 Years and Over

West Point city, Mississippi



Source: C21001. SEX BY AGE BY VETERAN STATUS FOR THE CIVILIAN POPULATION 18 YEARS AND OVER
Data Set: 2008-2012 American Community Survey 5-Year Estimates

B22005. RECEIPT OF FOOD STAMPS/SNAP IN THE PAST 12 MONTHS BY RACE OF HOUSEHOLDER

Data Set: 2008-2012 American Community Survey 5-Year Estimates

	West Point city, Mississippi					
	African American	Margin of Error (+/-)	% of AA Total	White, Not Hispanic	Margin of Error (+/-)	% of NHW Total
Total:	2,320	213	100.0%	1,805	150	100.0%
HH received Food Stamps/SNAP in the past 12 months	949	190	40.9%	162	81	9.0%
HH did not receive Food Stamps/SNAP in the past 12 months	1,371	231	59.1%	1,643	151	91.0%

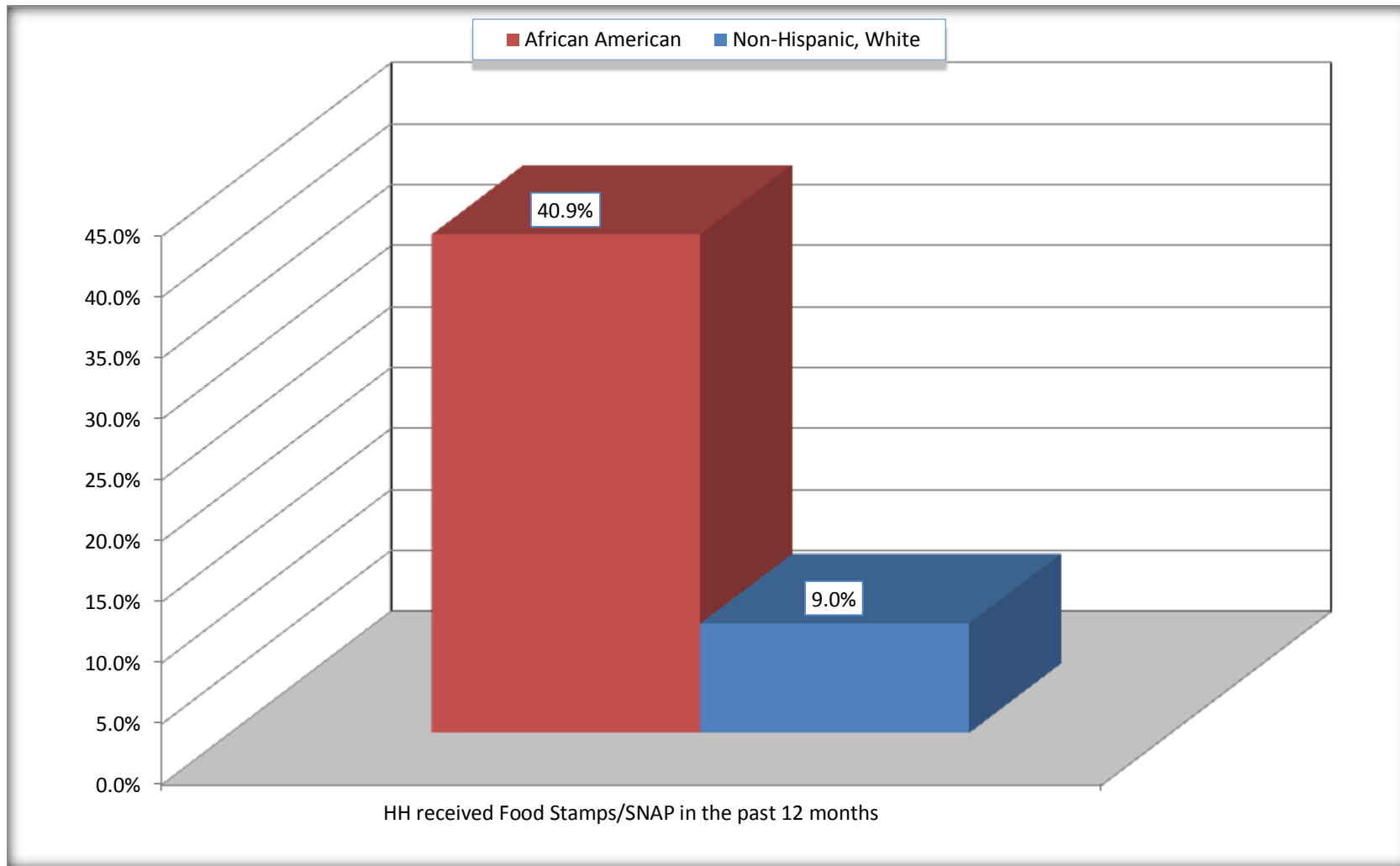
Source: U.S. Census Bureau, 2008-2012 American Community Survey

For information on confidentiality protection, sampling error, nonsampling error, and definitions, see Survey Methodology.

<http://www.census.gov/acs/www/UseData/index.htm>

Receipt of Food Stamps/SNAP in the Past 12 Months by Household

West Point city, Mississippi



Source: B22005. RECEIPT OF FOOD STAMPS/SNAP IN THE PAST 12 MONTHS BY RACE OF HOUSEHOLDER
Data Set: 2008-2012 American Community Survey 5-Year Estimates

C23002. SEX BY AGE BY EMPLOYMENT STATUS FOR THE POPULATION 16 YEARS AND OVER

Data Set: 2008-2012 American Community Survey 5-Year Estimates

	West Point city, Mississippi					
	African American	Margin of Error (+/-)	% of AA Total	White, Not Hispanic	Margin of Error (+/-)	% of NHW Total
Total:	4,548	332	100.0%	3,702	255	100.0%
In labor force:	2,810	NC	61.8%	2,157	NC	58.3%
In Armed Forces	13	NC	0.3%	0	NC	0.0%
Civilian:	2,746	NC	60.4%	2,006	NC	54.2%
Employed	2,055	NC	45.2%	1,904	NC	51.4%
Unemployed	742	NC	16.3%	253	NC	6.8%
Not in labor force	1,738	NC	38.2%	1,545	NC	41.7%
Male:	1,932	220	42.5%	1,802	145	48.7%
16 to 64 years:	1,701	208	37.4%	1,350	145	36.5%
In labor force:	1,111	190	24.4%	1,102	146	29.8%
In Armed Forces	13	21	0.3%	0	19	0.0%
Civilian:	1,098	191	24.1%	1,102	146	29.8%
Employed	792	200	17.4%	944	132	25.5%
Unemployed	306	124	6.7%	158	79	4.3%
Not in labor force	590	154	13.0%	248	91	6.7%
65 years and over:	231	78	5.1%	452	65	12.2%
In labor force:	6	10	0.1%	107	42	2.9%
Employed	6	10	0.1%	107	42	2.9%
Unemployed	0	19	0.0%	0	19	0.0%
Not in labor force	225	80	4.9%	345	68	9.3%

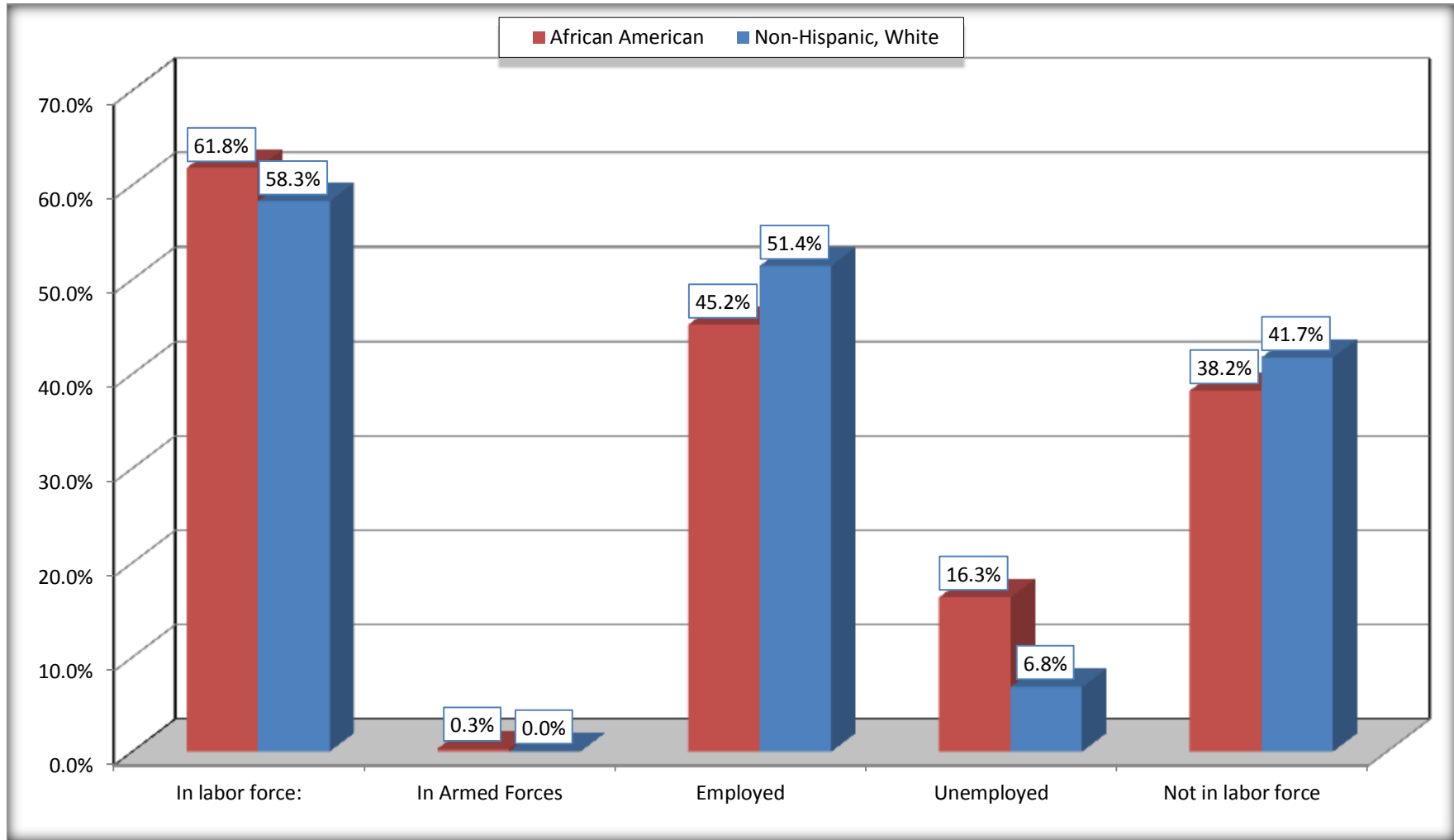
	West Point city, Mississippi					
	African American	Margin of Error (+/-)	% of AA Total	White, Not Hispanic	Margin of Error (+/-)	% of NHW Total
Female:	2,616	197	57.5%	1,900	157	51.3%
16 to 64 years:	2,176	182	47.8%	1,260	141	34.0%
In labor force:	1,648	168	36.2%	904	151	24.4%
In Armed Forces	0	19	0.0%	0	19	0.0%
Civilian:	1,648	168	36.2%	904	151	24.4%
Employed	1,212	221	26.6%	809	144	21.9%
Unemployed	436	157	9.6%	95	69	2.6%
Not in labor force	528	135	11.6%	356	104	9.6%
65 years and over:	440	82	9.7%	640	68	17.3%
In labor force:	45	36	1.0%	44	38	1.2%
Employed	45	36	1.0%	44	38	1.2%
Unemployed	0	19	0.0%	0	19	0.0%
Not in labor force	395	82	8.7%	596	70	16.1%

Source: U.S. Census Bureau, 2008-2012 American Community Survey

For information on confidentiality protection, sampling error, nonsampling error, and definitions, see Survey Methodology.
<http://www.census.gov/acs/www/UseData/index.htm>

Employment Status for the Population 16 years and over

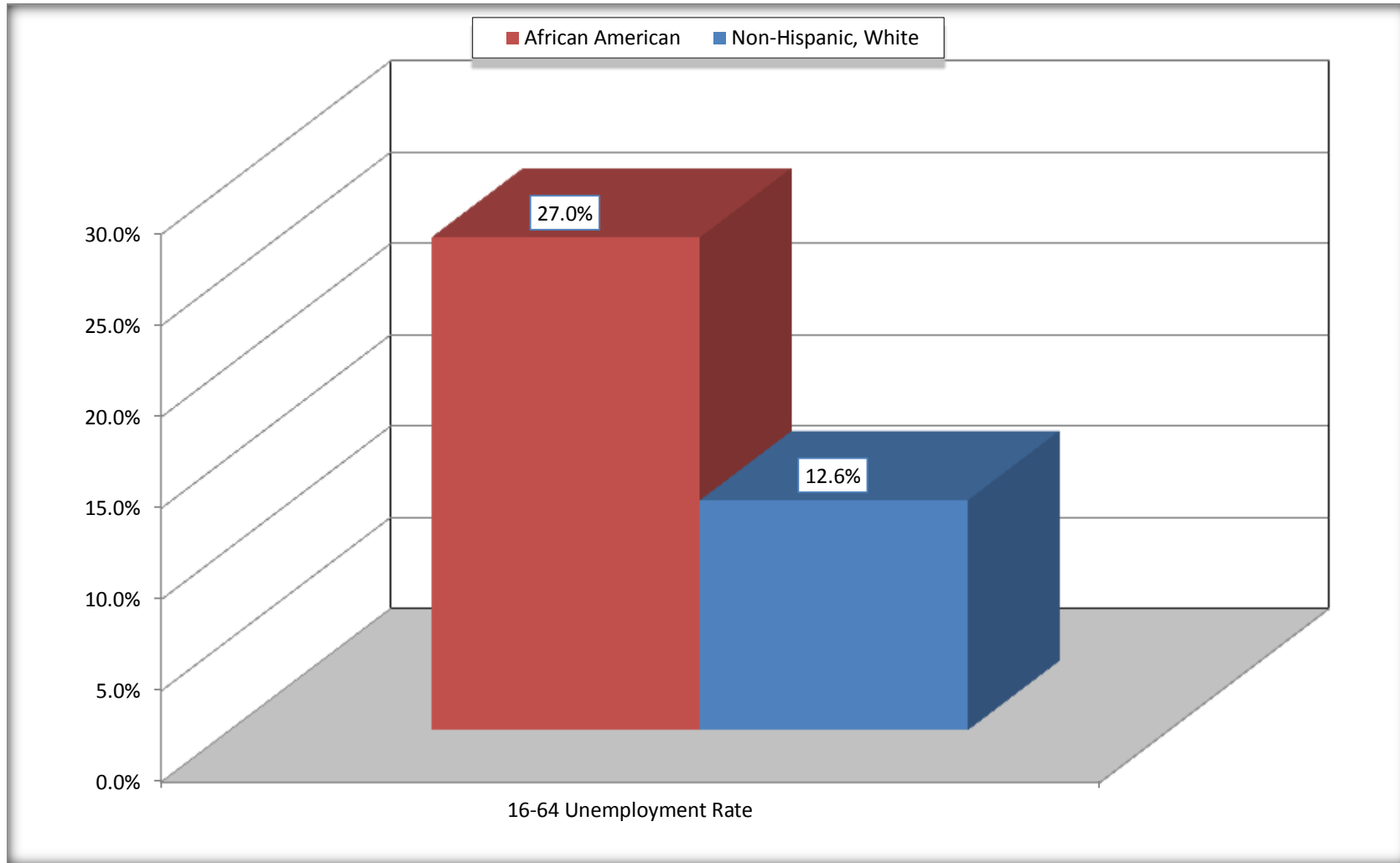
West Point city, Mississippi



Source: C23002. SEX BY AGE BY EMPLOYMENT STATUS FOR THE POPULATION 16 YEARS AND OVER
Data Set: 2008-2012 American Community Survey 5-Year Estimates

Unemployment of Working Age Population (Ages 16 to 64) (As a Percent of 16-64 Civilian Labor Force)

West Point city, Mississippi



Source: C23002. SEX BY AGE BY EMPLOYMENT STATUS FOR THE POPULATION 16 YEARS AND OVER
Data Set: 2008-2012 American Community Survey 5-Year Estimates

C24010. SEX BY OCCUPATION FOR THE CIVILIAN EMPLOYED POPULATION 16 YEARS AND OVER

Data Set: 2008-2012 American Community Survey 5-Year Estimates

	West Point city, Mississippi					
	African American	Margin of Error (+/-)	% of AA Total	White, Not Hispanic	Margin of Error (+/-)	% of NHW Total
Total:	2,055	302	100.0%	1,904	227	100.0%
Management, professional, and related occupations	373	NC	18.2%	790	NC	41.5%
Service occupations	485	NC	23.6%	167	NC	8.8%
Sales and office occupations	567	NC	27.6%	496	NC	26.1%
Natural resources, construction, and maintenance occupations:	115	NC	5.6%	136	NC	7.1%
Production, transportation, and material moving occupations	515	NC	25.1%	315	NC	16.5%
Male:	798	201	38.8%	1,051	135	55.2%
Management, business, science, and arts occupations:	76	62	3.7%	432	121	22.7%
Service occupations	143	98	7.0%	61	40	3.2%
Sales and office occupations	151	98	7.3%	173	77	9.1%
Natural resources, construction, and maintenance occupations:	115	74	5.6%	111	60	5.8%
Production, transportation, and material moving occupations	313	140	15.2%	274	95	14.4%
Female:	1,257	229	61.2%	853	151	44.8%
Management, professional, and related occupations	297	110	14.5%	358	96	18.8%
Service occupations	342	127	16.6%	106	61	5.6%
Sales and office occupations	416	155	20.2%	323	103	17.0%
Natural resources, construction, and maintenance occupations:	0	19	0.0%	25	29	1.3%
Production, transportation, and material moving occupations	202	97	9.8%	41	32	2.2%

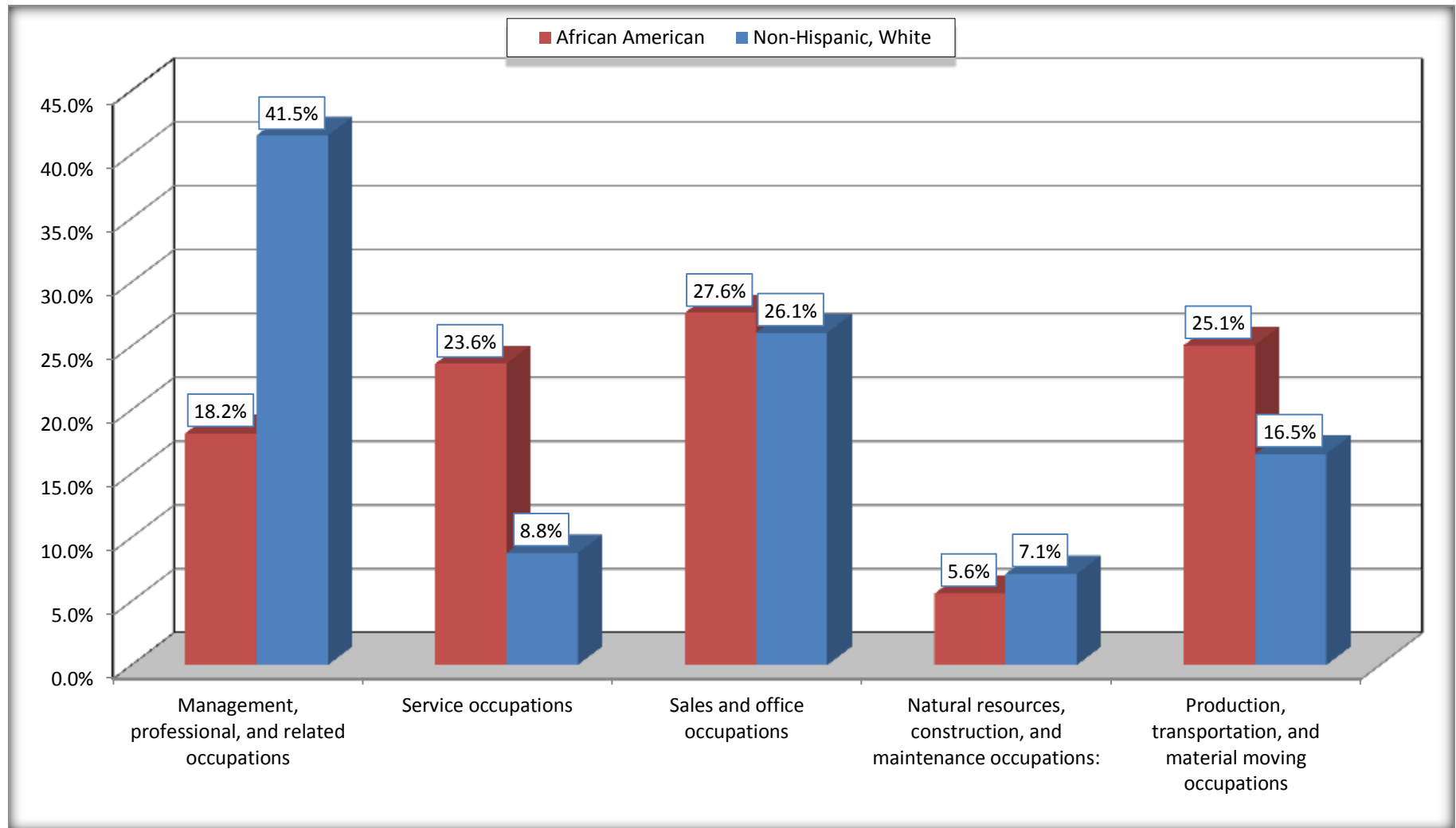
Source: U.S. Census Bureau, 2008-2012 American Community Survey

For information on confidentiality protection, sampling error, nonsampling error, and definitions, see Survey Methodology.

<http://www.census.gov/acs/www/UseData/index.htm>

Occupation for the Civilian Employed 16 Years and Over Population

West Point city, Mississippi



Source: C24010. SEX BY OCCUPATION FOR THE CIVILIAN EMPLOYED POPULATION 16 YEARS AND OVER
Data Set: 2008-2012 American Community Survey 5-Year Estimates

B25003. TENURE - Universe: OCCUPIED HOUSING UNITS

Data Set: 2008-2012 American Community Survey 5-Year Estimates

	West Point city, Mississippi					
	African American	Margin of Error (+/-)	% of AA Total	White, Not Hispanic	Margin of Error (+/-)	% of NHW Total
Total:	2,320	213	100.0%	1,805	150	100.0%
Owner occupied	1,192	198	51.4%	1,337	122	74.1%
Renter occupied	1,128	187	48.6%	468	120	25.9%

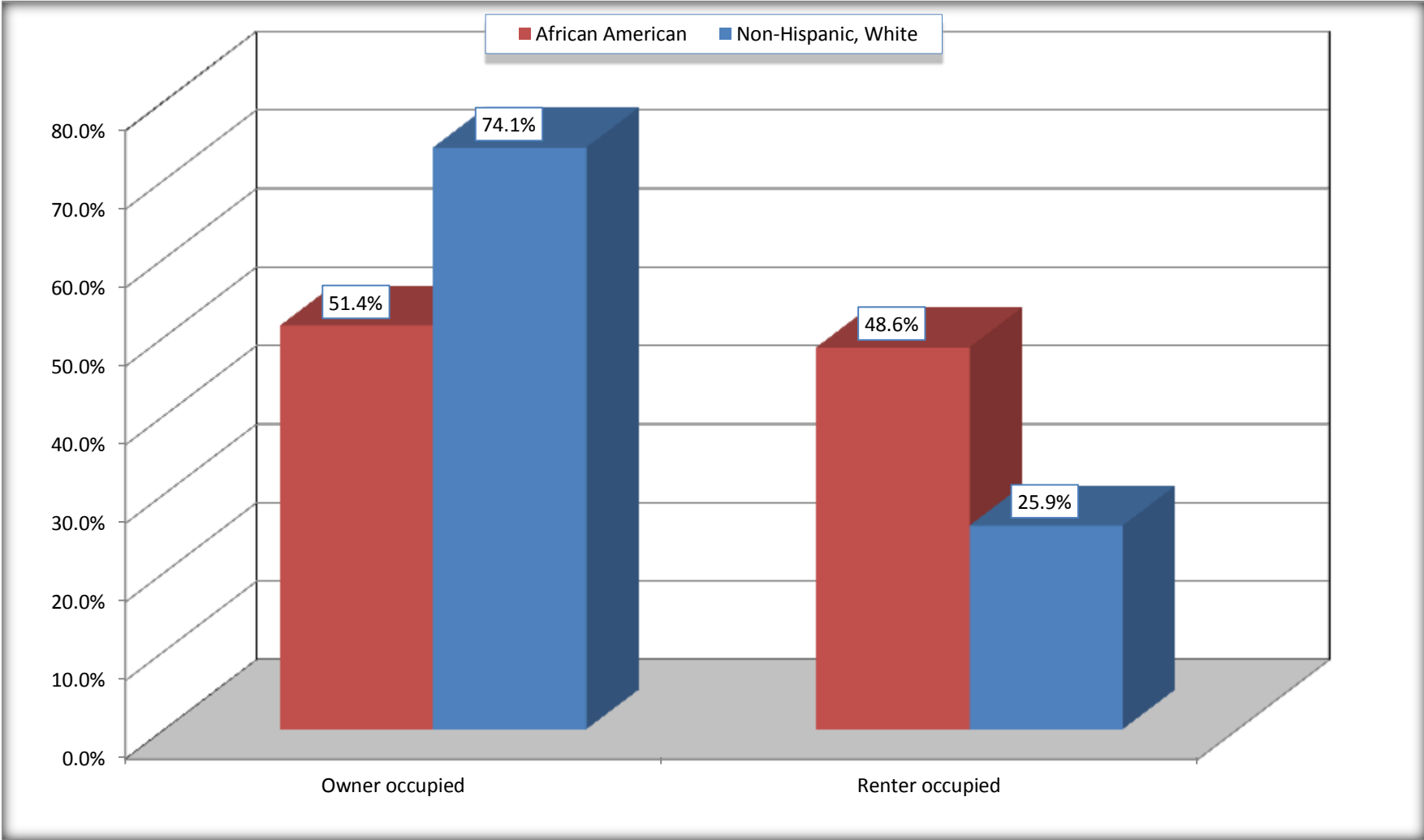
Source: U.S. Census Bureau, 2008-2012 American Community Survey

For information on confidentiality protection, sampling error, nonsampling error, and definitions, see Survey Methodology.

<http://www.census.gov/acs/www/UseData/index.h>

Home Owners and Renters by Household

West Point city, Mississippi



Source: B25003. TENURE - Universe: OCCUPIED HOUSING UNITS
Data Set: 2008-2012 American Community Survey 5-Year Estimates

B25014. OCCUPANTS PER ROOM - Universe: OCCUPIED HOUSING UNITS

Data Set: 2008-2012 American Community Survey 5-Year Estimates

	West Point city, Mississippi					
	African American	Margin of Error (+/-)	% of AA Total	White, Not Hispanic	Margin of Error (+/-)	% of NHW Total
Total:	2,320	213	100.0%	1,805	150	100.0%
1.00 or less occupants per room	2,272	206	97.9%	1,777	152	98.4%
1.01 or more occupants per room	48	30	2.1%	28	31	1.6%

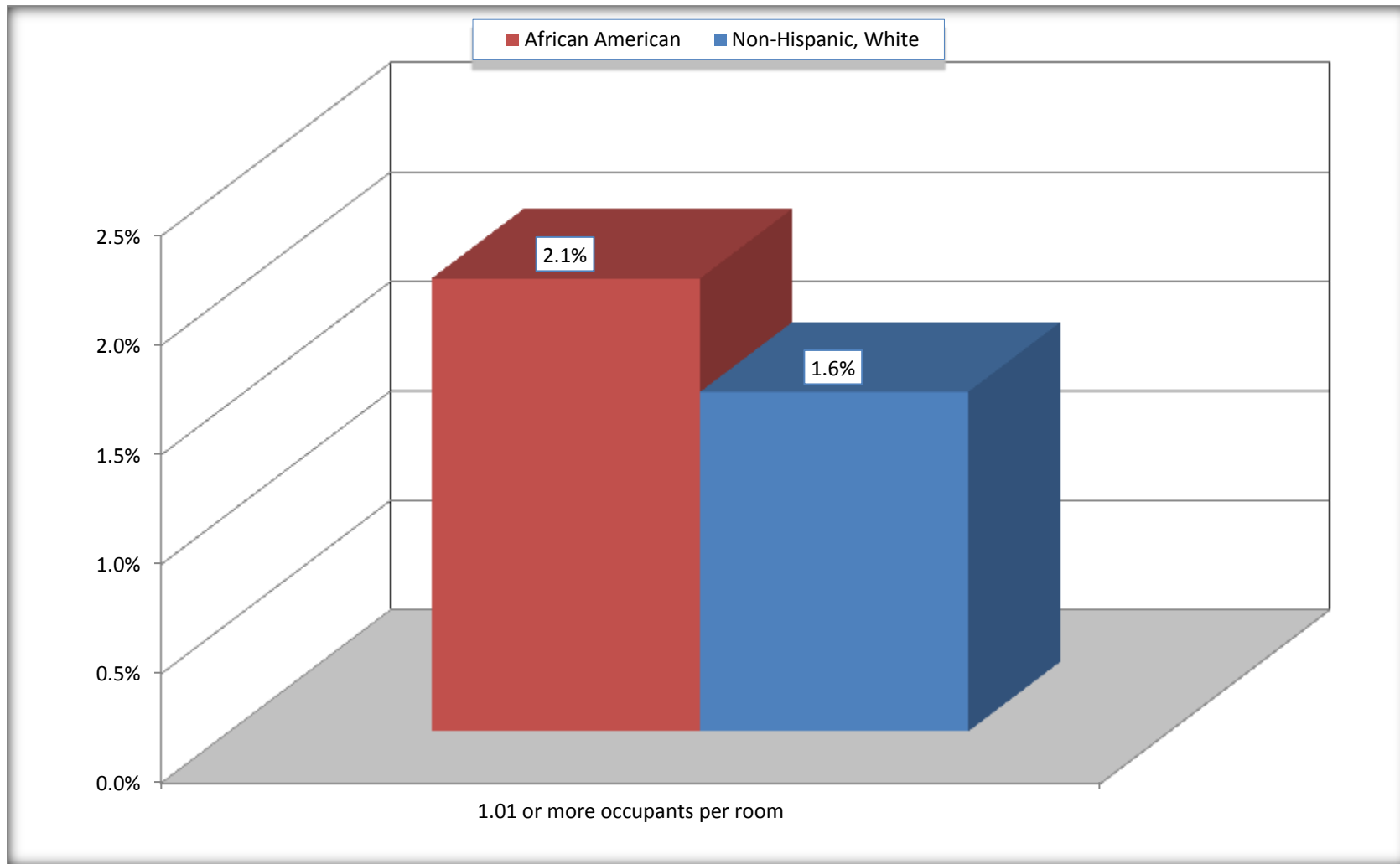
Source: U.S. Census Bureau, 2008-2012 American Community Survey

For information on confidentiality protection, sampling error, nonsampling error, and definitions, see Survey Methodology.

<http://www.census.gov/acs/www/UseData/index.ht>

More than One Person per Room (Crowding) by Household

West Point city, Mississippi



Source: B25014. OCCUPANTS PER ROOM - Universe: OCCUPIED HOUSING UNITS
Data Set: 2008-2012 American Community Survey 5-Year Estimates

B18101. AGE BY DISABILITY STATUS

Data Set: 2008-2012 American Community Survey 5-Year Estimates

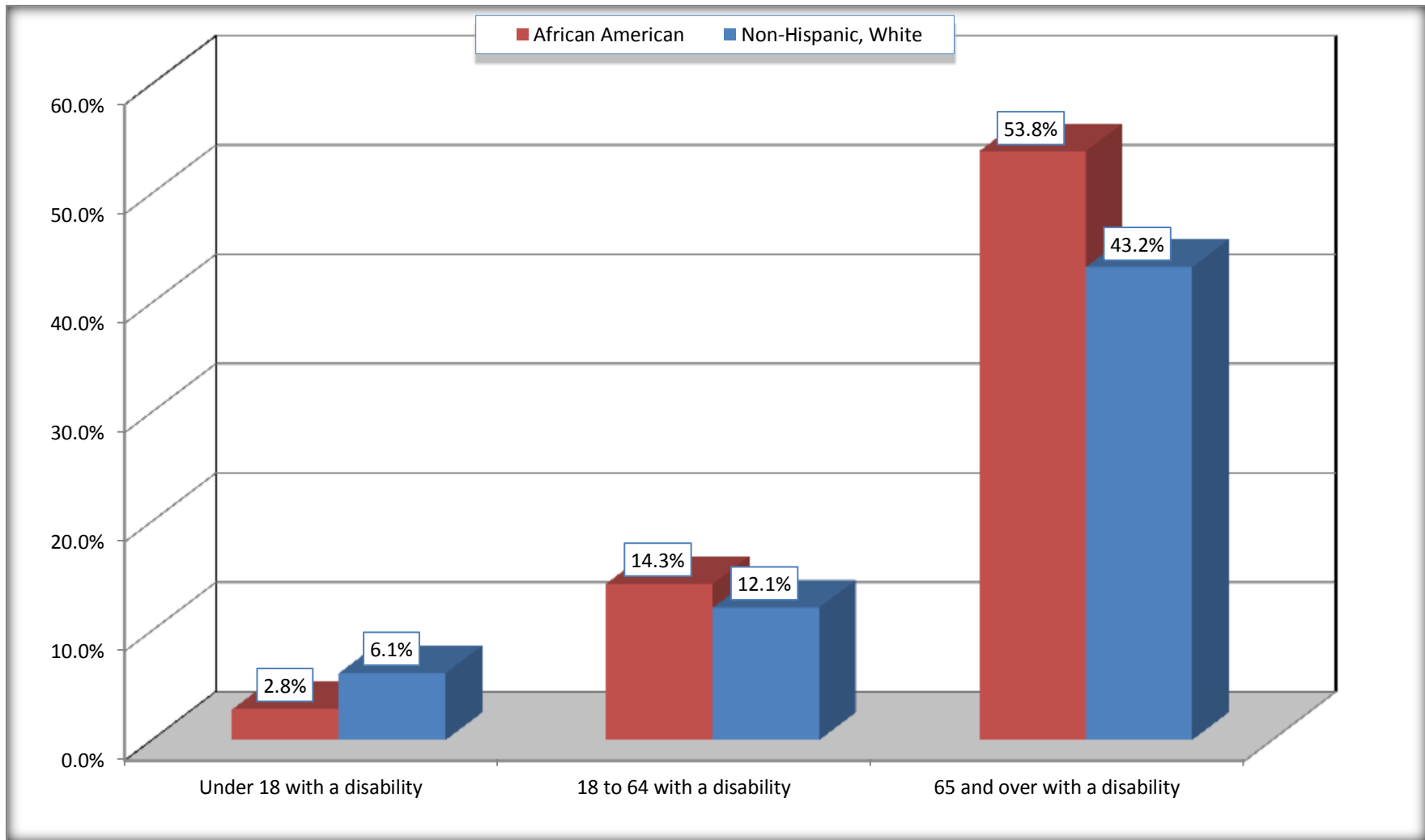
	West Point city, Mississippi					
	African American	Margin of Error (+/-)	% of AA Total	White, Not Hispanic	Margin of Error (+/-)	% of NHW Total
Total:	6,511	352	100.0%	4,315	307	100.0%
Under 18 years:	2,289	195	35.2%	851	38	19.7%
With a disability	64	45	1.0%	52	54	1.2%
No disability	2,225	201	34.2%	799	169	18.5%
18 to 64 years:	3,598	290	55.3%	2,428	236	56.3%
With a disability	514	170	7.9%	294	99	6.8%
No disability	3,084	282	47.4%	2,134	221	49.5%
65 years and over:	624	129	9.6%	1,036	111	24.0%
With a disability	336	109	5.2%	448	101	10.4%
No disability	288	96	4.4%	588	87	13.6%

Source: U.S. Census Bureau, 2008-2012 American Community Survey

For information on confidentiality protection, sampling error, nonsampling error, and definitions, see Survey Methodology.

<http://www.census.gov/acs/www/UseData/index.htm>

Disability by Age West Point city, Mississippi



Source: B18101. AGE BY DISABILITY STATUS
Data Set: 2008-2012 American Community Survey 5-Year Estimates

C27001B. HEALTH INSURANCE COVERAGE STATUS BY AGE

Data Set: 2008-2012 American Community Survey 5-Year Estimates

	West Point city, Mississippi					
	African American	Margin of Error (+/-)	% of AA Total	White, Not Hispanic	Margin of Error (+/-)	% of NHW Total
Total:	6,511	352	100.0%	4,315	307	100.0%
Under 18 years:	2,289	195	35.2%	851	165	19.7%
With health insurance coverage	2,114	222	32.5%	851	165	19.7%
No health insurance coverage	175	114	2.7%	0	19	0.0%
18 to 64 years:	3,598	290	55.3%	2,428	236	56.3%
With health insurance coverage	2,354	326	36.2%	1,904	252	44.1%
No health insurance coverage	1,244	279	19.1%	524	166	12.1%
65 years and over:	624	129	9.6%	1,036	111	24.0%
With health insurance coverage	616	130	9.5%	1,036	111	24.0%
No health insurance coverage	8	14	0.1%	0	19	0.0%

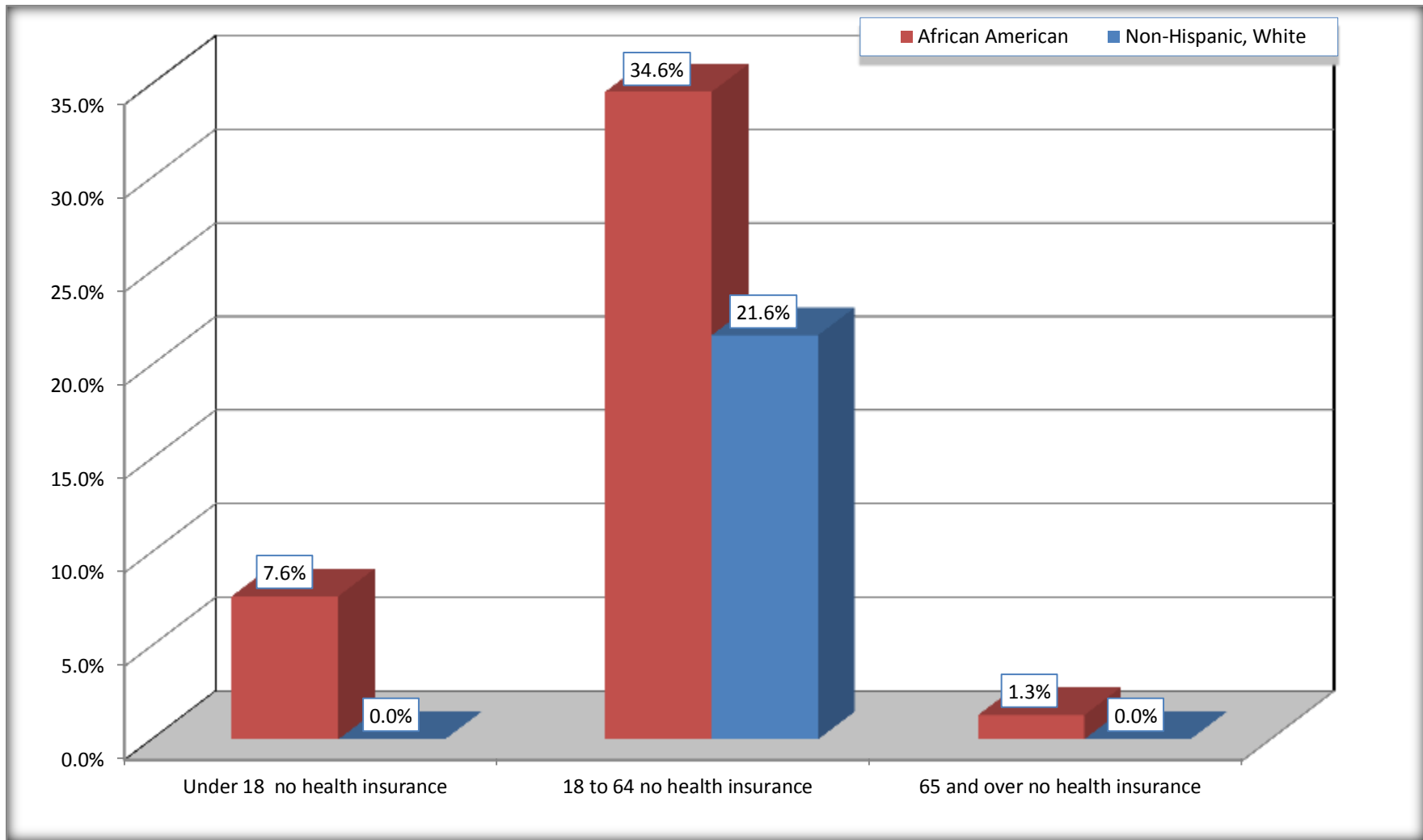
Source: U.S. Census Bureau, 2008-2012 American Community Survey

For information on confidentiality protection, sampling error, nonsampling error, and definitions, see Survey Methodology.

<http://www.census.gov/acs/www/UseData/index.htm>

Lack of Health Insurance Coverage by Age

West Point city, Mississippi



Source: C27001B. HEALTH INSURANCE COVERAGE STATUS BY AGE
Data Set: 2008-2012 American Community Survey 5-Year Estimates