

Selected Socio-Economic Data

Waynesboro city, Mississippi

African American and White, Not Hispanic

Data Set: 2008-2012 American Community Survey 5-Year Estimates

www.fairvote2020.org

www.fairdata2000.com

[29-Dec-13](#)

C02003.DETAILED RACE - Universe: TOTAL POPULATION

Data Set: 2008-2012 American Community Survey 5-Year Estimates

	Waynesboro city, Mississippi		
	Population	Margin of Error (+/-)	% of Total
Total:	5,073	19	100.0%
Population of one race:	5,073	19	100.0%
White	1,838	315	36.2%
Black or African American	3,234	319	63.7%
American Indian and Alaska Native	0	17	0.0%
Asian alone	0	17	0.0%
Native Hawaiian and Other Pacific Islander	0	17	0.0%
Some other race	1	5	0.0%
Population of two or more races:	0	17	0.0%
Two races including Some other race	0	17	0.0%
Two races excluding Some other race, and three or more races	0	17	0.0%
Population of two races:	0	17	0.0%
White; Black or African American	0	17	0.0%
White; American Indian and Alaska Native	0	17	0.0%
White; Asian	0	17	0.0%
Black or African American; American Indian and Alaska Native	0	17	0.0%
All other two race combinations	0	17	0.0%
Population of three races	0	17	0.0%
Population of four or more races	0	17	0.0%

Note: Hispanics may be of any race. See Table B03002 and chart.

Source: U.S. Census Bureau, 2008-2012 American Community Survey

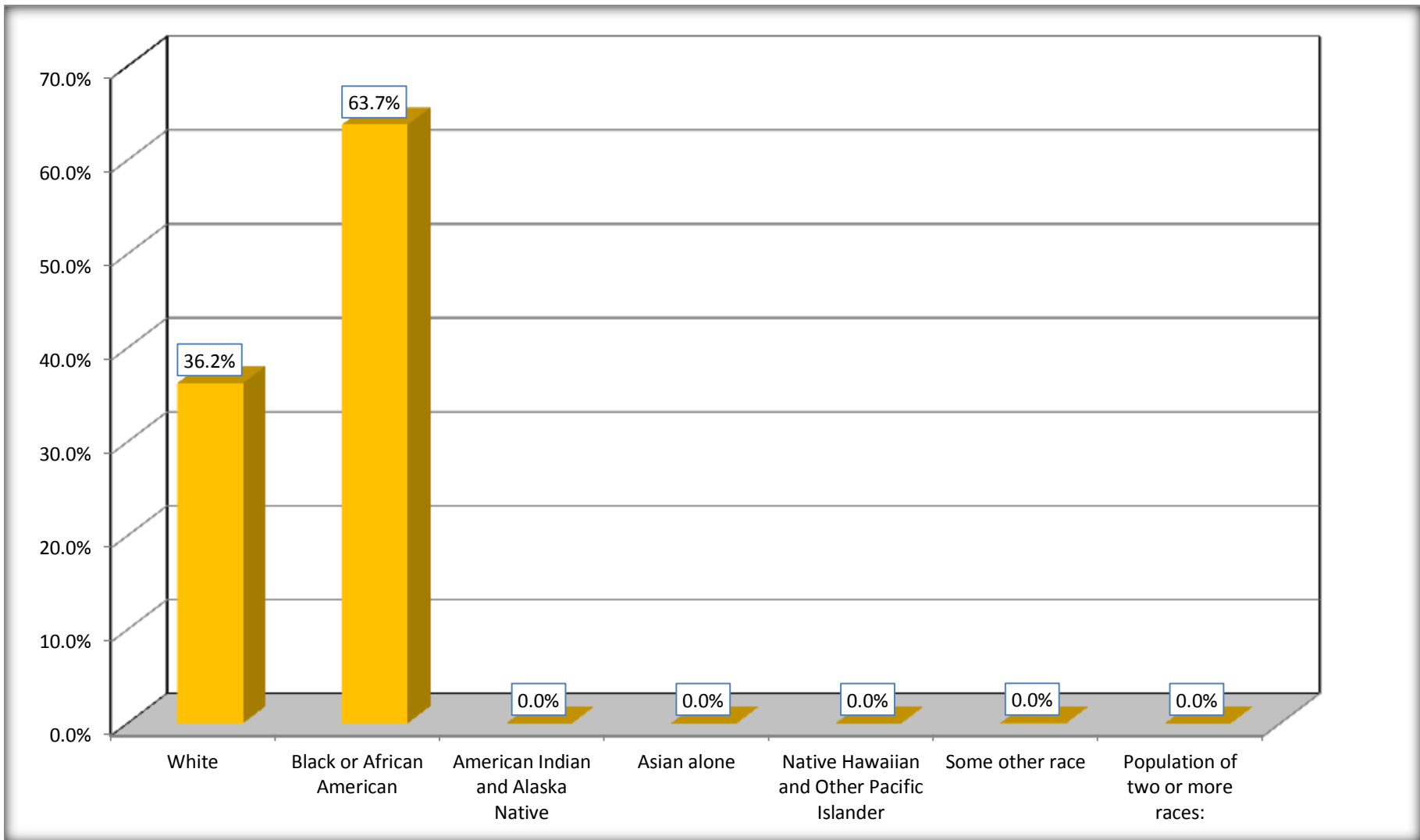
Although the American Community Survey (ACS) produces population, demographic and housing unit estimates, it is the Census Bureau's Population Estimates Program that produces and disseminates the official estimates of the population for the nation, states, counties, cities and towns and estimates of housing units for states and counties.

For information on confidentiality protection, sampling error, nonsampling error, and definitions, see Survey Methodology.

<http://www.census.gov/acs/www/UseData/index.htm>

Population by Race

Waynesboro city, Mississippi



Source: C02003.DETAILED RACE - Universe: TOTAL POPULATION
Data Set: 2008-2012 American Community Survey 5-Year Estimates

B03002. HISPANIC OR LATINO ORIGIN BY RACE - Universe: TOTAL POPULATION

Data Set: 2008-2012 American Community Survey 5-Year Estimates

	Waynesboro city, Mississippi		
	Population	Margin of Error (+/-)	% of Total
Total:	5,073	19	100.0%
Not Hispanic or Latino:	5,072	20	100.0%
White alone	1,838	315	36.2%
Black or African American alone	3,234	319	63.7%
American Indian and Alaska Native alone	0	17	0.0%
Asian alone	0	17	0.0%
Native Hawaiian and Other Pacific Islander alone	0	17	0.0%
Some other race alone	0	17	0.0%
Two or more races:	0	17	0.0%
Two races including Some other race	0	17	0.0%
Two races excluding Some other race, and three or more races	0	17	0.0%
Hispanic or Latino	1	5	0.0%

Source: U.S. Census Bureau, 2008-2012 American Community Survey

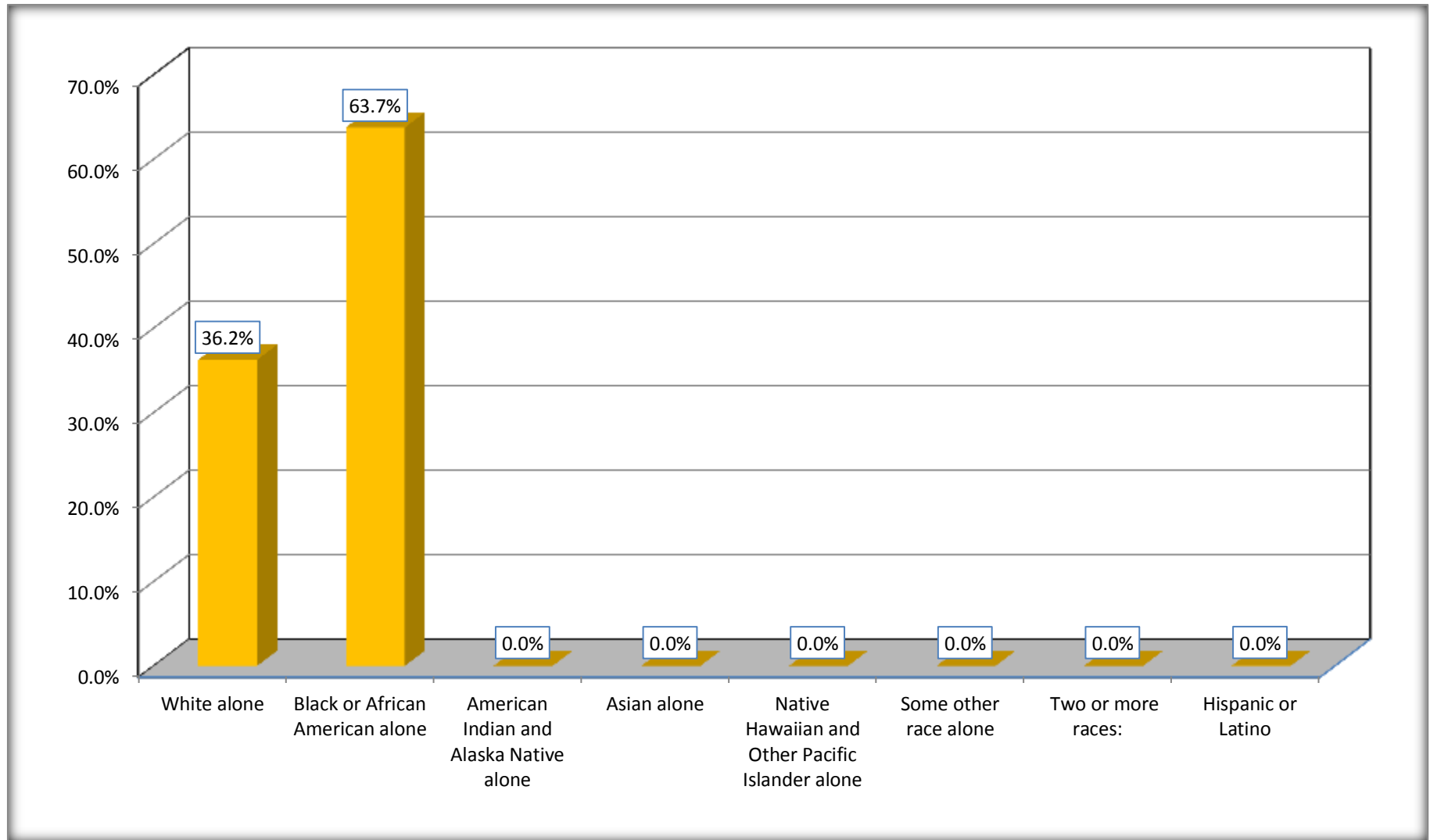
Although the American Community Survey (ACS) produces population, demographic and housing unit estimates, it is the Census Bureau's Population Estimates Program that produces and disseminates the official estimates of the population for the nation, states, counties, cities and towns and estimates of housing units for states and counties.

For information on confidentiality protection, sampling error, nonsampling error, and definitions, see Survey Methodology.

<http://www.census.gov/acs/www/UseData/index.htm>

Non-Hispanic by Race and Hispanic Population

Waynesboro city, Mississippi



Source: B03002. HISPANIC OR LATINO ORIGIN BY RACE - Universe: TOTAL POPULATION
Data Set: 2008-2012 American Community Survey 5-Year Estimates

B03002. HISPANIC OR LATINO ORIGIN BY RACE

Data Set: 2008-2012 American Community Survey 5-Year Estimates

	Waynesboro city, Mississippi		
	Population	Margin of Error (+/-)	% of Total
Hispanic or Latino:	1	5	100.0%
White alone	0	17	0.0%
Black or African American alone	0	17	0.0%
American Indian and Alaska Native alone	0	17	0.0%
Asian alone	0	17	0.0%
Native Hawaiian and Other Pacific Islander alone	0	17	0.0%
Some other race alone	1	5	100.0%
Two or more races:	0	17	0.0%
Two races including Some other race	0	17	0.0%
Two races excluding Some other race, and three or more races	0	17	0.0%

Source: U.S. Census Bureau, 2008-2012 American Community Survey

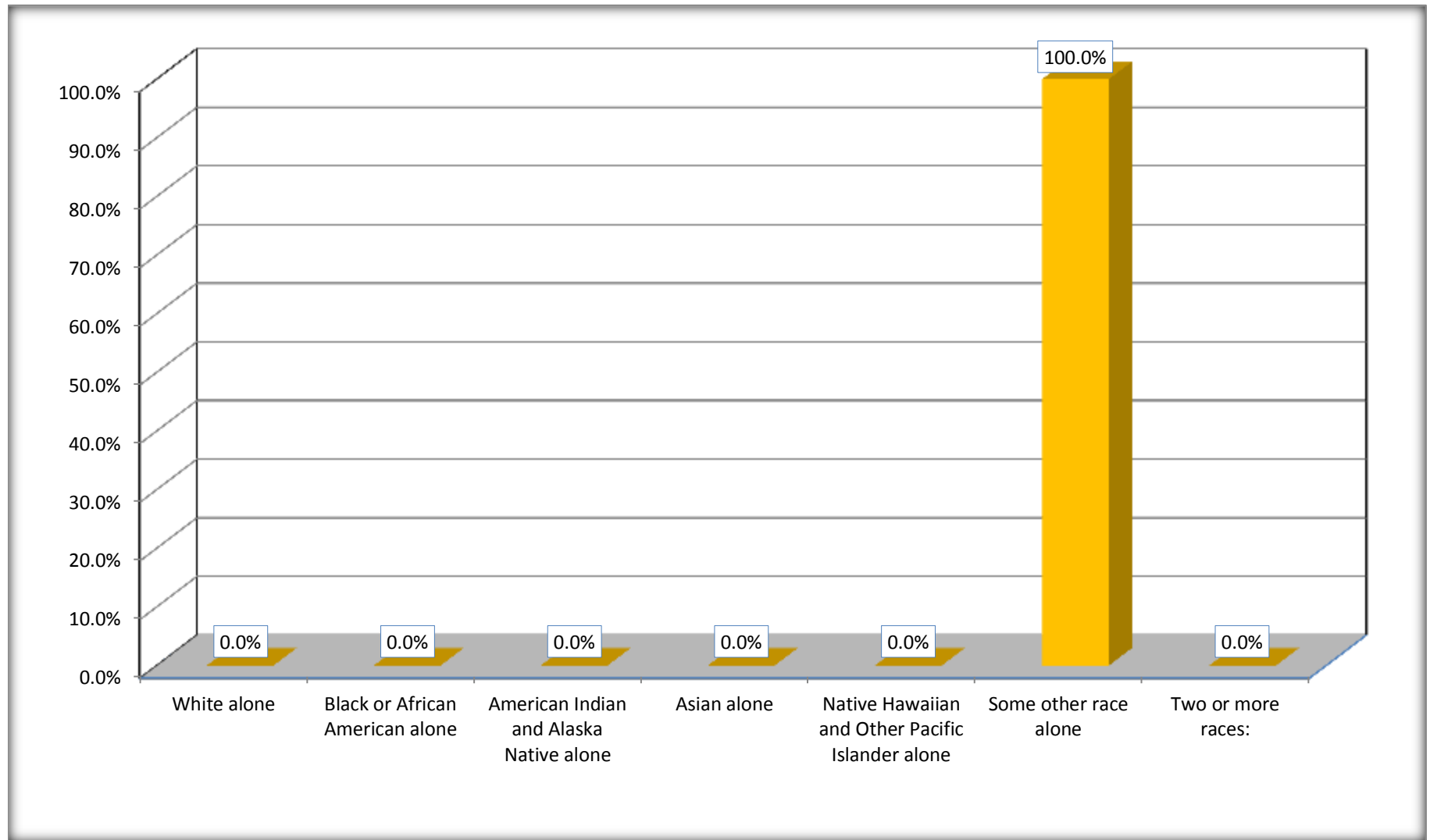
Although the American Community Survey (ACS) produces population, demographic and housing unit estimates, it is the Census Bureau's Population Estimates Program that produces and disseminates the official estimates of the population for the nation, states, counties, cities and towns and estimates of housing units for states and counties.

For information on confidentiality protection, sampling error, nonsampling error, and definitions, see Survey Methodology.

<http://www.census.gov/acs/www/UseData/index.htm>

Hispanic or Latino Origin by Race

Waynesboro city, Mississippi



Source: B03002. HISPANIC OR LATINO ORIGIN BY RACE
Data Set: 2008-2012 American Community Survey 5-Year Estimates

B01001. SEX BY AGE

Data Set: 2008-2012 American Community Survey 5-Year Estimates

	Waynesboro city, Mississippi					
	African American	Margin of Error (+/-)	% of AA Total	White, Not Hispanic	Margin of Error (+/-)	% of NHW Total
Total:	3,234	319	100.0%	1,838	315	100.0%
Under 18 years	1,063	NC	32.9%	315	NC	17.1%
18 to 64 years	1,972	NC	61.0%	1,023	NC	55.7%
65 years and over	199	NC	6.2%	500	NC	27.2%
Male:	1,448	203	44.8%	952	389	51.8%
Under 18 years	632	NC	19.5%	210	NC	11.4%
18 to 64 years	717	NC	22.2%	503	NC	27.4%
65 years and over	99	NC	3.1%	239	NC	13.0%
Female:	1,786	231	55.2%	886	412	48.2%
Under 18 years	431	NC	13.3%	105	NC	5.7%
18 to 64 years	1,255	NC	38.8%	520	NC	28.3%
65 years and over	100	NC	3.1%	261	NC	14.2%

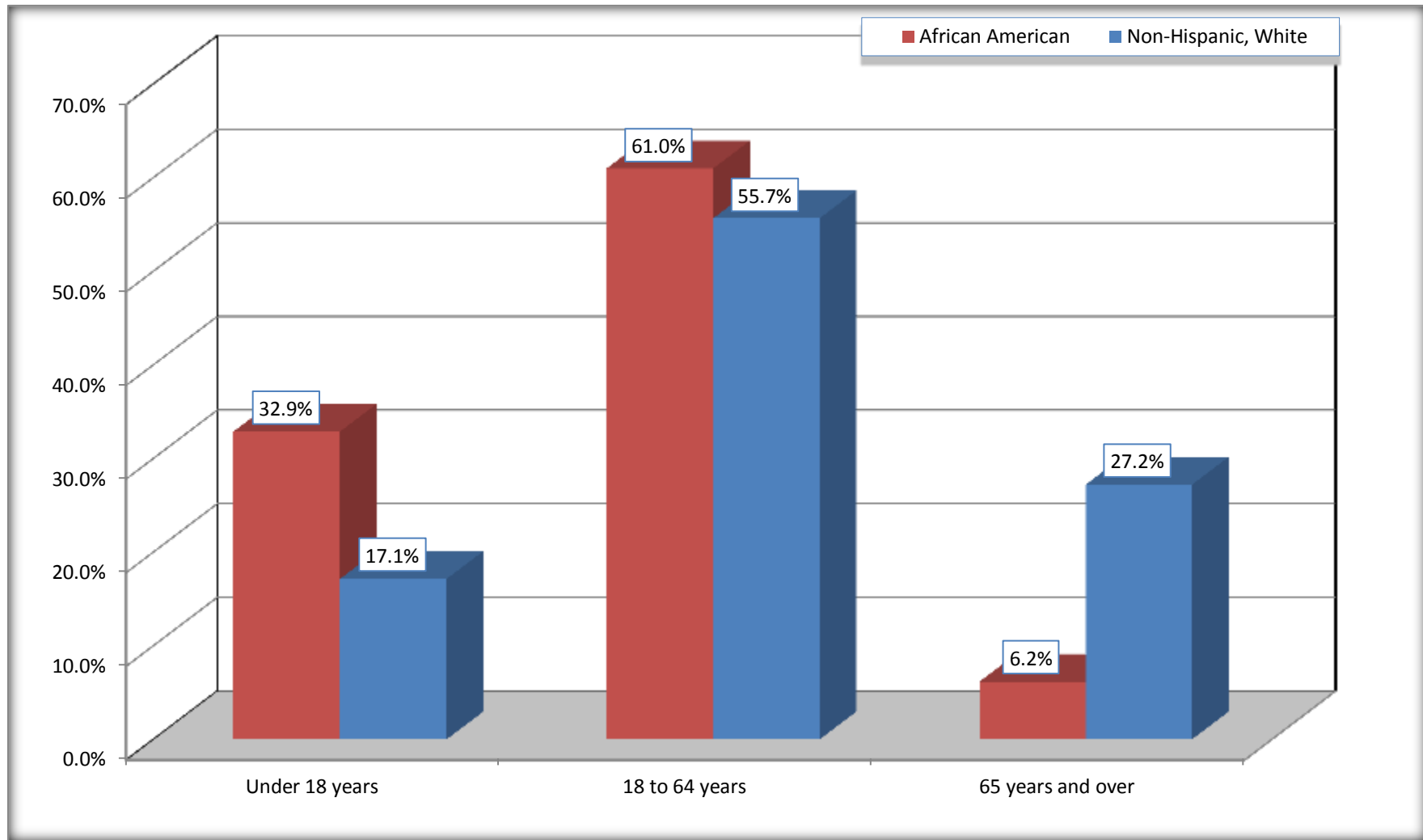
Source: U.S. Census Bureau, 2008-2012 American Community Survey

Although the American Community Survey (ACS) produces population, demographic and housing unit estimates, it is the Census Bureau's Population Estimates Program that produces and disseminates the official estimates of the population for the nation, states, counties, cities and towns and estimates of housing units for states and counties.

For information on confidentiality protection, sampling error, nonsampling error, and definitions, see Survey Methodology.
<http://www.census.gov/acs/www/UseData/index.htm>

Population by Age

Waynesboro city, Mississippi



Source: B01001. SEX BY AGE
Data Set: 2008-2012 American Community Survey 5-Year Estimates

B05003. SEX BY AGE BY CITIZENSHIP STATUS

Data Set: 2008-2012 American Community Survey 5-Year Estimates

	Waynesboro city, Mississippi					
	African American	Margin of Error (+/-)	% of AA Total by Age	White, Not Hispanic	Margin of Error (+/-)	% of NHW Total by Age
Total:	3,234	319	100.0%	1,838	315	100.0%
Under 18 years:	1,063	NC	100.0%	315	NC	100.0%
Native	1,063	NC	100.0%	315	NC	100.0%
Foreign born:	0	NC	0.0%	0	NC	0.0%
Naturalized U.S. citizen	0	NC	0.0%	0	NC	0.0%
Not a U.S. citizen	0	NC	0.0%	0	NC	0.0%
18 years and over:	2,171	NC	100.0%	1,523	NC	100.0%
Native	2,171	NC	100.0%	1,523	NC	100.0%
Foreign born:	0	NC	0.0%	0	NC	0.0%
Naturalized U.S. citizen	0	NC	0.0%	0	NC	0.0%
Not a U.S. citizen	0	NC	0.0%	0	NC	0.0%
Male:	1,448	203	44.8%	952	195	51.8%
Under 18 years:	632	179	100.0%	210	97	100.0%
Native	632	179	100.0%	210	97	100.0%
Foreign born:	0	17	0.0%	0	17	0.0%
Naturalized U.S. citizen	0	17	0.0%	0	17	0.0%
Not a U.S. citizen	0	17	0.0%	0	17	0.0%
18 years and over:	816	168	100.0%	742	150	100.0%
Native	816	168	100.0%	742	150	100.0%
Foreign born:	0	17	0.0%	0	17	0.0%
Naturalized U.S. citizen	0	17	0.0%	0	17	0.0%
Not a U.S. citizen	0	17	0.0%	0	17	0.0%

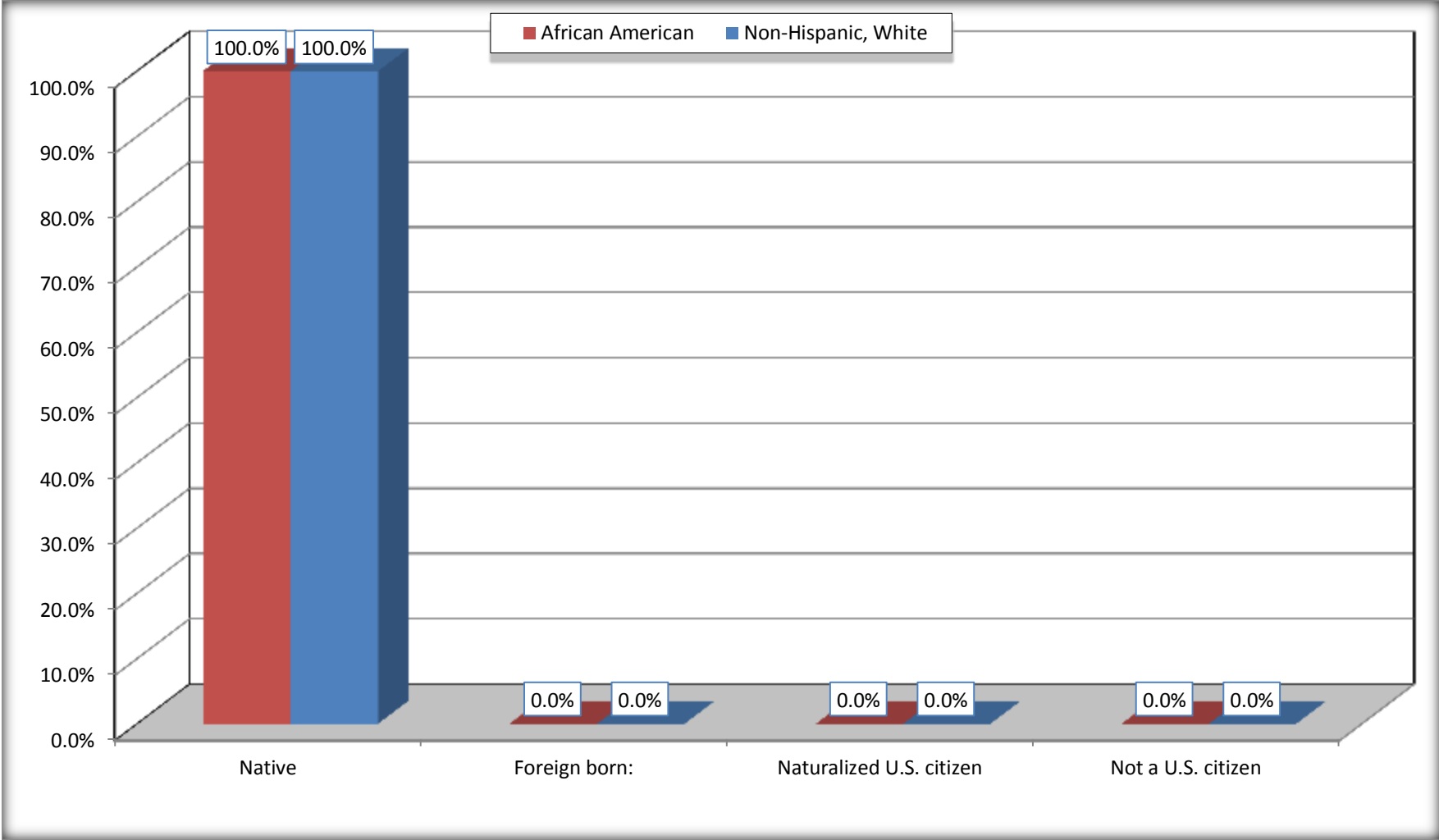
	Waynesboro city, Mississippi					
	African American	Margin of Error (+/-)	% of AA by Age	White, Not Hispanic	Margin of Error (+/-)	% of NHW by Age
Female:	1,786	231	55.2%	886	172	48.2%
Under 18 years:	431	156	100.0%	105	46	100.0%
Native	431	156	100.0%	105	46	100.0%
Foreign born:	0	17	0.0%	0	17	0.0%
Naturalized U.S. citizen	0	17	0.0%	0	17	0.0%
Not a U.S. citizen	0	17	0.0%	0	17	0.0%
18 years and over:	1,355	166	100.0%	781	157	100.0%
Native	1,355	166	100.0%	781	157	100.0%
Foreign born:	0	17	0.0%	0	17	0.0%
Naturalized U.S. citizen	0	17	0.0%	0	17	0.0%
Not a U.S. citizen	0	17	0.0%	0	17	0.0%

Source: U.S. Census Bureau, 2008-2012 American Community Survey

For information on confidentiality protection, sampling error, nonsampling error, and definitions, see Survey Methodology.
<http://www.census.gov/acs/www/UseData/index.htm>

Citizenship Status of Voting Age Population (18 and Over)

Waynesboro city, Mississippi



Source: B05003. SEX BY AGE BY CITIZENSHIP STATUS
Data Set: 2008-2012 American Community Survey 5-Year Estimates

**B07004. GEOGRAPHICAL MOBILITY IN THE PAST YEAR BY RACE FOR CURRENT RESIDENCE IN THE UNITED STATES - Universe:
POPULATION 1 YEAR AND OVER**

Data Set: 2008-2012 American Community Survey 5-Year Estimates

	Waynesboro city, Mississippi					
	African American	Margin of Error (+/-)	% of AA Total	White, Not Hispanic	Margin of Error (+/-)	% of NHW Total
Total:	3,203	312	100.0%	1,815	313	100.0%
Same house 1 year ago	3,022	340	94.3%	1,617	314	89.1%
Moved within same county	151	104	4.7%	114	81	6.3%
Moved from different county within same state	30	36	0.9%	42	74	2.3%
Moved from different state	0	17	0.0%	42	50	2.3%
Moved from abroad	0	17	0.0%	0	17	0.0%

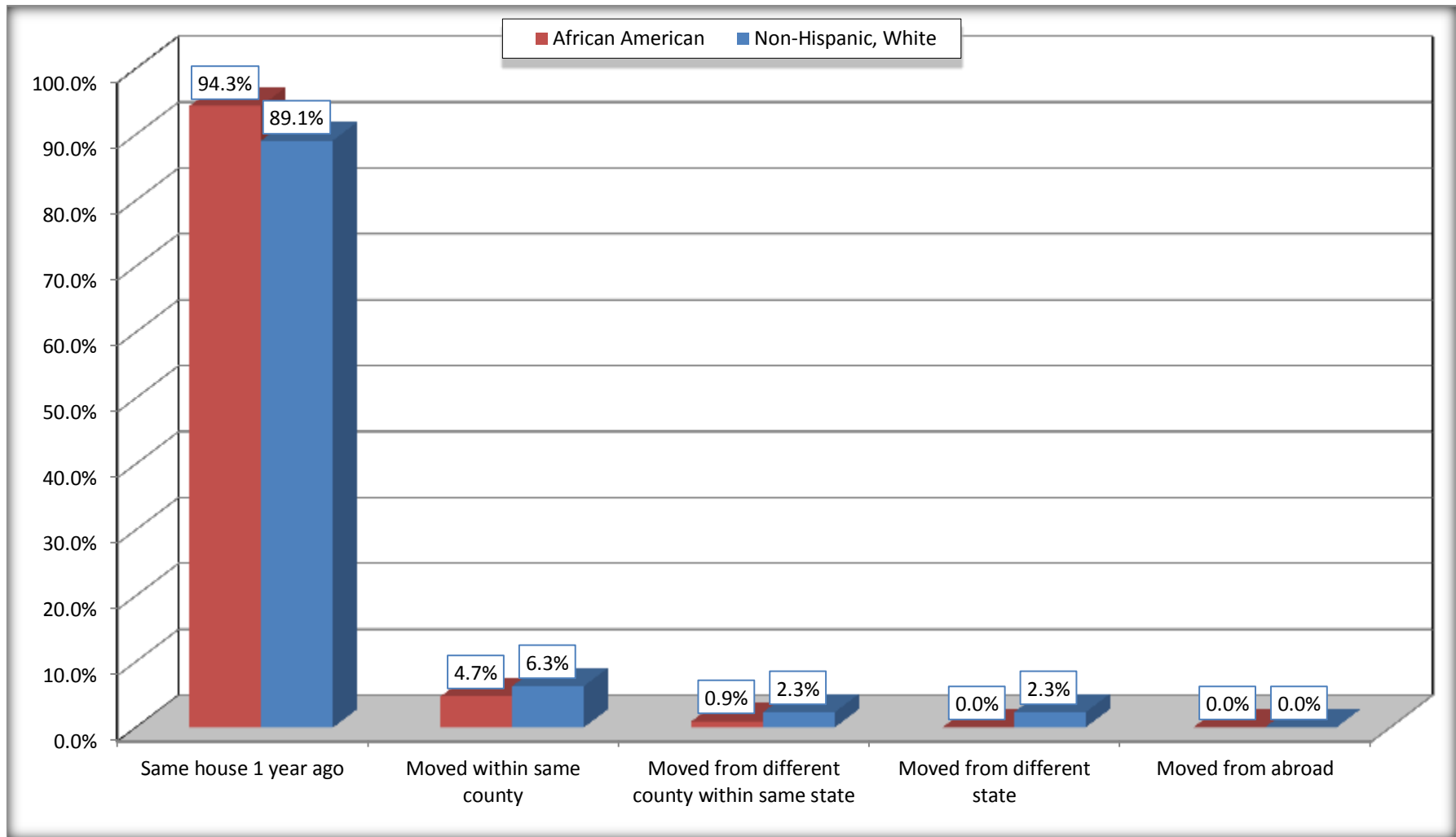
Source: U.S. Census Bureau, 2008-2012 American Community Survey

For information on confidentiality protection, sampling error, nonsampling error, and definitions, see Survey Methodology.

<http://www.census.gov/acs/www/UseData/index.htm>

Geographical Mobility in the Past Year (Population 1 Year and Over)

Waynesboro city, Mississippi



Source: B07004. GEOGRAPHICAL MOBILITY IN THE PAST YEAR BY RACE FOR CURRENT RESIDENCE IN THE UNITED STATES - Universe: POPULATION 1 YEAR AND OVER

Data Set: 2008-2012 American Community Survey 5-Year Estimates

B08105. MEANS OF TRANSPORTATION TO WORK - Universe: WORKERS 16 YEARS AND OVER

Data Set: 2008-2012 American Community Survey 5-Year Estimates

	Waynesboro city, Mississippi					
	African American	Margin of Error (+/-)	% of AA Total	White, Not Hispanic	Margin of Error (+/-)	% of NHW Total
Total:	914	283	100.0%	700	214	100.0%
Car, truck, or van - drove alone	673	242	73.6%	630	198	90.0%
Car, truck, or van - carpooled	157	122	17.2%	17	17	2.4%
Public transportation (excluding taxicab)	0	17	0.0%	0	17	0.0%
Walked	32	48	3.5%	1	2	0.1%
Taxicab, motorcycle, bicycle, or other means	41	41	4.5%	52	51	7.4%
Worked at home	11	18	1.2%	0	17	0.0%

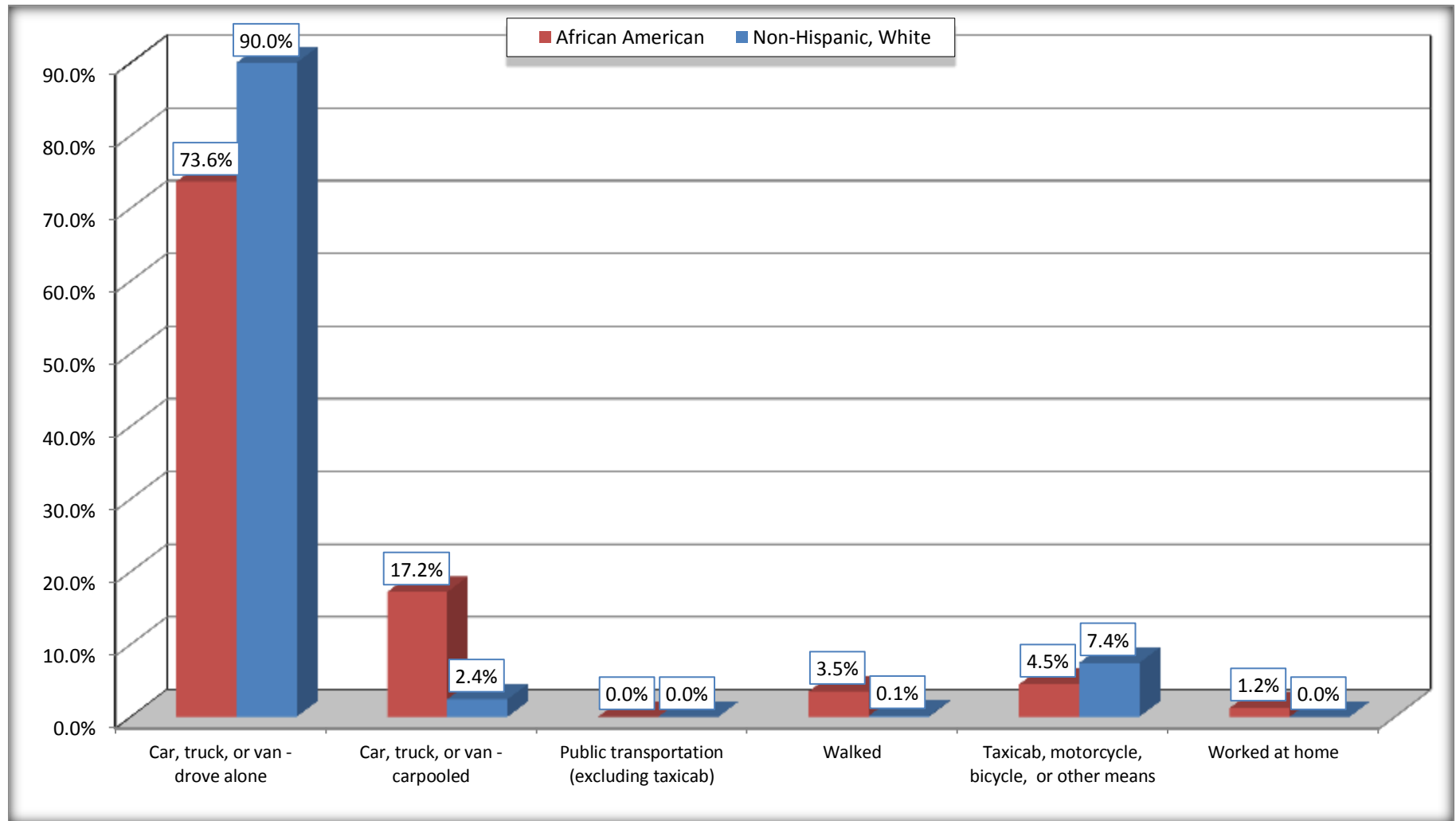
Source: U.S. Census Bureau, 2008-2012 American Community Survey

For information on confidentiality protection, sampling error, nonsampling error, and definitions, see Survey Methodology.

<http://www.census.gov/acs/www/UseData/index.htm>

Means of Transportation to Work (Workers 16 Years and Over)

Waynesboro city, Mississippi



Source: B08105. MEANS OF TRANSPORTATION TO WORK - Universe: WORKERS 16 YEARS AND OVER
Data Set: 2008-2012 American Community Survey 5-Year Estimates

B11002. HOUSEHOLD TYPE BY RELATIVES AND NONRELATIVES FOR POPULATION IN HOUSEHOLDS

Data Set: 2008-2012 American Community Survey 5-Year Estimates

	Waynesboro city, Mississippi					
	African American	Margin of Error (+/-)	% of AA Total	White, Not Hispanic	Margin of Error (+/-)	% of NHW Total
Total:	3106	311	100.0%	1732	329	100.0%
In family households	2710	357	87.3%	1567	317	90.5%
In nonfamily households	396	124	12.7%	165	92	9.5%

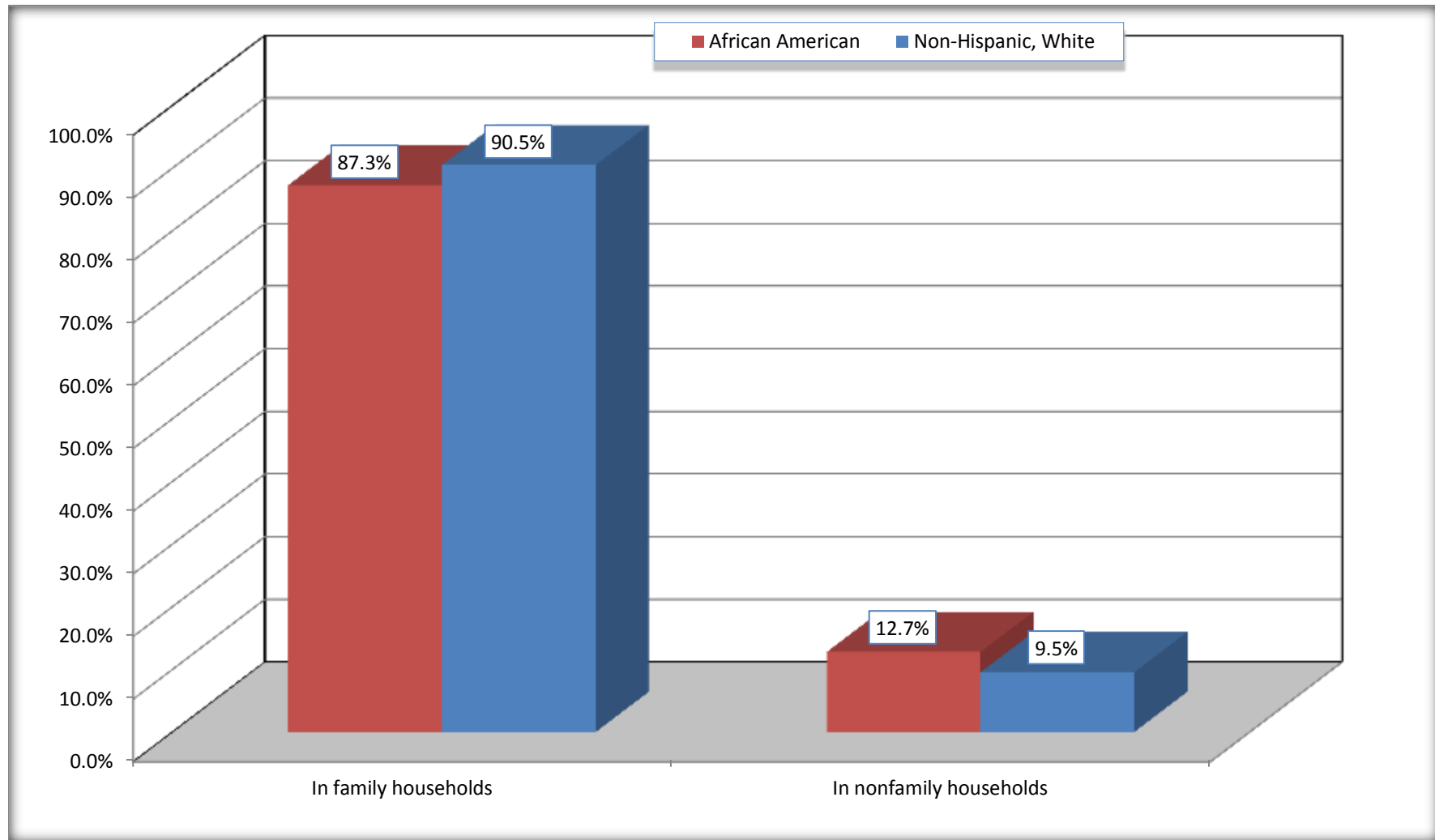
Source: U.S. Census Bureau, 2008-2012 American Community Survey

For information on confidentiality protection, sampling error, nonsampling error, and definitions, see Survey Methodology.

<http://www.census.gov/acs/www/UseData/index.htm>

Household Type for Population in Households

Waynesboro city, Mississippi



Source: B11002. HOUSEHOLD TYPE BY RELATIVES AND NONRELATIVES FOR POPULATION IN HOUSEHOLDS
Data Set: 2008-2012 American Community Survey 5-Year Estimates

B12002. MARITAL STATUS FOR THE POPULATION 15 YEARS AND OVER

Data Set: 2008-2012 American Community Survey 5-Year Estimates

	Waynesboro city, Mississippi					
	African American	Margin of Error (+/-)	% of AA Total	White, Not Hispanic	Margin of Error (+/-)	% of NHW Total
Total:	2,427	262	100.0%	1,549	266	100.0%
Never married	1,057	NC	43.6%	189	NC	12.2%
Now married (except separated)	751	NC	30.9%	1,060	NC	68.4%
Separated	172	NC	7.1%	0	NC	0.0%
Widowed	188	NC	7.7%	144	NC	9.3%
Divorced	259	NC	10.7%	156	NC	10.1%
Male:	1,014	172	41.8%	768	152	49.6%
Never married	435	151	17.9%	145	86	9.4%
Now married (except separated)	348	132	14.3%	510	130	32.9%
Separated	63	55	2.6%	0	17	0.0%
Widowed	36	44	1.5%	34	31	2.2%
Divorced	132	88	5.4%	79	60	5.1%
Female:	1,413	181	58.2%	781	157	50.4%
Never married	622	219	25.6%	44	39	2.8%
Now married (except separated)	403	144	16.6%	550	142	35.5%
Separated	109	69	4.5%	0	17	0.0%
Widowed	152	80	6.3%	110	66	7.1%
Divorced	127	77	5.2%	77	44	5.0%

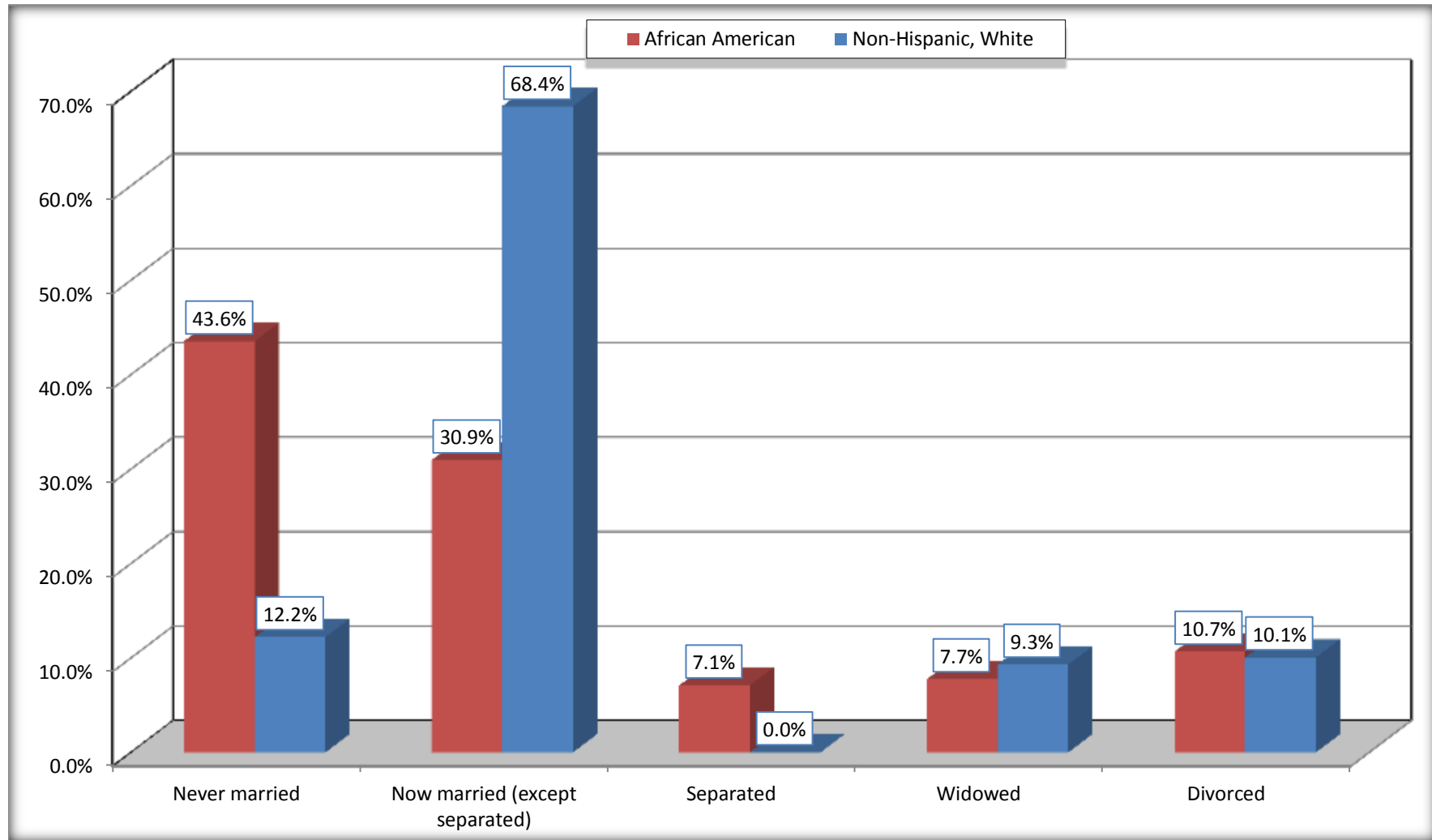
Source: U.S. Census Bureau, 2008-2012 American Community Survey

For information on confidentiality protection, sampling error, nonsampling error, and definitions, see Survey Methodology.

<http://www.census.gov/acs/www/UseData/index.htm>

Marital Status for the Population 15 Years and Over

Waynesboro city, Mississippi



Source: B12002. MARITAL STATUS FOR THE POPULATION 15 YEARS AND OVER
Data Set: 2008-2012 American Community Survey 5-Year Estimates

C15002. SEX BY EDUCATIONAL ATTAINMENT FOR THE POPULATION 25 YEARS AND OVER

Data Set: 2008-2012 American Community Survey 5-Year Estimates

	Waynesboro city, Mississippi					
	African American	Margin of Error (+/-)	% of AA Total	White, Not Hispanic	Margin of Error (+/-)	% of NHW Total
Total:	1,683	200	100.0%	1,392	253	100.0%
Less than high school diploma	671	NC	39.9%	384	NC	27.6%
High school graduate, GED, or alternative	529	NC	31.4%	369	NC	26.5%
Some college or associate's degree	265	NC	15.7%	414	NC	29.7%
Bachelor's degree or higher	218	NC	13.0%	225	NC	16.2%
Male:	604	134	35.9%	681	132	48.9%
Less than high school diploma	250	101	14.9%	193	97	13.9%
High school graduate, GED, or alternative	226	94	13.4%	162	78	11.6%
Some college or associate's degree	71	59	4.2%	226	115	16.2%
Bachelor's degree or higher	57	52	3.4%	100	67	7.2%
Female:	1,079	137	64.1%	711	157	51.1%
Less than high school diploma	421	147	25.0%	191	95	13.7%
High school graduate, GED, or alternative	303	119	18.0%	207	106	14.9%
Some college or associate's degree	194	97	11.5%	188	81	13.5%
Bachelor's degree or higher	161	104	9.6%	125	78	9.0%

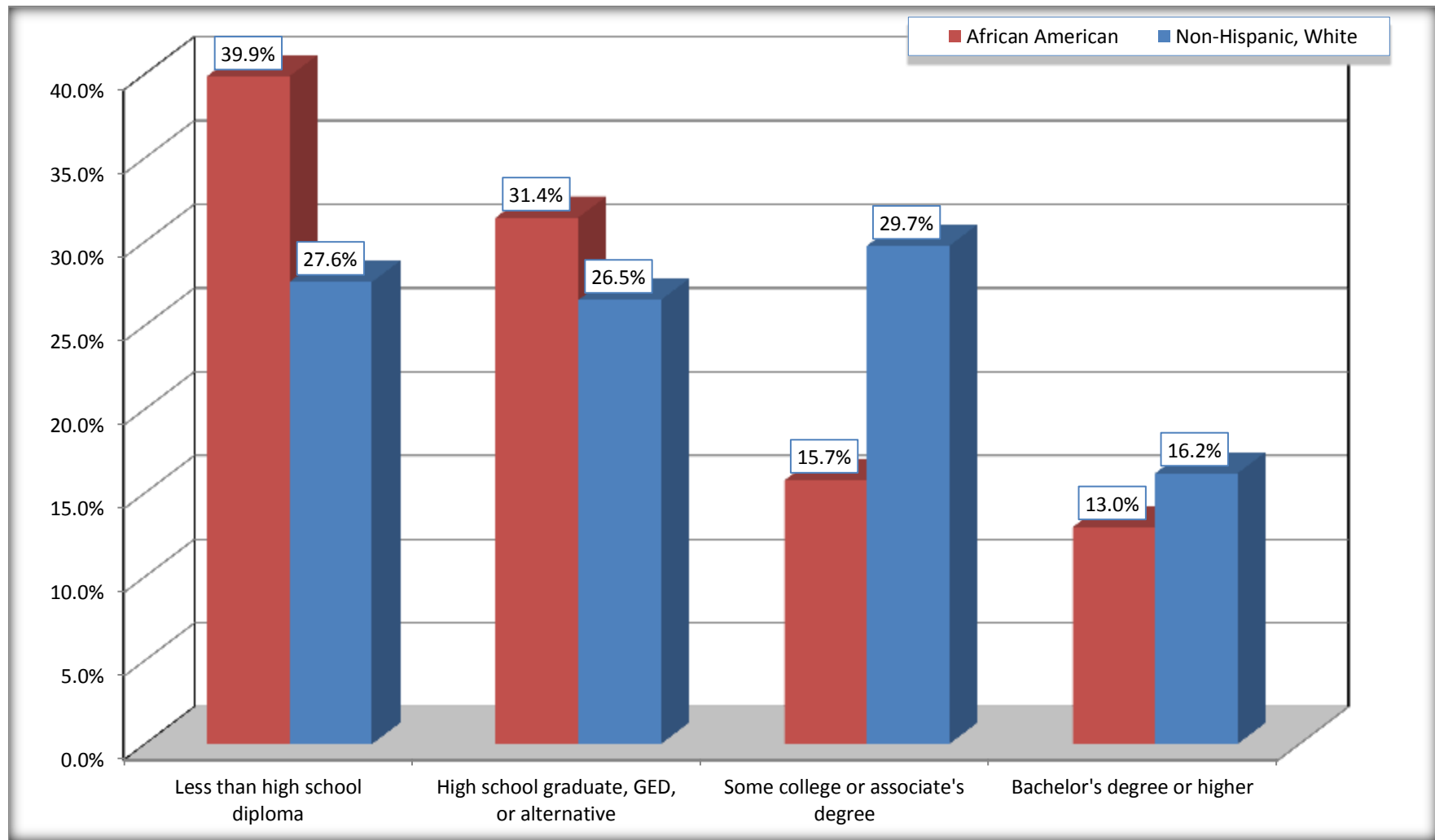
Source: U.S. Census Bureau, 2008-2012 American Community Survey

For information on confidentiality protection, sampling error, nonsampling error, and definitions, see Survey Methodology.

<http://www.census.gov/acs/www/UseData/index.htm>

Educational Attainment for the Population 25 Years and Older

Waynesboro city, Mississippi



Source: C15002. SEX BY EDUCATIONAL ATTAINMENT FOR THE POPULATION 25 YEARS AND OVER
Data Set: 2008-2012 American Community Survey 5-Year Estimates

B17010. POVERTY STATUS IN THE PAST 12 MONTHS OF FAMILIES BY FAMILY TYPE BY PRESENCE OF RELATED CHILDREN UNDER 18 YEARS

Data Set: 2008-2012 American Community Survey 5-Year Estimates

	Waynesboro city, Mississippi					
	African American	Margin of Error (+/-)	% of AA Total	White, Not Hispanic	Margin of Error (+/-)	% of NHW Total
Total:	771	134	100.0%	616	137	100.0%
Income in the past 12 months below poverty level:	353	120	45.8%	169	97	27.4%
Married-couple family:	0	17	0.0%	127	93	20.6%
With related children under 18 years	0	17	0.0%	92	74	14.9%
Other family:	353	120	45.8%	42	37	6.8%
Male householder, no wife present	0	17	0.0%	13	21	2.1%
With related children under 18 years	0	17	0.0%	0	17	0.0%
Female householder, no husband present	353	120	45.8%	29	30	4.7%
With related children under 18 years	318	113	41.2%	29	30	4.7%
Income in the past 12 months at or above poverty level:	418	137	54.2%	447	153	72.6%
Married-couple family:	292	120	37.9%	402	143	65.3%
With related children under 18 years	183	114	23.7%	134	79	21.8%
Other family:	126	65	16.3%	45	43	7.3%
Male householder, no wife present	0	17	0.0%	7	11	1.1%
With related children under 18 years	0	17	0.0%	7	11	1.1%
Female householder, no husband present	126	65	16.3%	38	42	6.2%
With related children under 18 years	26	28	3.4%	0	17	0.0%

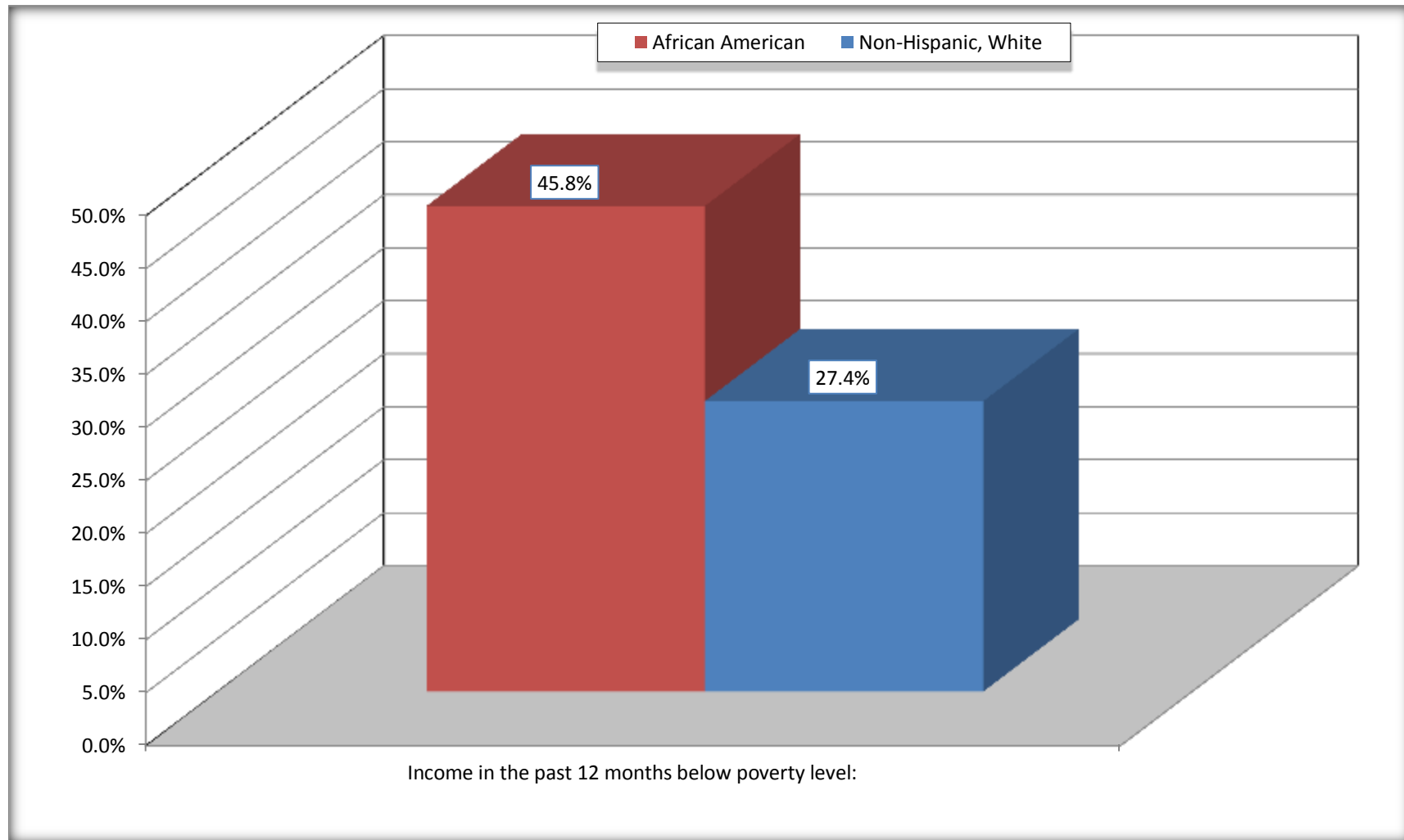
Source: U.S. Census Bureau, 2008-2012 American Community Survey

For information on confidentiality protection, sampling error, nonsampling error, and definitions, see Survey Methodology.

<http://www.census.gov/acs/www/UseData/index.htm>

Family Households Below Poverty in the Past 12 Months

Waynesboro city, Mississippi

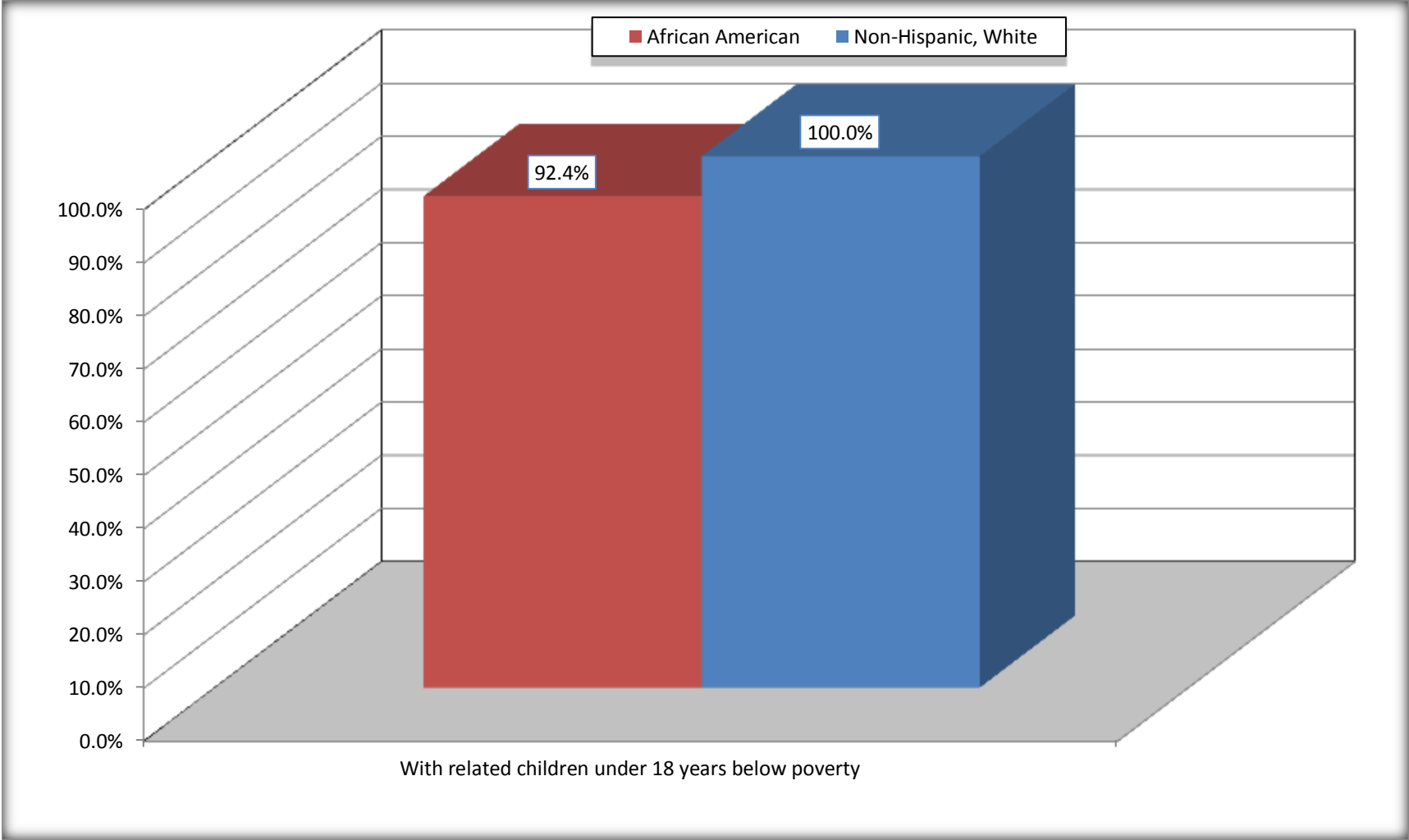


Source: B17010. POVERTY STATUS IN THE PAST 12 MONTHS OF FAMILIES BY FAMILY TYPE BY PRESENCE OF RELATED CHILDREN UNDER 18 YEARS

Data Set: 2008-2012 American Community Survey 5-Year Estimates

Female-headed Households with Related Children Below Poverty in the Past 12 Months

Waynesboro city, Mississippi



Source: B17010. POVERTY STATUS IN THE PAST 12 MONTHS OF FAMILIES BY FAMILY TYPE BY PRESENCE OF RELATED CHILDREN UNDER 18 YEARS

Data Set: 2008-2012 American Community Survey 5-Year Estimates

B17020 POVERTY STATUS IN THE PAST 12 MONTHS BY AGE - Universe: POPULATION FOR WHOM POVERTY STATUS IS DETERMINED

Data Set: 2008-2012 American Community Survey 5-Year Estimates

	Waynesboro city, Mississippi					
	African American	Margin of Error (+/-)	% of AA By Age	White, Not Hispanic	Margin of Error (+/-)	% of NHW By Age
Total:	3,131	310	100.0%	1,748	322	100.0%
Income in the past 12 months below poverty level:	1,682	452	53.7%	519	234	29.7%
Under 18 years	804	NC	75.8%	138	NC	44.2%
18 to 64 years	806	252	42.3%	332	169	33.8%
65 years and over	72	NC	43.4%	49	NC	10.8%
Income in the past 12 months at or above poverty level:	1,449	397	46.3%	1,229	380	70.3%
Under 18 years	257	NC	24.2%	174	NC	55.8%
18 to 64 years	1,098	306	57.7%	650	235	66.2%
65 years and over	94	NC	56.6%	405	NC	89.2%

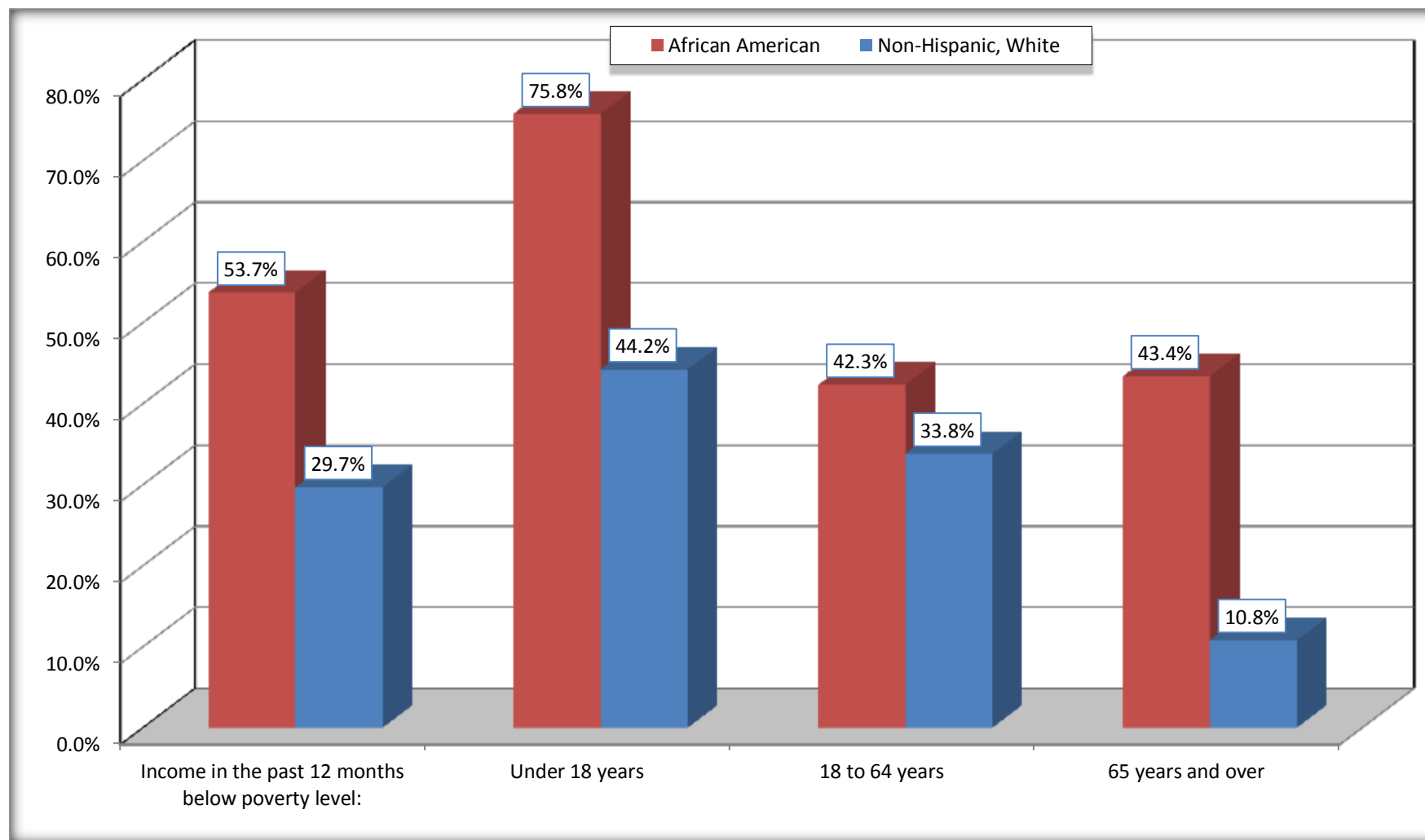
Source: U.S. Census Bureau, 2008-2012 American Community Survey

For information on confidentiality protection, sampling error, nonsampling error, and definitions, see Survey Methodology.

<http://www.census.gov/acs/www/UseData/index.htm>

Population Below Poverty in the Past 12 Months

Waynesboro city, Mississippi



Source: B17020 POVERTY STATUS IN THE PAST 12 MONTHS BY AGE - Universe: POPULATION FOR WHOM POVERTY STATUS IS DETERMINED
Data Set: 2008-2012 American Community Survey 5-Year Estimates

B19001. HOUSEHOLD INCOME IN THE PAST 12 MONTHS (IN 2010 INFLATION-ADJUSTED DOLLARS)

Data Set: 2008-2012 American Community Survey 5-Year Estimates

	Waynesboro city, Mississippi					
	African American	Margin of Error (+/-)	% of AA Total	White, Not Hispanic	Margin of Error (+/-)	% of NHW Total
Total:	1,150	159	100.0%	775	155	100.0%
Less than \$ 10,000	298	131	25.9%	79	54	10.2%
\$ 10,000 to \$ 14,999	160	87	13.9%	95	71	12.3%
\$ 15,000 to \$ 24,999	304	NC	26.4%	201	NC	25.9%
\$ 25,000 to \$ 34,999	22	NC	1.9%	88	NC	11.4%
\$ 35,000 to \$ 49,999	175	NC	15.2%	77	NC	9.9%
\$ 50,000 to \$ 74,999	70	NC	6.1%	51	NC	6.6%
\$ 75,000 to \$ 99,999	57	59	5.0%	74	58	9.5%
\$ 100,000 to \$ 149,999	50	NC	4.3%	57	NC	7.4%
\$ 150,000 to \$ 199,999	0	17	0.0%	34	44	4.4%
\$ 200,000 or more	14	24	1.2%	19	29	2.5%

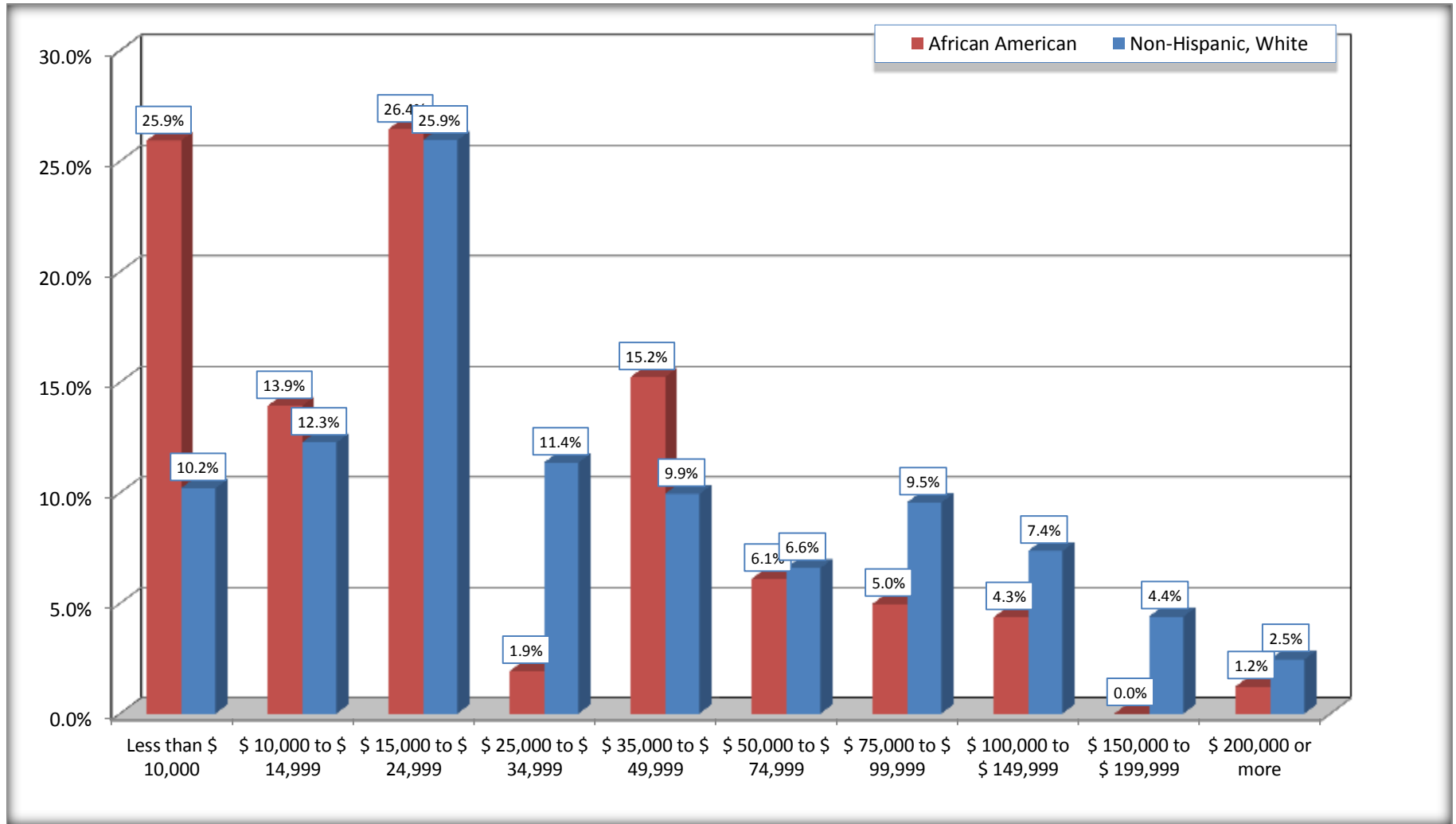
Source: U.S. Census Bureau, 2008-2012 American Community Survey

For information on confidentiality protection, sampling error, nonsampling error, and definitions, see Survey Methodology.

<http://www.census.gov/acs/www/UseData/index.htm>

Household Income in the Past 12 Months

Waynesboro city, Mississippi



Source: B19001. HOUSEHOLD INCOME IN THE PAST 12 MONTHS (IN 2010 INFLATION-ADJUSTED DOLLARS)
Data Set: 2008-2012 American Community Survey 5-Year Estimates

B19013. MEDIAN HOUSEHOLD INCOME IN THE PAST 12 MONTHS (IN 2010 INFLATION-ADJUSTED DOLLARS)

Data Set: 2008-2012 American Community Survey 5-Year Estimates

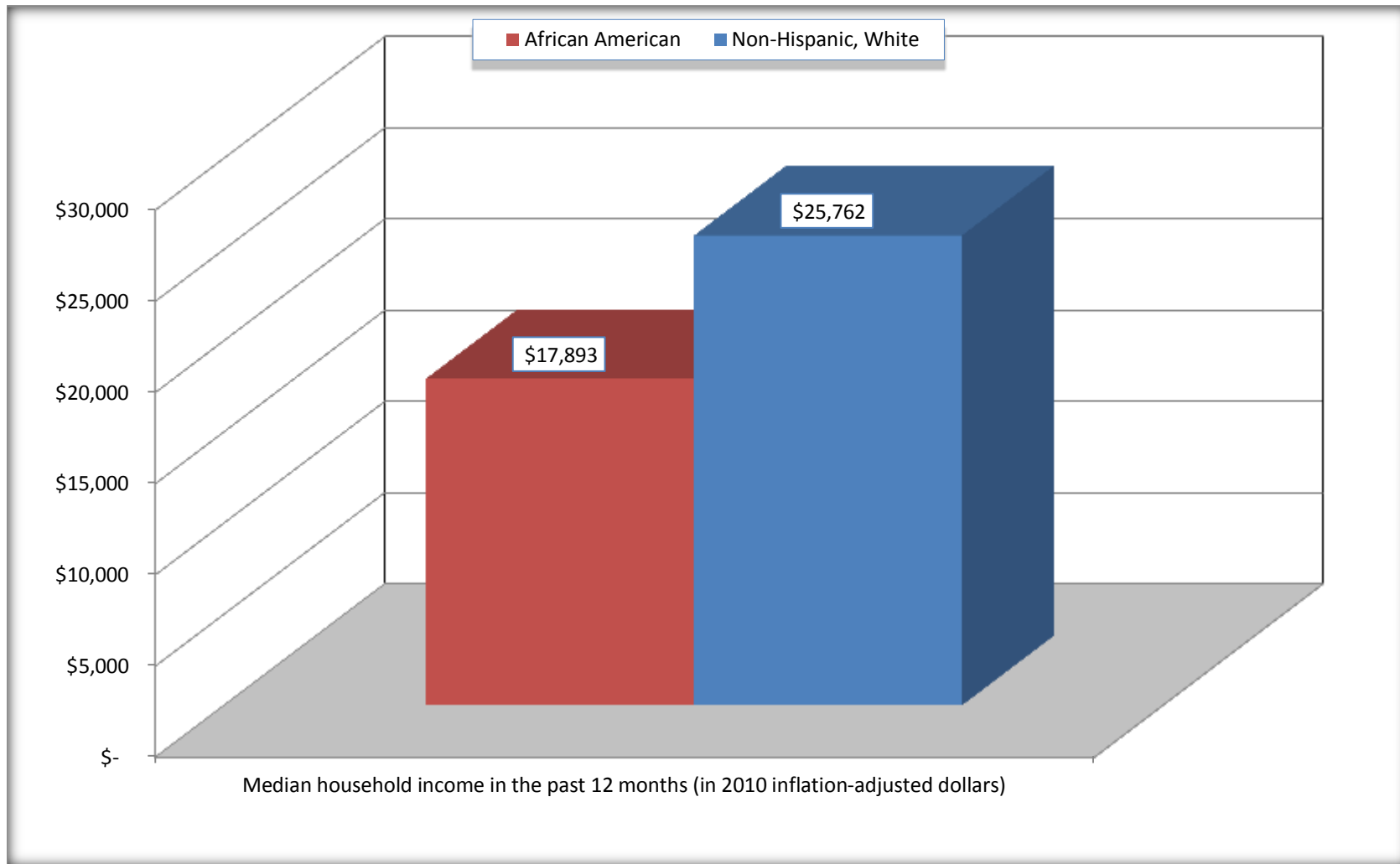
	Waynesboro city, Mississippi			
	African American	Margin of Error (+/-)	White, Not Hispanic	Margin of Error (+/-)
Median household income in the past 12 months (in 2010 inflation-adjusted dollars)	\$ 17,893	\$ 2,718	\$ 25,762	\$ 11,438

Source: U.S. Census Bureau, 2008-2012 American Community Survey

For information on confidentiality protection, sampling error, nonsampling error, and definitions, see Survey Methodology.
<http://www.census.gov/acs/www/UseData/index.htm>

Median Household Income in the Past 12 Months

Waynesboro city, Mississippi



Source: B19013. MEDIAN HOUSEHOLD INCOME IN THE PAST 12 MONTHS (IN 2010 INFLATION-ADJUSTED DOLLARS)
Data Set: 2008-2012 American Community Survey 5-Year Estimates

B19101. FAMILY INCOME IN THE PAST 12 MONTHS (IN 2010 INFLATION-ADJUSTED DOLLARS)

Data Set: 2008-2012 American Community Survey 5-Year Estimates

	Waynesboro city, Mississippi					
	African American	Margin of Error (+/-)	% of AA Total	White, Not Hispanic	Margin of Error (+/-)	% of NHW Total
Total:	771	134	100.0%	616	137	100.0%
Less than \$ 10,000	212	115	27.5%	27	31	4.4%
\$ 10,000 to \$ 14,999	66	64	8.6%	49	54	8.0%
\$ 15,000 to \$ 24,999	164	NC	21.3%	159	NC	25.8%
\$ 25,000 to \$ 34,999	22	NC	2.9%	85	NC	13.8%
\$ 35,000 to \$ 49,999	138	NC	17.9%	77	NC	12.5%
\$ 50,000 to \$ 74,999	48	NC	6.2%	35	NC	5.7%
\$ 100,000 to \$ 149,999	50	NC	6.5%	57	NC	9.3%
\$ 150,000 to \$ 199,999	0	17	0.0%	34	44	5.5%
\$ 200,000 or more	14	24	1.8%	19	29	3.1%

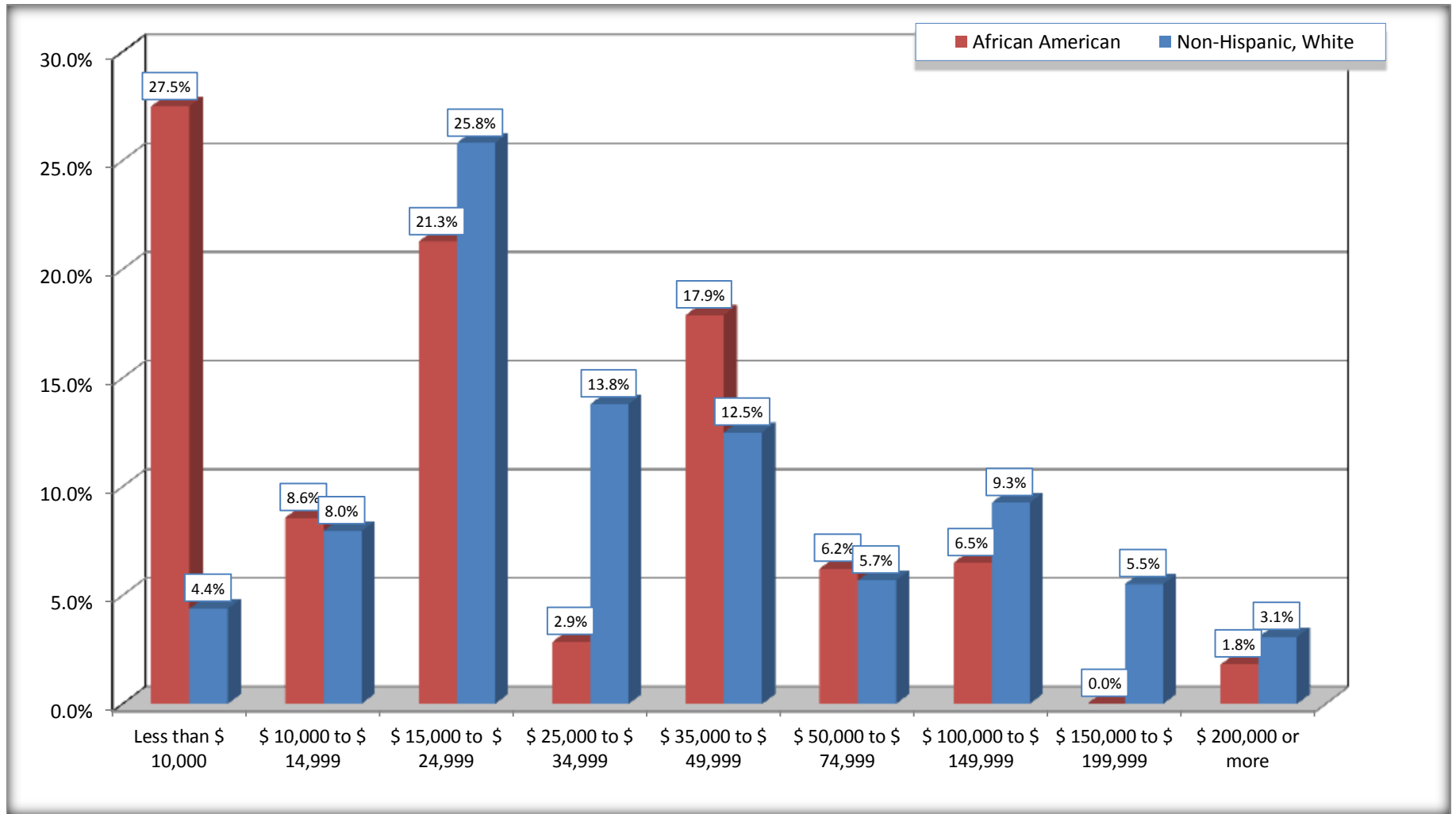
Source: U.S. Census Bureau, 2008-2012 American Community Survey

For information on confidentiality protection, sampling error, nonsampling error, and definitions, see Survey Methodology.

<http://www.census.gov/acs/www/UseData/index.htm>

Family Income in the Past 12 Months

Waynesboro city, Mississippi



Source: B19101. FAMILY INCOME IN THE PAST 12 MONTHS (IN 2010 INFLATION-ADJUSTED DOLLARS)
Data Set: 2008-2012 American Community Survey 5-Year Estimates

B19113. MEDIAN FAMILY INCOME IN THE PAST 12 MONTHS (IN 2010 INFLATION-ADJUSTED DOLLARS)

Data Set: 2008-2012 American Community Survey 5-Year Estimates

	Waynesboro city, Mississippi			
	African American	Margin of Error (+/-)	White, Not Hispanic	Margin of Error (+/-)
Median family income in the past 12 months (in 2010 inflation-adjusted dollars)	\$ 19,882	\$ 10,145	\$ 33,929	\$ 11,643

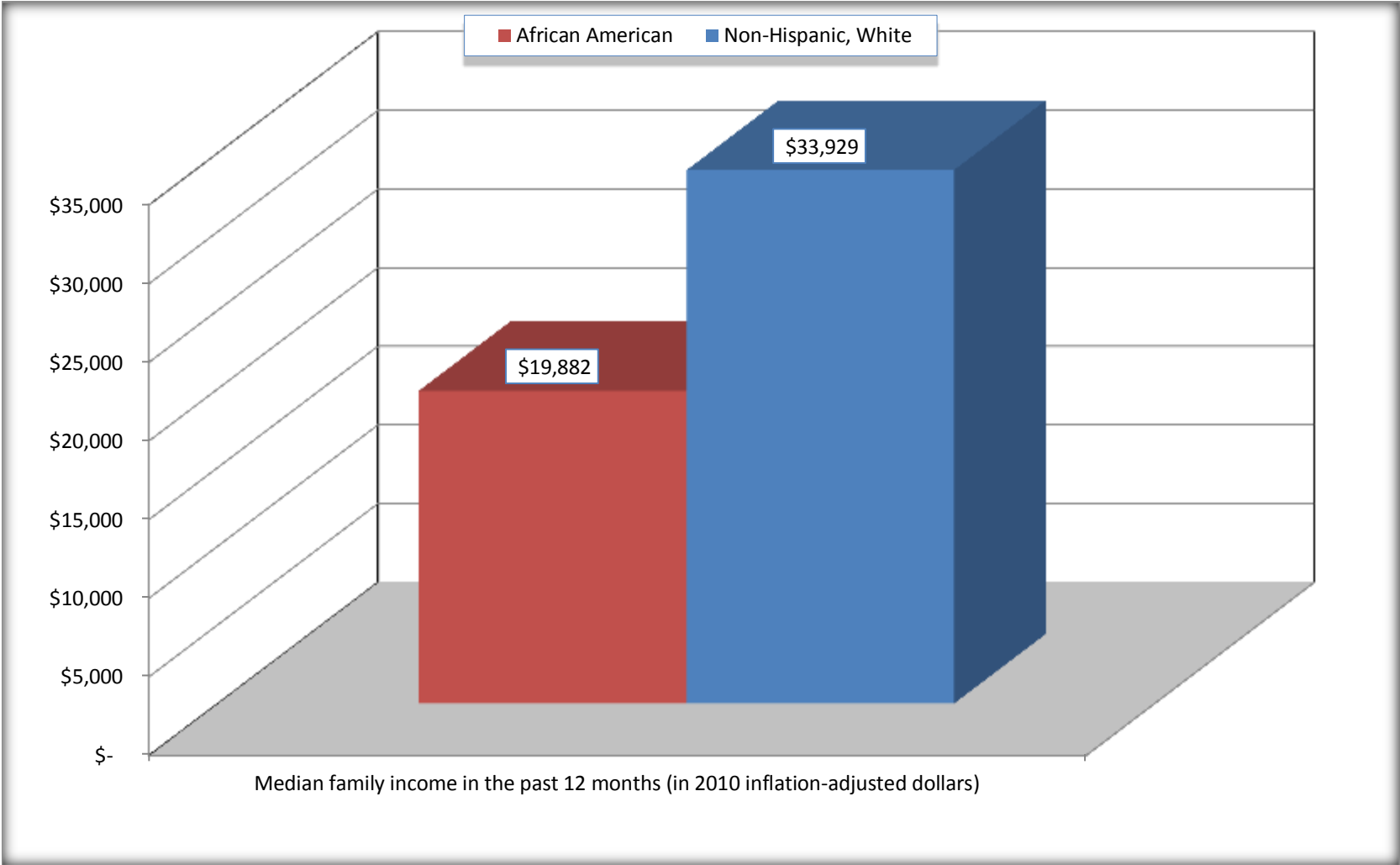
Source: U.S. Census Bureau, 2008-2012 American Community Survey

For information on confidentiality protection, sampling error, nonsampling error, and definitions, see Survey Methodology.

<http://www.census.gov/acs/www/UseData/index.htm>

Median Family Income in the Past 12 Months

Waynesboro city, Mississippi



Source: B19113. MEDIAN FAMILY INCOME IN THE PAST 12 MONTHS (IN 2010 INFLATION-ADJUSTED DOLLARS)
Data Set: 2008-2012 American Community Survey 5-Year Estimates

B19202. MEDIAN NONFAMILY HOUSEHOLD INCOME IN THE PAST 12 MONTHS (IN 2010 INFLATION-ADJUSTED DOLLARS)

Data Set: 2008-2012 American Community Survey 5-Year Estimates

	Waynesboro city, Mississippi			
	African American	Margin of Error (+/-)	White, Not Hispanic	Margin of Error (+/-)
Median nonfamily household income in the past 12 months (in 2010 inflation-adjusted dollars)	\$ 15,409	\$ 6,095	\$ 11,910	\$ 3,455

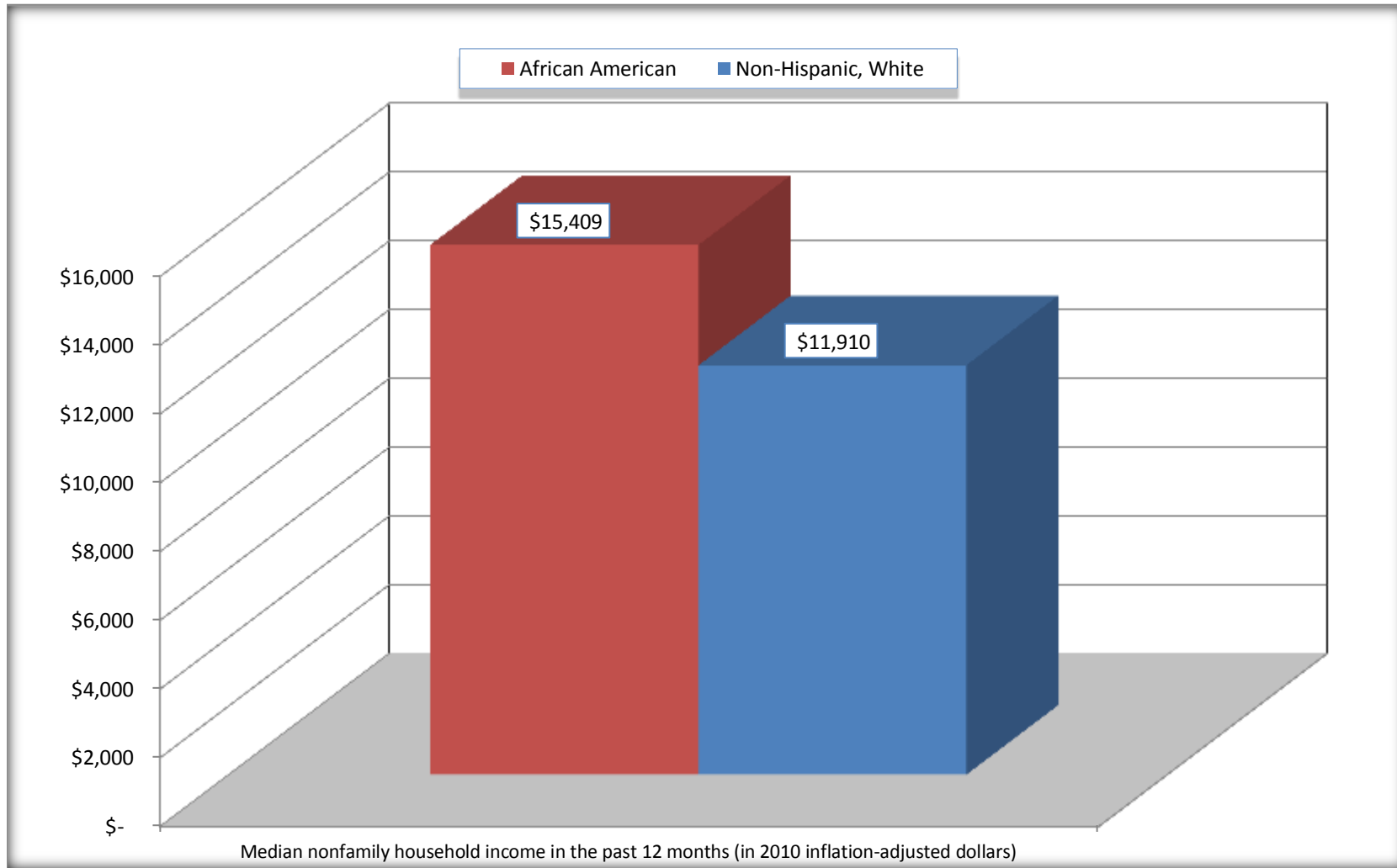
Source: U.S. Census Bureau, 2008-2012 American Community Survey

For information on confidentiality protection, sampling error, nonsampling error, and definitions, see Survey Methodology.

<http://www.census.gov/acs/www/UseData/index.htm>

Median Non-Family Income in the Past 12 Months

Waynesboro city, Mississippi



Source: B19202. MEDIAN NONFAMILY HOUSEHOLD INCOME IN THE PAST 12 MONTHS (IN 2010 INFLATION-ADJUSTED DOLLARS)
Data Set: 2008-2012 American Community Survey 5-Year Estimates

B19301. PER CAPITA INCOME IN THE PAST 12 MONTHS (IN 2010 INFLATION-ADJUSTED DOLLARS)

Data Set: 2008-2012 American Community Survey 5-Year Estimates

	Waynesboro city, Mississippi			
	African American	Margin of Error (+/-)	White, Not Hispanic	Margin of Error (+/-)
Per capita income in the past 12 months (in 2010 inflation-adjusted dollars)	\$ 12,247	\$ 4,094	\$ 21,010	\$ 5,510

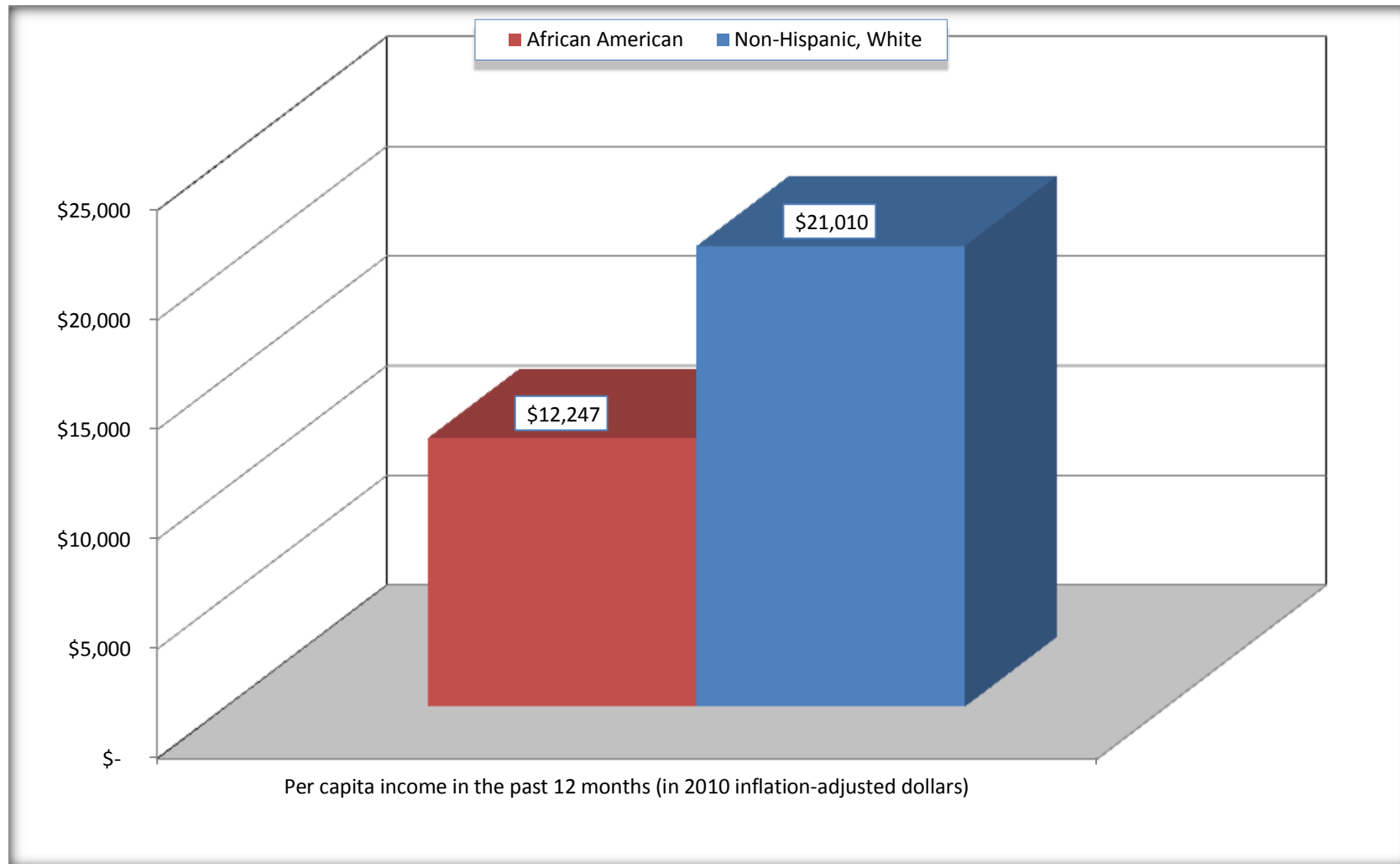
Source: U.S. Census Bureau, 2008-2012 American Community Survey

For information on confidentiality protection, sampling error, nonsampling error, and definitions, see Survey Methodology.

<http://www.census.gov/acs/www/UseData/index.htm>

Per capita Income in the Past 12 Months

Waynesboro city, Mississippi



Source: B19301. PER CAPITA INCOME IN THE PAST 12 MONTHS (IN 2010 INFLATION-ADJUSTED DOLLARS)
Data Set: 2008-2012 American Community Survey 5-Year Estimates

B20017. MEDIAN EARNINGS IN THE PAST 12 MONTHS (IN 2010 INFLATION-ADJUSTED DOLLARS) BY SEX BY WORK EXPERIENCE IN THE PAST 12 MONTHS FOR THE POPULATION 16 YEARS AND OVER WITH EARNINGS IN THE PAST 12 MONTHS

Data Set: 2008-2012 American Community Survey 5-Year Estimates

	Waynesboro city, Mississippi			
	African American	Margin of Error (+/-)	White, Not Hispanic	Margin of Error (+/-)
Median earnings in the past 12 months (in 2010 inflation-adjusted dollars) --				
Total:	\$ 19,697	\$ 2,327	\$ 30,694	\$ 15,757
Male --				
Total	\$ 25,443	\$ 5,248	\$ 34,333	\$ 17,136
Worked full-time, year-round in the past 12 months	\$ 30,417	\$ 10,701	\$ 40,956	\$ 6,196
Other	\$ 6,094	\$ 2,184	\$ 16,406	\$ 5,519
Female --				
Total	\$ 18,475	\$ 2,035	\$ 25,441	\$ 12,921
Worked full-time, year-round in the past 12 months	\$ 21,554	\$ 5,972	\$ 35,129	\$ 14,507
Other	\$ 4,942	\$ 6,302	\$ 11,118	\$ 6,760

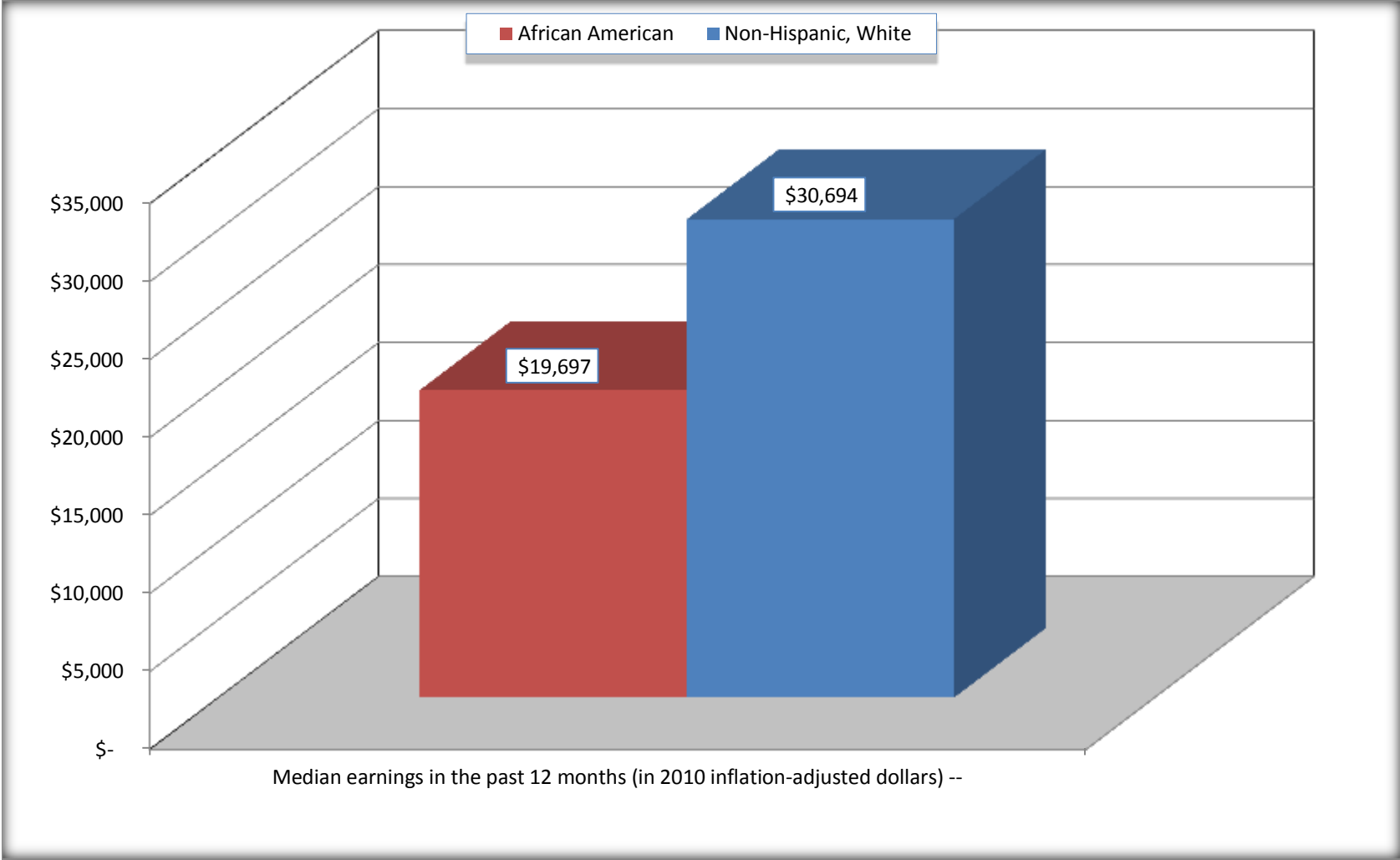
Source: U.S. Census Bureau, 2008-2012 American Community Survey

For information on confidentiality protection, sampling error, nonsampling error, and definitions, see Survey Methodology.

<http://www.census.gov/acs/www/UseData/index.htm>

Median earnings in the Past 12 Months (16 Years and Over with Earnings)

Waynesboro city, Mississippi



Source: B20017. MEDIAN EARNINGS IN THE PAST 12 MONTHS (IN 2010 INFLATION-ADJUSTED DOLLARS) BY SEX BY WORK EXPERIENCE IN THE PAST 12 MONTHS FOR THE POPULATION 16 YEARS AND OVER WITH EARNINGS IN THE PAST 12 MONTHS
Data Set: 2008-2012 American Community Survey 5-Year Estimates

B20005. SEX BY WORK EXPERIENCE IN THE PAST 12 MONTHS BY EARNINGS IN THE PAST 12 MONTHS (IN 2010 INFLATION-ADJUSTED DOLLARS) FOR THE POPULATION 16 YEARS AND OVER

Data Set: 2008-2012 American Community Survey 5-Year Estimates

	Waynesboro city, Mississippi					
	African American	Margin of Error (+/-)	% of AA Total	White, Not Hispanic	Margin of Error (+/-)	% of NHW Total
Total:	2,321	291	100.0%	1,539	266	100.0%
Worked full-time, year-round in the past 12 months:	638	NC	27.5%	431	NC	28.0%
No earnings	0	NC	0.0%	0	NC	0.0%
With earnings:	638	NC	27.5%	431	NC	28.0%
\$ 1 to \$ 9,999 or loss	48	NC	2.1%	14	NC	0.9%
\$ 10,000 to \$ 19,999	139	NC	6.0%	21	NC	1.4%
\$ 20,000 to \$ 29,999	181	NC	7.8%	92	NC	6.0%
\$ 30,000 to \$ 49,999	130	NC	5.6%	176	NC	11.4%
\$ 50,000 to \$ 74,999	80	NC	3.4%	58	NC	3.8%
\$ 75,000 or more	60	NC	2.6%	70	NC	4.5%
Other:	1,683	NC	72.5%	1,108	NC	72.0%
No earnings	1,251	NC	53.9%	771	NC	50.1%
With earnings: less than full time, year-round	432	NC	18.6%	337	NC	21.9%
Male:	908	194	39.1%	758	151	49.3%
Worked full-time, year-round in the past 12 months:	288	122	12.4%	238	114	15.5%
No earnings	0	17	0.0%	0	17	0.0%
With earnings:	288	122	12.4%	238	114	15.5%
\$ 1 to \$ 9,999 or loss	20	NC	0.9%	14	NC	0.9%
\$ 10,000 to \$ 19,999	15	NC	0.6%	0	NC	0.0%
\$ 20,000 to \$ 29,999	104	NC	4.5%	28	NC	1.8%
\$ 30,000 to \$ 49,999	55	NC	2.4%	113	NC	7.3%
\$ 50,000 to \$ 74,999	34	NC	1.5%	33	NC	2.1%
\$ 75,000 or more	60	NC	2.6%	50	NC	3.2%

	Waynesboro city, Mississippi					
	African American	Margin of Error (+/-)	% of AA Total	White, Not Hispanic	Margin of Error (+/-)	% of NHW Total
Other:	620	169	26.7%	520	118	33.8%
No earnings	515	164	22.2%	254	96	16.5%
With earnings:	105	87	4.5%	266	92	17.3%
Female:	1,413	181	60.9%	781	157	50.7%
Worked full-time, year-round in the past 12 months:	350	164	15.1%	193	107	12.5%
No earnings	0	17	0.0%	0	17	0.0%
With earnings:	350	164	15.1%	193	107	12.5%
\$ 1 to \$ 9,999 or loss	28	NC	1.2%	0	NC	0.0%
\$ 10,000 to \$ 19,999	124	NC	5.3%	21	NC	1.4%
\$ 20,000 to \$ 29,999	77	NC	3.3%	64	NC	4.2%
\$ 30,000 to \$ 49,999	75	NC	3.2%	63	NC	4.1%
\$ 50,000 to \$ 74,999	46	NC	2.0%	25	NC	1.6%
\$ 75,000 or more	0	NC	0.0%	20	NC	1.3%
Other:	1,063	227	45.8%	588	153	38.2%
No earnings	736	222	31.7%	517	151	33.6%
With earnings:	327	121	14.1%	71	50	4.6%

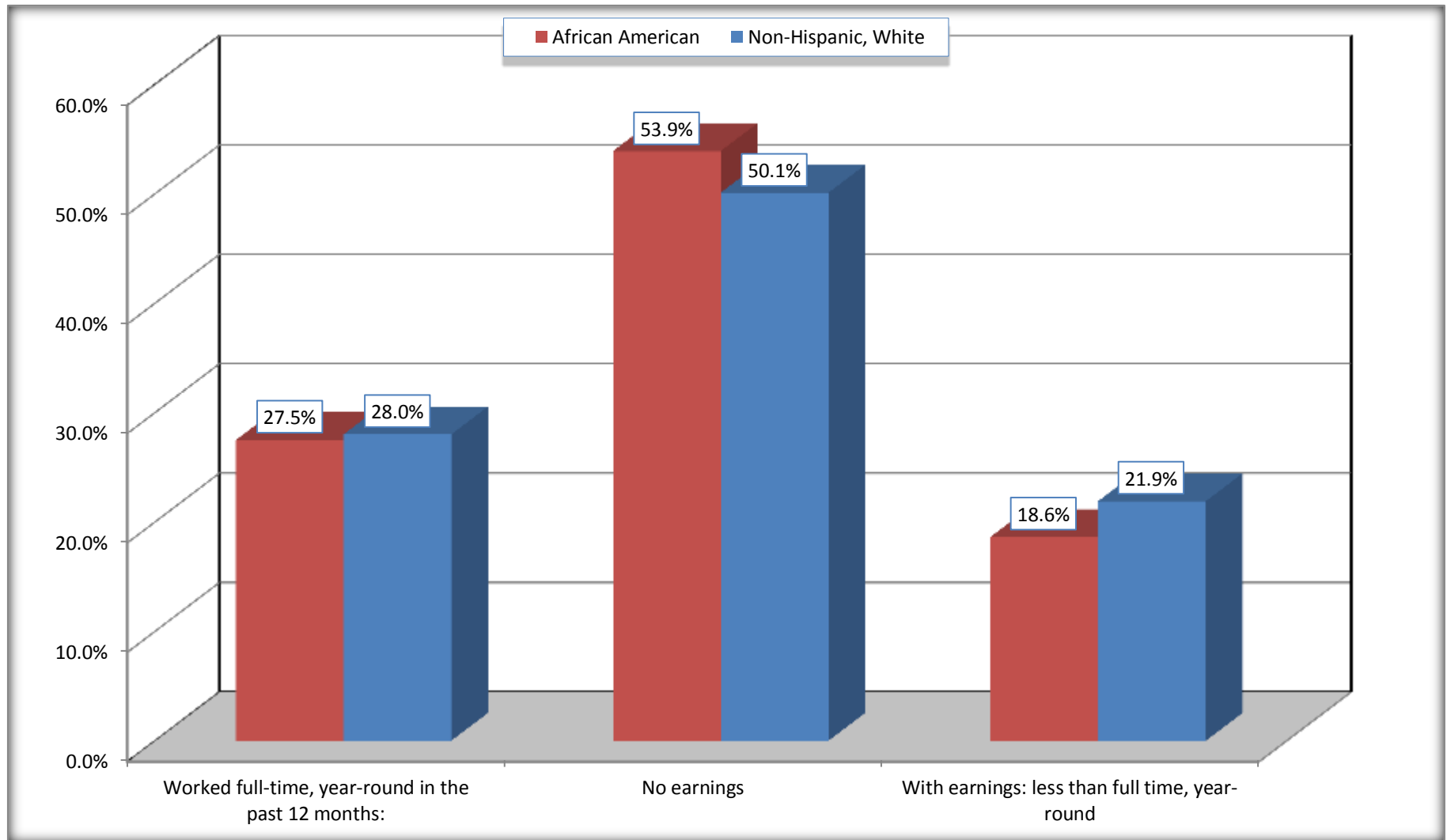
Source: U.S. Census Bureau, 2008-2012 American Community Survey

For information on confidentiality protection, sampling error, nonsampling error, and definitions, see Survey Methodology.

<http://www.census.gov/acs/www/UseData/index.htm>

Employment and Earnings in in the Past 12 Months (16 Years and Over)

Waynesboro city, Mississippi



Source: B20005. SEX BY WORK EXPERIENCE IN THE PAST 12 MONTHS BY EARNINGS IN THE PAST 12 MONTHS (IN 2010 INFLATION-ADJUSTED DOLLARS) FOR THE POPULATION 16 YEARS AND OVER

Data Set: 2008-2012 American Community Survey 5-Year Estimates

C21001. SEX BY AGE BY VETERAN STATUS FOR THE CIVILIAN POPULATION 18 YEARS AND OVER

Data Set: 2008-2012 American Community Survey 5-Year Estimates

	Waynesboro city, Mississippi					
	African American	Margin of Error (+/-)	% of AA Total	White, Not Hispanic	Margin of Error (+/-)	% of NHW Total
Total:	2,171	250	100.0%	1,523	266	100.0%
Veteran	86	NC	4.0%	149	NC	9.8%
Nonveteran	2,085	NC	96.0%	1,374	NC	90.2%
Male:	816	168	37.6%	742	150	48.7%
18 to 64 years:	717	163	33.0%	503	124	33.0%
Veteran	86	61	4.0%	58	54	3.8%
Nonveteran	631	167	29.1%	445	134	29.2%
65 years and over:	99	74	4.6%	239	73	15.7%
Veteran	0	17	0.0%	91	63	6.0%
Nonveteran	99	74	4.6%	148	67	9.7%
Female:	1,355	166	62.4%	781	157	51.3%
18 to 64 years:	1,255	161	57.8%	520	127	34.1%
Veteran	0	17	0.0%	0	17	0.0%
Nonveteran	1,255	161	57.8%	520	127	34.1%
65 years and over:	100	46	4.6%	261	96	17.1%
Veteran	0	17	0.0%	0	17	0.0%
Nonveteran	100	46	4.6%	261	96	17.1%

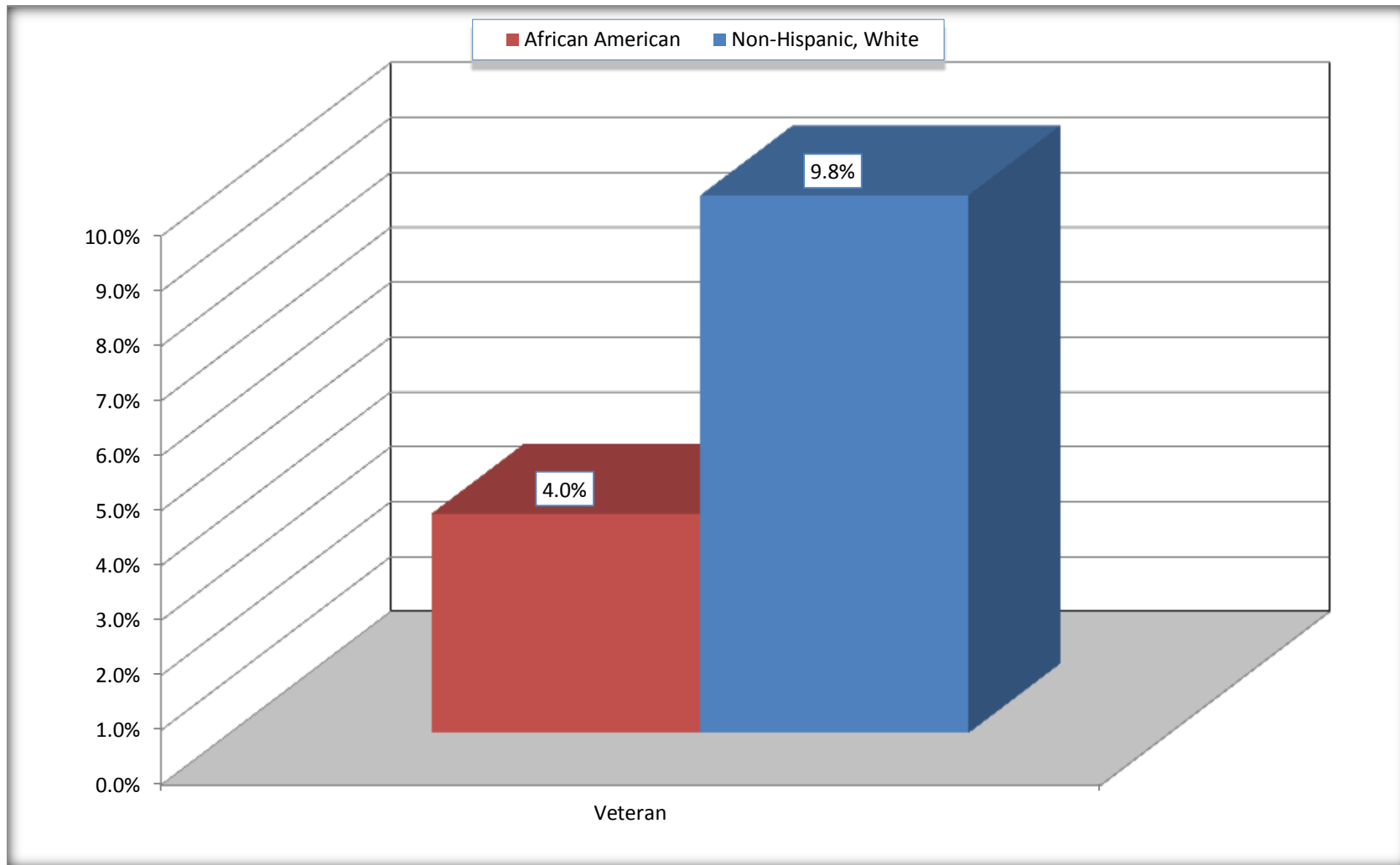
Source: U.S. Census Bureau, 2008-2012 American Community Survey

For information on confidentiality protection, sampling error, nonsampling error, and definitions, see Survey Methodology.

<http://www.census.gov/acs/www/UseData/index.htm>

Veterans in the Civilian Population 18 Years and Over

Waynesboro city, Mississippi



Source: C21001. SEX BY AGE BY VETERAN STATUS FOR THE CIVILIAN POPULATION 18 YEARS AND OVER
Data Set: 2008-2012 American Community Survey 5-Year Estimates

B22005. RECEIPT OF FOOD STAMPS/SNAP IN THE PAST 12 MONTHS BY RACE OF HOUSEHOLDER

Data Set: 2008-2012 American Community Survey 5-Year Estimates

	Waynesboro city, Mississippi					
	African American	Margin of Error (+/-)	% of AA Total	White, Not Hispanic	Margin of Error (+/-)	% of NHW Total
Total:	1,150	159	100.0%	775	155	100.0%
HH received Food Stamps/SNAP in the past 12 months	484	141	42.1%	159	99	20.5%
HH did not receive Food Stamps/SNAP in the past 12 months	666	169	57.9%	616	170	79.5%

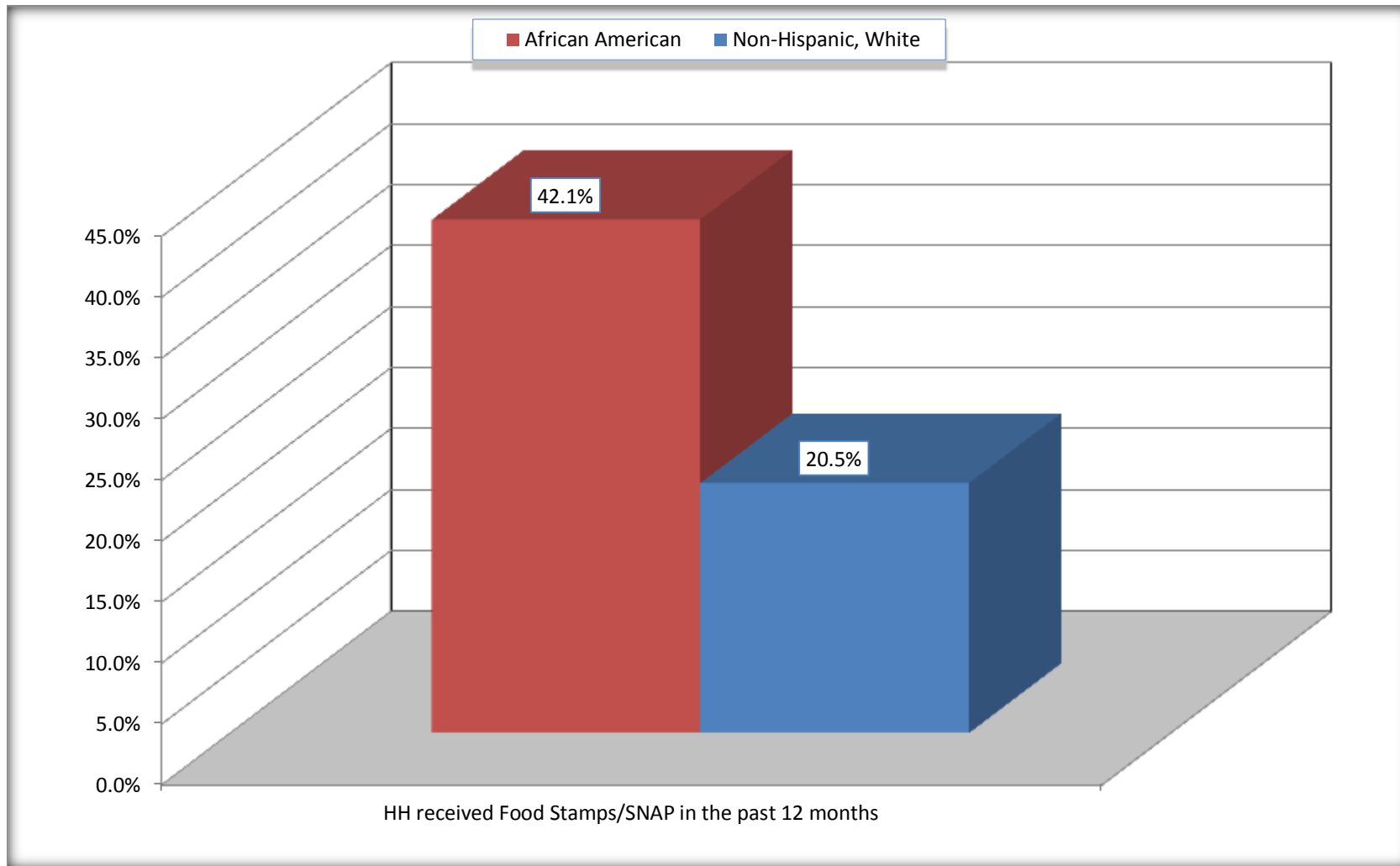
Source: U.S. Census Bureau, 2008-2012 American Community Survey

For information on confidentiality protection, sampling error, nonsampling error, and definitions, see Survey Methodology.

<http://www.census.gov/acs/www/UseData/index.htm>

Receipt of Food Stamps/SNAP in the Past 12 Months by Household

Waynesboro city, Mississippi



Source: B22005. RECEIPT OF FOOD STAMPS/SNAP IN THE PAST 12 MONTHS BY RACE OF HOUSEHOLDER
Data Set: 2008-2012 American Community Survey 5-Year Estimates

C23002. SEX BY AGE BY EMPLOYMENT STATUS FOR THE POPULATION 16 YEARS AND OVER

Data Set: 2008-2012 American Community Survey 5-Year Estimates

	Waynesboro city, Mississippi					
	African American	Margin of Error (+/-)	% of AA Total	White, Not Hispanic	Margin of Error (+/-)	% of NHW Total
Total:	2,321	291	100.0%	1,539	266	100.0%
In labor force:	1,090	NC	47.0%	719	NC	46.7%
In Armed Forces	0	NC	0.0%	0	NC	0.0%
Civilian:	1,089	NC	46.9%	642	NC	41.7%
Employed	914	NC	39.4%	700	NC	45.5%
Unemployed	176	NC	7.6%	19	NC	1.2%
Not in labor force	1,231	NC	53.0%	820	NC	53.3%
Male:	908	194	39.1%	758	151	49.3%
16 to 64 years:	809	191	34.9%	519	125	33.7%
In labor force:	420	155	18.1%	420	136	27.3%
In Armed Forces	0	17	0.0%	0	17	0.0%
Civilian:	420	155	18.1%	420	136	27.3%
Employed	383	153	16.5%	401	130	26.1%
Unemployed	37	43	1.6%	19	33	1.2%
Not in labor force	389	150	16.8%	99	69	6.4%
65 years and over:	99	74	4.3%	239	73	15.5%
In labor force:	1	3	0.0%	46	33	3.0%
Employed	1	3	0.0%	46	33	3.0%
Unemployed	0	17	0.0%	0	17	0.0%
Not in labor force	98	74	4.2%	193	71	12.5%

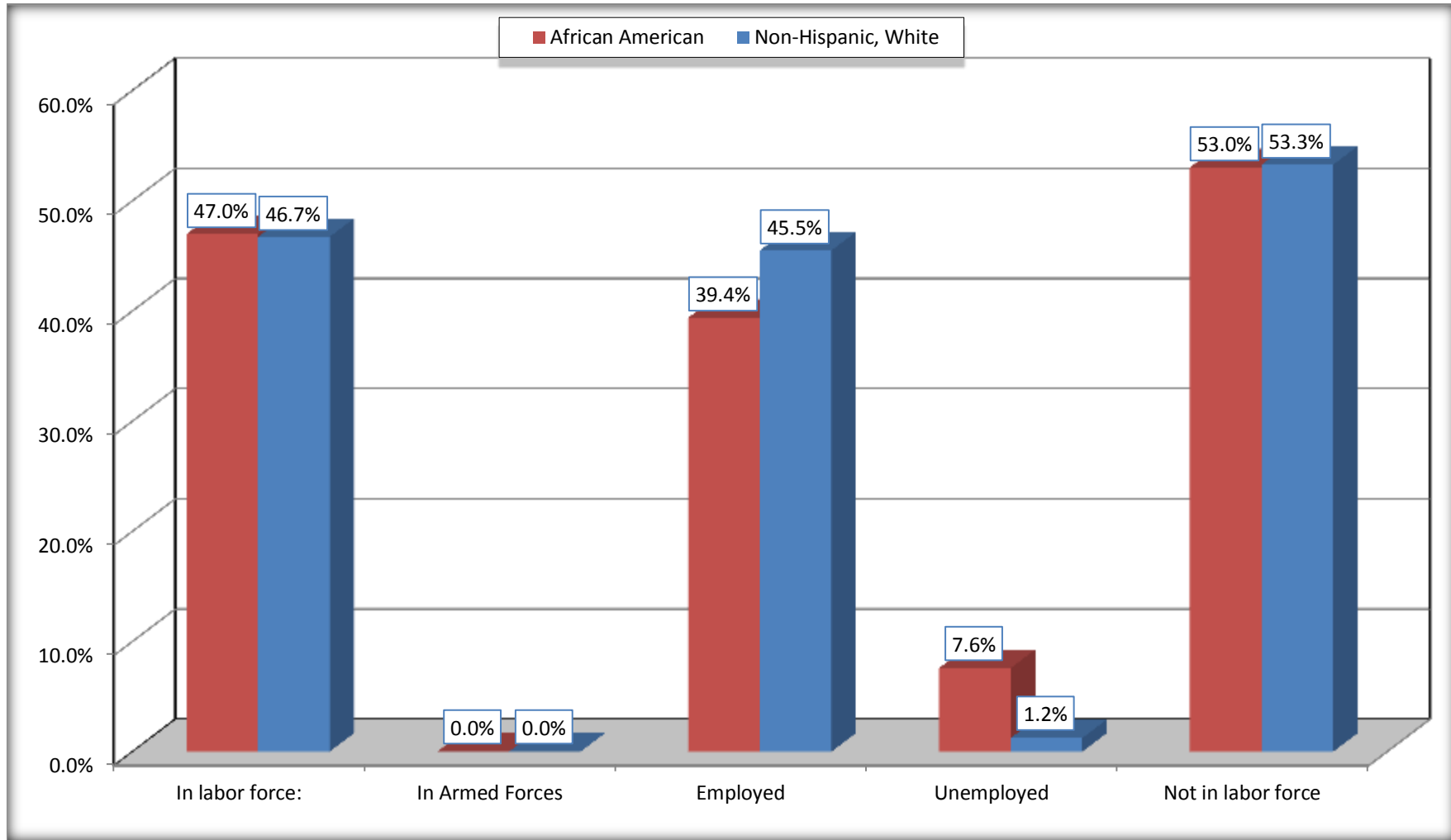
	Waynesboro city, Mississippi					
	African American	Margin of Error (+/-)	% of AA Total	White, Not Hispanic	Margin of Error (+/-)	% of NHW Total
Female:	1,413	181	60.9%	781	157	50.7%
16 to 64 years:	1,313	182	56.6%	520	127	33.8%
In labor force:	669	174	28.8%	222	99	14.4%
In Armed Forces	0	17	0.0%	0	17	0.0%
Civilian:	669	174	28.8%	222	99	14.4%
Employed	530	177	22.8%	222	99	14.4%
Unemployed	139	85	6.0%	0	17	0.0%
Not in labor force	644	226	27.7%	298	128	19.4%
65 years and over:	100	46	4.3%	261	96	17.0%
In labor force:	0	17	0.0%	31	35	2.0%
Employed	0	17	0.0%	31	35	2.0%
Unemployed	0	17	0.0%	0	17	0.0%
Not in labor force	100	46	4.3%	230	93	14.9%

Source: U.S. Census Bureau, 2008-2012 American Community Survey

For information on confidentiality protection, sampling error, nonsampling error, and definitions, see Survey Methodology.
<http://www.census.gov/acs/www/UseData/index.htm>

Employment Status for the Population 16 years and over

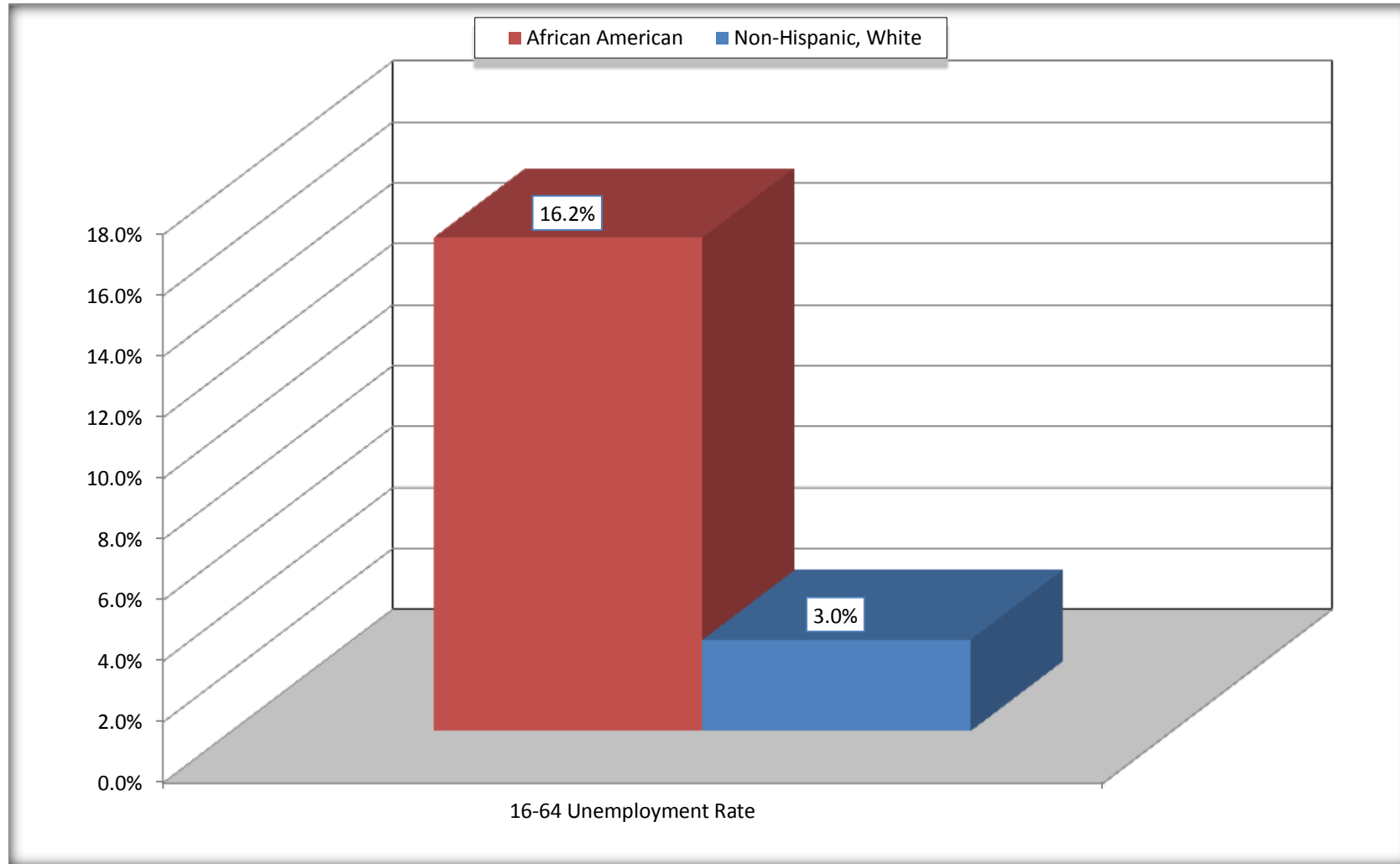
Waynesboro city, Mississippi



Source: C23002. SEX BY AGE BY EMPLOYMENT STATUS FOR THE POPULATION 16 YEARS AND OVER
Data Set: 2008-2012 American Community Survey 5-Year Estimates

Unemployment of Working Age Population (Ages 16 to 64) (As a Percent of 16-64 Civilian Labor Force)

Waynesboro city, Mississippi



Source: C23002. SEX BY AGE BY EMPLOYMENT STATUS FOR THE POPULATION 16 YEARS AND OVER
Data Set: 2008-2012 American Community Survey 5-Year Estimates

C24010. SEX BY OCCUPATION FOR THE CIVILIAN EMPLOYED POPULATION 16 YEARS AND OVER

Data Set: 2008-2012 American Community Survey 5-Year Estimates

	Waynesboro city, Mississippi					
	African American	Margin of Error (+/-)	% of AA Total	White, Not Hispanic	Margin of Error (+/-)	% of NHW Total
Total:	914	283	100.0%	700	214	100.0%
Management, professional, and related occupations	121	NC	13.2%	138	NC	19.7%
Service occupations	240	NC	26.3%	57	NC	8.1%
Sales and office occupations	66	NC	7.2%	177	NC	25.3%
Natural resources, construction, and maintenance occupations:	71	NC	7.8%	122	NC	17.4%
Production, transportation, and material moving occupations	416	NC	45.5%	206	NC	29.4%
Male:	384	153	42.0%	447	131	63.9%
Management, business, science, and arts occupations:	29	33	3.2%	59	71	8.4%
Service occupations	44	49	4.8%	15	21	2.1%
Sales and office occupations	37	36	4.0%	94	64	13.4%
Natural resources, construction, and maintenance occupations:	71	65	7.8%	122	96	17.4%
Production, transportation, and material moving occupations	203	125	22.2%	157	86	22.4%
Female:	530	177	58.0%	253	109	36.1%
Management, professional, and related occupations	92	62	10.1%	79	52	11.3%
Service occupations	196	84	21.4%	42	44	6.0%
Sales and office occupations	29	46	3.2%	83	63	11.9%
Natural resources, construction, and maintenance occupations:	0	17	0.0%	0	17	0.0%
Production, transportation, and material moving occupations	213	120	23.3%	49	41	7.0%

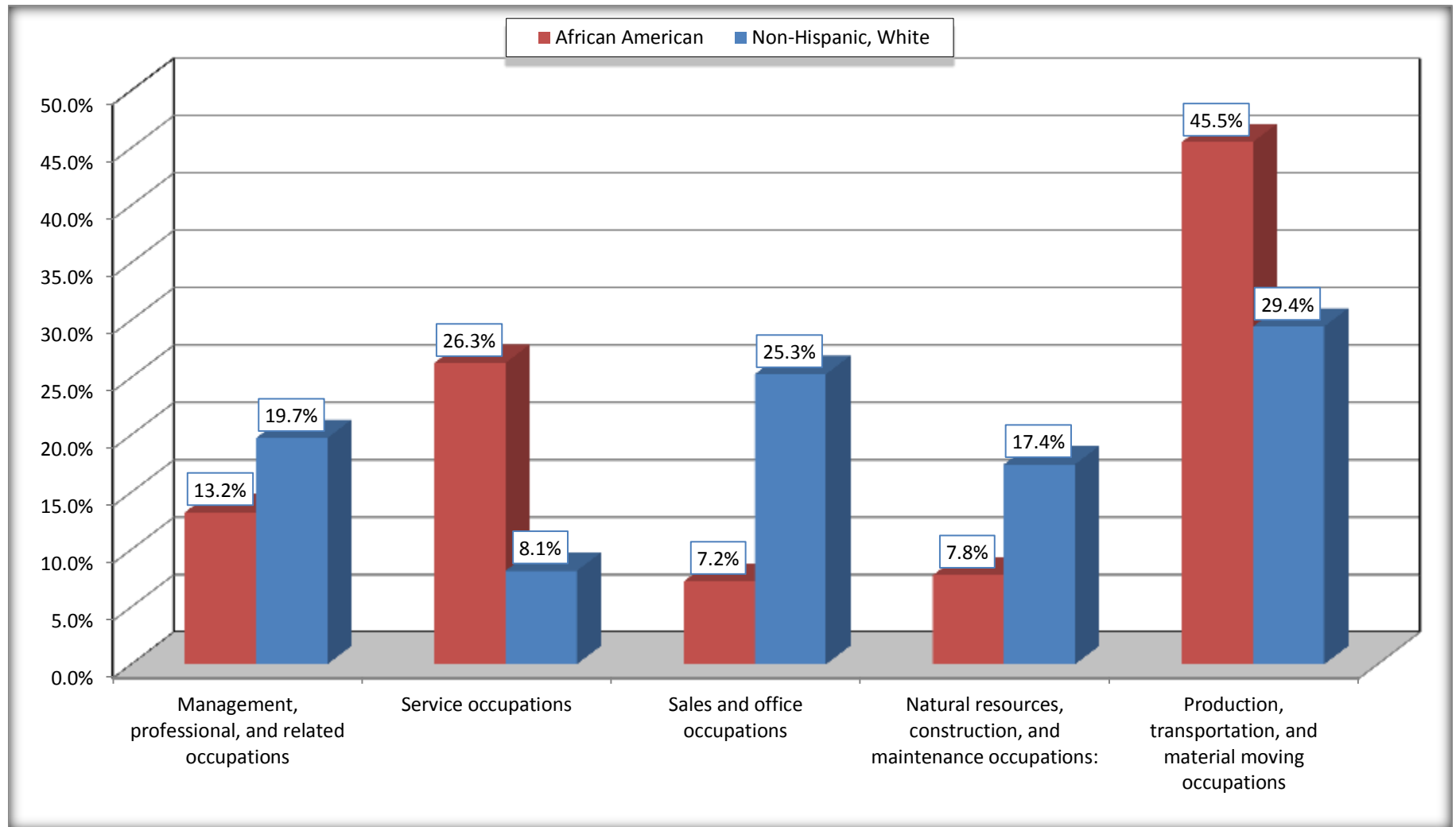
Source: U.S. Census Bureau, 2008-2012 American Community Survey

For information on confidentiality protection, sampling error, nonsampling error, and definitions, see Survey Methodology.

<http://www.census.gov/acs/www/UseData/index.htm>

Occupation for the Civilian Employed 16 Years and Over Population

Waynesboro city, Mississippi



Source: C24010. SEX BY OCCUPATION FOR THE CIVILIAN EMPLOYED POPULATION 16 YEARS AND OVER
Data Set: 2008-2012 American Community Survey 5-Year Estimates

B25003. TENURE - Universe: OCCUPIED HOUSING UNITS

Data Set: 2008-2012 American Community Survey 5-Year Estimates

	Waynesboro city, Mississippi					
	African American	Margin of Error (+/-)	% of AA Total	White, Not Hispanic	Margin of Error (+/-)	% of NHW Total
Total:	1,150	159	100.0%	775	155	100.0%
Owner occupied	680	140	59.1%	654	152	84.4%
Renter occupied	470	138	40.9%	121	67	15.6%

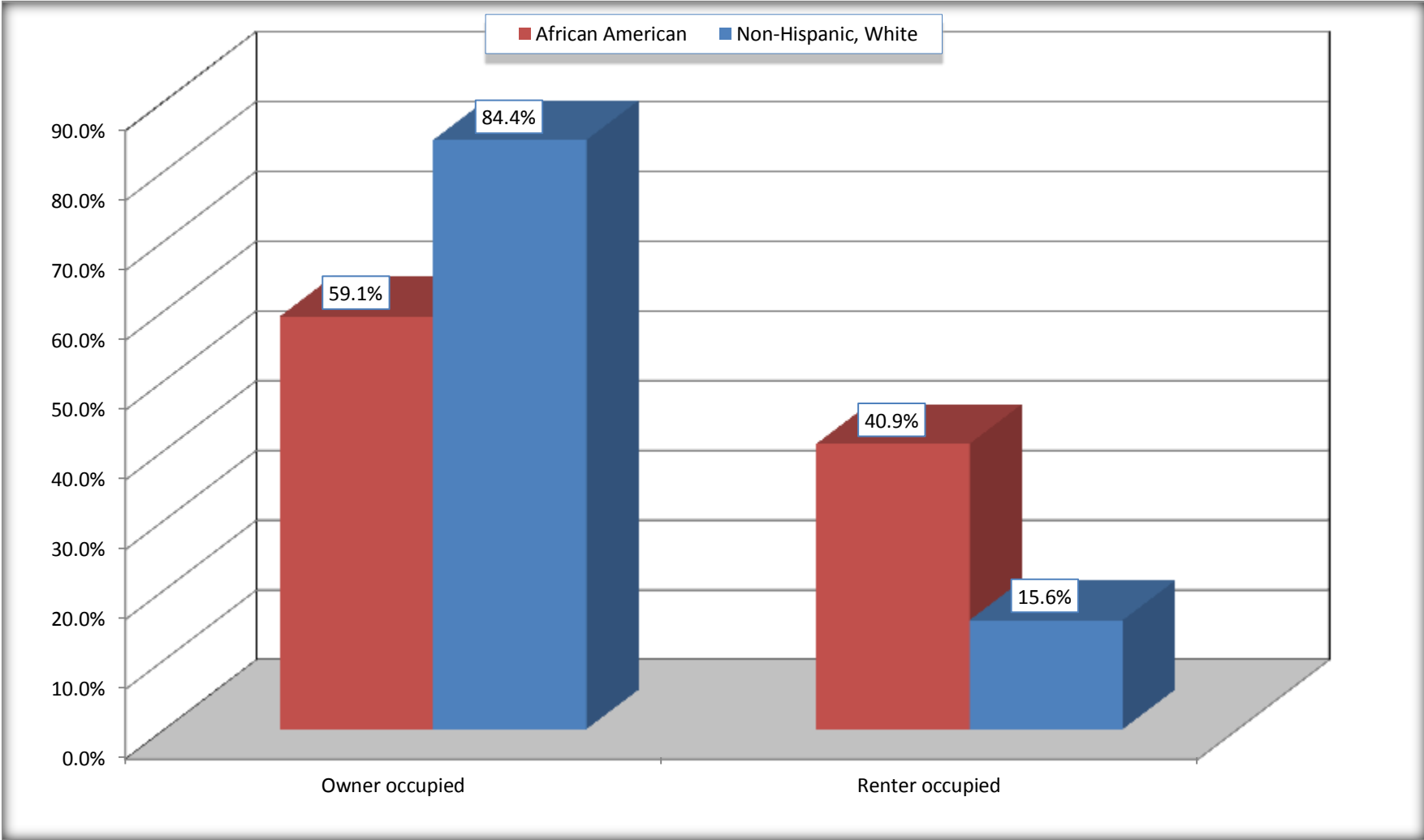
Source: U.S. Census Bureau, 2008-2012 American Community Survey

For information on confidentiality protection, sampling error, nonsampling error, and definitions, see Survey Methodology.

<http://www.census.gov/acs/www/UseData/index.h>

Home Owners and Renters by Household

Waynesboro city, Mississippi



Source: B25003. TENURE - Universe: OCCUPIED HOUSING UNITS
Data Set: 2008-2012 American Community Survey 5-Year Estimates

B25014. OCCUPANTS PER ROOM - Universe: OCCUPIED HOUSING UNITS

Data Set: 2008-2012 American Community Survey 5-Year Estimates

	Waynesboro city, Mississippi					
	African American	Margin of Error (+/-)	% of AA Total	White, Not Hispanic	Margin of Error (+/-)	% of NHW Total
Total:	1,150	159	100.0%	775	155	100.0%
1.00 or less occupants per room	1,129	170	98.2%	775	155	100.0%
1.01 or more occupants per room	21	33	1.8%	0	17	0.0%

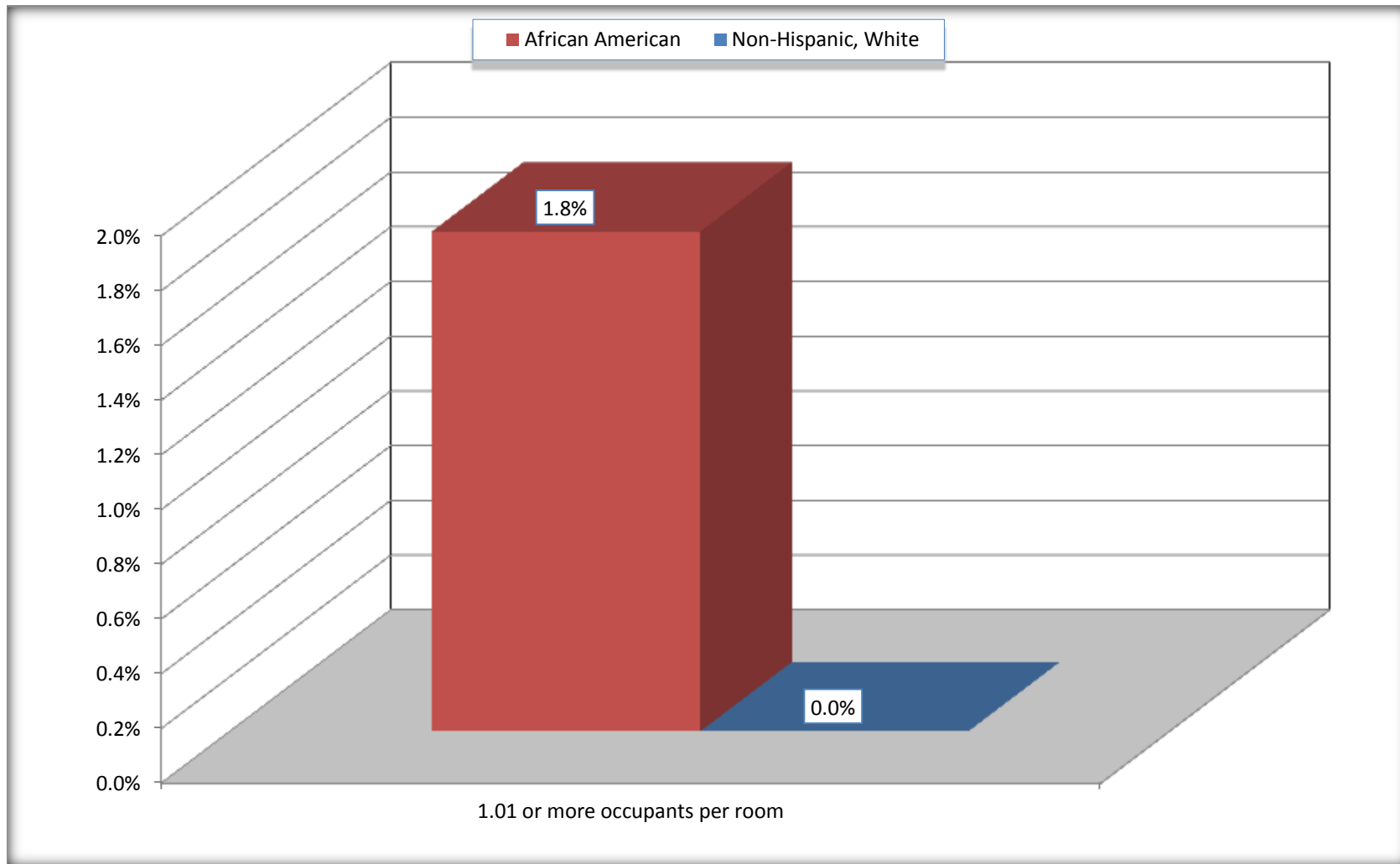
Source: U.S. Census Bureau, 2008-2012 American Community Survey

For information on confidentiality protection, sampling error, nonsampling error, and definitions, see Survey Methodology.

<http://www.census.gov/acs/www/UseData/index.ht>

More than One Person per Room (Crowding) by Household

Waynesboro city, Mississippi



Source: B25014. OCCUPANTS PER ROOM - Universe: OCCUPIED HOUSING UNITS
Data Set: 2008-2012 American Community Survey 5-Year Estimates

B18101. AGE BY DISABILITY STATUS

Data Set: 2008-2012 American Community Survey 5-Year Estimates

	Waynesboro city, Mississippi					
	African American	Margin of Error (+/-)	% of AA Total	White, Not Hispanic	Margin of Error (+/-)	% of NHW Total
Total:	3,131	310	100.0%	1,748	322	100.0%
Under 18 years:	1,061	240	33.9%	312	19	17.8%
With a disability	91	115	2.9%	23	26	1.3%
No disability	970	211	31.0%	289	110	16.5%
18 to 64 years:	1,904	235	60.8%	982	217	56.2%
With a disability	580	205	18.5%	228	116	13.0%
No disability	1,324	240	42.3%	754	226	43.1%
65 years and over:	166	84	5.3%	454	141	26.0%
With a disability	155	82	5.0%	265	121	15.2%
No disability	11	17	0.4%	189	69	10.8%

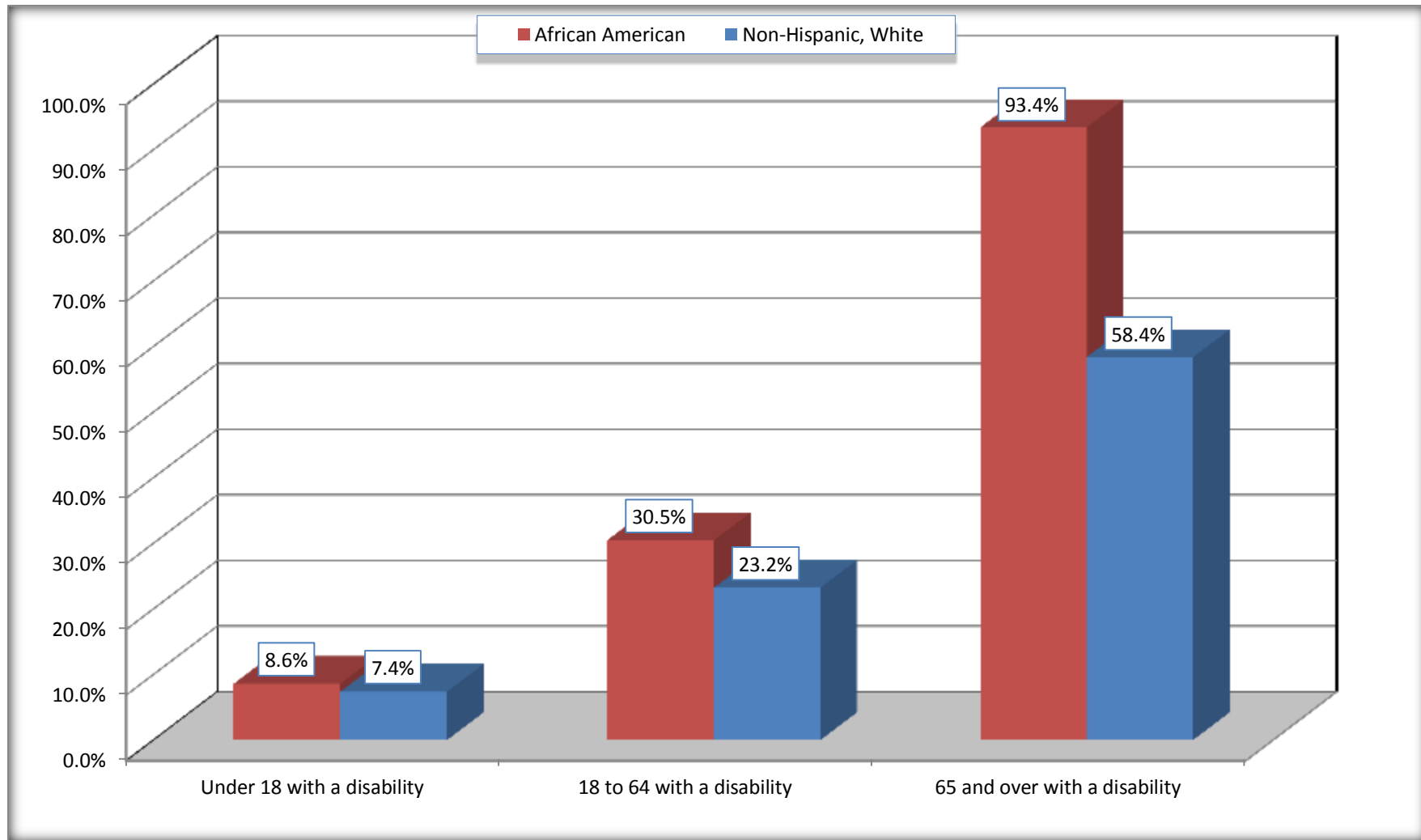
Source: U.S. Census Bureau, 2008-2012 American Community Survey

For information on confidentiality protection, sampling error, nonsampling error, and definitions, see Survey Methodology.

<http://www.census.gov/acs/www/UseData/index.htm>

Disability by Age

Waynesboro city, Mississippi



Source: B18101. AGE BY DISABILITY STATUS
Data Set: 2008-2012 American Community Survey 5-Year Estimates

C27001B. HEALTH INSURANCE COVERAGE STATUS BY AGE

Data Set: 2008-2012 American Community Survey 5-Year Estimates

	Waynesboro city, Mississippi					
	African American	Margin of Error (+/-)	% of AA Total	White, Not Hispanic	Margin of Error (+/-)	% of NHW Total
Total:	3,131	310	100.0%	1,748	322	100.0%
Under 18 years:	1,061	240	33.9%	312	111	17.8%
With health insurance coverage	1,054	237	33.7%	255	116	14.6%
No health insurance coverage	7	12	0.2%	57	82	3.3%
18 to 64 years:	1,904	235	60.8%	982	217	56.2%
With health insurance coverage	1,326	223	42.4%	697	215	39.9%
No health insurance coverage	578	192	18.5%	285	153	16.3%
65 years and over:	166	84	5.3%	454	141	26.0%
With health insurance coverage	166	84	5.3%	454	141	26.0%
No health insurance coverage	0	17	0.0%	0	17	0.0%

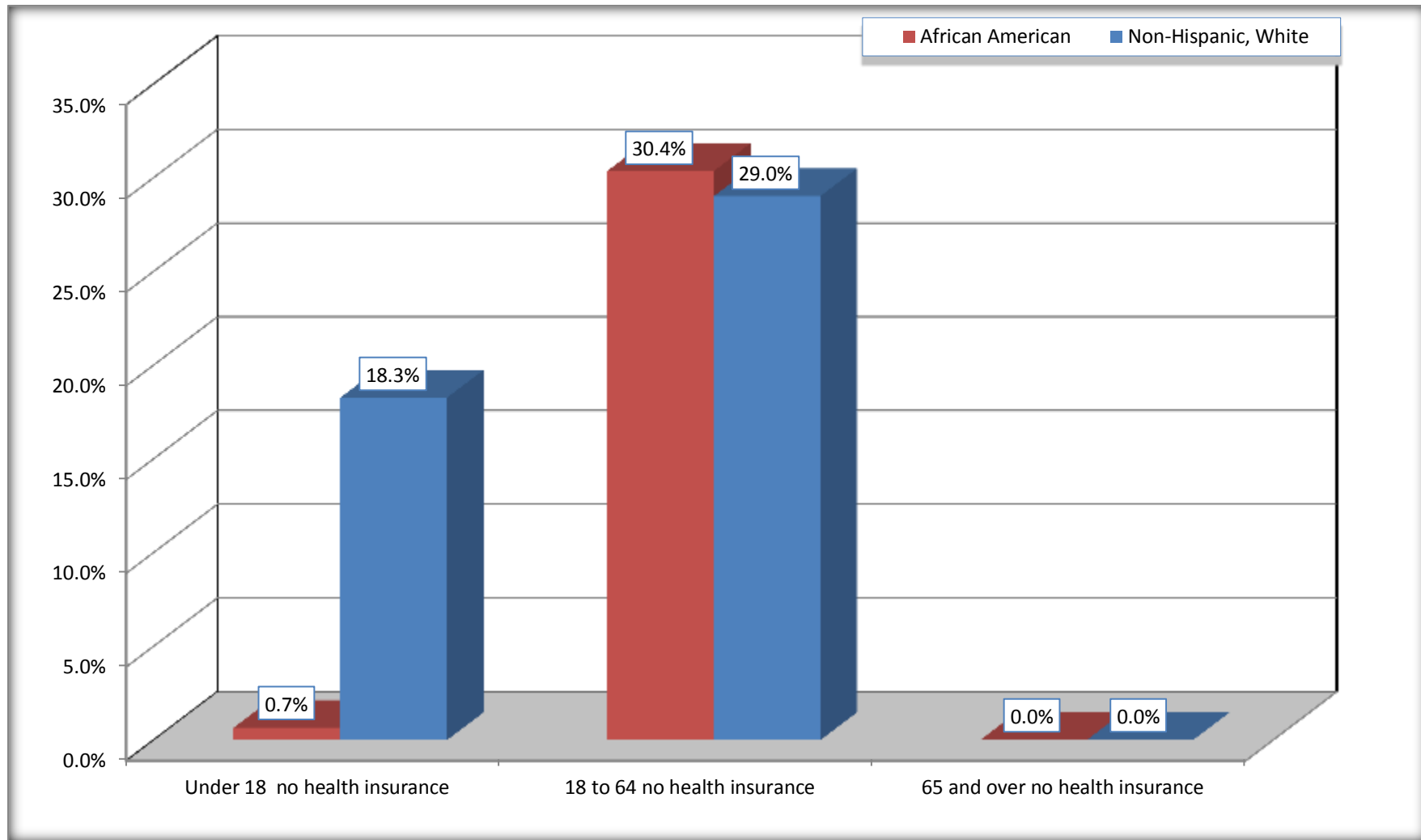
Source: U.S. Census Bureau, 2008-2012 American Community Survey

For information on confidentiality protection, sampling error, nonsampling error, and definitions, see Survey Methodology.

<http://www.census.gov/acs/www/UseData/index.htm>

Lack of Health Insurance Coverage by Age

Waynesboro city, Mississippi



Source: C27001B. HEALTH INSURANCE COVERAGE STATUS BY AGE
Data Set: 2008-2012 American Community Survey 5-Year Estimates