

# **Selected Socio-Economic Data**

## **Picayune city, Mississippi**

### **African American and White, Not Hispanic**

**Data Set: 2008-2012 American Community Survey 5-Year Estimates**

[www.fairvote2020.org](http://www.fairvote2020.org)

[www.fairdata2000.com](http://www.fairdata2000.com)

[29-Dec-13](#)

**C02003.DETAILED RACE - Universe: TOTAL POPULATION**

Data Set: 2008-2012 American Community Survey 5-Year Estimates

	Picayune city, Mississippi		
	Population	Margin of Error (+/-)	% of Total
<b>Total:</b>	<b>10,982</b>	<b>24</b>	<b>100.0%</b>
Population of one race:	10,856	130	98.9%
White	7,230	477	65.8%
Black or African American	3,561	444	32.4%
American Indian and Alaska Native	0	19	0.0%
Asian alone	55	89	0.5%
Native Hawaiian and Other Pacific Islander	0	19	0.0%
Some other race	10	17	0.1%
Population of two or more races:	126	127	1.1%
Two races including Some other race	0	19	0.0%
Two races excluding Some other race, and three or more races	126	127	1.1%
Population of two races:	126	127	1.1%
White; Black or African American	46	68	0.4%
White; American Indian and Alaska Native	42	76	0.4%
White; Asian	38	64	0.3%
Black or African American; American Indian and Alaska Native	0	19	0.0%
All other two race combinations	0	19	0.0%
Population of three races	0	19	0.0%
Population of four or more races	0	19	0.0%

Note: Hispanics may be of any race. See Table B03002 and chart.

Source: U.S. Census Bureau, 2008-2012 American Community Survey

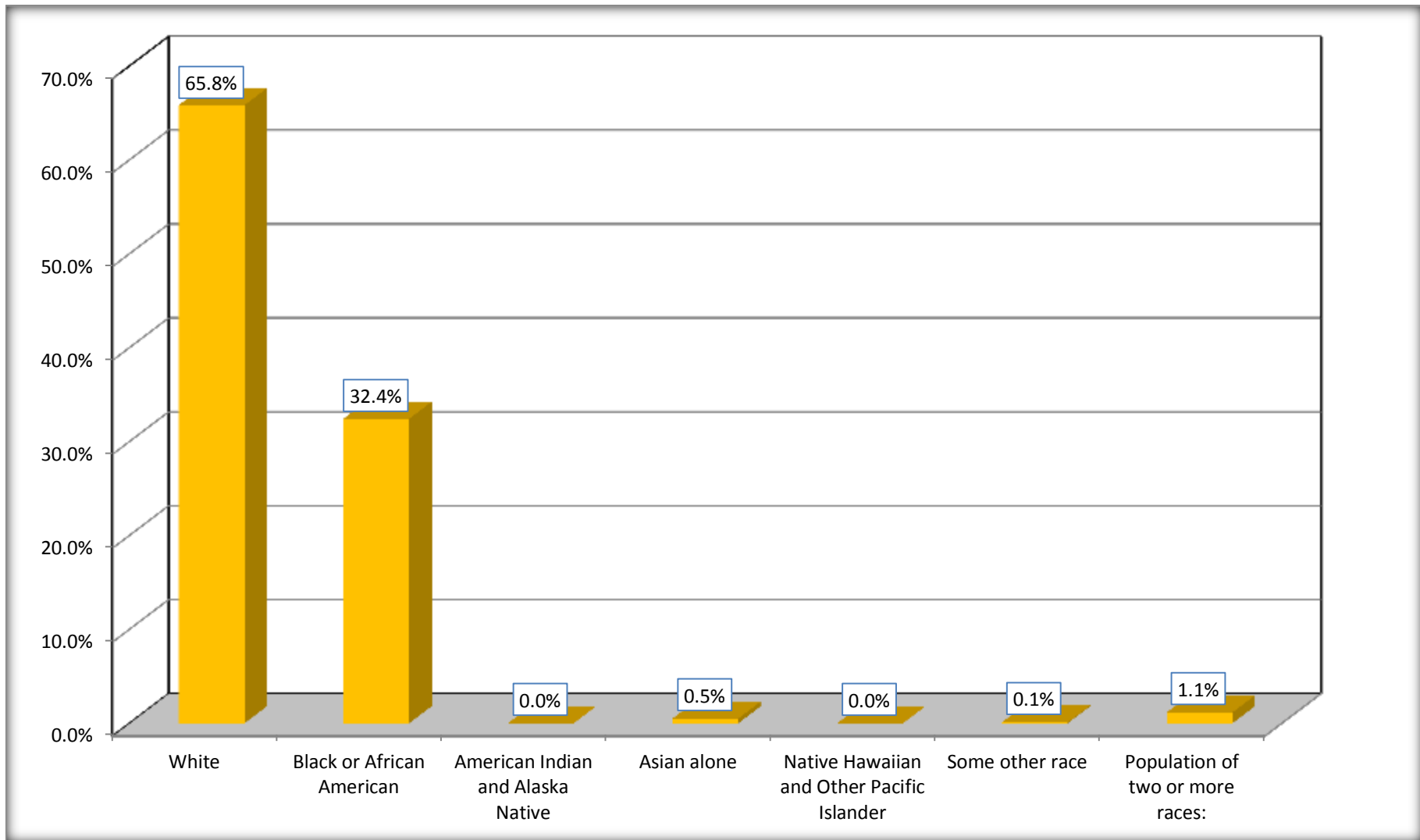
Although the American Community Survey (ACS) produces population, demographic and housing unit estimates, it is the Census Bureau's Population Estimates Program that produces and disseminates the official estimates of the population for the nation, states, counties, cities and towns and estimates of housing units for states and counties.

For information on confidentiality protection, sampling error, nonsampling error, and definitions, see Survey Methodology.

<http://www.census.gov/acs/www/UseData/index.htm>

# Population by Race

## Picayune city, Mississippi



Source: C02003.DETAILED RACE - Universe: TOTAL POPULATION  
Data Set: 2008-2012 American Community Survey 5-Year Estimates

**B03002. HISPANIC OR LATINO ORIGIN BY RACE - Universe: TOTAL POPULATION**

Data Set: 2008-2012 American Community Survey 5-Year Estimates

	Picayune city, Mississippi		
	Population	Margin of Error (+/-)	% of Total
<b>Total:</b>	10,982	24	<b>100.0%</b>
Not Hispanic or Latino:	10,668	214	97.1%
White alone	6,964	473	63.4%
Black or African American alone	3,561	444	32.4%
American Indian and Alaska Native alone	0	19	0.0%
Asian alone	55	89	0.5%
Native Hawaiian and Other Pacific Islander alone	0	19	0.0%
Some other race alone	0	19	0.0%
Two or more races:	88	97	0.8%
Two races including Some other race	0	19	0.0%
Two races excluding Some other race, and three or more races	88	97	0.8%
Hispanic or Latino	314	214	2.9%

Source: U.S. Census Bureau, 2008-2012 American Community Survey

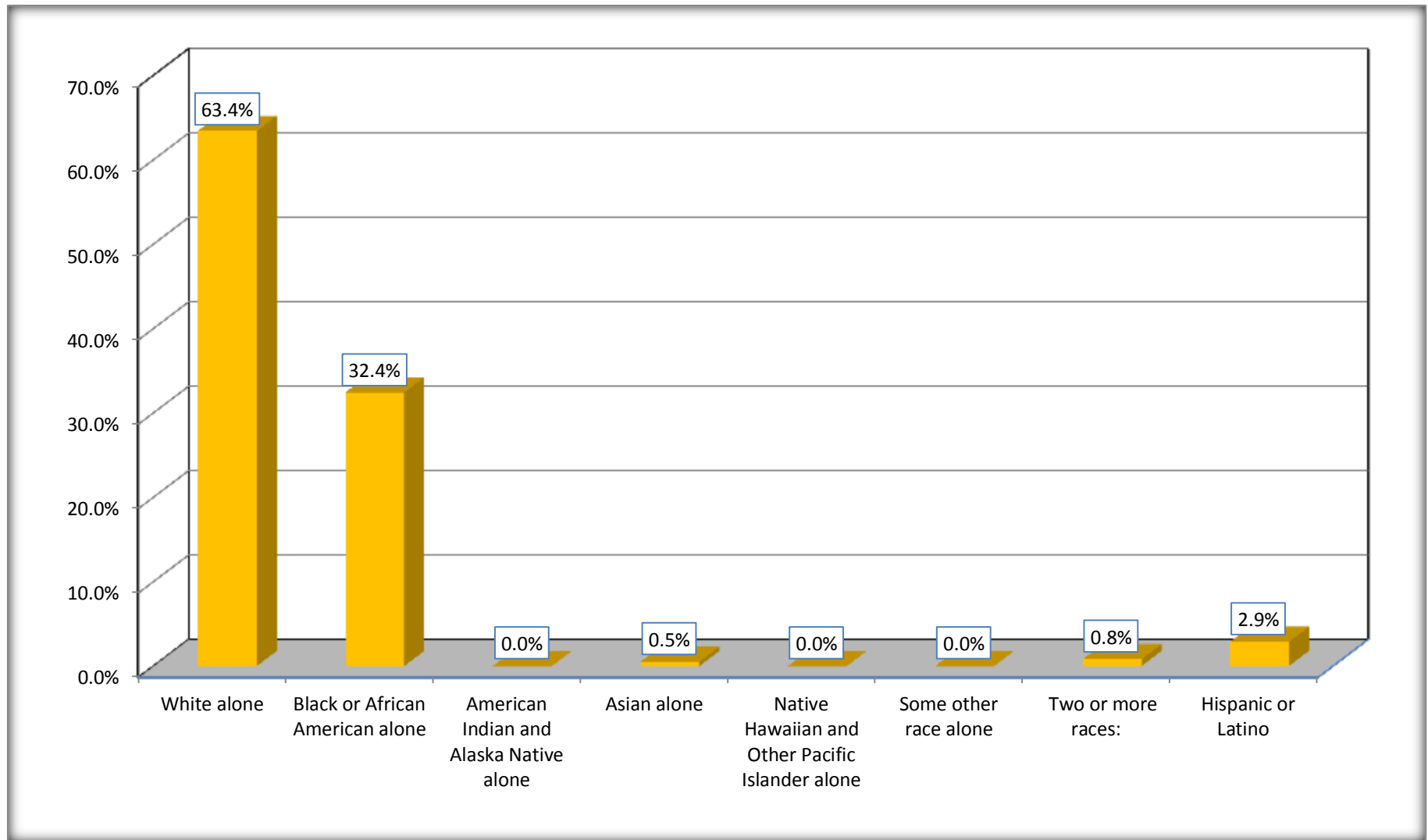
Although the American Community Survey (ACS) produces population, demographic and housing unit estimates, it is the Census Bureau's Population Estimates Program that produces and disseminates the official estimates of the population for the nation, states, counties, cities and towns and estimates of housing units for states and counties.

For information on confidentiality protection, sampling error, nonsampling error, and definitions, see Survey Methodology.

<http://www.census.gov/acs/www/UseData/index.htm>

# Non-Hispanic by Race and Hispanic Population

## Picayune city, Mississippi



Source: B03002. HISPANIC OR LATINO ORIGIN BY RACE - Universe: TOTAL POPULATION  
Data Set: 2008-2012 American Community Survey 5-Year Estimates

**B03002. HISPANIC OR LATINO ORIGIN BY RACE**

Data Set: 2008-2012 American Community Survey 5-Year Estimates

	Picayune city, Mississippi		
	Population	Margin of Error (+/-)	% of Total
Hispanic or Latino:	314	214	<b>100.0%</b>
White alone	266	202	84.7%
Black or African American alone	0	19	0.0%
American Indian and Alaska Native alone	0	19	0.0%
Asian alone	0	19	0.0%
Native Hawaiian and Other Pacific Islander alone	0	19	0.0%
Some other race alone	10	17	3.2%
Two or more races:	38	64	12.1%
Two races including Some other race	0	19	0.0%
Two races excluding Some other race, and three or more races	38	64	12.1%

Source: U.S. Census Bureau, 2008-2012 American Community Survey

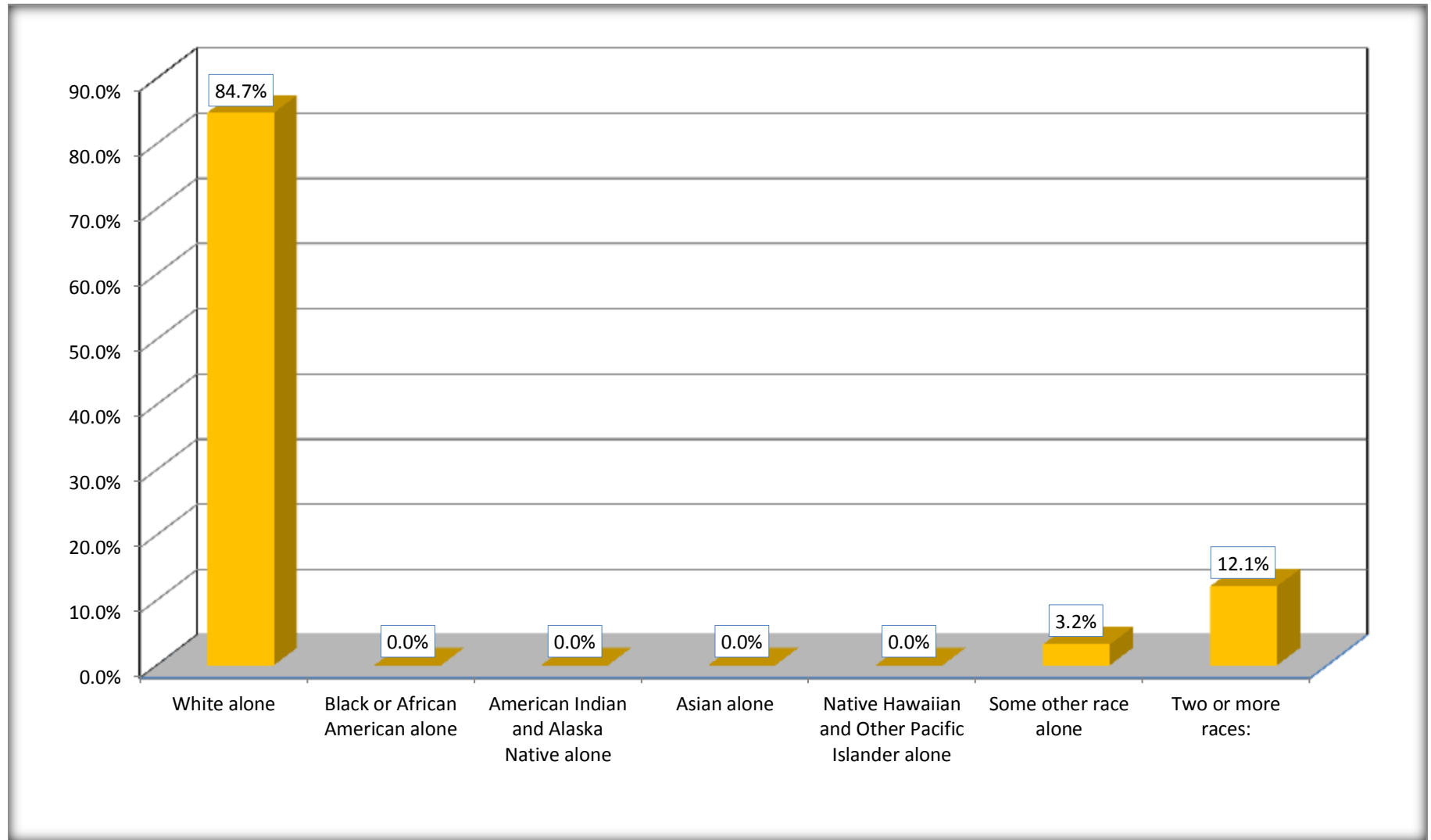
Although the American Community Survey (ACS) produces population, demographic and housing unit estimates, it is the Census Bureau's Population Estimates Program that produces and disseminates the official estimates of the population for the nation, states, counties, cities and towns and estimates of housing units for states and counties.

For information on confidentiality protection, sampling error, nonsampling error, and definitions, see Survey Methodology.

<http://www.census.gov/acs/www/UseData/index.htm>

# Hispanic or Latino Origin by Race

## Picayune city, Mississippi



Source: B03002. HISPANIC OR LATINO ORIGIN BY RACE  
Data Set: 2008-2012 American Community Survey 5-Year Estimates

**B01001. SEX BY AGE**

Data Set: 2008-2012 American Community Survey 5-Year Estimates

	Picayune city, Mississippi					
	African American	Margin of Error (+/-)	% of AA Total	White, Not Hispanic	Margin of Error (+/-)	% of NHW Total
<b>Total:</b>	<b>3,561</b>	<b>444</b>	<b>100.0%</b>	<b>6,964</b>	<b>473</b>	<b>100.0%</b>
Under 18 years	1,096	NC	30.8%	1,684	NC	24.2%
18 to 64 years	2,093	NC	58.8%	3,850	NC	55.3%
65 years and over	372	NC	10.4%	1,430	NC	20.5%
Male:	1,696	263	47.6%	2,948	389	42.3%
Under 18 years	469	NC	13.2%	746	NC	10.7%
18 to 64 years	1,055	NC	29.6%	1,597	NC	22.9%
65 years and over	172	NC	4.8%	605	NC	8.7%
Female:	1,865	238	52.4%	4,016	412	57.7%
Under 18 years	627	NC	17.6%	938	NC	13.5%
18 to 64 years	1,038	NC	29.1%	2,253	NC	32.4%
65 years and over	200	NC	5.6%	825	NC	11.8%

Source: U.S. Census Bureau, 2008-2012 American Community Survey

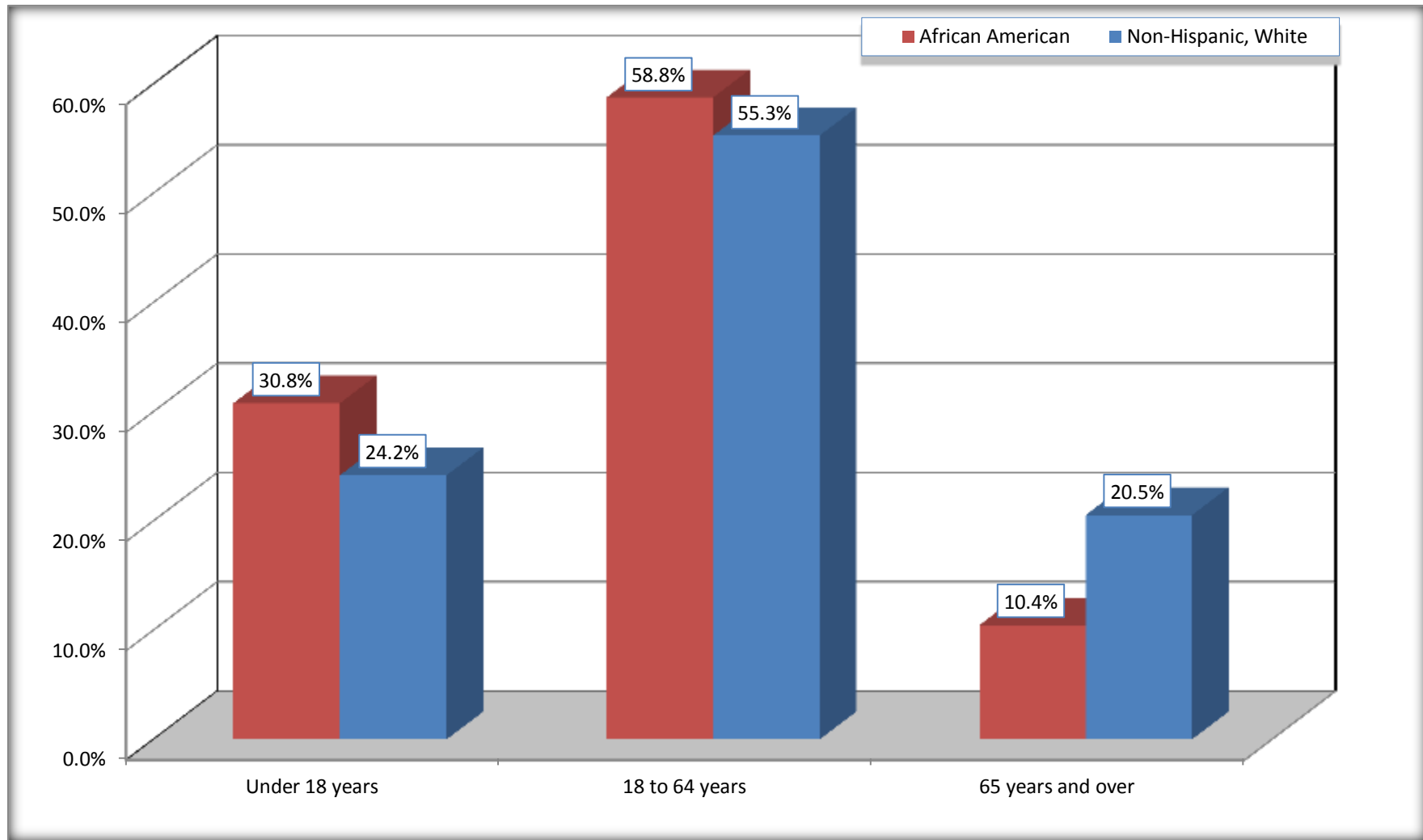
Although the American Community Survey (ACS) produces population, demographic and housing unit estimates, it is the Census Bureau's Population Estimates Program that produces and disseminates the official estimates of the population for the nation, states, counties, cities and towns and estimates of housing units for states and counties.

For information on confidentiality protection, sampling error, nonsampling error, and definitions, see Survey Methodology.  
<http://www.census.gov/acs/www/UseData/index.htm>



# Population by Age

## Picayune city, Mississippi



Source: B01001. SEX BY AGE  
Data Set: 2008-2012 American Community Survey 5-Year Estimates

**B05003. SEX BY AGE BY CITIZENSHIP STATUS**

Data Set: 2008-2012 American Community Survey 5-Year Estimates

	Picayune city, Mississippi					
	African American	Margin of Error (+/-)	% of AA Total by Age	White, Not Hispanic	Margin of Error (+/-)	% of NHW Total by Age
<b>Total:</b>	<b>3,561</b>	<b>444</b>	<b>100.0%</b>	<b>6,964</b>	<b>473</b>	<b>100.0%</b>
<b>Under 18 years:</b>	<b>1,096</b>	<b>NC</b>	<b>100.0%</b>	<b>1,684</b>	<b>NC</b>	<b>100.0%</b>
Native	1,096	NC	100.0%	1,652	NC	98.1%
Foreign born:	0	NC	0.0%	32	NC	1.9%
Naturalized U.S. citizen	0	NC	0.0%	32	NC	1.9%
Not a U.S. citizen	0	NC	0.0%	0	NC	0.0%
<b>18 years and over:</b>	<b>2,465</b>	<b>NC</b>	<b>100.0%</b>	<b>5,280</b>	<b>NC</b>	<b>100.0%</b>
Native	2,465	NC	100.0%	5,244	NC	99.3%
Foreign born:	0	NC	0.0%	36	NC	0.7%
Naturalized U.S. citizen	0	NC	0.0%	36	NC	0.7%
Not a U.S. citizen	0	NC	0.0%	0	NC	0.0%
<b>Male:</b>	1,696	263	47.6%	2,948	313	42.3%
<b>Under 18 years:</b>	469	159	<b>100.0%</b>	746	218	<b>100.0%</b>
Native	469	159	100.0%	746	218	100.0%
Foreign born:	0	19	0.0%	0	19	0.0%
Naturalized U.S. citizen	0	19	0.0%	0	19	0.0%
Not a U.S. citizen	0	19	0.0%	0	19	0.0%
<b>18 years and over:</b>	<b>1,227</b>	<b>178</b>	<b>100.0%</b>	<b>2,202</b>	<b>226</b>	<b>100.0%</b>
Native	1,227	178	100.0%	2,202	226	100.0%
Foreign born:	0	19	0.0%	0	19	0.0%
Naturalized U.S. citizen	0	19	0.0%	0	19	0.0%
Not a U.S. citizen	0	19	0.0%	0	19	0.0%

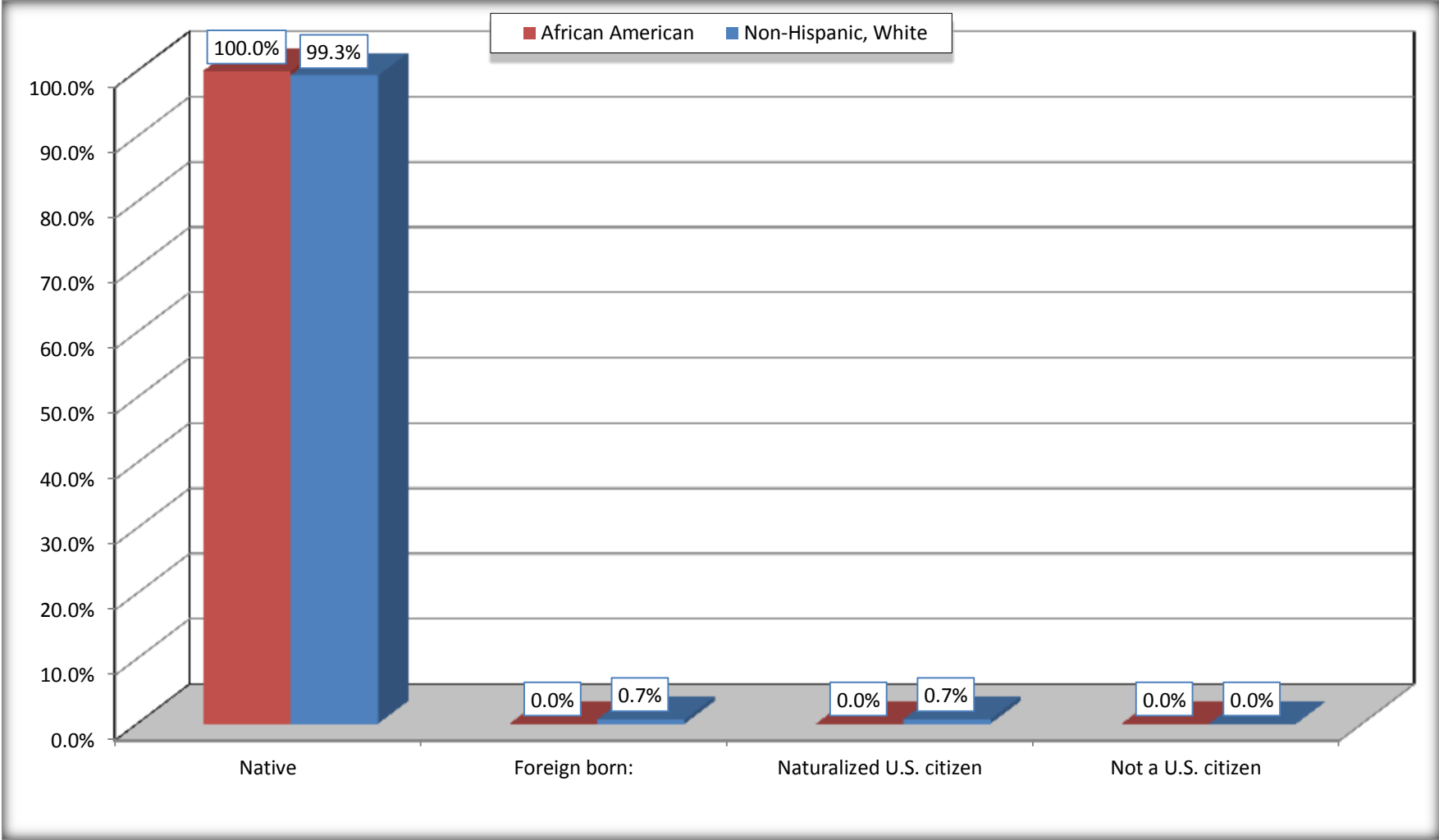
	Picayune city, Mississippi					
	African American	Margin of Error (+/-)	% of AA by Age	White, Not Hispanic	Margin of Error (+/-)	% of NHW by Age
<b>Female:</b>	1,865	238	52.4%	4,016	328	57.7%
<b>Under 18 years:</b>	<b>627</b>	<b>121</b>	<b>100.0%</b>	<b>938</b>	<b>232</b>	<b>100.0%</b>
Native	627	121	100.0%	906	234	96.6%
Foreign born:	0	19	0.0%	32	42	3.4%
Naturalized U.S. citizen	0	19	0.0%	32	42	3.4%
Not a U.S. citizen	0	19	0.0%	0	19	0.0%
<b>18 years and over:</b>	<b>1,238</b>	<b>179</b>	<b>100.0%</b>	<b>3,078</b>	<b>274</b>	<b>100.0%</b>
Native	1,238	179	100.0%	3,042	277	98.8%
Foreign born:	0	19	0.0%	36	32	1.2%
Naturalized U.S. citizen	0	19	0.0%	36	32	1.2%
Not a U.S. citizen	0	19	0.0%	0	19	0.0%

Source: U.S. Census Bureau, 2008-2012 American Community Survey

For information on confidentiality protection, sampling error, nonsampling error, and definitions, see Survey Methodology.  
<http://www.census.gov/acs/www/UseData/index.htm>

# Citizenship Status of Voting Age Population (18 and Over)

## Picayune city, Mississippi



Source: B05003. SEX BY AGE BY CITIZENSHIP STATUS  
Data Set: 2008-2012 American Community Survey 5-Year Estimates

**B07004. GEOGRAPHICAL MOBILITY IN THE PAST YEAR BY RACE FOR CURRENT RESIDENCE IN THE UNITED STATES - Universe:  
POPULATION 1 YEAR AND OVER**

Data Set: 2008-2012 American Community Survey 5-Year Estimates

	Picayune city, Mississippi					
	African American	Margin of Error (+/-)	% of AA Total	White, Not Hispanic	Margin of Error (+/-)	% of NHW Total
<b>Total:</b>	<b>3,539</b>	<b>445</b>	<b>100.0%</b>	<b>6,897</b>	<b>479</b>	<b>100.0%</b>
Same house 1 year ago	2,972	446	84.0%	6,236	533	90.4%
Moved within same county	489	308	13.8%	382	175	5.5%
Moved from different county within same state	78	71	2.2%	106	79	1.5%
Moved from different state	0	19	0.0%	173	140	2.5%
Moved from abroad	0	19	0.0%	0	19	0.0%

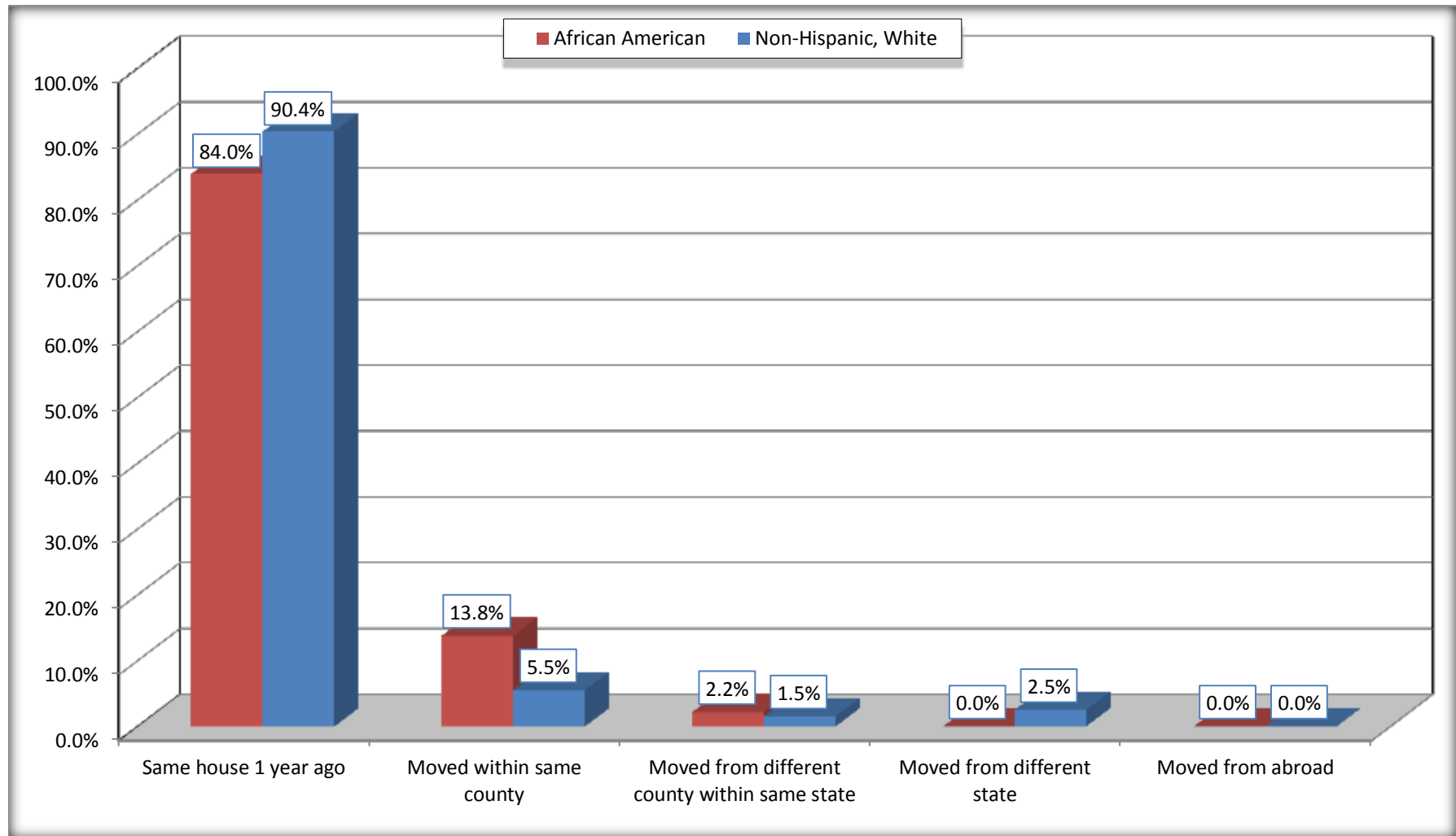
Source: U.S. Census Bureau, 2008-2012 American Community Survey

For information on confidentiality protection, sampling error, nonsampling error, and definitions, see Survey Methodology.

<http://www.census.gov/acs/www/UseData/index.htm>

# Geographical Mobility in the Past Year (Population 1 Year and Over)

## Picayune city, Mississippi



Source: B07004. GEOGRAPHICAL MOBILITY IN THE PAST YEAR BY RACE FOR CURRENT RESIDENCE IN THE UNITED STATES - Universe: POPULATION 1 YEAR AND OVER

Data Set: 2008-2012 American Community Survey 5-Year Estimates

**B08105. MEANS OF TRANSPORTATION TO WORK - Universe: WORKERS 16 YEARS AND OVER**

Data Set: 2008-2012 American Community Survey 5-Year Estimates

	Picayune city, Mississippi					
	African American	Margin of Error (+/-)	% of AA Total	White, Not Hispanic	Margin of Error (+/-)	% of NHW Total
<b>Total:</b>	1129	252	<b>100.0%</b>	2803	349	<b>100.0%</b>
Car, truck, or van - drove alone	960	252	85.0%	2555	350	91.2%
Car, truck, or van - carpooled	39	50	3.5%	112	62	4.0%
Public transportation (excluding taxicab)	0	19	0.0%	0	19	0.0%
Walked	44	56	3.9%	9	13	0.3%
Taxicab, motorcycle, bicycle, or other means	23	37	2.0%	62	53	2.2%
Worked at home	63	70	5.6%	65	53	2.3%

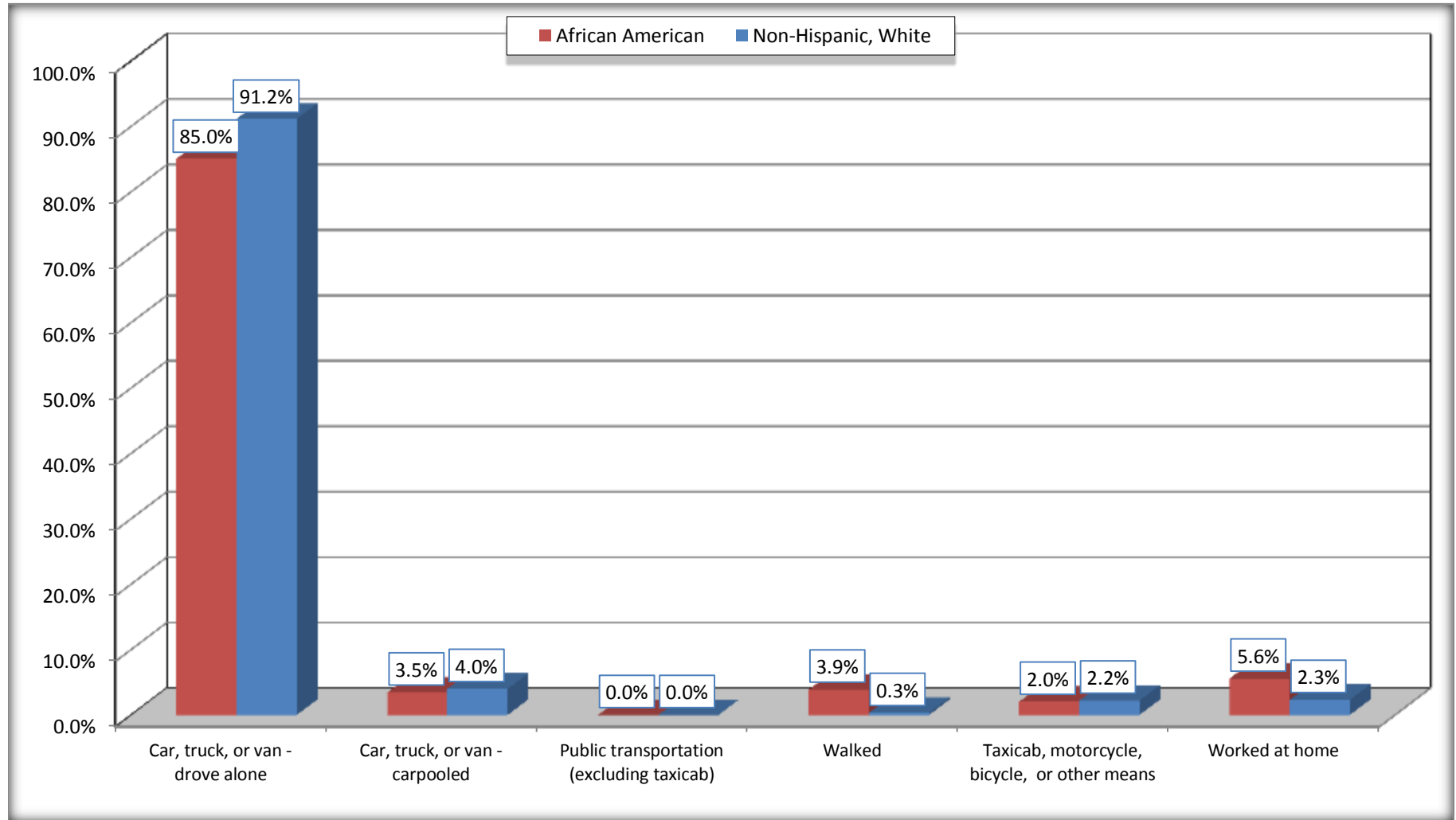
Source: U.S. Census Bureau, 2008-2012 American Community Survey

For information on confidentiality protection, sampling error, nonsampling error, and definitions, see Survey Methodology.

<http://www.census.gov/acs/www/UseData/index.htm>

# Means of Transportation to Work (Workers 16 Years and Over)

## Picayune city, Mississippi



Source: B08105. MEANS OF TRANSPORTATION TO WORK - Universe: WORKERS 16 YEARS AND OVER  
Data Set: 2008-2012 American Community Survey 5-Year Estimates



**B11002. HOUSEHOLD TYPE BY RELATIVES AND NONRELATIVES FOR POPULATION IN HOUSEHOLDS**

Data Set: 2008-2012 American Community Survey 5-Year Estimates

	Picayune city, Mississippi					
	African American	Margin of Error (+/-)	% of AA Total	White, Not Hispanic	Margin of Error (+/-)	% of NHW Total
<b>Total:</b>	3475	447	<b>100.0%</b>	7042	468	<b>100.0%</b>
In family households	2994	458	86.2%	5946	547	84.4%
In nonfamily households	481	174	13.8%	1096	273	15.6%

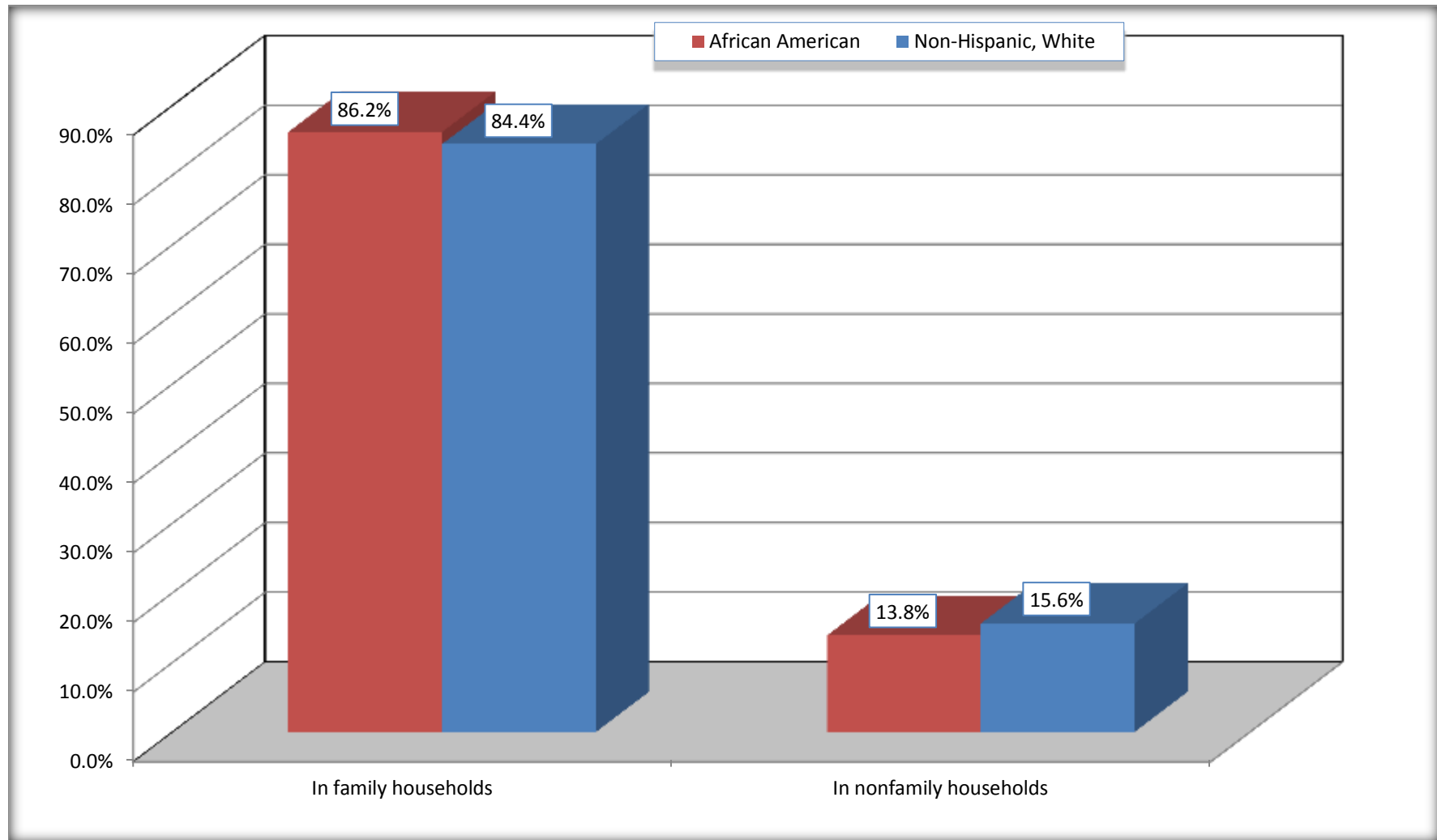
Source: U.S. Census Bureau, 2008-2012 American Community Survey

For information on confidentiality protection, sampling error, nonsampling error, and definitions, see Survey Methodology.

<http://www.census.gov/acs/www/UseData/index.htm>

# Household Type for Population in Households

## Picayune city, Mississippi



Source: B11002. HOUSEHOLD TYPE BY RELATIVES AND NONRELATIVES FOR POPULATION IN HOUSEHOLDS  
Data Set: 2008-2012 American Community Survey 5-Year Estimates

**B12002. MARITAL STATUS FOR THE POPULATION 15 YEARS AND OVER**

Data Set: 2008-2012 American Community Survey 5-Year Estimates

	Picayune city, Mississippi					
	African American	Margin of Error (+/-)	% of AA Total	White, Not Hispanic	Margin of Error (+/-)	% of NHW Total
<b>Total:</b>	<b>2,697</b>	<b>333</b>	<b>100.0%</b>	<b>5,583</b>	<b>422</b>	<b>100.0%</b>
Never married	1,257	NC	46.6%	1,199	NC	21.5%
Now married (except separated)	885	NC	32.8%	2,779	NC	49.8%
Separated	61	NC	2.3%	235	NC	4.2%
Widowed	279	NC	10.3%	579	NC	10.4%
Divorced	215	NC	8.0%	791	NC	14.2%
<b>Male:</b>	<b>1,298</b>	<b>202</b>	<b>48.1%</b>	<b>2,366</b>	<b>256</b>	<b>42.4%</b>
Never married	606	172	22.5%	565	175	10.1%
Now married (except separated)	464	161	17.2%	1,404	219	25.1%
Separated	53	52	2.0%	55	41	1.0%
Widowed	103	80	3.8%	106	87	1.9%
Divorced	72	49	2.7%	236	104	4.2%
<b>Female:</b>	<b>1,399</b>	<b>182</b>	<b>51.9%</b>	<b>3,217</b>	<b>284</b>	<b>57.6%</b>
Never married	651	149	24.1%	634	184	11.4%
Now married (except separated)	421	118	15.6%	1,375	232	24.6%
Separated	8	17	0.3%	180	100	3.2%
Widowed	176	65	6.5%	473	145	8.5%
Divorced	143	74	5.3%	555	196	9.9%

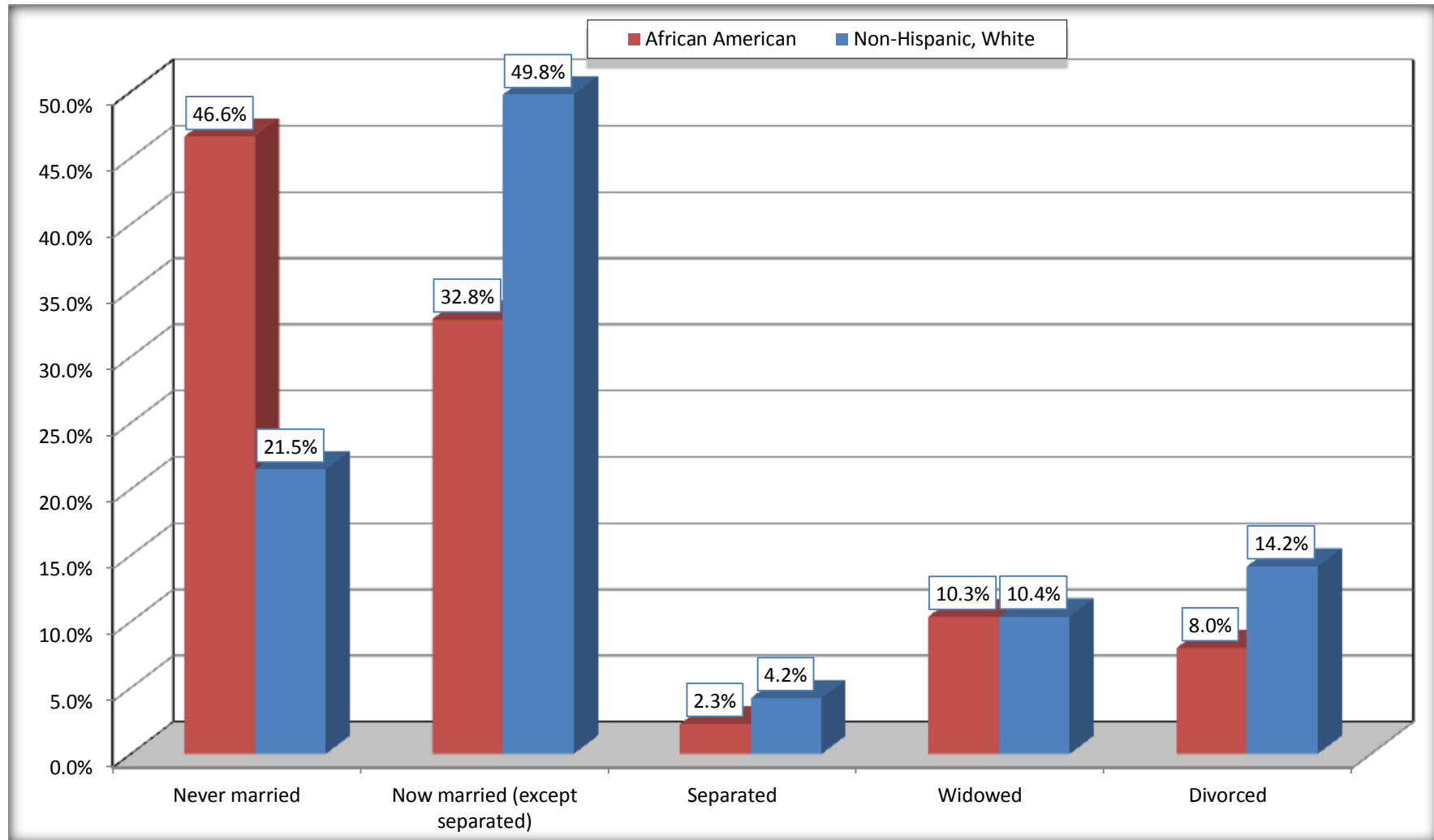
Source: U.S. Census Bureau, 2008-2012 American Community Survey

For information on confidentiality protection, sampling error, nonsampling error, and definitions, see Survey Methodology.

<http://www.census.gov/acs/www/UseData/index.htm>

# Marital Status for the Population 15 Years and Over

## Picayune city, Mississippi



Source: B12002. MARITAL STATUS FOR THE POPULATION 15 YEARS AND OVER  
Data Set: 2008-2012 American Community Survey 5-Year Estimates

**C15002. SEX BY EDUCATIONAL ATTAINMENT FOR THE POPULATION 25 YEARS AND OVER**

Data Set: 2008-2012 American Community Survey 5-Year Estimates

	Picayune city, Mississippi					
	African American	Margin of Error (+/-)	% of AA Total	White, Not Hispanic	Margin of Error (+/-)	% of NHW Total
<b>Total:</b>	<b>1,961</b>	<b>247</b>	<b>100.0%</b>	<b>4,654</b>	<b>390</b>	<b>100.0%</b>
Less than high school diploma	399	NC	20.3%	646	NC	13.9%
High school graduate, GED, or alternative	651	NC	33.2%	1,443	NC	31.0%
Some college or associate's degree	675	NC	34.4%	1,465	NC	31.5%
Bachelor's degree or higher	236	NC	12.0%	1,100	NC	23.6%
Male:	921	139	47.0%	1,906	215	41.0%
Less than high school diploma	168	105	8.6%	282	116	6.1%
High school graduate, GED, or alternative	295	112	15.0%	526	146	11.3%
Some college or associate's degree	310	115	15.8%	546	156	11.7%
Bachelor's degree or higher	148	120	7.5%	552	188	11.9%
Female:	1,040	164	53.0%	2,748	270	59.0%
Less than high school diploma	231	106	11.8%	364	220	7.8%
High school graduate, GED, or alternative	356	106	18.2%	917	169	19.7%
Some college or associate's degree	365	125	18.6%	919	219	19.7%
Bachelor's degree or higher	88	67	4.5%	548	175	11.8%

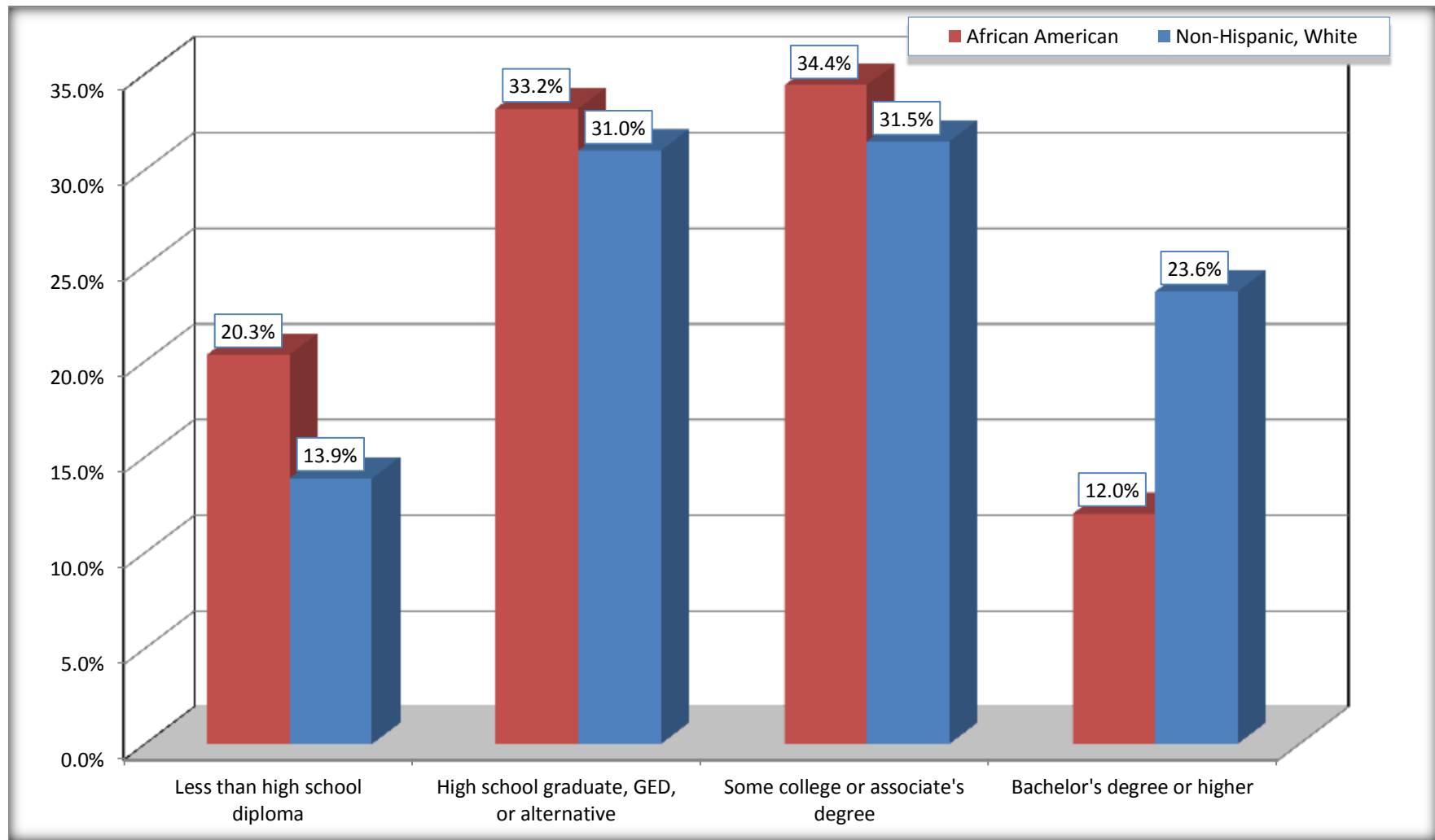
Source: U.S. Census Bureau, 2008-2012 American Community Survey

For information on confidentiality protection, sampling error, nonsampling error, and definitions, see Survey Methodology.

<http://www.census.gov/acs/www/UseData/index.htm>

# Educational Attainment for the Population 25 Years and Older

## Picayune city, Mississippi



Source: C15002. SEX BY EDUCATIONAL ATTAINMENT FOR THE POPULATION 25 YEARS AND OVER  
Data Set: 2008-2012 American Community Survey 5-Year Estimates

**B17010. POVERTY STATUS IN THE PAST 12 MONTHS OF FAMILIES BY FAMILY TYPE BY PRESENCE OF RELATED CHILDREN UNDER 18 YEARS**

Data Set: 2008-2012 American Community Survey 5-Year Estimates

	Picayune city, Mississippi					
	African American	Margin of Error (+/-)	% of AA Total	White, Not Hispanic	Margin of Error (+/-)	% of NHW Total
<b>Total:</b>	<b>847</b>	<b>164</b>	<b>100.0%</b>	<b>1,915</b>	<b>228</b>	<b>100.0%</b>
Income in the past 12 months below poverty level:	250	123	29.5%	295	126	15.4%
Married-couple family:	12	21	1.4%	111	73	5.8%
With related children under 18 years	12	21	1.4%	35	41	1.8%
Other family:	238	120	28.1%	184	96	9.6%
Male householder, no wife present	0	19	0.0%	22	27	1.1%
With related children under 18 years	0	19	0.0%	0	19	0.0%
Female householder, no husband present	238	120	28.1%	162	92	8.5%
With related children under 18 years	202	115	23.8%	140	85	7.3%
Income in the past 12 months at or above poverty level:	597	170	70.5%	1,620	214	84.6%
Married-couple family:	401	147	47.3%	1,242	219	64.9%
With related children under 18 years	258	120	30.5%	454	141	23.7%
Other family:	196	109	23.1%	378	120	19.7%
Male householder, no wife present	35	43	4.1%	33	30	1.7%
With related children under 18 years	30	41	3.5%	22	24	1.1%
Female householder, no husband present	161	89	19.0%	345	120	18.0%
With related children under 18 years	74	67	8.7%	218	108	11.4%

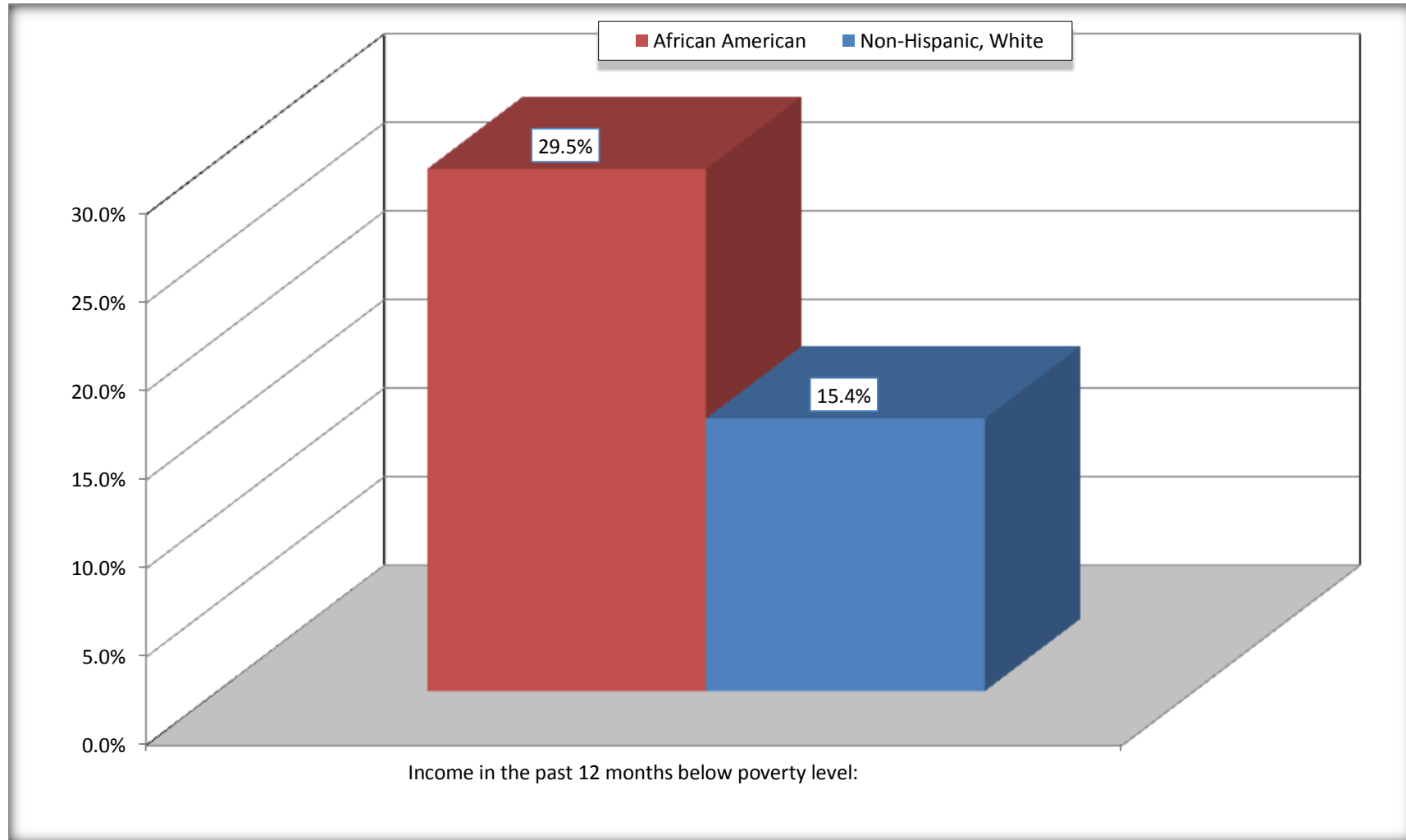
Source: U.S. Census Bureau, 2008-2012 American Community Survey

For information on confidentiality protection, sampling error, nonsampling error, and definitions, see Survey Methodology.

<http://www.census.gov/acs/www/UseData/index.htm>

# Family Households Below Poverty in the Past 12 Months

## Picayune city, Mississippi



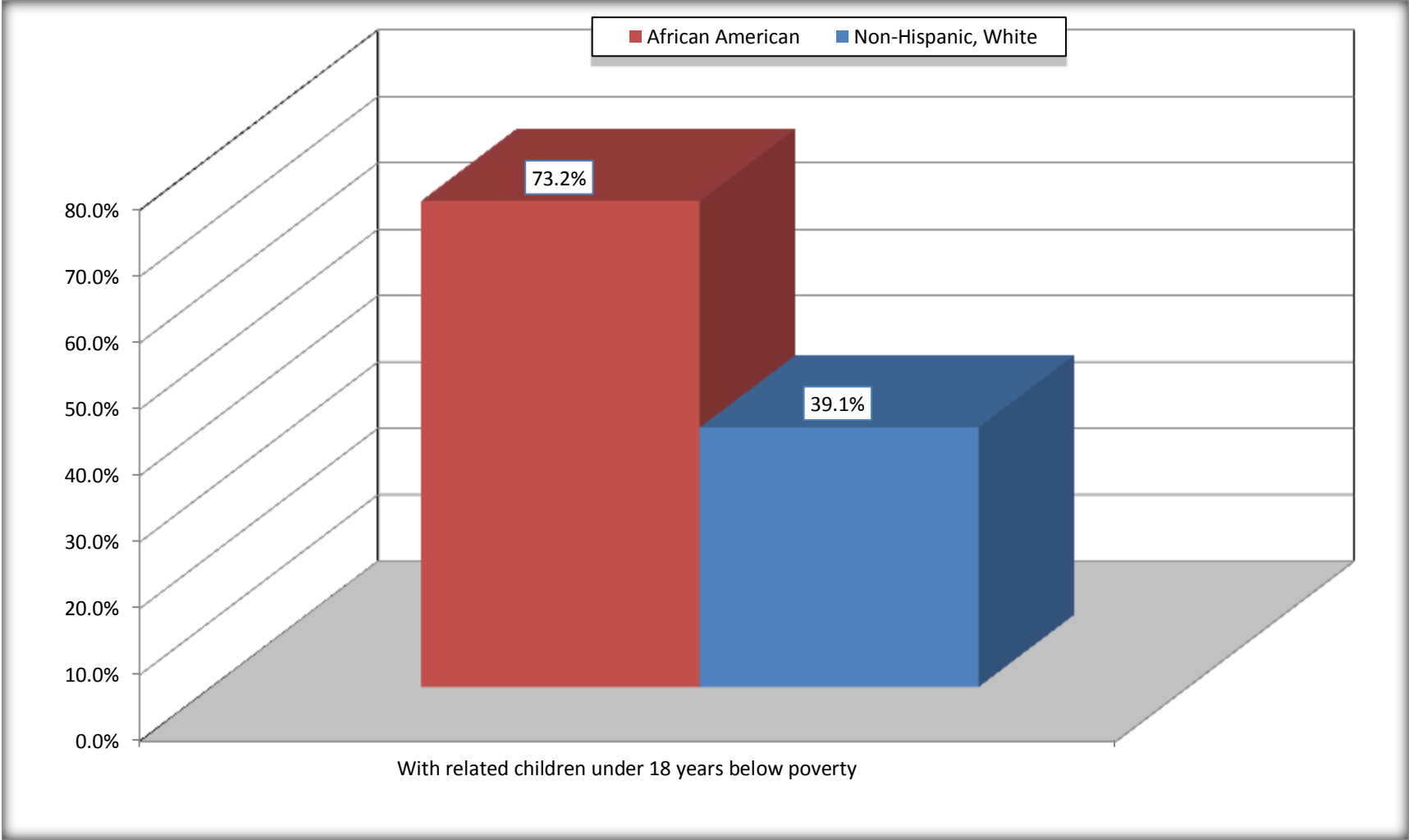
Source: B17010. POVERTY STATUS IN THE PAST 12 MONTHS OF FAMILIES BY FAMILY TYPE BY PRESENCE OF RELATED CHILDREN UNDER 18 YEARS

Data Set: 2008-2012 American Community Survey 5-Year Estimates



# Female-headed Households with Related Children Below Poverty in the Past 12 Months

## Picayune city, Mississippi



Source: B17010. POVERTY STATUS IN THE PAST 12 MONTHS OF FAMILIES BY FAMILY TYPE BY PRESENCE OF RELATED CHILDREN UNDER 18 YEARS

Data Set: 2008-2012 American Community Survey 5-Year Estimates

**B17020 POVERTY STATUS IN THE PAST 12 MONTHS BY AGE - Universe: POPULATION FOR WHOM POVERTY STATUS IS DETERMINED**

Data Set: 2008-2012 American Community Survey 5-Year Estimates

	Picayune city, Mississippi					
	African American	Margin of Error (+/-)	% of AA By Age	White, Not Hispanic	Margin of Error (+/-)	% of NHW By Age
<b>Total:</b>	<b>3,536</b>	<b>446</b>	<b>100.0%</b>	<b>6,914</b>	<b>473</b>	<b>100.0%</b>
Income in the past 12 months below poverty level:	1,048	404	29.6%	1,151	436	16.6%
<b>Under 18 years</b>	455	NC	41.5%	321	NC	19.1%
<b>18 to 64 years</b>	486	204	23.3%	633	242	16.5%
<b>65 years and over</b>	107	NC	30.5%	197	NC	14.2%
Income in the past 12 months at or above poverty level:	2,488	532	70.4%	5,763	566	83.4%
<b>Under 18 years</b>	641	NC	58.5%	1,363	NC	80.9%
<b>18 to 64 years</b>	1,603	341	76.7%	3,209	325	83.5%
<b>65 years and over</b>	244	NC	69.5%	1,191	NC	85.8%

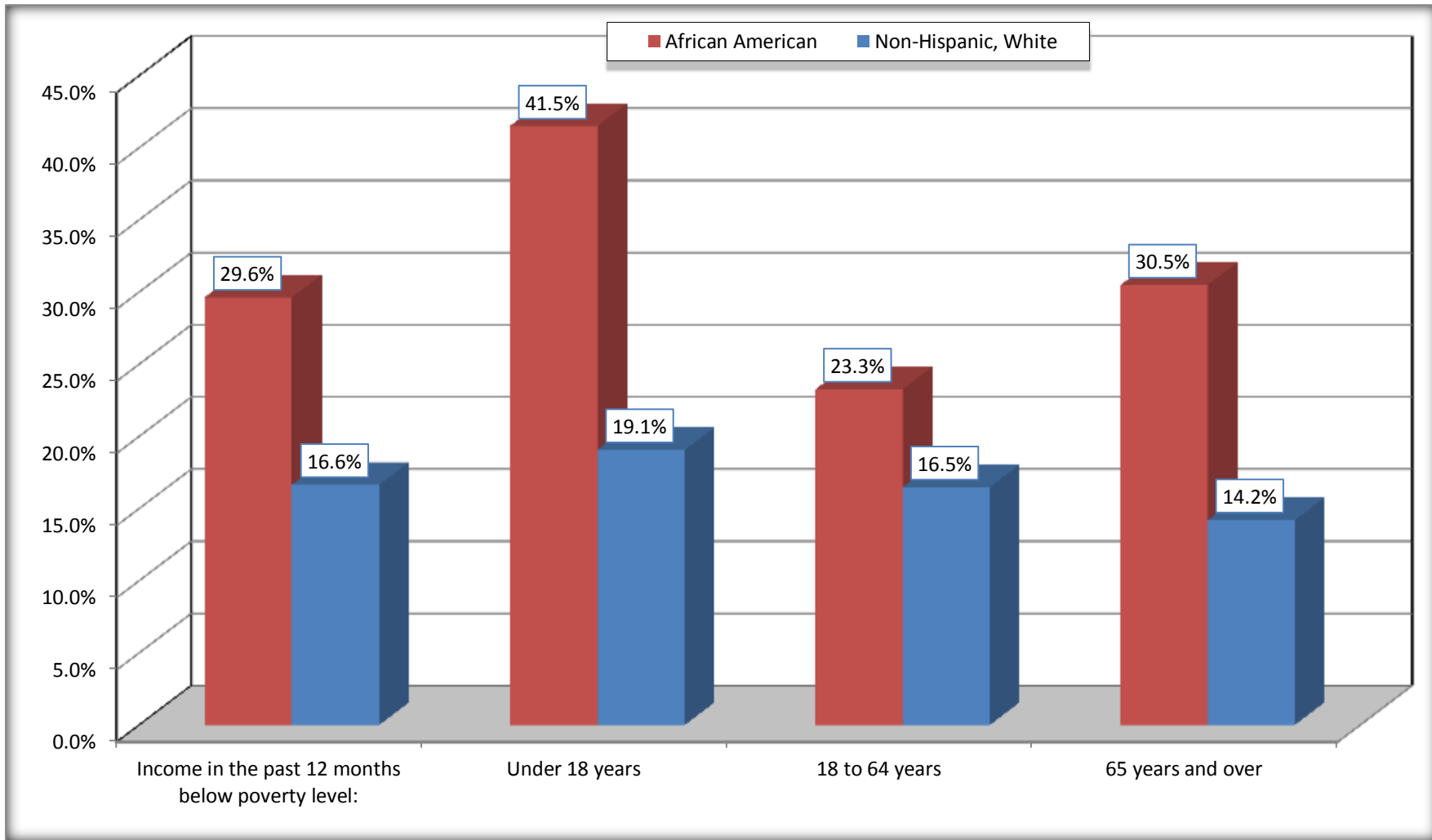
Source: U.S. Census Bureau, 2008-2012 American Community Survey

For information on confidentiality protection, sampling error, nonsampling error, and definitions, see Survey Methodology.

<http://www.census.gov/acs/www/UseData/index.htm>

# Population Below Poverty in the Past 12 Months

## Picayune city, Mississippi



Source: B17020 POVERTY STATUS IN THE PAST 12 MONTHS BY AGE - Universe: POPULATION FOR WHOM POVERTY STATUS IS DETERMINED  
Data Set: 2008-2012 American Community Survey 5-Year Estimates

**B19001. HOUSEHOLD INCOME IN THE PAST 12 MONTHS (IN 2010 INFLATION-ADJUSTED DOLLARS)**

Data Set: 2008-2012 American Community Survey 5-Year Estimates

	Picayune city, Mississippi					
	African American	Margin of Error (+/-)	% of AA Total	White, Not Hispanic	Margin of Error (+/-)	% of NHW Total
<b>Total:</b>	<b>1,292</b>	<b>180</b>	<b>100.0%</b>	<b>2,871</b>	<b>257</b>	<b>100.0%</b>
Less than \$ 10,000	175	98	13.5%	235	112	8.2%
\$ 10,000 to \$ 14,999	170	98	13.2%	282	101	9.8%
<b>\$ 15,000 to \$ 24,999</b>	264	NC	20.4%	526	NC	18.3%
<b>\$ 25,000 to \$ 34,999</b>	183	NC	14.2%	268	NC	9.3%
<b>\$ 35,000 to \$ 49,999</b>	112	NC	8.7%	336	NC	11.7%
<b>\$ 50,000 to \$ 74,999</b>	193	NC	14.9%	619	NC	21.6%
\$ 75,000 to \$ 99,999	170	99	13.2%	314	125	10.9%
<b>\$ 100,000 to \$ 149,999</b>	25	NC	1.9%	204	NC	7.1%
\$ 150,000 to \$ 199,999	0	19	0.0%	87	54	3.0%
\$ 200,000 or more	0	19	0.0%	0	19	0.0%

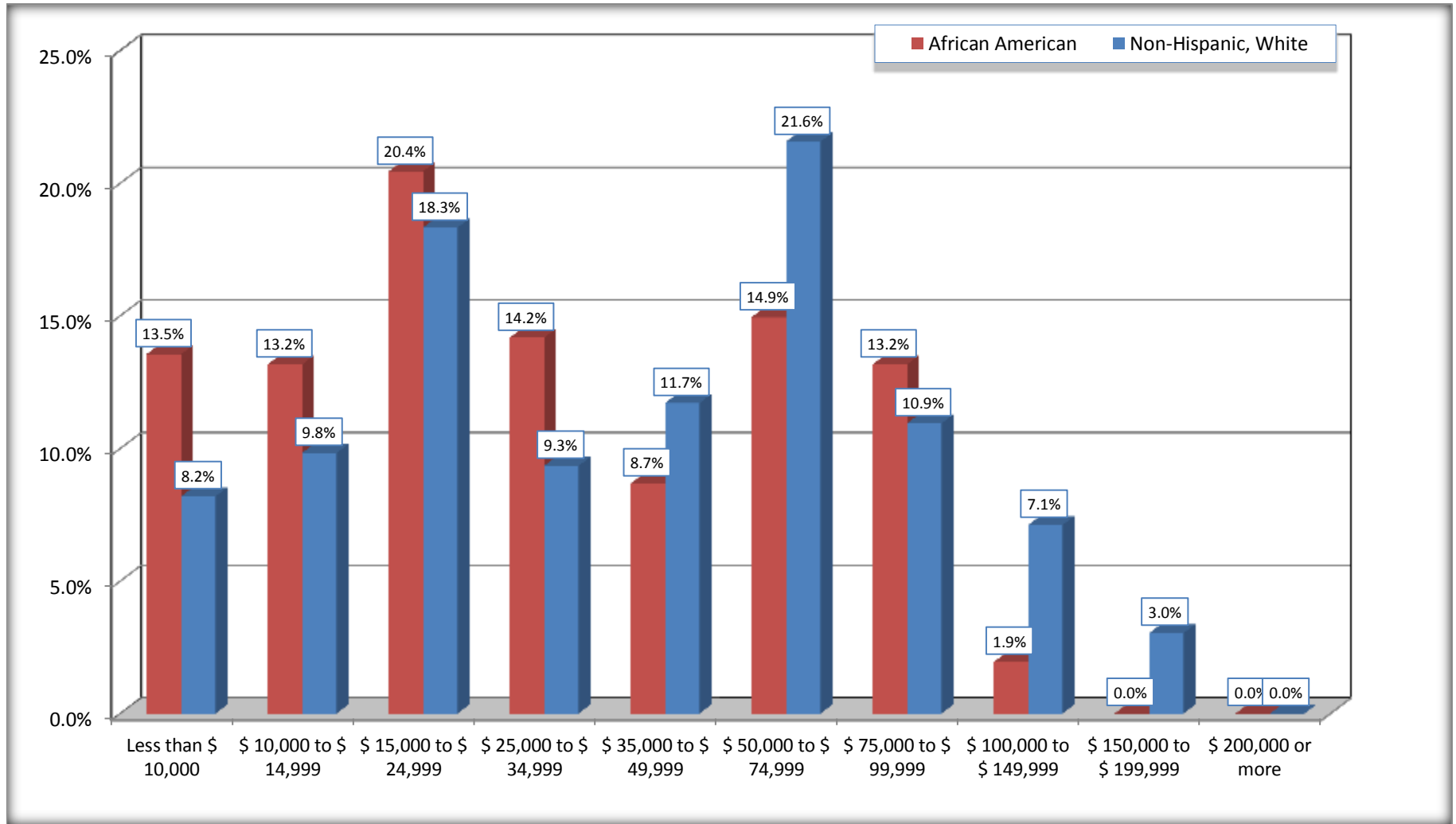
Source: U.S. Census Bureau, 2008-2012 American Community Survey

For information on confidentiality protection, sampling error, nonsampling error, and definitions, see Survey Methodology.

<http://www.census.gov/acs/www/UseData/index.htm>

# Household Income in the Past 12 Months

## Picayune city, Mississippi



Source: B19001. HOUSEHOLD INCOME IN THE PAST 12 MONTHS (IN 2010 INFLATION-ADJUSTED DOLLARS)  
Data Set: 2008-2012 American Community Survey 5-Year Estimates

**B19013. MEDIAN HOUSEHOLD INCOME IN THE PAST 12 MONTHS (IN 2010 INFLATION-ADJUSTED DOLLARS)**

Data Set: 2008-2012 American Community Survey 5-Year Estimates

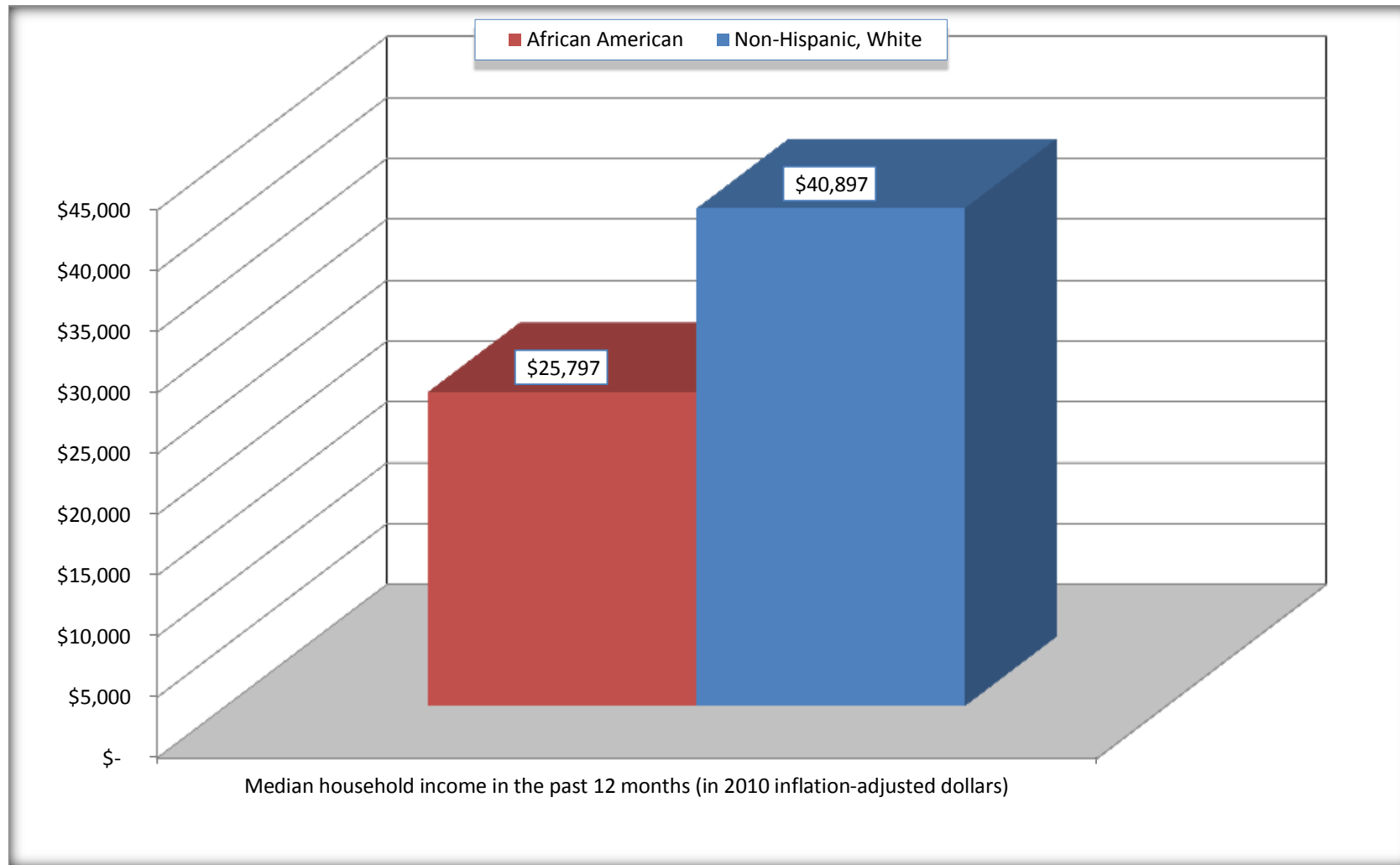
	<b>Picayune city, Mississippi</b>			
	African American	Margin of Error (+/-)	White, Not Hispanic	Margin of Error (+/-)
Median household income in the past 12 months (in 2010 inflation-adjusted dollars)	\$ 25,797	\$ 7,178	\$ 40,897	\$ 9,531

Source: U.S. Census Bureau, 2008-2012 American Community Survey

For information on confidentiality protection, sampling error, nonsampling error, and definitions, see Survey Methodology.  
<http://www.census.gov/acs/www/UseData/index.htm>

## Median Household Income in the Past 12 Months

### Picayune city, Mississippi



Source: B19013. MEDIAN HOUSEHOLD INCOME IN THE PAST 12 MONTHS (IN 2010 INFLATION-ADJUSTED DOLLARS)  
Data Set: 2008-2012 American Community Survey 5-Year Estimates

**B19101. FAMILY INCOME IN THE PAST 12 MONTHS (IN 2010 INFLATION-ADJUSTED DOLLARS)**

Data Set: 2008-2012 American Community Survey 5-Year Estimates

	Picayune city, Mississippi					
	African American	Margin of Error (+/-)	% of AA Total	White, Not Hispanic	Margin of Error (+/-)	% of NHW Total
<b>Total:</b>	<b>847</b>	<b>164</b>	<b>100.0%</b>	<b>1,915</b>	<b>228</b>	<b>100.0%</b>
Less than \$ 10,000	135	94	15.9%	98	77	5.1%
\$ 10,000 to \$ 14,999	52	54	6.1%	114	77	6.0%
<b>\$ 15,000 to \$ 24,999</b>	<b>129</b>	<b>NC</b>	<b>15.2%</b>	<b>250</b>	<b>NC</b>	<b>13.1%</b>
<b>\$ 25,000 to \$ 34,999</b>	<b>93</b>	<b>NC</b>	<b>11.0%</b>	<b>177</b>	<b>NC</b>	<b>9.2%</b>
<b>\$ 35,000 to \$ 49,999</b>	<b>93</b>	<b>NC</b>	<b>11.0%</b>	<b>282</b>	<b>NC</b>	<b>14.7%</b>
<b>\$ 50,000 to \$ 74,999</b>	<b>150</b>	<b>NC</b>	<b>17.7%</b>	<b>495</b>	<b>NC</b>	<b>25.8%</b>
<b>\$ 100,000 to \$ 149,999</b>	<b>25</b>	<b>NC</b>	<b>3.0%</b>	<b>204</b>	<b>NC</b>	<b>10.7%</b>
\$ 150,000 to \$ 199,999	0	19	0.0%	87	54	4.5%
\$ 200,000 or more	0	19	0.0%	0	19	0.0%

Source: U.S. Census Bureau, 2008-2012 American Community Survey

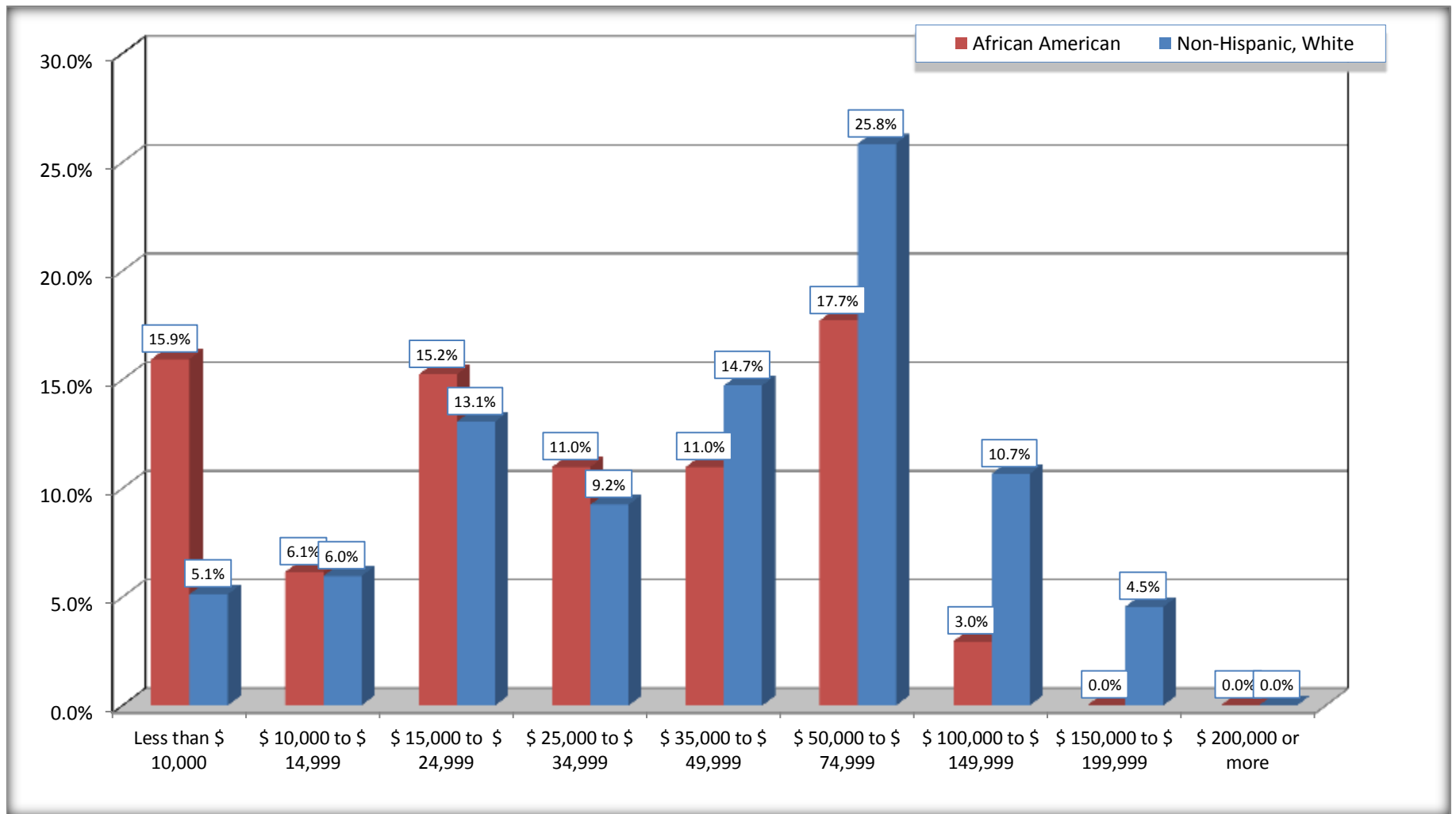
For information on confidentiality protection, sampling error, nonsampling error, and definitions, see Survey Methodology.

<http://www.census.gov/acs/www/UseData/index.htm>



# Family Income in the Past 12 Months

## Picayune city, Mississippi



Source: B19101. FAMILY INCOME IN THE PAST 12 MONTHS (IN 2010 INFLATION-ADJUSTED DOLLARS)  
Data Set: 2008-2012 American Community Survey 5-Year Estimates

**B19113. MEDIAN FAMILY INCOME IN THE PAST 12 MONTHS (IN 2010 INFLATION-ADJUSTED DOLLARS)**

Data Set: 2008-2012 American Community Survey 5-Year Estimates

	<b>Picayune city, Mississippi</b>			
	African American	Margin of Error (+/-)	White, Not Hispanic	Margin of Error (+/-)
Median family income in the past 12 months (in 2010 inflation-adjusted dollars)	\$ 36,169	\$ 14,139	\$ 50,787	\$ 5,560

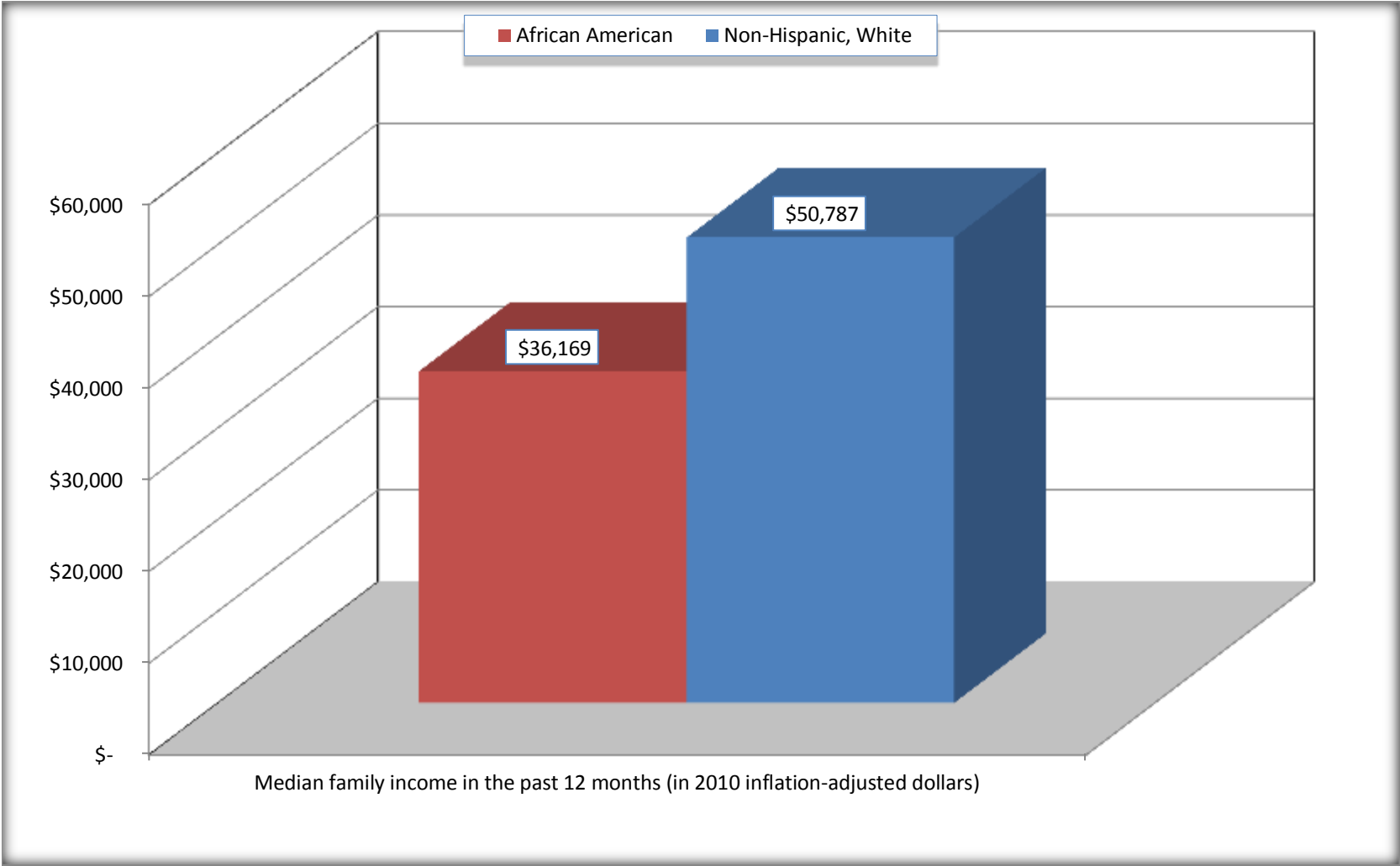
Source: U.S. Census Bureau, 2008-2012 American Community Survey

For information on confidentiality protection, sampling error, nonsampling error, and definitions, see Survey Methodology.

<http://www.census.gov/acs/www/UseData/index.htm>

# Median Family Income in the Past 12 Months

## Picayune city, Mississippi



Source: B19113. MEDIAN FAMILY INCOME IN THE PAST 12 MONTHS (IN 2010 INFLATION-ADJUSTED DOLLARS)  
Data Set: 2008-2012 American Community Survey 5-Year Estimates

**B19202. MEDIAN NONFAMILY HOUSEHOLD INCOME IN THE PAST 12 MONTHS (IN 2010 INFLATION-ADJUSTED DOLLARS)**

Data Set: 2008-2012 American Community Survey 5-Year Estimates

	<b>Picayune city, Mississippi</b>			
	African American	Margin of Error (+/-)	White, Not Hispanic	Margin of Error (+/-)
Median nonfamily household income in the past 12 months (in 2010 inflation-adjusted dollars)	\$ 18,110	\$ 7,159	\$ 20,994	\$ 3,661

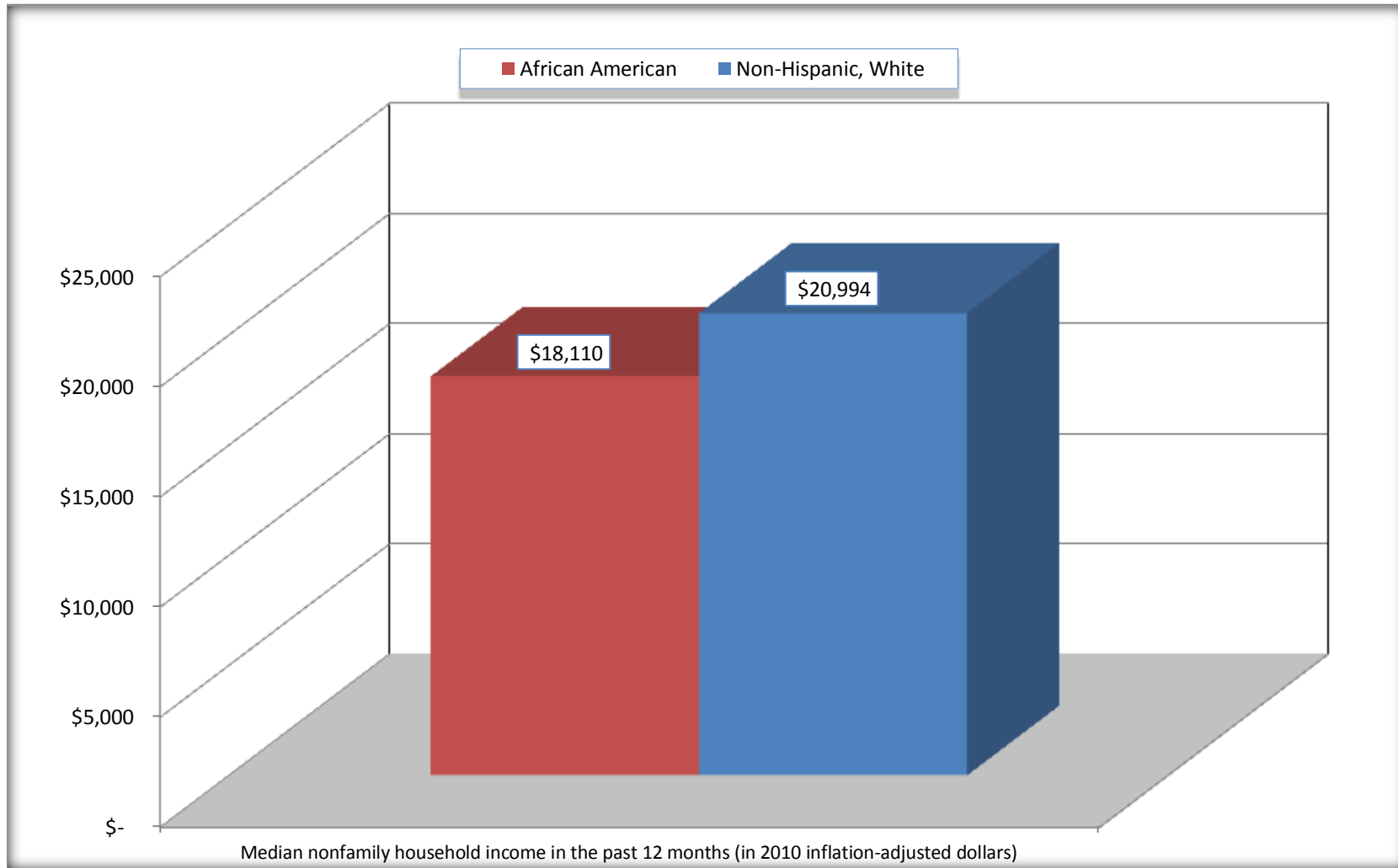
Source: U.S. Census Bureau, 2008-2012 American Community Survey

For information on confidentiality protection, sampling error, nonsampling error, and definitions, see Survey Methodology.

<http://www.census.gov/acs/www/UseData/index.htm>

# Median Non-Family Income in the Past 12 Months

## Picayune city, Mississippi



Source: B19202. MEDIAN NONFAMILY HOUSEHOLD INCOME IN THE PAST 12 MONTHS (IN 2010 INFLATION-ADJUSTED DOLLARS)  
Data Set: 2008-2012 American Community Survey 5-Year Estimates

**B19301. PER CAPITA INCOME IN THE PAST 12 MONTHS (IN 2010 INFLATION-ADJUSTED DOLLARS)**

Data Set: 2008-2012 American Community Survey 5-Year Estimates

	<b>Picayune city, Mississippi</b>			
	African American	Margin of Error (+/-)	White, Not Hispanic	Margin of Error (+/-)
Per capita income in the past 12 months (in 2010 inflation-adjusted dollars)	\$ 13,094	\$ 2,178	\$ 21,373	\$ 2,466

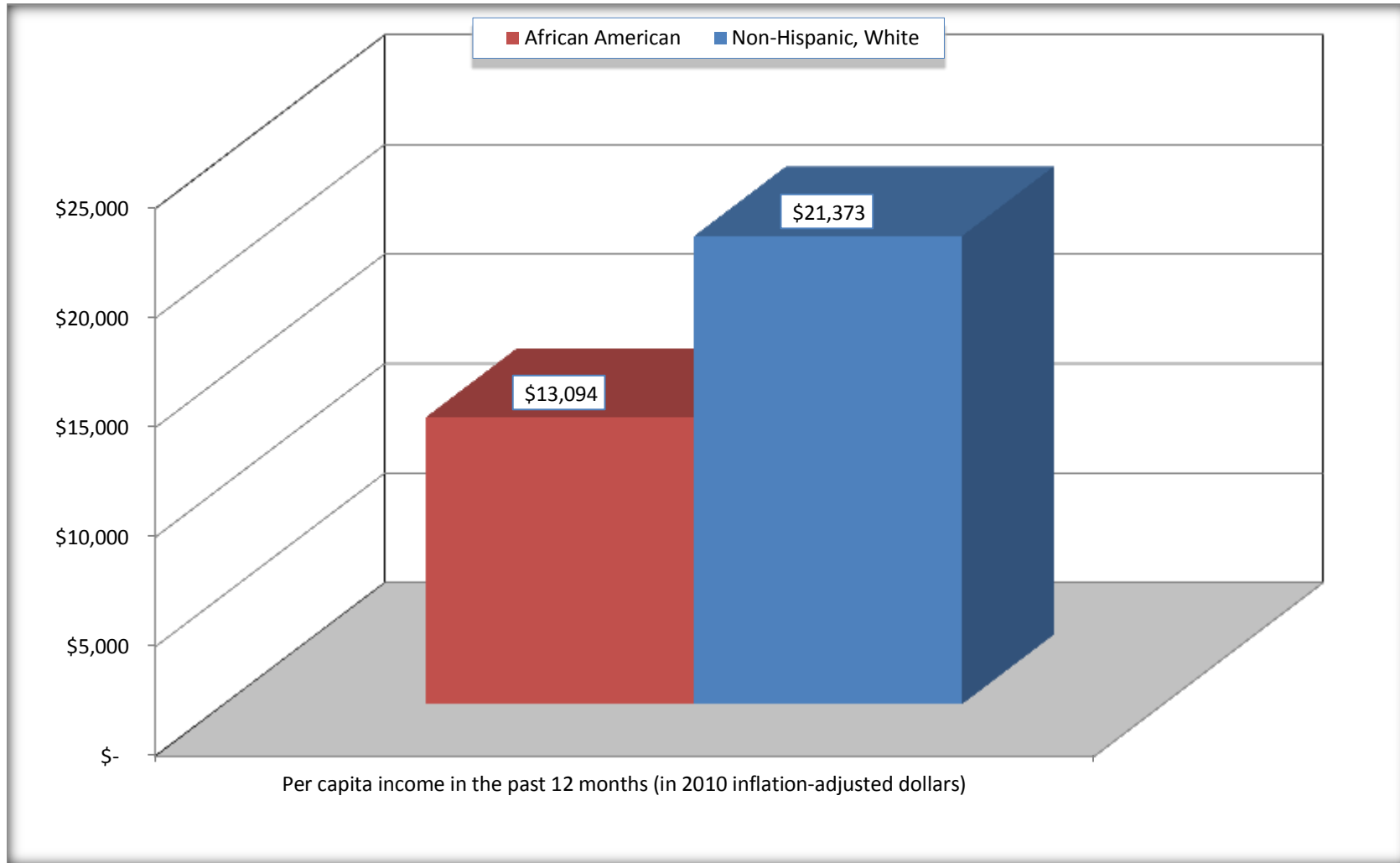
Source: U.S. Census Bureau, 2008-2012 American Community Survey

For information on confidentiality protection, sampling error, nonsampling error, and definitions, see Survey Methodology.

<http://www.census.gov/acs/www/UseData/index.htm>

## Per capita Income in the Past 12 Months

### Picayune city, Mississippi



Source: B19301. PER CAPITA INCOME IN THE PAST 12 MONTHS (IN 2010 INFLATION-ADJUSTED DOLLARS)  
Data Set: 2008-2012 American Community Survey 5-Year Estimates

**B20017. MEDIAN EARNINGS IN THE PAST 12 MONTHS (IN 2010 INFLATION-ADJUSTED DOLLARS) BY SEX BY WORK EXPERIENCE IN THE PAST 12 MONTHS FOR THE POPULATION 16 YEARS AND OVER WITH EARNINGS IN THE PAST 12 MONTHS**

Data Set: 2008-2012 American Community Survey 5-Year Estimates

	Picayune city, Mississippi			
	African American	Margin of Error (+/-)	White, Not Hispanic	Margin of Error (+/-)
Median earnings in the past 12 months (in 2010 inflation-adjusted dollars) --				
Total:	\$ 23,084	\$ 7,887	\$ 25,752	\$ 3,134
Male --				
Total	\$ 25,550	\$ 9,849	\$ 33,454	\$ 2,674
Worked full-time, year-round in the past 12 months	\$ 32,727	\$ 4,249	\$ 45,597	\$ 7,668
Other	\$ 12,022	\$ 11,755	\$ 12,714	\$ 8,986
Female --				
Total	\$ 18,545	\$ 6,814	\$ 19,023	\$ 3,832
Worked full-time, year-round in the past 12 months	\$ 26,773	\$ 6,511	\$ 31,424	\$ 4,717
Other	\$ 8,977	\$ 4,963	\$ 7,454	\$ 2,127

Source: U.S. Census Bureau, 2008-2012 American Community Survey

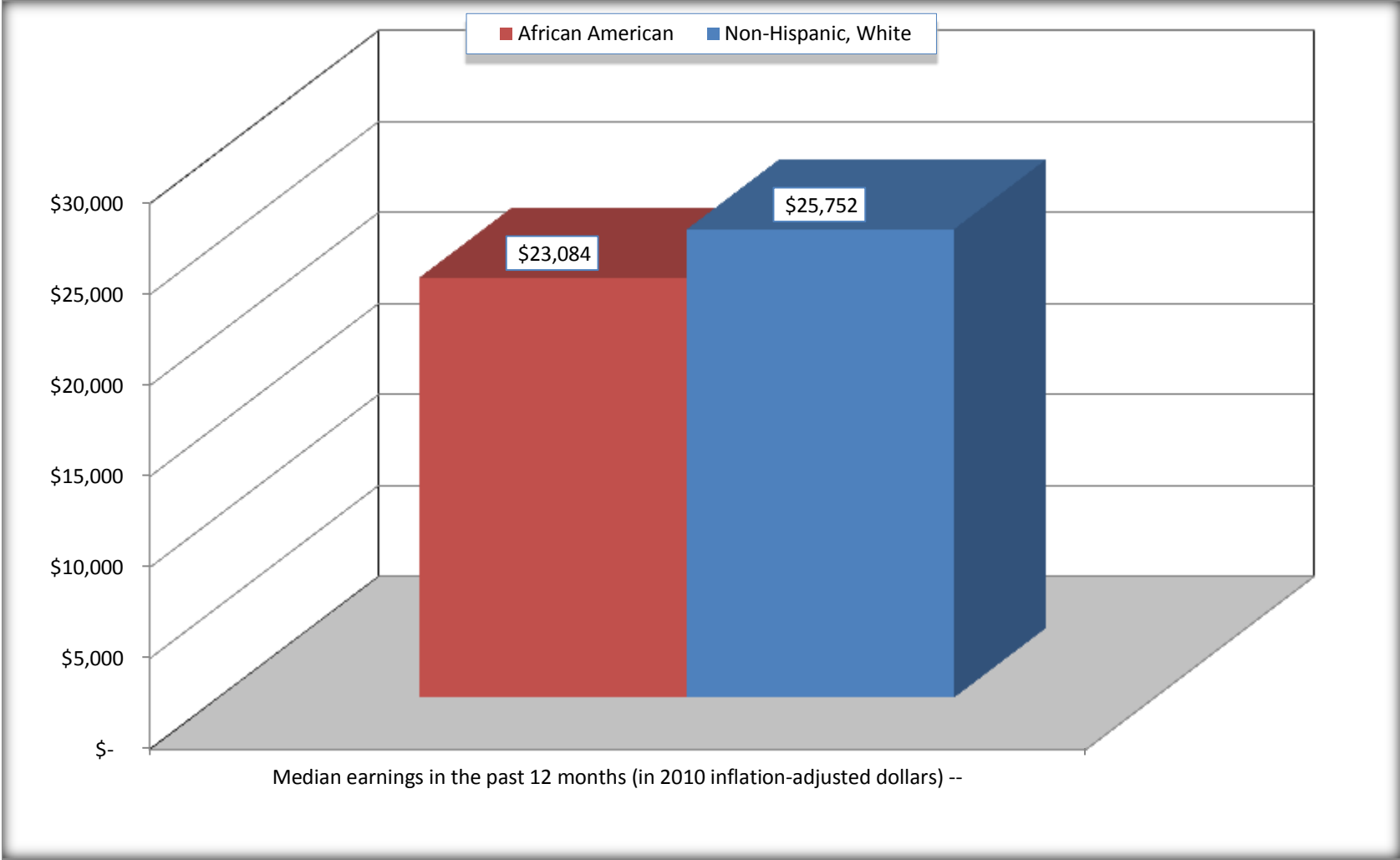
For information on confidentiality protection, sampling error, nonsampling error, and definitions, see Survey Methodology.

<http://www.census.gov/acs/www/UseData/index.htm>



# Median earnings in the Past 12 Months (16 Years and Over with Earnings)

## Picayune city, Mississippi



Source: B20017. MEDIAN EARNINGS IN THE PAST 12 MONTHS (IN 2010 INFLATION-ADJUSTED DOLLARS) BY SEX BY WORK EXPERIENCE IN THE PAST 12 MONTHS FOR THE POPULATION 16 YEARS AND OVER WITH EARNINGS IN THE PAST 12 MONTHS  
Data Set: 2008-2012 American Community Survey 5-Year Estimates

**B20005. SEX BY WORK EXPERIENCE IN THE PAST 12 MONTHS BY EARNINGS IN THE PAST 12 MONTHS (IN 2010 INFLATION-ADJUSTED DOLLARS) FOR THE POPULATION 16 YEARS AND OVER**

Data Set: 2008-2012 American Community Survey 5-Year Estimates

	Picayune city, Mississippi					
	African American	Margin of Error (+/-)	% of AA Total	White, Not Hispanic	Margin of Error (+/-)	% of NHW Total
<b>Total:</b>	<b>2,679</b>	<b>335</b>	<b>100.0%</b>	<b>5,530</b>	<b>424</b>	<b>100.0%</b>
Worked full-time, year-round in the past 12 months:	742	NC	27.7%	1,902	NC	34.4%
No earnings	0	NC	0.0%	0	NC	0.0%
With earnings:	742	NC	27.7%	1,902	NC	34.4%
\$ 1 to \$ 9,999 or loss	29	NC	1.1%	64	NC	1.2%
\$ 10,000 to \$ 19,999	136	NC	5.1%	289	NC	5.2%
\$ 20,000 to \$ 29,999	198	NC	7.4%	233	NC	4.2%
\$ 30,000 to \$ 49,999	271	NC	10.1%	760	NC	13.7%
\$ 50,000 to \$ 74,999	94	NC	3.5%	301	NC	5.4%
\$ 75,000 or more	14	NC	0.5%	255	NC	4.6%
Other:	1,937	NC	72.3%	3,628	NC	65.6%
No earnings	1,327	NC	49.5%	2,288	NC	41.4%
With earnings: less than full time, year-round	610	NC	22.8%	1,340	NC	24.2%
Male:	1,298	202	48.5%	2,339	249	42.3%
Worked full-time, year-round in the past 12 months:	392	170	14.6%	905	181	16.4%
No earnings	0	19	0.0%	0	19	0.0%
With earnings:	392	170	14.6%	905	181	16.4%
\$ 1 to \$ 9,999 or loss	0	NC	0.0%	8	NC	0.1%
\$ 10,000 to \$ 19,999	58	NC	2.2%	97	NC	1.8%
\$ 20,000 to \$ 29,999	90	NC	3.4%	48	NC	0.9%
\$ 30,000 to \$ 49,999	176	NC	6.6%	393	NC	7.1%
\$ 50,000 to \$ 74,999	68	NC	2.5%	147	NC	2.7%
\$ 75,000 or more	0	NC	0.0%	212	NC	3.8%

	Picayune city, Mississippi					
	African American	Margin of Error (+/-)	% of AA Total	White, Not Hispanic	Margin of Error (+/-)	% of NHW Total
Other:	906	219	33.8%	1,434	248	25.9%
No earnings	589	189	22.0%	896	215	16.2%
With earnings:	317	181	11.8%	538	148	9.7%
Female:	1,381	184	51.5%	3,191	286	57.7%
Worked full-time, year-round in the past 12 months:	350	138	13.1%	997	197	18.0%
No earnings	0	19	0.0%	0	19	0.0%
With earnings:	350	138	13.1%	997	197	18.0%
\$ 1 to \$ 9,999 or loss	29	NC	1.1%	56	NC	1.0%
\$ 10,000 to \$ 19,999	78	NC	2.9%	192	NC	3.5%
\$ 20,000 to \$ 29,999	108	NC	4.0%	185	NC	3.3%
\$ 30,000 to \$ 49,999	95	NC	3.5%	367	NC	6.6%
\$ 50,000 to \$ 74,999	26	NC	1.0%	154	NC	2.8%
\$ 75,000 or more	14	NC	0.5%	43	NC	0.8%
Other:	1,031	183	38.5%	2,194	241	39.7%
No earnings	738	155	27.5%	1,392	264	25.2%
With earnings:	293	139	10.9%	802	174	14.5%

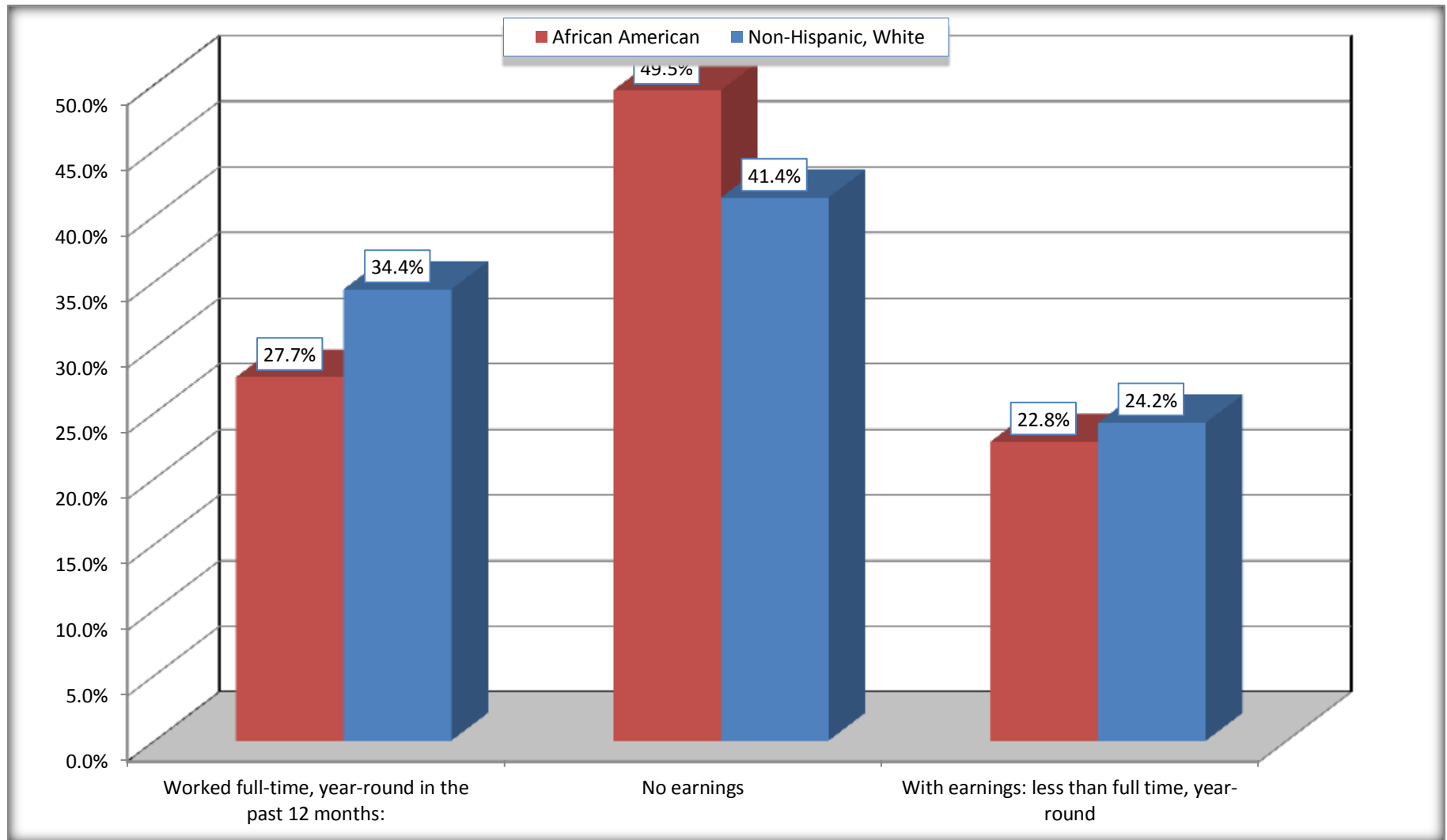
Source: U.S. Census Bureau, 2008-2012 American Community Survey

For information on confidentiality protection, sampling error, nonsampling error, and definitions, see Survey Methodology.

<http://www.census.gov/acs/www/UseData/index.htm>

# Employment and Earnings in in the Past 12 Months (16 Years and Over)

## Picayune city, Mississippi



Source: B20005. SEX BY WORK EXPERIENCE IN THE PAST 12 MONTHS BY EARNINGS IN THE PAST 12 MONTHS (IN 2010 INFLATION-ADJUSTED DOLLARS) FOR THE POPULATION 16 YEARS AND OVER

Data Set: 2008-2012 American Community Survey 5-Year Estimates

**C21001. SEX BY AGE BY VETERAN STATUS FOR THE CIVILIAN POPULATION 18 YEARS AND OVER**

Data Set: 2008-2012 American Community Survey 5-Year Estimates

	Picayune city, Mississippi					
	African American	Margin of Error (+/-)	% of AA Total	White, Not Hispanic	Margin of Error (+/-)	% of NHW Total
<b>Total:</b>	<b>2,465</b>	<b>303</b>	<b>100.0%</b>	<b>5,264</b>	<b>404</b>	<b>100.0%</b>
Veteran	287	NC	11.6%	747	NC	14.2%
Nonveteran	2,178	NC	88.4%	4,517	NC	85.8%
Male:	1,227	178	49.8%	2,186	230	41.5%
18 to 64 years:	1,055	174	42.8%	1,581	207	30.0%
Veteran	266	140	10.8%	327	137	6.2%
Nonveteran	789	177	32.0%	1,254	205	23.8%
65 years and over:	172	50	7.0%	605	156	11.5%
Veteran	21	26	0.9%	401	128	7.6%
Nonveteran	151	53	6.1%	204	97	3.9%
Female:	1,238	179	50.2%	3,078	274	58.5%
18 to 64 years:	1,038	177	42.1%	2,253	259	42.8%
Veteran	0	19	0.0%	10	17	0.2%
Nonveteran	1,038	177	42.1%	2,243	258	42.6%
65 years and over:	200	59	8.1%	825	160	15.7%
Veteran	0	19	0.0%	9	13	0.2%
Nonveteran	200	59	8.1%	816	158	15.5%

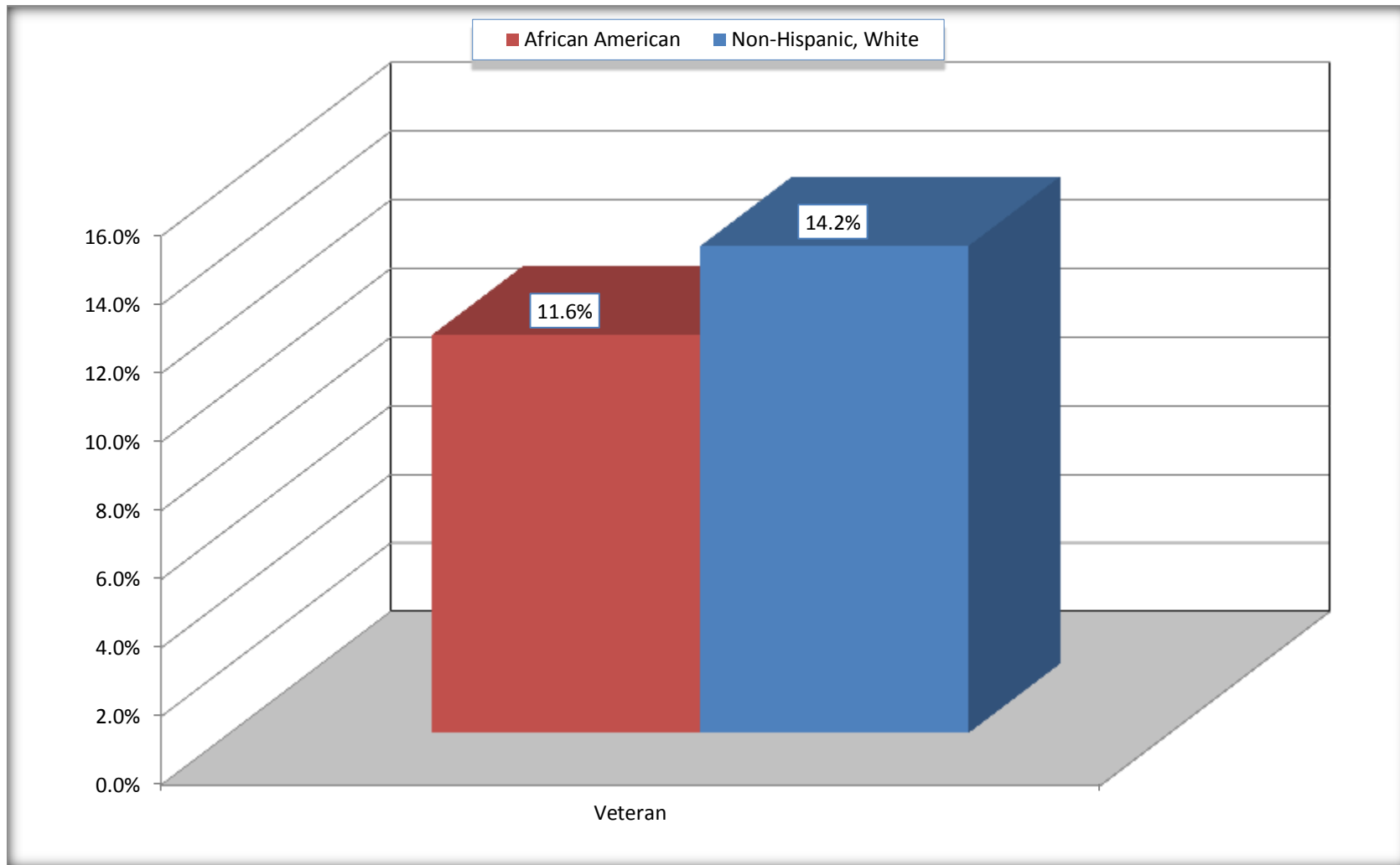
Source: U.S. Census Bureau, 2008-2012 American Community Survey

For information on confidentiality protection, sampling error, nonsampling error, and definitions, see Survey Methodology.

<http://www.census.gov/acs/www/UseData/index.htm>

# Veterans in the Civilian Population 18 Years and Over

## Picayune city, Mississippi



Source: C21001. SEX BY AGE BY VETERAN STATUS FOR THE CIVILIAN POPULATION 18 YEARS AND OVER  
Data Set: 2008-2012 American Community Survey 5-Year Estimates

**B22005. RECEIPT OF FOOD STAMPS/SNAP IN THE PAST 12 MONTHS BY RACE OF HOUSEHOLDER**

Data Set: 2008-2012 American Community Survey 5-Year Estimates

	Picayune city, Mississippi					
	African American	Margin of Error (+/-)	% of AA Total	White, Not Hispanic	Margin of Error (+/-)	% of NHW Total
<b>Total:</b>	<b>1,292</b>	<b>180</b>	<b>100.0%</b>	<b>2,871</b>	<b>257</b>	<b>100.0%</b>
HH received Food Stamps/SNAP in the past 12 months	408	156	31.6%	541	174	18.8%
HH did not receive Food Stamps/SNAP in the past 12 months	884	166	68.4%	2,330	282	81.2%

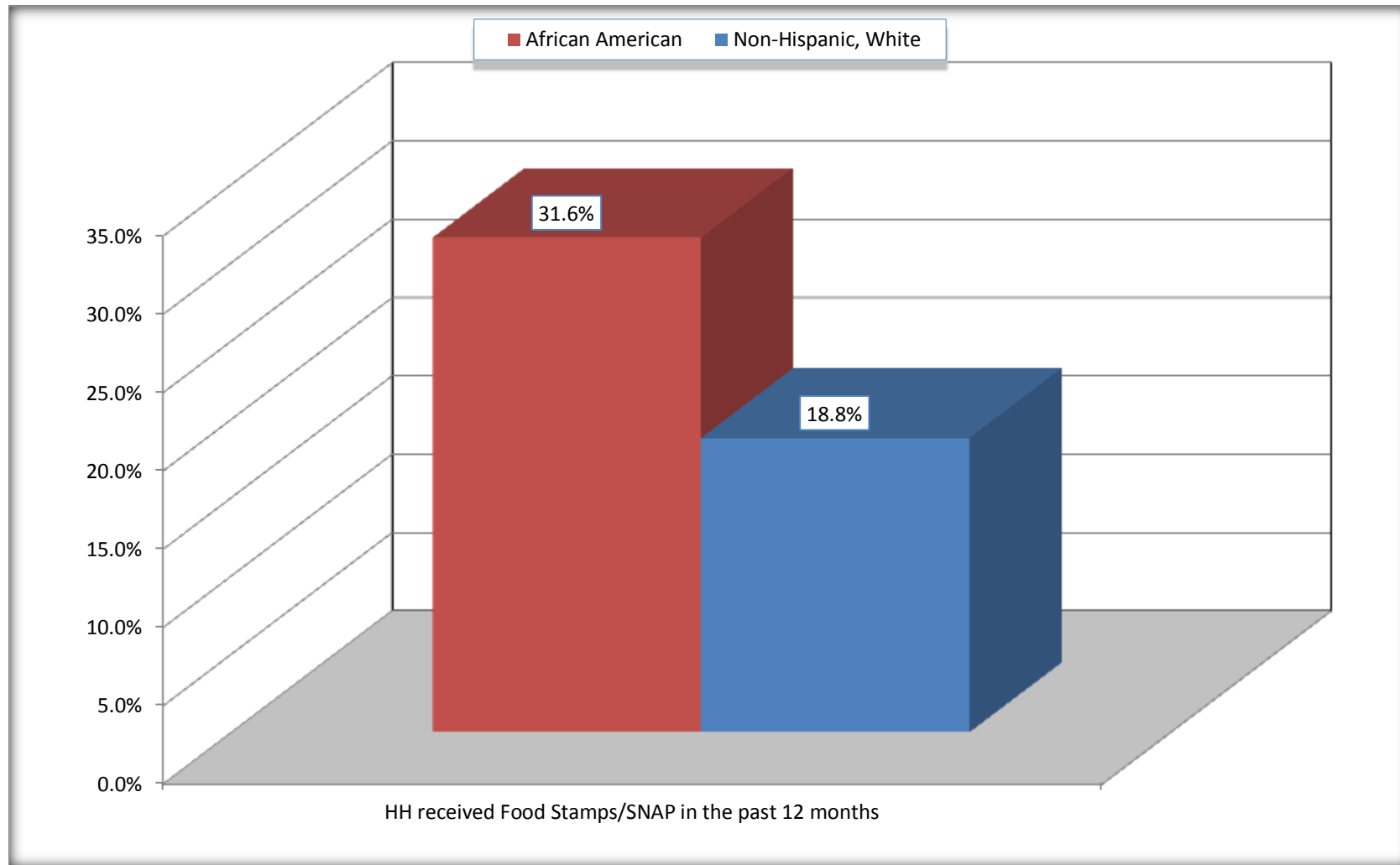
Source: U.S. Census Bureau, 2008-2012 American Community Survey

For information on confidentiality protection, sampling error, nonsampling error, and definitions, see Survey Methodology.

<http://www.census.gov/acs/www/UseData/index.htm>

# Receipt of Food Stamps/SNAP in the Past 12 Months by Household

## Picayune city, Mississippi



Source: B22005. RECEIPT OF FOOD STAMPS/SNAP IN THE PAST 12 MONTHS BY RACE OF HOUSEHOLDER  
Data Set: 2008-2012 American Community Survey 5-Year Estimates



**C23002. SEX BY AGE BY EMPLOYMENT STATUS FOR THE POPULATION 16 YEARS AND OVER**

Data Set: 2008-2012 American Community Survey 5-Year Estimates

	Picayune city, Mississippi					
	African American	Margin of Error (+/-)	% of AA Total	White, Not Hispanic	Margin of Error (+/-)	% of NHW Total
<b>Total:</b>	<b>2,679</b>	<b>335</b>	<b>100.0%</b>	<b>5,530</b>	<b>424</b>	<b>100.0%</b>
In labor force:	1,522	NC	56.8%	3,023	NC	54.7%
In Armed Forces	0	NC	0.0%	16	NC	0.3%
Civilian:	1,483	NC	55.4%	2,881	NC	52.1%
Employed	1,198	NC	44.7%	2,855	NC	51.6%
Unemployed	324	NC	12.1%	152	NC	2.7%
Not in labor force	1,157	NC	43.2%	2,507	NC	45.3%
Male:	1,298	202	48.5%	2,339	249	42.3%
16 to 64 years:	1,126	191	42.0%	1,734	226	31.4%
In labor force:	819	186	30.6%	1,280	206	23.1%
In Armed Forces	0	19	0.0%	16	26	0.3%
Civilian:	819	186	30.6%	1,264	210	22.9%
Employed	659	170	24.6%	1,167	208	21.1%
Unemployed	160	97	6.0%	97	62	1.8%
Not in labor force	307	158	11.5%	454	151	8.2%
65 years and over:	172	50	6.4%	605	156	10.9%
In labor force:	12	22	0.4%	93	67	1.7%
Employed	0	19	0.0%	93	67	1.7%
Unemployed	12	22	0.4%	0	19	0.0%
Not in labor force	160	48	6.0%	512	153	9.3%

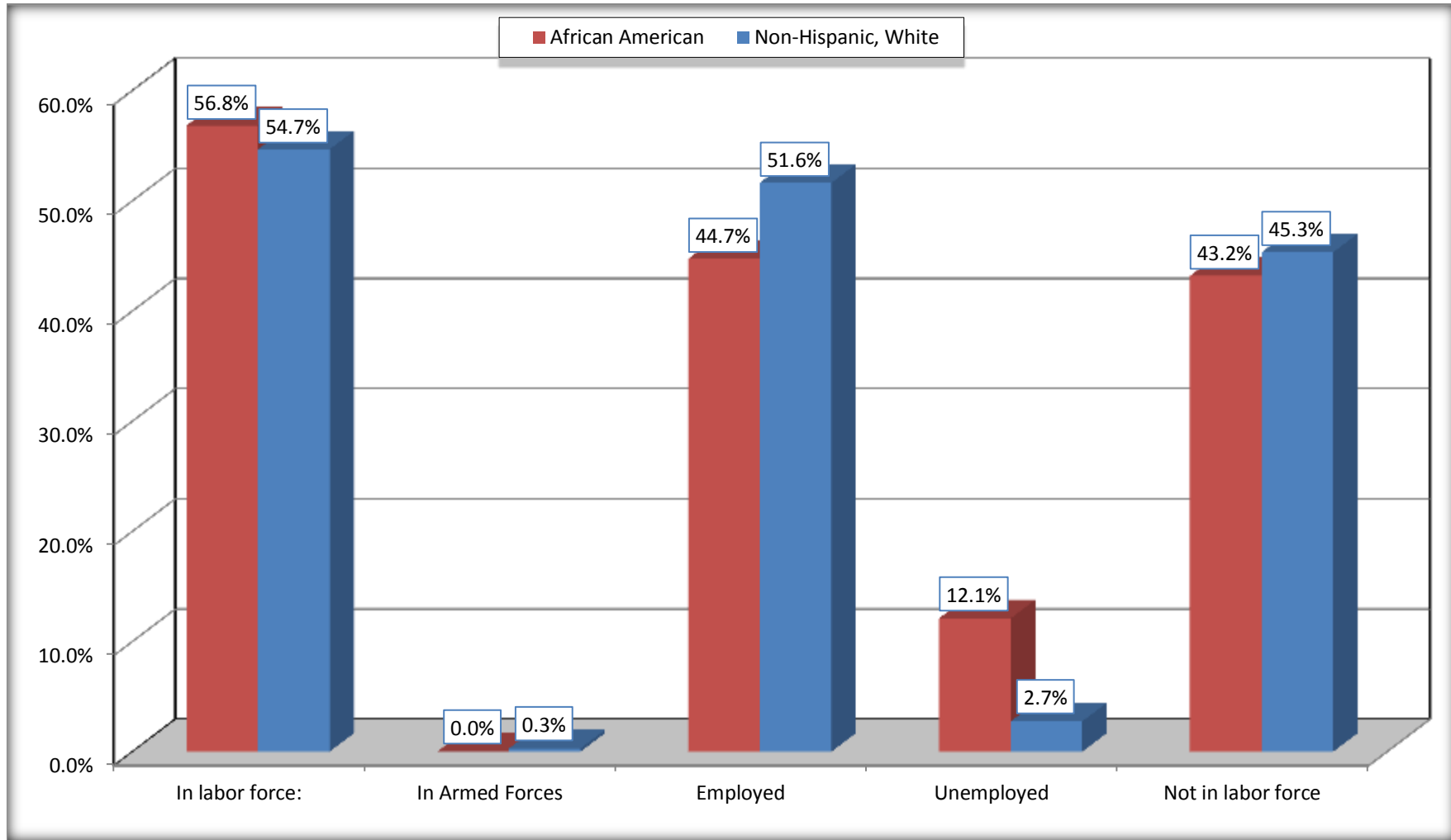
	Picayune city, Mississippi					
	African American	Margin of Error (+/-)	% of AA Total	White, Not Hispanic	Margin of Error (+/-)	% of NHW Total
Female:	1,381	184	51.5%	3,191	286	57.7%
16 to 64 years:	1,181	180	44.1%	2,366	275	42.8%
In labor force:	664	169	24.8%	1,617	255	29.2%
In Armed Forces	0	19	0.0%	0	19	0.0%
Civilian:	664	169	24.8%	1,617	255	29.2%
Employed	521	143	19.4%	1,562	254	28.2%
Unemployed	143	93	5.3%	55	48	1.0%
Not in labor force	517	135	19.3%	749	196	13.5%
65 years and over:	200	59	7.5%	825	160	14.9%
In labor force:	27	33	1.0%	33	33	0.6%
Employed	18	28	0.7%	33	33	0.6%
Unemployed	9	15	0.3%	0	19	0.0%
Not in labor force	173	61	6.5%	792	157	14.3%

Source: U.S. Census Bureau, 2008-2012 American Community Survey

For information on confidentiality protection, sampling error, nonsampling error, and definitions, see Survey Methodology.  
<http://www.census.gov/acs/www/UseData/index.htm>

# Employment Status for the Population 16 years and over

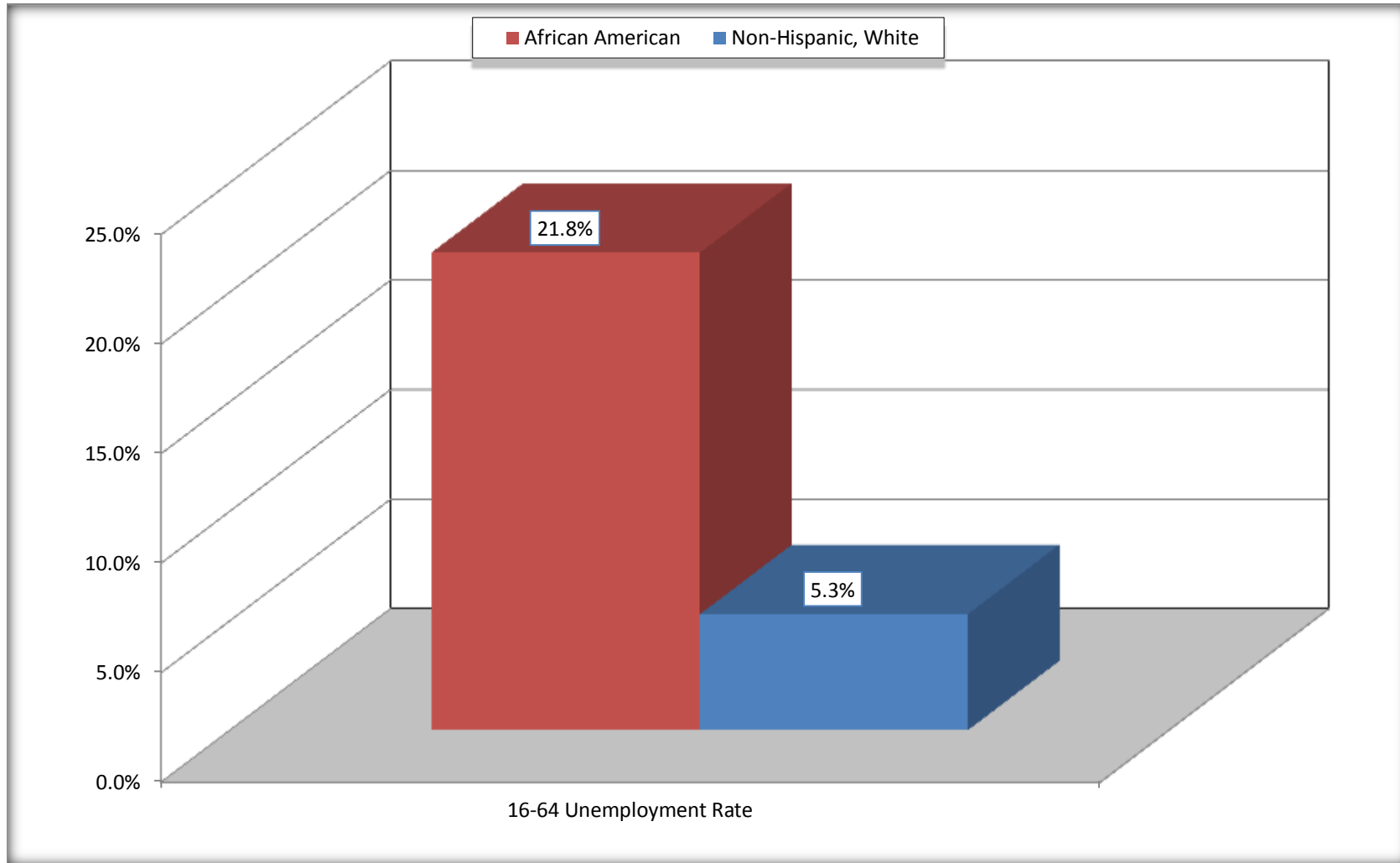
## Picayune city, Mississippi



Source: C23002. SEX BY AGE BY EMPLOYMENT STATUS FOR THE POPULATION 16 YEARS AND OVER  
Data Set: 2008-2012 American Community Survey 5-Year Estimates

# Unemployment of Working Age Population (Ages 16 to 64) (As a Percent of 16-64 Civilian Labor Force)

## Picayune city, Mississippi



Source: C23002. SEX BY AGE BY EMPLOYMENT STATUS FOR THE POPULATION 16 YEARS AND OVER  
Data Set: 2008-2012 American Community Survey 5-Year Estimates

**C24010. SEX BY OCCUPATION FOR THE CIVILIAN EMPLOYED POPULATION 16 YEARS AND OVER**

Data Set: 2008-2012 American Community Survey 5-Year Estimates

	Picayune city, Mississippi					
	African American	Margin of Error (+/-)	% of AA Total	White, Not Hispanic	Margin of Error (+/-)	% of NHW Total
<b>Total:</b>	<b>1,198</b>	<b>253</b>	<b>100.0%</b>	<b>2,855</b>	<b>351</b>	<b>100.0%</b>
Management, professional, and related occupations	307	NC	25.6%	1,135	NC	39.8%
Service occupations	333	NC	27.8%	443	NC	15.5%
Sales and office occupations	307	NC	25.6%	820	NC	28.7%
Natural resources, construction, and maintenance occupations:	172	NC	14.4%	235	NC	8.2%
Production, transportation, and material moving occupations	79	NC	6.6%	222	NC	7.8%
Male:	659	170	55.0%	1,260	210	44.1%
Management, business, science, and arts occupations:	108	94	9.0%	423	146	14.8%
Service occupations	166	119	13.9%	103	63	3.6%
Sales and office occupations	156	116	13.0%	321	129	11.2%
Natural resources, construction, and maintenance occupations:	161	121	13.4%	215	96	7.5%
Production, transportation, and material moving occupations	68	55	5.7%	198	112	6.9%
Female:	539	143	45.0%	1,595	257	55.9%
Management, professional, and related occupations	199	99	16.6%	712	199	24.9%
Service occupations	167	103	13.9%	340	131	11.9%
Sales and office occupations	151	77	12.6%	499	131	17.5%
Natural resources, construction, and maintenance occupations:	11	22	0.9%	20	29	0.7%
Production, transportation, and material moving occupations	11	20	0.9%	24	28	0.8%

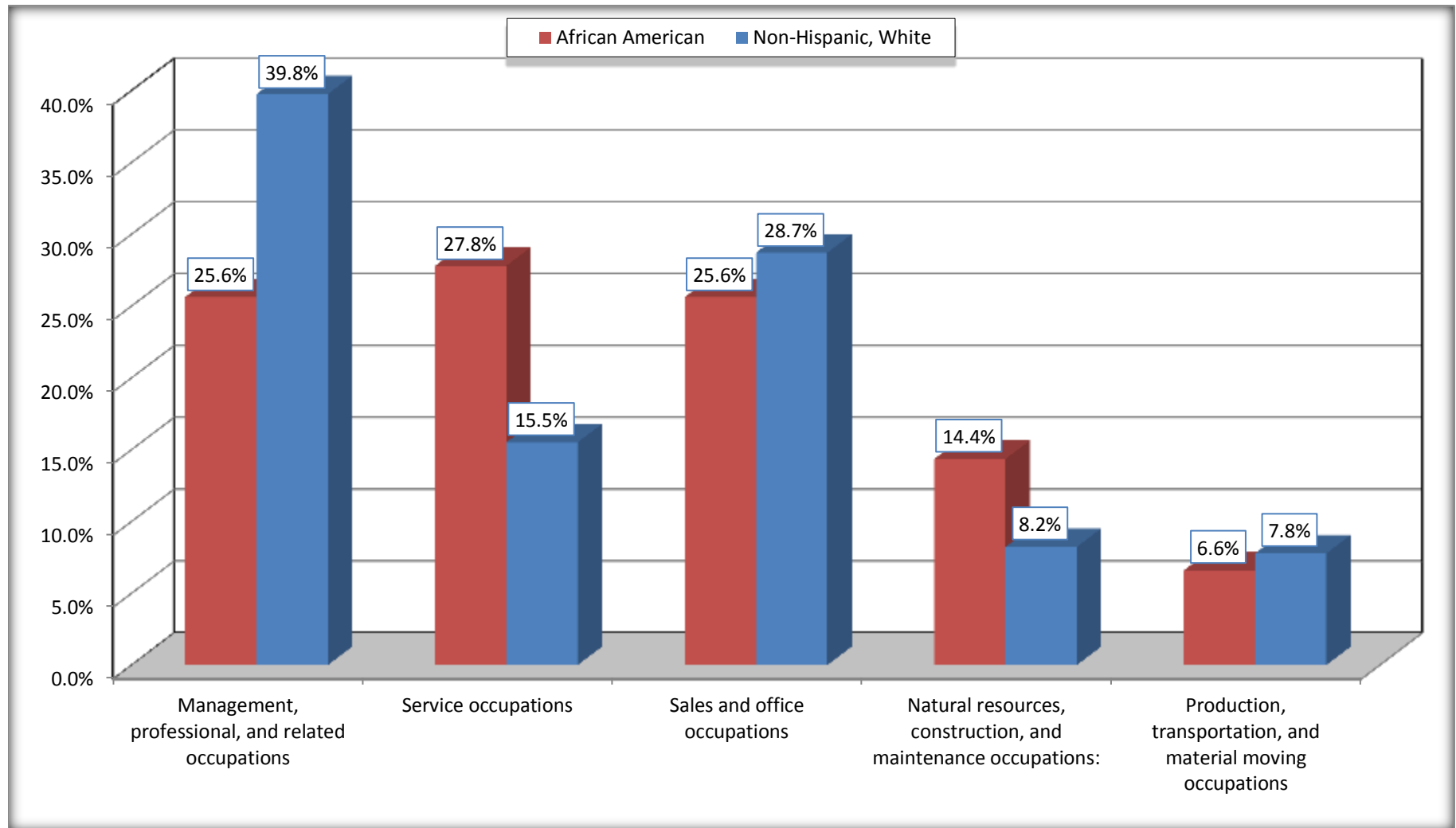
Source: U.S. Census Bureau, 2008-2012 American Community Survey

For information on confidentiality protection, sampling error, nonsampling error, and definitions, see Survey Methodology.

<http://www.census.gov/acs/www/UseData/index.htm>

# Occupation for the Civilian Employed 16 Years and Over Population

## Picayune city, Mississippi



Source: C24010. SEX BY OCCUPATION FOR THE CIVILIAN EMPLOYED POPULATION 16 YEARS AND OVER  
Data Set: 2008-2012 American Community Survey 5-Year Estimates

**B25003. TENURE - Universe: OCCUPIED HOUSING UNITS**

Data Set: 2008-2012 American Community Survey 5-Year Estimates

	Picayune city, Mississippi					
	African American	Margin of Error (+/-)	% of AA Total	White, Not Hispanic	Margin of Error (+/-)	% of NHW Total
<b>Total:</b>	<b>1,292</b>	<b>180</b>	<b>100.0%</b>	<b>2,871</b>	<b>257</b>	<b>100.0%</b>
Owner occupied	828	163	64.1%	1,846	199	64.3%
Renter occupied	464	151	35.9%	1,025	208	35.7%

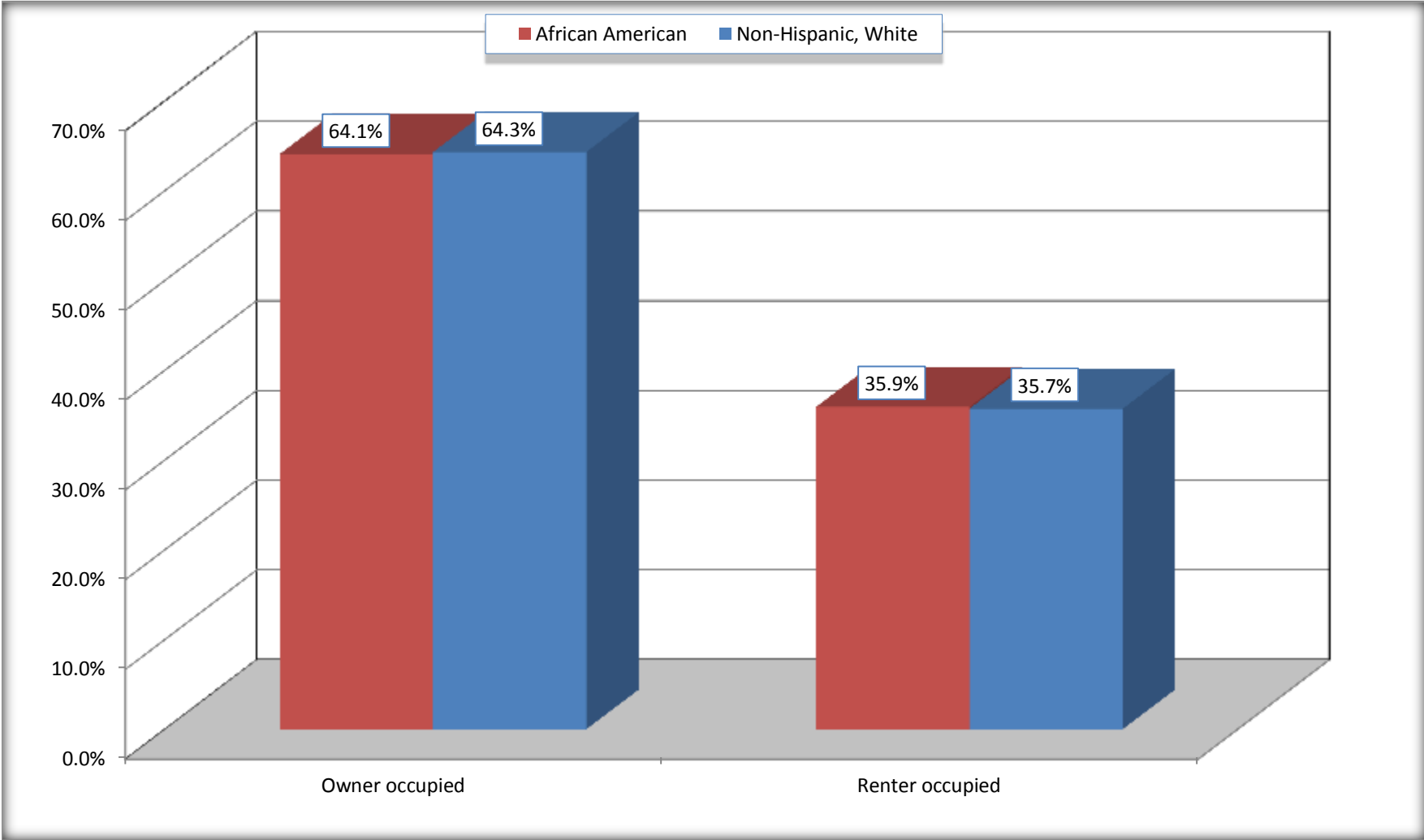
Source: U.S. Census Bureau, 2008-2012 American Community Survey

For information on confidentiality protection, sampling error, nonsampling error, and definitions, see Survey Methodology.

<http://www.census.gov/acs/www/UseData/index.h>

# Home Owners and Renters by Household

## Picayune city, Mississippi



Source: B25003. TENURE - Universe: OCCUPIED HOUSING UNITS  
Data Set: 2008-2012 American Community Survey 5-Year Estimates



**B25014. OCCUPANTS PER ROOM - Universe: OCCUPIED HOUSING UNITS**

Data Set: 2008-2012 American Community Survey 5-Year Estimates

	Picayune city, Mississippi					
	African American	Margin of Error (+/-)	% of AA Total	White, Not Hispanic	Margin of Error (+/-)	% of NHW Total
<b>Total:</b>	<b>1,292</b>	<b>180</b>	<b>100.0%</b>	<b>2,871</b>	<b>257</b>	<b>100.0%</b>
1.00 or less occupants per room	1,174	192	90.9%	2,825	267	98.4%
1.01 or more occupants per room	118	102	9.1%	46	43	1.6%

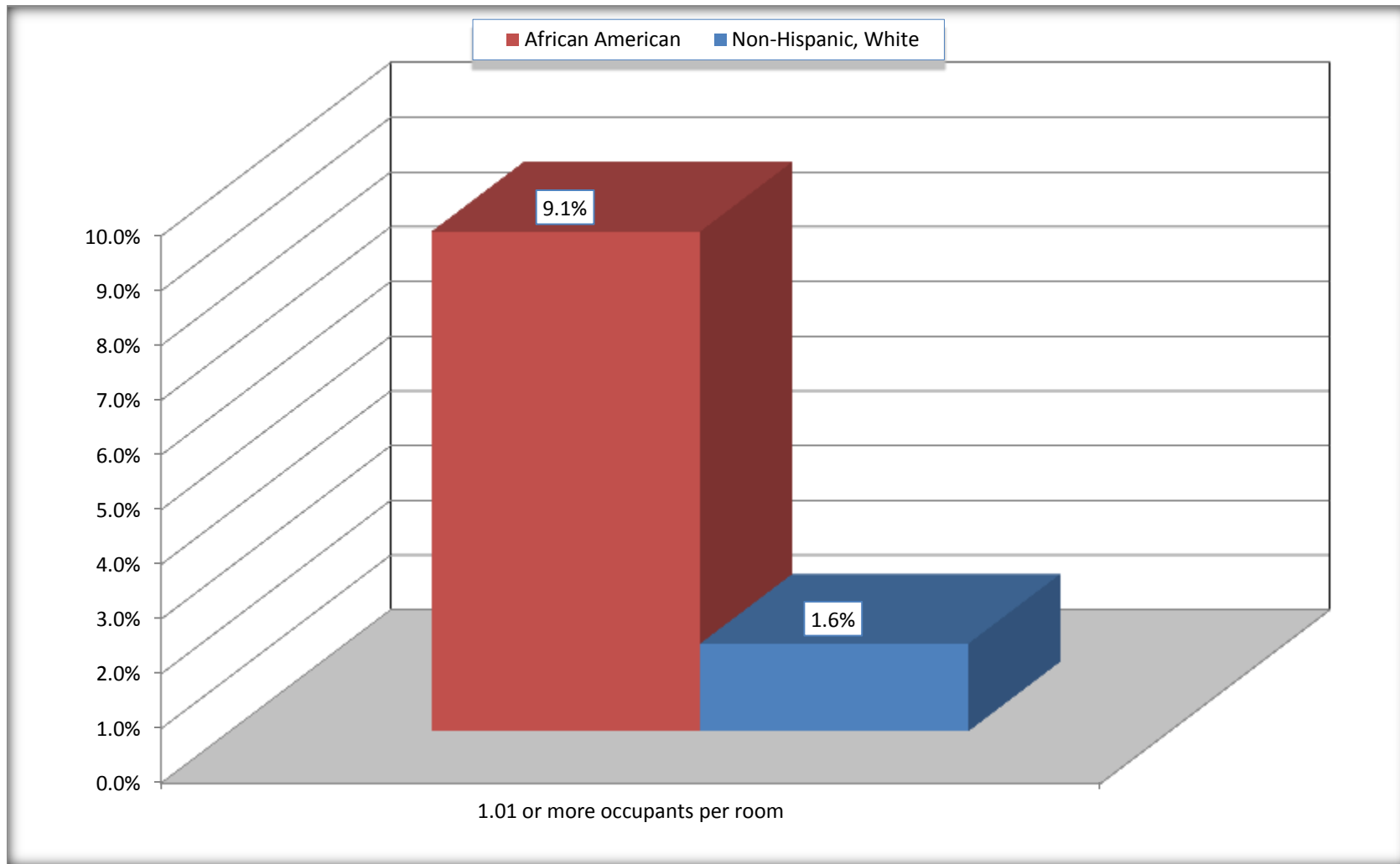
Source: U.S. Census Bureau, 2008-2012 American Community Survey

For information on confidentiality protection, sampling error, nonsampling error, and definitions, see Survey Methodology.

<http://www.census.gov/acs/www/UseData/index.ht>

# More than One Person per Room (Crowding) by Household

## Picayune city, Mississippi



Source: B25014. OCCUPANTS PER ROOM - Universe: OCCUPIED HOUSING UNITS  
Data Set: 2008-2012 American Community Survey 5-Year Estimates

**B18101. AGE BY DISABILITY STATUS**

Data Set: 2008-2012 American Community Survey 5-Year Estimates

	Picayune city, Mississippi					
	African American	Margin of Error (+/-)	% of AA Total	White, Not Hispanic	Margin of Error (+/-)	% of NHW Total
<b>Total:</b>	<b>3,536</b>	<b>446</b>	<b>100.0%</b>	<b>6,898</b>	<b>476</b>	<b>100.0%</b>
Under 18 years:	1,096	242	31.0%	1,684	50	24.4%
With a disability	29	32	0.8%	67	64	1.0%
No disability	1,067	250	30.2%	1,617	339	23.4%
18 to 64 years:	2,089	293	59.1%	3,826	372	55.5%
With a disability	248	106	7.0%	641	202	9.3%
No disability	1,841	265	52.1%	3,185	342	46.2%
65 years and over:	351	90	9.9%	1,388	244	20.1%
With a disability	187	75	5.3%	655	182	9.5%
No disability	164	82	4.6%	733	196	10.6%

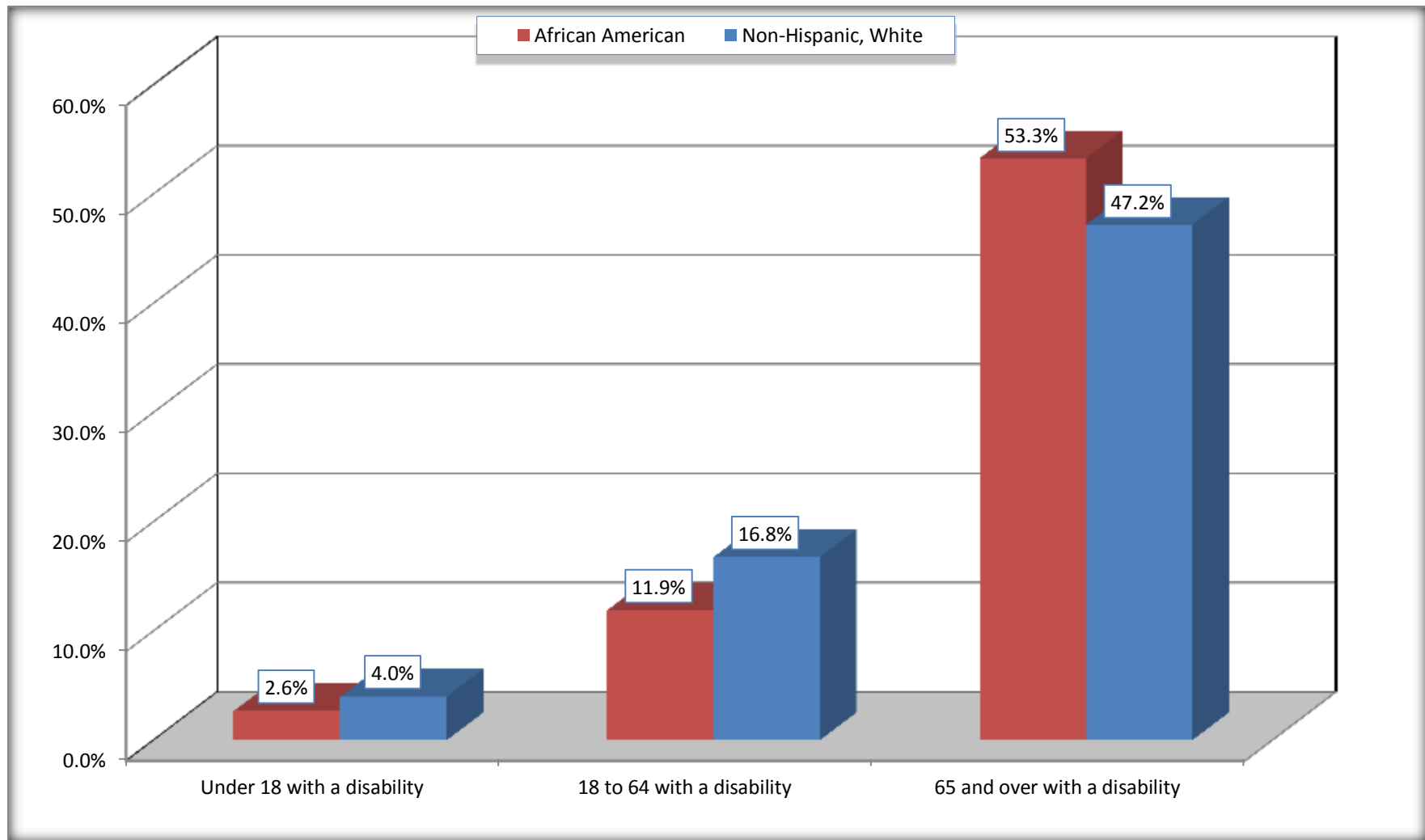
Source: U.S. Census Bureau, 2008-2012 American Community Survey

For information on confidentiality protection, sampling error, nonsampling error, and definitions, see Survey Methodology.

<http://www.census.gov/acs/www/UseData/index.htm>

## Disability by Age

### Picayune city, Mississippi



Source: B18101. AGE BY DISABILITY STATUS  
Data Set: 2008-2012 American Community Survey 5-Year Estimates

**C27001B. HEALTH INSURANCE COVERAGE STATUS BY AGE**

Data Set: 2008-2012 American Community Survey 5-Year Estimates

	<b>Picayune city, Mississippi</b>					
	African American	Margin of Error (+/-)	% of AA Total	White, Not Hispanic	Margin of Error (+/-)	% of NHW Total
<b>Total:</b>	<b>3,536</b>	<b>446</b>	<b>100.0%</b>	<b>6,898</b>	<b>476</b>	<b>100.0%</b>
Under 18 years:	1,096	242	31.0%	1,684	341	24.4%
With health insurance coverage	926	241	26.2%	1,487	349	21.6%
No health insurance coverage	170	143	4.8%	197	170	2.9%
18 to 64 years:	2,089	293	59.1%	3,826	372	55.5%
With health insurance coverage	1,064	267	30.1%	2,643	361	38.3%
No health insurance coverage	1,025	261	29.0%	1,183	309	17.1%
65 years and over:	351	90	9.9%	1,388	244	20.1%
With health insurance coverage	351	90	9.9%	1,388	244	20.1%
No health insurance coverage	0	19	0.0%	0	19	0.0%

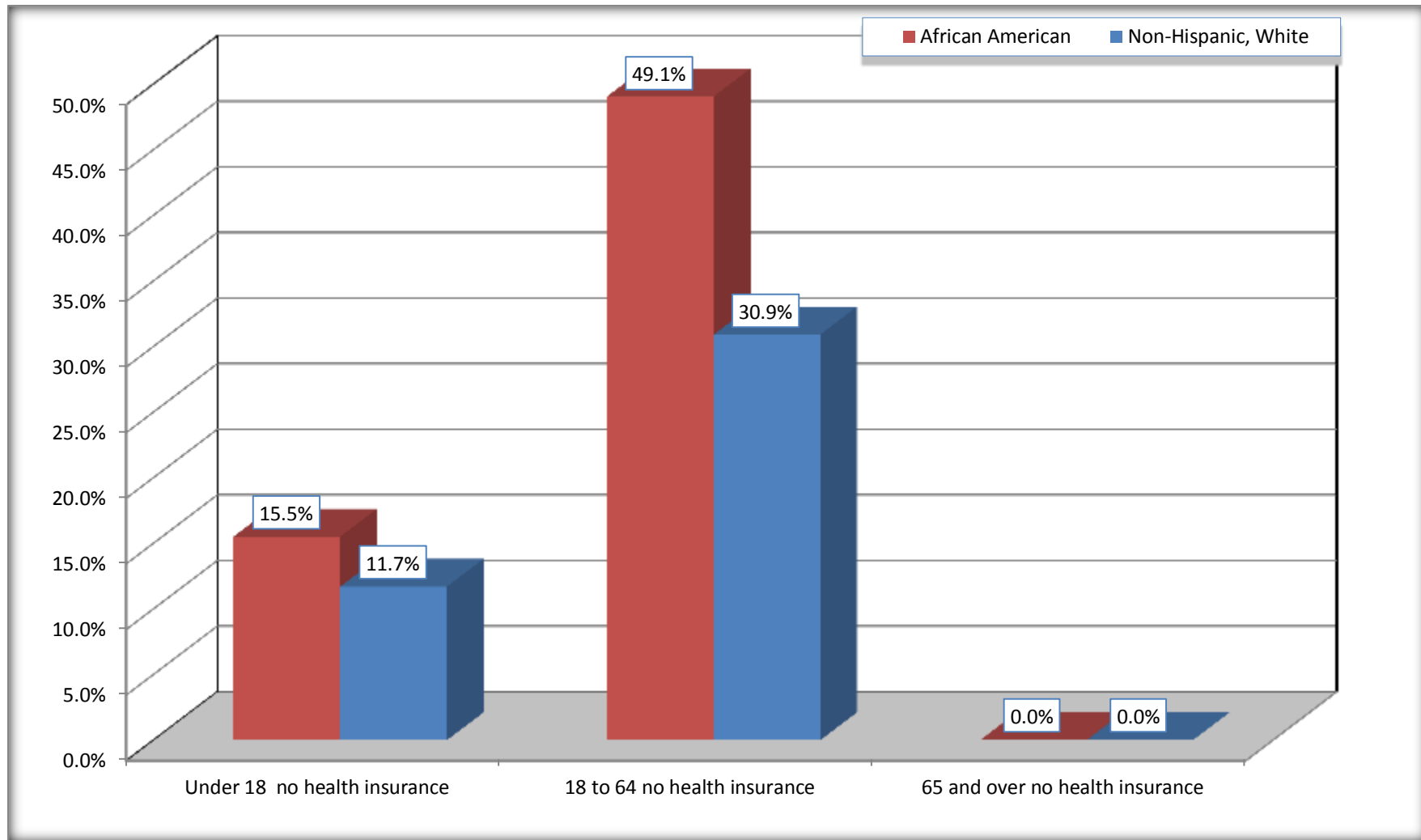
Source: U.S. Census Bureau, 2008-2012 American Community Survey

For information on confidentiality protection, sampling error, nonsampling error, and definitions, see Survey Methodology.

<http://www.census.gov/acs/www/UseData/index.htm>

# Lack of Health Insurance Coverage by Age

## Picayune city, Mississippi



Source: C27001B. HEALTH INSURANCE COVERAGE STATUS BY AGE  
Data Set: 2008-2012 American Community Survey 5-Year Estimates