

Selected Socio-Economic Data

Columbus city, Mississippi

African American and White, Not Hispanic

Data Set: 2008-2012 American Community Survey 5-Year Estimates

www.fairvote2020.org

www.fairdata2000.com

[29-Dec-13](#)

C02003.DETAILED RACE - Universe: TOTAL POPULATION
 Data Set: 2008-2012 American Community Survey 5-Year Estimates

	Columbus city, Mississippi		
	Population	Margin of Error (+/-)	% of Total
Total:	23,604	32	100.0%
Population of one race:	23,521	70	99.6%
White	8,595	563	36.4%
Black or African American	14,702	579	62.3%
American Indian and Alaska Native	46	48	0.2%
Asian alone	70	74	0.3%
Native Hawaiian and Other Pacific Islander	0	23	0.0%
Some other race	108	85	0.5%
Population of two or more races:	83	64	0.4%
Two races including Some other race	1	2	0.0%
Two races excluding Some other race, and three or more races	82	64	0.3%
Population of two races:	83	64	0.4%
White; Black or African American	60	56	0.3%
White; American Indian and Alaska Native	15	25	0.1%
White; Asian	0	23	0.0%
Black or African American; American Indian and Alaska Native	0	23	0.0%
All other two race combinations	8	12	0.0%
Population of three races	0	23	0.0%
Population of four or more races	0	23	0.0%

Note: Hispanics may be of any race. See Table B03002 and chart.

Source: U.S. Census Bureau, 2008-2012 American Community Survey

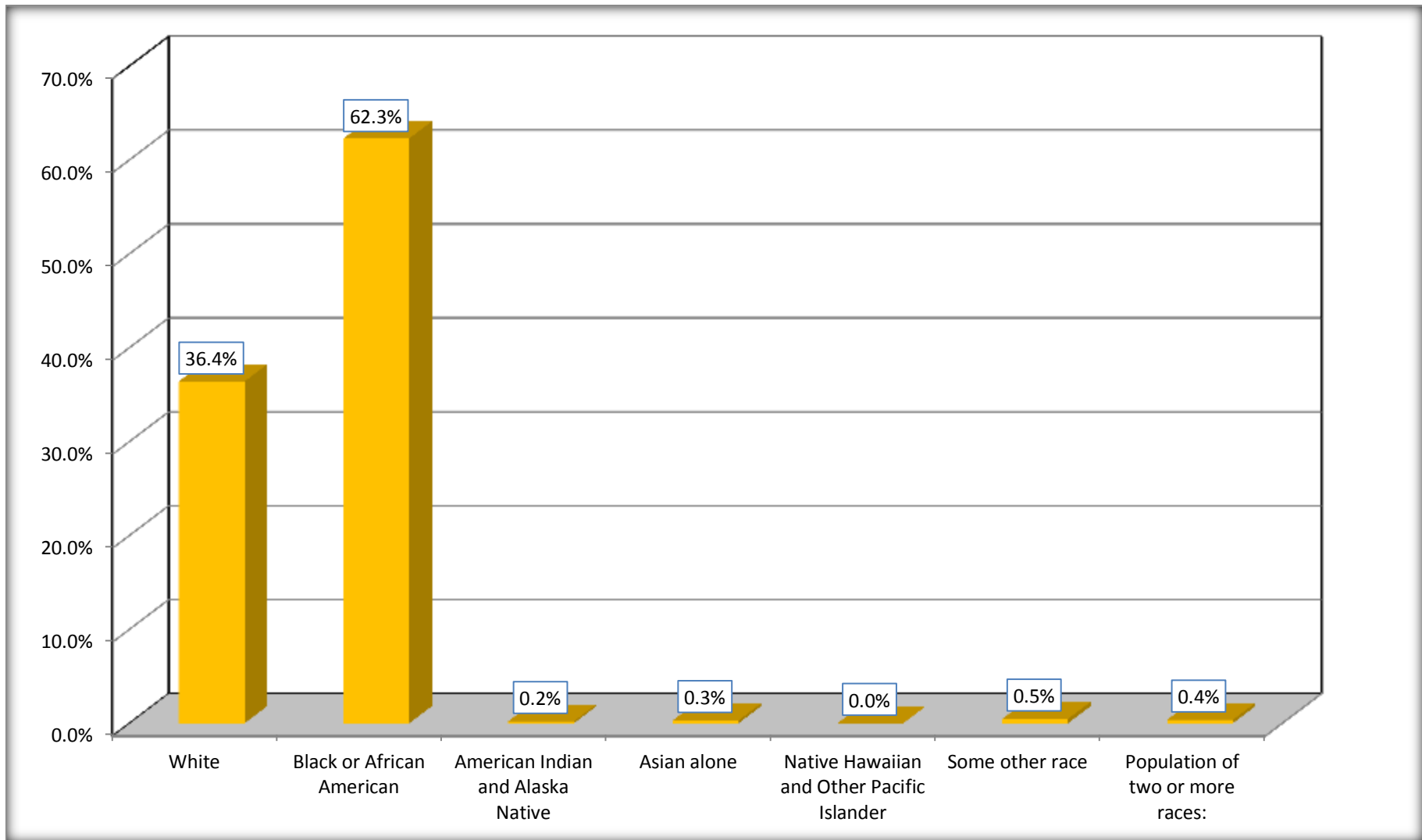
Although the American Community Survey (ACS) produces population, demographic and housing unit estimates, it is the Census Bureau's Population Estimates Program that produces and disseminates the official estimates of the population for the nation, states, counties, cities and towns and estimates of housing units for states and counties.

For information on confidentiality protection, sampling error, nonsampling error, and definitions, see Survey Methodology.

<http://www.census.gov/acs/www/UseData/index.htm>

Population by Race

Columbus city, Mississippi



Source: C02003.DETAILED RACE - Universe: TOTAL POPULATION
Data Set: 2008-2012 American Community Survey 5-Year Estimates

B03002. HISPANIC OR LATINO ORIGIN BY RACE - Universe: TOTAL POPULATION

Data Set: 2008-2012 American Community Survey 5-Year Estimates

	Columbus city, Mississippi		
	Population	Margin of Error (+/-)	% of Total
Total:	23,604	32	100.0%
Not Hispanic or Latino:	23,294	103	98.7%
White alone	8,437	557	35.7%
Black or African American alone	14,676	582	62.2%
American Indian and Alaska Native alone	46	48	0.2%
Asian alone	70	74	0.3%
Native Hawaiian and Other Pacific Islander alone	0	23	0.0%
Some other race alone	0	23	0.0%
Two or more races:	65	61	0.3%
Two races including Some other race	0	23	0.0%
Two races excluding Some other race, and three or more races	65	61	0.3%
Hispanic or Latino	310	103	1.3%

Source: U.S. Census Bureau, 2008-2012 American Community Survey

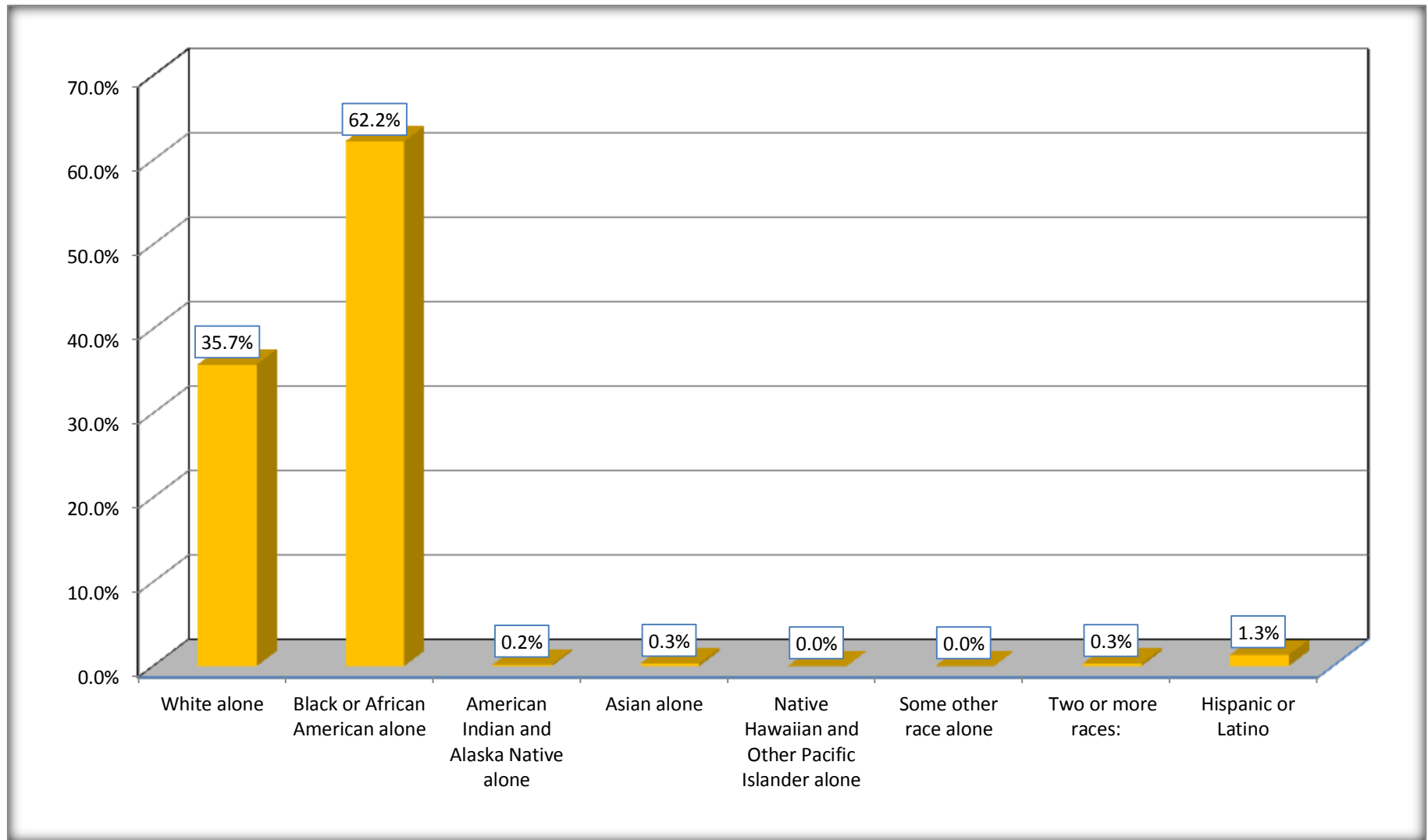
Although the American Community Survey (ACS) produces population, demographic and housing unit estimates, it is the Census Bureau's Population Estimates Program that produces and disseminates the official estimates of the population for the nation, states, counties, cities and towns and estimates of housing units for states and counties.

For information on confidentiality protection, sampling error, nonsampling error, and definitions, see Survey Methodology.

<http://www.census.gov/acs/www/UseData/index.htm>

Non-Hispanic by Race and Hispanic Population

Columbus city, Mississippi



Source: B03002. HISPANIC OR LATINO ORIGIN BY RACE - Universe: TOTAL POPULATION
Data Set: 2008-2012 American Community Survey 5-Year Estimates

B03002. HISPANIC OR LATINO ORIGIN BY RACE

Data Set: 2008-2012 American Community Survey 5-Year Estimates

	Columbus city, Mississippi		
	Population	Margin of Error (+/-)	% of Total
Hispanic or Latino:	310	103	100.0%
White alone	158	78	51.0%
Black or African American alone	26	31	8.4%
American Indian and Alaska Native alone	0	23	0.0%
Asian alone	0	23	0.0%
Native Hawaiian and Other Pacific Islander alone	0	23	0.0%
Some other race alone	108	85	34.8%
Two or more races:	18	19	5.8%
Two races including Some other race	1	2	0.3%
Two races excluding Some other race, and three or more races	17	19	5.5%

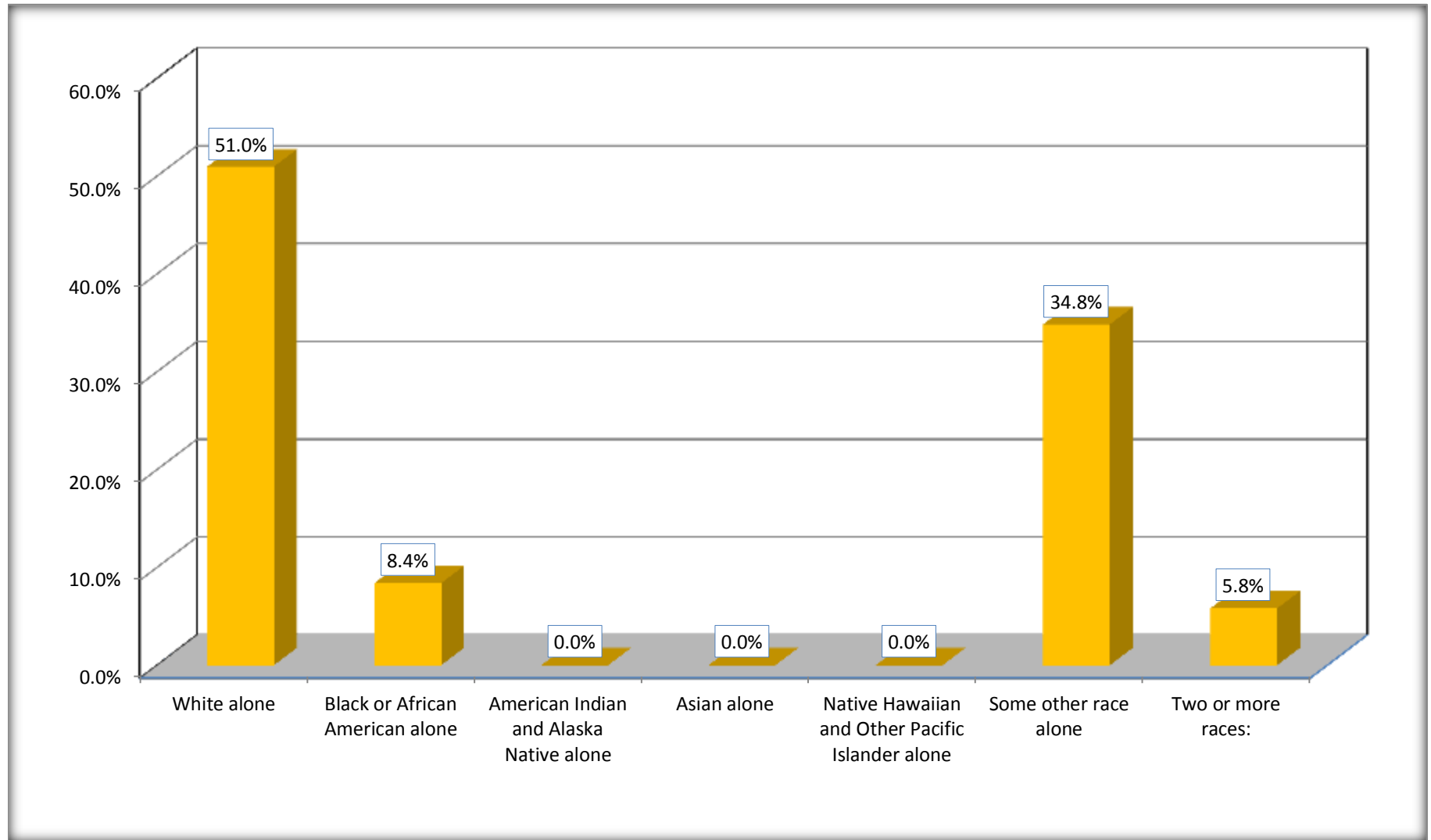
Source: U.S. Census Bureau, 2008-2012 American Community Survey

Although the American Community Survey (ACS) produces population, demographic and housing unit estimates, it is the Census Bureau's Population Estimates Program that produces and disseminates the official estimates of the population for the nation, states, counties, cities and towns and estimates of housing units for states and counties.

For information on confidentiality protection, sampling error, nonsampling error, and definitions, see Survey Methodology.

<http://www.census.gov/acs/www/UseData/index.htm>

Hispanic or Latino Origin by Race Columbus city, Mississippi



Source: B03002. HISPANIC OR LATINO ORIGIN BY RACE
Data Set: 2008-2012 American Community Survey 5-Year Estimates

B01001. SEX BY AGE

Data Set: 2008-2012 American Community Survey 5-Year Estimates

	Columbus city, Mississippi					
	African American	Margin of Error (+/-)	% of AA Total	White, Not Hispanic	Margin of Error (+/-)	% of NHW Total
Total:	14,702	579	100.0%	8,437	557	100.0%
Under 18 years	4,243	NC	28.9%	1,049	NC	12.4%
18 to 64 years	9,009	NC	61.3%	4,980	NC	59.0%
65 years and over	1,450	NC	9.9%	2,408	NC	28.5%
Male:	6,705	380	45.6%	3,619	389	42.9%
Under 18 years	2137	NC	14.5%	374	NC	4.4%
18 to 64 years	4,023	NC	27.4%	2,379	NC	28.2%
65 years and over	545	NC	3.7%	866	NC	10.3%
Female:	7,997	380	54.4%	4,818	412	57.1%
Under 18 years	2,106	NC	14.3%	675	NC	8.0%
18 to 64 years	4,986	NC	33.9%	2,601	NC	30.8%
65 years and over	905	NC	6.2%	1,542	NC	18.3%

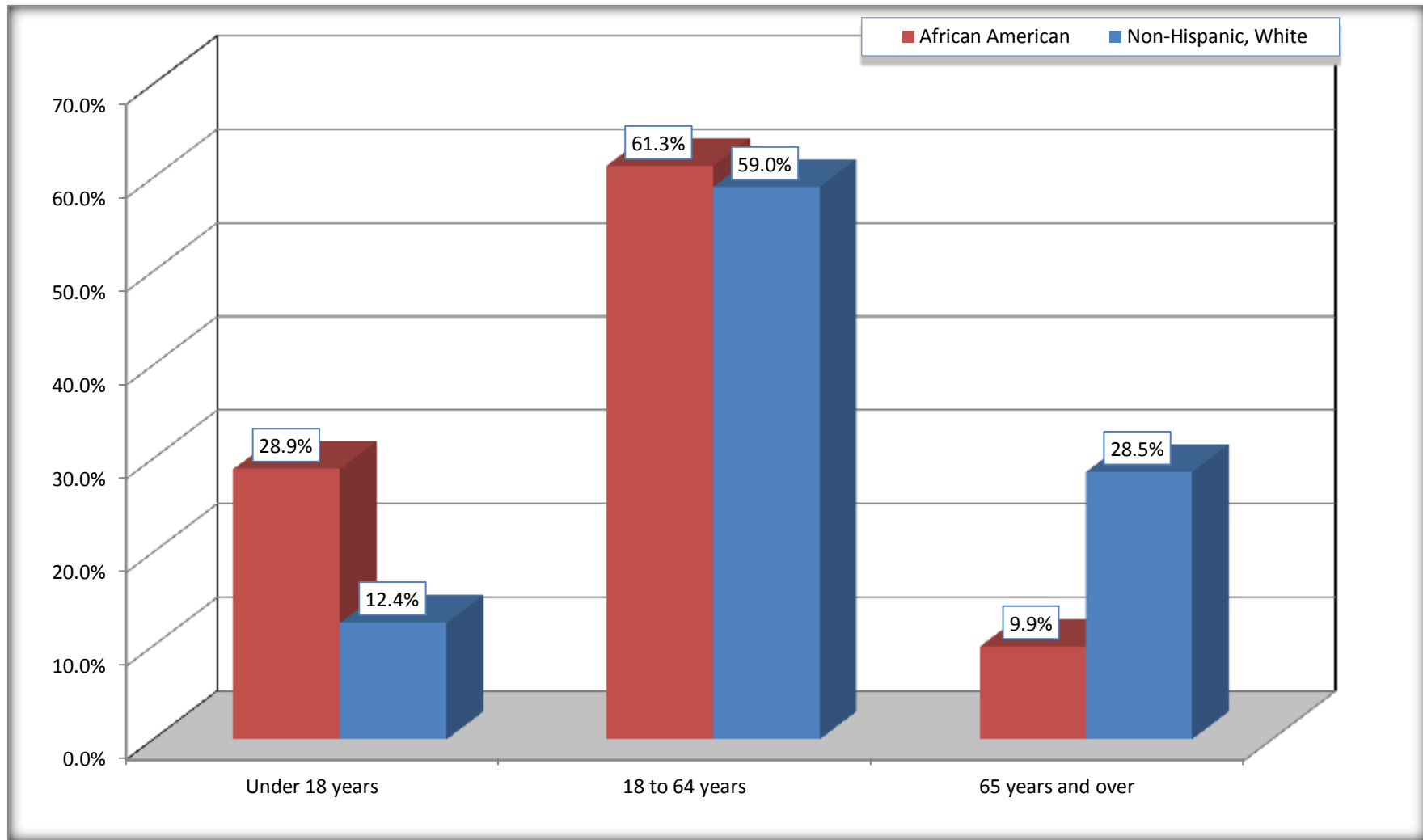
Source: U.S. Census Bureau, 2008-2012 American Community Survey

Although the American Community Survey (ACS) produces population, demographic and housing unit estimates, it is the Census Bureau's Population Estimates Program that produces and disseminates the official estimates of the population for the nation, states, counties, cities and towns and estimates of housing units for states and counties.

For information on confidentiality protection, sampling error, nonsampling error, and definitions, see Survey Methodology.
<http://www.census.gov/acs/www/UseData/index.htm>

Population by Age

Columbus city, Mississippi



Source: B01001. SEX BY AGE
Data Set: 2008-2012 American Community Survey 5-Year Estimates

B05003. SEX BY AGE BY CITIZENSHIP STATUS

Data Set: 2008-2012 American Community Survey 5-Year Estimates

	Columbus city, Mississippi					
	African American	Margin of Error (+/-)	% of AA Total by Age	White, Not Hispanic	Margin of Error (+/-)	% of NHW Total by Age
Total:	14,702	579	100.0%	8,437	557	100.0%
Under 18 years:	4,243	NC	100.0%	1,049	NC	100.0%
Native	4,243	NC	100.0%	1,025	NC	97.7%
Foreign born:	0	NC	0.0%	24	NC	2.3%
Naturalized U.S. citizen	0	NC	0.0%	0	NC	0.0%
Not a U.S. citizen	0	NC	0.0%	24	NC	2.3%
18 years and over:	10,459	NC	100.0%	7,388	NC	100.0%
Native	10,459	NC	100.0%	7,349	NC	99.5%
Foreign born:	0	NC	0.0%	39	NC	0.5%
Naturalized U.S. citizen	0	NC	0.0%	0	NC	0.0%
Not a U.S. citizen	0	NC	0.0%	39	NC	0.5%
Male:	6,705	380	45.6%	3,619	361	42.9%
Under 18 years:	2137	275	100.0%	374	138	100.0%
Native	2,137	275	100.0%	350	131	93.6%
Foreign born:	0	23	0.0%	24	44	6.4%
Naturalized U.S. citizen	0	23	0.0%	0	23	0.0%
Not a U.S. citizen	0	23	0.0%	24	44	6.4%
18 years and over:	4,568	312	100.0%	3,245	319	100.0%
Native	4,568	312	100.0%	3,219	321	99.2%
Foreign born:	0	23	0.0%	26	29	0.8%
Naturalized U.S. citizen	0	23	0.0%	0	23	0.0%
Not a U.S. citizen	0	23	0.0%	26	29	0.8%

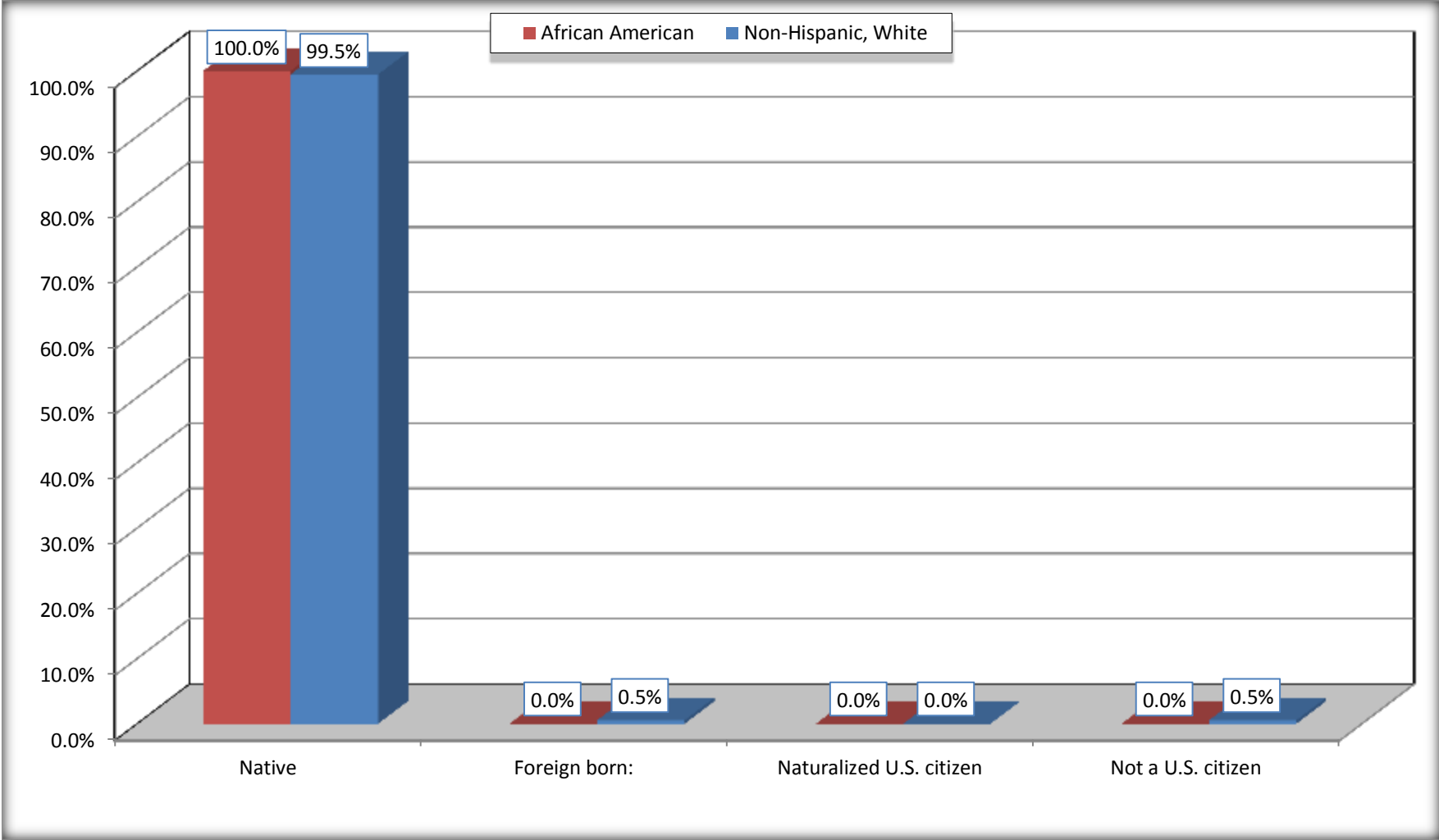
	Columbus city, Mississippi					
	African American	Margin of Error (+/-)	% of AA by Age	White, Not Hispanic	Margin of Error (+/-)	% of NHW by Age
Female:	7,997	380	54.4%	4,818	424	57.1%
Under 18 years:	2,106	277	100.0%	675	228	100.0%
Native	2,106	277	100.0%	675	228	100.0%
Foreign born:	0	23	0.0%	0	23	0.0%
Naturalized U.S. citizen	0	23	0.0%	0	23	0.0%
Not a U.S. citizen	0	23	0.0%	0	23	0.0%
18 years and over:	5,891	256	100.0%	4,143	296	100.0%
Native	5,891	256	100.0%	4,130	296	99.7%
Foreign born:	0	23	0.0%	13	22	0.3%
Naturalized U.S. citizen	0	23	0.0%	0	23	0.0%
Not a U.S. citizen	0	23	0.0%	13	22	0.3%

Source: U.S. Census Bureau, 2008-2012 American Community Survey

For information on confidentiality protection, sampling error, nonsampling error, and definitions, see Survey Methodology.
<http://www.census.gov/acs/www/UseData/index.htm>

Citizenship Status of Voting Age Population (18 and Over)

Columbus city, Mississippi



Source: B05003. SEX BY AGE BY CITIZENSHIP STATUS
Data Set: 2008-2012 American Community Survey 5-Year Estimates

**B07004. GEOGRAPHICAL MOBILITY IN THE PAST YEAR BY RACE FOR CURRENT RESIDENCE IN THE UNITED STATES - Universe:
POPULATION 1 YEAR AND OVER**

Data Set: 2008-2012 American Community Survey 5-Year Estimates

	Columbus city, Mississippi					
	African American	Margin of Error (+/-)	% of AA Total	White, Not Hispanic	Margin of Error (+/-)	% of NHW Total
Total:	14,530	575	100.0%	8,370	538	100.0%
Same house 1 year ago	11,966	687	82.4%	6,524	465	77.9%
Moved within same county	2,144	592	14.8%	1,116	326	13.3%
Moved from different county within same state	343	150	2.4%	446	180	5.3%
Moved from different state	51	45	0.4%	241	130	2.9%
Moved from abroad	26	29	0.2%	43	34	0.5%

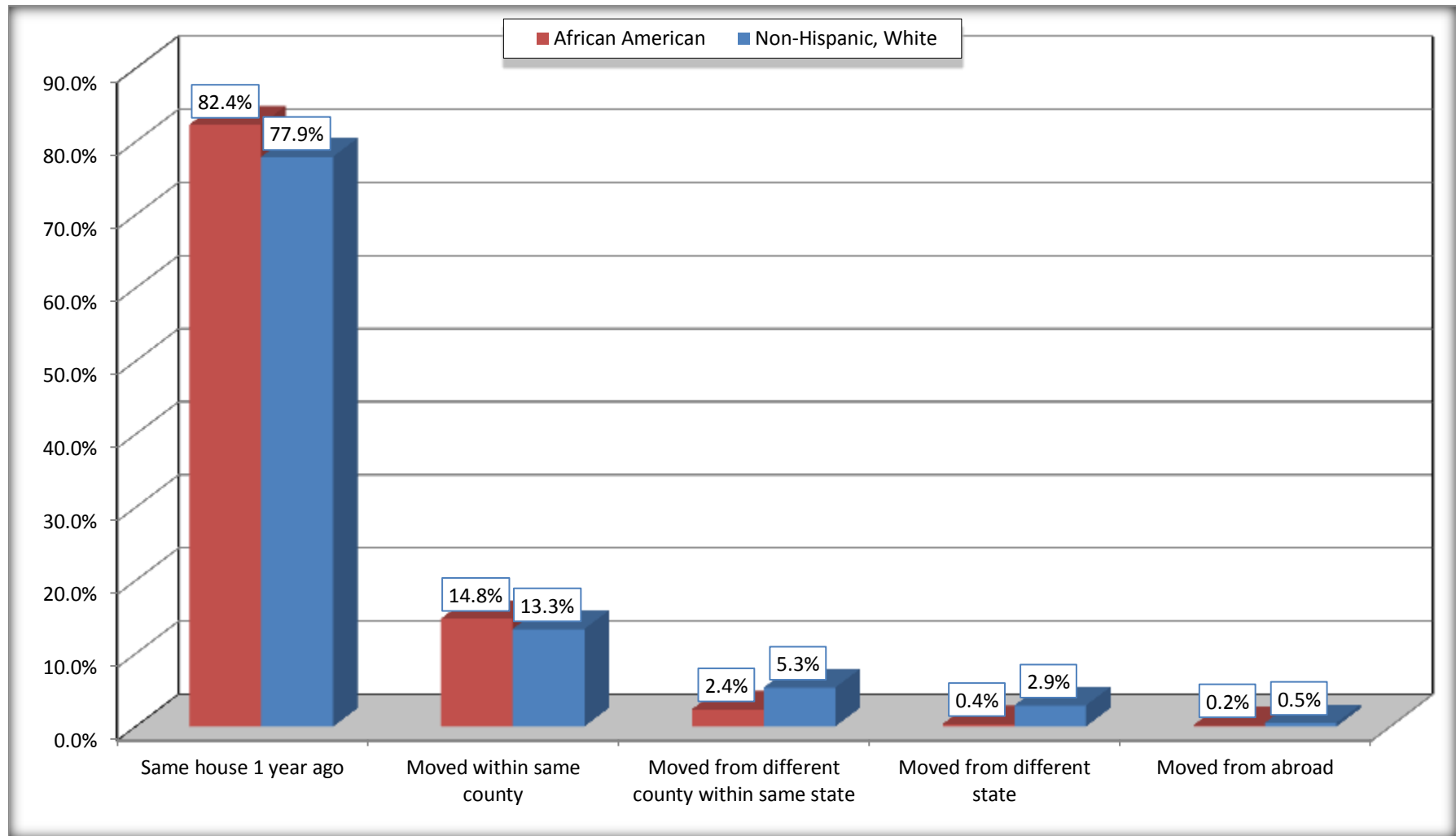
Source: U.S. Census Bureau, 2008-2012 American Community Survey

For information on confidentiality protection, sampling error, nonsampling error, and definitions, see Survey Methodology.

<http://www.census.gov/acs/www/UseData/index.htm>

Geographical Mobility in the Past Year (Population 1 Year and Over)

Columbus city, Mississippi



Source: B07004. GEOGRAPHICAL MOBILITY IN THE PAST YEAR BY RACE FOR CURRENT RESIDENCE IN THE UNITED STATES - Universe: POPULATION 1 YEAR AND OVER

Data Set: 2008-2012 American Community Survey 5-Year Estimates

B08105. MEANS OF TRANSPORTATION TO WORK - Universe: WORKERS 16 YEARS AND OVER

Data Set: 2008-2012 American Community Survey 5-Year Estimates

	Columbus city, Mississippi					
	African American	Margin of Error (+/-)	% of AA Total	White, Not Hispanic	Margin of Error (+/-)	% of NHW Total
Total:	5084	464	100.0%	3618	405	100.0%
Car, truck, or van - drove alone	4024	440	79.2%	3050	400	84.3%
Car, truck, or van - carpooled	745	191	14.7%	203	120	5.6%
Public transportation (excluding taxicab)	27	37	0.5%	0	23	0.0%
Walked	170	97	3.3%	224	92	6.2%
Taxicab, motorcycle, bicycle, or other means	42	29	0.8%	38	39	1.1%
Worked at home	76	65	1.5%	103	56	2.8%

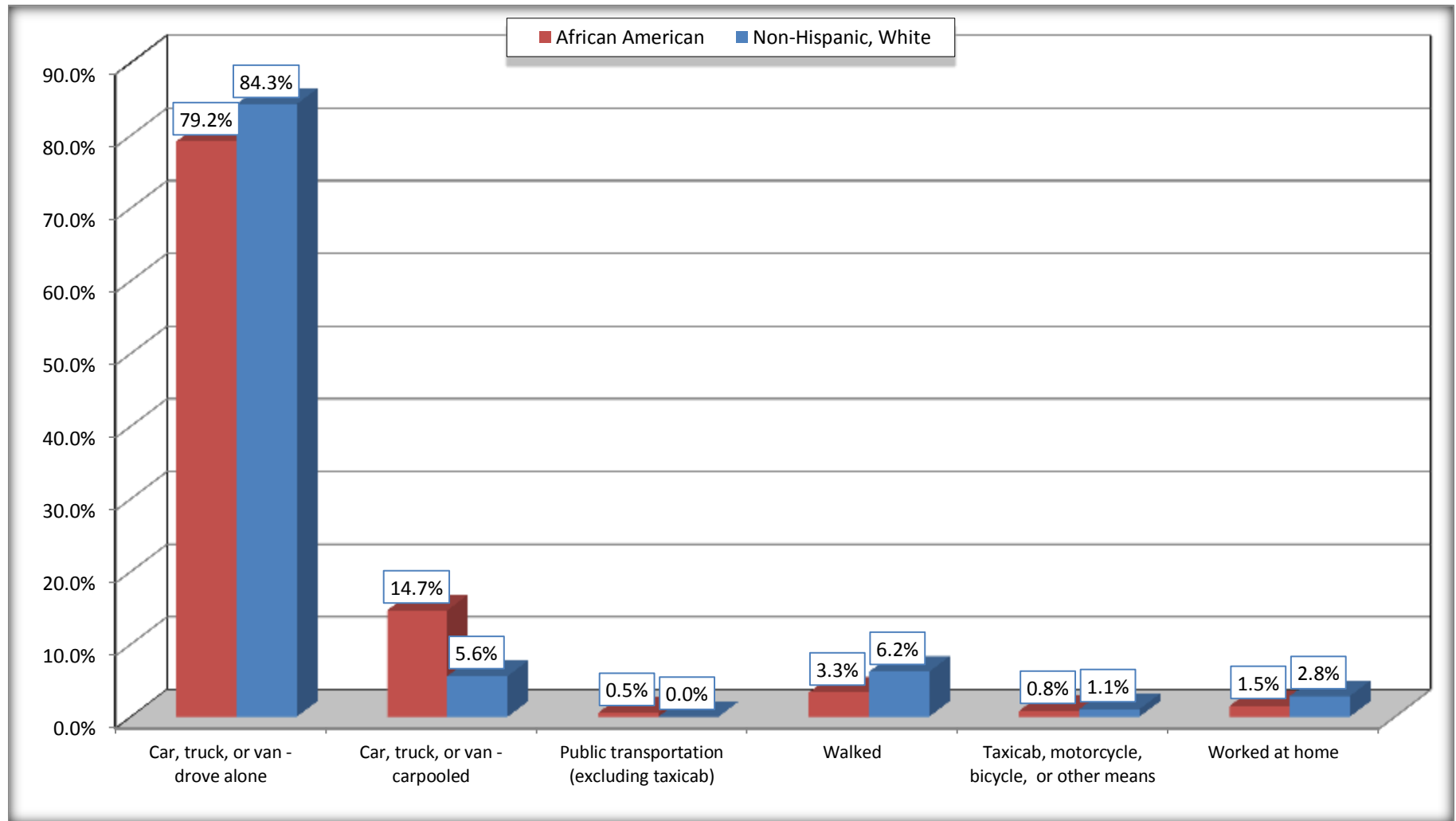
Source: U.S. Census Bureau, 2008-2012 American Community Survey

For information on confidentiality protection, sampling error, nonsampling error, and definitions, see Survey Methodology.

<http://www.census.gov/acs/www/UseData/index.htm>

Means of Transportation to Work (Workers 16 Years and Over)

Columbus city, Mississippi



Source: B08105. MEANS OF TRANSPORTATION TO WORK - Universe: WORKERS 16 YEARS AND OVER
Data Set: 2008-2012 American Community Survey 5-Year Estimates

B11002. HOUSEHOLD TYPE BY RELATIVES AND NONRELATIVES FOR POPULATION IN HOUSEHOLDS

Data Set: 2008-2012 American Community Survey 5-Year Estimates

	Columbus city, Mississippi					
	African American	Margin of Error (+/-)	% of AA Total	White, Not Hispanic	Margin of Error (+/-)	% of NHW Total
Total:	13956	635	100.0%	7633	548	100.0%
In family households	11445	766	82.0%	5191	630	68.0%
In nonfamily households	2511	431	18.0%	2442	512	32.0%

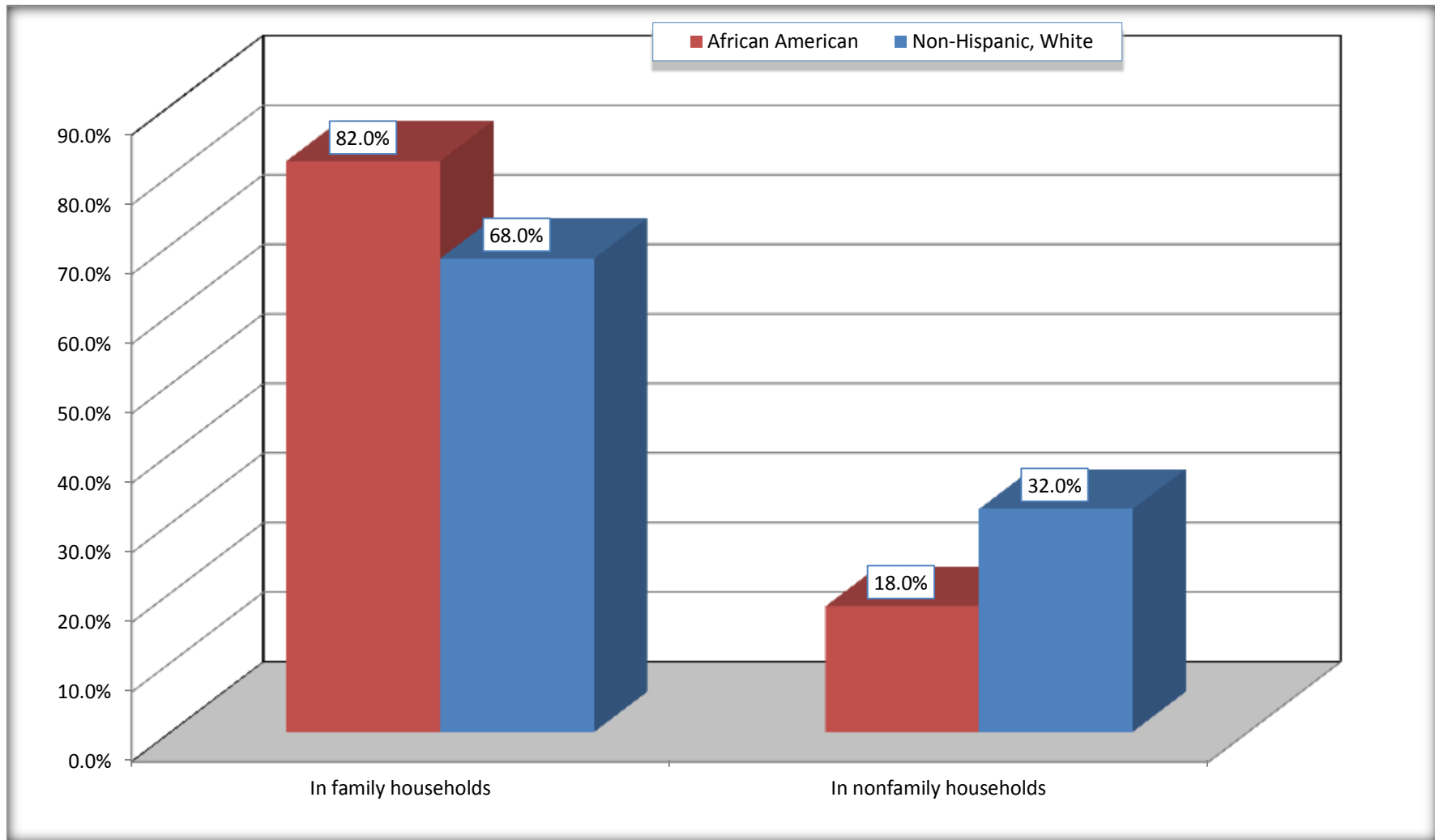
Source: U.S. Census Bureau, 2008-2012 American Community Survey

For information on confidentiality protection, sampling error, nonsampling error, and definitions, see Survey Methodology.

<http://www.census.gov/acs/www/UseData/index.htm>

Household Type for Population in Households

Columbus city, Mississippi



Source: B11002. HOUSEHOLD TYPE BY RELATIVES AND NONRELATIVES FOR POPULATION IN HOUSEHOLDS
Data Set: 2008-2012 American Community Survey 5-Year Estimates

B12002. MARITAL STATUS FOR THE POPULATION 15 YEARS AND OVER

Data Set: 2008-2012 American Community Survey 5-Year Estimates

	Columbus city, Mississippi					
	African American	Margin of Error (+/-)	% of AA Total	White, Not Hispanic	Margin of Error (+/-)	% of NHW Total
Total:	11,261	495	100.0%	7,574	464	100.0%
Never married	5,513	NC	49.0%	1,800	NC	23.8%
Now married (except separated)	3,008	NC	26.7%	3,371	NC	44.5%
Separated	736	NC	6.5%	190	NC	2.5%
Widowed	767	NC	6.8%	1,064	NC	14.0%
Divorced	1,237	NC	11.0%	1,149	NC	15.2%
Male:	5,010	355	44.5%	3,328	328	43.9%
Never married	2,521	301	22.4%	847	208	11.2%
Now married (except separated)	1,599	236	14.2%	1,736	213	22.9%
Separated	286	166	2.5%	91	84	1.2%
Widowed	112	53	1.0%	162	74	2.1%
Divorced	492	148	4.4%	492	197	6.5%
Female:	6,251	276	55.5%	4,246	309	56.1%
Never married	2,992	323	26.6%	953	210	12.6%
Now married (except separated)	1,409	272	12.5%	1,635	202	21.6%
Separated	450	161	4.0%	99	94	1.3%
Widowed	655	118	5.8%	902	140	11.9%
Divorced	745	197	6.6%	657	248	8.7%

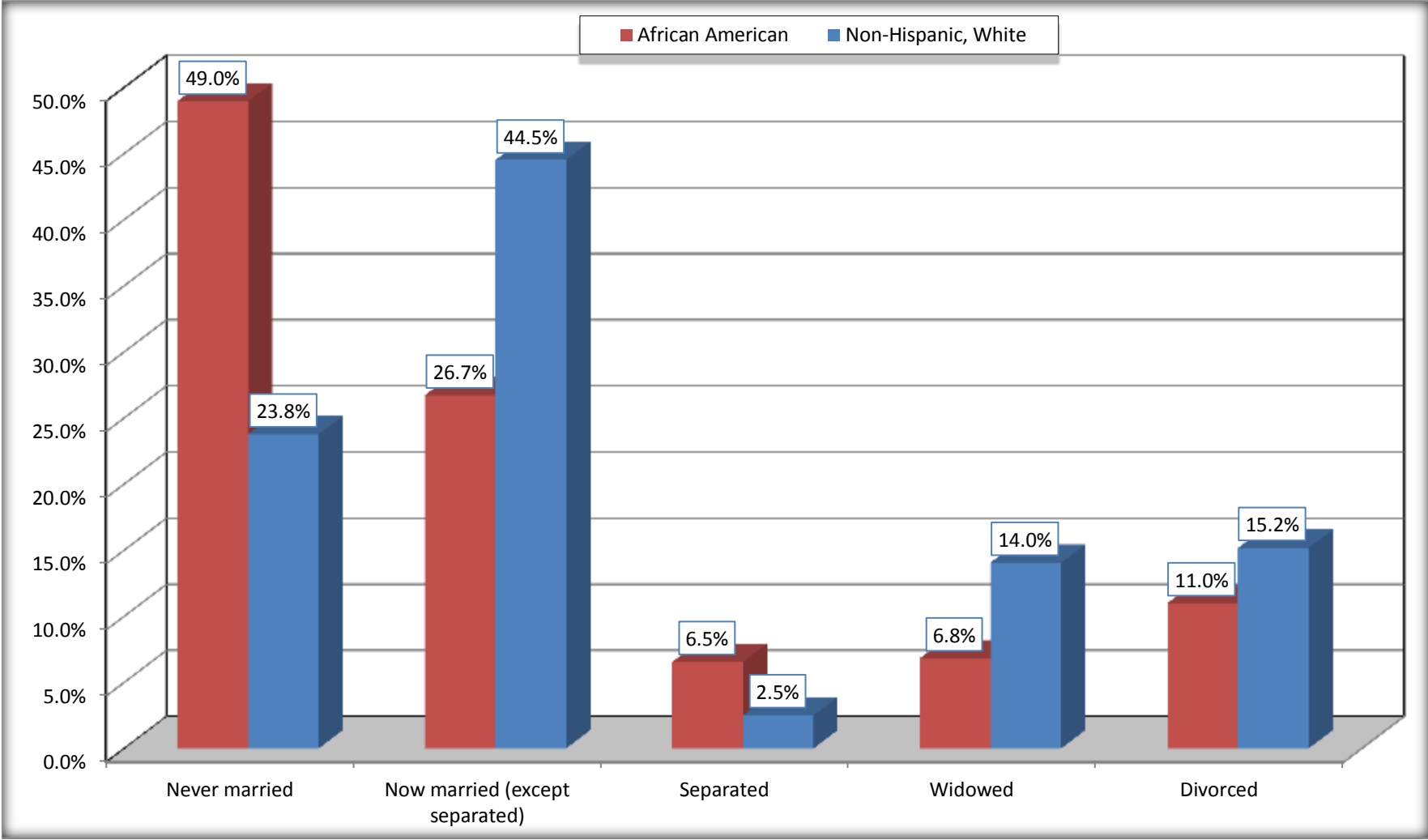
Source: U.S. Census Bureau, 2008-2012 American Community Survey

For information on confidentiality protection, sampling error, nonsampling error, and definitions, see Survey Methodology.

<http://www.census.gov/acs/www/UseData/index.htm>

Marital Status for the Population 15 Years and Over

Columbus city, Mississippi



Source: B12002. MARITAL STATUS FOR THE POPULATION 15 YEARS AND OVER
Data Set: 2008-2012 American Community Survey 5-Year Estimates

C15002. SEX BY EDUCATIONAL ATTAINMENT FOR THE POPULATION 25 YEARS AND OVER

Data Set: 2008-2012 American Community Survey 5-Year Estimates

	Columbus city, Mississippi					
	African American	Margin of Error (+/-)	% of AA Total	White, Not Hispanic	Margin of Error (+/-)	% of NHW Total
Total:	8,685	361	100.0%	6,436	428	100.0%
Less than high school diploma	2,507	NC	28.9%	814	NC	12.6%
High school graduate, GED, or alternative	2,908	NC	33.5%	1,458	NC	22.7%
Some college or associate's degree	2,354	NC	27.1%	2,153	NC	33.5%
Bachelor's degree or higher	916	NC	10.5%	2,011	NC	31.2%
Male:	3,721	232	42.8%	2,847	304	44.2%
Less than high school diploma	951	207	10.9%	212	98	3.3%
High school graduate, GED, or alternative	1,316	246	15.2%	575	179	8.9%
Some college or associate's degree	1,159	231	13.3%	1,166	299	18.1%
Bachelor's degree or higher	295	131	3.4%	894	205	13.9%
Female:	4,964	238	57.2%	3,589	269	55.8%
Less than high school diploma	1,556	273	17.9%	602	186	9.4%
High school graduate, GED, or alternative	1,592	253	18.3%	883	185	13.7%
Some college or associate's degree	1,195	257	13.8%	987	184	15.3%
Bachelor's degree or higher	621	158	7.2%	1,117	203	17.4%

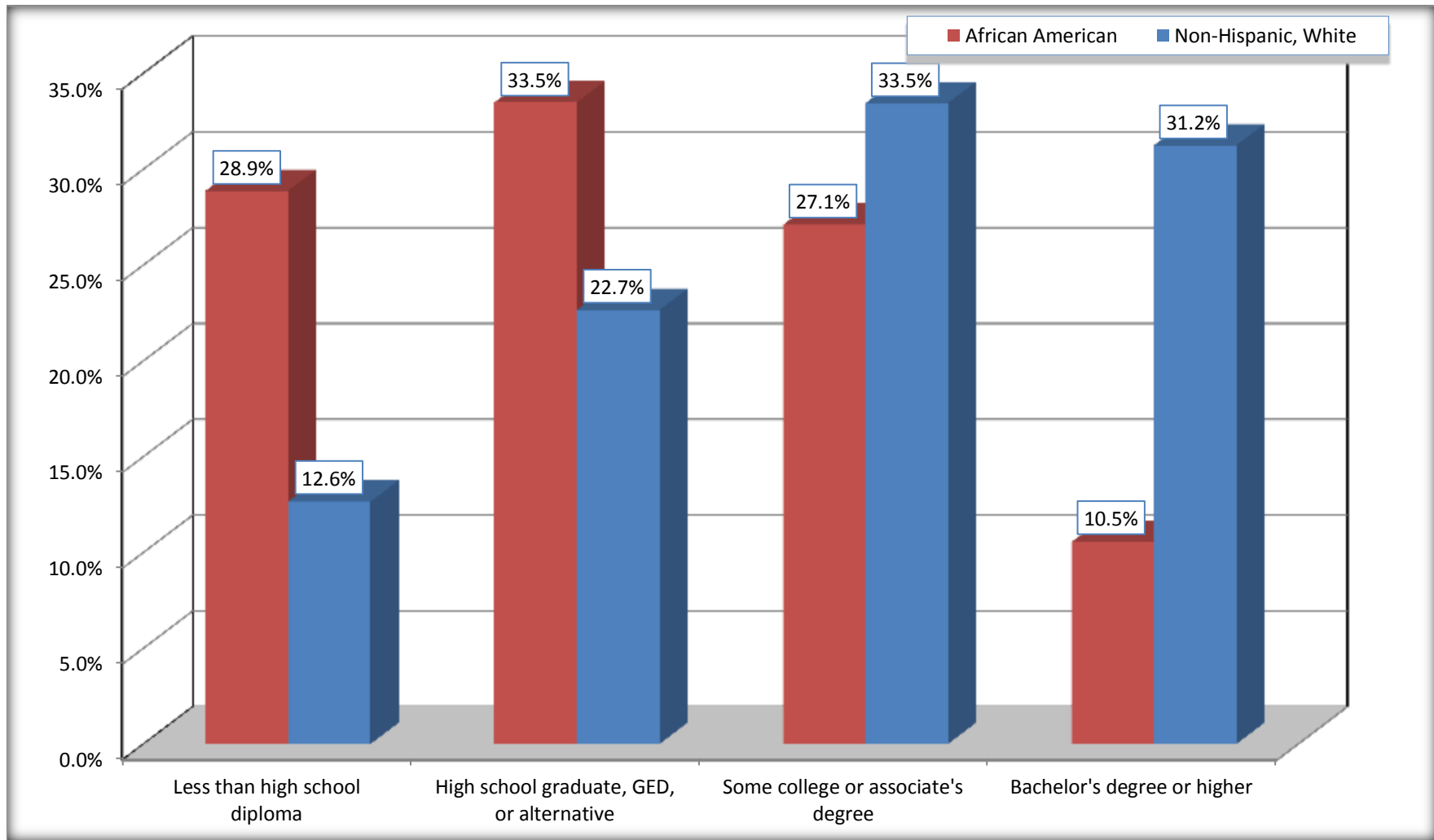
Source: U.S. Census Bureau, 2008-2012 American Community Survey

For information on confidentiality protection, sampling error, nonsampling error, and definitions, see Survey Methodology.

<http://www.census.gov/acs/www/UseData/index.htm>

Educational Attainment for the Population 25 Years and Older

Columbus city, Mississippi



Source: C15002. SEX BY EDUCATIONAL ATTAINMENT FOR THE POPULATION 25 YEARS AND OVER
Data Set: 2008-2012 American Community Survey 5-Year Estimates

B17010. POVERTY STATUS IN THE PAST 12 MONTHS OF FAMILIES BY FAMILY TYPE BY PRESENCE OF RELATED CHILDREN UNDER 18 YEARS

Data Set: 2008-2012 American Community Survey 5-Year Estimates

	Columbus city, Mississippi					
	African American	Margin of Error (+/-)	% of AA Total	White, Not Hispanic	Margin of Error (+/-)	% of NHW Total
Total:	3,358	292	100.0%	2,012	248	100.0%
Income in the past 12 months below poverty level:	1,324	210	39.4%	299	128	14.9%
Married-couple family:	131	77	3.9%	94	68	4.7%
With related children under 18 years	77	61	2.3%	12	20	0.6%
Other family:	1,193	194	35.5%	205	127	10.2%
Male householder, no wife present	91	75	2.7%	0	23	0.0%
With related children under 18 years	79	74	2.4%	0	23	0.0%
Female householder, no husband present	1,102	187	32.8%	205	127	10.2%
With related children under 18 years	930	179	27.7%	165	112	8.2%
Income in the past 12 months at or above poverty level:	2,034	255	60.6%	1,713	223	85.1%
Married-couple family:	1,252	235	37.3%	1,466	194	72.9%
With related children under 18 years	508	180	15.1%	327	124	16.3%
Other family:	782	175	23.3%	247	99	12.3%
Male householder, no wife present	185	95	5.5%	59	47	2.9%
With related children under 18 years	79	64	2.4%	26	30	1.3%
Female householder, no husband present	597	154	17.8%	188	85	9.3%
With related children under 18 years	424	145	12.6%	38	38	1.9%

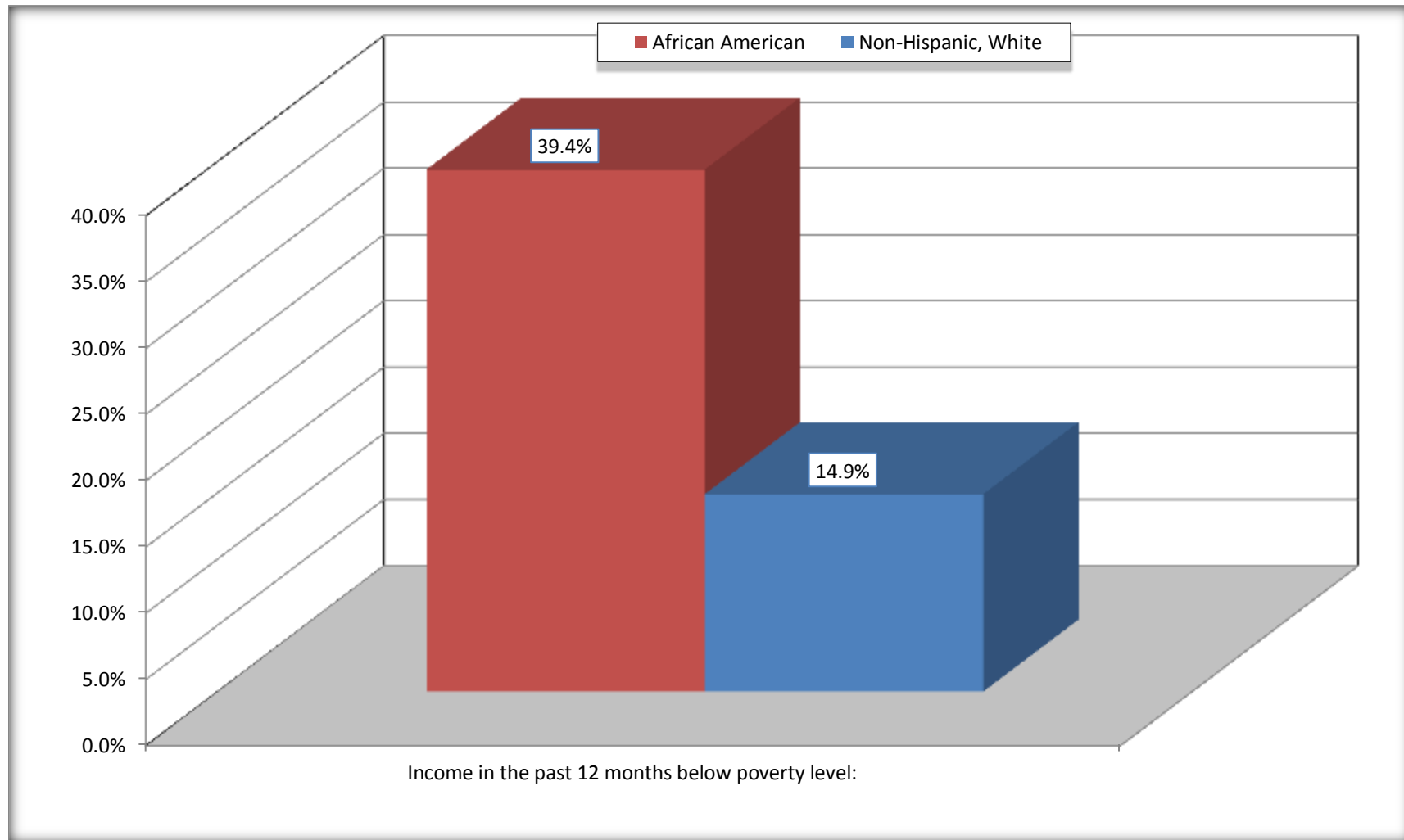
Source: U.S. Census Bureau, 2008-2012 American Community Survey

For information on confidentiality protection, sampling error, nonsampling error, and definitions, see Survey Methodology.

<http://www.census.gov/acs/www/UseData/index.htm>

Family Households Below Poverty in the Past 12 Months

Columbus city, Mississippi

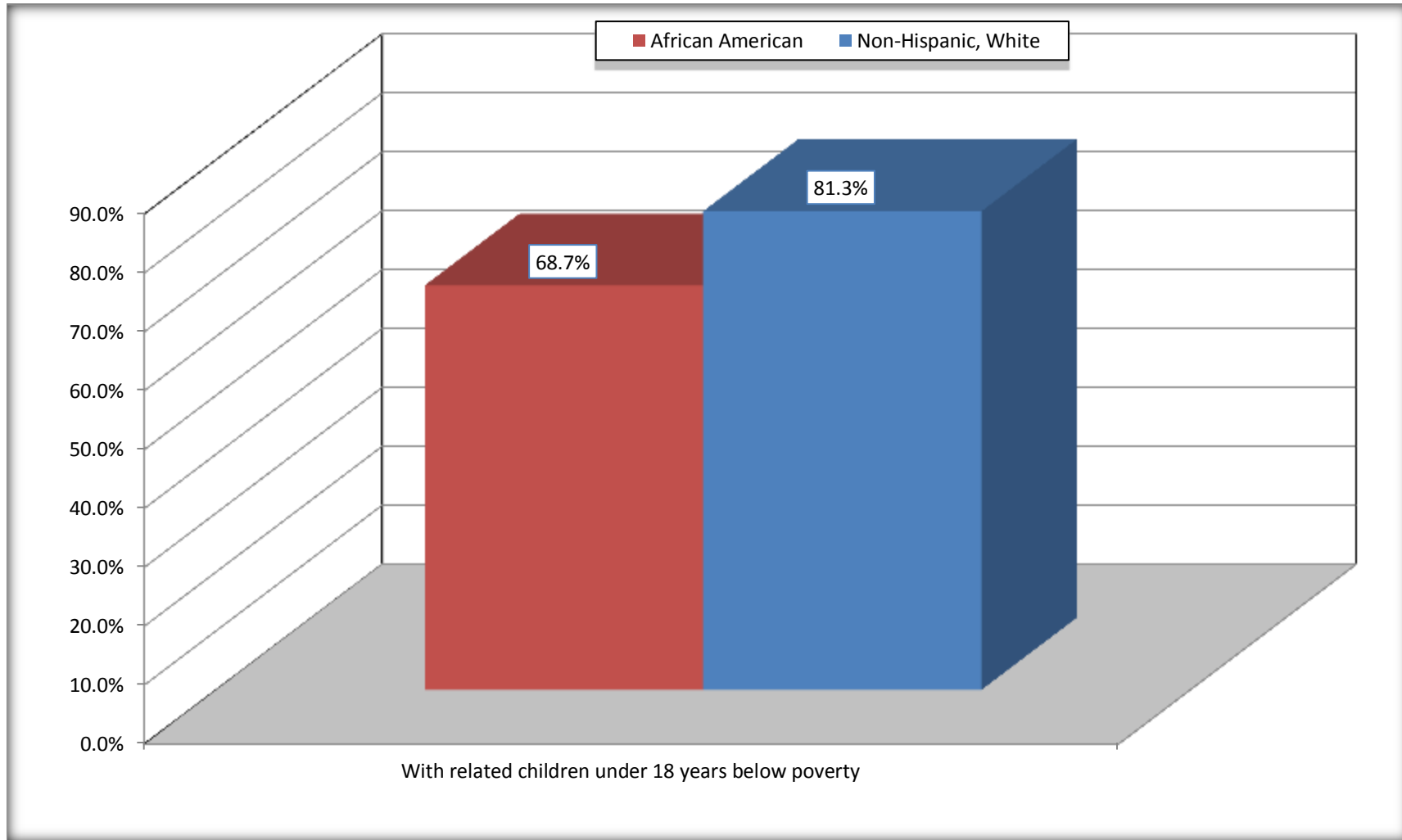


Source: B17010. POVERTY STATUS IN THE PAST 12 MONTHS OF FAMILIES BY FAMILY TYPE BY PRESENCE OF RELATED CHILDREN UNDER 18 YEARS

Data Set: 2008-2012 American Community Survey 5-Year Estimates

Female-headed Households with Related Children Below Poverty in the Past 12 Months

Columbus city, Mississippi



Source: B17010. POVERTY STATUS IN THE PAST 12 MONTHS OF FAMILIES BY FAMILY TYPE BY PRESENCE OF RELATED CHILDREN UNDER 18 YEARS

Data Set: 2008-2012 American Community Survey 5-Year Estimates

B17020 POVERTY STATUS IN THE PAST 12 MONTHS BY AGE - Universe: POPULATION FOR WHOM POVERTY STATUS IS DETERMINED

Data Set: 2008-2012 American Community Survey 5-Year Estimates

	Columbus city, Mississippi					
	African American	Margin of Error (+/-)	% of AA By Age	White, Not Hispanic	Margin of Error (+/-)	% of NHW By Age
Total:	14,238	587	100.0%	7,538	540	100.0%
Income in the past 12 months below poverty level:	6,383	819	44.8%	1,320	377	17.5%
Under 18 years	2,518	NC	61.2%	261	NC	30.3%
18 to 64 years	3,301	481	37.7%	830	261	18.2%
65 years and over	564	NC	41.6%	229	NC	10.8%
Income in the past 12 months at or above poverty level:	7,855	817	55.2%	6,218	578	82.5%
Under 18 years	1,599	NC	38.8%	600	NC	69.7%
18 to 64 years	5,464	557	62.3%	3,736	453	81.8%
65 years and over	792	NC	58.4%	1,882	NC	89.2%

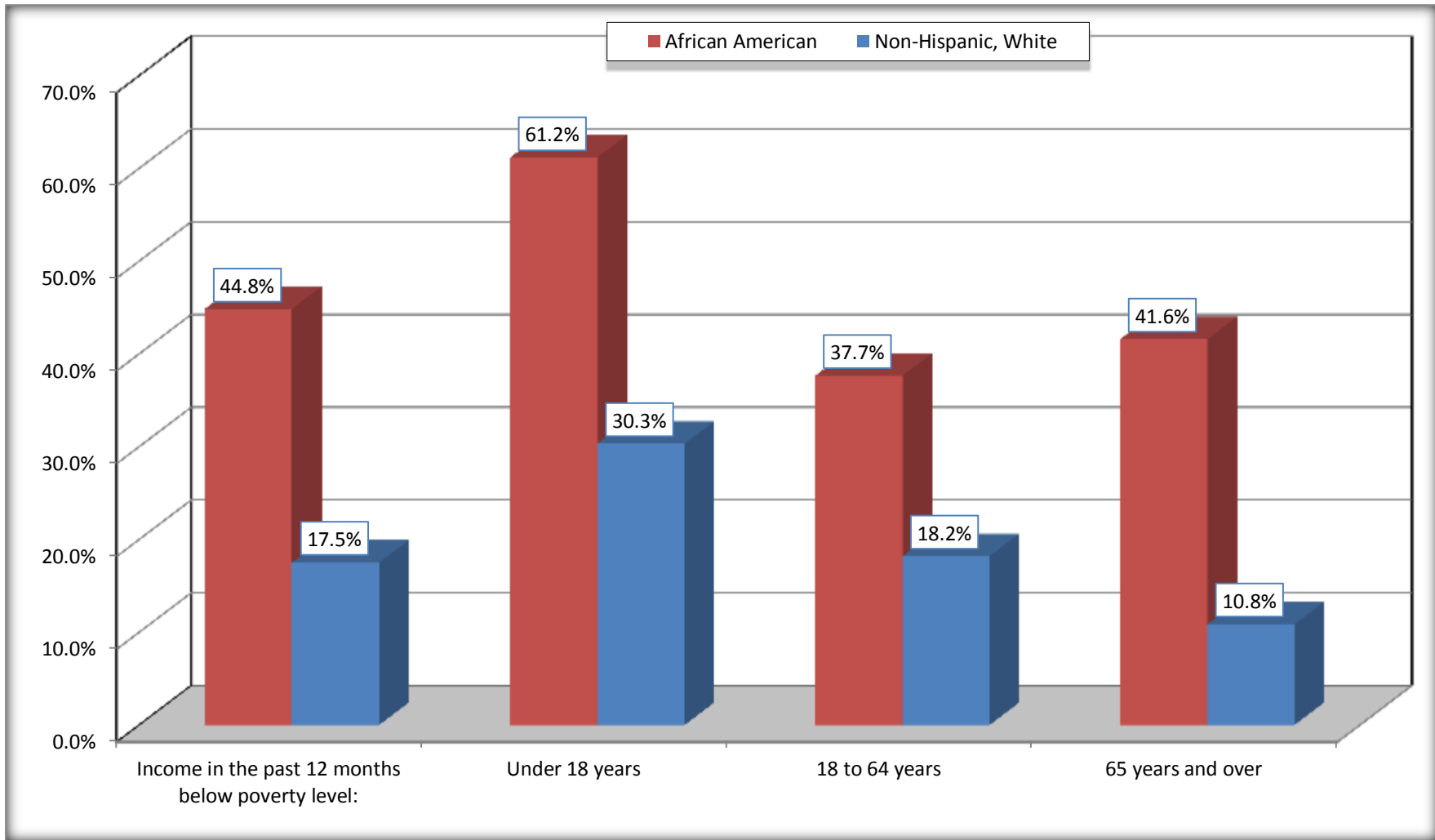
Source: U.S. Census Bureau, 2008-2012 American Community Survey

For information on confidentiality protection, sampling error, nonsampling error, and definitions, see Survey Methodology.

<http://www.census.gov/acs/www/UseData/index.htm>

Population Below Poverty in the Past 12 Months

Columbus city, Mississippi



Source: B17020 POVERTY STATUS IN THE PAST 12 MONTHS BY AGE - Universe: POPULATION FOR WHOM POVERTY STATUS IS DETERMINED
Data Set: 2008-2012 American Community Survey 5-Year Estimates

B19001. HOUSEHOLD INCOME IN THE PAST 12 MONTHS (IN 2010 INFLATION-ADJUSTED DOLLARS)

Data Set: 2008-2012 American Community Survey 5-Year Estimates

	Columbus city, Mississippi					
	African American	Margin of Error (+/-)	% of AA Total	White, Not Hispanic	Margin of Error (+/-)	% of NHW Total
Total:	5,489	303	100.0%	3,995	341	100.0%
Less than \$ 10,000	1,316	243	24.0%	407	144	10.2%
\$ 10,000 to \$ 14,999	737	175	13.4%	446	155	11.2%
\$ 15,000 to \$ 24,999	961	NC	17.5%	547	NC	13.7%
\$ 25,000 to \$ 34,999	666	NC	12.1%	476	NC	11.9%
\$ 35,000 to \$ 49,999	635	NC	11.6%	428	NC	10.7%
\$ 50,000 to \$ 74,999	627	NC	11.4%	660	NC	16.5%
\$ 75,000 to \$ 99,999	344	144	6.3%	431	144	10.8%
\$ 100,000 to \$ 149,999	184	NC	3.4%	259	NC	6.5%
\$ 150,000 to \$ 199,999	0	23	0.0%	68	56	1.7%
\$ 200,000 or more	19	31	0.3%	273	114	6.8%

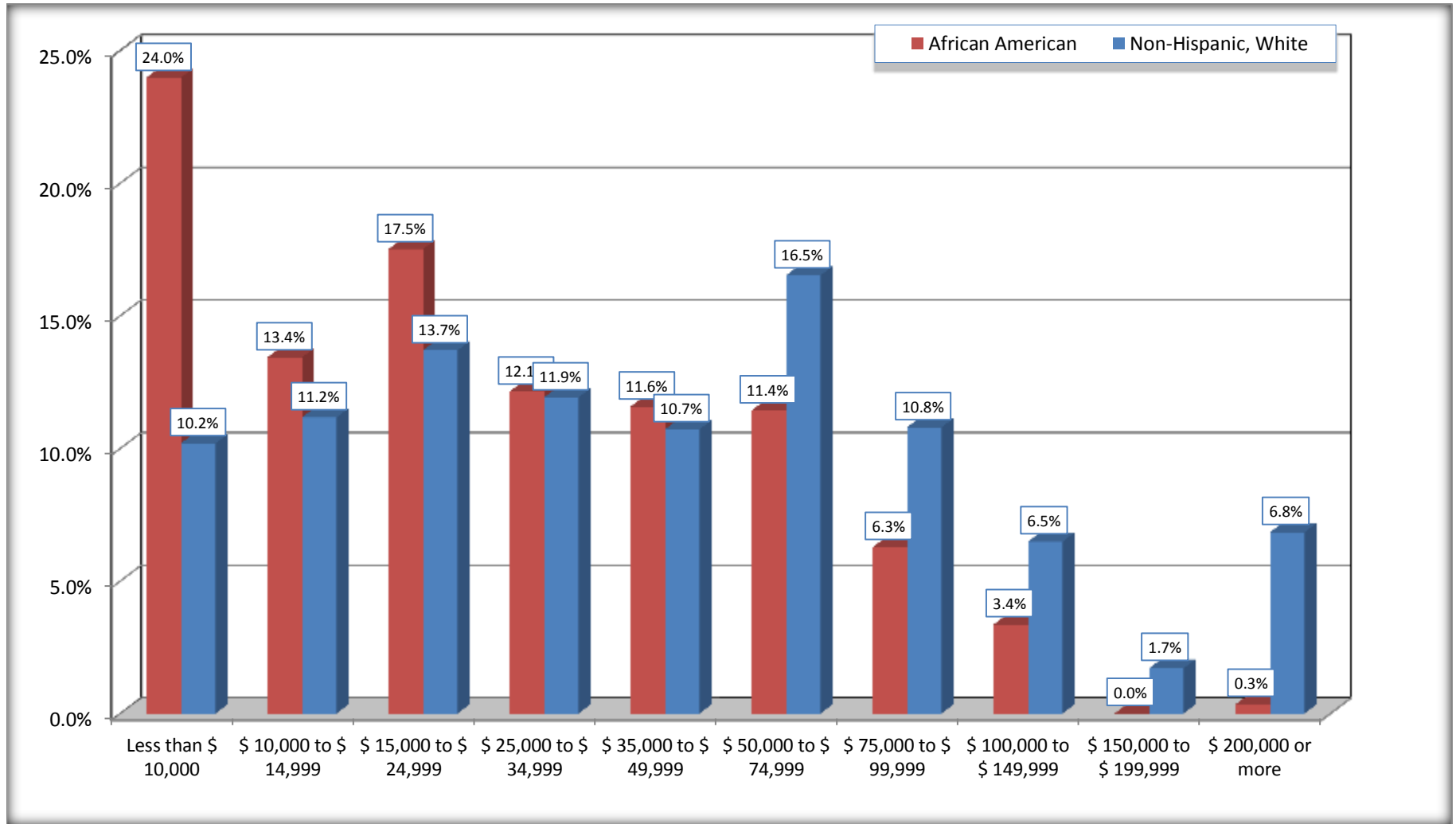
Source: U.S. Census Bureau, 2008-2012 American Community Survey

For information on confidentiality protection, sampling error, nonsampling error, and definitions, see Survey Methodology.

<http://www.census.gov/acs/www/UseData/index.htm>

Household Income in the Past 12 Months

Columbus city, Mississippi



Source: B19001. HOUSEHOLD INCOME IN THE PAST 12 MONTHS (IN 2010 INFLATION-ADJUSTED DOLLARS)
Data Set: 2008-2012 American Community Survey 5-Year Estimates

B19013. MEDIAN HOUSEHOLD INCOME IN THE PAST 12 MONTHS (IN 2010 INFLATION-ADJUSTED DOLLARS)

Data Set: 2008-2012 American Community Survey 5-Year Estimates

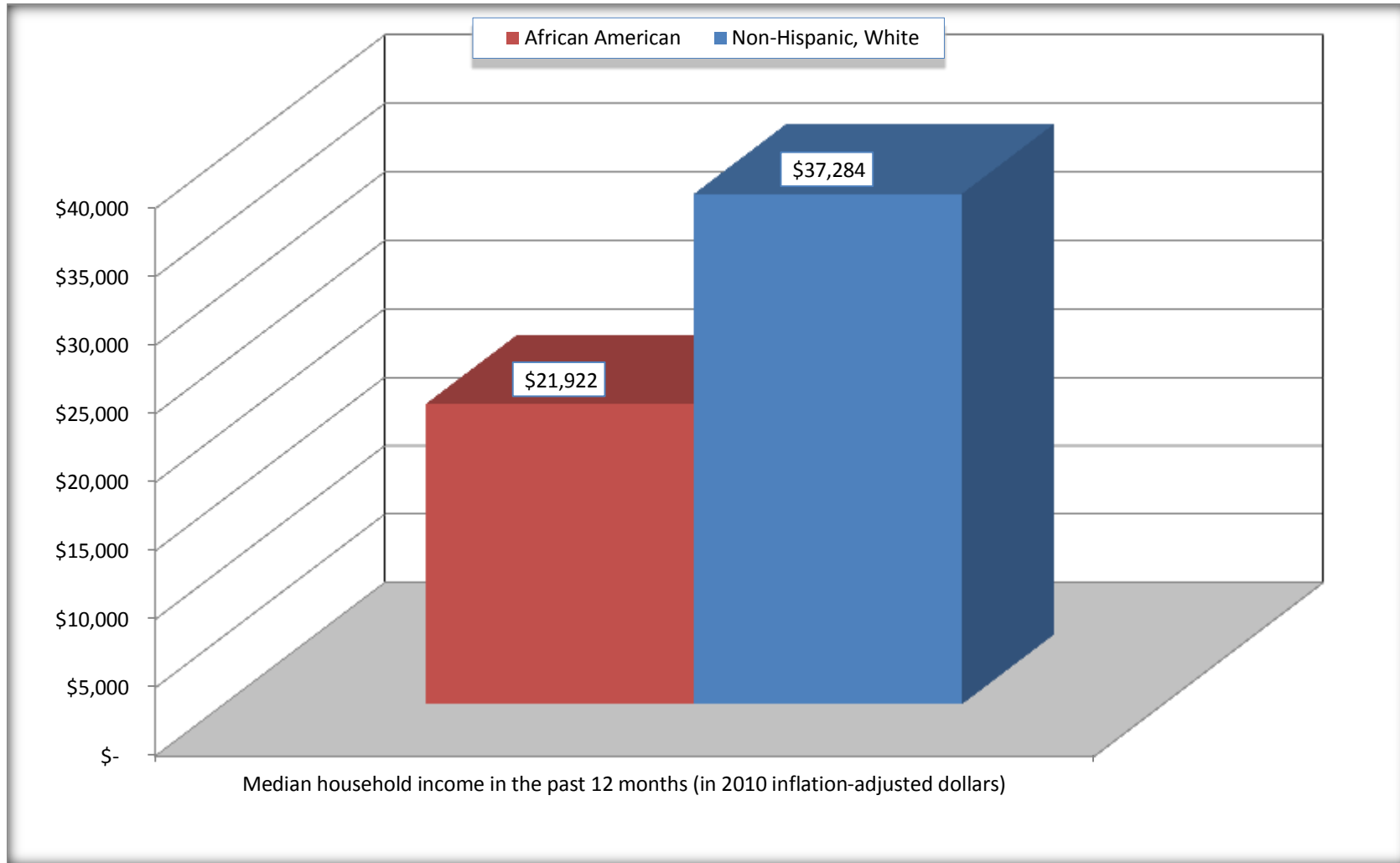
	Columbus city, Mississippi			
	African American	Margin of Error (+/-)	White, Not Hispanic	Margin of Error (+/-)
Median household income in the past 12 months (in 2010 inflation-adjusted dollars)	\$ 21,922	\$ 2,423	\$ 37,284	\$ 5,736

Source: U.S. Census Bureau, 2008-2012 American Community Survey

For information on confidentiality protection, sampling error, nonsampling error, and definitions, see Survey Methodology.
<http://www.census.gov/acs/www/UseData/index.htm>

Median Household Income in the Past 12 Months

Columbus city, Mississippi



Source: B19013. MEDIAN HOUSEHOLD INCOME IN THE PAST 12 MONTHS (IN 2010 INFLATION-ADJUSTED DOLLARS)
Data Set: 2008-2012 American Community Survey 5-Year Estimates

B19101. FAMILY INCOME IN THE PAST 12 MONTHS (IN 2010 INFLATION-ADJUSTED DOLLARS)

Data Set: 2008-2012 American Community Survey 5-Year Estimates

	Columbus city, Mississippi					
	African American	Margin of Error (+/-)	% of AA Total	White, Not Hispanic	Margin of Error (+/-)	% of NHW Total
Total:	3,358	292	100.0%	2,012	248	100.0%
Less than \$ 10,000	575	142	17.1%	105	56	5.2%
\$ 10,000 to \$ 14,999	391	156	11.6%	179	92	8.9%
\$ 15,000 to \$ 24,999	787	NC	23.4%	171	NC	8.5%
\$ 25,000 to \$ 34,999	368	NC	11.0%	114	NC	5.7%
\$ 35,000 to \$ 49,999	375	NC	11.2%	235	NC	11.7%
\$ 50,000 to \$ 74,999	413	NC	12.3%	453	NC	22.5%
\$ 100,000 to \$ 149,999	111	NC	3.3%	223	NC	11.1%
\$ 150,000 to \$ 199,999	0	23	0.0%	52	46	2.6%
\$ 200,000 or more	19	31	0.6%	227	102	11.3%

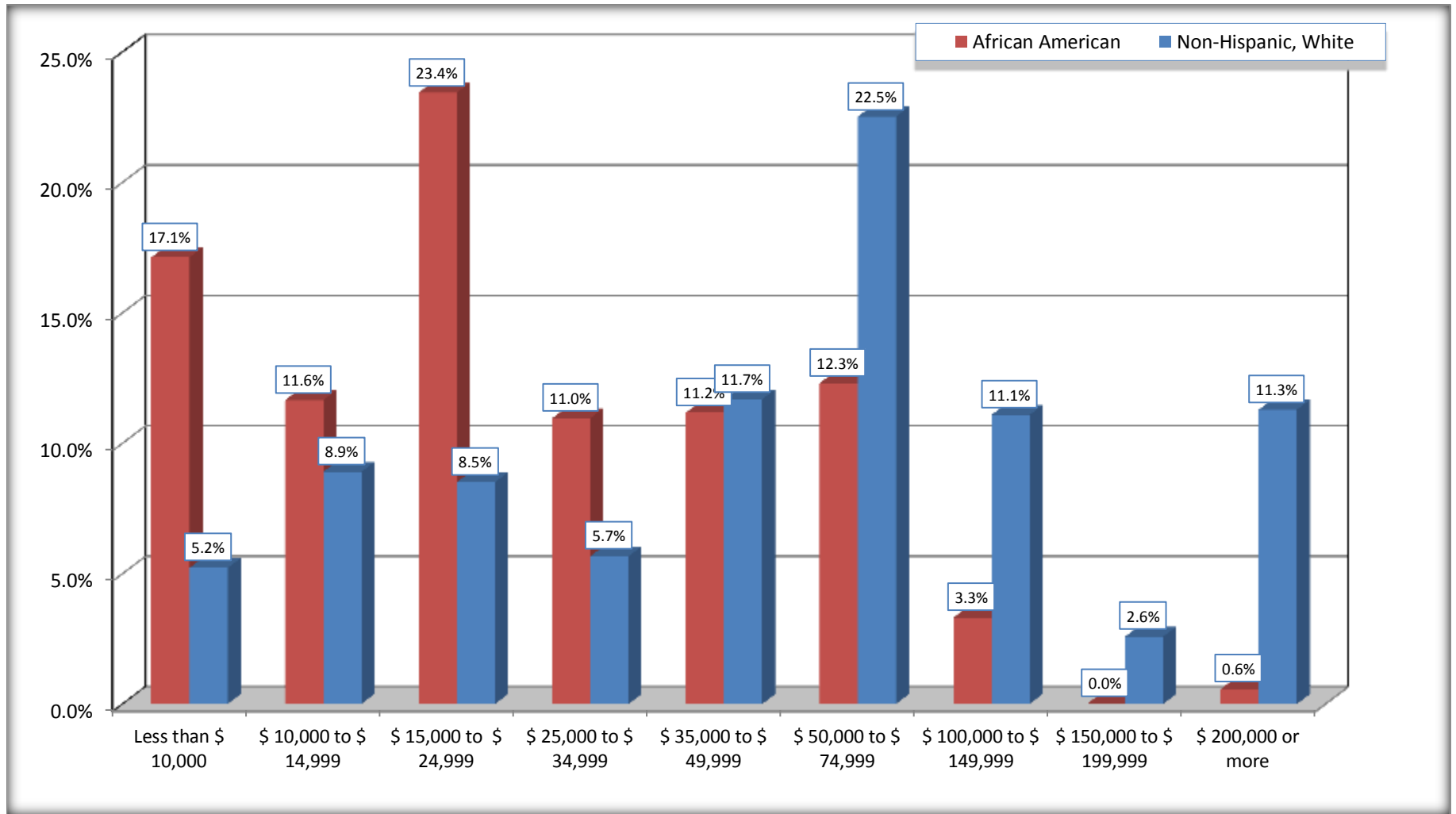
Source: U.S. Census Bureau, 2008-2012 American Community Survey

For information on confidentiality protection, sampling error, nonsampling error, and definitions, see Survey Methodology.

<http://www.census.gov/acs/www/UseData/index.htm>

Family Income in the Past 12 Months

Columbus city, Mississippi



Source: B19101. FAMILY INCOME IN THE PAST 12 MONTHS (IN 2010 INFLATION-ADJUSTED DOLLARS)
Data Set: 2008-2012 American Community Survey 5-Year Estimates

B19113. MEDIAN FAMILY INCOME IN THE PAST 12 MONTHS (IN 2010 INFLATION-ADJUSTED DOLLARS)

Data Set: 2008-2012 American Community Survey 5-Year Estimates

	Columbus city, Mississippi			
	African American	Margin of Error (+/-)	White, Not Hispanic	Margin of Error (+/-)
Median family income in the past 12 months (in 2010 inflation-adjusted dollars)	\$ 24,011	\$ 2,573	\$ 59,784	\$ 10,245

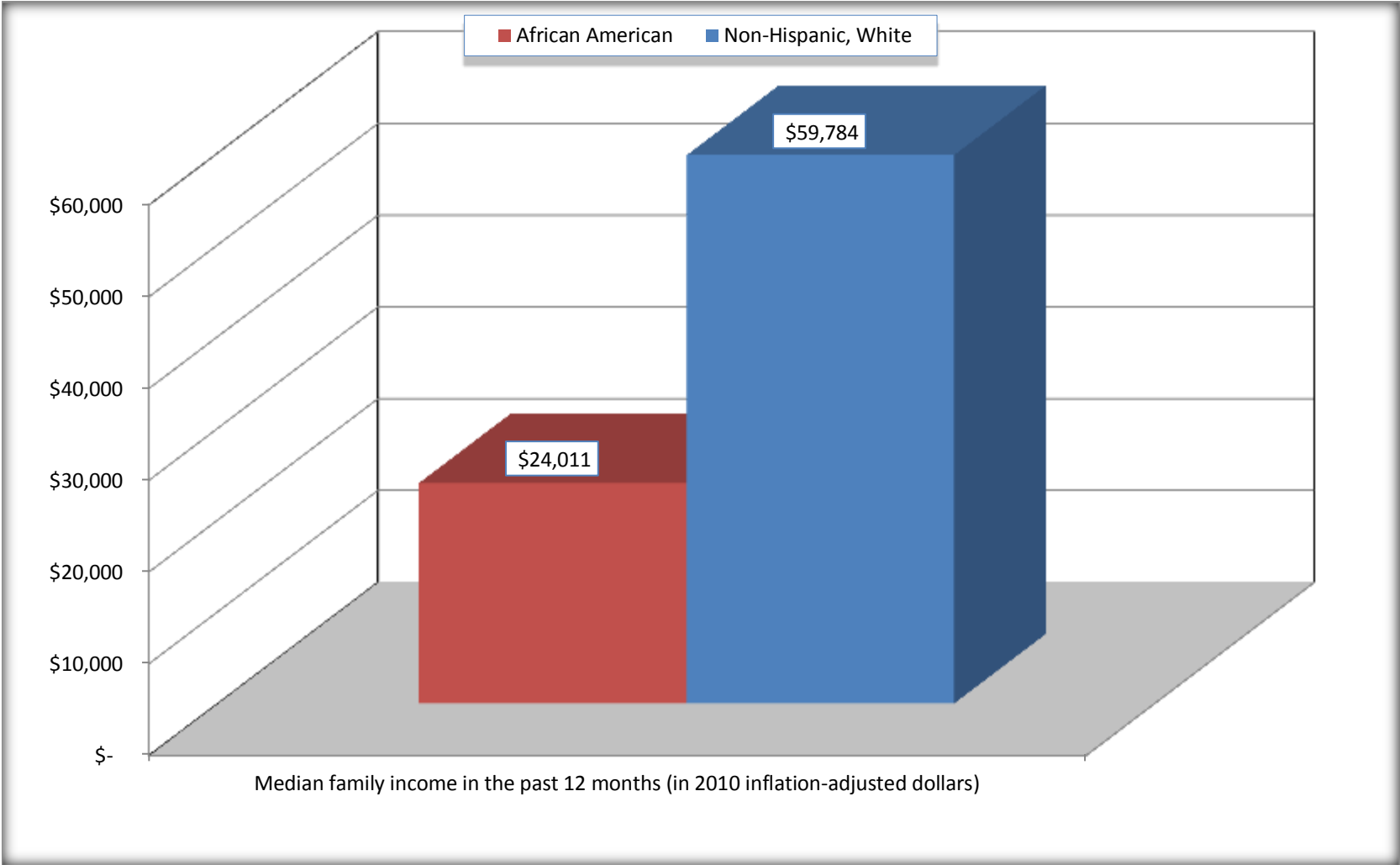
Source: U.S. Census Bureau, 2008-2012 American Community Survey

For information on confidentiality protection, sampling error, nonsampling error, and definitions, see Survey Methodology.

<http://www.census.gov/acs/www/UseData/index.htm>

Median Family Income in the Past 12 Months

Columbus city, Mississippi



Source: B19113. MEDIAN FAMILY INCOME IN THE PAST 12 MONTHS (IN 2010 INFLATION-ADJUSTED DOLLARS)
Data Set: 2008-2012 American Community Survey 5-Year Estimates

B19202. MEDIAN NONFAMILY HOUSEHOLD INCOME IN THE PAST 12 MONTHS (IN 2010 INFLATION-ADJUSTED DOLLARS)

Data Set: 2008-2012 American Community Survey 5-Year Estimates

	Columbus city, Mississippi			
	African American	Margin of Error (+/-)	White, Not Hispanic	Margin of Error (+/-)
Median nonfamily household income in the past 12 months (in 2010 inflation-adjusted dollars)	\$ 14,218	\$ 3,694	\$ 25,146	\$ 6,024

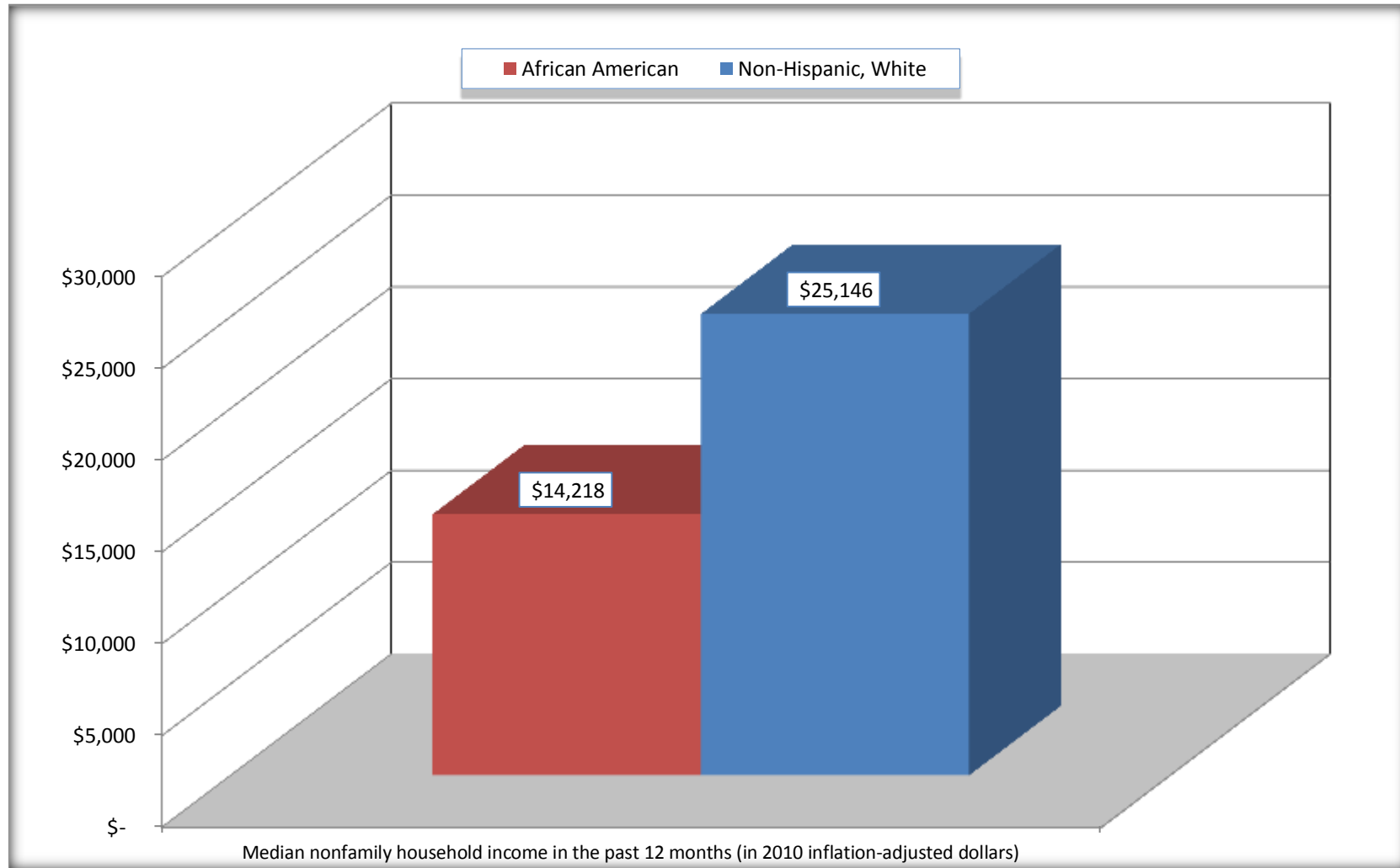
Source: U.S. Census Bureau, 2008-2012 American Community Survey

For information on confidentiality protection, sampling error, nonsampling error, and definitions, see Survey Methodology.

<http://www.census.gov/acs/www/UseData/index.htm>

Median Non-Family Income in the Past 12 Months

Columbus city, Mississippi



Source: B19202. MEDIAN NONFAMILY HOUSEHOLD INCOME IN THE PAST 12 MONTHS (IN 2010 INFLATION-ADJUSTED DOLLARS)
Data Set: 2008-2012 American Community Survey 5-Year Estimates

B19301. PER CAPITA INCOME IN THE PAST 12 MONTHS (IN 2010 INFLATION-ADJUSTED DOLLARS)

Data Set: 2008-2012 American Community Survey 5-Year Estimates

	Columbus city, Mississippi			
	African American	Margin of Error (+/-)	White, Not Hispanic	Margin of Error (+/-)
Per capita income in the past 12 months (in 2010 inflation-adjusted dollars)	\$ 12,663	\$ 1,378	\$ 34,737	\$ 6,705

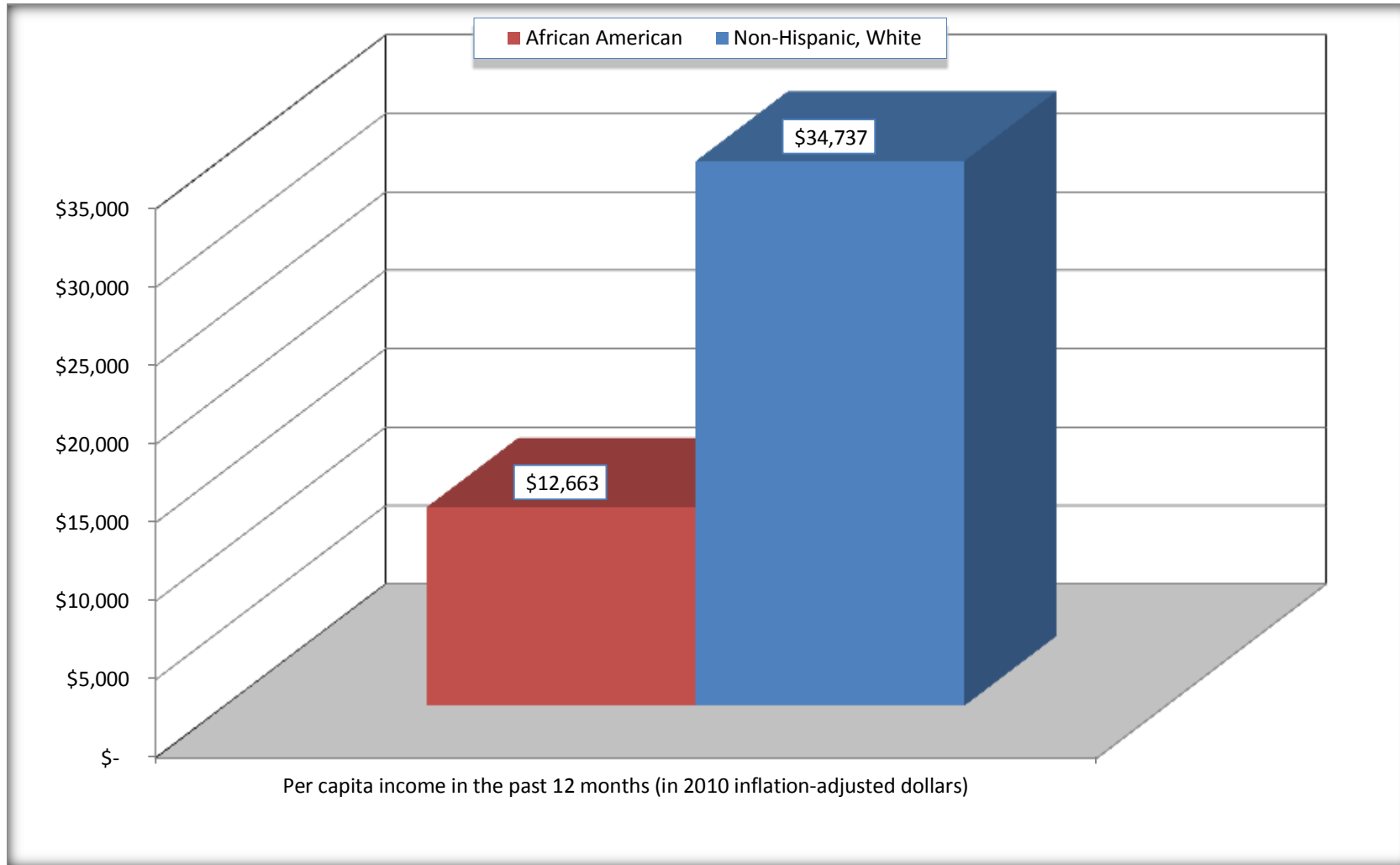
Source: U.S. Census Bureau, 2008-2012 American Community Survey

For information on confidentiality protection, sampling error, nonsampling error, and definitions, see Survey Methodology.

<http://www.census.gov/acs/www/UseData/index.htm>

Per capita Income in the Past 12 Months

Columbus city, Mississippi



Source: B19301. PER CAPITA INCOME IN THE PAST 12 MONTHS (IN 2010 INFLATION-ADJUSTED DOLLARS)
Data Set: 2008-2012 American Community Survey 5-Year Estimates

B20017. MEDIAN EARNINGS IN THE PAST 12 MONTHS (IN 2010 INFLATION-ADJUSTED DOLLARS) BY SEX BY WORK EXPERIENCE IN THE PAST 12 MONTHS FOR THE POPULATION 16 YEARS AND OVER WITH EARNINGS IN THE PAST 12 MONTHS

Data Set: 2008-2012 American Community Survey 5-Year Estimates

	Columbus city, Mississippi			
	African American	Margin of Error (+/-)	White, Not Hispanic	Margin of Error (+/-)
Median earnings in the past 12 months (in 2010 inflation-adjusted dollars) --				
Total:	\$ 17,412	\$ 1,774	\$ 30,234	\$ 6,245
Male --				
Total	\$ 22,365	\$ 3,170	\$ 41,513	\$ 7,180
Worked full-time, year-round in the past 12 months	\$ 36,466	\$ 6,553	\$ 49,318	\$ 7,179
Other	\$ 5,750	\$ 1,914	\$ 12,353	\$ 7,443
Female --				
Total	\$ 14,878	\$ 1,675	\$ 17,218	\$ 7,194
Worked full-time, year-round in the past 12 months	\$ 20,823	\$ 1,944	\$ 31,756	\$ 9,425
Other	\$ 5,489	\$ 1,276	\$ 5,411	\$ 2,939

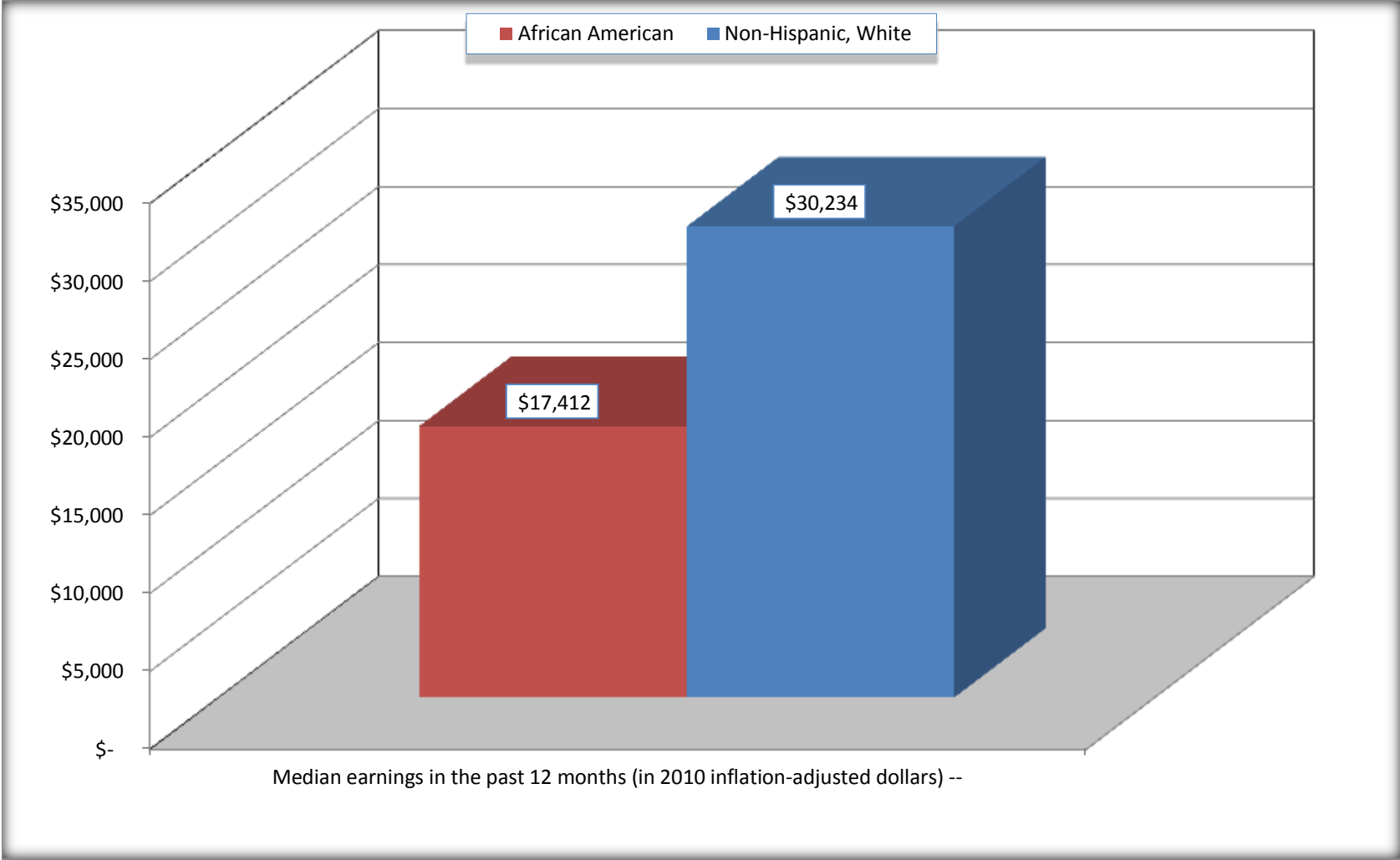
Source: U.S. Census Bureau, 2008-2012 American Community Survey

For information on confidentiality protection, sampling error, nonsampling error, and definitions, see Survey Methodology.

<http://www.census.gov/acs/www/UseData/index.htm>

Median earnings in the Past 12 Months (16 Years and Over with Earnings)

Columbus city, Mississippi



Source: B20017. MEDIAN EARNINGS IN THE PAST 12 MONTHS (IN 2010 INFLATION-ADJUSTED DOLLARS) BY SEX BY WORK EXPERIENCE IN THE PAST 12 MONTHS FOR THE POPULATION 16 YEARS AND OVER WITH EARNINGS IN THE PAST 12 MONTHS
Data Set: 2008-2012 American Community Survey 5-Year Estimates

B20005. SEX BY WORK EXPERIENCE IN THE PAST 12 MONTHS BY EARNINGS IN THE PAST 12 MONTHS (IN 2010 INFLATION-ADJUSTED DOLLARS) FOR THE POPULATION 16 YEARS AND OVER

Data Set: 2008-2012 American Community Survey 5-Year Estimates

	Columbus city, Mississippi					
	African American	Margin of Error (+/-)	% of AA Total	White, Not Hispanic	Margin of Error (+/-)	% of NHW Total
Total:	11,021	462	100.0%	7,495	464	100.0%
Worked full-time, year-round in the past 12 months:	3,718	NC	33.7%	2,545	NC	34.0%
No earnings	0	NC	0.0%	0	NC	0.0%
With earnings:	3,718	NC	33.7%	2,545	NC	34.0%
\$ 1 to \$ 9,999 or loss	221	NC	2.0%	85	NC	1.1%
\$ 10,000 to \$ 19,999	992	NC	9.0%	223	NC	3.0%
\$ 20,000 to \$ 29,999	899	NC	8.2%	346	NC	4.6%
\$ 30,000 to \$ 49,999	1,071	NC	9.7%	893	NC	11.9%
\$ 50,000 to \$ 74,999	379	NC	3.4%	434	NC	5.8%
\$ 75,000 or more	156	NC	1.4%	564	NC	7.5%
Other:	7,303	NC	66.3%	4,950	NC	66.0%
No earnings	4,867	NC	44.2%	3,158	NC	42.1%
With earnings: less than full time, year-round	2,436	NC	22.1%	1,792	NC	23.9%
Male:	4,822	345	43.8%	3,289	326	43.9%
Worked full-time, year-round in the past 12 months:	1,742	282	15.8%	1,592	276	21.2%
No earnings	0	23	0.0%	0	23	0.0%
With earnings:	1,742	282	15.8%	1,592	276	21.2%
\$ 1 to \$ 9,999 or loss	116	NC	1.1%	34	NC	0.5%
\$ 10,000 to \$ 19,999	187	NC	1.7%	83	NC	1.1%
\$ 20,000 to \$ 29,999	378	NC	3.4%	90	NC	1.2%
\$ 30,000 to \$ 49,999	653	NC	5.9%	592	NC	7.9%
\$ 50,000 to \$ 74,999	275	NC	2.5%	315	NC	4.2%
\$ 75,000 or more	133	NC	1.2%	478	NC	6.4%

	Columbus city, Mississippi					
	African American	Margin of Error (+/-)	% of AA Total	White, Not Hispanic	Margin of Error (+/-)	% of NHW Total
Other:	3,080	313	27.9%	1,697	231	22.6%
No earnings	1,992	260	18.1%	1,093	168	14.6%
With earnings:	1,088	199	9.9%	604	146	8.1%
Female:	6,199	269	56.2%	4,206	311	56.1%
Worked full-time, year-round in the past 12 months:	1,976	304	17.9%	953	189	12.7%
No earnings	0	23	0.0%	0	23	0.0%
With earnings:	1,976	304	17.9%	953	189	12.7%
\$ 1 to \$ 9,999 or loss	105	NC	1.0%	51	NC	0.7%
\$ 10,000 to \$ 19,999	805	NC	7.3%	140	NC	1.9%
\$ 20,000 to \$ 29,999	521	NC	4.7%	256	NC	3.4%
\$ 30,000 to \$ 49,999	418	NC	3.8%	301	NC	4.0%
\$ 50,000 to \$ 74,999	104	NC	0.9%	119	NC	1.6%
\$ 75,000 or more	23	NC	0.2%	86	NC	1.1%
Other:	4,223	368	38.3%	3,253	273	43.4%
No earnings	2,875	317	26.1%	2,065	211	27.6%
With earnings:	1,348	197	12.2%	1,188	240	15.9%

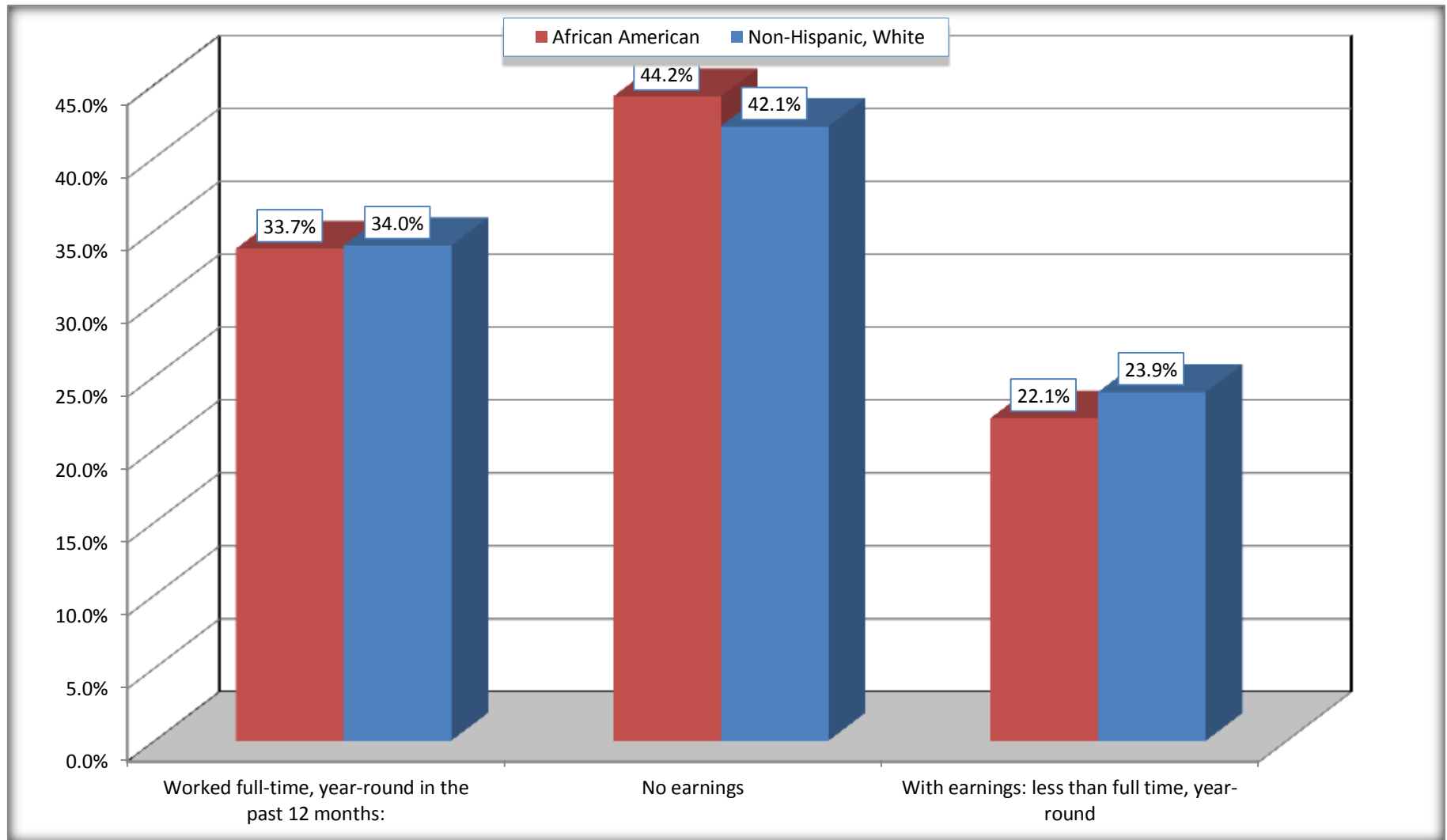
Source: U.S. Census Bureau, 2008-2012 American Community Survey

For information on confidentiality protection, sampling error, nonsampling error, and definitions, see Survey Methodology.

<http://www.census.gov/acs/www/UseData/index.htm>

Employment and Earnings in in the Past 12 Months (16 Years and Over)

Columbus city, Mississippi



Source: B20005. SEX BY WORK EXPERIENCE IN THE PAST 12 MONTHS BY EARNINGS IN THE PAST 12 MONTHS (IN 2010 INFLATION-ADJUSTED DOLLARS) FOR THE POPULATION 16 YEARS AND OVER

Data Set: 2008-2012 American Community Survey 5-Year Estimates

C21001. SEX BY AGE BY VETERAN STATUS FOR THE CIVILIAN POPULATION 18 YEARS AND OVER

Data Set: 2008-2012 American Community Survey 5-Year Estimates

	Columbus city, Mississippi					
	African American	Margin of Error (+/-)	% of AA Total	White, Not Hispanic	Margin of Error (+/-)	% of NHW Total
Total:	10,448	429	100.0%	7,231	452	100.0%
Veteran	944	NC	9.0%	1,275	NC	17.6%
Nonveteran	9,504	NC	91.0%	5,956	NC	82.4%
Male:	4,557	315	43.6%	3,088	318	42.7%
18 to 64 years:	4,012	295	38.4%	2,222	300	30.7%
Veteran	737	194	7.1%	569	206	7.9%
Nonveteran	3,275	307	31.3%	1,653	264	22.9%
65 years and over:	545	87	5.2%	866	118	12.0%
Veteran	129	59	1.2%	648	116	9.0%
Nonveteran	416	80	4.0%	218	92	3.0%
Female:	5,891	256	56.4%	4,143	296	57.3%
18 to 64 years:	4,986	243	47.7%	2,601	292	36.0%
Veteran	78	66	0.7%	43	67	0.6%
Nonveteran	4,908	256	47.0%	2,558	283	35.4%
65 years and over:	905	94	8.7%	1,542	136	21.3%
Veteran	0	23	0.0%	15	24	0.2%
Nonveteran	905	94	8.7%	1,527	138	21.1%

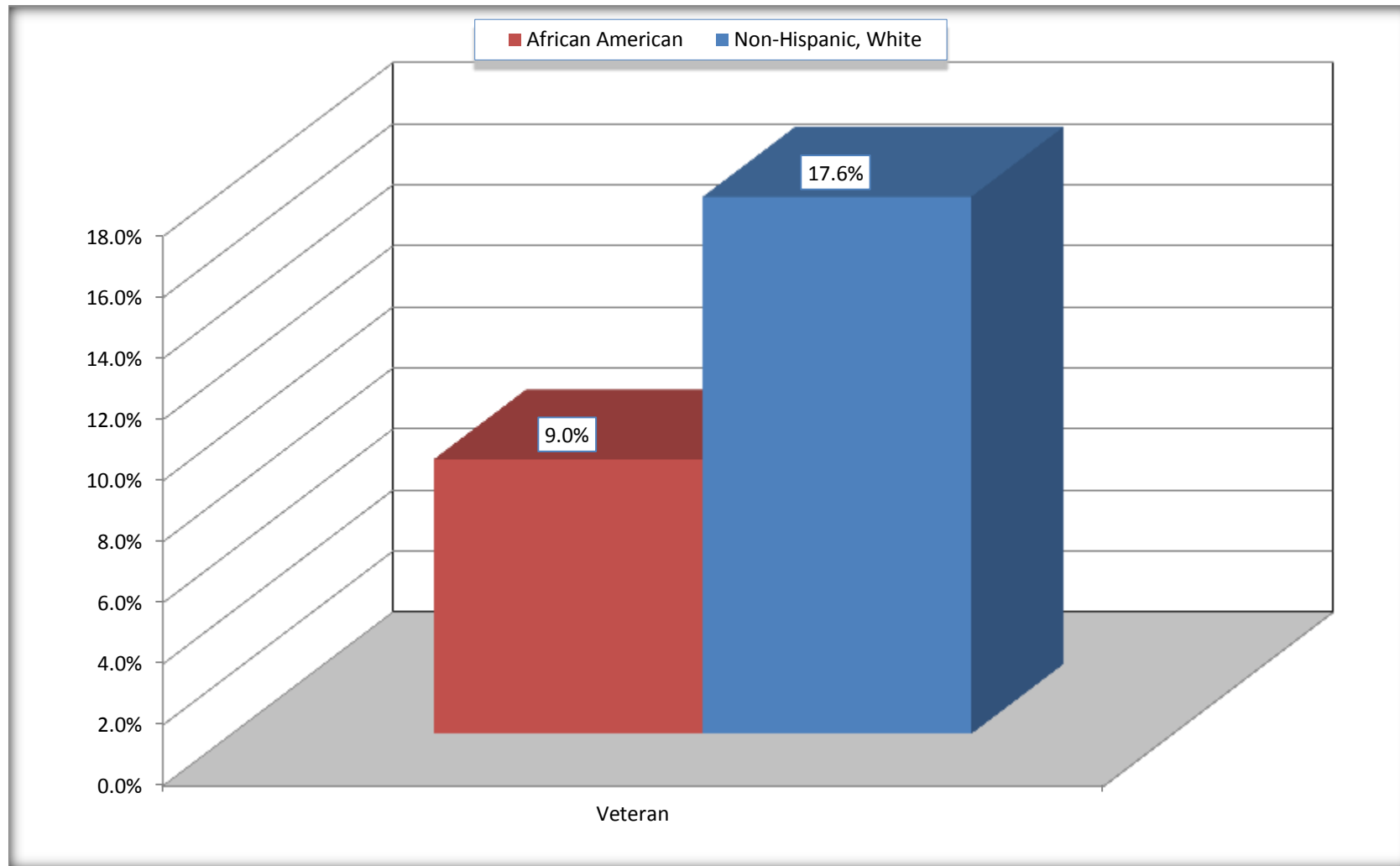
Source: U.S. Census Bureau, 2008-2012 American Community Survey

For information on confidentiality protection, sampling error, nonsampling error, and definitions, see Survey Methodology.

<http://www.census.gov/acs/www/UseData/index.htm>

Veterans in the Civilian Population 18 Years and Over

Columbus city, Mississippi



Source: C21001. SEX BY AGE BY VETERAN STATUS FOR THE CIVILIAN POPULATION 18 YEARS AND OVER
Data Set: 2008-2012 American Community Survey 5-Year Estimates

B22005. RECEIPT OF FOOD STAMPS/SNAP IN THE PAST 12 MONTHS BY RACE OF HOUSEHOLDER

Data Set: 2008-2012 American Community Survey 5-Year Estimates

	Columbus city, Mississippi					
	African American	Margin of Error (+/-)	% of AA Total	White, Not Hispanic	Margin of Error (+/-)	% of NHW Total
Total:	5,489	303	100.0%	3,995	341	100.0%
HH received Food Stamps/SNAP in the past 12 months	1,825	252	33.2%	466	189	11.7%
HH did not receive Food Stamps/SNAP in the past 12 months	3,664	314	66.8%	3,529	331	88.3%

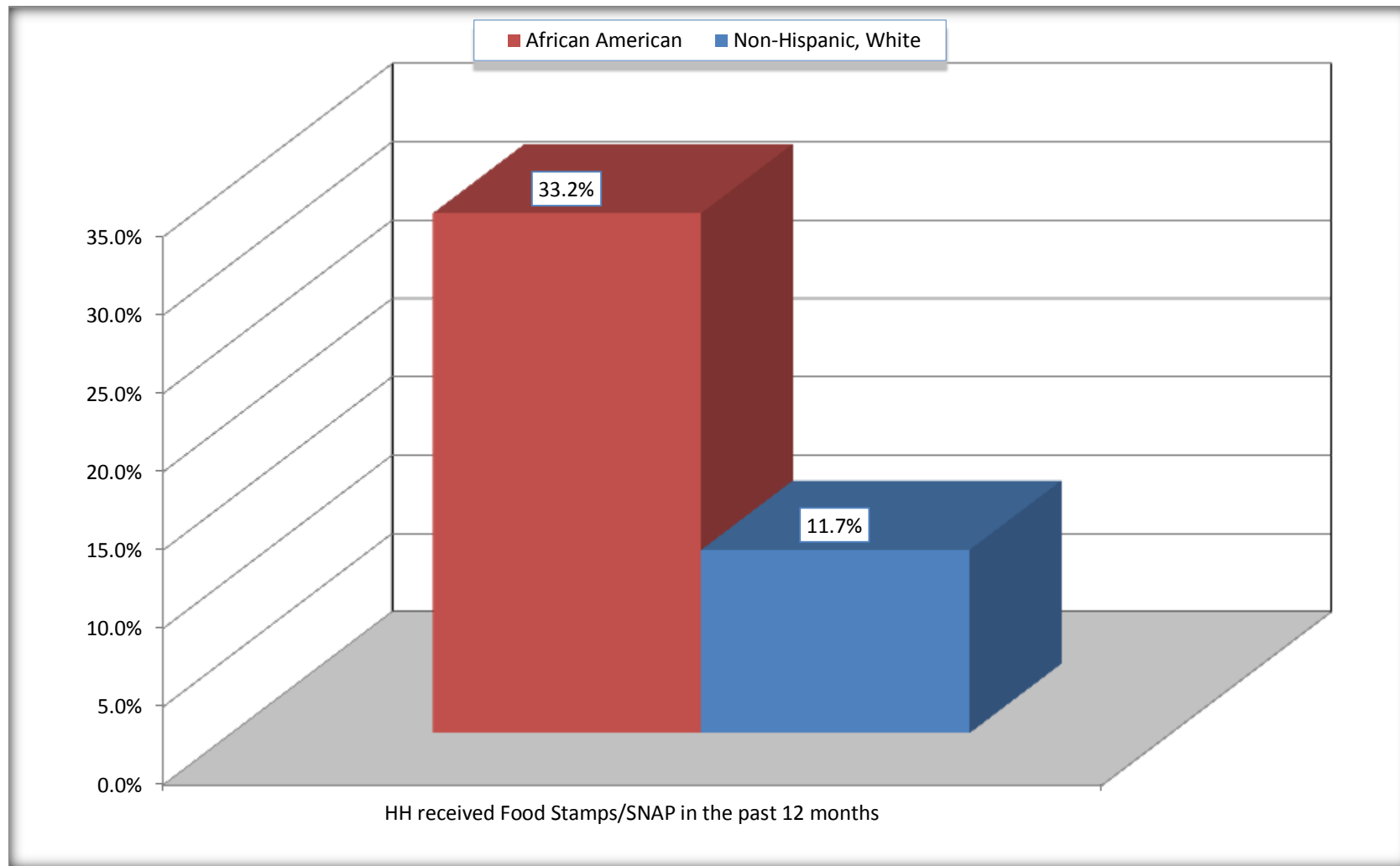
Source: U.S. Census Bureau, 2008-2012 American Community Survey

For information on confidentiality protection, sampling error, nonsampling error, and definitions, see Survey Methodology.

<http://www.census.gov/acs/www/UseData/index.htm>

Receipt of Food Stamps/SNAP in the Past 12 Months by Household

Columbus city, Mississippi



Source: B22005. RECEIPT OF FOOD STAMPS/SNAP IN THE PAST 12 MONTHS BY RACE OF HOUSEHOLDER
Data Set: 2008-2012 American Community Survey 5-Year Estimates

C23002. SEX BY AGE BY EMPLOYMENT STATUS FOR THE POPULATION 16 YEARS AND OVER

Data Set: 2008-2012 American Community Survey 5-Year Estimates

	Columbus city, Mississippi					
	African American	Margin of Error (+/-)	% of AA Total	White, Not Hispanic	Margin of Error (+/-)	% of NHW Total
Total:	11,021	462	100.0%	7,495	464	100.0%
In labor force:	6,653	NC	60.4%	3,996	NC	53.3%
In Armed Forces	11	NC	0.1%	157	NC	2.1%
Civilian:	6,581	NC	59.7%	3,400	NC	45.4%
Employed	5,299	NC	48.1%	3,618	NC	48.3%
Unemployed	1,343	NC	12.2%	221	NC	2.9%
Not in labor force	4,368	NC	39.6%	3,499	NC	46.7%
Male:	4,822	345	43.8%	3,289	326	43.9%
16 to 64 years:	4,277	326	38.8%	2,423	313	32.3%
In labor force:	2,865	338	26.0%	1,834	286	24.5%
In Armed Forces	11	25	0.1%	157	114	2.1%
Civilian:	2,854	341	25.9%	1,677	287	22.4%
Employed	2,296	350	20.8%	1,575	256	21.0%
Unemployed	558	172	5.1%	102	79	1.4%
Not in labor force	1,412	255	12.8%	589	165	7.9%
65 years and over:	545	87	4.9%	866	118	11.6%
In labor force:	41	34	0.4%	217	94	2.9%
Employed	30	30	0.3%	217	94	2.9%
Unemployed	11	18	0.1%	0	23	0.0%
Not in labor force	504	86	4.6%	649	118	8.7%

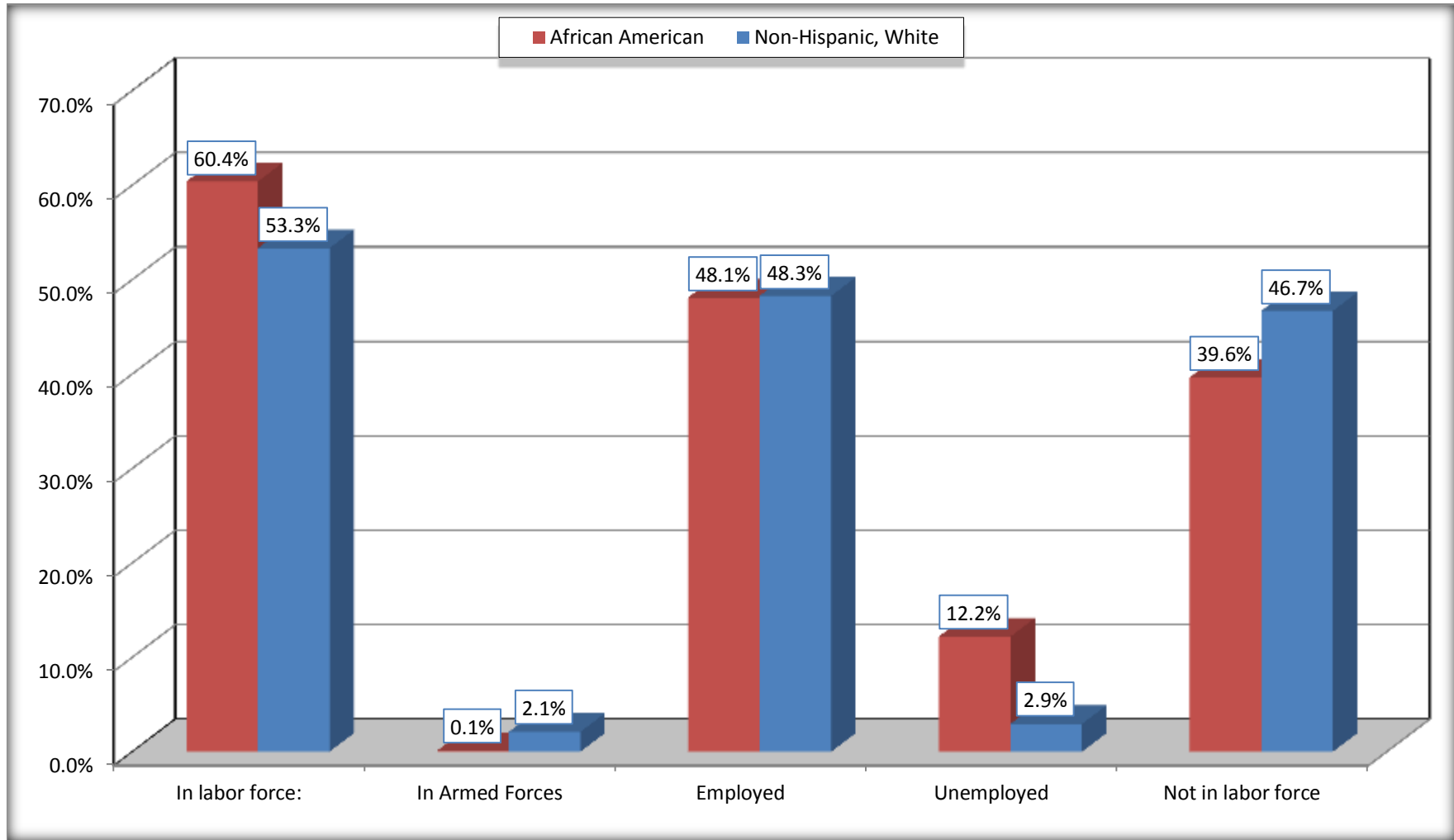
	Columbus city, Mississippi					
	African American	Margin of Error (+/-)	% of AA Total	White, Not Hispanic	Margin of Error (+/-)	% of NHW Total
Female:	6,199	269	56.2%	4,206	311	56.1%
16 to 64 years:	5,294	264	48.0%	2,664	310	35.5%
In labor force:	3,727	273	33.8%	1,723	270	23.0%
In Armed Forces	0	23	0.0%	0	23	0.0%
Civilian:	3,727	273	33.8%	1,723	270	23.0%
Employed	2,953	293	26.8%	1,604	277	21.4%
Unemployed	774	236	7.0%	119	64	1.6%
Not in labor force	1,567	259	14.2%	941	230	12.6%
65 years and over:	905	94	8.2%	1,542	136	20.6%
In labor force:	20	22	0.2%	222	81	3.0%
Employed	20	22	0.2%	222	81	3.0%
Unemployed	0	23	0.0%	0	23	0.0%
Not in labor force	885	97	8.0%	1,320	142	17.6%

Source: U.S. Census Bureau, 2008-2012 American Community Survey

For information on confidentiality protection, sampling error, nonsampling error, and definitions, see Survey Methodology.
<http://www.census.gov/acs/www/UseData/index.htm>

Employment Status for the Population 16 years and over

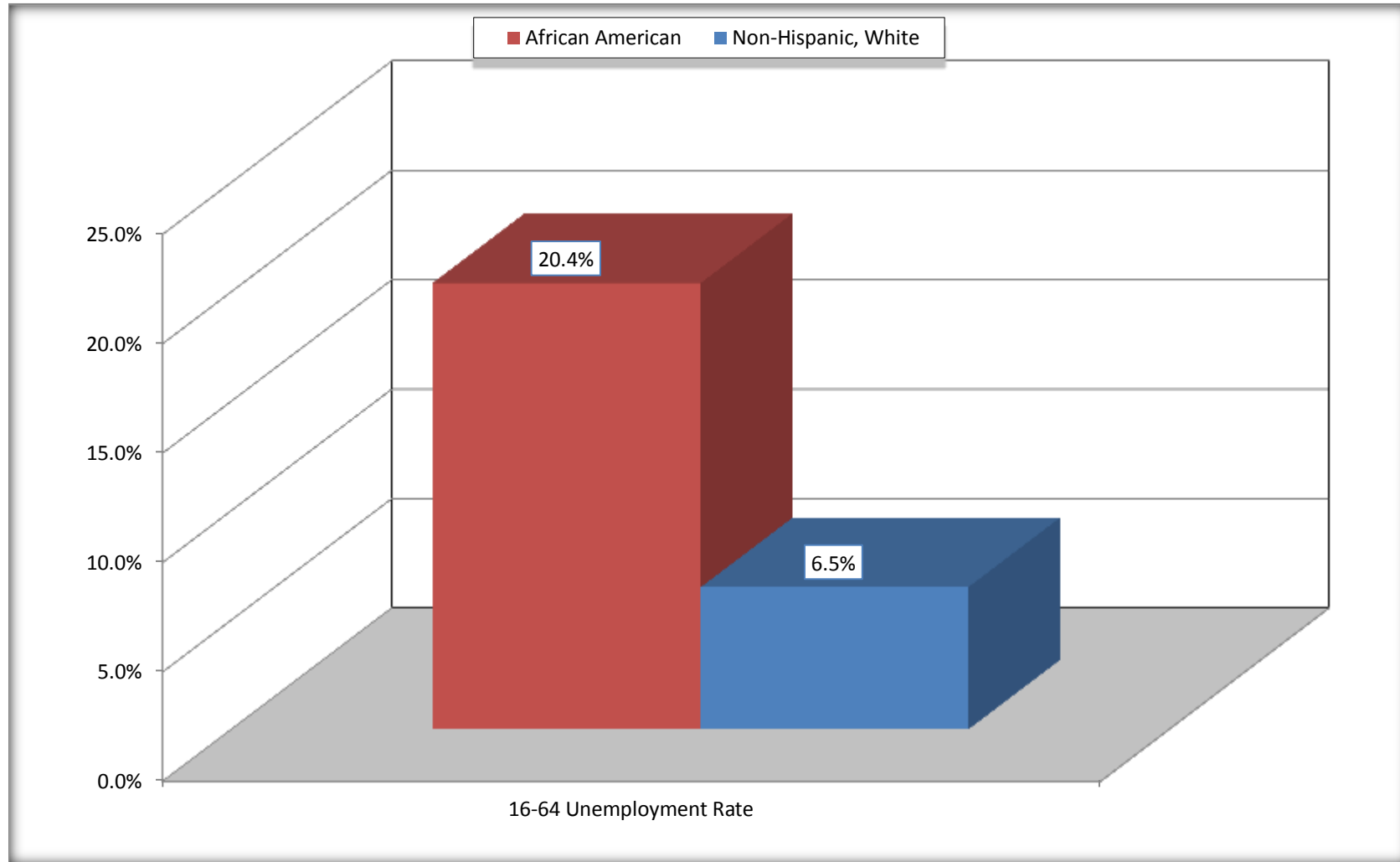
Columbus city, Mississippi



Source: C23002. SEX BY AGE BY EMPLOYMENT STATUS FOR THE POPULATION 16 YEARS AND OVER
Data Set: 2008-2012 American Community Survey 5-Year Estimates

Unemployment of Working Age Population (Ages 16 to 64) (As a Percent of 16-64 Civilian Labor Force)

Columbus city, Mississippi



Source: C23002. SEX BY AGE BY EMPLOYMENT STATUS FOR THE POPULATION 16 YEARS AND OVER
Data Set: 2008-2012 American Community Survey 5-Year Estimates

C24010. SEX BY OCCUPATION FOR THE CIVILIAN EMPLOYED POPULATION 16 YEARS AND OVER

Data Set: 2008-2012 American Community Survey 5-Year Estimates

	Columbus city, Mississippi					
	African American	Margin of Error (+/-)	% of AA Total	White, Not Hispanic	Margin of Error (+/-)	% of NHW Total
Total:	5,299	474	100.0%	3,618	429	100.0%
Management, professional, and related occupations	948	NC	17.9%	1,380	NC	38.1%
Service occupations	1,446	NC	27.3%	850	NC	23.5%
Sales and office occupations	1,271	NC	24.0%	881	NC	24.4%
Natural resources, construction, and maintenance occupations:	442	NC	8.3%	278	NC	7.7%
Production, transportation, and material moving occupations	1,192	NC	22.5%	229	NC	6.3%
Male:	2,326	347	43.9%	1,792	276	49.5%
Management, business, science, and arts occupations:	217	94	4.1%	601	163	16.6%
Service occupations	365	156	6.9%	426	156	11.8%
Sales and office occupations	399	144	7.5%	301	115	8.3%
Natural resources, construction, and maintenance occupations:	434	166	8.2%	278	131	7.7%
Production, transportation, and material moving occupations	911	258	17.2%	186	97	5.1%
Female:	2,973	293	56.1%	1,826	305	50.5%
Management, professional, and related occupations	731	189	13.8%	779	195	21.5%
Service occupations	1,081	211	20.4%	424	146	11.7%
Sales and office occupations	872	217	16.5%	580	173	16.0%
Natural resources, construction, and maintenance occupations:	8	13	0.2%	0	23	0.0%
Production, transportation, and material moving occupations	281	117	5.3%	43	42	1.2%

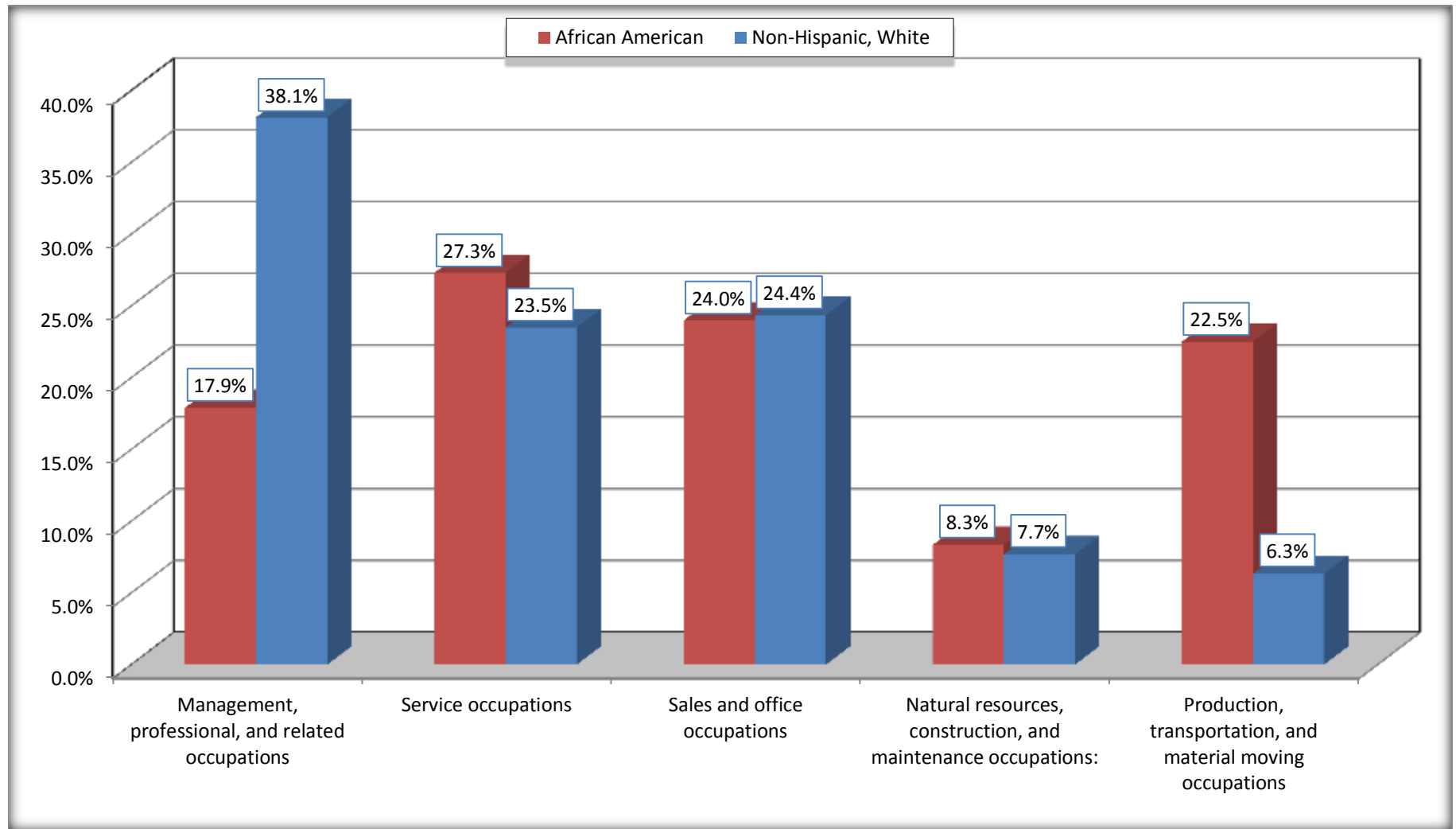
Source: U.S. Census Bureau, 2008-2012 American Community Survey

For information on confidentiality protection, sampling error, nonsampling error, and definitions, see Survey Methodology.

<http://www.census.gov/acs/www/UseData/index.htm>

Occupation for the Civilian Employed 16 Years and Over Population

Columbus city, Mississippi



Source: C24010. SEX BY OCCUPATION FOR THE CIVILIAN EMPLOYED POPULATION 16 YEARS AND OVER
Data Set: 2008-2012 American Community Survey 5-Year Estimates

B25003. TENURE - Universe: OCCUPIED HOUSING UNITS

Data Set: 2008-2012 American Community Survey 5-Year Estimates

	Columbus city, Mississippi					
	African American	Margin of Error (+/-)	% of AA Total	White, Not Hispanic	Margin of Error (+/-)	% of NHW Total
Total:	5,489	303	100.0%	3,995	341	100.0%
Owner occupied	2,320	233	42.3%	2,371	207	59.3%
Renter occupied	3,169	299	57.7%	1,624	315	40.7%

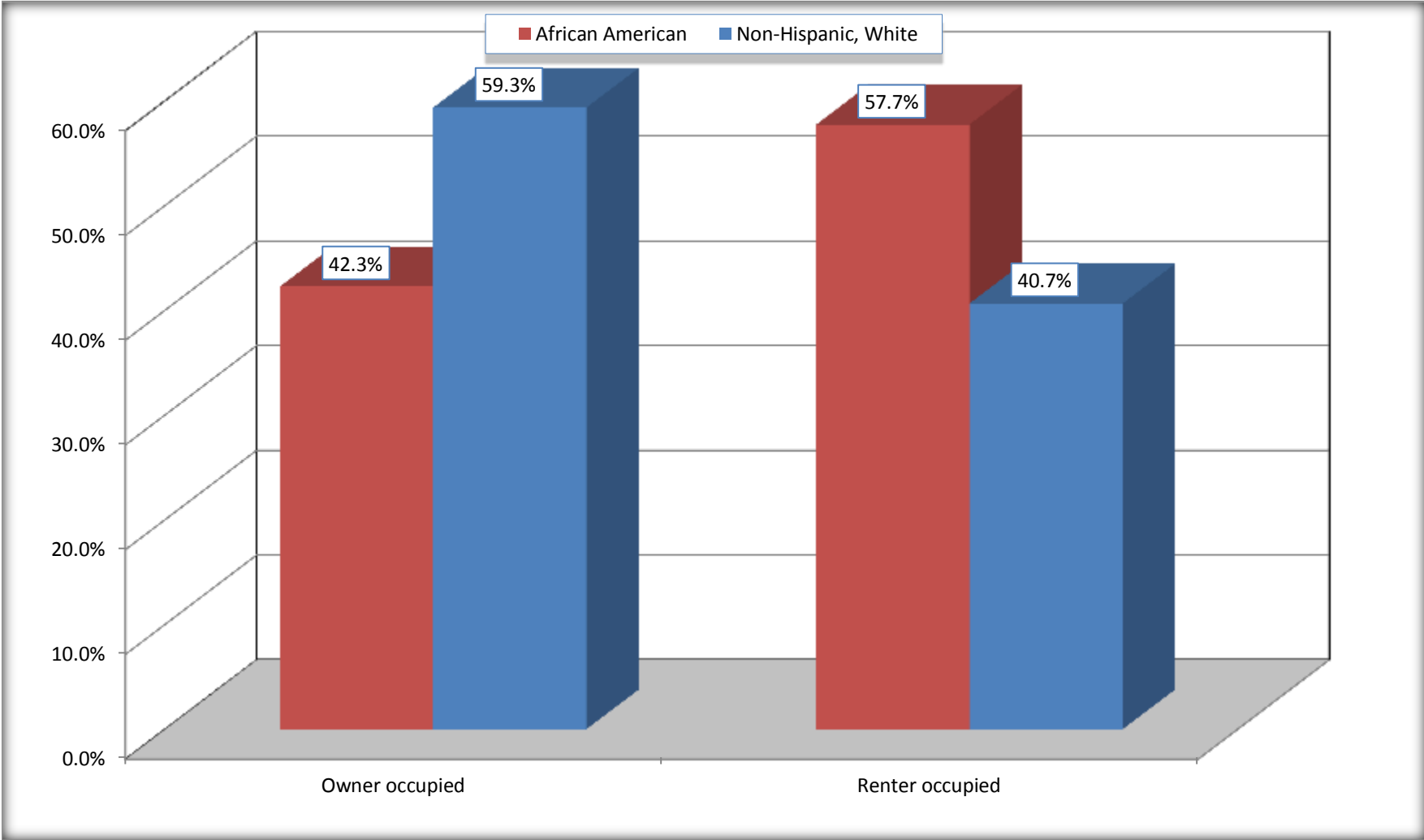
Source: U.S. Census Bureau, 2008-2012 American Community Survey

For information on confidentiality protection, sampling error, nonsampling error, and definitions, see Survey Methodology.

<http://www.census.gov/acs/www/UseData/index.h>

Home Owners and Renters by Household

Columbus city, Mississippi



Source: B25003. TENURE - Universe: OCCUPIED HOUSING UNITS
Data Set: 2008-2012 American Community Survey 5-Year Estimates

B25014. OCCUPANTS PER ROOM - Universe: OCCUPIED HOUSING UNITS

Data Set: 2008-2012 American Community Survey 5-Year Estimates

	Columbus city, Mississippi					
	African American	Margin of Error (+/-)	% of AA Total	White, Not Hispanic	Margin of Error (+/-)	% of NHW Total
Total:	5,489	303	100.0%	3,995	341	100.0%
1.00 or less occupants per room	5,351	313	97.5%	3,970	338	99.4%
1.01 or more occupants per room	138	76	2.5%	25	41	0.6%

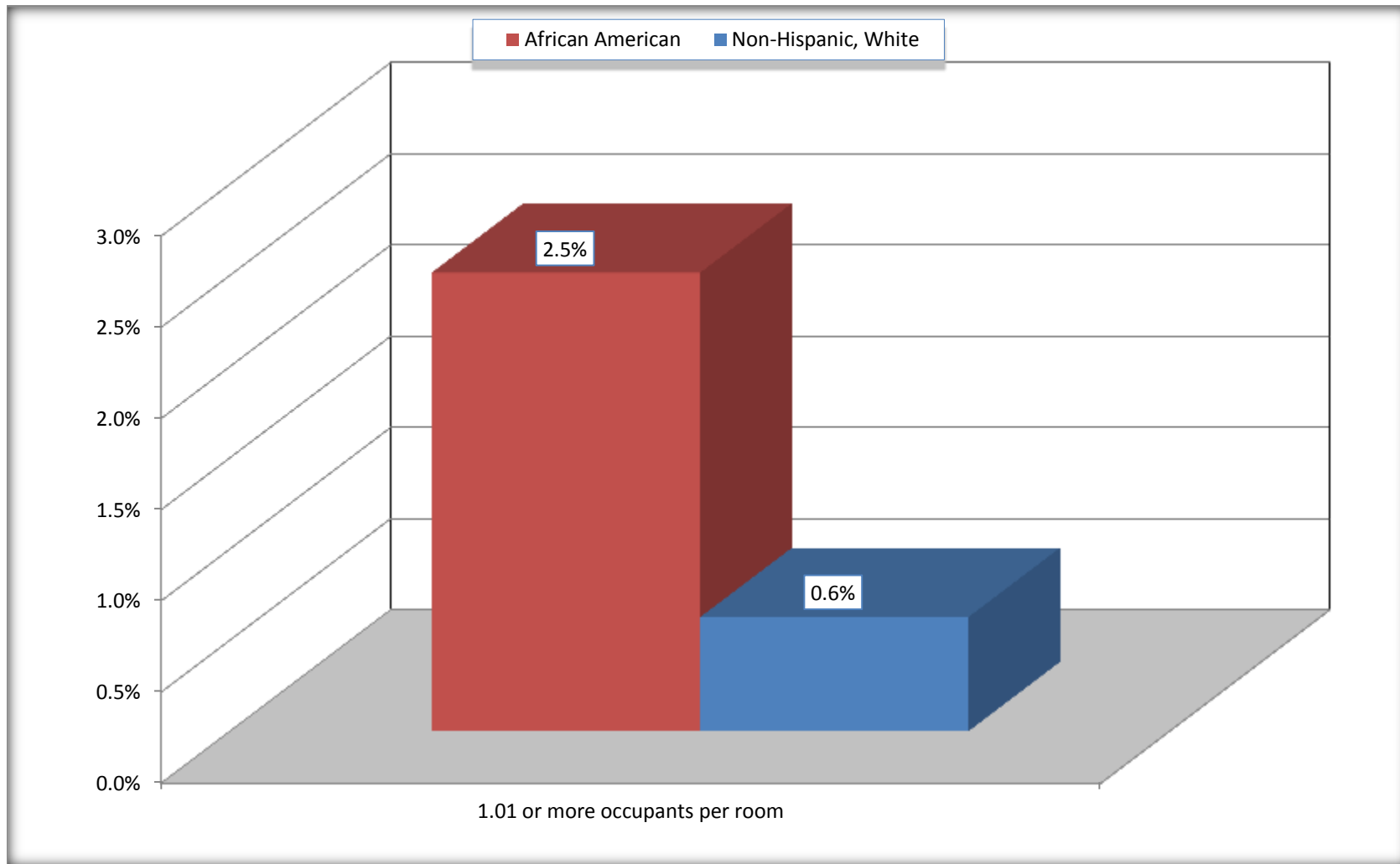
Source: U.S. Census Bureau, 2008-2012 American Community Survey

For information on confidentiality protection, sampling error, nonsampling error, and definitions, see Survey Methodology.

<http://www.census.gov/acs/www/UseData/index.ht>

More than One Person per Room (Crowding) by Household

Columbus city, Mississippi



Source: B25014. OCCUPANTS PER ROOM - Universe: OCCUPIED HOUSING UNITS
Data Set: 2008-2012 American Community Survey 5-Year Estimates

B18101. AGE BY DISABILITY STATUS

Data Set: 2008-2012 American Community Survey 5-Year Estimates

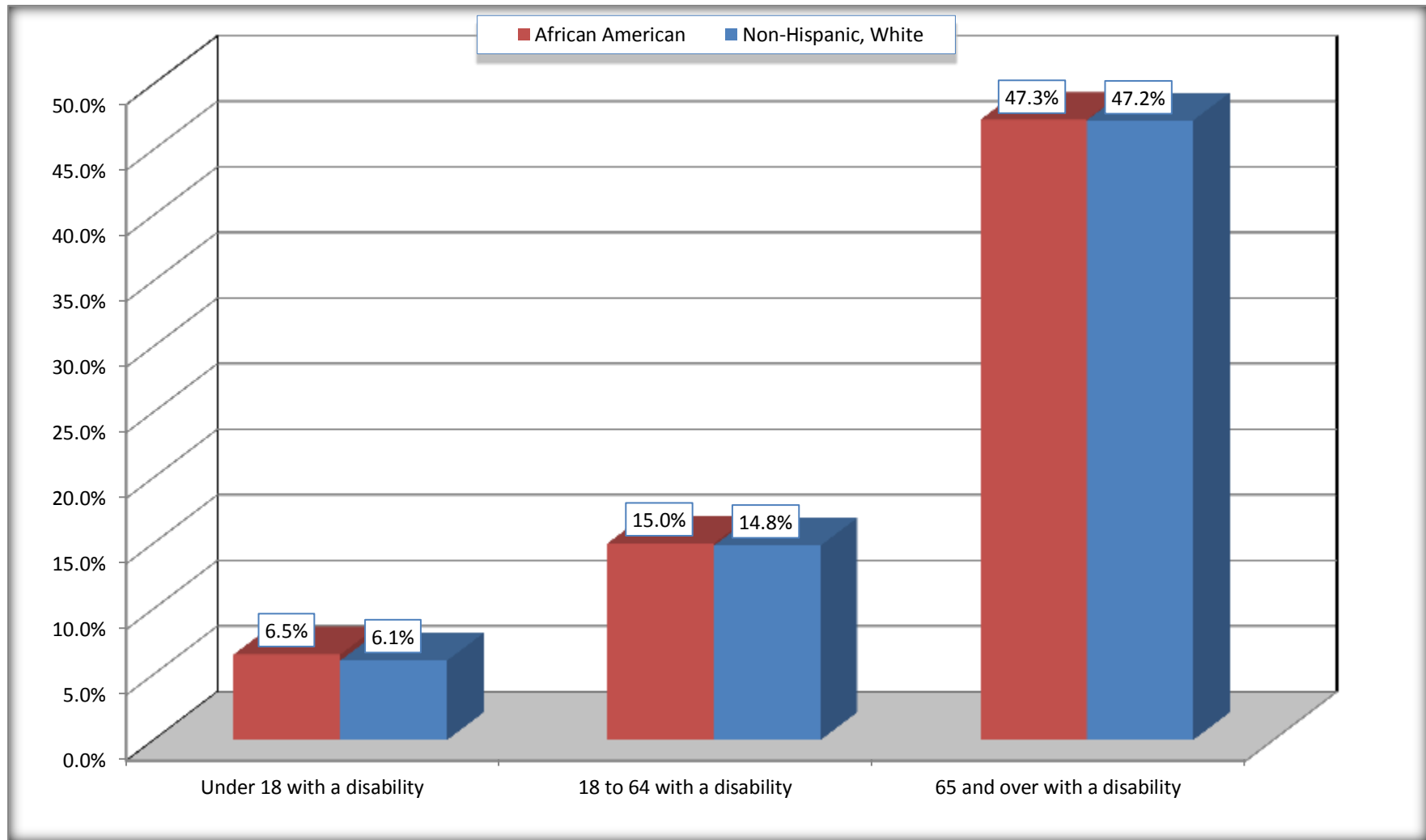
	Columbus city, Mississippi					
	African American	Margin of Error (+/-)	% of AA Total	White, Not Hispanic	Margin of Error (+/-)	% of NHW Total
Total:	14,416	577	100.0%	7,787	527	100.0%
Under 18 years:	4,189	388	29.1%	925	111	11.9%
With a disability	273	127	1.9%	56	55	0.7%
No disability	3,916	394	27.2%	869	235	11.2%
18 to 64 years:	8,871	391	61.5%	4,751	428	61.0%
With a disability	1,329	251	9.2%	704	261	9.0%
No disability	7,542	381	52.3%	4,047	420	52.0%
65 years and over:	1,356	155	9.4%	2,111	209	27.1%
With a disability	641	123	4.4%	997	187	12.8%
No disability	715	124	5.0%	1,114	190	14.3%

Source: U.S. Census Bureau, 2008-2012 American Community Survey

For information on confidentiality protection, sampling error, nonsampling error, and definitions, see Survey Methodology.

<http://www.census.gov/acs/www/UseData/index.htm>

Disability by Age Columbus city, Mississippi



Source: B18101. AGE BY DISABILITY STATUS
Data Set: 2008-2012 American Community Survey 5-Year Estimates

C27001B. HEALTH INSURANCE COVERAGE STATUS BY AGE

Data Set: 2008-2012 American Community Survey 5-Year Estimates

	Columbus city, Mississippi					
	African American	Margin of Error (+/-)	% of AA Total	White, Not Hispanic	Margin of Error (+/-)	% of NHW Total
Total:	14,416	577	100.0%	7,787	527	100.0%
Under 18 years:	4,189	388	29.1%	925	253	11.9%
With health insurance coverage	3,471	386	24.1%	912	255	11.7%
No health insurance coverage	718	302	5.0%	13	22	0.2%
18 to 64 years:	8,871	391	61.5%	4,751	428	61.0%
With health insurance coverage	5,933	466	41.2%	3,755	386	48.2%
No health insurance coverage	2,938	338	20.4%	996	240	12.8%
65 years and over:	1,356	155	9.4%	2,111	209	27.1%
With health insurance coverage	1,356	155	9.4%	2,102	209	27.0%
No health insurance coverage	0	23	0.0%	9	15	0.1%

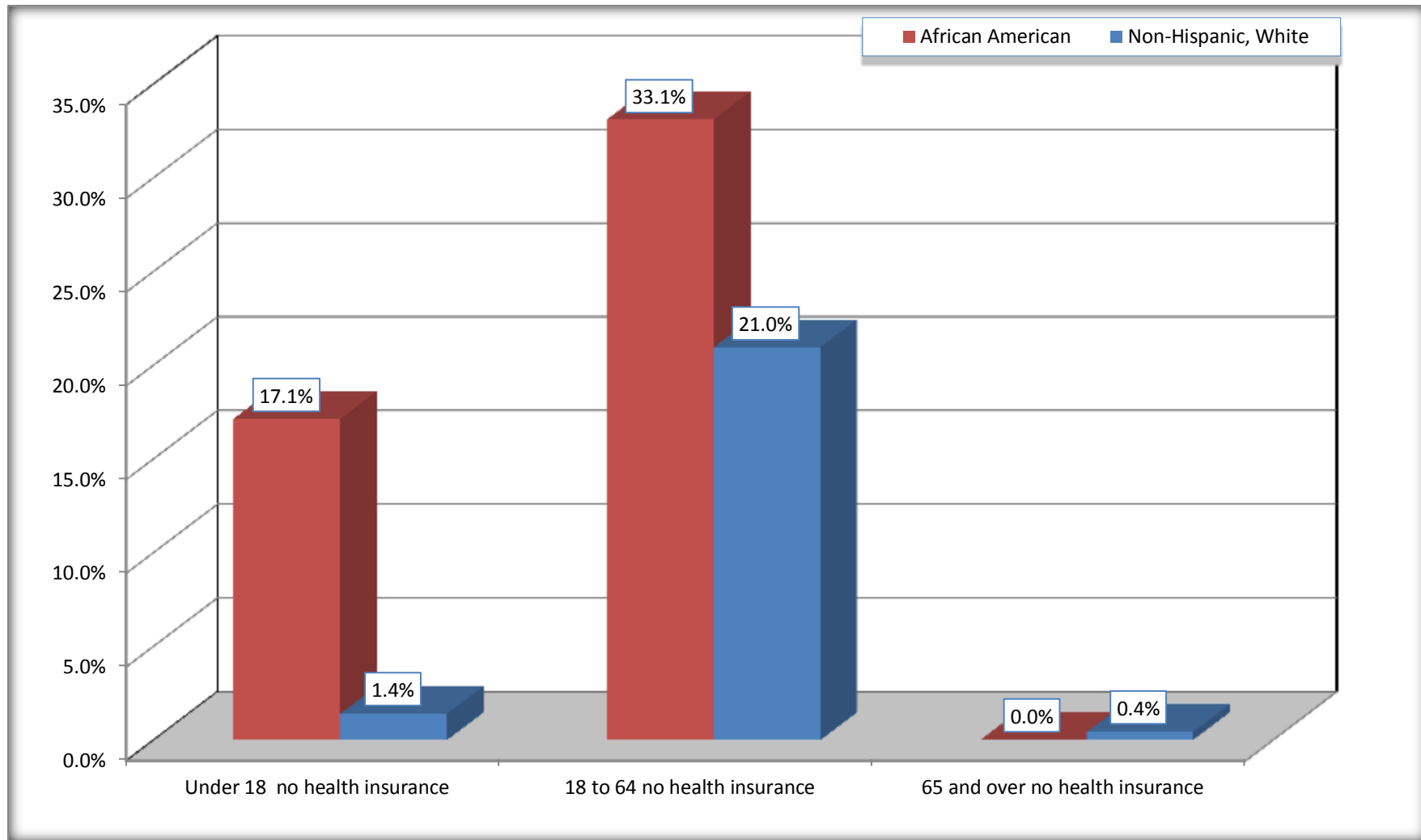
Source: U.S. Census Bureau, 2008-2012 American Community Survey

For information on confidentiality protection, sampling error, nonsampling error, and definitions, see Survey Methodology.

<http://www.census.gov/acs/www/UseData/index.htm>

Lack of Health Insurance Coverage by Age

Columbus city, Mississippi



Source: C27001B. HEALTH INSURANCE COVERAGE STATUS BY AGE
Data Set: 2008-2012 American Community Survey 5-Year Estimates