

# **Selected Socio-Economic Data**

## **Byram city, Mississippi**

### **African American and White, Not Hispanic**

**Data Set: 2008-2012 American Community Survey 5-Year Estimates**

[www.fairvote2020.org](http://www.fairvote2020.org)

[www.fairdata2000.com](http://www.fairdata2000.com)

[29-Dec-13](#)

**C02003.DETAILED RACE - Universe: TOTAL POPULATION**

Data Set: 2008-2012 American Community Survey 5-Year Estimates

	Byram city, Mississippi		
	Population	Margin of Error (+/-)	% of Total
<b>Total:</b>	<b>11,277</b>	<b>31</b>	<b>100.0%</b>
Population of one race:	11,263	41	99.9%
White	4,815	613	42.7%
Black or African American	6,341	612	56.2%
American Indian and Alaska Native	0	19	0.0%
Asian alone	69	111	0.6%
Native Hawaiian and Other Pacific Islander	0	19	0.0%
Some other race	38	44	0.3%
Population of two or more races:	14	25	0.1%
Two races including Some other race	0	19	0.0%
Two races excluding Some other race, and three or more races	14	25	0.1%
Population of two races:	14	25	0.1%
White; Black or African American	14	25	0.1%
White; American Indian and Alaska Native	0	19	0.0%
White; Asian	0	19	0.0%
Black or African American; American Indian and Alaska Native	0	19	0.0%
All other two race combinations	0	19	0.0%
Population of three races	0	19	0.0%
Population of four or more races	0	19	0.0%

Note: Hispanics may be of any race. See Table B03002 and chart.

Source: U.S. Census Bureau, 2008-2012 American Community Survey

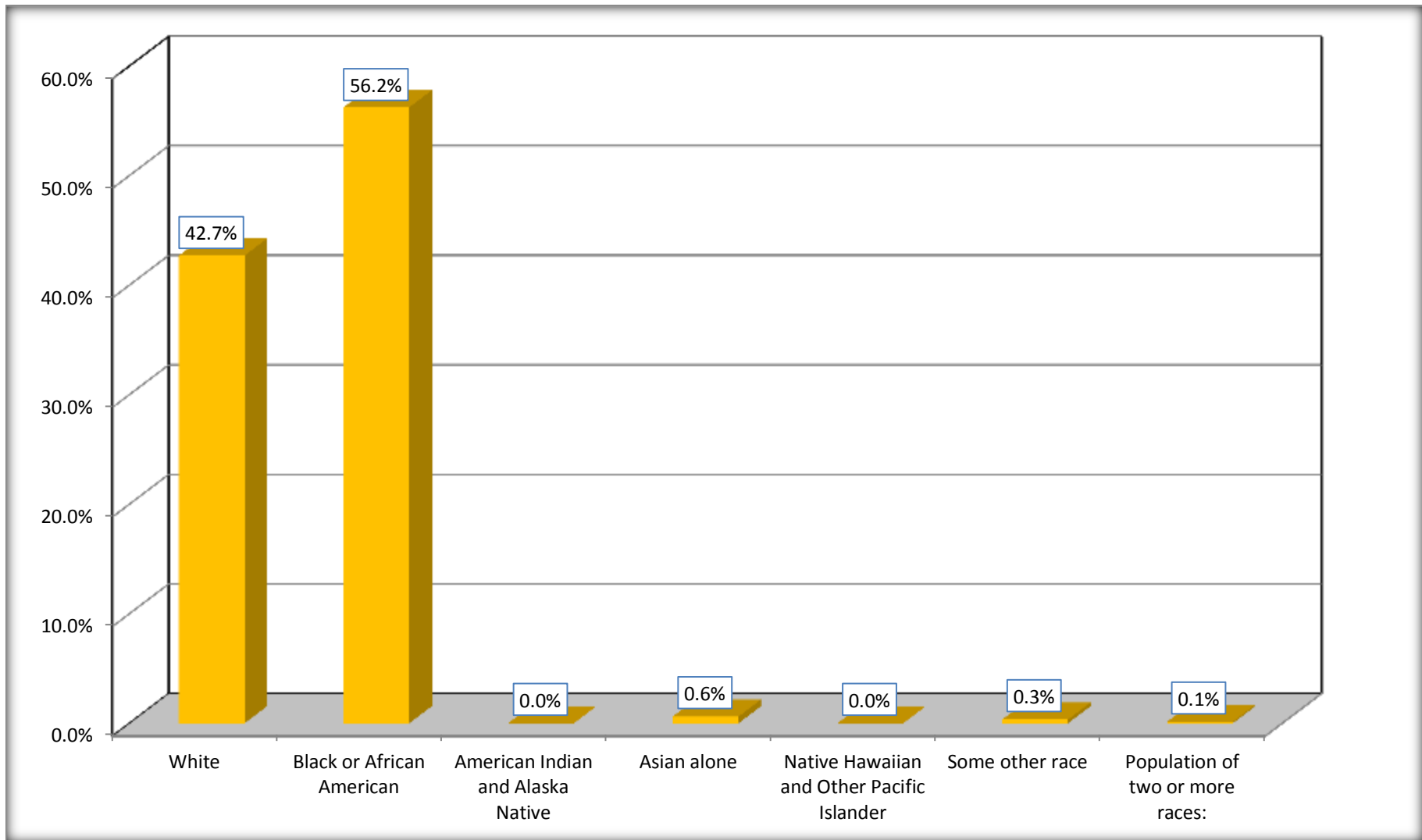
Although the American Community Survey (ACS) produces population, demographic and housing unit estimates, it is the Census Bureau's Population Estimates Program that produces and disseminates the official estimates of the population for the nation, states, counties, cities and towns and estimates of housing units for states and counties.

For information on confidentiality protection, sampling error, nonsampling error, and definitions, see Survey Methodology.

<http://www.census.gov/acs/www/UseData/index.htm>

# Population by Race

## Byram city, Mississippi



Source: C02003.DETAILED RACE - Universe: TOTAL POPULATION  
Data Set: 2008-2012 American Community Survey 5-Year Estimates

**B03002. HISPANIC OR LATINO ORIGIN BY RACE - Universe: TOTAL POPULATION**

Data Set: 2008-2012 American Community Survey 5-Year Estimates

	Byram city, Mississippi		
	Population	Margin of Error (+/-)	% of Total
<b>Total:</b>	11,277	31	<b>100.0%</b>
Not Hispanic or Latino:	11,269	35	99.9%
White alone	4,807	614	42.6%
Black or African American alone	6,341	612	56.2%
American Indian and Alaska Native alone	0	19	0.0%
Asian alone	69	111	0.6%
Native Hawaiian and Other Pacific Islander alone	0	19	0.0%
Some other race alone	38	44	0.3%
Two or more races:	14	25	0.1%
Two races including Some other race	0	19	0.0%
Two races excluding Some other race, and three or more races	14	25	0.1%
Hispanic or Latino	8	15	0.1%

Source: U.S. Census Bureau, 2008-2012 American Community Survey

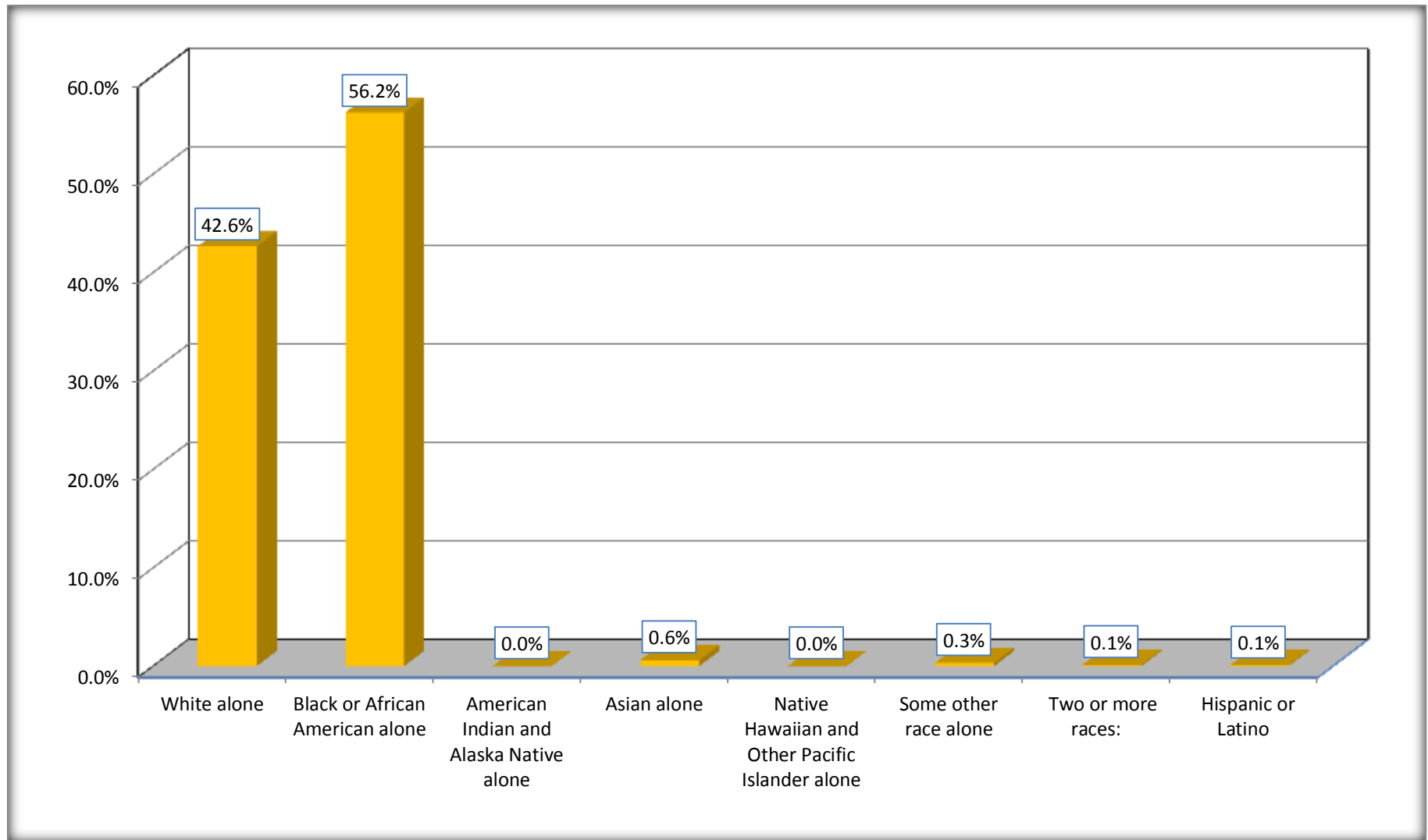
Although the American Community Survey (ACS) produces population, demographic and housing unit estimates, it is the Census Bureau's Population Estimates Program that produces and disseminates the official estimates of the population for the nation, states, counties, cities and towns and estimates of housing units for states and counties.

For information on confidentiality protection, sampling error, nonsampling error, and definitions, see Survey Methodology.

<http://www.census.gov/acs/www/UseData/index.htm>

# Non-Hispanic by Race and Hispanic Population

## Byram city, Mississippi



Source: B03002. HISPANIC OR LATINO ORIGIN BY RACE - Universe: TOTAL POPULATION  
Data Set: 2008-2012 American Community Survey 5-Year Estimates

**B03002. HISPANIC OR LATINO ORIGIN BY RACE**

Data Set: 2008-2012 American Community Survey 5-Year Estimates

	Byram city, Mississippi		
	Population	Margin of Error (+/-)	% of Total
Hispanic or Latino:	8	15	<b>100.0%</b>
White alone	8	15	100.0%
Black or African American alone	0	19	0.0%
American Indian and Alaska Native alone	0	19	0.0%
Asian alone	0	19	0.0%
Native Hawaiian and Other Pacific Islander alone	0	19	0.0%
Some other race alone	0	19	0.0%
Two or more races:	0	19	0.0%
Two races including Some other race	0	19	0.0%
Two races excluding Some other race, and three or more races	0	19	0.0%

Source: U.S. Census Bureau, 2008-2012 American Community Survey

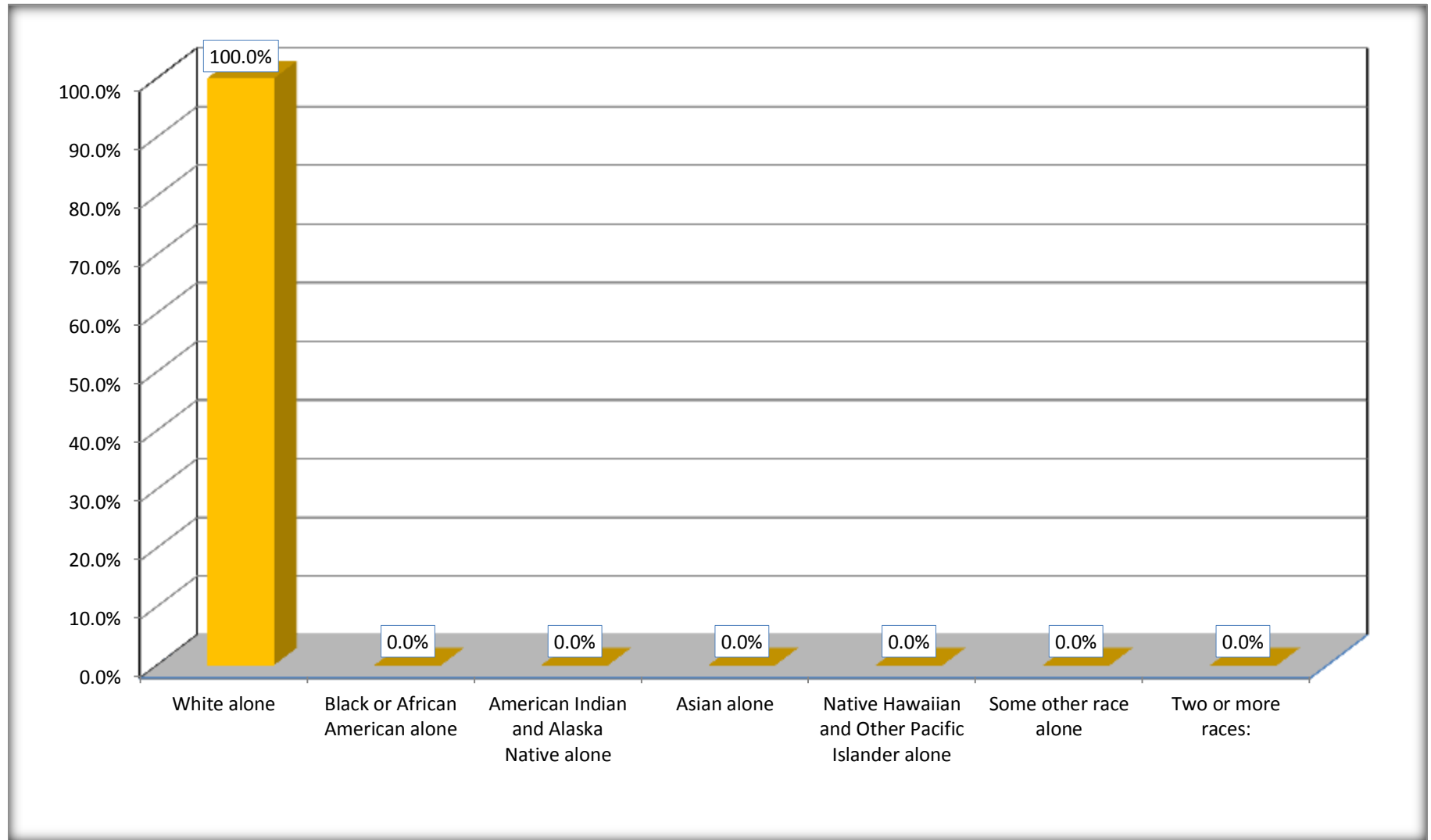
Although the American Community Survey (ACS) produces population, demographic and housing unit estimates, it is the Census Bureau's Population Estimates Program that produces and disseminates the official estimates of the population for the nation, states, counties, cities and towns and estimates of housing units for states and counties.

For information on confidentiality protection, sampling error, nonsampling error, and definitions, see Survey Methodology.

<http://www.census.gov/acs/www/UseData/index.htm>

# Hispanic or Latino Origin by Race

## Byram city, Mississippi



Source: B03002. HISPANIC OR LATINO ORIGIN BY RACE  
Data Set: 2008-2012 American Community Survey 5-Year Estimates

**B01001. SEX BY AGE**

Data Set: 2008-2012 American Community Survey 5-Year Estimates

	Byram city, Mississippi					
	African American	Margin of Error (+/-)	% of AA Total	White, Not Hispanic	Margin of Error (+/-)	% of NHW Total
<b>Total:</b>	<b>6,341</b>	<b>612</b>	<b>100.0%</b>	<b>4,807</b>	<b>614</b>	<b>100.0%</b>
Under 18 years	2,074	NC	32.7%	1,090	NC	22.7%
18 to 64 years	4,105	NC	64.7%	3,162	NC	65.8%
65 years and over	162	NC	2.6%	555	NC	11.5%
Male:	3,173	416	50.0%	2,302	389	47.9%
Under 18 years	1223	NC	19.3%	539	NC	11.2%
18 to 64 years	1,893	NC	29.9%	1,657	NC	34.5%
65 years and over	57	NC	0.9%	106	NC	2.2%
Female:	3,168	406	50.0%	2,505	412	52.1%
Under 18 years	851	NC	13.4%	551	NC	11.5%
18 to 64 years	2,212	NC	34.9%	1,505	NC	31.3%
65 years and over	105	NC	1.7%	449	NC	9.3%

Source: U.S. Census Bureau, 2008-2012 American Community Survey

Although the American Community Survey (ACS) produces population, demographic and housing unit estimates, it is the Census Bureau's Population Estimates Program that produces and disseminates the official estimates of the population for the nation, states, counties, cities and towns and estimates of housing units for states and counties.

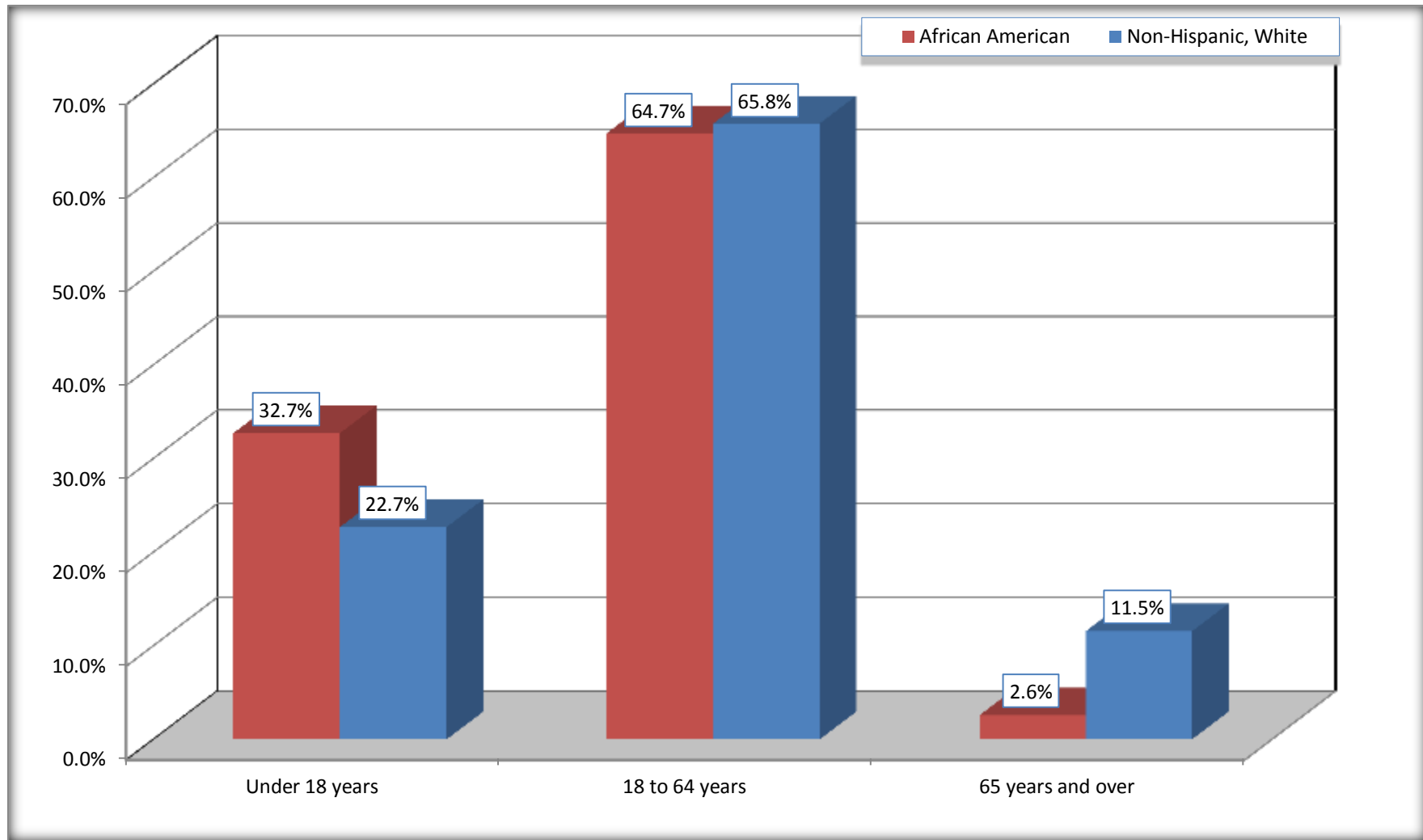
For information on confidentiality protection, sampling error, nonsampling error, and definitions, see Survey Methodology.

<http://www.census.gov/acs/www/UseData/index.htm>



# Population by Age

## Byram city, Mississippi



Source: B01001. SEX BY AGE  
Data Set: 2008-2012 American Community Survey 5-Year Estimates

**B05003. SEX BY AGE BY CITIZENSHIP STATUS**

Data Set: 2008-2012 American Community Survey 5-Year Estimates

	Byram city, Mississippi					
	African American	Margin of Error (+/-)	% of AA Total by Age	White, Not Hispanic	Margin of Error (+/-)	% of NHW Total by Age
<b>Total:</b>	<b>6,341</b>	<b>612</b>	<b>100.0%</b>	<b>4,807</b>	<b>614</b>	<b>100.0%</b>
<b>Under 18 years:</b>	<b>2,074</b>	<b>NC</b>	<b>100.0%</b>	<b>1,090</b>	<b>NC</b>	<b>100.0%</b>
Native	2,074	NC	100.0%	1,090	NC	100.0%
Foreign born:	0	NC	0.0%	0	NC	0.0%
Naturalized U.S. citizen	0	NC	0.0%	0	NC	0.0%
Not a U.S. citizen	0	NC	0.0%	0	NC	0.0%
<b>18 years and over:</b>	<b>4,267</b>	<b>NC</b>	<b>100.0%</b>	<b>3,717</b>	<b>NC</b>	<b>100.0%</b>
Native	4,247	NC	99.5%	3,677	NC	98.9%
Foreign born:	20	NC	0.5%	40	NC	1.1%
Naturalized U.S. citizen	20	NC	0.5%	32	NC	0.9%
Not a U.S. citizen	0	NC	0.0%	8	NC	0.2%
<b>Male:</b>	<b>3,173</b>	<b>416</b>	<b>50.0%</b>	<b>2,302</b>	<b>385</b>	<b>47.9%</b>
<b>Under 18 years:</b>	<b>1,223</b>	<b>261</b>	<b>100.0%</b>	<b>539</b>	<b>184</b>	<b>100.0%</b>
Native	1,223	261	100.0%	539	184	100.0%
Foreign born:	0	19	0.0%	0	19	0.0%
Naturalized U.S. citizen	0	19	0.0%	0	19	0.0%
Not a U.S. citizen	0	19	0.0%	0	19	0.0%
<b>18 years and over:</b>	<b>1,950</b>	<b>327</b>	<b>100.0%</b>	<b>1,763</b>	<b>314</b>	<b>100.0%</b>
Native	1,930	329	99.0%	1,763	314	100.0%
Foreign born:	20	31	1.0%	0	19	0.0%
Naturalized U.S. citizen	20	31	1.0%	0	19	0.0%
Not a U.S. citizen	0	19	0.0%	0	19	0.0%

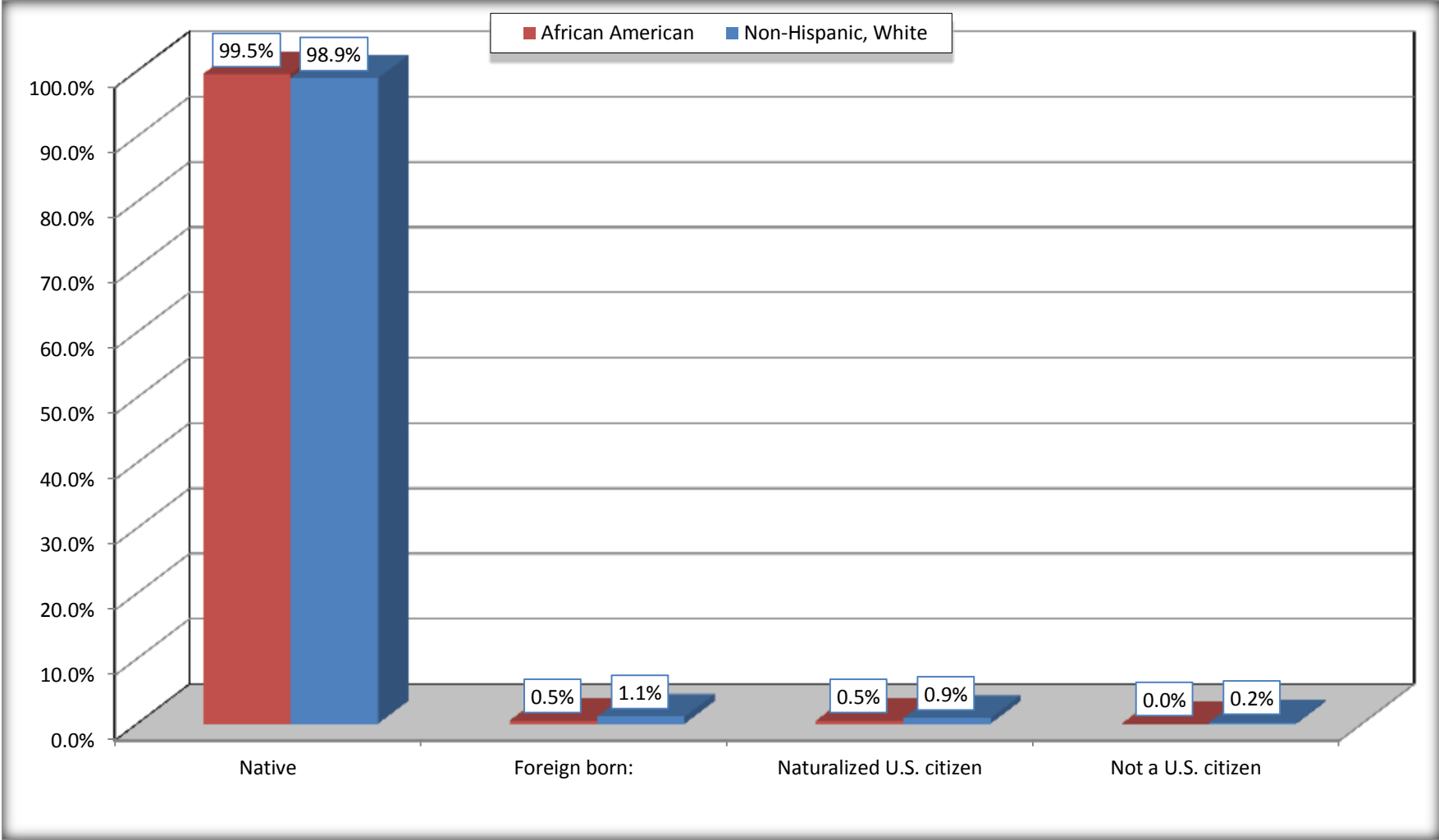
	Byram city, Mississippi					
	African American	Margin of Error (+/-)	% of AA by Age	White, Not Hispanic	Margin of Error (+/-)	% of NHW by Age
<b>Female:</b>	3,168	406	50.0%	2,505	330	52.1%
<b>Under 18 years:</b>	<b>851</b>	<b>232</b>	<b>100.0%</b>	<b>551</b>	<b>175</b>	<b>100.0%</b>
Native	851	232	100.0%	551	175	100.0%
Foreign born:	0	19	0.0%	0	19	0.0%
Naturalized U.S. citizen	0	19	0.0%	0	19	0.0%
Not a U.S. citizen	0	19	0.0%	0	19	0.0%
<b>18 years and over:</b>	<b>2,317</b>	<b>354</b>	<b>100.0%</b>	<b>1,954</b>	<b>250</b>	<b>100.0%</b>
Native	2,317	354	100.0%	1,914	239	98.0%
Foreign born:	0	19	0.0%	40	46	2.0%
Naturalized U.S. citizen	0	19	0.0%	32	46	1.6%
Not a U.S. citizen	0	19	0.0%	8	13	0.4%

Source: U.S. Census Bureau, 2008-2012 American Community Survey

For information on confidentiality protection, sampling error, nonsampling error, and definitions, see Survey Methodology.  
<http://www.census.gov/acs/www/UseData/index.htm>

# Citizenship Status of Voting Age Population (18 and Over)

## Byram city, Mississippi



Source: B05003. SEX BY AGE BY CITIZENSHIP STATUS  
Data Set: 2008-2012 American Community Survey 5-Year Estimates

**B07004. GEOGRAPHICAL MOBILITY IN THE PAST YEAR BY RACE FOR CURRENT RESIDENCE IN THE UNITED STATES - Universe:  
POPULATION 1 YEAR AND OVER**

Data Set: 2008-2012 American Community Survey 5-Year Estimates

	Byram city, Mississippi					
	African American	Margin of Error (+/-)	% of AA Total	White, Not Hispanic	Margin of Error (+/-)	% of NHW Total
<b>Total:</b>	<b>6,237</b>	<b>600</b>	<b>100.0%</b>	<b>4,734</b>	<b>605</b>	<b>100.0%</b>
Same house 1 year ago	4,685	612	75.1%	4,196	608	88.6%
Moved within same county	1,025	516	16.4%	245	135	5.2%
Moved from different county within same state	482	412	7.7%	173	120	3.7%
Moved from different state	45	38	0.7%	120	125	2.5%
Moved from abroad	0	19	0.0%	0	19	0.0%

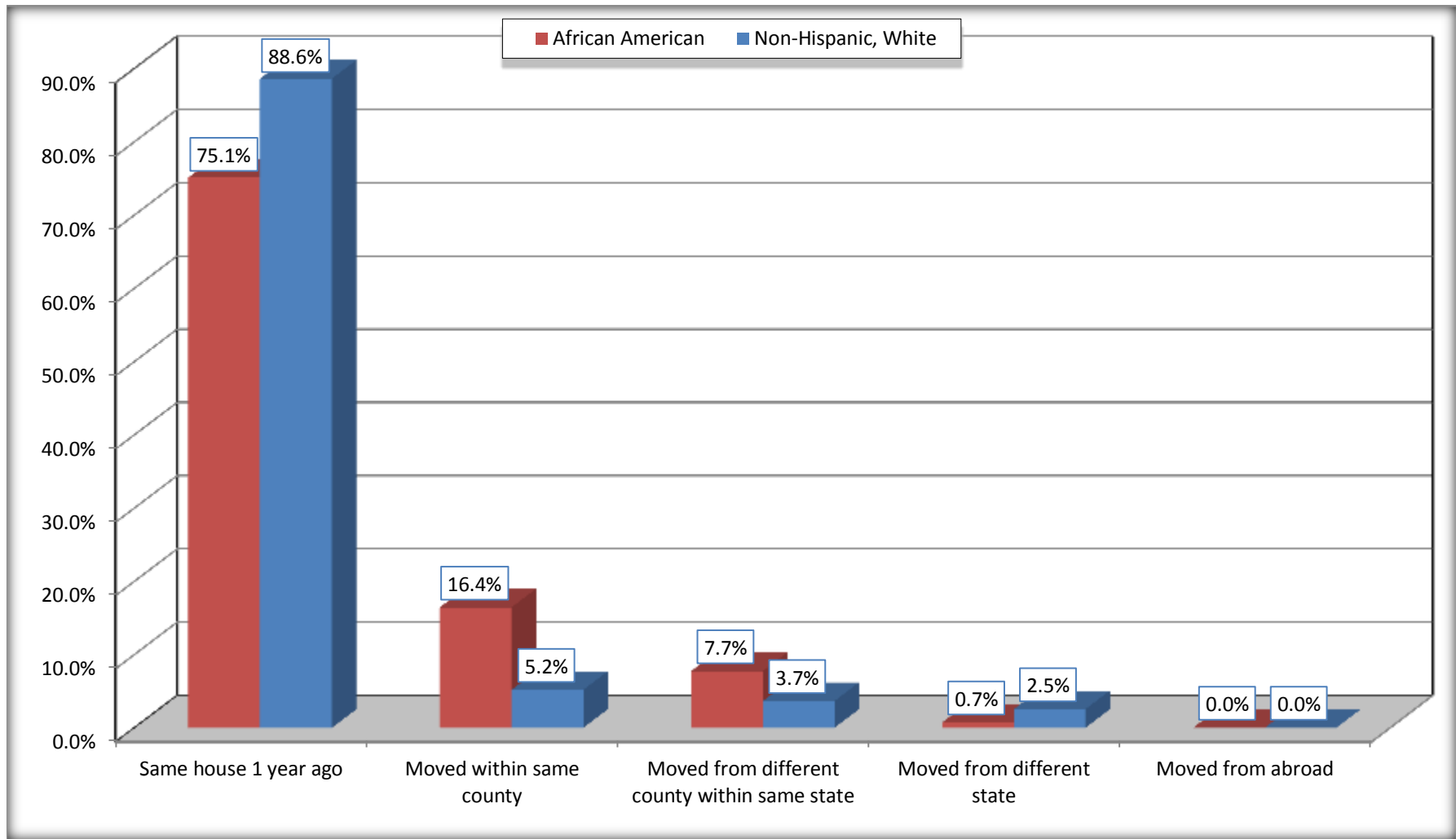
Source: U.S. Census Bureau, 2008-2012 American Community Survey

For information on confidentiality protection, sampling error, nonsampling error, and definitions, see Survey Methodology.

<http://www.census.gov/acs/www/UseData/index.htm>

# Geographical Mobility in the Past Year (Population 1 Year and Over)

## Byram city, Mississippi



Source: B07004. GEOGRAPHICAL MOBILITY IN THE PAST YEAR BY RACE FOR CURRENT RESIDENCE IN THE UNITED STATES - Universe: POPULATION 1 YEAR AND OVER

Data Set: 2008-2012 American Community Survey 5-Year Estimates

**B08105. MEANS OF TRANSPORTATION TO WORK - Universe: WORKERS 16 YEARS AND OVER**

Data Set: 2008-2012 American Community Survey 5-Year Estimates

	Byram city, Mississippi					
	African American	Margin of Error (+/-)	% of AA Total	White, Not Hispanic	Margin of Error (+/-)	% of NHW Total
<b>Total:</b>	3313	407	<b>100.0%</b>	2412	354	<b>100.0%</b>
Car, truck, or van - drove alone	2907	403	87.7%	1997	318	82.8%
Car, truck, or van - carpooled	346	205	10.4%	333	167	13.8%
Public transportation (excluding taxicab)	0	19	0.0%	0	19	0.0%
Walked	0	19	0.0%	0	19	0.0%
Taxicab, motorcycle, bicycle, or other means	0	19	0.0%	55	58	2.3%
Worked at home	60	79	1.8%	27	33	1.1%

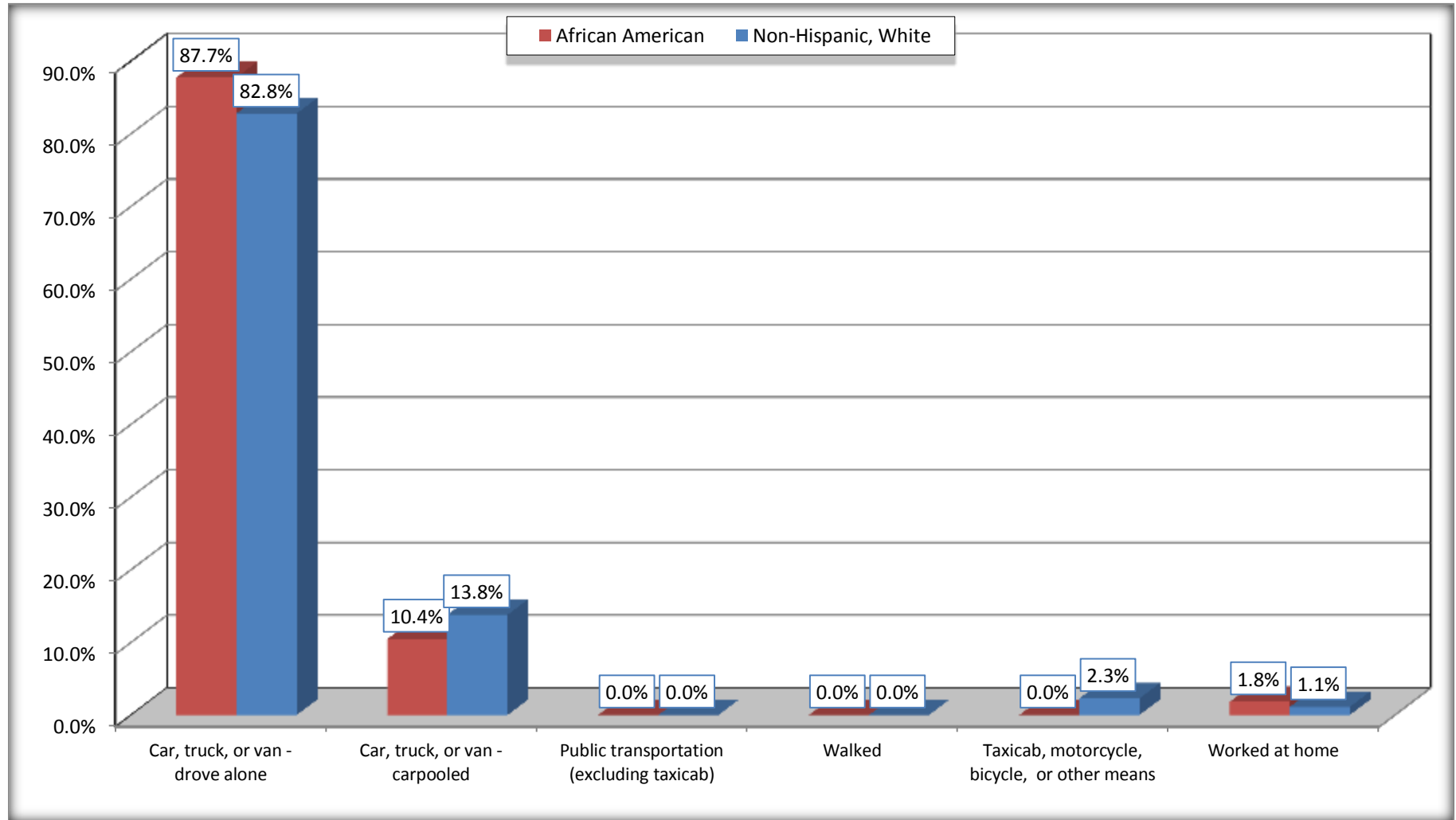
Source: U.S. Census Bureau, 2008-2012 American Community Survey

For information on confidentiality protection, sampling error, nonsampling error, and definitions, see Survey Methodology.

<http://www.census.gov/acs/www/UseData/index.htm>

# Means of Transportation to Work (Workers 16 Years and Over)

## Byram city, Mississippi



Source: B08105. MEANS OF TRANSPORTATION TO WORK - Universe: WORKERS 16 YEARS AND OVER  
Data Set: 2008-2012 American Community Survey 5-Year Estimates



**B11002. HOUSEHOLD TYPE BY RELATIVES AND NONRELATIVES FOR POPULATION IN HOUSEHOLDS**

Data Set: 2008-2012 American Community Survey 5-Year Estimates

	Byram city, Mississippi					
	African American	Margin of Error (+/-)	% of AA Total	White, Not Hispanic	Margin of Error (+/-)	% of NHW Total
<b>Total:</b>	6374	614	<b>100.0%</b>	4821	610	<b>100.0%</b>
In family households	5811	641	91.2%	4153	589	86.1%
In nonfamily households	563	202	8.8%	668	191	13.9%

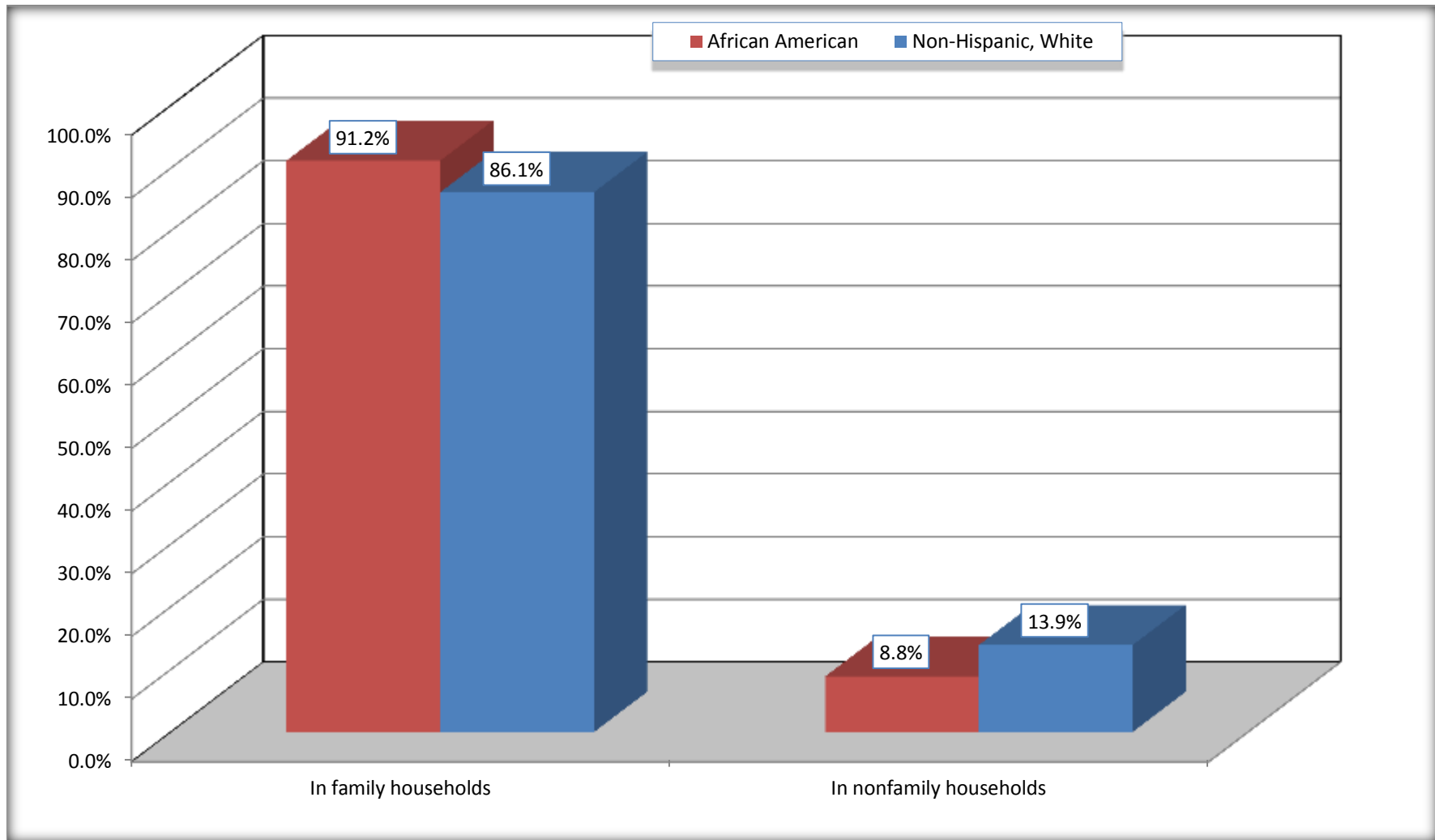
Source: U.S. Census Bureau, 2008-2012 American Community Survey

For information on confidentiality protection, sampling error, nonsampling error, and definitions, see Survey Methodology.

<http://www.census.gov/acs/www/UseData/index.htm>

# Household Type for Population in Households

## Byram city, Mississippi



Source: B11002. HOUSEHOLD TYPE BY RELATIVES AND NONRELATIVES FOR POPULATION IN HOUSEHOLDS  
Data Set: 2008-2012 American Community Survey 5-Year Estimates

**B12002. MARITAL STATUS FOR THE POPULATION 15 YEARS AND OVER**

Data Set: 2008-2012 American Community Survey 5-Year Estimates

	Byram city, Mississippi					
	African American	Margin of Error (+/-)	% of AA Total	White, Not Hispanic	Margin of Error (+/-)	% of NHW Total
<b>Total:</b>	<b>4,532</b>	<b>463</b>	<b>100.0%</b>	<b>3,982</b>	<b>530</b>	<b>100.0%</b>
Never married	1,793	NC	39.6%	891	NC	22.4%
Now married (except separated)	1,610	NC	35.5%	2,088	NC	52.4%
Separated	240	NC	5.3%	27	NC	0.7%
Widowed	100	NC	2.2%	371	NC	9.3%
Divorced	789	NC	17.4%	605	NC	15.2%
<b>Male:</b>	<b>2,141</b>	<b>349</b>	<b>47.2%</b>	<b>1,940</b>	<b>330</b>	<b>48.7%</b>
Never married	926	262	20.4%	602	197	15.1%
Now married (except separated)	825	179	18.2%	1,075	184	27.0%
Separated	63	80	1.4%	0	19	0.0%
Widowed	29	43	0.6%	13	22	0.3%
Divorced	298	164	6.6%	250	110	6.3%
<b>Female:</b>	<b>2,391</b>	<b>350</b>	<b>52.8%</b>	<b>2,042</b>	<b>282</b>	<b>51.3%</b>
Never married	867	233	19.1%	289	146	7.3%
Now married (except separated)	785	179	17.3%	1,013	167	25.4%
Separated	177	114	3.9%	27	40	0.7%
Widowed	71	82	1.6%	358	109	9.0%
Divorced	491	190	10.8%	355	144	8.9%

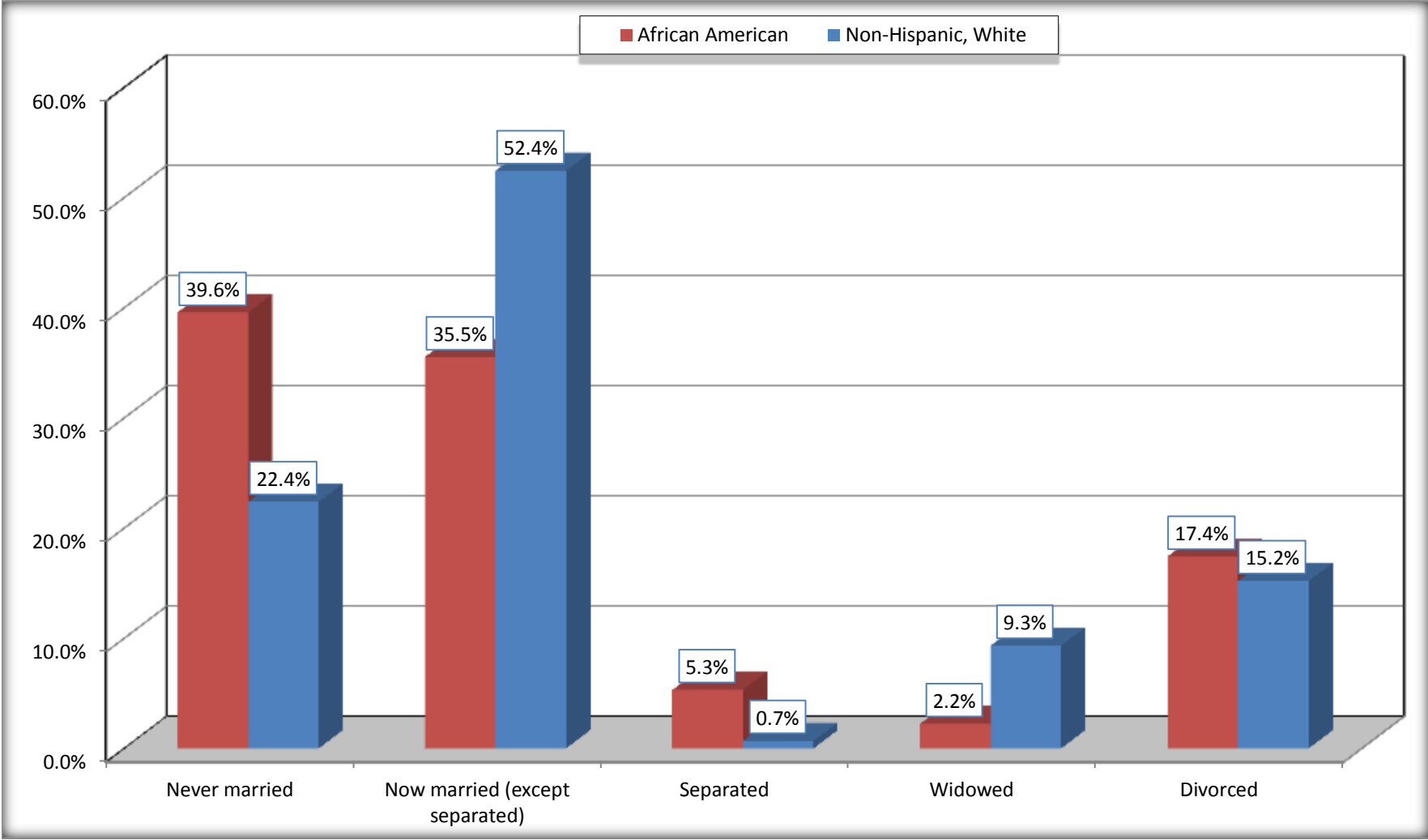
Source: U.S. Census Bureau, 2008-2012 American Community Survey

For information on confidentiality protection, sampling error, nonsampling error, and definitions, see Survey Methodology.

<http://www.census.gov/acs/www/UseData/index.htm>

# Marital Status for the Population 15 Years and Over

## Byram city, Mississippi



Source: B12002. MARITAL STATUS FOR THE POPULATION 15 YEARS AND OVER  
Data Set: 2008-2012 American Community Survey 5-Year Estimates

**C15002. SEX BY EDUCATIONAL ATTAINMENT FOR THE POPULATION 25 YEARS AND OVER**

Data Set: 2008-2012 American Community Survey 5-Year Estimates

	Byram city, Mississippi					
	African American	Margin of Error (+/-)	% of AA Total	White, Not Hispanic	Margin of Error (+/-)	% of NHW Total
<b>Total:</b>	<b>3,675</b>	<b>387</b>	<b>100.0%</b>	<b>3,399</b>	<b>443</b>	<b>100.0%</b>
Less than high school diploma	157	NC	4.3%	438	NC	12.9%
High school graduate, GED, or alternative	913	NC	24.8%	1,105	NC	32.5%
Some college or associate's degree	1,385	NC	37.7%	1,299	NC	38.2%
Bachelor's degree or higher	1,220	NC	33.2%	557	NC	16.4%
Male:	1,622	289	44.1%	1,553	265	45.7%
Less than high school diploma	72	51	2.0%	221	130	6.5%
High school graduate, GED, or alternative	589	210	16.0%	404	158	11.9%
Some college or associate's degree	542	170	14.7%	664	201	19.5%
Bachelor's degree or higher	419	149	11.4%	264	86	7.8%
Female:	2,053	326	55.9%	1,846	251	54.3%
Less than high school diploma	85	59	2.3%	217	120	6.4%
High school graduate, GED, or alternative	324	123	8.8%	701	197	20.6%
Some college or associate's degree	843	221	22.9%	635	157	18.7%
Bachelor's degree or higher	801	257	21.8%	293	106	8.6%

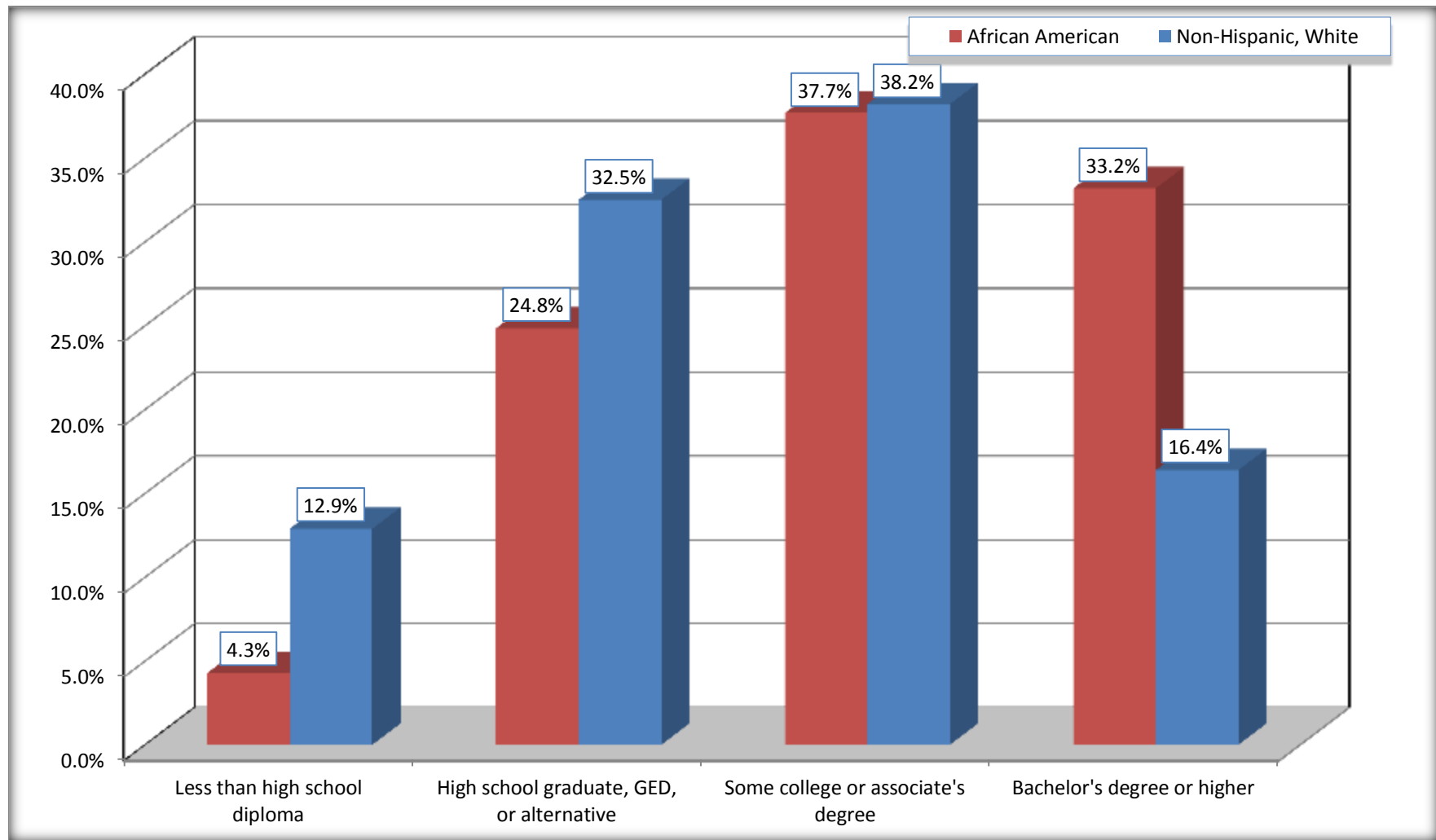
Source: U.S. Census Bureau, 2008-2012 American Community Survey

For information on confidentiality protection, sampling error, nonsampling error, and definitions, see Survey Methodology.

<http://www.census.gov/acs/www/UseData/index.htm>

# Educational Attainment for the Population 25 Years and Older

## Byram city, Mississippi



Source: C15002. SEX BY EDUCATIONAL ATTAINMENT FOR THE POPULATION 25 YEARS AND OVER  
Data Set: 2008-2012 American Community Survey 5-Year Estimates

**B16005. NATIVITY BY LANGUAGE SPOKEN AT HOME BY ABILITY TO SPEAK ENGLISH FOR THE POPULATION 5 YEARS AND OVER**

Data Set: 2008-2012 American Community Survey 5-Year Estimates

	Byram city, Mississippi					
	African American	Margin of Error (+/-)	% of AA Total	White, Not Hispanic	Margin of Error (+/-)	% of NHW Total
<b>Total:</b>	<b>5,730</b>	<b>560</b>	<b>100.0%</b>	<b>4,488</b>	<b>601</b>	<b>100.0%</b>
Speak only English	5,655	NC	98.7%	4,437	NC	98.9%
Speak another language	75	NC	1.3%	51	NC	1.1%
Speak English "very well"	23	NC	0.4%	43	NC	1.0%
Speak English "less than very well"	52	NC	0.9%	8	NC	0.2%
Native:	5,710	556	99.7%	4,448	593	99.1%
Speak only English	5,635	557	98.3%	4,397	590	98.0%
Speak another language	75	46	1.3%	51	44	1.1%
Speak English "very well"	23	30	0.4%	43	42	1.0%
Speak English "less than very well"	52	36	0.9%	8	13	0.2%
Foreign born:	20	31	0.3%	40	46	0.9%
Speak only English	20	31	0.3%	40	46	0.9%
Speak another language	0	19	0.0%	0	19	0.0%
Speak English "very well"	0	19	0.0%	0	19	0.0%
Speak English "less than very well"	0	19	0.0%	0	19	0.0%

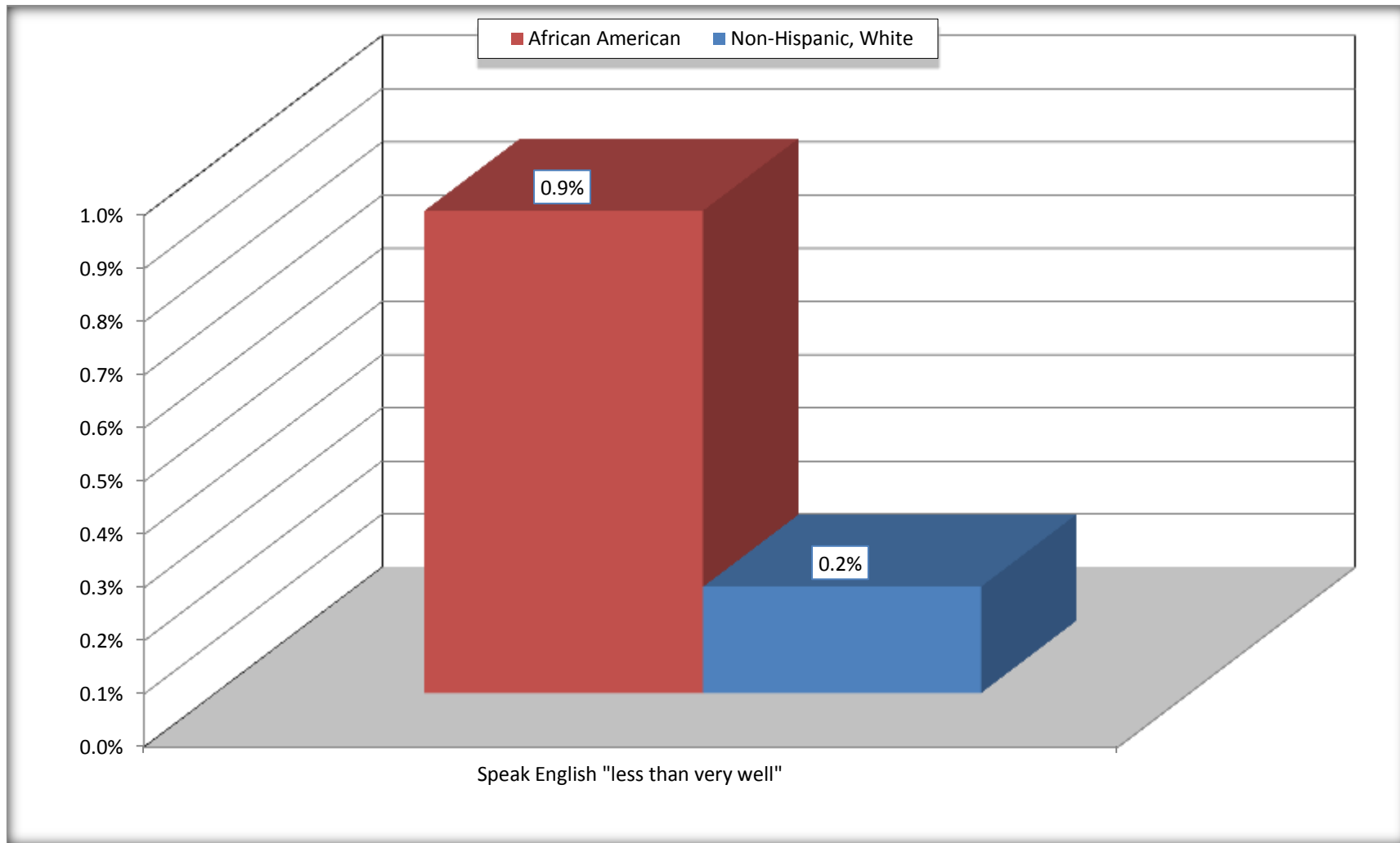
Source: U.S. Census Bureau, 2008-2012 American Community Survey

For information on confidentiality protection, sampling error, nonsampling error, and definitions, see Survey Methodology.

<http://www.census.gov/acs/www/UseData/index.htm>

# Speak English "Less than Very Well" (Population 5 Years and Over)

## Byram city, Mississippi



Source: B16005. NATIVITY BY LANGUAGE SPOKEN AT HOME BY ABILITY TO SPEAK ENGLISH FOR THE POPULATION 5 YEARS AND OVER  
Data Set: 2008-2012 American Community Survey 5-Year Estimates



**B17010. POVERTY STATUS IN THE PAST 12 MONTHS OF FAMILIES BY FAMILY TYPE BY PRESENCE OF RELATED CHILDREN UNDER 18 YEARS**

Data Set: 2008-2012 American Community Survey 5-Year Estimates

	Byram city, Mississippi					
	African American	Margin of Error (+/-)	% of AA Total	White, Not Hispanic	Margin of Error (+/-)	% of NHW Total
<b>Total:</b>	<b>1,621</b>	<b>173</b>	<b>100.0%</b>	<b>1,245</b>	<b>181</b>	<b>100.0%</b>
Income in the past 12 months below poverty level:	137	95	8.5%	52	48	4.2%
Married-couple family:	13	22	0.8%	7	13	0.6%
With related children under 18 years	0	19	0.0%	0	19	0.0%
Other family:	124	93	7.6%	45	46	3.6%
Male householder, no wife present	9	16	0.6%	13	20	1.0%
With related children under 18 years	9	16	0.6%	13	20	1.0%
Female householder, no husband present	115	91	7.1%	32	43	2.6%
With related children under 18 years	101	86	6.2%	32	43	2.6%
Income in the past 12 months at or above poverty level:	1,484	172	91.5%	1,193	176	95.8%
Married-couple family:	735	165	45.3%	894	163	71.8%
With related children under 18 years	416	133	25.7%	401	141	32.2%
Other family:	749	187	46.2%	299	106	24.0%
Male householder, no wife present	262	137	16.2%	58	58	4.7%
With related children under 18 years	243	136	15.0%	39	43	3.1%
Female householder, no husband present	487	170	30.0%	241	100	19.4%
With related children under 18 years	396	161	24.4%	120	87	9.6%

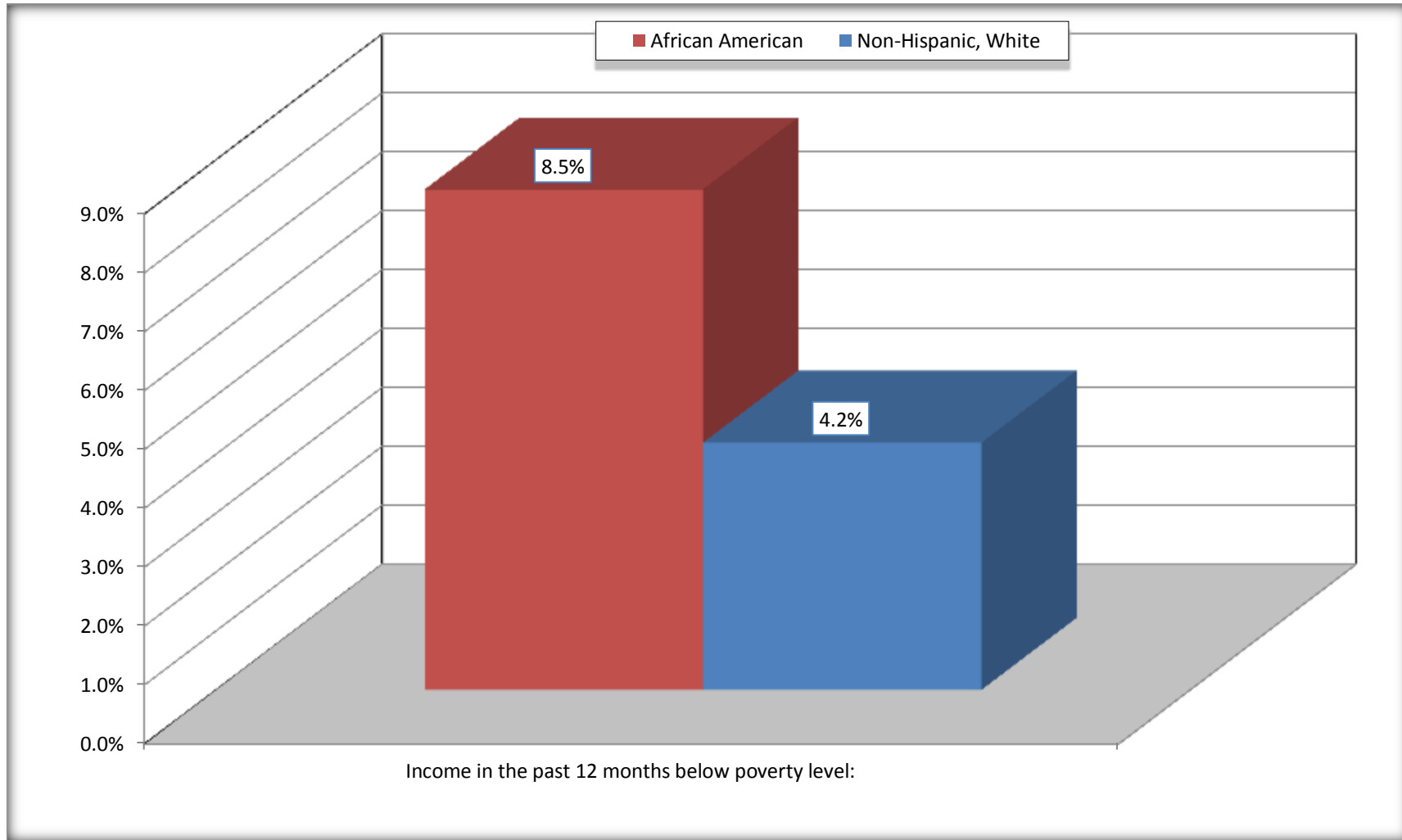
Source: U.S. Census Bureau, 2008-2012 American Community Survey

For information on confidentiality protection, sampling error, nonsampling error, and definitions, see Survey Methodology.

<http://www.census.gov/acs/www/UseData/index.htm>

# Family Households Below Poverty in the Past 12 Months

## Byram city, Mississippi

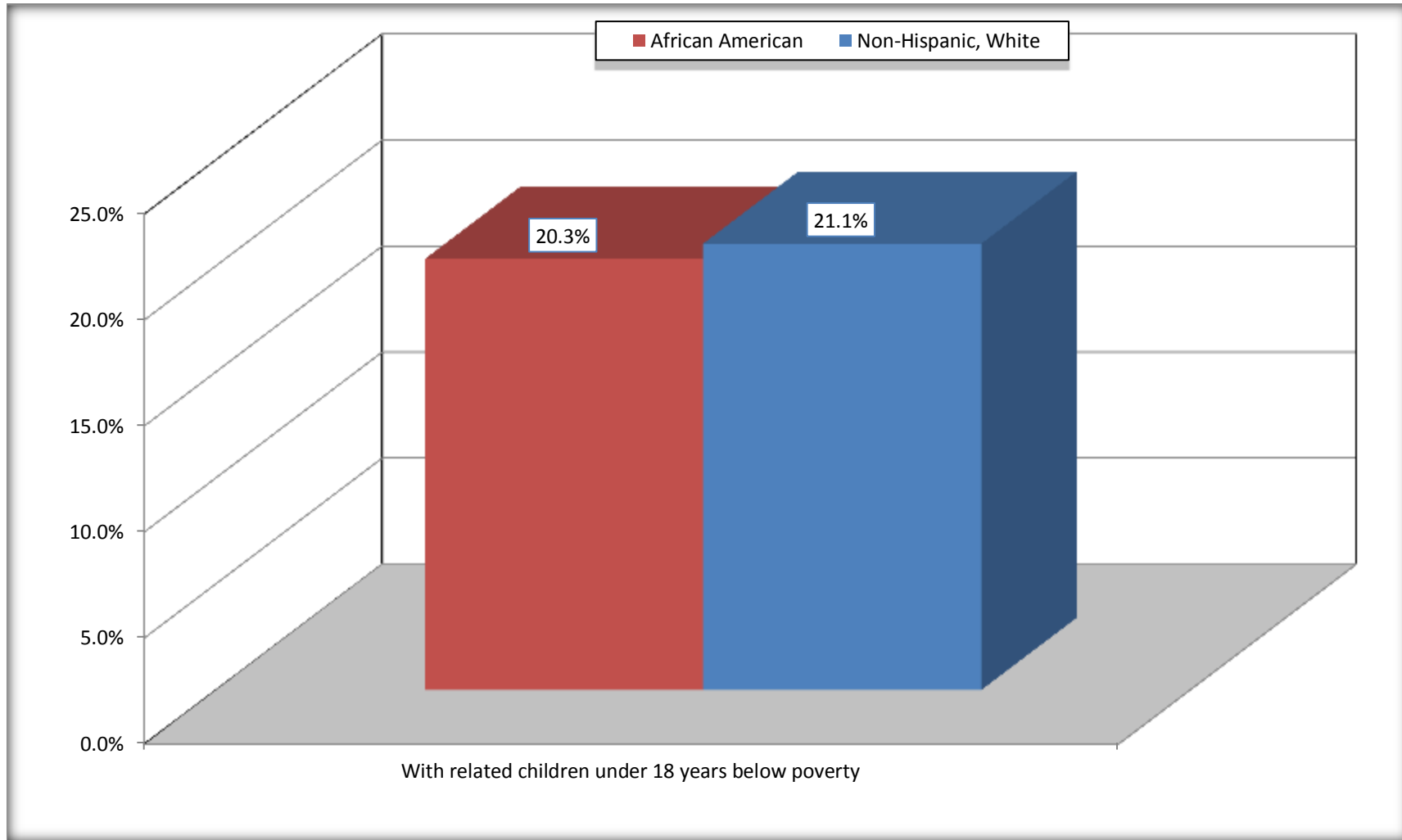


Source: B17010. POVERTY STATUS IN THE PAST 12 MONTHS OF FAMILIES BY FAMILY TYPE BY PRESENCE OF RELATED CHILDREN UNDER 18 YEARS

Data Set: 2008-2012 American Community Survey 5-Year Estimates

# Female-headed Households with Related Children Below Poverty in the Past 12 Months

## Byram city, Mississippi



Source: B17010. POVERTY STATUS IN THE PAST 12 MONTHS OF FAMILIES BY FAMILY TYPE BY PRESENCE OF RELATED CHILDREN UNDER 18 YEARS

Data Set: 2008-2012 American Community Survey 5-Year Estimates

**B17020 POVERTY STATUS IN THE PAST 12 MONTHS BY AGE - Universe: POPULATION FOR WHOM POVERTY STATUS IS DETERMINED**

Data Set: 2008-2012 American Community Survey 5-Year Estimates

	Byram city, Mississippi					
	African American	Margin of Error (+/-)	% of AA By Age	White, Not Hispanic	Margin of Error (+/-)	% of NHW By Age
<b>Total:</b>	<b>6,324</b>	<b>608</b>	<b>100.0%</b>	<b>4,807</b>	<b>614</b>	<b>100.0%</b>
Income in the past 12 months below poverty level:	592	296	9.4%	353	206	7.3%
<b>Under 18 years</b>	198	NC	9.6%	143	NC	13.1%
<b>18 to 64 years</b>	394	176	9.6%	210	108	6.6%
<b>65 years and over</b>	0	NC	0.0%	0	NC	0.0%
Income in the past 12 months at or above poverty level:	5,732	609	90.6%	4,454	606	92.7%
<b>Under 18 years</b>	1,859	NC	90.4%	947	NC	86.9%
<b>18 to 64 years</b>	3,711	447	90.4%	2,952	428	93.4%
<b>65 years and over</b>	162	NC	100.0%	555	NC	100.0%

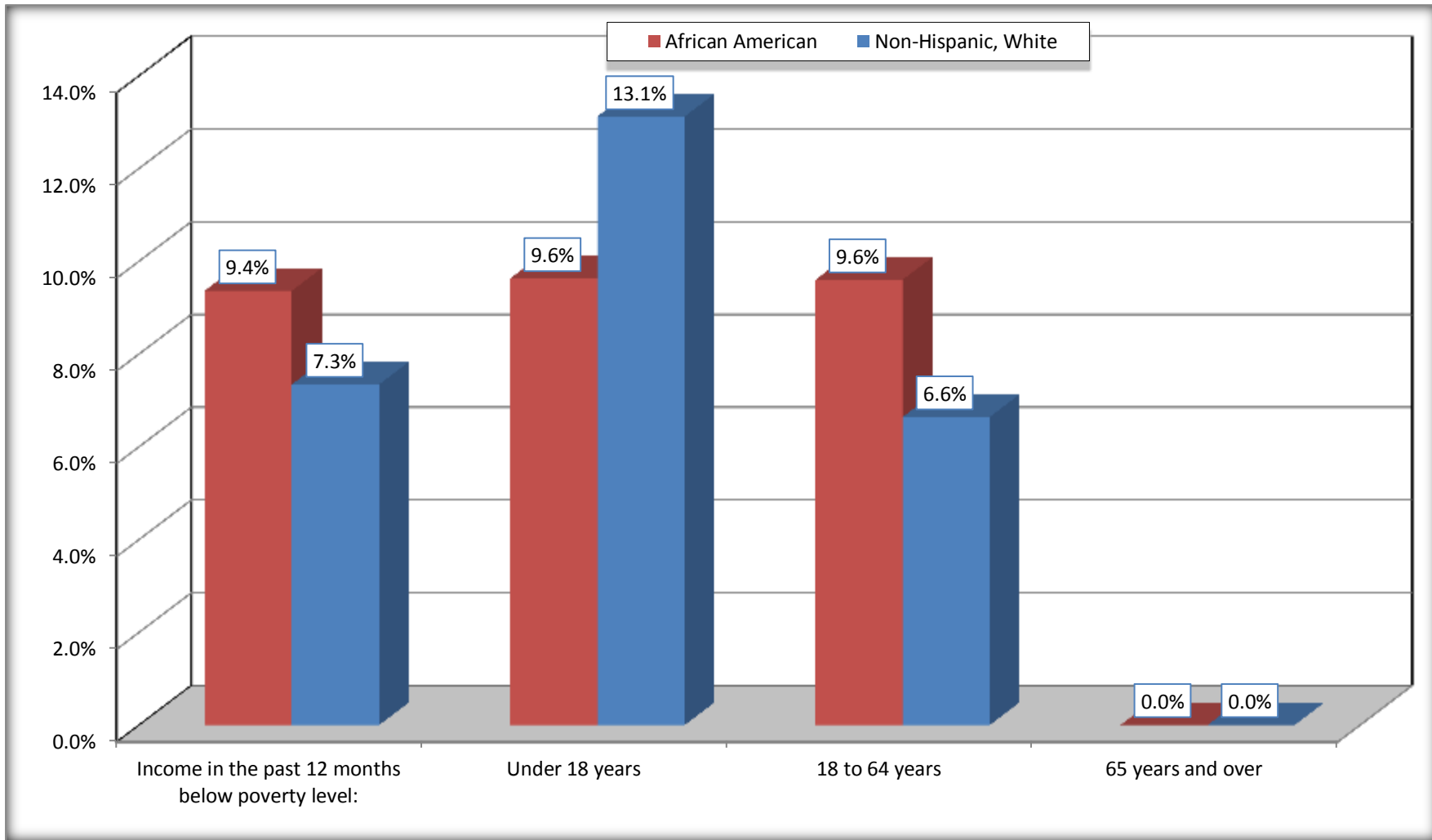
Source: U.S. Census Bureau, 2008-2012 American Community Survey

For information on confidentiality protection, sampling error, nonsampling error, and definitions, see Survey Methodology.

<http://www.census.gov/acs/www/UseData/index.htm>

# Population Below Poverty in the Past 12 Months

## Byram city, Mississippi



Source: B17020 POVERTY STATUS IN THE PAST 12 MONTHS BY AGE - Universe: POPULATION FOR WHOM POVERTY STATUS IS DETERMINED  
Data Set: 2008-2012 American Community Survey 5-Year Estimates

**B19001. HOUSEHOLD INCOME IN THE PAST 12 MONTHS (IN 2010 INFLATION-ADJUSTED DOLLARS)**

Data Set: 2008-2012 American Community Survey 5-Year Estimates

	Byram city, Mississippi					
	African American	Margin of Error (+/-)	% of AA Total	White, Not Hispanic	Margin of Error (+/-)	% of NHW Total
<b>Total:</b>	<b>2,099</b>	<b>214</b>	<b>100.0%</b>	<b>1,842</b>	<b>255</b>	<b>100.0%</b>
Less than \$ 10,000	124	94	5.9%	123	92	6.7%
\$ 10,000 to \$ 14,999	92	89	4.4%	54	54	2.9%
<b>\$ 15,000 to \$ 24,999</b>	241	NC	11.5%	147	NC	8.0%
<b>\$ 25,000 to \$ 34,999</b>	138	NC	6.6%	197	NC	10.7%
<b>\$ 35,000 to \$ 49,999</b>	350	NC	16.7%	262	NC	14.2%
<b>\$ 50,000 to \$ 74,999</b>	492	NC	23.4%	438	NC	23.8%
\$ 75,000 to \$ 99,999	386	140	18.4%	342	142	18.6%
<b>\$ 100,000 to \$ 149,999</b>	225	NC	10.7%	177	NC	9.6%
\$ 150,000 to \$ 199,999	43	34	2.0%	77	53	4.2%
\$ 200,000 or more	8	13	0.4%	25	31	1.4%

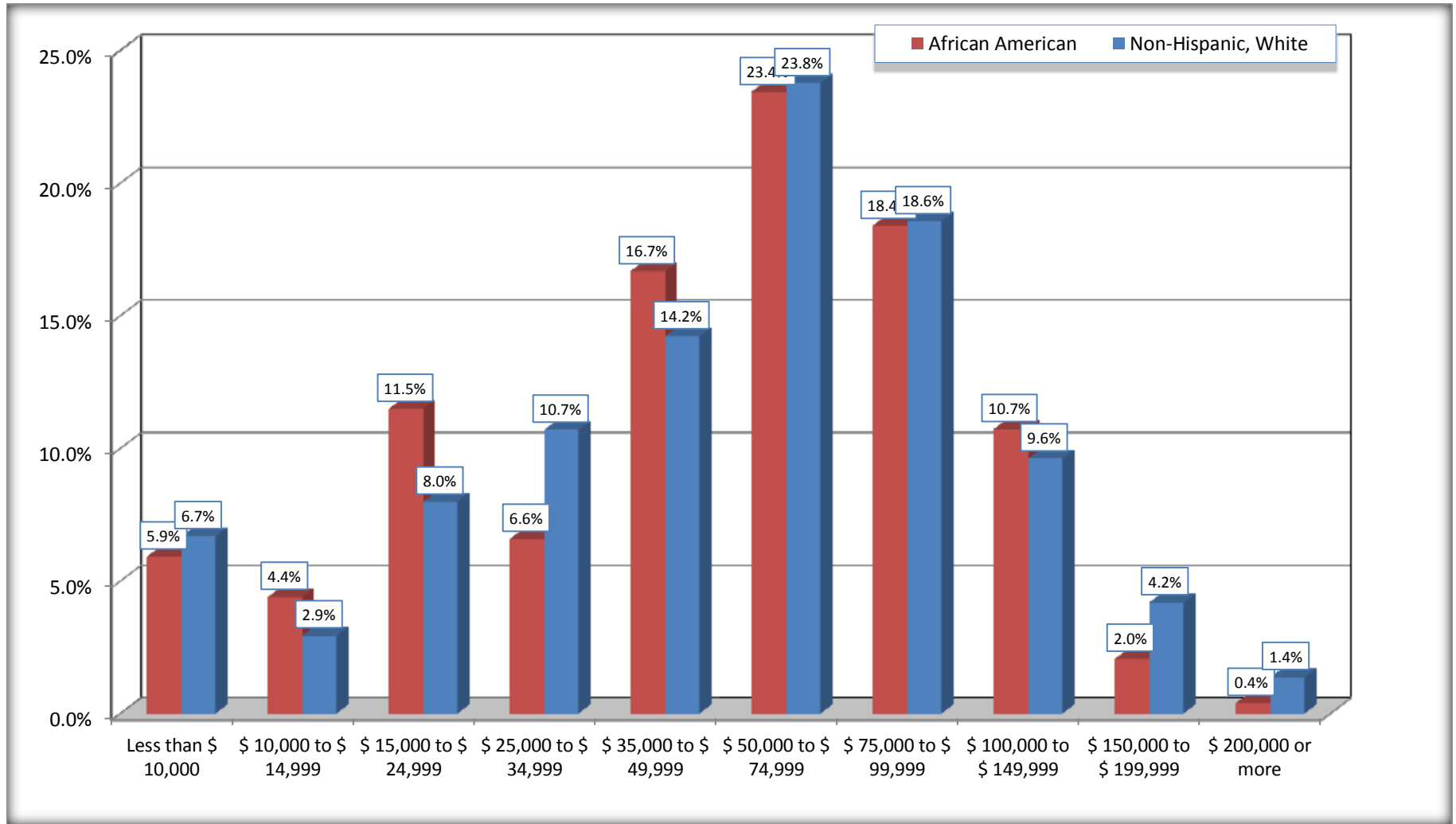
Source: U.S. Census Bureau, 2008-2012 American Community Survey

For information on confidentiality protection, sampling error, nonsampling error, and definitions, see Survey Methodology.

<http://www.census.gov/acs/www/UseData/index.htm>

# Household Income in the Past 12 Months

## Byram city, Mississippi



Source: B19001. HOUSEHOLD INCOME IN THE PAST 12 MONTHS (IN 2010 INFLATION-ADJUSTED DOLLARS)  
Data Set: 2008-2012 American Community Survey 5-Year Estimates

**B19013. MEDIAN HOUSEHOLD INCOME IN THE PAST 12 MONTHS (IN 2010 INFLATION-ADJUSTED DOLLARS)**

Data Set: 2008-2012 American Community Survey 5-Year Estimates

	Byram city, Mississippi			
	African American	Margin of Error (+/-)	White, Not Hispanic	Margin of Error (+/-)
Median household income in the past 12 months (in 2010 inflation-adjusted dollars)	\$ 52,252	\$ 9,864	\$ 58,910	\$ 5,603

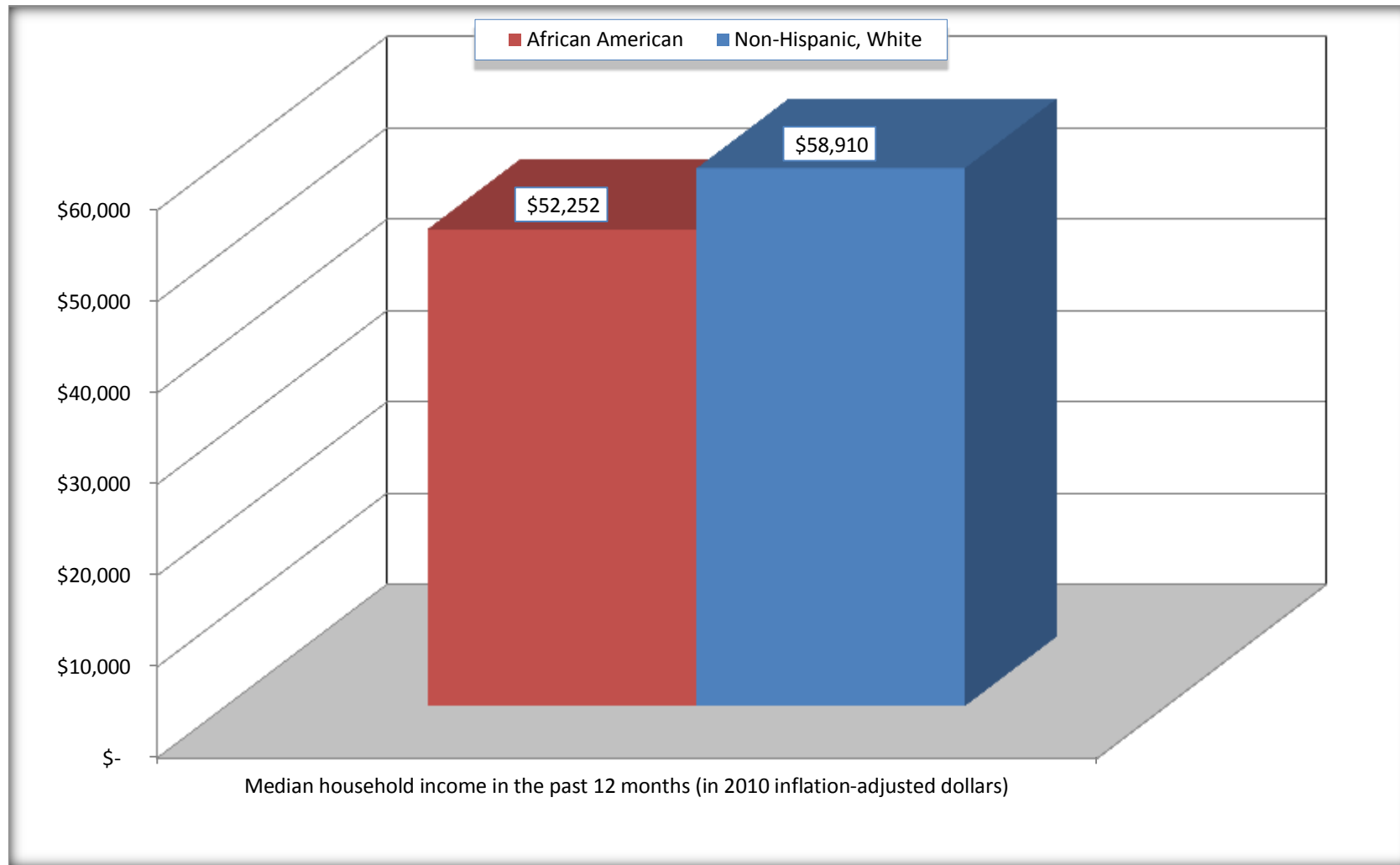
Source: U.S. Census Bureau, 2008-2012 American Community Survey

For information on confidentiality protection, sampling error, nonsampling error, and definitions, see Survey Methodology.  
<http://www.census.gov/acs/www/UseData/index.htm>



## Median Household Income in the Past 12 Months

### Byram city, Mississippi



Source: B19013. MEDIAN HOUSEHOLD INCOME IN THE PAST 12 MONTHS (IN 2010 INFLATION-ADJUSTED DOLLARS)  
Data Set: 2008-2012 American Community Survey 5-Year Estimates

**B19101. FAMILY INCOME IN THE PAST 12 MONTHS (IN 2010 INFLATION-ADJUSTED DOLLARS)**

Data Set: 2008-2012 American Community Survey 5-Year Estimates

	Byram city, Mississippi					
	African American	Margin of Error (+/-)	% of AA Total	White, Not Hispanic	Margin of Error (+/-)	% of NHW Total
<b>Total:</b>	<b>1,621</b>	<b>173</b>	<b>100.0%</b>	<b>1,245</b>	<b>181</b>	<b>100.0%</b>
Less than \$ 10,000	56	61	3.5%	39	45	3.1%
\$ 10,000 to \$ 14,999	39	51	2.4%	0	19	0.0%
<b>\$ 15,000 to \$ 24,999</b>	<b>149</b>	<b>NC</b>	<b>9.2%</b>	<b>60</b>	<b>NC</b>	<b>4.8%</b>
<b>\$ 25,000 to \$ 34,999</b>	<b>169</b>	<b>NC</b>	<b>10.4%</b>	<b>119</b>	<b>NC</b>	<b>9.6%</b>
<b>\$ 35,000 to \$ 49,999</b>	<b>279</b>	<b>NC</b>	<b>17.2%</b>	<b>177</b>	<b>NC</b>	<b>14.2%</b>
<b>\$ 50,000 to \$ 74,999</b>	<b>409</b>	<b>NC</b>	<b>25.2%</b>	<b>296</b>	<b>NC</b>	<b>23.8%</b>
<b>\$ 100,000 to \$ 149,999</b>	<b>144</b>	<b>NC</b>	<b>8.9%</b>	<b>166</b>	<b>NC</b>	<b>13.3%</b>
\$ 150,000 to \$ 199,999	32	29	2.0%	77	53	6.2%
\$ 200,000 or more	0	19	0.0%	25	31	2.0%

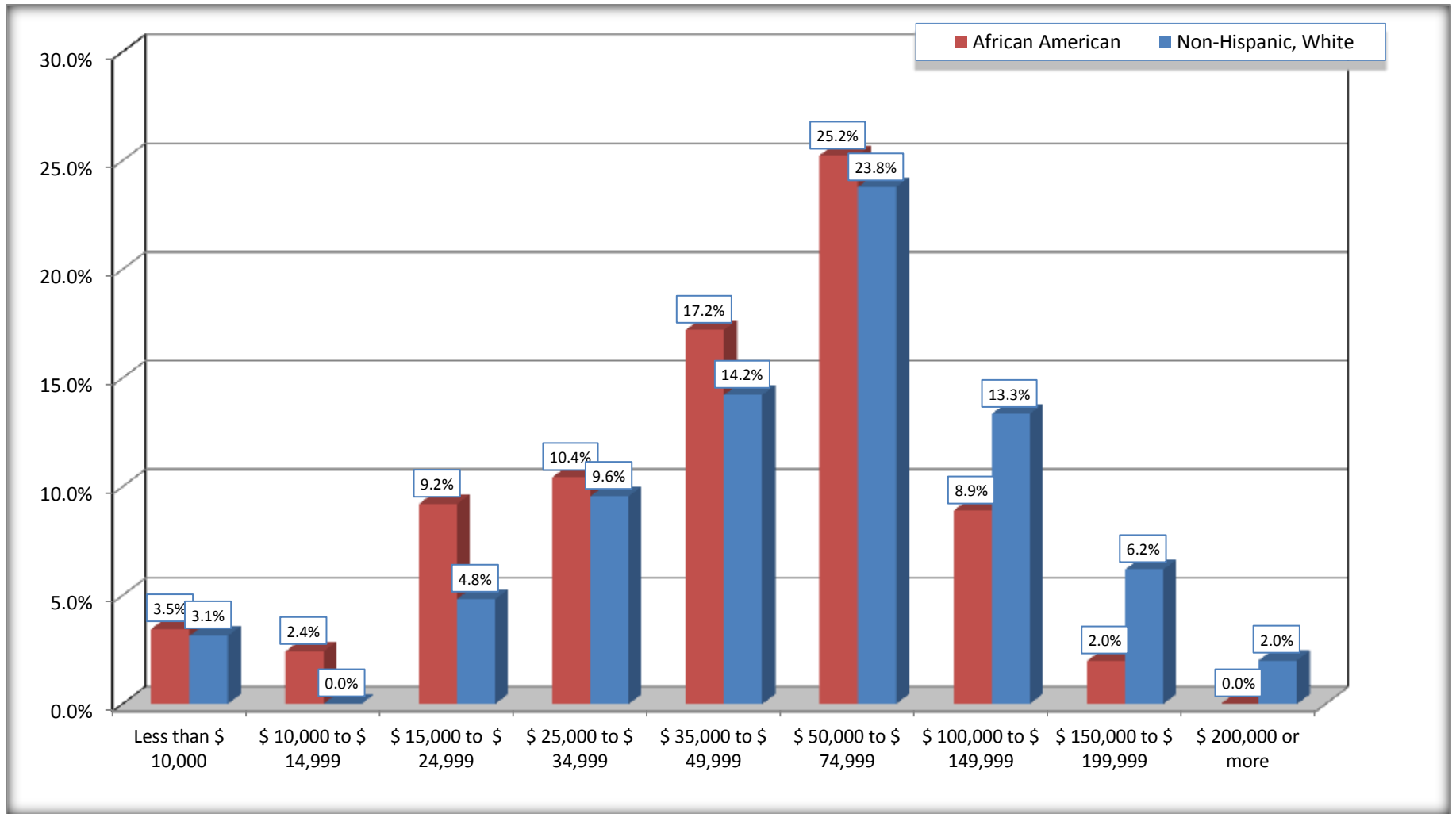
Source: U.S. Census Bureau, 2008-2012 American Community Survey

For information on confidentiality protection, sampling error, nonsampling error, and definitions, see Survey Methodology.

<http://www.census.gov/acs/www/UseData/index.htm>

# Family Income in the Past 12 Months

## Byram city, Mississippi



Source: B19101. FAMILY INCOME IN THE PAST 12 MONTHS (IN 2010 INFLATION-ADJUSTED DOLLARS)  
Data Set: 2008-2012 American Community Survey 5-Year Estimates

**B19113. MEDIAN FAMILY INCOME IN THE PAST 12 MONTHS (IN 2010 INFLATION-ADJUSTED DOLLARS)**

Data Set: 2008-2012 American Community Survey 5-Year Estimates

	Byram city, Mississippi			
	African American	Margin of Error (+/-)	White, Not Hispanic	Margin of Error (+/-)
Median family income in the past 12 months (in 2010 inflation-adjusted dollars)	\$ 52,428	\$ 5,100	\$ 70,744	\$ 12,985

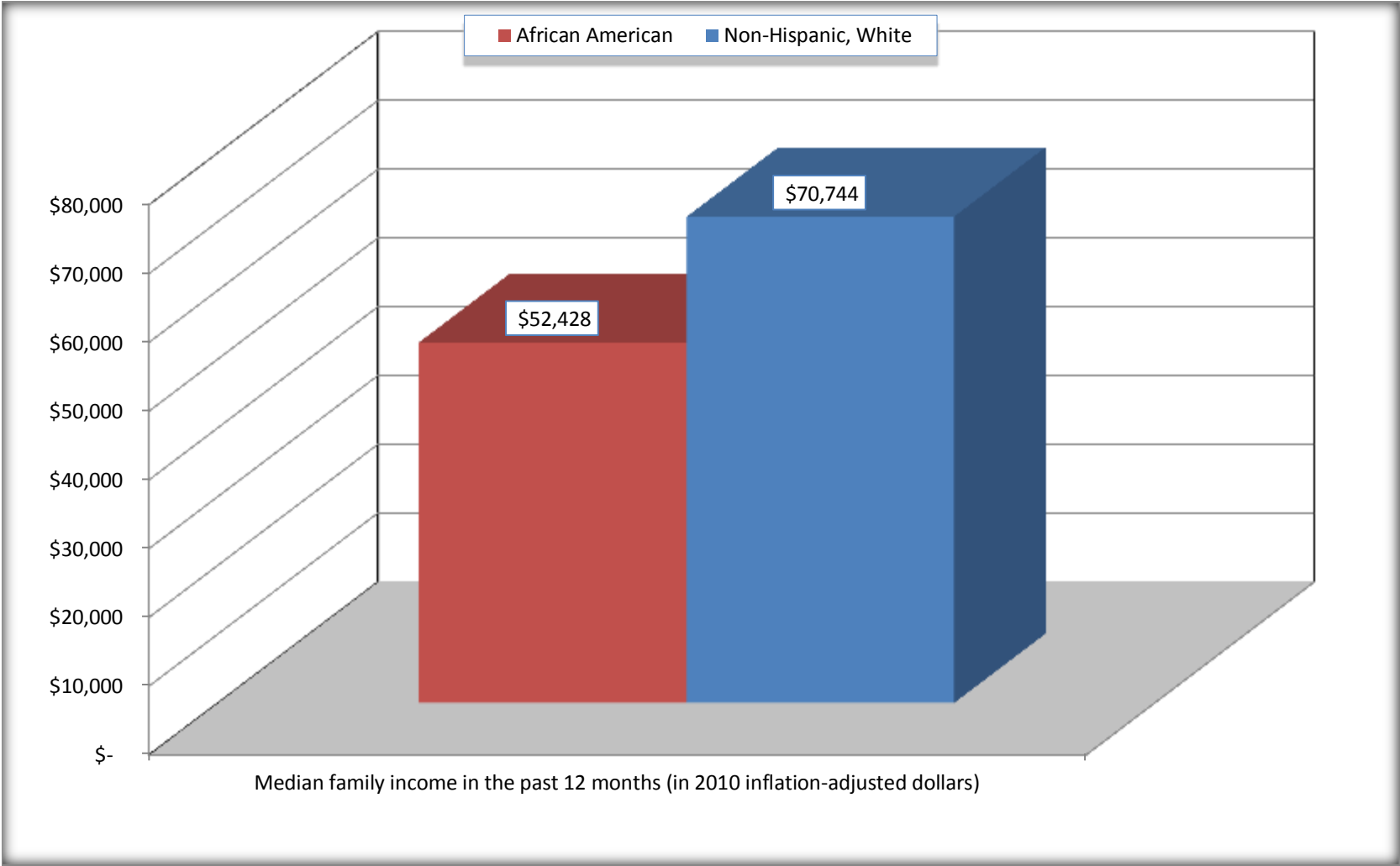
Source: U.S. Census Bureau, 2008-2012 American Community Survey

For information on confidentiality protection, sampling error, nonsampling error, and definitions, see Survey Methodology.

<http://www.census.gov/acs/www/UseData/index.htm>

# Median Family Income in the Past 12 Months

## Byram city, Mississippi



Source: B19113. MEDIAN FAMILY INCOME IN THE PAST 12 MONTHS (IN 2010 INFLATION-ADJUSTED DOLLARS)  
Data Set: 2008-2012 American Community Survey 5-Year Estimates

**B19202. MEDIAN NONFAMILY HOUSEHOLD INCOME IN THE PAST 12 MONTHS (IN 2010 INFLATION-ADJUSTED DOLLARS)**

Data Set: 2008-2012 American Community Survey 5-Year Estimates

	Byram city, Mississippi			
	African American	Margin of Error (+/-)	White, Not Hispanic	Margin of Error (+/-)
Median nonfamily household income in the past 12 months (in 2010 inflation-adjusted dollars)	\$ 43,500	\$ 29,173	\$ 27,750	\$ 17,885

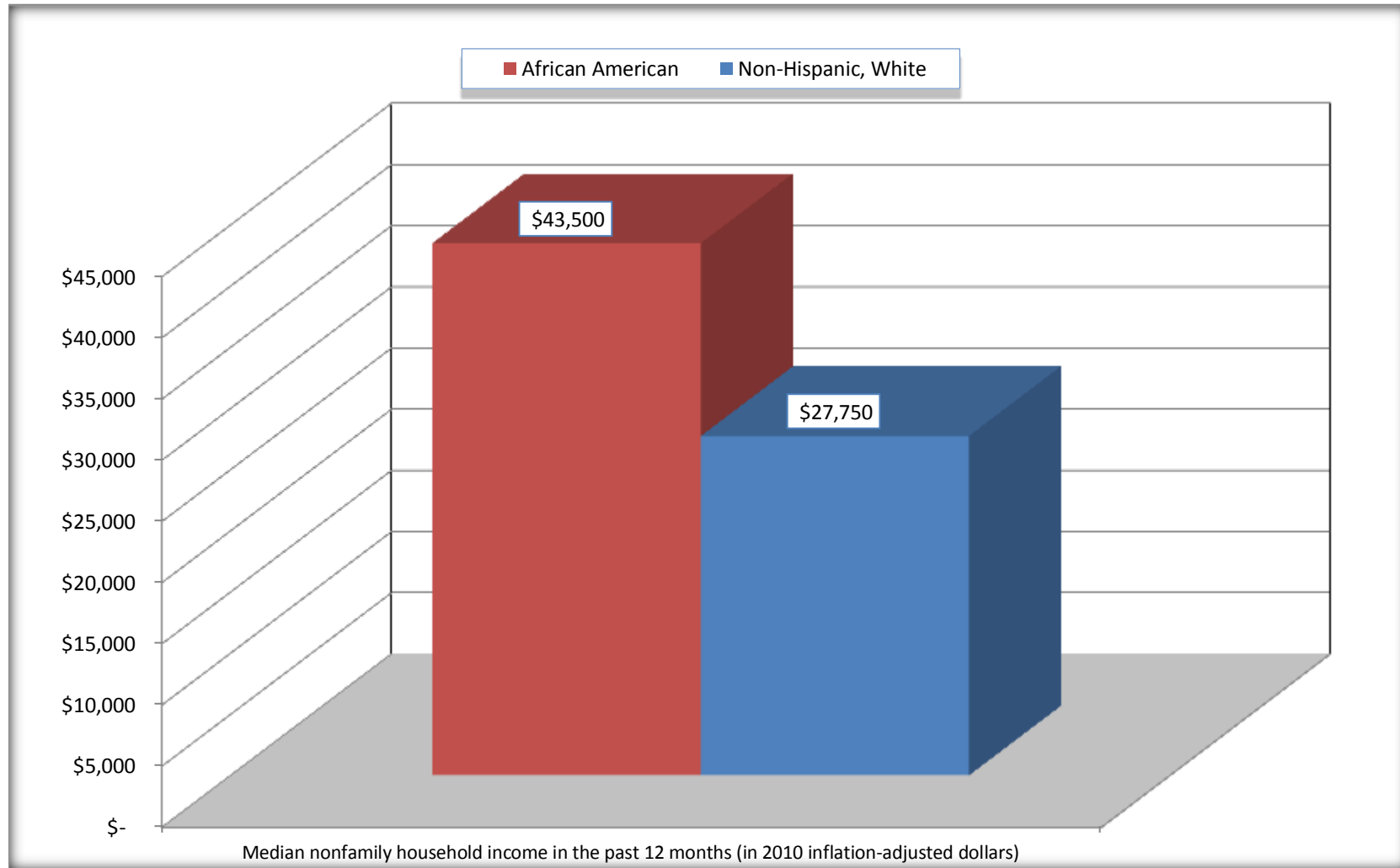
Source: U.S. Census Bureau, 2008-2012 American Community Survey

For information on confidentiality protection, sampling error, nonsampling error, and definitions, see Survey Methodology.

<http://www.census.gov/acs/www/UseData/index.htm>

# Median Non-Family Income in the Past 12 Months

## Byram city, Mississippi



Source: B19202. MEDIAN NONFAMILY HOUSEHOLD INCOME IN THE PAST 12 MONTHS (IN 2010 INFLATION-ADJUSTED DOLLARS)  
Data Set: 2008-2012 American Community Survey 5-Year Estimates

**B19301. PER CAPITA INCOME IN THE PAST 12 MONTHS (IN 2010 INFLATION-ADJUSTED DOLLARS)**

Data Set: 2008-2012 American Community Survey 5-Year Estimates

	Byram city, Mississippi			
	African American	Margin of Error (+/-)	White, Not Hispanic	Margin of Error (+/-)
Per capita income in the past 12 months (in 2010 inflation-adjusted dollars)	\$ 21,516	\$ 2,835	\$ 25,441	\$ 2,418

Source: U.S. Census Bureau, 2008-2012 American Community Survey

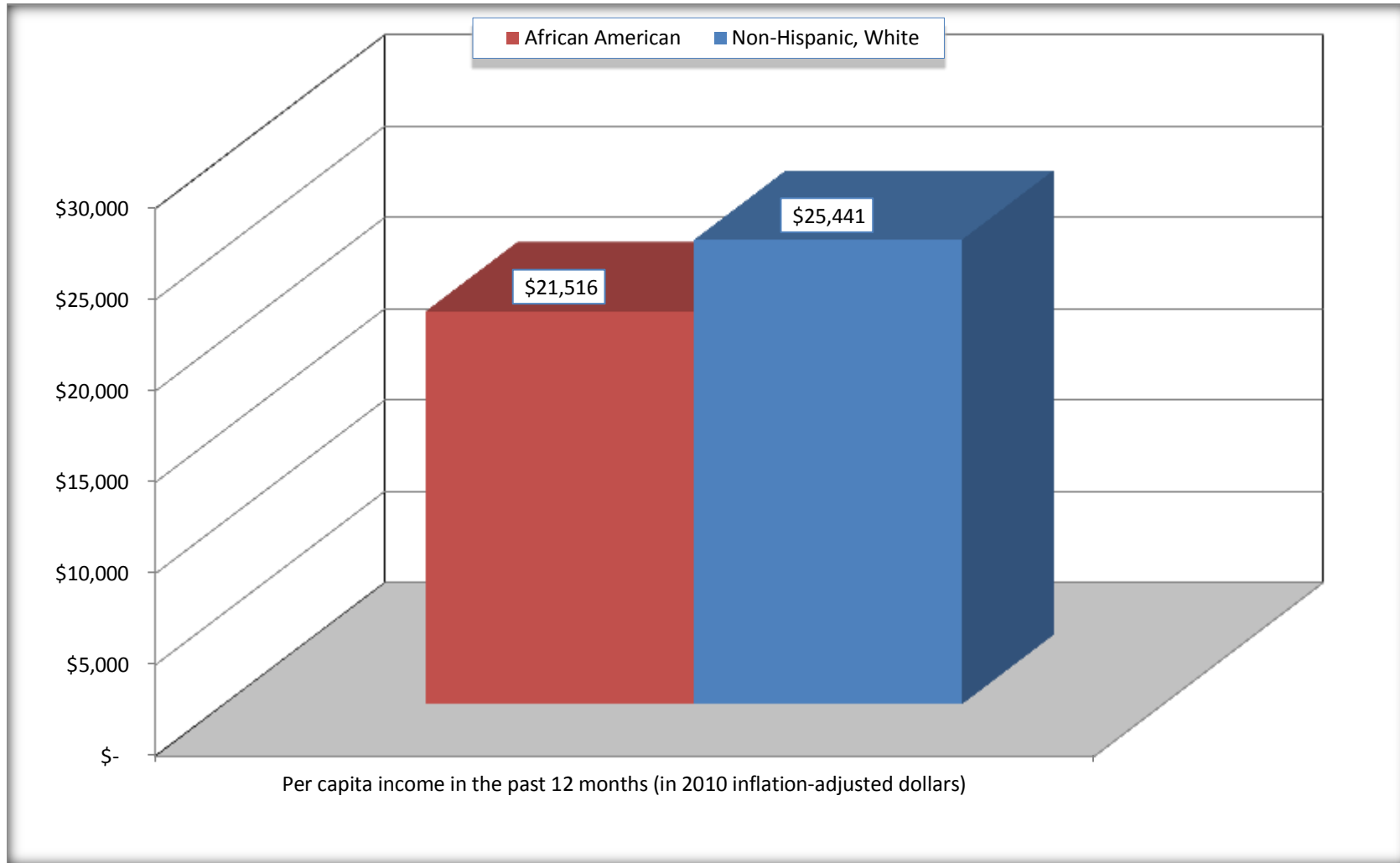
For information on confidentiality protection, sampling error, nonsampling error, and definitions, see Survey Methodology.

<http://www.census.gov/acs/www/UseData/index.htm>



## Per capita Income in the Past 12 Months

### Byram city, Mississippi



Source: B19301. PER CAPITA INCOME IN THE PAST 12 MONTHS (IN 2010 INFLATION-ADJUSTED DOLLARS)  
Data Set: 2008-2012 American Community Survey 5-Year Estimates

**B20017. MEDIAN EARNINGS IN THE PAST 12 MONTHS (IN 2010 INFLATION-ADJUSTED DOLLARS) BY SEX BY WORK EXPERIENCE IN THE PAST 12 MONTHS FOR THE POPULATION 16 YEARS AND OVER WITH EARNINGS IN THE PAST 12 MONTHS**

Data Set: 2008-2012 American Community Survey 5-Year Estimates

	Byram city, Mississippi			
	African American	Margin of Error (+/-)	White, Not Hispanic	Margin of Error (+/-)
Median earnings in the past 12 months (in 2010 inflation-adjusted dollars) --				
Total:	\$ 32,678	\$ 5,130	\$ 35,376	\$ 3,965
Male --				
Total	\$ 36,898	\$ 6,751	\$ 40,933	\$ 7,478
Worked full-time, year-round in the past 12 months	\$ 41,721	\$ 1,964	\$ 51,964	\$ 11,219
Other	\$ 9,709	\$ 4,253	\$ 20,833	\$ 7,026
Female --				
Total	\$ 27,825	\$ 4,667	\$ 30,400	\$ 5,292
Worked full-time, year-round in the past 12 months	\$ 34,110	\$ 7,894	\$ 35,592	\$ 3,272
Other	\$ 10,228	\$ 1,826	\$ 7,205	\$ 3,829

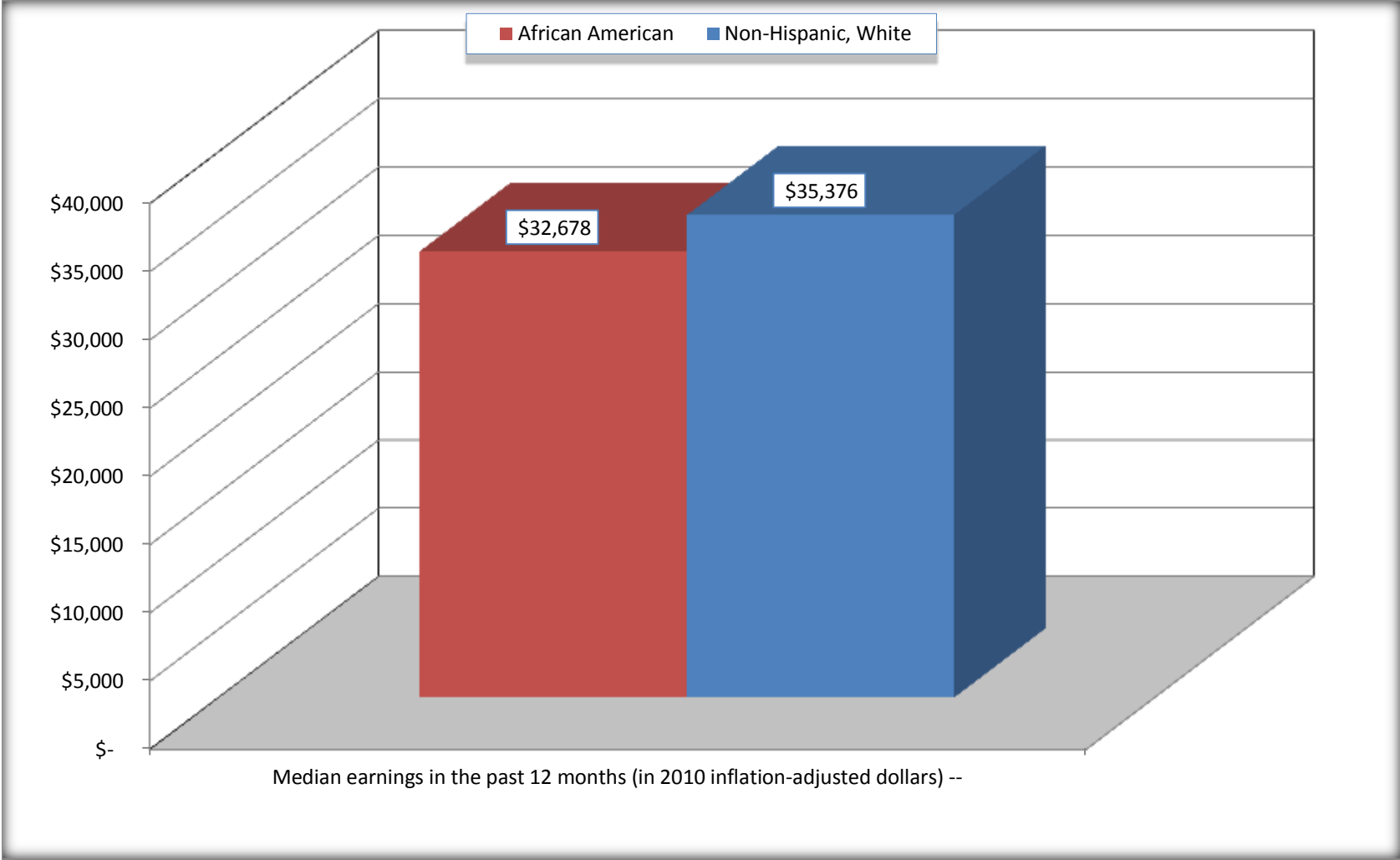
Source: U.S. Census Bureau, 2008-2012 American Community Survey

For information on confidentiality protection, sampling error, nonsampling error, and definitions, see Survey Methodology.

<http://www.census.gov/acs/www/UseData/index.htm>

# Median earnings in the Past 12 Months (16 Years and Over with Earnings)

## Byram city, Mississippi



Source: B20017. MEDIAN EARNINGS IN THE PAST 12 MONTHS (IN 2010 INFLATION-ADJUSTED DOLLARS) BY SEX BY WORK EXPERIENCE IN THE PAST 12 MONTHS FOR THE POPULATION 16 YEARS AND OVER WITH EARNINGS IN THE PAST 12 MONTHS  
Data Set: 2008-2012 American Community Survey 5-Year Estimates

**B20005. SEX BY WORK EXPERIENCE IN THE PAST 12 MONTHS BY EARNINGS IN THE PAST 12 MONTHS (IN 2010 INFLATION-ADJUSTED DOLLARS) FOR THE POPULATION 16 YEARS AND OVER**

Data Set: 2008-2012 American Community Survey 5-Year Estimates

	Byram city, Mississippi					
	African American	Margin of Error (+/-)	% of AA Total	White, Not Hispanic	Margin of Error (+/-)	% of NHW Total
<b>Total:</b>	<b>4,491</b>	<b>466</b>	<b>100.0%</b>	<b>3,833</b>	<b>497</b>	<b>100.0%</b>
Worked full-time, year-round in the past 12 months:	2,495	NC	55.6%	1,809	NC	47.2%
No earnings	0	NC	0.0%	0	NC	0.0%
With earnings:	2,495	NC	55.6%	1,809	NC	47.2%
\$ 1 to \$ 9,999 or loss	10	NC	0.2%	0	NC	0.0%
\$ 10,000 to \$ 19,999	331	NC	7.4%	195	NC	5.1%
\$ 20,000 to \$ 29,999	509	NC	11.3%	230	NC	6.0%
\$ 30,000 to \$ 49,999	949	NC	21.1%	788	NC	20.6%
\$ 50,000 to \$ 74,999	542	NC	12.1%	340	NC	8.9%
\$ 75,000 or more	154	NC	3.4%	256	NC	6.7%
Other:	1,996	NC	44.4%	2,024	NC	52.8%
No earnings	927	NC	20.6%	1,179	NC	30.8%
With earnings: less than full time, year-round	1,069	NC	23.8%	845	NC	22.0%
Male:	2,110	353	47.0%	1,823	318	47.6%
Worked full-time, year-round in the past 12 months:	1,141	248	25.4%	988	206	25.8%
No earnings	0	19	0.0%	0	19	0.0%
With earnings:	1,141	248	25.4%	988	206	25.8%
\$ 1 to \$ 9,999 or loss	0	NC	0.0%	0	NC	0.0%
\$ 10,000 to \$ 19,999	113	NC	2.5%	27	NC	0.7%
\$ 20,000 to \$ 29,999	132	NC	2.9%	120	NC	3.1%
\$ 30,000 to \$ 49,999	576	NC	12.8%	336	NC	8.8%
\$ 50,000 to \$ 74,999	285	NC	6.3%	281	NC	7.3%
\$ 75,000 or more	35	NC	0.8%	224	NC	5.8%

	Byram city, Mississippi					
	African American	Margin of Error (+/-)	% of AA Total	White, Not Hispanic	Margin of Error (+/-)	% of NHW Total
Other:	969	284	21.6%	835	225	21.8%
No earnings	447	183	10.0%	379	143	9.9%
With earnings:	522	216	11.6%	456	160	11.9%
Female:	2,381	348	53.0%	2,010	268	52.4%
Worked full-time, year-round in the past 12 months:	1,354	225	30.1%	821	150	21.4%
No earnings	0	19	0.0%	0	19	0.0%
With earnings:	1,354	225	30.1%	821	150	21.4%
\$ 1 to \$ 9,999 or loss	10	NC	0.2%	0	NC	0.0%
\$ 10,000 to \$ 19,999	218	NC	4.9%	168	NC	4.4%
\$ 20,000 to \$ 29,999	377	NC	8.4%	110	NC	2.9%
\$ 30,000 to \$ 49,999	373	NC	8.3%	452	NC	11.8%
\$ 50,000 to \$ 74,999	257	NC	5.7%	59	NC	1.5%
\$ 75,000 or more	119	NC	2.6%	32	NC	0.8%
Other:	1,027	290	22.9%	1,189	213	31.0%
No earnings	480	190	10.7%	800	197	20.9%
With earnings:	547	229	12.2%	389	140	10.1%

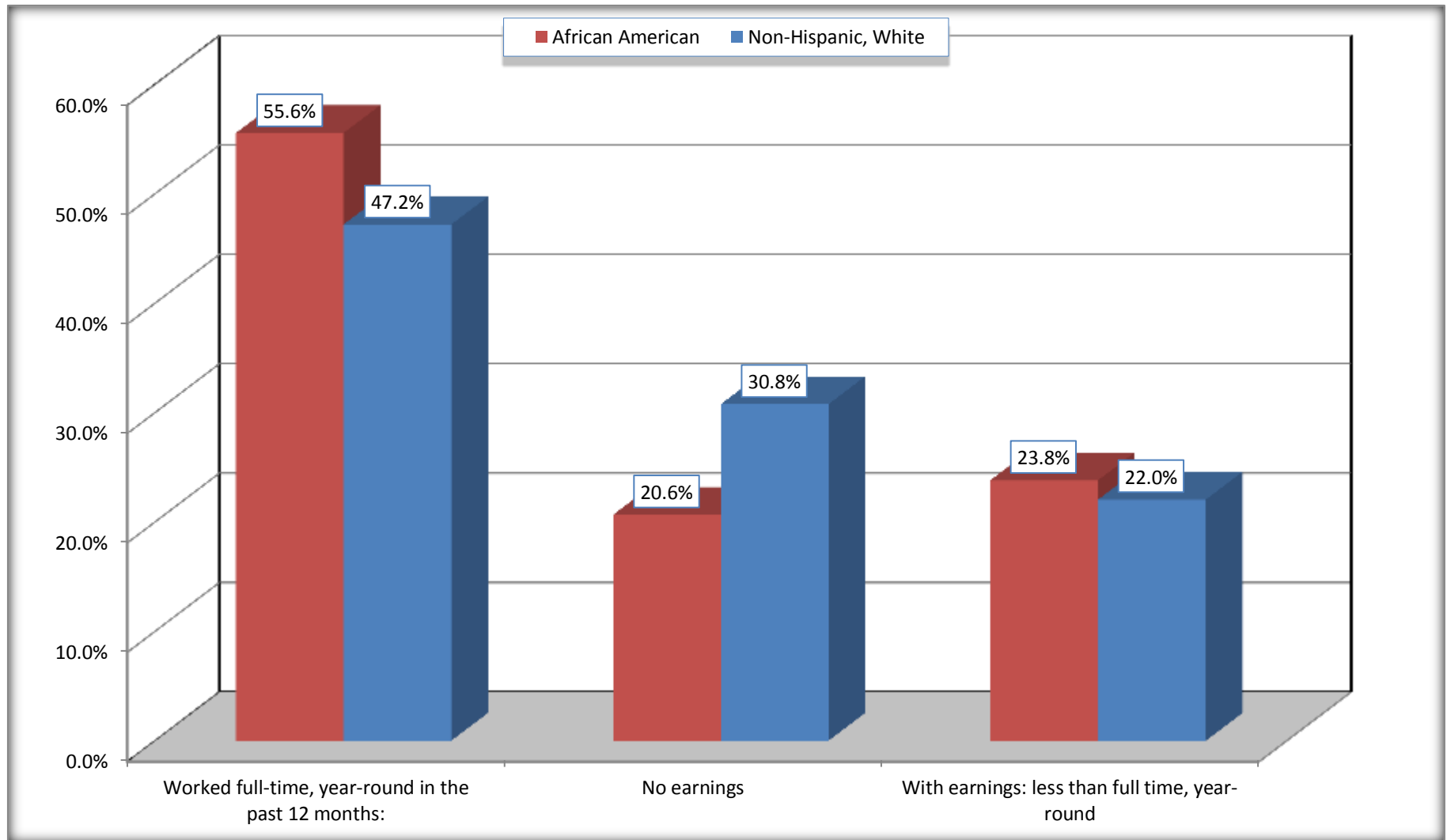
Source: U.S. Census Bureau, 2008-2012 American Community Survey

For information on confidentiality protection, sampling error, nonsampling error, and definitions, see Survey Methodology.

<http://www.census.gov/acs/www/UseData/index.htm>

# Employment and Earnings in in the Past 12 Months (16 Years and Over)

## Byram city, Mississippi



Source: B20005. SEX BY WORK EXPERIENCE IN THE PAST 12 MONTHS BY EARNINGS IN THE PAST 12 MONTHS (IN 2010 INFLATION-ADJUSTED DOLLARS) FOR THE POPULATION 16 YEARS AND OVER

Data Set: 2008-2012 American Community Survey 5-Year Estimates

**C21001. SEX BY AGE BY VETERAN STATUS FOR THE CIVILIAN POPULATION 18 YEARS AND OVER**

Data Set: 2008-2012 American Community Survey 5-Year Estimates

	Byram city, Mississippi					
	African American	Margin of Error (+/-)	% of AA Total	White, Not Hispanic	Margin of Error (+/-)	% of NHW Total
<b>Total:</b>	<b>4,244</b>	<b>436</b>	<b>100.0%</b>	<b>3,717</b>	<b>478</b>	<b>100.0%</b>
Veteran	252	NC	5.9%	325	NC	8.7%
Nonveteran	3,992	NC	94.1%	3,392	NC	91.3%
Male:	1,937	323	45.6%	1,763	314	47.4%
18 to 64 years:	1,880	329	44.3%	1,657	302	44.6%
Veteran	137	106	3.2%	249	113	6.7%
Nonveteran	1,743	330	41.1%	1,408	294	37.9%
65 years and over:	57	47	1.3%	106	56	2.9%
Veteran	38	31	0.9%	76	46	2.0%
Nonveteran	19	23	0.4%	30	27	0.8%
Female:	2,307	354	54.4%	1,954	250	52.6%
18 to 64 years:	2,202	360	51.9%	1,505	223	40.5%
Veteran	77	59	1.8%	0	19	0.0%
Nonveteran	2,125	364	50.1%	1,505	223	40.5%
65 years and over:	105	54	2.5%	449	112	12.1%
Veteran	0	19	0.0%	0	19	0.0%
Nonveteran	105	54	2.5%	449	112	12.1%

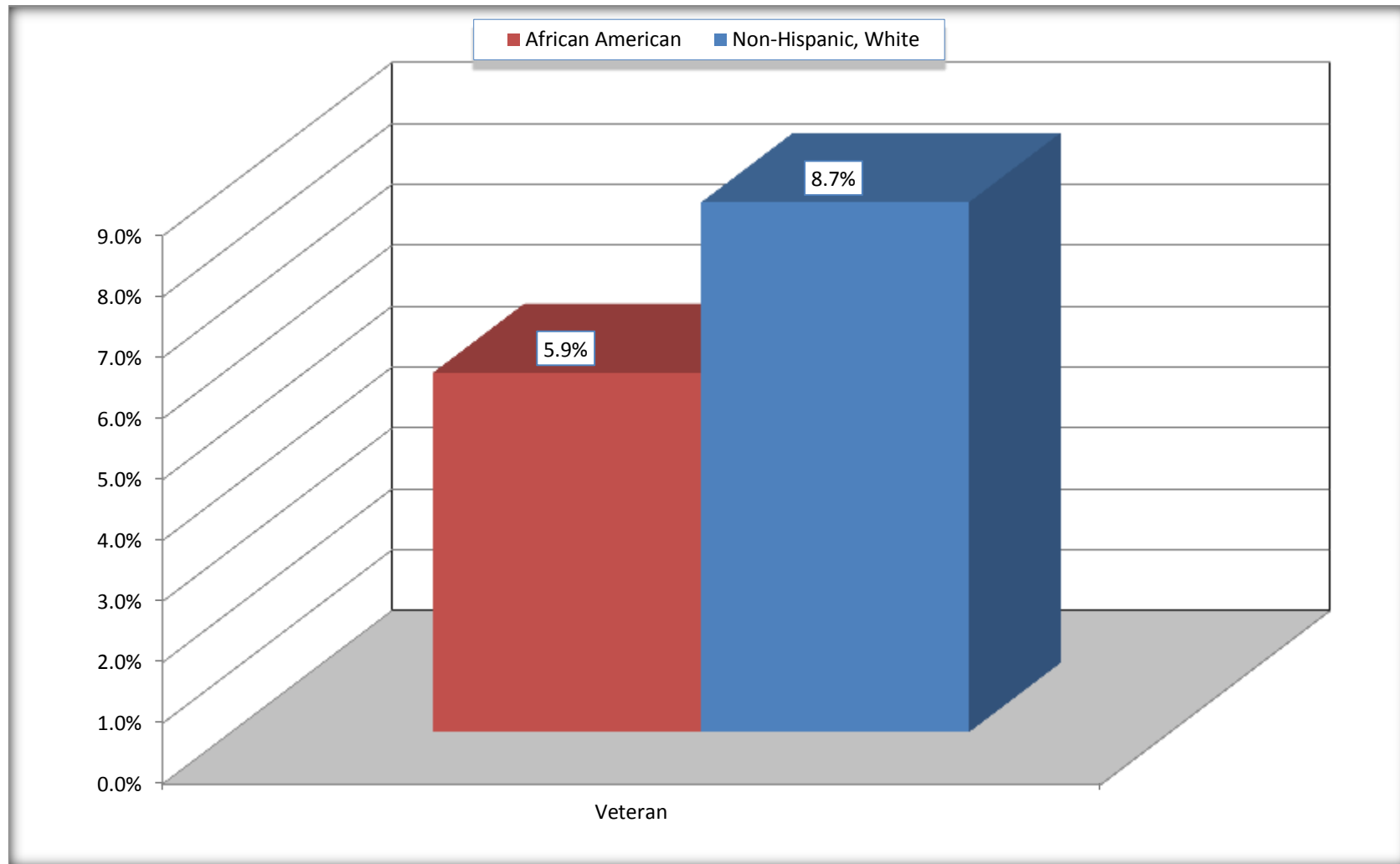
Source: U.S. Census Bureau, 2008-2012 American Community Survey

For information on confidentiality protection, sampling error, nonsampling error, and definitions, see Survey Methodology.

<http://www.census.gov/acs/www/UseData/index.htm>

# Veterans in the Civilian Population 18 Years and Over

## Byram city, Mississippi



Source: C21001. SEX BY AGE BY VETERAN STATUS FOR THE CIVILIAN POPULATION 18 YEARS AND OVER  
Data Set: 2008-2012 American Community Survey 5-Year Estimates



**B22005. RECEIPT OF FOOD STAMPS/SNAP IN THE PAST 12 MONTHS BY RACE OF HOUSEHOLDER**

Data Set: 2008-2012 American Community Survey 5-Year Estimates

	Byram city, Mississippi					
	African American	Margin of Error (+/-)	% of AA Total	White, Not Hispanic	Margin of Error (+/-)	% of NHW Total
<b>Total:</b>	<b>2,099</b>	<b>214</b>	<b>100.0%</b>	<b>1,842</b>	<b>255</b>	<b>100.0%</b>
HH received Food Stamps/SNAP in the past 12 months	220	114	10.5%	94	60	5.1%
HH did not receive Food Stamps/SNAP in the past 12 months	1,879	226	89.5%	1,748	262	94.9%

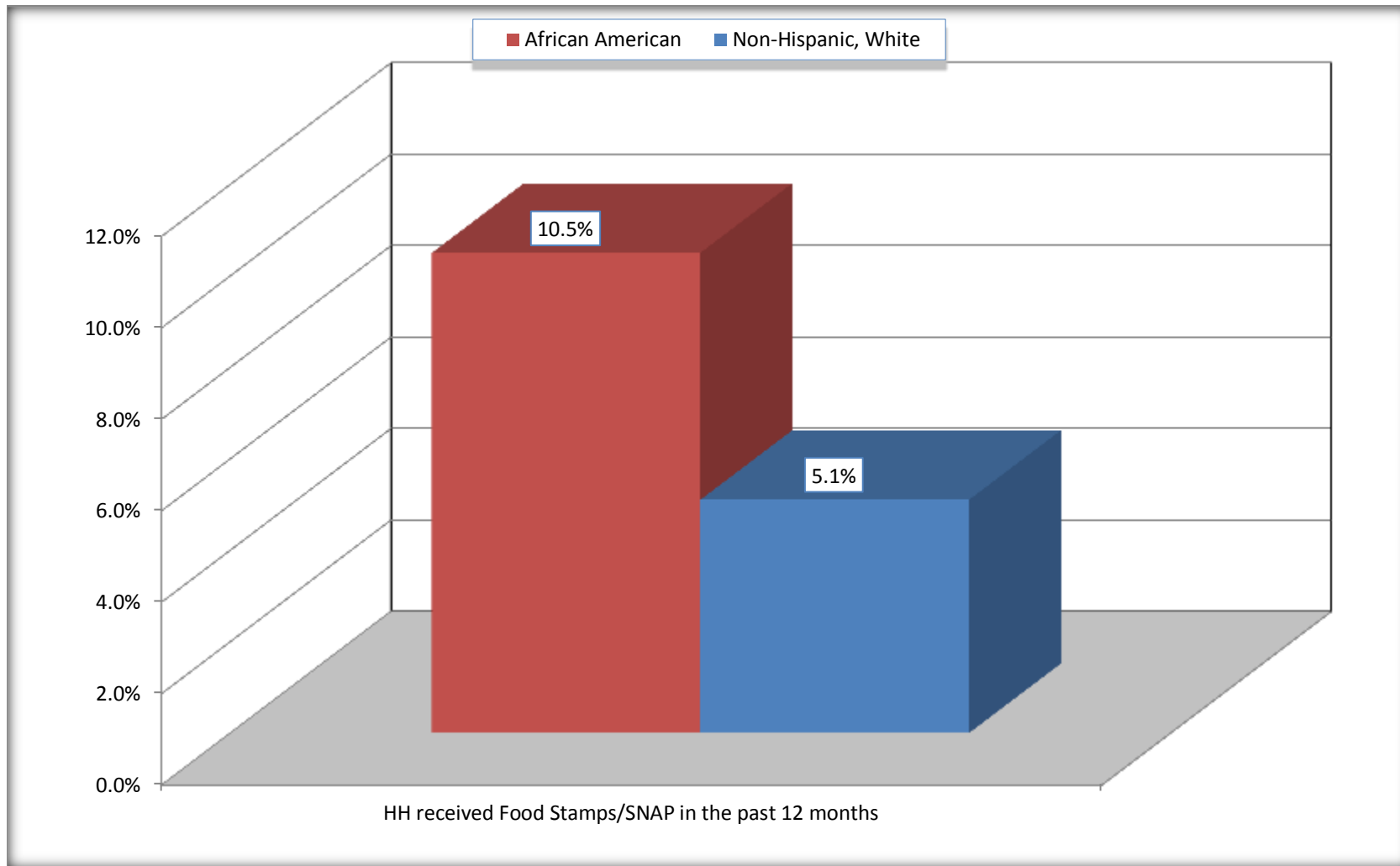
Source: U.S. Census Bureau, 2008-2012 American Community Survey

For information on confidentiality protection, sampling error, nonsampling error, and definitions, see Survey Methodology.

<http://www.census.gov/acs/www/UseData/index.htm>

# Receipt of Food Stamps/SNAP in the Past 12 Months by Household

## Byram city, Mississippi



Source: B22005. RECEIPT OF FOOD STAMPS/SNAP IN THE PAST 12 MONTHS BY RACE OF HOUSEHOLDER  
Data Set: 2008-2012 American Community Survey 5-Year Estimates

**C23002. SEX BY AGE BY EMPLOYMENT STATUS FOR THE POPULATION 16 YEARS AND OVER**

Data Set: 2008-2012 American Community Survey 5-Year Estimates

	Byram city, Mississippi					
	African American	Margin of Error (+/-)	% of AA Total	White, Not Hispanic	Margin of Error (+/-)	% of NHW Total
<b>Total:</b>	<b>4,491</b>	<b>466</b>	<b>100.0%</b>	<b>3,833</b>	<b>497</b>	<b>100.0%</b>
In labor force:	3,682	NC	82.0%	2,610	NC	68.1%
In Armed Forces	23	NC	0.5%	0	NC	0.0%
Civilian:	3,612	NC	80.4%	2,530	NC	66.0%
Employed	3,347	NC	74.5%	2,482	NC	64.8%
Unemployed	312	NC	6.9%	128	NC	3.3%
Not in labor force	809	NC	18.0%	1,223	NC	31.9%
Male:	2,110	353	47.0%	1,823	318	47.6%
16 to 64 years:	2,053	357	45.7%	1,717	306	44.8%
In labor force:	1,785	336	39.7%	1,433	243	37.4%
In Armed Forces	13	21	0.3%	0	19	0.0%
Civilian:	1,772	331	39.5%	1,433	243	37.4%
Employed	1,582	288	35.2%	1,370	224	35.7%
Unemployed	190	126	4.2%	63	62	1.6%
Not in labor force	268	133	6.0%	284	134	7.4%
65 years and over:	57	47	1.3%	106	56	2.8%
In labor force:	9	14	0.2%	23	25	0.6%
Employed	0	19	0.0%	23	25	0.6%
Unemployed	9	14	0.2%	0	19	0.0%
Not in labor force	48	45	1.1%	83	55	2.2%

	Byram city, Mississippi					
	African American	Margin of Error (+/-)	% of AA Total	White, Not Hispanic	Margin of Error (+/-)	% of NHW Total
Female:	2,381	348	53.0%	2,010	268	52.4%
16 to 64 years:	2,276	352	50.7%	1,561	241	40.7%
In labor force:	1,850	311	41.2%	1,097	180	28.6%
In Armed Forces	10	16	0.2%	0	19	0.0%
Civilian:	1,840	311	41.0%	1,097	180	28.6%
Employed	1,727	310	38.5%	1,032	171	26.9%
Unemployed	113	90	2.5%	65	63	1.7%
Not in labor force	426	176	9.5%	464	153	12.1%
65 years and over:	105	54	2.3%	449	112	11.7%
In labor force:	38	36	0.8%	57	44	1.5%
Employed	38	36	0.8%	57	44	1.5%
Unemployed	0	19	0.0%	0	19	0.0%
Not in labor force	67	50	1.5%	392	100	10.2%

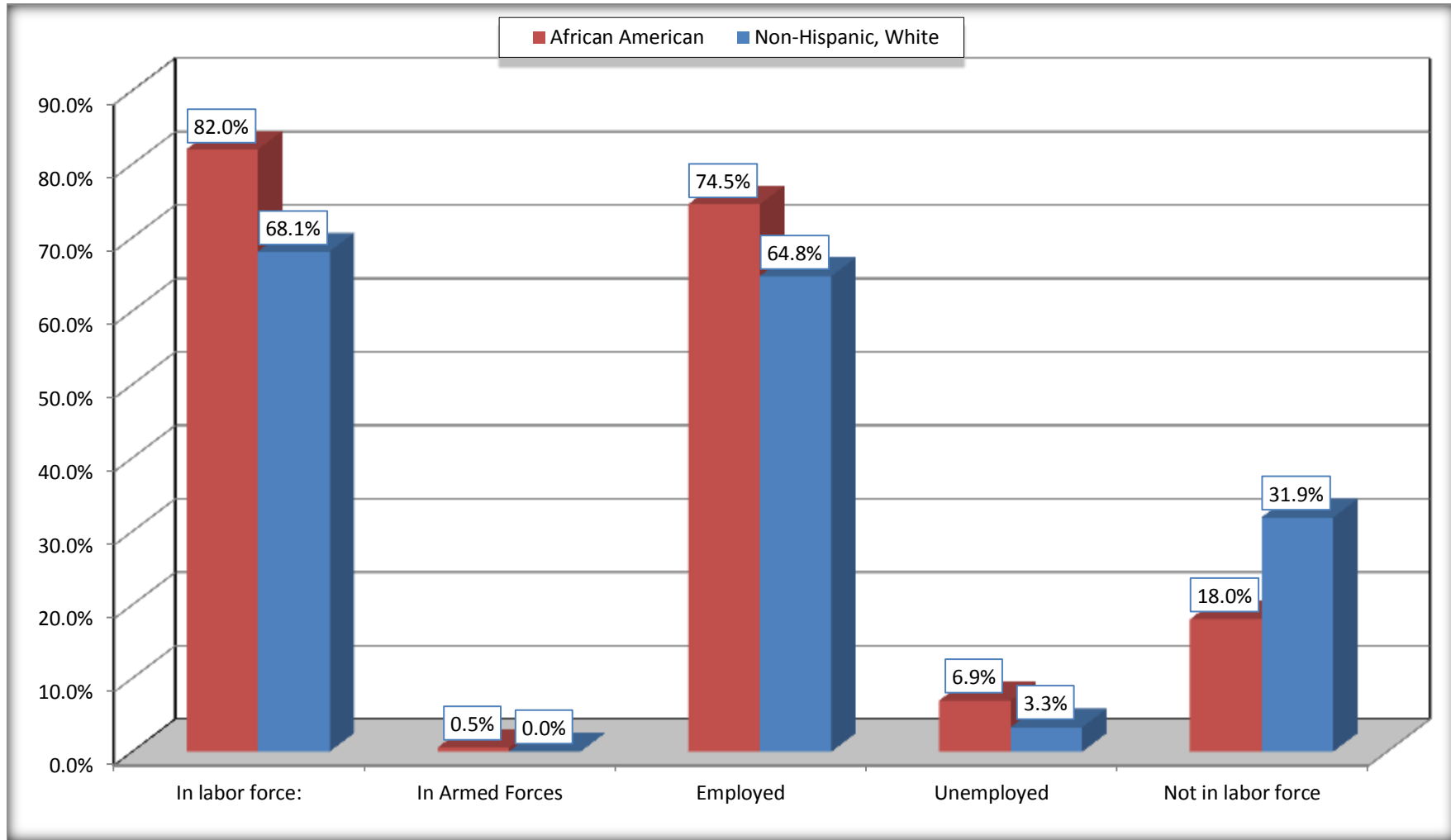
Source: U.S. Census Bureau, 2008-2012 American Community Survey

For information on confidentiality protection, sampling error, nonsampling error, and definitions, see Survey Methodology.

<http://www.census.gov/acs/www/UseData/index.htm>

# Employment Status for the Population 16 years and over

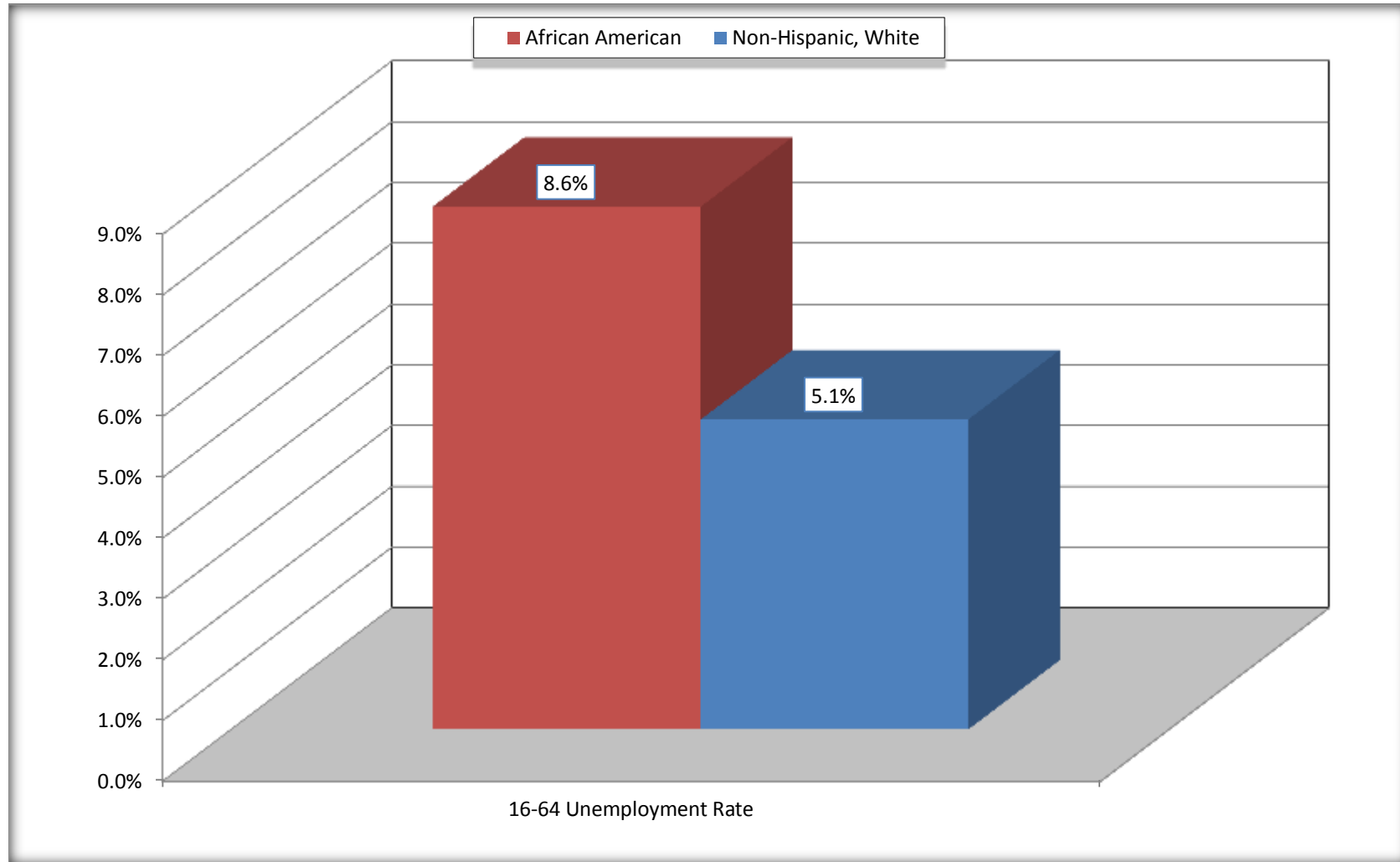
## Byram city, Mississippi



Source: C23002. SEX BY AGE BY EMPLOYMENT STATUS FOR THE POPULATION 16 YEARS AND OVER  
Data Set: 2008-2012 American Community Survey 5-Year Estimates

# Unemployment of Working Age Population (Ages 16 to 64) (As a Percent of 16-64 Civilian Labor Force)

## Byram city, Mississippi



Source: C23002. SEX BY AGE BY EMPLOYMENT STATUS FOR THE POPULATION 16 YEARS AND OVER  
Data Set: 2008-2012 American Community Survey 5-Year Estimates

**C24010. SEX BY OCCUPATION FOR THE CIVILIAN EMPLOYED POPULATION 16 YEARS AND OVER**

Data Set: 2008-2012 American Community Survey 5-Year Estimates

	Byram city, Mississippi					
	African American	Margin of Error (+/-)	% of AA Total	White, Not Hispanic	Margin of Error (+/-)	% of NHW Total
<b>Total:</b>	<b>3,347</b>	<b>392</b>	<b>100.0%</b>	<b>2,482</b>	<b>349</b>	<b>100.0%</b>
Management, professional, and related occupations	1,107	NC	33.1%	889	NC	35.8%
Service occupations	559	NC	16.7%	223	NC	9.0%
Sales and office occupations	866	NC	25.9%	703	NC	28.3%
Natural resources, construction, and maintenance occupations:	284	NC	8.5%	383	NC	15.4%
Production, transportation, and material moving occupations	531	NC	15.9%	284	NC	11.4%
Male:	1,582	288	47.3%	1,393	226	56.1%
Management, business, science, and arts occupations:	387	154	11.6%	456	134	18.4%
Service occupations	221	134	6.6%	141	88	5.7%
Sales and office occupations	206	120	6.2%	206	93	8.3%
Natural resources, construction, and maintenance occupations:	284	165	8.5%	319	119	12.9%
Production, transportation, and material moving occupations	484	262	14.5%	271	122	10.9%
Female:	1,765	313	52.7%	1,089	176	43.9%
Management, professional, and related occupations	720	181	21.5%	433	130	17.4%
Service occupations	338	163	10.1%	82	51	3.3%
Sales and office occupations	660	218	19.7%	497	122	20.0%
Natural resources, construction, and maintenance occupations:	0	19	0.0%	64	71	2.6%
Production, transportation, and material moving occupations	47	38	1.4%	13	22	0.5%

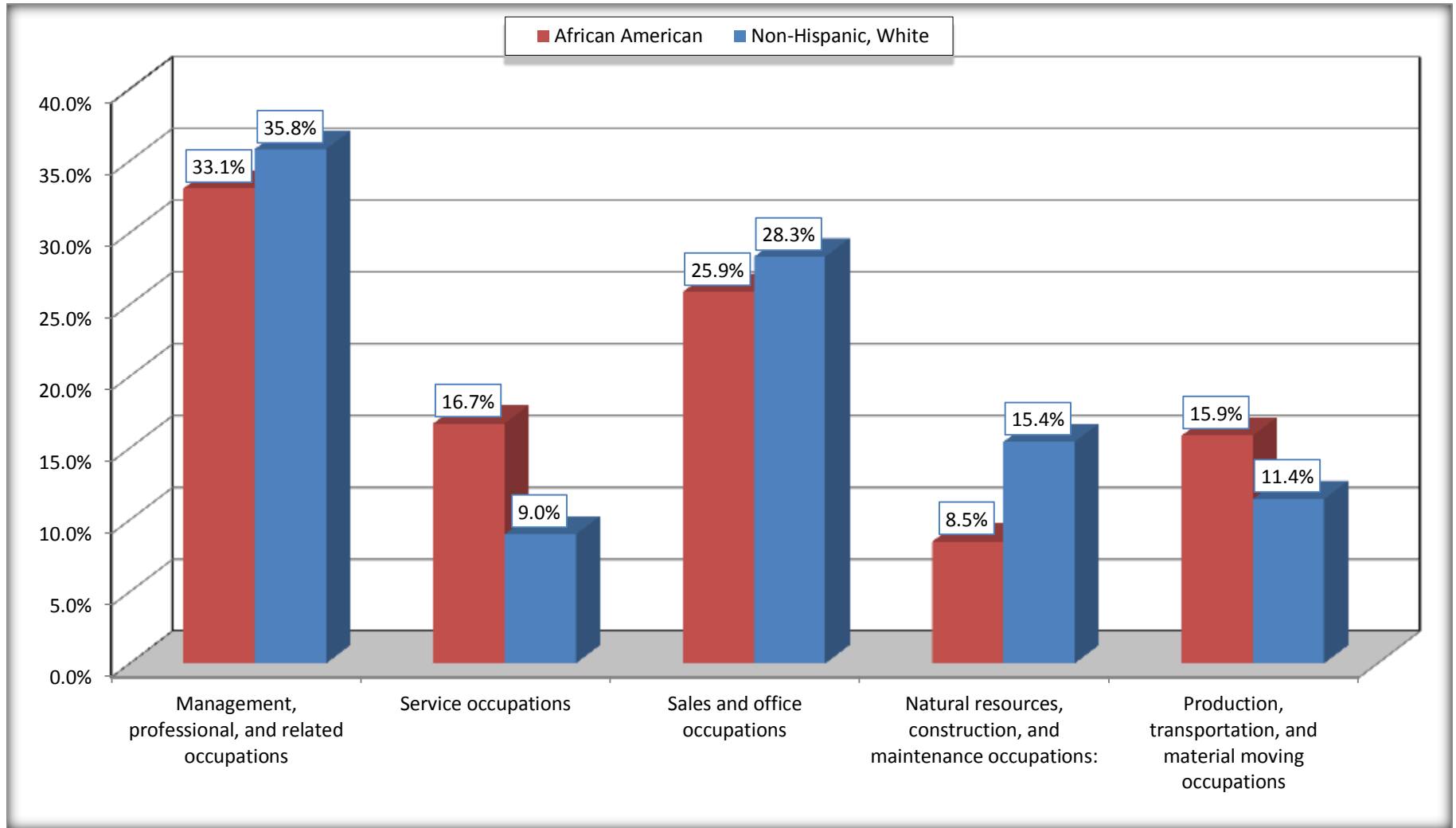
Source: U.S. Census Bureau, 2008-2012 American Community Survey

For information on confidentiality protection, sampling error, nonsampling error, and definitions, see Survey Methodology.

<http://www.census.gov/acs/www/UseData/index.htm>

# Occupation for the Civilian Employed 16 Years and Over Population

## Byram city, Mississippi



Source: C24010. SEX BY OCCUPATION FOR THE CIVILIAN EMPLOYED POPULATION 16 YEARS AND OVER  
Data Set: 2008-2012 American Community Survey 5-Year Estimates



**B25003. TENURE - Universe: OCCUPIED HOUSING UNITS**

Data Set: 2008-2012 American Community Survey 5-Year Estimates

	Byram city, Mississippi					
	African American	Margin of Error (+/-)	% of AA Total	White, Not Hispanic	Margin of Error (+/-)	% of NHW Total
<b>Total:</b>	<b>2,099</b>	<b>214</b>	<b>100.0%</b>	<b>1,842</b>	<b>255</b>	<b>100.0%</b>
Owner occupied	1,300	204	61.9%	1,471	220	79.9%
Renter occupied	799	189	38.1%	371	168	20.1%

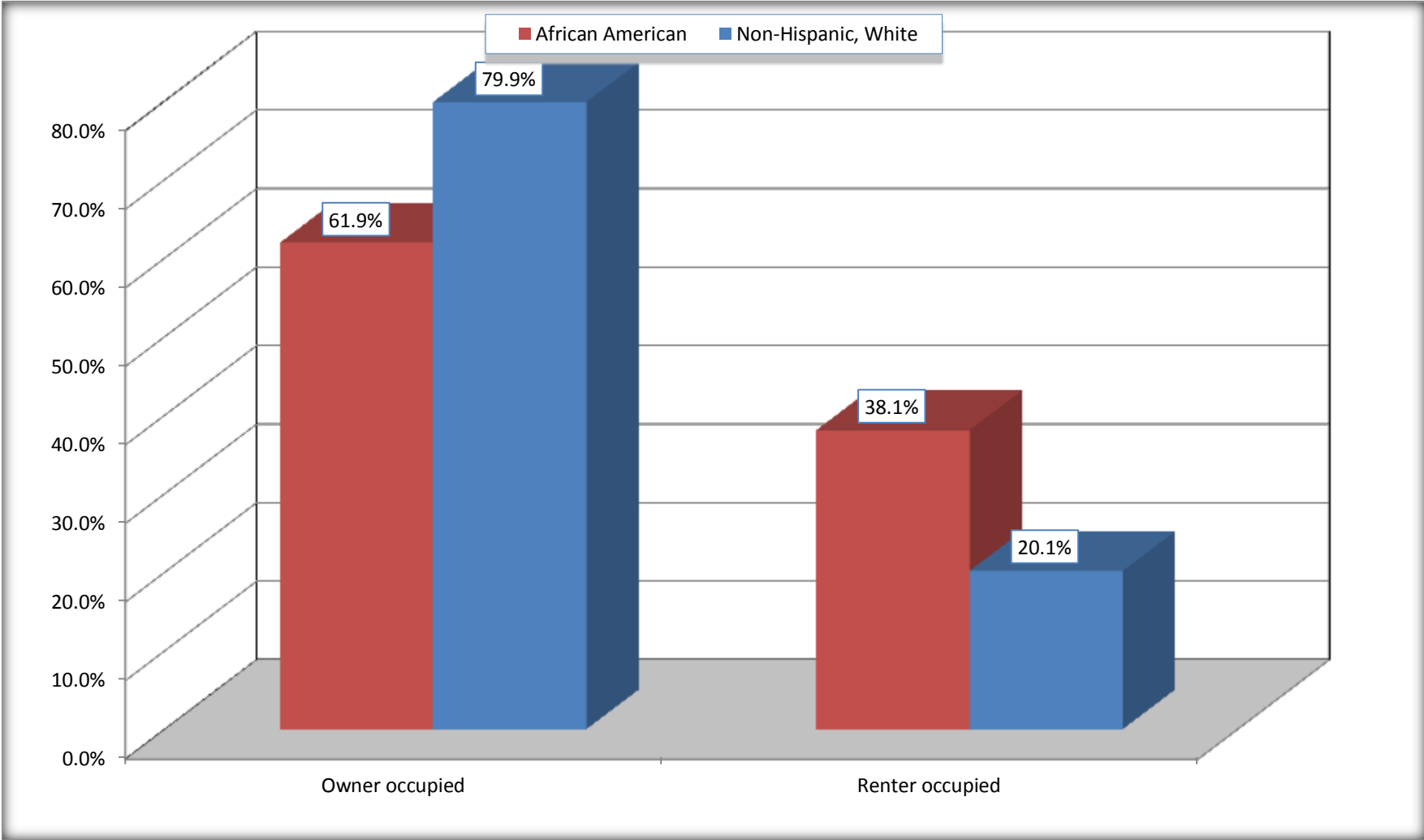
Source: U.S. Census Bureau, 2008-2012 American Community Survey

For information on confidentiality protection, sampling error, nonsampling error, and definitions, see Survey Methodology.

<http://www.census.gov/acs/www/UseData/index.h>

# Home Owners and Renters by Household

## Byram city, Mississippi



Source: B25003. TENURE - Universe: OCCUPIED HOUSING UNITS  
Data Set: 2008-2012 American Community Survey 5-Year Estimates

**B25014. OCCUPANTS PER ROOM - Universe: OCCUPIED HOUSING UNITS**

Data Set: 2008-2012 American Community Survey 5-Year Estimates

	Byram city, Mississippi					
	African American	Margin of Error (+/-)	% of AA Total	White, Not Hispanic	Margin of Error (+/-)	% of NHW Total
<b>Total:</b>	<b>2,099</b>	<b>214</b>	<b>100.0%</b>	<b>1,842</b>	<b>255</b>	<b>100.0%</b>
1.00 or less occupants per room	2,000	241	95.3%	1,800	261	97.7%
1.01 or more occupants per room	99	84	4.7%	42	42	2.3%

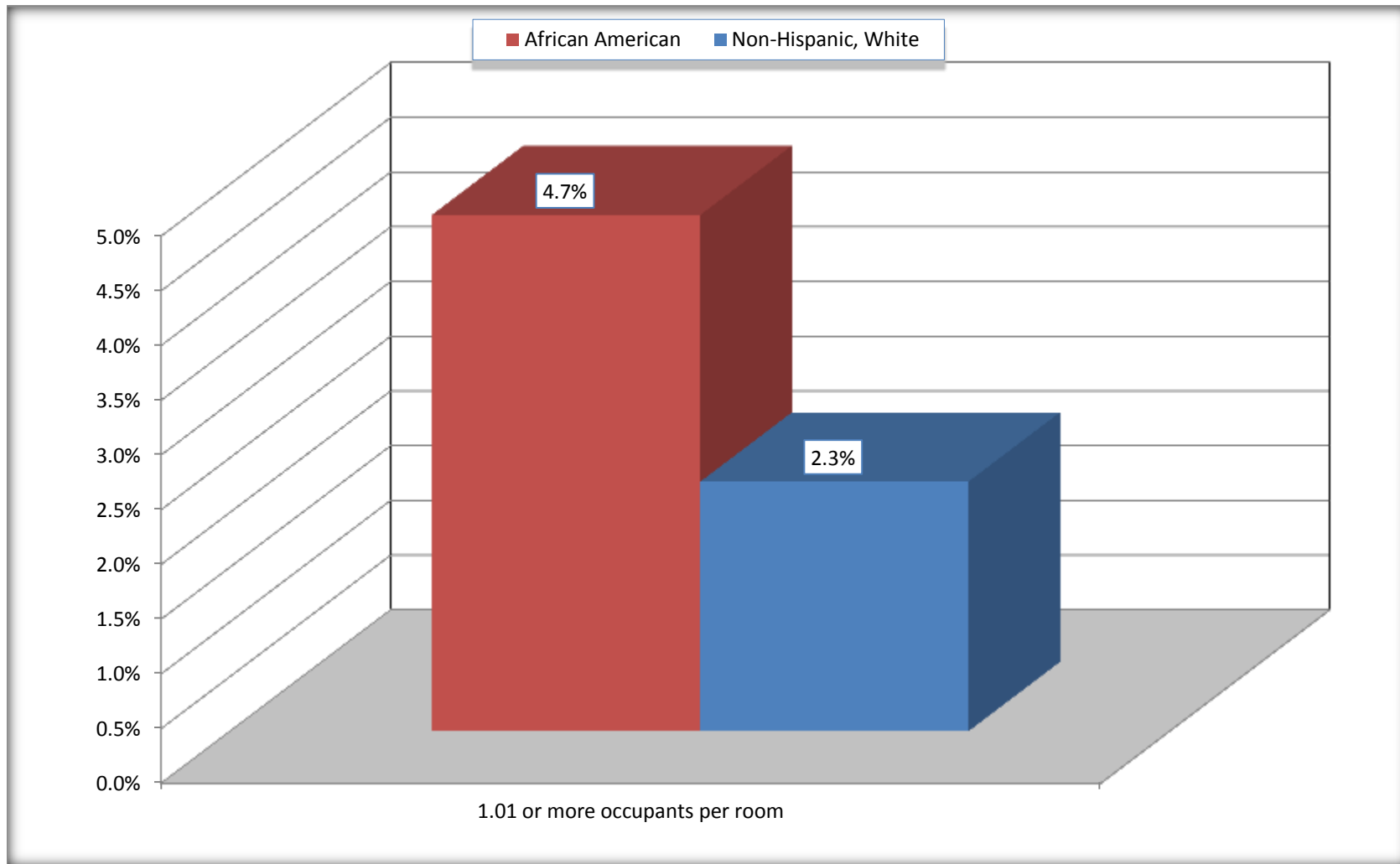
Source: U.S. Census Bureau, 2008-2012 American Community Survey

For information on confidentiality protection, sampling error, nonsampling error, and definitions, see Survey Methodology.

<http://www.census.gov/acs/www/UseData/index.ht>

# More than One Person per Room (Crowding) by Household

## Byram city, Mississippi



Source: B25014. OCCUPANTS PER ROOM - Universe: OCCUPIED HOUSING UNITS  
Data Set: 2008-2012 American Community Survey 5-Year Estimates

**B18101. AGE BY DISABILITY STATUS**

Data Set: 2008-2012 American Community Survey 5-Year Estimates

	Byram city, Mississippi					
	African American	Margin of Error (+/-)	% of AA Total	White, Not Hispanic	Margin of Error (+/-)	% of NHW Total
<b>Total:</b>	<b>6,318</b>	<b>607</b>	<b>100.0%</b>	<b>4,807</b>	<b>614</b>	<b>100.0%</b>
Under 18 years:	2,074	339	32.8%	1,090	37	22.7%
With a disability	21	25	0.3%	87	86	1.8%
No disability	2,053	337	32.5%	1,003	266	20.9%
18 to 64 years:	4,082	446	64.6%	3,162	444	65.8%
With a disability	339	190	5.4%	445	162	9.3%
No disability	3,743	448	59.2%	2,717	405	56.5%
65 years and over:	162	81	2.6%	555	137	11.5%
With a disability	61	47	1.0%	312	118	6.5%
No disability	101	57	1.6%	243	106	5.1%

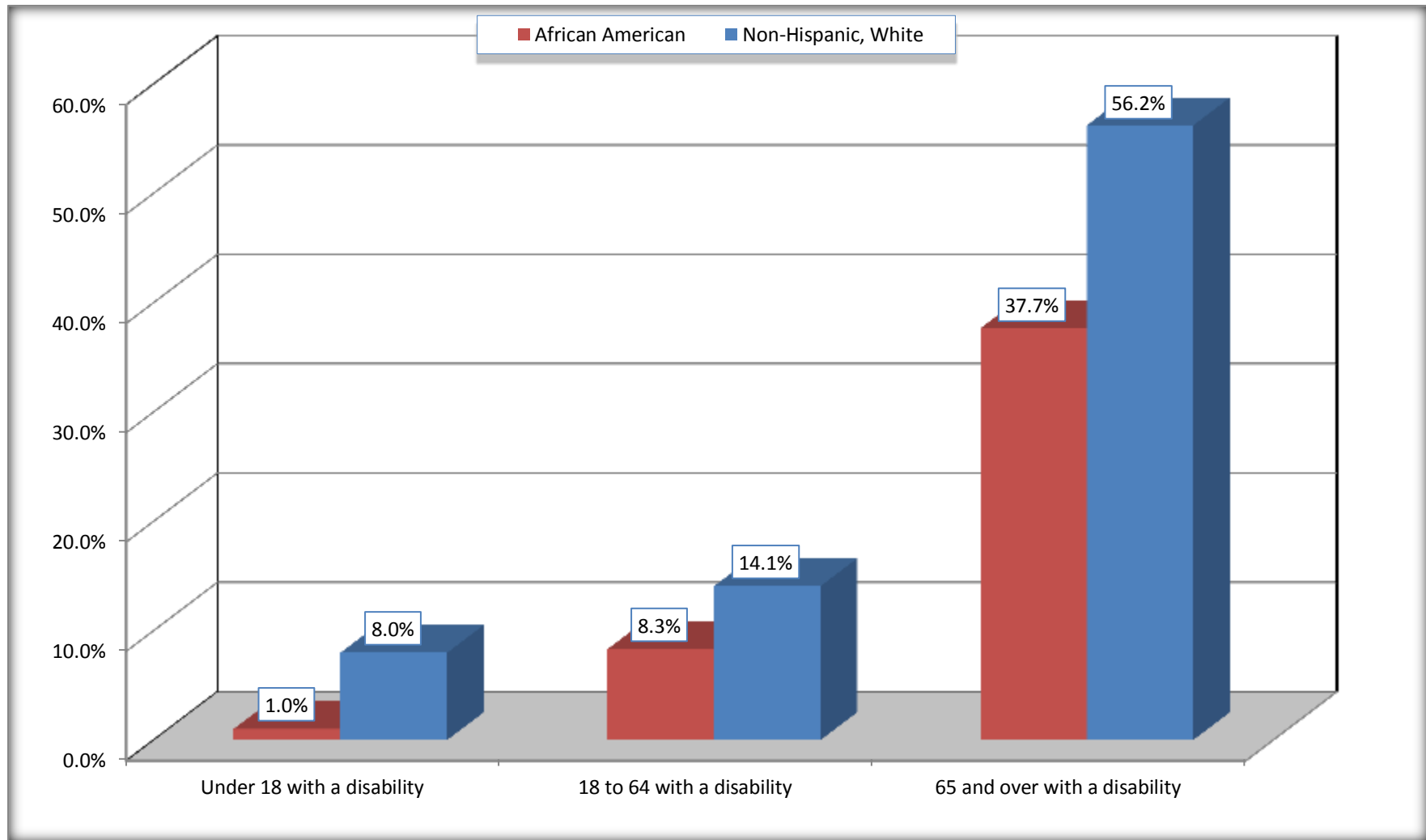
Source: U.S. Census Bureau, 2008-2012 American Community Survey

For information on confidentiality protection, sampling error, nonsampling error, and definitions, see Survey Methodology.

<http://www.census.gov/acs/www/UseData/index.htm>

# Disability by Age

## Byram city, Mississippi



Source: B18101. AGE BY DISABILITY STATUS  
Data Set: 2008-2012 American Community Survey 5-Year Estimates

**C27001B. HEALTH INSURANCE COVERAGE STATUS BY AGE**

Data Set: 2008-2012 American Community Survey 5-Year Estimates

	<b>Byram city, Mississippi</b>					
	African American	Margin of Error (+/-)	% of AA Total	White, Not Hispanic	Margin of Error (+/-)	% of NHW Total
<b>Total:</b>	<b>6,318</b>	<b>607</b>	<b>100.0%</b>	<b>4,807</b>	<b>614</b>	<b>100.0%</b>
Under 18 years:	2,074	339	32.8%	1,090	284	22.7%
With health insurance coverage	2,009	346	31.8%	1,070	281	22.3%
No health insurance coverage	65	66	1.0%	20	34	0.4%
18 to 64 years:	4,082	446	64.6%	3,162	444	65.8%
With health insurance coverage	3,240	460	51.3%	2,551	374	53.1%
No health insurance coverage	842	316	13.3%	611	265	12.7%
65 years and over:	162	81	2.6%	555	137	11.5%
With health insurance coverage	162	81	2.6%	555	137	11.5%
No health insurance coverage	0	19	0.0%	0	19	0.0%

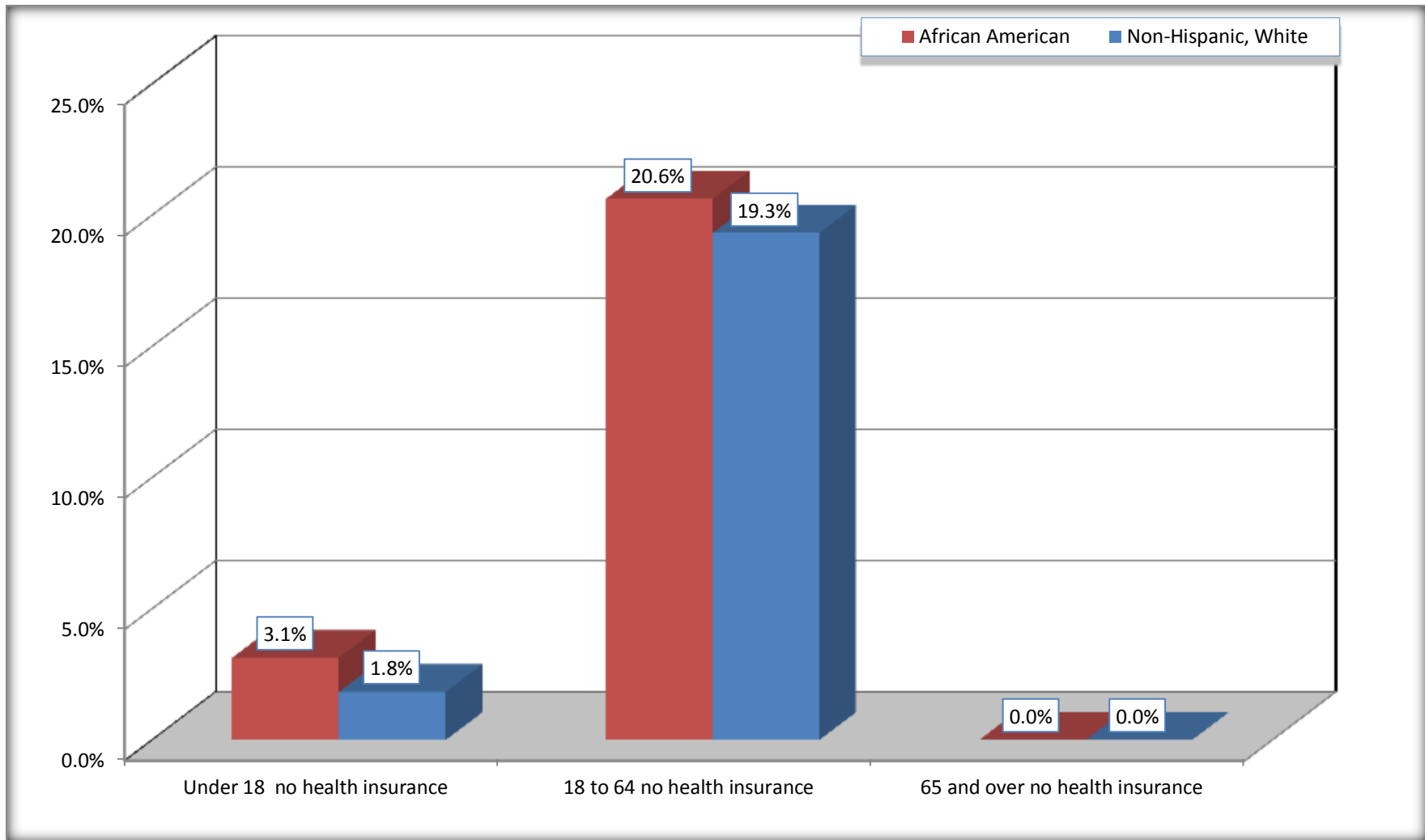
Source: U.S. Census Bureau, 2008-2012 American Community Survey

For information on confidentiality protection, sampling error, nonsampling error, and definitions, see Survey Methodology.

<http://www.census.gov/acs/www/UseData/index.htm>

# Lack of Health Insurance Coverage by Age

## Byram city, Mississippi



Source: C27001B. HEALTH INSURANCE COVERAGE STATUS BY AGE  
Data Set: 2008-2012 American Community Survey 5-Year Estimates