

# **Selected Socio-Economic Data**

## **Batesville city, Mississippi**

### **African American and White, Not Hispanic**

**Data Set: 2008-2012 American Community Survey 5-Year Estimates**

[www.fairvote2020.org](http://www.fairvote2020.org)

[www.fairdata2000.com](http://www.fairdata2000.com)

[29-Dec-13](#)

**C02003.DETAILED RACE - Universe: TOTAL POPULATION**

Data Set: 2008-2012 American Community Survey 5-Year Estimates

	<b>Batesville city, Mississippi</b>		
	Population	Margin of Error (+/-)	% of Total
<b>Total:</b>	<b>7,457</b>	<b>23</b>	<b>100.0%</b>
Population of one race:	7,453	25	99.9%
White	4,290	440	57.5%
Black or African American	3,163	443	42.4%
American Indian and Alaska Native	0	17	0.0%
Asian alone	0	17	0.0%
Native Hawaiian and Other Pacific Islander	0	17	0.0%
Some other race	0	17	0.0%
Population of two or more races:	4	8	0.1%
Two races including Some other race	0	17	0.0%
Two races excluding Some other race, and three or more races	4	8	0.1%
Population of two races:	0	17	0.0%
White; Black or African American	0	17	0.0%
White; American Indian and Alaska Native	0	17	0.0%
White; Asian	0	17	0.0%
Black or African American; American Indian and Alaska Native	0	17	0.0%
All other two race combinations	0	17	0.0%
Population of three races	4	8	0.1%
Population of four or more races	0	17	0.0%

Note: Hispanics may be of any race. See Table B03002 and chart.

Source: U.S. Census Bureau, 2008-2012 American Community Survey

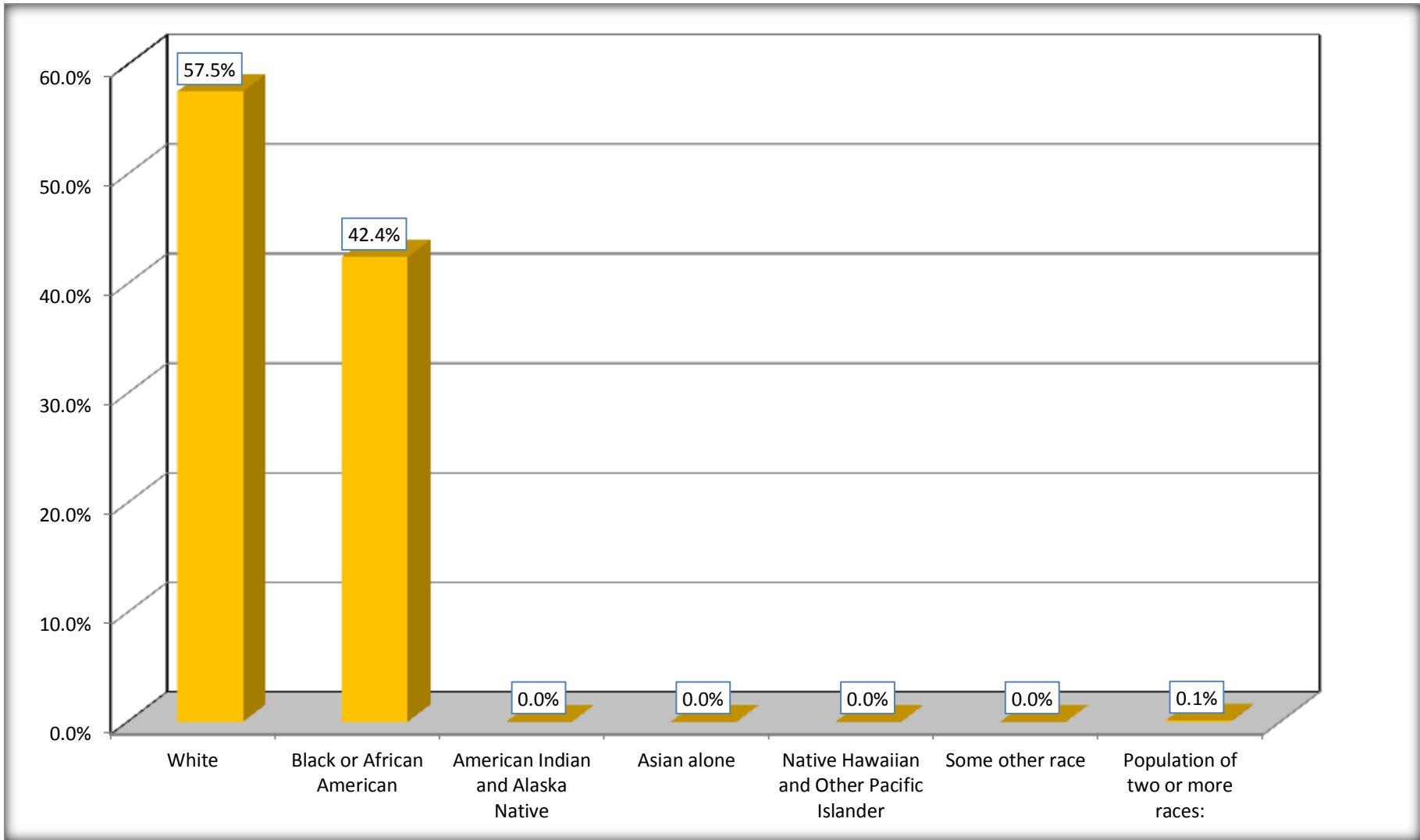
Although the American Community Survey (ACS) produces population, demographic and housing unit estimates, it is the Census Bureau's Population Estimates Program that produces and disseminates the official estimates of the population for the nation, states, counties, cities and towns and estimates of housing units for states and counties.

For information on confidentiality protection, sampling error, nonsampling error, and definitions, see Survey Methodology.

<http://www.census.gov/acs/www/UseData/index.htm>

# Population by Race

## Batesville city, Mississippi



Source: C02003.DETAILED RACE - Universe: TOTAL POPULATION  
Data Set: 2008-2012 American Community Survey 5-Year Estimates

**B03002. HISPANIC OR LATINO ORIGIN BY RACE - Universe: TOTAL POPULATION**

Data Set: 2008-2012 American Community Survey 5-Year Estimates

	Batesville city, Mississippi		
	Population	Margin of Error (+/-)	% of Total
<b>Total:</b>	7,457	23	<b>100.0%</b>
Not Hispanic or Latino:	7,419	91	99.5%
White alone	4,290	440	57.5%
Black or African American alone	3,129	427	42.0%
American Indian and Alaska Native alone	0	17	0.0%
Asian alone	0	17	0.0%
Native Hawaiian and Other Pacific Islander alone	0	17	0.0%
Some other race alone	0	17	0.0%
Two or more races:	0	17	0.0%
Two races including Some other race	0	17	0.0%
Two races excluding Some other race, and three or more races	0	17	0.0%
Hispanic or Latino	38	90	0.5%

Source: U.S. Census Bureau, 2008-2012 American Community Survey

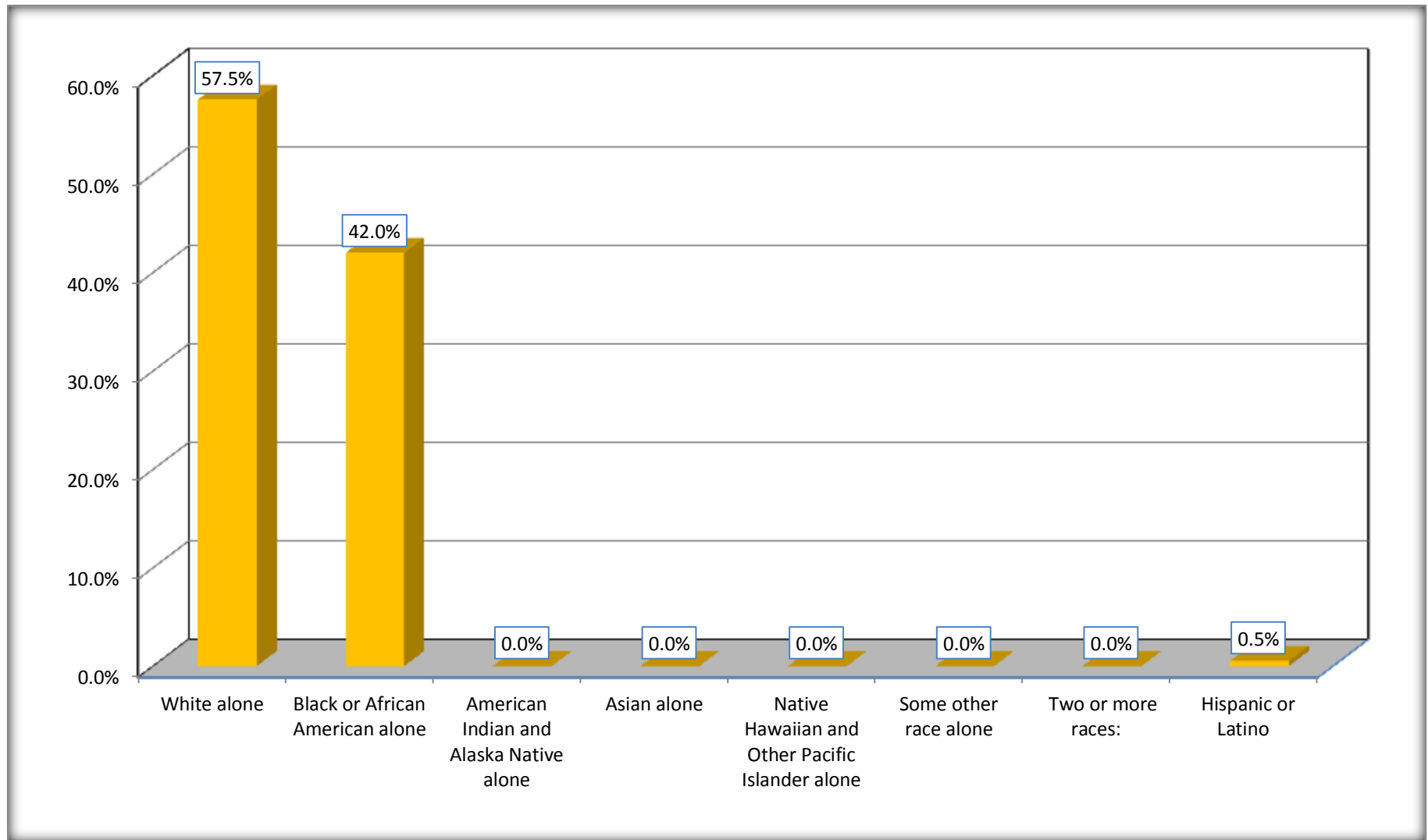
Although the American Community Survey (ACS) produces population, demographic and housing unit estimates, it is the Census Bureau's Population Estimates Program that produces and disseminates the official estimates of the population for the nation, states, counties, cities and towns and estimates of housing units for states and counties.

For information on confidentiality protection, sampling error, nonsampling error, and definitions, see Survey Methodology.

<http://www.census.gov/acs/www/UseData/index.htm>

# Non-Hispanic by Race and Hispanic Population

## Batesville city, Mississippi



Source: B03002. HISPANIC OR LATINO ORIGIN BY RACE - Universe: TOTAL POPULATION  
Data Set: 2008-2012 American Community Survey 5-Year Estimates

**B03002. HISPANIC OR LATINO ORIGIN BY RACE**

Data Set: 2008-2012 American Community Survey 5-Year Estimates

	Batesville city, Mississippi		
	Population	Margin of Error (+/-)	% of Total
Hispanic or Latino:	38	90	<b>100.0%</b>
White alone	0	17	0.0%
Black or African American alone	34	90	89.5%
American Indian and Alaska Native alone	0	17	0.0%
Asian alone	0	17	0.0%
Native Hawaiian and Other Pacific Islander alone	0	17	0.0%
Some other race alone	0	17	0.0%
Two or more races:	4	8	10.5%
Two races including Some other race	0	17	0.0%
Two races excluding Some other race, and three or more races	4	8	10.5%

Source: U.S. Census Bureau, 2008-2012 American Community Survey

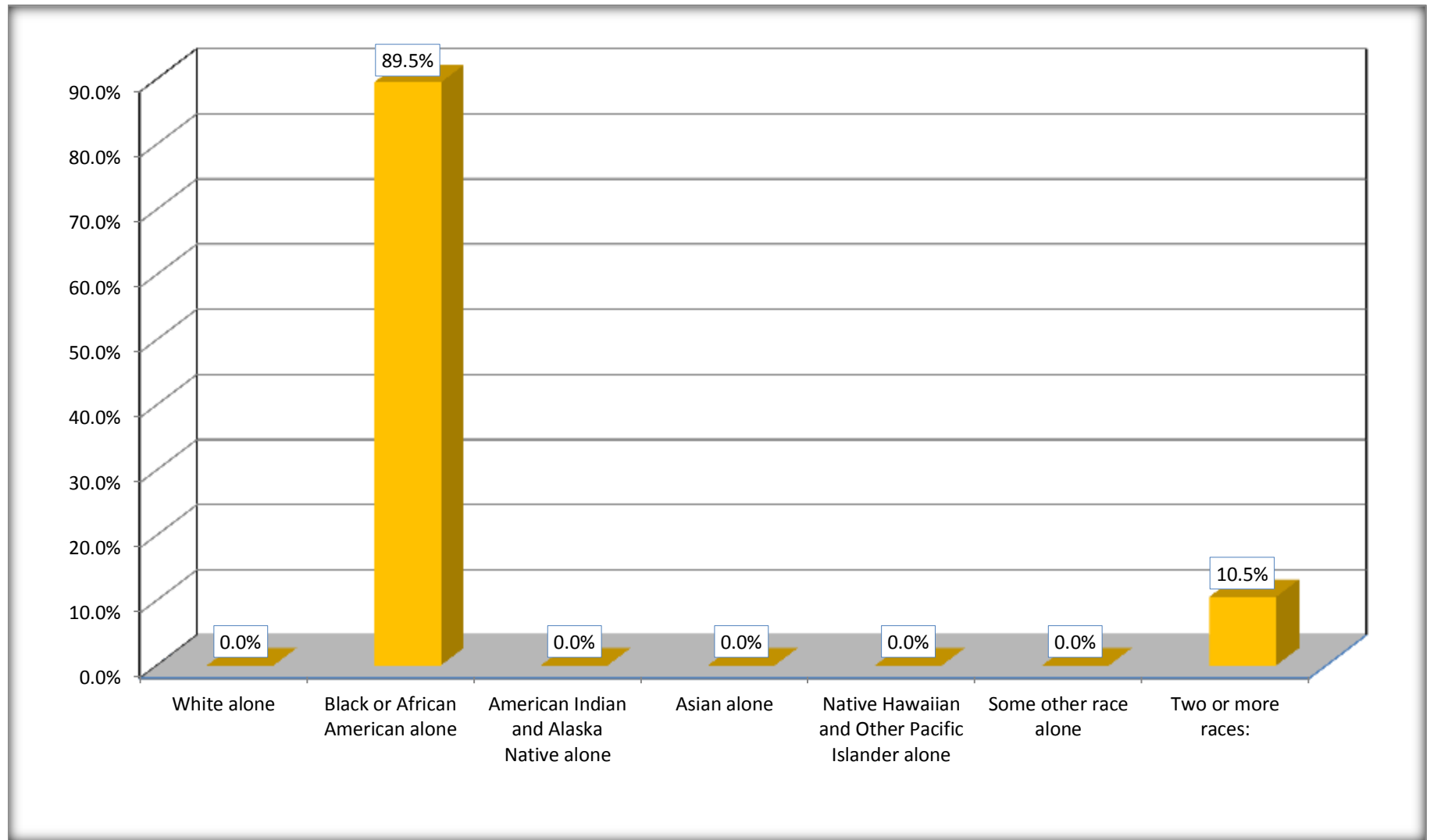
Although the American Community Survey (ACS) produces population, demographic and housing unit estimates, it is the Census Bureau's Population Estimates Program that produces and disseminates the official estimates of the population for the nation, states, counties, cities and towns and estimates of housing units for states and counties.

For information on confidentiality protection, sampling error, nonsampling error, and definitions, see Survey Methodology.

<http://www.census.gov/acs/www/UseData/index.htm>

## Hispanic or Latino Origin by Race

### Batesville city, Mississippi



Source: B03002. HISPANIC OR LATINO ORIGIN BY RACE  
Data Set: 2008-2012 American Community Survey 5-Year Estimates

**B01001. SEX BY AGE**

Data Set: 2008-2012 American Community Survey 5-Year Estimates

	<b>Batesville city, Mississippi</b>					
	African American	Margin of Error (+/-)	% of AA Total	White, Not Hispanic	Margin of Error (+/-)	% of NHW Total
<b>Total:</b>	<b>3,163</b>	<b>443</b>	<b>100.0%</b>	<b>4,290</b>	<b>440</b>	<b>100.0%</b>
Under 18 years	1,516	NC	47.9%	1,018	NC	23.7%
18 to 64 years	1,428	NC	45.1%	2,444	NC	57.0%
65 years and over	219	NC	6.9%	828	NC	19.3%
Male:	1,431	227	45.2%	2,015	389	47.0%
Under 18 years	743	NC	23.5%	412	NC	9.6%
18 to 64 years	574	NC	18.1%	1,221	NC	28.5%
65 years and over	114	NC	3.6%	382	NC	8.9%
Female:	1,732	317	54.8%	2,275	412	53.0%
Under 18 years	773	NC	24.4%	606	NC	14.1%
18 to 64 years	854	NC	27.0%	1,223	NC	28.5%
65 years and over	105	NC	3.3%	446	NC	10.4%

Source: U.S. Census Bureau, 2008-2012 American Community Survey

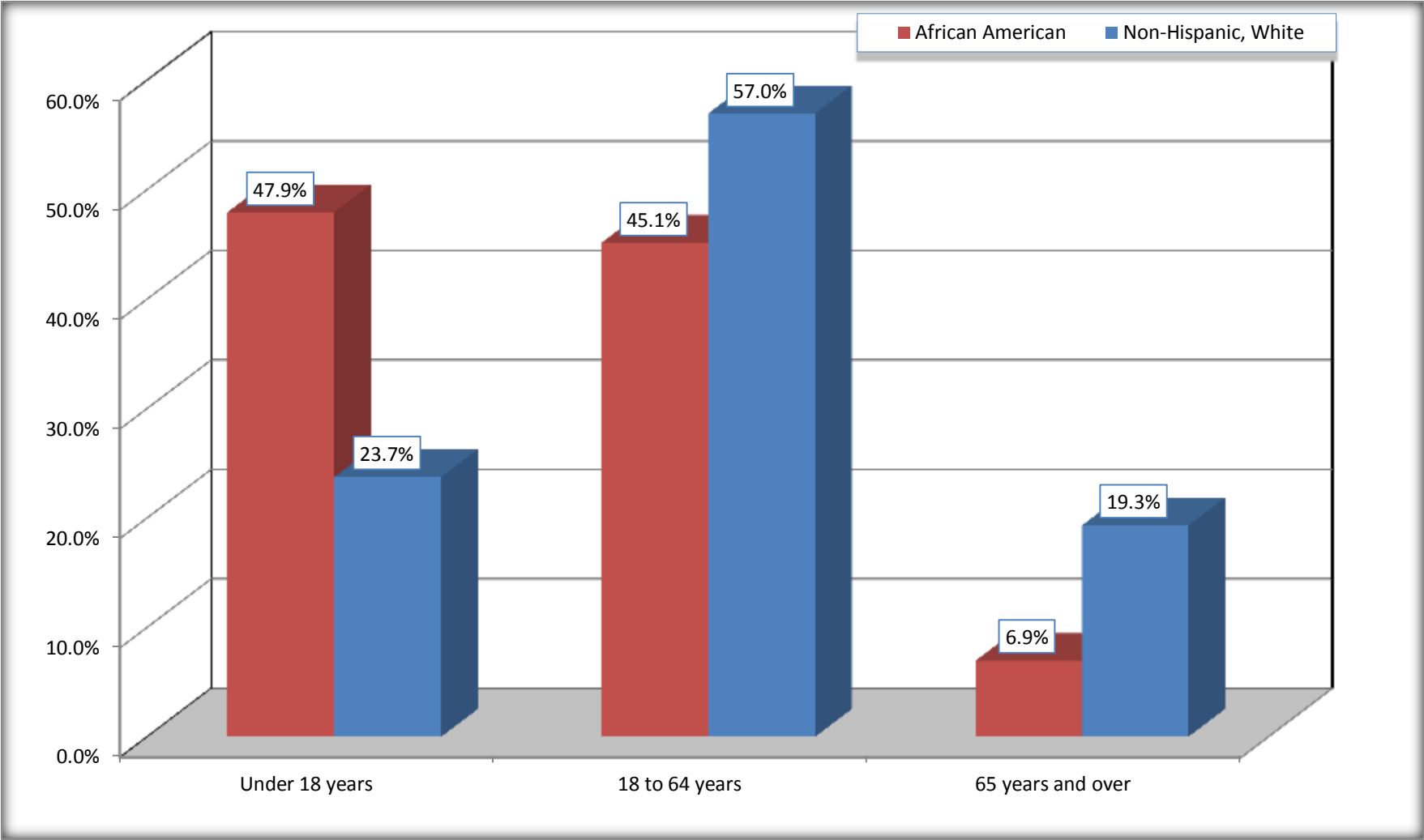
Although the American Community Survey (ACS) produces population, demographic and housing unit estimates, it is the Census Bureau's Population Estimates Program that produces and disseminates the official estimates of the population for the nation, states, counties, cities and towns and estimates of housing units for states and counties.

For information on confidentiality protection, sampling error, nonsampling error, and definitions, see Survey Methodology.  
<http://www.census.gov/acs/www/UseData/index.htm>



# Population by Age

## Batesville city, Mississippi



Source: B01001. SEX BY AGE  
Data Set: 2008-2012 American Community Survey 5-Year Estimates

**B05003. SEX BY AGE BY CITIZENSHIP STATUS**

Data Set: 2008-2012 American Community Survey 5-Year Estimates

	Batesville city, Mississippi					
	African American	Margin of Error (+/-)	% of AA Total by Age	White, Not Hispanic	Margin of Error (+/-)	% of NHW Total by Age
<b>Total:</b>	<b>3,163</b>	<b>443</b>	<b>100.0%</b>	<b>4,290</b>	<b>440</b>	<b>100.0%</b>
<b>Under 18 years:</b>	<b>1,516</b>	<b>NC</b>	<b>100.0%</b>	<b>1,018</b>	<b>NC</b>	<b>100.0%</b>
Native	1,516	NC	100.0%	1,018	NC	100.0%
Foreign born:	0	NC	0.0%	0	NC	0.0%
Naturalized U.S. citizen	0	NC	0.0%	0	NC	0.0%
Not a U.S. citizen	0	NC	0.0%	0	NC	0.0%
<b>18 years and over:</b>	<b>1,647</b>	<b>NC</b>	<b>100.0%</b>	<b>3,272</b>	<b>NC</b>	<b>100.0%</b>
Native	1,635	NC	99.3%	3,272	NC	100.0%
Foreign born:	12	NC	0.7%	0	NC	0.0%
Naturalized U.S. citizen	12	NC	0.7%	0	NC	0.0%
Not a U.S. citizen	0	NC	0.0%	0	NC	0.0%
<b>Male:</b>	<b>1,431</b>	<b>227</b>	<b>45.2%</b>	<b>2,015</b>	<b>262</b>	<b>47.0%</b>
<b>Under 18 years:</b>	<b>743</b>	<b>227</b>	<b>100.0%</b>	<b>412</b>	<b>132</b>	<b>100.0%</b>
Native	743	227	100.0%	412	132	100.0%
Foreign born:	0	17	0.0%	0	17	0.0%
Naturalized U.S. citizen	0	17	0.0%	0	17	0.0%
Not a U.S. citizen	0	17	0.0%	0	17	0.0%
<b>18 years and over:</b>	<b>688</b>	<b>156</b>	<b>100.0%</b>	<b>1,603</b>	<b>220</b>	<b>100.0%</b>
Native	676	155	98.3%	1,603	220	100.0%
Foreign born:	12	19	1.7%	0	17	0.0%
Naturalized U.S. citizen	12	19	1.7%	0	17	0.0%
Not a U.S. citizen	0	17	0.0%	0	17	0.0%

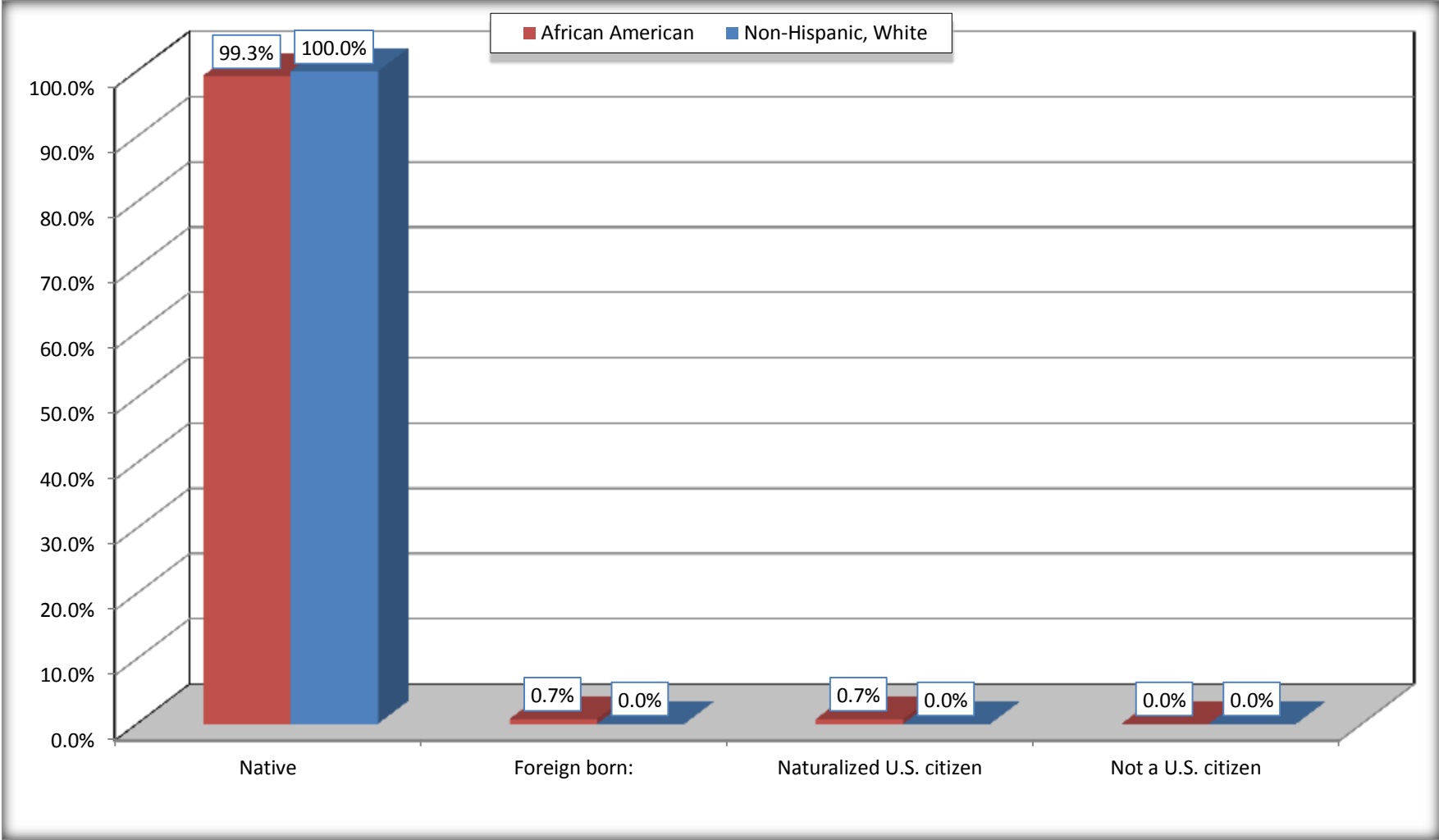
	<b>Batesville city, Mississippi</b>					
	African American	Margin of Error (+/-)	% of AA by Age	White, Not Hispanic	Margin of Error (+/-)	% of NHW by Age
<b>Female:</b>	1,732	317	54.8%	2,275	272	53.0%
<b>Under 18 years:</b>	<b>773</b>	<b>232</b>	<b>100.0%</b>	<b>606</b>	<b>143</b>	<b>100.0%</b>
Native	773	232	100.0%	606	143	100.0%
Foreign born:	0	17	0.0%	0	17	0.0%
Naturalized U.S. citizen	0	17	0.0%	0	17	0.0%
Not a U.S. citizen	0	17	0.0%	0	17	0.0%
<b>18 years and over:</b>	<b>959</b>	<b>176</b>	<b>100.0%</b>	<b>1,669</b>	<b>224</b>	<b>100.0%</b>
Native	959	176	100.0%	1,669	224	100.0%
Foreign born:	0	17	0.0%	0	17	0.0%
Naturalized U.S. citizen	0	17	0.0%	0	17	0.0%
Not a U.S. citizen	0	17	0.0%	0	17	0.0%

Source: U.S. Census Bureau, 2008-2012 American Community Survey

For information on confidentiality protection, sampling error, nonsampling error, and definitions, see Survey Methodology.  
<http://www.census.gov/acs/www/UseData/index.htm>

# Citizenship Status of Voting Age Population (18 and Over)

## Batesville city, Mississippi



Source: B05003. SEX BY AGE BY CITIZENSHIP STATUS  
Data Set: 2008-2012 American Community Survey 5-Year Estimates

**B07004. GEOGRAPHICAL MOBILITY IN THE PAST YEAR BY RACE FOR CURRENT RESIDENCE IN THE UNITED STATES - Universe:  
POPULATION 1 YEAR AND OVER**

Data Set: 2008-2012 American Community Survey 5-Year Estimates

	<b>Batesville city, Mississippi</b>					
	African American	Margin of Error (+/-)	% of AA Total	White, Not Hispanic	Margin of Error (+/-)	% of NHW Total
<b>Total:</b>	<b>3,136</b>	<b>440</b>	<b>100.0%</b>	<b>4,232</b>	<b>440</b>	<b>100.0%</b>
Same house 1 year ago	2,557	539	81.5%	3,807	456	90.0%
Moved within same county	375	398	12.0%	137	117	3.2%
Moved from different county within same state	142	107	4.5%	51	44	1.2%
Moved from different state	62	74	2.0%	69	71	1.6%
Moved from abroad	0	17	0.0%	168	214	4.0%

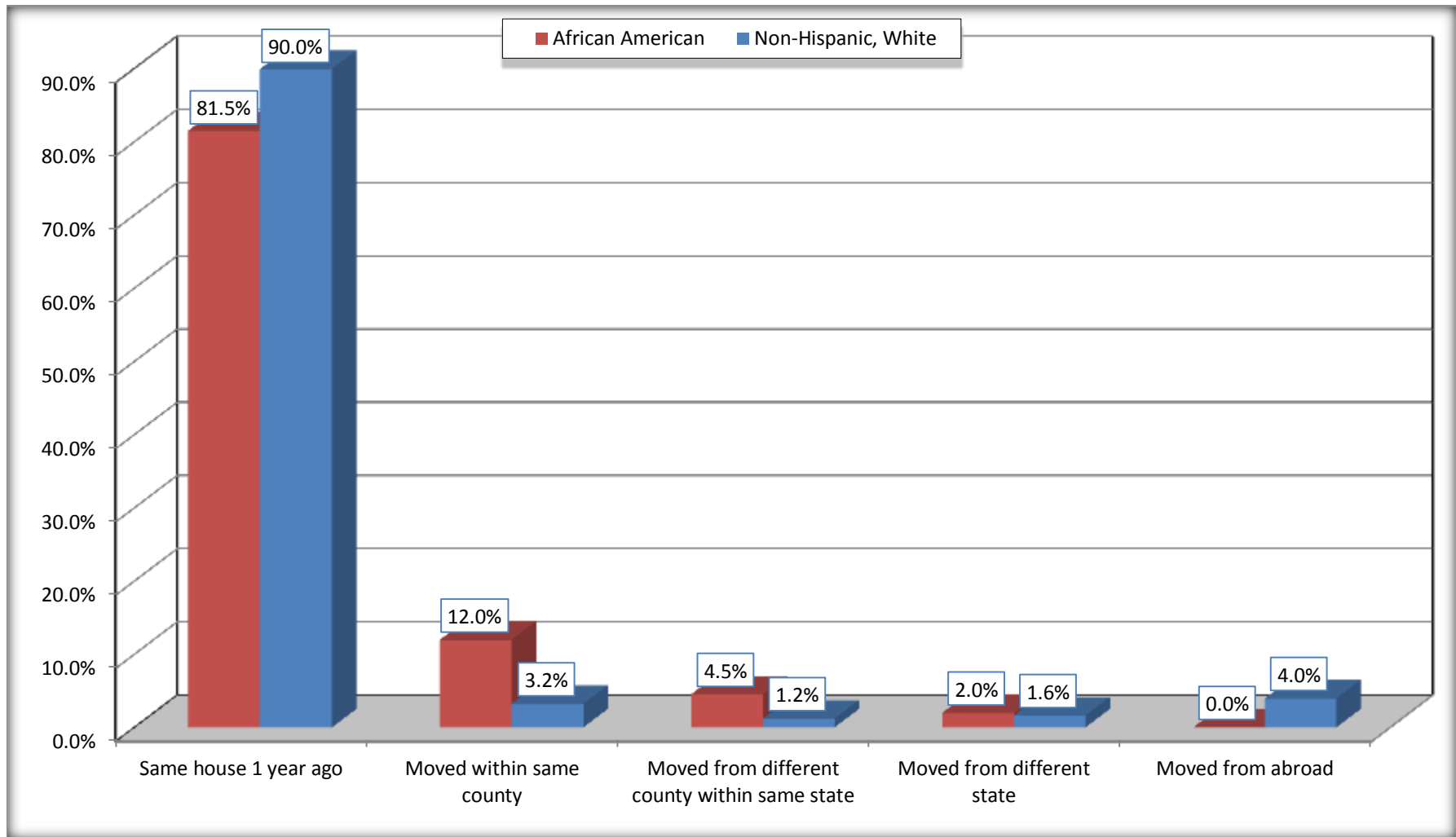
Source: U.S. Census Bureau, 2008-2012 American Community Survey

For information on confidentiality protection, sampling error, nonsampling error, and definitions, see Survey Methodology.

<http://www.census.gov/acs/www/UseData/index.htm>

# Geographical Mobility in the Past Year (Population 1 Year and Over)

## Batesville city, Mississippi



Source: B07004. GEOGRAPHICAL MOBILITY IN THE PAST YEAR BY RACE FOR CURRENT RESIDENCE IN THE UNITED STATES - Universe: POPULATION 1 YEAR AND OVER

Data Set: 2008-2012 American Community Survey 5-Year Estimates

**B08105. MEANS OF TRANSPORTATION TO WORK - Universe: WORKERS 16 YEARS AND OVER**

Data Set: 2008-2012 American Community Survey 5-Year Estimates

	Batesville city, Mississippi					
	African American	Margin of Error (+/-)	% of AA Total	White, Not Hispanic	Margin of Error (+/-)	% of NHW Total
<b>Total:</b>	514	172	<b>100.0%</b>	1828	262	<b>100.0%</b>
Car, truck, or van - drove alone	441	160	85.8%	1504	218	82.3%
Car, truck, or van - carpooled	50	38	9.7%	253	173	13.8%
Public transportation (excluding taxicab)	0	17	0.0%	0	17	0.0%
Walked	0	17	0.0%	0	17	0.0%
Taxicab, motorcycle, bicycle, or other means	17	28	3.3%	3	5	0.2%
Worked at home	6	13	1.2%	68	71	3.7%

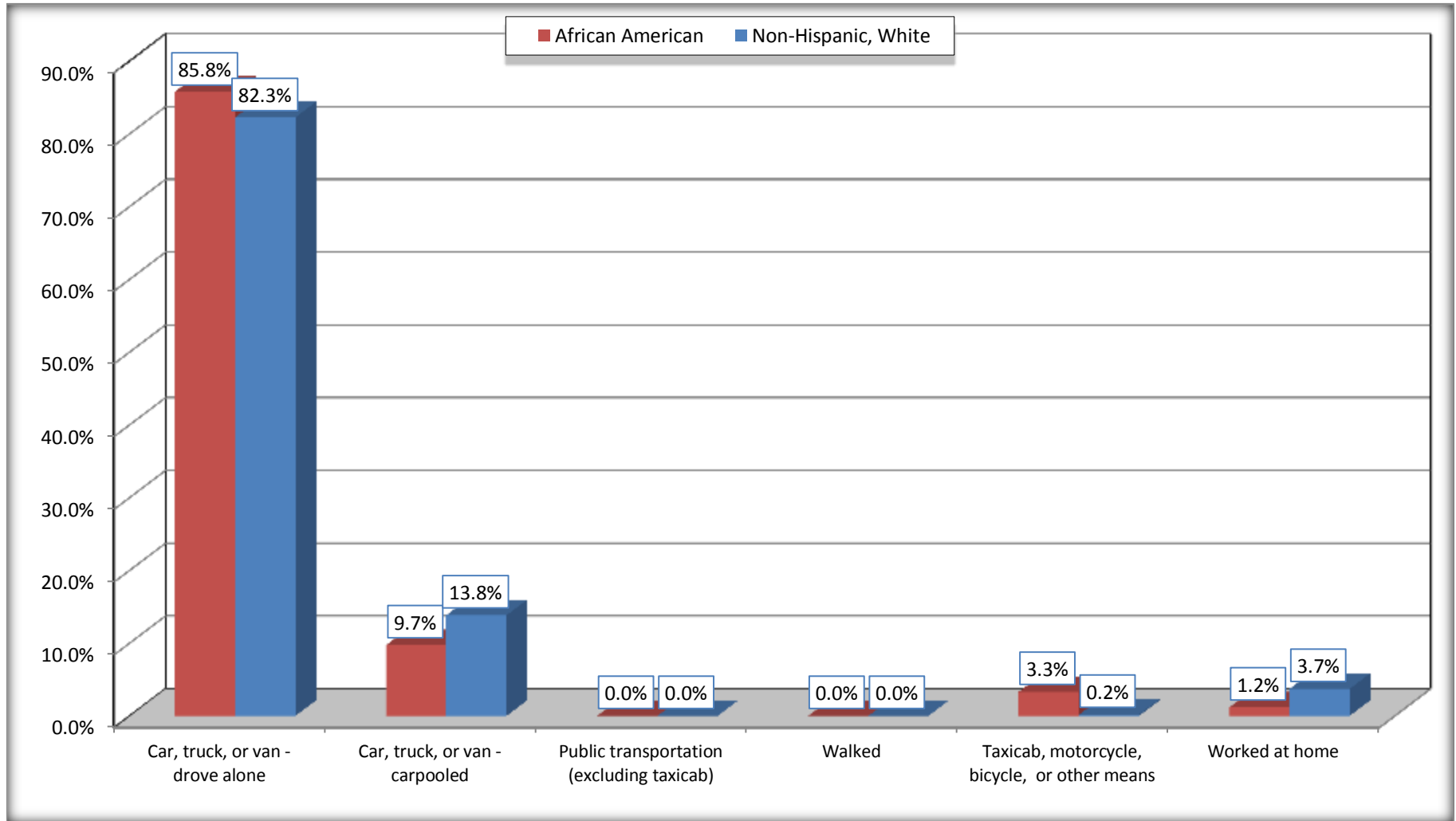
Source: U.S. Census Bureau, 2008-2012 American Community Survey

For information on confidentiality protection, sampling error, nonsampling error, and definitions, see Survey Methodology.

<http://www.census.gov/acs/www/UseData/index.htm>

# Means of Transportation to Work (Workers 16 Years and Over)

## Batesville city, Mississippi



Source: B08105. MEANS OF TRANSPORTATION TO WORK - Universe: WORKERS 16 YEARS AND OVER  
Data Set: 2008-2012 American Community Survey 5-Year Estimates



**B11002. HOUSEHOLD TYPE BY RELATIVES AND NONRELATIVES FOR POPULATION IN HOUSEHOLDS**

Data Set: 2008-2012 American Community Survey 5-Year Estimates

	<b>Batesville city, Mississippi</b>					
	African American	Margin of Error (+/-)	% of AA Total	White, Not Hispanic	Margin of Error (+/-)	% of NHW Total
<b>Total:</b>	2975	463	<b>100.0%</b>	4191	429	<b>100.0%</b>
In family households	2722	519	91.5%	3492	424	83.3%
In nonfamily households	253	157	8.5%	699	270	16.7%

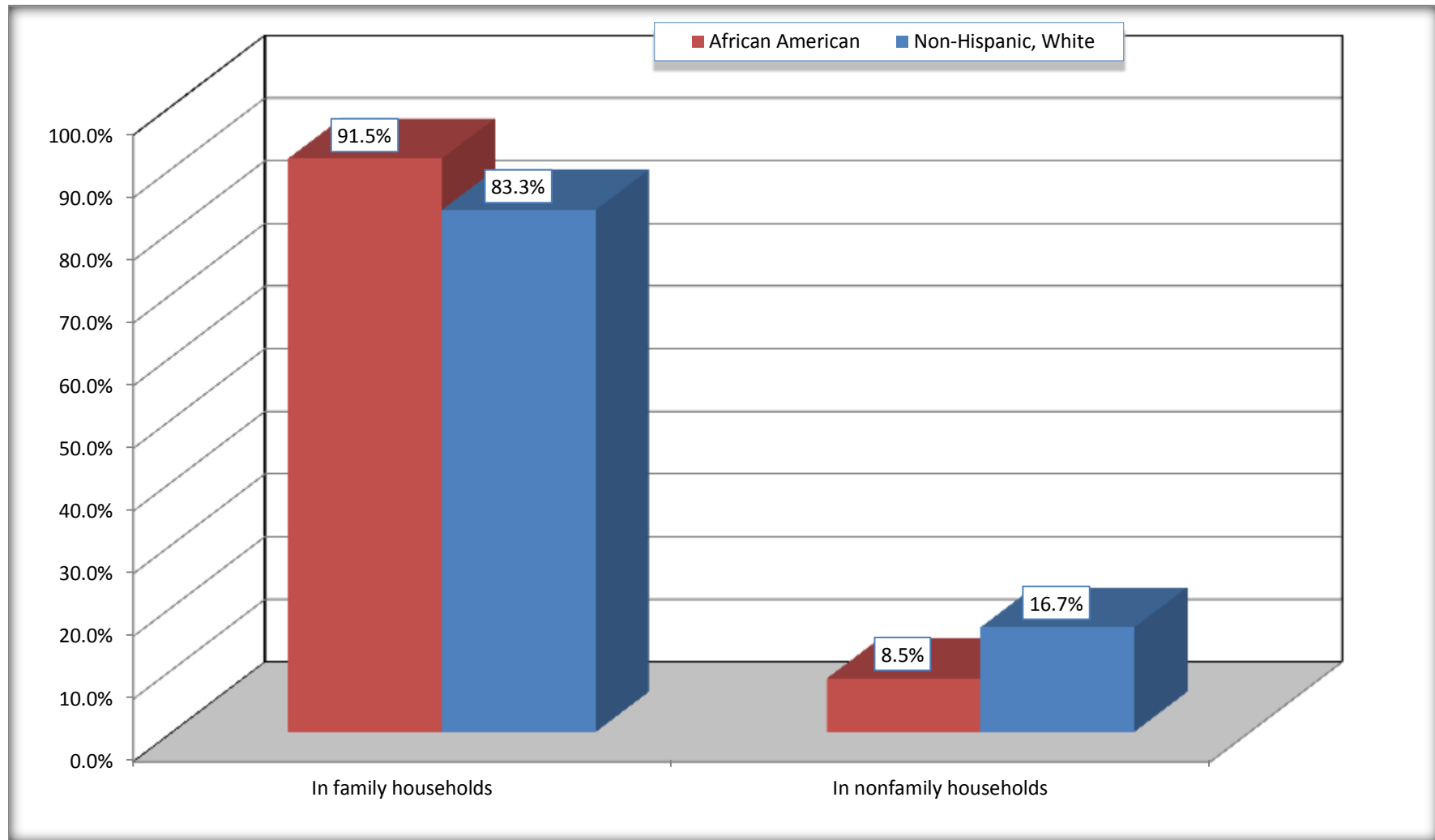
Source: U.S. Census Bureau, 2008-2012 American Community Survey

For information on confidentiality protection, sampling error, nonsampling error, and definitions, see Survey Methodology.

<http://www.census.gov/acs/www/UseData/index.htm>

# Household Type for Population in Households

## Batesville city, Mississippi



Source: B11002. HOUSEHOLD TYPE BY RELATIVES AND NONRELATIVES FOR POPULATION IN HOUSEHOLDS  
Data Set: 2008-2012 American Community Survey 5-Year Estimates

**B12002. MARITAL STATUS FOR THE POPULATION 15 YEARS AND OVER**

Data Set: 2008-2012 American Community Survey 5-Year Estimates

	Batesville city, Mississippi					
	African American	Margin of Error (+/-)	% of AA Total	White, Not Hispanic	Margin of Error (+/-)	% of NHW Total
<b>Total:</b>	<b>2,036</b>	<b>297</b>	<b>100.0%</b>	<b>3,543</b>	<b>388</b>	<b>100.0%</b>
Never married	1,134	NC	55.7%	1,066	NC	30.1%
Now married (except separated)	411	NC	20.2%	1,752	NC	49.4%
Separated	191	NC	9.4%	12	NC	0.3%
Widowed	65	NC	3.2%	256	NC	7.2%
Divorced	235	NC	11.5%	457	NC	12.9%
<b>Male:</b>	<b>864</b>	<b>182</b>	<b>42.4%</b>	<b>1,708</b>	<b>231</b>	<b>48.2%</b>
Never married	546	156	26.8%	651	213	18.4%
Now married (except separated)	213	84	10.5%	860	154	24.3%
Separated	38	60	1.9%	12	21	0.3%
Widowed	25	29	1.2%	71	74	2.0%
Divorced	42	56	2.1%	114	88	3.2%
<b>Female:</b>	<b>1,172</b>	<b>208</b>	<b>57.6%</b>	<b>1,835</b>	<b>244</b>	<b>51.8%</b>
Never married	588	194	28.9%	415	158	11.7%
Now married (except separated)	198	79	9.7%	892	146	25.2%
Separated	153	116	7.5%	0	17	0.0%
Widowed	40	41	2.0%	185	100	5.2%
Divorced	193	120	9.5%	343	162	9.7%

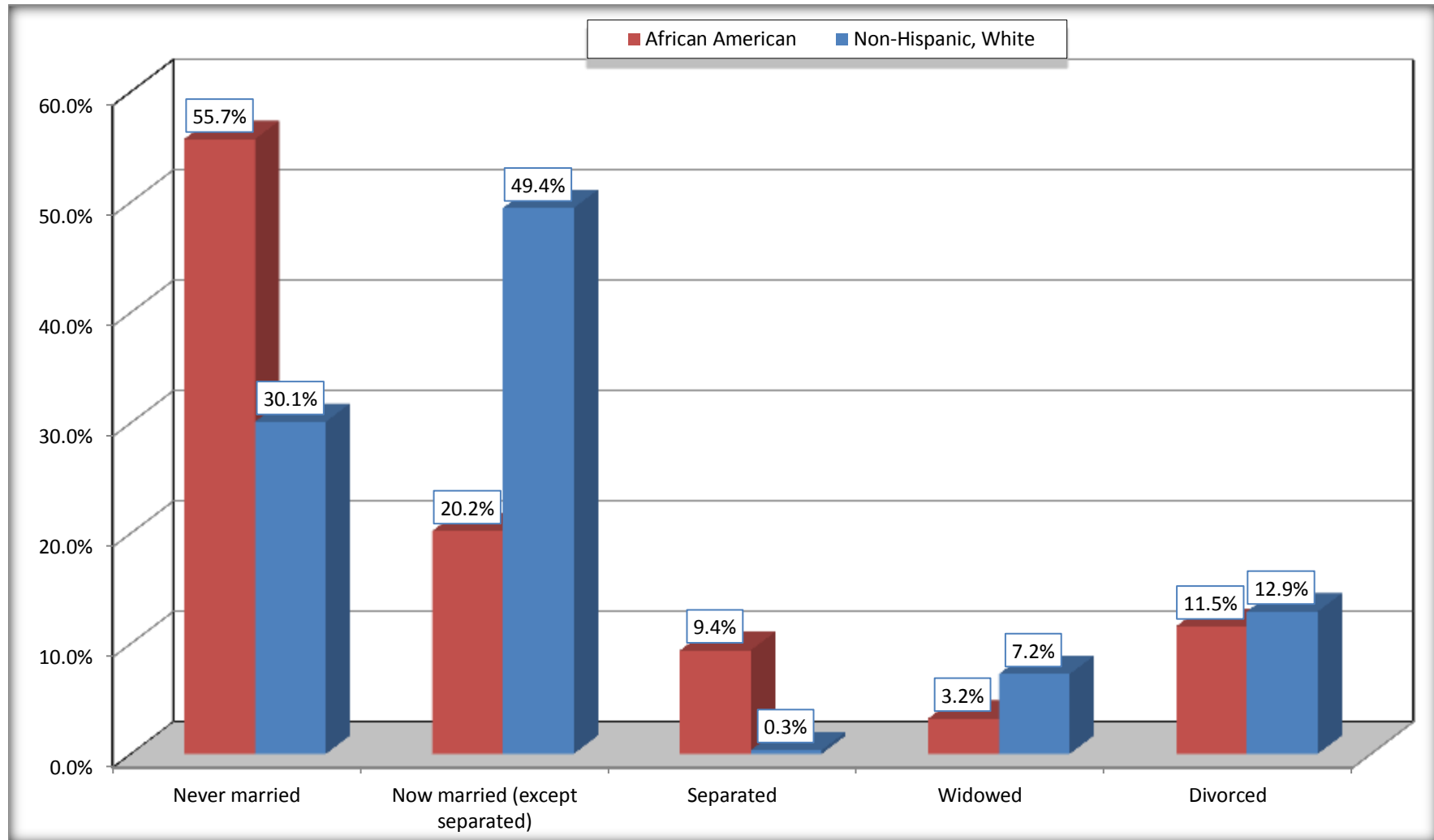
Source: U.S. Census Bureau, 2008-2012 American Community Survey

For information on confidentiality protection, sampling error, nonsampling error, and definitions, see Survey Methodology.

<http://www.census.gov/acs/www/UseData/index.htm>

# Marital Status for the Population 15 Years and Over

## Batesville city, Mississippi



Source: B12002. MARITAL STATUS FOR THE POPULATION 15 YEARS AND OVER  
Data Set: 2008-2012 American Community Survey 5-Year Estimates

**C15002. SEX BY EDUCATIONAL ATTAINMENT FOR THE POPULATION 25 YEARS AND OVER**

Data Set: 2008-2012 American Community Survey 5-Year Estimates

	Batesville city, Mississippi					
	African American	Margin of Error (+/-)	% of AA Total	White, Not Hispanic	Margin of Error (+/-)	% of NHW Total
<b>Total:</b>	<b>1,204</b>	<b>214</b>	<b>100.0%</b>	<b>2,858</b>	<b>335</b>	<b>100.0%</b>
Less than high school diploma	473	NC	39.3%	351	NC	12.3%
High school graduate, GED, or alternative	263	NC	21.8%	609	NC	21.3%
Some college or associate's degree	343	NC	28.5%	794	NC	27.8%
Bachelor's degree or higher	125	NC	10.4%	1,104	NC	38.6%
Male:	465	133	38.6%	1,334	207	46.7%
Less than high school diploma	211	103	17.5%	225	126	7.9%
High school graduate, GED, or alternative	105	87	8.7%	285	139	10.0%
Some college or associate's degree	89	67	7.4%	304	107	10.6%
Bachelor's degree or higher	60	46	5.0%	520	155	18.2%
Female:	739	142	61.4%	1,524	193	53.3%
Less than high school diploma	262	141	21.8%	126	79	4.4%
High school graduate, GED, or alternative	158	133	13.1%	324	148	11.3%
Some college or associate's degree	254	116	21.1%	490	142	17.1%
Bachelor's degree or higher	65	41	5.4%	584	138	20.4%

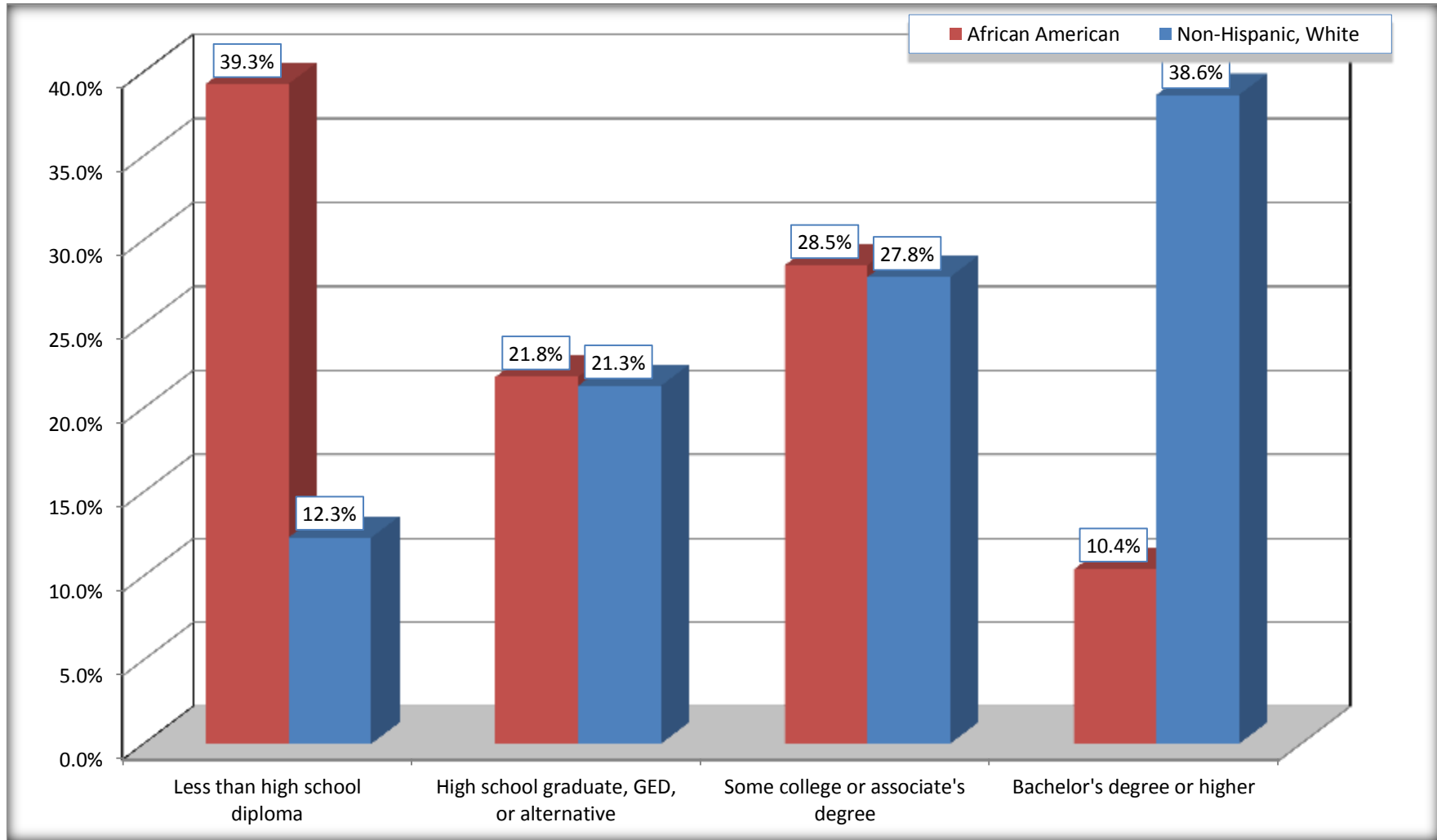
Source: U.S. Census Bureau, 2008-2012 American Community Survey

For information on confidentiality protection, sampling error, nonsampling error, and definitions, see Survey Methodology.

<http://www.census.gov/acs/www/UseData/index.htm>

# Educational Attainment for the Population 25 Years and Older

## Batesville city, Mississippi



Source: C15002. SEX BY EDUCATIONAL ATTAINMENT FOR THE POPULATION 25 YEARS AND OVER  
Data Set: 2008-2012 American Community Survey 5-Year Estimates

**B17010. POVERTY STATUS IN THE PAST 12 MONTHS OF FAMILIES BY FAMILY TYPE BY PRESENCE OF RELATED CHILDREN UNDER 18 YEARS**

Data Set: 2008-2012 American Community Survey 5-Year Estimates

	Batesville city, Mississippi					
	African American	Margin of Error (+/-)	% of AA Total	White, Not Hispanic	Margin of Error (+/-)	% of NHW Total
<b>Total:</b>	<b>653</b>	<b>136</b>	<b>100.0%</b>	<b>1,074</b>	<b>134</b>	<b>100.0%</b>
Income in the past 12 months below poverty level:	351	122	53.8%	55	51	5.1%
Married-couple family:	9	15	1.4%	35	54	3.3%
With related children under 18 years	9	15	1.4%	35	54	3.3%
Other family:	342	125	52.4%	20	24	1.9%
Male householder, no wife present	22	29	3.4%	10	16	0.9%
With related children under 18 years	9	18	1.4%	0	17	0.0%
Female householder, no husband present	320	125	49.0%	10	17	0.9%
With related children under 18 years	278	121	42.6%	10	17	0.9%
Income in the past 12 months at or above poverty level:	302	119	46.2%	1,019	130	94.9%
Married-couple family:	174	81	26.6%	823	137	76.6%
With related children under 18 years	103	57	15.8%	405	114	37.7%
Other family:	128	76	19.6%	196	94	18.2%
Male householder, no wife present	15	26	2.3%	25	29	2.3%
With related children under 18 years	15	26	2.3%	25	29	2.3%
Female householder, no husband present	113	73	17.3%	171	95	15.9%
With related children under 18 years	91	68	13.9%	119	88	11.1%

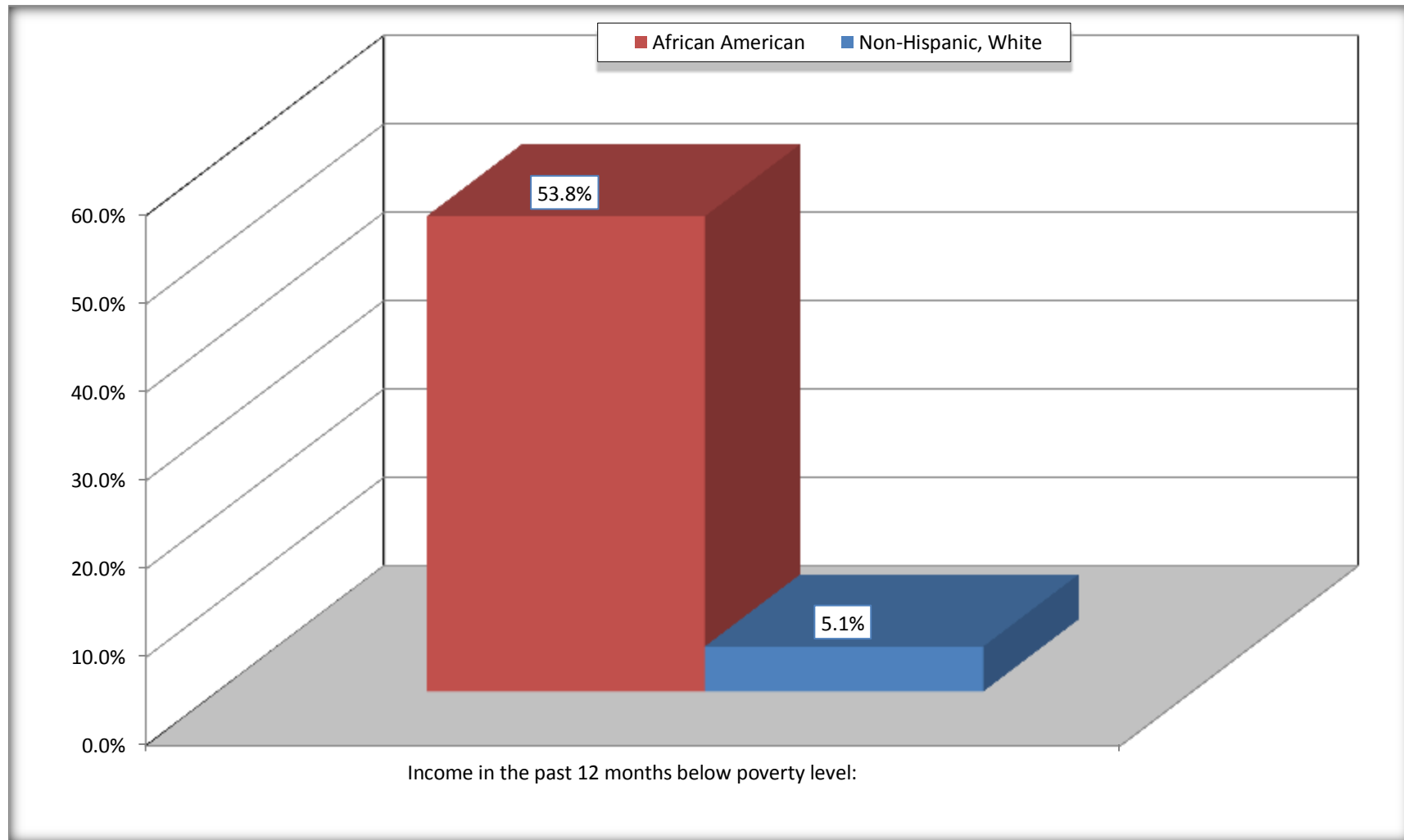
Source: U.S. Census Bureau, 2008-2012 American Community Survey

For information on confidentiality protection, sampling error, nonsampling error, and definitions, see Survey Methodology.

<http://www.census.gov/acs/www/UseData/index.htm>

# Family Households Below Poverty in the Past 12 Months

## Batesville city, Mississippi



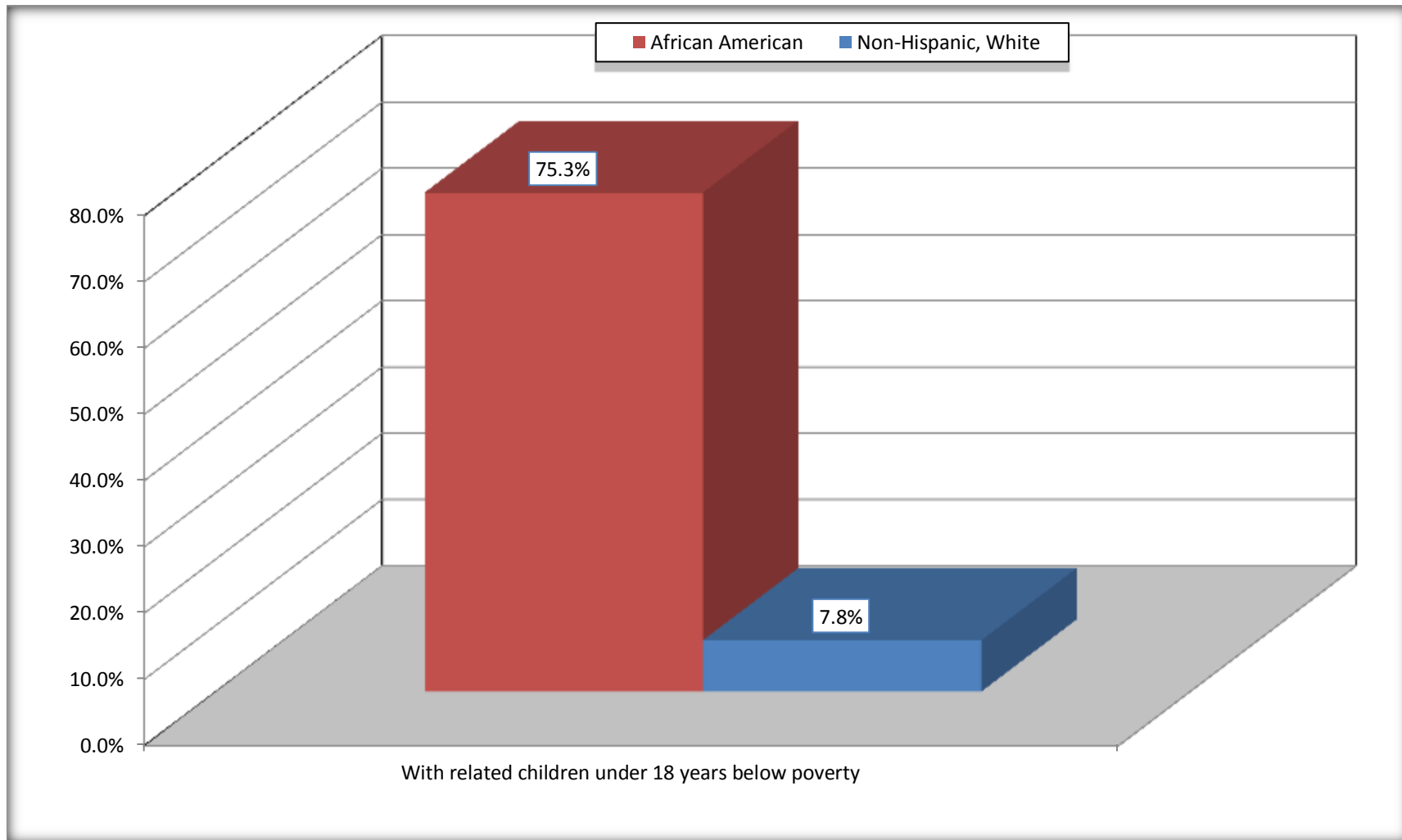
Source: B17010. POVERTY STATUS IN THE PAST 12 MONTHS OF FAMILIES BY FAMILY TYPE BY PRESENCE OF RELATED CHILDREN UNDER 18 YEARS

Data Set: 2008-2012 American Community Survey 5-Year Estimates



# Female-headed Households with Related Children Below Poverty in the Past 12 Months

## Batesville city, Mississippi



Source: B17010. POVERTY STATUS IN THE PAST 12 MONTHS OF FAMILIES BY FAMILY TYPE BY PRESENCE OF RELATED CHILDREN UNDER 18 YEARS

Data Set: 2008-2012 American Community Survey 5-Year Estimates

**B17020 POVERTY STATUS IN THE PAST 12 MONTHS BY AGE - Universe: POPULATION FOR WHOM POVERTY STATUS IS DETERMINED**

Data Set: 2008-2012 American Community Survey 5-Year Estimates

	Batesville city, Mississippi					
	African American	Margin of Error (+/-)	% of AA By Age	White, Not Hispanic	Margin of Error (+/-)	% of NHW By Age
<b>Total:</b>	<b>3,125</b>	<b>441</b>	<b>100.0%</b>	<b>4,246</b>	<b>445</b>	<b>100.0%</b>
Income in the past 12 months below poverty level:	1,836	512	58.8%	306	175	7.2%
<b>Under 18 years</b>	993	NC	65.5%	55	NC	5.4%
<b>18 to 64 years</b>	810	233	57.5%	207	128	8.5%
<b>65 years and over</b>	33	NC	16.4%	44	NC	5.6%
Income in the past 12 months at or above poverty level:	1,289	449	41.2%	3,940	410	92.8%
<b>Under 18 years</b>	523	NC	34.5%	962	NC	94.6%
<b>18 to 64 years</b>	598	203	42.5%	2,235	286	91.5%
<b>65 years and over</b>	168	NC	83.6%	743	NC	94.4%

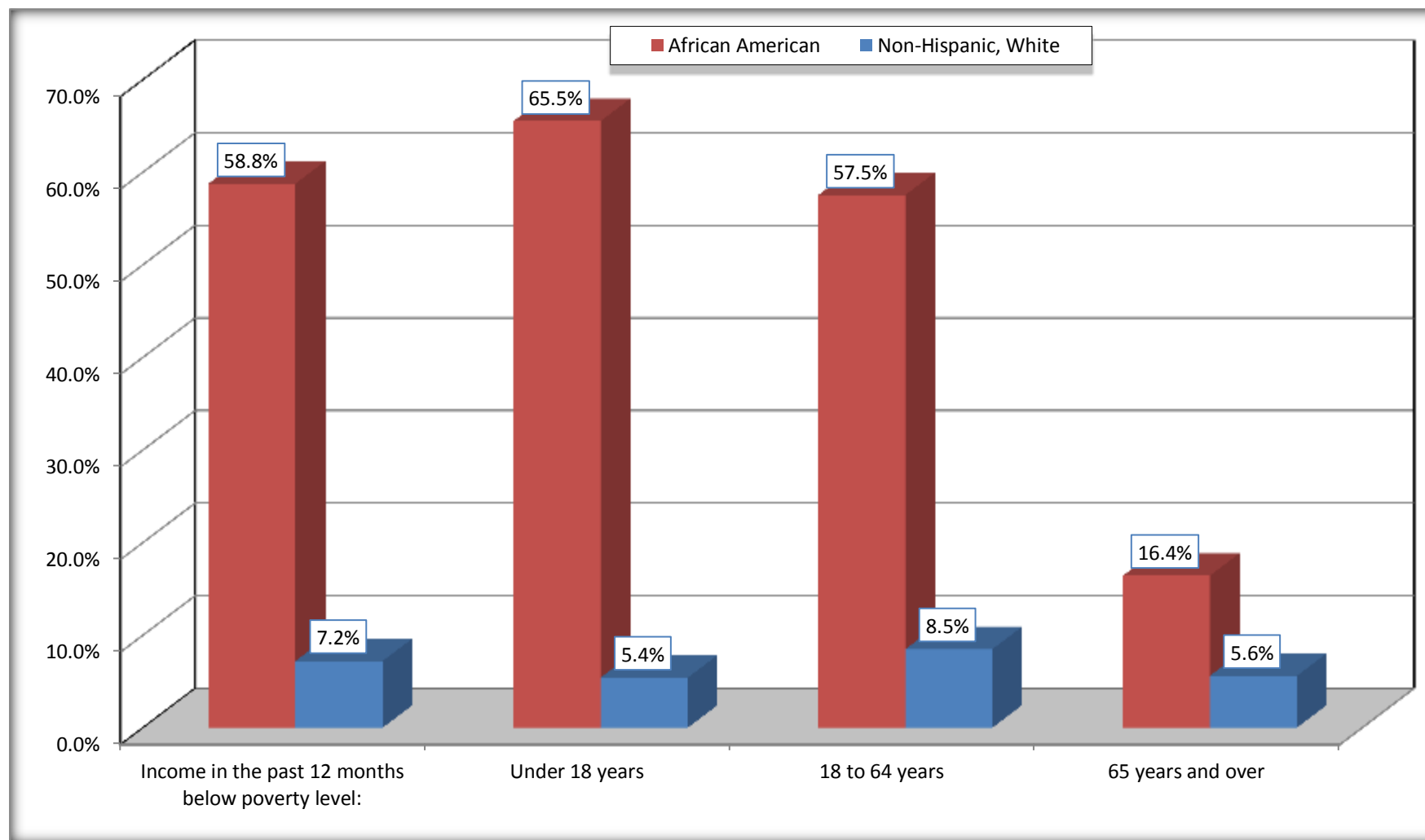
Source: U.S. Census Bureau, 2008-2012 American Community Survey

For information on confidentiality protection, sampling error, nonsampling error, and definitions, see Survey Methodology.

<http://www.census.gov/acs/www/UseData/index.htm>

# Population Below Poverty in the Past 12 Months

## Batesville city, Mississippi



Source: B17020 POVERTY STATUS IN THE PAST 12 MONTHS BY AGE - Universe: POPULATION FOR WHOM POVERTY STATUS IS DETERMINED  
Data Set: 2008-2012 American Community Survey 5-Year Estimates

**B19001. HOUSEHOLD INCOME IN THE PAST 12 MONTHS (IN 2010 INFLATION-ADJUSTED DOLLARS)**

Data Set: 2008-2012 American Community Survey 5-Year Estimates

	Batesville city, Mississippi					
	African American	Margin of Error (+/-)	% of AA Total	White, Not Hispanic	Margin of Error (+/-)	% of NHW Total
<b>Total:</b>	<b>870</b>	<b>138</b>	<b>100.0%</b>	<b>1,676</b>	<b>233</b>	<b>100.0%</b>
Less than \$ 10,000	288	130	33.1%	100	73	6.0%
\$ 10,000 to \$ 14,999	100	103	11.5%	72	60	4.3%
<b>\$ 15,000 to \$ 24,999</b>	151	NC	17.4%	112	NC	6.7%
<b>\$ 25,000 to \$ 34,999</b>	116	NC	13.3%	61	NC	3.6%
<b>\$ 35,000 to \$ 49,999</b>	87	NC	10.0%	403	NC	24.0%
<b>\$ 50,000 to \$ 74,999</b>	94	NC	10.8%	373	NC	22.3%
\$ 75,000 to \$ 99,999	27	33	3.1%	227	101	13.5%
<b>\$ 100,000 to \$ 149,999</b>	0	NC	0.0%	220	NC	13.1%
\$ 150,000 to \$ 199,999	7	13	0.8%	17	19	1.0%
\$ 200,000 or more	0	17	0.0%	91	80	5.4%

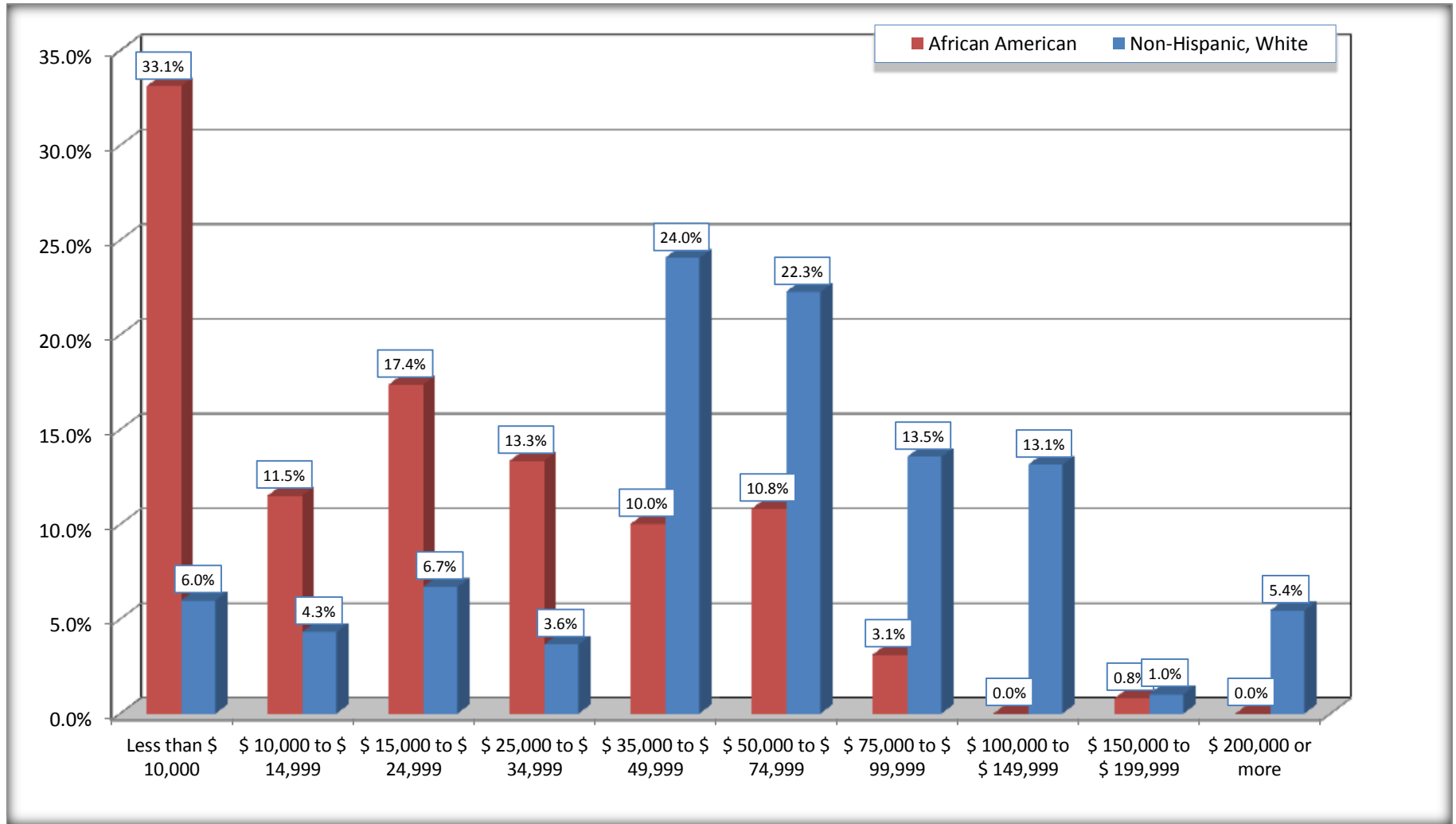
Source: U.S. Census Bureau, 2008-2012 American Community Survey

For information on confidentiality protection, sampling error, nonsampling error, and definitions, see Survey Methodology.

<http://www.census.gov/acs/www/UseData/index.htm>

# Household Income in the Past 12 Months

## Batesville city, Mississippi



Source: B19001. HOUSEHOLD INCOME IN THE PAST 12 MONTHS (IN 2010 INFLATION-ADJUSTED DOLLARS)  
Data Set: 2008-2012 American Community Survey 5-Year Estimates

**B19013. MEDIAN HOUSEHOLD INCOME IN THE PAST 12 MONTHS (IN 2010 INFLATION-ADJUSTED DOLLARS)**

Data Set: 2008-2012 American Community Survey 5-Year Estimates

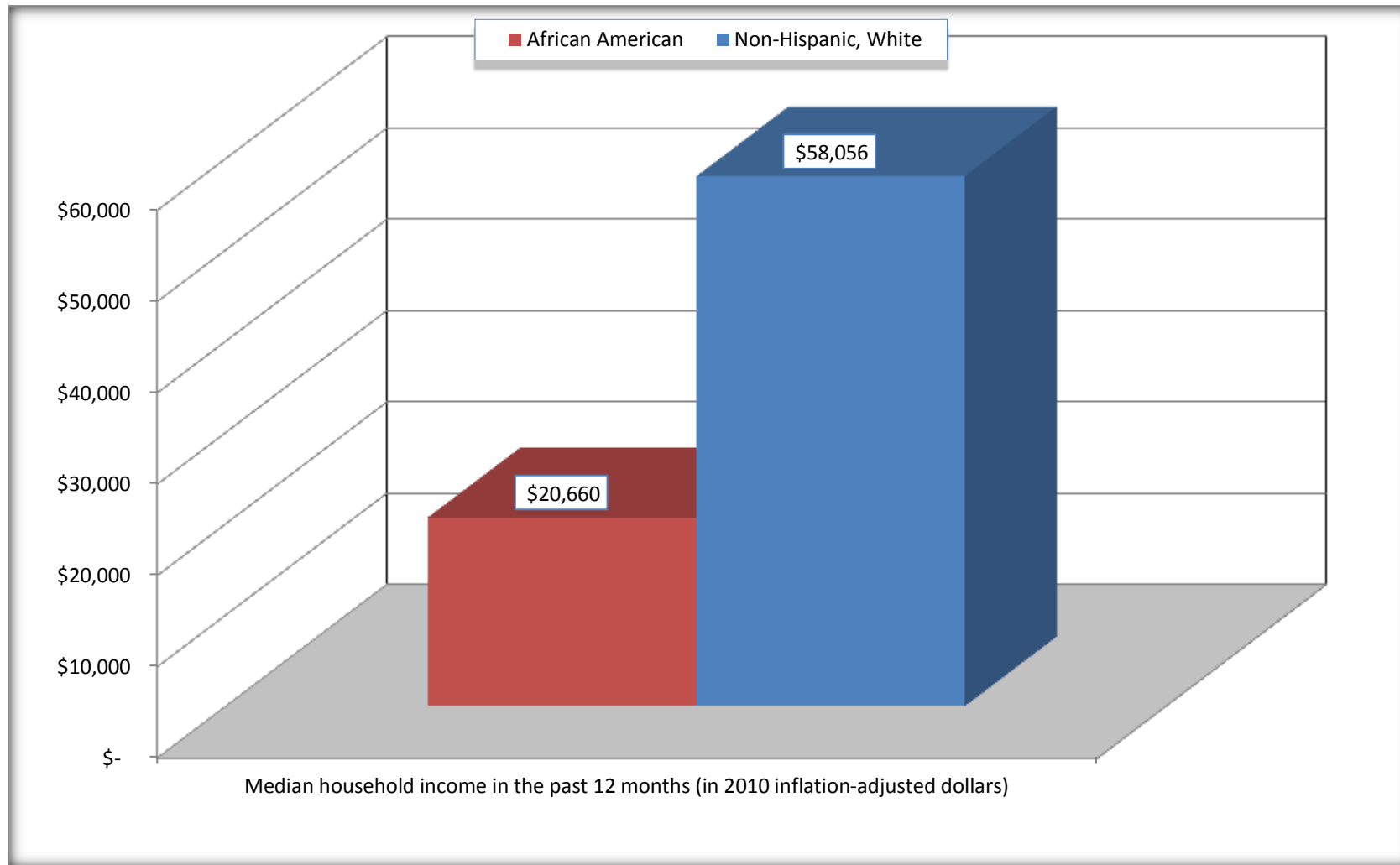
	<b>Batesville city, Mississippi</b>			
	African American	Margin of Error (+/-)	White, Not Hispanic	Margin of Error (+/-)
Median household income in the past 12 months (in 2010 inflation-adjusted dollars)	\$ 20,660	\$ 9,013	\$ 58,056	\$ 8,414

Source: U.S. Census Bureau, 2008-2012 American Community Survey

For information on confidentiality protection, sampling error, nonsampling error, and definitions, see Survey Methodology.  
<http://www.census.gov/acs/www/UseData/index.htm>

## Median Household Income in the Past 12 Months

### Batesville city, Mississippi



Source: B19013. MEDIAN HOUSEHOLD INCOME IN THE PAST 12 MONTHS (IN 2010 INFLATION-ADJUSTED DOLLARS)  
Data Set: 2008-2012 American Community Survey 5-Year Estimates

**B19101. FAMILY INCOME IN THE PAST 12 MONTHS (IN 2010 INFLATION-ADJUSTED DOLLARS)**

Data Set: 2008-2012 American Community Survey 5-Year Estimates

	Batesville city, Mississippi					
	African American	Margin of Error (+/-)	% of AA Total	White, Not Hispanic	Margin of Error (+/-)	% of NHW Total
<b>Total:</b>	<b>653</b>	<b>136</b>	<b>100.0%</b>	<b>1,074</b>	<b>134</b>	<b>100.0%</b>
Less than \$ 10,000	227	123	34.8%	10	17	0.9%
\$ 10,000 to \$ 14,999	88	101	13.5%	45	49	4.2%
<b>\$ 15,000 to \$ 24,999</b>	<b>111</b>	<b>NC</b>	<b>17.0%</b>	<b>40</b>	<b>NC</b>	<b>3.7%</b>
<b>\$ 25,000 to \$ 34,999</b>	<b>61</b>	<b>NC</b>	<b>9.3%</b>	<b>42</b>	<b>NC</b>	<b>3.9%</b>
<b>\$ 35,000 to \$ 49,999</b>	<b>74</b>	<b>NC</b>	<b>11.3%</b>	<b>266</b>	<b>NC</b>	<b>24.8%</b>
<b>\$ 50,000 to \$ 74,999</b>	<b>73</b>	<b>NC</b>	<b>11.2%</b>	<b>210</b>	<b>NC</b>	<b>19.6%</b>
<b>\$ 100,000 to \$ 149,999</b>	<b>-</b>	<b>NC</b>	<b>0.0%</b>	<b>208</b>	<b>NC</b>	<b>19.4%</b>
\$ 150,000 to \$ 199,999	7	13	1.1%	17	19	1.6%
\$ 200,000 or more	0	17	0.0%	91	80	8.5%

Source: U.S. Census Bureau, 2008-2012 American Community Survey

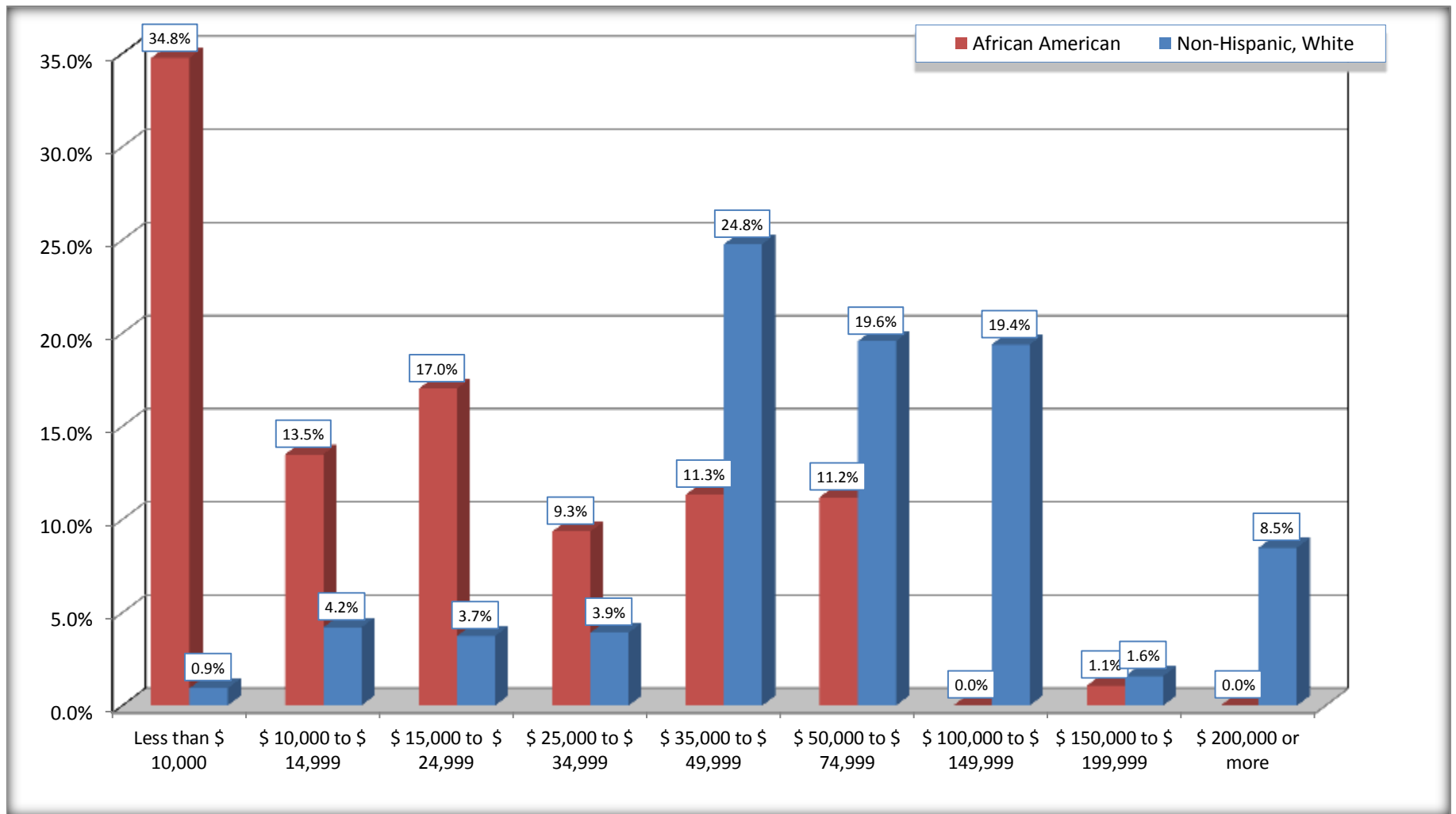
For information on confidentiality protection, sampling error, nonsampling error, and definitions, see Survey Methodology.

<http://www.census.gov/acs/www/UseData/index.htm>



# Family Income in the Past 12 Months

## Batesville city, Mississippi



Source: B19101. FAMILY INCOME IN THE PAST 12 MONTHS (IN 2010 INFLATION-ADJUSTED DOLLARS)  
Data Set: 2008-2012 American Community Survey 5-Year Estimates

**B19113. MEDIAN FAMILY INCOME IN THE PAST 12 MONTHS (IN 2010 INFLATION-ADJUSTED DOLLARS)**

Data Set: 2008-2012 American Community Survey 5-Year Estimates

	<b>Batesville city, Mississippi</b>			
	African American	Margin of Error (+/-)	White, Not Hispanic	Margin of Error (+/-)
Median family income in the past 12 months (in 2010 inflation-adjusted dollars)	\$ 15,737	\$ 10,519	\$ 64,032	\$ 14,037

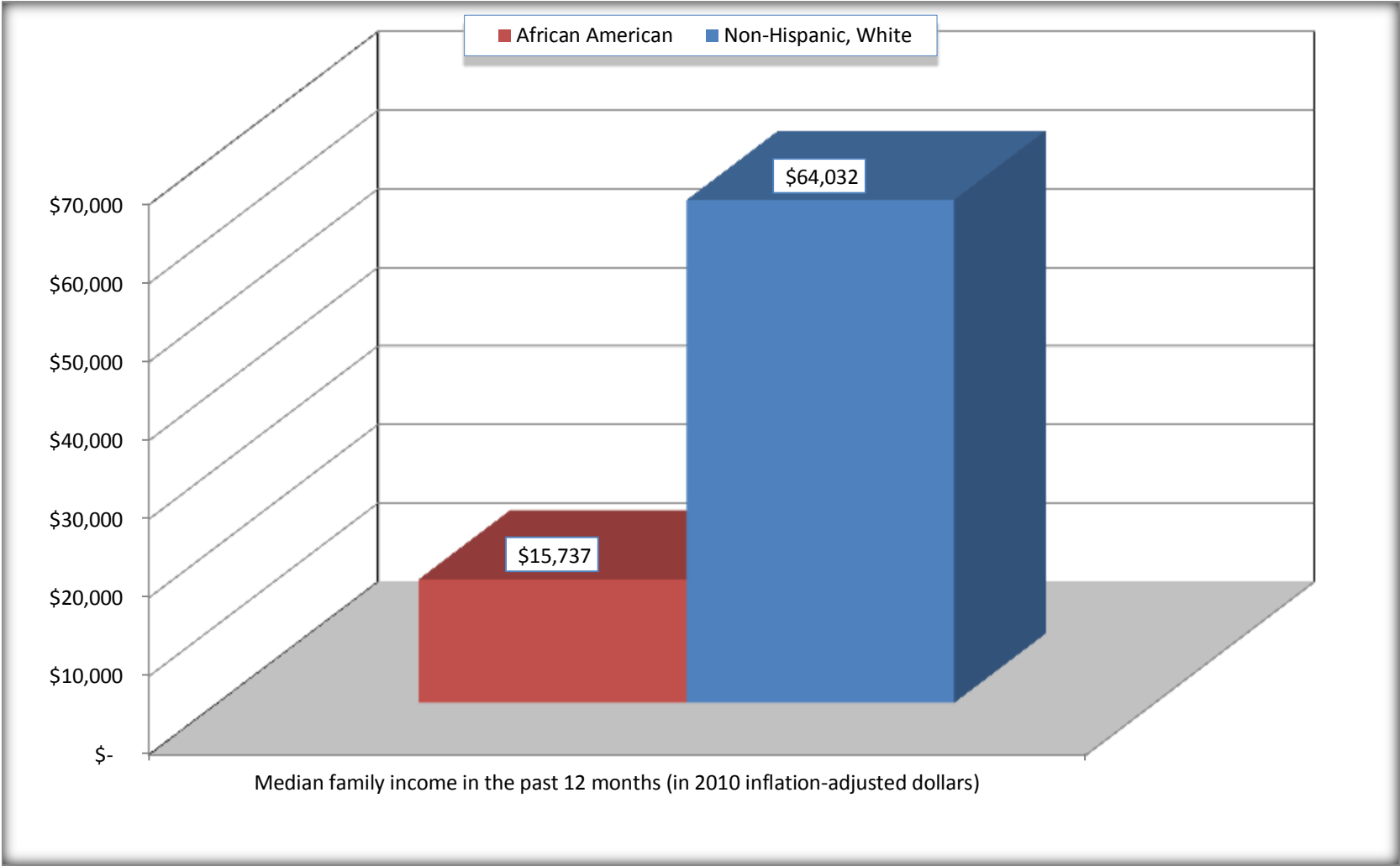
Source: U.S. Census Bureau, 2008-2012 American Community Survey

For information on confidentiality protection, sampling error, nonsampling error, and definitions, see Survey Methodology.

<http://www.census.gov/acs/www/UseData/index.htm>

# Median Family Income in the Past 12 Months

## Batesville city, Mississippi



Source: B19113. MEDIAN FAMILY INCOME IN THE PAST 12 MONTHS (IN 2010 INFLATION-ADJUSTED DOLLARS)  
Data Set: 2008-2012 American Community Survey 5-Year Estimates

**B19202. MEDIAN NONFAMILY HOUSEHOLD INCOME IN THE PAST 12 MONTHS (IN 2010 INFLATION-ADJUSTED DOLLARS)**

Data Set: 2008-2012 American Community Survey 5-Year Estimates

	<b>Batesville city, Mississippi</b>			
	African American	Margin of Error (+/-)	White, Not Hispanic	Margin of Error (+/-)
Median nonfamily household income in the past 12 months (in 2010 inflation-adjusted dollars)	\$ 22,159	\$ 11,498	\$ 43,100	\$ 13,304

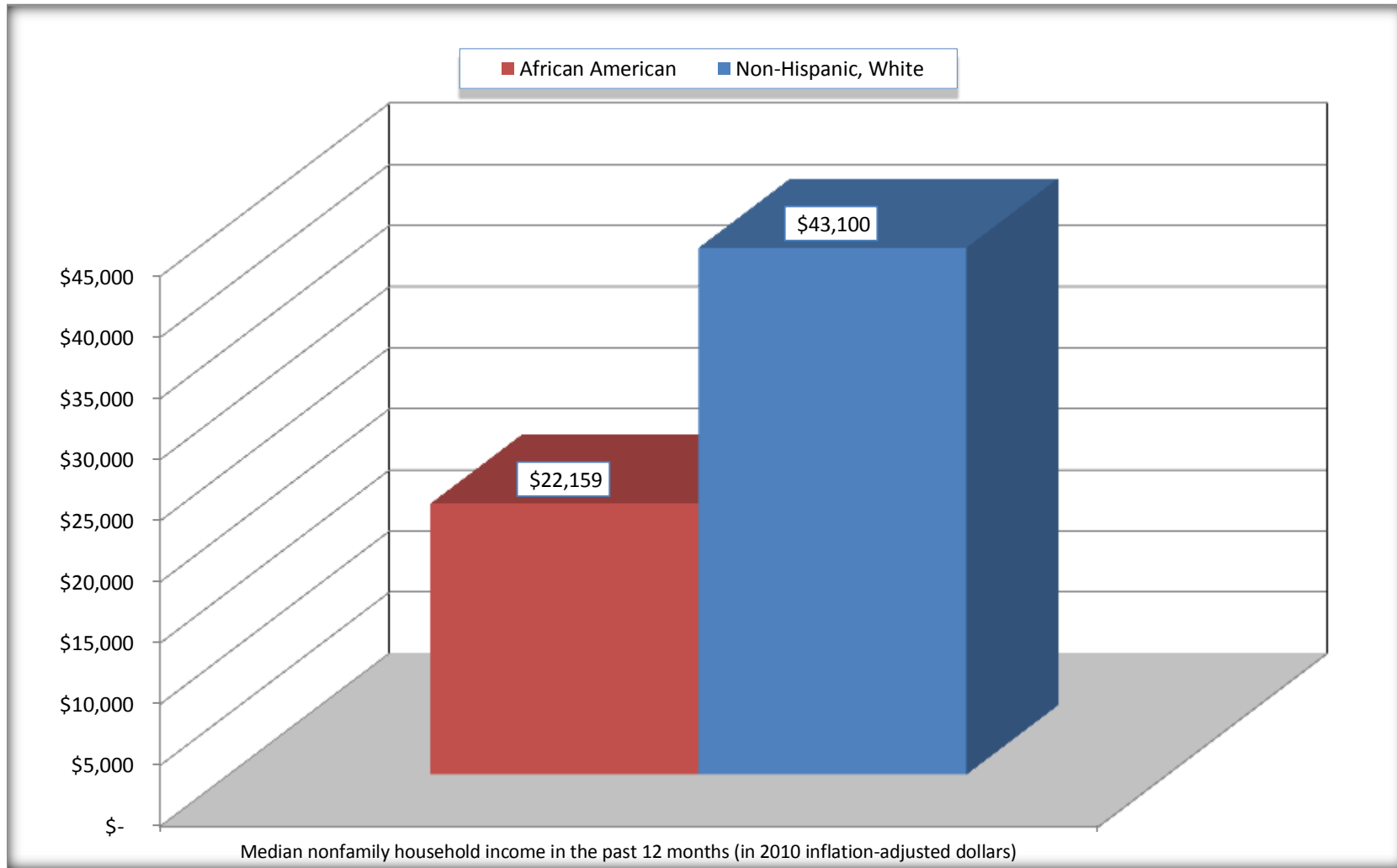
Source: U.S. Census Bureau, 2008-2012 American Community Survey

For information on confidentiality protection, sampling error, nonsampling error, and definitions, see Survey Methodology.

<http://www.census.gov/acs/www/UseData/index.htm>

# Median Non-Family Income in the Past 12 Months

## Batesville city, Mississippi



Source: B19202. MEDIAN NONFAMILY HOUSEHOLD INCOME IN THE PAST 12 MONTHS (IN 2010 INFLATION-ADJUSTED DOLLARS)  
Data Set: 2008-2012 American Community Survey 5-Year Estimates

**B19301. PER CAPITA INCOME IN THE PAST 12 MONTHS (IN 2010 INFLATION-ADJUSTED DOLLARS)**

Data Set: 2008-2012 American Community Survey 5-Year Estimates

	<b>Batesville city, Mississippi</b>			
	African American	Margin of Error (+/-)	White, Not Hispanic	Margin of Error (+/-)
Per capita income in the past 12 months (in 2010 inflation-adjusted dollars)	\$ 7,209	\$ 1,853	\$ 29,817	\$ 5,036

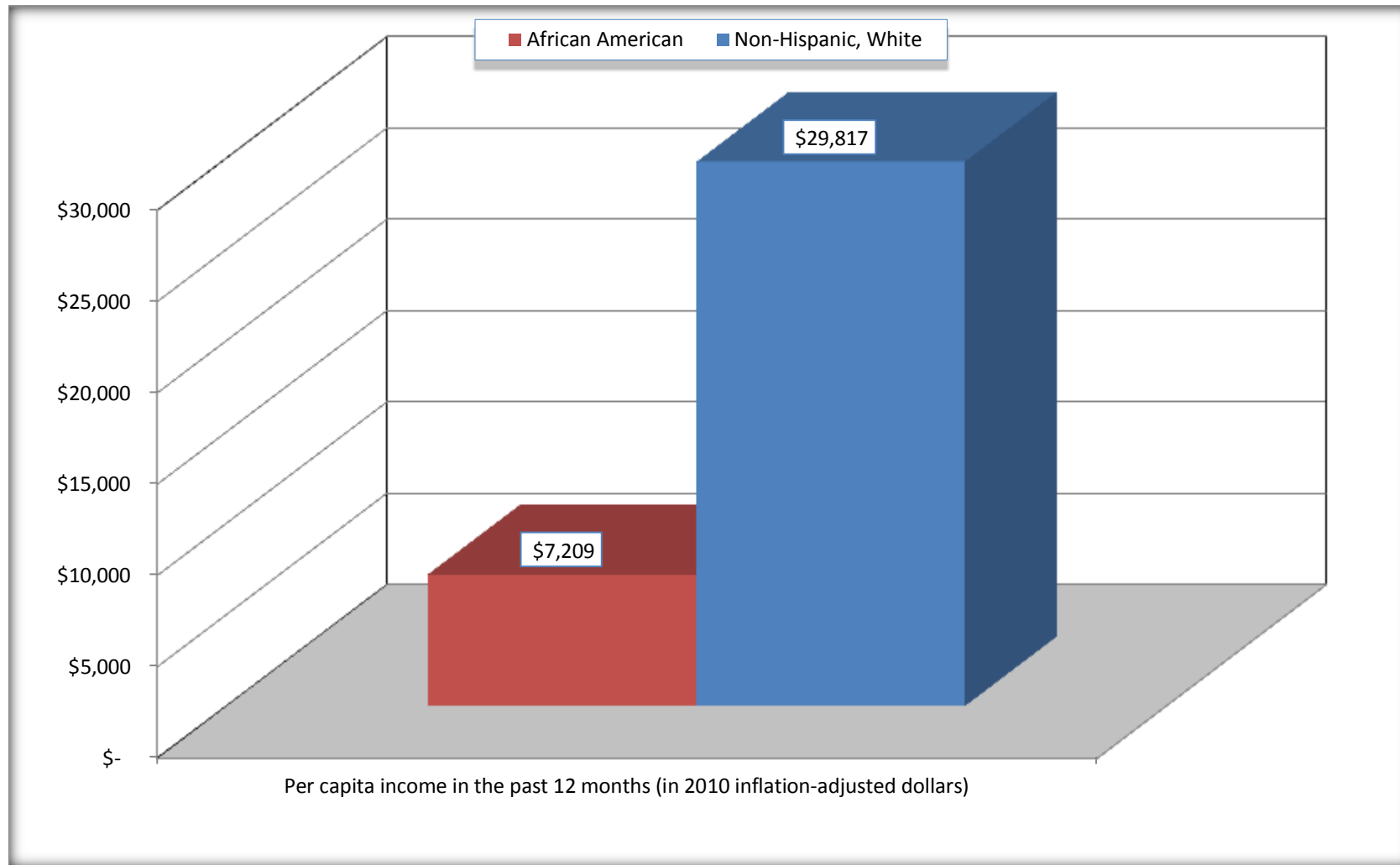
Source: U.S. Census Bureau, 2008-2012 American Community Survey

For information on confidentiality protection, sampling error, nonsampling error, and definitions, see Survey Methodology.

<http://www.census.gov/acs/www/UseData/index.htm>

## Per capita Income in the Past 12 Months

### Batesville city, Mississippi



Source: B19301. PER CAPITA INCOME IN THE PAST 12 MONTHS (IN 2010 INFLATION-ADJUSTED DOLLARS)  
Data Set: 2008-2012 American Community Survey 5-Year Estimates

**B20017. MEDIAN EARNINGS IN THE PAST 12 MONTHS (IN 2010 INFLATION-ADJUSTED DOLLARS) BY SEX BY WORK EXPERIENCE IN THE PAST 12 MONTHS FOR THE POPULATION 16 YEARS AND OVER WITH EARNINGS IN THE PAST 12 MONTHS**

Data Set: 2008-2012 American Community Survey 5-Year Estimates

	Batesville city, Mississippi			
	African American	Margin of Error (+/-)	White, Not Hispanic	Margin of Error (+/-)
Median earnings in the past 12 months (in 2010 inflation-adjusted dollars) --				
Total:	\$ 18,281	\$ 11,400	\$ 36,557	\$ 3,872
Male --				
Total	\$ 28,379	\$ 3,989	\$ 41,466	\$ 13,200
Worked full-time, year-round in the past 12 months	\$ 29,628	\$ 19,599	\$ 49,861	\$ 12,294
Other	\$ 7,275	\$ 16,148	\$ 10,354	\$ 6,592
Female --				
Total	\$ 7,463	\$ 12,777	\$ 32,378	\$ 6,347
Worked full-time, year-round in the past 12 months	\$ 25,333	\$ 6,063	\$ 39,926	\$ 7,341
Other	\$ 4,425	\$ 2,587	\$ 16,711	\$ 13,559

Source: U.S. Census Bureau, 2008-2012 American Community Survey

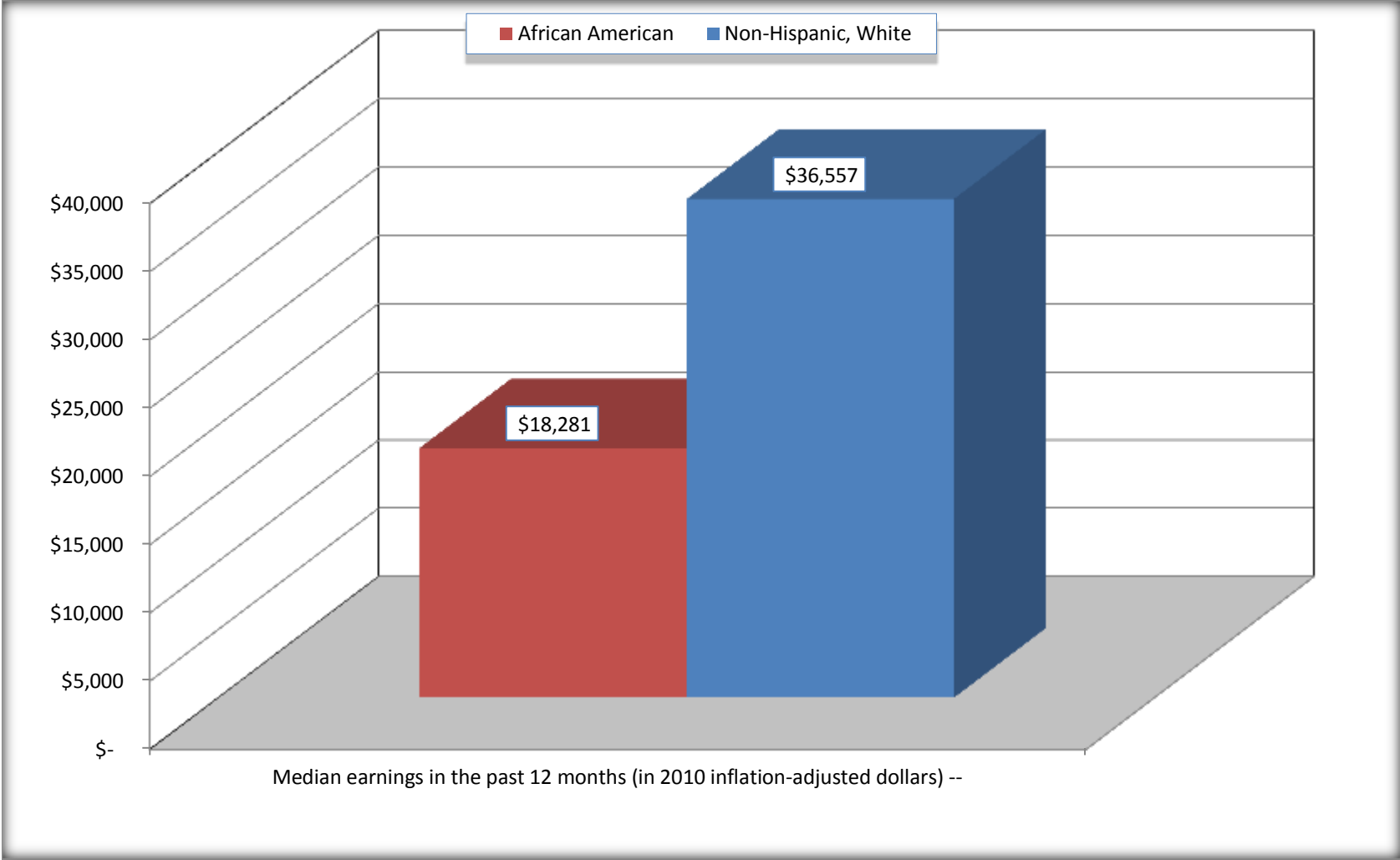
For information on confidentiality protection, sampling error, nonsampling error, and definitions, see Survey Methodology.

<http://www.census.gov/acs/www/UseData/index.htm>



# Median earnings in the Past 12 Months (16 Years and Over with Earnings)

## Batesville city, Mississippi



Source: B20017. MEDIAN EARNINGS IN THE PAST 12 MONTHS (IN 2010 INFLATION-ADJUSTED DOLLARS) BY SEX BY WORK EXPERIENCE IN THE PAST 12 MONTHS FOR THE POPULATION 16 YEARS AND OVER WITH EARNINGS IN THE PAST 12 MONTHS  
Data Set: 2008-2012 American Community Survey 5-Year Estimates

**B20005. SEX BY WORK EXPERIENCE IN THE PAST 12 MONTHS BY EARNINGS IN THE PAST 12 MONTHS (IN 2010 INFLATION-ADJUSTED DOLLARS) FOR THE POPULATION 16 YEARS AND OVER**

Data Set: 2008-2012 American Community Survey 5-Year Estimates

	Batesville city, Mississippi					
	African American	Margin of Error (+/-)	% of AA Total	White, Not Hispanic	Margin of Error (+/-)	% of NHW Total
<b>Total:</b>	<b>1,857</b>	<b>297</b>	<b>100.0%</b>	<b>3,477</b>	<b>375</b>	<b>100.0%</b>
Worked full-time, year-round in the past 12 months:	330	NC	17.8%	1,446	NC	41.6%
No earnings	0	NC	0.0%	16	NC	0.5%
With earnings:	330	NC	17.8%	1,430	NC	41.1%
\$ 1 to \$ 9,999 or loss	0	NC	0.0%	30	NC	0.9%
\$ 10,000 to \$ 19,999	15	NC	0.8%	99	NC	2.8%
\$ 20,000 to \$ 29,999	183	NC	9.9%	114	NC	3.3%
\$ 30,000 to \$ 49,999	73	NC	3.9%	574	NC	16.5%
\$ 50,000 to \$ 74,999	52	NC	2.8%	388	NC	11.2%
\$ 75,000 or more	7	NC	0.4%	225	NC	6.5%
Other:	1,527	NC	82.2%	2,031	NC	58.4%
No earnings	1,060	NC	57.1%	1,402	NC	40.3%
With earnings: less than full time, year-round	467	NC	25.1%	629	NC	18.1%
Male:	803	198	43.2%	1,694	230	48.7%
Worked full-time, year-round in the past 12 months:	156	94	8.4%	767	153	22.1%
No earnings	0	17	0.0%	0	17	0.0%
With earnings:	156	94	8.4%	767	153	22.1%
\$ 1 to \$ 9,999 or loss	0	NC	0.0%	30	NC	0.9%
\$ 10,000 to \$ 19,999	0	NC	0.0%	10	NC	0.3%
\$ 20,000 to \$ 29,999	85	NC	4.6%	31	NC	0.9%
\$ 30,000 to \$ 49,999	49	NC	2.6%	315	NC	9.1%
\$ 50,000 to \$ 74,999	15	NC	0.8%	182	NC	5.2%
\$ 75,000 or more	7	NC	0.4%	199	NC	5.7%

	Batesville city, Mississippi					
	African American	Margin of Error (+/-)	% of AA Total	White, Not Hispanic	Margin of Error (+/-)	% of NHW Total
Other:	647	199	34.8%	927	191	26.7%
No earnings	520	177	28.0%	680	181	19.6%
With earnings:	127	81	6.8%	247	125	7.1%
Female:	1,054	177	56.8%	1,783	238	51.3%
Worked full-time, year-round in the past 12 months:	174	88	9.4%	679	144	19.5%
No earnings	0	17	0.0%	16	25	0.5%
With earnings:	174	88	9.4%	663	138	19.1%
\$ 1 to \$ 9,999 or loss	0	NC	0.0%	0	NC	0.0%
\$ 10,000 to \$ 19,999	15	NC	0.8%	89	NC	2.6%
\$ 20,000 to \$ 29,999	98	NC	5.3%	83	NC	2.4%
\$ 30,000 to \$ 49,999	24	NC	1.3%	259	NC	7.4%
\$ 50,000 to \$ 74,999	37	NC	2.0%	206	NC	5.9%
\$ 75,000 or more	0	NC	0.0%	26	NC	0.7%
Other:	880	169	47.4%	1,104	191	31.8%
No earnings	540	145	29.1%	722	144	20.8%
With earnings:	340	128	18.3%	382	138	11.0%

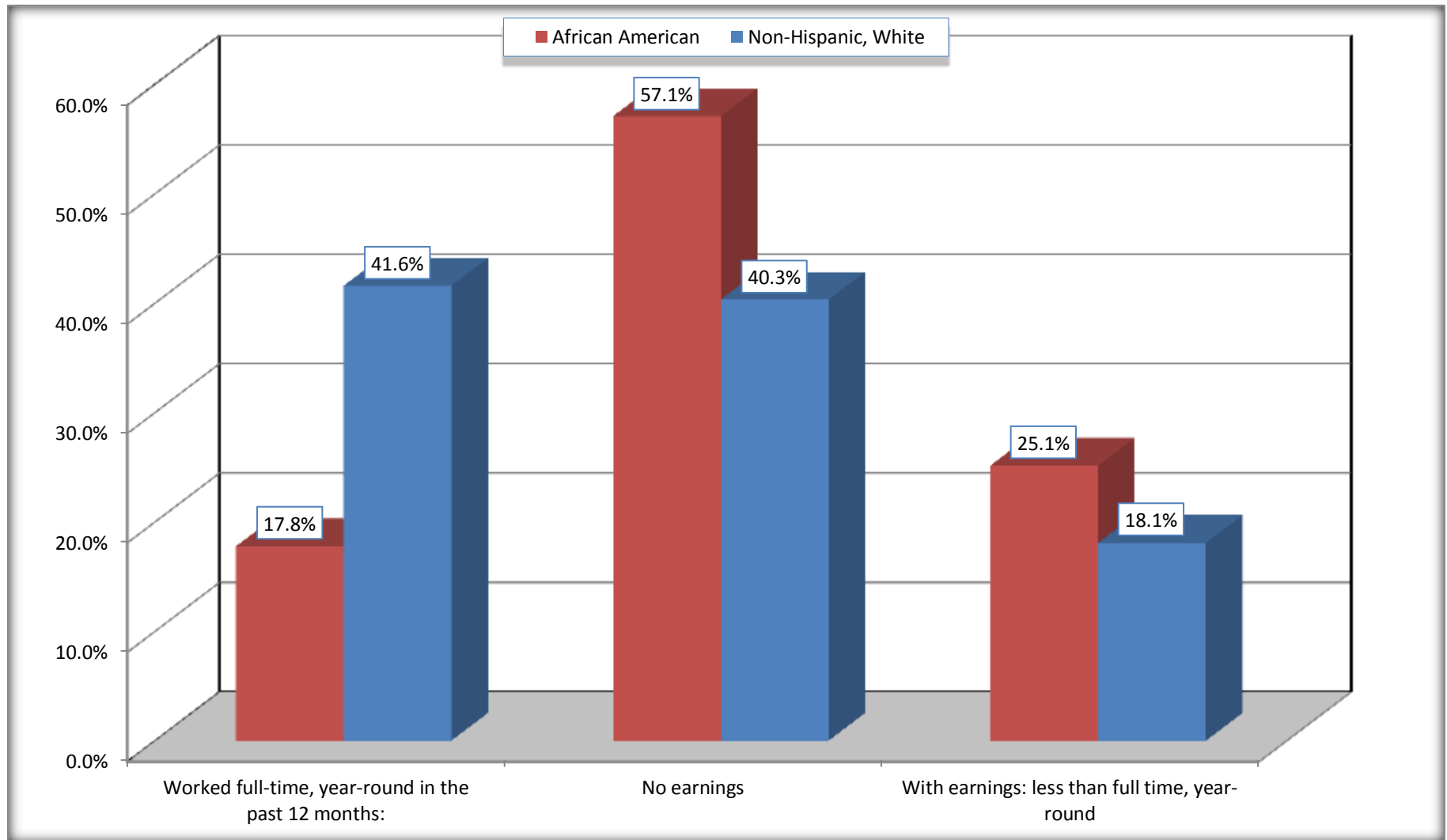
Source: U.S. Census Bureau, 2008-2012 American Community Survey

For information on confidentiality protection, sampling error, nonsampling error, and definitions, see Survey Methodology.

<http://www.census.gov/acs/www/UseData/index.htm>

# Employment and Earnings in in the Past 12 Months (16 Years and Over)

## Batesville city, Mississippi



Source: B20005. SEX BY WORK EXPERIENCE IN THE PAST 12 MONTHS BY EARNINGS IN THE PAST 12 MONTHS (IN 2010 INFLATION-ADJUSTED DOLLARS) FOR THE POPULATION 16 YEARS AND OVER

Data Set: 2008-2012 American Community Survey 5-Year Estimates

**C21001. SEX BY AGE BY VETERAN STATUS FOR THE CIVILIAN POPULATION 18 YEARS AND OVER**

Data Set: 2008-2012 American Community Survey 5-Year Estimates

	Batesville city, Mississippi					
	African American	Margin of Error (+/-)	% of AA Total	White, Not Hispanic	Margin of Error (+/-)	% of NHW Total
<b>Total:</b>	<b>1,647</b>	<b>261</b>	<b>100.0%</b>	<b>3,272</b>	<b>357</b>	<b>100.0%</b>
Veteran	60	NC	3.6%	302	NC	9.2%
Nonveteran	1,587	NC	96.4%	2,970	NC	90.8%
Male:	688	156	41.8%	1,603	220	49.0%
18 to 64 years:	574	139	34.9%	1,221	203	37.3%
Veteran	31	32	1.9%	40	34	1.2%
Nonveteran	543	139	33.0%	1,181	201	36.1%
65 years and over:	114	56	6.9%	382	107	11.7%
Veteran	29	32	1.8%	262	101	8.0%
Nonveteran	85	50	5.2%	120	60	3.7%
Female:	959	176	58.2%	1,669	224	51.0%
18 to 64 years:	854	169	51.9%	1,223	216	37.4%
Veteran	0	17	0.0%	0	17	0.0%
Nonveteran	854	169	51.9%	1,223	216	37.4%
65 years and over:	105	58	6.4%	446	102	13.6%
Veteran	0	17	0.0%	0	17	0.0%
Nonveteran	105	58	6.4%	446	102	13.6%

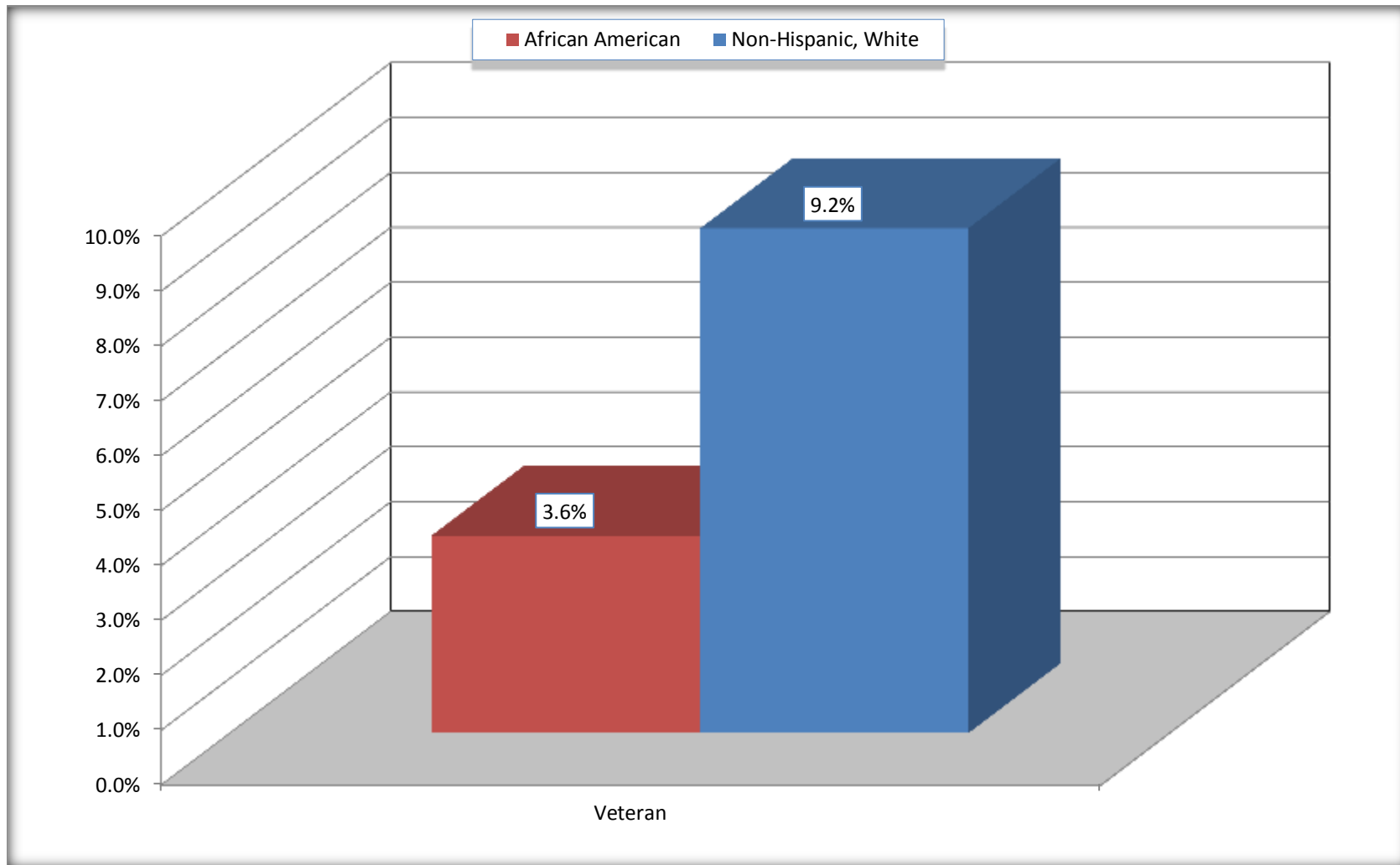
Source: U.S. Census Bureau, 2008-2012 American Community Survey

For information on confidentiality protection, sampling error, nonsampling error, and definitions, see Survey Methodology.

<http://www.census.gov/acs/www/UseData/index.htm>

# Veterans in the Civilian Population 18 Years and Over

## Batesville city, Mississippi



Source: C21001. SEX BY AGE BY VETERAN STATUS FOR THE CIVILIAN POPULATION 18 YEARS AND OVER  
Data Set: 2008-2012 American Community Survey 5-Year Estimates

**B22005. RECEIPT OF FOOD STAMPS/SNAP IN THE PAST 12 MONTHS BY RACE OF HOUSEHOLDER**

Data Set: 2008-2012 American Community Survey 5-Year Estimates

	<b>Batesville city, Mississippi</b>					
	African American	Margin of Error (+/-)	% of AA Total	White, Not Hispanic	Margin of Error (+/-)	% of NHW Total
<b>Total:</b>	<b>870</b>	<b>138</b>	<b>100.0%</b>	<b>1,676</b>	<b>233</b>	<b>100.0%</b>
HH received Food Stamps/SNAP in the past 12 months	272	125	31.3%	45	49	2.7%
HH did not receive Food Stamps/SNAP in the past 12 months	598	172	68.7%	1,631	226	97.3%

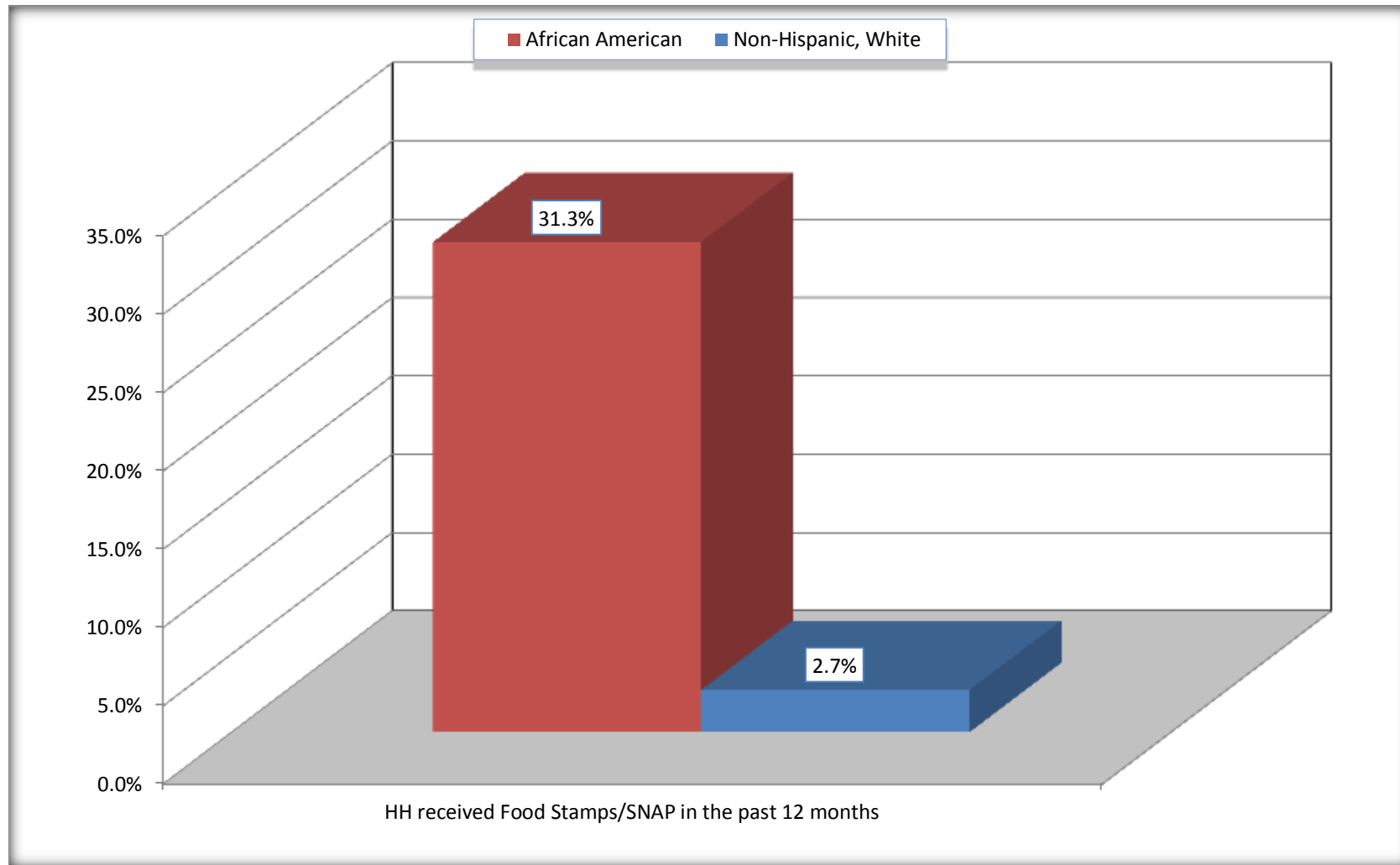
Source: U.S. Census Bureau, 2008-2012 American Community Survey

For information on confidentiality protection, sampling error, nonsampling error, and definitions, see Survey Methodology.

<http://www.census.gov/acs/www/UseData/index.htm>

# Receipt of Food Stamps/SNAP in the Past 12 Months by Household

## Batesville city, Mississippi



Source: B22005. RECEIPT OF FOOD STAMPS/SNAP IN THE PAST 12 MONTHS BY RACE OF HOUSEHOLDER  
Data Set: 2008-2012 American Community Survey 5-Year Estimates



**C23002. SEX BY AGE BY EMPLOYMENT STATUS FOR THE POPULATION 16 YEARS AND OVER**

Data Set: 2008-2012 American Community Survey 5-Year Estimates

	Batesville city, Mississippi					
	African American	Margin of Error (+/-)	% of AA Total	White, Not Hispanic	Margin of Error (+/-)	% of NHW Total
<b>Total:</b>	<b>1,857</b>	<b>297</b>	<b>100.0%</b>	<b>3,477</b>	<b>375</b>	<b>100.0%</b>
In labor force:	778	NC	41.9%	1,902	NC	54.7%
In Armed Forces	0	NC	0.0%	0	NC	0.0%
Civilian:	765	NC	41.2%	1,794	NC	51.6%
Employed	535	NC	28.8%	1,872	NC	53.8%
Unemployed	243	NC	13.1%	30	NC	0.9%
Not in labor force	1,079	NC	58.1%	1,575	NC	45.3%
Male:	803	198	43.2%	1,694	230	48.7%
16 to 64 years:	689	184	37.1%	1,312	217	37.7%
In labor force:	278	107	15.0%	878	201	25.3%
In Armed Forces	0	17	0.0%	0	17	0.0%
Civilian:	278	107	15.0%	878	201	25.3%
Employed	231	111	12.4%	860	202	24.7%
Unemployed	47	51	2.5%	18	33	0.5%
Not in labor force	411	175	22.1%	434	162	12.5%
65 years and over:	114	56	6.1%	382	107	11.0%
In labor force:	13	20	0.7%	79	61	2.3%
Employed	13	20	0.7%	79	61	2.3%
Unemployed	0	17	0.0%	0	17	0.0%
Not in labor force	101	56	5.4%	303	106	8.7%

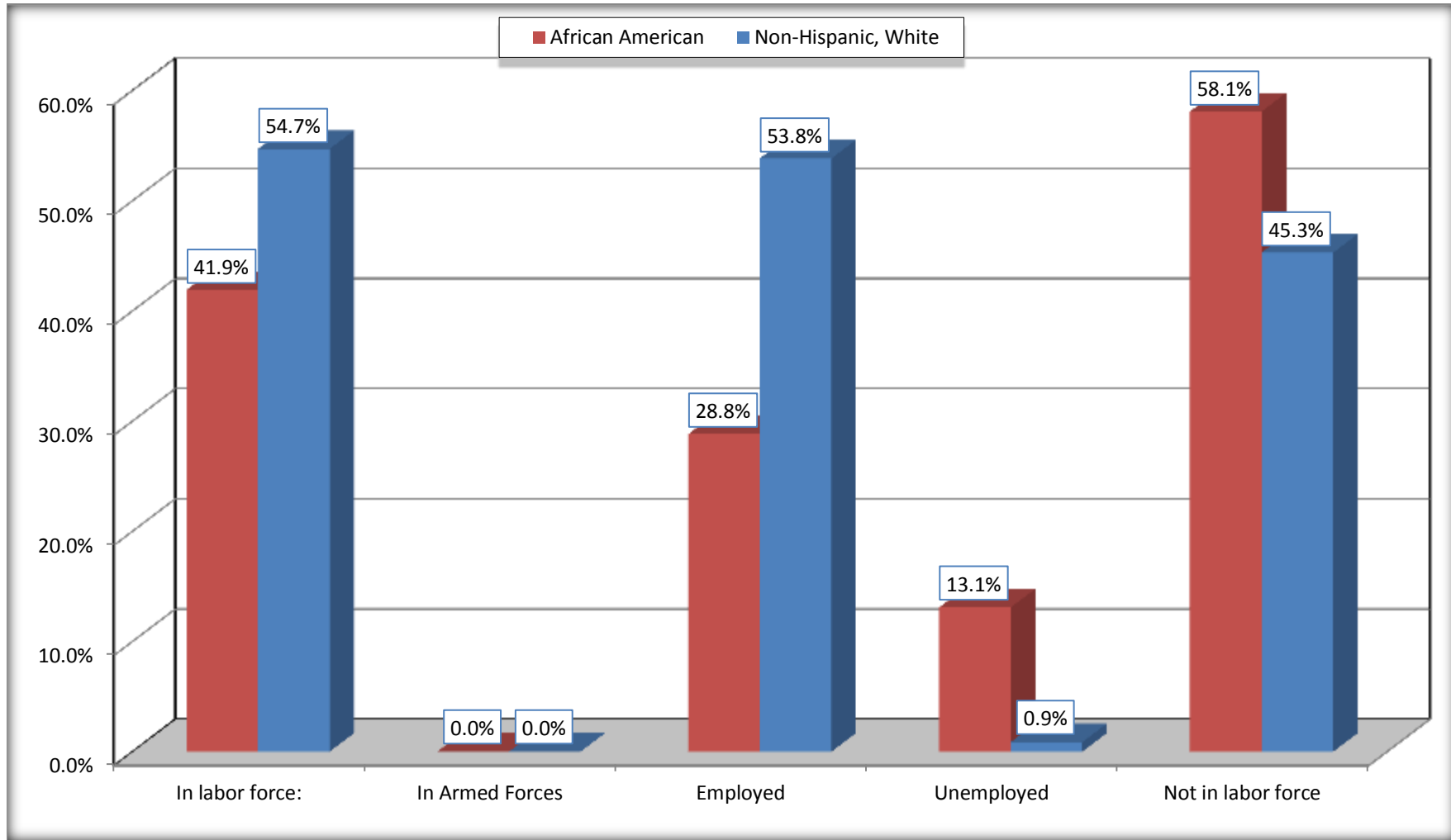
	Batesville city, Mississippi					
	African American	Margin of Error (+/-)	% of AA Total	White, Not Hispanic	Margin of Error (+/-)	% of NHW Total
Female:	1,054	177	56.8%	1,783	238	51.3%
16 to 64 years:	949	170	51.1%	1,337	235	38.5%
In labor force:	487	146	26.2%	916	201	26.3%
In Armed Forces	0	17	0.0%	0	17	0.0%
Civilian:	487	146	26.2%	916	201	26.3%
Employed	291	122	15.7%	904	200	26.0%
Unemployed	196	144	10.6%	12	26	0.3%
Not in labor force	462	177	24.9%	421	117	12.1%
65 years and over:	105	58	5.7%	446	102	12.8%
In labor force:	0	17	0.0%	29	32	0.8%
Employed	0	17	0.0%	29	32	0.8%
Unemployed	0	17	0.0%	0	17	0.0%
Not in labor force	105	58	5.7%	417	104	12.0%

Source: U.S. Census Bureau, 2008-2012 American Community Survey

For information on confidentiality protection, sampling error, nonsampling error, and definitions, see Survey Methodology.  
<http://www.census.gov/acs/www/UseData/index.htm>

# Employment Status for the Population 16 years and over

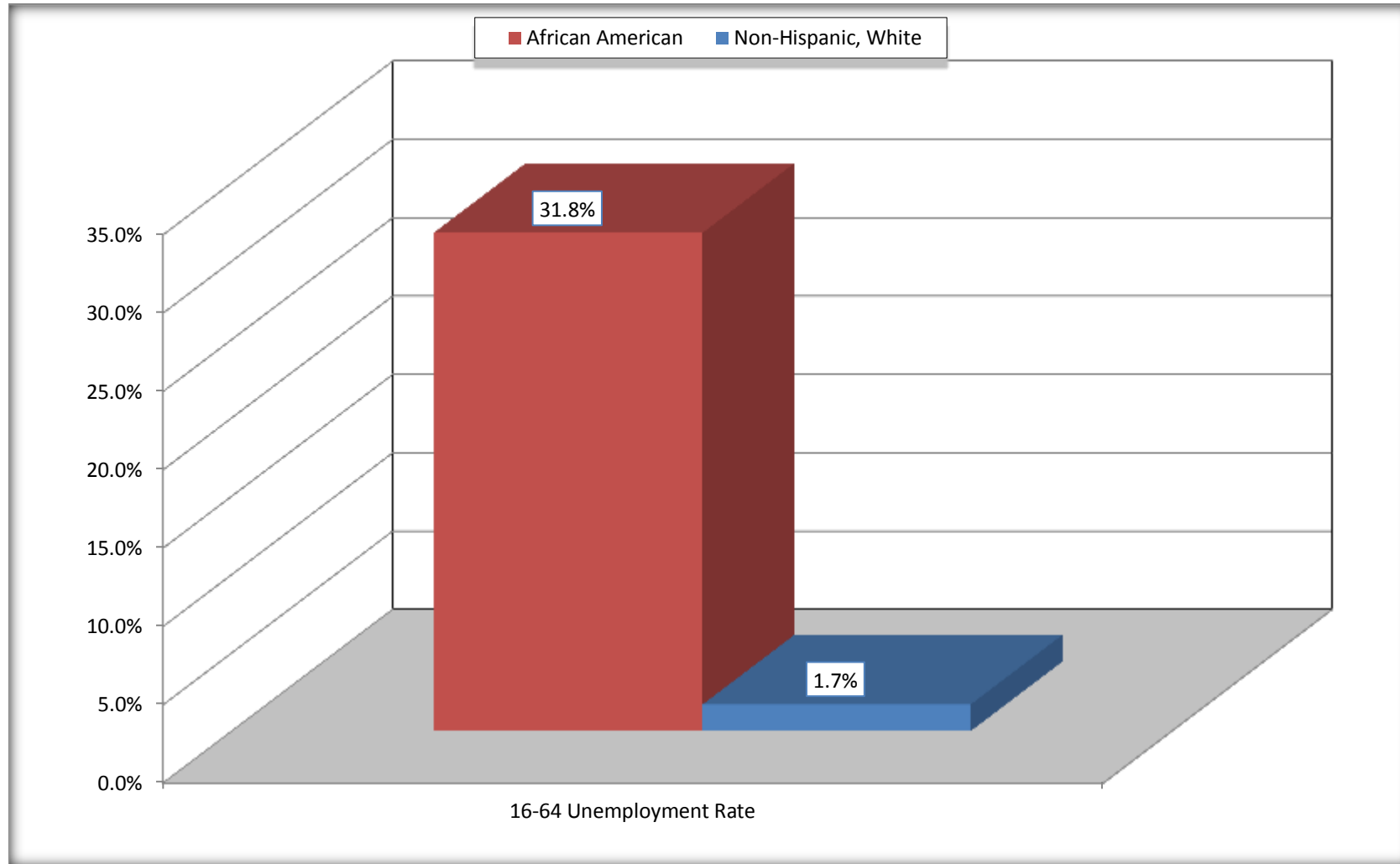
## Batesville city, Mississippi



Source: C23002. SEX BY AGE BY EMPLOYMENT STATUS FOR THE POPULATION 16 YEARS AND OVER  
Data Set: 2008-2012 American Community Survey 5-Year Estimates

# Unemployment of Working Age Population (Ages 16 to 64) (As a Percent of 16-64 Civilian Labor Force)

## Batesville city, Mississippi



Source: C23002. SEX BY AGE BY EMPLOYMENT STATUS FOR THE POPULATION 16 YEARS AND OVER  
Data Set: 2008-2012 American Community Survey 5-Year Estimates

**C24010. SEX BY OCCUPATION FOR THE CIVILIAN EMPLOYED POPULATION 16 YEARS AND OVER**

Data Set: 2008-2012 American Community Survey 5-Year Estimates

	Batesville city, Mississippi					
	African American	Margin of Error (+/-)	% of AA Total	White, Not Hispanic	Margin of Error (+/-)	% of NHW Total
<b>Total:</b>	<b>535</b>	<b>177</b>	<b>100.0%</b>	<b>1,872</b>	<b>271</b>	<b>100.0%</b>
Management, professional, and related occupations	156	NC	29.2%	909	NC	48.6%
Service occupations	139	NC	26.0%	223	NC	11.9%
Sales and office occupations	89	NC	16.6%	414	NC	22.1%
Natural resources, construction, and maintenance occupations:	3	NC	0.6%	128	NC	6.8%
Production, transportation, and material moving occupations	148	NC	27.7%	198	NC	10.6%
Male:	244	110	45.6%	939	195	50.2%
Management, business, science, and arts occupations:	68	69	12.7%	454	189	24.3%
Service occupations	64	63	12.0%	53	47	2.8%
Sales and office occupations	21	26	3.9%	183	107	9.8%
Natural resources, construction, and maintenance occupations:	3	7	0.6%	128	77	6.8%
Production, transportation, and material moving occupations	88	50	16.4%	121	83	6.5%
Female:	291	122	54.4%	933	201	49.8%
Management, professional, and related occupations	88	74	16.4%	455	161	24.3%
Service occupations	75	57	14.0%	170	88	9.1%
Sales and office occupations	68	60	12.7%	231	82	12.3%
Natural resources, construction, and maintenance occupations:	0	17	0.0%	0	17	0.0%
Production, transportation, and material moving occupations	60	53	11.2%	77	76	4.1%

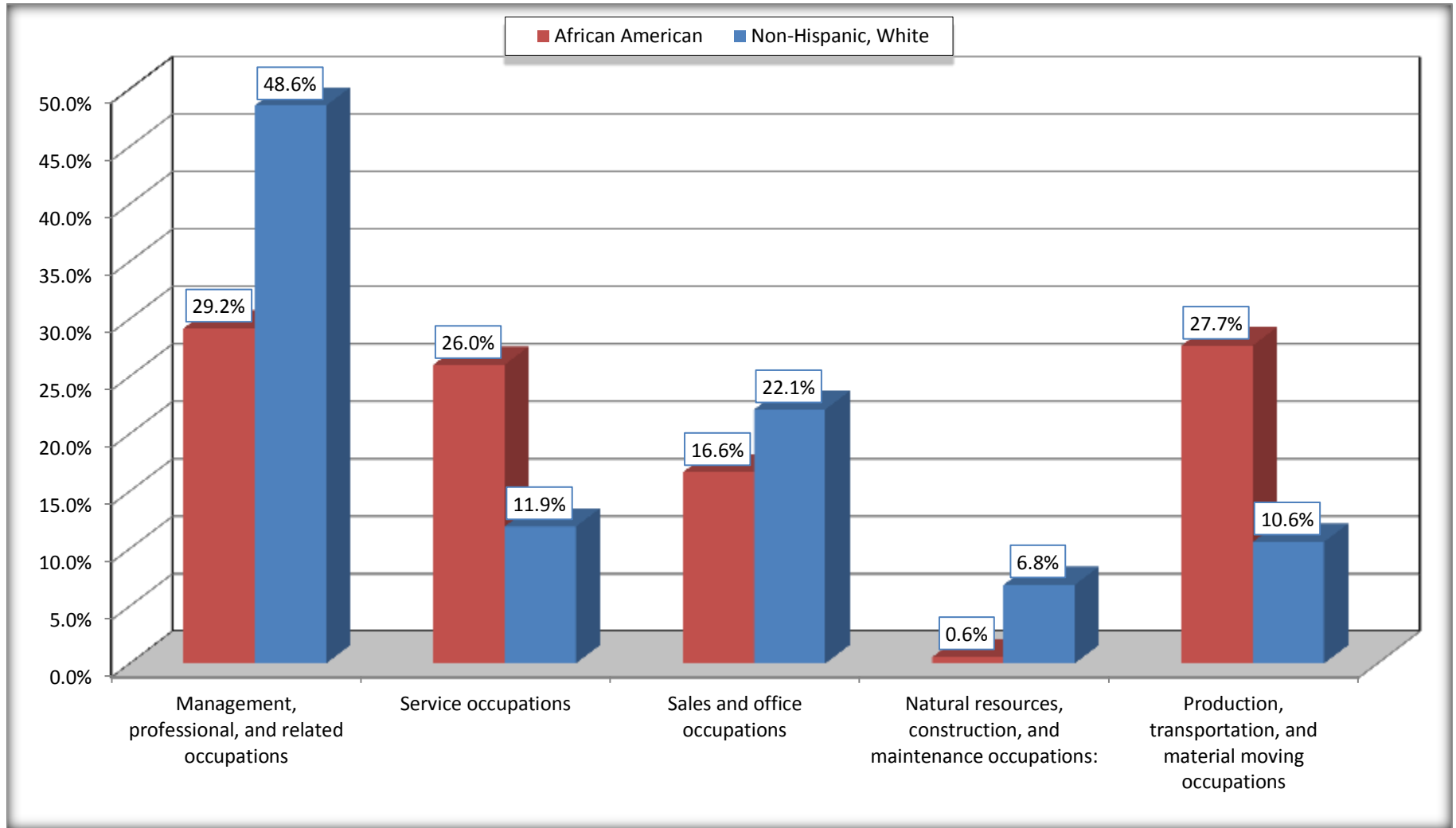
Source: U.S. Census Bureau, 2008-2012 American Community Survey

For information on confidentiality protection, sampling error, nonsampling error, and definitions, see Survey Methodology.

<http://www.census.gov/acs/www/UseData/index.htm>

# Occupation for the Civilian Employed 16 Years and Over Population

## Batesville city, Mississippi



Source: C24010. SEX BY OCCUPATION FOR THE CIVILIAN EMPLOYED POPULATION 16 YEARS AND OVER  
Data Set: 2008-2012 American Community Survey 5-Year Estimates

**B25003. TENURE - Universe: OCCUPIED HOUSING UNITS**

Data Set: 2008-2012 American Community Survey 5-Year Estimates

	<b>Batesville city, Mississippi</b>					
	African American	Margin of Error (+/-)	% of AA Total	White, Not Hispanic	Margin of Error (+/-)	% of NHW Total
<b>Total:</b>	<b>870</b>	<b>138</b>	<b>100.0%</b>	<b>1,676</b>	<b>233</b>	<b>100.0%</b>
Owner occupied	422	122	48.5%	1,289	197	76.9%
Renter occupied	448	128	51.5%	387	133	23.1%

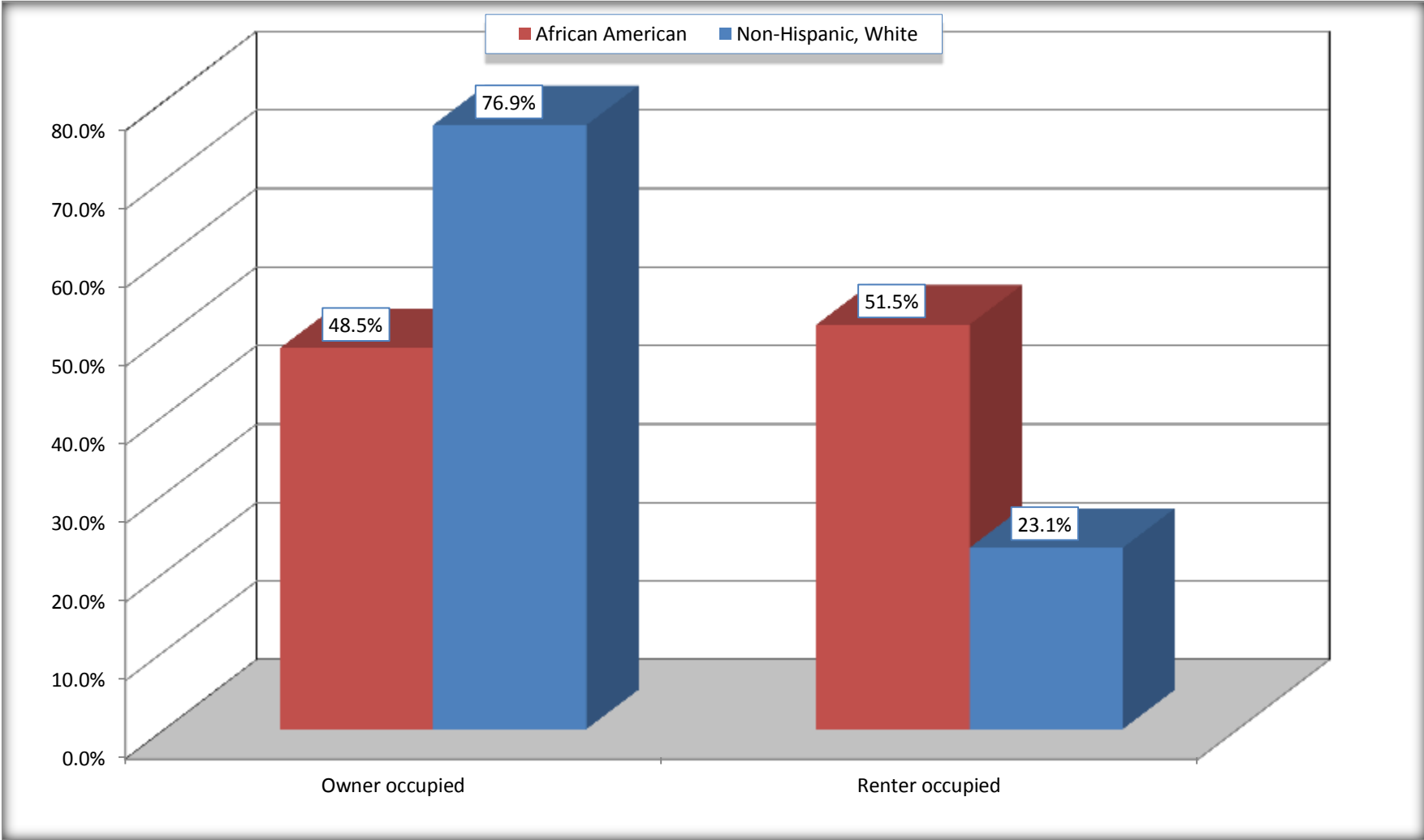
Source: U.S. Census Bureau, 2008-2012 American Community Survey

For information on confidentiality protection, sampling error, nonsampling error, and definitions, see Survey Methodology.

<http://www.census.gov/acs/www/UseData/index.h>

# Home Owners and Renters by Household

## Batesville city, Mississippi



Source: B25003. TENURE - Universe: OCCUPIED HOUSING UNITS  
Data Set: 2008-2012 American Community Survey 5-Year Estimates



**B25014. OCCUPANTS PER ROOM - Universe: OCCUPIED HOUSING UNITS**

Data Set: 2008-2012 American Community Survey 5-Year Estimates

	Batesville city, Mississippi					
	African American	Margin of Error (+/-)	% of AA Total	White, Not Hispanic	Margin of Error (+/-)	% of NHW Total
<b>Total:</b>	<b>870</b>	<b>138</b>	<b>100.0%</b>	<b>1,676</b>	<b>233</b>	<b>100.0%</b>
1.00 or less occupants per room	857	139	98.5%	1,676	233	100.0%
1.01 or more occupants per room	13	20	1.5%	0	17	0.0%

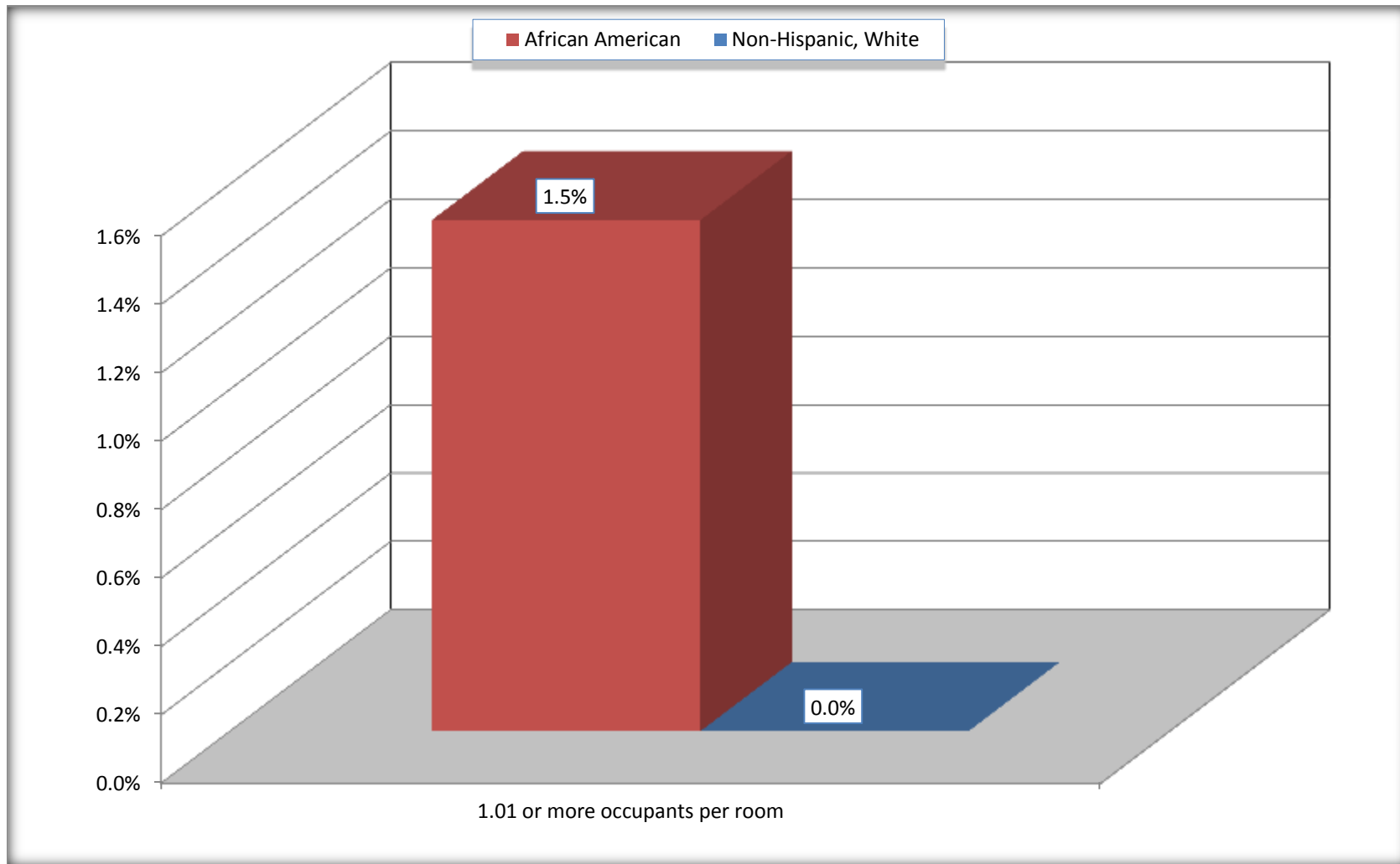
Source: U.S. Census Bureau, 2008-2012 American Community Survey

For information on confidentiality protection, sampling error, nonsampling error, and definitions, see Survey Methodology.

<http://www.census.gov/acs/www/UseData/index.ht>

# More than One Person per Room (Crowding) by Household

## Batesville city, Mississippi



Source: B25014. OCCUPANTS PER ROOM - Universe: OCCUPIED HOUSING UNITS  
Data Set: 2008-2012 American Community Survey 5-Year Estimates

**B18101. AGE BY DISABILITY STATUS**

Data Set: 2008-2012 American Community Survey 5-Year Estimates

	<b>Batesville city, Mississippi</b>					
	African American	Margin of Error (+/-)	% of AA Total	White, Not Hispanic	Margin of Error (+/-)	% of NHW Total
<b>Total:</b>	<b>3,125</b>	<b>441</b>	<b>100.0%</b>	<b>4,246</b>	<b>445</b>	<b>100.0%</b>
Under 18 years:	1,516	366	48.5%	1,017	39	24.0%
With a disability	105	155	3.4%	29	44	0.7%
No disability	1,411	334	45.2%	988	214	23.3%
18 to 64 years:	1,408	232	45.1%	2,442	323	57.5%
With a disability	320	153	10.2%	291	144	6.9%
No disability	1,088	189	34.8%	2,151	273	50.7%
65 years and over:	201	100	6.4%	787	185	18.5%
With a disability	37	34	1.2%	368	128	8.7%
No disability	164	107	5.2%	419	124	9.9%

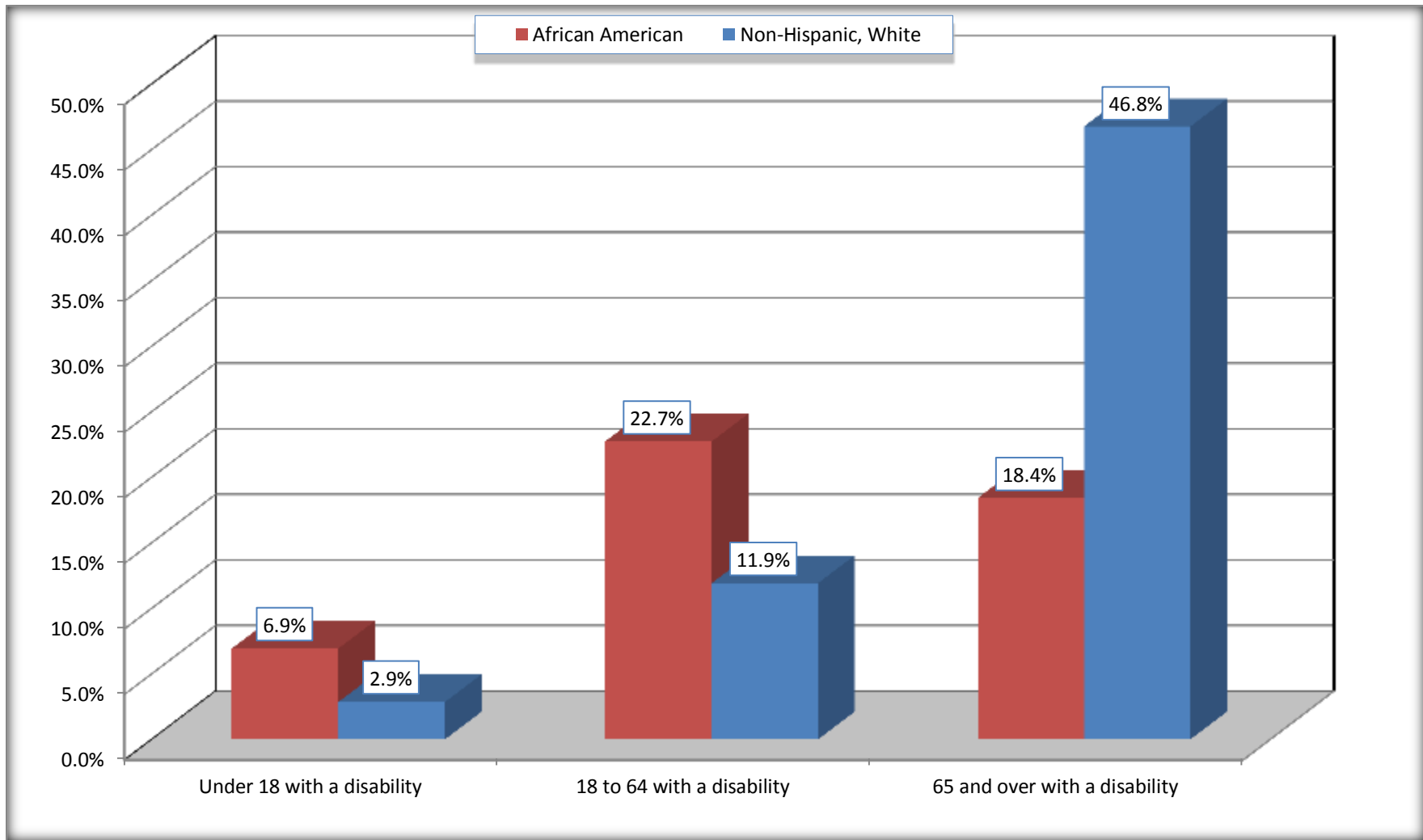
Source: U.S. Census Bureau, 2008-2012 American Community Survey

For information on confidentiality protection, sampling error, nonsampling error, and definitions, see Survey Methodology.

<http://www.census.gov/acs/www/UseData/index.htm>

# Disability by Age

## Batesville city, Mississippi



Source: B18101. AGE BY DISABILITY STATUS  
Data Set: 2008-2012 American Community Survey 5-Year Estimates

**C27001B. HEALTH INSURANCE COVERAGE STATUS BY AGE**

Data Set: 2008-2012 American Community Survey 5-Year Estimates

	<b>Batesville city, Mississippi</b>					
	African American	Margin of Error (+/-)	% of AA Total	White, Not Hispanic	Margin of Error (+/-)	% of NHW Total
<b>Total:</b>	<b>3,125</b>	<b>441</b>	<b>100.0%</b>	<b>4,246</b>	<b>445</b>	<b>100.0%</b>
Under 18 years:	1,516	366	48.5%	1,017	216	24.0%
With health insurance coverage	1,516	366	48.5%	919	203	21.6%
No health insurance coverage	0	17	0.0%	98	131	2.3%
18 to 64 years:	1,408	232	45.1%	2,442	323	57.5%
With health insurance coverage	952	265	30.5%	2,050	358	48.3%
No health insurance coverage	456	185	14.6%	392	167	9.2%
65 years and over:	201	100	6.4%	787	185	18.5%
With health insurance coverage	201	100	6.4%	787	185	18.5%
No health insurance coverage	0	17	0.0%	0	17	0.0%

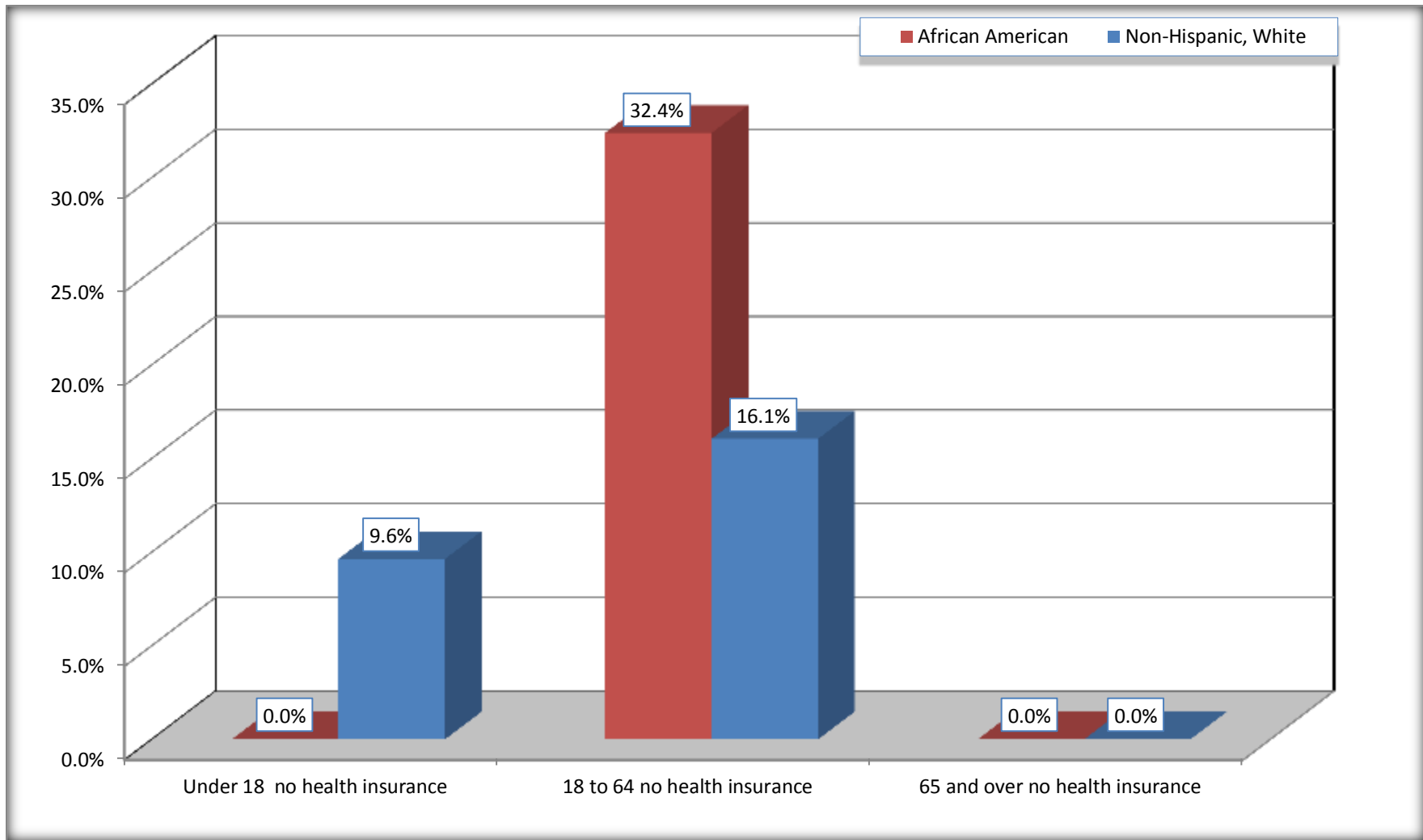
Source: U.S. Census Bureau, 2008-2012 American Community Survey

For information on confidentiality protection, sampling error, nonsampling error, and definitions, see Survey Methodology.

<http://www.census.gov/acs/www/UseData/index.htm>

# Lack of Health Insurance Coverage by Age

## Batesville city, Mississippi



Source: C27001B. HEALTH INSURANCE COVERAGE STATUS BY AGE  
Data Set: 2008-2012 American Community Survey 5-Year Estimates