

Selected Socio-Economic Data

Ionia city, Michigan

African American and White, Not Hispanic

Data Set: 2008-2012 American Community Survey 5-Year Estimates

www.fairvote2020.org

www.fairdata2000.com

[29-Dec-13](#)

C02003.DETAILED RACE - Universe: TOTAL POPULATION

Data Set: 2008-2012 American Community Survey 5-Year Estimates

	Ionia city, Michigan		
	Population	Margin of Error (+/-)	% of Total
Total:	11,602	34	100.0%
Population of one race:	11,045	158	95.2%
White	8,525	355	73.5%
Black or African American	2,169	325	18.7%
American Indian and Alaska Native	77	49	0.7%
Asian alone	29	30	0.2%
Native Hawaiian and Other Pacific Islander	0	16	0.0%
Some other race	245	149	2.1%
Population of two or more races:	557	146	4.8%
Two races including Some other race	254	99	2.2%
Two races excluding Some other race, and three or more races	303	125	2.6%
Population of two races:	546	147	4.7%
White; Black or African American	133	110	1.1%
White; American Indian and Alaska Native	83	59	0.7%
White; Asian	24	28	0.2%
Black or African American; American Indian and Alaska Native	36	25	0.3%
All other two race combinations	270	101	2.3%
Population of three races	11	15	0.1%
Population of four or more races	0	16	0.0%

Note: Hispanics may be of any race. See Table B03002 and chart.

Source: U.S. Census Bureau, 2008-2012 American Community Survey

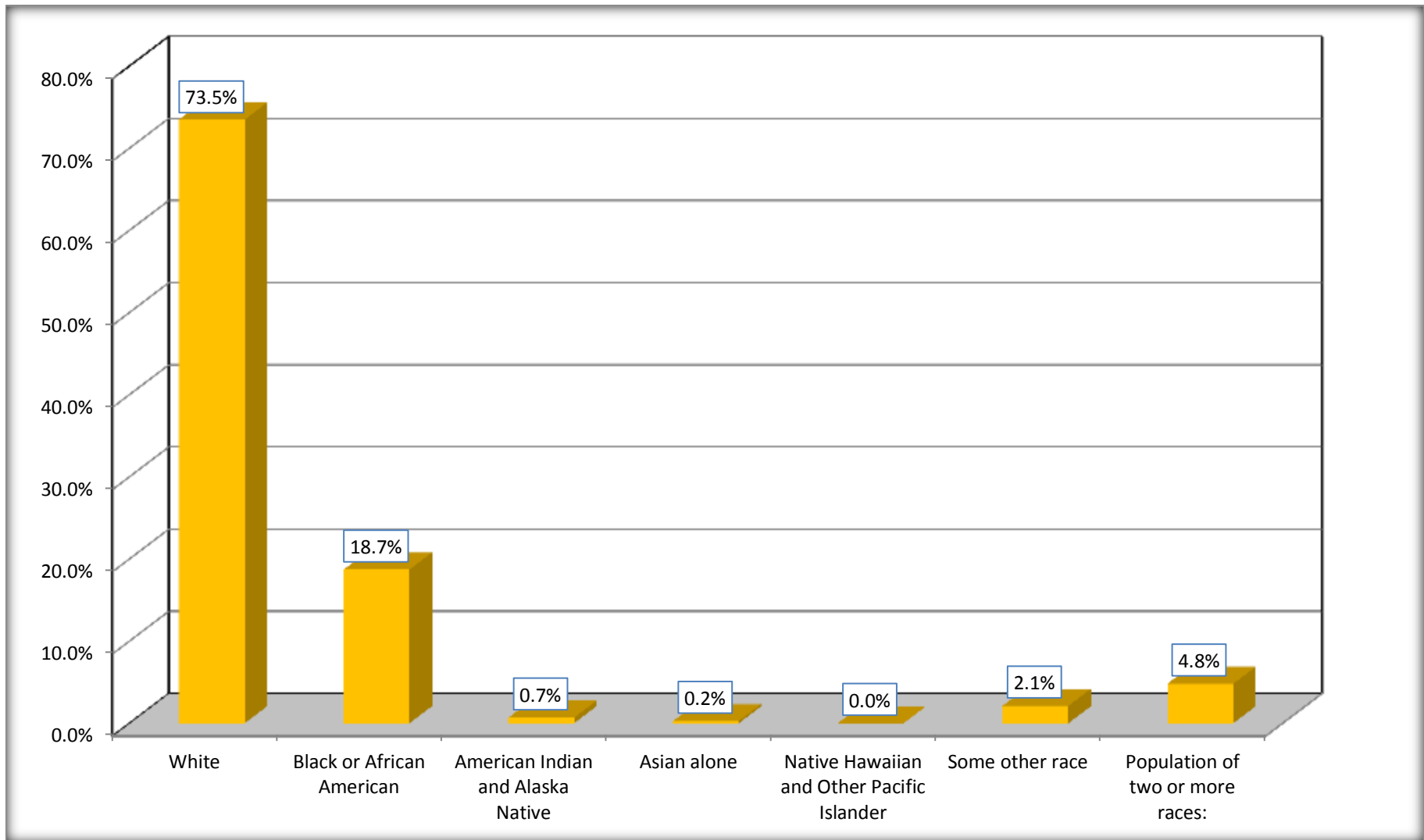
Although the American Community Survey (ACS) produces population, demographic and housing unit estimates, it is the Census Bureau's Population Estimates Program that produces and disseminates the official estimates of the population for the nation, states, counties, cities and towns and estimates of housing units for states and counties.

For information on confidentiality protection, sampling error, nonsampling error, and definitions, see Survey Methodology.

<http://www.census.gov/acs/www/UseData/index.htm>

Population by Race

Ionia city, Michigan



Source: C02003.DETAILED RACE - Universe: TOTAL POPULATION
Data Set: 2008-2012 American Community Survey 5-Year Estimates

B03002. HISPANIC OR LATINO ORIGIN BY RACE - Universe: TOTAL POPULATION

Data Set: 2008-2012 American Community Survey 5-Year Estimates

	Ionia city, Michigan		
	Population	Margin of Error (+/-)	% of Total
Total:	11,602	34	100.0%
Not Hispanic or Latino:	10,810	203	93.2%
White alone	8,239	362	71.0%
Black or African American alone	2,080	313	17.9%
American Indian and Alaska Native alone	57	44	0.5%
Asian alone	29	30	0.2%
Native Hawaiian and Other Pacific Islander alone	0	16	0.0%
Some other race alone	26	27	0.2%
Two or more races:	379	111	3.3%
Two races including Some other race	108	52	0.9%
Two races excluding Some other race, and three or more races	271	104	2.3%
Hispanic or Latino	792	204	6.8%

Source: U.S. Census Bureau, 2008-2012 American Community Survey

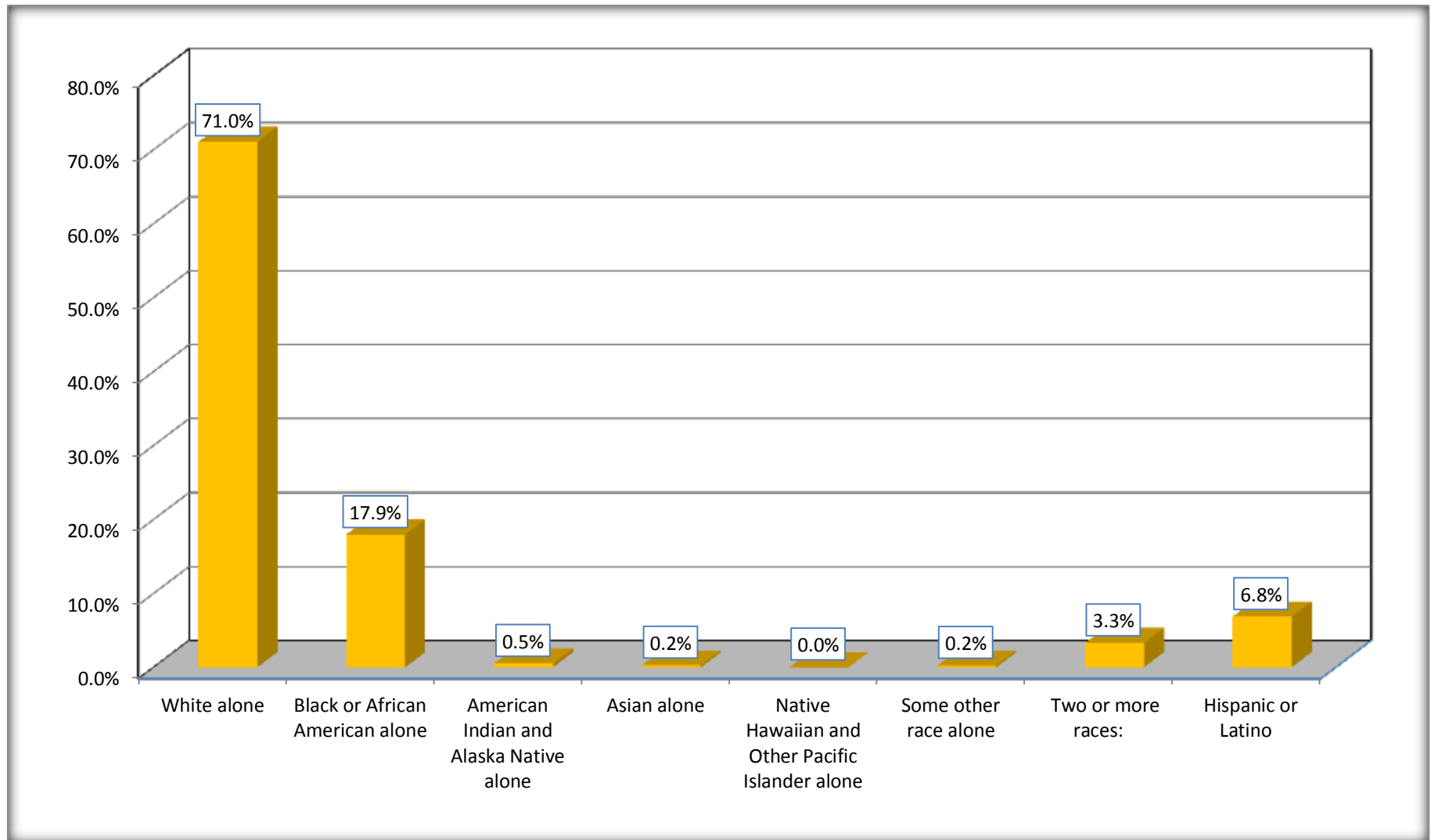
Although the American Community Survey (ACS) produces population, demographic and housing unit estimates, it is the Census Bureau's Population Estimates Program that produces and disseminates the official estimates of the population for the nation, states, counties, cities and towns and estimates of housing units for states and counties.

For information on confidentiality protection, sampling error, nonsampling error, and definitions, see Survey Methodology.

<http://www.census.gov/acs/www/UseData/index.htm>

Non-Hispanic by Race and Hispanic Population

Ionia city, Michigan



Source: B03002. HISPANIC OR LATINO ORIGIN BY RACE - Universe: TOTAL POPULATION
Data Set: 2008-2012 American Community Survey 5-Year Estimates

B03002. HISPANIC OR LATINO ORIGIN BY RACE

Data Set: 2008-2012 American Community Survey 5-Year Estimates

	Ionia city, Michigan		
	Population	Margin of Error (+/-)	% of Total
Hispanic or Latino:	792	204	100.0%
White alone	286	149	36.1%
Black or African American alone	89	69	11.2%
American Indian and Alaska Native alone	20	21	2.5%
Asian alone	0	16	0.0%
Native Hawaiian and Other Pacific Islander alone	0	16	0.0%
Some other race alone	219	147	27.7%
Two or more races:	178	100	22.5%
Two races including Some other race	146	89	18.4%
Two races excluding Some other race, and three or more races	32	43	4.0%

Source: U.S. Census Bureau, 2008-2012 American Community Survey

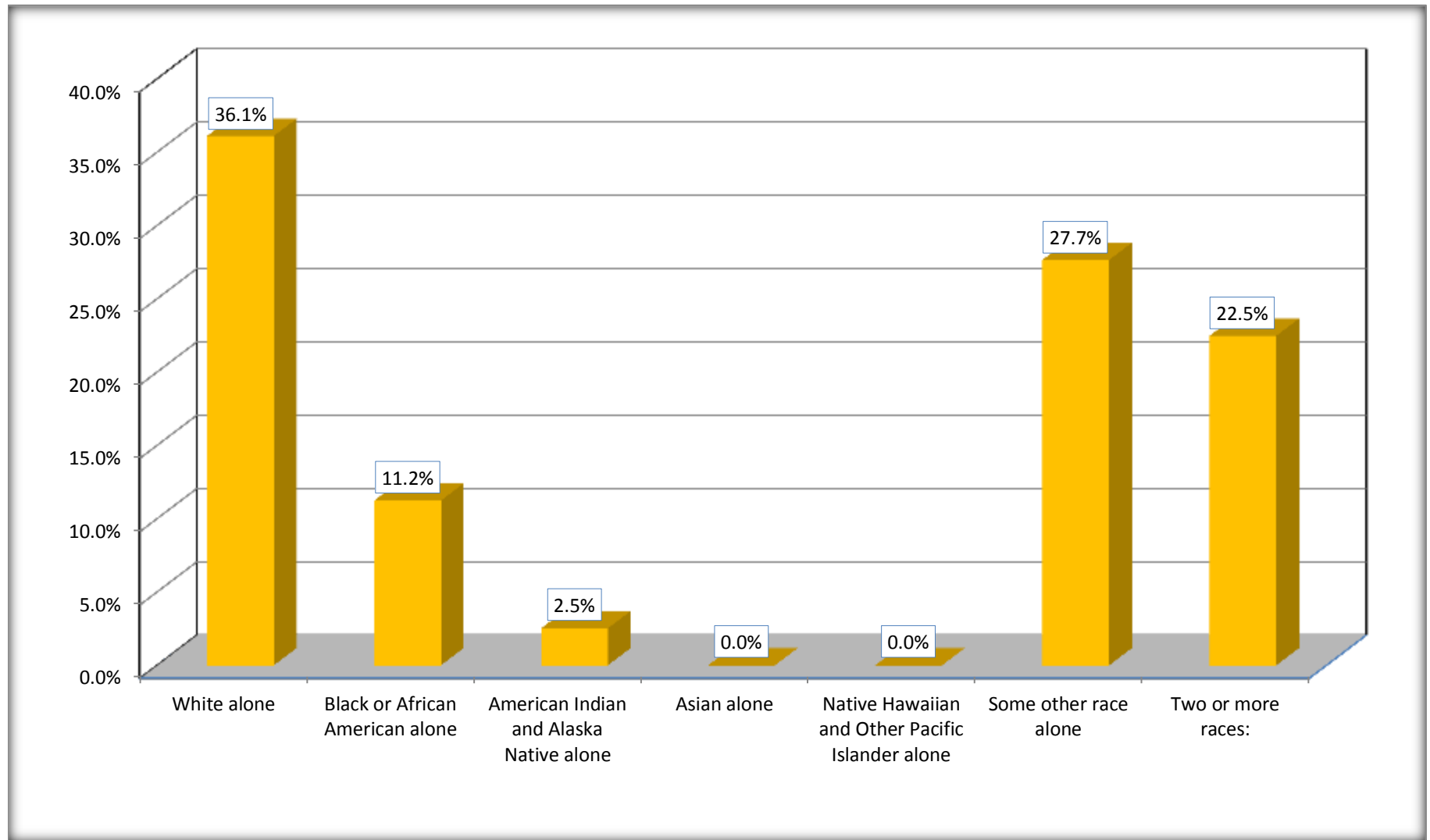
Although the American Community Survey (ACS) produces population, demographic and housing unit estimates, it is the Census Bureau's Population Estimates Program that produces and disseminates the official estimates of the population for the nation, states, counties, cities and towns and estimates of housing units for states and counties.

For information on confidentiality protection, sampling error, nonsampling error, and definitions, see Survey Methodology.

<http://www.census.gov/acs/www/UseData/index.htm>

Hispanic or Latino Origin by Race

Ionia city, Michigan



Source: B03002. HISPANIC OR LATINO ORIGIN BY RACE
Data Set: 2008-2012 American Community Survey 5-Year Estimates

B01001. SEX BY AGE

Data Set: 2008-2012 American Community Survey 5-Year Estimates

	Ionia city, Michigan					
	African American	Margin of Error (+/-)	% of AA Total	White, Not Hispanic	Margin of Error (+/-)	% of NHW Total
Total:	2,169	325	100.0%	8,239	362	100.0%
Under 18 years	47	NC	2.2%	1,706	NC	20.7%
18 to 64 years	2,111	NC	97.3%	5,671	NC	68.8%
65 years and over	11	NC	0.5%	862	NC	10.5%
Male:	2,144	322	98.8%	4,685	389	56.9%
Under 18 years	30	NC	1.4%	914	NC	11.1%
18 to 64 years	2,103	NC	97.0%	3,492	NC	42.4%
65 years and over	11	NC	0.5%	279	NC	3.4%
Female:	25	29	1.2%	3,554	412	43.1%
Under 18 years	17	NC	0.8%	792	NC	9.6%
18 to 64 years	8	NC	0.4%	2,179	NC	26.4%
65 years and over	0	NC	0.0%	583	NC	7.1%

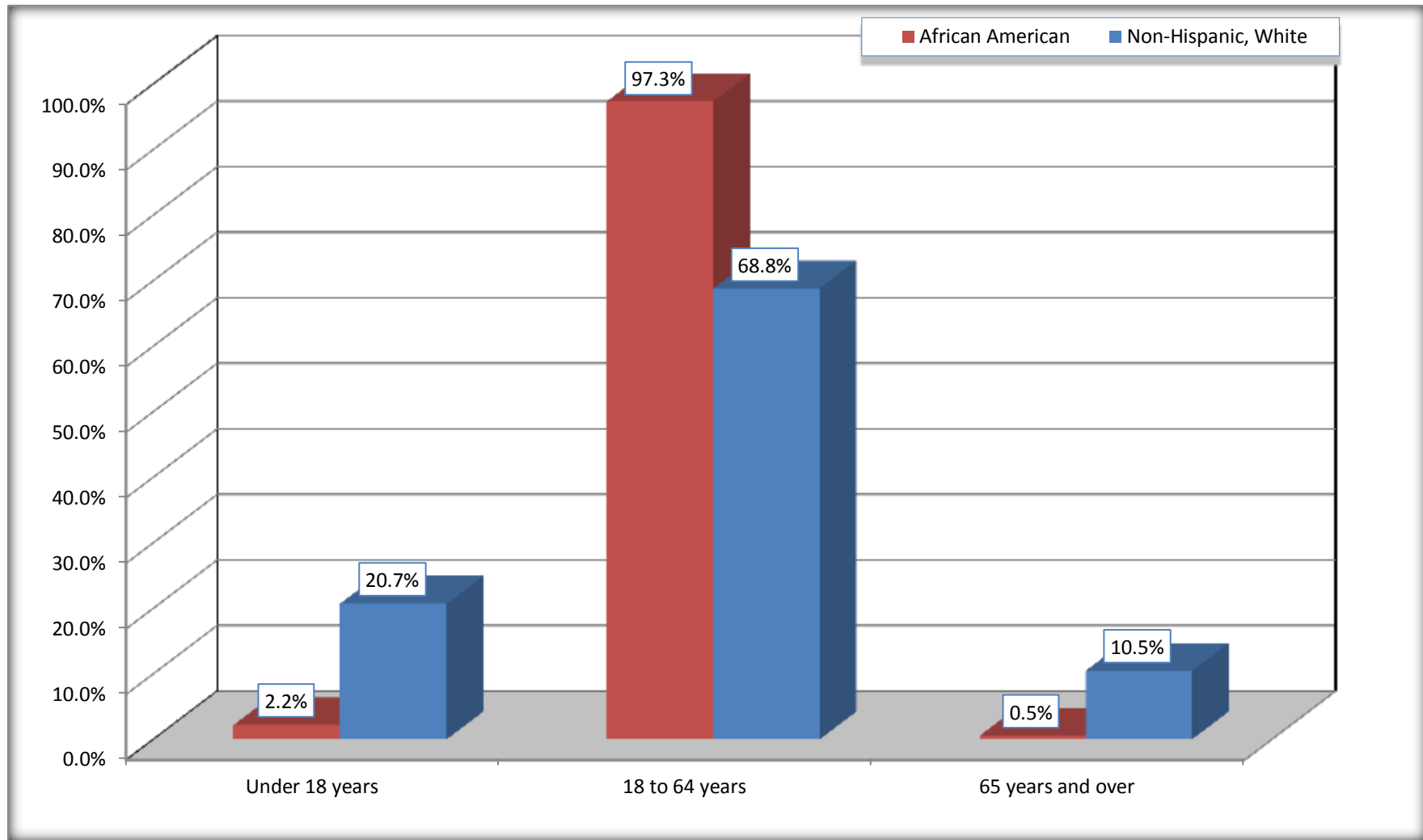
Source: U.S. Census Bureau, 2008-2012 American Community Survey

Although the American Community Survey (ACS) produces population, demographic and housing unit estimates, it is the Census Bureau's Population Estimates Program that produces and disseminates the official estimates of the population for the nation, states, counties, cities and towns and estimates of housing units for states and counties.

For information on confidentiality protection, sampling error, nonsampling error, and definitions, see Survey Methodology.
<http://www.census.gov/acs/www/UseData/index.htm>

Population by Age

Ionia city, Michigan



Source: B01001. SEX BY AGE
Data Set: 2008-2012 American Community Survey 5-Year Estimates

B05003. SEX BY AGE BY CITIZENSHIP STATUS

Data Set: 2008-2012 American Community Survey 5-Year Estimates

	Ionia city, Michigan					
	African American	Margin of Error (+/-)	% of AA Total by Age	White, Not Hispanic	Margin of Error (+/-)	% of NHW Total by Age
Total:	2,169	325	100.0%	8,239	362	100.0%
Under 18 years:	47	NC	100.0%	1,706	NC	100.0%
Native	47	NC	100.0%	1,706	NC	100.0%
Foreign born:	0	NC	0.0%	0	NC	0.0%
Naturalized U.S. citizen	0	NC	0.0%	0	NC	0.0%
Not a U.S. citizen	0	NC	0.0%	0	NC	0.0%
18 years and over:	2,122	NC	100.0%	6,533	NC	100.0%
Native	2,122	NC	100.0%	6,465	NC	99.0%
Foreign born:	0	NC	0.0%	68	NC	1.0%
Naturalized U.S. citizen	0	NC	0.0%	36	NC	0.6%
Not a U.S. citizen	0	NC	0.0%	32	NC	0.5%
Male:	2,144	322	98.8%	4,685	282	56.9%
Under 18 years:	30	40	100.0%	914	199	100.0%
Native	30	40	100.0%	914	199	100.0%
Foreign born:	0	16	0.0%	0	16	0.0%
Naturalized U.S. citizen	0	16	0.0%	0	16	0.0%
Not a U.S. citizen	0	16	0.0%	0	16	0.0%
18 years and over:	2,114	317	100.0%	3,771	254	100.0%
Native	2,114	317	100.0%	3,745	253	99.3%
Foreign born:	0	16	0.0%	26	25	0.7%
Naturalized U.S. citizen	0	16	0.0%	24	25	0.6%
Not a U.S. citizen	0	16	0.0%	2	3	0.1%

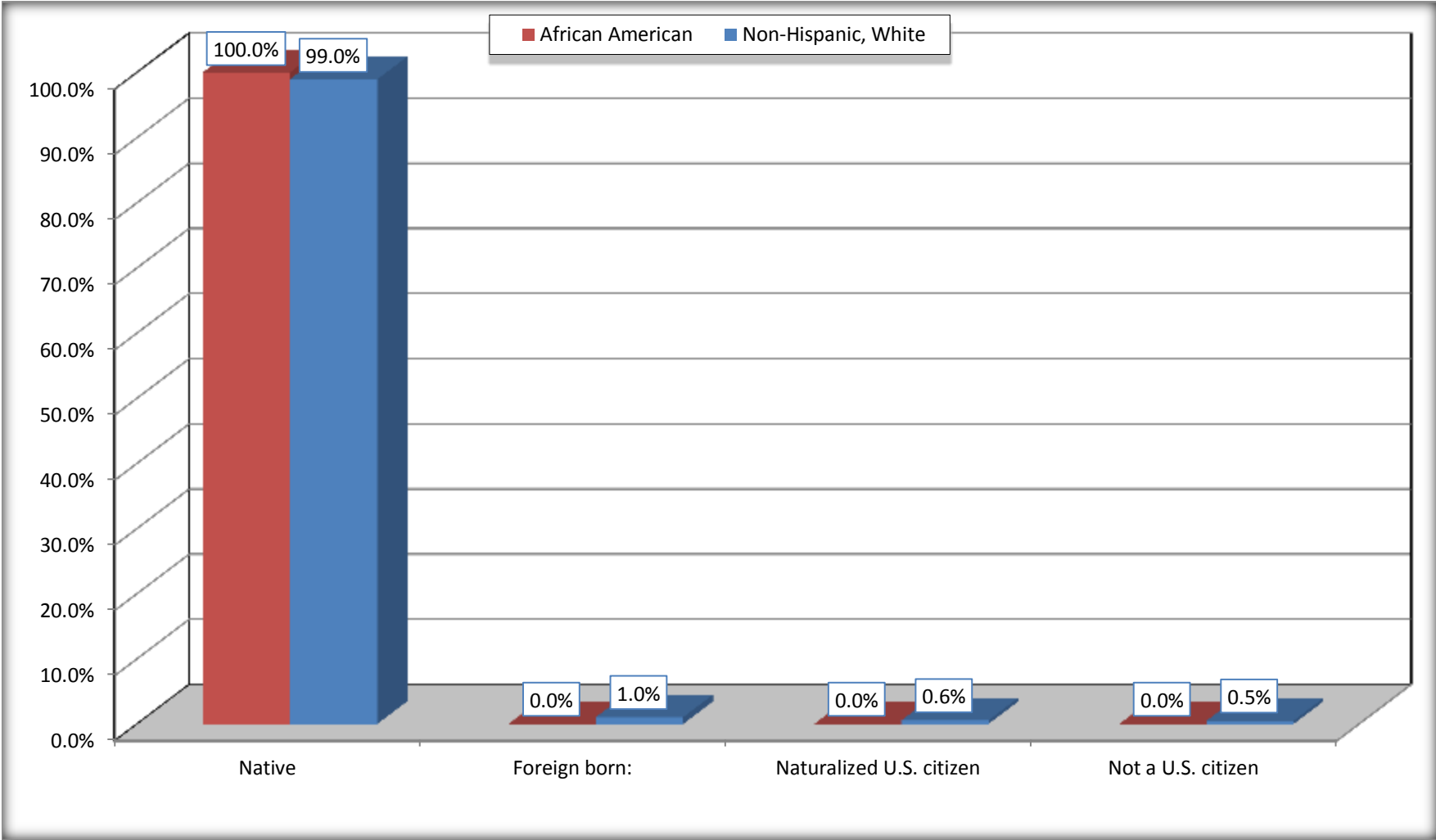
	Ionia city, Michigan					
	African American	Margin of Error (+/-)	% of AA by Age	White, Not Hispanic	Margin of Error (+/-)	% of NHW by Age
Female:	25	29	1.2%	3,554	285	43.1%
Under 18 years:	17	26	100.0%	792	145	100.0%
Native	17	26	100.0%	792	145	100.0%
Foreign born:	0	16	0.0%	0	16	0.0%
Naturalized U.S. citizen	0	16	0.0%	0	16	0.0%
Not a U.S. citizen	0	16	0.0%	0	16	0.0%
18 years and over:	8	11	100.0%	2,762	242	100.0%
Native	8	11	100.0%	2,720	242	98.5%
Foreign born:	0	16	0.0%	42	42	1.5%
Naturalized U.S. citizen	0	16	0.0%	12	19	0.4%
Not a U.S. citizen	0	16	0.0%	30	38	1.1%

Source: U.S. Census Bureau, 2008-2012 American Community Survey

For information on confidentiality protection, sampling error, nonsampling error, and definitions, see Survey Methodology.
<http://www.census.gov/acs/www/UseData/index.htm>

Citizenship Status of Voting Age Population (18 and Over)

Ionia city, Michigan



Source: B05003. SEX BY AGE BY CITIZENSHIP STATUS
Data Set: 2008-2012 American Community Survey 5-Year Estimates

**B07004. GEOGRAPHICAL MOBILITY IN THE PAST YEAR BY RACE FOR CURRENT RESIDENCE IN THE UNITED STATES - Universe:
POPULATION 1 YEAR AND OVER**

Data Set: 2008-2012 American Community Survey 5-Year Estimates

	Ionia city, Michigan					
	African American	Margin of Error (+/-)	% of AA Total	White, Not Hispanic	Margin of Error (+/-)	% of NHW Total
Total:	2,169	325	100.0%	8,003	361	100.0%
Same house 1 year ago	1,329	238	61.3%	5,863	487	73.3%
Moved within same county	92	47	4.2%	1,260	343	15.7%
Moved from different county within same state	740	166	34.1%	742	163	9.3%
Moved from different state	8	16	0.4%	138	118	1.7%
Moved from abroad	0	16	0.0%	0	16	0.0%

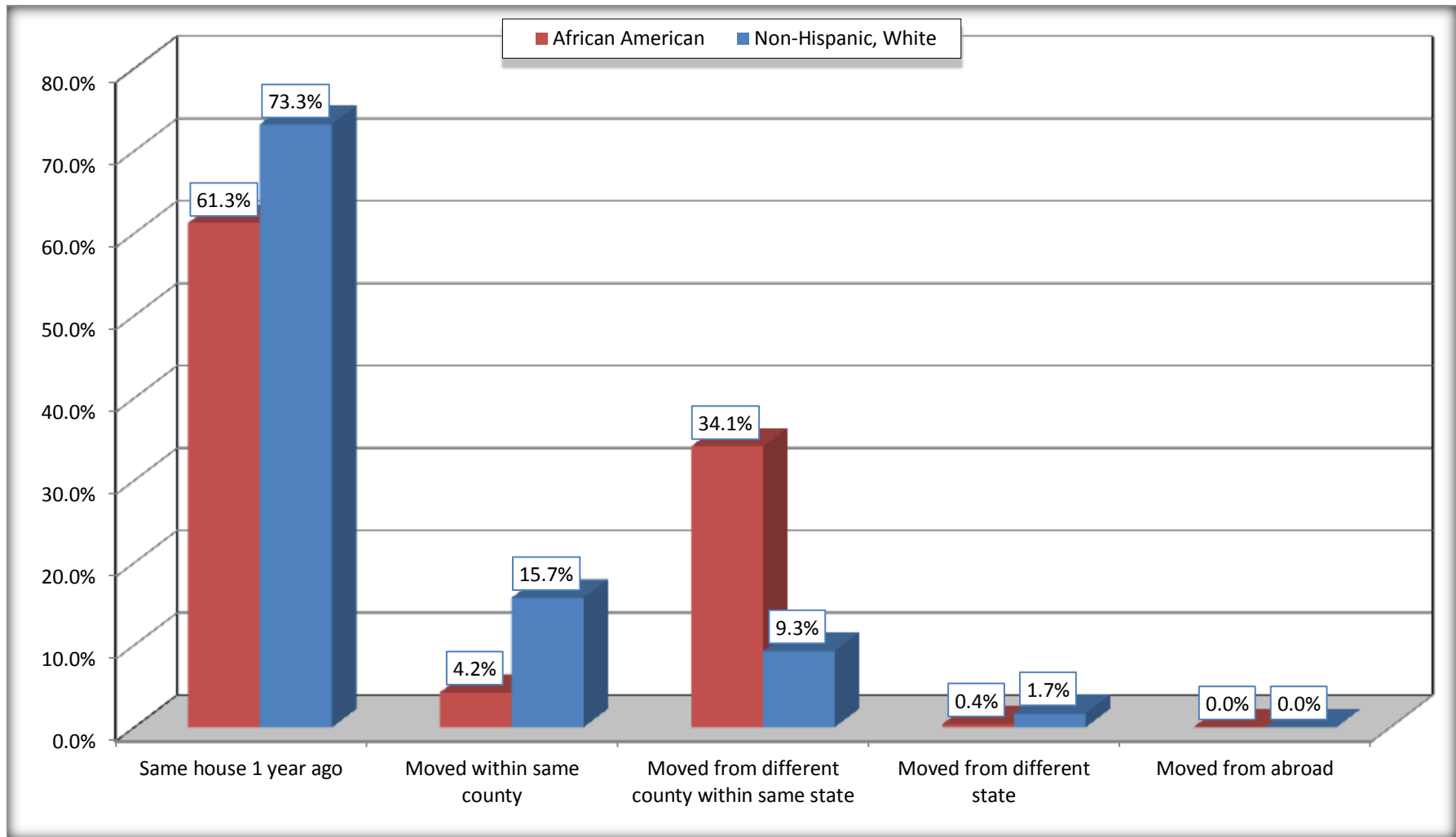
Source: U.S. Census Bureau, 2008-2012 American Community Survey

For information on confidentiality protection, sampling error, nonsampling error, and definitions, see Survey Methodology.

<http://www.census.gov/acs/www/UseData/index.htm>

Geographical Mobility in the Past Year (Population 1 Year and Over)

Ionia city, Michigan



Source: B07004. GEOGRAPHICAL MOBILITY IN THE PAST YEAR BY RACE FOR CURRENT RESIDENCE IN THE UNITED STATES - Universe: POPULATION 1 YEAR AND OVER

Data Set: 2008-2012 American Community Survey 5-Year Estimates

B12002. MARITAL STATUS FOR THE POPULATION 15 YEARS AND OVER

Data Set: 2008-2012 American Community Survey 5-Year Estimates

	Ionia city, Michigan					
	African American	Margin of Error (+/-)	% of AA Total	White, Not Hispanic	Margin of Error (+/-)	% of NHW Total
Total:	2,129	318	100.0%	6,974	359	100.0%
Never married	1,679	NC	78.9%	2,674	NC	38.3%
Now married (except separated)	200	NC	9.4%	2,345	NC	33.6%
Separated	55	NC	2.6%	147	NC	2.1%
Widowed	12	NC	0.6%	516	NC	7.4%
Divorced	183	NC	8.6%	1,292	NC	18.5%
Male:	2,121	319	99.6%	4,021	270	57.7%
Never married	1,671	267	78.5%	1,812	244	26.0%
Now married (except separated)	200	83	9.4%	1,209	202	17.3%
Separated	55	37	2.6%	58	36	0.8%
Widowed	12	13	0.6%	101	59	1.4%
Divorced	183	63	8.6%	841	161	12.1%
Female:	8	11	0.4%	2,953	256	42.3%
Never married	8	11	0.4%	862	203	12.4%
Now married (except separated)	0	16	0.0%	1,136	198	16.3%
Separated	0	16	0.0%	89	70	1.3%
Widowed	0	16	0.0%	415	123	6.0%
Divorced	0	16	0.0%	451	150	6.5%

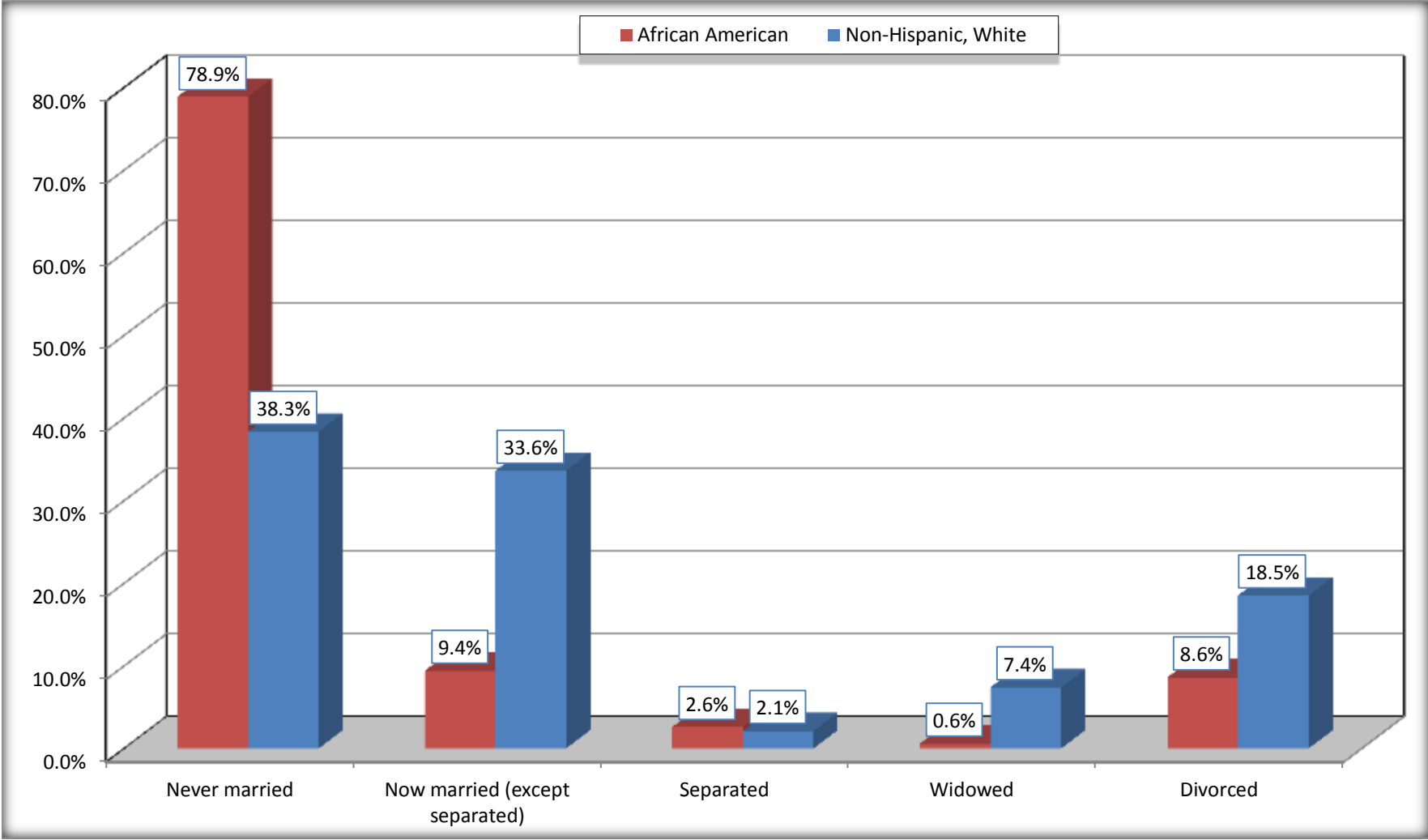
Source: U.S. Census Bureau, 2008-2012 American Community Survey

For information on confidentiality protection, sampling error, nonsampling error, and definitions, see Survey Methodology.

<http://www.census.gov/acs/www/UseData/index.htm>

Marital Status for the Population 15 Years and Over

Ionia city, Michigan



Source: B12002. MARITAL STATUS FOR THE POPULATION 15 YEARS AND OVER
Data Set: 2008-2012 American Community Survey 5-Year Estimates

C15002. SEX BY EDUCATIONAL ATTAINMENT FOR THE POPULATION 25 YEARS AND OVER

Data Set: 2008-2012 American Community Survey 5-Year Estimates

	Ionia city, Michigan					
	African American	Margin of Error (+/-)	% of AA Total	White, Not Hispanic	Margin of Error (+/-)	% of NHW Total
Total:	1,573	276	100.0%	5,396	401	100.0%
Less than high school diploma	503	NC	32.0%	697	NC	12.9%
High school graduate, GED, or alternative	781	NC	49.7%	2,122	NC	39.3%
Some college or associate's degree	281	NC	17.9%	1,885	NC	34.9%
Bachelor's degree or higher	8	NC	0.5%	692	NC	12.8%
Male:	1,567	276	99.6%	3,101	244	57.5%
Less than high school diploma	503	123	32.0%	441	129	8.2%
High school graduate, GED, or alternative	775	161	49.3%	1,369	185	25.4%
Some college or associate's degree	281	104	17.9%	977	172	18.1%
Bachelor's degree or higher	8	12	0.5%	314	125	5.8%
Female:	6	11	0.4%	2,295	263	42.5%
Less than high school diploma	0	16	0.0%	256	134	4.7%
High school graduate, GED, or alternative	6	11	0.4%	753	191	14.0%
Some college or associate's degree	0	16	0.0%	908	185	16.8%
Bachelor's degree or higher	0	16	0.0%	378	137	7.0%

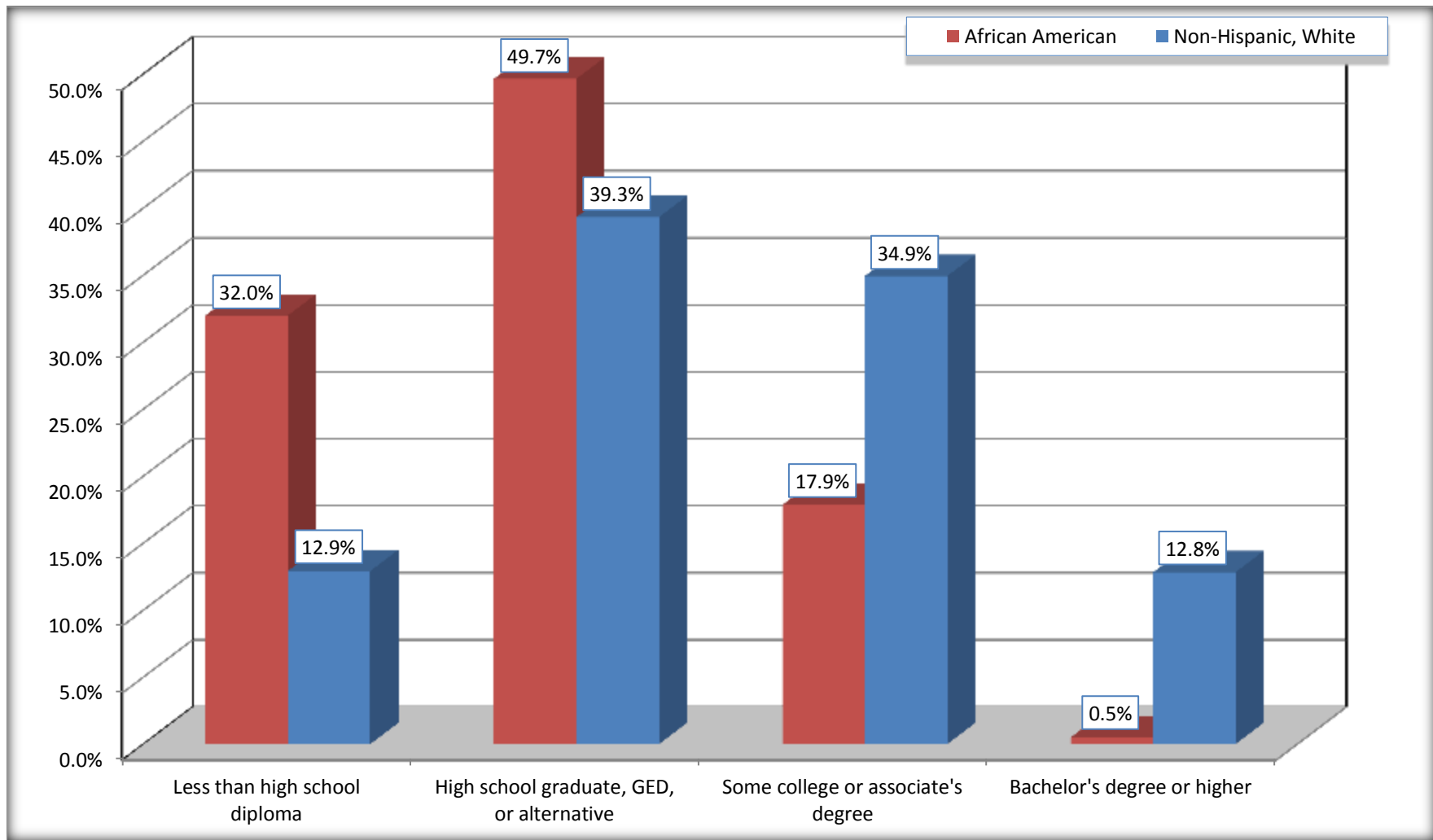
Source: U.S. Census Bureau, 2008-2012 American Community Survey

For information on confidentiality protection, sampling error, nonsampling error, and definitions, see Survey Methodology.

<http://www.census.gov/acs/www/UseData/index.htm>

Educational Attainment for the Population 25 Years and Older

Ionia city, Michigan



Source: C15002. SEX BY EDUCATIONAL ATTAINMENT FOR THE POPULATION 25 YEARS AND OVER
Data Set: 2008-2012 American Community Survey 5-Year Estimates

B17020 POVERTY STATUS IN THE PAST 12 MONTHS BY AGE - Universe: POPULATION FOR WHOM POVERTY STATUS IS DETERMINED

Data Set: 2008-2012 American Community Survey 5-Year Estimates

	Ionia city, Michigan					
	African American	Margin of Error (+/-)	% of AA By Age	White, Not Hispanic	Margin of Error (+/-)	% of NHW By Age
Total:	41	63	100.0%	6,651	454	100.0%
Income in the past 12 months below poverty level:	1	3	2.4%	1,653	443	24.9%
Under 18 years	0	NC	0.0%	671	NC	39.5%
18 to 64 years	1	3	100.0%	902	247	21.7%
65 years and over	0	NC	#DIV/0!	80	NC	10.0%
Income in the past 12 months at or above poverty level:	40	63	97.6%	4,998	594	75.1%
Under 18 years	40	NC	100.0%	1,028	NC	60.5%
18 to 64 years	0	16	0.0%	3,251	441	78.3%
65 years and over	0	NC	#DIV/0!	719	NC	90.0%

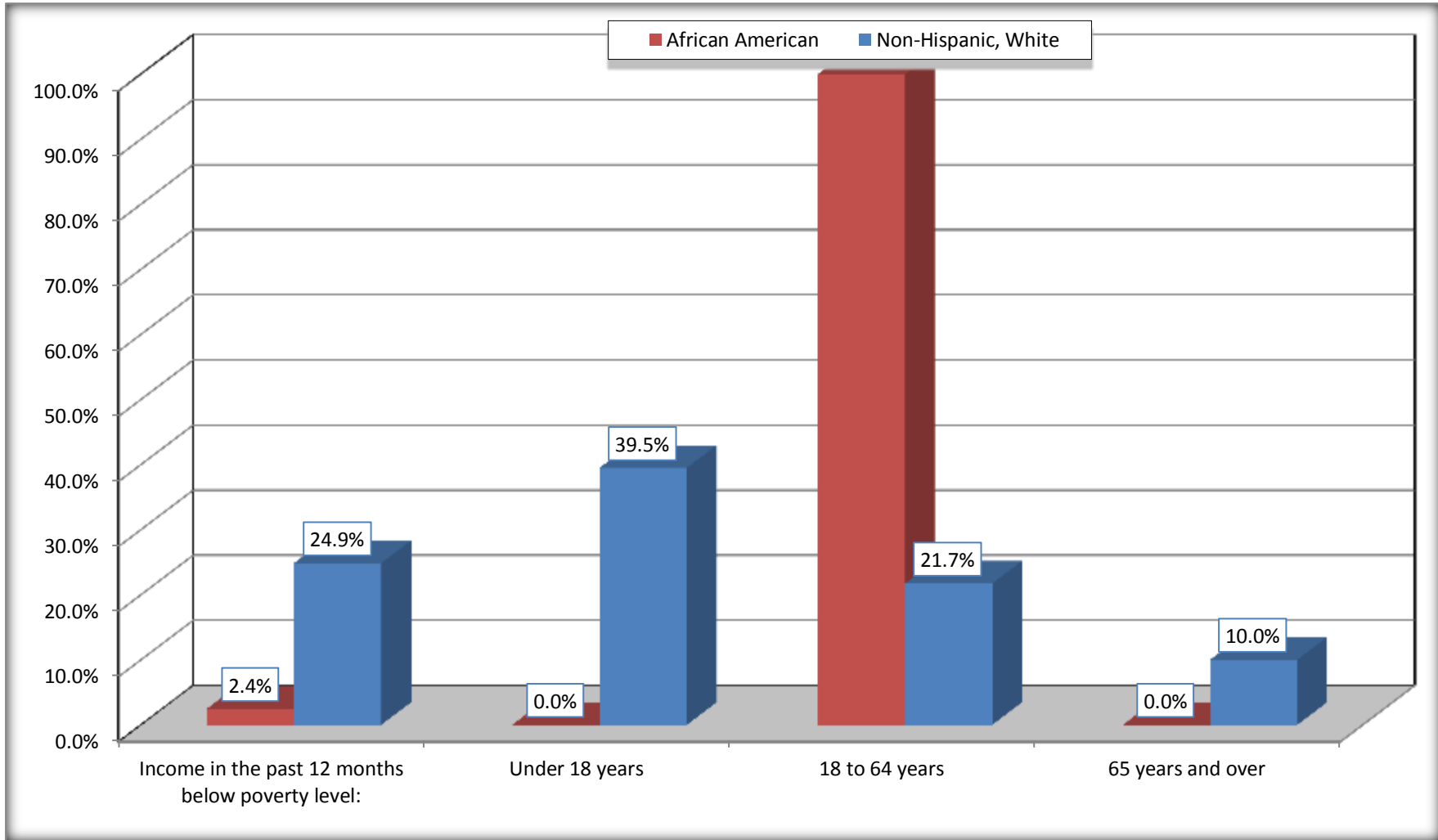
Source: U.S. Census Bureau, 2008-2012 American Community Survey

For information on confidentiality protection, sampling error, nonsampling error, and definitions, see Survey Methodology.

<http://www.census.gov/acs/www/UseData/index.htm>

Population Below Poverty in the Past 12 Months

Ionia city, Michigan



Source: B17020 POVERTY STATUS IN THE PAST 12 MONTHS BY AGE - Universe: POPULATION FOR WHOM POVERTY STATUS IS DETERMINED
Data Set: 2008-2012 American Community Survey 5-Year Estimates

B19301. PER CAPITA INCOME IN THE PAST 12 MONTHS (IN 2010 INFLATION-ADJUSTED DOLLARS)

Data Set: 2008-2012 American Community Survey 5-Year Estimates

	Ionia city, Michigan			
	African American	Margin of Error (+/-)	White, Not Hispanic	Margin of Error (+/-)
Per capita income in the past 12 months (in 2010 inflation-adjusted dollars)	\$ 3,791	\$ 1,284	\$ 15,214	\$ 2,061

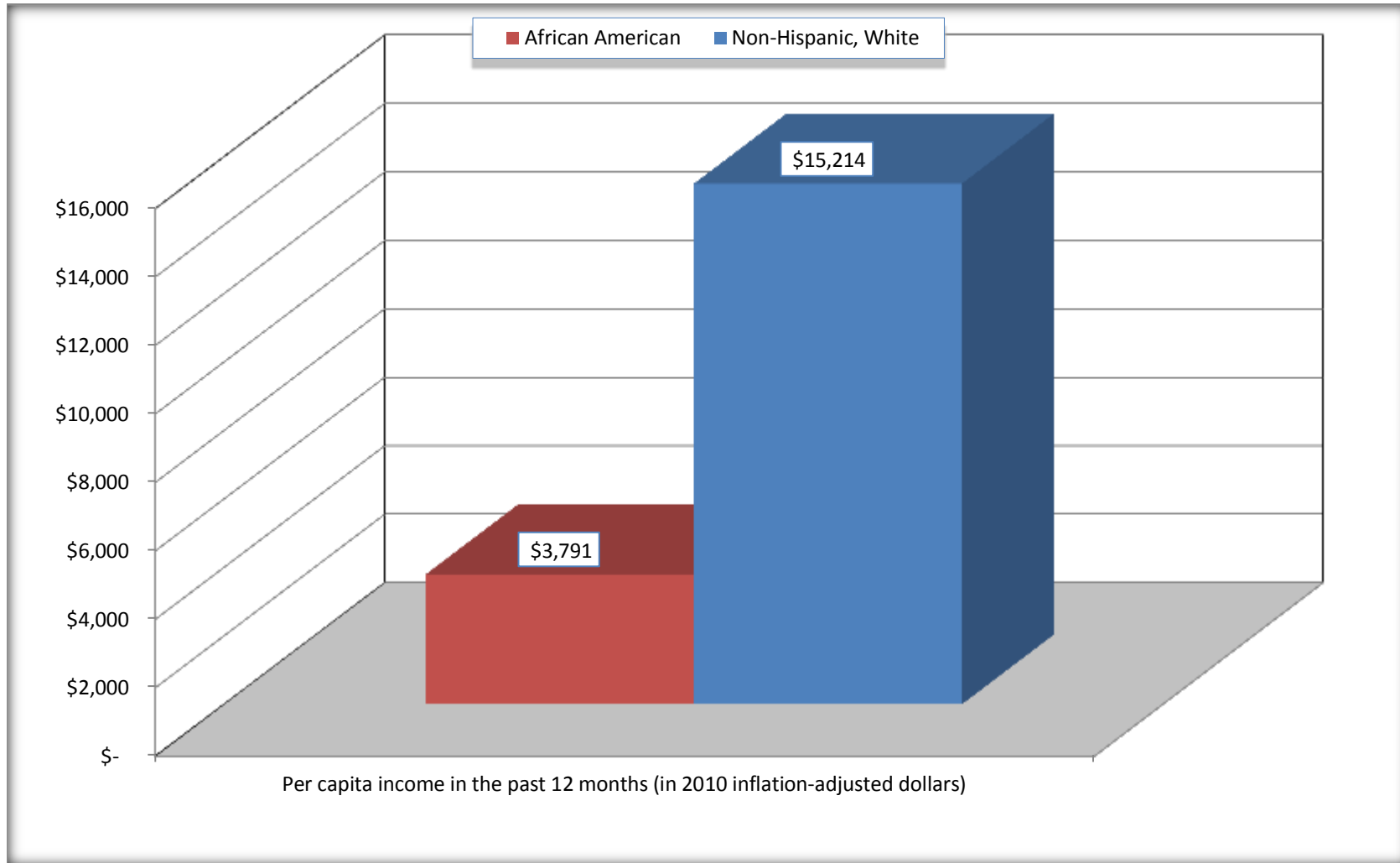
Source: U.S. Census Bureau, 2008-2012 American Community Survey

For information on confidentiality protection, sampling error, nonsampling error, and definitions, see Survey Methodology.

<http://www.census.gov/acs/www/UseData/index.htm>

Per capita Income in the Past 12 Months

Ionia city, Michigan



Source: B19301. PER CAPITA INCOME IN THE PAST 12 MONTHS (IN 2010 INFLATION-ADJUSTED DOLLARS)
Data Set: 2008-2012 American Community Survey 5-Year Estimates

B20017. MEDIAN EARNINGS IN THE PAST 12 MONTHS (IN 2010 INFLATION-ADJUSTED DOLLARS) BY SEX BY WORK EXPERIENCE IN THE PAST 12 MONTHS FOR THE POPULATION 16 YEARS AND OVER WITH EARNINGS IN THE PAST 12 MONTHS

Data Set: 2008-2012 American Community Survey 5-Year Estimates

	Ionia city, Michigan			
	African American	Margin of Error (+/-)	White, Not Hispanic	Margin of Error (+/-)
Median earnings in the past 12 months (in 2010 inflation-adjusted dollars) --				
Total:	\$ 7,083	\$ 1,208	\$ 18,859	\$ 4,465
Male --				
Total	\$ 7,103	\$ 1,220	\$ 20,572	\$ 5,579
Worked full-time, year-round in the past 12 months	\$ 15,625	\$ 8,366	\$ 35,139	\$ 8,539
Other	\$ 6,215	\$ 1,443	\$ 7,414	\$ 3,279
Female --				
Total	\$ -	\$ -	\$ 16,576	\$ 5,205
Worked full-time, year-round in the past 12 months	\$ -	\$ -	\$ 29,932	\$ 4,717
Other	\$ -	\$ -	\$ 5,975	\$ 2,940

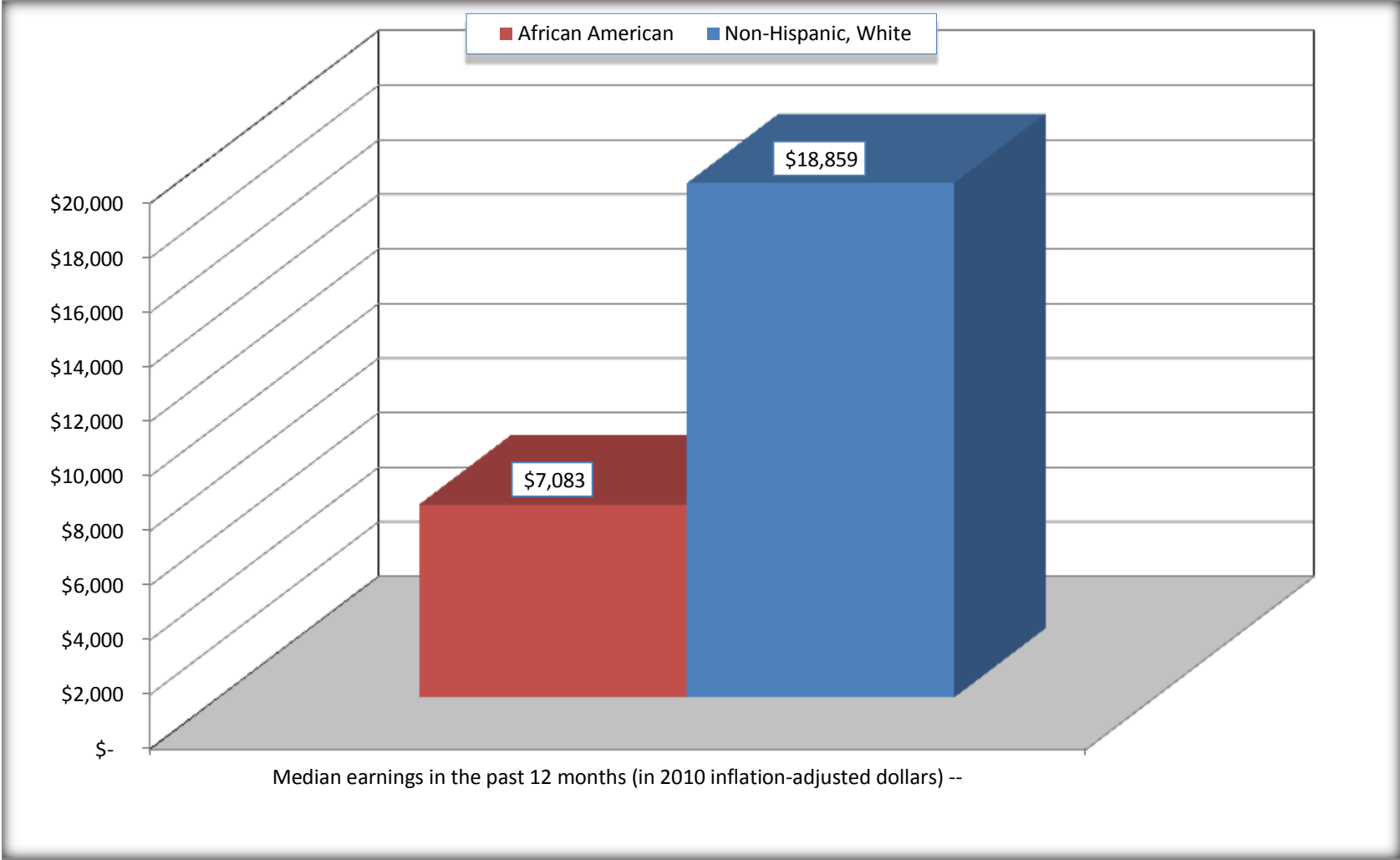
Source: U.S. Census Bureau, 2008-2012 American Community Survey

For information on confidentiality protection, sampling error, nonsampling error, and definitions, see Survey Methodology.

<http://www.census.gov/acs/www/UseData/index.htm>

Median earnings in the Past 12 Months (16 Years and Over with Earnings)

Ionia city, Michigan



Source: B20017. MEDIAN EARNINGS IN THE PAST 12 MONTHS (IN 2010 INFLATION-ADJUSTED DOLLARS) BY SEX BY WORK EXPERIENCE IN THE PAST 12 MONTHS FOR THE POPULATION 16 YEARS AND OVER WITH EARNINGS IN THE PAST 12 MONTHS
Data Set: 2008-2012 American Community Survey 5-Year Estimates

B20005. SEX BY WORK EXPERIENCE IN THE PAST 12 MONTHS BY EARNINGS IN THE PAST 12 MONTHS (IN 2010 INFLATION-ADJUSTED DOLLARS) FOR THE POPULATION 16 YEARS AND OVER

Data Set: 2008-2012 American Community Survey 5-Year Estimates

	Ionia city, Michigan					
	African American	Margin of Error (+/-)	% of AA Total	White, Not Hispanic	Margin of Error (+/-)	% of NHW Total
Total:	2,129	318	100.0%	6,785	366	100.0%
Worked full-time, year-round in the past 12 months:	143	NC	6.7%	1,877	NC	27.7%
No earnings	0	NC	0.0%	0	NC	0.0%
With earnings:	143	NC	6.7%	1,877	NC	27.7%
\$ 1 to \$ 9,999 or loss	40	NC	1.9%	94	NC	1.4%
\$ 10,000 to \$ 19,999	41	NC	1.9%	337	NC	5.0%
\$ 20,000 to \$ 29,999	44	NC	2.1%	411	NC	6.1%
\$ 30,000 to \$ 49,999	3	NC	0.1%	656	NC	9.7%
\$ 50,000 to \$ 74,999	15	NC	0.7%	331	NC	4.9%
\$ 75,000 or more	0	NC	0.0%	48	NC	0.7%
Other:	1,986	NC	93.3%	4,908	NC	72.3%
No earnings	1,465	NC	68.8%	3,248	NC	47.9%
With earnings: less than full time, year-round	521	NC	24.5%	1,660	NC	24.5%
Male:	2,121	319	99.6%	3,905	266	57.6%
Worked full-time, year-round in the past 12 months:	143	57	6.7%	1,157	202	17.1%
No earnings	0	16	0.0%	0	16	0.0%
With earnings:	143	57	6.7%	1,157	202	17.1%
\$ 1 to \$ 9,999 or loss	40	NC	1.9%	76	NC	1.1%
\$ 10,000 to \$ 19,999	41	NC	1.9%	198	NC	2.9%
\$ 20,000 to \$ 29,999	44	NC	2.1%	207	NC	3.1%
\$ 30,000 to \$ 49,999	3	NC	0.1%	404	NC	6.0%
\$ 50,000 to \$ 74,999	15	NC	0.7%	251	NC	3.7%
\$ 75,000 or more	0	NC	0.0%	21	NC	0.3%

	Ionia city, Michigan					
	African American	Margin of Error (+/-)	% of AA Total	White, Not Hispanic	Margin of Error (+/-)	% of NHW Total
Other:	1,978	317	92.9%	2,748	307	40.5%
No earnings	1,459	249	68.5%	1,865	263	27.5%
With earnings:	519	139	24.4%	883	196	13.0%
Female:	8	11	0.4%	2,880	250	42.4%
Worked full-time, year-round in the past 12 months:	0	16	0.0%	720	148	10.6%
No earnings	0	16	0.0%	0	16	0.0%
With earnings:	0	16	0.0%	720	148	10.6%
\$ 1 to \$ 9,999 or loss	0	NC	0.0%	18	NC	0.3%
\$ 10,000 to \$ 19,999	0	NC	0.0%	139	NC	2.0%
\$ 20,000 to \$ 29,999	0	NC	0.0%	204	NC	3.0%
\$ 30,000 to \$ 49,999	0	NC	0.0%	252	NC	3.7%
\$ 50,000 to \$ 74,999	0	NC	0.0%	80	NC	1.2%
\$ 75,000 or more	0	NC	0.0%	27	NC	0.4%
Other:	8	11	0.4%	2,160	264	31.8%
No earnings	6	11	0.3%	1,383	268	20.4%
With earnings:	2	5	0.1%	777	177	11.5%

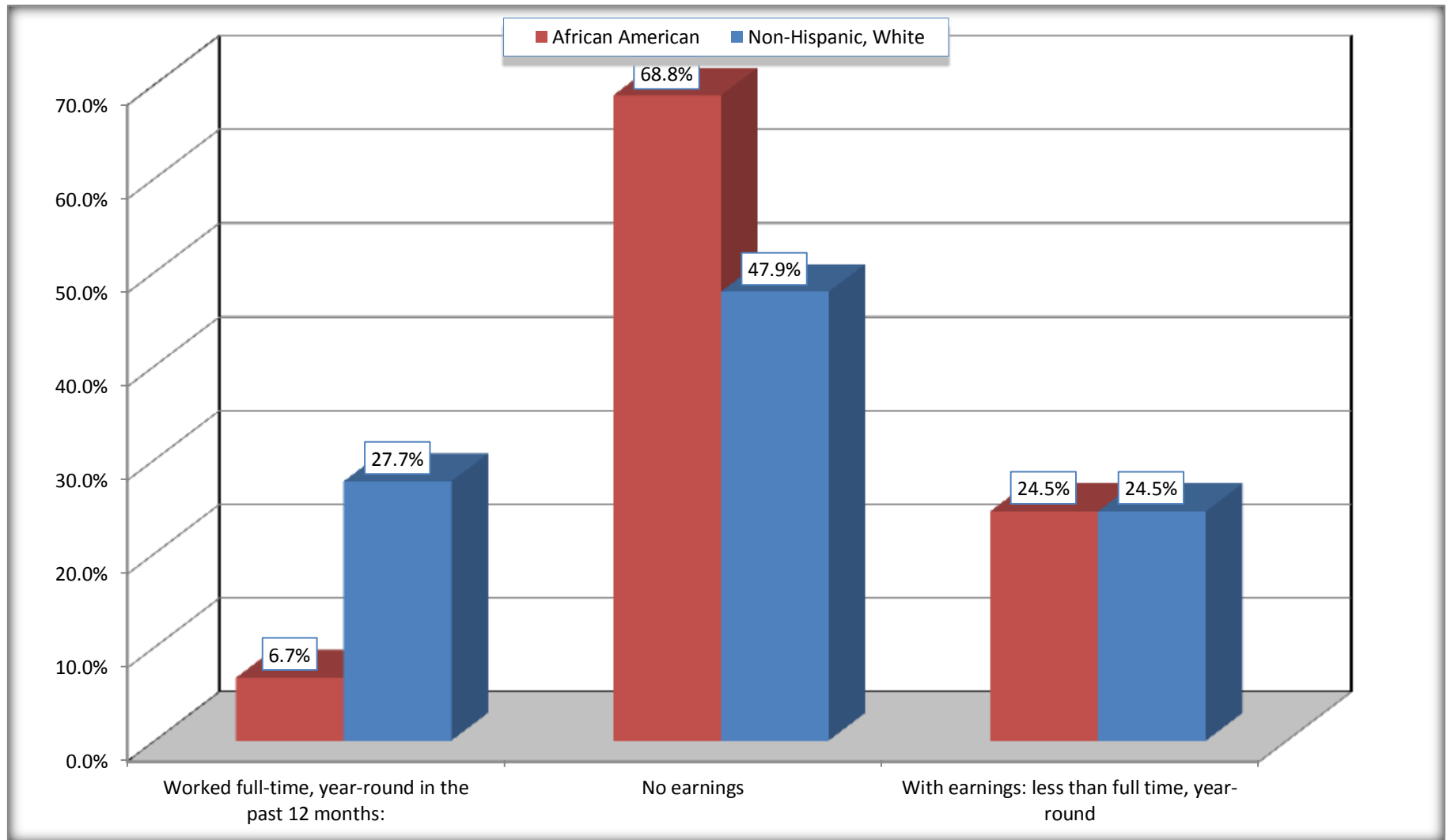
Source: U.S. Census Bureau, 2008-2012 American Community Survey

For information on confidentiality protection, sampling error, nonsampling error, and definitions, see Survey Methodology.

<http://www.census.gov/acs/www/UseData/index.htm>

Employment and Earnings in in the Past 12 Months (16 Years and Over)

Ionia city, Michigan



Source: B20005. SEX BY WORK EXPERIENCE IN THE PAST 12 MONTHS BY EARNINGS IN THE PAST 12 MONTHS (IN 2010 INFLATION-ADJUSTED DOLLARS) FOR THE POPULATION 16 YEARS AND OVER

Data Set: 2008-2012 American Community Survey 5-Year Estimates

C21001. SEX BY AGE BY VETERAN STATUS FOR THE CIVILIAN POPULATION 18 YEARS AND OVER

Data Set: 2008-2012 American Community Survey 5-Year Estimates

	Ionia city, Michigan					
	African American	Margin of Error (+/-)	% of AA Total	White, Not Hispanic	Margin of Error (+/-)	% of NHW Total
Total:	2,122	315	100.0%	6,533	357	100.0%
Veteran	76	NC	3.6%	808	NC	12.4%
Nonveteran	2,046	NC	96.4%	5,725	NC	87.6%
Male:	2,114	317	99.6%	3,771	254	57.7%
18 to 64 years:	2,103	316	99.1%	3,492	246	53.5%
Veteran	76	44	3.6%	512	159	7.8%
Nonveteran	2,027	321	95.5%	2,980	226	45.6%
65 years and over:	11	15	0.5%	279	84	4.3%
Veteran	0	16	0.0%	143	77	2.2%
Nonveteran	11	15	0.5%	136	72	2.1%
Female:	8	11	0.4%	2,762	242	42.3%
18 to 64 years:	8	11	0.4%	2,179	197	33.4%
Veteran	0	16	0.0%	153	134	2.3%
Nonveteran	8	11	0.4%	2,026	212	31.0%
65 years and over:	0	16	0.0%	583	124	8.9%
Veteran	0	16	0.0%	0	16	0.0%
Nonveteran	0	16	0.0%	583	124	8.9%

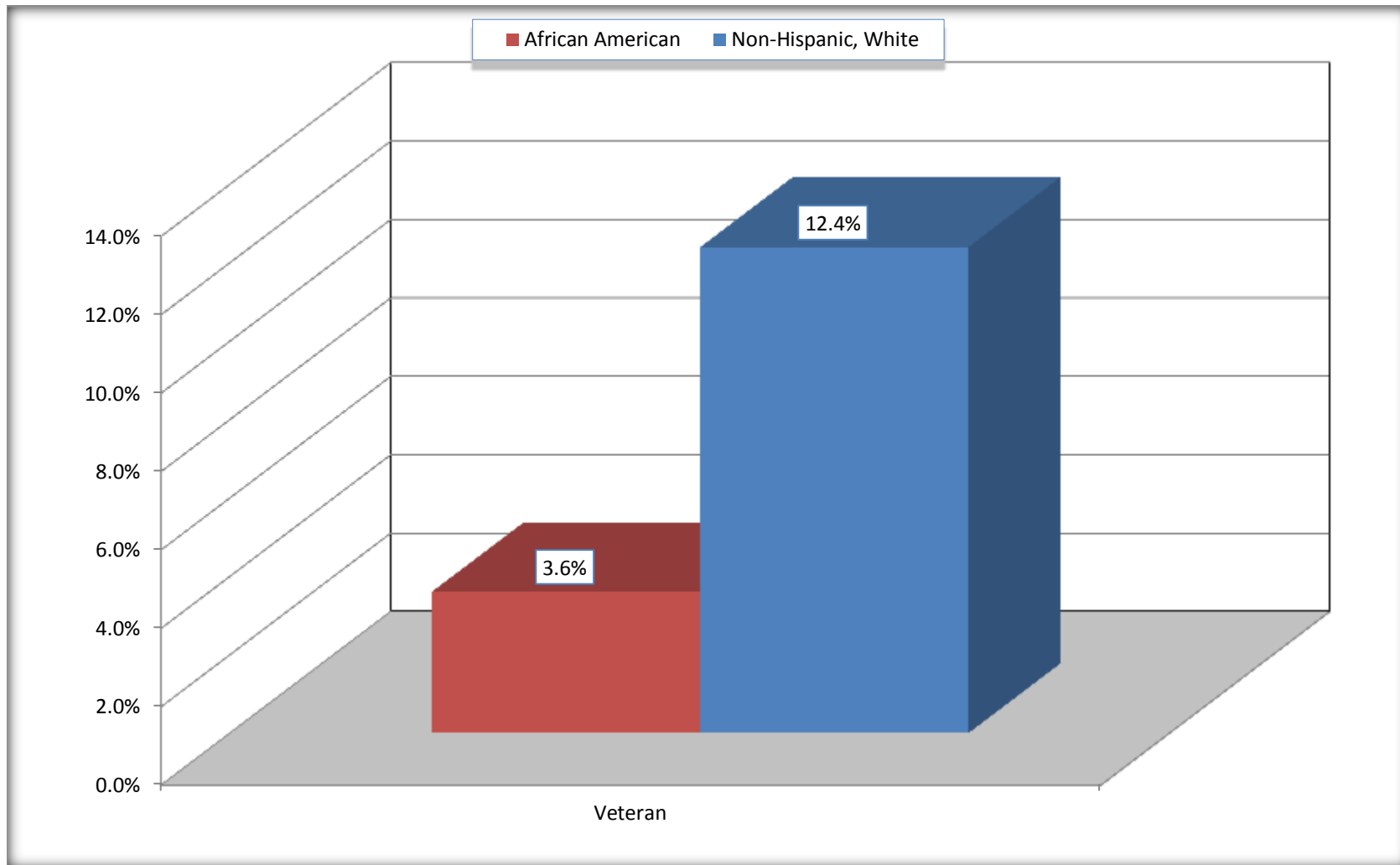
Source: U.S. Census Bureau, 2008-2012 American Community Survey

For information on confidentiality protection, sampling error, nonsampling error, and definitions, see Survey Methodology.

<http://www.census.gov/acs/www/UseData/index.htm>

Veterans in the Civilian Population 18 Years and Over

Ionia city, Michigan



Source: C21001. SEX BY AGE BY VETERAN STATUS FOR THE CIVILIAN POPULATION 18 YEARS AND OVER
Data Set: 2008-2012 American Community Survey 5-Year Estimates

C23002. SEX BY AGE BY EMPLOYMENT STATUS FOR THE POPULATION 16 YEARS AND OVER

Data Set: 2008-2012 American Community Survey 5-Year Estimates

	Ionia city, Michigan					
	African American	Margin of Error (+/-)	% of AA Total	White, Not Hispanic	Margin of Error (+/-)	% of NHW Total
Total:	2,129	318	100.0%	6,785	366	100.0%
In labor force:	0	NC	0.0%	3,403	NC	50.2%
In Armed Forces	0	NC	0.0%	0	NC	0.0%
Civilian:	0	NC	0.0%	3,343	NC	49.3%
Employed	0	NC	0.0%	2,903	NC	42.8%
Unemployed	0	NC	0.0%	500	NC	7.4%
Not in labor force	2,129	NC	100.0%	3,382	NC	49.8%
Male:	2,121	319	99.6%	3,905	266	57.6%
16 to 64 years:	2,110	318	99.1%	3,626	256	53.4%
In labor force:	0	16	0.0%	1,733	256	25.5%
In Armed Forces	0	16	0.0%	0	16	0.0%
Civilian:	0	16	0.0%	1,733	256	25.5%
Employed	0	16	0.0%	1,511	234	22.3%
Unemployed	0	16	0.0%	222	95	3.3%
Not in labor force	2,110	318	99.1%	1,893	283	27.9%
65 years and over:	11	15	0.5%	279	84	4.1%
In labor force:	0	16	0.0%	35	38	0.5%
Employed	0	16	0.0%	16	24	0.2%
Unemployed	0	16	0.0%	19	29	0.3%
Not in labor force	11	15	0.5%	244	81	3.6%

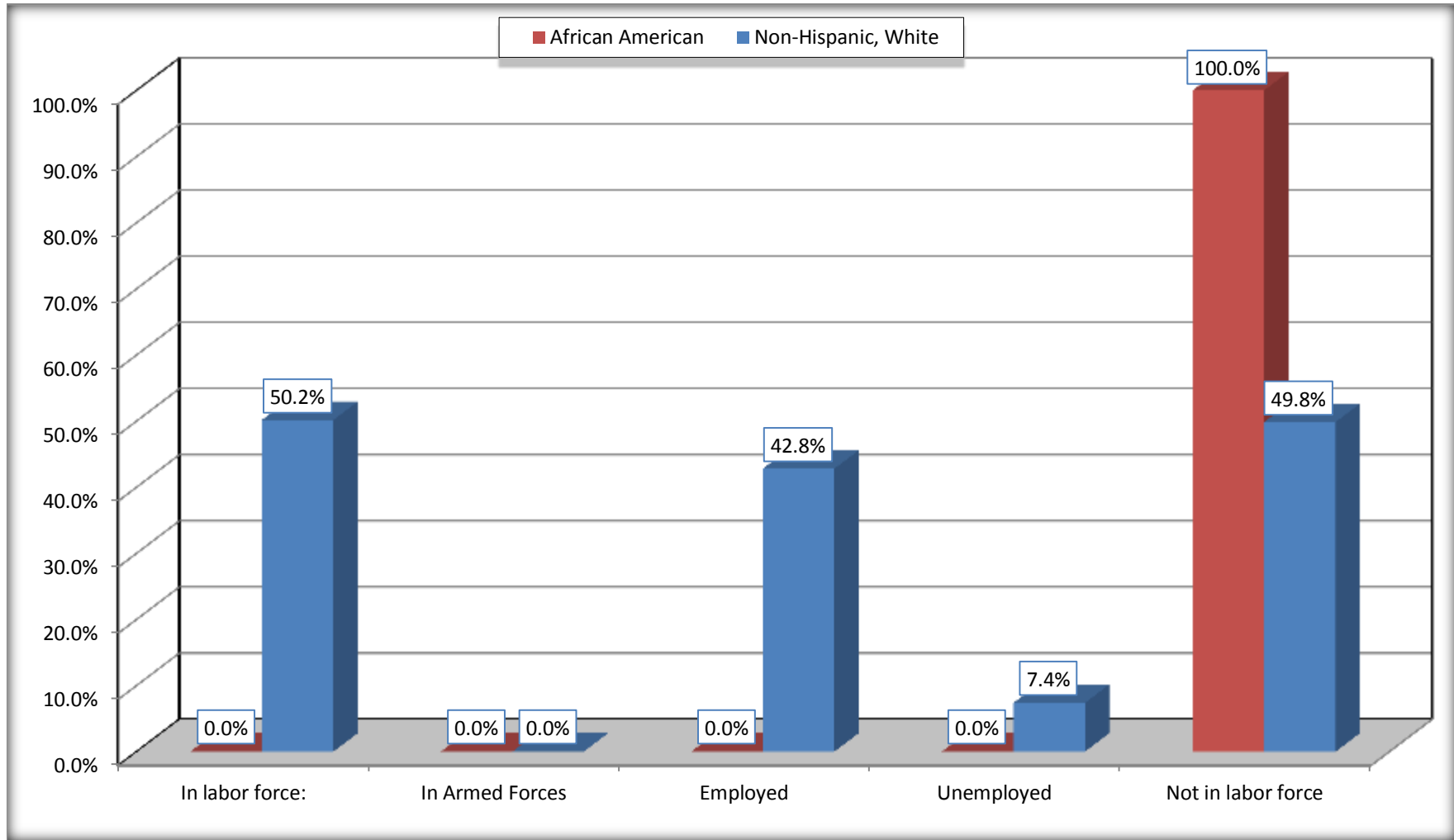
	Ionia city, Michigan					
	African American	Margin of Error (+/-)	% of AA Total	White, Not Hispanic	Margin of Error (+/-)	% of NHW Total
Female:	8	11	0.4%	2,880	250	42.4%
16 to 64 years:	8	11	0.4%	2,297	212	33.9%
In labor force:	0	16	0.0%	1,610	225	23.7%
In Armed Forces	0	16	0.0%	0	16	0.0%
Civilian:	0	16	0.0%	1,610	225	23.7%
Employed	0	16	0.0%	1,351	223	19.9%
Unemployed	0	16	0.0%	259	109	3.8%
Not in labor force	8	11	0.4%	687	169	10.1%
65 years and over:	0	16	0.0%	583	124	8.6%
In labor force:	0	16	0.0%	25	37	0.4%
Employed	0	16	0.0%	25	37	0.4%
Unemployed	0	16	0.0%	0	16	0.0%
Not in labor force	0	16	0.0%	558	128	8.2%

Source: U.S. Census Bureau, 2008-2012 American Community Survey

For information on confidentiality protection, sampling error, nonsampling error, and definitions, see Survey Methodology.
<http://www.census.gov/acs/www/UseData/index.htm>

Employment Status for the Population 16 years and over

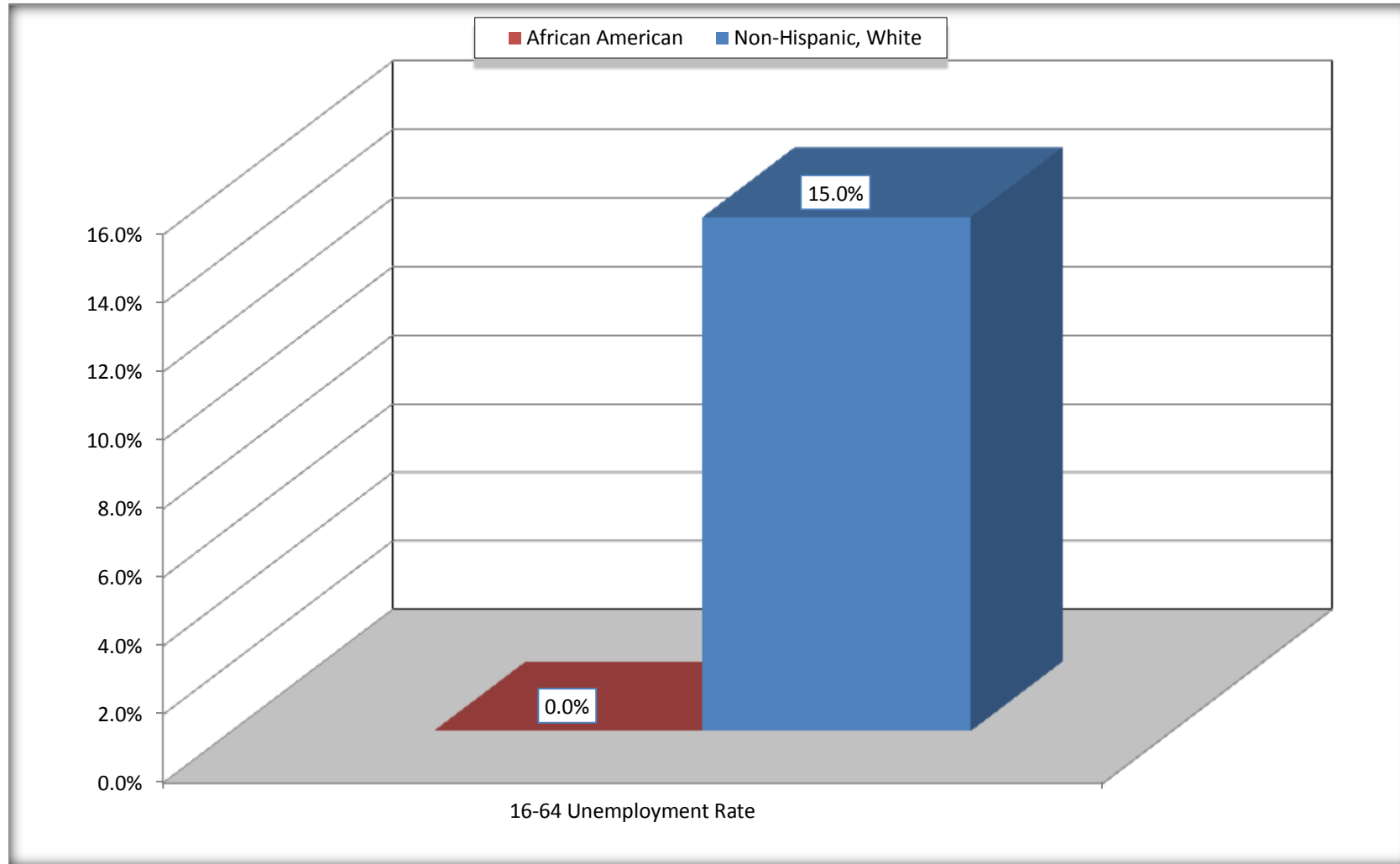
Ionia city, Michigan



Source: C23002. SEX BY AGE BY EMPLOYMENT STATUS FOR THE POPULATION 16 YEARS AND OVER
Data Set: 2008-2012 American Community Survey 5-Year Estimates

Unemployment of Working Age Population (Ages 16 to 64) (As a Percent of 16-64 Civilian Labor Force)

Ionia city, Michigan



Source: C23002. SEX BY AGE BY EMPLOYMENT STATUS FOR THE POPULATION 16 YEARS AND OVER
Data Set: 2008-2012 American Community Survey 5-Year Estimates

B18101. AGE BY DISABILITY STATUS

Data Set: 2008-2012 American Community Survey 5-Year Estimates

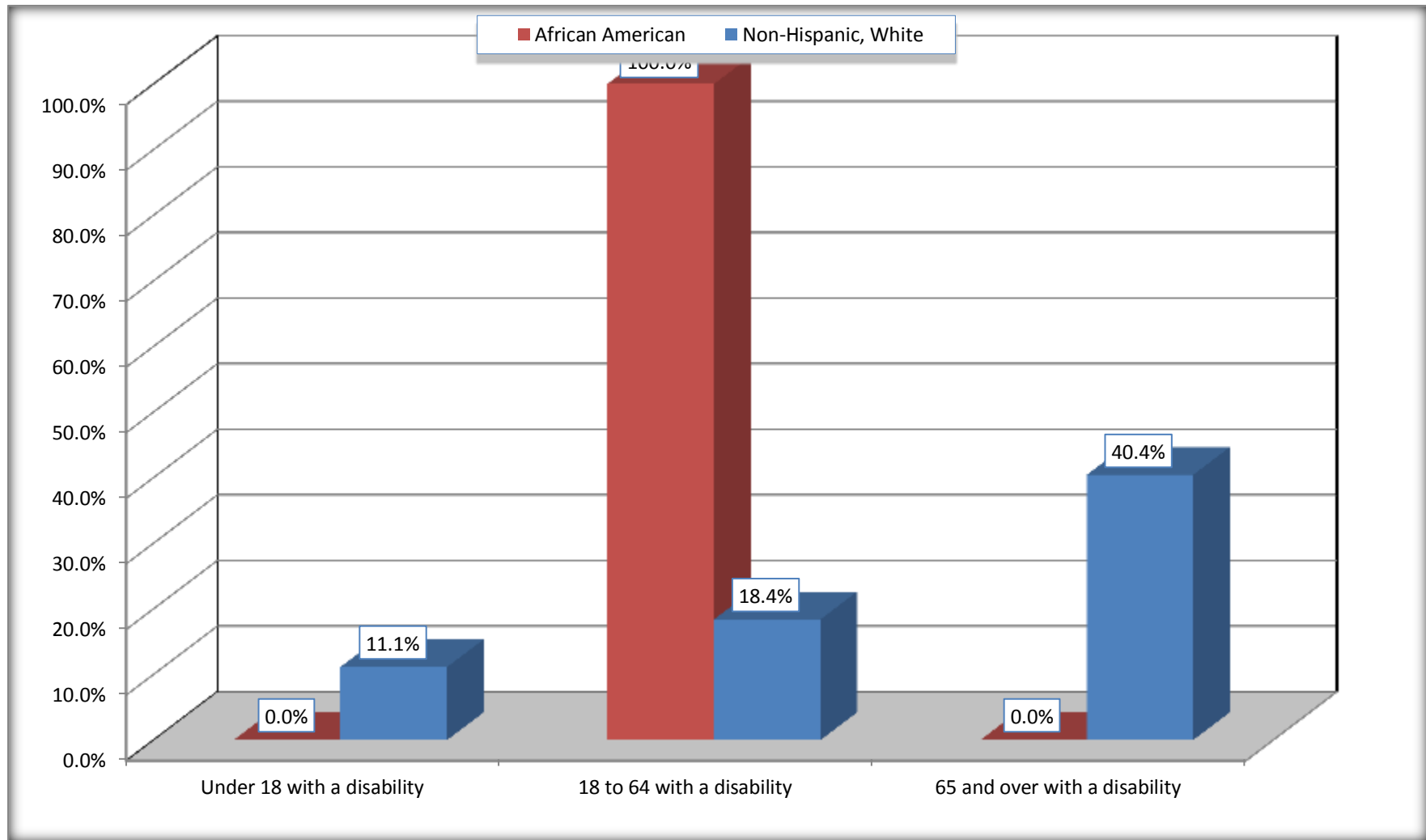
	Ionia city, Michigan					
	African American	Margin of Error (+/-)	% of AA Total	White, Not Hispanic	Margin of Error (+/-)	% of NHW Total
Total:	41	63	100.0%	6,658	455	100.0%
Under 18 years:	40	63	97.6%	1,706	52	25.6%
With a disability	0	16	0.0%	190	160	2.9%
No disability	40	63	97.6%	1,516	259	22.8%
18 to 64 years:	1	3	2.4%	4,153	379	62.4%
With a disability	1	3	2.4%	764	206	11.5%
No disability	0	16	0.0%	3,389	379	50.9%
65 years and over:	0	16	0.0%	799	155	12.0%
With a disability	0	16	0.0%	323	150	4.9%
No disability	0	16	0.0%	476	131	7.1%

Source: U.S. Census Bureau, 2008-2012 American Community Survey

For information on confidentiality protection, sampling error, nonsampling error, and definitions, see Survey Methodology.

<http://www.census.gov/acs/www/UseData/index.htm>

Disability by Age Ionia city, Michigan



Source: B18101. AGE BY DISABILITY STATUS
Data Set: 2008-2012 American Community Survey 5-Year Estimates

C27001B. HEALTH INSURANCE COVERAGE STATUS BY AGE

Data Set: 2008-2012 American Community Survey 5-Year Estimates

	Ionia city, Michigan					
	African American	Margin of Error (+/-)	% of AA Total	White, Not Hispanic	Margin of Error (+/-)	% of NHW Total
Total:	41	63	100.0%	6,658	455	100.0%
Under 18 years:	40	63	97.6%	1,706	245	25.6%
With health insurance coverage	40	63	97.6%	1,664	243	25.0%
No health insurance coverage	0	16	0.0%	42	38	0.6%
18 to 64 years:	1	3	2.4%	4,153	379	62.4%
With health insurance coverage	1	3	2.4%	3,219	292	48.3%
No health insurance coverage	0	16	0.0%	934	274	14.0%
65 years and over:	0	16	0.0%	799	155	12.0%
With health insurance coverage	0	16	0.0%	799	155	12.0%
No health insurance coverage	0	16	0.0%	0	16	0.0%

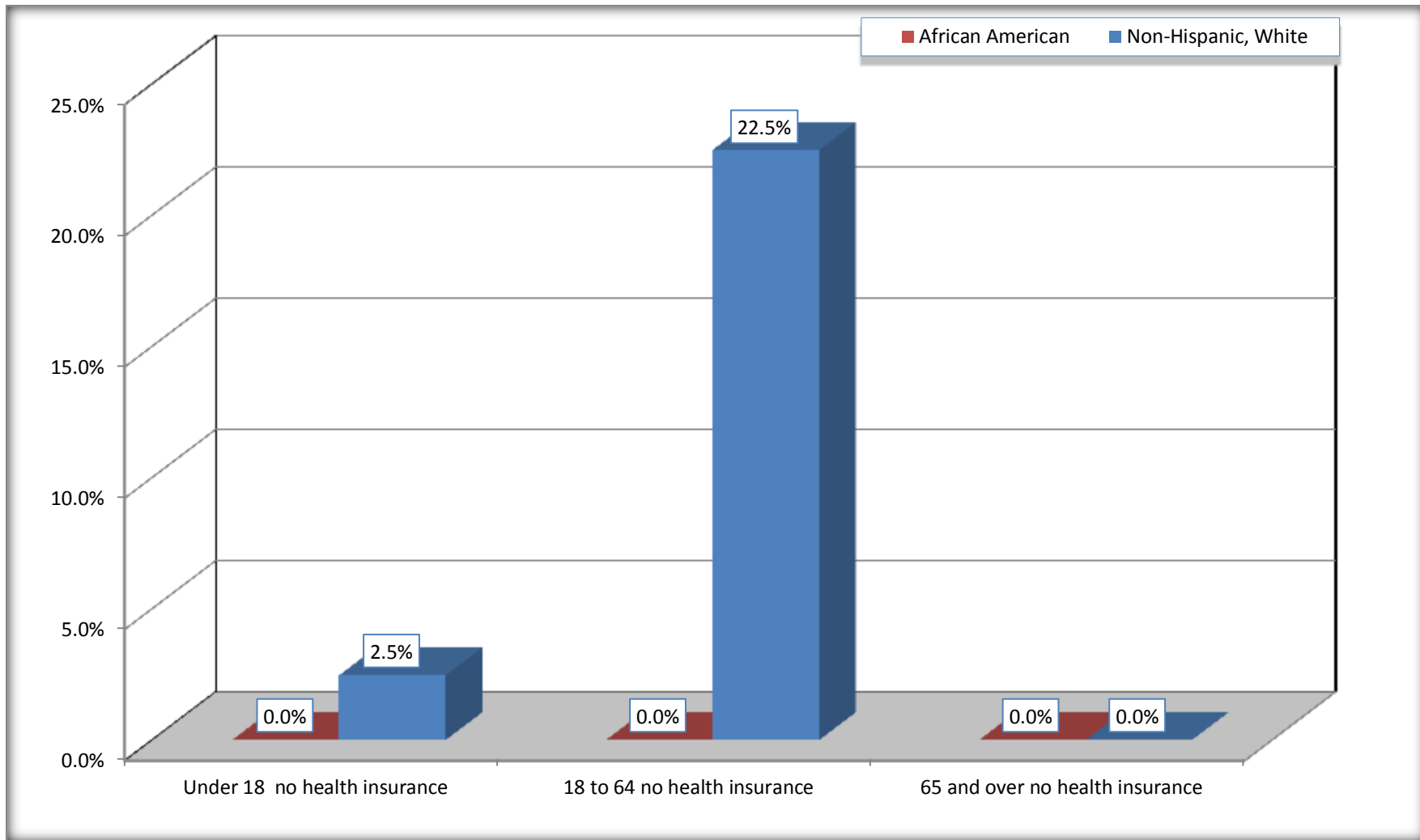
Source: U.S. Census Bureau, 2008-2012 American Community Survey

For information on confidentiality protection, sampling error, nonsampling error, and definitions, see Survey Methodology.

<http://www.census.gov/acs/www/UseData/index.htm>

Lack of Health Insurance Coverage by Age

Ionia city, Michigan



Source: C27001B. HEALTH INSURANCE COVERAGE STATUS BY AGE
Data Set: 2008-2012 American Community Survey 5-Year Estimates