

# **Selected Socio-Economic Data**

## **Comstock Northwest CDP, Michigan**

### **African American and White, Not Hispanic**

**Data Set: 2008-2012 American Community Survey 5-Year Estimates**

[www.fairvote2020.org](http://www.fairvote2020.org)

[www.fairdata2000.com](http://www.fairdata2000.com)

[29-Dec-13](#)

**C02003.DETAILED RACE - Universe: TOTAL POPULATION**

Data Set: 2008-2012 American Community Survey 5-Year Estimates

	<b>Comstock Northwest CDP, Michigan</b>		
	Population	Margin of Error (+/-)	% of Total
<b>Total:</b>	<b>5,923</b>	<b>495</b>	<b>100.0%</b>
Population of one race:	5,850	495	98.8%
White	4,449	507	75.1%
Black or African American	917	317	15.5%
American Indian and Alaska Native	74	85	1.2%
Asian alone	339	246	5.7%
Native Hawaiian and Other Pacific Islander	0	15	0.0%
Some other race	71	104	1.2%
Population of two or more races:	73	53	1.2%
Two races including Some other race	15	25	0.3%
Two races excluding Some other race, and three or more races	58	46	1.0%
Population of two races:	73	53	1.2%
White; Black or African American	0	15	0.0%
White; American Indian and Alaska Native	36	36	0.6%
White; Asian	22	28	0.4%
Black or African American; American Indian and Alaska Native	0	15	0.0%
All other two race combinations	15	25	0.3%
Population of three races	0	15	0.0%
Population of four or more races	0	15	0.0%

Note: Hispanics may be of any race. See Table B03002 and chart.

Source: U.S. Census Bureau, 2008-2012 American Community Survey

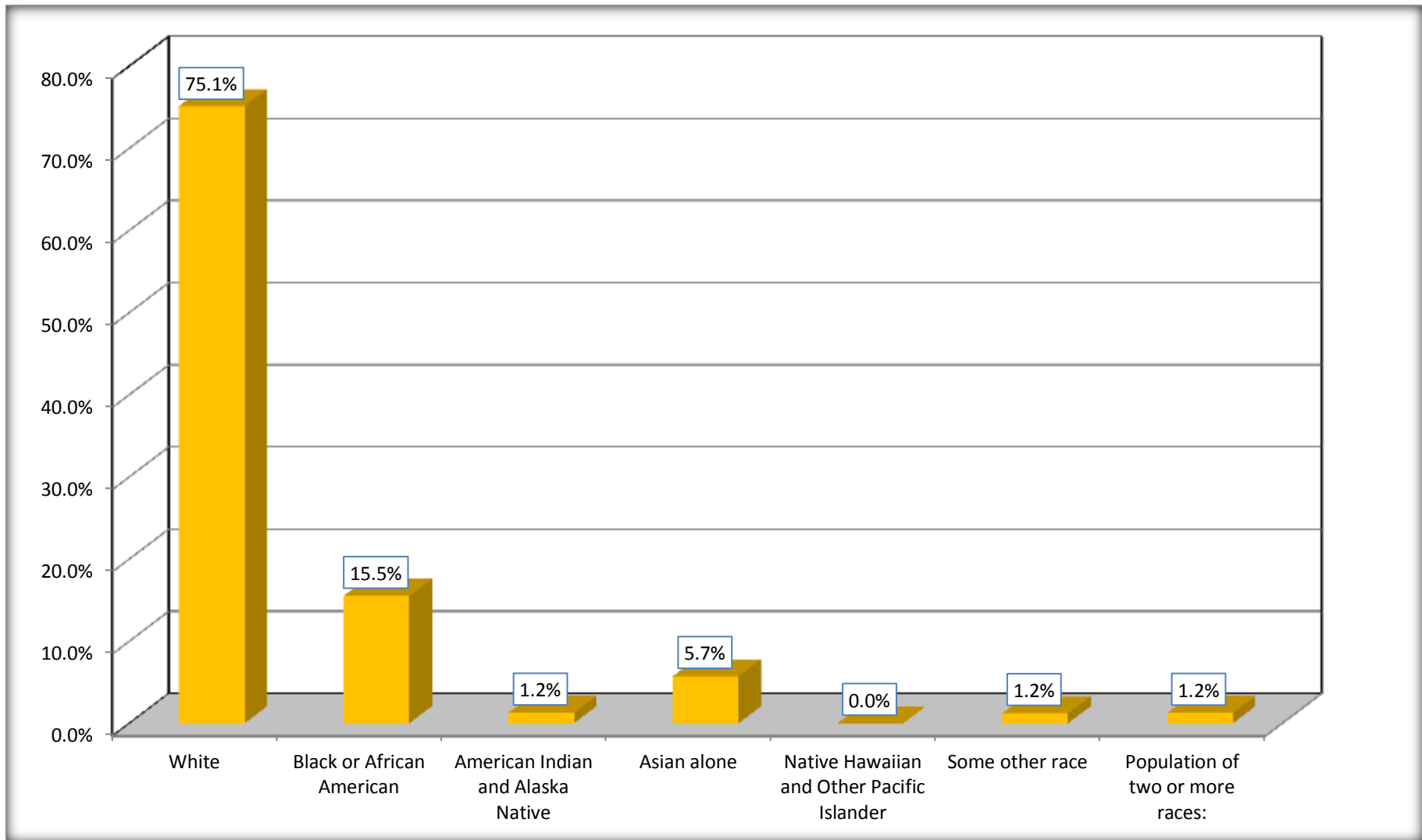
Although the American Community Survey (ACS) produces population, demographic and housing unit estimates, it is the Census Bureau's Population Estimates Program that produces and disseminates the official estimates of the population for the nation, states, counties, cities and towns and estimates of housing units for states and counties.

For information on confidentiality protection, sampling error, nonsampling error, and definitions, see Survey Methodology.

<http://www.census.gov/acs/www/UseData/index.htm>

# Population by Race

## Comstock Northwest CDP, Michigan



Source: C02003.DETAILED RACE - Universe: TOTAL POPULATION  
Data Set: 2008-2012 American Community Survey 5-Year Estimates

**B03002. HISPANIC OR LATINO ORIGIN BY RACE - Universe: TOTAL POPULATION**

Data Set: 2008-2012 American Community Survey 5-Year Estimates

	Comstock Northwest CDP, Michigan		
	Population	Margin of Error (+/-)	% of Total
<b>Total:</b>	5,923	495	<b>100.0%</b>
Not Hispanic or Latino:	5,696	482	96.2%
White alone	4,373	508	73.8%
Black or African American alone	891	314	15.0%
American Indian and Alaska Native alone	20	26	0.3%
Asian alone	339	246	5.7%
Native Hawaiian and Other Pacific Islander alone	0	15	0.0%
Some other race alone	0	15	0.0%
Two or more races:	73	53	1.2%
Two races including Some other race	15	25	0.3%
Two races excluding Some other race, and three or more races	58	46	1.0%
Hispanic or Latino	227	168	3.8%

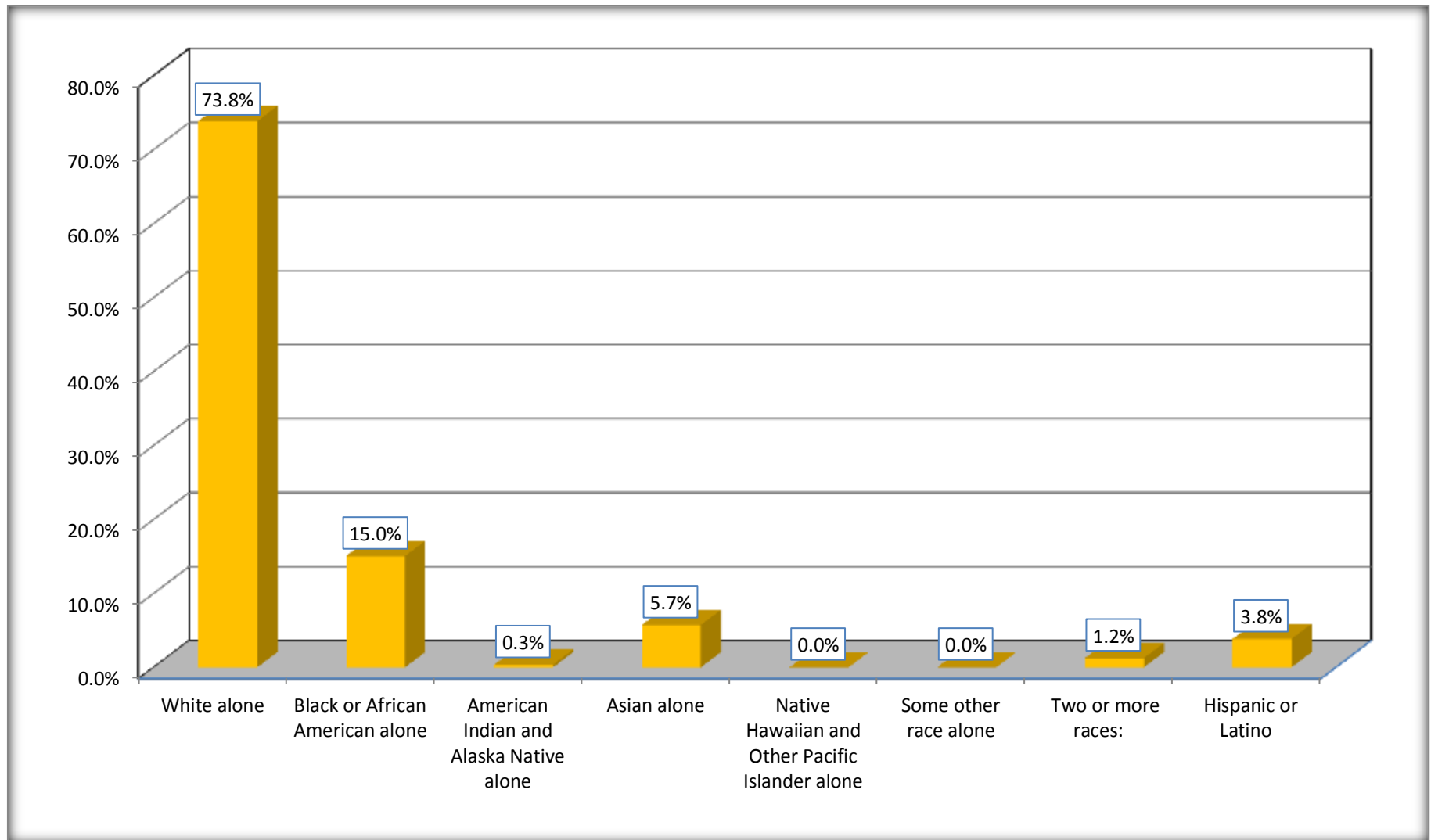
Source: U.S. Census Bureau, 2008-2012 American Community Survey

Although the American Community Survey (ACS) produces population, demographic and housing unit estimates, it is the Census Bureau's Population Estimates Program that produces and disseminates the official estimates of the population for the nation, states, counties, cities and towns and estimates of housing units for states and counties.

For information on confidentiality protection, sampling error, nonsampling error, and definitions, see Survey Methodology.

<http://www.census.gov/acs/www/UseData/index.htm>

## Non-Hispanic by Race and Hispanic Population Comstock Northwest CDP, Michigan



Source: B03002. HISPANIC OR LATINO ORIGIN BY RACE - Universe: TOTAL POPULATION  
Data Set: 2008-2012 American Community Survey 5-Year Estimates

**B03002. HISPANIC OR LATINO ORIGIN BY RACE**

Data Set: 2008-2012 American Community Survey 5-Year Estimates

	Comstock Northwest CDP, Michigan		
	Population	Margin of Error (+/-)	% of Total
Hispanic or Latino:	227	168	<b>100.0%</b>
White alone	76	66	33.5%
Black or African American alone	26	29	11.5%
American Indian and Alaska Native alone	54	82	23.8%
Asian alone	0	15	0.0%
Native Hawaiian and Other Pacific Islander alone	0	15	0.0%
Some other race alone	71	104	31.3%
Two or more races:	0	15	0.0%
Two races including Some other race	0	15	0.0%
Two races excluding Some other race, and three or more races	0	15	0.0%

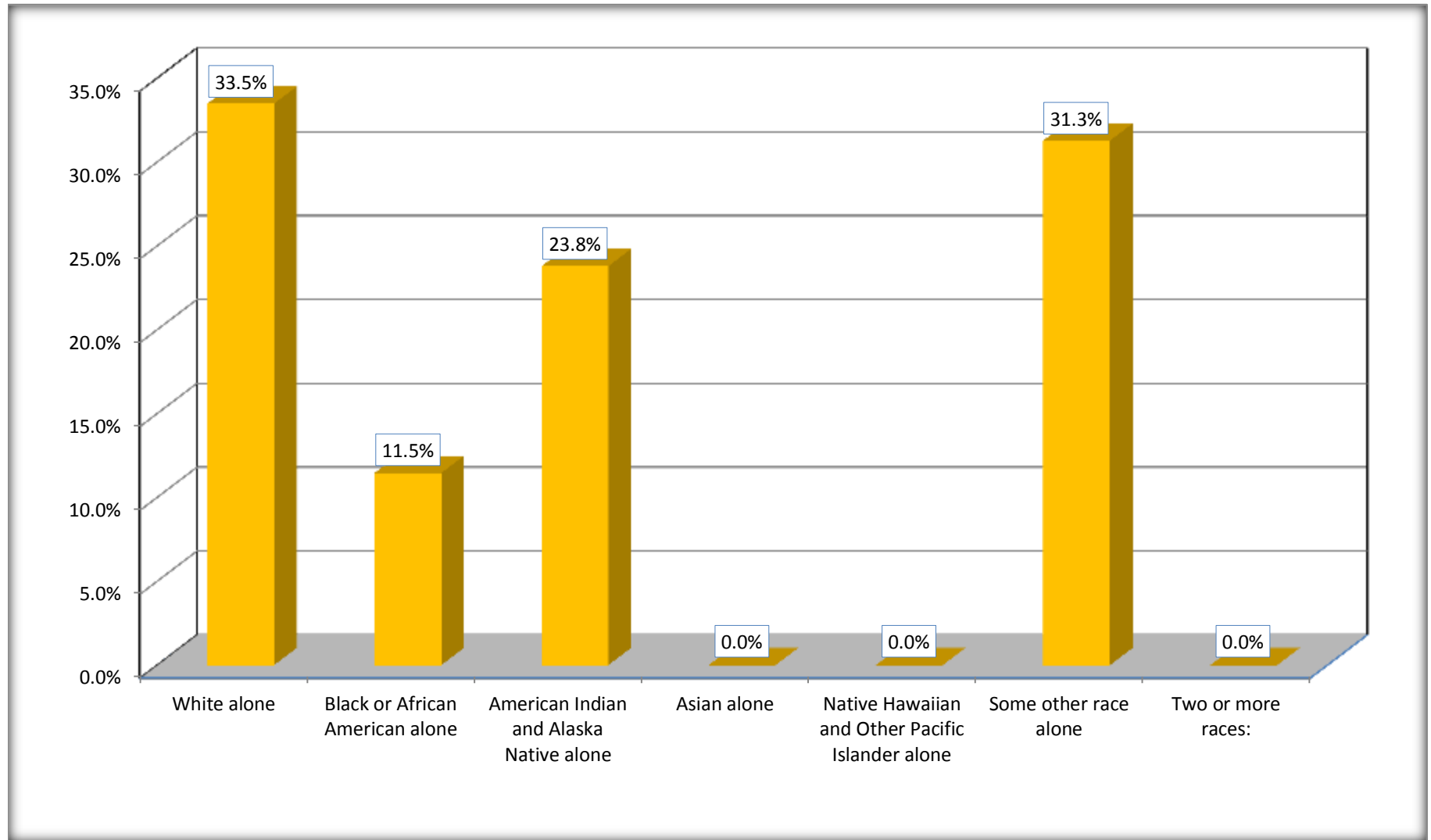
Source: U.S. Census Bureau, 2008-2012 American Community Survey

Although the American Community Survey (ACS) produces population, demographic and housing unit estimates, it is the Census Bureau's Population Estimates Program that produces and disseminates the official estimates of the population for the nation, states, counties, cities and towns and estimates of housing units for states and counties.

For information on confidentiality protection, sampling error, nonsampling error, and definitions, see Survey Methodology.

<http://www.census.gov/acs/www/UseData/index.htm>

## Hispanic or Latino Origin by Race Comstock Northwest CDP, Michigan



Source: B03002. HISPANIC OR LATINO ORIGIN BY RACE  
Data Set: 2008-2012 American Community Survey 5-Year Estimates

**B01001. SEX BY AGE**

Data Set: 2008-2012 American Community Survey 5-Year Estimates

	Comstock Northwest CDP, Michigan					
	African American	Margin of Error (+/-)	% of AA Total	White, Not Hispanic	Margin of Error (+/-)	% of NHW Total
<b>Total:</b>	<b>917</b>	<b>317</b>	<b>100.0%</b>	<b>4,373</b>	<b>508</b>	<b>100.0%</b>
Under 18 years	300	NC	32.7%	892	NC	20.4%
18 to 64 years	509	NC	55.5%	2,848	NC	65.1%
65 years and over	108	NC	11.8%	633	NC	14.5%
Male:	601	210	65.5%	2,061	389	47.1%
Under 18 years	249	NC	27.2%	544	NC	12.4%
18 to 64 years	308	NC	33.6%	1,247	NC	28.5%
65 years and over	44	NC	4.8%	270	NC	6.2%
Female:	316	148	34.5%	2,312	412	52.9%
Under 18 years	51	NC	5.6%	348	NC	8.0%
18 to 64 years	201	NC	21.9%	1,601	NC	36.6%
65 years and over	64	NC	7.0%	363	NC	8.3%

Source: U.S. Census Bureau, 2008-2012 American Community Survey

Although the American Community Survey (ACS) produces population, demographic and housing unit estimates, it is the Census Bureau's Population Estimates Program that produces and disseminates the official estimates of the population for the nation, states, counties, cities and towns and estimates of housing units for states and counties.

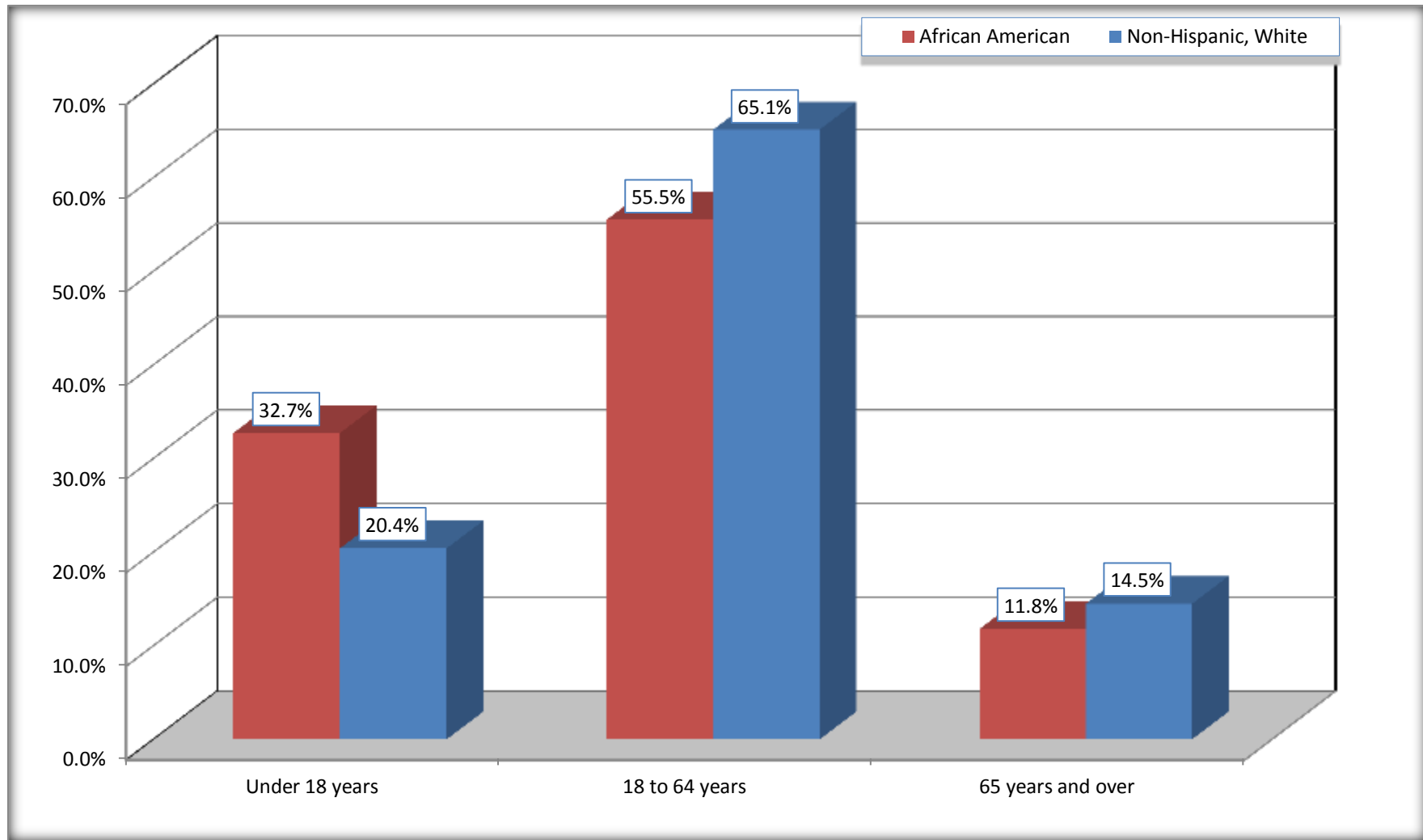
For information on confidentiality protection, sampling error, nonsampling error, and definitions, see Survey Methodology.

<http://www.census.gov/acs/www/UseData/index.htm>



# Population by Age

## Comstock Northwest CDP, Michigan



Source: B01001. SEX BY AGE  
Data Set: 2008-2012 American Community Survey 5-Year Estimates

**B05003. SEX BY AGE BY CITIZENSHIP STATUS**

Data Set: 2008-2012 American Community Survey 5-Year Estimates

	Comstock Northwest CDP, Michigan					
	African American	Margin of Error (+/-)	% of AA Total by Age	White, Not Hispanic	Margin of Error (+/-)	% of NHW Total by Age
<b>Total:</b>	<b>917</b>	<b>317</b>	<b>100.0%</b>	<b>4,373</b>	<b>508</b>	<b>100.0%</b>
<b>Under 18 years:</b>	<b>300</b>	<b>NC</b>	<b>100.0%</b>	<b>892</b>	<b>NC</b>	<b>100.0%</b>
Native	239	NC	79.7%	882	NC	98.9%
Foreign born:	61	NC	20.3%	10	NC	1.1%
Naturalized U.S. citizen	0	NC	0.0%	0	NC	0.0%
Not a U.S. citizen	61	NC	20.3%	10	NC	1.1%
<b>18 years and over:</b>	<b>617</b>	<b>NC</b>	<b>100.0%</b>	<b>3,481</b>	<b>NC</b>	<b>100.0%</b>
Native	540	NC	87.5%	3,397	NC	97.6%
Foreign born:	77	NC	12.5%	84	NC	2.4%
Naturalized U.S. citizen	0	NC	0.0%	48	NC	1.4%
Not a U.S. citizen	77	NC	12.5%	36	NC	1.0%
<b>Male:</b>	<b>601</b>	<b>210</b>	<b>65.5%</b>	<b>2,061</b>	<b>357</b>	<b>47.1%</b>
<b>Under 18 years:</b>	<b>249</b>	<b>168</b>	<b>100.0%</b>	<b>544</b>	<b>198</b>	<b>100.0%</b>
Native	188	102	75.5%	534	198	98.2%
Foreign born:	61	90	24.5%	10	16	1.8%
Naturalized U.S. citizen	0	15	0.0%	0	15	0.0%
Not a U.S. citizen	61	90	24.5%	10	16	1.8%
<b>18 years and over:</b>	<b>352</b>	<b>118</b>	<b>100.0%</b>	<b>1,517</b>	<b>227</b>	<b>100.0%</b>
Native	306	124	86.9%	1,485	221	97.9%
Foreign born:	46	66	13.1%	32	42	2.1%
Naturalized U.S. citizen	0	15	0.0%	25	40	1.6%
Not a U.S. citizen	46	66	13.1%	7	11	0.5%

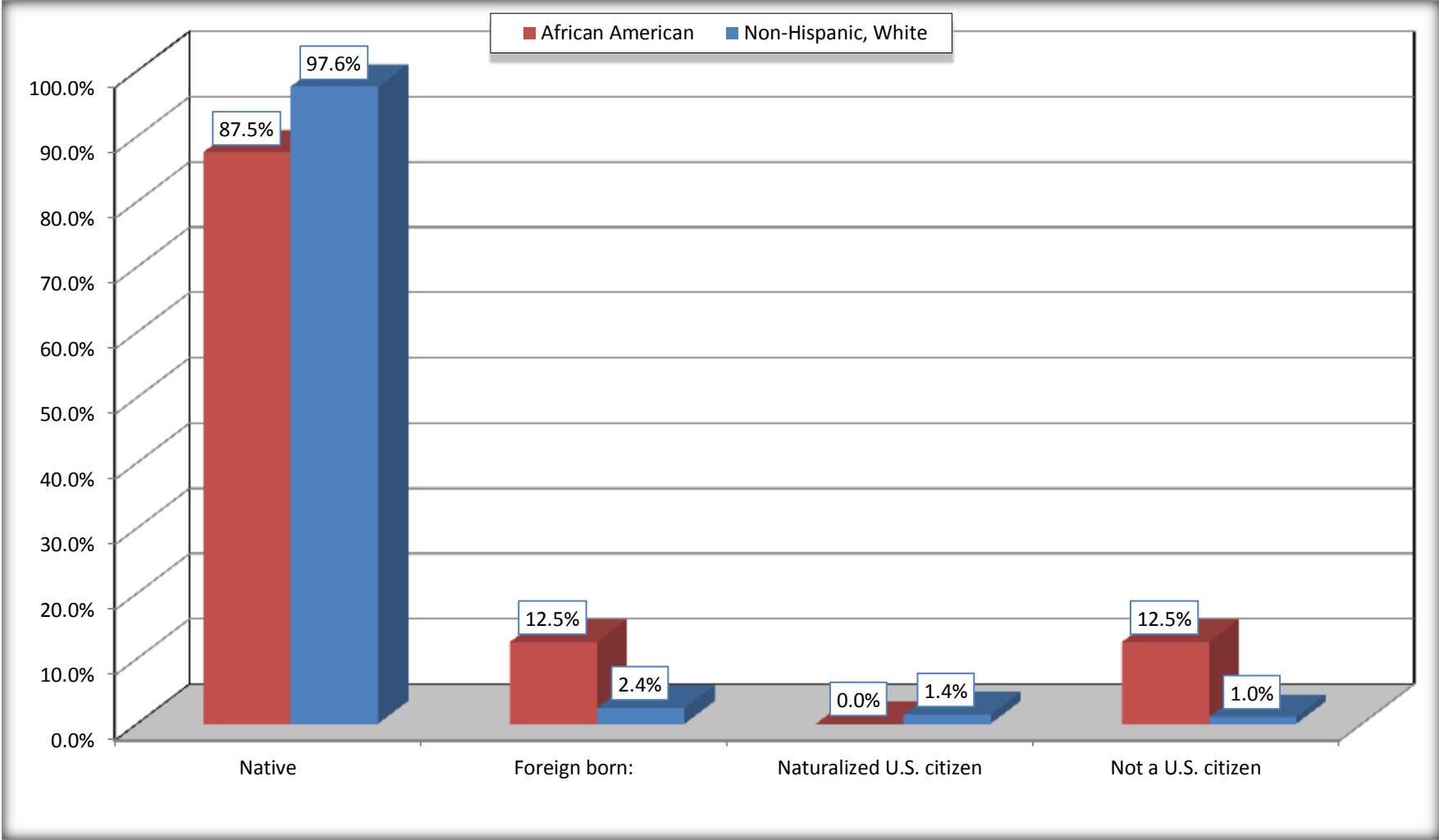
	Comstock Northwest CDP, Michigan					
	African American	Margin of Error (+/-)	% of AA by Age	White, Not Hispanic	Margin of Error (+/-)	% of NHW by Age
<b>Female:</b>	316	148	34.5%	2,312	287	52.9%
<b>Under 18 years:</b>	<b>51</b>	<b>52</b>	<b>100.0%</b>	<b>348</b>	<b>131</b>	<b>100.0%</b>
Native	51	52	100.0%	348	131	100.0%
Foreign born:	0	15	0.0%	0	15	0.0%
Naturalized U.S. citizen	0	15	0.0%	0	15	0.0%
Not a U.S. citizen	0	15	0.0%	0	15	0.0%
<b>18 years and over:</b>	<b>265</b>	<b>119</b>	<b>100.0%</b>	<b>1,964</b>	<b>242</b>	<b>100.0%</b>
Native	234	106	88.3%	1,912	241	97.4%
Foreign born:	31	46	11.7%	52	39	2.6%
Naturalized U.S. citizen	0	15	0.0%	23	27	1.2%
Not a U.S. citizen	31	46	11.7%	29	27	1.5%

Source: U.S. Census Bureau, 2008-2012 American Community Survey

For information on confidentiality protection, sampling error, nonsampling error, and definitions, see Survey Methodology.  
<http://www.census.gov/acs/www/UseData/index.htm>

# Citizenship Status of Voting Age Population (18 and Over)

## Comstock Northwest CDP, Michigan



Source: B05003. SEX BY AGE BY CITIZENSHIP STATUS  
Data Set: 2008-2012 American Community Survey 5-Year Estimates

**B07004. GEOGRAPHICAL MOBILITY IN THE PAST YEAR BY RACE FOR CURRENT RESIDENCE IN THE UNITED STATES - Universe:  
POPULATION 1 YEAR AND OVER**

Data Set: 2008-2012 American Community Survey 5-Year Estimates

	Comstock Northwest CDP, Michigan					
	African American	Margin of Error (+/-)	% of AA Total	White, Not Hispanic	Margin of Error (+/-)	% of NHW Total
<b>Total:</b>	<b>917</b>	<b>317</b>	<b>100.0%</b>	<b>4,251</b>	<b>465</b>	<b>100.0%</b>
Same house 1 year ago	675	242	73.6%	3,392	411	79.8%
Moved within same county	172	252	18.8%	581	297	13.7%
Moved from different county within same state	70	111	7.6%	211	107	5.0%
Moved from different state	0	15	0.0%	55	46	1.3%
Moved from abroad	0	15	0.0%	12	18	0.3%

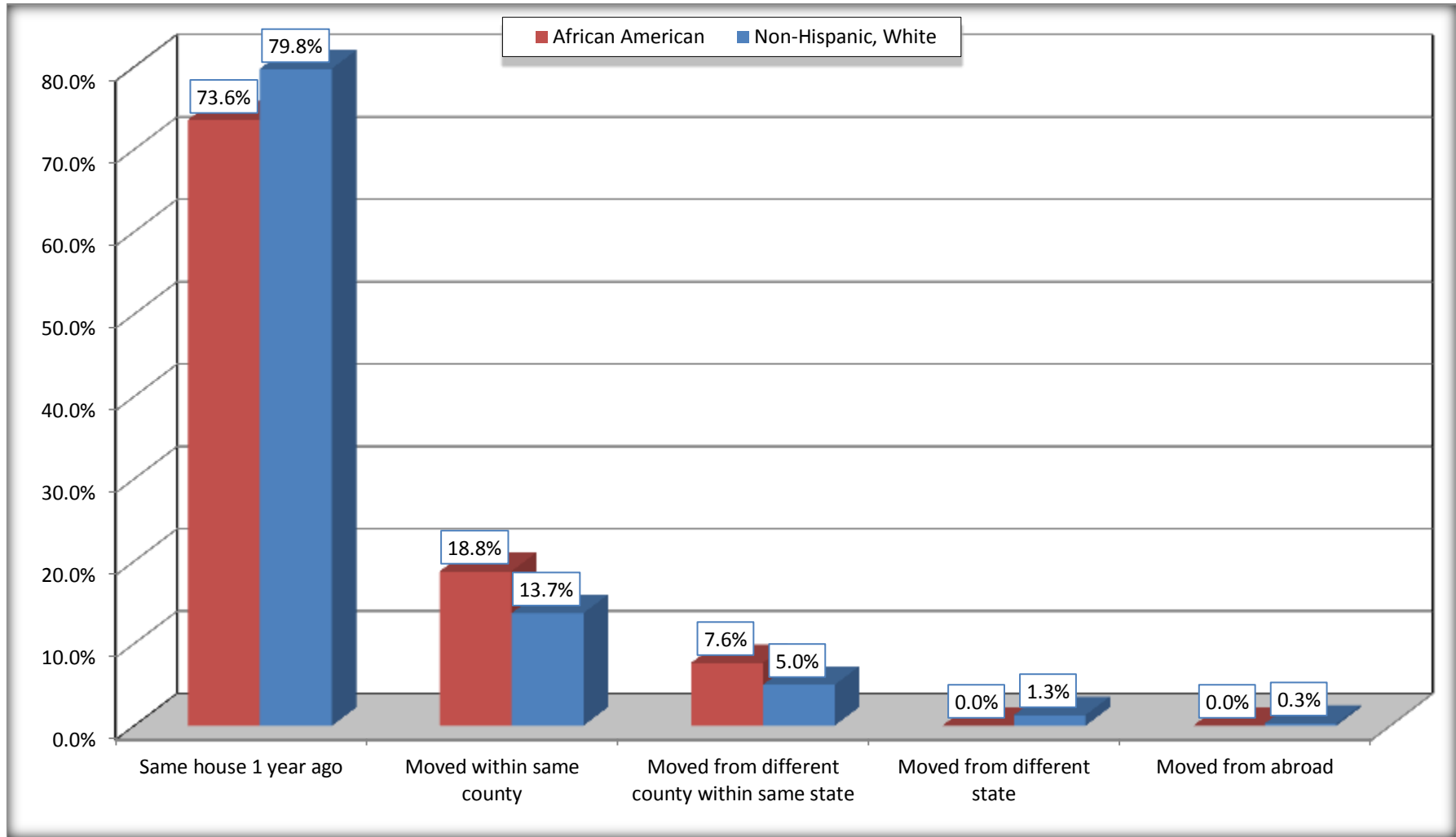
Source: U.S. Census Bureau, 2008-2012 American Community Survey

For information on confidentiality protection, sampling error, nonsampling error, and definitions, see Survey Methodology.

<http://www.census.gov/acs/www/UseData/index.htm>

# Geographical Mobility in the Past Year (Population 1 Year and Over)

## Comstock Northwest CDP, Michigan



Source: B07004. GEOGRAPHICAL MOBILITY IN THE PAST YEAR BY RACE FOR CURRENT RESIDENCE IN THE UNITED STATES - Universe: POPULATION 1 YEAR AND OVER

Data Set: 2008-2012 American Community Survey 5-Year Estimates

**B08105. MEANS OF TRANSPORTATION TO WORK - Universe: WORKERS 16 YEARS AND OVER**

Data Set: 2008-2012 American Community Survey 5-Year Estimates

	Comstock Northwest CDP, Michigan					
	African American	Margin of Error (+/-)	% of AA Total	White, Not Hispanic	Margin of Error (+/-)	% of NHW Total
<b>Total:</b>	336	147	<b>100.0%</b>	2042	280	<b>100.0%</b>
Car, truck, or van - drove alone	318	151	94.6%	1903	275	93.2%
Car, truck, or van - carpooled	0	15	0.0%	34	34	1.7%
Public transportation (excluding taxicab)	3	8	0.9%	15	24	0.7%
Walked	0	15	0.0%	0	15	0.0%
Taxicab, motorcycle, bicycle, or other means	0	15	0.0%	12	20	0.6%
Worked at home	15	26	4.5%	78	64	3.8%

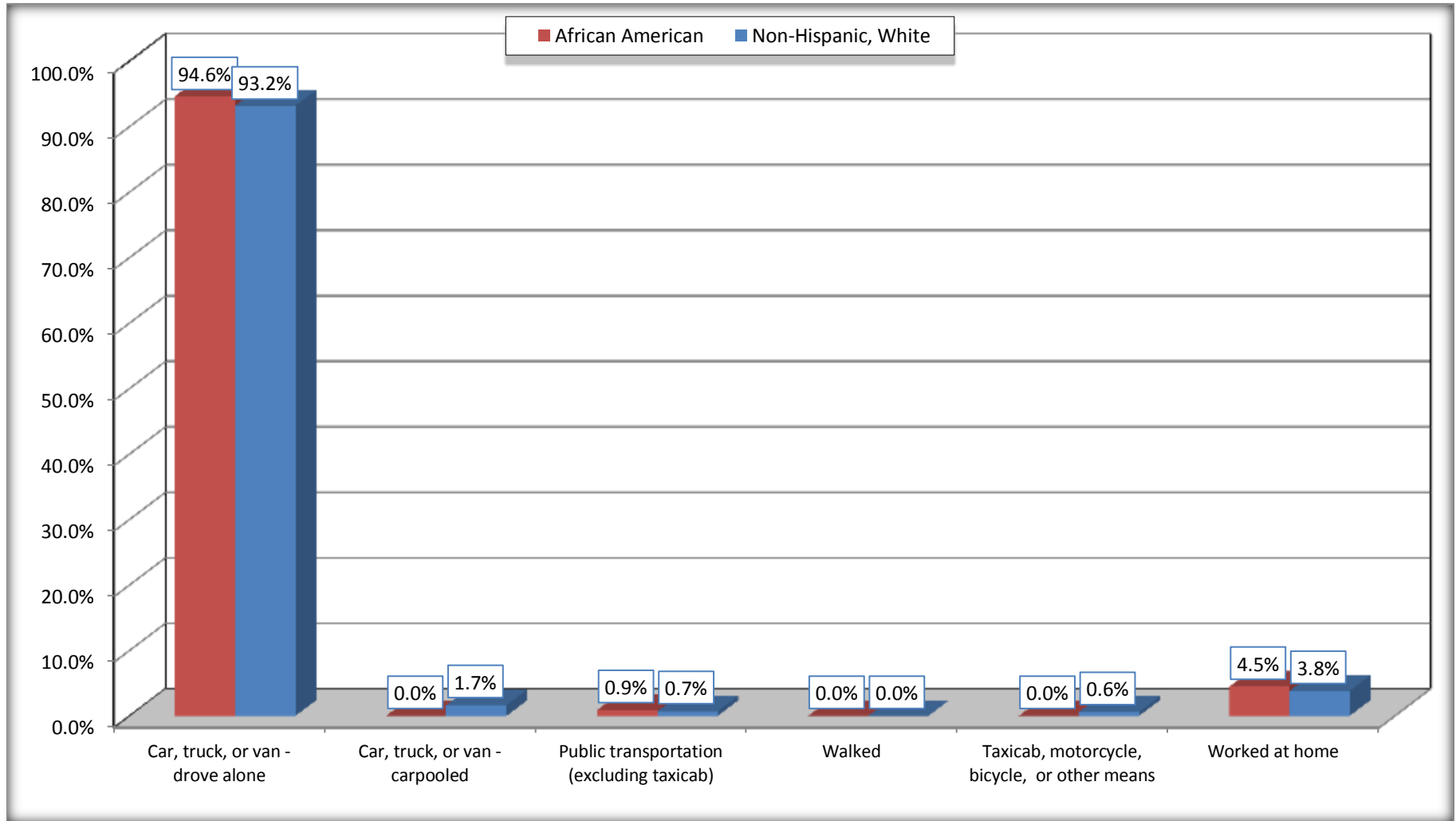
Source: U.S. Census Bureau, 2008-2012 American Community Survey

For information on confidentiality protection, sampling error, nonsampling error, and definitions, see Survey Methodology.

<http://www.census.gov/acs/www/UseData/index.htm>

# Means of Transportation to Work (Workers 16 Years and Over)

## Comstock Northwest CDP, Michigan



Source: B08105. MEANS OF TRANSPORTATION TO WORK - Universe: WORKERS 16 YEARS AND OVER  
Data Set: 2008-2012 American Community Survey 5-Year Estimates



**B11002. HOUSEHOLD TYPE BY RELATIVES AND NONRELATIVES FOR POPULATION IN HOUSEHOLDS**

Data Set: 2008-2012 American Community Survey 5-Year Estimates

	Comstock Northwest CDP, Michigan					
	African American	Margin of Error (+/-)	% of AA Total	White, Not Hispanic	Margin of Error (+/-)	% of NHW Total
<b>Total:</b>	818	363	<b>100.0%</b>	4575	548	<b>100.0%</b>
In family households	742	350	90.7%	3161	516	69.1%
In nonfamily households	76	64	9.3%	1414	324	30.9%

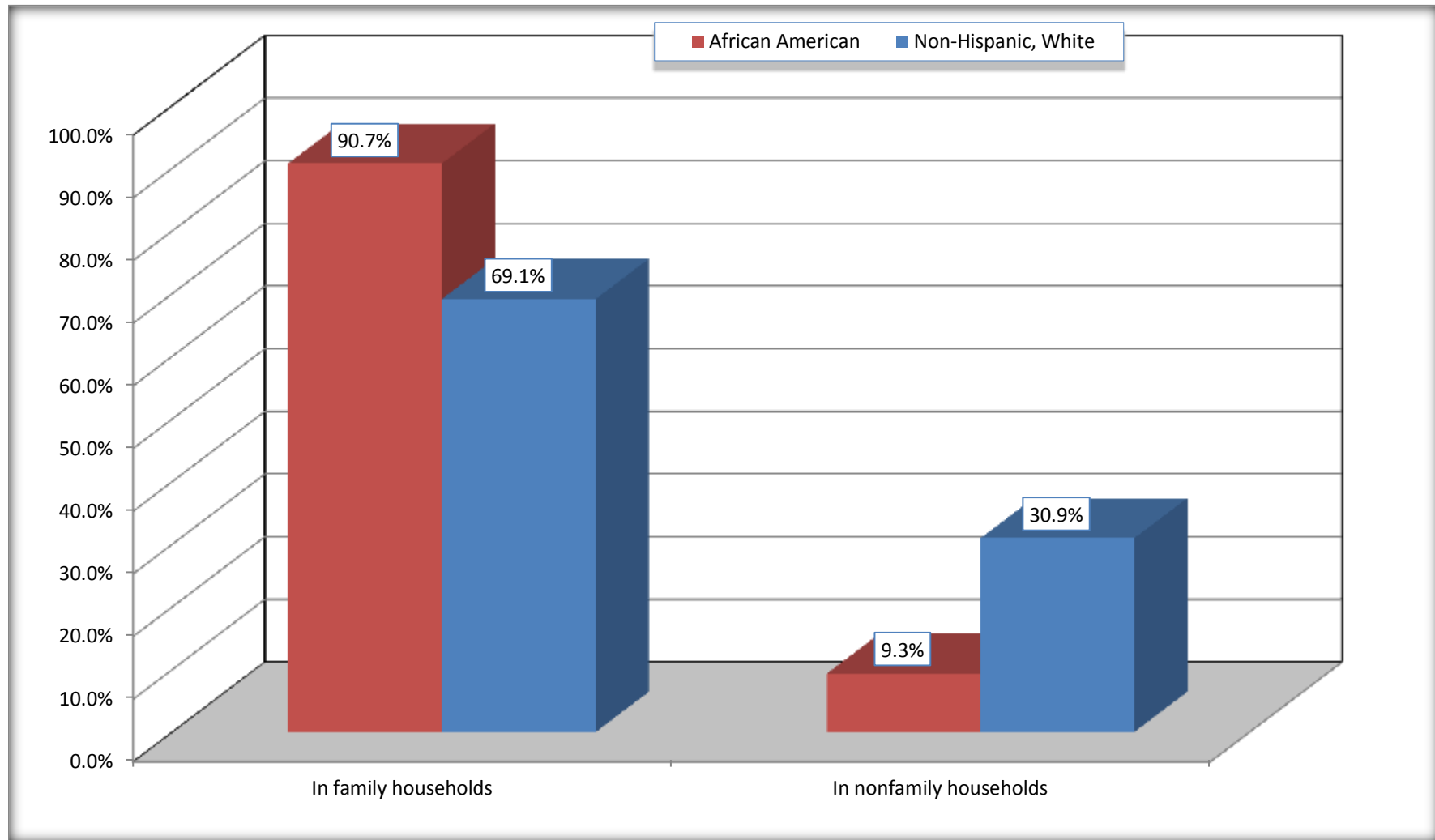
Source: U.S. Census Bureau, 2008-2012 American Community Survey

For information on confidentiality protection, sampling error, nonsampling error, and definitions, see Survey Methodology.

<http://www.census.gov/acs/www/UseData/index.htm>

# Household Type for Population in Households

## Comstock Northwest CDP, Michigan



Source: B11002. HOUSEHOLD TYPE BY RELATIVES AND NONRELATIVES FOR POPULATION IN HOUSEHOLDS  
Data Set: 2008-2012 American Community Survey 5-Year Estimates

**B12002. MARITAL STATUS FOR THE POPULATION 15 YEARS AND OVER**

Data Set: 2008-2012 American Community Survey 5-Year Estimates

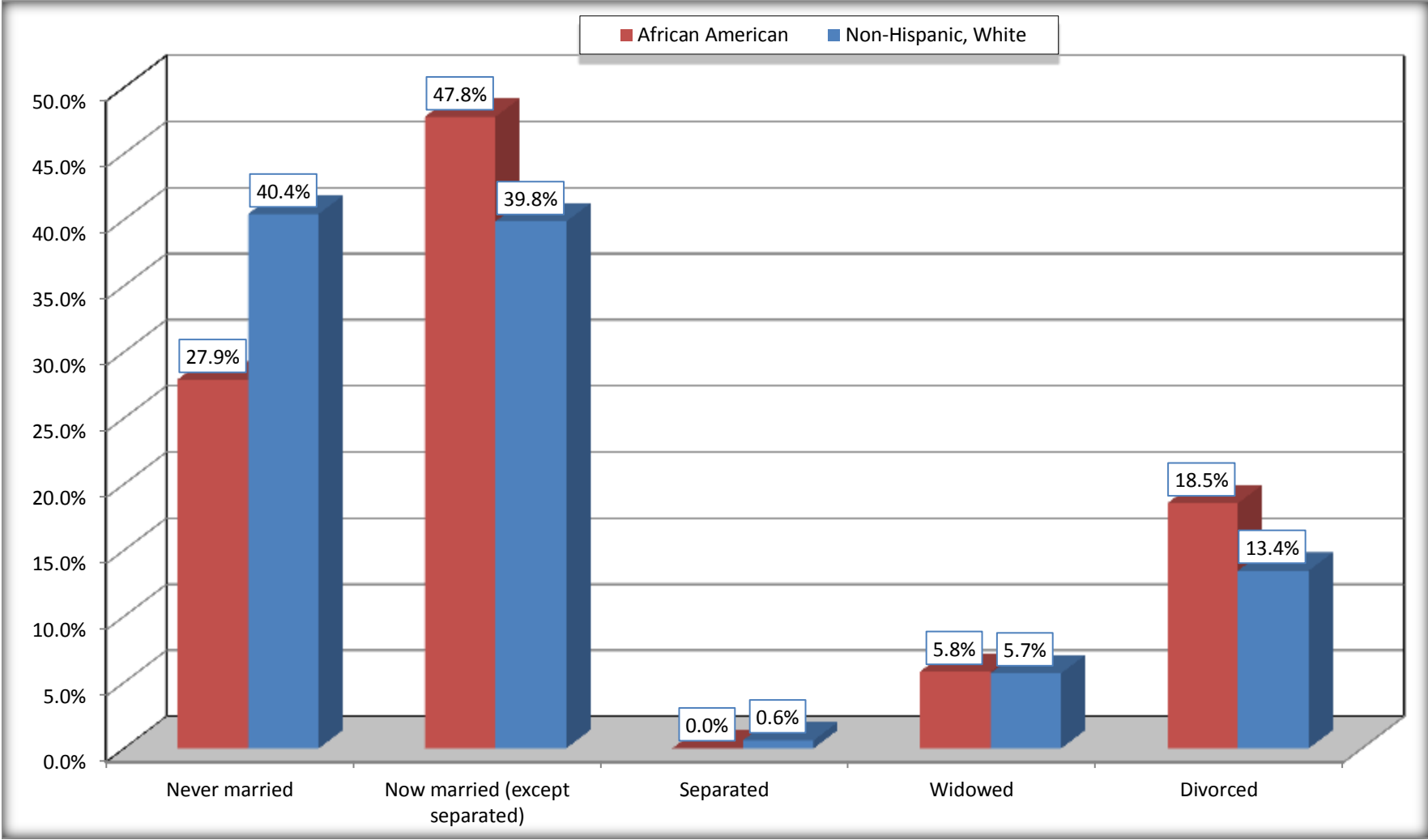
	Comstock Northwest CDP, Michigan					
	African American	Margin of Error (+/-)	% of AA Total	White, Not Hispanic	Margin of Error (+/-)	% of NHW Total
<b>Total:</b>	<b>674</b>	<b>222</b>	<b>100.0%</b>	<b>3,644</b>	<b>365</b>	<b>100.0%</b>
Never married	188	NC	27.9%	1,473	NC	40.4%
Now married (except separated)	322	NC	47.8%	1,452	NC	39.8%
Separated	0	NC	0.0%	22	NC	0.6%
Widowed	39	NC	5.8%	207	NC	5.7%
Divorced	125	NC	18.5%	490	NC	13.4%
<b>Male:</b>	<b>409</b>	<b>134</b>	<b>60.7%</b>	<b>1,603</b>	<b>231</b>	<b>44.0%</b>
Never married	159	112	23.6%	615	154	16.9%
Now married (except separated)	186	107	27.6%	708	121	19.4%
Separated	0	15	0.0%	0	15	0.0%
Widowed	24	40	3.6%	50	41	1.4%
Divorced	40	68	5.9%	230	116	6.3%
<b>Female:</b>	<b>265</b>	<b>119</b>	<b>39.3%</b>	<b>2,041</b>	<b>254</b>	<b>56.0%</b>
Never married	29	34	4.3%	858	200	23.5%
Now married (except separated)	136	74	20.2%	744	118	20.4%
Separated	0	15	0.0%	22	28	0.6%
Widowed	15	26	2.2%	157	72	4.3%
Divorced	85	106	12.6%	260	108	7.1%

Source: U.S. Census Bureau, 2008-2012 American Community Survey

For information on confidentiality protection, sampling error, nonsampling error, and definitions, see Survey Methodology.

<http://www.census.gov/acs/www/UseData/index.htm>

**Marital Status for the Population 15 Years and Over**  
**Comstock Northwest CDP, Michigan**



Source: B12002. MARITAL STATUS FOR THE POPULATION 15 YEARS AND OVER  
Data Set: 2008-2012 American Community Survey 5-Year Estimates

**C15002. SEX BY EDUCATIONAL ATTAINMENT FOR THE POPULATION 25 YEARS AND OVER**

Data Set: 2008-2012 American Community Survey 5-Year Estimates

	Comstock Northwest CDP, Michigan					
	African American	Margin of Error (+/-)	% of AA Total	White, Not Hispanic	Margin of Error (+/-)	% of NHW Total
<b>Total:</b>	<b>504</b>	<b>199</b>	<b>100.0%</b>	<b>2,847</b>	<b>316</b>	<b>100.0%</b>
Less than high school diploma	31	NC	6.2%	101	NC	3.5%
High school graduate, GED, or alternative	59	NC	11.7%	966	NC	33.9%
Some college or associate's degree	159	NC	31.5%	971	NC	34.1%
Bachelor's degree or higher	255	NC	50.6%	809	NC	28.4%
Male:	253	107	50.2%	1,266	190	44.5%
Less than high school diploma	3	8	0.6%	32	37	1.1%
High school graduate, GED, or alternative	23	39	4.6%	421	130	14.8%
Some college or associate's degree	120	83	23.8%	400	102	14.0%
Bachelor's degree or higher	107	91	21.2%	413	118	14.5%
Female:	251	113	49.8%	1,581	222	55.5%
Less than high school diploma	28	33	5.6%	69	51	2.4%
High school graduate, GED, or alternative	36	48	7.1%	545	165	19.1%
Some college or associate's degree	39	46	7.7%	571	141	20.1%
Bachelor's degree or higher	148	73	29.4%	396	136	13.9%

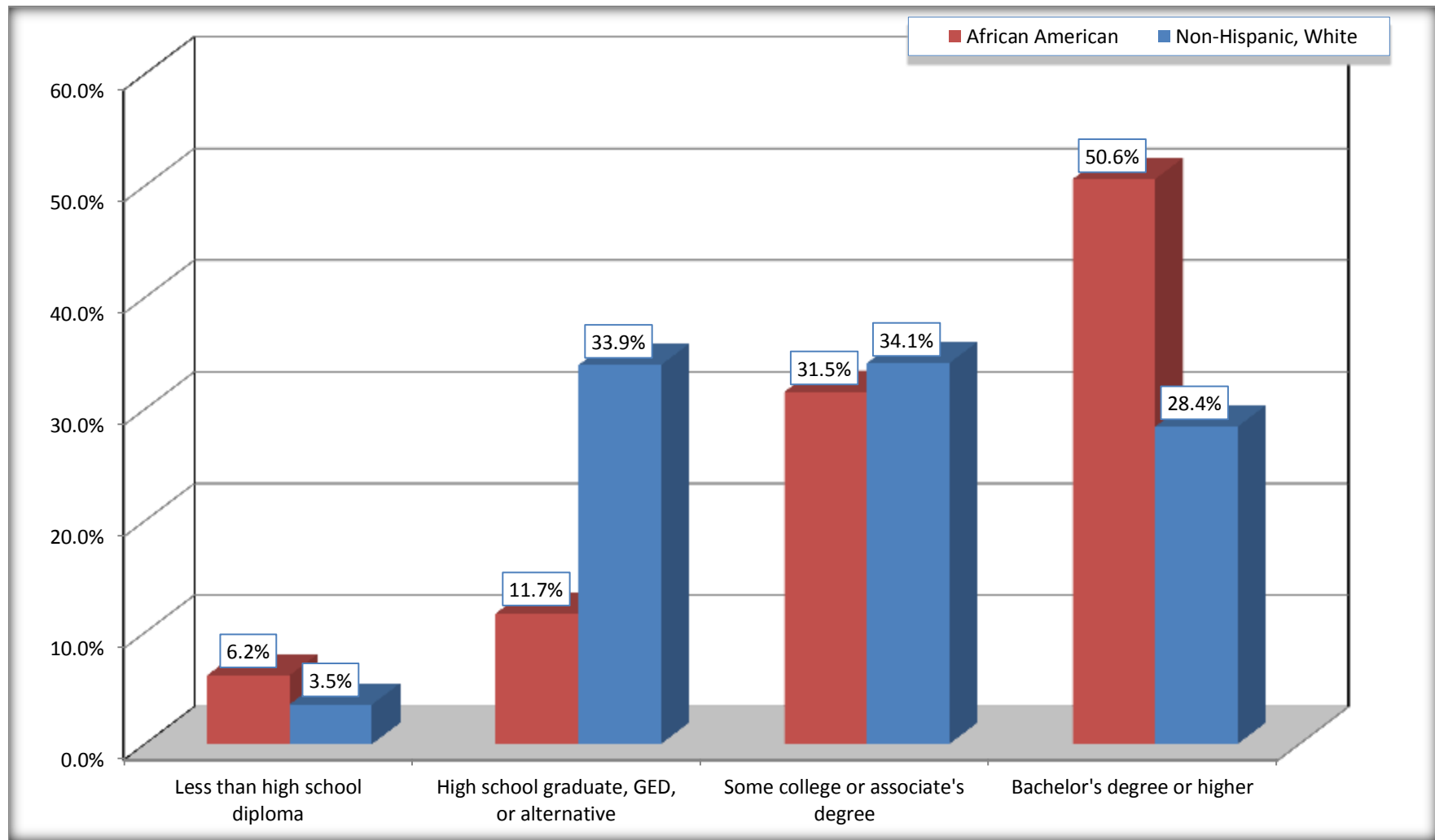
Source: U.S. Census Bureau, 2008-2012 American Community Survey

For information on confidentiality protection, sampling error, nonsampling error, and definitions, see Survey Methodology.

<http://www.census.gov/acs/www/UseData/index.htm>

# Educational Attainment for the Population 25 Years and Older

## Comstock Northwest CDP, Michigan



Source: C15002. SEX BY EDUCATIONAL ATTAINMENT FOR THE POPULATION 25 YEARS AND OVER  
Data Set: 2008-2012 American Community Survey 5-Year Estimates

**B17010. POVERTY STATUS IN THE PAST 12 MONTHS OF FAMILIES BY FAMILY TYPE BY PRESENCE OF RELATED CHILDREN UNDER 18 YEARS**

Data Set: 2008-2012 American Community Survey 5-Year Estimates

	Comstock Northwest CDP, Michigan					
	African American	Margin of Error (+/-)	% of AA Total	White, Not Hispanic	Margin of Error (+/-)	% of NHW Total
<b>Total:</b>	<b>188</b>	<b>85</b>	<b>100.0%</b>	<b>1,040</b>	<b>154</b>	<b>100.0%</b>
Income in the past 12 months below poverty level:	0	15	0.0%	132	80	12.7%
Married-couple family:	0	15	0.0%	12	18	1.2%
With related children under 18 years	0	15	0.0%	12	18	1.2%
Other family:	0	15	0.0%	120	80	11.5%
Male householder, no wife present	0	15	0.0%	0	15	0.0%
With related children under 18 years	0	15	0.0%	0	15	0.0%
Female householder, no husband present	0	15	0.0%	120	80	11.5%
With related children under 18 years	0	15	0.0%	68	44	6.5%
Income in the past 12 months at or above poverty level:	188	85	100.0%	908	151	87.3%
Married-couple family:	156	90	83.0%	707	122	68.0%
With related children under 18 years	136	91	72.3%	302	93	29.0%
Other family:	32	42	17.0%	201	109	19.3%
Male householder, no wife present	17	29	9.0%	145	99	13.9%
With related children under 18 years	0	15	0.0%	125	102	12.0%
Female householder, no husband present	15	26	8.0%	56	45	5.4%
With related children under 18 years	15	26	8.0%	23	27	2.2%

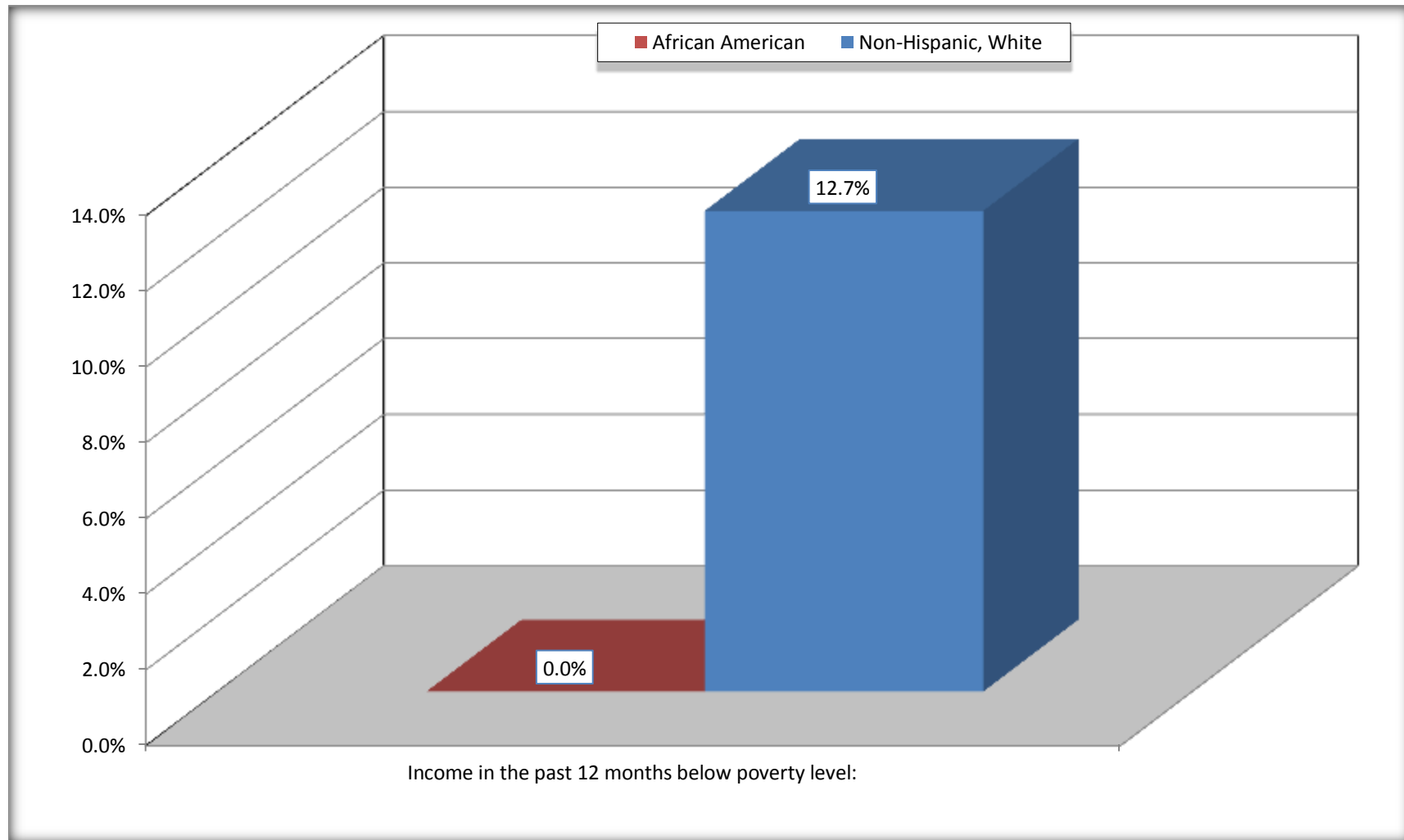
Source: U.S. Census Bureau, 2008-2012 American Community Survey

For information on confidentiality protection, sampling error, nonsampling error, and definitions, see Survey Methodology.

<http://www.census.gov/acs/www/UseData/index.htm>

# Family Households Below Poverty in the Past 12 Months

## Comstock Northwest CDP, Michigan



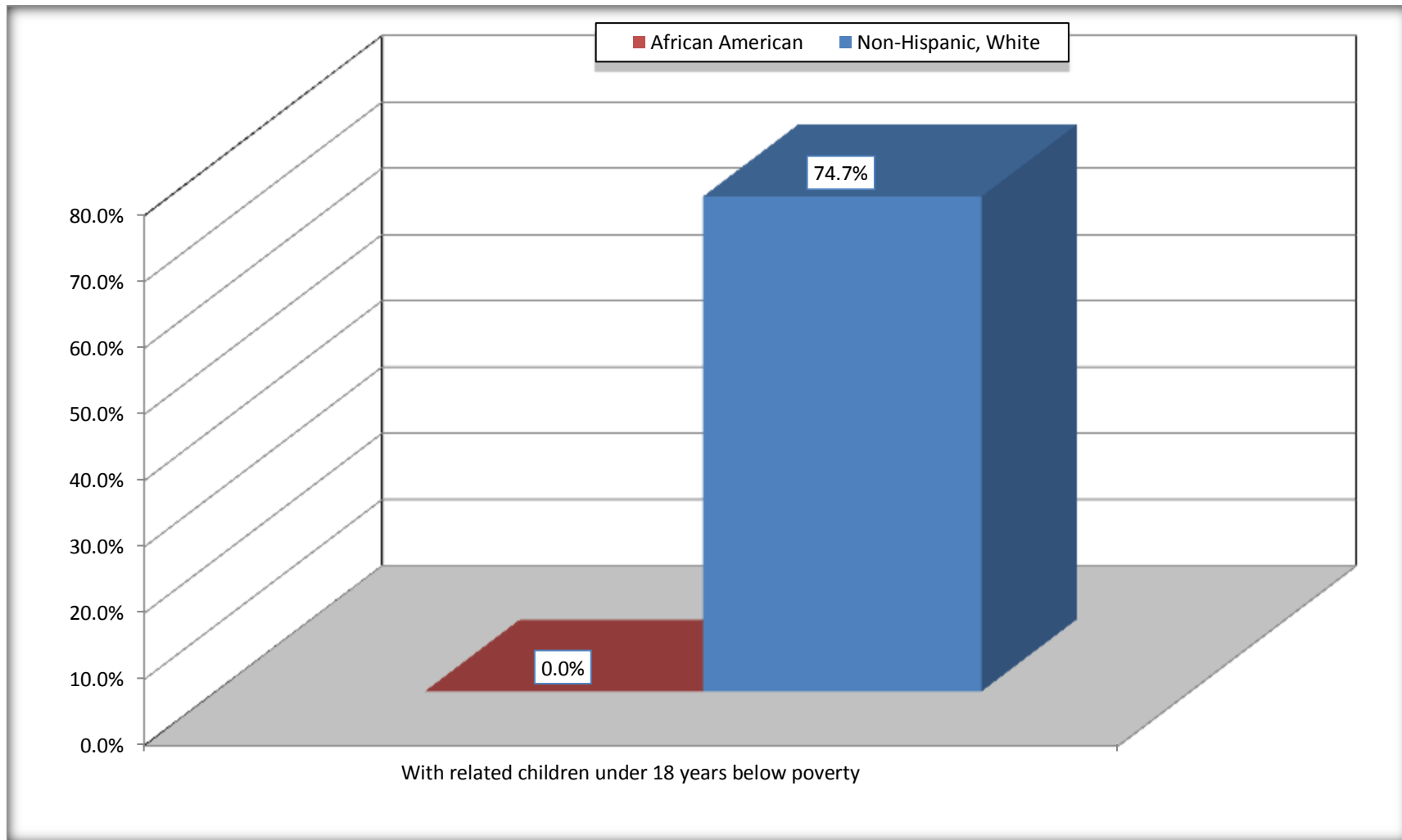
Source: B17010. POVERTY STATUS IN THE PAST 12 MONTHS OF FAMILIES BY FAMILY TYPE BY PRESENCE OF RELATED CHILDREN UNDER 18 YEARS

Data Set: 2008-2012 American Community Survey 5-Year Estimates



# Female-headed Households with Related Children Below Poverty in the Past 12 Months

## Comstock Northwest CDP, Michigan



Source: B17010. POVERTY STATUS IN THE PAST 12 MONTHS OF FAMILIES BY FAMILY TYPE BY PRESENCE OF RELATED CHILDREN UNDER 18 YEARS

Data Set: 2008-2012 American Community Survey 5-Year Estimates

**B17020 POVERTY STATUS IN THE PAST 12 MONTHS BY AGE - Universe: POPULATION FOR WHOM POVERTY STATUS IS DETERMINED**

Data Set: 2008-2012 American Community Survey 5-Year Estimates

	Comstock Northwest CDP, Michigan					
	African American	Margin of Error (+/-)	% of AA By Age	White, Not Hispanic	Margin of Error (+/-)	% of NHW By Age
<b>Total:</b>	<b>917</b>	<b>317</b>	<b>100.0%</b>	<b>4,362</b>	<b>507</b>	<b>100.0%</b>
Income in the past 12 months below poverty level:	88	116	9.6%	721	283	16.5%
<b>Under 18 years</b>	0	NC	0.0%	168	NC	19.1%
<b>18 to 64 years</b>	73	111	14.3%	488	221	17.1%
<b>65 years and over</b>	15	NC	13.9%	65	NC	10.3%
Income in the past 12 months at or above poverty level:	829	366	90.4%	3,641	485	83.5%
<b>Under 18 years</b>	300	NC	100.0%	713	NC	80.9%
<b>18 to 64 years</b>	436	215	85.7%	2,360	308	82.9%
<b>65 years and over</b>	93	NC	86.1%	568	NC	89.7%

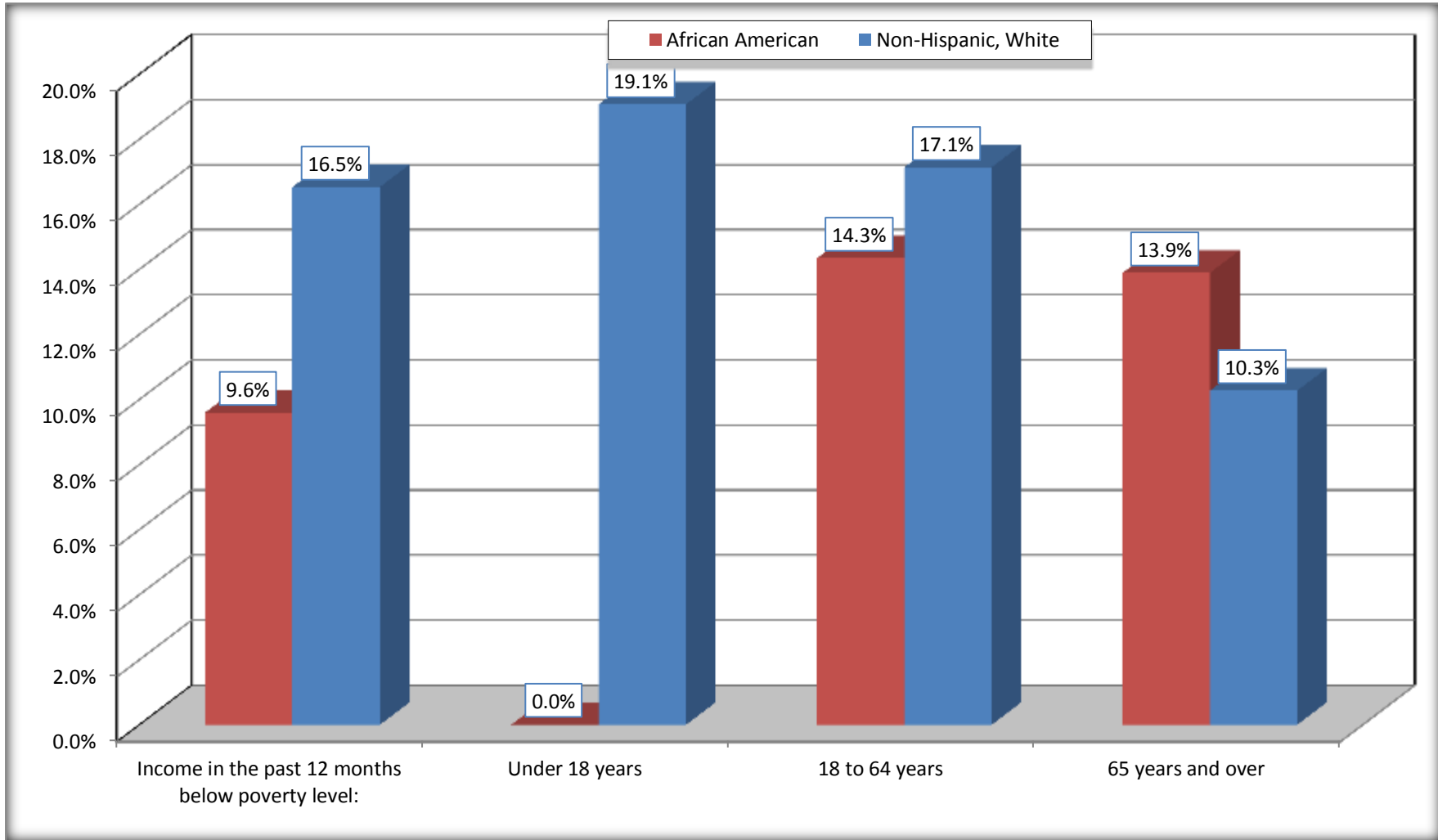
Source: U.S. Census Bureau, 2008-2012 American Community Survey

For information on confidentiality protection, sampling error, nonsampling error, and definitions, see Survey Methodology.

<http://www.census.gov/acs/www/UseData/index.htm>

# Population Below Poverty in the Past 12 Months

## Comstock Northwest CDP, Michigan



Source: B17020 POVERTY STATUS IN THE PAST 12 MONTHS BY AGE - Universe: POPULATION FOR WHOM POVERTY STATUS IS DETERMINED  
Data Set: 2008-2012 American Community Survey 5-Year Estimates

**B19001. HOUSEHOLD INCOME IN THE PAST 12 MONTHS (IN 2010 INFLATION-ADJUSTED DOLLARS)**

Data Set: 2008-2012 American Community Survey 5-Year Estimates

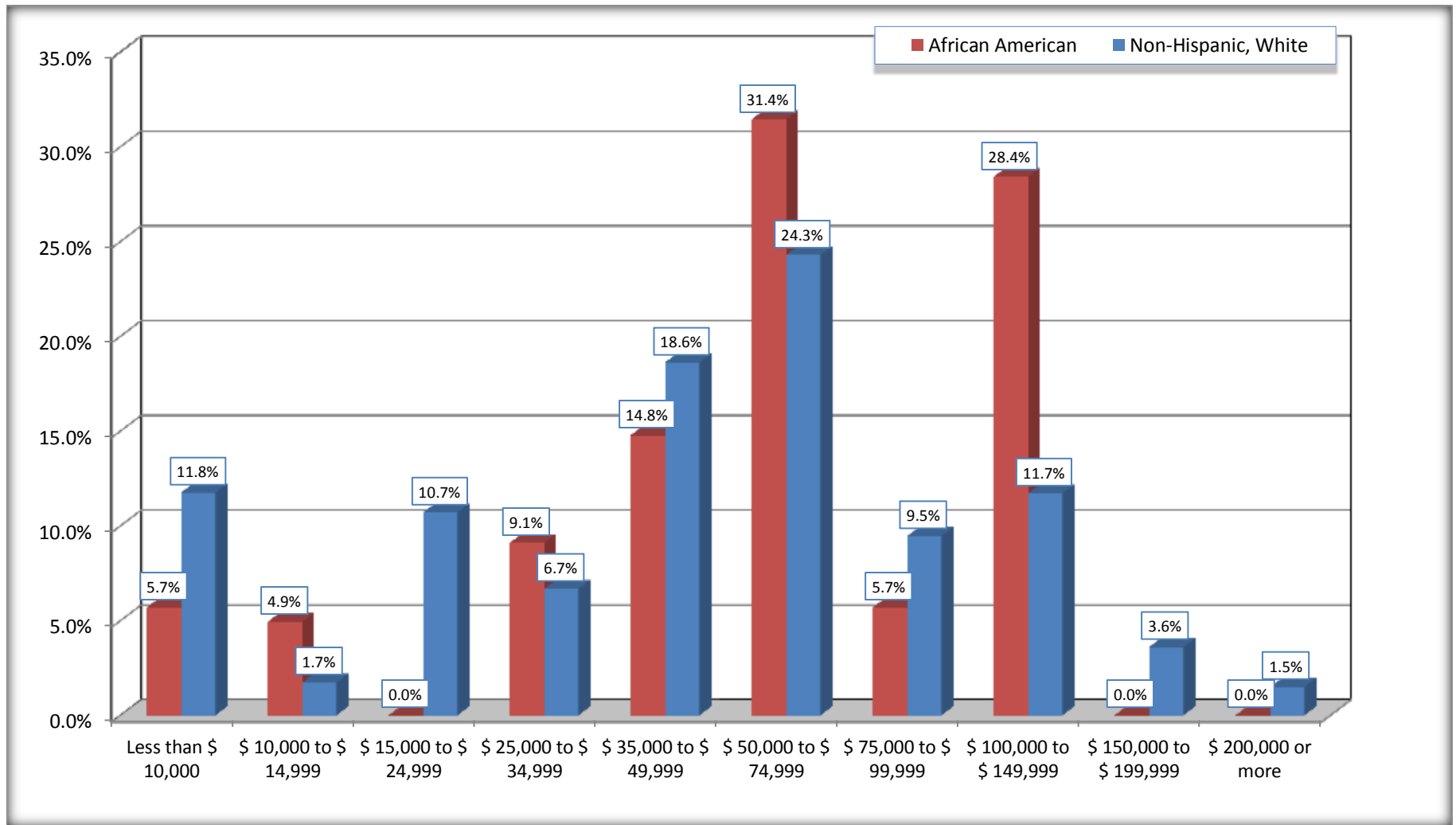
	Comstock Northwest CDP, Michigan					
	African American	Margin of Error (+/-)	% of AA Total	White, Not Hispanic	Margin of Error (+/-)	% of NHW Total
<b>Total:</b>	<b>264</b>	<b>108</b>	<b>100.0%</b>	<b>2,084</b>	<b>205</b>	<b>100.0%</b>
Less than \$ 10,000	15	26	5.7%	245	124	11.8%
\$ 10,000 to \$ 14,999	13	20	4.9%	36	36	1.7%
<b>\$ 15,000 to \$ 24,999</b>	0	NC	0.0%	223	NC	10.7%
<b>\$ 25,000 to \$ 34,999</b>	24	NC	9.1%	139	NC	6.7%
<b>\$ 35,000 to \$ 49,999</b>	39	NC	14.8%	388	NC	18.6%
<b>\$ 50,000 to \$ 74,999</b>	83	NC	31.4%	506	NC	24.3%
\$ 75,000 to \$ 99,999	15	25	5.7%	197	75	9.5%
<b>\$ 100,000 to \$ 149,999</b>	75	NC	28.4%	244	NC	11.7%
\$ 150,000 to \$ 199,999	0	15	0.0%	75	48	3.6%
\$ 200,000 or more	0	15	0.0%	31	35	1.5%

Source: U.S. Census Bureau, 2008-2012 American Community Survey

For information on confidentiality protection, sampling error, nonsampling error, and definitions, see Survey Methodology.

<http://www.census.gov/acs/www/UseData/index.htm>

## Household Income in the Past 12 Months Comstock Northwest CDP, Michigan



Source: B19001. HOUSEHOLD INCOME IN THE PAST 12 MONTHS (IN 2010 INFLATION-ADJUSTED DOLLARS)  
Data Set: 2008-2012 American Community Survey 5-Year Estimates

**B19013. MEDIAN HOUSEHOLD INCOME IN THE PAST 12 MONTHS (IN 2010 INFLATION-ADJUSTED DOLLARS)**

Data Set: 2008-2012 American Community Survey 5-Year Estimates

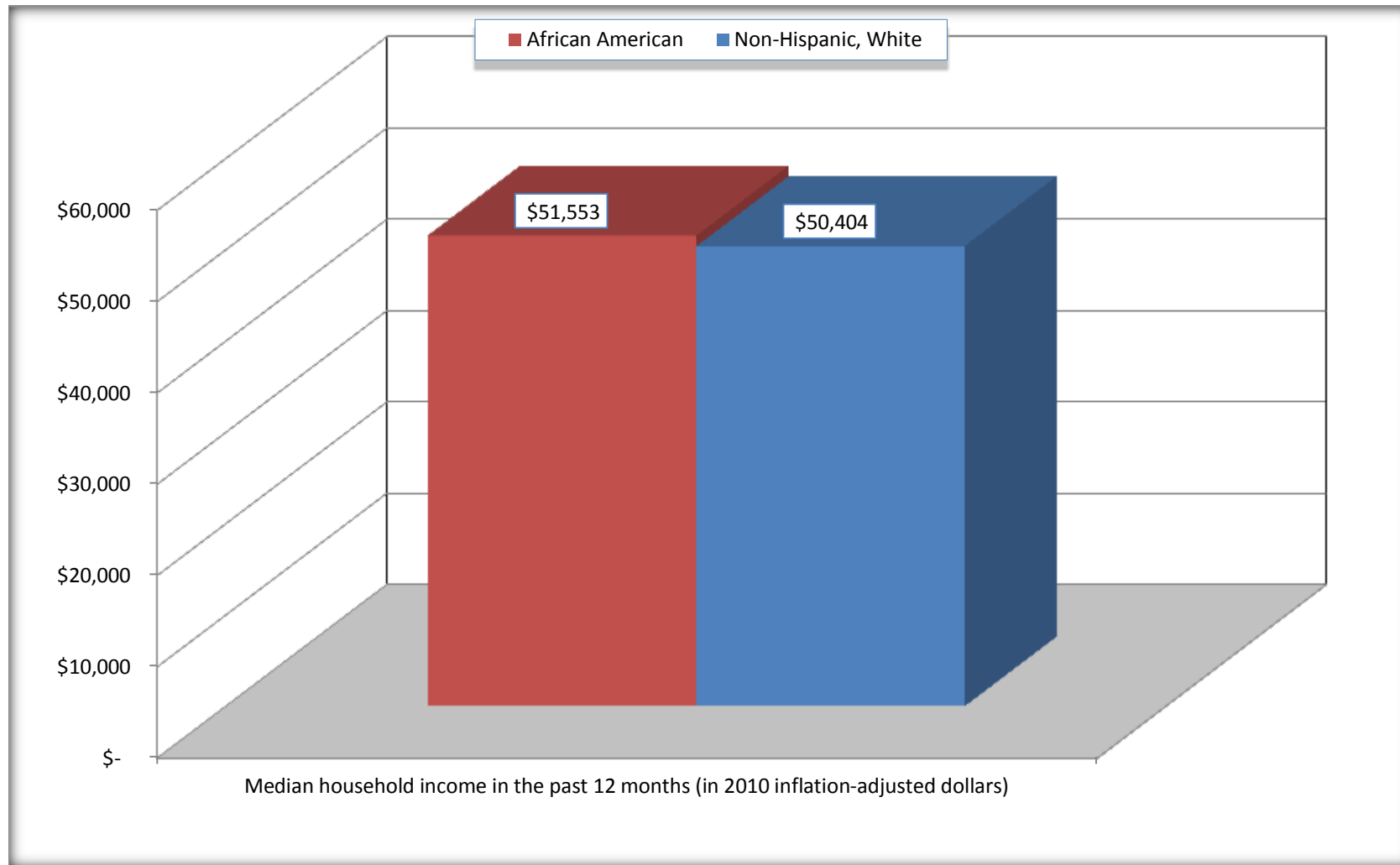
	<b>Comstock Northwest CDP, Michigan</b>			
	African American	Margin of Error (+/-)	White, Not Hispanic	Margin of Error (+/-)
Median household income in the past 12 months (in 2010 inflation-adjusted dollars)	\$ 51,553	\$ 29,481	\$ 50,404	\$ 8,197

Source: U.S. Census Bureau, 2008-2012 American Community Survey

For information on confidentiality protection, sampling error, nonsampling error, and definitions, see Survey Methodology.  
<http://www.census.gov/acs/www/UseData/index.htm>

## Median Household Income in the Past 12 Months

### Comstock Northwest CDP, Michigan



Source: B19013. MEDIAN HOUSEHOLD INCOME IN THE PAST 12 MONTHS (IN 2010 INFLATION-ADJUSTED DOLLARS)  
Data Set: 2008-2012 American Community Survey 5-Year Estimates

**B19101. FAMILY INCOME IN THE PAST 12 MONTHS (IN 2010 INFLATION-ADJUSTED DOLLARS)**

Data Set: 2008-2012 American Community Survey 5-Year Estimates

	Comstock Northwest CDP, Michigan					
	African American	Margin of Error (+/-)	% of AA Total	White, Not Hispanic	Margin of Error (+/-)	% of NHW Total
<b>Total:</b>	<b>188</b>	<b>85</b>	<b>100.0%</b>	<b>1,040</b>	<b>154</b>	<b>100.0%</b>
Less than \$ 10,000	0	15	0.0%	92	75	8.8%
\$ 10,000 to \$ 14,999	0	15	0.0%	0	15	0.0%
<b>\$ 15,000 to \$ 24,999</b>	<b>0</b>	<b>NC</b>	<b>0.0%</b>	<b>85</b>	<b>NC</b>	<b>8.2%</b>
<b>\$ 25,000 to \$ 34,999</b>	<b>0</b>	<b>NC</b>	<b>0.0%</b>	<b>37</b>	<b>NC</b>	<b>3.6%</b>
<b>\$ 35,000 to \$ 49,999</b>	<b>15</b>	<b>NC</b>	<b>8.0%</b>	<b>174</b>	<b>NC</b>	<b>16.7%</b>
<b>\$ 50,000 to \$ 74,999</b>	<b>83</b>	<b>NC</b>	<b>44.1%</b>	<b>260</b>	<b>NC</b>	<b>25.0%</b>
<b>\$ 100,000 to \$ 149,999</b>	<b>75</b>	<b>NC</b>	<b>39.9%</b>	<b>166</b>	<b>NC</b>	<b>16.0%</b>
\$ 150,000 to \$ 199,999	0	15	0.0%	64	45	6.2%
\$ 200,000 or more	0	15	0.0%	31	35	3.0%

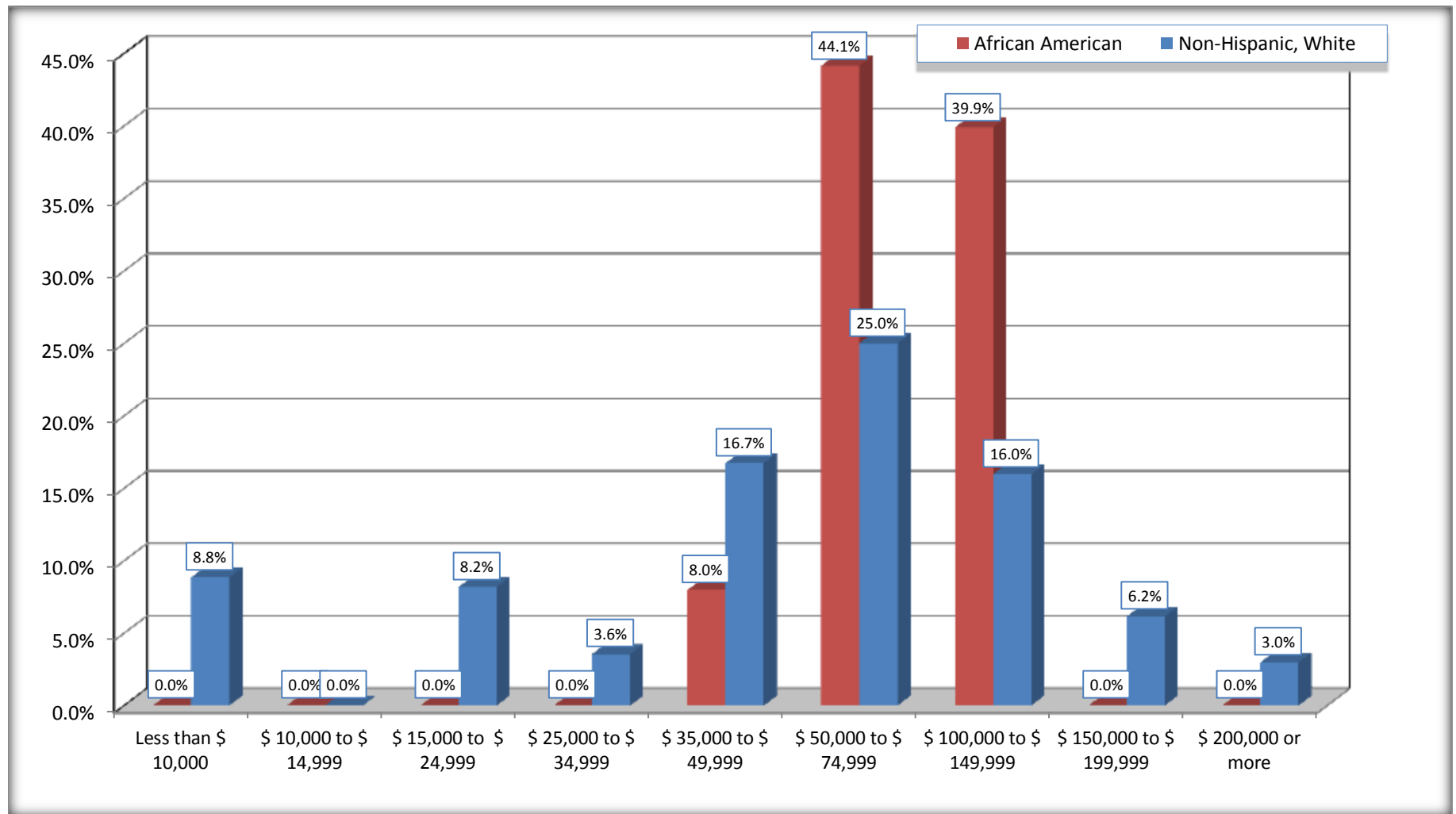
Source: U.S. Census Bureau, 2008-2012 American Community Survey

For information on confidentiality protection, sampling error, nonsampling error, and definitions, see Survey Methodology.

<http://www.census.gov/acs/www/UseData/index.htm>



## Family Income in the Past 12 Months Comstock Northwest CDP, Michigan



Source: B19101. FAMILY INCOME IN THE PAST 12 MONTHS (IN 2010 INFLATION-ADJUSTED DOLLARS)  
Data Set: 2008-2012 American Community Survey 5-Year Estimates

**B19113. MEDIAN FAMILY INCOME IN THE PAST 12 MONTHS (IN 2010 INFLATION-ADJUSTED DOLLARS)**

Data Set: 2008-2012 American Community Survey 5-Year Estimates

	<b>Comstock Northwest CDP, Michigan</b>			
	African American	Margin of Error (+/-)	White, Not Hispanic	Margin of Error (+/-)
Median family income in the past 12 months (in 2010 inflation-adjusted dollars)	\$ 71,912	\$ 71,372	\$ 60,566	\$ 7,670

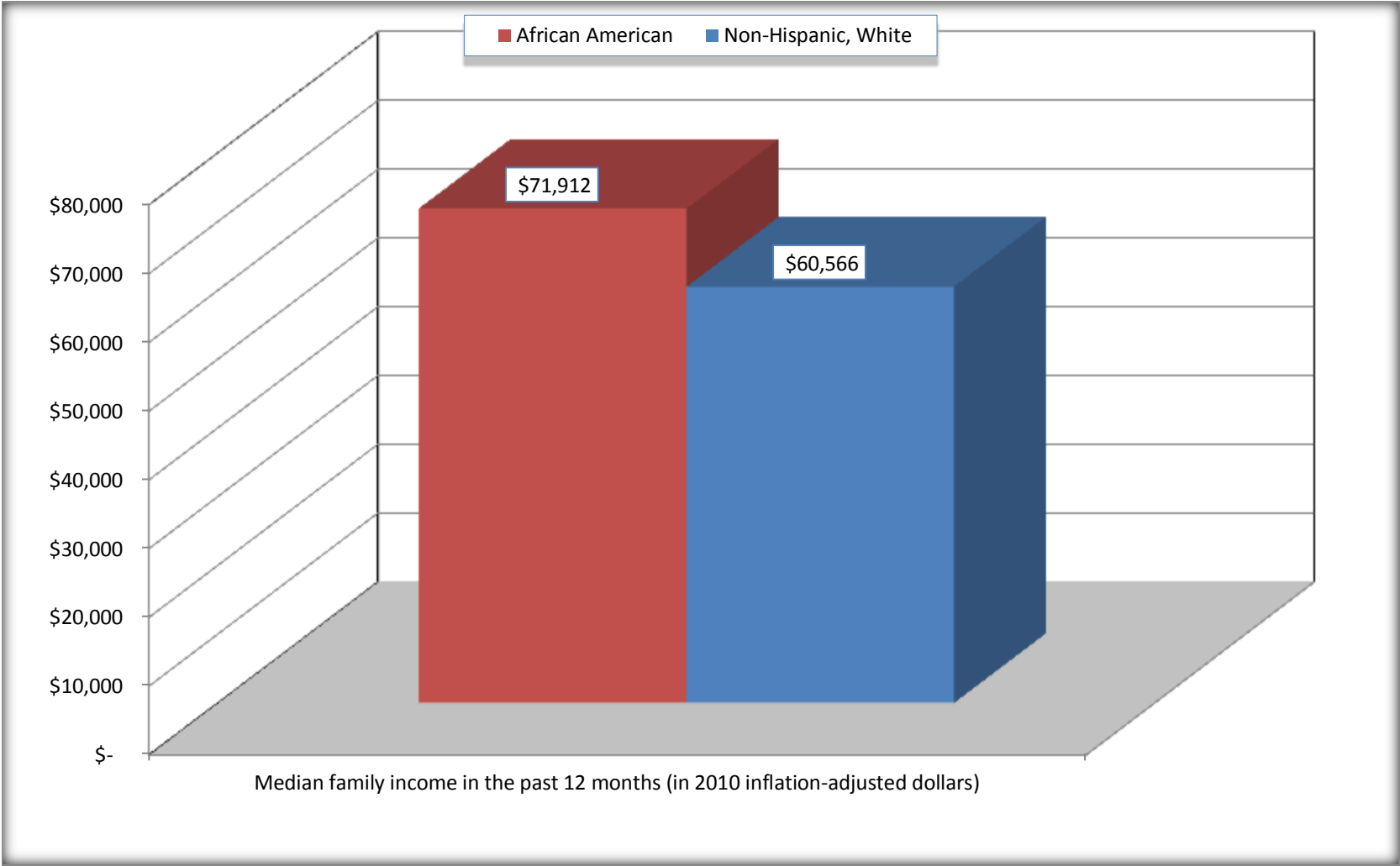
Source: U.S. Census Bureau, 2008-2012 American Community Survey

For information on confidentiality protection, sampling error, nonsampling error, and definitions, see Survey Methodology.

<http://www.census.gov/acs/www/UseData/index.htm>

# Median Family Income in the Past 12 Months

## Comstock Northwest CDP, Michigan



Source: B19113. MEDIAN FAMILY INCOME IN THE PAST 12 MONTHS (IN 2010 INFLATION-ADJUSTED DOLLARS)  
Data Set: 2008-2012 American Community Survey 5-Year Estimates

**B19202. MEDIAN NONFAMILY HOUSEHOLD INCOME IN THE PAST 12 MONTHS (IN 2010 INFLATION-ADJUSTED DOLLARS)**

Data Set: 2008-2012 American Community Survey 5-Year Estimates

	<b>Comstock Northwest CDP, Michigan</b>			
	African American	Margin of Error (+/-)	White, Not Hispanic	Margin of Error (+/-)
Median nonfamily household income in the past 12 months (in 2010 inflation-adjusted dollars)	\$ 33,542	\$ 21,450	\$ 37,469	\$ 4,087

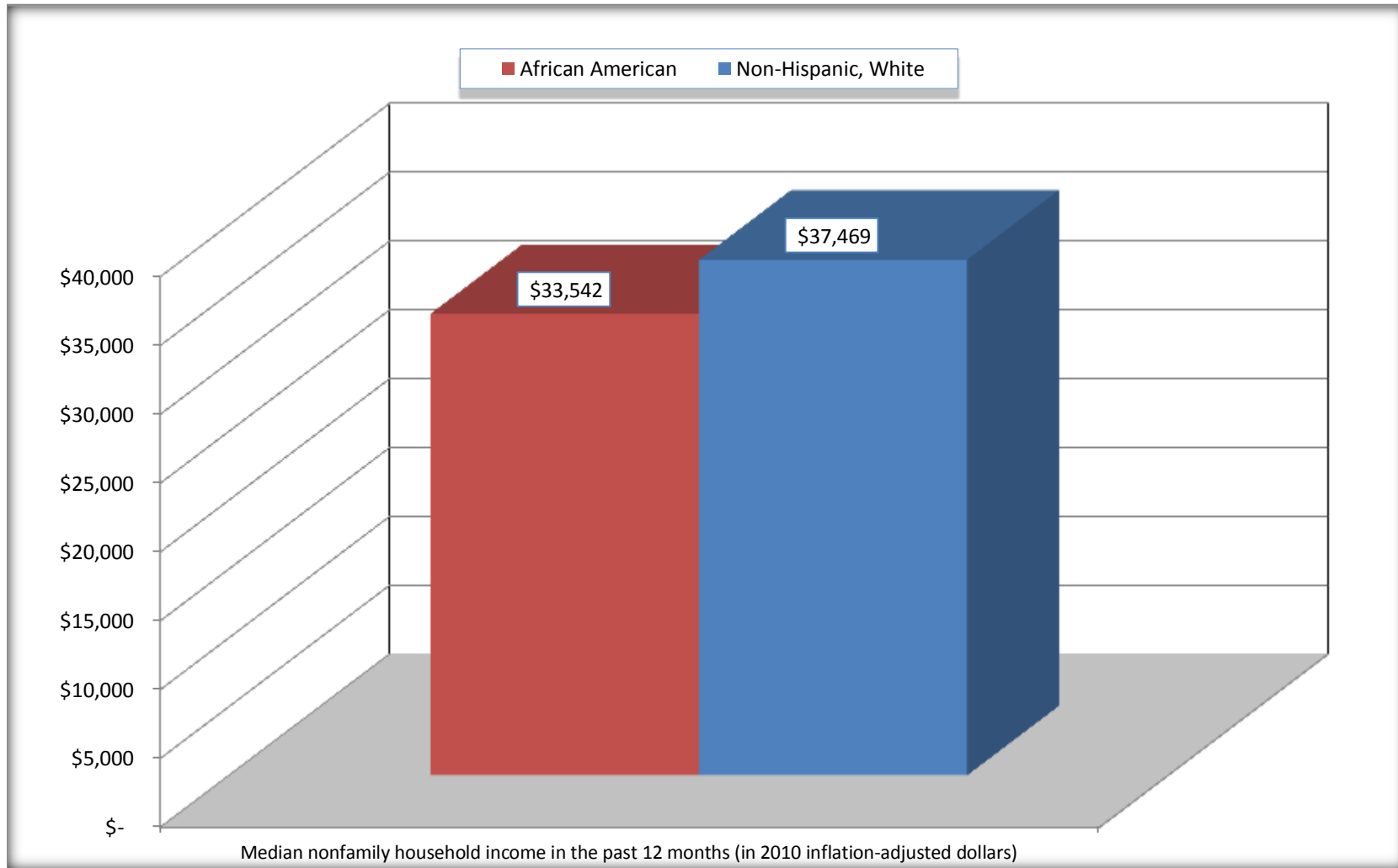
Source: U.S. Census Bureau, 2008-2012 American Community Survey

For information on confidentiality protection, sampling error, nonsampling error, and definitions, see Survey Methodology.

<http://www.census.gov/acs/www/UseData/index.htm>

# Median Non-Family Income in the Past 12 Months

## Comstock Northwest CDP, Michigan



Source: B19202. MEDIAN NONFAMILY HOUSEHOLD INCOME IN THE PAST 12 MONTHS (IN 2010 INFLATION-ADJUSTED DOLLARS)  
Data Set: 2008-2012 American Community Survey 5-Year Estimates

**B19301. PER CAPITA INCOME IN THE PAST 12 MONTHS (IN 2010 INFLATION-ADJUSTED DOLLARS)**

Data Set: 2008-2012 American Community Survey 5-Year Estimates

	<b>Comstock Northwest CDP, Michigan</b>			
	African American	Margin of Error (+/-)	White, Not Hispanic	Margin of Error (+/-)
Per capita income in the past 12 months (in 2010 inflation-adjusted dollars)	\$ 22,285	\$ 7,888	\$ 27,913	\$ 2,979

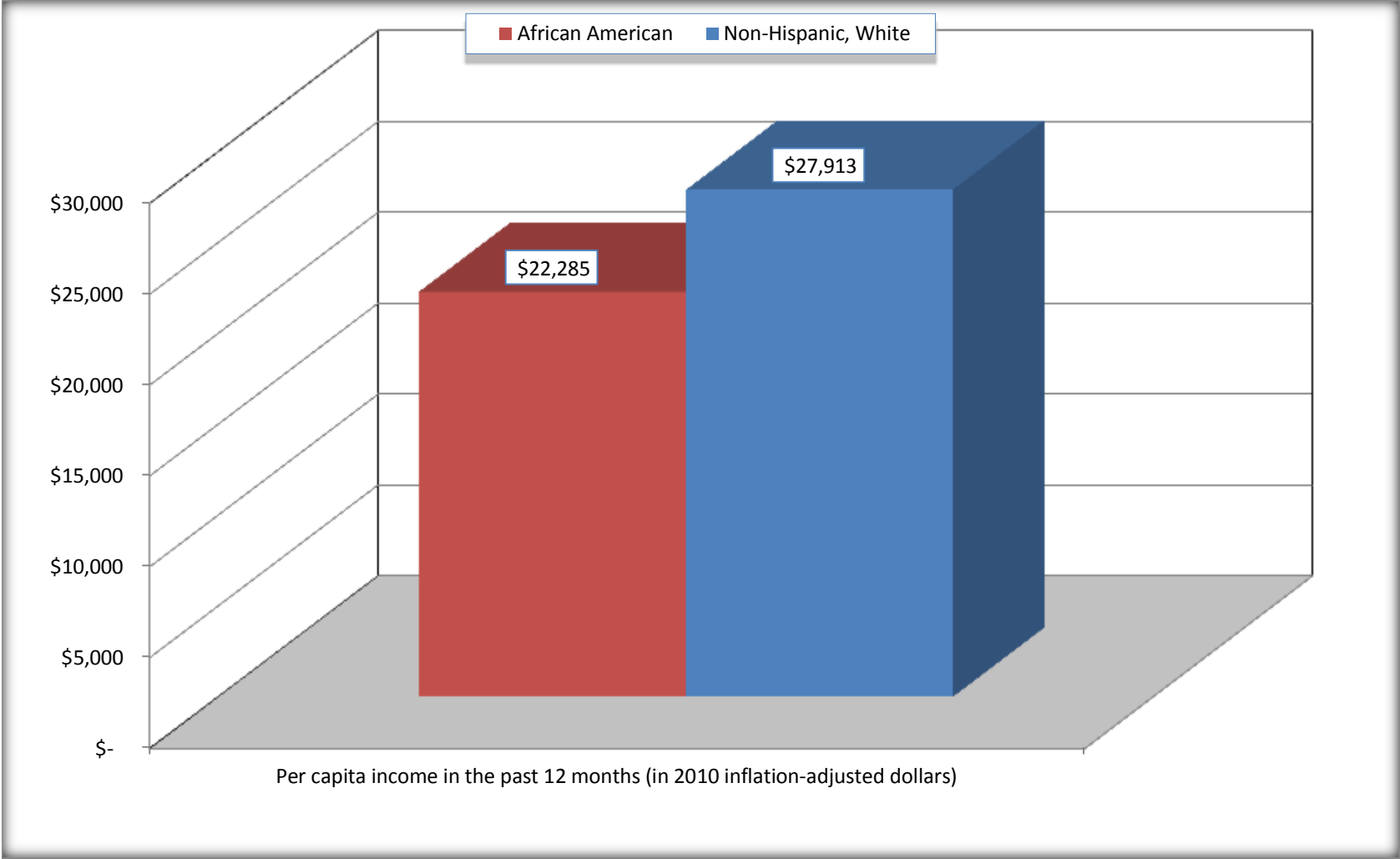
Source: U.S. Census Bureau, 2008-2012 American Community Survey

For information on confidentiality protection, sampling error, nonsampling error, and definitions, see Survey Methodology.

<http://www.census.gov/acs/www/UseData/index.htm>

# Per capita Income in the Past 12 Months

## Comstock Northwest CDP, Michigan



Source: B19301. PER CAPITA INCOME IN THE PAST 12 MONTHS (IN 2010 INFLATION-ADJUSTED DOLLARS)  
Data Set: 2008-2012 American Community Survey 5-Year Estimates

**B20017. MEDIAN EARNINGS IN THE PAST 12 MONTHS (IN 2010 INFLATION-ADJUSTED DOLLARS) BY SEX BY WORK EXPERIENCE IN THE PAST 12 MONTHS FOR THE POPULATION 16 YEARS AND OVER WITH EARNINGS IN THE PAST 12 MONTHS**

Data Set: 2008-2012 American Community Survey 5-Year Estimates

	Comstock Northwest CDP, Michigan			
	African American	Margin of Error (+/-)	White, Not Hispanic	Margin of Error (+/-)
Median earnings in the past 12 months (in 2010 inflation-adjusted dollars) --				
Total:	\$ 42,594	\$ 4,736	\$ 37,049	\$ 5,915
Male --				
Total	\$ 42,589	\$ 46,215	\$ 48,792	\$ 11,067
Worked full-time, year-round in the past 12 months	\$ 42,857	\$ 47,439	\$ 53,779	\$ 6,840
Other	\$ -	\$ -	\$ 16,971	\$ 14,592
Female --				
Total	\$ 42,595	\$ 2,136	\$ 21,932	\$ 5,319
Worked full-time, year-round in the past 12 months	\$ 43,203	\$ 1,473	\$ 42,375	\$ 10,145
Other	\$ 12,419	\$ 20,369	\$ 7,520	\$ 3,116

Source: U.S. Census Bureau, 2008-2012 American Community Survey

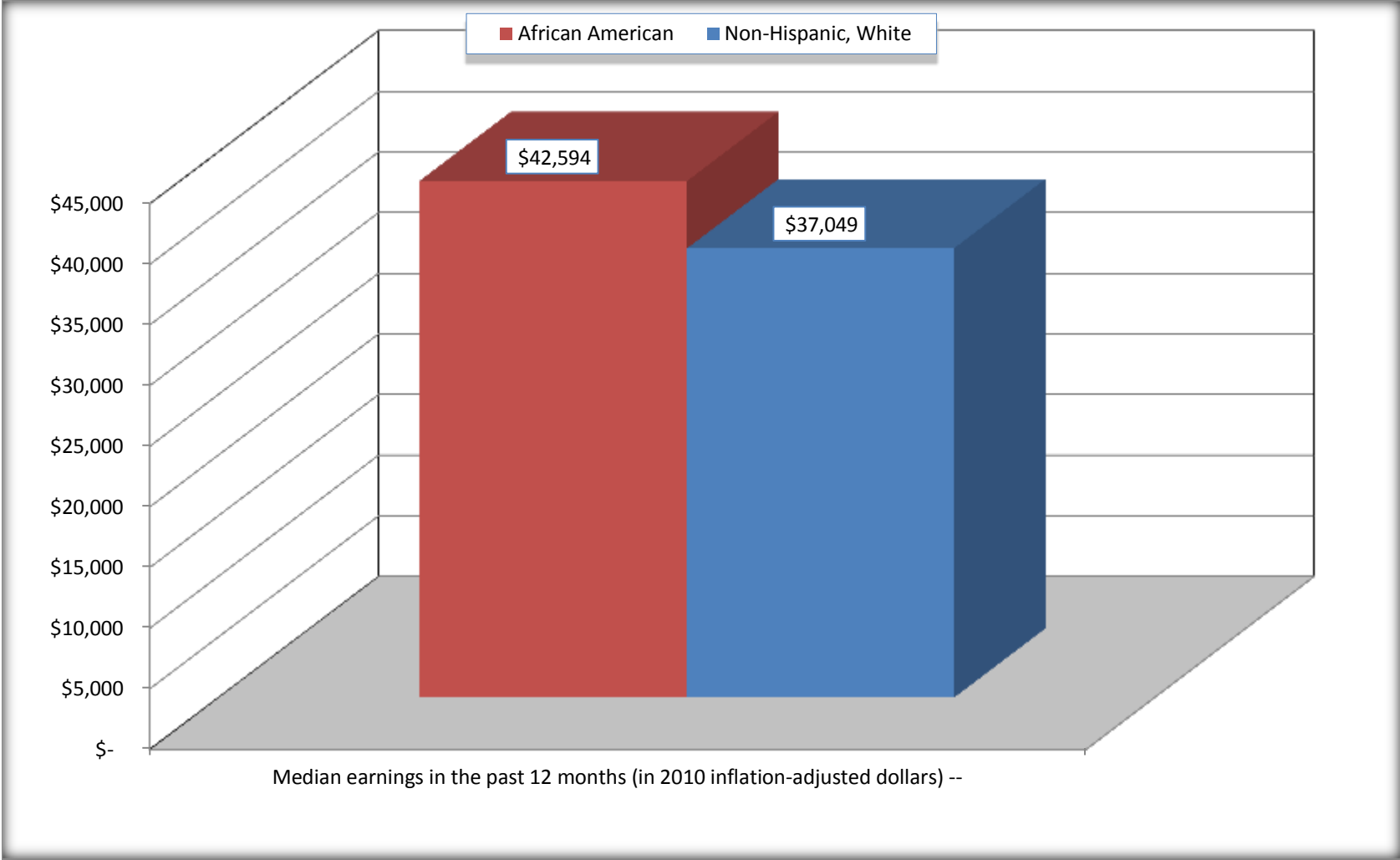
For information on confidentiality protection, sampling error, nonsampling error, and definitions, see Survey Methodology.

<http://www.census.gov/acs/www/UseData/index.htm>



# Median earnings in the Past 12 Months (16 Years and Over with Earnings)

## Comstock Northwest CDP, Michigan



Source: B20017. MEDIAN EARNINGS IN THE PAST 12 MONTHS (IN 2010 INFLATION-ADJUSTED DOLLARS) BY SEX BY WORK EXPERIENCE IN THE PAST 12 MONTHS FOR THE POPULATION 16 YEARS AND OVER WITH EARNINGS IN THE PAST 12 MONTHS  
Data Set: 2008-2012 American Community Survey 5-Year Estimates

**B20005. SEX BY WORK EXPERIENCE IN THE PAST 12 MONTHS BY EARNINGS IN THE PAST 12 MONTHS (IN 2010 INFLATION-ADJUSTED DOLLARS) FOR THE POPULATION 16 YEARS AND OVER**

Data Set: 2008-2012 American Community Survey 5-Year Estimates

	Comstock Northwest CDP, Michigan					
	African American	Margin of Error (+/-)	% of AA Total	White, Not Hispanic	Margin of Error (+/-)	% of NHW Total
<b>Total:</b>	<b>674</b>	<b>222</b>	<b>100.0%</b>	<b>3,583</b>	<b>355</b>	<b>100.0%</b>
Worked full-time, year-round in the past 12 months:	350	NC	51.9%	1,658	NC	46.3%
No earnings	0	NC	0.0%	0	NC	0.0%
With earnings:	350	NC	51.9%	1,658	NC	46.3%
\$ 1 to \$ 9,999 or loss	0	NC	0.0%	0	NC	0.0%
\$ 10,000 to \$ 19,999	70	NC	10.4%	202	NC	5.6%
\$ 20,000 to \$ 29,999	0	NC	0.0%	201	NC	5.6%
\$ 30,000 to \$ 49,999	163	NC	24.2%	480	NC	13.4%
\$ 50,000 to \$ 74,999	117	NC	17.4%	483	NC	13.5%
\$ 75,000 or more	0	NC	0.0%	292	NC	8.1%
Other:	324	NC	48.1%	1,925	NC	53.7%
No earnings	261	NC	38.7%	1,237	NC	34.5%
With earnings: less than full time, year-round	63	NC	9.3%	688	NC	19.2%
Male:	409	134	60.7%	1,567	229	43.7%
Worked full-time, year-round in the past 12 months:	236	110	35.0%	940	184	26.2%
No earnings	0	15	0.0%	0	15	0.0%
With earnings:	236	110	35.0%	940	184	26.2%
\$ 1 to \$ 9,999 or loss	0	NC	0.0%	0	NC	0.0%
\$ 10,000 to \$ 19,999	70	NC	10.4%	87	NC	2.4%
\$ 20,000 to \$ 29,999	0	NC	0.0%	51	NC	1.4%
\$ 30,000 to \$ 49,999	60	NC	8.9%	289	NC	8.1%
\$ 50,000 to \$ 74,999	106	NC	15.7%	324	NC	9.0%
\$ 75,000 or more	0	NC	0.0%	189	NC	5.3%

	Comstock Northwest CDP, Michigan					
	African American	Margin of Error (+/-)	% of AA Total	White, Not Hispanic	Margin of Error (+/-)	% of NHW Total
Other:	173	144	25.7%	627	166	17.5%
No earnings	170	144	25.2%	430	144	12.0%
With earnings:	3	8	0.4%	197	80	5.5%
Female:	265	119	39.3%	2,016	249	56.3%
Worked full-time, year-round in the past 12 months:	114	68	16.9%	718	188	20.0%
No earnings	0	15	0.0%	0	15	0.0%
With earnings:	114	68	16.9%	718	188	20.0%
\$ 1 to \$ 9,999 or less	0	NC	0.0%	0	NC	0.0%
\$ 10,000 to \$ 19,999	0	NC	0.0%	115	NC	3.2%
\$ 20,000 to \$ 29,999	0	NC	0.0%	150	NC	4.2%
\$ 30,000 to \$ 49,999	103	NC	15.3%	191	NC	5.3%
\$ 50,000 to \$ 74,999	11	NC	1.6%	159	NC	4.4%
\$ 75,000 or more	0	NC	0.0%	103	NC	2.9%
Other:	151	118	22.4%	1,298	215	36.2%
No earnings	91	94	13.5%	807	198	22.5%
With earnings:	60	56	8.9%	491	145	13.7%

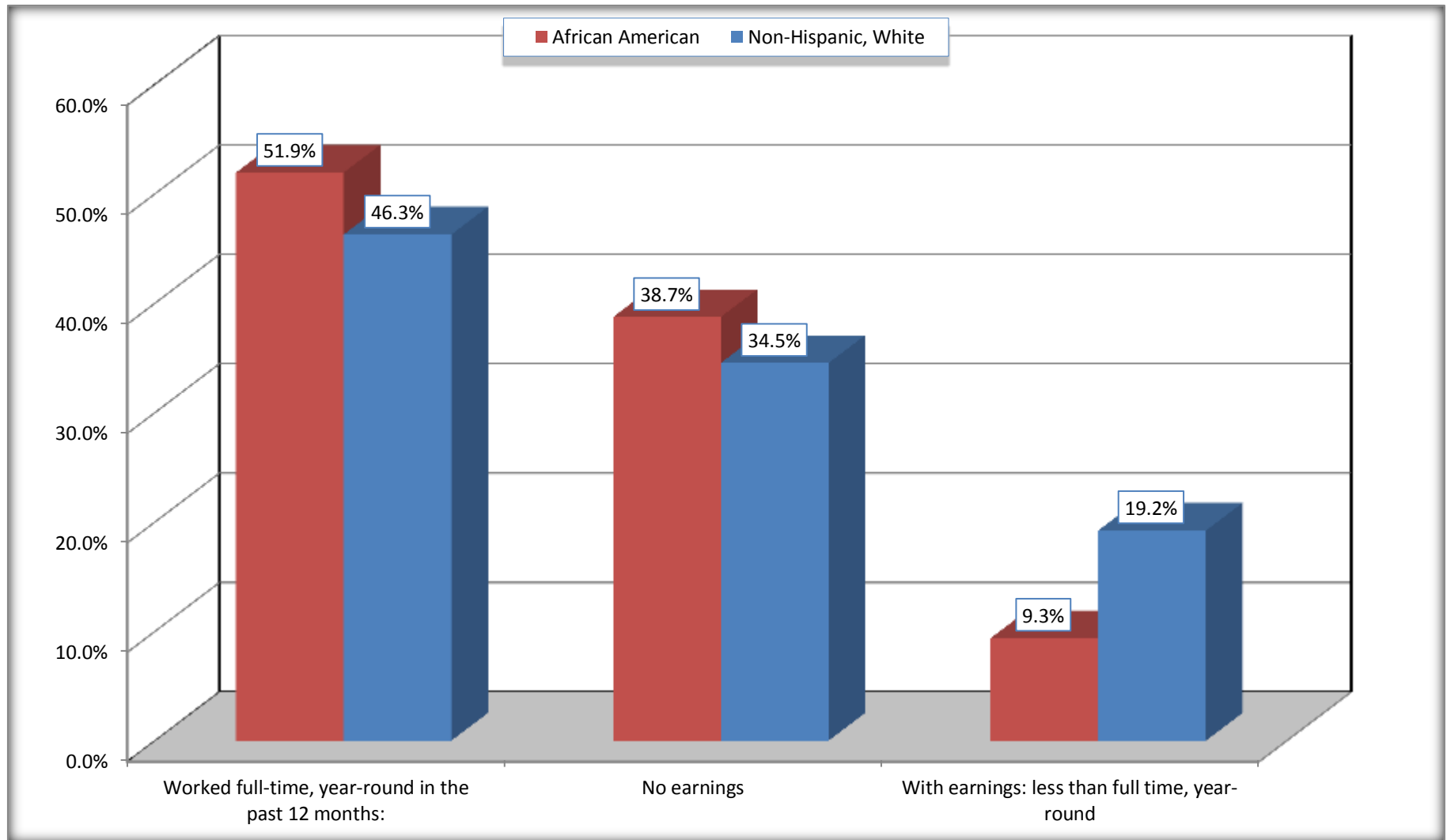
Source: U.S. Census Bureau, 2008-2012 American Community Survey

For information on confidentiality protection, sampling error, nonsampling error, and definitions, see Survey Methodology.

<http://www.census.gov/acs/www/UseData/index.htm>

# Employment and Earnings in in the Past 12 Months (16 Years and Over)

## Comstock Northwest CDP, Michigan



Source: B20005. SEX BY WORK EXPERIENCE IN THE PAST 12 MONTHS BY EARNINGS IN THE PAST 12 MONTHS (IN 2010 INFLATION-ADJUSTED DOLLARS) FOR THE POPULATION 16 YEARS AND OVER

Data Set: 2008-2012 American Community Survey 5-Year Estimates

**C21001. SEX BY AGE BY VETERAN STATUS FOR THE CIVILIAN POPULATION 18 YEARS AND OVER**

Data Set: 2008-2012 American Community Survey 5-Year Estimates

	Comstock Northwest CDP, Michigan					
	African American	Margin of Error (+/-)	% of AA Total	White, Not Hispanic	Margin of Error (+/-)	% of NHW Total
<b>Total:</b>	<b>617</b>	<b>199</b>	<b>100.0%</b>	<b>3,481</b>	<b>339</b>	<b>100.0%</b>
Veteran	41	NC	6.6%	421	NC	12.1%
Nonveteran	576	NC	93.4%	3,060	NC	87.9%
Male:	352	118	57.1%	1,517	227	43.6%
18 to 64 years:	308	123	49.9%	1,247	201	35.8%
Veteran	17	29	2.8%	210	90	6.0%
Nonveteran	291	110	47.2%	1,037	200	29.8%
65 years and over:	44	51	7.1%	270	86	7.8%
Veteran	24	40	3.9%	174	71	5.0%
Nonveteran	20	31	3.2%	96	64	2.8%
Female:	265	119	42.9%	1,964	242	56.4%
18 to 64 years:	201	94	32.6%	1,601	210	46.0%
Veteran	0	15	0.0%	24	19	0.7%
Nonveteran	201	94	32.6%	1,577	210	45.3%
65 years and over:	64	56	10.4%	363	80	10.4%
Veteran	0	15	0.0%	13	20	0.4%
Nonveteran	64	56	10.4%	350	76	10.1%

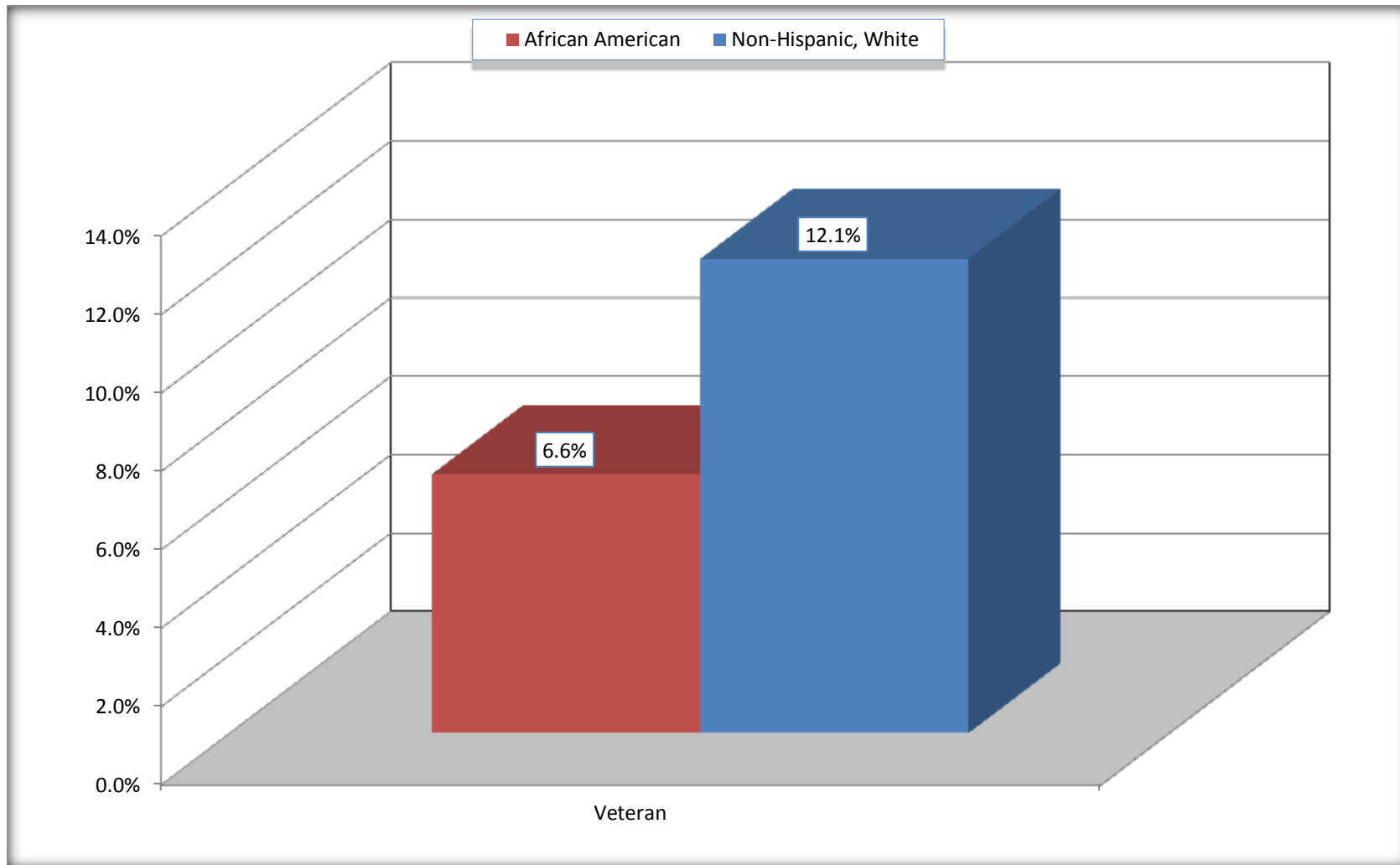
Source: U.S. Census Bureau, 2008-2012 American Community Survey

For information on confidentiality protection, sampling error, nonsampling error, and definitions, see Survey Methodology.

<http://www.census.gov/acs/www/UseData/index.htm>

# Veterans in the Civilian Population 18 Years and Over

## Comstock Northwest CDP, Michigan



Source: C21001. SEX BY AGE BY VETERAN STATUS FOR THE CIVILIAN POPULATION 18 YEARS AND OVER  
Data Set: 2008-2012 American Community Survey 5-Year Estimates

**B22005. RECEIPT OF FOOD STAMPS/SNAP IN THE PAST 12 MONTHS BY RACE OF HOUSEHOLDER**

Data Set: 2008-2012 American Community Survey 5-Year Estimates

	<b>Comstock Northwest CDP, Michigan</b>					
	African American	Margin of Error (+/-)	% of AA Total	White, Not Hispanic	Margin of Error (+/-)	% of NHW Total
<b>Total:</b>	<b>264</b>	<b>108</b>	<b>100.0%</b>	<b>2,084</b>	<b>205</b>	<b>100.0%</b>
HH received Food Stamps/SNAP in the past 12 months	32	40	12.1%	210	99	10.1%
HH did not receive Food Stamps/SNAP in the past 12 months	232	105	87.9%	1,874	219	89.9%

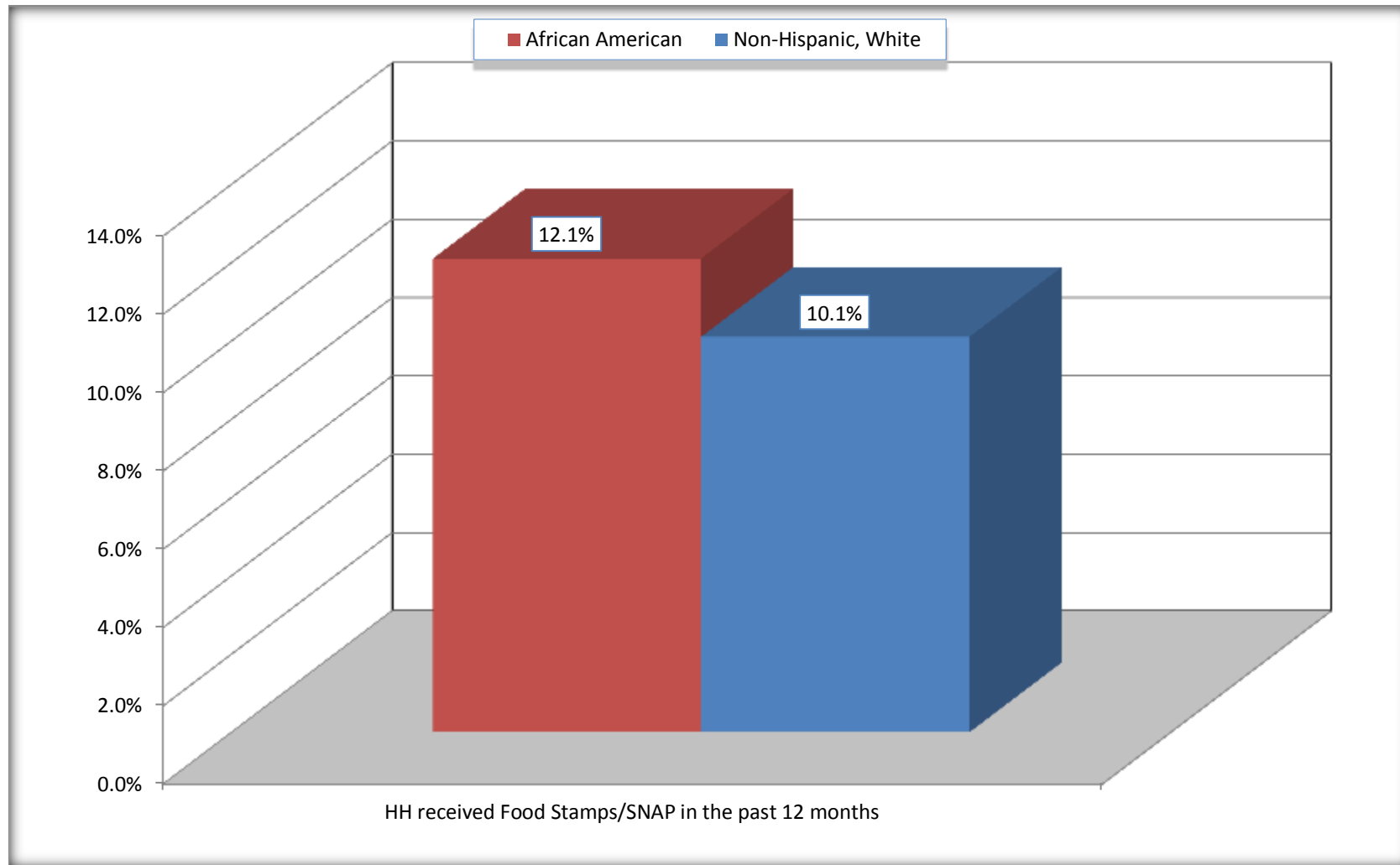
Source: U.S. Census Bureau, 2008-2012 American Community Survey

For information on confidentiality protection, sampling error, nonsampling error, and definitions, see Survey Methodology.

<http://www.census.gov/acs/www/UseData/index.htm>

# Receipt of Food Stamps/SNAP in the Past 12 Months by Household

## Comstock Northwest CDP, Michigan



Source: B22005. RECEIPT OF FOOD STAMPS/SNAP IN THE PAST 12 MONTHS BY RACE OF HOUSEHOLDER  
Data Set: 2008-2012 American Community Survey 5-Year Estimates



**C23002. SEX BY AGE BY EMPLOYMENT STATUS FOR THE POPULATION 16 YEARS AND OVER**

Data Set: 2008-2012 American Community Survey 5-Year Estimates

	Comstock Northwest CDP, Michigan					
	African American	Margin of Error (+/-)	% of AA Total	White, Not Hispanic	Margin of Error (+/-)	% of NHW Total
<b>Total:</b>	<b>674</b>	<b>222</b>	<b>100.0%</b>	<b>3,583</b>	<b>355</b>	<b>100.0%</b>
In labor force:	452	NC	67.1%	2,270	NC	63.4%
In Armed Forces	0	NC	0.0%	0	NC	0.0%
Civilian:	452	NC	67.1%	2,243	NC	62.6%
Employed	413	NC	61.3%	2,105	NC	58.7%
Unemployed	39	NC	5.8%	165	NC	4.6%
Not in labor force	222	NC	32.9%	1,313	NC	36.6%
Male:	409	134	60.7%	1,567	229	43.7%
16 to 64 years:	365	137	54.2%	1,297	203	36.2%
In labor force:	278	103	41.2%	1,147	198	32.0%
In Armed Forces	0	15	0.0%	0	15	0.0%
Civilian:	278	103	41.2%	1,147	198	32.0%
Employed	239	111	35.5%	1,049	185	29.3%
Unemployed	39	48	5.8%	98	90	2.7%
Not in labor force	87	94	12.9%	150	100	4.2%
65 years and over:	44	51	6.5%	270	86	7.5%
In labor force:	0	15	0.0%	13	21	0.4%
Employed	0	15	0.0%	13	21	0.4%
Unemployed	0	15	0.0%	0	15	0.0%
Not in labor force	44	51	6.5%	257	85	7.2%

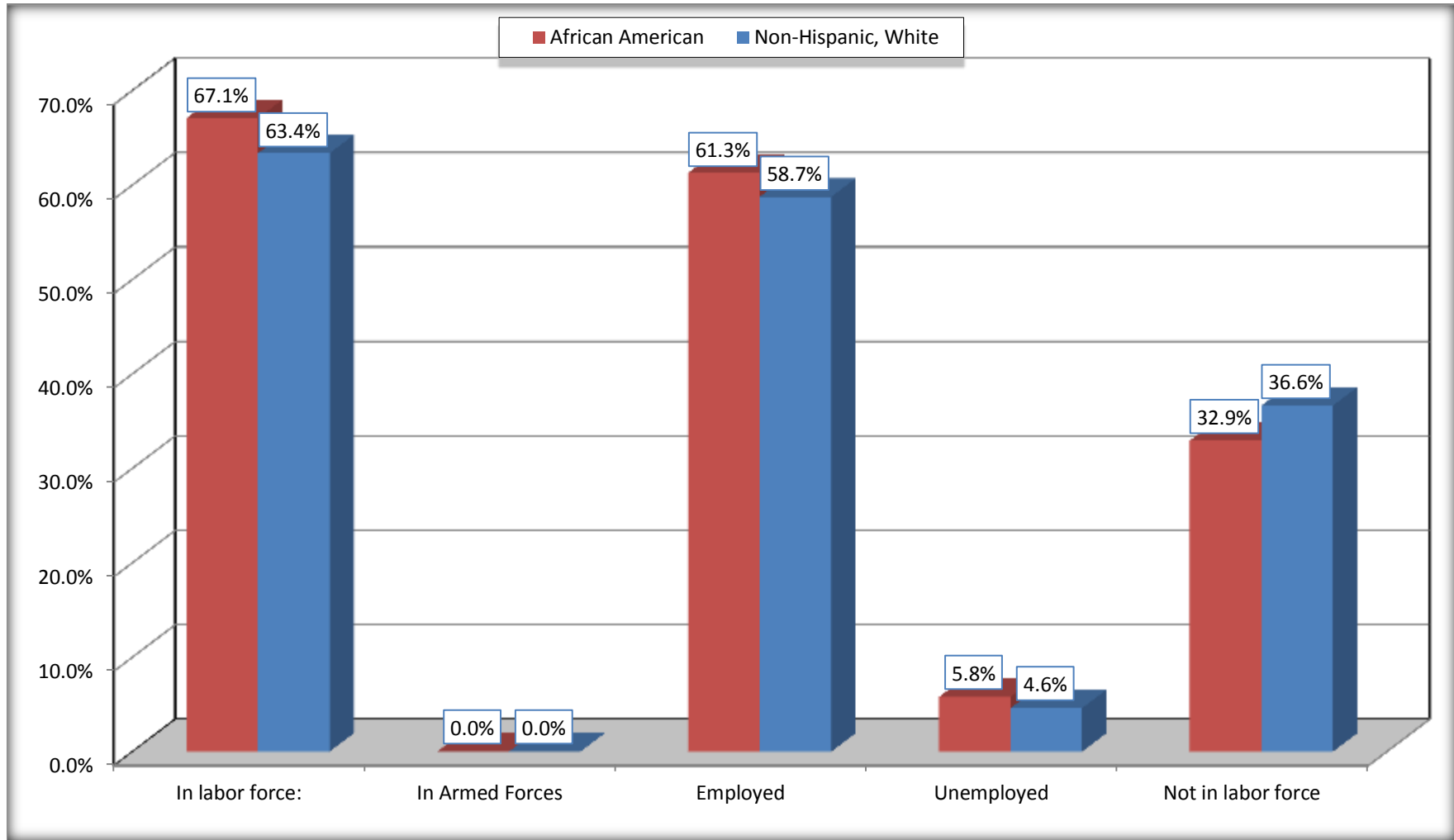
	Comstock Northwest CDP, Michigan					
	African American	Margin of Error (+/-)	% of AA Total	White, Not Hispanic	Margin of Error (+/-)	% of NHW Total
Female:	265	119	39.3%	2,016	249	56.3%
16 to 64 years:	201	94	29.8%	1,653	218	46.1%
In labor force:	174	85	25.8%	1,096	204	30.6%
In Armed Forces	0	15	0.0%	0	15	0.0%
Civilian:	174	85	25.8%	1,096	204	30.6%
Employed	174	85	25.8%	1,029	200	28.7%
Unemployed	0	15	0.0%	67	55	1.9%
Not in labor force	27	47	4.0%	557	177	15.5%
65 years and over:	64	56	9.5%	363	80	10.1%
In labor force:	0	15	0.0%	14	22	0.4%
Employed	0	15	0.0%	14	22	0.4%
Unemployed	0	15	0.0%	0	15	0.0%
Not in labor force	64	56	9.5%	349	82	9.7%

Source: U.S. Census Bureau, 2008-2012 American Community Survey

For information on confidentiality protection, sampling error, nonsampling error, and definitions, see Survey Methodology.  
<http://www.census.gov/acs/www/UseData/index.htm>

# Employment Status for the Population 16 years and over

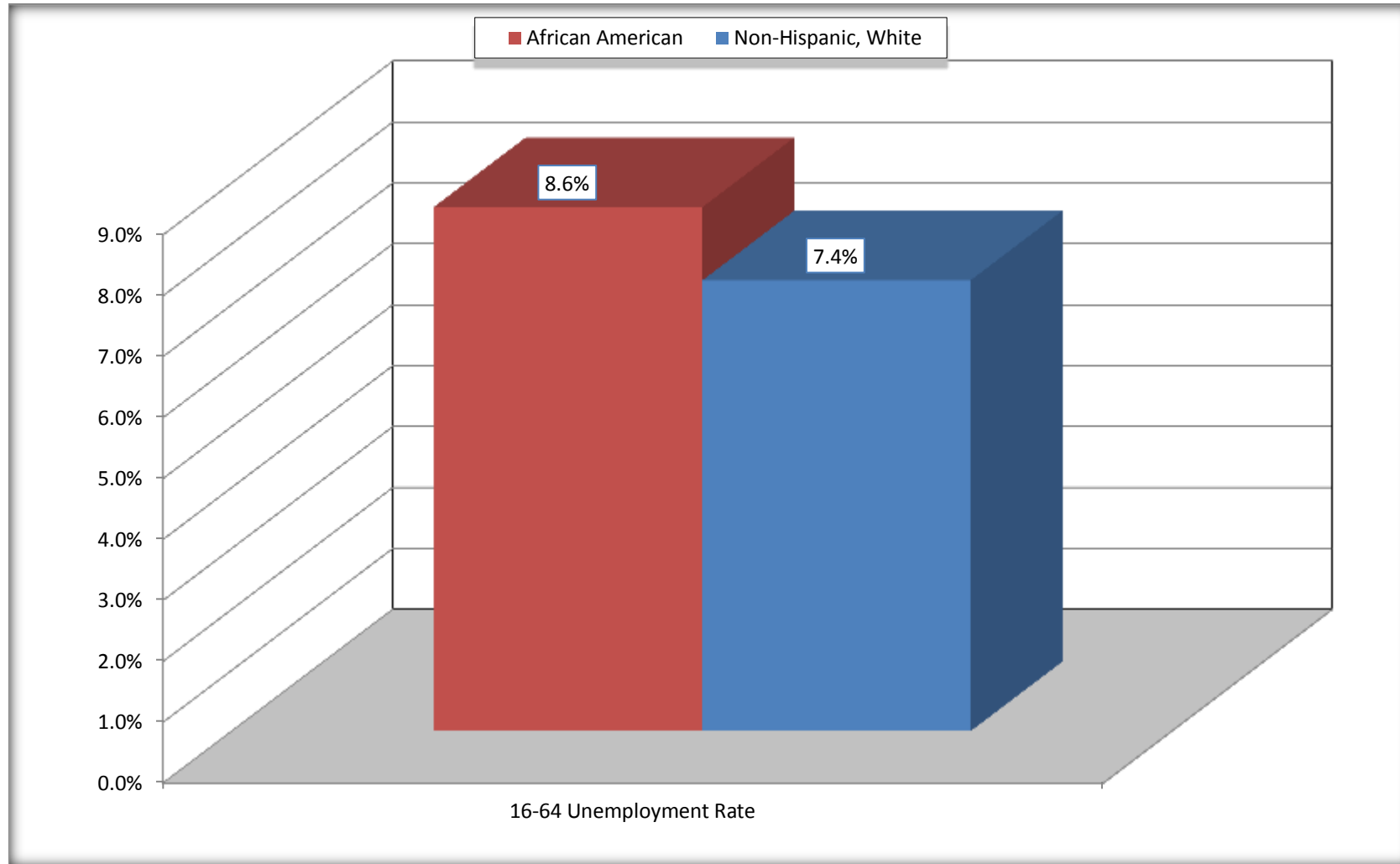
## Comstock Northwest CDP, Michigan



Source: C23002. SEX BY AGE BY EMPLOYMENT STATUS FOR THE POPULATION 16 YEARS AND OVER  
Data Set: 2008-2012 American Community Survey 5-Year Estimates

# Unemployment of Working Age Population (Ages 16 to 64) (As a Percent of 16-64 Civilian Labor Force)

## Comstock Northwest CDP, Michigan



Source: C23002. SEX BY AGE BY EMPLOYMENT STATUS FOR THE POPULATION 16 YEARS AND OVER  
Data Set: 2008-2012 American Community Survey 5-Year Estimates

**C24010. SEX BY OCCUPATION FOR THE CIVILIAN EMPLOYED POPULATION 16 YEARS AND OVER**

Data Set: 2008-2012 American Community Survey 5-Year Estimates

	Comstock Northwest CDP, Michigan					
	African American	Margin of Error (+/-)	% of AA Total	White, Not Hispanic	Margin of Error (+/-)	% of NHW Total
<b>Total:</b>	<b>413</b>	<b>155</b>	<b>100.0%</b>	<b>2,105</b>	<b>285</b>	<b>100.0%</b>
Management, professional, and related occupations	117	NC	28.3%	904	NC	42.9%
Service occupations	42	NC	10.2%	226	NC	10.7%
Sales and office occupations	64	NC	15.5%	497	NC	23.6%
Natural resources, construction, and maintenance occupations:	14	NC	3.4%	137	NC	6.5%
Production, transportation, and material moving occupations	176	NC	42.6%	341	NC	16.2%
Male:	239	111	57.9%	1,062	190	50.5%
Management, business, science, and arts occupations:	46	66	11.1%	494	125	23.5%
Service occupations	3	8	0.7%	74	66	3.5%
Sales and office occupations	0	15	0.0%	148	80	7.0%
Natural resources, construction, and maintenance occupations:	14	24	3.4%	124	65	5.9%
Production, transportation, and material moving occupations	176	123	42.6%	222	112	10.5%
Female:	174	85	42.1%	1,043	204	49.5%
Management, professional, and related occupations	71	61	17.2%	410	111	19.5%
Service occupations	39	44	9.4%	152	81	7.2%
Sales and office occupations	64	61	15.5%	349	125	16.6%
Natural resources, construction, and maintenance occupations:	0	15	0.0%	13	21	0.6%
Production, transportation, and material moving occupations	0	15	0.0%	119	93	5.7%

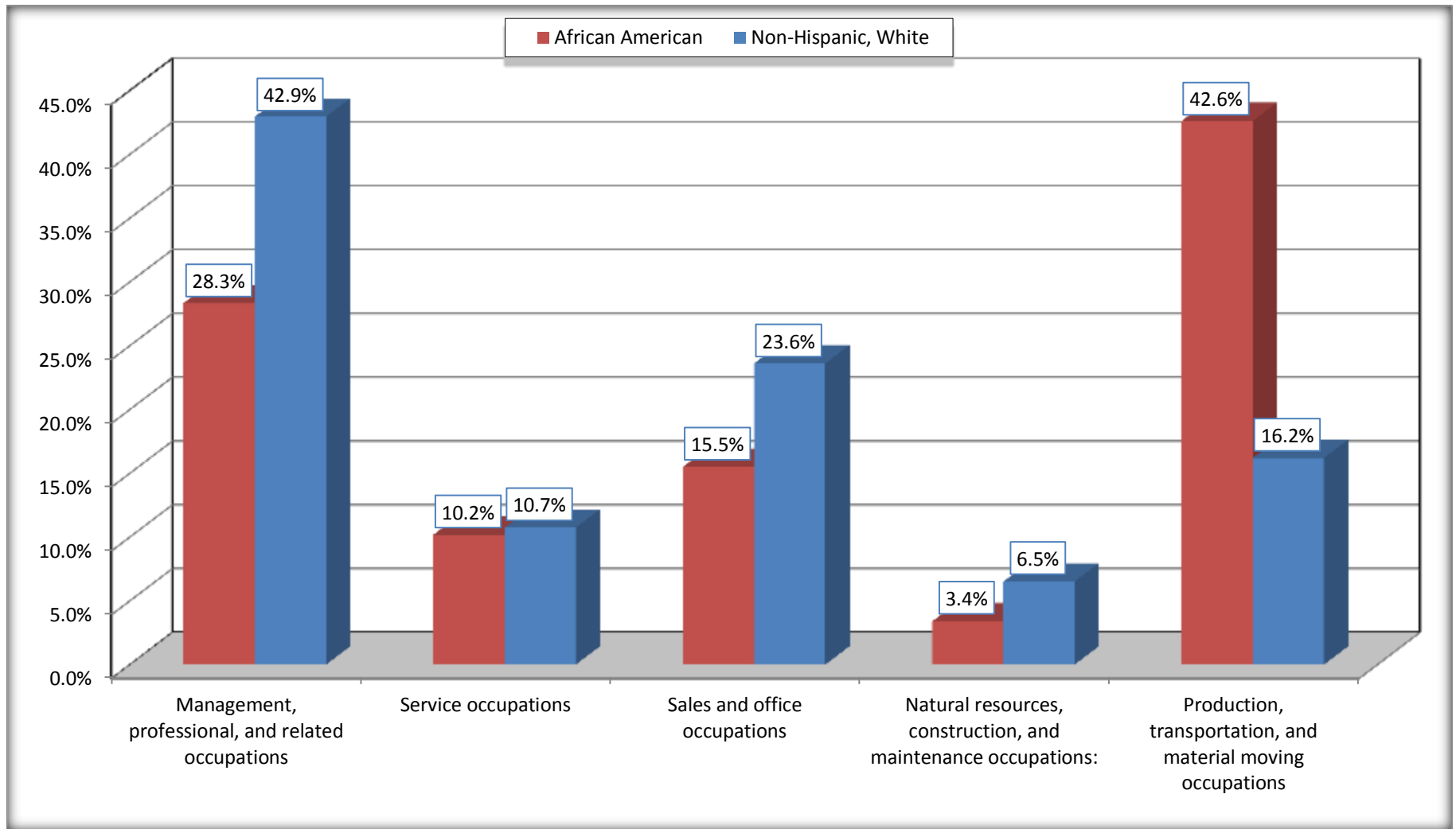
Source: U.S. Census Bureau, 2008-2012 American Community Survey

For information on confidentiality protection, sampling error, nonsampling error, and definitions, see Survey Methodology.

<http://www.census.gov/acs/www/UseData/index.htm>

# Occupation for the Civilian Employed 16 Years and Over Population

## Comstock Northwest CDP, Michigan



Source: C24010. SEX BY OCCUPATION FOR THE CIVILIAN EMPLOYED POPULATION 16 YEARS AND OVER  
Data Set: 2008-2012 American Community Survey 5-Year Estimates

**B25003. TENURE - Universe: OCCUPIED HOUSING UNITS**

Data Set: 2008-2012 American Community Survey 5-Year Estimates

	Comstock Northwest CDP, Michigan					
	African American	Margin of Error (+/-)	% of AA Total	White, Not Hispanic	Margin of Error (+/-)	% of NHW Total
<b>Total:</b>	<b>264</b>	<b>108</b>	<b>100.0%</b>	<b>2,084</b>	<b>205</b>	<b>100.0%</b>
Owner occupied	190	70	72.0%	1,069	165	51.3%
Renter occupied	74	76	28.0%	1,015	164	48.7%

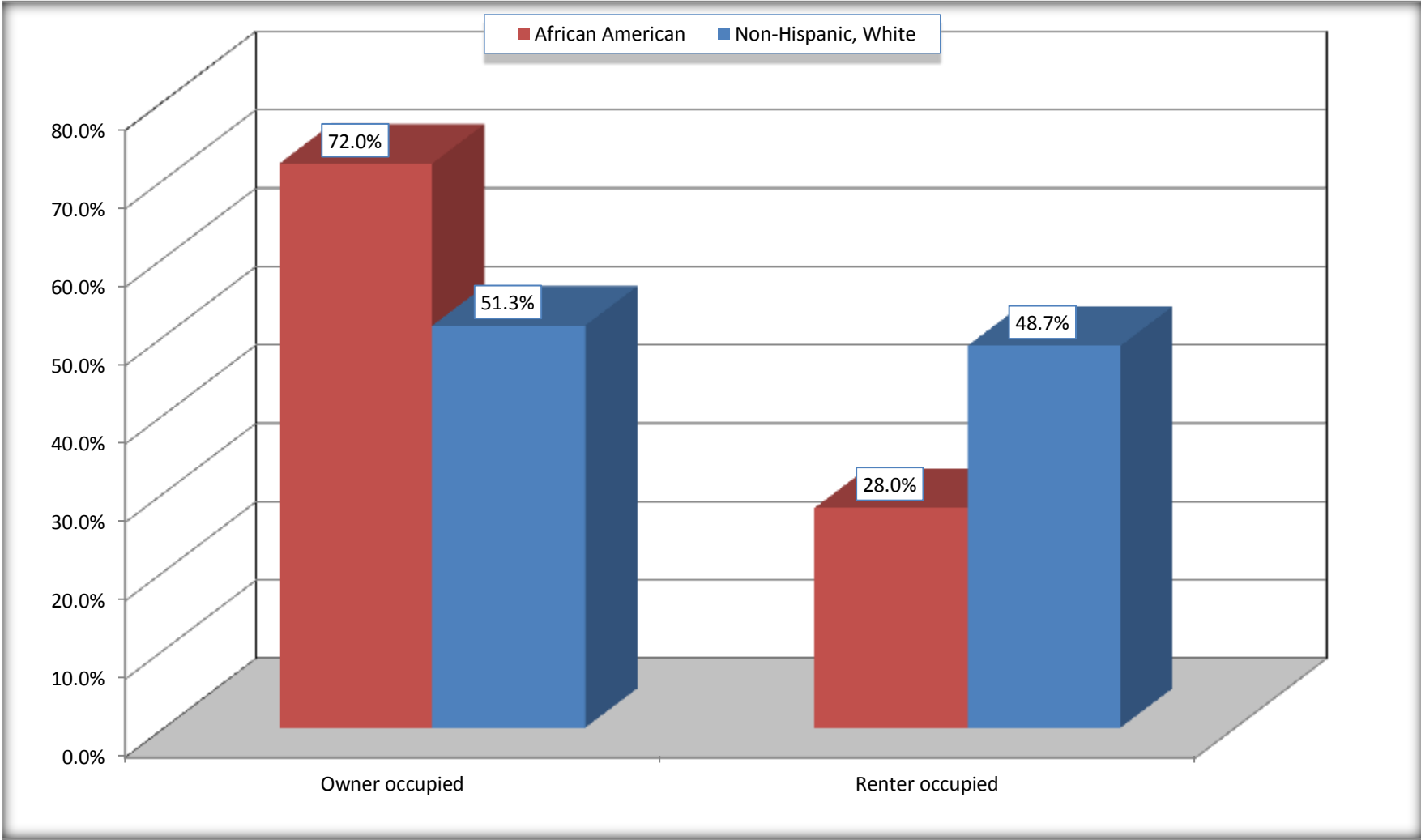
Source: U.S. Census Bureau, 2008-2012 American Community Survey

For information on confidentiality protection, sampling error, nonsampling error, and definitions, see Survey Methodology.

<http://www.census.gov/acs/www/UseData/index.h>

# Home Owners and Renters by Household

## Comstock Northwest CDP, Michigan



Source: B25003. TENURE - Universe: OCCUPIED HOUSING UNITS  
Data Set: 2008-2012 American Community Survey 5-Year Estimates



**B25014. OCCUPANTS PER ROOM - Universe: OCCUPIED HOUSING UNITS**

Data Set: 2008-2012 American Community Survey 5-Year Estimates

	Comstock Northwest CDP, Michigan					
	African American	Margin of Error (+/-)	% of AA Total	White, Not Hispanic	Margin of Error (+/-)	% of NHW Total
<b>Total:</b>	<b>264</b>	<b>108</b>	<b>100.0%</b>	<b>2,084</b>	<b>205</b>	<b>100.0%</b>
1.00 or less occupants per room	264	108	100.0%	2,066	206	99.1%
1.01 or more occupants per room	0	15	0.0%	18	28	0.9%

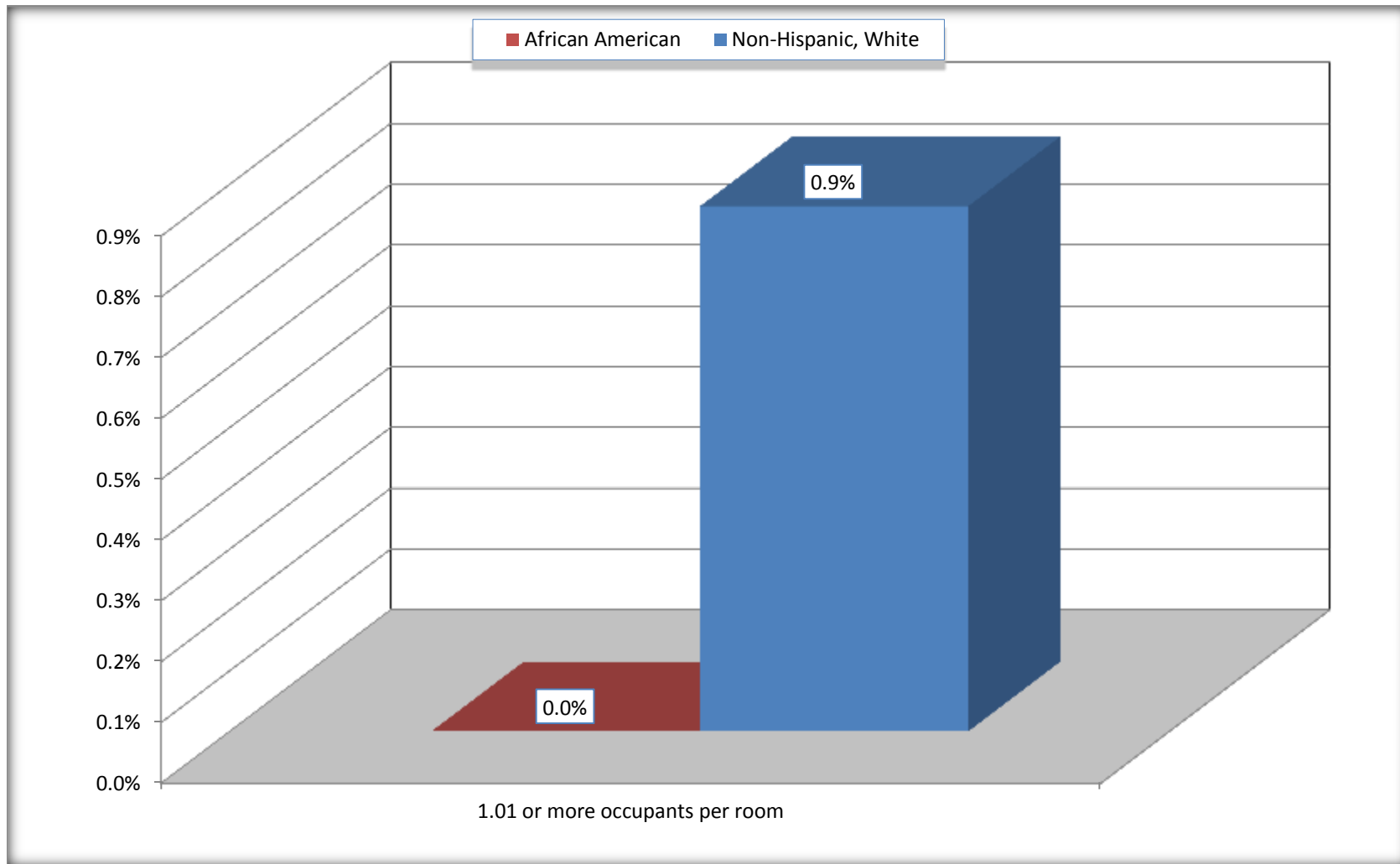
Source: U.S. Census Bureau, 2008-2012 American Community Survey

For information on confidentiality protection, sampling error, nonsampling error, and definitions, see Survey Methodology.

<http://www.census.gov/acs/www/UseData/index.ht>

# More than One Person per Room (Crowding) by Household

## Comstock Northwest CDP, Michigan



Source: B25014. OCCUPANTS PER ROOM - Universe: OCCUPIED HOUSING UNITS  
Data Set: 2008-2012 American Community Survey 5-Year Estimates

**B18101. AGE BY DISABILITY STATUS**

Data Set: 2008-2012 American Community Survey 5-Year Estimates

	Comstock Northwest CDP, Michigan					
	African American	Margin of Error (+/-)	% of AA Total	White, Not Hispanic	Margin of Error (+/-)	% of NHW Total
<b>Total:</b>	<b>917</b>	<b>317</b>	<b>100.0%</b>	<b>4,373</b>	<b>508</b>	<b>100.0%</b>
Under 18 years:	300	185	32.7%	892	39	20.4%
With a disability	30	54	3.3%	81	67	1.9%
No disability	270	186	29.4%	811	255	18.5%
18 to 64 years:	509	185	55.5%	2,848	296	65.1%
With a disability	99	127	10.8%	342	155	7.8%
No disability	410	148	44.7%	2,506	306	57.3%
65 years and over:	108	87	11.8%	633	126	14.5%
With a disability	34	42	3.7%	227	107	5.2%
No disability	74	76	8.1%	406	127	9.3%

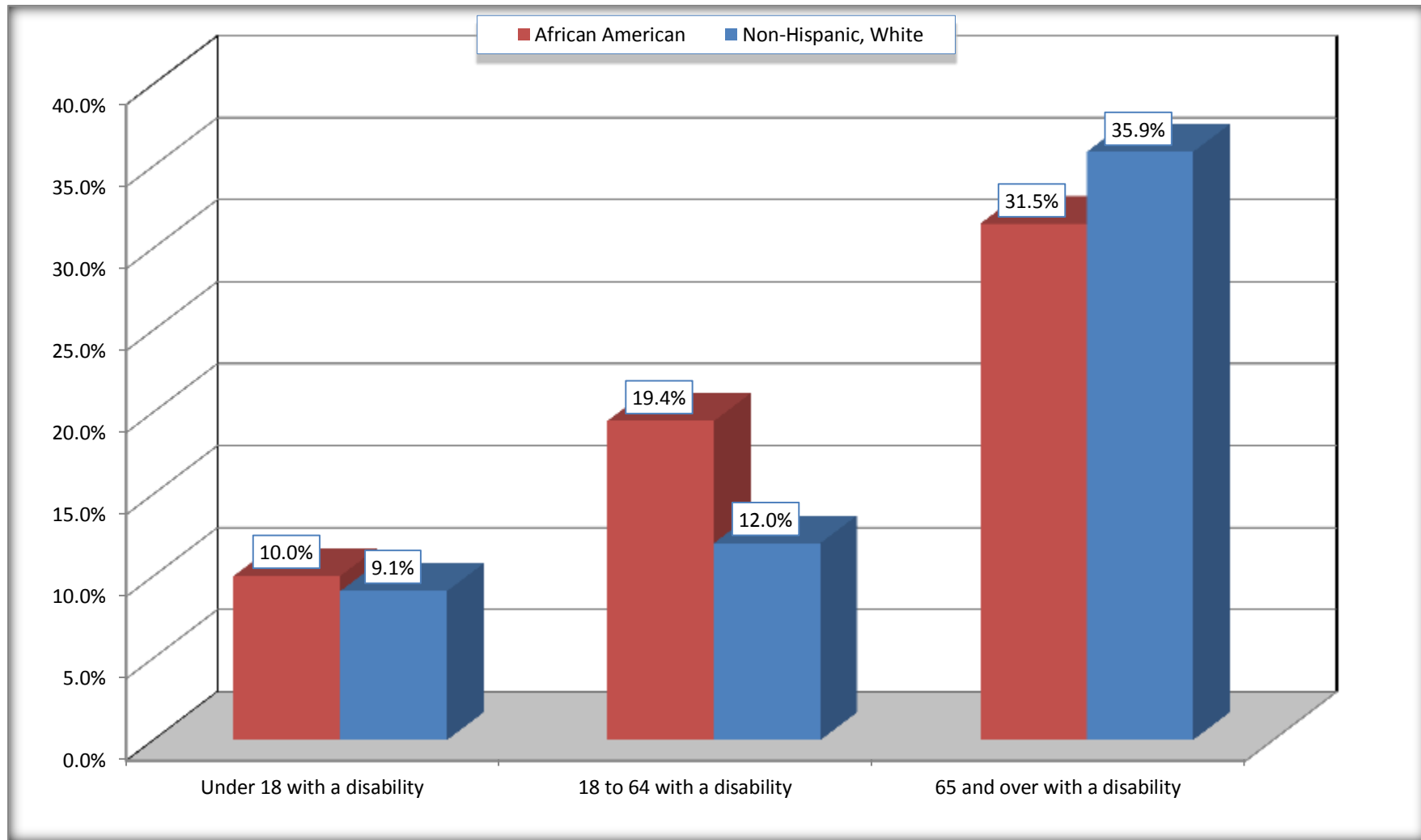
Source: U.S. Census Bureau, 2008-2012 American Community Survey

For information on confidentiality protection, sampling error, nonsampling error, and definitions, see Survey Methodology.

<http://www.census.gov/acs/www/UseData/index.htm>

# Disability by Age

## Comstock Northwest CDP, Michigan



Source: B18101. AGE BY DISABILITY STATUS  
Data Set: 2008-2012 American Community Survey 5-Year Estimates

**C27001B. HEALTH INSURANCE COVERAGE STATUS BY AGE**

Data Set: 2008-2012 American Community Survey 5-Year Estimates

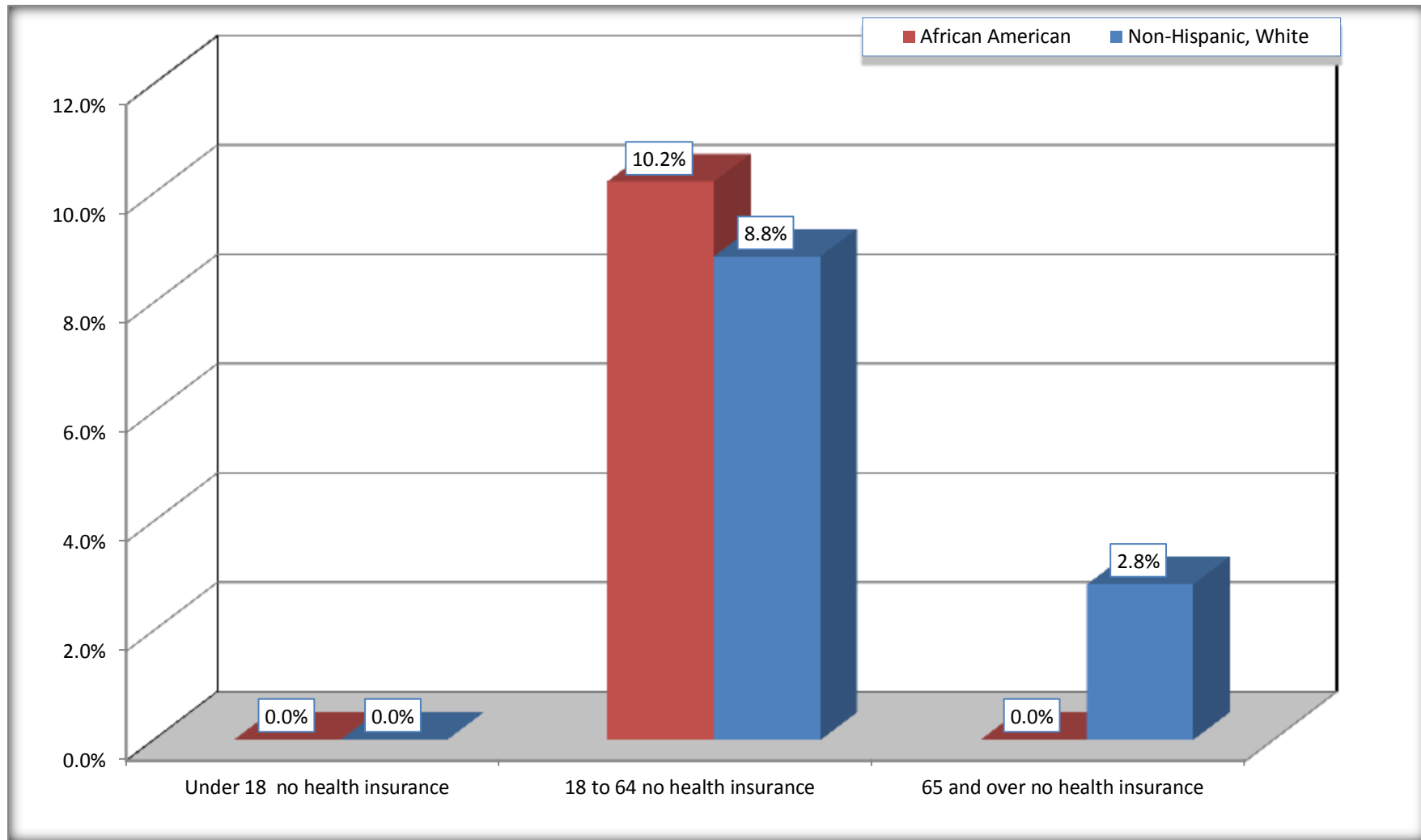
	<b>Comstock Northwest CDP, Michigan</b>					
	African American	Margin of Error (+/-)	% of AA Total	White, Not Hispanic	Margin of Error (+/-)	% of NHW Total
<b>Total:</b>	<b>917</b>	<b>317</b>	<b>100.0%</b>	<b>4,373</b>	<b>508</b>	<b>100.0%</b>
Under 18 years:	300	185	32.7%	892	266	20.4%
With health insurance coverage	300	185	32.7%	892	266	20.4%
No health insurance coverage	0	15	0.0%	0	15	0.0%
18 to 64 years:	509	185	55.5%	2,848	296	65.1%
With health insurance coverage	457	164	49.8%	2,596	246	59.4%
No health insurance coverage	52	64	5.7%	252	163	5.8%
65 years and over:	108	87	11.8%	633	126	14.5%
With health insurance coverage	108	87	11.8%	615	119	14.1%
No health insurance coverage	0	15	0.0%	18	28	0.4%

Source: U.S. Census Bureau, 2008-2012 American Community Survey

For information on confidentiality protection, sampling error, nonsampling error, and definitions, see Survey Methodology.

<http://www.census.gov/acs/www/UseData/index.htm>

## Lack of Health Insurance Coverage by Age Comstock Northwest CDP, Michigan



Source: C27001B. HEALTH INSURANCE COVERAGE STATUS BY AGE  
Data Set: 2008-2012 American Community Survey 5-Year Estimates