

Selected Socio-Economic Data

Buena Vista CDP, Michigan

African American and White, Not Hispanic

Data Set: 2008-2012 American Community Survey 5-Year Estimates

www.fairvote2020.org

www.fairdata2000.com

[29-Dec-13](#)

C02003.DETAILED RACE - Universe: TOTAL POPULATION

Data Set: 2008-2012 American Community Survey 5-Year Estimates

	Buena Vista CDP, Michigan		
	Population	Margin of Error (+/-)	% of Total
Total:	6,498	266	100.0%
Population of one race:	6,171	320	95.0%
White	1,427	328	22.0%
Black or African American	4,548	443	70.0%
American Indian and Alaska Native	16	26	0.2%
Asian alone	0	15	0.0%
Native Hawaiian and Other Pacific Islander	0	15	0.0%
Some other race	180	132	2.8%
Population of two or more races:	327	233	5.0%
Two races including Some other race	0	15	0.0%
Two races excluding Some other race, and three or more races	327	233	5.0%
Population of two races:	327	233	5.0%
White; Black or African American	251	213	3.9%
White; American Indian and Alaska Native	0	15	0.0%
White; Asian	0	15	0.0%
Black or African American; American Indian and Alaska Native	76	87	1.2%
All other two race combinations	0	15	0.0%
Population of three races	0	15	0.0%
Population of four or more races	0	15	0.0%

Note: Hispanics may be of any race. See Table B03002 and chart.

Source: U.S. Census Bureau, 2008-2012 American Community Survey

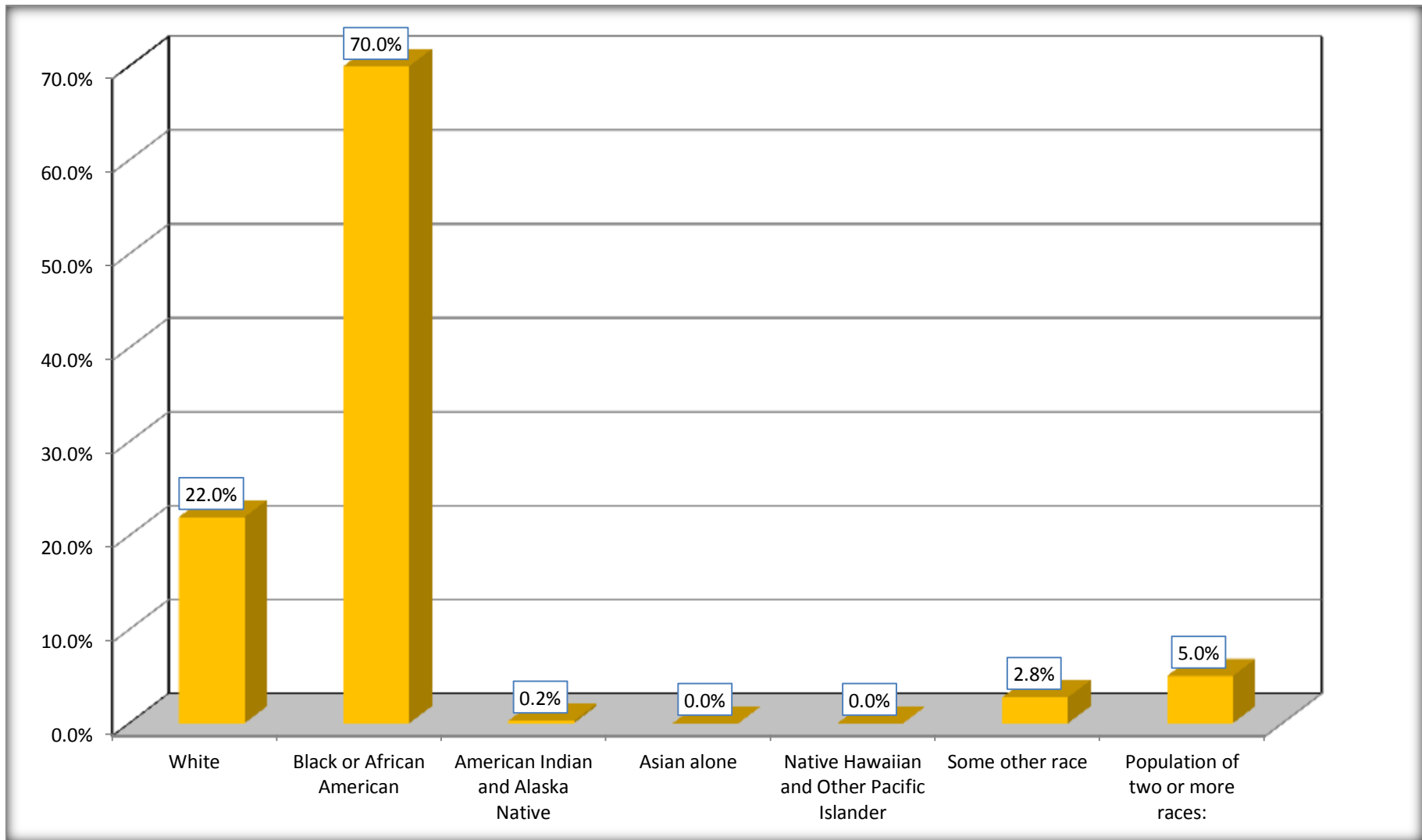
Although the American Community Survey (ACS) produces population, demographic and housing unit estimates, it is the Census Bureau's Population Estimates Program that produces and disseminates the official estimates of the population for the nation, states, counties, cities and towns and estimates of housing units for states and counties.

For information on confidentiality protection, sampling error, nonsampling error, and definitions, see Survey Methodology.

<http://www.census.gov/acs/www/UseData/index.htm>

Population by Race

Buena Vista CDP, Michigan



Source: C02003.DETAILED RACE - Universe: TOTAL POPULATION
Data Set: 2008-2012 American Community Survey 5-Year Estimates

B03002. HISPANIC OR LATINO ORIGIN BY RACE - Universe: TOTAL POPULATION

Data Set: 2008-2012 American Community Survey 5-Year Estimates

	Buena Vista CDP, Michigan		
	Population	Margin of Error (+/-)	% of Total
Total:	6,498	266	100.0%
Not Hispanic or Latino:	5,946	319	91.5%
White alone	1,065	301	16.4%
Black or African American alone	4,528	445	69.7%
American Indian and Alaska Native alone	16	26	0.2%
Asian alone	0	15	0.0%
Native Hawaiian and Other Pacific Islander alone	0	15	0.0%
Some other race alone	10	15	0.2%
Two or more races:	327	233	5.0%
Two races including Some other race	0	15	0.0%
Two races excluding Some other race, and three or more races	327	233	5.0%
Hispanic or Latino	552	216	8.5%

Source: U.S. Census Bureau, 2008-2012 American Community Survey

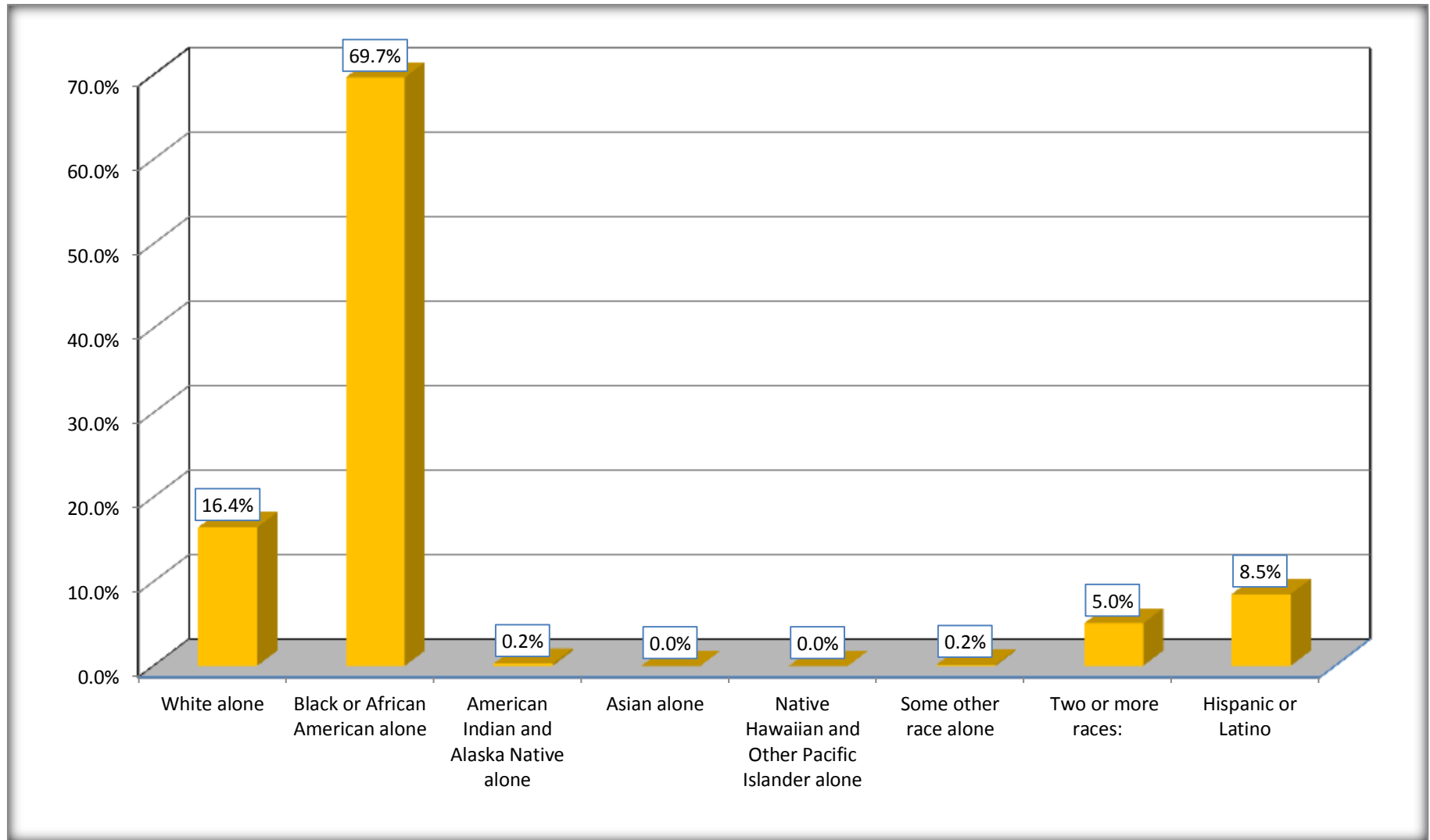
Although the American Community Survey (ACS) produces population, demographic and housing unit estimates, it is the Census Bureau's Population Estimates Program that produces and disseminates the official estimates of the population for the nation, states, counties, cities and towns and estimates of housing units for states and counties.

For information on confidentiality protection, sampling error, nonsampling error, and definitions, see Survey Methodology.

<http://www.census.gov/acs/www/UseData/index.htm>

Non-Hispanic by Race and Hispanic Population

Buena Vista CDP, Michigan



Source: B03002. HISPANIC OR LATINO ORIGIN BY RACE - Universe: TOTAL POPULATION
Data Set: 2008-2012 American Community Survey 5-Year Estimates

B03002. HISPANIC OR LATINO ORIGIN BY RACE

Data Set: 2008-2012 American Community Survey 5-Year Estimates

	Buena Vista CDP, Michigan		
	Population	Margin of Error (+/-)	% of Total
Hispanic or Latino:	552	216	100.0%
White alone	362	198	65.6%
Black or African American alone	20	30	3.6%
American Indian and Alaska Native alone	0	15	0.0%
Asian alone	0	15	0.0%
Native Hawaiian and Other Pacific Islander alone	0	15	0.0%
Some other race alone	170	131	30.8%
Two or more races:	0	15	0.0%
Two races including Some other race	0	15	0.0%
Two races excluding Some other race, and three or more races	0	15	0.0%

Source: U.S. Census Bureau, 2008-2012 American Community Survey

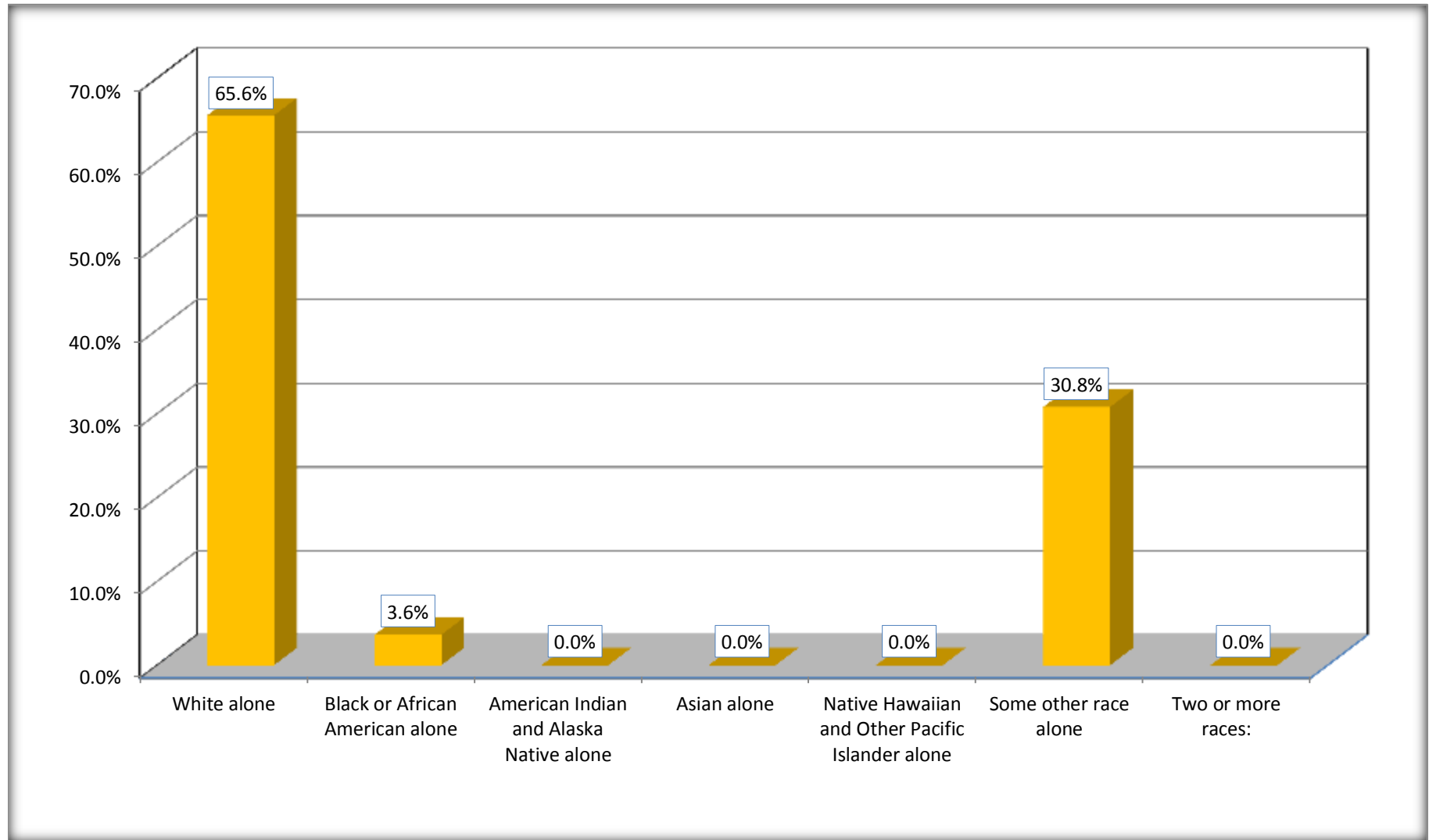
Although the American Community Survey (ACS) produces population, demographic and housing unit estimates, it is the Census Bureau's Population Estimates Program that produces and disseminates the official estimates of the population for the nation, states, counties, cities and towns and estimates of housing units for states and counties.

For information on confidentiality protection, sampling error, nonsampling error, and definitions, see Survey Methodology.

<http://www.census.gov/acs/www/UseData/index.htm>

Hispanic or Latino Origin by Race

Buena Vista CDP, Michigan



Source: B03002. HISPANIC OR LATINO ORIGIN BY RACE
Data Set: 2008-2012 American Community Survey 5-Year Estimates

B01001. SEX BY AGE

Data Set: 2008-2012 American Community Survey 5-Year Estimates

	Buena Vista CDP, Michigan					
	African American	Margin of Error (+/-)	% of AA Total	White, Not Hispanic	Margin of Error (+/-)	% of NHW Total
Total:	4,548	443	100.0%	1,065	301	100.0%
Under 18 years	881	NC	19.4%	157	NC	14.7%
18 to 64 years	2,755	NC	60.6%	760	NC	71.4%
65 years and over	912	NC	20.1%	148	NC	13.9%
Male:	1,969	334	43.3%	451	389	42.3%
Under 18 years	440	NC	9.7%	15	NC	1.4%
18 to 64 years	1,305	NC	28.7%	322	NC	30.2%
65 years and over	224	NC	4.9%	114	NC	10.7%
Female:	2,579	266	56.7%	614	412	57.7%
Under 18 years	441	NC	9.7%	142	NC	13.3%
18 to 64 years	1,450	NC	31.9%	438	NC	41.1%
65 years and over	688	NC	15.1%	34	NC	3.2%

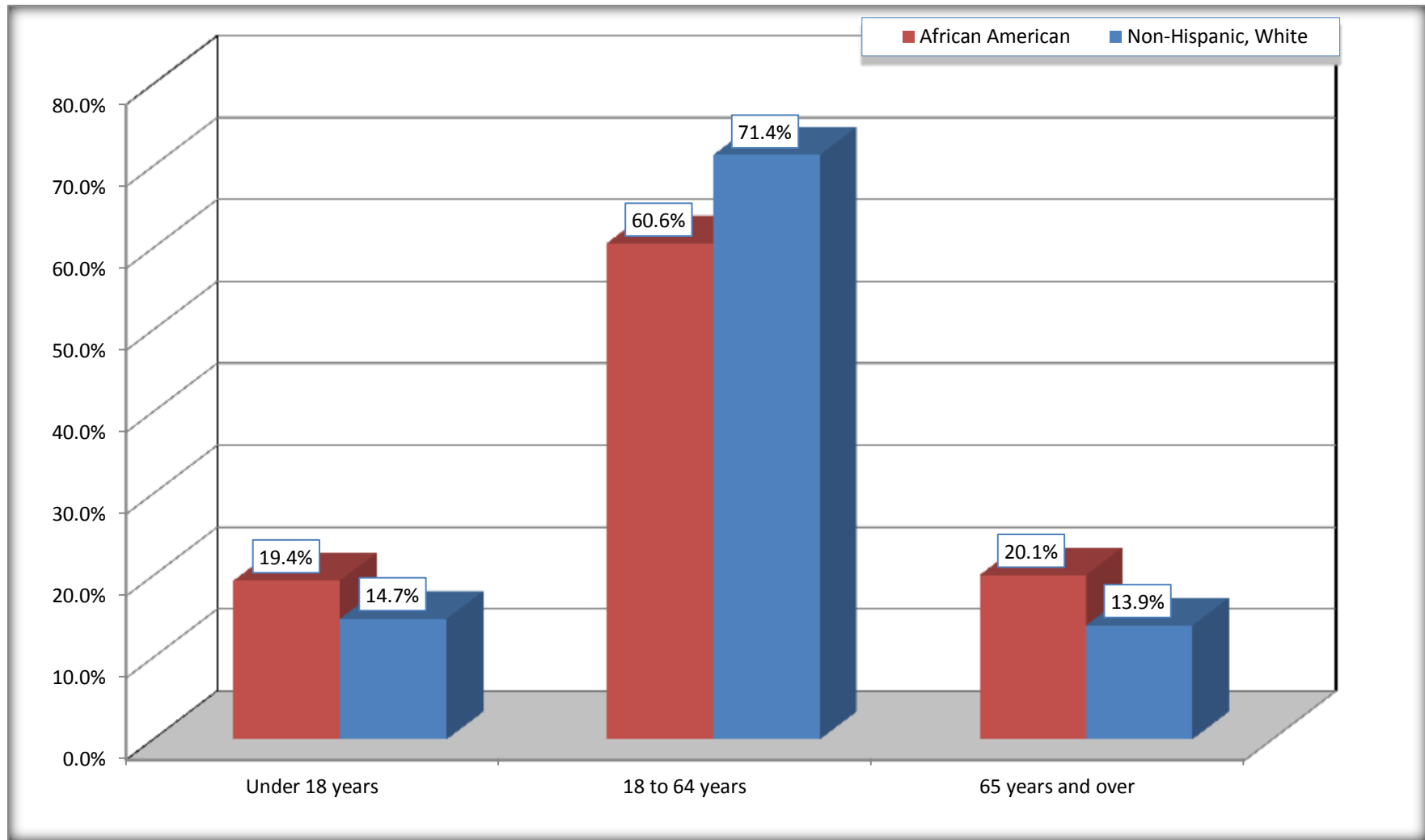
Source: U.S. Census Bureau, 2008-2012 American Community Survey

Although the American Community Survey (ACS) produces population, demographic and housing unit estimates, it is the Census Bureau's Population Estimates Program that produces and disseminates the official estimates of the population for the nation, states, counties, cities and towns and estimates of housing units for states and counties.

For information on confidentiality protection, sampling error, nonsampling error, and definitions, see Survey Methodology.
<http://www.census.gov/acs/www/UseData/index.htm>

Population by Age

Buena Vista CDP, Michigan



Source: B01001. SEX BY AGE
Data Set: 2008-2012 American Community Survey 5-Year Estimates

B05003. SEX BY AGE BY CITIZENSHIP STATUS

Data Set: 2008-2012 American Community Survey 5-Year Estimates

	Buena Vista CDP, Michigan					
	African American	Margin of Error (+/-)	% of AA Total by Age	White, Not Hispanic	Margin of Error (+/-)	% of NHW Total by Age
Total:	4,548	443	100.0%	1,065	301	100.0%
Under 18 years:	881	NC	100.0%	157	NC	100.0%
Native	881	NC	100.0%	157	NC	100.0%
Foreign born:	0	NC	0.0%	0	NC	0.0%
Naturalized U.S. citizen	0	NC	0.0%	0	NC	0.0%
Not a U.S. citizen	0	NC	0.0%	0	NC	0.0%
18 years and over:	3,667	NC	100.0%	908	NC	100.0%
Native	3,568	NC	97.3%	908	NC	100.0%
Foreign born:	99	NC	2.7%	0	NC	0.0%
Naturalized U.S. citizen	31	NC	0.8%	0	NC	0.0%
Not a U.S. citizen	68	NC	1.9%	0	NC	0.0%
Male:	1,969	334	43.3%	451	166	42.3%
Under 18 years:	440	230	100.0%	15	24	100.0%
Native	440	230	100.0%	15	24	100.0%
Foreign born:	0	15	0.0%	0	15	0.0%
Naturalized U.S. citizen	0	15	0.0%	0	15	0.0%
Not a U.S. citizen	0	15	0.0%	0	15	0.0%
18 years and over:	1,529	228	100.0%	436	163	100.0%
Native	1,459	220	95.4%	436	163	100.0%
Foreign born:	70	63	4.6%	0	15	0.0%
Naturalized U.S. citizen	31	46	2.0%	0	15	0.0%
Not a U.S. citizen	39	47	2.6%	0	15	0.0%

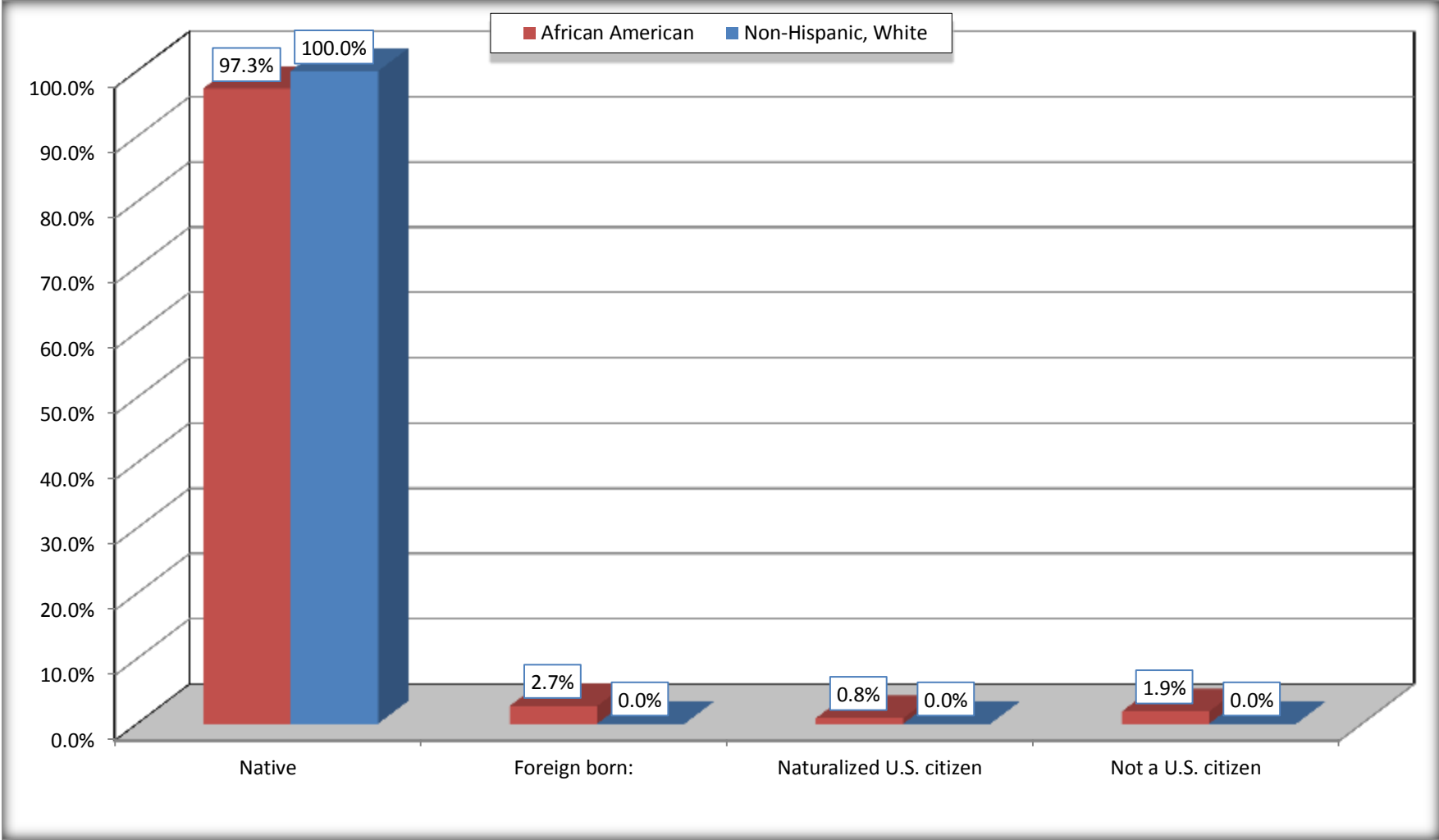
	Buena Vista CDP, Michigan					
	African American	Margin of Error (+/-)	% of AA by Age	White, Not Hispanic	Margin of Error (+/-)	% of NHW by Age
Female:	2,579	266	56.7%	614	230	57.7%
Under 18 years:	441	175	100.0%	142	117	100.0%
Native	441	175	100.0%	142	117	100.0%
Foreign born:	0	15	0.0%	0	15	0.0%
Naturalized U.S. citizen	0	15	0.0%	0	15	0.0%
Not a U.S. citizen	0	15	0.0%	0	15	0.0%
18 years and over:	2,138	242	100.0%	472	176	100.0%
Native	2,109	242	98.6%	472	176	100.0%
Foreign born:	29	36	1.4%	0	15	0.0%
Naturalized U.S. citizen	0	15	0.0%	0	15	0.0%
Not a U.S. citizen	29	36	1.4%	0	15	0.0%

Source: U.S. Census Bureau, 2008-2012 American Community Survey

For information on confidentiality protection, sampling error, nonsampling error, and definitions, see Survey Methodology.
<http://www.census.gov/acs/www/UseData/index.htm>

Citizenship Status of Voting Age Population (18 and Over)

Buena Vista CDP, Michigan



Source: B05003. SEX BY AGE BY CITIZENSHIP STATUS
Data Set: 2008-2012 American Community Survey 5-Year Estimates

**B07004. GEOGRAPHICAL MOBILITY IN THE PAST YEAR BY RACE FOR CURRENT RESIDENCE IN THE UNITED STATES - Universe:
POPULATION 1 YEAR AND OVER**

Data Set: 2008-2012 American Community Survey 5-Year Estimates

	Buena Vista CDP, Michigan					
	African American	Margin of Error (+/-)	% of AA Total	White, Not Hispanic	Margin of Error (+/-)	% of NHW Total
Total:	4,530	445	100.0%	1,065	301	100.0%
Same house 1 year ago	3,891	497	85.9%	1,013	289	95.1%
Moved within same county	411	228	9.1%	23	30	2.2%
Moved from different county within same state	24	32	0.5%	29	40	2.7%
Moved from different state	204	188	4.5%	0	15	0.0%
Moved from abroad	0	15	0.0%	0	15	0.0%

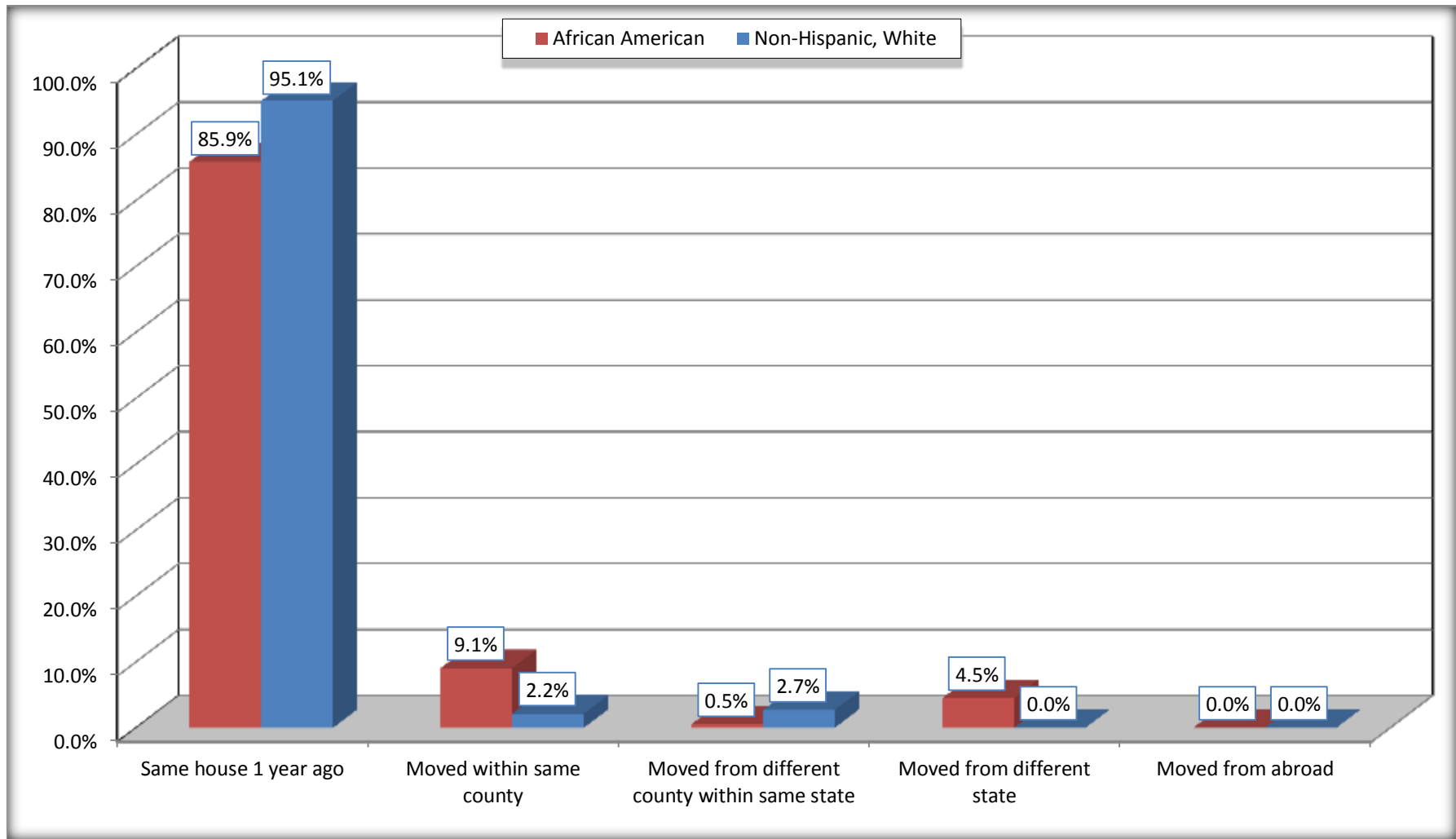
Source: U.S. Census Bureau, 2008-2012 American Community Survey

For information on confidentiality protection, sampling error, nonsampling error, and definitions, see Survey Methodology.

<http://www.census.gov/acs/www/UseData/index.htm>

Geographical Mobility in the Past Year (Population 1 Year and Over)

Buena Vista CDP, Michigan



Source: B07004. GEOGRAPHICAL MOBILITY IN THE PAST YEAR BY RACE FOR CURRENT RESIDENCE IN THE UNITED STATES - Universe: POPULATION 1 YEAR AND OVER

Data Set: 2008-2012 American Community Survey 5-Year Estimates

B08105. MEANS OF TRANSPORTATION TO WORK - Universe: WORKERS 16 YEARS AND OVER

Data Set: 2008-2012 American Community Survey 5-Year Estimates

	Buena Vista CDP, Michigan					
	African American	Margin of Error (+/-)	% of AA Total	White, Not Hispanic	Margin of Error (+/-)	% of NHW Total
Total:	1019	252	100.0%	251	117	100.0%
Car, truck, or van - drove alone	815	218	80.0%	125	89	49.8%
Car, truck, or van - carpoled	29	30	2.8%	14	25	5.6%
Public transportation (excluding taxicab)	0	15	0.0%	0	15	0.0%
Walked	11	17	1.1%	0	15	0.0%
Taxicab, motorcycle, bicycle, or other means	37	42	3.6%	96	78	38.2%
Worked at home	127	103	12.5%	16	38	6.4%

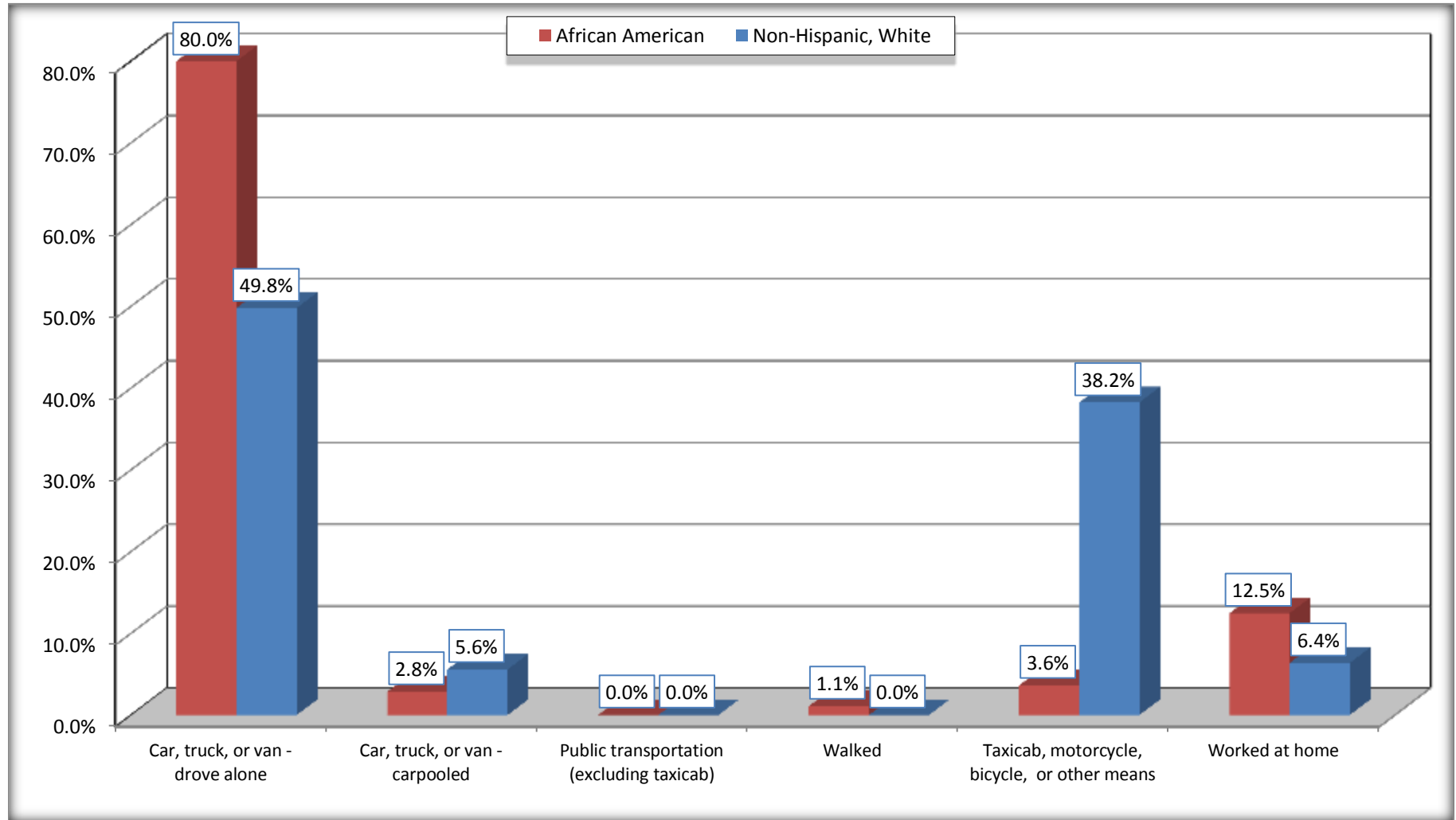
Source: U.S. Census Bureau, 2008-2012 American Community Survey

For information on confidentiality protection, sampling error, nonsampling error, and definitions, see Survey Methodology.

<http://www.census.gov/acs/www/UseData/index.htm>

Means of Transportation to Work (Workers 16 Years and Over)

Buena Vista CDP, Michigan



Source: B08105. MEANS OF TRANSPORTATION TO WORK - Universe: WORKERS 16 YEARS AND OVER
Data Set: 2008-2012 American Community Survey 5-Year Estimates

B11002. HOUSEHOLD TYPE BY RELATIVES AND NONRELATIVES FOR POPULATION IN HOUSEHOLDS

Data Set: 2008-2012 American Community Survey 5-Year Estimates

	Buena Vista CDP, Michigan					
	African American	Margin of Error (+/-)	% of AA Total	White, Not Hispanic	Margin of Error (+/-)	% of NHW Total
Total:	4559	445	100.0%	1248	401	100.0%
In family households	3158	582	69.3%	1067	399	85.5%
In nonfamily households	1401	400	30.7%	181	101	14.5%

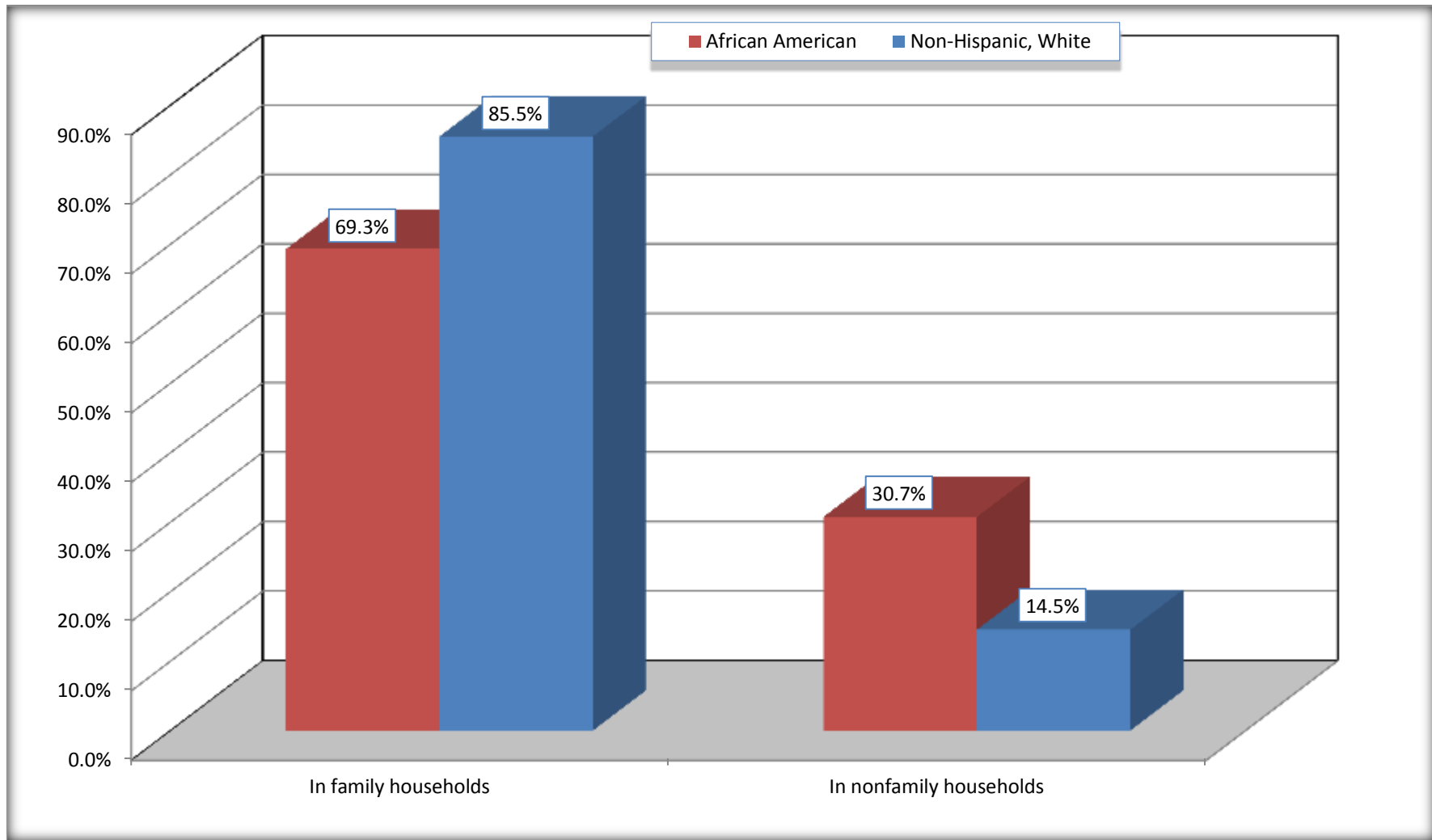
Source: U.S. Census Bureau, 2008-2012 American Community Survey

For information on confidentiality protection, sampling error, nonsampling error, and definitions, see Survey Methodology.

<http://www.census.gov/acs/www/UseData/index.htm>

Household Type for Population in Households

Buena Vista CDP, Michigan



Source: B11002. HOUSEHOLD TYPE BY RELATIVES AND NONRELATIVES FOR POPULATION IN HOUSEHOLDS
Data Set: 2008-2012 American Community Survey 5-Year Estimates

B12002. MARITAL STATUS FOR THE POPULATION 15 YEARS AND OVER

Data Set: 2008-2012 American Community Survey 5-Year Estimates

	Buena Vista CDP, Michigan					
	African American	Margin of Error (+/-)	% of AA Total	White, Not Hispanic	Margin of Error (+/-)	% of NHW Total
Total:	3,821	300	100.0%	948	267	100.0%
Never married	1,637	NC	42.8%	371	NC	39.1%
Now married (except separated)	881	NC	23.1%	372	NC	39.2%
Separated	138	NC	3.6%	0	NC	0.0%
Widowed	500	NC	13.1%	118	NC	12.4%
Divorced	665	NC	17.4%	87	NC	9.2%
Male:	1,529	228	40.0%	436	163	46.0%
Never married	708	159	18.5%	123	87	13.0%
Now married (except separated)	502	170	13.1%	164	84	17.3%
Separated	2	4	0.1%	0	15	0.0%
Widowed	74	48	1.9%	84	80	8.9%
Divorced	243	131	6.4%	65	55	6.9%
Female:	2,292	245	60.0%	512	191	54.0%
Never married	929	256	24.3%	248	177	26.2%
Now married (except separated)	379	127	9.9%	208	105	21.9%
Separated	136	83	3.6%	0	15	0.0%
Widowed	426	110	11.1%	34	31	3.6%
Divorced	422	142	11.0%	22	28	2.3%

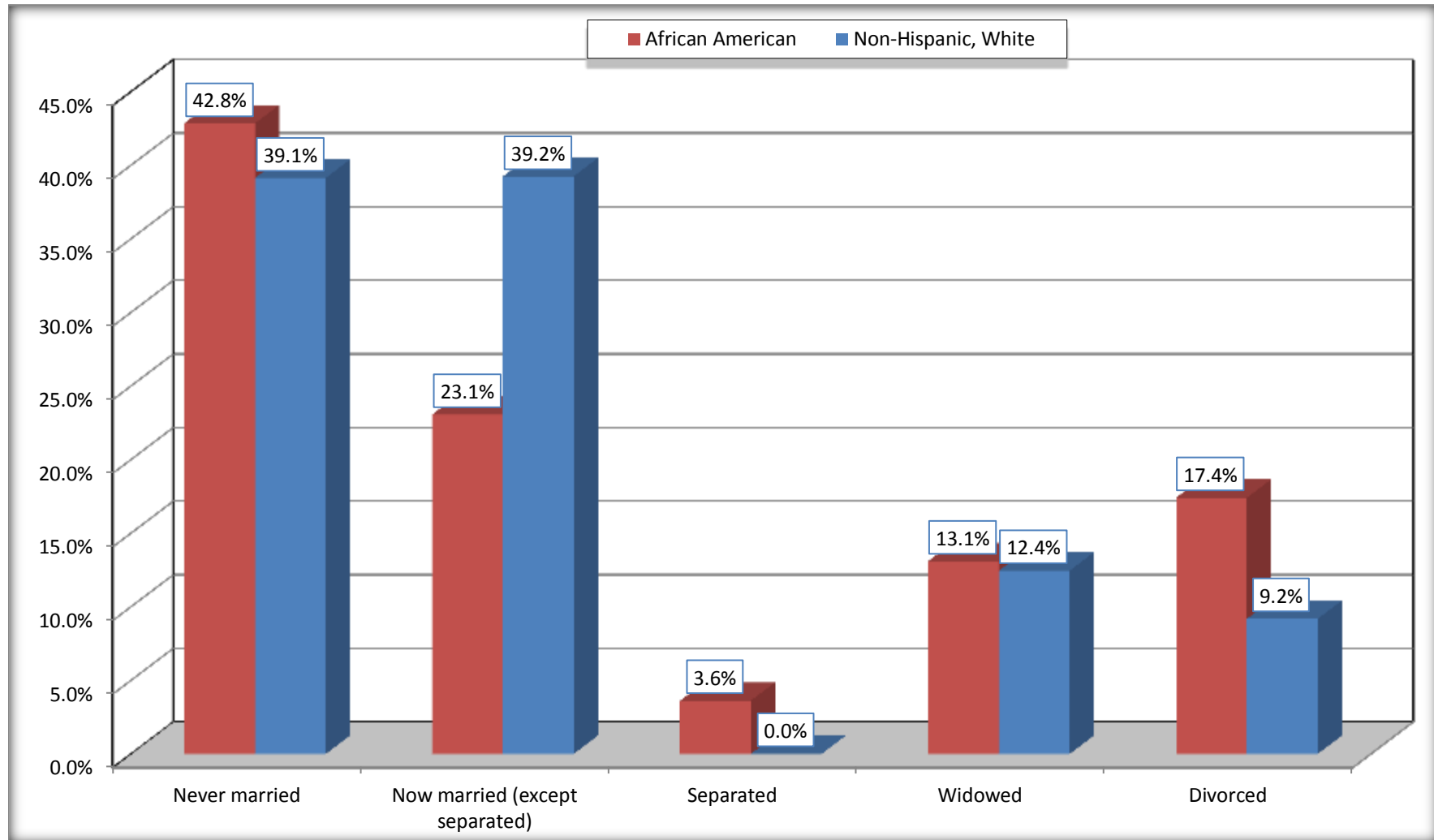
Source: U.S. Census Bureau, 2008-2012 American Community Survey

For information on confidentiality protection, sampling error, nonsampling error, and definitions, see Survey Methodology.

<http://www.census.gov/acs/www/UseData/index.htm>

Marital Status for the Population 15 Years and Over

Buena Vista CDP, Michigan



Source: B12002. MARITAL STATUS FOR THE POPULATION 15 YEARS AND OVER
Data Set: 2008-2012 American Community Survey 5-Year Estimates

C15002. SEX BY EDUCATIONAL ATTAINMENT FOR THE POPULATION 25 YEARS AND OVER

Data Set: 2008-2012 American Community Survey 5-Year Estimates

	Buena Vista CDP, Michigan					
	African American	Margin of Error (+/-)	% of AA Total	White, Not Hispanic	Margin of Error (+/-)	% of NHW Total
Total:	3,210	274	100.0%	748	243	100.0%
Less than high school diploma	626	NC	19.5%	140	NC	18.7%
High school graduate, GED, or alternative	1,147	NC	35.7%	383	NC	51.2%
Some college or associate's degree	1,169	NC	36.4%	209	NC	27.9%
Bachelor's degree or higher	268	NC	8.3%	16	NC	2.1%
Male:	1,337	195	41.7%	361	155	48.3%
Less than high school diploma	215	101	6.7%	98	68	13.1%
High school graduate, GED, or alternative	481	167	15.0%	181	100	24.2%
Some college or associate's degree	519	167	16.2%	66	60	8.8%
Bachelor's degree or higher	122	93	3.8%	16	38	2.1%
Female:	1,873	193	58.3%	387	164	51.7%
Less than high school diploma	411	128	12.8%	42	41	5.6%
High school graduate, GED, or alternative	666	141	20.7%	202	152	27.0%
Some college or associate's degree	650	225	20.2%	143	87	19.1%
Bachelor's degree or higher	146	89	4.5%	0	15	0.0%

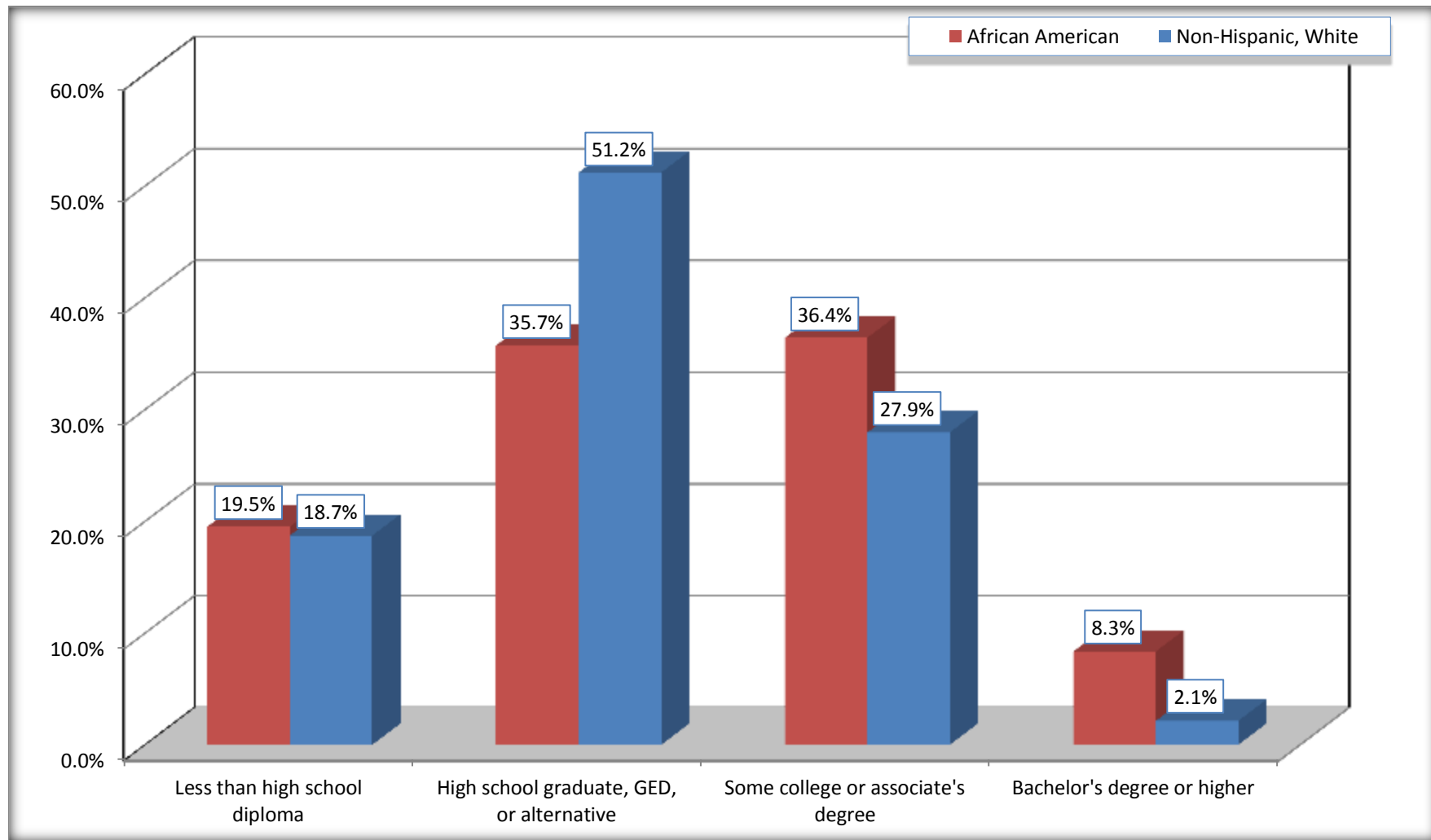
Source: U.S. Census Bureau, 2008-2012 American Community Survey

For information on confidentiality protection, sampling error, nonsampling error, and definitions, see Survey Methodology.

<http://www.census.gov/acs/www/UseData/index.htm>

Educational Attainment for the Population 25 Years and Older

Buena Vista CDP, Michigan



Source: C15002. SEX BY EDUCATIONAL ATTAINMENT FOR THE POPULATION 25 YEARS AND OVER
Data Set: 2008-2012 American Community Survey 5-Year Estimates

B17010. POVERTY STATUS IN THE PAST 12 MONTHS OF FAMILIES BY FAMILY TYPE BY PRESENCE OF RELATED CHILDREN UNDER 18 YEARS

Data Set: 2008-2012 American Community Survey 5-Year Estimates

	Buena Vista CDP, Michigan					
	African American	Margin of Error (+/-)	% of AA Total	White, Not Hispanic	Margin of Error (+/-)	% of NHW Total
Total:	968	175	100.0%	288	101	100.0%
Income in the past 12 months below poverty level:	339	102	35.0%	136	75	47.2%
Married-couple family:	83	57	8.6%	69	60	24.0%
With related children under 18 years	23	32	2.4%	48	44	16.7%
Other family:	256	91	26.4%	67	76	23.3%
Male householder, no wife present	24	29	2.5%	0	15	0.0%
With related children under 18 years	0	15	0.0%	0	15	0.0%
Female householder, no husband present	232	86	24.0%	67	76	23.3%
With related children under 18 years	224	85	23.1%	67	76	23.3%
Income in the past 12 months at or above poverty level:	629	159	65.0%	152	86	52.8%
Married-couple family:	284	123	29.3%	139	83	48.3%
With related children under 18 years	40	49	4.1%	50	57	17.4%
Other family:	345	106	35.6%	13	25	4.5%
Male householder, no wife present	23	35	2.4%	0	15	0.0%
With related children under 18 years	0	15	0.0%	0	15	0.0%
Female householder, no husband present	322	115	33.3%	13	25	4.5%
With related children under 18 years	55	47	5.7%	0	15	0.0%

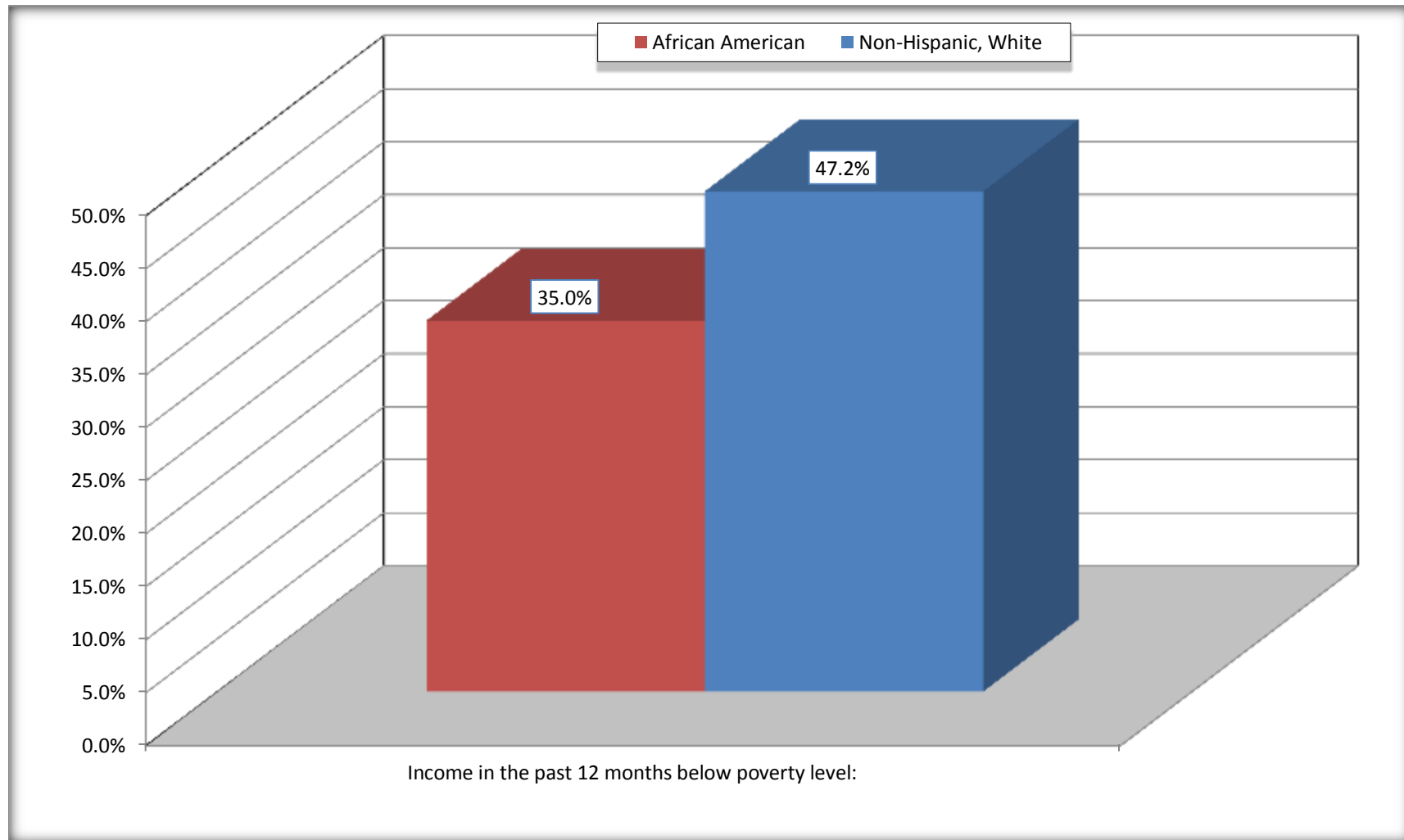
Source: U.S. Census Bureau, 2008-2012 American Community Survey

For information on confidentiality protection, sampling error, nonsampling error, and definitions, see Survey Methodology.

<http://www.census.gov/acs/www/UseData/index.htm>

Family Households Below Poverty in the Past 12 Months

Buena Vista CDP, Michigan

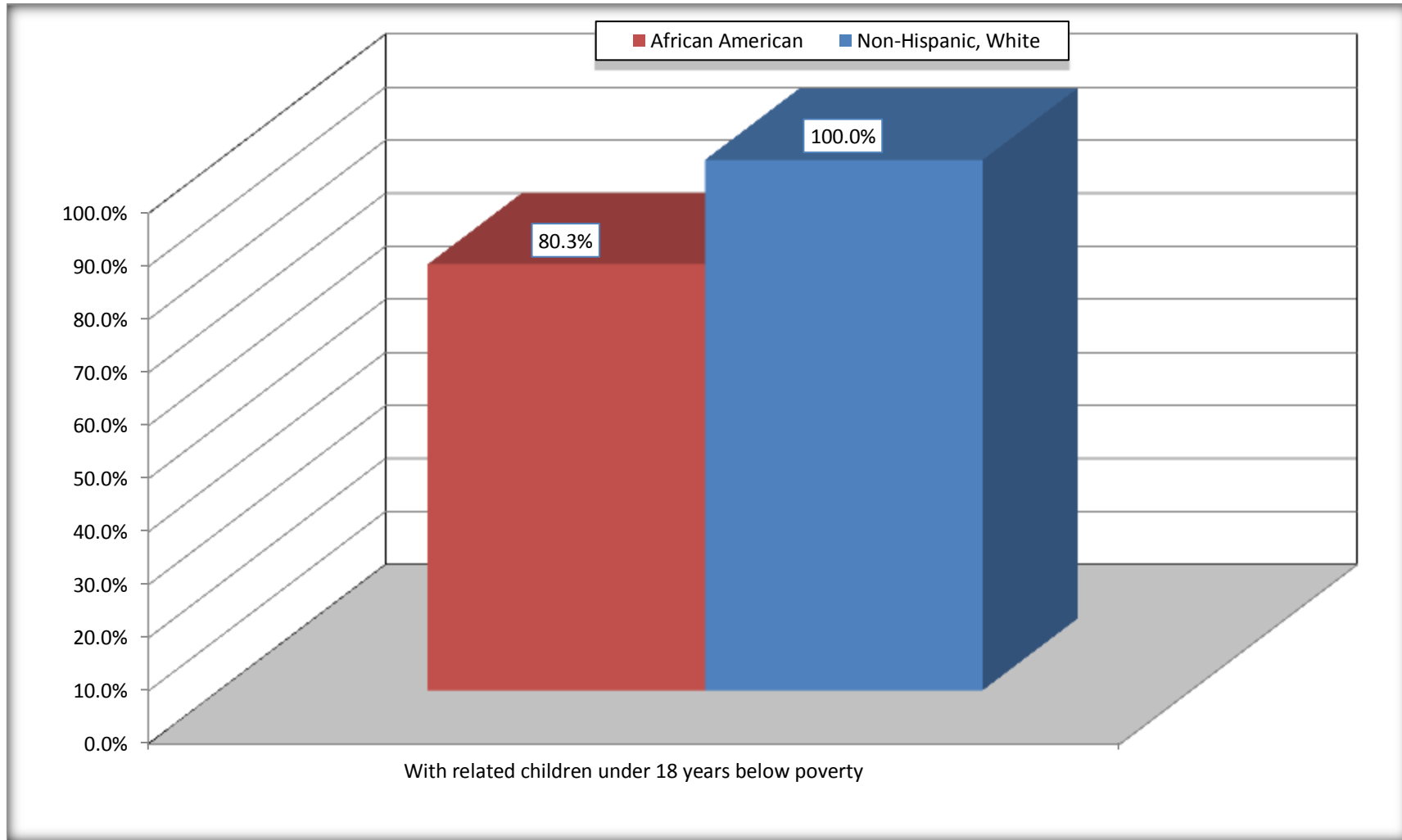


Source: B17010. POVERTY STATUS IN THE PAST 12 MONTHS OF FAMILIES BY FAMILY TYPE BY PRESENCE OF RELATED CHILDREN UNDER 18 YEARS

Data Set: 2008-2012 American Community Survey 5-Year Estimates

Female-headed Households with Related Children Below Poverty in the Past 12 Months

Buena Vista CDP, Michigan



Source: B17010. POVERTY STATUS IN THE PAST 12 MONTHS OF FAMILIES BY FAMILY TYPE BY PRESENCE OF RELATED CHILDREN UNDER 18 YEARS

Data Set: 2008-2012 American Community Survey 5-Year Estimates

B17020 POVERTY STATUS IN THE PAST 12 MONTHS BY AGE - Universe: POPULATION FOR WHOM POVERTY STATUS IS DETERMINED

Data Set: 2008-2012 American Community Survey 5-Year Estimates

	Buena Vista CDP, Michigan					
	African American	Margin of Error (+/-)	% of AA By Age	White, Not Hispanic	Margin of Error (+/-)	% of NHW By Age
Total:	4,476	436	100.0%	1,036	300	100.0%
Income in the past 12 months below poverty level:	1,668	481	37.3%	473	225	45.7%
Under 18 years	717	NC	84.4%	157	NC	100.0%
18 to 64 years	831	246	30.6%	316	133	43.2%
65 years and over	120	NC	13.2%	0	NC	0.0%
Income in the past 12 months at or above poverty level:	2,808	369	62.7%	563	228	54.3%
Under 18 years	133	NC	15.6%	0	NC	0.0%
18 to 64 years	1,883	303	69.4%	415	209	56.8%
65 years and over	792	NC	86.8%	148	NC	100.0%

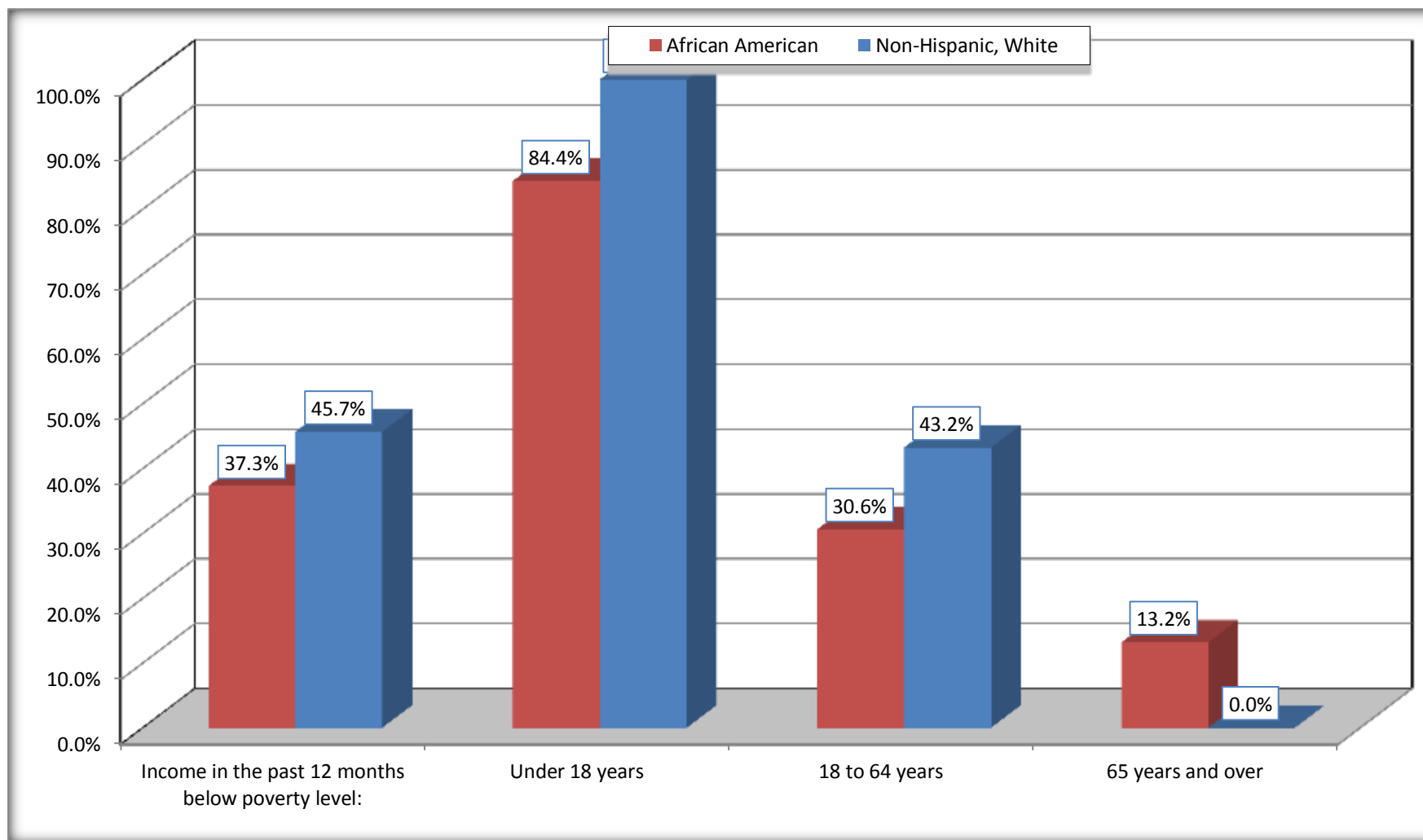
Source: U.S. Census Bureau, 2008-2012 American Community Survey

For information on confidentiality protection, sampling error, nonsampling error, and definitions, see Survey Methodology.

<http://www.census.gov/acs/www/UseData/index.htm>

Population Below Poverty in the Past 12 Months

Buena Vista CDP, Michigan



Source: B17020 POVERTY STATUS IN THE PAST 12 MONTHS BY AGE - Universe: POPULATION FOR WHOM POVERTY STATUS IS DETERMINED
Data Set: 2008-2012 American Community Survey 5-Year Estimates

B19001. HOUSEHOLD INCOME IN THE PAST 12 MONTHS (IN 2010 INFLATION-ADJUSTED DOLLARS)

Data Set: 2008-2012 American Community Survey 5-Year Estimates

	Buena Vista CDP, Michigan					
	African American	Margin of Error (+/-)	% of AA Total	White, Not Hispanic	Margin of Error (+/-)	% of NHW Total
Total:	2,057	191	100.0%	446	132	100.0%
Less than \$ 10,000	309	111	15.0%	78	59	17.5%
\$ 10,000 to \$ 14,999	260	113	12.6%	50	47	11.2%
\$ 15,000 to \$ 24,999	439	NC	21.3%	81	NC	18.2%
\$ 25,000 to \$ 34,999	246	NC	12.0%	85	NC	19.1%
\$ 35,000 to \$ 49,999	354	NC	17.2%	65	NC	14.6%
\$ 50,000 to \$ 74,999	340	NC	16.5%	58	NC	13.0%
\$ 75,000 to \$ 99,999	64	76	3.1%	9	13	2.0%
\$ 100,000 to \$ 149,999	27	NC	1.3%	20	NC	4.5%
\$ 150,000 to \$ 199,999	18	31	0.9%	0	15	0.0%
\$ 200,000 or more	0	15	0.0%	0	15	0.0%

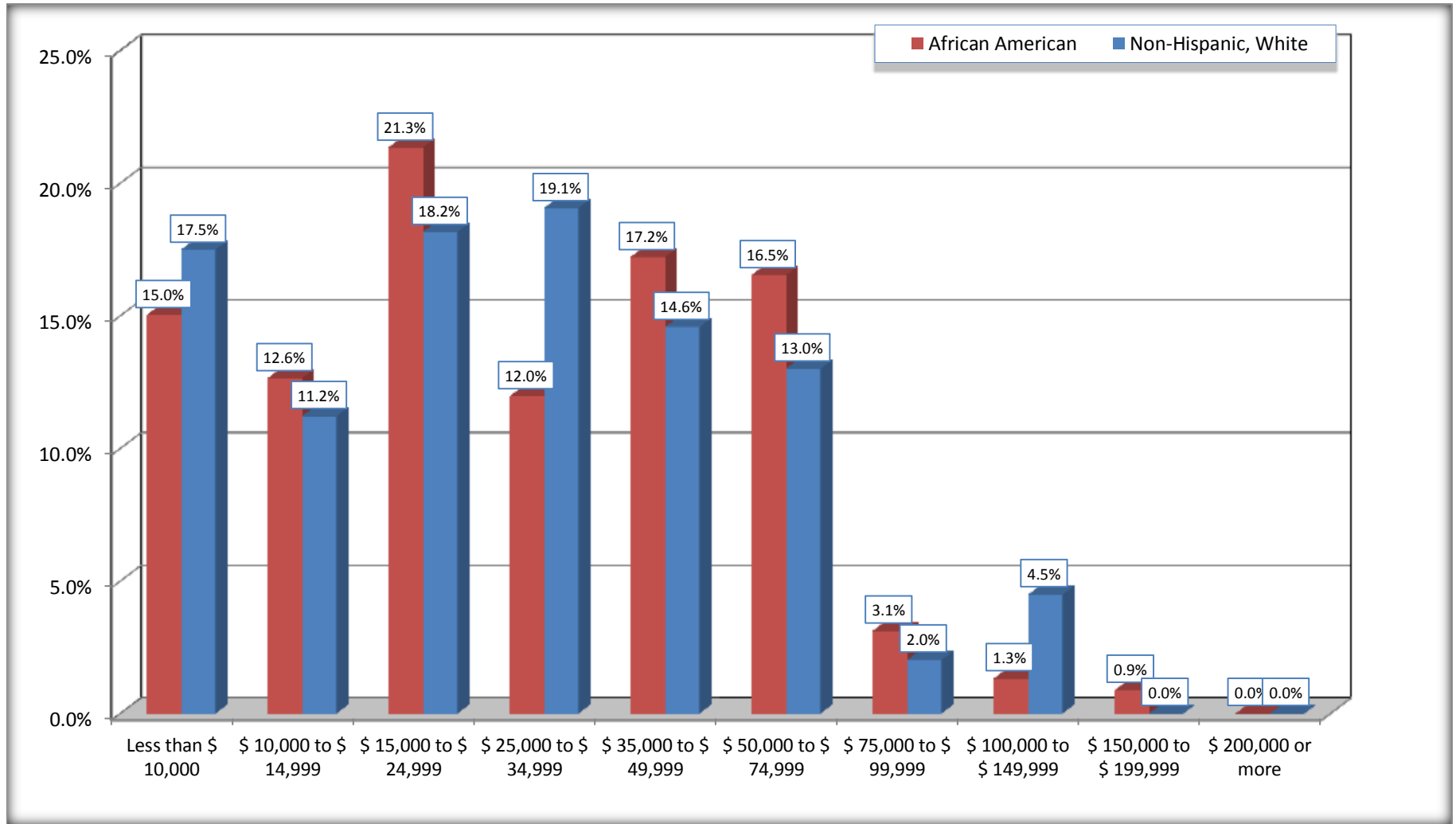
Source: U.S. Census Bureau, 2008-2012 American Community Survey

For information on confidentiality protection, sampling error, nonsampling error, and definitions, see Survey Methodology.

<http://www.census.gov/acs/www/UseData/index.htm>

Household Income in the Past 12 Months

Buena Vista CDP, Michigan



Source: B19001. HOUSEHOLD INCOME IN THE PAST 12 MONTHS (IN 2010 INFLATION-ADJUSTED DOLLARS)
Data Set: 2008-2012 American Community Survey 5-Year Estimates

B19013. MEDIAN HOUSEHOLD INCOME IN THE PAST 12 MONTHS (IN 2010 INFLATION-ADJUSTED DOLLARS)

Data Set: 2008-2012 American Community Survey 5-Year Estimates

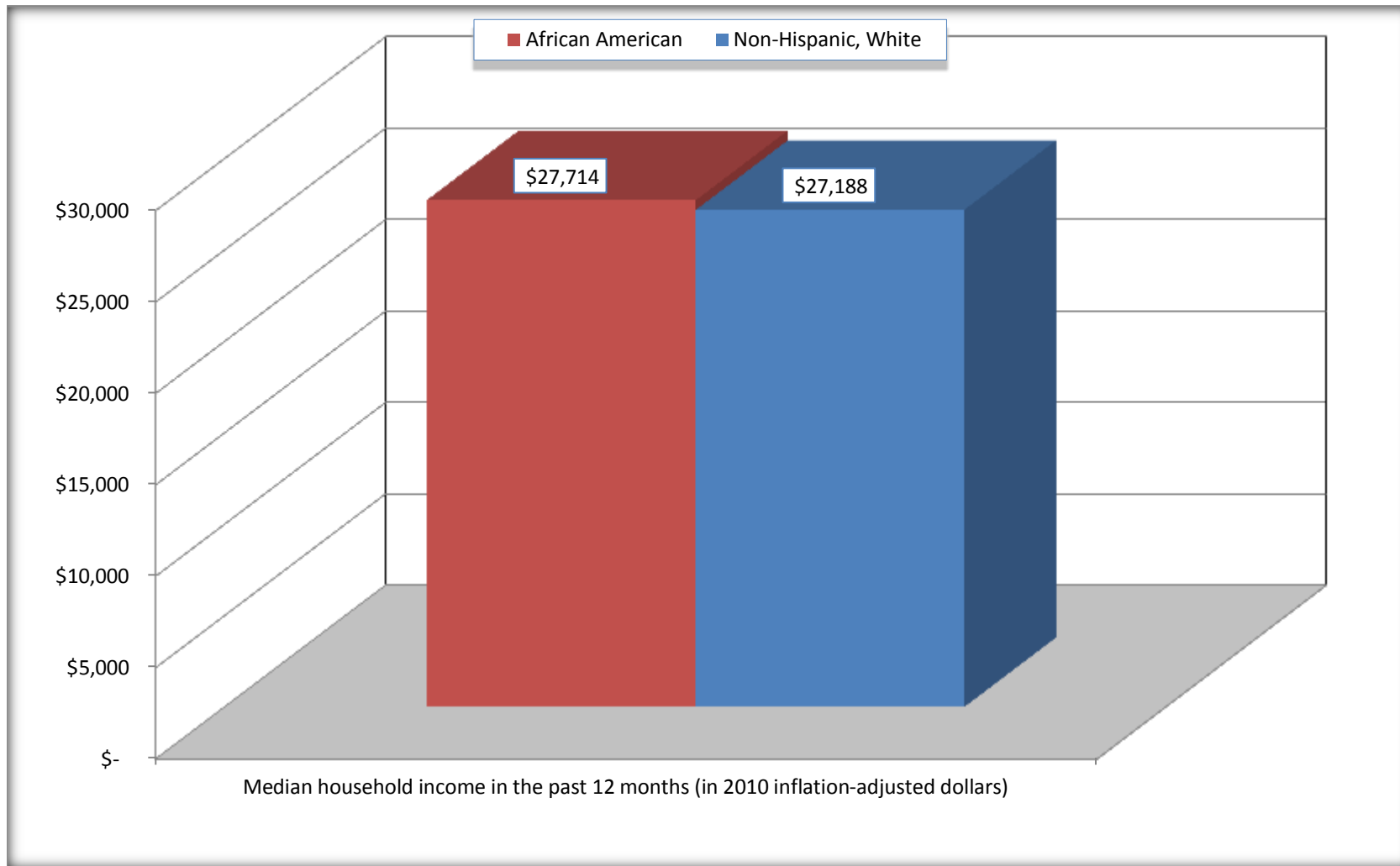
	Buena Vista CDP, Michigan			
	African American	Margin of Error (+/-)	White, Not Hispanic	Margin of Error (+/-)
Median household income in the past 12 months (in 2010 inflation-adjusted dollars)	\$ 27,714	\$ 7,623	\$ 27,188	\$ 8,542

Source: U.S. Census Bureau, 2008-2012 American Community Survey

For information on confidentiality protection, sampling error, nonsampling error, and definitions, see Survey Methodology.
<http://www.census.gov/acs/www/UseData/index.htm>

Median Household Income in the Past 12 Months

Buena Vista CDP, Michigan



Source: B19013. MEDIAN HOUSEHOLD INCOME IN THE PAST 12 MONTHS (IN 2010 INFLATION-ADJUSTED DOLLARS)
Data Set: 2008-2012 American Community Survey 5-Year Estimates

B19101. FAMILY INCOME IN THE PAST 12 MONTHS (IN 2010 INFLATION-ADJUSTED DOLLARS)

Data Set: 2008-2012 American Community Survey 5-Year Estimates

	Buena Vista CDP, Michigan					
	African American	Margin of Error (+/-)	% of AA Total	White, Not Hispanic	Margin of Error (+/-)	% of NHW Total
Total:	968	175	100.0%	288	101	100.0%
Less than \$ 10,000	137	70	14.2%	124	75	43.1%
\$ 10,000 to \$ 14,999	111	73	11.5%	0	15	0.0%
\$ 15,000 to \$ 24,999	242	NC	25.0%	64	NC	22.2%
\$ 25,000 to \$ 34,999	69	NC	7.1%	14	NC	4.9%
\$ 35,000 to \$ 49,999	179	NC	18.5%	44	NC	15.3%
\$ 50,000 to \$ 74,999	185	NC	19.1%	13	NC	4.5%
\$ 100,000 to \$ 149,999	27	NC	2.8%	20	NC	6.9%
\$ 150,000 to \$ 199,999	18	31	1.9%	0	15	0.0%
\$ 200,000 or more	0	15	0.0%	0	15	0.0%

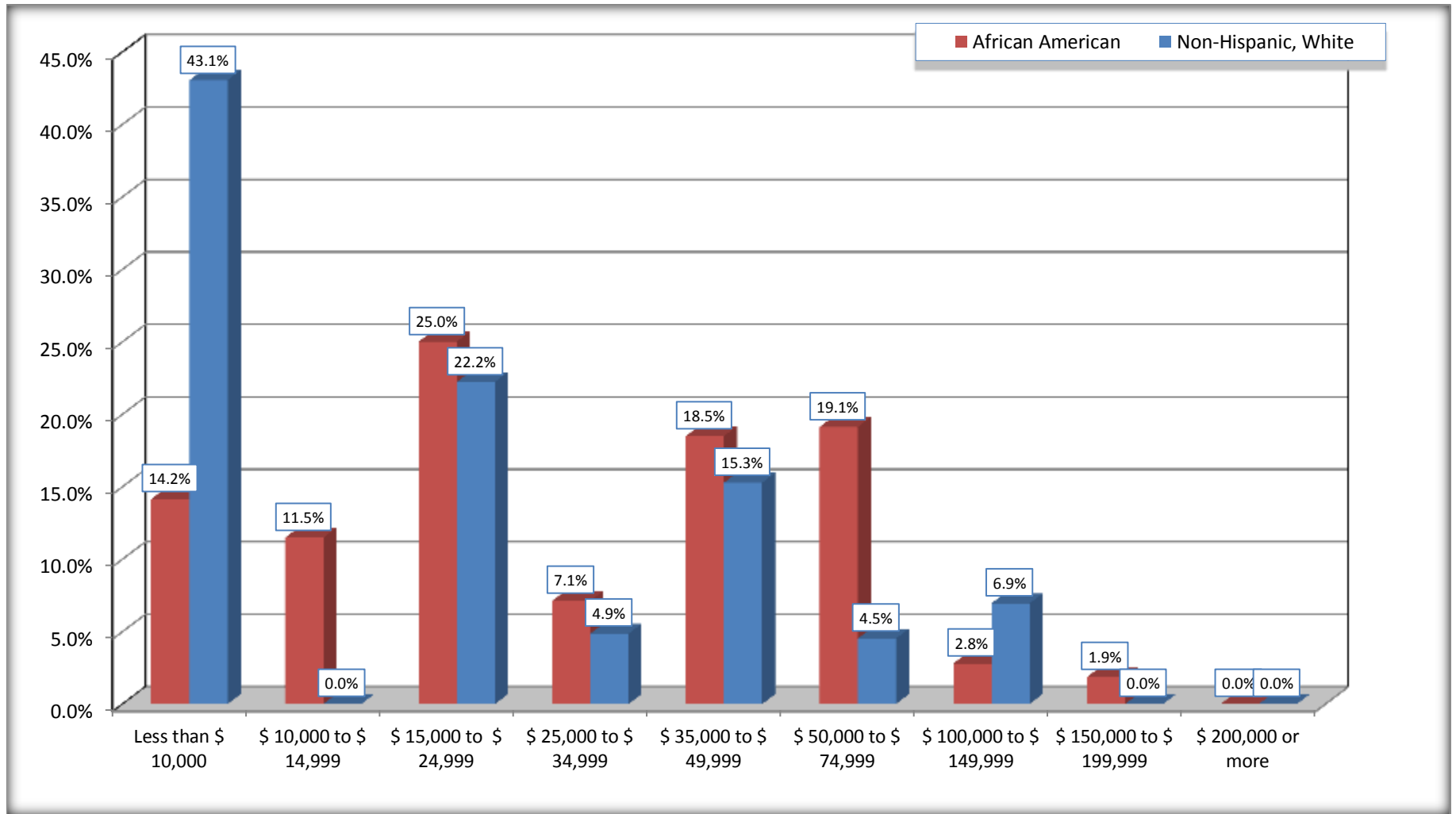
Source: U.S. Census Bureau, 2008-2012 American Community Survey

For information on confidentiality protection, sampling error, nonsampling error, and definitions, see Survey Methodology.

<http://www.census.gov/acs/www/UseData/index.htm>

Family Income in the Past 12 Months

Buena Vista CDP, Michigan



Source: B19101. FAMILY INCOME IN THE PAST 12 MONTHS (IN 2010 INFLATION-ADJUSTED DOLLARS)
Data Set: 2008-2012 American Community Survey 5-Year Estimates

B19113. MEDIAN FAMILY INCOME IN THE PAST 12 MONTHS (IN 2010 INFLATION-ADJUSTED DOLLARS)

Data Set: 2008-2012 American Community Survey 5-Year Estimates

	Buena Vista CDP, Michigan			
	African American	Margin of Error (+/-)	White, Not Hispanic	Margin of Error (+/-)
Median family income in the past 12 months (in 2010 inflation-adjusted dollars)	\$ 24,717	\$ 15,742	\$ 18,056	\$ 12,039

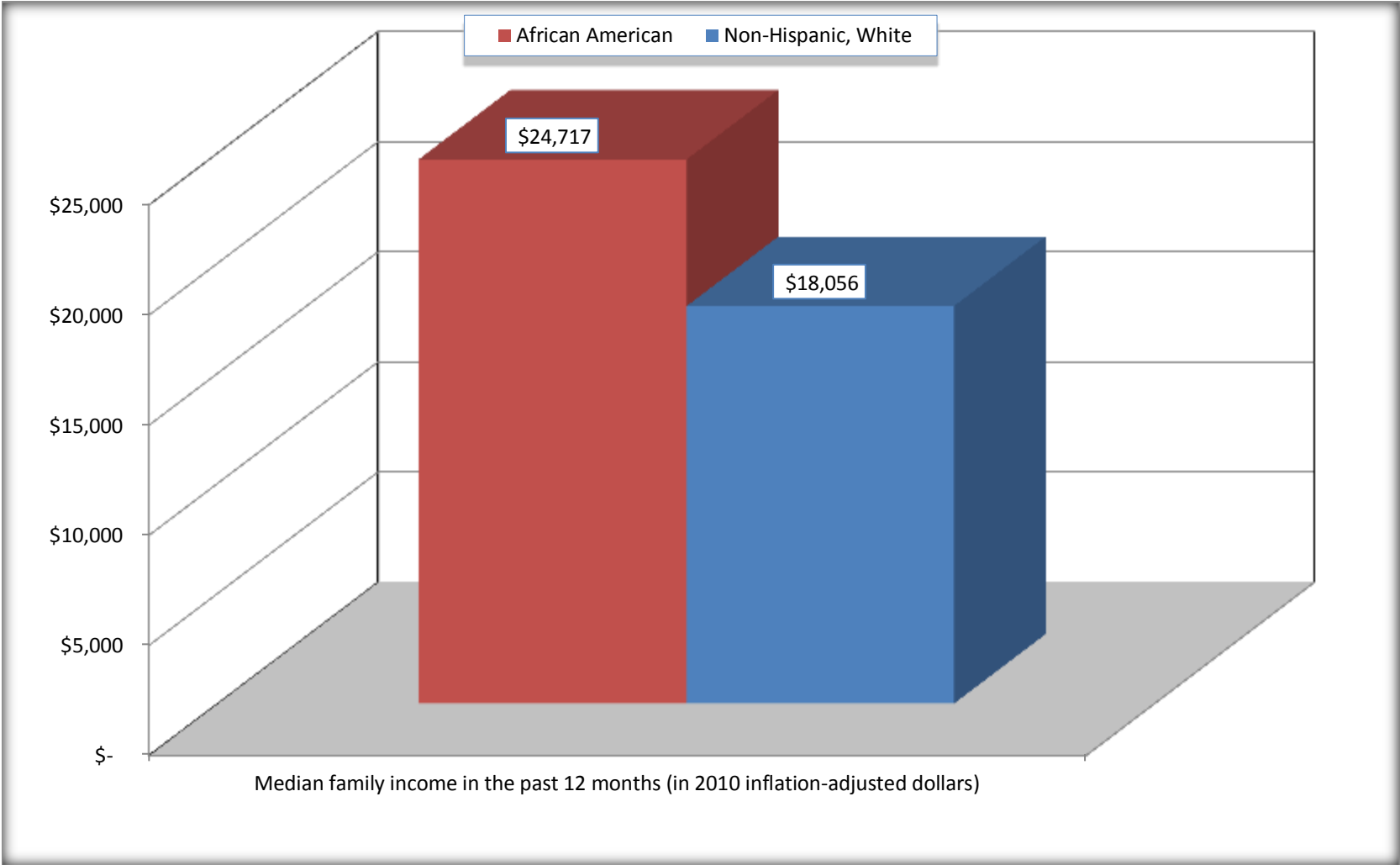
Source: U.S. Census Bureau, 2008-2012 American Community Survey

For information on confidentiality protection, sampling error, nonsampling error, and definitions, see Survey Methodology.

<http://www.census.gov/acs/www/UseData/index.htm>

Median Family Income in the Past 12 Months

Buena Vista CDP, Michigan



Source: B19113. MEDIAN FAMILY INCOME IN THE PAST 12 MONTHS (IN 2010 INFLATION-ADJUSTED DOLLARS)
Data Set: 2008-2012 American Community Survey 5-Year Estimates

B19202. MEDIAN NONFAMILY HOUSEHOLD INCOME IN THE PAST 12 MONTHS (IN 2010 INFLATION-ADJUSTED DOLLARS)

Data Set: 2008-2012 American Community Survey 5-Year Estimates

	Buena Vista CDP, Michigan			
	African American	Margin of Error (+/-)	White, Not Hispanic	Margin of Error (+/-)
Median nonfamily household income in the past 12 months (in 2010 inflation-adjusted dollars)	\$ 24,825	\$ 8,196	\$ 25,469	\$ 24,053

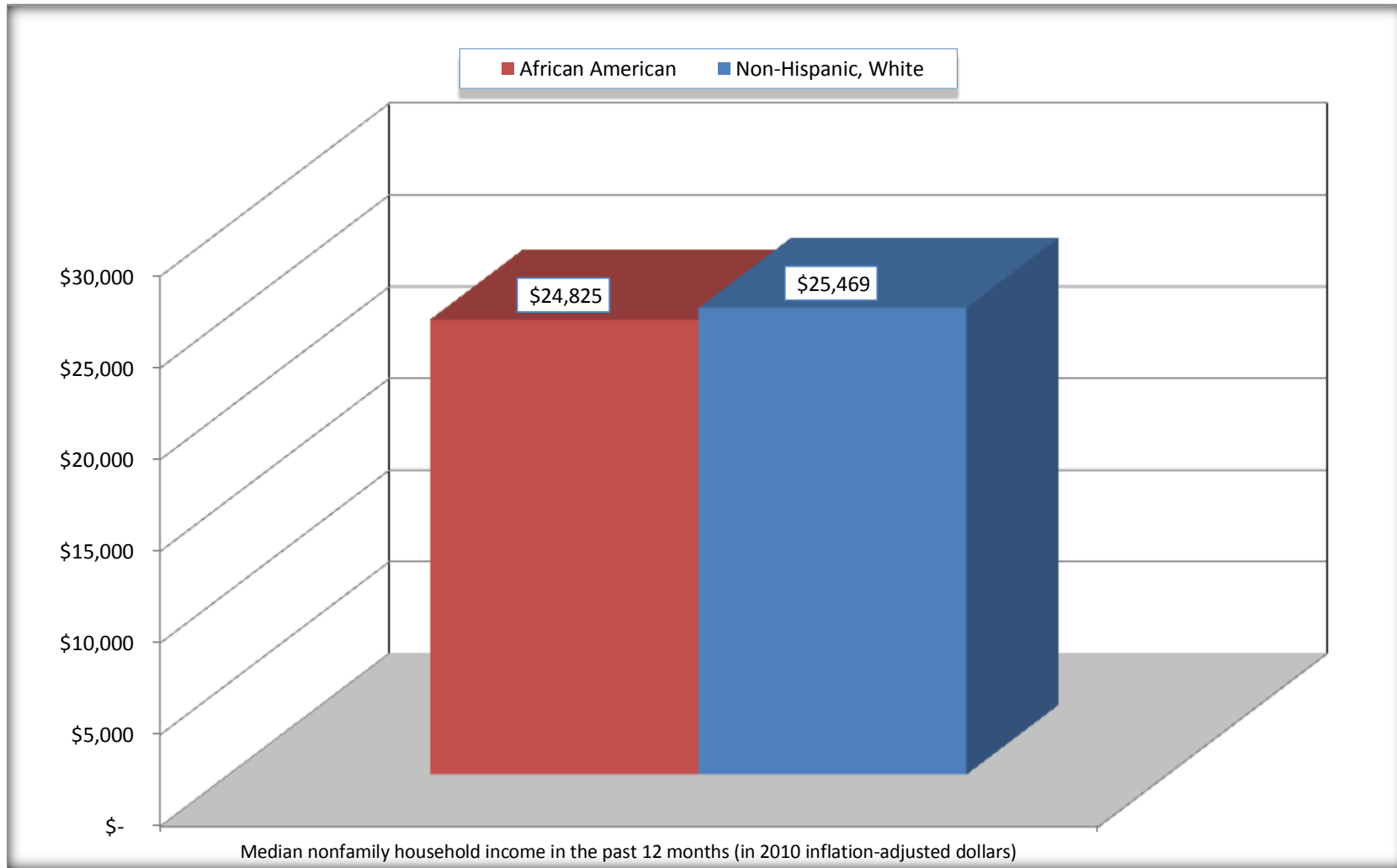
Source: U.S. Census Bureau, 2008-2012 American Community Survey

For information on confidentiality protection, sampling error, nonsampling error, and definitions, see Survey Methodology.

<http://www.census.gov/acs/www/UseData/index.htm>

Median Non-Family Income in the Past 12 Months

Buena Vista CDP, Michigan



Source: B19202. MEDIAN NONFAMILY HOUSEHOLD INCOME IN THE PAST 12 MONTHS (IN 2010 INFLATION-ADJUSTED DOLLARS)
Data Set: 2008-2012 American Community Survey 5-Year Estimates

B19301. PER CAPITA INCOME IN THE PAST 12 MONTHS (IN 2010 INFLATION-ADJUSTED DOLLARS)

Data Set: 2008-2012 American Community Survey 5-Year Estimates

	Buena Vista CDP, Michigan			
	African American	Margin of Error (+/-)	White, Not Hispanic	Margin of Error (+/-)
Per capita income in the past 12 months (in 2010 inflation-adjusted dollars)	\$ 15,431	\$ 2,233	\$ 12,001	\$ 3,976

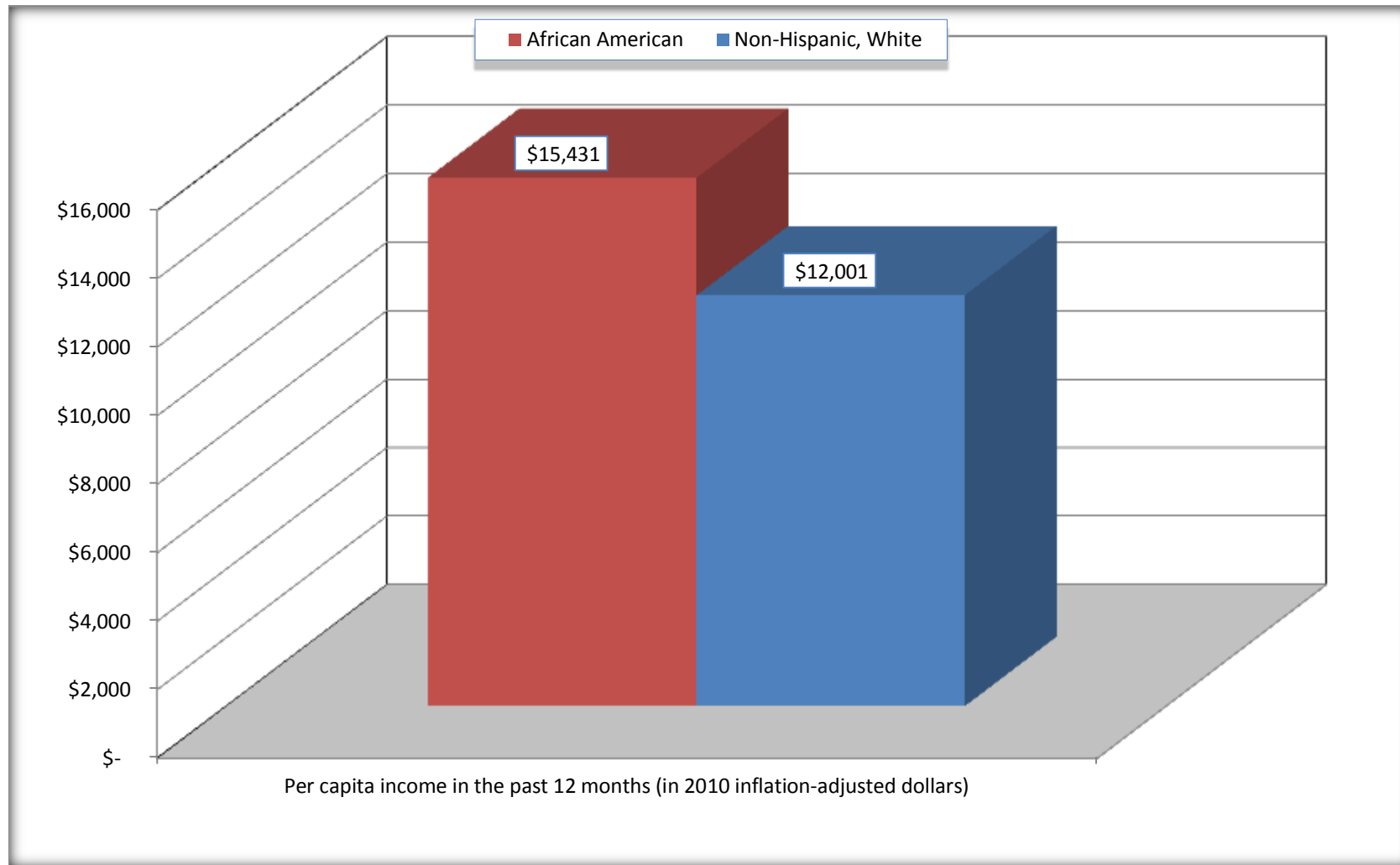
Source: U.S. Census Bureau, 2008-2012 American Community Survey

For information on confidentiality protection, sampling error, nonsampling error, and definitions, see Survey Methodology.

<http://www.census.gov/acs/www/UseData/index.htm>

Per capita Income in the Past 12 Months

Buena Vista CDP, Michigan



Source: B19301. PER CAPITA INCOME IN THE PAST 12 MONTHS (IN 2010 INFLATION-ADJUSTED DOLLARS)
Data Set: 2008-2012 American Community Survey 5-Year Estimates

B20017. MEDIAN EARNINGS IN THE PAST 12 MONTHS (IN 2010 INFLATION-ADJUSTED DOLLARS) BY SEX BY WORK EXPERIENCE IN THE PAST 12 MONTHS FOR THE POPULATION 16 YEARS AND OVER WITH EARNINGS IN THE PAST 12 MONTHS

Data Set: 2008-2012 American Community Survey 5-Year Estimates

	Buena Vista CDP, Michigan			
	African American	Margin of Error (+/-)	White, Not Hispanic	Margin of Error (+/-)
Median earnings in the past 12 months (in 2010 inflation-adjusted dollars) --				
Total:	\$ 19,629	\$ 5,862	\$ 10,179	\$ 13,618
Male --				
Total	\$ 17,391	\$ 13,712	\$ 18,778	\$ 5,322
Worked full-time, year-round in the past 12 months	\$ 38,508	\$ 22,161	\$ 19,659	\$ 2,207
Other	\$ 10,272	\$ 9,027	\$ 9,830	\$ 12,150
Female --				
Total	\$ 20,204	\$ 7,534	\$ 6,750	\$ 10,574
Worked full-time, year-round in the past 12 months	\$ 26,902	\$ 5,476	\$ 24,911	\$ 10,970
Other	\$ 10,633	\$ 6,270	\$ 5,735	\$ 3,080

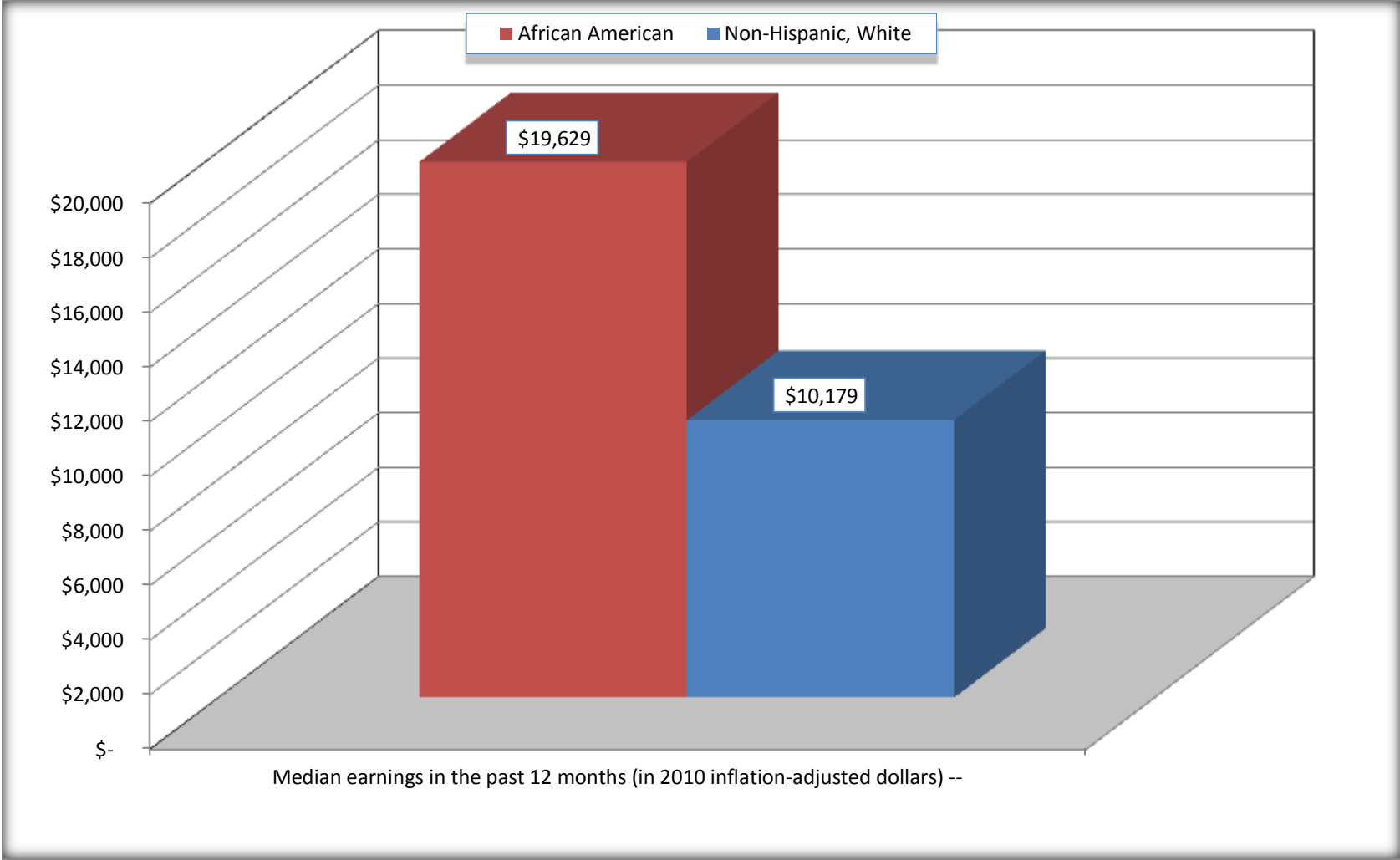
Source: U.S. Census Bureau, 2008-2012 American Community Survey

For information on confidentiality protection, sampling error, nonsampling error, and definitions, see Survey Methodology.

<http://www.census.gov/acs/www/UseData/index.htm>

Median earnings in the Past 12 Months (16 Years and Over with Earnings)

Buena Vista CDP, Michigan



Source: B20017. MEDIAN EARNINGS IN THE PAST 12 MONTHS (IN 2010 INFLATION-ADJUSTED DOLLARS) BY SEX BY WORK EXPERIENCE IN THE PAST 12 MONTHS FOR THE POPULATION 16 YEARS AND OVER WITH EARNINGS IN THE PAST 12 MONTHS
Data Set: 2008-2012 American Community Survey 5-Year Estimates

B20005. SEX BY WORK EXPERIENCE IN THE PAST 12 MONTHS BY EARNINGS IN THE PAST 12 MONTHS (IN 2010 INFLATION-ADJUSTED DOLLARS) FOR THE POPULATION 16 YEARS AND OVER

Data Set: 2008-2012 American Community Survey 5-Year Estimates

	Buena Vista CDP, Michigan					
	African American	Margin of Error (+/-)	% of AA Total	White, Not Hispanic	Margin of Error (+/-)	% of NHW Total
Total:	3,754	303	100.0%	922	256	100.0%
Worked full-time, year-round in the past 12 months:	672	NC	17.9%	145	NC	15.7%
No earnings	0	NC	0.0%	0	NC	0.0%
With earnings:	672	NC	17.9%	145	NC	15.7%
\$ 1 to \$ 9,999 or less	48	NC	1.3%	0	NC	0.0%
\$ 10,000 to \$ 19,999	92	NC	2.5%	52	NC	5.6%
\$ 20,000 to \$ 29,999	218	NC	5.8%	64	NC	6.9%
\$ 30,000 to \$ 49,999	124	NC	3.3%	29	NC	3.1%
\$ 50,000 to \$ 74,999	127	NC	3.4%	0	NC	0.0%
\$ 75,000 or more	63	NC	1.7%	0	NC	0.0%
Other:	3,082	NC	82.1%	777	NC	84.3%
No earnings	2,243	NC	59.7%	570	NC	61.8%
With earnings: less than full time, year-round	839	NC	22.3%	207	NC	22.5%
Male:	1,529	228	40.7%	436	163	47.3%
Worked full-time, year-round in the past 12 months:	245	116	6.5%	76	74	8.2%
No earnings	0	15	0.0%	0	15	0.0%
With earnings:	245	116	6.5%	76	74	8.2%
\$ 1 to \$ 9,999 or less	32	NC	0.9%	0	NC	0.0%
\$ 10,000 to \$ 19,999	44	NC	1.2%	44	NC	4.8%
\$ 20,000 to \$ 29,999	34	NC	0.9%	23	NC	2.5%
\$ 30,000 to \$ 49,999	54	NC	1.4%	9	NC	1.0%
\$ 50,000 to \$ 74,999	23	NC	0.6%	0	NC	0.0%
\$ 75,000 or more	58	NC	1.5%	0	NC	0.0%

	Buena Vista CDP, Michigan					
	African American	Margin of Error (+/-)	% of AA Total	White, Not Hispanic	Margin of Error (+/-)	% of NHW Total
Other:	1,284	219	34.2%	360	168	39.0%
No earnings	1,067	197	28.4%	293	151	31.8%
With earnings:	217	119	5.8%	67	54	7.3%
Female:	2,225	244	59.3%	486	181	52.7%
Worked full-time, year-round in the past 12 months:	427	149	11.4%	69	53	7.5%
No earnings	0	15	0.0%	0	15	0.0%
With earnings:	427	149	11.4%	69	53	7.5%
\$ 1 to \$ 9,999 or less	16	NC	0.4%	0	NC	0.0%
\$ 10,000 to \$ 19,999	48	NC	1.3%	8	NC	0.9%
\$ 20,000 to \$ 29,999	184	NC	4.9%	41	NC	4.4%
\$ 30,000 to \$ 49,999	70	NC	1.9%	20	NC	2.2%
\$ 50,000 to \$ 74,999	104	NC	2.8%	0	NC	0.0%
\$ 75,000 or more	5	NC	0.1%	0	NC	0.0%
Other:	1,798	260	47.9%	417	170	45.2%
No earnings	1,176	187	31.3%	277	146	30.0%
With earnings:	622	238	16.6%	140	94	15.2%

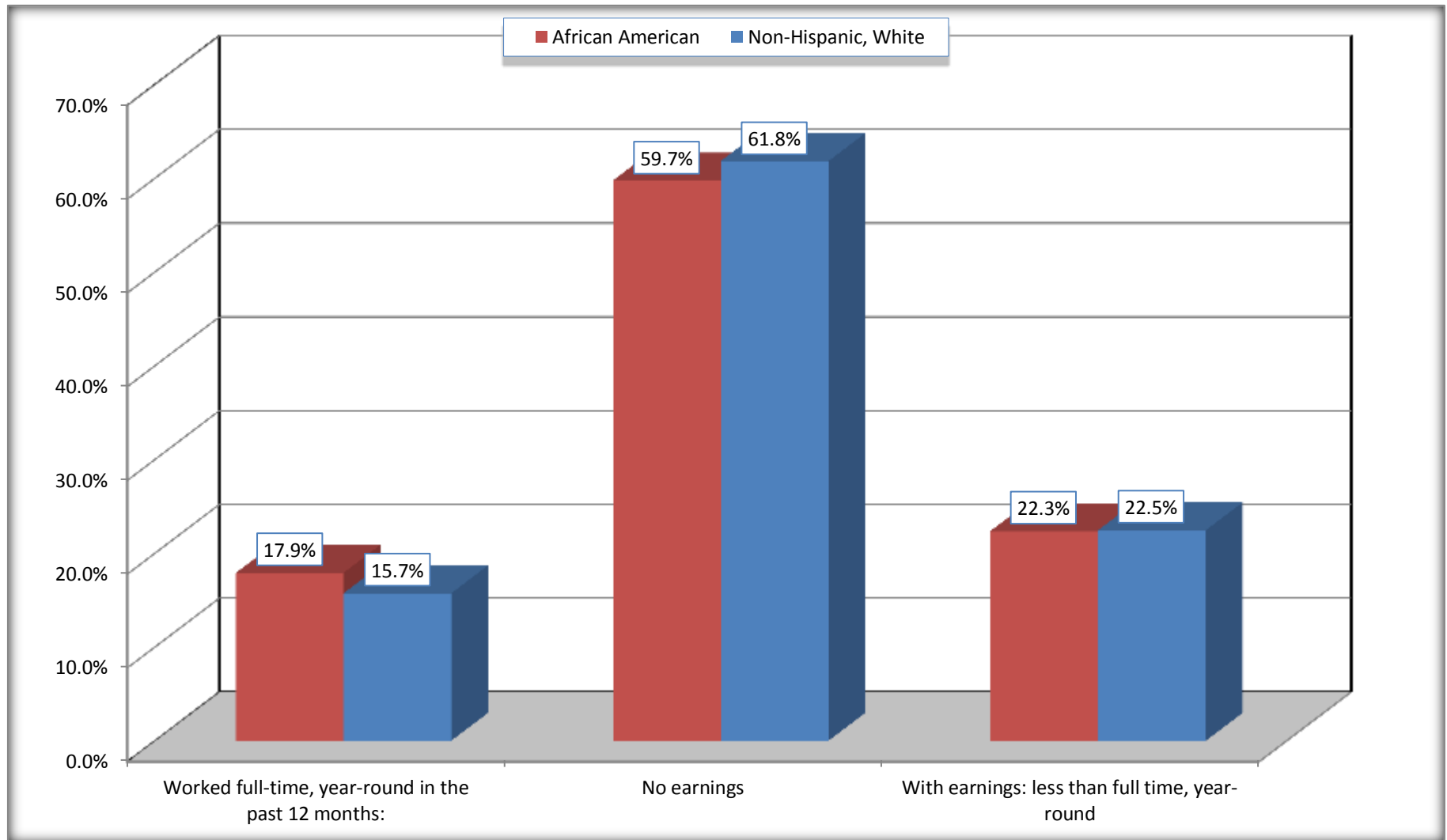
Source: U.S. Census Bureau, 2008-2012 American Community Survey

For information on confidentiality protection, sampling error, nonsampling error, and definitions, see Survey Methodology.

<http://www.census.gov/acs/www/UseData/index.htm>

Employment and Earnings in in the Past 12 Months (16 Years and Over)

Buena Vista CDP, Michigan



Source: B20005. SEX BY WORK EXPERIENCE IN THE PAST 12 MONTHS BY EARNINGS IN THE PAST 12 MONTHS (IN 2010 INFLATION-ADJUSTED DOLLARS) FOR THE POPULATION 16 YEARS AND OVER

Data Set: 2008-2012 American Community Survey 5-Year Estimates

C21001. SEX BY AGE BY VETERAN STATUS FOR THE CIVILIAN POPULATION 18 YEARS AND OVER

Data Set: 2008-2012 American Community Survey 5-Year Estimates

	Buena Vista CDP, Michigan					
	African American	Margin of Error (+/-)	% of AA Total	White, Not Hispanic	Margin of Error (+/-)	% of NHW Total
Total:	3,667	287	100.0%	908	251	100.0%
Veteran	574	NC	15.7%	139	NC	15.3%
Nonveteran	3,093	NC	84.3%	769	NC	84.7%
Male:	1,529	228	41.7%	436	163	48.0%
18 to 64 years:	1,305	218	35.6%	322	140	35.5%
Veteran	264	134	7.2%	49	52	5.4%
Nonveteran	1,041	208	28.4%	273	133	30.1%
65 years and over:	224	77	6.1%	114	80	12.6%
Veteran	121	70	3.3%	90	78	9.9%
Nonveteran	103	69	2.8%	24	27	2.6%
Female:	2,138	242	58.3%	472	176	52.0%
18 to 64 years:	1,450	227	39.5%	438	173	48.2%
Veteran	189	178	5.2%	0	15	0.0%
Nonveteran	1,261	179	34.4%	438	173	48.2%
65 years and over:	688	102	18.8%	34	29	3.7%
Veteran	0	15	0.0%	0	15	0.0%
Nonveteran	688	102	18.8%	34	29	3.7%

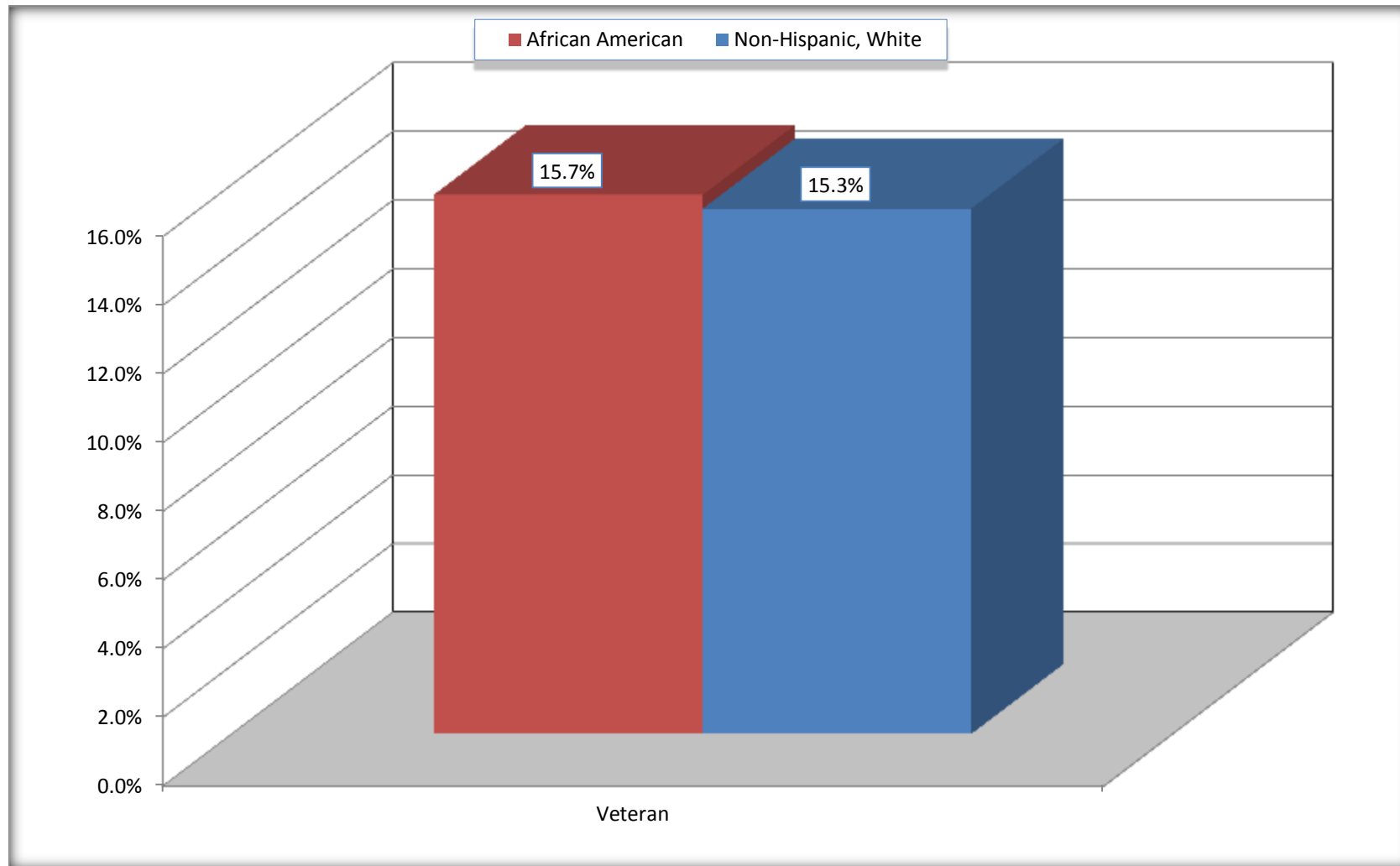
Source: U.S. Census Bureau, 2008-2012 American Community Survey

For information on confidentiality protection, sampling error, nonsampling error, and definitions, see Survey Methodology.

<http://www.census.gov/acs/www/UseData/index.htm>

Veterans in the Civilian Population 18 Years and Over

Buena Vista CDP, Michigan



Source: C21001. SEX BY AGE BY VETERAN STATUS FOR THE CIVILIAN POPULATION 18 YEARS AND OVER
Data Set: 2008-2012 American Community Survey 5-Year Estimates

B22005. RECEIPT OF FOOD STAMPS/SNAP IN THE PAST 12 MONTHS BY RACE OF HOUSEHOLDER

Data Set: 2008-2012 American Community Survey 5-Year Estimates

	Buena Vista CDP, Michigan					
	African American	Margin of Error (+/-)	% of AA Total	White, Not Hispanic	Margin of Error (+/-)	% of NHW Total
Total:	2,057	191	100.0%	446	132	100.0%
HH received Food Stamps/SNAP in the past 12 months	682	173	33.2%	242	109	54.3%
HH did not receive Food Stamps/SNAP in the past 12 months	1,375	239	66.8%	204	111	45.7%

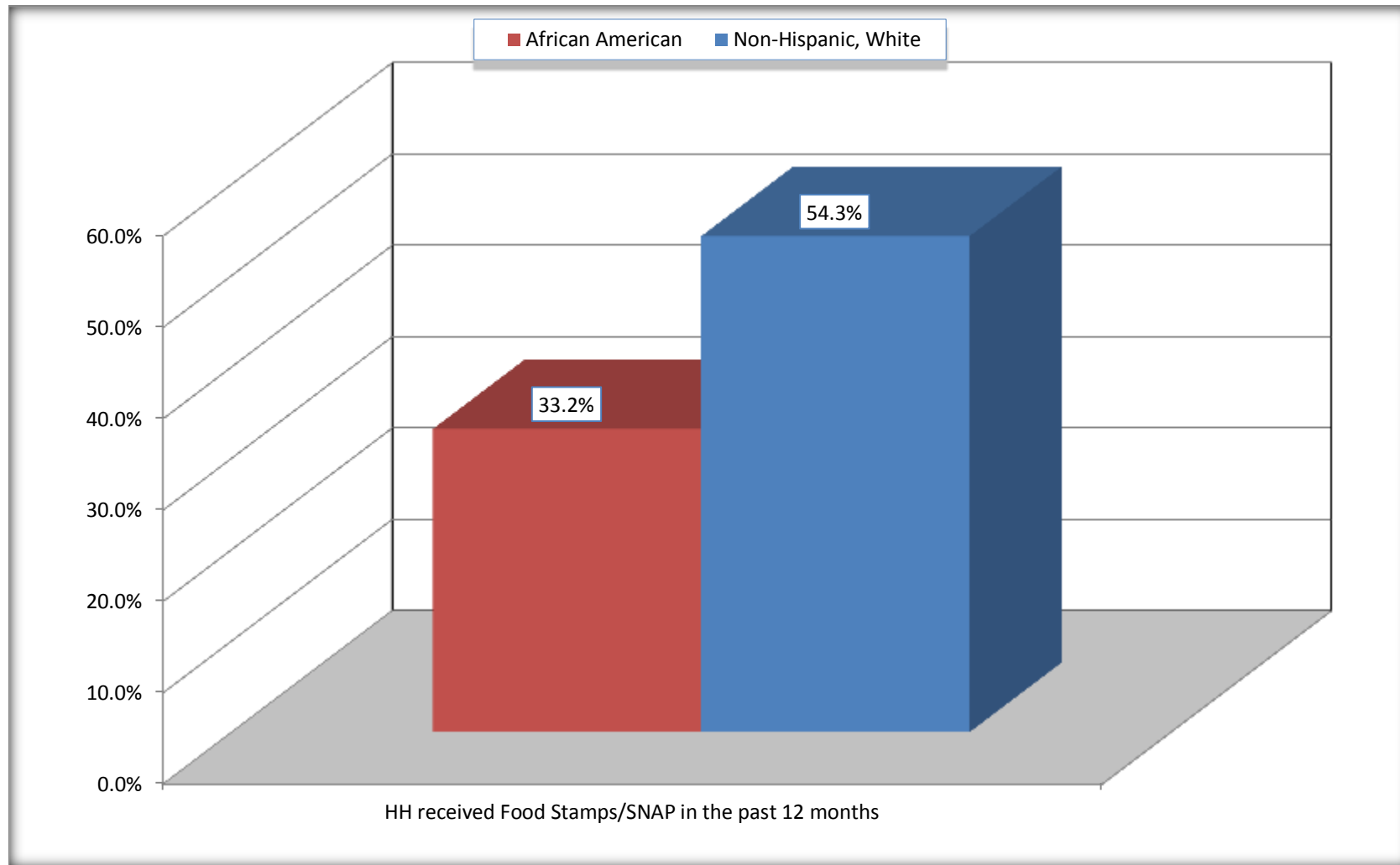
Source: U.S. Census Bureau, 2008-2012 American Community Survey

For information on confidentiality protection, sampling error, nonsampling error, and definitions, see Survey Methodology.

<http://www.census.gov/acs/www/UseData/index.htm>

Receipt of Food Stamps/SNAP in the Past 12 Months by Household

Buena Vista CDP, Michigan



Source: B22005. RECEIPT OF FOOD STAMPS/SNAP IN THE PAST 12 MONTHS BY RACE OF HOUSEHOLDER
Data Set: 2008-2012 American Community Survey 5-Year Estimates

C23002. SEX BY AGE BY EMPLOYMENT STATUS FOR THE POPULATION 16 YEARS AND OVER

Data Set: 2008-2012 American Community Survey 5-Year Estimates

	Buena Vista CDP, Michigan					
	African American	Margin of Error (+/-)	% of AA Total	White, Not Hispanic	Margin of Error (+/-)	% of NHW Total
Total:	3,754	303	100.0%	922	256	100.0%
In labor force:	1,575	NC	42.0%	323	NC	35.0%
In Armed Forces	0	NC	0.0%	0	NC	0.0%
Civilian:	1,526	NC	40.6%	304	NC	33.0%
Employed	1,137	NC	30.3%	251	NC	27.2%
Unemployed	438	NC	11.7%	72	NC	7.8%
Not in labor force	2,179	NC	58.0%	599	NC	65.0%
Male:	1,529	228	40.7%	436	163	47.3%
16 to 64 years:	1,305	218	34.8%	322	140	34.9%
In labor force:	495	170	13.2%	148	86	16.1%
In Armed Forces	0	15	0.0%	0	15	0.0%
Civilian:	495	170	13.2%	148	86	16.1%
Employed	302	136	8.0%	107	83	11.6%
Unemployed	193	103	5.1%	41	35	4.4%
Not in labor force	810	175	21.6%	174	119	18.9%
65 years and over:	224	77	6.0%	114	80	12.4%
In labor force:	0	15	0.0%	9	13	1.0%
Employed	0	15	0.0%	9	13	1.0%
Unemployed	0	15	0.0%	0	15	0.0%
Not in labor force	224	77	6.0%	105	81	11.4%

	Buena Vista CDP, Michigan					
	African American	Margin of Error (+/-)	% of AA Total	White, Not Hispanic	Margin of Error (+/-)	% of NHW Total
Female:	2,225	244	59.3%	486	181	52.7%
16 to 64 years:	1,537	230	40.9%	452	177	49.0%
In labor force:	1,031	245	27.5%	156	91	16.9%
In Armed Forces	0	15	0.0%	0	15	0.0%
Civilian:	1,031	245	27.5%	156	91	16.9%
Employed	786	220	20.9%	135	89	14.6%
Unemployed	245	160	6.5%	21	23	2.3%
Not in labor force	506	181	13.5%	296	151	32.1%
65 years and over:	688	102	18.3%	34	29	3.7%
In labor force:	49	62	1.3%	10	13	1.1%
Employed	49	62	1.3%	0	15	0.0%
Unemployed	0	15	0.0%	10	13	1.1%
Not in labor force	639	101	17.0%	24	27	2.6%

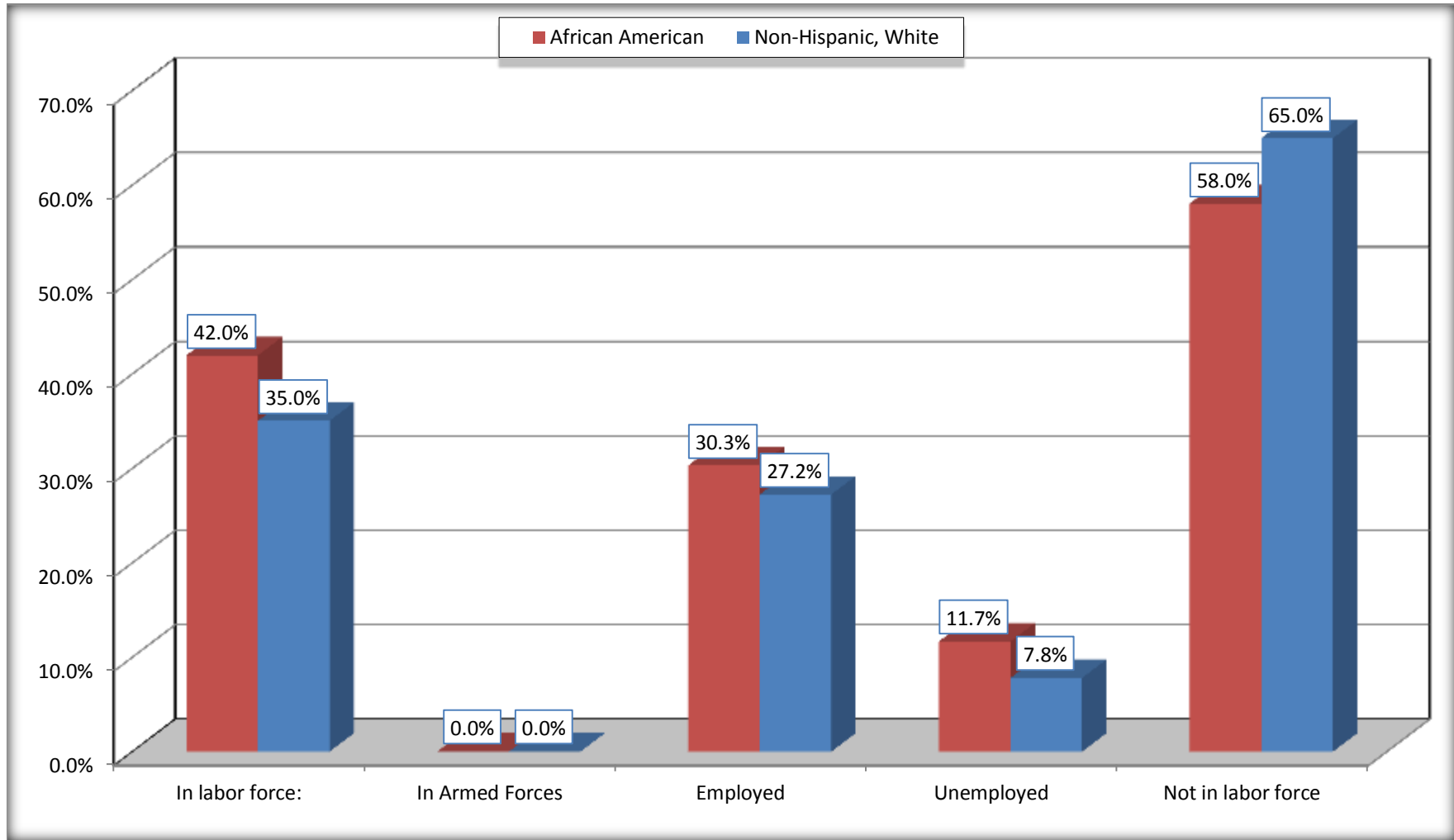
Source: U.S. Census Bureau, 2008-2012 American Community Survey

For information on confidentiality protection, sampling error, nonsampling error, and definitions, see Survey Methodology.

<http://www.census.gov/acs/www/UseData/index.htm>

Employment Status for the Population 16 years and over

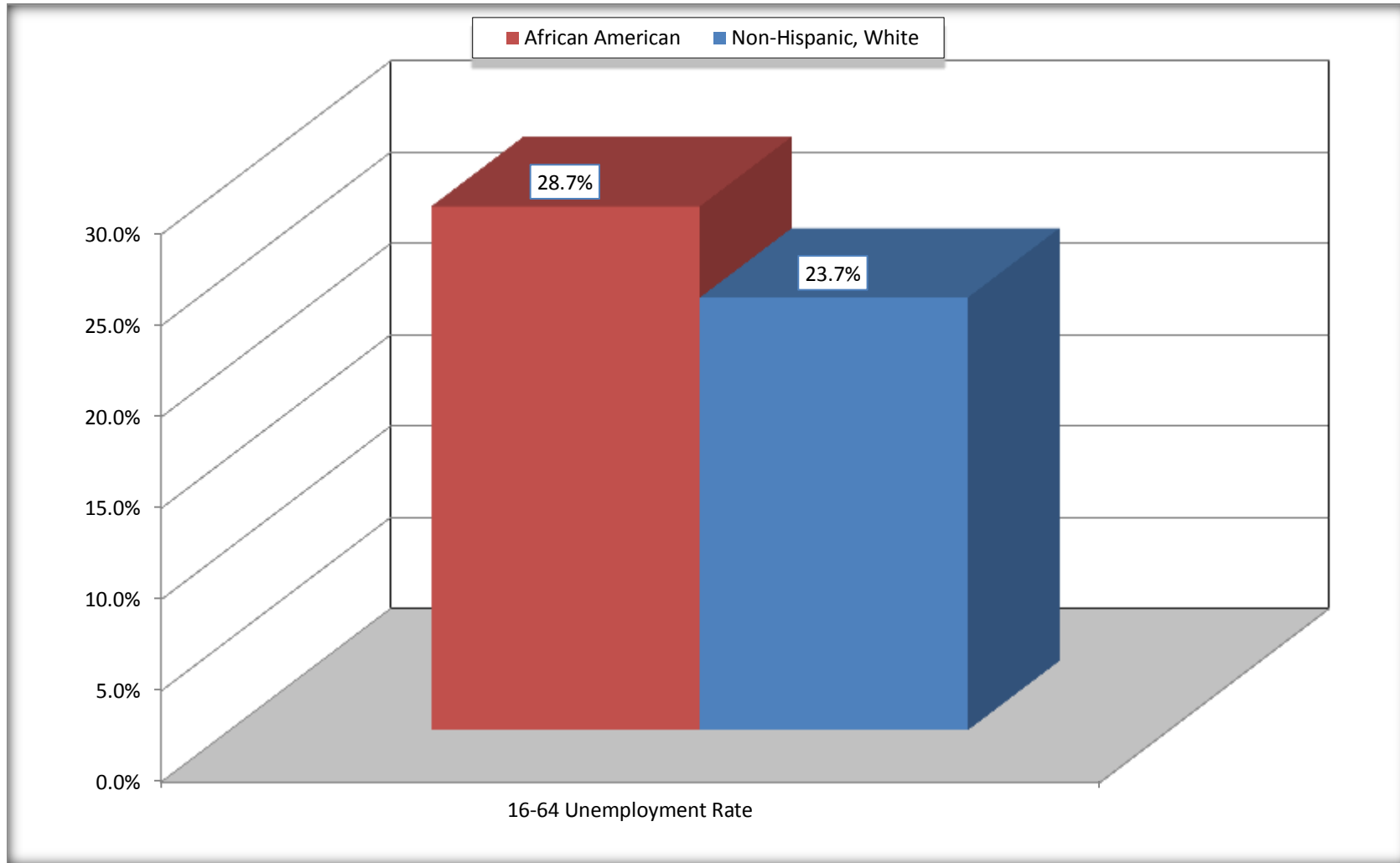
Buena Vista CDP, Michigan



Source: C23002. SEX BY AGE BY EMPLOYMENT STATUS FOR THE POPULATION 16 YEARS AND OVER
Data Set: 2008-2012 American Community Survey 5-Year Estimates

Unemployment of Working Age Population (Ages 16 to 64) (As a Percent of 16-64 Civilian Labor Force)

Buena Vista CDP, Michigan



Source: C23002. SEX BY AGE BY EMPLOYMENT STATUS FOR THE POPULATION 16 YEARS AND OVER
Data Set: 2008-2012 American Community Survey 5-Year Estimates

C24010. SEX BY OCCUPATION FOR THE CIVILIAN EMPLOYED POPULATION 16 YEARS AND OVER

Data Set: 2008-2012 American Community Survey 5-Year Estimates

	Buena Vista CDP, Michigan					
	African American	Margin of Error (+/-)	% of AA Total	White, Not Hispanic	Margin of Error (+/-)	% of NHW Total
Total:	1,137	252	100.0%	251	117	100.0%
Management, professional, and related occupations	232	NC	20.4%	16	NC	6.4%
Service occupations	487	NC	42.8%	93	NC	37.1%
Sales and office occupations	194	NC	17.1%	71	NC	28.3%
Natural resources, construction, and maintenance occupations:	80	NC	7.0%	0	NC	0.0%
Production, transportation, and material moving occupations	144	NC	12.7%	71	NC	28.3%
Male:	302	136	26.6%	116	82	46.2%
Management, business, science, and arts occupations:	22	38	1.9%	16	38	6.4%
Service occupations	71	73	6.2%	49	49	19.5%
Sales and office occupations	40	48	3.5%	0	15	0.0%
Natural resources, construction, and maintenance occupations:	55	60	4.8%	0	15	0.0%
Production, transportation, and material moving occupations	114	78	10.0%	51	63	20.3%
Female:	835	233	73.4%	135	89	53.8%
Management, professional, and related occupations	210	124	18.5%	0	15	0.0%
Service occupations	416	162	36.6%	44	56	17.5%
Sales and office occupations	154	106	13.5%	71	58	28.3%
Natural resources, construction, and maintenance occupations:	25	39	2.2%	0	15	0.0%
Production, transportation, and material moving occupations	30	35	2.6%	20	33	8.0%

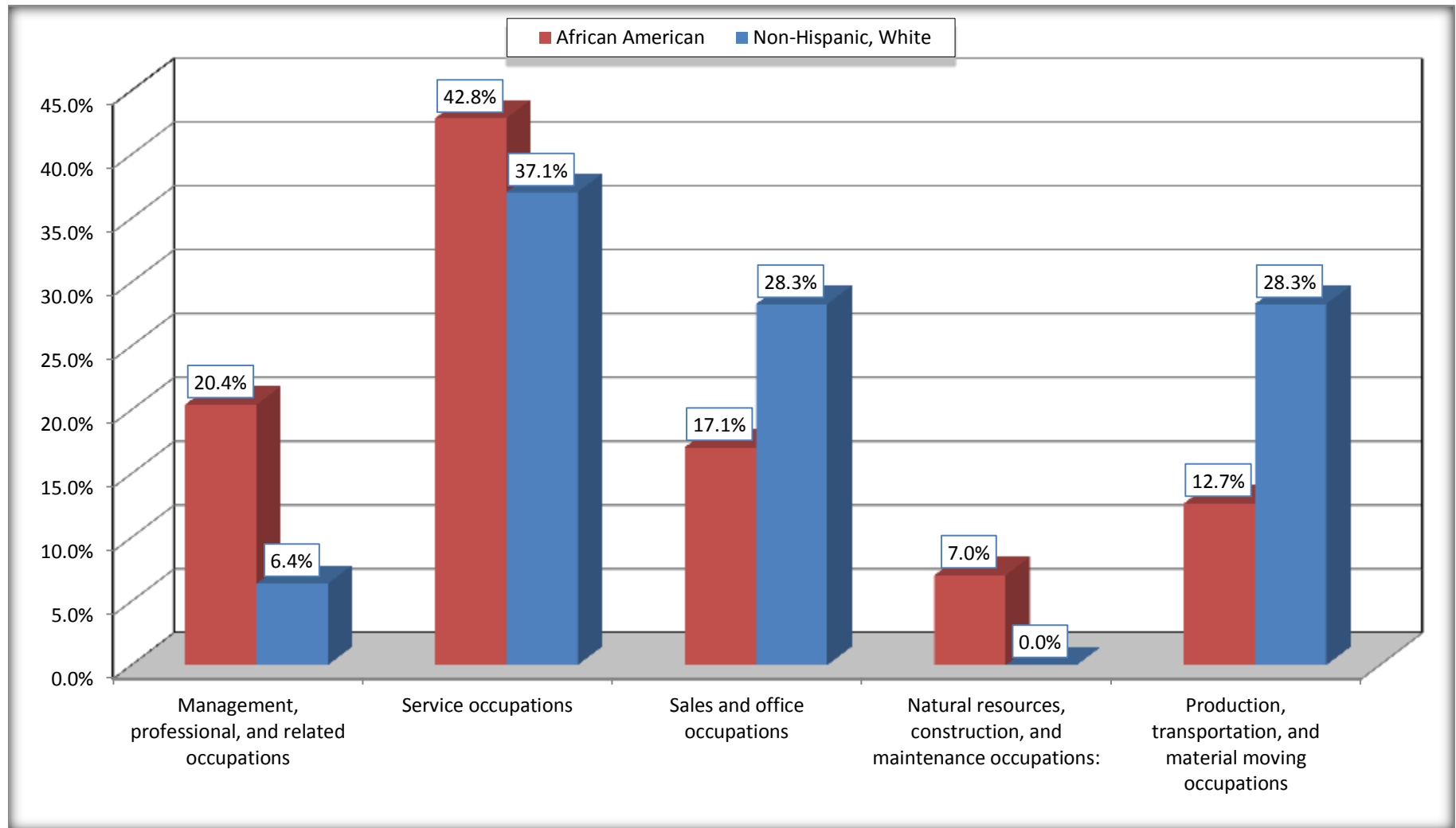
Source: U.S. Census Bureau, 2008-2012 American Community Survey

For information on confidentiality protection, sampling error, nonsampling error, and definitions, see Survey Methodology.

<http://www.census.gov/acs/www/UseData/index.htm>

Occupation for the Civilian Employed 16 Years and Over Population

Buena Vista CDP, Michigan



Source: C24010. SEX BY OCCUPATION FOR THE CIVILIAN EMPLOYED POPULATION 16 YEARS AND OVER
Data Set: 2008-2012 American Community Survey 5-Year Estimates

B25003. TENURE - Universe: OCCUPIED HOUSING UNITS

Data Set: 2008-2012 American Community Survey 5-Year Estimates

	Buena Vista CDP, Michigan					
	African American	Margin of Error (+/-)	% of AA Total	White, Not Hispanic	Margin of Error (+/-)	% of NHW Total
Total:	2,057	191	100.0%	446	132	100.0%
Owner occupied	1,185	183	57.6%	284	131	63.7%
Renter occupied	872	178	42.4%	162	86	36.3%

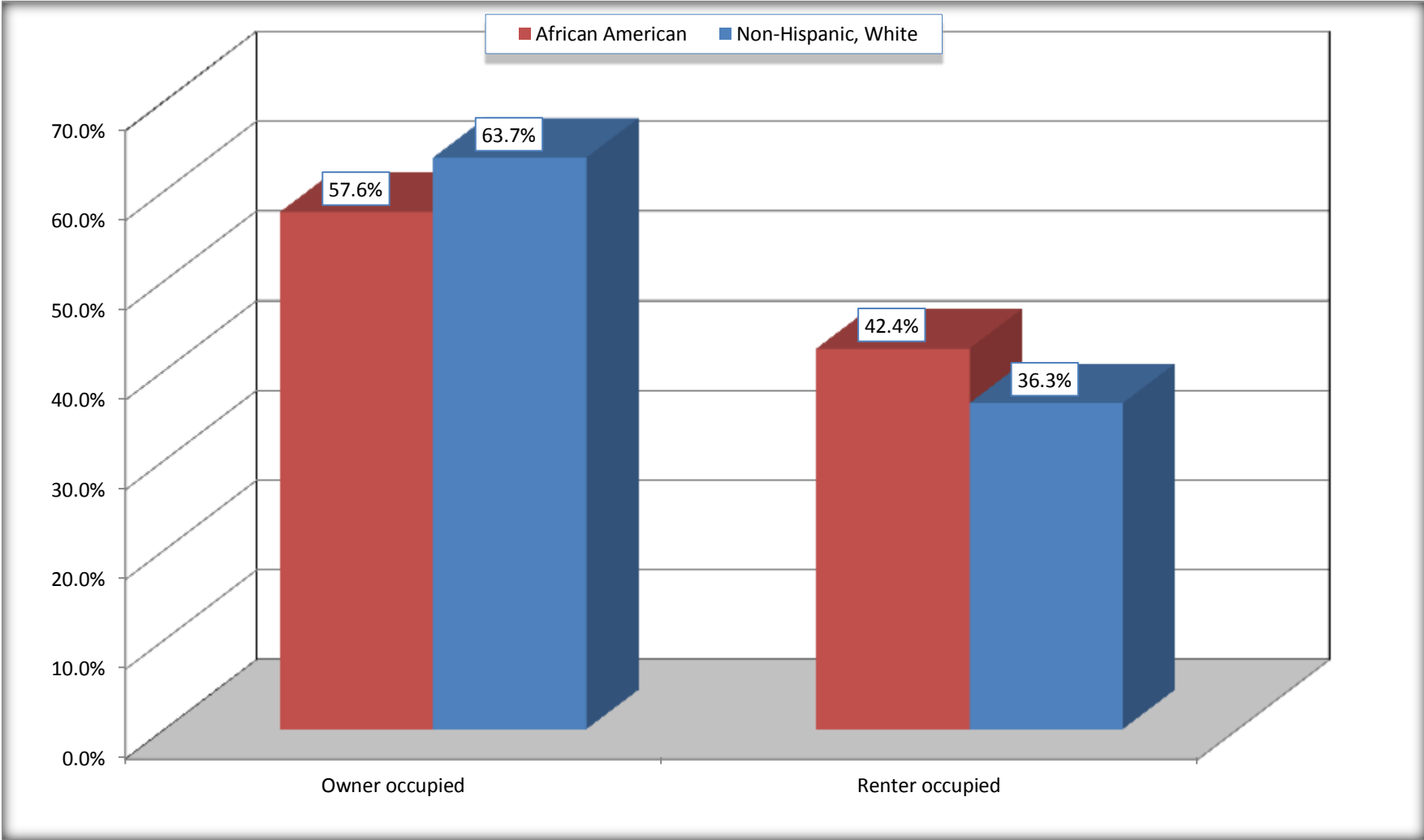
Source: U.S. Census Bureau, 2008-2012 American Community Survey

For information on confidentiality protection, sampling error, nonsampling error, and definitions, see Survey Methodology.

<http://www.census.gov/acs/www/UseData/index.h>

Home Owners and Renters by Household

Buena Vista CDP, Michigan



Source: B25003. TENURE - Universe: OCCUPIED HOUSING UNITS
Data Set: 2008-2012 American Community Survey 5-Year Estimates

B25014. OCCUPANTS PER ROOM - Universe: OCCUPIED HOUSING UNITS

Data Set: 2008-2012 American Community Survey 5-Year Estimates

	Buena Vista CDP, Michigan					
	African American	Margin of Error (+/-)	% of AA Total	White, Not Hispanic	Margin of Error (+/-)	% of NHW Total
Total:	2,057	191	100.0%	446	132	100.0%
1.00 or less occupants per room	2,057	191	100.0%	424	133	95.1%
1.01 or more occupants per room	0	15	0.0%	22	34	4.9%

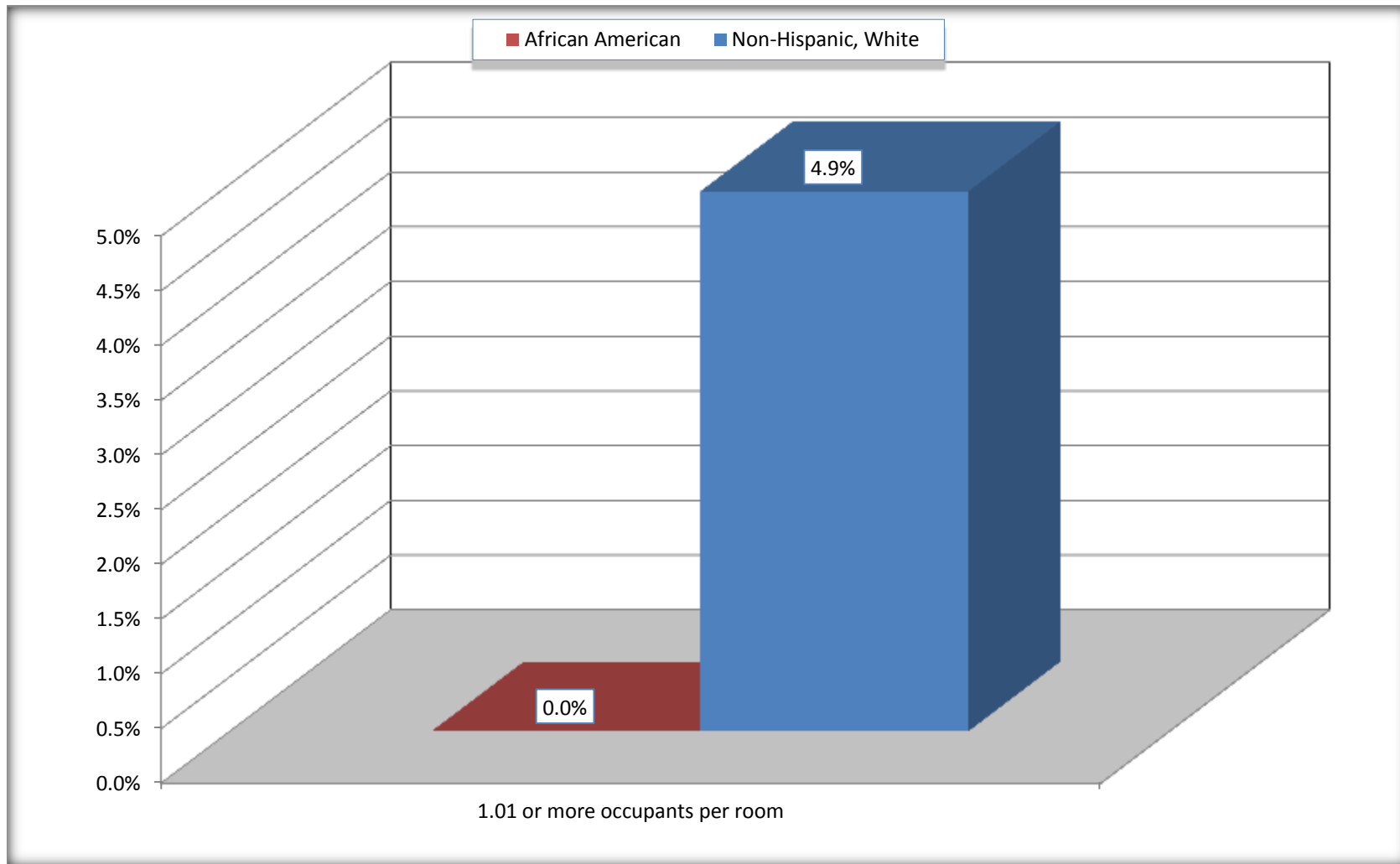
Source: U.S. Census Bureau, 2008-2012 American Community Survey

For information on confidentiality protection, sampling error, nonsampling error, and definitions, see Survey Methodology.

<http://www.census.gov/acs/www/UseData/index.ht>

More than One Person per Room (Crowding) by Household

Buena Vista CDP, Michigan



Source: B25014. OCCUPANTS PER ROOM - Universe: OCCUPIED HOUSING UNITS
Data Set: 2008-2012 American Community Survey 5-Year Estimates

B18101. AGE BY DISABILITY STATUS

Data Set: 2008-2012 American Community Survey 5-Year Estimates

	Buena Vista CDP, Michigan					
	African American	Margin of Error (+/-)	% of AA Total	White, Not Hispanic	Margin of Error (+/-)	% of NHW Total
Total:	4,507	436	100.0%	1,036	300	100.0%
Under 18 years:	881	351	19.5%	157	15	15.2%
With a disability	56	52	1.2%	27	29	2.6%
No disability	825	342	18.3%	130	116	12.5%
18 to 64 years:	2,714	271	60.2%	731	235	70.6%
With a disability	807	226	17.9%	244	150	23.6%
No disability	1,907	310	42.3%	487	182	47.0%
65 years and over:	912	121	20.2%	148	90	14.3%
With a disability	571	141	12.7%	110	79	10.6%
No disability	341	126	7.6%	38	32	3.7%

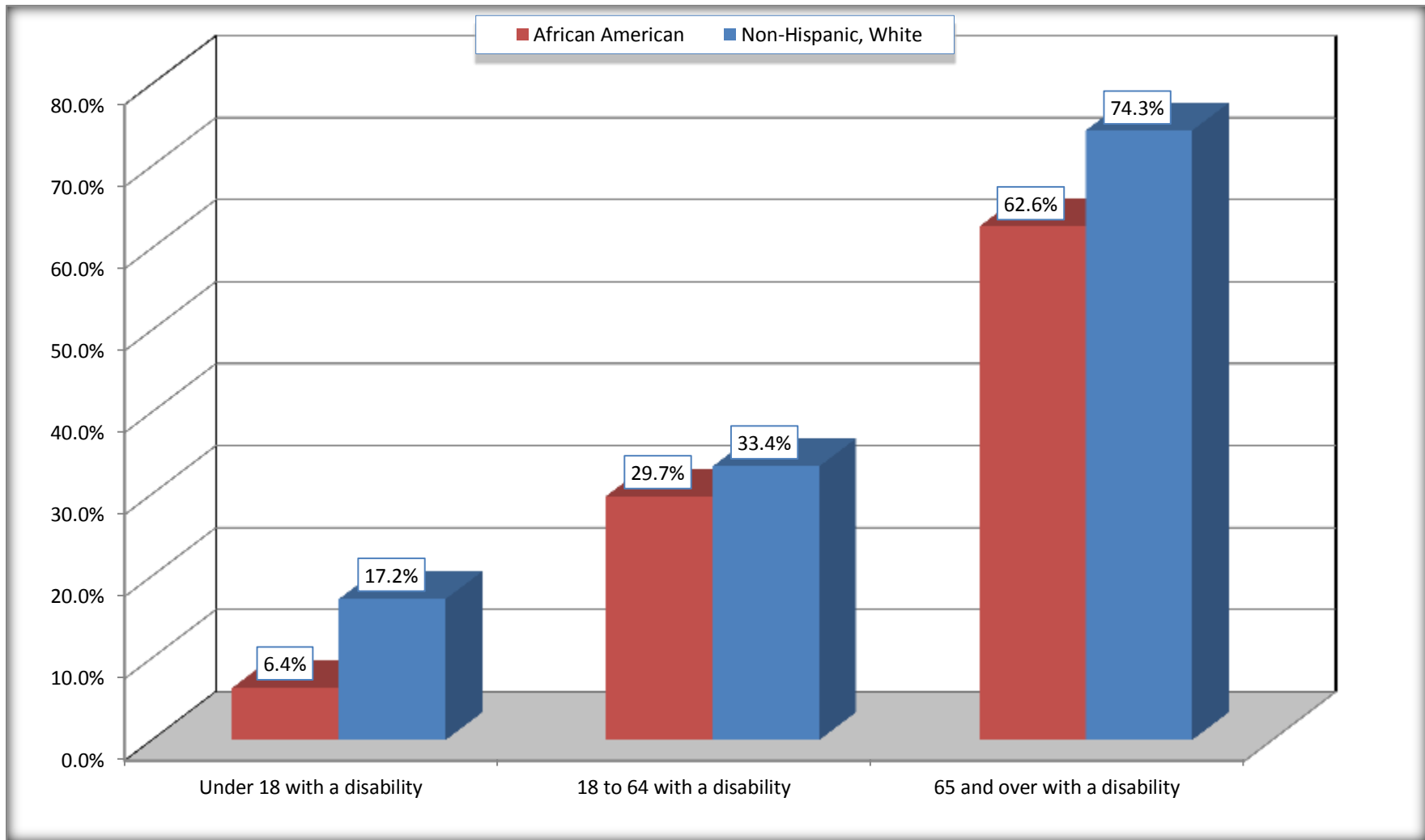
Source: U.S. Census Bureau, 2008-2012 American Community Survey

For information on confidentiality protection, sampling error, nonsampling error, and definitions, see Survey Methodology.

<http://www.census.gov/acs/www/UseData/index.htm>

Disability by Age

Buena Vista CDP, Michigan



Source: B18101. AGE BY DISABILITY STATUS
Data Set: 2008-2012 American Community Survey 5-Year Estimates

C27001B. HEALTH INSURANCE COVERAGE STATUS BY AGE

Data Set: 2008-2012 American Community Survey 5-Year Estimates

	Buena Vista CDP, Michigan					
	African American	Margin of Error (+/-)	% of AA Total	White, Not Hispanic	Margin of Error (+/-)	% of NHW Total
Total:	4,507	436	100.0%	1,036	300	100.0%
Under 18 years:	881	351	19.5%	157	117	15.2%
With health insurance coverage	881	351	19.5%	157	117	15.2%
No health insurance coverage	0	15	0.0%	0	15	0.0%
18 to 64 years:	2,714	271	60.2%	731	235	70.6%
With health insurance coverage	2,166	291	48.1%	641	229	61.9%
No health insurance coverage	548	180	12.2%	90	64	8.7%
65 years and over:	912	121	20.2%	148	90	14.3%
With health insurance coverage	896	120	19.9%	148	90	14.3%
No health insurance coverage	16	26	0.4%	0	15	0.0%

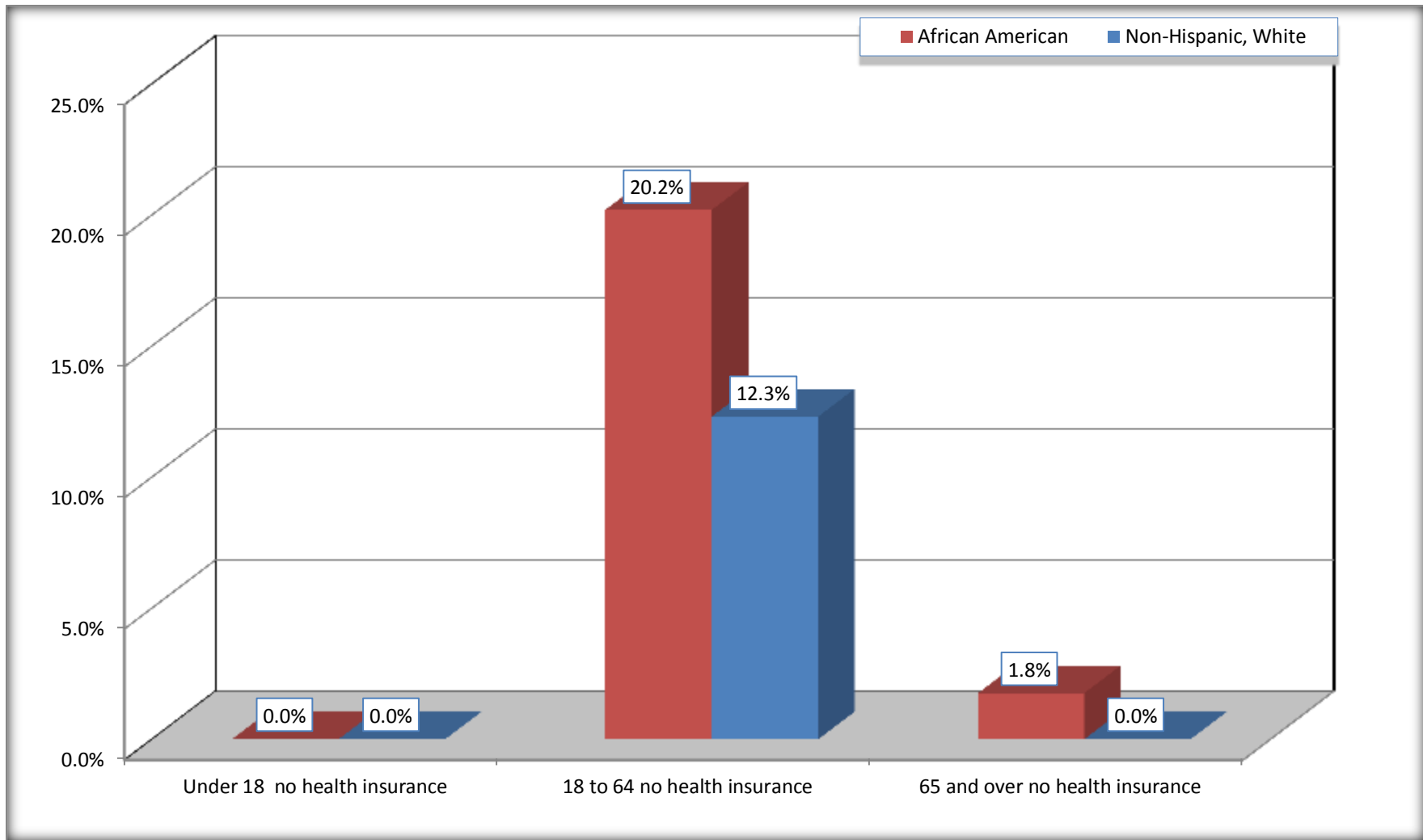
Source: U.S. Census Bureau, 2008-2012 American Community Survey

For information on confidentiality protection, sampling error, nonsampling error, and definitions, see Survey Methodology.

<http://www.census.gov/acs/www/UseData/index.htm>

Lack of Health Insurance Coverage by Age

Buena Vista CDP, Michigan



Source: C27001B. HEALTH INSURANCE COVERAGE STATUS BY AGE
Data Set: 2008-2012 American Community Survey 5-Year Estimates