

Selected Socio-Economic Data

Riverside CDP, Maryland

African American and White, Not Hispanic

Data Set: 2008-2012 American Community Survey 5-Year Estimates

www.fairvote2020.org

www.fairdata2000.com

[29-Dec-13](#)

C02003.DETAILED RACE - Universe: TOTAL POPULATION

Data Set: 2008-2012 American Community Survey 5-Year Estimates

	Riverside CDP, Maryland		
	Population	Margin of Error (+/-)	% of Total
Total:	6,886	649	100.0%
Population of one race:	6,805	656	98.8%
White	5,080	592	73.8%
Black or African American	1,137	425	16.5%
American Indian and Alaska Native	22	34	0.3%
Asian alone	363	180	5.3%
Native Hawaiian and Other Pacific Islander	0	17	0.0%
Some other race	203	219	2.9%
Population of two or more races:	81	73	1.2%
Two races including Some other race	17	25	0.2%
Two races excluding Some other race, and three or more races	64	71	0.9%
Population of two races:	81	73	1.2%
White; Black or African American	52	69	0.8%
White; American Indian and Alaska Native	0	17	0.0%
White; Asian	12	17	0.2%
Black or African American; American Indian and Alaska Native	0	17	0.0%
All other two race combinations	17	25	0.2%
Population of three races	0	17	0.0%
Population of four or more races	0	17	0.0%

Note: Hispanics may be of any race. See Table B03002 and chart.

Source: U.S. Census Bureau, 2008-2012 American Community Survey

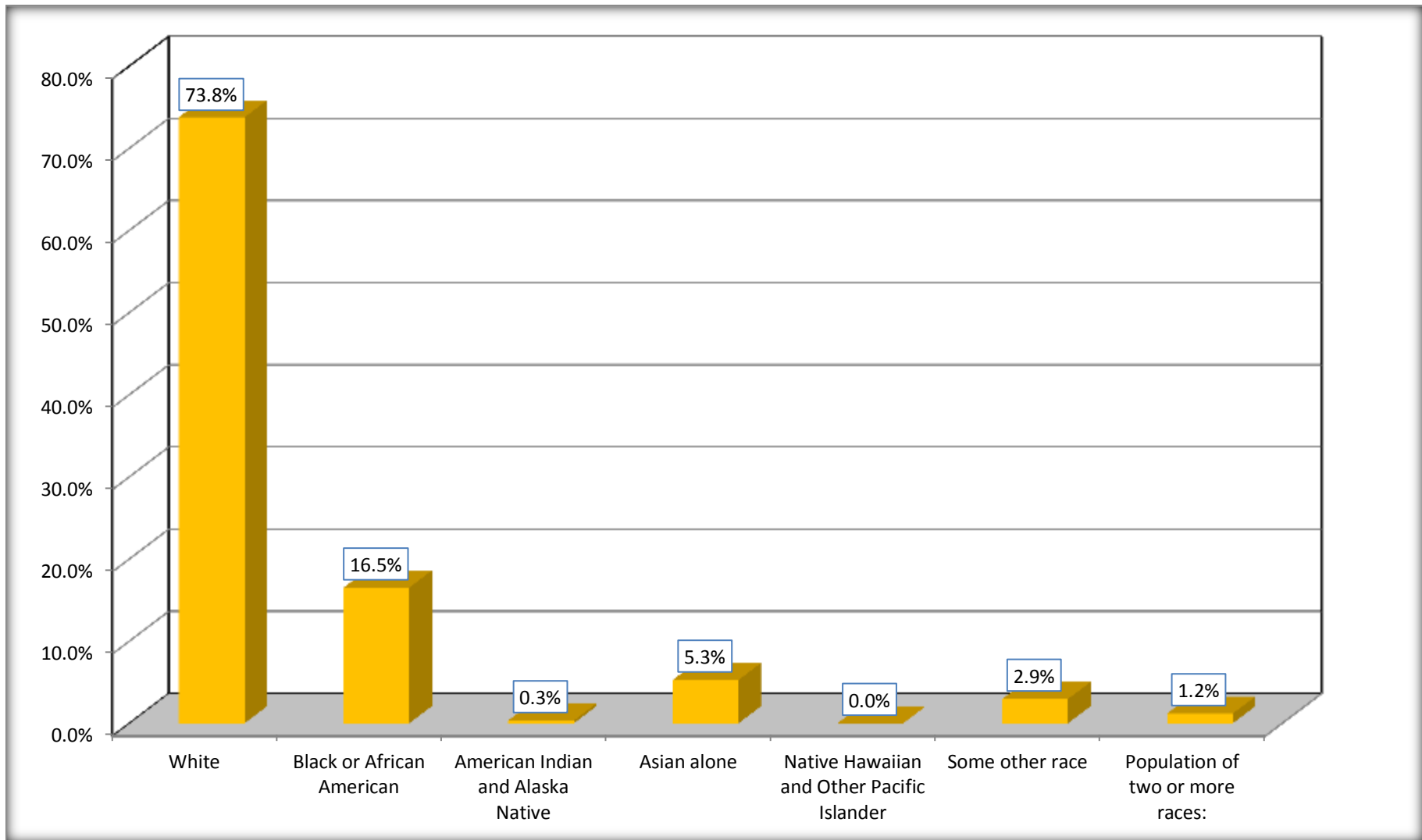
Although the American Community Survey (ACS) produces population, demographic and housing unit estimates, it is the Census Bureau's Population Estimates Program that produces and disseminates the official estimates of the population for the nation, states, counties, cities and towns and estimates of housing units for states and counties.

For information on confidentiality protection, sampling error, nonsampling error, and definitions, see Survey Methodology.

<http://www.census.gov/acs/www/UseData/index.htm>

Population by Race

Riverside CDP, Maryland



Source: C02003.DETAILED RACE - Universe: TOTAL POPULATION
Data Set: 2008-2012 American Community Survey 5-Year Estimates

B03002. HISPANIC OR LATINO ORIGIN BY RACE - Universe: TOTAL POPULATION

Data Set: 2008-2012 American Community Survey 5-Year Estimates

	Riverside CDP, Maryland		
	Population	Margin of Error (+/-)	% of Total
Total:	6,886	649	100.0%
Not Hispanic or Latino:	6,463	599	93.9%
White alone	4,811	584	69.9%
Black or African American alone	1,137	425	16.5%
American Indian and Alaska Native alone	22	34	0.3%
Asian alone	363	180	5.3%
Native Hawaiian and Other Pacific Islander alone	0	17	0.0%
Some other race alone	49	57	0.7%
Two or more races:	81	73	1.2%
Two races including Some other race	17	25	0.2%
Two races excluding Some other race, and three or more races	64	71	0.9%
Hispanic or Latino	423	301	6.1%

Source: U.S. Census Bureau, 2008-2012 American Community Survey

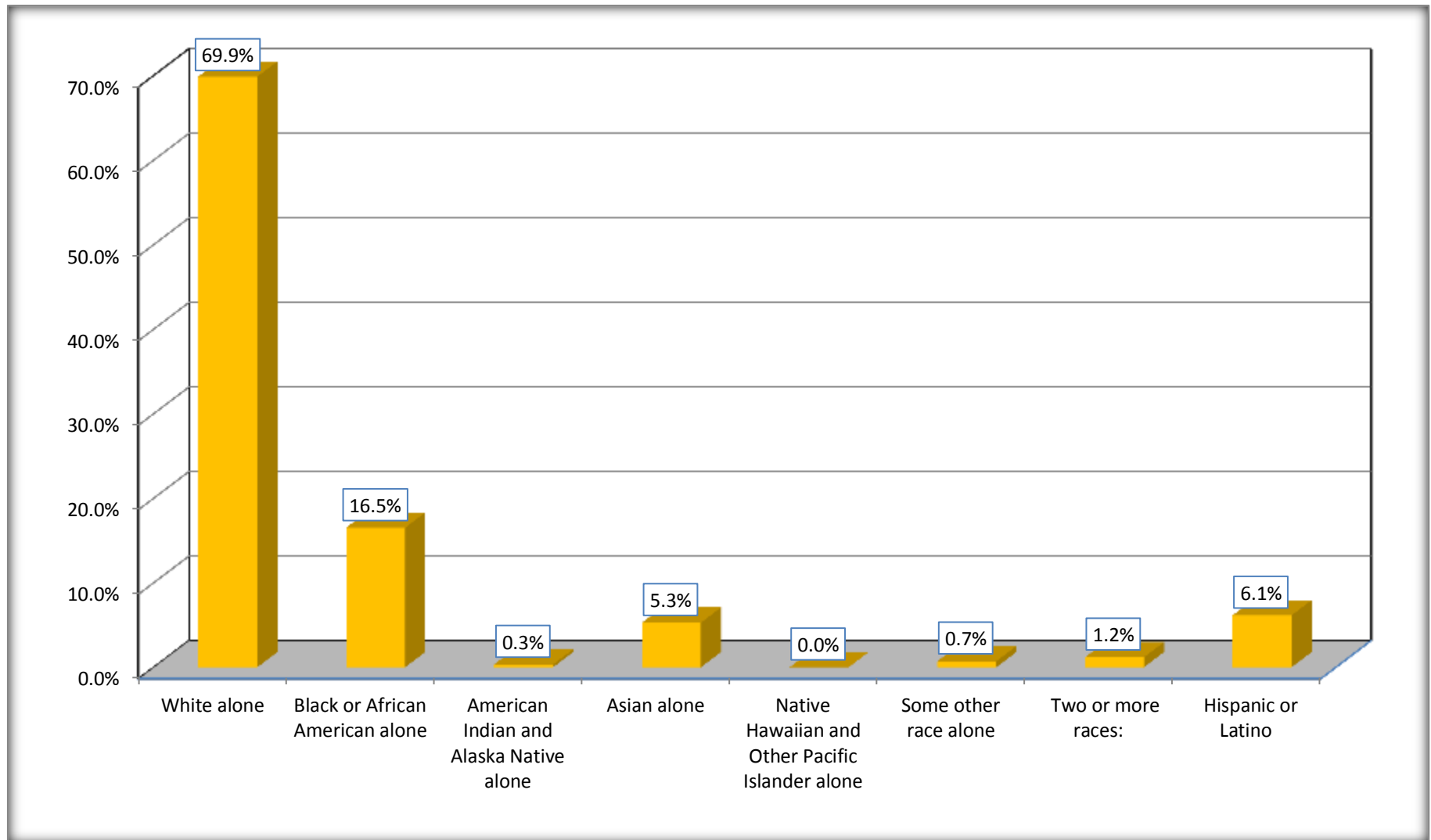
Although the American Community Survey (ACS) produces population, demographic and housing unit estimates, it is the Census Bureau's Population Estimates Program that produces and disseminates the official estimates of the population for the nation, states, counties, cities and towns and estimates of housing units for states and counties.

For information on confidentiality protection, sampling error, nonsampling error, and definitions, see Survey Methodology.

<http://www.census.gov/acs/www/UseData/index.htm>

Non-Hispanic by Race and Hispanic Population

Riverside CDP, Maryland



Source: B03002. HISPANIC OR LATINO ORIGIN BY RACE - Universe: TOTAL POPULATION
Data Set: 2008-2012 American Community Survey 5-Year Estimates

B03002. HISPANIC OR LATINO ORIGIN BY RACE

Data Set: 2008-2012 American Community Survey 5-Year Estimates

	Riverside CDP, Maryland		
	Population	Margin of Error (+/-)	% of Total
Hispanic or Latino:	423	301	100.0%
White alone	269	229	63.6%
Black or African American alone	0	17	0.0%
American Indian and Alaska Native alone	0	17	0.0%
Asian alone	0	17	0.0%
Native Hawaiian and Other Pacific Islander alone	0	17	0.0%
Some other race alone	154	211	36.4%
Two or more races:	0	17	0.0%
Two races including Some other race	0	17	0.0%
Two races excluding Some other race, and three or more races	0	17	0.0%

Source: U.S. Census Bureau, 2008-2012 American Community Survey

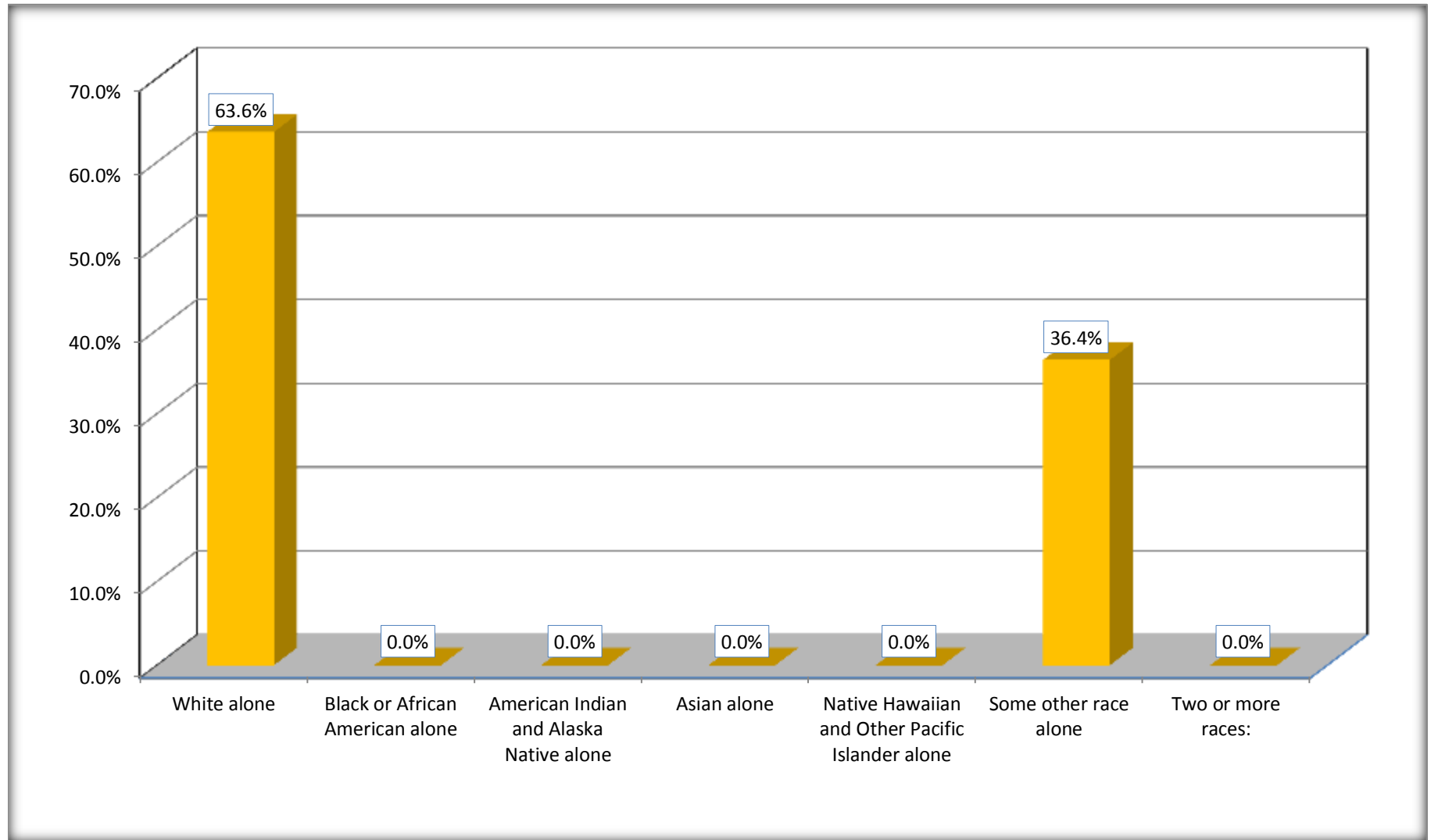
Although the American Community Survey (ACS) produces population, demographic and housing unit estimates, it is the Census Bureau's Population Estimates Program that produces and disseminates the official estimates of the population for the nation, states, counties, cities and towns and estimates of housing units for states and counties.

For information on confidentiality protection, sampling error, nonsampling error, and definitions, see Survey Methodology.

<http://www.census.gov/acs/www/UseData/index.htm>

Hispanic or Latino Origin by Race

Riverside CDP, Maryland



Source: B03002. HISPANIC OR LATINO ORIGIN BY RACE
Data Set: 2008-2012 American Community Survey 5-Year Estimates

B01001. SEX BY AGE

Data Set: 2008-2012 American Community Survey 5-Year Estimates

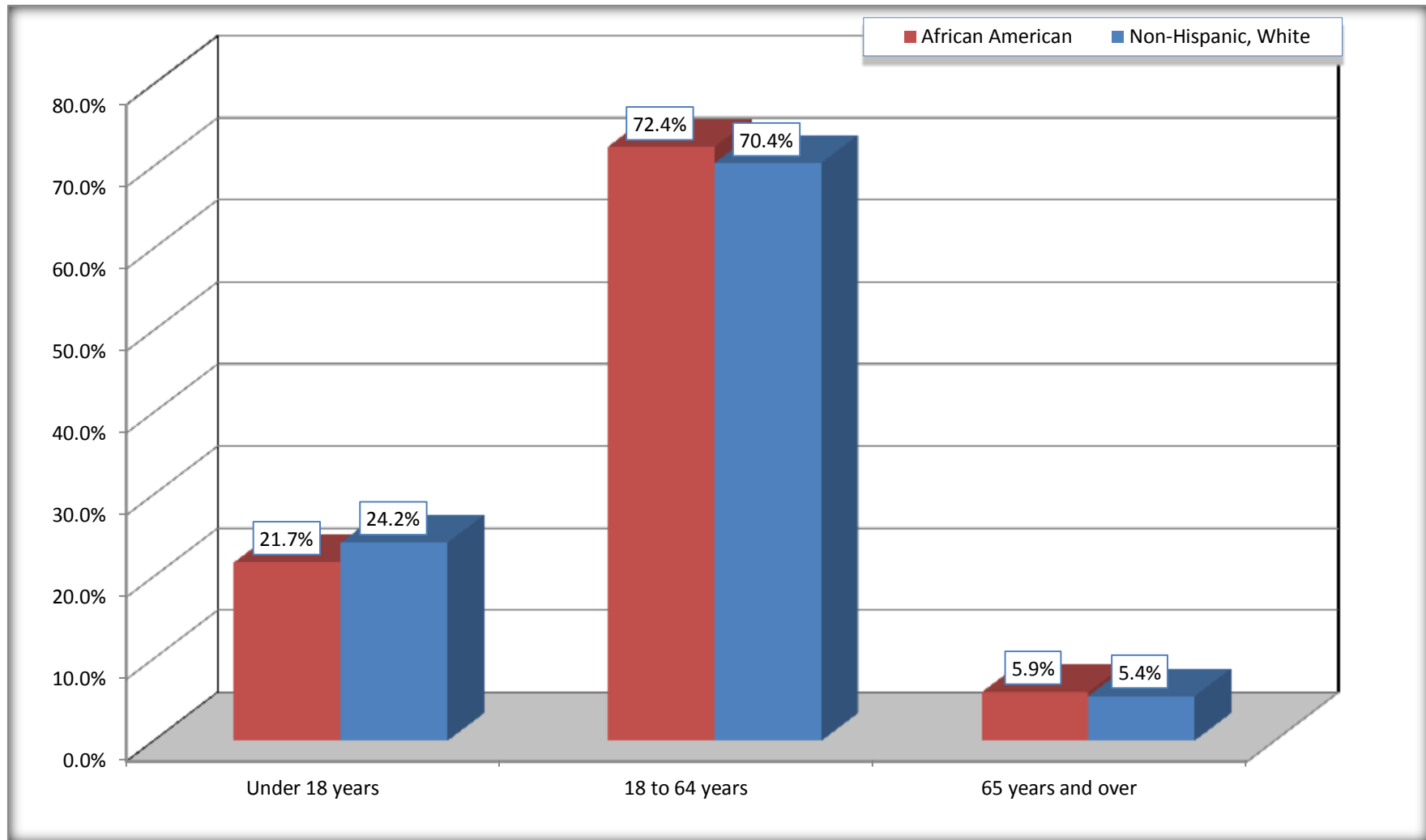
	Riverside CDP, Maryland					
	African American	Margin of Error (+/-)	% of AA Total	White, Not Hispanic	Margin of Error (+/-)	% of NHW Total
Total:	1,137	425	100.0%	4,811	584	100.0%
Under 18 years	247	NC	21.7%	1,162	NC	24.2%
18 to 64 years	823	NC	72.4%	3,388	NC	70.4%
65 years and over	67	NC	5.9%	261	NC	5.4%
Male:	591	210	52.0%	2,458	389	51.1%
Under 18 years	185	NC	16.3%	721	NC	15.0%
18 to 64 years	390	NC	34.3%	1,603	NC	33.3%
65 years and over	16	NC	1.4%	134	NC	2.8%
Female:	546	244	48.0%	2,353	412	48.9%
Under 18 years	62	NC	5.5%	441	NC	9.2%
18 to 64 years	433	NC	38.1%	1,785	NC	37.1%
65 years and over	51	NC	4.5%	127	NC	2.6%

Source: U.S. Census Bureau, 2008-2012 American Community Survey

Although the American Community Survey (ACS) produces population, demographic and housing unit estimates, it is the Census Bureau's Population Estimates Program that produces and disseminates the official estimates of the population for the nation, states, counties, cities and towns and estimates of housing units for states and counties.

For information on confidentiality protection, sampling error, nonsampling error, and definitions, see Survey Methodology.
<http://www.census.gov/acs/www/UseData/index.htm>

Population by Age Riverside CDP, Maryland



Source: B01001. SEX BY AGE
Data Set: 2008-2012 American Community Survey 5-Year Estimates

B05003. SEX BY AGE BY CITIZENSHIP STATUS

Data Set: 2008-2012 American Community Survey 5-Year Estimates

	Riverside CDP, Maryland					
	African American	Margin of Error (+/-)	% of AA Total by Age	White, Not Hispanic	Margin of Error (+/-)	% of NHW Total by Age
Total:	1,137	425	100.0%	4,811	584	100.0%
Under 18 years:	247	NC	100.0%	1,162	NC	100.0%
Native	247	NC	100.0%	1,162	NC	100.0%
Foreign born:	0	NC	0.0%	0	NC	0.0%
Naturalized U.S. citizen	0	NC	0.0%	0	NC	0.0%
Not a U.S. citizen	0	NC	0.0%	0	NC	0.0%
18 years and over:	890	NC	100.0%	3,649	NC	100.0%
Native	871	NC	97.9%	3,546	NC	97.2%
Foreign born:	19	NC	2.1%	103	NC	2.8%
Naturalized U.S. citizen	19	NC	2.1%	78	NC	2.1%
Not a U.S. citizen	0	NC	0.0%	25	NC	0.7%
Male:	591	210	52.0%	2,458	416	51.1%
Under 18 years:	185	105	100.0%	721	201	100.0%
Native	185	105	100.0%	721	201	100.0%
Foreign born:	0	17	0.0%	0	17	0.0%
Naturalized U.S. citizen	0	17	0.0%	0	17	0.0%
Not a U.S. citizen	0	17	0.0%	0	17	0.0%
18 years and over:	406	139	100.0%	1,737	313	100.0%
Native	406	139	100.0%	1,715	311	98.7%
Foreign born:	0	17	0.0%	22	27	1.3%
Naturalized U.S. citizen	0	17	0.0%	13	22	0.7%
Not a U.S. citizen	0	17	0.0%	9	16	0.5%

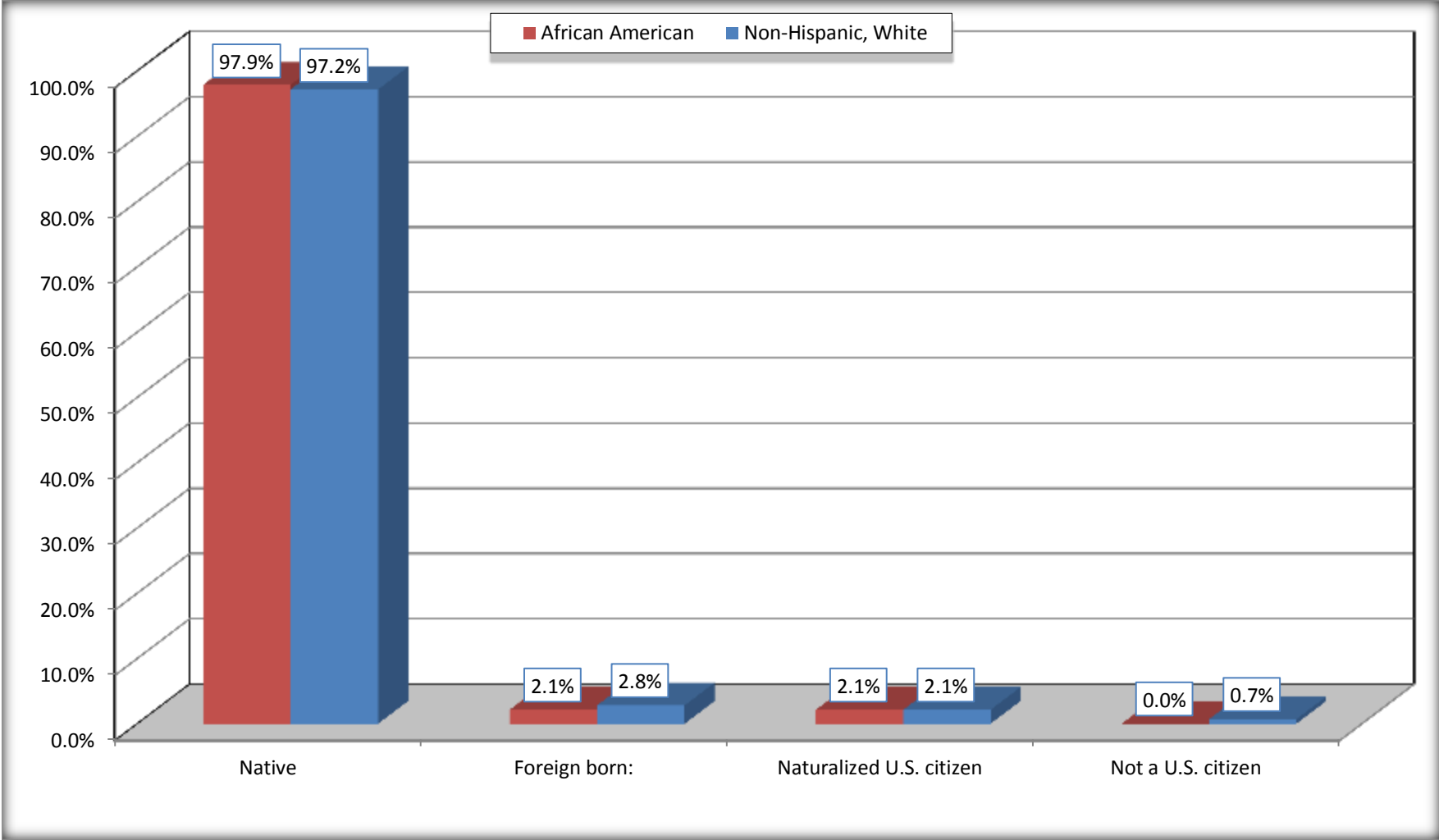
	Riverside CDP, Maryland					
	African American	Margin of Error (+/-)	% of AA by Age	White, Not Hispanic	Margin of Error (+/-)	% of NHW by Age
Female:	546	244	48.0%	2,353	300	48.9%
Under 18 years:	62	82	100.0%	441	177	100.0%
Native	62	82	100.0%	441	177	100.0%
Foreign born:	0	17	0.0%	0	17	0.0%
Naturalized U.S. citizen	0	17	0.0%	0	17	0.0%
Not a U.S. citizen	0	17	0.0%	0	17	0.0%
18 years and over:	484	187	100.0%	1,912	213	100.0%
Native	465	174	96.1%	1,831	208	95.8%
Foreign born:	19	32	3.9%	81	55	4.2%
Naturalized U.S. citizen	19	32	3.9%	65	50	3.4%
Not a U.S. citizen	0	17	0.0%	16	25	0.8%

Source: U.S. Census Bureau, 2008-2012 American Community Survey

For information on confidentiality protection, sampling error, nonsampling error, and definitions, see Survey Methodology.
<http://www.census.gov/acs/www/UseData/index.htm>

Citizenship Status of Voting Age Population (18 and Over)

Riverside CDP, Maryland



Source: B05003. SEX BY AGE BY CITIZENSHIP STATUS
Data Set: 2008-2012 American Community Survey 5-Year Estimates

**B07004. GEOGRAPHICAL MOBILITY IN THE PAST YEAR BY RACE FOR CURRENT RESIDENCE IN THE UNITED STATES - Universe:
POPULATION 1 YEAR AND OVER**

Data Set: 2008-2012 American Community Survey 5-Year Estimates

	Riverside CDP, Maryland					
	African American	Margin of Error (+/-)	% of AA Total	White, Not Hispanic	Margin of Error (+/-)	% of NHW Total
Total:	1,137	425	100.0%	4,742	576	100.0%
Same house 1 year ago	1,108	426	97.4%	4,174	612	88.0%
Moved within same county	24	30	2.1%	318	114	6.7%
Moved from different county within same state	5	11	0.4%	149	148	3.1%
Moved from different state	0	17	0.0%	65	75	1.4%
Moved from abroad	0	17	0.0%	36	39	0.8%

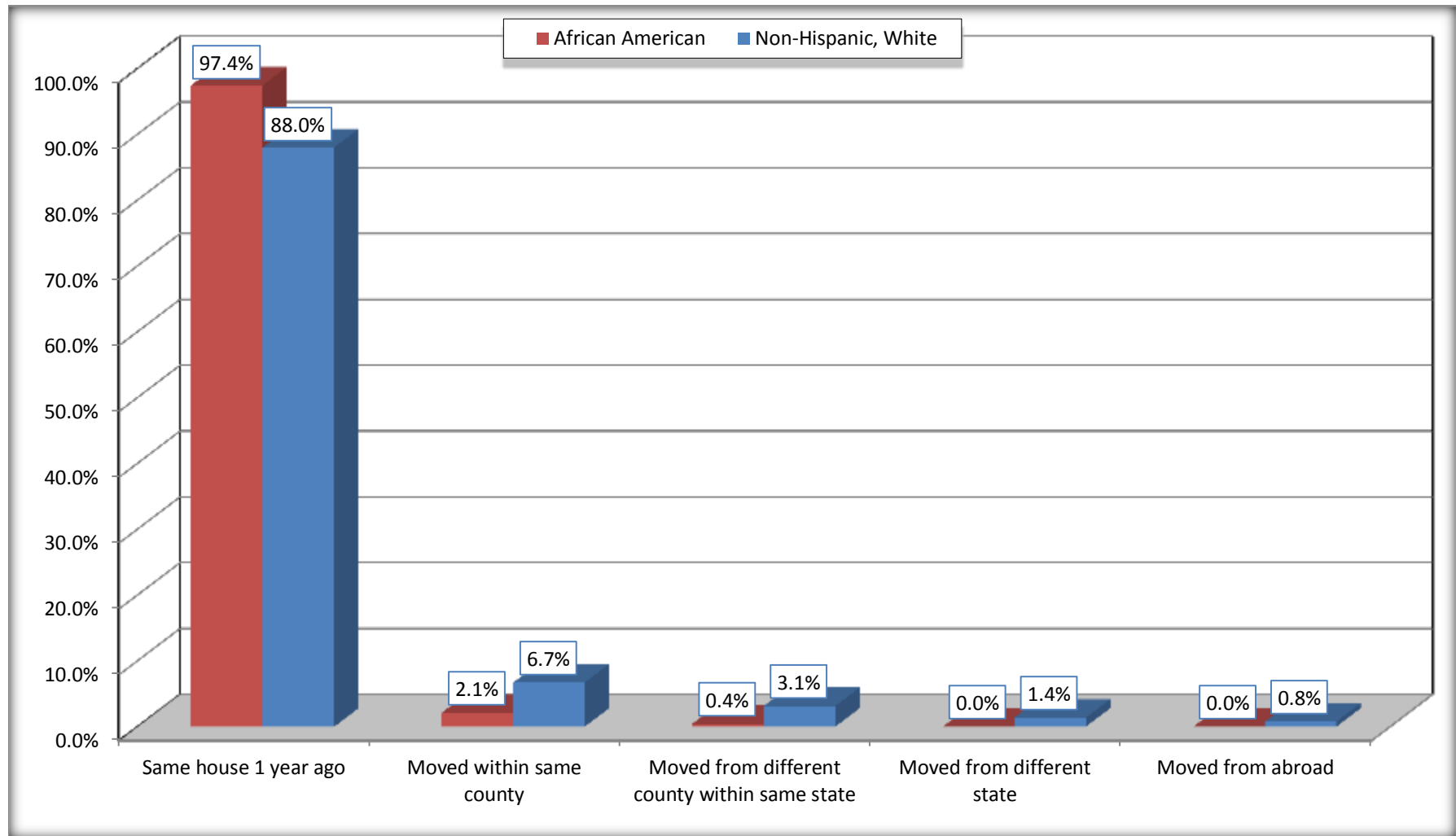
Source: U.S. Census Bureau, 2008-2012 American Community Survey

For information on confidentiality protection, sampling error, nonsampling error, and definitions, see Survey Methodology.

<http://www.census.gov/acs/www/UseData/index.htm>

Geographical Mobility in the Past Year (Population 1 Year and Over)

Riverside CDP, Maryland



Source: B07004. GEOGRAPHICAL MOBILITY IN THE PAST YEAR BY RACE FOR CURRENT RESIDENCE IN THE UNITED STATES - Universe: POPULATION 1 YEAR AND OVER

Data Set: 2008-2012 American Community Survey 5-Year Estimates

B08105. MEANS OF TRANSPORTATION TO WORK - Universe: WORKERS 16 YEARS AND OVER

Data Set: 2008-2012 American Community Survey 5-Year Estimates

	Riverside CDP, Maryland					
	African American	Margin of Error (+/-)	% of AA Total	White, Not Hispanic	Margin of Error (+/-)	% of NHW Total
Total:	711	275	100.0%	2534	286	100.0%
Car, truck, or van - drove alone	691	280	97.2%	2183	288	86.1%
Car, truck, or van - carpooled	20	34	2.8%	200	87	7.9%
Public transportation (excluding taxicab)	0	17	0.0%	28	32	1.1%
Walked	0	17	0.0%	0	17	0.0%
Taxicab, motorcycle, bicycle, or other means	0	17	0.0%	12	20	0.5%
Worked at home	0	17	0.0%	111	66	4.4%

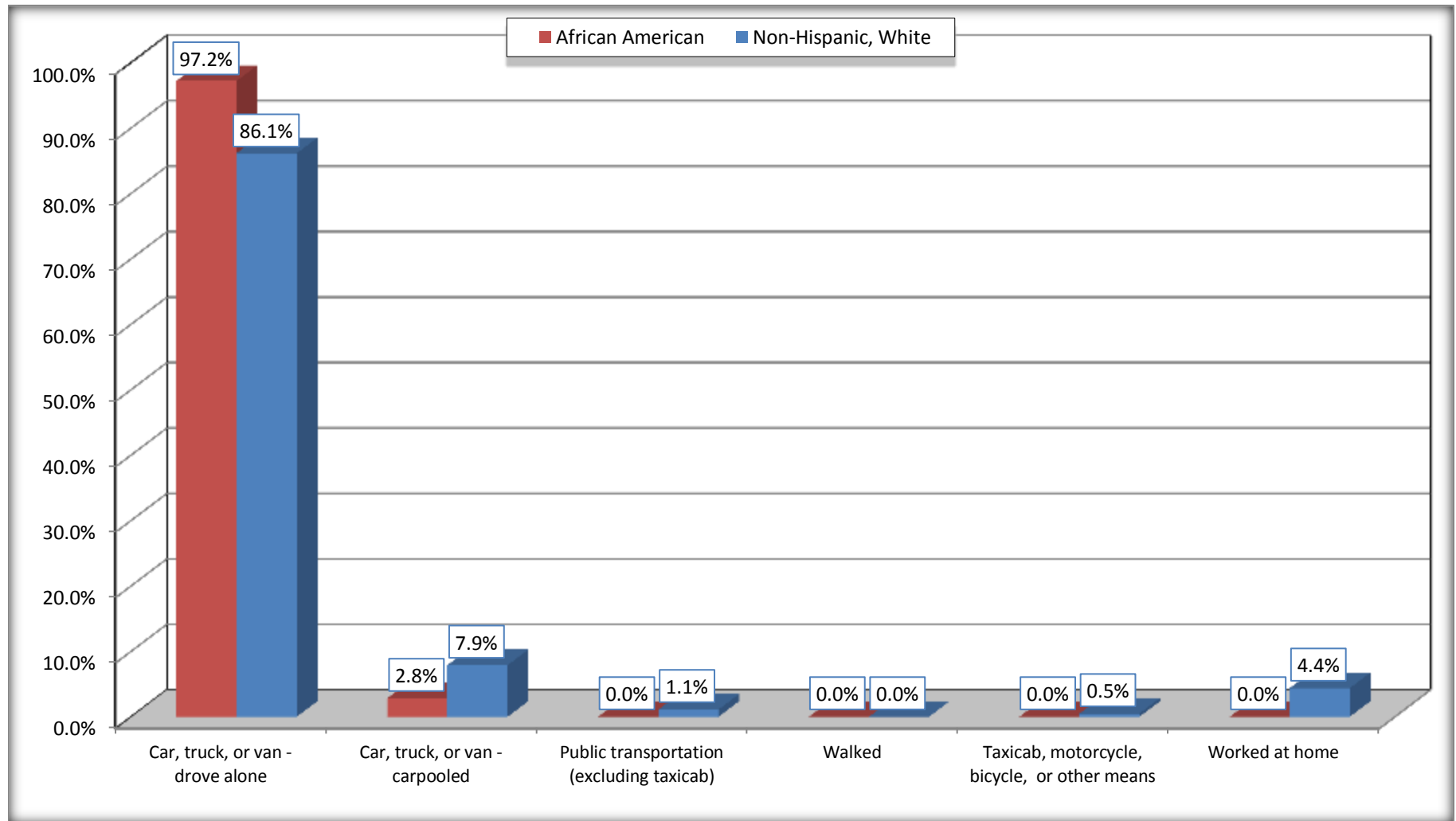
Source: U.S. Census Bureau, 2008-2012 American Community Survey

For information on confidentiality protection, sampling error, nonsampling error, and definitions, see Survey Methodology.

<http://www.census.gov/acs/www/UseData/index.htm>

Means of Transportation to Work (Workers 16 Years and Over)

Riverside CDP, Maryland



Source: B08105. MEANS OF TRANSPORTATION TO WORK - Universe: WORKERS 16 YEARS AND OVER
Data Set: 2008-2012 American Community Survey 5-Year Estimates

B11002. HOUSEHOLD TYPE BY RELATIVES AND NONRELATIVES FOR POPULATION IN HOUSEHOLDS

Data Set: 2008-2012 American Community Survey 5-Year Estimates

	Riverside CDP, Maryland					
	African American	Margin of Error (+/-)	% of AA Total	White, Not Hispanic	Margin of Error (+/-)	% of NHW Total
Total:	1134	425	100.0%	4788	624	100.0%
In family households	950	399	83.8%	3872	579	80.9%
In nonfamily households	184	154	16.2%	916	357	19.1%

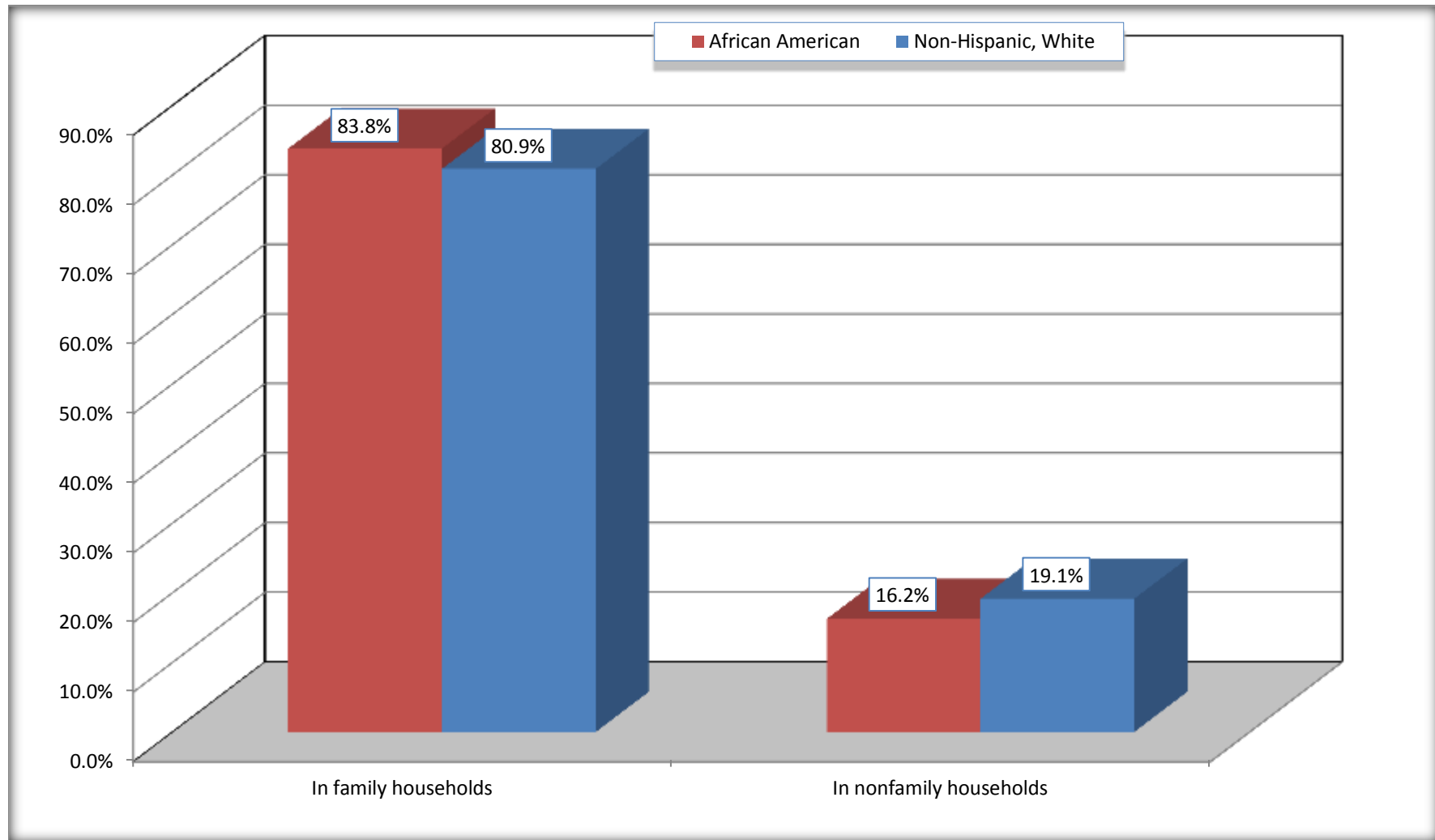
Source: U.S. Census Bureau, 2008-2012 American Community Survey

For information on confidentiality protection, sampling error, nonsampling error, and definitions, see Survey Methodology.

<http://www.census.gov/acs/www/UseData/index.htm>

Household Type for Population in Households

Riverside CDP, Maryland



Source: B11002. HOUSEHOLD TYPE BY RELATIVES AND NONRELATIVES FOR POPULATION IN HOUSEHOLDS
Data Set: 2008-2012 American Community Survey 5-Year Estimates

B12002. MARITAL STATUS FOR THE POPULATION 15 YEARS AND OVER

Data Set: 2008-2012 American Community Survey 5-Year Estimates

	Riverside CDP, Maryland					
	African American	Margin of Error (+/-)	% of AA Total	White, Not Hispanic	Margin of Error (+/-)	% of NHW Total
Total:	905	305	100.0%	3,734	399	100.0%
Never married	426	NC	47.1%	1,137	NC	30.4%
Now married (except separated)	349	NC	38.6%	1,954	NC	52.3%
Separated	6	NC	0.7%	20	NC	0.5%
Widowed	31	NC	3.4%	147	NC	3.9%
Divorced	93	NC	10.3%	476	NC	12.7%
Male:	421	147	46.5%	1,789	318	47.9%
Never married	221	118	24.4%	536	206	14.4%
Now married (except separated)	200	106	22.1%	989	201	26.5%
Separated	0	17	0.0%	0	17	0.0%
Widowed	0	17	0.0%	50	43	1.3%
Divorced	0	17	0.0%	214	86	5.7%
Female:	484	187	53.5%	1,945	213	52.1%
Never married	205	112	22.7%	601	157	16.1%
Now married (except separated)	149	100	16.5%	965	180	25.8%
Separated	6	13	0.7%	20	34	0.5%
Widowed	31	32	3.4%	97	47	2.6%
Divorced	93	83	10.3%	262	98	7.0%

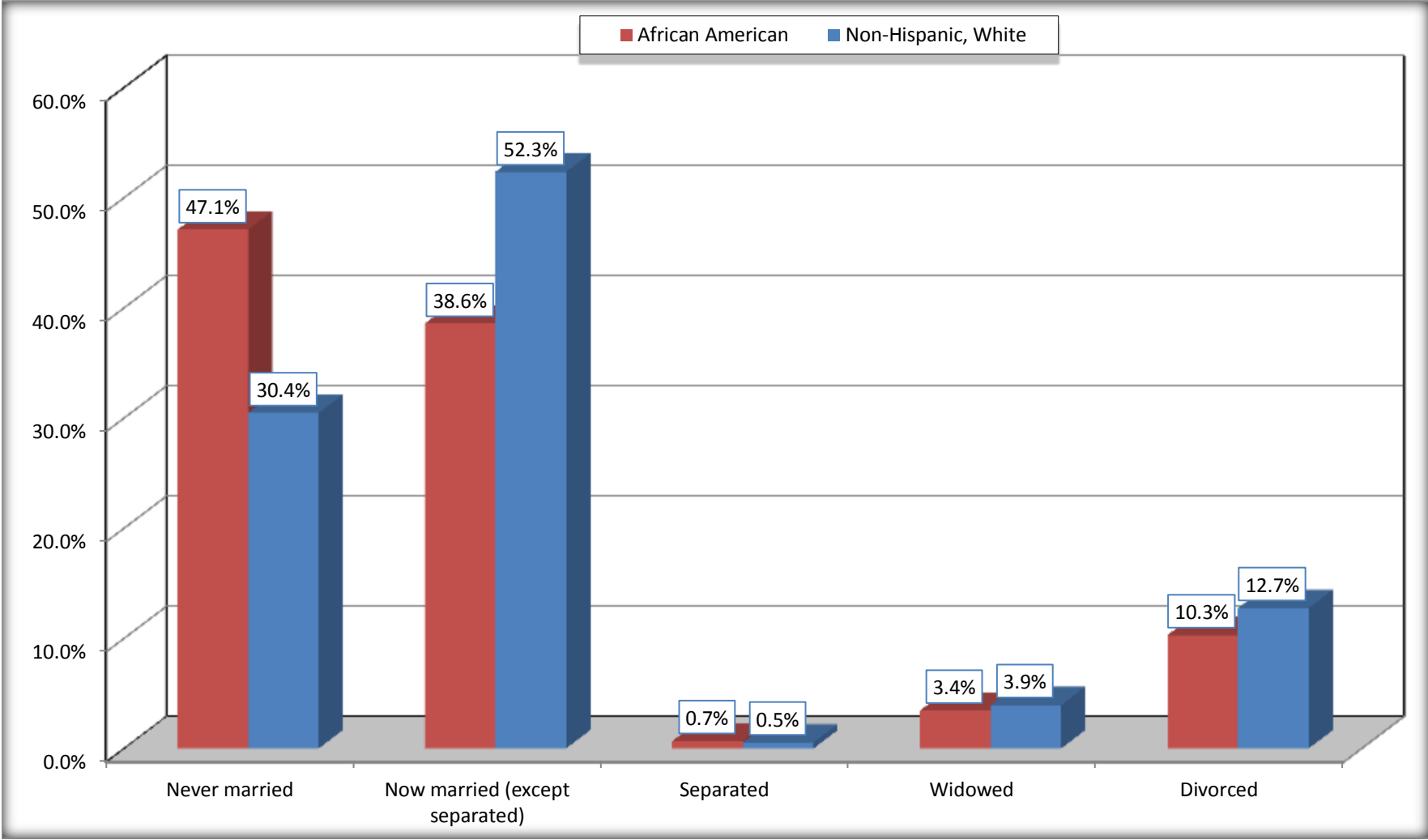
Source: U.S. Census Bureau, 2008-2012 American Community Survey

For information on confidentiality protection, sampling error, nonsampling error, and definitions, see Survey Methodology.

<http://www.census.gov/acs/www/UseData/index.htm>

Marital Status for the Population 15 Years and Over

Riverside CDP, Maryland



Source: B12002. MARITAL STATUS FOR THE POPULATION 15 YEARS AND OVER
Data Set: 2008-2012 American Community Survey 5-Year Estimates

C15002. SEX BY EDUCATIONAL ATTAINMENT FOR THE POPULATION 25 YEARS AND OVER

Data Set: 2008-2012 American Community Survey 5-Year Estimates

	Riverside CDP, Maryland					
	African American	Margin of Error (+/-)	% of AA Total	White, Not Hispanic	Margin of Error (+/-)	% of NHW Total
Total:	713	290	100.0%	3,136	354	100.0%
Less than high school diploma	5	NC	0.7%	262	NC	8.4%
High school graduate, GED, or alternative	126	NC	17.7%	1,036	NC	33.0%
Some college or associate's degree	392	NC	55.0%	1,094	NC	34.9%
Bachelor's degree or higher	190	NC	26.6%	744	NC	23.7%
Male:	337	136	47.3%	1,524	227	48.6%
Less than high school diploma	0	17	0.0%	138	96	4.4%
High school graduate, GED, or alternative	63	44	8.8%	506	146	16.1%
Some college or associate's degree	194	123	27.2%	542	136	17.3%
Bachelor's degree or higher	80	68	11.2%	338	119	10.8%
Female:	376	178	52.7%	1,612	187	51.4%
Less than high school diploma	5	11	0.7%	124	71	4.0%
High school graduate, GED, or alternative	63	47	8.8%	530	138	16.9%
Some college or associate's degree	198	106	27.8%	552	147	17.6%
Bachelor's degree or higher	110	103	15.4%	406	124	12.9%

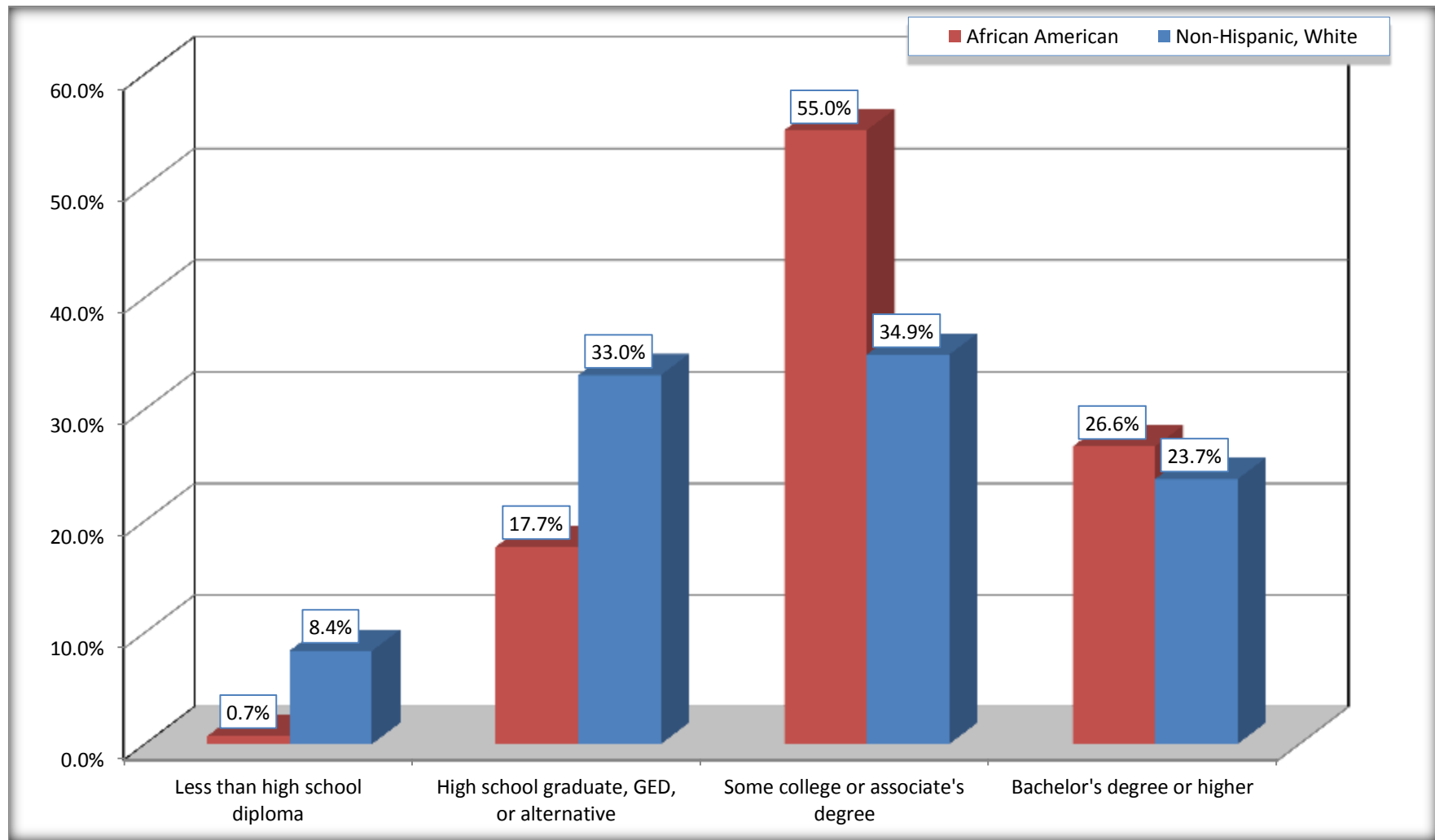
Source: U.S. Census Bureau, 2008-2012 American Community Survey

For information on confidentiality protection, sampling error, nonsampling error, and definitions, see Survey Methodology.

<http://www.census.gov/acs/www/UseData/index.htm>

Educational Attainment for the Population 25 Years and Older

Riverside CDP, Maryland



Source: C15002. SEX BY EDUCATIONAL ATTAINMENT FOR THE POPULATION 25 YEARS AND OVER
Data Set: 2008-2012 American Community Survey 5-Year Estimates

B16005. NATIVITY BY LANGUAGE SPOKEN AT HOME BY ABILITY TO SPEAK ENGLISH FOR THE POPULATION 5 YEARS AND OVER

Data Set: 2008-2012 American Community Survey 5-Year Estimates

	Riverside CDP, Maryland					
	African American	Margin of Error (+/-)	% of AA Total	White, Not Hispanic	Margin of Error (+/-)	% of NHW Total
Total:	1,104	414	100.0%	4,296	489	100.0%
Speak only English	1,030	NC	93.3%	4,133	NC	96.2%
Speak another language	74	NC	6.7%	163	NC	3.8%
Speak English "very well"	74	NC	6.7%	137	NC	3.2%
Speak English "less than very well"	0	NC	0.0%	26	NC	0.6%
Native:	1,085	402	98.3%	4,193	486	97.6%
Speak only English	1,011	353	91.6%	4,072	469	94.8%
Speak another language	74	96	6.7%	121	86	2.8%
Speak English "very well"	74	96	6.7%	121	86	2.8%
Speak English "less than very well"	0	17	0.0%	0	17	0.0%
Foreign born:	19	32	1.7%	103	69	2.4%
Speak only English	19	32	1.7%	61	49	1.4%
Speak another language	0	17	0.0%	42	50	1.0%
Speak English "very well"	0	17	0.0%	16	25	0.4%
Speak English "less than very well"	0	17	0.0%	26	44	0.6%

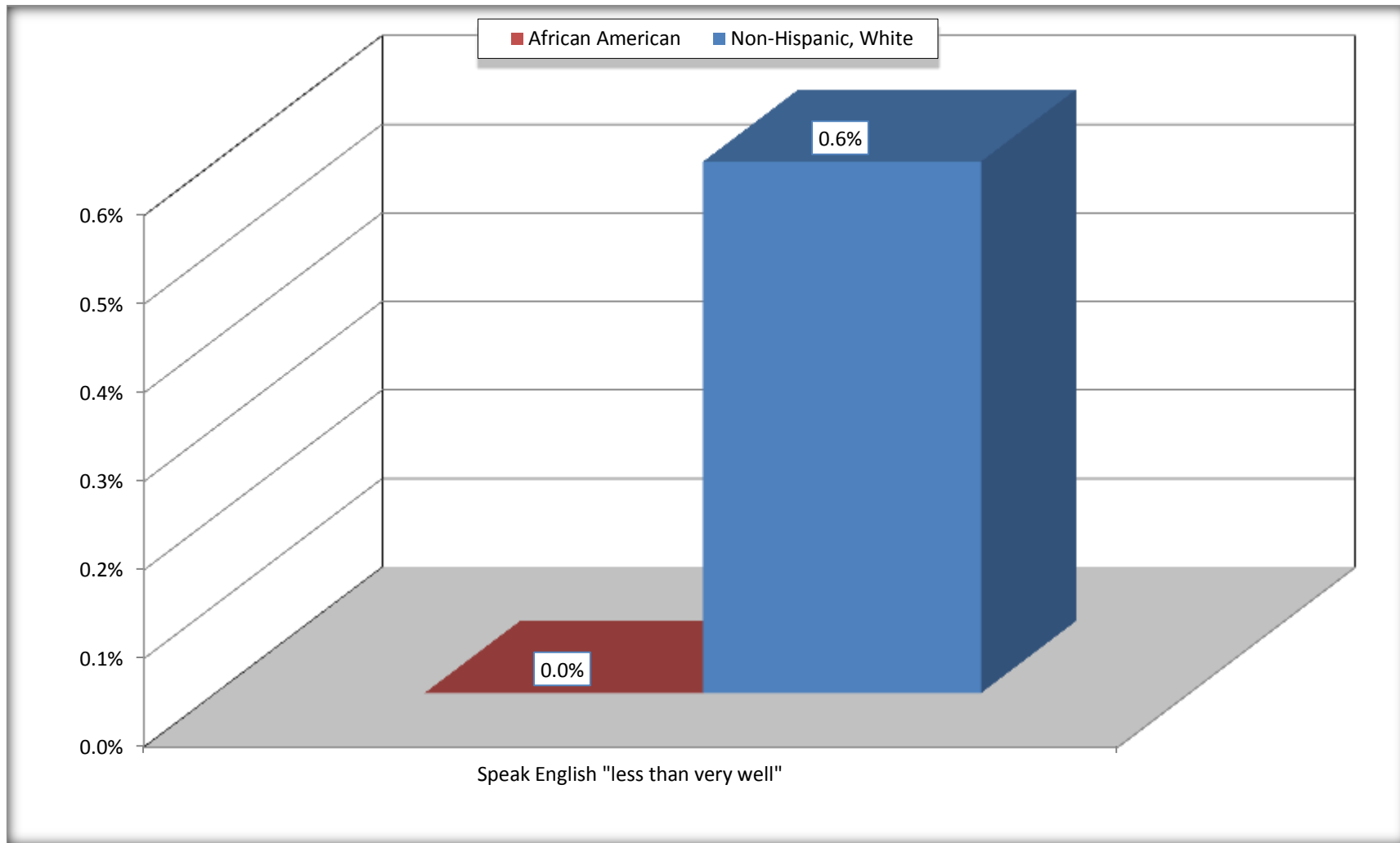
Source: U.S. Census Bureau, 2008-2012 American Community Survey

For information on confidentiality protection, sampling error, nonsampling error, and definitions, see Survey Methodology.

<http://www.census.gov/acs/www/UseData/index.htm>

Speak English "Less than Very Well" (Population 5 Years and Over)

Riverside CDP, Maryland



Source: B16005. NATIVITY BY LANGUAGE SPOKEN AT HOME BY ABILITY TO SPEAK ENGLISH FOR THE POPULATION 5 YEARS AND OVER
Data Set: 2008-2012 American Community Survey 5-Year Estimates

B17010. POVERTY STATUS IN THE PAST 12 MONTHS OF FAMILIES BY FAMILY TYPE BY PRESENCE OF RELATED CHILDREN UNDER 18 YEARS

Data Set: 2008-2012 American Community Survey 5-Year Estimates

	Riverside CDP, Maryland					
	African American	Margin of Error (+/-)	% of AA Total	White, Not Hispanic	Margin of Error (+/-)	% of NHW Total
Total:	240	100	100.0%	1,205	181	100.0%
Income in the past 12 months below poverty level:	0	17	0.0%	85	52	7.1%
Married-couple family:	0	17	0.0%	32	35	2.7%
With related children under 18 years	0	17	0.0%	32	35	2.7%
Other family:	0	17	0.0%	53	51	4.4%
Male householder, no wife present	0	17	0.0%	0	17	0.0%
With related children under 18 years	0	17	0.0%	0	17	0.0%
Female householder, no husband present	0	17	0.0%	53	51	4.4%
With related children under 18 years	0	17	0.0%	53	51	4.4%
Income in the past 12 months at or above poverty level:	240	100	100.0%	1,120	185	92.9%
Married-couple family:	138	85	57.5%	914	173	75.9%
With related children under 18 years	64	49	26.7%	454	123	37.7%
Other family:	102	68	42.5%	206	83	17.1%
Male householder, no wife present	34	55	14.2%	32	37	2.7%
With related children under 18 years	34	55	14.2%	0	17	0.0%
Female householder, no husband present	68	70	28.3%	174	76	14.4%
With related children under 18 years	54	69	22.5%	93	68	7.7%

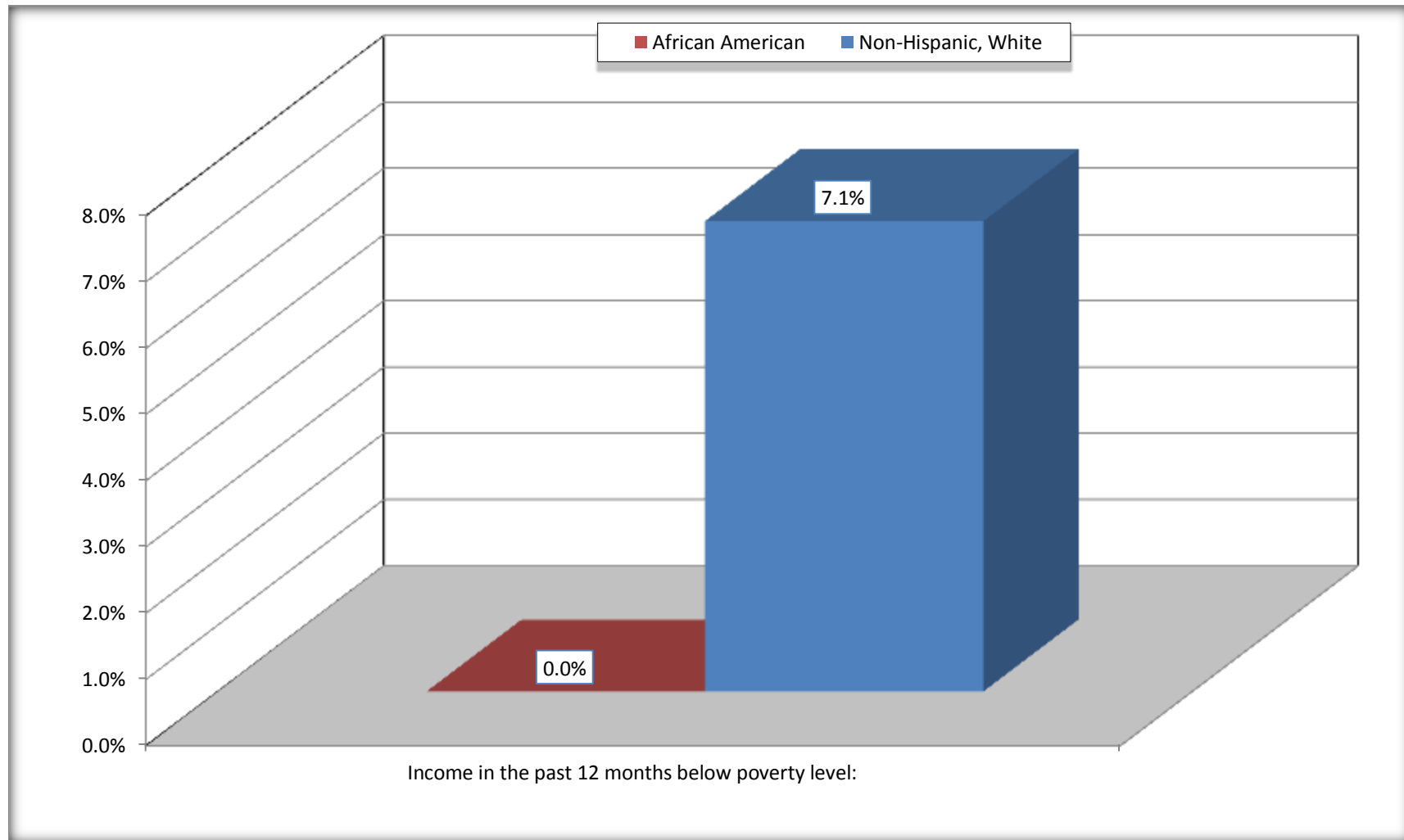
Source: U.S. Census Bureau, 2008-2012 American Community Survey

For information on confidentiality protection, sampling error, nonsampling error, and definitions, see Survey Methodology.

<http://www.census.gov/acs/www/UseData/index.htm>

Family Households Below Poverty in the Past 12 Months

Riverside CDP, Maryland

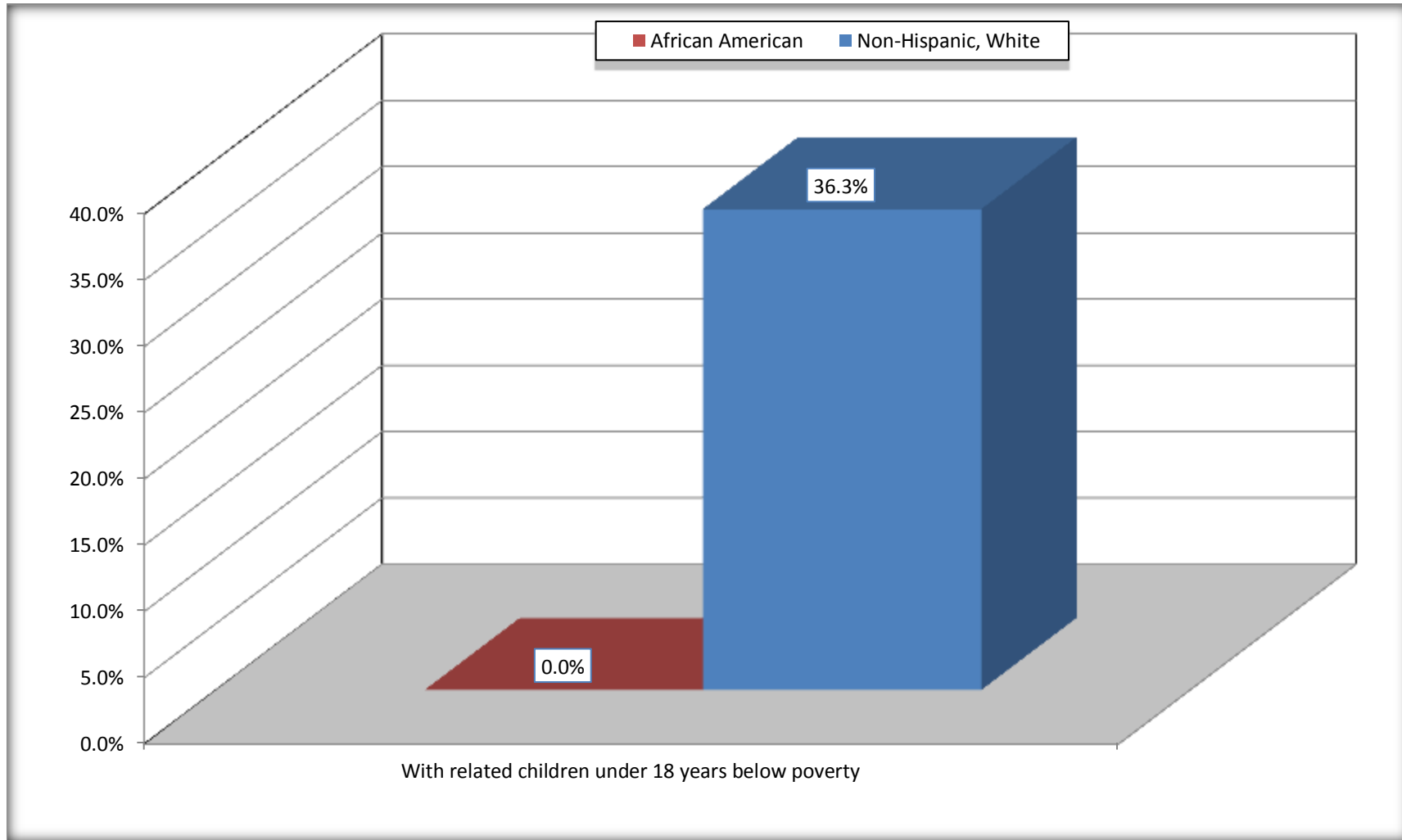


Source: B17010. POVERTY STATUS IN THE PAST 12 MONTHS OF FAMILIES BY FAMILY TYPE BY PRESENCE OF RELATED CHILDREN UNDER 18 YEARS

Data Set: 2008-2012 American Community Survey 5-Year Estimates

Female-headed Households with Related Children Below Poverty in the Past 12 Months

Riverside CDP, Maryland



Source: B17010. POVERTY STATUS IN THE PAST 12 MONTHS OF FAMILIES BY FAMILY TYPE BY PRESENCE OF RELATED CHILDREN UNDER 18 YEARS

Data Set: 2008-2012 American Community Survey 5-Year Estimates

B17020 POVERTY STATUS IN THE PAST 12 MONTHS BY AGE - Universe: POPULATION FOR WHOM POVERTY STATUS IS DETERMINED

Data Set: 2008-2012 American Community Survey 5-Year Estimates

	Riverside CDP, Maryland					
	African American	Margin of Error (+/-)	% of AA By Age	White, Not Hispanic	Margin of Error (+/-)	% of NHW By Age
Total:	1,126	424	100.0%	4,669	588	100.0%
Income in the past 12 months below poverty level:	93	96	8.3%	503	274	10.8%
Under 18 years	33	NC	13.4%	163	NC	14.5%
18 to 64 years	60	77	7.3%	340	217	10.1%
65 years and over	0	NC	0.0%	0	NC	0.0%
Income in the past 12 months at or above poverty level:	1,033	413	91.7%	4,166	560	89.2%
Under 18 years	214	NC	86.6%	962	NC	85.5%
18 to 64 years	763	297	92.7%	3,030	324	89.9%
65 years and over	56	NC	100.0%	174	NC	100.0%

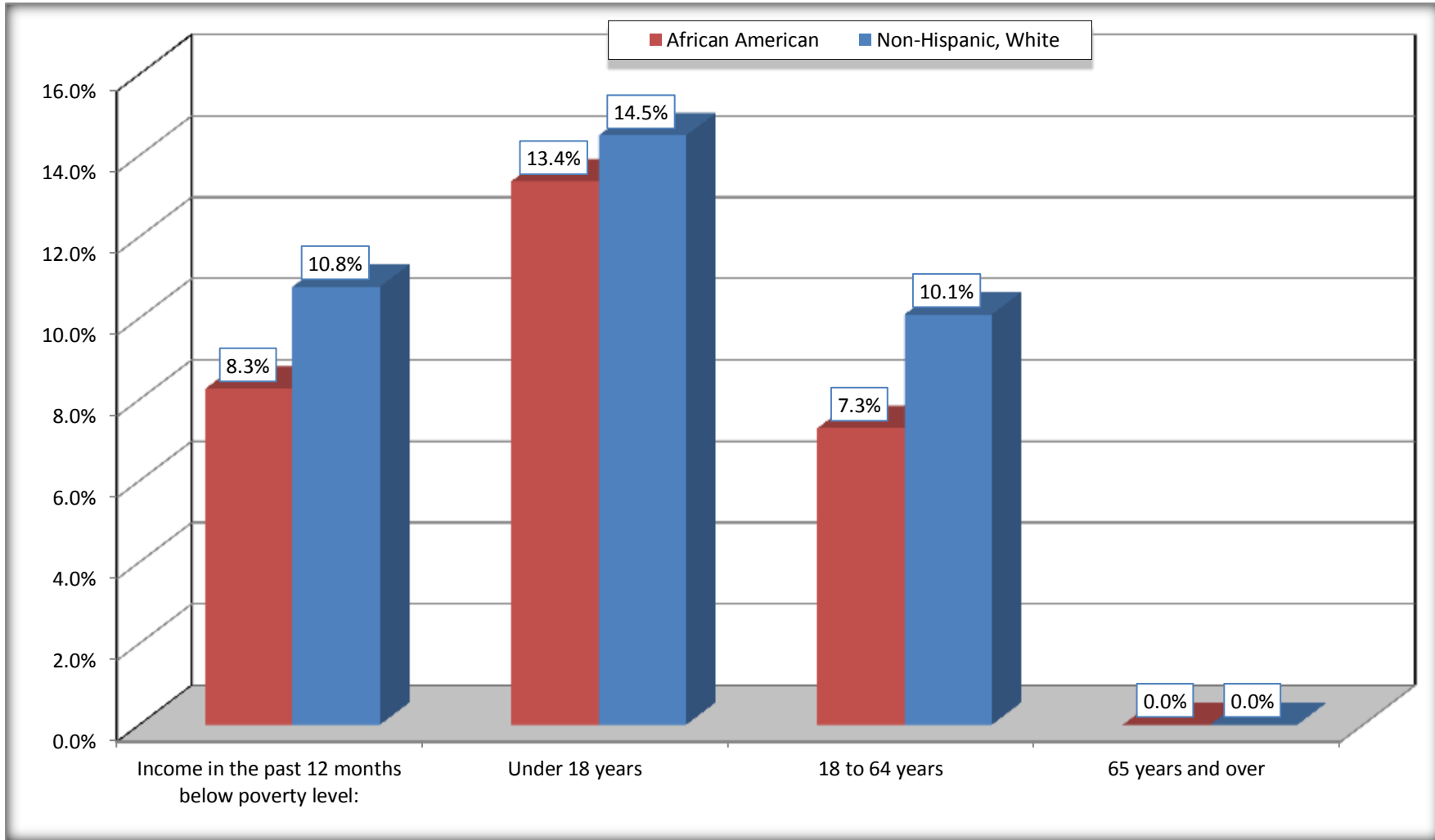
Source: U.S. Census Bureau, 2008-2012 American Community Survey

For information on confidentiality protection, sampling error, nonsampling error, and definitions, see Survey Methodology.

<http://www.census.gov/acs/www/UseData/index.htm>

Population Below Poverty in the Past 12 Months

Riverside CDP, Maryland



Source: B17020 POVERTY STATUS IN THE PAST 12 MONTHS BY AGE - Universe: POPULATION FOR WHOM POVERTY STATUS IS DETERMINED
Data Set: 2008-2012 American Community Survey 5-Year Estimates

B19001. HOUSEHOLD INCOME IN THE PAST 12 MONTHS (IN 2010 INFLATION-ADJUSTED DOLLARS)

Data Set: 2008-2012 American Community Survey 5-Year Estimates

	Riverside CDP, Maryland					
	African American	Margin of Error (+/-)	% of AA Total	White, Not Hispanic	Margin of Error (+/-)	% of NHW Total
Total:	343	124	100.0%	1,838	207	100.0%
Less than \$ 10,000	0	17	0.0%	70	66	3.8%
\$ 10,000 to \$ 14,999	0	17	0.0%	0	17	0.0%
\$ 15,000 to \$ 24,999	0	NC	0.0%	98	NC	5.3%
\$ 25,000 to \$ 34,999	17	NC	5.0%	70	NC	3.8%
\$ 35,000 to \$ 49,999	0	NC	0.0%	272	NC	14.8%
\$ 50,000 to \$ 74,999	83	NC	24.2%	503	NC	27.4%
\$ 75,000 to \$ 99,999	50	44	14.6%	425	111	23.1%
\$ 100,000 to \$ 149,999	125	NC	36.4%	362	NC	19.7%
\$ 150,000 to \$ 199,999	68	62	19.8%	38	34	2.1%
\$ 200,000 or more	0	17	0.0%	0	17	0.0%

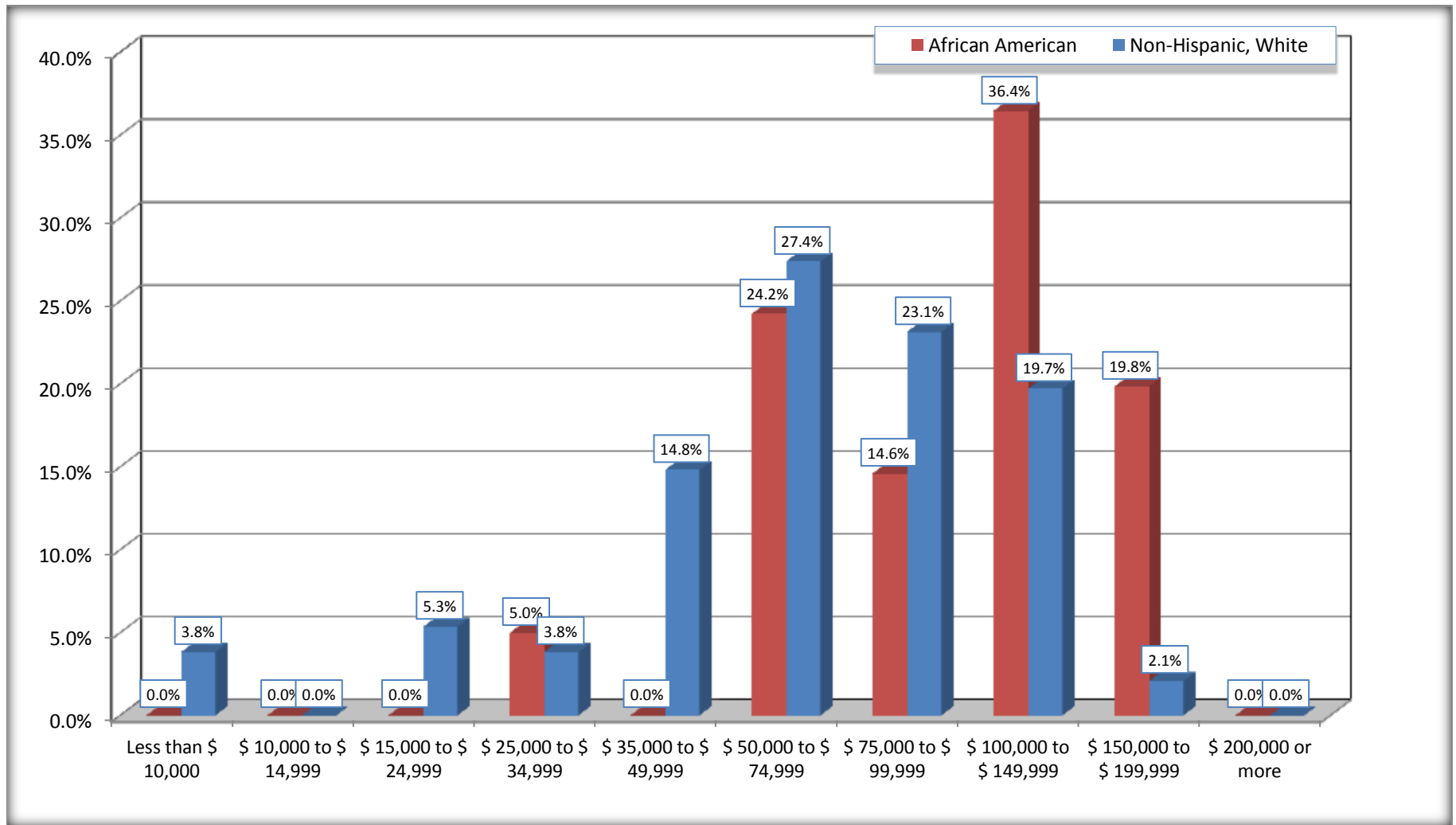
Source: U.S. Census Bureau, 2008-2012 American Community Survey

For information on confidentiality protection, sampling error, nonsampling error, and definitions, see Survey Methodology.

<http://www.census.gov/acs/www/UseData/index.htm>

Household Income in the Past 12 Months

Riverside CDP, Maryland



Source: B19001. HOUSEHOLD INCOME IN THE PAST 12 MONTHS (IN 2010 INFLATION-ADJUSTED DOLLARS)
Data Set: 2008-2012 American Community Survey 5-Year Estimates

B19013. MEDIAN HOUSEHOLD INCOME IN THE PAST 12 MONTHS (IN 2010 INFLATION-ADJUSTED DOLLARS)

Data Set: 2008-2012 American Community Survey 5-Year Estimates

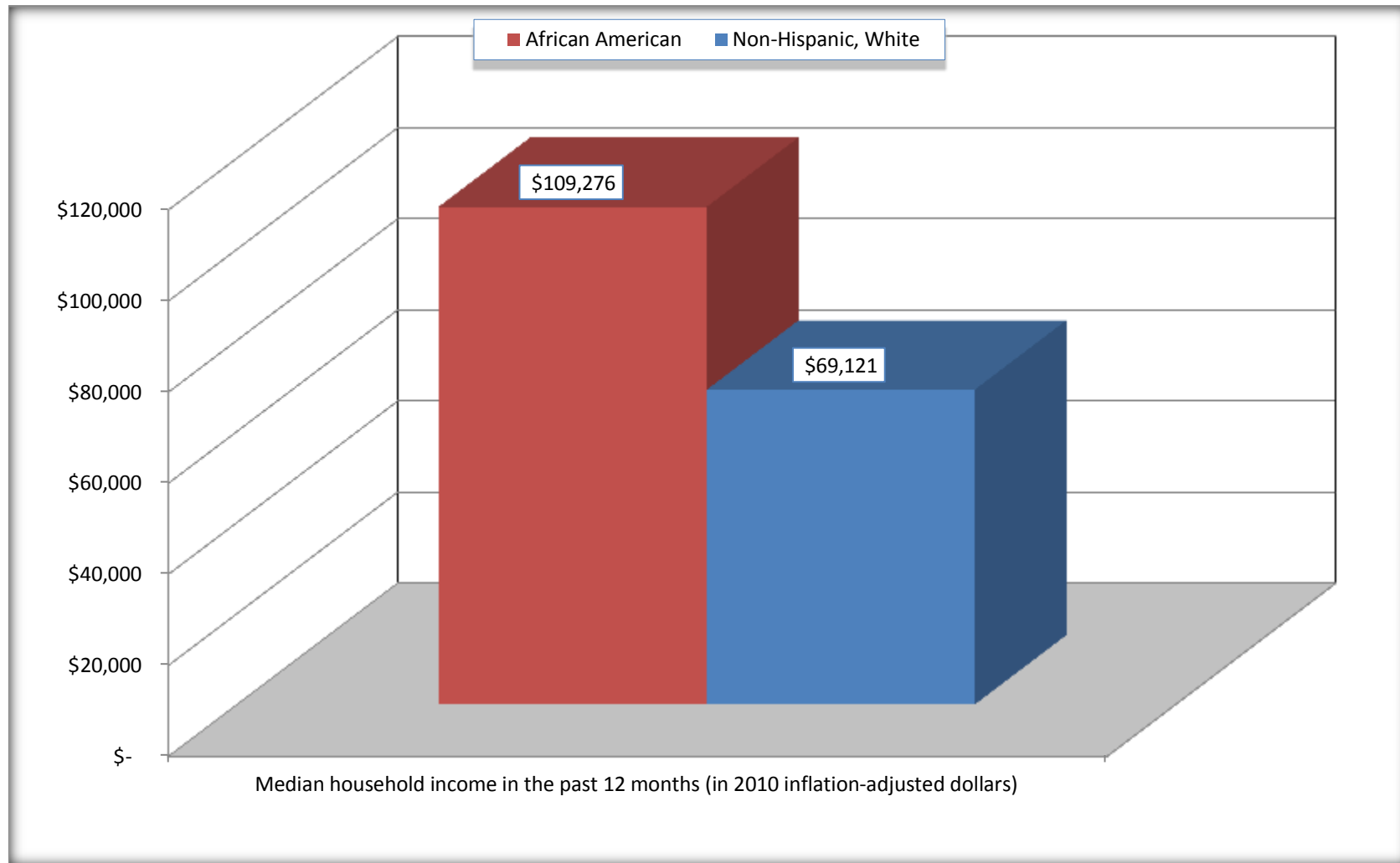
	Riverside CDP, Maryland			
	African American	Margin of Error (+/-)	White, Not Hispanic	Margin of Error (+/-)
Median household income in the past 12 months (in 2010 inflation-adjusted dollars)	\$ 109,276	\$ 22,230	\$ 69,121	\$ 7,370

Source: U.S. Census Bureau, 2008-2012 American Community Survey

For information on confidentiality protection, sampling error, nonsampling error, and definitions, see Survey Methodology.
<http://www.census.gov/acs/www/UseData/index.htm>

Median Household Income in the Past 12 Months

Riverside CDP, Maryland



Source: B19013. MEDIAN HOUSEHOLD INCOME IN THE PAST 12 MONTHS (IN 2010 INFLATION-ADJUSTED DOLLARS)
Data Set: 2008-2012 American Community Survey 5-Year Estimates

B19101. FAMILY INCOME IN THE PAST 12 MONTHS (IN 2010 INFLATION-ADJUSTED DOLLARS)

Data Set: 2008-2012 American Community Survey 5-Year Estimates

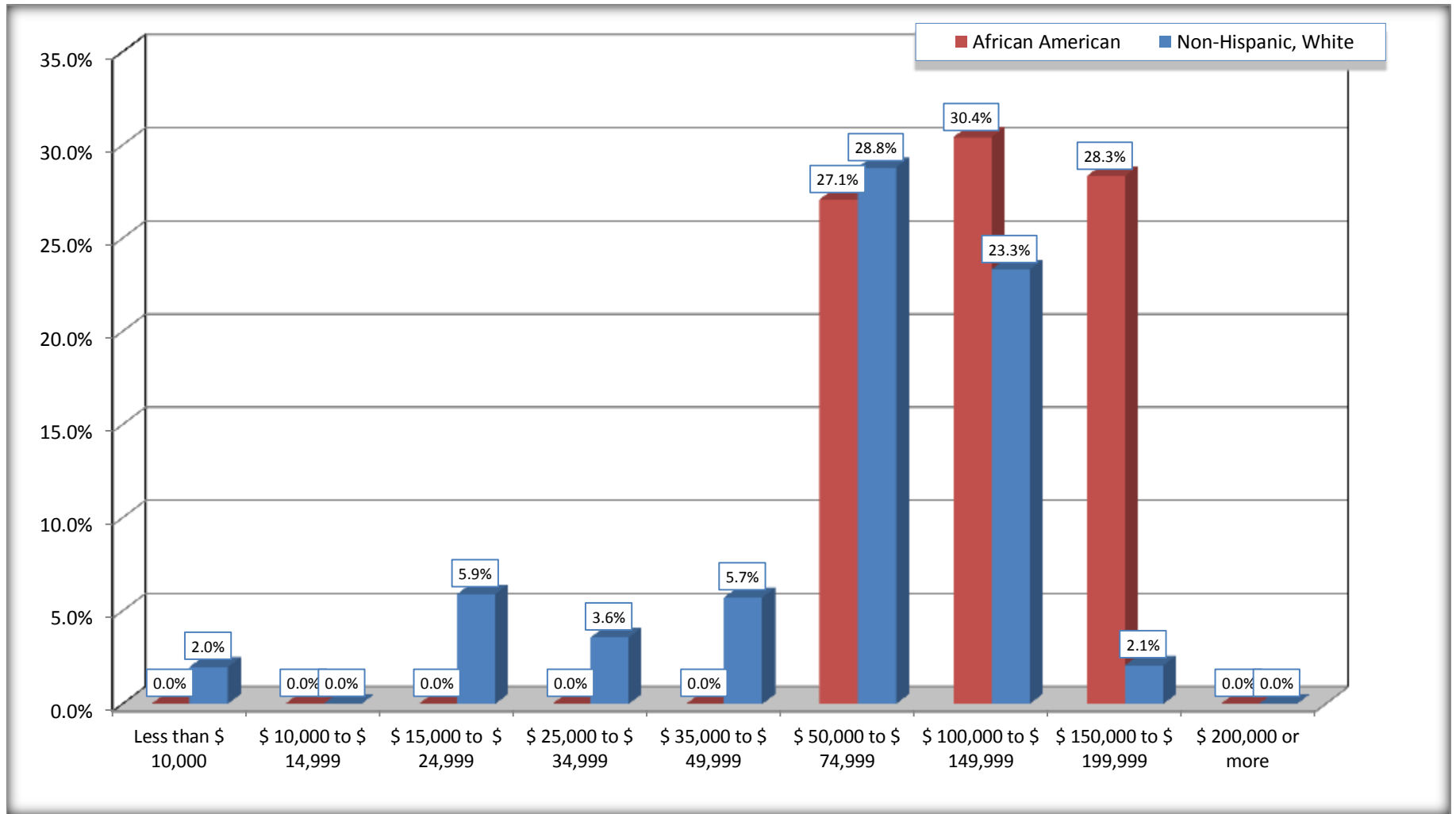
	Riverside CDP, Maryland					
	African American	Margin of Error (+/-)	% of AA Total	White, Not Hispanic	Margin of Error (+/-)	% of NHW Total
Total:	240	100	100.0%	1,205	181	100.0%
Less than \$ 10,000	0	17	0.0%	24	28	2.0%
\$ 10,000 to \$ 14,999	0	17	0.0%	0	17	0.0%
\$ 15,000 to \$ 24,999	0	NC	0.0%	71	NC	5.9%
\$ 25,000 to \$ 34,999	0	NC	0.0%	43	NC	3.6%
\$ 35,000 to \$ 49,999	0	NC	0.0%	69	NC	5.7%
\$ 50,000 to \$ 74,999	65	NC	27.1%	347	NC	28.8%
\$ 100,000 to \$ 149,999	73	NC	30.4%	281	NC	23.3%
\$ 150,000 to \$ 199,999	68	62	28.3%	25	28	2.1%
\$ 200,000 or more	0	17	0.0%	0	17	0.0%

Source: U.S. Census Bureau, 2008-2012 American Community Survey

For information on confidentiality protection, sampling error, nonsampling error, and definitions, see Survey Methodology.

<http://www.census.gov/acs/www/UseData/index.htm>

Family Income in the Past 12 Months Riverside CDP, Maryland



Source: B19101. FAMILY INCOME IN THE PAST 12 MONTHS (IN 2010 INFLATION-ADJUSTED DOLLARS)
Data Set: 2008-2012 American Community Survey 5-Year Estimates

B19113. MEDIAN FAMILY INCOME IN THE PAST 12 MONTHS (IN 2010 INFLATION-ADJUSTED DOLLARS)

Data Set: 2008-2012 American Community Survey 5-Year Estimates

	Riverside CDP, Maryland			
	African American	Margin of Error (+/-)	White, Not Hispanic	Margin of Error (+/-)
Median family income in the past 12 months (in 2010 inflation-adjusted dollars)	\$ 109,211	\$ 26,227	\$ 79,223	\$ 8,711

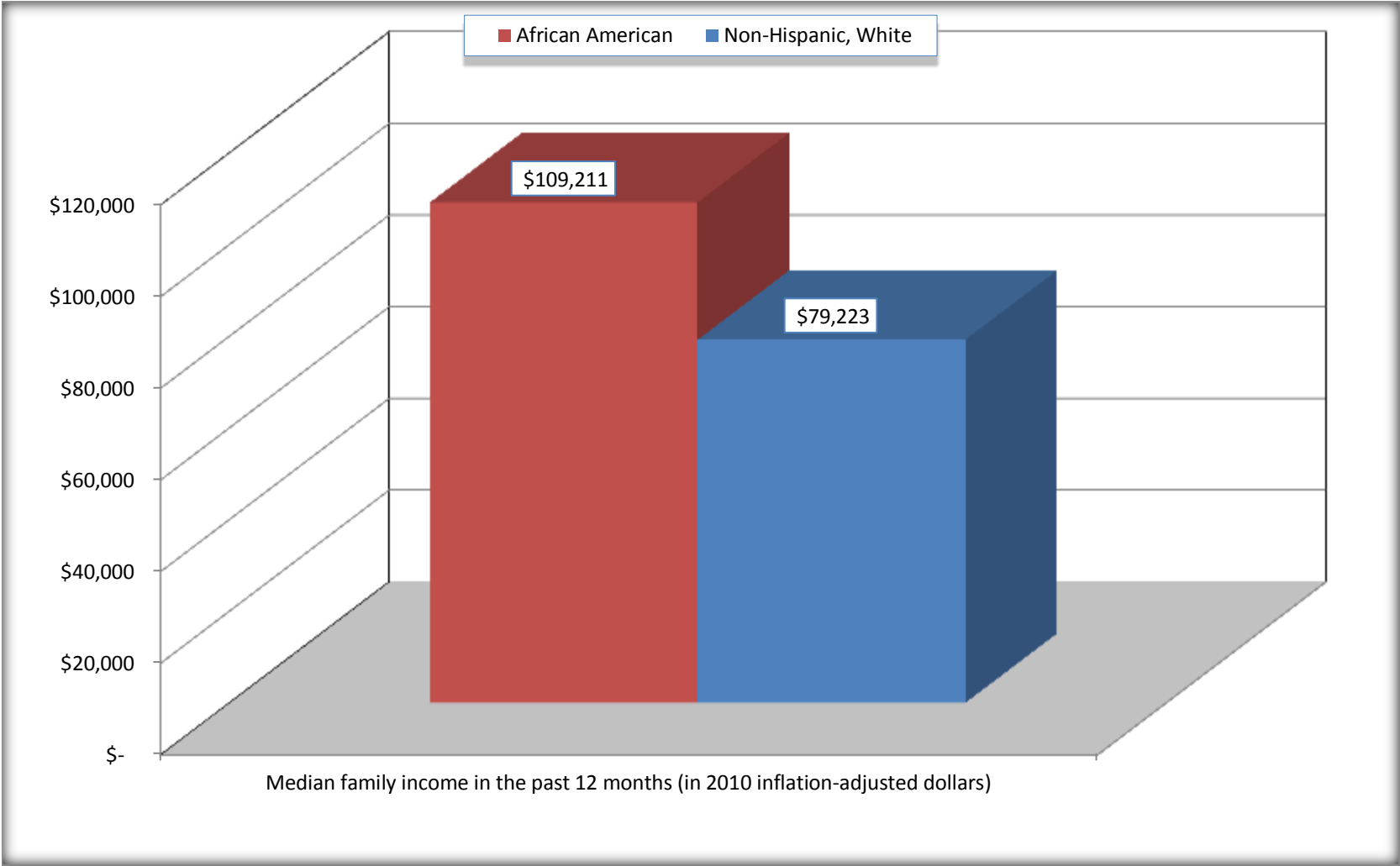
Source: U.S. Census Bureau, 2008-2012 American Community Survey

For information on confidentiality protection, sampling error, nonsampling error, and definitions, see Survey Methodology.

<http://www.census.gov/acs/www/UseData/index.htm>

Median Family Income in the Past 12 Months

Riverside CDP, Maryland



Source: B19113. MEDIAN FAMILY INCOME IN THE PAST 12 MONTHS (IN 2010 INFLATION-ADJUSTED DOLLARS)
Data Set: 2008-2012 American Community Survey 5-Year Estimates

B19202. MEDIAN NONFAMILY HOUSEHOLD INCOME IN THE PAST 12 MONTHS (IN 2010 INFLATION-ADJUSTED DOLLARS)

Data Set: 2008-2012 American Community Survey 5-Year Estimates

	Riverside CDP, Maryland			
	African American	Margin of Error (+/-)	White, Not Hispanic	Margin of Error (+/-)
Median nonfamily household income in the past 12 months (in 2010 inflation-adjusted dollars)	\$ 115,037	\$ 60,492	\$ 49,955	\$ 8,417

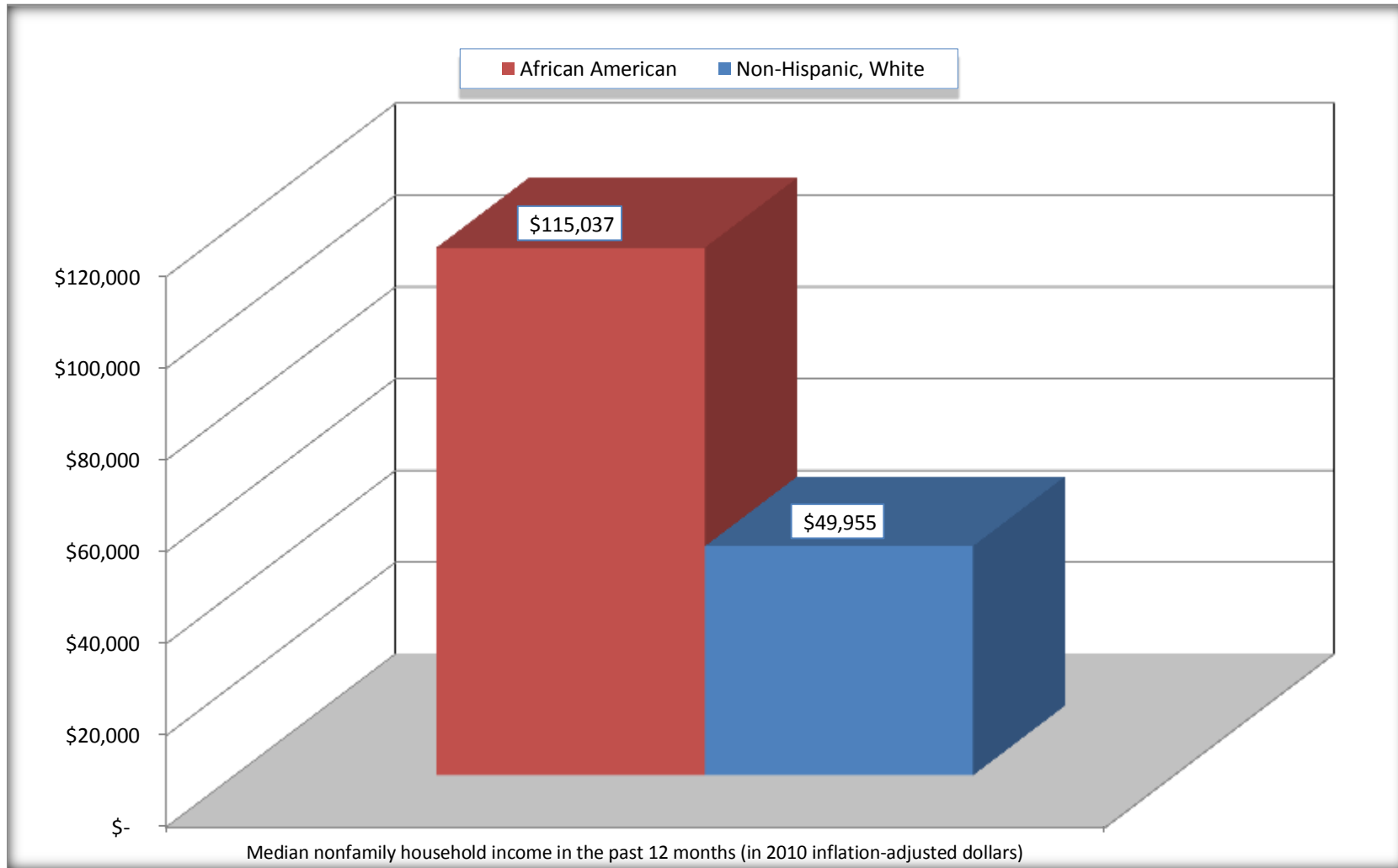
Source: U.S. Census Bureau, 2008-2012 American Community Survey

For information on confidentiality protection, sampling error, nonsampling error, and definitions, see Survey Methodology.

<http://www.census.gov/acs/www/UseData/index.htm>

Median Non-Family Income in the Past 12 Months

Riverside CDP, Maryland



Source: B19202. MEDIAN NONFAMILY HOUSEHOLD INCOME IN THE PAST 12 MONTHS (IN 2010 INFLATION-ADJUSTED DOLLARS)
Data Set: 2008-2012 American Community Survey 5-Year Estimates

B19301. PER CAPITA INCOME IN THE PAST 12 MONTHS (IN 2010 INFLATION-ADJUSTED DOLLARS)

Data Set: 2008-2012 American Community Survey 5-Year Estimates

	Riverside CDP, Maryland			
	African American	Margin of Error (+/-)	White, Not Hispanic	Margin of Error (+/-)
Per capita income in the past 12 months (in 2010 inflation-adjusted dollars)	\$ 33,258	\$ 6,297	\$ 28,516	\$ 3,036

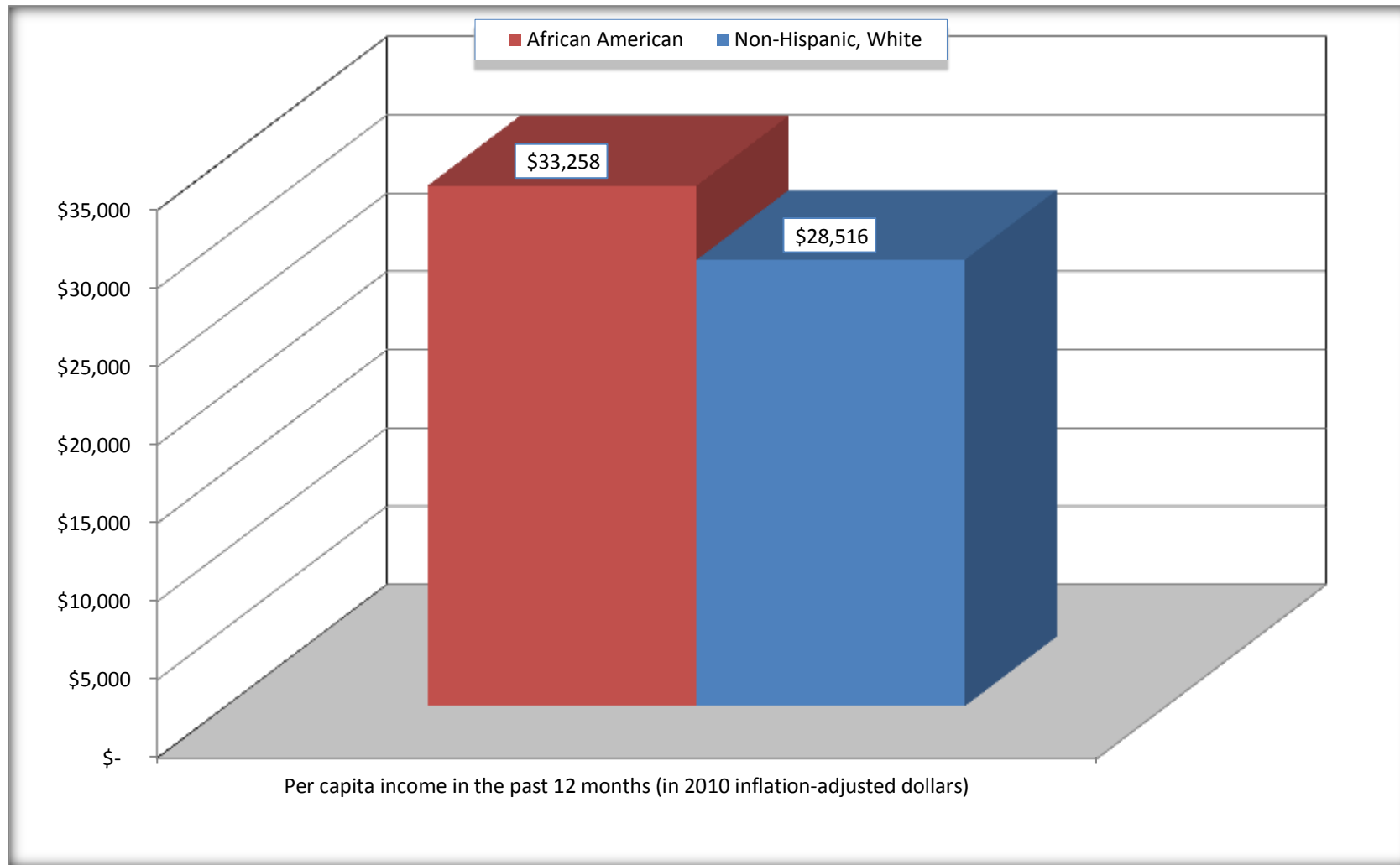
Source: U.S. Census Bureau, 2008-2012 American Community Survey

For information on confidentiality protection, sampling error, nonsampling error, and definitions, see Survey Methodology.

<http://www.census.gov/acs/www/UseData/index.htm>

Per capita Income in the Past 12 Months

Riverside CDP, Maryland



Source: B19301. PER CAPITA INCOME IN THE PAST 12 MONTHS (IN 2010 INFLATION-ADJUSTED DOLLARS)
Data Set: 2008-2012 American Community Survey 5-Year Estimates

B20017. MEDIAN EARNINGS IN THE PAST 12 MONTHS (IN 2010 INFLATION-ADJUSTED DOLLARS) BY SEX BY WORK EXPERIENCE IN THE PAST 12 MONTHS FOR THE POPULATION 16 YEARS AND OVER WITH EARNINGS IN THE PAST 12 MONTHS

Data Set: 2008-2012 American Community Survey 5-Year Estimates

	Riverside CDP, Maryland			
	African American	Margin of Error (+/-)	White, Not Hispanic	Margin of Error (+/-)
Median earnings in the past 12 months (in 2010 inflation-adjusted dollars) --				
Total:	\$ 42,425	\$ 8,985	\$ 42,091	\$ 3,056
Male --				
Total	\$ 49,743	\$ 12,405	\$ 50,435	\$ 4,816
Worked full-time, year-round in the past 12 months	\$ 59,677	\$ 8,727	\$ 55,581	\$ 5,098
Other	\$ 6,362	\$ 561	\$ 20,625	\$ 23,637
Female --				
Total	\$ 39,665	\$ 3,888	\$ 32,109	\$ 8,237
Worked full-time, year-round in the past 12 months	\$ 39,485	\$ 4,248	\$ 41,667	\$ 6,411
Other	\$ -	\$ -	\$ 9,677	\$ 2,725

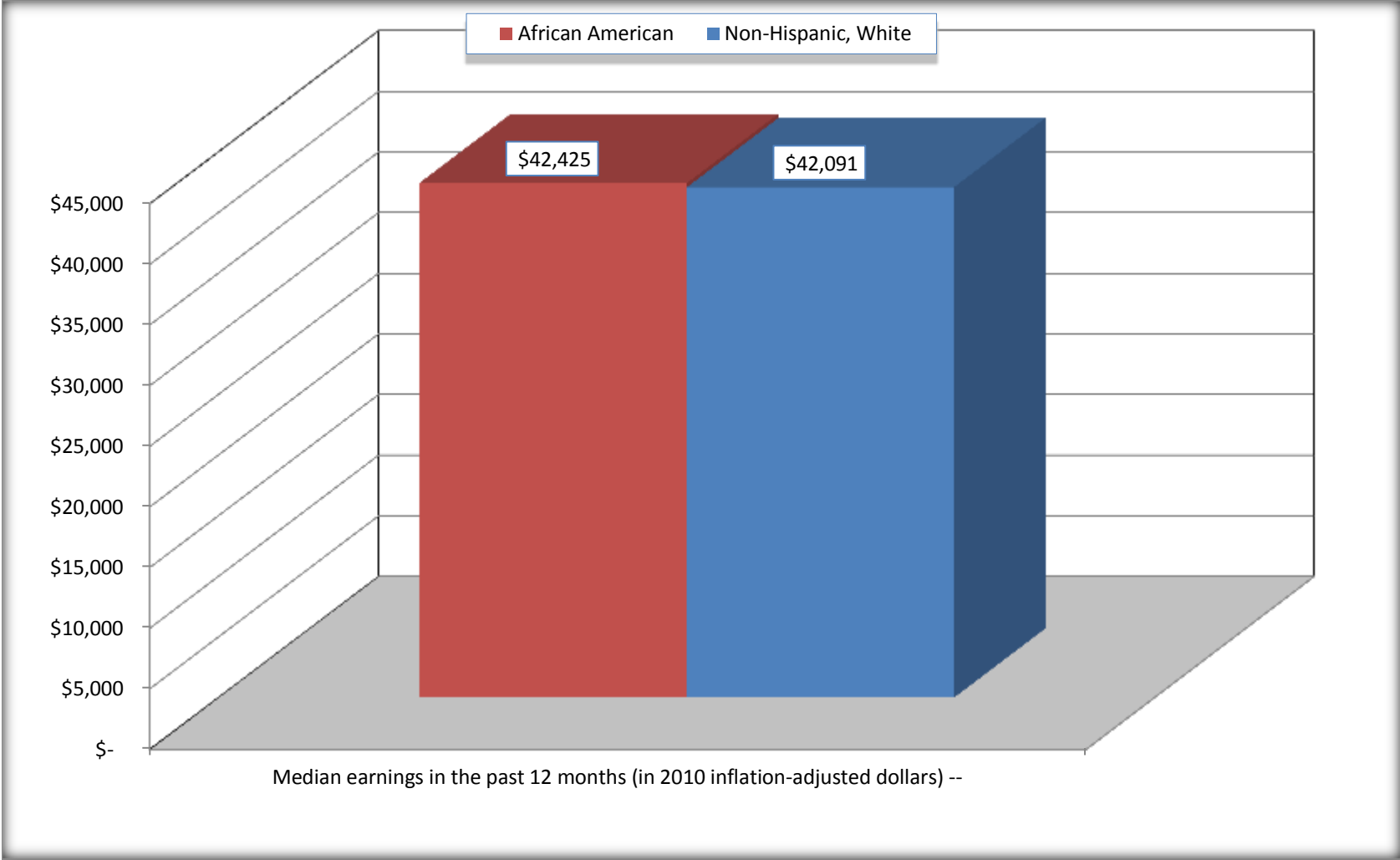
Source: U.S. Census Bureau, 2008-2012 American Community Survey

For information on confidentiality protection, sampling error, nonsampling error, and definitions, see Survey Methodology.

<http://www.census.gov/acs/www/UseData/index.htm>

Median earnings in the Past 12 Months (16 Years and Over with Earnings)

Riverside CDP, Maryland



Source: B20017. MEDIAN EARNINGS IN THE PAST 12 MONTHS (IN 2010 INFLATION-ADJUSTED DOLLARS) BY SEX BY WORK EXPERIENCE IN THE PAST 12 MONTHS FOR THE POPULATION 16 YEARS AND OVER WITH EARNINGS IN THE PAST 12 MONTHS
Data Set: 2008-2012 American Community Survey 5-Year Estimates

B20005. SEX BY WORK EXPERIENCE IN THE PAST 12 MONTHS BY EARNINGS IN THE PAST 12 MONTHS (IN 2010 INFLATION-ADJUSTED DOLLARS) FOR THE POPULATION 16 YEARS AND OVER

Data Set: 2008-2012 American Community Survey 5-Year Estimates

	Riverside CDP, Maryland					
	African American	Margin of Error (+/-)	% of AA Total	White, Not Hispanic	Margin of Error (+/-)	% of NHW Total
Total:	890	302	100.0%	3,712	400	100.0%
Worked full-time, year-round in the past 12 months:	574	NC	64.5%	2,022	NC	54.5%
No earnings	0	NC	0.0%	0	NC	0.0%
With earnings:	574	NC	64.5%	2,022	NC	54.5%
\$ 1 to \$ 9,999 or loss	77	NC	8.7%	13	NC	0.4%
\$ 10,000 to \$ 19,999	31	NC	3.5%	46	NC	1.2%
\$ 20,000 to \$ 29,999	0	NC	0.0%	336	NC	9.1%
\$ 30,000 to \$ 49,999	205	NC	23.0%	653	NC	17.6%
\$ 50,000 to \$ 74,999	145	NC	16.3%	613	NC	16.5%
\$ 75,000 or more	116	NC	13.0%	361	NC	9.7%
Other:	316	NC	35.5%	1,690	NC	45.5%
No earnings	165	NC	18.5%	891	NC	24.0%
With earnings: less than full time, year-round	151	NC	17.0%	799	NC	21.5%
Male:	406	139	45.6%	1,780	317	48.0%
Worked full-time, year-round in the past 12 months:	204	108	22.9%	1,080	211	29.1%
No earnings	0	17	0.0%	0	17	0.0%
With earnings:	204	108	22.9%	1,080	211	29.1%
\$ 1 to \$ 9,999 or loss	0	NC	0.0%	0	NC	0.0%
\$ 10,000 to \$ 19,999	0	NC	0.0%	0	NC	0.0%
\$ 20,000 to \$ 29,999	0	NC	0.0%	134	NC	3.6%
\$ 30,000 to \$ 49,999	65	NC	7.3%	281	NC	7.6%
\$ 50,000 to \$ 74,999	111	NC	12.5%	356	NC	9.6%
\$ 75,000 or more	28	NC	3.1%	309	NC	8.3%

	Riverside CDP, Maryland					
	African American	Margin of Error (+/-)	% of AA Total	White, Not Hispanic	Margin of Error (+/-)	% of NHW Total
Other:	202	123	22.7%	700	266	18.9%
No earnings	65	78	7.3%	355	248	9.6%
With earnings:	137	102	15.4%	345	111	9.3%
Female:	484	187	54.4%	1,932	211	52.0%
Worked full-time, year-round in the past 12 months:	370	170	41.6%	942	156	25.4%
No earnings	0	17	0.0%	0	17	0.0%
With earnings:	370	170	41.6%	942	156	25.4%
\$ 1 to \$ 9,999 or loss	77	NC	8.7%	13	NC	0.4%
\$ 10,000 to \$ 19,999	31	NC	3.5%	46	NC	1.2%
\$ 20,000 to \$ 29,999	0	NC	0.0%	202	NC	5.4%
\$ 30,000 to \$ 49,999	140	NC	15.7%	372	NC	10.0%
\$ 50,000 to \$ 74,999	34	NC	3.8%	257	NC	6.9%
\$ 75,000 or more	88	NC	9.9%	52	NC	1.4%
Other:	114	76	12.8%	990	192	26.7%
No earnings	100	74	11.2%	536	157	14.4%
With earnings:	14	22	1.6%	454	143	12.2%

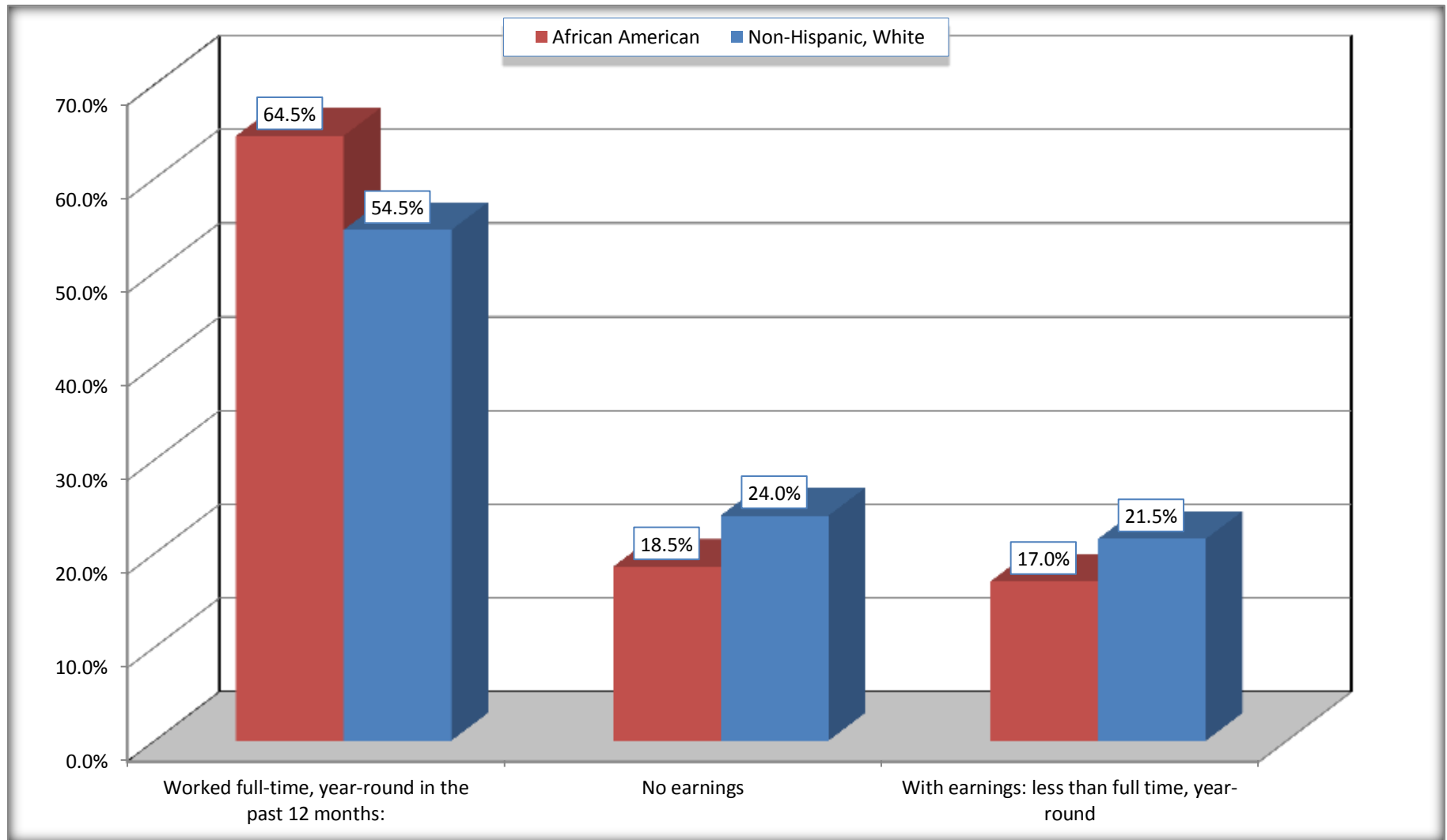
Source: U.S. Census Bureau, 2008-2012 American Community Survey

For information on confidentiality protection, sampling error, nonsampling error, and definitions, see Survey Methodology.

<http://www.census.gov/acs/www/UseData/index.htm>

Employment and Earnings in in the Past 12 Months (16 Years and Over)

Riverside CDP, Maryland



Source: B20005. SEX BY WORK EXPERIENCE IN THE PAST 12 MONTHS BY EARNINGS IN THE PAST 12 MONTHS (IN 2010 INFLATION-ADJUSTED DOLLARS) FOR THE POPULATION 16 YEARS AND OVER

Data Set: 2008-2012 American Community Survey 5-Year Estimates

C21001. SEX BY AGE BY VETERAN STATUS FOR THE CIVILIAN POPULATION 18 YEARS AND OVER

Data Set: 2008-2012 American Community Survey 5-Year Estimates

	Riverside CDP, Maryland					
	African American	Margin of Error (+/-)	% of AA Total	White, Not Hispanic	Margin of Error (+/-)	% of NHW Total
Total:	855	304	100.0%	3,649	396	100.0%
Veteran	40	NC	4.7%	455	NC	12.5%
Nonveteran	815	NC	95.3%	3,194	NC	87.5%
Male:	389	136	45.5%	1,737	313	47.6%
18 to 64 years:	373	136	43.6%	1,603	309	43.9%
Veteran	24	28	2.8%	405	137	11.1%
Nonveteran	349	133	40.8%	1,198	301	32.8%
65 years and over:	16	25	1.9%	134	59	3.7%
Veteran	16	25	1.9%	50	46	1.4%
Nonveteran	0	17	0.0%	84	45	2.3%
Female:	466	188	54.5%	1,912	213	52.4%
18 to 64 years:	415	186	48.5%	1,785	190	48.9%
Veteran	0	17	0.0%	0	17	0.0%
Nonveteran	415	186	48.5%	1,785	190	48.9%
65 years and over:	51	46	6.0%	127	70	3.5%
Veteran	0	17	0.0%	0	17	0.0%
Nonveteran	51	46	6.0%	127	70	3.5%

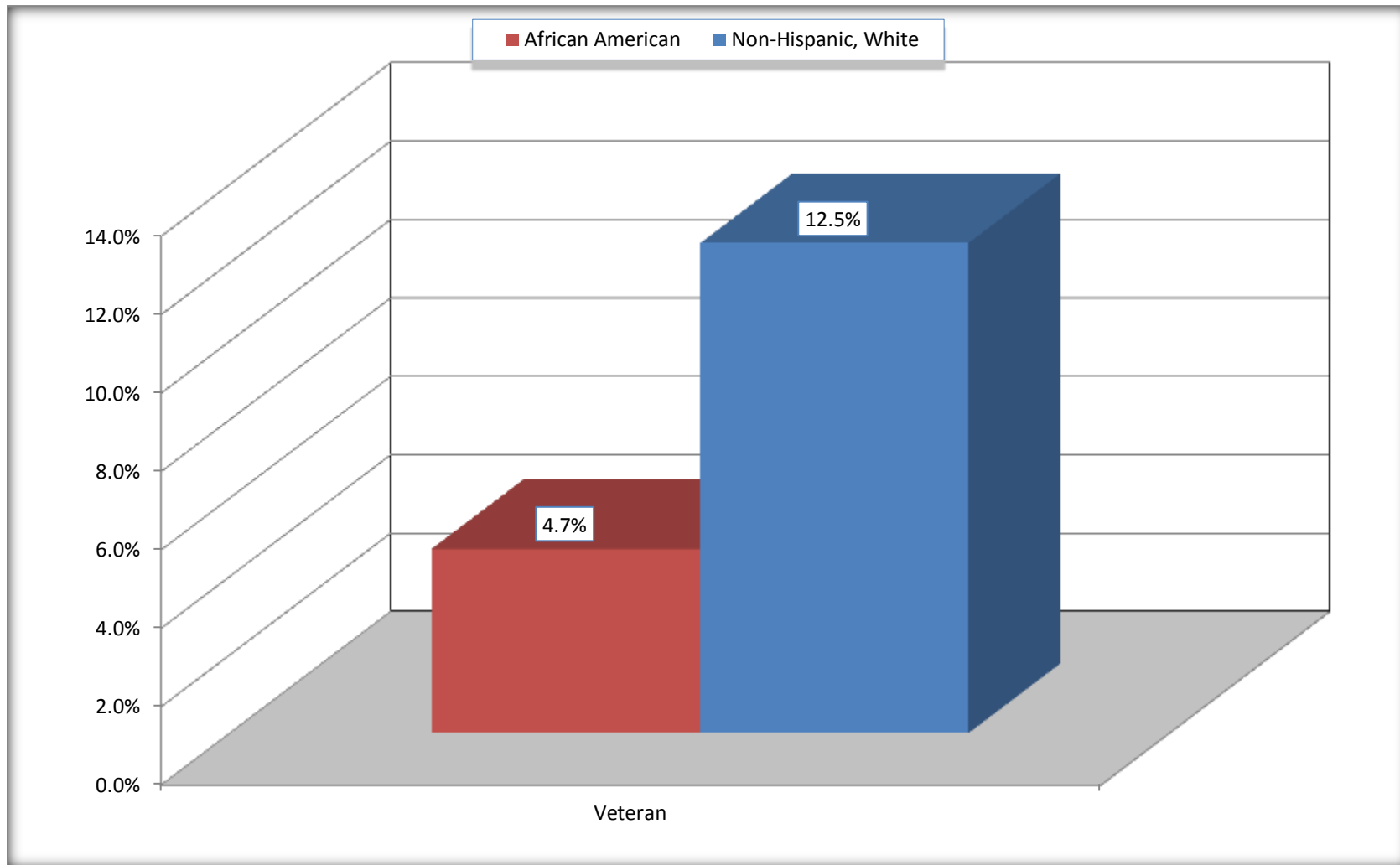
Source: U.S. Census Bureau, 2008-2012 American Community Survey

For information on confidentiality protection, sampling error, nonsampling error, and definitions, see Survey Methodology.

<http://www.census.gov/acs/www/UseData/index.htm>

Veterans in the Civilian Population 18 Years and Over

Riverside CDP, Maryland



Source: C21001. SEX BY AGE BY VETERAN STATUS FOR THE CIVILIAN POPULATION 18 YEARS AND OVER
Data Set: 2008-2012 American Community Survey 5-Year Estimates

B22005. RECEIPT OF FOOD STAMPS/SNAP IN THE PAST 12 MONTHS BY RACE OF HOUSEHOLDER

Data Set: 2008-2012 American Community Survey 5-Year Estimates

	Riverside CDP, Maryland					
	African American	Margin of Error (+/-)	% of AA Total	White, Not Hispanic	Margin of Error (+/-)	% of NHW Total
Total:	343	124	100.0%	1,838	207	100.0%
HH received Food Stamps/SNAP in the past 12 months	-	17	0.0%	87	55	4.7%
HH did not receive Food Stamps/SNAP in the past 12 months	343	124	100.0%	1,751	215	95.3%

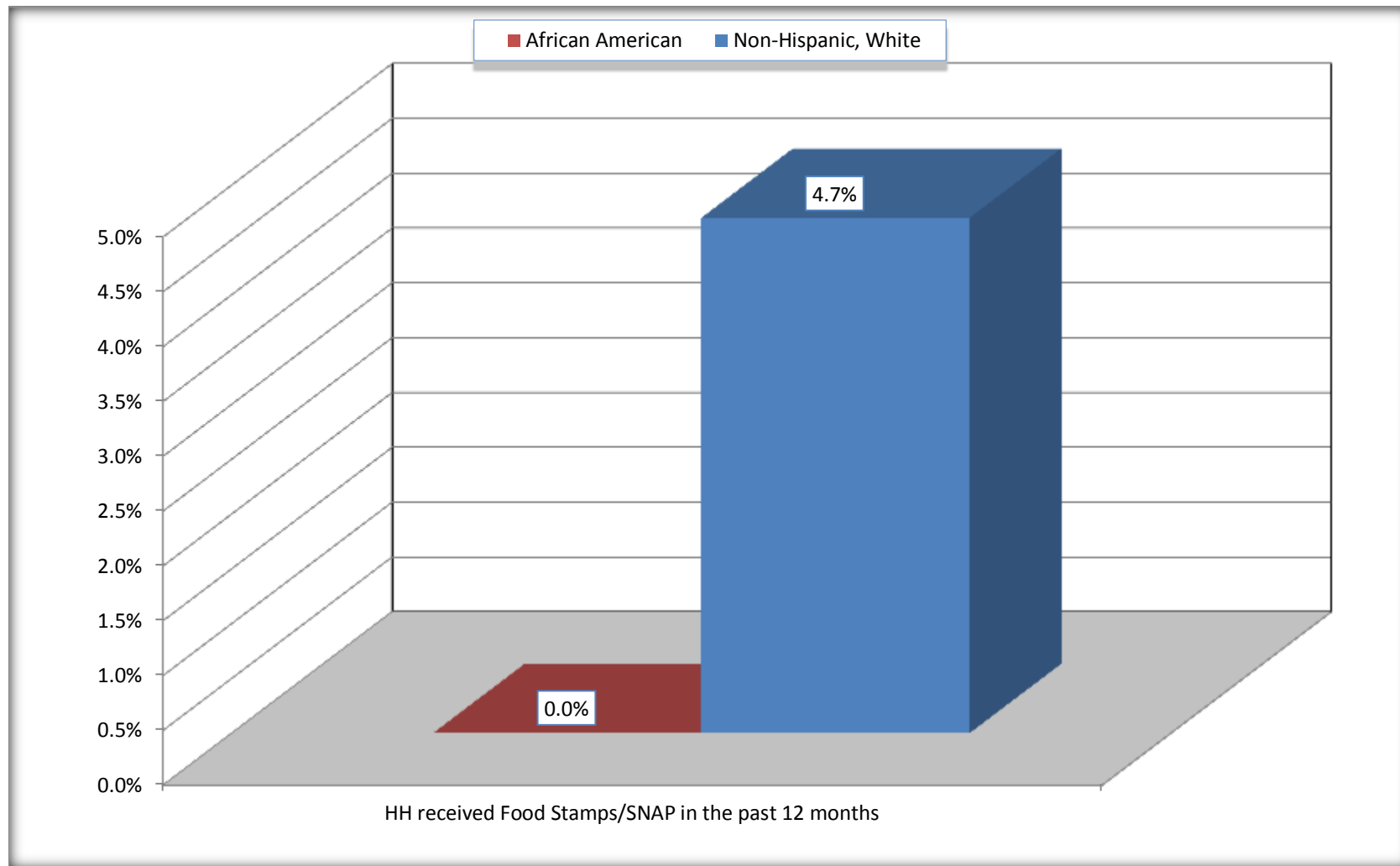
Source: U.S. Census Bureau, 2008-2012 American Community Survey

For information on confidentiality protection, sampling error, nonsampling error, and definitions, see Survey Methodology.

<http://www.census.gov/acs/www/UseData/index.htm>

Receipt of Food Stamps/SNAP in the Past 12 Months by Household

Riverside CDP, Maryland



Source: B22005. RECEIPT OF FOOD STAMPS/SNAP IN THE PAST 12 MONTHS BY RACE OF HOUSEHOLDER
Data Set: 2008-2012 American Community Survey 5-Year Estimates

C23002. SEX BY AGE BY EMPLOYMENT STATUS FOR THE POPULATION 16 YEARS AND OVER

Data Set: 2008-2012 American Community Survey 5-Year Estimates

	Riverside CDP, Maryland					
	African American	Margin of Error (+/-)	% of AA Total	White, Not Hispanic	Margin of Error (+/-)	% of NHW Total
Total:	890	302	100.0%	3,712	400	100.0%
In labor force:	727	NC	81.7%	2,704	NC	72.8%
In Armed Forces	35	NC	3.9%	0	NC	0.0%
Civilian:	653	NC	73.4%	2,637	NC	71.0%
Employed	676	NC	76.0%	2,568	NC	69.2%
Unemployed	16	NC	1.8%	136	NC	3.7%
Not in labor force	163	NC	18.3%	1,008	NC	27.2%
Male:	406	139	45.6%	1,780	317	48.0%
16 to 64 years:	390	138	43.8%	1,646	316	44.3%
In labor force:	327	133	36.7%	1,319	198	35.5%
In Armed Forces	17	28	1.9%	0	17	0.0%
Civilian:	310	131	34.8%	1,319	198	35.5%
Employed	310	131	34.8%	1,274	208	34.3%
Unemployed	0	17	0.0%	45	42	1.2%
Not in labor force	63	79	7.1%	327	247	8.8%
65 years and over:	16	25	1.8%	134	59	3.6%
In labor force:	16	25	1.8%	54	33	1.5%
Employed	0	17	0.0%	18	20	0.5%
Unemployed	16	25	1.8%	36	36	1.0%
Not in labor force	0	17	0.0%	80	54	2.2%

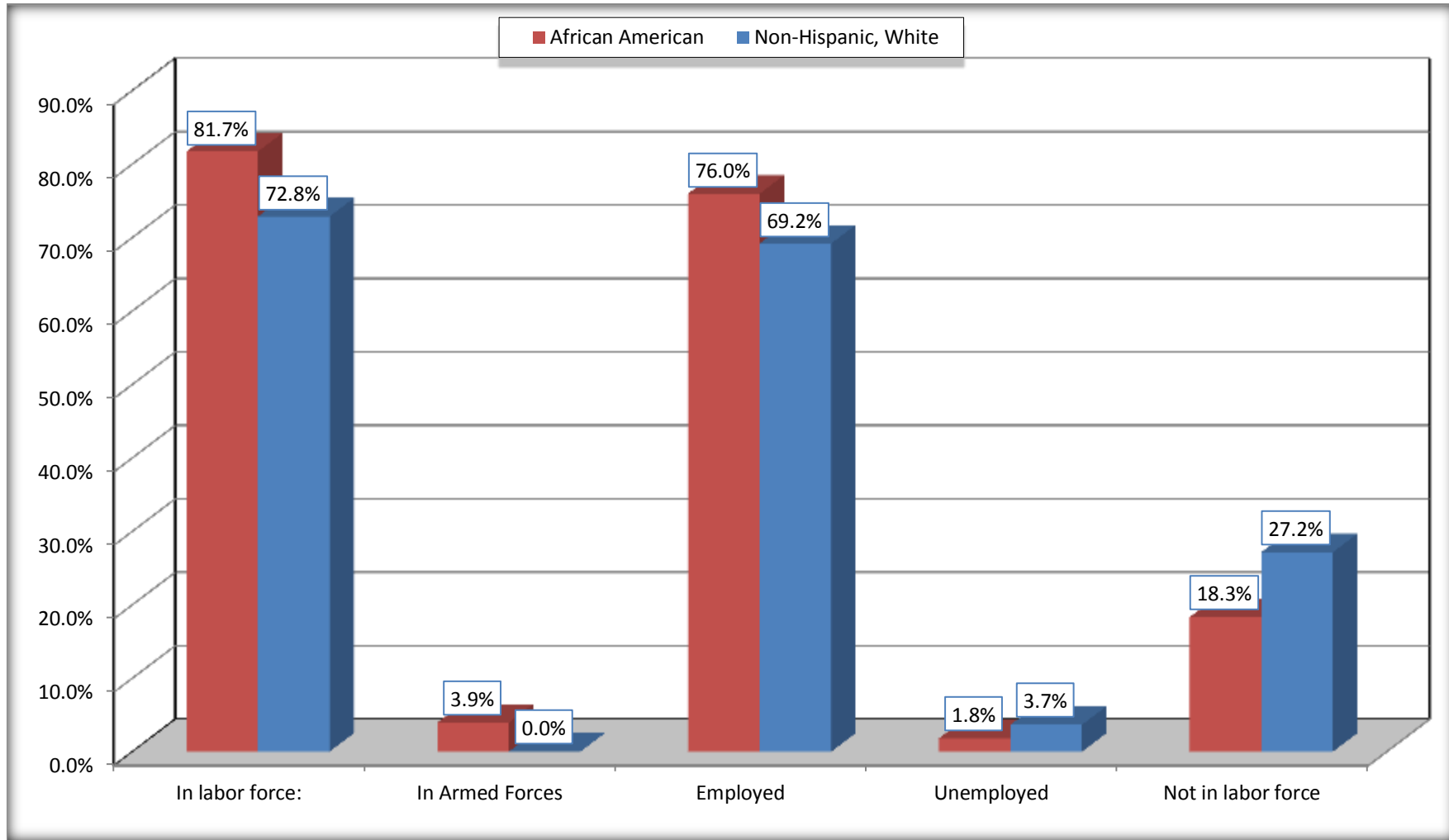
	Riverside CDP, Maryland					
	African American	Margin of Error (+/-)	% of AA Total	White, Not Hispanic	Margin of Error (+/-)	% of NHW Total
Female:	484	187	54.4%	1,932	211	52.0%
16 to 64 years:	433	185	48.7%	1,805	188	48.6%
In labor force:	361	166	40.6%	1,318	189	35.5%
In Armed Forces	18	26	2.0%	0	17	0.0%
Civilian:	343	167	38.5%	1,318	189	35.5%
Employed	343	167	38.5%	1,263	173	34.0%
Unemployed	0	17	0.0%	55	51	1.5%
Not in labor force	72	69	8.1%	487	134	13.1%
65 years and over:	51	46	5.7%	127	70	3.4%
In labor force:	23	36	2.6%	13	21	0.4%
Employed	23	36	2.6%	13	21	0.4%
Unemployed	0	17	0.0%	0	17	0.0%
Not in labor force	28	29	3.1%	114	69	3.1%

Source: U.S. Census Bureau, 2008-2012 American Community Survey

For information on confidentiality protection, sampling error, nonsampling error, and definitions, see Survey Methodology.
<http://www.census.gov/acs/www/UseData/index.htm>

Employment Status for the Population 16 years and over

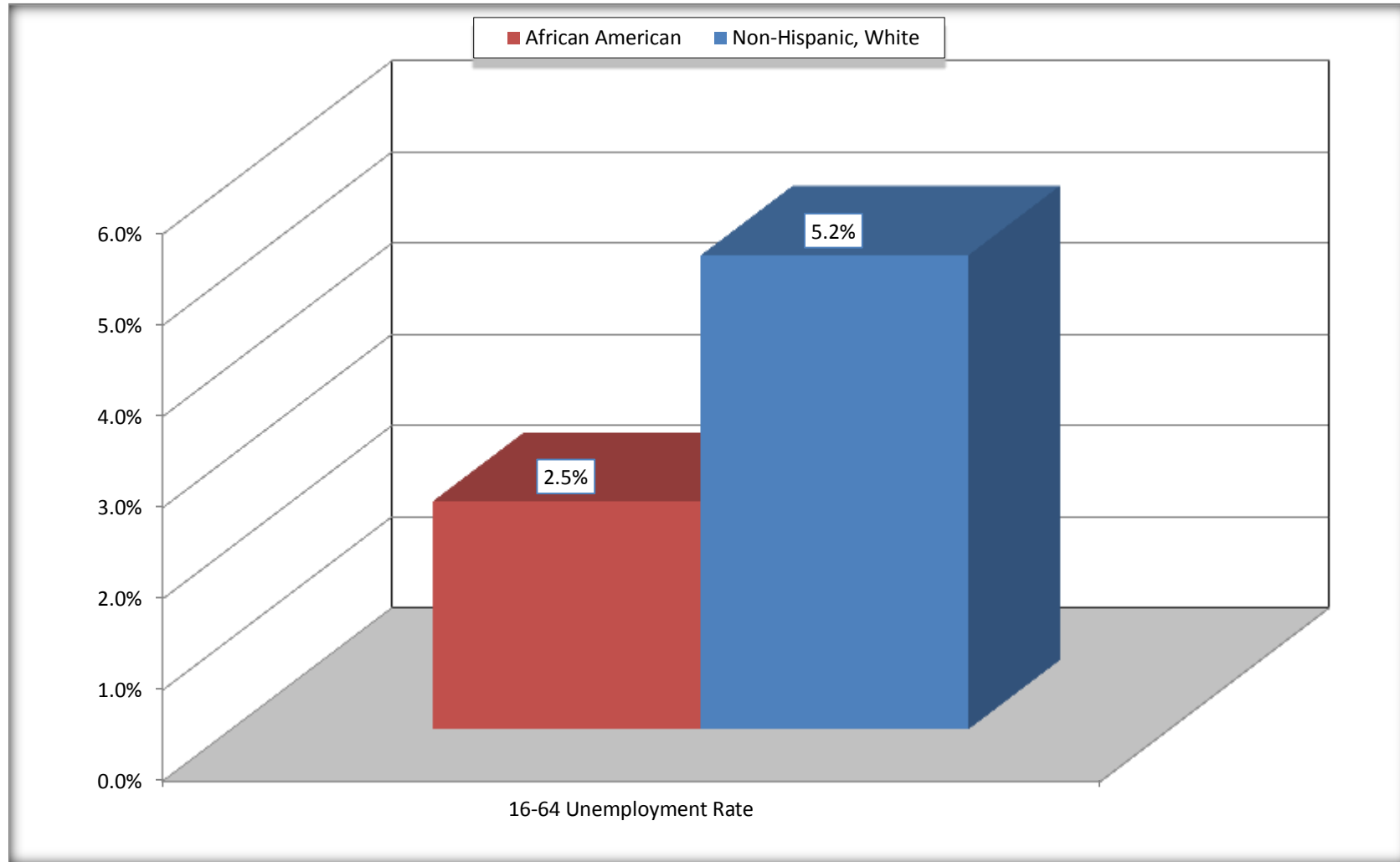
Riverside CDP, Maryland



Source: C23002. SEX BY AGE BY EMPLOYMENT STATUS FOR THE POPULATION 16 YEARS AND OVER
Data Set: 2008-2012 American Community Survey 5-Year Estimates

Unemployment of Working Age Population (Ages 16 to 64) (As a Percent of 16-64 Civilian Labor Force)

Riverside CDP, Maryland



Source: C23002. SEX BY AGE BY EMPLOYMENT STATUS FOR THE POPULATION 16 YEARS AND OVER
Data Set: 2008-2012 American Community Survey 5-Year Estimates

C24010. SEX BY OCCUPATION FOR THE CIVILIAN EMPLOYED POPULATION 16 YEARS AND OVER

Data Set: 2008-2012 American Community Survey 5-Year Estimates

	Riverside CDP, Maryland					
	African American	Margin of Error (+/-)	% of AA Total	White, Not Hispanic	Margin of Error (+/-)	% of NHW Total
Total:	676	275	100.0%	2,568	284	100.0%
Management, professional, and related occupations	182	NC	26.9%	894	NC	34.8%
Service occupations	107	NC	15.8%	456	NC	17.8%
Sales and office occupations	162	NC	24.0%	681	NC	26.5%
Natural resources, construction, and maintenance occupations:	24	NC	3.6%	297	NC	11.6%
Production, transportation, and material moving occupations	201	NC	29.7%	240	NC	9.3%
Male:	310	131	45.9%	1,292	205	50.3%
Management, business, science, and arts occupations:	31	46	4.6%	425	137	16.5%
Service occupations	30	37	4.4%	224	126	8.7%
Sales and office occupations	54	58	8.0%	187	85	7.3%
Natural resources, construction, and maintenance occupations:	8	12	1.2%	297	103	11.6%
Production, transportation, and material moving occupations	187	114	27.7%	159	89	6.2%
Female:	366	169	54.1%	1,276	175	49.7%
Management, professional, and related occupations	151	105	22.3%	469	134	18.3%
Service occupations	77	89	11.4%	232	106	9.0%
Sales and office occupations	108	95	16.0%	494	159	19.2%
Natural resources, construction, and maintenance occupations:	16	24	2.4%	0	17	0.0%
Production, transportation, and material moving occupations	14	22	2.1%	81	86	3.2%

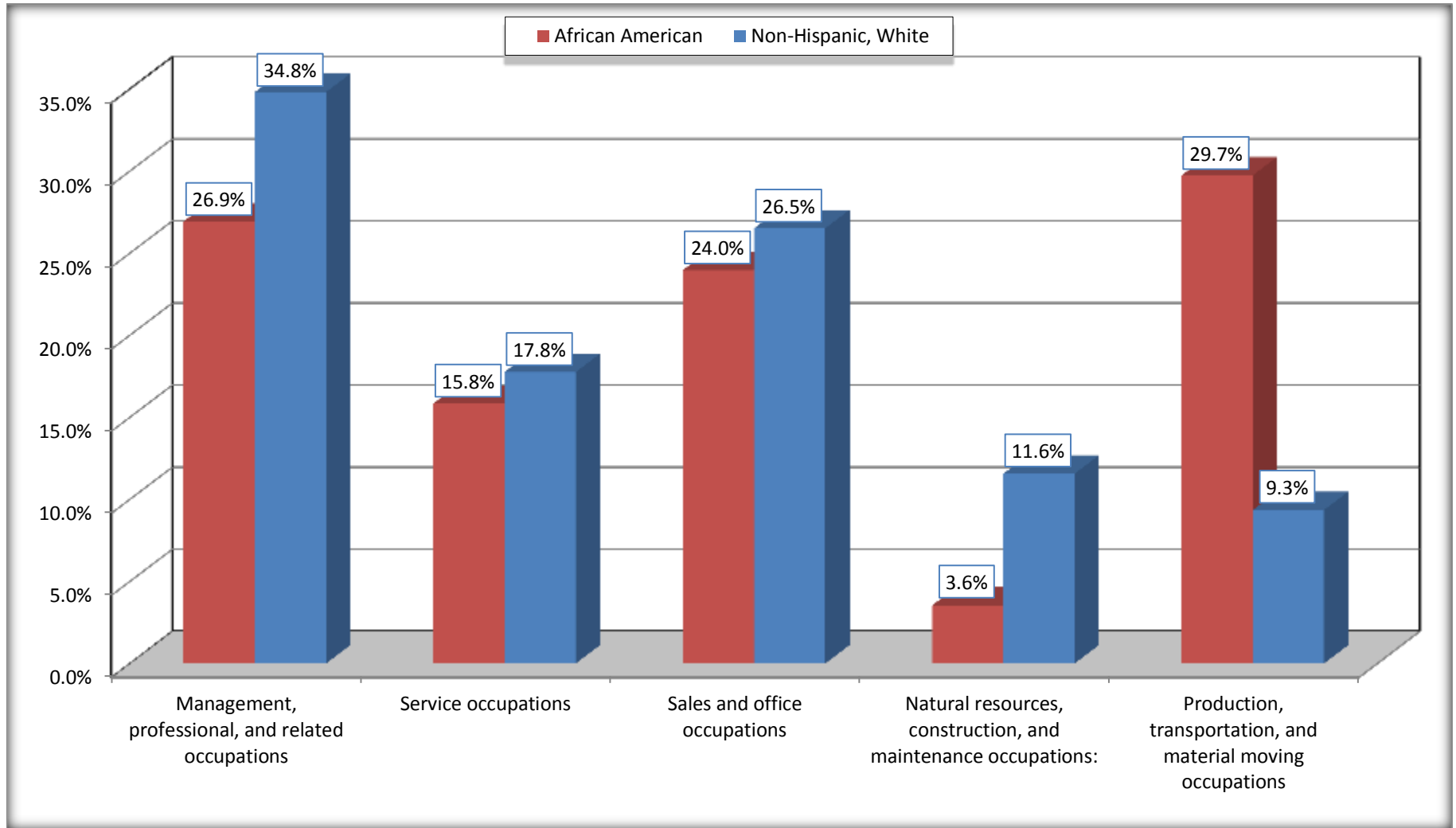
Source: U.S. Census Bureau, 2008-2012 American Community Survey

For information on confidentiality protection, sampling error, nonsampling error, and definitions, see Survey Methodology.

<http://www.census.gov/acs/www/UseData/index.htm>

Occupation for the Civilian Employed 16 Years and Over Population

Riverside CDP, Maryland



Source: C24010. SEX BY OCCUPATION FOR THE CIVILIAN EMPLOYED POPULATION 16 YEARS AND OVER
Data Set: 2008-2012 American Community Survey 5-Year Estimates

B25003. TENURE - Universe: OCCUPIED HOUSING UNITS

Data Set: 2008-2012 American Community Survey 5-Year Estimates

	Riverside CDP, Maryland					
	African American	Margin of Error (+/-)	% of AA Total	White, Not Hispanic	Margin of Error (+/-)	% of NHW Total
Total:	343	124	100.0%	1,838	207	100.0%
Owner occupied	296	115	86.3%	1,308	144	71.2%
Renter occupied	47	32	13.7%	530	164	28.8%

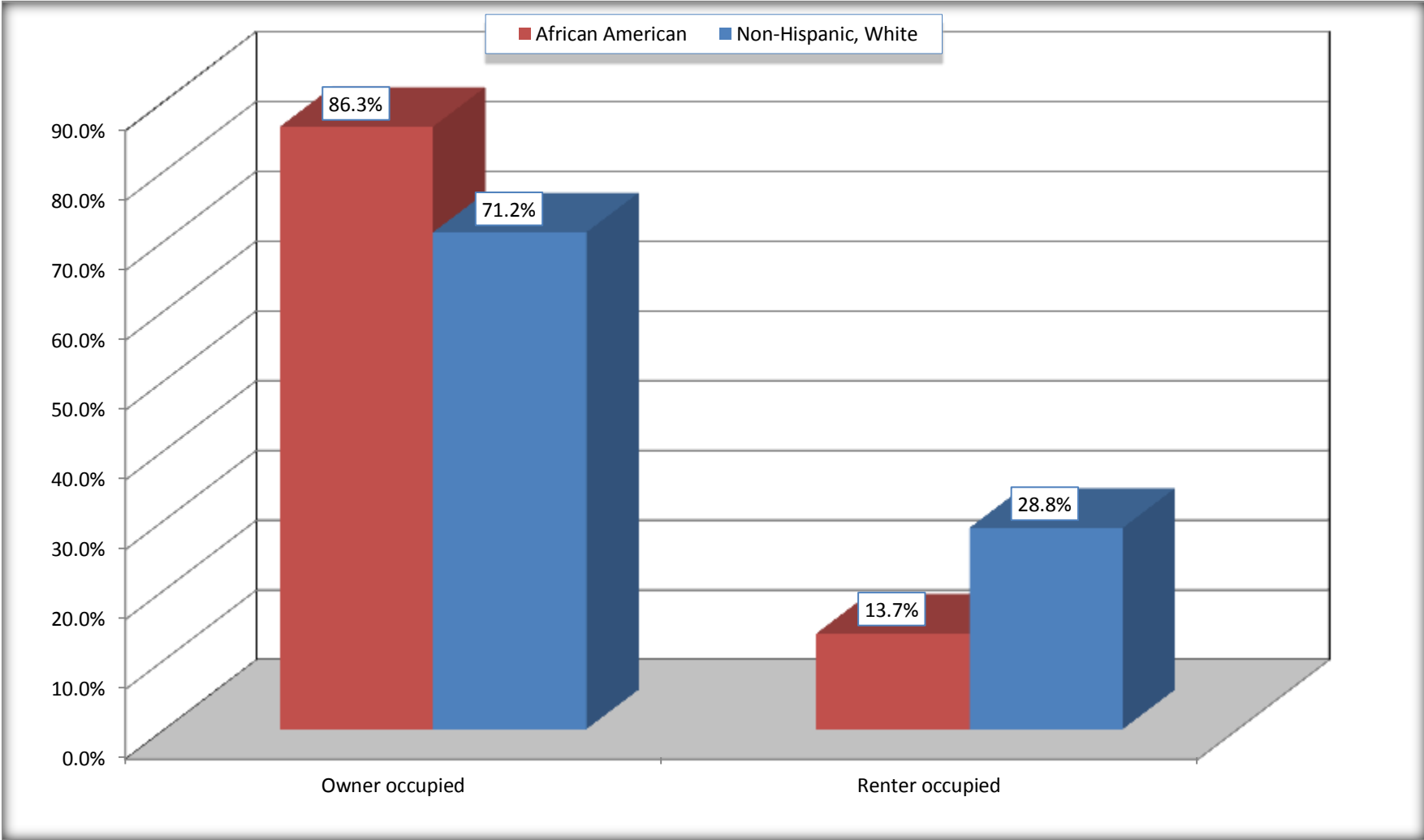
Source: U.S. Census Bureau, 2008-2012 American Community Survey

For information on confidentiality protection, sampling error, nonsampling error, and definitions, see Survey Methodology.

<http://www.census.gov/acs/www/UseData/index.h>

Home Owners and Renters by Household

Riverside CDP, Maryland



Source: B25003. TENURE - Universe: OCCUPIED HOUSING UNITS
Data Set: 2008-2012 American Community Survey 5-Year Estimates

B25014. OCCUPANTS PER ROOM - Universe: OCCUPIED HOUSING UNITS

Data Set: 2008-2012 American Community Survey 5-Year Estimates

	Riverside CDP, Maryland					
	African American	Margin of Error (+/-)	% of AA Total	White, Not Hispanic	Margin of Error (+/-)	% of NHW Total
Total:	343	124	100.0%	1,838	207	100.0%
1.00 or less occupants per room	343	124	100.0%	1,787	203	97.2%
1.01 or more occupants per room	0	17	0.0%	51	52	2.8%

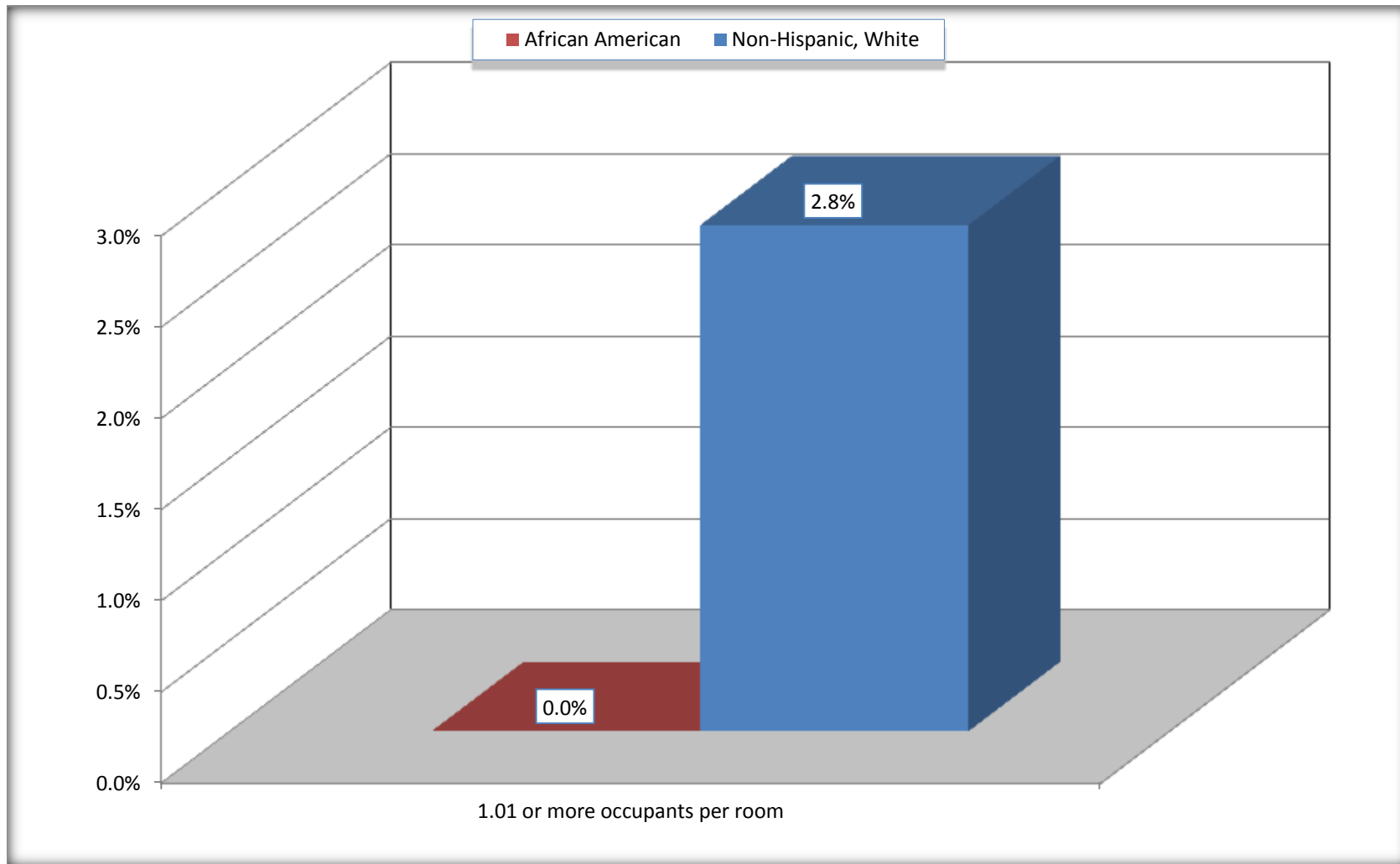
Source: U.S. Census Bureau, 2008-2012 American Community Survey

For information on confidentiality protection, sampling error, nonsampling error, and definitions, see Survey Methodology.

<http://www.census.gov/acs/www/UseData/index.ht>

More than One Person per Room (Crowding) by Household

Riverside CDP, Maryland



Source: B25014. OCCUPANTS PER ROOM - Universe: OCCUPIED HOUSING UNITS
Data Set: 2008-2012 American Community Survey 5-Year Estimates

B18101. AGE BY DISABILITY STATUS

Data Set: 2008-2012 American Community Survey 5-Year Estimates

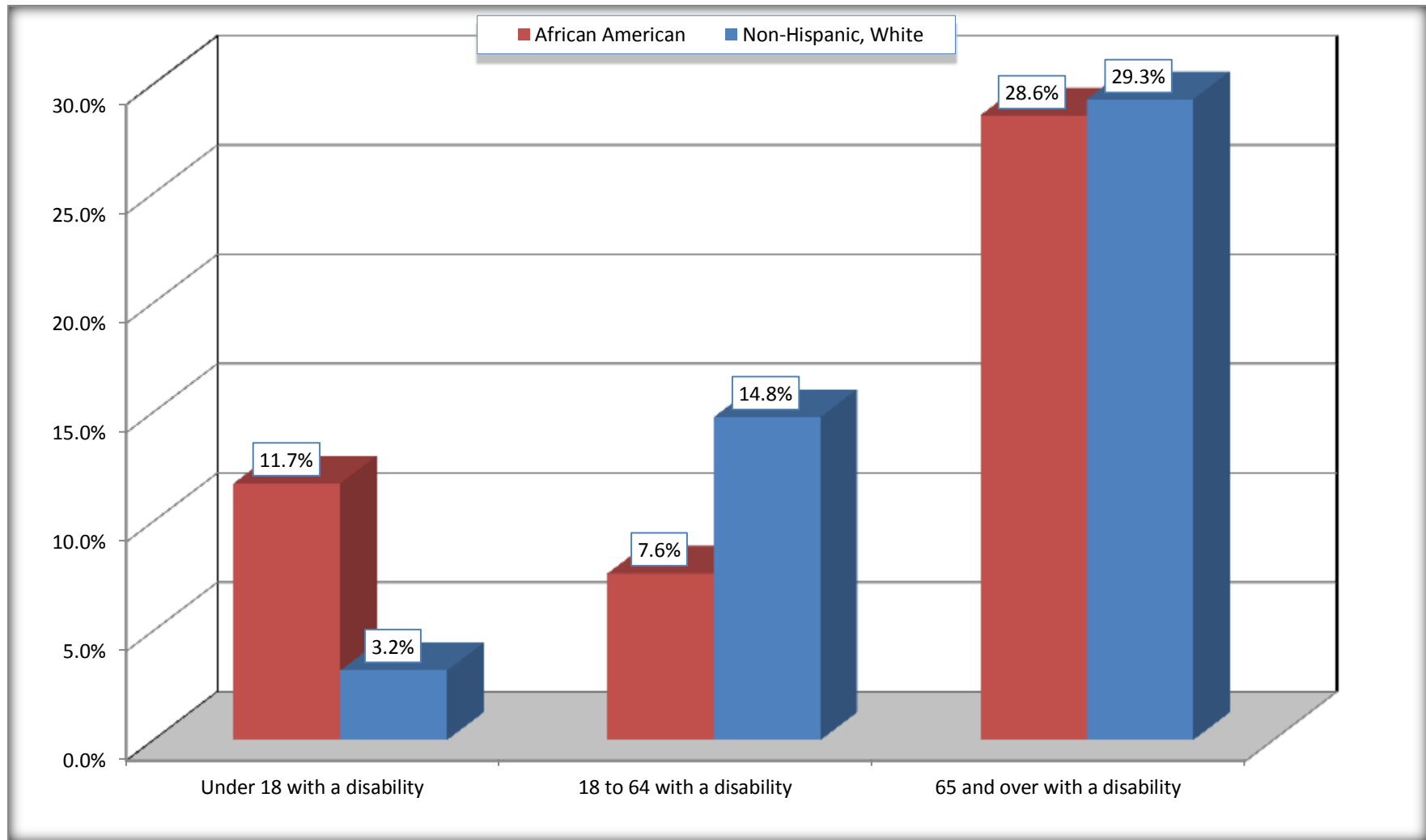
	Riverside CDP, Maryland					
	African American	Margin of Error (+/-)	% of AA Total	White, Not Hispanic	Margin of Error (+/-)	% of NHW Total
Total:	1,091	426	100.0%	4,706	578	100.0%
Under 18 years:	247	157	22.6%	1,162	58	24.7%
With a disability	29	54	2.7%	37	48	0.8%
No disability	218	168	20.0%	1,125	312	23.9%
18 to 64 years:	788	300	72.2%	3,370	386	71.6%
With a disability	60	77	5.5%	498	252	10.6%
No disability	728	299	66.7%	2,872	335	61.0%
65 years and over:	56	65	5.1%	174	52	3.7%
With a disability	16	25	1.5%	51	27	1.1%
No disability	40	44	3.7%	123	50	2.6%

Source: U.S. Census Bureau, 2008-2012 American Community Survey

For information on confidentiality protection, sampling error, nonsampling error, and definitions, see Survey Methodology.

<http://www.census.gov/acs/www/UseData/index.htm>

Disability by Age Riverside CDP, Maryland



Source: B18101. AGE BY DISABILITY STATUS
Data Set: 2008-2012 American Community Survey 5-Year Estimates

C27001B. HEALTH INSURANCE COVERAGE STATUS BY AGE

Data Set: 2008-2012 American Community Survey 5-Year Estimates

	Riverside CDP, Maryland					
	African American	Margin of Error (+/-)	% of AA Total	White, Not Hispanic	Margin of Error (+/-)	% of NHW Total
Total:	1,091	426	100.0%	4,706	578	100.0%
Under 18 years:	247	157	22.6%	1,162	307	24.7%
With health insurance coverage	247	157	22.6%	1,126	293	23.9%
No health insurance coverage	0	17	0.0%	36	41	0.8%
18 to 64 years:	788	300	72.2%	3,370	386	71.6%
With health insurance coverage	788	300	72.2%	3,138	362	66.7%
No health insurance coverage	0	17	0.0%	232	137	4.9%
65 years and over:	56	65	5.1%	174	52	3.7%
With health insurance coverage	56	65	5.1%	174	52	3.7%
No health insurance coverage	0	17	0.0%	0	17	0.0%

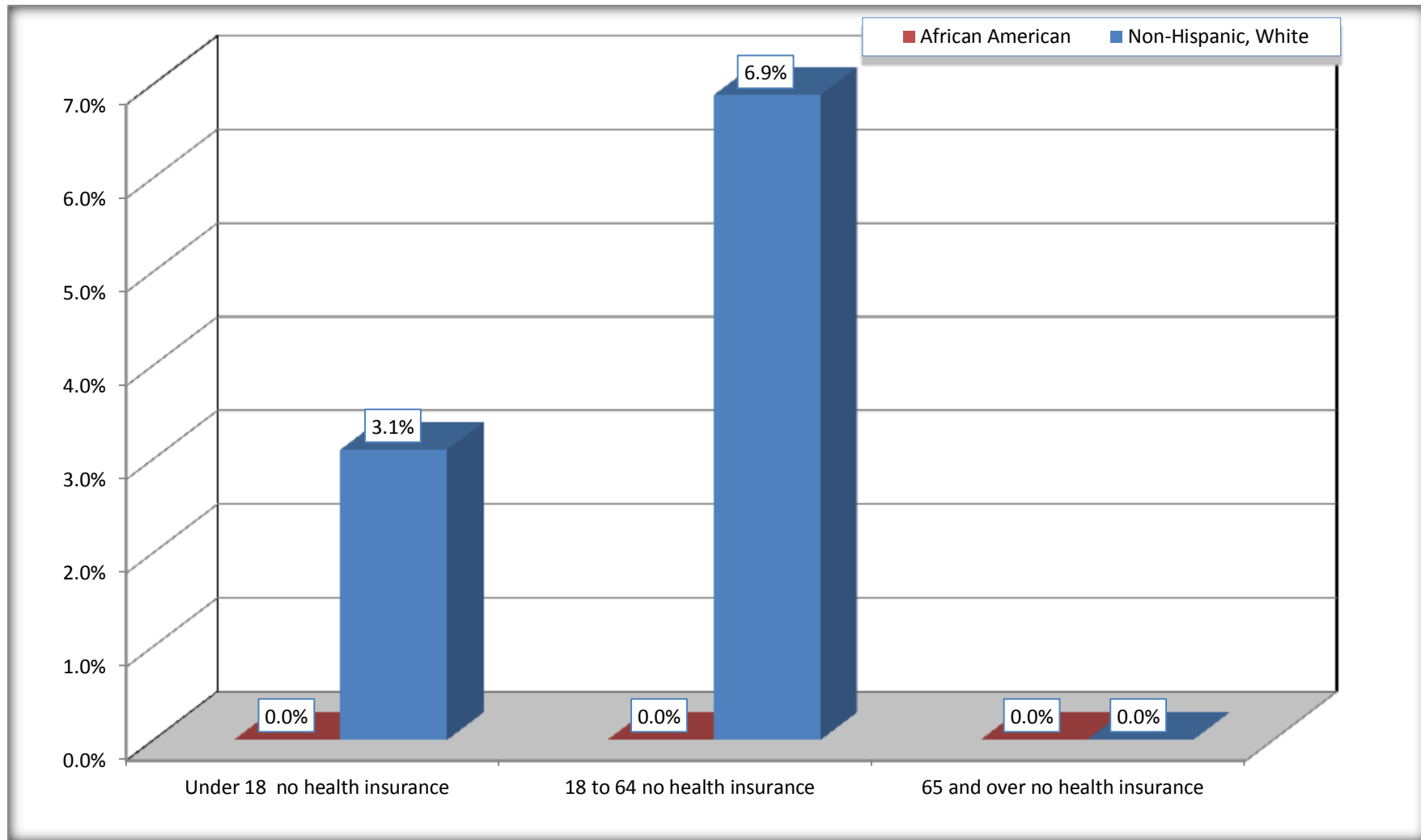
Source: U.S. Census Bureau, 2008-2012 American Community Survey

For information on confidentiality protection, sampling error, nonsampling error, and definitions, see Survey Methodology.

<http://www.census.gov/acs/www/UseData/index.htm>

Lack of Health Insurance Coverage by Age

Riverside CDP, Maryland



Source: C27001B. HEALTH INSURANCE COVERAGE STATUS BY AGE
Data Set: 2008-2012 American Community Survey 5-Year Estimates