

Selected Socio-Economic Data

Lanham CDP, Maryland

African American and White, Not Hispanic

Data Set: 2008-2012 American Community Survey 5-Year Estimates

www.fairvote2020.org

www.fairdata2000.com

[29-Dec-13](#)

C02003.DETAILED RACE - Universe: TOTAL POPULATION
 Data Set: 2008-2012 American Community Survey 5-Year Estimates

	Lanham CDP, Maryland		
	Population	Margin of Error (+/-)	% of Total
Total:	9,606	683	100.0%
Population of one race:	9,365	689	97.5%
White	2,039	470	21.2%
Black or African American	6,517	669	67.8%
American Indian and Alaska Native	68	83	0.7%
Asian alone	172	107	1.8%
Native Hawaiian and Other Pacific Islander	0	17	0.0%
Some other race	569	359	5.9%
Population of two or more races:	241	165	2.5%
Two races including Some other race	18	27	0.2%
Two races excluding Some other race, and three or more races	223	160	2.3%
Population of two races:	192	134	2.0%
White; Black or African American	73	80	0.8%
White; American Indian and Alaska Native	15	22	0.2%
White; Asian	17	31	0.2%
Black or African American; American Indian and Alaska Native	42	51	0.4%
All other two race combinations	45	57	0.5%
Population of three races	29	37	0.3%
Population of four or more races	20	32	0.2%

Note: Hispanics may be of any race. See Table B03002 and chart.

Source: U.S. Census Bureau, 2008-2012 American Community Survey

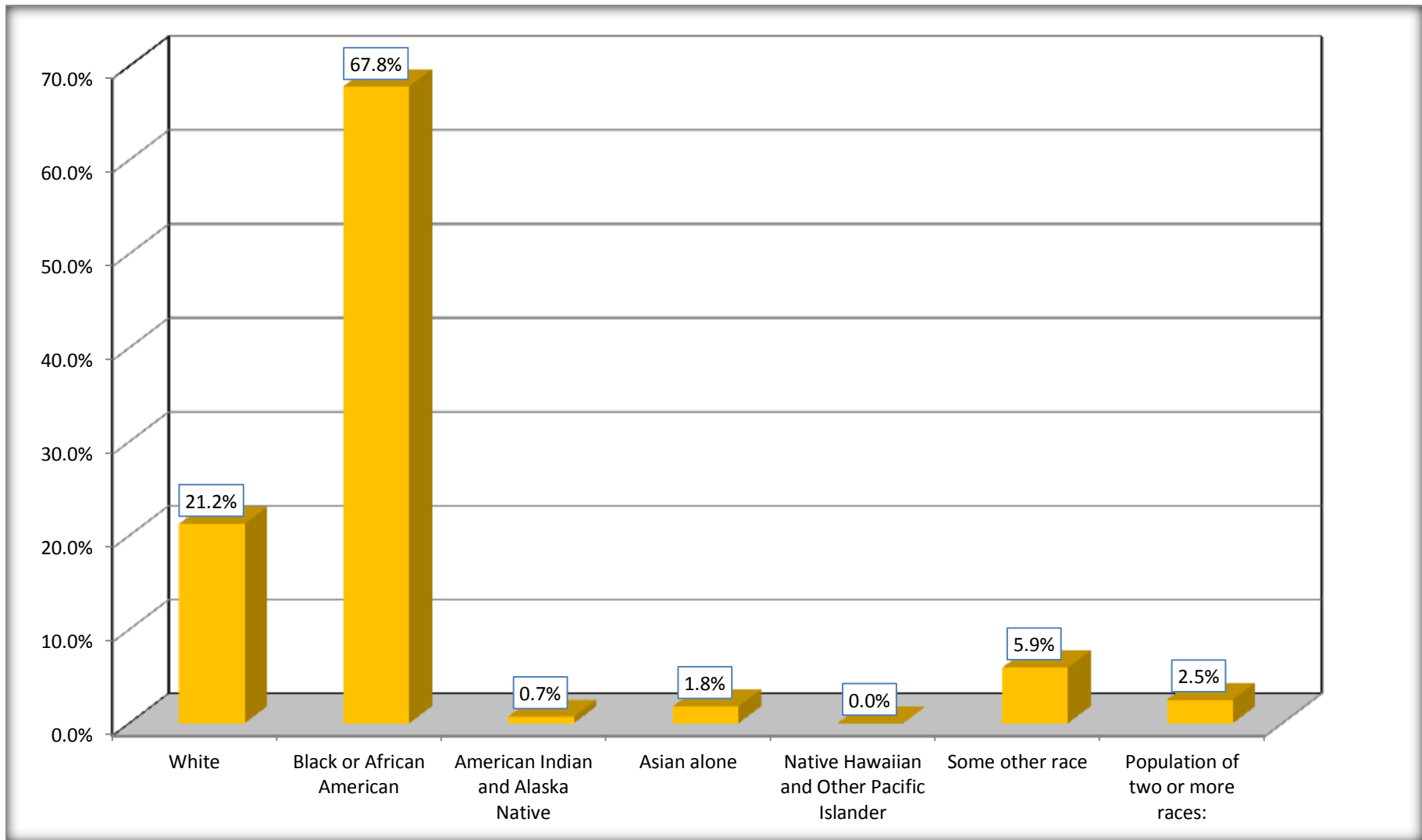
Although the American Community Survey (ACS) produces population, demographic and housing unit estimates, it is the Census Bureau's Population Estimates Program that produces and disseminates the official estimates of the population for the nation, states, counties, cities and towns and estimates of housing units for states and counties.

For information on confidentiality protection, sampling error, nonsampling error, and definitions, see Survey Methodology.

<http://www.census.gov/acs/www/UseData/index.htm>

Population by Race

Lanham CDP, Maryland



Source: C02003.DETAILED RACE - Universe: TOTAL POPULATION
Data Set: 2008-2012 American Community Survey 5-Year Estimates

B03002. HISPANIC OR LATINO ORIGIN BY RACE - Universe: TOTAL POPULATION

Data Set: 2008-2012 American Community Survey 5-Year Estimates

	Lanham CDP, Maryland		
	Population	Margin of Error (+/-)	% of Total
Total:	9,606	683	100.0%
Not Hispanic or Latino:	7,615	658	79.3%
White alone	833	278	8.7%
Black or African American alone	6,424	662	66.9%
American Indian and Alaska Native alone	0	17	0.0%
Asian alone	172	107	1.8%
Native Hawaiian and Other Pacific Islander alone	0	17	0.0%
Some other race alone	0	17	0.0%
Two or more races:	186	137	1.9%
Two races including Some other race	0	17	0.0%
Two races excluding Some other race, and three or more races	186	137	1.9%
Hispanic or Latino	1,991	415	20.7%

Source: U.S. Census Bureau, 2008-2012 American Community Survey

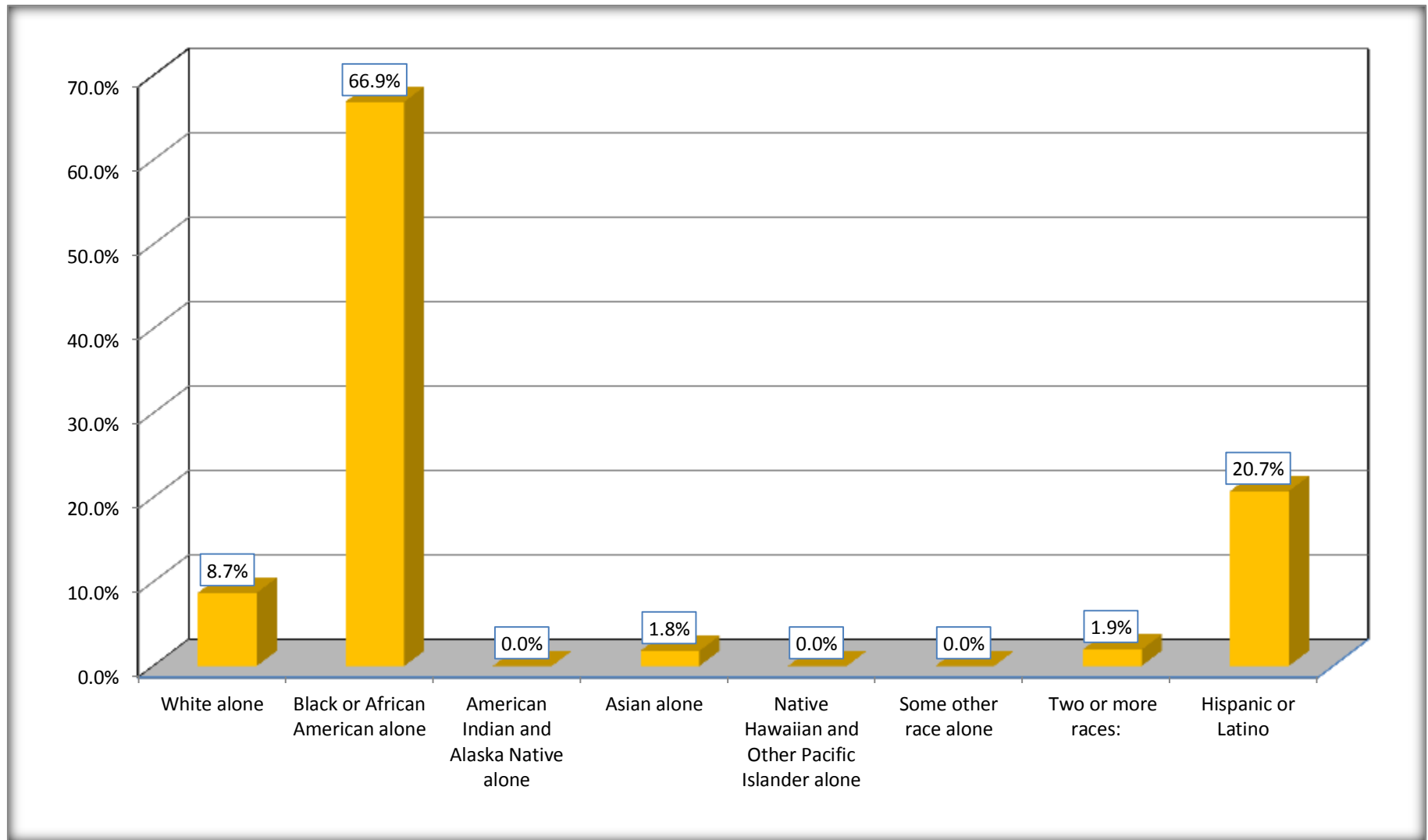
Although the American Community Survey (ACS) produces population, demographic and housing unit estimates, it is the Census Bureau's Population Estimates Program that produces and disseminates the official estimates of the population for the nation, states, counties, cities and towns and estimates of housing units for states and counties.

For information on confidentiality protection, sampling error, nonsampling error, and definitions, see Survey Methodology.

<http://www.census.gov/acs/www/UseData/index.htm>

Non-Hispanic by Race and Hispanic Population

Lanham CDP, Maryland



Source: B03002. HISPANIC OR LATINO ORIGIN BY RACE - Universe: TOTAL POPULATION
Data Set: 2008-2012 American Community Survey 5-Year Estimates

B03002. HISPANIC OR LATINO ORIGIN BY RACE

Data Set: 2008-2012 American Community Survey 5-Year Estimates

	Lanham CDP, Maryland		
	Population	Margin of Error (+/-)	% of Total
Hispanic or Latino:	1,991	415	100.0%
White alone	1,206	367	60.6%
Black or African American alone	93	81	4.7%
American Indian and Alaska Native alone	68	83	3.4%
Asian alone	0	17	0.0%
Native Hawaiian and Other Pacific Islander alone	0	17	0.0%
Some other race alone	569	359	28.6%
Two or more races:	55	58	2.8%
Two races including Some other race	18	27	0.9%
Two races excluding Some other race, and three or more races	37	48	1.9%

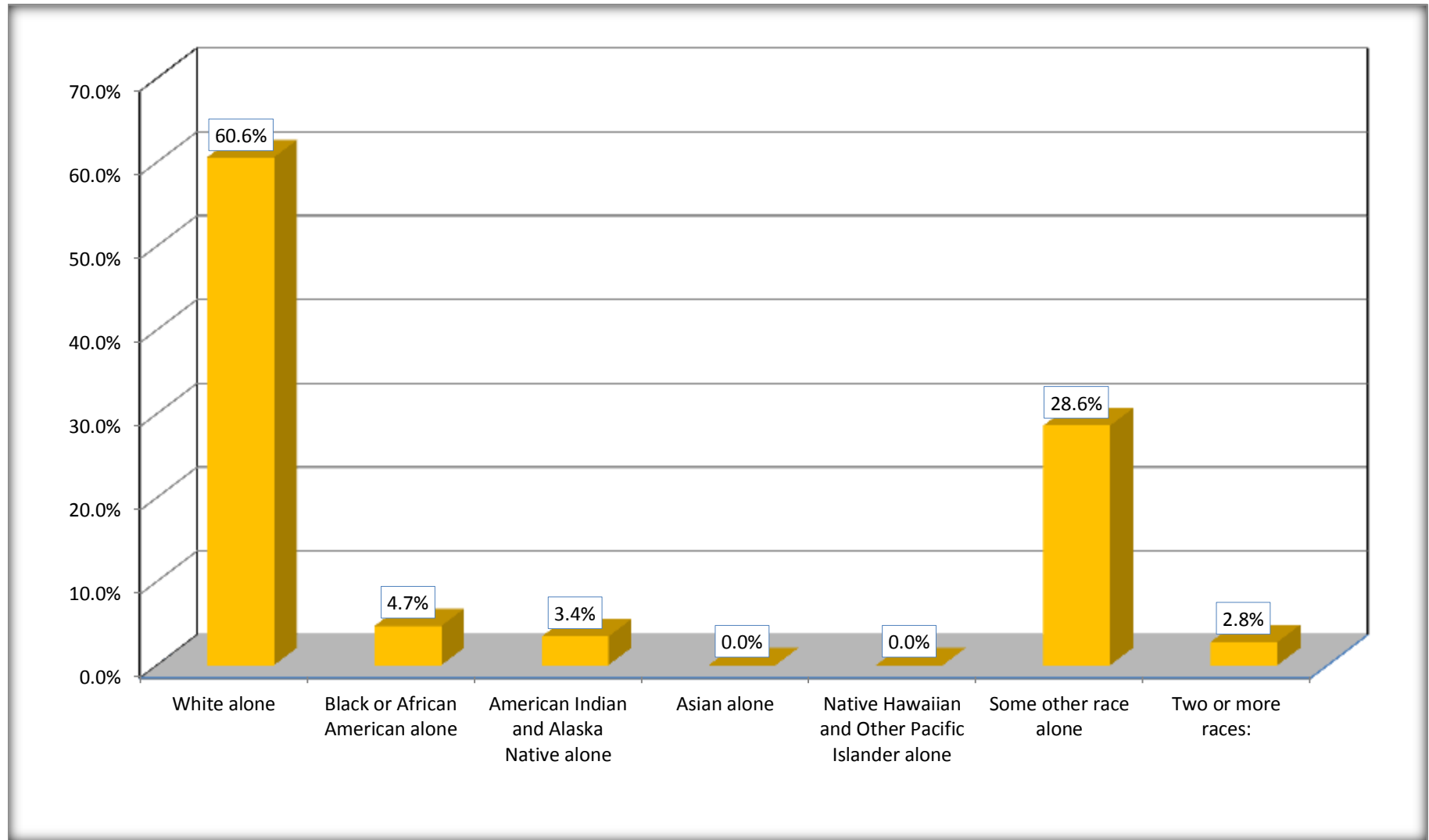
Source: U.S. Census Bureau, 2008-2012 American Community Survey

Although the American Community Survey (ACS) produces population, demographic and housing unit estimates, it is the Census Bureau's Population Estimates Program that produces and disseminates the official estimates of the population for the nation, states, counties, cities and towns and estimates of housing units for states and counties.

For information on confidentiality protection, sampling error, nonsampling error, and definitions, see Survey Methodology.

<http://www.census.gov/acs/www/UseData/index.htm>

Hispanic or Latino Origin by Race Lanham CDP, Maryland



Source: B03002. HISPANIC OR LATINO ORIGIN BY RACE
Data Set: 2008-2012 American Community Survey 5-Year Estimates

B01001. SEX BY AGE

Data Set: 2008-2012 American Community Survey 5-Year Estimates

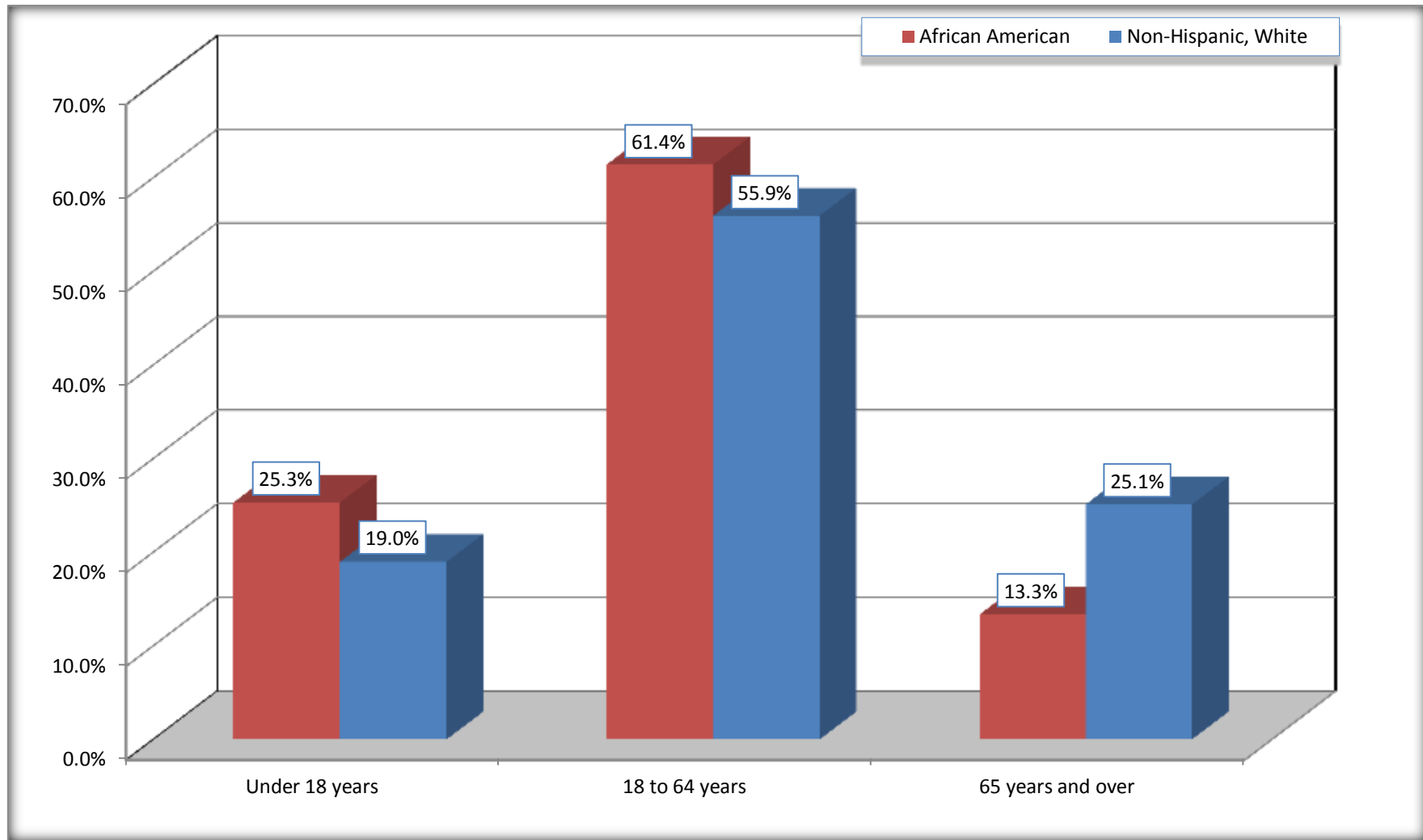
	Lanham CDP, Maryland					
	African American	Margin of Error (+/-)	% of AA Total	White, Not Hispanic	Margin of Error (+/-)	% of NHW Total
Total:	6,517	669	100.0%	833	278	100.0%
Under 18 years	1,648	NC	25.3%	158	NC	19.0%
18 to 64 years	4,001	NC	61.4%	466	NC	55.9%
65 years and over	868	NC	13.3%	209	NC	25.1%
Male:	3,184	373	48.9%	378	389	45.4%
Under 18 years	924	NC	14.2%	72	NC	8.6%
18 to 64 years	1,871	NC	28.7%	199	NC	23.9%
65 years and over	389	NC	6.0%	107	NC	12.8%
Female:	3,333	379	51.1%	455	412	54.6%
Under 18 years	724	NC	11.1%	86	NC	10.3%
18 to 64 years	2,130	NC	32.7%	267	NC	32.1%
65 years and over	479	NC	7.4%	102	NC	12.2%

Source: U.S. Census Bureau, 2008-2012 American Community Survey

Although the American Community Survey (ACS) produces population, demographic and housing unit estimates, it is the Census Bureau's Population Estimates Program that produces and disseminates the official estimates of the population for the nation, states, counties, cities and towns and estimates of housing units for states and counties.

For information on confidentiality protection, sampling error, nonsampling error, and definitions, see Survey Methodology.
<http://www.census.gov/acs/www/UseData/index.htm>

Population by Age Lanham CDP, Maryland



Source: B01001. SEX BY AGE
Data Set: 2008-2012 American Community Survey 5-Year Estimates

B05003. SEX BY AGE BY CITIZENSHIP STATUS

Data Set: 2008-2012 American Community Survey 5-Year Estimates

	Lanham CDP, Maryland					
	African American	Margin of Error (+/-)	% of AA Total by Age	White, Not Hispanic	Margin of Error (+/-)	% of NHW Total by Age
Total:	6,517	669	100.0%	833	278	100.0%
Under 18 years:	1,648	NC	100.0%	158	NC	100.0%
Native	1,561	NC	94.7%	158	NC	100.0%
Foreign born:	87	NC	5.3%	0	NC	0.0%
Naturalized U.S. citizen	0	NC	0.0%	0	NC	0.0%
Not a U.S. citizen	87	NC	5.3%	0	NC	0.0%
18 years and over:	4,869	NC	100.0%	675	NC	100.0%
Native	3,535	NC	72.6%	659	NC	97.6%
Foreign born:	1,334	NC	27.4%	16	NC	2.4%
Naturalized U.S. citizen	940	NC	19.3%	16	NC	2.4%
Not a U.S. citizen	394	NC	8.1%	0	NC	0.0%
Male:	3,184	373	48.9%	378	143	45.4%
Under 18 years:	924	254	100.0%	72	67	100.0%
Native	872	237	94.4%	72	67	100.0%
Foreign born:	52	71	5.6%	0	17	0.0%
Naturalized U.S. citizen	0	17	0.0%	0	17	0.0%
Not a U.S. citizen	52	71	5.6%	0	17	0.0%
18 years and over:	2,260	260	100.0%	306	97	100.0%
Native	1,584	214	70.1%	300	97	98.0%
Foreign born:	676	218	29.9%	6	10	2.0%
Naturalized U.S. citizen	525	188	23.2%	6	10	2.0%
Not a U.S. citizen	151	87	6.7%	0	17	0.0%

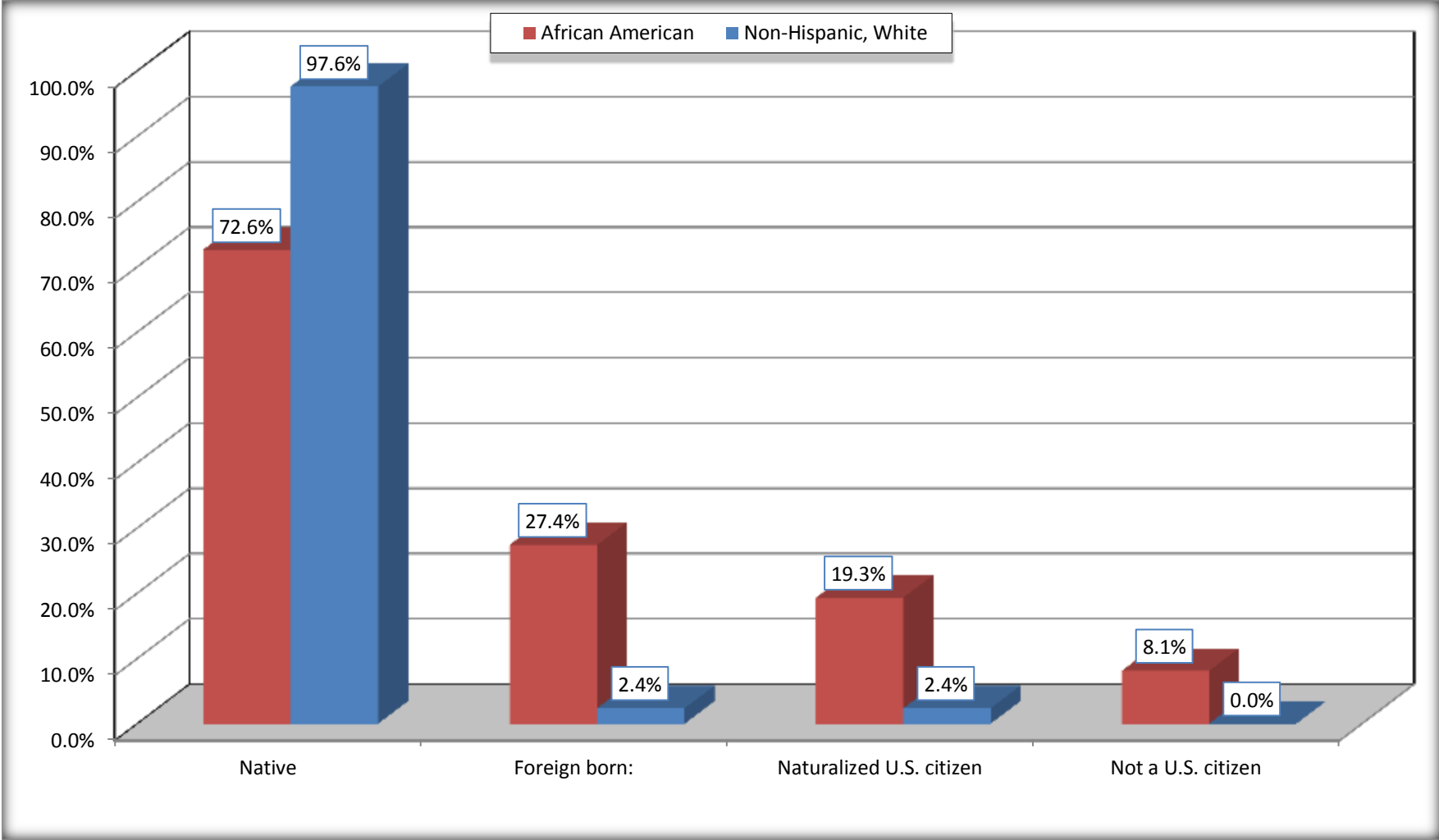
	Lanham CDP, Maryland					
	African American	Margin of Error (+/-)	% of AA by Age	White, Not Hispanic	Margin of Error (+/-)	% of NHW by Age
Female:	3,333	379	51.1%	455	156	54.6%
Under 18 years:	724	210	100.0%	86	73	100.0%
Native	689	194	95.2%	86	73	100.0%
Foreign born:	35	51	4.8%	0	17	0.0%
Naturalized U.S. citizen	0	17	0.0%	0	17	0.0%
Not a U.S. citizen	35	51	4.8%	0	17	0.0%
18 years and over:	2,609	253	100.0%	369	96	100.0%
Native	1,951	233	74.8%	359	97	97.3%
Foreign born:	658	207	25.2%	10	15	2.7%
Naturalized U.S. citizen	415	144	15.9%	10	15	2.7%
Not a U.S. citizen	243	148	9.3%	0	17	0.0%

Source: U.S. Census Bureau, 2008-2012 American Community Survey

For information on confidentiality protection, sampling error, nonsampling error, and definitions, see Survey Methodology.
<http://www.census.gov/acs/www/UseData/index.htm>

Citizenship Status of Voting Age Population (18 and Over)

Lanham CDP, Maryland



Source: B05003. SEX BY AGE BY CITIZENSHIP STATUS
Data Set: 2008-2012 American Community Survey 5-Year Estimates

**B07004. GEOGRAPHICAL MOBILITY IN THE PAST YEAR BY RACE FOR CURRENT RESIDENCE IN THE UNITED STATES - Universe:
POPULATION 1 YEAR AND OVER**

Data Set: 2008-2012 American Community Survey 5-Year Estimates

	Lanham CDP, Maryland					
	African American	Margin of Error (+/-)	% of AA Total	White, Not Hispanic	Margin of Error (+/-)	% of NHW Total
Total:	6,470	658	100.0%	820	270	100.0%
Same house 1 year ago	5,916	745	91.4%	713	247	87.0%
Moved within same county	132	82	2.0%	73	100	8.9%
Moved from different county within same state	27	40	0.4%	16	20	2.0%
Moved from different state	395	235	6.1%	18	22	2.2%
Moved from abroad	0	17	0.0%	0	17	0.0%

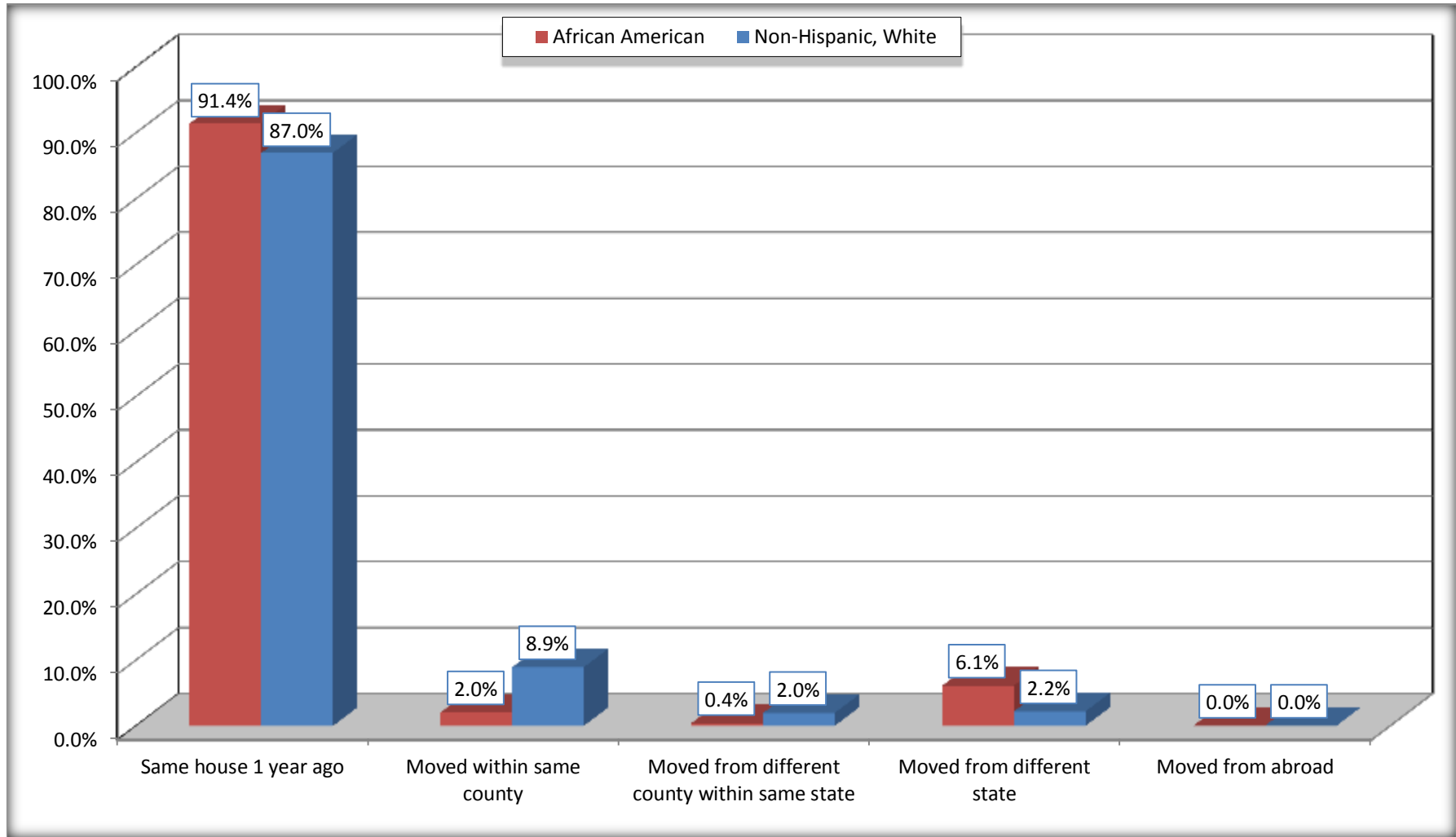
Source: U.S. Census Bureau, 2008-2012 American Community Survey

For information on confidentiality protection, sampling error, nonsampling error, and definitions, see Survey Methodology.

<http://www.census.gov/acs/www/UseData/index.htm>

Geographical Mobility in the Past Year (Population 1 Year and Over)

Lanham CDP, Maryland



Source: B07004. GEOGRAPHICAL MOBILITY IN THE PAST YEAR BY RACE FOR CURRENT RESIDENCE IN THE UNITED STATES - Universe: POPULATION 1 YEAR AND OVER

Data Set: 2008-2012 American Community Survey 5-Year Estimates

B08105. MEANS OF TRANSPORTATION TO WORK - Universe: WORKERS 16 YEARS AND OVER

Data Set: 2008-2012 American Community Survey 5-Year Estimates

	Lanham CDP, Maryland					
	African American	Margin of Error (+/-)	% of AA Total	White, Not Hispanic	Margin of Error (+/-)	% of NHW Total
Total:	3182	340	100.0%	464	154	100.0%
Car, truck, or van - drove alone	2342	310	73.6%	362	110	78.0%
Car, truck, or van - carpooled	245	110	7.7%	73	59	15.7%
Public transportation (excluding taxicab)	361	144	11.3%	8	12	1.7%
Walked	56	43	1.8%	0	17	0.0%
Taxicab, motorcycle, bicycle, or other means	18	20	0.6%	10	17	2.2%
Worked at home	160	88	5.0%	11	18	2.4%

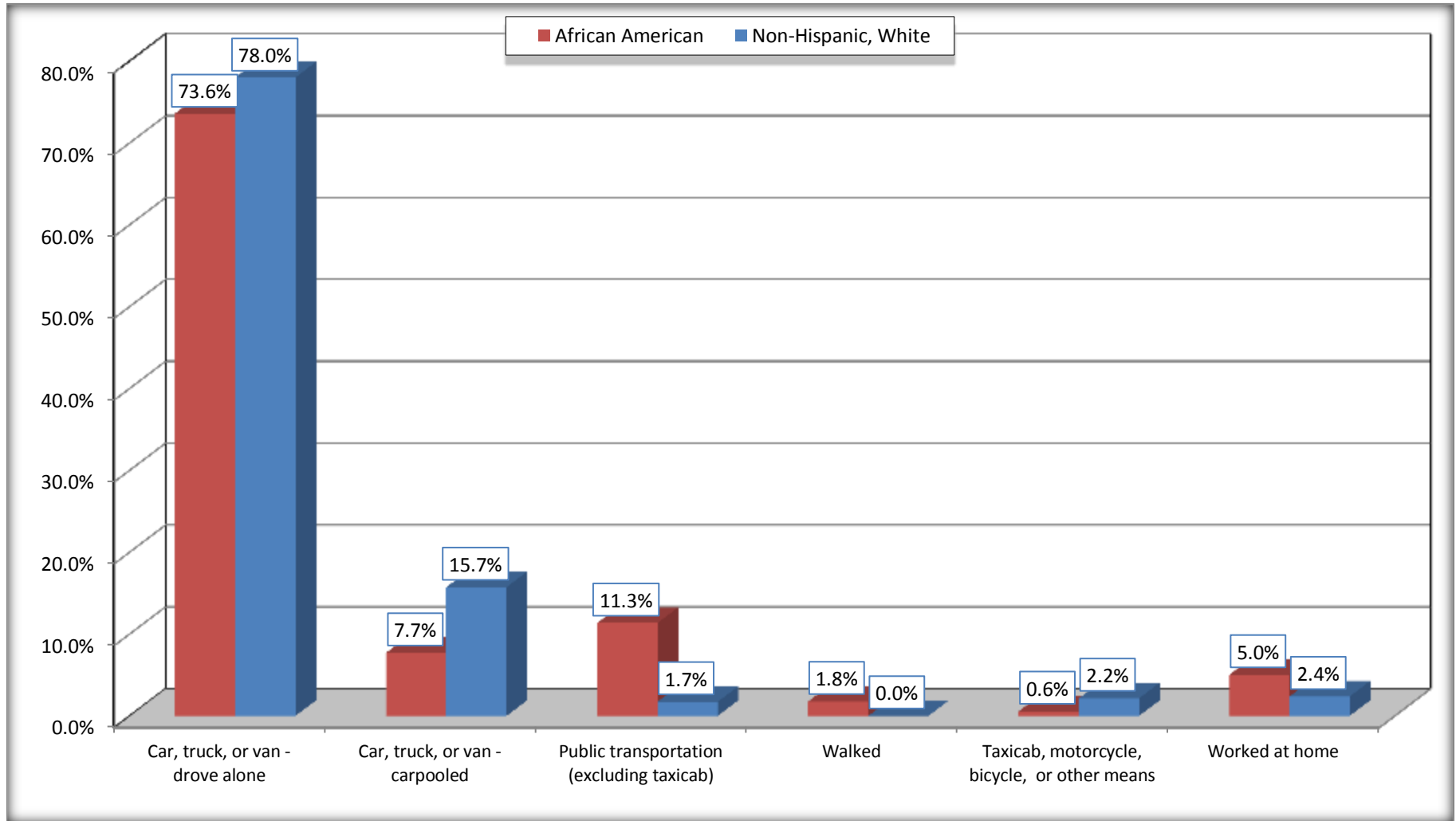
Source: U.S. Census Bureau, 2008-2012 American Community Survey

For information on confidentiality protection, sampling error, nonsampling error, and definitions, see Survey Methodology.

<http://www.census.gov/acs/www/UseData/index.htm>

Means of Transportation to Work (Workers 16 Years and Over)

Lanham CDP, Maryland



Source: B08105. MEANS OF TRANSPORTATION TO WORK - Universe: WORKERS 16 YEARS AND OVER
Data Set: 2008-2012 American Community Survey 5-Year Estimates

B11002. HOUSEHOLD TYPE BY RELATIVES AND NONRELATIVES FOR POPULATION IN HOUSEHOLDS

Data Set: 2008-2012 American Community Survey 5-Year Estimates

	Lanham CDP, Maryland					
	African American	Margin of Error (+/-)	% of AA Total	White, Not Hispanic	Margin of Error (+/-)	% of NHW Total
Total:	6514	686	100.0%	798	291	100.0%
In family households	6050	733	92.9%	668	306	83.7%
In nonfamily households	464	133	7.1%	130	59	16.3%

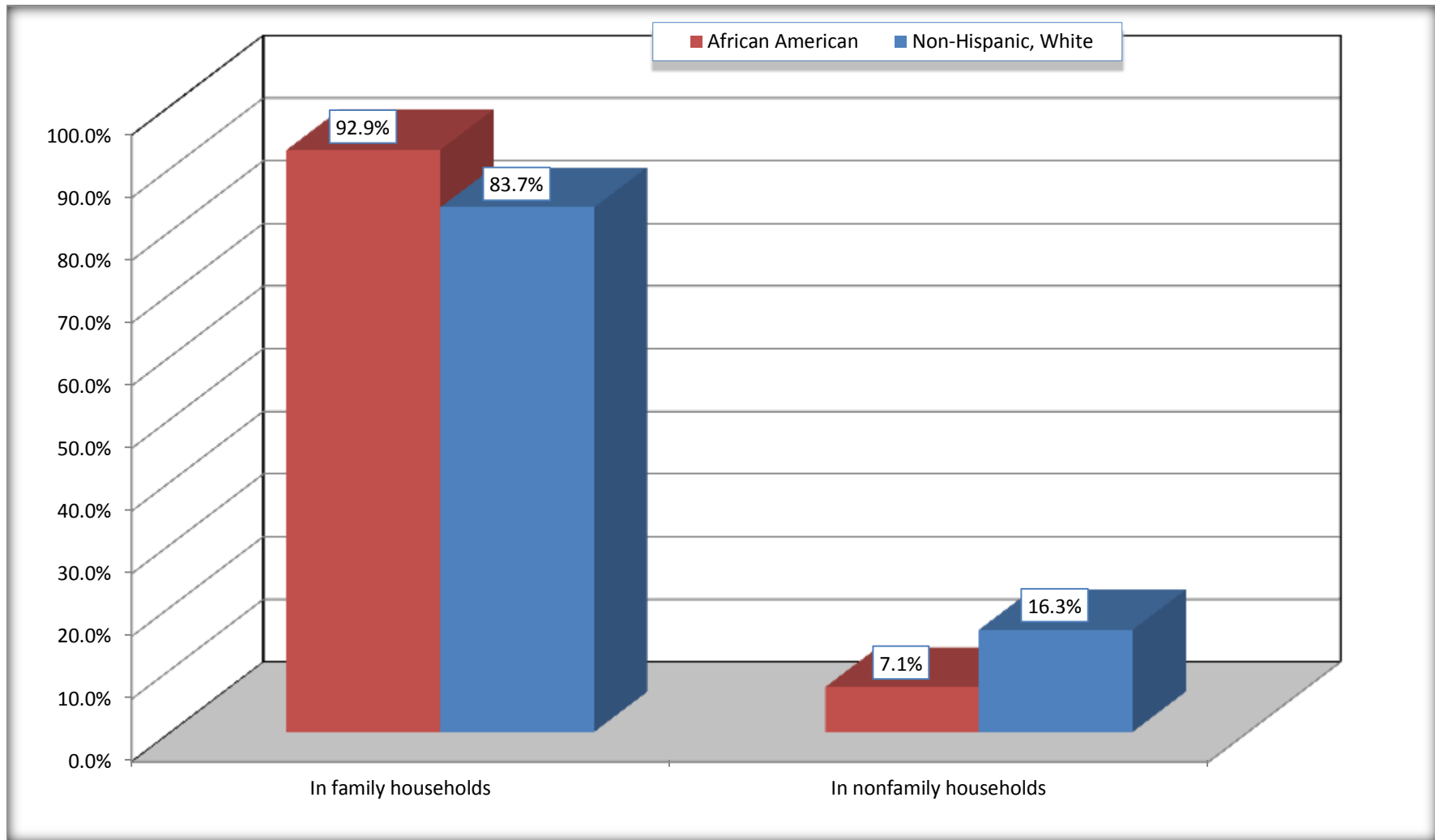
Source: U.S. Census Bureau, 2008-2012 American Community Survey

For information on confidentiality protection, sampling error, nonsampling error, and definitions, see Survey Methodology.

<http://www.census.gov/acs/www/UseData/index.htm>

Household Type for Population in Households

Lanham CDP, Maryland



Source: B11002. HOUSEHOLD TYPE BY RELATIVES AND NONRELATIVES FOR POPULATION IN HOUSEHOLDS
Data Set: 2008-2012 American Community Survey 5-Year Estimates

B12002. MARITAL STATUS FOR THE POPULATION 15 YEARS AND OVER

Data Set: 2008-2012 American Community Survey 5-Year Estimates

	Lanham CDP, Maryland					
	African American	Margin of Error (+/-)	% of AA Total	White, Not Hispanic	Margin of Error (+/-)	% of NHW Total
Total:	5,132	443	100.0%	687	177	100.0%
Never married	1,730	NC	33.7%	158	NC	23.0%
Now married (except separated)	2,568	NC	50.0%	429	NC	62.4%
Separated	115	NC	2.2%	13	NC	1.9%
Widowed	290	NC	5.7%	38	NC	5.5%
Divorced	429	NC	8.4%	49	NC	7.1%
Male:	2,390	263	46.6%	306	97	44.5%
Never married	817	223	15.9%	71	46	10.3%
Now married (except separated)	1,332	155	26.0%	215	80	31.3%
Separated	60	65	1.2%	13	16	1.9%
Widowed	56	45	1.1%	0	17	0.0%
Divorced	125	63	2.4%	7	11	1.0%
Female:	2,742	274	53.4%	381	103	55.5%
Never married	913	238	17.8%	87	57	12.7%
Now married (except separated)	1,236	138	24.1%	214	82	31.1%
Separated	55	56	1.1%	0	17	0.0%
Widowed	234	88	4.6%	38	33	5.5%
Divorced	304	97	5.9%	42	28	6.1%

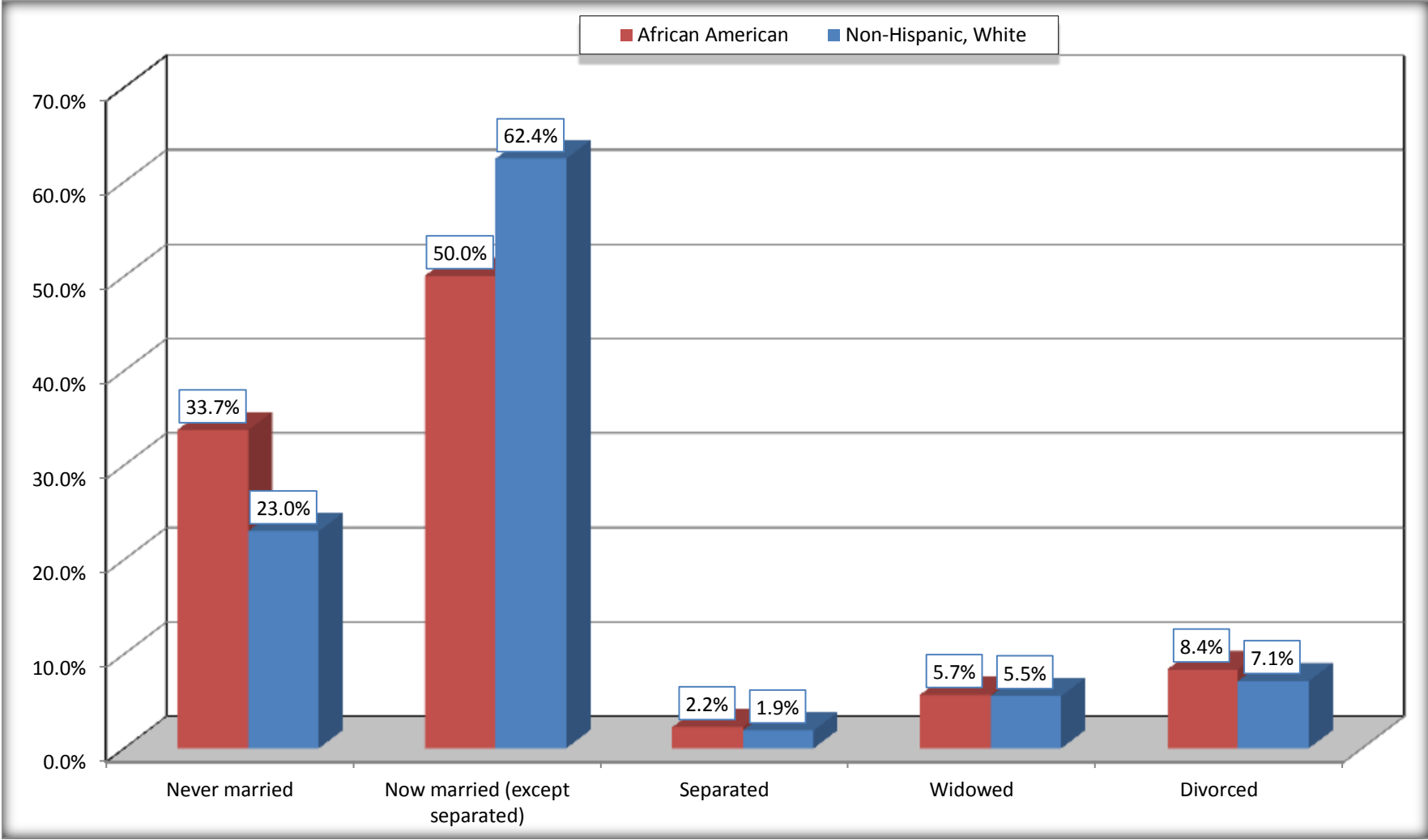
Source: U.S. Census Bureau, 2008-2012 American Community Survey

For information on confidentiality protection, sampling error, nonsampling error, and definitions, see Survey Methodology.

<http://www.census.gov/acs/www/UseData/index.htm>

Marital Status for the Population 15 Years and Over

Lanham CDP, Maryland



Source: B12002. MARITAL STATUS FOR THE POPULATION 15 YEARS AND OVER
Data Set: 2008-2012 American Community Survey 5-Year Estimates

C15002. SEX BY EDUCATIONAL ATTAINMENT FOR THE POPULATION 25 YEARS AND OVER

Data Set: 2008-2012 American Community Survey 5-Year Estimates

	Lanham CDP, Maryland					
	African American	Margin of Error (+/-)	% of AA Total	White, Not Hispanic	Margin of Error (+/-)	% of NHW Total
Total:	4,210	313	100.0%	588	150	100.0%
Less than high school diploma	306	NC	7.3%	99	NC	16.8%
High school graduate, GED, or alternative	1,243	NC	29.5%	220	NC	37.4%
Some college or associate's degree	1,358	NC	32.3%	122	NC	20.7%
Bachelor's degree or higher	1,303	NC	31.0%	147	NC	25.0%
Male:	1,891	183	44.9%	268	85	45.6%
Less than high school diploma	159	81	3.8%	73	60	12.4%
High school graduate, GED, or alternative	602	165	14.3%	81	45	13.8%
Some college or associate's degree	583	150	13.8%	22	24	3.7%
Bachelor's degree or higher	547	140	13.0%	92	42	15.6%
Female:	2,319	212	55.1%	320	80	54.4%
Less than high school diploma	147	68	3.5%	26	30	4.4%
High school graduate, GED, or alternative	641	168	15.2%	139	64	23.6%
Some college or associate's degree	775	150	18.4%	100	48	17.0%
Bachelor's degree or higher	756	157	18.0%	55	34	9.4%

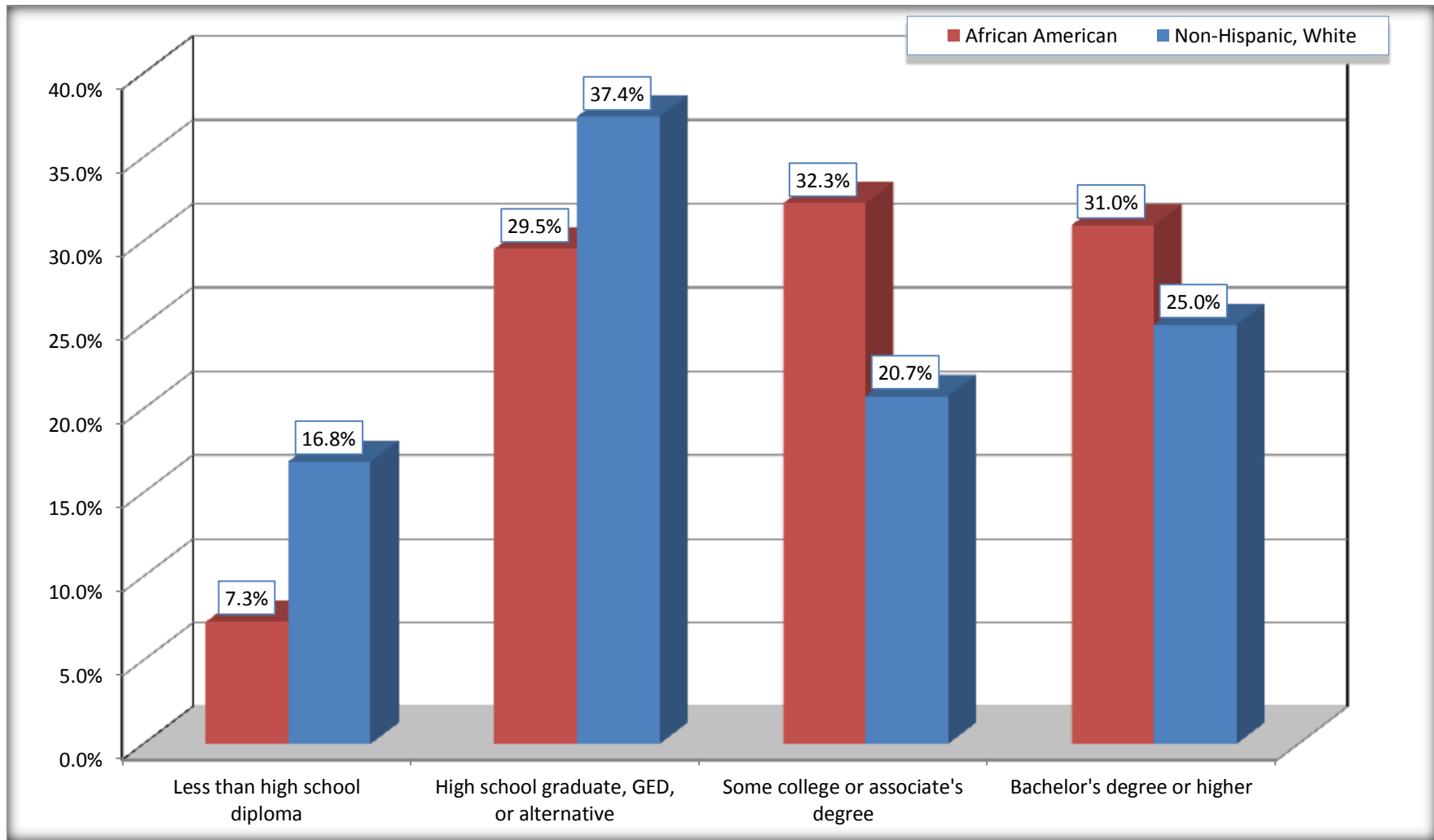
Source: U.S. Census Bureau, 2008-2012 American Community Survey

For information on confidentiality protection, sampling error, nonsampling error, and definitions, see Survey Methodology.

<http://www.census.gov/acs/www/UseData/index.htm>

Educational Attainment for the Population 25 Years and Older

Lanham CDP, Maryland



Source: C15002. SEX BY EDUCATIONAL ATTAINMENT FOR THE POPULATION 25 YEARS AND OVER
Data Set: 2008-2012 American Community Survey 5-Year Estimates

B17010. POVERTY STATUS IN THE PAST 12 MONTHS OF FAMILIES BY FAMILY TYPE BY PRESENCE OF RELATED CHILDREN UNDER 18 YEARS

Data Set: 2008-2012 American Community Survey 5-Year Estimates

	Lanham CDP, Maryland					
	African American	Margin of Error (+/-)	% of AA Total	White, Not Hispanic	Margin of Error (+/-)	% of NHW Total
Total:	1,735	170	100.0%	204	79	100.0%
Income in the past 12 months below poverty level:	16	20	0.9%	0	17	0.0%
Married-couple family:	4	7	0.2%	0	17	0.0%
With related children under 18 years	0	17	0.0%	0	17	0.0%
Other family:	12	20	0.7%	0	17	0.0%
Male householder, no wife present	0	17	0.0%	0	17	0.0%
With related children under 18 years	0	17	0.0%	0	17	0.0%
Female householder, no husband present	12	20	0.7%	0	17	0.0%
With related children under 18 years	12	20	0.7%	0	17	0.0%
Income in the past 12 months at or above poverty level:	1,719	172	99.1%	204	79	100.0%
Married-couple family:	1,131	148	65.2%	195	79	95.6%
With related children under 18 years	512	123	29.5%	66	56	32.4%
Other family:	588	188	33.9%	9	14	4.4%
Male householder, no wife present	174	117	10.0%	0	17	0.0%
With related children under 18 years	108	93	6.2%	0	17	0.0%
Female householder, no husband present	414	124	23.9%	9	14	4.4%
With related children under 18 years	226	101	13.0%	9	14	4.4%

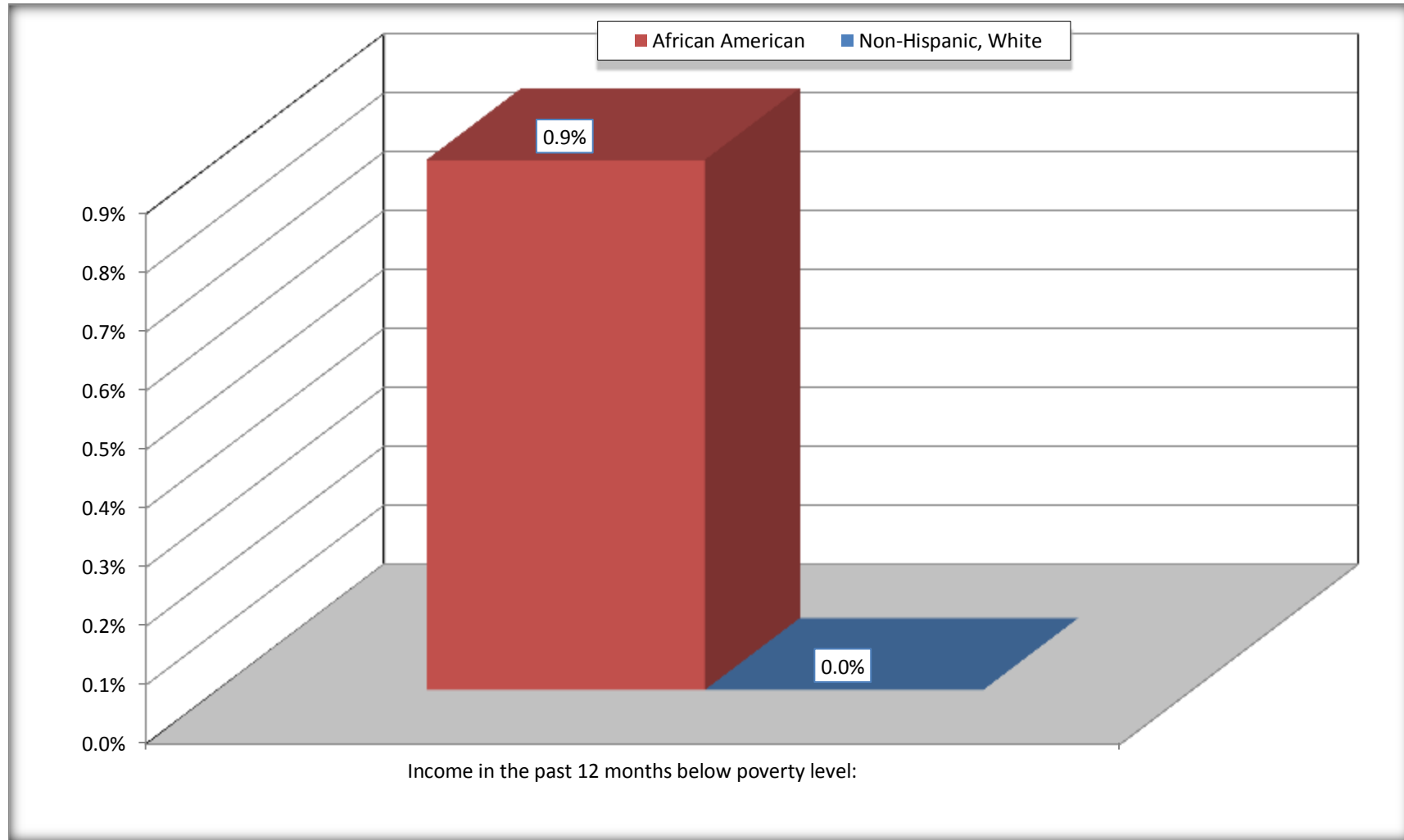
Source: U.S. Census Bureau, 2008-2012 American Community Survey

For information on confidentiality protection, sampling error, nonsampling error, and definitions, see Survey Methodology.

<http://www.census.gov/acs/www/UseData/index.htm>

Family Households Below Poverty in the Past 12 Months

Lanham CDP, Maryland

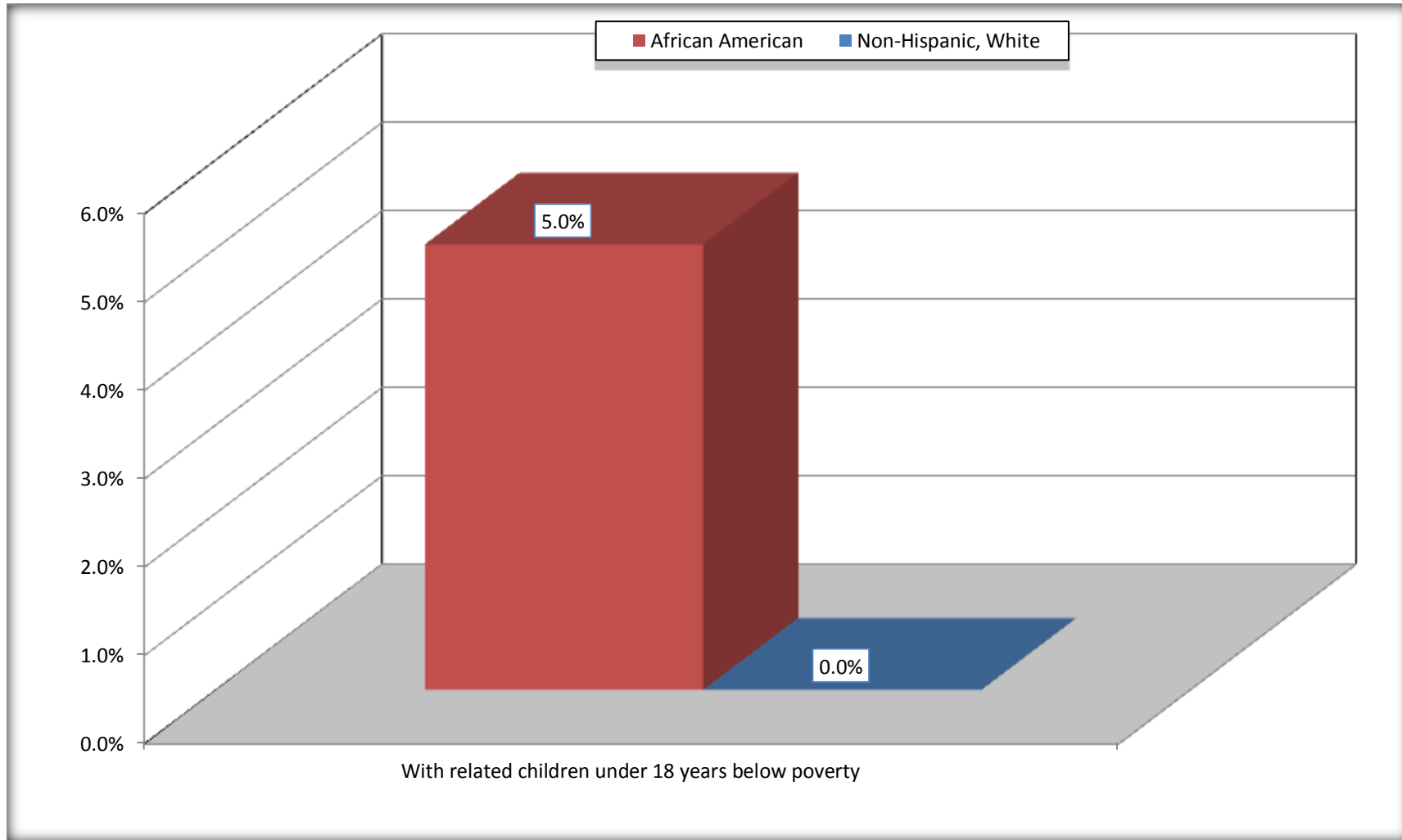


Source: B17010. POVERTY STATUS IN THE PAST 12 MONTHS OF FAMILIES BY FAMILY TYPE BY PRESENCE OF RELATED CHILDREN UNDER 18 YEARS

Data Set: 2008-2012 American Community Survey 5-Year Estimates

Female-headed Households with Related Children Below Poverty in the Past 12 Months

Lanham CDP, Maryland



Source: B17010. POVERTY STATUS IN THE PAST 12 MONTHS OF FAMILIES BY FAMILY TYPE BY PRESENCE OF RELATED CHILDREN UNDER 18 YEARS

Data Set: 2008-2012 American Community Survey 5-Year Estimates

B17020 POVERTY STATUS IN THE PAST 12 MONTHS BY AGE - Universe: POPULATION FOR WHOM POVERTY STATUS IS DETERMINED

Data Set: 2008-2012 American Community Survey 5-Year Estimates

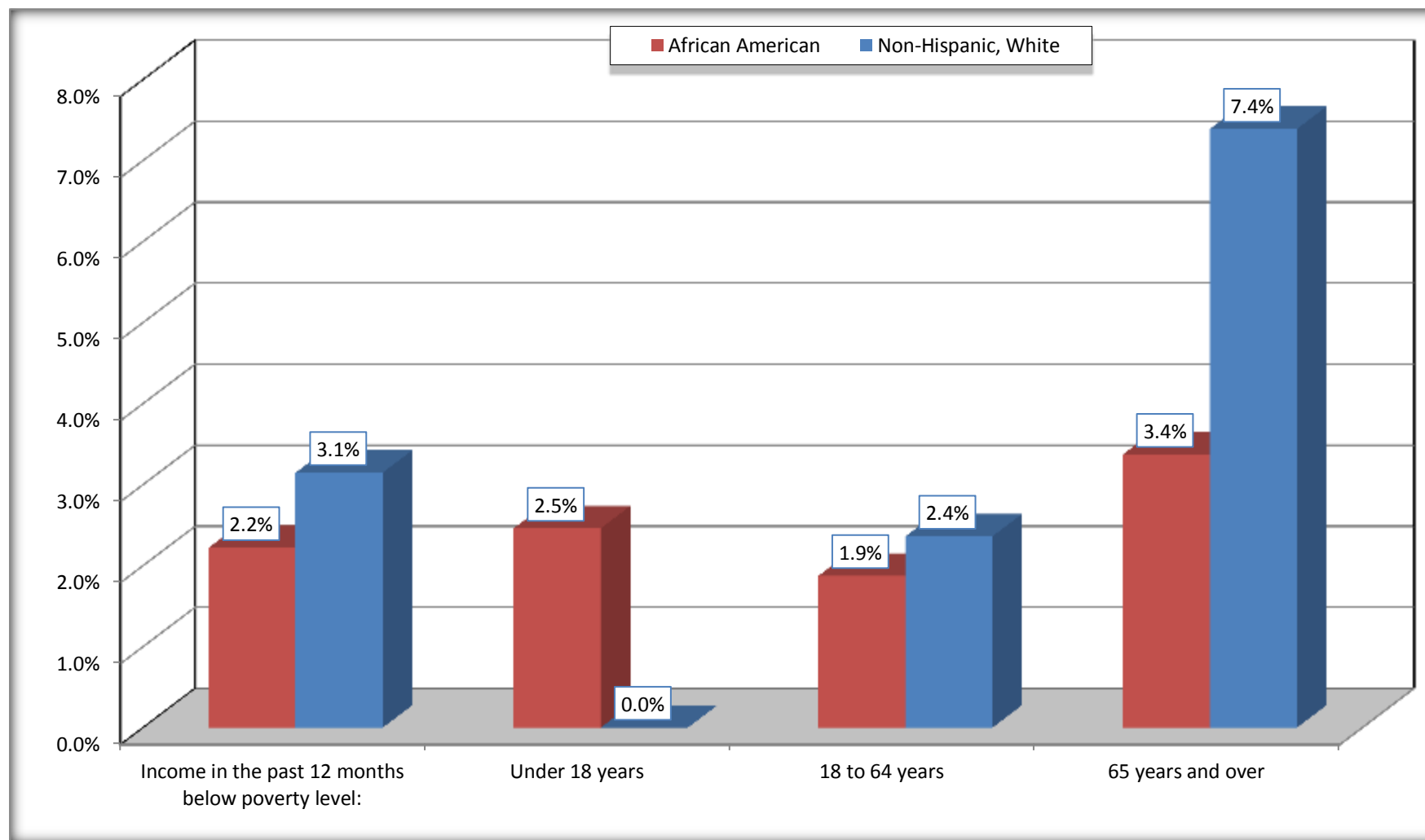
	Lanham CDP, Maryland					
	African American	Margin of Error (+/-)	% of AA By Age	White, Not Hispanic	Margin of Error (+/-)	% of NHW By Age
Total:	6,488	670	100.0%	826	280	100.0%
Income in the past 12 months below poverty level:	144	131	2.2%	26	24	3.1%
Under 18 years	40	NC	2.5%	0	NC	0.0%
18 to 64 years	75	70	1.9%	11	15	2.4%
65 years and over	29	NC	3.4%	15	NC	7.4%
Income in the past 12 months at or above poverty level:	6,344	660	97.8%	800	279	96.9%
Under 18 years	1,587	NC	97.5%	157	NC	100.0%
18 to 64 years	3,926	410	98.1%	455	159	97.6%
65 years and over	831	NC	96.6%	188	NC	92.6%

Source: U.S. Census Bureau, 2008-2012 American Community Survey

For information on confidentiality protection, sampling error, nonsampling error, and definitions, see Survey Methodology.

<http://www.census.gov/acs/www/UseData/index.htm>

Population Below Poverty in the Past 12 Months Lanham CDP, Maryland



Source: B17020 POVERTY STATUS IN THE PAST 12 MONTHS BY AGE - Universe: POPULATION FOR WHOM POVERTY STATUS IS DETERMINED
Data Set: 2008-2012 American Community Survey 5-Year Estimates

B19001. HOUSEHOLD INCOME IN THE PAST 12 MONTHS (IN 2010 INFLATION-ADJUSTED DOLLARS)

Data Set: 2008-2012 American Community Survey 5-Year Estimates

	Lanham CDP, Maryland					
	African American	Margin of Error (+/-)	% of AA Total	White, Not Hispanic	Margin of Error (+/-)	% of NHW Total
Total:	2,151	140	100.0%	321	76	100.0%
Less than \$ 10,000	35	32	1.6%	11	16	3.4%
\$ 10,000 to \$ 14,999	4	7	0.2%	6	9	1.9%
\$ 15,000 to \$ 24,999	61	NC	2.8%	40	NC	12.5%
\$ 25,000 to \$ 34,999	80	NC	3.7%	14	NC	4.4%
\$ 35,000 to \$ 49,999	220	NC	10.2%	31	NC	9.7%
\$ 50,000 to \$ 74,999	626	NC	29.1%	32	NC	10.0%
\$ 75,000 to \$ 99,999	307	82	14.3%	72	61	22.4%
\$ 100,000 to \$ 149,999	448	NC	20.8%	87	NC	27.1%
\$ 150,000 to \$ 199,999	251	100	11.7%	28	29	8.7%
\$ 200,000 or more	119	69	5.5%	0	17	0.0%

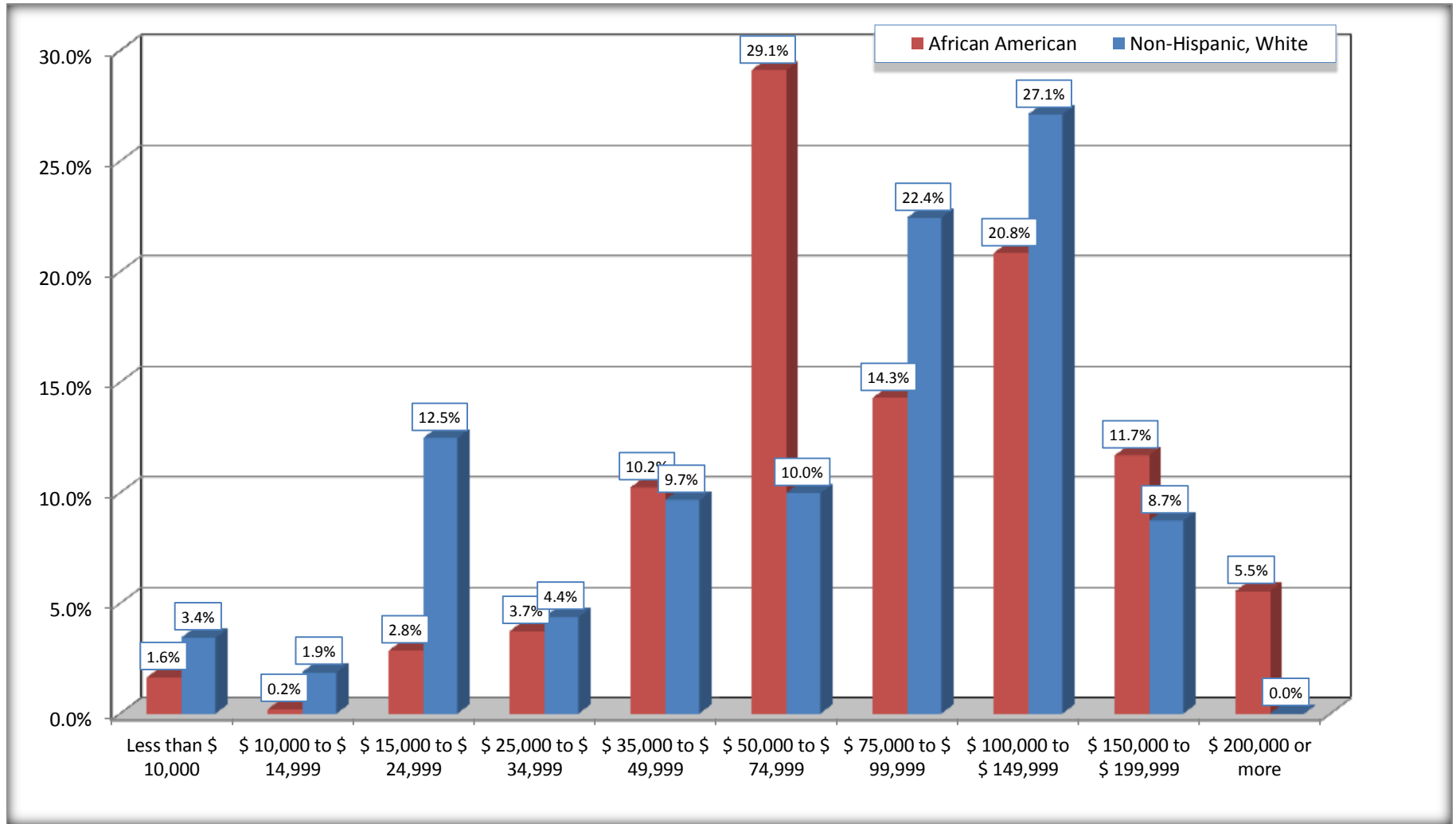
Source: U.S. Census Bureau, 2008-2012 American Community Survey

For information on confidentiality protection, sampling error, nonsampling error, and definitions, see Survey Methodology.

<http://www.census.gov/acs/www/UseData/index.htm>

Household Income in the Past 12 Months

Lanham CDP, Maryland



Source: B19001. HOUSEHOLD INCOME IN THE PAST 12 MONTHS (IN 2010 INFLATION-ADJUSTED DOLLARS)
Data Set: 2008-2012 American Community Survey 5-Year Estimates

B19013. MEDIAN HOUSEHOLD INCOME IN THE PAST 12 MONTHS (IN 2010 INFLATION-ADJUSTED DOLLARS)

Data Set: 2008-2012 American Community Survey 5-Year Estimates

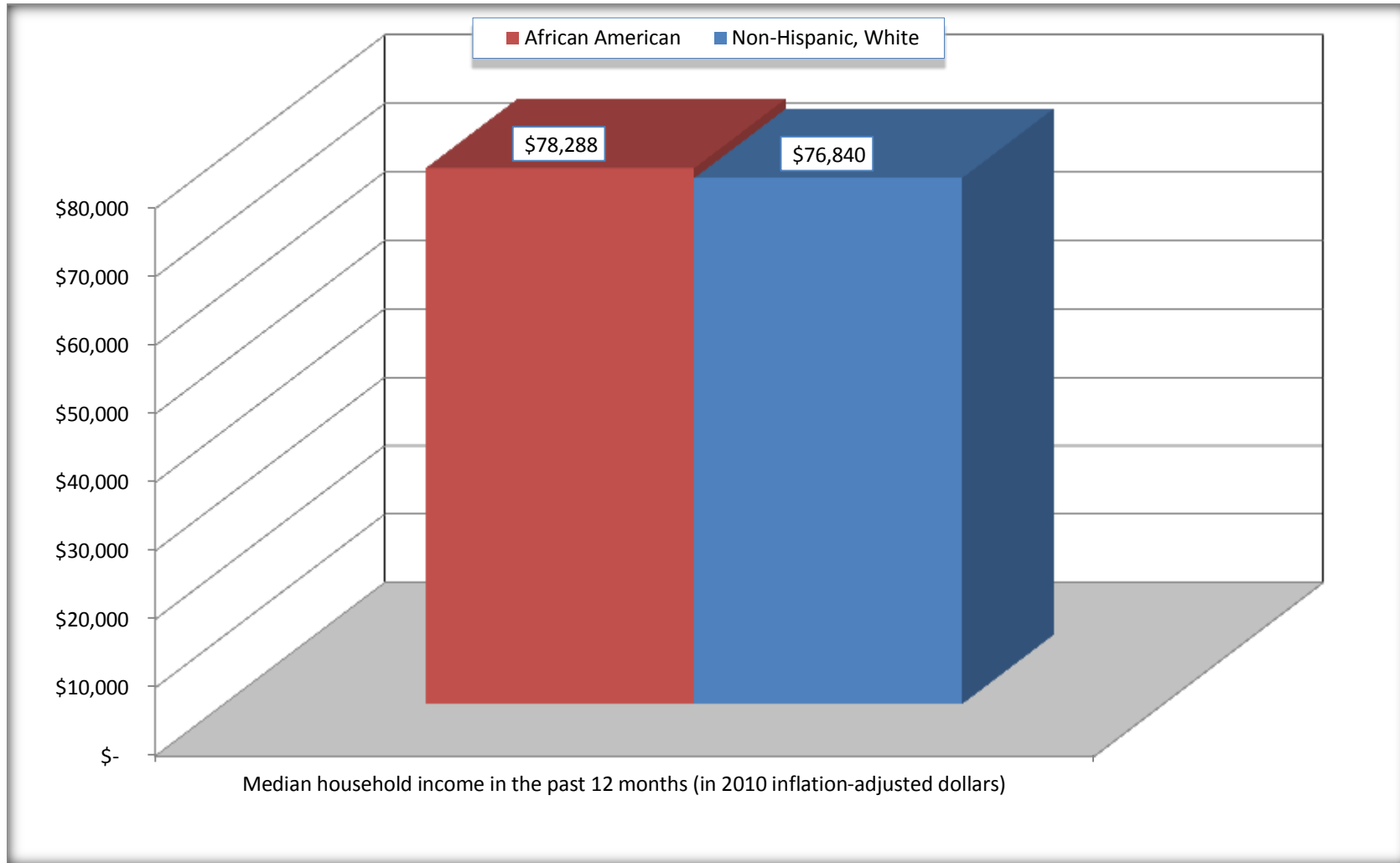
	Lanham CDP, Maryland			
	African American	Margin of Error (+/-)	White, Not Hispanic	Margin of Error (+/-)
Median household income in the past 12 months (in 2010 inflation-adjusted dollars)	\$ 78,288	\$ 11,841	\$ 76,840	\$ 5,834

Source: U.S. Census Bureau, 2008-2012 American Community Survey

For information on confidentiality protection, sampling error, nonsampling error, and definitions, see Survey Methodology.
<http://www.census.gov/acs/www/UseData/index.htm>

Median Household Income in the Past 12 Months

Lanham CDP, Maryland



Source: B19013. MEDIAN HOUSEHOLD INCOME IN THE PAST 12 MONTHS (IN 2010 INFLATION-ADJUSTED DOLLARS)
Data Set: 2008-2012 American Community Survey 5-Year Estimates

B19101. FAMILY INCOME IN THE PAST 12 MONTHS (IN 2010 INFLATION-ADJUSTED DOLLARS)

Data Set: 2008-2012 American Community Survey 5-Year Estimates

	Lanham CDP, Maryland					
	African American	Margin of Error (+/-)	% of AA Total	White, Not Hispanic	Margin of Error (+/-)	% of NHW Total
Total:	1,735	170	100.0%	204	79	100.0%
Less than \$ 10,000	12	20	0.7%	0	17	0.0%
\$ 10,000 to \$ 14,999	4	7	0.2%	0	17	0.0%
\$ 15,000 to \$ 24,999	38	NC	2.2%	10	NC	4.9%
\$ 25,000 to \$ 34,999	51	NC	2.9%	14	NC	6.9%
\$ 35,000 to \$ 49,999	69	NC	4.0%	9	NC	4.4%
\$ 50,000 to \$ 74,999	543	NC	31.3%	25	NC	12.3%
\$ 100,000 to \$ 149,999	366	NC	21.1%	64	NC	31.4%
\$ 150,000 to \$ 199,999	251	100	14.5%	28	29	13.7%
\$ 200,000 or more	110	66	6.3%	0	17	0.0%

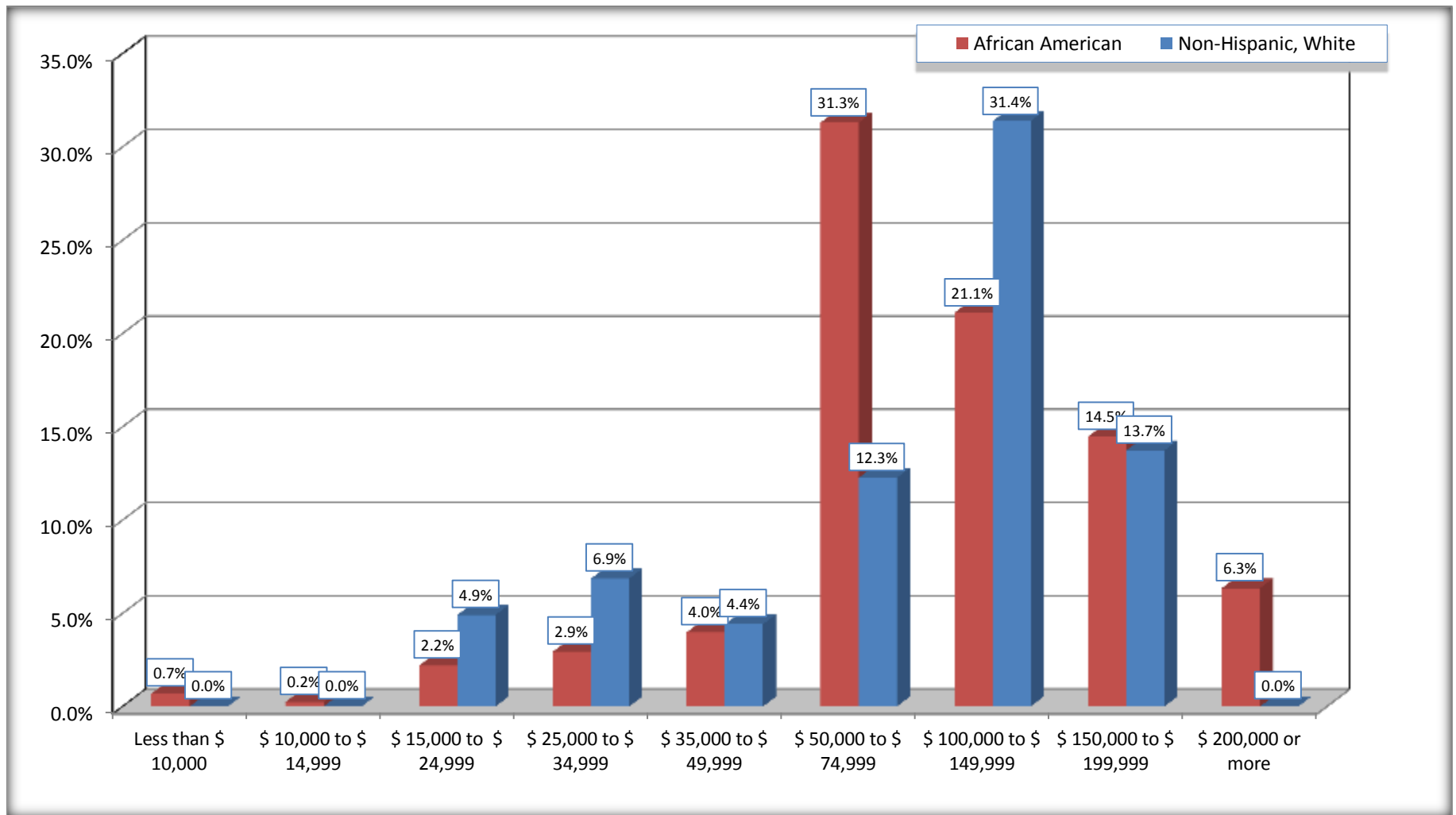
Source: U.S. Census Bureau, 2008-2012 American Community Survey

For information on confidentiality protection, sampling error, nonsampling error, and definitions, see Survey Methodology.

<http://www.census.gov/acs/www/UseData/index.htm>

Family Income in the Past 12 Months

Lanham CDP, Maryland



Source: B19101. FAMILY INCOME IN THE PAST 12 MONTHS (IN 2010 INFLATION-ADJUSTED DOLLARS)
Data Set: 2008-2012 American Community Survey 5-Year Estimates

B19113. MEDIAN FAMILY INCOME IN THE PAST 12 MONTHS (IN 2010 INFLATION-ADJUSTED DOLLARS)

Data Set: 2008-2012 American Community Survey 5-Year Estimates

	Lanham CDP, Maryland			
	African American	Margin of Error (+/-)	White, Not Hispanic	Margin of Error (+/-)
Median family income in the past 12 months (in 2010 inflation-adjusted dollars)	\$ 84,757	\$ 17,846	\$ 92,727	\$ 34,367

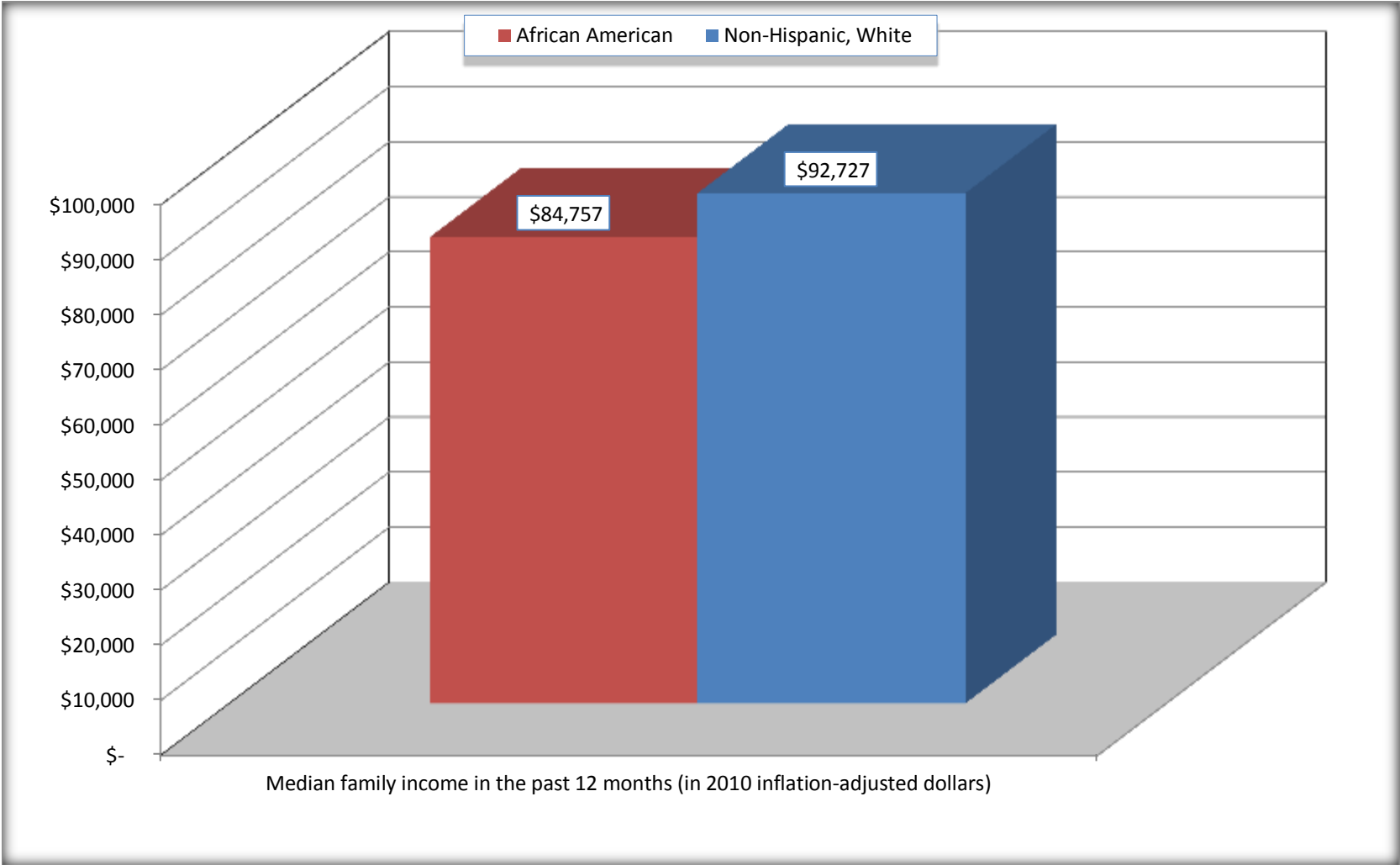
Source: U.S. Census Bureau, 2008-2012 American Community Survey

For information on confidentiality protection, sampling error, nonsampling error, and definitions, see Survey Methodology.

<http://www.census.gov/acs/www/UseData/index.htm>

Median Family Income in the Past 12 Months

Lanham CDP, Maryland



Source: B19113. MEDIAN FAMILY INCOME IN THE PAST 12 MONTHS (IN 2010 INFLATION-ADJUSTED DOLLARS)
Data Set: 2008-2012 American Community Survey 5-Year Estimates

B19202. MEDIAN NONFAMILY HOUSEHOLD INCOME IN THE PAST 12 MONTHS (IN 2010 INFLATION-ADJUSTED DOLLARS)

Data Set: 2008-2012 American Community Survey 5-Year Estimates

	Lanham CDP, Maryland			
	African American	Margin of Error (+/-)	White, Not Hispanic	Margin of Error (+/-)
Median nonfamily household income in the past 12 months (in 2010 inflation-adjusted dollars)	\$ 47,589	\$ 8,491	\$ 42,813	\$ 30,203

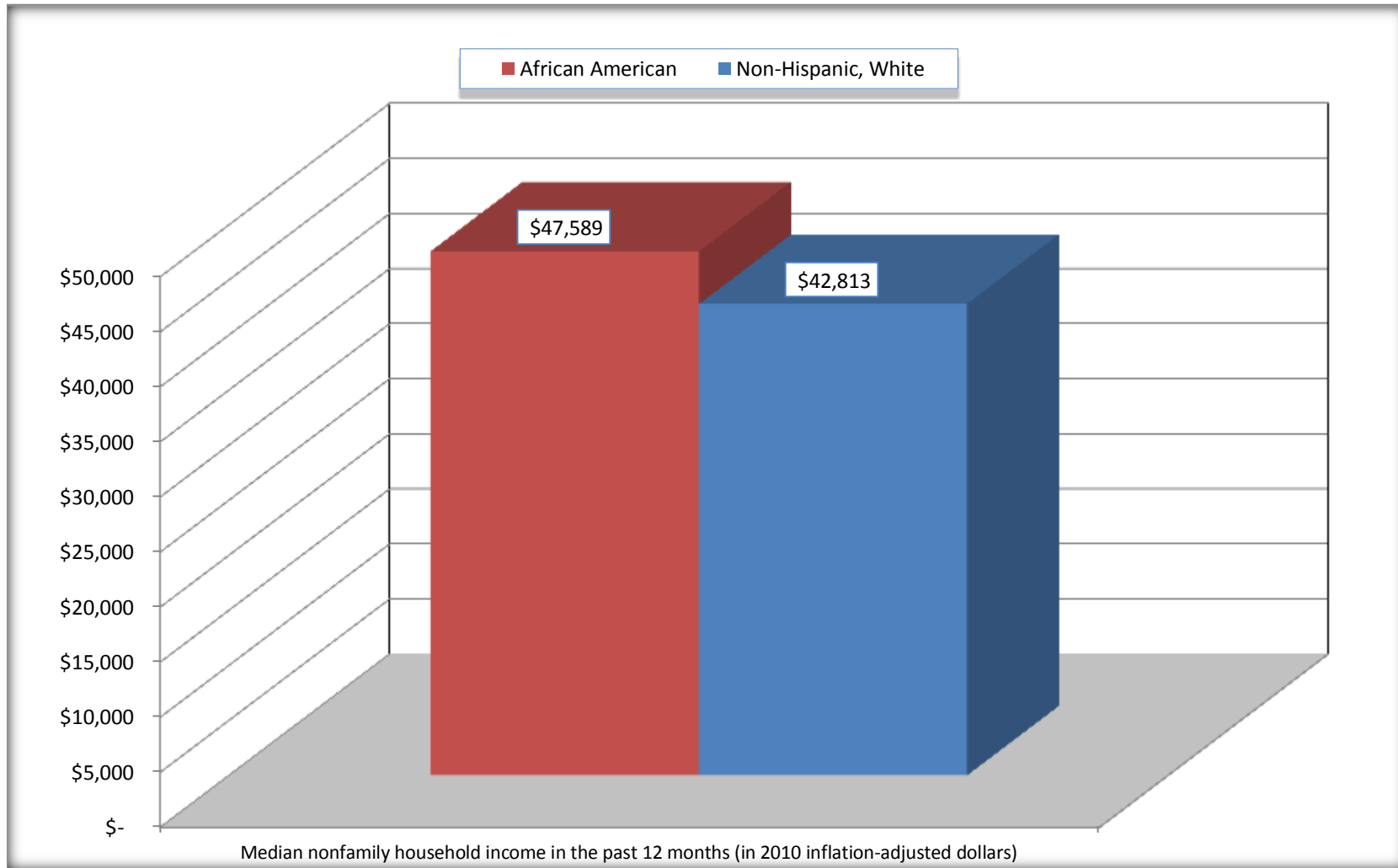
Source: U.S. Census Bureau, 2008-2012 American Community Survey

For information on confidentiality protection, sampling error, nonsampling error, and definitions, see Survey Methodology.

<http://www.census.gov/acs/www/UseData/index.htm>

Median Non-Family Income in the Past 12 Months

Lanham CDP, Maryland



Source: B19202. MEDIAN NONFAMILY HOUSEHOLD INCOME IN THE PAST 12 MONTHS (IN 2010 INFLATION-ADJUSTED DOLLARS)
Data Set: 2008-2012 American Community Survey 5-Year Estimates

B19301. PER CAPITA INCOME IN THE PAST 12 MONTHS (IN 2010 INFLATION-ADJUSTED DOLLARS)

Data Set: 2008-2012 American Community Survey 5-Year Estimates

	Lanham CDP, Maryland			
	African American	Margin of Error (+/-)	White, Not Hispanic	Margin of Error (+/-)
Per capita income in the past 12 months (in 2010 inflation-adjusted dollars)	\$ 32,561	\$ 3,237	\$ 34,390	\$ 7,968

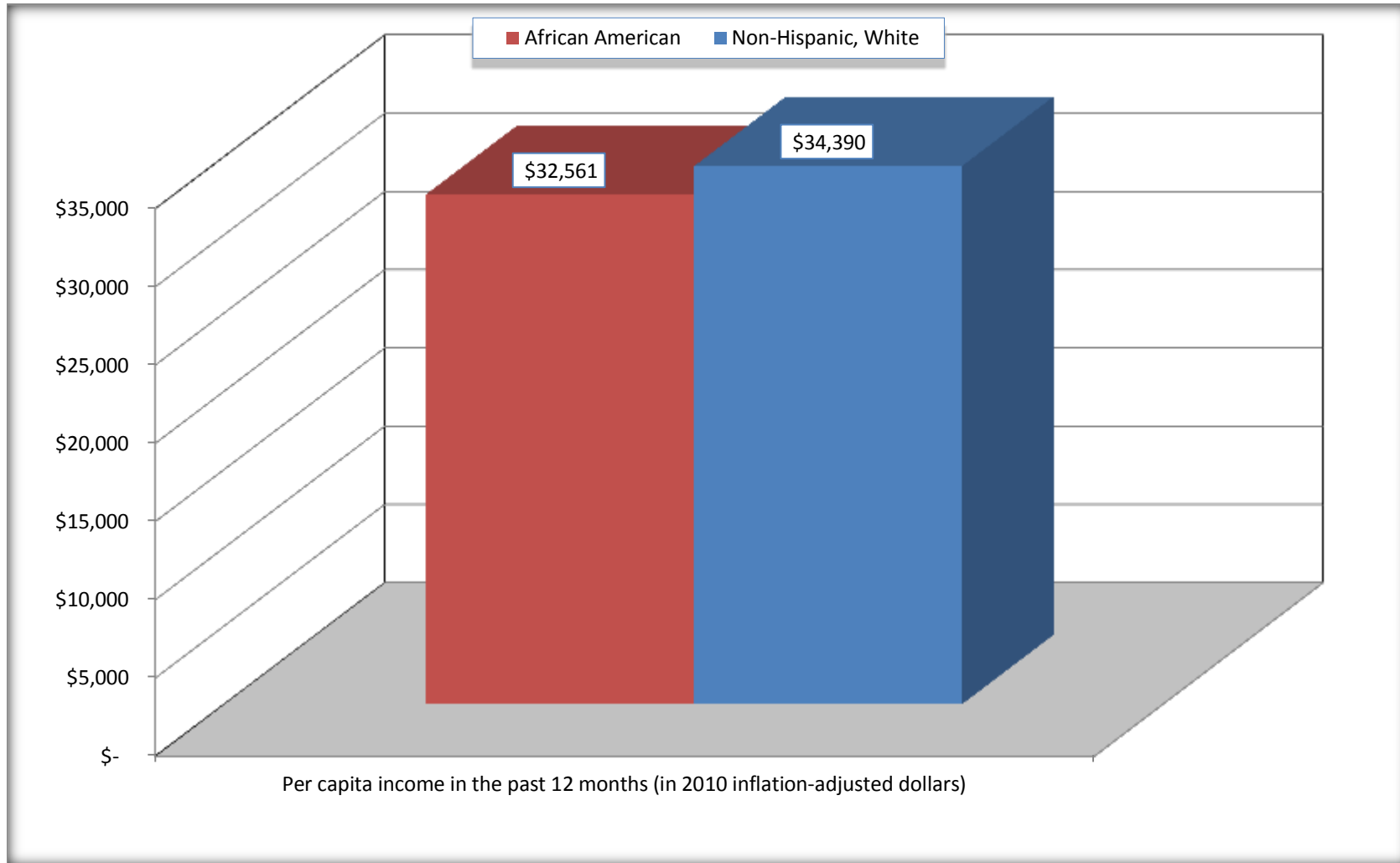
Source: U.S. Census Bureau, 2008-2012 American Community Survey

For information on confidentiality protection, sampling error, nonsampling error, and definitions, see Survey Methodology.

<http://www.census.gov/acs/www/UseData/index.htm>

Per capita Income in the Past 12 Months

Lanham CDP, Maryland



Source: B19301. PER CAPITA INCOME IN THE PAST 12 MONTHS (IN 2010 INFLATION-ADJUSTED DOLLARS)
Data Set: 2008-2012 American Community Survey 5-Year Estimates

B20017. MEDIAN EARNINGS IN THE PAST 12 MONTHS (IN 2010 INFLATION-ADJUSTED DOLLARS) BY SEX BY WORK EXPERIENCE IN THE PAST 12 MONTHS FOR THE POPULATION 16 YEARS AND OVER WITH EARNINGS IN THE PAST 12 MONTHS

Data Set: 2008-2012 American Community Survey 5-Year Estimates

	Lanham CDP, Maryland			
	African American	Margin of Error (+/-)	White, Not Hispanic	Margin of Error (+/-)
Median earnings in the past 12 months (in 2010 inflation-adjusted dollars) --				
Total:	\$ 42,000	\$ 5,664	\$ 37,961	\$ 14,120
Male --				
Total	\$ 48,688	\$ 10,354	\$ 57,045	\$ 19,090
Worked full-time, year-round in the past 12 months	\$ 57,098	\$ 9,830	\$ 59,201	\$ 18,078
Other	\$ 7,727	\$ 3,813	\$ 22,054	\$ 18,017
Female --				
Total	\$ 39,792	\$ 8,655	\$ 20,284	\$ 11,504
Worked full-time, year-round in the past 12 months	\$ 49,107	\$ 8,402	\$ 43,587	\$ 3,744
Other	\$ 9,835	\$ 2,534	\$ 18,138	\$ 15,894

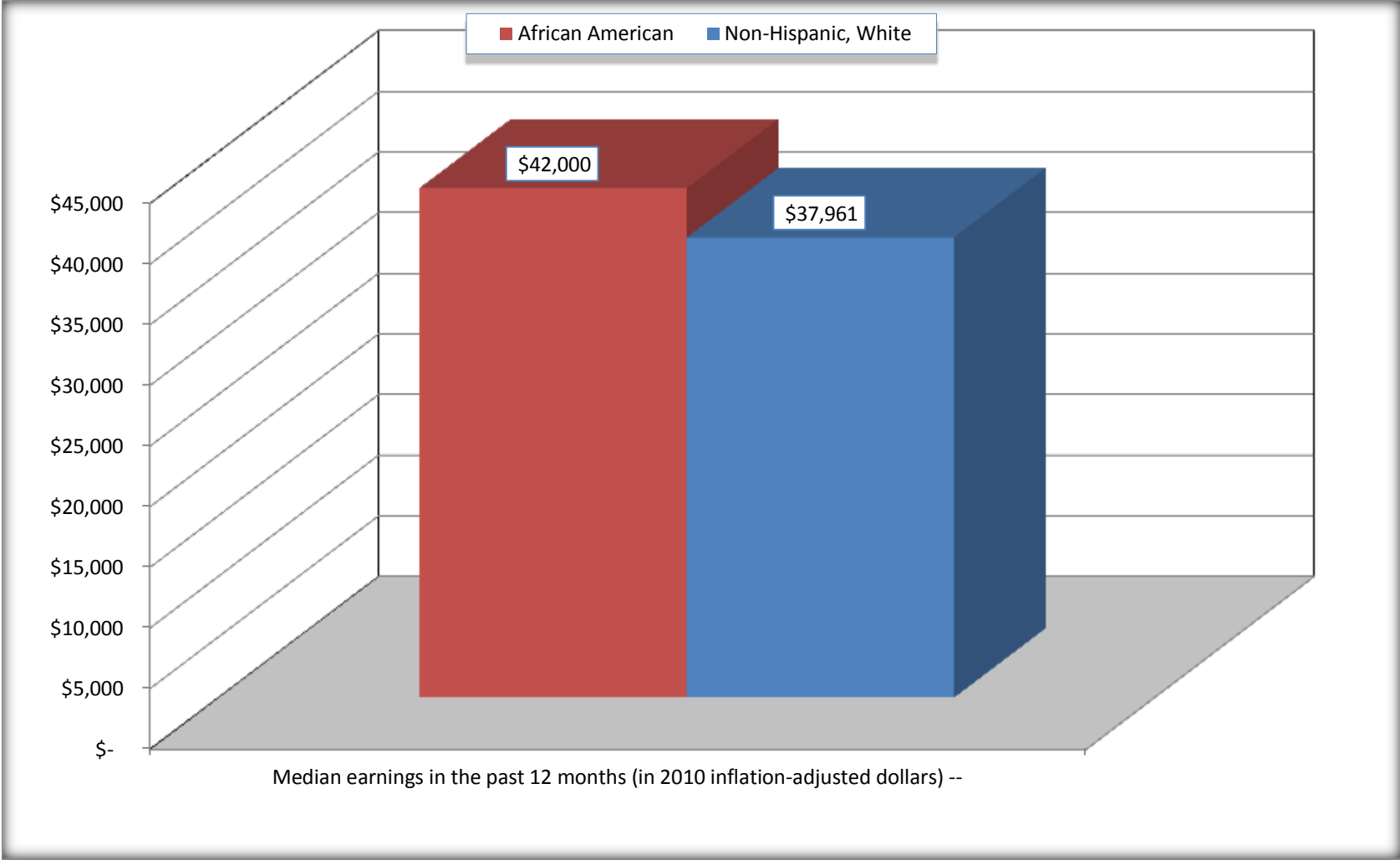
Source: U.S. Census Bureau, 2008-2012 American Community Survey

For information on confidentiality protection, sampling error, nonsampling error, and definitions, see Survey Methodology.

<http://www.census.gov/acs/www/UseData/index.htm>

Median earnings in the Past 12 Months (16 Years and Over with Earnings)

Lanham CDP, Maryland



Source: B20017. MEDIAN EARNINGS IN THE PAST 12 MONTHS (IN 2010 INFLATION-ADJUSTED DOLLARS) BY SEX BY WORK EXPERIENCE IN THE PAST 12 MONTHS FOR THE POPULATION 16 YEARS AND OVER WITH EARNINGS IN THE PAST 12 MONTHS
Data Set: 2008-2012 American Community Survey 5-Year Estimates

B20005. SEX BY WORK EXPERIENCE IN THE PAST 12 MONTHS BY EARNINGS IN THE PAST 12 MONTHS (IN 2010 INFLATION-ADJUSTED DOLLARS) FOR THE POPULATION 16 YEARS AND OVER

Data Set: 2008-2012 American Community Survey 5-Year Estimates

	Lanham CDP, Maryland					
	African American	Margin of Error (+/-)	% of AA Total	White, Not Hispanic	Margin of Error (+/-)	% of NHW Total
Total:	5,077	432	100.0%	687	177	100.0%
Worked full-time, year-round in the past 12 months:	2,663	NC	52.5%	255	NC	37.1%
No earnings	0	NC	0.0%	0	NC	0.0%
With earnings:	2,663	NC	52.5%	255	NC	37.1%
\$ 1 to \$ 9,999 or loss	11	NC	0.2%	0	NC	0.0%
\$ 10,000 to \$ 19,999	131	NC	2.6%	0	NC	0.0%
\$ 20,000 to \$ 29,999	387	NC	7.6%	27	NC	3.9%
\$ 30,000 to \$ 49,999	725	NC	14.3%	83	NC	12.1%
\$ 50,000 to \$ 74,999	832	NC	16.4%	75	NC	10.9%
\$ 75,000 or more	577	NC	11.4%	70	NC	10.2%
Other:	2,414	NC	47.5%	432	NC	62.9%
No earnings	1,605	NC	31.6%	190	NC	27.7%
With earnings: less than full time, year-round	809	NC	15.9%	242	NC	35.2%
Male:	2,365	252	46.6%	306	97	44.5%
Worked full-time, year-round in the past 12 months:	1,253	187	24.7%	177	76	25.8%
No earnings	0	17	0.0%	0	17	0.0%
With earnings:	1,253	187	24.7%	177	76	25.8%
\$ 1 to \$ 9,999 or loss	0	NC	0.0%	0	NC	0.0%
\$ 10,000 to \$ 19,999	26	NC	0.5%	0	NC	0.0%
\$ 20,000 to \$ 29,999	241	NC	4.7%	21	NC	3.1%
\$ 30,000 to \$ 49,999	277	NC	5.5%	24	NC	3.5%
\$ 50,000 to \$ 74,999	433	NC	8.5%	66	NC	9.6%
\$ 75,000 or more	276	NC	5.4%	66	NC	9.6%

	Lanham CDP, Maryland					
	African American	Margin of Error (+/-)	% of AA Total	White, Not Hispanic	Margin of Error (+/-)	% of NHW Total
Other:	1,112	227	21.9%	129	60	18.8%
No earnings	784	193	15.4%	58	40	8.4%
With earnings:	328	112	6.5%	71	41	10.3%
Female:	2,712	271	53.4%	381	103	55.5%
Worked full-time, year-round in the past 12 months:	1,410	206	27.8%	78	40	11.4%
No earnings	0	17	0.0%	0	17	0.0%
With earnings:	1,410	206	27.8%	78	40	11.4%
\$ 1 to \$ 9,999 or loss	11	NC	0.2%	0	NC	0.0%
\$ 10,000 to \$ 19,999	105	NC	2.1%	0	NC	0.0%
\$ 20,000 to \$ 29,999	146	NC	2.9%	6	NC	0.9%
\$ 30,000 to \$ 49,999	448	NC	8.8%	59	NC	8.6%
\$ 50,000 to \$ 74,999	399	NC	7.9%	9	NC	1.3%
\$ 75,000 or more	301	NC	5.9%	4	NC	0.6%
Other:	1,302	226	25.6%	303	98	44.1%
No earnings	821	163	16.2%	132	55	19.2%
With earnings:	481	148	9.5%	171	93	24.9%

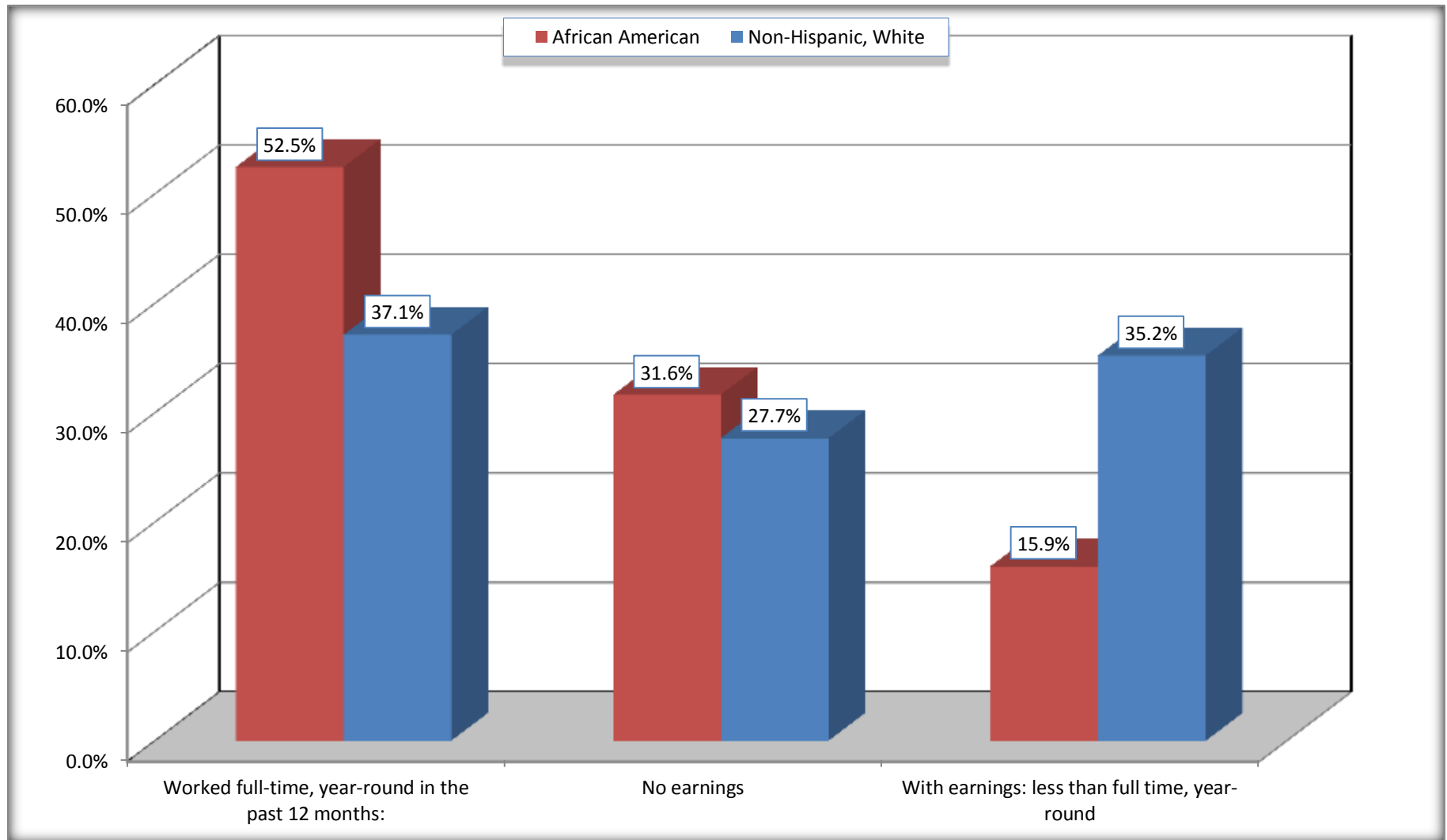
Source: U.S. Census Bureau, 2008-2012 American Community Survey

For information on confidentiality protection, sampling error, nonsampling error, and definitions, see Survey Methodology.

<http://www.census.gov/acs/www/UseData/index.htm>

Employment and Earnings in in the Past 12 Months (16 Years and Over)

Lanham CDP, Maryland



Source: B20005. SEX BY WORK EXPERIENCE IN THE PAST 12 MONTHS BY EARNINGS IN THE PAST 12 MONTHS (IN 2010 INFLATION-ADJUSTED DOLLARS) FOR THE POPULATION 16 YEARS AND OVER

Data Set: 2008-2012 American Community Survey 5-Year Estimates

C21001. SEX BY AGE BY VETERAN STATUS FOR THE CIVILIAN POPULATION 18 YEARS AND OVER

Data Set: 2008-2012 American Community Survey 5-Year Estimates

	Lanham CDP, Maryland					
	African American	Margin of Error (+/-)	% of AA Total	White, Not Hispanic	Margin of Error (+/-)	% of NHW Total
Total:	4,869	416	100.0%	675	171	100.0%
Veteran	574	NC	11.8%	102	NC	15.1%
Nonveteran	4,295	NC	88.2%	573	NC	84.9%
Male:	2,260	260	46.4%	306	97	45.3%
18 to 64 years:	1,871	249	38.4%	199	86	29.5%
Veteran	211	89	4.3%	18	18	2.7%
Nonveteran	1,660	257	34.1%	181	83	26.8%
65 years and over:	389	97	8.0%	107	46	15.9%
Veteran	294	93	6.0%	84	42	12.4%
Nonveteran	95	47	2.0%	23	21	3.4%
Female:	2,609	253	53.6%	369	96	54.7%
18 to 64 years:	2,130	259	43.7%	267	95	39.6%
Veteran	27	34	0.6%	0	17	0.0%
Nonveteran	2,103	266	43.2%	267	95	39.6%
65 years and over:	479	101	9.8%	102	47	15.1%
Veteran	42	52	0.9%	0	17	0.0%
Nonveteran	437	89	9.0%	102	47	15.1%

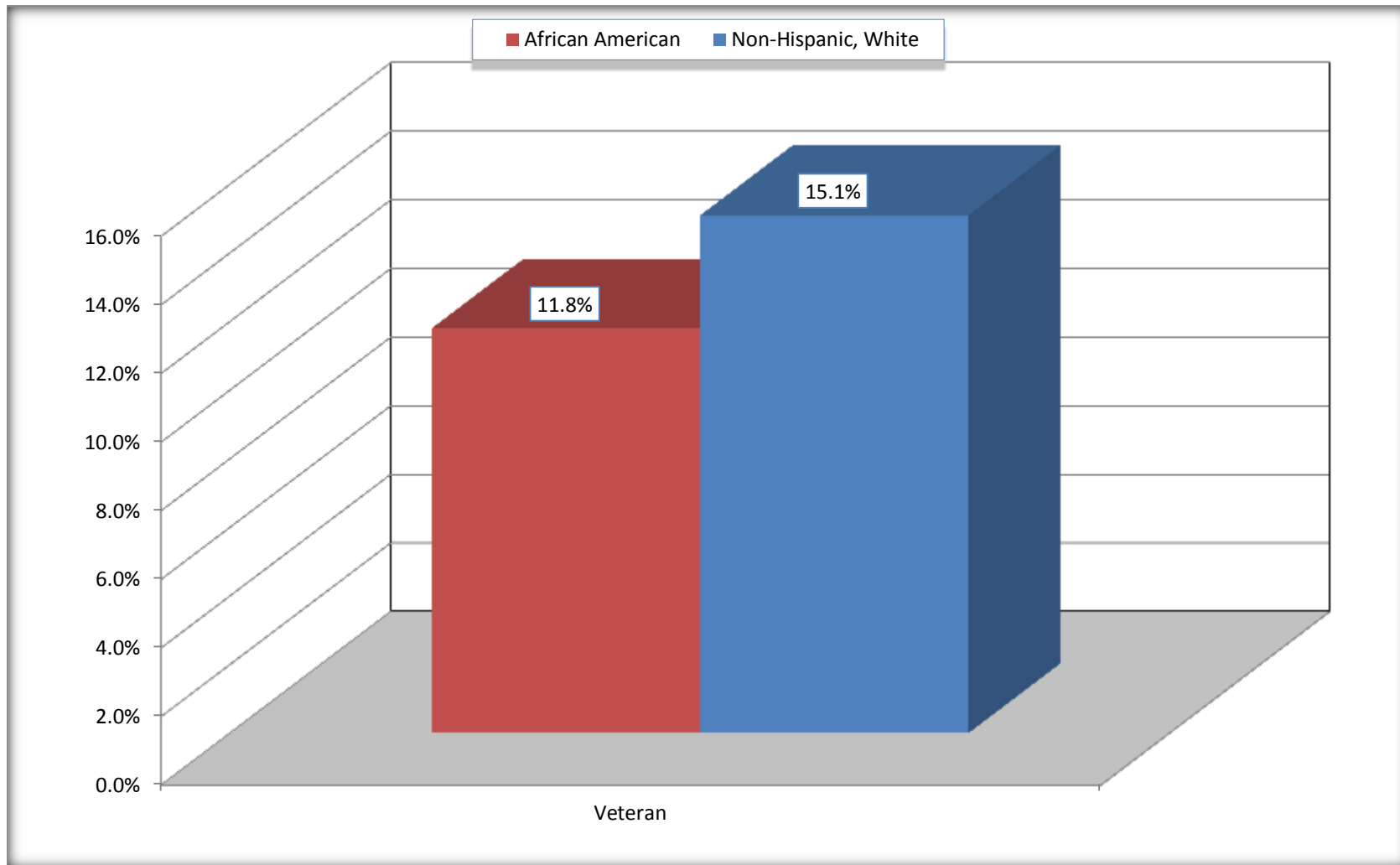
Source: U.S. Census Bureau, 2008-2012 American Community Survey

For information on confidentiality protection, sampling error, nonsampling error, and definitions, see Survey Methodology.

<http://www.census.gov/acs/www/UseData/index.htm>

Veterans in the Civilian Population 18 Years and Over

Lanham CDP, Maryland



Source: C21001. SEX BY AGE BY VETERAN STATUS FOR THE CIVILIAN POPULATION 18 YEARS AND OVER
Data Set: 2008-2012 American Community Survey 5-Year Estimates

B22005. RECEIPT OF FOOD STAMPS/SNAP IN THE PAST 12 MONTHS BY RACE OF HOUSEHOLDER

Data Set: 2008-2012 American Community Survey 5-Year Estimates

	Lanham CDP, Maryland					
	African American	Margin of Error (+/-)	% of AA Total	White, Not Hispanic	Margin of Error (+/-)	% of NHW Total
Total:	2,151	140	100.0%	321	76	100.0%
HH received Food Stamps/SNAP in the past 12 months	155	78	7.2%	10	17	3.1%
HH did not receive Food Stamps/SNAP in the past 12 months	1,996	139	92.8%	311	77	96.9%

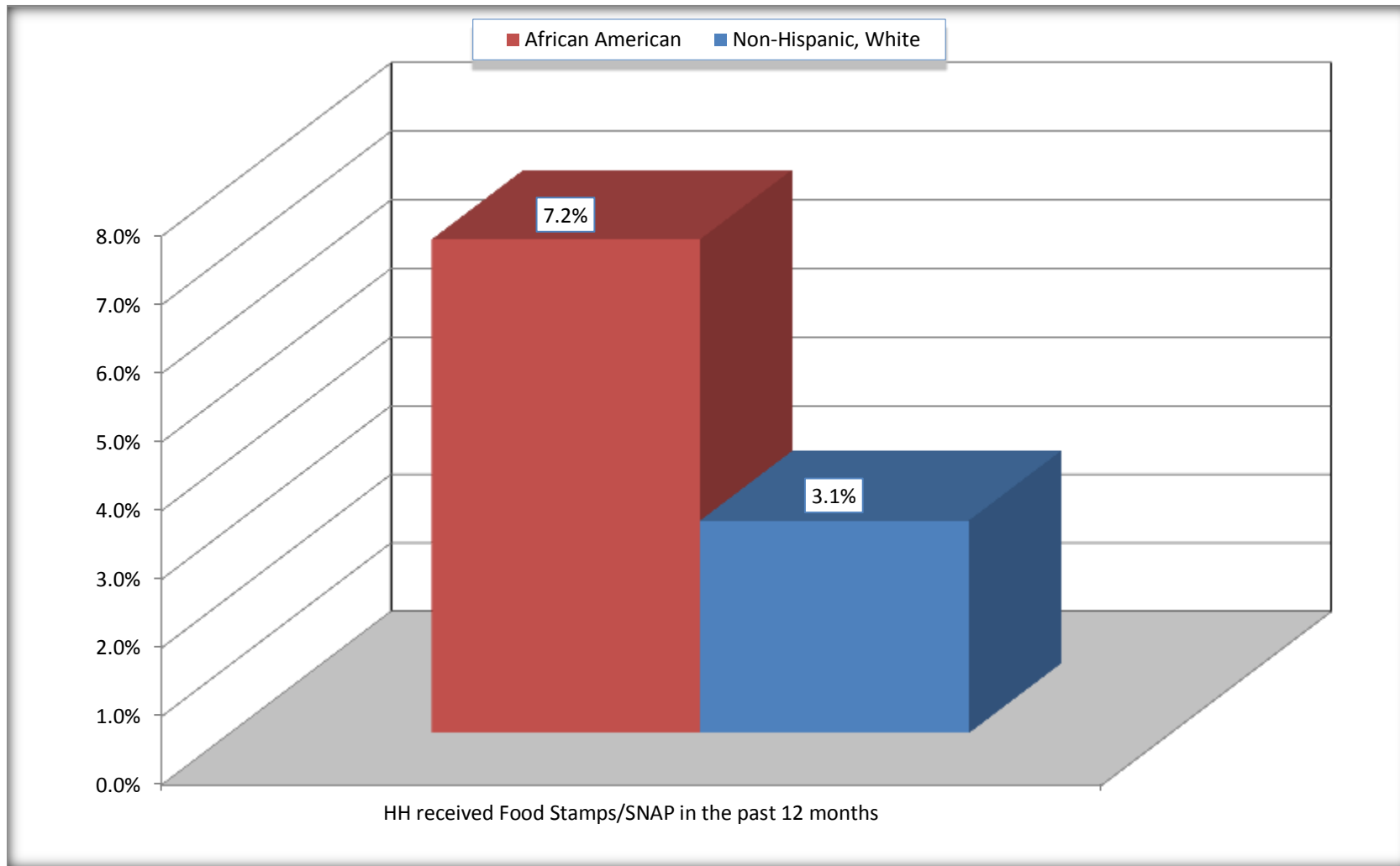
Source: U.S. Census Bureau, 2008-2012 American Community Survey

For information on confidentiality protection, sampling error, nonsampling error, and definitions, see Survey Methodology.

<http://www.census.gov/acs/www/UseData/index.htm>

Receipt of Food Stamps/SNAP in the Past 12 Months by Household

Lanham CDP, Maryland



Source: B22005. RECEIPT OF FOOD STAMPS/SNAP IN THE PAST 12 MONTHS BY RACE OF HOUSEHOLDER
Data Set: 2008-2012 American Community Survey 5-Year Estimates

C23002. SEX BY AGE BY EMPLOYMENT STATUS FOR THE POPULATION 16 YEARS AND OVER

Data Set: 2008-2012 American Community Survey 5-Year Estimates

	Lanham CDP, Maryland					
	African American	Margin of Error (+/-)	% of AA Total	White, Not Hispanic	Margin of Error (+/-)	% of NHW Total
Total:	5,077	432	100.0%	687	177	100.0%
In labor force:	3,533	NC	69.6%	506	NC	73.7%
In Armed Forces	0	NC	0.0%	0	NC	0.0%
Civilian:	3,336	NC	65.7%	410	NC	59.7%
Employed	3,235	NC	63.7%	464	NC	67.5%
Unemployed	298	NC	5.9%	42	NC	6.1%
Not in labor force	1,544	NC	30.4%	181	NC	26.3%
Male:	2,365	252	46.6%	306	97	44.5%
16 to 64 years:	1,976	248	38.9%	199	86	29.0%
In labor force:	1,552	230	30.6%	185	84	26.9%
In Armed Forces	0	17	0.0%	0	17	0.0%
Civilian:	1,552	230	30.6%	185	84	26.9%
Employed	1,450	210	28.6%	185	84	26.9%
Unemployed	102	74	2.0%	0	17	0.0%
Not in labor force	424	153	8.4%	14	21	2.0%
65 years and over:	389	97	7.7%	107	46	15.6%
In labor force:	73	46	1.4%	71	40	10.3%
Employed	73	46	1.4%	60	37	8.7%
Unemployed	0	17	0.0%	11	16	1.6%
Not in labor force	316	87	6.2%	36	28	5.2%

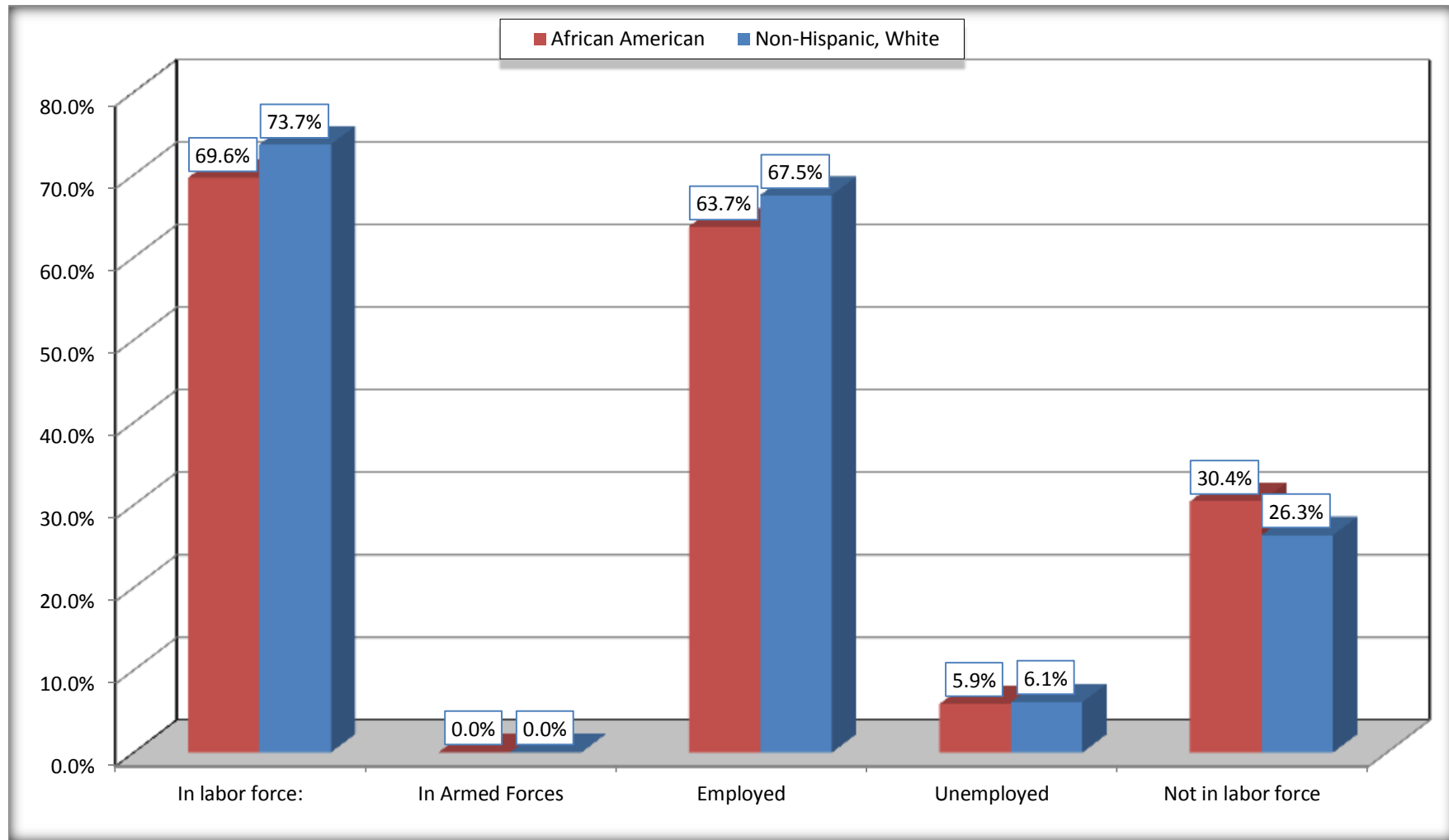
	Lanham CDP, Maryland					
	African American	Margin of Error (+/-)	% of AA Total	White, Not Hispanic	Margin of Error (+/-)	% of NHW Total
Female:	2,712	271	53.4%	381	103	55.5%
16 to 64 years:	2,233	286	44.0%	279	101	40.6%
In labor force:	1,784	245	35.1%	225	95	32.8%
In Armed Forces	0	17	0.0%	0	17	0.0%
Civilian:	1,784	245	35.1%	225	95	32.8%
Employed	1,588	226	31.3%	194	97	28.2%
Unemployed	196	105	3.9%	31	33	4.5%
Not in labor force	449	141	8.8%	54	38	7.9%
65 years and over:	479	101	9.4%	102	47	14.8%
In labor force:	124	61	2.4%	25	27	3.6%
Employed	124	61	2.4%	25	27	3.6%
Unemployed	0	17	0.0%	0	17	0.0%
Not in labor force	355	83	7.0%	77	37	11.2%

Source: U.S. Census Bureau, 2008-2012 American Community Survey

For information on confidentiality protection, sampling error, nonsampling error, and definitions, see Survey Methodology.
<http://www.census.gov/acs/www/UseData/index.htm>

Employment Status for the Population 16 years and over

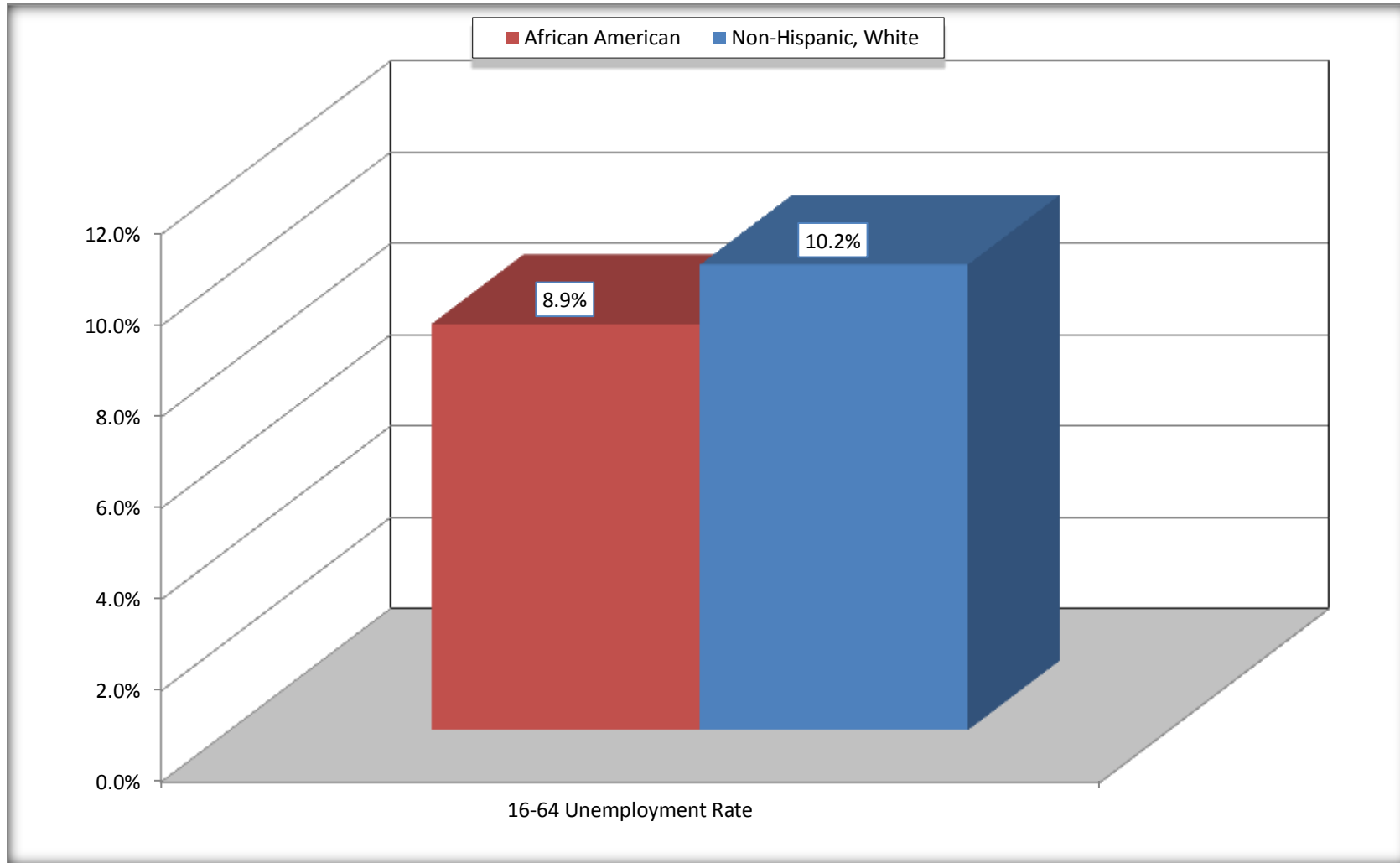
Lanham CDP, Maryland



Source: C23002. SEX BY AGE BY EMPLOYMENT STATUS FOR THE POPULATION 16 YEARS AND OVER
Data Set: 2008-2012 American Community Survey 5-Year Estimates

Unemployment of Working Age Population (Ages 16 to 64) (As a Percent of 16-64 Civilian Labor Force)

Lanham CDP, Maryland



Source: C23002. SEX BY AGE BY EMPLOYMENT STATUS FOR THE POPULATION 16 YEARS AND OVER
Data Set: 2008-2012 American Community Survey 5-Year Estimates

C24010. SEX BY OCCUPATION FOR THE CIVILIAN EMPLOYED POPULATION 16 YEARS AND OVER

Data Set: 2008-2012 American Community Survey 5-Year Estimates

	Lanham CDP, Maryland					
	African American	Margin of Error (+/-)	% of AA Total	White, Not Hispanic	Margin of Error (+/-)	% of NHW Total
Total:	3,235	341	100.0%	464	154	100.0%
Management, professional, and related occupations	1,191	NC	36.8%	98	NC	21.1%
Service occupations	695	NC	21.5%	57	NC	12.3%
Sales and office occupations	827	NC	25.6%	140	NC	30.2%
Natural resources, construction, and maintenance occupations:	251	NC	7.8%	75	NC	16.2%
Production, transportation, and material moving occupations	271	NC	8.4%	94	NC	20.3%
Male:	1,523	203	47.1%	245	85	52.8%
Management, business, science, and arts occupations:	320	117	9.9%	51	33	11.0%
Service occupations	332	114	10.3%	21	25	4.5%
Sales and office occupations	367	119	11.3%	40	31	8.6%
Natural resources, construction, and maintenance occupations:	251	110	7.8%	75	59	16.2%
Production, transportation, and material moving occupations	253	112	7.8%	58	45	12.5%
Female:	1,712	220	52.9%	219	95	47.2%
Management, professional, and related occupations	871	203	26.9%	47	38	10.1%
Service occupations	363	160	11.2%	36	43	7.8%
Sales and office occupations	460	139	14.2%	100	48	21.6%
Natural resources, construction, and maintenance occupations:	0	17	0.0%	0	17	0.0%
Production, transportation, and material moving occupations	18	24	0.6%	36	50	7.8%

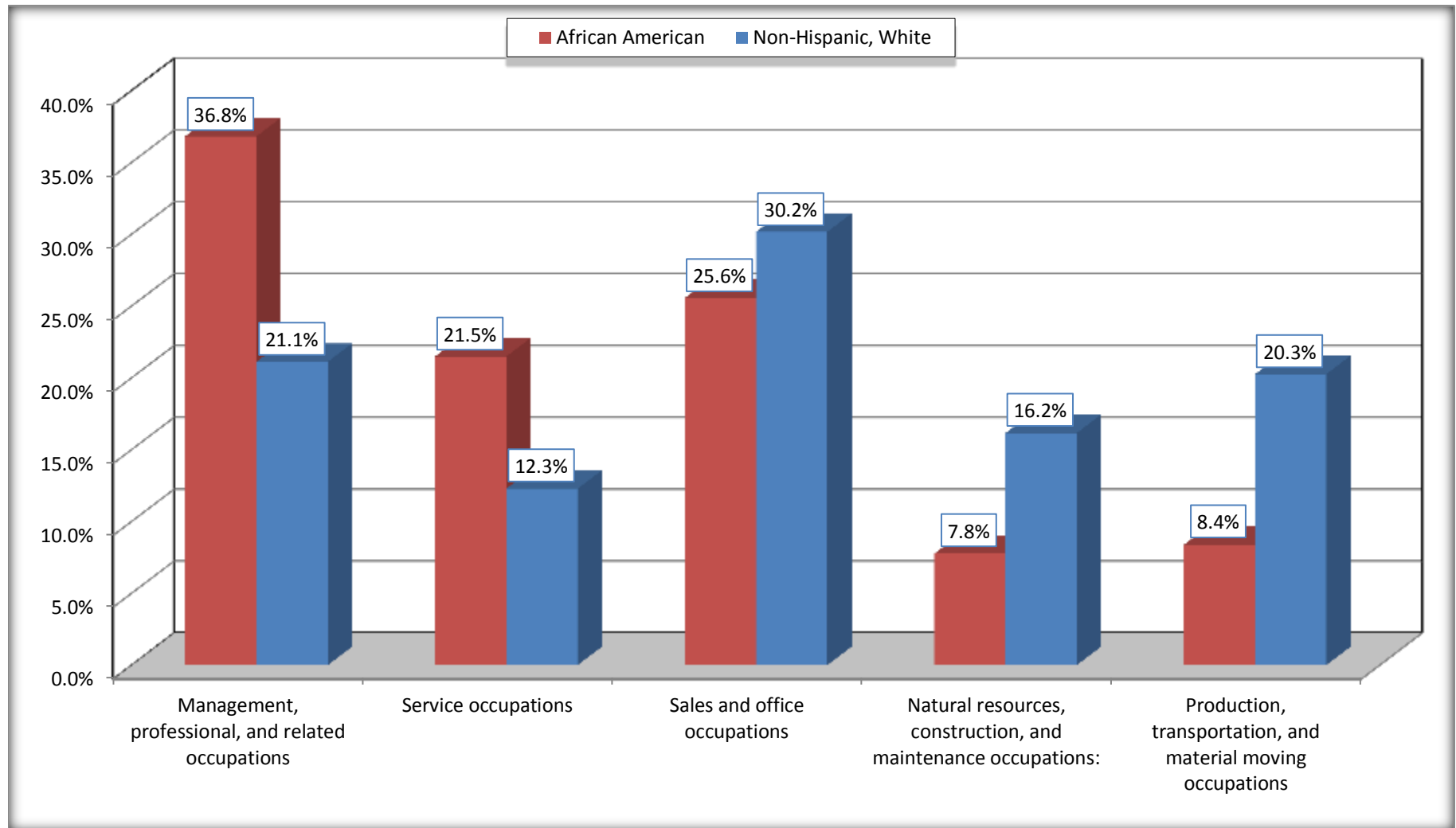
Source: U.S. Census Bureau, 2008-2012 American Community Survey

For information on confidentiality protection, sampling error, nonsampling error, and definitions, see Survey Methodology.

<http://www.census.gov/acs/www/UseData/index.htm>

Occupation for the Civilian Employed 16 Years and Over Population

Lanham CDP, Maryland



Source: C24010. SEX BY OCCUPATION FOR THE CIVILIAN EMPLOYED POPULATION 16 YEARS AND OVER
Data Set: 2008-2012 American Community Survey 5-Year Estimates

B25003. TENURE - Universe: OCCUPIED HOUSING UNITS

Data Set: 2008-2012 American Community Survey 5-Year Estimates

	Lanham CDP, Maryland					
	African American	Margin of Error (+/-)	% of AA Total	White, Not Hispanic	Margin of Error (+/-)	% of NHW Total
Total:	2,151	140	100.0%	321	76	100.0%
Owner occupied	1,826	155	84.9%	295	75	91.9%
Renter occupied	325	117	15.1%	26	26	8.1%

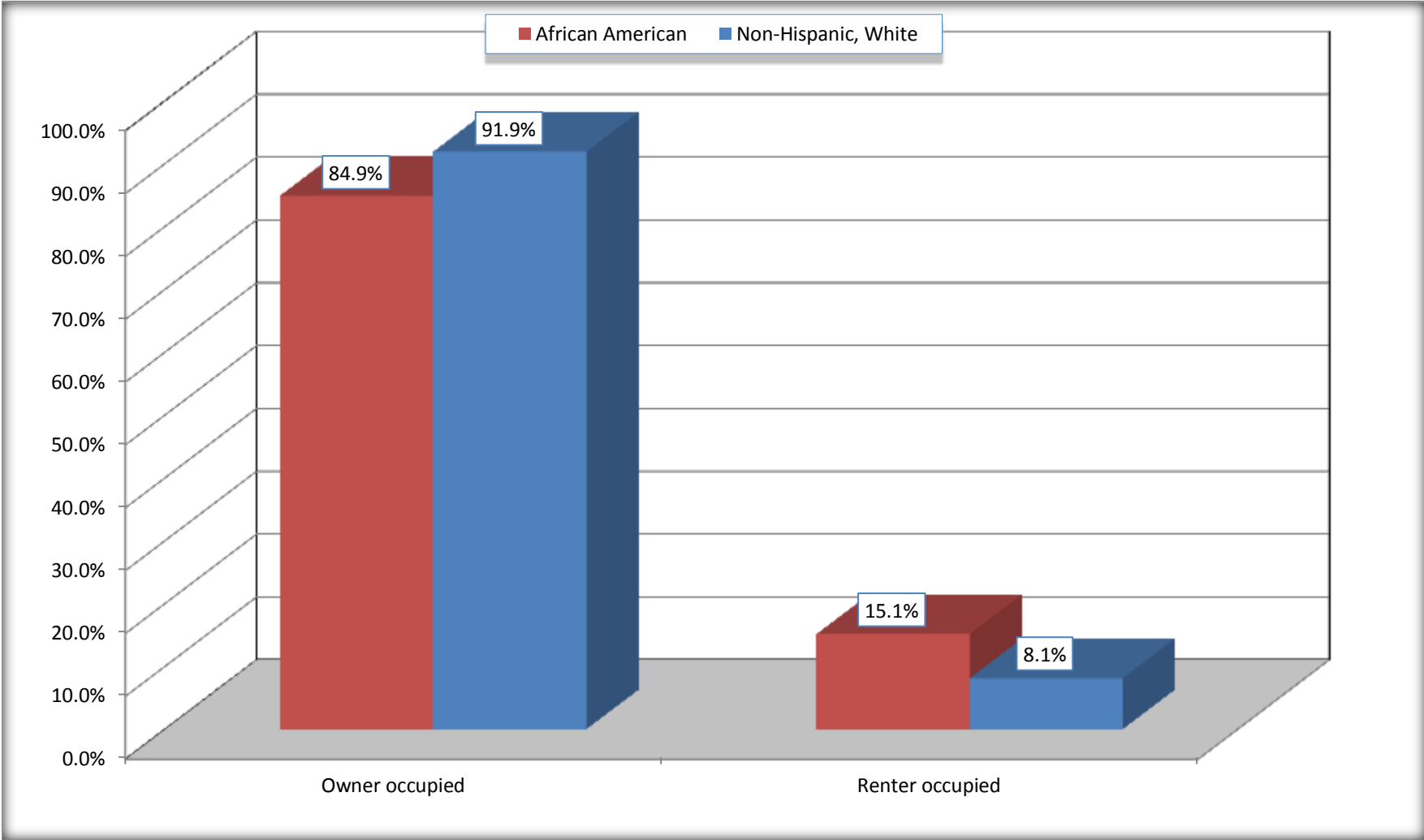
Source: U.S. Census Bureau, 2008-2012 American Community Survey

For information on confidentiality protection, sampling error, nonsampling error, and definitions, see Survey Methodology.

<http://www.census.gov/acs/www/UseData/index.h>

Home Owners and Renters by Household

Lanham CDP, Maryland



Source: B25003. TENURE - Universe: OCCUPIED HOUSING UNITS
Data Set: 2008-2012 American Community Survey 5-Year Estimates

B25014. OCCUPANTS PER ROOM - Universe: OCCUPIED HOUSING UNITS

Data Set: 2008-2012 American Community Survey 5-Year Estimates

	Lanham CDP, Maryland					
	African American	Margin of Error (+/-)	% of AA Total	White, Not Hispanic	Margin of Error (+/-)	% of NHW Total
Total:	2,151	140	100.0%	321	76	100.0%
1.00 or less occupants per room	2,143	139	99.6%	321	76	100.0%
1.01 or more occupants per room	8	12	0.4%	0	17	0.0%

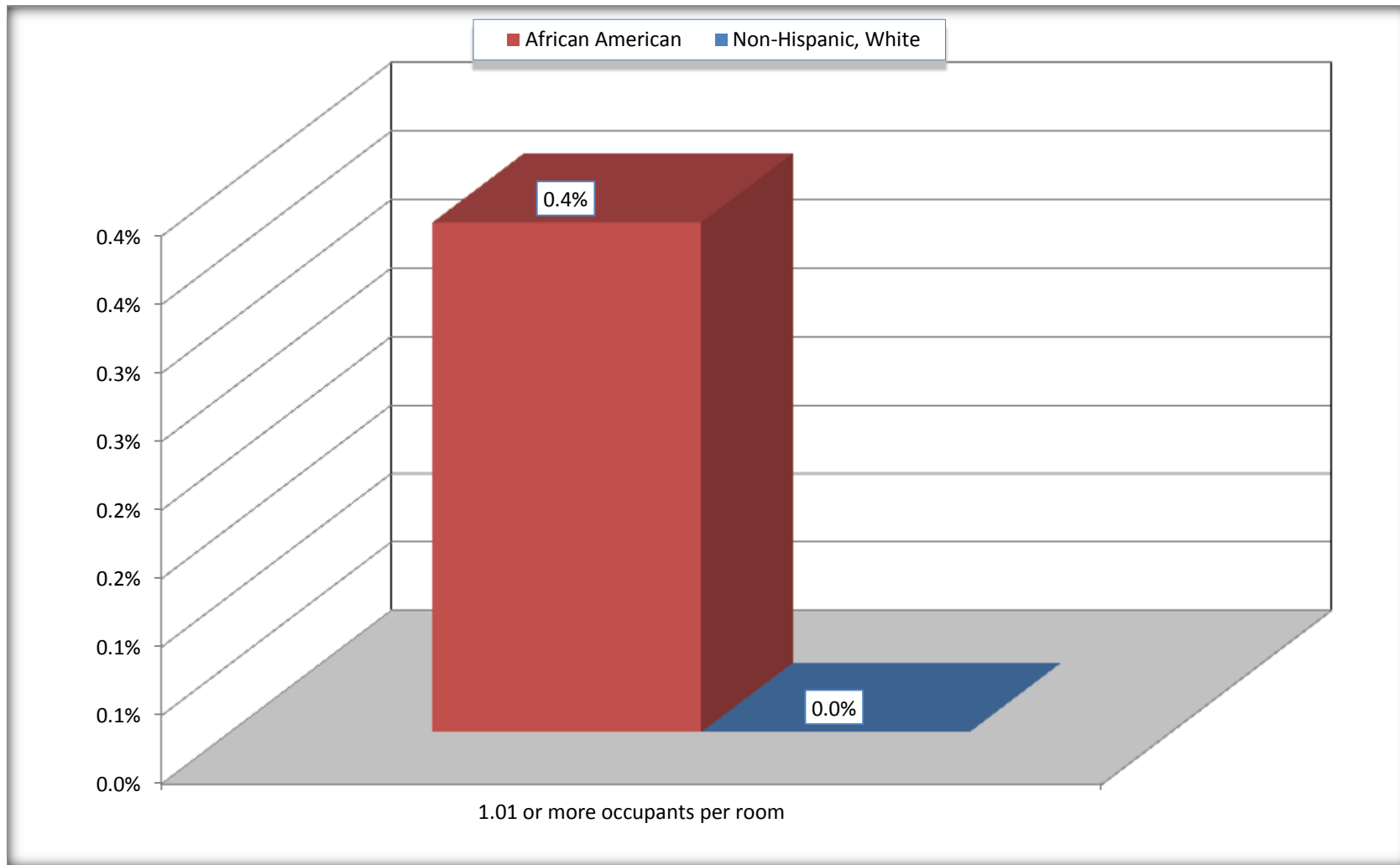
Source: U.S. Census Bureau, 2008-2012 American Community Survey

For information on confidentiality protection, sampling error, nonsampling error, and definitions, see Survey Methodology.

<http://www.census.gov/acs/www/UseData/index.ht>

More than One Person per Room (Crowding) by Household

Lanham CDP, Maryland



Source: B25014. OCCUPANTS PER ROOM - Universe: OCCUPIED HOUSING UNITS
Data Set: 2008-2012 American Community Survey 5-Year Estimates

B18101. AGE BY DISABILITY STATUS

Data Set: 2008-2012 American Community Survey 5-Year Estimates

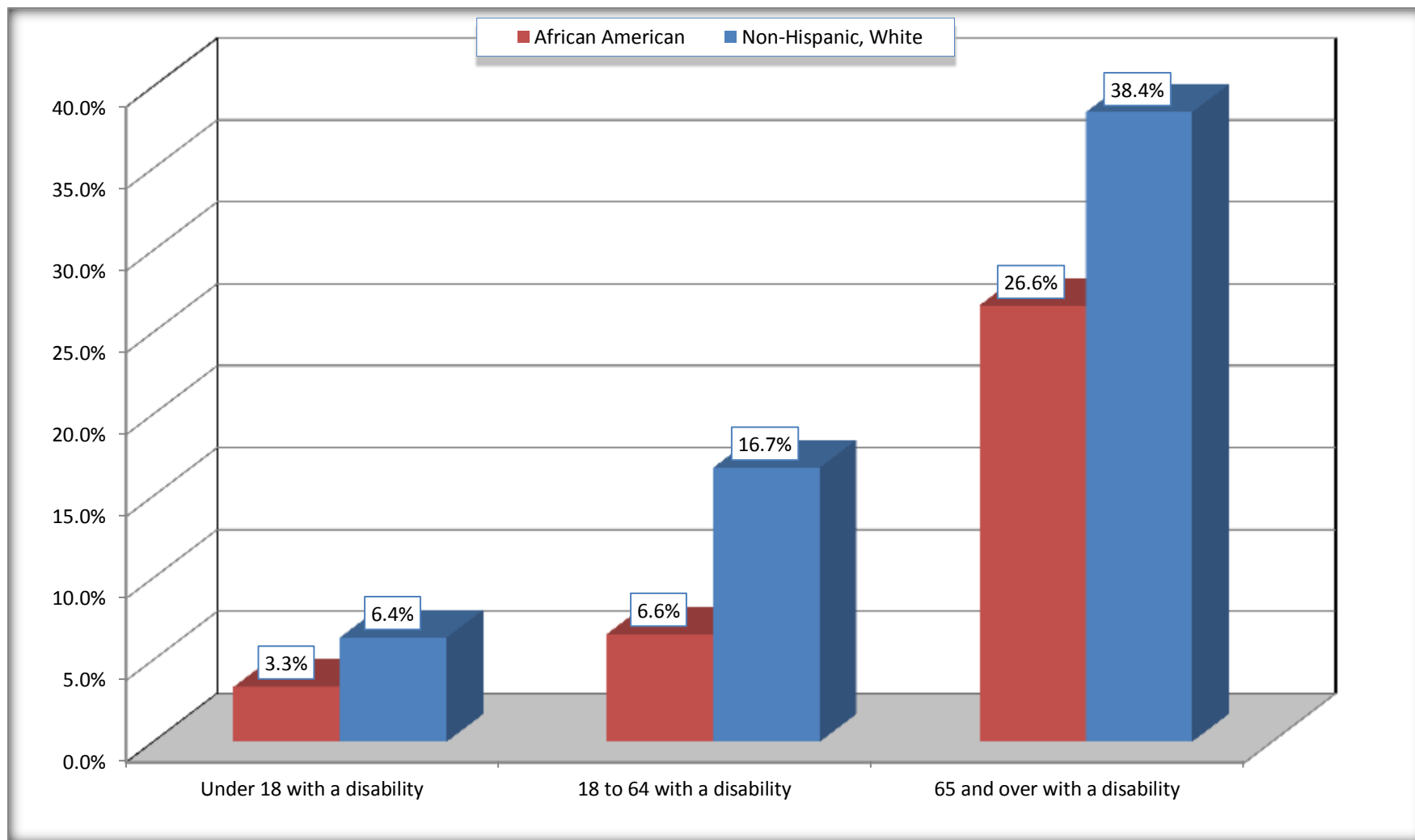
	Lanham CDP, Maryland					
	African American	Margin of Error (+/-)	% of AA Total	White, Not Hispanic	Margin of Error (+/-)	% of NHW Total
Total:	6,508	668	100.0%	826	280	100.0%
Under 18 years:	1,647	371	25.3%	157	12	19.0%
With a disability	55	45	0.8%	10	15	1.2%
No disability	1,592	361	24.5%	147	129	17.8%
18 to 64 years:	4,001	424	61.5%	466	162	56.4%
With a disability	263	102	4.0%	78	65	9.4%
No disability	3,738	397	57.4%	388	145	47.0%
65 years and over:	860	148	13.2%	203	77	24.6%
With a disability	229	89	3.5%	78	43	9.4%
No disability	631	145	9.7%	125	55	15.1%

Source: U.S. Census Bureau, 2008-2012 American Community Survey

For information on confidentiality protection, sampling error, nonsampling error, and definitions, see Survey Methodology.

<http://www.census.gov/acs/www/UseData/index.htm>

Disability by Age Lanham CDP, Maryland



Source: B18101. AGE BY DISABILITY STATUS
Data Set: 2008-2012 American Community Survey 5-Year Estimates

C27001B. HEALTH INSURANCE COVERAGE STATUS BY AGE

Data Set: 2008-2012 American Community Survey 5-Year Estimates

	Lanham CDP, Maryland					
	African American	Margin of Error (+/-)	% of AA Total	White, Not Hispanic	Margin of Error (+/-)	% of NHW Total
Total:	6,508	668	100.0%	826	280	100.0%
Under 18 years:	1,647	371	25.3%	157	133	19.0%
With health insurance coverage	1,498	360	23.0%	157	133	19.0%
No health insurance coverage	149	111	2.3%	0	17	0.0%
18 to 64 years:	4,001	424	61.5%	466	162	56.4%
With health insurance coverage	3,489	370	53.6%	463	161	56.1%
No health insurance coverage	512	188	7.9%	3	10	0.4%
65 years and over:	860	148	13.2%	203	77	24.6%
With health insurance coverage	848	149	13.0%	203	77	24.6%
No health insurance coverage	12	18	0.2%	0	17	0.0%

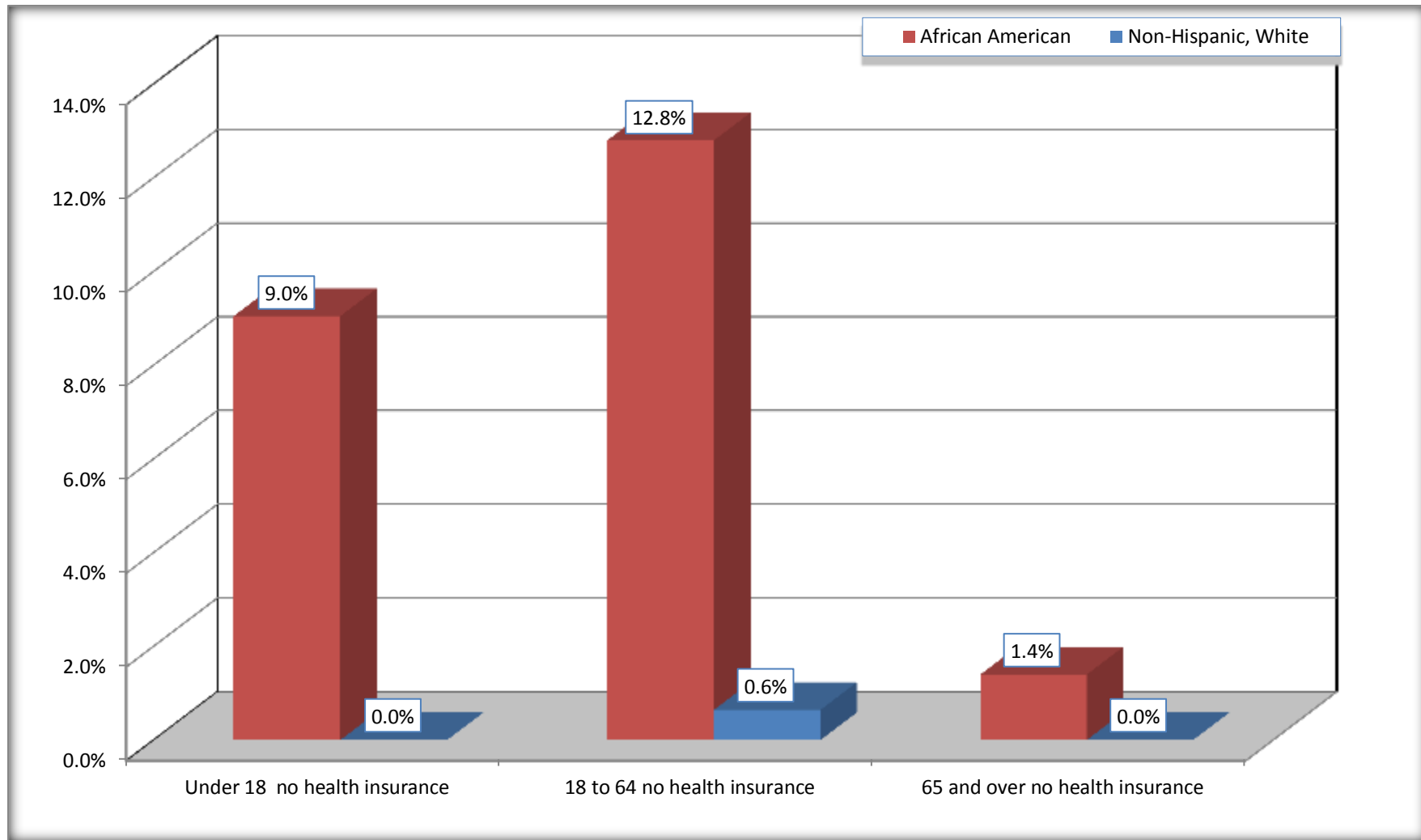
Source: U.S. Census Bureau, 2008-2012 American Community Survey

For information on confidentiality protection, sampling error, nonsampling error, and definitions, see Survey Methodology.

<http://www.census.gov/acs/www/UseData/index.htm>

Lack of Health Insurance Coverage by Age

Lanham CDP, Maryland



Source: C27001B. HEALTH INSURANCE COVERAGE STATUS BY AGE
Data Set: 2008-2012 American Community Survey 5-Year Estimates